



# Cattle on Feed

ISSN: 1948-9080

---

Released November 17, 2017, by the National Agricultural Statistics Service (NASS), Agricultural Statistics Board, United States Department of Agriculture (USDA).

## United States Cattle on Feed Up 6 Percent

**Cattle and calves on feed** for the slaughter market in the United States for feedlots with capacity of 1,000 or more head totaled 11.3 million head on November 1, 2017. The inventory was 6 percent above November 1, 2016.

**Placements** in feedlots during October totaled 2.39 million head, 10 percent above 2016. Net placements were 2.32 million head. During October, placements of cattle and calves weighing less than 600 pounds were 675,000 head, 600-699 pounds were 590,000 head, 700-799 pounds were 510,000 head, 800-899 pounds were 368,000 head, 900-999 pounds were 160,000 head, and 1,000 pounds and greater were 90,000 head.

**Marketings** of fed cattle during October totaled 1.80 million head, 6 percent above 2016.

**Other disappearance** totaled 73,000 head during October, 28 percent above 2016.

**Number of Cattle on Feed, Placements, Marketings, and Other Disappearance on 1,000+ Capacity Feedlots – United States: November 1, 2016 and 2017**

Item	Number		Percent of previous year
	2016	2017	
	(1,000 head)	(1,000 head)	(percent)
On feed October 1 .....	10,256	10,813	105
Placed on feed during October .....	2,171	2,393	110
Fed cattle marketed during October .....	1,705	1,801	106
Other disappearance during October .....	57	73	128
On feed November 1 .....	10,665	11,332	106

**Number of Cattle on Feed, Placements, Marketings, and Other Disappearance on 1,000+ Capacity Feedlots – United States: October 1, 2016 and 2017**

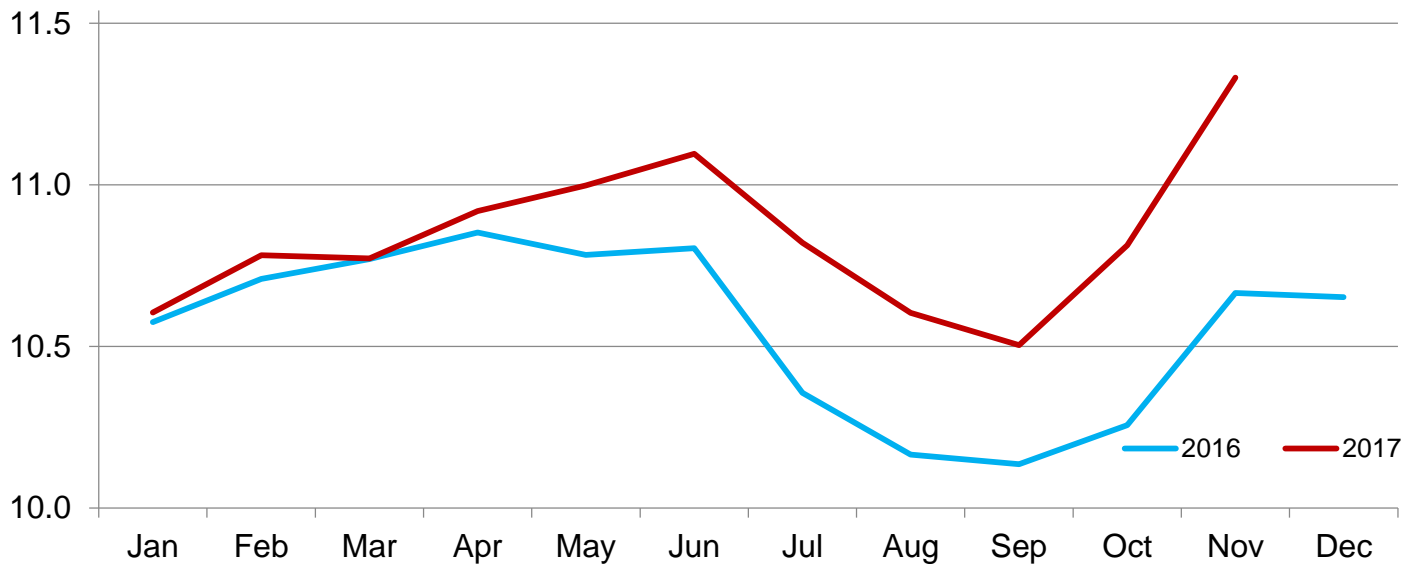
Item	Number		Percent of previous year
	2016	2017	
	(1,000 head)	(1,000 head)	(percent)
On feed September 1 .....	10,135	10,504	104
Placed on feed during September .....	1,895	2,150	113
Fed cattle marketed during September .....	1,732	1,783	103
Other disappearance during September .....	42	58	138
On feed October 1 .....	10,256	10,813	105

**Number of Cattle on Feed on 1,000+ Capacity Feedlots by Month – States and United States: 2016 and 2017**

State	November 1, 2016	October 1, 2017	November 1, 2017		
			Number	Percent of previous year	Percent of previous month
	(1,000 head)	(1,000 head)	(1,000 head)	(percent)	(percent)
Arizona .....	253	248	252	100	102
California .....	420	430	440	105	102
Colorado .....	910	940	980	108	104
Idaho .....	250	245	255	102	104
Iowa .....	600	650	690	115	106
Kansas .....	2,240	2,250	2,290	102	102
Minnesota .....	142	120	150	106	125
Nebraska .....	2,320	2,290	2,520	109	110
Oklahoma .....	295	320	320	108	100
South Dakota .....	240	220	260	108	118
Texas .....	2,490	2,600	2,640	106	102
Washington .....	195	200	210	108	105
Other States .....	310	300	325	105	108
United States .....	10,665	10,813	11,332	106	105

**Cattle on Feed Inventory on 1,000+ Capacity Feedlots – United States**

Million head

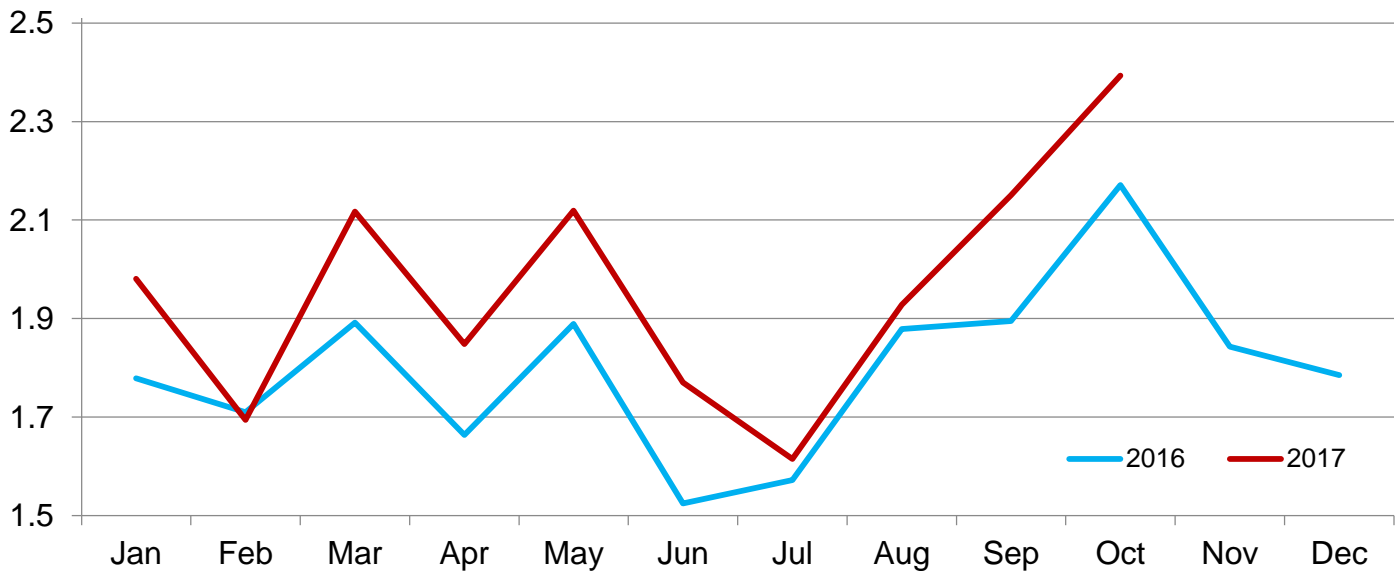


**Number of Cattle Placed on Feed on 1,000+ Capacity Feedlots by Month – States and United States: 2016 and 2017**

State	During October 2016 (1,000 head)	During September 2017 (1,000 head)	During October 2017		
			Number (1,000 head)	Percent of previous year (percent)	Percent of previous month (percent)
Arizona .....	14	20	25	179	125
California .....	46	56	63	137	113
Colorado .....	205	250	195	95	78
Idaho .....	50	55	58	116	105
Iowa .....	129	106	142	110	134
Kansas .....	390	435	430	110	99
Minnesota .....	39	26	43	110	165
Nebraska .....	615	570	680	111	119
Oklahoma .....	63	63	59	94	94
South Dakota .....	71	48	87	123	181
Texas .....	445	440	505	113	115
Washington .....	50	34	50	100	147
Other States .....	54	47	56	104	119
United States .....	2,171	2,150	2,393	110	111

**Number of Cattle Placed on 1,000+ Capacity Feedlots – United States**

Million head



**Number of Cattle Placed on Feed by Weight Group on 1,000+ Capacity Feedlots by Month – States and United States: 2016 and 2017**

State	During October 2016							
	Under 600 lbs	600-699 lbs	700-799 lbs	800-899 lbs	900+ lbs <sup>1</sup>	900-999 lbs	1,000+ lbs	Total
	(1,000 head)	(1,000 head)	(1,000 head)	(1,000 head)	(1,000 head)	(1,000 head)	(1,000 head)	(1,000 head)
Colorado .....	55	45	35	40	30	(D)	(D)	205
Kansas .....	65	95	115	80	35	(D)	(D)	390
Nebraska .....	200	145	95	90	85	(D)	(D)	615
Texas .....	105	115	145	65	15	(D)	(D)	445
Other States ...	185	125	81	70	55	(D)	(D)	516
United States ..	610	525	471	345	(X)	145	75	2,171
State	During September 2017							
	Under 600 lbs	600-699 lbs	700-799 lbs	800-899 lbs	900+ lbs <sup>1</sup>	900-999 lbs	1,000+ lbs	Total
	(1,000 head)	(1,000 head)	(1,000 head)	(1,000 head)	(1,000 head)	(1,000 head)	(1,000 head)	(1,000 head)
Colorado .....	30	25	50	75	70	(D)	(D)	250
Kansas .....	60	90	130	105	50	(D)	(D)	435
Nebraska .....	55	60	110	160	185	(D)	(D)	570
Texas .....	140	110	120	60	10	(D)	(D)	440
Other States ...	120	55	80	115	85	(D)	(D)	455
United States ..	405	340	490	515	(X)	285	115	2,150
State	During October 2017							
	Under 600 lbs	600-699 lbs	700-799 lbs	800-899 lbs	900+ lbs <sup>1</sup>	900-999 lbs	1,000+ lbs	Total
	(1,000 head)	(1,000 head)	(1,000 head)	(1,000 head)	(1,000 head)	(1,000 head)	(1,000 head)	(1,000 head)
Colorado .....	55	40	35	35	30	(D)	(D)	195
Kansas .....	70	95	130	90	45	(D)	(D)	430
Nebraska .....	190	175	110	100	105	(D)	(D)	680
Texas .....	140	135	145	70	15	(D)	(D)	505
Other States ...	220	145	90	73	55	(D)	(D)	583
United States ..	675	590	510	368	(X)	160	90	2,393

(D) Withheld to avoid disclosing data for individual operations.

(X) Not applicable.

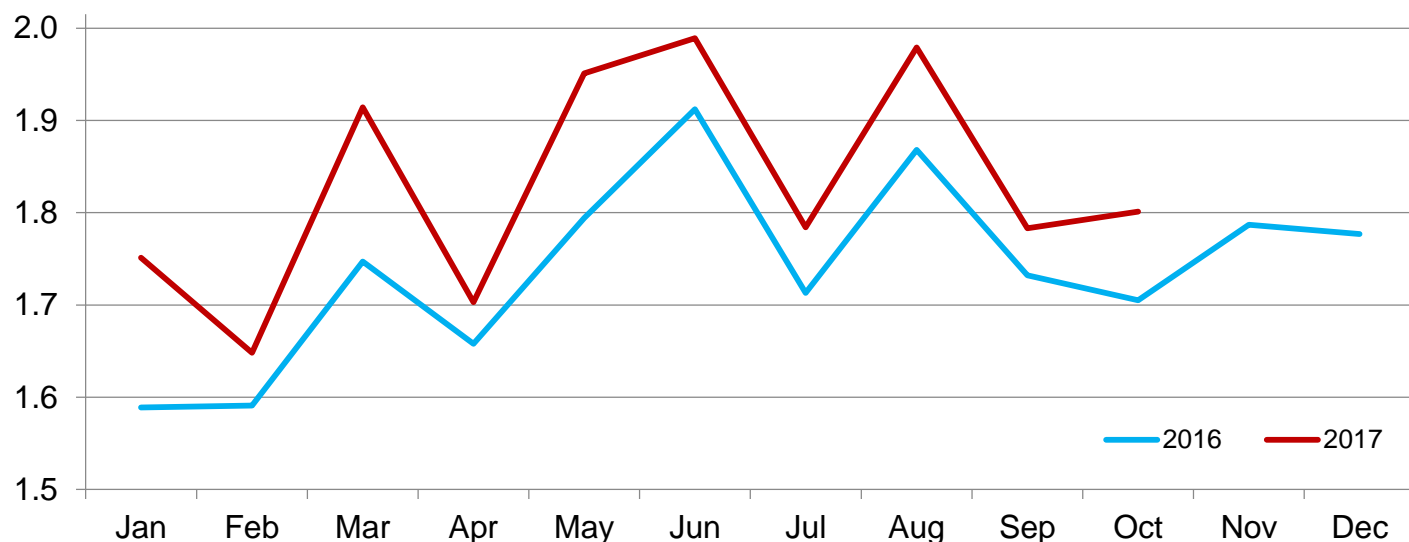
<sup>1</sup> The 900 pounds and greater weight group is the sum of 900-999 pounds and 1,000 pounds and greater weight groups.

**Number of Cattle Marketed on 1,000+ Capacity Feedlots by Month – States and United States: 2016 and 2017**

State	During October 2016	During September 2017	During October 2017		
			Number	Percent of previous year	Percent of previous month
			(1,000 head)	(percent)	(percent)
Arizona .....	23	15	20	87	133
California .....	39	44	49	126	111
Colorado .....	140	165	150	107	91
Idaho .....	39	48	46	118	96
Iowa .....	96	95	99	103	104
Kansas .....	350	390	375	107	96
Minnesota .....	14	25	12	86	48
Nebraska .....	445	420	435	98	104
Oklahoma .....	57	56	57	100	102
South Dakota .....	40	42	45	113	107
Texas .....	395	415	445	113	107
Washington .....	39	33	38	97	115
Other States .....	28	35	30	107	86
United States .....	1,705	1,783	1,801	106	101

## Number of Cattle Marketed on 1,000+ Capacity Feedlots – United States

Million head



### Other Disappearance on 1,000+ Capacity Feedlots by Month – States and United States: 2016 and 2017

State	During October 2016 (1,000 head)	During September 2017 (1,000 head)	During October 2017		
			Number (1,000 head)	Percent of previous year (percent)	Percent of previous month (percent)
Arizona .....	1	1	1	100	100
California .....	2	2	4	200	200
Colorado .....	5	5	5	100	100
Idaho .....	1	2	2	200	100
Iowa .....	3	1	3	100	300
Kansas .....	20	15	15	75	100
Minnesota .....	1	1	1	100	100
Nebraska .....	10	10	15	150	150
Oklahoma .....	1	2	2	200	100
South Dakota .....	1	1	2	200	200
Texas .....	10	15	20	200	133
Washington .....	1	1	2	200	200
Other States .....	1	2	1	100	50
United States .....	57	58	73	128	126

## Terms and Definitions of Cattle on Feed Estimates

**Cattle on feed** are steers and heifers being fed a ration of grain, silage, hay and/or protein supplement for slaughter market that are expected to produce a carcass that will grade select or better. It excludes cattle being "backgrounded only" for later sale as feeders or later placement in another feedlot.

**Placements** are steers and heifers put into a feedlot, fed a ration which will produce a carcass that will grade select or better, and are intended for the slaughter market.

**Marketings** are steers and heifers shipped out of feedlots to a slaughter market.

**Other disappearance** includes death loss, movement from feedlots to pasture, and shipments to other feedlots for further feeding.

## Statistical Methodology

**Survey Procedures:** During January and July all known feedlots in the United States with capacity of 1,000 or more head are surveyed to provide data for cattle on feed estimates. During the other months, all known feedlots from 16 States are surveyed. The 16 States account for approximately 98 percent of the cattle on feed in feedlots with capacity of 1,000 or more head. Individual State estimates are published monthly for 12 of the 16 States. Data collected from the remaining 4 States are used to establish the "Other States" estimates. These 4 States include Illinois, New Mexico, Oregon, and Wyoming. The "Other States" category represents all cattle on feed with a capacity of 1,000 or more head for the rest of the United States.

**Estimating Procedures:** These cattle on feed estimates were prepared by the Agricultural Statistics Board after reviewing recommendations and analysis submitted by Regional Field Offices. Regional and State survey data were reviewed for reasonableness with each other and with estimates from the previous month when establishing the current estimates.

**Revision Policy:** Revisions to previous estimates are made to improve month to month relationships. Estimates for the previous month are subject to revision in all States each month when current estimates are made. In February, all monthly estimates for the previous year, and the number of feedlots and annual marketings from two years ago are reviewed and subject to revisions. The reviews are primarily based on slaughter data, state check-off or brand data, and any other data that may have been received after the original estimate was made. Estimates will also be reviewed after data from the *Census of Agriculture* are available. No revisions will be made after that date and estimates become final.

**Reliability:** Since all 1,000+ capacity cattle on feed operators in every State are not included in the monthly survey, survey estimates are subject to sampling variability. Survey results are also subject to non-sampling errors such as omissions, duplications, and mistakes in reporting, recording, and processing the data. The effects of these errors cannot be measured directly. They are minimized through rigid quality controls in the data collection process and through a careful review of all reported data for consistency and reasonableness.

To assist users in evaluating the reliability of estimates in this report, the "**Root Mean Square Error**" is shown for selected items in the table on the following page. The "Root Mean Square Error" is a statistical measure based on past performance and is computed using the differences between first and latest estimates. The "Root Mean Square Error" for cattle on feed inventory estimates over the past 24 months is 0.0 percent. This means that chances are 2 out of 3 that the final estimate will not be above or below the current estimate of 11.3 million head by more than 0.0 percent. Chances are 9 out of 10 that the difference will not exceed 0.1 percent.

The table on the following page shows a 24 month record of the range of differences between first and latest estimates for selected items. Using estimates of number on feed as an example, changes between the first estimate and the latest estimate during the past 24 months have averaged 2,000 head, ranging from 0 to 15,000 head. During this period the initial estimate has been above the latest estimate 1 time and has been below the latest estimate 5 times. This does not imply that the initial estimate is likely to understate or overstate final inventory.

## Reliability of Monthly Cattle on Feed Estimates

[Based on data for the past 24 months]

Item	Root mean square error	90 percent confidence level	Difference between first and latest estimate				
			Average	Smallest	Largest	Months	
						Below latest	Above latest
	(percent)	(percent)	(1,000)	(1,000)	(1,000)	(number)	(number)
Number on feed .....	0.0	0.1	2	0	15	5	1
Placements .....	0.2	0.4	2	0	15	5	2
Marketings .....	0.1	0.2	0	0	10	0	1

## Information Contacts

Listed below are the commodity specialists in the Livestock Branch of the National Agricultural Statistics Service to contact for additional information. E-mail inquiries may be sent to [nass@nass.usda.gov](mailto:nass@nass.usda.gov).

Travis Averill, Chief, Livestock Branch .....	(202) 720-3570
Scott Hollis, Head, Livestock Section .....	(202) 690-2424
Sherry Bertramsen – Livestock Slaughter .....	(202) 720-3240
Donnie Fike – Dairy Products .....	(202) 690-3236
Heidi Gleich – Cattle, Cattle on Feed .....	(202) 720-3040
Mike Miller – Milk Production and Milk Cows .....	(202) 720-3278
Seth Riggins – Hogs and Pigs .....	(202) 720-3106
Vacant – Sheep and Goats .....	(202) 720-8784



## Access to NASS Reports

For your convenience, you may access NASS reports and products the following ways:

- All reports are available electronically, at no cost, on the NASS web site: [www.nass.usda.gov](http://www.nass.usda.gov)
- Both national and state specific reports are available via a free e-mail subscription. To set-up this free subscription, visit [www.nass.usda.gov](http://www.nass.usda.gov) and click on “National” or “State” in upper right corner above “search” box to create an account and select the reports you would like to receive.

For more information on NASS surveys and reports, call the NASS Agricultural Statistics Hotline at (800) 727-9540, 7:30 a.m. to 4:00 p.m. ET, or e-mail: [nass@nass.usda.gov](mailto:nass@nass.usda.gov).

The U.S. Department of Agriculture (USDA) prohibits discrimination against its customers, employees, and applicants for employment on the basis of race, color, national origin, age, disability, sex, gender identity, religion, reprisal, and where applicable, political beliefs, marital status, familial or parental status, sexual orientation, or all or part of an individual's income is derived from any public assistance program, or protected genetic information in employment or in any program or activity conducted or funded by the Department. (Not all prohibited bases will apply to all programs and/or employment activities.)

If you wish to file a Civil Rights program complaint of discrimination, complete the [USDA Program Discrimination Complaint Form](#) (PDF), found online at [http://www.ascr.usda.gov/complaint\\_filing\\_cust.html](http://www.ascr.usda.gov/complaint_filing_cust.html), or at any USDA office, or call (866) 632-9992 to request the form. You may also write a letter containing all of the information requested in the form. Send your completed complaint form or letter to us by mail at U.S. Department of Agriculture, Director, Office of Adjudication, 1400 Independence Avenue, S.W., Washington, D.C. 20250-9410, by fax (202) 690-7442 or email at [program.intake@usda.gov](mailto:program.intake@usda.gov).



United States Department of Agriculture

# USDA's 94th Annual Agricultural Outlook Forum



# THE ROOTS OF PROSPERITY

February 22-23, 2018  
Crystal Gateway Marriott Hotel  
Arlington, Virginia

[www.usda.gov/oce/forum](http://www.usda.gov/oce/forum)