



United States  
Department  
of Agriculture

CWS-07h

Sept. 13, 2007



A Report from the Economic Research Service

www.ers.usda.gov

# Cotton and Wool Outlook

Leslie Meyer, Stephen MacDonald, and Robert Skinner

## World Cotton Ending Stocks Decline in 2007/08

### Contents

[Domestic Outlook](#)  
[Intl. Outlook](#)  
[Contacts & Links](#)

### Tables

[U.S. Supply & Use](#)  
[World Supply & Use](#)  
[Fiber Supply](#)  
[Fiber Consumption](#)  
[Fiber Exports](#)  
[Fiber Prices](#)  
[Textile Imports](#)  
[Textile Exports](#)  
[Country Imports](#)  
[Country Exports](#)  
[U.S. Cotton Acreage](#)

### Web Sites

[WASDE](#)  
[Briefing Room](#)

-----  
The next release is  
October 15, 2007  
-----

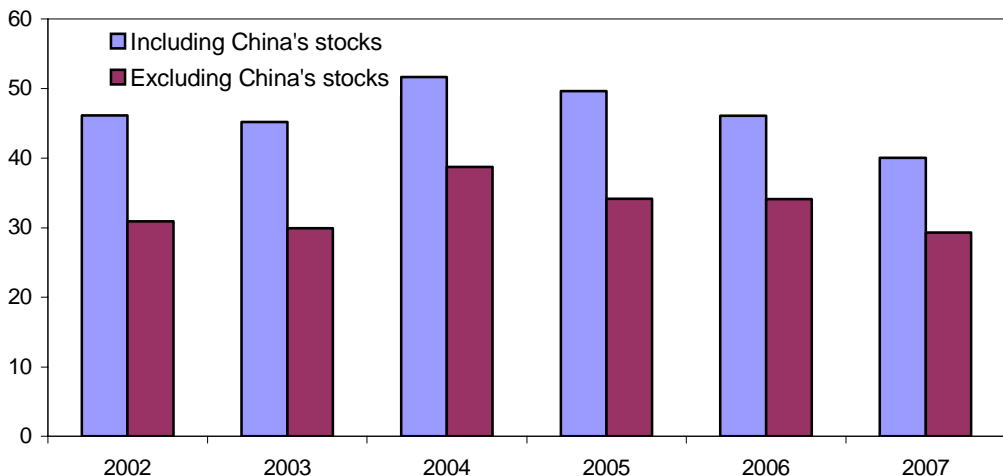
Approved by the  
World Agricultural  
Outlook Board

The latest U.S. Department of Agriculture (USDA) cotton projections for 2007/08 indicate that the global cotton ending stocks ratio compared with use is expected to decline about 6 percentage points, from 2006/07's 46 percent to 2007/08's 40 percent. If China's stocks are excluded from the world total, the decline is about 4 percentage points, from 34 percent to 30 percent. For 2007/08, USDA is forecasting the lowest level of stocks relative to use in at least a decade.

The decline in the 2007/08 global ending stocks-to-use ratio is in large part attributable to the United States. U.S. ending stocks rose sharply in 2006/07, giving the United States its largest global share of stocks since the mid- to late-1980s. Two-thirds of 2007/08's global 5.2-million-bale decline in stocks is expected to occur in the United States.

Figure 1

**World cotton ending stocks to use ratio <sup>1</sup>**  
Percent



Source: World Agricultural Outlook Board, WASDE-450.

<sup>1</sup> On a global basis, mill consumption is the sole component of use.

## Domestic Outlook

### 2007/08 Production Forecast Higher in September

According to USDA's September forecast of the 2007 cotton crop, U.S. production is projected at 17.8 million bales, about 500,000 bales above the August forecast but 17.5 percent below last season's crop. U.S. crop conditions have remained relatively stable this season, averaging slightly below the 5-year average. Upland production is projected at 17 million bales, 3.8 million below 2006, while the extra-long staple (ELS) crop is expected to reach 793,000 bales, nearly 4 percent above last season.

During the previous 20 years, the September forecast has been above final cotton production 7 times and below 13 times. Past differences between the September forecast and the final production estimate indicate that chances are two out of three that the 2007 U.S. cotton crop will range between 16.6 and 19.0 million bales.

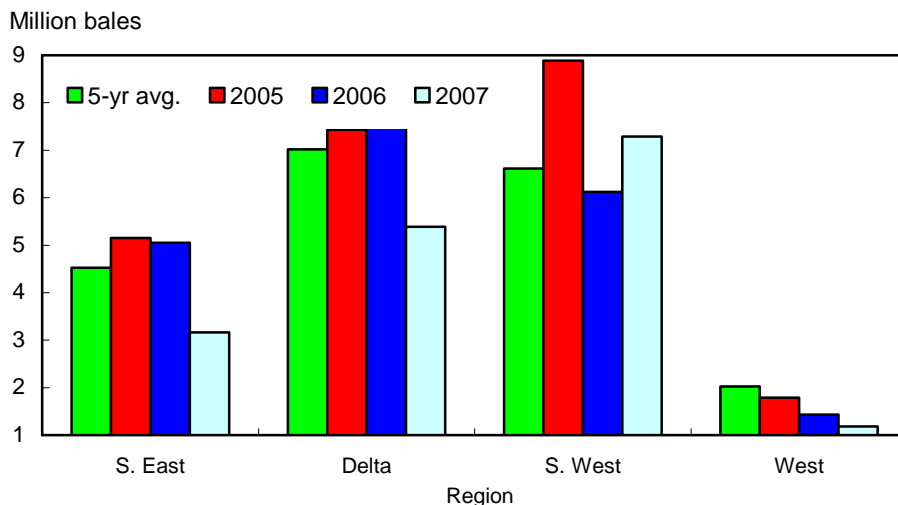
Compared with last season, upland production is expected to be lower in three of the Cotton Belt regions. Only the Southwest region is forecast to produce a larger crop in 2007 than in 2006. Southwest production is projected at nearly 7.3 million bales, 19 percent above last season but 22 percent below the 2005 crop of nearly 8.9 million bales.

In the Delta, cotton production is estimated at about 5.4 million bales, the lowest since 2000/01 as cotton area declined this season. Alternative crop plantings this spring forced cotton area to its lowest since 1986/87. Similarly for the Southeast, cotton area was reduced this season to its lowest since 1994/95, while production is estimated at about 3.2 million bales, the lowest since 1993/94.

In the West, upland area continues to decline as acreage moves into ELS or tree crops. Upland production in the region is forecast at nearly 1.2 million bales, the

Figure 2

#### U.S. regional upland cotton production



Source: *Crop Production* reports, NASS, USDA.

least since 1946/47. In contrast, ELS production is dominated by the region and California in particular. The total ELS crop is forecast at a record, with California accounting for 93 percent of the total. The national ELS yield is estimated at 1,317 pounds per harvested acre.

Total area planted to cotton is estimated at nearly 10.85 million acres, with harvested acreage estimated at 10.5 million acres, both the lowest since 1989/90. The implied abandonment is estimated at a historically low 3 percent, well below last season but similar to the 2005 crop. The national yield is currently projected at 811 pounds per harvested acre, slightly below last season and the lowest in 4 years.

### ***Demand Estimates Unchanged for 2007/08 and 2006/07***

Total demand for 2007/08 remains estimated at 21.3 million bales—16.7 million for exports and 4.6 million for domestic use. At this level, U.S. cotton demand would be the second highest on record, following 2005/06's 23.9 million bales. With 2007/08 demand estimates unchanged in September, the increase in U.S. production was placed in inventories, and ending stocks are now forecast at 6.2 million bales, a stocks-to-use ratio of 29 percent. Demand estimates for 2006/07 were unchanged this month also, awaiting the final end of season Census data, which is expected to be published later this month. Demand for 2006/07 is estimated at 18 million bales, with ending stocks forecast at 9.7 million bales. The implied stocks-to-use ratio is a relatively large 54 percent, the highest since 1985/86.

### ***U.S. Textile Trade Higher***

U.S. textile imports rose during June 2007, to 1.7 billion (raw-fiber equivalent) pounds, 11 percent above May but 5 percent below June 2006. Imports of cotton, wool, and manmade fiber textiles increased in June compared with a month earlier. Imports of all major end-use categories increased in June with apparel imports, at 1.1 billion pounds, accounting for most of the increase. Cotton imports, at 981 million pounds, accounted for 57 percent of the total. Imports of cotton rose 10 percent from May but were 6 percent below a year ago. Imports from Asia accounted for 70 percent of the June total, while shipments from other North American countries provided another 22 percent.

U.S. textile exports in June, at 363 million pounds, were slightly above a month earlier but 14 percent below June 2006. Exports of manmade fibers and wool textiles rose slightly, while shipments of cotton, linen, and silk declined from May. For major end-use categories, increased shipments of yarn, thread, and fabric and floor coverings more than offset lower shipments of apparel and home furnishings. Cotton textile exports, at 179 million pounds, were 1 percent below the previous month and accounted for 49 percent of all textile shipments. U.S. cotton textile exports, for the most part, are sent to other North American countries, and 91 percent of the shipments were sent to this region in June.

Overall, the U.S. textile trade deficit for the first half of 2007 reached 7.1 billion pounds, 6 percent higher than in the first half of 2006. The cotton textile trade deficit, at 4.2 billion pounds, rose 5 percent above January-June 2006. However, cotton's share of the total trade deficit was 59 percent, the same share as during the first 6 months of 2006.

# International Outlook

## World Economic Growth Sustains Cotton Consumption Gains

World cotton consumption prospects remain strong in 2007/08. Despite recent volatility in world credit markets, the outlook for above-average global income growth remains good. Furthermore, although cotton production is falling in 2007/08, cotton supplies are expected to remain plentiful, and while cotton prices have risen in recent months, polyester prices have also risen.

World cotton production in 2007/08 is forecast about 2 million bales lower than in 2006/07, at 117 million bales. Beginning stocks in 2007/08 are estimated 1 million bales lower than in 2006/07, but the volume of global cotton from unaccounted sources is forecast to be about 1 million bales higher. The volume of cotton available in 2007/08 is therefore forecast at 179 million bales, its second highest ever, and only 1.7 million bales lower than in 2006/07.<sup>1</sup>

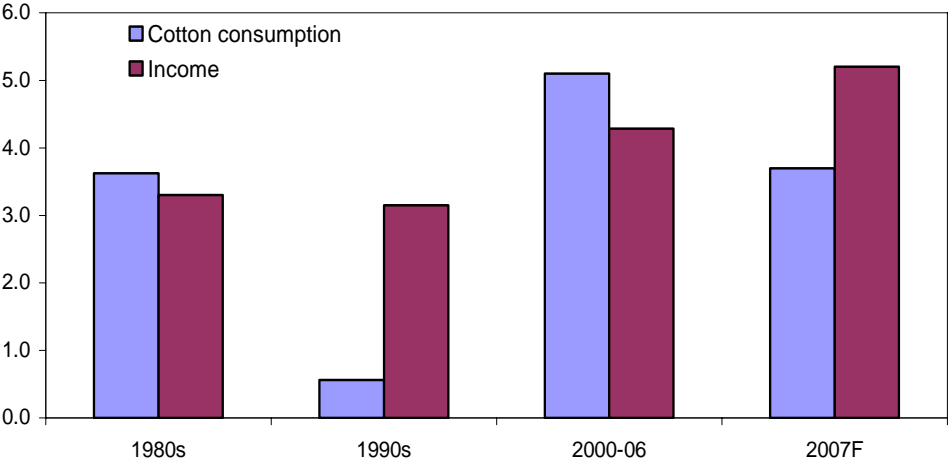
World cotton consumption in 2007/08 is expected to increase 4 percent from the year before, to 128 million bales. World cotton consumption's annual growth rate averaged over 5 percent during 1996-2006. This is more than double its longrun growth rate of 1.8 percent. Favorable prices relative to polyester account for some of this strength, but a prolonged period of above-average income growth is an important factor. During the 1980s, world gross domestic product (GDP) growth averaged 3.3 percent annually, and during the 1990s it averaged 3.2 percent.<sup>2</sup> However, since 2000, the world economy has grown 4.3 percent each year on average. The lowest annual rate reported by the International Monetary Fund (IMF) since 2004 has been 4.9 percent. For 2007 and 2008, the IMF forecast growth of 5.2 percent in its July 2007 update to its *World Economic Outlook*.<sup>3</sup> While some GDP forecasts for the United States have been scaled back in recent months, the likely impact of credit volatility on total global economic activity has been less certain.

<sup>1</sup>World ending stocks are expected to fall 5.2 million bales to 51.6 million. This would be the lowest ending stocks since 2003/04.

<sup>2</sup>These averages are based on purchasing-power-parity-adjusted GDP estimates.

<sup>3</sup>For highlights of the IMF's July 25 update, see: <http://www.imf.org/external/np/tr/2007/tr070725.htm>

Figure 3  
**World cotton consumption and income growth rates, 1980-2007**  
Percent



Source: World Agricultural Outlook Board, WASDE-450, and International Monetary Fund, World Economic Outlook database, April 2007, and July 2007 forecast.

## Contacts and Links

### Contact Information

Leslie Meyer (U.S. cotton and textiles), (202) 694-5307, [lmeyer@ers.usda.gov](mailto:lmeyer@ers.usda.gov)  
Stephen MacDonald (foreign cotton), (202) 694-5305, [stephenm@ers.usda.gov](mailto:stephenm@ers.usda.gov)  
Robert Skinner (textiles and wool), (202) 694-5313, [rskinner@ers.usda.gov](mailto:rskinner@ers.usda.gov)

### Subscription Information

Subscribe to ERS e-mail notification service at <http://www.ers.usda.gov/updates/> to receive timely notification of newsletter availability. Printed copies can be purchased from the USDA Order Desk by calling 1-800-999-6779 (specify the issue number). To order printed copies of the five field crop newsletters—cotton and wool, feed, rice, oil crops, and wheat—as a series, specify series SUB-COR-4043.

### Data

Monthly tables from *Cotton and Wool Outlook* are available in Excel (.xls) spreadsheets at <http://www.ers.usda.gov/briefing/cotton/data.htm>. These tables contain the latest data on the production, use, imports, exports, prices, and textile trade of cotton and other fibers

### Related Websites

WASDE

<http://usda.mannlib.cornell.edu/MannUsda/viewDocumentInfo.do?documentID=1194>

Cotton Briefing Room

<http://www.ers.usda.gov/briefing/cotton/>

### E-mail Notification

Readers of ERS outlook reports have two ways they can receive an e-mail notice about release of reports and associated data.

- Receive timely notification (soon after the report is posted on the web) via USDA's Economics, Statistics and Market Information System (which is housed at Cornell University's Mann Library). Go to <http://usda.mannlib.cornell.edu/MannUsda/aboutEmailService.do> and follow the instructions to receive e-mail notices about ERS, Agricultural Marketing Service, National Agricultural Statistics Service, and World Agricultural Outlook Board products.
- Receive weekly notification (on Friday afternoon) via the ERS website. Go to <http://www.ers.usda.gov/Updates/> and follow the instructions to receive notices about ERS outlook reports, Amber Waves magazine, and other reports and data products on specific topics. ERS also offers RSS (really simple syndication) feeds for all ERS products. Go to <http://www.ers.usda.gov/rss/> to get started.

The U.S. Department of Agriculture (USDA) prohibits discrimination in all its programs and activities on the basis of race, color, national origin, sex, religion, age, disability, political beliefs, sexual orientation, or marital or family status. (Not all prohibited bases apply to all programs.) Persons with disabilities who require alternative means for communication of program information (Braille, large print, audiotape, etc.) should contact USDA's TARGET Center at (202) 720-2600 (voice and TDD).

To file a complaint of discrimination, write USDA, Director, Office of Civil Rights, Room 326-W, Whitten Building, 14th and Independence Avenue, SW, Washington, DC 20250-9410 or call (202) 720-5964 (voice and TDD). USDA is an equal opportunity provider and employer.

Table 1--U.S. cotton supply and use estimates

Item	2006/07	2007/08		
		July	Aug.	Sep.
<i>Million acres</i>				
Upland:				
Planted	14.948	10.760	10.760	10.554
Harvested	12.408	10.208	10.343	10.254
<i>Pounds</i>				
Yield/harvested acre	806	787	767	797
<i>Million 480-lb. bales</i>				
Beginning stocks	5.981	9.679	9.576	9.576
Production	20.823	16.735	16.537	17.019
Total supply 1/	26.812	26.424	26.123	26.605
Mill use	4.910	4.360	4.560	4.560
Exports	12.328	16.250	15.900	15.900
Total use	17.238	20.610	20.460	20.460
Ending stocks 2/	9.576	5.804	5.707	6.123
<i>Percent</i>				
Stocks-to-use ratio	55.6	28.2	27.9	29.9
<i>1,000 acres</i>				
Extra-long staple:				
Planted	326	298	298	293
Harvested	324	292	293	289
<i>Pounds</i>				
Yield/harvested acre	1,136	1,258	1,325	1,317
<i>1,000 480-lb. bales</i>				
Beginning stocks	69	121	124	124
Production	765	765	809	793
Total supply 1/	846	896	943	927
Mill use	40	40	40	40
Exports	672	750	800	800
Total use	712	790	840	840
Ending stocks 2/	124	96	93	77
<i>Percent</i>				
Stocks-to-use ratio	17.4	12.2	11.1	9.2

1/ Includes imports. 2/ Includes unaccounted.

Last update: 09/13/07.

Sources: USDA, World Agricultural Outlook Board and USDC, U.S. Census Bureau.

Table 2--World cotton supply and use estimates

Item	2006/07	2007/08		
		July	Aug.	Sep.
<i>Million 480-lb. bales</i>				
Supply:				
Beginning stocks--				
World	57.75	57.32	57.86	56.79
Foreign	51.70	47.52	48.16	47.09
Production--				
World	119.15	115.79	115.92	117.18
Foreign	97.56	98.29	98.57	99.37
Imports--				
World	36.74	41.30	41.06	40.08
Foreign	36.72	41.28	41.04	40.06
Use:				
Mill use--				
World	123.22	127.16	127.78	127.78
Foreign	118.27	122.76	123.18	123.18
Exports--				
World	37.41	40.81	40.58	39.70
Foreign	24.41	23.81	23.88	23.00
Ending stocks--				
World	56.79	50.78	51.52	51.56
Foreign	47.09	44.88	45.72	45.36
<i>Percent</i>				
Stocks-to-use ratio:				
World	46.1	39.9	40.3	40.4
Foreign	39.8	36.6	37.1	36.8

Last update: 09/13/07.

Source: USDA, World Agricultural Outlook Board.

Table 3--U.S. fiber supply

Item	2007			2006
	May	June	July	July
<i>1,000 480-lb. bales</i>				
Cotton:				
Ginnings	0	0	0	0
Imports since August 1	14.8	17.4	NA	28.2
Stocks, beginning	17,025	14,807	12,541	8,348
At mills	241	265	255	280
Public storage	14,382	11,915	9,674	7,280
CCC stocks	10,771	2,873	1,762	1,702
<i>Million pounds</i>				
Manmade:				
Production	659.1	643.4	618.7	670.6
Noncellulosic	659.1	643.4	618.7	670.6
Cellulosic	NA	NA	NA	NA
Total since January 1	3,225.6	3,869.0	4,487.7	4,787.4
<i>Million pounds</i>				
<i>1,000 pounds</i>				
Raw fiber imports:				
Noncellulosic	186.7	170.9	171.9	159.5
Cellulosic	168.3	155.0	154.5	149.4
Total since January 1	18.4	15.9	17.4	10.1
Total since January 1	664.1	835.0	1,006.9	1,023.8
<i>1,000 pounds</i>				
Wool and mohair:				
Raw wool imports, clean	1,417.0	1,356.5	1,302.7	1,592.2
48s-and-finer	500.3	462.4	931.6	956.0
Not-finer-than-46s	916.7	894.1	371.1	636.2
Total since January 1	5,193.8	6,550.3	7,853.1	8,915.7
Wool top imports	399.5	264.7	428.7	242.2
Total since January 1	1,541.5	1,806.2	2,234.9	1,703.3
Mohair imports, clean	0	0	0	0
Total since January 1	0	0	0	12.2

NA = Not available.

Last update: 09/13/07.

Sources: USDA, National Agricultural Statistics Service; USDC, U.S. Census Bureau; and *Fiber Organon*.



Table 4--U.S. cotton system fiber consumption

Item	2007			2006
	May	June	July	July
<i>1,000 480-lb. bales</i>				
Cotton:				
All consumed by mills 1/	444	418	404	414
Total since August 1 1/	4,131	48	4,953	5,871
SA annual rate 2/	4,920	63	4,969	5,416
SA daily rate 2/	18.9	19.0	19.0	20.8
Daily rate	19.3	19.9	18.4	19.7
Upland consumed by mills 1/	440	414	402	410
Total since August 1 1/	4,097	4,512	4,913	5,821
Daily rate	19.1	19.7	18.3	19.5
<i>1,000 spindles/hours</i>				
Spindles in place	1,580	1,581	1,574	1,733
Active spindles	1,469	1,468	1,456	1,602
Spindle hours (1,000)	755	967	729	795
<i>Percent</i>				
Cotton's share of fibers	84.9	86.1	86.4	85.3
<i>1,000 pounds</i>				
Manmade:				
Total consumed by mills 1/	37,925	32,388	30,496	34,274
Total since August 1 1/	353,768	386,156	416,652	538,124
Daily rate	1,649	1,542	1,386	1,632
Noncellulosic staple	1,614	1,510	1,352	1,598
Cellulosic staple	35	32	34	34

1/ Adjusted to calendar month. 2/ SA = Seasonally adjusted.

Last update: 09/13/07.

Source: USDC, U.S. Census Bureau.

Table 5--U.S. fiber exports

Item	2007			2006
	Apr.	May	June	June
<i>1,000 480-lb. bales</i>				
Cotton:				
Upland exports	1,297	1,679	1,823	1,861
Total since August 1	6,477	8,156	9,979	15,041
Sales for next season	133	157	158	98
Total since August 1	561	717	875	656
Extra-long staple exports	102.2	98.3	55.8	28.0
Total since August 1	460.7	559.0	614.8	561.9
Sales for next season	51.5	17.4	12.4	5.6
Total since August 1	110.6	128.0	140.4	45.9
<i>Million pounds</i>				
Manmade:				
Raw fiber exports	67.6	67.6	70.6	76.2
Noncellulosic	66.9	66.9	69.6	74.8
Cellulosic	0.7	0.7	1.0	1.4
Total since January 1	274.7	342.3	412.9	435.1
<i>1,000 pounds</i>				
Wool and mohair:				
Raw wool exports, clean	1,329.0	1,137.6	1,801.4	1,645.4
Total since January 1	5,810.1	6,947.7	8,749.1	8,169.7
Wool top exports	348.9	103.7	404.3	330.4
Total since January 1	1,228.1	1,331.8	1,736.1	1,801.2
Mohair exports, clean	33.4	130.4	188.0	194.0
Total since January 1	226.0	356.4	544.4	708.4

Last update: 09/13/07.

Sources: USDA, *Export Sales*; USDC, U.S. Census Bureau; and *Fiber Organon*.

Table 6--U.S. and world fiber prices

Item	2007			2006
	Jun.	Jul.	Aug.	Aug.
<i>Cents per pound</i>				
Domestic cotton prices:				
Adjusted world price	48.13	54.86	51.60	44.83
Upland spot 41-34	50.35	57.50	53.46	48.65
Pima spot 03-46	86.00	86.00	86.00	114.00
Avg. price received by upland producers	46.40	46.50	44.90	47.20
Mill delivered:				
Cotton--				
Actual	59.40	65.84	62.82	57.45
Raw-fiber equivalent	66.00	73.16	69.80	63.83
Rayon staple--				
Actual	113.00	113.00	113.00	113.00
Raw-fiber equivalent	117.71	117.71	117.71	117.71
Polyester staple--				
Actual	74.00	74.00	74.00	69.00
Raw-fiber equivalent	77.08	77.08	77.08	71.88
<i>Percent</i>				
Price ratios				
Cotton/rayon	56.1	62.1	59.3	54.2
Cotton/polyester	85.6	94.9	90.6	88.8
<i>Cents per pound</i>				
Northern Europe cotton quotes:				
A Index	63.24	69.65	67.95	60.96
Memphis Territory	61.63	68.75	67.40	65.05
California/Arizona	65.31	72.50	72.15	68.15
B Index	NQ	NQ	NQ	NQ
Orleans/Texas	57.94	65.25	49.80	58.70
<i>Dollars per pound</i>				
Wool prices (clean):				
U.S. 56s	1.23	NQ	NQ	1.00
Australian 56s 1/	2.68	2.58	2.40	2.15
U.S. 60s	2.30	2.38	NQ	1.44
Australian 60s 1/	3.42	3.40	3.24	2.48
U.S. 64s	2.95	2.85	2.70	1.65
Australian 64s 1/	3.80	3.78	3.59	2.60

NQ = No quote.

1/ In bond, Charleston, SC.

Last update: 09/13/07.

Sources: USDA, Agricultural Marketing Service; Cotton Outlook; and trade reports.

Table 7--U.S. textile imports, by fiber

Item	2007			2006
	Apr.	May	June	June
	<i>1,000 pounds 1/</i>			
Yarn, thread, and fabric	258,493	259,712	260,699	299,401
Cotton	76,762	80,345	80,287	99,094
Linen	22,952	18,251	14,894	21,095
Wool	3,548	3,990	4,035	4,035
Silk	1,378	1,457	1,265	1,588
Manmade	153,853	160,586	160,218	173,587
Apparel	851,609	957,353	1,125,623	1,187,030
Cotton	553,688	640,890	728,863	777,182
Linen	15,724	19,507	17,726	26,066
Wool	11,917	14,952	20,874	20,054
Silk	14,843	13,742	13,127	14,878
Manmade	255,437	298,234	345,033	348,851
Home furnishings	206,998	241,257	242,982	236,404
Cotton	137,616	154,159	156,188	149,330
Linen	1,085	1,241	1,038	1,189
Wool	301	319	277	438
Silk	631	739	911	1307
Manmade	67,365	85,047	84,568	84,140
Floor coverings	63,821	69,260	70,256	73,341
Cotton	8,828	9,679	9,520	10,091
Linen	14,852	14,153	13,504	14,627
Wool	12,931	14,884	13,329	16,464
Silk	1,756	1,851	1,763	1,595
Manmade	25,454	29,155	32,140	30,564
Total imports 2/	1,391,717	1,540,391	1,713,042	1,810,276
Cotton	782,688	891,499	980,973	1,043,021
Linen	55,507	54,157	48,283	63,914
Wool	28,889	34,408	38,942	41,474
Silk	18,608	17,790	17,068	19,371
Manmade	506,025	578,167	627,776	642,496

Note: Data are preliminary and subject to revisions.

1/ Raw-fiber equivalent. 2/ Includes headgear.

Last update: 09/13/07.

Sources: USDA, Economic Research Service and USDC, U.S. Census Bureau.

Table 8--U.S. textile exports, by fiber

Item	2007			2006
	Apr.	May	June	June
	<i>1,000 pounds 1/</i>			
Yarn, thread, and fabric	264,552	283,910	285,555	321,992
Cotton	141,836	155,829	155,220	165,135
Linen	7,613	8,092	7,861	9,103
Wool	4,835	4,753	5,075	7,321
Silk	2,471	2,162	2,345	2,673
Manmade	107,797	113,074	115,054	137,761
Apparel	36,463	41,150	38,875	60,433
Cotton	18,669	20,187	18,829	34,685
Linen	510	575	421	697
Wool	2,065	2,613	2,589	2,760
Silk	1,685	2,261	1,982	2,465
Manmade	13,534	15,514	115,054	19,825
Home furnishings	5,004	5,163	5,036	5,711
Cotton	2,928	2,734	2,745	3,102
Linen	167	261	185	184
Wool	64	91	73	64
Silk	74	123	61	88
Manmade	1,771	1,954	1,972	2,272
Floor coverings	29,585	31,945	32,187	34,180
Cotton	2,225	2,262	2,249	2,492
Linen	1,154	1,250	1,194	1,273
Wool	3,054	3,131	3,083	2,967
Silk	54	56	51	61
Manmade	23,098	25,246	25,610	27,388
Total exports 2/	335,882	362,627	362,943	422,566
Cotton	165,768	181,115	179,113	205,480
Linen	9,455	10,190	9,665	11,263
Wool	10,027	10,602	10,825	13,127
Silk	4,283	4,602	4,439	5,286
Manmade	146,349	156,118	158,901	187,410

Note: Data are preliminary and subject to revisions.

1/ Raw-fiber equivalent. 2/ Includes headgear.

Last update: 09/13/07.

Sources: USDA, Economic Research Service and USDC, U.S. Census Bureau.

Table 9--U.S. cotton textile imports, by country of origin

Region/country	2007			2006
	Apr.	May	June	June
	<i>1,000 pounds 1/</i>			
North America	179,678	205,009	220,197	259,237
Canada	9,278	9,842	9,742	12,322
Costa Rica	4,796	6,468	8,035	9,119
Dominican Republic	8,047	8,500	9,555	18,401
El Salvador	21,545	23,440	25,022	26,925
Guatemala	16,689	16,796	15,946	19,525
Haiti	11,356	11,161	11,917	11,088
Honduras	37,656	44,909	47,633	55,833
Jamaica	503	408	512	620
Mexico	56,292	66,919	75,698	89,466
Nicaragua	13,265	16,465	15,952	15,741
South America	15,865	14,491	15,810	21,817
Brazil	7,894	6,309	7,057	9,664
Colombia	2,847	3,145	3,552	5,727
Peru	4,534	4,567	4,726	5,829
Europe	21,250	22,782	22,419	29,934
Italy	3,023	3,268	3,540	3,453
Portugal	1,806	3,452	2,594	3,862
Russia	26	27	854	877
Turkey	10,298	8,825	8,800	13,384
Asia	522,943	601,628	690,906	697,595
Bahrain	1,597	1,485	1,294	1,996
Bangladesh	41,102	41,485	44,815	46,717
Cambodia	19,643	20,626	26,563	25,401
China	170,776	217,404	267,178	218,520
Hong Kong	10,209	13,328	19,099	30,831
India	66,155	67,325	62,328	64,987
Indonesia	26,690	28,476	30,323	34,590
Israel	2,228	2,469	2,641	2,858
Macao	6,005	10,006	11,321	12,881
Malaysia	3,826	5,925	7,075	10,554
Pakistan	73,599	89,271	97,091	112,353
Philippines	11,545	12,771	14,881	21,348
Singapore	754	693	752	999
South Korea	9,102	9,770	9,987	14,255
Sri Lanka	11,378	9,793	13,043	12,899
Taiwan	7,647	775	8,689	10,692
Thailand	15,446	7,775	16,919	19,045
United Arab Emirates	1,211	1,514	1,835	4,408
Oceania	174	218	86	427
Australia	64	108	22	347
Africa	26,513	27,448	31,555	34,011
Egypt	11,221	11,748	13,967	12,518
Lesotho	5,201	5,574	5,417	7,281
South Africa	168	261	343	534
World 2/	766,430	871,580	980,973	1,043,021

Note: Data are preliminary and subject to revisions.

1/ Raw-fiber equivalent. 2/ Totals may not add due to rounding.

Last update: 09/13/07.

Sources: USDA, Economic Research Service and USDC, U.S. Census Bureau.

Table 10--U.S. cotton textile exports, by destination country

Region/country	2007			2006
	Apr.	May	June	June
<i>1,000 pounds 1/</i>				
North America	150,770	166,300	163,395	188,229
Bahamas	392	440	161	255
Canada	13,855	14,866	15,237	24,974
Costa Rica	3,181	3,203	4,307	7,169
Dominican Republic	18,155	22,554	22,305	24,590
El Salvador	12,472	12,465	14,637	15,075
Guatemala	6,819	5,956	5,533	6,511
Haiti	891	718	875	2,350
Honduras	54,702	61,955	57,653	52,879
Jamaica	767	447	481	822
Mexico	37,710	41,778	40,267	51,639
Nicaragua	1,198	984	1,265	1,254
Panama	204	226	232	66
South America	5,056	4,630	5,025	7,458
Argentina	50	68	45	68
Brazil	434	1,464	536	342
Chile	329	158	201	208
Colombia	2,379	1,516	3,054	4,295
Ecuador	123	27	70	159
Peru	181	165	209	358
Venezuela	1,431	1,145	846	1,881
Europe	3,980	4,001	4,071	4,032
Belgium	608	484	623	453
France	242	162	168	167
Germany	770	899	775	484
Italy	244	180	192	270
Netherlands	366	361	355	367
Turkey	93	145	78	540
United Kingdom	960	1,008	1,131	992
Asia	5,198	5,358	5,378	4,898
China	1,266	998	1,036	759
Hong Kong	420	442	369	736
Israel	169	212	384	199
Japan	944	1,043	989	1,193
Malaysia	56	96	86	26
Philippines	109	283	165	97
Saudi Arabia	171	214	151	177
Singapore	216	148	383	171
South Korea	536	547	394	350
Sri Lanka	136	216	131	143
Taiwan	68	123	78	142
United Arab Emirates	193	205	246	199
Oceania	459	517	539	487
Australia	358	401	336	357
Africa	300	308	705	377
Morocco	0	2	10	6
World 2/	165,768	181,115	179,113	205,480

Note: Data are preliminary and subject to revisions.

1/ Raw-fiber equivalent. 2/ Totals may not add due to rounding.

Last update: 09/13/07.

Sources: USDA, Economic Research Service and USDC, U.S. Census Bureau.

Table 11--Cotton acreage, yield, and production estimates for 2007

State/region	Planted	Harvested	Yield	Production
	-- 1,000 acres --		<i>Pounds/ harvested acre</i>	<i>1,000 bales</i>
Upland:				
Alabama	400	390	578	470
Florida	84	82	644	110
Georgia	1,040	1,010	808	1,700
N. Carolina	500	495	611	630
S. Carolina	180	178	485	180
Virginia	60	59	586	72
Southeast	2,264	2,214	686	3,162
Arkansas	860	850	1,045	1,850
Louisiana	330	325	960	650
Mississippi	660	655	953	1,300
Missouri	390	389	925	750
Tennessee	500	495	815	840
Delta	2,740	2,714	953	5,390
Kansas	50	45	480	45
Oklahoma	175	165	698	240
Texas	4,900	4,700	715	7,000
Southwest	5,125	4,910	712	7,285
Arizona	180	178	1,375	510
California	195	194	1,410	570
New Mexico	50	44	1,113	102
West	425	416	1,364	1,182
Total Upland	10,554	10,254	797	17,019
Pima:				
Arizona	3	3	880	6
California	260	257	1,382	740
New Mexico	5	5	720	8
Texas	25	24	800	40
Total Pima	293	289	1,317	793
Total all	10,847	10,543	811	17,812

Last update: 09/13/07.

Source: Based on USDA, NASS, September 2007 *Crop Production* report.