

Cotton and Wool Outlook

Leslie Meyer

lmeyer@ers.usda.gov

Stephen MacDonald

stephenm@ers.usda.gov

James Kiawu

jkiawu@ers.usda.gov

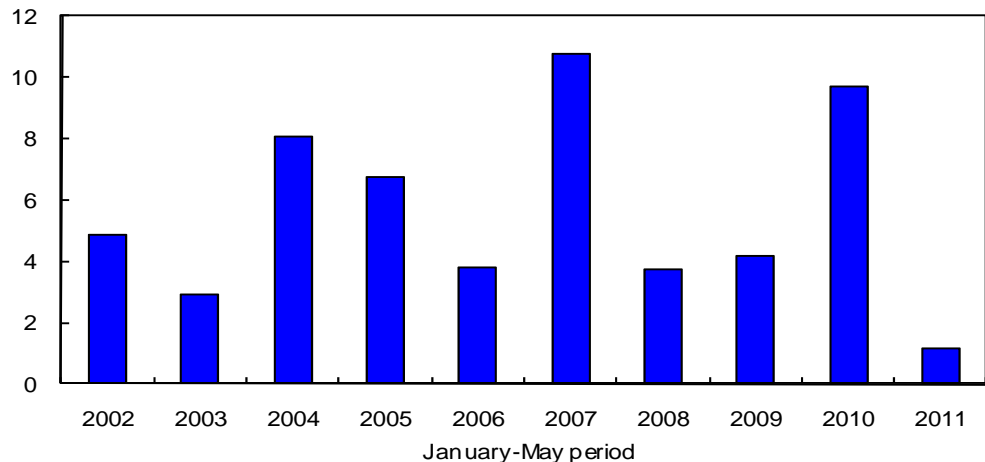
Drought Conditions Reduce 2011 U.S. Crop Potential

The latest U.S. Department of Agriculture (USDA) projections for 2011/12 forecast a decline in U.S. cotton production as drought conditions persist across much of the southern Cotton Belt in early June. The U.S. cotton crop for 2011/12 is now projected at 17 million bales, a million bales below last month's initial forecast as additional area is expected to be abandoned.

In Texas—where about half of the U.S. cotton area is located—conditions have been extraordinarily dry as the *U.S. Drought Monitor* indicates that 94 percent of the State is experiencing a “severe” drought or worse. On the High Plains of Texas—where two-thirds of the Texas cotton area is located—drought conditions are considered the most severe. Rainfall there has been limited this year with only 1.2 inches recorded through May, compared with a long-term average of 6.5 inches (fig. 1). In fact, the January-May 2011 rainfall total is the lowest since records began in 1895 and about half of the next highest amount recorded in 1996.

Figure 1
Texas High Plains precipitation

Inches of precipitation



Source: National Climatic Data Center, U.S. Department of Commerce.

Contents

- [Domestic Outlook](#)
- [Intl. Outlook](#)
- [Contacts & Links](#)

Tables

- [U.S. supply & use](#)
- [World supply & use](#)
- [Fiber supply](#)
- [Fiber consumption](#)
- [Fiber exports](#)
- [Fiber prices](#)
- [Textile imports](#)
- [Textile exports](#)
- [Country imports](#)
- [Country exports](#)

Websites

- [WASDE](#)
- [Cotton Briefing Room](#)

The next release is
July 13, 2011

Approved by the
World Agricultural
Outlook Board

Domestic Outlook

2011 U.S. Cotton Production Projection Lowered

USDA's June projection for the 2011 cotton crop was reduced from 18 million bales in May to 17 million bales due to the drought conditions which are expected to reduce harvested area, particularly in the Southwest region. In 2010, the U.S. cotton crop totaled 18.1 million bales. With U.S. abandonment projected at 19 percent for 2011, harvested acreage is currently estimated at 10.2 million acres, 500,000 acres below 2010 despite 1.6 million additional acres expected to be planted for the 2011 season.

The planting estimate—currently at 12.6 million acres—will be updated in the *Acreage* report released by USDA on June 30th. This report will include actual plantings as of early June as well as estimates for any remaining cotton to be planted. As of June 5th, 87 percent of the expected cotton area had been planted, slightly below last season but equal to the 5-year average. In addition to planting progress, 9 percent of the national crop area was squaring, slightly above last season and the 5-year average.

With the June projection, the U.S. cotton yield remains forecast at 800 pounds per harvested acre, as the reduction in production was associated with the expected loss of area to be harvested. The 2011/12 yield projection is 12 pounds below the 2010 season and 19 pounds below the 5-year average. USDA will begin “in field” production surveys in August.

Revisions to Demand and Stock Estimates

Adjustments to June's U.S. cotton demand estimates were limited to exports. For both 2010/11 and 2011/12, U.S. cotton exports were reduced 500,000 bales. The current-year adjustment was the result of continued cancellations of previous sales and includes a small allowance for rollover sales into the new crop year. The reduction for 2011/12 was the result of a smaller U.S. crop projection, which is expected to limit exportable supplies, as well as slightly lower foreign demand. U.S. exports are estimated at 15 million bales for the current season and 13 million bales for 2011/12. With U.S. exports decreasing and world trade expected to rise 10 percent in 2011/12, the U.S. share of global trade is estimated to decline from 42 percent in 2010/11 to 33 percent, a share similar to 2009/10.

As a result of the reduction in 2010/11 exports, U.S. ending stocks were increased to 2.25 million bales but are still 700,000 bales below the beginning level and the lowest since the mid-1920s; the stocks-to-use ratio is also near historic lows at 12 percent. For 2011/12, ending stocks remain projected at 2.5 million bales, up slightly from the current season. The stocks-to-use ratio rises to 15 percent but remains the second lowest since the 1995 season.

Based on the latest supply and demand estimates, the forecast for the 2011/12 U.S. average farm price is projected to range between 95 and 115 cents per pound, with the midpoint of this range a record. The comparable price for 2010/11 is estimated between 81 and 83 cents per pound, following a 62.9 cent farm price for 2009/10.

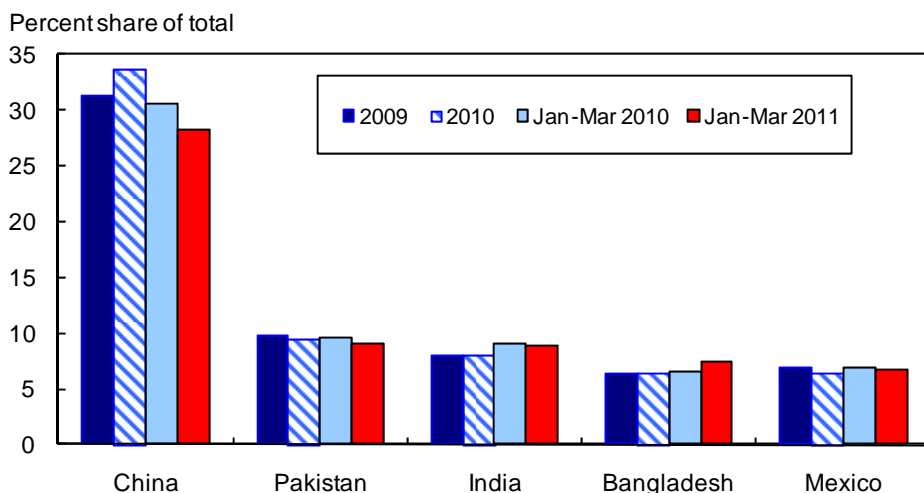
U.S. Cotton Textile Trade

U.S. cotton textile trade during the first quarter of 2011 was similar to that of a year earlier. During January-March 2011, cotton product imports approached 2.1 billion (raw-fiber equivalent) pounds, slightly below the amount imported in the corresponding period of 2010. Meanwhile, cotton textile and apparel exports for the first 3 months of 2011 were slightly above a year earlier at 468 million pounds. As a result, the cotton product trade deficit for first-quarter 2011 was 1.6 billion pounds, compared with 1.7 billion for the comparable period in 2010. Cotton products continue to account for the largest share of the total fiber product deficit.

Although 2011 U.S. cotton product imports thus far were similar to a year ago, the leading suppliers' share declined as the share from a number of other countries grew. In fact, only one of the top five countries—Bangladesh—indicated a growth in its share from a year earlier (fig. 2). During the first 3 months of 2011, Bangladesh's share of total U.S. imports rose about 1 percentage point to 7.4 percent. In contrast, the share for China—the single largest source for U.S. cotton products—declined more than 2 percentage points to 28 percent. Although the shares for the other leading suppliers were lower than a year ago, the reductions were relatively small.

U.S. cotton product exports are more concentrated than imports, but they too saw a smaller share going to the leading destinations. During January-March 2011, the top five countries accounted for 84 percent of the total, compared with 85 percent a year earlier. Honduras and Mexico—the top two destinations—accounted for about 57 percent of the total U.S. cotton product exports, down from 61 percent during the first quarter of 2010.

Figure 2
Leading suppliers of U.S. cotton textile imports



Source: Compiled by USDA from Census Bureau reports.

World Production Projected at All-Time High in 2011/12

After rebounding in 2010/11, global cotton production in 2011/12 is forecast to set a new record of 123.8 million bales, up 8.3 percent from the previous year. A strong producer response to higher market prices is expected to drive new crop projections. China, India, and Pakistan are forecast to produce 33 million bales, 27 million bales, and 10.3 million bales, up 8 percent, 13 percent, and 17 percent, respectively, from the previous year. Australia and the United States are projected to produce 4.25 million bales and 17 million bales, respectively, in 2011/12, a decline of 3 percent and 6 percent. Brazil's production is forecast to remain unchanged at 9.3 million bales in 2011/12.

Global cotton area is projected at 35.7 million hectares, up 7 percent from a year ago. India, which is forecast to expand harvested area to a record 12 million hectares, will account for 38 percent of the 2011/12 global area increase. China's cotton area is forecast at 5.5 million hectares, a 7-percent increase from a year earlier. The world yield in 2011/12 is forecast at 754 kg/ha.

Global Trade Projected to Rise Further in 2011/12

World cotton exports are forecast at 39.4 million bales, an increase of 10 percent from the preceding year and the second largest trade on record. Australia and Brazil are forecast to expand exports by 61 percent and 130 percent, to 4.5 million bales and 4.6 million bales, respectively, from a year ago. In the African Franc Zone and Uzbekistan, 2011/12 exports are forecast at 2.6 million bales and 3.2 million bales, up 25 percent and 15 percent, respectively, from the previous year. In the United States and India, 2011/12 exports are forecast to decline 13 percent and 4 percent to 13 million bales and 4.8 million bales, respectively, from a year ago.

China, the world's largest cotton importer, is projected to import 16 million bales in 2011/12, an increase of 28 percent from a year earlier and 41 percent of global trade. Bangladesh, Indonesia, and Turkey are forecast to import 4 million bales, 1.95 million bales and 3.5 million bales, up 4 percent, 8 percent, and 3 percent, respectively, from the previous year. Pakistan's 2011/12 imports are forecast at 1.3 million bales, down 13 percent from the preceding year.

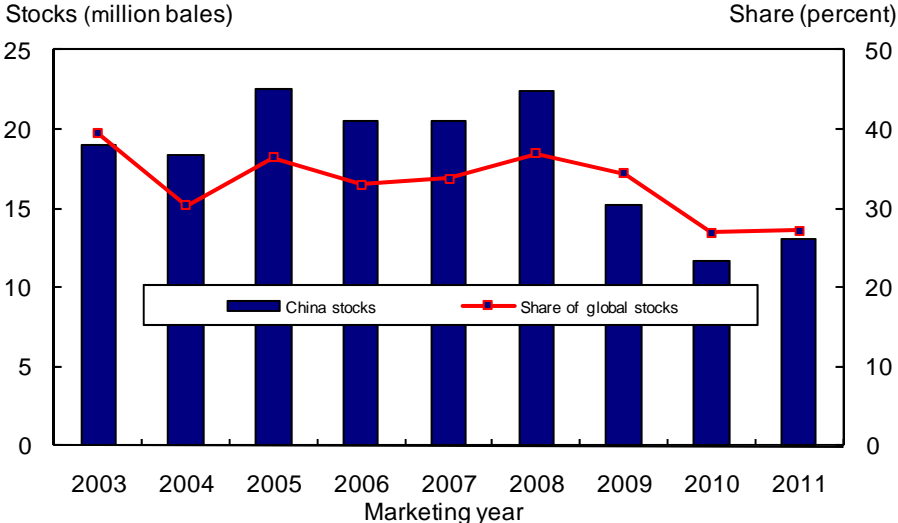
World 2011/12 Mill Use and Stocks to Rebound

Global cotton consumption in 2011/12 is forecast to rise 3 percent from a year ago to 119 million bales. China and India are projected to consume 47.5 million bales and 21.5 million bales, up 2 percent and 5 percent, respectively, from the previous year. Mill use in 2011/12 is also forecast to rise in Pakistan and Turkey by 5 percent and 3 percent, to 10.8 million bales and 6.1 million bales, respectively.

World ending stocks in 2011/12 are projected at 48.3 million bales, a 12-percent increase from the previous year. China's ending stocks in 2011/12 are projected at 13.1 million bales, up 12 percent from the preceding year and 27 percent of the projected global stocks (fig. 3). Brazil's 2011/12 ending stocks are projected at 8.4 million bales, a 4-percent increase from a year earlier and 17 percent of world ending stocks. In the United States and India, 2011/12 stocks are projected at 2.5

million bales and 6.5 million bales, up 11 percent and 18 percent, respectively, from the previous year.

Figure 3
China's stocks and share of global stocks



Source: World Agricultural Supply and Demand Estimates reports, USDA.

Contacts and Links

Contact Information

Leslie Meyer (U.S. cotton and textiles), (202) 694-5307, lmeyer@ers.usda.gov
Stephen MacDonald (foreign cotton), (202) 694-5305, stephenm@ers.usda.gov
James Kiawu (cotton trade), (202) 694-5273, jkiawu@ers.usda.gov
Erma McCray (web publishing) (202) 694-5306 ejmccray@ers.usda.gov

Subscription Information

Subscribe to ERS e-mail notification service at <http://www.ers.usda.gov/updates/> to receive timely notification of newsletter availability. Printed copies can be purchased from the USDA Order Desk by calling 1-800-363-2068 (specify the issue number). To order printed copies of the five field crop newsletters—cotton and wool, feed, rice, oil crops, and wheat—as a series, specify series SUB-COR-4043.

Data

Monthly tables from *Cotton and Wool Outlook* are available in Excel (.xls) spreadsheets at <http://www.ers.usda.gov/briefing/cotton/Data/data.htm>. These tables contain the latest data on the production, use, imports, exports, prices, and textile trade of cotton and other fibers.

Related Websites

WASDE

<http://usda.mannlib.cornell.edu/MannUsda/viewDocumentInfo.do?documentID=1194>

Cotton Briefing Room

<http://www.ers.usda.gov/briefing/cotton/>

Cotton and Wool Outlook

<http://usda.mannlib.cornell.edu/MannUsda/viewDocumentInfo.do?documentID=1281>

E-mail Notification

Readers of ERS outlook reports have two ways they can receive an e-mail notice about release of reports and associated data.

- Receive timely notification (soon after the report is posted on the web) via USDA's Economics, Statistics and Market Information System (which is housed at Cornell University's Mann Library). Go to <http://usda.mannlib.cornell.edu/MannUsda/aboutEmailService.do> and follow the instructions to receive e-mail notices about ERS, Agricultural Marketing Service, National Agricultural Statistics Service, and World Agricultural Outlook Board products.

- Receive weekly notification (on Friday afternoon) via the ERS website. Go to <http://www.ers.usda.gov/Updates/> and follow the instructions to receive notices about ERS outlook reports, Amber Waves magazine, and other reports and data products on specific topics. ERS also offers RSS (really simple syndication) feeds for all ERS products. Go to <http://www.ers.usda.gov/rss/> to get started.

The U.S. Department of Agriculture (USDA) prohibits discrimination in all its programs and activities on the basis of race, color, national origin, age, disability, and where applicable, sex, marital status, familial status, parental status, religion, sexual orientation, genetic information, political beliefs, reprisal, or because all or a part of an individual's income is derived from any public assistance program. (Not all prohibited bases apply to all programs.) Persons with disabilities who require alternative means for communication of program information (Braille, large print, audiotape, etc.) should contact USDA's TARGET Center at (202) 720-2600 (voice and TDD). To file a complaint of discrimination, write to USDA, Director, Office of Civil Rights, 1400 Independence Avenue, SW, Washington, DC 20250-9410 or call (800) 795-3272 (voice) or (202) 720-6382 (TDD). USDA is an equal opportunity provider and employer.

Table 1--U.S. cotton supply and use estimates

| Item | 2009/10 | 2010/11 | 2011/12 | |
|------------------------------|---------|---------|---------|--------|
| | | | May | June |
| <i>Million acres</i> | | | | |
| Upland: | | | | |
| Planted | 9.008 | 10.769 | 12.313 | 12.313 |
| Harvested | 7.391 | 10.497 | 10.550 | 9.950 |
| <i>Pounds</i> | | | | |
| Yield/harvested acre | 766 | 805 | 788 | 787 |
| <i>Million 480-lb. bales</i> | | | | |
| Beginning stocks | 6.032 | 2.929 | 1.733 | 2.228 |
| Production | 11.788 | 17.600 | 17.323 | 16.323 |
| Total supply 1/ | 17.820 | 20.534 | 19.061 | 18.556 |
| Mill use | 3.429 | 3.770 | 3.765 | 3.770 |
| Exports | 11.343 | 14.520 | 12.900 | 12.400 |
| Total use | 14.772 | 18.290 | 16.665 | 16.170 |
| Ending stocks 2/ | 2.929 | 2.228 | 2.441 | 2.431 |
| <i>Percent</i> | | | | |
| Stocks-to-use ratio | 19.8 | 12.2 | 14.6 | 15.0 |
| <i>1,000 acres</i> | | | | |
| Extra-long staple: | | | | |
| Planted | 141.4 | 204.2 | 252.5 | 252.5 |
| Harvested | 138.2 | 201.7 | 250.0 | 250.0 |
| <i>Pounds</i> | | | | |
| Yield/harvested acre | 1,389 | 1,200 | 1,300 | 1,300 |
| <i>1,000 480-lb. bales</i> | | | | |
| Beginning stocks | 305 | 18 | 17 | 22 |
| Production | 400 | 504 | 677 | 677 |
| Total supply 1/ | 705 | 522 | 694 | 699 |
| Mill use | 32 | 30 | 35 | 30 |
| Exports | 694 | 480 | 600 | 600 |
| Total use | 726 | 510 | 635 | 630 |
| Ending stocks 2/ | 18 | 22 | 59 | 69 |
| <i>Percent</i> | | | | |
| Stocks-to-use ratio | 2.5 | 4.3 | 9.3 | 11.0 |

1/ Includes imports. 2/ Includes unaccounted.

Last update: 06/10/11.

Sources: USDA, World Agricultural Outlook Board; and USDC, U.S. Census Bureau.

Table 2--World cotton supply and use estimates

| Item | 2009/10 | 2010/11 | 2011/12 | |
|------------------------------|---------|---------|---------|--------|
| | | | May | June |
| <i>Million 480-lb. bales</i> | | | | |
| Supply: | | | | |
| Beginning stocks-- | | | | |
| World | 60.54 | 44.28 | 42.52 | 43.24 |
| Foreign | 54.20 | 41.33 | 40.77 | 40.99 |
| Production-- | | | | |
| World | 101.38 | 114.29 | 124.72 | 123.77 |
| Foreign | 89.20 | 96.18 | 106.72 | 106.77 |
| Imports-- | | | | |
| World | 36.24 | 35.95 | 39.86 | 39.41 |
| Foreign | 36.24 | 35.94 | 39.86 | 39.41 |
| Use: | | | | |
| Mill use-- | | | | |
| World | 118.40 | 115.51 | 119.50 | 118.95 |
| Foreign | 114.94 | 111.71 | 115.70 | 115.15 |
| Exports-- | | | | |
| World | 35.57 | 35.90 | 39.87 | 39.42 |
| Foreign | 23.53 | 20.90 | 26.37 | 26.42 |
| Ending stocks-- | | | | |
| World | 44.28 | 43.24 | 47.93 | 48.25 |
| Foreign | 41.33 | 40.99 | 45.43 | 45.75 |
| <i>Percent</i> | | | | |
| Stocks-to-use ratio: | | | | |
| World | 37.4 | 37.4 | 40.1 | 40.6 |
| Foreign | 36.0 | 36.7 | 39.3 | 39.7 |

Last update: 06/10/11.

Source: USDA, World Agricultural Outlook Board.

Table 3--U.S. fiber supply

| Item | 2011 | | | 2010 |
|----------------------------|---------|---------|---------|---------|
| | Feb. | Mar. | Apr. | Apr. |
| <i>1,000 480-lb. bales</i> | | | | |
| Cotton: | | | | |
| Ginnings | 262 | 0 | 0 | 0 |
| Imports since August 1 | 2.8 | 2.8 | NA | 0.3 |
| Stocks, beginning | 12,797 | 10,898 | 8,556 | 9,298 |
| At mills | 161 | 156 | 158 | 153 |
| Public storage | 10,375 | 8,654 | 6,254 | 8,030 |
| CCC stocks | 4,576 | 3,640 | 2,704 | 3,814 |
| <i>Million pounds</i> | | | | |
| Manmade: | | | | |
| Production | 513.2 | 537.0 | 539.5 | 513.3 |
| Noncellulosic | 513.2 | 537.0 | 539.5 | 513.3 |
| Cellulosic | NA | NA | NA | NA |
| Total since January 1 | 1,037.4 | 1,570.7 | 2110.2 | 1,462.8 |
| <hr/> <hr/> | | | | |
| <i>Million pounds</i> | | | | |
| <hr/> <hr/> | | | | |
| <i>Million pounds</i> | | | | |
| Raw fiber imports: | 134.6 | 128.0 | 153.2 | 152.7 |
| Noncellulosic | 120.0 | 116.2 | 137.7 | 139.3 |
| Cellulosic | 14.6 | 11.8 | 15.5 | 13.4 |
| Total since January 1 | 134.6 | 262.6 | 415.8 | 428.9 |
| <i>1,000 pounds</i> | | | | |
| Wool and mohair: | | | | |
| Raw wool imports, clean | 857.1 | 451.2 | 564.5 | 681.0 |
| 48s-and-finer | 307.5 | 286.5 | 362.2 | 232.8 |
| Not-finer-than-46s | 549.6 | 164.7 | 202.3 | 429.5 |
| Total since January 1 | 857.1 | 1,308.3 | 1,872.8 | 1,727.8 |
| Wool top imports | 361.1 | 331.6 | 355.4 | 165.9 |
| Total since January 1 | 361.1 | 692.7 | 1,048.1 | 805.8 |
| Mohair imports, clean | 2.3 | 0.0 | 0.0 | 0.0 |
| Total since January 1 | 2.3 | 2.3 | 2.3 | 0.0 |

NA = Not available.

Last update: 06/10/11.

Sources: USDA, National Agricultural Statistics Service; USDC, U.S. Census Bureau; and *Fiber Organon*.

Table 4--U.S. cotton system fiber consumption

| Item | 2011 | | | 2010 |
|------------------------------|---------|---------|---------|---------|
| | Feb. | Mar. | Apr. | Apr. |
| <i>1,000 480-lb. bales</i> | | | | |
| Cotton: | | | | |
| All consumed by mills: 1/ | 289 | 320 | 289 | 293 |
| Total since August 1 1/ | 2,126 | 2,445 | 2,735 | 2,475 |
| SA annual rate 2/ | 3,756 | 3,657 | 3,579 | 3,437 |
| SA daily rate 2/ | 14.4 | 14.1 | 13.8 | 13.2 |
| Daily rate | 14.5 | 13.9 | 13.8 | 13.3 |
| Upland consumed by mills: 1/ | | | | |
| Total since August 1 1/ | 286 | 316 | 286 | 290 |
| Daily rate | 2,105 | 2,421 | 2,708 | 2,452 |
| Daily rate | 14.3 | 13.8 | 13.6 | 13.2 |
| <i>1,000 spindles/hours</i> | | | | |
| Spindles in place: | 1,003 | 979 | 982 | 1,008 |
| Active spindles | 944 | 920 | 924 | 948 |
| Spindle hours (1,000) | 576 | 714 | 576 | 548 |
| <i>Percent</i> | | | | |
| Cotton's share of fibers | 86.7 | 86.7 | 86.6 | 88.0 |
| <i>1,000 pounds</i> | | | | |
| Manmade: | | | | |
| Total consumed by mills 1/ | 21,371 | 23,494 | 21,538 | 19,252 |
| Total since August 1 1/ | 150,358 | 173,852 | 195,390 | 175,441 |
| Daily rate | 1,069 | 1,021 | 1,026 | 875 |
| Noncellulosic staple | 1,049 | 1,002 | 1,012 | 868 |
| Cellulosic staple | 20 | 19 | 14 | 7 |

1/ Adjusted to calendar month. 2/ SA = Seasonally adjusted.

Last update: 06/10/11.

Source: USDC, U.S. Census Bureau.

Table 5--U.S. fiber exports

| Item | 2011 | | | 2010 |
|----------------------------|-------|---------|---------|---------|
| | Jan. | Feb. | Mar. | Mar. |
| <i>1,000 480-lb. bales</i> | | | | |
| Cotton: | | | | |
| Upland exports | 1,632 | 1,801 | 1,944 | 1,361 |
| Total since August 1 | 5,902 | 7,703 | 9,647 | 6,431 |
| Sales for next season | 1,008 | 878 | 1,228 | 190 |
| Total since August 1 | 2,838 | 3,717 | 4,944 | 624 |
| Extra-long staple exports | 103.1 | 72.0 | 78.4 | 59.4 |
| Total since August 1 | 250.5 | 322.5 | 400.9 | 614.2 |
| Sales for next season | 65.4 | 22.8 | 38.7 | 11.0 |
| Total since August 1 | 259.1 | 281.9 | 320.6 | 11.4 |
| <i>Million pounds</i> | | | | |
| Manmade: | | | | |
| Raw fiber exports | 63.2 | 58.5 | 62.2 | 34.2 |
| Noncellulosic | 62.7 | 58.1 | 62.1 | 33.7 |
| Cellulosic | 0.5 | 0.4 | 0.1 | 0.5 |
| Total since January 1 | 63.2 | 121.7 | 183.9 | 125.8 |
| <i>1,000 pounds</i> | | | | |
| Wool and mohair: | | | | |
| Raw wool exports, clean | 670.1 | 410.0 | 694.9 | 727.4 |
| Total since January 1 | 670.1 | 1,080.1 | 1,775.0 | 2,003.3 |
| Wool top exports | 123.5 | 201.8 | 126.4 | 179.0 |
| Total since January 1 | 123.5 | 325.3 | 451.7 | 486.7 |
| Mohair exports, clean | 130.7 | 0.0 | 32.2 | 0.0 |
| Total since January 1 | 130.7 | 130.7 | 163.0 | 128.5 |

Last update: 06/10/11.

Sources: USDA, *Export Sales*; USDC, U.S. Census Bureau; and *Fiber Organon*.

Table 6--U.S. and world fiber prices

| Item | 2011 | | | 2010 |
|---|--------|--------|--------|--------|
| | Mar. | Apr. | May | May |
| <i>Cents per pound</i> | | | | |
| Domestic cotton prices: | | | | |
| Adjusted world price | 209.05 | 193.45 | 147.31 | 72.68 |
| Upland spot 41-34 | 195.79 | 181.98 | 151.93 | 74.70 |
| Pima spot 03-46 | 247.00 | 247.00 | 247.00 | 112.00 |
| Average price received by upland producers | 82.30 | 87.30 | 80.30 | 66.60 |
| Far Eastern cotton quotes: | | | | |
| A Index | 226.42 | 208.70 | 167.26 | 90.36 |
| Memphis/Eastern | 224.40 | 210.75 | 180.00 | 90.31 |
| Memphis/Orleans/Texas | 221.70 | 208.25 | 177.13 | 89.69 |
| California/Arizona | NQ | NQ | NQ | 91.17 |
| <i>Dollars per pound</i> | | | | |
| Wool prices (clean): | | | | |
| U.S. 56s | NQ | NQ | 3.40 | 2.01 |
| Australian 56s 1/ | 4.16 | 4.45 | 4.27 | 2.52 |
| U.S. 60s | NQ | NQ | 4.36 | 2.67 |
| Australian 60s 1/ | 5.58 | 6.08 | 8.28 | 3.55 |
| U.S. 64s | NQ | NQ | 5.16 | 3.41 |
| Australian 64s 1/ | 5.86 | 6.37 | 6.43 | 3.73 |

NQ = No quote.

1/ In bond, Charleston, SC.

Last update: 06/10/11.

Sources: USDA, *Cotton Price Statistics*; Cotlook Ltd., *Cotton Outlook*; and trade reports.

Table 7--U.S. textile imports, by fiber

| Item | 2011 | | | 2010 |
|---------------------------|-----------|-----------|-----------|-----------|
| | Jan. | Feb. | Mar. | Mar. |
| Yarn, thread, and fabric: | 236,643 | 215,142 | 224,030 | 231,975 |
| Cotton | 54,271 | 46,933 | 49,546 | 55,433 |
| Linen | 12,628 | 18,338 | 16,563 | 19,304 |
| Wool | 3,593 | 2,925 | 3,621 | 3,496 |
| Silk | 704 | 613 | 121 | 632 |
| Manmade | 165,447 | 146,333 | 154,178 | 153,110 |
| Apparel: | 889,149 | 843,311 | 790,779 | 826,533 |
| Cotton | 537,862 | 510,327 | 495,623 | 531,993 |
| Linen | 10,989 | 11,874 | 10,372 | 9,613 |
| Wool | 15,337 | 14,144 | 12,568 | 11,293 |
| Silk | 10,977 | 11,376 | 8,744 | 9,126 |
| Manmade | 313,985 | 295,589 | 263,472 | 264,507 |
| Home furnishings: | 196,650 | 180,641 | 168,759 | 195,182 |
| Cotton | 116,164 | 108,753 | 110,948 | 129,672 |
| Linen | 838 | 877 | 562 | 525 |
| Wool | 272 | 199 | 339 | 360 |
| Silk | 174 | 138 | 121 | 188 |
| Manmade | 79,201 | 70,675 | 56,789 | 64,437 |
| Floor coverings: | 56,728 | 48,114 | 53,813 | 57,784 |
| Cotton | 7,656 | 5,625 | 6,783 | 8,400 |
| Linen | 15,628 | 12,321 | 13,701 | 15,093 |
| Wool | 8,858 | 7,857 | 10,615 | 8,957 |
| Silk | 1,492 | 1,547 | 1,669 | 1,967 |
| Manmade | 23,095 | 20,764 | 21,045 | 23,367 |
| Total exports: 2/ | 1,390,752 | 1,297,262 | 1,245,279 | 1,319,977 |
| Cotton | 720,591 | 675,772 | 665,987 | 729,038 |
| Linen | 41,013 | 44,311 | 41,713 | 45,145 |
| Wool | 28,402 | 25,350 | 27,371 | 24,267 |
| Silk | 13,349 | 13,682 | 11,175 | 11,913 |
| Manmade | 587,397 | 538,148 | 499,033 | 509,614 |

1/ Raw-fiber equivalent. 2/ Includes headgear.

Last update: 06/10/11.

Sources: USDA, Economic Research Service; and USDC, U.S. Census Bureau.

Table 8--U.S. textile exports, by fiber

| Item | 2011 | | | 2010 |
|---------------------------|------------------------|---------|---------|---------|
| | Jan. | Feb. | Mar. | Mar. |
| | <i>1,000 pounds 1/</i> | | | |
| Yarn, thread, and fabric: | 247,517 | 249,048 | 273,318 | 254,066 |
| Cotton | 141,032 | 136,847 | 148,587 | 135,416 |
| Linen | 6,338 | 6,820 | 7,238 | 7,638 |
| Wool | 3,097 | 3,044 | 3,493 | 3,465 |
| Silk | 962 | 1,160 | 1,458 | 1,277 |
| Manmade | 96,088 | 101,177 | 112,542 | 106,270 |
| Apparel: | 20,854 | 21,656 | 26,064 | 26,524 |
| Cotton | 9,313 | 9,640 | 11,207 | 11,774 |
| Linen | 315 | 456 | 424 | 514 |
| Wool | 1,371 | 1,415 | 1,492 | 1,577 |
| Silk | 1,355 | 1,108 | 1,473 | 1,274 |
| Manmade | 8,500 | 9,038 | 11,469 | 11,386 |
| Home furnishings: | 3,061 | 2,858 | 3,152 | 3,700 |
| Cotton | 1,429 | 1,332 | 1,385 | 1,515 |
| Linen | 145 | 153 | 205 | 127 |
| Wool | 261 | 137 | 94 | 62 |
| Silk | 97 | 71 | 103 | 52 |
| Manmade | 1,129 | 1,165 | 1,365 | 1,945 |
| Floor coverings: | 26,781 | 29,829 | 31,969 | 29,189 |
| Cotton | 1,965 | 2,239 | 2,280 | 2,104 |
| Linen | 973 | 1,103 | 1,093 | 1,071 |
| Wool | 2,137 | 2,861 | 3,178 | 2,416 |
| Silk | 45 | 60 | 62 | 27 |
| Manmade | 21,661 | 23,566 | 25,357 | 23,571 |
| Total imports: 2/ | 298,330 | 303,597 | 334,746 | 313,658 |
| Cotton | 153,780 | 150,163 | 163,579 | 150,874 |
| Linen | 7,773 | 8,535 | 8,962 | 9,353 |
| Wool | 6,872 | 7,480 | 8,264 | 7,527 |
| Silk | 2,460 | 2,399 | 3,095 | 2,630 |
| Manmade | 127,445 | 135,020 | 150,845 | 143,275 |

1/ Raw-fiber equivalent. 2/ Includes headgear.

Last update: 06/10/11.

Sources: USDA, Economic Research Service; and USDC, U.S. Census Bureau.

Table 9--U.S. cotton textile imports, by origin

| Region/country | 2011 | | | 2010 |
|--------------------|------------------------|---------|---------|---------|
| | Jan. | Feb. | Mar. | Mar. |
| | <i>1,000 pounds 1/</i> | | | |
| North America | 120,515 | 151,442 | 172,655 | 170,851 |
| Canada | 3,176 | 2,985 | 3,699 | 3,539 |
| Costa Rica | 539 | 766 | 906 | 1,868 |
| Dominican Republic | 2,432 | 5,896 | 6,756 | 5,712 |
| El Salvador | 17,546 | 22,457 | 25,619 | 24,197 |
| Guatemala | 8,185 | 7,207 | 11,176 | 13,100 |
| Haiti | 8,131 | 13,793 | 15,517 | 10,944 |
| Honduras | 25,743 | 38,080 | 37,810 | 37,241 |
| Mexico | 41,808 | 45,215 | 52,699 | 56,441 |
| Nicaragua | 12,945 | 15,033 | 18,420 | 17,791 |
| South America | 5,881 | 4,751 | 5,662 | 8,761 |
| Brazil | 697 | 537 | 260 | 3,189 |
| Colombia | 1,630 | 1,414 | 1,775 | 1,815 |
| Peru | 3,440 | 2,710 | 3,450 | 3,542 |
| Europe | 10,825 | 9,278 | 11,406 | 11,821 |
| Germany | 842 | 937 | 1,154 | 662 |
| Italy | 1,811 | 1,700 | 1,746 | 2,049 |
| Portugal | 1,550 | 1,035 | 1,226 | 1,145 |
| Turkey | 4,222 | 3,141 | 4,324 | 5,352 |
| Asia | 563,578 | 497,923 | 456,732 | 516,511 |
| Bahrain | 2,098 | 1,380 | 2,147 | 1,984 |
| Bangladesh | 52,518 | 46,052 | 55,027 | 54,545 |
| Cambodia | 23,410 | 20,660 | 21,930 | 20,472 |
| China | 244,289 | 211,581 | 125,063 | 179,266 |
| Hong Kong | 1,169 | 1,102 | 1,011 | 1,312 |
| India | 56,348 | 55,423 | 69,250 | 69,260 |
| Indonesia | 30,445 | 31,552 | 32,598 | 32,373 |
| Israel | 1,714 | 894 | 1,345 | 1,898 |
| Japan | 902 | 926 | 1,151 | 1,070 |
| Jordan | 4,501 | 3,567 | 3,653 | 5,659 |
| Malaysia | 2,737 | 2,897 | 2,915 | 2,875 |
| Pakistan | 63,920 | 50,999 | 73,741 | 68,962 |
| Philippines | 6,225 | 5,176 | 6,604 | 7,013 |
| South Korea | 5,612 | 3,931 | 5,048 | 7,931 |
| Sri Lanka | 7,662 | 6,935 | 7,099 | 8,394 |
| Taiwan | 3,346 | 2,593 | 2,947 | 3,378 |
| Thailand | 9,376 | 8,654 | 9,906 | 11,103 |
| Vietnam | 45,593 | 41,955 | 33,394 | 36,875 |
| Oceania | 69 | 47 | 44 | 58 |
| Africa | 19,721 | 12,328 | 19,487 | 21,034 |
| Egypt | 11,074 | 7,090 | 11,037 | 10,722 |
| Kenya | 2,501 | 1,531 | 1,907 | 2,050 |
| Lesotho | 3,388 | 1,941 | 4,003 | 3,889 |
| Mauritius | 825 | 525 | 1,044 | 926 |
| World 2/ | 720,591 | 675,772 | 665,987 | 729,038 |

1/ Raw-fiber equivalent. 2/ Totals may not add due to rounding.

Last update: 06/10/11.

Sources: USDA, Economic Research Service; and USDC, U.S. Census Bureau.

Table 10--U.S. cotton textile exports, by destination

| Region/country | 2011 | | | 2010 |
|----------------------|------------------------|---------|---------|---------|
| | Jan. | Feb. | Mar. | Mar. |
| | <i>1,000 pounds 1/</i> | | | |
| North America | 136,293 | 133,503 | 145,216 | 135,678 |
| Bahamas | 82 | 40 | 149 | 74 |
| Canada | 7,920 | 8,123 | 9,915 | 8,939 |
| Costa Rica | 240 | 370 | 338 | 613 |
| Dominican Republic | 21,576 | 23,180 | 25,592 | 18,839 |
| El Salvador | 8,161 | 9,956 | 12,635 | 10,243 |
| Guatemala | 3,939 | 3,720 | 3,898 | 3,679 |
| Haiti | 456 | 581 | 780 | 797 |
| Honduras | 66,844 | 60,089 | 58,390 | 61,231 |
| Jamaica | 64 | 112 | 87 | 131 |
| Mexico | 24,773 | 25,089 | 31,073 | 28,938 |
| Nicaragua | 1,614 | 1,444 | 1,551 | 1,724 |
| Panama | 330 | 407 | 352 | 144 |
| South America | 3,537 | 2,609 | 2,394 | 2,778 |
| Brazil | 786 | 773 | 743 | 442 |
| Chile | 132 | 287 | 124 | 344 |
| Colombia | 690 | 562 | 598 | 1,019 |
| Peru | 396 | 234 | 356 | 241 |
| Venezuela | 1,351 | 534 | 338 | 407 |
| Europe | 3,739 | 3,443 | 3,608 | 3,848 |
| Belgium | 445 | 391 | 380 | 527 |
| France | 115 | 148 | 133 | 162 |
| Germany | 693 | 592 | 625 | 622 |
| Italy | 168 | 126 | 220 | 137 |
| Netherlands | 286 | 442 | 513 | 536 |
| Russia | 91 | 247 | 147 | 62 |
| Turkey | 419 | 170 | 194 | 135 |
| United Kingdom | 933 | 865 | 817 | 1,055 |
| Asia | 9,429 | 9,711 | 10,577 | 7,386 |
| Bangladesh | 498 | 389 | 981 | 4 |
| China | 5,597 | 5,239 | 5,132 | 3,178 |
| Hong Kong | 355 | 350 | 551 | 476 |
| India | 329 | 251 | 402 | 404 |
| Israel | 218 | 238 | 318 | 276 |
| Japan | 836 | 941 | 1,070 | 915 |
| Pakistan | 136 | 201 | 265 | 117 |
| Saudi Arabia | 99 | 90 | 122 | 110 |
| Singapore | 86 | 165 | 317 | 282 |
| South Korea | 552 | 859 | 569 | 780 |
| Taiwan | 79 | 127 | 124 | 113 |
| United Arab Emirates | 177 | 362 | 236 | 260 |
| Oceania | 555 | 675 | 843 | 632 |
| Australia | 403 | 524 | 714 | 458 |
| Africa | 217 | 218 | 932 | 552 |
| South Africa | 77 | 102 | 113 | 46 |
| World 2/ | 153,780 | 150,163 | 163,579 | 150,874 |

1/ Raw-fiber equivalent. 2/ Totals may not add due to rounding.

Last update: 06/10/11.

Sources: USDA, Economic Research Service; and USDC, U.S. Census Bureau.