



Economic Research Service

Situation and Outlook

CWS-15g

Release Date July 14, 2015

Cotton and Wool Outlook

Leslie Meyer
lmeyer@ers.usda.gov
Stephen MacDonald
stephenm@ers.usda.gov

Global Cotton Mill Use Rising; Shifting Among Countries

The latest U.S. Department of Agriculture (USDA) projections indicate that global cotton mill use is expected to expand for the fourth consecutive season. World 2015/16 cotton consumption is forecast at 114.4 million bales, 3 percent (3.6 million bales) above a year ago. China remains the leading user of raw cotton, accounting for 30 percent of the total.

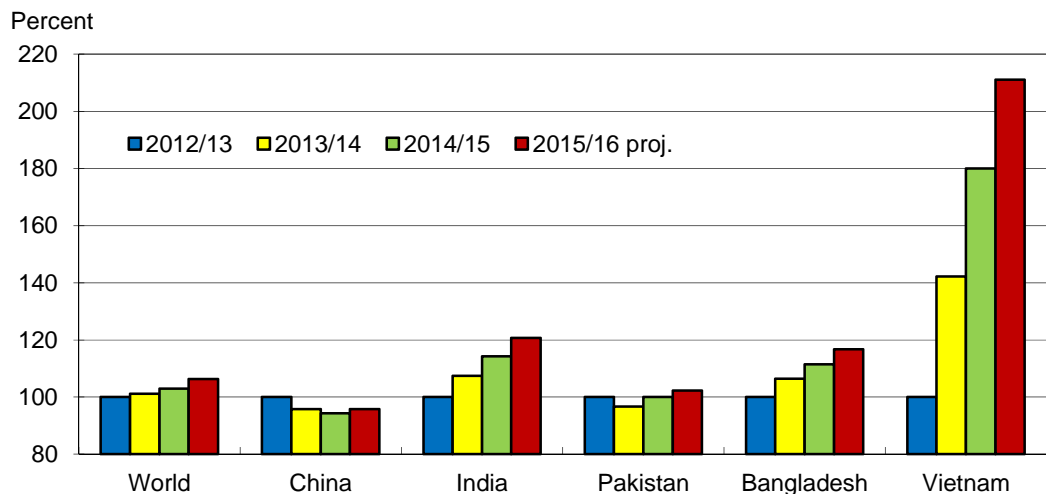
However, China's share of the global market has declined for several years, as its cotton spinning costs have increased relative to costs in other countries. As a result, cotton mill use growth has recently shifted among countries (fig. 1). Using 2012/13 as the base year, global cotton mill use is projected 6 percent higher in 2015/16—a 2 percent annual growth that is near the long-term average. Although growth has not occurred in China, mill use has expanded in countries such as India, Bangladesh, and Vietnam. In 2015/16, mill use in India and Bangladesh is expected to be about 20 percent above 2012/13. More impressive, however, is the growth seen in Vietnam recently; in 2015/16, mill use in Vietnam is expected to be more than double the 2012/13 level.

Cotton and Wool Chart Gallery will be updated on July 16, 2015

The next release is August 14, 2015

Approved by the World Agricultural Outlook Board

Figure 1
Cotton mill use growth for selected countries



Note: Growth calculated using 2012/13 as the base year.

Source: USDA, World Agricultural Outlook Board.

U.S. 2015 Cotton Crop Projection Unchanged in July

The 2015 U.S. cotton crop is projected at 14.5 million bales, unchanged since May and 11 percent below the 2014 crop. Despite a decrease in planted area reported in the June *Acreage* report, expectations for a lower abandonment and a higher yield offset reduced plantings. Favorable precipitation in May and June eliminated drought conditions—particularly in the Southwest—but the rainfall in June kept plantings from reaching initial expectations; the Southwest planted area was reduced 505,000 acres from the March *Prospective Plantings* report (see table 10). Based on the June *Acreage* report, U.S. cotton producers indicated that they had planted or intended to plant 9.0 million acres to cotton in 2015, 6 percent below March indications and 18 percent below 2014.

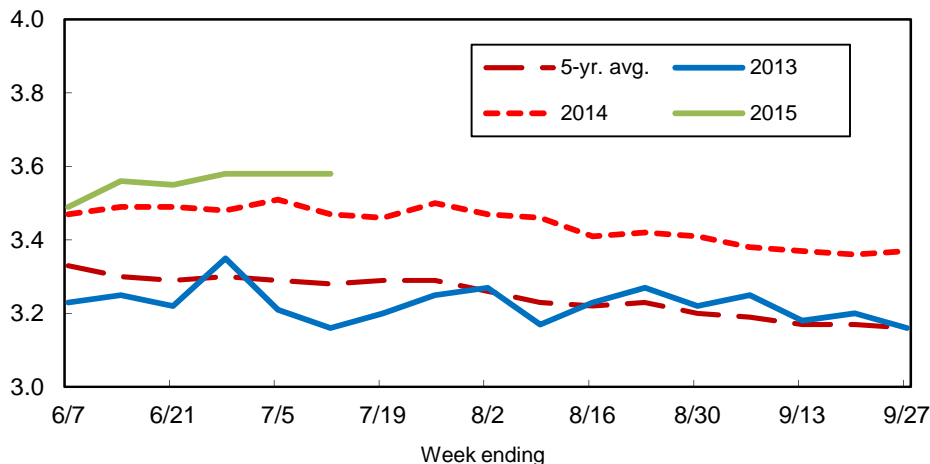
Upland cotton area projections decreased for each of the Cotton Belt regions for 2015, as lower cotton prices encouraged alternative crop plantings this spring. Area in the Southwest is reported at 5.5 million acres, 15 percent lower than 2014; despite hitting its lowest level since 2009, Southwest upland acreage is expected to account for 62 percent of the U.S. area in 2015, the highest share in over a century. In the Southeast, cotton acreage is estimated at nearly 2.2 million acres, 18 percent lower than 2014 and the lowest in 6 years. Area in the Delta is expected at a record low of only 1.0 million acres (30 percent lower than 2014), accounting for about 12 percent of the U.S. acreage in 2015. Meanwhile, the drought in California continues to reduce cotton area in the West. Upland acreage is estimated at only 161,000 acres (36 percent lower) in 2015, the smallest in nearly a century and contributing a paltry 2 percent of U.S. upland area. In addition, extra-long staple cotton acreage is predominantly in the West and is projected to total 148,000 acres, 23 percent below 2014 and the lowest since 2009.

Total cotton harvested area is estimated at 8.5 million acres in July; U.S. abandonment is based on the 10-year average abandonment by region, with the Southwest estimated at 7.5 percent due to the favorable moisture. The U.S. yield is currently forecast at 819 pounds per harvested acre, 19 pounds below last season, as a larger share of the Southwest's lower yielding acreage is expected to be harvested in 2015. Yield expectations are based on 3-year average yields by region, with the Southwest adjusted to reflect the beneficial rainfall this season. In August, USDA's National Agricultural Statistics Service (NASS) will publish its first survey-based results for cotton production in 2015; in addition, NASS announced that an update to planted acreage will also be made in August.

U.S. cotton crop development in 2015 is slightly behind last season and the 5-year average. As of July 12th, 61 percent of the crop was squaring, compared with 68 percent last year and the 2010-14 average of 70 percent. Similarly, area setting bolls had reached 18 percent by July 12th, compared with 22 percent in 2014 and a 5-year average of 24 percent. Due to this season's beneficial rainfall, early season U.S. cotton crop conditions are above the last several seasons (fig. 2). As of July 12th, 57 percent of the U.S. cotton area was rated "good" or "excellent," compared with 53 percent a year earlier, while 8 percent was rated "poor" or "very poor," compared with 14 percent in 2014.

Figure 2
U.S. cotton crop conditions

Index (3=fair and 4=good)



Source: USDA, *Crop Progress* reports.

U.S. Cotton Demand and Stocks Revised in July

U.S. demand and stocks for both 2014/15 and 2015/16 were revised this month. For 2014/15, U.S. cotton demand was increased to 14.55 million bales due to recent activity. The U.S. mill use estimate was reduced 100,000 bales in July to 3.55 million bales, equal to the 2013/14 level. Exports, on the other hand, were increased 300,000 bales as shipments through early July were stronger than previously anticipated. U.S. cotton exports are forecast at 11 million bales for 2014/15, 4.5 percent above the previous season. Based on the latest estimates, the U.S. share of world trade is projected near 32 percent, up from 26 percent in 2013/14.

For 2015/16, U.S. cotton demand was increased slightly to 14.55 million bales, matching the revised 2014/15 estimate. U.S. mill use is forecast at 3.75 million bales in 2015/16—a 50,000-bale decrease in July but a 200,000-bale increase from 2014/15—as additional spinning capacity comes online and is expected to elevate mill use to its highest since 2010/11. U.S. 2015/16 exports are projected at 10.8 million bales, the result of a 100,000-bale increase in July but 200,000 bales below the revised 2014/15 estimate. With global cotton trade also forecast lower in 2015/16, the U.S. share of world trade is expected to be near the previous season’s 32 percent.

Based on the latest supply and demand estimates, 2015/16 ending stocks are forecast at 4.2 million bales, equal to the 2014/15 estimate and the highest since 6.3 million bales were reported for 2008/09. U.S. stocks were relatively low between 2009/10 and 2013/14, years of large imports by China which benefited U.S. cotton exports and kept stocks tight. For 2015/16, the stocks-to-use ratio is forecast at 29 percent, equal to 2014/15. Meanwhile, the 2015/16 upland cotton farm price is expected to range between 54 and 70 cents per pound, with the midpoint of this range 1.5 cents above 2014/15’s estimate of 60.5 cents per pound.

Global Cotton Production Projected Lower in 2015/16

World 2015/16 cotton production is forecast at 111.5 million bales, 6 percent (7.5 million bales) below 2014/15 and the smallest global crop since 2009/10. For 2015/16, production declines are noted for most cotton producers as relative prices favor alternative crop plantings. Global cotton harvested area in 2015/16 is forecast at 31.8 million hectares, 2 million hectares (6 percent) below the preceding year. The world cotton yield is estimated at 764 kg/hectare, slightly below 2014/15.

Global cotton production is expected to remain concentrated among a few countries in 2015/16. The top five cotton-producing countries are forecast to contribute a combined 79 percent of world production in 2015/16, slightly above the 2011/12-2014/15 average. Figure 3 illustrates each of the major producers' estimated shares of production. India and China together account for more than 50 percent of global cotton production.

In 2015/16, India is expected to surpass China as the world's largest cotton producer with a crop forecast at 29.5 million bales. While lower harvested area is anticipated, a rebound in yield is projected to keep India's production unchanged from 2014/15; India's share of world production is expected to climb to 26.5 percent. For China, 2015/16 production is forecast to decrease 10 percent (3 million bales) to 27 million bales, the lowest since 2003/04; China's share of global production is forecast at 24 percent as area continues to trend lower. In 2015/16, the lowest area—3.7 million hectares—is expected to be devoted to cotton in China since a similar amount was harvested in 1999/00.

World Cotton Consumption Estimates Reduced in July

Global cotton consumption estimates for both 2014/15 and 2015/16 were lowered in July, but remain on an upward trend as a result of world economic growth projections and the lagged effect of lower cotton prices. China's consumption was reduced sharply in July due to continued strong competition from both polyester fiber and imported cotton products. However, China's reduction was partially offset by increases in other countries, notably India and Vietnam.

For 2014/15, world cotton mill use is now projected at 110.9 million bales, 600,000 bales below the June estimate but nearly 2 million bales above the previous season. The July reduction was largely attributable to a decrease of 1 million bales for China, where consumption is now estimated at 34 million bales, the lowest since 2003/04. Record cotton yarn imports by China have resulted from policies that have supported domestic cotton prices above market-clearing levels; as a result, spinning cotton locally becomes less attractive than importing the yarn.

Offsetting a portion of China's mill use reduction are increases for countries benefitting from China's yarn imports, including India and Vietnam. For 2014/15, India is expected to use nearly 24.9 million bales of cotton (up 350,000 bales in July). Similarly, the estimate for Vietnam mill use has risen to nearly 4.1 million bales (up 200,000 bales in July). Both India and Vietnam are experiencing record mill use of cotton.

For 2015/16, global cotton mill use is currently projected at 114.4 million bales, 875,000 bales below the June forecast but 3 percent above 2014/15 and the highest in 5 years. China’s 2015/16 mill use forecast was lowered 1.5 million bales to 34.5 million bales as recent Government decisions—including limited reserve auctions and higher-than-expected sale prices—will continue to support China’s domestic prices into 2015/16 and limit mill use growth.

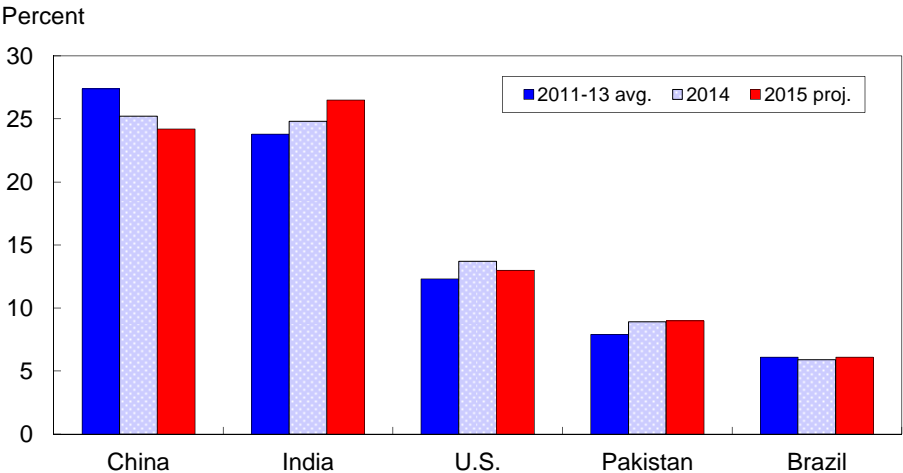
India and Vietnam are two countries that will likely benefit again in 2015/16. For India, mill use was increased 500,000 bales this month to nearly 26.3 million bales, a growth of more than 5.5 percent. For Vietnam, mill use was raised 650,000 bales in July to about 4.8 million bales, a growth of 17 percent. If realized, both countries would reach new records and account for a combined 27 percent of global cotton use in 2015/16, compared with 20 percent just 4 years ago.

Global Stocks to Decline in 2015/16

World ending stocks are forecast at 108.1 million bales for 2015/16, a 2.5-percent reduction (2.9 million bales) from the record level achieved in 2014/15, as global consumption exceeds production. As during the past several seasons, China will hold the bulk of these stocks; however, stocks in China are projected to decrease for the first time in several seasons, declining 3 percent (1.8 million bales) to 65.1 million bales. Despite the reduction, China will account for 60 percent of global stocks at the end of 2015/16, most of which are unavailable to the global market.

With U.S. ending stocks unchanged in 2015/16, stocks outside of China are forecast to decline the remaining 1.1 million bales. Stocks in Brazil are expected to decline 550,000 bales to 6.5 million bales in 2015/16 due to lower supplies, while stocks in India are forecast to decrease 500,000 bales to 12.9 million bales due to higher demand. Based on the latest world supply and demand, the global stocks-to-use ratio is projected to fall 6 percentage points to 94 percent by the end of 2015/16.

Figure 3
Share of total cotton production by major producer



Source: USDA, *World Agricultural Supply and Demand Estimates* reports.

Contacts and Links

Contact Information

Leslie Meyer (U.S. cotton & textiles) (202) 694-5307 lmeyer@ers.usda.gov
Stephen MacDonald (foreign cotton) (202) 694-5305 stephenm@ers.usda.gov
Carolyn Liggon (web publishing) (202) 694-5056 cvliggon@ers.usda.gov

Subscription Information

Subscribe to ERS e-mail notification service at <http://www.ers.usda.gov/subscribe-to-ers-e-newsletters.aspx> to receive timely notification of newsletter availability.
Printed copies can be purchased from the USDA Order Desk by calling 1-800-363-2068 (specify the issue number). To order printed copies of the five field crop newsletters—cotton and wool, feed, rice, oil crops, and wheat—as a series, specify series SUB-COR-4043.

Data

Cotton and Wool Monthly Tables (<http://ers.usda.gov/publications/cws-cotton-and-wool-outlook>)

Cotton and Wool Chart Gallery (<http://www.ers.usda.gov/data-products/cotton-and-wool-chart-gallery.aspx#UguTC6z8J8E>)

Related Websites

WASDE

<http://usda.mannlib.cornell.edu/MannUsda/viewDocumentInfo.do?documentID=1194>

Cotton Topics

<http://www.ers.usda.gov/topics/crops/cotton-wool.aspx>

Cotton and Wool Outlook

<http://usda.mannlib.cornell.edu/MannUsda/viewDocumentInfo.do?documentID=1281>

The U.S. Department of Agriculture (USDA) prohibits discrimination in all its programs and activities on the basis of race, color, national origin, age, disability, and where applicable, sex, marital status, familial status, parental status, religion, sexual orientation, genetic information, political beliefs, reprisal, or because all or a part of an individual's income is derived from any public assistance program. (Not all prohibited bases apply to all programs.) Persons with disabilities who require alternative means for communication of program information (Braille, large print, audiotape, etc.) should contact USDA's TARGET Center at (202) 720-2600 (voice and TDD). To file a complaint of discrimination, write to USDA, Director, Office of Civil Rights, 1400 Independence Avenue, SW, Washington, DC 20250-9410 or call (800) 795-3272 (voice) or (202) 720-6382 (TDD). USDA is an equal opportunity provider and employer.

E-mail Notification

Readers of ERS outlook reports have two ways they can receive an e-mail notice about release of reports and associated data.

- Receive timely notification (soon after the report is posted on the web) via USDA's Economics, Statistics, and Market Information System (which is housed at Cornell University's Mann Library). Go to <http://usda.mannlib.cornell.edu/MannUsda/aboutEmailService.do> and follow the instructions to receive e-mail notices about ERS, Agricultural Marketing Service, National Agricultural Statistics Service, and World Agricultural Outlook Board products.
- Receive weekly notification (on Friday afternoon) via the ERS website. Go to <http://www.ers.usda.gov/subscribe-to-ers-e-newsletters.aspx> and follow the instructions to receive notices about ERS outlook reports, Amber Waves magazine, and other reports and data products on specific topics. ERS also offers RSS (really simple syndication) feeds for all ERS products. Go to <http://www.ers.usda.gov/rss/> to get started.

Table 1--U.S. cotton supply and use estimates

Item	2014/15	2015/16		
		May	June	July
<i>Million acres</i>				
Upland:				
Planted	10.845	9.399	9.399	8.850
Harvested	9.157	8.451	8.451	8.353
<i>Pounds</i>				
Yield/harvested acre	826	797	797	807
<i>Million 480-lb. bales</i>				
Beginning stocks	2.325	4.129	4.129	3.925
Production	15.753	14.030	14.030	14.035
Total supply 1/	18.086	18.164	18.164	17.965
Mill use	3.530	3.775	3.775	3.725
Exports	10.600	10.150	10.150	10.250
Total use	14.130	13.925	13.925	13.975
Ending stocks 2/	3.925	4.229	4.229	4.030
<i>Percent</i>				
Stocks-to-use ratio	27.8	30.4	30.4	28.8
<i>1,000 acres</i>				
Extra-long staple:				
Planted	192.4	150.0	150.0	148.0
Harvested	189.8	149.0	149.0	147.0
<i>Pounds</i>				
Yield/harvested acre	1,432	1,514	1,514	1,518
<i>1,000 480-lb. bales</i>				
Beginning stocks	125	271	271	276
Production	566	470	470	465
Total supply 1/	696	746	746	746
Mill use	20	25	25	25
Exports	400	550	550	550
Total use	420	575	575	575
Ending stocks 2/	276	171	171	171
<i>Percent</i>				
Stocks-to-use ratio	65.7	29.7	29.7	29.7

1/ Includes imports. 2/ Includes unaccounted.

Source: USDA, World Agricultural Outlook Board.

Last update: 07/14/15.

Table 2--World cotton supply and use estimates

Item	2014/15	2015/16		
		May	June	July
<i>Million 480-lb. bales</i>				
Supply:				
Beginning stocks--				
World	102.80	110.25	110.01	110.96
Foreign	100.35	105.85	105.61	106.76
Production--				
World	118.98	111.25	111.32	111.46
Foreign	102.66	96.75	96.82	96.96
Imports--				
World	34.57	33.65	33.77	34.05
Foreign	34.56	33.64	33.76	34.04
Use:				
Mill use--				
World	110.86	115.29	115.31	114.44
Foreign	107.31	111.49	111.51	110.69
Exports--				
World	34.60	33.66	33.80	34.05
Foreign	23.60	22.96	23.10	23.25
Ending stocks--				
World	110.96	106.29	106.08	108.14
Foreign	106.76	101.89	101.68	103.94
<i>Percent</i>				
Stocks-to-use ratio:				
World	100.1	92.2	92.0	94.5
Foreign	99.5	91.4	91.2	93.9

Source: USDA, World Agricultural Outlook Board.

Last update: 07/14/15.

Table 3--U.S. fiber supply

Item	Mar. 2015	Apr. 2015	May 2015	May 2014
<i>1,000 480-lb. bales</i>				
Cotton:				
Stocks, beginning	11,812	9,959	8,233	5,682
Ginnings	0	0	0	0
Imports since August 1	6.4	8.0	10.6	11.5
<i>Million pounds</i>				
Manmade:				
Production	524.9	520.9	522.3	549.7
Noncellulosic	524.9	520.9	522.3	549.7
Cellulosic	NA	NA	NA	NA
Total since January 1	1,565.7	2,086.6	2,608.9	2,650.9
<i>Million pounds</i>				
	Feb. 2015	Mar. 2015	Apr. 2015	Apr. 2014
<i>Million pounds</i>				
Raw fiber imports:	154.4	206.7	223.0	172.2
Noncellulosic	143.0	190.7	204.6	157.5
Cellulosic	11.4	16.0	18.4	14.7
Total since January 1	339.2	545.9	768.9	650.4
<i>1,000 pounds</i>				
Wool and mohair:				
Raw wool imports, clean	800.1	420.0	657.0	583.8
48s-and-finer	542.2	228.6	388.6	314.8
Not-finer-than-46s	257.9	191.4	268.3	269.0
Total since January 1	1,304.8	1,724.9	2,381.8	1,908.9
Wool top imports	294.0	291.0	258.2	373.5
Total since January 1	597.9	888.9	1,147.2	1,071.8
Mohair imports, clean	0.0	0.0	0.0	0.0
Total since January 1	0.0	0.0	0.0	0.0

NA = Not available.

Sources: USDA, National Agricultural Statistics Service;
U.S. Dept. of Commerce, U.S. Census Bureau; and *Fiber Organon*.

Last update: 07/14/15.

Table 4--U.S. fiber demand

Item	Mar. 2015	Apr. 2015	May 2015	May 2014
<i>1,000 480-lb. bales</i>				
Cotton:				
All consumed by mills 1/	311	300	311	309
Total since August 1	2,320	2,620	2,931	2,942
Daily rate	14.1	13.6	14.8	14.1
Upland consumed by mills 1/	310	299	310	308
Total since August 1	2,309	2,608	2,917	2,928
Daily rate	14.1	13.6	14.8	14.0
Upland exports	1,484	1,388	1,391	894
Total since August 1	6,302	7,689	9,080	8,729
Sales for next season	156	186	270	519
Total since August 1	944	1,130	1,400	2,236
Extra-long staple exports	59.3	40.8	69.0	54.2
Total since August 1	196.7	237.4	306.4	628.8
Sales for next season	0.0	0.3	1.4	3.5
Total since August 1	0.0	0.3	1.7	18.6
	Feb.	Mar.	Apr.	Apr.
	2015	2015	2015	2014
<i>Million pounds</i>				
Manmade:				
Raw fiber exports	48.4	53.6	50.1	54.4
Noncellulosic	47.9	53.3	49.7	53.6
Cellulosic	0.5	0.3	0.4	0.8
Total since January 1	96.9	150.5	200.6	208.5
<i>1,000 pounds</i>				
Wool and mohair:				
Raw wool exports, clean	530.3	477.6	319.1	331.8
Total since January 1	649.6	1,127.2	1,446.3	2,345.8
Wool top exports	4.2	14.7	1.1	102.2
Total since January 1	6.2	20.9	21.9	460.8
Mohair exports, clean	38.4	197.0	64.5	118.7
Total since January 1	404.8	601.8	666.3	305.2

1/ Estimated by USDA.

Sources: USDA, Farm Service Agency; USDA, Foreign Agricultural Service, *U.S. Export Sales*; U.S. Dept. of Commerce, U.S. Census Bureau; and *Fiber Organon*.

Last update: 07/14/15.

Table 5--U.S. and world fiber prices

Item	Apr. 2015	May 2015	June 2015	June 2014
<i>Cents per pound</i>				
Domestic cotton prices:				
Adjusted world price	49.99	51.61	50.71	69.43
Upland spot 41-34	63.08	63.06	62.86	78.54
Pima spot 02-46	152.24	149.00	149.00	183.50
Average price received by upland producers	62.40	64.10	NA	83.90
Far Eastern cotton quotes:				
A Index	71.62	72.46	72.40	91.13
Memphis/Eastern	74.85	74.81	75.38	95.31
Memphis/Orleans/Texas	74.20	74.50	74.63	94.81
California/Arizona	77.80	77.38	77.13	95.56
<i>Dollars per pound</i>				
Wool prices (clean):				
U.S. 58s	2.97	3.13	3.36	3.32
Australian 58s 1/	3.67	4.15	4.21	3.91
U.S. 60s	2.90	3.36	3.48	3.57
Australian 60s 1/	3.97	4.28	NQ	NQ
U.S. 64s	3.38	3.86	3.99	4.31
Australian 64s 1/	4.34	4.90	5.17	4.98

NA = Not available. NQ = No quote.

1/ In bond, Charleston, SC.

Sources: USDA, *Cotton Price Statistics*; Cotlook Ltd., *Cotton Outlook*; and trade reports.

Last update: 07/14/15.

Table 6--U.S. textile imports, by fiber

Item	Mar. 2015	Apr. 2015	May 2015	May 2014
	<i>1,000 pounds 1/</i>			
Yarn, thread, and fabric:	307,109	288,437	300,913	266,825
Cotton	65,041	59,575	66,185	57,425
Linen	23,874	27,259	21,544	17,088
Wool	4,439	4,198	4,887	4,429
Silk	500	569	571	546
Manmade	213,255	196,836	207,727	187,337
Apparel:	947,692	813,060	879,034	817,774
Cotton	513,418	440,347	471,989	445,812
Linen	10,822	9,206	7,989	8,682
Wool	19,771	18,331	20,387	19,282
Silk	11,429	9,754	8,555	8,745
Manmade	392,252	335,423	370,114	335,253
Home furnishings:	257,834	231,563	261,589	224,697
Cotton	149,227	141,091	146,690	128,689
Linen	1,138	779	977	1,226
Wool	336	336	283	387
Silk	141	98	186	143
Manmade	106,992	89,259	113,454	94,252
Floor coverings:	81,154	83,626	82,206	77,894
Cotton	10,592	11,027	10,105	9,364
Linen	22,391	22,185	20,333	19,485
Wool	10,778	11,333	10,962	11,539
Silk	2,905	3,007	2,217	2,083
Manmade	34,488	36,074	38,589	35,423
Total imports: 2/	1,594,252	1,417,050	1,524,109	1,387,598
Cotton	738,577	652,301	695,238	641,561
Linen	58,226	59,429	50,843	46,482
Wool	35,332	34,210	36,528	35,651
Silk	14,975	13,428	11,528	11,518
Manmade	747,141	657,681	729,973	652,386

1/ Raw-fiber equivalent. 2/ Includes headgear.

Sources: USDA, Economic Research Service; and
U.S. Dept. of Commerce, U.S. Census Bureau.

Last update: 07/14/15.

Table 7--U.S. textile exports, by fiber

Item	Mar. 2015	Apr. 2015	May 2015	May 2014
	<i>1,000 pounds 1/</i>			
Yarn, thread, and fabric:	265,654	262,624	278,786	265,226
Cotton	142,451	138,316	152,585	139,555
Linen	6,578	7,021	6,288	7,895
Wool	3,459	3,164	3,494	2,840
Silk	1,136	1,230	1,094	1,992
Manmade	112,031	112,893	115,326	112,945
Apparel:	28,461	27,319	25,366	26,441
Cotton	13,072	12,024	10,931	11,620
Linen	810	475	440	447
Wool	1,538	1,311	1,240	1,281
Silk	952	834	849	1,047
Manmade	12,089	12,675	11,907	12,046
Home furnishings:	4,833	4,959	5,090	5,790
Cotton	2,506	2,401	2,437	2,590
Linen	259	378	324	343
Wool	88	77	125	100
Silk	77	196	180	170
Manmade	1,904	1,907	2,023	2,586
Floor coverings:	30,982	28,066	27,986	35,322
Cotton	2,402	2,262	2,287	2,517
Linen	1,366	1,331	1,317	1,197
Wool	1,978	1,831	1,535	2,238
Silk	58	56	43	37
Manmade	25,177	22,586	22,805	29,333
Total exports: 2/	330,004	323,029	337,276	332,834
Cotton	160,478	155,040	168,267	156,315
Linen	9,012	9,206	8,369	9,883
Wool	7,064	6,384	6,395	6,460
Silk	2,224	2,316	2,165	3,246
Manmade	151,226	150,083	152,079	156,930

1/ Raw-fiber equivalent. 2/ Includes headgear.

Sources: USDA, Economic Research Service; and
U.S. Dept. of Commerce, U.S. Census Bureau.

Last update: 07/14/15.

Table 8--U.S. cotton textile imports, by origin

Region/country	Mar. 2015	Apr. 2015	May 2015	May 2014
	<i>1,000 pounds 1/</i>			
North America	153,178	134,319	142,463	135,830
Canada	3,234	3,215	3,018	2,765
Costa Rica	12	10	10	269
Dominican Republic	9,336	8,028	9,572	7,212
El Salvador	20,393	16,556	18,906	20,365
Guatemala	7,670	7,763	7,678	7,798
Haiti	14,680	12,983	14,049	12,849
Honduras	33,479	25,065	30,128	25,083
Mexico	44,262	42,198	41,714	43,694
Nicaragua	20,105	18,487	17,387	15,792
South America	4,044	3,798	3,957	4,073
Colombia	1,572	1,724	1,645	1,760
Peru	2,267	1,744	1,936	2,052
Europe	13,505	11,942	13,019	12,049
Germany	1,255	1,230	1,170	1,214
Italy	1,934	1,772	1,827	1,781
Portugal	1,439	1,060	1,113	883
Turkey	6,160	5,468	5,893	5,281
Turkmenistan	486	304	504	437
Asia	554,041	488,381	521,320	475,921
Bahrain	1,892	2,251	1,551	1,458
Bangladesh	53,646	49,282	49,150	43,519
Cambodia	18,012	16,967	15,530	14,058
China	208,807	158,209	214,046	196,256
Hong Kong	751	754	1,080	731
India	82,891	81,710	72,527	62,385
Indonesia	26,755	25,512	22,838	20,832
Israel	598	588	649	710
Japan	1,561	1,781	1,427	1,407
Jordan	5,462	3,708	4,641	3,694
Malaysia	3,568	2,673	3,213	3,054
Pakistan	61,477	64,391	59,527	59,187
Philippines	4,552	5,333	3,636	3,051
South Korea	6,840	6,305	6,742	6,090
Sri Lanka	9,666	7,964	6,416	6,651
Taiwan	2,913	2,120	1,993	2,146
Thailand	6,074	5,922	4,379	5,203
United Arab Emirates	612	760	608	325
Vietnam	57,384	51,714	50,750	44,614
Oceania	69	36	34	50
Africa	13,740	13,826	14,444	13,638
Egypt	7,483	7,503	7,567	7,163
Kenya	2,503	2,447	2,471	2,555
Lesotho	1,572	1,917	2,757	2,149
Mauritius	1,153	882	598	624
World 2/	738,577	652,301	695,238	641,561

1/ Raw-fiber equivalent. 2/ Totals may not add due to rounding.

Sources: USDA, Economic Research Service; and
U.S. Dept. of Commerce, U.S. Census Bureau.

Last update: 07/14/15.

Table 9--U.S. cotton textile exports, by destination

Region/country	Mar. 2015	Apr. 2015	May 2015	May 2014
	<i>1,000 pounds 1/</i>			
North America	138,474	130,999	144,233	137,190
Bahamas	215	184	103	109
Canada	10,590	10,167	9,373	11,477
Costa Rica	346	319	399	367
Dominican Republic	20,823	20,183	22,689	21,459
El Salvador	8,314	8,758	8,976	11,632
Guatemala	3,162	2,704	2,090	2,324
Haiti	761	956	1,177	885
Honduras	63,380	56,288	68,062	57,443
Jamaica	116	75	126	121
Mexico	27,766	28,302	27,911	29,042
Nicaragua	2,297	2,330	2,773	1,732
Panama	380	316	259	227
South America	5,163	5,775	5,540	5,309
Brazil	274	310	491	633
Chile	362	135	210	186
Colombia	2,402	2,450	3,005	2,892
Ecuador	119	129	97	158
Peru	1,517	2,246	1,276	859
Venezuela	76	131	96	292
Europe	3,653	3,030	3,432	3,096
Belgium	373	385	407	408
France	153	192	127	148
Germany	572	494	666	574
Italy	289	236	288	185
Netherlands	250	260	386	428
United Kingdom	1,171	862	981	770
Asia	11,872	13,842	13,671	9,777
China	7,164	9,324	8,508	6,346
Hong Kong	471	743	478	475
India	169	139	520	199
Israel	83	104	69	78
Japan	1,175	948	1,170	806
Lebanon	71	27	34	55
Saudi Arabia	134	149	225	122
Singapore	315	172	103	183
South Korea	736	564	442	577
Taiwan	88	181	89	132
Thailand	86	123	48	80
United Arab Emirates	483	250	203	327
Vietnam	379	54	524	105
Oceania	654	501	546	621
Australia	495	388	416	488
New Zealand	130	98	98	111
Africa	663	893	846	322
South Africa	160	22	116	36
World 2/	160,478	155,040	168,267	156,315

1/ Raw-fiber equivalent. 2/ Totals may not add due to rounding.

Sources: USDA, Economic Research Service; and
U.S. Dept. of Commerce, U.S. Census Bureau.

Last update: 07/14/15.

Table 10--U.S. actual and projected cotton acreage

State/region	Actual 2014	Projected	Projected	2015/2014 Percent
		March 2015 1/ 1,000 acres	June 2015 2/	
Upland:				
Alabama	350	300	300	86
Florida	107	90	85	79
Georgia	1,380	1,100	1,100	80
N. Carolina	465	375	375	81
S. Carolina	280	235	240	86
Virginia	87	85	85	98
Southeast	2,669	2,185	2,185	82
Arkansas	335	230	240	72
Louisiana	170	130	130	76
Mississippi	425	350	310	73
Missouri	250	175	175	70
Tennessee	275	170	170	62
Delta	1,455	1,055	1,025	70
Kansas	31	24	29	94
Oklahoma	240	260	250	104
Texas	6,200	5,700	5,200	84
Southwest	6,471	5,984	5,479	85
Arizona	150	95	80	53
California	57	45	51	89
New Mexico	43	35	30	70
West	250	175	161	64
Total Upland	10,845	9,399	8,850	82
Pima:				
Arizona	15	20	18	120
California	155	110	110	71
New Mexico	5	5	5	100
Texas	17	15	15	88
Total Pima	192	150	148	77
Total All	11,037	9,549	8,998	82

1/ Planting intentions as indicated by reports from farmers.

2/ Total acres planted or intended to be planted.

Source: USDA, National Agricultural Statistics Service, *Acreage* report.

Last update: 07/14/15.