



United States  
Department  
of Agriculture

WHS-07b

Feb. 13, 2007



Electronic Outlook Report from the Economic Research Service

[www.ers.usda.gov](http://www.ers.usda.gov)

## Wheat Outlook

Gary Vocke and Edward Allen

### U.S. Wheat Supply/Disappearance Unchanged, Price Down Slightly

U.S. wheat supply, use, and stocks projections for 2006/07 are unchanged this month. The season-average farm price is projected at \$4.20 to \$4.30 per bushel, up 5 cents on the lower end of the range and down 15 cents on the upper end from last month. The changes are based on monthly farm-gate prices to date.

Projected world wheat ending stocks were reduced this month as increased forecast use more than offset larger production. Forecast feed use is increasing in Canada, the former Soviet Union, and the EU-25 partly because of the high price of feed grains, especially corn. Reduced ending stocks are expected for Canada, the EU-25, Uzbekistan, Russia and Ukraine, more than offsetting a significant increase for Kazakhstan due to increased production.

#### Contents

[Domestic Outlook](#)

[Intl. Outlook](#)

[Contacts & Links](#)

#### Tables

[Supply & Use by  
Year](#)

[Supply & Use by  
Class](#)

[Quarterly Supply  
& Use](#)

[Monthly Food Use  
National Avg.](#)

[Prices](#)

[Prices Received by  
Farmers by Class](#)

[Cash Grain Bids](#)

[Exports & Imports](#)

[Census & Exports](#)

[Sales Comparison](#)

#### Web Sites

[WASDE](#)

[Grain Circular](#)

[Wheat Briefing](#)

[Room](#)

-----  
The next release is  
April 12, 2007  
-----

Approved by the  
World Agricultural  
Outlook Board.

## Domestic Situation and Outlook

### *Hard Red Winter Crop Conditions*

Hard red winter wheat crop conditions improved in December and January in both Kansas and Oklahoma compared to the last National Agricultural Statistics Service report in November 2006, but have slipped slightly in Texas and Nebraska. Kansas reported that only 7 percent of its winter wheat crop was rated poor to very poor at the end of January and that 62 percent was rated good to very good. The Kansas ratings for November last year were 8 percent poor to very poor and 51 percent good to very good. Oklahoma reported that 19 percent of its winter wheat crop was rated poor to very poor at the end of January and that 53 percent was rated good to very good. The Oklahoma ratings for November last year were 24 percent poor to very poor and 42 percent good to very good.

Nebraska reported that only 6 percent of its winter wheat crop was rated poor to very poor at the end of January and that 54 percent was rated good to very good. The Nebraska ratings for November last year were 4 percent poor to very poor and 60 percent good to very good. Texas reported that 23 percent of its winter wheat crop was rated poor to very poor at the end of January and that 42 percent was rated good to very good. The Texas ratings for November last year were 14 percent poor to very poor and 44 percent good to very good.

## International Situation and Outlook

### ***World Wheat Production for 2006/07 Projected Up This Month***

Kazakh wheat production for 2006/07 was estimated at 13.5 million tons, up 2 million tons this month based on harvest reports. Good harvest weather contributed to the largest wheat crop in 14 years, as critical cold and snow came a week to 10 days later than usual. Wheat crops for several former Soviet Union (FSU) countries were adjusted with increases for Belarus and Moldova mostly offsetting declines for Ukraine and Armenia.

In the EU, wheat production in Poland was reported down 0.7 million tons to 7.1 million, causing a drop in EU-25 production this month that partly offset the increase in the FSU, leaving world wheat production forecast for 2006/07 up 1.3 million tons to 592.0 million.

### ***Projected 2006/07 World Wheat Feed Use Boosted Nearly 2 Million Tons***

Statistics Canada reported lower than expected quarterly wheat stocks, implying that more wheat was used for feed or lost to waste. The annual marketing-year feed and residual use forecast was increased 1.0 million tons this month to 5.8 million, larger than the previous year when more low-quality wheat was available. Part of the increase in wheat feeding was offset by a reduction in corn imports and feed use, as Canada has been slow to import high-priced U.S. corn.

Wheat feed and residual use projected for the FSU increased 0.55 million tons this month to 21.6 million, with increases for Belarus, Uzbekistan, Kazakhstan, and Moldova. EU-25 wheat feed use was projected 0.4 million tons higher to 58.0 million tons as the high price of grains in the EU has resulted in less exports and more domestic use than previously expected.

These changes in forecast wheat feed and residual use boost global 2006/07 wheat feeding 2 million tons to 107 million, down less than 4 percent from the previous year. High prices for corn and other feed grains is keeping world wheat feed use from dropping as much as the decline in global wheat production.

### ***Increased Use, Lower Beginning Stocks Reduce Projected Ending Stocks***

World wheat ending stocks for 2006/07 are projected down 1.0 million tons this month to 120.8 million tons. Projected stocks are down 1.0 million tons for Canada and 0.6 million for the EU-25. Stocks are also projected lower for several countries of the FSU. These reductions combine to more than offset a dramatic increase for Kazakhstan. It is difficult to track the use of wheat in Kazakhstan because reliable data are not available for exports, much less for domestic use or stocks.

The supply and use of wheat in Uzbekistan was revised back to 2004/05, with reduced 2004/05 production and use and reduced 2005/06 production resulting in lower 2006/08 beginning stocks, down 0.45 million tons from last month.

***World Wheat Trade for 2006/07 Projected Up Slightly This Month***

World wheat trade in 2006/07 is projected to reach 111.7 million tons, up slightly this month. EU-25 exports were cut 0.5 million tons to 15.0 million while Russia's forecast exports increased 0.5 million to 10 million. Key markets like Egypt have bought more wheat than expected from Russia and less from the EU-25. There was a small increase in exports of wheat grain and flour expected for Romania, Sri Lanka, and Brazil, but a reduction for Paraguay.

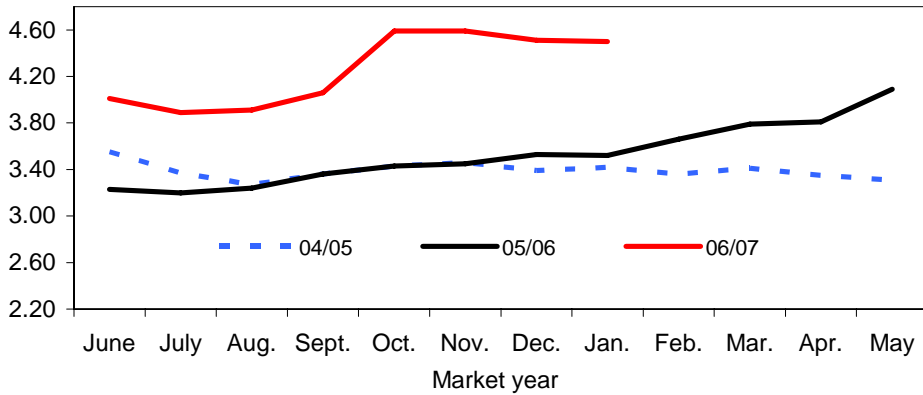
Projected imports for 2006/07 were little changed this month with an increase of 0.4 million in FSU imports due to the pace of purchases by Georgia from Russia, and a small increase for Armenia. However, expected wheat imports were trimmed 0.2 million tons each for Turkey and Libya, based on the slow pace of purchases.

U.S. exports projected for 2006/07 were unchanged this month at 875 million bushels for the June-May marketing year and 24.5 million tons for the July-June trade year. For July through December 2006, U.S. Census data indicate exports of about 11.5 million tons, down 3.5 from the previous year. Grain inspections for January 2007 were slightly below a year earlier. However, outstanding export sales on February 1, 2007, were up 0.4 million tons compared to a year earlier. Recent sales have been helped by declining wheat prices.

Figure 1

**All wheat average prices received by farmers**

\$/bu

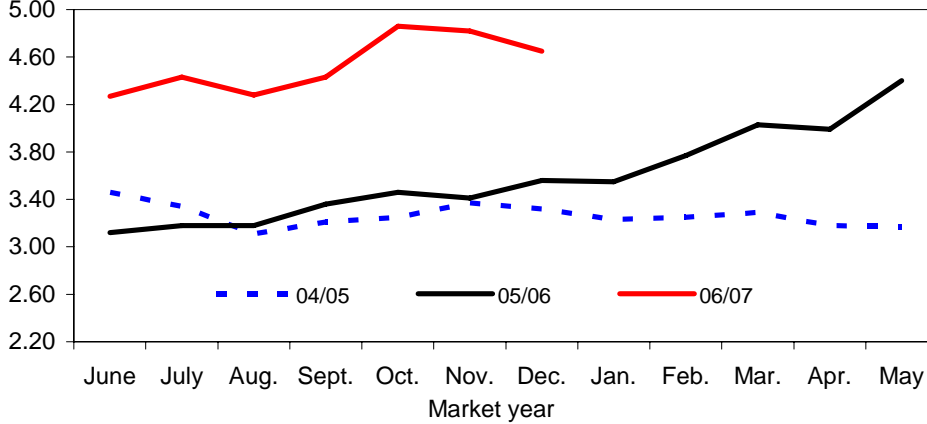


Source: *Agricultural Prices*, NASS, USDA.

Figure 2

**Hard red winter wheat average prices received by farmers**

\$/bu

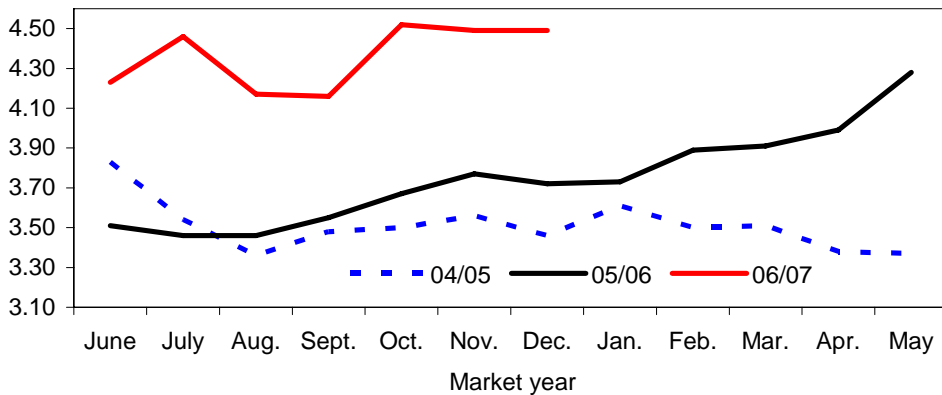


Source: *Agricultural Prices*, NASS, USDA.

Figure 3

**Hard red spring wheat average prices received by farmers**

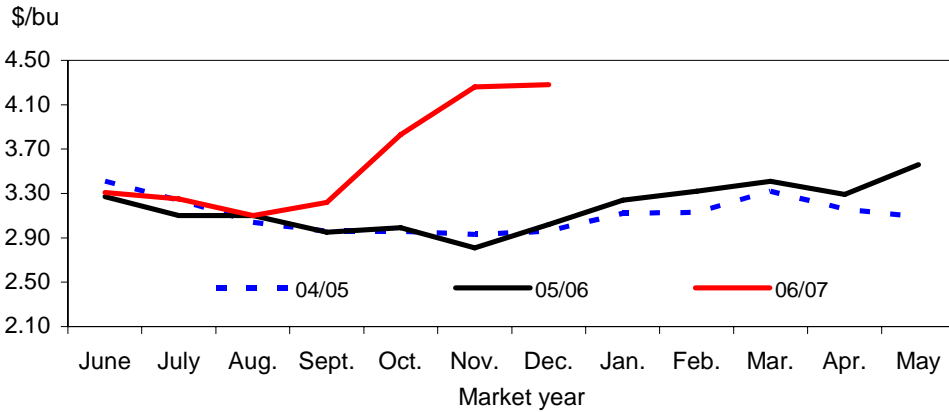
\$/bu



Source: *Agricultural Prices*, NASS, USDA.

Figure 4

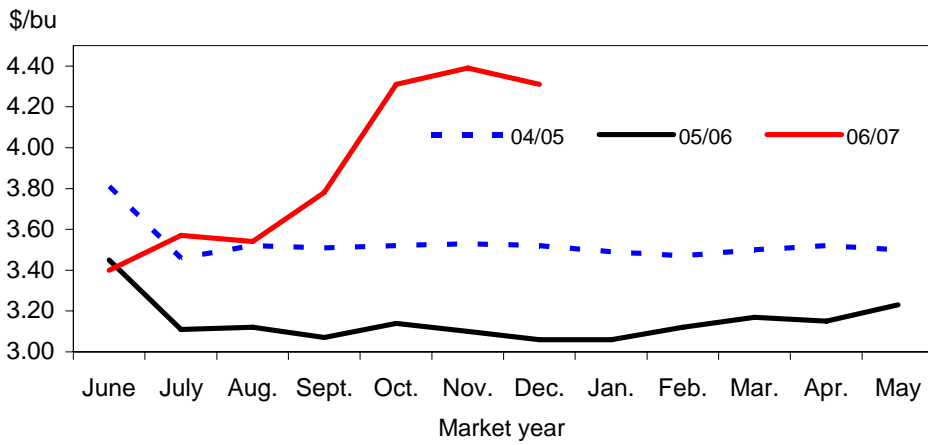
**Soft red winter wheat average prices received by farmers**



Source: *Agricultural Prices*, NASS, USDA.

Figure 5

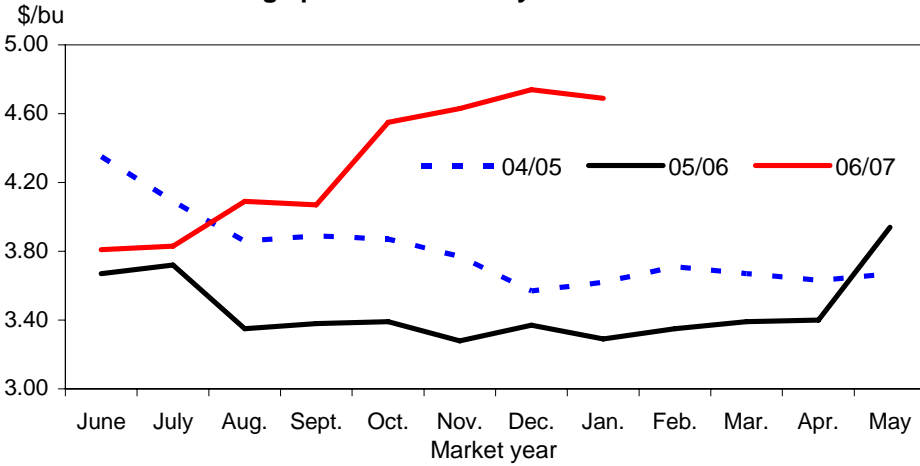
**Soft white wheat average prices received by farmers**



Source: *Agricultural Prices*, NASS, USDA.

Figure 6

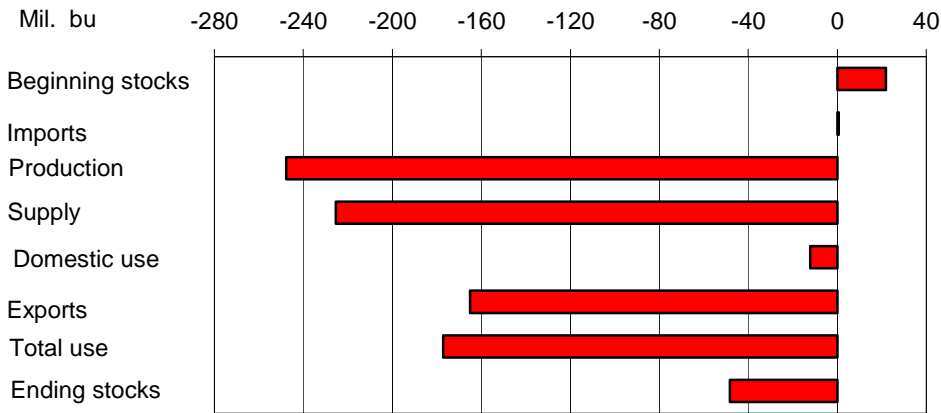
**Durum wheat average prices received by farmers**



Source: *Agricultural Prices*, NASS, USDA.

Figure 7

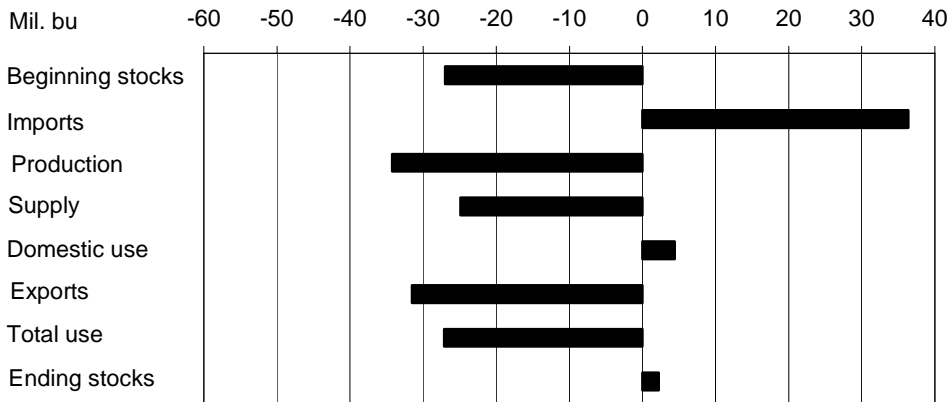
**Hard red winter wheat**



Source: WASDE, World Agricultural Outlook Board, USDA.

Figure 8

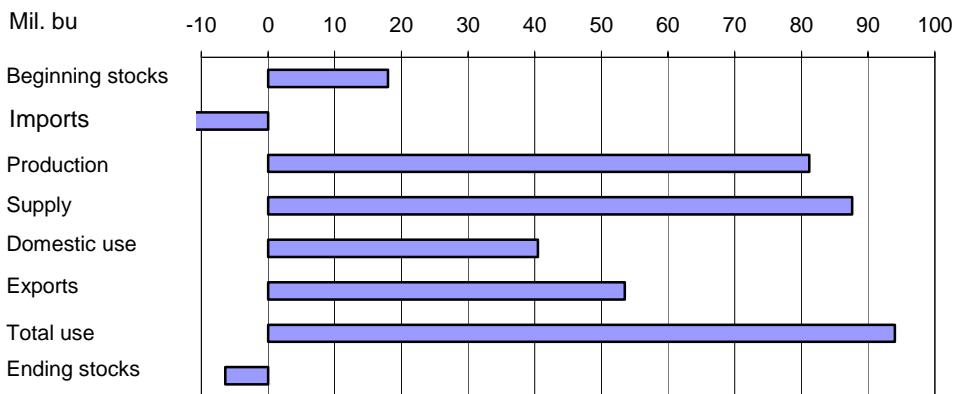
**Hard red spring wheat**



Source: WASDE, World Agricultural Outlook Board, USDA.

Figure 9

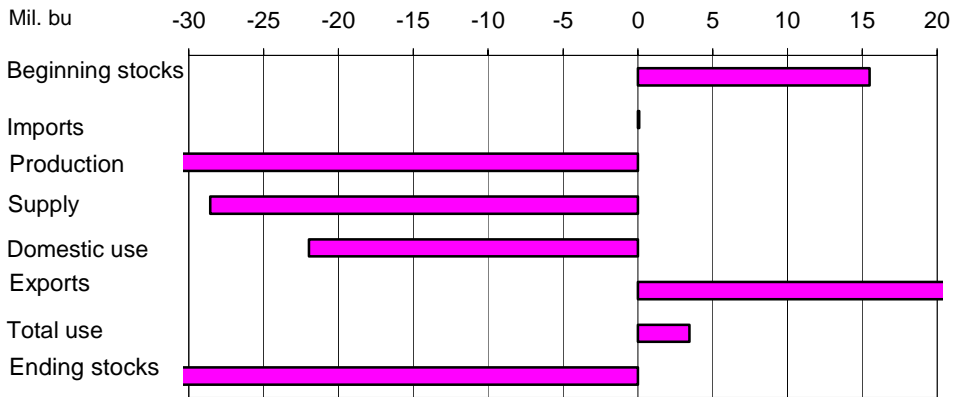
**Soft red winter wheat**



Source: WASDE, World Agricultural Outlook Board, USDA.

Figure 10

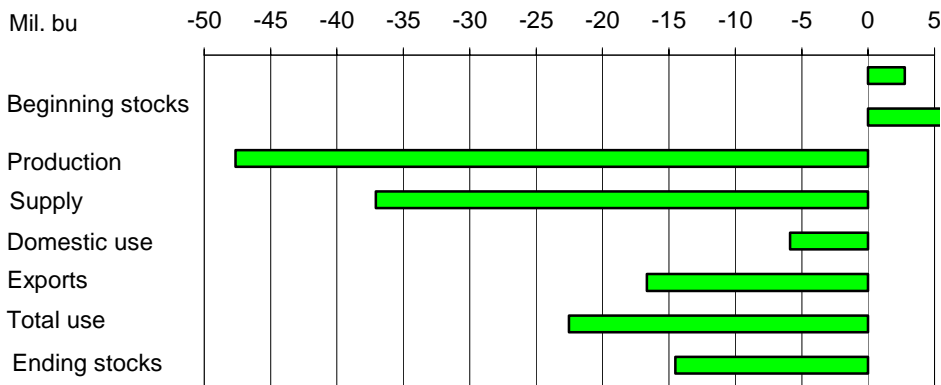
**White wheat**



Source: WASDE, World Agricultural Outlook Board, USDA.

Figure 11

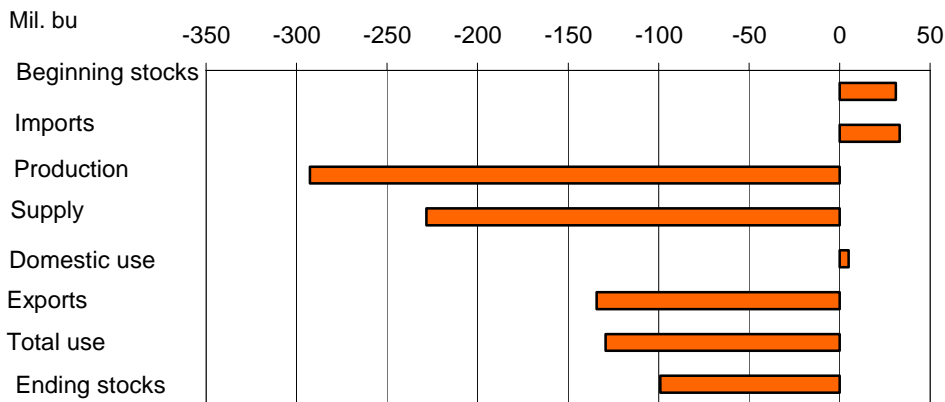
**Durum**



Source: WASDE, World Agricultural Outlook Board, USDA.

Figure 12

**All wheat**



Source: WASDE, World Agricultural Outlook Board, USDA.





Forecasts • Trends • Policies

# Agriculture at the Crossroads

Energy, Farm & Rural Policy

March 1-2, 2007

Crystal Gateway Marriott Hotel  
Arlington, Virginia

## Topics will include:

- Energy
- Rural Development
- Policy & Trade
- Science & Technology
- Food Trends
- Commodities

For registration and other details:  
[www.usda.gov/oce/forum/index.htm](http://www.usda.gov/oce/forum/index.htm)

## Contacts and Links

### Contact Information

Gary Vocke (domestic), (202) 694-5285, [gvocke@ers.usda.gov](mailto:gvocke@ers.usda.gov)  
Edward Allen (international), (202) 694-5288, [ewallen@ers.usda.gov](mailto:ewallen@ers.usda.gov)

### Subscription Information

Subscribe to ERS' e-mail notification service at <http://www.ers.usda.gov/updates/> to receive timely notification of newsletter availability. Printed copies can be purchased from the USDA Order Desk by calling 1-800-999-6779 (specify the issue number).

To order printed copies of the five field crop newsletters—cotton and wool, feed, rice, oil crops, and wheat—as a series, specify series SUB-COR-4043.

### E-mail Notification

Readers of ERS outlook reports have two ways they can receive an e-mail notice about release of reports and associated data.

- Receive timely notification (soon after the report is posted on the web) via USDA's Economics, Statistics and Market Information System (which is housed at Cornell University's Mann Library). Go to <http://usda.mannlib.cornell.edu/MannUsda/aboutEmailService.do> and follow the instructions to receive e-mail notices about ERS, Agricultural Marketing Service, National Agricultural Statistics Service, and World Agricultural Outlook Board products.

- Receive weekly notification (on Friday afternoon) via the ERS website. Go to <http://www.ers.usda.gov/Updates/> and follow the instructions to receive notices about ERS outlook reports, Amber Waves magazine, and other reports and data products on specific topics. ERS also offers RSS (really simple syndication) feeds for all ERS products. Go to <http://www.ers.usda.gov/rss/> to get started.

### Data

Monthly tables from *Wheat Outlook* are available in Excel (.xls) spreadsheets at <http://www.ers.usda.gov/briefing/wheat/data.htm>. These tables contain the latest data on supply and disappearance, monthly food-use estimates, prices, exports, and imports.

### Related Websites

WASDE

<http://usda.mannlib.cornell.edu/MannUsda/viewDocumentInfo.do?documentID=1194>

Grain Circular, [http://www.fas.usda.gov/grain\\_arc.asp](http://www.fas.usda.gov/grain_arc.asp)

Wheat Briefing Room, <http://www.ers.usda.gov/briefing/wheat/>

The U.S. Department of Agriculture (USDA) prohibits discrimination in all its programs and activities on the basis of race, color, national origin, age, disability, and, where applicable, sex, marital status, familial status, parental status, religion, sexual orientation, genetic information, political beliefs, reprisal, or because all or a part of an individual's income is derived from any public assistance program. (Not all prohibited bases apply to all programs.) Persons with disabilities who require alternative means for communication of program information (Braille, large print, audiotape, etc.) should contact USDA's TARGET Center at (202) 720-2600 (voice and TDD).

To file a complaint of discrimination write to USDA, Director, Office of Civil Rights, 1400 Independence Avenue, S.W., Washington, D.C. 20250-9410 or call (800) 795-3272 (voice) or (202) 720-6382 (TDD). USDA is an equal opportunity provider and employer.

Table 1--Wheat: U.S. market year supply and disappearance, 02/13/07

Item	1997/98	1998/99	1999/00	2000/01	2001/02	2002/03	2003/04	2004/05e	2005/06P	2006/07P
Area: (mil. ac)										
National total base	0.0	0.0	0.0	0.0	0.0	0.0	0.0	0.0	0.0	0.0
Eff. base/Ctr. acres										
0,50/92,85	0.0	0.0	0.0	0.0	0.0	0.0	0.0	0.0	0.0	0.0
CRP base retired	10.1	9.7	0.0	0.0	0.0	0.0	0.0	0.0	0.0	0.0
Planted	70.4	65.8	62.7	62.5	59.4	60.3	62.1	59.7	57.2	57.3
Harvested	62.8	59.0	53.8	53.1	48.5	45.8	53.1	50.0	50.1	46.8
Yield: (bu/acre)	39.5	43.2	42.7	42.0	40.2	35.0	44.2	43.2	42.0	38.7
Supply:										
	Million bushels									
Beginning stocks	443.6	722.5	945.9	949.7	876.2	777.1	491.4	546.4	540.1	571.2
Production	2,481.5	2,547.3	2,295.6	2,228.2	1,947.5	1,605.9	2,344.8	2,158.2	2,104.7	1,812.0
Imports 1/	94.9	103.0	94.5	89.8	107.6	77.4	63.0	70.6	81.7	115.0
Total supply	3,020.0	3,372.8	3,336.0	3,267.7	2,931.2	2,460.4	2,899.2	2,775.3	2,726.5	2,498.2
Use:										
Food	914.1	910.0	928.8	949.6	926.4	918.6	911.9	909.6	915.2	925.0
Seed	92.5	80.4	91.7	79.5	83.4	84.4	79.7	77.6	77.7	81.0
Feed and residual	250.5	390.7	279.3	300.4	182.0	115.7	202.9	182.1	153.2	145.0
Total domestic	1,257.1	1,381.1	1,299.7	1,329.5	1,191.8	1,118.7	1,194.4	1,169.2	1,146.1	1,151.0
Exports 1/	1,040.4	1,045.7	1,086.5	1,062.0	962.3	850.2	1,158.3	1,065.9	1,009.3	875.0
Total use	2,297.5	2,426.9	2,386.2	2,391.6	2,154.1	1,968.9	2,352.8	2,235.2	2,155.3	2,026.0
Ending stocks:	722.5	945.9	949.7	876.2	777.1	491.4	546.4	540.1	571.2	472.2
Farmer-owned reserve	0.0	0.0	0.0	0.0	0.0	0.0	0.0	0.0	0.0	0.0
CCC inventory 2/	94.0	128.0	104.0	97.0	99.0	66.0	61.0	54.0	43.0	35.0
Free stocks	628.5	817.9	845.7	779.2	678.1	425.4	485.4	486.1	528.2	437.2
Stocks-to-use ratio	31.4	39.0	39.8	36.6	36.1	25.0	23.2	24.2	26.5	23.3
Prices: (\$/bu)										
Target price	0.00	0.00	0.00	0.00	0.00	0.00	0.00	0.00	0.00	0.00
Loan rate	2.58	2.58	2.58	2.58	2.58	2.80	2.80	2.75	2.75	2.75
Contract rate	0.63	0.66	0.64	0.59	0.48	0.52	0.52	0.52	0.52	0.52
Ave. farm price	3.38	2.65	2.48	2.62	2.78	3.56	3.40	3.40	3.42	4.20-4.30
Gov't. pmts. (mil. dollars) 3/	1,412	2,717	3,827	3,606	2,474	1,172	1,237	1,218	1,151	1,126
Market value of production (mil. dollars)	8,287	6,781	5,594	5,782	5,440	5,679	7,929	7,283	7,198	7,701

Totals may not add due to rounding. E=Estimated, P=Projected.

1/ Imports and exports include flour and other products expressed in wheat equivalent. 2/ Includes Food Security Reserve.

3/ Unpublished data from Farm Service Agency, USDA.

Source: *World Agricultural Supply and Demand Estimates*, World Agricultural Outlook Board, USDA.

Table 2--Wheat: U.S. market year supply and disappearance, 02/13/07 1/

2005/06E	HRW	HRS	SRW	White	Durum	All wheat
Area:			Million acres			
Planted	30.049	13.344	6.134	4.942	2.76	57.229
Harvested	24.625	12.946	5.147	4.685	2.716	50.119
Yield: (bu/acre)	37.8	36	60	63.6	37.2	42.0
Supply:			Million bushels			
Beg. stocks	193.01	159.00	88.00	62.50	37.59	540.10
Production	929.82	466.59	309.02	298.16	101.11	2,104.69
Imports 2/	0.43	12.65	26.56	9.90	32.19	81.73
Total	1,123.26	638.24	423.58	370.55	170.89	2,726.52
Utilization:						
Food	369.32	227.00	155.00	85.00	78.86	915.18
Seed	33.34	20.88	14.04	6.57	2.91	77.74
Feed and residual	75.75	-23.18	72.06	26.41	2.12	153.15
Total domestic	478.41	224.70	241.10	117.98	83.88	1,146.08
Exports 2/	430.00	281.53	76.48	174.58	46.66	1,009.25
Total	908.42	506.24	317.58	292.55	130.54	2,155.33
Ending stocks:	214.84	132.00	106.00	78.00	40.35	571.19
-----	-----	-----	-----	-----	-----	-----
2006/07P	HRW	HRS	SRW	White	Durum	All wheat
-----	-----	-----	-----	-----	-----	-----
Area:			Million acres			
Planted	29.34	14.421	7.385	4.328	1.87	57.344
Harvested	21.32	13.419	6.162	4.095	1.815	46.800
Yield: (bu/acre)	32	32.2	63.3	62	29.5	38.7
Supply:			Million bushels			
Beg. stocks	214.84	132.00	106.00	78.00	40.35	571.19
Production	682.08	432.34	390.17	253.98	53.48	1,812.04
Imports 2/	1.00	49.00	15.00	10.00	40.00	115.00
Total	897.92	613.34	511.17	341.98	133.83	2,498.23
Utilization:						
Total domestic	466.31	229.11	281.58	96.00	78.00	1,151.00
Exports 2/	265.00	250.00	130.00	200.00	30.00	875.00
Total	731.31	479.11	411.58	296.00	108.00	2,026.00
Ending stocks:	166.61	134.23	99.58	45.98	25.83	472.23

Totals may not add due to rounding. 1/ ERS

estimates of area, yield, and domestic use. 2/ Imports and exports include flour and other products expressed in wheat equivalent.

Source: *World Agricultural Supply and Demand Estimates*, World Agricultural Outlook Board, USDA.

Table 3--Wheat: Quarterly supply and disappearance (1,000 bu), 02/13/07

Market year	Production	Imports 1/	Supply	Food	Seed	Feed	Exports 1/	Ending stocks	
Million bushels									
1998/99	Jun-Aug	2,547	24	3,294	226	1	425	257	2,385
	Sep-Nov	---	24	2,409	241	55	-74	292	1,896
	Dec-Feb	---	28	1,923	213	1	7	251	1,450
	Mar-May	---	27	1,477	230	23	32	246	946
	Mkt. year	2,547	103	3,373	910	80	391	1,046	946
1999/00	Jun-Aug	2,296	31	3,272	230	6	269	322	2,445
	Sep-Nov	---	19	2,465	241	55	-5	290	1,884
	Dec-Feb	---	19	1,903	223	2	26	236	1,417
	Mar-May	---	25	1,442	235	28	-10	239	950
	Mkt. year	2,296	95	3,336	929	92	279	1,086	950
2000/01	Jun-Aug	2,228	20	3,198	239	1	318	288	2,353
	Sep-Nov	---	25	2,378	253	50	-24	293	1,806
	Dec-Feb	---	21	1,828	228	3	11	246	1,338
	Mar-May	---	23	1,361	230	25	-4	235	876
	Mkt. year	2,228	90	3,268	950	79	300	1,062	876
2001/02:	Jun-Aug	1,947	26	2,849	234	3	238	218	2,156
	Sep-Nov	---	29	2,185	245	52	-23	288	1,623
	Dec-Feb	---	28	1,651	221	2	-7	225	1,210
	Mar-May	---	25	1,235	226	26	-26	231	777
	Mkt. year	1,947	108	2,931	926	83	182	962	777
2002/03:	Jun-Aug	1,606	27	2,410	233	3	185	240	1,749
	Sep-Nov	---	23	1,772	238	55	-75	235	1,320
	Dec-Feb	---	13	1,333	219	3	14	190	907
	Mar-May	---	15	922	229	24	-8	186	491
	Mkt. year	1,606	77	2,460	919	84	116	850	491
2003/04	Jun-Aug	2,345	16	2,852	231	2	315	265	2,039
	Sep-Nov	---	18	2,057	240	53	-62	305	1,520
	Dec-Feb	---	13	1,533	216	2	3	291	1,021
	Mar-May	---	17	1,037	226	22	-54	296	546
	Mkt. year	2,345	63	2,899	912	80	203	1,158	546
2004/05	Jun-Aug	2,158	17	2,722	227	4	265	287	1,938
	Sep-Nov	---	19	1,957	236	47	-56	300	1,430
	Dec-Feb	---	18	1,448	218	2	3	240	984
	Mar-May	---	17	1,001	229	24	-31	239	540
	Mkt. year	2,158	71	2,775	910	78	182	1,066	540
2005/06 E:	Jun-Aug	2,105	19	2,663	231	2	263	244	1,923
	Sep-Nov	---	20	1,944	238	51	-61	286	1,429
	Dec-Feb	---	20	1,450	219	1	1	257	972
	Mar-May	---	22	995	226	24	-49	222	571
	Mkt. year	2,105	82	2,727	915	78	153	1,009	571
2006/07 P:	Jun-Aug	1,812	26	2,410	233	2	211	214	1,751
	Sep-Nov	---	30	1,780	244	55	-45	212	1,315

Totals might not add due to rounding. E=Estimated, P=Projected. 1/ Imports and exports include flour and selected products expressed in wheat equivalent. Source: *World Agricultural Supply and Demand Estimates*, WAOB, USDA.

Table 4--Monthly food disappearance estimates for last 12 months (1,000 bu), 02/13/07

Item		Oct.	Nov.	Dec.	Jan.	Feb.	Mar.
Mill grind	+	78,222	74,871	70,278	70,926	70,363	74,652
Food imports 1/	+	2,421	2,397	2,241	2,127	1,956	2,339
Non-flour							
food disappearance 2/	+	2,000	2,000	2,000	2,000	2,000	2,000
Food exports 1/	-	1,567	1,384	1,628	1,623	1,504	1,520
Food disappearance	=	81,076	77,884	72,891	73,430	72,815	77,471
Item		Apr.	May	June	July	Aug	Sept
Mill grind	+	71,508	73,114	69,951	73,647	80,491	77,398
Food imports 1/	+	2,316	2,524	2,377	2,272	2,350	1,966
Non-flour							
food disappearance 2/	+	2,000	2,000	2,000	2,000	2,000	2,000
Food exports 1/	-	2,137	2,335	1,210	1,193	1,825	997
Food disappearance	=	73,687	75,303	73,118	76,726	83,016	80,367

1/ Wheat flour and flour products converted to wheat grain equivalent. 2/ ERS estimate of cereal use.

Totals may not add due to rounding.

Source: Economic Research Service, USDA, estimates.

Table 5--Wheat: National average price received by farmers, 02/13/07 1/

Month	All wheat		Winter		Durum		Other spring	
	05/06	06/07	05/06	06/07	05/06	06/07	05/06	06/07
June	3.23	4.01	3.15	3.99	3.67	3.81	3.51	4.18
July	3.20	3.89	3.15	3.82	3.72	3.83	3.45	4.41
August	3.24	3.91	3.16	3.77	3.35	4.09	3.43	4.11
September	3.36	4.06	3.28	4.03	3.38	4.07	3.51	4.11
October	3.43	4.59	3.34	4.63	3.39	4.55	3.61	4.48
November	3.45	4.59	3.27	4.68	3.28	4.63	3.71	4.48
December	3.53	4.51	3.45	4.51	3.37	4.74	3.68	4.48
January	3.52	4.50	3.45	4.47	3.29	4.69	3.70	4.52
February	3.66		3.59		3.35		3.83	
March	3.79		3.82		3.39		3.85	
April	3.81		3.76		3.40		3.94	
May	4.09		4.06		3.94		4.18	

1/ Preliminary mid-month weighted average price for current month.

Source: *Agricultural Prices*, National Agricultural Statistics Service, USDA .

Table 6--Wheat prices received by farmers by class, 02/13/07

Month	Hard red winter		Soft red winter		Hard red spring		Soft white	
	05/06	06/07	05/06	06/07	05/06	06/07	05/06	06/07
June	3.12	4.27	3.27	3.31	3.51	4.23	3.45	3.40
July	3.18	4.43	3.10	3.25	3.46	4.46	3.11	3.57
August	3.18	4.28	3.10	3.10	3.46	4.17	3.12	3.54
September	3.36	4.43	2.95	3.22	3.55	4.16	3.07	3.78
October	3.46	4.86	2.99	3.83	3.67	4.52	3.14	4.31
November	3.41	4.82	2.81	4.26	3.77	4.49	3.10	4.39
December	3.56	4.65	3.02	4.28	3.72	4.49	3.06	4.31
January	3.55		3.24		3.74		3.07	
February	3.77		3.32		3.89		3.12	
March	4.03		3.41		3.91		3.17	
April	3.99		3.29		3.99		3.15	
May	4.40		3.56		4.28		3.23	

Source: *Agricultural Prices*, National Agricultural Statistics Service, USDA.

Table 7--Wheat: Average cash grain bids at selected markets (\$/bu), 02/13/07

Month	KC HRW #1 ordinary		KC HRW #1 13% protein		Portland #1 HRW Ord.		FOB Gulf \$/mt (#2 HRW)	
	05/06	06/07	05/06	06/07	05/06	06/07	05/06	06/07
	June	3.87	5.25	4.00	5.43	3.82	5.14	142.25
July	3.83	5.27	3.89	5.38	3.80	5.26	145.52	204.31
August	3.96	5.00	4.04	5.15	3.91	5.04	154.28	193.99
September	4.30	5.16	4.30	5.19	4.28	5.19	166.89	201.39
October	4.57	5.62	4.68	5.55	4.44	5.56	173.12	214.90
November	4.53	5.61	4.55	5.63	4.34	5.62	164.74	212.54
December	4.52	5.49	4.60	5.55	4.39	5.67	171.45	210.43
January	4.46	5.29	4.50	5.29	4.37	5.49	167.50	202.90
February	4.72		4.83		4.57		180.10	
March	4.62		4.81		4.51		175.78	
April	4.86		5.04		4.71		181.55	
May	5.21		5.38		5.08		195.36	

Month	Minneapolis DNS 13% protein		Minneapolis DNS 14% protein		Minneapolis #1 HAD milling		Portland DNS 14% protein	
	05/06	06/07	05/06	06/07	05/06	06/07	05/06	06/07
	June	4.32	5.43	5.03	5.59	N/Q	N/Q	5.10
July	4.11	5.52	4.71	5.65	N/Q	N/Q	4.54	5.93
August	4.48	4.85	4.83	4.94	N/Q	N/Q	4.66	5.44
September	4.46	4.85	4.80	4.86	N/Q	N/Q	5.03	5.38
October	4.83	5.35	5.11	5.36	N/Q	N/Q	5.18	5.80
November	4.83	5.57	5.11	5.55	N/Q	N/Q	5.18	5.92
December	4.64	5.43	5.28	5.44	N/Q	N/Q	5.08	5.88
January	4.65	5.26	4.87	5.27	N/Q	N/Q	5.11	5.70
February	4.61		4.90		N/Q		5.27	
March	4.65		4.83		N/Q		5.26	
April	4.79		4.94		N/Q		5.47	
May	5.19		5.31		N/Q		5.72	

Month	St. Louis #2 soft red		Chicago #2 soft red		Toledo #2 soft red		Portland #1 soft white	
	05/06	06/07	05/06	06/07	05/06	06/07	05/06	06/07
	June	3.46	3.40	3.09	3.26	3.16	3.10	3.76
July	3.30	3.40	3.22	3.43	3.21	3.11	3.59	3.86
August	3.10	3.32	3.04	3.20	3.04	2.85	3.54	3.97
September	2.64	3.75	2.93	3.39	2.99	3.15	3.46	4.27
October	2.78	3.75	2.99	4.40	3.09	4.25	3.61	4.97
November	3.14	4.68	2.83	4.35	2.90	4.39	3.46	4.96
December	3.15	4.78	2.98	4.49	3.00	4.46	3.44	4.94
January	3.15	4.36	3.11	4.19	3.14	4.19	3.46	4.96
February	3.37		3.34		3.39		3.54	
March	3.45		3.29		3.27		3.59	
April	3.45		3.21		3.13		3.62	
May	3.45		3.54		3.42		3.79	

N/Q=no quote.

Source: Agricultural Marketing Service, USDA. <http://www.ams.usda.gov/lsmnpubs/grains.htm>.



Table 8--Wheat: U.S. exports and imports for last 6 months, 02/13/07 1/

Exports, (1,000 bu)						
Item 1/	June	July	Aug	Sept	Oct	Nov
Wheat grain	63,115	67,846	78,225	76,431	70,752	60,595
Wheat flour	720	488	780	610	532	754
Products	634	967	1,073	392	1,153	762
Total	64,469	69,301	80,078	77,433	72,437	62,111
Imports, (1,000 bu)						
Item 1/	June	July	Aug	Sept	Oct	Nov
Wheat grain	6,349	6,758	6,342	7,736	7,955	6,360
Wheat flour	1,031	944	990	963	1,194	1,100
Products	1,352	1,333	1,371	1,225	1,428	1,551
Total	8,732	9,035	8,703	9,924	10,577	9,011

1/ Wheat flour and products converted to wheat grain equivalent. Totals may not add due to rounding.

Source: Economic Research Service, USDA, estimates.

Table 9--Wheat: U.S. exports, Census and export sales comparison, 02/13/07 1/

Importing country	2004/05		2005/06		2006/07 (as of 2/01/07)		
	Shipments				Shipments	Outstanding sales	Total
	Data source	Export sales	Census	Export sales	Export sales	Export sales	
1,000 metric tons							
Country:							
Nigeria	2,576	2,529	3,110	3,036	1,551	471	2,022
Japan	3,011	3,109	2,902	2,966	2,054	573	2,626
Mexico	2,868	2,699	2,654	2,564	1,335	320	1,655
Iraq	393	387	2,278	2,338	648	250	898
Philippines	1,787	1,786	1,650	1,676	1,236	267	1,504
EU-25	1,036	1,551	1,131	1,479	572	55	626
Egypt	1,781	1,897	1,123	1,181	1,451	235	1,686
South Korea	1,287	1,298	1,097	1,143	775	197	972
Venezuela	715	708	1,046	1,085	519	79	598
Taiwan	968	971	906	914	633	183	816
Total grain	28,410	26,572	26,804	25,320	14,971	4,313	19,284
Total (including products)	28,930	26,641	27,324	25,370	15,004	4,317	19,321
USDA forecast of Census					23,814		

1/ Export sales and shipments from USDA's weekly *U.S. Export Sales* report.

Source: *U.S. Export Sales*, FAS, USDA.