



United States
Department of
Agriculture

Foreign
Agricultural
Service

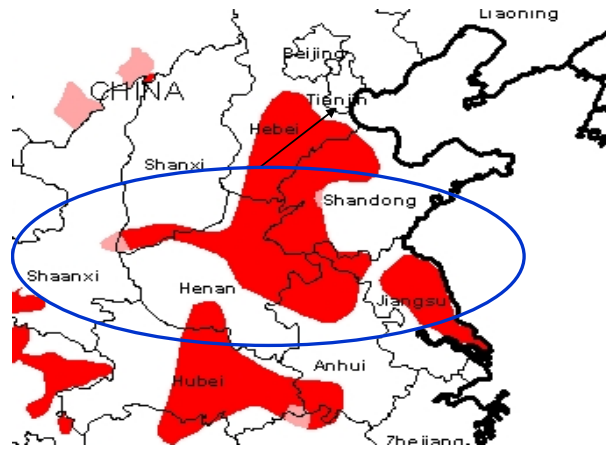
Circular Series
WAP 10-05
October 2005

World Agricultural Production

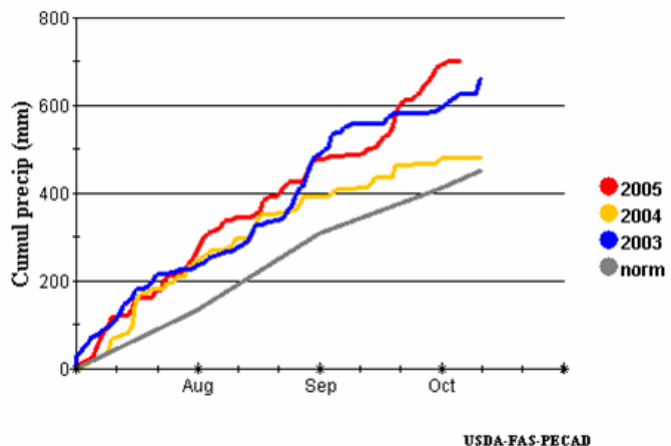
China: Rains Reduce Cotton Output

China's 2005/06 cotton production is estimated at 24.5 million bales (5.33 million tons), down 1.0 million from last month and down 4.5 million from last year. Area is estimated at 5.1 million hectares, unchanged from last month. The forecast yield of 1046 kilograms per hectare is down 6 percent from last year and below the 5-year average. The cotton crop is now at the open boll stage and harvesting is underway.

Crop conditions deteriorated in September over most of the North China Plain due to excessive rainfall and storm damage. The precipitation pattern in this area has been very similar to 2003, when heavy late-season rainfall caused sharply lower yields. This wet pattern extended into early October, bringing additional unwelcome rain to Shandong, southern Hebei, Shaanxi, Henan, Hubei, Anhui, and Jiangsu. Severe flooding has been reported this week in parts of Hubei and Shaanxi provinces. According to local sources, crop quality was rated fair to poor in most areas and moisture levels were excessive. The rain, cloudiness, and cool temperatures have slowed maturation and delayed harvest progress. There have been many reports of bollworm and aphid infestations, disease outbreaks (such as fusarium wilt), boll rot, and boll dropping.



Red = Major Production Areas on the North China Plain - About 50 percent of total output



USDA-FAS-PECAD

The situation is more favorable in Xinjiang, China's most important cotton-producing province (about 34 percent of total production). Planting in Xinjiang was hampered by cool temperatures and periodic storms, but local sources report that summer weather was very good and yield prospects are excellent. Planted area increased in 2005/06 to approximately 1.15 million hectares, and production is forecast to reach a record 1.8 million tons.

China: Excessive Rains Drop Corn Yields

China's corn production for 2005/06 is estimated at 126.0 million tons, down 1.0 million from last month and down 4.3 million from last year's crop. Corn area for 2005/06 was raised to 26.0 million hectares, up 0.55 million from last year's revised area of 25.45 million hectares. (The Chinese government published final 2004/05 area statistics in September). Corn area increased in 2005/06 mainly on the North China Plain. The government offered various tax and policy incentives in 2005 to encourage farmers to expand grain production. At the same time, lower prices for cotton in 2004 led to a significant reduction in cotton area this year, opening up arable land for corn planting. The estimated corn yield of 4.85 tons per hectare is down 5 percent from last year's excellent yield but equal to the 5-year average.

Based on crop travel in September by FAS personnel and other analysts, it appears that abundant rainfall and warm temperatures supported average crop development in the important corn-producing provinces of Hebei, Henan, and Heilongjiang. However, excessive rainfall during flowering and pollination lowered yield prospects in Liaoning, Jilin, and Inner Mongolia this year. Conditions in Shandong province were mixed, with good yields expected in the northwest part of the province and lower yields expected in the southeast. There were reports of significant problems with insects and diseases in several provinces. Harvesting is now underway across China. Scattered showers in the Northeast caused minor delays, but temperatures have remained above freezing in the main production areas and the harvest should soon be complete. On the North China Plain, periods of heavy rain in September and early October have hindered harvest activities and may have reduced yield prospects and crop quality. *(For more information, contact Paulette Sandene at 202-690-0133.)*

Pakistan: Cotton Production Forecast Revised Down

Pakistan's 2005/06 cotton production is forecast at 9.5 million bales, down 0.5 million percent from last month and down 1.3 million from last year. The area forecast is 3.15 million hectares, unchanged from last month. Above-average rainfall received in key growing regions in the Punjab during late September has resulted in reduced output. Field reports indicated crop condition was satisfactory to very good prior to September. The subsequent wetter-than-normal conditions during harvest was compounded by a lack of quality pesticide availability resulted in a pest-vulnerable crop. This season a pest infestation has reduced cotton yield. The full extent of damage will become more apparent as Pakistan gin arrival data, published every 15 days during harvest, is published. *(For more information, contact Jim Crutchfield at 202-690-0135.)*

European Union: Harvest Results Drop Wheat Production 1.8 Million Tons

The European Union (EU) is estimated to produce 121.7 million tons of wheat from 22.7 million hectares. EU wheat production is estimated down 2 percent from last month, 11 percent from last year, but on par with the five-year average. Area was revised down by 150,000 hectares from last month. The net result is an overall wheat yield of 5.36 tons per hectare, compared to last year's record 5.88 tons per hectare and the 5.32 tons per hectare five-year-average.

October estimates were revised downward, largely in response to collected harvest results that have been recently released. Specifically, the United Kingdom's (UK) wheat harvest was lowered 500,000 tons due to lower planted area. France's production estimate was lowered 1.0 million tons as new information suggests unusually high temperatures during June had impacted the crop more than expected. In addition, France's problem was compounded by concurrent dryness. Poland's wheat estimate was reduced 400,000 tons from last month to 8.6 million tons. Yields for wheat, Poland's largest crop, fell because of a short-but critical-dry spell that occurred during June. Crops suffered most in the rainfall deficit areas, concentrated in the center and northern sections of the country. Other revised estimates included Austria at 1.4 million tons (down 100,000 tons), while Lithuania's production increased 200,000 tons to 1.4 million tons. *(For more information, contact Bryan Purcell at 202-690-0138)*

European Union: Corn Production Lowest Since 2003 Drought Year

European Union (EU) corn production for 2005/06 is estimated at 45.9 million tons, down 3.7 percent from last month and down 14.0 percent from last year. Area remained virtually unchanged at 5.9 million hectares, slightly below the 6.0-million-ton five-year average, but well below last season's 6.4 million hectares. Yield is estimated at 7.77 tons per hectare (8.36 tons per hectare last year, 7.85 tons per hectare is the average), the lowest since drought ravaged the continent in 2003. Austria's production was lowered 200,000 tons to 1.5 million tons. The Czech Republic's crop was lowered 125,000 tons, largely due to an area reduction. More significantly, June dryness caused a 400,000-ton drop in Poland's corn estimate. France, the EU's largest corn producer, is estimated to harvest 13.2 million tons, down 300,000 from last month's estimate. Italy's crop was reduced 200,000 tons to 9.4 million tons, while Germany's crop estimate was adjusted down, 100,000 tons to 4.0 million tons. New numbers in Greece drew down its production estimate by 450,000 tons. The EU's third largest corn producer, Hungary, has seen its corn estimate bolstered by late season rainfall. Hungary's corn production remains on track and unchanged from last month, at a record 8.5 million tons, 4 percent higher than last year's 8.2-million-ton record harvest. *(For more information, contact Bryan Purcell at 202-690-0138)*

India: Corn Production Revised Down

India's 2005/06 corn output is estimated at 13.5 million tons, down 1.0 million from last month and down 0.1 million from last season's crop. The area forecast is 7.2 million hectares, down 0.2 from last month, but up 0.2 million from last year. The 2005/06 Kharif, or fall harvested corn crop, accounts for approximately 85 percent of the total crop, and the Rabi, or summer harvested corn crop, is normally about 15 percent of the total. A late monsoon arrival delayed sowing

operations in some regions. Yields are expected to be lower due to extended dry periods this monsoon (June 2005 to September 2005). *(For more information, contact Jim Crutchfield at 202-690-0135.)*

India: Millet Production Revised Down

India's 2005/06 millet output is estimated at 9.0 million tons, down 1.0 million from last month and down 0.4 million from last season's crop. The area forecast is 9.8 million hectares, down 0.2 from last month, but unchanged from last year. The 2005/06 millet crop, also known as Bajra, is predominantly grown during the monsoon or Kharif season. A late monsoon arrival delayed sowing operations in some regions. Extended dry periods this monsoon (June 2005 to September 2005) may have reduced yield prospects. *(For more information, contact Jim Crutchfield at 202-690-0135.)*

Canada: Wheat Production Increases Despite Variable Weather

Canada's wheat production for 2005/06 is forecast at 25.5 million tons, up 1.0 million from last month, but down 0.36 million from last year. The increase is a result of slight increases in both area and yield. USDA's increase in Canada wheat area and production is in response to Statistics Canada's September field crop report. Despite variable late-season weather with cool temperatures, heavy rains, and occasional frost in the main wheat-growing regions of Alberta and Saskatchewan, production is forecast upward from last month; wheat quality, however, is reported to have suffered. As reported by Saskatchewan Agriculture and Food, winter wheat harvest is nearly complete as of October 2, while spring wheat harvest is 56 percent complete in Saskatchewan, where 48 percent of the wheat crop is grown. Alberta produces approximately 27 percent of the wheat crop, while Manitoba and Ontario produce 17 and 7 percent, respectively. *(For more information, contact Nicole Wagner at 202-720-0882.)*

South Africa: Lower Corn Area and Output for 2005/06

South Africa's 2005/06 corn production is forecasted at 8.0 million tons, down 1.0 million tons from last month and down 4.0 million from last year. Area is forecasted at 2.8 million hectares, down 400,000 hectares from last month and down 700,000 from last year. The estimated yield of 2.86 tons per hectare is near the five-year average and assumes normal weather for the upcoming growing season. The area was lowered in response to the first intentions to plant survey released by South Africa's Crop Estimates Committee (CEC), whereby commercial farmers indicated they would plant 42 percent less corn area than last year. However, corn prices have increased since the farmers were surveyed at the end of August, and plantings could also increase if good rainfall occurs in November. Total corn area, therefore, was reduced by only 20 percent from last year in expectation that farmers will plant more corn than they indicated in the survey. *(For more information, contact Curt Reynolds at 202-690-0134.)*

Argentina: Soybean Production Outlook Gets Boost from Wheat Difficulties

Argentina's soybean production for 2005/06 is forecast at 40.5 million tons, up 4 percent from last month and 4 percent from last year. Harvested soybean area for 2005/06 is forecast at 15.2 million hectares, while yield is forecast at 2.66 tons per hectare, slightly above the 5-year average, but lower than last year's large yield of 2.71 tons per hectare.

The higher soybean output is due to a decline in wheat area. Upon completion of wheat plantings in mid-September, Argentina's Agricultural Secretaria reported that planted wheat area had decreased by 340,000 hectares, or 20 percent, from last year. This decrease was due to relatively favorable economics for planting oilseeds over grains, and an abandonment of intended wheat plantings in areas where planting progress was delayed due to low temperatures and dry soils. First-crop soybeans, which comprise approximately 82 percent of total soybean production, will increase in area, while second-crop soy, which follows wheat, will decline in area. Some of the abandoned wheat area will be planted to sunflowers, which are currently being planted, but dryness in Sante Fe, Chaco, and Santiago del Estero may cause an abandonment of some intended sunflower plantings, further increasing the area available to soybeans. Planting of first-crop soybeans will be in November and December, with second-crop soybeans planted in December and January.

This report uses information from the Foreign Agricultural Service's (FAS) global network of agricultural attachés and counselors, official statistics of foreign governments and other foreign source materials, and the results of economic and satellite imagery analysis. Estimates of foreign area, yield, and production are from the Production Estimates and Crop Assessment Division, FAS, and are reviewed by USDA's Inter-Agency Commodity Estimates Committee. Estimates of U.S. area, yield, and production are from USDA's National Agricultural Statistics Service. Numbers within the report may not add to totals because of rounding. This report reflects official USDA estimates released in the World Agricultural Supply and Demand Estimates (WASDE-426), Oct. 12, 2005.

Printed copies are available from the National Technical Information Service. Download an order form at http://www.ntis.gov/products/specialty/usda/fas_a-g.asp, or call NTIS at 1-800-363-2068.

The FAS Production Estimates and Crop Assessment Division prepared this report. The next issue of World Agricultural Production will be released after 9:00 a.m. Eastern Time, November 10, 2005.

Conversion Table

Metric tons to bushels

Wheat, soybeans	=	MT * 36.7437
Corn, sorghum, rye	=	MT * 39.36825
Barley	=	MT * 45.929625
Oats	=	MT * 68.894438

Metric tons to 480-lb bales

Cotton	=	MT * 4.592917
--------	---	---------------

Metric tons to hundredweight

Rice	=	MT * 22.04622
------	---	---------------

Area & weight

1 hectare	=	2.471044 acres
1 kilogram	=	2.204622 pounds

For further information, contact:
U.S. Department of Agriculture
Foreign Agricultural Service
Production Estimates and Crop Assessment Division
Ag Box 1045, Room 6541, South Building
Washington, DC 20250-1045
Telephone: (202) 720-0888 Fax: (202) 720-8880

GENERAL INFORMATION

Division Director	Allen Vandergriff	202-720-0888	vandergriff@fas.usda.gov
Administrative Assistant	Mary Jackson	202-720-0888	jacksonma@fas.usda.gov
Deputy Director for Analysis	George Douvelis	202-720-0873	douvelis@fas.usda.gov
Remote Sensing Specialist	Brad Doorn	202-690-0131	doorn@fas.usda.gov
Contract Representative	Theresa Wright	202-720-8887	wrightt@fas.usda.gov
Imagery Archive Coordinator	Bob Tetrault	202-690-0130	tetrault@fas.usda.gov
USDA Remote Sensing Advisor	Glenn Bethel	202-720-1280	bethel@fas.usda.gov
Chief of Technology Services	Bob Baldwin	202-720-1860	baldwin@fas.usda.gov
Image Processing Specialist	Stephen Macugoski	202-720-6237	macugoski@fas.usda.gov
GIS Specialist	(Vacant)		

COMMODITY-SPECIFIC INFORMATION

Grains Chairperson	Michelle Greenberg	202-720-7339	greenberg@fas.usda.gov
Oilseeds Chairperson	Paul Provance	202-720-0881	provance@fas.usda.gov
Rice Chairperson	Teresa McKeivier	202-720-0879	teresa.mckeivier@usda.gov
Cotton Chairperson	Teresa McKeivier	202-720-0879	teresa.mckeivier@usda.gov

COUNTRY- AND REGION-SPECIFIC INFORMATION

Brazil, Paraguay, & Venezuela	Michael Shean	202-720-7366	shean@fas.usda.gov
Canada & Argentina	Nicole Wagner	202-720-0882	nicole.c.wagner@usda.gov
European Union, the Balkans, & North Africa	Bryan Purcell	202-690-0138	purcellb@fas.usda.gov
Russia, Ukraine, & Central Asia	Mark Lindeman	202-690-0143	lindeman@fas.usda.gov
China, Koreas, Japan, & Southeast Asia	Paulette Sandene	202-690-0133	sandene@fas.usda.gov
Australia, Bangladesh, India, & Pakistan	Jim Crutchfield	202-690-0135	crutchfield@fas.usda.gov
Southern Africa & West Africa	Curt Reynolds	202-690-0134	reynoldsc@fas.usda.gov
Western United States	Carl Gernazio	202-690-0136	gernazio@fas.usda.gov
Eastern United States	(Vacant)		
Turkey, Iran, Afghanistan, & Iraq	(Vacant)		
Mexico, Central America, & Caribbean	(Vacant)		

TABLE 1
World Crop Production Summary

Commodity	World	Total Foreign	North America			EU-25	Other Europe		Asia					South America		Selected Other			All Others
			United States	Canada	Mexico		Russia	Ukraine	China	India	Indonesia	Pakistan	Thailand	Argentina	Brazil	Australia	South Africa	Turkey	
---Million metric tons---																			
<u>Wheat</u>																			
2003/04	554.19	490.38	63.81	23.55	2.70	106.88	34.10	3.60	86.49	65.10	0.00	19.19	0.00	14.00	5.85	26.23	1.54	16.80	84.34
2004/05 prel.	625.15	566.42	58.74	25.86	2.32	136.76	45.30	17.50	91.95	72.06	0.00	19.00	0.00	16.00	5.85	21.50	1.68	18.00	92.64
2005/06 proj.																			
Sept.	610.26	551.28	58.98	24.50	3.00	123.47	48.50	19.00	95.00	72.00	0.00	21.00	0.00	12.50	4.80	21.50	2.00	17.50	86.51
Oct.	607.96	550.86	57.11	25.50	3.00	121.67	48.50	19.00	95.00	72.00	0.00	21.00	0.00	11.70	4.80	22.00	2.00	17.50	87.19
<u>Coarse Grains</u>																			
2003/04	913.80	638.70	275.10	26.33	30.10	122.97	30.50	15.60	124.64	37.81	6.35	1.85	4.24	18.60	44.88	14.81	10.36	10.34	139.33
2004/05 prel.	1,008.15	688.70	319.45	26.39	29.56	150.58	29.55	23.00	138.29	31.99	6.50	1.98	4.20	23.90	37.80	10.96	12.53	11.05	150.43
2005/06 proj.																			
Sept.	938.96	651.40	287.56	24.73	27.73	130.29	28.30	16.67	135.70	33.96	6.60	1.98	4.34	22.65	47.13	11.06	9.55	11.35	139.37
Oct.	941.88	650.08	291.80	24.46	27.48	128.24	28.80	17.17	133.90	31.46	6.60	1.98	4.34	22.00	47.13	10.76	8.52	11.35	145.90
<u>Rice (Milled)</u>																			
2003/04	391.49	385.07	6.42	0.00	0.20	1.72	0.29	0.06	112.46	88.28	35.02	4.85	18.01	0.74	8.71	0.38	0.00	0.27	114.08
2004/05 prel.	401.89	394.48	7.41	0.00	0.20	1.86	0.31	0.05	125.36	85.31	34.25	4.92	17.00	0.68	8.98	0.22	0.00	0.33	115.02
2005/06 proj.																			
Sept.	405.62	398.37	7.25	0.00	0.20	1.71	0.35	0.05	127.50	84.50	34.90	5.00	17.80	0.70	8.10	0.47	0.00	0.33	116.78
Oct.	404.71	397.63	7.09	0.00	0.20	1.71	0.35	0.05	126.00	85.00	34.90	5.00	17.80	0.66	7.80	0.47	0.00	0.33	117.37
<u>Total Grains 1/</u>																			
2003/04	1,859.48	1,514.15	345.33	49.88	33.00	231.57	64.89	19.26	323.59	191.19	41.37	25.89	22.25	33.34	59.44	41.42	11.90	27.41	337.75
2004/05 prel.	2,035.20	1,649.60	385.60	52.25	32.08	289.21	75.16	40.55	355.60	189.36	40.75	25.90	21.20	40.59	52.63	32.67	14.21	29.37	358.09
2005/06 proj.																			
Sept.	1,954.85	1,601.05	353.79	49.23	30.93	255.47	77.15	35.72	358.20	190.46	41.50	27.98	22.14	35.85	60.03	33.02	11.55	29.17	342.66
Oct.	1,954.56	1,598.57	355.99	49.96	30.68	251.62	77.65	36.22	354.90	188.46	41.50	27.98	22.14	34.36	59.73	33.22	10.52	29.17	350.46
<u>Oilseeds 2/</u>																			
2003/04	334.46	257.87	76.60	9.18	0.34	16.44	5.44	4.54	50.85	28.86	1.96	3.76	0.34	36.84	53.04	2.27	1.04	2.06	40.91
2004/05 prel.	379.17	283.20	95.97	10.83	0.44	21.06	5.58	3.56	58.11	29.12	1.99	5.36	0.37	43.43	53.69	2.61	1.06	2.15	43.86
2005/06 proj.																			
Sept.	379.34	289.89	89.45	11.26	0.48	19.83	5.95	4.75	54.88	29.55	2.02	4.84	0.38	43.68	62.64	2.06	1.06	1.96	44.58
Oct.	384.83	292.02	92.81	11.56	0.48	20.45	6.15	5.05	53.98	29.52	2.02	4.64	0.38	45.28	62.49	2.06	1.24	1.96	44.78
---Million 480 pound bales---																			
<u>Cotton</u>																			
2003/04	95.06	76.81	18.26	0.00	0.36	1.96	0.00	0.00	18.26	13.80	0.03	7.75	0.06	0.52	6.02	1.70	0.13	4.10	22.14
2004/05 prel.	120.43	97.18	23.25	0.00	0.63	2.30	0.00	0.00	23.25	19.00	0.03	11.30	0.06	0.68	5.90	3.00	0.10	4.15	26.79
2005/06 proj.																			
Sept.	111.53	89.25	22.28	0.00	0.75	2.20	0.00	0.00	25.50	18.40	0.03	10.00	0.05	0.65	5.70	2.40	0.10	3.70	19.76
Oct.	111.44	88.72	22.72	0.00	0.75	2.20	0.00	0.00	24.50	19.00	0.03	9.50	0.05	0.65	5.60	2.40	0.10	3.70	20.24

1/ Includes wheat, coarse grains, and rice (milled) shown above.

2/ Includes soybean, cottonseed, peanut (inshell), sunflowerseed, rapeseed for individual countries. Copra and palm kernel are added to world totals.

Note: Entries of 0.0 indicate no reported or insignificant production.

TABLE 2
Wheat Area, Yield, and Production
World and Selected Countries and Regions

Country/Region	Area				Yield				Production				Change in Production			
	Prel.		2005/06 Proj.		Prel.		2005/06 Proj.		Prel.		2005/06 Proj.		From last month		From last year	
	2003/04	2004/05	Sept.	Oct.	2003/04	2004/05	Sept.	Oct.	2003/04	2004/05	Sept.	Oct.	MMT	Percent	MMT	Percent
	Million hectares				Metric tons per hectare				Million metric tons							
World	209.87	217.05	216.89	216.33	2.64	2.88	2.81	2.81	554.19	625.15	610.26	607.96	-2.30	-0.38	-17.19	-2.75
United States	21.47	20.23	20.38	20.23	2.97	2.90	2.89	2.82	63.81	58.74	58.98	57.11	-1.88	-3.18	-1.63	-2.78
Total Foreign	188.40	196.82	196.51	196.10	2.60	2.88	2.81	2.81	490.38	566.42	551.28	550.86	-0.42	-0.08	-15.56	-2.75
North & South America																
Canada	10.47	9.86	9.75	9.83	2.25	2.62	2.51	2.59	23.55	25.86	24.50	25.50	1.00	4.08	-0.36	-1.39
Mexico	0.60	0.51	0.65	0.65	4.50	4.55	4.62	4.62	2.70	2.32	3.00	3.00	0.00	0.00	0.68	29.31
Argentina	5.70	6.10	5.10	4.90	2.46	2.62	2.45	2.39	14.00	16.00	12.50	11.70	-0.80	-6.40	-4.30	-26.88
Brazil	2.46	2.76	2.40	2.40	2.37	2.12	2.00	2.00	5.85	5.85	4.80	4.80	0.00	0.00	-1.05	-17.88
Europe																
EU - 25	22.04	23.24	22.86	22.70	4.85	5.88	5.40	5.36	106.88	136.76	123.47	121.67	-1.80	-1.46	-15.09	-11.03
EU - 15	17.08	17.92	17.35	17.18	5.30	6.25	5.85	5.81	90.59	111.99	101.42	99.82	-1.60	-1.58	-12.17	-10.87
France	4.92	5.24	5.37	5.28	6.23	7.58	7.08	7.01	30.64	39.71	38.00	37.00	-1.00	-2.63	-2.71	-6.83
United Kingdom	1.84	1.99	1.95	1.88	7.78	7.78	7.95	8.00	14.29	15.47	15.50	15.00	-0.50	-3.23	-0.47	-3.06
Germany	2.96	3.11	3.17	3.17	6.50	8.17	7.44	7.44	19.26	25.43	23.60	23.60	0.00	0.00	-1.83	-7.19
NMS - 10	4.96	5.33	5.52	5.52	3.28	4.65	4.00	3.96	16.28	24.77	22.06	21.86	-0.20	-0.91	-2.92	-11.77
Poland	2.31	2.31	2.45	2.45	3.40	4.28	3.67	3.51	7.86	9.89	9.00	8.60	-0.40	-4.44	-1.29	-13.06
Hungary	1.11	1.15	1.17	1.17	2.61	5.04	4.27	4.27	2.90	5.80	5.00	5.00	0.00	0.00	-0.80	-13.79
Other Europe																
Bulgaria	0.75	0.95	1.00	1.00	2.27	3.79	3.00	3.00	1.70	3.60	3.00	3.00	0.00	0.00	-0.60	-16.67
Romania	1.50	1.80	2.10	2.10	1.33	3.61	2.62	2.81	2.00	6.50	5.50	5.90	0.40	7.27	-0.60	-9.23
Russian Fed.	22.15	24.20	25.50	25.50	1.54	1.87	1.90	1.90	34.10	45.30	48.50	48.50	0.00	0.00	3.20	7.06
Ukraine	2.45	5.90	6.65	6.65	1.47	2.97	2.86	2.86	3.60	17.50	19.00	19.00	0.00	0.00	1.50	8.57
Kazakstan	11.30	11.80	11.50	11.50	0.97	0.84	1.00	0.96	11.00	9.95	11.50	11.00	-0.50	-4.35	1.05	10.55
Asia & Oceania																
Australia	13.02	12.20	11.50	11.50	2.01	1.76	1.87	1.91	26.23	21.50	21.50	22.00	0.50	2.33	0.50	2.33
Bangladesh	0.57	0.60	0.60	0.60	2.21	1.83	2.00	2.00	1.25	1.10	1.20	1.20	0.00	0.00	0.10	9.09
China	22.00	21.63	22.70	22.70	3.93	4.25	4.19	4.19	86.49	91.95	95.00	95.00	0.00	0.00	3.05	3.32
India	24.86	26.62	26.30	26.30	2.62	2.71	2.74	2.74	65.10	72.06	72.00	72.00	0.00	0.00	-0.06	-0.08
Iran	6.50	6.60	6.80	6.80	2.08	2.12	2.13	2.13	13.50	14.00	14.50	14.50	0.00	0.00	0.50	3.57
Pakistan	8.09	8.20	8.30	8.30	2.37	2.32	2.53	2.53	19.19	19.00	21.00	21.00	0.00	0.00	2.00	10.53
Saudi Arabia	0.45	0.32	0.24	0.24	4.71	5.00	5.00	5.00	2.10	1.60	1.20	1.20	0.00	0.00	-0.40	-25.00
Turkey	8.60	8.60	8.60	8.60	1.95	2.09	2.03	2.03	16.80	18.00	17.50	17.50	0.00	0.00	-0.50	-2.78
Africa																
Algeria	2.76	2.00	1.40	1.40	1.08	1.30	1.07	1.07	2.97	2.60	1.50	1.50	0.00	0.00	-1.10	-42.35
Morocco	2.99	3.06	3.00	2.97	1.72	1.81	0.83	1.03	5.15	5.54	2.50	3.04	0.54	21.72	-2.50	-45.07
South Africa	0.75	0.83	0.82	0.82	2.06	2.02	2.44	2.44	1.54	1.68	2.00	2.00	0.00	0.00	0.32	19.05
Egypt	1.03	1.09	1.12	1.12	6.26	6.07	6.07	6.07	6.44	6.63	6.80	6.80	0.00	0.00	0.17	2.56
Others	17.36	17.94	17.61	17.53	2.20	2.29	2.20	2.23	38.23	41.12	38.81	39.04	0.24	0.61	-2.07	-5.04

October 2005

Production Estimates and Crop Assessment Division, FAS, USDA

TABLE 3
Total Coarse Grain Area, Yield, and Production
 World and Selected Countries and Regions

Country/Region	Area				Yield				Production				Change in Production			
	Prel.	2005/06 Proj.			Prel.	2005/06 Proj.			Prel.	2005/06 Proj.			From last month		From last year	
	2003/04	2004/05	Sept.	Oct.	2003/04	2004/05	Sept.	Oct.	2003/04	2004/05	Sept.	Oct.	MMT	Percent	MMT	Percent
	Million hectares				Metric tons per hectare				Million metric tons				MMT	Percent	MMT	Percent
World	306.78	302.15	299.88	299.88	2.98	3.34	3.13	3.14	913.80	1,008.15	938.96	941.88	2.92	0.31	-66.27	-6.57
United States	34.81	34.91	34.85	34.56	7.90	9.15	8.25	8.44	275.10	319.45	287.56	291.80	4.24	1.47	-27.65	-8.66
Total Foreign	271.97	267.24	265.03	265.32	2.35	2.58	2.46	2.45	638.70	688.70	651.40	650.08	-1.32	-0.20	-38.62	-5.61
North & South America																
Canada	7.53	6.70	6.80	6.27	3.49	3.94	3.64	3.90	26.33	26.39	24.73	24.46	-0.27	-1.09	-1.93	-7.32
Mexico	9.98	9.87	9.36	9.31	3.02	3.00	2.96	2.95	30.10	29.56	27.73	27.48	-0.25	-0.90	-2.08	-7.02
Argentina	3.38	3.90	3.68	3.59	5.50	6.14	6.15	6.13	18.60	23.90	22.65	22.00	-0.65	-2.87	-1.90	-7.97
Brazil	13.79	12.81	14.45	14.45	3.26	2.95	3.26	3.26	44.88	37.80	47.13	47.13	0.00	0.00	9.33	24.67
Europe																
EU-25	28.96	29.10	28.37	28.39	4.25	5.18	4.59	4.52	122.97	150.58	130.29	128.24	-2.05	-1.57	-22.34	-14.84
EU-15	19.10	18.95	18.23	18.18	4.95	5.89	5.21	5.12	94.62	111.59	94.99	93.11	-1.87	-1.97	-18.48	-16.56
Germany	3.88	3.83	3.66	3.71	5.19	6.70	6.39	6.25	20.10	25.67	23.40	23.15	-0.25	-1.07	-2.52	-9.82
France	4.00	4.08	3.86	3.86	6.09	7.51	6.96	6.85	24.39	30.66	26.86	26.45	-0.41	-1.55	-4.22	-13.75
NMS-10	9.86	10.14	10.13	10.21	2.88	3.84	3.48	3.44	28.35	39.00	35.31	35.13	-0.17	-0.50	-3.86	-9.90
Poland	5.82	6.02	6.10	6.10	2.66	3.27	2.76	2.75	15.49	19.67	16.85	16.80	-0.05	-0.30	-2.87	-14.60
Czech Rep.	0.80	0.74	0.74	0.78	3.88	5.04	4.98	4.53	3.10	3.73	3.66	3.54	-0.13	-3.42	-0.19	-5.20
Hungary	1.73	1.83	1.79	1.82	3.40	5.78	5.84	5.74	5.87	10.57	10.47	10.47	0.00	0.00	-0.10	-0.97
Other Europe																
Romania	3.27	3.65	3.70	3.70	2.44	3.78	2.84	2.84	7.97	13.81	10.51	10.51	0.00	0.00	-3.30	-23.90
Russia	18.10	17.45	16.90	16.90	1.69	1.69	1.67	1.70	30.50	29.55	28.30	28.80	0.50	1.77	-0.75	-2.54
Ukraine	7.80	8.44	7.33	7.33	2.00	2.73	2.28	2.34	15.60	23.00	16.67	17.17	0.50	3.00	-5.83	-25.35
Kazakhstan	2.17	2.07	1.97	1.97	1.20	0.98	1.23	1.18	2.60	2.02	2.42	2.32	-0.10	-4.13	0.30	14.85
Lithuania	0.51	0.50	0.52	0.52	2.76	2.82	2.43	2.43	1.41	1.41	1.27	1.27	0.00	0.00	-0.15	-10.47
Turkey	4.48	4.61	4.71	4.71	2.31	2.40	2.41	2.41	10.34	11.05	11.35	11.35	0.00	0.00	0.30	2.72
Asia & Oceania																
China	27.26	28.33	28.15	28.85	4.57	4.88	4.82	4.64	124.64	138.29	135.70	133.90	-1.80	-1.33	-4.39	-3.17
Thailand	1.20	1.22	1.22	1.22	3.54	3.45	3.56	3.56	4.24	4.20	4.34	4.34	0.00	0.00	0.14	3.33
India	30.76	26.96	27.56	27.06	1.23	1.19	1.23	1.16	37.81	31.99	33.96	31.46	-2.50	-7.36	-0.53	-1.66
Indonesia	3.20	3.30	3.30	3.30	1.98	1.97	2.00	2.00	6.35	6.50	6.60	6.60	0.00	0.00	0.10	1.54
Philippines	2.49	2.40	2.50	2.50	1.97	2.10	2.10	2.20	4.90	5.05	5.25	5.50	0.25	4.76	0.45	8.91
Australia	6.39	5.65	5.50	5.60	2.32	1.94	2.01	1.92	14.81	10.96	11.06	10.76	-0.30	-2.71	-0.20	-1.83
Africa																
South Africa	4.24	4.40	4.12	3.70	2.45	2.85	2.32	2.30	10.36	12.53	9.55	8.52	-1.03	-10.78	-4.01	-31.98
Others	96.48	95.91	94.91	95.96	1.29	1.36	1.28	1.34	124.31	130.12	121.91	128.29	6.38	5.24	-1.83	-1.40

TABLE 4
Corn Area, Yield, and Production
World and Selected Countries and Regions

Country/Region	Area				Yield				Production				Change in Production			
	2003/04	Prel. 2004/05	2005/06 Proj. Sept.	Oct.	2003/04	Prel. 2004/05	2005/06 Proj. Sept.	Oct.	2003/04	Prel. 2004/05	2005/06 Proj. Sept.	Oct.	From last month		From last year	
	Million hectares				Metric tons per hectare				Million metric tons				MMT	Percent	MMT	Percent
World	141.65	144.32	144.08	144.99	4.40	4.91	4.60	4.61	623.34	708.58	663.49	668.19	4.69	0.71	-40.40	-5.70
United States	28.71	29.80	30.08	30.08	8.93	10.07	8.99	9.17	256.28	299.92	270.23	275.79	5.56	2.06	-24.13	-8.04
Total Foreign	112.94	114.52	114.01	114.91	3.25	3.57	3.45	3.41	367.06	408.67	393.26	392.39	-0.87	-0.22	-16.27	-3.98
North & South America																
Canada	1.23	1.07	1.10	1.09	7.80	8.25	7.27	7.74	9.60	8.80	8.00	8.40	0.40	5.00	-0.40	-4.57
Mexico	7.69	7.76	7.20	7.20	2.83	2.92	2.85	2.85	21.80	22.63	20.50	20.50	0.00	0.00	-2.13	-9.41
Argentina	2.30	2.70	2.55	2.50	6.52	7.22	7.25	7.20	15.00	19.50	18.50	18.00	-0.50	-2.70	-1.50	-7.69
Brazil	12.44	11.47	13.00	13.00	3.38	3.05	3.38	3.38	42.00	35.00	44.00	44.00	0.00	0.00	9.00	25.71
Europe																
EU-25	6.04	6.38	5.92	5.91	6.61	8.36	8.05	7.77	39.88	53.35	47.65	45.87	-1.78	-3.73	-7.48	-14.02
EU-15	4.30	4.49	4.03	4.00	7.53	9.14	8.73	8.47	32.39	41.03	35.13	33.88	-1.25	-3.56	-7.16	-17.44
France	1.65	1.82	1.60	1.65	7.24	8.99	8.44	8.00	11.98	16.38	13.50	13.20	-0.30	-2.22	-3.18	-19.40
Italy	1.16	1.20	1.05	1.05	6.96	9.16	9.14	8.95	8.10	10.98	9.60	9.40	-0.20	-2.08	-1.58	-14.41
NMS-10	1.74	1.90	1.89	1.91	4.31	6.50	6.62	6.30	7.49	12.32	12.52	12.00	-0.53	-4.19	-0.32	-2.61
Hungary	1.10	1.20	1.17	1.20	4.18	6.83	7.26	7.08	4.60	8.20	8.50	8.50	0.00	0.00	0.30	3.66
Poland	0.36	0.41	0.43	0.43	5.29	5.69	5.35	4.42	1.88	2.34	2.30	1.90	-0.40	-17.39	-0.44	-18.94
Slovak Rep.	0.15	0.15	0.15	0.15	2.01	5.86	5.33	5.33	0.30	0.86	0.80	0.80	0.00	0.00	-0.06	-7.19
Other Europe																
Romania	2.70	3.00	3.00	3.00	2.60	4.00	3.00	3.00	7.02	12.00	9.00	9.00	0.00	0.00	-3.00	-25.00
Serbia	1.20	1.20	1.30	1.25	3.17	5.22	4.54	5.04	3.80	6.27	5.90	6.30	0.40	6.78	0.03	0.41
Russia	0.70	0.90	0.80	0.80	3.00	3.83	3.13	3.75	2.10	3.45	2.50	3.00	0.50	20.00	-0.45	-13.04
Ukraine	2.00	2.30	1.60	1.60	3.43	3.83	3.44	3.75	6.85	8.80	5.50	6.00	0.50	9.09	-2.80	-31.82
Asia																
China	24.07	25.45	25.00	26.00	4.81	5.12	5.08	4.85	115.83	130.30	127.00	126.00	-1.00	-0.79	-4.30	-3.30
Thailand	1.11	1.13	1.13	1.13	3.69	3.54	3.66	3.66	4.10	4.00	4.14	4.14	0.00	0.00	0.14	3.50
India	7.42	7.00	7.40	7.20	1.98	1.94	1.96	1.88	14.72	13.60	14.50	13.50	-1.00	-6.90	-0.10	-0.74
Indonesia	3.20	3.30	3.30	3.30	1.98	1.97	2.00	2.00	6.35	6.50	6.60	6.60	0.00	0.00	0.10	1.54
Philippines	2.49	2.40	2.50	2.50	1.97	2.10	2.10	2.20	4.90	5.05	5.25	5.50	0.25	4.76	0.45	8.91
Africa																
South Africa	3.30	3.50	3.20	2.80	2.94	3.43	2.81	2.86	9.70	12.00	9.00	8.00	-1.00	-11.11	-4.00	-33.33
Egypt	0.67	0.68	0.70	0.70	8.54	8.50	8.50	8.50	5.74	5.78	5.95	5.95	0.00	0.00	0.17	2.94
Zimbabwe	1.37	1.20	1.30	1.30	0.66	0.46	0.85	0.69	0.90	0.55	1.10	0.90	-0.20	-18.18	0.35	63.64
Others	33.03	33.08	33.01	33.64	1.72	1.85	1.76	1.81	56.78	61.08	58.17	60.73	2.56	4.40	-0.35	-0.57

TABLE 5
Barley Area, Yield, and Production
World and Selected Countries and Regions

Country/Region	Area				Yield				Production				Change in Production			
	2003/04	Prel. 2004/05	2005/06 Proj. Sept.	Oct.	2003/04	Prel. 2004/05	2005/06 Proj. Sept.	Oct.	2003/04	Prel. 2004/05	2005/06 Proj. Sept.	Oct.	From last month		From last year	
	Million hectares				Metric tons per hectare				Million metric tons				MMT	Percent	MMT	Percent
World	59.97	57.48	55.72	55.68	2.38	2.66	2.41	2.40	142.56	153.00	134.55	133.56	-1.00	-0.74	-19.45	-12.71
United States	1.91	1.63	1.41	1.33	3.17	3.74	3.67	3.48	6.06	6.09	5.15	4.62	-0.53	-10.36	-1.47	-24.15
Total Foreign	58.06	55.85	54.32	54.35	2.35	2.63	2.38	2.37	136.50	146.91	129.40	128.94	-0.46	-0.36	-17.98	-12.24
North & South America																
Canada	4.45	4.05	4.00	3.88	2.77	3.26	3.08	3.12	12.33	13.19	12.30	12.10	-0.20	-1.63	-1.09	-8.24
Europe																
EU-25	13.43	13.06	12.99	13.06	4.08	4.73	4.02	4.02	54.83	61.75	52.26	52.46	0.20	0.38	-9.29	-15.05
EU-15	10.61	10.36	10.24	10.25	4.40	5.02	4.26	4.21	46.73	51.97	43.59	43.14	-0.45	-1.03	-8.83	-16.98
Denmark	0.71	0.71	0.70	0.70	5.29	5.14	5.29	5.29	3.78	3.63	3.70	3.70	0.00	0.00	0.07	1.82
France	1.75	1.63	1.60	1.60	5.69	6.77	6.38	6.44	9.96	11.03	10.20	10.30	0.10	0.98	-0.73	-6.64
Germany	2.08	1.98	1.93	1.97	5.11	6.57	6.22	6.01	10.60	12.99	12.00	11.80	-0.20	-1.67	-1.19	-9.18
Italy	0.31	0.31	0.34	0.34	3.29	3.80	3.70	3.70	1.02	1.17	1.25	1.25	0.00	0.00	0.08	7.11
Spain	3.11	3.17	3.10	3.10	2.79	3.35	1.48	1.48	8.69	10.61	4.60	4.60	0.00	0.00	-6.01	-56.64
United Kingdom	1.08	1.01	0.98	0.94	5.91	5.76	5.71	5.53	6.37	5.82	5.60	5.20	-0.40	-7.14	-0.62	-10.58
NMS-10	2.81	2.70	2.75	2.81	2.88	3.63	3.15	3.31	8.10	9.78	8.66	9.31	0.65	7.50	-0.47	-4.77
Poland	1.02	1.01	1.10	1.10	2.79	3.52	2.59	3.18	2.83	3.57	2.85	3.50	0.65	22.81	-0.07	-1.99
Czech Rep.	0.55	0.47	0.46	0.52	3.76	4.97	5.22	4.62	2.07	2.33	2.40	2.40	0.00	0.00	0.07	2.96
Hungary	0.38	0.35	0.34	0.34	2.17	4.00	3.68	3.68	0.83	1.40	1.25	1.25	0.00	0.00	-0.15	-10.71
Lithuania	0.31	0.29	0.30	0.30	2.92	2.93	2.43	2.43	0.90	0.86	0.73	0.73	0.00	0.00	-0.13	-15.02
Other Europe																
Russia	10.50	10.00	9.30	9.30	1.71	1.72	1.72	1.72	18.00	17.20	16.00	16.00	0.00	0.00	-1.20	-6.98
Ukraine	4.60	4.50	4.50	4.50	1.49	2.47	2.00	2.00	6.85	11.10	9.00	9.00	0.00	0.00	-2.10	-18.92
Kazakhstan	1.80	1.70	1.60	1.60	1.17	0.88	1.19	1.13	2.10	1.50	1.90	1.80	-0.10	-5.26	0.30	20.00
Romania	0.32	0.40	0.45	0.45	1.70	3.50	2.44	2.44	0.54	1.40	1.10	1.10	0.00	0.00	-0.30	-21.43
Norway	0.18	0.18	0.18	0.18	3.71	3.71	3.71	3.71	0.65	0.65	0.65	0.65	0.00	0.00	0.00	0.00
Turkey	3.45	3.50	3.50	3.50	2.00	2.11	2.06	2.06	6.90	7.40	7.20	7.20	0.00	0.00	-0.20	-2.70
Asia & Oceania																
China	0.95	0.90	0.85	0.85	3.58	3.61	3.65	3.65	3.40	3.25	3.10	3.10	0.00	0.00	-0.15	-4.62
India	0.75	0.76	0.76	0.76	1.88	1.93	1.93	1.93	1.41	1.46	1.46	1.46	0.00	0.00	0.00	0.00
Australia	4.40	3.80	3.70	3.80	2.34	1.84	2.03	1.89	10.29	7.00	7.50	7.20	-0.30	-4.00	0.20	2.86
Africa																
Algeria	0.78	0.92	0.70	0.70	1.56	1.43	0.57	0.57	1.22	1.31	0.40	0.40	0.00	0.00	-0.91	-69.56
Others	12.46	12.10	11.79	11.78	1.44	1.63	1.40	1.40	17.99	19.70	16.53	16.47	-0.06	-0.38	-3.24	-16.42

TABLE 6
Oats Area, Yield, and Production
World and Selected Countries and Regions

Country/Region	Area				Yield				Production				Change in Production			
	2003/04	Prel. 2004/05	2005/06 Proj. Sept.	Oct.	2003/04	Prel. 2004/05	2005/06 Proj. Sept.	Oct.	2003/04	Prel. 2004/05	2005/06 Proj. Sept.	Oct.	From last month	Percent	From last year	Percent
	Million hectares				Metric tons per hectare				Million metric tons				MMT	Percent	MMT	Percent
World	13.77	12.85	12.92	12.46	1.93	2.00	1.88	1.89	26.59	25.73	24.24	23.53	-0.71	-2.91	-2.20	-8.55
United States	0.90	0.72	0.80	0.74	2.33	2.32	2.32	2.26	2.10	1.68	1.86	1.67	-0.19	-10.03	-0.01	-0.60
Total Foreign	12.87	12.13	12.12	11.73	1.90	1.98	1.85	1.86	24.49	24.05	22.38	21.86	-0.52	-2.32	-2.19	-9.10
North & South America																
Canada	1.58	1.32	1.40	1.04	2.34	2.80	2.64	3.17	3.69	3.68	3.70	3.30	-0.40	-10.81	-0.38	-10.40
Argentina	0.23	0.28	0.23	0.23	1.51	1.83	1.52	1.52	0.35	0.51	0.35	0.35	0.00	0.00	-0.16	-31.10
Europe																
EU-25	2.91	2.69	2.73	2.70	2.97	3.26	2.84	2.83	8.62	8.76	7.75	7.63	-0.12	-1.55	-1.13	-12.90
EU-15	2.08	1.87	1.87	1.83	3.26	3.48	3.06	3.05	6.79	6.52	5.70	5.58	-0.12	-2.10	-0.94	-14.35
Finland	0.42	0.33	0.35	0.35	3.05	3.07	3.14	3.14	1.29	1.00	1.10	1.10	0.00	0.00	0.10	9.78
Germany	0.26	0.23	0.22	0.22	4.59	5.22	4.88	4.88	1.20	1.19	1.05	1.05	0.00	0.00	-0.14	-11.47
Sweden	0.28	0.23	0.20	0.20	3.96	4.02	4.00	4.00	1.09	0.93	0.80	0.80	0.00	0.00	-0.13	-13.89
Italy	0.15	0.15	0.17	0.17	2.07	2.29	2.21	2.21	0.31	0.34	0.38	0.38	0.00	0.00	0.04	13.10
NMS-10	0.82	0.82	0.87	0.87	2.23	2.74	2.36	2.36	1.84	2.24	2.05	2.05	0.00	0.00	-0.19	-8.66
Czech Rep.	0.08	0.06	0.06	0.06	3.04	3.85	3.27	3.27	0.23	0.23	0.18	0.18	0.00	0.00	-0.05	-20.70
Poland	0.53	0.52	0.57	0.57	2.24	2.75	2.37	2.37	1.18	1.43	1.35	1.35	0.00	0.00	-0.08	-5.59
Serbia	0.07	0.07	0.07	0.07	1.69	1.85	1.85	1.85	0.11	0.12	0.12	0.12	0.00	0.00	0.00	0.00
Hungary	0.06	0.07	0.07	0.07	1.70	3.04	2.40	2.40	0.10	0.22	0.18	0.18	0.00	0.00	-0.04	-18.98
Other Europe																
Norway	0.09	0.09	0.09	0.09	4.44	4.44	4.44	4.44	0.40	0.40	0.40	0.40	0.00	0.00	0.00	0.00
Turkey	0.15	0.16	0.16	0.16	1.85	1.87	1.87	1.87	0.29	0.29	0.29	0.29	0.00	0.00	0.00	0.00
Russia	3.70	3.55	3.50	3.50	1.41	1.39	1.37	1.37	5.20	4.95	4.80	4.80	0.00	0.00	-0.15	-3.03
Ukraine	0.55	0.51	0.47	0.47	1.68	1.96	1.70	1.70	0.93	1.00	0.80	0.80	0.00	0.00	-0.20	-20.00
Belarus	0.25	0.25	0.25	0.25	2.00	3.08	2.40	2.40	0.50	0.77	0.60	0.60	0.00	0.00	-0.17	-22.08
Asia & Oceania																
China	0.50	0.50	0.50	0.50	1.20	1.20	1.20	1.20	0.60	0.60	0.60	0.60	0.00	0.00	0.00	0.00
Australia	1.08	0.90	0.90	0.90	1.83	1.22	1.22	1.22	1.97	1.10	1.10	1.10	0.00	0.00	0.00	0.00
Others	1.83	1.89	1.90	1.90	1.07	1.06	1.05	1.05	1.95	1.99	1.99	1.99	0.00	0.00	0.00	0.05

TABLE 7
Rye Area, Yield, and Production
World and Selected Countries and Regions

Country/Region	Area				Yield				Production				Change in Production			
	2003/04	Prel. 2004/05	2005/06 Proj. Sept.	Oct.	2003/04	Prel. 2004/05	2005/06 Proj. Sept.	Oct.	2003/04	Prel. 2004/05	2005/06 Proj. Sept.	Oct.	From last month		From last year	
	Million hectares				Metric tons per hectare				Million metric tons				MMT	Percent	MMT	Percent
World	6.68	6.91	7.03	7.02	2.09	2.46	2.24	2.20	13.98	16.98	15.77	15.45	-0.32	-2.00	-1.53	-9.01
United States	0.13	0.12	0.13	0.11	1.70	1.74	1.65	1.69	0.22	0.21	0.22	0.19	-0.03	-11.57	-0.02	-9.05
Total Foreign	6.55	6.79	6.90	6.91	2.10	2.47	2.25	2.21	13.76	16.77	15.55	15.26	-0.29	-1.86	-1.51	-9.01
North & South America																
Canada	0.15	0.16	0.15	0.16	2.22	2.57	2.13	2.39	0.33	0.40	0.32	0.37	0.05	15.63	-0.03	-8.42
Europe																
EU-25	2.57	2.75	2.64	2.64	2.69	3.62	3.11	2.98	6.91	9.97	8.21	7.87	-0.34	-4.14	-2.09	-21.00
EU-15	0.86	0.95	0.85	0.85	3.71	5.13	4.60	4.56	3.19	4.85	3.90	3.86	-0.04	-1.03	-1.00	-20.50
Denmark	0.04	0.03	0.03	0.03	4.83	4.81	4.80	4.80	0.17	0.15	0.12	0.12	0.00	0.00	-0.03	-22.08
France	0.03	0.03	0.03	0.03	4.07	5.00	4.67	5.00	0.11	0.17	0.14	0.15	0.01	7.14	-0.02	-9.09
Germany	0.53	0.63	0.56	0.56	4.29	6.13	5.54	5.45	2.28	3.83	3.10	3.05	-0.05	-1.61	-0.78	-20.37
Spain	0.11	0.09	0.09	0.09	1.64	1.82	1.11	1.11	0.18	0.17	0.10	0.10	0.00	0.00	-0.07	-39.76
Austria	0.04	0.05	0.04	0.04	3.33	4.63	4.25	4.25	0.13	0.21	0.17	0.17	0.00	0.00	-0.04	-20.19
Sweden	0.02	0.03	0.02	0.02	4.92	5.36	5.50	5.50	0.12	0.13	0.11	0.11	0.00	0.00	-0.02	-17.91
NMS-10	1.71	1.81	1.79	1.79	2.18	2.83	2.41	2.24	3.72	5.11	4.32	4.02	-0.30	-6.95	-1.10	-21.47
Hungary	0.05	0.05	0.05	0.05	1.34	2.70	1.84	1.84	0.07	0.14	0.09	0.09	0.00	0.00	-0.04	-31.85
Poland	1.48	1.55	1.55	1.55	2.14	2.76	2.39	2.19	3.17	4.28	3.70	3.40	-0.30	-8.11	-0.88	-20.58
Czech Rep.	0.04	0.06	0.06	0.06	3.79	5.32	3.64	3.64	0.16	0.31	0.20	0.20	0.00	0.00	-0.11	-36.31
Lithuania	0.06	0.06	0.06	0.06	2.45	2.52	2.42	2.42	0.15	0.14	0.15	0.15	0.00	0.00	0.00	2.84
Other Europe																
Russia	2.35	2.00	2.40	2.40	1.79	1.43	1.67	1.67	4.20	2.85	4.00	4.00	0.00	0.00	1.15	40.35
Ukraine	0.40	0.73	0.62	0.62	1.56	2.21	1.94	1.94	0.63	1.60	1.20	1.20	0.00	0.00	-0.40	-25.00
Belarus	0.70	0.75	0.70	0.70	1.71	1.87	1.86	1.86	1.20	1.40	1.30	1.30	0.00	0.00	-0.10	-7.14
Turkey	0.15	0.15	0.15	0.15	1.63	1.60	1.60	1.60	0.24	0.24	0.24	0.24	0.00	0.00	0.00	0.00
Others	0.24	0.26	0.24	0.24	1.10	1.22	1.15	1.15	0.26	0.31	0.28	0.28	0.00	0.00	-0.03	-10.86

TABLE 8
Sorghum Area, Yield, and Production
World and Selected Countries and Regions

Country/Region	Area				Yield				Production				Change in Production			
	Prel. 2003/04	2004/05	2005/06 Proj. Sept.	Oct.	Prel. 2003/04	2004/05	2005/06 Proj. Sept.	Oct.	Prel. 2003/04	2004/05	2005/06 Proj. Sept.	Oct.	From last month	Percent	From last year	Percent
	Million hectares				Metric tons per hectare				Million metric tons				MMT	Percent	MMT	Percent
World	41.62	40.26	39.98	39.84	1.42	1.44	1.42	1.44	59.01	58.13	56.81	57.44	0.63	1.11	-0.69	-1.18
United States	3.16	2.64	2.44	2.30	3.31	4.38	4.14	4.14	10.45	11.56	10.10	9.53	-0.57	-5.69	-2.03	-17.54
Total Foreign	38.46	37.62	37.54	37.54	1.26	1.24	1.24	1.28	48.56	46.57	46.71	47.92	1.21	2.59	1.34	2.88
North & South America																
Mexico	1.90	1.70	1.75	1.70	3.84	3.50	3.57	3.53	7.30	5.95	6.25	6.00	-0.25	-4.00	0.05	0.84
Colombia	0.06	0.06	0.06	0.06	2.83	2.83	2.83	2.83	0.17	0.17	0.17	0.17	0.00	0.00	0.00	0.00
Venezuela	0.14	0.16	0.16	0.16	2.44	2.19	2.19	2.19	0.33	0.34	0.35	0.35	0.00	0.00	0.01	2.94
Argentina	0.47	0.58	0.57	0.55	4.64	5.04	5.09	5.09	2.20	2.90	2.90	2.80	-0.10	-3.45	-0.10	-3.45
Europe																
EU-25	0.10	0.09	0.11	0.09	3.88	5.49	5.51	5.40	0.38	0.48	0.59	0.48	-0.12	-19.49	0.00	-0.63
EU-15	0.10	0.09	0.11	0.09	3.88	5.49	5.51	5.40	0.38	0.48	0.59	0.48	-0.12	-19.49	0.00	-0.63
France	0.06	0.05	0.07	0.05	3.79	5.30	5.57	5.39	0.23	0.27	0.39	0.28	-0.12	-29.49	0.01	3.77
Italy	0.03	0.03	0.03	0.03	4.00	6.33	6.00	6.00	0.12	0.19	0.18	0.18	0.00	0.00	-0.01	-5.26
Spain	0.01	0.01	0.01	0.01	4.14	3.29	2.86	2.86	0.03	0.02	0.02	0.02	0.00	0.00	0.00	-13.04
Asia & Oceania																
China	0.72	0.57	0.70	0.60	3.97	4.10	4.00	4.00	2.87	2.33	2.80	2.40	-0.40	-14.29	0.07	3.09
India	9.49	9.40	9.40	9.30	0.77	0.80	0.85	0.81	7.33	7.53	8.00	7.50	-0.50	-6.25	-0.03	-0.40
Thailand	0.09	0.09	0.09	0.09	1.59	2.27	2.22	2.22	0.14	0.20	0.20	0.20	0.00	0.00	0.00	0.00
Australia	0.76	0.80	0.75	0.75	2.77	3.00	2.67	2.67	2.11	2.40	2.00	2.00	0.00	0.00	-0.40	-16.67
Africa																
Nigeria	6.80	7.20	7.30	7.40	1.32	1.39	1.23	1.42	9.00	10.00	9.00	10.50	1.50	16.67	0.50	5.00
Sudan	7.00	6.00	6.00	6.00	0.74	0.43	0.60	0.60	5.19	2.60	3.58	3.58	0.00	0.00	0.98	37.50
Ethiopia	1.68	1.58	1.50	1.50	1.01	1.37	0.93	1.20	1.70	2.15	1.40	1.80	0.40	28.57	-0.35	-16.28
Egypt	0.16	0.16	0.16	0.16	5.63	5.63	5.63	5.63	0.90	0.90	0.90	0.90	0.00	0.00	0.00	0.00
Yemen	0.32	0.32	0.32	0.32	0.81	0.81	0.81	0.81	0.26	0.26	0.26	0.26	0.00	0.00	0.00	0.00
Tanzania	0.75	0.85	0.75	0.89	0.67	0.96	0.73	1.00	0.50	0.82	0.55	0.89	0.34	61.82	0.07	8.54
Niger	1.50	1.50	1.50	1.50	0.48	0.33	0.40	0.43	0.72	0.50	0.60	0.65	0.05	8.33	0.15	30.00
South Africa	0.13	0.10	0.11	0.09	2.88	3.03	2.50	2.50	0.38	0.30	0.28	0.23	-0.05	-18.18	-0.07	-24.24
Others	6.39	6.48	6.32	6.38	1.11	1.04	1.09	1.13	7.10	6.75	6.89	7.22	0.33	4.84	0.47	6.96

TABLE 9
Rice Area, Yield, and Production
World and Selected Countries and Regions

Country/Region	Area				Yield (Rough)				Production (Milled)				Change in Production			
	2003/04	Prel. 2004/05	2005/06 Proj. Sept.	Oct.	2003/04	Prel. 2004/05	2005/06 Proj. Sept.	Oct.	2003/04	Prel. 2004/05	2005/06 Proj. Sept.	Oct.	From last month	Percent	From last year	Percent
	Million hectares				Metric tons per hectare				Million metric tons				MMT	Percent	MMT	Percent
World	148.14	149.39	150.63	151.66	3.94	4.00	4.01	3.97	391.49	401.89	405.62	404.71	-0.91	-0.22	2.82	0.70
United States	1.21	1.35	1.35	1.33	7.48	7.78	7.65	7.61	6.42	7.41	7.25	7.09	-0.16	-2.23	-0.32	-4.31
Total Foreign	146.93	148.04	149.28	150.33	3.91	3.97	3.97	3.94	385.07	394.48	398.37	397.63	-0.75	-0.19	3.14	0.80
North & South America																
Brazil	3.73	3.91	3.50	3.40	3.43	3.38	3.40	3.37	8.71	8.98	8.10	7.80	-0.30	-3.70	-1.18	-13.10
Europe																
EU-25	0.41	0.43	0.42	0.42	2.66	2.71	2.60	2.60	1.72	1.86	1.71	1.71	0.00	0.00	-0.16	-8.37
EU-15	0.40	0.42	0.42	0.42	6.55	6.38	6.24	6.24	1.71	1.86	1.70	1.70	0.00	0.00	-0.16	-8.35
Italy	0.22	0.23	0.23	0.23	6.18	6.13	6.26	6.26	0.83	0.93	0.90	0.90	0.00	0.00	-0.03	-3.64
Spain	0.12	0.12	0.12	0.12	7.30	7.17	6.53	6.53	0.60	0.63	0.54	0.54	0.00	0.00	-0.09	-14.29
Greece	0.02	0.03	0.03	0.03	8.09	6.72	7.69	7.69	0.12	0.13	0.13	0.13	0.00	0.00	0.00	0.00
Other Europe																
Russia	0.16	0.13	0.15	0.15	2.91	3.62	3.71	3.71	0.29	0.31	0.35	0.35	0.00	0.00	0.04	14.38
Asia & Oceania																
China	26.51	28.38	29.40	29.00	6.06	6.31	6.20	6.21	112.46	125.36	127.50	126.00	-1.50	-1.18	0.64	0.51
Thailand	10.32	9.82	10.17	10.17	2.65	2.62	2.65	2.65	18.01	17.00	17.80	17.80	0.00	0.00	0.80	4.71
India	42.40	42.30	42.00	43.40	3.12	3.03	3.02	2.94	88.28	85.31	84.50	85.00	0.50	0.59	-0.31	-0.36
Pakistan	2.46	2.50	2.50	2.50	2.96	2.95	3.00	3.00	4.85	4.92	5.00	5.00	0.00	0.00	0.08	1.63
Indonesia	11.90	11.65	11.70	11.70	4.56	4.56	4.62	4.62	35.02	34.25	34.90	34.90	0.00	0.00	0.65	1.90
Iran	0.56	0.63	0.63	0.63	5.90	5.29	5.29	5.29	2.18	2.20	2.20	2.20	0.00	0.00	0.00	0.00
Philippines	4.09	4.10	4.12	4.12	3.46	3.54	3.55	3.55	9.20	9.45	9.50	9.50	0.00	0.00	0.05	0.58
Japan	1.67	1.70	1.68	1.68	5.85	6.42	6.54	6.54	7.09	7.94	8.00	8.00	0.00	0.00	0.06	0.70
South Korea	1.02	1.00	0.98	0.98	6.05	6.73	6.76	6.76	4.45	5.00	4.90	4.90	0.00	0.00	-0.10	-2.00
Taiwan	0.27	0.24	0.26	0.26	6.06	6.05	5.64	5.64	1.16	1.01	1.03	1.03	0.00	0.00	0.01	1.38
Bangladesh	10.90	11.00	11.10	11.10	3.60	3.53	3.61	3.61	26.15	25.90	26.70	26.70	0.00	0.00	0.80	3.09
Burma	6.30	6.00	6.27	6.27	2.94	2.75	2.87	2.87	10.73	9.57	10.44	10.44	0.00	0.00	0.87	9.09
Australia	0.07	0.05	0.08	0.08	8.22	6.10	8.67	8.67	0.38	0.22	0.47	0.47	0.00	0.00	0.25	113.30
Vietnam	7.47	7.42	7.50	7.40	4.48	4.62	4.60	4.61	22.08	22.63	22.77	22.50	-0.27	-1.19	-0.13	-0.56
Cambodia	2.24	2.15	2.20	2.20	2.10	1.92	1.97	1.97	2.96	2.60	2.73	2.73	0.00	0.00	0.13	4.81
Africa																
Nigeria	1.80	1.85	2.00	2.00	2.04	2.07	2.17	2.25	2.20	2.30	2.60	2.70	0.10	3.85	0.40	17.39
Egypt	0.63	0.64	0.64	0.64	9.84	10.00	9.62	10.08	4.03	4.13	4.00	4.19	0.19	4.82	0.06	1.57
Others	12.04	12.17	12.00	12.25	1.92	1.94	1.93	1.94	23.10	23.55	23.19	23.72	0.53	2.29	0.17	0.72

TABLE 10
Total Oilseed Area, Yield, and Production
World and Selected Countries and Regions

Country/Region	Area				Yield				Production				Change in Production			
	Prel.		2005/06 Proj.		Prel.		2005/06 Proj.		Prel.		2005/06 Proj.		From last month		From last year	
	2003/04	2004/05	Sept.	Oct.	2003/04	2004/05	Sept.	Oct.	2003/04	2004/05	Sept.	Oct.	MMT	Percent	MMT	Percent
	Million hectares				Metric tons per hectare				Million metric tons							
World Total 1/	--	--	--	--	--	--	--	--	334.46	379.17	379.34	384.83	5.49	1.45	5.66	1.49
Total Foreign	--	--	--	--	--	--	--	--	257.87	283.20	289.89	292.02	2.13	0.73	8.82	3.11
Copra	--	--	--	--	--	--	--	--	5.37	5.39	5.38	5.38	0.00	0.00	-0.01	-0.17
Palm Kernel	--	--	--	--	--	--	--	--	8.45	9.29	9.66	9.66	0.00	0.00	0.37	4.00
Major Oilseed	190.40	197.73	197.96	198.24	1.68	1.84	1.84	1.87	320.64	364.50	364.31	369.80	5.49	1.51	5.30	1.45
United States	36.04	36.81	36.87	36.53	2.13	2.61	2.43	2.54	76.60	95.97	89.45	92.81	3.36	3.76	-3.16	-3.29
Foreign Oilseed	154.36	160.93	161.09	161.71	1.58	1.67	1.71	1.71	244.04	268.53	274.86	276.99	2.13	0.77	8.46	3.15
South America	42.48	44.89	44.58	45.21	2.28	2.32	2.56	2.56	96.69	104.10	114.29	115.85	1.56	1.36	11.75	11.29
Brazil	22.78	24.19	23.23	23.21	2.33	2.22	2.70	2.69	53.04	53.69	62.64	62.49	-0.15	-0.24	8.80	16.39
Argentina	16.25	16.87	17.52	18.07	2.27	2.57	2.49	2.51	36.84	43.43	43.68	45.28	1.60	3.66	1.86	4.27
Paraguay	2.06	2.25	2.28	2.28	2.01	1.76	2.19	2.19	4.14	3.96	4.99	4.99	0.00	0.00	1.04	26.17
Bolivia	0.95	1.08	1.02	1.11	2.05	2.04	2.03	1.95	1.94	2.20	2.06	2.17	0.11	5.34	-0.03	-1.36
China	27.87	28.40	28.14	28.04	1.82	2.05	1.95	1.93	50.85	58.11	54.88	53.98	-0.90	-1.64	-4.13	-7.11
India	31.79	33.95	33.93	33.90	0.91	0.86	0.87	0.87	28.86	29.12	29.55	29.52	-0.03	-0.10	0.40	1.37
EU-25	7.38	7.49	7.40	7.45	2.23	2.81	2.68	2.74	16.44	21.06	19.83	20.45	0.62	3.13	-0.61	-2.88
France	1.86	1.80	1.91	1.91	2.70	3.11	3.05	3.13	5.04	5.60	5.83	5.98	0.15	2.57	0.38	6.71
Germany	1.30	1.32	1.38	1.38	2.84	4.07	3.67	3.67	3.71	5.35	5.05	5.05	0.00	0.00	-0.30	-5.55
United Kingdom	0.54	0.56	0.61	0.61	3.27	2.88	3.20	3.20	1.77	1.61	1.95	1.95	0.00	0.00	0.34	21.19
Hungary	0.61	0.61	0.62	0.66	1.88	2.54	2.19	2.44	1.15	1.55	1.36	1.61	0.25	18.38	0.06	3.80
Poland	0.43	0.54	0.54	0.55	1.86	3.04	2.30	2.57	0.79	1.63	1.24	1.40	0.16	12.90	-0.23	-14.27
Spain	0.89	0.88	0.60	0.60	0.99	1.09	0.86	0.86	0.88	0.95	0.51	0.51	0.00	0.00	-0.44	-46.48
Italy	0.31	0.28	0.30	0.30	2.06	2.81	2.47	2.47	0.63	0.78	0.74	0.74	0.00	0.00	-0.05	-5.77
Canada	5.85	6.17	6.45	6.40	1.57	1.75	1.75	1.81	9.18	10.83	11.26	11.56	0.30	2.66	0.73	6.74
Russia	5.45	5.46	5.93	5.93	1.00	1.02	1.00	1.04	5.44	5.58	5.95	6.15	0.20	3.36	0.57	10.20
Ukraine	4.05	3.76	4.10	4.10	1.12	0.95	1.16	1.23	4.54	3.56	4.75	5.05	0.30	6.32	1.49	41.77
Pakistan	3.58	3.76	3.73	3.73	1.05	1.43	1.30	1.24	3.76	5.36	4.84	4.64	-0.20	-4.03	-0.72	-13.48
Australia	1.30	1.55	1.30	1.30	1.75	1.68	1.58	1.58	2.27	2.61	2.06	2.06	0.00	0.00	-0.55	-21.17
Turkey	1.26	1.22	1.18	1.18	1.64	1.76	1.66	1.66	2.06	2.15	1.96	1.96	0.00	0.00	-0.19	-8.86
Indonesia	1.34	1.37	1.40	1.40	1.46	1.45	1.44	1.44	1.96	1.99	2.02	2.02	0.00	0.00	0.03	1.51
Uzbekistan	1.43	1.46	1.45	1.45	1.26	1.55	1.45	1.50	1.80	2.25	2.10	2.18	0.08	3.81	-0.07	-3.11
Nigeria	2.01	2.03	2.03	2.03	1.04	1.04	1.04	1.04	2.09	2.11	2.11	2.11	0.00	0.00	0.00	0.00
Burma	1.46	1.50	1.50	1.50	0.87	0.86	0.86	0.86	1.28	1.29	1.29	1.29	0.00	0.00	0.00	0.00
Romania	1.23	1.15	1.18	1.18	1.31	1.59	1.36	1.36	1.61	1.83	1.61	1.61	0.00	0.00	-0.22	-11.83
South Africa	0.78	0.72	0.77	0.91	1.34	1.47	1.38	1.36	1.04	1.06	1.06	1.24	0.18	17.39	0.18	17.17
Others	15.12	16.06	16.04	16.01	0.94	0.97	0.95	0.96	14.19	15.52	15.31	15.32	0.01	0.07	-0.20	-1.31

1/ Major oilseeds plus copra and palm kernel. 2/ Individual countries and regions include soybean, cottonseed, peanut (inshell), sunflowerseed, and rapeseed.

TABLE 11
Soybean Area, Yield, and Production
World and Selected Countries and Regions

Country/Region	Area				Yield				Production				Change in Production			
	2003/04	Prel.	2005/06 Proj.	Oct.	2003/04	Prel.	2005/06 Proj.	Oct.	2003/04	Prel.	2005/06 Proj.	Oct.	From last month		From last year	
		2004/05	Sept.			2004/05	Sept.			2004/05	Sept.		MMT	Percent	MMT	Percent
	Million hectares				Metric tons per hectare				Million metric tons							
World	88.43	92.49	91.60	91.48	2.11	2.31	2.37	2.41	186.26	213.35	216.72	220.87	4.15	1.92	7.52	3.53
United States	29.33	29.93	29.21	28.84	2.28	2.84	2.66	2.80	66.78	85.01	77.74	80.75	3.01	3.87	-4.26	-5.01
Total Foreign	59.10	62.56	62.38	62.64	2.02	2.05	2.23	2.24	119.48	128.33	138.98	140.12	1.14	0.82	11.78	9.18
South Americ	38.47	40.53	40.05	40.55	2.33	2.38	2.66	2.66	89.79	96.49	106.53	108.03	1.50	1.41	11.54	11.96
Brazil	21.52	22.84	22.00	22.00	2.35	2.23	2.73	2.73	50.50	51.00	60.00	60.00	0.00	0.00	9.00	17.65
Argentina	14.00	14.40	14.70	15.20	2.36	2.71	2.65	2.66	33.00	39.00	39.00	40.50	1.50	3.85	1.50	3.85
Paraguay	1.75	2.00	2.00	2.00	2.23	1.90	2.40	2.40	3.91	3.80	4.80	4.80	0.00	0.00	1.00	26.32
Bolivia	0.86	0.92	0.95	0.95	2.14	2.21	2.11	2.11	1.85	2.03	2.00	2.00	0.00	0.00	-0.03	-1.48
Uruguay	0.25	0.28	0.30	0.30	1.53	1.79	1.83	1.83	0.38	0.50	0.55	0.55	0.00	0.00	0.05	10.00
China	9.31	9.59	9.70	9.60	1.65	1.81	1.75	1.77	15.39	17.40	17.00	17.00	0.00	0.00	-0.40	-2.30
India	6.45	7.20	7.20	7.00	1.05	0.76	0.90	0.86	6.80	5.50	6.50	6.00	-0.50	-7.69	0.50	9.09
Canada	1.04	1.17	1.15	1.15	2.17	2.59	2.57	2.61	2.26	3.04	2.95	3.00	0.05	1.69	-0.04	-1.38
EU-25	0.30	0.27	0.31	0.31	2.12	2.89	2.52	2.52	0.63	0.79	0.77	0.77	0.00	0.00	-0.02	-2.65
Italy	0.15	0.15	0.18	0.18	2.56	3.32	2.86	2.86	0.39	0.50	0.50	0.50	0.00	0.00	0.00	-0.20
France	0.08	0.06	0.06	0.06	1.60	2.52	2.17	2.17	0.13	0.15	0.13	0.13	0.00	0.00	-0.02	-15.58
Indonesia	0.63	0.64	0.65	0.65	1.30	1.29	1.28	1.28	0.82	0.83	0.84	0.84	0.00	0.00	0.01	1.21
Russia	0.40	0.56	0.60	0.60	0.98	1.00	1.00	1.00	0.39	0.56	0.60	0.60	0.00	0.00	0.04	8.11
North Korea	0.32	0.32	0.32	0.32	1.14	1.14	1.14	1.14	0.36	0.36	0.36	0.36	0.00	0.00	0.00	0.00
Serbia	0.14	0.13	0.13	0.13	2.14	2.31	2.31	2.31	0.30	0.30	0.30	0.30	0.00	0.00	0.00	0.00
Japan	0.15	0.14	0.15	0.15	1.53	1.20	1.53	1.53	0.23	0.17	0.23	0.23	0.00	0.00	0.07	39.39
Thailand	0.18	0.17	0.17	0.17	1.22	1.45	1.52	1.52	0.22	0.24	0.25	0.25	0.00	0.00	0.01	4.17
Ukraine	0.19	0.26	0.40	0.40	1.23	1.42	1.25	1.25	0.23	0.36	0.50	0.50	0.00	0.00	0.14	37.74
South Africa	0.14	0.15	0.15	0.20	1.63	1.81	1.66	1.65	0.22	0.28	0.24	0.33	0.09	37.50	0.05	19.13
Vietnam	0.18	0.19	0.19	0.19	1.24	1.26	1.26	1.26	0.23	0.24	0.24	0.24	0.00	0.00	0.00	0.00
Uganda	0.15	0.15	0.15	0.15	1.10	1.10	1.10	1.10	0.17	0.17	0.17	0.17	0.00	0.00	0.00	0.00
Others	1.06	1.10	1.08	1.08	1.35	1.47	1.40	1.40	1.43	1.62	1.51	1.51	0.00	0.00	-0.11	-6.74

TABLE 12
Cottonseed Area, Yield, and Production
World and Selected Countries and Regions

Country/Region	Area				Yield				Production				Change in Production			
	Prel.		2005/06 Proj.		Prel.		2005/06 Proj.		Prel.		2005/06 Proj.		From last month		From last year	
	2003/04	2004/05	Sept.	Oct.	2003/04	2004/05	Sept.	Oct.	2003/04	2004/05	Sept.	Oct.	MMT	Percent	MMT	Percent
	Million hectares				Metric tons per hectare				Million metric tons							
World	31.25	34.74	34.06	34.19	1.14	1.31	1.24	1.23	35.72	45.53	42.13	41.89	-0.24	-0.56	-3.64	-8.00
United States	4.86	5.28	5.53	5.53	1.24	1.42	1.31	1.34	6.05	7.48	7.24	7.39	0.15	2.04	-0.09	-1.15
Total Foreign	26.39	29.45	28.53	28.65	1.12	1.29	1.22	1.20	29.67	38.06	34.89	34.50	-0.38	-1.10	-3.56	-9.34
China	5.11	5.69	5.10	5.10	1.74	2.02	1.96	1.88	8.87	11.50	10.00	9.60	-0.40	-4.00	-1.90	-16.52
India	7.79	9.00	9.13	9.30	0.75	0.90	0.85	0.87	5.86	8.07	7.80	8.07	0.27	3.46	0.00	0.00
Pakistan	3.09	3.19	3.15	3.15	1.06	1.50	1.35	1.29	3.29	4.80	4.25	4.06	-0.20	-4.59	-0.74	-15.47
Central Asia	2.48	2.64	2.68	2.68	1.14	1.28	1.20	1.23	2.83	3.37	3.22	3.30	0.08	2.48	-0.07	-2.05
Uzbekistan	1.43	1.46	1.45	1.45	1.26	1.55	1.45	1.50	1.80	2.25	2.10	2.18	0.08	3.81	-0.07	-3.11
Tajikistan	0.29	0.29	0.28	0.28	1.07	1.09	1.05	1.05	0.31	0.32	0.30	0.30	0.00	0.00	-0.02	-6.35
Turkmenis	0.48	0.55	0.60	0.60	0.77	0.69	0.67	0.67	0.37	0.38	0.40	0.40	0.00	0.00	0.02	5.26
Kazakhstan	0.19	0.22	0.20	0.20	1.16	1.23	1.23	1.23	0.22	0.27	0.25	0.25	0.00	0.00	-0.02	-7.55
African Fran	2.23	2.53	2.41	2.41	0.74	0.71	0.74	0.71	1.64	1.80	1.78	1.71	-0.07	-3.93	-0.09	-4.95
Mali	0.52	0.53	0.54	0.54	0.94	0.83	0.78	0.78	0.48	0.44	0.42	0.42	0.00	0.00	-0.02	-5.41
Burkina	0.46	0.55	0.55	0.55	0.75	0.77	0.75	0.75	0.35	0.42	0.42	0.42	0.00	0.00	-0.01	-2.12
Benin	0.31	0.30	0.33	0.33	0.67	0.74	0.89	0.65	0.21	0.22	0.29	0.21	-0.08	-27.59	-0.01	-4.98
Brazil	1.10	1.17	1.05	1.03	2.04	1.96	2.13	2.02	2.24	2.30	2.24	2.09	-0.15	-6.71	-0.22	-9.35
Turkey	0.71	0.70	0.63	0.63	1.88	1.99	1.87	1.87	1.33	1.39	1.18	1.18	0.00	0.00	-0.21	-15.11
Greece	0.37	0.38	0.37	0.37	1.34	1.57	1.51	1.51	0.49	0.60	0.55	0.55	0.00	0.00	-0.04	-7.56
Australia	0.20	0.31	0.29	0.29	2.45	2.90	2.68	2.68	0.48	0.91	0.77	0.77	0.00	0.00	-0.15	-16.12
Syria	0.20	0.23	0.22	0.21	2.85	3.01	2.77	2.97	0.57	0.71	0.61	0.63	0.02	3.28	-0.08	-10.64
Egypt	0.22	0.31	0.27	0.27	1.41	1.41	1.41	1.41	0.31	0.43	0.38	0.38	0.00	0.00	-0.05	-12.44
Others	2.91	3.30	3.25	3.23	0.61	0.66	0.65	0.67	1.77	2.19	2.12	2.18	0.06	2.84	-0.01	-0.46

TABLE 13
Peanut Area, Yield, and Production
World and Selected Countries and Regions

Country/Region	Area				Yield				Production				Change in Production			
	Prel.		2005/06 Proj.		Prel.		2005/06 Proj.		Prel.		2005/06 Proj.		From last month		From last year	
	2003/04	2004/05	Sept.	Oct.	2003/04	2004/05	Sept.	Oct.	2003/04	2004/05	Sept.	Oct.	MMT	Percent	MMT	Percent
	Million hectares				Metric tons per hectare				Million metric tons							
World	22.66	22.69	22.97	22.90	1.44	1.46	1.49	1.48	32.61	33.14	34.16	33.83	-0.33	-0.96	0.69	2.08
United States	0.53	0.56	0.65	0.65	3.54	3.43	3.50	3.43	1.88	1.93	2.27	2.23	-0.04	-1.80	0.30	15.42
Total Foreign	22.13	22.13	22.32	22.25	1.39	1.41	1.43	1.42	30.73	31.21	31.89	31.60	-0.29	-0.90	0.39	1.25
China	5.06	4.75	5.00	4.90	2.65	3.02	2.94	2.90	13.42	14.34	14.70	14.20	-0.50	-3.40	-0.14	-0.98
India	8.00	8.00	7.80	7.80	0.96	0.85	0.90	0.92	7.70	6.80	7.00	7.20	0.20	2.86	0.40	5.88
Africa	6.88	7.09	7.19	7.22	0.88	0.88	0.88	0.88	6.08	6.24	6.37	6.38	0.01	0.22	0.14	2.19
Nigeria	1.23	1.24	1.24	1.24	1.23	1.23	1.23	1.23	1.51	1.52	1.52	1.52	0.00	0.00	0.00	0.00
Senegal	0.53	0.75	0.85	0.85	0.85	0.77	0.82	0.82	0.45	0.57	0.70	0.70	0.00	0.00	0.13	22.16
Chad	0.48	0.48	0.48	0.48	0.94	0.94	0.94	0.94	0.45	0.45	0.45	0.45	0.00	0.00	0.00	0.00
Sudan	0.55	0.55	0.55	0.55	0.67	0.67	0.67	0.67	0.37	0.37	0.37	0.37	0.00	0.00	0.00	0.00
Congo, DR	0.46	0.46	0.46	0.46	0.79	0.79	0.79	0.79	0.36	0.36	0.37	0.37	0.00	0.00	0.00	0.27
Burkina Faso	0.35	0.35	0.35	0.35	0.93	0.93	0.93	0.93	0.32	0.32	0.32	0.32	0.00	0.00	0.00	0.00
Ghana	0.47	0.47	0.47	0.47	0.94	0.94	0.94	0.94	0.44	0.44	0.44	0.44	0.00	0.00	0.00	0.00
Guinea	0.21	0.21	0.21	0.21	1.19	1.19	1.19	1.19	0.25	0.25	0.25	0.25	0.00	0.00	0.00	0.00
Egypt	0.06	0.06	0.06	0.06	3.17	3.17	3.17	3.17	0.19	0.19	0.19	0.19	0.00	0.00	0.00	0.00
Mali	0.21	0.21	0.21	0.21	0.74	0.86	0.86	0.86	0.16	0.18	0.18	0.18	0.00	0.00	0.00	0.00
Indonesia	0.70	0.72	0.74	0.74	1.61	1.60	1.58	1.58	1.13	1.15	1.17	1.17	0.00	0.00	0.02	1.74
Burma	0.58	0.58	0.58	0.58	1.23	1.23	1.23	1.23	0.71	0.72	0.72	0.72	0.00	0.00	0.00	0.00
Vietnam	0.25	0.25	0.25	0.25	1.60	1.60	1.60	1.60	0.40	0.40	0.40	0.40	0.00	0.00	0.00	0.00
Argentina	0.17	0.21	0.23	0.23	2.51	2.79	2.39	2.39	0.42	0.59	0.55	0.55	0.00	0.00	-0.03	-5.98
Brazil	0.10	0.13	0.13	0.13	2.17	2.40	2.46	2.46	0.22	0.31	0.32	0.32	0.00	0.00	0.01	3.23
Mexico	0.06	0.06	0.06	0.06	1.43	1.52	1.52	1.52	0.09	0.09	0.09	0.09	0.00	0.00	0.00	0.00
Others	0.34	0.34	0.34	0.34	1.66	1.69	1.69	1.69	0.57	0.57	0.57	0.57	0.00	0.00	0.00	-0.17

TABLE 14
Sunflowerseed Area, Yield, and Production
World and Selected Countries and Regions

Country/Region	Area				Yield				Production				Change in Production			
	Prel.		2005/06 Proj.		Prel.		2005/06 Proj.		Prel.		2005/06 Proj.		From last month		From last year	
	2003/04	2004/05	Sept.	Oct.	2003/04	2004/05	Sept.	Oct.	2003/04	2004/05	Sept.	Oct.	MMT	Percent	MMT	Percent
	Million hectares				Metric tons per hectare				Million metric tons							
World	22.73	21.51	22.82	23.08	1.18	1.20	1.20	1.25	26.71	25.88	27.42	28.74	1.32	4.83	2.86	11.05
United States	0.89	0.69	1.05	1.05	1.36	1.34	1.47	1.68	1.21	0.93	1.53	1.76	0.22	14.47	0.83	88.82
Total Foreign	21.84	20.82	21.77	22.04	1.17	1.20	1.19	1.22	25.50	24.95	25.89	26.99	1.10	4.25	2.03	8.15
South America	2.11	2.25	2.53	2.68	1.73	1.80	1.69	1.68	3.65	4.06	4.28	4.49	0.21	4.91	0.43	10.59
Argentina	1.83	1.89	2.25	2.30	1.77	1.90	1.73	1.74	3.24	3.60	3.90	4.00	0.10	2.56	0.40	11.11
Uruguay	0.11	0.13	0.14	0.14	1.61	1.28	1.41	1.41	0.18	0.17	0.19	0.19	0.00	0.00	0.03	15.15
Bolivia	0.08	0.16	0.07	0.16	1.11	1.06	0.92	1.06	0.09	0.17	0.06	0.17	0.11	183.33	0.00	0.00
Russia	4.85	4.65	5.10	5.10	1.00	1.02	1.00	1.04	4.85	4.75	5.10	5.30	0.20	3.92	0.55	11.58
Ukraine	3.81	3.40	3.50	3.50	1.12	0.90	1.14	1.23	4.25	3.05	4.00	4.30	0.30	7.50	1.25	40.98
EU-25	2.44	2.24	1.95	2.00	1.65	1.86	1.80	1.91	4.04	4.18	3.52	3.83	0.31	8.85	-0.36	-8.49
France	0.69	0.61	0.65	0.65	2.16	2.37	2.31	2.31	1.49	1.46	1.50	1.50	0.00	0.00	0.04	3.09
Hungary	0.51	0.48	0.48	0.52	1.94	2.50	2.19	2.50	0.99	1.20	1.05	1.30	0.25	23.81	0.10	8.51
Spain	0.79	0.78	0.50	0.50	0.97	1.01	0.70	0.70	0.76	0.79	0.35	0.35	0.00	0.00	-0.44	-55.41
Italy	0.15	0.12	0.12	0.12	1.57	2.21	1.92	1.92	0.24	0.27	0.23	0.23	0.00	0.00	-0.04	-16.06
China	1.17	1.10	1.14	1.14	1.49	1.54	1.56	1.56	1.74	1.69	1.78	1.78	0.00	0.00	0.09	5.33
India	2.80	2.85	3.00	3.00	0.61	0.61	0.62	0.62	1.70	1.75	1.85	1.85	0.00	0.00	0.10	5.71
Romania	1.10	0.95	1.00	1.00	1.27	1.50	1.30	1.30	1.40	1.43	1.30	1.30	0.00	0.00	-0.13	-8.77
Bulgaria	0.61	0.49	0.58	0.58	1.18	1.73	1.47	1.47	0.72	0.85	0.85	0.85	0.00	0.00	0.00	0.00
Turkey	0.50	0.48	0.51	0.51	1.20	1.35	1.31	1.31	0.60	0.65	0.67	0.67	0.00	0.00	0.02	3.08
South Africa	0.53	0.50	0.55	0.62	1.23	1.34	1.27	1.26	0.65	0.67	0.70	0.78	0.08	11.43	0.12	17.29
Serbia	0.22	0.21	0.21	0.21	1.82	2.10	1.86	1.86	0.40	0.44	0.39	0.39	0.00	0.00	-0.05	-11.36
Moldova	0.28	0.25	0.20	0.20	1.43	1.44	1.50	1.50	0.40	0.36	0.30	0.30	0.00	0.00	-0.06	-16.67
Burma	0.49	0.49	0.49	0.49	0.58	0.58	0.58	0.58	0.29	0.29	0.29	0.29	0.00	0.00	0.00	0.00
Others	0.93	0.96	1.02	1.02	0.88	0.83	0.85	0.85	0.82	0.80	0.87	0.87	0.00	0.00	0.07	8.67

TABLE 15
Rapeseed Area, Yield, and Production
World and Selected Countries and Regions

Country/Region	Area				Yield				Production				Change in Production			
	2003/04	Prel. 2004/05	2005/06 Proj. Sept.	Oct.	2003/04	Prel. 2004/05	2005/06 Proj. Sept.	Oct.	2003/04	Prel. 2004/05	2005/06 Proj. Sept.	Oct.	From last month		From last year	
	Million hectares				Metric tons per hectare				Million metric tons				MMT	Percent	MMT	Percent
World	25.33	26.30	26.51	26.59	1.55	1.77	1.66	1.67	39.34	46.59	43.88	44.46	0.58	1.32	-2.13	-4.57
United States	0.43	0.34	0.43	0.46	1.58	1.81	1.53	1.49	0.69	0.61	0.66	0.68	0.02	3.03	0.07	11.09
Total Foreign	24.89	25.96	26.08	26.14	1.55	1.77	1.66	1.68	38.66	45.98	43.22	43.78	0.56	1.30	-2.20	-4.77
China	7.22	7.27	7.20	7.30	1.58	1.81	1.58	1.56	11.42	13.18	11.40	11.40	0.00	0.00	-1.78	-13.52
EU-25	4.18	4.50	4.69	4.69	2.67	3.41	3.17	3.23	11.17	15.34	14.84	15.15	0.31	2.09	-0.19	-1.21
Germany	1.27	1.28	1.35	1.35	2.87	4.11	3.70	3.70	3.63	5.28	5.00	5.00	0.00	0.00	-0.28	-5.25
France	1.09	1.13	1.20	1.20	3.13	3.55	3.50	3.63	3.41	4.00	4.20	4.35	0.15	3.57	0.36	8.89
United Kingdom	0.54	0.56	0.61	0.61	3.27	2.88	3.20	3.20	1.77	1.61	1.95	1.95	0.00	0.00	0.34	21.19
Poland	0.43	0.54	0.54	0.55	1.86	3.04	2.30	2.57	0.79	1.63	1.24	1.40	0.16	12.90	-0.23	-14.27
Czech Republic	0.25	0.26	0.25	0.25	1.57	3.61	3.00	3.00	0.39	0.93	0.75	0.75	0.00	0.00	-0.18	-19.70
Denmark	0.11	0.12	0.10	0.10	3.31	3.84	3.75	3.75	0.35	0.47	0.38	0.38	0.00	0.00	-0.09	-19.87
Slovakia	0.05	0.09	0.10	0.10	1.02	2.89	2.50	2.50	0.05	0.26	0.25	0.25	0.00	0.00	-0.01	-4.94
Hungary	0.07	0.10	0.11	0.11	1.52	2.76	2.23	2.23	0.11	0.29	0.25	0.25	0.00	0.00	-0.04	-12.89
Sweden	0.06	0.09	0.09	0.09	2.20	2.71	2.41	2.41	0.13	0.23	0.21	0.21	0.00	0.00	-0.02	-8.70
Canada	4.69	4.94	5.20	5.15	1.44	1.57	1.58	1.64	6.77	7.73	8.20	8.45	0.25	3.05	0.72	9.34
India	6.75	6.90	6.80	6.80	1.01	1.01	0.94	0.94	6.80	7.00	6.40	6.40	0.00	0.00	-0.60	-8.57
Australia	1.01	1.14	0.90	0.90	1.61	1.34	1.22	1.22	1.62	1.53	1.10	1.10	0.00	0.00	-0.43	-28.25
Bangladesh	0.30	0.30	0.30	0.30	0.73	0.77	0.77	0.77	0.22	0.23	0.23	0.23	0.00	0.00	0.00	0.00
Pakistan	0.28	0.29	0.30	0.30	0.83	0.83	0.87	0.87	0.24	0.24	0.26	0.26	0.00	0.00	0.02	7.88
Russia	0.20	0.25	0.23	0.23	0.97	1.10	1.09	1.09	0.19	0.28	0.25	0.25	0.00	0.00	-0.03	-9.42
Others	0.27	0.37	0.46	0.46	0.83	1.21	1.18	1.18	0.22	0.45	0.54	0.54	0.00	0.00	0.09	19.87

TABLE 16
Copra, Palm Kernel, and Palm Oil Production
 World and Selected Countries and Regions

Country/Region	Production				Change in Production			
	2003/04	Prel. 2004/05	2005/06 Proj.		From last month		From last year	
			Sept.	Oct.				
	Million metric tons				MMT	Percent	MMT	Percent
COPRA								
World	5.37	5.39	5.38	5.38	0.00	0.00	-0.01	-0.17
Philippines	2.30	2.25	2.20	2.20	0.00	0.00	-0.05	-2.22
Indonesia	1.36	1.40	1.44	1.44	0.00	0.00	0.04	2.86
India	0.73	0.74	0.74	0.74	0.00	0.00	0.00	0.00
Vietnam	0.24	0.24	0.24	0.24	0.00	0.00	0.00	0.00
Mexico	0.20	0.22	0.22	0.22	0.00	0.00	0.00	0.93
Papua New Guinea	0.11	0.11	0.11	0.11	0.00	0.00	0.00	0.00
Sri Lanka	0.08	0.08	0.08	0.08	0.00	0.00	0.00	0.00
Others	0.35	0.35	0.35	0.35	0.00	0.00	0.00	-0.28
PALM KERNEL								
World	8.45	9.29	9.66	9.66	0.00	0.00	0.37	4.00
Malaysia	3.56	4.03	4.11	4.11	0.00	0.00	0.08	1.99
Indonesia	3.30	3.63	3.90	3.90	0.00	0.00	0.27	7.44
Nigeria	0.60	0.65	0.65	0.65	0.00	0.00	0.00	0.00
Thailand	0.17	0.15	0.16	0.16	0.00	0.00	0.01	5.26
Colombia	0.13	0.14	0.14	0.14	0.00	0.00	0.00	2.96
Papua New Guinea	0.08	0.08	0.08	0.08	0.00	0.00	0.00	0.00
Ecuador	0.05	0.05	0.05	0.05	0.00	0.00	0.00	0.00
Cote d'Ivoire	0.07	0.07	0.08	0.08	0.00	0.00	0.00	5.56
Others	0.50	0.48	0.48	0.48	0.00	0.00	0.00	1.04
PALM OIL								
World	29.68	33.18	34.57	34.57	0.00	0.00	1.39	4.20
Malaysia	13.42	15.20	15.50	15.50	0.00	0.00	0.30	1.97
Indonesia	11.50	13.20	14.20	14.20	0.00	0.00	1.00	7.58
Nigeria	0.78	0.79	0.80	0.80	0.00	0.00	0.01	1.27
Thailand	0.84	0.76	0.80	0.80	0.00	0.00	0.04	5.26
Colombia	0.61	0.65	0.67	0.67	0.00	0.00	0.02	3.06
Papua New Guinea	0.38	0.38	0.38	0.38	0.00	0.00	0.00	0.00
Ecuador	0.34	0.34	0.34	0.34	0.00	0.00	0.00	0.00
Cote d'Ivoire	0.31	0.34	0.36	0.36	0.00	0.00	0.02	5.88
Others	1.49	1.51	1.51	1.51	0.00	0.00	0.00	0.13

TABLE 17
Cotton Area, Yield, and Production
World and Selected Countries and Regions

Country/Region	Area				Yield				Production				Change In Production			
	2003/04	Prel. 2004/05	2005/06 Proj. Sept.	2005/06 Proj. Oct.	2003/04	Prel. 2004/05	2005/06 Proj. Sept.	2005/06 Proj. Oct.	2003/04	Prel. 2004/05	2005/06 Proj. Sept.	2005/06 Proj. Oct.	From last month	Percent	From last year	Percent
	Million hectares				Kilograms per hectare				Million 480 lb. bales				Mbales	Percent	MBales	Percent
World	32.37	35.88	35.19	35.33	639.42	730.87	689.97	686.68	95.06	120.43	111.53	111.44	-0.09	-0.08	-8.99	-7.46
United States	4.86	5.28	5.53	5.53	818.16	958.05	876.81	893.93	18.26	23.25	22.28	22.72	0.43	1.95	-0.53	-2.30
Total Foreign	27.51	30.59	29.66	29.80	607.86	691.63	655.12	648.20	76.81	97.18	89.25	88.72	-0.52	-0.59	-8.46	-8.70
China	5.11	5.69	5.10	5.10	950.16	1,109.68	1,088.63	1,045.94	22.30	29.00	25.50	24.50	-1.00	-3.92	-4.50	-15.52
India	7.79	9.00	9.13	9.30	385.95	459.64	439.03	444.82	13.80	19.00	18.40	19.00	0.60	3.26	0.00	0.00
Pakistan	3.09	3.19	3.15	3.15	545.72	771.26	691.20	656.64	7.75	11.30	10.00	9.50	-0.50	-5.00	-1.80	-15.93
Central Asia	2.48	2.64	2.68	2.68	592.24	663.58	621.44	637.71	6.74	8.04	7.64	7.84	0.20	2.62	-0.20	-2.55
Uzbekistan	1.43	1.46	1.45	1.45	623.81	777.59	720.75	750.78	4.10	5.20	4.80	5.00	0.20	4.17	-0.20	-3.85
Tajikistan	0.29	0.29	0.28	0.28	595.88	600.62	583.20	583.20	0.78	0.80	0.75	0.75	0.00	0.00	-0.05	-6.25
Turkmenistan	0.48	0.55	0.60	0.60	426.38	376.07	362.88	362.88	0.94	0.95	1.00	1.00	0.00	0.00	0.05	5.26
African Franc Zone	2.31	2.61	2.48	2.48	413.30	407.51	404.73	406.92	4.39	4.89	4.61	4.64	0.02	0.54	-0.25	-5.12
Mali	0.52	0.53	0.54	0.54	506.34	449.34	423.36	423.36	1.20	1.10	1.05	1.05	0.00	0.00	-0.05	-4.55
Burkina Faso	0.46	0.55	0.55	0.55	456.75	467.12	455.25	455.25	0.97	1.18	1.15	1.15	0.00	0.00	-0.03	-2.54
Benin	0.31	0.30	0.33	0.33	440.31	486.26	418.70	418.70	0.64	0.67	0.63	0.63	0.00	0.00	-0.05	-6.72
Cote d'Ivoire	0.23	0.30	0.27	0.27	378.65	435.45	468.32	468.32	0.40	0.60	0.57	0.57	0.00	0.00	-0.03	-5.00
Turkey	0.71	0.70	0.63	0.63	1,257.29	1,290.81	1,278.71	1,278.71	4.10	4.15	3.70	3.70	0.00	0.00	-0.45	-10.84
Brazil	1.10	1.17	1.05	1.03	1,190.57	1,096.06	1,181.94	1,183.76	6.02	5.90	5.70	5.60	-0.10	-1.75	-0.30	-5.08
Greece	0.36	0.38	0.37	0.37	917.69	1,045.09	1,014.07	1,014.07	1.53	1.80	1.70	1.70	0.00	0.00	-0.10	-5.56
Australia	0.20	0.31	0.29	0.29	1,888.44	2,080.19	1,833.49	1,833.49	1.70	3.00	2.40	2.40	0.00	0.00	-0.60	-20.00
Egypt	0.22	0.31	0.27	0.27	918.85	944.66	927.35	927.35	0.92	1.33	1.15	1.15	0.00	0.00	-0.18	-13.66
Syria	0.20	0.23	0.22	0.21	1,415.22	1,488.73	1,360.79	1,463.49	1.30	1.60	1.38	1.43	0.05	3.64	-0.18	-10.94
Iran	0.15	0.17	0.15	0.16	780.81	801.81	750.78	799.25	0.52	0.62	0.50	0.58	0.08	16.00	-0.04	-5.69
Argentina	0.25	0.37	0.34	0.34	448.52	392.96	422.45	422.45	0.52	0.68	0.65	0.65	0.00	0.00	-0.03	-3.70
Spain	0.09	0.09	0.09	0.09	1,017.63	1,209.59	1,209.59	1,209.59	0.43	0.50	0.50	0.50	0.00	0.00	0.00	0.00
Others	3.46	3.73	3.74	3.72	302.14	314.01	315.85	324.57	4.81	5.38	5.43	5.55	0.12	2.21	0.17	3.08

TABLE 18

The table below presents a 24-year record of the differences between the October projection and the final estimate. Using world wheat production as an example, changes between the October projection and the final estimate have averaged 7.5 million tons (1.4 percent) and ranged from -26.7 to 9.5 million tons. The October projection has been below the final 15 times and above the final 9 times.

RELIABILITY OF PRODUCTION PROJECTIONS

COMMODITY AND REGION	PROJECTION AND FINAL ESTIMATES, 1981/82 - 2004/05 1/					
	Difference		Lowest	Highest	Below Final	Above Final
	Average	Average	Difference			
	Percent	---Million metric tons---			Number of years 2/	
WHEAT						
World	1.4	7.5	-26.7	9.5	15	9
U.S.	0.3	0.2	-1.2	0.5	10	12
Foreign	1.6	7.5	-26.8	9.6	15	9
COARSE GRAINS 3/						
World	1.4	12.0	-33.7	9.1	18	6
U.S.	2.1	4.7	-14.5	17.9	16	8
Foreign	1.6	9.8	-27.7	7.5	19	5
RICE (Milled)						
World	3.1	4.4	-12.2	14.5	13	11
U.S.	2.5	1.4	-3.2	3.1	9	15
Foreign	5.7	4.3	-9.6	15.4	13	11
SOYBEANS						
World	2.0	6.6	-20.9	3.0	19	4
U.S.	3.2	0.2	-0.4	0.5	13	11
Foreign	2.0	6.6	-21.0	3.1	19	5
COTTON		---Million 480-lb. bales---				
World	3.2	2.8	-10.6	9.9	14	9
U.S.	3.7	0.6	-1.7	1.2	16	8
Foreign	3.7	2.7	-10.4	10.2	13	10
UNITED STATES		-----Million bushels-----				
CORN	2.2	174	-541	618	15	9
SORGHUM	3.3	21	-59	71	13	11
BARLEY	1.2	5	-12	24	8	12
OATS	0.9	3	-18	16	6	9

1/ The final estimate for 1981/82-2003/04 is defined as the first November estimate following the marketing year.

2/ May not total 24 if projection was the same as the final.

3/ Includes corn, sorghum, barley, oats, rye, millet, and mixed grain.