

AGRICULTURAL PRICES



Economics, Statistics, &
Cooperatives Service

U.S. Department
of Agriculture

Washington, D.C.
20250

Released: April 28, 1978
3:00 P.M. ET

PRICES RECEIVED INDEX UP 8 POINTS PRICES PAID INDEX UP 2 POINTS

The April Index of Prices Received by Farmers increased 8 points (4 percent) to 208 percent of its January-December 1967 average, according to the Crop Reporting Board. Contributing most to the increase since March were higher prices for cattle, soybeans, corn, broilers, wheat, tomatoes and lettuce. Lower prices for hogs, oranges and eggs were partially offsetting. The index was 17 points (9 percent) above a year ago.

The Index of Prices Paid by Farmers for Commodities and Services, Interest, Taxes and Farm Wage Rates for April 15 was 216, up 2 points (1 percent) from mid-March. Higher prices for feeder livestock and feed accounted for most of the index rise. The index was 12 points (6 percent) higher than a year earlier.

SUMMARY TABLE

INDEX 1967=100	MAR 1977	APR 1977	MAR 1978		APR 1978
			PRELIM	REVISED	PRELIM
PRICES RECEIVED	190	191	200	200	208
PRICES PAID, INTEREST, TAXES, AND FARM WAGE RATES ^{1/}	202	204	214	214	216
RATIO ^{2/}	94	94	93	93	96

^{1/} MID-MONTH INDEX. ^{2/} RATIO OF INDEX OF PRICES RECEIVED BY FARMERS TO INDEX OF PRICES PAID, INTEREST, TAXES, AND FARM WAGE RATES.

CORRECTIONS TO FRUIT AND CITRUS PRICES PUBLISHED
IN THE JANUARY-MARCH 1978 ISSUES OF AGRICULTURAL
PRICES APPEAR ON PAGES 33-34 OF THIS ISSUE.

PRICES RECEIVED BY FARMERS

The Index of Prices Received by Farmers increased 8 points (4 percent) from the previous month to 208 percent of its 1967 average. Compared with a year earlier the index was up 17 points (9 percent). Of the subgroups shown on page 7, the following contributed most the net change from a month earlier.

MEAT ANIMALS: The April index of prices received by farmers for meat animals at 218 was up 9 points (4 percent) from a month earlier. Mid-April beef cattle prices, averaging \$47.30 per cwt, increased \$3.50 from Mid-March. Mid-month calf prices at \$52.90 per cwt were up \$3.80 from mid-March. However, mid-month hog prices at \$44.80 per cwt were down \$2.00 from a month earlier. The index was up 53 points (32 percent) from a year earlier.

VEGETABLES: The index of prices received by farmers for commercial vegetables for the first half of April at 234 was 46 points (24 percent) above the index for the entire month of March. Higher prices received for tomatoes, lettuce, cucumbers, onions, and green peppers contributed most to the increase. Lower prices for cabbage, celery, asparagus, snap beans and carrots were only slightly offsetting. The index was 43 points (23 percent) above April 1977.

OIL-BEARING CROPS: The April index of prices received by farmers for oil-bearing crops at 238 was 17 points (8 percent) above the previous month. Soybeans at mid-April averaged \$6.74 per bushel, 54 cents above the month of March. Flaxseed at \$4.80 per bushel for mid-April was up 54 cents from a month earlier. The index was 76 points (24 percent) below April 1977.

FEED GRAINS AND HAY: The April index of prices received by farmers for feed grains and hay at 194 was 7 points (4 percent) above March. All feed grains at mid-April were higher than their average for the entire month of March while mid-April hay prices showed no change from a month earlier. Corn brought \$2.26 per bushel, up 11 cents, and grain sorghum increased 15 cents to \$3.52 per cwt. Barley averaged \$1.96 per bushel, up 7 cents while oats increased 5 cents to \$1.21 per bushel. The index was 12 points (6 percent) lower than a year earlier.

POULTRY AND EGGS: The April index of prices received by farmers for poultry and eggs increased 5 points (3 percent) from the previous month to 187. Broiler prices for the month at 28.1 cents per pound were up 3.3 cents from last month. Mid-April turkey prices at 37.9 cents per pound were up one-tenth of a cent from mid-March. Mid-April prices for eggs at 52.2 cents per dozen were down 3.2 cents from a month ago. The index was up 10 points (6 percent) from April 1977.

FRUIT: The index of prices received by farmers for all fruit at 195 for the month of April decreased 8 points (4 percent) from March. Lower prices for oranges and strawberries were only partially offset by price increases for pears, apples, lemons, and grapefruit. The index was 54 points (38 percent) above a year earlier.

PRICES PAID INCLUDING INTEREST, TAXES AND WAGE RATES (PPITW)

The Index of Prices Paid by Farmers for Commodities and Services, Interest, Taxes, and Farm Wage Rates for April 15 was 216 percent of its 1967 average, up 2 points (1 percent) from March and up 12 points (6 percent) from April 1977.

PRODUCTION INDEX HIGHER

At 214, the mid-April index of prices paid for farm production goods and services was up 3 points (1 1/2 percent) from a month earlier. Higher prices for feeder livestock accounted for more than three-fourths of the index rise. Other contributors were feed, seed, and building and fencing materials. The index was 10 points (5 percent) above a year earlier.

FEEDER LIVESTOCK: The index of prices paid for feeder livestock increased 6 percent from last month. At 214, the index was 29 percent above April 1977. This month's index was the highest since August 1973.

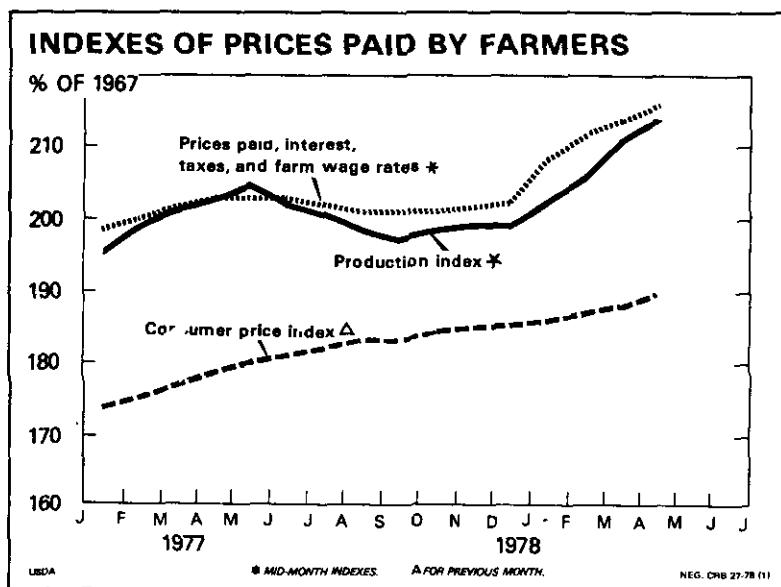
FEED: The mid-April prices paid for feed index, at 187, was 2 percent above a month earlier. Prices averaged higher for all feed items surveyed except hay which was down slightly. The index was 8 percent below a year ago.

BUILDING AND FENCING MATERIALS: At 243, the index of prices paid for building materials and fencing was up 1 1/2 percent from March of this year. Compared to April 1977, the index was up 8 percent.

FUELS AND ENERGY: The April 15 index of prices paid by farmers for fuels and energy, at 206, was unchanged from a month earlier. Small price increases for gasoline were mostly offset by a decline for L.P. gas. The index was 2 percent above a year earlier.

CONSUMER PRICE INDEX (CPI-U)

The unadjusted March 1978 Consumer Price Index for All Urban Consumers, at 189.8, rose 0.7 percent from a month earlier. On a seasonally adjusted basis, the CPI-U rose 0.8 percent in March, compared with 0.6 percent in February and 0.8 percent in January. Food and beverage prices rose sharply in March for the third consecutive month, up 1.3 percent. The housing index rose 1.0 percent, somewhat more than in January or February. The index for apparel and upkeep also increased 1.0 percent in March, after declining by a similar amount in February. Increases in March were 0.6 percent for medical care and 0.2 for transportation.



AVERAGE PRICES RECEIVED BY FARMERS FOR FARM PRODUCTS, UNITED STATES, APRIL 1978
WITH COMPARISONS

COMMODITY	PRICE PER	UNIT	AVERAGE		APR	APR	MAR	MAR	APR	APR
			JAN 1970: DEC 1974:	JAN 1967: DEC 1967:	15, 1977	1977 (ENTIRE MONTH)	15, 1978	1978 (ENTIRE MONTH)	15, 1978	1978 (ENTIRE MONTH)
ALL WHEAT	BU.	DOL.	.880	1.47		2.37		2.67	2.83	
WINTER WHEAT	"	"				2.32		2.67	2.84	
SPRING WHEAT	"	"				2.55		2.62	2.79	
RICE, (ROUGH)	CWT	"	1.81	5.05		6.95		10.70	9.59	
CORN	BU	"	.649	1.17		2.31		2.15	2.26	
OATS	"	"	.399	.668		1.64		1.16	1.21	
BARLEY	"	"	.617	1.02		2.22		1.89	1.96	
SORGHUM GRAIN	CWT	"		1.88		3.44		3.37	3.52	
ALL HAY, BALED	TON	"	11.90	23.50	63.20		51.40		51.40	
COTTON, AMER. UPLAND	LB	CT	1/11.92	22.54		68.3		51.3	50.7	
PEANUTS	"	"	4.83	11.4						
TOBACCO	"	"				110.8		120.2		118.4
COTTONSEED	TON	DOL	21.80	58.00						
SOYBEANS	BU	"		2.62		9.05		6.20	6.74	
FLAXSEED	"	"	1.68	2.89		7.52	4.26		4.80	
POTATOES	CWT	"	1.13	2.02		3.99		3.24		3.39
SWEETPOTATOES	"	"	1.61	5.65		10.51	13.20		12.90	
DRY EDIBLE BEANS	"	"	3.39	7.99	16.70		21.40		20.60	
DRY FLD PEAS (OPEN MKT.)	"	"		4.64	12.00		12.50		10.70	
APPLES, FRESH 3/	LB	CT		6.65		12.3		14.8		15.2
PEACHES, FRESH 3/	"	"		9.20						
STRAWBERRIES, FRESH	"	"		28.3		38.0		52.9	36.4	
PEARS, FRESH 3/	TON	DOL		125.00		112.00		274.00		404.00
CITRUS (EQUIV. ON-TREE)	BOX	"								
GRAPEFRUIT	"	"		1.38		1.10		1.25		1.28
LEMONS	"	"		2.45		.99		.44		.99
ORANGES	"	"		1.58		2.03		4.49		4.04
TANGELLOS	"	"		2.49						
TANGERINES	"	"		2.66		3.41		5.14		6.18
TEMPLES	"	"		1.62		1.91		4.26		3.74
LIMES	"	"						41.53		44.85
ALL BEEF CATTLE	CWT	DOL	5.52	22.20		35.30	43.80		47.30	
COWS	"	"		16.50		26.80	32.80		35.20	
STEERS, HEIFERS	"	"		24.00		37.40	46.70		50.30	
CALVES	"	"	6.84	26.40		38.20	49.10		52.90	
HOGS	"	"	7.29	19.00		36.00	46.80		44.80	
LAMBS	"	"	5.96	22.20		50.80	67.70		64.20	
SHEEP	"	"	4.59	6.38		14.40	19.20		19.30	
ALL MILK	CWT	DOL	1.61	5.03		9.43		10.20		2/10.10
MILK, FLUID MARKET	"	"		5.44		9.62		10.40		2/10.40
MILK, MANU. GRADE	"	"		4.07		8.66		9.23		2/ 9.26
BROILERS, LIVE	LB	CT		13.3		24.2		24.8		28.1
EGGS 4/	DOZ	"	21.6	37.2	55.4		55.4		52.2	
TURKEYS, LIVE	LB	"	14.3	20.0	33.5		37.8		37.9	
WOOL 5/	LB	"	17.8	39.7		72.5		72.1		73.7
ADJ. FOR SEASONAL VARIATION										
ALL MILK	CWT	DOL		5.04		9.62		10.10		6/10.31
EGGS	DOZ	CT		31.2	7/58.3		54.3		55.5	

1/ ALL COTTON. 2/ PRELIMINARY. FAT TEST PERCENT FOR ALL MILK, 3.68; FLUID MILK, 3.68, MANUFACTURING GRADE, 3.66. 3/ EQUIVALENT PACKINGHOUSE-DOOR RETURNS FOR WASHINGTON AND OREGON, EQUIVALENT FIRST DELIVERY POINT RETURNS FOR CALIFORNIA, AND PRICES AS SOLD FOR OTHER STATES. 4/ ALL EGGS, INCLUDING HATCHING EGGS AND EGGS SOLD RETAIL. 5/ AVERAGE LOCAL PRICE, EXCLUDING INCENTIVE PAYMENT. 6/ PRELIMINARY. 7/ REVISED.

UNITED STATES PARITY PRICES FOR FARM PRODUCTS AND AVERAGE PRICES RECEIVED AS
 PERCENTAGE OF PARITY PRICES BASED ON DATA FOR APRIL 1978 WITH COMPARISONS 1/

COMMODITY AND UNIT	ADJUSTED BASE PRICES 2/	PARITY PRICES 3/ BASED ON DATA FOR			AVERAGE PRICES AS PERCENTAGE OF PARITY PRICES			
		APR	MAR	APR	APR	MAR	APR	
		1977	1978	1978	1977	1978	1978	
BASIC COMMODITIES:								
WHEAT, PER BU.	DOL.	.708	5.08	5.15	5.21	47	52	54
RICE, PER CWT.	"	4/2.05	13.90	14.90	15.10	50	72	64
CORN, PER BU.	"	.495	3.49	3.60	3.64	66	60	62
COTTON, PER LB.								
AMERICAN UPLAND	CT.	12.10	84.60	88.00	89.10	80	58	57
EXTRA LONG STAPLE	"	4/19.0	131.00	138.00	140.00			
PEANUTS, PER LB.	"	4/ 4.21	28.9	30.6	31.0			
TOBACCO, PER LB.								
FLUE-CURED, TYPES 11-14	"	4/23.6	162.0	172.0	174.0			
VA FIRE-CURED, TYPE 21	"	4/19.4	131.0	141.0	143.0			
KY-TENN FIRE-CURED, TYPES 22-23	"	14/						
BURLEY, TYPE 31	"	4/24.2	168.0	176.0	178.0	63	66	
MARYLAND, TYPE 32	"	5/22.9	153.0	166.0	169.0	73		70
DARK AIR-CURED, TYPES 35-36	"	4/18.2	119.0	132.0	134.0			
SUN-CURED, TYPE 37	"	4/18.8	127.0	137.0	138.0			
PA SEEDLEAF, TYPE 41	"	14/						
CIGAR FILLER AND BINDER, TYPES 42-44, 53-55	"	14/						
PUERTO RICAN FILLER, TYPE 46	"	4/14.7	103.0	107.0	108.0			
CIGAR BINDER, TYPES 51-52	"	4/20.1	139.0	146.0	148.0			
DESIGNATED NONBASIC COMMODITIES:								
TUNG NUTS, PER TON	DOL.	8.10	72.10	58.90	59.60			
ALL MILK, SOLD TO PLANTS, PER CWT.	"	1.90	13.00	13.80	14.00	6/ 74	6/ 73	6/ 74
MILKFAT IN CREAM, PER LB.	CT.	18.4		134.0	135.0			
HONEY, WHOLESALE, PER LB. EXTRACTED	"	7/ 8.68	56.6	63.1	63.9			
WOOL AND MOHAIR:								
WOOL, PER LB.	CT.	19.7	138.0	143.0	145.0	8/ 53	8/ 50	8/ 51
MOHAIR, PER LB.	"	39.2	247.0	285.0	289.0			
OTHER NONBASIC COMMODITIES:								
BARLEY, PER BU.	DOL.	.436	3.02	3.17	3.21	71	60	61
COTTONSEED, PER TON	"	4/20.00	143.0	145.0	147.0	71		
DRY EDIBLE BEANS, PER CWT.	"	3.95	27.2	28.7	29.1	61	75	71
FLAXSEED, PER BU.	"	1.26	8.66	9.16	9.27	86	47	52
OATS, PER BU.	"	.256	1.75	1.86	1.88	93	62	64
POTATOES, PER CWT.	"	4/ .847	5.81	6.16	6.23	71	53	54
RYE, PER BU.	"	.411	2.79	2.99	3.02			
SORGHUM GRAIN, PER CWT.	"	.821	5.84	5.97	6.04	60	56	58
SOYBEANS, PER BU.	"	1.17	7.69	8.51	8.61	122	73	78
SWEETPOTATOES, PER CWT.	"	2.03	14.10	14.80	14.90	75	89	87
APPLES, FOR FRESH USE, PER LB. 9/								
CITRUS (EQUIV. ON-TREE), PER BOX:	CT.	2.41	16.6	17.5	17.7	73	85	86
GRAPEFRUIT	DOL.	4/ .464	3.17	3.37	3.42	35	37	37
LEMONS	"	4/ .894	6.08	6.50	6.58	20	7	15
LIMES	"	4/ 1.51	8.80	11.00	11.10		378	404
ORANGES	"	4/ .483	3.33	3.51	3.55	63	128	114
TANGERINES	"	* 4/ .833	5.66	6.04	6.13	66	85	101
TEMPLES	"	4/ .517	3.51	3.76	3.81	29	113	98
BEEF CATTLE, PER CWT.	"	8.39	58.90	61.00	61.80	59	72	77
CALVES, PER CWT.	"	9.68	68.70	70.40	71.20	55	70	74
HOGS, PER CWT.	"	8.21	56.00	59.70	60.40	64	78	74
LAMBS, PER CWT.	"	9.32	62.60	67.80	68.60	81	100	94
SHEEP, PER CWT.	"	2.58	17.50	18.80	19.00	82	102	102
EGG, PER DOZ.	CT.	11.8	81.8	85.8	86.8	6/ 71	6/ 63	6/ 64
TURKEYS, LIVE, PER LB.	"	7.16	49.7	52.1	52.7	68	73	72

SEE FOOTNOTES ON PAGE 6.
 AGRICULTURAL PRICES, APRIL 1978

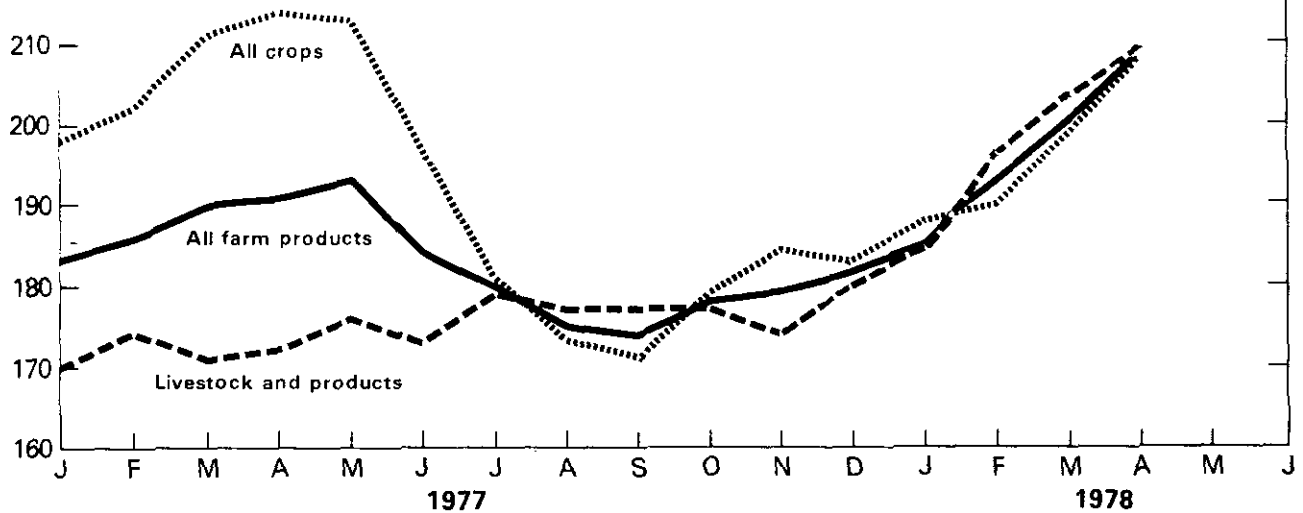
PARITY PRICES BASED ON DATA FOR APRIL 1978, UNITED STATES 1/

OTHER NONBASIC COMMODITIES (CONTINUED)	ADJUSTED BASE PRICES 4/	PARITY PRICES 3/	OTHER NONBASIC COMMODITIES (CONTINUED)	ADJUSTED BASE PRICES 4/	PARITY PRICES 3/
	DOLLARS			DOLLARS	
FIELD CROPS AND MISC. COMMODITIES			NONCITRUS FRUITS:		
			PEACHES		
			FOR FRESH USE, LB. 11/	.0325	.239
CRUDE PINE GUM, BBL.	2/ 14.00	103.00	DRIED (CALIF.), TON	273.00	2,010.00
HOPS, LB.	.185	1.36	FOR PROCESSING (EXCL. DRIED)		
TOBACCO, LB.:			CLINGSTONE (CALIF.), TON 10/	25.60	188.00
CIGAR WRAPPER, TYPE 61	14/	6.34	PEARS		
CIGAR WRAPPER, TYPE 62	.861		FOR FRESH USE, TON 12/	39.50	291.00
			DRIED (CALIF.), TON	254.00	1,870.00
			PLUMS (CALIF.) EQUIV.		
NONCITRUS FRUITS:			ON-TREE, TON		
APPLES, FOR PROCESSING,			FOR FRESH USE	*53.40	393.00
TON	19.60	144.00			
			PRUNES, DRIED (CALIF.), TON	101.00	743.00
APRICOTS, TON			PRUNES AND PLUMS		
FOR FRESH USE	*111.00	817.00	(EXCL. CALIF.), TON		
DRIED (CALIF.)	439.00	3,230.00	FOR FRESH USE	57.10	420.00
AVOCADOS, TON	14/		FOR PROCESSING (EXCL. DRIED)	*20.70	152.00
CHERRIES, TON					
SWEET, TON	103.00	758.00	TREE NUTS, TON:		
TART, LB.	.0395	.291	ALMONDS	218.00	1,600.00
CRANBERRIES, BBL.	14/		FILBERTS	148.00	1,090.00
DATES (CALIF.), TON	55.80	411.00	WALNUTS	140.00	1,030.00
GRAPES, TON					
RAISIN VARIETIES			VEGETABLES FOR FRESH MARKET		
DRIED (CALIF.)	139.00	1,020.00	CWT.		
GRAPES EXCL. RAISIN			CANTALOUPE	2.15	15.80
VARIETIES DRIED	34.00	250.00	CARROTS 13/	1.39	10.20
NECTARINES (CALIF.)			CAULIFLOWER 13/	3.29	24.20
TON			CELERY 13/	1.67	12.30
FOR FRESH USE 10/	52.40	386.00	HONEYDEW MELONS	2.00	14.70
OLIVES (CALIF.)			LETTUCE	1.70	12.50
FOR CANNING, TON 10/	97.60	718.00	ONIONS 13/	1.53	11.30
			TOMATOES	4.08	30.00

1/ PARITY PRICES ARE COMPUTED UNDER THE PROVISIONS OF TITLE III, SUBTITLE A, SECTION 301 (A) OF THE AGRICULTURAL ADJUSTMENT ACT OF 1938 AS AMENDED BY THE AGRICULTURAL ACTS OF 1948, 1949, 1954, AND 1956.
 2/ ADJUSTED BASE PRICE 1910-14 DERIVED FROM 120-MONTH, JANUARY 1968-DECEMBER 1977 AVERAGE (INCLUDING AN ALLOWANCE WHERE APPROPRIATE FOR UNREDEEMED LOANS AND OTHER SUPPLEMENTAL PAYMENTS RESULTING FROM PRICE SUPPORT OPERATIONS) BY DIVIDING BY 380 PERCENT (THE 120-MONTH AVERAGE OF THE INDEX OF PRICES RECEIVED BY FARMERS ADJUSTED TO INCLUDE AN ALLOWANCE FOR UNREDEEMED LOANS AND OTHER SUPPLEMENTAL PAYMENTS) UNLESS OTHERWISE NOTED. 3/ PARITY PRICES AS COMPUTED CURRENTLY USING BASE PRICES IN EFFECT AND INDEXES FOR MONTH INDICATED. THESE PARITY PRICES ARE THE LEGALLY APPLICABLE PARITY PRICES FOR THE FOLLOWING CALENDAR MONTH. 4/ ADJUSTED BASE PRICE 1910-14 DERIVED FROM 10 SEASON AVERAGE PRICES 1968-77 (INCLUDING AN ALLOWANCE, WHERE APPROPRIATE, FOR UNREDEEMED LOANS, AND OTHER SUPPLEMENTAL PAYMENTS RESULTING FROM PRICE SUPPORT OPERATIONS). 5/ ADJUSTED BASE PRICE 1910-14 DERIVED FROM 10 WEIGHTED CALENDAR YEAR PRICES 1968-77. 6/ SEASONALLY ADJUSTED PRICE AS PERCENTAGE OF PARITY PRICE. 7/ ADJUSTED BASE PRICE DERIVED FROM STATE ANNUAL AVERAGE PRICES WEIGHTED BY PRODUCTION. 8/ AVERAGE LOCAL MARKET PRICE, EXCLUDING INCENTIVE PAYMENTS. 9/ EQUIVALENT PACKINGHOUSE-DOOR RETURNS FOR APPLES FOR WASHINGTON AND OREGON, EQUIVALENT FIRST DELIVERY POINT RETURNS FOR CALIFORNIA, AND PRICE AT POINT OF FIRST SALE FOR OTHER STATES. 10/ EQUIVALENT RETURNS FOR BULK FRUIT AT FIRST DELIVERY POINT. 11/ BASED ON PRICES FOR FRESH PEACHES IN NEW YORK, PENNSYLVANIA, MICHIGAN, NORTH CAROLINA, SOUTH CAROLINA, GEORGIA, WASHINGTON, CALIFORNIA, NEW JERSEY, MARYLAND, WEST VIRGINIA, ILLINOIS, OHIO, OREGON AND ALABAMA AND AVERAGE PRICE FOR ALL METHODS OF SALE FOR OTHER STATES. 12/ BASED ON PACKINGHOUSE-DOOR RETURNS FOR FRESH PEARS FOR WASHINGTON AND OREGON, EQUIVALENT FIRST DELIVERY POINT RETURNS FOR FRESH PEARS FOR CALIFORNIA, AVERAGE PRICES AS SOLD FOR FRESH USE FOR NEW YORK AND MICHIGAN, AND AVERAGE PRICES FOR ALL METHODS OF SALES FOR OTHER STATES. 13/ INCLUDES SOME PROCESSING. 14/ NOT AVAILABLE. * CORRECTED.
 SEE PAGE 25 JANUARY 1978 AGRICULTURAL PRICES FOR DETAILS ON PARITY PRICE COMPUTATIONS.

INDEXES OF PRICES RECEIVED BY FARMERS

% OF 1967



USDA

NEG. CRB 28-78 111

INDEX NUMBERS OF PRICES RECEIVED BY FARMERS, UNITED STATES, APRIL 15, 1978
WITH COMPARISONS

INDEX	AVERAGE JAN-DEC 1967	1910-14=100				1967=100			
		1977		1978		1977		1978	
		MAR	APR	MAR	APR	MAR	APR	MAR	APR
UNADJUSTED									
ALL FARM PRODUCTS	250	474	478	*501	521	190	191	200	208
ALL CROPS	225	474	482	*445	467	211	214	*198	208
FOOD GRAINS	176	282	277	*328	338	160	157	*186	192
FEED GRAINS AND HAY	174	365	359	*325	338	210	206	*187	194
FEED GRAINS	172	348	342	*314	330	202	199	*183	192
COTTON	190	592	577	*433	428	310	301	*228	225
TOBACCO	555	957	967	1,006	1,017	172	174	181	183
OIL-BEARING CROPS	269	743	845	*595	641	276	314	*221	238
FRUIT	227	297	319	460	442	131	141	203	195
FRESH MARKET 1/	222	275	301	*467	446	124	136	210	201
COMMERCIAL VEGETABLES	283	641	539	*533	662	227	191	*188	234
FRESH MARKET	334	903	720	*698	927	270	216	*209	278
POTATOES, ETC. 2/	187	335	372	348	354	179	199	186	189
LIVESTOCK & PRODUCTS	275	471	473	560	576	171	172	204	209
MEAT ANIMALS	335	544	551	700	730	162	165	209	218
DAIRY PRODUCTS	308	577	577	624	618	187	187	203	201
POULTRY & EGGS	131	240	232	238	245	183	177	182	187
SEASONALLY ADJUSTED									
FRESH MARKET FRUIT 1/	223	276	311	473	460	124	139	212	206
FRESH MARKET VEGETABLES	340	894	678	*713	865	263	199	*210	254
POTATOES, ETC. 2/	187	332	353	340	331	178	189	182	177
DAIRY PRODUCTS	308	571	589	618	630	185	191	201	205
POULTRY & EGGS	131	232	239	234	244	177	182	179	186

1/ FRESH MARKET FOR NONCITRUS AND FRESH MARKET AND PROCESSING FOR CITRUS. 2/ INCLUDES SWEETPOTATOES AND DRY EDIBLE BEANS. * REVISED.

INDEX NUMBERS OF PRICES PAID BY FARMERS, INTEREST, TAXES, AND WAGE RATES
AND RELATED DATA, UNITED STATES, APRIL 15, 1978, WITH COMPARISONS

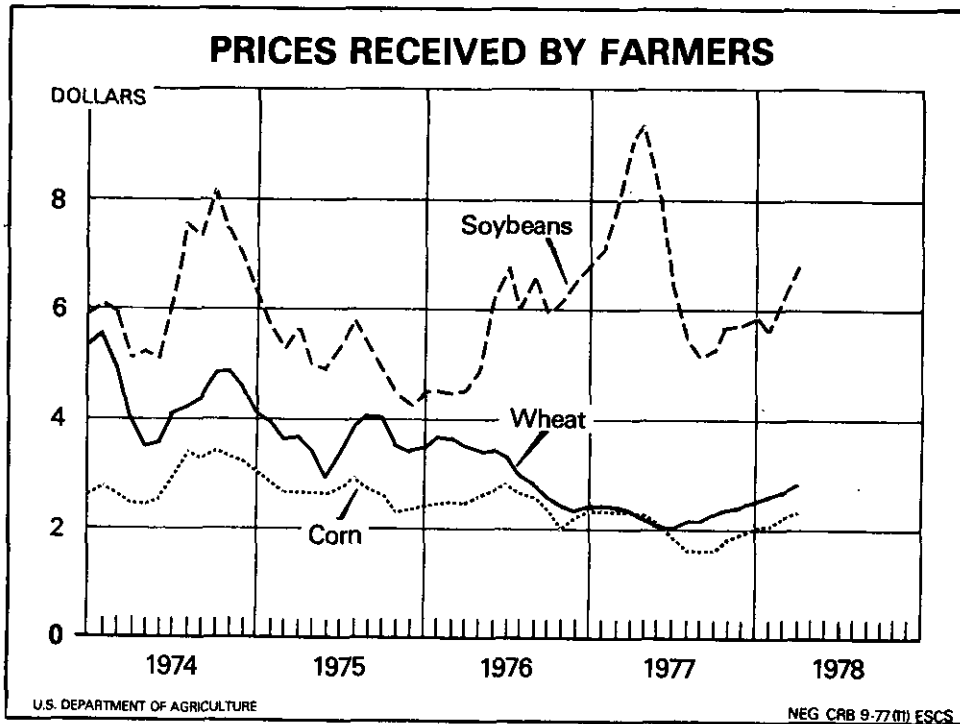
INDEXES AND RATIOS	1910-14=100					1967=100				
	1977		1978			1977		1978		
	MAR : 15	APR : 15	FEB : 15	MAR : 15	APR : 15	MAR : 15	APR : 15	FEB : 15	MAR : 15	APR : 15
PRICES PAID BY FARMERS FOR COMMODITIES & SERVICES, INTEREST, TAXES, & WAGE RATES (PARITY INDEX 1910-14=100)	686	1/692	717	727	736	202	204	211	214	216
PRODUCTION ITEMS	583	592	598	611	621	201	204	206	211	214
FEED	431	436	380	1/390	400	202	204	178	1/183	187
FEEDER LIVESTOCK	1/608	1/639	712	780	825	158	166	185	202	214
SEED	572	641	633	633	655	240	269	266	266	275
FERTILIZER	266	266	264	266	266	181	181	179	181	181
AGRICULTURAL CHEMICALS	427	427	424	402	402	154	154	153	145	145
FUELS & ENERGY	352	355	365	365	365	199	201	206	206	206
FARM & MOTOR SUPPLIES	438	439	450	450	452	164	164	168	168	169
AUTOS & TRUCKS	1,125	1,137	1,177	1,182	1,191	229	231	240	241	242
TRACTORS & SELF-PROPELLED MACHINERY	1,183	1,183	1,244	1,275	1,275	233	233	245	251	251
OTHER MACHINERY	1,094	1,094	1,151	1,176	1,176	241	241	253	259	259
BUILDING & FENCING	900	914	971	971	982	223	226	240	240	243
FARM SERVICES & CASH RENT	682	682	719	719	719	235	235	248	248	248
INTEREST <u>2/</u>	1,610	1,610	1,870	1,870	1,870	331	331	384	384	384
TAXES <u>3/</u>	1,657	1,657	1,783	1,783	1,783	195	195	210	210	210
WAGE RATES <u>4/</u>	1,940	1,898	2,068	2,068	2,068	229	224	244	244	244
PRODUCTION ITEMS, INTEREST, TAXES, AND WAGE RATES	744	1/752	775	788	799	209	1/211	218	221	224
FAMILY LIVING - CPI <u>5/</u>	562	565	593	598	602	177	178	187	188	190
PRICES PAID - PRODUCTION ITEMS & FAMILY LIVING	590	597	61	621	630	196	198	203	206	209
PARITY RATIO <u>6/</u>	69	69	67	69	71					
ADJUSTED PARITY RATIO (PRELIM.) <u>7/</u>	70	70	69	71	73					
PRODUCERS (WHOLESALE) PRICE INDEX <u>8/</u>										
ALL COMMODITIES						192	194	202	204	
INDUSTRIAL COMMODITIES						192	193	203	204	
FARM PROD & PROC FOODS & FEEDS						191	196	197	200	

1/ REVISED. 2/ INTEREST PAYABLE PER ACRE ON FARM REAL ESTATE DEBT. 3/ FARM REAL ESTATE TAXES PAYABLE PER ACRE. 4/ SEASONALLY ADJUSTED, ANNUAL AVERAGE IS SIMPLE AVERAGE OF QUARTERLY INDEXES. 5/ BUREAU OF LABOR STATISTICS, CONSUMER PRICE INDEX FOR ALL URBAN CONSUMERS (CPI-U), FOR THE PREVIOUS MONTH. 6/ RATIO OF INDEX OF PRICES RECEIVED TO INDEX OF PRICES PAID, INTEREST, TAXES, AND WAGE RATES. 7/ THE PRELIMINARY ADJUSTMENT FACTOR USED FOR COMPUTING THE ADJUSTED PARITY RATIO IS BASED ON ESTIMATED CASH RECEIPTS FROM MARKETINGS AND GOVERNMENT PAYMENTS. THE ADJUSTMENT FACTOR IS 102.6 FOR 1978 AND THE REVISED ADJUSTMENT FACTOR IS 101.8 FOR 1977. SEE PAGE 30, APRIL 1967 AGRICULTURAL PRICES, FOR A DESCRIPTION OF THE METHOD OF MAKING CURRENT ESTIMATES OF THE ADJUSTED PARITY RATIO. 8/ BUREAU OF LABOR STATISTICS INDEXES.

AVERAGE MONTHLY PRICES RECEIVED BY FARMERS, U.S., 1974 TO DATE

YEAR AND MONTH	ALL WHEAT	CORN	SOYBEANS	YEAR AND MONTH	ALL WHEAT	CORN	SOYBEANS	YEAR AND MONTH	ALL WHEAT	CORN	SOYBEANS
1974			1976			1978					
JAN	5.29	2.59	5.87	JAN	3.43	2.44	4.46	JAN	2.53	2.00	5.75
FEB	5.52	2.76	6.07	FEB	3.66	2.48	4.50	FEB	2.59	2.03	5.53
MAR	4.96	2.68	5.96	MAR	3.65	2.50	4.46	MAR	2.67	2.15	6.20
APR	3.98	2.41	5.15	APR	3.50	2.46	4.52	APR 1/	2.83	2.26	6.74
MAY	3.52	2.45	5.21	MAY	3.43	2.61	4.87	MAY			
JUN	3.57	2.57	5.13	JUN	3.46	2.74	6.16	JUN			
JUL	4.04	2.91	6.11	JUL	3.33	2.82	6.73	JUL			
AUG	4.24	3.37	7.55	AUG	2.97	2.64	6.07	AUG			
SEP	4.32	3.30	7.32	SEP	2.88	2.60	6.65	SEP			
OCT	4.85	3.45	8.17	OCT	2.59	2.33	5.90	OCT			
NOV	4.87	3.32	7.44	NOV	2.46	2.02	6.11	NOV			
DEC	4.65	3.27	7.03	DEC	2.39	2.24	6.56	DEC			
1975			1977								
JAN	4.11	3.07	6.30	JAN	2.43	2.34	6.81				
FEB	3.95	2.86	5.72	FEB	2.47	2.34	7.06				
MAR	3.65	2.67	5.31	MAR	2.43	2.35	7.83				
APR	3.69	2.68	5.60	APR	2.37	2.31	9.05				
MAY	3.47	2.66	5.00	MAY	2.19	2.25	9.24				
JUN	2.92	2.68	4.90	JUN	2.03	2.12	8.13				
JUL	3.33	2.72	5.30	JUL	2.00	1.88	6.52				
AUG	3.89	2.95	5.80	AUG	2.13	1.63	5.48				
SEP	4.11	2.76	5.32	SEP	2.16	1.60	5.17				
OCT	4.02	2.62	4.92	OCT	2.30	1.67	5.28				
NOV	3.58	2.33	4.45	NOV	2.46	1.88	5.61				
DEC	3.41	2.37	4.28	DEC	2.47	1.96	5.69				

1/ MID-MONTH.



AVERAGE PRICES RECEIVED BY FARMERS, BY STATES

STATE	ALL WHEAT PER BU.		WINTER WHEAT PER BU.		OTHER SPRING WHEAT PER BU.		CORN PER BU.	
	MAR 1978	APR 1978	MAR 1978	APR 1978	MAR 1978	APR 1978	MAR 1978	APR 1978
	1/	2/	1/	2/	1/	2/	1/	2/
D O L L A R S								
ARIZ	3.00	--	--	--	--	--	--	--
COLO	2.39	2.54	2.39	2.54	--	--	2.06	2.24
GA	--	--	--	--	--	--	2.30	2.54
IDAHO	2.86	3.02	2.86	3.08	2.87	2.92	--	--
ILL	2.73	2.92	2.73	2.92	--	--	2.13	2.31
IND	2.62	2.94	2.62	2.94	--	--	2.17	2.34
IOWA	--	--	--	--	--	--	2.19	2.21
KANS	2.58	2.73	2.58	2.73	--	--	2.17	2.30
KY	--	--	--	--	--	--	2.40	2.41
MICH	2.64	2.83	2.64	2.83	--	--	2.10	2.16
MINN	2.66	2.85	2.61	2.80	2.65	2.84	1.97	2.14
MO	2.65	2.85	2.65	2.85	--	--	2.27	2.32
MONT	2.53	2.75	2.47	2.68	2.64	2.81	--	--
NEBR	2.46	2.59	2.46	2.59	--	--	2.09	2.19
N C	--	--	--	--	--	--	2.51	2.60
N DAK	2.62	2.78	2.39	2.56	2.52	2.72	--	--
OHIO	2.56	2.92	2.56	2.92	--	--	2.17	2.30
OKLA	2.71	2.86	2.71	2.86	--	--	--	--
OREG	3.13	3.30	3.13	3.30	--	--	--	--
PA	--	--	--	--	--	--	2.43	2.45
S DAK	2.59	2.74	2.53	2.60	2.73	2.83	1.92	2.06
TEX	2.63	2.80	2.63	2.80	--	--	2.31	2.43
WASH	3.21	3.35	3.21	3.35	--	--	--	--
WIS	--	--	--	--	--	--	2.00	2.19
U S	2.67	2.83	2.67	2.84	2.62	2.79	2.15	2.26

1/ REVISED--ENTIRE MONTH. 2/ PRELIMINARY MID-MONTH

AVERAGE PRICE PER CWT RECEIVED BY FARMERS, U S

RICE	
PRELIMINARY APR 1978	REVISED MAR 1978
9.59	10.70

DOLLARS

AVERAGE PRICES RECEIVED BY FARMERS, BY STATES

STATE	OATS PER BU.		BARLEY PER BU.		SORGHUM GRAIN PER CWT.		SOYBEANS PER BU.	
	MAR 1978	APR 1978	MAR 1978	APR 1978	MAR 1978	APR 1978	MAR 1978	APR 1978
	1/	2/	1/	2/	1/	2/	1/	2/
D O L L A R S								
ALA	--	--	--	--	--	--	6.44	7.00
ARK	--	--	--	--	--	--	6.35	6.80
CALIF	1.50	1.60	2.16	2.32	--	--	--	--
COLO	--	--	2.13	2.15	--	--	--	--
GA	--	--	--	--	--	--	6.52	6.96
IDAHO	1.52	1.60	2.08	2.18	--	--	--	--
ILL	1.25	1.31	--	--	--	--	6.14	6.79
IND	1.56	1.57	--	--	--	--	6.11	6.86
IOWA	1.17	1.20	--	--	--	--	6.05	6.62
KANS	--	--	--	--	3.24	3.47	6.28	6.53
KY	--	--	--	--	--	--	6.46	6.81
LA	--	--	--	--	--	--	6.36	6.65
MICH	1.43	1.38	--	--	--	--	5.82	6.81
MINN	1.10	1.18	1.86	1.96	--	--	6.07	6.52
MISS	--	--	--	--	--	--	6.44	7.11
MO	--	--	--	--	3.26	3.37	6.25	6.82
MONT	1.29	1.36	1.87	1.92	--	--	--	--
NEBR	1.11	1.13	--	--	3.17	3.35	6.02	6.46
N MEX	--	--	--	--	3.41	3.43	--	--
N Y	1.78	1.73	--	--	--	--	--	--
N C	1.72	1.80	--	--	--	--	6.68	7.10
N DAK	1.04	1.06	1.72	1.79	--	--	--	--
OHIO	1.56	1.49	--	--	--	--	6.34	6.97
OKLA	1.37	1.45	1.69	1.55	3.33	3.59	--	--
OREG	1.18	1.27	2.02	2.13	--	--	--	--
PA	1.60	1.58	2.08	2.00	--	--	--	--
S C	--	--	--	--	--	--	6.50	6.90
S DAK	1.09	1.11	1.72	1.73	--	--	--	--
TENN	--	--	--	--	--	--	6.16	6.53
TEX	--	--	--	--	3.72	3.97	--	--
UTAH	--	--	2.20	2.21	--	--	--	--
WASH	--	--	2.05	2.11	--	--	--	--
WIS	1.12	1.18	--	--	--	--	--	--
U S	1.16	1.21	1.89	1.96	3.37	3.52	6.20	6.74

1/ REVISED--ENTIRE MONTH. 2/ PRELIMINARY MID-MONTH

HOPS: SEASON AVERAGE PRICE PER POUND,
1975-77

STATE	1975	1976	1977
CENTS			
CALIF	88.0	88.5	93.9
IDAHO	82.6	88.1	88.0
OREG	86.0	91.4	105.0
WASH	82.0	82.7	85.8
U S	83.0	84.8	89.6

AVERAGE PRICES RECEIVED BY FARMERS, BY STATES, APRIL 15, 1978

STATE	PEANUTS	TOBACCO		APPLES	FLAX-	DRY	SWEET
	PER LB. 1/	PER LB. 2/	3/	FRESH USE PER LB. 3/ 4/	SEED PER BU.	EDIBLE BEANS PER CWT. 1	POTATOES PER CWT.
CENTS					DOLLARS		
ALA	--	--	--	--	--	--	15.80
CALIF	--	--	--	14.1	--	26.80	20.50
COLO	--	--	--	--	--	18.00	--
CONN	--	--	--	17.0	--	--	--
GA	--	--	--	--	--	--	17.00
IDAHO	--	--	--	24.0	--	16.50	--
ILL	--	--	--	12.0	--	--	--
LA	--	--	--	--	--	--	15.50
MAINE	--	--	--	17.0	--	--	--
MD	--	119.0	--	18.4	--	--	11.25
MASS	--	--	--	17.0	--	--	--
MICH	--	--	--	17.4	--	20.30	--
MINN	--	--	--	--	4.84	16.00	--
MISS	--	--	--	--	--	--	9.00
NEBR	--	--	--	--	--	18.20	--
N H	--	--	--	17.0	--	--	--
N J	--	--	--	16.1	--	--	--
N Y	--	--	--	16.0	--	24.60	--
N C	--	--	--	--	--	--	10.65
N DAK	--	--	--	--	4.74	--	--
OREG	--	--	--	5.8	--	--	--
PA	--	--	--	16.3	--	--	--
S DAK	--	--	--	--	4.87	--	--
TENN	--	95.0	--	--	--	--	11.60
VT	--	--	--	16.0	--	--	--
VA	--	--	--	18.0	--	--	11.25
WASH	--	--	--	14.4	--	20.10	--
W VA	--	--	--	17.8	--	--	--
WYO	--	--	--	--	--	18.20	--
U S	--	118.4	--	15.2	4.80	20.60	12.90

1/ INSUFFICIENT SALES. 2/ PRICES BY TYPES OR AREA SHOWN ON PAGE 16.
 3/ AVERAGE FOR THE MONTH. 4/ EQUIVALENT P.H.D. RETURNS FOR WASHINGTON
 AND OREGON, EQUIVALENT FIRST DELIVERY POINT RETURNS FOR CALIFORNIA, AND
 PRICE AT POINT OF FIRST SALE FOR OTHER STATES.

REVISIONS: PRICES RECEIVED BY FARMERS, 1977-78

STATE	JAN	FEB	MAR	APR	MAY	JUN	JUL	AUG	SEP	OCT	NOV	DEC
FLAXSEED, DOL PER BU												
1977												
MINN												4.30
N DAK						5.50	4.81	4.26	4.76	4.24	4.34	
S DAK						4.13	3.75	4.29	4.09	4.40	4.31	
U S						5.14	4.15	4.20	4.56	4.20		
1978												
MINN	4.05	4.06										
N DAK	4.20	3.99										
S DAK	4.35	4.26										
U S	4.21											

AVERAGE PRICES RECEIVED BY FARMERS, BY STATES

STATE	AMERICAN UPLAND COTTON PER LB.		APRIL 15, 1978			
	MAR 1978 1/ 2/	APR 1978 1/ 3/	COTTON SEED PER TON 4/	HAY, BALED, PER TON		
				ALL	ALFALFA	OTHER
	CENTS		DOLLARS			
ALA	50.9	51.6	--	--	--	--
ARIZ	56.9	52.6	--	66.50	67.00	57.00
ARK	50.9	51.4	--	41.00	57.50	39.00
CALIF	56.6	58.0	--	54.50	57.00	40.00
COLO	--	--	--	51.50	50.00	54.50
GA	50.0	52.2	--	60.00	--	60.00
IDAHO	--	--	--	39.00	40.00	33.50
ILL	--	--	--	50.00	53.50	44.50
IND	--	--	--	60.50	67.50	52.00
IOWA	--	--	--	43.00	44.00	39.00
KANS	--	--	--	38.50	39.00	37.50
KY	--	--	--	49.00	57.00	49.00
LA	52.1	53.5	--	--	--	--
MICH	--	--	--	65.50	68.00	54.50
MINN	--	--	--	43.00	45.50	33.50
MISS	51.7	51.8	--	--	--	--
MO	48.2	--	--	48.00	56.50	43.50
MONT	--	--	--	59.00	60.50	56.50
NEBR	--	--	--	30.00	30.00	30.50
NEV	--	--	--	45.50	48.00	40.00
N MEX	--	--	--	67.00	68.50	53.00
N Y	--	--	--	69.00	76.50	61.00
N DAK	--	--	--	52.00	57.00	46.50
OHIO	--	--	--	58.00	60.00	54.00
OKLA	49.0	48.2	--	63.50	75.00	55.00
OREG	--	--	--	49.50	55.50	42.50
PA	--	--	--	85.50	98.00	72.50
S C	54.5	52.1	--	--	--	--
S DAK	--	--	--	34.50	36.50	30.50
TENN	50.5	48.3	--	--	--	--
TEX	48.9	48.7	--	53.50	67.50	51.00
UTAH	--	--	--	50.00	50.50	45.50
WASH	--	--	--	45.00	50.00	32.50
WIS	--	--	--	45.00	46.50	38.50
WYO	--	--	--	44.50	43.00	47.50
U S	51.3	50.7	--	51.40	53.40	46.70

1/ PRICE BASED ON 480 POUND NET WEIGHT BALE. 2/ REVISED--ENTIRE MONTH.
3/ PRELIMINARY. 4/ INSUFFICIENT SALES.

AVERAGE PRICES PER CWT. RECEIVED BY FARMERS, BY STATES, APRIL 15, 1978

STATE	HOGS	COWS 1/	STEERS AND HEIFERS	BEEF CATTLE 2/	CALVES
D O L L A R S					
ALA	43.40	35.60	44.30	41.10	43.70
ARIZ	--	36.60	51.80	51.20	55.90
ARK	--	36.80	46.20	44.30	45.20
CALIF	--	36.00	51.60	47.90	49.60
COLO	--	35.60	52.70	52.30	56.60
FLA	--	34.30	47.70	43.30	51.00
GA	41.50	33.40	42.80	39.40	48.70
IDAHO	--	36.40	52.00	50.20	57.50
ILL	45.00	32.90	49.00	47.60	52.40
IND	44.60	35.80	49.80	47.90	50.20
IOWA	45.20	35.60	49.70	47.40	54.80
KANS	45.00	35.00	50.80	48.40	54.00
KY	44.60	34.50	46.70	43.90	52.50
LA	--	34.00	48.90	40.80	54.30
MICH	45.40	37.10	51.20	45.80	58.80
MINN	45.30	37.10	49.30	43.30	55.90
MISS	44.20	33.60	48.90	41.10	53.00
MO	45.00	33.70	48.60	46.20	53.00
MONT	--	35.90	50.70	47.90	57.30
NEBR	45.20	36.30	51.00	49.30	54.40
NEV	--	33.00	50.00	46.80	58.00
N MEX	--	34.20	51.40	50.40	51.90
N Y	--	33.30	42.50	34.40	48.60
N C	44.50	35.00	43.00	38.80	51.20
N DAK	--	35.30	52.40	49.00	57.50
OHIO	45.00	36.80	49.00	46.10	59.10
OKLA	45.10	34.50	50.50	48.10	56.40
OREG	--	35.20	49.80	46.20	52.50
PA	45.50	37.10	50.70	42.00	59.80
S C	42.90	37.40	46.60	41.50	52.60
S DAK	45.30	34.70	50.80	48.70	56.70
TENN	43.60	34.90	48.90	43.50	55.70
TEX	43.00	34.30	49.90	46.90	54.50
UTAH	--	34.90	49.00	45.60	53.10
VA	42.60	31.80	40.50	36.60	42.80
WASH	--	35.00	51.30	48.00	51.50
WJS	44.40	35.60	46.00	38.50	52.40
WYO	--	36.10	53.70	50.80	59.40
U S	44.80	35.20	50.30	47.30	52.90

1/ INCLUDES CULL DAIRY COWS SOLD FOR SLAUGHTER, BUT NOT DAIRY COWS FOR HERD REPLACEMENT. 2/ "COWS" AND "STEERS AND HEIFERS" COMBINED WITH ALLOWANCE WHERE NECESSARY FOR SLAUGHTER BULLS.

AVERAGE PRICES RECEIVED BY FARMERS, BY STATES, APRIL 15, 1978

STATE	SHEEP	LAMBS	WOOL		TURKEYS	BROILERS	EGGS
	PER CWT.	PER CWT.	PER LB.	1/ 2/	PER LB.	PER LB.	PER DOZ.
	D O L L A R S			C E N T S			
ALA	--	--	--	--	--	4/ 26.5	63.5
ARIZ	16.00	62.00	71.0	--	--	--	--
ARK	--	--	--	--	42.0	30.0	53.0
CALIF	17.90	64.40	70.0	--	36.0	29.0	46.2
COLO	16.00	68.00	76.0	--	--	--	--
CONN	--	--	--	--	--	--	63.0
DEL	--	--	--	--	--	4/ 27.0	--
FLA	--	--	--	--	--	4/ 26.5	46.1
GA	--	--	--	--	40.0	4/ 28.0	62.7
IDAHO	15.30	64.40	70.0	--	--	--	--
ILL	13.00	61.10	63.0	--	--	--	53.0
IND	14.30	58.40	60.0	--	34.0	--	54.9
IOWA	13.70	61.30	67.0	--	37.0	--	37.3
KANS	13.00	63.50	71.0	--	--	--	42.0
KY	--	--	--	--	--	--	48.2
LA	--	--	--	--	--	29.0	63.5
MAINE	--	--	--	--	--	4/ 26.5	57.0
MD	--	--	--	--	--	4/ 27.0	--
MASS	--	--	--	--	--	--	61.0
MICH	17.80	67.70	65.0	--	41.0	--	46.8
MINN	18.20	64.20	67.0	--	36.0	--	42.3
MISS	--	--	--	--	--	4/ 29.0	57.2
MO	15.50	60.80	70.0	--	36.0	--	44.4
MONT	13.50	65.30	78.0	--	--	--	--
NEBR	13.70	64.60	72.0	--	--	--	38.4
NEV	15.00	60.00	68.0	--	--	--	--
N J	--	--	--	--	--	--	57.8
N MEX	19.00	70.00	78.0	--	--	--	--
N Y	--	--	--	--	--	--	46.3
N C	--	--	--	--	38.0	4/ 26.5	60.8
N DAK	13.40	62.20	70.0	--	--	--	--
OHIO	20.10	68.00	65.0	--	36.0	--	46.8
OKLA	--	--	--	--	--	30.0	--
OREG	15.00	63.60	73.0	--	39.0	--	50.6
PA	--	--	--	--	43.0	28.0	52.4
S C	--	--	--	--	39.0	4/ 26.5	53.0
S DAK	14.70	63.60	70.0	--	36.0	--	37.0
TENN	--	--	--	--	--	4/ 28.0	53.4
TEX	26.00	62.00	88.0	--	38.0	31.5	60.0
UTAH	15.40	59.10	73.0	--	--	--	--
VA	--	--	--	--	38.0	4/ 26.0	65.0
WASH	--	--	--	--	--	--	44.9
WIS	--	--	--	--	--	--	46.0
WYO	21.00	66.00	76.0	--	--	--	--
U S	19.30	64.20	73.7	--	37.9	28.1	52.2

1/ AVERAGE FOR THE MONTH. 2/ INCENTIVE PAYMENT NOT INCLUDED. 3/ AVERAGE OF ALL EGGS SOLD BY FARMERS INCLUDING HATCHING EGGS AND EGGS SOLD RETAIL. 4/ LIVELWEIGHT EQUIVALENT PRICE.

POTATOES: AVERAGE PRICES PER CWT. RECEIVED BY FARMERS, BY STATES, APRIL 1978

STATE	DOLLARS	STATE	DOLLARS
ALABAMA	--	NORTH CAROLINA	--
ARIZONA	--	NORTH DAKOTA	2.85
CALIFORNIA - ALL	5.85	OHIO	4.10
WINTER	9.30	OREGON	3.00
SPRING	--	PENNSYLVANIA	4.50
SUMMER	--	TEXAS	--
FALL	5.45	VIRGINIA	--
COLORADO	2.70	WASHINGTON	2.60
FLORIDA	8.26	WISCONSIN	4.10
IDAHO	2.90		
MAINE	3.50		
MICHIGAN	4.55		
MINNESOTA	2.90		
NEW JERSEY	--		
NEW YORK - ALL	4.40		
LONG ISLAND	3.55		
UPSTATE	4.80		
		UNITED STATES	3.39

AVERAGE PRICES RECEIVED BY GROWERS FOR TOBACCO, BY AREAS AND TYPES, (CENTS PER POUND)

CLASS	TYPE	TOBACCO	
		APR 1977	APR 1978 1/
FIRE-CURED			
TENN	22	139.4	95.0
TOTAL EASTERN BELT	22	139.4	95.0
BURLEY BELT	31	105.5	
SOUTHERN MD BELT	32	111.5	119.0
TOTAL LIGHT AIR-CURED	31-32	105.5	119.0
U S		115.2	118.4

1/ PRICES BY STATES ARE SHOWN ON PAGE 12.

COMMERCIAL VEGETABLES FOR FRESH MARKET: AVERAGE F.O.B. SHIPPING POINT PRICES PER CWT., UNITED STATES, APRIL 1-15, 1978, WITH COMPARISONS

COMMODITY	AVERAGE	APR	MAR	MAR	APR
	JAN-DEC	1-30,	1-15,	1-31,	1-15,
	1967	1977	1978	1978	1978
		D O L L A R S			
ASPARAGUS	23.70	40.20	60.30	53.40	42.60
CABBAGE	2.85	11.20	9.88	8.90	8.24
CANTALOUPE	6.26				
CARROTS	5.74	11.00	8.32	7.37	7.23
CELERY	4.94	10.20	11.90	11.60	10.80
CUCUMBERS	7.74	15.10			39.20
GREEN PEPPERS	12.20	31.70	20.40	27.80	54.50
LETTUCE	5.19	5.28	7.88	9.92	14.00
ONIONS	4.37	19.40	6.37	7.79	12.90
SNAP BEANS	11.70	16.00	35.60	25.80	22.80
SWEET CORN	5.68	8.50	13.40	12.30	13.70
TOMATOES	9.63	26.30	21.60	21.80	33.70
WATERMELONS	2.06				

CITRUS FRUIT: AVERAGE PRICES AND EQUIVALENT RETURNS PER BOX RECEIVED BY
GROWERS, BY UTILIZATION, APRIL 1978

COMMODITY AND STATE	F.O.B. PACKED FRESH	EQUIVALENT RETURNS PER BOX 1/					
		PACKINGHOUSE DOOR			ON-TREE		
		ALL	FRESH	PROCESS	ALL	FRESH	PROCESS
D O L L A R S							
<u>ORANGES:</u>							
ARIZ	9.85	4.70	6.50	2.05	3.45	5.25	.80
NAVELS AND MISC.							
VALENCIAS	9.85	4.70	6.50	2.05	3.45	5.25	.80
CALIF	9.48	4.21	6.19	.76	2.97	4.95	-.48
NAVELS	9.25	3.84	5.99	.43	2.60	4.75	-.81
VALENCIAS	10.10	5.33	6.74	2.05	4.09	5.50	.81
FLA	9.50	5.59	6.80	5.50	4.44	5.65	4.35
EARLY AND MIDS.							
VALENCIAS	9.50	5.59	6.80	5.50	4.44	5.65	4.35
TEX	9.29	4.84	5.02	4.73	3.90	3.92	3.88
EARLY AND MIDS.	8.69	4.05	4.10	4.04	3.17	3.00	3.19
VALENCIAS	9.29	4.85	5.02	4.75	3.91	3.92	3.90
CALIF-ARIZ							
NAVELS AND MISC.						5.44	
VALENCIAS						5.08	
U S	9.51	5.21	6.29	4.88	4.04		3.72
<u>GRAPEFRUIT:</u>							
ARIZ	5.05	1.38	2.15	.15	.58	1.35	-.65
CALIF	5.22	1.70	2.32	.16	.90	1.52	-.64
DESERT VALLEYS	5.22	1.70	2.32	.16	.90	1.52	-.64
OTHER AREAS							
FLA	5.71	2.45	3.21	2.18	1.49	2.31	1.20
WHITE SEEDLESS	5.35	2.38	2.85	2.25	1.44	1.95	1.30
PINK SEEDLESS	6.05	2.72	3.55	1.90	1.72	2.65	.80
OTHER THAN SEEDLESS		2.20		2.20	1.30		1.30
TEX	4.82	1.20	1.60	.88	.42	.60	.28
CALIF-ARIZ							
DESERT VALLEYS						1.44	
U S	5.66	2.21	2.75	1.98	1.28	1.83	1.06
<u>LEMONS:</u>							
ARIZ	10.15	1.63	5.55	.85	-.27	3.65	-1.05
CALIF	10.60	2.92	6.00	.85	1.02	4.10	-1.05
U S	10.60	2.89	6.00	.85	.99	4.10	-1.05
<u>LIMES:</u>							
FLA	58.00	48.39	52.35	2.80	44.85	48.75	0.00
<u>TEMPLES:</u>							
FLA	10.50	4.89	7.70	4.25	3.74	6.55	3.10
<u>TANGERINES:</u>							
ARIZ	14.55	8.28	11.65	.85	6.93	10.30	-.50
CALIF	11.00	4.80	8.10	.84	3.45	6.75	-.51
FLA							
U S	13.91	7.53	11.01	.85	6.18	9.66	-.50

1/ APPROXIMATE NET CONTENTS PER BOX ARE AS FOLLOWS: ORANGES - CALIF AND ARIZ, 75 LBS.; FLA AND OTHER STATES, 90 LBS.; TANGERINES - CALIF AND ARIZ, 75 LBS.; FLA, 95 LBS.; GRAPEFRUIT - CALIF DESERT VALLEY AND ARIZ, 64 LBS.; OTHER CALIF AREAS, 67 LBS.; FLA, 85 LBS.; TEX 80 LBS.; LEMONS - 76 LBS.; TEMPLES - 90 LBS.; AND LIMES - 80 LBS.

AVERAGE PRICES RECEIVED BY FARMERS, BY STATES, MARCH 1978 AND APRIL 1978

STATE	MILK SOLD TO PLANTS, PRICE PER CWT. MAR 1978						APR 1978		
	ELIGIBLE FOR		MANUFACTURING		ALL		ALL MILK 2/		MILK COWS
	FLUID MARKET 1/		GRADE		MILK		PRICE	FAT	PER HEAD
	PRICE	FAT TEST	PRICE	FAT TEST	PRICE	FAT TEST	PER CWT	TEST	3/
	DOL	PCT	DOL	PCT	DOL	PCT	DOL	PCT	DOL
ALA	11.40	3.70	8.45	3.80	11.30	3.70	11.20	3.64	360
ARIZ	10.70	3.65			10.70	3.65	10.80	3.62	
ARK	11.00	3.67	8.95	3.56	10.40	3.64	10.40	3.54	390
CALIF	10.10	3.65	9.10	3.72	10.10	3.65	9.95	3.63	795
COLO	11.00	3.65			11.00	3.65	10.90	3.57	625
CONN	11.00	3.77			11.00	3.77	10.80	3.71	
FLA	12.30	3.42			12.30	3.42	12.20	3.39	450
GA	11.00	3.71			11.00	3.71	10.90	3.60	530
IDAHO	10.00	3.72	9.35	3.62	9.60	3.66	9.55	3.62	540
ILL	10.20	3.79	9.55	3.75	10.00	3.78	10.00	3.72	450
IND	10.70	3.87	8.65	3.88	10.50	3.87	10.30	3.79	550
IOWA	10.30	3.79	9.25	3.70	9.75	3.74	9.85	3.69	495
KANS	10.70	3.79	9.05	3.80	10.40	3.79	10.30	3.67	545
KY	10.50	3.87	8.65	3.76	10.10	3.85	9.90	3.71	460
LA	11.00	3.63			11.00	3.63	10.90	3.57	550
MAINE	11.10	3.70			11.10	3.70	11.00	3.66	
MD	11.00	3.86			11.00	3.86	11.10	3.80	575
MASS	10.90	3.70			10.90	3.70	10.70	3.68	
MICH	10.30	3.78	9.00	3.73	10.20	3.78	10.20	3.74	570
MINN	9.64	3.64	9.11	3.59	9.35	3.61	9.45	3.60	605
MISS	10.70	3.70	8.90	3.78	10.60	3.70	10.60	3.60	535
MO	10.30	3.78	8.90	3.72	9.90	3.76	9.65	3.67	455
NEBR	10.40	3.82	9.15	3.80	9.85	3.81	9.85	3.68	515
N J	10.80	3.76			10.80	3.76	10.70	3.73	
N Y	9.90	3.67			9.90	3.67	9.80	3.64	520
N C	11.50	3.80	9.15	3.80	11.50	3.80	11.40	3.70	345
N DAK	9.45	3.60	8.65	3.60	8.95	3.60	8.95	3.56	500
OHIO	10.50	3.83	8.55	3.78	10.30	3.83	10.20	3.79	590
OKLA	10.80	3.70	8.95	3.61	10.60	3.69	10.60	3.54	510
OREG	10.50	3.77	9.95	4.05	10.40	3.80	10.30	3.74	650
PA	11.00	3.85	9.25	3.80	10.90	3.85	10.80	3.83	690
S DAK	10.10	3.69	9.15	3.63	9.40	3.65	9.50	3.57	565
TENN	10.50	3.82	8.70	3.79	10.20	3.82	10.10	3.69	495
TEX	11.30	3.61			11.30	3.61	11.20	3.50	400
UTAH	10.00	3.57	9.45	3.59	9.85	3.58	9.75	3.51	565
VT	10.60	3.70			10.60	3.70	10.40	3.69	540
VA	11.00	3.81	8.80	3.73	10.80	3.80	10.80	3.74	435
WASH	10.10	3.70			10.10	3.70	10.10	3.65	475
WIS	9.90	3.77	9.53	3.77	9.78	3.77	9.85	3.75	680
U S	10.40	3.73	4/9.23	4/3.70	10.20	3.72	10.10	3.68	579

- 1/ INCLUDING SURPLUS DIVERTED TO MANUFACTURING.
- 2/ PRELIMINARY.
- 3/ ANIMALS SOLD FOR DAIRY HERD REPLACEMENT ONLY. MID-MONTH PRICE.
- 4/ INCLUDES DATA FOR SOME STATES NOT SHOWN SEPARATELY.

MEAT ANIMALS: AVERAGE PRICE PER CWT RECEIVED
BY FARMERS, UNITED STATES, 1976-77 1/2/

SPECIES AND CLASS	1976	1977
DOLLARS		
HOGS	43.30	39.40
BEEF CATTLE	33.70	34.40
COWS	24.50	24.30
STEERS & HEIFERS	36.50	37.30
CALVES	34.20	36.90
LAMBS	46.90	51.30
SHEEP	13.20	13.40

1/ HOG PRICES ON A MARKETING YEAR BASIS (DECEMBER THROUGH NOVEMBER), AND THE OTHER MEAT ANIMALS ARE ON A CALENDAR YEAR BASIS.

2/ REVISED.

HOGS: AVERAGE PRICE PER CWT RECEIVED BY FARMERS, UNITED STATES,
MONTHLY DECEMBER 1976-NOVEMBER 1977 1/

SPECIES	1976				1977							
	DEC	JAN	FEB	MAR	APR	MAY	JUN	JUL	AUG	SEP	OCT	NOV
DOLLARS												
HOGS	36.60	38.10	39.40	37.20	36.00	40.70	42.00	44.80	42.80	40.30	39.90	37.80

1/ REVISED INDIVIDUAL STATE DATA WERE PUBLISHED IN FEBRUARY 1978 ISSUE OF AGRICULTURAL PRICES.

MEAT ANIMALS: AVERAGE PRICE PER CWT RECEIVED BY
FARMERS, UNITED STATES, MONTHLY 1977 1/

SPECIES AND CLASS	JAN	FEB	MAR	APR	MAY	JUN	JUL	AUG	SEP	OCT	NOV	DEC
DOLLARS												
BEEF CATTLE	32.20	33.20	33.80	35.30	36.30	34.00	34.90	34.50	34.70	35.10	34.30	35.50
COWS	23.00	24.10	25.90	26.80	26.50	24.40	24.00	24.10	24.30	23.00	23.00	24.00
STEERS & HEIFERS	35.00	35.80	35.90	37.40	38.90	36.70	37.80	37.30	37.50	38.30	38.00	39.20
CALVES	33.40	35.70	36.60	38.20	38.40	35.80	36.40	37.10	38.00	37.20	36.80	37.50
LAMBS	48.30	49.60	49.10	50.80	55.00	50.90	50.60	49.10	51.30	52.60	52.40	56.90
SHEEP	13.80	13.90	15.40	14.40	13.00	12.00	12.30	12.40	13.40	13.20	14.10	14.60

1/ REVISED INDIVIDUAL STATE DATA WERE PUBLISHED IN FEBRUARY 1978 ISSUE OF AGRICULTURAL PRICES.

POULTRY AND EGGS: AVERAGE PRICES RECEIVED BY FARMERS, UNITED STATES 1976-77 1/2/

COMMODITY	1976	1977
CENTS		
CHICKENS EXCLUDING BROILERS - PER POUND	12.9	12.1
BROILERS - PER POUND	23.6	23.6
EGGS - PER DOZEN <u>3/</u>	58.3	55.7
TURKEYS - PER POUND	31.7	35.5

1/ MARKETING YEAR FOR BROILERS, CHICKENS EXCLUDING BROILERS, AND EGGS IS DECEMBER-NOVEMBER; TURKEYS ON A CALENDAR YEAR BASIS. 2/ REVISED. 3/ AVERAGE OF ALL EGGS SOLD BY FARMERS INCLUDING HATCHING EGGS AND EGGS SOLD RETAIL.

BROILERS: MONTHLY AND MARKETING YEAR AVERAGE PRICE PER POUND RECEIVED BY FARMERS,
BY STATES, DECEMBER 1976-NOVEMBER 1977 ^{1/}

STATE	1976					1977							MKT YR AV
	DEC	JAN	FEB	MAR	APR	MAY	JUN	JUL	AUG	SEP	OCT	NOV	
	C E N T S												
ALA ^{2/}	18.0	21.0	22.5	23.0	22.0	23.0	23.5	24.5	22.5	22.0	21.0	20.0	22.0
ARK	19.5	21.5	24.0	23.5	24.0	24.0	24.5	25.5	24.5	23.5	22.5	21.5	23.3
CALIF	25.0	26.0	27.5	28.0	28.0	26.5	26.5	26.0	28.0	27.0	26.5	25.0	26.7
CONN													23.1
DEL ^{2/}	19.5	20.5	24.5	23.5	24.5	23.0	25.0	26.5	22.5	24.0	22.5	21.0	23.0
FLA ^{2/}	19.0	21.0	23.0	23.5	23.0	23.0	24.0	25.0	23.0	22.5	21.0	20.0	22.4
GA ^{2/}	20.0	22.5	24.5	25.0	24.5	24.5	25.5	26.0	24.0	23.5	22.5	21.0	23.7
HAW													42.0
IND													23.4
IOWA													30.5
KY													22.0
LA	20.0	22.5	24.5	24.5	24.0	24.5	25.0	25.5	24.5	25.0	23.0	21.5	23.8
MAINE ^{2/}	19.0	22.0	24.0	23.5	23.5	24.0	25.5	25.5	24.5	23.0	22.0	20.5	23.1
MD ^{2/}	19.5	20.5	24.5	23.5	24.5	23.0	25.0	26.5	22.5	24.0	22.5	21.0	23.0
MICH													26.0
MINN													27.1
MISS ^{2/}	20.0	23.0	25.5	25.5	25.0	25.0	26.0	26.5	25.5	24.5	23.0	22.0	24.3
MO													22.7
NEBR													35.0
N C ^{2/}	19.0	21.5	24.0	23.0	24.0	25.0	24.5	26.0	24.0	24.5	23.0	21.0	23.4
OHIO													23.1
OKLA	19.5	22.0	24.5	24.5	24.0	25.0	24.5	25.5	24.0	23.5	22.5	21.5	23.5
OREG													28.5
PA	21.5	22.5	25.0	26.5	26.5	24.5	27.5	28.5	25.0	26.5	25.5	22.5	25.2
S C ^{2/}	19.0	21.5	23.0	23.5	23.0	23.0	24.0	25.0	23.0	22.0	21.0	20.0	22.3
TENN ^{2/}	17.5	21.5	24.5	23.5	22.5	22.0	23.5	25.0	21.5	21.5	21.0	19.5	22.0
TEX	20.5	24.5	27.0	26.0	25.5	25.5	26.0	27.5	26.0	24.5	25.0	23.5	25.3
VA ^{2/}	19.0	21.0	22.5	23.0	23.0	23.0	24.0	26.0	24.0	24.0	22.5	21.0	22.8
WASH													29.2
W VA													27.0
WIS													24.6
U S	19.7	21.9	24.3	24.2	24.2	24.1	24.9	25.9	24.1	23.8	22.7	21.3	23.6

^{1/} REVISED. ^{2/} LIVEWEIGHT EQUIVALENT PRICE.

CHICKENS EXCLUDING BROILERS: MARKETING YEAR AVERAGE PRICES RECEIVED BY FARMERS,
BY STATE, 1977 ^{1/}

STATE	CENTS PER LB	STATE	CENTS PER LB	STATE	CENTS PER LB	STATE	CENTS PER LB
ALA	12.2	IND	9.5	NEBR	6.8	S C	12.2
ALAS	21.0	IOWA	9.2	NEV	8.2	S DAK	5.0
ARIZ	8.4	KANS	10.6	N H	11.3	TENN	16.8
ARK	12.8	KY	12.0	N J	11.6	TEX	13.1
CALIF	8.1	LA	11.8	N MEX	8.5	UTAH	7.5
COLO	10.0	MAINE	11.3	N Y	8.6	VT	11.3
CONN	11.3	MD	13.6	N C	17.0	VA	13.1
DEL	14.0	MASS	11.3	N DAK	4.0	WASH	7.5
FLA	9.5	MICH	10.0	OHIO	9.8	W VA	12.5
GA	13.5	MINN	3.7	OKLA	13.0	WIS	14.1
HAW	16.0	MISS	15.2	OREG	8.5	WYO	10.0
IDAHO	8.5	MO	15.0	PA	19.9		
ILL	9.0	MONT	8.0	R I	11.3	U S	12.1

^{1/} MARKETING YEAR -- DECEMBER THROUGH NOVEMBER.

EGGS: MONTHLY AND MARKETING YEAR AVERAGE PRICE PER DOZEN RECEIVED BY FARMERS,
BY STATES, DECEMBER 1976-NOVEMBER 1977 1/

STATE	1976	1977											MKT YR AV
	DEC	JAN	FEB	MAR	APR	MAY	JUN	JUL	AUG	SEP	OCT	NOV	
	C E N T S												
ALA	74.6	71.0	70.2	64.0	62.0	54.3	50.0	53.5	57.1	58.8	53.5	58.0	60.6
ALAS													120.0
ARIZ													48.3
ARK	77.2	71.1	70.1	65.3	60.4	50.8	47.4	49.6	50.1	48.9	47.0	50.0	57.0
CALIF	63.5	58.3	58.5	52.8	51.9	43.2	44.1	46.2	49.5	50.3	42.7	48.3	50.8
COLO													53.0
CONN	88.0	85.0	79.0	71.0	68.0	67.0	64.0	73.0	68.0	72.0	62.0	69.0	72.3
DEL													68.3
FLA	63.3	59.6	58.5	49.1	44.2	37.8	37.2	40.8	40.1	41.3	38.6	40.6	45.9
GA	79.0	78.5	71.0	63.5	59.5	55.5	56.5	60.0	59.5	59.0	58.0	56.5	63.0
HAW													68.3
IDAHO													50.0
ILL	64.0	63.0	65.0	60.0	57.0	52.0	50.0	52.0	54.0	55.0	52.0	55.0	56.5
IND	60.1	59.4	60.6	57.2	54.6	50.5	50.5	51.7	52.8	53.7	52.5	54.5	54.8
IOWA	59.9	54.0	54.3	45.3	40.4	35.2	33.7	37.4	38.1	36.0	32.6	37.9	42.2
KANS	58.9	54.4	54.1	44.4	38.6	38.6	35.0	42.5	39.6	41.2	40.0	41.2	44.1
KY	65.6	58.4	67.8	57.7	51.1	43.3	38.2	46.3	47.2	46.5	41.5	46.3	50.6
LA	84.4	79.7	80.7	68.5	63.4	56.2	55.2	60.2	61.2	61.9	55.4	60.2	65.7
MAINE	81.0	78.0	74.0	66.0	61.0	61.0	57.0	67.0	62.0	66.0	55.0	63.0	66.0
MD													68.1
MASS	85.0	82.0	77.0	69.0	66.0	65.0	62.0	71.0	66.0	70.0	60.0	67.0	69.9
MICH	60.0	62.2	60.6	54.9	48.2	45.0	42.5	47.9	43.6	45.9	40.6	45.6	49.6
MINN	56.0	49.0	52.4	50.4	48.1	40.2	35.1	36.2	41.3	42.5	37.5	41.8	44.4
MISS	81.8	75.5	78.8	69.4	67.9	60.9	61.6	63.5	64.2	58.5	55.4	60.3	66.4
MO	66.4	61.9	63.3	57.0	49.7	41.6	39.7	45.6	44.8	46.9	41.0	42.9	50.1
MONT													57.0
NEBR	53.8	50.2	51.3	46.5	40.0	37.4	35.8	38.0	37.5	39.0	33.3	35.1	41.5
NEV													52.1
N H													69.5
N J	76.0	70.0	72.0	66.0	63.0	56.0	51.0	55.0	56.0	54.0	49.0	54.0	60.6
N MEX													59.0
N Y	73.5	71.0	65.8	58.6	51.2	43.9	44.5	47.7	47.6	48.4	45.0	47.7	53.4
N C	77.6	75.2	77.1	70.6	68.7	61.9	58.5	62.5	62.9	63.6	59.8	61.3	66.3
N DAK													37.0
OHIO	67.5	60.7	61.1	53.2	49.8	43.0	37.0	40.7	41.6	44.7	39.1	43.8	48.8
OKLA													62.0
OREG	66.0	63.0	62.0	57.0	54.0	46.0	47.5	50.5	54.5	53.0	48.0	52.5	54.5
PA	68.5	67.0	68.5	59.6	55.2	49.2	43.6	47.6	47.9	49.8	42.5	47.5	53.7
R I													70.1
S C	75.7	71.0	69.7	60.2	56.1	47.7	47.6	52.2	53.0	52.2	48.6	51.2	56.7
S DAK	53.0	49.0	50.0	45.4	39.7	34.6	34.8	36.0	33.9	34.0	30.0	32.3	39.4
TENN	68.5	71.5	70.0	61.5	57.8	52.7	51.2	52.6	51.5	53.1	50.4	52.4	57.8
TEX	78.8	73.1	74.5	65.5	60.2	55.2	51.4	58.5	57.5	59.2	54.1	58.1	62.3
UTAH													48.2
VT													75.1
VA	80.2	74.7	74.9	68.2	63.8	61.8	58.1	59.6	62.3	63.3	57.9	59.0	65.3
WASH	62.5	53.6	58.6	52.1	53.5	43.2	42.6	46.4	49.7	50.6	43.2	50.0	50.6
W VA													62.5
WIS	58.0	58.0	59.0	57.0	55.0	52.0	48.0	52.0	52.5	52.0	45.5	47.7	53.1
WYO													54.0
U S	69.8	66.1	65.5	58.9	55.4	49.2	47.3	50.9	51.6	52.3	47.8	51.2	55.7

1/ AVERAGE OF ALL EGGS SOLD BY FARMERS INCLUDING HATCHING EGGS AND EGGS SOLD RETAIL. REVISED.

TURKEYS: AVERAGE PRICE PER POUND RECEIVED BY FARMERS,
BY STATES, MONTHLY AND ANNUAL, 1977 1/

STATE	JAN	FEB	MAR	APR	MAY	JUNE	JULY	AUG	SEP	OCT	NOV	DEC	ANNUAL AVERAGE
	C E N T S												
ARK	34.0	33.0	33.0	33.0	33.0	33.0	35.0	33.0	33.0	37.0	36.0	42.0	34.5
CALIF	30.0	30.0	34.0	32.0	32.0	34.0	34.0	34.0	35.0	36.0	39.0	42.0	35.3
COLO													41.0
CONN													59.0
GA	34.0	34.0	34.0	34.0	34.0	35.0	34.0	35.0	35.0	37.0	39.0	39.0	35.6
ILL	33.0	30.0							36.0	38.0	39.0	39.0	38.4
IND	32.0	32.0	34.0	34.0	33.0	34.0	34.0	34.0	35.0	36.0	36.0	36.0	34.8
IOWA	28.0	27.0	32.0	35.0	31.0	30.0	30.0	31.0	33.0	34.0	38.9	39.0	32.9
KANS													34.0
LA													34.5
MAINE													56.0
MD													39.2
MASS													58.0
MICH	33.0	32.0	32.0	32.0	34.0	32.0	32.0	35.0	36.0	37.0	38.0	37.0	34.9
MINN	29.0	29.0	32.0	33.0	33.0	32.0	31.0	32.0	33.0	35.0	37.0	39.0	33.4
MO	29.0	29.0	30.0	32.0	31.0	31.0	31.0	31.0	33.0	35.0	37.0	35.0	32.7
NEBR						27.0	31.0	33.0	35.0	38.0	40.0	40.0	36.4
N H													60.0
N J													57.0
N Y													42.0
N C	35.0	35.0	38.0	35.0	35.0	38.0	37.0	36.0	35.0	39.0	44.0	45.0	37.9
N DAK													35.0
OHIO	30.0	33.0	32.0	35.0	37.0	37.0	37.0	38.0	39.0	41.0	44.0	44.0	41.2
OKLA													33.0
OREG	33.0	34.0	34.0	34.0	33.0	36.0	35.0	35.0	36.0	36.0	37.0	38.0	35.8
PA	37.0	37.0	38.0	38.0	40.0	40.0	35.0	38.0	40.0	43.0	42.0	43.0	40.2
R I													58.0
S C	33.0	33.0	33.0	33.0	32.0	32.0	32.0	32.0	36.0	36.0	37.0	37.0	34.2
S DAK	31.0	32.0	32.0	36.0	32.0	36.0	35.0	36.0	33.0	34.0	34.0	36.0	34.4
TENN													34.5
TEX	34.0	33.0	33.0	33.0	34.0	34.0	36.0	36.0	33.0	36.0	37.0	35.0	34.8
UTAH					33.0	34.0	35.0	34.0	35.0	39.0	40.0	41.0	37.1
VT													57.0
VA	33.0	33.0	34.0	35.0	35.0	35.0	35.0	34.0	36.0	38.0	40.0	40.0	35.7
W VA													33.5
WIS	32.0				40.0	39.0	36.0	37.0	36.0	36.0	41.0	40.0	37.5
OTH													
STS 2/													39.3
U S	32.2	32.0	33.9	33.5	33.6	34.2	33.8	33.8	34.4	36.5	39.0	40.2	35.5

1/ REVISED. 2/ ALA, ARIZ, DEL, FLA, IDAHO, KY, MONT, N MEX, WASH, AND WYO COMBINED TO AVOID DISCLOSING INDIVIDUAL OPERATIONS.

LOCAL MARKET COMMODITY - FEED PRICE RATIOS, UNITED STATES,
APRIL 15, 1978, WITH COMPARISONS 1/

COMMODITY-FEED PRICE RATIO	APR 15, 1976	APR 15, 1977	MAR 15, 1978	APR 15, 1978
HOG-CORN: BUSHELS OF CORN EQUAL IN VALUE TO 100-LBS. OF HOG, LIVEWEIGHT UNITED STATES	19.1	15.6	3/21.8	19.8
NORTH CENTRAL STATES	19.3	15.7	3/22.1	20.1
EGG-FEED: POUNDS OF LAYING FEED EQUAL IN VALUE TO 1 DOZEN EGGS	7.3	6.8	7.4	6.8
BROILER-FEED: POUNDS OF BROILER GROWER EQUAL IN VALUE TO 1 LB. BROILER LIVEWEIGHT <u>1/</u>	3.0	2.7	3.0	3.3
TURKEY-FEED: POUNDS OF TURKEY GROWER EQUAL IN VALUE TO 1 LB. TURKEY, LIVEWEIGHT	3.9	3.4	4.2	4.1
MILK-FEED: POUNDS CONCENTRATE RATION EQUAL IN VALUE TO 1 LB. WHOLE MILK <u>1/</u>	1.53	1.46	1.68	2/1.62

1/ BROILER AND MILK-FEED PRICE RATIOS ARE COMPUTED USING MONTHLY AVERAGES FOR BROILERS AND MILK.
2/ PRELIMINARY. 3/ REVISED.

MILK-FEED PRICE RATIOS, MILK PRICES, AND RATION VALUES, BY REGIONS AND UNITED STATES,
APRIL 1978, WITH COMPARISONS 1/

REGION	MILK-FEED PRICE RATIO <u>2/</u>			ALL MILK PRICE PER CWT.			RATION VALUE <u>3/</u>		
	APR 1977	MAR 1978	APR 1978	APR 1977	MAR 1978	APR 1978	APR 1977	MAR 1978	APR 1978
	P O U N D S			D O L L A R S					
N ATL	1.40	1.56	1.53	9.61	10.40	10.30	6.84	6.65	6.75
N CENT	1.48	1.72	1.67	9.12	9.82	9.84	6.17	5.70	5.90
S ATL	1.48	1.66	1.62	10.60	11.40	11.40	7.14	6.85	7.05
S CENT	1.42	1.66	1.62	9.73	10.70	10.60	6.85	6.45	6.55
WEST	1.51	1.74	1.69	9.42	10.10	10.00	6.25	5.80	5.90
U S	1.46	1.68	1.62	9.43	10.20	10.10	6.47	6.08	6.23

1/ DATA FOR CURRENT MONTH ARE PRELIMINARY. 2/ POUNDS OF CONCENTRATE RATION EQUAL IN VALUE TO 1 POUND
MILK SOLD TO PLANTS. 3/ VALUE PER 100 POUNDS OF CONCENTRATE RATION FED TO MILK COWS.

PARITY PRICE EQUIVALENT FOR MANUFACTURING MILK 1/, UNITED STATES,
APRIL 1978, WITH COMPARISONS

ITEM	APR 1977	MAR 1978	APR 1978	
PARITY EQUIVALENT	DOL. PER CWT.	11.01	11.81	11.98
AVERAGE PRICE F.O.B. PLANTS	DOL. PER CWT.	8.66	9.23	2/9.26
AVERAGE FAT TEST OF MILK	PERCENT	3.62	3.70	2/3.66

1/ BASED ON PRICES RECEIVED BY FARMERS FOR ALL MANUFACTURING GRADE MILK. PARITY PRICE EQUIVALENT
RELATES TO THE NATIONAL AVERAGE PRICE FOR ALL MANUFACTURING GRADE MILK OF AVERAGE MILKFAT CONTENT SOLD
BY FARMERS. THE PARITY PRICE EQUIVALENT DURING 1978 IS 85.6 PERCENT OF THE PARITY PRICE OF ALL MILK
SOLD TO PLANTS, WHICH COMPARES WITH 84.7 PERCENT IN 1977. FOR ADDITIONAL DETAILS SEE THE JANUARY 1978
ISSUE OF AGRICULTURAL PRICES.

2/ PRELIMINARY.

FEED: AVERAGE PRICES PAID BY FARMERS, UNITED STATES,
APRIL 15, 1978, WITH COMPARISONS

COMMODITY	UNIT	1977			1978		
		FEB 15	MAR 15	APR 15	FEB 15	MAR 15	APR 15
D O L L A R S							
ALFALFA HAY, BALED	TON	80.30	80.80	80.90	69.40	69.30	68.50
OTHER HAY, BALED	TON	63.90	64.30	63.20	60.40	60.40	59.50
COTTONSEED MEAL, 41 PCT	CWT	11.60	12.00	12.20	10.50	10.50	10.60
SOYBEAN MEAL, 44 PCT	"	13.00	13.70	15.10	10.90	11.30	11.90
BRAN	"	7.93	7.85	7.79	7.39	7.40	7.45
MIDDINGS	"	7.80	7.73	7.63	7.31	7.31	7.44
CORN MEAL	"	6.13	6.18	6.17	5.59	5.69	5.98
LAYING FEED	TON	161	161	163	146	149	154
BROILER GROWER FEED	"	178	179	183	164	167	169
TURKEY GROWER	"	186	188	195	177	179	183
CHICK STARTER FEED	"	181	184	188	166	170	175
DAIRY FEED							
14 PCT PROTEIN	TON	144	141	142	125	126	129
16 PCT PROTEIN	"	151	148	148	134	135	137
18 PCT PROTEIN	"				146	148	149
20 PCT PROTEIN	"				147	149	151
32 PCT PROTEIN	"	216	217	225	192	197	203
HOG FEED, 14-18 PCT	CWT	8.84	9.11	9.22	8.12	8.39	8.66
HOG CONCT. 38-42 PCT PROTEIN	"	13.80	14.50	15.50	11.90	12.40	13.00
BEEF CATTLE CONCT.							
32-36 PCT PROTEIN	"	9.47	9.69	10.00	8.55	8.71	8.89
STOCK SALT	"	3.39	3.44	3.45	3.74	3.81	3.86
MOLASSES, LIQUID	"	5.76	5.81	5.78	5.56	5.59	5.62
INDEX NUMBERS (1967=100)							
FEED, PRICES PAID BY FARMERS	PCT	200	202	204	178	178	187

1/ REVISED.

LIVESTOCK: AVERAGE PRICES PAID BY FARMERS, UNITED STATES,
APRIL 15, 1978, WITH COMPARISONS

COMMODITY	UNIT	1977			1978		
		FEB	MAR	APR	FEB	MAR	APR
D O L L A R S							
FEEDERS AND STOCKERS:							
CATTLE AND CALVES	CWT	35.50	36.50	39.00	44.50	49.00	52.00
PIGS, 1/	"	77.00	84.00	83.00	87.50	101	110
BABY CHICKS	PER 100	2/16.20	2/15.70	2/16.10	15.80	16.20	16.50
TURKEY POULTS	EACH	.706	.729	.731	.714	.727	.730
INDEX NUMBERS (1967=100)							
ALL LIVESTOCK	PCT	153	158	166	185	202	214

1/ BASED ON DATA DERIVED FROM REPORTS FROM FARMERS IN 27 STATES IN JAN, APR, JUL, OCT, ON PRICES PAID FOR FEEDER PIGS WEIGHING 40-60 LBS. 2/ REVISED.

FEEB: AVERAGE PRICE PER 100 POUNDS PAID BY FARMERS, BY STATES,
APRIL 15, 1978

STATE	BRAN	MIDLINGS	COTTONSEED MEAL 41% PROTEIN	SOYBEAN MEAL 44% PROTEIN	CORN MEAL	MOLASSES LIQUID	STOCK SALT
DOLLARS							
ALA	7.80	8.30	10.50	12.00	7.10	6.30	4.55
ARIZ	8.80	9.70	6.50	15.50	7.70	6.00	3.50
ARK	6.70	7.00	9.60	11.00	6.60	5.90	3.05
CALIF	7.70	8.30	9.30	13.50	8.20	4.10	3.00
COLO	7.20	6.60	10.00	12.00	6.30	4.95	2.95
CONN	8.00	7.60		14.00	7.80	5.10	4.90
DEL	7.50	7.70	11.00	12.50	6.60	4.90	4.65
FLA	9.30	8.70	12.00	13.50	7.90	2.60	4.40
GA	8.00	8.20	11.50	12.00	7.00	6.50	4.25
HAW							
IDAHO	6.50	6.20	11.00	14.50	6.70	5.40	2.90
ILL	7.70	7.80	12.50	11.50	4.80	6.40	4.50
IND	7.70	7.60	12.00	12.00	5.20	7.10	4.80
IOWA	7.30	7.30	12.00	11.50	4.75	6.10	4.40
KANS	6.50	6.50	11.00	11.00	5.40	4.50	2.20
KY	7.30	7.10	11.50	11.80	5.40	6.90	4.70
LA	6.90	8.20	11.00	12.00	7.90	4.15	3.35
MAINE	8.00	7.60		14.00	7.80	5.10	4.90
MD	7.50	7.70	11.00	12.50	6.60	4.90	4.65
MASS	8.00	7.60		14.00	7.80	5.10	4.90
MICH	7.80	7.50	13.50	12.00	5.60	6.80	4.75
MINN	7.20	6.90	12.50	11.20	4.90	6.50	4.10
MISS	8.00	8.60	9.60	11.00	6.70	5.20	3.85
MO	6.70	6.60	10.50	11.00	5.50	5.70	2.45
MONT	7.10	5.90	11.00	13.00	6.70	5.40	3.00
NEBR	7.30	7.20	12.50	12.00	4.90	5.40	3.00
NEV	9.00	9.10	12.50		8.50	5.00	4.00
N H	8.00	7.60		14.00	7.80	5.10	4.90
N J	8.30	8.30		14.00	6.70	4.70	5.50
N MEX	7.80	7.80	10.00	13.50	7.30	5.10	3.20
N Y	7.00	7.40	12.50	12.00	6.40	4.75	4.20
N C	7.70	7.20	12.00	12.50	6.40	6.20	4.95
N DAK	7.80	5.40		12.50	4.30	5.90	4.10
OHIO	7.40	7.00	12.50	12.00	5.80	6.20	4.20
OKLA	6.90	6.80	9.50	11.50	6.70	4.70	2.50
OREG	8.20	7.80	11.00	13.00	7.20	3.85	3.65
PA	7.00	6.90	11.50	12.00	6.10	4.95	4.45
R I							
S C	8.60	7.60	11.50	12.50	6.90	6.10	5.00
S DAK	7.50	8.20	11.00	11.50	5.50	6.20	3.35
TENN	7.20	7.40	11.00	12.00	7.40	6.50	4.55
TEX	7.60	7.70	9.70	13.00	7.20	4.30	3.25
UTAH	6.50	6.20	10.50	13.50	6.90	4.40	2.30
VT	8.00	7.60		14.00	7.80	5.10	4.90
VA	8.00	7.60	12.50	12.50	6.70	6.30	4.75
WASH	9.60	7.70	11.50	15.50	7.90	5.00	3.45
W VA	7.80	8.10	12.00	12.50	6.60	5.40	4.65
WIS	7.10	7.10	11.00	11.00	4.70	5.80	4.40
WYO	7.70	8.30	12.50		7.30	5.70	3.20
U S	7.45	7.44	10.60	11.90	5.98	5.62	3.86

FEED: AVERAGE PRICE PAID BY FARMERS, BY STATES,
APRIL 15, 1978

STATE	HOG FEED		BEEF CATTLE	DAIRY FEED, PERCENT PROTEIN				
	14-18% PROTEIN	HOG CONCT. 38-42% PROTEIN	CONCENTRATE 32-36% PROTEIN	14	16	18	20	32
	DOLLARS PER CWT			DOLLARS PER TON				
ALA	8.50	13.00	8.90		147	150	150	163
ARIZ	9.10	14.00		137				
ARK	7.60	12.00	7.80	123	127			170
CALIF	8.90	15.50	8.20	116	117			
COLO	8.00	12.50	7.60	150	145			200
CONN					133	140	148	
DEL					144	160	160	210
FLA	9.30	13.00	10.00	122	167			186
GA	8.80	12.80	9.20		145	147	155	198
HAW								
IDAHO	8.60	13.50	8.30	126	138			170
ILL	9.60	13.30	9.90	152	155			220
IND	9.20	13.30	10.70		149	159		230
IOWA	8.80	13.00	10.50	137	142			220
KANS	8.20	12.50	8.20	130	139			185
KY	8.40	13.10	9.40		139	155	156	210
LA	8.60	13.50	8.90		136	143	150	163
MAINE					139	147	155	
MD	8.40	13.00	9.80		144	160	160	210
MASS					133	140	148	
MICH	8.00	13.50	10.50	154	169			230
MINN	8.80	13.10	9.70	128	126			205
MISS	8.60	13.00	9.00		132	134	148	176
MO	7.80	12.50	8.20	130	134			180
MONT	8.40	14.00	9.00	135	145			
NEBR	8.60	13.00	8.50	130	136			205
NEV			8.00	150	165			
N H					137	145	153	
N J	8.30	13.50			156	162	167	205
N MEX	9.50	14.50	8.30	153	150			155
N Y	8.10	12.00	9.30		137	142	144	174
N C	8.20	12.50	9.20		145	146	148	190
N DAK	7.70	13.00	8.50	129	130			184
OHIO	7.80	13.50	10.50		145	160	170	220
OKLA	7.50	12.50	8.70	130	130			195
OREG	8.00	12.50	7.50	129	132			190
PA	7.70	12.60	9.60		144	154	156	210
R I					133			
S C	7.80	12.50	10.00		146	149	153	193
S DAK	8.20	13.00	9.70	133	135			210
TENN	8.50	12.50	8.80		141	149	155	200
TEX	8.30	13.20	8.20	135	140			160
UTAH			8.30	123	126			150
VT					135	141	150	
VA	8.10	12.50	10.00		147	154	158	196
WASH			7.50	129	138			205
W VA			9.90		158	175	176	200
WIS	8.80	13.50	9.90	130	134			210
WYO			8.60	151	159			
U S	8.66	13.00	8.89	129	137	149	151	203

FEEED: AVERAGE PRICE PER TON PAID BY FARMERS FOR POULTRY FEED
AND POULTRY FEED RATIOS, BY STATES, APRIL 15, 1978

STATE	POULTRY FEED, PER TON				POULTRY PRICE RATIOS 1/		
	CHICK STARTER	LAYING FEED	BROILER GROWER	TURKEY GROWER	EGG FEED	BROILER FEED	TURKEY FEED
	DOLLARS				POUNDS		
ALA	177	157	159		8.1	3.3	
ARIZ		149					
ARK	165	146	160	195	7.3		4.3
CALIF	162	138	155	174	6.7	3.7	4.1
COLO		170		195			
CONN		150			8.4		
DEL	180	160	173	185		3.1	
FLA	187	167	175		5.5	3.0	
GA	169	148	173	198	8.5	3.2	4.0
HAW		182					
IDAHO		155					
ILL	200	180		210	5.9		
IND	181	150	166	172	7.3		4.0
IOWA	193	162		200	4.6		3.7
KANS		160			5.3		
KY	189	159			6.1		
LA	171	146	163		8.7	3.6	
MAINE	164	150	180		7.6	2.9	
MD	180	160	173			3.1	
MASS		150			6.8		
MICH	190	150		210	6.2		3.9
MINN	193	163	164	157	5.2		4.6
MISS	176	162	187		7.1	3.1	
MO	177	147	162	177	6.0		4.1
MONT		185					
NEBR		159		155	4.8		
NEV							
N H		150					
N J		151			7.7		
N MEX		169					
N Y		151		190	6.1		
N C	178	156	171	190	7.8	3.1	4.0
N DAK		181		191			
OHIO	175	160	165	180	5.9		4.0
OKLA	180	165	170	200		3.5	
OREG	184	160	196	205	6.3		3.8
PA	177	154	178	178	6.8	3.1	4.8
R I		150					
S C	181	160	171	190	6.6	3.1	4.1
S DAK		160		200	4.6		3.6
TENN	185	168	175		6.4	3.2	
TEX	195	170	160	230	7.1	3.9	3.3
UTAH		144		174			
VT		150					
VA	188	153	172	172	8.5	3.0	4.4
WASH	181	156	186	190	5.8		
W VA		169	178	194			
WIS	200	170	170	200	5.4		
WYO							
U S	175	154	169	183	6.8	3.3	4.1

1/ NUMBER OF POUNDS OF LAYING FEED, EQUIVALENT IN VALUE TO ONE DOZEN EGGS, NUMBER OF POUNDS BROILER GROWER EQUAL IN VALUE TO ONE POUND OF BROILER LIVE WEIGHT, AND NUMBER OF POUNDS TURKEY GROWER EQUAL IN VALUE TO ONE POUND OF TURKEY LIVE WEIGHT.

GASOLINE AND DIESEL FUEL: AVERAGE PRICE PER GALLON PAID BY FARMERS, BY STATES,
APRIL 15, 1978

STATE	GASOLINE, REGULAR		DIESEL FUEL
	SERVICE STATION UNLEADED	BULK DELIVERY LEADED	
DOLLARS			
ALA	.630	.560	.450
ARIZ	.640	.600	.450
ARK	.610	.560	.430
CALIF	.630	.580	.460
COLO	.650	.580	.440
CONN ^{1/}	.650	.610	.520
DEL ^{2/}	.630	.600	.500
FLA	.630	.590	.520
GA	.640	.590	.500
HAW	.770	.610	.450
IDAHO	.650	.600	.440
ILL	.670	.600	.490
IND	.670	.590	.460
IOWA	.640	.580	.460
KANS	.640	.590	.450
KY	.630	.590	.460
LA	.650	.560	.420
MAINE ^{1/}	.650	.610	.520
MD ^{2/}	.630	.600	.500
MASS ^{1/}	.650	.610	.520
MICH	.640	.550	.480
MINN	.640	.590	.450
MISS	.660	.570	.530
MO	.620	.570	.450
MONT	.660	.590	.450
NEBR	.650	.600	.450
NEV	.670	.590	.480
N H ^{1/}	.650	.610	.520
N J	.640	.580	.510
N MEX	.640	.570	.450
N Y	.650	.610	.500
N C	.620	.570	.530
N DAK	.650	.600	.460
OHIO	.600	.590	.480
OKLA	.620	.560	.460
OREG	.630	.570	.440
PA	.610	.580	.490
R I ^{1/}	.650	.610	.520
S C	.640	.580	.510
S DAK	.660	.590	.480
TENN	.630	.570	.470
TEX	.600	.530	.430
UTAH	.650	.580	.440
VT ^{1/}	.650	.610	.520
VA	.600	.570	.480
WASH	.660	.610	.440
W VA	.650	.590	.600
WIS	.610	.580	.470
WYO	.680	.600	.460
U S	.634	.579	.458

^{1/} AVERAGE PRICE NEW ENGLAND STATES. ^{2/} AVERAGE PRICE DEL AND MD.

PRICES PAID BY FARMERS FOR SEEDS UP

Prices paid by farmers for spring planted grass and legume seeds were mostly higher than a year ago, while most grain seed prices were down, according to the Crop Reporting Board.

Seed corn prices were up 8 percent from last year, soybeans down 12 percent, and cottonseed up 2 percent. Certified alfalfa seed prices increased 10 percent and red clover seed prices were up 19 percent.

The April 15 index of prices paid for seeds was 275 percent of its 1967 base. This was 2 percent above the 269 for April 1977 and 16 percent above the 237 for April 1976.

FIELD SEEDS: RETAIL PRICES, UNITED STATES, APRIL 15, 1978 WITH COMPARISONS

ITEM AND UNIT	APR 15, 1975	APR 15, 1976	APR 15, 1977	APR 15, 1978
	DOLLARS			
ALFALFA, CERTIFIED VARIETIES, PER 100 LB	140.00	116.00	177.00	194.00
ALFALFA, UNCERTIFIED VARIETIES, PER 100 LB	114.00	99.00	153.00	168.00
CLOVER, RED, PER 100 LB	106.00	90.00	108.00	128.00
CLOVER, ALSIKE, PER 100 LB	67.50	63.00	89.50	67.00
CLOVER, SWEET, PER 100 LB	35.00	36.00	38.50	39.00
CLOVER, LADINO, PER LB	2.50	2.10	2.20	2.20
LESPEDEZA, KOREAN, PER 100 LB	59.50	48.00	62.50	74.00
LESPEDEZA, STRIATE, KOBE, PER 100 LB	69.00	73.00	93.50	107.00
LESPEDEZA, SERICEA, PER 100 LB	76.00	91.00	226.00	301.00
TIMOTHY, PER 100 LB	51.00	37.00	60.00	124.00
ORCHARDGRASS, PER 100 LB	63.00	53.00	62.00	70.00
RYEGRASS, ANNUAL, PER 100 LB	34.90	28.00	35.00	32.00
BLUEGRASS, KENTUCKY, PER LB	1.07	.92	1.47	1.65
FESCUE, TALL, PER 100 LB	35.00	32.50	47.50	62.00
SUDANGRASS, PER 100 LB	27.30	28.00	34.50	32.00
SEED POTATOES, PER 100 LB ^{1/}	5.30	7.40	5.63	5.00
SEED CORN, HYBRID, PER BU	36.50	36.50	40.00	43.00
SEED WHEAT (SPRING), PER BU	7.70	6.50	5.20	5.10
SEED OATS, PER BU	3.65	3.40	3.70	3.10
SEED BARLEY, PER BU	5.50	5.10	4.60	4.10
SEED FLAX, PER BU	13.00	10.50	11.00	7.00
SEED PEANUTS, PER 100 LB	45.50	43.50	52.00	53.00
SOYBEANS FOR SEED, PER BU	10.50	7.40	13.00	11.50
COTTONSEED FOR PLANTING, PER 100 LB	33.60	28.50	30.30	31.00
GRAIN SORGHUMS, HYBRID, PER 100 LB	36.50	37.50	41.00	43.00
FORAGE SORGHUMS, PER 100 LB	23.50	21.50	27.50	22.50

^{1/} SEASON AVERAGE PRICE.

FIELD SEEDS: RETAIL PRICES BY STATES, SEPTEMBER 15, 1977 AND APRIL 15, 1978

STATE	ALFALFA SEED (PER 100 POUNDS)				SEED WHEAT (PER BUSHEL)		SEED CORN	GRAIN SORGHUMS
	CERTIFIED		UNCERTIFIED		WINTER	SPRING	HYBRID (PER BU)	HYBRID (PER 100 LBS)
	SEP 15, 1977	APR 15, 1978	SEP 15, 1977	APR 15, 1978	SEP 15, 1977	APR 15, 1978	APR 15, 1978	APR 15, 1978
	DOLLARS							
ALA					5.10		43.50	47.00
ARIZ	155	148	135	132	6.50			
ARK					3.40			
CALIF	158	178	140	151	6.50		51.00	
COLO	192	210	166	169	4.30		43.00	44.00
DEL								
GA					5.00		42.00	47.00
IDAHO	189	202	177	189	4.70	4.70		
ILL	191	199	157	169	4.50		48.00	
IND	182	202	160	184	4.50		43.00	
IOWA	178	190	157	168			44.00	
KANS	175	195	140	134	4.10		43.00	47.00
KY	180	190	149	168	4.00		47.00	
LA							44.00	
MD								
MICH	184	199	163	184	4.30		44.00	
MINN	178	196	159	169		5.20	38.50	
MISS					3.90			
MO	190	186	147	160	3.60		45.00	44.50
MONT	193	202	169	180	4.30	6.40		
NEBR	184	194	153	161	4.00		46.00	43.00
NEV	170	195	150	180				
N MEX	157	160	140	137	5.25			42.00
N Y	189	219	170	191	5.30		39.00	
N C					4.60		45.00	47.00
N DAK	195	193	165	174		4.80		
OHIO	177	193	155	167	4.00		38.50	
OKLA	145	152	135	117	4.20			47.00
OREG	190	208	170	192	4.80	5.50		
PA	183	210	166	189	5.40		40.00	
S C								
S DAK	180	183	144	161	4.10	4.90	37.00	47.00
TENN					3.40			
TEX	150	177	125	142	4.90		32.50	40.00
UTAH	175	190	150	170	5.00			
VA					5.00		44.00	
WASH	185	198	175	188	4.90	6.20		
WIS	184	187	165	162			33.50	
WYO	195	212	175	187				
U S	182	194	158	168	4.40	5.10	43.00	43.00

FIELD SEEDS: RETAIL PRICES BY STATES, SEPTEMBER 15, 1977 AND APRIL 15, 1978

STATE	FORAGE	SEED BARLEY (PER BU)		SEED OATS (PER BU)		SOYBEANS	COTTONSEED	SEED POTATOES (PER
	SORGHUMS (PER 100 LBS) APR 15, 1978	WINTER SEP 15, 1977	SPRING APR 15, 1978	WINTER SEP 15, 1977	SPRING APR 15, 1978	FOR SEED (PER BU) APR 15, 1978	FOR PLANT- ING (PER 100 LBS) APR 15, 1978:	100 LBS) ^{1/} 1978
DOLLARS								
ALA	23.50			3.50		14.50	30.00	6.10
ARIZ		3.90					36.00	7.10
ARK				2.70		12.00	27.00	
CALIF		4.10	6.20	4.80	4.50		33.00	6.00
COLO	23.00	3.60	4.00	3.00				5.40
CONN								4.70
DEL		4.90						7.80
FLA				3.30				8.00
GA	24.00	4.80		3.60		15.00	42.00	
IDAHO		4.00	3.70					3.85
ILL		4.60		3.90	3.70	10.50		5.10
IND		4.80		4.00	3.80	11.00		6.00
IOWA					3.20	10.50		6.20
KANS	21.00	4.40		2.50	2.90	10.50		
KY		3.80				11.00		
LA				3.20		13.50	31.00	7.10
MAINE								3.50
MD		4.90						7.80
MASS								4.70
MICH					3.60			6.70
MINN			4.40		2.90	9.50		4.10
MISS				3.00		13.50	27.50	9.30
MO	31.00	5.00		3.10	2.80	10.00	33.00	
MONT		3.90	4.50		3.10			6.00
NEBR	23.00				3.20	10.00		6.50
NEV								4.45
N H								4.70
N J		4.70						6.60
N MEX	22.00						28.50	6.80
N Y		5.50			3.90			6.80
N C	30.00	4.60		3.80		15.00	42.00	7.70
N DAK			3.70		2.70			3.25
OHIO		4.90		3.90	3.70	10.50		7.20
OKLA	21.50	3.90		2.70	2.90		30.00	
OREG		3.70	3.70	2.60	2.60			5.00
PA		5.00		4.70	3.80			6.80
R I								4.70
S C		4.70		3.60		14.00	44.00	
S DAK	21.00		4.10		2.90			3.35
TENN		3.90		3.80		11.50	31.00	7.70
TEX	20.00	4.30		3.10	2.90	14.00	31.00	7.00
UTAH		3.70	4.10					6.70
VT								4.70
VA		4.70		4.50				7.40
WASH		3.80	4.30					6.10
W VA		4.80						7.30
WIS			5.30		3.00			4.70
WYO		3.80	4.20					5.80
U S	22.50	4.30	4.10	3.60	3.10	11.50	31.00	5.00

^{1/} SEASON AVERAGE PRICE.

BUILDING MATERIALS: AVERAGE PRICES PAID BY FARMERS,
UNITED STATES, APRIL 1978, WITH COMPARISONS

COMMODITY AND UNIT	1977		1978	
	APR	FEB	APR	APR
	15	15	15	15
	DOLLARS			
<u>BUILDING MATERIALS</u>				
LUMBER, PER 1,000 BOARD FT.				
2"x4" PINE, STANDARD AND BETTER	289	342		348
2"x4" FIR, STANDARD AND BETTER	332	379		382
ROUGH BOARDS, FOR FARM FENCES AND CONSTRUCTION 1/ DRESSED BOARDS, 1-INCH, S4S STANDARD AND BETTER OR NO. 2 AND BETTER	362	378		389
ASPHALT SHINGLES, MINERAL SURFACE, APPROX 240 LB. PER SQUARE	421	472		483
GALVANIZED STEEL ROOFING 28-29 GA., PER 100 SQ. FT.	21.10	22.90		23.10
	31.80	32.80		33.30
INSULATING SHEATHING, REG. DEN., 1/2", PER 1,000 SQUARE FT.	105	121		121
PLYWOOD, C-D-X 1/2" (EXT GLUE) PER 1,000 SQ. FT.	303	340		335
CONCRETE BLOCKS, 8"x8"x16", PER 100	53.70	57.70		58.80
PORTLAND CEMENT, 94 LB. NET, EACH	3.63	3.83		3.90
POSTS, WOOD, LINE FENCE, EACH	2.03	2.10		2.14
HOUSE PAINT, EXTERIOR, PER GAL.	12.10	12.50		12.50

1/ ROUGH BOARDS, STANDARD & BETTER OR NO. 2 & BETTER PRIOR TO FEB. 15, 1978.

MOTOR SUPPLIES: AVERAGE PRICES PAID BY FARMERS, UNITED STATES,
APRIL 1978, WITH COMPARISONS

COMMODITY AND UNIT	1977		1978	
	APR	JAN	APR	APR
	15	15	15	15
	DOLLARS			
<u>MOTOR SUPPLIES</u>				
MOTOR OIL, PER GAL				
REGULAR (NON-DETERGENT)	2.15	2.26		2.27
HEAVY DUTY (DETERGENT)	2.55	2.64		2.65
ALL WEATHER (HIGH DETERGENT)	2.92	3.04		3.06
GREASE, PER 14½ OZ CARTRIDGE	.596	.625		.637
GREASE, PER 35 LB PAIL	14.90	16.10		16.50
TIRES, AUTO, TUBELESS, EACH:				
BIAS-BELTED, SIZE 678-15	42.90	43.40		43.00
RADIAL, STEEL BELTED, SIZE 205-15, GR78-15	65.90	65.50		66.10
TIRES, TRUCK, 7.00-15, 6-PLY, EACH	46.40	47.50		47.60
TIRES, TRUCK, 7.50-20, 10-PLY, EACH	87.30	88.70		89.00
TIRES, TRACTOR, REAR, 13.6-28, 4-PLY, EACH	137	142		142
TIRES, TRACTOR, REAR, 18.4-34, 6-PLY, EACH	276	286		286
STORAGE BATTERIES, CPR 220-310 AMPS, EACH	36.60	38.60		39.30
STORAGE BATTERIES, CPR 315-500 AMPS, EACH	45.70	49.30		50.10
SPARK PLUGS	1.39			1.42
ANTIFREEZE, PERMANENT TYPE, PER GAL	3.92			3.89
OIL FILTERS				
CARTRIDGE REFILL TYPE, EACH	3.11			3.12
SPIN-DN TYPE, EACH	4.01			4.02

FUELS: AVERAGE PRICES PAID BY FARMERS, UNITED STATES,
APRIL 1978, WITH COMPARISONS

COMMODITY AND UNIT	1977		1978	
	APR	MAR	APR	APR
	15	15	15	15
	DOLLARS			
<u>FUELS</u>				
GASOLINE, SERVICE STATION (UNLEADED REGULAR), PER GAL 1/	.605	.632		.634
GASOLINE, BULK DELIVERY, (LEADED REGULAR), PER GAL	.564	.578		.579
FURNACE OR FUEL OIL, PER GAL	.465	.479		.480
DIESEL FUEL, PER GAL	.448	.458		.458
L.P. GAS, BULK DELIVERY, PER GAL	.378	.416		.411

1/ GASOLINE, SERVICE STATION, (REGULAR), PRIOR TO JAN 1978.

E R R A T A

January, February, and March 1978 Agricultural Prices should be corrected as follows:

PAGE 5

United States Parity Prices for Farm Products and Average Prices Received as Percentage of Parity Prices Based on Data for (January), (February), and (March) 1978 With Comparisons 1/

Commodity and Unit	Adjusted Base Prices 2/
Citrus (Equiv. on-tree) per box	
Tangerines Dol	.833 .831

PAGE 6

Commodity and Unit	Adjusted Base Prices 4/ Dollars
Apricots, fresh use, ton	111.00 110.00
Plums (Calif) Equiv. on-tree fresh use, ton	53.40 55.80
Prunes & Plums (excl. Calif), ton for processing (excl. dried)	20.70 21.30

January Agricultural Prices should be corrected as follows:

PAGE 27

Adjusted Base Prices and United States Parity Prices Based on Data for January 1978 1/

Commodity and Unit	Adjusted Base Prices 2/ Dollars
Fruits:	
<u>Citrus</u> (equiv. on-tree), box:	
Tangerines	.833 .831
<u>Deciduous and Other:</u>	
Apricots for fresh use, ton	111.00 110.00
Nectarines (Calif), for processing, ton	26.60 13/

PAGE 28

Peaches for processing (excl. dried) Freestone, ton	26.30 27.30
Plums (Calif) equiv. on-tree, ton for fresh use	53.40 55.80
Prunes & Plums (excl. Calif), ton for processing (excl. dried)	20.70 21.30
Vegetables for <u>Fresh Market</u> , cwt Broccoli	3.26 3.50

PAGES 32-35

Prices Received by Farmers for Agricultural Commodities, Annual Averages, U S 1/

COMMODITY AND UNIT	1968	1969	1970	1971	1972	1973	1974	1975	1976	1977	1967-76 : AVERAGE	1968-77 : AVERAGE	
DOLLARS													
Season Average Price 7/:													
Tangerines	2.71 5/2.39	5/2.39 2.07	5/2.07 2.06								5/3.00 5/2.93		
Apricots, fresh use, ton 25/									474.00 420.00		394.00 390.00	422.00 418.00	
Dates (Calif), ton 14/				5/159.00 158.00									
Nectarines (Calif), ton for fresh use 14/							230.00 229.00						
for processing										26/0	27/101.00 97.20		
Olives (Calif), ton Crushed for oil 14/									71.00 71.00			50.80 60.80	
Peaches Dried (Calif), ton						1,130.00 130.00							
for processing (excl. dried) Freestone, ton 13/		5/70.90 5/72.40	5/68.00 5/67.30	5/72.70 5/70.80	5/82.50 5/87.60	5/118.00 5/124.00	5/144.00 5/156.00	5/114.00 5/117.00	5/124.00 5/132.00	121.00 124.00	5/97.20 5/100.00	100.00 104.00	
Pears for processing, (excl. dried) ton 13/		97.30 97.60											
Plums (Calif), equiv. on-tree, ton, for fresh use 25/									5/310.00 390.00	225.00 235.00	5/196.00 204.00	203.00 212.00	
Prunes & Plums (excl. Calif), ton for processing (excl. dried) 13/									82.10 86.00	5/75.20 5/85.50	82.30 89.70	5/77.00 5/78.50	78.60 80.80
Tree Nuts, ton Filberts						573.00 575.00							
Pecans, All							944.00 942.00						
Vegetables, Fresh Market, cwt 19/													
Asparagus			22.30 23.30										
Broccoli									15.10 17.40	15.90 19.00	16.40 20.00	11.70 5/12.20	12.40 13.30

PAGE 36 Add the following footnotes: 26/ None processed in 1977. 27/ Nine year average 1968-76.

February Agricultural Prices should be corrected as follows:

PAGE 33

Grapes: Season Average Equivalent Returns Per Ton 1/ Received by Growers, by Utilization and Variety Groups, Calif, 1975-77

Variety and Utilization Group	1976
	Dollars
All Varieties	
Grapes excl. varieties dried	151 154

PAGE 37

Prunes & Plums for Processing: Season Average Price Per Ton Received by Growers, Michigan, Oregon, Washington, and United States, 1975-77 1/

STATE	Processing Except Dried 2/		
	1975	1976	1977
		DOLLARS	
Oregon	81.00 94.00	77.00 96.00	79.00 92.00
U S	82.10 86.80	75.20 85.50	82.30 89.70

INDEX OF FEATURES SPECIAL TO THIS ISSUE

PRICES RECEIVED BY FARMERS

	<u>PAGE</u>
Crops: Revised monthly prices received by farmers, selected crops, by States and U. S., 1977-78	12
Meat Animals: Revised monthly prices for U. S., 1977	19
Poultry and Egg: 1977 monthly and/or 1976-77 marketing year average prices, by States and U. S. for broilers, chickens excl. broilers, eggs, and turkeys	21-22
Hops: Season average prices 1974-77, by States and U. S. ...	11

PRICES PAID BY FARMERS

Building Materials and Motor Supplies: Average prices paid by farmers, U. S., April 1978 with comparisons	32
Seed, Field, Retail Prices:	
U. S., April 15, 1978, with comparisons	29
By States, September 15, 1977 and April 1978	30-31

