

# Agricultural Prices



Agricultural  
Statistics  
Board

National Agricultural  
Statistics Service

United States  
Department of  
Agriculture

Washington, D.C. 20250

RELEASED: June 30, 1986  
3:00 P.M. ET

## PRICES RECEIVED INDEX DOWN 2 POINTS

The June All Farm Products Index of Prices Received by Farmers decreased 2 points (1.6 percent) from May to 121 percent of its January-December 1977 average, according to the Agricultural Statistics Board. Lower prices for wheat, lettuce, cattle, eggs, tomatoes, and hay were partially offset by higher prices for hogs, broilers, oranges, potatoes, and apples. The index was 8 points (6.2 percent) below a year ago.

The 57 cent decrease in the all wheat price from May to June erased the small gains of this spring and moved the all wheat price to the lowest level since October 1977. A \$4.30 increase in the all hog price and 40 cent increase in the calf price offset a \$1.60 decrease in the beef cattle price, leaving the all livestock index unchanged from May. The June all hog price was the highest since August of 1984. Broiler prices averaged 3.1 cents per pound above May, the highest price since July 1984.

### SUMMARY TABLE

INDEX 1977=100	MAY 1986		JUN 1986		
	PRELIM	REVISED	PRELIM	REVISED	
PRICES RECEIVED	130	129	124	123	121
PRICES PAID, INTEREST, TAXES, AND FARM WAGE RATES	164	164			
RATIO 1/	79	79	2/78	2/77	2/76

1/ RATIO OF INDEX OF PRICES RECEIVED BY FARMERS TO INDEX OF PRICES PAID, INTEREST, TAXES, AND FARM WAGE RATES. 2/ RATIO DERIVED USING THE MOST RECENT PRICES PAID INDEX.

\*\*\*\*\*  
 \* Requests for a subscription order form covering all available reports \*  
 \* should be directed to Agricultural Statistics Board Publications, \*  
 \* Room 5829 - South Building, USDA, Washington, D.C. 20250 \*  
 \* (Phone (202) 447-4021). \*  
 \*\*\*\*\*

## PRICES RECEIVED

The June All Farm Products Index of Prices Received by Farmers decreased 2 points (1.6 percent) from the previous month to 121 percent of its 1977 average. Compared with a year earlier the index was down 8 points (6.2 percent). Of the subgroups shown on page 4, the following contributed most to the changes from a month earlier.

**ALL CROPS:** The all crops index for June was 110, down 4 points (3.5 percent) from a month earlier and 13 points (11 percent) below a year earlier.

**FOOD GRAINS:** The food grains index decreased 20 points (17 percent) from May to 100 and was 29 points (22 percent) below a year earlier. Wheat averaged \$2.45 per bushel -- down 57 cents from May. Rice was \$5.27 per cwt -- up 26 cents.

**FEED GRAINS AND HAY:** At 114, the index was 4 points (3.4 percent) below the previous month and 16 points (12 percent) below June 1985. Corn was \$2.38 per bushel, down one cent and barley was 9 cents lower at \$1.65 per bushel. Oats declined 7 cents to \$1.14 per bushel. Sorghum brought \$3.95 per cwt, down 3 cents. Hay averaged \$62.40 per ton, \$8.50 lower than in May.

**VEGETABLES:** The index for commercial vegetables was 117 -- down 27 points (19 percent) from a month earlier, but 14 points (14 percent) above last June. Lower prices for lettuce and tomatoes contributed most to the decline.

**FRUIT:** At 177, the all fruit index was 20 points (13 percent) above May, but was 13 points (6.8 percent) below June 1985. The increase from last month was primarily due to higher prices for oranges, apples, grapefruit, and pears.

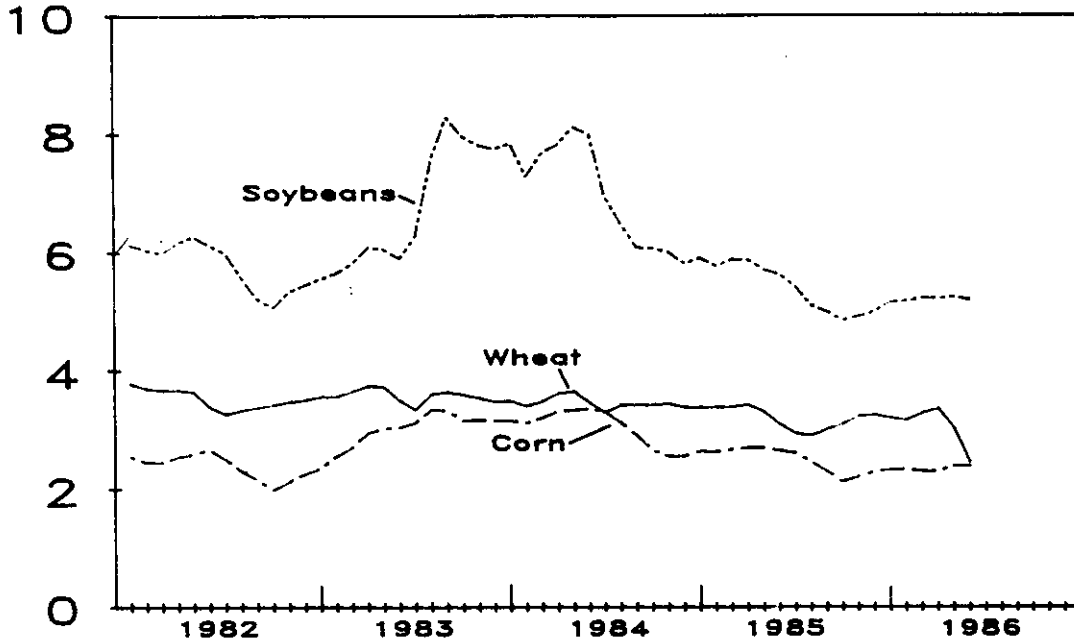
**POTATOES, SWEETPOTATOES, AND DRY BEANS:** The index, at 120, was 15 points (14 percent) above the previous month but was 43 points (26 percent) below a year ago. Potato prices rose 80 cents to \$4.89 per cwt and dry bean prices were up 40 cents to \$17.10 per cwt.

**LIVESTOCK AND PRODUCTS:** The June index, at 131, was unchanged from the preceding month but 3 points (2.2 percent) less than a year earlier.

**MEAT ANIMALS:** At 138, the index was unchanged from the previous month, but was down 4 points (2.8 percent) from a year ago. Hog prices averaged \$50.10 per cwt, up \$4.30 from May. Beef Cattle prices declined \$1.60 to average \$49.40 per cwt.

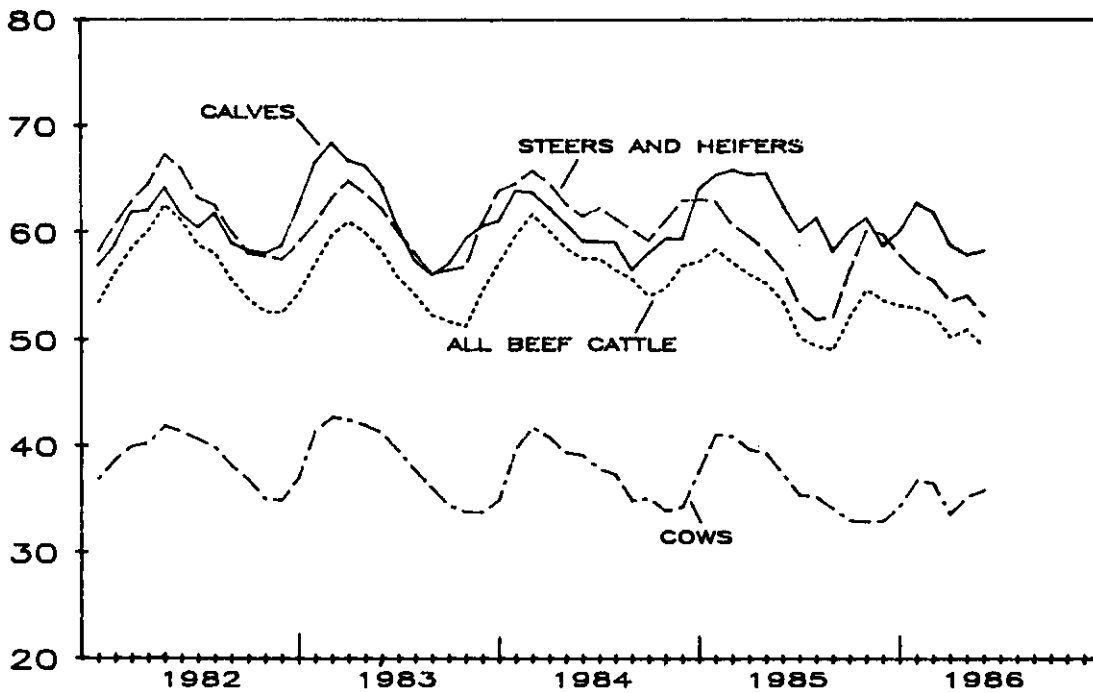
## Prices Received by Farmers, US

DOLLARS PER BU



## Prices Received by Farmers, US

DOLLARS PER CWT



INDEX NUMBERS OF PRICES RECEIVED BY FARMERS, UNITED STATES, JUNE 1986,  
WITH COMPARISONS

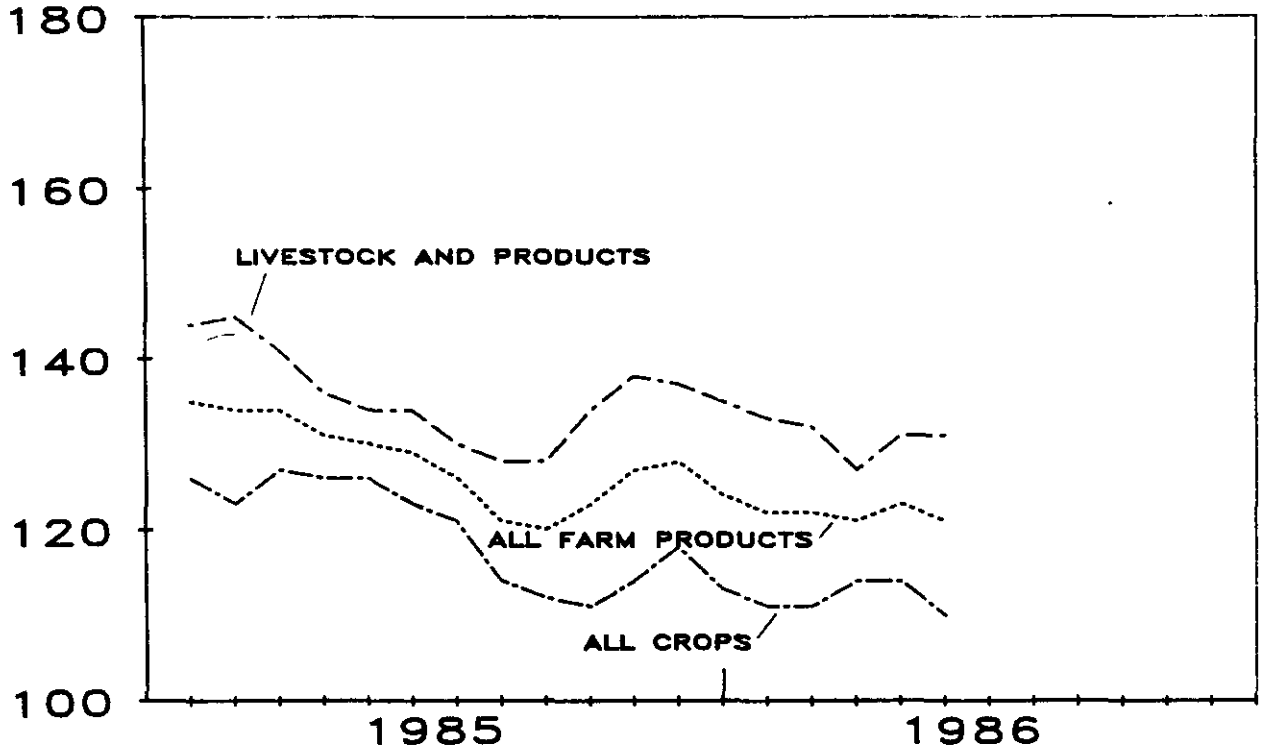
INDEX	1910-14=100			1977=100			
	AVERAGE: 1985 :		1986	1985 :		1986	
	JAN-DEC:						
	1977 :	JUN	MAY	JUN	JUN	MAY	JUN
UNADJUSTED	:						
ALL FARM PRODUCTS	:	457	*588	*560	553	*129	*123 121
ALL CROPS	:	433	534	*493	477	123	*114 110
FOOD GRAINS	:	275	354	*331	276	129	*120 100
FEED GRAINS & HAY	:	316	410	*371	361	130	*118 114
FEED GRAINS	:	299	391	*348	344	131	*116 115
COTTON	:	511	509	*480	480	100	*94 94
TOBACCO	:	972	1529	1374	1374	157	141 141
OIL-BEARING CROPS	:	652	569	*511	506	87	78 78
FRUIT, ALL	:	370	*704	583	654	*190	157 177
FRESH MARKET 1/	:	362	*744	600	685	*206	166 189
COMMERCIAL VEGETABLES	:	498	*513	*719	583	*103	*144 117
FRESH MARKET	:	658	*599	*946	709	*91	*144 108
POTATOES, ETC 2/	:	363	590	*379	435	163	*105 120
LIVESTOCK & PRODUCTS	:	481	*644	*630	632	134	131 131
MEAT ANIMALS	:	564	801	*777	780	142	138 138
DAIRY PRODUCTS	:	594	*746	*734	728	*126	*124 123
POULTRY & EGGS	:	228	*262	266	271	*115	117 119
FOOD COMMODITIES	:					133	*129 127
SEASONALLY ADJUSTED	:						
FRESH MARKET FRUIT 1/	:	352	*746	602	656	*212	171 186
FRESH MARKET VEGETABLES	:	663	*584	*902	746	*88	*136 113
POTATOES, ETC 2/	:	365	511	*343	384	140	*94 105
DAIRY PRODUCTS	:	594	*769	*749	750	*129	*126 126
POULTRY & EGGS	:	228	*266	277	277	*117	121 121

1/ FRESH MARKET FOR NON-CITRUS. FRESH MARKET AND PROCESSING FOR CITRUS.  
2/ INCLUDES SWEETPOTATOES AND DRY EDIBLE BEANS. \* REVISED.

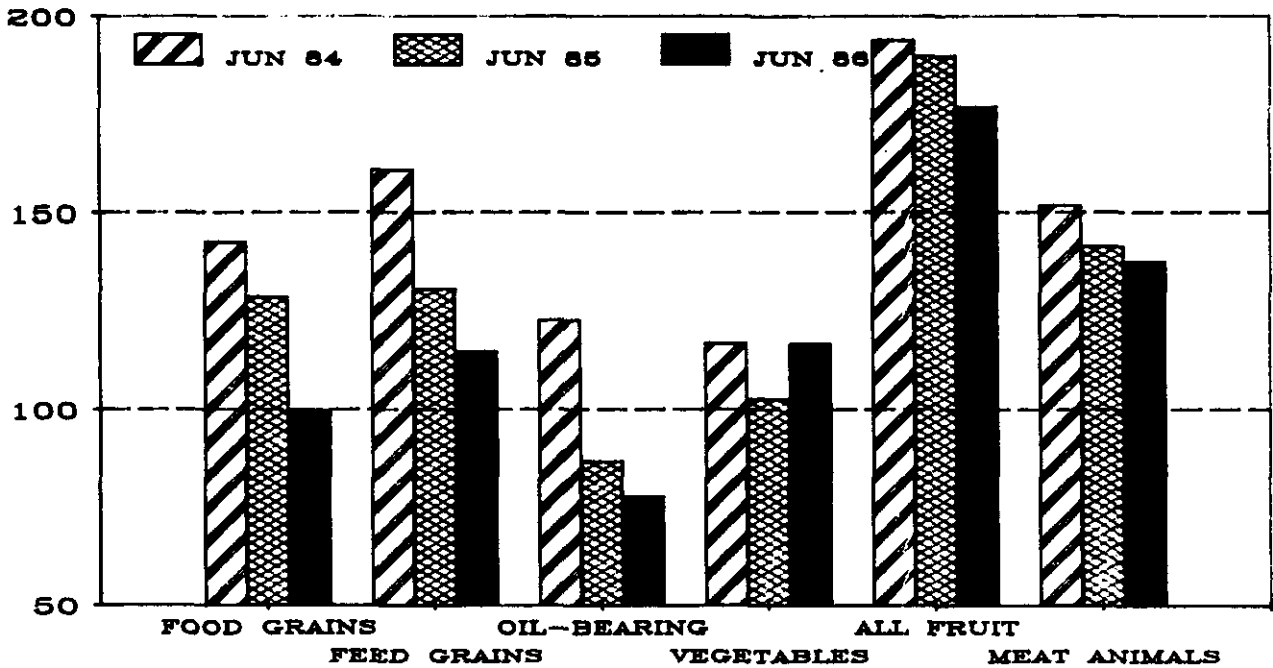
SELECTED INDEX NUMBERS FOR PRICES RECEIVED AND PAID BY FARMERS,  
1977=100, BY MONTHS, UNITED STATES, 1985 AND 1986

MONTH	INDEX OF PRICES RECEIVED					INDEX OF PRICES PAID				
	ALL FARM PRODUCTS		ALL CROPS		LIVESTOCK AND PRODUCTS	COMM, SERVICES AND WAGE RATES		PRODUCTION ITEMS		
	1985	1986	1985	1986	1985	1986	1985	1986	1985	1986
JAN	135	124	126	113	144	135	164	163	154	150
FEB	134	122	123	111	145	133	164	163	154	149
MAR	134	122	127	111	141	132	164		153	
APR	131	121	126	114	136	127	164	160	153	145
MAY	130	123	126	114	134	131	164		152	
JUN	129	121	123	110	134	131	164		152	
JUL	126		121		130		163		150	
AUG	121		114		128		162		149	
SEP	120		112		128		162		148	
OCT	123		111		134		162		148	
NOV	127		114		138		162		149	
DEC	128		118		137		162		149	

**INDEX OF PRICES RECEIVED BY FARMERS, US**  
 INDEX VALUES(1977=100)



**PRICES RECEIVED INDEX COMPARISONS**  
 INDEX VALUES(1977=100) JUNE



PRICES RECEIVED BY FARMERS, UNITED STATES,  
JUNE 1986, WITH COMPARISONS

COMMODITY	UNIT	AVERAGE		ENTIRE MONTH		PRELIMINARY
		JAN - DEC 1977	DEC	JUN 1985	MAY 1986	JUN 1986
DOLLARS						
FIELD CROPS						
BARLEY, ALL	BU	1.91		2.14	1.74	1.65
FEED	BU			2.26	1.81	1.82
MALTING	BU			2.02	1.66	1.43
BEANS, DRY EDIBLE	CWT	17.60		19.20	16.70	17.10
CORN	BU	2.03		2.64	2.39	2.38
COTTON, AMER UPLAND	LB	.605		.603	.569	.569
COTTONSEED	TON	79.70				
FLAXSEED	BU	5.78		6.54	4.87	4.55
HAY, ALL, BALED 1/	TON	57.10		72.10	70.90	62.40
ALFALFA	TON			77.50	74.10	66.00
OTHER	TON			54.20	56.40	51.30
OATS	BU	1.29		1.59	1.21	1.14
PEANUTS, IN-SHELL	LB	.208				
POTATOES	CWT	3.78		6.67	4.09	4.89
RICE, ROUGH	CWT	7.94		7.83	5.01	5.27
SORGHUM GRAIN	CWT	3.11		4.52	3.98	3.95
SOYBEANS	BU	6.82		5.62	5.25	5.19
SUNFLOWER 2/	CWT			11.50	6.94	6.88
SWEETPOTATOES	CWT	10.20		20.50	1/10.60	10.80
TOBACCO	LB	1.141			1.066	
WHEAT, ALL	BU	2.29		3.09	3.02	2.45
WINTER	BU	2.25		3.00	2.75	2.36
DURUM	BU			3.53	3.41	2.95
OTHER SPRING	BU	2.42		3.50	3.48	2.57
HARD RED	BU			3.06	2.92	
SOFT RED	BU			3.01	2.88	
WHITE	BU			3.35	3.49	
FRUIT						
CITRUS (EQUIV ON-TREE)						
GRAPEFRUIT	BOX	1.66		5.63	4.41	5.58
LEMONS	BOX	2.18		7.74	4.93	6.39
LIMES	BOX	34.42		-7.80	36.74	30.46
ORANGES	BOX	2.78		7.81	3.91	4.44
TANGELOS	BOX	3.68				
TANGERINES	BOX	3.18		4.28	9.50	
TEMPLES	BOX	1.17				
NON-CITRUS						
APPLES, FRESH	LB	.120		.131	.211	.242
PEACHES, FRESH 3/	LB	.147		.195	.261	.192
PEARS, FRESH 3/	TON	145.00		550.00	604.00	838.00
STRAWBERRIES, FRESH	LB	.433		.449	.430	.551

1/ MID-MONTH PRICE.

2/ THREE-STATE (MINN, N DAK, AND S DAK) AVERAGE.

3/ EQUIVALENT PACKINGHOUSE-DOOR RETURNS FOR CALIF, N Y, OREG AND WASH. PRICES AS SOLD FOR OTHER STATES.

PRICES RECEIVED BY FARMERS, UNITED STATES,  
JUNE 1986, WITH COMPARISONS (CON'T)

COMMODITY	UNIT	AVERAGE		ENTIRE MONTH		PRELIMINARY
		JAN - DEC 1977	JUN 1985	MAY 1986	JUN 1986	
DOLLARS						
VEGETABLES, FRESH 1/						
ASPARAGUS	CWT	52.00	71.90	58.80	67.00	
BROCCOLI	CWT	19.90	16.70	21.20	18.30	
CARROTS	CWT	11.40	9.88	12.70	15.40	
CAULIFLOWER	CWT	23.40	23.90	33.30	27.20	
CELERY	CWT	8.76	9.39	13.70	10.90	
CORN, SWEET	CWT	9.14	12.10	12.90	11.80	
HONEYDEW MELONS	CWT	11.20	17.00	23.00	11.60	
LETTUCE	CWT	7.60	7.10	18.10	9.26	
ONIONS	CWT	10.30	10.90	9.53	11.10	
TOMATOES	CWT	23.40	17.70	26.90	20.60	
LIVESTOCK						
CALVES	CWT	36.80	62.60	58.00	58.40	
CATTLE, ALL BEEF	CWT	34.50	53.60	51.00	49.40	
COWS	CWT	24.40	37.40	35.30	35.90	
STEERS & HEIFERS	CWT	37.30	56.60	54.20	52.30	
MILK COWS 2/	HEAD	504.00				
HOGS, ALL	CWT	40.10	44.60	45.80	50.10	
BARROWS & GILTS	CWT		45.50	46.40	51.00	
SOWS	CWT		37.00	39.70	42.20	
LAMBS	CWT	51.40	69.70	76.30	75.40	
SHEEP	CWT	13.50	22.00	24.10	24.80	
WOOL 3/	LB	.714	.698	.752	.735	
DAIRY AND POULTRY						
MILK, ALL 4/	CWT	9.71	12.20	12.00	5/11.90	
FLUID GRADE	CWT	9.94	12.30	12.10	5/12.00	
MFG GRADE	CWT	8.71	11.30	11.10	5/10.90	
BROILERS, LIVE	LB	.235	.315	.309	.340	
EGGS, ALL 6/	DOZ	.541	.534	.562	.505	
MARKET 6/7/	DOZ		.456	.488	.419	
TURKEYS, LIVE 6/	LB	.348	.406	.407	.461	
ADJUSTED FOR SEASONAL VARIATION						
EGGS, ALL	DOZ	.545	.587	.604	.555	
MILK, ALL 4/	CWT	9.71	12.58	12.24	12.27	

1/ F.O.B. SHIPPING POINT. CURRENT MONTH PRICES ARE FOR FIRST HALF OF MONTH.

2/ ANIMALS SOLD FOR DAIRY HERD REPLACEMENT ONLY. PRICES AVAILABLE FOR JAN, APR, JUL, AND OCT.

3/ AVERAGE LOCAL PRICE, EXCLUDING INCENTIVE PAYMENTS.

4/ BEFORE DEDUCTIONS FOR HAULING, CO-OP FEES, AND GOVERNMENT WITHHOLDING, BUT INCLUDES BULK TANK, QUANTITY, AND OTHER PREMIUMS. EXCLUDES HAULING SUBSIDIES.

5/ FAT TEST PERCENT: ALL MILK 3.53, FLUID MILK 3.53, MFG GRADE 3.54.

6/ MID-MONTH PRICE.

7/ INCLUDES EGGS SOLD RETAIL BY THE PRODUCER.

UNITED STATES PARITY PRICES FOR FARM PRODUCTS AND AVERAGE PRICES RECEIVED AS PERCENT OF PARITY PRICES BASED ON DATA FOR JUNE 1986, WITH COMPARISONS 1/

COMMODITY AND UNIT	PARITY PRICES				PRICES AS PERCENT		
	ADJUSTED:	BASED ON DATA FOR			OF PARITY		
	BASE	JUN	MAY	JUN	JUN	MAY	JUN
	PRICES	1985	1986	1986	1985	1986	1986
DOLLARS							
BASIC COMMODITIES							
ALL WHEAT, BU	.610	7.07	6.72	6.72	44	45	36
RICE, CWT	1.74	19.60	19.20	19.20	40	26	27
CORN, BU	.445	5.14	4.90	4.90	51	49	49
COTTON, LB							
AMERICAN UPLAND	.112	1.24	1.23	1.23	49	46	46
EXTRA LONG STAPLE	.169	1.96	1.86	1.86			
PEANUTS, LB	.0404	.456	.445	.445			
TOBACCO, BY TYPE, LB							
FLUE-CURED, 11-14	.261	2.89	2.88	2.88			
VA FIRE-CURED, 21	.199	2.25	2.19	2.19			
KY-TENN FIRE-CURED, 22-23	.253	2.75	2.79	2.79			
BURLEY, 31	.268	3.00	2.95	2.95			
MARYLAND, 32	.223	2.45	2.46	2.46		43	
DARK AIR-CURED, 35-36	.211	2.37	2.33	2.33			
SUN-CURED, 37	.186	2.13	2.05	2.05			
PA SEEDLEAF, 41	.130	1.42	1.43	1.43			
CIGAR FILLER & BINDER, 42-44, 53-55	.175	1.96	1.93	1.93			
PUERTO RICAN FILLER, 46	.163	1.77	1.80	1.80			
CIGAR BINDER, 51-52	.268	2.92	2.95	2.95			
DESIGNATED NONBASIC							
ALL MILK, SOLD TO PLANTS, PER CWT	2.10	23.50	23.10	23.10	2/54	2/53	2/53
HONEY, EXTRACTED, LB	3/.0986	1.11	1.09	1.09			
WOOL AND MOHAIR							
WOOL, LB	.220	2.35	2.42	2.42	4/30	4/31	4/30
MOHAIR, LB	.708	7.64	7.80	7.80			
OTHER NONBASIC							
BARLEY, BU	.404	4.76	4.45	4.45	45	39	37
COTTONSEED, TON	17.70	211.00	195.00	195.00			
DRY EDIBLE BEANS, CWT	3.44	40.00	37.90	37.90	48	44	45
FLAXSEED, BU	1.05	12.40	11.60	11.60	53	42	39
OATS, BU	.259	3.03	2.85	2.85	52	42	40
POTATOES, CWT	.866	9.24	9.54	9.54	72	43	51
RYE, BU	.393	4.58	4.33	4.33			
SORGHUM GRAIN, CWT	.754	8.68	8.31	8.31	52	48	48
SOYBEANS, BU	1.10	12.80	12.10	12.10	44	43	43
SWEETPOTATOES, CWT	2.22	24.70	24.50	24.50	83	43	44
APPLES, FRESH, LB 5/	.0244	.274	.269	.269	48	78	90
CITRUS (EQUIV ON-TREE), BOX:							
GRAPEFRUIT	.441	4.38	4.86	4.86	129	91	115
LEMONS	.519	5.49	5.72	5.72	141	86	112
LIMES (FLA)	1.56	17.40	17.20	17.20	10/	214	177
ORANGES	.760	7.46	8.38	8.38	105	47	53
TANGERINES	.919	8.99	10.10	10.10	48	94	
TEMPLES (FLA)	.688	7.08	7.58	7.58			
BEEF CATTLE, CWT	9.07	101.00	100.00	100.00	53	51	49
CALVES, CWT	10.40	114.00	115.00	115.00	55	50	51
HOGS, CWT	7.65	89.40	84.30	84.30	50	54	59
LAMBS, CWT	10.30	114.00	114.00	114.00	61	67	66
SHEEP, CWT	3.40	36.70	37.50	37.50	60	64	66
EGGS, DOZ	.102	1.17	1.12	1.12	2/50	2/54	2/50
TURKEYS, LIVE, LB	.0684	.762	.754	.754	53	54	61

SEE FOOTNOTES ON PAGE 9.



PARITY PRICES BASED ON DATA FOR JUNE 1986, UNITED STATES 1/

OTHER NONBASIC COMMODITIES (CONT)	ADJ BASE PRICES	PARITY PRICES	OTHER NONBASIC COMMODITIES (CONT)	ADJ BASE PRICES	PARITY PRICES
DOLLARS			DOLLARS		
FIELD CROPS AND MISC COMMODITIES			NONCITRUS FRUIT		
HOPS, LB	.247	2.72	PEARS, TON		
TOBACCO, LB TYPE 61	1.66	18.30	FRESH 8/	42.60	469.00
			DRIED, CALIF	159.00	1750.00
NONCITRUS FRUIT			PLUMS, CALIF, TON:		
APPLES, TON			FRESH, EQUIV		
PROCESSING	18.30	202.00	ON-TREE	47.80	527.00
APRICOTS, TON			PRUNES, DRIED, CALIF, TON	109.00	1200.00
FRESH	125.00	1380.00	PRUNES AND PLUMS, EXCL CALIF, TON:		
DRIED, CALIF	340.00	3750.00	FRESH	56.20	619.00
AVOCADOS, TON	110.00	1210.00	PROCESSING		
CHERRIES			EXCL DRIED	18.00	198.00
SWEET, TON	105.00	1160.00			
TART, LB	.0550	.606	TREE NUTS		
CRANBERRIES, BBL	4.87	53.70	ALMONDS, LB	.174	1.92
DATES, CALIF, TON	105.00	1160.00	FILBERTS, TON	130.00	1430.00
GRAPES, TON			WALNUTS, TON	147.00	1620.00
RAISIN VARIETY	163.00	1800.00			
OTHER, DRIED	35.10	387.00	VEGETABLES, CWT		
NECTARINES			FRESH		
FRESH, CALIF, TON 6/	44.80	494.00	CARROTS 9/	1.40	15.40
OLIVES, CALIF			CAULIFLOWER 9/	3.80	41.90
CANNING, TON 6/	85.90	947.00	CELERY 9/	1.79	19.70
PEACHES			HONEYDEW MELONS	2.11	23.30
FRESH, LB 7/	.0351	.387	LETTUCE	1.72	19.00
DRIED, CALIF, TON	199.00	2190.00	ONIONS 9/	1.63	18.00
PROCESSING 7/			TOMATOES	3.75	41.30
EXCL DRIED					
CLINGSTONE, CALIF, TON	28.40	313.00			

1/ PARITY PRICES ARE COMPUTED UNDER THE PROVISIONS OF TITLE III, SUBTITLE A, SECTION 301 (A) OF THE AGRICULTURAL ADJUSTMENT ACT OF 1938 AS AMENDED BY THE AGRICULTURAL ACTS OF 1948, 1949, AND 1956. SEE JANUARY AND JULY AGRICULTURAL PRICES FOR DETAILS ON ADJUSTED BASE PRICE AND PARITY PRICE COMPUTATIONS.

2/ SEASONALLY ADJUSTED PRICE AS PERCENTAGE OF PARITY PRICE.

3/ WHOLESALE EXTRACTED. ADJUSTED BASE PRICE DERIVED FROM STATE ANNUAL AVERAGE PRICES WEIGHTED BY PRODUCTION. FOR 1982 THROUGH 1985 THE NATIONAL AVERAGES ARE THE SUPPORT PRICES.

4/ AVERAGE LOCAL MARKET PRICE, EXCLUDING INCENTIVE PAYMENTS.

5/ EQUIVALENT PACKINGHOUSE-DOOR RETURNS FOR APPLES FOR CALIF, OREG, AND WASH, AND PRICE AT POINT OF FIRST SALE FOR OTHER STATES.

6/ EQUIVALENT RETURNS FOR BULK FRUIT AT FIRST DELIVERY POINT.

7/ BASED ON PRICES FOR FRESH PEACHES IN N Y, PA, MICH, N C, S C, GA, WASH, CALIF, N J, MINN, W VA, ILL, OHIO, OREG, AND ALA, AND AVERAGE PRICES FOR ALL METHODS OF SALE FOR OTHER STATES.

8/ BASED ON PACKINGHOUSE-DOOR RETURNS FOR FRESH PEARS FOR CALIF, WASH, AND OREG, AVERAGE PRICES AS SOLD FOR FRESH USE FOR N Y AND MICH, AND AVERAGE PRICES FOR ALL METHODS OF SALES FOR OTHER STATES.

9/ INCLUDES SOME PROCESSING.

10/ DERIVED ON-TREE NEGATIVE VALUE.

e

WHEAT: PRICES RECEIVED, BY STATES, MAY AND JUNE 1986

STATE	ALL WHEAT		WINTER WHEAT		DURUM WHEAT		OTH SPRING WHEAT	
	MAY 1/	JUN 2/	MAY 1/	JUN 2/	MAY 1/	JUN 2/	MAY 1/	JUN 2/
DOLLARS PER BUSHEL								
ARIZ	3.53	3.33	3.17	2.93	3.61	3.42		
ARK		2.40		2.40				
CALIF	2.96	2.76	2.84	2.65	3.20	3.00		
COLO	2.99	2.37	2.99	2.37				
GA	2.56	2.47	2.56	2.47				
IDAHO	3.43	2.87	3.44	2.90			3.40	2.83
ILL		2.51		2.51				
IND	3.45	2.42	3.45	2.42				
KANS	2.99	2.18	2.99	2.18				
MICH	3.01	2.50	3.01	2.50				
MINN	3.26	2.56	2.85	1.89	3.19	2.90	3.27	2.57
MO		2.40		2.40				
MONT	3.49	2.67	3.18	2.45	3.13	3.05	3.83	2.85
NEBR	2.90	2.36	2.90	2.36				
N DAK	3.43	2.64	2.84	2.05	3.37	2.80	3.49	2.55
OHIO	3.41	2.50	3.41	2.50				
OKLA	2.45	2.18	2.45	2.18				
OREG	3.53	2.70	3.53	2.70				
S DAK	3.36	2.38	3.10	2.13	3.35	2.97	3.49	2.48
TEX	2.42	2.30	2.42	2.30				
WASH	3.54	2.65	3.54	2.65				
U S	3.02	2.45	2.75	2.36	3.41	2.95	3.48	2.57

1/ ENTIRE MONTH. 2/ MID-MONTH.

PRICES RECEIVED FOR SELECTED AGRICULTURAL COMMODITIES, BY MONTHS, UNITED STATES, 1985 AND 1986

MONTH	ALL WHEAT		CORN		SOYBEANS		BEEF CATTLE 1/		ALL HOGS	
	1985	1986 2/	1985	1986 2/	1985	1986 2/	1985	1986 2/	1985	1986 2/
DOLLARS PER BUSHEL										
JAN	3.38	3.19	2.64	2.33	5.91	5.16	57.40	53.20	48.00	44.30
FEB	3.38	3.15	2.62	2.32	5.77	5.18	58.50	53.00	48.30	42.80
MAR	3.38	3.28	2.67	2.29	5.88	5.23	57.30	52.40	43.60	40.40
APR	3.43	3.36	2.70	2.29	5.88	5.22	56.20	50.30	41.20	39.70
MAY	3.30	3.02	2.68	2.39	5.70	5.25	55.30	51.00	41.40	45.80
JUN	3.09	2.45	2.64	2.38	5.62	5.19	53.60	49.40	44.60	50.10
JUL	2.93		2.60		5.42		50.20		45.70	
AUG	2.89		2.44		5.10		49.40		42.50	
SEP	3.01		2.29		4.99		49.10		39.70	
OCT	3.09		2.11		4.85		52.10		43.10	
NOV	3.23		2.21		4.92		54.70		43.20	
DEC	3.25		2.29		5.00		53.70		45.30	

1/ COWS, STEERS AND HEIFERS. 2/ CURRENT MONTH - MID-MONTH PRICE. OTHER MONTHS - ENTIRE MONTH PRICES.

GRAINS: PRICES RECEIVED, BY STATES, MAY AND JUNE 1986

STATE	BARLEY 1/		CORN		OATS		SOYBEANS		SORGHUM GRAIN	
	MAY 2/	JUN 3/	MAY 2/	JUN 3/	MAY 2/	JUN 3/	MAY 2/	JUN 3/	MAY 2/	JUN 3/
-----DOLLARS PER BUSHEL-----										
								DOLLARS PER CWT		
ALA							5.20			
ARIZ	2.65	2.60								
ARK										
CALIF	2.11	2.22			1.47	1.40	5.31	5.20		3.60
COLO	2.01	2.10	2.60	2.65					3.99	3.95
GA			2.73	2.76			5.20			
IDAHO	2.09	2.03								
ILL			2.45	2.44	1.50	1.33	5.35	5.26		
IND			2.43	2.45	1.38	1.39	5.32	5.30		
IOWA			2.30	2.31	1.20	1.13	5.16	5.13		
KANS			2.62	2.52			5.12	5.10	4.02	3.84
KY			2.57	2.53			5.42	5.33		
LA							5.30	5.20		
MICH			2.32	2.25	1.00	.95	5.14	5.15		
MINN	1.63	1.42	2.17	2.25	1.11	1.01	5.13	5.08		
MISS							5.29	5.19		
MO			2.38	2.45			5.26	5.25	4.32	3.70
MONT	1.87	1.73			1.64	1.50				
NEBR			2.41	2.41	1.12	1.09	5.06	5.05	3.88	3.73
N MEX										4.08
N Y					1.02	1.05				
N C			2.80	2.79			5.25	5.26		
N DAK	1.52	1.30			1.04	.90				
OHIO			2.41	2.36	1.02	.95	5.33	5.25		
OKLA									3.74	4.05
OREG	2.10	1.74			1.22	1.17				
PA			2.65	2.54	1.15	1.10				
S C							5.25	5.34		
S DAK	1.73	1.39	2.20	2.17	1.05	1.00	5.07	4.98	3.55	3.22
TENN							5.39	5.41		
TEX			2.94	2.66	1.68	1.68	4.97		3.84	4.10
UTAH	2.46	2.33								
WASH	1.91	1.72								
WIS			2.30	2.35	1.19	1.14				
U S	1.74	1.65	2.39	2.38	1.21	1.14	5.25	5.19	3.98	3.95

1/ THE THREE-STATE (MINN, N DAK, AND S DAK) FEED BARLEY PRICE FOR JUN 86 IS \$1.22. 2/ ENTIRE MONTH. 3/ MID-MONTH.

UPLAND COTTON AND RICE: PRICES RECEIVED AND MARKETINGS, UNITED STATES, JUNE 1986, WITH COMPARISONS

ITEM	UNIT	APR 1986 1/	MAY 1986 1/	JUN 1986 2/
COTTON, UPLAND				
AVERAGE PRICE	DOLLARS/POUND	.564	.569	.569
MARKETINGS 3/	THOUSAND BALES	430	447	NA
RICE				
AVERAGE PRICE	DOLLARS/CWT	5.80	5.01	5.27
MARKETINGS 4/	THOUSAND CWT	8409	12388	NA

1/ ENTIRE MONTH. 2/ BASED ON PURCHASES FOR THE FIRST HALF OF THE MONTH. 3/ MARKETINGS BASED ON EXPANDED DATA FROM A SAMPLE OF APPROXIMATELY 35 PERCENT OF THE COTTON BUYERS. 4/ PURCHASES FROM PRODUCERS AS REPORTED BY PRIVATE FIRMS AND RICE (ROUGH EQUIVALENT) SHIPPED FROM PRODUCERS AS REPORTED BY COOPERATIVE MILLS.

FIELD CROPS: PRICES RECEIVED, BY STATES, MAY AND JUNE 1986

STATE	DRY EDIBLE BEANS :		FLAXSEED :		TOBACCO :	PEANUTS 3/4/	
	MAY 1/	JUN 2/	MAY 1/	JUN 2/	JUN 4/	MAY 1/	JUN 2/
	DOLLARS PER CWT		DOLLARS PER BU		DOLLARS PER POUND		
ALA							
CALIF	21.20	23.00					
COLO	16.30	16.20					
FLA							
GA							
IDAHO	17.50	17.60					
IND							
KY							
MD							
MICH	14.00	15.50					
MINN	14.60	15.00	4.52	4.50			
MO							
NEBR	18.80	20.30					
N C							
N DAK	13.10	13.50	4.89	4.55			
OHIO							
OKLA							
S C							
S DAK							
TENN							
TEX							
VA							
WASH	16.40	16.80					
W VA							
WYO	17.30	16.60					
U S	16.70	17.10	4.87	4.55			

1/ ENTIRE MONTH. 2/ MID-MONTH. 3/ IN-SHELL. 4/ INSUFFICIENT SALES.

TOBACCO: AVERAGE PRICE RECEIVED  
BY FARMERS, BY AREAS AND TYPES

CLASS BY BELTS	TYPE	TOBACCO	
		JUN 1985	JUN 1986
		DOLLARS PER POUND	
U S	11-37	INSUFFICIENT SALES	

FIELD CROPS AND APPLES: PRICES RECEIVED, BY STATES,  
MAY AND JUNE 1986

STATE	COTTON		JUNE					
	AMERICAN UPLAND		COTTON-SEED	HAY, BALED 3/	ALFALFA	OTHER	SWEET POTATOES	APPLES FRESH
	MAY 1/	JUN 2/	5/	ALL			3/	USE 1/4/
	DOLLARS PER POUND		DOLLARS PER TON			DOL/CWT	DOL/LB	
ALA	.610	.553						
ARIZ	.575	.553	77.00	77.00				
ARK	.598	.600	42.00	60.00	40.00			
CALIF	.628	.615	75.00	76.00	65.00	12.80		
COLO			59.00	60.00	52.00			
CONN								
GA	.575	.590						
IDAHO			64.00	65.00	50.00			.270
ILL			47.00	48.00	38.00			
IND			44.00	46.00	39.00			
IOWA			45.00	47.00	34.00			
KANS			47.00	48.00	39.00			
KY			61.00	87.00	55.00			
LA	.594	.594						
MAINE								
MD								
MASS								
MICH			48.00	50.00	40.00			.155
MINN			57.00	59.00	46.00			
MISS	.611	.606						
MO			55.00	62.00	51.00			
MONT			72.00	73.00	67.00			
NEBR			36.00	37.00	35.00			
NEV			74.00	80.00	60.00			
N H								
N J								.180
N MEX			73.00	75.00	55.00			
N Y			78.00	86.00	73.00			
N C						9.95		
N DAK			50.00	57.00	41.00			
OHIO			51.00	55.00	38.00			
OKLA	.487	.562	49.00	61.00	43.00			
OREG			74.00	83.00	60.00			
PA			64.00	72.00	55.00			.173
S DAK			45.00	45.00				
TENN	.579	.604						
TEX	.513	.524	60.00	68.00	55.00			
UTAH			67.00	71.00	53.00			
VT								
VA								
WASH			81.00	82.00	76.00			.251
W VA								
WIS			55.00	55.00	50.00			
WYO			59.00	61.00	57.00			
U S	.569	.569	62.40	66.00	51.30	10.80		.242

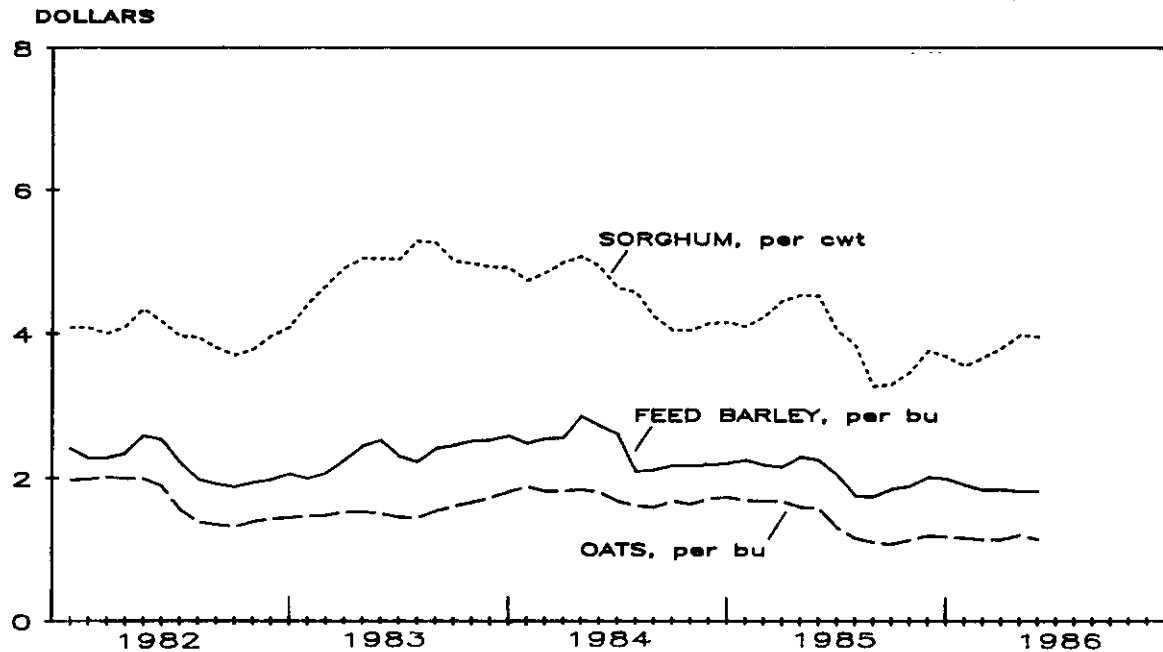
1/ ENTIRE MONTH. 2/ BASED ON SALES DURING THE FIRST HALF OF THE MONTH.  
3/ MID-MONTH. 4/ EQUIVALENT P.H.D. RETURNS FOR CALIF, N Y, OREG, AND WASH.  
PRICE AT POINT OF FIRST SALE FOR OTHER STATES. 5/ INSUFFICIENT SALES.

POTATOES: PRICES RECEIVED, BY STATES,  
MAY AND JUNE 1986

STATE	MAY	JUN	STATE	MAY	JUN
	DOLLARS PER CWT			DOLLARS PER CWT	
ALA			N Y - ALL	3.30	
ARIZ	7.00	6.10	- LONG ISLAND	2.80	
CALIF - ALL	7.45	8.10	- UPSTATE	3.30	
- WINTER			N C		
- SPRING	8.35	8.30	N DAK	2.65	2.65
- SUMMER			OHIO		
- FALL	6.10	7.00	OREGON	3.25	3.60
COLO	2.10	3.50	PA	5.05	5.60
FLA	5.95	5.55	TEX		6.55
IDAHO - ALL 1/	3.45	3.45	VA		
- FRESH	1.95	NA	WASH	3.60	3.50
- PROCESSING	3.65	NA	WIS		
MAINE	2.90				
MICH	4.40	4.60	U S - ALL 1/	4.09	4.89
MINN	3.20		- FRESH	4.30	NA
N J			- PROCESSING	3.80	NA

1/ AVERAGE PRICE OF POTATOES SOLD FOR ALL USES, INCLUDING FRESH MARKET, PROCESSING, SEED AND LIVESTOCK FEED.

PRICES RECEIVED BY FARMERS, US



CITRUS FRUIT: PRICES AND EQUIVALENT RETURNS,  
BY UTILIZATION, BY STATES, JUNE 1986

COMMODITY AND STATE	F.O.B. PACKED FRESH	EQUIVALENT RETURNS					
		PACKINGHOUSE-DOOR			ON-TREE		
		ALL	FRESH	PROCESS	ALL	FRESH	PROCESS
DOLLARS PER BOX 1/							
GRAPEFRUIT:	:	:	:	:	:	:	:
ARIZ	: 14.20	6.08	9.46	.86	4.60	7.98	-.62
CALIF	: 14.40	6.98	9.35	.85	5.63	8.01	-.54
DESERT VALLEYS	: 13.40	4.57	8.48	.92	3.07	6.98	-.58
OTHER AREAS	: 14.60	7.64	9.50	.80	6.32	8.18	-.52
CALIF-ARIZ	:	:	:	:	:	:	:
DESERT VALLEYS	:	:	:	:	3.52	7.33	-.59
U S	: 14.40	6.84	9.36	.85	5.58	8.01	-.55
LEMONS:	:	:	:	:	:	:	:
CALIF	: 19.90	9.11	12.50	1.72	6.39	9.78	-1.00
U S	: 19.90	9.11	12.50	1.72	6.39	9.78	-1.00
LIMES:	:	:	:	:	:	:	:
FLA	: 50.00	35.64	41.20	2.25	30.46	35.90	-2.15
ORANGES:	:	:	:	:	:	:	:
ARIZ	: 11.40	5.61	6.20	.64	3.81	4.40	-1.16
VALENCIAS	: 11.40	5.61	6.20	.64	3.81	4.40	-1.16
CALIF	: 12.50	6.23	7.30	.64	4.43	5.50	-1.16
VALENCIAS	: 12.50	6.23	7.30	.64	4.43	5.50	-1.16
FLA	: 13.20	6.45	8.40	6.40	4.45	6.40	4.40
VALENCIAS	: 13.20	6.45	8.40	6.40	4.45	6.40	4.40
CALIF-ARIZ	:	:	:	:	:	:	:
VALENCIAS	:	:	:	:	4.41	5.46	-1.16
U S	: 12.50	6.38	7.33	6.04	4.44	5.52	4.05

1/ APPROXIMATE NET CONTENTS PER BOX ARE AS FOLLOWS: GRAPEFRUIT - ARIZ AND CALIF DESERT VALLEY, 64 LBS; OTHER CALIF AREAS, 67 LBS; LEMONS - 76 LBS; LIMES - 80 LBS; ORANGES - ARIZ AND CALIF, 75 LBS; FLA, 90 LBS.

APRICOTS, PRUNES AND PLUMS FOR FRESH USE: SEASON AVERAGE PRICES AND EQUIVALENT RETURNS RECEIVED BY GROWERS, WASHINGTON 1983-85

COMMODITY	AS SOLD	EQUIVALENT PACKING-: EQUIVALENT							
		HOUSE DOOR RETURNS			ON-TREE RETURNS				
		1983	1984	1985	1983	1984	1985		
DOLLARS PER TON									
APRICOTS	: 982	920	1043	656	562	727	582	491	651
PRUNES & PLUMS	: 344	362	462	189	189	284	145	140	229

CATTLE: PRICES RECEIVED, BY STATES, MAY AND JUNE 1986

STATE	COWS 1/		STEERS & HEIFERS:		BEEF CATTLE 4/		CALVES	
	MAY 2/	JUN 3/	MAY 2/	JUN 3/	MAY 2/	JUN 3/	MAY 2/	JUN 3/
DOLLARS PER CWT								
ALA	33.70	38.00	46.20	47.50	41.00	43.60	49.70	50.70
ARIZ	33.70	34.10	53.70	50.60	51.40	48.80	52.50	51.70
ARK	34.60	34.60	49.50	48.10	41.70	41.10	55.00	53.10
CALIF	33.00	32.50	50.20	50.00	43.40	43.00	49.60	46.00
COLO	36.00	37.50	57.00	54.50	55.70	53.70	60.80	60.50
FLA	34.20	35.60	44.20	48.00	35.70	38.10	55.90	62.50
GA	32.90	35.10	46.10	46.20	38.80	40.40	49.80	52.90
IDAHO	35.10	35.50	53.00	50.90	49.70	47.80	55.70	53.00
ILL	36.00	37.60	54.10	52.60	53.40	52.00	76.90	75.80
IND	36.30	37.10	51.60	50.30	47.50	46.70	56.20	60.90
IOWA	35.50	35.80	54.80	53.70	51.90	51.00	58.80	54.10
KANS	36.10	37.30	54.80	51.90	53.70	51.00	60.50	55.20
KY	34.50	35.30	49.40	51.20	43.10	44.50	54.60	56.00
LA	35.20	35.50	46.40	46.00	38.60	38.80	56.40	55.50
MICH	35.50	36.50	49.40	49.50	43.50	43.90	55.00	57.00
MINN	36.60	36.70	51.90	51.00	48.60	48.00	55.40	56.80
MISS	34.00	36.00	48.00	51.40	38.80	41.20	53.30	53.30
MO	36.60	38.00	52.90	51.00	47.50	46.70	58.40	54.50
MONT	36.30	35.80	53.70	53.60	46.70	44.70	60.40	59.00
NEBR	36.20	37.00	55.90	53.40	55.10	52.70	63.20	63.80
N MEX	34.10	35.00	50.70	49.90	45.80	46.00	60.80	64.00
N Y	34.70	35.50	41.80	42.00	35.60	36.20	67.80	66.00
N DAK	36.60	35.40	52.90	53.30	49.70	48.80	61.10	59.80
OHIO	36.00	36.50	51.50	50.00	48.70	47.60	58.30	53.00
OKLA	35.00	35.00	53.20	52.00	48.30	46.90	55.90	60.00
OREG	34.00	34.90	47.10	46.20	39.90	40.60	51.90	51.00
PA	36.00	37.00	50.50	49.90	46.30	46.20	73.90	71.00
S DAK	37.20	36.50	53.70	51.80	50.10	48.40	63.30	62.00
TENN	32.90	34.30	48.10	48.20	39.70	40.60	51.40	53.50
TEX	35.70	36.50	54.70	53.50	51.30	50.40	56.20	59.00
UTAH	33.60	35.40	52.50	49.80	49.70	47.60	54.10	53.30
VA	33.20	33.50	49.50	48.10	43.10	42.10	53.10	54.00
WASH	34.10	34.00	53.90	52.50	51.10	49.90	50.60	49.00
WIS	36.50	36.90	48.40	46.50	43.60	42.70	89.20	87.80
WYO	38.70	39.00	53.40	50.70	49.40	47.50	62.90	60.90
U S	35.30	35.90	54.20	52.30	51.00	49.40	58.00	58.40

1/ BEEF COWS SOLD FOR SLAUGHTER AND HERD REPLACEMENT, AND CULL DAIRY COWS SOLD FOR SLAUGHTER. 2/ ENTIRE MONTH. 3/ MID-MONTH. 4/ "COWS" AND "STEERS AND HEIFERS" COMBINED.



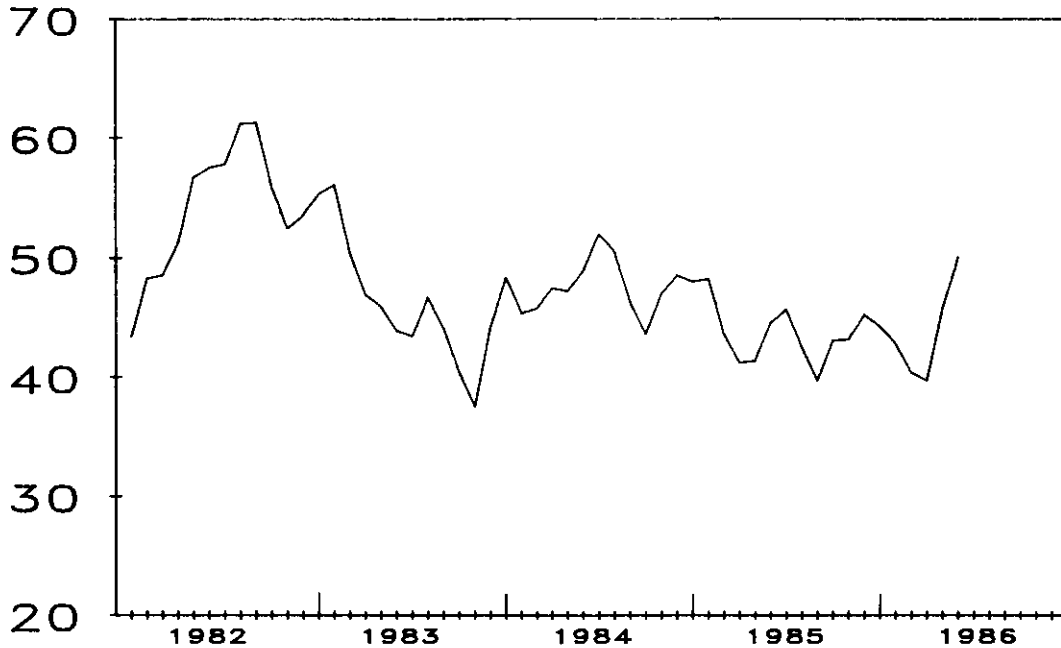
HOGS: PRICES RECEIVED, BY STATES, MAY AND JUNE 1986

STATE	SOWS		BARROWS AND GILTS		ALL HOGS	
	MAY 1/	JUN 2/	MAY 1/	JUN 2/	MAY 1/	JUN 2/
	DOLLARS PER CWT					
ALA	36.80	38.70	46.30	50.80	45.50	49.70
GA	36.50	39.60	46.90	50.60	46.40	50.20
ILL	40.50	43.00	46.30	48.70	45.50	47.90
IND	38.30	40.90	46.10	52.00	45.50	51.20
IOWA	40.90	43.40	46.60	51.30	46.10	50.60
KANS	40.10	41.70	46.10	51.30	45.20	49.90
KY	39.10	41.60	46.60	50.90	46.20	50.40
MICH	36.60	39.00	45.30	51.00	44.40	49.80
MINN	39.00	42.20	47.30	51.30	46.90	50.80
MO	41.50	45.00	46.60	54.50	46.00	53.30
NEBR	40.60	41.80	47.00	50.80	46.40	50.00
N C	38.00	41.20	46.40	51.20	45.90	50.70
OHIO	38.40	40.00	45.80	50.00	45.40	49.50
PA	37.20	38.50	47.10	52.50	46.50	51.50
S C	37.20	39.30	46.50	51.40	45.40	50.10
S DAK	38.60	40.70	45.10	50.20	44.30	49.20
TENN	39.10	40.80	45.10	48.00	44.30	47.00
TEX	37.40	39.50	47.50	52.00	46.80	51.10
VA	37.40	40.40	45.70	49.90	45.00	49.00
WIS	39.60	42.70	47.60	51.50	46.60	50.40
U S	39.70	42.20	46.40	51.00	45.80	50.10

1/ ENTIRE MONTH. 2/ MID-MONTH.

Prices Received by Farmers for Hogs, US

DOLLARS PER CWT



SHEEP, WOOL, AND POULTRY: PRICES RECEIVED, BY STATES,  
MAY AND JUNE 1986

STATE	SHEEP		LAMBS		JUNE			
	MAY 1/	JUN 2/	MAY 1/	JUN 2/	WOOL 1/3/	TURKEYS 2/	BROILERS 1/4/	EGGS 2/5/
	DOLLARS PER CWT				DOLLARS PER POUND			DOL/DOZ
ALA							.331	.421
ARIZ	24.30	26.30	68.20	68.50	.65			
ARK						.48	.350	.390
CALIF	19.20	22.00	72.80	76.00	.73	.41	.360	.360
COLO	18.40	20.00	76.80	77.00	.56			
CONN								.730
DEL							.370	
FLA							.320	.360
GA							.320	.396
IDAHO	20.10	21.10	63.80	64.30	.62			
ILL								.470
IND								.480
IOWA	26.40	25.10	86.00	81.20	.41	.48		.318
KANS	24.10	24.00	75.80	73.00	.49			
LA							.355	
MAINE							.320	.630
MD							.370	
MICH								.340
MINN	23.60	20.60	79.10	77.50	.43	.47		.350
MISS							.344	.450
MO						.46		.308
MONT	20.40	22.30	58.40	60.00	.74			
NEBR	25.40	26.60	81.00	85.70	.69			
N MEX	30.20	27.40	74.00	74.70				
N Y								.460
N C						.47	.315	.380
OHIO	31.70	31.00	78.50	76.00	.43			.380
OKLA							.350	
OREG	17.00	17.30	63.50	69.90	.69			
PA							.340	.480
S C							.320	.445
S DAK	21.30	21.30	74.70	69.60	.75			
TENN							.305	.482
TEX	25.90	28.30	78.70	77.70	.85	.48	.360	.530
UTAH	16.50	15.00	69.50	73.00	.73			
VA						.51	.355	.400
WASH								.340
WIS						.39		.340
WYO	17.10	22.20	68.90	78.10	.74			
U S	24.10	24.80	76.30	75.40	.735	.461	.340	.419

1/ ENTIRE MONTH. 2/ MID-MONTH. 3/ INCENTIVE PAYMENT NOT INCLUDED.  
4/ LIVEWEIGHT EQUIVALENT PRICE EXCEPT FOR ARK, CALIF, LA, OKLA, PA, AND TEX.  
5/ MARKET (TABLE) EGGS. INCLUDES EGGS SOLD RETAIL BY THE PRODUCER.

MILK AND MILK COWS: PRICES RECEIVED, BY STATES, MAY AND JUNE 1986

STATE	MAY				JUNE				
	FLUID GRADE MILK 1/	MANUFACTURING GRADE MILK	ALL MILK 2/	ALL MILK 2/3/	ALL MILK 2/3/	ALL MILK 2/3/	ALL MILK 2/3/	COWS 4/	
	PRICE	FAT TEST	PRICE	FAT TEST	PRICE	FAT TEST	PRICE	FAT TEST	
	DOL/CWT	PCT	DOL/CWT	PCT	DOL/CWT	PCT	DOL/CWT	PCT	DOL/HEAD
ALA	14.20	3.54	10.50	3.65	14.20	3.54	14.20	3.53	
ARK	13.60	3.40	10.60	3.44	13.40	3.40	13.40	3.40	
CALIF	11.40	3.57	10.70	3.63	11.38	3.57	11.40	3.52	
COLO	13.10	3.61			13.10	3.61	13.00	3.50	
FLA	16.20	3.54			16.20	3.54	16.20	3.50	
GA	13.90	3.57			13.90	3.57	13.80	3.52	
IDAHO	11.90	3.52	10.89	3.54	11.50	3.53	11.10	3.44	
ILL	12.20	3.59	11.40	3.55	12.10	3.58	11.80	3.54	
IND	12.30	3.60	10.50	3.63	12.10	3.60	12.00	3.56	
IOWA	11.70	3.56	10.80	3.49	11.40	3.54	11.10	3.46	
KANS	12.50	3.46	10.70	3.50	12.20	3.47	12.10	3.43	
KY	12.40	3.55	10.40	3.49	12.10	3.54	12.00	3.51	
LA	13.60	3.42			13.60	3.42	13.60	3.45	
MD	12.20	3.54			12.20	3.54	12.10	3.51	
MICH	12.20	3.59	10.90	3.63	12.20	3.59	12.10	3.53	
MINN	11.60	3.61	11.10	3.60	11.44	3.61	11.40	3.55	
MISS	13.10	3.47	10.50	3.58	13.00	3.47	12.90	3.48	
MO	12.00	3.48	10.80	3.45	11.80	3.48	11.80	3.47	
NEBR	12.30	3.55	10.70	3.50	11.70	3.53	11.50	3.45	
N Y	11.60	3.61			11.60	3.61	11.50	3.57	
N C	13.50	3.59	11.20	3.63	13.40	3.59	13.30	3.52	
N DAK	11.30	3.53	10.30	3.49	10.80	3.51	10.60	3.43	
OHIO	12.20	3.61	11.70	3.82	12.10	3.63	12.00	3.57	
OKLA	12.60	3.49	10.30	3.41	12.40	3.48	12.40	3.47	
OREG	12.00	3.70	11.70	3.90	12.00	3.72	11.90	3.68	
PA	12.30	3.60	11.50	3.65	12.30	3.60	12.20	3.54	
TENN	13.00	3.59	10.80	3.46	12.80	3.58	12.60	3.54	
TEX	13.20	3.47			13.20	3.47	13.20	3.45	
UTAH	11.50	3.43	10.60	3.43	11.30	3.43	11.10	3.37	
VT	12.30	3.73			12.30	3.73	12.10	3.67	
VA	12.70	3.54	10.70	3.48	12.60	3.54	12.60	3.51	
WASH	11.80	3.65			11.80	3.65	11.70	3.61	
WIS	11.79	3.63	11.41	3.71	11.69	3.65	11.50	3.56	
U S	12.10	3.59	11.10	3.62	12.00	3.59	11.90	3.53	

1/ INCLUDING SURPLUS DIVERTED TO MANUFACTURING. 2/ BEFORE DEDUCTIONS FOR HAULING, CO-OP FEES, AND GOVERNMENT WITHHOLDING. INCLUDES BULK-TANK, QUANTITY, AND OTHER PREMIUMS. EXCLUDES HAULING SUBSIDIES. 3/ PRELIMINARY. 4/ ANIMALS SOLD FOR DAIRY HERD REPLACEMENT ONLY. PRICES PUBLISHED JAN, APR, JUL, AND OCT.

PARITY PRICE EQUIVALENT FOR MANUFACTURING MILK 1/: UNITED STATES, MAY AND JUNE 1986, WITH COMPARISONS

ITEM	JUN 1985	MAY 1986	JUN 1986
PARITY EQUIVALENT.....DOL PER CWT	21.53	21.28	21.28
AVERAGE PRICE F.O.B.....DOL PER CWT	11.30	11.10	2/10.90
AVERAGE FAT TEST OF MILK...PERCENT	3.52	3.62	2/3.54

1/ THE PARITY PRICE EQUIVALENT DURING 1986 IS 92.1 PERCENT OF THE PARITY PRICE OF ALL MILK SOLD TO PLANTS, WHICH COMPARES WITH 91.6 PERCENT IN 1985. FOR ADDITIONAL DETAILS, SEE JANUARY 1986 ISSUE OF AGRICULTURAL PRICES. 2/ PRELIMINARY.

INDEX OF PRICES RECEIVED BY FARMERS, BY MONTHS AND ANNUAL AVERAGE,  
UNITED STATES, 1982-85, REVISED

YEAR	JAN	FEB	MAR	APR	MAY	JUN	JUL	AUG	SEP	OCT	NOV	DEC	ANNUAL
ALL FARM PRODUCTS 1910-14=100													
1982	601	607	607	617	632	627	624	616	625	583	583	581	609
1983	584	603	610	621	624	609	600	623	621	622	624	641	615
1984	665	660	664	665	662	656	662	654	640	630	620	618	650
1985	619	614	612	600	595	588	574	554	549	560	578	583	586
1977=100													
1982	132	133	133	135	138	137	137	135	137	128	128	127	133
1983	128	132	134	136	137	133	131	136	136	136	137	140	135
1984	146	144	145	146	145	144	145	143	140	138	136	135	142
1985	135	134	134	131	130	129	126	121	120	123	127	128	128
ALL CROPS 1910-14=100													
1982	543	529	518	530	541	538	541	524	548	484	498	495	524
1983	489	507	522	546	557	543	537	578	583	594	595	592	554
1984	607	597	603	607	626	621	625	620	601	595	552	541	600
1985	547	534	549	546	545	534	523	492	484	479	495	509	520
1977=100													
1982	126	122	120	123	125	124	125	121	127	112	115	114	121
1983	113	117	121	126	129	126	124	134	135	137	138	137	128
1984	140	138	139	140	145	144	145	143	139	138	128	125	139
1985	126	123	127	126	126	123	121	114	112	111	114	118	120
FOOD GRAINS 1910-14=100													
1982	432	425	419	417	413	388	374	376	383	388	393	398	401
1983	404	405	412	423	421	396	380	410	414	411	405	398	407
1984	399	391	399	412	414	393	376	391	390	390	392	385	394
1985	385	383	385	390	376	354	337	334	345	354	368	370	365
1977=100													
1982	157	155	153	152	150	141	136	137	139	141	143	145	146
1983	147	147	150	154	153	144	138	149	151	150	147	145	148
1984	145	142	145	150	151	143	137	142	142	142	143	140	144
1985	140	139	140	142	137	129	123	122	126	129	134	135	133
FEED GRAINS 1910-14=100													
1982	383	370	372	383	393	385	368	344	325	303	322	341	357
1983	353	378	399	430	443	443	451	480	479	458	461	459	436
1984	459	452	464	479	485	483	471	446	417	389	377	379	442
1985	389	385	392	398	397	391	377	354	328	309	324	337	365
1977=100													
1982	128	124	124	128	131	129	123	115	109	101	108	114	120
1983	118	126	133	144	148	148	151	160	160	153	154	153	146
1984	153	151	155	160	162	161	157	149	139	130	126	127	148
1985	130	129	131	133	133	131	126	118	110	103	108	113	122

INDEX OF PRICES RECEIVED BY FARMERS, BY MONTHS AND ANNUAL AVERAGE,  
UNITED STATES, 1982-85, REVISED

YEAR	JAN	FEB	MAR	APR	MAY	JUN	JUL	AUG	SEP	OCT	NOV	DEC	ANNUAL
FEED GRAINS AND HAY 1910-14=100													
1982	399	390	391	404	417	403	385	363	347	327	346	363	378
1983	375	400	415	447	462	457	463	489	491	474	475	475	452
1984	475	471	482	496	503	496	482	458	433	409	397	401	459
1985	409	406	411	417	420	410	394	372	350	332	345	358	385
1977=100													
1982	126	124	124	128	132	128	122	115	110	104	110	115	120
1983	119	127	131	142	146	145	147	155	156	150	150	150	143
1984	150	149	153	157	159	157	153	145	137	130	126	127	145
1985	130	129	130	132	133	130	125	118	111	105	109	113	122
COTTON 1910-14=100													
1982	425	415	425	459	471	490	506	445	473	514	515	487	469
1983	481	487	525	510	537	528	567	545	530	533	566	559	531
1984	529	549	592	567	614	574	556	568	554	544	524	474	554
1985	441	418	474	481	485	509	511	473	465	479	473	450	472
1977=100													
1982	83	81	83	90	92	96	99	87	93	101	101	95	92
1983	94	95	103	100	105	103	111	107	104	104	111	109	104
1984	104	107	116	111	120	112	109	111	108	106	103	93	108
1985	86	82	93	94	95	100	100	93	91	94	93	88	92
TOBACCO 1910-14=100													
1982	1474	1469	1469	1474	1469	1469	1406	1520	1553	1532	1521	1512	1489
1983	1519	1511	1506	1509	1506	1506	1479	1463	1566	1514	1490	1487	1505
1984	1486	1469	1463	1457	1457	1457	1434	1459	1521	1503	1550	1550	1484
1985	1574	1540	1549	1530	1529	1529	1393	1432	1523	1519	1418	1417	1496
1977=100													
1982	152	151	151	152	151	151	145	156	160	158	157	156	153
1983	156	156	155	155	155	155	152	151	161	156	153	153	155
1984	153	151	151	150	150	150	148	150	157	155	160	160	153
1985	162	158	159	157	157	157	143	147	157	156	146	146	154
OIL BEARING CROPS 1910-14=100													
1982	605	598	594	609	617	604	593	560	524	508	538	551	575
1983	552	560	573	595	593	580	611	751	809	787	775	773	663
1984	787	741	774	787	811	800	712	652	629	612	601	586	708
1985	594	582	591	591	576	569	552	508	494	486	495	500	545
1977=100													
1982	93	92	91	93	95	93	91	86	80	78	83	85	88
1983	85	86	88	91	91	89	94	115	124	121	119	119	102
1984	121	114	119	121	124	123	109	100	97	94	92	90	109
1985	91	89	91	91	88	87	85	78	76	75	76	77	84

INDEX OF PRICES RECEIVED BY FARMERS, BY MONTHS AND ANNUAL AVERAGE,  
UNITED STATES, 1982-85, REVISED

YEAR	JAN	FEB	MAR	APR	MAY	JUN	JUL	AUG	SEP	OCT	NOV	DEC	ANNUAL
ALL FRUIT 1910-14=100													
1982	498	515	507	517	569	586	754	832	1175	661	604	548	647
1983	481	467	447	462	485	460	408	419	394	584	581	515	475
1984	557	525	495	529	644	717	884	920	1025	1062	837	758	746
1985	721	667	654	673	709	704	669	632	673	690	698	644	678
1977=100													
1982	135	139	137	140	154	158	204	225	317	179	163	148	175
1983	130	126	121	125	131	124	110	113	106	158	157	139	128
1984	150	142	134	143	174	194	239	249	277	287	226	205	202
1985	195	180	177	182	192	190	181	171	182	186	189	174	183
FRESH MARKET 1910-14=100													
1982	492	513	502	514	574	603	804	896	1305	692	623	556	673
1983	476	459	436	454	479	450	418	414	378	604	601	521	474
1984	574	534	500	541	681	761	961	1001	1120	1160	892	796	793
1985	754	689	677	701	743	744	699	656	708	725	732	668	708
1977=100													
1982	136	142	139	142	159	167	222	248	361	191	172	154	186
1983	132	127	121	125	132	124	116	114	104	167	166	144	131
1984	159	148	138	150	188	210	266	277	310	321	247	220	220
1985	208	190	187	194	205	206	193	181	196	200	202	185	196
COMMERCIAL VEGETABLES 1910-14=100													
1982	892	775	650	635	608	643	623	516	496	517	617	572	629
1983	529	630	680	734	715	685	559	592	620	667	656	717	649
1984	804	853	781	685	610	581	611	705	643	688	533	577	673
1985	654	639	735	614	574	513	656	613	569	558	661	865	638
1977=100													
1982	179	156	131	128	122	129	125	104	100	104	124	115	126
1983	106	127	137	147	144	138	112	119	124	134	132	144	130
1984	161	171	157	138	122	117	123	142	129	138	107	116	135
1985	131	128	148	123	115	103	132	123	114	112	133	174	128
FRESH MARKET 1910-14=100													
1982	1234	1016	828	798	744	775	759	615	578	616	794	718	790
1983	641	817	904	999	967	916	696	741	791	871	855	962	847
1984	1093	1177	1059	898	765	712	763	928	828	909	636	713	873
1985	844	805	960	766	710	599	846	765	690	667	835	1184	806
1977=100													
1982	187	154	126	121	113	118	115	93	88	94	121	109	120
1983	97	124	137	152	147	139	106	113	120	132	130	146	129
1984	166	179	161	136	116	108	116	141	126	138	97	108	133
1985	128	122	146	116	108	91	129	116	105	101	127	180	122
POTATOES, SWEETPOTATOES & DRY EDIBLE BEANS 1910-14=100													
1982	453	455	471	507	553	605	548	494	371	334	334	331	455
1983	315	327	354	399	463	463	545	608	470	413	467	515	445
1984	577	567	584	599	626	634	793	723	440	405	432	458	570
1985	481	496	497	531	574	590	525	389	344	336	329	323	451
1977=100													
1982	125	125	130	140	152	167	151	136	102	92	92	91	125
1983	87	90	98	110	128	128	150	168	130	114	129	142	123
1984	159	156	161	165	173	175	219	199	121	112	119	126	157
1985	133	137	137	146	158	163	145	107	95	93	91	89	125

INDEX OF PRICES RECEIVED BY FARMERS, BY MONTHS AND ANNUAL AVERAGE,  
UNITED STATES, 1982-85, REVISED

YEAR	JAN	FEB	MAR	APR	MAY	JUN	JUL	AUG	SEP	OCT	NOV	DEC	ANNUAL
LIVESTOCK AND LIVESTOCK PRODUCTS 1910-14=100													
1982	661	687	700	707	727	720	710	712	706	685	671	670	696
1983	684	704	702	699	692	679	665	669	659	649	653	691	679
1984	725	725	727	724	699	691	700	688	679	666	690	699	701
1985	695	697	677	655	646	644	626	618	616	644	665	661	654
1977=100													
1982	137	143	145	147	151	150	147	148	147	142	139	139	145
1983	142	146	146	145	144	141	138	139	137	135	136	144	141
1984	151	151	151	150	145	144	145	143	141	138	143	145	146
1985	144	145	141	136	134	134	130	128	128	134	138	137	136
MEAT ANIMALS 1910-14=100													
1982	790	843	870	897	949	936	912	922	895	851	823	828	876
1983	857	893	895	891	875	848	817	813	781	758	742	807	831
1984	854	869	890	881	863	860	873	856	826	799	822	852	854
1985	857	871	837	815	806	801	769	748	730	777	805	802	802
1977=100													
1982	140	149	154	159	168	166	162	163	159	151	146	147	155
1983	152	158	159	158	155	150	145	144	138	134	132	143	147
1984	151	154	158	156	153	152	155	152	146	142	146	151	151
1985	152	154	148	144	143	142	136	133	129	138	143	142	142
DAIRY PRODUCTS 1910-14=100													
1982	856	844	838	826	807	807	807	813	832	844	850	850	831
1983	850	844	832	832	813	807	807	813	826	844	850	838	830
1984	832	820	813	801	795	789	795	807	832	856	875	856	823
1985	850	838	813	789	764	746	740	740	752	771	771	771	779
1977=100													
1982	144	142	141	139	136	136	136	137	140	142	143	143	140
1983	143	142	140	140	137	136	136	137	139	142	143	141	140
1984	140	138	137	135	134	133	134	136	140	144	147	144	139
1985	143	141	137	133	129	126	125	125	127	130	130	130	131
POULTRY AND EGGS 1910-14=100													
1982	261	267	268	256	247	247	252	239	252	251	246	234	252
1983	233	243	240	237	253	258	263	279	291	284	317	339	270
1984	374	362	337	348	304	286	291	274	277	265	290	282	308
1985	265	258	264	249	249	262	260	270	286	285	304	297	271
1977=100													
1982	114	117	118	112	108	108	111	105	111	110	108	103	110
1983	102	107	105	104	111	113	115	122	128	125	139	149	118
1984	164	159	148	153	133	125	128	120	121	116	127	124	135
1985	116	113	116	109	109	115	114	118	125	125	133	130	119
ALL FOOD COMMODITIES 1977=100													
1982	138	141	141	142	146	145	146	145	149	137	136	134	142
1983	135	139	139	140	140	136	133	136	134	136	136	142	137
1984	149	148	148	148	146	144	149	148	146	145	143	143	146
1985	143	142	140	136	135	133	130	127	126	131	136	137	135

SEASONALLY ADJUSTED INDEX OF PRICES RECEIVED BY FARMERS, BY MONTHS AND ANNUAL AVERAGE,  
UNITED STATES, 1982-85, REVISED

YEAR	JAN	FEB	MAR	APR	MAY	JUN	JUL	AUG	SEP	OCT	NOV	DEC	ANNUAL
FRESH MARKET FRUIT 1910-14=100													
1982	525	533	509	532	567	565	798	848	1221	661	642	581	665
1983	504	472	439	469	474	421	394	418	377	593	572	531	472
1984	577	558	508	571	687	706	945	1098	1157	1100	818	820	795
1985	810	723	714	734	752	746	664	601	644	737	720	808	721
1977=100													
1982	149	151	144	151	161	160	226	241	346	188	182	165	189
1983	143	134	125	133	135	119	112	119	107	168	162	151	134
1984	164	158	144	162	195	200	268	312	328	312	232	233	226
1985	230	205	203	208	213	212	188	171	183	209	204	229	205
FRESH MARKET VEGETABLES 1910-14=100													
1982	1209	982	850	750	700	690	749	672	665	674	701	719	780
1983	608	771	905	957	903	794	669	756	831	906	894	990	832
1984	1043	1182	990	813	728	671	752	981	895	951	699	755	872
1985	790	685	832	731	671	584	857	801	771	742	948	1288	808
1977=100													
1982	182	148	128	113	106	104	113	101	100	102	106	108	118
1983	92	116	137	144	136	120	101	114	125	137	135	149	126
1984	157	178	149	123	110	101	113	148	135	143	105	114	131
1985	119	103	125	110	101	88	129	121	116	112	143	194	122
POTATOES, SWEETPOTATOES & DRY EDIBLE BEANS 1910-14=100													
1982	492	466	457	470	464	533	432	459	438	424	398	391	452
1983	326	343	371	416	458	407	430	541	516	491	520	538	446
1984	595	594	610	623	618	559	624	625	501	511	511	504	573
1985	515	524	503	504	527	511	427	332	393	431	389	358	451
1977=100													
1982	135	128	125	129	127	146	118	126	120	116	109	107	124
1983	89	94	102	114	126	112	118	148	141	135	143	148	123
1984	163	163	167	171	169	153	171	171	137	140	140	138	157
1985	141	144	138	138	145	140	117	91	108	118	107	98	124
DAIRY PRODUCTS 1910-14=100													
1982	831	827	838	843	841	859	850	830	823	812	810	818	832
1983	825	827	832	849	847	859	832	830	826	827	818	814	832
1984	816	804	813	809	820	822	820	824	832	840	849	831	823
1985	834	822	813	797	788	769	763	755	752	755	748	748	779
1977=100													
1982	140	139	141	142	142	145	143	140	139	137	136	138	140
1983	139	139	140	143	143	145	140	140	139	139	138	137	140
1984	137	135	137	136	138	138	138	139	140	141	143	140	139
1985	140	138	137	134	133	129	128	127	127	127	126	126	131
POULTRY AND EGGS 1910-14=100													
1982	256	259	261	260	258	253	252	241	252	257	243	227	252
1983	226	236	234	243	268	268	264	283	285	286	308	327	269
1984	366	355	331	360	326	296	288	270	269	265	280	281	307
1985	265	256	261	259	263	266	260	275	284	291	293	292	272
1977=100													
1982	112	114	114	114	113	111	110	106	110	113	107	100	110
1983	99	103	103	107	118	118	116	124	125	125	135	143	118
1984	160	156	145	158	143	130	126	118	118	116	123	123	135
1985	116	112	114	114	115	117	114	121	125	128	128	128	119



INDEX  
PRICES RECEIVED

	PAGE		PAGE
<b>U.S. PRICES AND INDEXES</b>			
Narrative.....	2-3	Cows, Beef.....	16
Parity Prices.....	8-9	Cows, Milk.....	19
Price Indexes.....	4	Eggs.....	18
Prices Received		Flaxseed.....	12
Selected Commodities.....	10	Fruit, Citrus.....	15
Upland Cotton and Rice:		Hay.....	13
Prices and Marketings..	11	All Hogs.....	17
U.S. Summary.....	6-7	Lambs.....	18
		Milk.....	19
<b>MONTHLY STATE PRICES</b>			
Received		Oats.....	11
Apples.....	13	Peanuts.....	12
Barley.....	11	Potatoes.....	14
Barrows and Gilts.....	17	Sheep.....	18
Beans, Dry Edible.....	12	Sorghum, Grain.....	11
Beef Cattle.....	16	Soybeans.....	11
Broilers.....	18	Sows.....	17
Calves.....	16	Steers and Heifers.....	16
Corn.....	11	Sweetpotatoes.....	13
Cotton.....	13	Tobacco.....	12
Cottonseed.....	13	Turkeys.....	18
		Wheat.....	10
		Wool.....	18

SPECIAL FEATURES

Apricots and Prunes and Plums, Season Average Prices, Washington, 1983-85.....	15
Revised Prices Received Indexes, by Months and Years, U.S., 1982-85.....	20-23
Revised Seasonally Adjusted Prices Received Indexes, by Months and Years, U.S., 1982-85.....	24

CORRECTION TO PREVIOUS MONTH'S REPORT





