

Agricultural Prices



National
Agricultural
Statistics
Service

United States
Department of
Agriculture

Washington, D.C.

Released August 30, 1991, by the Agricultural Statistics Board.

Prices Received Index Down 4 Points

The August All Farm Products Index of Prices Received decreased 4 points (2.7 percent) from July to 146 percent of its January-December 1977 average. Decreases in the prices of cattle, hogs, and potatoes were partially offset by higher prices for oranges, wheat, and milk. August cattle prices decreased sharply from July. The August average price was the lowest monthly price since August of 1988. Hog prices also declined substantially from July. The all milk price increased from July but continued well below August a year ago. Orange prices were up again this month. Feed grains showed moderate increases from a month earlier while oilseed prices were down. Wheat prices increased from July but average rice prices were down.

The Index was 5 points (3.3 percent) below a year ago. Lower prices for cattle, milk, and hogs were major contributors to the decline from a year ago. A large increase in the orange price and smaller increases in lemon and apple prices were partially offsetting.

Summary Table

Index 1977=100	1990		1991	
	Jul	Aug	Jul	Aug
Prices Received	151	151	150	146
Prices Paid	184	<u>2</u> /184	189	<u>3</u> /189
Ratio <u>1</u> /	82	82	79	77

1/ Ratio of index of prices received by farmers to index of prices paid.

2/ Jul 1990 prices paid index. 3/ Jul 1991 prices paid index.

Index is located at the end of this report. For information, call (202) 447-5446. Office hours are 8:00 a.m. to 4:30 p.m. ET.

Prices Received

The All Farm Products Index of Prices Received by Farmers for August decreased 4 points (2.7 percent) from the previous month to 146 percent of its 1977 average. Compared with a year earlier, the index was down 5 points (3.3 percent).

Livestock and Products: The August index was 155, 4.3 percent below July and 12 percent below a year earlier.

Meat Animals: At 174, the August meat animal index declined 7.4 percent from last month and was 13 percent below a year ago. Beef cattle prices averaged \$66.40 per cwt in August, down \$5.10 from July. The August steer and heifer price declined \$5.50, averaging \$69.20 per cwt, while cow prices were down \$1.80 per cwt to \$48.70. Calf prices averaged \$97.80 per cwt in August, down \$5.20 from July. The August all hog price was down \$4.30, averaging \$49.90 per cwt. Sows, at \$38.70 per cwt, were down \$2.50, while barrows and gilts were down \$4.50 to \$50.90 per cwt.

Dairy Products: The August dairy products index of 125 was up 2.5 percent from last month but 14 percent below August 1990. The August all milk price surpassed \$12.00 per cwt for the first time since November 1990. In August, the all milk price rose to \$12.10, \$0.30 higher than the previous month.

All Crops: The August all crop index, was 136 percent of its 1977 base, down 0.7 percent from July, but 8.8 percent above a year earlier.

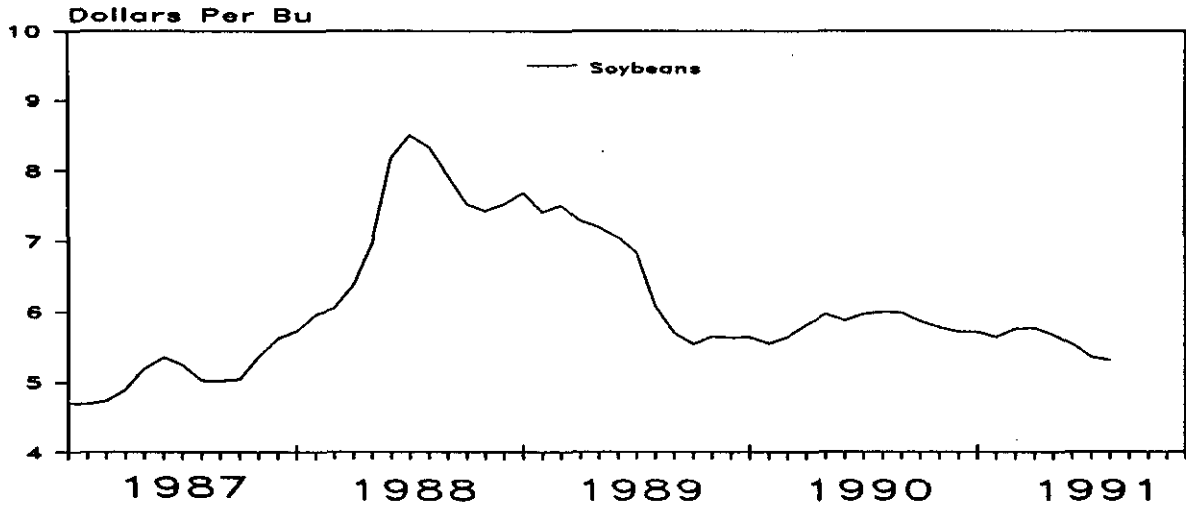
Potatoes and Dry Beans: The August index, at 142, declined 26 percent from a month earlier and was down 29 percent from a year ago. Potatoes averaged \$5.88 per cwt compared to \$8.05 per cwt in July. Dry beans averaged \$17.70 per cwt, declining \$3.70 from July.

Feed Grains and Hay: At 117 percent, the August feed grains and hay index was 3.5 percent above July but 7.1 percent below a year earlier. Prices of all feed grains were above last month. Corn, at \$2.34 per bushel, was up 6 cents from July and barley was up 27 cents to \$1.98 per bushel. The August oat price was up 7 cents from July to \$1.15 per bushel while sorghum increased 10 cents per cwt to \$4.06. The all hay price was \$71.50 per ton, up 90 cents per ton from July. Alfalfa decreased slightly in price while other hay increased.

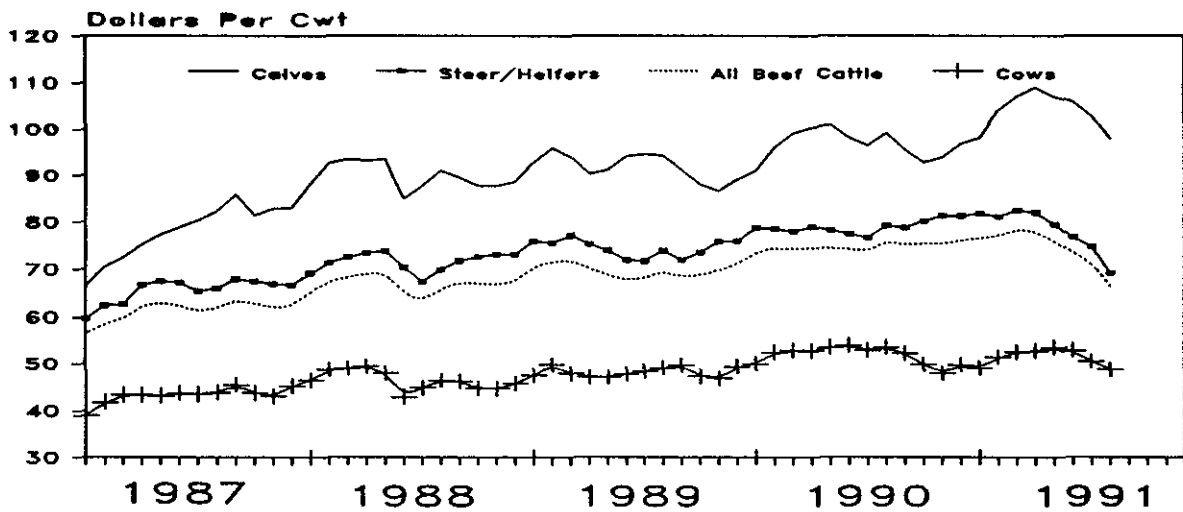
Food Grains: The food grain index for August moved up 6.6 percent from July to 113 percent of its 1977 base due to an increase in the price of wheat. Compared to a year earlier, the index was up 4.6 percent. The August wheat price was \$2.69 per bushel, up 20 cents from July. Rice prices fell 24 cents to \$7.04 per cwt in August.

Commercial Vegetables: The commercial vegetable index, at 125, was down 6.0 percent from last month and down 10 percent from last year. Lower prices for onions, tomatoes, and celery were offset slightly by higher prices for lettuce and sweet corn.

Prices Received by Farmers, U.S.



Prices Received by Farmers, U.S.



Index Numbers of Prices Received by Farmers, United States, August 1991,
with Comparisons

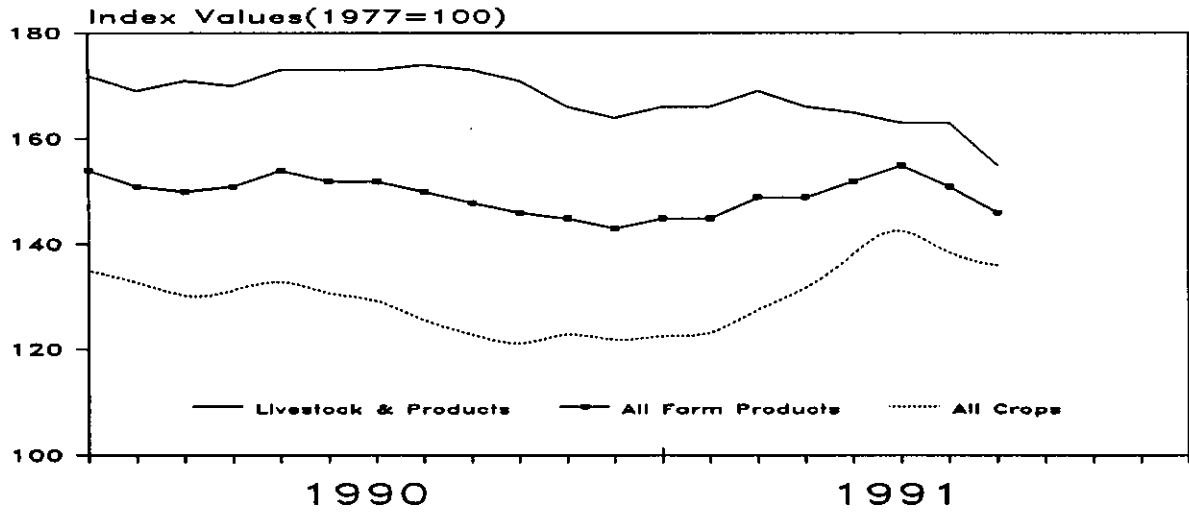
Index	1910-14=100				1977=100					
	Average:		1990 :		1991		1990 :		1991	
	Jan-Dec:		1977 :		Aug :	Jul :	Aug :	Aug :	Jul :	Aug
	1977 :		Aug :	Jul :	Aug :	Aug :	Jul :	Aug		
Unadjusted										
All Farm Products	457	690	*685	666	151	*150	146			
All Crops	433	541	*594	590	125	137	136			
Food Grains	275	297	*291	310	108	*106	113			
Feed Grains & Hay	316	397	*358	369	126	*113	117			
Feed Grains	299	366	*334	345	122	*112	115			
Cotton	511	546	*555	572	107	*109	112			
Tobacco	972	1416	*1484	1472	146	153	151			
Oil-Bearing Crops	652	611	*581	566	94	*89	87			
Fruit, All	370	674	1349	1353	182	364	366			
Fresh Market ^{1/}	362	687	1485	1494	190	410	413			
Commercial Vegetables	498	693	*664	621	139	*133	125			
Fresh Market	658	845	*790	724	128	*120	110			
Potatoes & Dry Beans	363	728	*691	515	201	*191	142			
Livestock & Products	481	847	*780	744	176	*162	155			
Meat Animals	564	1133	*1060	984	201	*188	174			
Dairy Products	594	868	*722	740	146	*122	125			
Poultry & Eggs	228	288	289	286	126	127	125			
Food Commodities					164	*165	158			
Seasonally Adjusted										
Fresh Market Fruit ^{1/}	352	666	*1425	1559	189	404	442			
Fresh Market Vegetables	663	939	*801	742	142	*121	112			
Potatoes & Dry Beans	365	645	*542	469	177	*149	129			
Dairy Products	594	895	*768	763	151	*129	128			
Poultry & Eggs	228	281	288	278	123	126	122			

^{1/} Fresh market for non-citrus. Fresh market and processing for citrus.
* Revised.

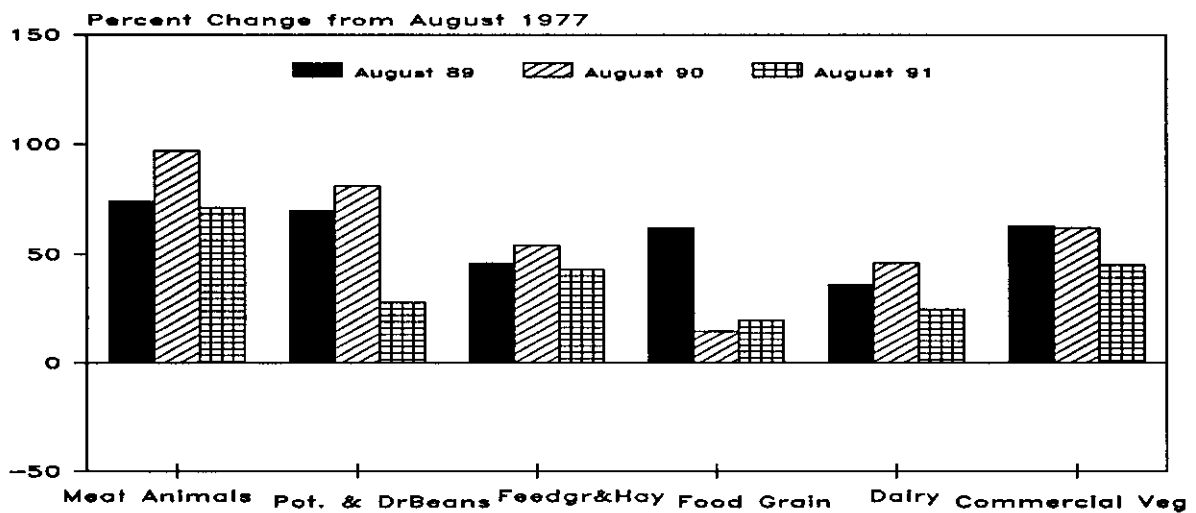
Selected Index Numbers for Prices Received and Paid by Farmers,
1977=100, by Months, United States, 1990 and 1991

Month	Index of Prices Received				Index of Prices Paid					
	All Farm Products		All Crops		Livestock and Products		Comm, Services: Int., Taxes, Wage Rates		Production Items	
	1990	1991	1990	1991	1990	1991	1990	1991	1990	1991
Jan	153	145	135	123	171	166	181	188	169	173
Feb	152	145	133	122	170	166	181		169	
Mar	149	149	129	128	168	169	181		169	
Apr	151	149	131	131	170	166	183	190	170	175
May	153	152	134	138	170	165	183		170	
Jun	152	155	130	146	173	163	183		170	
Jul	151	150	129	137	172	162	184	189	170	173
Aug	151	146	125	136	176	155	184		170	
Sep	148		123		172		184		170	
Oct	146		120		170		187		174	
Nov	147		124		169		187		174	
Dec	143		121		164		187		174	

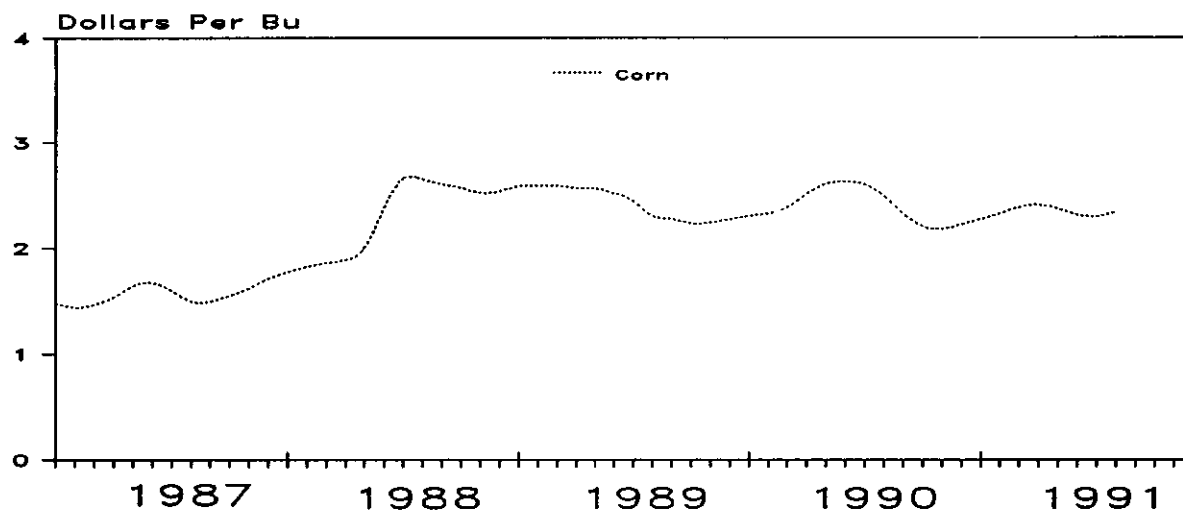
Index of Prices Received by Farmers, US



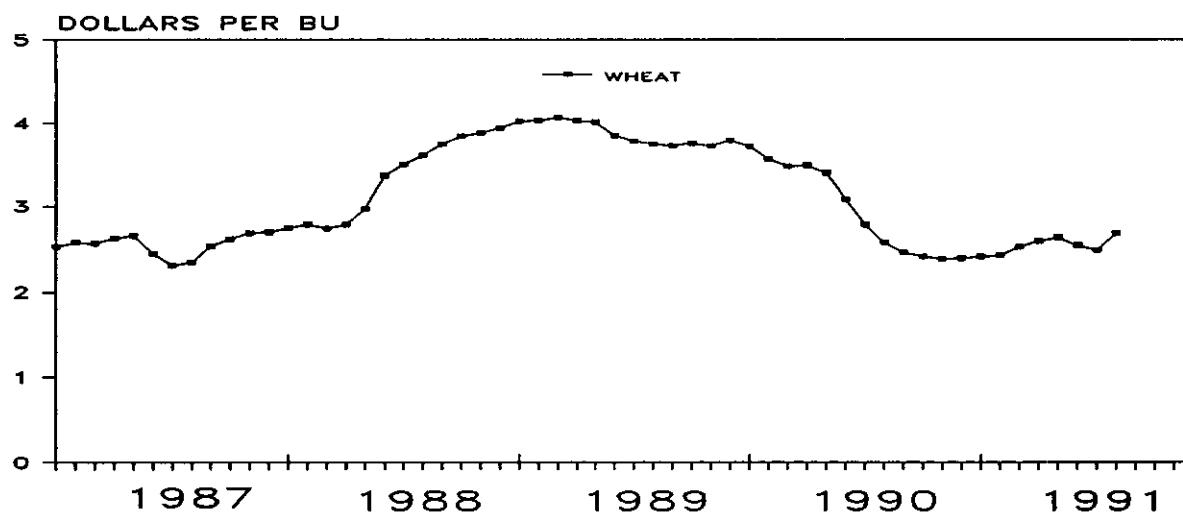
Prices Received Index Comparisons



Prices Received by Farmers, U.S.



PRICES RECEIVED BY FARMERS, US



Prices Received by Farmers, United States,
August 1991, with Comparisons

Commodity	Unit	Average Jan - Dec 1977	Entire Month		Preliminary
			Aug 1990	Jul 1991	Aug 1991
Dollars					
Field Crops					
Barley, All	Bu	1.91	2.13	1.71	1.98
Feed	Bu		1.77	1.60	1.73
Malting	Bu		2.47	2.03	2.53
Beans, Dry Edible	Cwt	17.60	26.70	21.40	17.70
Corn	Bu	2.03	2.51	2.28	2.34
Cotton, Amer Upland	Lb	.605	.647	.657	.678
Cottonseed	Ton	79.70	123.00		80.00
Flaxseed	Bu	5.78	5.85	3.86	3.70
Hay, All, Baled <u>1/</u>	Ton	57.10	83.40	70.60	71.50
Alfalfa	Ton		89.30	75.20	74.70
Other	Ton		65.30	55.80	60.00
Oats	Bu	1.29	1.06	1.08	1.15
Peanuts, In-Shell	Lb	.208	.265		
Potatoes	Cwt	3.78	8.21	8.05	5.88
Rice, Rough	Cwt	7.94	6.74	7.28	7.04
Sorghum Grain	Cwt	3.11	4.14	3.96	4.06
Soybeans	Bu	6.82	6.00	5.36	5.31
Sunflower <u>2/</u>	Cwt		13.70	10.90	10.10
Tobacco	Lb	1.141	1.605		1.655
Wheat, All	Bu	2.29	2.58	2.49	2.69
Winter	Bu	2.25	2.59	2.50	2.76
Durum	Bu		2.53	2.44	2.35
Other Spring	Bu	2.42	2.57	2.47	2.53
Hard Red	Bu		2.53	2.49	
Soft Red	Bu		2.66	2.46	
White	Bu		2.75	2.69	
Fruit					
Citrus (Equiv on-tree)					
Grapefruit	Box	1.66	2.77	4.82	4.17
Lemons	Box	2.18	10.48	21.23	20.51
Limes	Box	34.42	7.81	.860	5.14
Oranges	Box	2.78	4.71	19.48	20.45
Tangelos	Box	3.68			
Tangerines	Box	3.18			
Temples	Box	1.17			
Non-citrus					
Apples, Fresh <u>3/</u>	Lb	.120	.223	.248	.246
Peaches, Fresh <u>3/</u>	Lb	.147	.250	.164	.191
Pears, Fresh <u>3/</u>	Ton	145.00	273.00		399.00
Strawberries, Fresh	Lb	.433	.500	.460	.350

1/ Mid-month price. 2/ MN, KS, ND and SD average. 3/ Equivalent packing-house-door returns for CA, NY (apples only), or (except peaches) and WA. Prices as sold for other states. --continued.

Prices Received by Farmers, United States,
August 1991, with Comparisons (continued)

Commodity	Unit	Average Jan - Dec 1977	Entire Month		Preliminary
			Aug 1990	Jul 1991	Aug 1991
Dollars					
Vegetables, Fresh <u>1/</u>					
Asparagus	Cwt	52.00	112.00		
Broccoli	Cwt	19.90	26.10	15.70	19.30
Carrots	Cwt	11.40	9.04	9.60	9.55
Cauliflower	Cwt	23.40	28.30	15.50	16.90
Celery	Cwt	8.76	8.43	10.70	7.07
Corn, Sweet	Cwt	9.14	14.70	15.60	17.40
Honeydew Melons	Cwt	11.20	11.10	24.60	10.60
Lettuce	Cwt	7.60	14.20	6.65	8.59
Onions	Cwt	10.30	10.80	17.00	11.60
Tomatoes	Cwt	23.40	26.00	29.10	24.50
Livestock					
Calves	Cwt	36.80	98.90	103.00	97.80
Cattle, All Beef	Cwt	34.50	76.00	71.50	66.40
Cows	Cwt	24.40	53.50	50.50	48.70
Steers & Heifers	Cwt	37.30	79.10	74.70	69.20
Milk Cows <u>2/</u>	Head	504.00		1090.00	
Hogs, All	Cwt	40.10	55.90	54.20	49.90
Barrows & Gilts	Cwt		56.80	55.40	50.90
Sows	Cwt		48.00	41.20	38.70
Lambs	Cwt	51.40	54.00	57.70	55.90
Sheep	Cwt	13.50	24.30	20.30	21.40
Wool <u>3/</u>	Lb	.714	.710	.564	.530
Dairy and Poultry					
Milk, All <u>4/</u>	Cwt	9.71	14.20	11.80	<u>5/12.10</u>
Fluid Grade	Cwt	9.94	14.30	11.90	<u>5/12.20</u>
Mfg Grade	Cwt	8.71	12.90	10.80	<u>5/11.20</u>
Broilers, Live	Lb	.235	.326	.326	.323
Eggs, All <u>6/</u>	Doz	.541	.661	.650	.638
Market <u>6/ 7/</u>	Doz		.581	.562	.555
Turkeys, Live <u>6/</u>	Lb	.348	.402	.400	.407
Adjusted for Seasonal Variation					
Eggs, All	Doz	.545	.696	.707	.679
Milk, All <u>4/</u>	Cwt	9.71	14.64	12.55	12.47

- 1/ F.O.B. shipping point. Current month prices are for first half of month.
2/ Animals sold for dairy herd replacement only. Prices available for Jan, Apr, Jul, and Oct. 3/ Average local price, excluding incentive payments.
4/ Before deductions for hauling and government withholding, but includes bulk tank, quantity, and other premiums. Excludes hauling subsidies.
5/ Fat test percent: all milk 3.52, fluid milk 3.51, mfg grade 3.53.
6/ Mid-month price. 7/ Includes eggs sold retail by the producer.

Wheat: Prices Received, by States, July and August 1991

State	All Wheat		Winter Wheat		Durum Wheat		Oth Spring Wheat	
	Jul <u>1</u> /	Aug <u>2</u> /	Jul <u>1</u> /	Aug <u>2</u> /	Jul <u>1</u> /	Aug <u>2</u> /	Jul <u>1</u> /	Aug <u>2</u> /
	Dollars Per Bushel							
AZ	3.31		3.31					
AR	2.66	2.62	2.66	2.62				
CA	3.30	3.05	3.08	3.05	3.55			
CO	2.47	2.59	2.47	2.59			2.50	2.59
GA	2.44	2.41	2.44	2.41				
ID	2.80	2.92	2.84	2.99			2.75	2.79
IL	2.24	2.68	2.24	2.68				
IN	2.55	2.81	2.55	2.81				
KS	2.48	2.66	2.48	2.66				
MI	2.50	2.70	2.50	2.70				
MN	2.44	2.49	2.39	2.41	2.37	2.35	2.44	2.49
MO	2.05	2.25	2.05	2.25				
MT	2.65	2.65	2.62	2.69	2.38	2.36	2.71	2.63
NE	2.54	2.66	2.54	2.66				
ND	2.38	2.42	2.35	2.40	2.29	2.35	2.43	2.45
OH	2.67	2.89	2.67	2.89				
OK	2.49	2.66	2.49	2.66				
OR	3.05	3.06	3.05	3.06				
SD	2.43	2.50	2.40	2.50	2.44	2.35	2.51	2.51
TX	2.52	2.73	2.52	2.73				
WA	3.08	3.10	3.08	3.10				
US	2.49	2.69	2.50	2.76	2.44	2.35	2.47	2.53

1/ Entire month.
2/ Mid-month.

Prices Received for Selected Agricultural Commodities, by Months, United States, 1990 and 1991

Month	All Wheat		Corn		Soybeans		Beef Cattle <u>1</u> /		All Hogs	
	1990	1991 <u>2</u> /	1990	1991 <u>2</u> /	1990	1991 <u>2</u> /	1990	1991 <u>2</u> /	1990	1991 <u>2</u> /
	-----Dollars Per Bushel-----						-----Dollars Per Cwt-----			
Jan	3.71	2.42	2.31	2.27	5.65	5.72	73.60	76.60	47.30	50.00
Feb	3.56	2.43	2.32	2.32	5.56	5.65	74.60	77.00	48.20	52.10
Mar	3.48	2.53	2.37	2.39	5.65	5.76	74.30	78.50	51.30	51.40
Apr	3.49	2.60	2.51	2.42	5.82	5.77	74.70	78.00	53.80	50.80
May	3.40	2.64	2.62	2.38	5.97	5.67	74.60	75.90	61.20	54.10
Jun	3.08	2.55	2.63	2.31	5.88	5.55	74.20	73.60	60.30	54.70
Jul	2.79	2.49	2.62	2.28	5.97	5.36	73.60	71.50	60.80	54.20
Aug	2.58	2.69	2.51	2.34	6.00	5.31	76.00	66.40	55.90	49.90
Sep	2.46		2.32		5.99		75.00		54.30	
Oct	2.43		2.19		5.87		75.50		56.80	
Nov	2.39		2.16		5.77		75.30		50.20	
Dec	2.40		2.22		5.72		76.10		47.80	

1/ Cows, steers and heifers.
2/ Current month prices are mid-month; Prices for previous months are for the entire month.

Grains: Prices Received, by States, July and August 1991

State	Barley 1/		Corn		Oats		Soybeans		Sorghum Grain	
	Jul 2/	Aug 3/	Jul 2/	Aug 3/	Jul 2/	Aug 3/	Jul 2/	Aug 3/	Jul 2/	Aug 3/
Dollars Per Bushel						Dollars Per Cwt				
AL							5.66	5.51		
AR							5.54	5.55	4.07	4.15
CA	2.24	2.15			1.44	1.40				
CO	2.90	2.28	2.43	2.36					3.93	3.93
GA			2.61	2.53			5.66	5.40		
ID	2.45	2.06								
IL			2.37	2.42	1.07	1.00	5.49	5.45		
IN			2.34	2.40	1.31	1.35	5.40	5.37		
IA			2.23	2.27	1.11	1.21	5.30	5.27		
KS			2.45	2.39			5.44	5.18	3.71	3.78
KY			2.53	2.50			5.64	5.46		
LA							5.89	5.49		
MI			2.25	2.30	1.38	1.35	5.12	5.30		
MN	1.49	1.47	2.15	2.17	.99	1.09	5.23	5.21		
MS							5.73	5.47		
MO			2.57	2.50			5.42	5.40	3.95	3.95
MT	2.55	2.41			1.28	1.34				
NE			2.29	2.26	1.13	1.11	5.31	5.17	3.61	3.69
NM									4.30	4.40
NY					1.28	1.29				
NC			2.50	2.46			5.56	5.49		
ND	1.57	1.52			.95	.95				
OH			2.39	2.38	1.13	1.20	5.45	5.34		
OK									3.98	3.96
OR	2.24	2.02			1.44	1.30				
PA			2.75	2.75	1.30	1.30				
SC							5.68	5.51		
SD	1.49	1.46	2.13	2.12	1.04	1.08	5.17	5.08	3.41	3.40
TN							5.60	5.53		
TX			2.50	2.66	1.67		5.14	5.32	4.01	4.14
UT	2.14	2.10								
WA	2.05	1.86								
WI			2.28	2.26	1.04	1.06				
US	1.71	1.98	2.28	2.34	1.08	1.15	5.36	5.31	3.96	4.06

1/ The Three-State (MN, ND and SD) Feed Barley price for Aug 1991 is \$1.41. 2/ Entire month. 3/ Mid-month.

Malting and Feed Barley: Prices Received Selected States
July and August 1991

State	Malting Barley		Feed Barley	
	Jul	Aug	Jul	Aug
Dollars Per bushel				
ID	3.33	2.49	2.15	2.01
MN	1.53	1.64	1.47	1.42
MT	3.08	3.00	1.99	1.77
ND	1.79	1.70	1.49	1.40
SD	1.77	1.84	1.48	1.44

Field Crops: Prices Received, by States, July and August 1991

State	Dry Edible Beans :		Flaxseed :		Tobacco :	Peanuts 3/	
	Jul 1/	Aug 2/	Jul 1/	Aug 2/	Aug 1/	Jul 1/	Aug 2/
	Dollars Per Cwt		Dollars Per Bu		Dollars Per Pound		
AL							
CA	31.60	30.80					
CO	16.40	14.80					
FL					1.640		
GA					1.675		
ID	17.50	17.00					
IN							
KY							
MD							
MI	15.80	14.60					
MN	21.30	13.40	3.48	3.55			
MO							
NE	16.50	14.80					
NC					1.655		
ND	17.90	17.40	3.80	3.70			
OH							
OK							
SC					1.660		
SD			4.56	3.75			
TN							
TX							
VA					1.600		
WA	19.10	20.40					
WV							
US	21.40	17.70	3.86	3.70	1.655		

1/ Entire month. 2/ Mid-month. 3/ In-shell.

Upland Cotton and Rice: Prices Received and Marketings, United States, August 1991, with Comparisons

Item	Unit	Jun 1991 1/	Jul 1991 1/	Aug 1991 2/
Cotton, Upland				
Average Price	Dollars/Pound	.672	.657	.678
Marketings 3/	1,000 Bales	290	174	NA
Rice				
Average Price	Dollars/Cwt	7.40	7.28	7.04
Marketings 4/	1,000 Cwt	7854	6402	NA

1/ Entire month. 2/ Based on purchases for the first half of the month. 3/ Expanded data from sample of about 35 percent of buyers. 4/ Purchases by private firms and rice (rough equivalent) shipped by cooperatives.

Tobacco: Average Prices Received By Farmers, By Areas And Types

Area	Type	Tobacco	
		Aug 1990	Aug 1991
Dollars Per Pound			
Class 1, Flue-Cured			
Old and Middle Belt	11	1.580	1.625
Eastern NC Belt	12	1.620	1.655
NC Border and SC Belt	13	1.560	1.665
GA-FL Belt	14	1.680	1.670
Total Flue-Cured	11-14	1.605	1.655
US	11-37	1.605	1.655

Field Crops and Apples: Prices Received, by States,
July and August 1991

State	Cotton		August				Apples Fresh Use <u>1/</u> <u>4/</u>
	American Upland		Cotton- seed	Hay, Baled <u>3/</u>			
	Jul <u>1/</u>	Aug <u>2/</u>		All	Alfalfa	Other	
	Dollars Per Pound		Dollars Per Ton			Dol/Lb	
AL	.679	.734					
AZ	<u>5/</u>	<u>5/</u>		57.00	56.00	78.00	
AR	.641	.641		56.00	110.00	50.00	
CA	<u>5/</u>	<u>5/</u>		80.00	81.00	70.00	
CO				72.00	72.00	77.00	
CT							
GA	.723						
ID				73.00	74.00	60.00	
IL				77.00	79.00	60.00	
IN				81.00	87.00	69.00	
IA				57.00	59.00	42.00	
KS				62.00	65.00	52.00	
KY				69.00	97.00	62.00	
LA	.641	.641					
ME							
MD						.362	
MA							
MI				63.00	65.00	45.00	
MN				63.00	68.00	43.00	
MS	.641	.641					
MO				62.00	79.00	53.00	
MT				50.00	50.00	47.00	
NE				46.00	48.00	39.00	
NV				83.00	85.00	75.00	
NH							
NJ							
NM				105.00	108.00	81.00	
NY				74.00	80.00	70.00	
NC						.213	
ND				44.00	53.00	31.00	
OH				114.00	130.00	75.00	
OK				63.00	79.00	54.00	
OR				86.00	95.00	65.00	
PA				110.00	126.00	91.00	
SD				39.00	39.00	37.00	
TN	.665						
TX	.635	.676	80.00	68.00	113.00	54.00	
UT				60.00	63.00	49.00	
VT							
VA						.210	
WA				83.00	79.00	103.00	
WV						.236	
WI							
WY				63.00	64.00	61.00	
US	.657	.678	80.00	71.50	74.70	60.00	

1/ Entire month.

2/ Based on sales during the first half of the month.

3/ Mid-month.

4/ Equivalent P.H.D. returns for CA, NY, OR, and WA. Price at point of first sale for other states.

5/ Not published to avoid disclosure of individual operations.

Citrus Fruit: Prices and Equivalent Returns, by Utilization,
By States, August 1991

Commodity, State and Area	FOB Packed Fresh	Equivalent Returns					
		Packinghouse-door			On-tree		
		All	Fresh	Process	All	Fresh	Process
Dollars Per Box <u>1/</u>							
Grapefruit							
CA							
Other Areas	14.00	5.90	8.28	-0.25	4.17	6.55	-1.98
US	14.00	5.90	8.28	-0.25	4.17	6.55	-1.98
Lemons							
CA	40.90	23.54	33.48	2.02	20.51	30.45	-1.01
US	40.90	23.54	33.48	2.02	20.51	30.45	-1.01
Limes							
FL	24.00	10.07	15.20	2.70	5.14	9.90	-1.70
Oranges							
CA							
Valencia	35.60	22.33	30.07	1.78	20.45	28.19	-0.10
US	35.60	22.33	30.07	1.78	20.45	28.19	-0.10

1/ Approximate net contents per box are as follows: Grapefruit - CA other areas, 67 lbs; Lemons - 76 lbs; Limes - 88 lbs; Oranges - CA, 75 lbs.

Potatoes: Prices Received, by States,
July and August 1991

State	Jul	Aug	State	Jul	Aug
: Dollars Per Cwt					
AL	10.10	6.20	NY - All		9.00
AZ	6.20		- Long Island		9.00
CA - All	9.65	13.00	- Upstate		9.00
- Winter			NC	7.85	12.00
- Spring	10.10		ND		
- Summer	9.10	13.30	OH	6.95	6.65
- Fall	5.20	3.65	OR	6.40	5.40
CO	8.00	4.10	PA	13.40	8.40
FL			TX	9.60	8.30
ID - All 1/	5.05	4.30	VA	10.60	
- Fresh 2/	5.20	NA	WA	5.15	5.95
- Processing	4.80	NA	WI	6.35	5.00
ME					
MI	9.20		US - All 1/	8.05	5.88
MN	6.70	5.00	- Fresh 2/	9.14	NA
NJ	8.40	6.35	- Processing	5.48	NA

1/ Average price of potatoes sold for all uses, including table stock, processing, seed and livestock feed.

2/ Fresh market prices only, includes table stock prices.

Feed Price Ratios: United States, August 1991, With Comparisons

Feed Price Ratio	1990		1991	
	Aug	Jul	Jul	Aug
Broiler-Feed: Pounds of Broiler Grower equal in value to 1 pound of broiler, live weight 1/	3.0	3.2		3.2
Egg Feed: Pounds of Laying Feed equal in value to 1 dozen eggs 1/	6.4	6.9		6.8
Hog-Corn: Bushels of Corn equal in value to 100 pounds of hog, live weight	*22.3	*23.8		21.3
Milk-Feed: Pounds of 16% Mixed Dairy Feed equal in value to 1 pound of Whole Milk 1/	*1.57	*1.37		1.41
Turkey-Feed: Pounds of Turkey Grower equal in value to 1 pound of Turkey, live weight 1/	*3.4	3.5		3.6

1/ Commercial feed prices are surveyed in Jan, Apr, Jul, and Oct.

* Revised

Cattle: Prices Received, by States, July and August 1991

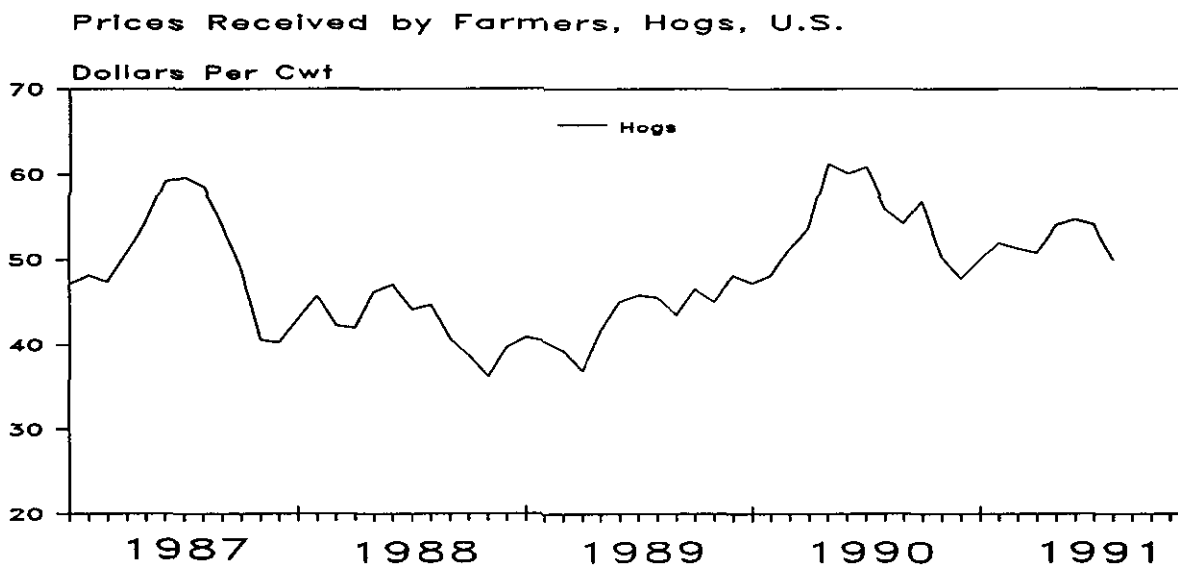
State	Cows 1/		Steers & Heifers: Beef Cattle 4/				Calves	
	Jul 2/	Aug 3/	Jul 2/	Aug 3/	Jul 2/	Aug 3/	Jul 2/	Aug 3/
	Dollars Per Cwt							
AL	51.20	50.00	85.40	80.00	76.40	72.20	95.40	88.70
AZ	48.60	48.80	75.80	71.70	73.60	69.90	95.20	89.50
AR	51.50	47.50	86.00	86.00	68.00	66.00	102.00	99.00
CA	47.30	46.10	73.40	69.70	61.80	59.30	90.70	86.20
CO	52.40	51.00	73.70	65.00	73.40	64.70	106.00	103.00
FL	49.40	49.00	82.60	81.50	60.80	60.40	107.00	101.00
GA	52.10	51.80	80.40	73.50	60.80	58.70	98.70	90.10
ID	49.30	47.00	70.30	66.80	64.80	61.50	100.00	95.80
IL	49.20	46.90	72.00	66.00	71.30	65.40	117.00	119.00
IN	49.60	46.20	69.70	64.30	63.30	58.50	91.00	87.00
IA	51.80	53.00	72.40	68.80	71.00	67.70	106.00	97.00
KS	50.30	49.40	75.10	68.10	74.30	67.50	101.00	99.10
KY	48.90	47.50	83.70	78.00	73.20	68.90	97.20	90.00
LA	51.50	50.00	83.50	83.00	62.30	61.60	104.00	99.00
MI	48.40	46.40	66.40	64.60	60.90	59.00	111.00	108.00
MN	49.10	48.00	69.20	66.30	65.60	63.00	118.00	117.00
MS	51.40	49.60	84.60	79.10	64.00	60.80	102.00	96.00
MO	52.00	47.80	86.80	80.50	79.20	74.00	100.00	94.00
MT	53.20	51.10	77.20	72.00	57.80	61.60	93.20	90.30
NE	52.30	52.10	73.30	66.10	72.00	65.30	104.00	100.00
NM	52.70	48.70	68.70	64.00	63.10	58.60	101.00	91.00
NY	47.50	46.50	64.30	63.00	50.30	49.10	124.00	121.00
ND	50.20	48.40	78.80	78.00	62.80	65.30	100.00	101.00
OH	47.80	47.00	72.20	71.00	68.70	67.60	96.30	95.00
OK	50.90	47.50	87.10	81.50	77.20	72.30	103.00	95.50
OR	49.10	46.70	80.80	76.00	74.70	70.40	92.70	89.50
PA	47.50	44.10	72.00	70.00	55.50	65.90	128.00	121.00
SD	53.30	50.90	75.80	73.10	71.00	68.40	103.00	101.00
TN	50.50	48.00	84.20	76.90	70.70	65.30	93.60	87.60
TX	51.90	49.50	75.10	68.10	73.70	67.00	104.00	97.80
UT	50.20	49.30	70.40	65.40	69.70	64.80	96.40	95.20
VA	48.20	46.20	78.10	76.10	68.70	67.10	92.60	90.60
WA	47.90	44.30	71.80	67.50	68.50	64.30	92.90	88.10
WI	50.00	47.00	67.00	63.40	57.20	53.90	144.00	148.00
WY	54.30	53.40	84.10	78.90	70.40	67.20	95.80	93.00
US	50.50	48.70	74.70	69.20	71.50	66.40	103.00	97.80

- 1/ Beef cows and cull dairy cows sold for slaughter.
2/ Entire month.
3/ Mid-month.
4/ "Cows" and "steers and heifers" combined.

Hogs: Prices Received, by States, July and August 1991

State	Sows		Barrows and Gilts		All Hogs	
	Jul 1/	Aug 2/	Jul 1/	Aug 2/	Jul 1/	Aug 2/
	Dollars Per Cwt					
AL	41.40	40.60	51.00	50.00	48.60	47.70
GA	39.60	37.90	54.20	50.80	53.40	50.20
IL	41.40	38.40	55.60	50.20	53.70	48.70
IN	40.10	37.80	54.40	50.80	52.20	48.90
IA	42.20	39.10	56.20	51.10	55.50	50.50
KS	40.70	39.10	53.80	49.40	51.80	47.90
KY	41.00	40.00	53.80	51.00	53.00	50.30
MI	39.90	38.50	54.80	52.00	51.10	48.60
MN	41.10	39.00	56.70	52.50	55.50	51.60
MO	40.50	37.80	54.80	50.20	54.10	49.60
NE	41.90	39.20	54.40	48.90	53.50	48.20
NC	38.30	37.10	53.10	48.20	52.80	47.90
OH	41.90	39.00	54.30	52.00	52.70	50.70
PA	41.30	41.20	54.50	51.70	52.70	50.20
SC	38.90	36.90	53.90	49.90	52.40	48.60
SD	42.00	39.10	56.00	50.70	53.80	49.00
TN	39.10	38.00	54.30	49.50	52.70	48.40
TX	39.50	35.00	49.60	45.60	48.40	44.30
VA	44.20	42.70	55.60	54.30	55.30	54.00
WI	39.00	36.40	54.70	49.20	52.50	47.40
US	41.20	38.70	55.40	50.90	54.20	49.90

1/ Entire month. 2/ Mid-month.



Sheep, Wool, and Poultry: Prices Received, by States,
July and August 1991

State	Sheep		Lambs		August			
	Jul 1/	Aug 2/	Jul 1/	Aug 2/	Wool 1/ 3/	Turkeys 2/	Broilers 1/ 4/	Eggs 2/ 5/
	Dollars Per Cwt				Dollars Per Pound			Do1/Doz
AL							.320	.503
AZ	19.10	19.10	53.30	50.60				
AR						.42	.340	.500
CA	20.40	21.40	58.10	58.60	.67	.44	.295	.633
CO	23.20	25.00	60.70	60.50	.45			
CT								1.020
DE							.345	
FL								.470
GA							.310	.533
ID	20.70	22.40	52.50	48.50	.45			
IL								
IN						.42		.550
IA	20.80	21.70	55.60	50.60	.13	.39		.462
KS	19.00	19.00	60.00	57.00	.27			
LA								
ME								.950
MD							.345	
MI								.500
MN	20.10	20.90	56.90	55.70	.18	.35		.460
MS							.310	.570
MO						.42		.447
MT	20.20	20.60	52.60	48.90	.55			
NE	21.00	22.60	53.00	51.10	.29			
NM	24.80	21.20	50.60	50.50				
NY								.530
NC						.41	.300	.502
OH	15.90	16.50	50.10	50.00	.08			.545
OK								
OR	15.30	15.30	48.90	48.90	.20			
PA						.41	.350	.480
SC								.598
SD	20.10	18.70	54.90	52.40	.51			
TN								
TX	27.10	24.60	59.30	56.80	1.04		.350	.600
UT	22.60	21.00	48.00	47.00	.51			
VA						.45	.335	
WA								.662
WI								
WY	21.20	20.80	53.90	50.90	.69			
US	20.30	21.40	57.70	55.90	.530	.407	.323	.555

1/ Entire month. 2/ Mid-month. 3/ Incentive payment not included.
4/ Liveweight equivalent price except for AR, PA, and TX. 5/ Market (table) eggs. Includes eggs sold retail by the producer. 6/ Not published to avoid disclosure of individual operations

Milk and Milk Cows: Prices Received, by States, July and August 1991

State	July						August			
	Fluid Grade Milk 1/		Manufacturing Grade Milk		All Milk 2/		All Milk 2/ 3/		Milk Cows 4/	
	Price	Fat Test	Price	Fat Test	Price	Fat Test	Price	Fat Test	Price	Fat Test
	Dol/Cwt	Pct	Dol/Cwt	Pct	Dol/Cwt	Pct	Dol/Cwt	Pct	Dol/Head	
AL	13.80	3.55	11.50	3.48	13.80	3.55	14.00	3.56		
AR	12.30	3.41	10.20	3.58	12.30	3.41	12.50	3.42		
CA	10.75	3.52	9.85	3.65	10.72	3.52	10.80	3.55		
CO	12.30	3.48			12.30	3.48	12.50	3.55		
FL	14.60	3.49			14.60	3.49	14.80	3.54		
GA	13.50	3.52			13.50	3.52	13.90	3.53		
ID	10.80	3.48	11.00	3.49	10.80	3.48	11.10	3.49		
IL	11.50	3.47	10.80	3.41	11.40	3.46	11.80	3.49		
IN	11.80	3.43	10.50	3.66	11.70	3.45	11.90	3.44		
IA	11.30	3.41	10.80	3.40	11.20	3.41	11.60	3.43		
KS	11.40	3.42	10.10	3.44	11.30	3.42	11.70	3.45		
KY	12.30	3.46	9.70	3.52	12.10	3.46	12.40	3.46		
LA	13.20	3.51			13.20	3.51	13.70	3.53		
MD	12.70	3.48			12.70	3.48	13.00	3.48		
MI	11.80	3.43	10.30	3.43	11.80	3.43	12.20	3.44		
MN	12.00	3.53	10.75	3.48	11.70	3.52	12.10	3.54		
MS	13.10	3.54	10.60	3.51	13.10	3.54	13.40	3.55		
MO	11.60	3.43	10.30	3.52	11.50	3.44	11.70	3.46		
NE	11.30	3.39	10.20	3.34	11.00	3.38	11.40	3.42		
NY	12.20	3.52			12.20	3.52	12.70	3.53		
NC	13.50	3.54	9.80	3.68	13.40	3.55	13.80	3.55		
ND	11.20	3.41	10.50	3.56	10.90	3.48	11.20	3.50		
OH	11.70	3.46	11.00	3.51	11.60	3.47	11.90	3.47		
OK	12.40	3.42	10.30	3.50	12.40	3.42	12.60	3.45		
OR	12.00	3.57	9.80	3.70	11.90	3.57	12.10	3.60		
PA	12.80	3.50	11.50	3.64	12.80	3.50	13.20	3.48		
TN	12.60	3.46	10.30	3.49	12.40	3.46	12.60	3.46		
TX	12.30	3.46			12.30	3.46	12.70	3.47		
UT	11.20	3.43	10.60	3.47	11.10	3.44	11.20	3.50		
VT	12.50	3.58			12.50	3.58	12.90	3.59		
VA	12.80	3.46	9.70	3.44	12.70	3.46	13.00	3.45		
WA	11.70	3.57			11.70	3.57	11.90	3.57		
WI	11.79	3.52	11.14	3.55	11.69	3.52	12.10	3.55		
US	11.90	3.50	10.80	3.50	11.80	3.50	12.10	3.52		

1/ Including surplus diverted to manufacturing. 2/ Before deductions for hauling and government withholding. Includes bulk-tank, quantity, and other premiums. Excludes hauling subsidies. 3/ Preliminary. 4/ Animals sold for dairy herd replacement only. Prices published Jan, Apr, Jul and Oct.

Parity Price Equivalent for Manufacturing Milk 1/: United States, July and August 1991, with Comparisons

Item	Aug 1990	Jul 1991	Aug 1991
Parity Equivalent.....Dol Per Cwt	24.21	24.39	24.39
Average Price F.O.B.....Dol Per Cwt	12.90	10.80	2/11.20
Average Fat Test of Milk...Percent	3.55	3.50	2/3.53

1/ The parity price equivalent during 1991 is 91.7 percent of the parity price of all milk sold to plants, compared with 92.4 percent in 1990. For additional details, see Jan 1991 issue of Agricultural Prices.

2/ Preliminary.

United States Parity Prices for Farm Products and Average Prices Received as Percent of Parity Prices Based on Data for August 1991, with Comparisons 1/

Commodity and Unit	Adjusted Base Prices	Parity Prices Based on Data for			Prices as Percent of Parity		
		Aug 1990	Jul 1991	Aug 1991	Aug 1990	Jul 1991	Aug 1991
Dollars							
Basic Commodities							
All Wheat, Bu	.621	7.86	8.07	8.07	33	31	33
Rice, Cwt	1.71	21.10	22.20	22.20	32	33	32
Corn, Bu	.435	5.55	5.65	5.65	45	40	41
Cotton, Lb							
American Upland	.116	1.43	1.51	1.51	45	44	45
Extra Long Staple	.156	2.02	2.03	2.03			
Peanuts, Lb	.0429	.531	.557	.557	50		
Tobacco, by Type, Lb							
Flue-Cured 11-14	.261	3.31	3.39	3.39	48		49
VA Fire-Cured, 21	.208	2.59	2.70	2.70			
KY-TN Fire-Cured, 22-23	.266	3.28	3.46	3.46			
Burley, 31	.264	3.38	3.43	3.43			
Maryland, 32	.213	2.69	2.77	2.77			
Dark Air-Cured, 35-36	.224	2.73	2.91	2.91			
Sun-Cured, 37	.185	2.35	2.40	2.40			
PA Seedleaf, 41	.140	1.64	1.82	1.82			
Cigar Filler & Binder, 42-44, 53-55	.179	2.18	2.33	2.33			
Puerto Rican Filler, 46	.173	2.20	2.25	2.25			
Cigar Binder, 51-52	.283	3.48	3.68	3.68			
Designated Nonbasic							
All Milk, Sold to Plants, Per Cwt	2.05	26.20	26.60	26.60	2/56	2/47	2/47
Honey, Extracted, Lb	3/.0888	1.17	1.15	1.15			
Wool and Mohair							
Wool, Lb	.257	3.20	3.34	3.34	4/22	4/17	4/16
Mohair, Lb	.709	8.92	9.21	9.21			
Other Nonbasic							
Barley, Bu	.384	4.92	4.99	4.99	43	34	40
Cottonseed, Ton	15.60	202.00	203.00	203.00	61		39
Dry Edible Beans, Cwt	3.39	43.00	44.00	44.00	62	49	40
Flaxseed, Bu	.913	11.70	11.90	11.90	50	32	31
Oats, Bu	.258	3.34	3.35	3.35	32	32	34
Potatoes, Cwt	.843	10.80	11.00	11.00	76	73	53
Rye, Bu	.333	4.34	4.33	4.33			
Sorghum Grain, Cwt	.734	9.31	9.53	9.53	44	42	43
Soybeans, Bu	.955	12.40	12.40	12.40	48	43	43
Sweetpotatoes, Cwt	2.05	26.90	26.60	26.60			
Apples, Fresh, Lb 5/	.0244	.314	.317	.317	71	78	78
Citrus (equiv on-tree), Box:							
Grapefruit	.579	7.32	7.52	7.52	38	64	55
Lemons	.707	8.94	9.18	9.18	117	231	223
Limes (FL)	1.41	17.20	18.30	18.30	45	5	28
Oranges	.854	10.80	11.10	11.10	44	175	184
Tangerines	1.34	17.00	17.40	17.40			
Temples (FL)	.686	8.68	8.91	8.91			
Beef Cattle, Cwt	9.46	119.00	123.00	123.00	64	58	54
Calves, Cwt	11.30	142.00	147.00	147.00	70	70	67
Hogs, Cwt	7.40	92.10	96.10	96.10	61	56	52
Lambs, Cwt	9.86	132.00	128.00	128.00	41	45	44
Sheep, Cwt	3.67	46.80	47.70	47.70	52	43	45
Eggs, Doz	.0963	1.21	1.25	1.25	2/58	2/57	2/54
Turkeys, Live, Lb	.0622	.803	.808	.808	50	50	50

--continued

Parity Prices Based on Data for August 1991, United States 1/ (continued)

Other Nonbasic Commodities	Adj Base Prices	Parity Prices	Other Nonbasic Commodities	Adj Base Prices	Parity Prices
	Dollars			Dollars	
Field Crops and Misc Commodities			Noncitrus Fruit		
Hops, Lb	.263	3.42	Pears, Ton		
Tobacco, Lb Type 61	2.38	30.90	Fresh <u>5/</u>	46.80	608.00
			Dried, CA <u>7/</u>	113.00	1470.00
Noncitrus Fruit			Plums, CA, Ton		
Apples, Ton <u>7/</u> Processing	17.10	222.00	Fresh, Equiv on-Tree	54.30	705.00
Apricots, Ton			Prunes, Dried, CA, Ton <u>7/</u>	114.00	1480.00
Fresh <u>8/</u>	148.00	1920.00	Prunes and Plums, Excl CA, Ton		
Dried, CA	308.00	4000.00	Fresh <u>10/</u> Processing <u>7/</u>	57.70	750.00
Avocados, Ton <u>8/</u>	134.00	1740.00	Excl Dried	16.30	212.00
Cherries					
Sweet, Ton	115.00	1490.00	Tree Nuts <u>11/</u>		
Tart, Lb	.0361	.469	Almonds, Lb	.159	2.07
Cranberry, Bbl <u>6/</u>	6.89	89.50	Filberts, Ton	116.00	1510.00
Dates, CA, Ton <u>8/</u>	127.00	1650.00	Walnuts, Ton	144.00	1870.00
Grapes, Ton					
Raisin Variety	134.00	1740.00	Vegetables, Cwt <u>12/</u>		
Other, Dried	41.20	535.00	Fresh		
Nectarines			Carrots <u>9/</u>	1.75	22.70
Fresh, CA, Ton <u>8/</u>	54.10	703.00	Cauliflower <u>9/</u>	4.18	54.30
Olives, CA			Celery <u>9/</u>	1.80	23.40
Canning, Ton <u>6/</u>	99.40	1290.00	Honeydew Melons	2.19	28.40
Peaches			Lettuce	1.91	24.80
Fresh, Lb <u>5/</u>	.0389	.505	Onions <u>9/</u>	1.71	22.20
Dried, CA, Ton	146.00	1900.00	Tomatoes	3.98	51.70
Processing <u>6/</u> Excl Dried					
Clingstone, CA, Ton	29.10	378.00			

1/ Parity prices are computed under the provisions of Title III, Subtitle a, Section 301 (a) of the Agricultural Adjustment Act of 1938 as amended by the Agricultural Acts of 1948, 1949, and 1956. See January and July Agricultural Prices for details on adjusted base price and parity price computations.

2/ Seasonally adjusted price as percentage of parity price. 3/ Wholesale extracted. Adjusted base price derived from state annual averages prices weighted by production. For 1982 through 1985 the national averages are the support prices. 4/ Average local market price, excluding incentive payments. 5/ Equivalent packinghouse-door returns for CA, NY (apples only), OR (except peaches), and WA. Price at point of first sale for other states.

6/ Equivalent returns for bulk fruit at first delivery point. 7/ Equivalent returns at processing plant door. 8/ Equivalent returns at packinghouse door. 9/ Includes some processing. 10/ Based on "as sold" prices for fresh fruit in all states. 11/ Prices in-shell basis except almonds which are shelled basis. 12/ F.O.B. shipping point prices.

Cranberries: Marketing Year Average Prices Received
by Growers, 1989-1990 1/

State	:	1989	:	1990
	:	Dollars Per Barrel		
MA	:	45.70		46.30
NJ	:	41.00		43.00
OR	:	42.80		42.70
WA	:	42.80		42.70
WI	:	42.50		43.50
US	:	44.00		44.50

1/ Equivalent returns at first delivery point, screened basis of utilized production.

Index

Prices Received

U.S. Prices and Indexes	Page		Page
Narrative.....	2-3	Cows, Beef.....	15
Price Indexes.....	4	Cows, Milk.....	18
Price Received		Eggs.....	17
Selected Commodities...	9	Flaxseed.....	11
Upland Cotton and Rice:		Fruit, Citrus.....	13
Prices and Marketings..	10	Hay.....	12
U.S. Summary.....	7-8	All Hogs.....	16
Feed Price Ratios.....	14	Lambs.....	17
Parity Prices.....	19-20	Milk.....	18
		Oats.....	10
		Peanuts.....	11
		Potatoes.....	14
		Sheep.....	17
		Sorghum, Grain.....	10
		Soybeans.....	10
		Sows.....	16
		Steers and Heifers.....	15
		Tobacco.....	11
		Turkeys.....	17
		Wheat.....	9
		Wool.....	17
 Monthly State Prices			
Apples.....	12		
Barley.....	10		
Barrows and Gilts.....	16		
Beans, Dry Edible.....	11		
Beef Cattle.....	15		
Broilers.....	17		
Calves.....	15		
Corn.....	10		
Cotton.....	12		
Cottonseed.....	12		

Special Features

Cranberries: Marketing Year Average Price..... 21

Corrections to Previous Month's Report

July Report:	From	To
Building Materials: page B-8	1991 Oct	1991 Jul
Grazing Fee Rates For Cattle		
Animal Unit, 1991		
New Mexico	3.02	<u>3/</u> 3.02

Subscription Information

To subscribe to NASS reports or to order single copies, call toll free, 1-800-999-6779 (weekdays 8:30 a.m.-5:00 p.m. ET). You may write: ERS/NASS, P.O. Box 1608, Rockville, MD. 20849-1608.

The next "Agricultural Prices" report will be released on September 30, 1991 at 3:00 p.m. ET.



