

Agricultural Prices



United States
Department of
Agriculture

Washington, D.C.

Released August 31, 1992, by the Agricultural Statistics Board.

August Prices Received Index Down 1 Point

The August All Farm Products Index of Prices Received moved down one point (0.7 percent) from July to 137 based on 1977=100. Price decreases for corn, wheat, oranges, and potatoes more than offset price increases for lettuce, cattle, strawberries, and onions.

The All Farm Products Index was 9 points (6.2 percent) below August 1991. Without the abnormal change in orange prices from last years record high for August to the current level, the All Farm Products Index would have been up 1 point. Otherwise milk, cattle, and lettuce price increases more than offset hog, cotton, and corn price declines compared with August a year ago.

Summary Table

Index 1977=100	1991		1992	
	Jul	Aug	Jul	Aug
Prices Received	148	146	138	137
Prices Paid	189	<u>2</u> /189	192	<u>3</u> /192
Ratio <u>1</u> /	78	77	72	71

1/ Ratio of index of prices received by farmers to index of prices paid.

2/ July 1991 prices paid index brought forward.

3/ July 1992 prices paid index brought forward.

For information, call (202) 720-5446. Office hours are 8:00 a.m. to 4:30 p.m. ET.

Prices Received by Farmers

The All Farm Products Index in August was 137 percent of its 1977 base, 0.7 percent below July and 6.2 percent below August 1991.

All Crops: The August all crops index was 114, 2.6 percent below July and 14 percent below August 1991.

Feed Grains and Hay: At 110 percent, the August feed grains and hay index was down 6.0 percent from last month and August a year ago. Corn was down 19 cents to \$2.13 per bushel, the lowest since June of 1988. Sorghum was off 3 cents from July to \$3.77 per cwt. All hay was down \$2.20 to \$69.60 per ton.

Commercial Vegetables: The August commercial vegetable index, at 156, was up 14 percent from July and up 38 percent from last year. Higher August prices for lettuce, onions, and celery were only partially offset by a lower price for tomatoes.

Food Grains: The food grains index moved down 7.8 percent from last month and was 119 percent of its 1977 base. Compared with a year earlier, the index was up 7.2 percent. The wheat price, the main contributor, was \$2.88 per bushel, down 26 cents from July but still 25 cents above a year earlier. Rice prices declined 13 cents from last month to \$6.81 per cwt, the fifth decline in the past six months.

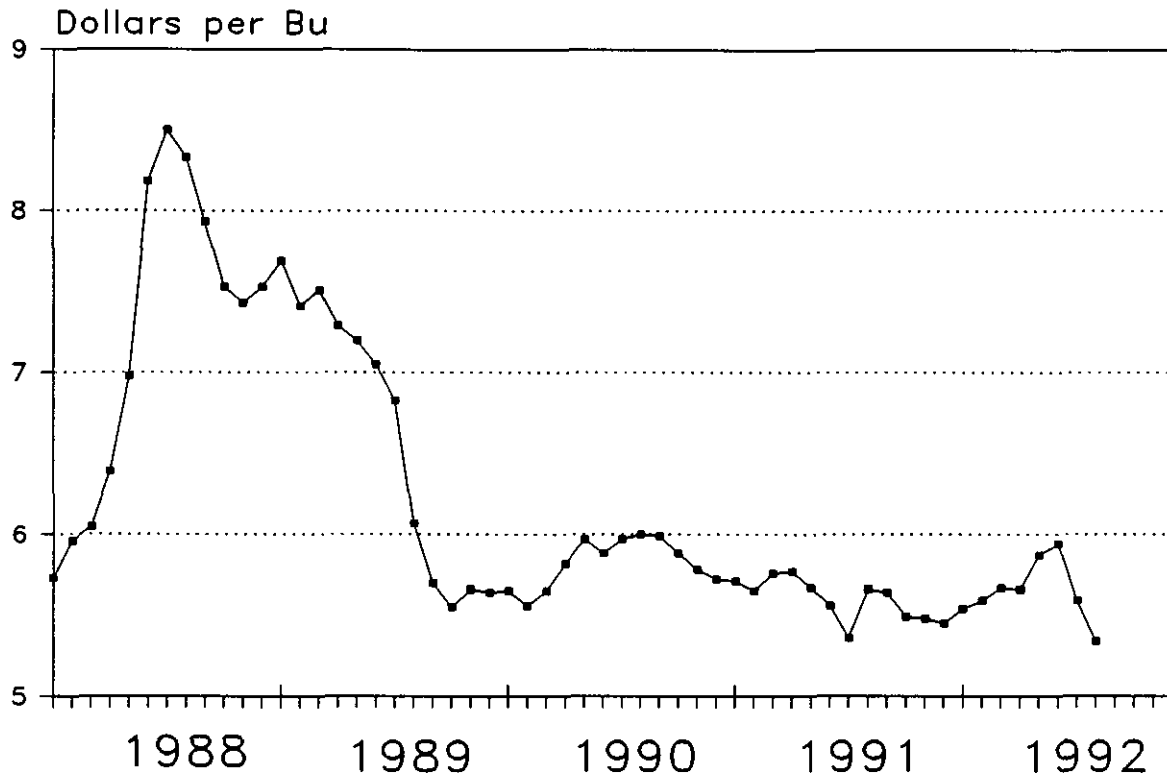
Potatoes and Dry Beans: The August index was 156, down 11 percent from July but up 18 percent from August 1991. Potato prices in August averaged \$6.60 per cwt, down 99 cents from July. Dry beans averaged \$17.50 per cwt in August, up 30 cents from July.

Oil-Bearing Crops: At 81, the oil-bearing index was down 2.4 percent from last month and 11 percent below a year ago. Soybeans, at \$5.34 per bushel, were down 25 cents from July and at the lowest level since October 1987. Flaxseed was up 1 cent from a month ago, to \$3.71 per bushel.

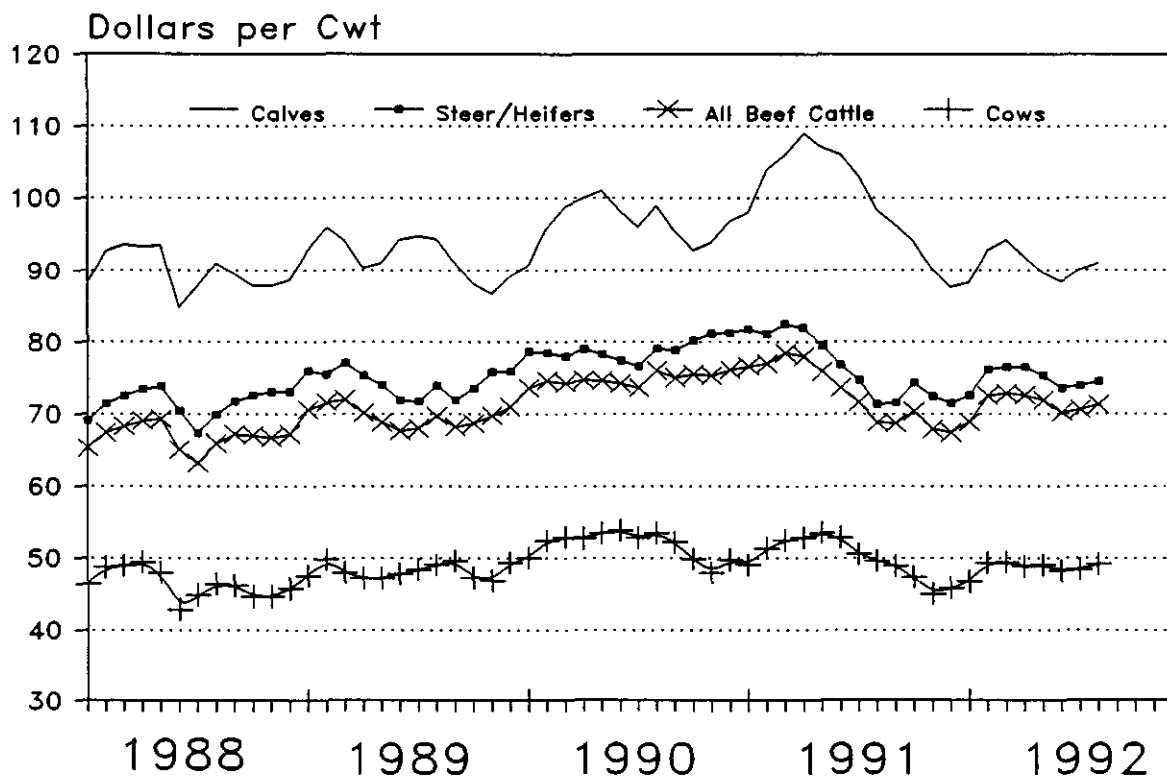
Livestock and Products: The August index was 159, 0.6 percent above both July 1992 and August 1991.

Meat Animals: The August index moved up 1 point (0.6 percent) from a month earlier to 178 of its 1977 base. Beef cattle prices averaged \$71.30 per cwt in August, up 70 cents from July. Cows were up 70 cents while steers and heifers were up 60 cents from July. Hog prices averaged \$44.30 in August, 10 cents below July.

Prices Received by Farmers, Soybeans, US



Prices Received by Farmers, Cattle, US



Index Numbers of Prices Received by Farmers, United States, August 1992,
with Comparisons

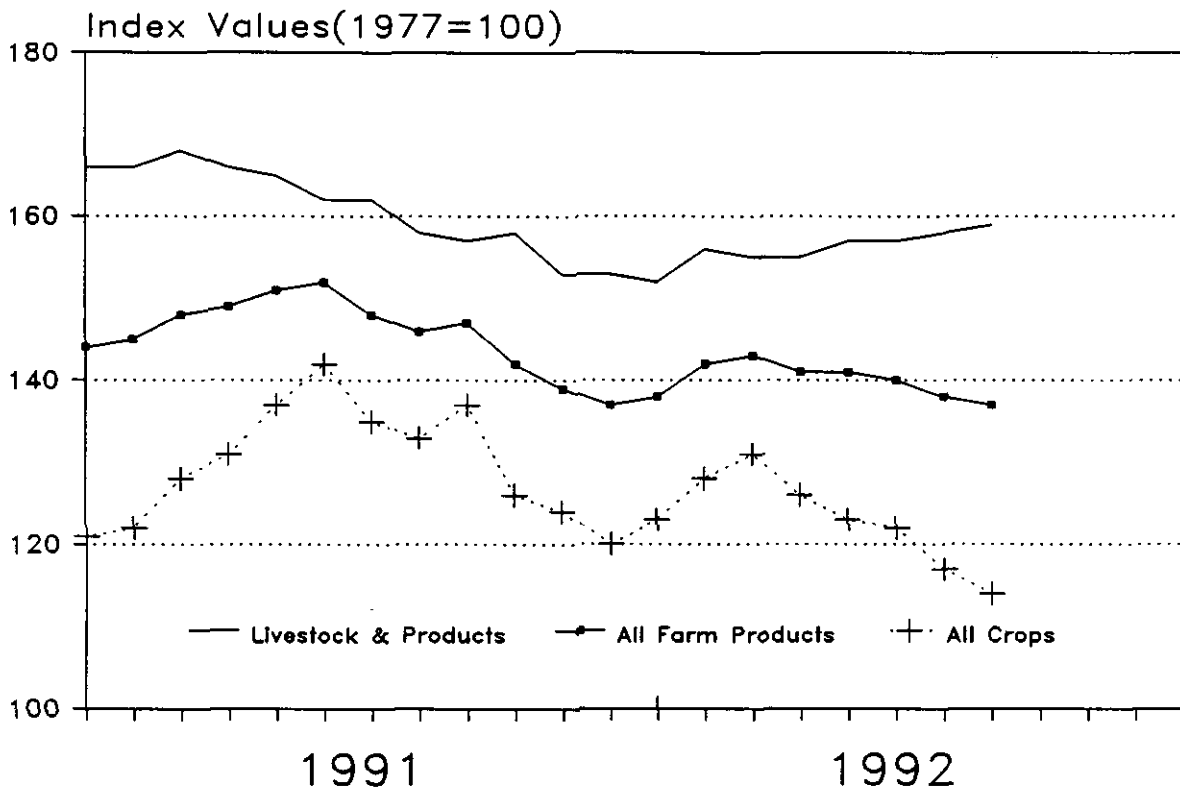
Index	1910-14=100				1977=100			
	Average:		1991 :		1992 :		1992	
	Jan-Dec:	1977 :	Aug :	Jul :	Aug :	Aug :	Jul :	Aug
Unadjusted								
All Farm Products	457	667	*630	628	146	*138	137	
All Crops	433	576	*506	495	133	*117	114	
Food Grains	275	304	*354	327	111	*129	119	
Feed Grains & Hay	316	368	*369	346	117	*117	110	
Feed Grains	299	344	*345	321	115	115	107	
Cotton	511	565	*467	464	111	*91	91	
Tobacco	972	1448	*1348	1392	149	*139	143	
Oil-Bearing Crops	652	592	*540	530	91	*83	81	
Fruit, All	370	1266	*566	561	342	*153	152	
Fresh Market 1/	362	1390	*542	534	384	*150	148	
Commercial Vegetables	498	562	*681	775	113	*137	156	
Fresh Market	658	710	*904	1077	108	*137	164	
Potatoes & Dry Beans	363	479	*637	566	132	*176	156	
Livestock & Products	481	762	*760	767	158	158	159	
Meat Animals	564	1015	*996	1004	180	*177	178	
Dairy Products	594	752	820	826	127	138	139	
Poultry & Eggs	228	284	267	272	125	117	119	
Food Commodities					159	*150	150	
Seasonally Adjusted								
Fresh Market Fruit 1/	352	1445	*519	540	410	*147	153	
Fresh Market Vegetables	663	725	*919	1116	109	*139	168	
Potatoes & Dry Beans	365	436	*523	523	120	*143	143	
Dairy Products	594	775	845	834	130	142	140	
Poultry & Eggs	228	276	266	263	121	117	115	

1/ Fresh market for non-citrus. Fresh market and processing for citrus.
* Revised.

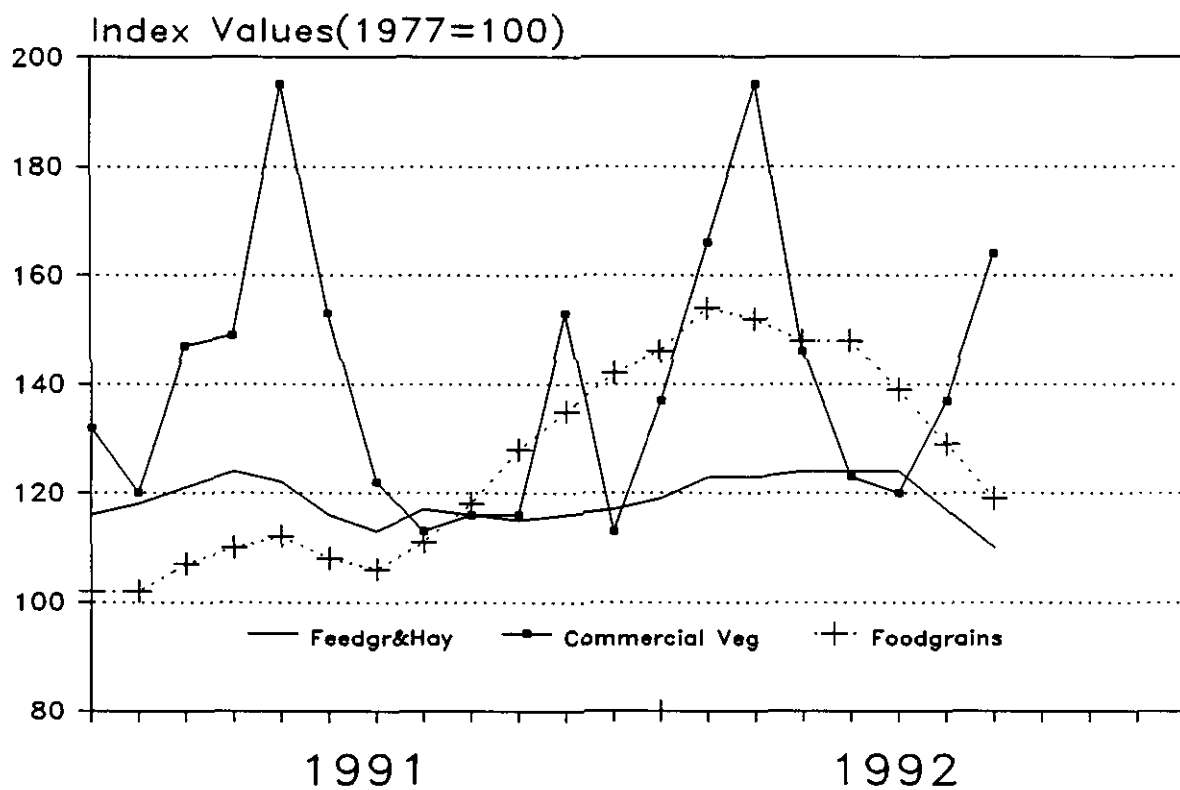
Selected Index Numbers for Prices Received and Paid by Farmers,
1977=100, by Months, United States, 1991 and 1992

Month	Index of Prices Received						Index of Prices Paid			
	All Farm		All		Livestock		Comm, Services:		Production	
	Products	Products	Crops	Crops	and	Products	Int., Taxes, Wage Rates	Wage Rates	Items	Items
	1991	1992	1991	1992	1991	1992	1991	1992	1991	1992
Jan	144	138	121	123	166	152	188	189	173	171
Feb	145	142	122	128	166	156	188		173	
Mar	148	143	128	131	168	155	188		173	
Apr	149	141	131	126	166	155	189	191	175	174
May	151	141	137	123	165	157	189		175	
Jun	152	140	142	122	162	157	189		175	
Jul	148	138	135	117	162	158	189	192	173	174
Aug	146	137	133	114	158	159	189		173	
Sep	147		137		157		189		173	
Oct	142		126		158		189		172	
Nov	139		124		153		189		172	
Dec	137		120		153		189		172	

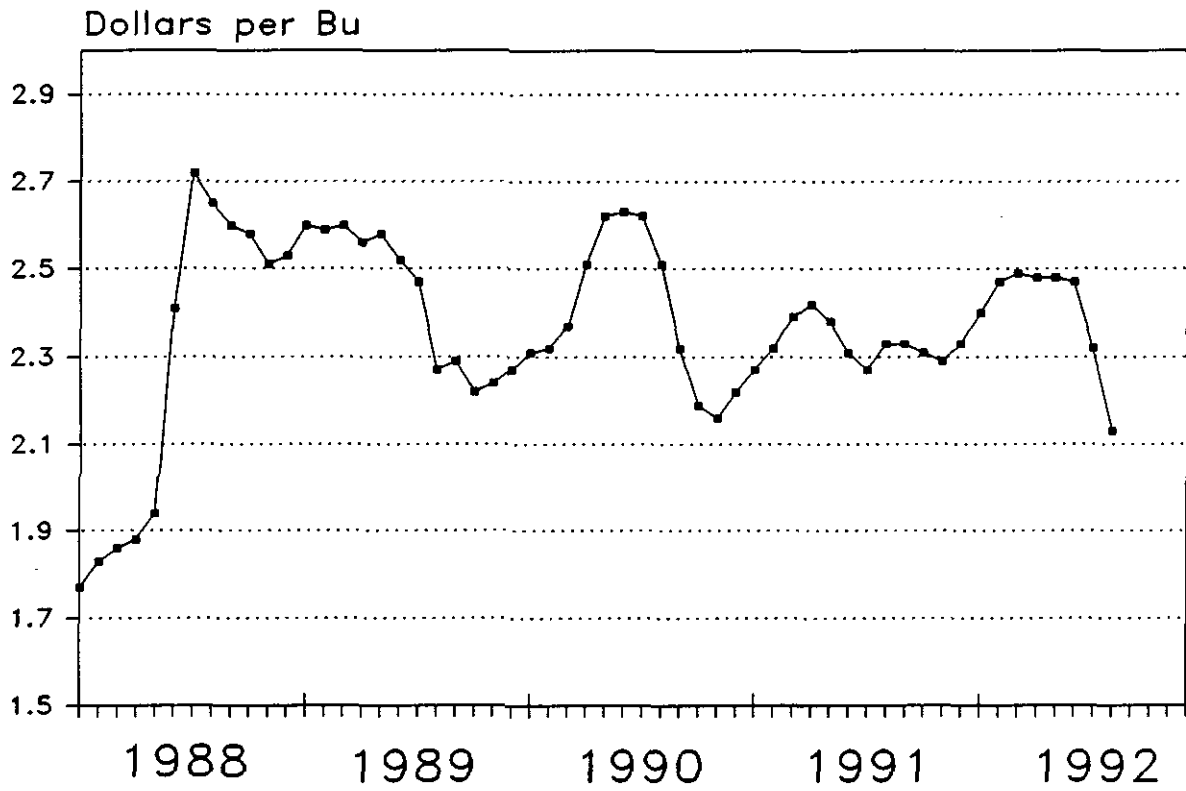
Prices Received by Farmers, US



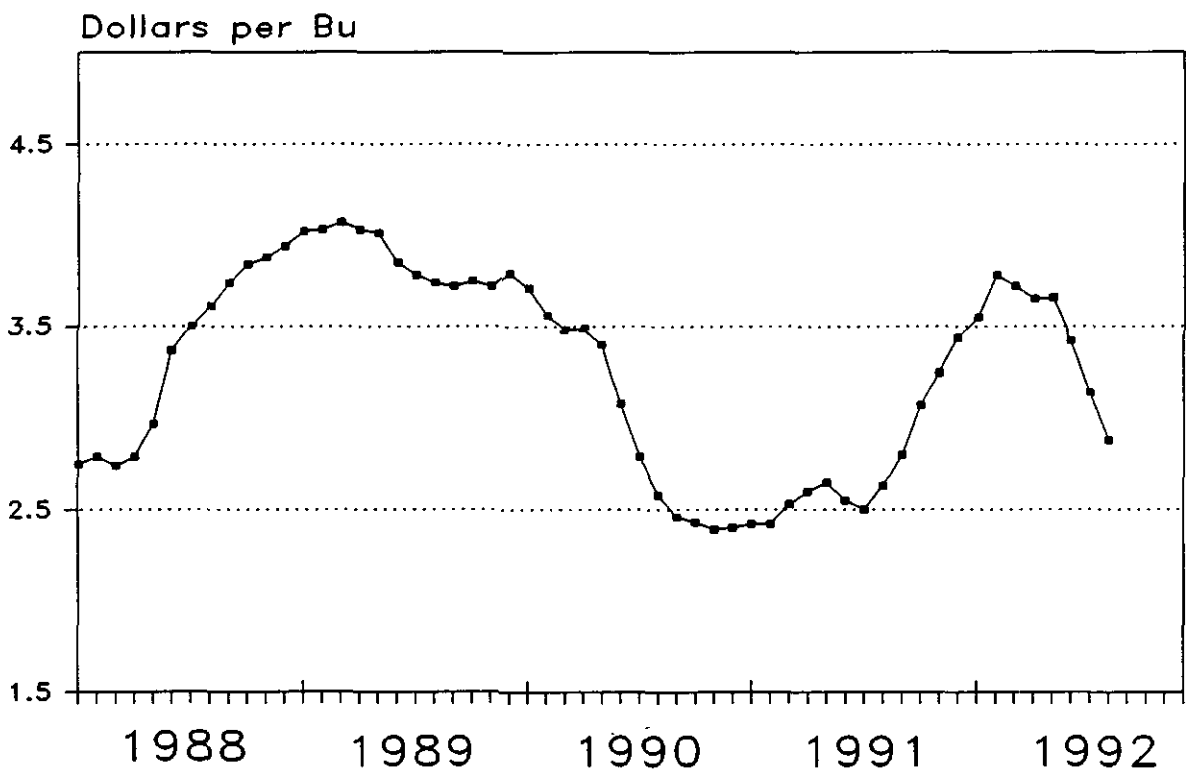
Prices Received Selected Indexes



Prices Received by Farmers, Corn, US



Prices Received by Farmers, Wheat, US



Prices Received by Farmers, United States,
August 1992, with Comparisons

Commodity	Unit	Average Jan - Dec 1977	Entire Month		Preliminary
			Aug 1991	Jul 1992	Aug 1992
Dollars					
Field Crops					
Barley, All	Bu	1.91	2.06	2.25	2.14
Feed	Bu		1.63	1.99	1.78
Malting	Bu		2.80	2.50	2.49
Beans, Dry Edible	Cwt	17.60	15.80	17.20	17.50
Corn	Bu	2.03	2.33	2.32	2.13
Cotton, Amer Upland	Lb	.605	.669	.553	.550
Cottonseed	Ton	79.70	80.00	4/	104.00
Flaxseed	Bu	5.78	3.69	3.70	3.71
Hay, All, Baled 1/	Ton	57.10	71.50	71.80	69.60
Alfalfa 1/	Ton		74.60	78.20	73.30
Other 1/	Ton		59.90	55.20	56.60
Oats	Bu	1.29	1.09	1.32	1.26
Peanuts, In-Shell	Lb	.208	.297		
Potatoes	Cwt	3.78	5.52	7.59	6.60
Rice, Rough	Cwt	7.94	7.16	6.94	6.81
Sorghum Grain	Cwt	3.11	4.01	3.80	3.77
Soybeans	Bu	6.82	5.66	5.59	5.34
Sunflower 2/	Cwt		11.30	9.54	9.06
Tobacco	Lb	1.141	1.665	1.550	1.600
Wheat, All	Bu	2.29	2.63	3.14	2.88
Winter	Bu	2.25	2.72	3.12	2.89
Durum	Bu		2.24	3.03	2.72
Other Spring	Bu	2.42	2.56	3.62	2.91
Hard Red	Bu		2.58	3.12	
Soft Red	Bu		2.74	3.14	
White	Bu		3.05	3.58	
Fruit					
Citrus (Equiv on-tree)					
Grapefruit	Box	1.66	3.43	2.87	3.11
Lemons	Box	2.18	20.51	9.93	10.63
Limes	Box	34.42	5.12	-.310	.730
Oranges	Box	2.78	18.79	2.32	1.56
Tangelos	Box	3.68			
Tangerines	Box	3.18			
Temples	Box	1.17			
Non-citrus					
Apples, Fresh 3/	Lb	.120	.234	.271	.271
Peaches, Fresh 3/	Lb	.147	.164	.193	.231
Pears, Fresh 3/	Ton	145.00	342.00	390.00	276.00
Strawberries, Fresh	Lb	.433	.350	.495	.771

1/ Mid-month price.

2/ MN, KS, ND and SD average.

3/ Equivalent packinghouse-door returns for CA, NY (apples only), OR (except peaches) and WA. Prices as sold for other states.

4/ Marketing year begins in August.

--continued

Prices Received by Farmers, United States,
August 1992, with Comparisons (continued)

Commodity	Unit	Average Jan - Dec 1977	Entire Month		Preliminary
			Aug 1991	Jul 1992	Aug 1992
Dollars					
Vegetables, Fresh <u>1/</u>					
Asparagus	Cwt	52.00		78.40	
Broccoli	Cwt	19.90	21.00	23.60	32.60
Carrots	Cwt	11.40	10.60	16.60	15.80
Cauliflower	Cwt	23.40	21.40	23.20	41.60
Celery	Cwt	8.76	7.71	11.40	16.00
Corn, Sweet	Cwt	9.14	17.20	15.70	16.50
Honeydew Melons	Cwt	11.20	10.70	12.30	13.80
Lettuce	Cwt	7.60	8.32	13.10	19.70
Onions	Cwt	10.30	12.90	12.20	15.70
Tomatoes	Cwt	23.40	21.90	27.80	24.00
Livestock					
Calves	Cwt	36.80	98.30	90.10	91.00
Cattle, All Beef	Cwt	34.50	68.80	70.60	71.30
Cows	Cwt	24.40	49.60	48.40	49.10
Steers & Heifers	Cwt	37.30	71.30	73.90	74.50
Milk Cows <u>2/</u>	Head	504.00		1150.00	
Hogs, All	Cwt	40.10	51.20	44.40	44.30
Barrows & Gilts	Cwt		52.20	45.50	45.30
Sows	Cwt		39.60	32.00	33.20
Lambs	Cwt	51.40	53.40	61.40	58.00
Sheep	Cwt	13.50	19.20	24.00	25.50
Wool <u>3/</u>	Lb	.714	.470	.741	.650
Dairy and Poultry					
Milk, All <u>4/</u>	Cwt	9.71	12.40	13.40	5/13.50
Fluid Grade	Cwt	9.94	12.40	13.50	5/13.60
Mfg Grade	Cwt	8.71	11.30	12.40	5/12.40
Broilers, Live	Lb	.235	.324	.338	.346
Eggs, All <u>6/</u>	Doz	.541	.630	.523	.534
Market <u>6/7/</u>	Doz		.536	.399	.411
Turkeys, Live <u>6/</u>	Lb	.348	.401	.382	.379
Adjusted for Seasonal Variation					
Eggs, All	Doz	.545	.670	.575	.562
Milk, All <u>4/</u>	Cwt	9.71	12.68	13.81	13.64

1/ F.O.B. shipping point.

2/ Animals sold for dairy herd replacement only. Prices available for Jan, Apr, Jul, and Oct.

3/ Average local price, excluding incentive payments.

4/ Before deductions for hauling and government withholding, but includes bulk tank, quantity, and other premiums. Excludes hauling subsidies.

5/ Fat test percent: all milk 3.55, fluid milk 3.55, mfg grade 3.56.

6/ Mid-month price.

7/ Includes eggs sold retail by the producer.

Wheat: Prices Received, by States, July and August 1992

State:	All Wheat		Winter Wheat		Durum Wheat		Oth Spring Wheat	
	Jul <u>1</u> /	Aug <u>2</u> /	Jul <u>1</u> /	Aug <u>2</u> /	Jul <u>1</u> /	Aug <u>2</u> /	Jul <u>1</u> /	Aug <u>2</u> /
	Dollars per Bushel							
AZ	3.80	3.90	3.30		3.90	3.90		
AR	3.33	3.00	3.33	3.00				
CA	3.49	3.33	3.48	3.30	3.57	3.50		
CO	3.06	2.72	3.06	2.72			2.95	2.65
GA	2.91	3.07	2.91	3.07				
ID	3.59	3.19	3.59	3.24			3.60	3.10
IL	3.22	2.89	3.22	2.89				
IN	3.20	2.90	3.20	2.90				
KS	3.07	2.72	3.07	2.72				
MI	3.04	2.80	3.04	2.80				
MN	3.72	2.90		2.61	3.24	2.86	3.75	2.90
MO	3.07	2.75	3.07	2.75				
MT	3.54	2.88	3.47	2.74	3.10	2.57	3.75	3.07
NE	3.11	2.78	3.11	2.78				
ND	3.27	2.79	2.83	2.55	2.96	2.70	3.56	2.85
OH	3.12	2.87	3.12	2.87				
OK	3.06	2.72	3.06	2.72				
OR	3.75	3.60	3.75	3.60				
SD	3.32	2.74	3.15	2.65	3.06	2.75	3.47	2.82
TX	3.09	2.74	3.09	2.74				
WA	3.93	3.48	3.91	3.47			4.06	3.53
US	3.14	2.88	3.12	2.89	3.03	2.72	3.62	2.91

1/ Entire month.
2/ Mid-month.

Prices Received for Selected Agricultural Commodities, by Months, United States, 1991 and 1992

Month:	All Wheat		Corn		Soybeans		Beef Cattle <u>1</u> /		All Hogs	
	1991	1992 <u>2</u> /	1991	1992 <u>2</u> /	1991	1992 <u>2</u> /	1991	1992 <u>2</u> /	1991	1992 <u>2</u> /
	-----Dollars per Bushel-----						-----Dollars per Cwt-----			
Jan	2.42	3.54	2.27	2.40	5.71	5.54	76.60	68.90	50.00	36.40
Feb	2.42	3.78	2.32	2.47	5.65	5.59	77.00	72.50	52.20	39.80
Mar	2.53	3.72	2.39	2.49	5.76	5.67	78.50	72.90	51.50	38.90
Apr	2.60	3.65	2.42	2.48	5.77	5.66	78.00	72.60	50.90	40.70
May	2.65	3.66	2.38	2.48	5.67	5.87	75.90	71.90	54.10	44.80
Jun	2.55	3.42	2.31	2.47	5.56	5.94	73.60	70.20	54.70	46.40
Jul	2.50	3.14	2.27	2.32	5.36	5.59	71.60	70.60	54.20	44.40
Aug	2.63	2.88	2.33	2.13	5.66	5.34	68.80	71.30	51.20	44.30
Sep	2.80		2.33		5.64		68.70		46.40	
Oct	3.07		2.31		5.49		70.40		43.60	
Nov	3.25		2.29		5.48		67.90		38.00	
Dec	3.44		2.33		5.45		67.40		38.60	

1/ Cows, steers and heifers.
2/ Current month prices are mid-month; prices for previous months are for the entire month.

Grains: Prices Received, by States, July and August 1992

State	Barley 1/		Corn		Oats		Soybeans		Sorghum Grain	
	Jul 2/	Aug 3/	Jul 2/	Aug 3/	Jul 2/	Aug 3/	Jul 2/	Aug 3/	Jul 2/	Aug 3/
	Dollars per Bushel						Dollars per Cwt			
AL							5.90	5.47		
AR							5.66	5.53		3.70
CA	2.45	2.40			1.48	1.50				
CO	2.52	2.74	2.51	2.37					4.06	3.80
GA			2.81	2.40			5.56	5.35		
ID	3.00	2.92								
IL			2.35	2.17	1.34	1.27	5.66	5.44		
IN			2.36	2.14	1.72	1.46	5.69	5.45		
IA			2.25	2.02	1.34	1.30	5.54	5.28		
KS			2.43	2.25			5.49	5.21	3.74	3.63
KY			2.47	2.31			5.76	5.44		
LA							5.67	5.43		
MI			2.31	2.15	1.78	1.60	5.54	5.30		
MN	2.00	1.73	2.26	2.04	1.26	1.24	5.47	5.25		
MS							5.90	5.61		
MO			2.49	2.25			5.65	5.45	4.22	3.65
MT	2.47	2.39			1.29	1.16				
NE			2.34	2.07	1.27	1.20	5.50	5.15	3.61	3.37
NM										
NY					1.80	1.58				
NC			2.78	2.55			5.89	5.48		
ND	1.89	1.63			1.12	1.00				
OH			2.42	2.19	1.61	1.41	5.68	5.46		
OK									4.14	4.01
OR	2.32	2.23			1.46	1.43				
PA			2.93	2.70	1.52	1.46				
SC							5.90	5.42		
SD	1.85	1.58	2.15	1.96	1.24	1.12	5.36	5.10	4.02	3.65
TN							5.70	5.54		
TX			2.56	2.41	1.70	1.41		5.13	3.80	3.81
UT	2.23	2.17								
WA	2.15	1.97								
WI			2.33	2.10	1.34	1.24				
US	2.25	2.14	2.32	2.13	1.32	1.26	5.59	5.34	3.80	3.77

1/ The Three-State (MN, ND and SD) Feed Barley price for August 1992 is \$1.56. Data for WY unpublished, but included in US total.
 2/ Entire month. 3/ Mid-month.

Malting and Feed Barley: Prices Received Selected States
 July and August 1992

State	Malting Barley		Feed Barley	
	Jul	Aug	Jul	Aug
	Dollars per Bushel			
ID	3.48	3.48	2.30	2.11
MN	2.07	1.78	1.86	1.62
MT	3.27	3.38	2.03	1.85
ND	1.99	1.70	1.76	1.55
SD	2.09	1.65	1.76	1.56

Field Crops: Prices Received, by States, July and August 1992

State	Dry Edible Beans		Flaxseed		Tobacco		Peanuts ^{4/}	
	Jul <u>1/</u>	Aug <u>2/</u>	Jul <u>1/</u>	Aug <u>2/</u>	Jul <u>1/</u>	Aug <u>3/</u>	Jul <u>1/</u>	Aug <u>2/</u>
	Dollars per Cwt		Dollars per Bu		Dollars per Pound			
AL								
CA	22.50	22.50						
CO	15.20	15.90						
FL					1.295	1.625		
GA					1.400	1.655		
ID	16.20	16.80						
IN								
KY								
MD								
MI	17.00	19.90						
MN	20.60	22.50	3.71	3.63				
MO								
NE	14.40	15.20						
NC					1.600	1.595		
ND	13.20	13.90	3.70	3.70				
OH								
OK								
SC					1.445	1.625		
SD			3.71	3.74				
TN								
TX								
VA					1.745	1.520		
WA	21.80	21.10						
WV								
US	17.20	17.50	3.70	3.71	1.550	1.600		

^{1/} Entire month.

^{2/} Mid-month.

^{3/} Based on sales through first half of month.

^{4/} Marketing year Aug-Jan. Mid-month August price not available.

Tobacco: Prices Received, by Area and Type, August 1992, with Comparisons

Area	Type	Tobacco		
		Aug 1991	Jul 1992	Aug 1992
Dollars per Pound				
Flue-cured				
Old and Middle Belts	11	1.615	1.735	1.550
Eastern NC Belt	12	1.665	1.595	1.605
NC Border and SC Belt	13	1.690	1.445	1.605
GA-FL Belt	14	1.735	1.385	1.650
Total Flue-cured	11-14	1.665	1.550	1.600
US	11-37	1.665	1.550	1.600

Field Crops and Apples: Prices Received, by States,
July and August 1992

State	Cotton		August				Apples Fresh Use 1/4/
	American Upland		Cotton- seed	Hay, Baled 3/			
	Jul 1/	Aug 2/		All	Alfalfa	Other	
	Dollars per Pound		Dollars per Ton			Dol/Lb	
AL	.615	.588					
AZ	.639	.5/		49.00	49.00	53.00	
AR	.540	.537		52.00	110.00	45.00	
CA	.659	.640		69.00	70.00	45.00	.232
CO				63.00	63.00	67.00	
CT							
GA	.605	.589					
ID				77.00	78.00	65.00	
IL				92.00	95.00	72.00	.128
IN				89.00	97.00	75.00	
IA				76.00	78.00	58.00	
KS				64.00	65.00	50.00	
KY				75.00	102.00	68.00	
LA	.545	.538					
ME							
MD							.219
MA							
MI				68.00	70.00	50.00	.192
MN				70.00	79.00	49.00	
MS	.540	.537					
MO				64.00	84.00	56.00	.220
MT				70.00	71.00	64.00	
NE				44.00	45.00	39.00	
NV				73.00	77.00	59.00	
NH							
NJ							.270
NM				93.00	95.00	70.00	
NY				83.00	85.00	70.00	
NC							
ND				49.00	58.00	37.00	
OH				95.00	110.00	60.00	.300
OK				60.00	81.00	49.00	
OR				80.00	89.00	59.00	.279
PA				120.00	133.00	103.00	.170
SD				58.00	60.00	38.00	
TN	.569	.548					
TX	.521	.545	104.00	59.00	90.00	50.00	
UT				62.00	68.00	40.00	
VT							
VA							
WA				83.00	76.00	110.00	.290
WV							
WI				76.00	84.00	45.00	.380
WY				68.00	70.00	65.00	
US	.553	.550	104.00	69.60	73.30	56.60	.271

1/ Entire month. 2/ Based on sales during the first half of the month.
3/ Mid-month. 4/ Equivalent packinghouse-door returns for CA, NY, OR, and WA. Price at point of first sale for other states. 5/ Unpublished to avoid disclosure of individual reports.

Upland Cotton and Rice: Prices Received and Marketings,
United States, August 1992, with Comparisons

Item	Unit	Jun 1992 1/	Jul 1992 1/	Aug 1992 2/
Cotton, Upland				
Average Price	Dollars/Pound	.569	.553	.550
Marketings 3/	1,000 Bales	361	184	NA
Rice				
Average Price	Dollars/Cwt	6.93	6.94	6.81
Marketings 4/	1,000 Cwt	9081	9133	NA

1/ Entire month. 2/ Based on purchases for the first half of the month.
3/ Expanded data from sample of about 35 percent of buyers.
4/ Purchases by private firms and rice (rough equivalent) shipped by cooperatives.

Citrus Fruit: Prices and Equivalent Returns, by Utilization,
by State and United States, August 1992

Commodity, State and Area	Equivalent Returns						
	FOB	Packinghouse-door			On-tree		
	Packed:	Fresh		Process		Process	
	Fresh :	All	Fresh	Process	All	Fresh	Process
	Dollars per Box <u>1/</u>						
Grapefruit							
CA							
Other Areas	13.80	4.84	8.08	1.17	3.11	6.35	-0.56
US	13.80	4.84	8.08	1.17	3.11	6.35	-0.56
Lemons							
CA	28.30	13.66	20.88	1.74	10.63	17.85	-1.29
US	28.30	13.66	20.88	1.74	10.63	17.85	-1.29
Limes							
FL	18.00	6.10	8.40	3.00	0.73	2.60	-1.80
Oranges							
CA							
Valencia	12.80	3.53	6.71	1.49	1.56	4.74	-0.48
US	12.80	3.53	6.71	1.49	1.56	4.74	-0.48

1/ Approximate net contents per box are as follows: Grapefruit - CA other areas, 67 lbs; Lemons - 76 lbs; Limes - 88 lbs; Oranges - CA, 75 lbs.

Potatoes: Prices Received, by States,
July and August 1992

State	Jul	Aug	State	Jul	Aug
	Dollars per Cwt			Dollars per Cwt	
AL	5.75	3.20	NY - All		8.90
AZ	5.70		- Long Island		7.50
CA - All	13.60	18.90	- Upstate		9.50
- Winter			NC	3.45	12.00
- Spring	12.70		ND		
- Summer	17.00	18.90	OH	7.00	7.10
- Fall			OR	5.10	6.25
CO	5.30	6.80	PA		7.75
FL			TX	14.60	14.70
ID - All <u>1/</u>	6.00	5.45	VA	10.00	7.65
- Fresh <u>2/</u>	6.30	NA	WA	3.90	5.80
- Processing	5.10	NA	WI	4.90	4.50
ME					
MI		5.80	US - All <u>1/</u>	7.59	6.60
MN	8.25	6.75	- Fresh <u>2/</u>	9.22	NA
NJ			- Processing	3.99	NA

1/ Average price of potatoes sold for all uses, including table stock, processing, seed, and livestock feed.

2/ Fresh market prices only, includes table stock prices.

Feed Price Ratios: With Comparisons, United States, August 1992

Feed Price Ratio	1991	1992	
	Aug	Jul	Aug
Broiler-Feed: Pounds of Broiler Grower equal in value to 1 pound of broiler, live weight <u>1/</u>	3.2	3.2	3.3
Egg Feed: Pounds of Laying Feed equal in value to 1 dozen eggs <u>1/</u>	6.7	5.2	5.3
Hog-Corn: Bushels of Corn equal in value to 100 pounds of hog, live weight	22.0	*19.1	20.8
Milk-Feed: Pounds of 16% Mixed Dairy Feed equal in value to 1 pound of Whole Milk <u>1/</u>	*1.44	1.51	1.52
Turkey-Feed: Pounds of Turkey Grower equal in value to 1 pound of Turkey, live weight <u>1/</u>	3.5	3.1	3.1

1/ Commercial feed prices are surveyed in January, April, July, and October.

* Revised

Cattle: Prices Received, by States, July and August 1992

State	Cows <u>1/</u>		Steers & Heifers:		Beef Cattle <u>4/</u>		Calves	
	Jul <u>2/</u>	Aug <u>3/</u>	Jul <u>2/</u>	Aug <u>3/</u>	Jul <u>2/</u>	Aug <u>3/</u>	Jul <u>2/</u>	Aug <u>3/</u>
	Dollars per Cwt							
AL	47.10	47.20	74.10	74.90	65.60	66.30	82.10	83.40
AZ	44.40	44.60	70.90	72.30	69.00	70.40	84.10	87.20
AR	47.90	49.00	79.90	80.50	65.60	66.30	88.70	90.00
CA	45.80	48.30	74.20	75.00	58.10	59.80	87.10	87.00
CO	56.20	56.00	73.50	74.00	72.00	72.20	98.00	98.00
FL	45.50	46.00	76.80	75.60	59.00	58.70	89.70	90.00
GA	46.30	46.70	73.90	75.30	54.80	55.60	83.80	86.50
ID	46.90	47.00	64.40	66.00	60.60	62.20	89.90	90.80
IL	49.20	49.50	71.70	72.50	70.80	71.60	112.00	116.00
IN	48.30	49.60	68.20	68.50	60.90	61.50	80.20	83.70
IA	48.90	49.90	72.30	73.00	68.20	69.10	93.70	96.00
KS	48.80	49.30	75.10	75.40	74.80	75.10	90.50	91.20
KY	46.90	47.00	76.00	78.00	67.60	69.00	84.50	86.00
LA	47.50	48.00	77.00	78.00	59.30	58.20	89.60	90.00
MI	47.80	49.00	64.90	65.00	59.00	59.40	91.60	84.30
MN	47.60	48.10	68.10	67.60	64.90	64.50	104.00	104.00
MS	49.80	49.80	77.10	77.90	62.10	62.40	86.20	87.90
MO	50.00	50.20	81.10	83.50	75.00	77.80	91.90	93.00
MT	48.90	48.70	73.40	74.90	53.20	55.30	90.50	94.10
NE	49.30	51.00	73.80	74.80	72.20	72.90	95.80	96.30
NM	50.30	51.90	74.30	74.80	58.60	59.90	85.80	85.90
NY	45.60	45.00	64.60	66.00	49.70	49.60	104.00	93.00
ND	47.00	47.00	73.40	75.00	61.30	63.20	91.20	93.00
OH	46.30	47.00	70.20	71.00	66.50	67.40	88.90	87.00
OK	47.00	48.00	80.40	82.50	74.40	76.30	90.50	94.00
OR	45.30	44.80	74.40	75.10	66.50	66.90	81.50	93.00
PA	45.70	45.80	70.10	70.80	65.20	65.80	115.00	111.00
SD	50.40	51.00	75.50	74.60	70.50	69.90	99.00	100.00
TN	48.30	47.90	75.20	76.40	65.30	65.90	83.10	84.30
TX	48.70	48.80	74.10	74.70	72.60	73.10	89.60	89.20
UT	46.60	47.60	71.00	73.00	70.10	72.00	91.90	91.90
VA	43.90	44.00	72.30	72.80	63.70	64.20	78.40	79.40
WA	43.80	43.20	72.30	72.90	70.00	70.50	93.30	93.70
WI	49.00	50.40	66.20	66.60	56.80	57.70	126.00	121.00
WY	53.00	53.10	78.80	80.50	72.10	73.40	99.50	101.00
US	48.40	49.10	73.90	74.50	70.60	71.30	90.10	91.00

1/ Beef cows and cull dairy cows sold for slaughter.

2/ Entire month.

3/ Mid-month.

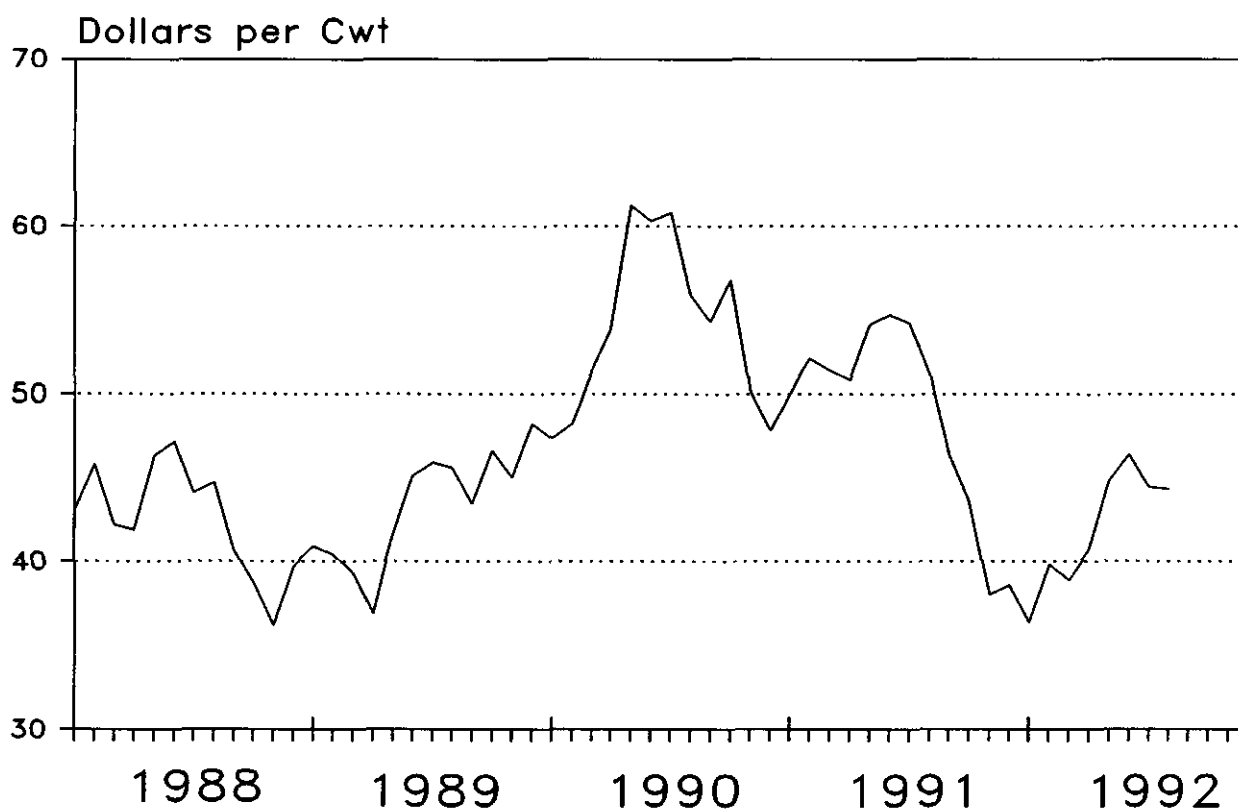
4/ "Cows" and "steers and heifers" combined.

Hogs: Prices Received, by States, July and August 1992

State	Sows		Barrows and Gilts		All Hogs	
	Jul 1/	Aug 2/	Jul 1/	Aug 2/	Jul 1/	Aug 2/
	Dollars per Cwt					
AL	28.30	30.50	39.70	40.30	38.00	38.80
GA	32.40	33.00	43.60	43.70	42.40	42.60
IL	32.40	34.40	46.80	46.20	44.50	44.30
IN	30.80	31.10	44.40	43.90	42.00	41.60
IA	32.80	33.20	46.60	46.40	45.90	45.70
KS	31.40	32.00	43.60	43.00	42.20	41.70
KY	31.00	32.00	44.30	44.00	43.60	43.40
MI	31.70	33.50	45.10	44.70	41.50	41.70
MN	31.70	33.50	46.90	45.60	46.10	45.00
MO	30.40	32.20	44.30	44.40	43.80	44.00
NE	32.80	35.00	45.00	45.10	44.30	44.50
NC	30.20	30.30	39.40	41.10	38.90	40.60
OH	32.60	33.00	44.60	44.00	43.10	42.70
PA	33.50	34.00	45.80	44.40	44.40	43.30
SC	30.00	29.50	43.10	43.50	42.10	42.40
SD	32.70	34.20	46.30	45.20	44.60	43.90
TN	30.20	32.20	43.40	44.30	41.70	42.70
TX	29.30	28.80	38.80	37.40	37.40	36.20
VA	34.50	34.50	44.70	45.00	44.40	44.70
WI	30.60	32.20	44.50	43.90	42.50	42.30
US	32.00	33.20	45.50	45.30	44.40	44.30

1/ Entire month. 2/ Mid-month.

Prices Received by Farmers, Hogs, US



Sheep, Wool, and Poultry: Prices Received, by States,
July and August 1992

State	Sheep		Lambs		August			
	Jul 1/	Aug 2/	Jul 1/	Aug 2/	Wool 1/ 3/	Turkeys 2/	Broilers 1/ 4/	Eggs 2/ 5/
	Dollars per Cwt				Dollars per Pound			Dol/Doz
AL							.355	.366
AZ	27.50	29.20	59.20	55.20				
AR						.39	.370	.430
CA	20.70	21.80	65.70	64.80	.54	.39	.325	.380
CO	25.30	27.50	64.60	62.50				
CT								.970
DE							.335	
FL								.350
GA							.340	.394
ID	19.60	22.90	58.10	53.10	.60			
IL								
IN						.41		.410
IA	24.60	26.60	60.00	54.70	.26	.39		.335
KS	24.20	25.70	63.00	54.00	.21			
LA								
ME								.880
MD							.335	
MI								.380
MN	23.60	26.10	60.70	54.20	.35	.34		.380
MS							.340	.470
MO						.39		.376
MT	21.10	21.10	57.50	56.30	.80			
NE	28.30	29.30	58.70	53.20	.26			
NM	32.30	33.30	57.90	52.90				
NY								.486
NC						.37	.315	.363
OH	22.80	23.50	56.40	50.00				.340
OK								
OR	18.10	21.90	54.40	52.40	.30			
PA						.44	.330	.330
SC								.396
SD	22.60	26.60	61.30	54.40	.79			
TN								
TX	31.90	35.80	62.90	55.70	1.01		.380	.470
UT	23.60	24.50	53.30	52.00	.73			
VA						.40	.340	
WA								.641
WI								
WY	22.50	24.30	61.80	56.70	.86			
US	24.00	25.50	61.40	58.00	.650	.379	.346	.411

1/ Entire month.

2/ Mid-month.

3/ Incentive payment not included.

4/ Liveweight equivalent price except for AR, PA, and TX.

5/ Market (table) eggs. Includes eggs sold retail by the producer.

Milk and Milk Cows: Prices Received, by States, July and August 1992

State	July				August				
	Fluid Grade Milk <u>1/</u>		Manufacturing Grade Milk		All Milk <u>2/</u>		All Milk <u>2/ 3/</u>		Milk Cows <u>4/</u>
	Price	Fat Test	Price	Fat Test	Price	Fat Test	Price	Fat Test	
	Dol/Cwt	Pct	Dol/Cwt	Pct	Dol/Cwt	Pct	Dol/Cwt	Pct	Dol/Head
AL	15.20	3.58	14.10	3.60	15.20	3.58	15.60	3.57	
AR	14.10	3.41	13.70	4.00	14.10	3.43	14.30	3.43	
CA	12.10	3.51	11.20	3.76	12.08	3.51	12.00	3.55	
CO	13.70	3.53			13.70	3.53	14.00	3.55	
FL	15.70	3.54			15.70	3.54	15.90	3.50	
GA	15.10	3.56			15.10	3.56	15.50	3.52	
ID	12.50	3.47	11.90	3.52	12.40	3.48	12.30	3.49	
IL	13.20	3.54	12.60	3.47	13.20	3.53	13.30	3.55	
IN	13.50	3.55	11.50	3.95	13.40	3.58	13.60	3.59	
IA	13.00	3.48	12.30	3.44	12.80	3.47	13.30	3.52	
KS	12.80	3.46	11.60	3.52	12.70	3.46	13.20	3.49	
KY	14.00	3.51	11.30	3.55	13.90	3.51	14.30	3.51	
LA	14.80	3.52			14.80	3.52	15.30	3.56	
MD	14.10	3.58			14.10	3.58	14.50	3.52	
MI	13.50	3.50	12.60	3.51	13.50	3.50	13.20	3.51	
MN	13.50	3.56	12.40	3.51	13.28	3.55	13.20	3.56	
MS	14.80	3.56	12.30	3.60	14.80	3.56	15.20	3.58	
MO	13.60	3.47	12.10	3.57	13.50	3.48	13.80	3.49	
NE	13.00	3.49	12.60	3.49	12.90	3.49	13.10	3.49	
NM	12.30	3.45			12.30	3.45	12.70	3.50	
NY	13.60	3.60			13.60	3.60	13.90	3.60	
NC	15.00	3.57	11.60	3.71	15.00	3.57	15.40	3.57	
ND	13.00	3.46	12.00	3.54	12.60	3.50	12.80	3.51	
OH	14.00	3.59	12.10	3.68	13.80	3.60	14.00	3.58	
OK	13.90	3.44	11.90	3.52	13.90	3.44	14.40	3.47	
OR	13.40	3.59	11.50	3.70	13.40	3.59	13.60	3.60	
PA	14.20	3.58	12.00	3.68	14.20	3.58	14.40	3.57	
TN	14.30	3.49	11.30	3.49	14.10	3.49	14.40	3.49	
TX	13.90	3.43			13.90	3.43	14.30	3.47	
UT	12.60	3.45	11.70	3.49	12.40	3.46	12.50	3.48	
VT	13.90	3.64			13.90	3.64	14.10	3.62	
VA	14.70	3.52	11.40	3.47	14.60	3.52	14.70	3.50	
WA	13.20	3.59			13.20	3.59	13.40	3.60	
WI	13.74	3.60	12.82	3.63	13.62	3.60	13.60	3.58	
US	13.50	3.54	12.40	3.56	13.40	3.54	13.50	3.55	

1/ Including surplus diverted to manufacturing. 2/ Before deductions for hauling and government withholding. Includes quality, quantity, and other premiums. Excludes hauling subsidies. 3/ Preliminary. 4/ Animals sold for dairy herd replacement only. Prices published Jan, Apr, Jul, and Oct.

Parity Price Equivalent for Manufacturing Milk 1/: United States, July and August 1992, with Comparisons

Item	Aug 1991	Jul 1992	Aug 1992
Parity Equivalent.....Dol per Cwt	24.39	24.55	24.55
Average Price F.O.B.....Dol per Cwt	11.30	12.40	<u>2/</u> 12.40
Average Fat Test of Milk...Percent	3.55	3.56	<u>2/3/</u> 3.56

1/ The parity price equivalent during 1992 is 92.3 percent of the parity price of all milk sold to plants, compared with 91.7 percent in 1991. For additional details, see January 1992 issue of Agricultural Prices.
2/ Preliminary.

United States Parity Prices for Farm Products and Average Prices Received as Percent of Parity Prices Based on Data for August 1992, with Comparisons 1/

Commodity and Unit	Adjusted Base Prices	Parity Prices Based on Data for			Prices as Percent of Parity		
		Aug 1991	Jul 1992	Aug 1992	Aug 1991	Jul 1992	Aug 1992
Dollars							
Basic Commodities							
All Wheat, Bu	.611	8.07	8.07	8.07	33	39	36
Rice, Cwt	1.67	22.20	22.10	22.10	32	31	31
Corn, Bu	.434	5.65	5.73	5.73	41	40	37
Cotton, Lb							
American Upland	.114	1.51	1.51	1.51	44	37	36
Extra Long Staple	.156	2.03	2.06	2.06			
Peanuts, Lb	.0429	.557	.567	.567	53		
Tobacco, By Type, Lb							
Flue-Cured 11-14	.261	3.39	3.45	3.45	49	45	46
VA Fire-Cured, 21	.210	2.70	2.77	2.77			
KY-TN Fire-Cured, 22-23	.273	3.46	3.61	3.61			
Burley, 31	.262	3.43	3.46	3.46			
Maryland, 32	.215	2.77	2.84	2.84			
Dark Air-Cured, 35-36	.228	2.91	3.01	3.01			
Sun-Cured, 37	.187	2.40	2.47	2.47			
PA Seedleaf, 41	.149	1.82	1.97	1.97			
Cigar Filler & Binder, 42-44, 54-55	.184	2.33	2.43	2.43			
Puerto Rican Filler, 46	.173	2.25	2.29	2.29			
Cigar Binder, 51-52	.292	3.68	3.86	3.86			
Designated Nonbasic							
All Milk, Sold to Plants, Per Cwt	2.01	26.60	26.60	26.60	2/48	2/52	2/51
Honey, Extracted, Lb	3/.0872	1.15	1.15	1.15			
Wool and Mohair							
Wool, Lb	.262	3.34	3.46	3.46	4/14	4/21	4/19
Mohair, Lb	.716	9.21	9.46	9.46			
Other Nonbasic							
Barley, Bu	.377	4.99	4.98	4.98	41	45	43
Cottonseed, Ton	15.30	203.00	202.00	202.00	39		51
Dry Edible Beans, Cwt	3.18	44.00	42.00	42.00	36	41	42
Flaxseed, Bu	.860	11.90	11.40	11.40	31	32	33
Oats, Bu	.245	3.35	3.24	3.24	33	41	39
Potatoes, Cwt	.830	11.00	11.00	11.00	50	69	60
Rye, Bu	.332	4.33	4.39	4.39			
Sorghum Grain, Cwt	.710	9.53	9.38	9.38	42	41	40
Soybeans, Bu	.929	12.40	12.30	12.30	46	45	43
Sweetpotatoes, Cwt	1.81	26.60	23.90	23.90			
Apples, Fresh, Lb 5/	.0258	.317	.341	.341	78	79	79
Citrus (equiv on-tree), box:							
Grapefruit	.631	7.52	8.34	8.34	46	34	37
Lemons	.966	9.18	12.80	12.80	223	78	83
Limes (FL)	1.45	18.30	19.20	19.20	28	10/	4
Oranges	.932	11.10	12.30	12.30	169	19	13
Tangerines	1.72	17.40	22.70	22.70			
Temples (FL)	.751	8.91	9.92	9.92			
Beef Cattle, Cwt	9.61	123.00	127.00	127.00	56	56	56
Calves, Cwt	11.80	147.00	156.00	156.00	67	58	58
Hogs, Cwt	7.42	96.10	98.00	98.00	53	45	45
Lambs, Cwt	10.00	128.00	132.00	132.00	42	47	44
Sheep, Cwt	3.61	47.70	47.70	47.70	40	50	53
Eggs, Doz	.0961	1.25	1.27	1.27	2/54	2/45	2/44
Turkeys, Live, Lb	.0616	.808	.814	.814	50	47	47

--continued

Parity Prices Based on Data for August 1992, United States 1/ (continued)

Other Nonbasic Commodities	Adj Base Prices	Parity Prices	Other Nonbasic Commodities	Adj Base Prices	Parity Prices
	Dollars			Dollars	
Field Crops and Misc Commodities			Noncitrus Fruit		
Hops, Lb	.262	3.46	Pears, Ton		
Tobacco, Lb Type 61	2.45	32.40	Fresh 5/	48.80	645.00
			Dried, CA 7/	117.00	1550.00
Noncitrus Fruit			Plums, Ca, Ton		
Apples, Ton 7/ Processing	18.20	240.00	Fresh, Equiv on-Tree	55.90	738.00
Apricots, Ton			Prunes, Dried, CA, Ton 7/	118.00	1560.00
Fresh 8/	155.00	2050.00	Prunes and Plums, Excl CA, Ton		
Dried, CA	310.00	4100.00	Fresh 10/	59.40	785.00
Avocados, Ton 8/	139.00	1840.00	Processing 7/ Excl Dried	18.20	240.00
Cherries					
Sweet, Ton	118.00	1560.00	Tree Nuts 11/		
Tart, Lb	.0358	.473	Almonds, Lb	.164	2.17
Cranberry, Bbl 6/	7.02	92.70	Filberts, Ton	114.00	1510.00
Dates, CA, Ton 8/	130.00	1720.00	Walnuts, Ton	144.00	1900.00
Grapes, Ton					
Raisin Variety	128.00	1690.00	Vegetables, Cwt 12/		
Other, Dried	42.00	555.00	Fresh		
Nectarines			Carrots 9/	1.51	19.90
Fresh, Calif, Ton 8/	56.60	748.00	Cauliflower 9/	3.95	52.20
Olives, CA			Celery 9/	1.79	23.60
Canning, Ton 6/	95.50	1260.00	Honeydew Melons	2.21	29.20
Peaches			Lettuce	1.90	25.10
Fresh, Lb 5/	.0398	.526	Onions 9/	1.67	22.10
Dried, CA, Ton	144.00	1900.00	Tomatoes	4.12	54.40
Processing 6/ Excl Dried					
Clingstone, CA, Ton	29.30	387.00			

- 1/ Parity prices are computed under the provisions of Title III, Subtitle a, Section 301 (a) of the Agricultural Adjustment Act of 1938 as amended by the Agricultural Acts of 1948, 1949, and 1956. See January and July Agricultural Prices for details on adjusted base price and parity price computations.
- 2/ Seasonally adjusted price as percentage of parity price.
- 3/ Wholesale extracted. Adjusted base price derived from state annual averages prices weighted by production. For 1982 through 1985 the national averages are the support prices.
- 4/ Average local market price, excluding incentive payments.
- 5/ Equivalent packinghouse-door returns for CA, NY (apples only), OR (except peaches), and WA. Price at point of first sale for other states.
- 6/ Equivalent returns for bulk fruit at first delivery point.
- 7/ Equivalent returns at processing plant door.
- 8/ Equivalent returns at packinghouse door.
- 9/ Includes some processing.
- 10/ Based on "as sold" prices for fresh fruit in all states.
- 11/ Prices in-shell basis except almonds which are shelled basis.
- 12/ F.O.B. shipping point prices.

Cranberries: Marketing Year Average Prices Received
by Growers, 1990-91 1/

State	:	1990	:	1991
	:	Dollars per Barrel		
MA	:	47.60		49.90
NJ	:	45.00		47.50
OR	:	44.80		47.30
WA	:	44.80		47.30
WI	:	45.30		48.60
US	:	46.10		49.00

1/ Weighted average of co-op and independent sales. Co-op prices represent pool proceeds excluding returns from non-cranberry products and before any deductions for capital stock and other retains.

Prices Received by Farmers

Definition: Prices received represent sales from producers to first buyers. They include all grades and qualities. The average commodity price from the survey times the total quantity marketed theoretically should give the total cash receipts for the commodity.

Survey Procedures: Primary sales data used to determine grain and livestock prices were obtained from probability samples of 2600 mills and elevators and 850 livestock firms selected from packers, stockyards, auctions, and dealers. These procedures ensure that virtually all grain and livestock moving into commercial channels have a chance of being included in the survey. Generally, States surveyed account for 90 percent or more of total U.S. production. Inter farm sales of grain and livestock are not included since they represent very small percentages of the total marketings. Grain marketed for seed is also excluded. Fruit and vegetable prices are obtained from sample surveys and market check data from AMS--USDA, private marketing organizations, state agencies, and universities.

Summary and Estimation Procedures: Survey quantities sold are expanded by strata to state levels and used to weight average strata prices to a state average. State prices are then weighted to a U.S. price based on expanded marketings. Recommendations are prepared by the State Statistical Offices and reviewed by the Agricultural Statistics Board in Washington, D.C. State recommendations are reviewed for reasonableness with survey data, other States, and recent historic estimates.

Revisions: For most items, the current month's price represents a 3-5 day period around the mid-month. Previous month's prices represent actual dollars received for quantities sold during the entire month. Revisions are published in monthly issues of Agricultural Prices and in the annual summary published in June. A schedule of monthly revisions is published in the December issue of Agricultural Prices and in the June annual summary.

Reliability: U.S. price estimates generally have a sampling error of less than one half percent for the major commodities such as corn, wheat, soybeans, cotton, cattle, and hogs. For example, if the estimated U.S. price of corn was \$2.00 per bushel, the chances are 2 out of 3 that the indications of all possible samples averaged together would lie in the range from \$1.99 to \$2.01.

Index

Prices Received

U.S. Prices and Indexes	Page		Page
Narrative.....	2	Cows, Beef.....	15
Price Indexes.....	4	Cows, Milk.....	18
Prices Received		Eggs.....	17
U.S. Summary.....	7-8	Flaxseed.....	11
Selected Commodities...	9	Fruit, Citrus.....	13
Upland Cotton and Rice		Hay.....	12
Prices and Marketings..	12	All Hogs.....	16
Feed Price Ratios.....	14	Lambs.....	17
Parity Prices.....	19-20	Milk.....	18
Reliability Statement....	22	Oats.....	10
		Peanuts.....	11
Monthly State Prices		Potatoes.....	14
Apples.....	12	Sheep.....	17
Barley.....	10	Sorghum, Grain.....	10
Barrows and Gilts.....	16	Soybeans.....	10
Beans, Dry Edible.....	11	Sows.....	16
Beef Cattle.....	15	Steers and Heifers.....	15
Broilers.....	17	Tobacco.....	11
Calves.....	15	Turkeys.....	17
Corn.....	10	Wheat.....	9
Cotton.....	12	Wool.....	17
Cottonseed.....	12		

Special Features

Cranberries: Marketing Year Average Price	21
---	----

Corrections to Previous Month's Report

July 1992:

Page A-18-Manufacturing Grade Milk "Price":	From	To
IL - June 1992	12.61	12.60

The next "Agricultural Prices" report will be released on September 29, 1992 at 3:00 p.m. ET.

Want to subscribe? **Time to renew?**

Subscribe to **Agricultural Prices** today! If you already subscribe to this timely periodical, note that your subscription expires in the month and year shown on the top line of your mailing label. The expiration date will appear in one of two formats: APR93 (for April 1993) or 930430 (for April 30, 1993). Disregard this notice if no renewal date appears. Call 1-800-999-6779, and tell us whether you want to subscribe or renew, or return this form to: **ERS-NASS, P.O. Box 1608, Rockville, MD 20849-1608.**

Agricultural Prices

- Yes! I want to **start** my subscription.
- Yes! I want to **renew** my subscription.

	1 Year	2 Years	3 Years
Domestic	<input type="checkbox"/> \$24.00	<input type="checkbox"/> \$47.00	<input type="checkbox"/> \$70.00
Foreign	<input type="checkbox"/> \$30.00	<input type="checkbox"/> \$58.75	<input type="checkbox"/> \$87.50

New subscribers:

Name: _____
 Address: _____
 City, State, Zip: _____
 Daytime phone: (____) _____

Renewals:

ATTACH MAILING LABEL HERE

Payment method:

- Bill me. Use purchase orders, checks drawn on U.S. banks, cashier's checks, or international money orders. **Make payable to ERS-NASS.**
- Enclosed is \$_____.

Credit card orders: MasterCard Visa Total charges \$_____.

Credit card number: Card expiration date: /
Month/Year

For fastest service, call our toll-free order desk 1-800-999-6779, in the U.S. and Canada; other areas please call 301-725-7937