

# Agricultural Prices



National  
Agricultural  
Statistics  
Service

United States  
Department of  
Agriculture

Washington, D.C.

Released August 31, 1993, by the Agricultural Statistics Board.

## August Prices Received Index Rises 2 Points

The All Farm Products Index of Prices Received in August was 142 based on 1977=100, up 2 points (1.4 percent) from July 1993. Price gains from July for oranges, lemons, grapefruit, and apples more than offset price declines for potatoes, lettuce, soybeans, and milk.

Compared with August 1992, the All Farm Products Index was 3 points (2.2 percent) higher. Price increases from August 1992 for oranges, soybeans, hogs, and cattle more than offset price decreases for milk, apples, lettuce, and strawberries.

Index Summary Table

Index 1977=100	1992		1993	
	Jul	Aug	Jul	Aug
Prices Received	138	139	140	142
Prices Paid	192	<u>2</u> /192	197	<u>3</u> /197
Ratio <u>1</u> /	72	72	71	72

1/ Ratio of index of prices received by farmers to index of prices paid.

2/ July 1992 prices paid index brought forward.

3/ July 1993 prices paid index brought forward.

For information call (202) 720-5446. Office hours are 8:00 a.m. to 4:30 p.m. ET.

## Prices Received by Farmers

The August All Farm Products Index was 142 percent of its 1977 base, 1.4 percent higher than July 1993 and 2.2 percent above August 1992.

**All Crops:** The August index was 122, 3.4 percent above July and 4.3 percent above August 1992. Monthly index gains for oranges, lemons, grapefruit, and apples more than offset declines for potatoes, lettuce, and soybeans.

**All Fruit:** The August all fruit index, at 195, was up 37 percent from July and up 24 percent from a year ago. Light supplies of oranges, lemons, and grapefruit, combined with good late summer demand, raised August prices for these items. Higher apple prices also contributed to the monthly index increase.

**Potatoes & Dry Beans:** The August index was 157, down 15 percent from July but unchanged from August 1992. Potato prices in August averaged \$6.55 per cwt, down \$1.38 from July as larger volumes of the new fall crop were marketed. Dry bean prices averaged \$19.10 per cwt in August, up 40 cents from July and up 90 cents from August 1992.

**Food Grains:** The food grains index, at 120, was 5.3 percent above July but 2.4 percent below August 1992. Wheat prices averaged 16 cents higher in August than in July as the 1993 production forecast was lowered 2 percent and spring wheat harvest is running late. Rice prices were up 4 cents from a month earlier.

**Oil-Bearing Crops:** The August index was 99, 2.0 percent below July but 18 percent above August 1992. Soybean prices were down 21 cents from July but nearly a dollar above August 1992. The August price decline follows a sharp July increase of 67 cents. Higher 1993 prices have followed news of midwest flooding, extremely late crop development, and drought in the southeast.

**Livestock & Products:** The August index, at 162, was 0.6 percent above July and 1.3 percent higher than a year earlier. August price increases for hogs, eggs, cattle, and broilers more than offset price decreases for milk and calves.

**Meat Animals:** The August meat animals index, at 184, was up 1.1 percent from July and 3.4 percent above the August 1992 index. Beef cattle prices increased 40 cents per cwt from July to \$73.00. August steer and heifer prices averaged \$75.70 per cwt, up 50 cents from July. Hog prices were up \$1.20 per cwt in August as slaughter volume was less than anticipated.

**Poultry & Eggs:** The August index of 130 was up 4.8 percent from July and 9.2 percent from August last year. The market egg price increased 4.2 cents per dozen from July and 9.5 cents per dozen from August 1992. Turkey and broiler prices increased slightly from last month.

**Dairy Products:** The dairy products index was 130 in August, down 1.5 percent from July and down 6.5 percent from August 1992. Milk prices averaged \$12.60 per cwt in August, down 20 cents from July as both fluid and manufacturing grade milk prices dropped. The all milk price was 90 cents below August 1992.

Index Numbers of Prices Received by Farmers, United States, August 1993,  
with Comparisons

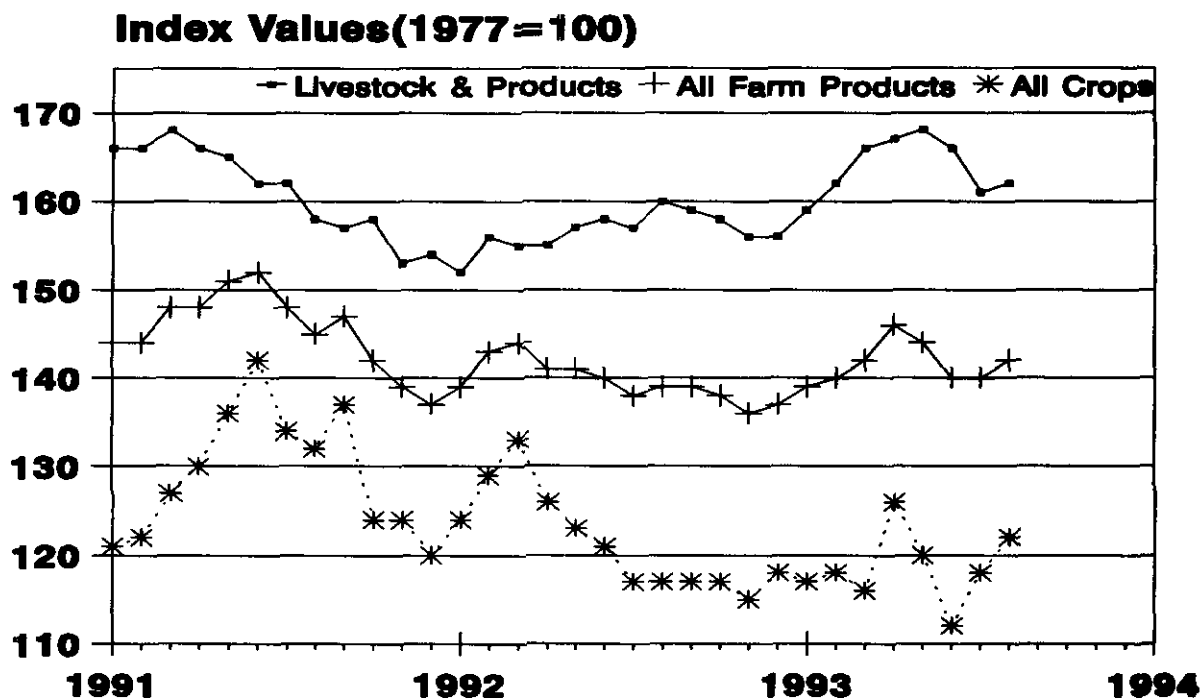
Index	1910-14=100				1977=100					
	Average:		1992 :		1993		1992 :		1993	
	Jan-Dec:	1977 :	Aug :	Jul :	Aug :	Aug :	Jul :	Aug		
Unadjusted										
All Farm Products	457		633	*639	651		139		140	142
All Crops	433		504	510	526		117		118	122
Food Grains	275		339	*314	330		123		*114	120
Feed Grains & Hay	316		348	*358	357		110		113	113
Feed Grains	299		324	*328	326		108		*110	109
Cotton	511		454	*457	432		89		*89	85
Tobacco	972		1439	*1374	1392		148		141	143
Oil-Bearing Crops	652		549	*661	642		84		*101	99
Fruit, All	370		581	*526	720		157		142	195
Fresh Market 1/	362		567	516	748		157		143	207
Commercial Vegetables	498		778	*697	702		156		*140	141
Fresh Market	658		1065	*943	949		162		*143	144
Potatoes & Dry Beans	363		570	*669	570		157		*184	157
Livestock & Products	481		768	*774	781		160		*161	162
Meat Animals	564		1007	*1029	1038		178		*182	184
Dairy Products	594		826	*783	771		139		*132	130
Poultry & Eggs	228		271	283	296		119		124	130
Food Commodities							151		*151	155
Seasonally Adjusted										
Fresh Market Fruit 1/	352		569	485	715		161		138	203
Fresh Market Vegetables	663		1103	*952	1049		166		*144	158
Potatoes & Dry Beans	365		526	*529	515		144		*145	141
Dairy Products	594		834	*799	763		140		*134	128
Poultry & Eggs	228		261	287	291		114		126	128

1/ Fresh market for non-citrus. Fresh market and processing for citrus.  
\* Revised.

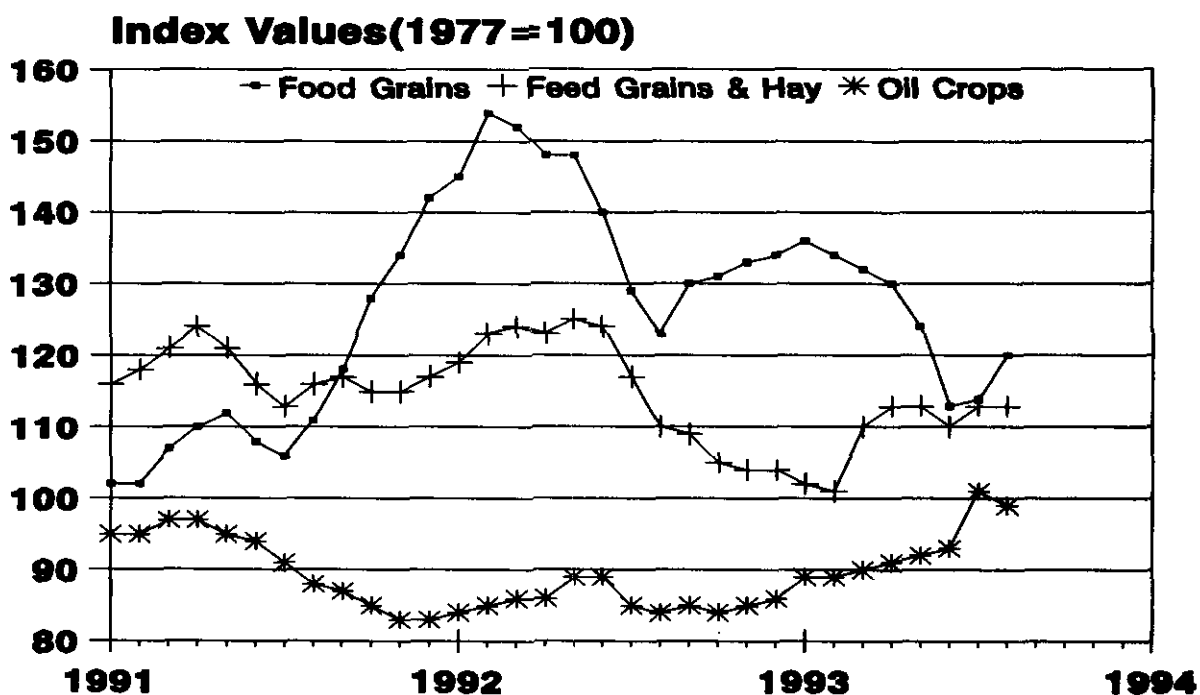
Selected Index Numbers for Prices Received and Paid by Farmers,  
1977=100, by Months, United States, 1992 and 1993

Month	Index of Prices Received						Index of Prices Paid			
	All Farm		All		Livestock		Comm. Services:		Production	
	Products	Crops	and	Products	Int., Taxes,	Wage Rates	Production	Items		
	1992	1993	1992	1993	1992	1993	1992	1993	1992	1993
Jan	139	139	124	117	152	159	190	194	172	176
Feb	143	140	129	118	156	162	190	194	172	176
Mar	144	142	133	116	155	166	190	194	172	176
Apr	141	146	126	126	155	167	191	197	174	179
May	141	144	123	120	157	168	191	197	174	179
Jun	140	140	121	112	158	166	191	197	174	179
Jul	138	140	117	118	157	161	192	197	175	178
Aug	139	142	117	122	160	162	192	197	175	178
Sep	139		117		159		192		175	
Oct	138		117		158		192		175	
Nov	136		115		156		192		175	
Dec	137		118		156		192		175	

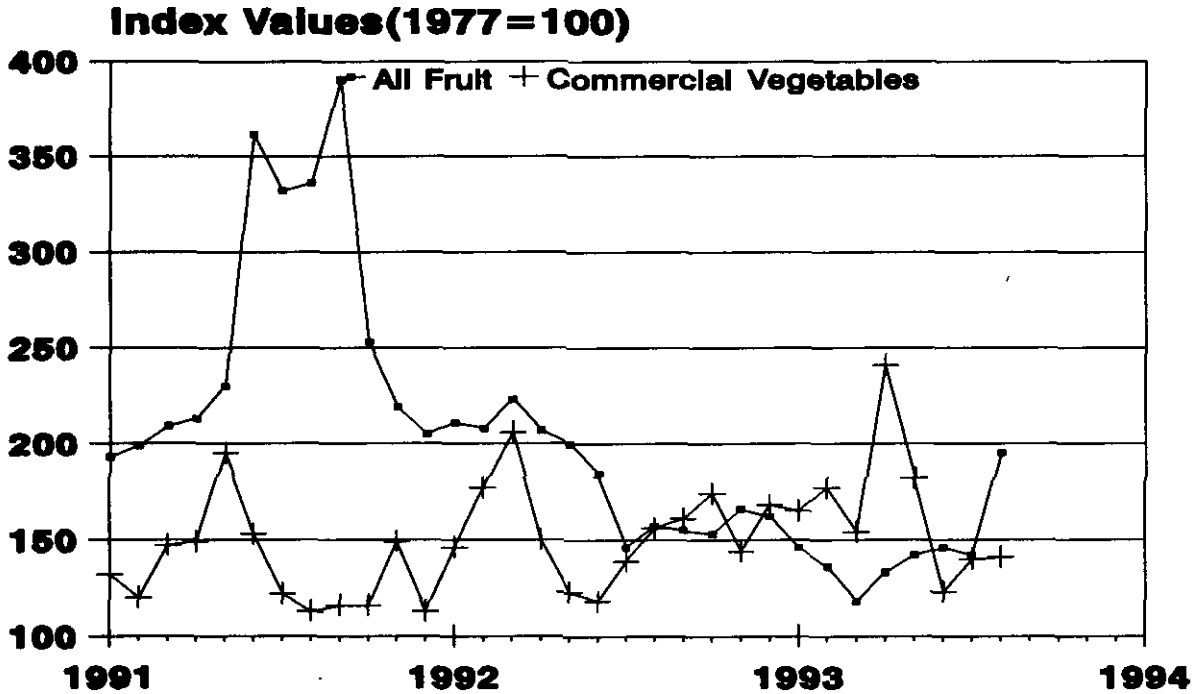
## Prices Received, Major Indexes, US,



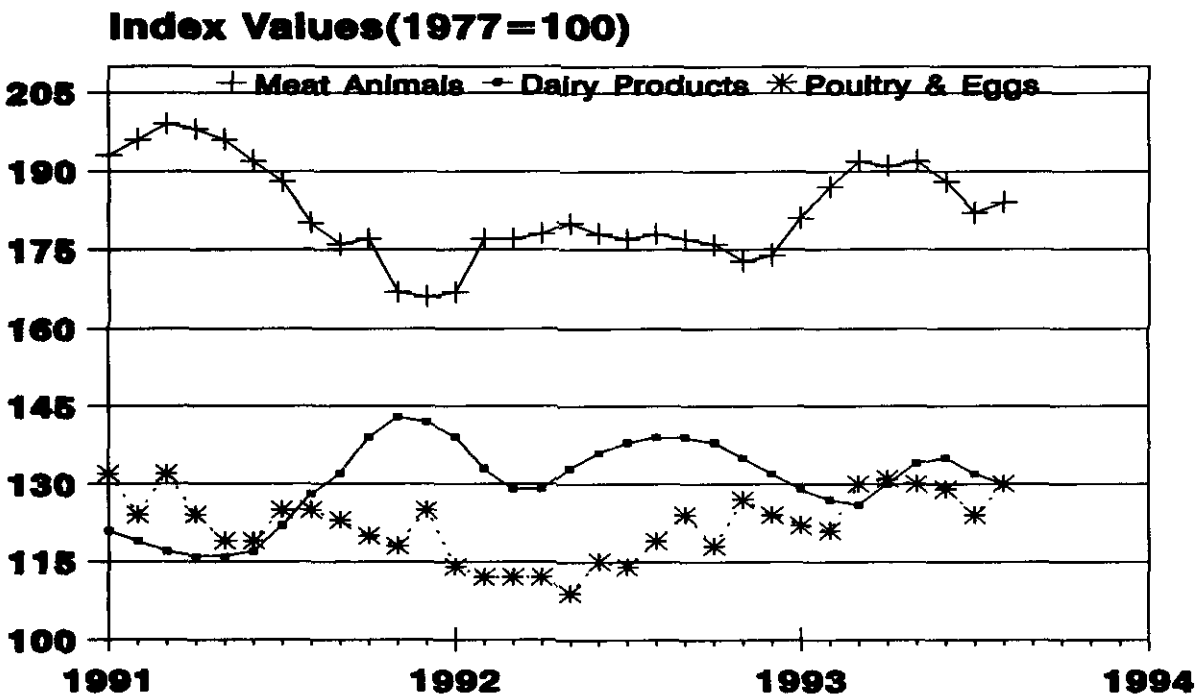
## Prices Received, Food, Feed & Oil Indexes, US



## Prices Received, Fruit/Vegetable Indexes, US



## Prices Received, Livestock Product Indexes, US



Prices Received by Farmers, United States,  
August 1993, with Comparisons

Commodity	Unit	Average Jan - Dec 1977	Entire Month		Preliminary
			Aug 1992	Jul 1993	Aug 1993
Dollars					
Field Crops					
Barley, All	Bu	1.91	2.16	1.81	1.79
Feed	Bu		1.73	1.77	1.77
Malting	Bu		2.60	1.86	1.84
Beans, Dry Edible	Cwt	17.60	18.20	18.70	19.10
Corn	Bu	2.03	2.15	2.22	2.20
Cotton, Upland	Lb	.605	.537	.541	.512
Cottonseed	Ton	79.70	103.00		111.00
Flaxseed	Bu	5.78	3.68	4.29	4.25
Hay, All, Baled <u>1/</u>	Ton	57.10	69.20	77.20	77.40
Alfalfa <u>1/</u>	Ton		72.80	83.40	81.60
Other <u>1/</u>	Ton		56.10	58.00	62.00
Oats	Bu	1.29	1.23	1.36	1.35
Peanuts, In-Shell	Lb	.208			
Potatoes	Cwt	3.78	6.60	7.93	6.55
Rice, Rough	Cwt	7.94	6.60	4.92	4.96
Sorghum Grain	Cwt	3.11	3.77	3.72	3.78
Soybeans	Bu	6.82	5.40	6.57	6.36
Sunflower <u>2/</u>	Cwt		9.70	11.80	13.10
Tobacco	Lb	1.141	1.655	1.580	1.600
Wheat, All	Bu	2.29	3.01	2.85	3.01
Winter	Bu	2.25	2.99	2.76	2.84
Durum	Bu		2.75	3.26	3.34
Other Spring	Bu	2.42	3.12	3.50	3.57
Hard Red	Bu		2.93	2.88	
Soft Red	Bu		2.89	2.71	
White	Bu		3.45	3.03	
Fruit					
Citrus-Equiv on-tree					
Grapefruit	Box	1.66	4.08	.14	3.65
Lemons	Box	2.18	10.63	11.31	23.62
Limes	Box	34.42	.68		16.58
Oranges	Box	2.78	.99	4.10	5.38
Tangelos	Box	3.68			
Tangerines	Box	3.18			
Temples	Box	1.17			
Non-citrus					
Apples, Fresh <u>3/</u>	Lb	.120	.333	.180	.231
Peaches, Fresh <u>3/</u>	Lb	.147	.219	.190	.216
Pears, Fresh <u>3/</u>	Ton	145.00	273.00	401.00	353.00
Strawberries, Fresh	Lb	.433	.892	.442	.583

1/ Mid-month price.

2/ KS, MN, ND and SD average.

3/ Equivalent packinghouse-door returns for CA, NY (apples only), OR (except peaches) and WA. Prices as sold for other states.

-- continued

Prices Received by Farmers, United States,  
August 1993, with Comparisons (continued)

Commodity	Unit	Average		Entire Month		Preliminary
		Jan - Dec 1977	Dec	Aug 1992	Jul 1993	Aug 1993
Dollars						
Vegetables, Fresh <u>1/</u>						
Asparagus	Cwt	52.00		103.00	93.80	70.80
Broccoli	Cwt	19.90		27.40	24.50	17.70
Carrots	Cwt	11.40		16.50	9.00	10.40
Cauliflower	Cwt	23.40		43.50	28.20	31.70
Celery	Cwt	8.76		14.90	9.97	11.80
Corn, Sweet	Cwt	9.14		14.80	18.70	18.90
Honeydew Melons	Cwt	11.20		13.30	17.10	20.50
Lettuce	Cwt	7.60		19.90	18.90	14.60
Onions	Cwt	10.30		14.80	13.10	13.70
Tomatoes	Cwt	23.40		23.60	20.00	29.50
Livestock						
Calves	Cwt	36.80		90.40	96.90	96.30
Cattle, All Beef	Cwt	34.50		71.80	72.60	73.00
Cows	Cwt	24.40		48.30	50.20	49.50
Steers & Heifers	Cwt	37.30		74.70	75.20	75.70
Milk Cows <u>2/</u>	Head	504.00			1170.00	
Hogs, All	Cwt	40.10		44.10	45.90	47.10
Barrows & Gilts	Cwt			45.00	46.70	48.00
Sows	Cwt			33.40	35.00	34.70
Lambs	Cwt	51.40		55.90	54.20	57.00
Sheep	Cwt	13.50		25.80	28.70	28.00
Wool <u>3/</u>	Lb	.714		.620	.486	.388
Dairy and Poultry						
Milk, All <u>4/</u>	Cwt	9.71		13.50	12.80	<u>5/</u> 12.60
Fluid Grade	Cwt	9.94		13.50	12.90	<u>5/</u> 12.70
Mfg Grade	Cwt	8.71		12.30	11.30	<u>5/</u> 11.10
Broilers, Live	Lb	.235		.343	.350	.363
Eggs, All <u>6/</u>	Doz	.541		.536	.576	.613
Market <u>6/7/</u>	Doz			.417	.470	.512
Turkeys, Live <u>6/</u>	Lb	.348		.378	.389	.395
Adjusted for Seasonal Variation						
Eggs, All	Doz	.545		.564	.633	.652
Milk, All <u>4/</u>	Cwt	9.71		13.64	13.06	12.48

1/ F.O.B. shipping point.

2/ Animals sold for dairy herd replacement only. Prices available for Jan, Apr, Jul, and Oct.

3/ Average local price, excluding incentive payments.

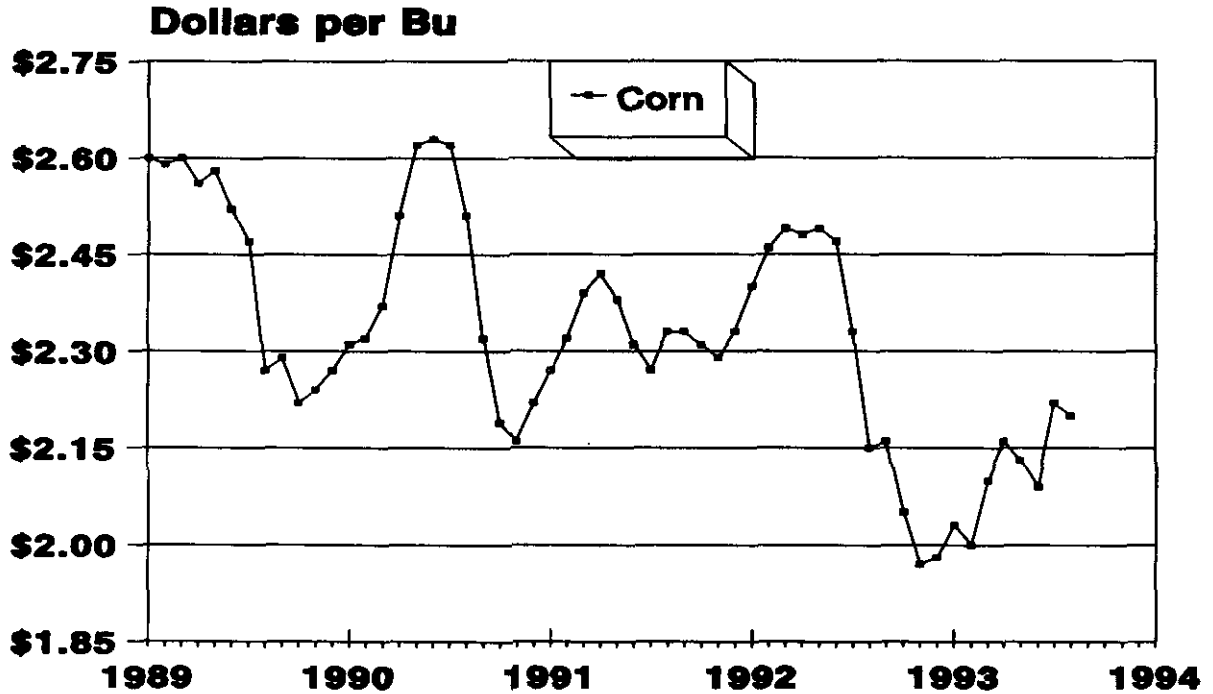
4/ Before deductions for hauling and government withholding, but includes bulk tank, quantity, and other premiums. Excludes hauling subsidies.

5/ Fat test percent: all milk 3.54, fluid milk 3.53, mfg grade 3.62.

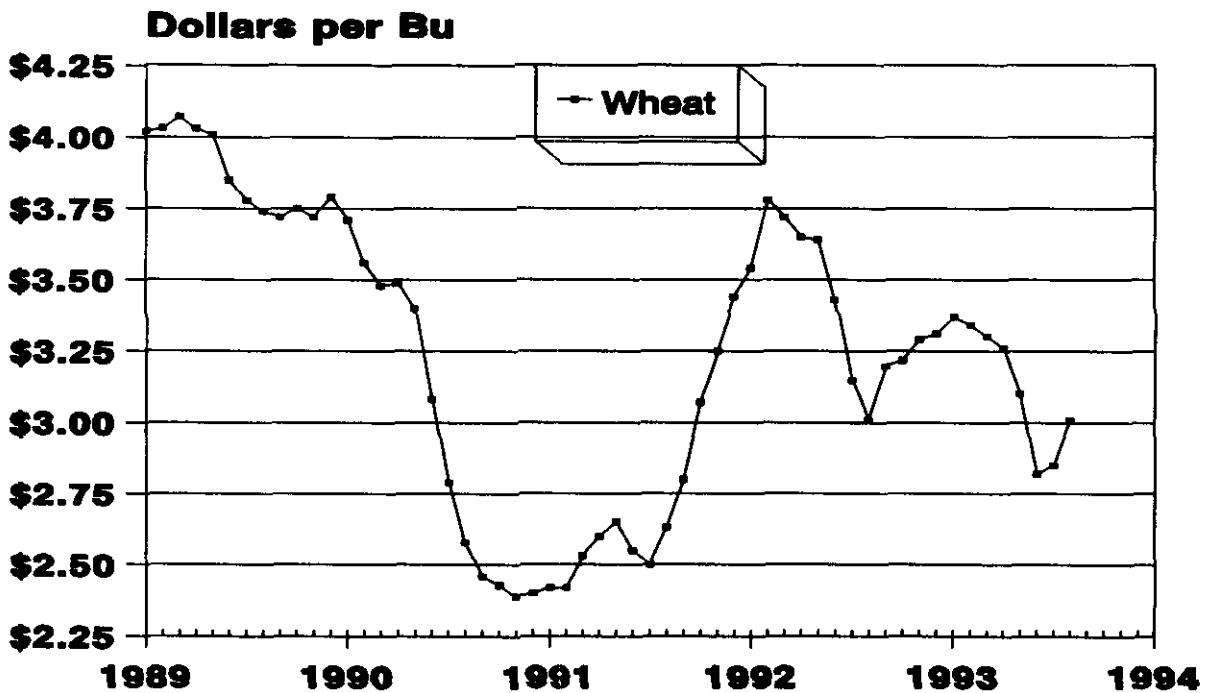
6/ Mid-month price.

7/ Includes eggs sold retail by the producer.

## Prices Received by Farmers, Corn, US



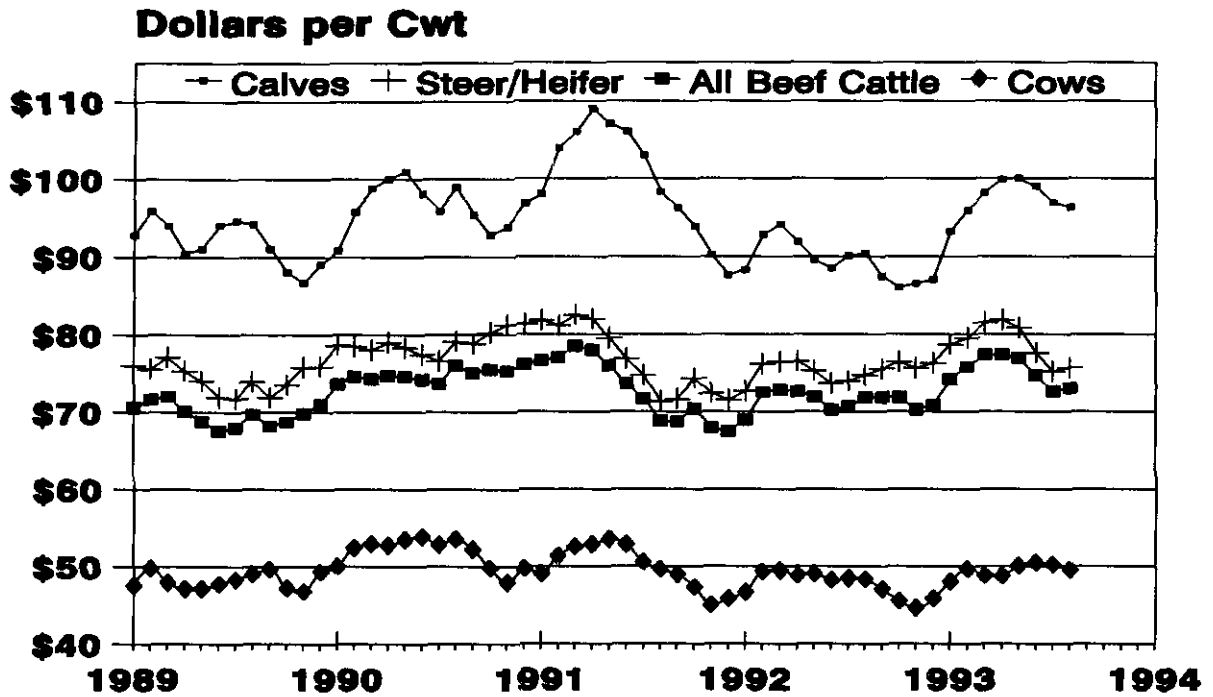
## Prices Received by Farmers, Wheat, US



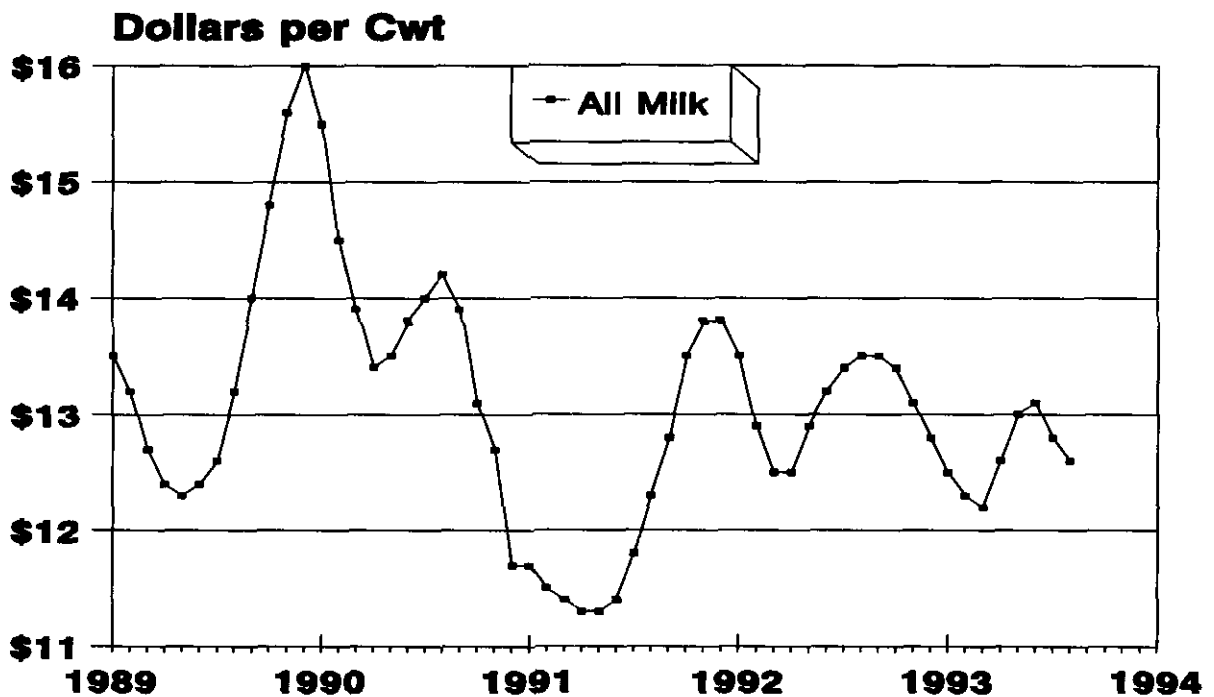




## Prices Received by Farmers, Cattle, US



## Prices Received by Farmers, Milk, US





Wheat: Prices Received, by States, July and August 1993

State	All Wheat		Winter Wheat		Durum Wheat		Oth Spring Wheat	
	Jul <u>1</u> /	Aug <u>2</u> /	Jul <u>1</u> /	Aug <u>2</u> /	Jul <u>1</u> /	Aug <u>2</u> /	Jul <u>1</u> /	Aug <u>2</u> /
	Dollars per Bushel							
AZ	3.49	<u>3</u> /	3.04	<u>3</u> /	3.64	<u>3</u> /		
AR	2.90	3.00	2.90	3.00				
CA	3.00	3.09	3.00	3.09				
CO	2.71	2.72	2.71	2.72			<u>3</u> /	<u>3</u> /
GA	2.77	<u>3</u> /	2.77	<u>3</u> /				
ID	3.02	2.95	3.03	2.96			3.01	2.86
IL	2.65	2.81	2.65	2.81				
IN	2.75	2.88	2.75	2.88				
KS	2.74	2.76	2.74	2.76				
MI	2.83	2.90	2.83	2.90				
MN	3.35	2.98	2.65	2.75	3.17	3.51	3.36	2.97
MO	2.51	2.75	2.51	2.75				
MT	3.32	3.36	3.08	2.76	2.99	3.00	3.54	3.92
NE	2.87	2.81	2.87	2.81				
ND	3.41	3.55	3.09	2.50	3.16	3.35	3.53	3.65
OH	2.77	2.85	2.77	2.85				
OK	2.73	2.77	2.73	2.77				
OR	3.10	3.05	3.10	3.05				
SD	3.41	3.30	2.89	2.72	3.15	3.41	3.73	3.63
TX	2.78	2.79	2.78	2.79				
WA	3.27	3.12	3.22	3.06			3.55	3.47
US	2.85	3.01	2.76	2.84	3.26	3.34	3.50	3.57

1/ Entire month.

2/ Mid-month.

3/ Sales volume insufficient to establish a price.

Prices Received for Selected Agricultural Commodities, by Months, United States, 1992 and 1993

Month	All Wheat		Corn		Soybeans		Beef Cattle <u>1</u> /		All Hogs	
	1992	1993 <u>2</u> /	1992	1993 <u>2</u> /	1992	1993 <u>2</u> /	1992	1993 <u>2</u> /	1992	1993 <u>2</u> /
	Dollars per Bushel						Dollars per Cwt			
Jan	3.54	3.38	2.40	2.03	5.54	5.58	68.90	74.20	36.80	41.40
Feb	3.78	3.33	2.46	2.00	5.59	5.56	72.50	75.80	40.20	44.20
Mar	3.72	3.30	2.49	2.10	5.67	5.65	72.80	77.30	39.10	46.80
Apr	3.65	3.25	2.48	2.16	5.66	5.73	72.60	77.40	41.00	45.50
May	3.64	3.10	2.49	2.13	5.87	5.81	71.90	76.90	45.10	47.00
Jun	3.43	2.82	2.47	2.09	5.94	5.90	70.20	74.70	46.70	48.20
Jul	3.15	2.85	2.33	2.22	5.59	6.57	70.60	72.60	44.60	45.90
Aug	3.01	3.01	2.15	2.20	5.40	6.36	71.80	73.00	44.10	47.10
Sep	3.20		2.16		5.36		71.80		42.10	
Oct	3.22		2.05		5.26		71.80		42.00	
Nov	3.29		1.98		5.36		70.20		41.10	
Dec	3.31		1.97		5.46		70.80		41.80	

1/ Cows, steers and heifers.

2/ Current month prices are mid-month; prices for previous months are for the entire month.

Grains: Prices Received, by States, July and August 1993

State	Barley <sup>1/</sup>		Corn		Oats		Soybeans		Sorghum Grain	
	Jul <sup>2/</sup>	Aug <sup>3/</sup>	Jul <sup>2/</sup>	Aug <sup>3/</sup>	Jul <sup>2/</sup>	Aug <sup>3/</sup>	Jul <sup>2/</sup>	Aug <sup>3/</sup>	Jul <sup>2/</sup>	Aug <sup>3/</sup>
----- Dollars per Bushel -----										
AL							7.07	6.43		
AR							6.07	6.40	4.02	4.00
CA	2.42	2.52			4/	4/				
CO	1.93	1.88	2.30	2.34					3.63	3.71
GA			2.52	2.48			6.74	6.54		
ID	2.25	2.20								
IL			2.23	2.22	1.54	1.51	6.62	6.46		
IN			2.31	2.30	1.54	1.30	6.82	6.56		
IA			2.14	2.13	1.40	1.46	6.47	6.30		
KS			2.34	2.34			6.47	6.26	3.47	3.53
KY			2.47	2.42			6.75	6.75		
LA							4/	6.48		
MI			2.07	2.10	1.72	1.65	6.60	6.50		
MN	1.78	1.70	2.04	2.06	1.31	1.33	6.39	6.17		
MS							6.59	6.48		
MO			2.31	2.30			6.47	6.40	3.59	3.70
MT	1.86	1.68			1.50	1.14				
NE			2.21	2.24	1.40	1.41	6.46	6.30	3.54	3.52
NM									3.84	4.00
NY					1.72	1.46				
NC			2.56	2.53			6.55	6.40		
ND	1.69	1.63			1.18	1.15				
OH			2.32	2.35	1.54	1.50	6.84	6.60		
OK									3.72	3.78
OR	2.23	2.19			1.60	1.58				
PA			2.68	2.58	1.50	1.40				
SC							6.49	6.50		
SD	1.67	1.66	2.04	2.13	1.31	1.31	6.30	6.15	2.84	3.20
TN							6.79	6.60		
TX			2.39	2.41	1.49	4/	4/	5.75	3.81	3.82
UT	2.20	2.13								
WA	1.91	1.88								
WI			2.19	2.16	1.38	1.32				
US	1.81	1.79	2.22	2.20	1.36	1.35	6.57	6.36	3.72	3.78

<sup>1/</sup> The Three-State (MN, ND and SD) Feed Barley price for August 1993 is \$1.50. Data for WY unpublished, but included in US total.

<sup>2/</sup> Entire month.

<sup>3/</sup> Mid-month.

<sup>4/</sup> Sales volume insufficient to establish a price.

Malting and Feed Barley: Prices Received, Selected States, July and August 1993

State	Malting Barley		Feed Barley	
	Jul	Aug	Jul	Aug
----- Dollars per Bushel -----				
ID	2.54	2.65	2.13	2.03
MN	1.86	1.77	1.59	1.52
MT	2.26	1.80	1.81	1.67
ND	1.80	1.75	1.58	1.50
SD	1.85	1.95	1.55	1.47

Field Crops: Prices Received, by States, July and August 1993

State	Dry Edible Beans		Flaxseed		Tobacco		Peanuts <sup>4/</sup>	
	Jul <sup>1/</sup>	Aug <sup>2/</sup>	Jul <sup>1/</sup>	Aug <sup>2/</sup>	Jul <sup>1/</sup>	Aug <sup>3/</sup>	Jul	Aug
	Dollars per Cwt		Dollars per Bu		Dollars per Pound			
AL								
CA	24.80	27.40						
CO	17.30	18.60						
FL					1.360	1.505		
GA					1.480	1.550		
ID	17.50	18.60						
IN								
KY								
MD								
MI	19.00	18.50						
MN	17.90	19.40						
MO								
NE	16.60	18.30						
NC					1.685	1.600		
ND	14.00	15.30	4.29	4.25				
OH								
OK								
SC					1.485	1.505		
SD			<sup>5/</sup>	<sup>5/</sup>				
TN								
TX								
VA						1.740		
WA	23.60	21.30						
WV								
US	18.70	19.10	4.29	4.25	1.580	1.600		

- <sup>1/</sup> Entire month.  
<sup>2/</sup> Mid-month.  
<sup>3/</sup> Based on sales through first half of month.  
<sup>4/</sup> Marketing year Aug-Jan.  
<sup>5/</sup> Sales volume insufficient to establish a price.

Tobacco: Prices Received, by Area and Type,  
 August 1993, with Comparisons

		Tobacco		
Area	Type	Aug 1992	Jul 1993	Aug 1993
Dollars per Pound				
Flue-cured				
Old and Middle Belts	11	1.615	1.755	1.705
Eastern N C Belt	12	1.660	1.730	1.590
NC Border and SC Belt	13	1.660	1.510	1.510
GA-FL Belt	14	1.700	1.460	1.545
Total Flue-cured	11-14	1.655	1.580	1.600
US	11-37	1.655	1.580	1.600

Field Crops and Apples: Prices Received, by States,  
July and August 1993

State	Cotton, Upland		Cotton- seed	August			Apples Fresh Use <u>1/4/</u>
	Jul <u>1/</u>	Aug <u>2/</u>		Hay, Baled <u>3/</u>			
	Dollars per Pound			All	Alfalfa	Other	
AL	<u>6/</u>	<u>5/</u>					
AZ	.539	<u>5/</u>		84.00	81.00	88.00	
AR	.510	.503		57.00	96.00	53.00	
CA	<u>6/</u>	.598		90.00	91.00	80.00	.347
CO				73.00	73.00	72.00	
CT							
GA	.551	<u>5/</u>					
ID				76.00	77.00	60.00	
IL				92.00	95.00	70.00	.133
IN				62.00	70.00	48.00	
IA				85.00	88.00	63.00	
KS				66.00	68.00	52.00	
KY				74.00	106.00	66.00	
LA	.526	.514					
ME							
MD							.217
MA							
MI				59.00	60.00	50.00	.144
MN				94.00	100.00	68.00	
MS	.512	.504					
MO				65.00	88.00	55.00	
MT				68.00	70.00	58.00	
NE				47.00	48.00	40.00	
NV				89.00	94.00	74.00	
NH							
NJ							
NM				99.00	101.00	84.00	.180
NY				70.00	72.00	66.00	
NC							
ND				45.00	54.00	35.00	
OH				84.00	100.00	45.00	.260
OK				77.00	92.00	55.00	
OR				92.00	97.00	65.00	
PA				98.00	109.00	84.00	.220
SD				51.00	52.00	41.00	
TN	.527	.524	111.00				
TX	.490	.497		62.00	100.00	50.00	
UT				59.00	61.00	45.00	
VT							
VA							
WA				94.00	92.00	113.00	.221
WV							
WI				82.00	85.00	65.00	.350
WY				73.00	75.00	71.00	
US	.541	.512	111.00	77.40	81.60	62.00	.231

1/ Entire month. 2/ Based on sales during the first half of the month.  
3/ Mid-month. 4/ Equivalent packinghouse-door returns for CA, NY, OR, and WA.  
 Price at point of first sale for other states. 5/ Sales insufficient to publish price.  
6/ Price not published to avoid disclosure of individual operation.

Upland Cotton and Rice: Prices Received and Marketings,  
United States, August 1993, with Comparisons

Item	Unit	Jun 1993 <u>1/</u>	Jul 1993 <u>1/</u>	Aug 1993 <u>2/</u>
Cotton, Upland				
Average Price	Dollars/Pound	.530	.541	.512
Marketings <u>3/</u>	1,000 Bales	261	280	NA
Rice				
Average Price	Dollars/Cwt	5.02	4.92	4.96
Marketings <u>4/</u>	1,000 Cwt	12551	14062	NA

1/ Entire month. 2/ Based on purchases for the first half of the month.  
3/ Expanded data from sample of about 35 percent of buyers. 4/ Purchases by private firms and rice (rough equivalent) shipped by cooperatives.

Citrus Fruit: Prices and Equivalent Returns, by Utilization,  
by State and United States, August 1993

Commodity, State and Area	FOB	Equivalent Returns					
		Packed Fresh	Packinghouse-door			On-tree	
			All	Fresh	Process	All	Fresh
Dollars per Box <sup>1/</sup>							
Grapefruit							
CA							
Other Areas	13.90	5.62	8.00	-0.19	3.65	6.03	-2.16
US	13.90	5.62	8.00	-0.19	3.65	6.03	-2.16
Lemons							
CA	42.90	27.11	35.00	1.95	23.62	31.51	-1.54
US	42.90	27.11	35.00	1.95	23.62	31.51	-1.54
Limes							
FL	36.00	22.19	26.40	4.50	16.58	20.60	-0.30
Oranges							
CA							
Valencia	16.50	7.53	10.40	0.58	5.38	8.25	-1.57
US	16.50	7.53	10.40	0.58	5.38	8.25	-1.57

<sup>1/</sup> Approximate net contents per box are as follows: Grapefruit - AZ and CA Desert Valley, 64 lbs; Other CA areas, 67 lbs; FL, 85 lbs; TX, 80 lbs; Lemons - 76 lbs; Limes - 88 lbs; Oranges - AZ and CA, 75 lbs; FL, 90 lbs; TX, 85 lbs.



Potatoes: Prices Received, by States.  
July and August 1993

State	Jul	Aug	State	Jul	Aug
Dollars per Cwt			Dollars per Cwt		
AL	9.75	9.25	NY - All	7.50	8.10
AZ			- Long Island		6.00
CA - All	12.80	15.30	- Upstate	7.50	9.00
- Winter			NC	5.35	9.50
- Spring	12.20		ND		
- Summer	16.20	15.30	OH		7.00
- Fall			OR	5.25	5.55
CO	4.20	5.30	PA	15.10	7.00
FL			TX	11.70	9.55
ID - All <u>1/</u>	4.90	4.60	VA	14.00	13.50
- Fresh <u>2/</u>	4.10	NA	WA	6.05	7.25
- Processing	5.70	NA	WI	7.05	6.30
ME					
MI	8.20	7.85	US - All <u>1/</u>	7.93	6.55
MN	10.00	6.95	- Fresh <u>2/</u>	9.83	NA
			- Processing	5.44	NA

1/ Average price of potatoes sold for all uses, including table stock, processing, seed and livestock feed.

2/ Fresh market prices only, includes table stock prices.

Cattle: Prices Received, by States, July and August 1993

State	Cows <u>1/</u>		Steers & Heifers:		Beef Cattle <u>4/</u>		Calves	
	Jul <u>2/</u>	Aug <u>3/</u>	Jul <u>2/</u>	Aug <u>3/</u>	Jul <u>2/</u>	Aug <u>3/</u>	Jul <u>2/</u>	Aug <u>3/</u>
Dollars per Cwt								
AZ	45.60	45.10	73.00	75.00	70.80	73.20	94.00	94.00
AR	49.00	48.00	84.50	85.00	67.80	67.60	93.50	97.00
CA	48.60	48.90	86.00	85.70	70.20	70.20	92.70	93.20
CO	55.40	54.10	74.30	76.30	73.50	75.40	108.00	104.00
FL	48.40	48.00	85.30	85.00	62.10	61.70	96.70	95.00
GA	48.20	48.90	77.40	76.20	57.30	59.80	86.40	86.20
ID	49.00	50.10	71.60	72.60	66.40	68.60	97.10	97.70
IL	49.20	48.50	73.60	73.80	72.90	73.00	108.00	107.00
IA	51.00	51.10	74.00	74.90	68.50	69.40	103.00	100.00
KS	50.20	51.20	76.00	75.30	75.70	74.80	96.00	95.00
KY	49.00	49.00	81.00	81.00	73.30	73.30	90.00	90.00
LA	47.60	47.50	80.30	80.50	59.00	59.70	93.50	93.00
MI	49.70	48.30	67.40	66.70	60.80	59.70	105.00	102.00
MN	49.10	48.80	67.10	66.30	65.30	64.60	100.00	99.30
MO	50.80	49.90	85.40	85.50	78.50	79.10	95.20	95.80
MT	52.50	53.60	80.20	82.10	60.50	65.00	93.70	95.20
NE	52.00	52.20	74.50	76.70	74.00	76.20	105.00	103.00
NM	50.80	50.80	82.10	82.50	69.30	70.50	97.70	97.50
NY	46.70	46.30	66.00	64.00	49.00	48.40	114.00	110.00
ND	50.20	51.00	76.30	79.00	63.00	70.00	102.00	104.00
OH	47.90	46.40	74.00	73.00	68.30	69.30	104.00	102.00
OK	48.10	47.00	87.80	88.00	83.30	79.00	99.80	98.50
OR	46.30	48.30	79.00	80.00	69.20	70.50	91.20	95.00
PA	50.10	49.00	72.40	71.20	66.60	65.40	137.00	134.00
SD	53.80	53.60	75.70	76.30	69.20	69.70	98.60	98.60
TN	43.40	43.00	81.20	81.20	66.10	65.90	87.00	85.50
TX	46.90	46.50	78.00	77.10	75.50	74.70	96.10	95.90
VA	45.10	44.90	78.70	78.50	67.00	68.10	87.40	86.50
WI	50.90	50.00	66.90	69.00	57.30	57.60	127.00	128.00
WY	53.90	52.50	80.90	81.70	63.70	71.50	103.00	103.00
US	50.20	49.50	75.20	75.70	72.60	73.00	96.90	96.30

- 1/ Beef cows and cull dairy cows sold for slaughter.  
2/ Entire month.  
3/ Mid-month.  
4/ "Cows" and "steers and heifers" combined.

Hogs: Prices Received, by States, July and August 1993

State	Sows		Barrows and Gilts		All Hogs	
	Jul <u>1</u> /	Aug <u>2</u> /	Jul <u>1</u> /	Aug <u>2</u> /	Jul <u>1</u> /	Aug <u>2</u> /
Dollars per Cwt						
GA	35.80	36.40	44.80	46.90	43.90	45.90
IL	34.60	35.40	45.60	46.70	44.10	45.10
IN	33.80	33.30	46.00	48.30	44.60	46.50
IA	35.70	34.60	47.20	48.40	46.60	47.70
KS	34.50	35.00	45.80	47.90	44.40	46.40
KY	35.00	34.00	45.00	46.50	44.60	46.00
MI	33.20	33.50	46.60	47.50	43.50	44.30
MN	34.80	35.50	47.70	49.00	47.20	48.50
MO	33.30	34.10	45.40	46.20	44.90	45.70
NE	36.20	36.70	47.40	49.50	46.90	48.70
NC	35.00	35.20	46.70	48.80	46.60	48.70
OH	35.60	36.00	46.90	48.00	46.40	47.50
PA	34.90	35.60	44.30	44.70	42.90	43.30
SC	32.20	32.00	42.70	43.80	42.10	43.10
SD	35.00	35.20	47.50	49.00	46.80	48.20
TN	34.00	34.00	44.50	45.50	43.50	44.40
TX	33.70	31.90	42.30	42.90	41.20	41.50
VA	36.50	36.00	46.30	46.80	46.10	46.60
WI	32.20	32.90	45.80	48.50	44.00	46.50
US	35.00	34.70	46.70	48.00	45.90	47.10

1/ Entire month.

2/ Mid-month.

Feed Price Ratios: With Comparisons, United States, August 1993

Feed Price Ratio	1992		1993
	Aug	Jul	Aug
Broiler-Feed: Pounds of Broiler Grower equal in value to 1 pound of broiler, live weight <u>1</u> /	3.3	3.4	3.6
Egg Feed: Pounds of Laying Feed equal in value to 1 dozen eggs <u>1</u> /	5.3	5.7	6.1
Hog-Corn: Bushels of Corn equal in value to 100 pounds of hog, live weight	*20.5	*20.7	21.4
Milk-Feed: Pounds of 16% Mixed Dairy Feed equal in value to 1 pound of Whole Milk <u>1</u> /	1.52	*1.43	1.41
Turkey-Feed: Pounds of Turkey Grower equal in value to 1 pound of Turkey, live weight <u>1</u> /	3.1	3.1	3.2

1/ Commercial feed prices are surveyed in January, April, July, and October.

\* Revised.

Sheep, Wool, and Poultry: Prices Received, by States,  
July and August 1993

State	Sheep		Lambs		August			
	Jul 1/ <sup>1/</sup>	Aug 2/ <sup>2/</sup>	Jul 1/ <sup>1/</sup>	Aug 2/ <sup>2/</sup>	Wool 1/3	Turkeys 2/	Broilers 1/4/	Eggs 2/5/
	Dollars per Cwt				Dollars per Pound			Do1/Doz
AL							.375	.490
AZ								
AR						.42	.380	.520
CA	22.80	21.50	63.50	60.00	.45	.43	.345	.440
CO	29.40	30.50	51.10	57.00				
CT								1.060
DE							.345	
FL								.480
GA							.370	.543
ID	28.00	29.00	52.90	54.00	.45			
IN						.40		.540
IA	34.00	34.40	52.80	55.80	.14	.38		.449
KS	29.00	29.00	55.50	57.00	.23			
ME								.990
MD							.345	
MI								.490
MN	27.50	28.20	53.60	56.60	.18	.35		.430
MS							.360	.604
MO						.42		.478
MT	30.70	29.00	52.40	57.80	.50			
NE	31.20	30.90	53.00	58.00	.17			
NM	30.70	30.50	56.80	57.00				
NY								.567
NC						.39	.335	.501
OH	30.60	29.00	51.30	55.00				.426
OR	23.70	25.10	50.70	51.70	.20			
PA						.41	.340	.413
SC								.543
SD	28.50	30.40	54.60	60.00	.41			
TX	34.50	33.00	55.40	55.40	.47		.390	.630
UT	23.00	23.00	50.00	56.00	.45			
VA						.41	.330	
WA								.691
WY	25.30	28.00	55.60	60.00	.60			
US	28.70	28.00	54.20	57.00	.388	.395	.363	.512

- 1/ Entire month.
- 2/ Mid-month.
- 3/ Incentive payment not included.
- 4/ Liveweight equivalent price except for AR, PA, and TX.
- 5/ Market (table) eggs. Includes eggs sold retail by the producer.

Milk and Milk Cows: Prices Received, by States, July and August 1993

State	July				August				
	Fluid Grade Milk <u>1/</u>		Manufacturing Grade Milk		All Milk <u>2/</u>		All Milk <u>2/3/</u>		Milk Cows <u>4/</u>
	Price	Fat Test	Price	Fat Test	Price	Fat Test	Price	Fat Test	
Dol/Cwt	Pct	Dol/Cwt	Pct	Dol/Cwt	Pct	Dol/Cwt	Pct	Dol/Head	
AL	15.60	3.53	14.00	3.40	15.60	3.53	15.20	3.51	
AR	14.10	3.35	11.80	4.01	14.00	3.37	13.40	3.38	
CA	11.65	3.49	11.35	3.81	11.64	3.50	11.60	3.52	
CO	13.10	3.50			13.10	3.50	13.50	3.55	
FL	16.20	3.45			16.20	3.45	15.70	3.45	
GA	16.00	3.45			16.00	3.45	15.50	3.48	
ID	12.00	3.44	11.40	3.54	11.90	3.46	11.80	3.47	
IL	12.80	3.56	11.80	3.51	12.70	3.56	12.00	3.59	
IN	13.60	3.46	10.90	3.54	13.40	3.46	13.20	3.47	
IA	12.40	3.52	11.10	3.50	12.20	3.52	12.00	3.53	
KS	12.40	3.40	11.20	3.46	12.30	3.40	12.40	3.45	
KY	14.40	3.45	10.60	3.55	14.20	3.46	13.70	3.46	
LA	14.80	3.51			14.80	3.51	15.00	3.56	
MD	13.70	3.46			13.70	3.46	13.40	3.46	
MI	13.30	3.43	11.50	3.43	13.30	3.43	13.10	3.47	
MN	12.55	3.60	11.15	3.55	12.33	3.59	12.00	3.61	
MS	15.00	3.56	12.50	3.48	15.00	3.56	14.50	3.60	
MO	13.00	3.42	11.40	3.54	12.90	3.43	13.10	3.45	
NE	12.60	3.51	11.60	3.48	12.40	3.50	11.90	3.50	
NM	11.80	3.42			11.80	3.42	12.10	3.46	
NY	13.10	3.48			13.10	3.48	12.60	3.53	
NC	15.30	3.44	10.60	3.72	15.30	3.44	14.80	3.43	
ND	12.30	3.51	10.90	3.59	11.70	3.55	11.40	3.62	
OH	13.30	3.47	10.50	3.55	13.00	3.48	12.80	3.52	
OK	13.40	3.38	10.70	3.46	13.30	3.38	13.90	3.41	
OR	12.60	3.56	11.50	3.70	12.60	3.56	12.40	3.58	
PA	13.90	3.48	11.50	3.64	13.90	3.48	13.50	3.49	
TN	14.80	3.44	11.00	3.61	14.70	3.44	15.00	3.45	
TX	13.60	3.40			13.60	3.40	13.90	3.43	
UT	12.20	3.45	11.00	3.47	12.10	3.45	11.90	3.46	
VT	13.60	3.57			13.60	3.57	13.10	3.59	
VA	14.60	3.40	10.90	3.48	14.50	3.40	14.20	3.40	
WA	12.40	3.56			12.40	3.56	12.10	3.57	
WI	12.60	3.64	11.62	3.68	12.48	3.64	12.20	3.66	
US	12.90	3.51	11.30	3.60	12.80	3.52	12.60	3.54	

1/ Including surplus diverted to manufacturing. 2/ Before deductions for hauling and government withholding. Includes quality, quantity, and other premiums. Excludes hauling subsidies. 3/ Preliminary. 4/ Animals sold for dairy herd replacement only. Prices published Jan, Apr, Jul and Oct.

Parity Price Equivalent for Manufacturing Milk 1/: United States, July and August 1993, with Comparisons

Item	Aug 1992	Jul 1993	Aug 1993
Parity Equivalent.....Dol per Cwt	24.55	24.71	24.71
Average Price F.O.B.....Dol per Cwt	12.30	11.30	<u>2/</u> 11.10
Average Fat Test of Milk...Percent	3.61	3.60	<u>2/</u> 3.62

1/ The parity price equivalent during 1993 is 91.5 percent of the parity price of all milk sold to plants, compared with 92.3 percent in 1992. For additional details, see January 1993 issue of Agricultural Prices.

2/ Preliminary.

United States Parity Prices for Farm Products and Average Prices Received as Percent of Parity Prices Based on Data for August 1993, with Comparisons 1/

Commodity and Unit	Adjusted Base Prices	Parity Prices Based on Data for			Prices as Percent of Parity		
		Aug 1992	Jul 1993	Aug 1993	Aug 1992	Jul 1993	Aug 1993
Dollars							
<b>Basic Commodities</b>							
All Wheat, Bu	.613	8.07	8.31	8.31	37	34	36
Rice, Cwt	1.70	22.10	23.10	23.10	30	21	21
Corn, Bu	.433	5.73	5.87	5.87	38	38	37
Cotton, Lb							
Upland	.113	1.51	1.53	1.53	36	35	33
Extra Long Staple	.151	2.06	2.05	2.05			
Peanuts, Lb	.0434	.567	.589	.589			
Tobacco, By Type, Lb							
Flue-Cured 11-14	.258	3.45	3.50	3.50	48	45	46
VA Fire-Cured, 21	.215	2.77	2.92	2.92			
KY-TN Fire-Cured, 22-23	.281	3.61	3.81	3.81			
Burley, 31	.261	3.46	3.54	3.54			
Maryland, 32	.213	2.84	2.89	2.89			
Dark Air-Cured, 35-36	.235	3.01	3.19	3.19			
Sun-Cured, 37	.190	2.47	2.58	2.58			
PA Seedleaf, 41	.155	1.97	2.10	2.10			
Cigar Filler & Binder, 42-44, 54-55	.190	2.43	2.58	2.58			
Puerto Rican Filler, 46	.173	2.29	2.35	2.35			
Cigar Binder, 51-52	.305	3.86	4.14	4.14			
<b>Designated Nonbasic</b>							
All Milk, Sold to Plants, Per Cwt	1.99	26.60	27.00	27.00	2/51	2/48	2/46
Honey, Extracted, Lb	3/.0859	1.15	1.16	1.16			
<b>Wool and Mohair</b>							
Wool, Lb	.270	3.46	3.66	3.66	4/18	4/13	4/11
Mohair, Lb	.721	9.46	9.78	9.78			
<b>Other Nonbasic</b>							
Barley, Bu	.374	4.98	5.07	5.07	43	36	35
Cottonseed, Ton	15.50	202.00	210.00	210.00	51		53
Dry Edible Beans, Cwt	3.17	42.00	43.00	43.00	43	43	44
Flaxseed, Bu	.819	11.40	11.10	11.10	32	39	38
Oats, Bu	.241	3.24	3.27	3.27	38	42	41
Potatoes, Cwt	.836	11.00	11.30	11.30	60	70	58
Rye, Bu	.313	4.39	4.24	4.24			
Sorghum Grain, Cwt	.701	9.38	9.51	9.51	40	39	40
Soybeans, Bu	.920	12.30	12.50	12.50	44	53	51
Sweetpotatoes, Cwt	1.58	23.90	21.40	21.40			
Apples, Fresh, Lb 5/	.0270	.341	.366	.366	98	49	63
Citrus (equiv on-tree), box:							
Grapefruit	.694	8.34	9.41	9.41	49	1	39
Lemons	1.07	12.80	14.50	14.50	83	78	163
Limes (FL)	1.35	19.20	18.30	18.30	4		91
Oranges	.929	12.30	12.60	12.60	8	33	43
Tangerines	1.83	22.70	24.80	24.80			
Temples (FL)	.790	9.92	10.70	10.70			
Beef Cattle, Cwt	9.77	127.00	132.00	132.00	57	55	55
Calves, Cwt	12.10	156.00	164.00	164.00	58	59	59
Hogs, Cwt	7.19	98.00	97.50	97.50	45	47	48
Lambs, Cwt	10.10	132.00	137.00	137.00	42	40	42
Sheep, Cwt	3.70	47.70	50.20	50.20	54	57	56
Eggs, Doz	.0952	1.27	1.29	1.29	2/44	2/49	2/51
Turkeys, Live, Lb	.0613	.814	.831	.831	46	47	48

-- continued

Parity Prices Based on Data for August 1993, United States 1/ (continued)

Other Nonbasic Commodities	Adj Base Prices	Parity Prices	Other Nonbasic Commodities	Adj Base Prices	Parity Prices
Dollars			Dollars		
Field Crops and Misc Commodities			Noncitrus Fruit		
Hops, Lb	.261	3.54	Pears, Ton		
Tobacco, Lb Type 61	2.52	34.20	Fresh <u>5/</u>	50.30	682.00
Noncitrus Fruit			Dried, CA <u>7/</u>	125.00	1700.00
Apples, Ton <u>7/</u>			Plums, CA, Ton		
Processing	18.30	248.00	Fresh, Equiv on-Tree	49.70	674.00
Apricots, Ton			Prunes, Dried, CA, Ton <u>7/</u>	122.00	1650.00
Fresh <u>8/</u>	155.00	2100.00	Prunes and Plums, Excl CA, Ton		
Dried, CA	302.00	4100.00	Fresh <u>10/</u>	57.40	778.00
Avocados, Ton <u>8/</u>	141.00	1910.00	Processing <u>7/</u>		
Cherries			Excl Dried	18.90	256.00
Sweet, Ton	121.00	1640.00	Tree Nuts <u>11/</u>		
Tart, Lb	.0363	.492	Almonds, Lb	.169	2.29
Cranberry, Bbl	7.10	96.30	Filberts, Ton	112.00	1520.00
Dates, CA, Ton <u>8/</u>	135.00	1830.00	Walnuts, Ton	148.00	2010.00
Grapes, Ton			Vegetables, Cwt <u>12/</u>		
Raisin Variety	123.00	1670.00	Fresh		
Other, Dried	43.30	587.00	Carrots <u>9/</u>	1.53	20.70
Nectarines			Cauliflower <u>9/</u>	3.99	54.10
Fresh, Calif, Ton <u>8/</u>	57.40	778.00	Celery <u>9/</u>	1.81	24.50
Olives, CA			Honeydew Melons	2.21	30.00
Canning, Ton <u>6/</u>	96.60	1310.00	Lettuce	1.90	25.80
Peaches			Onions <u>9/</u>	1.73	23.50
Fresh, Lb <u>5/</u>	.0402	.545	Tomatoes	4.29	58.20
Dried, CA, Ton	144.00	1950.00			
Processing <u>6/</u>					
Excl Dried					
Clingstone, CA, Ton	30.10	408.00			

1/ Parity prices are computed under the provisions of Title III, Subtitle a, Section 301 (a) of the Agricultural Adjustment Act of 1938 as amended by the Agricultural Acts of 1948, 1949, and 1956. See January and July Agricultural Prices for details on adjusted base price and parity price computations.

2/ Seasonally adjusted price as percentage of parity price.

3/ Wholesale extracted. Adjusted base price derived from state annual averages prices weighted by production. For 1982 through 1985 the national averages are the support prices.

4/ Average local market price, excluding incentive payments.

5/ Equivalent packinghouse-door returns for CA, NY (apples only), OR (except peaches), and WA. Price at point of first sale for other states.

6/ Equivalent returns for bulk fruit at first delivery point.

7/ Equivalent returns at processing plant door.

8/ Equivalent returns at packinghouse door.

9/ Includes some processing.

10/ Based on "as sold" prices for fresh fruit in all states.

11/ Prices in-shell basis except almonds which are shelled basis.

12/ F.O.B. shipping point prices.

Cranberries: Marketing Year Average Prices Received  
by Growers, 1991-92 <sup>1/</sup>

State	1991	1992
	Dollars per Barrel	
MA	49.80	53.30
NJ	47.70	48.40
OR	47.20	48.10
WA	47.20	48.10
WI	48.60	50.50
US	49.00	51.30

<sup>1/</sup> Weighted average of co-op and independent sales. Co-op prices represent pool proceeds excluding returns from non-cranberry products and before deductions for capital stock and other retains.



## Prices Received by Farmers

**Definition:** Prices received represent sales from producers to first buyers. They include all grades and qualities. The average commodity price from the survey multiplied by the total quantity marketed theoretically should give the total cash receipts for the commodity.

**Survey Procedures:** Primary sales data used to determine grain prices were obtained from probability samples of 2600 mills and elevators. These procedures ensure that virtually all grain moving into commercial channels have a chance of being included in the survey. Generally, States surveyed account for 90 percent or more of total U.S. production. Livestock prices are obtained from packers, stockyards, auctions, dealers, and market check data from AMS-USDA, private marketing organizations, and state commodity groups and agencies. Inter farm sales of grain and livestock are not included since they represent very small percentages of the total marketings. Grain marketed for seed is also excluded. Fruit and vegetable prices are obtained from sample surveys and market check data from AMS-USDA, private marketing organizations, state agencies, and universities.

**Summary and Estimation Procedures:** Survey quantities sold are expanded by strata to state levels and used to weight average strata prices to a state average. State prices are then weighted to a U.S. price based on expanded marketings. Recommendations are prepared by the State Statistical Offices and reviewed by the Agricultural Statistics Board in Washington, D.C. State recommendations are reviewed for reasonableness with survey data, other States, and recent historic estimates.

**Revisions:** For most items, the current month's price represents a 3-5 day period around the mid-month. Previous month's prices represent actual dollars received for quantities sold during the entire month. Revisions are published in monthly issues of Agricultural Prices and in the annual summary published in June. A schedule of monthly revisions is published in the December issue of Agricultural Prices and in the June annual summary.

**Reliability:** U.S. price estimates generally have a sampling error of less than one half percent for the major commodities such as corn, wheat, soybeans, cotton, and rice. For example, if the estimated U.S. price of corn was \$2.00 per bushel, the chances are 2 out of 3 that the indications of all possible samples averaged together would lie in the range from \$1.99 to \$2.01.

## Index

### Prices Received

U.S. Prices and Indexes	Page		Page
Narrative.....	2	Cows, Beef.....	18
Price Indexes.....	3	Cows, Milk.....	21
Prices Received		Eggs.....	20
U.S. Summary.....	6-7	Flaxseed.....	14
Selected Commodities...	12	Fruit, Citrus.....	16
Upland Cotton and Rice		Hay.....	15
Prices and Marketings..	15	All Hogs.....	19
Feed Price Ratios.....	19	Lambs.....	20
Parity Prices.....	22-23	Milk.....	21
Reliability Statement....	25	Oats.....	13
<b>Monthly State Prices</b>		Peanuts.....	14
Apples.....	15	Potatoes.....	17
Barley.....	13	Sheep.....	20
Barrows and Gilts.....	19	Sorghum, Grain.....	13
Beans, Dry Edible.....	14	Soybeans.....	13
Beef Cattle.....	18	Sows.....	19
Broilers.....	20	Steers and Heifers.....	18
Calves.....	18	Tobacco.....	14
Corn.....	13	Turkeys.....	20
Cotton.....	15	Wheat.....	12
Cottonseed.....	15	Wool.....	20

### Special Features

Cranberries: Marketing Year Average Price .....	24
---	----

## Report Features

The next "Agricultural Prices" report will be released at 3 p.m. ET on September 29, 1993.

Listed below are the commodity specialists in the Economic Statistics Branch of the National Agricultural Statistics Service to contact for additional information.

Economic Statistics Branch  
Robert W. Milton, Chief (202) 720-3570

### Commodity Prices Section (Prices Received)

Herb Vanderberry, Head - Prices Received Indexes (202) 720-5446  
James Hand - Potatoes, Hogs, Sheep & Lambs, Milk,  
Wool (202) 690-3236  
Herb Vanderberry - Grains, Oilseeds, Hay (202) 720-5446  
Debra Kenerson - Cattle, Cotton, Poultry (202) 690-0270  
Doug Rundle - Fruits, Vegetables, Peanuts,  
Tobacco, Sugar Crops (202) 690-3231

### Farm Inputs Section (Prices Paid)

Douglas Kleweno, Head (202) 720-4214  
Daryl Brinkman - Prices Paid Indexes, Seeds, Building  
Materials, Fertilizer, Pesticides (202) 690-3226  
Dan Ledbury - Grazing Fees (202) 720-1790  
Nancy Moore - Feed and Autos & Trucks (202) 690-3347  
Jim Williams - Motor Supplies, Farm Supplies, Farm  
Machinery, Fuels, Feeder Livestock,  
Poultry Chicks, Feed Price Ratios (202) 690-3225

# **Want to subscribe?** **Time to renew?**

Subscribe to *Agricultural Prices, Monthly* today! If you already subscribe to this timely periodical, note that expiration information about your subscription appears on the top line of your mailing label. **Expiration information will appear in one of two formats:** 1-PAP-2 (this means you have TWO issues remaining in your subscription) or APR94 (expiration date is April 1994). Disregard this notice if no renewal information appears.

**Need it fast?** Subscribe to *Agricultural Prices, Monthly* via CALL-ERS/NASS, an electronic Bulletin Board Service that supports 1200/2400/9600 baud communications. Reports may be accessed by 9 a.m. ET the day following release. An electronic subscription costs the same as paper!

Call toll free, 1-800-999-6779, and tell us whether you want to subscribe or renew, or return this form to:  
**ERS-NASS, 341 Victory Drive, Herndon, VA 22070.**

## **Agricultural Prices, Monthly**

- |   |          | 1 Year                           | 2 Years                          | 3 Years                           |
|---|----------|----------------------------------|----------------------------------|-----------------------------------|
| <input type="checkbox"/> Yes! I want to <b>start</b> my subscription. | Domestic | <input type="checkbox"/> \$28.00 | <input type="checkbox"/> \$54.00 | <input type="checkbox"/> \$80.00  |
| <input type="checkbox"/> Yes! I want to <b>renew</b> my subscription. | Foreign  | <input type="checkbox"/> \$35.00 | <input type="checkbox"/> \$67.50 | <input type="checkbox"/> \$100.00 |
- Check one:**  Paper  
 Electronic (1-year subscriptions only)  
 Both (rate is double the listed price)

### **New subscribers:**

Name: \_\_\_\_\_  
Address: \_\_\_\_\_  
City, State, Zip: \_\_\_\_\_  
Daytime phone: (\_\_\_\_) \_\_\_\_\_

### **Renewals:**

ATTACH MAILING LABEL HERE

### **Payment method:**

- Bill me.  Enclosed is \$ \_\_\_\_\_.

Use purchase orders, checks drawn on U.S. banks, cashier's checks, or international money orders. **Make payable to ERS-NASS.**

Credit card number:

Card expiration date:     
Month/Year

**For fastest service, call our toll-free order desk 1-800-999-6779,  
in the U.S. and Canada; other areas please call 703-834-0125,  
or FAX this page to 703-834-0110.**