



Agricultural Prices

Released August 31, 1999, by the National Agricultural Statistics Service (NASS), Agricultural Statistics Board, U.S. Department of Agriculture. For information on "Agricultural Prices" or other assistance, see page B-11.

Prices Received Index Increases 3 Points

The All Farm Products Index of Prices Received in August was 98 based on 1990-92=100 and mid-month August prices, up 3 points (3.2 percent) from the preliminary July index. Price increases from July for milk, hogs, wheat, and corn more than offset price decreases for broilers, potatoes, oranges, and tomatoes. The seasonal changes in the mix of commodities farmers sell also affect the overall index. Higher seasonal marketings of tobacco, cattle, grapes, and sweet corn more than offset the relatively lower marketings of wheat, hay, milk, and broilers. These marketing changes contributed less than one point to the overall increase in the index.

Compared with August 1998, the All Farm Products Index was 3 points (3.0 percent) lower. Price decreases from August 1998 for broilers, soybeans, milk, and lettuce more than offset price increases for cattle, peaches, calves, and turkeys.

Prices Paid Index Unchanged

The August Index of Prices Paid for Commodities and Services, Interest, Taxes, and Farm Wage Rates (PPITW) was 116 percent of the 1990-92 average. The index was unchanged from July and from August 1998. Since July, lower prices for feeder cattle, nitrogen fertilizers, feeder pigs, and complete feeds were offset by higher prices for diesel fuel, gasoline, feed grains, and building materials.

Index Summary Table

Index 1990-92=100	1998		1999	
	Jul	Aug	Jul	Aug
Prices Received	102	101	95	98
Prices Paid	116	116	116	116
Ratio 1/	88	87	82	84

1/ Ratio of index of prices received by farmers to index of prices paid.

Prices Received by Farmers

The August All Farm Products Index was 98 percent of its 1990-92 base, up 3.2 percent from the July preliminary index but down 3.0 percent from August 1998.

All Crops: The August index was 99, up 4.2 percent from July but 3.9 percent below August 1998. Prices increased from July, for all groups except potatoes and dry beans and cotton.

Food Grains: The August index, at 85, was up 10 percent from the previous month but unchanged from August 1998. The August all wheat price, at \$2.43 per bushel, was up 20 cents from the July price and 5 cents above August 1998.

Feed Grains & Hay: The August index was 85, up 1.2 percent from last month's revised index but 6.6 percent below August 1998. The corn price, at \$1.78 per bushel, was up 4 cents from July but 11 cents below the August 1998 price. The all hay price, at \$77.40 per ton, was down \$1.00 from last month and \$10.60 below August 1998.

Oil-Bearing Crops: The August index, at 76, was up 1.3 percent from the revised July index but 22 percent below August 1998. The soybean price, at \$4.25 per bushel, increased 5 cents from July but was \$1.18 below August 1998.

Fruit and Nuts: The August fruit and nuts index, at 138, was up 3.8 percent from the previous month and from August 1998. Increases in the prices of peaches, strawberries, apples, lemons, and grapes more than offset declines in the prices of oranges, grapefruit, and pears.

Commercial Vegetables: The August index, at 108, was up 4.9 percent from last month but 2.7 percent below August 1998. Price increases for broccoli, sweet corn, cucumbers, and cauliflower more than offset price decreases for tomatoes, onions, celery, and carrots.

Livestock and Products: The August index, at 97, was up 3.2 percent from last month but down 2.0 percent from August 1998. Compared with a year ago, prices were up for cattle, calves, turkeys, and hogs but down for broilers, all milk, and eggs.

Meat Animals: The August index, at 85, was up 4.9 percent from last month and 8.9 percent above a year ago. The August hog price was \$36.40 per cwt, up \$5.20 from July and \$1.20 above August 1998. The aid package to Russia and lower slaughter levels during early August pushed prices up. The August beef cattle price of \$62.90 was up 30 cents from last month and \$5.50 above last year.

Poultry and Eggs: The August index, at 110, was down 2.7 percent from July and 16 percent below a year ago. The August broiler price, at 36.2 cents per pound, decreased 1.9 cents from July. Broiler supplies were adequate to plentiful although domestic and international demand was occasionally soft. Market egg prices increased 2.1 cents to 42.0 cents per dozen with domestic demand up marginally. Turkey prices increased 1.3 cents to 43.1 cents per pound. Cold storage holdings of turkeys on July 31, 1999 were 14 percent lower than a year earlier.

Dairy Products: The August index, at 114, was up 8.6 percent from July but down 4.2 percent from August 1998. The August all milk price at \$14.90 per cwt, was up \$1.20 from July but down 60 cents from last year. July milk production was up 2.3 percent from July 1998. August prices increased for both fluid and manufacturing grade milk from July. Cheese prices increased during August.

Index Numbers of Prices Received, United States, August 1999,
with Comparisons

Index	1910-14=100				1990-92=100			
	1998		1999		1998		1999	
	Aug	Jul	Aug	Jul	Aug	Jul	Aug	
All Farm Products	639	640	*602	623	101	*95	98	
All Crops	500	508	*469	490	103	*95	99	
Food Grains	325	270	*246	270	85	*77	85	
Feed Grains & Hay	363	326	*299	303	91	*84	85	
Cotton	517	560	*459	456	109	*90	89	
Tobacco	1263	1413	*1304	1430	93	*86	95	
Oil-Bearing Crops	554	538	*412	416	98	*75	76	
Fruit & Nuts	716	931	*932	962	133	133	138	
Commercial Vegetables	698	744	*685	719	111	*103	108	
Potatoes & Dry Beans	540	488	*613	505	96	*121	100	
Other Crops	493	532	532	532	108	108	108	
Livestock & Products	768	756	*724	743	99	94	97	
Meat Animals	1021	792	*826	860	78	81	85	
Dairy Products	799	953	*842	916	119	*105	114	
Poultry & Eggs	282	369	317	308	131	113	110	
Food Commodities					102	*95	99	

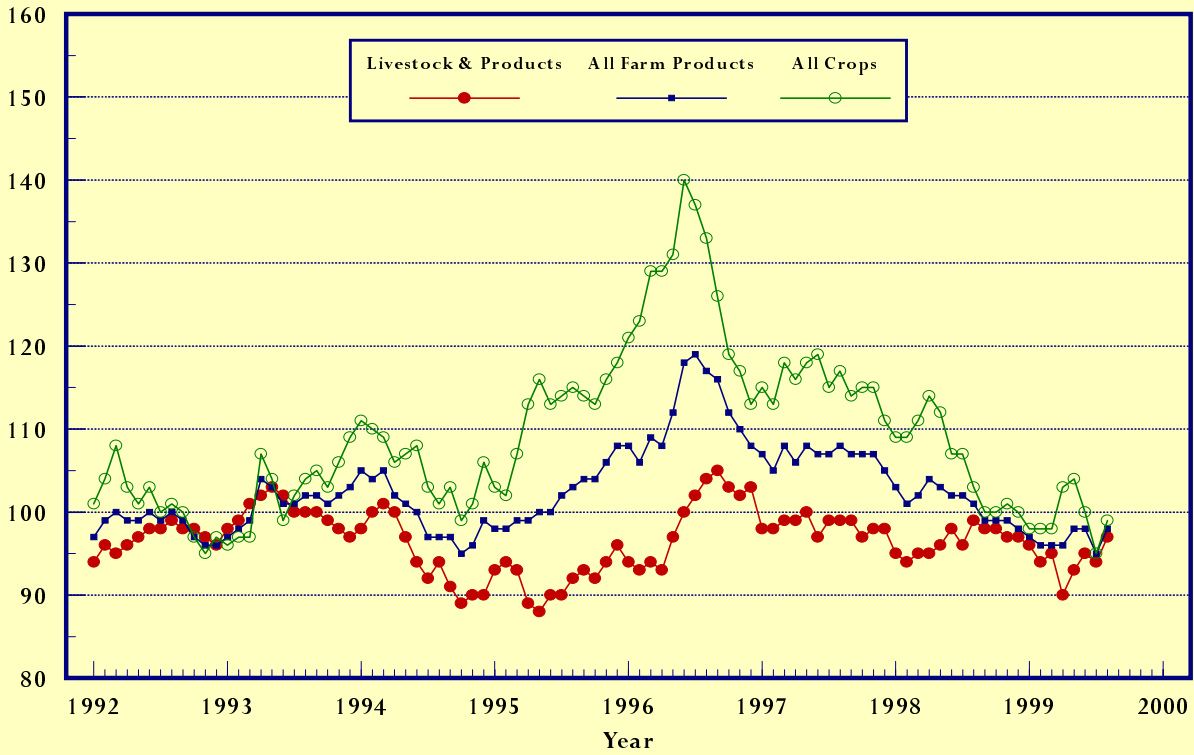
* Revised.

Selected Index Numbers for Prices Received and Paid,
1990-92=100, by Months, United States, 1998 and 1999

Month	Index of Prices Received				Index of Prices Paid					
	All Farm Products		All Crops		Livestock and Products		All Items		Production Items	
	1998	1999	1998	1999	1998	1999	1998	1999	1998	1999
Jan	103	97	109	98	95	96	119	116	118	113
Feb	101	96	109	98	94	94	119	116	117	113
Mar	102	96	111	98	95	95	118	116	116	113
Apr	104	96	114	103	95	90	118	116	116	113
May	103	98	112	104	96	93	117	116	116	113
Jun	102	98	107	100	98	95	117	117	115	113
Jul	102	95	107	95	96	94	116	116	115	113
Aug	101	98	103	99	99	97	116	116	114	113
Sep	99		100		98		115		112	
Oct	99		100		98		116		113	
Nov	99		101		97		116		113	
Dec	98		100		97		116		113	

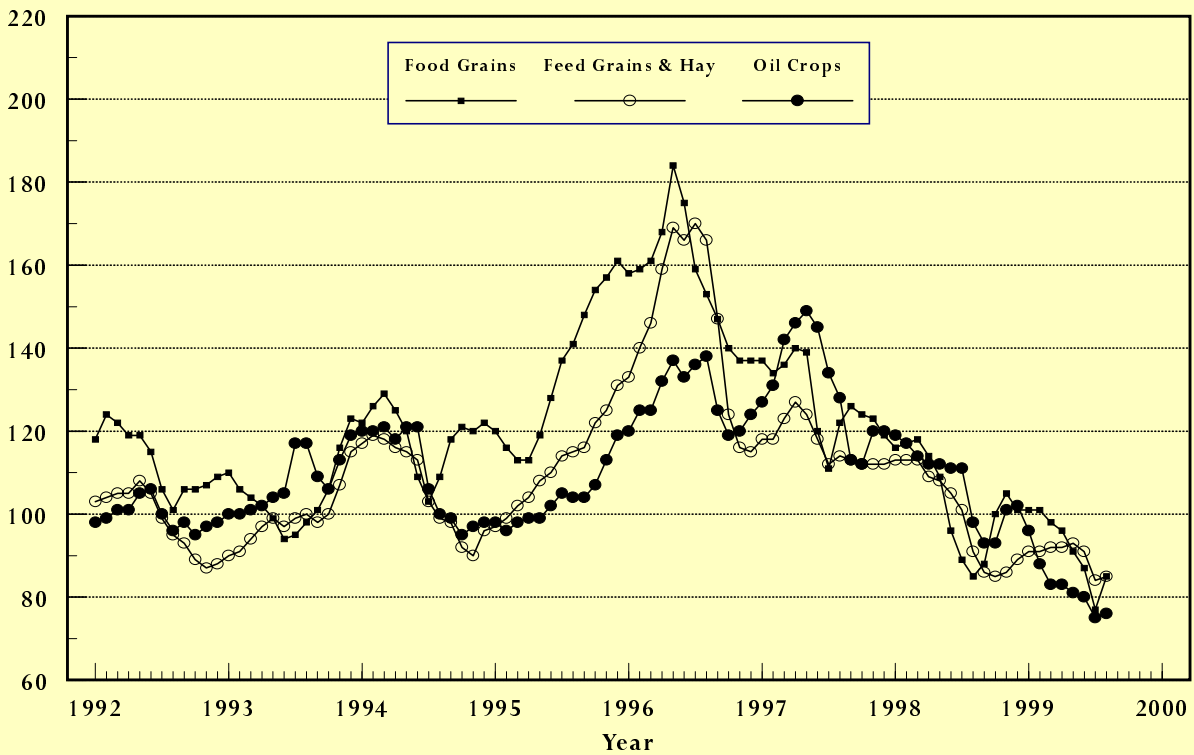
Prices Received, Major Indexes, US

Index Values(1990-92=100)



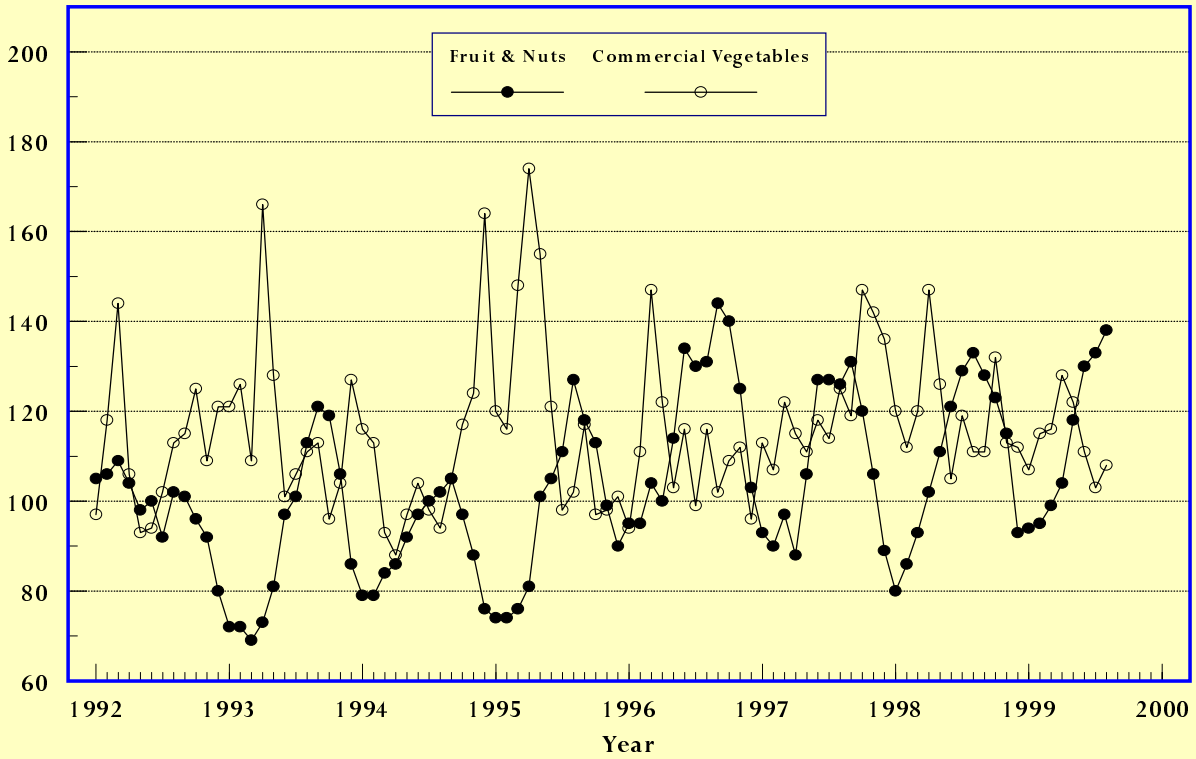
Prices Received, Food, Feed & Oil Indexes, US

Index Values(1990-92=100)



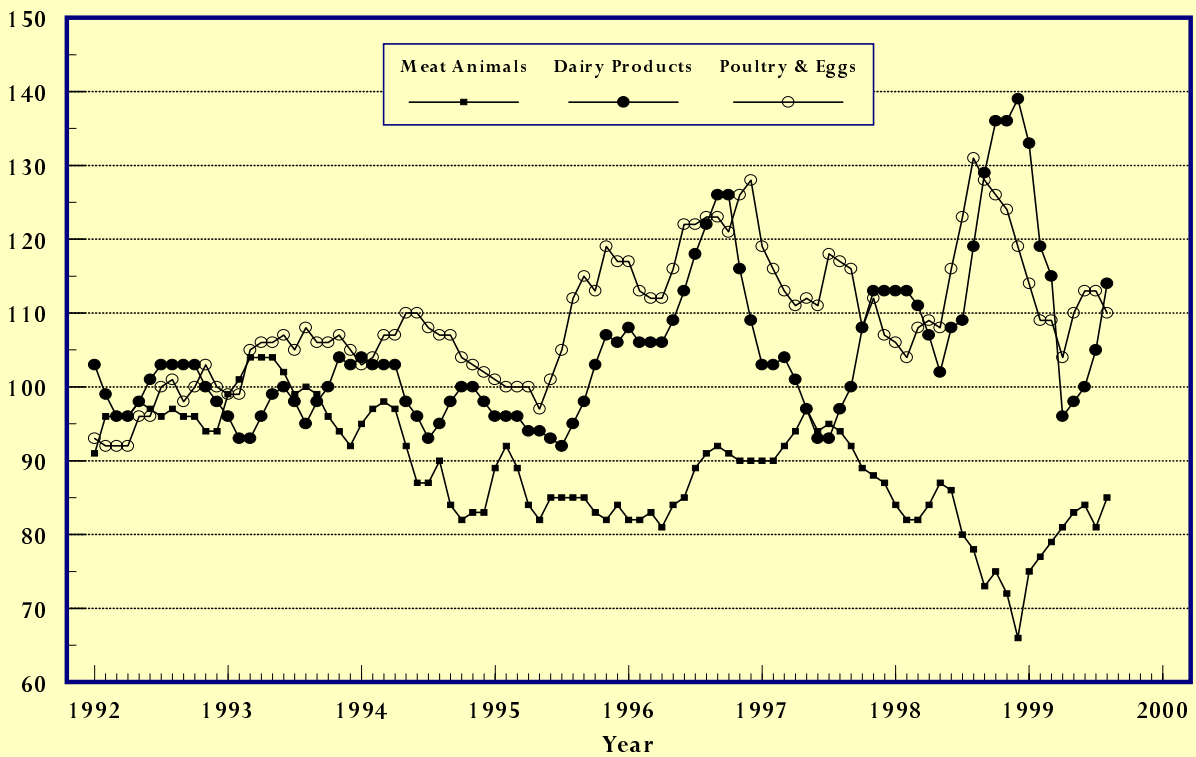
Prices Received, Fruit/Vegetable Indexes, US

Index Values(1990-92=100)



Prices Received, Livestock Product Indexes, US

Index Values(1990-92=100)



Prices Received, United States,
August 1999, with Comparisons

Commodity	Unit	Average 1990-92	Entire Month		Preliminary
			Aug 1998	Jul 1999	Aug 1999
Dollars					
Field Crops					
Barley, All	Bu	2.12	2.07	2.04	2.13
Feed	Bu	1.90	1.49	1.48	1.58
Malting	Bu	2.43	2.60	2.50	2.63
Beans, Dry Edible	Cwt	19.10	19.60	19.30	19.10
Corn	Bu	2.30	1.89	1.74	1.78
Cotton, Upland	Lb	.606	.662	.543	.539
Cottonseed	Ton	96.00	113.00		70.00
Flaxseed	Bu	4.27	5.45	4.40	4.10
Hay, All, Baled 1/	Ton	76.30	88.00	78.40	77.40
Alfalfa 1/	Ton	77.20	90.20	82.00	81.50
Other 1/	Ton	60.00	76.40	65.30	62.80
Oats	Bu	1.22	1.02	1.08	1.07
Peanuts, In-Shell	Lb	.304			
Potatoes	Cwt	5.82	5.55	7.34	5.80
Rice, Rough	Cwt	7.07	8.95	8.15	8.06
Sorghum Grain	Cwt	3.75	3.32	2.83	2.94
Soybeans	Bu	5.61	5.43	4.20	4.25
Sunflower 2/	Cwt	9.50	14.40	9.16	8.88
Tobacco	Lb	1.740	1.625	1.500	1.645
Wheat, All	Bu	2.96	2.38	2.23	2.43
Winter	Bu	2.93	2.25	2.13	2.30
Durum	Bu	2.86	3.23	2.89	2.83
Other Spring	Bu	3.11	2.69	2.93	2.85
Hard Red Winter	Bu		2.30	2.17	
Soft Red Winter	Bu	2.87	2.16	1.98	
Hard Red Spring	Bu		2.91	2.95	
White	Bu	3.24	2.10	2.60	
Fruit					
Citrus-Equiv on-tree					
Grapefruit	Box	5.77	6.01	10.67	5.36
Lemons	Box	10.10	24.67	11.45	16.40
Limes 3/	Box	10.15	10.85		
Oranges	Box	5.79	5.37	10.10	6.93
Tangelos	Box	5.82			
Tangerines	Box	15.11			
Temples	Box	6.23			
Non-citrus					
Apples, Fresh 4/	Lb	.212	.138	.124	.184
Grapes, Fresh 4/	Ton	506.00	800.00	700.00	770.00
Peaches, Fresh 4/	Lb	.216	.270	.316	.366
Pears, Fresh 4/	Ton	370.00	328.00	469.00	341.00
Strawberries, Fresh	Lb	.560	.650	.579	.671

1/ Mid-month price.

2/ KS, MN, ND and SD average.

3/ Current prices not published to avoid disclosure of individual firms.

4/ Equivalent packinghouse-door returns for CA, NY (apples only), OR (pears only) and WA (apples, peaches, and pears). Prices as sold for other states.

-- continued

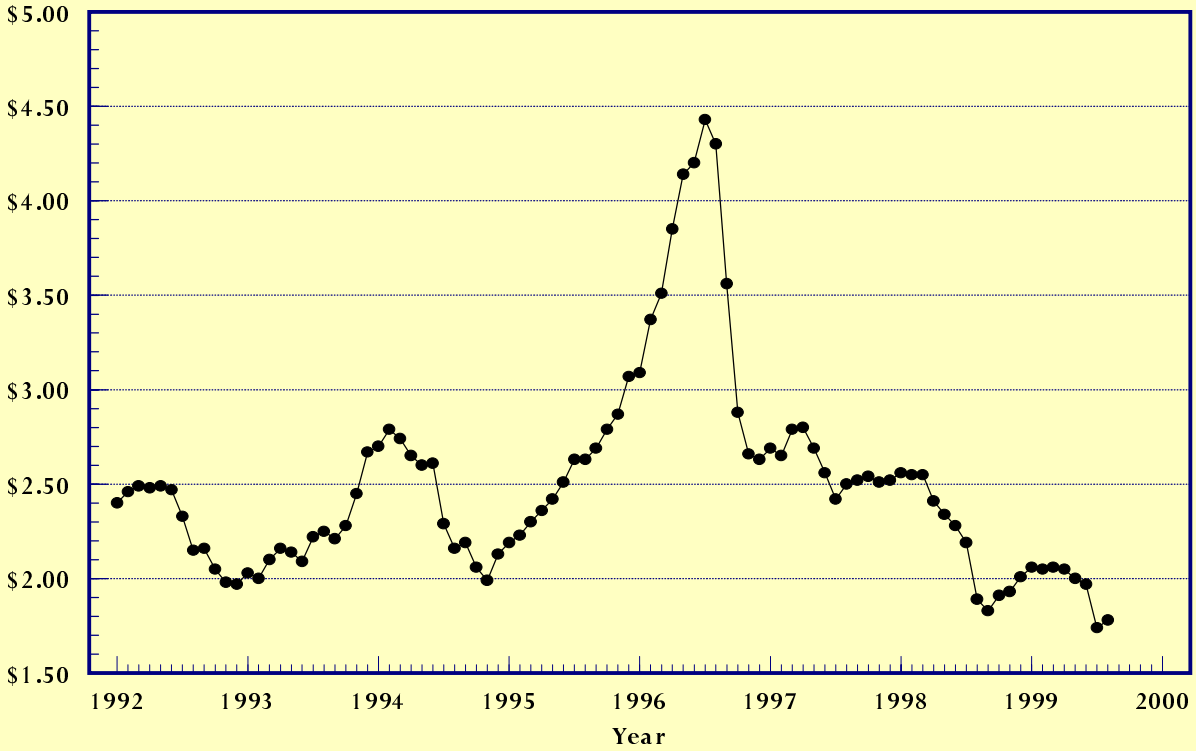
Prices Received, United States,
August 1999, with Comparisons (continued)

Commodity	Unit	Average 1990-92	Entire Month		Preliminary
			Aug	Jul	Aug
			1998	1999	1999
Dollars					
Vegetables, Fresh 1/					
Asparagus	Cwt	79.80	211.00	138.00	225.00
Broccoli	Cwt	22.50	27.60	18.70	28.50
Cantaloupes	Cwt		11.80	14.30	14.30
Carrots	Cwt	13.20	10.80	15.60	15.00
Cauliflower	Cwt	26.80	26.00	19.30	27.10
Celery	Cwt	11.60	10.40	14.00	10.90
Corn, Sweet	Cwt	15.70	16.60	14.70	16.40
Cucumbers 2/	Cwt		20.20	16.40	23.00
Lettuce	Cwt	11.90	16.30	12.50	12.90
Onions	Cwt	12.80	14.30	17.10	15.90
Snap Beans 2/	Cwt		57.80	45.10	52.60
Tomatoes	Cwt	32.30	25.50	25.40	21.50
Livestock					
Calves	Cwt	94.30	76.90	89.20	89.00
Cattle, All Beef	Cwt	72.90	57.40	62.60	62.90
Cows	Cwt	49.60	34.20	37.70	37.00
Steers & Heifers	Cwt	77.10	59.70	65.20	65.60
Milk Cows 3/	Head	1130.00		1280.00	
Hogs, All	Cwt	47.70	35.20	31.20	36.40
Barrows & Gilts	Cwt	48.40	35.90	31.90	37.20
Sows	Cwt	39.50	21.80	20.50	23.40
Lambs	Cwt	56.20	80.10	77.00	
Sheep	Cwt	23.40	28.30	32.00	
Dairy and Poultry					
Milk, All 4/	Cwt	13.06	15.50	13.70	5/14.90
Fluid Grade	Cwt	13.10	15.50	13.80	5/14.90
Mfg Grade	Cwt	11.80	14.60	13.20	5/14.80
Broilers, Live 6/	Lb	.317	.468	.381	.362
Eggs, All 7/	Doz	.643	.650	.573	.590
Market 7/	Doz	.546	.516	.399	.420
Turkeys, Live 6/7/	Lb	.380	.386	.418	.431
Adjusted for Seasonal Variation					
Eggs, All	Doz	.545	.684	.623	.641
Milk, All 4/	Cwt	9.71	15.50	14.27	14.90

- 1/ F.O.B. shipping point.
2/ Monthly estimates began January 1995.
3/ Animals sold for dairy herd replacement only. Prices available for Jan, Apr, Jul, and Oct.
4/ Before deductions for hauling. Includes quality, quantity, and other premiums. Excludes hauling subsidies.
5/ Fat test percent: all milk 3.54, fluid milk 3.54, mfg grade 3.62.
6/ Liveweight equivalent price.
7/ Mid-month price.

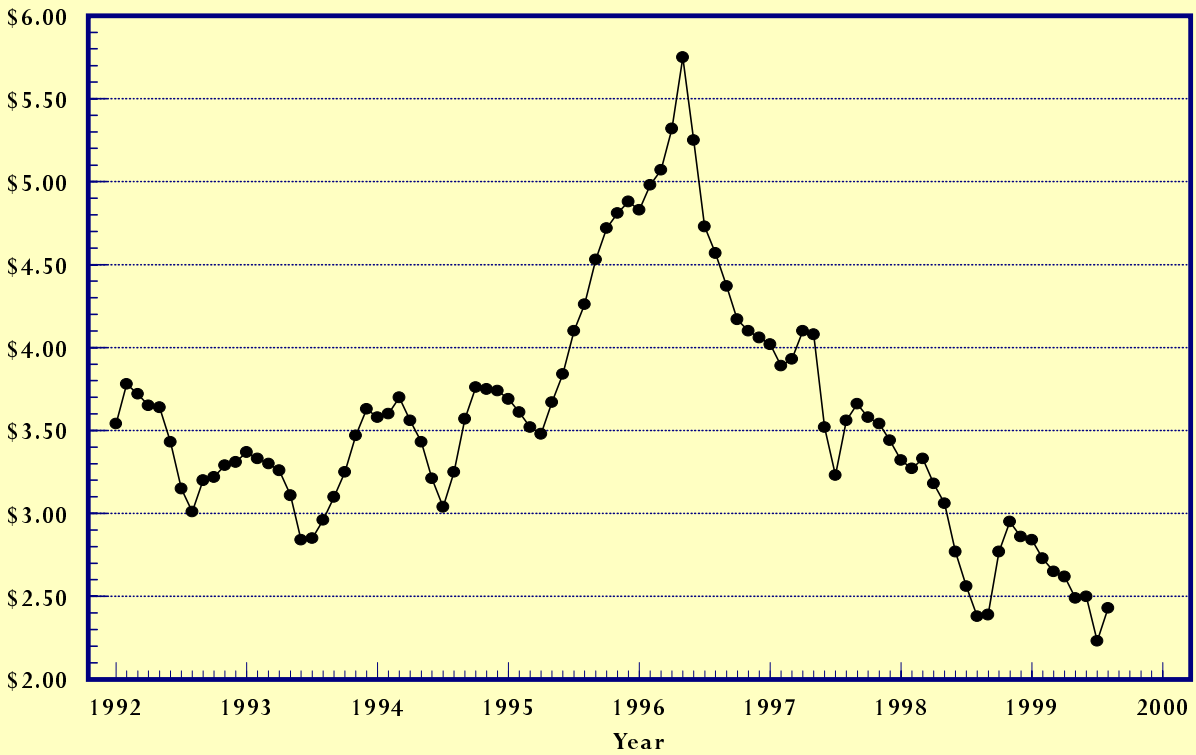
Prices Received, Corn, US

Dollars per Bu



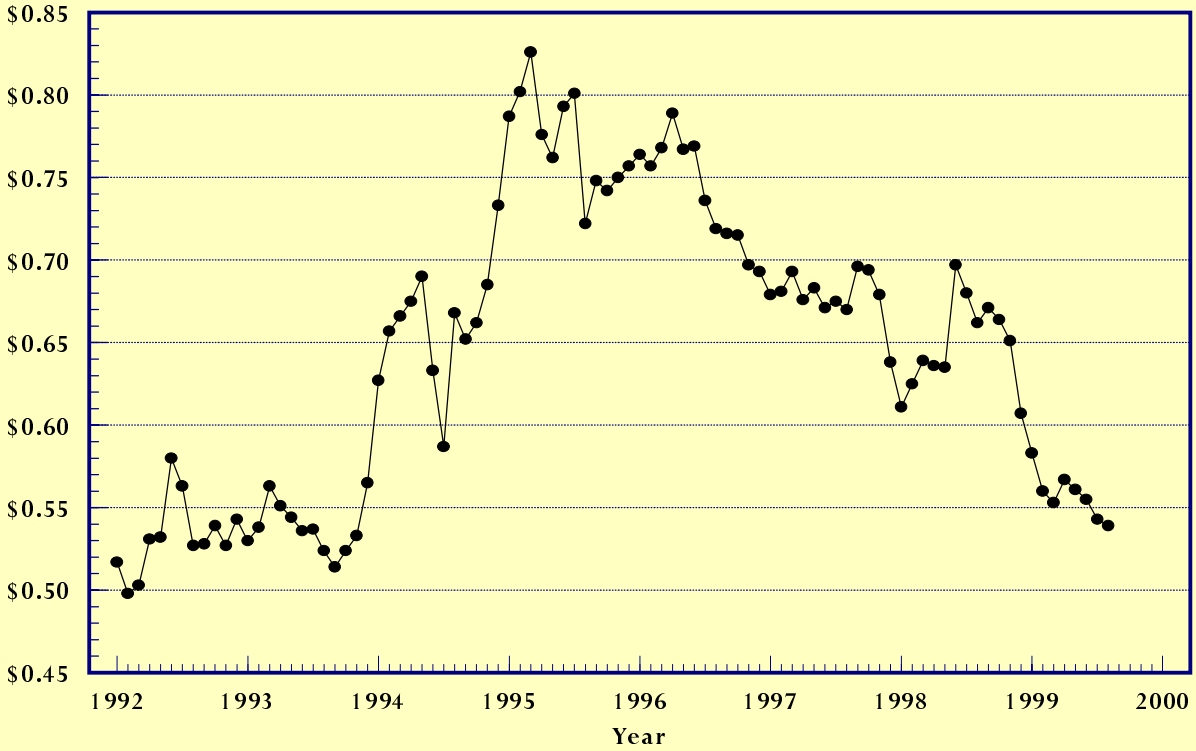
Prices Received, Wheat, US

Dollars per Bu



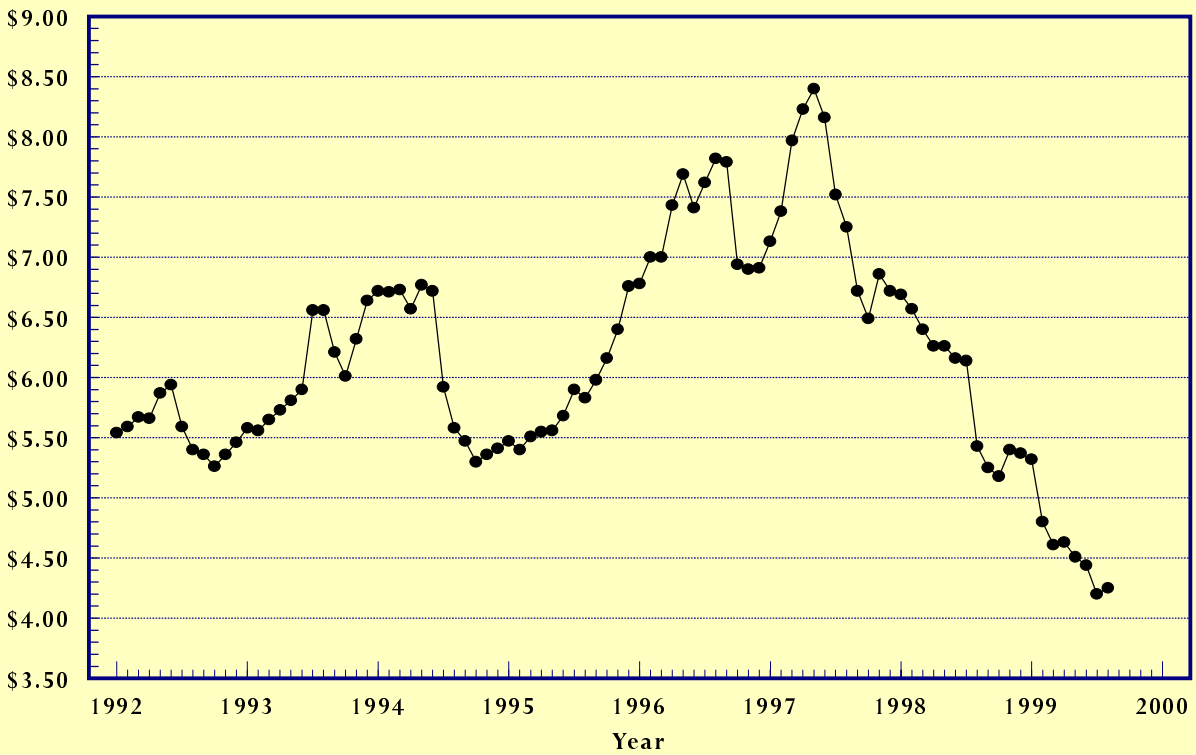
Prices Received, Cotton, US

Dollars per Lb



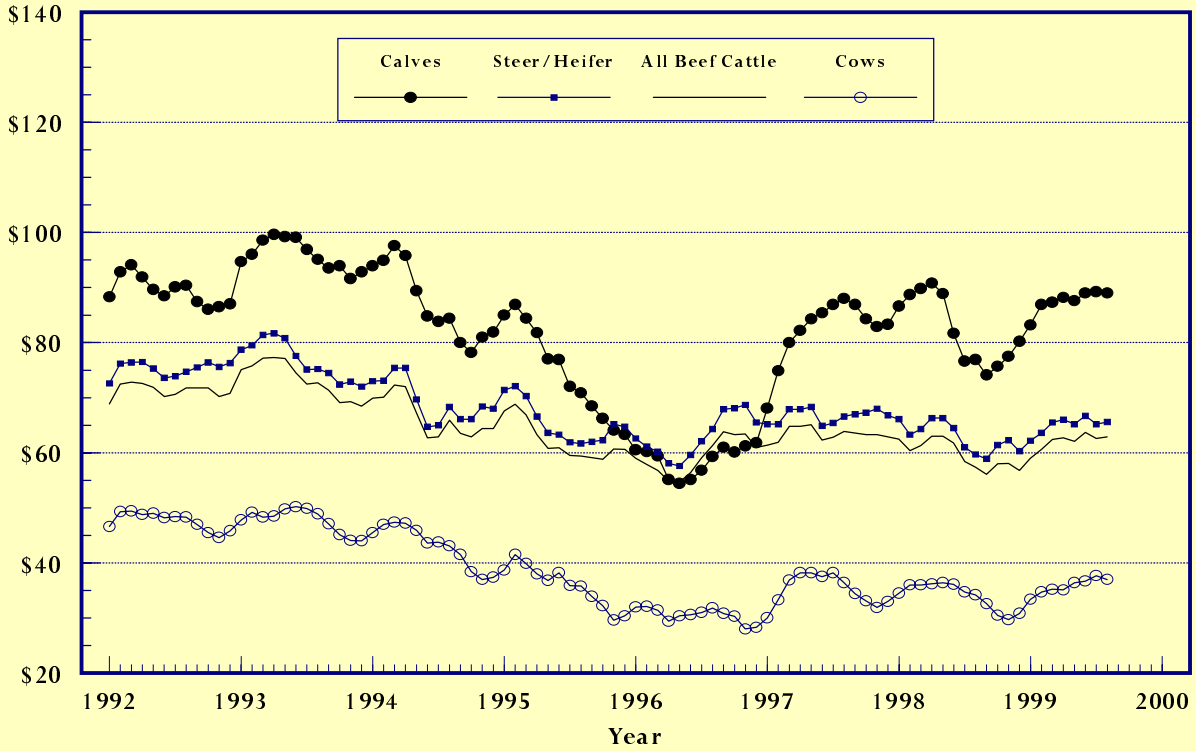
Prices Received, Soybeans, US

Dollars per Bu



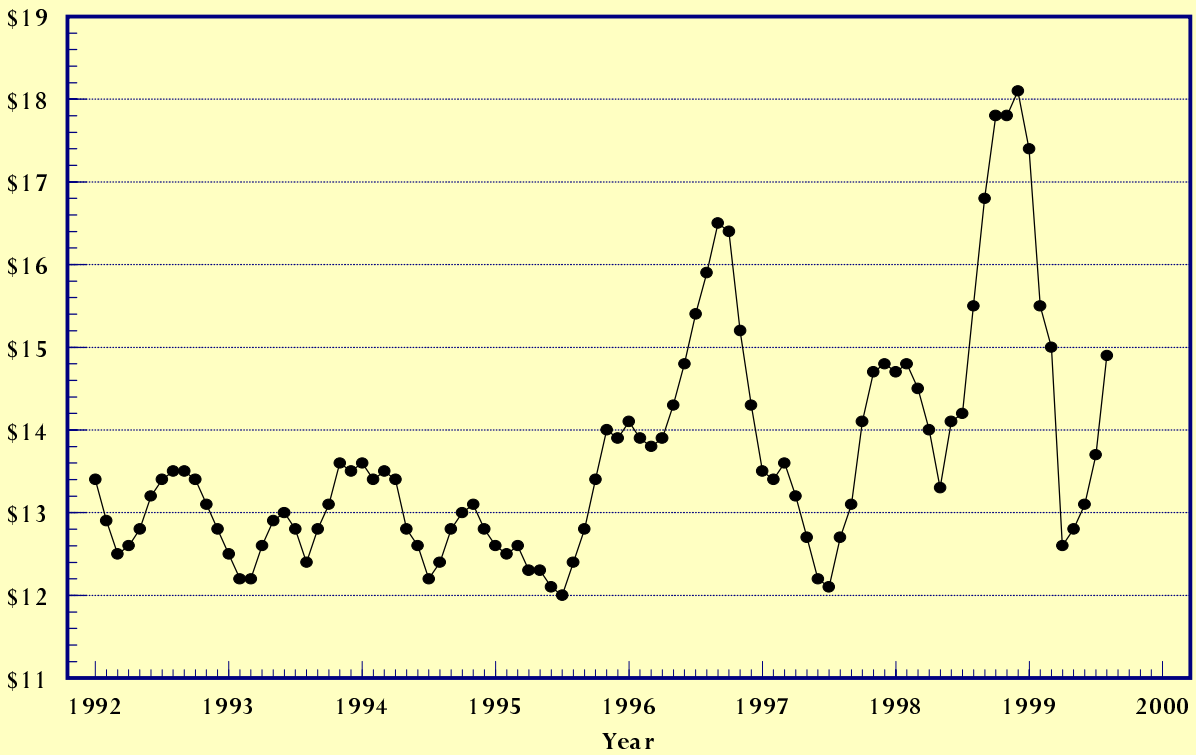
Prices Received, Cattle, US

Dollars per Cwt



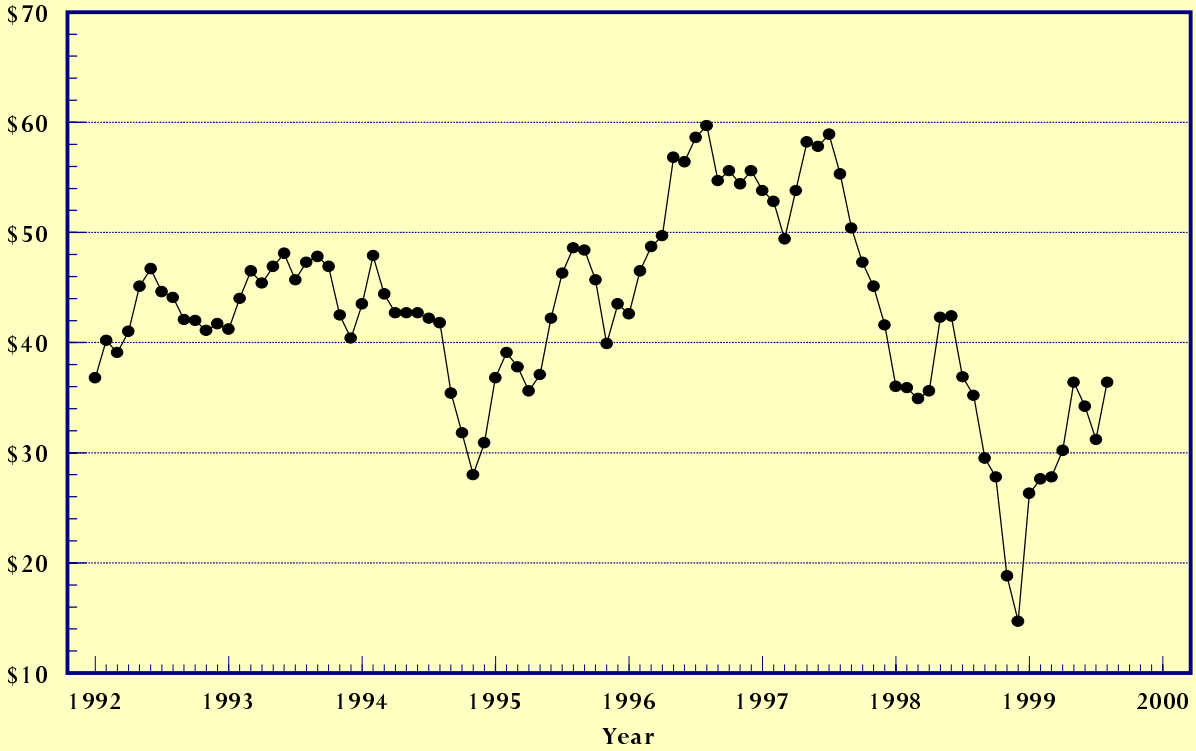
Prices Received, Milk, US

Dollars per Cwt



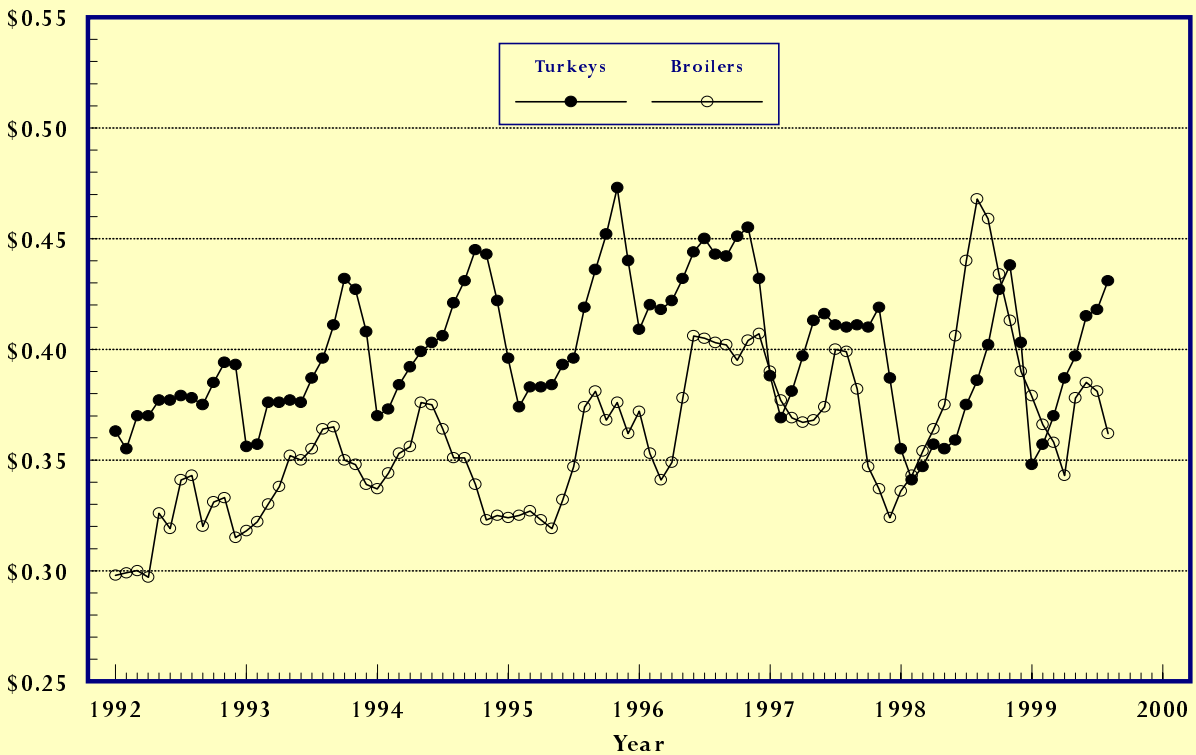
Prices Received, Hogs, US

Dollars per Cwt



Prices Received, Turkeys & Broilers, US

Dollars per Lb



Wheat: Prices Received, by States, July and August 1999

State	All Wheat		Winter Wheat		Durum Wheat		Oth Spring Wheat	
	Jul 1/	Aug 2/	Jul 1/	Aug 2/	Jul 1/	Aug 2/	Jul 1/	Aug 2/
	Dollars per Bushel							
AR	2.05	2.49	2.05	2.49				
CA	3/	3/	2.75	2.72	4/	4/		
CO	2.12	2.09	2.12	2.09			2.15	2.20
ID	2.59	2.55	2.40	2.45			2.74	2.70
IL	1.91	2.05	1.91	2.05				
IN	2.08	2.13	2.08	2.13				
KS	2.15	2.27	2.15	2.27				
MI	2.01	2.15	2.01	2.15				
MN	2.96	2.88	2.09	2.05	4/	4/	2.98	2.90
MO	1.94	2.15	1.94	2.15				
MT	3.03	2.93	2.69	2.65	2.98	3.00	3.13	3.00
NE	2.13	2.20	2.13	2.20				
ND	2.93	2.87	2.82	2.50	2.87	2.80	2.95	2.90
OH	1.96	2.15	1.96	2.15				
OK	2.13	2.33	2.13	2.33				
OR	2.87	2.77	2.86	2.75			2.93	2.90
SD	2.42	2.49	2.15	2.27	4/	2.93	2.72	2.72
TX	2.18	2.34	2.18	2.34				
WA	2.72	2.74	2.71	2.75			2.76	2.66
US	2.23	2.43	2.13	2.30	2.89	2.83	2.93	2.85

1/ Entire month.

2/ Mid-month.

3/ Price not published to avoid disclosure of individual firms.

4/ Insufficient sales to establish a price.

Prices Received for Selected Agricultural Commodities, by Months, United States, 1998 and 1999

Month	All Wheat		Corn		Soybeans		Beef Cattle 1/		All Hogs	
	1998	1999 2/	1998	1999 2/	1998	1999 2/	1998	1999 2/	1998	1999 2/
	Dollars per Bushel						Dollars per Cwt			
Jan	3.32	2.84	2.56	2.06	6.69	5.32	62.50	59.00	36.00	26.30
Feb	3.27	2.73	2.55	2.05	6.57	4.80	60.40	60.60	35.90	27.60
Mar	3.33	2.65	2.55	2.06	6.40	4.61	61.30	62.40	34.90	27.80
Apr	3.18	2.62	2.41	2.05	6.26	4.63	63.00	62.70	35.60	30.20
May	3.06	2.49	2.34	2.00	6.26	4.51	63.00	62.10	42.30	36.40
Jun	2.77	2.50	2.28	1.97	6.16	4.44	61.80	63.70	42.40	34.20
Jul	2.56	2.23	2.19	1.74	6.14	4.20	58.40	62.60	36.90	31.20
Aug	2.38	2.43	1.89	1.78	5.43	4.25	57.40	62.90	35.20	36.40
Sep	2.39		1.83		5.25		56.10		29.50	
Oct	2.77		1.91		5.18		58.00		27.80	
Nov	2.95		1.93		5.40		58.10		18.80	
Dec	2.86		2.01		5.37		56.80		14.70	

1/ Cows, steers and heifers.

2/ Current month prices are mid-month; prices for previous months are for the entire month.

Grains: Prices Received, by States, July and August 1999

State	Barley 1/		Corn		Oats		Soybeans		Sorghum Grain	
	Jul 2/	Aug 3/	Jul 2/	Aug 3/	Jul 2/	Aug 3/	Jul 2/	Aug 3/	Jul 2/	Aug 3/
	----- Dollars per Bushel ----- Dollars per Cwt									
AL										
AR							4.51	4.46	3.23	3.10
CA	2.27	2.17								
CO	3.02	3.00	1.95	1.81						
GA			2.32	2.23			4.43	4.67		
ID	2.05	2.50								
IL			1.79	1.85	1.29	1.30	4.25	4.40	2.87	3.05
IN			1.94	1.97			4.28	4.50		
IA			1.66	1.65	1.06	1.10	4.04	4.10		
KS			1.86	1.79			4.30	4.10	2.64	2.71
KY			1.94	1.95			4.22	4.50		
LA							4.21	4.46		
MI			1.77	1.85	1.38	1.30	4.26	4.40		
MN	1.34	1.35	1.63	1.65	.90	.90	4.02	4.10		
MS							4/	4.39		
MO			1.74	1.85			4.25	4.30	3.23	2.90
MT	2.33	2.45			1.08	1.05				
NE			1.72	1.75	1.10	1.10	4.04	4.10	2.67	2.80
NC			2.49	2.35			4.36	4.50		
ND	1.66	1.65			.85	.85				
OH			1.92	1.95	1.29	1.25	4.30	4.60		
OK									2.70	2.91
OR	1.86	1.70			1.43	1.20				
PA			2.48	2.34	1.47	1.50				
SD	2.11	1.95	1.61	1.47	1.02	1.00	4.23	3.97		
TN			2.65	2.50			4.38	4.50		
TX			1.90	2.04	5/	5/			2.85	2.98
UT	1.83	1.83								
WA	1.79	1.72								
WI			1.60	1.65	1.00	1.05	3.93	4.20		
WY	3.19	3.01								
US	2.04	2.13	1.74	1.78	1.08	1.07	4.20	4.25	2.83	2.94

- 1/ The Three-State (MN, ND and SD) Feed Barley price for August 1999 is \$1.33.
- 2/ Entire month.
- 3/ Mid-month.
- 4/ Price not published to avoid disclosure of individual firms.
- 5/ Insufficient sales to establish a price.

Malting and Feed Barley: Prices Received Selected States, July and August 1999

State	Malting Barley		Feed Barley	
	Jul	Aug	Jul	Aug
	----- Dollars per Bushel -----			
ID	2.77	2.80	1.69	1.80
MN	1.68	1.70	1.25	1.25
MT	2.88	2.90	1.48	1.40
ND	1.91	1.90	1.35	1.35
SD	1/	2.05	1.53	1.25
WY	1/	1/	1.44	1.40

- 1/ Price not published to avoid disclosure of individual firms.

Field Crops: Prices Received, by States, July and August 1999

State	Dry Edible Beans	Sunflower	Flaxseed	Tobacco	Peanuts 4/			
	Jul 1/	Aug 2/	Jul 1/	Aug 2/	Jul 1/	Aug 3/	Jul 1/	Aug 3/
	Dollars per Cwt		Dollars per Bu		Dollars per Pound			
AL								
CA	36.20	34.50						
CO	14.60	14.50						
FL					1.490	1.570		
GA					1.500	1.520		
ID	16.30	16.20						
IN								
KS			5/	5/				
KY								
MD								
MI	21.00	21.00						
MN	18.90	18.10	9.37	9.42				
MO								
NE	17.60	17.20						
NC							1.665	
ND	13.70	13.50	9.47	9.14	4.40	4.10		
OH								
OK								
SC							1.560	
SD			7.59	6.62	5/	5/		
TN								
TX								
VA							1.790	
WV								
US	19.30	19.10	9.16	8.88	4.40	4.10	1.500	1.645

- 1/ Entire month.
- 2/ Mid-month.
- 3/ Based on sales through first half of month.
- 4/ Marketing year Aug - Jan.
- 5/ Price not published to avoid disclosure of individual firms.

Tobacco: Prices Received, by Area and Type, August 1999, with Comparisons

Class by Type	Type	Aug 1998	Jul 1999	Aug 1999 1/
Dollars per Pound				
Flue-cured				
Old and Middle Belts	11	1.660		1.775
Eastern N C Belt	12	1.640		1.640
NC Border & SC Belt	13	1.580		1.555
GA-FL Belt	14	1.585	1.500	1.535
Total Flue-cured	11-14	1.625	1.500	1.645
US	11-37	1.625	1.500	1.645

- 1/ Based on sales during the first half of the month.

Field Crops and Apples: Prices Received, by States,
July and August 1999

State	Cotton, Upland		August				Apples Fresh Use 1/4/
	Jul 1/	Aug 2/	Cotton- seed 5/	Hay, Baled 3/ All	Alfalfa	Other	
	Dollars per Pound		Dollars per Ton			Dol/Lb	
AL	.592	.592					
AZ	.486	6/	86.00	87.00	63.00		
AR	.582	.556					
CA	.525	6/	74.00	76.00	57.00	.290	
CO			74.00	74.00	70.00		
GA	.549	.521					
ID			90.00	91.00	65.00		
IL			77.00	82.00	58.00		
IA			70.00	71.00	52.00		
KS			68.00	69.00	54.00		
KY			99.00	120.00	78.00		
LA	.522	.540					
MI			61.00	65.00	45.00	.160	
MN			58.00	65.00	40.00		
MS	.573	.582					
MO			67.00	100.00	60.00		
MT			62.00	63.00	53.00		
NE			38.00	38.00	32.00		
NV			86.00	87.00	76.00		
NM			114.00	116.00	99.00		
NY			107.00	125.00	80.00		
NC	6/	6/					
ND			43.00	45.00	30.00		
OH			108.00	120.00	80.00	.375	
OK			71.00	80.00	58.00		
OR			96.00	100.00	80.00		
PA			126.00	141.00	111.00	.250	
SD			43.00	48.00	32.00		
TN	.592	.592					
TX	.524	.518	70.00	73.00	134.00	58.00	
UT				73.00	74.00	35.00	
VA							
WA			100.00	93.00	133.00	.152	
WI			45.00	50.00	40.00		
WY			68.00	69.00	62.00		
US	.543	.539	70.00	77.40	81.50	62.80 .184	

1/ Entire month. 2/ Based on sales during the first half of the month.
3/ Mid-month. 4/ Equivalent packinghouse-door returns for CA,MI,NY and WA.
Price at point of first sale for other states. 5/ Marketing year
August-February. 6/ Price not published to avoid disclosure of
individual firms.

Upland Cotton and Rice: Prices Received and Marketings,
United States, August 1999, with Comparisons

Item	Unit	Jun 1999 1/	Jul 1999 1/	Aug 1999 2/
Cotton, Upland				
Average Price	Dollars/Pound	.555	.543	.539
Marketings 3/	1,000 Bales	440	349	NA
Rice				
Average Price	Dollars/Cwt	8.20	8.15	8.06
Marketings 4/	1,000 Cwt	9943	9430	NA

1/ Entire month. 2/ Based on purchases for the first half of the month.
3/ Expanded data from sample of about 60 percent of buyers. 4/ Purchases
by private firms and rice (rough equivalent) shipped by cooperatives.

Citrus Fruit: Prices and Equivalent Returns, by Utilization,
by State and United States, August 1999 1/

Commodity And State	:	Equivalent Returns						
		F.O.B.	Packinghouse-door			On-tree		
		Fresh	All	Fresh	Process	All	Fresh	Process
Dollars per Box 2/								
Grapefruit	:							
CA	:	17.30	7.30	11.86	-0.04	5.36	9.92	-1.98
US	:	17.30	7.30	11.86	-0.04	5.36	9.92	-1.98
Lemons	:							
CA	:	38.40	20.04	29.96	0.74	16.40	26.32	-2.90
US	:	38.40	20.04	29.96	0.74	16.40	26.32	-2.90
Oranges	:							
CA	:							
Valencia	:	22.60	9.01	16.70	3.16	6.93	14.62	1.08
US	:	22.60	9.01	16.70	3.16	6.93	14.62	1.08

1/ Lime prices not published to avoid disclosure of individual operations.
2/ Net lbs. per box: Grapefruit-67; Lemons-76; Limes-88; Oranges-75.

Potatoes: Prices Received, by States,
July and August 1999

State	Jul	Aug	State	Jul	Aug
	: Dollars per Cwt			: Dollars per Cwt	
AL	6.95	6.95	NC	6.45	7.80
AZ	7.75		ND - All 1/		
CA - All	11.30	13.40	- Fresh 2/		
- Winter			- Processing		
- Spring	11.00		OH	9.20	8.50
- Summer	14.30	13.40	OR	6.80	4.85
- Fall	9.75		PA		7.50
CO - All 1/	7.35	9.05	TX	8.70	8.80
- Fresh 2/	8.10	NA	VA	10.70	6.20
FL			WA - All	3.55	4.75
ID - All 1/	5.95	6.05	- Processing	4.30	NA
- Fresh 2/	7.20	NA	WI - All 1/		
- Processing	5.50	NA	- Fresh 2/		
ME			- Processing		
MI	8.30	6.60			
MN			US - All 1/	7.34	5.80
NY			- Fresh 2/	9.87	NA
			- Processing	5.20	NA

- 1/ Average price of potatoes sold for all uses, including table stock, processing, seed and livestock feed.
2/ Fresh market prices only, includes table stock prices.

Cattle: Prices Received, by States, July and August 1999

State	Cows 1/		Steers & Heifers:		Beef Cattle 4/		Calves	
	Jul 2/	Aug 3/	Jul 2/	Aug 3/	Jul 2/	Aug 3/	Jul 2/	Aug 3/
	Dollars per Cwt							
AZ	38.30	40.30	64.10	64.30	63.80	64.10	87.50	90.70
AR	34.20	33.80	69.40	69.00	56.40	57.70	85.10	85.60
CA	36.50	37.00	63.00	64.00	49.20	50.20	76.00	77.50
CO	38.80	39.30	64.10	64.90	62.80	63.90	87.60	84.90
FL	35.50	34.80	70.70	71.30	44.00	43.60	90.20	88.20
GA	35.50	34.60	68.10	67.50	46.60	45.50	83.30	83.60
ID	34.00	33.30	65.10	65.30	59.50	59.50	77.00	80.00
IL	38.20	38.60	62.40	62.90	61.90	62.40	106.00	107.00
IA	39.30	41.40	63.90	64.80	62.40	63.40	85.90	85.90
KS	38.70	35.80	65.70	65.00	65.40	64.70	93.00	89.00
KY	36.00	36.00	71.00	71.00	62.60	62.60	79.00	79.00
LA	35.80	34.00	71.90	71.00	48.10	47.70	85.30	83.00
MI	36.60	36.00	59.50	58.50	52.60	51.80	70.00	75.00
MN	39.10	38.50	62.20	62.50	57.90	57.90	79.80	78.00
MO	37.90	38.50	77.90	76.30	69.10	68.00	85.60	84.60
MT	39.70	39.90	73.80	74.30	55.00	64.00	86.50	85.00
NE	39.80	37.10	64.60	66.10	64.00	65.20	86.70	83.70
NM	41.20	41.80	72.90	74.80	60.90	61.60	87.60	88.50
ND	40.00	39.50	67.20	68.00	49.80	49.50	88.50	85.00
OH	36.00	36.00	62.90	63.00	60.20	60.30	77.10	80.00
OK	38.20	35.90	75.30	76.00	70.30	70.80	86.60	86.50
OR	39.70	39.70	70.30	71.00	61.10	61.60	75.10	76.90
PA	37.60	37.00	61.40	61.40	55.20	55.10	102.00	100.00
SD	40.10	40.70	77.60	79.40	68.20	69.70	93.00	93.00
TN	36.10	34.00	73.50	73.00	58.50	57.40	81.50	79.50
TX	36.50	34.40	67.10	67.50	65.00	65.20	91.00	91.30
VA	32.00	32.30	69.90	69.90	56.60	58.20	75.90	79.20
WI	38.90	39.00	62.60	63.00	48.90	49.10	113.00	113.00
WY	42.00	39.70	75.40	76.30	66.00	72.60	91.60	91.50
US	37.70	37.00	65.20	65.60	62.60	62.90	89.20	89.00

- 1/ Beef cows and cull dairy cows sold for slaughter.
- 2/ Entire month.
- 3/ Mid-month.
- 4/ "Cows" and "steers and heifers" combined.

Hogs: Prices Received, by States, July and August 1999

State	Sows		Barrows and Gilts		All Hogs	
	Jul 1/	Aug 2/	Jul 1/	Aug 2/	Jul 1/	Aug 2/
	Dollars per Cwt					
GA	20.00	21.80	31.40	36.40	30.30	34.90
IL	19.40	23.60	30.60	34.90	29.70	34.00
IN	21.50	23.50	30.40	36.10	29.50	34.80
IA	22.90	27.00	34.30	41.00	34.10	40.70
KS	20.80	24.60	29.60	36.20	28.50	34.80
KY	20.00	24.00	29.00	35.00	28.60	34.60
MI	19.50	20.00	32.50	39.00	29.50	34.60
MN	21.10	25.00	31.50	36.50	31.10	36.00
MO	18.30	20.10	25.70	31.60	24.90	30.30
NE	22.00	27.90	34.10	38.60	34.10	38.40
NC	22.30	25.50	30.70	36.90	30.60	36.80
OH	19.70	21.00	32.40	35.00	31.40	33.90
PA	18.70	21.20	29.90	34.80	28.20	32.80
SC	23.50	23.90	30.60	36.90	30.20	36.10
SD	23.20	27.30	33.60	37.30	32.00	35.80
TN	21.50	24.00	30.70	37.00	28.90	35.70
TX	16.40	17.90	26.50	31.00	25.20	29.30
VA	16.50	19.60	30.60	35.40	30.30	35.10
WI	15.90	21.10	28.90	36.40	27.20	34.40
US	20.50	23.40	31.90	37.20	31.20	36.40

1/ Entire month
2/ Mid-month.

Sheep and Poultry: Prices Received, by States,
July and August 1999

State	July		August		
	Sheep 1/	Lambs 1/	Turkeys 2/3/	Broilers 1/4/	Eggs 2/5/
	---- Dollars per Cwt ----		Dollars per Pound		Dol/Doz
AL				.385	.410
AZ					
AR			.48	.370	.300
CA	26.00	75.50	.46		.436
CO	31.70	78.00			
CT					.470
DE				.340	
FL					.410
GA				.360	.420
ID	30.70	75.70			
IN			.44		.420
IA	35.50	79.60	.36		.301
KS	24.00	78.00			
ME					.550
MD				.340	
MI					.390
MN	23.20	77.50	.35		.350
MS				.365	.510
MO			.48		.288
MT	32.90	78.10			
NE	33.80	75.30			
NM					
NY					.491
NC			.46	.350	.380
OH	31.10	76.10			.494
OR	27.60	69.10			
PA			.43	.330	.490
SC					.464
SD	36.60	80.40			
TX	44.40	77.80		.360	.390
UT	28.00	76.00			
VA			.46	.350	
WA					.491
WY	36.20	79.50			
US	32.00	77.00	.431	.362	.420

- 1/ Entire month.
- 2/ Mid-month.
- 3/ IN, IA, MN and PA are actual liveweight prices. All other State prices are equivalent liveweight returns to producers (see footnote 4 for formula).
- 4/ Liveweight equivalent price. Derived from ready-to-cook (RTC) prices using the following formula: (RTC price minus processing cost) * (dressing percentage) = liveweight equivalent price.
- 5/ Market (table) eggs.

Milk and Milk Cows: Prices Received, by States, July and August 1999

State	July				August				
	Fluid Grade Milk 1/ Price	Manufacturing Grade Milk Fat Test	All Milk 2/ Price	All Milk 2/ Price	All Milk 2/3/ Price	All Milk 2/3/ Price	All Milk 2/3/ Price	All Milk 2/3/ Price	Milk Cows 4/ Dol/Head
AL	14.40	3.57			14.40	3.57	14.50	3.59	
AZ	13.50	3.51			13.50	3.51	14.10	3.49	
AR	13.10	3.60			13.10	3.60	13.30	3.60	
CA	13.20	3.50	14.50	3.89	13.21	3.50	14.40	3.52	
CO	13.10	3.44			13.10	3.44	13.70	3.47	
FL	16.60	3.57			16.60	3.57	16.90	3.58	
GA	14.20	3.52			14.20	3.52	14.40	3.54	
ID	13.80	3.46	13.80	3.49	13.80	3.46	15.70	3.49	
IL	12.90	3.57	14.10	3.51	13.00	3.57	13.60	3.55	
IN	12.80	3.52	12.50	3.47	12.80	3.52	13.00	3.53	
IA	12.80	3.55	13.00	3.46	12.80	3.54	13.70	3.54	
KS	12.80	3.53	12.00	3.46	12.80	3.53	13.00	3.55	
KY	13.30	3.51	12.10	3.54	13.30	3.51	13.50	3.51	
LA	14.90	3.48			14.90	3.48	15.10	3.51	
MD	13.80	3.55			13.80	3.55	14.00	3.58	
MI	13.30	3.50	13.20	3.44	13.30	3.50	14.10	3.52	
MN	14.60	3.58	13.30	3.54	14.51	3.58	17.10	3.60	
MS	15.00	3.57			15.00	3.57	15.20	3.60	
MO	13.50	3.52	12.70	3.65	13.40	3.53	13.80	3.52	
NE	12.70	3.59	13.40	3.60	12.70	3.59	12.80	3.59	
NM	13.40	3.40			13.40	3.40	13.60	3.43	
NY	13.40	3.44			13.40	3.44	14.40	3.51	
NC	15.70	3.57	13.10	3.84	15.70	3.57	15.90	3.57	
ND	13.10	3.53	12.30	3.53	12.80	3.53	13.20	3.54	
OH	13.50	3.55	12.60	3.63	13.40	3.55	14.00	3.57	
OK	13.90	3.47			13.90	3.47	14.10	3.48	
OR	13.90	3.54	12.70	3.72	13.90	3.54	16.00	3.54	
PA	13.90	3.51	13.30	3.58	13.90	3.51	14.10	3.53	
TN	13.70	3.57	12.10	3.53	13.70	3.57	14.00	3.57	
TX	14.40	3.52			14.40	3.52	15.10	3.57	
UT	12.70	3.45	12.40	3.45	12.70	3.45	12.80	3.50	
VT	14.60	3.59			14.60	3.59	14.80	3.57	
VA	14.30	3.45	12.20	3.80	14.30	3.46	14.40	3.47	
WA	13.90	3.54			13.90	3.54	16.30	3.55	
WI	14.31	3.56	13.46	3.63	14.25	3.56	16.50	3.59	
US	13.80	3.52	13.20	3.59	13.70	3.52	14.90	3.54	

- 1/ Including milk diverted to manufacturing.
- 2/ Before deductions for hauling. Includes quality, quantity, and other premiums. Excludes hauling subsidies.
- 3/ Preliminary.
- 4/ Animals sold for dairy herd replacement only. Prices published Jan, Apr, Jul and Oct.

Parity Price Equivalent for Manufacturing Milk 1/: United States, July and August 1999, with Comparisons

Item	Aug 1998	Jul 1999	Aug 1999
Parity Equivalent.....Dol per Cwt	26.63	27.88	27.69
Average Price F.O.B.....Dol per Cwt	14.60	13.20	2/14.80
Average Fat Test of Milk..Percent	3.59	3.59	2/3.62

- 1/ The parity price equivalent during 1999 is 91.1 percent of the parity price of all milk sold to plants, compared with 90.9 percent in 1998. For additional details, see January 1999 issue of "Agricultural Prices".
- 2/ Preliminary.

United States Parity Prices for Farm Products and Average Prices Received as Percent of Parity Prices Based on Data for August 1999, with Comparisons 1/

Commodity and Unit	: Adjusted: : : Base : : Prices :	Parity Prices Based on Data for			: Prices as Percent : of Parity			
		: Aug : : 1998 :	: Jul : : 1999 :	: Aug : : 1999 :	: Aug : : 1998 :	: Jul : : 1999 :	: Aug : : 1999 :	
		----- Dollars -----			----- Percents -----			
Basic Commodities	:							
All Wheat, Bu	:	.626	9.65	9.71	9.67	25	23	25
Rice, Cwt	:	1.78	26.90	27.60	27.50	33	30	29
Corn, Bu	:	.428	6.55	6.64	6.61	29	26	27
Cotton, Lb	:							
American Upland	:	.113	1.71	1.75	1.74	39	31	31
Extra Long Staple	:	.145	2.24	2.25	2.24			
Peanuts, Lb	:	.0425	.644	.659	.656			
Tobacco, By Type, Lb	:							
Flue-Cured 11-14	:	.252	3.80	3.91	3.89	43		42
VA Fire-Cured, 21	:	.249	3.71	3.86	3.84			
KY-TN Fire-Cured, 22-23	:	.313	4.75	4.85	4.83			
Burley, 31	:	.266	4.00	4.13	4.11			
Maryland, 32	:	.231	3.31	3.58	3.57			
Dark Air-Cured, 35-36	:	.266	3.99	4.13	4.11			
Sun-Cured, 37	:	.226	3.33	3.51	3.49			
PA Seedleaf, 41	:	.193	2.84	2.99	2.98			
Cigar Filler & Binder,	:							
42-44, 54-55	:	.217	3.25	3.37	3.35			
Puerto Rican Filler, 46	:	.173	2.64	2.68	2.67			
Cigar Binder, 51-52	:	.552	7.47	8.56	8.52			
Designated Nonbasic	:							
All Milk, Sold to	:							
Plants, Per Cwt	:	1.97	29.30	30.60	30.40	2/53	2/47	2/49
Honey, Extracted, Lb	:	3/.0878	1.31	1.36	1.36			
Wool and Mohair	:							
Wool, Lb	:	.125	4.12	1.94	1.93			
Mohair, Lb	:	.231	11.00	3.58	3.57			
Other Nonbasic	:							
Barley, Bu	:	.383	5.89	5.94	5.91	35	34	36
Cottonseed, Ton	:	15.90	240.00	247.00	245.00	47		29
Dry Edible Beans, Cwt	:	3.26	50.20	50.60	50.30	39	38	38
Flaxseed, Bu	:	.780	11.90	12.10	12.00	46	36	34
Oats, Bu	:	.224	3.62	3.47	3.46	28	31	31
Potatoes, Cwt	:	.860	12.80	13.30	13.30	43	55	44
Rye, Bu	:	.326	4.96	5.06	5.03			
Sorghum Grain, Cwt	:	.674	10.30	10.50	10.40	32	27	28
Soybeans, Bu	:	.905	14.10	14.00	14.00	39	30	30
Sweetpotatoes, Cwt	:	2.04	24.60	31.60	31.50			
Apples, Fresh, Lb 5/	:	.0290	.435	.450	.448	32	28	41
Citrus (equiv on-tree), box:	:							
Grapefruit	:	.524	10.80	8.13	8.09	56	131	66
Lemons	:	1.20	17.60	18.60	18.50	140	62	89
Limes (FL)	:	1.17	18.50	18.10	18.10	59		
Oranges	:	.747	13.70	11.60	11.50	39	87	60
Tangerines	:	1.79	29.00	27.80	27.60			
Temples (FL)	:	.635	11.50	9.85	9.80			
Beef Cattle, Cwt	:	9.80	151.00	152.00	151.00	38	41	42
Calves, Cwt	:	12.50	192.00	194.00	193.00	40	46	46
Hogs, Cwt	:	6.58	103.00	102.00	102.00	34	31	36
Lambs, Cwt	:	10.10	154.00	157.00	156.00	52	49	
Sheep, Cwt	:	4.21	62.90	65.30	65.00	45	49	
Eggs, Doz	:	.0964	1.44	1.50	1.49	2/48	2/42	2/43
Turkeys, Live, Lb	:	.0576	.878	.893	.889	44	47	48

--continued

Parity Prices Based on Data for August 1999, United States 1/ (continued)

Other Nonbasic Commodities	Adj Base Prices	Parity Prices	Other Nonbasic Commodities	Adj Base Prices	Parity Prices
	Dollars			Dollars	
Field Crops and Misc Commodities			Noncitrus Fruit		
Hops, Lb	.239	3.69	Peaches, cont.		
Spearmint Oil, Lb	1.85	28.60	Processing 6/		
Tobacco, Lb			Excl Dried		
Type 61	2.78	42.90	Clingstone, CA, Ton	31.60	488.00
Noncitrus Fruit			Pears, Ton		
Apples, Ton 7/			Fresh 5/	51.70	798.00
Processing	19.80	306.00	Dried, CA 7/	148.00	2290.00
Apricots, Ton			Plums, CA, Ton		
Fresh 8/	122.00	1880.00	Fresh, Equiv on-Tree	53.70	829.00
Dried, CA	293.00	4520.00	Prunes, Dried, CA, Ton 7/	135.00	2080.00
Avocados, Ton 8/	192.00	2960.00	Prunes and Plums, Excl CA, Ton		
Cherries			Fresh 10/	55.30	854.00
Sweet, Ton	157.00	2420.00	Processing 7/		
Tart, Lb	.0265	.409	Excl Dried	22.40	346.00
Cranberry, Bbl 6/	7.55	117.00	Tree Nuts 11/		
Dates, CA, Ton 8/	139.00	2150.00	Almonds, Lb	.227	3.50
Grapes, Ton			Hazelnuts, Ton	117.00	1810.00
Raisin Variety	142.00	2190.00	Pistachio, Lb	.164	2.53
Other Dried	58.40	902.00	Walnuts, Ton	179.00	2760.00
Kiwifruit, Ton	72.60	1120.00	Vegetables, Cwt 12/		
Nectarines			Fresh		
Fresh, Calif, Ton 8/	63.00	973.00	Carrots 9/	1.78	27.50
Olives, CA			Cauliflower 9/	4.31	66.50
Canning, Ton 6/	93.20	1440.00	Celery 9/	1.85	28.60
Papayas (HA) Lb	.0479	.740	Honeydew Melons	2.52	38.90
Peaches			Lettuce	2.15	33.20
Fresh, Lb 5/	.0384	.593	Onions 9/	1.70	26.20
Dried, CA, Ton	119.00	1840.00	Tomatoes	4.47	69.00

- 1/ Parity prices are computed under the provisions of Title III, Subtitle a, Section 301 (a) of the Agricultural Adjustment Act of 1938 as amended by the Agricultural Acts of 1948, 1949, and 1956. See January "Agricultural Prices" for details on adjusted base price and parity price computations.
- 2/ Seasonally adjusted price as percentage of parity price.
- 3/ Wholesale extracted. Adjusted base price derived from state annual average prices weighted by production. For 1982 through 1985 the national averages are the support prices.
- 4/ Average local market price, excluding incentive payments.
- 5/ Equivalent packinghouse-door returns for CA, NY (apples only), OR (except peaches), and WA. Price at point of first sale for other states.
- 6/ Equivalent returns for bulk fruit at first delivery point.
- 7/ Equivalent returns at processing plant door.
- 8/ Equivalent returns at packinghouse door.
- 9/ Includes some processing.
- 10/ Based on "as sold" prices for fresh fruit in all states.
- 11/ Prices in-shell basis except almonds which are shelled basis.
- 12/ F.O.B. shipping point prices.

Crops: Marketing Year Average Prices Received, by States
and United States, 1997 and 1998 Revised 1/

State	Barley						Oats	
	All		Feed		Malting		1997	1998
	1997	1998	1997	1998	1997	1998		
Dollars per Bu								
AL							1.70	2.05
AK	3.20	3.60					2.50	2.60
AZ	2.90	2.45						
AR							2.15	1.45
CA	2.75	2.33	2.75	2.33			1.98	1.36
CO	2.98	2.84	2.12	1.67	2/	2/	2.05	1.70
DE	1.95	1.27						
GA							1.87	1.50
ID	2.82	2.40	2.29	1.77	3.15	2.88	1.64	1.30
IL							1.71	1.52
IN							1.94	1.74
IA							1.63	1.24
KS	2.69	2.10					1.52	1.56
KY	2.06	1.31						
ME							1.20	.97
MD	2.05	1.30					1.75	1.65
MI	1.90	1.50					1.86	1.42
MN	1.88	1.62	1.74	1.32	2.11	2.09	1.46	1.02
MO							1.85	1.60
MT	2.83	2.27	2.09	1.41	3.12	2.82	1.33	1.18
NE	2.20	1.80					1.79	1.19
NV	2.85	2.45						
NJ	2.00	1.11						
NY							1.70	1.41
NC	2.10	1.80					1.80	1.70
ND	1.96	1.67	1.76	1.31	2.17	1.86	1.32	.93
OH							1.76	1.38
OK	2.15	1.60					2.10	1.80
OR	2.39	1.70	2.36	1.67	2.92	2.17	1.77	1.39
PA	2.01	1.52					1.84	1.46
SC	2.05	1.80					1.55	1.35
SD	2.23	1.82	1.83	1.40	2.41	1.93	1.56	1.03
TX	2.30	2.05					2.36	1.44
UT	2.29	1.86	2.29	1.86			1.97	1.45
VA	2.10	1.40						
WA	2.27	1.58	2.23	1.55	2.79	2.12	1.75	1.00
WV							2.07	1.31
WI	1.70	1.25					1.46	1.10
WY	3.32	2.63	1.99	1.45	3.37	2/	1.86	1.70
Year	United States							
1998	1.98		1.54		2.38		1.10	
1997	2.38		2.05		2.74		1.60	

1/ Marketing Year Average prices are weighted average prices for crops sold during the marketing year. Marketing years for Barley and Oats are defined at the U.S. level as June 1 through May 31 of the following calendar year. Individual State marketing years are as follows. Barley: June 1-May 31 for CA; July 1-June 30 for all other estimated States. Oats: May 1-April 30 for TX; June 1-May 31 for CA; July 1-June 30 for all other estimated States.

2/ Not published to avoid disclosure of individual firms.

Crops: Marketing Year Average Prices Received, by States
and United States, 1997 and 1998 Revised, (continued) 1/

State	Wheat								Rye	
	All		Winter		Other Spring		Durum		1997	1998
	1997	1998	1997	1998	1997	1998	1997	1998		
Dollars per Bu										
AL	3.20	2.65	3.20	2.65						
AZ	4.70	4.40	4.05	3.25			4.70	4.50		
AR	3.49	2.73	3.49	2.73						
CA	3.82	3.02	3.71	2.96			4.28	3.83		
CO	3.17	2.49	3.17	2.49	3.16	2.36			3.30	1.80
DE	3.07	2.35	3.07	2.35						
FL	3.40	2.50	3.40	2.50						
GA	3.19	2.60	3.19	2.60					5.00	3.40
ID	3.12	2.38	3.12	2.28	3.12	2.49				
IL	3.14	2.35	3.14	2.35					2.90	2.20
IN	3.18	2.36	3.18	2.36					2.90	2.30
IA	3.16	2.73	3.16	2.75						
KS	3.16	2.53	3.16	2.53					3.60	2.20
KY	3.24	2.26	3.24	2.26						
LA	3.50	2.75	3.50	2.75						
MD	3.15	2.37	3.15	2.37					2.45	2.30
MI	3.26	2.33	3.26	2.33					2.90	2.50
MN	3.52	3.09	3.22	2.41	3.53	3.09	5.30	3.00	3.10	1.90
MS	3.17	2.39	3.17	2.39						
MO	3.09	2.31	3.09	2.31						
MT	3.62	3.03	3.40	2.80	3.58	3.13	5.18	3.23		
NE	3.20	2.54	3.20	2.54					3.60	1.80
NV	3.25	2.30	3.25	2.25	3.25	2.35				
NJ	3.20	2.46	3.20	2.46					3.60	3.00
NM	3.25	2.65	3.25	2.65						
NY	3.35	2.13	3.35	2.13					2.10	2.00
NC	3.20	2.55	3.20	2.55					2.60	2.40
ND	3.82	3.03	3.17	2.69	3.48	3.04	4.91	3.00	3.12	2.07
OH	3.16	2.26	3.16	2.26					3.05	2.20
OK	3.21	2.57	3.21	2.57					4.50	3.50
OR	3.55	2.63	3.53	2.62	3.61	2.74				
PA	3.37	2.59	3.37	2.59					3.75	3.50
SC	3.20	2.60	3.20	2.60					3.00	2.50
SD	3.41	2.74	3.10	2.42	3.58	2.99	4.28	2.97	3.60	1.90
TN	3.30	2.61	3.30	2.61						
TX	3.25	2.66	3.25	2.66					3.90	3.90
UT	3.32	2.94	3.29	2.95	3.51	2.70				
VA	3.05	2.41	3.05	2.41					2.45	2.00
WA	3.39	2.63	3.36	2.59	3.61	2.90				
WV	3.25	2.29	3.25	2.29						
WI	3.00	2.15	3.00	2.15	3.00	2.15			3.60	1.85
WY	3.10	2.49	3.10	2.48	3.12	2.71				

Year	United States									
1998	2.65		2.52		3.00		3.15		2.49	
1997	3.38		3.23		3.53		4.92		3.75	

1/ Marketing Year Average prices are weighted average prices for crops sold during the marketing year. Marketing years for Wheat and Rye are defined at the U.S. level as June 1 through May 31 of the following calendar year. Individual State marketing years are as follows. Wheat and Rye: May 1-April 30 for AZ, CA, GA, OK and TX; June 1-May 31 for AR, IL, IN, KS and MO; July 1-June 30 for all other estimated States.

Prices Received: Wheat by Class, Marketing Year Average, United States,
1996-97 and 1997-98 1/

Year	Class			
	Hard Red Winter	Soft Red Winter	Hard Red Spring	White
	Dollars per Bushel			
1997-98	2.55	2.40	3.10	2.43
1996-97	2/	3.21	2/	3.35

- 1/ Marketing Year Average prices are weighted average prices for crops sold during the marketing year. Marketing year for Wheat is defined at the U.S. level as June 1 through May 31 of the following calendar year.
2/ Estimates began in 1998-99 marketing year.

Cranberries: Marketing Year Average Prices Received by Growers,
1997 and 1998 2/

State	1997	1998 2/
	Dollars per Barrel	
MA	66.20	37.50
NJ	56.60	33.40
OR	55.70	32.10
WA	55.70	32.10
WI	65.00	48.20
US	63.70	41.60

- 1/ Weighted average of co-op and independent sales. Co-op prices represent pool proceeds excluding returns from non-cranberry products and before any deductions for capital stock and other retains.
2/ 1998 revised.

Crops: Marketing Year Average Prices Received, by States
and United States, 1997 and 1998 Revised, (continued) 1/

Hay								
State	All		Alfalfa		Other			
	1997	1998	1997	1998	1997	1998		
Dollars per Ton								
AL	47.00	53.00			47.00	53.00		
AK	190.00	200.00						
AZ	111.00	89.50	112.00	89.50	88.50	78.50		
AR	59.00	61.00	128.00	127.00	54.00	54.00		
CA	117.00	96.00	119.00	98.00	98.00	68.00		
CO	101.00	92.00	101.00	91.00	106.00	101.00		
CT	139.00	134.00	164.00	160.00	131.00	130.00		
DE	145.00	118.00	163.00	127.00	131.00	109.00		
FL	86.00	114.00			86.00	114.00		
GA	59.00	71.00			59.00	71.00		
ID	105.00	83.00	106.00	84.00	77.00	64.00		
IL	102.00	85.00	107.00	89.50	82.00	66.00		
IN	113.00	88.00	120.00	94.00	95.00	69.00		
IA	109.00	83.50	112.00	85.00	74.00	60.50		
KS	84.00	72.50	88.00	74.00	72.00	63.00		
KY	77.00	86.00	99.00	112.00	66.00	73.00		
LA	54.00	57.00			54.00	57.00		
ME	114.00	113.00	143.00	145.00	113.00	109.00		
MD	142.00	119.00	161.00	130.00	122.00	112.00		
MA	144.00	140.00	167.00	158.00	137.00	137.00		
MI	101.00	86.00	103.00	90.00	90.50	71.00		
MN	88.00	67.00	98.00	73.50	61.00	47.00		
MS	42.50	42.50			42.50	42.50		
MO	71.00	68.00	105.00	102.00	64.00	61.00		
MT	79.00	72.00	80.00	73.00	69.00	62.50		
NE	76.00	48.50	79.50	49.50	58.50	42.50		
NV	105.00	102.00	107.00	103.00	89.00	92.00		
NH	137.00	144.00	167.00	153.00	131.00	141.00		
NJ	120.00	128.00	144.00	146.00	111.00	118.00		
NM	124.00	117.00	127.00	120.00	97.00	97.00		
NY	94.00	93.00	110.00	105.00	80.50	82.00		
NC	84.00	80.00	125.00	126.00	82.00	78.00		
ND	60.00	51.00	65.00	57.50	43.50	37.50		
OH	135.00	98.00	163.00	115.00	87.00	66.00		
OK	78.00	81.00	94.00	95.00	54.50	61.00		
OR	117.00	104.00	123.00	110.00	91.50	87.00		
PA	138.00	114.00	158.00	131.00	123.00	102.00		
RI	146.00	150.00	168.00	163.00	133.00	145.00		
SC	85.00	85.00			85.00	85.00		
SD	77.00	51.00	81.50	55.00	55.50	36.00		
TN	56.00	56.00	108.00	115.00	54.00	54.00		
TX	72.00	89.00	136.00	149.00	61.00	75.50		
UT	84.00	76.00	85.00	77.00	64.00	51.50		
VT	131.00	120.00	155.00	140.00	125.00	115.00		
VA	83.00	81.50	110.00	117.00	78.00	77.00		
WA	115.00	97.00	111.00	91.50	136.00	123.00		
WV	55.00	57.00	109.00	91.50	49.00	52.00		
WI	91.50	74.00	97.50	78.00	66.50	58.00		
WY	85.00	76.00	86.00	76.00	77.00	71.00		
Year	United States							
1998	84.60		88.10		71.80			
1997	100.00		107.00		75.70			

1/ April - May for US. April - March for AZ; May - April for AR, CA, GA, KS, KY, MO, NV, NM, OK, TX and UT; June - May for all other estimated States.

Prices Received: All Barley, by State and Month,
for Marketing Years, 1997-98 and 1998-99 1/

State :	May	Jun	Jul	Aug	Sep	Oct	Nov
	Dollars per Bushel						
	1998-99						
CA :	3/	3/	2.42	3/	3/	3/	3/
CO :	2.16	2.04	3.04	2.93	2.78	3.13	2.64
ID :	2.68	2.22	2.88	2.53	2.37	1.98	2.41
MN :	1.82	1.73	1.80	1.51	1.87	2.03	1.54
MT :	2.26	2.22	2.60	2.44	2.25	2.30	2.44
ND :	1.78	1.85	1.75	1.63	1.73	1.60	1.70
OR :	2.04	2.21	1.78	1.58	1.45	1.64	1.69
SD :	2.42	2.24	1.67	1.72	1.93	1.65	2.06
UT :	2.15	2.14	1.96	1.86	1.76	1.73	1.79
WA :	1.90	1.87	1.76	1.54	1.40	1.61	1.60
WY :	1.92	2.10	3.18	3.25	3.21	1.54	2.80
US :	2.13	1.95	2.02	2.07	2.01	1.91	2.05
	1997-98						
CA :	3.08	2.90	3/	2.90	3/	3/	3/
CO :	3.03	2.56	3.24	3.14	2.92	3.02	2.74
ID :	2.70	3.13	2.99	2.93	2.72	2.66	2.98
MN :	2.22	2.06	2.02	1.84	1.86	2.09	1.95
MT :	2.62	2.42	2.83	3.00	2.72	2.76	3.01
ND :	2.08	2.07	1.95	1.87	1.94	2.13	2.10
OR :	2.68	2.50	2.56	2.28	2.47	2.43	2.49
SD :	2.35	2.43	2.12	2.08	2.30	2.44	2.42
UT :	2.74	2.57	2.36	2.25	2.26	2.33	2.38
WA :	2.49	2.65	2.40	2.28	2.38	2.32	2.37
WY :	2.46	2.32	3.29	3.32	3.39	3.37	3.09
US :	2.29	2.25	2.27	2.35	2.38	2.44	2.61

See footnotes at end of table.

-- continued

Prices Received: All Barley, by State and Month,
for Marketing Years, 1997-98 and 1998-99 (continued) 1/

State :	Dec	Jan 2/ :	Feb	Mar	Apr	May	Jun
Dollars per Bushel							
1998-99							
CA :	3/	3/	3/	3/	3/	2.14	2.12
CO :	2.16	2.13	1.74	1.77	1.73	1.81	1.71
ID :	2.42	2.14	2.20	2.67	2.51	2.32	2.38
MN :	1.79	1.45	1.56	1.40	1.36	1.39	1.46
MT :	2.54	2.26	2.26	2.27	1.79	1.77	1.68
ND :	1.70	1.72	1.71	1.65	1.56	1.66	1.53
OR :	1.95	1.83	1.81	1.80	1.80	1.79	1.93
SD :	1.87	1.84	1.88	1.80	1.75	1.98	1.90
UT :	1.83	1.87	1.93	1.95	1.90	1.83	1.93
WA :	1.68	1.70	1.66	1.56	1.54	1.64	1.88
WY :	2.77	2.75	2.58	2.58	2.19	2.24	1.48
US :	2.03	1.89	1.90	2.00	1.78	1.82	1.70
1997-98							
CA :	3/	2.83	2.80	2.76	3/	3/	3/
CO :	2.14	2.15	2.50	2.40	2.49	2.16	2.04
ID :	2.84	2.78	2.91	2.97	2.61	2.68	2.22
MN :	1.88	1.77	1.69	1.79	1.75	1.82	1.73
MT :	2.88	2.92	2.79	2.82	2.52	2.26	2.22
ND :	2.01	2.04	1.95	1.96	1.87	1.78	1.85
OR :	2.38	2.45	2.22	2.18	2.38	2.04	2.21
SD :	2.35	2.28	2.02	2.08	2.14	2.42	2.24
UT :	2.38	2.34	2.34	2.29	2.37	2.15	2.14
WA :	2.29	2.23	2.11	2.24	1.97	1.90	1.87
WY :	3.40	3.12	2.94	2.94	2.79	1.92	2.10
US :	2.43	2.42	2.42	2.40	2.16	2.13	1.95

1/ June - May for CA; July - June for all other estimated States;
June - May for US.

2/ Second year.

3/ Not published to avoid disclosure of individual firms.

Prices Received: Feed Barley, by State and Month,
for Marketing Years, 1997-98 and 1998-99 1/

State :	May :	Jun :	Jul :	Aug :	Sep :	Oct :	Nov
Dollars per Bushel							
1998-99							
CA :	3/	3/	2.42	3/	3/	3/	3/
CO :	2.16	2.04	1.89	1.70	1.50	1.67	1.54
ID :	2.22	2.21	1.94	1.70	1.67	1.56	1.67
MN :	1.50	1.64	1.41	1.33	1.03	1.11	1.22
MT :	1.92	2.06	1.67	1.35	1.26	1.28	1.36
ND :	1.54	1.53	1.37	1.30	1.16	1.22	1.31
OR :	2.04	2.21	1.78	1.57	1.45	1.64	1.69
SD :	1.90	1.52	1.31	1.42	1.45	1.34	1.24
UT :	2.15	2.14	1.96	1.86	1.76	1.73	1.79
WA :	1.83	1.84	1.74	1.53	1.36	1.59	1.52
WY :	1.92	2.10	1.69	3/	1.81	1.44	1.63
US :	1.91	1.82	1.61	1.49	1.40	1.46	1.47
1997-98							
CA :	3.08	2.90	3/	2.90	3/	3/	3/
CO :	3.03	2.56	2.20	2.09	2.08	2.02	2.30
ID :	2.51	2.56	2.37	2.23	2.25	2.41	2.38
MN :	2.01	2.04	1.82	1.73	1.81	1.80	1.81
MT :	2.24	2.27	2.17	2.06	2.03	2.13	2.29
ND :	1.98	1.94	1.74	1.73	1.82	1.93	1.84
OR :	2.62	2.50	2.50	2.28	2.42	2.43	2.47
SD :	2.17	2.08	1.93	1.78	1.77	1.89	1.76
UT :	2.74	2.57	2.36	2.25	2.26	2.33	2.38
WA :	2.54	2.47	2.39	2.27	2.33	2.29	2.32
WY :	2.46	2.32	3/	1.94	2.20	1.92	1.92
US :	2.26	2.14	1.96	1.96	2.09	2.17	2.15

See footnotes at end of table.

-- continued

Prices Received: Feed Barley, by State and Month,
for Marketing Years, 1997-98 and 1998-99 (continued) 1/

State :	Dec	Jan 2/ :	Feb	Mar	Apr	May	Jun
Dollars per Bushel							
1998-99							
CA :	3/	3/	3/	3/	3/	2.14	2.12
CO :	1.71	1.74	1.74	1.69	1.68	1.81	1.70
ID :	1.72	1.70	1.88	1.82	2.01	2.01	1.87
MN :	1.28	1.35	1.40	1.28	1.35	1.33	1.36
MT :	1.49	1.51	1.44	1.39	1.40	1.47	1.50
ND :	1.34	1.35	1.32	1.28	1.27	1.32	1.32
OR :	1.95	1.71	1.77	1.78	1.71	1.79	1.93
SD :	1.35	1.35	1.42	1.35	1.40	1.41	1.60
UT :	1.83	1.87	1.93	1.95	1.90	1.83	1.93
WA :	1.66	1.67	1.66	1.56	1.54	1.63	1.84
WY :	3/	1.75	3/	3/	3/	3/	3/
US :	1.55	1.58	1.60	1.49	1.54	1.62	1.55
1997-98							
CA :	3/	2.83	2.80	2.76	3/	3/	3/
CO :	2.14	2.15	2.21	2.32	2.02	2.16	2.04
ID :	2.16	2.37	2.42	2.33	2.26	2.22	2.21
MN :	1.77	1.72	1.65	1.64	1.51	1.50	1.64
MT :	2.01	2.13	2.14	2.04	2.02	1.92	2.06
ND :	1.84	1.82	1.75	1.68	1.55	1.54	1.53
OR :	2.38	2.37	2.22	2.18	2.38	2.04	2.21
SD :	1.85	1.90	1.91	1.76	1.86	1.90	1.52
UT :	2.38	2.34	2.34	2.29	2.37	2.15	2.14
WA :	2.26	2.15	2.08	2.19	1.91	1.83	1.84
WY :	2.04	2.07	2.00	2.11	1.90	1.92	2.10
US :	2.03	2.09	2.02	1.99	1.90	1.91	1.82

1/ June - May for CA; July - June for all other estimated States;
June - May for US.

2/ Second year.

3/ Not published to avoid disclosure of individual firms.

Prices Received: Malting Barley, by State and Month,
for Marketing Years, 1997-98 and 1998-99 1/

State :	May	Jun	Jul	Aug	Sep	Oct	Nov
Dollars per Bushel							
1998-99							
ID :	2.97	2.78	3/	3.03	2.93	3/	2.55
MN :	2.25	1.90	2.01	3/	3/	3/	2.45
MT :	2.77	2.75	3.10	2.88	2.84	2.78	2.99
ND :	2.07	2.06	1.93	1.88	1.85	1.79	1.87
SD :	2.49	2.30	3/	3/	3/	3/	3/
WA :	3/	2.80	3/	2.13	2.05	1.98	2.14
US :	2.52	2.08	2.27	2.60	2.50	2.47	2.48
1997-98							
ID :	3.01	3.48	3.31	3.21	3.17	3.01	3.10
MN :	2.27	2.12	2.09	2.42	1.99	2.25	3/
MT :	3.29	2.97	3.29	3.23	3.14	3.07	3.19
ND :	2.21	2.17	2.08	2.08	2.32	2.41	2.33
SD :	2.48	2.47	2.18	2.35	2.52	2.65	2.47
WA :	2.32	3.12	3/	2.90	2.87	2.72	2.86
US :	2.32	2.38	2.45	2.82	2.93	2.81	2.92

See footnotes at end of table.

-- continued

Prices Received: Malting Barley, by State and Month,
for Marketing Years, 1997-98 and 1998-99 (continued) 1/

State :	Dec	Jan 2/ :	Feb	Mar	Apr	May	Jun
	Dollars per Bushel						
	1998-99						
ID :	2.70	2.69	3/	3/	3/	2.81	2.80
MN :	2.18	1.96	3/	1.73	3/	3/	1.80
MT :	2.91	2.78	2.80	2.72	2.49	2.48	2.29
ND :	1.89	1.88	1.85	1.86	1.71	1.85	1.80
SD :	3/	3/	3/	3/	3/	3/	3/
WA :	2.24	2.18	3/		1.78	3/	3.45
US :	2.35	2.26	2.22	2.40	2.11	2.17	1.99
	1997-98						
ID :	3.17	3.13	3.18	3.23	2.95	2.97	2.78
MN :	1.99	1.95	2.02	2.15	2.04	2.25	1.90
MT :	3.14	3.06	3.11	3.07	2.74	2.77	2.75
ND :	2.16	2.16	2.20	2.18	2.19	2.07	2.06
SD :	2.48	2.37	2.28	2.40	2.45	2.49	2.30
WA :	2.77	2.62	3/	2.96	2.61	3/	2.80
US :	2.75	2.66	2.86	2.73	2.50	2.52	2.08

1/ June - May for CA; July - June for all other estimated States;
June - May for US.

2/ Second year.

3/ Not published to avoid disclosure of individual firms.

Prices Received: Oats, by State and Month,
for Marketing Years, 1997-98 and 1998-99 1/

State :	May :	Jun :	Jul :	Aug :	Sep :	Oct :	Nov
Dollars per Bushel							
1998-99							
IL :	3/	1.65	1.64	1.01	1.15	1.42	1.52
IA :	1.66	1.55	1.15	1.09	1.24	1.26	1.36
MI :	1.90	1.75	1.36	1.30	1.39	1.61	1.61
MN :	1.35	1.44	1.03	.93	.98	.92	.92
MT :	3/	3/	1.54	1.39	1.28	1.23	1.37
NE :	1.65	1.66	1.19	1.22	.99	1.03	1.26
ND :	1.32	1.10	1.07	.89	.80	.93	.88
OH :	1.78	1.63	1.44	1.31	1.36	1.36	1.32
OR :	1.76	1.52	1.40	1.41	1.45	1.32	1.43
PA :	1.74	1.66	1.39	1.29	1.36	1.40	1.30
SD :	1.46	1.31	1.08	.90	.90	.92	1.05
TX :	1.41	1.36	1.65	3/	3/	3/	3/
WI :	1.45	1.34	1.13	.92	1.02	1.05	1.09
US :	1.53	1.39	1.19	1.02	1.07	1.09	1.10
1997-98							
IL :	2.30	2.25	1.77	1.69	1.61	1.63	3/
IA :	2.12	1.93	1.63	1.58	1.51	1.56	1.92
MI :	2.41	2.42	2.01	1.83	1.72	2.02	1.63
MN :	1.80	1.73	1.54	1.45	1.42	1.49	1.56
MT :	1.80	1.65	3/	1.32	1.22	1.22	3/
NE :	1.97	2.14	1.82	1.80	1.61	1.58	1.94
ND :	1.48	1.49	1.37	1.31	1.28	1.42	1.45
OH :	2.27	2.18	2.06	1.75	1.76	1.72	1.81
OR :	2.08	2.07	2.10	1.94	1.83	1.79	1.76
PA :	2.33	2.24	1.91	1.77	1.92	1.89	1.88
SD :	1.76	1.72	1.57	1.56	1.53	1.59	1.55
TX :	3/	2.04	1.91	3/	3/	3/	3/
WI :	1.90	1.81	1.65	1.44	1.41	1.45	1.45
US :	1.86	1.81	1.67	1.57	1.47	1.62	1.66

See footnotes at end of table.

-- continued

Prices Received: Oats, by State and Month,
for Marketing Years, 1997-98 and 1998-99 (continued) 1/

State :	Dec	Jan 2/ :	Feb	Mar	Apr	May	Jun
Dollars per Bushel							
1998-99							
IL :	1.55	1.63	1.63	1.66	1.67	1.70	1.12
IA :	1.41	1.41	1.44	1.48	1.49	1.36	1.31
MI :	1.52	1.48	1.54	1.50	1.55	1.60	1.37
MN :	1.24	1.10	1.04	1.09	1.10	1.16	1.05
MT :	1.15	1.24	1.06	1.04	1.11	1.12	1.18
NE :	1.31	1.24	1.27	1.24	1.32	1.24	1.11
ND :	.92	.95	.90	.90	1.06	1.03	.97
OH :	1.20	1.32	1.52	1.36	1.32	1.52	1.41
OR :	1.32	1.33	1.35	1.33	1.32	1.41	1.50
PA :	1.40	1.63	1.60	1.59	1.55	1.52	1.59
SD :	1.03	1.03	1.08	1.05	1.09	1.10	1.22
TX :	3/	3/	3/	3/	3/	3/	1.27
WI :	1.14	1.32	1.24	1.20	1.14	1.17	1.15
US :	1.19	1.20	1.20	1.20	1.18	1.31	1.22
1997-98							
IL :	3/	1.82	1.75	3/	1.40	3/	1.65
IA :	1.83	1.76	1.80	1.76	1.78	1.66	1.55
MI :	1.79	1.79	1.91	1.98	1.89	1.90	1.75
MN :	1.58	1.42	1.49	1.51	1.51	1.35	1.44
MT :	3/	3/	1.42	1.42	3/	3/	3/
NE :	1.61	1.81	1.62	1.81	1.81	1.65	1.66
ND :	1.34	1.36	1.29	1.32	1.33	1.32	1.10
OH :	1.72	1.90	1.71	1.73	1.67	1.78	1.63
OR :	1.81	1.85	1.65	1.78	1.89	1.76	1.52
PA :	1.96	1.94	1.90	1.95	1.75	1.74	1.66
SD :	1.52	1.52	1.62	1.67	1.57	1.46	1.31
TX :	3/	3/	3/	3/	3/	1.41	1.36
WI :	1.51	1.48	1.52	1.51	1.52	1.45	1.34
US :	1.57	1.60	1.60	1.64	1.61	1.53	1.39

- 1/ May - April for TX; July - June for all other estimated States;
June - May for US.
2/ Second year.
3/ Insufficient sales to establish a price.

Prices Received: All Wheat, by State and Month,
for Marketing Years, 1997-98 and 1998-99 1/

State :	May :	Jun :	Jul :	Aug :	Sep :	Oct :	Nov
Dollars per Bushel							
1998-99							
AR :	2.80	2.88	2.56	2.24	2.39	2.54	2.42
CA :	3.73	3/	3/	3/	2.60	3.12	3/
CO :	2.92	2.87	2.52	2.25	2.24	2.68	2.67
ID :	2.64	2.52	2.39	1.89	2.08	2.35	2.63
IL :	2.88	2.54	2.36	2.19	1.99	2.09	2.33
IN :	2.55	2.50	2.37	2.21	2.21	2.33	2.60
KS :	2.91	2.71	2.50	2.29	2.31	2.67	2.78
MI :	2.59	2.60	2.39	2.09	2.28	2.51	2.56
MN :	3.41	3.30	3.10	2.97	2.86	3.17	3.31
MO :	2.63	2.46	2.26	2.09	2.00	2.22	2.47
MT :	3.43	3.34	3.26	2.80	2.69	3.00	3.15
NE :	3.00	2.79	2.60	2.28	2.24	2.58	2.74
ND :	3.33	3.42	3.11	2.94	2.80	3.09	3.22
OH :	2.62	2.50	2.31	2.17	2.12	2.34	2.35
OK :	2.77	2.62	2.51	2.22	2.43	2.68	2.80
OR :	3.09	2.56	2.36	2.36	2.57	2.86	2.78
SD :	3.27	3.04	2.75	2.68	2.54	2.89	3.11
TX :	2.97	2.66	2.60	2.38	2.37	2.62	2.71
WA :	3.03	2.69	2.69	2.35	2.38	2.82	2.85
US :	3.06	2.77	2.56	2.38	2.39	2.77	2.95
1997-98							
AR :	3/	3.58	3.28	3.48	3.50	3.49	3.35
CA :	4.20	4.01	3/	3/	3.73	3.92	3/
CO :	4.17	3.67	3.20	3.33	3.31	3.21	3.16
ID :	3.88	3.89	3.69	3.42	3.46	3.28	3.33
IL :	3.76	3.06	3.08	3.18	3.41	3.35	3.29
IN :	3.58	3.26	3.13	3.30	3.39	3.39	3.38
KS :	4.20	3.24	3.14	3.36	3.38	3.33	3.25
MI :	3.44	3.00	3.20	3.40	3.46	3.40	3.30
MN :	3.99	3.78	3.54	3.77	3.67	3.49	3.58
MO :	3.79	3.06	3.05	3.36	3.32	3.13	3.14
MT :	4.20	4.02	3.95	3.94	3.68	3.73	3.68
NE :	4.08	3.52	3.24	3.37	3.42	3.28	3.17
ND :	4.09	3.79	3.90	4.15	4.18	4.05	4.05
OH :	3.56	3.23	3.24	3.32	3.39	3.22	3.14
OK :	4.19	3.28	3.10	3.39	3.42	3.39	3.33
OR :	4.37	4.06	3.84	3.87	3.84	3.70	3.73
SD :	3.91	3.72	3.44	3.53	3.52	3.46	3.48
TX :	3.84	3.41	3.11	3.34	3.36	3.26	3.12
WA :	4.33	3.93	3.72	3.67	3.67	3.67	3.42
US :	4.08	3.52	3.23	3.56	3.66	3.58	3.54

See footnotes at end of table.

-- continued

Prices Received: All Wheat, by State and Month,
for Marketing Years, 1997-98 and 1998-99 (continued) 1/

State :	Dec :	Jan 2/ :	Feb :	Mar :	Apr :	May :	Jun
Dollars per Bushel							
1998-99							
AR :	2.40	2.41	2.11	2.36	2.16	2.33	2.26
CA :	3/	2.90	3.01	2.96	3.13	2.79	3/
CO :	2.69	2.76	2.66	2.58	2.42	2.29	2.36
ID :	2.53	2.82	2.74	2.56	2.63	2.60	2.74
IL :	2.31	2.16	1.88	2.26	2.14	2.04	2.12
IN :	2.45	2.28	2.34	2.17	2.37	2.22	2.16
KS :	2.71	2.74	2.50	2.53	2.41	2.28	2.33
MI :	2.41	2.49	2.43	2.32	2.33	2.22	2.19
MN :	3.34	3.22	3.10	3.03	2.97	2.97	3.00
MO :	2.30	2.44	2.21	2.37	2.17	2.13	2.08
MT :	3.14	3.13	3.07	3.04	3.04	2.99	3.05
NE :	2.72	2.74	2.51	2.57	2.62	2.34	2.41
ND :	3.16	3.14	3.00	2.99	2.87	2.88	2.97
OH :	2.30	2.34	2.19	2.27	2.28	2.20	2.09
OK :	2.69	2.71	2.38	2.51	2.36	2.33	2.31
OR :	2.80	2.77	2.83	2.95	2.92	2.88	3.06
SD :	2.97	2.77	2.77	2.58	2.54	2.51	2.93
TX :	2.71	2.72	2.56	2.47	2.39	2.43	2.35
WA :	2.78	2.78	2.87	2.80	2.90	2.98	2.79
US :	2.86	2.84	2.73	2.65	2.62	2.49	2.50
1997-98							
AR :	3.35	3.30	3.20	3.10	2.89	2.80	2.88
CA :	3/	3/	3/	3.13	3.13	3.73	2.99
CO :	3.25	3.17	3.18	3.25	3.08	2.92	2.87
ID :	3.10	3.10	2.95	2.85	2.80	2.64	2.52
IL :	3.29	3.27	3.24	3.27	3.05	2.88	2.54
IN :	3.20	3.20	3.04	2.99	2.56	2.55	2.50
KS :	3.13	3.09	3.14	3.14	2.89	2.91	2.71
MI :	2.93	3.10	3.07	3.06	2.77	2.59	2.60
MN :	3.49	3.39	3.34	3.47	3.42	3.41	3.30
MO :	3.10	3.04	3.01	2.98	2.74	2.63	2.46
MT :	3.82	3.59	3.43	3.49	3.56	3.43	3.34
NE :	3.12	3.13	3.15	3.19	3.03	3.00	2.79
ND :	3.77	3.89	3.58	3.70	3.56	3.33	3.42
OH :	3.08	3.08	2.98	2.96	2.67	2.62	2.50
OK :	3.18	3.11	3.13	3.14	2.88	2.77	2.62
OR :	3.50	3.50	3.39	3.34	3.09	3.09	2.56
SD :	3.42	3.41	3.34	3.45	3.34	3.27	3.04
TX :	3.19	3.05	3.12	3.07	2.89	2.97	2.66
WA :	3.42	3.31	3.27	3.25	2.97	3.03	2.69
US :	3.44	3.32	3.27	3.33	3.18	3.06	2.77

1/ May - April for CA, OK and TX; June - May for AR, IL, IN, KS and MO;
July - June for all other estimated States; June - May for US.

2/ Second year.

3/ Not published to avoid disclosure of individual firms.

Prices Received: Winter Wheat, by State and Month,
for Marketing Years, 1997-98 and 1998-99 1/

State :	May :	Jun :	Jul :	Aug :	Sep :	Oct :	Nov
Dollars per Bushel							
1998-99							
AR :	2.80	2.88	2.56	2.24	2.39	2.54	2.42
CA :	3.11	2.99	2.92	3/	3/	3/	3.65
CO :	2.92	2.88	2.52	2.25	2.26	2.68	2.67
ID :	2.56	2.49	2.31	1.82	1.99	2.36	2.55
IL :	2.88	2.54	2.36	2.19	1.99	2.09	2.33
IN :	2.55	2.50	2.37	2.21	2.21	2.33	2.60
KS :	2.91	2.71	2.50	2.29	2.31	2.67	2.78
MI :	2.59	2.60	2.39	2.09	2.28	2.51	2.56
MN :	2.64	2.69	2.56	2.30	2.27	2.49	3/
MO :	2.63	2.46	2.26	2.09	2.00	2.22	2.47
MT :	3.06	2.81	2.92	2.51	2.37	2.78	2.90
NE :	3.00	2.79	2.60	2.28	2.24	2.58	2.74
ND :	2.97	2.70	2.50	2.66	2.37	3.22	3/
OH :	2.62	2.50	2.31	2.17	2.12	2.34	2.35
OK :	2.77	2.62	2.51	2.22	2.43	2.68	2.80
OR :	3.09	2.56	2.36	2.36	2.53	2.84	2.79
SD :	2.81	2.51	2.50	2.19	2.20	2.50	2.90
TX :	2.97	2.66	2.60	2.38	2.37	2.62	2.71
WA :	2.99	2.68	2.49	2.30	2.35	2.74	2.79
US :	2.90	2.68	2.47	2.25	2.29	2.66	2.76
1997-98							
AR :	3/	3.58	3.28	3.48	3.50	3.49	3.35
CA :	3/	3/	3/	3/	3.71	3/	3/
CO :	4.18	3.68	3.20	3.33	3.29	3.22	3.13
ID :	3.89	3.94	3.64	3.44	3.44	3.35	3.25
IL :	3.76	3.06	3.08	3.18	3.41	3.35	3.29
IN :	3.58	3.26	3.13	3.30	3.39	3.39	3.38
KS :	4.20	3.24	3.14	3.36	3.38	3.33	3.25
MI :	3.44	3.00	3.20	3.40	3.46	3.40	3.30
MN :	3.71	4.11	3.44	3.28	3.40	3.28	3.07
MO :	3.79	3.06	3.05	3.36	3.32	3.13	3.14
MT :	4.22	4.04	3.97	3.86	3.37	3.58	3.43
NE :	4.08	3.52	3.24	3.37	3.42	3.28	3.17
ND :	4/	3.10	3.15	3.30	3.75	3.22	4/
OH :	3.56	3.23	3.24	3.32	3.39	3.22	3.14
OK :	4.19	3.28	3.10	3.39	3.42	3.39	3.33
OR :	4.37	4.08	3.83	3.86	3.83	3.67	3.72
SD :	3.93	3.66	3.25	3.19	3.22	3.26	3.28
TX :	3.84	3.41	3.11	3.34	3.36	3.26	3.12
WA :	4.30	3.91	3.72	3.61	3.60	3.66	3.40
US :	4.09	3.42	3.16	3.40	3.46	3.44	3.31

See footnotes at end of table.

-- continued

Prices Received: Winter Wheat, by State and Month,
for Marketing Years, 1997-98 and 1998-99 (continued) 1/

State :	Dec :	Jan 2/ :	Feb :	Mar :	Apr :	May :	Jun
Dollars per Bushel							
1998-99							
AR :	2.40	2.41	2.11	2.36	2.16	2.33	2.26
CA :	3/	2.81	2.57	2.87	3/	3/	2.87
CO :	2.69	2.77	2.66	2.58	2.41	2.29	2.36
ID :	2.47	2.66	2.51	2.50	2.57	2.58	2.59
IL :	2.31	2.16	1.88	2.26	2.14	2.04	2.12
IN :	2.45	2.28	2.34	2.17	2.37	2.22	2.16
KS :	2.71	2.74	2.50	2.53	2.41	2.28	2.33
MI :	2.41	2.49	2.43	2.32	2.33	2.22	2.19
MN :	3/	3/	3/	3/	3/	3/	3/
MO :	2.30	2.44	2.21	2.37	2.17	2.13	2.08
MT :	2.94	2.87	2.91	2.80	2.93	2.89	2.79
NE :	2.72	2.74	2.51	2.57	2.62	2.34	2.41
ND :	3.03	2.91	3/	2.30	3/	3/	2.47
OH :	2.30	2.34	2.19	2.27	2.28	2.20	2.09
OK :	2.69	2.71	2.38	2.51	2.36	2.33	2.31
OR :	2.79	2.76	2.83	2.95	2.90	2.88	3.03
SD :	2.60	2.52	2.42	2.33	2.30	2.21	2.37
TX :	2.71	2.72	2.56	2.47	2.39	2.43	2.35
WA :	2.75	2.77	2.83	2.79	2.89	2.90	2.78
US :	2.68	2.70	2.55	2.53	2.48	2.34	2.32
1997-98							
AR :	3.35	3.30	3.20	3.10	2.89	2.80	2.88
CA :	3/	3/	3/	3/	3.13	3.11	2.99
CO :	3.25	3.17	3.20	3.25	3.08	2.92	2.88
ID :	3.08	3.03	2.99	2.85	2.79	2.56	2.49
IL :	3.29	3.27	3.24	3.27	3.05	2.88	2.54
IN :	3.20	3.20	3.04	2.99	2.56	2.55	2.50
KS :	3.13	3.09	3.14	3.14	2.89	2.91	2.71
MI :	2.93	3.10	3.07	3.06	2.77	2.59	2.60
MN :	3.10	3.14	3.04	2.96	2.78	2.64	2.69
MO :	3.10	3.04	3.01	2.98	2.74	2.63	2.46
MT :	3.59	3.35	3.25	3.19	3.27	3.06	2.81
NE :	3.12	3.13	3.15	3.19	3.03	3.00	2.79
ND :	3.52	2.82	4/	3.11	4/	2.97	2.70
OH :	3.08	3.08	2.98	2.96	2.67	2.62	2.50
OK :	3.18	3.11	3.13	3.14	2.88	2.77	2.62
OR :	3.49	3.48	3.37	3.34	3.06	3.09	2.56
SD :	3.24	3.14	3.16	3.09	2.95	2.81	2.51
TX :	3.19	3.05	3.12	3.07	2.89	2.97	2.66
WA :	3.40	3.26	3.24	3.23	2.95	2.99	2.68
US :	3.24	3.16	3.16	3.16	2.94	2.90	2.68

1/ May - April for CA, OK and TX; June - May for AR, IL, IN, KS and MO;
July - June for all other estimated States; June - May for US.

2/ Second year.

3/ Not published to avoid disclosure of individual firms.

4/ Insufficient sales to establish a price.

Prices Received: Other Spring Wheat, by State and Month,
for Marketing Years, 1997-98 and 1998-99 1/

State :	May	Jun	Jul	Aug	Sep	Oct	Nov
	Dollars per Bushel						
	1998-99						
CO :	2.95	2.66	2.45	2.24	1.99	3/	2.79
ID :	2.71	2.56	2.47	1.98	2.19	2.34	2.73
MN :	3.43	3.30	3.11	2.98	2.86	3.18	3.31
MT :	3.54	3.41	3.31	2.92	2.73	3.09	3.25
ND :	3.25	3.26	3.08	2.90	2.77	3.11	3.25
OR :	3.12	2.56	2.38	2.39	2.83	3.02	2.80
SD :	3.53	3.31	3.15	2.84	2.70	3.09	3.29
WA :	3.25	2.79	3.31	2.58	2.55	3.17	3.15
US :	3.31	3.22	3.08	2.69	2.62	3.04	3.23
	1997-98						
CO :	3.39	3.39	2.96	3.45	3.56	3.14	3.33
ID :	3.86	3.84	3.75	3.39	3.48	3.21	3.43
MN :	3.99	3.76	3.54	3.82	3.67	3.48	3.60
MT :	4.17	3.99	3.85	3.85	3.62	3.58	3.57
ND :	3.93	3.63	3.65	3.71	3.61	3.51	3.54
OR :	4.38	3.88	3.89	3.93	3.91	3.75	3.78
SD :	3.90	3.75	3.59	3.72	3.65	3.57	3.63
WA :	4.50	4.09	3.74	4.01	4.00	3.75	3.52
US :	3.99	3.75	3.66	3.74	3.64	3.50	3.55

See footnotes at end of table.

-- continued

Prices Received: Other Spring Wheat, by State and Month,
for Marketing Years, 1997-98 and 1998-99 (continued) 1/

State :	Dec	Jan 2/ :	Feb	Mar	Apr	May	Jun
	Dollars per Bushel						
	1998-99						
CO :	2.84	2.10	2.49	2.58	2.62	3/	3/
ID :	2.61	2.98	2.91	2.63	2.70	2.63	2.90
MN :	3.34	3.22	3.10	3.03	2.97	2.97	3.00
MT :	3.23	3.25	3.26	3.15	3.13	3.05	3.14
ND :	3.20	3.10	3.07	3.02	2.92	2.90	3.00
OR :	2.89	2.86	2.84	2.95	3.04	2.89	3.27
SD :	3.29	3.16	3.11	3.00	2.92	2.90	2.96
WA :	2.97	2.89	3.09	2.88	2.99	3.32	2.86
US :	3.19	3.12	3.09	3.00	2.95	2.92	3.01
	1997-98						
CO :	3.23	2.92	2.72	3.14	3.06	2.95	2.66
ID :	3.11	3.16	2.91	2.85	2.81	2.71	2.56
MN :	3.50	3.40	3.34	3.48	3.43	3.43	3.30
MT :	3.73	3.50	3.42	3.54	3.55	3.54	3.41
ND :	3.50	3.43	3.34	3.44	3.35	3.25	3.26
OR :	3.57	3.55	3.46	3.43	3.18	3.12	2.56
SD :	3.57	3.52	3.49	3.60	3.58	3.53	3.31
WA :	3.54	3.56	3.47	3.38	3.12	3.25	2.79
US :	3.51	3.44	3.33	3.43	3.37	3.31	3.22

- 1/ May - April for CA, OK and TX; June - May for AR, IL, IN, KS and MO;
July - June for all other estimated States; June - May for US.
2/ Second year.
3/ Not published to avoid disclosure of individual firms.
4/ Insufficient sales to establish a price.

Prices Received: Durum Wheat, by State and Month,
for Marketing Years, 1997-98 and 1998-99 1/

State :	May :	Jun :	Jul :	Aug :	Sep :	Oct :	Nov
Dollars per Bushel							
1998-99							
CA :	3/	4/	4/	4/	4/	4/	4/
MN :	4/	4/	4/	3/	3/	3/	4/
MT :	4.73	4.30	4.10	4.17	3.49	3.23	3.29
ND :	4.08	3.95	3.30	3.10	2.90	2.99	3.03
SD :	4.50	4/	4/	3/	4/	4/	3/
US :	4.28	3.98	3.39	3.23	3.03	3.04	3.08
1997-98							
CA :	4.35	3/	4/	4/	3/	3/	3/
MN :	4/	4.60	4/	4/	3/	3/	3/
MT :	4.40	4.20	4.43	4.96	5.51	5.62	5.65
ND :	4.37	4.19	4.63	5.26	5.34	5.10	5.27
SD :	4.15	4.14	4.12	4.00	3/	4.92	4/
US :	4.37	4.20	4.61	5.23	5.35	5.14	5.29

See footnotes at end of table.

-- continued

Prices Received: Durum Wheat, by State and Month,
for Marketing Years, 1997-98 and 1998-99 (continued) 1/

State :	Dec :	Jan 2/ :	Feb :	Mar :	Apr :	May :	Jun
Dollars per Bushel							
1998-99							
CA :	4/	3/	3/	3/	3/	3/	4/
MN :	4/	4/	4/	3/	4/	3/	3/
MT :	3.15	3.13	3.11	2.88	2.81	2.85	3.00
ND :	3.04	3.21	2.75	2.76	2.72	2.82	2.90
SD :	4/	4/	4/	4/	4/	4/	3/
US :	3.05	3.20	2.84	2.82	2.80	2.84	2.93
1997-98							
CA :	3/	4/	3/	3/	4/	3/	4/
MN :	4/	4/	4/	4/	4/	4/	4/
MT :	5.57	5.30	4.95	4.97	4.88	4.73	4.30
ND :	5.08	4.98	4.63	4.66	4.55	4.08	3.95
SD :	3/	3/	3/	4/	3/	4.50	4/
US :	5.16	5.02	4.69	4.70	4.60	4.28	3.98

1/ May - April for CA, OK and TX; June - May for AR, IL, IN, KS and MO;
July - June for all other estimated States; June - May for US.

2/ Second year.

3/ Not published to avoid disclosure of individual firms.

4/ Insufficient sales to establish a price.

Prices Received: Wheat by Class, United States, by Month,
for Marketing Years, 1997-98 and 1998-99 1/

Year	Jun	Jul	Aug	Sep	Oct	Nov
Dollars per Bushel						
Hard Red Winter 3/						
1998-99	2.68	2.53	2.30	2.33	2.69	2.82
Soft Red Winter						
1998-99	2.69	2.33	2.16	2.15	2.34	2.37
1997-98	3.47	3.15	3.30	3.39	3.28	3.28
Hard Red Spring 3/						
1998-99	3.30	3.14	2.91	2.79	3.14	3.28
White						
1998-99	2.57	2.41	2.10	2.21	2.57	2.65
1997-98	3.90	3.61	3.59	3.57	3.49	3.38

-- continued

Prices Received: Wheat by Class, United States, by Month,
for Marketing Years, 1997-98 and 1998-99 (continued) 1/

Year	Dec	Jan 2/	Feb	Mar	Apr	May
Dollars per Bushel						
Hard Red Winter 3/						
1998-99	2.72	2.76	2.59	2.53	2.45	2.32
Soft Red Winter						
1998-99	2.34	2.36	2.18	2.28	2.23	2.21
1997-98	3.15	3.12	3.07	3.10	2.87	2.71
Hard Red Spring 3/						
1998-99	3.26	3.22	3.17	3.06	3.00	2.96
White						
1998-99	2.58	2.62	2.64	2.65	2.76	2.67
1997-98	3.26	3.21	3.11	3.05	2.89	2.82

1/ June - May

2/ Second year.

3/ Estimates began in 1998-99 marketing year.

Prices Received: All Hay, by State and Month,
for Marketing Years, 1997-98 and 1998-99 1/

State :	Apr :	May :	Jun :	Jul :	Aug :	Sep :	Oct
Dollars per Ton							
1998-99							
AZ :	115.00	108.00	104.00	84.00	71.00	67.00	65.00
CA :	129.00	103.00	100.00	99.00	97.00	91.00	92.00
CO :	97.00	91.00	85.00	92.00	91.00	95.00	98.00
ID :	89.00	80.00	84.00	84.00	89.00	86.00	85.00
IL :	101.00	95.00	90.00	88.00	84.00	82.00	84.00
IA :	101.00	99.00	92.00	85.00	82.00	79.00	78.00
KS :	74.00	72.00	74.00	70.00	73.00	76.00	81.00
KY :	88.00	95.00	82.00	86.00	92.00	83.00	75.00
MI :	99.00	101.00	93.00	81.00	92.00	93.00	92.00
MN :	79.00	75.00	73.00	76.00	71.00	66.00	55.00
MO :	72.00	73.00	71.00	70.00	67.00	68.00	67.00
MT :	70.00	70.00	76.00	79.00	76.00	74.00	73.00
NE :	71.00	67.00	64.00	56.00	52.00	49.00	48.00
NV :	104.00	105.00	115.00	116.00	116.00	107.00	98.00
NM :	127.00	118.00	115.00	118.00	115.00	115.00	117.00
NY :	109.00	91.00	90.00	75.00	85.00	84.00	94.00
ND :	51.00	54.00	56.00	58.00	56.00	55.00	52.00
OH :	114.00	110.00	105.00	101.00	89.00	97.00	97.00
OK :	78.00	69.00	78.00	83.00	81.00	83.00	83.00
OR :	114.00	112.00	110.00	113.00	117.00	97.00	100.00
PA :	148.00	131.00	121.00	114.00	114.00	107.00	112.00
SD :	58.00	56.00	58.00	52.00	57.00	55.00	52.00
TX :	65.00	96.00	96.00	100.00	95.00	95.00	87.00
UT :	78.00	77.00	76.00	81.00	80.00	79.00	77.00
WA :	112.00	110.00	104.00	103.00	98.00	94.00	95.00
WI :	104.00	94.00	89.00	76.00	72.00	76.00	76.00
WY :	76.00	77.00	79.00	79.00	78.00	78.00	78.00
US :	98.30	96.60	91.10	88.50	88.00	85.00	83.80
1997-98							
AZ :	140.00	127.00	106.00	103.00	96.00	88.00	98.00
CA :	128.00	128.00	122.00	115.00	111.00	113.00	110.00
CO :	115.00	125.00	120.00	100.00	100.00	101.00	100.00
ID :	113.00	107.00	111.00	97.00	106.00	107.00	114.00
IL :	125.00	120.00	111.00	95.00	96.00	100.00	101.00
IA :	112.00	117.00	116.00	117.00	108.00	110.00	109.00
KS :	85.00	92.00	89.00	85.00	77.00	83.00	87.00
KY :	80.00	86.00	71.00	70.00	78.00	77.00	75.00
MI :	115.00	118.00	108.00	83.00	98.00	103.00	103.00
MN :	95.00	108.00	96.00	94.00	91.00	93.00	91.00
MO :	70.00	72.00	71.00	68.00	67.00	72.00	72.00
MT :	113.00	99.00	84.00	78.00	82.00	84.00	84.00
NE :	70.00	71.00	76.00	76.00	77.00	77.00	79.00
NV :	111.00	116.00	102.00	103.00	106.00	101.00	99.00
NM :	140.00	131.00	126.00	127.00	118.00	116.00	121.00
NY :	90.00	87.00	84.00	83.00	79.00	86.00	101.00
ND :	65.00	64.00	64.00	65.00	66.00	61.00	60.00
OH :	163.00	169.00	156.00	135.00	143.00	137.00	146.00
OK :	84.00	84.00	79.00	72.00	74.00	85.00	88.00
OR :	121.00	115.00	103.00	114.00	120.00	118.00	123.00
PA :	132.00	129.00	129.00	118.00	128.00	132.00	137.00
SD :	85.00	93.00	96.00	87.00	74.00	83.00	86.00
TX :	78.00	91.00	87.00	76.00	73.00	69.00	67.00
UT :	83.00	88.00	85.00	88.00	83.00	84.00	85.00
WA :	118.00	118.00	110.00	116.00	115.00	118.00	112.00
WI :	105.00	103.00	96.00	90.00	81.00	80.00	85.00
WY :	94.00	94.00	85.00	81.00	83.00	87.00	87.00
US :	117.00	117.00	105.00	98.80	99.00	100.00	100.00

See footnotes at end of table.

-- continued

Prices Received: All Hay, by State and Month,
for Marketing Years, 1997-98 and 1998-99 (continued) 1/

State :	Nov	Dec	Jan 2/	Feb	Mar	Apr	May
Dollars per Ton							
1998-99							
AZ :	68.00	72.00	80.00	89.00	105.00	94.00	103.00
CA :	86.00	79.00	76.00	100.00	103.00	98.00	103.00
CO :	100.00	89.00	103.00	93.00	82.00	81.00	78.00
ID :	86.00	78.00	80.00	72.00	77.00	73.00	60.00
IL :	87.00	87.00	86.00	87.00	78.00	79.00	78.00
IA :	84.00	87.00	86.00	80.00	73.00	70.00	73.00
KS :	73.00	71.00	70.00	72.00	70.00	68.00	72.00
KY :	80.00	78.00	82.00	97.00	96.00	100.00	110.00
MI :	97.00	86.00	85.00	80.00	85.00	80.00	76.00
MN :	68.00	66.00	64.00	64.00	69.00	66.00	67.00
MO :	67.00	67.00	66.00	66.00	66.00	67.00	67.00
MT :	73.00	70.00	69.00	63.00	59.00	61.00	59.00
NE :	48.00	48.00	47.00	46.00	42.00	40.00	42.00
NV :	102.00	100.00	99.00	87.00	81.00	75.00	72.00
NM :	122.00	115.00	119.00	124.00	121.00	121.00	120.00
NY :	92.00	102.00	101.00	105.00	101.00	102.00	102.00
ND :	51.00	50.00	46.00	46.00	45.00	47.00	42.00
OH :	99.00	103.00	109.00	96.00	90.00	90.00	97.00
OK :	89.00	85.00	85.00	81.00	82.00	76.00	80.00
OR :	104.00	102.00	95.00	102.00	100.00	94.00	103.00
PA :	114.00	116.00	117.00	116.00	106.00	117.00	109.00
SD :	50.00	53.00	53.00	45.00	41.00	41.00	44.00
TX :	82.00	81.00	72.00	88.00	82.00	80.00	87.00
UT :	77.00	74.00	74.00	74.00	65.00	62.00	62.00
WA :	93.00	95.00	105.00	93.00	85.00	88.00	100.00
WI :	79.00	82.00	70.00	67.00	61.00	66.00	66.00
WY :	76.00	76.00	73.00	73.00	70.00	69.00	69.00
US :	81.40	77.50	78.50	79.90	79.00	82.50	92.60
1997-98							
AZ :	97.00	105.00	110.00	107.00	105.00	115.00	108.00
CA :	123.00	118.00	118.00	120.00	113.00	129.00	103.00
CO :	101.00	101.00	105.00	100.00	102.00	97.00	91.00
ID :	111.00	105.00	105.00	102.00	99.00	89.00	80.00
IL :	104.00	107.00	105.00	101.00	100.00	101.00	95.00
IA :	110.00	112.00	110.00	105.00	104.00	101.00	99.00
KS :	83.00	85.00	87.00	81.00	76.00	74.00	72.00
KY :	81.00	75.00	76.00	83.00	84.00	88.00	95.00
MI :	109.00	104.00	108.00	102.00	98.00	99.00	101.00
MN :	89.00	90.00	89.00	89.00	82.00	79.00	75.00
MO :	72.00	72.00	72.00	72.00	72.00	72.00	73.00
MT :	80.00	81.00	77.00	73.00	70.00	70.00	70.00
NE :	74.00	80.00	78.00	75.00	73.00	71.00	67.00
NV :	104.00	109.00	106.00	107.00	109.00	104.00	105.00
NM :	123.00	123.00	121.00	128.00	129.00	127.00	118.00
NY :	102.00	95.00	101.00	108.00	102.00	109.00	91.00
ND :	60.00	59.00	59.00	57.00	54.00	51.00	54.00
OH :	143.00	140.00	130.00	113.00	121.00	114.00	110.00
OK :	71.00	79.00	68.00	86.00	81.00	78.00	69.00
OR :	121.00	121.00	116.00	118.00	123.00	114.00	112.00
PA :	140.00	143.00	148.00	151.00	143.00	148.00	131.00
SD :	80.00	74.00	72.00	70.00	60.00	58.00	56.00
TX :	69.00	67.00	66.00	66.00	66.00	65.00	96.00
UT :	86.00	85.00	83.00	79.00	80.00	78.00	77.00
WA :	120.00	117.00	122.00	115.00	112.00	112.00	110.00
WI :	85.00	97.00	97.00	100.00	104.00	104.00	94.00
WY :	87.00	87.00	87.00	86.00	84.00	76.00	77.00
US :	100.00	95.20	94.70	96.10	95.30	98.30	96.60

1/ April - March for AZ; May - April for AR, CA, GA, KS, KY, MO, NV, NM, OK, TX and UT; June - May for all other estimated States; April - May for US.
2/ Second year.

Prices Received: Alfalfa Hay, by State and Month,
for Marketing Years, 1997-98 and 1998-99 1/

State :	Apr	May	Jun	Jul	Aug	Sep	Oct
Dollars per Ton							
1998-99							
AZ	115.00	109.00	104.00	84.00	70.00	67.00	64.00
CA	130.00	107.00	102.00	99.00	99.00	93.00	96.00
CO	97.00	90.00	85.00	92.00	90.00	93.00	97.00
ID	90.00	80.00	85.00	86.00	91.00	88.00	85.00
IL	106.00	100.00	95.00	93.00	89.00	85.00	89.00
IA	105.00	101.00	93.00	87.00	84.00	80.00	80.00
KS	78.00	73.00	75.00	70.00	73.00	78.00	83.00
KY	110.00	110.00	105.00	111.00	111.00	107.00	111.00
MI	100.00	105.00	95.00	85.00	95.00	95.00	95.00
MN	89.00	83.00	83.00	86.00	81.00	71.00	65.00
MO	105.00	107.00	105.00	105.00	100.00	101.00	100.00
MT	71.00	71.00	76.00	80.00	77.00	74.00	74.00
NE	74.00	68.00	64.00	57.00	53.00	50.00	49.00
NV	105.00	106.00	116.00	117.00	119.00	107.00	99.00
NM	131.00	120.00	117.00	120.00	117.00	117.00	120.00
NY	142.00	92.00	97.00	92.00	101.00	99.00	99.00
ND	57.00	57.00	57.00	62.00	60.00	60.00	56.00
OH	135.00	130.00	125.00	120.00	105.00	110.00	120.00
OK	87.00	85.00	93.00	94.00	91.00	92.00	99.00
OR	115.00	115.00	120.00	120.00	122.00	100.00	105.00
PA	166.00	156.00	139.00	128.00	129.00	126.00	126.00
SD	65.00	59.00	60.00	55.00	60.00	60.00	55.00
TX	153.00	149.00	148.00	148.00	154.00	151.00	149.00
UT	78.00	77.00	76.00	81.00	81.00	80.00	78.00
WA	108.00	101.00	103.00	97.00	94.00	91.00	91.00
WI	109.00	100.00	95.00	80.00	75.00	80.00	80.00
WY	78.00	78.00	79.00	79.00	79.00	79.00	78.00
US	105.00	102.00	95.00	92.10	90.20	87.10	86.90
1997-98							
AZ	141.00	127.00	106.00	104.00	96.00	90.00	99.00
CA	132.00	131.00	125.00	117.00	113.00	113.00	121.00
CO	115.00	125.00	120.00	100.00	100.00	100.00	100.00
ID	115.00	108.00	112.00	100.00	109.00	109.00	116.00
IL	130.00	125.00	116.00	100.00	101.00	105.00	106.00
IA	117.00	119.00	117.00	120.00	110.00	112.00	113.00
KS	91.00	95.00	90.00	89.00	85.00	90.00	89.00
KY	98.00	95.00	91.00	91.00	95.00	100.00	110.00
MI	120.00	125.00	110.00	85.00	100.00	105.00	105.00
MN	109.00	115.00	110.00	104.00	103.00	102.00	97.00
MO	104.00	105.00	104.00	102.00	100.00	105.00	106.00
MT	114.00	101.00	84.00	79.00	82.00	84.00	85.00
NE	74.00	74.00	78.00	78.00	79.00	79.00	81.00
NV	116.00	119.00	105.00	105.00	108.00	102.00	100.00
NM	141.00	134.00	129.00	130.00	121.00	119.00	124.00
NY	92.00	90.00	113.00	95.00	97.00	102.00	110.00
ND	72.00	69.00	66.00	70.00	72.00	69.00	65.00
OH	200.00	210.00	190.00	165.00	170.00	165.00	180.00
OK	100.00	100.00	102.00	88.00	85.00	102.00	102.00
OR	123.00	120.00	115.00	120.00	125.00	125.00	130.00
PA	139.00	144.00	148.00	134.00	143.00	157.00	156.00
SD	98.00	97.00	97.00	90.00	75.00	85.00	90.00
TX	145.00	150.00	135.00	130.00	130.00	128.00	131.00
UT	83.00	88.00	85.00	89.00	84.00	84.00	85.00
WA	110.00	112.00	110.00	114.00	113.00	116.00	108.00
WI	110.00	109.00	104.00	95.00	85.00	85.00	90.00
WY	95.00	95.00	85.00	81.00	84.00	87.00	87.00
US	123.00	125.30	114.00	107.00	105.00	106.00	106.00

See footnotes at end of table.

-- continued

Prices Received: Alfalfa Hay, by State and Month,
for Marketing Years, 1997-98 and 1998-99 (continued) 1/

State :	Nov	Dec	Jan 2/	Feb	Mar	Apr	May
Dollars per Ton							
1998-99							
AZ :	68.00	73.00	80.00	90.00	105.00	95.00	103.00
CA :	89.00	79.00	79.00	102.00	109.00	101.00	106.00
CO :	98.00	88.00	102.00	92.00	81.00	80.00	78.00
ID :	87.00	80.00	81.00	72.00	77.00	74.00	62.00
IL :	92.00	91.00	91.00	92.00	82.00	84.00	83.00
IA :	86.00	88.00	87.00	81.00	74.00	72.00	74.00
KS :	74.00	72.00	72.00	75.00	75.00	70.00	73.00
KY :	107.00	107.00	110.00	125.00	123.00	125.00	122.00
MI :	100.00	90.00	90.00	85.00	90.00	85.00	80.00
MN :	74.00	70.00	68.00	70.00	74.00	70.00	72.00
MO :	100.00	101.00	100.00	100.00	101.00	101.00	100.00
MT :	74.00	70.00	70.00	64.00	60.00	61.00	60.00
NE :	50.00	48.00	47.00	47.00	43.00	41.00	42.00
NV :	103.00	101.00	100.00	89.00	80.00	75.00	72.00
NM :	124.00	118.00	122.00	127.00	124.00	125.00	123.00
NY :	98.00	118.00	106.00	124.00	120.00	110.00	110.00
ND :	57.00	57.00	57.00	56.00	52.00	53.00	51.00
OH :	125.00	115.00	125.00	110.00	110.00	110.00	105.00
OK :	109.00	104.00	102.00	96.00	93.00	85.00	90.00
OR :	110.00	110.00	100.00	110.00	105.00	100.00	105.00
PA :	130.00	133.00	131.00	132.00	126.00	132.00	128.00
SD :	55.00	60.00	60.00	50.00	45.00	45.00	45.00
TX :	145.00	162.00	152.00	152.00	136.00	154.00	132.00
UT :	79.00	75.00	75.00	76.00	66.00	64.00	63.00
WA :	86.00	88.00	92.00	84.00	74.00	77.00	90.00
WI :	82.00	85.00	75.00	70.00	65.00	70.00	70.00
WY :	76.00	76.00	74.00	74.00	70.00	69.00	69.00
US :	84.40	79.70	81.40	83.70	83.20	86.40	96.60
1997-98							
AZ :	100.00	106.00	110.00	108.00	105.00	115.00	109.00
CA :	125.00	119.00	120.00	121.00	115.00	130.00	107.00
CO :	100.00	100.00	105.00	100.00	102.00	97.00	90.00
ID :	114.00	106.00	107.00	103.00	100.00	90.00	80.00
IL :	109.00	112.00	110.00	106.00	105.00	106.00	100.00
IA :	114.00	114.00	111.00	107.00	107.00	105.00	101.00
KS :	85.00	88.00	90.00	89.00	87.00	78.00	73.00
KY :	108.00	104.00	103.00	107.00	107.00	110.00	110.00
MI :	110.00	105.00	110.00	105.00	100.00	100.00	105.00
MN :	100.00	95.00	100.00	105.00	94.00	89.00	83.00
MO :	105.00	106.00	106.00	107.00	107.00	105.00	107.00
MT :	81.00	82.00	78.00	74.00	71.00	71.00	71.00
NE :	82.00	83.00	81.00	80.00	77.00	74.00	68.00
NV :	106.00	111.00	107.00	109.00	111.00	105.00	106.00
NM :	126.00	126.00	124.00	131.00	132.00	131.00	120.00
NY :	112.00	104.00	111.00	113.00	128.00	142.00	92.00
ND :	64.00	65.00	62.00	60.00	61.00	57.00	57.00
OH :	175.00	170.00	160.00	135.00	145.00	135.00	130.00
OK :	85.00	93.00	84.00	100.00	96.00	87.00	85.00
OR :	125.00	125.00	120.00	120.00	125.00	115.00	115.00
PA :	157.00	166.00	168.00	171.00	167.00	166.00	156.00
SD :	85.00	80.00	75.00	75.00	65.00	65.00	59.00
TX :	139.00	139.00	150.00	150.00	160.00	153.00	149.00
UT :	86.00	85.00	84.00	80.00	81.00	78.00	77.00
WA :	114.00	110.00	114.00	109.00	100.00	108.00	101.00
WI :	90.00	105.00	105.00	106.00	110.00	109.00	100.00
WY :	88.00	87.00	87.00	86.00	85.00	78.00	78.00
US :	107.00	102.00	102.00	105.00	102.00	105.00	102.00

1/ April - March for AZ; May - April for AR, CA, GA, KS, KY, MO, NV, NM, OK, TX and UT; June - May for all other estimated States; April - May for US.
2/ Second year.

Prices Received: Other Hay, by State and Month,
for Marketing Years, 1997-98 and 1998-99 1/

State :	Apr :	May :	Jun :	Jul :	Aug :	Sep :	Oct
Dollars per Ton							
1998-99							
AZ :		61.00	86.00	114.00	100.00	63.00	89.00
CA :	104.00	72.00	78.00	95.00	79.00	70.00	46.00
CO :	105.00	98.00	93.00	100.00	98.00	101.00	105.00
ID :	65.00	55.00	58.00	66.00	71.00	63.00	61.00
IL :	80.00	76.00	71.00	66.00	66.00	65.00	66.00
IA :	73.00	67.00	66.00	62.00	62.00	56.00	61.00
KS :	64.00	65.00	69.00	65.00	65.00	63.00	63.00
KY :	72.00	73.00	68.00	72.00	72.00	70.00	72.00
MI :	95.00	85.00	85.00	65.00	80.00	85.00	80.00
MN :	41.00	57.00	51.00	52.00	49.00	47.00	41.00
MO :	65.00	66.00	64.00	63.00	60.00	61.00	60.00
MT :	60.00	61.00	68.00	68.00	67.00	65.00	62.00
NE :	56.00	54.00	53.00	49.00	40.00	44.00	40.00
NV :	91.00	93.00	102.00	108.00	90.00	110.00	85.00
NM :	96.00	98.00	97.00	101.00	97.00	98.00	94.00
NY :	76.00	89.00	83.00	64.00	75.00	72.00	88.00
ND :	37.00	38.00	39.00	40.00	41.00	40.00	37.00
OH :	70.00	75.00	70.00	65.00	60.00	70.00	70.00
OK :	65.00	45.00	55.00	67.00	65.00	70.00	58.00
OR :	94.00	95.00	100.00	90.00	95.00	85.00	80.00
PA :	129.00	117.00	109.00	101.00	98.00	98.00	100.00
SD :	45.00	41.00	40.00	45.00	35.00	35.00	37.00
TX :	57.00	60.00	66.00	80.00	80.00	83.00	79.00
UT :	60.00	60.00	60.00	60.00	60.00	57.00	55.00
WA :	123.00	137.00	110.00	125.00	115.00	124.00	120.00
WI :	81.00	70.00	66.00	60.00	60.00	60.00	60.00
WY :	71.00	71.00	73.00	74.00	74.00	74.00	73.00
US :	72.20	74.10	74.80	75.40	76.40	74.90	70.40
1997-98							
AZ :	74.00	132.00	98.00	95.00	94.00	80.00	67.00
CA :	92.00	91.00	93.00	100.00	98.00	108.00	95.00
CO :	110.00	115.00	110.00	105.00	105.00	105.00	105.00
ID :	76.00	74.00	77.00	73.00	80.00	81.00	80.00
IL :	96.00	92.00	90.00	76.00	78.00	82.00	80.00
IA :	74.00	77.00	73.00	80.00	77.00	77.00	76.00
KS :	71.00	68.00	74.00	76.00	66.00	70.00	74.00
KY :	66.00	63.00	59.00	59.00	62.00	65.00	72.00
MI :	100.00	110.00	95.00	70.00	85.00	90.00	90.00
MN :	70.00	67.00	63.00	69.00	73.00	73.00	68.00
MO :	64.00	65.00	64.00	61.00	60.00	65.00	65.00
MT :	95.00	89.00	71.00	71.00	73.00	72.00	71.00
NE :	50.00	53.00	53.00	54.00	55.00	56.00	61.00
NV :	90.00	86.00	78.00	85.00	85.00	90.00	87.00
NM :	103.00	103.00	100.00	103.00	90.00	88.00	95.00
NY :	89.00	85.00	71.00	75.00	60.00	79.00	88.00
ND :	47.00	44.00	43.00	48.00	48.00	46.00	44.00
OH :	100.00	110.00	95.00	80.00	95.00	80.00	100.00
OK :	59.00	59.00	45.00	48.00	57.00	59.00	68.00
OR :	85.00	80.00	90.00	92.00	95.00	90.00	90.00
PA :	107.00	111.00	115.00	103.00	113.00	120.00	120.00
SD :	64.00	67.00	67.00	57.00	55.00	60.00	65.00
TX :	72.00	71.00	70.00	60.00	59.00	56.00	58.00
UT :	55.00	55.00	55.00	60.00	60.00	60.00	70.00
WA :	142.00	137.00	126.00	128.00	127.00	136.00	139.00
WI :	70.00	65.00	62.00	70.00	65.00	60.00	65.00
WY :	85.00	85.00	78.00	74.00	77.00	80.00	80.00
US :	82.30	83.40	76.00	73.20	75.40	74.80	76.20

See footnotes at end of table.

-- continued

Prices Received: Other Hay, by State and Month,
for Marketing Years, 1997-98 and 1998-99 (continued) 1/

State :	Nov	Dec	Jan 2/	Feb	Mar	Apr	May
Dollars per Ton							
1998-99							
AZ :	90.00	66.00	70.00	80.00	95.00	70.00	88.00
CA :	51.00	77.00	50.00	42.00	37.00	45.00	55.00
CO :	106.00	96.00	110.00	100.00	89.00	86.00	80.00
ID :	64.00	60.00	67.00	60.00	68.00	61.00	40.00
IL :	68.00	69.00	68.00	65.00	60.00	61.00	59.00
IA :	65.00	65.00	61.00	56.00	56.00	55.00	52.00
KS :	65.00	62.00	64.00	66.00	58.00	57.00	60.00
KY :	70.00	70.00	72.00	81.00	80.00	81.00	79.00
MI :	85.00	70.00	65.00	60.00	65.00	60.00	60.00
MN :	45.00	49.00	47.00	40.00	48.00	50.00	48.00
MO :	60.00	60.00	59.00	59.00	59.00	60.00	60.00
MT :	64.00	61.00	58.00	57.00	52.00	52.00	48.00
NE :	44.00	44.00	43.00	41.00	39.00	37.00	37.00
NV :	95.00	95.00	85.00	65.00	87.00	80.00	70.00
NM :	99.00	92.00	96.00	94.00	92.00	89.00	97.00
NY :	88.00	88.00	93.00	93.00	81.00	91.00	91.00
ND :	38.00	38.00	37.00	36.00	36.00	36.00	35.00
OH :	75.00	65.00	75.00	55.00	55.00	55.00	60.00
OK :	58.00	57.00	59.00	58.00	65.00	62.00	64.00
OR :	90.00	80.00	80.00	75.00	75.00	70.00	80.00
PA :	101.00	105.00	105.00	102.00	97.00	102.00	99.00
SD :	36.00	35.00	35.00	30.00	30.00	35.00	35.00
TX :	77.00	76.00	68.00	83.00	79.00	74.00	71.00
UT :	53.00	51.00	50.00	47.00	45.00	35.00	35.00
WA :	130.00	135.00	132.00	125.00	115.00	120.00	130.00
WI :	65.00	68.00	50.00	50.00	45.00	45.00	45.00
WY :	71.00	71.00	67.00	67.00	64.00	64.00	65.00
US :	72.00	71.10	70.60	70.10	67.40	65.70	70.10
1997-98							
AZ :	68.00	80.00	102.00	91.00	86.00		61.00
CA :	98.00	108.00	103.00	107.00	87.00	104.00	72.00
CO :	110.00	110.00	110.00	105.00	106.00	105.00	98.00
ID :	70.00	75.00	80.00	90.00	80.00	65.00	55.00
IL :	84.00	87.00	86.00	81.00	80.00	80.00	76.00
IA :	75.00	74.00	75.00	71.00	69.00	73.00	67.00
KS :	72.00	74.00	72.00	76.00	66.00	64.00	65.00
KY :	71.00	68.00	67.00	70.00	70.00	72.00	73.00
MI :	100.00	95.00	100.00	90.00	90.00	95.00	85.00
MN :	63.00	68.00	64.00	52.00	55.00	41.00	57.00
MO :	65.00	65.00	65.00	65.00	65.00	65.00	66.00
MT :	71.00	70.00	66.00	66.00	63.00	60.00	61.00
NE :	62.00	62.00	63.00	56.00	57.00	56.00	54.00
NV :	85.00	95.00	95.00	90.00	95.00	91.00	93.00
NM :	95.00	97.00	92.00	96.00	102.00	96.00	98.00
NY :	88.00	85.00	92.00	106.00	76.00	76.00	89.00
ND :	42.00	42.00	41.00	40.00	41.00	37.00	38.00
OH :	95.00	90.00	90.00	80.00	80.00	70.00	75.00
OK :	51.00	59.00	45.00	66.00	58.00	65.00	45.00
OR :	95.00	95.00	90.00	95.00	94.00	94.00	95.00
PA :	125.00	129.00	131.00	133.00	131.00	129.00	117.00
SD :	65.00	60.00	60.00	55.00	45.00	45.00	41.00
TX :	63.00	62.00	62.00	60.00	60.00	57.00	60.00
UT :	72.00	70.00	70.00	68.00	67.00	60.00	60.00
WA :	151.00	146.00	138.00	137.00	144.00	123.00	137.00
WI :	65.00	65.00	65.00	70.00	80.00	81.00	70.00
WY :	80.00	80.00	80.00	80.00	79.00	71.00	71.00
US :	75.80	76.10	76.40	76.80	76.30	72.20	74.10

1/ April - March for AZ; May - April for AR, CA, GA, KS, KY, MO, NV, NM, OK, TX and UT; June - May for all other estimated States; April - May for US.
2/ Second year.

Field Crops: Farm Marketings, Percent of Sales by Crop
and Month, United States, 1997-98 and 1998-99

Month	Crop Marketing Year					
	1997-98	1998-99	1997-98	1998-99	1997-98	1998-99
	Percent					
	Oats		Wheat		Barley	
Jun	5.1	5.9	9.2	14.1	6.5	5.2
Jul	14.0	23.3	20.4	16.5	6.7	8.5
Aug	33.2	19.9	12.4	11.5	17.0	17.4
Sep	10.8	7.2	7.6	9.5	17.2	12.3
Oct	4.7	4.4	4.9	7.8	9.5	7.7
Nov	3.0	4.8	4.6	4.9	8.0	5.9
Dec	3.9	4.3	8.1	6.5	10.0	9.1
Jan	5.0	5.5	8.7	7.5	7.5	10.0
Feb	6.3	6.2	5.4	4.2	5.7	8.6
Mar	5.6	5.7	6.6	8.0	5.3	7.5
Apr	5.2	6.5	5.9	4.4	3.8	4.9
May	3.2	6.3	6.2	5.1	2.8	2.9
Year	100.0	100.0	100.0	100.0	100.0	100.0
	Hay					
Apr	0.5	0.5				
May	4.7	4.6				
Jun	10.5	10.8				
Jul	11.7	11.3				
Aug	10.4	10.6				
Sep	9.7	9.4				
Oct	9.8	9.3				
Nov	8.5	8.3				
Dec	8.1	8.0				
Jan	7.5	7.4				
Feb	5.7	6.6				
Mar	5.9	6.5				
Apr	4.7	5.1				
May	2.3	1.6				
Year	100.0	100.0				

Barley: Farm Marketings, Percent of Sales,
by Month and State, 1997-98 and 1998-99 1/

State and Marketing Year		Jun	Jul	Aug	Sep	Oct	Nov	Dec	Jan	Feb	Mar	Apr	May	Jun
		Percent												
CA	1997-98	30	10	6	7	1		1	1	1	9	7	27	
	1998-99	10	33	15			1	8	10	10	7	1	5	
CO	1997-98		11	27	33	17	4	1	2	1	1	2		1
	1998-99		9	25	27	25	3	2	2	1	1	2	1	2
ID	1997-98		3	17	17	8	10	13	10	7	6	4	3	2
	1998-99		3	16	14	4	10	12	12	8	9	5	4	3
MN	1997-98		15	19	19	10	4	9	3	4	2	2	3	10
	1998-99		19	8	6	4	6	11	11	12	8	3	4	8
MT	1997-98		5	9	12	13	14	15	9	9	7	4	1	2
	1998-99		4	13	13	8	7	9	11	11	10	6	3	5
ND	1997-98		10	20	15	8	6	10	8	5	6	4	2	6
	1998-99		12	17	9	5	4	10	9	9	8	6	3	8
OR	1997-98		6	15	27	8	9	3	13	4	1	4	4	6
	1998-99		6	19	13	10	9	6	11	7	4	9	3	3
SD	1997-98		8	14	13	7	9	9	9	8	7	5	4	7
	1998-99		4	16	10	7	2	8	13	12	13	4	4	8
UT	1997-98		6	21	10	9	7	8	6	5	5	8	8	7
	1998-99		7	28	13	7	3	6	10	8	6	6	3	3
WA	1997-98		1	16	27	15	8	8	5	5	4	4	3	4
	1998-99		3	21	20	10	8	7	12	6	3	6	2	2
WY	1997-98		9	45	30	5	2	3	2	2	1	1		
	1998-99		8	38	14	32	1	1	2	1	2	1		

1/ Sample survey reported marketings as percent of total used for calculating marketing year average prices.

Oats: Farm Marketings, Percent of Sales, by Month
and State, 1997-98 and 1998-99 1/

State and Marketing Year	May	Jun	Jul	Aug	Sep	Oct	Nov	Dec	Jan	Feb	Mar	Apr	May	Jun
	Percent													
IL 1997-98			38	37	9	9			1	3		1		2
1998-99			38	15	2	4	1	7	9	11	8	3	1	1
IA 1997-98			26	43	6	2	1	3	3	3	3	4	3	3
1998-99			37	16	7	5	4	5	4	6	6	3	3	4
MI 1997-98			7	39	7	2	2	2	1	4	11	15	4	6
1998-99			23	25	9	3	2	2	4	7	2	5	9	9
MN 1997-98			7	44	12	4	1	3	3	3	6	6	3	8
1998-99			24	21	5	6	5	5	5	7	5	8	3	6
MT 1997-98				9	28	17	8	3	2	12	12	5	1	3
1998-99				1	7	11	12	3	11	4	11	15	17	8
NE 1997-98			45	22	6	3	8	1	4	3	1	4	2	1
1998-99			24	17	9	6	4	2	7	5	6	5	5	10
ND 1997-98			6	25	17	7	7	8	6	5	7	6	2	4
1998-99			9	23	7	5	15	7	8	6	6	8	3	3
OH 1997-98			5	39	10	6	2	4	4	7	10	5	5	3
1998-99			47	26	7	3	1	4	1	2	2	4	1	2
OR 1997-98				18	10	7	7	3	9	38	3	3	2	
1998-99				14	7	6	13	9	9	7	6	8	8	13
PA 1997-98			18	26	4	8	3	2	6	4	10	7	8	4
1998-99			22	14	6	8	4	3	11	9	10	3	4	6
SD 1997-98			13	32	10	4	2	4	8	5	9	6	3	4
1998-99			26	21	7	3	2	2	4	7	5	7	8	8
TX 1997-98	13	7	9	36		13	5	6	4	3	4			
1998-99	37	45	14								4			
WI 1997-98			7	37	19	6	2	4	4	3	3	6	4	5
1998-99			15	24	10	3	2	4	7	7	7	8	7	6

1/ Sample survey reported marketings as percent of total used for calculating marketing year average prices.

All Wheat: Farm Marketings, Percent of Sales,
by Month and State, 1997-98 and 1998-99 1/

State and Marketing Year	: :May	: :Jun	: :Jul	: :Aug	: :Sep	: :Oct	: :Nov	: :Dec	: :Jan	: :Feb	: :Mar	: :Apr	: :May	: :Jun
	Percent													
AR 1997-98		60	14	12	4	1	1	2	1	2	1		2	
1998-99		70	6	3	3	2	1	2	2	3	2	1	5	
CA 1997-98	12	34	24	7	3	5	1	2	3	1	5	3		
1998-99	7	13	20	13	9	15	7	1	4	1	6	4		
CO 1997-98			9	8	5	3	2	7	29	7	10	8	6	6
1998-99			16	10	8	9	3	5	9	4	9	10	11	6
ID 1997-98			2	9	16	12	6	13	9	7	7	5	7	7
1998-99			4	20	17	9	4	6	14	7	7	5	4	3
IL 1997-98		5	46	17	5	1	1	2	4	4	5	7	3	
1998-99		34	32	5	5	1	5	2	3	1	5	5	2	
IN 1997-98		9	62	18	5			2	1	1	1	1		
1998-99		29	29	14	10	1	1	2	3	2	2	3	4	
KS 1997-98		7	34	10	4	4	4	7	8	5	6	6	5	
1998-99		13	23	10	9	8	4	7	6	3	8	4	5	
MI 1997-98			20	27	7	3	25	3	3	5	2	2	2	1
1998-99			30	12	21	4	3	6	5	3	6	3	3	4
MN 1997-98			7	18	11	3	4	11	6	5	8	6	7	14
1998-99			9	15	7	7	8	12	5	5	9	7	6	10
MO 1997-98		3	56	12	6	2	2	2	6	4	3	2	2	
1998-99		32	28	8	4	2	1	3	8	3	4	4	3	
MT 1997-98			5	5	8	8	6	13	11	10	12	8	8	6
1998-99			5	7	9	9	7	9	15	11	9	6	5	8
NE 1997-98			21	17	7	3	2	5	10	8	12	5	5	5
1998-99			39	15	5	5	2	7	7	2	8	5	2	3
ND 1997-98			9	11	10	6	7	12	8	5	9	9	7	7
1998-99			10	8	9	10	9	11	9	5	9	5	5	10
OH 1997-98			47	24	4	1	2	2	4	2	2	2	2	8
1998-99			47	8	7	3	1	3	6	5	6	3	4	7
OK 1997-98	1	26	25	10	4	3	3	6	8	5	5	4		
1998-99	5	25	7	6	7	9	4	7	5	4	18	3		
OR 1997-98			5	15	15	7	7	12	15	6	4	4	5	5
1998-99			17	21	11	12	5	6	11	4	6	3	2	2
SD 1997-98			9	24	9	4	3	7	10	6	7	6	6	9
1998-99			17	19	7	5	9	6	5	3	8	5	9	7
TX 1997-98	3	33	39	6	3	1	1	3	4	2	3	2		
1998-99	18	41	9	9	4	5	2	2	4	1	3	2		
WA 1997-98			1	14	14	11	8	12	11	5	7	6	5	6
1998-99			6	18	21	12	6	6	10	4	6	6	2	3

1/ Sample survey reported marketings as percent of total used for calculating marketing year average prices.

Hay: Farm Marketings, Percent of Sales, by Month and State,
1997-98 and 1998-99 1/

State and Marketing Year	Apr	May	Jun	Jul	Aug	Sep	Oct	Nov	Dec	Jan	Feb	Mar	Apr	May
	Percent													
AZ 1997-98:	14	16	11	13	8	6	6	7	4	3	3	9		
1998-99:	13	15	10	12	9	7	7	7	5	4	4	7		
CA 1997-98:		13	12	14	13	11	15	7	3	3	2	4	3	
1998-99:		13	13	11	13	11	11	7	3	3	3	4	8	
CO 1997-98:			6	6	14	10	11	10	8	8	7	9	5	6
1998-99:			11	8	11	11	13	10	10	8	5	6	4	3
ID 1997-98:			10	9	10	15	8	12	9	6	7	6	4	4
1998-99:			15	12	14	13	10	8	6	6	7	6	2	1
IL 1997-98:			16	11	10	7	4	5	7	11	10	9	6	4
1998-99:			14	9	9	6	4	6	10	12	10	11	6	3
IA 1997-98:			10	11	9	8	5	7	9	11	9	10	7	4
1998-99:			21	14	14	6	4	6	6	8	7	7	4	3
KS 1997-98:		2	6	6	5	5	7	14	20	21	6	5	3	
1998-99:		4	5	7	12	7	10	13	12	12	7	6	5	
KY 1997-98:		5	13	10	9	9	8	7	13	11	8	5	2	
1998-99:		6	11	9	8	6	6	7	14	13	10	7	3	
MI 1997-98:			13	13	9	6	6	12	12	8	6	7	5	3
1998-99:			13	13	9	6	6	5	6	7	11	11	9	4
MN 1997-98:			9	8	6	5	6	8	9	10	11	12	11	5
1998-99:			9	8	6	5	7	8	6	10	12	14	7	8
MO 1997-98:		4	15	14	6	6	4	8	8	10	13	9	3	
1998-99:		4	14	13	6	7	4	7	11	10	11	9	4	
MT 1997-98:			8	11	11	9	10	11	10	9	7	7	4	3
1998-99:			5	13	10	15	15	11	10	8	6	3	3	1
NE 1997-98:			9	10	9	8	10	8	12	10	8	8	6	2
1998-99:			7	8	7	7	8	9	15	10	9	10	6	4
NV 1997-98:		3	3	10	12	11	12	11	10	9	8	7	4	
1998-99:		3	3	10	13	13	11	10	8	9	8	8	4	

--continued

Hay: Farm Marketings, Percent of Sales, by Month and State,
1997-98 and 1998-99 1/ (continued)

State and Marketing Year	Apr	May	Jun	Jul	Aug	Sep	Oct	Nov	Dec	Jan	Feb	Mar	Apr	May
	Percent													
NM 1997-98:	14	16	14	13	12	9	5	4	4	4	3	2		
1998-99:	14	15	14	12	11	8	6	5	4	4	4	3		
NY 1997-98:		17	14	7	4	4	6	8	9	9	10	7	5	
1998-99:		17	14	7	4	5	8	10	8	7	9	6	5	
ND 1997-98:		5	10	9	14	14	11	7	7	5	7	7	4	
1998-99:		4	9	7	11	13	15	14	7	5	8	5	2	
OH 1997-98:		14	11	8	8	6	8	10	9	8	8	6	4	
1998-99:		15	11	10	10	7	8	9	6	7	5	6	6	
OK 1997-98:	7	13	21	9	9	9	6	8	7	5	4	2		
1998-99:	7	13	21	7	7	6	7	7	6	7	7	5		
OR 1997-98:		13	15	13	11	12	7	7	5	6	6	3	2	
1998-99:		11	12	11	9	10	8	8	8	9	6	5	3	
PA 1997-98:		11	11	5	5	6	9	9	10	10	10	8	6	
1998-99:		11	11	5	4	5	9	11	11	11	10	7	5	
SD 1997-98:		11	12	5	11	13	7	6	7	5	10	8	5	
1998-99:		10	11	5	10	12	8	7	11	10	8	5	3	
TX 1997-98:	6	10	11	12	9	10	9	9	9	6	5	4		
1998-99:	10	11	14	7	7	10	9	9	7	7	6	3		
UT 1997-98:	2	10	12	18	13	9	7	10	7	4	4	4		
1998-99:	2	9	11	18	13	9	8	7	7	6	5	5		
WA 1997-98:		11	11	12	12	9	8	7	7	6	6	5	6	
1998-99:		12	12	13	13	10	7	8	7	5	5	4	4	
WI 1997-98:		19	15	16	10	4	2	7	7	5	4	6	5	
1998-99:		15	11	13	8	3	7	8	7	7	8	7	6	
WY 1997-98:		3	9	11	11	10	17	13	9	6	5	4	2	
1998-99:		3	9	11	11	10	16	15	11	6	5	2	1	

1/ Percents used to calculate marketing year average prices.

Reliability of Prices Received Estimates

Definition: Prices received represent sales from producers to first buyers. They include all grades and qualities. The average commodity price from the survey multiplied by the total quantity marketed theoretically should give the total cash receipts for the commodity.

Survey Procedures: Primary sales data used to determine grain prices were obtained from probability samples of 2600 mills and elevators. These procedures ensure that virtually all grain moving into commercial channels has a chance of being included in the survey. Generally, States surveyed account for 90 percent or more of total U.S. production. Livestock prices are obtained from packers, stockyards, auctions, dealers, and market check data from AMS-USDA, private marketing organizations, and state commodity groups and agencies. Inter-farm sales of grain and livestock are not included since they represent very small percentages of the total marketings. Grain marketed for seed is also excluded. Fruit and vegetable prices are obtained from sample surveys and market check data from AMS-USDA, private marketing organizations, state agencies, and universities.

Summary and Estimation Procedures: Survey quantities sold are expanded by strata to state levels and used to weight average strata prices to a state average. State prices are then weighted to a U.S. price based on expanded marketings. Recommendations are prepared by the State Statistical Offices and reviewed by the Agricultural Statistics Board in Washington, D.C. State recommendations are reviewed for reasonableness with survey data, other States, and recent historic estimates.

Revisions: For most items, the current month's price represents a 3-5 day period around the mid-month. Previous month's prices represent actual dollars received for quantities sold during the entire month. Revisions are published in monthly issues of "**Agricultural Prices**".

Reliability: U.S. price estimates based on probability surveys generally have a sampling error of less than one percent for the major commodities such as corn, wheat, soybeans, cotton, and rice. Current methods of summarization for non-probability commodities are not designed directly to calculate sampling errors. However, analytical measures approximate the U.S. relative sampling errors at around five percent. Any nonsampling errors are attributed to such things as the inability to obtain correct information, differences in interpreting questions or definitions, mistakes in coding or processing the data, etc. Efforts are made at each step in the survey process to minimize these nonsampling errors.

Prices Paid by Farmers

The August Index of Prices Paid for Commodities and Services, Interest, Taxes, and Farm Wage Rates (PPITW) was 116 (1990-92=100), unchanged from July and from August 1998.

Production Index: The August farm production, goods, and services index, at 113, was unchanged from last month but 0.9 percent below last year. Lower prices in August for feeder cattle, nitrogen fertilizers, feeder pigs, and complete feeds offset higher prices for diesel fuel, gasoline, feed grains, and building materials.

Feed: The feed index, at 97, was 1.0 percent less than July and 8.5 percent below last August. Lower August prices for complete feeds, feed concentrates, and hay and forages more than offset higher prices for feed grains.

Livestock and Poultry: The index for livestock and poultry purchases, at 91, was 1.1 percent lower than last month but 9.6 percent above last year. During August, prices were lower for both feeder cattle and feeder pigs.

Fertilizer: The fertilizer index, at 102, was down 1.9 percent from July and 8.9 percent less than August a year ago. Since July, prices were lower for all fertilizer components.

Agricultural Chemicals: The chemical index, at 119, was unchanged from last month but 3.3 percent below last August. Prices were slightly lower in August for insecticides and herbicides.

Fuels: The fuels index, at 105, was up 4.0 percent from a month earlier and 24 percent above August 1998. Compared to last month, prices were higher for diesel fuel and gasoline but slightly lower for LP gas.

Farm Machinery: The August farm machinery index was 135, unchanged from July but 1.5 percent above last August. Since July, prices were marginally higher for other machinery.

Consumer Price Index: The July 1999 Consumer Price Index for all urban consumers (CPI-U) rose 0.3 percent before seasonal adjustment to a level of 166.7 (1982-84=100). This compares to the June index of 166.2. The overall index has increased 2.1 percent for the 12-month period ending in July.

Index Numbers of Prices Paid by Farmers and Related Parity Ratios
United States, August 1999 With Comparisons

Indexes and Ratios	1910-14 = 100			1990-92 = 100		
	1998		1999		1999	
	Aug	Jul	Aug	Aug	Jul	Aug
Prices Paid by Farmers for	:					
Commodities & Services,	:					
Interest, Taxes, & Wage	:					
Rates (PPITW)	1541	*1546	1544	116	116	116
Production	1103	*1096	1093	114	113	113
Feed	518	*477	474	106	*98	97
Livestock and Poultry	1067	*1178	1157	83	92	91
Seeds	1216	1196	1196	123	121	121
Fertilizer	410	*380	375	112	104	102
Agricultural Chemicals	760	*738	733	123	*119	119
Fuels	658	*778	808	85	*101	105
Supplies & Repairs	848	*861	861	120	121	121
Autos & Trucks	3138	*3154	3146	118	119	118
Farm Machinery	3339	3380	3382	133	135	135
Building Material	1611	1645	1657	119	121	122
Farm Services & Rent	1478	*1456	1456			
Farm Services				117	*117	117
Rent				134	130	130
Interest 1/	2739	2757	2757	109	110	110
Taxes 2/	3185	3214	3214	119	120	120
Wage Rates	4678	*4898	4898	125	*131	131
Production, Interest, Taxes,	:					
& Wage Rates (PITW)	1539	*1538	1536	115	115	114
Family Living-CPI 3/	1552	*1583	1583	121	*124	124
Ratio (Received\Paid)				87	*82	84
Parity Ratio 4/	42	*39	40			
Parity Ratio Adjusted 5/	44	41	43			
PPITW Adjusted for	:					
Productivity 6/	1034	*1046	1045			
Crop Sector (PPITW)				120	*120	120
Livestock Sector (PPITW)				112	112	112
Farm Sector (Production)				100	99	98
Non-Farm Sector (Production)				120	120	120

* Revised.

- 1/ Interest per acre on farm real estate debt and interest rate on farm non-real estate debt.
- 2/ Farm real estate taxes payable per acre.
- 3/ Bureau of Labor Statistics, Consumer Price Index for all urban consumers (CPI-U), for the previous month converted by the USDA.
- 4/ Ratio of index of prices received to PPITW (1910-14=100).
- 5/ Based on estimated cash receipts, from marketings and government payments, the preliminary adjustment factor is 1.057 for 1999 and the revised factor is 1.065 for 1998.
- 6/ PPITW is adjusted based on productivity trend for the prior 15 years.

Prices Paid Indexes and Annual Weights for Input Components and
Sub-Components United States, August 1999 With Comparisons

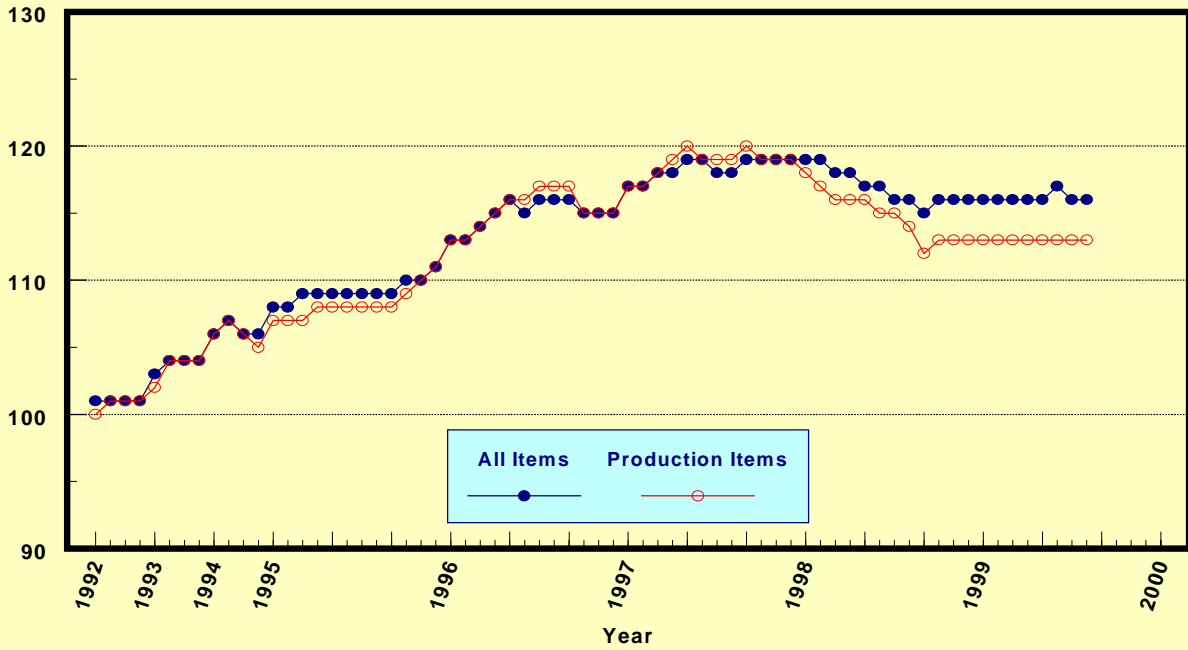
Index	Relative Weights		Input Indexes		
	5-Year Moving Average 1/		1998	1999	
	1998	1999	Aug	Jul	Aug
	----	Percent	----	(1990-92=100)	
Production Items	67.0	67.4	114	113	113
Feed	11.6	11.6	106	*98	97
Feed Grains	2.1	2.1	82	*75	77
Complete Feeds	5.1	5.1	112	*104	103
Hay/Forages	1.3	1.3	116	101	99
Concentrates	1.9	1.9	108	*93	92
Supplements	1.3	1.3	109	*113	113
Livestock & Poultry	7.5	7.2	83	92	91
Feeder Cattle	5.9	5.6	82	93	91
Feeder Pigs	0.6	0.6	62	*52	46
Milk Cow Replacements	0.6	0.6	99	113	113
Poultry	0.5	0.4	110	110	110
Seeds	2.8	2.8	123	121	121
Field Crops	2.5	2.6	123	121	121
Grasses/Legumes	0.3	0.3	123	121	121
Fertilizer	4.8	4.9	112	104	102
Mixed Fertilizer	2.1	2.1	116	115	115
Nitrogen	2.0	2.0	106	*88	86
Potash & Phosphate	0.7	0.7	116	*114	114
Agricultural Chemicals	3.7	3.8	123	*119	119
Herbicides	2.4	2.4	120	*112	112
Insecticides	0.9	0.9	134	*138	135
Fungicides/Other	0.5	0.5	117	120	120
Fuels	2.7	2.7	85	*101	105
Diesel	1.4	1.4	79	*95	99
Gasoline	1.0	1.0	94	*103	109
LP Gas	0.3	0.3	89	*120	119
Farm Supplies & Repairs	5.4	5.6	120	121	121
Supplies	1.8	1.9	116	117	117
Repairs	3.6	3.7	121	123	123
Autos & Trucks	1.4	1.4	118	119	118
Autos	0.2	0.2	112	111	111
Trucks	1.2	1.3	119	120	119
Farm Machinery	4.1	4.0	133	135	135
Tractors	0.9	0.9	130	132	132
Self-Propelled	1.7	1.6	133	*134	134
Other Machinery	1.6	1.5	135	138	138
Building Materials	2.7	2.8	119	121	122
Farm Services	12.2	12.4	117	*117	117
Custom Rates	1.3	1.3	117	115	115
Other Services	10.9	11.1	117	*117	117
Rent	8.1	8.2	134	130	130
Cash	3.7	3.7	141	141	141
Share	4.5	4.5	129	121	121
Interest	5.0	4.5	109	110	110
Taxes	3.2	3.1	119	120	120
Wage Rates	6.9	6.9	125	*131	131
Family Living-CPI	18.0	17.7	121	*124	124

1/ Weights may not add due to rounding.

* Revised.

Prices Paid by Farmers, Major Indexes US, by Quarter and Month 1/

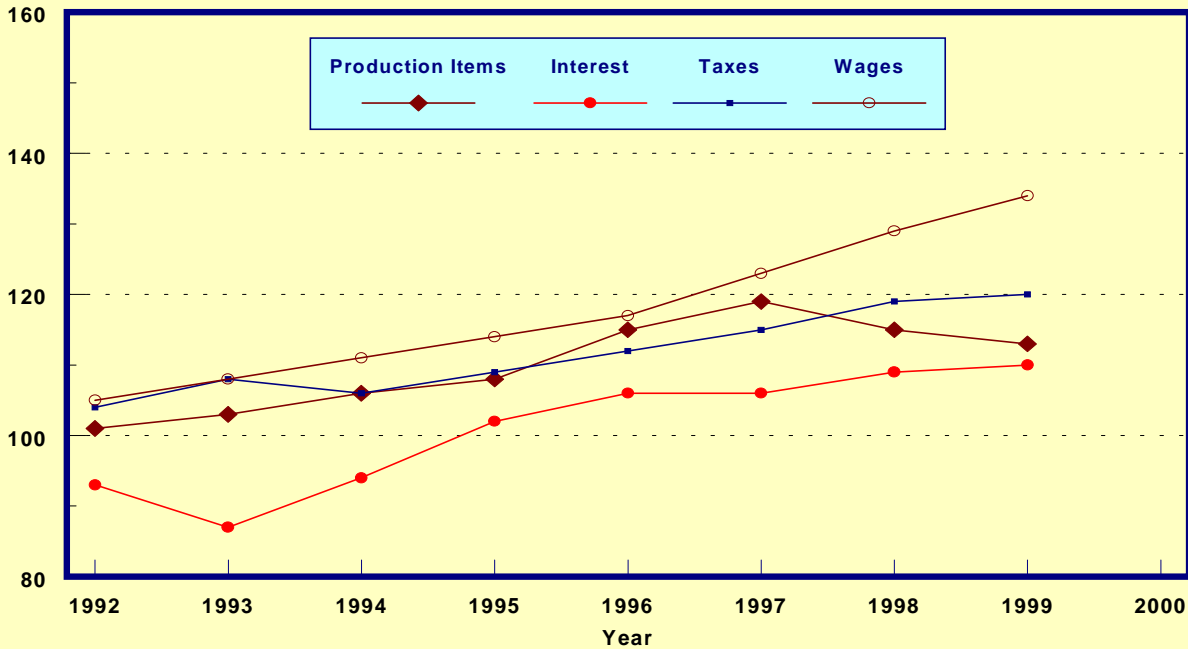
Percent (1990-92=100)



1/ Index values are monthly beginning in 1995.

Prices Paid by Farmers, Major Indexes US, Annual Averages 1/

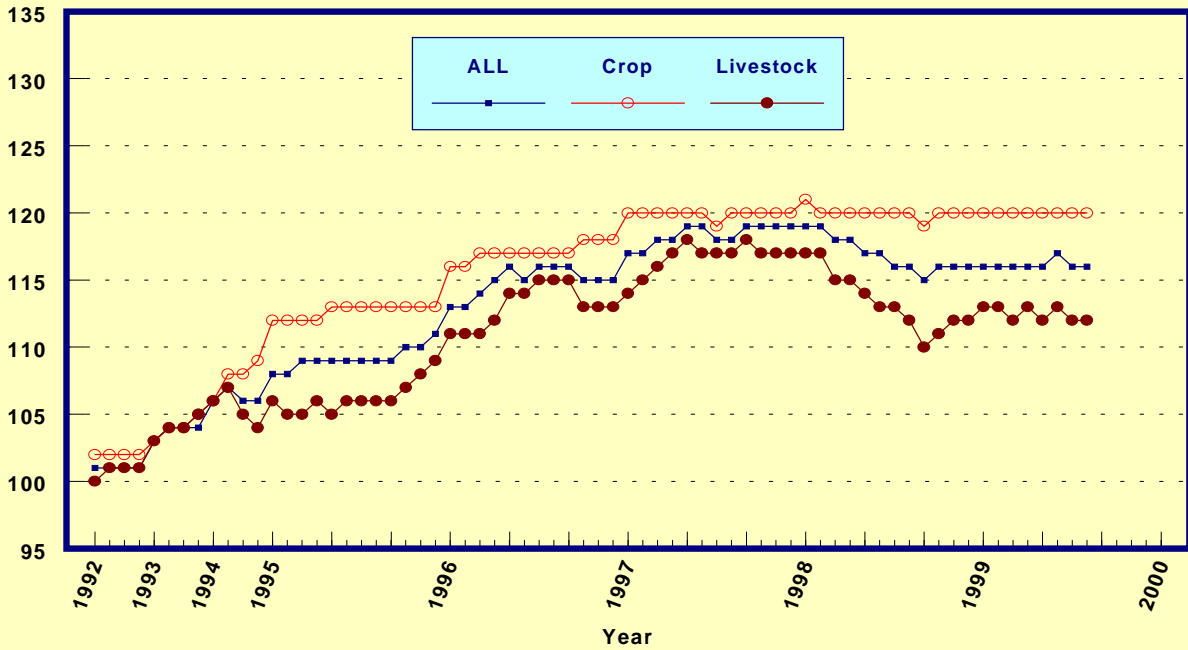
Percent (1990-92=100)



1/ Index values for 1999 are year-to-date averages.

Prices Paid by Farmers, Indexes, All Items US, By Farm Type 1/

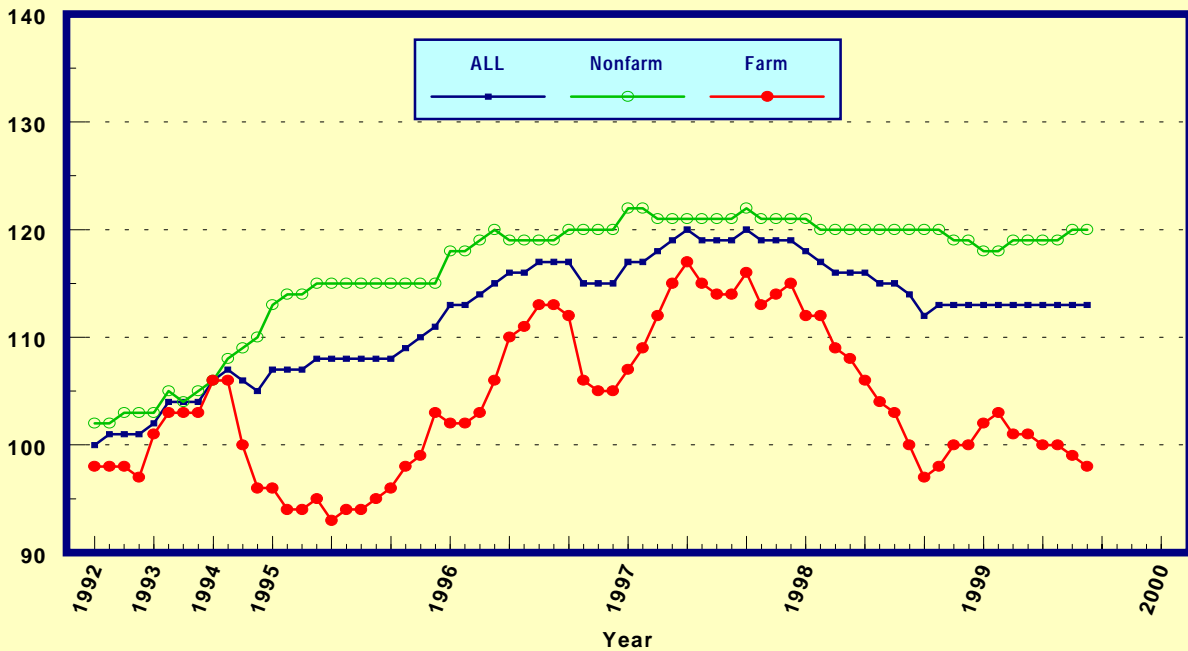
Percent (1990-92=100)



1/ Index values are monthly beginning in 1995.

Prices Paid by Farmers, Indexes, All Production Items US, By Sector Origin 1/

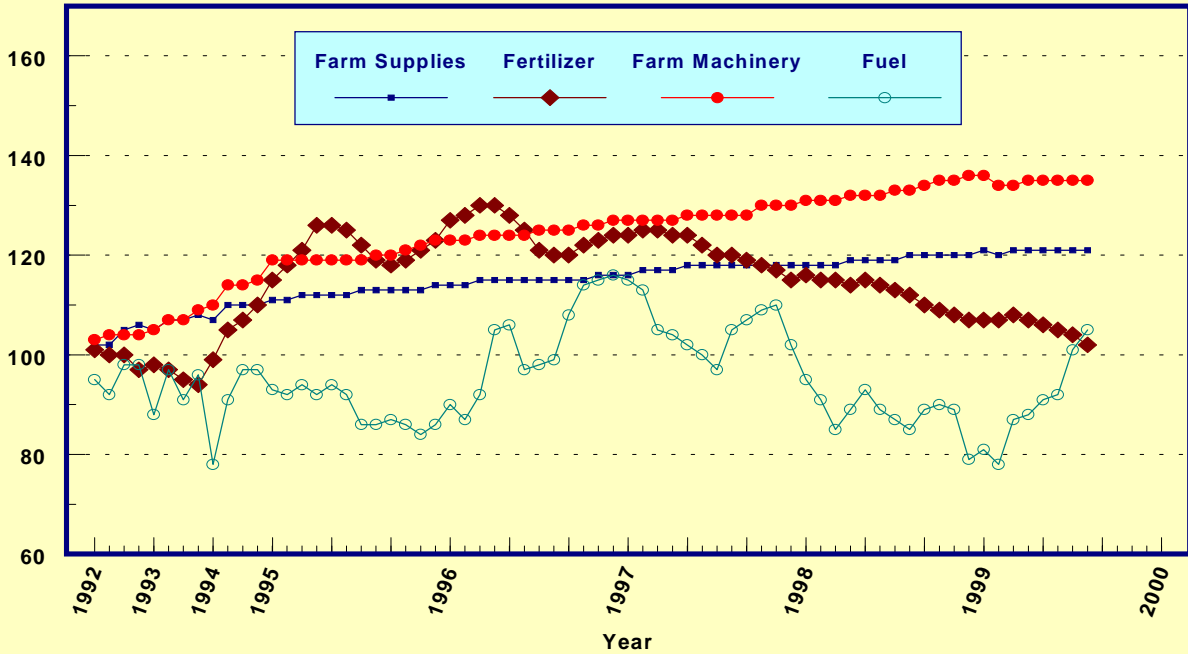
Percent (1990-92=100)



1/ Index values are monthly beginning in 1995.

Prices Paid by Farmers, Selected Production Indexes US, By Non-Farm Sector 1/

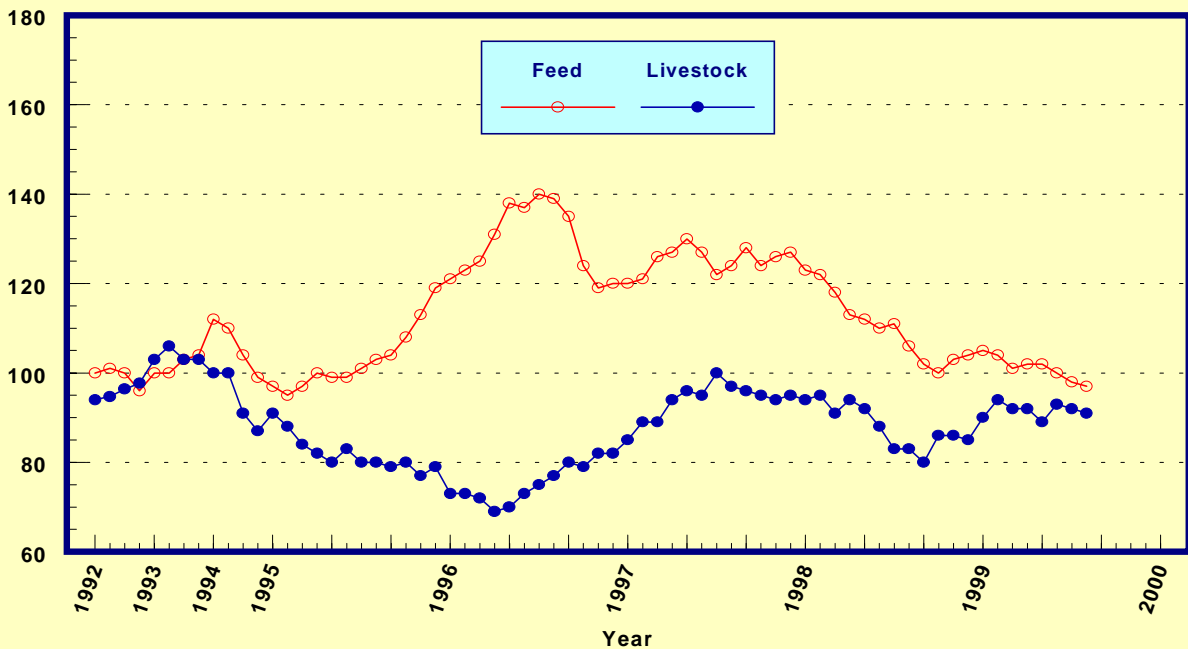
Percent (1990-92=100)



1/ Index values are monthly beginning in 1995.

Prices Paid by Farmers, Selected Production Indexes US, By Farm Sector 1/

Percent (1990-92=100)



1/ Index values are monthly beginning in 1995.

Feed Price Ratios: United States, August 1999 With Comparisons

Feed Price Ratio 1/	1998		1999	
	Aug	Jul	Aug	Aug
Broiler-Feed: Pounds of Broiler Grower feed equal in value to 1 pound of broiler live weight	8.1	*8.0	7.5	
Market-Egg-Feed: Pounds of Laying Feed equal in value to 1 dozen eggs	10.8	*9.8	10.1	
Hog-Corn: Bushels of Corn equal in value to 100 pounds of hog, live weight	18.6	17.9	20.4	
Milk-Feed: Pounds of 16% Mixed Dairy Feed equal in value to 1 pound of Whole Milk	*3.61	*3.58	3.86	
Steer & Heifer-Corn: Bushels of Corn equal in value to 100 pounds of Steer & Heifers, live weight	31.6	*37.5	36.9	
Turkey-Feed: Pounds of Turkey Grower equal in value to 1 pound of Turkey, live weight	7.6	*9.7	9.7	

1/ Effective January 1995, prices of commercial prepared feeds are based on current U.S. prices received for corn, soybeans, alfalfa hay, and all wheat.

* Revised.

Prices Used to Calculate Feed Price Ratios:
United States, August 1999 With Comparisons

Commodity	Unit	1998		1999	
		Aug	Jul	Aug	Aug
Broilers, Live	Lb	.468	.381	.362	
Eggs, Market	Doz	.516	.399	.420	
Hogs, All	Cwt	35.20	31.20	36.40	
Milk, All	Cwt	15.50	*13.70	14.90	
Steers and Heifers	Cwt	59.70	*65.20	65.60	
Turkeys, Live	Lb	.386	.418	.431	
Corn	Bu	1.89	*1.74	1.78	
Hay, Alfalfa, Baled	Ton	*90.20	82.00	81.50	
Soybeans	Bu	5.43	*4.20	4.25	
Wheat, All	Bu	*2.38	*2.23	2.43	

* Revised.

Prices Paid: Feeder livestock, United States, August 1999 With Comparisons

ITEM	Unit	1998		1999	
		Aug	Jul	Aug	Aug
Dollars					
Feeder and Stocker Cattle and Calves	Cwt	69.40	78.50	77.20	

Prices Paid by Farmers

Definition: Prices paid by farmers represent the average costs of inputs purchased by farmers and ranchers to produce agricultural commodities. Conceptually, the average price when multiplied by quantity purchased should equal total producer expenditures for the item.

Survey Procedures: The prices paid data are obtained from establishments that sell goods and services to farmers and ranchers. Annually, about 8,500 firms are randomly selected from lists by type of item sold with an average response rate in the range of 75-80 percent. Firms are asked to report the price for the specified item "most commonly bought by farmers" or that was the "volume seller". Approximately 135 items are surveyed each April to represent all production input items purchased. The survey reference period for most items is the 5 business days centered around the 15th of the month. Separate prices paid surveys are conducted for agricultural chemicals, fuels, feed, fertilizer, machinery, and seed.

Summary and Estimation Procedures: The annual April Paid Survey is summarized as a nonprobability survey. Average prices reported are aggregated to the region and U.S. level using weights available from expenditure data and other administrative sources. Price recommendations are prepared by the State Statistical Offices and Headquarters for review by the Agricultural Statistics Board in Washington, D.C. Also, the change in price level for individual items surveyed are combined to the regional and U.S. levels, and are published as prices paid indexes referenced to a specific base period. Prices paid indexes for new autos and trucks, building materials, farm supplies, motor supplies, and marketing containers are updated based on price changes measured in selected Bureau of Labor Statistics (BLS) indexes.

Revisions: Any revisions are published in the monthly and in annual issues of "Agricultural Prices". The basis for revision must be supported by additional data that directly affect the level of the estimate. More revisions are likely in April when separate prices paid surveys are conducted, in lieu of BLS indexes, by the USDA to measure price change.

Reliability: Current methods of summarization in April are not designed directly to calculate sampling errors. However, analytical measures approximate the U.S. relative sampling errors for major items around 10 percent. Any nonsampling errors are attributed to such things as the inability to obtain correct information, differences in interpreting questions or definitions, mistakes in coding or processing the data, etc. Efforts are made at each step in the survey process to minimize these nonsampling errors.

Program Change: Effective January 1, 1995, the National Agricultural Statistics Service updated the weights and changed the construction of its prices paid and received by farmers indexes. A Federal Register Notice dated October 28, 1994 discussed these program modifications.

A 1990-92 reference and base period replaced the 1977 reference and 1971-73 base weight period. Five-year moving average weights replaced the current fixed 1971-73 base period weights. The 1910-14=100 price indexes, required by statute for computing parity prices, were linked forward based on the changes in the new 1990-92=100 indexes. The new indexes were constructed by multiplying the ratios of the current prices to the base period prices by the moving average weights (adjusted for seasonal marketing patterns for the prices received indexes).

Index

Prices Received

U.S. Prices and Indexes	Page		Page
Narrative.....	A-2	Cows, Beef.....	A-18
Price Indexes.....	A-3	Cows, Milk.....	A-21
Prices Received		Eggs.....	A-20
U.S. Summary.....	A-6-7	Flaxseed.....	A-14
Selected Commodities....	A-12	Fruit, Citrus.....	A-16
Upland Cotton and Rice		Hay.....	A-15
Prices and Marketings...	A-15	All Hogs.....	A-19
Parity Prices.....	A-22-23	Lambs.....	A-20
Reliability Statement.....	A-56	Milk.....	A-21
		Oats.....	A-13
Monthly State Prices		Peanuts.....	A-14
Apples.....	A-15	Potatoes.....	A-17
Barley.....	A-13	Sheep.....	A-20
Barrows and Gilts.....	A-19	Sorghum, Grain.....	A-13
Beans, Dry Edible.....	A-14	Soybeans.....	A-13
Beef Cattle.....	A-18	Sows.....	A-19
Broilers.....	A-20	Steers and Heifers.....	A-18
Calves.....	A-18	Sunflower.....	A-14
Corn.....	A-13	Tobacco.....	A-14
Cotton.....	A-15	Turkeys.....	A-20
Cottonseed.....	A-15	Wheat.....	A-12

Special Features

Marketing Year Average Prices by State, U.S., 1997-98 and 1998-99	
Barley, Oats	A-24
Wheat, Rye	A-25
Wheat by Class, U.S., Cranberries	A-26
Hay	A-27
Monthly Prices by State, U.S., Marketing Years 1997-98 and 1998-99	
Barley	A-28-33
Oats	A-34-35
Wheat	A-36-42
Wheat by Class, U.S.,	A-43
Hay	A-44-49
Percent of Sales by Month, U.S., Marketing Years 1997-98 and 1998-99	
Barley, Oats, Wheat and Hay	A-50
Percent of Sales by Month, State, Marketing Years 1997-98 and 1998-99	
Barley	A-51
Oats	A-52
Wheat	A-53
Hay	A-54-55

Index

Prices Paid

	Page
Narrative.....	B-1
Indexes and Parity Ratios.....	B-2-3
Charts.....	B-4-6
Feed Ratios.....	B-7
Reliability Statement.....	B-8

U.S. Average Prices:

Commodity Prices Used in Feed Price Ratios	B-7
Feeder Livestock	B-7

Report Features

Listed below are the commodity specialists in the Estimates Division of the National Agricultural Statistics Service to contact for additional information.

Crops Branch

C. Ray Halley, Chief (202) 720-2127

Field Crops Section
Brad Parks, Head (202) 720-3843

Rhonda Brandt - Corn (202) 720-9526
Herman Ellison - Barley, Peanuts, Rice (202) 720-7688
Lance Honig - Hay, Sorghum (202) 690-3234
Jay Johnson - Cotton (202) 720-5944
Mark E. Miller - Oats (202) 720-7621
Jerry Ramirez - Oilseeds (202) 690-7369
Vaughn Siegenthaler - Wheat (202) 720-8068

Fruit and Vegetable Section
Dean Groskurth, Head (202) 720-3843

Arvin Budge - Potatoes (202) 720-4285
Dave DeWalt - Citrus (202) 720-5412
Steve Gunn - Apples, Non-Citrus Fruits (202) 720-4288
Howard Hill - Grapes, Tobacco (202) 720-7235
Jeffery Kissel - Dry Beans, Peaches, Pears (202) 690-0270
Biz Wallingsford - Vegetables, Strawberries (202) 720-2157

Commodity Prices Coordinator
Charles Van Lahr (202) 720-5446
Kirby Cavett - Prices Received Indexes (202) 690-3237

Livestock and Economic Branch

Robert W. Milton, Chief (202) 720-3570

Livestock Section
Dan Kerestes, Head (202) 720-4447

Chris Cadwallader - Sheep, Lambs (202) 720-4751
Rodger Ott - Hogs (202) 720-3106
Greg Thessen - Cattle, Milk (202) 720-3040

Poultry and Specialty Commodities Section
Debra Kenerson, Head (202) 720-6351

Dan Boostrom - Eggs (202) 720-3244
Tom Krutchen - Broilers, Honey (202) 690-4870
John Lange - Turkeys (202) 720-8784

Farm Inputs Section (Prices Paid)
Mark Harris, Head (202) 720-4214

Kim Nielsen - Prices Paid Indexes, Feed,
Fertilizer, Agricultural Chemicals,
Seeds (202) 690-3347

Jim Williams - Farm Supplies and Repairs, Farm
Machinery, Fuels, Feeder Livestock,
Poultry Chicks, Feed Price Ratios,
Grazing Fees, Autos & Trucks (202) 690-3225

The next "Agricultural Prices" report will be released at 3:00 p.m. ET on September 29, 1999.

The United States Department of Agriculture (USDA) prohibits discrimination in all its programs and activities on the basis of race, color, national origin, gender, religion, age, disability, political beliefs, sexual orientation, and marital or family status. (Not all prohibited bases apply to all programs.) Persons with disabilities who require alternative means for communication of program information (braille, large print, audiotape, etc.) should contact the USDA's TARGET Center at 202-720-2600 (voice and TDD).

To file a complaint of discrimination, write USDA, Director, Office of Civil Rights, Room 326-W, Whitten Building, 14th and Independence Avenue, SW, Washington, DC, 20250-9410, or call (202) 720-5964 (voice or TDD). USDA is an equal opportunity provider and employer.

ACCESS TO REPORTS!!

For your convenience, there are several ways to obtain NASS reports, data products, and services:

INTERNET ACCESS

All NASS reports are available free of charge on the worldwide Internet. For access, connect to the Internet and go to the NASS Home Page at: <http://www.usda.gov/nass/>. Select "Today's Reports" or Publications and then Reports by Calendar or Publications and then Search, by Title or Subject.

NEW INTERNET DATA BASE

Now available at the NASS home page is access to our **On-line Published Estimates Data Base**. Limited commodities are now available for U.S. and State estimates. Data from our five year Historic Bulletins will be available in the data base when publications are released.

E-MAIL SUBSCRIPTION

All NASS reports are available by subscription free of charge direct to your e-mail address. Send an e-mail message to: usda-reports@usda.mannlib.cornell.edu. In the body of the message type the word: **list**.

AUTOFAX ACCESS

NASSFax service is available for some reports from your fax machine. Please call 202-720-2000, using the handset attached to your fax. Respond to the voice prompts. Document 0411 is a list of available reports.

PRINTED REPORTS OR DATA PRODUCTS

CALL OUR TOLL-FREE ORDER DESK: 800-999-6779 (U.S. and Canada)
Other areas, please call 703-834-0125 FAX: 703-834-0110
(Visa, MasterCard, check, or money order acceptable for payment.)

ASSISTANCE

For **assistance** with general agricultural statistics or further information about NASS or its products or services, contact the **Agricultural Statistics Hotline** at 800-727-9540, 7:30 a.m. to 4:00 p.m. ET, or e-mail: nass@nass.usda.gov.

USDA to Hold Public Forum
October 18, 1999

Holiday Inn Mart Plaza
Chicago, Illinois

The National Agricultural Statistics Service will be organizing an open forum for Data Users. The purpose will be to provide updates on pending changes in the USDA statistical and information programs, and to seek comments and input from data users. Other agencies to be represented will include the Agricultural Marketing Service, the Economic Research Service, the Foreign Agricultural Service, and the World Agricultural Outlook Board.

For registration details, see the NASS home page at <http://www.usda.gov/nass/> or contact Fred Vogel (NASS) at (202) 720-3896 or at hq_ed_od@nass.usda.gov