



Agricultural Prices

Released September 29, 1999, by the National Agricultural Statistics Service (NASS), Agricultural Statistics Board, U.S. Department of Agriculture. For information on "Agricultural Prices" or other assistance, see page B-12.

Prices Received Index Declines 1 Point

The preliminary All Farm Products Index of Prices Received in September was 97 based on 1990-92=100, down 1 point (1.0 percent) from the August index. The seasonal changes in the mix of commodities farmers sell affect the overall index. Lower seasonal marketings of cattle, broilers, wheat, and grapes more than offset the relatively higher marketings of soybeans, peanuts, corn, and potatoes. The marketing changes would have decreased the index two points but were partially offset by the price increases. Price increases from August for milk, lettuce, tomatoes, and soybeans more than offset price decreases for hogs, grapes, potatoes, and onions.

Compared with September 1998, the All Farm Products Index was 2 points (2.0 percent) lower. Price decreases from September 1998 for broilers, soybeans, milk, and cotton more than offset price increases for cattle, hogs, calves, and wheat.

Prices Paid Index Unchanged

The September Index of Prices Paid for Commodities and Services, Interest, Taxes, and Farm Wage Rates (PPITW) was 117 percent of the 1990-92 average. The index was unchanged from August but 2 points (1.7 percent) above September 1998. Lower September prices for complete feeds, hay and forages, nitrogen fertilizers, and insecticides were offset by higher prices for feeder cattle, herbicides, feeder pigs, and feed concentrates.

Index Summary Table

Index 1990-92=100	1998		1999	
	Aug	Sep	Aug	Sep
Prices Received	101	99	98	97
Prices Paid	116	115	117	117
Ratio 1/	87	86	84	83

1/ Ratio of index of prices received by farmers to index of prices paid.

Prices Received by Farmers

The September All Farm Products Index was 97 percent of its 1990-92 base, down 1.0 percent from the August index and 2.0 percent below the September 1998 index.

All Crops: The September index was 97, down 2.0 percent from August and 3.0 percent below September 1998. Price increases from August for vegetables, oilseeds, tobacco, and food grains offset price decreases for potatoes and dry beans, fruit and nuts, feed grains and hay, and cotton.

Food Grains: The September index, at 89, was up 2.3 percent from the previous month and 1.1 percent above September 1998. The September all wheat price, at \$2.56 per bushel, was up 4 cents from the August price and 17 cents above September 1998.

Feed Grains & Hay: The September index was 82, down 3.5 percent from last month and 4.7 percent below September 1998. The corn price, at \$1.79 per bushel, was up 4 cents from August but 4 cents below the September 1998 price. The all hay price, at \$74.50 per ton, was down \$2.90 from last month and \$10.50 below September 1998.

Oil-Bearing Crops: The September index, at 84, was up 7.7 percent from the revised August index but 9.7 percent below September 1998. The soybean price, at \$4.61 per bushel, increased 22 cents from August but was 64 cents below September 1998.

Fruit and Nuts: The September fruit and nuts index, at 132, was down 4.3 percent from the previous month but 3.1 percent above September 1998. Decreases in the prices of grapes, oranges, and peaches more than offset increases in the price of other fruits.

Commercial Vegetables: The September index, at 107, was up 1.9 percent from last month but 3.6 percent below September 1998. Price increases for lettuce, tomatoes, broccoli, and celery more than offset price decreases for onions, carrots, and cucumbers.

Livestock and Products: The September index, at 98, was up 1.0 percent from last month but unchanged from September 1998. Compared with a year ago, prices were up for cattle, hogs, calves, and turkeys, but down for broilers, all milk, and eggs.

Meat Animals: The September index, at 83, was down 2.4 percent from last month but up 14 percent from a year ago. The September hog price was \$32.30 per cwt, down \$3.90 from August but up \$2.80 from a year ago. Higher levels of pork in cold storage, along with higher slaughter levels during September, pushed prices down. The September beef cattle price of \$63.80 was up 30 cents from last month and \$7.70 above September 1998.

Poultry and Eggs: The September index, at 110, was the same as August but 14 percent below a year ago. The September broiler price, at 36.5 cents per pound, increased 0.3 cent from August. The weather disrupted a number of markets. Broilers had adequate to plentiful supplies with soft spots in demand domestically and internationally. Market egg prices decreased 2.3 cents to 39.7 cents per dozen. Domestic demand for eggs was steady while export demand was weak. Turkey prices increased 1.4 cents to 44.5 cents per pound. End of August cold storage holdings of turkeys were 18 percent lower than August 31, 1998.

Dairy Products: The September index, at 122, was up 6.1 percent from August but down 5.4 percent from September 1998. The September all milk price at \$15.90 per cwt, was up 90 cents from August but down 80 cents from last year. September prices increased for both fluid and manufacturing grade milk. Cheese prices increased the first week of September but decreased the following two weeks.

Index Numbers of Prices Received, United States, September 1999,
with Comparisons

Index	1910-14=100				1990-92=100		
	1998		1999		1998		1999
	Average: 1990-92:	Sep	Aug	Sep	Sep	Aug	Sep
All Farm Products	639	629	*625	618	99	98	97
All Crops	500	494	490	477	100	99	97
Food Grains	325	279	*277	283	88	*87	89
Feed Grains & Hay	363	307	*302	294	86	85	82
Cotton	517	567	*448	438	111	*87	85
Tobacco	1263	1561	*1426	1496	103	*94	99
Oil-Bearing Crops	554	510	*429	460	93	*78	84
Fruit & Nuts	716	891	*961	924	128	138	132
Commercial Vegetables	698	743	*698	718	111	*105	107
Potatoes & Dry Beans	540	447	*543	463	88	*107	91
Other Crops	493	532	532	532	108	108	108
Livestock & Products	768	751	*746	751	98	97	98
Meat Animals	1021	745	*865	844	73	85	83
Dairy Products	799	1032	*922	977	129	*115	122
Poultry & Eggs	282	361	308	309	128	110	110
Food Commodities					100	*100	99

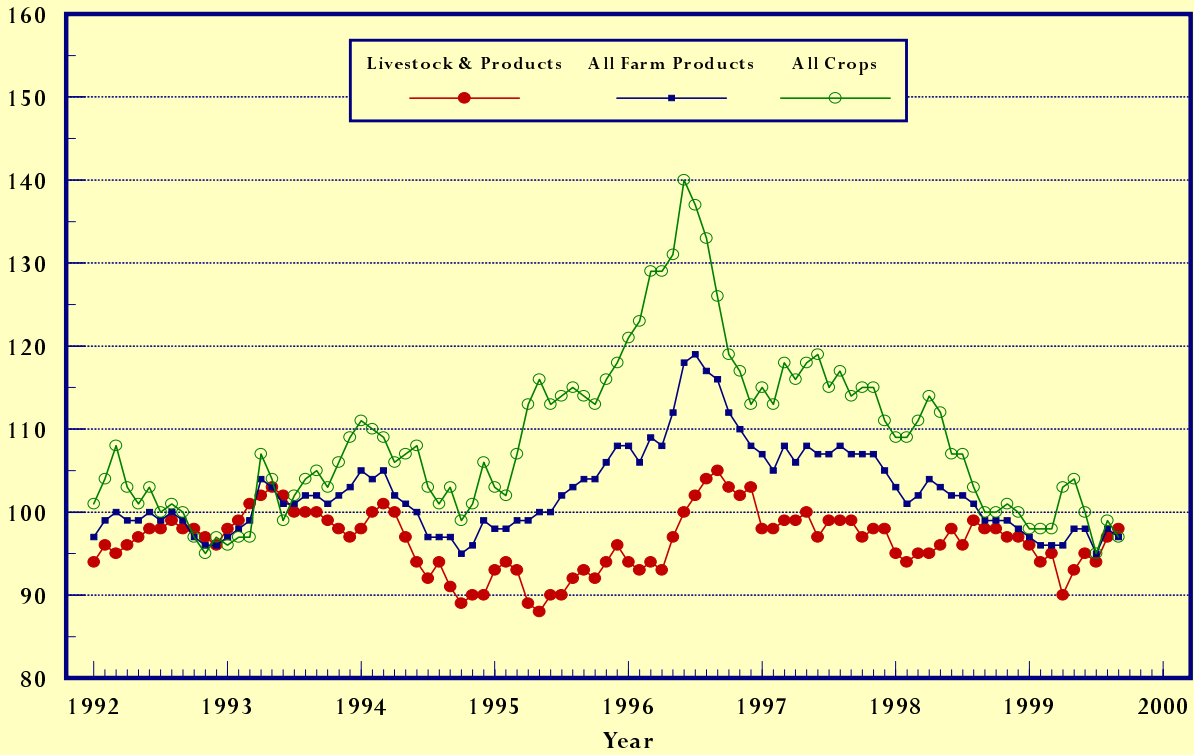
* Revised.

Selected Index Numbers for Prices Received and Paid,
1990-92=100, by Months, United States, 1998 and 1999

Month	Index of Prices Received				Index of Prices Paid					
	All Farm Products		All Crops		Livestock and Products		All Items		Production Items	
	1998	1999	1998	1999	1998	1999	1998	1999	1998	1999
Jan	103	97	109	98	95	96	119	116	118	113
Feb	101	96	109	98	94	94	119	116	117	113
Mar	102	96	111	98	95	95	118	116	116	113
Apr	104	96	114	103	95	90	118	116	116	113
May	103	98	112	104	96	93	117	116	116	113
Jun	102	98	107	100	98	95	117	117	115	113
Jul	102	95	107	95	96	94	116	116	115	113
Aug	101	98	103	99	99	97	116	117	114	113
Sep	99	97	100	97	98	98	115	117	112	114
Oct	99		100		98		116		113	
Nov	99		101		97		116		113	
Dec	98		100		97		116		113	

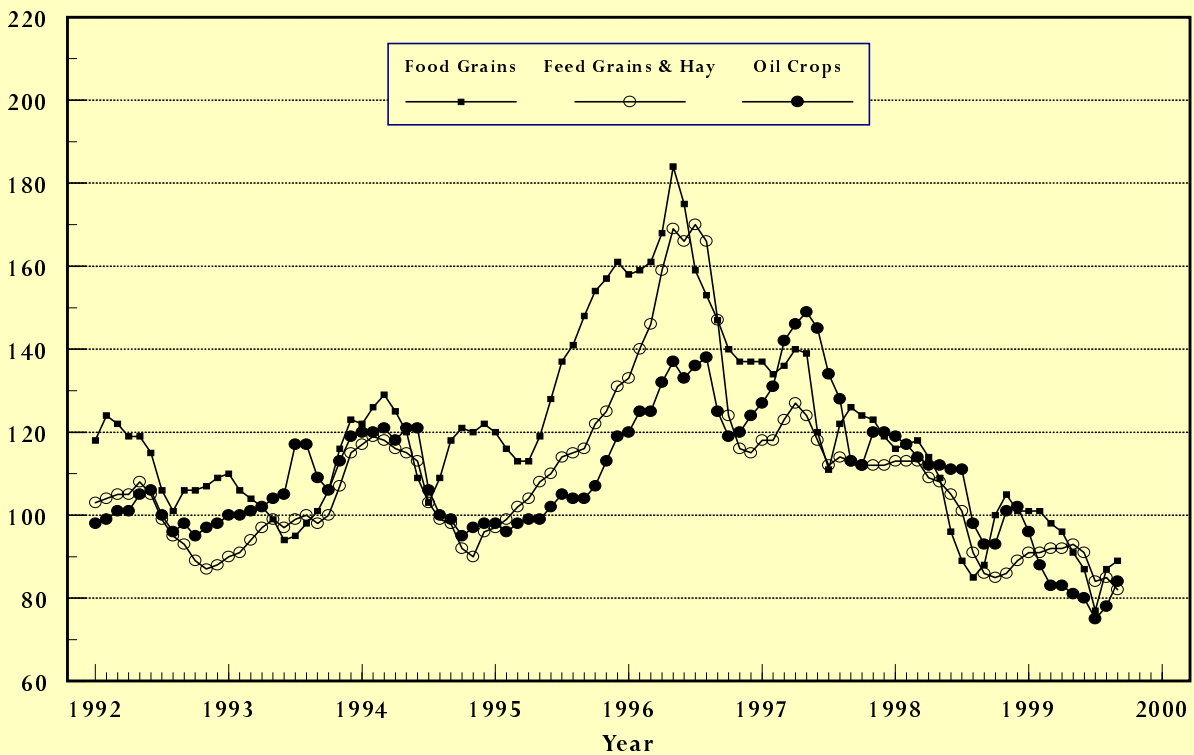
Prices Received, Major Indexes, US

Index Values(1990-92=100)



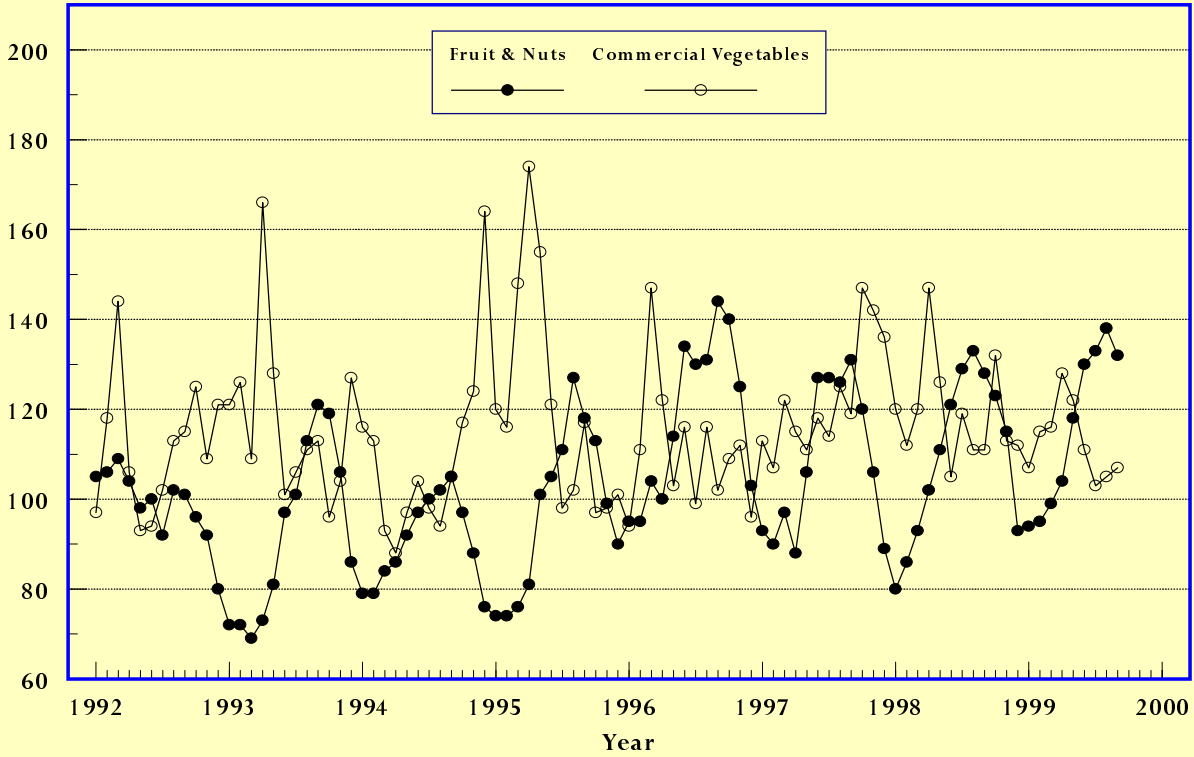
Prices Received, Food, Feed & Oil Indexes, US

Index Values(1990-92=100)



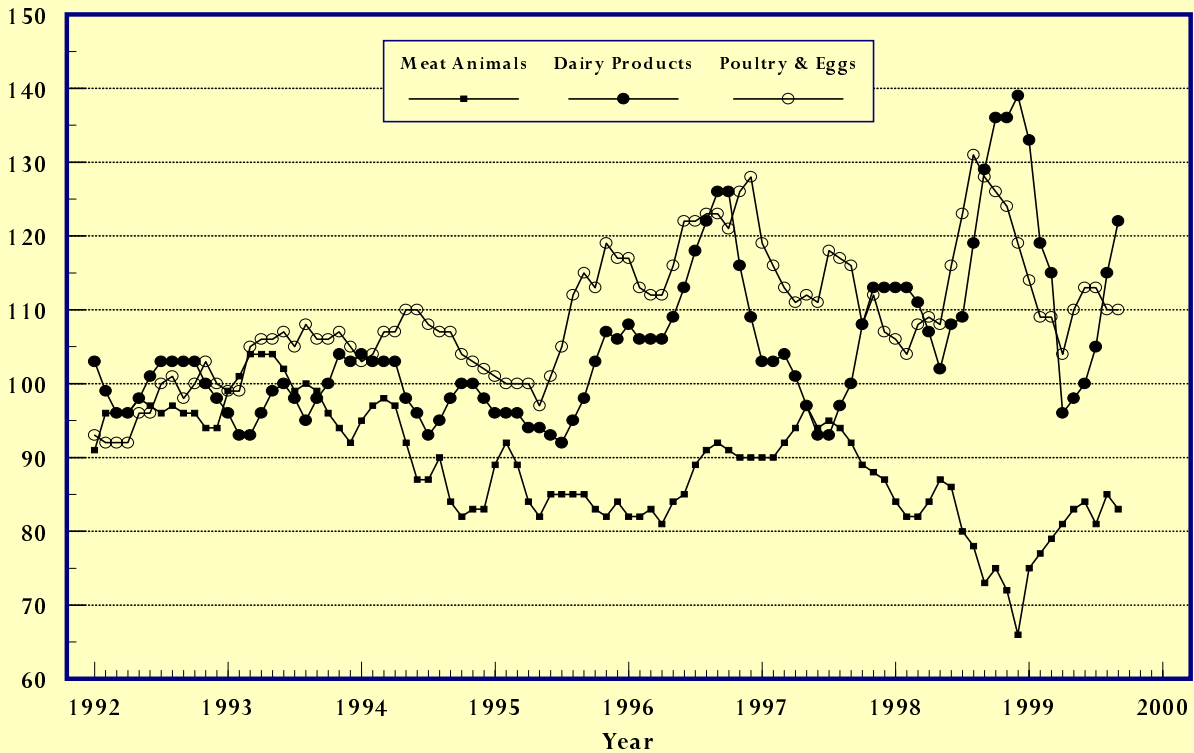
Prices Received, Fruit/Vegetable Indexes, US

Index Values(1990-92=100)



Prices Received, Livestock Product Indexes, US

Index Values(1990-92=100)



Prices Received, United States,
September 1999, with Comparisons

Commodity	Unit	Average 1990-92	Entire Month		Preliminary
			Sep	Aug	Sep
			1998	1999	1999
Dollars					
Field Crops					
Barley, All	Bu	2.12	2.01	2.37	2.14
Feed	Bu	1.90	1.40	1.51	1.68
Malting	Bu	2.43	2.50	2.65	2.61
Beans, Dry Edible	Cwt	19.10	19.30	18.80	18.10
Corn	Bu	2.30	1.83	1.75	1.79
Cotton, Upland	Lb	.606	.671	.530	.518
Cottonseed	Ton	96.00	113.00	70.00	72.00
Flaxseed	Bu	4.27	5.09	3.86	3.90
Hay, All, Baled 1/	Ton	76.30	85.00	77.40	74.50
Alfalfa 1/	Ton	77.20	87.10	81.50	77.30
Other 1/	Ton	60.00	74.90	62.80	63.70
Oats	Bu	1.22	1.07	.967	1.03
Peanuts, In-Shell	Lb	.304	.268	.257	.275
Potatoes	Cwt	5.82	4.97	6.33	5.26
Rice, Rough	Cwt	7.07	9.35	7.62	7.59
Sorghum Grain	Cwt	3.75	2.91	2.89	2.79
Soybeans	Bu	5.61	5.25	4.39	4.61
Sunflower 2/	Cwt	9.50	11.40	8.28	8.36
Tobacco	Lb	1.740	1.795	1.640	1.720
Wheat, All	Bu	2.96	2.39	2.52	2.56
Winter	Bu	2.93	2.29	2.34	2.41
Durum	Bu	2.86	3.03	2.74	2.69
Other Spring	Bu	3.11	2.62	2.85	2.82
Hard Red Winter	Bu		2.30	2.32	
Soft Red Winter	Bu	2.87	2.13	2.13	
Hard Red Spring	Bu		2.79	2.86	
White	Bu	3.24	2.21	2.81	
Fruit					
Citrus-Equiv on-tree					
Grapefruit	Box	5.77	13.90	7.45	8.18
Lemons	Box	10.10	19.40	16.40	18.70
Limes 3/	Box	10.15	6.70		
Oranges	Box	5.79	6.03	11.48	7.98
Tangelos	Box	5.82			
Tangerines	Box	15.11			
Temples	Box	6.23			
Non-citrus					
Apples, Fresh 4/	Lb	.212	.226	.184	.232
Grapes, Fresh 4/	Ton	506.00	580.00	770.00	560.00
Peaches, Fresh 4/	Lb	.216	.284	.366	.350
Pears, Fresh 4/	Ton	370.00	372.00	341.00	388.00
Strawberries, Fresh	Lb	.560	.590	.662	.717

1/ Mid-month price.

2/ KS, MN, ND and SD average.

3/ Current prices not published to avoid disclosure of individual firms.

4/ Equivalent packinghouse-door returns for CA, NY (apples only), OR (pears only) and WA (apples, peaches, and pears). Prices as sold for other states.

-- continued

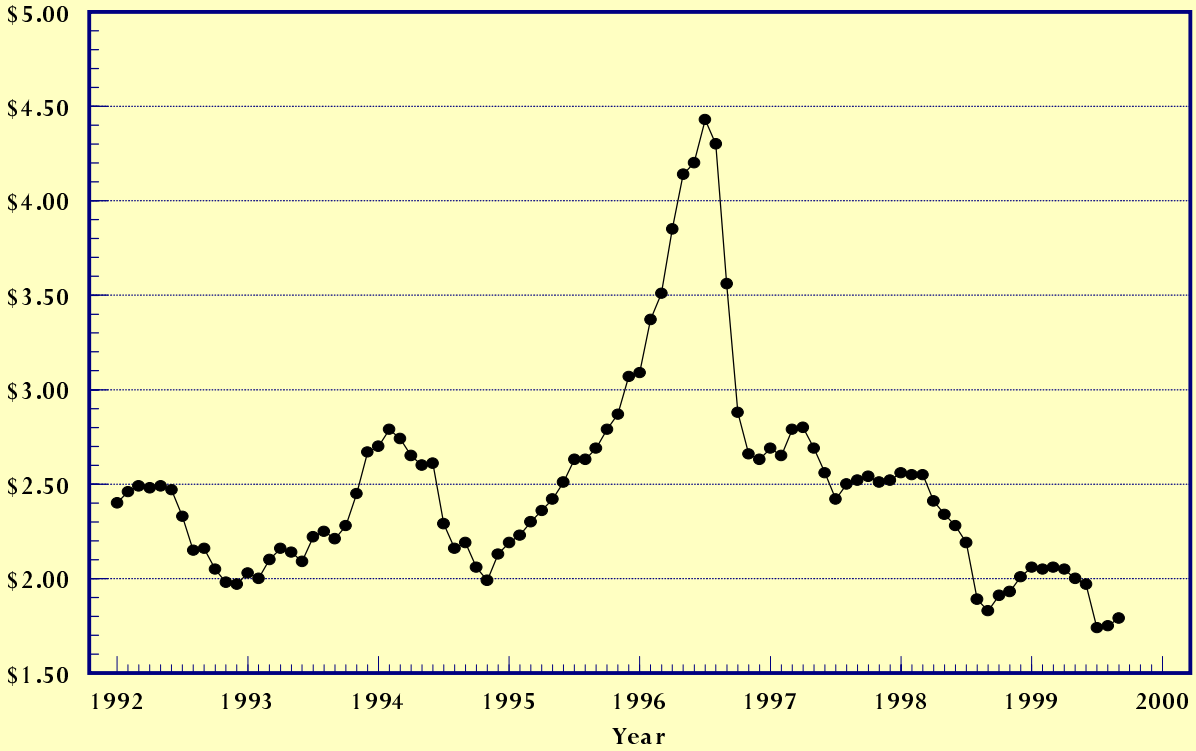
Prices Received, United States,
September 1999, with Comparisons (continued)

Commodity	Unit	Average 1990-92	Entire Month		Preliminary
			Sep 1998	Aug 1999	Sep 1999
Dollars					
Vegetables, Fresh 1/					
Asparagus	Cwt	79.80	199.00	228.00	160.00
Broccoli	Cwt	22.50	29.20	27.40	32.50
Cantaloupes	Cwt		17.60	14.30	14.20
Carrots	Cwt	13.20	10.60	12.70	9.95
Cauliflower	Cwt	26.80	32.30	24.80	21.70
Celery	Cwt	11.60	10.60	10.80	11.30
Corn, Sweet	Cwt	15.70	18.20	16.10	16.00
Cucumbers 2/	Cwt		23.50	21.60	19.30
Lettuce	Cwt	11.90	14.00	11.90	13.80
Onions	Cwt	12.80	12.80	15.40	12.70
Snap Beans 2/	Cwt		63.50	55.00	49.70
Tomatoes	Cwt	32.30	28.60	22.70	30.50
Livestock					
Calves	Cwt	94.30	74.10	89.60	91.20
Cattle, All Beef	Cwt	72.90	56.10	63.50	63.80
Cows	Cwt	49.60	32.60	36.30	34.90
Steers & Heifers	Cwt	77.10	58.90	66.20	66.90
Milk Cows 3/	Head	1130.00			
Hogs, All	Cwt	47.70	29.50	36.20	32.30
Barrows & Gilts	Cwt	48.40	30.10	36.90	32.90
Sows	Cwt	39.50	18.20	23.10	22.00
Lambs	Cwt	56.20	71.80	80.30	
Sheep	Cwt	23.40	26.80	29.80	
Dairy and Poultry					
Milk, All 4/	Cwt	13.06	16.70	15.00	5/15.90
Fluid Grade	Cwt	13.10	16.80	15.00	5/15.90
Mfg Grade	Cwt	11.80	15.40	15.20	5/15.50
Broilers, Live 6/	Lb	.317	.459	.362	.365
Eggs, All 7/	Doz	.643	.633	.590	.567
Market 7/	Doz	.546	.496	.420	.397
Turkeys, Live 6/7/	Lb	.380	.402	.431	.445
Adjusted for Seasonal Variation					
Eggs, All	Doz	.545	.659	.641	.585
Milk, All 4/	Cwt	9.71	16.37	15.00	15.59

- 1/ F.O.B. shipping point.
- 2/ Monthly estimates began January 1995.
- 3/ Animals sold for dairy herd replacement only. Prices available for Jan, Apr, Jul, and Oct.
- 4/ Before deductions for hauling. Includes quality, quantity, and other premiums. Excludes hauling subsidies.
- 5/ Fat test percent: all milk 3.61, fluid milk 3.61, mfg grade 3.72.
- 6/ Liveweight equivalent price.
- 7/ Mid-month price.

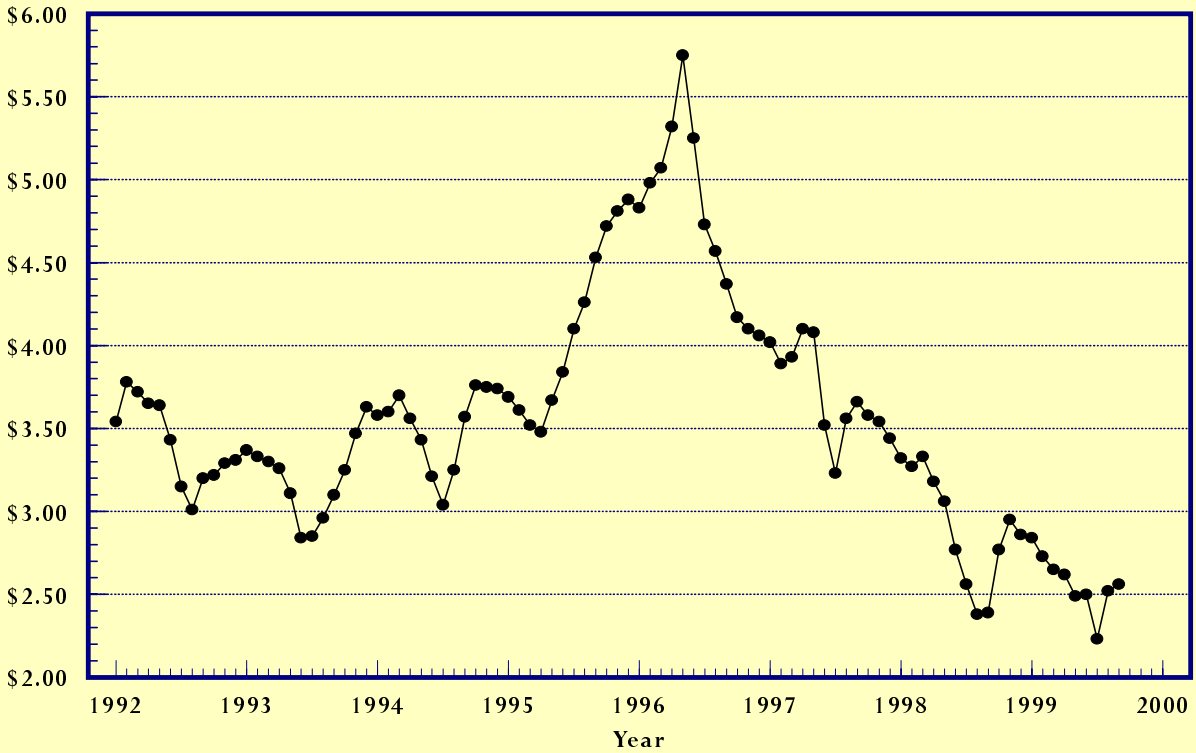
Prices Received, Corn, US

Dollars per Bu



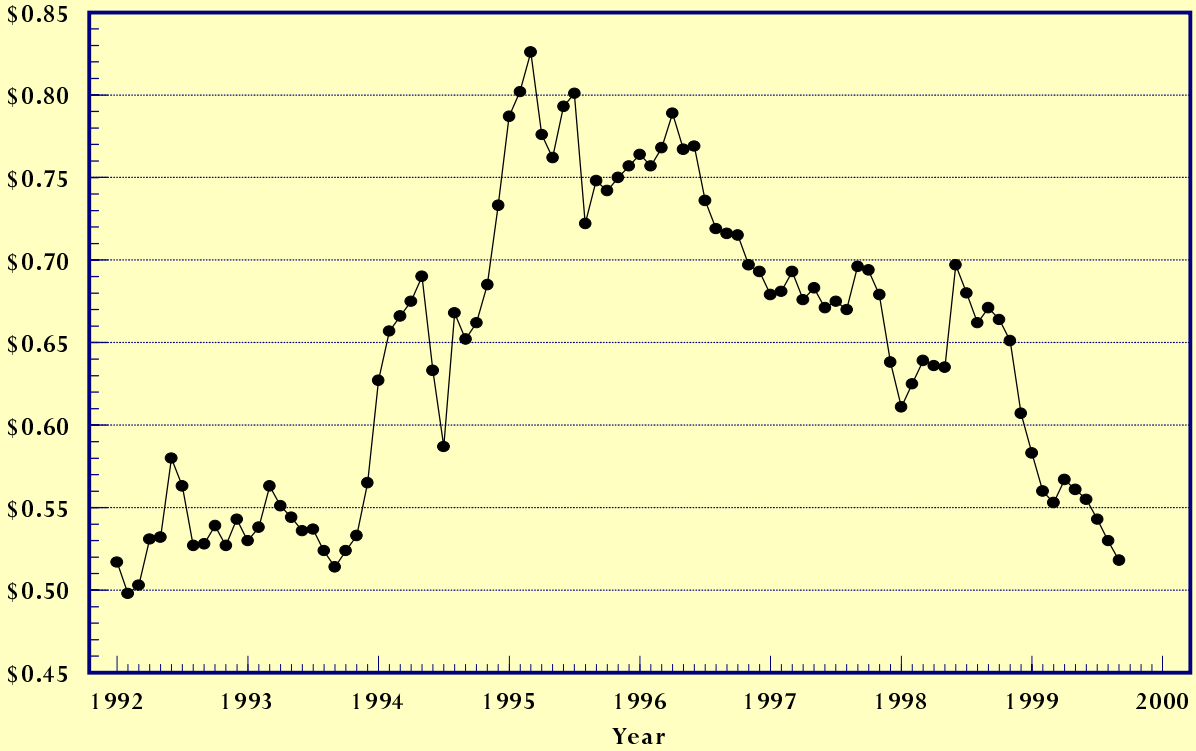
Prices Received, Wheat, US

Dollars per Bu



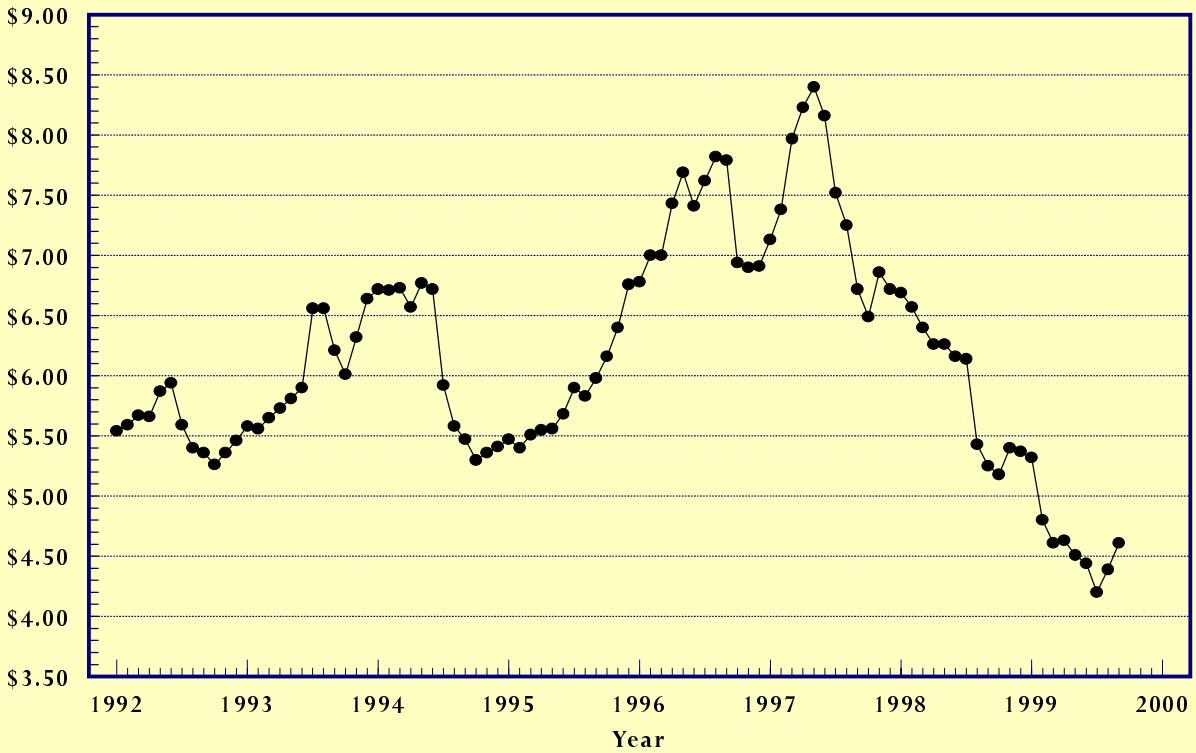
Prices Received, Cotton, US

Dollars per Lb



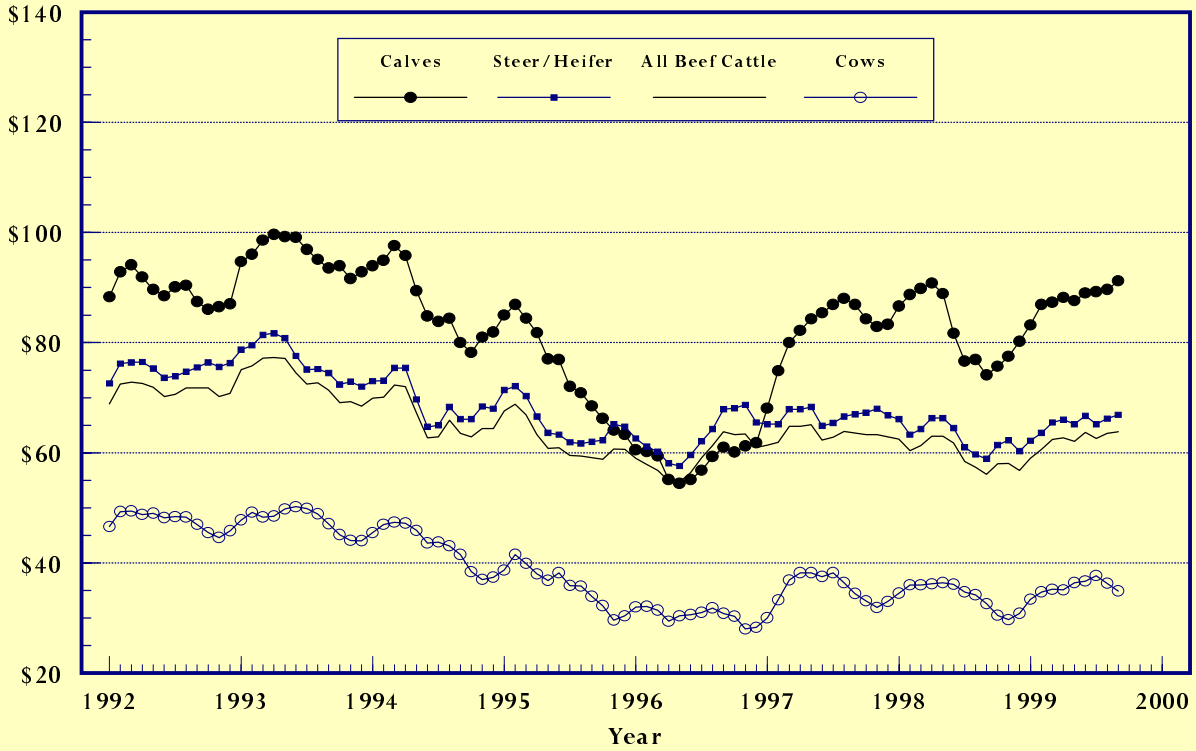
Prices Received, Soybeans, US

Dollars per Bu



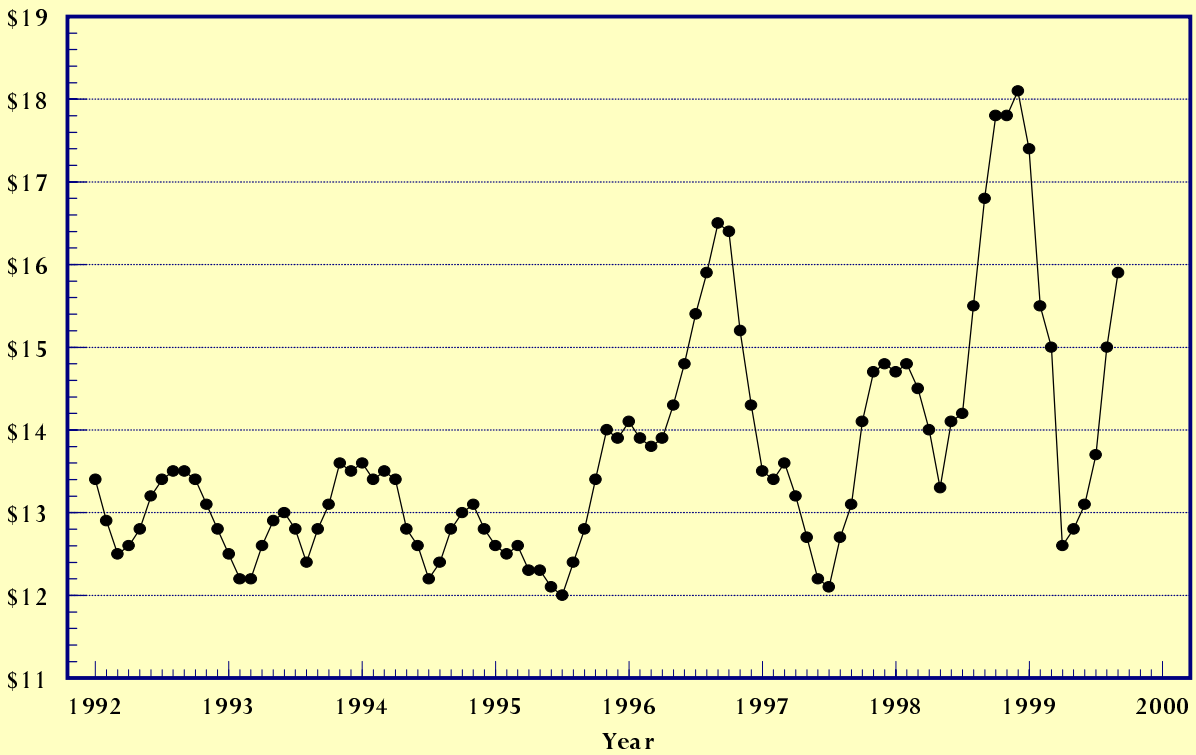
Prices Received, Cattle, US

Dollars per Cwt



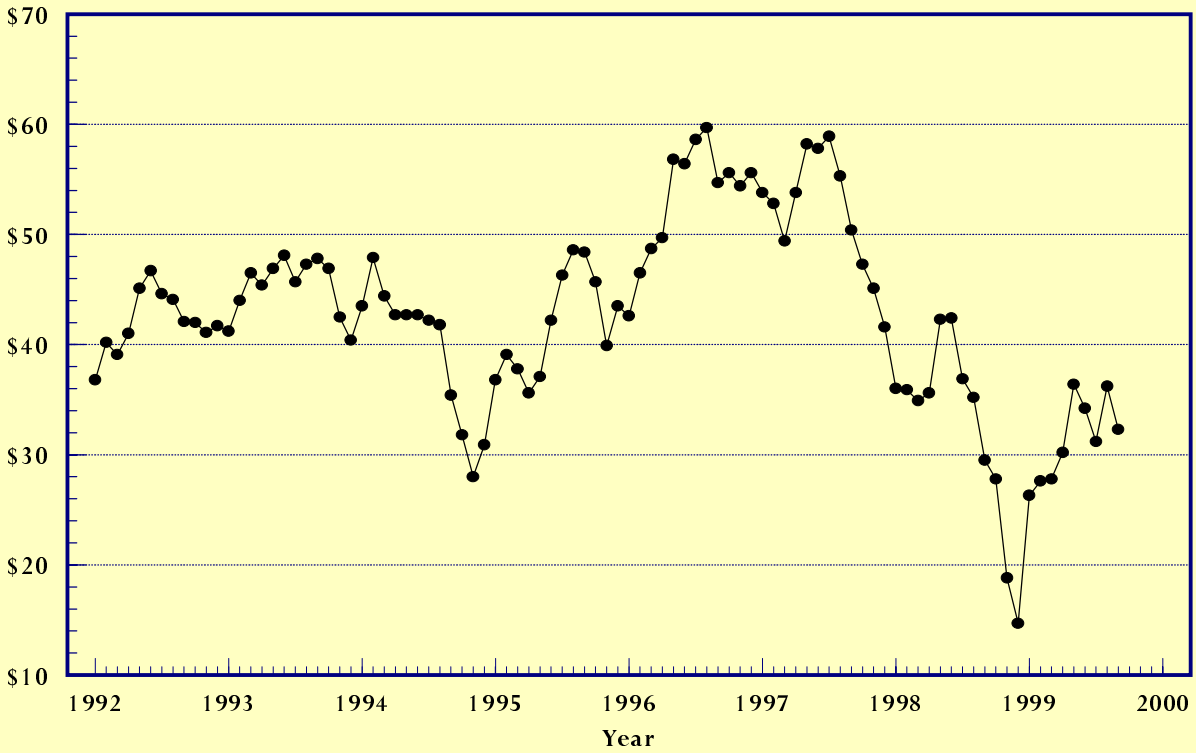
Prices Received, Milk, US

Dollars per Cwt



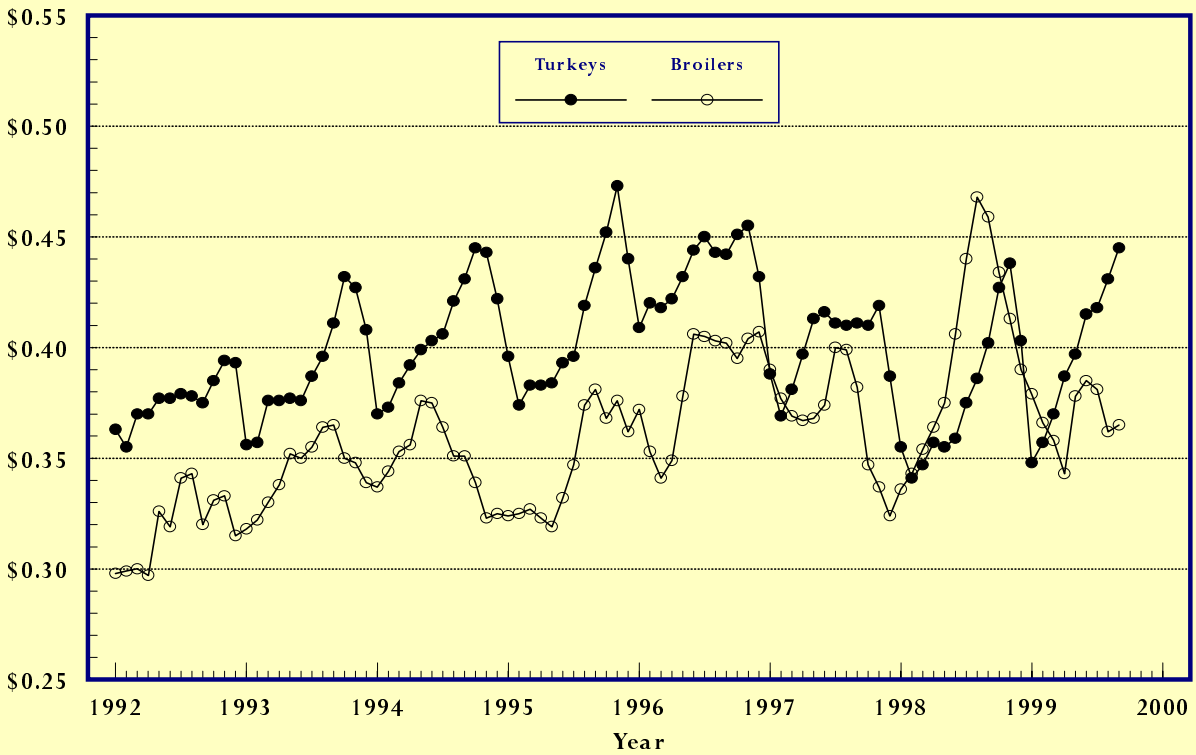
Prices Received, Hogs, US

Dollars per Cwt



Prices Received, Turkeys & Broilers, US

Dollars per Lb



Wheat: Prices Received, by States, August and September 1999

State	All Wheat		Winter Wheat		Durum Wheat		Oth Spring Wheat	
	Aug 1/	Sep 2/	Aug 1/	Sep 2/	Aug 1/	Sep 2/	Aug 1/	Sep 2/
	Dollars per Bushel							
AR	2.23	2.37	2.23	2.37				
CA	3/	3/	3/	3/	4/	4/		
CO	2.28	2.19	2.28	2.19			2.30	2.07
ID	2.52	2.62	2.51	2.60			2.54	2.65
IL	2.03	2.10	2.03	2.10				
IN	2.19	2.14	2.19	2.14				
KS	2.31	2.29	2.31	2.29				
MI	2.14	2.05	2.14	2.05				
MN	2.85	2.89	2.10	2.20	2.80	2.80	2.86	2.90
MO	2.18	2.30	2.18	2.30				
MT	2.82	2.85	2.60	2.70	2.92	3.00	2.90	2.90
NE	2.28	2.27	2.28	2.27				
ND	2.81	2.73	2.25	2.20	2.73	2.65	2.85	2.75
OH	2.10	2.15	2.10	2.15				
OK	2.32	2.36	2.32	2.36				
OR	2.85	2.88	2.82	2.85			3.08	3.05
SD	2.53	2.63	2.08	2.32	2.22	2.80	2.70	2.74
TX	2.36	2.34	2.36	2.34				
WA	3.08	2.98	2.99	2.87			3.35	3.28
US	2.52	2.56	2.34	2.41	2.74	2.69	2.85	2.82

- 1/ Entire month.
- 2/ Mid-month.
- 3/ Price not published to avoid disclosure of individual firms.
- 4/ Insufficient sales to establish a price.

Prices Received for Selected Agricultural Commodities, by Months, United States, 1998 and 1999

Month	All Wheat		Corn		Soybeans		Beef Cattle 1/		All Hogs	
	1998	1999 2/	1998	1999 2/	1998	1999 2/	1998	1999 2/	1998	1999 2/
	Dollars per Bushel						Dollars per Cwt			
Jan	3.32	2.84	2.56	2.06	6.69	5.32	62.50	59.00	36.00	26.30
Feb	3.27	2.73	2.55	2.05	6.57	4.80	60.40	60.60	35.90	27.60
Mar	3.33	2.65	2.55	2.06	6.40	4.61	61.30	62.40	34.90	27.80
Apr	3.18	2.62	2.41	2.05	6.26	4.63	63.00	62.70	35.60	30.20
May	3.06	2.49	2.34	2.00	6.26	4.51	63.00	62.10	42.30	36.40
Jun	2.77	2.50	2.28	1.97	6.16	4.44	61.80	63.70	42.40	34.20
Jul	2.56	2.23	2.19	1.74	6.14	4.20	58.40	62.60	36.90	31.20
Aug	2.38	2.52	1.89	1.75	5.43	4.39	57.40	63.50	35.20	36.20
Sep	2.39	2.56	1.83	1.79	5.25	4.61	56.10	63.80	29.50	32.30
Oct	2.77		1.91		5.18		58.00		27.80	
Nov	2.95		1.93		5.40		58.10		18.80	
Dec	2.86		2.01		5.37		56.80		14.70	

- 1/ Cows, steers and heifers.
- 2/ Current month prices are mid-month; prices for previous months are for the entire month.

Grains: Prices Received, by States, August and September 1999

State	Barley 1/		Corn		Oats		Soybeans		Sorghum Grain	
	Aug 2/	Sep 3/	Aug 2/	Sep 3/	Aug 2/	Sep 3/	Aug 2/	Sep 3/	Aug 2/	Sep 3/
----- Dollars per Bushel ----- Dollars per Cwt -----										
AL										
AR							4.64	4.78	3.03	2.85
CA	2.24	2.44								
CO	2.97	2.95	1.86	1.74						
GA			2.16	2.18			4.73	5.15		
ID	2.91	2.50								
IL			1.84	1.85	1.28	1.30	4.50	4.80	3.00	2.90
IN			1.97	1.93			4.55	4.69		
IA			1.65	1.65	.98	1.10	4.22	4.55		
KS			1.85	1.71			4.53	4.41	2.86	2.52
KY			1.95	1.85			4.68	4.70		
LA							5.46	4.82		
MI			1.83	1.80	1.24	1.30	4.45	4.60		
MN	1.33	1.36	1.56	1.60	.86	.90	4.19	4.50		
MS							4.79	4.87		
MO			1.80	1.80			4.45	4.60	2.99	2.70
MT	2.49	2.45			1.05	1.00				
NE			1.72	1.70	.93	1.00	4.29	4.40	2.88	2.70
NC			2.33	2.25			4.53	4.85		
ND	1.91	1.83			.80	.85				
OH			1.99	1.90	1.37	1.40	4.60	4.80		
OK									3.03	2.67
OR	1.84	1.85			1.45	1.25				
PA			2.49	2.46	1.50	1.50				
SD	2.15	2.13	1.59	1.43	.95	.96	4.36	4.31		
TN			1.94	1.90			4.63	4.80		
TX			1.95	2.00					2.86	2.94
UT	1.85	1.84								
WA	1.77	1.81								
WI			1.72	1.80	.96	1.00	4.34	4.70		
WY	4/	3.11								
US	2.37	2.14	1.75	1.79	.967	1.03	4.39	4.61	2.89	2.79

- 1/ The Three-State (MN, ND and SD) Feed Barley price for September 1999 is \$1.30.
- 2/ Entire month.
- 3/ Mid-month.
- 4/ Price not published to avoid disclosure of individual firms.

Malting and Feed Barley: Prices Received Selected States, August and September 1999

State	Malting Barley		Feed Barley	
	Aug	Sep	Aug	Sep
----- Dollars per Bushel -----				
ID	3.01	3.00	1.81	1.75
MN	1.67	1.70	1.27	1.30
MT	2.96	2.90	1.38	1.40
ND	2.07	2.00	1.28	1.30
SD	1/	1/	1.36	1.38
WY	1/	1/	2/	1/

- 1/ Price not published to avoid disclosure of individual firms.
- 2/ Insufficient sales to establish a price.

Field Crops: Prices Received, by States, August and September 1999

State	Dry Edible Beans		Sunflower		Flaxseed		Tobacco		Peanuts 4/5/	
	Aug 1/	Sep 2/	Aug 1/	Sep 2/	Aug 1/	Sep 2/	Aug 1/	Sep 3/	Aug 1/	Sep 3/
	Dollars per Cwt				Dollars per Bu		Dollars per Pound			
AL									7/	.277
CA	34.50	29.30								
CO	14.40	15.80								
FL							1.655	1.805	.241	.242
GA							1.600	1.765	.273	.288
ID	16.10	16.50								
IN										
KS			2/	2/						
KY										
MD										
MI	21.00	22.00								
MN	16.60	16.70	11.10	11.20						
MO										
NE	17.40	18.90								
NC							1.645	1.725		
ND	14.20	14.80	8.42	8.55	3.86	3.90				
OH										
OK										
SC							1.580	1.705		
SD			7.25	7.29						
TN										
TX									.203	7/
VA							1.715	1.640		
WV										
US	18.80	18.10	8.28	8.36	3.86	3.90	1.640	1.720	.257	.275

- 1/ Entire month.
- 2/ Mid-month.
- 3/ Based on sales through first half of month.
- 4/ In-shell.
- 5/ Includes additional loan peanuts at loan value.
- 6/ Sales volume insufficient to establish a state price, but all sales included in U.S. price.
- 7/ Price not published to avoid disclosure of individual firms.

Tobacco: Prices Received, by Area and Type, September 1999, with Comparisons

Class by Type	Type	Sep 1998	Aug 1999	Sep 1999 1/
Dollars per Pound				
Flue-cured				
Old and Middle Belts	11	1.770	1.700	1.645
Eastern N C Belt	12	1.825	1.630	1.745
NC Border & SC Belt	13	1.775	1.585	1.730
GA-FL Belt	14	1.795	1.615	1.770
Total Flue-cured	11-14	1.795	1.640	1.720
US	11-37	1.795	1.640	1.720

- 1/ Based on sales during the first half of the month.

Field Crops and Apples: Prices Received, by States,
August and September 1999

State	Cotton, Upland		September				Apples Fresh Use 1/4/
	Aug 1/	Sep 2/	Cotton- seed 5/	Hay, Baled 3/ All	Alfalfa	Other	
	Dollars per Pound		Dollars per Ton			Dol/Lb	
AL	7/	7/					
AZ	.491	7/		75.00	75.00	6/	
AR	.577	.566	70.00				
CA	.528	7/		75.00	77.00	53.00	.295
CO				70.00	71.00	65.00	
GA	.575	.522	75.00				
ID				82.00	83.00	62.00	
IL				75.00	80.00	55.00	
IA				66.00	67.00	47.00	
KS				67.00	69.00	54.00	
KY				93.00	120.00	78.00	
LA	.548	.539	70.00				
MI				68.00	70.00	60.00	.160
MN				59.00	65.00	35.00	
MS	.591	.600	70.00				
MO				68.00	101.00	61.00	
MT				68.00	68.00	58.00	
NE				35.00	35.00	32.00	
NV				84.00	84.00	80.00	
NM				112.00	114.00	92.00	
NY				106.00	135.00	70.00	.172
NC	7/	7/					
ND				40.00	43.00	30.00	
OH				93.00	115.00	70.00	.325
OK				74.00	91.00	49.00	
OR				97.00	100.00	85.00	
PA				136.00	157.00	125.00	.220
SD				43.00	46.00	32.00	
TN	.575	.507					
TX	.494	.495	72.00	74.00	135.00	62.00	
UT				73.00	74.00	38.00	
VA							.250
WA				91.00	86.00	133.00	.221
WI				47.00	50.00	35.00	
WY				67.00	68.00	62.00	
US	.530	.518	72.00	74.50	77.30	63.70	.232

1/ Entire month. 2/ Based on sales during the first half of the month.
3/ Mid-month. 4/ Equivalent packinghouse-door returns for CA,MI,NY and WA.
Price at point of first sale for other states. 5/ Marketing year
August-February. 6/ Insufficient sales to establish a price. 7/ Price
not published to avoid disclosure of individual firms.

Upland Cotton and Rice: Prices Received and Marketings,
United States, September 1999, with Comparisons

Item	Unit	Jul 1999 1/	Aug 1999 1/	Sep 1999 2/
Cotton, Upland				
Average Price	Dollars/Pound	.543	.530	.518
Marketings 3/	1,000 Bales	349	403	NA
Rice				
Average Price	Dollars/Cwt	8.15	7.62	7.59
Marketings 4/	1,000 Cwt	9430	9215	NA

1/ Entire month. 2/ Based on purchases for the first half of the month.
3/ Expanded data from sample of about 60 percent of buyers. 4/ Purchases
by private firms and rice (rough equivalent) shipped by cooperatives.

Citrus Fruit: Prices and Equivalent Returns, by Utilization,
by State and United States, September 1999 1/

Commodity And State	:	Equivalent Returns								
		:	F.O.B.	Packinghouse-door			On-tree			
		:	Packed	:	:	:	:	:		
	:	Fresh	:	All	Fresh	Process	All	Fresh	Process	
Dollars per Box 2/										
Grapefruit	:									
CA	:	17.00	10.12	11.56	-0.04	8.18	9.62	-1.98		
	:									
US	:	17.00	10.12	11.56	-0.04	8.18	9.62	-1.98		
	:									
Lemons	:									
AZ	:	40.30	28.95	31.86	0.74	25.31	28.22	-2.90		
CA	:	39.50	21.50	31.06	0.74	17.86	27.42	-2.90		
	:									
US	:	39.60	22.34	31.17	0.74	18.70	27.53	-2.90		
	:									
Oranges	:									
CA	:									
Valencia	:	23.40	10.06	17.50	3.16	7.98	15.42	1.08		
	:									
US	:	23.40	10.06	17.50	3.16	7.98	15.42	1.08		

1/ Lime prices not published to avoid disclosure of individual operations.
2/ Net lbs. per box: Grapefruit-67; Lemons-76; Oranges-75.

Potatoes: Prices Received, by States,
August and September 1999

State	Aug	Sep	State	Aug	Sep
	: Dollars per Cwt			: Dollars per Cwt	
AL	8.90	8.25	NC	7.80	
AZ			ND - All 1/		4.95
CA - All	13.80	17.80	- Fresh 2/		
- Winter			- Processing		
- Spring			OH	8.00	7.70
- Summer	13.80	17.80	OR	4.75	4.35
- Fall			PA	6.40	6.65
CO - All 1/	7.20	5.35	TX	8.80	
- Fresh 2/	9.10	NA	VA	6.20	
FL			WA - All	6.20	4.90
ID - All 1/	5.90	5.00	- Processing	4.30	NA
- Fresh 2/	7.80	NA	WI - All 1/	6.60	5.25
- Processing	5.00	NA	- Fresh 2/	7.00	NA
ME	5.90	5.30	- Processing	3.85	NA
MI	6.45	5.90			
MN	6.00	5.00	US - All 1/	6.33	5.26
NY	9.75	9.45	- Fresh 2/	9.36	NA
			- Processing	4.64	NA

- 1/ Average price of potatoes sold for all uses, including table stock, processing, seed and livestock feed.
2/ Fresh market prices only, includes table stock prices.

Cattle: Prices Received, by States, August and September 1999

State	Cows 1/		Steers & Heifers:		Beef Cattle 4/		Calves	
	Aug 2/	Sep 3/	Aug 2/	Sep 3/	Aug 2/	Sep 3/	Aug 2/	Sep 3/
	Dollars per Cwt							
AZ	38.90	36.80	64.50	65.50	64.20	65.20	88.50	90.50
AR	32.50	30.40	69.80	70.80	57.10	55.40	81.20	82.30
CA	36.00	35.00	64.00	64.50	49.70	48.90	76.50	84.50
CO	37.20	36.30	65.10	67.40	64.00	66.50	83.90	90.80
FL	34.60	33.50	71.20	70.10	45.90	44.80	87.30	84.50
GA	33.10	32.30	67.10	68.00	44.30	44.10	82.30	81.30
ID	36.30	36.50	65.20	66.00	60.00	59.50	80.00	82.00
IL	36.70	35.50	63.30	63.70	62.80	63.10	107.00	110.00
IA	38.30	38.00	64.50	65.30	62.90	63.70	87.40	92.10
KS	36.70	33.60	66.90	66.00	66.60	65.40	91.00	89.00
KY	35.00	33.00	71.00	72.00	62.40	62.60	79.00	80.00
LA	34.70	33.00	70.40	71.00	47.90	47.10	82.90	85.00
MI	36.50	34.50	61.50	59.80	54.00	52.20	73.50	70.00
MN	36.80	36.50	62.70	63.50	58.30	58.90	81.60	83.00
MO	37.00	34.20	76.20	78.00	67.60	68.40	85.00	86.00
MT	38.90	37.30	74.00	74.70	63.50	68.30	88.10	88.00
NE	37.60	34.80	65.80	67.00	65.10	66.00	91.00	95.00
NM	41.40	39.20	74.50	75.10	61.30	61.10	88.70	83.90
ND	38.20	35.00	72.30	74.00	61.70	66.20	88.60	85.00
OH	34.20	33.00	65.40	64.00	62.30	60.90	80.00	81.00
OK	37.10	34.20	75.70	78.50	70.50	72.30	86.30	85.50
OR	38.50	37.80	71.60	73.00	61.70	62.40	77.40	79.40
PA	36.60	36.00	62.40	62.00	55.70	55.20	105.00	99.00
SD	37.60	35.40	75.30	74.50	69.30	69.80	92.90	93.00
TN	33.50	29.50	73.50	73.00	57.50	55.60	79.50	80.50
TX	34.40	33.10	68.00	69.00	65.70	66.50	91.00	91.50
VA	31.20	30.30	70.60	69.50	58.40	60.90	78.50	75.60
WI	37.90	35.60	63.10	64.50	48.50	47.70	117.00	117.00
WY	38.30	36.70	76.00	77.50	72.60	73.40	92.90	90.00
US	36.30	34.90	66.20	66.90	63.50	63.80	89.60	91.20

- 1/ Beef cows and cull dairy cows sold for slaughter.
- 2/ Entire month.
- 3/ Mid-month.
- 4/ "Cows" and "steers and heifers" combined.

Hogs: Prices Received, by States, August and September 1999

State	Sows		Barrows and Gilts		All Hogs	
	Aug 1/	Sep 2/	Aug 1/	Sep 2/	Aug 1/	Sep 2/
	Dollars per Cwt					
GA	21.90	21.50	37.40	34.40	35.90	33.10
IL	23.10	20.80	35.70	30.70	34.70	29.90
IN	23.90	23.60	36.70	33.90	35.40	32.90
IA	24.30	22.50	38.60	33.60	38.30	33.40
KS	23.90	24.10	34.00	32.30	32.80	31.20
KY	23.00	22.00	35.00	31.00	34.50	30.60
MI	21.90	20.50	38.70	37.00	36.30	34.70
MN	25.40	23.00	37.30	34.00	36.80	33.60
MO	22.30	21.30	34.50	30.30	33.40	29.50
NE	25.60	24.90	38.10	33.70	38.10	33.50
NC	24.00	24.00	36.40	31.50	36.30	31.40
OH	20.20	20.00	38.20	33.00	36.60	31.70
PA	21.10	18.10	35.40	32.40	33.30	30.30
SC	23.20	21.70	35.40	32.10	34.60	31.50
SD	25.20	24.80	38.00	37.70	36.20	36.20
TN	24.00	23.00	36.50	33.00	35.30	32.00
TX	18.50	18.30	31.20	31.50	29.30	29.50
VA	19.50	18.50	35.90	33.40	35.60	33.10
WI	19.70	19.50	34.80	29.70	32.80	28.40
US	23.10	22.00	36.90	32.90	36.20	32.30

1/ Entire month
2/ Mid-month.

Sheep and Poultry: Prices Received, by States,
August and September 1999

State	August		September		
	Sheep 1/	Lambs 1/	Turkeys 2/3/	Broilers 1/4/	Eggs 2/5/
	---- Dollars per Cwt ----		Dollars per Pound		Dol/Doz
AL				.380	.430
AZ					
AR			.50	.360	.330
CA	29.50	80.00	.46		.390
CO	29.40	83.50			
CT					.540
DE				.360	
FL					.320
GA				.370	.360
ID	31.00	75.00			
IN			.46		.420
IA	30.30	80.00	.36		.294
KS	25.00	84.00			
ME					.610
MD				.360	
MI					.390
MN	24.40	80.70	.35		.340
MS				.355	.490
MO			.50		.279
MT	28.60	79.60			
NE	33.00	80.60			
NM					
NY					.481
NC			.48	.365	.314
OH	36.80	70.10			.467
OR	27.00	71.20			
PA			.44	.362	.440
SC					.449
SD	27.80	81.30			
TX	39.70	83.00		.370	.380
UT	22.00	76.00			
VA			.47	.350	
WA					.469
WY	29.20	81.10			
US	29.80	80.30	.445	.365	.397

- 1/ Entire month.
- 2/ Mid-month.
- 3/ IN, IA, MN and PA are actual liveweight prices. All other State prices are equivalent liveweight returns to producers (see footnote 4 for formula).
- 4/ Liveweight equivalent price. Derived from ready-to-cook (RTC) prices using the following formula: (RTC price minus processing cost) * (dressing percentage) = liveweight equivalent price.
- 5/ Market (table) eggs.

Milk and Milk Cows: Prices Received, by States, August and September 1999

State	August				September				
	Fluid Grade Milk 1/	Manufacturing Grade Milk	All Milk 2/		All Milk 2/3/		Milk Cows 4/		
	Price	Fat Test	Price	Fat Test	Price	Fat Test	Price	Fat Test	
	Dol/Cwt	Pct	Dol/Cwt	Pct	Dol/Cwt	Pct	Dol/Cwt	Pct	Dol/Head
AL	14.70	3.59			14.70	3.59	16.70	3.59	
AZ	14.70	3.55			14.70	3.55	15.70	3.54	
AR	13.30	3.60			13.30	3.60	15.50	3.60	
CA	15.00	3.54	15.40	3.98	15.00	3.54	14.80	3.61	
CO	13.70	3.47			13.70	3.47	15.00	3.49	
FL	16.20	3.60			16.20	3.60	18.10	3.60	
GA	14.50	3.51			14.50	3.51	16.70	3.55	
ID	16.20	3.46	16.70	3.61	16.20	3.46	16.90	3.53	
IL	13.30	3.55	16.50	3.54	13.50	3.55	15.20	3.65	
IN	13.00	3.51	14.50	3.50	13.10	3.51	15.40	3.60	
IA	12.80	3.51	14.90	3.52	12.90	3.51	14.80	3.61	
KS	13.50	3.49	13.00	3.48	13.50	3.49	14.50	3.59	
KY	13.50	3.49	13.60	3.60	13.50	3.49	15.60	3.54	
LA	15.20	3.52			15.20	3.52	16.00	3.56	
MD	14.10	3.56			14.10	3.56	16.30	3.60	
MI	13.90	3.51	15.30	3.47	13.90	3.51	16.10	3.59	
MN	17.10	3.59	15.40	3.59	16.98	3.59	16.70	3.67	
MS	15.20	3.62			15.20	3.62	17.40	3.67	
MO	13.90	3.48	14.20	3.66	13.90	3.49	14.50	3.61	
NE	12.80	3.54	13.70	3.55	12.90	3.54	15.00	3.57	
NM	14.30	3.43			14.30	3.43	15.30	3.49	
NY	14.40	3.52			14.40	3.52	16.40	3.58	
NC	15.70	3.59	15.40	3.91	15.70	3.59	18.00	3.64	
ND	15.90	3.56	13.70	3.56	15.10	3.56	14.80	3.63	
OH	13.90	3.55	13.90	3.65	13.90	3.56	15.90	3.58	
OK	14.40	3.47			14.40	3.47	16.00	3.55	
OR	14.40	3.55	14.00	3.72	14.40	3.55	15.30	3.60	
PA	14.30	3.53	15.60	3.59	14.30	3.53	16.50	3.60	
TN	13.80	3.54	13.70	3.60	13.80	3.54	15.00	3.60	
TX	15.10	3.54			15.10	3.54	15.60	3.62	
UT	13.20	3.46	14.80	3.46	13.30	3.46	14.90	3.58	
VT	14.90	3.57			14.90	3.57	16.00	3.63	
VA	14.50	3.42	12.70	4.25	14.50	3.44	16.40	3.54	
WA	14.45	3.55			14.50	3.55	15.30	3.59	
WI	16.55	3.59	15.76	3.66	16.49	3.59	16.80	3.69	
US	15.00	3.54	15.20	3.64	15.00	3.54	15.90	3.61	

- 1/ Including milk diverted to manufacturing.
- 2/ Before deductions for hauling. Includes quality, quantity, and other premiums. Excludes hauling subsidies.
- 3/ Preliminary.
- 4/ Animals sold for dairy herd replacement only. Prices published Jan, Apr, Jul and Oct.

Parity Price Equivalent for Manufacturing Milk 1/: United States, August and September 1999, with Comparisons

Item	Unit	Sep 1998	Aug 1999	Sep 1999
Parity Equivalent.....	Dol per Cwt	26.27	27.69	27.97
Average Price F.O.B.....	Dol per Cwt	15.40	15.20	2/15.50
Average Fat Test of Milk..	Percent	3.69	3.64	2/3.72

- 1/ The parity price equivalent during 1999 is 91.1 percent of the parity price of all milk sold to plants, compared with 90.9 percent in 1998. For additional details, see January 1999 issue of "Agricultural Prices".
- 2/ Preliminary.

United States Parity Prices for Farm Products and Average Prices Received as Percent of Parity Prices Based on Data for September 1999, with Comparisons 1/

Commodity and Unit	: Adjusted: : : Base : : Prices :	Parity Prices Based on Data for			: Prices as Percent : of Parity			
		: Sep : : 1998 :	: Aug : : 1999 :	: Sep : : 1999 :	: Sep : : 1998:	: Aug : : 1999:	: Sep : : 1999:	
		----- Dollars -----			----- Percents -----			
Basic Commodities	:							
All Wheat, Bu	:	.626	9.52	9.67	9.76	25	26	26
Rice, Cwt	:	1.78	26.50	27.50	27.80	35	28	27
Corn, Bu	:	.428	6.47	6.61	6.67	28	26	27
Cotton, Lb	:							
American Upland	:	.113	1.69	1.74	1.76	40	30	29
Extra Long Staple	:	.145	2.22	2.24	2.26			
Peanuts, Lb	:	.0425	.636	.656	.663	42	39	41
Tobacco, By Type, Lb	:							
Flue-Cured 11-14	:	.252	3.75	3.89	3.93	48	42	44
VA Fire-Cured, 21	:	.249	3.66	3.84	3.88			
KY-TN Fire-Cured, 22-23	:	.313	4.69	4.83	4.88			
Burley, 31	:	.266	3.95	4.11	4.15			
Maryland, 32	:	.231	3.27	3.57	3.60			
Dark Air-Cured, 35-36	:	.266	3.93	4.11	4.15			
Sun-Cured, 37	:	.226	3.29	3.49	3.52			
PA Seedleaf, 41	:	.193	2.80	2.98	3.01			
Cigar Filler & Binder, 42-44, 54-55	:	.217	3.21	3.35	3.38			
Puerto Rican Filler, 46	:	.173	2.61	2.67	2.70			
Cigar Binder, 51-52	:	.552	7.37	8.52	8.61			
Designated Nonbasic	:							
All Milk, Sold to Plants, Per Cwt	:	1.97	28.90	30.40	30.70	2/57	2/49	2/51
Honey, Extracted, Lb	:	3/.0878	1.29	1.36	1.37			
Wool and Mohair	:							
Wool, Lb	:	.125	4.07	1.93	1.95			
Mohair, Lb	:	.231	10.90	3.57	3.60			
Other Nonbasic	:							
Barley, Bu	:	.383	5.82	5.91	5.97	35	40	36
Cottonseed, Ton	:	15.90	237.00	245.00	248.00	48	29	29
Dry Edible Beans, Cwt	:	3.26	49.60	50.30	50.80	39	37	36
Flaxseed, Bu	:	.780	11.80	12.00	12.20	43	32	32
Oats, Bu	:	.224	3.57	3.46	3.49	30	28	30
Potatoes, Cwt	:	.860	12.60	13.30	13.40	39	48	39
Rye, Bu	:	.326	4.90	5.03	5.08			
Sorghum Grain, Cwt	:	.674	10.20	10.40	10.50	29	28	27
Soybeans, Bu	:	.905	13.90	14.00	14.10	38	31	33
Sweetpotatoes, Cwt	:	2.04	24.30	31.50	31.80			
Apples, Fresh, Lb 5/	:	.0290	.429	.448	.452	53	41	51
Citrus (equiv on-tree), box:	:							
Grapefruit	:	.524	10.60	8.09	8.17	105	92	100
Lemons	:	1.20	17.30	18.50	18.70	113	89	100
Limes (FL)	:	1.17	18.20	18.10	18.20	49		
Oranges	:	.747	13.60	11.50	11.60	37	100	69
Tangerines	:	1.79	28.60	27.60	27.90			
Temples (FL)	:	.635	11.40	9.80	9.90			
Beef Cattle, Cwt	:	9.80	149.00	151.00	153.00	38	42	42
Calves, Cwt	:	12.50	190.00	193.00	195.00	39	46	47
Hogs, Cwt	:	6.58	101.00	102.00	103.00	29	35	31
Lambs, Cwt	:	10.10	152.00	156.00	157.00	47	44	
Sheep, Cwt	:	4.21	62.10	65.00	65.60	43	45	
Eggs, Doz	:	.0964	1.43	1.49	1.50	2/46	2/43	2/39
Turkeys, Live, Lb	:	.0576	.867	.889	.898	46	48	50

--continued

Parity Prices Based on Data for September 1999, United States 1/ (continued)

Other Nonbasic Commodities	Adj Base Prices	Parity Prices	Other Nonbasic Commodities	Adj Base Prices	Parity Prices
	Dollars			Dollars	
Field Crops and Misc Commodities			Noncitrus Fruit		
Hops, Lb	.239	3.73	Peaches, cont.		
Spearmint Oil, Lb	1.85	28.80	Processing 6/		
Tobacco, Lb			Excl Dried		
Type 61	2.78	43.30	Clingstone, CA, Ton	31.60	493.00
Noncitrus Fruit			Pears, Ton		
Apples, Ton 7/			Fresh 5/	51.70	806.00
Processing	19.80	309.00	Dried, CA 7/	148.00	2310.00
Apricots, Ton			Plums, CA, Ton		
Fresh 8/	122.00	1900.00	Fresh, Equiv on-Tree	53.70	837.00
Dried, CA	293.00	4570.00	Prunes, Dried, CA, Ton 7/	135.00	2100.00
Avocados, Ton 8/	192.00	2990.00	Prunes and Plums, Excl CA, Ton		
Cherries			Fresh 10/	55.30	862.00
Sweet, Ton	157.00	2450.00	Processing 7/		
Tart, Lb	.0265	.413	Excl Dried	22.40	349.00
Cranberry, Bbl 6/	7.55	118.00	Tree Nuts 11/		
Dates, CA, Ton 8/	139.00	2170.00	Almonds, Lb	.227	3.54
Grapes, Ton			Hazelnuts, Ton	117.00	1820.00
Raisin Variety	142.00	2210.00	Pistachio, Lb	.164	2.56
Other Dried	58.40	910.00	Walnuts, Ton	179.00	2790.00
Kiwifruit, Ton	72.60	1130.00	Vegetables, Cwt 12/		
Nectarines			Fresh		
Fresh, Calif, Ton 8/	63.00	982.00	Carrots 9/	1.78	27.80
Olives, CA			Cauliflower 9/	4.31	67.20
Canning, Ton 6/	93.20	1450.00	Celery 9/	1.85	28.80
Papayas (HA) Lb	.0479	.747	Honeydew Melons	2.52	39.30
Peaches			Lettuce	2.15	33.50
Fresh, Lb 5/	.0384	.599	Onions 9/	1.70	26.50
Dried, CA, Ton	119.00	1860.00	Tomatoes	4.47	69.70

- 1/ Parity prices are computed under the provisions of Title III, Subtitle a, Section 301 (a) of the Agricultural Adjustment Act of 1938 as amended by the Agricultural Acts of 1948, 1949, and 1956. See January "Agricultural Prices" for details on adjusted base price and parity price computations.
- 2/ Seasonally adjusted price as percentage of parity price.
- 3/ Wholesale extracted. Adjusted base price derived from state annual average prices weighted by production. For 1982 through 1985 the national averages are the support prices.
- 4/ Average local market price, excluding incentive payments.
- 5/ Equivalent packinghouse-door returns for CA, NY (apples only), OR (except peaches), and WA. Price at point of first sale for other states.
- 6/ Equivalent returns for bulk fruit at first delivery point.
- 7/ Equivalent returns at processing plant door.
- 8/ Equivalent returns at packinghouse door.
- 9/ Includes some processing.
- 10/ Based on "as sold" prices for fresh fruit in all states.
- 11/ Prices in-shell basis except almonds which are shelled basis.
- 12/ F.O.B. shipping point prices.

Potatoes: Prices Received, Monthly and Marketing Year Average
by State and U.S., 1998 1/

State	Jan	Feb	Mar	Apr	May	Jun
	Dollars per Cwt					
AL					12.30	13.20
AK						
AZ				9.10	13.50	8.40
CA - All	11.00	12.30	17.10	15.30	11.00	10.20
Winter	16.60	22.40	23.20	28.40		
Spring					12.00	10.70
Summer						
Fall	8.00	8.00	7.30	7.45	7.10	7.60
CO - All	4.50	4.45	4.75	4.30	4.05	3.90
Fresh	4.70	4.60	4.50	4.20	4.35	4.25
DE						
FL	33.00	31.50	30.00	16.60	10.70	13.20
ID - All	4.40	4.40	4.40	4.55	4.50	3.85
Fresh	4.00	4.00	3.80	3.60	3.40	3.00
Processing	4.80	4.80	4.70	4.80	4.90	4.90
IL						
IN						
IA						
ME	6.10	6.35	6.55	6.95	6.75	6.30
MD						
MA						
MI	6.30	6.55	6.65	7.25	8.05	
MN	6.20	6.20	6.65	6.60	5.85	
MO						
MT						
NE						
NV						
NJ						
NM						
NY	8.05	8.00	8.40	8.40	9.85	
NC						6.10
ND - All	5.95	6.55	6.05	7.00	6.00	5.80
Fresh	7.00	7.00	7.40	7.00	4.50	3.60
Processing	5.10	5.80	5.15	5.35	5.80	5.85
OH	8.35	8.60	8.60	9.20		
OR	5.40	5.30	5.95	6.05	5.75	5.10
PA	7.95	9.05	10.60	9.55	9.80	9.55
RI						
SD						
TX					9.35	9.10
UT						
VA						11.00
WA - All	5.35	5.35	5.10	5.00	4.95	5.15
Processing	4.90	5.00	4.85	4.90	5.35	5.15
WI - All	5.55	5.70	6.80	6.55	6.35	6.50
Fresh	5.20	4.05	4.60	3.95	4.25	5.00
Processing	5.30	5.80	7.15	7.70	7.50	7.50
WY						
US - All	5.40	5.94	6.41	6.27	6.45	6.16
Fresh	5.76	6.81	7.54	6.84	7.29	7.24
Processing	5.06	5.25	5.24	5.49	5.97	5.58

See footnote at end of table.

-- continued

Potatoes: Prices Received, Monthly and Marketing Year Average
by State and U.S., 1998 1/ (continued)

State	Jul	Aug	Sep	Oct	Nov	Dec	MYA
Dollars per Cwt							
AL	12.80						12.90
AK							21.70
AZ	11.30						11.30
CA - All	9.90	10.90	12.00	10.70	11.50	14.20	11.60
Winter					18.10	20.30	22.40
Spring	9.35						10.50
Summer	13.80	10.90	12.00	13.40			11.90
Fall	11.10			8.50	5.00	7.60	8.40
CO - All	4.60	5.95	5.60	4.55	3.90	3.65	4.65
Fresh	5.10	6.65	5.90	4.75	4.05	3.70	4.70
DE							7.45
FL							14.70
ID - All	3.45	3.80	4.55	4.25	4.20	4.00	4.55
Fresh	2.40	2.80	4.40	4.10	3.70	3.40	4.35
Processing	4.50	4.80	4.60	4.30	4.40	4.40	4.55
IL							5.25
IN							5.65
IA							5.35
ME		6.25	5.40	5.70	5.85	5.90	6.45
MD							7.25
MA							6.25
MI	6.25	5.70	5.25	5.60	6.40	6.55	6.70
MN		6.00	4.25	4.15	4.30	5.80	5.10
MO							5.15
MT							7.95
NE							4.95
NV							4.25
NJ							6.95
NM							5.85
NY		9.75	9.35	9.35	9.35	9.60	9.35
NC	6.10	7.80					6.15
ND - All	5.50	6.05	5.10	5.60	5.15	5.70	5.30
Fresh		4.00	5.05	5.65	5.40	5.20	4.75
Processing	5.50	6.10	4.95	5.40	4.75	5.60	5.15
OH	9.45	7.30	7.30	5.90	5.20	6.80	6.60
OR	5.15	4.50	4.65	4.20	4.85	5.40	5.05
PA		8.40	6.40	6.35	6.35	6.95	7.35
RI							6.60
SD							4.85
TX	9.75	9.15					9.35
UT							4.85
VA	8.20	7.90	5.90				8.10
WA - All	4.25	5.35	4.85	4.00	4.15	5.25	4.80
Processing	4.40	4.85	4.00	3.95	3.85	4.85	4.40
WI - All	5.15	4.85	4.85	4.65	4.55	4.45	4.95
Fresh	5.50	5.05	5.40	5.15	4.30	4.20	5.00
Processing	4.85	4.45	4.60	4.35	4.65	4.10	4.75
WY							4.00
US - All	5.81	5.46	4.97	4.47	4.86	5.30	5.56
Fresh	6.99	6.74	6.31	5.44	5.46	5.62	6.94
Processing	5.04	4.93	4.49	4.28	4.52	5.07	4.86

1/ Preliminary. State Marketing Year Average Prices are computed by weighting state monthly prices by estimated sales for the month during the crop year. U.S. Marketing Year Average Price is computed by weighting state Marketing Year Average Prices by estimated sales for the crop year. Monthly prices refer to all potatoes sold in a given month regardless of the year harvested.

Citrus Prices

Revised State and U.S. monthly average prices and equivalent returns, and marketing year average prices for the 1996-97, 1997-98 and 1998-99 citrus crops are shown on pages 27 through 52 of this publication. These data, together with the September Agricultural Prices 1966-98 issues, supplement to the September 1965 issue, supplements to the October 1953-1964 issues and Statistical Bulletin No. 322 published in September 1962, bring to date the citrus price bulletin published as a supplement to the November 1952 issue of Agricultural Prices.

Revised monthly prices refer to all fruit sold in a given month regardless of the crop year in which the fruit was harvested.

Marketing year average prices refer to the prices received by growers for the entire marketing season for any one crop year. The crop year 1998-99 as shown on all citrus tables in this publication refers to the crop which bloomed in 1998 and was marketed during the 1998-99 season. For example, the 1998-99 marketing year average price received by California growers for tangerines refers to marketings from October 1998 through April 1999. In some years the season may vary a month or two, but a price was estimated only for those months with sufficient movement.

Monthly and marketing year average prices are weighted by box size at the U.S. level for grapefruit, oranges, and tangerines. Approximate net contents per box are as follows: Grapefruit: Arizona and California - 67 lbs., Florida - 85 lbs., and Texas - 80 lbs; Lemons - 76 lbs; Limes - 88 lbs.; Oranges: Arizona and California - 75 lbs., Florida - 90 lbs., and Texas - 85 lbs.; Tangelos - 90 lbs.; Tangerines: Arizona and California - 75 lbs. and Florida - 95 lbs.; Temples - 90 lbs.

Citrus prices are based on weighted average f.o.b. packed prices received for fresh fruit and weighted average prices received at the processing plant door for processing fruit. Equivalent returns for fresh and processed fruit are calculated at the packinghouse-door level and on-tree level by deducting hauling, picking, sorting, grading, packing, cooling, marketing, and other costs from the two base prices. In some cases, this results in negative returns.

Oranges: Average Prices and Equivalent Returns, United States
September 1996 - August 1999

State, Month, and Year		Equiv. P.H.D.			Equiv. On-Tree			
		F.O.B. Packed	All	Fresh	Proc.	All	Fresh	Proc.
		Dollars per box						
US		All Oranges						
Sep	1996	27.10	15.78	21.20	-0.48	13.70	19.12	-2.56
Oct		23.60	12.89	17.21	-0.14	10.94	15.27	-2.13
Nov		16.80	6.07	10.13	4.63	4.17	8.22	2.73
Dec		14.90	5.42	8.43	4.93	3.52	6.49	3.03
Jan	1997	15.10	5.49	8.84	5.02	3.59	6.89	3.12
Feb		15.10	5.59	8.93	4.93	3.67	6.97	3.02
Mar		15.50	6.78	9.33	5.53	4.82	7.35	3.57
Apr		16.30	6.64	10.09	5.92	4.68	8.11	3.97
May		17.00	6.71	10.84	5.91	4.74	8.81	3.96
Jun		16.50	6.60	10.45	5.59	4.62	8.40	3.63
Jul		16.80	8.56	10.90	2.88	6.48	8.82	0.80
Aug		18.50	9.53	12.60	3.38	7.45	10.52	1.30
Sep		18.70	9.23	12.80	3.40	7.15	10.72	1.32
Oct		16.20	6.36	9.60	3.56	4.48	7.65	1.75
Nov		15.10	4.87	8.66	4.12	3.09	6.73	2.37
Dec		14.60	4.92	8.08	4.29	3.14	6.15	2.53
Jan	1998	14.10	4.91	7.83	4.51	3.14	5.88	2.76
Feb		14.30	5.34	8.09	4.80	3.55	6.14	3.04
Mar		15.70	6.93	9.46	6.27	5.05	7.49	4.41
Apr		17.90	7.31	11.69	6.56	5.44	9.72	4.71
May		18.30	7.58	12.16	6.74	5.70	10.15	4.89
Jun		17.80	7.96	11.80	6.75	6.05	9.75	4.89
Jul		16.30	8.85	10.40	3.10	6.77	8.32	1.02
Aug		15.10	7.64	9.20	3.10	5.56	7.12	1.02
Sep		16.00	8.11	10.10	3.56	6.03	8.02	1.48
Oct		17.10	8.39	10.76	3.87	6.38	8.73	1.91
Nov		19.30	7.25	12.66	5.74	5.37	10.69	3.89
Dec		19.40	6.86	12.82	5.77	4.99	10.87	3.92
Jan	1999	24.70	6.85	17.99	6.13	4.98	16.07	4.27
Feb		24.50	7.59	17.97	6.63	5.71	16.01	4.76
Mar		24.30	7.99	17.85	6.55	6.03	15.87	4.60
Apr		24.00	8.04	17.38	7.08	6.09	15.37	5.13
May		26.70	9.38	20.38	7.28	7.40	18.33	5.32
Jun		26.70	11.91	20.62	6.94	9.90	18.56	4.96
Jul		25.00	9.62	19.10	3.16	7.54	17.02	1.08
Aug		25.00	13.56	19.10	3.16	11.48	17.02	1.08

Oranges: Average Prices and Equivalent Returns, Arizona
November 1996 - June 1999

State, Month, and Year		Equiv. P.H.D.			Equiv. On-Tree			
		F.O.B. Packed	All	Fresh	Proc.	All	Fresh	Proc.
Dollars per box								
AZ								
All Oranges								
Nov	1996	19.40	11.48	13.38	-0.28	9.50	11.40	-2.26
Dec		16.90	8.54	10.88	-0.28	6.56	8.90	-2.26
Jan	1997	15.70	8.28	9.68	-0.08	6.30	7.70	-2.06
Feb		11.50	5.09	5.48	0.60	3.11	3.50	-1.38
Mar		10.60	4.58	4.65	0.64	2.53	2.60	-1.34
Apr		11.60	5.64	5.70	1.08	3.56	3.62	-1.00
May		11.30	5.35	5.40	1.26	3.27	3.32	-0.82
Jun		8.10	2.20	2.20		0.12	0.12	
Oct			-0.28		-0.28	-2.26		-2.26
Nov		15.20	5.83	9.18	-0.28	3.85	7.20	-2.26
Dec		16.10	6.78	10.08	-0.28	4.80	8.10	-2.26
Jan	1998	14.20	5.40	8.18	-0.04	3.42	6.20	-2.02
Feb		9.22	2.60	3.20	0.55	0.61	1.22	-1.45
Mar		11.00	4.72	5.10	0.66	2.67	3.05	-1.32
Apr		11.60	5.63	5.70	0.84	3.56	3.62	-1.17
May		10.40	4.49	4.50	2.36	2.41	2.42	0.28
Jun		11.80	5.90	5.90		3.82	3.82	
Nov		24.40	15.33	18.38	0.46	13.35	16.40	-1.52
Dec		22.60	13.75	16.58	0.62	11.77	14.60	-1.36
Jan	1999	35.80	24.04	29.78	0.84	22.06	27.80	-1.14
Feb		28.10	18.64	22.06	0.23	16.65	20.08	-1.76
Mar		30.30	17.04	24.33	2.83	15.01	22.31	0.79
Apr		27.30	18.66	21.40	1.68	16.59	19.32	-0.38
May		29.40	18.34	23.46	2.38	16.27	21.39	0.30
Jun		29.50	15.78	23.60	3.16	13.70	21.52	1.08
AZ								
Navel and Miscellaneous								
Nov	1996	19.40	11.48	13.38	-0.28	9.50	11.40	-2.26
Dec		16.90	8.54	10.88	-0.28	6.56	8.90	-2.26
Jan	1997	15.70	8.28	9.68	-0.08	6.30	7.70	-2.06
Feb		11.50	5.09	5.48	0.60	3.11	3.50	-1.38
Mar		9.00	2.86	2.98	0.64	0.88	1.00	-1.34
Oct			-0.28		-0.28	-2.26		-2.26
Nov		15.20	5.83	9.18	-0.28	3.85	7.20	-2.26
Dec		16.10	6.78	10.08	-0.28	4.80	8.10	-2.26
Jan	1998	14.20	5.40	8.18	-0.04	3.42	6.20	-2.02
Feb		9.22	2.63	3.20	0.20	0.65	1.22	-1.78
Mar		8.40	1.90	2.38	0.66	-0.08	0.40	-1.32
Apr			0.66		0.66	-1.32		-1.32
Nov		24.40	15.33	18.38	0.46	13.35	16.40	-1.52
Dec		22.60	13.75	16.58	0.62	11.77	14.60	-1.36
Jan	1999	35.80	24.04	29.78	0.84	22.06	27.80	-1.14
Feb		27.90	18.59	21.88	-0.18	16.61	19.90	-2.16
Mar		26.60	15.20	20.58	-0.22	13.22	18.60	-2.20
Apr		18.20	9.15	12.18	0.06	7.17	10.20	-1.92
May		7.00	0.98	0.98		-1.00	-1.00	

Oranges: Average Prices and Equivalent Returns, Arizona and California
September 1996 - August 1999

State, Month, and Year	Equiv. P.H.D.				Equiv. On-Tree		
	F.O.B.						
	Packed	All	Fresh	Proc.	All	Fresh	Proc.
Dollars per box							
AZ							
Valencias							
Mar 1997	11.30	5.40	5.40		3.32	3.32	
Apr	11.60	5.64	5.70	1.08	3.56	3.62	-1.00
May	11.30	5.35	5.40	1.26	3.27	3.32	-0.82
Jun	8.10	2.20	2.20		0.12	0.12	
Feb 1998		1.96		1.96	-0.12		-0.12
Mar	11.90	6.00	6.00		3.92	3.92	
Apr	11.60	5.69	5.70	1.36	3.61	3.62	-0.72
May	10.40	4.49	4.50	2.36	2.41	2.42	0.28
Jun	11.80	5.90	5.90		3.82	3.82	
Feb 1999	30.40	19.15	24.50	3.10	17.07	22.42	1.02
Mar	34.90	18.84	29.00	4.68	16.76	26.92	2.60
Apr	28.00	19.50	22.10	1.96	17.42	20.02	-0.12
May	30.90	19.23	25.00	2.38	17.15	22.92	0.30
Jun	29.50	15.78	23.60	3.16	13.70	21.52	1.08
CA							
All Oranges							
Sep 1996	27.10	15.78	21.20	-0.48	13.70	19.12	-2.56
Oct	24.30	13.39	18.36	-0.44	11.33	16.31	-2.49
Nov	18.50	10.86	12.48	-0.28	8.88	10.50	-2.26
Dec	16.40	9.31	10.38	-0.28	7.33	8.40	-2.26
Jan 1997	16.20	9.15	10.18	-0.08	7.17	8.20	-2.06
Feb	15.50	8.17	9.45	0.66	6.18	7.47	-1.32
Mar	15.80	8.39	9.79	0.72	6.40	7.80	-1.27
Apr	17.30	9.38	11.27	0.72	7.38	9.27	-1.28
May	18.20	10.40	12.23	1.08	8.35	10.18	-0.97
Jun	16.40	8.01	10.50	1.52	5.93	8.42	-0.56
Jul	16.80	8.56	10.90	2.88	6.48	8.82	0.80
Aug	18.50	9.53	12.60	3.38	7.45	10.52	1.30
Sep	18.70	9.23	12.80	3.40	7.15	10.72	1.32
Oct	17.80	8.71	11.83	2.84	6.66	9.79	0.77
Nov	16.70	9.58	10.68	-0.28	7.60	8.70	-2.26
Dec	16.00	8.84	9.98	-0.28	6.86	8.00	-2.26
Jan 1998	14.90	7.65	8.88	-0.04	5.67	6.90	-2.02
Feb	14.90	7.51	8.88	0.28	5.53	6.90	-1.71
Mar	16.10	7.98	10.05	0.75	6.00	8.06	-1.24
Apr	19.40	10.72	13.35	0.78	8.72	11.36	-1.22
May	19.60	10.94	13.63	1.29	8.91	11.60	-0.73
Jun	18.20	10.45	12.33	2.88	8.38	10.26	0.81
Jul	16.30	8.85	10.40	3.10	6.77	8.32	1.02
Aug	15.10	7.64	9.20	3.10	5.56	7.12	1.02
Sep	16.00	8.11	10.10	3.56	6.03	8.02	1.48
Oct	16.90	8.51	11.00	1.84	6.43	8.92	-0.24
Nov	21.30	13.09	15.31	0.73	11.08	13.31	-1.28
Dec	21.30	12.75	15.28	0.62	10.77	13.30	-1.36
Jan 1999	29.50	7.50	23.48	0.84	5.52	21.50	-1.14
Feb	28.20	12.01	22.15	0.29	10.03	20.16	-1.69
Mar	27.70	10.99	21.65	-0.04	9.00	19.66	-2.02
Apr	32.50	15.11	26.49	0.33	13.10	24.46	-1.68
May	30.60	15.66	24.71	2.23	13.59	22.63	0.15
Jun	27.80	14.59	21.90	3.16	12.51	19.82	1.08
Jul	25.00	9.62	19.10	3.16	7.54	17.02	1.08
Aug	25.00	13.56	19.10	3.16	11.48	17.02	1.08

Oranges: Average Prices and Equivalent Returns, California
October 1996 - August 1999

State, Month, and Year	Equiv. P.H.D.			Equiv. On-Tree				
	F.O.B.							
	Packed	All	Fresh	Proc.	All	Fresh	Proc.	
Dollars per box								
CA Navels and Miscellaneous								
Oct 1996	26.60	15.94	20.58	-0.28	13.96	18.60	-2.26	
Nov	18.50	10.86	12.48	-0.28	8.88	10.50	-2.26	
Dec	16.40	9.31	10.38	-0.28	7.33	8.40	-2.26	
Jan 1997	16.20	9.15	10.18	-0.08	7.17	8.20	-2.06	
Feb	15.40	8.12	9.38	0.60	6.14	7.40	-1.38	
Mar	15.60	8.26	9.58	0.64	6.28	7.60	-1.34	
Apr	17.40	9.43	11.38	0.64	7.45	9.40	-1.34	
May	21.90	13.60	15.88	0.66	11.62	13.90	-1.32	
Oct	18.50	10.47	12.48	-0.28	8.49	10.50	-2.26	
Nov	16.70	9.58	10.68	-0.28	7.60	8.70	-2.26	
Dec	16.00	8.84	9.98	-0.28	6.86	8.00	-2.26	
Jan 1998	14.90	7.65	8.88	-0.04	5.67	6.90	-2.02	
Feb	14.90	7.53	8.88	0.20	5.55	6.90	-1.78	
Mar	16.00	7.96	9.98	0.66	5.98	8.00	-1.32	
Apr	19.40	10.77	13.38	0.66	8.79	11.40	-1.32	
May	20.30	10.73	14.28	0.66	8.75	12.30	-1.32	
Jun	22.30	13.37	16.28	0.66	11.39	14.30	-1.32	
Nov	22.10	13.68	16.08	0.46	11.70	14.10	-1.52	
Dec	21.30	12.75	15.28	0.62	10.77	13.30	-1.36	
Jan 1999	29.50	7.50	23.48	0.84	5.52	21.50	-1.14	
Feb	27.80	11.32	21.78	0.24	9.34	19.80	-1.74	
Mar	27.30	10.19	21.28	-0.18	8.21	19.30	-2.16	
Apr	34.30	13.54	28.28	-0.22	11.56	26.30	-2.20	
May	33.40	13.72	27.38	0.06	11.74	25.40	-1.92	
CA Valencias								
Feb 1997	18.60	10.04	12.70	2.04	7.96	10.62	-0.04	
Mar	18.60	10.08	12.70	1.34	8.00	10.62	-0.74	
Apr	16.70	9.12	10.80	1.08	7.04	8.72	-1.00	
May	16.30	8.84	10.40	1.26	6.76	8.32	-0.82	
Jun	16.40	8.01	10.50	1.52	5.93	8.42	-0.56	
Jul	16.80	8.56	10.90	2.88	6.48	8.82	0.80	
Aug	18.50	9.53	12.60	3.38	7.45	10.52	1.30	
Sep	18.70	9.23	12.80	3.40	7.15	10.72	1.32	
Oct	17.40	8.08	11.50	3.26	6.00	9.42	1.18	
Feb 1998	15.10	6.42	9.20	1.96	4.34	7.12	-0.12	
Mar	17.60	8.45	11.70	1.96	6.37	9.62	-0.12	
Apr	19.10	10.38	13.20	1.36	8.30	11.12	-0.72	
May	18.80	11.20	12.90	2.54	9.12	10.82	0.46	
Jun	17.80	10.14	11.90	3.10	8.06	9.82	1.02	
Jul	16.30	8.85	10.40	3.10	6.77	8.32	1.02	
Aug	15.10	7.64	9.20	3.10	5.56	7.12	1.02	
Sep	16.00	8.11	10.10	3.56	6.03	8.02	1.48	
Oct	16.90	8.51	11.00	1.84	6.43	8.92	-0.24	
Nov	19.00	11.37	13.10	1.52	9.29	11.02	-0.56	
Feb 1999	31.40	22.58	25.50	3.10	20.50	23.42	1.02	
Mar	30.20	20.59	24.30	4.68	18.51	22.22	2.60	
Apr	30.30	17.80	24.40	1.96	15.72	22.32	-0.12	
May	30.50	15.76	24.60	2.36	13.68	22.52	0.28	
Jun	27.80	14.59	21.90	3.16	12.51	19.82	1.08	
Jul	25.00	9.62	19.10	3.16	7.54	17.02	1.08	
Aug	25.00	13.56	19.10	3.16	11.48	17.02	1.08	

Oranges: Average Prices and Equivalent Returns, Florida
November 1996 - June 1999

State, Month, and Year		F.O.B. Packed	Equiv. P.H.D.			Equiv. On-Tree		
		All	Fresh	Proc.	All	Fresh	Proc.	
Dollars per box								
All Oranges								
FL								
Nov	1996	15.20	5.28	8.20	4.76	3.38	6.30	2.86
Dec		12.40	5.02	5.40	5.00	3.12	3.50	3.10
Jan	1997	11.20	5.07	4.20	5.09	3.17	2.30	3.19
Feb		13.10	5.09	6.11	5.06	3.18	4.21	3.15
Mar		13.10	5.95	6.10	5.94	4.00	4.20	3.99
Apr		12.30	6.09	5.30	6.12	4.15	3.40	4.17
May		13.10	6.06	6.10	6.06	4.11	4.20	4.11
Jun		18.20	6.16	11.20	5.97	4.21	9.30	4.02
Oct		14.50	5.05	7.40	3.78	3.25	5.50	2.03
Nov		12.40	4.26	5.30	4.19	2.50	3.40	2.44
Dec		12.20	4.42	5.10	4.37	2.66	3.20	2.62
Jan	1998	11.40	4.59	4.30	4.60	2.84	2.40	2.85
Feb		11.60	4.94	4.53	4.95	3.17	2.63	3.19
Mar		13.00	6.63	5.90	6.65	4.78	4.00	4.80
Apr		12.60	6.74	5.50	6.78	4.89	3.60	4.93
May		13.20	6.96	6.10	6.98	5.10	4.20	5.13
Jun		16.00	7.11	8.90	7.03	5.26	7.00	5.18
Oct		17.50	8.24	10.40	6.02	6.32	8.40	4.17
Nov		16.90	6.32	9.80	5.88	4.46	7.80	4.03
Dec		17.10	6.17	10.00	5.89	4.31	8.00	4.04
Jan	1999	18.50	6.71	11.40	6.59	4.86	9.40	4.74
Feb		18.30	7.08	11.19	6.95	5.22	9.19	5.09
Mar		18.00	7.39	10.90	7.20	5.44	8.90	5.25
Apr		17.60	7.47	10.50	7.30	5.52	8.50	5.35
May		18.50	7.98	11.40	7.75	6.02	9.40	5.80
Jun		22.00	9.38	14.90	8.55	7.42	12.90	6.60
Early and Midseason								
FL								
Nov	1996	15.20	5.28	8.20	4.76	3.38	6.30	2.86
Dec		12.40	5.02	5.40	5.00	3.12	3.50	3.10
Jan	1997	11.20	5.07	4.20	5.09	3.17	2.30	3.19
Feb		12.50	5.07	5.50	5.06	3.17	3.60	3.16
Oct		14.50	5.05	7.40	3.78	3.25	5.50	2.03
Nov		12.40	4.26	5.30	4.19	2.50	3.40	2.44
Dec		12.20	4.42	5.10	4.37	2.66	3.20	2.62
Jan	1998	11.40	4.59	4.30	4.60	2.84	2.40	2.85
Feb		11.10	4.94	4.00	4.95	3.18	2.10	3.20
Oct		17.50	8.24	10.40	6.02	6.32	8.40	4.17
Nov		16.90	6.32	9.80	5.88	4.46	7.80	4.03
Dec		17.10	6.17	10.00	5.89	4.31	8.00	4.04
Jan	1999	18.50	6.71	11.40	6.59	4.86	9.40	4.74
Feb		17.90	7.05	10.80	6.99	5.20	8.80	5.14
Valencias								
FL								
Feb	1997	13.80	5.19	6.80	5.07	3.24	4.90	3.12
Mar		13.10	5.95	6.10	5.94	4.00	4.20	3.99
Apr		12.30	6.09	5.30	6.12	4.15	3.40	4.17
May		13.10	6.06	6.10	6.06	4.11	4.20	4.11
Jun		18.20	6.16	11.20	5.97	4.21	9.30	4.02
Feb	1998	12.20	4.96	5.10	4.95	3.11	3.20	3.10
Mar		13.00	6.63	5.90	6.65	4.78	4.00	4.80
Apr		12.60	6.74	5.50	6.78	4.89	3.60	4.93
May		13.20	6.96	6.10	6.98	5.10	4.20	5.13
Jun		16.00	7.11	8.90	7.03	5.26	7.00	5.18
Feb	1999	18.70	7.32	11.60	6.40	5.36	9.60	4.45
Mar		18.00	7.39	10.90	7.20	5.44	8.90	5.25
Apr		17.60	7.47	10.50	7.30	5.52	8.50	5.35
May		18.50	7.98	11.40	7.75	6.02	9.40	5.80
Jun		22.00	9.38	14.90	8.55	7.42	12.90	6.60

Oranges: Average Prices and Equivalent Returns, Texas
October 1996 - May 1999

State, Month, and Year	Equiv. P.H.D.			Equiv. On-Tree			
	F.O.B. Packed	All	Fresh	Proc.	All	Fresh	Proc.
Dollars per box							
TX All Oranges							
Oct 1996	19.60	9.70	10.80	3.31	8.41	9.50	2.06
Nov	15.00	5.47	6.20	3.17	4.19	4.90	1.92
Dec	12.40	3.26	3.60	3.10	2.00	2.30	1.85
Jan 1997	12.40	3.39	3.60	3.10	2.12	2.30	1.85
Feb	14.30	5.22	5.54	3.75	3.93	4.24	2.50
Mar	15.00	6.04	6.19	4.35	4.74	4.89	3.10
Apr	15.50	6.24	6.70	4.42	4.95	5.40	3.17
May	15.50	5.94	6.70	4.42	4.66	5.40	3.17
Oct	18.10	8.47	9.30	2.29	7.18	8.00	1.04
Nov	13.70	4.34	4.90	2.29	3.05	3.60	1.04
Dec	12.50	3.16	3.70	2.04	1.88	2.40	0.79
Jan 1998	11.50	2.46	2.70	2.04	1.18	1.40	0.79
Feb	11.30	2.95	2.54	4.59	1.66	1.24	3.34
Mar	13.90	5.03	5.11	4.59	3.74	3.81	3.34
Apr	13.10	3.86	4.30	2.55	2.58	3.00	1.30
May	13.10	4.30	4.30		3.00	3.00	
Oct	17.20	7.42	8.40	3.23	6.12	7.10	1.98
Nov	17.80	8.17	9.00	3.19	6.88	7.70	1.94
Dec	17.30	7.55	8.50	2.75	6.26	7.20	1.50
Jan 1999	18.30	8.03	9.50	2.87	6.74	8.20	1.62
Feb	19.90	9.67	11.12	3.00	8.38	9.82	1.75
Mar	16.20	5.17	7.41	2.12	3.89	6.11	0.87
Apr	21.20	6.40	12.40	2.55	5.13	11.10	1.30
May	21.20	6.65	12.40	2.55	5.38	11.10	1.30
TX Early and Midseason							
Oct 1996	19.60	9.70	10.80	3.31	8.41	9.50	2.06
Nov	15.00	5.47	6.20	3.17	4.19	4.90	1.92
Dec	12.40	3.26	3.60	3.10	2.00	2.30	1.85
Jan 1997	12.40	3.39	3.60	3.10	2.12	2.30	1.85
Feb	12.40	3.52	3.60	3.10	2.23	2.30	1.85
Mar	12.40	3.60	3.60		2.30	2.30	
Oct	18.10	8.47	9.30	2.29	7.18	8.00	1.04
Nov	13.70	4.34	4.90	2.29	3.05	3.60	1.04
Dec	12.50	3.16	3.70	2.04	1.88	2.40	0.79
Jan 1998	11.50	2.46	2.70	2.04	1.18	1.40	0.79
Feb	11.10	2.78	2.30	4.59	1.49	1.00	3.34
Mar	11.10	2.63	2.30	4.59	1.33	1.00	3.34
Oct	17.20	7.42	8.40	3.23	6.12	7.10	1.98
Nov	17.80	8.17	9.00	3.19	6.88	7.70	1.94
Dec	17.30	7.55	8.50	2.75	6.26	7.20	1.50
Jan 1999	18.30	8.03	9.50	2.87	6.74	8.20	1.62
Feb	20.30	9.88	11.50	3.00	8.59	10.20	1.75
Mar	20.30	11.50	11.50		10.20	10.20	
TX Valencias							
Feb 1997	16.90	7.31	8.10	4.35	6.02	6.80	3.10
Mar	17.00	7.67	8.20	4.35	6.37	6.90	3.10
Apr	15.50	6.24	6.70	4.42	4.95	5.40	3.17
May	15.50	5.94	6.70	4.42	4.66	5.40	3.17
Feb 1998	15.50	6.70	6.70		5.40	5.40	
Mar	15.50	6.36	6.70	4.59	5.07	5.40	3.34
Apr	13.10	3.86	4.30	2.55	2.58	3.00	1.30
May	13.10	4.30	4.30		3.00	3.00	
Feb 1999	15.50	6.70	6.70		5.40	5.40	
Mar	15.50	4.58	6.70	2.12	3.30	5.40	0.87
Apr	21.20	6.40	12.40	2.55	5.13	11.10	1.30
May	21.20	6.65	12.40	2.55	5.38	11.10	1.30

Grapefruit: Average Prices and Equivalent Returns, United States
September 1995 - August 1999

State, Month, and Year		Equiv. P.H.D.			Equiv. On-Tree			
		F.O.B. Packed	All	Fresh	Proc.	All	Fresh	Proc.
		Dollars per box						
US		Grapefruit						
Sep	1995	15.10	6.57	9.63	-0.44	4.63	7.69	-2.38
Oct		16.20	7.22	8.64	1.95	5.34	6.85	-0.27
Nov		13.20	4.48	5.65	1.87	2.55	3.86	-0.39
Dec		12.20	3.76	4.65	2.50	1.85	2.93	0.33
Jan	1996	12.60	3.88	5.06	2.69	1.87	3.28	0.46
Feb		12.90	3.81	5.25	2.88	1.76	3.44	0.67
Mar		12.90	3.70	5.29	2.92	1.60	3.47	0.69
Apr		13.70	4.11	6.27	2.71	2.08	4.50	0.51
May		14.00	5.16	7.63	1.46	3.24	5.81	-0.61
Jun		13.50	6.18	8.08	-0.39	4.24	6.14	-2.33
Jul		11.70	4.76	6.29	-0.44	2.82	4.35	-2.38
Aug		16.70	6.22	11.26	-0.44	4.28	9.32	-2.38
Sep		19.60	10.03	14.18	-0.28	8.09	12.24	-2.22
Oct		16.50	7.54	8.93	1.86	5.67	7.17	-0.50
Nov		14.30	5.01	6.29	1.92	3.15	4.58	-0.30
Dec		13.20	4.24	5.48	2.25	2.19	3.66	-0.16
Jan	1997	13.60	4.19	5.69	2.27	2.17	3.89	-0.05
Feb		13.00	3.68	5.12	2.39	1.63	3.33	0.09
Mar		13.60	3.30	5.65	2.36	1.14	3.85	0.06
Apr		12.90	3.17	5.21	2.26	1.00	3.39	-0.06
May		11.90	2.90	4.60	2.04	0.75	2.76	-0.27
Jun		13.30	5.06	7.15	1.22	3.04	5.24	-0.99
Jul		14.60	8.66	9.20	-0.16	6.72	7.26	-2.10
Aug		13.90	5.75	8.46	0.02	3.81	6.52	-1.92
Sep		13.90	5.50	8.46	-0.24	3.56	6.52	-2.18
Oct		14.30	5.60	6.56	1.82	3.66	4.74	-0.65
Nov		13.40	4.35	5.53	1.83	2.35	3.76	-0.67
Dec		13.70	4.42	5.78	1.93	2.43	4.03	-0.51
Jan	1998	13.10	3.89	5.29	2.21	1.79	3.50	-0.27
Feb		13.40	3.64	5.53	2.35	1.44	3.74	-0.13
Mar		13.10	3.14	5.18	2.16	0.89	3.37	-0.30
Apr		13.10	3.14	5.22	2.07	0.89	3.41	-0.41
May		13.20	3.23	6.03	1.81	0.99	4.19	-0.62
Jun		16.40	6.36	10.94	-0.26	4.42	9.00	-2.20
Jul		17.80	8.40	12.34	-0.26	6.46	10.40	-2.20
Aug		19.90	10.86	14.46	-0.26	8.92	12.52	-2.20
Sep		24.20	15.84	18.76	-0.26	13.90	16.82	-2.20
Oct		17.50	7.35	9.69	0.82	5.29	7.77	-1.62
Nov		15.60	5.60	7.67	0.79	3.55	5.81	-1.70
Dec		14.90	4.88	7.01	1.53	2.82	5.18	-0.89
Jan	1999	14.60	4.62	6.65	2.19	2.48	4.76	-0.24
Feb		15.00	4.49	7.09	2.70	2.28	5.18	0.28
Mar		14.90	4.29	6.97	2.94	2.04	5.06	0.52
Apr		15.10	4.66	7.38	3.12	2.49	5.53	0.77
May		17.30	7.07	10.77	3.15	5.07	8.93	0.99
Jun		20.20	13.10	14.73	-0.09	11.16	12.79	-2.03
Jul		17.10	8.11	11.63	-0.04	6.17	9.69	-1.98
Aug		18.00	9.39	12.56	-0.04	7.45	10.62	-1.98

Grapefruit: Average Prices and Equivalent Returns, Arizona
September 1995 - July 1999

State, Month, and Year		Equiv. P.H.D.			Equiv. On-Tree			
		F.O.B. Packed	All	Fresh	Proc.	All	Fresh	Proc.
		Dollars per box						
AZ		All Grapefruit						
Sep	1995	20.80	15.36	15.36		13.42	13.42	
Oct		13.80	8.36	8.36		6.42	6.42	
Nov		11.40	5.66	5.96	-0.28	3.72	4.02	-2.22
Dec		11.70	5.79	6.26	-0.28	3.85	4.32	-2.22
Jan	1996	10.80	5.08	5.36	-0.28	3.14	3.42	-2.22
Feb		11.20	5.30	5.76	-0.28	3.35	3.82	-2.22
Mar		11.20	3.33	5.76	-0.28	1.39	3.82	-2.22
Apr		11.20	3.46	5.76	-0.28	1.52	3.82	-2.22
May		11.90	3.26	6.46	-0.28	1.32	4.52	-2.22
Jun		14.40	4.85	8.96	-0.28	2.91	7.02	-2.22
Jul		4.18	-1.19	-1.26	-0.28	-3.13	-3.20	-2.22
Sep		21.00	15.56	15.56		13.62	13.62	
Oct		15.80	9.18	10.36	-0.26	7.24	8.42	-2.20
Nov		15.20	7.74	9.76	-0.26	5.82	7.82	-2.20
Dec		12.50	7.06	7.06		5.12	5.12	
Jan	1997	10.30	4.43	4.86	-0.26	2.49	2.92	-2.20
Feb		11.10	5.32	5.66	-0.42	3.38	3.72	-2.36
Mar		9.88	4.22	4.44	-0.44	2.28	2.50	-2.38
Apr		11.30	3.45	5.86	-0.44	1.51	3.92	-2.38
May		11.50	2.51	6.06	-0.42	0.57	4.12	-2.36
Jun		11.20	2.23	5.76	-0.42	0.29	3.82	-2.36
Jul		9.80	3.21	4.36	-0.38	1.28	2.42	-2.32
Nov		9.10	3.66	3.66		1.72	1.72	
Dec		10.10	3.21	4.66	-0.26	1.27	2.72	-2.20
Jan	1998	10.00	4.10	4.56	-0.26	2.16	2.62	-2.20
Feb		11.20	4.96	5.76	-0.26	3.02	3.82	-2.20
Mar		11.20	3.93	5.76	-0.26	1.99	3.82	-2.20
Apr		11.60	4.28	6.16	-0.26	2.34	4.22	-2.20
May		13.30	4.80	7.86	-0.26	2.86	5.92	-2.20
Jun		15.20	5.12	9.76	-0.26	3.18	7.82	-2.20
Jul		14.90	4.30	9.46	-0.26	2.36	7.52	-2.20
Dec		12.60	6.29	7.16	-0.26	4.35	5.22	-2.20
Jan	1999	11.40	5.07	5.96	-0.26	3.13	4.02	-2.20
Feb		11.30	4.33	5.86	-0.26	2.39	3.92	-2.20
Mar		12.30	5.50	6.86	-0.26	3.56	4.92	-2.20
Apr		12.90	5.01	7.46	-0.26	3.07	5.52	-2.20
May		15.10	8.03	9.66	-0.26	6.09	7.72	-2.20
Jun		15.70	6.10	10.26	-0.12	4.16	8.32	-2.06
Jul		15.20	8.20	9.76	-0.12	6.26	7.82	-2.06

Grapefruit: Average Prices and Equivalent Returns, California
September 1995 - August 1999

State, Month, and Year		Equiv. P.H.D.			Equiv. On-Tree			
		F.O.B. Packed	All	Fresh	Proc.	All	Fresh	Proc.
		Dollars per box						
CA		All Grapefruit						
Sep	1995	15.00	6.50	9.56	-0.44	4.56	7.62	-2.38
Oct		17.40	10.15	11.96	-0.44	8.21	10.02	-2.38
Nov		20.00	12.14	14.56	-0.22	10.20	12.62	-2.16
Dec		15.30	9.29	9.86	-0.22	7.35	7.92	-2.16
Jan	1996	13.80	6.46	8.36	-0.22	4.52	6.42	-2.16
Feb		12.70	5.92	7.26	-0.22	3.98	5.32	-2.16
Mar		11.90	4.57	6.46	-0.22	2.63	4.52	-2.16
Apr		12.20	4.41	6.76	-0.22	2.47	4.82	-2.16
May		15.20	7.31	9.76	-0.22	5.37	7.82	-2.16
Jun		13.40	6.48	7.96	-0.22	4.54	6.02	-2.16
Jul		12.10	5.05	6.66	-0.22	3.11	4.72	-2.16
Aug		16.70	6.32	11.26	-0.22	4.38	9.32	-2.16
Sep		19.60	9.96	14.16	-0.28	8.02	12.22	-2.22
Oct		19.60	12.00	14.16	-0.28	10.06	12.22	-2.22
Nov		19.10	12.81	13.66	-0.26	10.87	11.72	-2.20
Dec		18.20	11.40	12.76	-0.26	9.46	10.82	-2.20
Jan	1997	16.00	8.71	10.56	0.18	6.77	8.62	-1.76
Feb		13.70	6.37	8.26	0.19	4.43	6.32	-1.75
Mar		12.40	4.56	6.96	-0.19	2.62	5.02	-2.13
Apr		12.30	4.23	6.86	-0.36	2.29	4.92	-2.30
May		12.90	3.97	7.46	-0.29	2.03	5.52	-2.23
Jun		14.60	6.75	9.16	-0.18	4.81	7.22	-2.12
Jul		14.70	8.75	9.26	-0.14	6.81	7.32	-2.08
Aug		13.90	5.75	8.46	0.02	3.81	6.52	-1.92
Sep		13.90	5.50	8.46	-0.24	3.56	6.52	-2.18
Oct		12.10	3.70	6.66	-0.40	1.76	4.72	-2.34
Nov		12.40	5.91	6.96	-0.26	3.97	5.02	-2.20
Dec		14.90	8.23	9.46	-0.26	6.29	7.52	-2.20
Jan	1998	14.70	8.10	9.26	-0.26	6.16	7.32	-2.20
Feb		12.60	5.58	7.16	-0.26	3.64	5.22	-2.20
Mar		13.20	5.32	7.76	-0.26	3.38	5.82	-2.20
Apr		14.20	5.16	8.76	-0.26	3.22	6.82	-2.20
May		15.70	5.24	10.26	-0.26	3.30	8.32	-2.20
Jun		16.60	6.62	11.16	-0.26	4.68	9.22	-2.20
Jul		17.90	8.67	12.46	-0.26	6.73	10.52	-2.20
Aug		19.90	10.86	14.46	-0.26	8.92	12.52	-2.20
Sep		24.20	15.84	18.76	-0.26	13.90	16.82	-2.20
Oct		24.20	16.22	18.76	-0.26	14.28	16.82	-2.20
Nov		21.70	13.93	16.26	-0.26	11.99	14.32	-2.20
Dec		20.60	13.16	15.16	-0.26	11.22	13.22	-2.20
Jan	1999	21.00	13.41	15.56	-0.26	11.47	13.62	-2.20
Feb		17.20	9.52	11.76	-0.26	7.58	9.82	-2.20
Mar		14.90	7.83	9.46	-0.26	5.89	7.52	-2.20
Apr		14.20	6.23	8.76	-0.26	4.29	6.82	-2.20
May		18.50	12.73	13.06	-0.26	10.79	11.12	-2.20
Jun		20.80	14.69	15.36	-0.04	12.75	13.42	-1.98
Jul		17.10	8.11	11.66	-0.04	6.17	9.72	-1.98
Aug		18.00	9.39	12.56	-0.04	7.45	10.62	-1.98

Grapefruit: Average Prices and Equivalent Returns, Florida
October 1995 - May 1999

State, Month, and Year		Equiv. P.H.D.			Equiv. On-Tree			
		F.O.B. Packed	All	Fresh	Proc.	All	Fresh	Proc.
		Dollars per box						
FL		All Grapefruit						
Oct	1995	15.80	6.75	8.11	2.01	4.78	6.24	-0.31
Nov		12.90	4.21	5.29	1.92	2.20	3.43	-0.43
Dec		11.90	3.55	4.31	2.59	1.49	2.45	0.28
Jan	1996	12.60	3.78	4.91	2.76	1.69	3.04	0.47
Feb		13.10	3.80	5.26	2.94	1.68	3.39	0.68
Mar		13.10	3.70	5.29	3.01	1.56	3.41	0.74
Apr		14.30	4.21	6.54	2.94	2.07	4.67	0.64
May		13.60	4.41	6.11	2.72	2.29	4.26	0.33
Oct		16.20	7.24	8.62	2.04	5.24	6.76	-0.50
Nov		13.90	4.81	6.07	2.02	2.75	4.20	-0.44
Dec		13.00	4.05	5.25	2.29	1.94	3.38	-0.17
Jan	1997	13.50	4.11	5.63	2.34	1.99	3.75	-0.06
Feb		13.00	3.67	5.17	2.46	1.52	3.29	0.09
Mar		13.70	3.27	5.77	2.41	1.05	3.88	0.07
Apr		12.90	3.13	5.11	2.34	0.90	3.24	-0.02
May		11.50	2.78	3.79	2.36	0.53	1.92	-0.05
Jun		11.60	3.57	4.02	2.94	1.42	2.16	0.40
Oct		14.30	5.66	6.44	2.33	3.65	4.57	-0.31
Nov		13.10	4.06	5.23	1.90	1.93	3.36	-0.71
Dec		13.50	4.25	5.65	2.01	2.10	3.77	-0.59
Jan	1998	13.00	3.74	5.15	2.27	1.53	3.27	-0.29
Feb		13.30	3.49	5.35	2.41	1.19	3.46	-0.13
Mar		13.00	3.03	5.00	2.21	0.70	3.11	-0.30
Apr		12.80	2.98	4.85	2.15	0.65	2.97	-0.40
May		12.00	2.70	4.16	2.15	0.34	2.29	-0.40
Oct		16.10	6.13	8.22	0.81	3.96	6.20	-1.74
Nov		14.70	4.85	6.90	0.76	2.65	4.89	-1.81
Dec		14.00	4.21	6.23	1.54	1.97	4.22	-1.00
Jan	1999	14.30	4.39	6.41	2.25	2.13	4.39	-0.27
Feb		14.80	4.32	6.90	2.78	2.01	4.88	0.30
Mar		15.00	4.26	7.09	3.01	1.92	5.07	0.54
Apr		15.30	4.65	7.45	3.41	2.29	5.43	0.91
May		16.60	5.18	8.92	3.85	2.80	6.91	1.34

Grapefruit: Average Prices and Equivalent Returns, Florida
October 1995 - May 1999

State, Month, and Year		Equiv. P.H.D.			Equiv. On-Tree			
		F.O.B. Packed	All	Fresh	Proc.	All	Fresh	Proc.
		Dollars per box						
FL		White Seedless						
Oct	1995	16.80	6.27	8.40	2.25	4.24	6.48	0.00
Nov		16.00	5.11	7.60	2.25	3.04	5.68	0.00
Dec		15.00	4.17	6.60	3.04	2.02	4.68	0.79
Jan	1996	16.20	4.58	7.80	3.17	2.43	5.88	0.92
Feb		16.50	4.35	8.10	3.18	2.17	6.18	0.93
Mar		16.20	4.01	7.80	3.16	1.82	5.88	0.91
Apr		16.10	4.04	7.70	3.17	1.86	5.78	0.92
Nov		17.90	6.67	9.46	1.78	4.61	7.53	-0.50
Dec		15.60	4.24	7.16	1.98	2.12	5.23	-0.30
Jan	1997	15.30	3.94	6.86	1.96	1.80	4.93	-0.32
Feb		14.50	3.43	6.06	2.20	1.26	4.13	-0.08
Mar		15.60	2.99	7.16	2.21	0.77	5.23	-0.07
Apr		16.50	2.89	8.06	1.98	0.66	6.13	-0.30
May		11.00	2.07	2.56	2.02	-0.18	0.63	-0.26
Oct		17.20	7.12	8.61	1.48	5.08	6.68	-0.97
Nov		15.00	3.99	6.41	1.46	1.81	4.48	-0.99
Dec		16.80	4.64	8.21	1.40	2.44	6.28	-1.05
Jan	1998	16.50	3.89	7.91	1.68	1.62	5.98	-0.77
Feb		16.10	3.48	7.51	1.91	1.18	5.58	-0.54
Mar		15.70	2.92	7.11	1.90	0.57	5.18	-0.55
Apr		15.50	2.65	6.91	1.72	0.29	4.98	-0.73
May		12.50	2.02	3.91	1.81	-0.38	1.98	-0.64
Oct		16.40	5.41	7.83	1.25	3.25	5.80	-1.14
Nov		16.50	4.69	7.93	1.20	2.49	5.90	-1.19
Dec		16.90	4.05	8.33	1.60	1.79	6.30	-0.79
Jan	1999	17.40	4.60	8.83	2.30	2.34	6.80	-0.09
Feb		17.40	4.22	8.83	2.60	1.93	6.80	0.21
Mar		17.90	4.18	9.33	2.95	1.85	7.30	0.56
Apr		18.10	4.18	9.53	3.30	1.84	7.50	0.91
May		15.80	3.85	7.23	3.70	1.47	5.20	1.31

Grapefruit: Average Prices and Equivalent Returns, Florida
October 1995 - May 1999

State, Month, and Year		Equiv. P.H.D.			Equiv. On-Tree			
		F.O.B. Packed	All	Fresh	Proc.	All	Fresh	Proc.
		Dollars per box						
FL		Colored Seedless						
Oct	1995	15.50	6.95	8.01	1.81	5.01	6.16	-0.58
Nov		12.40	4.02	4.91	1.81	2.01	3.06	-0.58
Dec		11.40	3.34	3.91	2.27	1.30	2.06	-0.12
Jan	1996	11.40	3.23	3.91	2.19	1.17	2.06	-0.20
Feb		11.30	3.16	3.81	2.31	1.07	1.96	-0.08
Mar		11.40	3.25	3.91	2.56	1.14	2.06	0.17
Apr		13.60	4.39	6.11	2.53	2.28	4.26	0.14
May		13.60	4.41	6.11	2.72	2.29	4.26	0.33
Oct		16.20	7.24	8.62	2.04	5.24	6.76	-0.50
Nov		12.50	4.10	4.92	2.13	2.05	3.06	-0.41
Dec		12.50	4.03	4.92	2.44	1.93	3.06	-0.10
Jan	1997	12.70	4.24	5.12	2.75	2.13	3.26	0.21
Feb		12.30	3.96	4.72	2.90	1.82	2.86	0.36
Mar		12.50	3.83	4.92	2.95	1.59	3.06	0.41
Apr		11.70	3.42	4.12	2.89	1.17	2.26	0.35
May		11.50	3.17	3.92	2.66	0.91	2.06	0.12
Jun		11.60	3.57	4.02	2.94	1.42	2.16	0.40
Oct		13.80	5.44	6.11	2.48	3.42	4.25	-0.19
Nov		12.70	4.08	5.01	2.07	1.97	3.15	-0.60
Dec		12.80	4.14	5.11	2.28	2.00	3.25	-0.39
Jan	1998	12.00	3.69	4.31	2.78	1.51	2.45	0.11
Feb		12.00	3.55	4.31	2.94	1.24	2.45	0.27
Mar		11.70	3.19	4.01	2.64	0.85	2.15	-0.03
Apr		11.90	3.25	4.21	2.58	0.91	2.35	-0.09
May		11.90	3.27	4.21	2.58	0.94	2.35	-0.09
Oct		16.00	6.37	8.33	0.60	4.20	6.32	-2.03
Nov		14.40	4.89	6.73	0.60	2.69	4.72	-2.03
Dec		13.60	4.30	5.93	1.50	2.06	3.92	-1.13
Jan	1999	13.40	4.30	5.73	2.20	2.04	3.72	-0.43
Feb		13.70	4.45	6.03	3.00	2.11	4.02	0.37
Mar		13.70	4.37	6.03	3.10	2.01	4.02	0.47
Apr		14.70	4.96	7.03	3.50	2.58	5.02	0.87
May		16.70	6.01	9.03	4.00	3.63	7.02	1.37

Grapefruit: Average Prices and Equivalent Returns,
Florida and Texas, October 1995 - May 1999

State, Month, and Year		Equiv. P.H.D.			Equiv. On-Tree			
		F.O.B. Packed	All	Fresh	Proc.	All	Fresh	Proc.
Dollars per box								
Other Than Seedless								
FL								
Dec	1995		2.80		2.80	1.10	1.10	
Jan	1996		3.50		3.50	1.80	1.80	
Feb			3.50		3.50	1.80	1.80	
Mar			3.40		3.40	1.70	1.70	
Apr			3.50		3.50	1.80	1.80	
Dec			1.20		1.20	-0.60	-0.60	
Jan	1997		1.50		1.50	-0.30	-0.30	
Feb			1.90		1.90	0.10	0.10	
Mar			2.10		2.10	0.30	0.30	
Apr			2.10		2.10	0.30	0.30	
May			1.50		1.50	-0.30	-0.30	
Jan	1998		1.40		1.40	-0.40	-0.40	
Feb			1.90		1.90	0.10	0.10	
Mar			2.00		2.00	0.20	0.20	
Apr			1.90		1.90	0.10	0.10	
Dec			1.80		1.80	-0.10	-0.10	
Jan	1999		2.50		2.50	0.60	0.60	
Feb			2.80		2.80	0.90	0.90	
Mar			3.15		3.15	1.25	1.25	
Apr			3.50		3.50	1.60	1.60	
All Grapefruit								
TX								
Oct	1995	19.80	10.80	12.32	1.80	9.80	11.32	0.85
Nov		15.50	6.60	8.02	1.80	5.62	7.02	0.85
Dec		13.60	4.81	6.12	1.80	3.82	5.12	0.85
Jan	1996	13.50	4.73	6.02	1.76	3.75	5.02	0.81
Feb		12.30	3.63	4.82	1.76	2.65	3.82	0.81
Mar		12.10	3.30	4.62	1.40	2.32	3.62	0.45
Apr		11.80	3.12	4.32	1.40	2.14	3.32	0.45
May		11.80	3.04	4.32	1.40	2.07	3.32	0.45
Oct		16.60	6.99	7.90	1.50	5.85	6.75	0.40
Nov		14.90	5.06	6.20	1.50	3.92	5.05	0.40
Dec		14.10	4.66	5.40	1.50	3.52	4.25	0.40
Jan	1997	13.60	3.99	4.90	1.50	2.85	3.75	0.40
Feb		12.80	3.29	4.10	1.50	2.15	2.95	0.40
Mar		13.10	3.29	4.40	1.50	2.16	3.25	0.40
Apr		13.20	3.30	4.50	1.50	2.17	3.35	0.40
May		13.20	2.89	4.50	1.50	1.77	3.35	0.40
Oct		16.30	7.06	7.60	1.50	5.92	6.45	0.40
Nov		15.40	5.81	6.70	1.50	4.67	5.55	0.40
Dec		14.50	4.83	5.80	1.50	3.69	4.65	0.40
Jan	1998	13.70	4.19	5.00	1.50	3.05	3.85	0.40
Feb		14.70	4.69	6.00	1.50	3.56	4.85	0.40
Mar		14.10	3.93	5.40	1.50	2.80	4.25	0.40
Apr		14.60	4.26	5.90	1.50	3.13	4.75	0.40
May		14.60	4.01	5.90	1.50	2.88	4.75	0.40
Oct		23.90	12.77	15.20	1.50	11.63	14.05	0.40
Nov		18.90	9.18	10.20	1.50	8.04	9.05	0.40
Dec		17.90	7.68	9.20	1.50	6.54	8.05	0.40
Jan	1999	15.40	5.33	6.70	1.50	4.19	5.55	0.40
Feb		15.10	4.77	6.40	1.50	3.63	5.25	0.40
Mar		14.10	3.91	5.40	1.50	2.78	4.25	0.40
Apr		14.90	3.96	6.20	1.50	2.83	5.05	0.40
May		15.90	3.84	7.20	1.50	2.72	6.05	0.40

Lemons: Average Prices and Equivalent Returns, United States
August 1996 - July 1999

State, Month, and Year		Equiv. P.H.D.			Equiv. On-Tree			
		F.O.B. Packed	All	Fresh	Proc.	All	Fresh	Proc.
		Dollars per box						
US		All Lemons						
Aug	1996	37.60	18.88	29.16	3.02	15.24	25.52	-0.62
Sep		35.20	18.00	26.72	3.02	14.36	23.08	-0.62
Oct		30.40	13.99	21.93	3.02	10.35	18.29	-0.62
Nov		27.80	11.79	19.39	3.02	8.15	15.75	-0.62
Dec		25.00	10.09	16.60	3.02	6.45	12.96	-0.62
Jan	1997	22.30	7.94	13.88	3.02	4.30	10.24	-0.62
Feb		19.50	5.50	11.02	3.02	1.86	7.38	-0.62
Mar		19.00	5.61	10.54	3.02	1.97	6.90	-0.62
Apr		22.30	8.92	13.86	3.02	5.28	10.22	-0.62
May		31.80	18.98	23.36	3.02	15.34	19.72	-0.62
Jun		41.90	28.78	33.46	3.02	25.14	29.82	-0.62
Jul		48.20	33.08	39.76	3.02	29.44	36.12	-0.62
Aug		49.90	27.30	41.46	3.02	23.66	37.82	-0.62
Sep		46.30	24.41	37.84	3.02	20.77	34.20	-0.62
Oct		32.00	15.03	23.58	3.02	11.39	19.94	-0.62
Nov		21.40	8.16	12.93	2.46	4.52	9.29	-1.18
Dec		18.90	6.44	10.51	2.46	2.80	6.87	-1.18
Jan	1998	17.90	5.62	9.48	2.46	1.98	5.84	-1.18
Feb		17.30	5.31	8.84	2.46	1.67	5.20	-1.18
Mar		19.60	5.36	11.20	2.26	1.72	7.56	-1.38
Apr		22.60	6.43	14.13	2.26	2.79	10.49	-1.38
May		27.80	10.52	19.36	2.26	6.88	15.72	-1.38
Jun		37.90	20.09	29.46	2.26	16.45	25.82	-1.38
Jul		44.60	26.97	36.16	2.26	23.33	32.52	-1.38
Aug		42.50	27.54	34.06	2.26	23.90	30.42	-1.38
Sep		36.30	23.04	27.84	2.26	19.40	24.20	-1.38
Oct		37.90	25.16	29.50	2.26	21.52	25.86	-1.38
Nov		30.20	16.42	21.76	0.74	12.78	18.12	-2.90
Dec		25.30	11.07	16.90	0.74	7.43	13.26	-2.90
Jan	1999	29.00	11.75	20.59	0.74	8.11	16.95	-2.90
Feb		23.30	8.83	14.83	0.74	5.19	11.19	-2.90
Mar		22.70	8.69	14.28	0.74	5.05	10.64	-2.90
Apr		26.40	10.33	18.00	0.74	6.69	14.36	-2.90
May		29.80	12.23	21.36	0.74	8.59	17.72	-2.90
Jun		35.30	14.40	26.86	0.74	10.76	23.22	-2.90
Jul		39.70	18.12	31.26	0.74	14.48	27.62	-2.90

Lemons: Average Prices and Equivalent Returns, Arizona and California
September 1996 - July 1999

State, Month, and Year		Equiv. P.H.D.			Equiv. On-Tree			
		F.O.B. Packed	All	Fresh	Proc.	All	Fresh	Proc.
Dollars per box								
AZ								
All Lemons								
Sep	1996	33.80	19.40	25.36	3.02	15.76	21.72	-0.62
Oct		29.90	16.58	21.46	3.02	12.94	17.82	-0.62
Nov		25.50	11.62	17.06	3.02	7.98	13.42	-0.62
Dec		23.40	9.43	14.96	3.02	5.79	11.32	-0.62
Jan	1997	21.50	7.79	13.06	3.02	4.15	9.42	-0.62
Feb		17.90	6.11	9.46	3.02	2.48	5.82	-0.62
Mar		15.90	4.93	7.46	3.02	1.28	3.82	-0.62
Sep		51.70	40.84	43.26	3.02	37.20	39.62	-0.62
Oct		31.60	17.49	23.16	3.02	13.85	19.52	-0.62
Nov		20.00	7.76	11.56	2.46	4.12	7.92	-1.18
Dec		17.90	6.06	9.46	2.46	2.42	5.82	-1.18
Jan	1998	17.20	5.39	8.76	2.46	1.75	5.12	-1.18
Feb		15.80	4.60	7.36	2.46	0.96	3.72	-1.18
Mar		17.10	4.50	8.66	2.26	0.86	5.02	-1.38
Apr		19.00	3.89	10.56	2.26	0.25	6.92	-1.38
Sep		37.20	27.43	28.76	2.26	23.78	25.12	-1.38
Oct		38.70	27.55	30.26	2.26	23.91	26.62	-1.38
Nov		28.60	16.13	20.16	0.74	12.49	16.52	-2.90
Dec		23.30	10.87	14.86	0.74	7.23	11.22	-2.90
Jan	1999	27.30	12.07	18.86	0.74	8.43	15.22	-2.90
Feb		21.60	7.82	13.16	0.74	4.18	9.52	-2.90
Mar		19.40	5.37	10.96	0.74	1.73	7.32	-2.90
Apr		20.80	5.39	12.36	0.74	1.75	8.72	-2.90
CA								
All Lemons								
Aug	1996	37.60	18.88	29.16	3.02	15.24	25.52	-0.62
Sep		35.40	17.80	26.96	3.02	14.16	23.32	-0.62
Oct		30.50	13.45	22.06	3.02	9.81	18.42	-0.62
Nov		28.40	11.82	19.96	3.02	8.18	16.32	-0.62
Dec		25.80	10.38	17.36	3.02	6.74	13.72	-0.62
Jan	1997	22.60	7.98	14.16	3.02	4.34	10.52	-0.62
Feb		19.60	5.47	11.16	3.02	1.83	7.52	-0.62
Mar		19.00	5.62	10.56	3.02	1.98	6.92	-0.62
Apr		22.30	8.92	13.86	3.02	5.28	10.22	-0.62
May		31.80	18.98	23.36	3.02	15.34	19.72	-0.62
Jun		41.90	28.78	33.46	3.02	25.14	29.82	-0.62
Jul		48.20	33.08	39.76	3.02	29.44	36.12	-0.62
Aug		49.90	27.30	41.46	3.02	23.66	37.82	-0.62
Sep		45.10	22.24	36.66	3.02	18.60	33.02	-0.62
Oct		32.20	14.22	23.76	3.02	10.58	20.12	-0.62
Nov		22.00	8.34	13.56	2.46	4.70	9.92	-1.18
Dec		19.40	6.59	10.96	2.46	2.95	7.32	-1.18
Jan	1998	18.10	5.68	9.66	2.46	2.04	6.02	-1.18
Feb		17.50	5.42	9.06	2.46	1.78	5.42	-1.18
Mar		19.70	5.38	11.26	2.26	1.74	7.62	-1.38
Apr		22.60	6.48	14.16	2.26	2.84	10.52	-1.38
May		27.80	10.52	19.36	2.26	6.88	15.72	-1.38
Jun		37.90	20.09	29.46	2.26	16.45	25.82	-1.38
Jul		44.60	26.97	36.16	2.26	23.33	32.52	-1.38
Aug		42.50	27.54	34.06	2.26	23.90	30.42	-1.38
Sep		36.00	21.96	27.56	2.26	18.32	23.92	-1.38
Oct		37.50	23.94	29.06	2.26	20.30	25.42	-1.38
Nov		31.20	16.59	22.76	0.74	12.95	19.12	-2.90
Dec		26.30	11.15	17.86	0.74	7.51	14.22	-2.90
Jan	1999	29.70	11.64	21.26	0.74	8.00	17.62	-2.90
Feb		23.90	9.21	15.46	0.74	5.57	11.82	-2.90
Mar		23.40	9.62	14.96	0.74	5.98	11.32	-2.90
Apr		26.50	10.39	18.06	0.74	6.75	14.42	-2.90
May		29.80	12.23	21.36	0.74	8.59	17.72	-2.90
Jun		35.30	14.40	26.86	0.74	10.76	23.22	-2.90
Jul		39.70	18.12	31.26	0.74	14.48	27.62	-2.90

Tangerines: Average Prices and Equivalent Returns, United States
and Arizona, October 1996 - May 1999

State, Month, and Year		Equiv. P.H.D.				Equiv. On-Tree		
		F.O.B. Packed	All	Fresh	Proc.	All	Fresh	Proc.
Dollars per box								
US								
Tangerines								
Oct	1996	25.10	13.48	16.96	3.57	10.36	13.95	0.12
Nov		24.00	12.41	16.39	3.80	9.43	13.58	0.47
Dec		21.70	10.73	13.88	4.19	7.66	10.97	0.76
Jan	1997	25.60	12.71	18.18	3.91	9.72	15.46	0.46
Feb		25.80	12.58	18.73	3.29	9.74	16.17	0.02
Mar		24.10	13.13	17.09	4.02	10.36	14.53	0.79
Apr		28.60	16.33	21.01	4.08	13.35	18.21	0.62
May		28.30	14.37	20.44	4.00	11.22	17.54	0.40
Sep		23.30	13.50	14.70	3.69	10.25	11.50	0.09
Oct		24.20	11.76	16.04	3.04	8.64	13.02	-0.29
Nov		23.10	11.12	15.04	2.90	8.04	12.07	-0.42
Dec		23.00	10.71	15.34	2.46	7.80	12.54	-0.65
Jan	1998	26.50	12.94	19.07	2.78	10.11	16.38	-0.28
Feb		22.30	11.27	14.85	3.79	8.41	12.14	0.60
Mar		22.40	11.74	14.84	4.17	8.88	12.08	1.03
Apr		29.70	17.46	22.02	4.72	14.56	19.22	1.58
May		10.60	4.09	4.67	0.66	2.01	2.59	-1.42
Jun		5.10	-0.34	-0.80	0.66	-2.42	-2.88	-1.42
Oct		25.40	13.83	17.11	5.03	10.46	13.83	1.40
Nov		26.50	14.77	18.51	5.50	11.54	15.38	2.01
Dec		24.80	14.32	16.92	5.91	11.17	13.84	2.56
Jan	1999	31.00	17.58	23.47	5.68	14.52	20.54	2.34
Feb		29.90	17.50	22.42	4.80	14.61	19.55	1.85
Mar		28.80	16.73	20.90	6.38	13.58	17.80	3.08
Apr		31.00	19.75	23.03	8.28	16.47	19.90	4.53
May		17.70	11.80	11.80		9.72	9.72	
AZ								
Tangerines								
Nov	1996	23.40	16.69	17.50	-0.28	14.61	15.42	-2.36
Dec		25.20	17.23	19.30	-0.28	15.15	17.22	-2.36
Jan	1997	24.70	17.01	18.80	-0.28	14.93	16.72	-2.36
Feb		19.80	11.46	13.90	-0.28	9.38	11.82	-2.36
Mar		18.10	12.20	12.20		10.12	10.12	
Apr		4.82	-1.08	-1.08		-3.16	-3.16	
May		4.80	-1.10	-1.10		-3.18	-3.18	
Nov		22.60	16.70	16.70		14.62	14.62	
Dec		23.70	15.03	17.80	-0.28	12.95	15.72	-2.36
Jan	1998	24.00	12.72	18.10	-0.08	10.64	16.02	-2.16
Feb		20.60	11.67	14.70	0.20	9.59	12.62	-1.88
Mar		18.60	11.01	12.70	0.66	8.93	10.62	-1.42
Apr		15.50	9.60	9.60		7.52	7.52	
May		11.40	4.95	5.50	0.66	2.87	3.42	-1.42
Nov		23.10	17.20	17.20		15.12	15.12	
Dec		24.90	15.94	19.00	1.40	13.86	16.92	-0.68
Jan	1999	32.00	20.78	26.10	1.48	18.70	24.02	-0.60
Feb		31.90	17.94	26.00	1.40	15.86	23.92	-0.68
Mar		32.60	18.87	26.70	0.72	16.79	24.62	-1.36
Apr		23.80	17.90	17.90		15.82	15.82	
May		17.70	11.80	11.80		9.72	9.72	

Tangerines: Average Prices and Equivalent Returns, California
and Florida, October 1996 - April 1999

State, Month, and Year		Equiv. P.H.D.				Equiv. On-Tree		
		F.O.B. Packed	All	Fresh	Proc.	All	Fresh	Proc.
Dollars per box								
CA								
Tangerines								
Oct	1996	35.90	24.95	30.00	-0.28	22.87	27.92	-2.36
Nov		27.20	17.11	21.30	-0.28	15.03	19.22	-2.36
Dec		22.80	13.38	16.90	-0.28	11.30	14.82	-2.36
Jan	1997	24.60	15.70	18.70	-0.28	13.62	16.62	-2.36
Feb		22.40	12.99	16.50	-0.28	10.91	14.42	-2.36
Mar		20.00	11.42	14.10	-0.28	9.34	12.02	-2.36
Apr		22.00	14.61	16.10	-0.28	12.53	14.02	-2.36
May		19.70	13.80	13.80		11.72	11.72	
Oct		36.80	19.99	30.90	-0.28	17.91	28.82	-2.36
Nov		26.40	14.01	20.50	-0.28	11.93	18.42	-2.36
Dec		23.60	10.51	17.70	-0.28	8.43	15.62	-2.36
Jan	1998	21.90	10.64	16.00	-0.08	8.56	13.92	-2.16
Feb		19.90	10.85	14.00	0.20	8.77	11.92	-1.88
Mar		20.10	10.82	14.20	0.66	8.74	12.12	-1.42
Apr		18.60	9.26	12.70	0.66	7.18	10.62	-1.42
May		5.40	-0.17	-0.50	0.66	-2.25	-2.58	-1.42
Jun		5.10	-0.34	-0.80	0.66	-2.42	-2.88	-1.42
Oct		33.40	20.12	27.50	0.44	18.04	25.42	-1.64
Nov		29.80	17.44	23.90	0.44	15.36	21.82	-1.64
Dec		26.70	15.51	20.80	1.40	13.43	18.72	-0.68
Jan	1999	25.90	14.05	20.00	1.48	11.97	17.92	-0.60
Feb		23.50	12.84	17.60	1.40	10.76	15.52	-0.68
Mar		24.20	12.10	18.30	0.72	10.02	16.22	-1.36
Apr		10.30	3.58	4.40	-0.30	1.50	2.32	-2.38
FL								
Tangerines								
Oct	1996	22.80	11.42	14.25	3.99	8.10	11.05	0.39
Nov		22.40	10.43	13.85	4.66	7.09	10.65	1.06
Dec		21.10	9.71	12.55	4.78	6.37	9.35	1.18
Jan	1997	26.30	11.15	17.75	4.38	7.76	14.55	0.78
Feb		31.20	12.57	22.65	4.28	9.15	19.45	0.68
Mar		30.00	14.52	21.45	5.40	11.14	18.25	1.80
Apr		33.00	17.43	24.45	4.50	14.09	21.25	0.90
May		33.00	15.36	24.45	4.00	11.98	21.25	0.40
Sep		23.30	13.50	14.70	3.69	10.25	11.50	0.09
Oct		21.70	10.07	13.10	3.77	6.74	9.90	0.17
Nov		22.30	10.39	13.70	3.61	7.06	10.50	0.01
Dec		22.60	10.21	14.00	3.78	6.87	10.80	0.18
Jan	1998	29.60	14.08	21.00	4.34	10.71	17.80	0.74
Feb		24.00	11.43	15.40	5.10	8.08	12.20	1.50
Mar		24.00	12.28	15.40	5.70	8.95	12.20	2.10
Apr		36.00	21.61	27.40	6.50	18.30	24.20	2.90
Oct		24.20	12.91	15.60	5.70	9.36	12.15	1.85
Nov		25.60	13.98	17.00	6.81	10.42	13.55	2.96
Dec		24.30	13.85	15.70	7.70	10.31	12.25	3.85
Jan	1999	32.30	17.78	23.70	7.37	14.18	20.25	3.52
Feb		30.50	18.51	21.90	8.30	14.96	18.45	4.45
Mar		29.00	17.30	20.40	8.95	13.74	16.95	5.10
Apr		34.50	21.47	25.90	8.80	17.91	22.45	4.95

Limes, Tangelos, and Temples: Average Prices and Equivalent Returns,
Florida, June 1996 - March 1999

State, Month, and Year		Equiv. P.H.D.			Equiv. On-Tree			
		F.O.B. Packed	All	Fresh	Proc.	All	Fresh	Proc.
Dollars per box								
All Limes								
FL								
Jun	1996	16.00	5.00	5.50	1.75	0.00	0.50	-3.25
Jul		18.60	6.96	8.10	1.75	1.96	3.10	-3.25
Aug		21.70	8.31	11.20	1.75	3.31	6.20	-3.25
Sep		21.90	8.92	11.40	1.75	3.92	6.40	-3.25
Oct		19.80	7.21	9.30	2.00	2.21	4.30	-3.00
Nov		24.60	10.80	14.10	2.00	5.80	9.10	-3.00
Dec		33.50	17.00	23.00	2.00	12.00	18.00	-3.00
Jan	1997	46.00	35.50	35.50		30.50	30.50	
Feb		52.00	41.50	41.50		36.50	36.50	
May		30.50	20.00	20.00		15.00	15.00	
Jun		21.50	8.71	11.00	2.00	3.71	6.00	-3.00
Jul		26.50	11.85	16.00	3.00	6.85	11.00	-2.00
Aug		23.50	9.89	13.00	2.80	4.89	8.00	-2.20
Sep		22.50	8.71	12.00	2.80	3.71	7.00	-2.20
Oct		21.50	8.75	11.00	2.00	3.75	6.00	-3.00
Nov		23.50	10.80	13.00	2.00	5.80	8.00	-3.00
Dec		34.50	19.11	24.00	2.00	14.11	19.00	-3.00
Jan	1998	30.50	20.00	20.00		15.00	15.00	
Apr		30.00	19.50	19.50		14.50	14.50	
May		24.00	13.50	13.50		8.50	8.50	
Jun		25.00	11.96	14.50	2.00	6.96	9.50	-3.00
Jul		23.00	9.74	12.50	2.00	4.74	7.50	-3.00
Aug		29.00	14.02	18.50	2.00	9.02	13.50	-3.00
Sep		26.00	11.70	15.50	2.00	6.70	10.50	-3.00
Oct		24.00	11.05	13.50	2.00	6.05	8.50	-3.00
Nov		24.00	12.27	13.50	2.00	7.27	8.50	-3.00
Dec		35.00	24.50	24.50		19.50	19.50	
Jan	1999	32.00	21.50	21.50		16.50	16.50	
Feb		54.00	43.50	43.50		38.50	38.50	
Mar		77.00	66.50	66.50		61.50	61.50	
Tangelos								
FL								
Nov	1996	15.00	5.80	7.60	4.30	3.27	5.15	1.70
Dec		13.30	4.88	5.90	4.30	2.33	3.45	1.70
Jan	1997	14.30	4.38	6.90	4.00	1.80	4.45	1.40
Feb		12.50	4.05	5.10	4.00	1.46	2.65	1.40
Oct		15.50	3.83	8.00	2.50	1.27	5.60	-0.10
Nov		15.00	4.93	7.50	2.50	2.43	5.10	-0.10
Dec		12.80	4.09	5.30	3.10	1.58	2.90	0.50
Jan	1998	14.90	4.01	7.40	3.45	1.44	5.00	0.85
Feb		18.00	4.33	10.50	3.90	1.74	8.10	1.30
Nov		15.20	6.77	7.70	6.00	4.16	5.20	3.30
Dec		16.50	7.63	9.00	6.30	5.03	6.50	3.60
Jan	1999	21.00	7.38	13.50	5.80	4.72	11.00	3.10
Feb		20.00	6.18	12.50	5.60	3.50	10.00	2.90
Temples								
FL								
Jan	1997	17.30	7.05	10.30	4.25	5.13	8.60	2.15
Feb		13.60	4.54	6.60	4.10	2.51	4.90	2.00
Mar		14.00	4.48	7.00	4.25	2.41	5.30	2.15
Jan	1998	14.50	5.24	7.40	3.80	3.22	5.50	1.70
Feb		12.00	4.82	4.90	4.80	2.75	3.00	2.70
Mar		13.50	5.64	6.40	5.50	3.57	4.50	3.40
Jan	1999	19.90	10.03	12.80	5.60	7.96	10.80	3.40
Feb		17.00	7.06	9.90	5.70	4.93	7.90	3.50
Mar		17.50	5.74	10.40	5.00	3.57	8.40	2.80

Oranges: Marketing Year Average Prices Received,
Crop Years 1996-97 and 1997-98

State, Variety, and Utilization	1996-97			1997-98		
	F.O.B.	Equiv.	Equiv.	F.O.B.	Equiv.	Equiv.
	Packed	P.H.D.	On-Tree	Packed	P.H.D.	On-Tree
	Dollars per box					
AZ						
Navel & Misc.		8.77	6.79		5.46	3.48
Fresh	16.50	10.48	8.50	14.20	8.18	6.20
Processing		-0.19	-2.17		-0.10	-2.08
Valencias		5.26	3.18		5.28	3.20
Fresh	11.20	5.30	3.22	11.20	5.30	3.22
Processing		1.16	-0.92		1.89	-0.19
All		6.64	4.60		5.35	3.30
Fresh	13.10	7.14	5.09	12.00	6.07	4.01
Processing		-0.07	-2.05		-0.05	-2.03
CA						
Navel & Misc.		9.35	7.37		8.84	6.86
Fresh	16.80	10.78	8.80	16.60	10.58	8.60
Processing		0.36	-1.62		0.36	-1.62
Valencias		8.77	6.69		9.03	6.95
Fresh	17.20	11.30	9.22	16.90	11.00	8.92
Processing		2.61	0.53		2.79	0.71
All		9.13	7.11		8.91	6.89
Fresh	16.90	10.95	8.94	16.70	10.72	8.71
Processing		1.62	-0.42		1.44	-0.58
FL						
Early/Mids.		5.08	3.18		4.57	2.81
Fresh	13.40	6.40	4.50	12.70	5.60	3.70
Processing		5.01	3.11		4.51	2.76
Valencias		6.01	4.07		6.73	4.88
Fresh	13.60	6.60	4.70	13.20	6.10	4.20
Processing		5.99	4.04		6.75	4.90
All		5.46	3.54		5.49	3.69
Fresh	13.50	6.47	4.57	12.90	5.75	3.85
Processing		5.41	3.49		5.48	3.68
Tex						
Early/Mids.		5.16	3.88		3.67	2.38
Fresh	15.00	6.20	4.90	12.90	4.10	2.80
Processing		3.13	1.88		2.49	1.24
Valencias		7.12	5.83		5.29	3.99
Fresh	16.60	7.80	6.50	14.50	5.70	4.40
Processing		4.37	3.12		3.44	2.19
All		5.33	4.04		3.85	2.56
Fresh	15.20	6.36	5.06	13.10	4.30	3.00
Processing		3.19	1.94		2.57	1.32
US						
Early/Mids. & Navels		5.93	4.02		5.44	3.64
Fresh	16.10	9.83	7.88	15.70	9.44	7.50
Processing		4.84	2.94		4.32	2.56
Valencias		6.50	4.53		7.10	5.21
Fresh	16.30	10.16	8.12	16.10	9.98	7.93
Processing		5.78	3.82		6.56	4.70
All		6.16	4.22		6.13	4.29
Fresh	16.20	9.94	7.96	15.90	9.62	7.64
Processing		5.23	3.31		5.29	3.48

Oranges: Marketing Year Average Prices Received,
Crop Year 1998-99

		1998-99		
State, Variety, and Utilization	F.O.B. Packed	Equiv. P.H.D.	Equiv. On-Tree	
Dollars per box				
AZ				
Navel & Misc.		16.91	14.93	
Fresh	26.80	20.78	18.80	
Processing		0.32	-1.66	
Valencias		19.09	17.01	
Fresh	29.80	23.90	21.82	
Processing		2.99	0.91	
All		18.05	16.02	
Fresh	28.30	22.37	20.34	
Processing		1.84	-0.19	
CA				
Navel & Misc.		10.83	8.85	
Fresh	25.50	19.48	17.50	
Processing		0.36	-1.62	
Valencias		14.27	12.19	
Fresh	28.10	22.20	20.12	
Processing		2.94	0.86	
All		12.37	10.34	
Fresh	26.70	20.75	18.72	
Processing		1.45	-0.57	
FL				
Early/Mids.		6.61	4.76	
Fresh	17.40	10.30	8.30	
Processing		6.40	4.55	
Valencias		7.66	5.71	
Fresh	18.50	11.40	9.40	
Processing		7.41	5.46	
All		7.03	5.13	
Fresh	17.90	10.77	8.77	
Processing		6.80	4.91	
TX				
Early/Mids.		8.14	6.85	
Fresh	18.10	9.30	8.00	
Processing		2.94	1.69	
Valencias		5.37	4.08	
Fresh	16.90	8.10	6.80	
Processing		2.30	1.05	
All		7.80	6.51	
Fresh	18.00	9.20	7.90	
Processing		2.77	1.52	
US				
Early/Mids. & Navels		7.23	5.36	
Fresh	22.20	15.62	13.67	
Processing		5.97	4.11	
Valencias		8.78	6.81	
Fresh	24.80	18.42	16.37	
Processing		7.05	5.09	
All		7.85	5.94	
Fresh	23.30	16.85	14.86	
Processing		6.40	4.50	

Grapefruit: Marketing Year Average Prices Received,
Crop Years 1995-96 and 1996-97

State, Variety, and Utilization	1995-96			1996-97		
	F.O.B. :	Equiv. :	Equiv. :	F.O.B. :	Equiv. :	Equiv. :
	Packed :	P.H.D. :	On-Tree :	Packed :	P.H.D. :	On-Tree :
	Dollars per box					
AZ		3.70	1.76		2.98	1.04
Fresh	11.50	6.06	4.12	11.50	6.06	4.12
Processing		-0.28	-2.22		-0.42	-2.36
CA		6.58	4.64		6.42	4.48
Fresh	14.40	8.96	7.02	14.20	8.76	6.82
Processing		-0.23	-2.17		-0.19	-2.13
FL						
Seedless-Clrd		3.83	1.77		4.07	1.91
Fresh	12.30	4.81	2.96	12.70	5.12	3.26
Processing		2.33	-0.06		2.74	0.20
Seedless-White		4.31	2.14		3.32	1.12
Fresh	16.20	7.80	5.88	15.60	7.16	5.23
Processing		3.13	0.88		2.10	-0.18
Seedless-all		4.05	1.94		3.75	1.57
Fresh	13.30	5.58	3.71	13.40	5.62	3.74
Processing		2.82	0.51		2.38	-0.01
Other		3.43	1.73		1.93	0.13
Fresh 1/						
Processing		3.43	1.73		1.93	0.13
All		4.03	1.93		3.72	1.55
Fresh	13.30	5.58	3.71	13.40	5.62	3.74
Processing		2.84	0.56		2.37	-0.01
TX		4.67	3.69		4.17	3.03
Fresh	13.70	6.22	5.22	14.00	5.30	4.15
Processing		1.61	0.66		1.50	0.40
US		4.33	2.32		4.00	1.93
Fresh	13.50	6.16	4.36	13.60	6.06	4.25
Processing		2.60	0.39		2.19	-0.11

1/ Fresh sales insignificant and included in processed.

Grapefruit: Marketing Year Average Prices Received,
Crop Years 1997-98 and 1998-99

State, Variety, and Utilization	1997-98			1998-99		
	F.O.B.	Equiv.	Equiv.	F.O.B.	Equiv.	Equiv.
	Packed	P.H.D.	On-Tree	Packed	P.H.D.	On-Tree
	Dollars per box					
AZ		4.67	2.73		6.60	4.66
Fresh	13.20	7.76	5.82	14.90	9.46	7.52
Processing		-0.26	-2.20		-0.16	-2.10
CA		8.42	6.48		11.28	9.34
Fresh	17.70	12.26	10.32	19.00	13.56	11.62
Processing		-0.26	-2.20		-0.10	-2.04
FL						
Seedless-Clrld		3.74	1.50		4.73	2.43
Fresh	12.40	4.71	2.85	14.20	6.53	4.52
Processing		2.62	-0.05		2.65	0.02
Seedless-White		3.24	0.93		4.30	2.01
Fresh	15.90	7.31	5.38	17.40	8.83	6.80
Processing		1.80	-0.65		2.75	0.36
Seedless-All		3.55	1.29		4.57	2.27
Fresh	13.20	5.30	3.42	14.90	7.05	5.04
Processing		2.22	-0.34		2.70	0.19
Other		1.90	0.10		2.92	1.02
Fresh 1/ Processing		1.90	0.10		2.92	1.02
All		3.53	1.27		4.55	2.26
Fresh	13.20	5.30	3.42	14.90	7.05	5.04
Processing		2.21	-0.33		2.70	0.21
TX		4.70	3.57		5.79	4.65
Fresh	14.60	5.90	4.75	16.60	7.90	6.75
Processing		1.50	0.40		1.50	0.40
US		4.13	2.00		5.36	3.22
Fresh	14.00	6.44	4.64	15.80	8.30	6.41
Processing		2.02	-0.43		2.52	0.13

1/ Fresh sales insignificant and included in processed.

Lemons, Limes, Tangelos, Tangerines, and Temples: Marketing Year
Average Prices Received, Crop Years 1996-97 and 1997-98

State, Variety, and Utilization	1996-97			1997-98		
	F.O.B.	Equiv.	Equiv.	F.O.B.	Equiv.	Equiv.
	Packed	P.H.D.	On-Tree	Packed	P.H.D.	On-Tree
	Dollars per box					
Lemons						
AZ		10.87	7.23		9.30	5.66
Fresh	25.10	16.66	13.02	23.30	14.86	11.22
Processing		3.02	-0.62		2.51	-1.13
CA		12.13	8.49		10.32	6.68
Fresh	29.30	20.86	17.22	27.60	19.16	15.52
Processing		3.02	-0.62		2.40	-1.24
US		12.00	8.36		10.21	6.57
Fresh	28.80	20.36	16.72	27.10	18.62	14.98
Processing		3.02	-0.62		2.41	-1.23
Limes						
FL		11.93	6.93		11.90	6.90
Fresh	25.00	14.50	9.50	25.50	15.00	10.00
Processing		1.81	-3.19		2.59	-2.41
Tangelos						
FL		4.75	2.19		4.19	1.66
Fresh	13.90	6.50	4.05	13.80	6.30	3.90
Processing		4.13	1.53		3.20	0.60
Tangerines						
AZ		15.14	13.06		12.53	10.45
Fresh	22.70	16.80	14.72	21.50	15.60	13.52
Processing		-0.28	-2.36		0.00	-2.08
CA		15.11	13.03		11.47	9.39
Fresh	24.50	18.60	16.52	22.60	16.70	14.62
Processing		-0.28	-2.36		0.01	-2.07
FL		11.35	7.99		11.82	8.49
Fresh	24.50	15.95	12.75	24.30	15.70	12.50
Processing		4.56	0.96		4.32	0.72
US		12.47	9.48		11.78	8.84
Fresh	24.30	16.77	13.98	23.70	15.95	13.12
Processing		3.85	0.47		3.12	-0.06
Temples						
FL		5.23	3.22		5.12	3.07
Fresh	15.70	8.70	7.00	13.60	6.50	4.60
Processing		4.18	2.08		4.65	2.55

Lemons, Limes, Tangelos, Tangerines, and Temples: Marketing Year
Average Prices Received, Crop Year 1998-99

State and Utilization		1998-99		
		F.O.B. Packed	Equiv. P.H.D.	Equiv. On-Tree
		Dollars per box		
Lemons				
AZ				
Fresh	27.70	19.26	15.62	
Processing		0.81	-2.83	
CA				
Fresh	29.80	21.36	17.72	
Processing		0.83	-2.81	
US				
Fresh	29.40	20.95	17.31	
Processing		0.83	-2.81	
Limes				
FL				
Fresh	30.10	19.60	14.60	
Processing		2.00	-3.00	
Tangelos				
FL				
Fresh	17.40	9.90	7.40	
Processing		5.92	3.22	
Tangerines				
AZ				
Fresh	29.90	24.00	21.92	
Processing		1.29	-0.79	
CA				
Fresh	26.70	20.80	18.72	
Processing		1.70	1.70	
FL				
Fresh	27.70	19.10	15.65	
Processing		7.50	3.65	
US				
Fresh	27.80	19.95	16.88	
Processing		5.86	2.87	
Temples				
FL				
Fresh	18.40	11.30	9.30	
Processing		5.37	3.17	

K-Early Citrus: Marketing Year Average Prices Received,
Crop Years 1996-97 and 1997-98

State and Utilization	1996-97			1997-98		
	F.O.B. : Packed	Equiv. : P.H.D.	Equiv. : On-Tree	F.O.B. : Packed	Equiv. : P.H.D.	Equiv. : On-Tree
	Dollars per box					
K-Early Citrus						
FL		3.95	1.40		1.13	-1.33
Fresh	13.70	6.30	3.85	8.00	0.50	-1.90
Processing		2.50	-0.10		3.00	0.40

Florida Grapefruit: Marketing Year Average Prices Received,
Crop Years 1996-97 and 1997-98

Variety, Area, and Utilization	1996-97			1997-98		
	F.O.B. : Packed	Equiv. : P.H.D.	Equiv. : On-Tree	F.O.B. : Packed	Equiv. : P.H.D.	Equiv. : On-Tree
	Dollars per box					
White Seedless						
Interior		2.53	0.58		2.17	0.28
Fresh	13.50	6.60	4.80	12.90	5.80	4.00
Processing		2.10	0.14		1.79	-0.11
Indian River		3.81	1.47		3.82	1.28
Fresh	16.00	7.30	5.35	16.40	7.60	5.65
Processing		2.11	-0.42		1.80	-1.05
Colored Seedless						
Interior		4.34	2.30		3.91	1.83
Fresh	12.30	5.80	4.05	12.00	5.40	3.65
Processing		2.70	0.34		2.61	0.25
Indian River		3.92	1.72		3.68	1.37
Fresh	12.80	4.80	2.90	12.60	4.50	2.60
Processing		2.75	0.13		2.62	-0.23

K-Early Citrus: Marketing Year Average Prices Received,
Crop Year 1998-99

		1998-99		
State and Utilization	F.O.B. Packed	Equiv. P.H.D.	Equiv. On-Tree	
Dollars per box				
K-Early Citrus				
FL				
Fresh	14.10	4.78	2.14	
Processing		6.60	4.10	
		4.00	1.30	

Florida Grapefruit: Marketing Year Average Prices Received,
Crop Year 1998-99

		1998-99		
Variety, Area, and Utilization	F.O.B. Packed	Equiv. P.H.D.	Equiv. On-Tree	
Dollars per box				
White Seedless				
Interior				
Fresh	15.50	3.41	1.35	
Processing		8.40	6.50	
		2.74	0.65	
Indian River				
Fresh	17.70	4.66	2.26	
Processing		8.90	6.85	
		2.75	0.20	
Colored Seedless				
Interior				
Fresh	13.50	4.53	2.33	
Processing		6.90	5.00	
		2.62	0.18	
Indian River				
Fresh	14.50	4.85	2.50	
Processing		6.40	4.35	
		2.67	-0.09	

Reliability of Prices Received Estimates

Definition: Prices received represent sales from producers to first buyers. They include all grades and qualities. The average commodity price from the survey multiplied by the total quantity marketed theoretically should give the total cash receipts for the commodity.

Survey Procedures: Primary sales data used to determine grain prices were obtained from probability samples of 2600 mills and elevators. These procedures ensure that virtually all grain moving into commercial channels has a chance of being included in the survey. Generally, States surveyed account for 90 percent or more of total U.S. production. Livestock prices are obtained from packers, stockyards, auctions, dealers, and market check data from AMS-USDA, private marketing organizations, and state commodity groups and agencies. Inter-farm sales of grain and livestock are not included since they represent very small percentages of the total marketings. Grain marketed for seed is also excluded. Fruit and vegetable prices are obtained from sample surveys and market check data from AMS-USDA, private marketing organizations, state agencies, and universities.

Summary and Estimation Procedures: Survey quantities sold are expanded by strata to state levels and used to weight average strata prices to a state average. State prices are then weighted to a U.S. price based on expanded marketings. Recommendations are prepared by the State Statistical Offices and reviewed by the Agricultural Statistics Board in Washington, D.C. State recommendations are reviewed for reasonableness with survey data, other States, and recent historic estimates.

Revisions: For most items, the current month's price represents a 3-5 day period around the mid-month. Previous month's prices represent actual dollars received for quantities sold during the entire month. Revisions are published in monthly issues of "**Agricultural Prices**".

Reliability: U.S. price estimates based on probability surveys generally have a sampling error of less than one percent for the major commodities such as corn, wheat, soybeans, cotton, and rice. Current methods of summarization for non-probability commodities are not designed directly to calculate sampling errors. However, analytical measures approximate the U.S. relative sampling errors at around five percent. Any nonsampling errors are attributed to such things as the inability to obtain correct information, differences in interpreting questions or definitions, mistakes in coding or processing the data, etc. Efforts are made at each step in the survey process to minimize these nonsampling errors.

Prices Paid by Farmers

The September Index of Prices Paid for Commodities and Services, Interest, Taxes, and Farm Wage Rates (PPITW) was 117 (1990-92=100), unchanged from August 1999 but 1.7 percent above September 1998.

Production Index: The September farm production, goods, and services index, at 114, was up 0.9 percent from last month and 1.8 percent above last year. Higher prices in September for feeder cattle, herbicides, feeder pigs, and feed concentrates more than offset lower prices for complete feeds, hay and forages, nitrogen fertilizers, and insecticides.

Feed: The feed index, at 99, was the same as August but 2.9 percent below September 1998. Slightly lower September prices for complete feeds and hay and forages offset slightly higher prices for feed concentrates, feed supplements, and feed grains.

Livestock and Poultry: The index for livestock and poultry purchases, at 94, was 3.3 percent higher than than last month and 18 percent above last year. Prices were higher for both feeder cattle and feeder pigs during September.

Fertilizer: The fertilizer index, at 103, was unchanged from August but 6.4 percent less than September a year ago. Lower September prices for nitrogen fertilizers offset slightly higher prices for mixed fertilizers and potash and phosphate materials.

Agricultural Chemicals: The chemical index, at 127, was up 3.3 percent from last month and up 6.7 percent from last September. Higher prices in September for herbicides and other chemicals more than offset lower prices for insecticides.

Fuels: The fuels index, at 113, was up 2.7 percent from a month earlier and 27 percent above September 1998. Compared to last month, prices were higher for both diesel fuel and gasoline.

Farm Machinery: The September farm machinery index was 135, unchanged from August but 0.7 percent above last September. Other machinery prices were slightly higher since August.

Consumer Price Index: The August 1999 Consumer Price Index for all urban consumers (CPI-U) rose 0.2 percent, before seasonal adjustment, to a level of 167.1 (1982-84=100). This compares to the July index of 166.7. The overall index has increased 2.3 percent for the 12-month period ending in August.

Index Numbers of Prices Paid by Farmers and Related Parity Ratios
United States, September 1999 With Comparisons

Indexes and Ratios	1910-14 = 100			1990-92 = 100		
	1998		1999		1999	
	Sep	Aug	Sep	Sep	Aug	Sep
Prices Paid by Farmers for Commodities & Services, Interest, Taxes, & Wage Rates (PPITW)	: 1529	*1551	1559	115	*117	117
Production	: 1090	*1100	1108	112	113	114
Feed	: 496	*481	485	102	*99	99
Livestock and Poultry	: 1019	1157	1203	80	91	94
Seeds	: 1216	1196	1196	123	121	121
Fertilizer	: 403	*379	377	110	*103	103
Agricultural Chemicals	: 738	*760	784	119	*123	127
Fuels	: 687	*850	871	89	*110	113
Supplies & Repairs	: 851	*860	860	120	121	121
Autos & Trucks	: 3133	*3142	3129	118	118	118
Farm Machinery	: 3350	*3382	3384	134	135	135
Building Material	: 1610	*1644	1643	119	*121	121
Farm Services & Rent	: 1476	*1455	1455			
Farm Services	:			117	117	117
Rent	:			134	130	130
Interest 1/	: 2739	2757	2757	109	110	110
Taxes 2/	: 3185	3214	3214	119	120	120
Wage Rates	: 4678	4898	4898	125	131	131
Production, Interest, Taxes, & Wage Rates (PITW)	: 1524	*1544	1553	113	*115	116
Family Living-CPI 3/	: 1554	*1587	1587	121	124	124
Ratio (Received\Paid)	:			*86	84	83
Parity Ratio 4/	: 41	40	40			
Parity Ratio Adjusted 5/	: 44	43	42			
PPITW Adjusted for Productivity 6/	: 1032	*1047	1048			
Crop Sector (PPITW)	:			119	*121	121
Livestock Sector (PPITW)	:			110	112	113
Farm Sector (Production)	:			97	*99	100
Non-Farm Sector (Production)	:			120	120	121

* Revised.

- 1/ Interest per acre on farm real estate debt and interest rate on farm non-real estate debt.
- 2/ Farm real estate taxes payable per acre.
- 3/ Bureau of Labor Statistics, Consumer Price Index for all urban consumers (CPI-U), for the previous month converted by the USDA.
- 4/ Ratio of index of prices received to PPITW (1910-14=100).
- 5/ Based on estimated cash receipts, from marketings and government payments, the preliminary adjustment factor is 1.057 for 1999 and the revised factor is 1.065 for 1998.
- 6/ PPITW is adjusted based on productivity trend for the prior 15 years.

Prices Paid Indexes and Annual Weights for Input Components and
Sub-Components United States, September 1999 With Comparisons

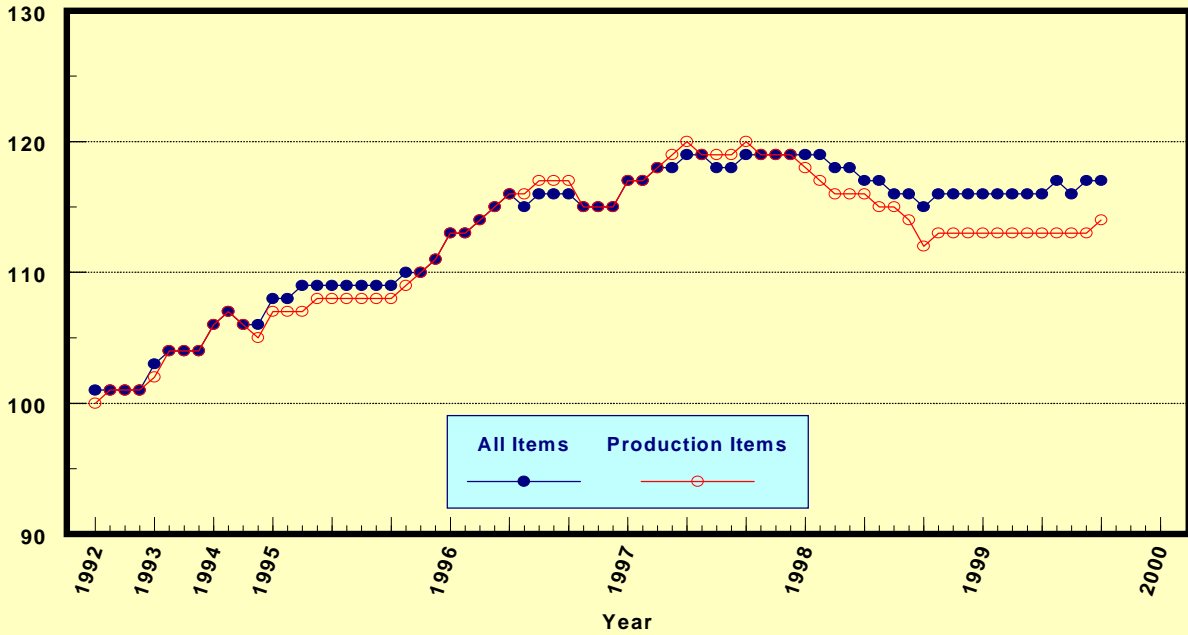
Index	Relative Weights		Input Indexes		
	5-Year Moving Average 1/		1998	1999	
	1998	1999	Sep	Aug	Sep
	----	Percent	----	(1990-92=100)	---
Production Items	67.0	67.4	112	113	114
Feed	11.6	11.6	102	*99	99
Feed Grains	2.1	2.1	78	*76	77
Complete Feeds	5.1	5.1	106	103	102
Hay/Forages	1.3	1.3	112	99	96
Concentrates	1.9	1.9	104	*100	107
Supplements	1.3	1.3	107	*116	119
Livestock & Poultry	7.5	7.2	80	91	94
Feeder Cattle	5.9	5.6	78	91	95
Feeder Pigs	0.6	0.6	55	46	57
Milk Cow Replacements	0.6	0.6	99	113	113
Poultry	0.5	0.4	110	110	110
Seeds	2.8	2.8	123	121	121
Field Crops	2.5	2.6	123	121	121
Grasses/Legumes	0.3	0.3	123	121	121
Fertilizer	4.8	4.9	110	*103	103
Mixed Fertilizer	2.1	2.1	116	115	115
Nitrogen	2.0	2.0	102	*87	86
Potash & Phosphate	0.7	0.7	115	*115	115
Agricultural Chemicals	3.7	3.8	119	*123	127
Herbicides	2.4	2.4	114	*119	127
Insecticides	0.9	0.9	134	*134	131
Fungicides/Other	0.5	0.5	118	120	121
Fuels	2.7	2.7	89	*110	113
Diesel	1.4	1.4	86	*103	106
Gasoline	1.0	1.0	94	*112	115
LP Gas	0.3	0.3	86	*139	139
Farm Supplies & Repairs	5.4	5.6	120	121	121
Supplies	1.8	1.9	115	117	117
Repairs	3.6	3.7	122	123	123
Autos & Trucks	1.4	1.4	118	118	118
Autos	0.2	0.2	112	*110	110
Trucks	1.2	1.3	119	119	119
Farm Machinery	4.1	4.0	134	135	135
Tractors	0.9	0.9	130	132	132
Self-Propelled	1.7	1.6	134	134	134
Other Machinery	1.6	1.5	136	138	138
Building Materials	2.7	2.8	119	*121	121
Farm Services	12.2	12.4	117	117	117
Custom Rates	1.3	1.3	117	115	115
Other Services	10.9	11.1	117	117	117
Rent	8.1	8.2	134	130	130
Cash	3.7	3.7	141	141	141
Share	4.5	4.5	129	121	121
Interest	5.0	4.5	109	110	110
Taxes	3.2	3.1	119	120	120
Wage Rates	6.9	6.9	125	131	131
Family Living-CPI	18.0	17.7	121	124	124

1/ Weights may not add due to rounding.

* Revised.

Prices Paid by Farmers, Major Indexes US, by Quarter and Month 1/

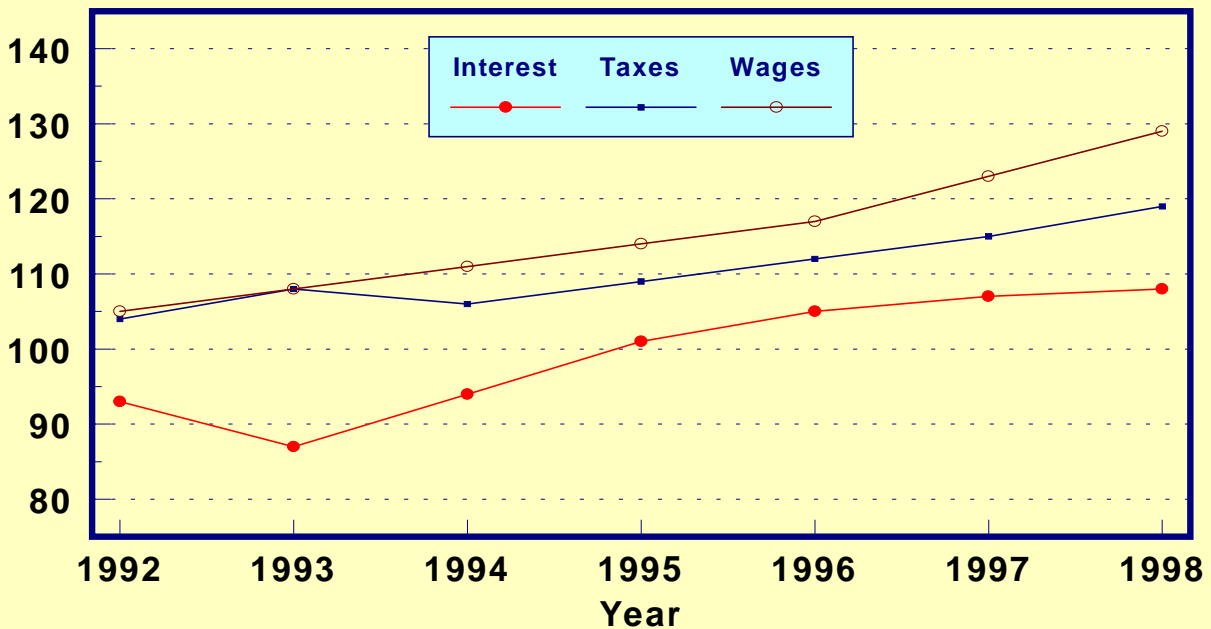
Percent (1990-92=100)



1/ Index values are monthly beginning in 1995.

Prices Paid by Farmers, Major Indexes US, Annual Averages 1/

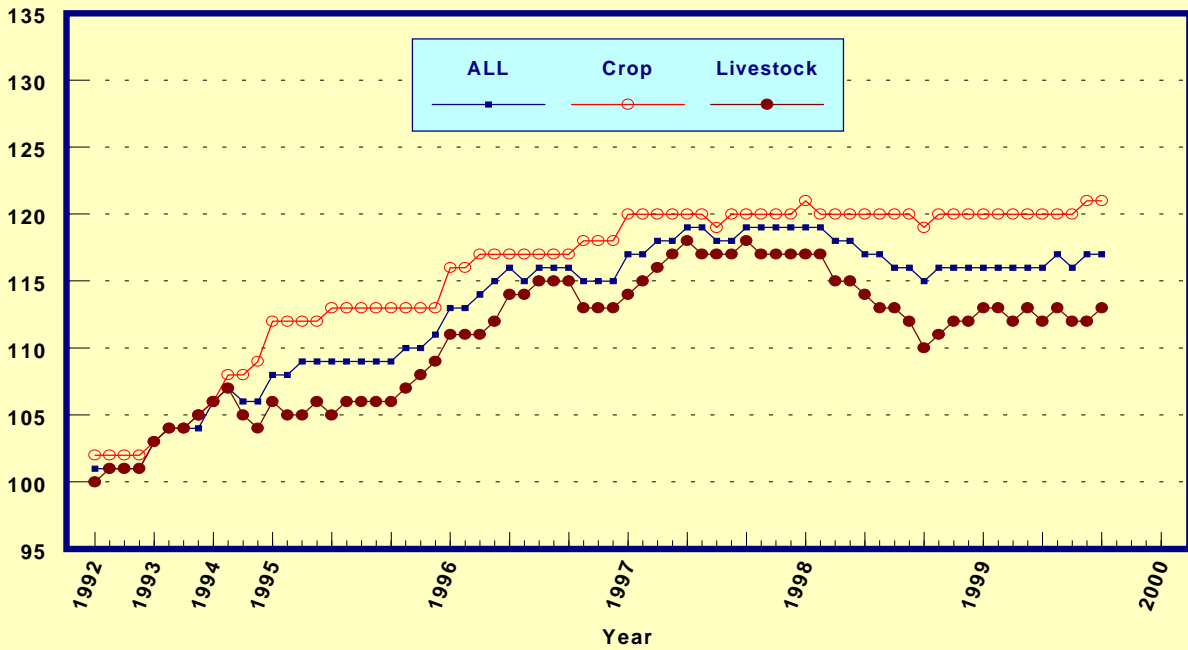
Percent (1990-92=100)



1/ Index values for 1998 are year-to-date averages.

Prices Paid by Farmers, Indexes, All Items US, By Farm Type 1/

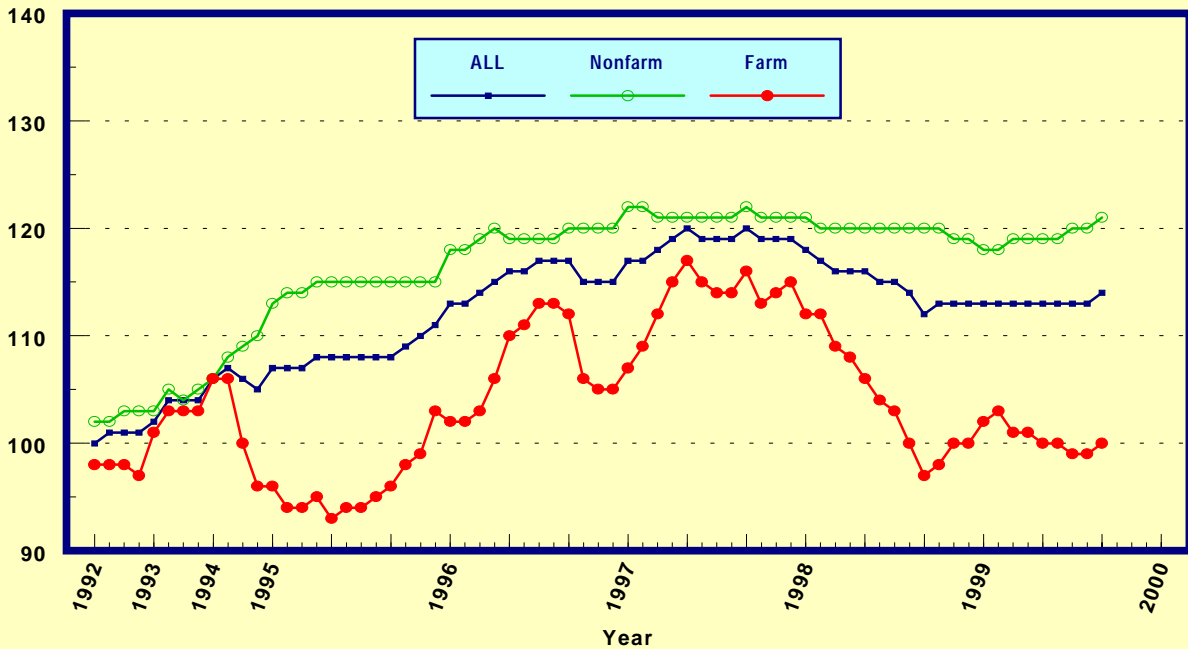
Percent (1990-92=100)



1/ Index values are monthly beginning in 1995.

Prices Paid by Farmers, Indexes, All Production Items US, By Sector Origin 1/

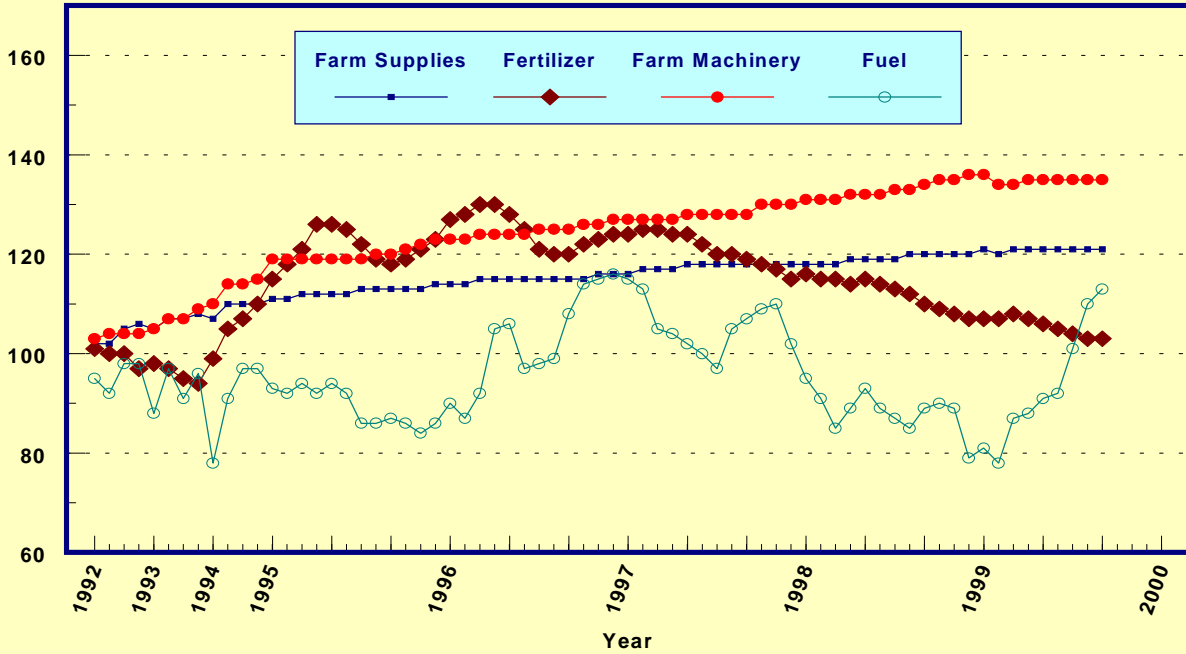
Percent (1990-92=100)



1/ Index values are monthly beginning in 1995.

Prices Paid by Farmers, Selected Production Indexes US, By Non-Farm Sector 1/

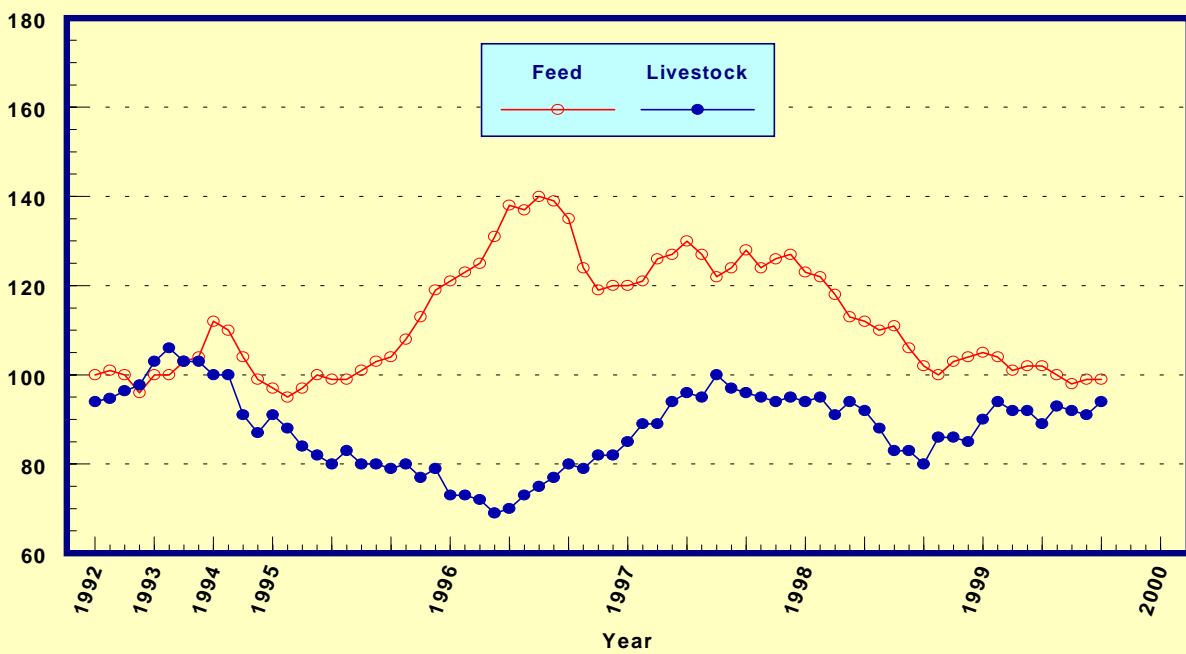
Percent (1990-92=100)



1/ Index values are monthly beginning in 1995.

Prices Paid by Farmers, Selected Production Indexes US, By Farm Sector 1/

Percent (1990-92=100)



1/ Index values are monthly beginning in 1995.

Feed Price Ratios: United States, September 1999 With Comparisons

Feed Price Ratio 1/	1998	1999	
	Sep	Aug	Sep
Broiler-Feed: Pounds of Broiler Grower feed equal in value to 1 pound of broiler, live weight	8.2	7.5	7.2
Market Egg Feed: Pounds of Laying Feed equal in value to 1 dozen eggs	10.7	10.1	9.2
Hog-Corn: Bushels of Corn equal in value to 100 pounds of hog, live weight	16.1	*20.7	18.0
Milk-Feed: Pounds of 16% Mixed Dairy Feed equal in value to 1 pound of Whole Milk	*4.02	*3.87	4.15
Steer & Heifer-Corn: Bushels of Corn equal in value to 100 pounds of Steer & Heifers, live weight	32.2	*37.8	37.4
Turkey-Feed: Pounds of Turkey Grower equal in value to 1 pound of Turkey, live weight	8.1	*9.5	9.5

1/ Effective January 1995, prices of commercial prepared feeds are based on current U.S. prices received for corn, soybeans, alfalfa hay, and all wheat.

* Revised.

Prices Used to Calculate Feed Price Ratios:
United States, September 1999 With Comparisons

Commodity	Unit	1998	1999	
		Sep	Aug	Sep
Broilers, Live	Lb	.459	.362	.365
Eggs, Market	Doz	.496	.420	.397
Hogs, All	Cwt	29.50	*36.20	32.30
Milk, All	Cwt	16.70	*15.00	15.90
Steers and Heifers	Cwt	58.90	*66.20	66.90
Turkeys, Live	Lb	.402	.413	.445
Corn	Bu	1.83	*1.78	1.79
Hay, Alfalfa, Baled	Ton	87.10	81.50	77.30
Soybeans	Bu	5.25	*4.39	4.61
Wheat, All	Bu	2.39	*2.52	2.56

* Revised.

Feeder Livestock: Prices Paid, United States
September 1999 With Comparisons

Item	Unit	1998	1999	
		Sep	Aug	Sep
			Dollars	
Feeders and Stockers				
Cattle and Calves	Cwt	66.00	77.20	80.20

Prices Paid by Farmers

Definition: Prices paid by farmers represent the average costs of inputs purchased by farmers and ranchers to produce agricultural commodities. Conceptually, the average price when multiplied by quantity purchased should equal total producer expenditures for the item.

Survey Procedures: The prices paid data are obtained from establishments that sell goods and services to farmers and ranchers. Annually, about 8,500 firms are randomly selected from lists by type of item sold with an average response rate in the range of 75-80 percent. Firms are asked to report the price for the specified item "most commonly bought by farmers" or that was the "volume seller". Approximately 135 items are surveyed each April to represent all production input items purchased. The survey reference period for most items is the 5 business days centered around the 15th of the month. Separate prices paid surveys are conducted for agricultural chemicals, fuels, feed, fertilizer, machinery, and seed.

Summary and Estimation Procedures: The annual April Paid Survey is summarized as a nonprobability survey. Average prices reported are aggregated to the region and U.S. level using weights available from expenditure data and other administrative sources. Price recommendations are prepared by the State Statistical Offices and Headquarters for review by the Agricultural Statistics Board in Washington, D.C. Also, the change in price level for individual items surveyed are combined to the regional and U.S. levels, and are published as prices paid indexes referenced to a specific base period. Prices paid indexes for new autos and trucks, building materials, farm supplies, motor supplies, and marketing containers are updated based on price changes measured in selected Bureau of Labor Statistics (BLS) indexes.

Revisions: Any revisions are published in the monthly and in annual issues of "Agricultural Prices". The basis for revision must be supported by additional data that directly affect the level of the estimate. More revisions are likely in April when separate prices paid surveys are conducted, in lieu of BLS indexes, by the USDA to measure price change.

Reliability: Current methods of summarization in April are not designed directly to calculate sampling errors. However, analytical measures approximate the U.S. relative sampling errors for major items around 10 percent. Any nonsampling errors are attributed to such things as the inability to obtain correct information, differences in interpreting questions or definitions, mistakes in coding or processing the data, etc. Efforts are made at each step in the survey process to minimize these nonsampling errors.

Program Change: Effective January 1, 1995, the National Agricultural Statistics Service updated the weights and changed the construction of its prices paid and received by farmers indexes. A Federal Register Notice dated October 28, 1994 discussed these program modifications.

A 1990-92 reference and base period replaced the 1977 reference and 1971-73 base weight period. Five-year moving average weights replaced the current fixed 1971-73 base period weights. The 1910-14=100 price indexes, required by statute for computing parity prices, were linked forward based on the changes in the new 1990-92=100 indexes. The new indexes were constructed by multiplying the ratios of the current prices to the base period prices by the moving average weights (adjusted for seasonal marketing patterns for the prices received indexes).

Index

Prices Received

U.S. Prices and Indexes	Page		Page
Narrative	A-2	Cows, Beef	A-18
Price Indexes	A-3	Cows, Milk	A-21
Prices Received		Eggs	A-20
U.S. Summary	A-6-7	Flaxseed	A-14
Selected Commodities ...	A-12	Fruit, Citrus	A-16
Upland Cotton and Rice		Hay	A-15
Prices and Marketings ..	A-5	All Hogs	A-19
Parity Prices	A-22-23	Lambs	A-20
Reliability Statement	A-53	Milk	A-21
		Oats	A-13
Monthly State Prices		Peanuts	A-14
Apples	A-15	Potatoes	A-17
Barley	A-13	Sheep	A-20
Barrows and Gilts	A-19	Sorghum, Grain	A-13
Beans, Dry Edible	A-14	Soybeans	A-13
Beef Cattle	A-18	Sows	A-19
Broilers	A-20	Steers and Heifers	A-18
Calves	A-18	Sunflower	A-14
Corn	A-13	Tobacco	A-14
Cotton	A-15	Turkeys	A-20
Cottonseed	A-15	Wheat	A-12

Special Features

Potatoes: Prices Received by Farmers, Monthly and Marketing Year	
Average by State and U.S., 1998	A-24-25
Citrus Prices: Average Prices Received, Monthly 1996-97 and	
1997-98 Crops and Marketing Year Averages 1996-97, 1997-98 and	
1998-99 Crops by State and U.S.	A-26-52

Index

Prices Paid

	Page
Narrative.....	B-1
Indexes and Parity Ratios.....	B-2-3
Charts.....	B-4-6
Feed Ratios.....	B-7
Reliability Statement.....	B-8

U.S. Average Prices:

Commodity prices used in feed price Ratios	B-7
Feeder Livestock	B-7

Report Features

Listed below are the commodity specialists in the Estimates Division of the National Agricultural Statistics Service to contact for additional information.

Crops Branch

C. Ray Halley, Chief (202) 720-2127

Field Crops Section
Brad Parks, Head (202) 720-3843

Rhonda Brandt - Corn (202) 720-9526
Herman Ellison - Peanuts, Rice (202) 720-7688
Lance Honig - Barley, Hay, Sorghum (202) 690-3234
Jay Johnson - Cotton (202) 720-5944
Mark E. Miller - Oats (202) 720-7621
Jerry Ramirez - Oilseeds (202) 690-7369
Vaughn Siegenthaler - Wheat (202) 720-8068

Fruit and Vegetable Section
Dean Groskurth, Head (202) 720-3843

Arvin Budge - Potatoes (202) 720-4285
Dave DeWalt - Citrus (202) 720-5412
Steve Gunn - Apples, Non-Citrus Fruits (202) 720-4288
Howard Hill - Grapes, Tobacco (202) 720-7235
Jeffery Kissel - Dry Beans, Peaches, Pears (202) 690-0270
Biz Wallingsford - Vegetables, Strawberries (202) 720-2157

Commodity Prices Coordinator
Charles Van Lahr (202) 720-5446
Kirby Cavett - Prices Received Indexes (202) 690-3237

Livestock and Economics Branch

Robert W. Milton, Chief (202) 720-3570

Livestock Section
Dan Kerestes, Head (202) 720-4447

Chris Cadwallader - Sheep, Lambs (202) 720-4751
Rodger Ott - Hogs (202) 720-3106
Greg Thessen - Cattle, Milk (202) 720-3040

Poultry and Specialty Commodities Section
Debra Kenerson, Head (202) 720-6351

Dan Boostrum - Eggs (202) 720-3244
Tom Krutchen - Broilers, Honey (202) 690-4870
John Lange - Turkeys (202) 720-8784

Farm Inputs Section (Prices Paid)
Mark Harris, Head (202) 720-4214

Kim Nielsen - Prices Paid Indexes, Feed, Fertilizer, Agricultural Chemicals, Seeds (202) 690-3347

Jim Williams - Farm Supplies and Repairs, Farm Machinery, Fuels, Feeder Livestock, Poultry Chicks, Feed Price Ratios, Grazing Fees, Autos & Trucks (202) 690-3225

The next "Agricultural Prices" report will be released at 3:00 p.m. ET on October 29, 1999.

The United States Department of Agriculture (USDA) prohibits discrimination in all its programs and activities on the basis of race, color, national origin, gender, religion, age, disability, political beliefs, sexual orientation, and marital or family status. (Not all prohibited bases apply to all programs.) Persons with disabilities who require alternative means for communication of program information (braille, large print, audiotape, etc.) should contact the USDA's TARGET Center at 202-720-2600 (voice and TDD).

To file a complaint of discrimination, write USDA, Director, Office of Civil Rights, Room 326-W, Whitten Building, 14th and Independence Avenue, SW, Washington, DC, 20250-9410, or call (202) 720-5964 (voice or TDD). USDA is an equal opportunity provider and employer.

ACCESS TO REPORTS!!

For your convenience, there are several ways to obtain NASS reports, data products, and services:

INTERNET ACCESS

All NASS reports are available free of charge on the worldwide Internet. For access, connect to the Internet and go to the NASS Home Page at: <http://www.usda.gov/nass/>. Select "Today's Reports" or Publications and then Reports by Calendar or Publications and then Search, by Title or Subject.

NEW INTERNET DATA BASE

Now available at the NASS home page is access to our **On-line Published Estimates Data Base**. Limited commodities are now available for U.S. and State estimates. Data from our five year Historic Bulletins will be available in the data base when publications are released.

E-MAIL SUBSCRIPTION

All NASS reports are available by subscription free of charge direct to your e-mail address. Send an e-mail message to: usda-reports@usda.mannlib.cornell.edu. In the body of the message type the word: **list**.

AUTOFAX ACCESS

NASSFax service is available for some reports from your fax machine. Please call 202-720-2000, using the handset attached to your fax. Respond to the voice prompts. Document 0411 is a list of available reports.

PRINTED REPORTS OR DATA PRODUCTS

CALL OUR TOLL-FREE ORDER DESK: 800-999-6779 (U.S. and Canada)
Other areas, please call 703-834-0125 FAX: 703-834-0110
(Visa, MasterCard, check, or money order acceptable for payment.)

ASSISTANCE

For **assistance** with general agricultural statistics or further information about NASS or its products or services, contact the **Agricultural Statistics Hotline** at 800-727-9540, 7:30 a.m. to 4:00 p.m. ET, or e-mail: nass@nass.usda.gov.

USDA to Hold Public Forum
October 18, 1999

Holiday Inn Mart Plaza
Chicago, Illinois

The National Agricultural Statistics Service will be organizing an open forum for Data Users. The purpose will be to provide updates on pending changes in the USDA statistical and information programs, and to seek comments and input from data users. Other agencies to be represented will include the Agricultural Marketing Service, the Economic Research Service, the Foreign Agricultural Service, and the World Agricultural Outlook Board.

For registration details, see the NASS home page at <http://www.usda.gov/nass/> or contact Fred Vogel (NASS) at (202) 720-3896 or at hq_ed_od@nass.usda.gov