

Released November 30, 2001, by the National Agricultural Statistics Service (NASS), Agricultural Statistics Board, U.S. Department of Agriculture. For information on "Agricultural Prices" or other assistance, see page B-9.

## Prices Received Index Down 1 Point

The preliminary All Farm Products Index of Prices Received by Farmers in November was 93, based on 1990-92=100, down 1 point (1.0 percent) from the October Index. Lower prices for milk, cattle, hogs, broilers, cotton, and apples more than offset higher prices for soybeans, potatoes, eggs, strawberries, and wheat. The seasonal change in the mix of commodities farmers sell often affects the overall index. Higher seasonal marketings of milk, cotton, cattle, cottonseed, and broilers more than offset lower marketings of soybeans, peanuts, and potatoes.

Compared with November 2000, the current All Farm Products Index was 5 points (5.1 percent) lower. Price decreases from November 2000 for cattle, lettuce, soybeans, eggs, and rice more than offset increases in potatoes, hay, broilers, and wheat.

## Prices Paid Index Down 1 Point

The November 2001 Index of Prices Paid for Commodities and Services, Interest, Taxes, and Farm Wage Rates (PPITW) was 122 percent of the 1990-92 average. The index was down 1 point (0.8 percent) from October, but 1 point (0.8 percent) higher than November 2000.

Lower prices in November for feeder cattle and calves, nitrogen fertilizer materials, diesel fuel, complete feeds, and gasoline were slightly offset by higher prices paid for farm machinery, feeder pigs, hays and forages, and new trucks.

Index Summary Table

Index 1990-92=100	2000		2001	
	Oct	Nov	Oct	Nov
Prices Received	93	98	94	93
Prices Paid	121	121	123	122
Ratio 1/	77	81	76	76

1/ Ratio of index of prices received by farmers to index of prices paid.

### Updated Version

Two pages have been revised from the first release on November 30<sup>th</sup>:  
Pages A-15 and A-31.

On page A-15:

The CO Barley price for November was changed from \$2.00 to \$2.49.

The TX Oats price for November should have been listed as 6/.

On page A-31:

The IL monthly Sorghum prices for April 2001 through July 2001 should have been listed as 4/.

**Table of Contents**

**Prices Received**

<b>U.S. Prices and Indexes</b>	<b>Page</b>	<b>Monthly State Prices, continued</b>	<b>Page</b>
Narrative .....	A-4	Cows, Beef .....	A-20
Price Indexes .....	A-5	Cows, Milk .....	A-23
Prices Received		Eggs .....	A-22
U.S. Summary .....	A-8-9	Flaxseed .....	A-16
Selected Commodities ...	A-14	Fruit, Citrus .....	A-18
Upland Cotton and Rice		Hay .....	A-17
Prices and Marketings ..	A-17	All Hogs .....	A-21
Parity Prices .....	A-24-25	Lambs .....	A-22
Reliability Statement ....	A-48	Milk .....	A-23
<b>Monthly State Prices</b>		Oats .....	A-15
Apples .....	A-17	Peanuts .....	A-16
Barley .....	A-15	Potatoes .....	A-19
Barrows and Gilts .....	A-21	Sheep .....	A-22
Beans, Dry Edible .....	A-16	Sorghum, Grain .....	A-15
Beef Cattle .....	A-20	Soybeans .....	A-15
Calves .....	A-20	Sows .....	A-21
Corn .....	A-15	Steers and Heifers .....	A-20
Cotton .....	A-17	Sunflower .....	A-16
Cottonseed .....	A-17	Tobacco .....	A-16
		Turkeys .....	A-22
		Wheat .....	A-14
<b>Information Contacts</b> .....			B-9

**Special Features**

<b>Revised Marketing Year Average Prices</b> , by State and United States, 1999 and 2000, for <b>Corn, Sorghum, Soybeans, Flaxseed, Sunflower, Dry Beans, and Peanuts</b> .....	A-26-27
<b>Revised Monthly Prices</b> by State and United States, 1999 and 2000 for <b>Corn, Sorghum, Soybeans, Flaxseed, Sunflower, Dry Beans, and Peanuts</b> .....	A-28-40
<b>Monthly Marketing Percentages</b> by State and United States, 1999-2000 and 2000-2001 for <b>Corn, Sorghum, Soybeans, Flaxseed, Sunflower, Dry Beans, and Peanuts</b> (U.S. only) .....	A-41-47

Table of Contents

Prices Paid

	<b>Page</b>
Narrative .....	B-1
Indexes and Parity Ratios .....	B-2-3
Charts .....	B-4-6
Feed Ratios .....	B-7
Reliability Statement .....	B-8

**U.S. Average Prices:**

Feeder Livestock .....	B-7
Prices Used to Calculate Feed Price Ratios .....	B-7

<b>Information Contacts</b> .....	B-9
-----------------------------------	-----

## Prices Received by Farmers

The November All Farm Products Index was 93 percent of its 1990-92 base, down 1.1 percent from the October index and 5.1 percent below the November 2000 index.

**All Crops:** The November index was 88, unchanged from October but 8.3 percent below the November 2000 index. Price increases from October for potatoes and dry beans, tobacco, and oil-bearing crops were offset by price decreases in fruit and nuts and cotton.

**Food Grains:** The November index, at 90, was unchanged from the previous month but down 2.2 percent from November 2000. The all wheat price, at \$2.94 per bushel, was up 8 cents from the October price and 12 cents above last November. The rice price, at \$4.23 per cwt, was down 13 cents from October and \$1.40 below a year ago.

**Feed Grains & Hay:** The November index was 86, unchanged from last month but 1.2 percent above November 2000. The corn price, at \$1.85 per bushel, was up 1 cent from October but 1 cent below last November's price. The all hay price, at \$97.10 per ton, was down \$2.30 from last month but \$13.10 above November 2000.

**Oil-Bearing Crops:** The November index, at 77, was up 4.1 percent from October but down 8.3 percent from the previous November. The soybean price, at \$4.18 per bushel, increased 9 cents from October but was down 37 cents from the November 2000 price.

**Cotton:** The November index, at 51, was down 11 percent from a month ago and 47 percent below November 2000. The cotton price, at 30.7 cents per pound, was down 3.8 cents from October and 27.3 cents below a year ago.

**Potatoes and Dry Beans:** The November index, at 106, was up 14 percent from last month and 39 percent above November 2000. The all potato price, at \$6.04 per cwt, was up 76 cents from the previous month and \$1.73 above last November. The dry edible bean price, at \$21.80 per cwt, was \$2.60 above last month and \$6.30 above a year ago.

**Fruit and Nuts:** The November fruit and nut index, at 105, was down 13 percent from the previous month but 6.1 percent above November 2000. Price decreases for apples, lemons, grapefruit, oranges, tangerines, and pears more than offset the price increase for strawberries.

**Commercial Vegetables:** The November index, at 101, was unchanged from last month but down 28 percent from November 2000. Price increases during November for cucumbers, cantaloupes, sweet corn, celery, tomatoes, and carrots were offset by price decreases for snap beans, broccoli, cauliflower, lettuce, and onions.

**Livestock and Products:** The November index, at 98, was down 5.8 percent from last month and down 1.0 percent from November 2000. Compared with a year ago, prices were higher for all milk and broilers but lower for all cattle, eggs, hogs, calves, and turkeys. Compared with last month, prices were higher for eggs and turkeys, but lower for all milk, all cattle, hogs, broilers, and calves.

**Meat Animals:** The November index, at 85, was down 6.6 percent from last month and down 7.6 percent from a year ago. The November hog price was \$34.90 per cwt, down \$5.60 from October and down \$1.90 from year ago. The November beef cattle price of \$62.80 was down \$3.80 from last month and down \$6.30 from November 2000. October cattle on feed numbers were up 1 percent from last year.

**Dairy Products:** The November index, at 109, was down 9.2 percent from October but 13.5 percent above November 2000. The November all milk price, at \$14.30 per cwt, was down \$1.40 from October but \$1.70 above last year. November prices decreased for both fluid and manufacturing grade milk. Cheese prices decreased the first three weeks of November.

**Poultry and Eggs:** The November 2001 index, at 117, was down 3 percent from October and 2 percent below a year ago. The November broiler price, at 39.0 cents per pound, was down 2 cents from October. Domestic broiler demand has softened seasonally, while export demand continued strong. November market egg prices, at 48.5 cents per dozen, were up 3.9 cents from October. Turkey prices increased slightly to 44.3 cents per pound. Demand was steady with stocks of frozen whole turkeys marginally above year ago levels.

Index Numbers of Prices Received, United States, November 2001,  
with Comparisons

Index	1910-14=100				1990-92=100			
	2000		2001		2000		2001	
	:Average:							
	:1990-92:	Nov	Oct	Nov	Nov	Oct	Nov	
All Farm Products	639	620	*598	589	98	*94	93	
All Crops	500	474	*432	436	96	*88	88	
Food Grains	325	292	*285	287	92	90	90	
Feed Grains & Hay	363	303	*308	309	85	*86	86	
Cotton	517	490	*292	259	96	57	51	
Tobacco	1263	1696	1657	1722	112	109	114	
Oil-Bearing Crops	554	461	*405	422	84	74	77	
Fruit & Nuts	716	691	*840	731	99	*120	105	
Commercial Vegetables	698	945	*675	672	141	*101	101	
Potatoes & Dry Beans	540	383	*469	537	76	*93	106	
Other Crops	493	532	532	532	108	108	108	
Livestock & Products	768	763	*801	754	99	*104	98	
Meat Animals	1021	939	*926	860	92	*91	85	
Dairy Products	799	774	*965	879	96	*120	109	
Poultry & Eggs	282	334	340	330	119	121	117	
Food Commodities					99	*96	96	

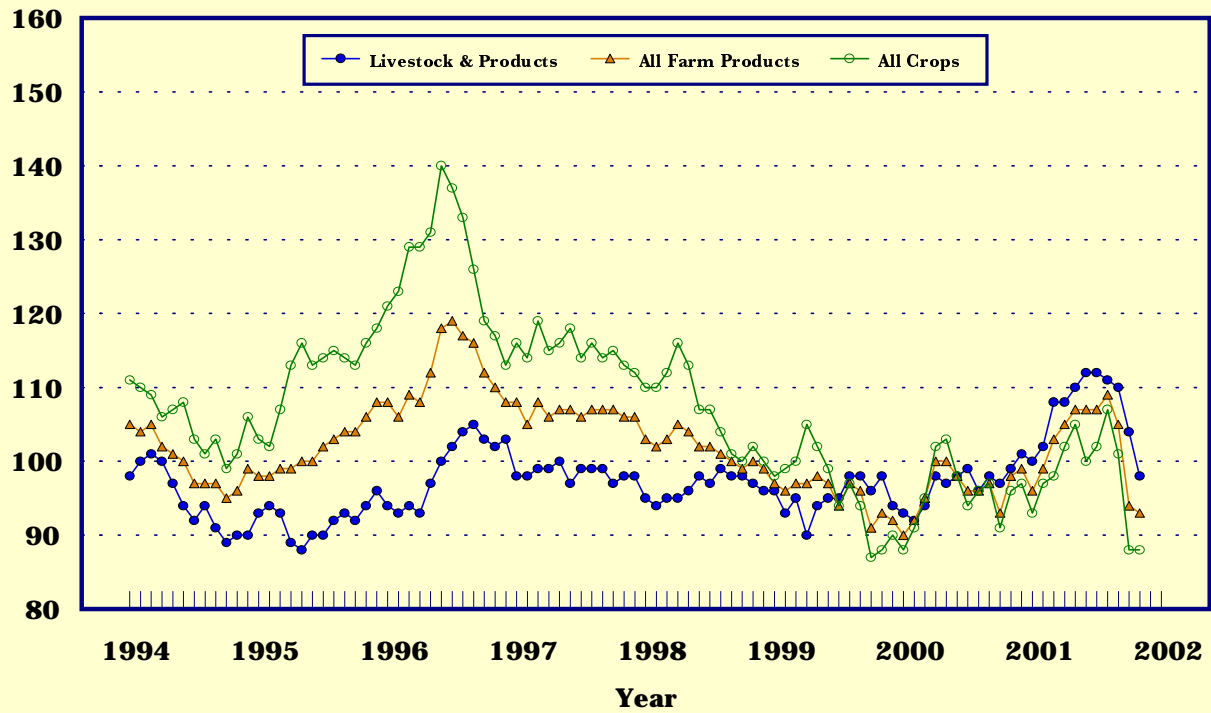
\* Revised.

Selected Index Numbers for Prices Received and Paid,  
1990-92=100, by Months, United States, 2000 and 2001

Month	Index of Prices Received						Index of Prices Paid			
	All Farm Products		All Crops		Livestock and Products		All Items		Production Items	
	2000	2001	2000	2001	2000	2001	2000	2001	2000	2001
Jan	90	96	88	93	93	100	118	124	114	121
Feb	92	99	91	97	92	102	118	124	115	120
Mar	95	103	95	98	94	108	119	124	115	120
Apr	100	105	102	102	98	108	119	124	115	120
May	100	107	103	105	97	110	119	124	116	120
Jun	98	107	98	100	98	112	120	124	116	120
Jul	96	107	94	102	99	112	120	123	116	120
Aug	96	109	96	107	96	111	119	123	115	119
Sep	97	105	97	101	98	110	120	123	116	119
Oct	93	94	91	88	97	104	121	123	117	118
Nov	98	93	96	88	99	98	121	122	118	117
Dec	99		97		101		122		119	

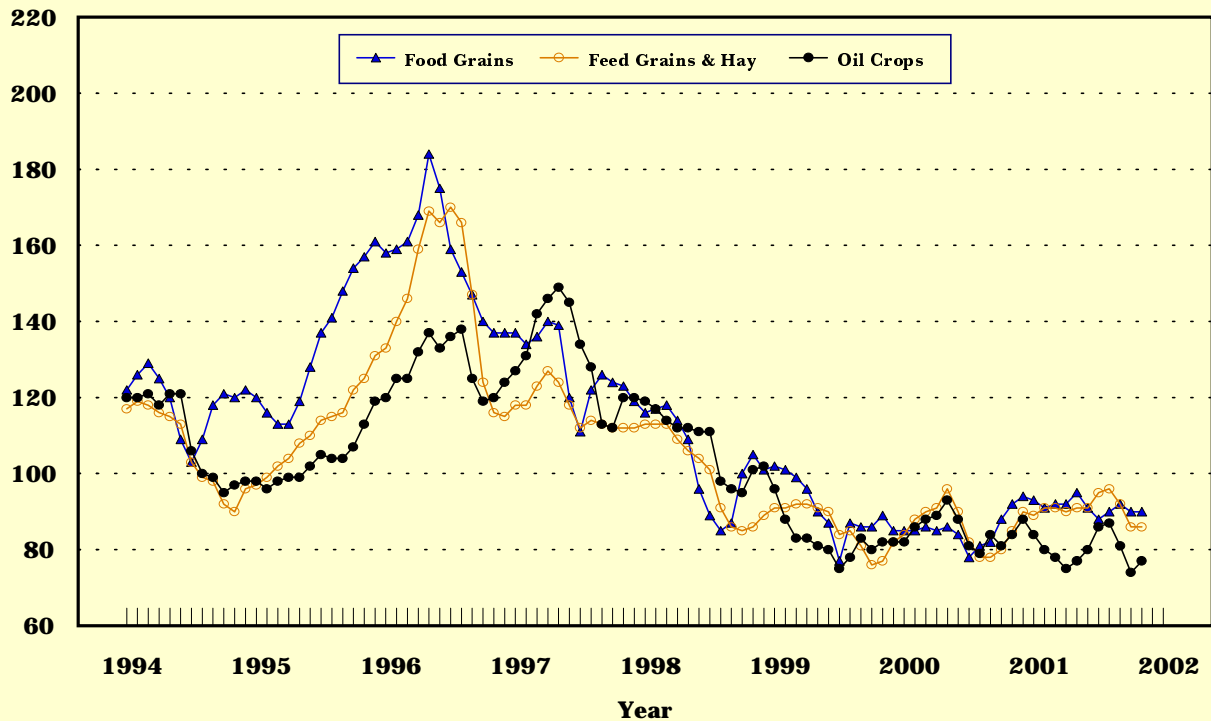
## Prices Received, Major Indexes, US

Index Values(1990-92=100)



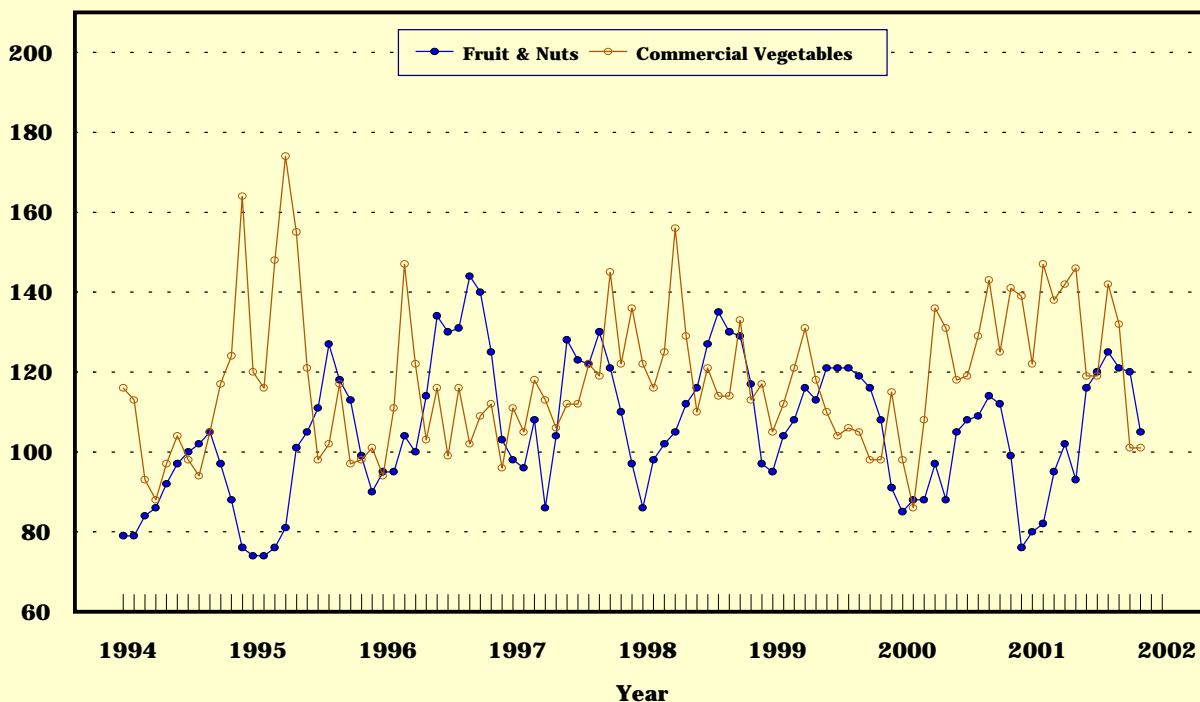
## Prices Received, Food, Feed & Oil Indexes, US

Index Values(1990-92=100)



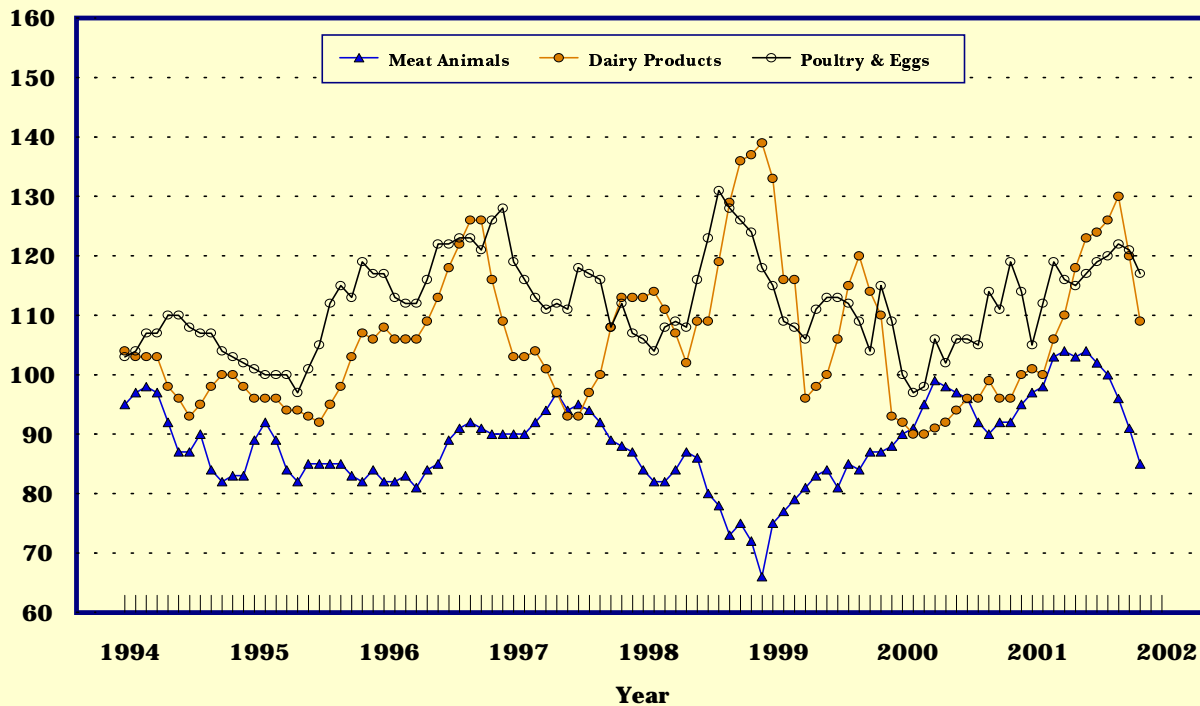
## Prices Received, Fruit/Vegetable Indexes, US

Index Values(1990-92=100)



## Prices Received, Livestock Product Indexes, US

Index Values(1990-92=100)



Prices Received, United States,  
November 2001, with Comparisons

Commodity	Unit	Average 1990-92	Entire Month		Preliminary
			Nov 2000	Oct 2001	Nov 2001
Dollars					
Field Crops					
Barley, All	Bu	2.12	2.15	2.30	2.31
Feed	Bu	1.90	1.87	1.86	1.83
Malting	Bu	2.43	2.42	2.77	2.71
Beans, Dry Edible	Cwt	19.10	15.50	19.20	21.80
Corn	Bu	2.30	1.86	1.84	1.85
Cotton, Upland	Lb	.606	.580	.345	.307
Cottonseed	Ton	96.00	108.00	85.00	91.00
Flaxseed	Bu	4.27	3.39	4.21	4.30
Hay, All, Baled 1/	Ton	76.30	84.00	99.40	97.10
Alfalfa 1/	Ton	77.20	88.00	108.00	106.00
Other 1/	Ton	60.00	71.10	70.00	74.10
Oats	Bu	1.22	1.22	1.65	1.59
Peanuts, In-Shell	Lb	.304	.261	.228	.204
Potatoes	Cwt	5.82	4.31	5.28	6.04
Rice, Rough	Cwt	7.07	5.63	4.36	4.23
Sorghum Grain	Cwt	3.75	3.27	3.30	3.35
Soybeans	Bu	5.61	4.55	4.09	4.18
Sunflower 2/	Cwt	9.50	6.20	8.19	8.69
Tobacco	Lb	1.740	1.950	1.905	1.980
Wheat, All	Bu	2.96	2.82	2.86	2.94
Winter	Bu	2.93	2.70	2.81	2.90
Durum	Bu	2.86	2.95	2.89	2.97
Other Spring	Bu	3.11	2.96	2.97	2.98
Hard Red Winter	Bu		2.84	2.68	
Soft Red Winter	Bu		2.18	2.47	
Hard Red Spring	Bu		3.02	2.94	
White	Bu	3.24	2.57	3.24	
Fruit					
Citrus-Equiv on-tree					
Grapefruit	Box	5.77	2.80	5.29	3.06
Lemons	Box	10.10	2.29	20.37	19.34
Limes 3/	Box	10.15			
Oranges	Box	5.79	2.69	5.12	3.19
Tangelos	Box	5.82	1.47		1.87
Tangerines	Box	15.11	7.91	9.22	7.48
Temples	Box	6.23			
Non-citrus					
Apples, Fresh 4/	Lb	.212	.185	.242	.233
Grapes, Fresh 4/	Ton	506.00	750.00	600.00	600.00
Peaches, Fresh 4/	Lb	.216			
Pears, Fresh 4/	Ton	370.00	323.00	413.00	350.00
Strawberries, Fresh	Lb	.560		.807	.964

1/ Mid-month price.  
2/ KS, MN, ND, and SD average.  
3/ Current prices not published to avoid disclosure of individual firms.  
4/ Equivalent packinghouse-door returns for CA, NY (apples only), OR (pears only) and WA (apples, peaches, and pears). Prices as sold for other states.

-- continued



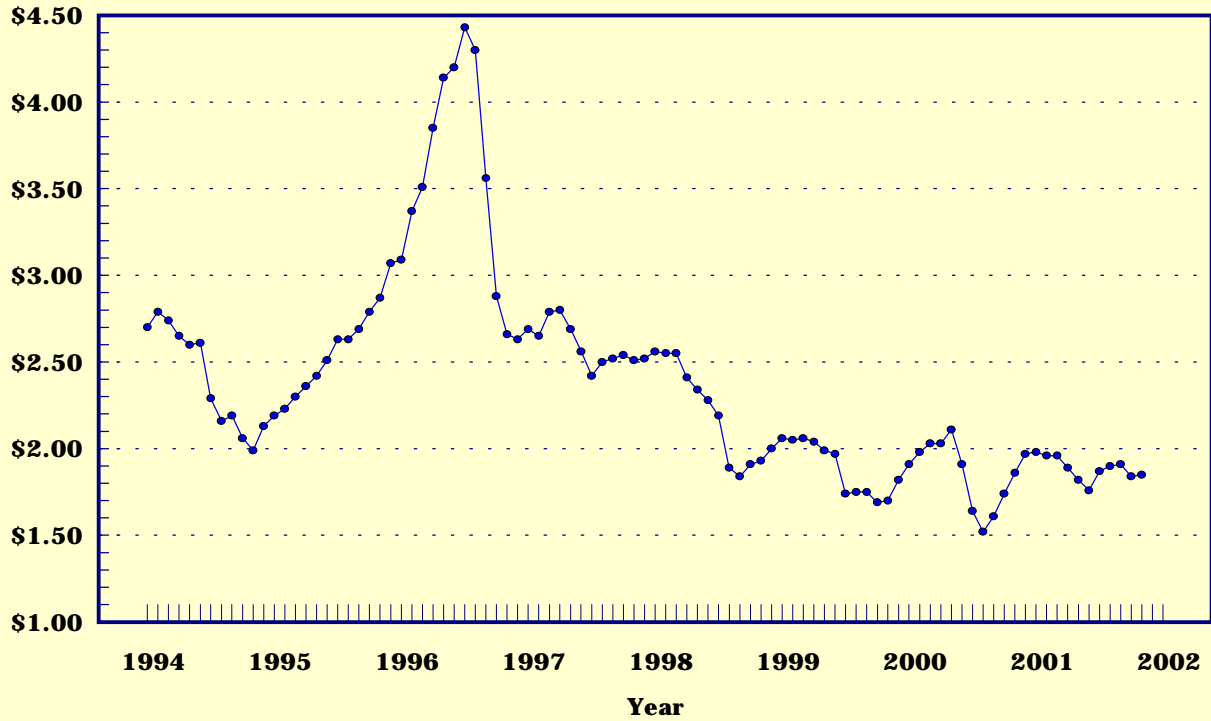
Prices Received, United States,  
November 2001, with Comparisons (continued)

Commodity	Unit	Average 1990-92	Entire Month		Preliminary
			Nov 2000	Oct 2001	Nov 2001
Dollars					
Vegetables, Fresh 1/					
Asparagus	Cwt	79.80		137.00	129.00
Broccoli	Cwt	22.50	48.10	24.20	22.20
Cantaloupes 2/	Cwt	13.90	28.00	16.00	18.30
Carrots	Cwt	13.20	14.30	17.00	18.00
Cauliflower	Cwt	26.80	70.00	21.60	20.10
Celery	Cwt	11.60	19.50	7.46	9.01
Corn, Sweet	Cwt	15.70	17.90	20.80	22.60
Cucumbers 2/	Cwt		12.20	14.20	19.10
Lettuce	Cwt	11.90	18.70	11.30	10.50
Onions	Cwt	12.80	11.00	10.40	10.00
Snap Beans 2/	Cwt		48.30	50.10	46.90
Tomatoes	Cwt	32.30	47.50	28.80	30.30
Livestock					
Calves	Cwt	94.30	106.00	99.20	96.20
Cattle, All Beef	Cwt	72.90	69.10	66.60	62.80
Cows	Cwt	49.60	36.60	37.50	35.30
Steers & Heifers	Cwt	77.10	73.80	70.20	66.60
Milk Cows 3/	Head	1130.00		1700.00	
Hogs, All	Cwt	47.70	36.80	40.50	34.90
Barrows & Gilts	Cwt	48.40	37.20	40.90	35.20
Sows	Cwt	39.50	28.40	33.20	29.10
Lambs	Cwt	56.20	71.50	52.90	
Sheep	Cwt	23.40	33.60	26.20	
Dairy and Poultry					
Milk, All 4/	Cwt	13.06	12.60	15.70	5/14.30
Fluid Grade	Cwt	13.10	12.60	15.70	5/14.30
Mfg Grade	Cwt	11.80	10.40	14.80	5/12.40
Broilers, Live 6/	Lb	.317	.380	.410	.390
Eggs, All 7/	Doz	.643	.720	.626	.658
Market 7/	Doz	.546	.573	.446	.485
Turkeys, Live 6/7/	Lb	.380	.471	.440	.443
Adjusted for Seasonal Variation					
Eggs, All	Doz	.545	.742	.645	.671
Milk, All 4/	Cwt	9.71	11.67	14.40	13.00

- 1/ F.O.B. shipping point.
- 2/ Monthly estimates began January 1995.
- 3/ Animals sold for dairy herd replacement only. Prices available for Jan, Apr, Jul, and Oct.
- 4/ Before deductions for hauling. Includes quality, quantity, and other premiums. Excludes hauling subsidies.
- 5/ Fat test percent: all milk 3.78, fluid milk 3.78, mfg grade 3.96.
- 6/ Liveweight equivalent price to producers, includes growers and contractors combined.
- 7/ Mid-month price.

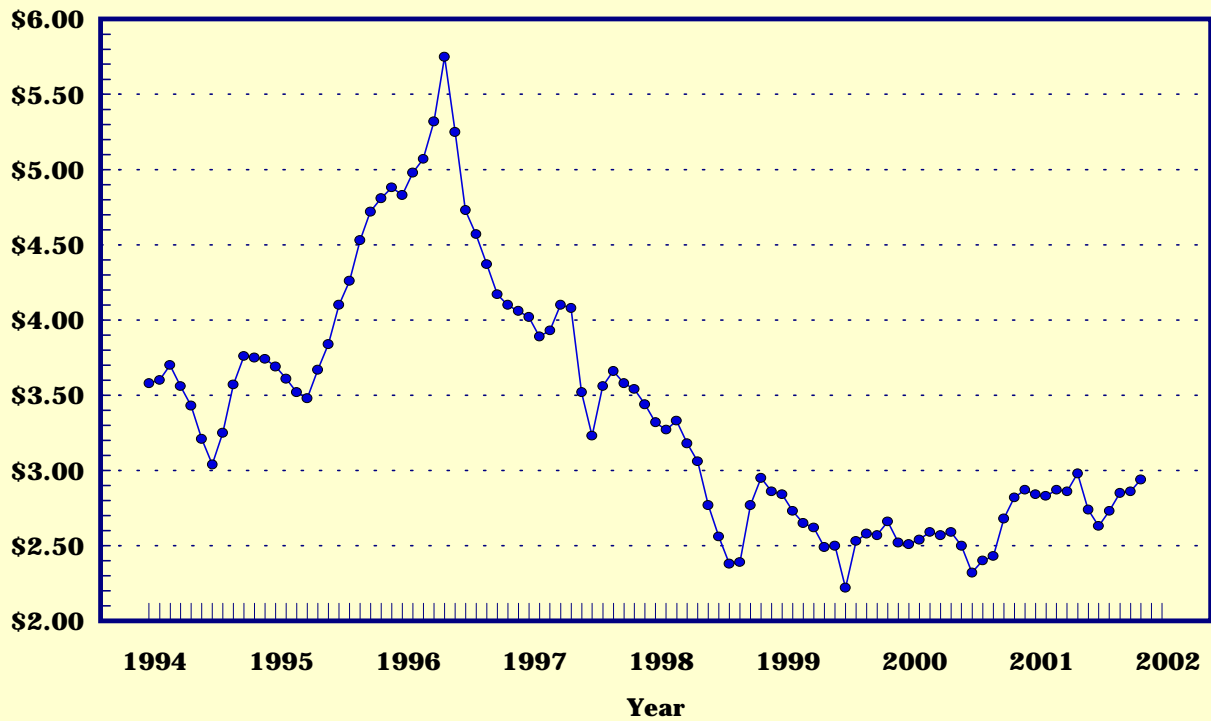
## Prices Received, Corn, US

Dollars per Bu



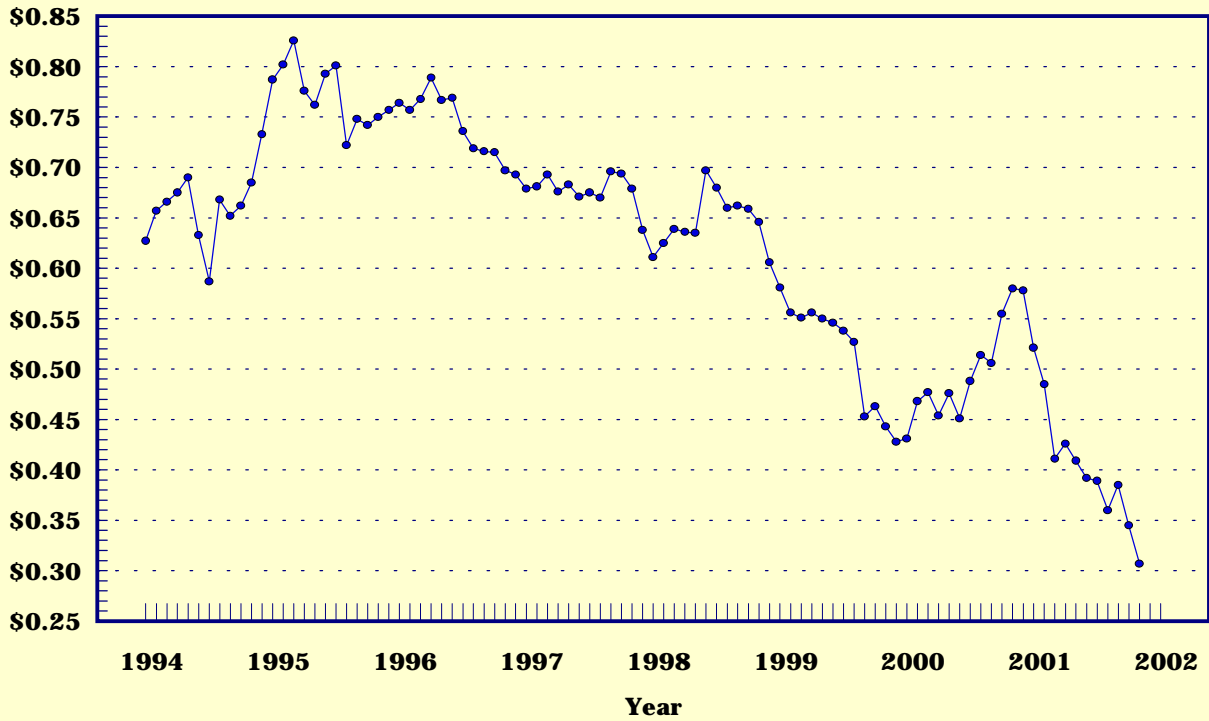
## Prices Received, Wheat, US

Dollars per Bu



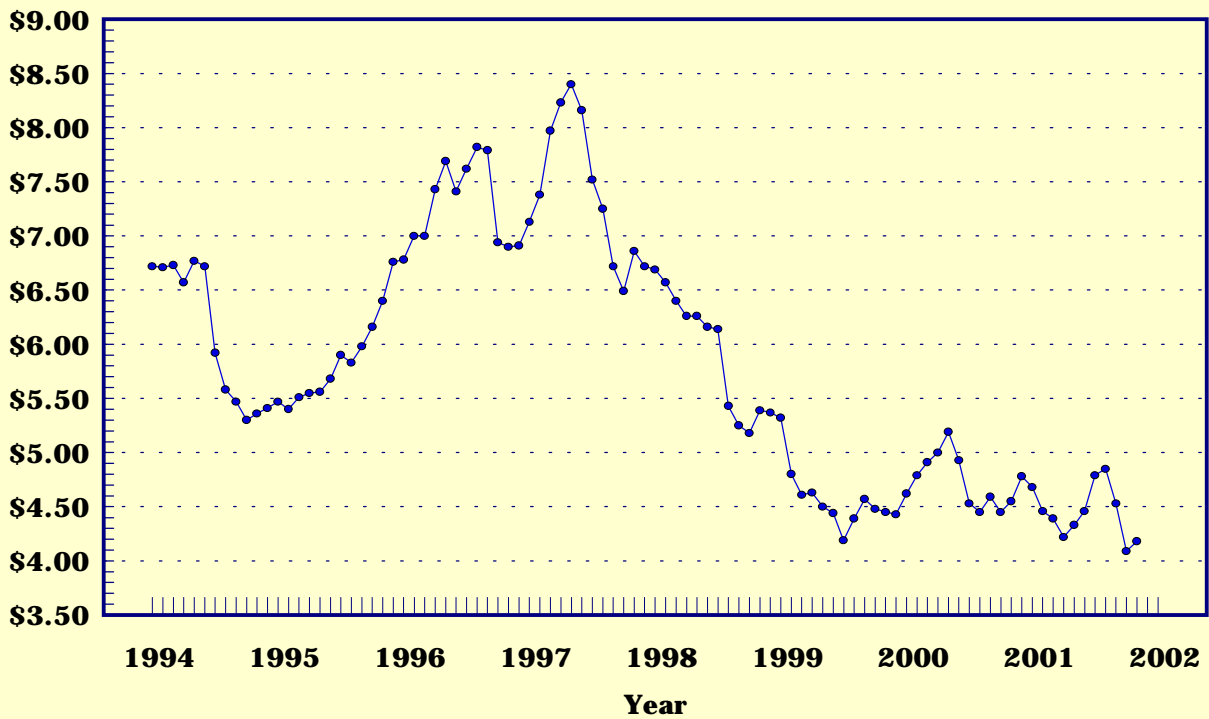
## Prices Received, Cotton, US

Dollars per Lb



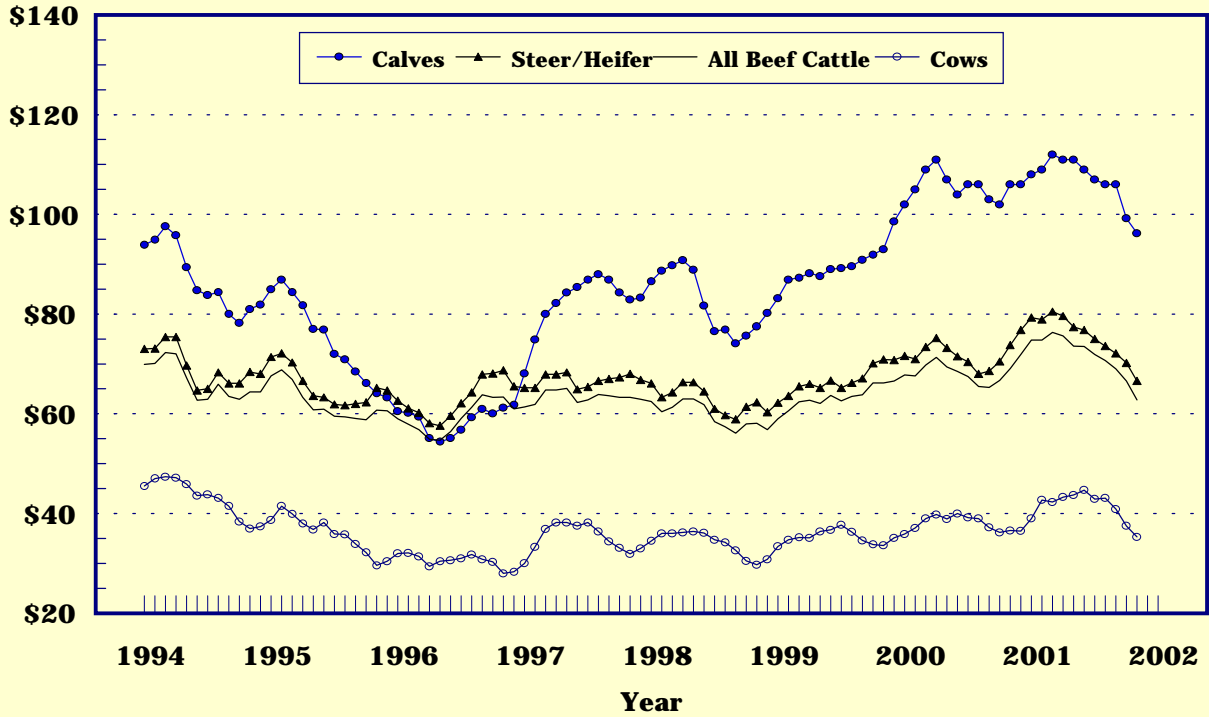
## Prices Received, Soybeans, US

Dollars per Bu



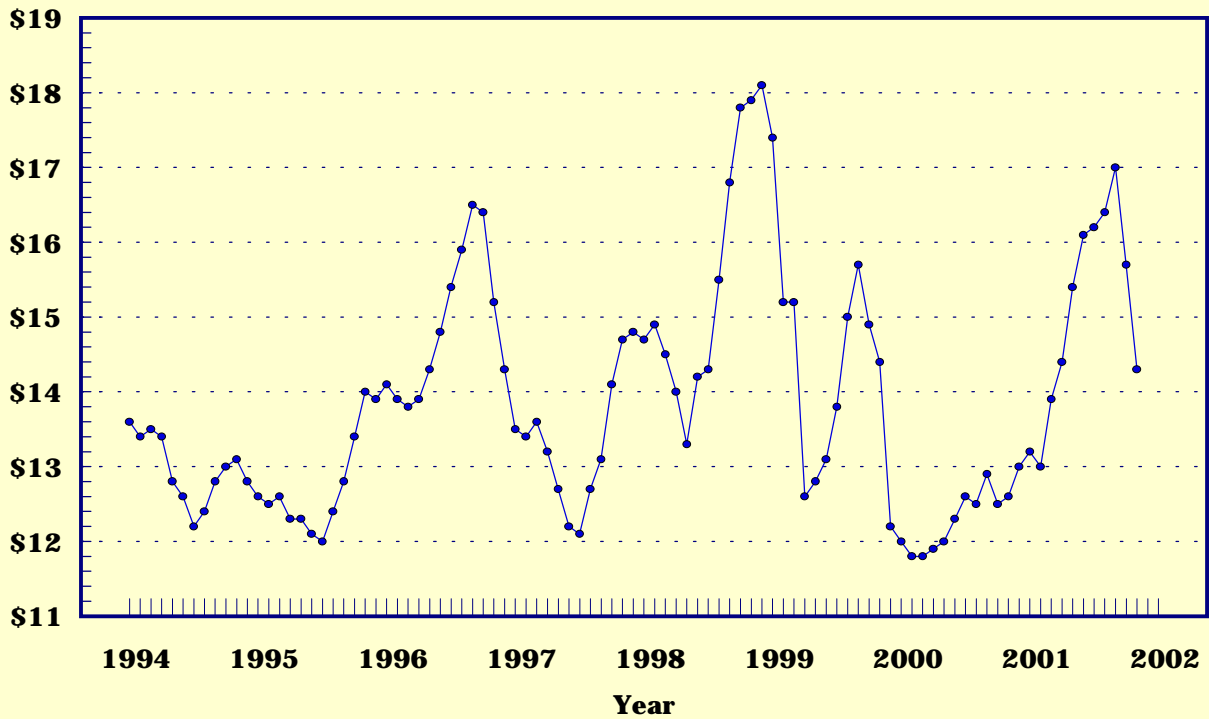
## Prices Received, Cattle, US

Dollars per Cwt



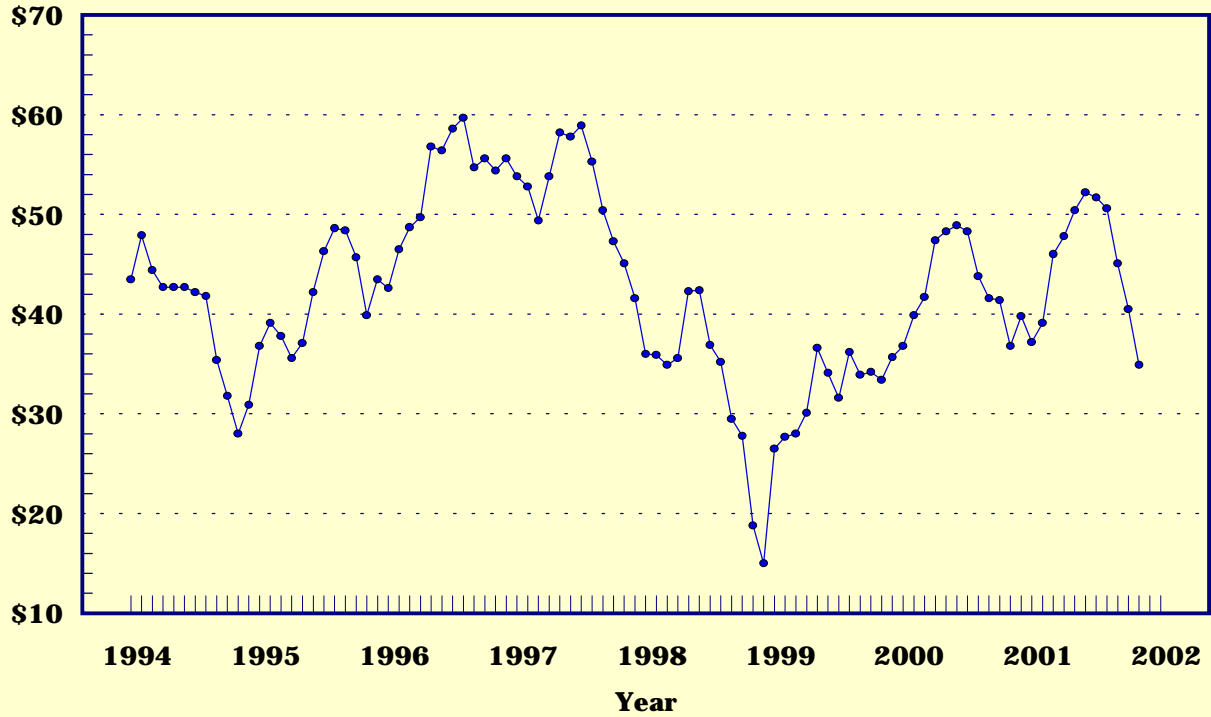
## Prices Received, Milk, US

Dollars per Cwt



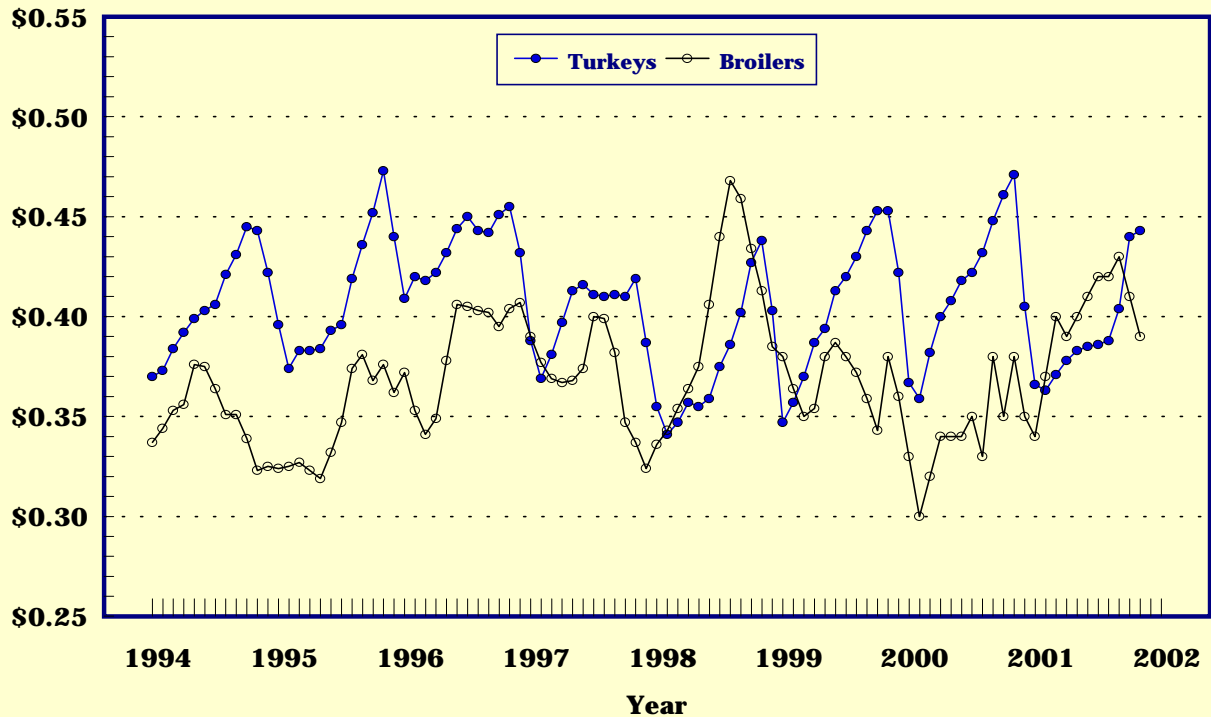
## Prices Received, Hogs, US

Dollars per Cwt



## Prices Received, Turkeys & Broilers, US

Dollars per Lb



Wheat: Prices Received, by States, October and November 2001

State	All Wheat		Winter Wheat		Durum Wheat		Oth Spring Wheat	
	Oct 1/	Nov 2/	Oct 1/	Nov 2/	Oct 1/	Nov 2/	Oct 1/	Nov 2/
	Dollars per Bushel							
AR	3/	2.76	3/	2.76				
CA	3/	3/	2.43	2.25	3/	3/		
CO	2.75	2.73	2.75	2.73			2.57	2.87
ID	3.24	3.23	3.16	3.15			3.34	3.35
IL	2.62	2.75	2.62	2.75				
IN	3.11	2.70	3.11	2.70				
KS	2.66	2.71	2.66	2.71				
MI	2.46	2.60	2.46	2.60				
MN 5/	2.97	3.05	2.57	4/			2.97	3.05
MO	2.39	2.50	2.39	2.50				
MT	3.23	3.26	3.09	2.90	3.78	3.90	3.18	3.25
NE	2.66	2.70	2.66	2.70				
ND	2.76	2.78	2.07	2.20	2.66	2.70	2.79	2.80
OH	2.58	2.70	2.58	2.70				
OK	2.69	2.69	2.69	2.69				
OR	3.47	3.51	3.47	3.50			3.49	3.55
SD 5/	2.85	2.93	2.50	2.74			2.92	2.95
TX	2.57	2.53	2.57	2.53				
WA	3.28	3.40	3.26	3.40			3.38	3.39
US	2.86	2.94	2.81	2.90	2.89	2.97	2.97	2.98

- 1/ Entire month.
- 2/ Mid-month.
- 3/ Price not published to avoid disclosure of individual firms.
- 4/ Insufficient sales to establish a price.
- 5/ Durum discontinued September 2001 for MN and SD.

Prices Received for Selected Agricultural Commodities, by Months, United States, 2000 and 2001

Month	All Wheat		Corn		Soybeans		Beef Cattle 1/		All Hogs	
	2000	2001 2/	2000	2001 2/	2000	2001 2/	2000	2001 2/	2000	2001 2/
	Dollars per Bushel						Dollars per Cwt			
Jan	2.51	2.84	1.91	1.98	4.62	4.68	67.80	74.80	36.80	37.20
Feb	2.54	2.83	1.98	1.96	4.79	4.46	67.60	74.80	39.90	39.10
Mar	2.59	2.87	2.03	1.96	4.91	4.39	69.80	76.30	41.70	46.00
Apr	2.57	2.86	2.03	1.89	5.00	4.22	71.30	75.60	47.40	47.80
May	2.59	2.98	2.11	1.82	5.19	4.33	69.40	73.60	48.30	50.40
Jun	2.50	2.74	1.91	1.76	4.93	4.46	68.50	73.50	48.90	52.20
Jul	2.32	2.63	1.64	1.87	4.53	4.79	67.50	71.90	48.30	51.70
Aug	2.40	2.73	1.52	1.90	4.45	4.85	65.50	70.70	43.80	50.60
Sep	2.43	2.85	1.61	1.91	4.59	4.53	65.30	69.00	41.60	45.10
Oct	2.68	2.86	1.74	1.84	4.45	4.09	66.70	66.60	41.40	40.50
Nov	2.82	2.94	1.86	1.85	4.55	4.18	69.10	62.80	36.80	34.90
Dec	2.87		1.97		4.78		71.90		39.80	

- 1/ Cows, steers and heifers.
- 2/ Current month prices are mid-month; prices for previous months are for the entire month.

Grains: Prices Received, by States, October and November 2001

State	Barley 1/		Corn		Oats		Soybeans		Sorghum Grain	
	Oct 2/	Nov 3/	Oct 2/	Nov 3/	Oct 2/	Nov 3/	Oct 2/	Nov 3/	Oct 2/	Nov 3/
	----- Dollars per Bushel ----- Dollars per Cwt									
AL										
AR							4.27	4.38	3.48	3.58
CA	2.42	2.35								
CO	2.47	2.49	2.12	2.00						
ID	2.77	2.81								
IL			1.85	1.95	1.75	1.65	4.23	4.40	3.47	4/
IN			1.83	1.84			4.17	4.25		
IA			1.78	1.80	1.81	1.55	4.05	4.15		
KS			2.02	2.05			3.89	4.11	3.22	3.26
KY			1.88	1.95			4.25	4.30		
LA							4.29	4.26		
MI			1.82	1.85	1.57	1.60	4.06	4.15		
MN	1.54	1.60	1.68	1.75	1.46	1.55	3.94	4.00		
MS							4.25	4.16		
MO			1.81	1.90			4.08	4.20	3.45	3.40
MT	2.57	2.64			1.87	1.75				
NE			1.86	1.88	1.91	1.75	4.00	4.10	3.09	3.30
NC			2.18	2.10			4.03	4.15		
ND 5/	1.76	1.82	1.71	1.65	1.58	1.40	3.82	3.85		
OH			1.86	1.85	1.68	1.50	4.18	4.25		
OK									3.36	3.42
OR	2.26	1.91			1.88	2.05				
PA			2.14	2.27	1.63	1.63				
SD	2.22	2.05	1.56	1.59	1.68	1.58	3.87	3.97		
TN			1.86	1.95			4.30	4.30		
TX			2.38	2.23	4/	6/			3.65	3.51
UT	2.11	2.06								
WA	1.92	2.06								
WI			1.86	1.90	1.26	1.50	4.01	4.15		
WY	2.70	3.05								
US	2.30	2.31	1.84	1.85	1.65	1.59	4.09	4.18	3.30	3.35

- 1/ The Three-State (MN, ND, and SD) Feed Barley price for November 2001 is \$1.50.
- 2/ Entire month.
- 3/ Mid-month.
- 4/ Price not published to avoid disclosure of individual firms.
- 5/ Corn and Soybean prices for ND began October 2001. GA discontinued September 2001.
- 6/ Insufficient sales to establish a price.

Malting and Feed Barley: Prices Received Selected States, October and November 2001

State	Malting Barley		Feed Barley	
	Oct	Nov	Oct	Nov
	----- Dollars per Bushel -----			
ID	2.90	2.90	2.01	2.00
MN	1/	1/	1.44	1.50
MT	2.83	2.95	1.85	1.80
ND	2.25	2.20	1.45	1.50
SD	2.22	2.05		
WY	1/	1/	2.30	1/

- 1/ Price not published to avoid disclosure of individual firms.

Field Crops: Prices Received, by States, October and November 2001

State	Dry Edible Beans		Sunflower		Flaxseed		Tobacco		Peanuts 4/5/	
	Oct 1/	Nov 2/	Oct 1/	Nov 2/	Oct 1/	Nov 2/	Oct 1/	Nov 3/	Oct 1/	Nov 3/
	---- Dollars per Cwt		---- Dollars per Bu		---		Dollars per Pound		---	
AL									.235	.213
CA	28.60	31.50								
CO	19.90	20.10								
FL									.207	.149
GA							1.915		.212	.206
ID	18.70	18.90								
IN								1.935		
KS			7/	7/						
KY								1.980		
MD										
MI	23.50	25.00								
MN	25.00	27.60	10.50	10.60						
MO										
NE	17.70	17.50								
NC							1.895	1.895	.263	.168
ND	16.60	19.20	8.48	9.10	4.21	4.30				
OH								1.935		
OK										
SC							1.865			
SD			7.40	7.91	7/	7/				
TN								1.975		
TX									7/	7/
VA							1.945	1.985	.269	.179
WV										
US	19.20	21.80	8.19	8.69	4.21	4.30	1.905	1.980	.228	.204

- 1/ Entire month.
- 2/ Mid-month.
- 3/ Based on sales through first half of month.
- 4/ In-shell.
- 5/ Includes additional loan peanuts at loan value.
- 6/ Sales volume insufficient to establish a state price, but all sales included in U.S. price.
- 7/ Price not published to avoid disclosure of individual firms.

Tobacco: Prices Received, by Area and Type, November 2001, with Comparisons

Class and Type	Type	Nov 2000	Oct 2001	Nov 2001 1/
Dollars per Pound				
Flue-cured				
Northern Auction Area 2/	--	4/	1.885	1.840
Northern Contract Area 2/	--	4/	1.925	1.915
Southern Auction Area 3/	--	4/	1.870	5/
Southern Contract Area 3/	--	4/	1.900	5/
Total Flue-cured Area	11-14:	1.785	1.905	1.840
Light Air-cured				
Burley	31	1.970	6/	1.980
Total Light Air-cured	31-32:	1.970	6/	1.980
US	11-37:	1.950	1.905	1.980

- 1/ Based on sales during the first half of the month.
- 2/ Consists of Eastern NC Belt, Old and Middle Belts in NC and VA.
- 3/ Consists of GA-FL Belt, SC Belt, and NC Border Belt.
- 4/ Comparisons not used for Northern and Southern Areas because data for both years are not comparable.
- 5/ Markets closed in October 2001.
- 6/ Markets opened in November 2001.



Field Crops and Apples: Prices Received, by States,  
October and November 2001

State	Cotton, Upland		November				Apples Fresh Use 1/4/
	Oct 1/	Nov 2/	Cotton- seed 5/	Hay, Baled 3/ All	Alfalfa	Other	
	Dollars per Pound		Dollars per Ton			Dol/Lb	
AL	6/	.294	74.00				
AZ	6/	6/	128.00	93.00	93.00	89.00	
AR	.397	.285	80.00				
CA	6/	.499	141.00	129.00	134.00	87.00	.265
CO				105.00	105.00	100.00	
GA	.449	.365	69.00				
ID				122.00	125.00	83.00	
IL				88.00	93.00	69.00	
IA				95.00	97.00	70.00	
KS				96.00	100.00	70.00	
KY				71.00	105.00	61.00	
LA	.348	.292	78.00				
MI				71.00	75.00	50.00	.160
MN				57.00	65.00	45.00	
MS	.402	.297	78.00				
MO				72.00	106.00	62.00	
MT				97.00	99.00	87.00	
NE				73.00	75.00	65.00	
NV				122.00	122.00	125.00	
NM				132.00	134.00	110.00	
NY				100.00	120.00	70.00	.187
NC	.279	.292	80.00				
ND				45.00	49.00	35.00	
OH				92.00	130.00	60.00	.280
OK				97.00	117.00	67.00	
OR				117.00	120.00	106.00	
PA				122.00	136.00	110.00	.200
SD				65.00	69.00	46.00	
TN	.304	.271	85.00				
TX	.279	.262	96.00	73.00	155.00	66.00	
UT				99.00	100.00	59.00	
VA							.240
WA				121.00	110.00	138.00	.242
WI				54.00	60.00	30.00	
WY				111.00	112.00	107.00	
US	.345	.307	91.00	97.10	106.00	74.10	.233

1/ Entire month. 2/ Based on sales during the first half of the month.  
3/ Mid-month. 4/ Equivalent packinghouse-door returns for CA,MI,NY,and WA.  
Price at point of first sale for other states. 5/ Marketing year  
August-February. 6/ Price not published to avoid disclosure of  
individual firms.

Upland Cotton and Rice: Prices Received and Marketings,  
United States, November 2001, with Comparisons

Item	Unit	Sep 2001 1/	Oct 2001 1/	Nov 2001 2/
Cotton, Upland				
Average Price	Dollars/Pound	.385	.345	.307
Marketings 3/	1,000 Bales	465	1246	NA
Rice				
Average Price	Dollars/Cwt	4.78	4.36	4.23
Marketings 4/	1,000 Cwt	9960	12850	NA

1/ Entire month. 2/ Based on purchases for the first half of the month.  
3/ Expanded data from sample of about 60 percent of buyers. 4/ Purchases  
by private firms and rice (rough equivalent) shipped by cooperatives.

Citrus Fruit: Prices and Equivalent Returns, by Utilization,  
by State and United States, November 2001

Commodity And State	Equivalent Returns						
	F.O.B.	Packinghouse-door			On-tree		
	Fresh	All	Fresh	Process	All	Fresh	Process
Dollars per Box 1/							
Grapefruit							
CA	16.10	8.36	9.85	-0.25	6.13	7.62	-2.48
FL	14.90	4.71	6.49	1.67	2.45	4.39	-0.87
White	16.10	5.07	7.10	2.70	2.85	5.00	0.35
Colored	14.30	4.49	6.20	0.75	2.20	4.10	-1.95
TX	17.00	7.40	7.40		6.25	6.25	
US	15.30	5.18	6.82	1.63	3.06	4.88	-0.90
Lemons							
AZ	34.20	23.14	24.51	0.24	18.96	20.33	-3.94
CA	35.40	23.76	25.71	0.24	19.58	21.53	-3.94
US	34.90	23.52	25.25	0.24	19.34	21.07	-3.94
Oranges							
AZ							
Navel and Misc	23.00	15.90	15.90		13.55	13.55	
CA	26.70	18.80	19.70	0.22	16.46	17.35	-2.12
Navel and Misc	30.00	22.07	22.90	-0.15	19.72	20.55	-2.50
Valencia	15.70	8.41	9.06	0.76	6.07	6.72	-1.58
FL							
Early and Mids	14.40	3.91	6.60	3.65	1.95	4.50	1.70
TX							
Early and Mids	15.80	5.52	6.10	2.55	4.23	4.80	1.30
US	20.40	5.19	12.92	3.63	3.19	10.73	1.68
Tangelos							
FL	14.80	4.47	6.90	2.20	1.87	4.40	-0.50
Tangerines							
AZ	19.90	13.12	13.12		10.73	10.73	
CA	32.90	24.63	26.12	0.74	22.24	23.73	-1.65
FL	22.20	9.18	13.20	3.00	5.43	9.60	-1.00
US	23.90	11.05	15.37	2.96	7.48	12.01	-1.01

1/ Net lbs. per box: Grapefruit-CA-67, FL-85, TX-80; Lemons-76; Oranges-AZ & CA-75, FL-90, TX-85; Tangelos-90; Tangerines-AZ & CA-75, FL-95.

Potatoes: Prices Received, by States,  
October and November 2001

State	Oct	Nov	State	Oct	Nov
	: Dollars per Cwt			: Dollars per Cwt	
AL			NC		
AZ			ND - All 1/	6.00	6.60
CA - All	15.80	12.40	- Fresh 2/	9.60	NA
- Winter		15.00	- Processing	4.80	NA
- Spring			OH	8.60	7.70
- Summer	15.80		OR	4.80	5.60
- Fall		8.85	PA	7.35	7.35
CO - All 1/	7.35	7.70	TX		
- Fresh 2/	8.07	NA	VA		
FL			WA - All	4.45	5.10
ID - All 1/	5.15	5.30	- Processing	4.10	NA
- Fresh 2/	6.40	NA	WI - All 1/	5.75	6.25
- Processing	4.60	NA	- Fresh 2/	7.30	NA
ME	6.05	6.55	- Processing	4.70	NA
MI	5.80	6.70			
MN	5.35	5.20	US - All 1/	5.28	6.04
NY	10.40	9.60	- Fresh 2/	8.14	NA
			- Processing	4.45	NA

1/ Average price of potatoes sold for all uses, including table stock, processing, seed and livestock feed.

2/ Fresh market prices only, includes table stock prices.

Cattle: Prices Received, by States, October and November 2001

State	Cows 1/		Steers & Heifers:		Beef Cattle 4/		Calves	
	Oct 2/	Nov 3/	Oct 2/	Nov 3/	Oct 2/	Nov 3/	Oct 2/	Nov 3/
	Dollars per Cwt							
AZ	36.50	35.40	68.50	66.60	68.20	66.30	94.30	89.70
AR	36.00	34.70	77.70	74.60	63.50	60.60	93.70	87.60
CA	37.00	36.00	69.00	65.50	49.80	47.80	89.00	87.00
CO	40.60	37.10	68.40	65.00	67.00	62.20	88.20	85.70
FL	37.30	37.00	73.80	71.90	52.30	51.30	88.20	84.30
GA	36.00	35.40	70.80	67.60	48.20	46.70	89.30	85.10
ID	36.40	34.40	70.30	67.50	60.80	56.60	94.00	92.00
IL	40.70	39.50	66.90	65.00	66.40	64.50	102.00	100.00
IA	36.70	33.30	67.60	63.60	67.00	63.00	94.30	82.40
KS	36.80	34.70	71.20	66.80	70.20	65.80	100.00	98.80
KY	37.00	36.00	77.00	72.00	67.40	63.40	88.00	83.00
LA	36.30	36.00	74.60	70.00	50.50	48.20	91.30	84.00
MI	40.00	40.00	61.00	59.00	54.70	53.30	100.00	100.00
MN	39.60	36.50	65.10	64.50	60.60	59.50	83.00	82.00
MO	37.60	34.10	81.80	77.00	73.00	68.40	93.40	88.30
MT	39.20	35.00	94.70	91.20	88.60	84.50	99.00	97.00
NE	36.20	33.10	70.50	68.40	69.50	67.30	100.00	99.10
NM	41.90	38.90	84.10	77.70	68.10	61.00	96.00	91.70
ND	36.90	36.50	83.40	83.00	76.00	71.40	90.50	90.00
OH	35.70	34.00	70.00	68.00	66.60	64.60	81.30	80.00
OK	40.20	36.00	85.30	78.90	74.80	69.00	94.90	90.60
OR	37.70	35.50	81.60	78.00	68.40	65.30	89.10	84.70
PA	39.20	37.20	64.40	62.60	57.90	56.00	114.00	114.00
SD	39.70	33.00	88.50	79.20	83.20	70.90	101.00	96.00
TN	36.00	35.00	75.00	71.00	59.40	56.60	84.00	81.00
TX	36.20	35.10	70.60	65.40	66.80	62.10	101.00	96.80
VA	35.40	33.70	73.50	72.00	65.50	62.00	87.50	86.00
WI	38.20	35.10	66.60	63.10	50.10	46.90	128.00	127.00
WY	42.40	39.00	87.60	83.00	76.80	69.80	103.00	98.00
US	37.50	35.30	70.20	66.60	66.60	62.80	99.20	96.20

- 1/ Beef cows and cull dairy cows sold for slaughter.
- 2/ Entire month.
- 3/ Mid-month.
- 4/ "Cows" and "steers and heifers" combined.

Hogs: Prices Received, by States, October and November 2001

State	Sows		Barrows and Gilts		All Hogs	
	Oct 1/	Nov 2/	Oct 1/	Nov 2/	Oct 1/	Nov 2/
	Dollars per Cwt					
AR	32.90	29.90	37.60	34.60	37.10	34.10
IL	32.00	27.00	40.30	36.50	39.60	35.70
IN	36.00	31.80	39.00	34.80	38.70	34.50
IA	36.40	31.10	43.10	36.30	43.00	36.20
KS	34.20	31.40	38.40	32.80	37.90	32.60
MI	31.00	26.00	35.00	33.00	34.70	32.40
MN	33.80	29.50	41.60	36.50	41.30	36.30
MO	33.00	30.00	37.60	32.80	37.30	32.60
NE	34.50	28.60	42.90	35.50	42.70	35.40
NC	33.40	28.50	40.00	34.60	39.90	34.50
OH	33.50	31.00	39.50	35.00	39.10	34.80
OK	32.50	27.90	36.40	30.30	35.80	29.90
PA	31.80	27.50	36.90	33.60	36.20	32.70
SD	33.10	28.10	43.30	37.30	42.10	36.10
TX	30.60	29.00	38.30	33.60	37.10	32.90
WI	26.40	19.80	35.20	30.20	34.10	28.80
US	33.20	29.10	40.90	35.20	40.50	34.90

1/ Entire month.

2/ Mid-month.

Sheep and Poultry: Prices Received, by States,  
October and November 2001

State	October		November	
	Sheep 1/	Lambs 1/	Turkeys 2/3/	Eggs 2/4/
	----- Dollars per Cwt -----		Dollars per Pound	Dol/Doz
AL				.500
AR			.46	.370
CA	26.50	51.50	.50	.460
CO	23.10	51.70		
CT				.560
DE				
FL				.460
GA				.431
ID	23.00	46.00		
IN			.43	.520
IA	26.40	44.90		.440
KS	20.20	43.50		
ME				.640
MD				
MI				.480
MN	17.60	44.80	.37	.420
MS				.550
MO			.47	.360
MT	26.10	51.60		
NE	23.80	42.60		
NY				.534
NC			.46	.400
ND	18.80	43.50		
OH	28.70	49.10		.522
OR	24.00	59.50		
PA				.520
SC				.545
SD	24.50	54.70		
TX	33.80	60.60		.520
UT	22.00	61.00		
VA			.45	
WA				.598
WY	27.40	56.20		
US	26.20	52.90	.443	.485

- 1/ Entire month.  
2/ Mid-month.  
3/ IN and MN are actual liveweight prices. All other State prices are equivalent liveweight returns to producers derived from ready-to-cook (RTC) prices using the following formula: (RTC price minus processing cost) \* (dressing percentage) = liveweight equivalent price.  
4/ Market (table) eggs.

Milk and Milk Cows: Prices Received, by States, October and November 2001

State	October				November			
	Fluid Grade Milk 1/ Price	Manufacturing Grade Milk Fat Test	All Milk 2/ Price	All Milk 2/ Fat Test	All Milk 2/3/ Price	All Milk 2/3/ Fat Test	Cows 4/ Dol/Head	
AZ	15.80	3.63			15.80	3.63	14.30	3.71
CA	14.00	3.68	13.70	4.09	14.00	3.68	12.80	3.75
FL	20.30	3.68			20.30	3.68	20.00	3.62
ID	13.40	3.66	14.00	3.90	13.40	3.66	12.00	3.72
IL	15.80	3.78	16.00	3.55	15.80	3.78	13.30	3.70
IN	16.20	3.69	14.50	3.72	16.10	3.69	14.50	3.74
IA	16.00	3.79	15.00	3.79	16.00	3.79	13.90	3.85
KY	16.70	3.73	12.90	3.87	16.70	3.73	16.40	3.75
MI	16.60	3.70	14.00	3.63	16.60	3.70	15.20	3.75
MN	16.20	3.81	15.10	3.86	16.10	3.81	13.70	3.85
MO	17.10	3.76	14.90	3.82	17.00	3.76	15.80	3.78
NM	15.50	3.61			15.50	3.61	14.70	3.66
NY	16.40	3.72			16.40	3.72	15.50	3.78
OH	15.80	3.75	15.00	3.79	15.70	3.75	14.70	3.83
PA	17.30	3.75	15.70	3.90	17.30	3.75	16.80	3.80
TX	16.80	3.76			16.80	3.76	16.00	3.84
VT	16.50	3.72			16.50	3.72	15.60	3.77
VA	17.90	3.54			17.90	3.54	17.50	3.70
WA	16.00	3.70			16.00	3.70	14.10	3.77
WI	16.00	3.80	14.90	3.93	15.90	3.81	13.20	3.86
US	15.70	3.72	14.80	3.89	15.70	3.73	14.30	3.78

- 1/ Including milk diverted to manufacturing.
- 2/ Before deductions for hauling. Includes quality, quantity, and other premiums. Excludes hauling subsidies.
- 3/ Preliminary.
- 4/ Animals sold for dairy herd replacement only. Prices published Jan, Apr, Jul and Oct.

Parity Price Equivalent for Manufacturing Milk 1/: United States, October and November 2001, with Comparisons

Item	Nov 2000	Oct 2001	Nov 2001
Parity Equivalent.....Dol per Cwt	29.02	29.12	29.03
Average Price F.O.B.....Dol per Cwt	10.40	14.80	2/12.40
Average Fat Test of Milk..Percent	3.96	3.89	2/3.96

- 1/ The parity price equivalent during 2001 is 91.0 percent of the parity price of all milk sold to plants, compared with 90.4 percent in 2000. For additional details, see January 2001 issue of "Agricultural Prices".
- 2/ Preliminary.

United States Parity Prices for Farm Products and Average Prices Received as  
Percent of Parity Prices Based on Data for November 2001, with Comparisons 1/

Commodity and Unit	: Adjusted: : Base : Prices	Parity Prices Based on Data for			: Prices as Percent : of Parity			
		: Nov : 2000	: Oct : 2001	: Nov : 2001	: Nov : 2000	: Oct : 2001	: Nov : 2001	
		----- Dollars -----			----- Percents -----			
Basic Commodities	:							
All Wheat, Bu	:	.589	9.83	9.63	9.57	29	30	31
Rice, Cwt	:	1.64	29.10	26.80	26.70	19	16	16
Corn, Bu	:	.402	6.78	6.57	6.53	27	28	28
Cotton, Lb	:							
American Upland	:	.102	1.81	1.67	1.66	32	21	18
Extra Long Staple	:	.142	2.31	2.32	2.31			
Peanuts, Lb	:	.0414	.688	.677	.673	38	34	30
Tobacco, By Type, Lb	:							
Flue-Cured 11-14	:	.256	4.08	4.19	4.16	44	45	44
VA Fire-Cured, 21	:	.257	4.10	4.20	4.18			
KY-TN Fire-Cured, 22-23	:	.323	5.13	5.28	5.25			
Burley, 31	:	.273	4.36	4.46	4.44	45		45
Maryland, 32	:	.225	3.70	3.68	3.66			
Dark Air-Cured, 35-36	:	.273	4.39	4.46	4.44	46		
Sun-Cured, 37	:	.232	3.73	3.79	3.77			
PA Seedleaf, 41	:	.190	3.10	3.11	3.09			
Cigar Filler & Binder, 42-44, 54-55	:	.218	3.42	3.56	3.54			
Puerto Rican Filler, 46	:	.173	2.79	2.83	2.81			
Cigar Binder, 51-52	:	.652	9.88	10.70	10.60			
Designated Nonbasic	:							
All Milk, Sold to Plants, Per Cwt	:	1.96	32.10	32.00	31.90	2/36	2/45	2/41
Honey, Extracted, Lb	:	3/.0918	1.45	1.50	1.49			
Wool and Mohair	:							
Wool, Lb	:	.101	1.84	1.65	1.64			
Mohair, Lb	:	.269	3.87	4.40	4.37			
Other Nonbasic	:							
Barley, Bu	:	.393	6.05	6.43	6.39	36	36	36
Cottonseed, Ton	:	15.50	252.00	253.00	252.00	43	34	36
Dry Edible Beans, Cwt	:	2.92	50.20	47.70	47.50	31	40	46
Flaxseed, Bu	:	.690	11.90	11.30	11.20	28	37	38
Oats, Bu	:	.230	3.44	3.76	3.74	35	44	43
Potatoes, Cwt	:	.831	13.80	13.60	13.50	31	39	45
Rye, Bu	:	.335	5.29	5.48	5.44			
Sorghum Grain, Cwt	:	.689	10.70	11.30	11.20	31	29	30
Soybeans, Bu	:	.876	14.20	14.30	14.20	32	29	29
Sweetpotatoes, Cwt	:	2.09	33.40	34.20	34.00			
Apples, Fresh, Lb 4/	:	.0298	1.50	.487	.484	12	50	48
Citrus (equiv on-tree), box:	:							
Grapefruit	:	.493	8.34	8.06	8.01	34	66	38
Lemons	:	1.20	19.70	19.60	19.50	12	104	99
Limes (FL)	:	1.27	21.00	20.80	20.60			
Oranges	:	.695	11.80	11.40	11.30	23	45	28
Tangerines	:	1.68	29.10	27.50	27.30	27	34	27
Temples (FL)	:	.591	10.20	9.66	9.60			
Beef Cattle, Cwt	:	9.65	157.00	158.00	157.00	44	42	40
Calves, Cwt	:	12.70	202.00	208.00	206.00	52	48	47
Hogs, Cwt	:	6.29	104.00	103.00	102.00	35	39	34
Lambs, Cwt	:	10.60	166.00	173.00	172.00	43	31	
Sheep, Cwt	:	4.42	68.80	72.30	71.80	49	36	
Eggs, Doz	:	.0949	1.54	1.55	1.54	2/48	2/42	2/44
Turkeys, Live, Lb	:	.0585	.936	.956	.951	50	46	47

--continued



Parity Prices Based on Data for November 2001, United States 1/ (continued)

Other Nonbasic Commodities	Adj Base Prices	Parity Prices	Other Nonbasic Commodities	Adj Base Prices	Parity Prices
	Dollars			Dollars	
Field Crops and Misc Commodities			Noncitrus Fruit		
Hops, Lb	.251	4.08	Peaches, cont.		
Spearmint Oil, Lb	1.71	27.80	Processing 5/ Excl Dried		
Tobacco, Lb			Clingstone, CA, Ton	32.50	528.00
Type 61	2.66	43.20	Pears, Ton		
Noncitrus Fruit			Fresh 4/	52.00	845.00
Apples, Ton 6/ Processing	19.60	319.00	Dried, CA 6/	155.00	2520.00
Apricots, Ton			Plums, CA, Ton		
Fresh 7/	110.00	1790.00	Fresh, Equiv on-Tree	54.50	886.00
Dried, CA	295.00	4790.00	Prunes, Dried, CA, Ton 6/	139.00	2260.00
Avocados, Ton 7/	210.00	3410.00	Prunes and Plums, Excl CA, Ton		
Cherries			Fresh 9/	52.90	860.00
Sweet, Ton	170.00	2760.00	Processing 6/ Excl Dried	24.40	397.00
Tart, Lb	.0270	.439	Tree Nuts 10/		
Cranberry, Bbl 5/	7.07	115.00	Almonds, Lb	.225	3.66
Dates, CA, Ton 7/	150.00	2440.00	Hazelnuts, Ton	120.00	1950.00
Grapes, Ton			Pistachio, Lb	.161	2.62
Raisin Variety	152.00	2470.00	Walnuts, Ton	180.00	2930.00
Other Dried	63.00	1020.00	Vegetables, Cwt 11/		
Kiwifruit, Ton	76.10	1240.00	Fresh		
Nectarines			Carrots 8/	1.93	31.40
Fresh, Calif, Ton 7/	62.70	1020.00	Cauliflower 8/	4.47	72.60
Olives, CA			Celery 8/	1.96	31.90
Canning, Ton 5/	96.50	1570.00	Honeydew Melons	2.70	43.90
Papayas (HI) Lb	.0522	.848	Lettuce	2.28	37.10
Peaches			Onions 8/	1.71	27.80
Fresh, Lb 4/	.0382	.621	Tomatoes	4.44	72.20
Dried, CA, Ton	113.00	1840.00			

- 1/ Parity prices are computed under the provisions of Title III, Subtitle a, Section 301 (a) of the Agricultural Adjustment Act of 1938 as amended by the Agricultural Acts of 1948, 1949, and 1956. See January "Agricultural Prices" for details on adjusted base price and parity price computations.
- 2/ Seasonally adjusted price as percentage of parity price.
- 3/ Wholesale extracted. Adjusted base price derived from state annual average prices weighted by production. For 1982 through 1985 the national averages are the support prices.
- 4/ Equivalent packinghouse-door returns for CA, NY (apples only), OR (except peaches), and WA. Price at point of first sale for other states.
- 5/ Equivalent returns for bulk fruit at first delivery point.
- 6/ Equivalent returns at processing plant door.
- 7/ Equivalent returns at packinghouse door.
- 8/ Includes some processing.
- 9/ Based on "as sold" prices for fresh fruit in all states.
- 10/ Prices in-shell basis except almonds which are shelled basis.
- 11/ F.O.B. shipping point prices.

Crops: Marketing Year Average Prices Received, by States  
and United States, 1999 and 2000 Revised

State	Corn		Sorghum		Soybeans	
	1999	2000	1999	2000	1999	2000
	Dollars per Bu		Dollars per Cwt		Dollars per Bu	
AL	2.26	2.16	3.50	3.48	4.80	4.75
AZ	2.72	2.78	1/	4.45		
AR	1.74	1.75	3.01	2.93	4.79	4.73
CA	2.50	2.44	1/	4.11		
CO	1.84	2.08	2.60	3.27		
DE	2.34	2.01	1/	3.21	4.69	4.50
FL	2.32	2.24			4.65	4.45
GA	2.27	2.06	3.20	3.55	4.79	4.43
ID	2.34	2.63				
IL	1.91	1.91	3.20	3.44	4.75	4.62
IN	1.88	1.90			4.71	4.61
IA	1.72	1.75			4.53	4.49
KS	1.81	2.00	2.64	3.19	4.53	4.50
KY	2.11	2.07	3.23	3.46	4.83	4.71
LA	2.05	1.75	3.40	2.95	5.07	4.86
MD	2.36	2.01	1/	3.21	4.66	4.50
MI	1.78	1.90			4.61	4.54
MN	1.60	1.71			4.42	4.38
MS	2.00	1.91	3.44	3.07	4.87	4.71
MO	1.96	1.78	2.99	3.14	4.67	4.55
MT	1.55	1.53				
NE	1.75	1.90	2.71	3.28	4.47	4.44
NJ	2.20	1.97			4.60	4.35
NM	2.41	2.52	3.27	3.93		
NY	2.24	2.35			4.20	4.55
NC	2.27	2.01	3.04	3.57	4.61	4.51
ND	1.59	1.65			4.19	4.23
OH	1.89	1.90			4.72	4.63
OK	1.95	2.10	2.87	3.10	4.35	4.25
OR	2.35	2.41				
PA	2.41	2.09	1/	3.20	4.60	4.37
SC	2.29	2.10	3.20	3.49	4.70	4.50
SD	1.54	1.61	2.51	2.70	4.33	4.27
TN	1.92	1.96	3.11	3.23	4.69	4.69
TX	2.07	2.18	2.93	3.28	4.20	4.40
UT	2.36	2.61				
VA	2.15	2.02	1/	2.90	4.50	4.35
WA	2.33	2.53				
WV	2.41	2.08			1/	4.66
WI	1.77	1.86			4.70	4.45
WY	1.94	2.02				
Year	United States					
2000	1.85		3.37		4.54	
1999	1.82		2.80		4.63	

1/ Estimates began in 2000.

Crops: Marketing Year Average Prices Received, by States  
and United States, 1999 and 2000 Revised, (continued)

State	Flaxseed		Sunflower					
			All		Oil		Non-Oil	
	1999	2000	1999	2000	1999	2000	1999	2000
	Dollars per Bu		Dollars per Cwt					
CO			8.80	8.50	7.40	6.80	11.60	11.60
KS			6.72	6.87	5.93	5.57	13.80	11.10
MN	3.91	3.39	9.34	7.90	6.74	6.62	12.60	10.90
NE			9.54	8.50	7.50	6.80	12.10	11.60
ND	3.79	3.31	8.18	7.46	6.56	6.06	13.50	11.30
SD	3.75	3.04	6.59	5.86	6.23	5.73	12.80	10.60
TX			13.60	10.30	13.00	8.00	14.00	11.00
Year	United States							
2000	3.30		6.89		5.89		11.20	
1999	3.79		7.53		6.33		13.40	

Crops: Marketing Year Average Prices Received, by States  
and United States, 1999 and 2000 Revised, (continued)

State	Dry Beans		Peanuts	
	1999	2000	1999	2000
	Dollars per Cwt		Dollars per Lb	
AL			0.268	0.266
CA	27.00	26.80		
CO	15.10	15.60		
FL			0.232	0.300
GA			0.272	0.286
ID	15.30	17.30		
KS	14.10	13.90		
MI	16.80	13.70		
MN	17.30	15.90		
MT	17.90	16.30		
NE	16.30	15.80		
NM	21.00	1/	0.274	0.320
NY	19.40	18.80		
NC			0.276	0.273
ND	13.90	12.60		
OK			0.280	0.293
OR	18.80	17.90		
SC			0.267	0.254
SD	2/	14.50		
TX	13.50	19.00	0.206	0.246
UT	17.70	20.60		
VA			0.275	0.263
WA	17.40	18.30		
WI	22.30	21.60		
WY	16.00	16.80		
Year	United States			
2000	15.50		0.274	
1999	16.40		0.254	

1/ Estimates discontinued in 2000.

2/ Estimates began in 2000.

Prices Received: Corn, by State and Month,  
for Marketing Years, 1999-2000 and 2000-2001 1/

State :	Aug	:	Sep	:	Oct	:	Nov	:	Dec	:	Jan 2/	:	Feb
	Dollars per Bushel												
	2000-2001												
CO :	1.81		1.89		2.00		2.07		2.10		2.16		2.09
GA :	1.84		2.03		1.90		2.26		2.44		2.54		2.58
IL :	1.54		1.64		1.80		1.92		2.03		1.97		2.00
IN :	1.63		1.67		1.75		1.83		2.06		2.03		2.01
IA :	1.43		1.46		1.66		1.83		1.89		1.86		1.87
KS :	1.68		1.90		1.96		2.07		2.07		2.07		2.02
KY :	1.95		1.85		1.85		2.00		2.23		2.18		2.28
MI :	1.51		1.59		1.74		1.86		1.88		2.04		1.96
MN :	1.40		1.43		1.60		1.70		1.79		1.81		1.80
MO :	1.69		1.60		1.63		1.74		1.93		1.92		2.01
NE :	1.52		1.60		1.81		1.86		1.99		1.97		1.95
NC :	2.07		1.79		1.95		2.02		2.09		2.38		2.36
OH :	1.59		1.59		1.75		1.87		2.02		2.08		2.01
PA :	2.14		2.06		1.89		1.89		2.10		2.18		2.35
SD :	1.40		1.30		1.48		1.52		1.69		1.67		1.75
TN :	1.65		1.72		1.87		2.30		2.22		2.21		2.32
TX :	1.67		2.09		2.19		2.19		2.25		2.38		2.13
WI :	1.60		1.58		1.83		1.86		1.87		1.89		1.83
US :	1.52		1.61		1.74		1.86		1.97		1.98		1.96
	1999-2000												
CO :	1.86		1.88		1.79		1.75		1.74		1.77		1.93
GA :	2.16		2.11		2.16		2.27		2.27		2.48		2.54
IL :	1.84		1.85		1.77		1.81		1.95		1.97		2.03
IN :	1.97		1.82		1.74		1.75		1.89		1.97		2.06
IA :	1.65		1.59		1.58		1.65		1.77		1.77		1.91
KS :	1.84		1.87		1.82		1.76		1.73		1.81		1.91
KY :	1.95		1.97		1.95		1.96		2.22		2.17		2.23
MI :	1.83		1.77		1.72		1.68		1.70		1.85		1.95
MN :	1.56		1.54		1.49		1.54		1.56		1.68		1.76
MO :	1.80		1.82		1.75		1.94		1.99		2.07		2.11
NE :	1.72		1.67		1.66		1.67		1.70		1.79		1.90
NC :	2.33		2.20		2.17		2.18		2.19		2.41		2.48
OH :	1.99		1.88		1.72		1.81		1.91		2.01		2.08
PA :	2.49		2.50		2.37		2.36		2.40		2.62		2.57
SD :	1.59		1.44		1.40		1.43		1.55		1.63		1.73
TN :	1.94		1.83		1.90		2.14		2.20		2.12		1.92
TX :	1.95		2.06		2.21		2.04		2.02		2.06		2.12
WI :	1.72		1.72		1.62		1.65		1.72		1.87		1.87
US :	1.75		1.75		1.69		1.70		1.82		1.91		1.98

See footnotes at end of table.

-- continued

Prices Received: Corn, by State and Month,  
for Marketing Years, 1999-2000 and 2000-2001 (continued) 1/

State :	Mar	:	Apr	:	May	:	Jun	:	Jul	:	Aug	:	Sep
	Dollars per Bushel												
	2000-2001												
CO :	2.12		2.11		1.98		2.00		2.10		2.17		2.08
GA :	2.57		2.67		2.31		2.28		2.37		2.29		2.18
IL :	2.00		1.92		1.86		1.83		1.95		1.99		1.94
IN :	2.02		1.98		1.95		1.84		1.97		2.01		1.93
IA :	1.88		1.83		1.72		1.66		1.79		1.83		1.82
KS :	2.07		2.02		1.88		1.92		2.03		1.96		1.99
KY :	2.20		2.08		2.08		2.07		2.12		2.13		1.99
MI :	1.95		1.90		1.86		1.75		1.89		1.96		1.93
MN :	1.76		1.77		1.68		1.67		1.72		1.73		1.69
MO :	1.99		1.90		1.80		1.80		1.90		1.97		1.98
NE :	1.98		1.95		1.81		1.77		1.86		1.90		1.87
NC :	2.46		2.32		2.28		2.14		2.30		2.14		2.16
OH :	2.00		1.89		1.83		1.80		1.95		2.01		1.97
PA :	2.30		2.28		2.31		2.25		2.38		2.33		2.32
SD :	1.69		1.68		1.54		1.58		1.69		1.69		1.65
TN :	2.29		2.29		2.39		2.44		2.40		2.10		1.97
TX :	2.21		2.16		2.05		2.23		2.32		2.28		2.35
WI :	1.81		1.85		1.78		1.84		1.87		1.93		1.95
US :	1.96		1.89		1.82		1.76		1.87		1.90		1.91
	1999-2000												
CO :	1.94		2.03		2.10		2.03		2.02		1.81		1.89
GA :	2.57		2.65		2.59		2.63		2.20		1.84		2.03
IL :	2.11		2.02		2.20		1.89		1.66		1.54		1.64
IN :	2.08		2.15		2.15		1.95		1.65		1.63		1.67
IA :	1.97		1.98		2.07		1.86		1.58		1.43		1.46
KS :	1.97		2.02		2.08		1.89		1.74		1.68		1.90
KY :	2.26		2.29		2.35		2.19		1.85		1.95		1.85
MI :	2.08		2.03		2.08		1.91		1.76		1.51		1.59
MN :	1.81		1.87		1.94		1.82		1.57		1.40		1.43
MO :	2.16		2.37		2.22		2.21		1.82		1.69		1.60
NE :	1.99		2.01		2.08		1.93		1.67		1.52		1.60
NC :	2.53		2.60		2.62		2.38		2.33		2.07		1.79
OH :	2.11		2.14		2.19		1.96		1.77		1.59		1.59
PA :	2.57		2.55		2.65		2.47		2.34		2.14		2.06
SD :	1.76		1.85		1.83		1.69		1.45		1.40		1.30
TN :	2.29		2.32		2.33		2.22		2.09		1.65		1.72
TX :	2.24		2.49		2.36		2.33		1.63		1.67		2.09
WI :	1.99		1.96		2.01		1.99		1.78		1.60		1.58
US :	2.03		2.03		2.11		1.91		1.64		1.52		1.61

1/ August - July for GA, LA, MS, and TX; September - August for IL, IN, IA, KS, KY, MO, NC, OH, and TN; October - September for all other estimated States; September - August for US.

2/ Second year.

Prices Received: Sorghum, by State and Month,  
for Marketing Years, 1999-2000 and 2000-2001 1/

State :	Jun :	Jul :	Aug :	Sep :	Oct :	Nov :	Dec :	Jan 2/
:	Dollars per Cwt							
:	2000-2001							
AR :	3.30	2.60	2.84	2.90	3.44	3.75	3.91	3.50
IL :	3.58	3/	2.81	2.67	3.19	3.51	3.78	3.48
KS :	2.79	2.46	2.56	2.64	2.93	3.19	3.49	3.30
MO :	3.15	2.44	2.45	2.79	2.95	3.29	3.34	3.44
NE :	3.27	2.68	2.50	2.60	3.01	3.23	3.40	3.43
OK :	2.99	2.90	2.60	2.52	3.01	3.45	3.27	3.46
TX :	3.45	2.89	2.84	3.11	3.23	3.60	3.83	3.59
US :	3.32	2.82	2.73	2.77	3.01	3.27	3.54	3.39
:	1999-2000							
AR :	3.22	3.23	3.02	2.96	3.00	3.20	3.41	3.39
IL :	3.57	2.87	3.00	3.17	2.79	2.97	3.14	3.44
KS :	2.72	2.68	2.70	2.61	2.37	2.46	2.50	2.79
MO :	3.23	3.23	2.99	2.96	2.54	2.65	3.10	3.28
NE :	3.07	2.67	2.88	2.77	2.52	2.50	2.61	2.82
OK :	3.03	2.70	3.04	2.82	2.66	2.67	2.70	2.85
TX :	3.11	2.85	2.86	2.85	2.96	2.86	2.85	2.89
US :	2.85	2.83	2.85	2.82	2.51	2.57	2.62	2.86

See footnotes at end of table.

-- continued

Prices Received: Sorghum, by State and Month,  
for Marketing Years, 1999-2000 and 2000-2001 (continued) 1/

State :	Feb :	Mar :	Apr :	May :	Jun :	Jul :	Aug :	Sep
Dollars per Cwt								
2000-2001								
AR :	3.66	3.81	3.66	3.55	3.30	2.82	3.71	3.40
IL :	3.80	3.93	4/	4/	4/	4/	3.93	3.57
KS :	3.27	3.21	2.89	3.17	3.28	3.27	3.33	3.25
MO :	3.78	3.51	3.47	3.54	3.43	2.99	3.52	3.62
NE :	3.42	3.35	3.35	3.27	3.22	3.43	3.47	3.29
OK :	3.36	3.28	3.18	3.13	3.14	3.36	3.15	3.33
TX :	3.82	3.79	3.56	3.33	3.92	3.77	3.56	3.82
US :	3.47	3.29	3.04	3.21	3.62	3.72	3.49	3.46
1999-2000								
AR :	3.54	3.77	3.38	3.77	3.30	2.60	2.84	2.90
IL :	3.69	3.68	3.77	3.94	3.58	3/	2.81	2.67
KS :	2.94	3.09	3.11	3.26	2.79	2.46	2.56	2.64
MO :	3.49	3.52	3.26	3.62	3.15	2.44	2.45	2.79
NE :	3.10	3.23	3.33	3.25	3.27	2.68	2.50	2.60
OK :	3.08	3.32	3.30	3.32	2.99	2.90	2.60	2.52
TX :	3.20	3.38	3.36	3.50	3.45	2.89	2.84	3.11
US :	3.06	3.21	3.24	3.33	3.32	2.82	2.73	2.77

- 1/ June - May for TX; August - July for AR and OK; September - August for IL, KS, and MO; October - September for NE; September - August for US.  
2/ Second year.  
3/ Price not published to avoid disclosure of individual firms.  
4/ Insufficient sales to establish a price.

Prices Received: Soybeans, by State and Month,  
for Marketing Years, 1999-2000 and 2000-2001 1/

State :	Sep	Oct	Nov	Dec	Jan 2/	Feb
Dollars per Bushel						
2000-2001						
AR :	4.66	4.66	4.73	4.94	4.91	4.60
GA :	4.53	4.31	4.39	4.64	4.44	4.40
IL :	4.66	4.55	4.62	4.86	4.74	4.51
IN :	4.71	4.51	4.57	4.93	4.74	4.53
IA :	4.53	4.41	4.60	4.75	4.53	4.40
KS :	4.57	4.46	4.55	4.70	4.53	4.36
KY :	4.81	4.62	4.58	4.94	4.88	4.67
LA :	5.11	4.88	4.80	4.97	4.83	4.60
MI :	4.75	4.50	4.55	4.73	4.67	4.45
MN :	4.41	4.26	4.44	4.59	4.55	4.28
MS :	4.92	4.77	4.62	4.92	4.88	4.57
MO :	4.51	4.48	4.49	4.78	4.69	4.53
NE :	4.55	4.37	4.46	4.68	4.54	4.29
NC :	4.77	4.44	4.43	4.55	4.57	4.48
OH :	4.67	4.48	4.60	4.99	4.86	4.57
SD :	4.29	4.22	4.29	4.43	4.36	4.25
TN :	4.79	4.61	4.62	4.97	4.89	4.61
WI :	4.52	4.46	4.48	4.78	4.50	4.13
US :	4.59	4.45	4.55	4.78	4.68	4.46
1999-2000						
AR :	4.76	4.77	4.81	4.58	4.79	5.15
GA :	4.77	4.63	4.49	4.38	4.73	5.08
IL :	4.66	4.61	4.55	4.58	4.74	4.87
IN :	4.54	4.58	4.56	4.56	4.65	4.90
IA :	4.42	4.35	4.30	4.37	4.44	4.67
KS :	4.55	4.46	4.35	4.26	4.41	4.67
KY :	4.76	4.63	4.55	4.62	4.85	5.06
LA :	5.32	5.13	4.64	4.70	4.84	4.92
MI :	4.58	4.50	4.40	4.42	4.63	4.78
MN :	4.36	4.24	4.18	4.16	4.32	4.55
MS :	5.19	4.86	4.65	4.58	4.76	4.95
MO :	4.54	4.50	4.55	4.51	4.73	4.91
NE :	4.42	4.34	4.26	4.25	4.42	4.61
NC :	4.54	4.72	4.41	4.42	4.56	4.93
OH :	4.61	4.50	4.66	4.53	4.74	4.92
SD :	4.24	4.17	4.09	4.08	4.36	4.43
TN :	4.64	4.61	4.59	4.42	4.70	5.06
WI :	4.36	4.38	4.63	4.63	5.06	5.03
US :	4.57	4.48	4.45	4.43	4.62	4.79

See footnotes at end of table.

-- continued



Prices Received: Soybeans, by State and Month,  
for Marketing Years, 1999-2000 and 2000-2001 (continued) 1/

State :	Mar	Apr	May	Jun	Jul	Aug
Dollars per Bushel						
2000-2001						
AR :	4.46	4.24	4.37	4.58	4.84	4.97
GA :	4.15	3/	3/	3/	3/	3/
IL :	4.49	4.31	4.47	4.58	4.91	4.91
IN :	4.52	4.25	4.43	4.62	4.98	5.15
IA :	4.29	4.19	4.26	4.42	4.77	4.87
KS :	4.22	4.01	4.22	4.42	4.87	4.94
KY :	4.56	4.38	4.47	4.66	5.05	5.02
LA :	4.36	4.30	4.37	4.50	5.19	4.70
MI :	4.42	4.29	4.39	4.43	4.81	4.91
MN :	4.27	4.12	4.12	4.28	4.57	4.63
MS :	4.50	4.29	4.35	4.54	3/	4.66
MO :	4.44	4.21	4.29	4.45	4.91	4.90
NE :	4.25	4.10	4.16	4.33	4.67	4.80
NC :	4.44	4.34	4.47	4.58	5.02	5.04
OH :	4.41	4.30	4.46	4.68	5.05	5.04
SD :	4.20	4.01	4.03	4.22	4.56	4.59
TN :	4.52	4.42	4.49	4.60	5.17	5.05
WI :	4.20	4.23	4.17	4.42	4.68	4.69
US :	4.39	4.22	4.33	4.46	4.79	4.85
1999-2000						
AR :	4.94	5.24	5.23	5.10	4.57	4.38
GA :	5.21	5.35	5.54	3/	3/	4.55
IL :	5.00	4.96	5.28	4.98	4.65	4.52
IN :	5.06	5.18	5.27	5.11	4.62	4.63
IA :	4.82	4.95	5.17	4.88	4.47	4.32
KS :	4.88	5.10	5.25	4.96	4.55	4.50
KY :	5.16	5.29	5.40	5.12	4.66	4.74
LA :	5.08	5.22	5.27	4.61	4.41	5.11
MI :	4.88	5.09	5.21	4.96	4.68	4.50
MN :	4.71	4.83	5.03	4.77	4.39	4.28
MS :	5.11	5.18	5.22	5.05	4.70	4.89
MO :	4.96	5.06	5.18	5.01	4.57	4.44
NE :	4.79	5.00	5.20	4.94	4.42	4.34
NC :	5.10	5.25	5.29	4.89	4.64	4.72
OH :	5.01	5.17	5.26	5.01	4.74	4.65
SD :	4.61	4.87	4.96	4.74	3.95	4.25
TN :	5.14	5.28	5.30	5.04	4.74	4.64
WI :	4.92	5.38	5.45	4.89	4.79	4.76
US :	4.91	5.00	5.19	4.93	4.53	4.45

1/ September - August for all estimated States.

2/ Second year.

3/ Prices not published to avoid disclosure of individual firms.

Prices Received: Flaxseed, by State and Month,  
for Marketing Years, 1999-2000 and 2000-2001 1/

State :	Jul	Aug	Sep	Oct	Nov	Dec
:	Dollars per Bushel					
:	2000-2001					
ND :	3.25	3.06	3.14	3.22	3.39	3.45
SD :	3/	3.00	2.85	3/		3/
US :	3.25	3.05	3.13	3.22	3.39	3.45
:	1999-2000					
ND :	4.40	3.86	4.00	3.75	3.66	3.61
SD :			3/	3/		
US :	4.40	3.86	4.00	3.75	3.66	3.61

See footnotes at end of table.

-- continued

Prices Received: Flaxseed, by State and Month,  
for Marketing Years, 1999-2000 and 2000-2001 (continued) 1/

State :	Jan 2/	Feb	Mar	Apr	May	Jun
:	Dollars per Bushel					
:	2000-2001					
ND :	3.47	3.43	3.90	3.70	3.91	4.10
SD :	3/	3/		3/		
US :	3.42	3.43	3.90	3.68	3.91	4.10
:	1999-2000					
ND :	3.75	3.43	3.70	3.66	3.77	3.64
SD :						
US :	3.75	3.43	3.70	3.66	3.77	3.64

1/ July - June for all estimated States.

2/ Second year.

3/ Price not published to avoid disclosure of individual firms.

Prices Received: All Sunflower, by State and Month,  
for Marketing Years, 1999-2000 and 2000-2001 1/

State :	Sep	Oct	Nov	Dec	Jan 2/	Feb
:	Dollars per Cwt					
:	2000-2001					
KS 3/:						
MN :	9.24	7.82	7.13	8.25	7.24	8.38
ND :	8.76	6.24	6.60	7.17	7.25	7.97
SD :	5.61	4.93	5.01	5.58	5.91	6.29
US :	6.31	5.76	6.20	6.49	6.92	7.29
:	1999-2000					
KS 3/:						
MN :	9.28	11.80	8.65	8.20	10.40	9.26
ND :	9.41	8.62	7.56	8.63	7.33	8.94
SD :	8.21	6.19	6.01	8.48	6.50	6.79
US :	8.76	6.99	6.87	7.52	7.34	8.72

See footnotes at end of table.

-- continued

Prices Received: All Sunflower, by State and Month,  
for Marketing Years, 1999-2000 and 2000-2001 (continued) 1/

State :	Mar	Apr	May	Jun	Jul	Aug
:	Dollars per Cwt					
:	2000-2001					
KS 3/:						
MN :	7.40	8.67	7.20	8.38	8.76	9.96
ND :	7.98	8.14	8.48	8.68	9.16	9.77
SD :	6.31	6.64	6.89	7.03	7.89	9.20
US :	7.46	7.67	7.99	8.40	8.71	9.48
:	1999-2000					
KS 3/:						
MN :	8.20	11.00	7.61	8.07	9.51	7.31
ND :	8.97	10.00	10.10	8.58	8.65	8.48
SD :	6.69	6.78	7.60	6.58	7.00	6.75
US :	8.53	7.93	9.63	8.09	8.16	7.82

1/ September - August for all estimated States.

2/ Second year.

3/ Price not published to avoid disclosure of individual firms.

Prices Received: Oil Sunflower, by State and Month,  
for Marketing Years, 1999-2000 and 2000-2001 1/

State :	Sep	Oct	Nov	Dec	Jan 2/	Feb
:	Dollars per Cwt					
:	2000-2001					
KS 3/:						
MN :	5.84	5.70	5.68	5.78	5.89	7.49
ND :	5.84	5.16	5.42	5.59	5.95	6.25
SD :	5.44	4.84	4.80	5.24	5.71	6.13
US :	5.39	5.00	5.21	5.50	5.84	6.22
:	1999-2000					
KS 3/:						
MN :	7.16	7.63	6.45	6.42	7.09	7.33
ND :	7.62	6.65	6.15	6.36	6.67	6.74
SD :	7.04	5.94	5.83	6.10	6.50	6.47
US :	7.28	6.09	5.95	6.15	6.64	6.65

See footnotes at end of table.

-- continued

Prices Received: Oil Sunflower, by State and Month,  
for Marketing Years, 1999-2000 and 2000-2001 (continued) 1/

State :	Mar	Apr	May	Jun	Jul	Aug
:	Dollars per Cwt					
:	2000-2001					
KS 3/:						
MN :	6.87	7.83	6.90	3/	3/	3/
ND :	6.71	6.83	6.84	7.57	8.13	8.45
SD :	6.23	6.46	6.65	7.03	7.89	9.20
US :	6.47	6.70	6.75	7.39	8.01	8.52
:	1999-2000					
KS 3/:						
MN :	6.61	9.78	6.72	6.50	6.67	6.01
ND :	6.56	6.98	6.58	6.77	6.27	5.94
SD :	6.54	6.74	6.65	6.14	6.34	5.66
US :	6.52	6.83	6.57	6.56	6.29	5.84

1/ September - August for all estimated States.

2/ Second year.

3/ Price not published to avoid disclosure of individual firms.

Prices Received: Non-Oil Sunflower, by State and Month,  
for Marketing Years, 1999-2000 and 2000-2001 1/

State :	Sep	Oct	Nov	Dec	Jan 2/	Feb
:	Dollars per Cwt					
:	2000-2001					
KS 3/:						
MN :	11.30	10.70	3/	3/	3/	3/
ND :	14.20	11.30	10.90	11.10	11.10	11.30
SD :	3/	3/	3/	3/	9.78	10.40
US :	13.70	10.90	10.80	11.10	11.10	11.20
:	1999-2000					
KS 3/:						
MN :	3/	13.50	11.80	12.50	12.80	3/
ND :	14.30	13.80	13.50	13.60	13.50	12.30
SD :	12.00	3/	3/	13.00		14.00
US :	13.70	13.80	13.30	13.40	13.60	12.60

See footnotes at end of table.

-- continued

Prices Received: Non-Oil Sunflower, by State and Month,  
for Marketing Years, 1999-2000 and 2000-2001 (continued) 1/

State :	Mar	Apr	May	Jun	Jul	Aug
:	Dollars per Cwt					
:	2000-2001					
KS 3/:						
MN :	3/	3/	3/	3/	3/	3/
ND :	11.00	11.50	11.40	11.20	11.10	11.20
SD :	10.60	3/	3/			
US :	11.10	11.40	11.30	11.40	11.10	11.10
:	1999-2000					
KS 3/:						
MN :	12.10	3/	3/	3/	3/	12.40
ND :	13.00	13.50	15.20	13.80	13.40	13.50
SD :	12.80	14.50	14.90	13.20	12.30	12.80
US :	13.10	13.50	15.10	13.70	13.20	13.30

1/ September - August for all estimated States.

2/ Second year.

3/ Price not published to avoid disclosure of individual firms.

Prices Received: Dry Beans, by State and Month,  
for Marketing Years, 1999-2000 and 2000-2001 1/

State :	Sep	Oct	Nov	Dec	Jan 2/	Feb
:	Dollars per Cwt					
:	2000-2001					
CA :	27.20	27.10	27.20	26.60	26.90	26.90
CO :	15.20	15.50	15.50	15.60	15.10	15.10
ID :	17.20	17.90	17.60	17.00	16.90	16.90
MI :	13.70	15.10	13.70	13.00	12.50	12.80
MN :	19.00	18.10	15.70	16.00	15.10	14.10
NE :	16.90	16.00	15.70	14.80	15.20	14.70
ND :	13.10	12.90	12.60	12.20	11.30	10.70
US :	15.50	15.70	15.50	14.40	15.10	15.30
:	1999-2000					
CA :	29.30	27.60	27.20	27.60	27.10	26.80
CO :	17.70	16.20	15.50	14.20	13.70	13.70
ID :	17.00	17.10	16.50	15.40	14.90	14.70
MI :	19.00	18.00	15.00	15.90	15.00	14.60
MN :	17.50	18.80	19.60	18.90	18.30	14.00
NE :	18.00	17.10	16.10	15.60	14.70	15.30
ND :	15.90	15.20	13.40	14.30	13.50	11.50
US :	18.00	17.10	17.20	16.10	15.80	15.60

See footnotes at end of table.

-- continued

Prices Received: Dry Beans, by State and Month,  
for Marketing Years, 1999-2000 and 2000-2001 (continued) 1/

State :	Mar	Apr	May	Jun	Jul	Aug
:	Dollars per Cwt					
:	2000-2001					
CA :	26.60	26.80	26.80	26.30	26.30	27.00
CO :	15.10	15.50	15.60	16.20	17.00	17.70
ID :	17.00	17.20	17.10	17.50	17.70	18.00
MI :	13.10	11.90	12.60	13.90	16.00	18.10
MN :	16.30	16.00	13.80	12.40	11.30	14.90
NE :	14.90	15.10	15.60	15.50	16.10	16.90
ND :	11.70	11.60	12.30	13.90	14.10	14.90
US :	14.90	15.60	16.90	16.40	16.80	17.40
:	1999-2000					
CA :	26.70	27.00	26.40	26.60	26.00	25.80
CO :	13.40	13.60	13.60	13.60	13.60	14.30
ID :	14.30	14.30	14.30	14.20	14.20	14.10
MI :	13.70	15.00	14.20	11.80	12.00	11.00
MN :	13.80	15.40	16.60	13.70	15.70	3/
NE :	15.10	15.30	15.10	15.50	15.60	16.20
ND :	11.40	11.30	11.10	10.90	12.00	12.30
US :	14.50	15.70	16.20	14.70	14.20	13.80

1/ September - August for all estimated States.

2/ Second year.

3/ Price not published to avoid disclosure of individual firms.

Prices Received: Peanuts, by State and Month,  
for Marketing Years, 1999-2000 and 2000-2001 1/

State	Aug	Sep	Oct	Nov	Dec	Jan 2/	Feb
Dollars per Bushel							
2000-2001							
AL	3/	0.268	0.273	0.250	0.248	3/	
FL		0.309	0.297	0.294	3/	3/	
GA		0.294	0.288	0.277	3/	3/	
NC		0.285	0.278	0.231	0.221	0.291	
TX	3/		3/	3/	3/		
VA		0.280	0.270	0.188	0.238	0.360	
US		0.286	0.277	0.261	0.273	0.314	
1999-2000							
AL		0.273	0.262	0.263	0.270		
FL	0.241	0.233	0.231	0.230			
GA		0.278	0.267	0.270	0.236		
NC			0.281	0.269	0.265	0.295	
TX	0.203	0.268	0.225	0.205	0.199		
VA			0.280	0.266	0.273	0.290	
US	0.257	0.270	0.255	0.241	0.218	0.149	

1/ August - February for all estimated States.

2/ Second year.

3/ Price not published to avoid disclosure of individual firms.



## Monthly Marketings - United States

**United States:** U.S. monthly marketing percentages for corn, sorghum, soybeans, flaxseed, sunflower and peanuts are based on the 12 months which are used for the U.S. marketing year. These months are consistent with the data used to weight U.S. marketing year average prices. Marketings are based on monthly probability surveys which obtain quantities of the crop purchased from producers and price information. Purchases are not identified by crop production year, but represent the commodity sold during the 12 months of the marketing year.

### Crop Marketing Seasons of Specified Field Crops

**Corn for Grain:** August 1 to July 31 for Georgia and Texas; September 1 to August 31 for Illinois, Indiana, Iowa, Kansas, Kentucky, Missouri, North Carolina, and Ohio; October 1 to September 30 for all other monthly marketing estimating States.

**Dry Edible Beans:** September 1 to August 31 for all estimating States.

**Flaxseed:** July 1 to June 30 for all estimating States.

**Peanuts:** August 1 - February 28 for all estimating States.

**Sorghum for Grain:** June 1 to May 31 for Texas; August 1 to July 31 for Arkansas and Oklahoma; September 1 to August 31 for Illinois, Kansas and Missouri; October 1 to September 30 for Nebraska.

**Soybeans:** September 1 to August 31 for all estimating States.

**Sunflower:** September 1 to August 31 for Kansas, Minnesota, North Dakota and South Dakota.

Field Crops: Farm Marketings, Percent of Sales by Crop  
and Month, United States, 1999-2000 and 2000-2001 1/

Month	Crop Marketing Year							
	1999-2000		2000-2001		1999-2000		2000-2001	
	Percent							
	Corn		Sorghum		Soybeans			
Sep	9.5	11.3	6.7	8.7	10.0	8.7		
Oct	14.2	15.8	15.1	13.7	23.9	23.1		
Nov	8.3	8.6	12.8	8.1	6.1	8.2		
Dec	6.9	6.8	13.1	16.2	6.2	7.1		
Jan	17.2	15.0	17.2	8.9	15.3	14.0		
Feb	6.7	5.3	4.6	4.0	6.0	6.6		
Mar	8.0	6.4	5.5	5.0	7.4	6.4		
Apr	5.5	4.9	2.3	3.7	4.8	5.1		
May	4.2	4.6	3.2	2.5	4.0	6.5		
Jun	4.3	5.4	5.7	6.9	3.7	5.3		
Jul	6.1	8.2	7.2	12.2	5.9	5.3		
Aug	9.1	7.7	6.6	10.1	6.7	3.7		
Year	100.0	100.0	100.0	100.0	100.0	100.0		
	Flaxseed				Peanuts			
Jul	3.1	2.8						
Aug	3.9	10.6			1.7			
Sep	20.9	29.8			26.3	13.2		
Oct	29.8	24.1			46.5	54.7		
Nov	7.3	4.4			19.2	29.3		
Dec	7.2	7.0			3.1	2.2		
Jan	14.5	7.7			3.2	0.6		
Feb	4.6	2.3						
Mar	4.8	5.3						
Apr	1.5	2.3						
May	0.9	1.1						
Jun	1.5	2.6						
Year	100.0	100.0			100.0	100.0		
	Dry Beans				Sunflower			
Sep	26.4	12.5			2.2	6.1		
Oct	18.8	17.3			20.6	21.7		
Nov	6.5	10.5			17.8	11.0		
Dec	7.5	13.4			9.1	9.5		
Jan	7.1	10.0			19.5	13.0		
Feb	4.5	5.7			4.9	7.6		
Mar	5.0	6.9			5.4	10.9		
Apr	5.0	5.7			6.8	5.1		
May	4.7	5.1			1.6	2.9		
Jun	3.8	4.6			5.5	4.8		
Jul	5.1	4.1			3.8	4.6		
Aug	5.6	4.2			2.8	2.8		
Year	100.0	100.0			100.0	100.0		

1/ Revised for 1999-2000.

Corn: Farm Marketings, Percent of Sales, by Month  
and State, 1999-2000 and 2000-2001 1/

State and Marketing Year	Aug	Sep	Oct	Nov	Dec	Jan	Feb	Mar	Apr	May	Jun	Jul	Aug	Sep
	Percent													
CO 1999-2000:			9	18	18	14	6	7	4	4	7	5	4	4
CO 2000-2001:			14	15	14	16	8	8	5	5	5	4	3	3
GA 1999-2000:	31	24	6	5	3	6	8	4	3	3	3	4		
GA 2000-2001:	36	16	18	3	5	4	5	3	1	2	4	3		
IL 1999-2000:		8	11	4	6	26	7	8	8	4	4	6	8	
IL 2000-2001:		10	12	5	7	22	6	8	6	6	5	7	6	
IN 1999-2000:		10	20	6	7	17	10	9	3	3	4	5	6	
IN 2000-2001:		14	15	8	6	17	6	7	5	5	5	8	4	
IA 1999-2000:		9	14	8	6	13	6	9	6	5	4	8	12	
IA 2000-2001:		11	17	7	5	11	4	6	6	5	6	11	11	
KS 1999-2000:		7	15	14	14	20	6	6	2	3	1	2	10	
KS 2000-2001:		18	22	12	11	16	3	3	3	2	2	5	3	
KY 1999-2000:		26	5	2	7	27	10	8	4	3	2	2	4	
KY 2000-2001:		14	15	6	5	22	9	9	3	3	4	6	4	
MI 1999-2000:			20	19	8	15	4	7	4	4	4	4	6	5
MI 2000-2001:			9	14	12	12	7	7	6	4	5	11	7	6
MN 1999-2000:			13	9	5	9	5	6	4	5	8	10	13	13
MN 2000-2001:			20	8	8	11	5	6	5	5	6	9	11	6
MO 1999-2000:		20	8	7	8	15	8	6	4	5	3	6	10	
MO 2000-2001:		32	12	5	4	15	4	5	3	3	3	4	10	
NE 1999-2000:			14	12	9	15	6	9	4	4	4	5	8	10
NE 2000-2001:			14	11	11	12	6	7	5	4	6	10	9	5
NC 1999-2000:		26	20	12	5	6	6	6	4	4	2	2	7	
NC 2000-2001:		36	19	7	3	4	3	3	3	3	3	3	13	
OH 1999-2000:		7	23	9	5	16	6	8	5	4	5	4	8	
OH 2000-2001:		4	21	17	6	15	6	5	4	5	5	6	6	
PA 1999-2000:			15	12	6	9	10	9	5	7	4	4	4	15
PA 2000-2001:			18	29	5	9	8	7	4	6	5	1	5	3
SD 1999-2000:			18	18	5	10	8	7	6	6	3	5	6	8
SD 2000-2001:			24	10	8	6	5	6	3	3	8	10	10	7
TN 1999-2000:		34	10	2	2	9	3	6	3	4	2	3	22	
TN 2000-2001:		45	10	3	3	11	2	3	2	2	1	3	15	
TX 1999-2000:	9	15	21	5	9	12	4	3	1	3	7	11		
TX 2000-2001:	9	17	17	6	6	25	3	1	1	2	2	11		
WI 1999-2000:			13	15	7	17	5	9	4	5	3	4	9	9
WI 2000-2001:			15	22	6	7	3	4	5	4	8	12	9	5

1/ Sample Survey reported marketings as percent of total used for calculating marketing year average prices.

Sorghum: Farm Marketings, Percent of Sales,  
by Month and State, 1999-2000 and 2000-2001 1/

State and Marketing Year	Jun	Jul	Aug	Sep	Oct	Nov	Dec	Jan	Feb	Mar	Apr	May	Jun	Jul	Aug	Sep	
-----																	
	Percent																
AR 1999-2000:			39	50	3	4		3	1								
2000-2001:			46	44	5	1	1	2		1							
IL 1999-2000:				17	30	8		25	7	3	2	4	1	1	2		
2000-2001:				1	32	35	1	18	4	2					7		
KS 1999-2000:				5	20	15	16	18	6	6	2	4	2	2	4		
2000-2001:				8	15	11	22	10	4	7	5	4	5	2	7		
MO 1999-2000:				38	11	9	7	11	6	4	2	3	3	2	4		
2000-2001:				28	22	11	5	12	3	4	5	2	1	2	5		
NE 1999-2000:					18	21	11	17	5	6	3	3	2	1	4	9	
2000-2001:					22	9	14	11	7	6	4	5	7	9	4	2	
OK 1999-2000:			5	3	12	19	19	19	4	10	3	4	2				
2000-2001:			10	18	8	14	18	15	3	5	2	3	2	2			
TX 1999-2000:	1	27	11	5	8	8	12	17	3	4	2	2					
2000-2001:	15	22	12	7	12	4	12	7	4	2	2	1					

1/ Sample survey reported marketings as percent of total used for calculating marketing year average prices.

Flaxseed: Farm Marketings, Percent of Sales,  
by Month and State, 1999-2000 and 2000-2001 1/

State and Marketing Year	Jul	Aug	Sep	Oct	Nov	Dec	Jan	Feb	Mar	Apr	May	Jun
-----												
	Percent											
ND 1999-2000:	3	4	21	30	7	7	14	5	5	1	1	2
2000-2001:	3	9	30	25	5	7	7	2	6	2	1	3
SD 1999-2000:			58	42								
2000-2001:	7	41	17	1		8	21	1		4		

1/ Percentages reflect crop marketings reported by surveyed firms.

Soybeans: Farm Marketings, Percent of Sales,  
by Month and State, 1999-2000 and 2000-2001 1/

State and Marketing Year	Year	Sep	Oct	Nov	Dec	Jan	Feb	Mar	Apr	May	Jun	Jul	Aug
		Percent											
AR	1999-2000:	4	41	13	11	17	5	3	2	1	1	1	1
	2000-2001:	7	21	20	17	15	4	3	3	3	1	3	3
GA	1999-2000:	3	11	32	9	8	10	6	11	6	2	1	1
	2000-2001:	1	16	60	5	5	3	1	1	1	1	1	5
IL	1999-2000:	9	17	3	5	22	7	8	7	4	4	7	7
	2000-2001:	7	16	6	6	19	8	9	6	9	6	5	3
IN	1999-2000:	17	22	3	7	12	7	7	3	4	5	8	5
	2000-2001:	14	28	6	5	14	7	6	5	6	3	4	2
IA	1999-2000:	8	22	5	6	13	5	9	5	5	4	8	10
	2000-2001:	8	22	7	7	11	5	6	7	7	7	8	5
KS	1999-2001:	7	30	15	8	14	5	7	3	3	3	2	3
	2000-2001:	9	18	9	12	14	6	6	4	7	6	4	5
KY	1999-2000:	8	21	13	4	21	10	9	4	3	2	2	3
	2000-2001:	3	16	15	5	25	10	8	4	5	4	3	2
LA	1999-2000:	23	35	7	5	9	4	3	1	1	1	1	10
	2000-2001:	20	32	9	5	13	4	2	1	3	2	1	8
MI	1999-2000:	8	33	7	7	12	3	7	4	3	4	4	8
	2000-2001:	6	25	11	9	14	6	5	7	8	5	3	1
MN	1999-2000:	9	24	5	6	11	6	7	5	5	6	7	9
	2000-2001:	12	19	7	8	13	6	6	5	7	6	6	5

--continued

Soybeans: Farm Marketings, Percent of Sales,  
by Month and State, 1999-2000 and 2000-2001 1/

State and Marketing Year	Year	Sep	Oct	Nov	Dec	Jan	Feb	Mar	Apr	May	Jun	Jul	Aug
		Percent											
MS	1999-2000:	13	27	8	6	20	4	4	2	1	1	8	6
	2000-2001:	13	16	7	10	18	6	4	4	3	2	9	8
MO	1999-2000:	6	25	11	7	17	7	8	4	3	3	4	5
	2000-2001:	6	27	11	6	16	6	7	4	5	4	5	3
NE	1999-2000:	8	28	5	7	17	6	8	4	3	3	5	6
	2000-2001:	7	23	10	10	14	7	5	4	6	5	5	4
NC	1999-2000:	2	5	35	22	8	8	8	5	2	1	1	3
	2000-2001:	1	8	34	19	9	5	4	4	6	5	3	2
OH	1999-2000:	23	22	4	3	13	6	7	6	3	2	5	6
	2000-2001:	7	33	8	7	13	8	6	3	4	4	4	3
SD	1999-2000:	6	37	6	4	7	6	6	6	6	4	6	6
	2000-2001:	11	34	5	4	6	7	5	4	4	8	8	4
TN	1999-2000:	8	28	24	9	9	5	5	3	3	1	2	3
	2000-2001:	5	43	12	8	12	5	4	2	3	2	2	2
WI	1999-2000:	8	34	8	5	14	5	8	4	4	2	4	4
	2000-2001:	9	36	12	4	6	3	5	5	6	5	6	3

1/ Percentages reflect crop marketings reported by surveyed firms.

Sunflower: Farm Marketings, Percent of Sales  
by Month and State, 1999-2000 and 2000-2001 1/

State and Marketing Year	Sep	Oct	Nov	Dec	Jan	Feb	Mar	Apr	May	Jun	Jul	Aug
Percent												
KS 1999-2000	1	45	25	20	3	1	3	1	1			
2000-2001	19	13	9	21	7	6	11	2	3	5	1	3
MN 1999-2000	4	19	13	10	12	8	9	3	1	2	4	15
2000-2001	5	11	17	10	8	5	19	9	6	1	4	5
ND 1999-2000	2	8	16	7	32	7	7	4	2	7	5	3
2000-2001	3	21	13	9	15	7	9	6	3	5	5	4
SD 1999-2000	3	29	15	4	7	3	5	19	1	6	5	3
2000-2001	8	27	8	7	11	9	13	5	2	4	5	1

1/ Percentages reflect estimates of actual marketings used for calculating marketing year average prices.

Dry Edible Beans: Farm Marketings, Percent of Sales,  
by Month and State, 1998-1999 and 2000-2001 1/

State and Marketing Year	Sep	Oct	Nov	Dec	Jan	Feb	Mar	Apr	May	Jun	Jul	Aug
Percent												
CA 1999-2000	5	11	12	8	9	8	7	10	12	6	5	7
2000-2001	5	10	11	9	11	8	7	9	12	6	6	6
CO 1999-2000	21	15	6	12	10	5	5	4	6	6	6	4
2000-2001	21	13	9	9	9	5	7	5	7	5	5	5
ID 1999-2000	9	12	11	10	13	9	8	7	6	7	5	3
2000-2001	9	12	11	10	12	11	9	7	5	7	4	3
MI 1999-2000	49	17	3	3	3	1		3	2	3	5	11
2000-2001	10	23	14	28	10	4	5	1	2	1	1	1
MN 1999-2000	40	22	5	5	2	3	6	5	6	3	2	1
2000-2001	16	19	10	5	5	9	6	7	6	5	8	4
NE 1999-2000	22	18	7	9	13	5	4	5	4	3	5	5
2000-2001	20	19	7	10	14	5	4	5	4	2	5	5
ND 1999-2000	22	26	6	8	5	5	7	5	4	2	6	4
2000-2001	11	16	9	6	8	5	10	9	6	8	5	7

1/ Percentages reflect estimates of actual marketings used for calculating marketing year average prices.

## Reliability of Prices Received Estimates

**Definition:** Prices received represent sales from producers to first buyers. They include all grades and qualities. The average commodity price from the survey multiplied by the total quantity marketed theoretically should give the total cash receipts for the commodity.

**Survey Procedures:** Primary sales data used to determine grain prices were obtained from probability samples of 2600 mills and elevators. These procedures ensure that virtually all grain moving into commercial channels has a chance of being included in the survey. Generally, States surveyed account for 90 percent or more of total U.S. production. Livestock prices are obtained from packers, stockyards, auctions, dealers, and market check data from AMS-USDA, private marketing organizations, and state commodity groups and agencies. Inter-farm sales of grain and livestock are not included since they represent very small percentages of the total marketings. Grain marketed for seed is also excluded. Fruit and vegetable prices are obtained from sample surveys and market check data from AMS-USDA, private marketing organizations, state agencies, and universities.

**Summary and Estimation Procedures:** Survey quantities sold are expanded by strata to state levels and used to weight average strata prices to a state average. State prices are then weighted to a U.S. price based on expanded marketings. Recommendations are prepared by the State Statistical Offices and reviewed by the Agricultural Statistics Board in Washington, D.C. State recommendations are reviewed for reasonableness with survey data, other States, and recent historic estimates.

**Revisions:** For most items, the current month's price represents a 3-5 day period around the mid-month. Previous month's prices represent actual dollars received for quantities sold during the entire month. Revisions are published in monthly issues of "**Agricultural Prices**".

**Reliability:** U.S. price estimates based on probability surveys generally have a sampling error of less than one percent for the major commodities such as corn, wheat, soybeans, cotton, and rice. Current methods of summarization for non-probability commodities are not designed directly to calculate sampling errors. However, analytical measures approximate the U.S. relative sampling errors at around five percent. Any nonsampling errors are attributed to such things as the inability to obtain correct information, differences in interpreting questions or definitions, mistakes in coding or processing the data, etc. Efforts are made at each step in the survey process to minimize these nonsampling errors.



## Prices Paid by Farmers

The November Index of Prices Paid for Commodities and Services, Interest, Taxes, and Farm Wage Rates (PPITW) was 122 (1990-92=100), down 0.8 percent from October but 0.8 percent higher than November 2000.

**Production Index:** The November Farm Production, Goods, and Services Index, at 117, was 0.8 percent below last month and last year. Lower prices in November for feeder cattle and calves, nitrogen fertilizer materials, diesel fuel, complete feeds, and gasoline were slightly offset by higher prices for farm machinery, feeder pigs, hays and forages, and new trucks.

**Feed:** The Feed Index, at 108, was 0.9 percent less than October but 4.9 percent greater than last November. Lower prices for complete feeds, feed concentrates, and feed supplements account for the month-to-month index decline.

**Livestock and Poultry:** The Index for Livestock and Poultry purchases, at 107, was 5.3 percent less than October and 4.5 percent less than last year. Lower prices for feeder cattle and calves since October account for the decline in the index. The November feeder cattle price, at \$86.70 per cwt, was down \$6.70 per cwt from the October price due partially to heavier weight animals being sold.

**Fertilizer:** The Fertilizer Index, at 107, was down 1.8 percent from October and 7.8 percent less than a year ago. Lower prices for nitrogen materials since October account for the decline.

**Agricultural Chemicals:** The Chemical Index, at 121, was unchanged from last month but 0.8 percent above last October. Slightly lower prices in November for insecticides did not affect the index.

**Fuels:** The Fuels Index, at 96, was down 6.8 percent from a month earlier and 36 percent less than November 2000. Lower prices for diesel fuel, gasoline, and LP gas account for the decline.

**Farm Machinery:** The November Farm Machinery Index, at 143, increased 1.4 percent from both last month and November 2000. Since October, prices for all components of the machinery index were fractionally higher.

**Consumer Price Index:** The October 2001 Consumer Price Index for All Urban Consumers (CPI-U) declined 0.3 percent, before seasonal adjustment, to a level of 177.7 (1982-84=100). This compares to the September index of 178.3. For the 12-month period ending in October, the overall index has increased 2.1 percent.

Index Numbers of Prices Paid by Farmers and Related Parity Ratios  
United States, November 2001 With Comparisons

Indexes and Ratios	: 1910-14 = 100			: 1990-92 = 100		
	: 2000			: 2001		
	: Nov	: Oct	: Nov	: Nov	: Oct	: Nov
	-----					
Prices Paid by Farmers for	:					
Commodities & Services,	:					
Interest, Taxes, & Wage	:					
Rates (PPITW)	1617	1635	1625	121	123	122
Production	1143	*1147	1136	118	*118	117
Feed	504	530	526	103	109	108
Livestock and Poultry	1438	1445	1370	112	113	107
Seeds	1238	1329	1329	125	134	134
Fertilizer	427	*399	392	116	*109	107
Agricultural Chemicals	739	748	750	120	121	121
Fuels	1154	*799	740	149	*103	96
Supplies & Repairs	891	912	912	126	129	129
Autos & Trucks	3151	*3117	3141	119	*117	118
Farm Machinery	3530	*3549	3578	141	*141	143
Building Material	1641	*1644	1640	121	121	121
Farm Services & Rent	1378	*1415	1415			
Farm Services				119	*120	120
Rent				110	116	116
Interest 1/	2798	2901	2901	112	116	116
Taxes 2/	3281	3281	3281	123	123	123
Wage Rates	5357	*5544	5544	143	*148	148
Production, Interest, Taxes,	:					
& Wage Rates (PITW)	1609	*1623	1612	120	121	120
Family Living-CPI 3/	1654	*1688	1688	129	132	132
-----						
Ratio (Received\Paid)	:			81	*76	76
Parity Ratio 4/	38	37	36			
Parity Ratio Adjusted 5/	43	39	39			
PPITW Adjusted for	:					
Productivity 6/	1103	*1133	1132			
-----						
Crop Sector (PPITW)	:			124	125	124
Livestock Sector (PPITW)	:			119	121	120
-----						
Farm Sector (Production)	:			109	114	111
Non-Farm Sector (Production)	:			122	*120	120

\* Revised.

- 1/ Interest per acre on farm real estate debt and interest rate on farm non-real estate debt.
- 2/ Farm real estate taxes payable per acre.
- 3/ Bureau of Labor Statistics, Consumer Price Index for all urban consumers (CPI-U), for the previous month converted by the USDA.
- 4/ Ratio of index of prices received to PPITW (1910-14=100).
- 5/ Based on estimated cash receipts, from marketings and government payments, the preliminary adjustment factor is 1.071 for 2001 and the revised factor is 1.113 for 2000.
- 6/ PPITW is adjusted based on productivity trend for the prior 15 years.

Prices Paid Indexes and Annual Weights for Input Components and  
Sub-Components United States, November 2001 With Comparisons

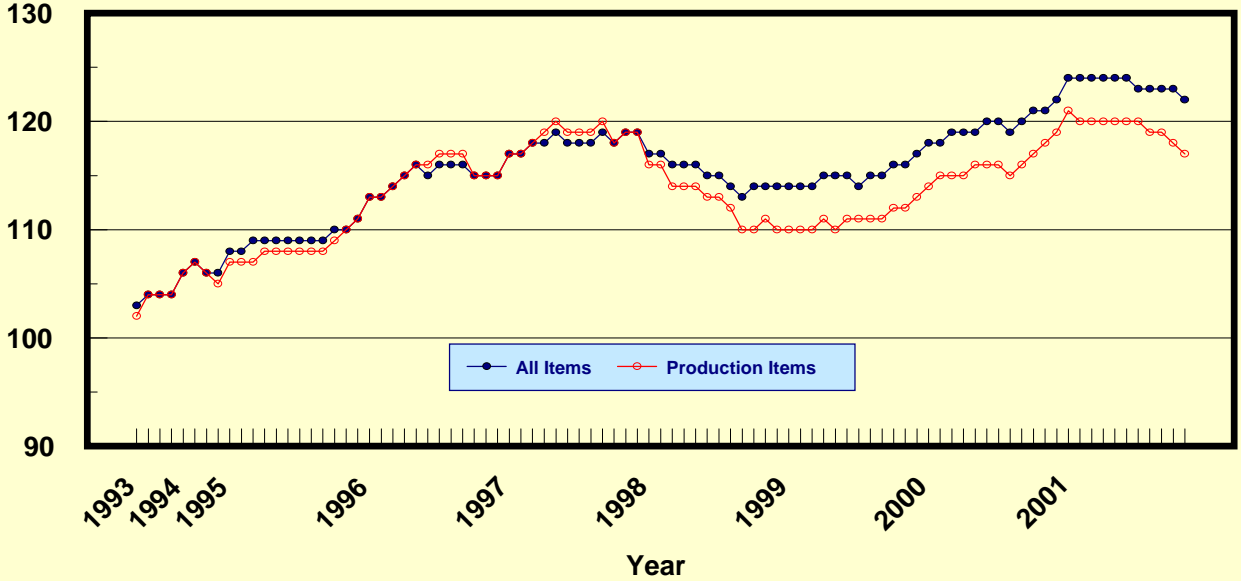
Index	Relative Weights		Input Indexes		
	5-Year Moving Average 1/		2000	2001	
	2000	2001	Nov	Oct	Nov
	----	Percent	----	(1990-92=100)	---
Production Items	67.3	67.1	118	*118	117
Feed	11.7	11.5	103	109	108
Feed Grains	1.7	1.6	81	*81	82
Complete Feeds	5.7	5.6	104	*110	109
Hay/Forages	1.5	1.4	110	123	124
Concentrates	1.8	1.8	109	*110	109
Supplements	1.0	1.0	115	121	120
Livestock & Poultry	6.8	6.7	112	113	107
Feeder Cattle	5.3	5.2	113	110	102
Feeder Pigs	0.5	0.5	106	105	108
Milk Cow Replacements	0.5	0.5	120	151	151
Poultry	0.4	0.4	109	109	109
Seeds	2.9	3.0	125	134	134
Field Crops	2.7	2.7	126	136	136
Grasses/Legumes	0.3	0.3	115	118	118
Fertilizer	4.9	4.8	116	*109	107
Mixed Fertilizer	2.2	2.1	107	*108	108
Nitrogen	2.1	2.0	129	*110	105
Potash & Phosphate	0.7	0.7	108	*108	109
Agricultural Chemicals	3.9	4.0	120	121	121
Herbicides	2.5	2.5	111	*113	113
Insecticides	0.9	0.9	144	*144	143
Fungicides/Other	0.6	0.6	120	121	121
Fuels	2.6	2.6	149	*103	96
Diesel	1.5	1.5	159	*107	101
Gasoline	0.8	0.7	128	*92	83
LP Gas	0.4	0.4	155	*111	100
Farm Supplies & Repairs	5.6	5.6	126	129	129
Supplies	1.9	1.9	119	123	123
Repairs	3.7	3.7	129	131	131
Autos & Trucks	1.6	1.7	119	*117	118
Autos	0.2	0.2	112	110	111
Trucks	1.4	1.5	120	*118	119
Farm Machinery	4.0	4.0	141	*141	143
Tractors	0.9	0.9	138	*140	141
Self-Propelled	1.6	1.6	140	*140	141
Other Machinery	1.5	1.5	143	144	145
Building Materials	2.8	2.8	121	121	121
Farm Services	12.4	12.4	119	*120	120
Custom Rates	1.3	1.3	120	121	121
Other Services	11.2	11.1	119	*120	120
Rent	8.1	7.9	110	116	116
Cash	4.0	4.0	139	141	141
Share	4.1	3.9	83	91	91
Interest	4.9	4.9	112	116	116
Taxes	3.1	3.1	123	123	123
Wage Rates	7.0	7.2	143	*148	148
Family Living-CPI	17.7	17.8	129	132	132

\* Revised.

1/ Weights may not add due to rounding.

## Prices Paid by Farmers, Major Indexes US, by Quarter and Month 1/

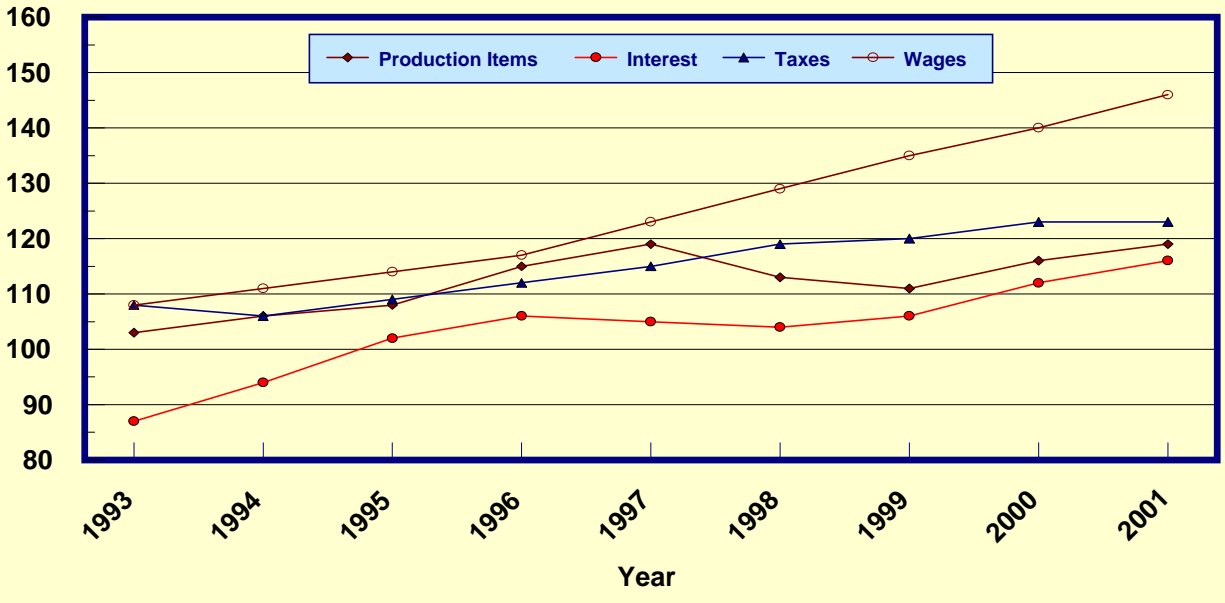
Percent (1990-92=100)



1/ Index values are monthly beginning in 1995.

## Prices Paid by Farmers, Major Indexes US, Annual Averages 1/

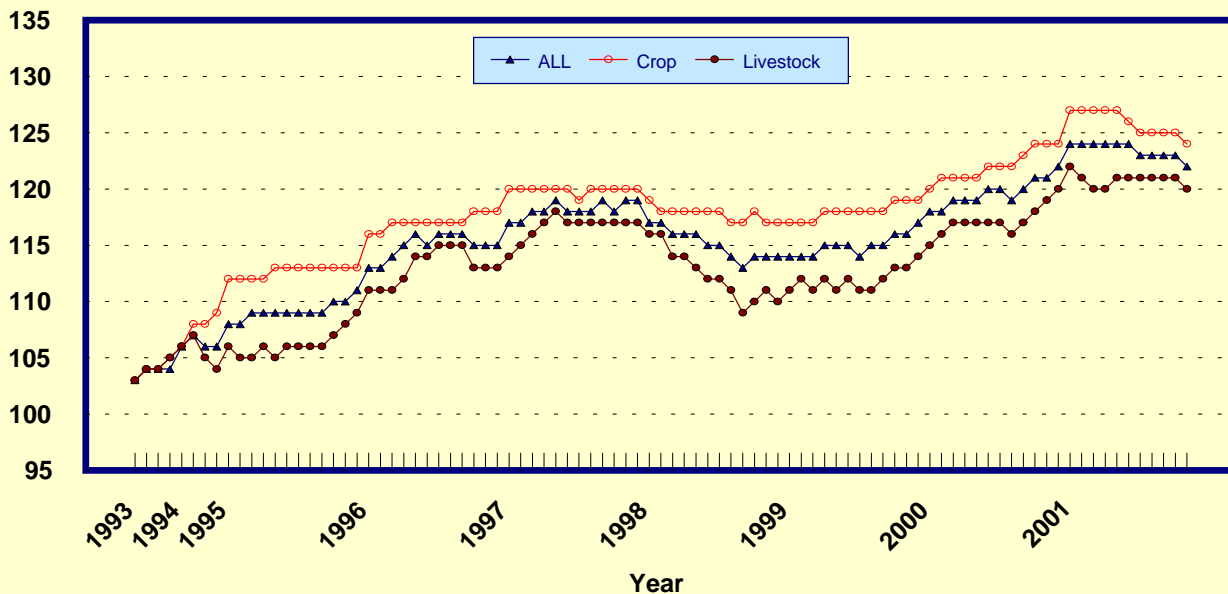
Percent (1990-92=100)



1/ Index values for 2001 are year-to-date averages.

## Prices Paid by Farmers, Indexes, All Items US, By Farm Type 1/

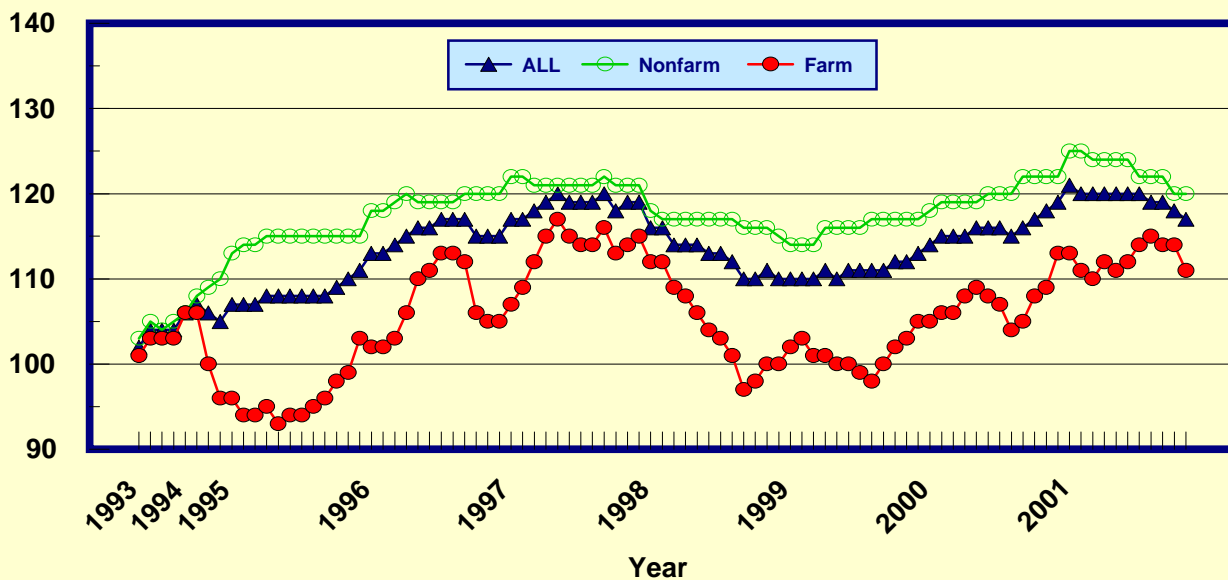
Percent (1990-92=100)



1/ Index values are monthly beginning in 1995.

## Prices Paid by Farmers, Indexes, All Production Items US, By Sector Origin 1/

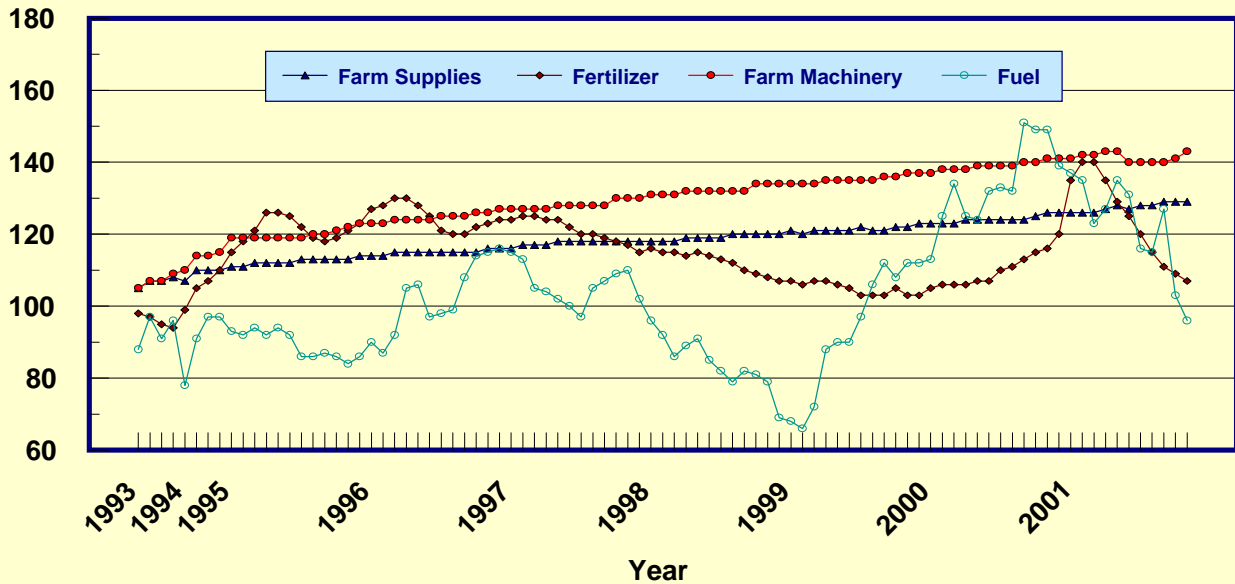
Percent (1990-92=100)



1/ Index values are monthly beginning in 1995.

## Prices Paid by Farmers, Selected Production Indexes US, By Non-Farm Sector 1/

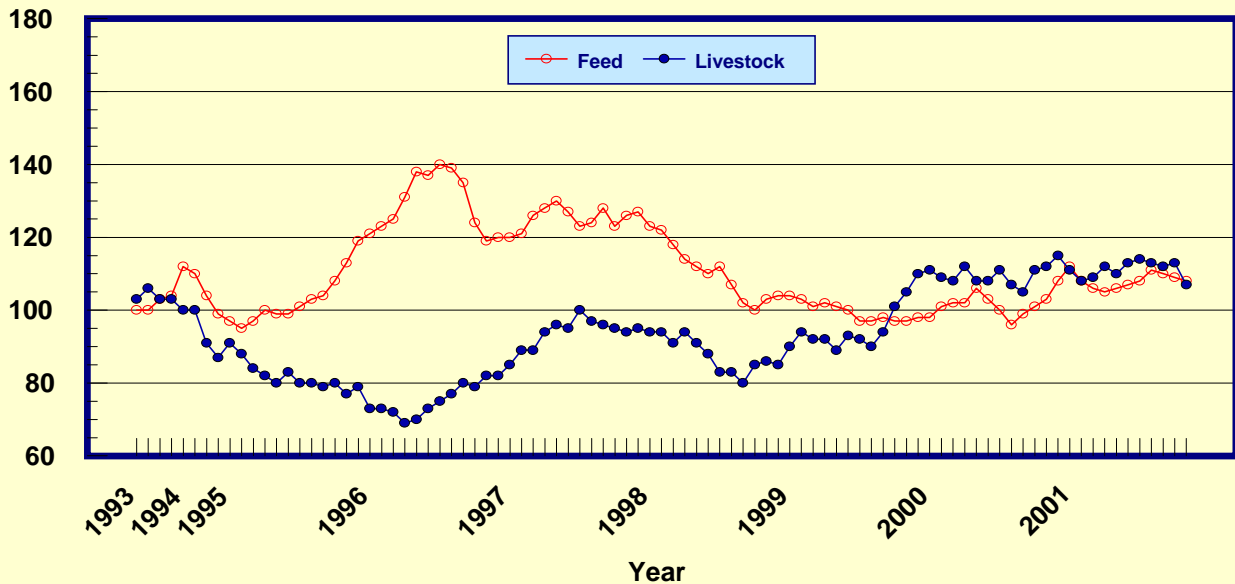
Percent (1990-92=100)



1/ Index values are monthly beginning in 1995.

## Prices Paid by Farmers, Selected Production Indexes US, By Farm Sector 1/

Percent (1990-92=100)



1/ Index values are monthly beginning in 1995.

Feed Price Ratios: United States, November 2001 with Comparisons

Feed Price Ratio 1/	2000		2001	
	Nov	Oct	Nov	Nov
Broiler-Feed: Pounds of Broiler Grower Feed equal in value to 1 pound of broiler, live weight	7.4	*8.6	8.1	
Market Egg Feed: Pounds of Laying Feed equal in Value to 1 dozen eggs	13.1	*10.7	11.5	
Hog-Corn: Bushels of Corn equal in value to 100 pounds of hog, live weight	19.8	*22.0	18.9	
Milk-Feed: Pounds of 16% Mixed Dairy Feed equal in value to 1 pound of Whole Milk	3.03	*3.54	3.24	
Steer & Heifer-Corn: Bushels of Corn equal in value to 100 pounds of Steer & Heifers, live weight	39.7	*38.2	36.0	
Turkey-Feed: Pounds of Turkey Grower equal in value to 1 pound of Turkey, live weight	9.8	*9.6	9.5	

1/ Effective February 1997, prices of commercial prepared feeds are based on current U.S. prices received for corn, soybeans, alfalfa hay, and all wheat.  
\* Revised.

Prices Used to Calculate Feed Price Ratios:  
United States, November 2001 with Comparisons

Commodity	Unit	2000		2001	
		Nov	Oct	Nov	Nov
Broilers, Live	Lb	0.380	0.410	0.390	
Eggs, Market	Doz	0.573	0.446	0.485	
Hogs, All	Cwt	36.80	*40.50	34.90	
Milk, All	Cwt	12.60	*15.70	14.30	
Steers and Heifers	Cwt	73.80	*70.20	66.60	
Turkeys, Live	Lb	0.471	0.440	0.443	
Corn	Bu	1.86	*1.84	1.85	
Hay, Alfalfa, Baled	Ton	88.00	108.00	106.00	
Soybeans	Bu	4.55	*4.09	4.18	
Wheat, All	Bu	2.82	2.86	2.94	

\* Revised.

Feeder Livestock: Prices Paid, United States  
November 2001 with Comparisons

Commodity	Unit	2000		2001	
		Nov	Oct	Nov	Nov
					Dollars
Feeders and Stockers					
Cattle and Calves	Cwt	95.40	93.40	86.70	
Feeder Pigs	Cwt	97.50	96.50	99.50	

## Prices Paid by Farmers

**Definition:** Prices paid by farmers represent the average costs of inputs purchased by farmers and ranchers to produce agricultural commodities. Conceptually, the average price when multiplied by quantity purchased should equal total producer expenditures for the item.

**Survey Procedures:** The prices paid data are obtained from establishments that sell goods and services to farmers and ranchers. Annually, about 8,500 firms are randomly selected from lists by type of item sold with an average response rate in the range of 75-80 percent. Firms are asked to report the price for the specified item "most commonly bought by farmers" or that was the "volume seller". Approximately 135 items are surveyed each April to represent all production input items purchased. The survey reference period for most items is the 5 business days centered around the 15th of the month. Separate prices paid surveys are conducted for agricultural chemicals, fuels, feed, fertilizer, machinery, and seed.

**Summary and Estimation Procedures:** The annual April Paid Survey is summarized as a nonprobability survey. Average prices reported are aggregated to the region and U.S. level using weights available from expenditure data and other administrative sources. Price recommendations are prepared by the State Statistical Offices and Headquarters for review by the Agricultural Statistics Board in Washington, D.C. Also, the change in price level for individual items surveyed are combined to the regional and U.S. levels, and are published as prices paid indexes referenced to a specific base period. Prices paid indexes for new autos and trucks, building materials, farm supplies, motor supplies, and marketing containers are updated based on price changes measured in selected Bureau of Labor Statistics (BLS) indexes.

**Revisions:** Any revisions are published in the monthly and in annual issues of "Agricultural Prices". The basis for revision must be supported by additional data that directly affect the level of the estimate. More revisions are likely in April when separate prices paid surveys are conducted, in lieu of BLS indexes, by the USDA to measure price change.

**Reliability:** Current methods of summarization in April are not designed directly to calculate sampling errors. However, analytical measures approximate the U.S. relative sampling errors for major items around 10 percent. Any nonsampling errors are attributed to such things as the inability to obtain correct information, differences in interpreting questions or definitions, mistakes in coding or processing the data, etc. Efforts are made at each step in the survey process to minimize these nonsampling errors.

**Program Change:** Effective January 1, 1995, the National Agricultural Statistics Service updated the weights and changed the construction of its prices paid and received by farmers indexes. A Federal Register Notice dated October 28, 1994 discussed these program modifications.

A 1990-92 reference and base period replaced the 1977 reference and 1971-73 base weight period. Five-year moving average weights replaced the current fixed 1971-73 base period weights. The 1910-14=100 price indexes, required by statute for computing parity prices, were linked forward based on the changes in the new 1990-92=100 indexes. The new indexes were constructed by multiplying the ratios of the current prices to the base period prices by the moving average weights (adjusted for seasonal marketing patterns for the prices received indexes).



## Information Contacts

General questions should be directed to **Linda Hutton**, Chief, Environmental, Economics and Demographics Branch at (202) 720-6146. Below are the commodity specialists to contact for additional information.

### Crop Prices

**Mark Harris**, Chief, Crops Branch (202) 720-2127

Field Crops Section  
**Greg Thessen**, Head (202) 720-2127

**Rhonda Brandt** - Corn (202) 720-9526  
**Herman Ellison** - Oilseeds (202) 720-7369  
**Lance Honig** - Wheat (202) 720-8068  
**Jay Johnson** - Cotton (202) 720-5944  
**Roy Karkosh** - Barley, Hay, Sorghum (202) 690-3234  
**Mark E. Miller** - Oats (202) 720-7621  
**Mark R. Miller** - Peanuts, Rice (202) 720-7688

Fruit and Vegetable Section  
**Jim Smith**, Head (202) 720-2127

**Arvin Budge** - Potatoes, Dry Beans (202) 720-4285  
**Dave DeWalt** - Citrus (202) 720-5412  
**Debbie Flippin** - Vegetables (202) 720-3250  
**Steve Gunn** - Apples, Peaches, Pears (202) 720-4288  
**Darin Jantzi** - Grapes, Tobacco (202) 720-7235  
**Biz Wallingsford** - Vegetables, Strawberries (202) 720-2157

### Livestock Prices

**Dan Kerestes**, Chief, Livestock Branch (202) 720-3570

Livestock Section  
**Rodger Ott**, Acting Head (202) 720-6880

**Steve Anderson** - Cattle, Sheep (202) 720-3040  
**Ty Kalas** - Milk (202) 690-3236  
**Rodger Ott** - Hogs (202) 720-3106

Poultry and Specialty Commodities Section  
**Nathan Crisp**, Head (202) 720-6351

**Tom Kruchten** - Broilers, Eggs (202) 690-4870  
**John Lange** - Turkeys (202) 720-0585

### Prices Paid and Indexes

**Linda Hutton**, Chief, Environmental, Economics and Demographics Branch (202) 720-6146

Economics Section  
**Larry Beard**, Head (202) 720-4214

**Tara Jackson** - Feed, Fertilizer, Agricultural Chemicals, Seeds (202) 690-3347

**Jim Williams** - Prices Paid Indexes, Farm Supplies and Repairs, Farm Machinery, Fuels, Feeder Livestock, Poultry Chicks, Feed Price Ratios, Grazing Fees, Autos & Trucks (202) 690-3225

**Kirby Cavett** - Prices Received Indexes (202) 690-3237

The next "Agricultural Prices" report will be released at 3:00 p.m. ET on December 31, 2001.

The United States Department of Agriculture (USDA) prohibits discrimination in all its programs on the basis of race, color, national origin, gender, religion, age, disability, political beliefs, sexual orientation, and marital or family status. (Not all prohibited bases apply to all programs.) Persons with disabilities who require alternative means for communication of program information (braille, large print, audiotape, etc.) should contact the USDA's TARGET Center at 202-720-2600 (voice and TDD).

To file a complaint of discrimination, write USDA, Director, Office of Civil Rights, Room 326-W, Whitten Building, 1400 Independence Avenue, SW, Washington, D.C., 20250-9410, or call 202-720-5964 (voice or TDD). USDA is an equal opportunity provider and employer.

## **ACCESS TO REPORTS!!**

---

For your convenience, there are several ways to obtain NASS reports, data products, and services:

### **INTERNET ACCESS**

All NASS reports are available free of charge on the worldwide Internet. For access, connect to the Internet and go to the NASS Home Page at: <http://www.usda.gov/nass/>. Select "Today's Reports" or Publications and then Reports by Calendar or Publications and then Search, by Title or Subject.

### **E-MAIL SUBSCRIPTION**

There are two options for subscribing via e-mail. All NASS reports are available by subscription free of charge direct to your e-mail address. 1) Starting with the NASS Home Page at <http://www.usda.gov/nass/>, click on **Publications**, then click on the **Subscribe by E-mail** button which takes you to the page describing e-mail delivery of reports. Finally, click on **Go to the Subscription Page** and follow the instructions. 2) If you do NOT have Internet access, send an e-mail message to: [usda-reports@usda.mannlib.cornell.edu](mailto:usda-reports@usda.mannlib.cornell.edu). In the body of the message type the word: **list**.

### **AUTOFAX ACCESS**

NASSFax service is available for some reports from your fax machine. Please call 202-720-2000, using the handset attached to your fax. Respond to the voice prompts. Document 0411 is a list of available reports.

-----  
**PRINTED REPORTS OR DATA PRODUCTS**

**CALL OUR TOLL-FREE ORDER DESK: 800-999-6779 (U.S. and Canada)**  
**Other areas, please call 703-605-6220      FAX: 703-605-6900**  
**(Visa, MasterCard, check, or money order acceptable for payment.)**  
-----

### **ASSISTANCE**

For **assistance** with general agricultural statistics or further information about NASS or its products or services, contact the **Agricultural Statistics Hotline** at **800-727-9540**, 7:30 a.m. to 4:00 p.m. ET, or e-mail: [nass@nass.usda.gov](mailto:nass@nass.usda.gov).