



Agricultural Prices

Released June 27, 2002, by the National Agricultural Statistics Service (NASS), Agricultural Statistics Board, U.S. Department of Agriculture. For information on "Agricultural Prices" or other assistance, see page B-9.

Farm Prices Received Index Up 1 Point From Last Month

The preliminary All Farm Products Index of Prices Received by Farmers in June was 98, based on 1990-92=100, up 1 point (1.0 percent) from the revised May index. Higher prices for eggs, broilers, broccoli, and hogs offset decreased prices for cantaloupe, cattle, milk, and peaches. The seasonal change in the mix of commodities farmers sell often affects the overall index. Higher marketings for wheat, grapes, hay, and cantaloupe more than offset decreased marketings of oranges, tomatoes, strawberries, and sweet corn.

Compared with June last year, the All Farm Products Index was down 9 points (8.4 percent). Lower prices for cattle, broilers, hogs, and celery more than offset higher prices for potatoes, corn, eggs, and wheat.

The Food Commodities Index decreased by 1.0 percent below last month to 96, and was 11.9 percent below last year.

Prices Paid Index Unchanged

The June Index of Prices Paid for Commodities and Services, Interest, Taxes, and Farm Wage Rates (PPITW) was 123 percent of the 1990-92 average. The index was unchanged from May but 1 point (0.8 percent) below June 2001. Lower prices paid in June for feeder pigs, hay and forages, complete feeds, and feeder cattle, were offset by higher prices for nitrogen fertilizers, feed concentrates, and feed grains.

Index Summary Table

Index 1990-92=100	2001		2002	
	May	Jun	May	Jun
Prices Received	108	107	97	98
Prices Paid	124	124	123	123
Ratio 1/	87	86	79	80

1/ Ratio of index of prices received by farmers to index of prices paid.

Prices Received by Farmers

The June Prices Received by Farmers Index for All Farm Products was 98 percent of its 1990-92 base, up 1.0 percent from the May index but 8.4 percent below the June 2001 index.

ALL CROPS: The June index was 105, down 0.9 percent from May but 2.9 percent above June 2001. From May, index decreases for potatoes and dry beans and vegetables more than offset index increases for fruits and nuts, food grains, oil-bearing crops, cotton, and feed grains and hay.

Food Grains: The June index, at 93, was 8.1 percent above the previous month and 2.2 percent greater than June 2001. The June all wheat price, at \$2.86 per bushel, was up 5 cents from the May price and 12 cents above June 2001.

Feed Grains & Hay: The June index was 96, up 2.1 percent from last month and 6.7 percent above June 2001. The corn price, at \$1.94 per bushel, was up 1 cent from May and 18 cents above the June 2001 price. The all hay price, at \$95.80 per ton, was down \$6.20 from last month but unchanged from June 2001.

Oil-Bearing Crops: The June index, at 87, was up 4.8 percent from the May index and 8.8 percent above June 2001. The soybean price, at \$4.79 per bushel, was up 15 cents from May and 33 cents above June 2001.

Cotton: The June index, at 50, was up 6.4 percent from last month but 23 percent below June 2001. The cotton price, at 30.3 cents per pound, was up 1.7 cents from May but 8.9 cents below June 2001.

Potatoes and Dry Beans: The June index, at 161, was down 6.9 percent from May but 66 percent above June 2001. The all potato price, at \$9.63, was down 77 cents from the previous month but \$3.88 above last June. The dry edible bean price, at \$27.00 per cwt, was 50 cents below last month but \$10.60 above June 2001.

Fruits and Nuts: The June index, at 118, was up 11 percent from the previous month but 1.7 percent below June 2001. The strawberry price, at 64.7 cents per pound, was 1.3 cents above last month and 2.2 cents greater than June 2001.

Commercial Vegetables: The June index, at 118, was down 4.8 percent from last month and 1.7 percent below June 2001. Vegetable prices are down from last month due to seasonal increases in production levels.

LIVESTOCK AND PRODUCTS: The June index, at 90, was unchanged from last month, but down 20 percent from June 2001. Compared with a year ago, prices were higher for eggs, but lower for all milk, hogs, all cattle, broilers, calves, and turkeys.

Meat Animals: The June index, at 84, was down 1.2 percent from last month and down 19 percent from a year ago. The June hog price was \$34.50 per cwt, up \$1.40 from May but down \$17.70 from this same time a year ago. The June beef cattle price of \$63.00 was down \$2.20 from last month, and down \$10.60 from June, 2001. Decreased cattle prices pushed the index down.

Dairy Products: The June index, at 91, was down 2.2 percent from May and 27 percent below June 2001. The June all milk price, at \$11.90 per cwt, was down 30 cents from May and down \$4.30 from last year. The June price for both fluid grade and manufacturing grade milk decreased 30 cents from May. Both grade milk prices decreased from the previous year.

Poultry and Eggs: The June index, at 102, was up 6 percent from May but 13 percent below a year ago. June market egg prices, at 44.5 cents per dozen, increased 14.8 cents from May due to seasonal increase. The June broiler price, at 33.0 cents per pound, increased 1.0 cent from May. Turkey prices, averaging 36.9 cents per pound, were up 1.4 cents from the previous month. Export demand is still questionable for all poultry as trade negotiations, foreign import restrictions, and the outbreak of Avian Influenza are affecting export markets. These factors have increased stocks above last year for both broilers and turkeys.

Table of Contents

Prices Received

U.S. Prices and Indexes	Page
Narrative	A-2
Price Indexes	A-5
Price Index Charts	A-6-7
Prices Received	
U.S. Summary	A-8-9
Charts	A-10-13
Selected Commodities	A-14
Upland Cotton and Rice	
Prices and Marketings	A-17
Parity Prices	A-24-25
Reliability Statement	A-26
Monthly State Prices	
Apples	A-17
Barley	A-15
Barrows and Gilts	A-21
Beans, Dry Edible	A-16
Beef Cattle	A-20
Calves	A-20
Corn	A-15
Cotton	A-17
Cottonseed	A-17
Cows, Beef	A-20
Cows, Milk	A-23
Eggs	A-22
Flaxseed	A-16
Fruit, Citrus	A-18
Hay	A-17
Hogs, All	A-21
Lambs	A-22
Milk	A-23
Oats	A-15
Peanuts	A-16
Potatoes	A-19
Sheep	A-22
Sorghum, Grain	A-15
Soybeans	A-15
Sows	A-21
Steers and Heifers	A-20
Sunflower	A-16
Tobacco	A-16
Wheat	A-14
Information Contacts	B-9

Special Features

Sweet Potatoes: Marketing Year Average Prices, by State, and U.S., 1999-2001	A-19
--	------

Table of Contents

Prices Paid

	Page
Narrative	B-1
Indexes and Parity Ratios	B-2-3
Charts	B-4-6
Feed Ratios	B-7
Reliability Statement	B-8

U.S. Average Prices

Commodity Prices Used in Feed Price Ratios	B-7
Feeder Livestock	B-7
Information Contacts	B-9

Index Numbers of Prices Received, United States, June 2002,
with Comparisons

Index	1910-14=100				1990-92=100			
	2001		2002		2001		2002	
	Average: 1990-92:	Jun	May	Jun	Jun	May	Jun	
All Farm Products	639	682	*619	620	107	*97	98	
All Crops	500	502	*523	520	102	106	105	
Food Grains	325	289	*273	296	91	*86	93	
Feed Grains & Hay	363	323	*337	343	90	*94	96	
Cotton	517	331	*242	256	65	*47	50	
Tobacco 1/	1263							
Oil-Bearing Crops	554	437	*455	474	80	83	87	
Fruit & Nuts	716	838	*737	825	120	*106	118	
Commercial Vegetables	698	805	*826	789	120	*124	118	
Potatoes & Dry Beans	540	489	*878	817	97	*173	161	
Other Crops	493	554	558	558	112	113	113	
Livestock & Products	768	864	*691	693	113	*90	90	
Meat Animals	1021	1055	*867	851	104	*85	84	
Dairy Products	799	996	*750	731	124	*93	91	
Poultry & Eggs	282	330	269	287	117	96	102	
Food Commodities					109	97	96	

* Revised.

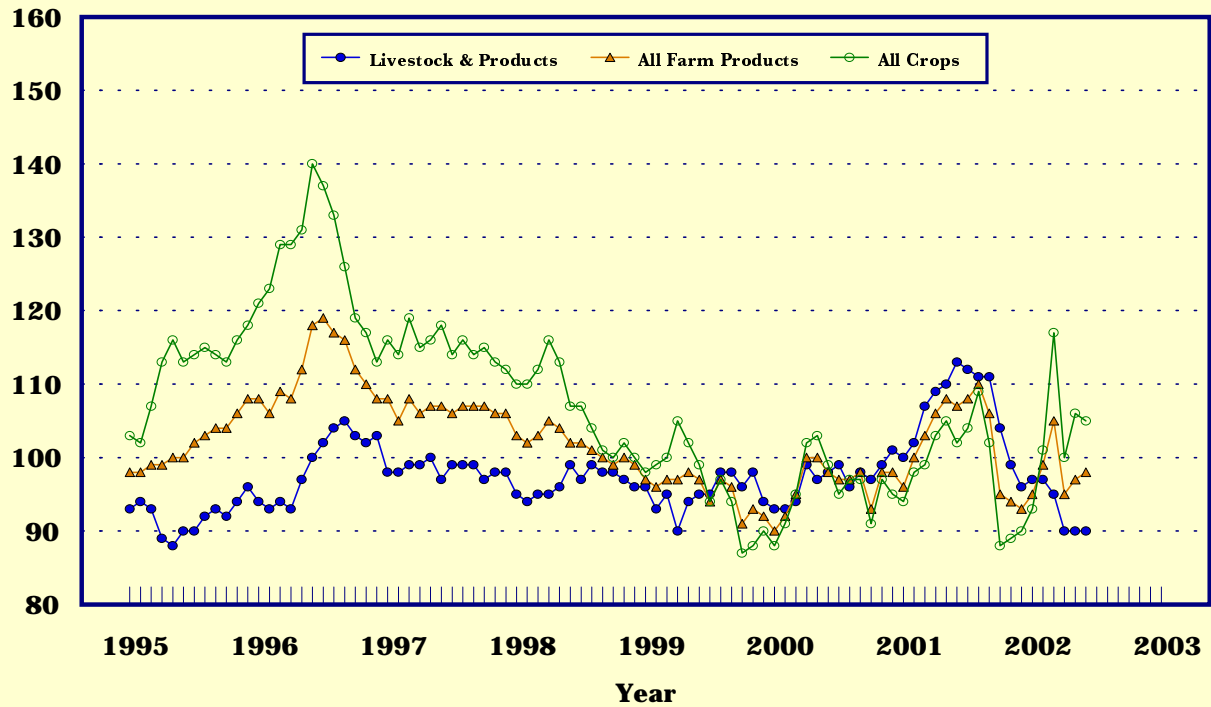
1/ Missing data indicates insufficient sales to establish a price.

Selected Index Numbers for Prices Received and Paid,
1990-92=100, by Months, United States, 2001 and 2002

Month	Index of Prices Received						Index of Prices Paid			
	All Farm Products		All Crops		Livestock and Products		All Items		Production Items	
	2001	2002	2001	2002	2001	2002	2001	2002	2001	2002
Jan	96	95	94	93	100	97	125	123	121	118
Feb	100	99	98	101	102	97	124	123	121	117
Mar	103	105	99	117	107	95	124	123	120	118
Apr	106	95	103	100	109	90	124	123	120	119
May	108	97	105	106	110	90	124	123	120	118
Jun	107	98	102	105	113	90	124	123	120	117
Jul	108		104		112		124		120	
Aug	110		109		111		124		120	
Sep	106		102		111		124		120	
Oct	95		88		104		123		119	
Nov	94		89		99		123		118	
Dec	93		90		96		122		117	

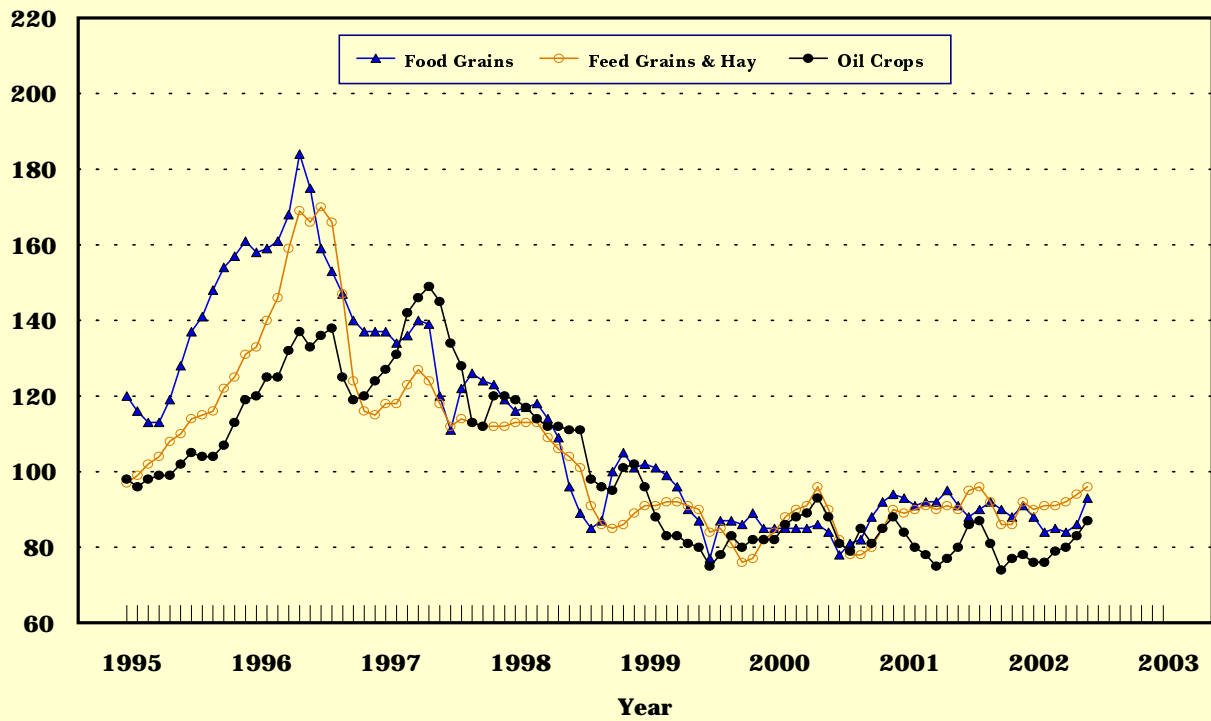
Prices Received, Major Indexes, US

Index Values(1990-92=100)



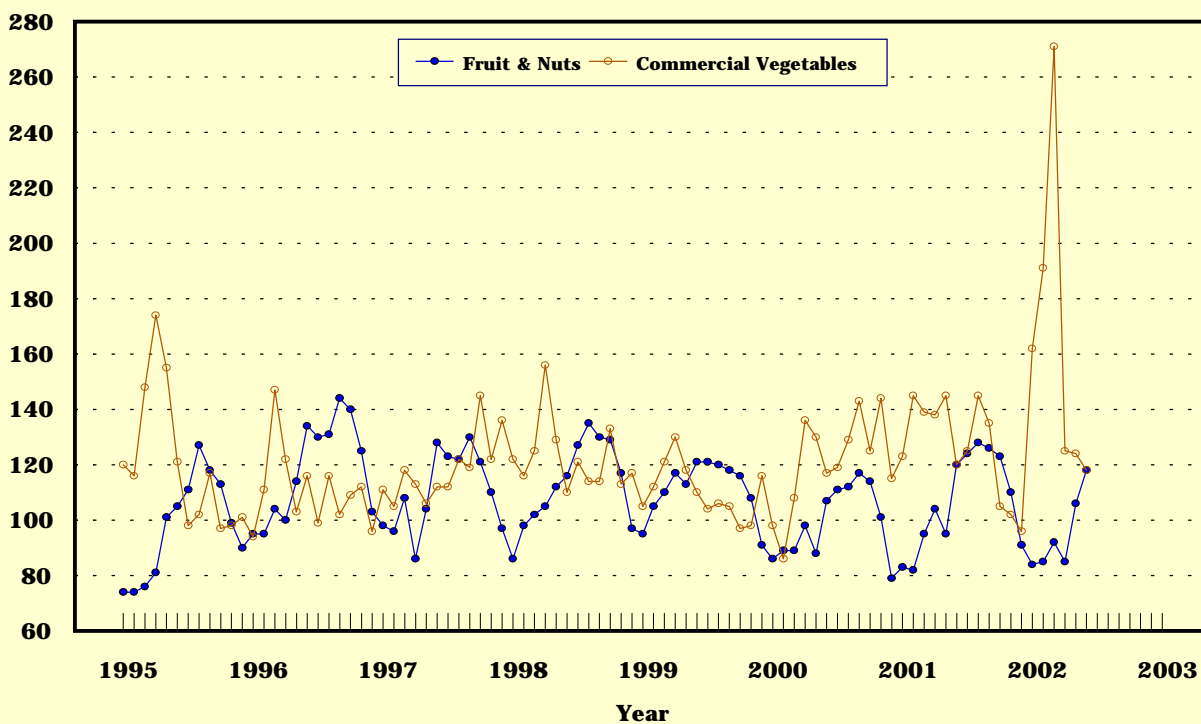
Prices Received, Food, Feed & Oil Indexes, US

Index Values(1990-92=100)



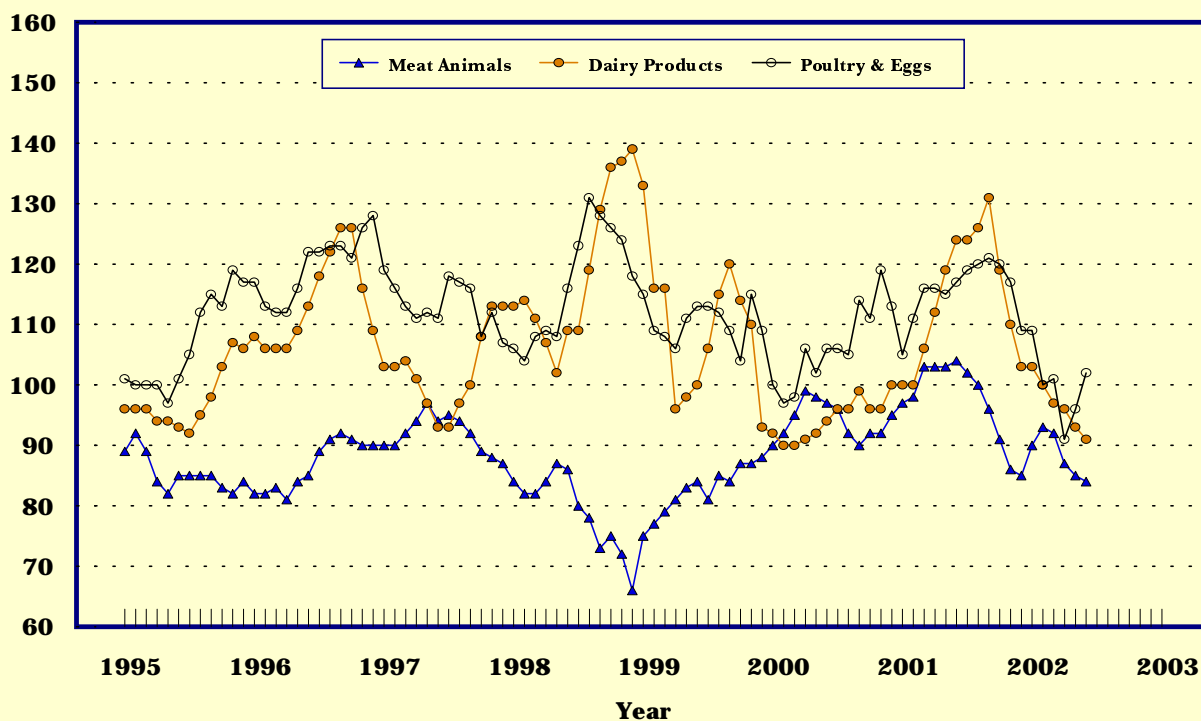
Prices Received, Fruit/Vegetable Indexes, US

Index Values(1990-92=100)



Prices Received, Livestock Product Indexes, US

Index Values(1990-92=100)



Prices Received, United States,
June 2002, with Comparisons

Commodity	Unit	Average 1990-92	Entire Month		Preliminary
			Jun 2001	May 2002	Jun 2002
Dollars					
Field Crops					
Barley, All	Bu	2.12	1.98	2.24	2.05
Feed	Bu	1.90	1.77	1.90	1.86
Malting	Bu	2.43	2.35	2.56	2.34
Beans, Dry Edible	Cwt	19.10	16.40	27.50	27.00
Corn	Bu	2.30	1.76	1.93	1.94
Cotton, Upland	Lb	.606	.392	.286	.303
Cottonseed	Ton	96.00			
Flaxseed	Bu	4.27	4.10	5.02	5.10
Hay, All, Baled 1/	Ton	76.30	95.80	102.00	95.80
Alfalfa 1/	Ton	77.20	103.00	108.00	102.00
Other 1/	Ton	60.00	70.70	76.70	73.20
Oats	Bu	1.22	1.38	1.99	1.90
Peanuts, In-Shell	Lb	.304			
Potatoes	Cwt	5.82	5.75	10.40	9.63
Rice, Rough	Cwt	7.07	5.14	3.96	3.92
Sorghum Grain	Cwt	3.75	3.62	3.17	3.33
Soybeans	Bu	5.61	4.46	4.64	4.79
Sunflower 2/	Cwt	9.50	8.40	10.50	11.90
Tobacco	Lb	1.740			
Wheat, All	Bu	2.96	2.74	2.81	2.86
Winter	Bu	2.93	2.68	2.73	2.86
Durum	Bu	2.86	3.37	3.37	3.16
Other Spring	Bu	3.11	2.99	2.90	2.84
Hard Red Winter	Bu		2.86	2.67	
Soft Red Winter	Bu		2.34	2.69	
Hard Red Spring	Bu		3.03	2.90	
White	Bu	3.24	2.95	3.03	
Fruit					
Citrus-Equiv on-tree					
Grapefruit	Box	5.77	3.44	1.05	4.16
Lemons	Box	10.10	9.27	7.58	9.52
Limes 3/	Box	10.15			
Oranges	Box	5.79	3.77	4.82	4.13
Tangelos	Box	5.82			
Tangerines	Box	15.11		19.33	
Temples	Box	6.23			
Non-citrus					
Apples, Fresh 4/	Lb	.212	.149	.218	.201
Grapes, Fresh 4/	Ton	506.00	1190.00		920.00
Peaches, Fresh 4/	Lb	.216	.339	.475	.275
Pears, Fresh 4/	Ton	370.00		267.00	337.00
Strawberries, Fresh	Lb	.560	.625	.634	.647

1/ Mid-month price.

2/ KS, MN, ND and SD average.

3/ Current prices not published to avoid disclosure of individual firms.

4/ Equivalent packinghouse-door returns for CA, NY (apples only), and WA (apples, peaches, and pears). Prices as sold for other states.

-- continued

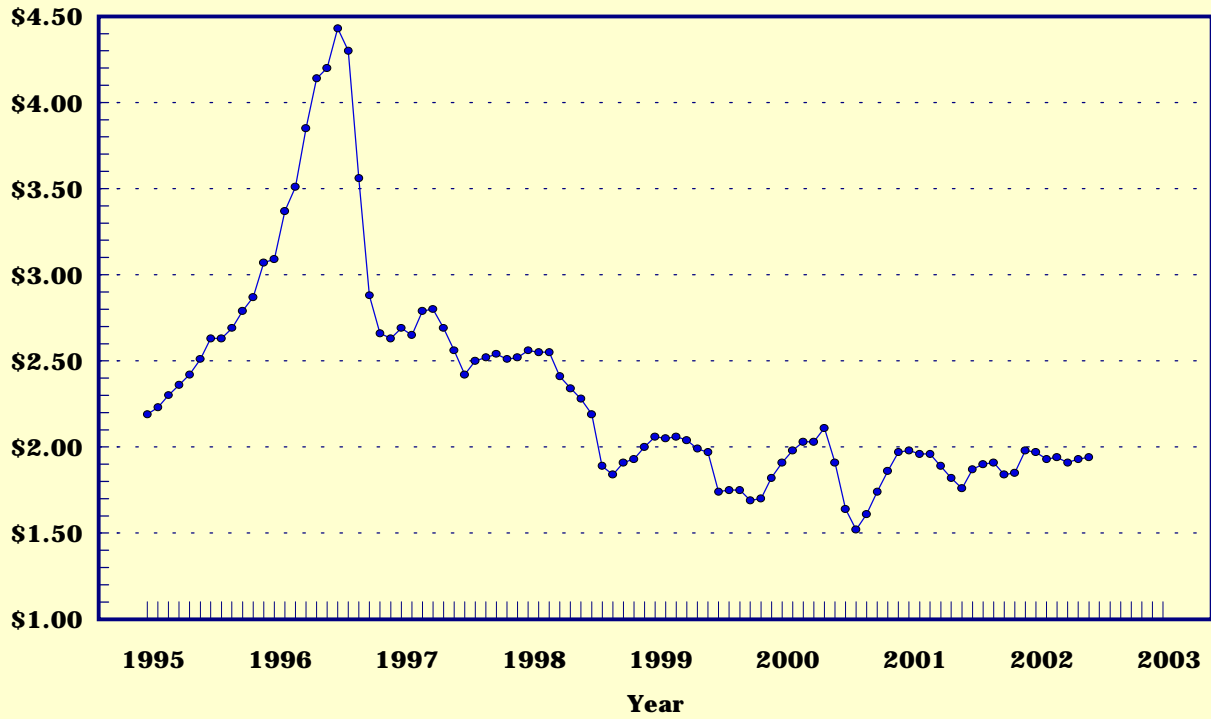
Prices Received, United States,
June 2002, with Comparisons (continued)

Commodity	Unit	Average 1990-92	Entire Month		Preliminary
			Jun 2001	May 2002	Jun 2002
Dollars					
Vegetables, Fresh 1/					
Asparagus	Cwt	79.80	101.00	109.00	95.80
Broccoli	Cwt	22.50	27.00	20.80	31.10
Cantaloupes 2/	Cwt	13.90	14.60	28.00	14.90
Carrots	Cwt	13.20	20.10	21.20	21.20
Cauliflower	Cwt	26.80	37.40	26.40	38.00
Celery	Cwt	11.60	33.70	12.30	9.62
Corn, Sweet	Cwt	15.70	18.60	16.50	16.70
Cucumbers 2/	Cwt		16.70	16.90	19.00
Lettuce	Cwt	11.90	12.10	9.97	9.82
Onions	Cwt	12.80	15.30	21.80	21.40
Snap Beans 2/	Cwt		36.20	44.00	50.70
Tomatoes	Cwt	32.30	28.50	30.00	31.00
Livestock					
Calves	Cwt	94.30	110.00	98.50	94.90
Cattle, All Beef	Cwt	72.90	73.60	65.20	63.00
Cows	Cwt	49.60	44.70	39.90	38.70
Steers & Heifers	Cwt	77.10	77.00	68.20	65.80
Milk Cows 3/	Head	1130.00			
Hogs, All	Cwt	47.70	52.20	33.10	34.50
Barrows & Gilts	Cwt	48.40	53.00	33.50	35.20
Sows	Cwt	39.50	40.20	23.40	21.60
Lambs	Cwt	56.20	71.60	64.30	
Sheep	Cwt	23.40	31.70	28.60	
Dairy and Poultry					
Milk, All 4/	Cwt	13.06	16.20	12.20	5/11.90
Fluid Grade	Cwt	13.10	16.20	12.20	5/11.90
Mfg Grade	Cwt	11.80	14.90	11.10	5/10.80
Broilers, Live 6/	Lb	.317	.410	.320	.330
Eggs, All 7/	Doz	.643	.550	.505	.633
Market 7/	Doz	.546	.362	.297	.445
Turkeys, Live 6/7/	Lb	.380	.383	.355	.369
Adjusted for Seasonal Variation					
Eggs, All	Doz	.545	.625	.526	.736
Milk, All 4/	Cwt	9.71	17.61	13.41	12.80

- 1/ F.O.B. shipping point.
- 2/ Monthly estimates began January 1995.
- 3/ Animals sold for dairy herd replacement only. Prices available for Jan, Apr, Jul, and Oct.
- 4/ Before deductions for hauling. Includes quality, quantity, and other premiums. Excludes hauling subsidies.
- 5/ Fat test percent: all milk 3.59, fluid milk 3.59, mfg grade 3.70.
- 6/ Liveweight equivalent price to producers, includes growers and contractors combined.
- 7/ Mid-month price.

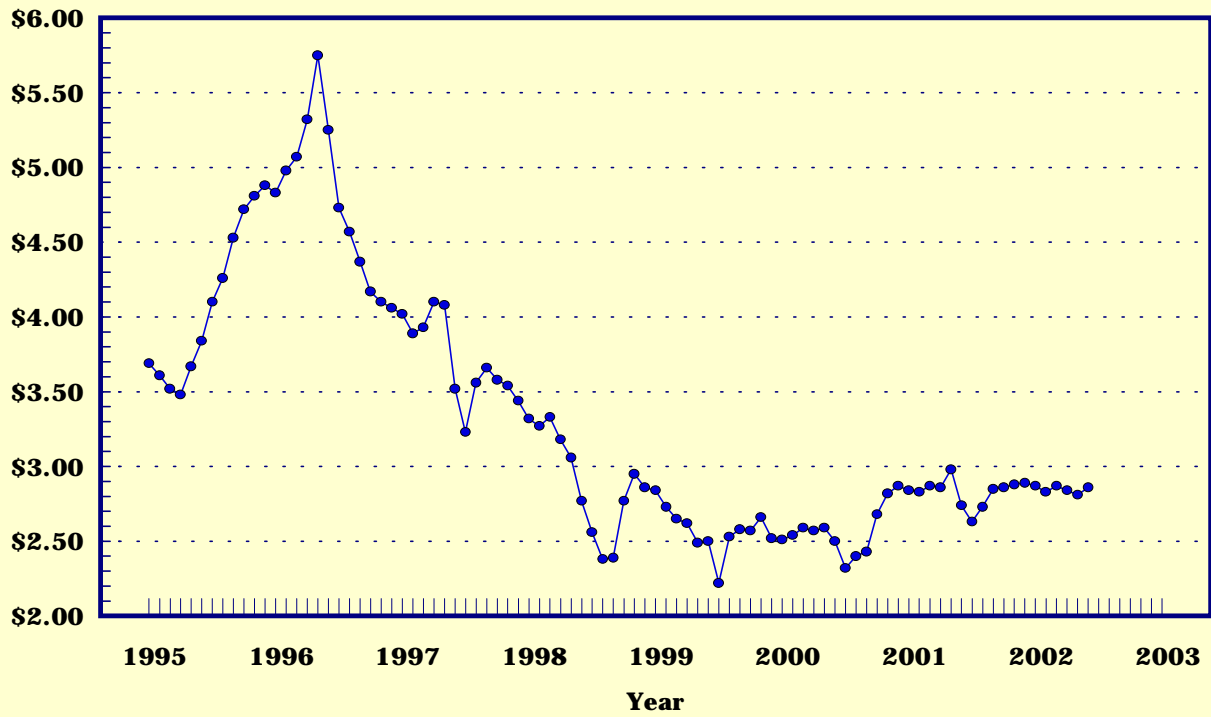
Prices Received, Corn, US

Dollars per Bu



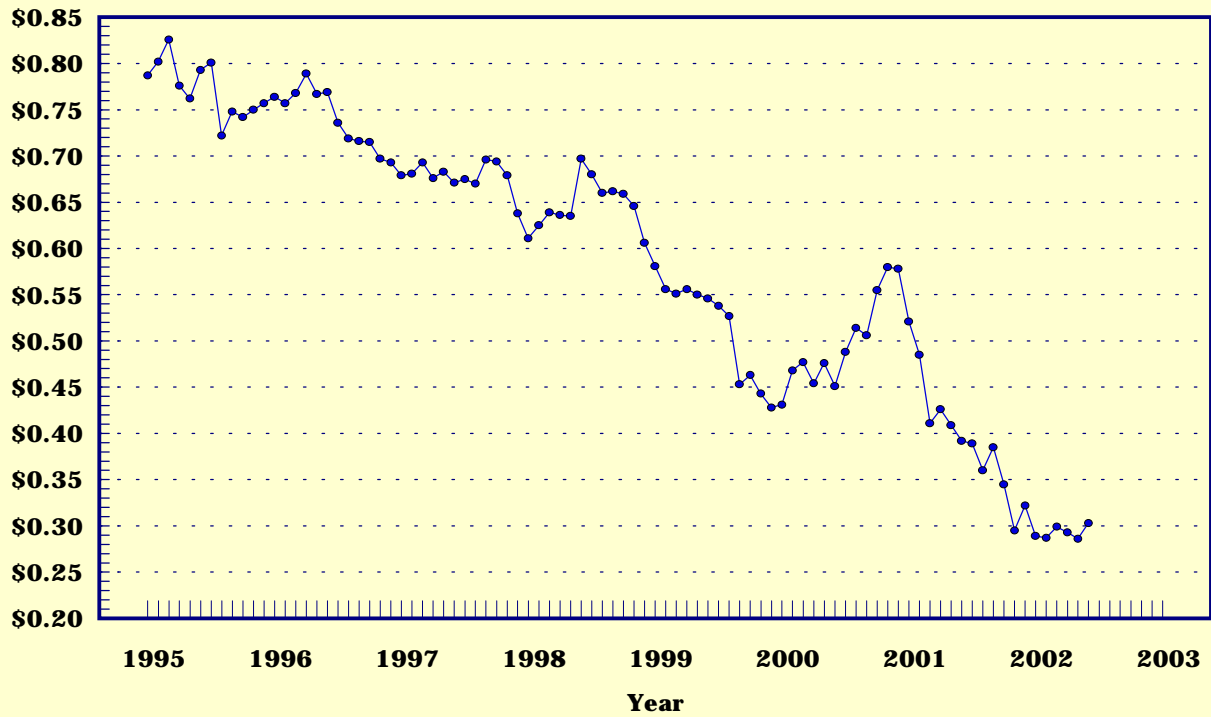
Prices Received, Wheat, US

Dollars per Bu



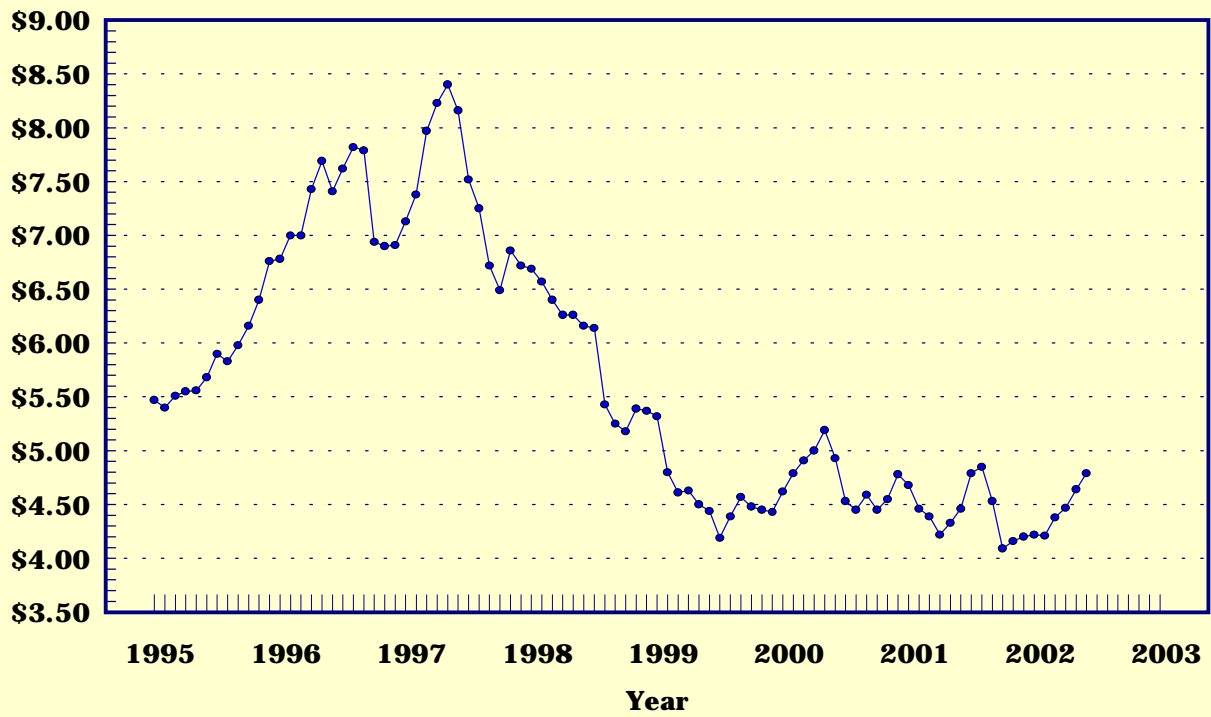
Prices Received, Cotton, US

Dollars per Lb



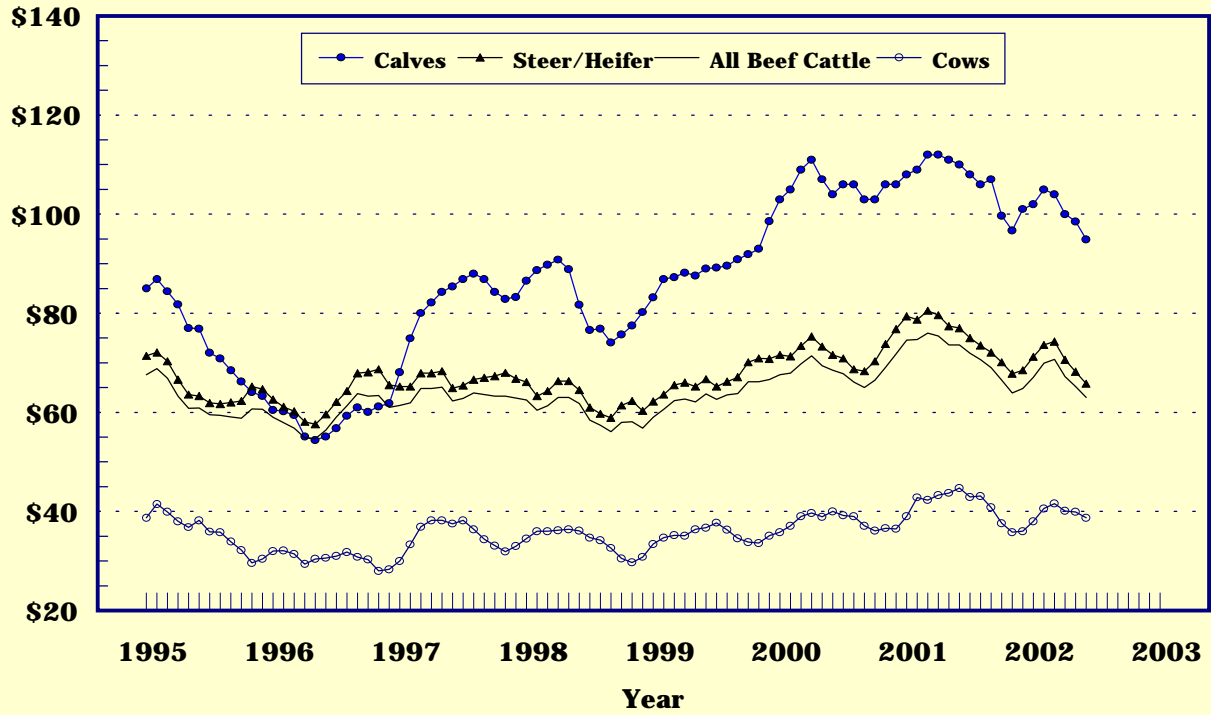
Prices Received, Soybeans, US

Dollars per Bu



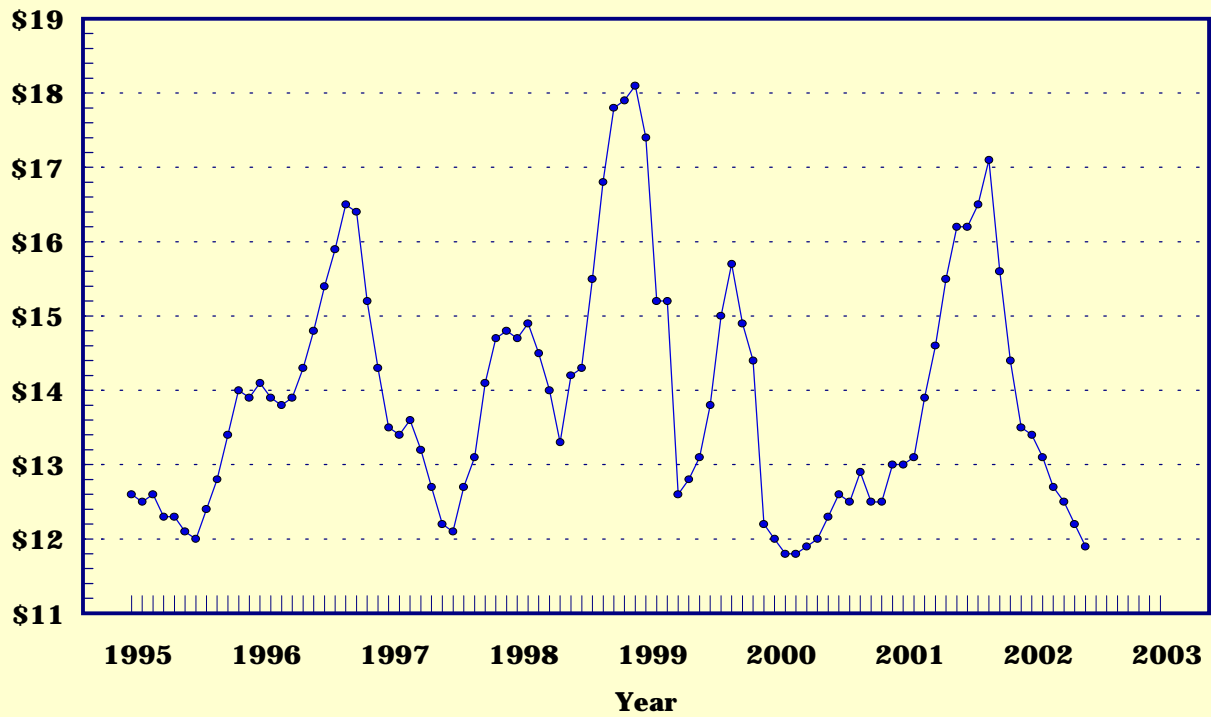
Prices Received, Cattle, US

Dollars per Cwt



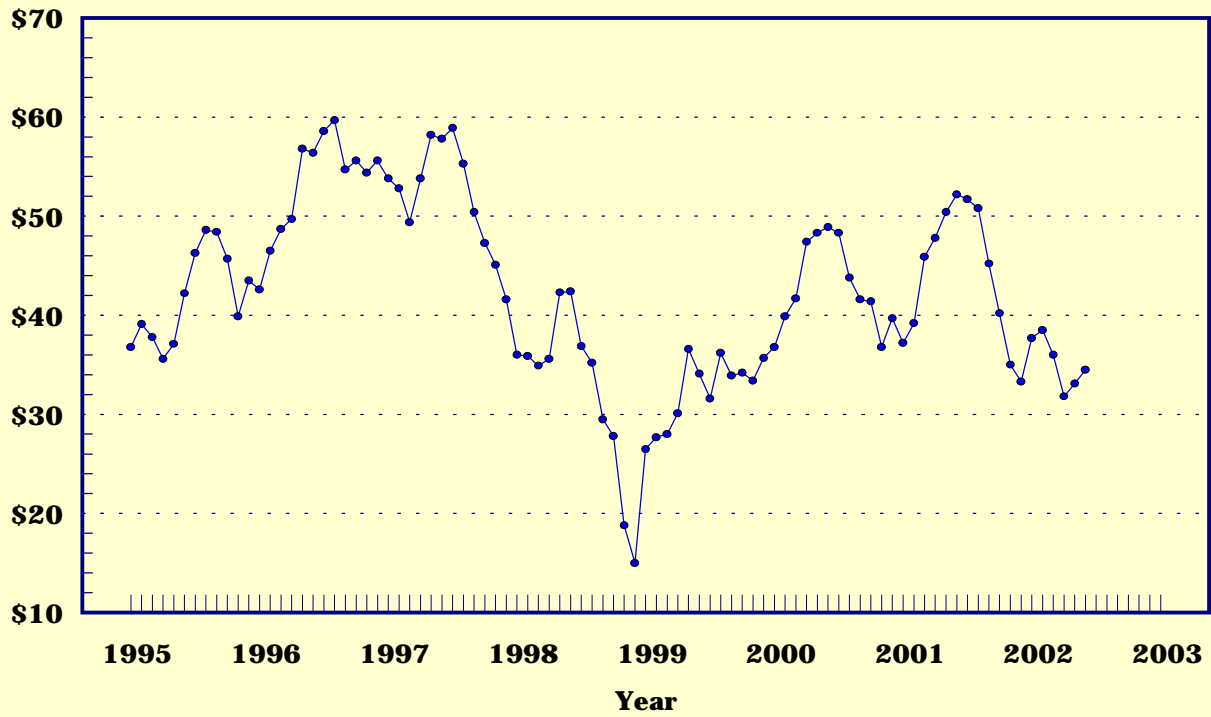
Prices Received, Milk, US

Dollars per Cwt



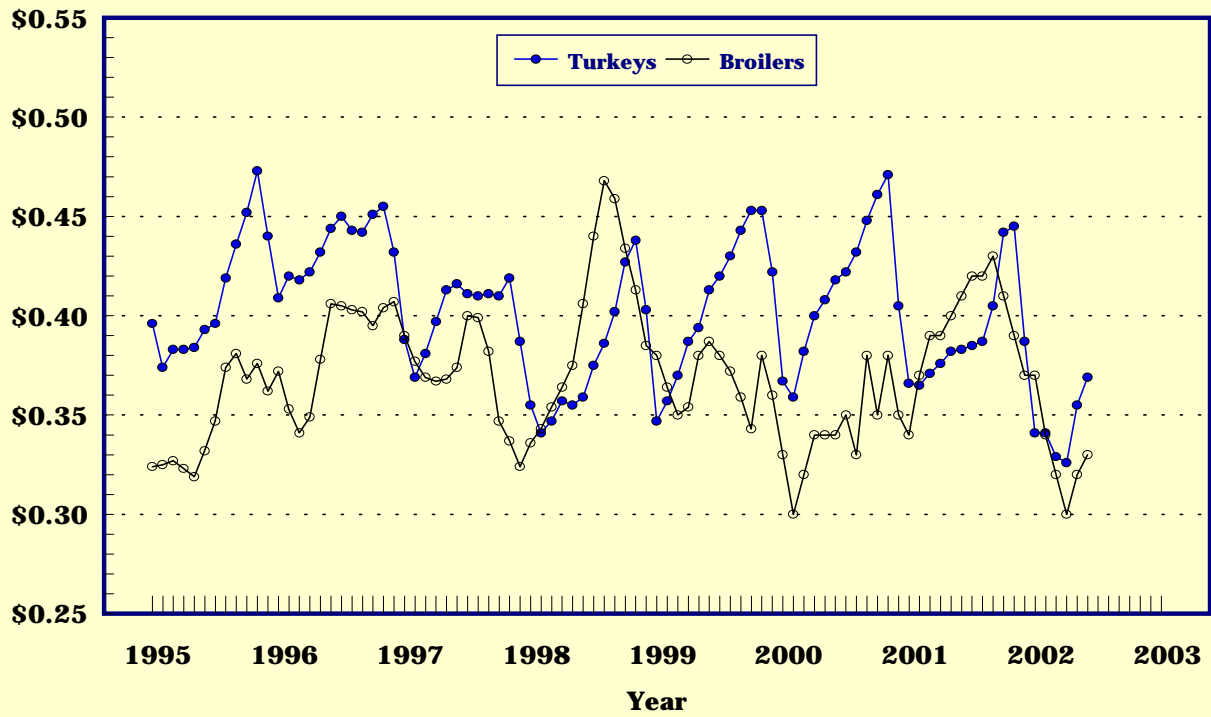
Prices Received, Hogs, US

Dollars per Cwt



Prices Received, Turkeys & Broilers, US

Dollars per Lb



Wheat: Prices Received, by States, May and June 2002

State	All Wheat		Winter Wheat		Durum Wheat 1/		Oth Spring Wheat	
	May 2/	Jun 3/	May 2/	Jun 3/	May 2/	Jun 3/	May 2/	Jun 3/
	Dollars per Bushel							
AR	2.38	2.79	2.38	2.79				
CA	4/	4/	3.01	3.18	5/	5/		
CO	2.67	2.92	2.67	2.92			4/	5/
ID	3.05	3.16	3.05	3.20			3.08	3.10
IL	2.61	2.75	2.61	2.75				
IN	3.88	3.72	3.88	3.72				
KS	2.61	2.86	2.61	2.86				
MI	2.48	2.60	2.48	2.60				
MN	3.00	3.00	4/	5/			3.00	3.00
MO	2.78	2.70	2.78	2.70				
MT	3.01	3.09	2.99	3.06	3.71	3.60	2.94	3.05
NE	2.71	2.90	2.71	2.90				
ND	2.80	2.78	2.75	5/	3.26	3.05	2.74	2.75
OH	2.47	2.55	2.47	2.55				
OK	2.61	2.92	2.61	2.92				
OR	3.16	3.26	3.09	3.25			3.39	3.35
SD	2.84	2.76	2.66	2.82			2.86	2.76
TX	2.68	2.75	2.68	2.75				
WA	3.14	3.29	3.05	3.29			3.37	3.30
US	2.81	2.86	2.73	2.86	3.37	3.16	2.90	2.84

- 1/ Durum discontinued September 2001 for MN and SD.
 2/ Entire month.
 3/ Mid-month.
 4/ Price not published to avoid disclosure of individual firms.
 5/ Insufficient sales to establish a price.

Prices Received for Selected Agricultural Commodities, by Months, United States, 2001 and 2002

Month	All Wheat		Corn		Soybeans		Beef Cattle 1/		All Hogs	
	2001	2002 2/	2001	2002 2/	2001	2002 2/	2001	2002 2/	2001	2002 2/
	Dollars per Bushel						Dollars per Cwt			
Jan	2.84	2.87	1.98	1.97	4.68	4.22	74.60	67.10	37.20	37.70
Feb	2.83	2.83	1.96	1.93	4.46	4.21	74.70	69.90	39.20	38.50
Mar	2.87	2.87	1.96	1.94	4.39	4.38	76.00	70.70	45.90	36.00
Apr	2.86	2.84	1.89	1.91	4.22	4.47	75.40	67.20	47.80	31.80
May	2.98	2.81	1.82	1.93	4.33	4.64	73.60	65.20	50.40	33.10
Jun	2.74	2.86	1.76	1.94	4.46	4.79	73.60	63.00	52.20	34.50
Jul	2.63		1.87		4.79		71.90		51.70	
Aug	2.73		1.90		4.85		70.60		50.80	
Sep	2.85		1.91		4.53		69.00		45.20	
Oct	2.86		1.84		4.09		66.50		40.20	
Nov	2.88		1.85		4.16		64.00		35.00	
Dec	2.89		1.98		4.20		64.80		33.30	

- 1/ Cows, steers and heifers.
 2/ Current month prices are mid-month; prices for previous months are for the entire month.

Grains: Prices Received, by States, May and June 2002

State	Barley 1/		Corn		Oats		Soybeans		Sorghum Grain	
	May 2/	Jun 3/	May 2/	Jun 3/	May 2/	Jun 3/	May 2/	Jun 3/	May 2/	Jun 3/
	----- Dollars per Bushel ----- Dollars per Cwt									
AL										
AR							4.68	4.90	4/	4/
CA	4/	4/								
CO	1.96	5/	2.02	2.05						
ID	2.78	2.85								
IL			2.00	2.00	2.00	2.00	4.76	4.90	3.71	3.70
IN			2.05	2.04			4.79	5.01		
IA			1.84	1.90	2.23	2.05	4.56	4.75		
KS			1.97	2.01			4.69	4.73	3.14	3.13
KY			2.01	2.05			4.81	4.85		
LA							4/	4/		
MI			1.92	1.95	2.34	2.35	4.60	4.90		
MN	4/	4/	1.80	1.75	1.77	1.85	4.46	4.65		
MS							4.76	4.90		
MO			1.97	2.00			4.66	4.85	4/	4/
MT	2.55	2.46			2.22	5/				
NE			1.91	1.90	2.20	1.90	4.52	4.64	3.21	3.26
NC			2.43	2.40			4.78	4.85		
ND	1.72	1.70	1.80	1.80	1.63	1.65	4.30	4.50		
OH			2.00	2.05	1.91	1.90	4.87	5.00		
OK									3.09	3.08
OR	1.98	2.00			2.40	5/				
PA			2.42	2.40	2.29	2.08				
SD	1.58	5/	1.74	1.76	2.06	1.83	4.44	4.61		
TN			2.15	2.20			4.72	5.05		
TX			2.32	2.30	5/	5/			3.39	3.44
UT	2.27	2.12								
WA	1.82	1.97								
WI			1.85	1.80	1.76	1.80	4.61	4.70		
WY	1.92	1.90								
US	2.24	2.05	1.93	1.94	1.99	1.90	4.64	4.79	3.17	3.33

- 1/ The Three-State (MN, ND and SD) Feed Barley price for June 2002 is \$1.47.
- 2/ Entire month.
- 3/ Mid-month.
- 4/ Price not published to avoid disclosure of individual firms.
- 5/ Insufficient sales to establish a price.

Malting and Feed Barley: Prices Received Selected States, May and June 2002

State	Malting Barley		Feed Barley	
	May	Jun	May	Jun
	----- Dollars per Bushel -----			
ID	1/	1/	2.21	2.25
MN	2/	2/	2/	2/
MT	2.93	2.90	2.19	2.05
ND	1.83	1.80	1.53	1.50
SD	2/	2/	1.58	2/
WY	2/	2/	1.92	1.90

- 1/ Price not published to avoid disclosure of individual firms.
- 2/ Insufficient sales to establish a price.

Field Crops: Prices Received, by States, May and June 2002

State	Dry Edible Beans		Sunflower		Flaxseed		Tobacco		Peanuts 4/	
	May 1/	Jun 2/	May 1/	Jun 2/	May 1/	Jun 2/	May 1/	Jun 3/	May 1/	Jun 3/
	Dollars per Cwt		Dollars per Bu		Dollars per Bu		Dollars per Pound			
AL										
CA	32.30	31.90								
CO	28.70	28.60								
FL										
GA										
ID	23.20	23.20								
IN										
KS			5/	5/						
KY										
MD										
MI	30.00	28.00								
MN	27.30	27.40	11.00	11.60						
MO										
NE	20.70	20.20								
NC										
ND	28.90	28.50	11.00	11.90	5.02	5.10				
OH										
OK										
SC										
SD			10.00	12.10	6/	6/				
TN										
TX										
VA										
WV										
US	27.50	27.00	10.50	11.90	5.02	5.10				

- 1/ Entire month.
- 2/ Mid-month.
- 3/ Based on sales through first half of month.
- 4/ Marketing year Aug - Jan.
- 5/ Price not published to avoid disclosure of individual firms.
- 6/ Insufficient sales to establish a price.

Field Crops and Apples: Prices Received, by States,
May and June 2002

State	Cotton, Upland		June			Apples Fresh Use 1/4/
	May 1/	Jun 2/	Cotton- seed 5/	Hay, Baled 3/ All	Alfalfa Other	
	Dollars per Pound		Dollars per Ton			Dol/Lb
AL	6/	6/				
AZ	6/	6/	107.00	107.00	99.00	
AR	.258	.260				
CA	6/	6/	103.00	106.00	80.00	
CO			102.00	100.00	130.00	
GA	.264	.281				
ID			96.00	96.00	75.00	
IL			89.00	93.00	71.00	
IA			83.00	86.00	59.00	
KS			85.00	87.00	69.00	
KY			67.00	95.00	55.00	
LA	.259	.269				
MI			54.00	55.00	50.00	.145
MN			67.00	73.00	50.00	
MS	.259	.269				
MO			66.00	107.00	56.00	
MT			87.00	88.00	82.00	
NE			64.00	65.00	56.00	
NV			108.00	108.00	111.00	
NM			137.00	140.00	113.00	
NY			112.00	130.00	90.00	.215
NC	.317	.350				
ND			58.00	60.00	39.00	
OH			105.00	135.00	55.00	.250
OK			80.00	96.00	56.00	
OR			114.00	116.00	108.00	
PA			120.00	140.00	107.00	
SD			63.00	67.00	46.00	
TN	.286	.319				
TX	.273	.275	91.00	143.00	72.00	
UT			94.00	96.00	57.00	
VA						
WA			121.00	119.00	135.00	.202
WI			63.00	70.00	40.00	
WY			104.00	104.00	98.00	
US	.286	.303	95.80	102.00	73.20	.201

1/ Entire month. 2/ Based on sales during the first half of the month.
3/ Mid-month. 4/ Equivalent packinghouse-door returns for CA, MI, NY and WA. Price at point of first sale for other states. 5/ Marketing year August-February. 6/ Prices not published to avoid disclosure of individual firms.

Upland Cotton and Rice: Prices Received and Marketings,
United States, June 2002, with Comparisons

Item	Unit	Apr 2002 1/	May 2002 1/	Jun 2002 2/
Cotton, Upland				
Average Price	Dollars/Pound	.293	.286	.303
Marketings 3/	1,000 Bales	551	751	NA
Rice				
Average Price	Dollars/Cwt	3.88	3.96	3.92
Marketings 4/	1,000 Cwt	11752	10364	NA

1/ Entire month. 2/ Based on purchases for the first half of the month.
3/ Expanded data from sample of about 60 percent of buyers. 4/ Purchases by private firms and rice (rough equivalent) shipped by cooperatives.

Citrus Fruit: Prices and Equivalent Returns, by Utilization,
by State and United States, June 2002

Commodity And State	:	Equivalent Returns						
		F.O.B.	Packinghouse-door			On-tree		
		Fresh	All	Fresh	Process	All	Fresh	Process
Dollars per Box 1/								
Grapefruit	:							
AZ	:	12.00	5.75	5.75		3.52	3.52	
CA	:	16.60	8.91	10.35	-0.25	6.68	8.12	-2.48
FL	:							
Colored	:	13.80	3.23	5.70	0.90	0.82	3.60	-1.80
TX	:	14.20	2.05	4.60	0.60	0.93	3.45	-0.50
US	:	15.80	6.16	8.88	0.49	4.16	6.81	-1.35
Lemons	:							
CA	:	34.10	13.70	24.41	0.24	9.52	20.23	-3.94
US	:	34.10	13.70	24.41	0.24	9.52	20.23	-3.94
Oranges	:							
AZ	:							
Valencia	:	9.00	2.22	2.22		-0.17	-0.17	
CA	:							
Valencia	:	14.60	6.72	7.82	0.74	4.33	5.43	-1.65
FL	:							
Valencia	:	16.00	6.12	8.20	6.00	4.12	6.10	4.00
TX	:							
Valencia	:	16.10	5.35	6.40	2.55	4.06	5.10	1.30
US	:	14.70	6.21	7.72	5.81	4.13	5.40	3.79

1/ Net lbs. per box: Grapefruit-AZ & CA-67, FL-85, TX-80; Lemons-76;
Oranges-AZ & CA-75, FL-90, TX-85.

Potatoes: Prices Received, by States,
May and June 2002

State	May	Jun	State	May	Jun
	Dollars per Cwt			Dollars per Cwt	
AL		14.20	NC		7.20
AZ	18.90	9.55	ND - All 1/	6.90	5.70
CA - All	25.30	19.30	- Fresh 2/	12.50	NA
- Winter			- Processing	4.75	NA
- Spring	25.30	19.30	OH		
- Summer			OR	7.65	8.10
- Fall			PA	12.90	
CO - All 1/	11.30	14.10	TX	8.25	8.00
- Fresh 2/	12.40	NA	VA		
FL	17.50	17.40	WA - All	6.85	6.85
ID - All 1/	6.85	8.00	- Processing	5.45	NA
- Fresh 2/	8.90	NA	WI - All 1/	8.90	8.25
- Processing	5.20	NA	- Fresh 2/	10.80	NA
ME	8.40	8.00	- Processing	4.75	NA
MI	9.40				
MN	5.05	4.30	US - All 1/	10.40	9.63
NY			- Fresh 2/	17.70	NA
			- Processing	6.14	NA

- 1/ Average price of potatoes sold for all uses, including table stock, processing, seed and livestock feed.
2/ Fresh market prices only, includes table stock prices.

Sweet Potatoes: Marketing Year Average Prices Received,
by State and United States, 1999-2001

State	1999	2000	2001 1/
	Dollars per Cwt		
AL	17.40	15.20	18.20
CA	28.80	24.10	26.90
GA	14.00	14.00	13.00
LA	14.30	13.20	13.30
MS	21.70	14.60	13.60
NJ	23.40	21.50	19.60
NC	12.00	12.30	12.00
SC	16.20	14.20	13.00
TX	16.40	16.50	18.70
VA	8.65	13.30	14.80
US	17.60	15.30	15.40

1/ Revised.

Cattle: Prices Received, by States, May and June 2002

State	Cows 1/		Steers & Heifers:		Beef Cattle 4/		Calves	
	May 2/	Jun 3/	May 2/	Jun 3/	May 2/	Jun 3/	May 2/	Jun 3/
	Dollars per Cwt							
AZ	35.20	35.00	68.00	67.40	67.70	67.10	98.00	97.00
AR	38.60	38.20	76.20	75.50	64.90	64.30	86.10	85.20
CA	37.00	37.00	67.00	65.50	51.70	51.50	84.50	80.00
CO	40.00	38.10	74.80	74.50	74.50	74.10	89.00	87.00
FL	41.30	41.00	74.10	72.80	45.60	45.10	91.90	88.00
GA	41.10	40.00	70.20	67.10	51.00	49.20	88.10	84.10
ID	37.80	36.00	66.90	63.90	59.90	57.20	89.00	87.00
IL	40.00	37.10	66.40	65.00	65.90	64.40	98.70	98.20
IA	40.30	37.30	64.30	61.90	63.80	61.40	89.30	85.90
KS	39.60	37.50	67.50	63.40	66.40	63.10	98.00	93.00
KY	41.00	40.00	74.00	73.00	66.10	65.10	88.00	84.00
LA	39.80	37.00	73.00	71.00	50.10	47.50	86.20	85.00
MI	41.50	41.00	62.00	61.00	55.90	55.00	110.00	110.00
MN	42.90	41.50	64.80	63.00	61.30	59.60	96.70	95.00
MO	40.60	39.00	80.70	77.30	69.50	66.60	93.80	89.30
MT	40.80	39.50	76.80	76.20	57.40	58.20	92.90	92.50
NE	38.90	36.60	67.50	64.50	66.60	63.70	97.20	94.30
NM	39.00	36.20	75.00	74.70	62.80	61.20	90.90	84.30
ND	40.40	40.00	72.30	70.50	64.30	56.80	88.30	88.00
OH	37.70	37.00	66.40	66.00	63.50	63.10	85.00	82.00
OK	40.00	36.90	73.50	73.30	70.50	70.00	92.90	92.10
OR	39.80	39.50	74.00	73.00	63.70	63.00	85.50	85.00
PA	43.60	42.40	65.00	64.80	59.40	59.00	120.00	120.00
SD	40.50	37.40	71.40	67.50	65.80	60.60	94.80	87.90
TN	40.00	39.00	74.00	73.00	60.40	59.40	86.00	81.00
TX	37.40	36.80	68.50	66.50	65.70	63.80	94.80	91.30
VA	37.80	37.00	71.40	67.90	58.60	56.20	84.60	82.00
WI	41.60	40.50	64.00	63.00	51.00	50.00	144.00	135.00
WY	40.90	39.10	75.30	74.40	66.40	63.80	96.80	91.00
US	39.90	38.70	68.20	65.80	65.20	63.00	98.50	94.90

- 1/ Beef cows and cull dairy cows sold for slaughter.
- 2/ Entire month.
- 3/ Mid-month.
- 4/ "Cows" and "steers and heifers" combined.

Hogs: Prices Received, by States, May and June 2002

State	Sows		Barrows and Gilts		All Hogs	
	May 1/	Jun 2/	May 1/	Jun 2/	May 1/	Jun 2/
	Dollars per Cwt					
AR	23.00	21.20	32.00	32.50	31.10	31.40
IL	22.00	20.00	34.60	35.80	33.60	34.50
IN	26.00	24.00	33.60	34.10	32.90	33.20
IA	26.30	23.40	33.50	35.50	33.40	35.10
KS	23.40	20.70	32.50	33.00	31.20	31.40
MI	23.00	22.00	31.50	33.00	30.80	32.10
MN	23.60	22.00	34.00	35.90	33.90	35.80
MO	21.00	19.30	31.20	32.50	30.50	31.60
NE	24.50	21.50	36.50	36.70	36.30	36.40
NC	22.80	19.30	34.30	36.40	34.20	36.20
OH	24.50	22.00	33.90	34.40	33.50	33.90
OK	23.20	21.20	30.10	33.00	29.10	31.40
PA	22.10	19.90	31.60	32.60	30.20	30.70
SD	22.80	22.50	36.30	36.50	34.80	34.50
TX	24.60	23.70	31.00	31.50	30.10	30.30
WI	21.10	20.80	29.30	30.30	28.20	29.10
US	23.40	21.60	33.50	35.20	33.10	34.50

1/ Entire month.
 2/ Mid-month.

Sheep and Poultry: Prices Received, by States,
May and June 2002

State	May		June
	Sheep 1/	Lambs 1/	Eggs 2/3/
----- Dollars per Cwt -----			Dol/Doz
AL			.400
AR			.340
CA	27.00	62.00	.410
CO	24.90	61.00	
CT			.540
FL			.430
GA			.414
ID	30.00	59.00	
IN			.480
IA	25.50	60.40	.350
KS	22.00	63.80	
ME			.620
MI			.420
MN	19.00	63.30	.410
MS			.480
MO			.340
MT	21.90	66.50	
NE	22.00	66.00	
NY			.504
NC			.405
ND	19.60	59.30	
OH	21.00	73.80	.485
OR	23.00	60.00	
PA			.520
SC			.489
SD	28.40	70.10	
TX	35.20	69.60	.480
UT	22.00	66.00	
WA			.590
WY	25.20	72.10	
US	28.60	64.30	.445

- 1/ Entire month.
- 2/ Mid-month.
- 3/ Market (table) eggs.

Milk and Milk Cows: Prices Received, by States, May and June 2002

State	May				June				
	Fluid Grade Milk 1/ Price	Manufacturing Grade Milk Fat Test	All Milk 2/ Price	Fat Test	All Milk 2/3/ Price	Fat Test	Milk Cows 4/ Price	Fat Test	Dol/Head
AZ	11.70	3.56			11.70	3.56	11.40	3.52	
CA	11.10	3.58	10.90	3.83	11.10	3.58	10.80	3.53	
FL	15.20	3.60			15.20	3.60	15.10	3.64	
ID	11.20	3.56	10.90	3.66	11.20	3.56	11.00	3.52	
IL	12.50	3.66	12.00	3.56	12.50	3.66	12.10	3.65	
IN	11.80	3.65	11.10	3.75	11.80	3.66	11.50	3.61	
IA	12.50	3.68	11.00	3.62	12.40	3.68	12.00	3.61	
KY	13.00	3.56			13.00	3.56	12.80	3.56	
MI	12.20	3.58	10.50	3.60	12.20	3.58	11.80	3.55	
MN	12.40	3.70	10.80	3.72	12.30	3.70	11.90	3.67	
MO	12.20	3.57	11.00	3.59	12.20	3.57	11.90	3.52	
NM	11.60	3.49			11.60	3.49	11.40	3.45	
NY	12.80	3.67			12.80	3.67	12.60	3.61	
OH	12.30	3.65	11.30	3.72	12.20	3.65	12.10	3.60	
PA	13.60	3.65	11.30	3.75	13.60	3.65	13.40	3.65	
TX	12.60	3.58			12.60	3.58	12.30	3.58	
VT	12.60	3.67			12.60	3.67	12.30	3.62	
VA	13.90	3.54			13.90	3.54	13.70	3.53	
WA	12.10	3.62			12.10	3.62	11.90	3.58	
WI	12.50	3.72	11.20	3.78	12.40	3.72	12.00	3.65	
US	12.20	3.63	11.10	3.74	12.20	3.63	11.90	3.59	

- 1/ Including milk diverted to manufacturing.
- 2/ Before deductions for hauling. Includes quality, quantity, and other premiums. Excludes hauling subsidies.
- 3/ Preliminary.
- 4/ Animals sold for dairy herd replacement only. Prices published Jan, Apr, Jul and Oct.

Parity Price Equivalent for Manufacturing Milk 1/: United States,
May and June 2002, with Comparisons

Item	Jun 2001	May 2002	Jun 2002
Parity Equivalent.....Dol per Cwt	29.30	29.59	29.41
Average Price F.O.B.....Dol per Cwt	14.90	11.10	2/10.80
Average Fat Test of Milk..Percent	3.67	3.74	2/3.70

- 1/ The parity price equivalent during 2002 is 90.5 percent of the parity price of all milk sold to plants, compared with 91.0 percent in 2001. For additional details, see January 2002 issue of "Agricultural Prices".
- 2/ Preliminary.

United States Parity Prices for Farm Products and Average Prices Received as
Percent of Parity Prices Based on Data for June 2002, with Comparisons 1/

Commodity and Unit	: Adjusted: : Base : Prices	Parity Prices Based on Data for			: Prices as Percent : of Parity			
		: Jun : 2001	: May : 2002	: Jun : 2002	: Jun : 2001	: May : 2002	: Jun : 2002	
		Dollars			Percents			
Basic Commodities	:							
All Wheat, Bu	:	.579	9.67	9.50	9.46	28	30	30
Rice, Cwt	:	1.55	26.90	25.40	25.30	19	16	15
Corn, Bu	:	.392	6.60	6.43	6.41	27	30	30
Cotton, Lb	:							
American Upland	:	.0990	1.67	1.62	1.62	23	18	19
Extra Long Staple	:	.140	2.33	2.30	2.29			
Peanuts, Lb	:	.0401	.679	.658	.655			
Tobacco, By Type, Lb	:							
Flue-Cured 11-14	:	.255	4.20	4.18	4.17			
VA Fire-Cured, 21	:	.257	4.22	4.22	4.20			
KY-TN Fire-Cured, 22-23	:	.319	5.30	5.23	5.21			
Burley, 31	:	.274	4.48	4.50	4.48			
Maryland, 32	:	.220	3.69	3.61	3.59			
Dark Air-Cured, 35-36	:	.270	4.48	4.43	4.41			
Sun-Cured, 37	:	.239	3.81	3.92	3.91			
PA Seedleaf, 41	:	.188	3.12	3.09	3.07			
Cigar Filler & Binder, 42-44, 54-55	:	.218	3.58	3.58	3.56			
Puerto Rican Filler, 46	:	.173	2.84	2.84	2.83			
Cigar Binder, 51-52	:	.678	10.70	11.10	11.10			
Designated Nonbasic	:							
All Milk, Sold to Plants, Per Cwt	:	1.99	32.20	32.70	32.50	2/55	2/41	2/39
Honey, Extracted, Lb	:	3/.0930	1.51	1.53	1.52			
Wool and Mohair	:							
Wool, Lb	:	.0950	1.66	1.56	1.55			
Mohair, Lb	:	.315	4.41	5.17	5.15			
Other Nonbasic	:							
Barley, Bu	:	.385	6.45	6.32	6.29	31	35	33
Cottonseed, Ton	:	15.70	254.00	258.00	257.00			
Dry Edible Beans, Cwt	:	2.90	47.90	47.60	47.40	34	58	57
Flaxseed, Bu	:	.684	11.30	11.20	11.20	36	45	46
Oats, Bu	:	.239	3.77	3.92	3.91	37	51	49
Potatoes, Cwt	:	.817	13.60	13.40	13.30	42	78	72
Rye, Bu	:	.341	5.50	5.60	5.57			
Sorghum Grain, Cwt	:	.666	11.30	10.90	10.90	32	29	31
Soybeans, Bu	:	.858	14.40	14.10	14.00	31	33	34
Sweetpotatoes, Cwt	:	2.18	34.30	35.80	35.60			
Apples, Fresh, Lb 4/ Citrus (equiv on-tree), box:	:	.0289	.489	.474	.472	30	46	43
Grapefruit	:	.441	8.09	7.24	7.21	43	15	58
Lemons	:	1.08	19.70	17.70	17.60	47	43	54
Limes (FL)	:	1.26	20.80	20.70	20.60			
Oranges	:	.643	11.40	10.60	10.50	33	45	39
Tangerines	:	1.55	27.60	25.40	25.30		76	
Temples (FL)	:	.527	9.70	8.65	8.61			
Beef Cattle, Cwt	:	9.56	158.00	157.00	156.00	47	42	40
Calves, Cwt	:	12.70	208.00	208.00	208.00	53	47	46
Hogs, Cwt	:	6.18	103.00	101.00	101.00	51	33	34
Lambs, Cwt	:	10.80	174.00	177.00	176.00	41	36	
Sheep, Cwt	:	4.57	72.50	75.00	74.70	44	38	
Eggs, Doz	:	.0933	1.56	1.53	1.52	2/40	2/34	2/48
Turkeys, Live, Lb	:	.0582	.960	.955	.951	40	37	39

--continued

Parity Prices Based on Data for June 2002, United States 1/ (continued)

Other Nonbasic Commodities	Adj Base Prices	Parity Prices	Other Nonbasic Commodities	Adj Base Prices	Parity Prices
	Dollars			Dollars	
Field Crops and Misc Commodities			Noncitrus Fruit		
Hops, Lb	.253	4.13	Peaches, cont.		
Spearmint Oil, Lb	1.64	26.80	Processing 5/		
Tobacco, Lb			Excl Dried		
Type 61	2.56	41.80	Clingstone, CA, Ton	32.50	531.00
Noncitrus Fruit			Pears, Ton		
Apples, Ton 6/			Fresh 4/	51.70	845.00
Processing	19.20	314.00	Dried, CA 6/	162.00	2650.00
Apricots, Ton			Plums, CA, Ton		
Fresh 7/	102.00	1670.00	Fresh, Equiv on-Tree	53.80	879.00
Dried, CA	290.00	4740.00	Prunes, Dried, CA, Ton 6/	137.00	2240.00
Avocados, Ton 7/	214.00	3500.00	Prunes and Plums, Excl CA, Ton		
Cherries			Fresh 9/	51.40	840.00
Sweet, Ton	173.00	2830.00	Processing 6/		
Tart, Lb	.0271	.443	Excl Dried	24.10	394.00
Cranberry, Bbl 5/	6.66	109.00			
Dates, CA, Ton 7/	157.00	2570.00	Tree Nuts 10/		
Grapes, Ton			Almonds, Lb	.215	3.51
Raisin Variety	134.00	2190.00	Hazelnuts, Ton	118.00	1930.00
Other Dried	65.70	1070.00	Pistachio, Lb	.157	2.57
Kiwifruit, Ton	76.90	1260.00	Walnuts, Ton	183.00	2990.00
Nectarines					
Fresh, Calif, Ton 7/	63.30	1030.00	Vegetables, Cwt 11/		
Olives, CA			Fresh		
Canning, Ton 5/	97.40	1590.00	Carrots 8/	2.00	32.70
Papayas (HI) Lb	.0505	.825	Cauliflower 8/	4.46	72.90
Peaches			Celery 8/	2.00	32.70
Fresh, Lb 4/	.0383	.626	Honeydew Melons	2.71	44.30
Dried, CA, Ton	103.00	1680.00	Lettuce	2.35	38.40
			Onions 8/	1.70	27.80
			Tomatoes	4.38	71.60

- 1/ Parity prices are computed under the provisions of Title III, Subtitle a, Section 301 (a) of the Agricultural Adjustment Act of 1938 as amended by the Agricultural Acts of 1948, 1949, and 1956. See January "Agricultural Prices" for details on adjusted base price and parity price computations.
- 2/ Seasonally adjusted price as percentage of parity price.
- 3/ Wholesale extracted. Adjusted base price derived from state annual average prices weighted by production. For 1982 through 1985 the national averages are the support prices.
- 4/ Equivalent packinghouse-door returns for CA, NY (apples only), OR (except peaches), and WA. Price at point of first sale for other states.
- 5/ Equivalent returns for bulk fruit at first delivery point.
- 6/ Equivalent returns at processing plant door.
- 7/ Equivalent returns at packinghouse door.
- 8/ Includes some processing.
- 9/ Based on "as sold" prices for fresh fruit in all states.
- 10/ Prices in-shell basis except almonds which are shelled basis.
- 11/ F.O.B. shipping point prices.

Reliability of Prices Received Estimates

Definition: Prices received represent sales from producers to first buyers. They include all grades and qualities. The average commodity price from the survey multiplied by the total quantity marketed theoretically should give the total cash receipts for the commodity.

Survey Procedures: Primary sales data used to determine grain prices were obtained from probability samples of 2600 mills and elevators. These procedures ensure that virtually all grain moving into commercial channels has a chance of being included in the survey. Generally, States surveyed account for 90 percent or more of total U.S. production. Livestock prices are obtained from packers, stockyards, auctions, dealers, and market check data from AMS-USDA, private marketing organizations, and state commodity groups and agencies. Inter-farm sales of grain and livestock are not included since they represent very small percentages of the total marketings. Grain marketed for seed is also excluded. Fruit and vegetable prices are obtained from sample surveys and market check data from AMS-USDA, private marketing organizations, state agencies, and universities.

Summary and Estimation Procedures: Survey quantities sold are expanded by strata to state levels and used to weight average strata prices to a state average. State prices are then weighted to a U.S. price based on expanded marketings. Recommendations are prepared by the State Statistical Offices and reviewed by the Agricultural Statistics Board in Washington, D.C. State recommendations are reviewed for reasonableness with survey data, other States, and recent historic estimates.

Revisions: For most items, the current month's price represents a 3-5 day period around the mid-month. Previous month's prices represent actual dollars received for quantities sold during the entire month. Revisions are published in monthly issues of "**Agricultural Prices**".

Reliability: U.S. price estimates based on probability surveys generally have a sampling error of less than one percent for the major commodities such as corn, wheat, soybeans, cotton, and rice. Current methods of summarization for non-probability commodities are not designed directly to calculate sampling errors. However, analytical measures approximate the U.S. relative sampling errors at around five percent. Any nonsampling errors are attributed to such things as the inability to obtain correct information, differences in interpreting questions or definitions, mistakes in coding or processing the data, etc. Efforts are made at each step in the survey process to minimize these nonsampling errors.

Prices Paid by Farmers

The June Index of Prices Paid for Commodities and Services, Interest, Taxes, and Farm Wage Rates (PPITW) was 123 (1990-92=100), unchanged from May 2002 but 0.8 percent below June 2001.

PRODUCTION INDEX: The June index for items used in production, at 117, was down 0.8 percent from last month and 2.5 percent below last year. Lower prices in June for feeder pigs, hay and forages, complete feeds, and feeder cattle more than offset higher prices for nitrogen fertilizers, feed concentrates, and feed grains.

Feed: The Feed Index, at 108, was 0.9 percent less than May but 0.9 percent above last June. Since May, lower prices for hay and forages, complete feeds, and feed supplements more than offset higher prices for feed concentrates and feed grains.

Livestock and Poultry: The index for livestock and poultry purchases, at 95, was 3.1 percent lower than last month and 16 percent below last year. Since May prices were lower for feeder pigs and feeder cattle. The June feeder cattle price at, \$77.40 per cwt, was down \$.70 per cwt from the May price.

Fertilizer: The Fertilizer Index, at 109, was up 0.9 percent from May but 11 percent less than June a year ago. Since May, higher prices for nitrogen fertilizers more than offset lower prices for potash and phosphate materials.

Agricultural Chemicals: The chemical index, at 118, was unchanged from last month but 1.7 percent below last June. Slightly lower herbicide prices in June offset slightly higher prices for insecticides.

Fuels: The Fuels Index, at 109, was down 0.9 percent from a month earlier and 17 percent below June 2001. Compared to last month, prices were lower for diesel fuel, gasoline, and LP gas.

Farm Machinery: The June Farm Machinery Index was 147, unchanged from May but 2.1 percent above last June. Since May, prices were slightly lower for other machinery.

CONSUMER PRICE INDEX: The Consumer Price Index for all urban consumers (CPI-U) for May 2002, at 179.8 (1982-84=100) before seasonal adjustment, was unchanged from April 2002. For the 12-month period ending in May, the overall index has increased 1.2 percent.

Indexes of Prices Paid by Farmers and Related Parity Ratios
United States, June 2002 With Comparisons

Indexes and Ratios	1910-14 = 100			1990-92 = 100		
	2001		2002		2002	
	Jun	May	Jun	Jun	May	Jun
Prices Paid by Farmers for	:					
Commodities & Services,	:					
Interest, Taxes, & Wage	:					
Rates (PPITW)	1650	*1638	1634	124	123	123
Production	1169	*1145	1140	120	118	117
Feed	521	*533	526	107	*109	108
Livestock and Poultry	1440	*1249	1212	113	98	95
Seeds	1329	1426	1426	134	144	144
Fertilizer	451	*394	398	123	*108	109
Agricultural Chemicals	745	*732	732	120	*118	118
Fuels	1022	*847	838	132	*110	109
Supplies & Repairs	906	*923	923	128	*130	130
Autos & Trucks	3132	*3073	3061	118	116	115
Farm Machinery	3603	*3697	3693	144	147	147
Building Material	1658	*1654	1656	122	122	122
Farm Services & Rent	1430	*1426	1426			
Farm Services				122	*120	120
Rent				117	120	120
Interest 1/	2845	2728	2728	114	109	109
Taxes 2/	3330	3378	3378	124	126	126
Wage Rates	5369	5705	5705	144	153	153
Production, Interest, Taxes,	:					
& Wage Rates (PITW)	1642	*1623	1617	122	121	120
Family Living-CPI 3/	1691	1708	1708	132	133	133
Ratio (Received\Paid)				86	*79	80
Parity Ratio 4/	41	38	38			
PPITW Adjusted for	:					
Productivity 6/	1124	*1144	1143			
Crop Sector (PPITW)				127	126	126
Livestock Sector (PPITW)				121	120	119
Farm Sector (Production)				112	111	109
Non-Farm Sector (Production)				124	121	121

* Revised.

- 1/ Interest per acre on farm real estate debt and interest rate on farm non-real estate debt.
- 2/ Farm real estate taxes payable per acre.
- 3/ Bureau of Labor Statistics, Consumer Price Index for all urban consumers (CPI-U), for the previous month converted by the USDA.
- 4/ Ratio of index of prices received to PPITW (1910-14=100).
- 5/ Based on estimated cash receipts, from marketings and government payments, the preliminary adjustment factor is 1.052 for 2002 and the revised factor is 1.105 for 2001.
- 6/ PPITW is adjusted based on productivity trend for the prior 15 years.

Prices Paid Indexes and Annual Weights for Input Components and
Sub-Components United States, June 2002 With Comparisons

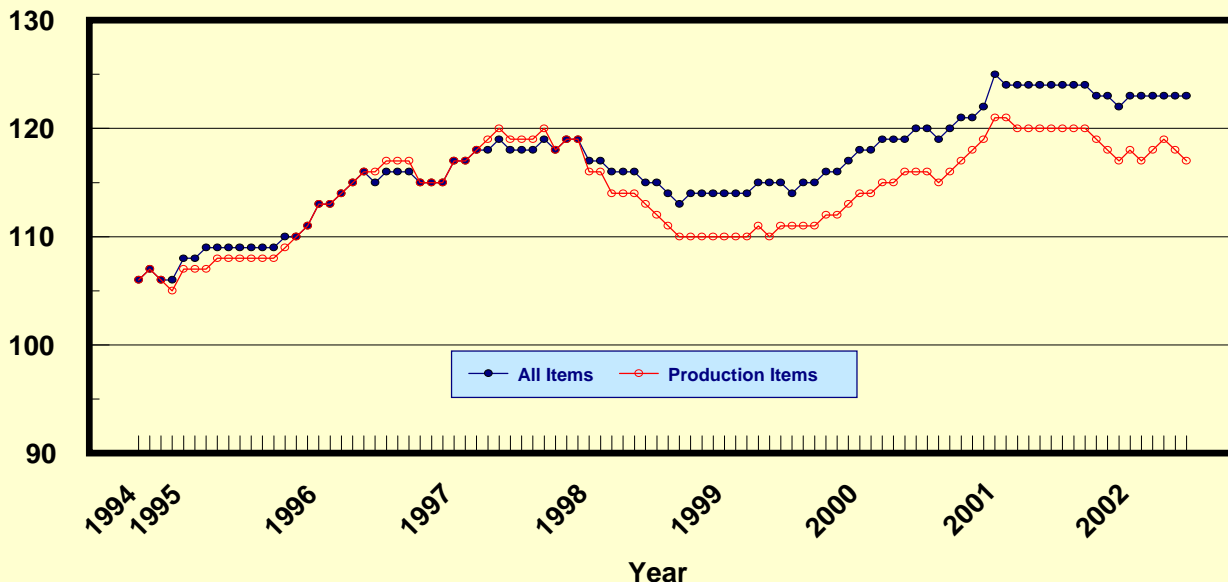
Index	Relative Weights		Input Indexes		
	5-Year Moving Average 1/		2001	2002	
	2001	2002	Jun	May	Jun
	----	Percent	----	(1990-92=100)	---
Production Items	67.1	66.9	67	67	67
Feed	11.5	11.3	107	*109	108
Feed Grains	1.6	1.6	79	*84	85
Complete Feeds	5.6	5.5	107	*111	110
Hay/Forages	1.4	1.4	120	127	121
Concentrates	1.8	1.8	115	*106	108
Supplements	1.0	0.9	117	*118	114
Livestock & Poultry	6.7	6.8	113	98	95
Feeder Cattle	5.2	5.3	112	92	91
Feeder Pigs	0.5	0.5	115	*88	60
Milk Cow Replacements	0.5	0.6	123	152	152
Poultry	0.4	0.4	109	109	109
Seeds	3.0	3.1	134	144	144
Field Crops	2.7	2.8	136	147	147
Grasses/Legumes	0.3	0.3	118	118	118
Fertilizer	4.8	4.7	123	*108	109
Mixed Fertilizer	2.1	2.1	110	*104	104
Nitrogen	2.0	2.0	141	*111	113
Potash & Phosphate	0.7	0.7	108	108	107
Agricultural Chemicals	4.0	3.9	120	*118	118
Herbicides	2.5	2.5	112	*111	111
Insecticides	0.9	0.9	144	137	137
Fungicides/Other	0.6	0.6	121	*119	119
Fuels	2.6	2.7	132	*110	109
Diesel	1.5	1.5	131	*105	103
Gasoline	0.7	0.8	130	*115	114
LP Gas	0.4	0.4	144	*120	120
Farm Supplies & Repairs	5.6	5.5	128	*130	130
Supplies	1.9	1.8	122	*124	124
Repairs	3.7	3.7	130	133	133
Autos & Trucks	1.7	1.7	118	116	115
Autos	0.2	0.2	111	110	109
Trucks	1.5	1.5	119	*116	116
Farm Machinery	4.0	4.0	144	147	147
Tractors	0.9	0.9	138	*140	140
Self-Propelled	1.6	1.6	144	147	147
Other Machinery	1.5	1.5	146	*152	152
Building Materials	2.8	3.1	122	122	122
Farm Services	12.4	12.3	122	*120	120
Custom Rates	1.3	1.3	121	121	121
Other Services	11.1	11.1	122	*120	120
Rent	7.9	7.7	117	120	120
Cash	4.0	4.2	143	145	145
Share	3.9	3.6	91	91	91
Interest	4.9	4.8	114	109	109
Taxes	3.1	3.0	124	126	126
Wage Rates	7.2	7.3	144	153	153
Family Living-CPI	17.8	18.0	132	133	133

* Revised.

1/ Weights may not add due to rounding.

Prices Paid by Farmers, Major Indexes US, by Quarter and Month 1/

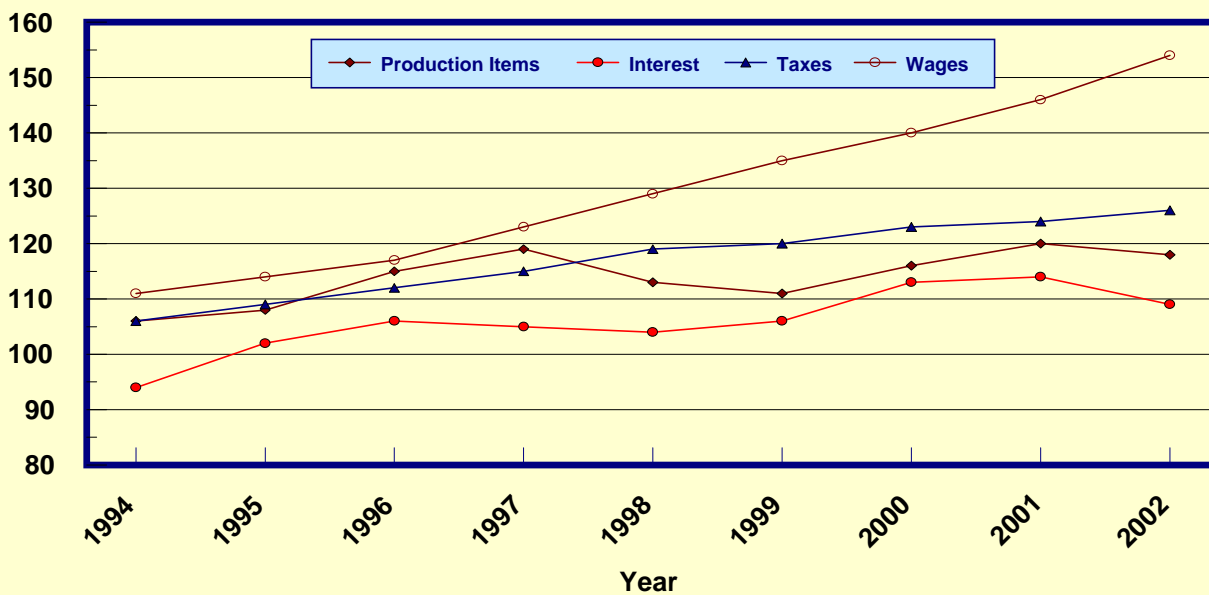
Percent (1990-92=100)



1/ Index values are monthly beginning in 1995.

Prices Paid by Farmers, Major Indexes US, Annual Averages 1/

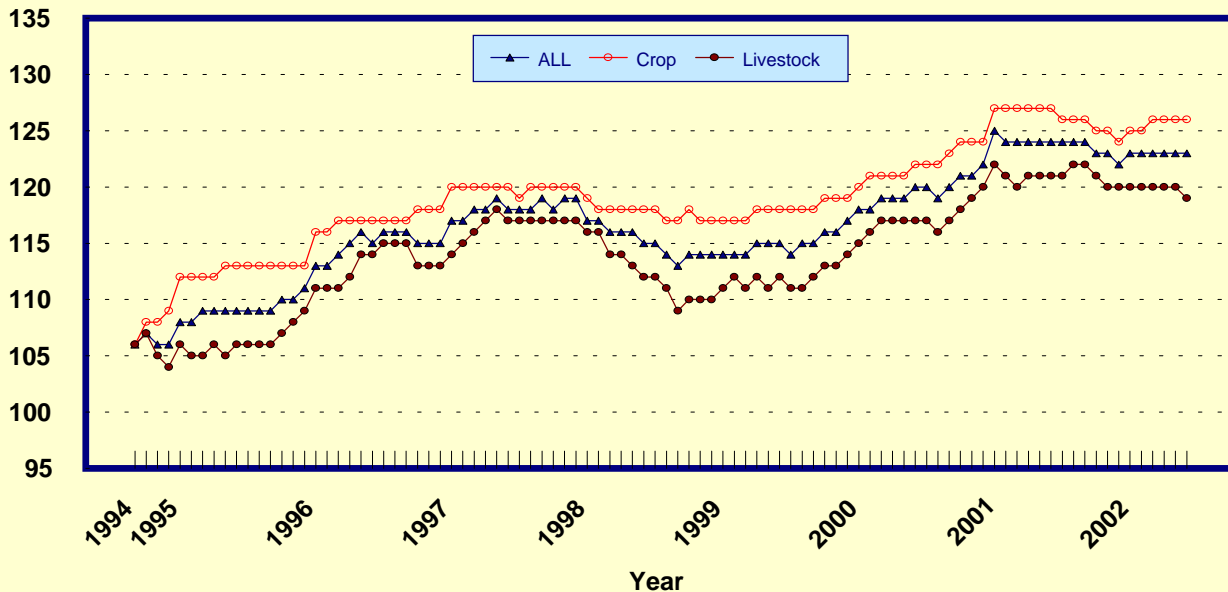
Percent (1990-92=100)



1/ Index values for 2002 are year-to-date averages.

Prices Paid by Farmers, Indexes, All Items US, By Farm Type 1/

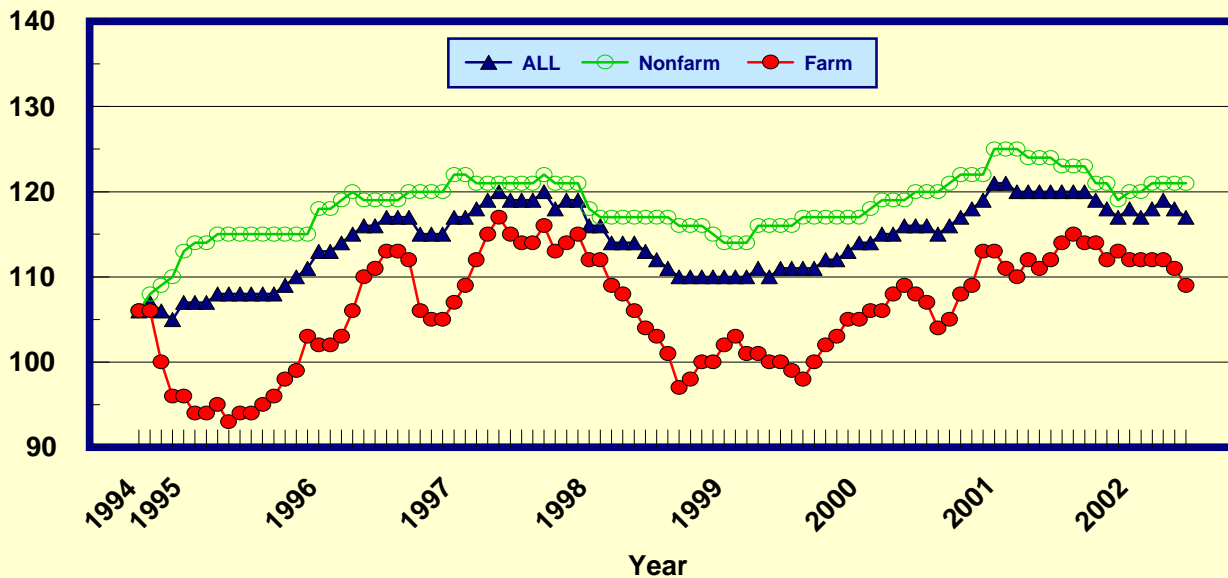
Percent (1990-92=100)



1/ Index values are monthly beginning in 1995.

Prices Paid by Farmers, Indexes, All Production Items US, By Sector Origin 1/

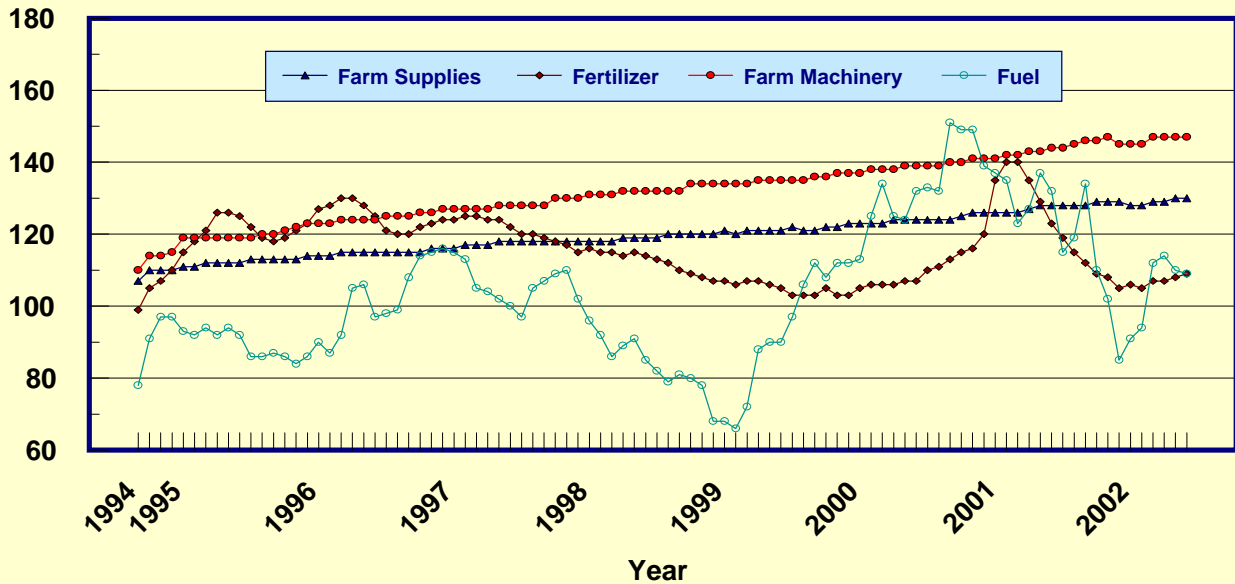
Percent (1990-92=100)



1/ Index values are monthly beginning in 1995.

Prices Paid by Farmers, Selected Production Indexes US, By Non-Farm Sector 1/

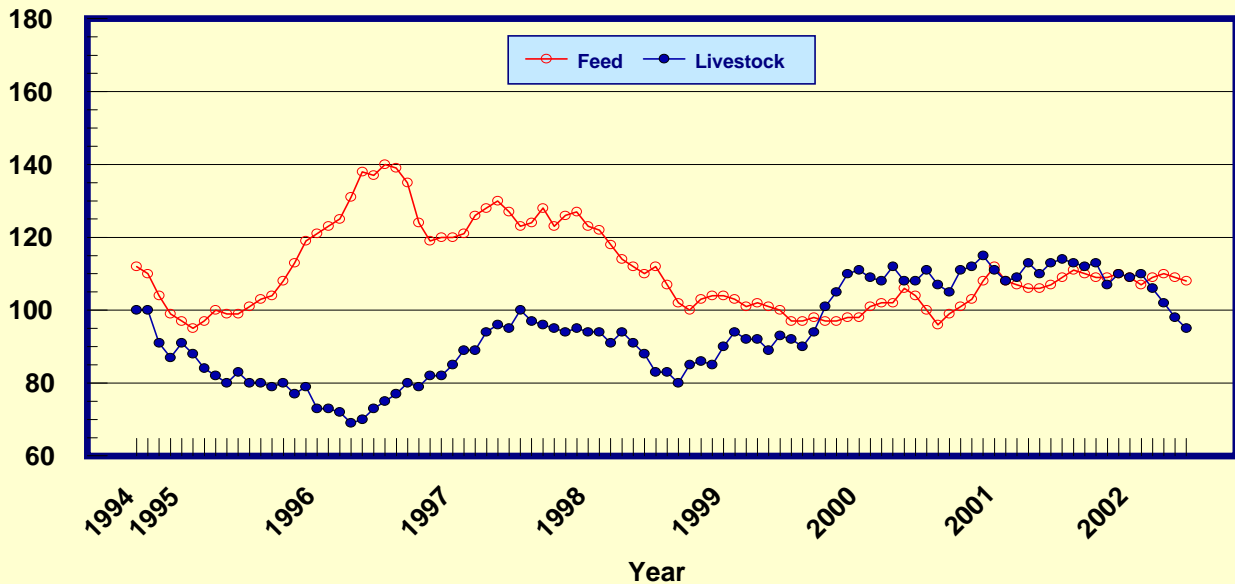
Percent (1990-92=100)



1/ Index values are monthly beginning in 1995.

Prices Paid by Farmers, Selected Production Indexes US, By Farm Sector 1/

Percent (1990-92=100)



1/ Index values are monthly beginning in 1995.

Feed Price Ratios: United States, June 2002 with Comparisons

Feed Price Ratio 1/	2001		2002	
	Jun	May	Jun	Jun
Broiler-Feed: Pounds of Broiler Grower Feed equal in value to 1 pound of broiler, live weight	8.3	6.1	6.2	
Market Egg Feed: Pounds of Laying Feed equal in Value to 1 dozen eggs	8.5	*6.6	9.7	
Hog-Corn: Bushels of Corn equal in value to 100 pounds of hog, live weight	29.7	*17.2	17.8	
Milk-Feed: Pounds of 16% Mixed Dairy Feed equal in value to 1 pound of Whole Milk	3.74	2.66	2.65	
Steer & Heifer-Corn: Bushels of Corn equal in value to 100 pounds of Steer & Heifers, live weight	43.6	*35.3	33.9	
Turkey-Feed: Pounds of Turkey Grower equal in value to 1 pound of Turkey, live weight	8.3	7.2	7.4	

1/ Effective September 1997, prices of commercial prepared feeds are based on current U.S. prices received for corn, soybeans, alfalfa hay, and all wheat.
* Revised.

Prices Used to Calculate Feed Price Ratios:
United States, June 2002 with Comparisons

Commodity	Unit	2001		2002	
		Jun	May	Jun	Jun
Broilers, Live	Lb	0.410	0.320	0.330	
Eggs, Market	Doz	0.362	0.297	0.445	
Hogs, All	Cwt	52.20	*33.10	34.50	
Milk, All	Cwt	16.20	*12.20	11.90	
Steers and Heifers	Cwt	77.00	*68.20	65.80	
Turkeys, Live	Lb	0.383	0.355	0.369	
Corn	Bu	1.76	*1.93	1.94	
Hay, Alfalfa, Baled	Ton	103.00	108.00	102.00	
Soybeans	Bu	4.46	*4.64	4.79	
Wheat, All	Bu	2.74	*2.81	2.86	

* Revised.

Feeder Livestock: Prices Paid, United States
June 2002 with Comparisons

Commodity	Unit	2001		2002	
		Jun	May	Jun	Jun
Dollars					
Feeders and Stockers					
Cattle and Calves	Cwt	94.50	78.10	77.40	
Feeder Pigs	Cwt	106.00	*81.00	55.00	

* Revised.

Prices Paid by Farmers

Definition: Prices paid by farmers represent the average costs of inputs purchased by farmers and ranchers to produce agricultural commodities. Conceptually, the average price when multiplied by quantity purchased should equal total producer expenditures for the item.

Survey Procedures: The prices paid data are obtained from establishments that sell goods and services to farmers and ranchers. Annually, about 8,500 firms are randomly selected from lists by type of item sold with an average response rate in the range of 75-80 percent. Firms are asked to report the price for the specified item "most commonly bought by farmers" or that was the "volume seller". Approximately 135 items are surveyed each April to represent all production input items purchased. The survey reference period for most items is the 5 business days centered around the 15th of the month. Separate prices paid surveys are conducted for, agricultural chemicals, fuels, feed, fertilizer, machinery, and seed.

Summary and Estimation Procedures: The annual April Prices Paid Survey is summarized as a nonprobability survey. Average prices reported are aggregated to the region and U.S. level using weights available from expenditure data and other administrative sources. Price recommendations are prepared by the State Statistical Offices and Headquarters for review by the Agricultural Statistics Board in Washington, D.C. Also, the change in price level for individual items surveyed are combined to the regional and U.S. levels, and are published as prices paid indexes referenced to a specific base period. Prices paid indexes for new autos and trucks, building materials, farm supplies, motor supplies, and marketing containers are updated based on price changes measured in selected Bureau of Labor Statistics (BLS) indexes.

Revisions: Any revisions are published in the monthly and in annual issues of "Agricultural Prices". The basis for revision must be supported by additional data that directly affect the level of the estimate. More revisions are likely in April when separate prices paid surveys are conducted, in lieu of BLS indexes, by the USDA to measure price change.

Reliability: Current methods of summarization in April are not designed directly to calculate sampling errors. However, analytical measures approximate the U.S. relative sampling errors for major items around 10 percent. Any nonsampling errors are attributed to such things as the inability to obtain correct information, differences in interpreting questions or definitions, mistakes in coding or processing the data, etc. Efforts are made at each step in the survey process to minimize these nonsampling errors.

Program Change: Effective January 1, 1995, the National Agricultural Statistics Service updated the weights and changed the construction of its prices paid and received by farmers indexes. A Federal Register Notice dated October 28, 1994 discussed these program modifications.

A 1990-92 reference and base period replaced the 1977 reference and 1971-73 base weight period. Five-year moving average weights replaced the current fixed 1971-73 base period weights. The 1910-14=100 price indexes, required by statute for computing parity prices, were linked forward based on the changes in the new 1990-92=100 indexes. The new indexes were constructed by multiplying the ratios of the current prices to the base period prices by the moving average weights (adjusted for seasonal marketing patterns for the prices received indexes).

Information Contacts

General questions should be directed to **Linda Hutton**, Chief, Environmental, Economics and Demographics Branch at (202) 720-6146. Below are the commodity specialists to contact for additional information.

Crop Prices

Mark Harris, Chief, Crops Branch (202) 720-2127

Field Crops Section
Greg Thessen, Head (202) 720-2127

Dave DeWalt - Cotton (202) 720-5412
Herman Ellison - Oilseeds (202) 720-7369
Lance Honig - Wheat (202) 720-8068
Darin Jantzi - Corn (202) 720-7235
Troy Joshua - Hay, Sorghum (202) 690-3234
Mark E. Miller - Oats (202) 720-7621
Mark R. Miller - Peanuts, Rice, Barley (202) 720-7688

Fruit and Vegetable Section
Jim Smith, Head (202) 720-2127

Arvin Budge - Potatoes, Dry Beans (202) 720-4285
Dave DeWalt - Citrus (202) 720-5412
Debbie Flippin - Vegetables (202) 720-3250
Steve Gunn - Apples, Peaches, Pears (202) 720-4288
Darin Jantzi - Grapes, Tobacco (202) 720-7235
Biz Wallingsford - Vegetables, Strawberries (202) 720-2157

Livestock Prices

Dan Kerestes, Chief, Livestock Branch (202) 720-3570

Livestock Section
Wil Hundl, Head (202) 720-6880

Steve Anderson - Cattle (202) 720-3040
Scott Hollis - Sheep (202) 720-4751
Ty Kalaus - Milk (202) 690-3236
Rodger Ott - Hogs (202) 720-3106

Poultry and Specialty Commodities Section
Nathan Crisp, Head (202) 720-6351

Tom Kruchten - Broilers, Eggs (202) 690-4870
John Lange - Turkeys (202) 720-0585

Prices Paid and Indexes

Linda Hutton, Chief, Environmental, Economics and Demographics Branch (202) 720-6146

Economics Section
Larry Beard, Head (202) 720-4214

Tara Jackson - Feed, Fertilizer, Agricultural Chemicals, Seeds (202) 690-3229

Jim Williams - Prices Paid Indexes, Farm Supplies and Repairs, Farm Machinery, Fuels, Feeder Livestock, Poultry Chicks, Feed Price Ratios, Grazing Fees, Autos & Trucks (202) 690-3225

Kirby Cavett - Prices Received Indexes (202) 690-3237

The next "Agricultural Prices" report will be released at 3:00 p.m. ET on July 31, 2002.

The United States Department of Agriculture (USDA) prohibits discrimination in all its programs on the basis of race, color, national origin, gender, religion, age, disability, political beliefs, sexual orientation, and marital or family status. (Not all prohibited bases apply to all programs.) Persons with disabilities who require alternative means for communication of program information (braille, large print, audiotape, etc.) should contact the USDA's TARGET Center at 202-720-2600 (voice and TDD).

To file a complaint of discrimination, write USDA, Director, Office of Civil Rights, Room 326-W, Whitten Building, 1400 Independence Avenue, SW, Washington, D.C., 20250-9410, or call 202-720-5964 (voice or TDD). USDA is an equal opportunity provider and employer.

ACCESS TO REPORTS!!

For your convenience, there are several ways to obtain NASS reports, data products, and services:

INTERNET ACCESS

All NASS reports are available free of charge on the worldwide Internet. For access, connect to the Internet and go to the NASS Home Page at: <http://www.usda.gov/nass/>. Select "Today's Reports" or Publications and then Reports by Calendar or Publications and then Search, by Title or Subject.

E-MAIL SUBSCRIPTION

There are two options for subscribing via e-mail. All NASS reports are available by subscription free of charge direct to your e-mail address. 1) Starting with the NASS Home Page at <http://www.usda.gov/nass/>, click on **Publications**, then click on the **Subscribe by E-mail** button which takes you to the page describing e-mail delivery of reports. Finally, click on **Go to the Subscription Page** and follow the instructions. 2) If you do NOT have Internet access, send an e-mail message to: usda-reports@usda.mannlib.cornell.edu. In the body of the message type the word: **list**.

AUTOFAX ACCESS

NASSFax service is available for some reports from your fax machine. Please call 202-720-2000, using the handset attached to your fax. Respond to the voice prompts. Document 0411 is a list of available reports.

PRINTED REPORTS OR DATA PRODUCTS

CALL OUR TOLL-FREE ORDER DESK: 800-999-6779 (U.S. and Canada)
Other areas, please call 703-605-6220 FAX: 703-605-6900
(Visa, MasterCard, check, or money order acceptable for payment.)

ASSISTANCE

For **assistance** with general agricultural statistics or further information about NASS or its products or services, contact the **Agricultural Statistics Hotline** at **800-727-9540**, 7:30 a.m. to 4:00 p.m. ET, or e-mail: nass@nass.usda.gov.