

Released September 30, 2002, by the National Agricultural Statistics Service (NASS), Agricultural Statistics Board, U.S. Department of Agriculture. For information on "Agricultural Prices" or other assistance, see page B-9.

Update Alert

The footer listed on the bottom left of pages A-2 through A-55 has been changed from "August" to "September."

Page A-17 has been revised. Footnote 6/ has been corrected to read "Prices not published to avoid disclosure of individual firms." Footnote 7/ has been added and now reads "Insufficient sales to establish a price."

Page A-49 has been updated. Prices for 2000-01 FL Grapefruit, Seedless-white, Seedless-all, All FL, and U.S. Fresh, Processing, and All have been corrected for the equivalent P.H.D. and on-tree levels.

Page A-52 has been updated. Fresh Temple prices for the equivalent on-tree level and processed Temple prices for the equivalent P.H.D. level have been corrected.

September Farm Prices Received Index Down 1 Point From Last Month

The preliminary All Farm Products Index of Prices Received by Farmers in September was 99, based on 1990-92=100, down 1 point (1.0 percent) from the August index. Lower prices for hogs, potatoes, lettuce, and strawberries more than offset increased prices for wheat, corn, broccoli, and broilers. The seasonal change in the mix of commodities farmers sell also affects the overall index. Decreased marketings of cattle, wheat, broilers, and grapes more than offset increased marketings of soybeans, corn, peanuts, and potatoes.

The preliminary All Farm Products Index is also 7 points (6.6 percent) below September 2001. Lower prices for milk, broilers, hogs, and lettuce more than offset higher prices for corn, wheat, soybeans, and broccoli.

The Food Commodities Index decreased 1 point (1.0 percent) below last month to 97, and was 11.0 percent below September last year.

Prices Paid Index Up 1 Point

The September Index of Prices Paid for Commodities and Services, Interest, Taxes, and Farm Wage Rates (PPITW) was 125 percent of the 1990-92 average. The index was up 1 point (0.8 percent) from August and September 2001. Higher prices in September for complete feeds, feed grains, feeder cattle, and diesel fuel more than offset lower prices for feeder pigs.

Index Summary Table

Index 1990-92=100	2001		2002	
	Aug	Sep	Aug	Sep
Prices Received	110	106	100	99
Prices Paid	124	124	124	125
Ratio 1/	89	85	81	79

1/ Ratio of index of prices received by farmers to index of prices paid.

Prices Received by Farmers

The September All Farm Products Index was 99 percent of its 1990-92 base, down 1.0 percent from the August index and 6.6 percent below the September 2001 index.

ALL CROPS: The September index was 111, down 2.6 percent from August but up 7.8 percent from September 2001. From August, price increases for food crops and feed grains and hay were offset by price decreases in fruits and nuts, potatoes and dry beans, and oil-bearing crops.

Food Grains: The September index, at 124, was up 8.8 percent from the previous month and 35 percent above September 2001. The September all wheat price, at \$4.07 per bushel, was up 44 cents from August and \$1.22 above September 2001.

Feed Grains & Hay: The September index was 115, up 4.5 percent from last month and 25 percent above September 2001. The corn price, at \$2.56 per bushel, was up 18 cents from August and 65 cents above the September 2001 price. From August, increases in corn, oats, sorghum, and hay prices more than offset decreases in barley. The September corn production forecast was down less than 1 percent from August and down 7 percent from 2001.

Oil-Bearing Crops: The September index, at 90, was down 9.1 percent from August but up 11 percent from September 2001. The soybean price, at \$5.54 per bushel, increased 1 cent from August and was \$1.01 above September 2001. The lower index was due to a lower peanut price and a seasonal increase in market weights.

Cotton: The September index, at 54, was unchanged from a month ago and 16 percent below September 2001. The cotton price, at 32.5 cents per pound, was down 0.5 cent from August and 6.0 cents below a year ago.

Potatoes & Dry Beans: The September index, at 108, was 17 percent below last month but 4.8 percent above September 2001. The all potato price, at \$6.53 per cwt, was down \$1.12 from the previous month, but 49 cents above last September. Potato prices are declining as we approach the height of fall harvest season. The dry edible bean price, at \$17.80 per cwt, fell \$5.60 from the August average price and 30 cents below a year ago.

Fruit & Nuts: The September fruit and nuts index, at 132, was down 2.2 percent from the previous month but up 2.3 percent from 2001. Price decreases in grapes, strawberries, peaches, pears, oranges, and lemons more than offset price increases for apples. Increased supplies of grapes, strawberries, peaches, and lemons have resulted in lower prices.

Commercial Vegetables: The September index, at 120, was unchanged from last month but 11 percent below September 2001. Price increases during September for broccoli, cauliflower, snap beans, and cantaloups were offset by price decreases for carrots, tomatoes, sweet corn, cucumbers, lettuce, and onions. Cool weather conditions in California resulted in increased lettuce supplies.

LIVESTOCK & PRODUCTS: The September index, at 86, was down 1.1 percent from last month and down 23 percent from September 2001. Compared with a year ago, prices were higher for eggs but lower for all milk, broilers, hogs, all cattle, turkeys, and calves.

Meat Animals: The September index, at 81, was down 3.6 percent from last month and down 16 percent from a year ago. The September hog price of \$26.50 per cwt was down \$5.40 from August and down \$18.70 from this same time a year ago. The September beef cattle price of \$64.60 was up 30 cents from last month but down \$4.40 from September 2001.

Dairy Products: The September index, at 88, was up 1.1 percent from August but 33 percent below September 2001. The September all milk price of \$11.50 per cwt was up 20 cents from August but down \$5.60 from last year. The September price for fluid grade and manufacturing grade milk increased 20 cents from August. Both fluid and manufactured grade milk prices were down from the previous year.

Poultry & Eggs: The September 2002 index, at 94, was unchanged from August and 22 percent below a year ago. September market egg prices, at 39.0 cents per dozen, decreased 4.9 cents from August due to continued expansion of layer flocks. The September broiler price, at 30.0 cents per pound, increased 1.0 cent from August. Analysts are optimistic about future exports. Turkey prices, averaging 36.9 cents per pound, were down 1.0 cent from the previous month. Increased poultry stocks in cold storage put downward pressure on prices.

Table of Contents

Prices Received

U.S. Prices and Indexes	Page		Page
Narrative	A-2	Cows, Beef	A-20
Price Indexes	A-5	Cows, Milk	A-23
Prices Received		Eggs	A-22
U.S. Summary	A-8-9	Flaxseed	A-16
Selected Commodities ...	A-14	Fruit, Citrus	A-18
Upland Cotton and Rice		Hay	A-17
Prices and Marketings ..	A-17	All Hogs	A-21
Parity Prices	A-24-25	Lambs	A-22
Reliability Statement	A-55	Milk	A-23
		Oats	A-15
Monthly State Prices		Peanuts	A-16
Apples	A-17	Potatoes	A-19
Barley	A-15	Sheep	A-22
Barrows and Gilts	A-21	Sorghum, Grain	A-15
Beans, Dry Edible	A-16	Soybeans	A-15
Beef Cattle	A-20	Sows	A-21
Calves	A-20	Steers and Heifers	A-20
Corn	A-15	Sunflower	A-16
Cotton	A-17	Tobacco	A-16
Cottonseed	A-17	Wheat	A-14

Special Features

Potatoes: Monthly and Marketing Year Average Prices Received, 2001 Crop by State and U.S.	A-26-27
Citrus: Monthly and Marketing Year Average Prices Received, 1999-2000, 2000-2001 and 2001-2002 Crops by State and U.S.	A-28-54
Hops: Marketing Year Average Prices Received, 2000-2001 by State and U.S.	A-54

Table of Contents

Prices Paid

	Page
Narrative	B-1
Indexes and Parity Ratios	B-2-3
Charts	B-4-6
Feed Ratios	B-7
Reliability Statement	B-8

U.S. Average Prices:

Commodity Prices Used to Feed Price Ratios	B-7
Feeder Livestock	B-7

Index Numbers of Prices Received, United States, September 2002,
with Comparisons

Index	1910-14=100				1990-92=100		
	2001		2002		2001		2002
	Average:						
	1990-92: Sep	Aug	Sep	Sep	Sep	Aug	Sep
All Farm Products	639	675	*638	630	106	*100	99
All Crops	500	507	*564	545	103	*114	111
Food Grains	325	292	*363	395	92	*114	124
Feed Grains & Hay	363	330	*395	409	92	*110	115
Cotton	517	325	*279	275	64	*54	54
Tobacco	1263	1639	*1570	1570	108	*104	104
Oil-Bearing Crops	554	445	*539	495	81	*99	90
Fruit & Nuts	716	902	*944	923	129	*135	132
Commercial Vegetables	698	900	*803	799	135	*120	120
Potatoes & Dry Beans	540	520	*659	545	103	*130	108
Other Crops	493	554	558	558	112	113	113
Livestock & Products	768	848	*668	658	111	87	86
Meat Animals	1021	976	*857	822	96	*84	81
Dairy Products	799	1051	*694	707	131	*87	88
Poultry & Eggs	282	341	*263	265	121	94	94
Food Commodities					109	*98	97

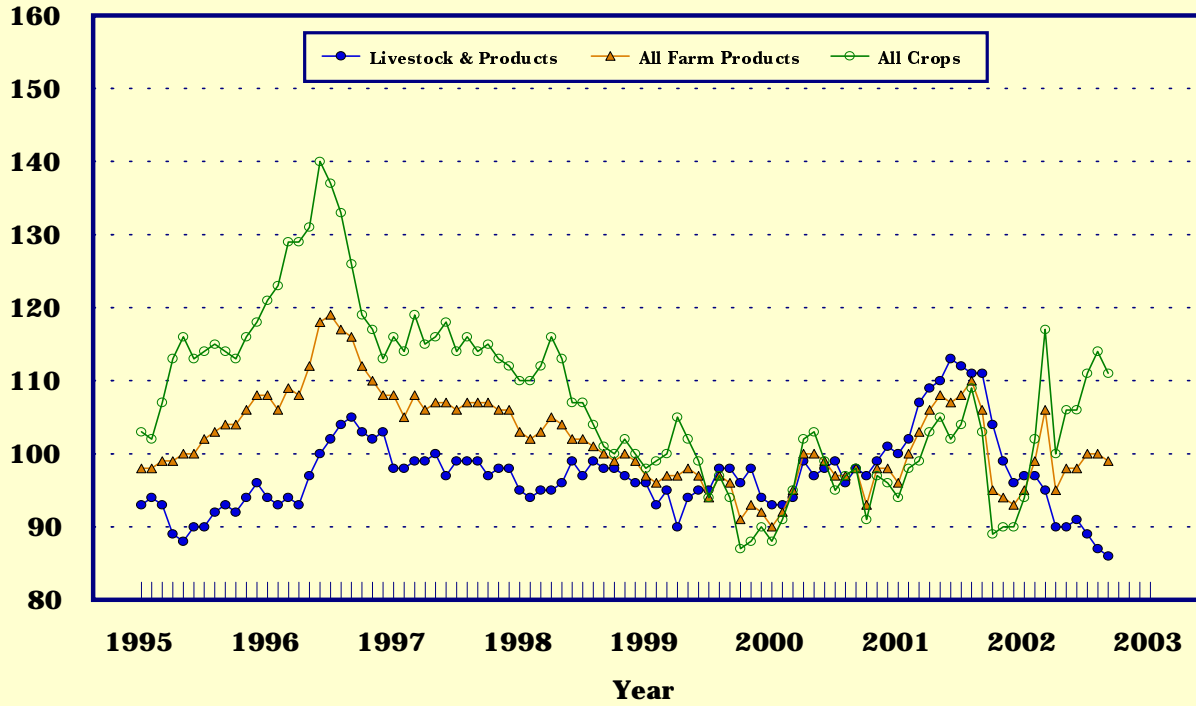
* Revised.

Selected Index Numbers for Prices Received and Paid,
1990-92=100, by Months, United States, 2001 and 2002

Month	Index of Prices Received				Index of Prices Paid					
	All Farm Products		All Crops		Livestock and Products		All Items		Production Items	
	2001	2002	2001	2002	2001	2002	2001	2002	2001	2002
Jan	96	95	94	94	100	97	125	123	121	118
Feb	100	99	98	102	102	97	124	123	121	117
Mar	103	106	99	117	107	95	124	123	120	118
Apr	106	95	103	100	109	90	124	123	120	119
May	108	98	105	106	110	90	124	123	120	118
Jun	107	98	102	106	113	91	124	123	120	118
Jul	108	100	104	111	112	89	124	124	120	119
Aug	110	100	109	114	111	87	124	124	120	120
Sep	106	99	103	111	111	86	124	125	120	121
Oct	95		89		104		123		119	
Nov	94		90		99		123		118	
Dec	93		90		96		122		117	

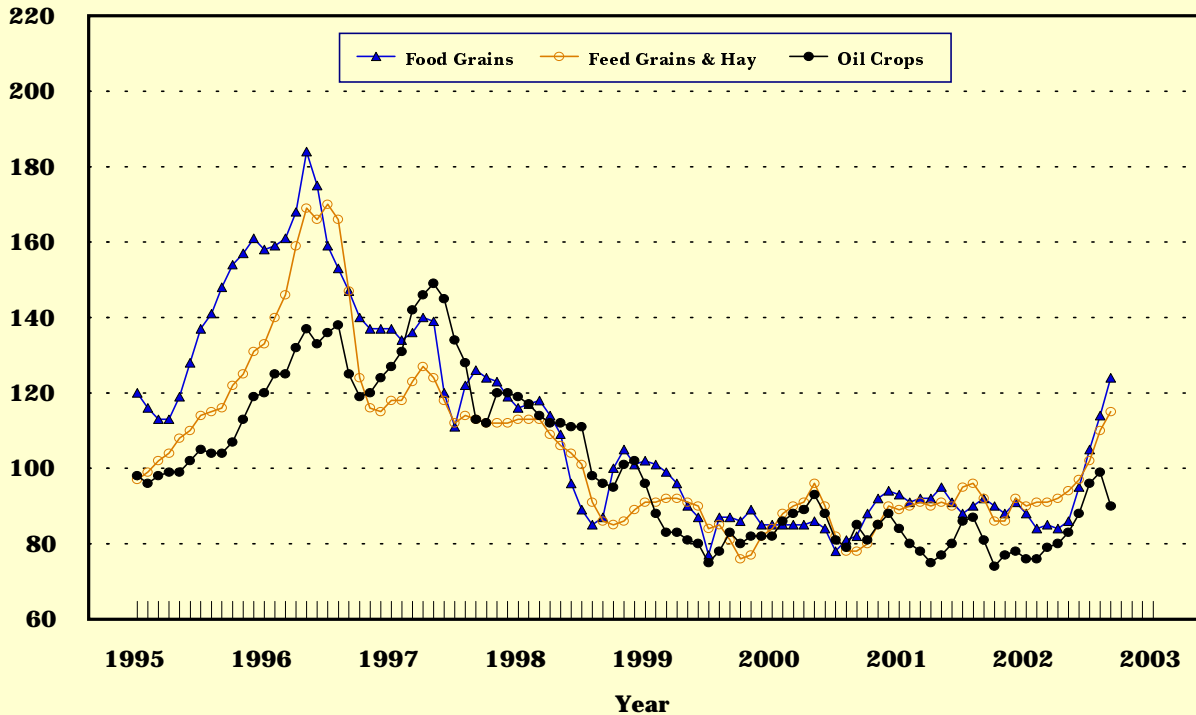
Prices Received, Major Indexes, US

Index Values(1990-92=100)



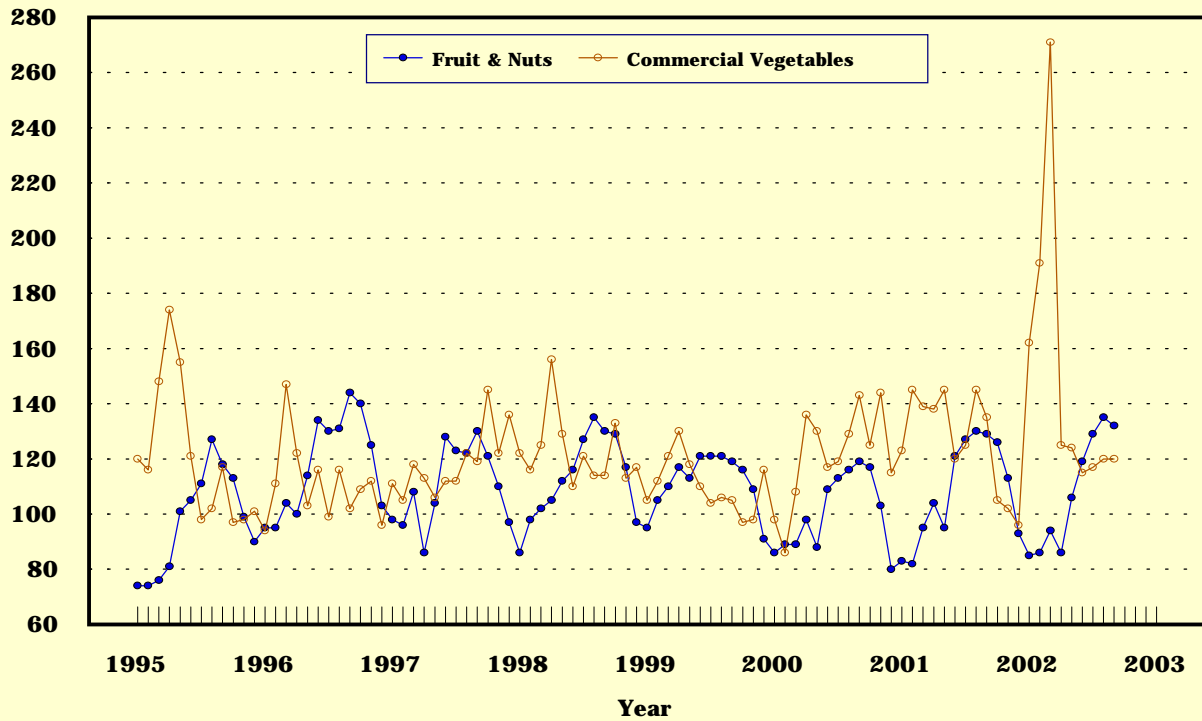
Prices Received, Food, Feed & Oil Indexes, US

Index Values(1990-92=100)



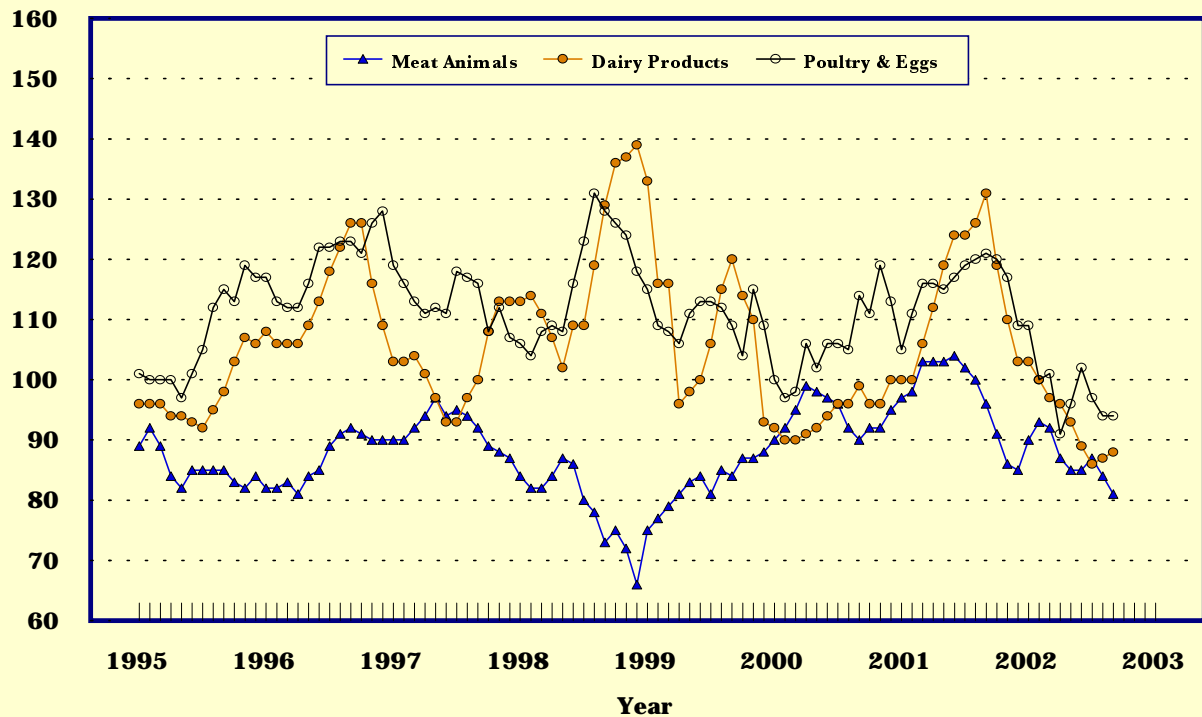
Prices Received, Fruit/Vegetable Indexes, US

Index Values(1990-92=100)



Prices Received, Livestock Product Indexes, US

Index Values(1990-92=100)



Prices Received, United States,
September 2002, with Comparisons

Commodity	Unit	Average 1990-92	Entire Month		Preliminary
			Sep	Aug	Sep
			2001	2002	2002
Dollars					
Field Crops					
Barley, All	Bu	2.12	2.24	2.70	2.49
Feed	Bu	1.90	1.71	2.09	2.06
Malting	Bu	2.43	2.72	2.93	2.83
Beans, Dry Edible	Cwt	19.10	18.10	23.40	17.80
Corn	Bu	2.30	1.91	2.38	2.56
Cotton, Upland	Lb	.606	.385	.330	.325
Cottonseed	Ton	96.00	85.00		95.00
Flaxseed	Bu	4.27	4.10	5.27	5.65
Hay, All, Baled 1/	Ton	76.30	99.00	93.70	95.50
Alfalfa 1/	Ton	77.20	108.00	101.00	102.00
Other 1/	Ton	60.00	71.90	71.30	74.80
Oats	Bu	1.22	1.39	1.68	1.75
Peanuts, In-Shell	Lb	.304	.249		.181
Potatoes	Cwt	5.82	6.04	7.65	6.53
Rice, Rough	Cwt	7.07	4.78	3.72	3.79
Sorghum Grain	Cwt	3.75	3.46	4.21	4.50
Soybeans	Bu	5.61	4.53	5.53	5.54
Sunflower 2/	Cwt	9.50	8.64	13.00	12.60
Tobacco	Lb	1.740	1.885	1.805	1.805
Wheat, All	Bu	2.96	2.85	3.63	4.07
Winter	Bu	2.93	2.81	3.63	4.00
Durum	Bu	2.86	3.02	3.55	4.00
Other Spring	Bu	3.11	2.87	3.66	4.23
Hard Red Winter	Bu		2.63	3.69	
Soft Red Winter	Bu		2.42	3.32	
Hard Red Spring	Bu		2.82	3.67	
White	Bu	3.24	3.17	3.64	
Fruit					
Citrus-Equiv on-tree					
Grapefruit	Box	5.77	6.88	5.60	5.81
Lemons	Box	10.10	15.28	16.52	15.97
Limes 3/	Box	10.15			
Oranges	Box	5.79	6.20	6.61	6.31
Tangelos	Box	5.82			
Tangerines	Box	15.11			
Temples	Box	6.23			
Noncitrus					
Apples, Fresh 4/	Lb	.212	.212	.245	.300
Grapes, Fresh 4/	Ton	506.00	670.00	730.00	650.00
Peaches, Fresh 4/	Lb	.216	.318	.278	.278
Pears, Fresh 4/	Ton	370.00	415.00	460.00	474.00
Strawberries, Fresh	Lb	.560	.781	.826	.617

1/ Mid-month price.

2/ KS, MN, ND and SD average.

3/ Current prices not published to avoid disclosure of individual firms.

4/ Equivalent packinghouse-door returns for CA, NY (apples only), and WA (apples, peaches, and pears). Prices as sold for other states.

-- continued

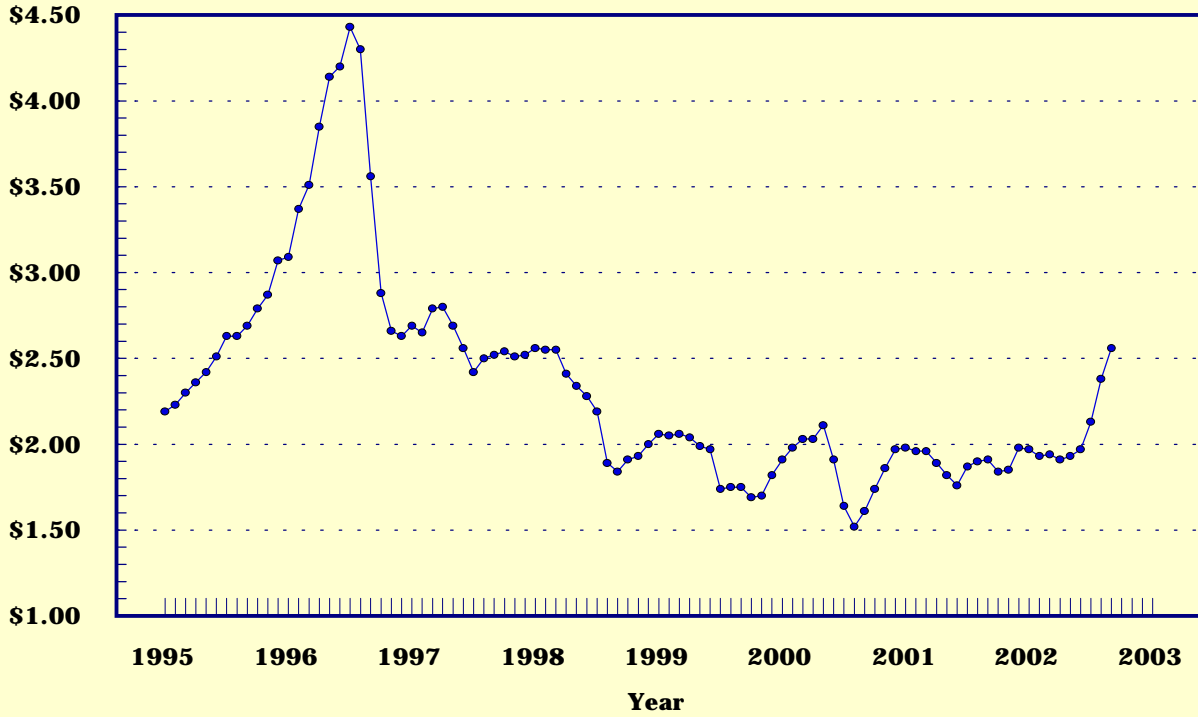
Prices Received, United States,
September 2002, with Comparisons (continued)

Commodity	Unit	Average 1990-92	Entire Month		Preliminary
			Sep	Aug	Sep
			2001	2002	2002
Dollars					
Vegetables, Fresh 1/					
Asparagus	Cwt	79.80		160.00	
Broccoli	Cwt	22.50	22.90	29.60	52.10
Cantaloupes 2/	Cwt	13.90	13.40	10.80	11.80
Carrots	Cwt	13.20	15.70	20.10	17.80
Cauliflower	Cwt	26.80	24.80	22.70	27.60
Celery	Cwt	11.60	9.43	11.00	13.20
Corn, Sweet	Cwt	15.70	19.00	18.70	18.10
Cucumbers 2/	Cwt		25.60	23.60	19.90
Lettuce	Cwt	11.90	26.20	14.60	13.00
Onions	Cwt	12.80	10.70	13.70	11.70
Snap Beans 2/	Cwt		62.90	58.80	78.60
Tomatoes	Cwt	32.30	23.50	23.70	21.30
Livestock					
Calves	Cwt	94.30	107.00	94.40	93.00
Cattle, All Beef	Cwt	72.90	69.00	64.30	64.60
Cows	Cwt	49.60	40.80	36.40	35.40
Steers & Heifers	Cwt	77.10	72.10	67.10	67.60
Milk Cows 3/	Head	1130.00			
Hogs, All	Cwt	47.70	45.20	31.90	26.50
Barrows & Gilts	Cwt	48.40	45.80	32.50	27.10
Sows	Cwt	39.50	34.80	18.90	15.20
Lambs	Cwt	56.20	52.50	75.00	
Sheep	Cwt	23.40	29.90	26.40	
Dairy and Poultry					
Milk, All 4/	Cwt	13.06	17.10	11.30	5/11.50
Fluid Grade	Cwt	13.10	17.10	11.40	5/11.60
Mfg Grade	Cwt	11.80	16.00	9.80	5/10.00
Broilers, Live 6/	Lb	.317	.430	.290	.300
Eggs, All 7/	Doz	.643	.555	.622	.579
Market 7/	Doz	.546	.377	.439	.390
Turkeys, Live 6/7/	Lb	.380	.405	.379	.369
Adjusted for Seasonal Variation					
Eggs, All	Doz	.545	.550	.676	.579
Milk, All 4/	Cwt	9.71	16.29	10.97	10.55

- 1/ F.O.B. shipping point.
- 2/ Monthly estimates began January 1995.
- 3/ Animals sold for dairy herd replacement only. Prices available for Jan, Apr, Jul, and Oct.
- 4/ Before deductions for hauling. Includes quality, quantity, and other premiums. Excludes hauling subsidies.
- 5/ Fat test percent: all milk 3.63, fluid milk 3.63, mfg grade 3.74.
- 6/ Liveweight equivalent price to producers, includes growers and contractors combined.
- 7/ Mid-month price.

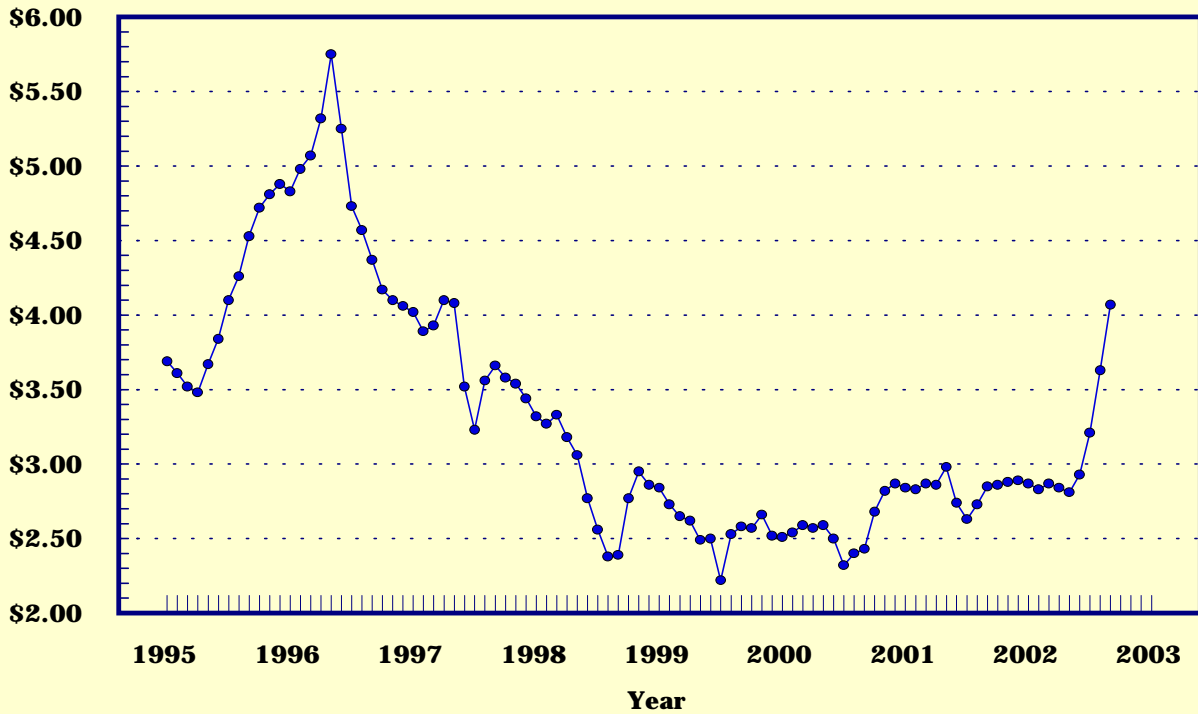
Prices Received, Corn, US

Dollars per Bu



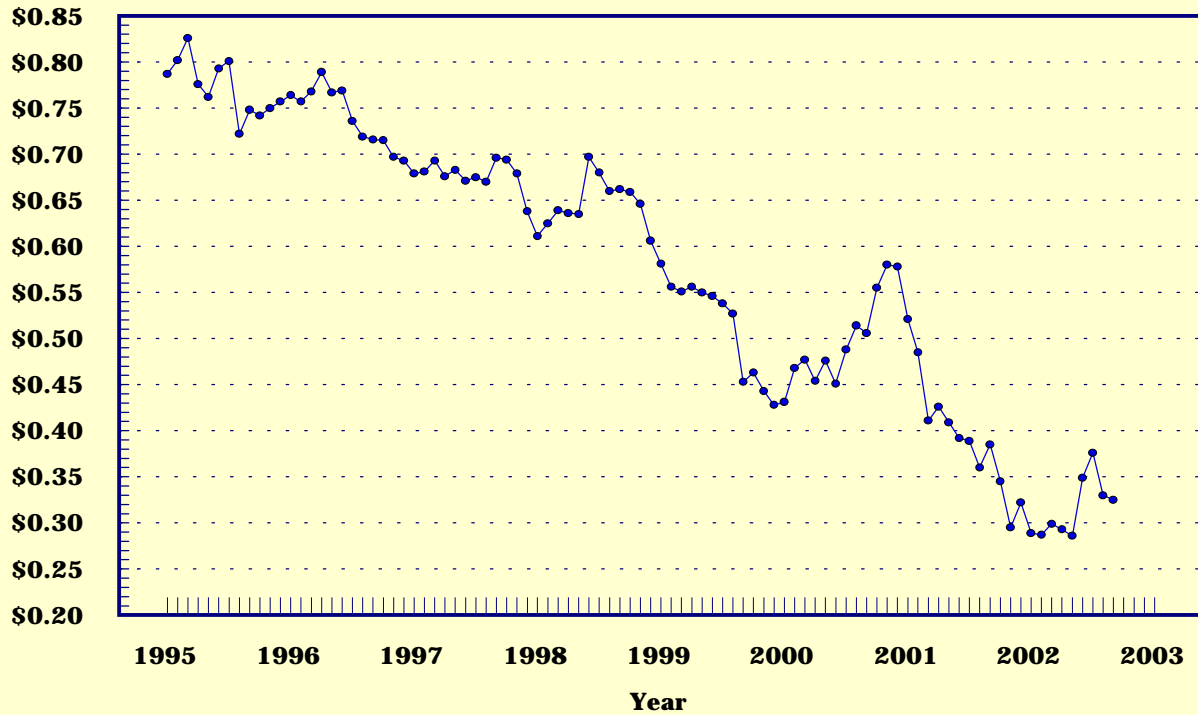
Prices Received, Wheat, US

Dollars per Bu



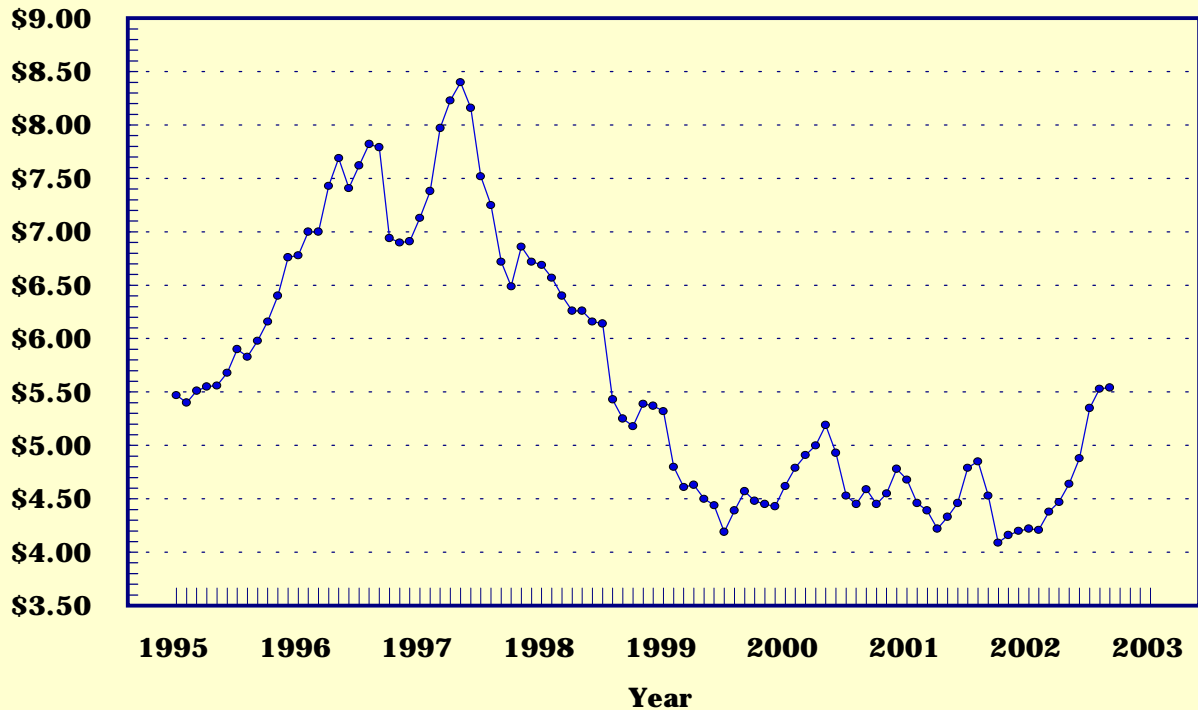
Prices Received, Cotton, US

Dollars per Lb



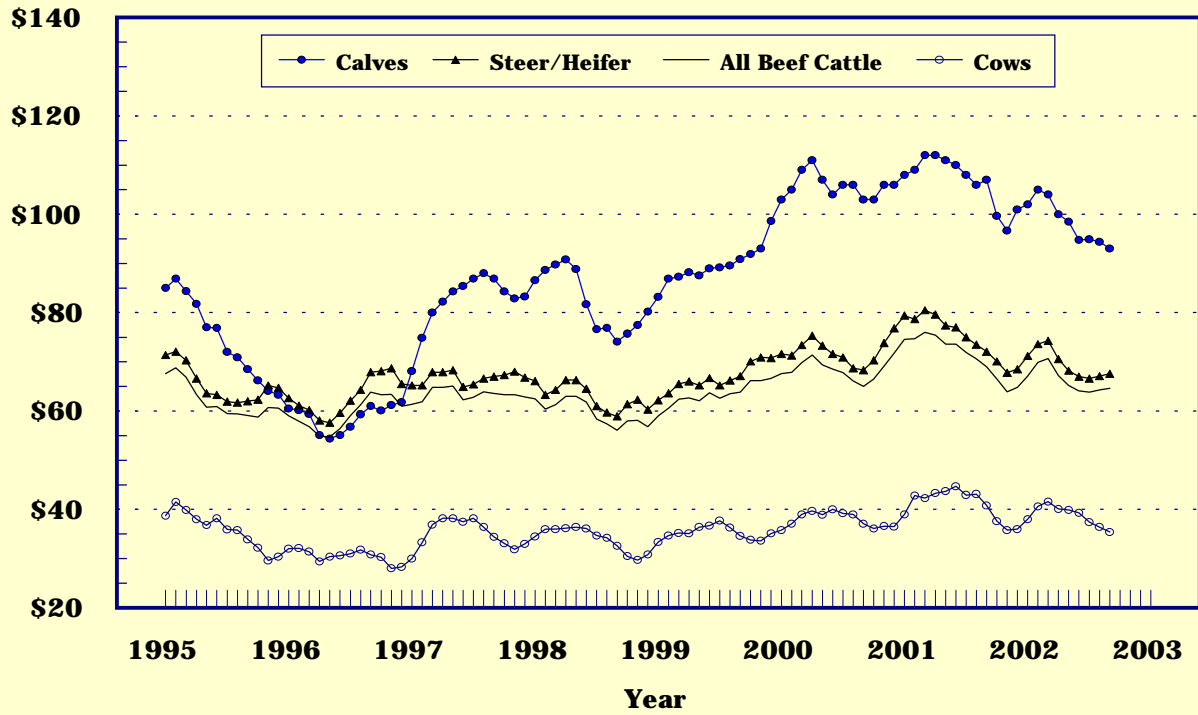
Prices Received, Soybeans, US

Dollars per Bu



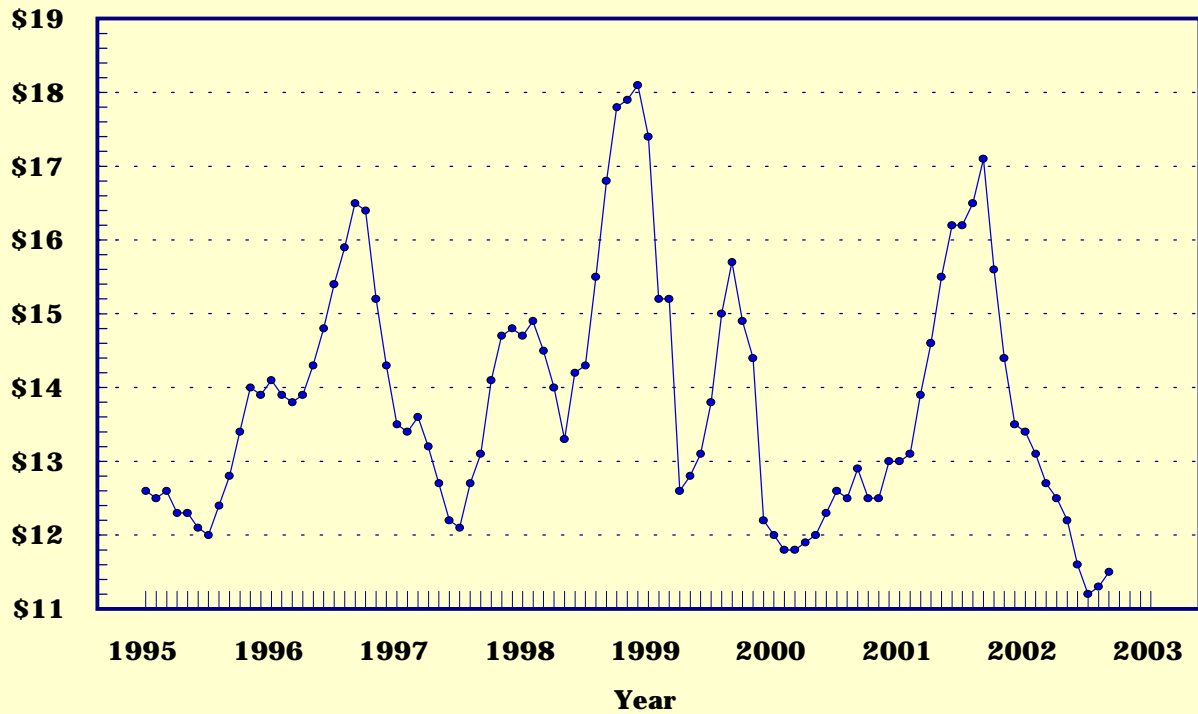
Prices Received, Cattle, US

Dollars per Cwt



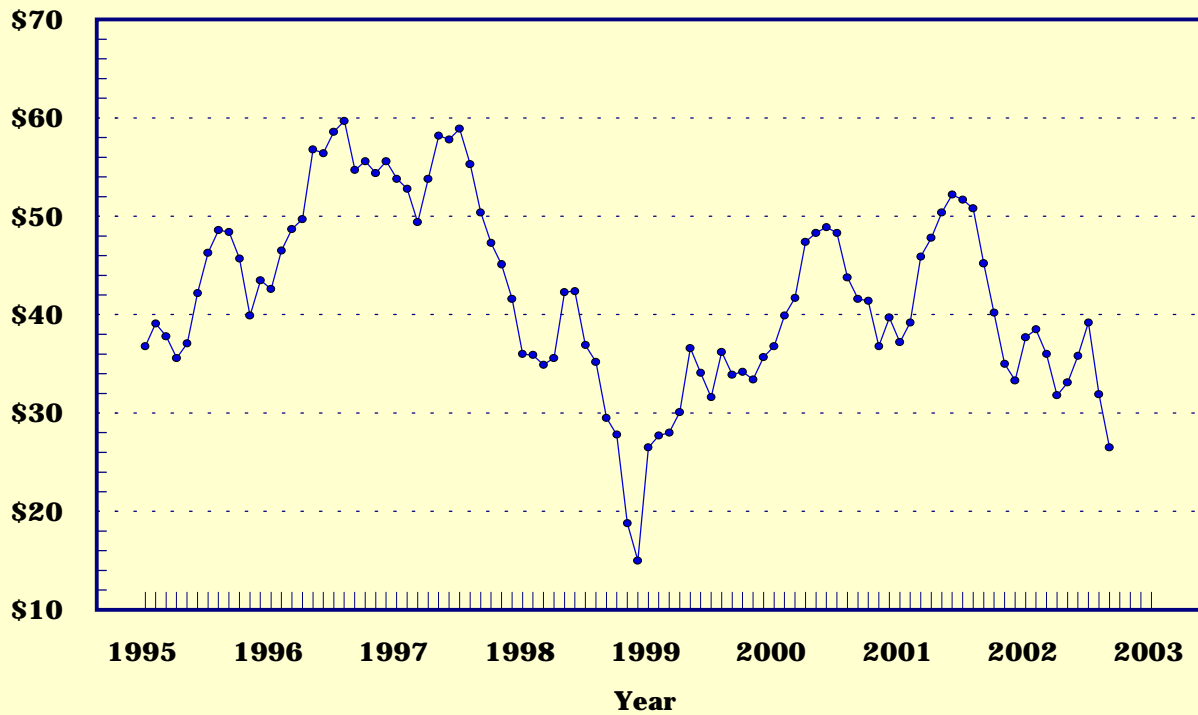
Prices Received, Milk, US

Dollars per Cwt



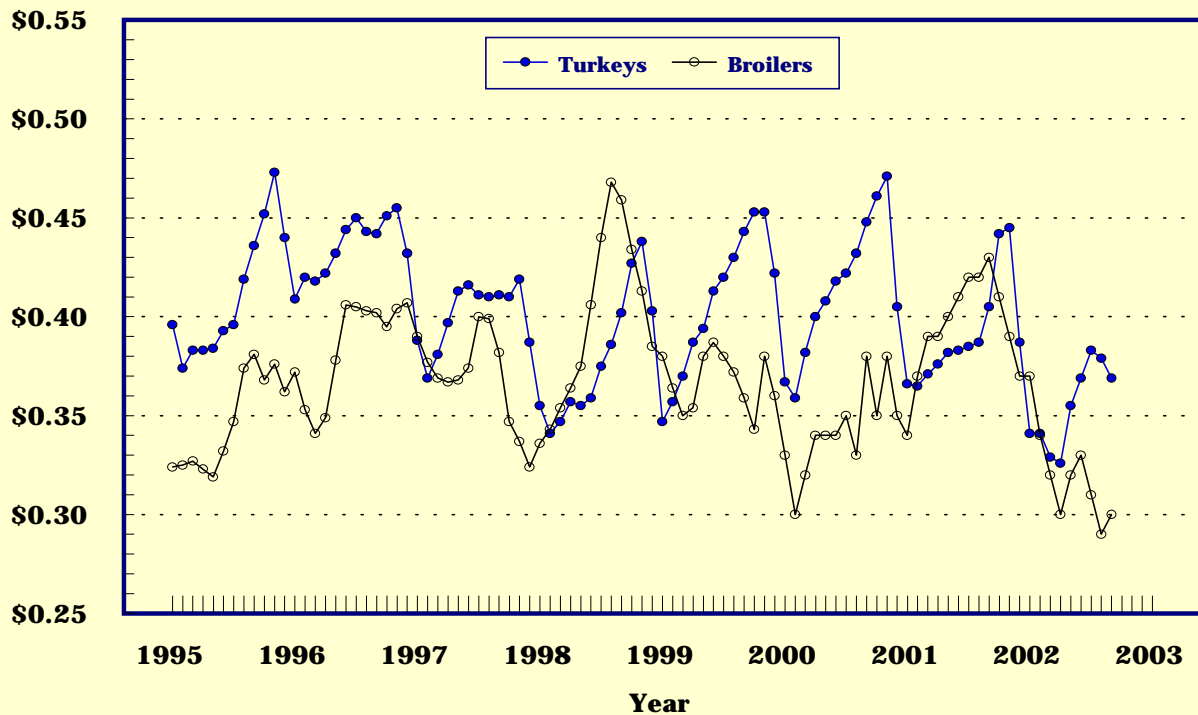
Prices Received, Hogs, US

Dollars per Cwt



Prices Received, Turkeys & Broilers, US

Dollars per Lb



Wheat: Prices Received, by States, August and September 2002

State	All Wheat		Winter Wheat		Durum Wheat 1/		Oth Spring Wheat	
	Aug 2/	Sep 3/	Aug 2/	Sep 3/	Aug 2/	Sep 3/	Aug 2/	Sep 3/
	Dollars per Bushel							
AR	3.26	3.79	3.26	3.79				
CA	4/	4/	4/	4/	4/	4/		
CO	3.67	4.28	3.68	4.28			3.46	4.25
ID	3.38	3.47	3.38	3.45			3.39	3.50
IL	3.25	3.60	3.25	3.60				
IN	3.44	3.73	3.44	3.73				
KS	3.71	4.32	3.71	4.32				
MI	3.34	3.75	3.34	3.75				
MN	3.76	4.35	3.38	3.75			3.77	4.36
MO	3.33	3.80	3.33	3.80				
MT	3.65	4.40	3.65	4.35	3.78	4.20	3.63	4.45
NE	3.76	4.30	3.76	4.30				
ND	3.55	4.28	3.35	3.95	3.48	3.90	3.57	4.35
OH	3.33	3.78	3.33	3.78				
OK	3.61	4.38	3.61	4.38				
OR	3.70	4.29	3.68	4.25			3.84	4.50
SD	3.82	4.49	3.93	4.51			3.78	4.48
TX	3.61	4.22	3.61	4.22				
WA	3.81	3.87	3.78	3.85			3.92	4.00
US	3.63	4.07	3.63	4.00	3.55	4.00	3.66	4.23

- 1/ Durum discontinued September 2001 for MN and SD.
- 2/ Entire month.
- 3/ Mid-month.
- 4/ Price not published to avoid disclosure of individual firms.
- 5/ Insufficient sales to establish a price.

Prices Received for Selected Agricultural Commodities, by Months, United States, 2001 and 2002

Month	All Wheat		Corn		Soybeans		Beef Cattle 1/		All Hogs	
	2001	2002 2/	2001	2002 2/	2001	2002 2/	2001	2002 2/	2001	2002 2/
	Dollars per Bushel						Dollars per Cwt			
Jan	2.84	2.87	1.98	1.97	4.68	4.22	74.60	67.10	37.20	37.70
Feb	2.83	2.83	1.96	1.93	4.46	4.21	74.70	69.90	39.20	38.50
Mar	2.87	2.87	1.96	1.94	4.39	4.38	76.00	70.70	45.90	36.00
Apr	2.86	2.83	1.89	1.91	4.22	4.47	75.40	67.20	47.80	31.80
May	2.98	2.81	1.82	1.93	4.33	4.64	73.50	65.20	50.40	33.10
Jun	2.74	2.93	1.76	1.97	4.46	4.88	73.50	64.10	52.20	35.80
Jul	2.63	3.21	1.87	2.13	4.79	5.35	71.80	63.80	51.70	39.20
Aug	2.74	3.63	1.90	2.38	4.85	5.53	70.60	64.30	50.80	31.90
Sep	2.85	4.07	1.91	2.56	4.53	5.54	69.00	64.60	45.20	26.50
Oct	2.87		1.84		4.09		66.50		40.20	
Nov	2.87		1.85		4.16		64.00		35.00	
Dec	2.88		1.98		4.20		64.80		33.30	

- 1/ Cows, steers and heifers.
- 2/ Current month prices are mid-month; prices for previous months are for the entire month.

Grains: Prices Received, by States, August and September 2002

State	Barley 1/		Corn		Oats		Soybeans		Sorghum Grain	
	Aug 2/	Sep 3/	Aug 2/	Sep 3/	Aug 2/	Sep 3/	Aug 2/	Sep 3/	Aug 2/	Sep 3/
	Dollars per Bushel						Dollars per Cwt			
AL										
AR							5.59	5.63	4/	4/
CA	5/	5/								
CO	3.01	3.02	2.50	2.80						
ID	3.06	3.01								
IL			2.47	2.55	1.77	1.75	5.73	5.75	4.80	5.00
IN			2.58	2.67			5.67	5.71		
IA			2.27	2.48	1.77	1.65	5.42	5.42		
KS			2.43	2.75			5.60	5.57	3.93	4.33
KY			2.48	2.65			5.58	5.60		
LA							5.86	5.68		
MI			2.44	2.55	1.70	1.80	5.56	5.60		
MN	1.77	1.88	2.20	2.41	1.61	1.65	5.32	5.36		
MS							4/	4/		
MO			2.34	2.50			5.45	5.55	4.24	4.45
MT	3.07	2.95			2.18	5/				
NE			2.38	2.60	2.03	1.90	5.43	5.38	4.31	4.60
NC			2.84	3.05			5.72	5/		
ND	2.06	2.14	2.25	2.40	1.56	1.65	5.12	5.25		
OH			2.56	2.69	1.71	1.70	5.59	5.70		
OK									4.06	4.44
OR	2.30	2.53			2.35	5/				
PA			2.87	3.06	1.69	1.72				
SD	1.74	1.87	2.23	2.44	1.79	1.95	5.29	5.29		
TN			2.54	2.75			5.64	5.70		
TX			2.46	2.75	5/	5/			4.27	4.41
UT	2.27	2.38								
WA	2.38	2.23								
WI			2.29	2.40	1.59	1.50	5.31	5.30		
WY	3.25	3.24								
US	2.70	2.49	2.38	2.56	1.68	1.75	5.53	5.54	4.21	4.50

- 1/ The Three-State (MN, ND and SD) Feed Barley price for September 2002 is \$1.85
- 2/ Entire month.
- 3/ Mid-month.
- 4/ Price not published to avoid disclosure of individual firms.
- 5/ Insufficient sales to establish a price.

Malting and Feed Barley: Prices Received Selected States, August and September 2002

State	Malting Barley		Feed Barley	
	Aug	Sep	Aug	Sep
	Dollars per Bushel			
ID	3.11	3.10	2.21	2.20
MN	1/	1/	1.73	1.82
MT	3.22	3.10	2.09	2.05
ND	2.23	2.30	1.72	1.85
SD	2/	2/	1.74	1.87
WY	3.25	3.25	2.04	2.15

- 1/ Price not published to avoid disclosure of individual firms.
- 2/ Insufficient sales to establish a price.

Field Crops: Prices Received, by States, August and September 2002

State	Dry Edible Beans		Sunflower		Flaxseed		Tobacco		Peanuts 4/5/	
	Aug 1/	Sep 2/	Aug 1/	Sep 2/	Aug 1/	Sep 2/	Aug 1/	Sep 3/	Aug 4/	Sep 2/
	Dollars per Cwt		Dollars per Bu		Dollars per Pound					
AL										5/
CA	33.40	32.50								
CO	23.10	22.00								
FL							1.895	1.930		5/
GA							1.845	1.890		5/
ID	23.50	20.70								
IN										
KS			5/	5/						
KY										
MD										
MI	20.00	17.00								
MN	5/	17.20	12.90	13.70						
MO										
NE	19.90	20.30								
NC							1.790	1.800		
ND	21.10	16.10	14.30	13.80	5.27	5.65				
OH										
OK										
SC							1.755	1.770		
SD			14.90	12.70	5/	6/				
TN										
TX										
VA							1.860	1.740		
WV										
US	23.40	17.80	13.00	12.60	5.27	5.65	1.805	1.805		.181

- 1/ Entire month.
- 2/ Mid-month.
- 3/ Based on sales through first half of month.
- 4/ Marketing year Aug - Jan.
- 5/ Price not published to avoid disclosure of individual firms.
- 6/ Insufficient sales to establish a price.

Tobacco: Prices Received, by Area and Type, September 2002, with Comparisons

Class and Type	Type	Sep 2001	Aug 2002	Sep 2002 1/
Dollars per Pound				
Flue-cured				
Northern Auction Area 2/	--	1.890	1.770	1.705
Northern Contract Area 2/	--	1.880	1.815	1.805
Southern Auction Area 3/	--	1.880	1.650	1.725
Southern Contract Area 3/	--	1.905	1.820	1.870
Total Flue-cured Area	11-14:	1.885	1.805	1.805
US	11-37:	1.885	1.805	1.805

- 1/ Based on sales during the first half of the month.
- 2/ Consists of Eastern NC Belt, Old and Middle Belts in NC and VA.
- 3/ Consists of GA-FL Belt, SC Belt, and NC Border Belt.

Field Crops and Apples: Prices Received, by States,
August and September 2002

State	Cotton, Upland		September				Apples Fresh Use 1/4/
	Aug 1/	Sep 2/	Cotton- seed 5/	Hay, Baled 3/ All	Alfalfa	Other	
	Dollars per Pound		Dollars per Ton			Dol/Lb	
AL	6/	6/	7/				
AZ	6/	6/	6/	95.00	95.00	90.00	
AR	.285	.285	7/				
CA	6/	6/	7/	90.00	92.00	78.00	.339
CO				124.00	120.00	153.00	
GA	.285	.298	80.00				
ID				96.00	98.00	74.00	
IL				89.00	95.00	71.00	
IA				83.00	83.00	61.00	
KS				100.00	105.00	74.00	
KY				74.00	105.00	61.00	
LA	.329	.289	6/				
MI				84.00	85.00	65.00	.250
MN				69.00	79.00	50.00	
MS	.288	.311	86.00				
MO				71.00	110.00	53.00	
MT				83.00	85.00	75.00	
NE				92.00	92.00	89.00	
NV				103.00	102.00	115.00	
NM				141.00	145.00	117.00	
NY				99.00	120.00	80.00	.287
NC	6/	6/	7/				
ND				68.00	74.00	52.00	
OH				107.00	140.00	61.00	.330
OK				79.00	102.00	58.00	
OR				107.00	106.00	110.00	
PA				125.00	148.00	116.00	.202
SD				79.00	84.00	60.00	
TN	.352	.285	7/				
TX	.346	.333	97.00	84.00	153.00	62.00	
UT				97.00	99.00	58.00	
VA							.270
WA				110.00	106.00	134.00	.297
WI				70.00	75.00	40.00	
WY				110.00	111.00	106.00	
US	.330	.325	95.00	95.50	102.00	74.80	.300

1/ Entire month. 2/ Based on sales during the first half of the month.
3/ Mid-month. 4/ Equivalent packinghouse-door returns for CA, MI, NY and WA. Price at point of first sale for other states. 5/ Marketing year August-February. 6/ Prices not published to avoid disclosure of individual firms. 7/ Insufficient sales to establish a price.

Upland Cotton and Rice: Prices Received and Marketings,
United States, September 2002, with Comparisons

Item	Unit	Jul 2002 1/	Aug 2002 1/	Sep 2002 2/
Cotton, Upland				
Average Price	Dollars/Pound	.376	.330	.325
Marketings 3/	1,000 Bales	414	354	NA
Rice				
Average Price	Dollars/Cwt	3.77	3.72	3.79
Marketings 4/	1,000 Cwt	8786	11478	NA

1/ Entire month. 2/ Based on purchases for the first half of the month.
3/ Expanded data from sample of about 60 percent of buyers. 4/ Purchases by private firms and rice (rough equivalent) shipped by cooperatives.

Citrus Fruit: Prices and Equivalent Returns, by Utilization,
by State and United States, September 2002

Commodity And State	Equivalent Returns						
	F.O.B.	Packinghouse-door			On-tree		
	Fresh	All	Fresh	Process	All	Fresh	Process
Dollars per Box 1/							
Grapefruit							
CA	15.80	8.04	9.55	-0.25	5.81	7.32	-2.48
US	15.80	8.04	9.55	-0.25	5.81	7.32	-2.48
Lemons							
AZ	37.20	27.51	27.51		23.33	23.33	
CA	41.10	19.79	31.41	0.24	15.61	27.23	-3.94
US	40.80	20.15	31.12	0.24	15.97	26.94	-3.94
Oranges							
CA							
Valencia	16.00	8.70	9.22	0.74	6.31	6.83	-1.65
US	16.00	8.70	9.22	0.74	6.31	6.83	-1.65

1/ Net lbs. per box: Grapefruit-67; Lemons-76; Oranges-75.

Potatoes: Prices Received, by States,
 August and September 2002

State	: Aug	: Sep	::	State	: Aug	: Sep	::
	: Dollars per Cwt ::				: Dollars per Cwt		
AL	17.20	17.20	:: NC				
AZ			:: ND	- All 1/		4.85	
CA	18.10	19.20	::	- Fresh 2/			
- Winter			::	- Processing			
- Spring			:: OH		12.60	12.20	
- Summer	18.10	19.20	:: OR		5.60	5.30	
- Fall			:: PA		7.60	8.50	
CO	10.80	4.85	:: TX		12.00	13.00	
- Fresh 2/	15.50	NA	:: VA		7.00		
FL			:: WA	- All	6.40	5.40	
ID	7.05	6.35	::	- Processing	4.35	NA	
- Fresh 2/	11.40	NA	:: WI	- All 1/	8.90	7.60	
- Processing	5.20	NA	::	- Fresh 2/	13.10	NA	
ME	6.30	5.75	::	- Processing	5.85	NA	
MI	7.20	6.55	::				
MN	7.40	7.00	:: US	- All 1/	7.65	6.53	
NY	15.20	16.40	::	- Fresh 2/	14.80	NA	
			::	- Processing	4.83	NA	

1/ Average price of potatoes sold for all uses, including table stock, processing, seed and livestock feed.

2/ Fresh market prices only, includes table stock prices.

Cattle: Prices Received, by States, August and September 2002

State	Cows 1/		Steers & Heifers:		Beef Cattle 4/		Calves	
	Aug 2/	Sep 3/	Aug 2/	Sep 3/	Aug 2/	Sep 3/	Aug 2/	Sep 3/
	Dollars per Cwt							
AZ	35.70	34.00	69.00	71.80	68.70	71.40	101.00	101.00
AR	34.50	33.80	72.20	71.80	61.60	61.20	81.50	80.50
CA	35.00	33.50	65.00	66.50	49.40	49.00	79.00	80.50
CO	37.70	36.60	76.60	76.80	76.20	76.40	91.90	90.00
FL	36.50	34.00	70.00	69.40	49.60	47.80	85.50	81.70
GA	36.40	34.90	66.60	66.50	47.00	45.60	82.90	82.20
ID	33.80	32.90	64.80	63.80	59.20	57.00	84.00	85.00
IL	37.60	37.00	64.00	64.00	63.50	63.50	90.60	91.00
IA	36.70	35.00	62.10	62.00	61.60	61.50	84.00	82.30
KS	35.50	34.00	66.30	65.70	66.00	65.10	94.60	93.70
KY	36.00	34.00	72.00	71.00	63.10	62.10	80.00	79.00
LA	35.60	33.00	69.50	69.00	48.10	46.30	83.50	82.00
MI	39.50	37.50	59.00	58.00	53.20	51.90	100.00	97.00
MN	38.70	38.00	61.50	61.00	57.90	57.30	83.00	80.00
MO	35.40	33.90	76.60	77.30	67.50	67.80	85.90	87.30
MT	36.60	36.10	74.90	76.20	62.60	68.20	91.60	92.10
NE	33.60	33.60	64.90	66.10	64.00	65.10	98.10	96.00
NM	38.20	37.20	76.70	76.80	61.30	61.40	90.00	90.00
ND	34.90	34.00	74.70	76.00	58.00	65.50	84.40	83.00
OH	34.10	33.00	62.00	62.00	59.20	59.10	70.00	72.00
OK	35.50	35.40	77.20	77.60	72.60	73.00	88.30	87.20
OR	35.00	34.50	72.00	70.00	60.90	59.40	80.00	79.00
PA	37.60	36.10	62.50	62.10	56.00	55.30	112.00	110.00
SD	37.50	35.90	69.60	71.50	64.50	67.20	96.00	94.90
TN	34.00	32.00	72.00	71.00	56.80	55.40	77.00	77.00
TX	35.70	34.80	67.10	68.60	64.90	66.20	93.20	91.00
VA	32.70	30.60	65.00	65.00	55.00	57.40	74.60	76.20
WI	38.90	38.30	61.00	61.00	48.20	47.80	128.00	127.00
WY	36.90	36.50	76.60	78.40	71.40	74.20	95.00	93.00
US	36.40	35.40	67.10	67.60	64.30	64.60	94.40	93.00

- 1/ Beef cows and cull dairy cows sold for slaughter.
- 2/ Entire month.
- 3/ Mid-month.
- 4/ "Cows" and "steers and heifers" combined.

Hogs: Prices Received, by States, August and September 2002

State	Sows		Barrows and Gilts		All Hogs	
	Aug 1/	Sep 2/	Aug 1/	Sep 2/	Aug 1/	Sep 2/
	Dollars per Cwt					
AR	18.70	14.50	29.00	25.00	28.00	24.00
IL	18.00	14.00	32.10	26.00	31.00	25.00
IN	21.50	16.00	30.70	24.50	29.80	23.70
IA	20.90	15.10	32.80	27.40	32.60	27.30
KS	18.30	15.90	29.20	26.80	27.90	25.40
MI	19.00	14.00	30.50	25.00	29.60	24.10
MN	20.20	16.00	36.00	28.00	35.80	27.90
MO	16.80	14.30	29.30	25.30	27.90	24.30
NE	18.90	14.00	36.30	29.00	36.00	28.70
NC	18.30	14.90	31.90	28.20	31.80	28.10
OH	18.00	15.60	32.10	27.00	31.50	26.50
OK	17.50	14.30	28.40	24.50	26.90	23.10
PA	16.90	13.80	29.60	24.60	27.70	23.00
SD	21.10	17.00	36.80	28.00	34.60	26.70
TX	18.50	15.00	27.60	24.60	26.40	23.20
WI	19.50	16.50	29.70	24.60	28.40	23.50
US	18.90	15.20	32.50	27.10	31.90	26.50

1/ Entire month.

2/ Mid-month.

Sheep and Poultry: Prices Received, by States,
August and September 2002

State	August		September
	Sheep 1/	Lambs 1/	Eggs 2/3/
	---- Dollars per Cwt ----		Dol/Doz
AL			.380
AR			.340
CA	29.50	73.50	.380
CO	21.70	77.20	
CT			.500
FL			.360
GA			.357
ID	29.00	72.00	
IN			.410
IA	23.20	79.40	.299
KS	22.00	75.90	
ME			.580
MI			.380
MN	21.20	71.60	.350
MS			.400
MO			.315
MT	23.70	75.90	
NE	23.30	74.70	
NY			.440
NC			.360
ND	21.90	70.30	
OH	20.90	72.80	.417
OR	22.50	70.60	
PA			.470
SC			.450
SD	23.60	75.90	
TX	33.10	74.90	.410
UT	23.00	71.00	
WA			.519
WY	23.70	80.10	
US	26.40	75.00	.390

- 1/ Entire month.
- 2/ Mid-month.
- 3/ Market (table) eggs.

Milk and Milk Cows: Prices Received, by States, August and September 2002

State	August						September			
	Fluid Grade Milk 1/		Manufacturing Grade Milk		All Milk 2/		All Milk 2/3/		Milk Cows 4/	
	Price	Fat Test	Price	Fat Test	Price	Fat Test	Price	Fat Test	Price	Fat Test
AZ	11.20	3.59			11.20	3.59	11.20	3.60		
CA	10.40	3.58	10.30	3.94	10.40	3.58	10.40	3.62		
FL	14.70	3.70			14.70	3.70	14.70	3.69		
ID	10.60	3.50	9.90	3.67	10.60	3.50	10.70	3.57		
IL	11.40	3.56	10.50	3.52	11.40	3.56	11.60	3.60		
IN	11.10	3.52	9.80	3.51	11.00	3.52	11.10	3.52		
IA	11.00	3.53	9.80	3.45	10.90	3.53	11.40	3.67		
KY	12.80	3.54			12.80	3.54	12.80	3.61		
MI	11.50	3.45	9.80	3.45	11.50	3.45	11.80	3.55		
MN	11.20	3.61	9.10	3.57	11.10	3.61	11.30	3.71		
MO	11.70	3.56	9.70	3.57	11.60	3.56	11.80	3.60		
NM	11.20	3.47			11.20	3.47	11.50	3.52		
NY	12.20	3.54			12.20	3.54	12.60	3.62		
OH	11.70	3.52	10.20	3.64	11.60	3.53	11.70	3.61		
PA	13.10	3.55	9.20	3.55	13.10	3.55	13.20	3.60		
TX	12.40	3.58			12.40	3.58	12.70	3.66		
VT	11.70	3.54			11.70	3.54	11.80	3.60		
VA	13.80	3.53			13.80	3.53	13.90	3.56		
WA	11.40	3.60			11.40	3.60	11.40	3.63		
WI	11.10	3.57	9.70	3.65	11.00	3.57	11.40	3.70		
US	11.40	3.56	9.80	3.64	11.30	3.56	11.50	3.63		

- 1/ Including milk diverted to manufacturing.
- 2/ Before deductions for hauling. Includes quality, quantity, and other premiums. Excludes hauling subsidies.
- 3/ Preliminary.
- 4/ Animals sold for dairy herd replacement only. Prices published Jan, Apr, Jul and Oct.

Parity Price Equivalent for Manufacturing Milk 1/: United States, August and September 2002, with Comparisons

Item	Sep 2001	Aug 2002	Sep 2002
Parity Equivalent.....Dol per Cwt	29.30	29.87	29.96
Average Price F.O.B.....Dol per Cwt	16.00	9.80	2/10.00
Average Fat Test of Milk..Percent	3.75	3.64	2/3.74

- 1/ The parity price equivalent during 2002 is 90.5 percent of the parity price of all milk sold to plants, compared with 91.0 percent in 2001. For additional details, see January 2002 issue of "Agricultural Prices".
- 2/ Preliminary.

United States Parity Prices for Farm Products and Average Prices Received as Percent of Parity Prices Based on Data for September 2002, with Comparisons 1/

Commodity and Unit	: Adjusted: : : Base : : Prices :	Parity Prices Based on Data for			: Prices as Percent : of Parity			
		: Sep : : 2001 :	: Aug : : 2002 :	: Sep : : 2002 :	: Sep : : 2001:	: Aug : : 2002:	: Sep : : 2002:	
		----- Dollars -----			---- Percents ----			
Basic Commodities	:							
All Wheat, Bu	:	.579	9.69	9.59	9.62	29	38	42
Rice, Cwt	:	1.55	27.00	25.70	25.70	18	14	15
Corn, Bu	:	.392	6.61	6.49	6.51	29	37	39
Cotton, Lb	:							
American Upland	:	.0990	1.68	1.64	1.64	23	20	20
Extra Long Staple	:	.140	2.34	2.32	2.33			
Peanuts, Lb	:	.0401	.681	.664	.666	37		27
Tobacco, By Type, Lb	:							
Flue-Cured 11-14	:	.255	4.21	4.22	4.24	45	43	43
VA Fire-Cured, 21	:	.257	4.23	4.26	4.27			
KY-TN Fire-Cured, 22-23	:	.319	5.31	5.28	5.30			
Burley, 31	:	.274	4.49	4.54	4.55			
Maryland, 32	:	.220	3.70	3.64	3.65			
Dark Air-Cured, 35-36	:	.270	4.49	4.47	4.48			
Sun-Cured, 37	:	.239	3.82	3.96	3.97			
PA Seedleaf, 41	:	.188	3.13	3.11	3.12			
Cigar Filler & Binder, 42-44, 54-55	:	.218	3.59	3.61	3.62			
Puerto Rican Filler, 46	:	.173	2.85	2.86	2.87			
Cigar Binder, 51-52	:	.678	10.70	11.20	11.30			
Designated Nonbasic	:							
All Milk, Sold to	:							
Plants, Per Cwt	:	1.99	32.20	33.00	33.10	2/51	2/33	2/32
Honey, Extracted, Lb	:	3/.0930	1.51	1.54	1.54			
Wool and Mohair	:							
Wool, Lb	:	.0950	1.66	1.57	1.58			
Mohair, Lb	:	.315	4.43	5.22	5.23			
Other Nonbasic	:							
Barley, Bu	:	.385	6.46	6.38	6.39	35	42	39
Cottonseed, Ton	:	15.70	255.00	260.00	261.00	33		36
Dry Edible Beans, Cwt	:	2.90	48.00	48.00	48.20	38	49	37
Flaxseed, Bu	:	.684	11.40	11.30	11.40	36	47	50
Oats, Bu	:	.239	3.78	3.96	3.97	37	42	44
Potatoes, Cwt	:	.817	13.70	13.50	13.60	44	57	48
Rye, Bu	:	.341	5.51	5.65	5.66			
Sorghum Grain, Cwt	:	.666	11.30	11.00	11.10	31	38	41
Soybeans, Bu	:	.858	14.40	14.20	14.30	31	39	39
Sweetpotatoes, Cwt	:	2.18	34.40	36.10	36.20			
Apples, Fresh, Lb 4/ Citrus (equiv on-tree), box:	:	.0289	.490	.479	.480	43	51	63
Grapefruit	:	.441	8.11	7.30	7.33	85	77	79
Lemons	:	1.08	19.70	17.90	17.90	78	92	89
Limes (FL)	:	1.26	20.90	20.90	20.90			
Oranges	:	.643	11.40	10.60	10.70	54	62	59
Tangerines	:	1.55	27.60	25.70	25.70			
Temples (FL)	:	.527	9.72	8.73	8.75			
Beef Cattle, Cwt	:	9.56	159.00	158.00	159.00	43	41	41
Calves, Cwt	:	12.70	209.00	210.00	211.00	51	45	44
Hogs, Cwt	:	6.18	103.00	102.00	103.00	44	31	26
Lambs, Cwt	:	10.80	174.00	179.00	179.00	30	42	
Sheep, Cwt	:	4.57	72.70	75.70	75.90	41	35	
Eggs, Doz	:	.0933	1.56	1.55	1.55	2/35	2/44	2/37
Turkeys, Live, Lb	:	.0582	.962	.964	.967	42	39	38

--continued

Parity Prices Based on Data for September 2002, United States 1/ (continued)

Other Nonbasic Commodities	Adj Base Prices	Parity Prices	Other Nonbasic Commodities	Adj Base Prices	Parity Prices
	Dollars			Dollars	
Field Crops and Misc Commodities			Noncitrus Fruit		
Hops, Lb	.253	4.20	Peaches, cont.		
Spearmint Oil, Lb	1.64	27.20	Processing 5/ Excl Dried		
Tobacco, Lb Type 61	2.56	42.50	Clingstone, CA, Ton	32.50	540.00
Noncitrus Fruit			Pears, Ton Fresh 4/	51.70	859.00
Apples, Ton 6/ Processing	19.20	319.00	Dried, CA 6/	162.00	2690.00
Apricots, Ton Fresh 7/	102.00	1690.00	Plums, CA, Ton Fresh, Equiv on-Tree	53.80	894.00
Dried, CA	290.00	4820.00	Prunes, Dried, CA, Ton 6/	137.00	2280.00
Avocados, Ton 7/	214.00	3550.00	Prunes and Plums, Excl CA, Ton Fresh 9/	51.40	854.00
Cherries Sweet, Ton	173.00	2870.00	Processing 6/ Excl Dried	24.10	400.00
Tart, Lb	.0271	.450	Tree Nuts 10/ Almonds, Lb	.215	3.57
Cranberry, Bbl 5/	6.66	111.00	Hazelnuts, Ton	118.00	1960.00
Dates, CA, Ton 7/	157.00	2610.00	Pistachio, Lb	.157	2.61
Grapes, Ton Raisin Variety	134.00	2230.00	Walnuts, Ton	183.00	3040.00
Other Dried	65.70	1090.00	Vegetables, Cwt 11/ Fresh		
Kiwifruit, Ton	76.90	1280.00	Carrots 8/	2.00	33.20
Nectarines Fresh, Calif, Ton 7/	63.30	1050.00	Cauliflower 8/	4.46	74.10
Olives, CA Canning, Ton 5/	97.40	1620.00	Celery 8/	2.00	33.20
Papayas (HI) Lb	.0505	.839	Honeydew Melons	2.71	45.00
Peaches Fresh, Lb 4/	.0383	.636	Lettuce	2.35	39.00
Dried, CA, Ton	103.00	1710.00	Onions 8/	1.70	28.20
			Tomatoes	4.38	72.80

- 1/ Parity prices are computed under the provisions of Title III, Subtitle a, Section 301 (a) of the Agricultural Adjustment Act of 1938 as amended by the Agricultural Acts of 1948, 1949, and 1956. See January "Agricultural Prices" for details on adjusted base price and parity price computations.
- 2/ Seasonally adjusted price as percentage of parity price.
- 3/ Wholesale extracted. Adjusted base price derived from state annual average prices weighted by production. For 1982 through 1985 the national averages are the support prices.
- 4/ Equivalent packinghouse-door returns for CA, NY (apples only), OR (except peaches), and WA. Price at point of first sale for other states.
- 5/ Equivalent returns for bulk fruit at first delivery point.
- 6/ Equivalent returns at processing plant door.
- 7/ Equivalent returns at packinghouse door.
- 8/ Includes some processing.
- 9/ Based on "as sold" prices for fresh fruit in all states.
- 10/ Prices in-shell basis except almonds which are shelled basis.
- 11/ F.O.B. shipping point prices.

Potatoes: Prices Received, Monthly and Marketing Year Average
by State and U.S., 2001 1/

State	Jan	Feb	Mar	Apr	May	Jun
	Dollars per Cwt					
AL						13.60
AK						
AZ				18.40	16.10	9.60
CA - All	15.80	16.00	7.35	6.85	12.10	11.10
Winter	21.00	19.90	22.40	22.50		
Spring					13.80	11.60
Summer						
Fall	5.30	5.30	5.25	5.15	5.40	7.20
CO - All	2.40	2.50	2.55	2.75	2.95	5.00
Fresh	1.95	1.90	2.00	2.15	2.80	5.50
DE						
FL		24.40	27.60	12.70	8.85	8.20
ID - All	3.65	3.80	4.10	4.00	3.35	3.85
Fresh	2.00	2.20	1.70	2.00	2.20	4.40
Processing	4.60	4.80	4.70	4.40	4.30	4.10
IL						
IN						
KS						
ME	5.50	5.90	6.20	6.80	7.30	7.00
MD						
MA						
MI	6.85	7.15	7.60	8.35	7.30	8.05
MN	5.00	5.15	4.75	4.90	5.20	4.80
MO						
MT						
NE						
NV						
NJ						
NM						
NY	8.70	8.55	8.65	8.90		
NC						6.05
ND - All	5.35	5.95	6.00	5.95	5.50	5.15
Fresh	6.00	5.65	5.65	5.55	5.20	4.00
Processing	4.85	5.75	5.75	5.50	5.40	5.95
OH	7.50	7.55	7.00	7.10	7.55	
OR	4.60	4.80	5.05	4.90	4.70	6.30
PA	7.75	7.90	8.90	8.95	8.50	9.15
RI						
SD						
TX					8.70	8.80
UT						
VA						6.50
WA - All	4.55	4.30	4.20	4.30	3.95	5.00
Processing	4.70	4.45	4.30	4.50	4.45	4.65
WI - All	3.95	4.85	5.35	5.40	5.15	4.45
Fresh	2.45	2.50	2.45	2.35	3.00	3.25
Processing	5.00	5.70	6.40	6.75	7.05	7.05
US - All	4.73	5.28	5.12	5.47	5.22	5.71
Fresh	4.38	5.41	4.50	5.50	7.23	8.36
Processing	4.95	5.15	5.10	5.19	5.09	4.96

See footnote at end of table.

-- continued

Potatoes: Prices Received, Monthly and Marketing Year Average
by State and U.S., 2001 1/ (continued)

State	Jul	Aug	Sep	Oct	Nov	Dec	MYA
Dollars per Cwt							
AL	9.70	11.80					10.40
AK							20.30
AZ							15.50
CA - All	12.60	15.70	14.80	11.00	13.20	17.10	14.20
Winter					18.40	19.50	19.70
Spring	12.60						12.40
Summer	15.50	15.70	14.80	11.00			15.10
Fall	8.00				7.40	7.50	8.15
CO - All	6.35	8.75	8.35	7.15	7.40	7.70	9.35
Fresh	7.40	12.50	9.05	8.05	8.10	8.60	10.60
DE							9.00
FL							11.20
ID - All	5.15	6.05	5.75	5.05	5.05	5.45	6.15
Fresh	5.60	9.40	8.50	6.40	6.00	6.40	8.35
Processing	5.10	4.70	4.80	4.60	4.60	4.90	4.95
IL							5.65
IN							5.35
KS							12.00
ME	7.90	6.20	5.70	6.05	6.65	7.50	7.65
MD							8.50
MA							6.90
MI	6.50	6.90	6.35	6.45	7.10	7.20	7.65
MN		8.70	6.80	4.90	5.15	5.25	5.60
MO							5.10
MT							9.15
NE							6.60
NV							6.55
NJ							6.00
NM							7.10
NY		10.50	10.30	10.40	9.60	9.80	9.90
NC	5.95						6.00
ND - All			5.40	5.55	5.55	6.40	6.00
Fresh			9.50	8.45	8.00	9.35	9.25
Processing			4.80	4.80	4.65	4.95	4.85
OH	13.20	7.70	7.30	7.40	8.00	8.15	7.90
OR	6.45	6.35	5.35	4.70	5.60	5.85	6.40
PA		6.70	6.70	7.20	7.55	8.20	8.05
RI							6.70
SD							4.85
TX	10.60	12.10					10.30
UT							8.05
VA	6.90	6.90					6.85
WA - All	4.30	6.55	5.25	4.50	5.30	5.95	5.85
Processing	5.05	4.20	4.20	4.10	4.40	4.80	4.65
WI - All	6.40	7.25	5.80	5.75	6.40	6.45	7.10
Fresh	6.40	9.15	8.70	7.30	8.25	8.20	8.85
Processing		5.20	4.00	4.70	4.70	4.35	5.00
US - All	6.37	7.61	6.04	5.15	5.96	6.66	6.99
Fresh	8.94	13.50	10.20	8.13	8.28	9.22	10.79
Processing	5.24	4.73	4.58	4.42	4.77	5.04	5.05

1/ State Marketing Year Average Prices are computed by weighting state monthly prices by estimated sales for the month during the crop year. U.S. Marketing Year Average Price is computed by weighting state Marketing Year Average Prices by estimated sales for the crop year. Monthly prices refer to all potatoes sold in a given month regardless of the year harvested.

Citrus Prices

Revised State and U.S. monthly average prices and equivalent returns, and marketing year average prices for the 1999-2000, 2000-2001 and 2001-2002 citrus crops are shown on pages 29 through 54 of this publication. These data, together with the September Agricultural Prices 1966-2001 issues, supplement to the September 1965 issue, supplements to the October 1953-1964 issues and Statistical Bulletin No. 322 published in September 1962, bring to date the citrus price bulletin published as a supplement to the November 1952 issue of Agricultural Prices.

Revised monthly prices refer to all fruit sold in a given month regardless of the crop year in which the fruit was harvested.

Marketing year average prices refer to the prices received by growers for the entire marketing season for any one crop year. The crop year 2001-02 as shown on all citrus tables in this publication refers to the crop which bloomed in 2001 and was marketed during the 2001-02 season. For example, the 2001-02 marketing year average price received by California growers for tangerines refers to marketings from October 2001 through April 2002. In some years the season may vary a month or two, but a price was estimated only for those months with sufficient movement.

Monthly and marketing year average prices are weighted by box size at the U.S. level for grapefruit, oranges, and tangerines. Approximate net contents per box are as follows: Grapefruit: Arizona and California - 67 lbs., Florida - 85 lbs., and Texas - 80 lbs; Lemons - 76 lbs; Limes - 88 lbs.; Oranges: Arizona and California - 75 lbs., Florida - 90 lbs., and Texas - 85 lbs.; Tangelos - 90 lbs.; Tangerines: Arizona and California - 75 lbs. and Florida - 95 lbs.; Temples - 90 lbs.

Citrus prices are based on weighted average f.o.b. packed prices received for fresh fruit and weighted average prices received at the processing plant door for processing fruit. Equivalent returns for fresh and processed fruit are calculated at the packinghouse-door level and on-tree level by deducting hauling, picking, sorting, grading, packing, cooling, marketing, and other costs from the two base prices. In some cases, this results in negative returns.

Oranges: Average Prices and Equivalent Returns, United States
September 1999 - August 2002

State, Month, and Year		Equiv. P.H.D.			Equiv. On-Tree			
		F.O.B. Packed	All	Fresh	Proc.	All	Fresh	Proc.
		Dollars per box						
US		All Oranges						
Sep	1999	27.10	12.21	20.71	3.11	9.96	18.46	0.86
Oct		25.30	11.62	18.45	3.10	9.50	16.39	0.89
Nov		19.60	6.67	12.33	4.55	4.70	10.21	2.63
Dec		15.60	5.36	8.45	4.78	3.42	6.30	2.87
Jan	2000	14.80	5.29	7.74	4.95	3.35	5.56	3.05
Feb		13.70	5.12	6.73	4.91	3.18	4.53	3.00
Mar		14.20	5.23	7.23	4.78	3.24	5.02	2.83
Apr		13.90	6.21	6.96	6.07	4.20	4.74	4.10
May		14.70	6.39	7.80	6.20	4.39	5.56	4.23
Jun		15.50	6.36	8.73	5.94	4.34	6.48	3.97
Jul		13.20	4.59	6.56	3.69	2.45	4.28	1.61
Aug		12.40	2.65	5.89	-0.13	0.35	3.59	-2.43
Sep		12.60	2.57	6.12	-0.13	0.29	3.85	-2.43
Oct		14.00	3.62	6.83	1.05	1.43	4.65	-1.14
Nov		16.60	5.20	9.23	4.25	3.20	7.03	2.30
Dec		15.60	4.95	8.24	4.31	2.95	6.03	2.36
Jan	2001	15.60	4.83	8.36	4.37	2.85	6.13	2.42
Feb		16.40	5.20	9.23	4.41	3.20	6.98	2.46
Mar		18.50	7.01	11.47	5.15	4.93	9.21	3.15
Apr		19.60	6.88	12.55	5.93	4.84	10.29	3.92
May		18.60	6.67	11.56	6.01	4.64	9.28	4.01
Jun		16.90	6.52	10.02	5.93	4.47	7.73	3.92
Jul		15.30	6.97	8.66	0.76	4.63	6.32	-1.58
Aug		15.60	7.35	8.96	0.76	5.01	6.62	-1.58
Sep		17.40	8.54	10.76	0.76	6.20	8.42	-1.58
Oct		16.50	7.21	9.24	1.06	4.99	7.01	-1.16
Nov		19.70	4.98	12.04	3.82	2.90	9.82	1.77
Dec		19.60	5.28	12.06	4.05	3.20	9.81	2.00
Jan	2002	20.30	5.84	12.89	4.62	3.75	10.62	2.57
Feb		20.10	6.15	12.80	4.71	4.05	10.51	2.66
Mar		19.10	6.79	11.85	5.45	4.64	9.53	3.34
Apr		19.50	6.79	12.29	5.88	4.65	9.96	3.77
May		17.30	6.61	10.30	6.08	4.47	7.96	3.97
Jun		14.80	6.16	7.86	5.77	4.00	5.50	3.66
Jul		14.30	6.45	7.48	0.74	4.06	5.09	-1.65
Aug		17.50	9.00	10.72	0.74	6.61	8.33	-1.65

Oranges: Average Prices and Equivalent Returns, Arizona
October 1999 - July 2002

State, Month, and Year		Equiv. P.H.D.			Equiv. On-Tree			
		F.O.B. Packed	All	Fresh	Proc.	All	Fresh	Proc.
Dollars per box								
AZ								
All Oranges								
Oct	1999	35.30	28.48	28.48		26.22	26.22	
Nov		21.20	10.58	14.38	-0.08	8.32	12.12	-2.34
Dec		17.50	8.51	10.68	-0.08	6.25	8.42	-2.34
Jan	2000	17.40	7.20	10.58	-0.08	4.94	8.32	-2.34
Feb		14.50	5.17	7.68	-0.08	2.91	5.42	-2.34
Mar		10.70	2.49	3.88	-0.08	0.23	1.62	-2.34
Apr		10.90	4.27	4.33	-0.08	1.98	2.04	-2.34
May		10.10	2.53	3.53	-0.13	0.23	1.23	-2.43
Jun		8.58	1.58	2.07	-0.13	-0.72	-0.23	-2.43
Jul		9.04	1.33	2.53	-0.13	-0.97	0.23	-2.43
Nov		17.70	7.35	10.74	-0.14	5.04	8.43	-2.45
Dec		17.10	6.94	10.14	-0.14	4.63	7.83	-2.45
Jan	2001	17.00	7.04	10.04	-0.14	4.73	7.73	-2.45
Feb		16.80	5.01	9.84	-0.14	2.70	7.53	-2.45
Mar		14.20	7.27	7.51	-0.17	4.93	5.17	-2.50
Apr		12.50	5.86	5.86		3.52	3.52	
May		10.20	3.56	3.56		1.22	1.22	
Jun		9.88	3.24	3.24		0.90	0.90	
Nov		24.70	15.06	17.60	-0.15	12.71	15.25	-2.50
Dec		24.40	12.17	17.30	-0.15	9.82	14.95	-2.50
Jan	2002	24.40	14.36	17.30	-0.15	12.10	14.95	-2.50
Feb		21.60	11.57	14.50	-0.15	9.22	12.15	-2.50
Mar		18.90	10.58	11.96	-0.15	8.21	9.58	-2.50
Apr		10.20	3.42	3.42		1.03	1.03	
May		9.50	2.70	2.70		0.31	0.31	
Jun		9.42	2.64	2.64		0.25	0.25	
Jul		5.60	-1.18	-1.18		-3.57	-3.57	
AZ								
Navel and Miscellaneous								
Oct	1999	35.30	28.48	28.48		26.22	26.22	
Nov		21.20	10.58	14.38	-0.08	8.32	12.12	-2.34
Dec		17.50	8.51	10.68	-0.08	6.25	8.42	-2.34
Jan	2000	17.40	7.20	10.58	-0.08	4.94	8.32	-2.34
Feb		14.50	5.17	7.68	-0.08	2.91	5.42	-2.34
Mar		10.50	2.31	3.68	-0.08	0.05	1.42	-2.34
Apr		6.08	-0.70	-0.74	-0.08	-2.96	-3.00	-2.34
May		16.40	8.20	9.58	-0.08	5.94	7.32	-2.34
Nov		17.70	7.35	10.74	-0.14	5.04	8.43	-2.45
Dec		17.10	6.94	10.14	-0.14	4.63	7.83	-2.45
Jan	2001	17.00	7.04	10.04	-0.14	4.73	7.73	-2.45
Feb		16.80	5.01	9.84	-0.14	2.70	7.53	-2.45
Mar		15.30	6.93	8.34	-0.14	4.62	6.03	-2.45
Nov		24.70	15.06	17.60	-0.15	12.71	15.25	-2.50
Dec		24.40	12.17	17.30	-0.15	9.82	14.95	-2.50
Jan	2002	24.40	14.36	17.30	-0.15	12.01	14.95	-2.50
Feb		21.60	11.57	14.50	-0.15	9.22	12.15	-2.50
Mar		20.40	10.10	13.30	-0.15	7.75	10.95	-2.50

Oranges: Average Prices and Equivalent Returns, Arizona and California
September 1999 - August 2002

State, Month, and Year	Equiv. P.H.D.				Equiv. On-Tree		
	F.O.B.						
	Packed	All	Fresh	Proc.	All	Fresh	Proc.
Dollars per box							
AZ							
Valencias							
Mar 2000	13.50	6.99	6.99		4.69	4.69	
Apr	12.50	5.99	5.99		3.69	3.69	
May	9.81	2.35	3.30	-0.13	0.05	1.00	-2.43
Jun	8.58	1.58	2.07	-0.13	-0.72	-0.23	-2.43
Jul	9.04	1.33	2.53	-0.13	-0.97	0.23	-2.43
Mar 2001	14.10	7.29	7.46	-0.18	4.95	5.12	-2.52
Apr	12.50	5.86	5.86		3.52	3.52	
May	10.20	3.56	3.56		1.22	1.22	
Jun	9.88	3.24	3.24		0.90	0.90	
Mar 2002	17.80	11.02	11.02		8.63	8.63	
Apr	10.20	3.42	3.42		1.03	1.03	
May	9.48	2.70	2.70		0.31	0.31	
Jun	9.42	2.64	2.64		0.25	0.25	
Jul	5.60	-1.18	-1.18		-3.57	-3.57	
CA							
All Oranges							
Sep 1999	27.10	12.21	20.71	3.11	9.96	18.46	0.86
Oct	26.40	11.68	20.01	3.11	9.43	17.76	0.86
Nov	20.80	11.45	14.08	0.90	9.19	11.83	-1.36
Dec	16.30	8.23	9.48	-0.08	5.97	7.22	-2.34
Jan 2000	15.40	7.45	8.58	-0.08	5.19	6.32	-2.34
Feb	14.20	6.06	7.38	-0.08	3.80	5.12	-2.34
Mar	14.20	5.71	7.44	-0.08	3.44	5.18	-2.34
Apr	14.00	5.26	7.21	-0.08	3.00	4.95	-2.34
May	15.10	5.69	8.33	-0.09	3.42	6.06	-2.36
Jun	15.60	5.99	8.99	-0.11	3.70	6.70	-2.39
Jul	12.90	3.31	6.39	-0.13	1.01	4.09	-2.43
Aug	12.40	2.65	5.89	-0.13	0.35	3.59	-2.43
Sep	12.70	2.59	6.19	-0.13	0.29	3.89	-2.43
Oct	12.60	2.23	6.01	-0.13	-0.07	3.71	-2.43
Nov	18.00	9.32	11.04	-0.14	7.01	8.73	-2.45
Dec	16.90	8.82	9.94	-0.14	6.51	7.63	-2.45
Jan 2001	16.50	8.61	9.54	-0.14	6.30	7.23	-2.45
Feb	17.00	8.92	10.07	-0.14	6.61	7.76	-2.45
Mar	19.40	10.62	12.52	-0.11	8.31	10.21	-2.42
Apr	21.30	11.92	14.41	-0.01	9.60	12.09	-2.32
May	20.20	11.57	13.44	0.34	9.24	11.11	-1.98
Jun	16.70	8.40	10.10	0.76	6.06	7.76	-1.58
Jul	15.30	6.97	8.66	0.76	4.63	6.32	-1.58
Aug	15.60	7.35	8.96	0.76	5.01	6.62	-1.58
Sep	17.40	8.54	10.76	0.76	6.20	8.42	-1.58
Oct	16.30	7.23	9.66	0.76	4.89	7.32	-1.58
Nov	26.50	17.18	19.40	-0.15	14.83	17.05	-2.50
Dec	23.30	14.60	16.20	-0.15	12.25	13.85	-2.50
Jan 2002	22.20	13.98	15.10	-0.15	11.63	12.75	-2.50
Feb	21.00	12.35	13.87	-0.09	10.00	11.52	-2.44
Mar	19.80	10.64	12.75	-0.03	8.29	10.39	-2.39
Apr	20.40	10.65	13.34	0.09	8.29	10.98	-2.27
May	18.10	9.57	11.25	0.52	7.19	8.88	-1.86
Jun	14.70	6.56	7.92	0.74	4.17	5.53	-1.65
Jul	14.30	6.48	7.52	0.74	4.09	5.13	-1.65
Aug	17.50	9.00	10.72	0.74	6.61	8.33	-1.65

Oranges: Average Prices and Equivalent Returns, California
November 1999 - August 2002

State, Month, and Year		Equiv. P.H.D.				Equiv. On-Tree		
		F.O.B. Packed	All	Fresh	Proc.	All	Fresh	Proc.
Dollars per box								
CA Navel and Miscellaneous								
Nov	1999	20.70	11.51	13.88	-0.08	9.25	11.62	-2.34
Dec		16.30	8.23	9.48	-0.08	5.97	7.22	-2.34
Jan	2000	15.40	7.45	8.58	-0.08	5.19	6.32	-2.34
Feb		14.20	6.06	7.38	-0.08	3.80	5.12	-2.34
Mar		14.10	5.55	7.28	-0.08	3.29	5.02	-2.34
Apr		13.80	5.00	6.98	-0.08	2.74	4.72	-2.34
May		15.30	5.45	8.48	-0.08	3.19	6.22	-2.34
Jun		19.60	7.56	12.78	-0.08	5.30	10.52	-2.34
Oct		20.90	9.25	13.94	-0.14	6.94	11.63	-2.45
Nov		18.00	9.32	11.04	-0.14	7.01	8.73	-2.45
Dec		16.90	8.82	9.94	-0.14	6.51	7.63	-2.45
Jan	2001	16.50	8.61	9.54	-0.14	6.30	7.23	-2.45
Feb		17.00	8.87	10.04	-0.14	6.56	7.73	-2.45
Mar		19.60	10.60	12.64	-0.14	8.29	10.33	-2.45
Apr		22.20	12.23	15.24	-0.14	9.92	12.93	-2.45
May		24.30	14.26	17.34	-0.14	11.95	15.03	-2.45
Jun		25.80	18.84	18.84		16.53	16.53	
Nov		26.50	17.18	19.40	-0.15	14.83	17.05	-2.50
Dec		23.30	14.60	16.20	-0.15	12.25	13.85	-2.50
Jan	2002	22.20	13.98	15.10	-0.15	11.63	12.75	-2.50
Feb		20.90	12.30	13.80	-0.15	9.95	11.45	-2.50
Mar		20.00	10.78	12.90	-0.15	8.43	10.55	-2.50
Apr		21.60	11.57	14.50	-0.15	9.22	12.15	-2.50
May		24.20	14.80	17.10	-0.15	12.45	14.75	-2.50
CA Valencias								
Mar	2000	15.80	7.72	9.29	-0.13	5.42	6.99	-2.43
Apr		15.60	7.86	9.09	-0.13	5.56	6.79	-2.43
May		14.50	6.37	7.99	-0.13	4.07	5.69	-2.43
Jun		14.00	5.25	7.49	-0.13	2.95	5.19	-2.43
Jul		12.90	3.31	6.39	-0.13	1.01	4.09	-2.43
Aug		12.40	2.65	5.89	-0.13	0.35	3.59	-2.43
Sep		12.70	2.59	6.19	-0.13	0.29	3.89	-2.43
Oct		11.50	1.74	4.99	-0.13	-0.56	2.69	-2.43
Feb	2001	17.70	11.06	11.06		8.72	8.72	
Mar		18.10	10.83	11.46	0.76	8.49	9.12	-1.58
Apr		18.80	10.98	12.16	0.76	8.64	9.82	-1.58
May		17.90	9.97	11.26	0.76	7.63	8.92	-1.58
Jun		16.40	8.07	9.76	0.76	5.73	7.42	-1.58
Jul		15.30	6.97	8.66	0.76	4.63	6.32	-1.58
Aug		15.60	7.35	8.96	0.76	5.01	6.62	-1.58
Sep		17.40	8.54	10.76	0.76	6.20	8.42	-1.58
Oct		16.30	7.23	9.66	0.76	4.89	7.32	-1.58
Feb	2002	22.00	13.15	15.22	0.74	10.76	12.83	-1.65
Mar		18.40	9.64	11.62	0.74	7.25	9.23	-1.65
Apr		16.70	7.99	9.92	0.74	5.60	7.53	-1.65
May		15.50	7.39	8.72	0.74	5.00	6.33	-1.65
Jun		14.70	6.56	7.92	0.74	4.17	5.53	-1.65
Jul		14.30	6.48	7.52	0.74	4.09	5.13	-1.65
Aug		17.50	9.00	10.72	0.74	6.61	8.33	-1.65

Oranges: Average Prices and Equivalent Returns, Florida
November 1999 - June 2002

State, Month, and Year		Equiv. P.H.D.			Equiv. On-Tree			
		F.O.B. Packed	All	Fresh	Proc.	All	Fresh	Proc.
Dollars per box								
All Oranges								
FL								
Nov	1999	18.50	5.75	10.90	4.72	3.82	8.85	2.82
Dec		14.20	4.98	6.60	4.87	3.07	4.55	2.97
Jan	2000	12.50	5.04	4.90	5.04	3.13	2.85	3.14
Feb		11.40	5.00	3.80	5.03	3.10	1.75	3.13
Mar		14.20	5.12	6.55	5.08	3.19	4.50	3.15
Apr		13.50	6.43	5.90	6.44	4.47	3.85	4.49
May		13.50	6.54	5.90	6.55	4.58	3.85	4.60
Jun		16.30	6.47	8.70	6.41	4.52	6.65	4.46
Jul		16.40	6.12	8.80	5.93	4.17	6.75	3.98
Oct		15.70	6.16	7.90	4.13	4.13	5.80	2.18
Nov		14.20	4.54	6.40	4.39	2.58	4.30	2.44
Dec		13.10	4.45	5.30	4.40	2.50	3.20	2.45
Jan	2001	12.80	4.45	5.00	4.44	2.50	2.90	2.49
Feb		14.40	4.59	6.63	4.53	2.64	4.53	2.58
Mar		14.00	5.56	6.15	5.53	3.57	4.05	3.54
Apr		13.50	6.09	5.70	6.10	4.09	3.60	4.10
May		14.00	6.11	6.20	6.11	4.11	4.10	4.11
Jun		18.00	6.23	10.20	6.08	4.23	8.10	4.08
Oct		16.00	6.80	8.10	1.75	4.63	5.90	-0.30
Nov		14.90	4.12	7.00	3.86	2.05	4.80	1.81
Dec		13.70	4.21	5.80	4.11	2.15	3.60	2.06
Jan	2002	14.10	4.73	6.20	4.68	2.67	4.00	2.63
Feb		14.20	4.86	6.30	4.83	2.81	4.10	2.78
Mar		15.20	5.76	7.27	5.70	3.67	5.07	3.61
Apr		14.00	6.10	6.10	6.10	4.00	3.90	4.00
May		14.80	6.22	6.90	6.20	4.11	4.70	4.10
Jun		16.10	6.08	8.20	6.00	3.98	6.00	3.90
FL								
Early and Midseason								
Nov	1999	18.50	5.75	10.90	4.72	3.82	8.85	2.82
Dec		14.20	4.98	6.60	4.87	3.07	4.55	2.97
Jan	2000	12.50	5.04	4.90	5.04	3.13	2.85	3.14
Feb		11.40	5.00	3.80	5.03	3.10	1.75	3.13
Mar		11.00	5.04	3.40	5.07	3.14	1.35	3.17
Oct		15.70	5.90	7.90	3.57	3.87	5.80	1.62
Nov		14.20	3.91	6.40	3.71	1.95	4.30	1.76
Dec		13.10	3.91	5.30	3.82	1.95	3.20	1.87
Jan	2001	12.80	3.97	5.00	3.94	2.01	2.90	1.99
Feb		14.40	4.19	6.60	4.14	2.24	4.50	2.19
Mar		13.00	4.31	5.20	4.30	2.36	3.10	2.35
Oct		16.00	6.80	8.10	1.75	4.63	5.90	-0.30
Nov		14.90	4.12	7.00	3.86	2.05	4.80	1.81
Dec		13.70	4.21	5.80	4.11	2.15	3.60	2.06
Jan	2002	14.10	4.73	6.20	4.68	2.67	4.00	2.63
Feb		14.20	4.86	6.30	4.83	2.81	4.10	2.78
Mar		13.10	5.00	5.20	5.00	2.95	3.00	2.95
FL								
Valencias								
Mar	2000	15.20	5.20	7.60	5.08	3.24	5.55	3.13
Apr		13.50	6.43	5.90	6.44	4.47	3.85	4.49
May		13.50	6.54	5.90	6.55	4.58	3.85	4.60
Jun		16.30	6.47	8.70	6.41	4.52	6.65	4.46
Jul		16.40	6.12	8.80	5.93	4.17	6.75	3.98
Feb	2001	14.50	4.87	6.70	4.54	2.85	4.60	2.54
Mar		14.00	5.57	6.20	5.53	3.56	4.10	3.53
Apr		13.50	6.09	5.70	6.10	4.09	3.60	4.10
May		14.00	6.11	6.20	6.11	4.11	4.10	4.11
Jun		18.00	6.23	10.20	6.08	4.23	8.10	4.08
Mar	2002	15.20	5.92	7.30	5.85	3.81	5.10	3.75
Apr		14.00	6.10	6.10	6.10	4.00	3.90	4.00
May		14.80	6.22	6.90	6.20	4.11	4.70	4.10
Jun		16.10	6.08	8.20	6.00	3.98	6.00	3.90

Oranges: Average Prices and Equivalent Returns, Texas
October 1999 - May 2002

State, Month, and Year	Equiv. P.H.D.			Equiv. On-Tree			
	F.O.B. Packed	All	Fresh	Proc.	All	Fresh	Proc.
Dollars per box							
TX All Oranges							
Oct 1999	20.90	10.82	12.10	2.90	9.53	10.80	1.65
Nov	18.70	8.60	9.90	2.90	7.31	8.60	1.65
Dec	16.70	6.45	7.90	2.90	5.16	6.60	1.65
Jan 2000	13.20	4.04	4.40	2.90	2.75	3.10	1.65
Feb	12.90	3.80	4.10	2.90	2.51	2.80	1.65
Mar	12.90	3.83	4.10	2.90	2.54	2.80	1.65
Apr	12.90	3.76	4.10	2.90	2.47	2.80	1.65
May	12.40	3.44	3.60	2.90	2.15	2.30	1.65
Oct	17.30	6.35	7.60	2.12	5.06	6.30	0.87
Nov	13.40	3.11	3.70	2.12	1.83	2.40	0.87
Dec	13.70	3.09	4.00	2.12	1.81	2.70	0.87
Jan 2001	10.30	1.48	0.60	2.12	0.21	-0.70	0.87
Feb	10.20	1.34	0.50	2.12	0.07	-0.80	0.87
Mar	11.20	1.71	1.50	2.12	0.43	0.20	0.87
Apr	12.90	2.98	3.18	2.12	1.69	1.88	0.87
May	13.70	3.62	4.00	2.12	2.33	2.70	0.87
Jun	13.70	2.75	4.00	2.12	1.48	2.70	0.87
Oct	19.60	8.62	9.90	2.55	7.33	8.60	1.30
Nov	15.80	5.51	6.10	2.55	4.21	4.80	1.30
Dec	14.20	4.04	4.50	2.55	2.75	3.20	1.30
Jan 2002	13.00	3.13	3.30	2.55	1.84	2.00	1.30
Feb	13.70	3.77	4.02	2.55	2.48	2.72	1.30
Mar	15.60	5.28	5.93	2.55	3.99	4.63	1.30
Apr	16.10	5.63	6.40	2.55	4.34	5.10	1.30
May	15.00	4.71	5.25	2.55	3.42	3.95	1.30
TX Early and Midseason							
Oct 1999	20.90	10.82	12.10	2.90	9.53	10.80	1.65
Nov	18.70	8.60	9.90	2.90	7.31	8.60	1.65
Dec	16.70	6.45	7.90	2.90	5.16	6.60	1.65
Jan 2000	13.20	4.04	4.40	2.90	2.75	3.10	1.65
Feb	12.90	3.80	4.10	2.90	2.51	2.80	1.65
Mar	12.90	3.82	4.10	2.90	2.53	2.80	1.65
Oct	17.30	6.35	7.60	2.12	5.06	6.30	0.87
Nov	13.40	3.11	3.70	2.12	1.83	2.40	0.87
Dec	13.70	3.09	4.00	2.12	1.81	2.70	0.87
Jan 2001	10.30	1.48	0.60	2.12	0.21	-0.70	0.87
Feb	10.20	1.34	0.50	2.12	0.07	-0.80	0.87
Mar	10.50	1.32	0.80	2.12	0.04	-0.50	0.87
Apr	11.30	1.60	1.60	0.00	0.30	0.30	0.00
Oct	19.60	8.62	9.90	2.55	7.33	8.60	1.30
Nov	15.80	5.51	6.10	2.55	4.21	4.80	1.30
Dec	14.20	4.04	4.50	2.55	2.75	3.20	1.30
Jan 2002	13.00	3.13	3.30	2.55	1.84	2.00	1.30
Feb	13.60	3.68	3.90	2.55	2.39	2.60	1.30
Mar	13.80	3.84	4.10	2.55	2.55	2.80	1.30
Apr							
May	13.80	4.00	4.10	2.55	2.70	2.80	1.30
TX Valencias							
Feb 2000	12.90	4.10	4.10	0.00	2.80	2.80	0.00
Mar	12.90	3.85	4.10	2.90	2.56	2.80	1.65
Apr	12.90	3.76	4.10	2.90	2.47	2.80	1.65
May	12.40	3.44	3.60	2.90	2.15	2.30	1.65
Mar 2001	13.20	3.37	3.50	2.12	2.08	2.20	0.87
Apr	13.20	3.19	3.50	2.12	1.91	2.20	0.87
May	13.70	3.62	4.00	2.12	2.33	2.70	0.87
Jun	13.70	2.75	4.00	2.12	1.48	2.70	0.87
Feb 2002	15.90	5.29	6.20	2.55	4.00	4.90	1.30
Mar	15.90	5.49	6.20	2.55	4.20	4.90	1.30
Apr	16.10	5.63	6.40	2.55	4.34	5.10	1.30
May	16.10	5.25	6.40	2.55	3.96	5.10	1.30

Grapefruit: Average Prices and Equivalent Returns, United States
September 1999 - August 2002

State, Month, and Year		Equiv. P.H.D.			Equiv. On-Tree			
		F.O.B. Packed	All	Fresh	Proc.	All	Fresh	Proc.
		Dollars per box						
US		All Grapefruit						
Sep	1999	12.20	5.80	6.31	-0.05	3.70	4.21	-2.15
Oct		19.70	9.71	11.71	2.90	7.72	9.83	0.54
Nov		16.90	7.15	8.92	3.26	5.11	7.04	0.87
Dec		16.70	6.62	8.61	3.66	4.56	6.74	1.30
Jan	2000	17.50	6.65	9.30	4.09	4.53	7.43	1.73
Feb		16.50	6.01	8.37	4.37	3.79	6.43	1.96
Mar		16.30	5.53	8.16	4.57	3.25	6.24	2.16
Apr		15.40	5.10	7.51	4.44	2.82	5.58	2.06
May		14.10	4.84	6.92	4.20	2.51	4.88	1.78
Jun		15.50	6.03	9.06	2.33	3.76	6.94	-0.15
Jul		15.20	7.49	9.24	-0.66	5.35	7.10	-2.80
Aug		15.00	6.79	8.99	-0.66	4.65	6.85	-2.80
Sep		15.50	8.21	9.17	-0.66	6.14	7.10	-2.80
Oct		16.20	6.98	7.95	1.83	4.99	6.00	-0.40
Nov		15.10	5.28	6.66	2.25	3.24	4.76	-0.07
Dec		14.40	4.60	5.93	2.47	2.49	4.00	0.09
Jan	2001	14.60	4.47	6.15	2.75	2.32	4.22	0.38
Feb		15.10	4.60	6.67	3.23	2.33	4.66	0.78
Mar		15.20	4.20	6.73	2.95	1.92	4.76	0.52
Apr		15.20	3.92	6.96	2.85	1.65	4.99	0.48
May		15.50	4.11	7.77	2.68	1.97	5.85	0.45
Jun		16.10	6.16	9.25	2.13	4.06	7.21	-0.06
Jul		16.00	8.28	9.87	-0.24	6.10	7.69	-2.42
Aug		15.50	7.16	9.37	-0.24	4.98	7.19	-2.42
Sep		16.30	9.06	10.17	-0.24	6.88	7.99	-2.42
Oct		18.80	8.69	10.64	0.95	6.53	8.61	-1.71
Nov		16.50	5.86	7.91	1.96	3.68	5.94	-0.61
Dec		15.60	5.20	7.06	2.52	2.99	5.09	-0.05
Jan	2002	15.40	4.91	6.89	2.67	2.71	4.91	0.21
Feb		15.10	4.31	6.63	2.92	2.01	4.63	0.43
Mar		15.20	4.02	6.79	2.90	1.66	4.72	0.42
Apr		14.70	3.70	6.30	2.53	1.38	4.25	0.09
May		14.50	3.73	6.68	2.03	1.50	4.62	-0.30
Jun		16.10	7.93	9.77	0.05	5.81	7.58	-1.78
Jul		16.60	8.69	10.35	-0.25	6.47	8.13	-2.47
Aug		16.50	7.83	10.25	-0.25	5.60	8.02	-2.48

Grapefruit: Average Prices and Equivalent Returns, Arizona
December 1999 - June 2002

State, Month, and Year		Equiv. P.H.D.			Equiv. On-Tree			
		F.O.B. Packed	All	Fresh	Proc.	All	Fresh	Proc.
Dollars per box								
All Grapefruit								
AZ								
Dec	1999	12.50	6.50	6.49	0.00	4.37	4.35	0.00
Jan	2000	11.50	4.71	5.49	-0.66	2.59	3.35	-2.80
Feb		11.40	4.18	5.39	-0.66	2.04	3.25	-2.80
Mar		12.30	4.39	6.29	-0.66	2.25	4.15	-2.80
Apr		12.40	2.86	6.39	-0.66	0.73	4.25	-2.80
May		12.30	2.12	6.29	-0.66	-0.02	4.15	-2.80
Jun		12.50	1.69	6.49	-0.66	-0.45	4.35	-2.80
Jul		12.80	2.30	6.79	-0.66	0.16	4.65	-2.80
Nov		13.10	4.57	6.97	-0.24	2.39	4.79	-2.42
Dec		12.90	5.29	6.77	-0.24	3.12	4.59	-2.42
Jan	2001	12.50	5.08	6.37	-0.24	2.91	4.19	-2.42
Feb		11.60	3.74	5.47	-0.24	1.56	3.29	-2.42
Mar		15.20	6.45	9.07	-0.24	4.27	6.89	-2.42
Apr		14.10	7.01	7.97	-0.24	4.83	5.79	-2.42
May		12.40	5.75	6.27	-0.24	3.57	4.09	-2.42
Jun		12.10	5.45	5.97	-0.24	3.27	3.79	-2.42
Nov		13.10	6.86	6.85	0.00	4.61	4.62	0.00
Dec		14.10	7.85	7.85	0.00	5.62	5.62	0.00
Jan	2002	13.80	6.84	7.55	-0.25	4.61	5.32	-2.48
Feb		12.50	6.25	6.25	0.00	4.02	4.02	0.00
Mar		12.10	5.86	5.85	0.00	3.62	3.62	0.00
Apr		12.70	3.57	6.45	-0.25	1.36	4.22	-2.48
May		14.00	7.47	7.75	-0.25	5.24	5.52	-2.48
Jun		12.10	5.85	5.85	0.00	3.62	3.62	0.00

Grapefruit: Average Prices and Equivalent Returns, California
September 1999 - August 2002

State, Month, and Year		Equiv. P.H.D.			Equiv. On-Tree			
		F.O.B. Packed	All	Fresh	Proc.	All	Fresh	Proc.
		Dollars per box						
CA		All Grapefruit						
Sep	1999	12.20	5.80	6.31	-0.05	3.70	4.21	-2.15
Oct		15.50	7.24	9.61	-0.05	5.14	7.51	-2.15
Nov		19.80	11.86	13.79	-0.66	9.72	11.65	-2.80
Dec		19.00	12.02	12.99	-0.66	9.88	10.85	-2.80
Jan	2000	18.50	11.24	12.49	-0.66	9.10	10.35	-2.80
Feb		16.50	9.69	10.49	-0.66	7.55	8.35	-2.80
Mar		14.70	8.37	8.69	-0.66	6.23	6.55	-2.80
Apr		12.90	6.62	6.89	-0.66	4.48	4.75	-2.80
May		14.10	7.13	8.09	-0.66	4.99	5.95	-2.80
Jun		16.20	8.74	10.19	-0.66	6.60	8.05	-2.80
Jul		15.30	7.73	9.29	-0.66	5.59	7.15	-2.80
Aug		15.00	6.79	8.99	-0.66	4.65	6.85	-2.80
Sep		15.40	8.34	9.39	-0.66	6.20	7.25	-2.80
Oct		16.80	9.06	10.79	-0.66	6.92	8.65	-2.80
Nov		18.10	10.09	11.97	-0.24	7.91	9.79	-2.42
Dec		17.70	10.59	11.57	-0.24	8.41	9.39	-2.42
Jan	2001	17.50	10.11	11.37	-0.24	7.93	9.19	-2.42
Feb		15.60	8.66	9.47	-0.24	6.48	7.29	-2.42
Mar		15.90	9.37	9.77	-0.24	7.19	7.59	-2.42
Apr		15.20	8.69	9.07	-0.24	6.51	6.89	-2.42
May		17.70	10.18	11.57	-0.24	8.00	9.39	-2.42
Jun		17.00	9.35	10.87	-0.24	7.17	8.69	-2.42
Jul		16.00	8.28	9.87	-0.24	6.10	7.69	-2.42
Aug		15.50	7.16	9.37	-0.24	4.98	7.19	-2.42
Sep		16.30	9.06	10.17	-0.24	6.88	7.99	-2.42
Oct		15.80	8.13	9.67	-0.24	5.95	7.49	-2.42
Nov		17.00	8.92	10.75	-0.25	6.70	8.53	-2.47
Dec		17.30	10.02	11.05	-0.25	7.80	8.83	-2.47
Jan	2002	17.00	10.41	10.75	-0.25	8.19	8.53	-2.47
Feb		16.40	9.20	10.15	-0.25	6.98	7.93	-2.47
Mar		12.20	5.68	5.95	-0.25	3.46	3.73	-2.47
Apr		13.30	6.74	7.05	-0.25	4.52	4.83	-2.47
May		15.60	8.23	9.35	-0.25	6.01	7.13	-2.47
Jun		16.30	8.63	10.05	-0.25	6.41	7.83	-2.47
Jul		16.60	8.69	10.35	-0.25	6.47	8.13	-2.47
Aug		16.50	7.83	10.25	-0.25	5.60	8.02	-2.48

Grapefruit: Average Prices and Equivalent Returns, Florida
October 1999 - May 2002

State, Month, and Year		Equiv. P.H.D.			Equiv. On-Tree			
		F.O.B. Packed	All	Fresh	Proc.	All	Fresh	Proc.
		Dollars per box						
FL		All Grapefruit						
Oct	1999	19.30	9.25	11.20	3.36	7.09	9.16	0.85
Nov		16.00	6.48	8.04	3.51	4.27	6.00	0.98
Dec		16.60	6.56	8.56	3.96	4.30	6.52	1.44
Jan	2000	17.60	6.66	9.47	4.39	4.36	7.42	1.90
Feb		16.70	6.08	8.55	4.53	3.76	6.50	2.05
Mar		16.40	5.54	8.26	4.69	3.18	6.22	2.23
Apr		15.70	5.18	7.68	4.64	2.80	5.63	2.18
May		14.10	4.67	6.23	4.37	2.27	4.19	1.91
Jun		14.00	4.12	6.16	3.32	1.68	4.12	0.73
Oct		16.20	7.06	7.87	2.55	4.89	5.77	-0.02
Nov		14.70	5.20	6.42	2.67	2.94	4.32	0.07
Dec		14.40	4.73	6.09	2.77	2.44	3.99	0.20
Jan	2001	14.70	4.63	6.40	3.05	2.30	4.30	0.51
Feb		15.30	4.75	6.96	3.39	2.38	4.86	0.86
Mar		15.60	4.36	7.23	3.10	1.98	5.13	0.59
Apr		15.70	4.05	7.42	3.05	1.65	5.32	0.57
May		15.60	3.84	7.46	3.16	1.44	5.36	0.70
Jun		15.90	3.99	7.76	3.00	1.61	5.66	0.55
Oct		18.60	8.25	10.47	1.05	5.94	8.29	-1.66
Nov		16.30	5.56	7.94	2.01	3.22	5.76	-0.59
Dec		15.40	4.95	7.11	2.55	2.58	4.93	-0.04
Jan	2002	15.60	5.02	7.31	2.87	2.62	5.12	0.28
Feb		15.30	4.40	7.01	3.06	1.96	4.83	0.49
Mar		15.60	4.14	7.32	2.99	1.70	5.14	0.46
Apr		14.90	3.77	6.57	2.67	1.34	4.39	0.14
May		14.00	3.34	5.88	2.33	0.90	3.70	-0.21

Grapefruit: Average Prices and Equivalent Returns, Florida
October 1999 - May 2002

State, Month, and Year		Equiv. P.H.D.			Equiv. On-Tree			
		F.O.B. Packed	All	Fresh	Proc.	All	Fresh	Proc.
		Dollars per box						
FL		White Seedless						
Oct	1999	19.50	8.21	10.73	2.78	6.06	8.68	0.41
Nov		21.20	8.36	12.43	3.66	6.16	10.38	1.29
Dec		22.30	8.30	13.53	4.14	6.07	11.48	1.77
Jan	2000	22.50	7.99	13.73	4.65	5.74	11.68	2.28
Feb		20.00	6.78	11.23	4.87	4.50	9.18	2.50
Mar		19.40	5.76	10.63	4.90	3.44	8.58	2.53
Apr		20.80	5.21	12.03	4.73	2.86	9.98	2.36
May		14.40	4.64	5.63	4.63	2.28	3.58	2.26
Oct		18.50	7.86	9.53	1.14	5.71	7.43	-1.21
Nov		15.00	4.31	6.03	2.09	2.10	3.93	-0.26
Dec		16.70	4.94	7.73	2.66	2.71	5.63	0.31
Jan	2001	17.90	5.13	8.93	3.18	2.86	6.83	0.83
Feb		17.90	5.13	8.93	3.54	2.85	6.83	1.19
Mar		17.90	4.31	8.93	3.29	2.00	6.83	0.94
Apr		18.30	3.72	9.33	3.20	1.39	7.23	0.85
May		17.20	3.32	8.23	3.22	0.98	6.13	0.87
Jun		15.70	2.98	6.73	2.93	0.64	4.63	0.58
Nov		18.80	6.49	9.93	2.85	4.19	7.74	0.44
Dec		16.90	5.14	8.03	3.45	2.81	5.84	1.04
Jan	2002	17.40	5.18	8.53	3.40	2.85	6.34	0.99
Feb		17.40	4.48	8.53	3.50	2.11	6.34	1.09
Mar		17.80	4.17	8.93	3.45	1.78	6.74	1.04
Apr		17.00	3.75	8.13	3.15	1.37	5.94	0.74
May		15.10	2.94	6.23	2.85	0.54	4.04	0.44

Grapefruit: Average Prices and Equivalent Returns, Florida
October 1999 - June 2002

State, Month, and Year		Equiv. P.H.D.			Equiv. On-Tree			
		F.O.B. Packed	All	Fresh	Proc.	All	Fresh	Proc.
Dollars per box								
Colored Seedless								
FL								
Oct	1999	19.20	9.65	11.36	3.68	7.49	9.32	1.09
Nov		15.00	6.00	7.16	3.45	3.79	5.12	0.86
Dec		15.20	5.98	7.36	3.88	3.72	5.32	1.29
Jan	2000	15.60	5.97	7.76	4.22	3.66	5.72	1.63
Feb		15.20	5.63	7.36	4.24	3.29	5.32	1.65
Mar		15.10	5.35	7.26	4.41	2.95	5.22	1.82
Apr		14.60	5.17	6.76	4.51	2.74	4.72	1.92
May		14.10	4.68	6.26	4.05	2.25	4.22	1.46
Jun		14.00	4.12	6.16	3.32	1.68	4.12	0.73
Oct		15.50	6.81	7.40	3.18	4.63	5.30	0.50
Nov		14.60	5.41	6.50	2.87	3.14	4.40	0.19
Dec		13.80	4.66	5.70	2.83	2.36	3.60	0.15
Jan	2001	13.70	4.38	5.60	2.96	2.02	3.50	0.28
Feb		14.20	4.50	6.10	3.27	2.07	4.00	0.59
Mar		14.70	4.40	6.60	2.87	1.96	4.50	0.19
Apr		15.10	4.38	7.00	2.84	1.92	4.90	0.16
May		15.50	4.55	7.40	3.03	2.08	5.30	0.35
Jun		15.90	5.22	7.80	3.15	2.80	5.70	0.47
Oct		18.60	8.25	10.47	1.05	5.94	8.29	-1.66
Nov		15.30	5.12	7.17	1.45	2.75	4.99	-1.26
Dec		15.00	4.87	6.87	1.95	2.48	4.69	-0.76
Jan	2002	15.10	4.95	6.97	2.55	2.53	4.79	-0.16
Feb		14.70	4.34	6.57	2.65	1.86	4.39	-0.06
Mar		14.90	4.10	6.77	2.25	1.61	4.59	-0.46
Apr		14.30	3.79	6.17	2.00	1.31	3.99	-0.71
May		14.00	3.62	5.87	1.70	1.15	3.69	-1.01
Other than Seedless 1/								
FL								
Jan	2000		4.00		4.00	2.10		2.10
Feb			5.00		5.00	3.10		3.10
Mar			5.00		5.00	3.10		3.10
Apr			4.85		4.85	2.95		2.95
May			4.75		4.75	2.85		2.85

1/ "Other than Seedless" grapefruit estimates discontinued after the 1999-2000 crop. Included with white seedless beginning with the 2000-01 crop.

Grapefruit: Average Prices and Equivalent Returns, Texas
October 1999 - June 2002

State, Month, and Year		Equiv. P.H.D.			Equiv. On-Tree			
		F.O.B. Packed	All	Fresh	Proc.	All	Fresh	Proc.
		Dollars per box						
TX		All Grapefruit						
Oct	1999	23.30	13.09	14.60	1.40	11.94	13.45	0.30
Nov		20.40	9.77	11.70	1.40	8.63	10.55	0.30
Dec		16.80	6.28	8.10	1.40	5.14	6.95	0.30
Jan	2000	16.70	5.85	8.00	1.40	4.72	6.85	0.30
Feb		15.40	4.73	6.70	1.40	3.60	5.55	0.30
Mar		16.20	5.12	7.50	1.40	3.99	6.35	0.30
Apr		15.80	3.78	7.10	1.40	2.66	5.95	0.30
May		15.80	3.33	7.10	1.40	2.21	5.95	0.30
Sep		16.10	6.50	6.50		5.35	5.35	
Oct		16.10	5.42	6.50	0.60	4.27	5.35	-0.50
Nov		16.30	4.97	6.70	0.60	3.84	5.55	-0.50
Dec		13.90	3.13	4.30	0.60	2.00	3.15	-0.50
Jan	2001	13.50	2.65	3.90	0.60	1.52	2.75	-0.50
Feb		13.10	2.19	3.50	0.60	1.06	2.35	-0.50
Mar		12.80	1.99	3.20	0.60	0.87	2.05	-0.50
Apr		12.80	1.60	3.20	0.60	0.48	2.05	-0.50
May		12.20	1.31	2.60	0.60	0.19	1.45	-0.50
Jun		12.20	1.61	2.60	0.60	0.49	1.45	-0.50
Oct		21.80	12.04	12.20	0.60	10.89	11.05	-0.50
Nov		17.00	7.13	7.40	0.60	5.98	6.25	-0.50
Dec		15.90	6.14	6.30	0.60	4.99	5.15	-0.50
Jan	2002	14.20	3.52	4.60	0.60	2.38	3.45	-0.50
Feb		14.00	3.09	4.40	0.60	1.95	3.25	-0.50
Mar		12.50	1.88	2.90	0.60	0.75	1.75	-0.50
Apr		13.80	2.25	4.20	0.60	1.13	3.05	-0.50
May		14.20	1.96	4.60	0.60	0.85	3.45	-0.50
Jun		14.20	1.69	4.60	0.60	0.57	3.45	-0.50

Lemons: Average Prices and Equivalent Returns, United States
August 1999 - July 2002

State, Month, and Year		Equiv. P.H.D.			Equiv. On-Tree			
		F.O.B. Packed	All	Fresh	Proc.	All	Fresh	Proc.
		Dollars per box						
US		Lemons						
Aug	1999	38.70	20.99	29.38	1.42	16.97	25.36	-2.60
Sep		40.00	24.71	30.69	1.42	20.69	26.67	-2.60
Oct		35.90	20.54	26.58	1.42	16.52	22.56	-2.60
Nov		29.10	14.10	19.79	1.42	10.08	15.77	-2.60
Dec		30.90	14.74	21.56	1.42	10.72	17.54	-2.60
Jan	2000	31.50	13.82	22.20	1.42	9.80	18.18	-2.60
Feb		26.70	12.67	17.40	1.42	8.65	13.38	-2.60
Mar		27.20	12.53	17.89	1.42	8.51	13.87	-2.60
Apr		24.50	9.49	15.18	1.42	5.47	11.16	-2.60
May		23.60	7.67	14.28	1.42	3.65	10.26	-2.60
Jun		31.10	10.87	21.78	1.42	6.85	17.76	-2.60
Jul		37.20	15.93	27.88	1.42	11.91	23.86	-2.60
Aug		38.10	17.54	28.60	1.40	13.44	24.50	-2.70
Sep		31.20	13.87	21.74	1.33	9.77	17.64	-2.77
Oct		25.00	9.04	15.46	1.22	4.94	11.36	-2.88
Nov		21.20	6.42	11.70	0.32	2.32	7.60	-3.78
Dec		20.60	5.88	11.15	0.32	1.78	7.05	-3.78
Jan	2001	20.00	4.86	10.47	0.32	0.76	6.37	-3.78
Feb		19.90	4.59	10.37	0.32	0.49	6.27	-3.78
Mar		22.20	5.37	12.69	0.32	1.27	8.59	-3.78
Apr		27.00	7.80	17.50	0.32	3.70	13.40	-3.78
May		28.80	9.54	19.30	0.32	5.44	15.20	-3.78
Jun		30.60	13.15	21.10	0.32	9.05	17.00	-3.78
Jul		36.30	19.96	26.80	0.32	15.86	22.70	-3.78
Aug		40.20	22.60	30.51	0.30	18.42	26.33	-3.88
Sep		36.90	19.46	27.21	0.30	15.28	23.03	-3.88
Oct		38.10	23.30	28.45	0.30	19.12	24.27	-3.88
Nov		33.90	19.11	24.21	0.24	14.93	20.03	-3.94
Dec		30.60	13.55	20.87	0.24	9.37	16.69	-3.94
Jan	2002	28.40	11.03	18.72	0.24	6.85	14.54	-3.94
Feb		26.50	8.82	16.81	0.24	4.64	12.63	-3.94
Mar		25.70	10.07	15.98	0.24	5.89	11.80	-3.94
Apr		28.10	12.66	18.41	0.24	8.48	14.23	-3.94
May		31.10	14.87	21.41	0.24	10.69	17.23	-3.94
Jun		36.00	19.86	26.31	0.24	15.68	22.13	-3.94
Jul		37.90	23.75	28.21	0.24	19.57	24.03	-3.94

Lemons: Average Prices and Equivalent Returns, Arizona and California
August 1999 - July 2002

State, Month, and Year	Equiv. P.H.D.				Equiv. On-Tree		
	F.O.B. Packed	All	Fresh	Proc.	All	Fresh	Proc.
Dollars per box							
AZ							
Lemons							
Sep 1999	40.80	28.22	31.48	1.42	24.20	27.46	-2.60
Oct	36.40	22.68	27.08	1.42	18.66	23.06	-2.60
Nov	27.40	12.98	18.08	1.42	8.96	14.06	-2.60
Dec	28.40	13.39	19.08	1.42	9.37	15.06	-2.60
Jan 2000	30.00	11.01	20.68	1.42	6.99	16.66	-2.60
Feb	24.70	8.75	15.38	1.42	4.73	11.36	-2.60
Mar	28.00	7.84	18.68	1.42	3.82	14.66	-2.60
Apr	24.50	5.82	15.18	1.42	1.80	11.16	-2.60
Sep	31.80	18.62	22.30	0.32	14.52	18.20	-3.78
Oct	24.70	11.02	15.20	0.32	6.92	11.10	-3.78
Nov	21.20	6.96	11.70	0.32	2.86	7.60	-3.78
Dec	20.30	5.99	10.80	0.32	1.89	6.70	-3.78
Jan 2001	19.90	4.92	10.40	0.32	0.82	6.30	-3.78
Feb	19.60	3.05	10.10	0.32	-1.05	6.00	-3.78
Mar	21.60	2.17	12.10	0.32	-1.93	8.00	-3.78
Sep	40.50	30.81	30.81		26.63	26.63	
Oct	40.10	28.48	30.41	0.24	24.30	26.23	-3.94
Nov	33.20	18.35	23.51	0.24	14.17	19.33	-3.94
Dec	30.00	13.21	20.31	0.24	9.03	16.13	-3.94
Jan 2002	28.80	11.97	19.11	0.24	7.79	14.93	-3.94
Feb	26.10	9.62	16.41	0.24	5.42	12.23	-3.94
Mar	24.00	6.60	14.31	0.24	2.41	10.13	-3.94
CA							
Lemons							
Aug 1999	38.70	20.99	29.38	1.42	16.97	25.36	-2.60
Sep	39.80	23.89	30.48	1.42	19.87	26.46	-2.60
Oct	35.60	19.40	26.28	1.42	15.38	22.26	-2.60
Nov	30.50	15.01	21.18	1.42	10.99	17.16	-2.60
Dec	32.70	15.69	23.38	1.42	11.67	19.36	-2.60
Jan 2000	32.20	15.47	22.88	1.42	11.45	18.86	-2.60
Feb	27.10	13.72	17.78	1.42	9.70	13.76	-2.60
Mar	27.20	12.68	17.88	1.42	8.66	13.86	-2.60
Apr	24.50	9.53	15.18	1.42	5.51	11.16	-2.60
May	23.60	7.67	14.28	1.42	3.65	10.26	-2.60
Jun	31.10	10.87	21.78	1.42	6.85	17.76	-2.60
Jul	37.20	15.93	27.88	1.42	11.91	23.86	-2.60
Aug	38.10	17.54	28.60	1.40	13.44	24.50	-2.70
Sep	31.10	13.02	21.60	1.40	8.92	17.50	-2.70
Oct	25.10	8.33	15.60	1.40	4.23	11.50	-2.70
Nov	21.20	6.10	11.70	0.32	2.00	7.60	-3.78
Dec	20.90	5.82	11.40	0.32	1.72	7.30	-3.78
Jan 2001	20.00	4.83	10.50	0.32	0.73	6.40	-3.78
Feb	19.90	4.89	10.40	0.32	0.79	6.30	-3.78
Mar	22.20	5.52	12.70	0.32	1.42	8.60	-3.78
Apr	27.00	7.80	17.50	0.32	3.70	13.40	-3.78
May	28.80	9.54	19.30	0.32	5.44	15.20	-3.78
Jun	30.60	13.15	21.10	0.32	9.05	17.00	-3.78
Jul	36.30	19.96	26.80	0.32	15.86	22.70	-3.78
Aug	40.20	22.60	30.51	0.30	18.42	26.33	-3.88
Sep	36.80	19.22	27.11	0.30	15.04	22.93	-3.88
Oct	37.60	22.10	27.91	0.30	17.92	23.73	-3.88
Nov	34.40	19.65	24.71	0.24	15.47	20.53	-3.94
Dec	30.90	13.75	21.21	0.24	9.57	17.03	-3.94
Jan 2002	28.20	10.57	18.51	0.24	6.39	14.33	-3.94
Feb	26.60	8.62	16.91	0.24	4.44	12.73	-3.94
Mar	25.70	10.17	16.01	0.24	5.99	11.83	-3.94
Apr	28.10	12.66	18.41	0.24	8.48	14.23	-3.94
May	31.10	14.87	21.41	0.24	10.69	17.23	-3.94
Jun	36.00	19.86	26.31	0.24	15.68	22.13	-3.94
Jul	37.90	23.75	28.21	0.24	19.57	24.03	-3.94

Tangerines: Average Prices and Equivalent Returns, United States
and Arizona, October 1999 - May 2002

State, Month, and Year		Equiv. P.H.D.			Equiv. On-Tree			
		F.O.B. Packed	All	Fresh	Proc.	All	Fresh	Proc.
		Dollars per box						
US		Tangerines						
Oct	1999	24.30	12.68	15.62	4.11	9.18	12.22	0.33
Nov		23.40	11.04	14.85	3.96	7.57	11.51	0.26
Dec		21.40	10.48	12.99	4.32	7.10	9.72	0.69
Jan	2000	24.30	11.00	16.43	4.70	7.73	13.46	1.09
Feb		20.60	9.15	12.76	2.91	6.05	9.81	-0.44
Mar		21.30	9.54	13.33	3.00	6.45	10.30	-0.20
Apr		21.50	9.99	13.52	2.53	6.87	10.47	-0.72
May		20.90	9.06	12.75	3.19	5.78	9.61	-0.30
Oct		20.10	9.18	11.21	0.61	5.59	7.67	-3.22
Nov		24.10	10.53	15.44	0.62	6.98	12.04	-3.23
Dec		21.20	9.84	12.77	0.49	6.47	9.47	-3.12
Jan	2001	25.40	11.53	17.47	1.71	8.29	14.43	-1.87
Feb		25.20	12.44	17.36	2.07	9.39	14.40	-1.17
Mar		26.60	13.87	18.79	2.84	10.74	15.85	-0.70
Apr		23.40	12.06	15.27	3.51	8.74	12.15	-0.30
May		34.00	15.08	25.00	3.98	11.29	21.40	-0.02
Oct		23.70	11.98	14.78	2.55	8.23	11.12	-1.53
Nov		25.70	11.99	17.01	2.86	8.28	13.48	-1.16
Dec		23.50	11.38	15.03	2.95	7.80	11.66	-1.11
Jan	2002	27.90	14.46	19.82	2.97	11.06	16.68	-0.96
Feb		24.80	13.07	16.80	3.48	9.78	13.71	-0.35
Mar		25.40	13.47	17.41	3.87	10.15	14.30	0.06
Apr		27.80	16.54	20.23	4.03	13.49	17.37	0.31
May		26.90	20.16	20.16		17.77	17.77	
AZ		Tangerines						
Nov	1999	21.50	11.86	14.99	-0.13	9.56	12.69	-2.43
Dec		24.00	12.03	17.49	-0.13	9.73	15.19	-2.43
Jan	2000	25.60	13.67	19.09	-0.13	11.37	16.79	-2.43
Feb		20.10	8.93	13.59	-0.13	6.63	11.29	-2.43
Mar		17.90	6.30	11.39	-0.13	4.00	9.09	-2.43
Apr		13.00	4.77	6.49	-0.13	2.47	4.19	-2.43
May		7.22	0.71	0.71		-1.59	-1.59	
Nov		25.90	16.67	19.26	-0.18	14.33	16.92	-2.52
Dec		28.50	17.75	21.86	-0.18	15.41	19.52	-2.52
Jan	2001	26.70	14.69	20.06	-0.18	12.35	17.72	-2.52
Feb		24.20	10.26	17.56	-0.18	7.92	15.22	-2.52
Mar		16.80	6.64	10.16	-0.18	4.30	7.82	-2.52
Apr		4.50	-1.75	-2.14	-0.18	-4.09	-4.48	-2.52
Nov		23.80	17.02	17.02		14.63	14.63	
Dec		29.44	21.53	22.66	0.74	19.14	20.27	-1.65
Jan	2002	29.26	20.17	22.48	0.74	17.78	20.09	-1.65
Feb		18.95	11.07	12.17	0.74	8.68	9.78	-1.65
Mar		15.98	9.11	9.20	0.74	6.72	6.81	-1.65
Apr		10.40	3.19	3.62	0.74	0.80	1.23	-1.65
May		5.60	-1.18	-1.18		-3.57	-3.57	

Tangerines: Average Prices and Equivalent Returns, California
and Florida, October 1999 - May 2002

State, Month, and Year		Equiv. P.H.D.			Equiv. On-Tree			
		F.O.B. Packed	All	Fresh	Proc.	All	Fresh	Proc.
Dollars per box								
CA								
Tangerines								
Oct	1999	42.70	27.11	36.19	-0.13	24.81	33.89	-2.43
Nov		31.50	16.06	24.99	-0.13	13.76	22.69	-2.43
Dec		23.10	12.48	16.59	-0.13	10.18	14.29	-2.43
Jan	2000	20.90	10.76	14.39	-0.13	8.46	12.09	-2.43
Feb		19.00	8.90	12.49	-0.13	6.60	10.19	-2.43
Mar		22.40	9.87	15.89	-0.13	7.57	13.59	-2.43
Apr		22.00	9.83	15.49	-0.13	7.53	13.19	-2.43
May		19.60	7.03	13.09	-0.13	4.73	10.79	-2.43
Oct		37.70	20.46	31.06	-0.18	18.12	28.72	-2.52
Nov		27.80	16.40	21.16	-0.18	14.06	18.82	-2.52
Dec		23.20	12.24	16.56	-0.18	9.90	14.22	-2.52
Jan	2001	21.90	11.42	15.26	-0.18	9.08	12.92	-2.52
Feb		25.60	13.91	18.96	-0.18	11.57	16.62	-2.52
Mar		28.70	18.10	22.06	-0.18	15.76	19.72	-2.52
Apr		14.60	7.18	7.96	-0.18	4.84	5.62	-2.52
Oct		40.60	30.51	33.82	0.74	28.12	31.43	-1.65
Nov		28.30	17.87	21.52	0.74	15.48	19.13	-1.65
Dec		23.30	15.98	16.52	0.74	13.59	14.13	-1.65
Jan	2002	27.60	18.98	20.82	0.74	16.59	18.43	-1.65
Feb		26.80	17.63	20.02	0.74	15.24	17.63	-1.65
Mar		25.30	15.72	18.52	0.74	13.33	16.13	-1.65
Apr		26.50	18.07	19.72	0.74	15.68	17.33	-1.65
May		27.70	20.92	20.92		18.53	18.53	
FL								
Tangerines								
Oct	1999	22.70	11.42	13.80	4.47	7.81	10.30	0.57
Nov		22.40	10.35	13.50	4.55	6.71	10.00	0.65
Dec		21.00	10.05	12.10	5.20	6.44	8.60	1.30
Jan	2000	25.50	10.58	16.60	5.76	6.86	13.10	1.86
Feb		21.60	9.32	12.70	4.51	5.65	9.20	0.61
Mar		21.00	9.74	12.10	5.40	6.10	8.60	1.50
Apr		22.40	10.68	13.50	4.35	7.06	10.00	0.45
May		23.40	10.44	14.50	4.35	6.78	11.00	0.45
Oct		19.20	8.48	10.20	0.70	4.80	6.60	-3.30
Nov		23.40	9.62	14.40	0.70	5.88	10.80	-3.30
Dec		20.00	8.53	11.00	0.70	4.84	7.40	-3.30
Jan	2001	26.70	10.81	17.70	2.35	7.03	14.10	-1.65
Feb		25.00	11.87	16.00	3.98	8.14	12.40	-0.02
Mar		25.00	11.15	16.00	3.98	7.39	12.40	-0.02
Apr		29.00	14.41	20.00	3.98	10.67	16.40	-0.02
May		34.00	15.08	25.00	3.98	11.29	21.40	-0.02
Oct		23.20	11.50	14.20	2.57	7.71	10.50	-1.53
Nov		25.40	11.35	16.40	2.96	7.50	12.70	-1.14
Dec		23.00	10.03	14.00	3.00	6.18	10.30	-1.10
Jan	2002	27.70	12.16	18.70	3.21	8.29	15.00	-0.89
Feb		25.00	11.42	16.00	4.00	7.57	12.30	-0.10
Mar		27.00	12.82	18.00	4.50	8.97	14.30	0.40
Apr		32.00	15.92	23.00	4.95	12.06	19.30	0.85

Tangelos and Temples: Average Prices and Equivalent Returns, Florida
November 1999 - April 2002

State, Month, and Year		Equiv. P.H.D.			Equiv. On-Tree			
		F.O.B. Packed	All	Fresh	Proc.	All	Fresh	Proc.
		Dollars per box						
FL		Tangelos						
Nov	1999	17.40	6.96	9.60	4.30	4.41	7.15	1.65
Dec		15.60	6.14	7.80	4.10	3.60	5.35	1.45
Jan	2000	14.60	4.14	6.80	3.50	1.52	4.35	0.85
Feb		15.20	3.34	7.40	3.20	0.70	4.95	0.55
Nov		13.80	4.23	5.90	2.70	1.63	3.40	0.00
Dec		13.10	4.27	5.20	3.30	1.67	2.70	0.60
Jan	2001	16.00	3.99	8.10	2.55	1.34	5.60	-0.15
Feb		15.00	2.73	7.10	2.30	0.05	4.60	-0.40
Nov		15.00	4.96	7.10	2.50	2.26	4.50	-0.30
Dec		16.50	5.88	8.60	3.25	3.18	6.00	0.45
Jan	2002	16.00	4.39	8.10	3.50	1.63	5.50	0.70
Feb		32.00	5.20	24.10	3.50	2.42	21.50	0.70
FL		Temples						
Jan	2000	16.60	6.89	9.20	3.90	4.80	7.20	1.70
Feb		13.60	4.41	6.20	3.80	2.26	4.20	1.60
Mar		13.70	4.06	6.30	3.90	1.88	4.30	1.70
Apr		12.50	3.91	5.10	3.90	1.71	3.10	1.70
Jan	2001	16.00	6.59	8.40	4.20	4.45	6.30	2.00
Feb		13.50	3.63	5.90	2.75	1.45	3.80	0.55
Mar		14.00	3.39	6.40	3.05	1.19	4.30	0.85
Jan	2002	16.50	6.53	8.80	3.70	4.29	6.60	1.40
Feb		14.50	4.23	6.80	3.50	1.95	4.60	1.20
Mar		11.70	3.47	4.00	3.40	1.18	1.80	1.10
Apr		11.50	3.40	3.80	3.40	1.12	1.60	1.10

Oranges: Marketing Year Average Prices Received,
Crop Years 1999-2000 and 2000-01

State, Variety, and Utilization	1999-2000			2000-01		
	F.O.B. :	Equiv. :	Equiv. :	F.O.B. :	Equiv. :	Equiv. :
	Packed :	P.H.D. :	On-Tree :	Packed :	P.H.D. :	On-Tree :
Dollars per box						
AZ						
Navel & Misc.		6.89	4.63		6.54	4.23
Fresh	16.40	9.58	7.32	17.10	10.14	7.83
Processing		-0.08	-2.34		-0.14	-2.45
Valencias		2.35	0.05		5.04	2.70
Fresh	9.70	3.19	0.89	11.70	5.06	2.72
Processing		-0.13	-2.43		-0.18	-2.52
All		4.83	2.55		5.84	3.51
Fresh	13.30	6.62	4.34	14.00	7.23	4.90
Processing		-0.10	-2.38		-0.14	-2.45
CA						
Navel & Misc.		6.55	4.29		9.98	7.67
Fresh	15.30	8.48	6.22	18.60	11.64	9.33
Processing		-0.08	-2.34		-0.14	-2.45
Valencias		3.48	1.18		8.43	6.09
Fresh	13.20	6.69	4.39	16.80	10.16	7.82
Processing		-0.13	-2.43		0.76	-1.58
All		5.40	3.13		9.44	7.12
Fresh	14.70	7.96	5.69	18.00	11.14	8.82
Processing		-0.11	-2.39		0.23	-2.09
FL						
Early/Mids.		5.10	3.19		4.56	2.60
Fresh	15.20	7.60	5.55	13.90	6.10	4.00
Processing		4.97	3.07		4.48	2.53
Valencias		6.28	4.33		6.02	4.02
Fresh	14.60	7.00	4.95	14.70	6.90	4.80
Processing		6.26	4.31		5.99	3.99
All		5.60	3.67		5.18	3.21
Fresh	15.00	7.42	5.37	14.20	6.39	4.29
Processing		5.52	3.60		5.13	3.16
TX						
Early/Mids.		6.46	5.17		2.32	1.04
Fresh	16.30	7.50	6.20	12.20	2.50	1.20
Processing		2.90	1.65		2.12	0.87
Valencias		3.73	2.44		3.33	2.04
Fresh	12.80	4.00	2.70	13.30	3.60	2.30
Processing		2.90	1.65		2.12	0.87
All		6.13	4.84		2.43	1.15
Fresh	15.90	7.09	5.79	12.40	2.67	1.37
Processing		2.90	1.65		2.12	0.87
US						
Early/Mids. &						
Navels		5.40	3.43		5.54	3.53
Fresh	15.30	8.29	6.10	17.50	10.31	8.07
Processing		4.68	2.76		4.31	2.35
Valencias		5.80	3.78		6.36	4.30
Fresh	13.40	6.65	4.41	16.20	9.32	7.04
Processing		5.68	3.70		5.83	3.82
All		5.56	3.58		5.88	3.85
Fresh	14.80	7.81	5.61	17.10	9.97	7.72
Processing		5.12	3.17		4.96	2.98

Oranges: Marketing Year
Average Prices Received, Crop Year 2001-02

		2001-02		
State, Variety, and Utilization:	F.O.B. Packed	Equiv. P.H.D.	Equiv. On-Tree	
		Dollars per box		

:				
:				
AZ				
:				
:				
Navel & Misc.				
:				
Fresh				
:				
Processing				
:				
Valencias				
:				
Fresh				
:				
Processing				
:				
All				
:				
Fresh				
:				
Processing				
:				
CA				
:				
:				
Navel & Misc.				
:				
Fresh				
:				
Processing				
:				
Valencias				
:				
Fresh				
:				
Processing				
:				
All				
:				
Fresh				
:				
Processing				
:				
FL				
:				
:				
Early/Mids.				
:				
Fresh				
:				
Processing				
:				
Valencias				
:				
Fresh				
:				
Processing				
:				
All				
:				
Fresh				
:				
Processing				
:				
TX				
:				
:				
Early/Mids.				
:				
Fresh				
:				
Processing				
:				
Valencias				
:				
Fresh				
:				
Processing				
:				
All				
:				
Fresh				
:				
Processing				
:				
US				
:				
:				
Early, Mids. &				
:				
Navels				
:				
Fresh				
:				
Processing				
:				
Valencias				
:				
Fresh				
:				
Processing				
:				
All				
:				
Fresh				
:				
Processing				
:				

Grapefruit: Marketing Year Average Prices Received,
Crop Years 1999-2000 and 2000-01

State, Variety, and Utilization		1999-2000			2000-01		
		F.O.B. Packed	Equiv. P.H.D.	Equiv. On-Tree	F.O.B. Packed	Equiv. P.H.D.	Equiv. On-Tree
		Dollars per box					
AZ			2.19	0.05		5.42	3.24
	Fresh	12.40	6.39	4.25	12.80	6.67	4.49
	Processing		-0.66	-2.80		-0.24	-2.42
CA			8.17	6.03		8.77	6.59
	Fresh	15.60	9.59	7.45	16.40	10.27	8.09
	Processing		-0.66	-2.80		-0.24	-2.42
FL							
	Seedless-Cldr		5.66	3.31		4.67	2.28
	Fresh	15.40	7.56	5.52	14.50	6.40	4.30
	Processing		4.19	1.60		2.97	0.29
	Seedless-White		6.17	3.87		4.37	2.07
	Fresh	20.60	11.83	9.78	17.60	8.63	6.53
	Processing		4.72	2.35		3.22	0.87
	Seedless-all		5.87	3.53		4.55	2.19
	Fresh	16.60	8.56	6.52	15.20	6.91	4.81
	Processing		4.44	1.96		3.10	0.59
	Other		4.86	2.96		0.00	0.00
	Fresh 1/ Processing		4.86	2.96		0.00	0.00
	All		5.85	3.53		4.55	2.19
	Fresh	16.60	8.56	6.52	15.20	6.91	4.81
	Processing		4.45	1.98		3.10	0.59
TX			6.30	5.16		2.76	1.58
	Fresh	17.60	8.90	7.75	14.40	4.40	3.20
	Processing		1.40	0.30		0.63	-0.53
US			6.07	3.87		4.71	2.51
	Fresh	16.50	8.78	6.84	15.30	7.11	5.12
	Processing		4.16	1.77		2.81	0.42

1/ Fresh sales insignificant and included in processed.

Grapefruit: Marketing Year
Average Prices Received, Crop Year 2001-02

		2001-02				
State, Variety, and Utilization	:	F.O.B. Packed	:	Equiv. P.H.D.	:	Equiv. On-Tree
		Dollars per box				
AZ	:			6.73		4.50
Fresh	:	13.30		7.05		4.82
Processing	:			-0.25		-2.48
CA	:			8.59		6.37
Fresh	:	16.30		10.05		7.83
Processing	:			-0.25		-2.47
FL	:					
Seedless-Cldr	:			4.61		2.17
Fresh	:	15.20		7.07		4.89
Processing	:			2.17		-0.54
Seedless-White 1/	:			4.32		1.95
Fresh	:	17.60		8.73		6.54
Processing	:			3.31		0.90
Seedless-All 1/	:			4.49		2.08
Fresh	:	15.70		7.41		5.23
Processing	:			2.77		0.21
All	:			4.49		2.08
Fresh	:	15.70		7.41		5.23
Processing	:			2.77		0.21
TX	:			3.91		2.77
Fresh	:	15.20		5.60		4.45
Processing	:			0.60		-0.50
US	:			4.78		2.51
Fresh	:	15.70		7.57		5.53
Processing	:			2.58		0.12

1/ Includes "Other than Seedless" grapefruit.

Lemons, Limes, Tangelos, Tangerines, and Temples: Marketing Year
Average Prices Received, Crop Years 1999-2000 and 2000-01

State, Variety, and Utilization	1999-2000			2000-01		
	F.O.B. :	Equiv. :	Equiv. :	F.O.B. :	Equiv. :	Equiv. :
	Packed :	P.H.D. :	On-Tree :	Packed :	P.H.D. :	On-Tree :
	Dollars per box					
Lemons						
AZ		14.45	10.43		6.84	2.74
Fresh	30.70	21.38	17.36	22.20	12.70	8.60
Process		1.42	-2.60		0.32	-3.78
CA		13.36	9.34		9.41	5.31
Fresh	30.30	20.98	16.96	27.50	18.00	13.90
Process		1.42	-2.60		0.50	-3.60
US		13.51	9.49		9.06	4.96
Fresh	30.40	21.04	17.02	26.80	17.25	13.15
Process		1.42	-2.60		0.48	-3.62
Limes						
FL		16.21	11.21		17.00	12.00
Fresh	29.50	19.00	14.00	29.50	19.00	14.00
Process		2.28	-2.72		2.30	-2.70
Tangelos						
FL		5.11	2.52		3.90	1.27
Fresh	15.80	8.00	5.55	14.00	6.10	3.60
Process		3.65	1.00		2.70	0.00
Tangerines						
AZ		9.74	7.44		13.67	11.33
Fresh	20.60	14.09	11.79	25.70	19.06	16.72
Process		-0.13	-2.43		-0.18	-2.52
CA		11.10	8.80		14.15	11.81
Fresh	22.90	16.39	14.09	24.90	18.26	15.92
Process		-0.13	-2.43		-0.18	-2.52
FL		10.31	6.66		10.14	6.40
Fresh	22.30	13.40	9.90	23.10	14.10	10.50
Process		5.01	1.11		2.07	-1.93
US		10.43	7.15		11.26	7.92
Fresh	22.30	14.10	10.94	23.70	15.46	12.26
Process		3.75	0.24		1.57	-2.06
Temples						
FL		4.70	2.55		4.23	2.05
Fresh	15.00	7.60	5.60	14.80	7.20	5.10
Process		3.86	1.66		3.10	0.90

Lemons, Limes, Tangelos, Tangerines, and Temples: Marketing Year
Average Prices Received, Crop Year 2001-02

		2001-02		
State, Variety, and Utilization:	F.O.B. Packed	Equiv. P.H.D.	Equiv. On-Tree	
		Dollars per box		
Lemons				
AZ		14.62	10.44	
Fresh	31.10	21.41	17.23	
Process		.24	-3.94	
CA		15.80	11.62	
Fresh	32.60	22.91	18.73	
Process		.25	-3.93	
US		15.65	11.47	
Fresh	32.40	22.72	18.54	
Process		.25	-3.93	
Limes				
FL		11.55	6.19	
Fresh	26.40	13.50	8.15	
Process		1.75	-3.60	
Tangelos				
FL		5.10	2.37	
Fresh	16.70	8.80	6.20	
Process		3.33	.53	
Tangerines				
AZ		15.83	13.44	
Fresh	23.90	17.12	14.73	
Process		.74	-1.65	
CA		14.65	15.26	
Fresh	26.40	19.62	17.23	
Process		.74	-1.65	
FL		11.54	7.69	
Fresh	25.20	16.20	12.50	
Process		3.36	-.74	
US		12.98	9.50	
Fresh	25.40	17.12	13.85	
Process		3.14	-0.82	
Temples				
FL		4.55	2.28	
Fresh	15.20	7.50	5.30	
Process		3.49	1.19	

K-Early Citrus: Marketing Year Average Prices Received,
Crop Years 1999-2000 and 2000-01

State and Utilization	1999-2000			2000-01		
	F.O.B. : Packed	Equiv. : P.H.D.	Equiv. : On-Tree	F.O.B. : Packed	Equiv. : P.H.D.	Equiv. : On-Tree
	Dollars per box					
K-Early Citrus						
FL		3.24	0.62		4.68	2.10
Fresh	15.60	7.80	5.35	15.00	7.10	4.60
Process		2.52	-0.13		2.00	-0.70

Florida Grapefruit: Marketing Year Average Prices Received,
Crop Years 1999-2000 and 2000-01

Variety, Area, and Utilization	1999-2000			2000-01		
	F.O.B. : Packed	Equiv. : P.H.D.	Equiv. : On-Tree	F.O.B. : Packed	Equiv. : P.H.D.	Equiv. : On-Tree
	Dollars per box					
White Seedless 1/						
Interior		5.04	3.06		3.47	1.51
Fresh	18.50	11.30	9.30	16.20	8.80	6.70
Processing		4.70	2.73		3.19	1.23
Indian River		6.70	4.25		4.76	2.31
Fresh	20.80	11.90	9.85	17.70	8.60	6.50
Processing		4.73	2.12		3.23	0.64
Colored Seedless						
Interior		5.55	3.37		3.92	1.67
Fresh	15.20	8.30	6.30	13.00	5.90	3.80
Processing		4.17	1.90		2.97	0.65
Indian River		5.74	3.30		5.10	2.63
Fresh	15.50	7.30	5.25	15.00	6.60	4.50
Processing		4.20	1.38		2.97	-0.03

1/ "Other than Seedless" grapefruit included with white seedless beginning with the 2000-01 crop.

K-Early Citrus: Marketing Year Average Prices Received,
Crop Year 2001-02

		2001-02		
State and Utilization	F.O.B. Packed	Equiv. P.H.D.	Equiv. On-Tree	
Dollars per box				
K-Early Citrus				
FL		3.83	1.07	
Fresh	15.00	7.10	4.50	
Process		3.00	0.20	

Florida Grapefruit: Marketing Year Average Prices Received,
Crop Year 2001-02

		2001-02		
Variety, Area and Utilization	F.O.B. Packed	Equiv. P.H.D.	Equiv. On-Tree	
Dollars per box				
White Seedless 1/ Interior		3.77	1.75	
Fresh	17.50	10.10	8.00	
Processing		3.30	1.29	
Indian River		4.63	2.06	
Fresh	17.60	8.50	6.30	
Processing		3.32	0.63	
Colored Seedless				
Interior		4.02	1.78	
Fresh	14.80	7.70	5.60	
Processing		2.15	-0.15	
Indian River		4.88	2.34	
Fresh	15.30	6.90	4.70	
Processing		2.18	-0.82	

1/ "Other than Seedless" grapefruit included with white seedless.

Hops: Marketing Year Average Prices Received,
by State and United States, 2000-01

State	2000	2001
Dollars per Pound		
ID	1.78	1.61
OR	2.19	2.41
WA	1.82	1.83
US	1.87	1.91

Reliability of Prices Received Estimates

Definition: Prices received represent sales from producers to first buyers. They include all grades and qualities. The average commodity price from the survey multiplied by the total quantity marketed theoretically should give the total cash receipts for the commodity.

Survey Procedures: Primary sales data used to determine grain prices were obtained from probability samples of 2600 mills and elevators. These procedures ensure that virtually all grain moving into commercial channels has a chance of being included in the survey. Generally, States surveyed account for 90 percent or more of total U.S. production. Livestock prices are obtained from packers, stockyards, auctions, dealers, and market check data from AMS-USDA, private marketing organizations, and state commodity groups and agencies. Inter-farm sales of grain and livestock are not included since they represent very small percentages of the total marketings. Grain marketed for seed is also excluded. Fruit and vegetable prices are obtained from sample surveys and market check data from AMS-USDA, private marketing organizations, state agencies, and universities.

Summary and Estimation Procedures: Survey quantities sold are expanded by strata to state levels and used to weight average strata prices to a state average. State prices are then weighted to a U.S. price based on expanded marketings. Recommendations are prepared by the State Statistical Offices and reviewed by the Agricultural Statistics Board in Washington, D.C. State recommendations are reviewed for reasonableness with survey data, other States, and recent historic estimates.

Revisions: For most items, the current month's price represents a 3-5 day period around the mid-month. Previous month's prices represent actual dollars received for quantities sold during the entire month. Revisions are published in monthly issues of "**Agricultural Prices**".

Reliability: U.S. price estimates based on probability surveys generally have a sampling error of less than one percent for the major commodities such as corn, wheat, soybeans, cotton, and rice. Current methods of summarization for non-probability commodities are not designed directly to calculate sampling errors. However, analytical measures approximate the U.S. relative sampling errors at around five percent. Any nonsampling errors are attributed to such things as the inability to obtain correct information, differences in interpreting questions or definitions, mistakes in coding or processing the data, etc. Efforts are made at each step in the survey process to minimize these nonsampling errors.

Prices Paid by Farmers

The September Index of Prices Paid for Commodities and Services, Interest, Taxes, and Farm Wage Rates (PPITW) was 125 (1990-92=100), 0.8 percent higher than August 2002 and 0.8 percent above September 2001.

PRODUCTION INDEX: The September Farm Production, Goods, and Services Index, at 121, was up 0.8 percent from last month and 0.8 percent above last year. Higher prices in September for complete feeds, feed grains, feeder cattle, and diesel fuel, more than offset lower prices for feeder pigs.

Feed: The Feed Index, at 120, was 2.6 percent more than August and 9.1 percent above last September. Since August, prices were higher for complete feeds, feed grains, hay and forages, feed concentrates, and feed supplements.

Livestock and Poultry: The Index for Livestock and Poultry purchases, at 98, was 1.0 percent higher than last month but 13 percent below last year. Since August, higher prices for feeder cattle more than offset lower prices for feeder pigs. The September feeder cattle price, at \$83.30 per cwt, was up \$1.70 per cwt from the August price.

Fertilizer: The Fertilizer Index, at 110, was up 0.9 percent from August but 1.8 percent less than September a year ago. Prices were slightly higher in September for potash and phosphate materials and nitrogen fertilizers.

Agricultural Chemicals: The Chemical index, at 118, was unchanged from last month but 1.7 percent below last September.

Fuels: The Fuels Index, at 119, was up 4.4 percent from a month earlier but 11 percent below September 2001. Compared to last month, prices were higher for diesel fuel and LP gas.

Farm Machinery: The September Farm Machinery Index was 148, up 0.7 percent from August and 1.4 percent above last September. Since August, prices were fractionally higher for other machinery.

CONSUMER PRICE INDEX: The August 2002 Consumer Price Index for all urban consumers (CPI-U) rose 0.3 percent before seasonal adjustment to a level of 180.7 (1982-84=100). This compares to the July index of 180.1. For the 12-month period ending in August, the overall index has increased 1.8 percent.

Indexes of Prices Paid by Farmers and Related Parity Ratios
United States, September 2002 With Comparisons

Indexes and Ratios	: 1910-14 = 100			: 1990-92 = 100		
	: 2001			: 2002		
	: Sep			: Aug		
	: Sep	: Aug	: Sep	: Sep	: Aug	: Sep
Prices Paid by Farmers for Commodities & Services, Interest, Taxes, & Wage Rates (PPITW)	: 1649	*1654	1661	124	124	125
Production	: 1167	*1164	1172	120	120	121
Feed	: 539	*574	588	110	*117	120
Livestock and Poultry	: 1429	*1243	1255	112	97	98
Seeds	: 1329	1426	1426	134	144	144
Fertilizer	: 411	*401	402	112	109	110
Agricultural Chemicals	: 739	732	732	120	118	118
Fuels	: 1031	*881	915	134	*114	119
Supplies & Repairs	: 912	*927	927	128	131	131
Autos & Trucks	: 3093	*3041	3028	116	*114	114
Farm Machinery	: 3653	*3698	3700	146	147	148
Building Material	: 1649	*1669	1680	121	*123	124
Farm Services & Rent	: 1430	1437	1437			
Farm Services	:			122	121	121
Rent	:			117	120	120
Interest 1/	: 2845	2728	2728	114	109	109
Taxes 2/	: 3330	3378	3378	124	126	126
Wage Rates	: 5357	5557	5557	143	149	149
Production, Interest, Taxes, & Wage Rates (PITW)	: 1640	*1640	1649	122	122	123
Family Living-CPI 3/	: 1693	*1716	1716	132	134	134
Ratio (Received\Paid)	:			85	81	79
Parity Ratio 4/	: 41	39	38			
Parity Ratio Adjusted 5/ PPITW Adjusted for	: 45	41	40			
Productivity 6/	: 1123	1138	1139			
Crop Sector (PPITW)	:			126	126	127
Livestock Sector (PPITW)	:			122	122	123
Farm Sector (Production)	:			114	*115	117
Non-Farm Sector (Production)	:			123	122	123

* Revised.

- 1/ Interest per acre on farm real estate debt and interest rate on farm non-real estate debt.
- 2/ Farm real estate taxes payable per acre.
- 3/ Bureau of Labor Statistics, Consumer Price Index for all urban consumers (CPI-U), for the previous month converted by the USDA.
- 4/ Ratio of index of prices received to PPITW (1910-14=100).
- 5/ Based on estimated cash receipts, from marketings and government payments, the preliminary adjustment factor is 1.052 for 2002 and the revised factor is 1.105 for 2001.
- 6/ PPITW is adjusted based on productivity trend for the prior 15 years.

Prices Paid Indexes and Annual Weights for Input Components and
Sub-Components United States, September 2002 With Comparisons

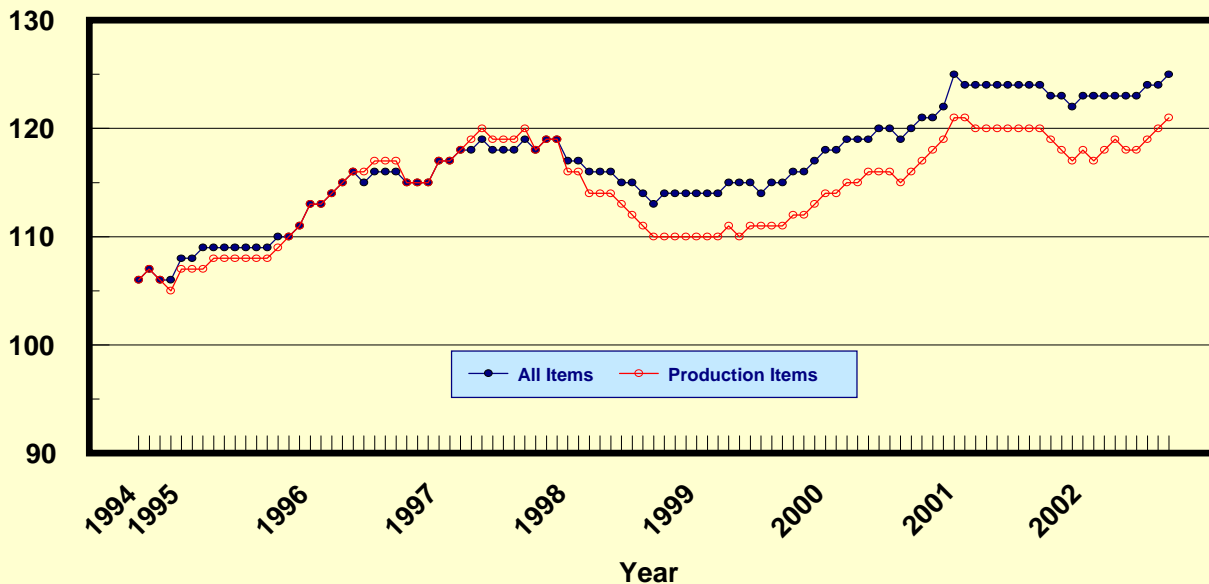
Index	Relative Weights		Input Indexes		
	5-Year Moving Average 1/		2001	2002	
	2001	2002	Sep	Aug	Sep
	----	Percent	----	(1990-92=100)	
Production Items	67.1	66.9	120	120	121
Feed	11.5	11.3	110	*117	120
Feed Grains	1.6	1.6	84	*104	111
Complete Feeds	5.6	5.5	113	*118	121
Hay/Forages	1.4	1.4	123	119	122
Concentrates	1.8	1.8	111	*121	122
Supplements	1.0	0.9	120	*128	129
Livestock & Poultry	6.7	6.8	112	97	98
Feeder Cattle	5.2	5.3	110	96	98
Feeder Pigs	0.5	0.5	106	*46	38
Milk Cow Replacements	0.5	0.6	141	148	148
Poultry	0.4	0.4	109	109	109
Seeds	3.0	3.1	134	144	144
Field Crops	2.7	2.8	136	147	147
Grasses/Legumes	0.3	0.3	118	118	118
Fertilizer	4.8	4.7	112	109	110
Mixed Fertilizer	2.1	2.1	107	104	104
Nitrogen	2.0	2.0	120	*115	115
Potash & Phosphate	0.7	0.7	105	*108	111
Agricultural Chemicals	4.0	3.9	120	118	118
Herbicides	2.5	2.5	112	111	111
Insecticides	0.9	0.9	141	137	137
Fungicides/Other	0.6	0.6	120	119	119
Fuels	2.6	2.7	134	*114	119
Diesel	1.5	1.5	137	*113	120
Gasoline	0.7	0.8	136	*118	118
LP Gas	0.4	0.4	116	*110	115
Farm Supplies & Repairs	5.6	5.5	128	131	131
Supplies	1.9	1.8	123	*124	124
Repairs	3.7	3.7	131	134	134
Autos & Trucks	1.7	1.7	116	*114	114
Autos	0.2	0.2	110	*108	108
Trucks	1.5	1.5	117	115	115
Farm Machinery	4.0	4.0	146	147	148
Tractors	0.9	0.9	138	140	140
Self-Propelled	1.6	1.6	147	147	147
Other Machinery	1.5	1.5	149	153	153
Building Materials	2.8	3.1	121	*123	124
Farm Services	12.4	12.3	122	121	121
Custom Rates	1.3	1.3	121	121	121
Other Services	11.1	11.1	122	121	121
Rent	7.9	7.7	117	120	120
Cash	4.0	4.2	143	145	145
Share	3.9	3.6	91	91	91
Interest	4.9	4.8	114	109	109
Taxes	3.1	3.0	124	126	126
Wage Rates	7.2	7.3	143	149	149
Family Living-CPI	17.8	18.0	132	134	134

* Revised.

1/ Weights may not add due to rounding.

Prices Paid by Farmers, Major Indexes US, by Quarter and Month 1/

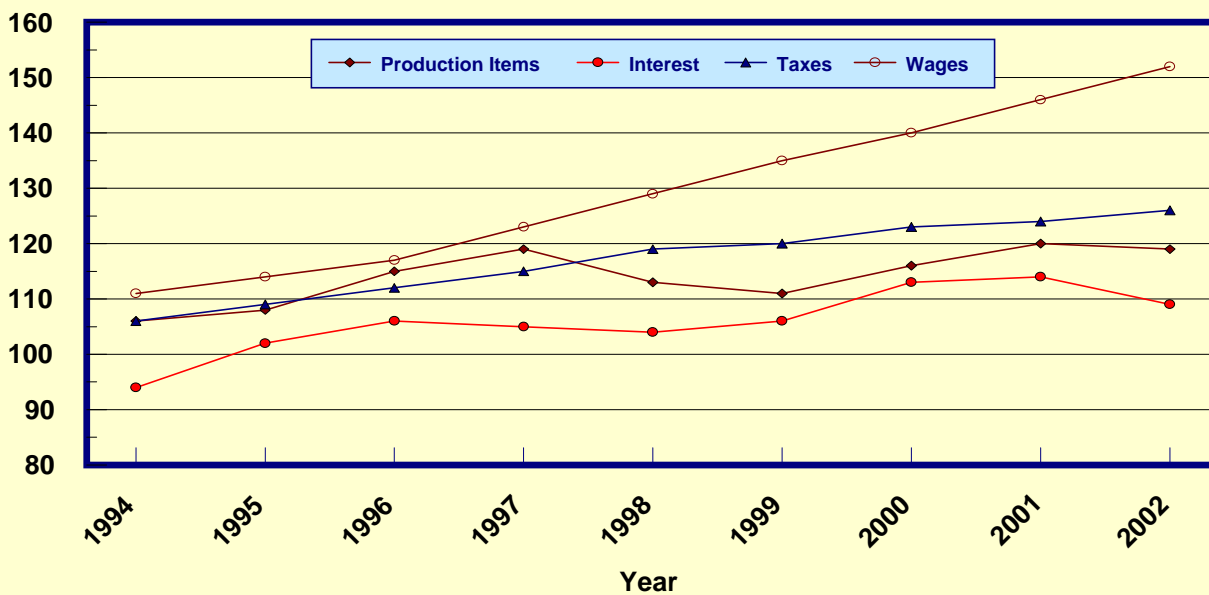
Percent (1990-92=100)



1/ Index values are monthly beginning in 1995.

Prices Paid by Farmers, Major Indexes US, Annual Averages 1/

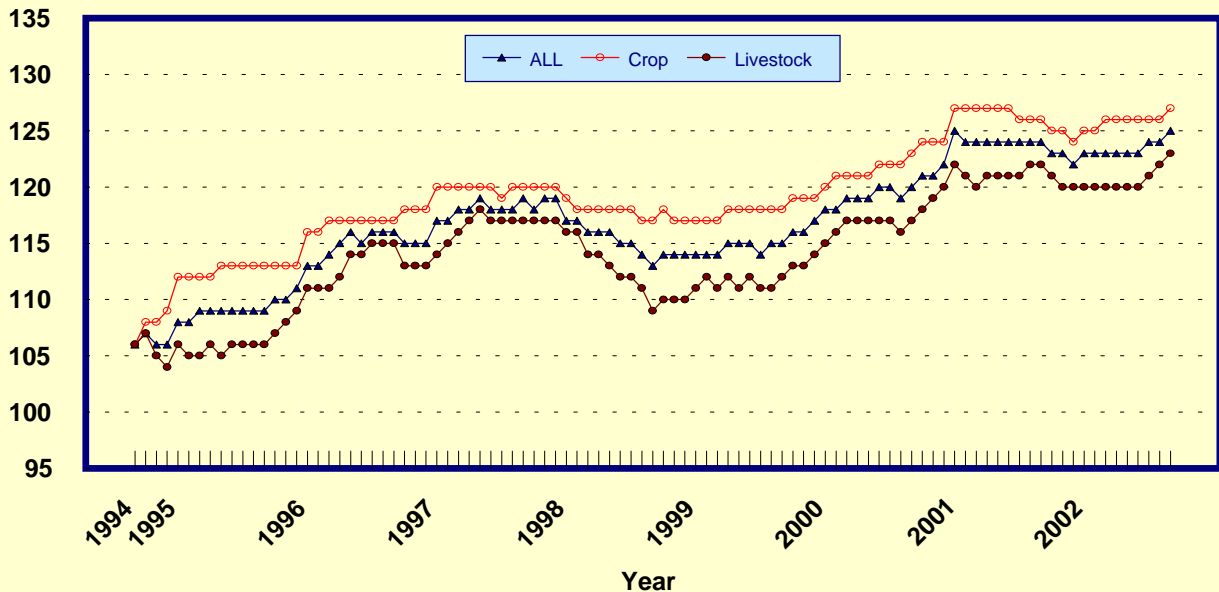
Percent (1990-92=100)



1/ Index values for 2002 are year-to-date averages.

Prices Paid by Farmers, Indexes, All Items US, By Farm Type 1/

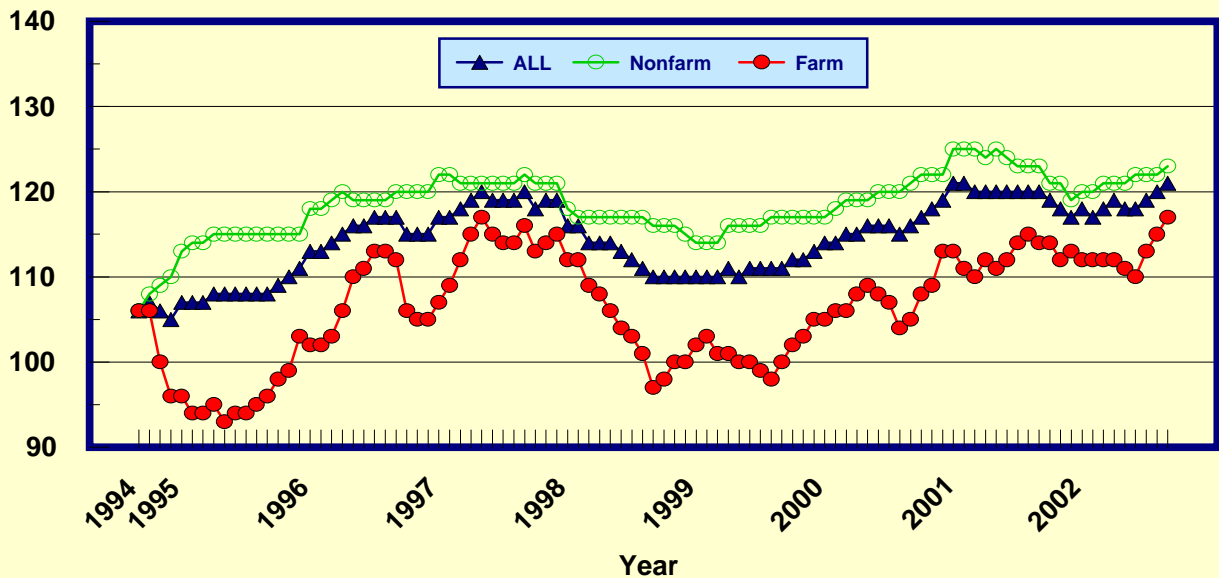
Percent (1990-92=100)



1/ Index values are monthly beginning in 1995.

Prices Paid by Farmers, Indexes, All Production Items US, By Sector Origin 1/

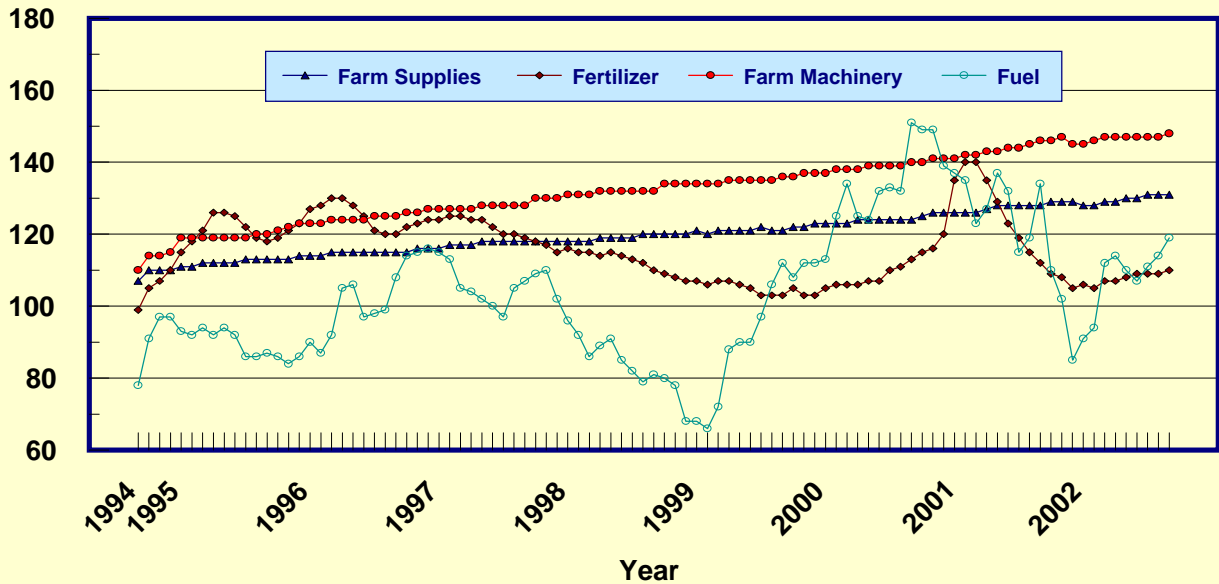
Percent (1990-92=100)



1/ Index values are monthly beginning in 1995.

Prices Paid by Farmers, Selected Production Indexes US, By Non-Farm Sector 1/

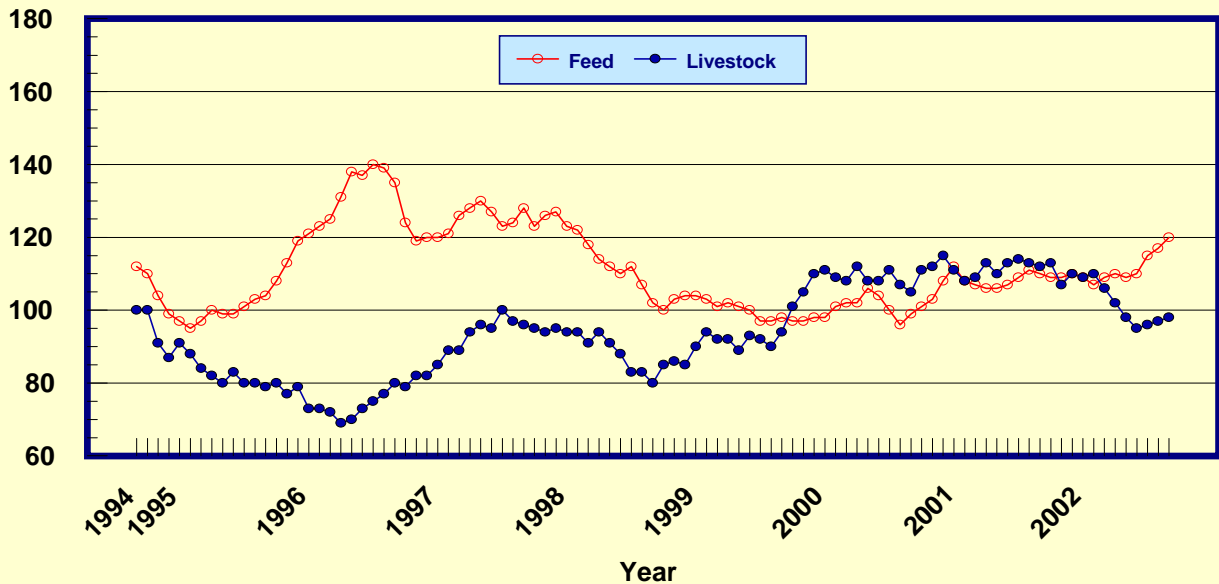
Percent (1990-92=100)



1/ Index values are monthly beginning in 1995.

Prices Paid by Farmers, Selected Production Indexes US, By Farm Sector 1/

Percent (1990-92=100)



1/ Index values are monthly beginning in 1995.

Feed Price Ratios: United States, September 2002 with Comparisons

Feed Price Ratio 1/	2001		2002	
	Sep	Aug	Sep	Aug
Broiler-Feed: Pounds of Broiler Grower Feed equal in value to 1 pound of broiler, live weight	8.4	*4.6	4.6	
Market Egg Feed: Pounds of Laying Feed equal in Value to 1 dozen eggs	8.5	*8.0	6.8	
Hog-Corn: Bushels of Corn equal in value to 100 pounds of hog, live weight	23.7	*13.4	10.4	
Milk-Feed: Pounds of 16% Mixed Dairy Feed equal in value to 1 pound of Whole Milk	3.75	*2.27	2.23	
Steer & Heifer-Corn: Bushels of Corn equal in value to 100 pounds of Steer & Heifers, live weight	37.7	*28.2	26.4	
Turkey-Feed: Pounds of Turkey Grower equal in value to 1 pound of Turkey, live weight	8.3	*6.3	5.8	

1/ Effective December 1998, prices of commercial prepared feeds are based on current U.S. prices received for corn, soybeans, alfalfa hay, and all wheat.
 * Revised.

Prices Used to Calculate Feed Price Ratios:
 United States, September 2002 with Comparisons

Commodity	Unit	2001		2002	
		Sep	Aug	Sep	Aug
Broilers, Live	Lb	0.430	0.290	0.300	
Eggs, Market	Doz	0.377	0.439	0.390	
Hogs, All	Cwt	45.20	*31.90	26.50	
Milk, All	Cwt	17.10	*11.30	11.50	
Steers and Heifers	Cwt	72.10	*67.10	67.60	
Turkeys, Live	Lb	0.405	0.379	0.369	
Corn	Bu	1.91	*2.38	2.56	
Hay, Alfalfa, Baled	Ton	108.00	101.00	102.00	
Soybeans	Bu	4.53	*5.53	5.54	
Wheat, All	Bu	2.85	*3.63	4.07	

* Revised.

Feeder Livestock: Prices Paid, United States
 September 2002 with Comparisons

Commodity	Unit	2001		2002	
		Sep	Aug	Sep	Aug
					Dollars
Feeders and Stockers					
Cattle and Calves	Cwt	92.80	81.60	83.30	
Feeder Pigs	Cwt	97.00	*42.00	35.00	

* Revised.

Prices Paid by Farmers

Definition: Prices paid by farmers represent the average costs of inputs purchased by farmers and ranchers to produce agricultural commodities. Conceptually, the average price when multiplied by quantity purchased should equal total producer expenditures for the item.

Survey Procedures: The prices paid data are obtained from establishments that sell goods and services to farmers and ranchers. Annually, about 8,500 firms are randomly selected from lists by type of item sold with an average response rate in the range of 75-80 percent. Firms are asked to report the price for the specified item "most commonly bought by farmers" or that was the "volume seller". Approximately 135 items are surveyed each April to represent all production input items purchased. The survey reference period for most items is the 5 business days centered around the 15th of the month. Separate prices paid surveys are conducted for agricultural chemicals, fuels, feed, fertilizer, machinery, and seed.

Summary and Estimation Procedures: The annual April Paid Survey is summarized as a nonprobability survey. Average prices reported are aggregated to the region and U.S. level using weights available from expenditure data and other administrative sources. Price recommendations are prepared by the State Statistical Offices and Headquarters for review by the Agricultural Statistics Board in Washington, D.C. Also, the change in price level for individual items surveyed are combined to the regional and U.S. levels, and are published as prices paid indexes referenced to a specific base period. Prices paid indexes for new autos and trucks, building materials, farm supplies, motor supplies, and marketing containers are updated based on price changes measured in selected Bureau of Labor Statistics (BLS) indexes.

Revisions: Any revisions are published in the monthly and in annual issues of "Agricultural Prices". The basis for revision must be supported by additional data that directly affect the level of the estimate. More revisions are likely in April when separate prices paid surveys are conducted, in lieu of BLS indexes, by the USDA to measure price change.

Reliability: Current methods of summarization in April are not designed directly to calculate sampling errors. However, analytical measures approximate the U.S. relative sampling errors for major items around 10 percent. Any nonsampling errors are attributed to such things as the inability to obtain correct information, differences in interpreting questions or definitions, mistakes in coding or processing the data, etc. Efforts are made at each step in the survey process to minimize these nonsampling errors.

Program Change: Effective January 1, 1995, the National Agricultural Statistics Service updated the weights and changed the construction of its prices paid and received by farmers indexes. A Federal Register Notice dated October 28, 1994 discussed these program modifications.

A 1990-92 reference and base period replaced the 1977 reference and 1971-73 base weight period. Five-year moving average weights replaced the current fixed 1971-73 base period weights. The 1910-14=100 price indexes, required by statute for computing parity prices, were linked forward based on the changes in the new 1990-92=100 indexes. The new indexes were constructed by multiplying the ratios of the current prices to the base period prices by the moving average weights (adjusted for seasonal marketing patterns for the prices received indexes).

Information Contacts

General questions should be directed to **Linda Hutton**, Chief, Environmental, Economics and Demographics Branch at (202) 720-6146. Below are the commodity specialists to contact for additional information.

Crop Prices

Mark Harris, Chief, Crops Branch (202) 720-2127

Field Crops Section

Greg Thessen, Head (202) 720-2127

- Dave DeWalt** - Cotton (202) 720-5412
- Herman Ellison** - Oilseeds (202) 720-7369
- Lance Honig** - Wheat (202) 720-8068
- Darin Jantzi** - Corn (202) 720-7235
- Troy Joshua** - Hay, Sorghum (202) 690-3234
- Mark E. Miller** - Oats (202) 720-7621
- Mark R. Miller** - Peanuts, Rice, Barley (202) 720-7688

Fruit and Vegetable Section

Jim Smith, Head (202) 720-2127

- Arvin Budge** - Potatoes, Dry Beans (202) 720-4285
- Kathy Broussard** - Citrus (202) 720-5412
- Debbie Flippin** - Peaches, Pears, Hops, Pulse crops, Mint (202) 720-3250
- Steve Gunn** - Apples, Cherries (202) 720-4288
- Mike Miller** - Grapes, Tobacco (202) 720-7235
- Biz Wallingsford** - Vegetables, Onions, Strawberries (202) 720-2157

Livestock Prices

Dan Kerestes, Chief, Livestock Branch (202) 720-3570

Livestock Section

Wil Hundl, Head (202) 720-6880

- Steve Anderson** - Cattle (202) 720-3040
- Scott Hollis** - Sheep (202) 720-4751
- Ty Kalas** - Milk (202) 690-3236
- Rodger Ott** - Hogs (202) 720-3106

Poultry and Specialty Commodities Section

Nathan Crisp, Head (202) 720-6351

- Tom Kruchten** - Broilers, Eggs (202) 690-4870
- John Lange** - Turkeys (202) 720-0585

Prices Paid and Indexes

Linda Hutton, Chief, Environmental, Economics and Demographics Branch (202) 720-6146

Economics Section

Larry Beard, Head (202) 720-4214

- Tara Jackson** - Feed, Fertilizer, Agricultural Chemicals, Seeds (202) 690-3229
- Jim Williams** - Prices Paid Indexes, Farm Supplies and Repairs, Farm Machinery, Fuels, Feeder Livestock, Poultry Chicks, Feed Price Ratios, Grazing Fees, Autos & Trucks (202) 690-3225
- Rhonda Brandt** - Prices Received Indexes (202) 720-5446

The next "Agricultural Prices" report will be released at 3:00 p.m. ET on October 31, 2002.

The United States Department of Agriculture (USDA) prohibits discrimination in all its programs on the basis of race, color, national origin, gender, religion, age, disability, political beliefs, sexual orientation, and marital or family status. (Not all prohibited bases apply to all programs.) Persons with disabilities who require alternative means for communication of program information (braille, large print, audiotape, etc.) should contact the USDA's TARGET Center at 202-720-2600 (voice and TDD).

To file a complaint of discrimination, write USDA, Director, Office of Civil Rights, Room 326-W, Whitten Building, 1400 Independence Avenue, SW, Washington, D.C., 20250-9410, or call 202-720-5964 (voice or TDD). USDA is an equal opportunity provider and employer.

ACCESS TO REPORTS!!

For your convenience, there are several ways to obtain NASS reports, data products, and services:

INTERNET ACCESS

All NASS reports are available free of charge on the worldwide Internet. For access, connect to the Internet and go to the NASS Home Page at: <http://www.usda.gov/nass/>. Select "Today's Reports" or Publications and then Reports by Calendar or Publications and then Search, by Title or Subject.

E-MAIL SUBSCRIPTION

There are two options for subscribing via e-mail. All NASS reports are available by subscription free of charge direct to your e-mail address. 1) Starting with the NASS Home Page at <http://www.usda.gov/nass/>, click on **Publications**, then click on the **Subscribe by E-mail** button which takes you to the page describing e-mail delivery of reports. Finally, click on **Go to the Subscription Page** and follow the instructions. 2) If you do NOT have Internet access, send an e-mail message to: usda-reports@usda.mannlib.cornell.edu. In the body of the message type the word: **list**.

AUTOFAX ACCESS

NASSFax service is available for some reports from your fax machine. Please call 202-720-2000, using the handset attached to your fax. Respond to the voice prompts. Document 0411 is a list of available reports.

PRINTED REPORTS OR DATA PRODUCTS

CALL OUR TOLL-FREE ORDER DESK: 800-999-6779 (U.S. and Canada)
Other areas, please call 703-605-6220 FAX: 703-605-6900
(Visa, MasterCard, check, or money order acceptable for payment.)

ASSISTANCE

For **assistance** with general agricultural statistics or further information about NASS or its products or services, contact the **Agricultural Statistics Hotline** at **800-727-9540**, 7:30 a.m. to 4:00 p.m. ET, or e-mail: nass@nass.usda.gov.

**USDA Data Users' Forum
October 21, 2002
Holiday Inn Mart Plaza
Chicago, Illinois**

The USDA's National Agricultural Statistics Service will hold a public forum for open exchange between Federal agricultural statistics agencies and data users on October 21, 2002. Agency representatives will provide updates on pending changes in the various statistical and information programs and will seek comments from data users. The USDA's Agricultural Marketing Service, Economic Research Service, Foreign Agricultural Service, and World Agricultural Outlook Board, as well as the U.S. Census Bureau's Foreign Trade Division, will also participate in the forum.

For registration details or additional information about the Data Users' Forum, see the NASS homepage at www.usda.gov/nass/ or contact Karlyn McCutcheon of NASS at (202) 690-8141 or at karlyn_mccutcheon@nass.usda.gov.

This Data Users' Forum precedes an Industry Outlook Meeting that will be held at the same location on October 22, 2002. The outlook meeting brings together analysts from various commodity sectors to discuss the outlook situation. For more information about the outlook meeting and to register for it, contact Terry Francel of the American Farm Bureau Federation at (847) 685-8769 or at terry@fb.org.