

Agricultural Prices

Released November 27, 2002, by the National Agricultural Statistics Service (NASS), Agricultural Statistics Board, U.S. Department of Agriculture. For information on "Agricultural Prices" or other assistance, see page B-9.

November Farm Prices Received Index Up 1 Point From Last Month

The preliminary All Farm Products Index of Prices Received by Farmers in November is 97, based on 1990-92=100, up 1 point (1.0 percent) from the October index. Higher prices for soybeans, eggs, cattle, and tomatoes more than offset lower prices for hogs, milk, lettuce, and corn. The seasonal change in the mix of commodities farmers sell also affects the overall index. Increased marketings of cotton, milk, cattle, and cottonseed offset decreased marketings of soybeans, peanuts, potatoes, and sunflower.

The preliminary All Farm Products Index is 4 points (4.3 percent) above November, 2001. Higher prices for corn, soybeans, wheat, and cattle more than offset lower prices for broilers, hogs, turkeys, and calves.

The Food Commodities Index increased 2 points (2.1 percent) above last month to 96, but is 1.0 percent below November last year.

Prices Paid Index Up 1 Point

The November Index of Prices Paid for Commodities and Services, Interest, Taxes, and Farm Wage Rates (PPITW) is 126 percent of the 1990-92 average. The index is up 1 point (0.8 percent) from October and 4 points (3.3 percent) above November 2001. Higher prices in November for feeder pigs, feeder cattle, feed supplements, and nitrogen fertilizers more than offset lower prices for feed concentrates, diesel fuel, herbicides, and self-propelled machinery.

Index Summary Table

Index 1990-92=100	2001		2002	
	Oct	Nov	Oct	Nov
Prices Received	94	93	96	97
Prices Paid	123	122	125	126
Ratio 1/	76	76	77	77

1/ Ratio of index of prices received by farmers to index of prices paid.

Prices Received by Farmers

The November All Farm Products Index is 97 percent of its 1990-92 base, up 1.0 percent from the October index and 4.3 percent above the November 2001 index.

ALL CROPS: The November index is 104, up 2.0 percent from October and 16.9 percent above the November 2001 index. Price decreases from October for food crops, feed grains and hay, and fruits and nuts are more than offset by price increases in cotton, tobacco, oil-bearing crops, commercial vegetables, and potatoes and dry beans.

Food Grains: The November index, at 121, is down 4.7 percent from the previous month but up 38 percent from November 2001. The all wheat price, at \$4.23 per bushel, is down 14 cents from the October price but \$1.36 above last November. The rice price, at \$3.62 per cwt, is down 7 cents from October and 46 cents below a year ago.

Feed Grains & Hay: The November index is 104, down 1.0 percent from last month but 21 percent above November 2001. The corn price, at \$2.30 per bushel, is down 4 cents from October but 45 cents above last November's price. The all hay price, at \$93.60 per ton, is down 90 cents from last month and \$2.30 above November 2001.

Oil-Bearing Crops: The November index, at 96, is up 6.7 percent from October and up 25 percent from the previous November. The soybean price, at \$5.43 per bushel, is up 24 cents from October and \$1.27 above the November 2001 price.

Cotton: The November index, at 68, is up 6.3 percent from a month ago and 48 percent above November 2001. The cotton price, at 41.4 cents per pound, is up 2.4 cents from October and 13.6 cents above a year ago.

Potatoes and Dry Beans: The November index, at 100, is up 6.4 percent from last month but 5.7 percent below November 2001. The all potato price, at \$6.01 per cwt, is up 44 cents from the previous month and 5 cents above last November. The dry edible bean price, at \$16.70 per cwt, is unchanged from last month but \$6.00 below a year ago.

Fruit and Nuts: The November fruit and nut index, at 114, is down 12 percent from the previous month but 2.7 percent above November 2001. Price decreases for apples, oranges, grapefruit, lemons, and pears more than offset the price increase for strawberries.

Commercial Vegetables: The November index, at 122, is up 10 percent from last month and 20 percent above November 2001. Price increases during November for snap beans, broccoli, cauliflower, celery, cucumbers, and tomatoes more than offset price decreases for carrots, lettuce, sweet corn, and cantaloupes.

LIVESTOCK & PRODUCTS: The November index, at 89, is up 2.3 percent from last month but down 10 percent from November 2001. Compared with a year ago, prices are higher for all cattle and eggs, but lower for all milk, broilers, hogs, turkeys, and calves.

Meat Animals: The November index, at 84, is unchanged from last month and down 2.3 percent from a year ago. The November hog price of \$27.40 per cwt is down \$3.20 from October and down \$7.60 from this same time a year ago. The November beef cattle price of \$66.50 is up \$1.80 from last month and up \$2.50 from November 2001.

Dairy Products: The November index, at 90, is down 3.2 percent from October and 18 percent below November 2001. The November all milk price of \$11.70 per cwt is down 40 cents from October and down \$2.70 from last year. Both fluid and manufactured grade milk prices are down from last month and the previous year.

Poultry and Eggs: The November 2002 index, at 98, is up 10 percent from October, but 16 percent below a year ago. November market egg prices, at 56.3 cents per dozen, increased 21.5 cents from October reflecting the seasonal increase due to holiday demand. The November broiler price, at 29.0 cents per pound, increased 1.0 cent from October but remains below historic average levels. Turkey prices, averaging 39.5 cents per pound, are up 2.6 cents from the previous month. Prices increased seasonally with strong demand for fresh, whole turkeys.

Table of Contents

Prices Received

U.S. Prices and Indexes	Page	Monthly State Prices, continued	Page
Narrative	A-2	Cows, Beef	A-20
Price Indexes	A-5	Cows, Milk	A-23
Prices Received		Eggs	A-22
U.S. Summary	A-8-9	Flaxseed	A-16
Selected Commodities ...	A-14	Fruit, Citrus	A-18
Upland Cotton and Rice		Hay	A-17
Prices and Marketings ..	A-17	All Hogs	A-21
Parity Prices	A-24-25	Lambs	A-22
Reliability Statement	A-48	Milk	A-23
Monthly State Prices		Oats	A-15
Apples	A-17	Peanuts	A-16
Barley	A-15	Potatoes	A-19
Barrows and Gilts	A-21	Sheep	A-22
Beans, Dry Edible	A-16	Sorghum, Grain	A-15
Beef Cattle	A-20	Soybeans	A-15
Calves	A-20	Sows	A-21
Corn	A-15	Steers and Heifers	A-20
Cotton	A-17	Sunflower	A-16
Cottonseed	A-17	Tobacco	A-16
		Wheat	A-14

Special Features

Revised Marketing Year Average Prices , by State and United States, 2000-2001 and 2001-2002, for Corn, Sorghum, Soybeans, Flaxseed, Sunflower, Dry Beans, and Peanuts	A-26-27
Revised Monthly Prices by State and United States, 2000-2001 and 2001-2002 for Corn, Sorghum, Soybeans, Flaxseed, Sunflower, Dry Beans and Peanuts	A-28-40
Monthly Marketing Percentages by State and United States, 2000-2001 and 2001-2002 for Corn, Sorghum, Soybeans, Flaxseed, Sunflower, Dry Beans and Peanuts (U.S. only)	A-41-47

Table of Contents

Prices Paid

	Page
Narrative	B-1
Indexes and Parity Ratios	B-2-3
Charts	B-4-6
Feed Ratios	B-7
Commodity Prices Used to Calculate Feed Price Ratios	B-7
Reliability Statement	B-8

U.S. Average Prices:

Feeder Livestock	B-7
------------------------	-----

Information Contacts:	B-9
------------------------------------	-----

Index Numbers of Prices Received, United States, November 2002,
with Comparisons

Index	1910-14=100				1990-92=100		
	2001		2002		2001		2002
	Average: 1990-92:	Nov	Oct	Nov	Nov	Oct	Nov
All Farm Products	639	593	*610	618	93	*96	97
All Crops	500	439	*503	514	89	*102	104
Food Grains	325	280	*404	384	88	*127	121
Feed Grains & Hay	363	308	*377	372	86	*105	104
Cotton	517	235	*330	350	46	*64	68
Tobacco	1263	1722	*1613	1683	114	*107	111
Oil-Bearing Crops	554	422	*493	528	77	90	96
Fruit & Nuts	716	776	*901	797	111	129	114
Commercial Vegetables	698	679	*740	817	102	*111	122
Potatoes & Dry Beans	540	534	*476	504	106	*94	100
Other Crops	493	554	558	558	112	113	113
Livestock & Products	768	759	*668	682	99	87	89
Meat Animals	1021	872	856	858	86	84	84
Dairy Products	799	885	*744	719	110	*93	90
Poultry & Eggs	282	329	249	275	117	89	98
Food Commodities					97	*94	96

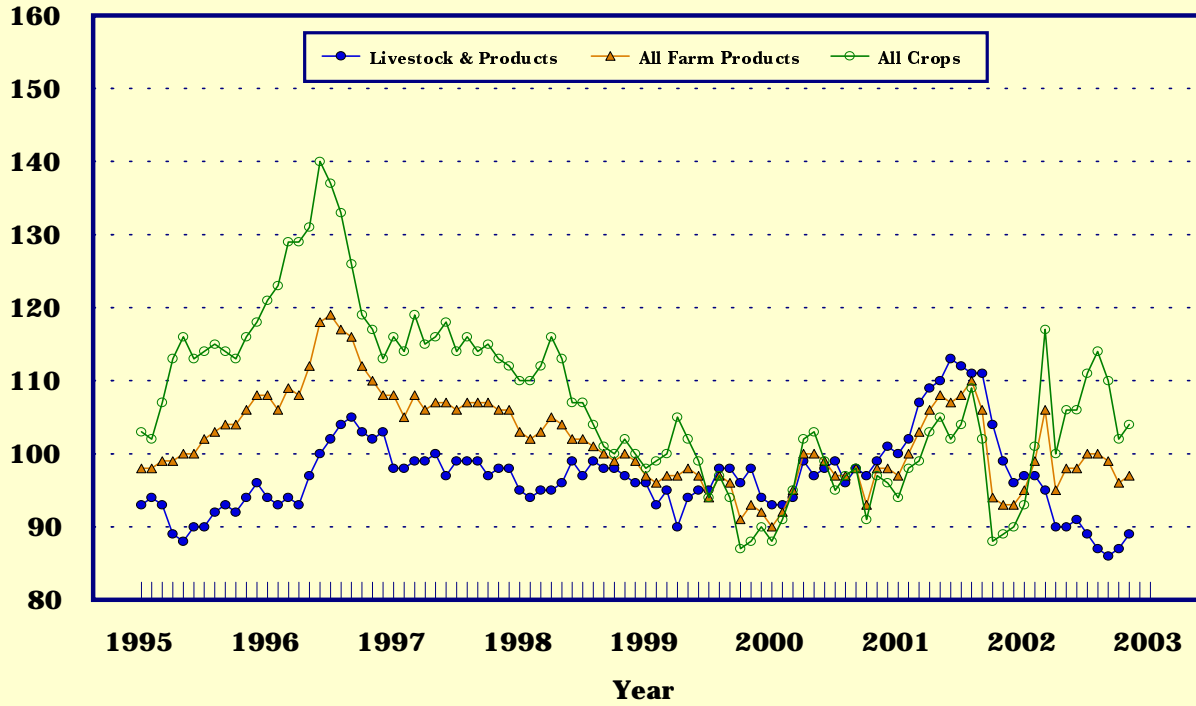
* Revised.

Selected Index Numbers for Prices Received and Paid,
1990-92=100, by Months, United States, 2001 and 2002

Month	Index of Prices Received						Index of Prices Paid			
	All Farm Products		All Crops		Livestock and Products		All Items		Production Items	
	2001	2002	2001	2002	2001	2002	2001	2002	2001	2002
Jan	97	95	94	93	100	97	125	123	121	118
Feb	100	99	98	101	102	97	124	123	121	117
Mar	103	106	99	117	107	95	124	123	120	118
Apr	106	95	103	100	109	90	124	123	120	119
May	108	98	105	106	110	90	124	123	120	118
Jun	107	98	102	106	113	91	124	123	120	118
Jul	108	100	104	111	112	89	124	124	120	119
Aug	110	100	109	114	111	87	124	124	120	120
Sep	106	99	102	110	111	86	124	125	120	121
Oct	94	96	88	102	104	87	123	125	119	121
Nov	93	97	89	104	99	89	123	126	118	121
Dec	93		90		96		122		117	

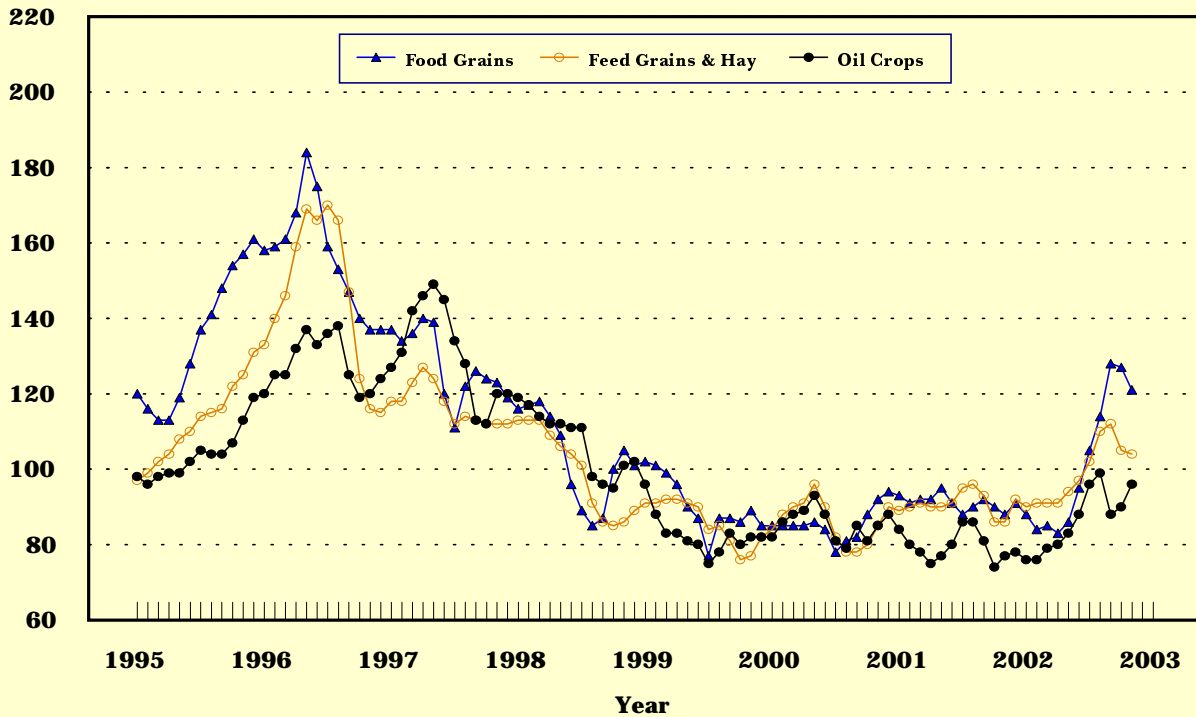
Prices Received, Major Indexes, US

Index Values(1990-92=100)



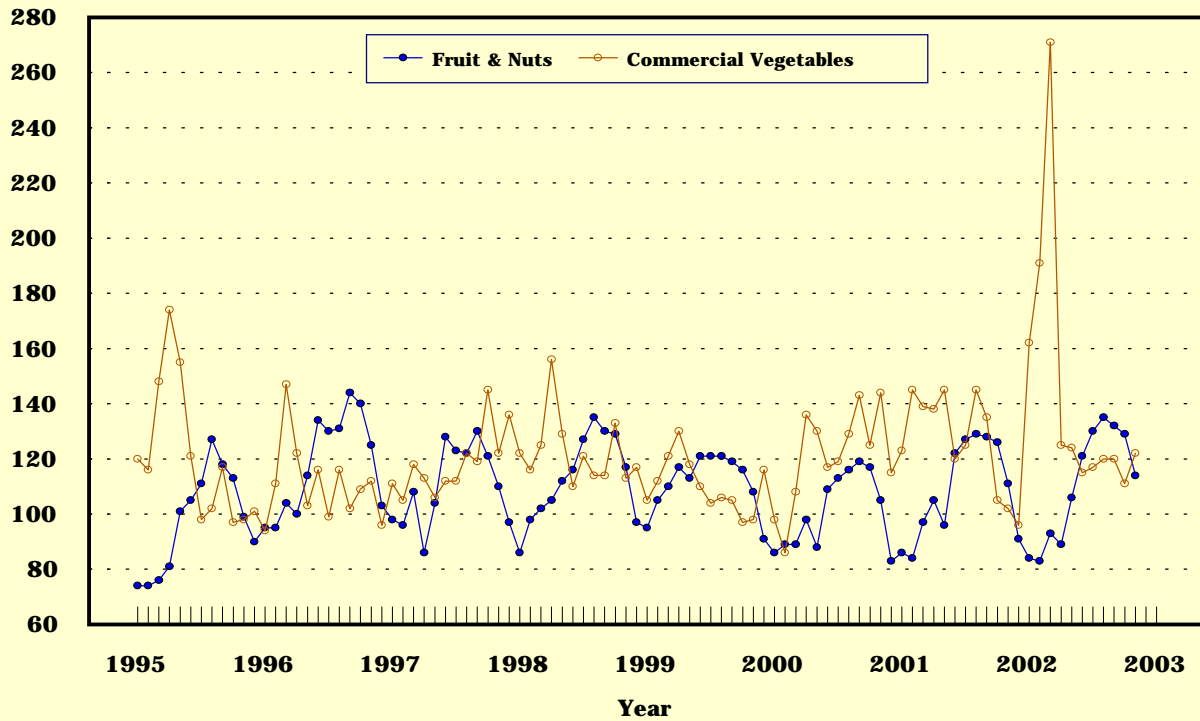
Prices Received, Food, Feed & Oil Indexes, US

Index Values(1990-92=100)



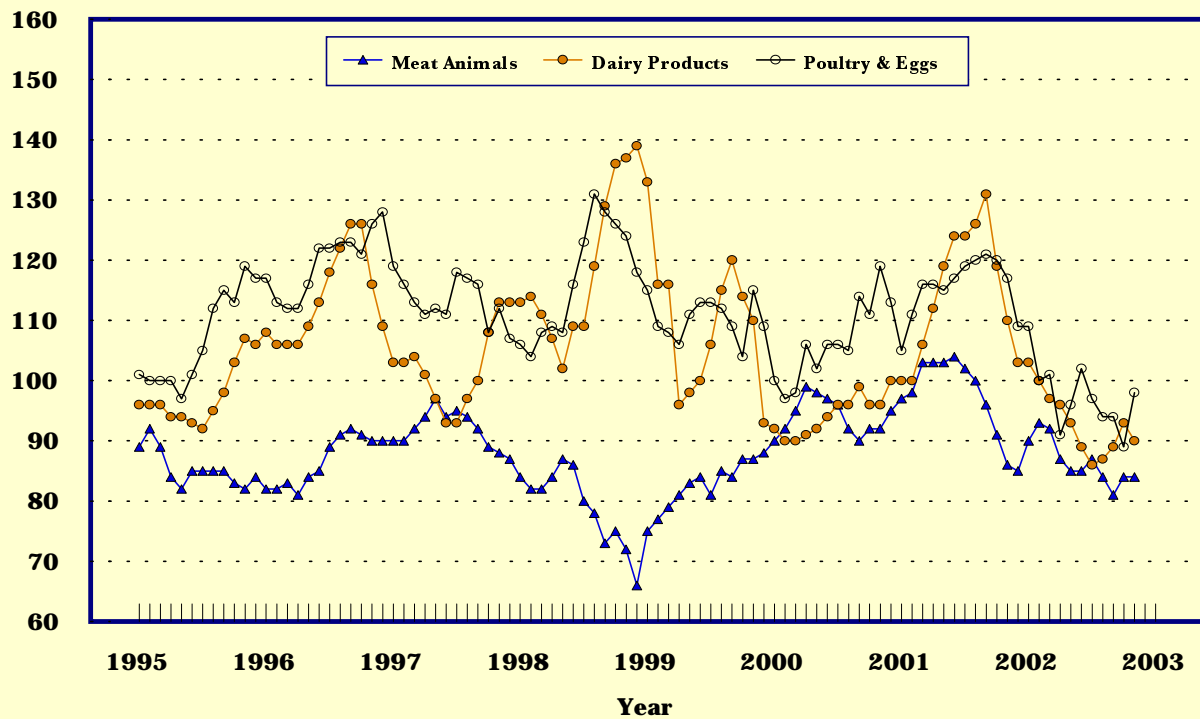
Prices Received, Fruit/Vegetable Indexes, US

Index Values(1990-92=100)



Prices Received, Livestock Product Indexes, US

Index Values(1990-92=100)



Prices Received, United States,
November 2002, with Comparisons

Commodity	Unit	Average 1990-92	Entire Month		Preliminary
			Nov	Oct	Nov
			2001	2002	2002
Dollars					
Field Crops					
Barley, All	Bu	2.12	2.30	2.65	2.81
Feed	Bu	1.90	1.79	2.25	2.33
Malting	Bu	2.43	2.65	2.91	3.14
Beans, Dry Edible	Cwt	19.10	22.70	16.70	16.70
Corn	Bu	2.30	1.85	2.34	2.30
Cotton, Upland	Lb	.606	.278	.390	.414
Cottonseed	Ton	96.00	91.00	100.00	100.00
Flaxseed	Bu	4.27	4.33	5.76	6.05
Hay, All, Baled 1/	Ton	76.30	95.90	94.50	93.60
Alfalfa 1/	Ton	77.20	104.00	101.00	101.00
Other 1/	Ton	60.00	74.90	73.40	75.40
Oats	Bu	1.22	1.79	1.85	1.87
Peanuts, In-Shell	Lb	.304	.210	.180	.175
Potatoes	Cwt	5.82	5.96	5.57	6.01
Rice, Rough	Cwt	7.07	4.08	3.69	3.62
Sorghum Grain	Cwt	3.75	3.30	4.35	4.32
Soybeans	Bu	5.61	4.16	5.19	5.43
Sunflower 2/	Cwt	9.50	9.10	12.00	12.40
Tobacco	Lb	1.740	1.980	1.855	1.935
Wheat, All	Bu	2.96	2.87	4.37	4.23
Winter	Bu	2.93	2.82	4.32	4.15
Durum	Bu	2.86	3.04	4.43	4.23
Other Spring	Bu	3.11	2.91	4.44	4.32
Hard Red Winter	Bu		2.69	4.49	
Soft Red Winter	Bu		2.62	3.94	
Hard Red Spring	Bu		2.89	4.49	
White	Bu	3.24	3.27	4.19	
Fruit					
Citrus-Equiv on-tree					
Grapefruit	Box	5.77	3.68	5.10	2.39
Lemons	Box	10.10	14.93	16.82	13.81
Limes 3/	Box	10.15			
Oranges	Box	5.79	2.90	4.71	3.27
Tangelos	Box	5.82	2.26		2.30
Tangerines	Box	15.11	8.28	8.37	12.34
Temples	Box	6.23			
Noncitrus					
Apples, Fresh 4/	Lb	.212	.235	.301	.268
Grapes, Fresh 4/	Ton	506.00	640.00	640.00	640.00
Peaches, Fresh 4/	Lb	.216			
Pears, Fresh 4/	Ton	370.00	374.00	458.00	442.00
Strawberries, Fresh	Lb	.560	.964	.684	1.08

- 1/ Mid-month price.
- 2/ KS, MN, ND and SD average.
- 3/ Current prices not published to avoid disclosure of individual firms.
- 4/ Equivalent packinghouse-door returns for CA, NY (apples only), and WA (apples, peaches, and pears). Prices as sold for other states.

-- continued

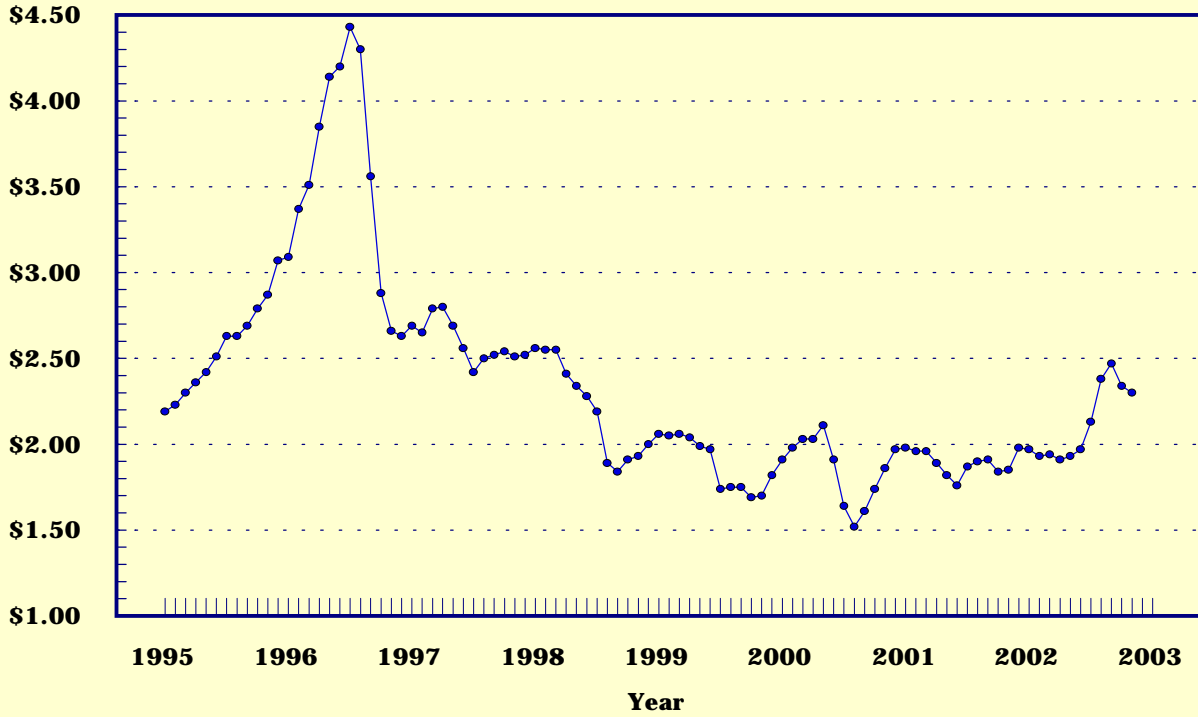
Prices Received, United States,
November 2002, with Comparisons (continued)

Commodity	Unit	Average 1990-92	Entire Month		Preliminary
			Nov	Oct	Nov
			2001	2002	2002
Dollars					
Vegetables, Fresh 1/					
Asparagus	Cwt	79.80	129.00		
Broccoli	Cwt	22.50	22.20	24.00	37.10
Cantaloupes 2/	Cwt	13.90	20.70	20.50	14.20
Carrots	Cwt	13.20	18.50	18.60	18.30
Cauliflower	Cwt	26.80	20.10	22.40	37.60
Celery	Cwt	11.60	9.01	9.68	15.30
Corn, Sweet	Cwt	15.70	24.80	18.20	17.00
Cucumbers 2/	Cwt		17.60	16.70	27.50
Lettuce	Cwt	11.90	10.90	13.30	11.20
Onions	Cwt	12.80	7.41	10.70	10.90
Snap Beans 2/	Cwt		49.60	56.80	59.70
Tomatoes	Cwt	32.30	28.50	28.70	39.10
Livestock					
Calves	Cwt	94.30	96.70	91.90	90.40
Cattle, All Beef	Cwt	72.90	64.00	64.70	66.50
Cows	Cwt	49.60	35.80	33.60	32.60
Steers & Heifers	Cwt	77.10	67.80	68.50	70.90
Milk Cows 3/	Head	1130.00		1420.00	
Hogs, All	Cwt	47.70	35.00	30.60	27.40
Barrows & Gilts	Cwt	48.40	35.40	31.30	27.70
Sows	Cwt	39.50	28.20	19.00	19.50
Lambs	Cwt	56.20	52.80	79.90	
Sheep	Cwt	23.40	27.10	26.50	
Dairy and Poultry					
Milk, All 4/	Cwt	13.06	14.40	12.10	5/11.70
Fluid Grade	Cwt	13.10	14.50	12.10	5/11.70
Mfg Grade	Cwt	11.80	12.40	11.20	5/10.50
Broilers, Live 6/	Lb	.317	.390	.280	.290
Eggs, All 7/	Doz	.643	.641	.540	.720
Market 7/	Doz	.546	.486	.348	.563
Turkeys, Live 6/7/	Lb	.380	.445	.369	.395
Adjusted for Seasonal Variation					
Eggs, All	Doz	.545	.654	.568	.720
Milk, All 4/	Cwt	9.71	13.09	11.42	11.14

- 1/ F.O.B. shipping point.
- 2/ Monthly estimates began January 1995.
- 3/ Animals sold for dairy herd replacement only. Prices available for Jan, Apr, Jul, and Oct.
- 4/ Before deductions for hauling. Includes quality, quantity, and other premiums. Excludes hauling subsidies.
- 5/ Fat test percent: all milk 3.79, fluid milk 3.79, mfg grade 3.97.
- 6/ Liveweight equivalent price to producers, includes growers and contractors combined.
- 7/ Mid-month price.

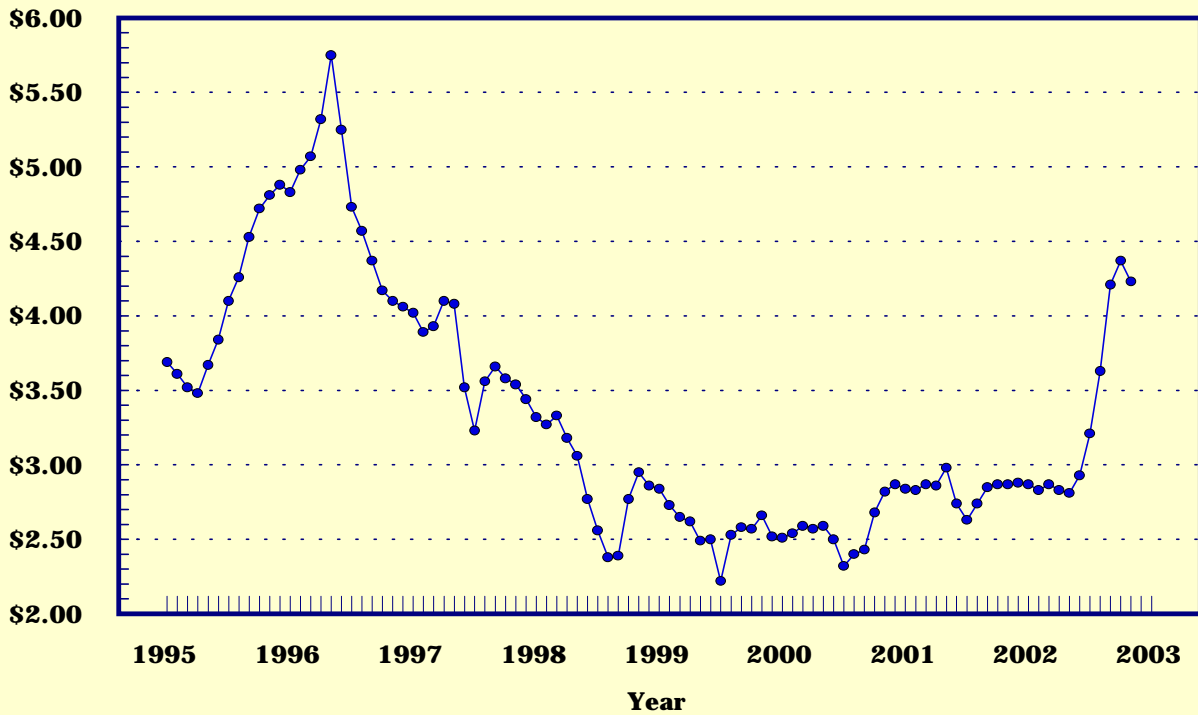
Prices Received, Corn, US

Dollars per Bu



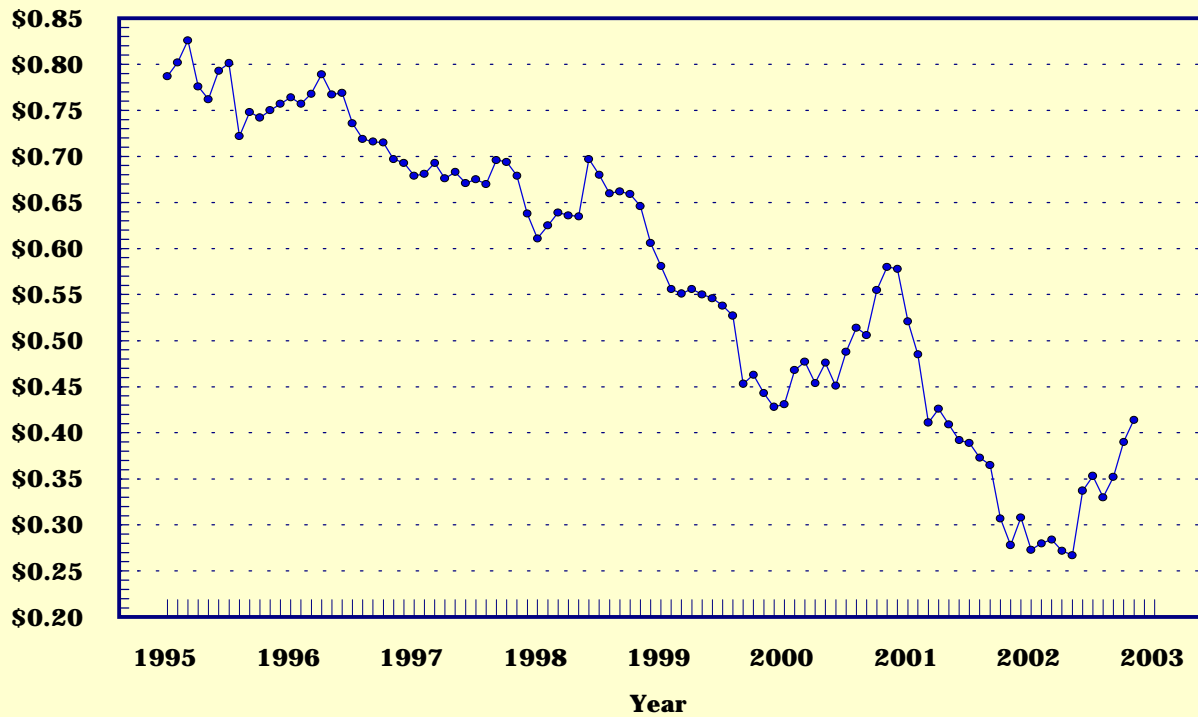
Prices Received, Wheat, US

Dollars per Bu



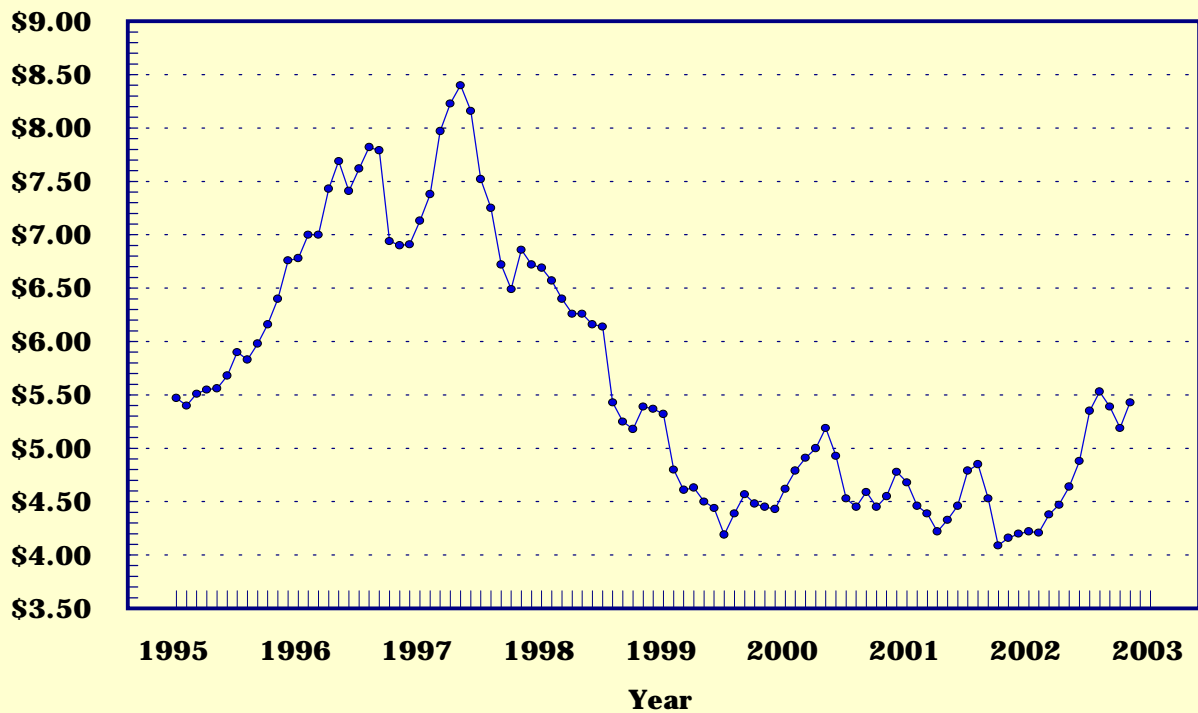
Prices Received, Cotton, US

Dollars per Lb



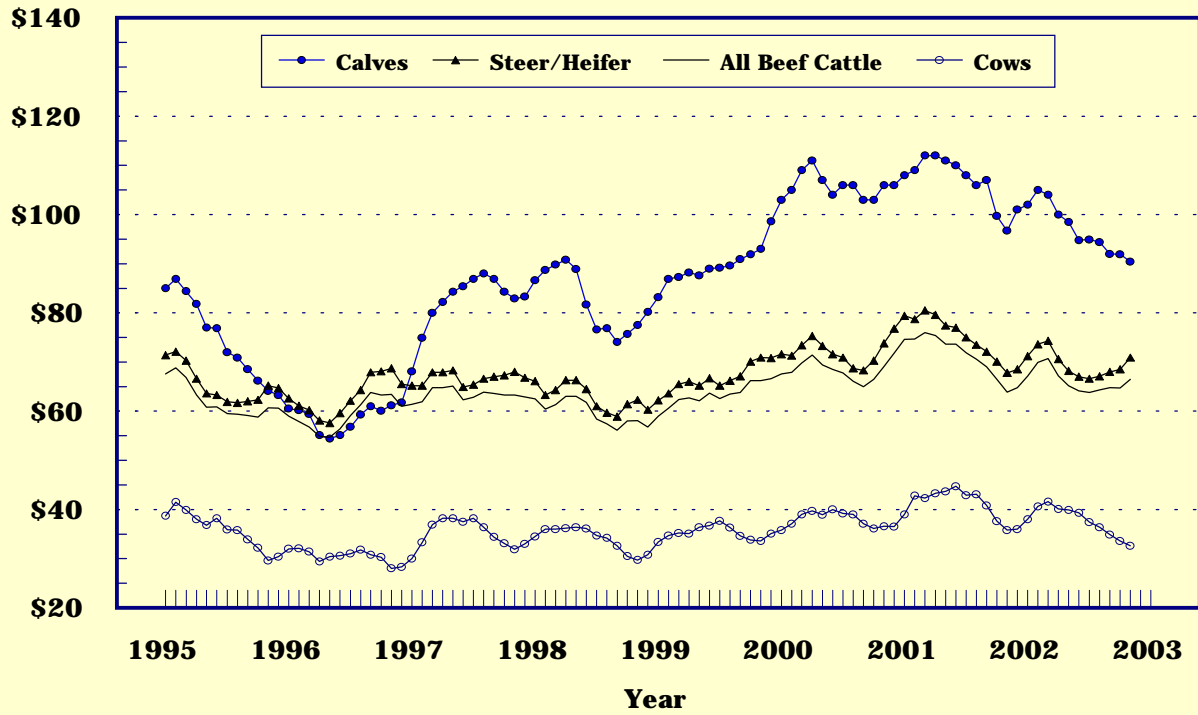
Prices Received, Soybeans, US

Dollars per Bu



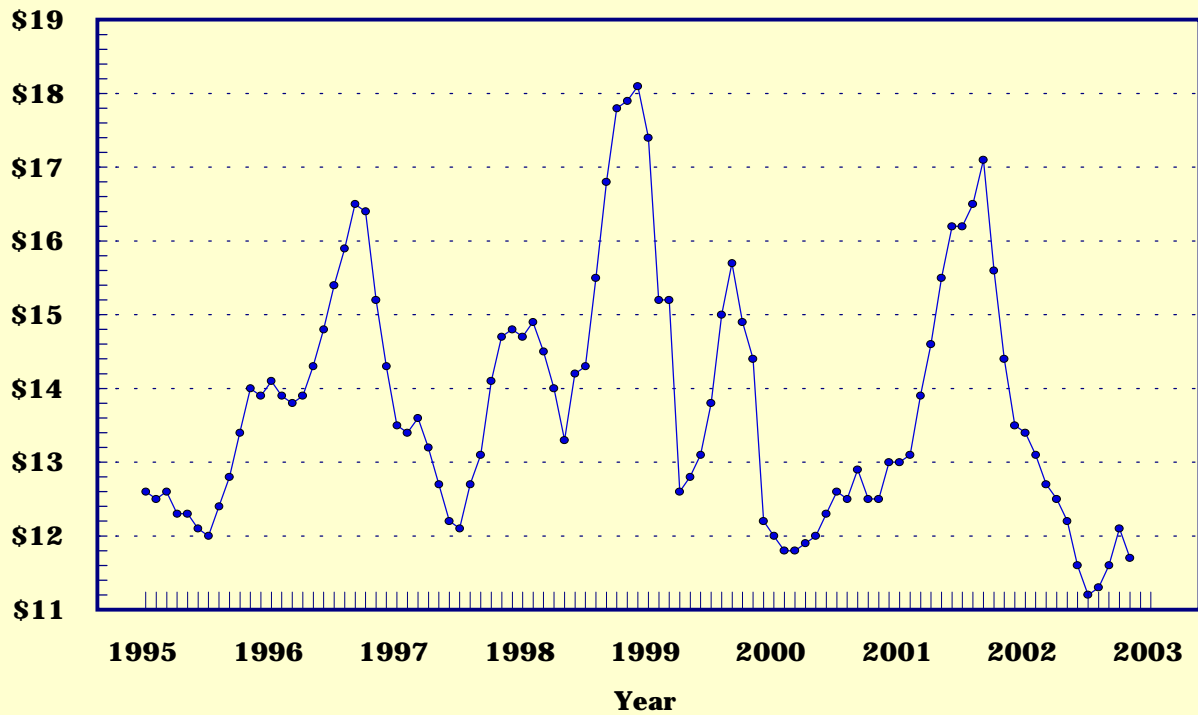
Prices Received, Cattle, US

Dollars per Cwt



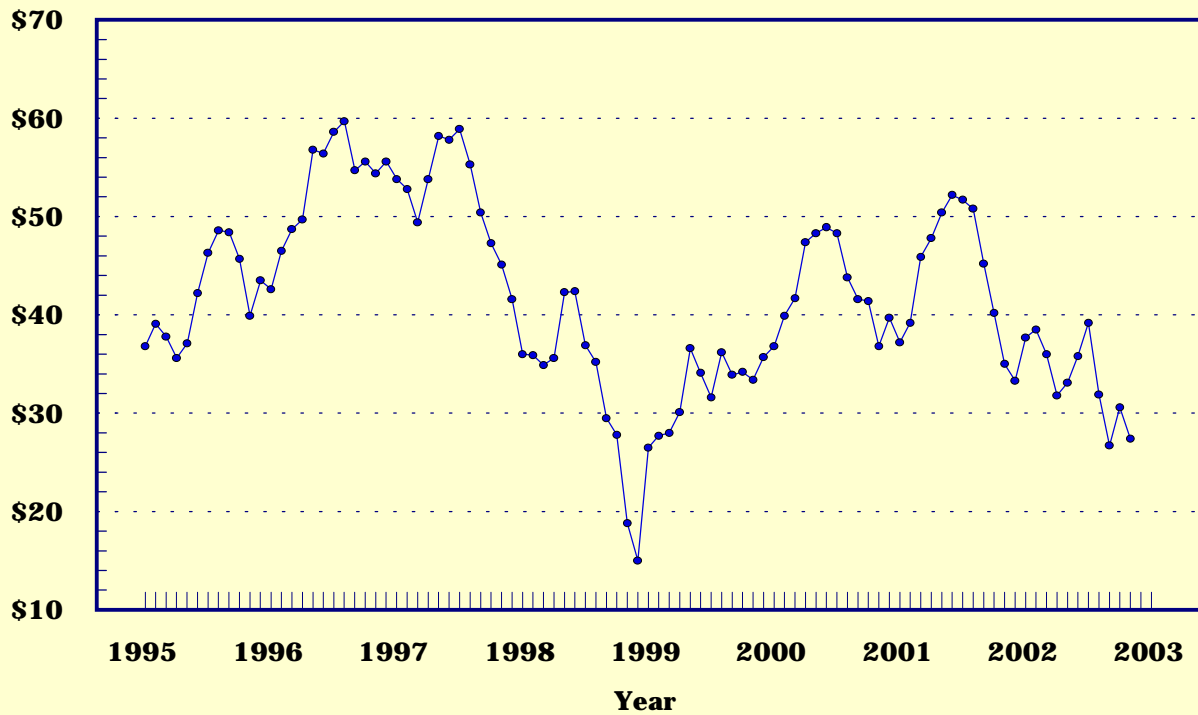
Prices Received, Milk, US

Dollars per Cwt



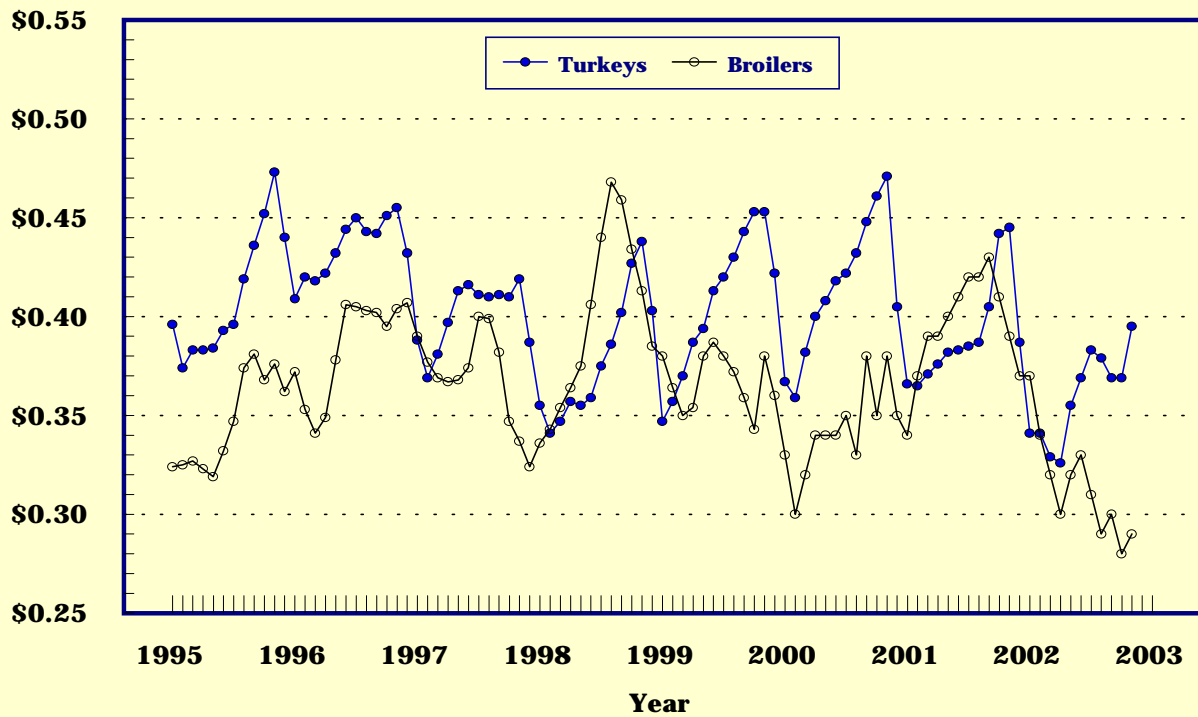
Prices Received, Hogs, US

Dollars per Cwt



Prices Received, Turkeys & Broilers, US

Dollars per Lb



Wheat: Prices Received, by States, October and November 2002

State	All Wheat		Winter Wheat		Durum Wheat 1/		Oth Spring Wheat	
	Oct 2/	Nov 3/	Oct 2/	Nov 3/	Oct 2/	Nov 3/	Oct 2/	Nov 3/
	Dollars per Bushel							
AR	3.84	3.84	3.84	3.84				
CA	4/	4/	4/	4/	4/	4/		
CO	4.47	4.19	4.47	4.19			4.36	4.20
ID	4.10	4.16	4.07	4.10			4.18	4.25
IL	3.85	3.90	3.85	3.90				
IN	3.89	3.61	3.89	3.61				
KS	4.56	4.14	4.56	4.14				
MI	3.76	3.80	3.76	3.80				
MN	4.39	4.32	4/	5/			4.39	4.32
MO	4.23	3.85	4.23	3.85				
MT	4.59	4.60	4.06	4.10	4.97	5.05	4.66	4.65
NE	4.58	4.25	4.58	4.25				
ND	4.32	4.15	4.06	3.95	4.35	4.15	4.31	4.15
OH	3.85	3.81	3.85	3.81				
OK	4.51	4.14	4.51	4.14				
OR	4.26	4.13	4.22	4.10			4.50	4.30
SD	4.62	4.36	4.57	4.27			4.65	4.41
TX	4.37	4.15	4.37	4.15				
WA	4.31	4.24	4.28	4.21			4.43	4.39
US	4.37	4.23	4.32	4.15	4.43	4.23	4.44	4.32

- 1/ Durum discontinued September 2001 for MN and SD.
- 2/ Entire month.
- 3/ Mid-month.
- 4/ Price not published to avoid disclosure of individual firms.
- 5/ Insufficient sales to establish a price.

Prices Received for Selected Agricultural Commodities, by Months, United States, 2001 and 2002

Month	All Wheat		Corn		Soybeans		Beef Cattle 1/		All Hogs	
	2001	2002 2/	2001	2002 2/	2001	2002 2/	2001	2002 2/	2001	2002 2/
	Dollars per Bushel						Dollars per Cwt			
Jan	2.84	2.87	1.98	1.97	4.68	4.22	74.60	67.10	37.20	37.70
Feb	2.83	2.83	1.96	1.93	4.46	4.22	74.70	69.90	39.20	38.50
Mar	2.87	2.87	1.96	1.94	4.39	4.38	76.00	70.70	45.90	36.00
Apr	2.86	2.83	1.89	1.91	4.22	4.47	75.40	67.20	47.80	31.80
May	2.98	2.81	1.82	1.93	4.33	4.64	73.50	65.20	50.40	33.10
Jun	2.74	2.93	1.76	1.97	4.46	4.88	73.50	64.10	52.20	35.80
Jul	2.63	3.21	1.87	2.13	4.79	5.35	71.80	63.80	51.70	39.20
Aug	2.74	3.63	1.90	2.38	4.85	5.53	70.60	64.30	50.80	31.90
Sep	2.85	4.21	1.91	2.47	4.53	5.39	69.00	64.80	45.20	26.70
Oct	2.87	4.37	1.84	2.34	4.09	5.19	66.50	64.70	40.20	30.60
Nov	2.87	4.23	1.85	2.30	4.16	5.43	64.00	66.50	35.00	27.40
Dec	2.88		1.98		4.20		64.80		33.30	

- 1/ Cows, steers and heifers.
- 2/ Current month prices are mid-month; prices for previous months are for the entire month.

Grains: Prices Received, by States, October and November 2002

State	Barley 1/		Corn		Oats		Soybeans		Sorghum Grain	
	Oct 2/	Nov 3/	Oct 2/	Nov 3/	Oct 2/	Nov 3/	Oct 2/	Nov 3/	Oct 2/	Nov 3/
	----- Dollars per Bushel ----- Dollars per Cwt									
AL										
AR							5.44	5.65	4/	4/
CA	5/	5/								
CO	3.25	3.10	2.61	2.69						
ID	2.88	2.94								
IL			2.36	2.35	2.00	1.90	5.25	5.50	4.61	4.79
IN			2.38	2.40			5.24	5.51		
IA			2.24	2.20	1.94	1.80	5.20	5.40		
KS			2.52	2.53			5.20	5.39	4.36	4.31
KY			2.46	2.50			5.56	5.65		
LA							5.42	5.51		
MI			2.31	2.35	5/	1.90	5.25	5.50		
MN	2.36	2.55	2.19	2.11	1.64	1.90	5.01	5.22		
MS							5.30	5.52		
MO			2.43	2.35			5.21	5.45	4.25	4.40
MT	2.77	2.91			1.98	5/				
NE			2.37	2.38	2.32	2.10	5.16	5.35	4.47	4.46
NC			2.92	2.94			5.41	5.46		
ND	2.25	2.67	2.16	2.15	1.71	1.65	5.01	5.15		
OH			2.43	2.40	1.91	2.00	5.27	5.58		
OK									4.13	4.12
OR	2.55	2.55			2.50	2.40				
PA			2.95	2.95	2.04	2.00				
SD	1.84	5/	2.21	2.15	2.08	2.02	5.02	5.20		
TN			2.61	2.60			5.47	5.75		
TX			2.61	2.59	5/	5/			4.36	4.23
UT	2.43	2.43								
WA	2.60	2.77								
WI			2.21	2.20	1.62	1.60	5.16	5.25		
WY	3.26	3.23								
US	2.65	2.81	2.34	2.30	1.85	1.87	5.19	5.43	4.35	4.32

- 1/ The Three-State (MN, ND and SD) Feed Barley price for November 2002 is \$1.90.
- 2/ Entire month.
- 3/ Mid-month.
- 4/ Price not published to avoid disclosure of individual firms.
- 5/ Insufficient sales to establish a price.

Malting and Feed Barley: Prices Received Selected States, October and November 2002

State	Malting Barley		Feed Barley	
	Oct	Nov	Oct	Nov
	----- Dollars per Bushel -----			
ID	3.01	3.00	2.41	2.40
MN	1/	1/	1.80	1.85
MT	3.07	3.28	2.22	2.21
ND	2.52	3.30	1.89	1.90
SD	2/	2/	1.84	2/
WY	1/	1/	2.11	2.15

- 1/ Price not published to avoid disclosure of individual firms.
- 2/ Insufficient sales to establish a price.

Field Crops: Prices Received, by States, October and November 2002

State	Dry Edible Beans		Sunflower		Flaxseed		Tobacco		Peanuts 4/5/	
	Oct 1/	Nov 2/	Oct 1/	Nov 2/	Oct 1/	Nov 2/	Oct 1/	Nov 3/	Oct 1/	Nov 3/
	Dollars per Cwt		Dollars per Bu		Dollars per Pound					
AL									.171	.160
CA	31.70	31.60								
CO	16.60	15.00								
FL									.179	.164
GA							1.880		.174	.169
ID	19.50	19.20								
IN										
KS			7/	7/						
KY								1.985		
MD										
MI	14.80	14.00								
MN	17.50	14.30	12.20	13.70						
MO										
NE	19.10	17.30								
NC							1.845	1.810	.211	.211
ND	14.80	13.40	12.00	12.30	5.76	6.05				
OH										
OK										
SC							1.755			
SD			12.20	12.70	7/	6/				
TN								1.975		
TX									7/	7/
VA							1.900	1.865	.195	.200
WV										
US	16.70	16.70	12.00	12.40	5.76	6.05	1.855	1.935	.180	.175

- 1/ Entire month.
- 2/ Mid-month.
- 3/ Based on sales through first half of month.
- 4/ In-shell.
- 5/ Includes additional loan peanuts at loan value.
- 6/ Sales volume insufficient to establish a state price, but all sales included in U.S. price.
- 7/ Price not published to avoid disclosure of individual firms.

Tobacco: Prices Received, by Area and Type, November 2002, with Comparisons

Class and Type	Type	Nov 2001	Oct 2002	Nov 2002 1/
Dollars per Pound				
Flue-cured				
Northern Auction Area 2/	--	1.865	1.820	1.775
Northern Contract Area 2/	--	4/	1.890	1.890
Southern Auction Area 3/	--	4/	1.720	5/
Southern Contract Area 3/	--	4/	1.845	5/
Total Flue-cured Area	11-14:	1.865	1.855	1.835
Light Air-cured				
Burley	31	1.980	6/	1.985
Total Light Air-cured	31-32:	1.980	6/	1.985
US	11-37:	1.980	1.855	1.935

- 1/ Based on sales during the first half of the month.
- 2/ Consists of Eastern NC Belt, Old and Middle Belts in NC and VA.
- 3/ Consists of GA-FL Belt, SC Belt, and NC Border Belt.
- 4/ Markets closed in October 2001.
- 5/ Markets closed in October 2002.
- 6/ Markets opened in November 2002.

Field Crops and Apples: Prices Received, by States,
October and November 2002

State	Cotton, Upland		November				Apples Fresh Use 1/4/
	Oct 1/	Nov 2/	Cotton- seed 5/	Hay, Baled 3/ All	Alfalfa	Other	
	Dollars per Pound		Dollars per Ton			Dol/Lb	
AL	.432	.447	88.00				
AZ	6/	6/	136.00	102.00	103.00	92.00	
AR	.485	.446	92.00				
CA	.519	6/	142.00	93.00	98.00	77.00	.226
CO				117.00	114.00	145.00	
GA	.450	.455	78.00				
ID				98.00	100.00	75.00	
IL				92.00	95.00	72.00	
IA				81.00	83.00	56.00	
KS				95.00	98.00	74.00	
KY				71.00	105.00	61.00	
LA	.404	.428	85.00				
MI				104.00	105.00	90.00	.230
MN				68.00	76.00	50.00	
MS	.430	.449	75.00				
MO				69.00	113.00	53.00	
MT				82.00	83.00	75.00	
NE				89.00	89.00	86.00	
NV				101.00	100.00	112.00	
NM				141.00	145.00	119.00	
NY				97.00	115.00	85.00	.285
NC	.387	.418	6/				
ND				62.00	68.00	49.00	
OH				122.00	155.00	84.00	.330
OK				91.00	107.00	63.00	
OR				103.00	103.00	102.00	
PA				130.00	150.00	119.00	.212
SD				78.00	83.00	58.00	
TN	.453	.432	95.00				
TX	.364	.384	109.00	72.00	160.00	62.00	
UT				95.00	97.00	58.00	
VA							.220
WA				110.00	100.00	124.00	.279
WI				77.00	80.00	60.00	
WY				110.00	111.00	106.00	
US	.390	.414	100.00	93.60	101.00	75.40	.268

1/ Entire month. 2/ Based on sales during the first half of the month.
3/ Mid-month. 4/ Equivalent packinghouse-door returns for CA, MI, NY and WA. Price at point of first sale for other states. 5/ Marketing year August-February. 6/ Price not published to avoid disclosure of individual firms.

Upland Cotton and Rice: Prices Received and Marketings,
United States, November 2002, with Comparisons

Item	Unit	Sep 2002 1/	Oct 2002 1/	Nov 2002 2/
Cotton, Upland				
Average Price	Dollars/Pound	.352	.390	.414
Marketings 3/	1,000 Bales	412	749	NA
Rice				
Average Price	Dollars/Cwt	3.94	3.69	3.62
Marketings 4/	1,000 Cwt	12787	14027	NA

1/ Entire month. 2/ Based on purchases for the first half of the month.
3/ Expanded data from sample of about 60 percent of buyers. 4/ Purchases by private firms and rice (rough equivalent) shipped by cooperatives.

Citrus Fruit: Prices and Equivalent Returns, by Utilization,
by State and United States, November 2002

Commodity And State	Equivalent Returns						
	F.O.B.	Packinghouse-door			On-tree		
	Fresh	All	Fresh	Process	All	Fresh	Process
Dollars per Box 1/							
Grapefruit							
AZ	13.30	6.93	6.93		4.66	4.66	
CA	15.80	7.70	9.43	-0.26	5.43	7.16	-2.53
FL	14.60	4.44	6.33	0.68	2.10	4.13	-1.93
White	16.50	4.46	7.50	1.20	2.16	5.30	-1.20
Colored	14.20	4.43	6.10	0.45	2.08	3.90	-2.25
TX	16.20	5.05	6.41	0.80	3.89	5.24	-0.32
US	14.80	4.61	6.46	0.67	2.39	4.36	-1.82
Lemons							
AZ	34.60	21.04	24.71	0.23	16.78	20.45	-4.03
CA	33.90	16.41	24.01	0.23	12.15	19.75	-4.03
US	34.20	18.07	24.30	0.23	13.81	20.04	-4.03
Oranges							
AZ							
Navel and Misc	22.40	15.16	15.16		12.76	12.76	
CA	21.50	13.42	14.33	-0.05	11.02	11.93	-2.45
Navel and Misc	21.90	13.78	14.66	-0.17	11.38	12.26	-2.57
Valencia	16.40	8.60	9.62	0.74	6.21	7.23	-1.65
FL							
Early and Mids	14.90	4.17	7.00	4.00	2.11	4.80	1.95
TX							
Early and Mids	16.90	5.55	7.01	1.70	4.23	5.68	0.42
US	19.60	5.37	12.11	3.96	3.27	9.79	1.91
Tangelos							
FL	17.40	5.04	9.50	3.15	2.30	6.90	0.35
Tangerines							
AZ	27.60	20.69	20.69		18.25	18.25	
CA	29.40	21.82	22.49	0.73	19.38	20.05	-1.71
FL	27.50	15.00	18.50	3.00	11.21	14.80	-1.10
US	27.80	15.94	19.15	2.95	12.34	15.66	-1.11

1/ Net lbs. per box: Grapefruit-AZ & CA-67, FL-85, TX-80; Lemons-76;
Oranges-AZ & CA-75, FL-90, TX-85; Tangelos-90; Tangerines-AZ & CA-75,
FL-95.

Potatoes: Prices Received, by States,
October and November 2002

State	Oct	Nov	State	Oct	Nov
	: Dollars per Cwt			: Dollars per Cwt	
AL			NC		
AZ			ND - All 1/	6.00	6.05
CA - All	9.45	9.55	- Fresh 2/	10.45	NA
- Winter			- Processing	4.85	NA
- Spring			OH	8.65	9.05
- Summer			OR	4.75	5.35
- Fall	9.45	9.55	PA	8.90	8.95
CO - All 1/	6.20	6.95	TX		
- Fresh 2/	7.12	NA	VA		
FL			WA - All	4.85	5.25
ID - All 1/	5.15	5.40	- Processing	4.50	NA
- Fresh 2/	6.00	NA	WI - All 1/	6.25	6.45
- Processing	4.80	NA	- Fresh 2/	7.75	NA
ME	5.65	6.25	- Processing	5.35	NA
MI	6.40	6.85			
MN	5.95	5.25	US - All 1/	5.57	6.01
NY	11.80	10.80	- Fresh 2/	8.20	NA
			- Processing	4.69	NA

1/ Average price of potatoes sold for all uses, including table stock, processing, seed and livestock feed.

2/ Fresh market prices only, includes table stock prices.

Cattle: Prices Received, by States, October and November 2002

State	Cows 1/		Steers & Heifers:		Beef Cattle 4/		Calves	
	Oct 2/	Nov 3/	Oct 2/	Nov 3/	Oct 2/	Nov 3/	Oct 2/	Nov 3/
	Dollars per Cwt							
AZ	33.20	32.20	70.50	70.40	70.10	70.00	95.00	93.20
AR	31.50	29.50	71.40	72.00	60.60	60.50	82.00	81.60
CA	32.50	31.50	66.50	69.50	48.50	48.20	79.50	80.00
CO	32.40	31.70	80.90	80.60	80.40	80.10	87.90	86.50
FL	34.00	31.80	69.20	69.60	46.70	45.40	79.70	79.90
GA	33.90	32.50	67.90	68.00	45.80	44.60	83.10	83.90
ID	32.30	31.40	66.00	68.80	56.60	56.50	83.00	88.00
IL	37.00	36.00	64.30	66.70	63.80	66.10	90.00	89.50
IA	32.40	30.60	62.80	65.90	62.20	65.20	81.10	76.90
KS	33.20	30.80	68.30	69.80	67.20	68.60	92.00	98.10
KY	34.00	31.00	72.00	73.00	62.90	62.90	80.00	81.00
LA	32.80	32.00	69.10	69.50	46.20	45.50	84.60	84.00
MI	36.00	34.00	58.00	59.00	51.40	51.50	95.00	95.00
MN	36.50	36.00	63.00	64.00	57.20	57.80	79.80	76.00
MO	32.50	30.00	76.40	77.40	66.70	67.90	85.80	86.70
MT	34.30	31.70	80.20	80.60	72.90	72.30	86.20	85.50
NE	32.80	32.50	67.20	71.10	66.20	69.90	92.90	93.30
NM	35.80	34.00	79.00	78.60	62.60	59.40	91.40	90.50
ND	32.10	32.00	78.60	79.00	71.60	69.60	83.30	82.00
OH	31.40	31.00	63.20	64.00	60.00	60.70	70.80	72.00
OK	33.40	31.10	79.10	80.90	73.20	74.40	87.30	91.20
OR	34.50	33.00	70.50	72.50	59.70	60.70	79.00	81.00
PA	35.00	33.60	62.80	63.20	55.60	55.50	108.00	102.00
SD	33.40	33.10	79.50	80.50	74.40	72.00	91.60	93.00
TN	31.00	29.00	71.00	72.00	55.00	54.80	78.00	78.00
TX	33.20	33.00	67.80	71.20	64.00	67.40	93.50	90.80
VA	32.10	29.80	68.70	69.00	61.00	58.80	77.20	75.40
WI	33.20	31.60	62.00	63.80	45.30	45.10	118.00	109.00
WY	33.80	32.50	81.90	83.10	69.40	67.90	91.10	91.30
US	33.60	32.60	68.50	70.90	64.70	66.50	91.90	90.40

- 1/ Beef cows and cull dairy cows sold for slaughter.
- 2/ Entire month.
- 3/ Mid-month.
- 4/ "Cows" and "steers and heifers" combined.

Hogs: Prices Received, by States, October and November 2002

State	Sows		Barrows and Gilts		All Hogs	
	Oct 1/	Nov 2/	Oct 1/	Nov 2/	Oct 1/	Nov 2/
	Dollars per Cwt					
AR	17.80	17.60	30.10	28.20	28.90	27.10
IL	19.00	19.00	32.20	27.00	31.10	26.40
IN	22.30	22.00	29.90	28.20	29.10	27.60
IA	20.90	22.00	32.60	28.00	32.40	27.90
KS	19.00	19.10	28.90	27.20	27.70	26.30
MI	17.50	19.00	28.00	27.00	27.20	26.40
MN	20.20	20.50	31.90	28.50	31.80	28.40
MO	17.00	16.30	27.90	25.80	27.10	25.20
NE	19.80	19.30	34.70	30.60	34.40	30.40
NC	18.70	19.40	30.90	27.40	30.80	27.30
OH	20.60	22.00	31.20	28.00	30.20	27.50
OK	17.50	17.00	27.50	25.00	26.10	23.90
PA	19.20	20.70	30.60	26.90	28.90	26.00
SD	17.80	20.00	34.10	28.50	32.10	27.40
TX	16.50	16.40	26.60	24.60	25.10	23.80
WI	17.00	17.00	27.00	25.30	25.70	24.20
US	19.00	19.50	31.30	27.70	30.60	27.40

1/ Entire month.

2/ Mid-month.

Sheep and Poultry: Prices Received, by States,
October and November 2002

State	October		November
	Sheep 1/	Lambs 1/	Eggs 2/3/
	---- Dollars per Cwt ----		Dol/Doz
AL			.580
AR			.460
CA	25.50	74.50	.550
CO	21.20	82.60	
CT			.650
FL			.560
GA			.542
ID	27.00	75.00	
IN			.600
IA	31.00	77.30	.481
KS	24.50	76.40	
ME			.720
MI			.580
MN	23.00	75.00	.500
MS			.580
MO			.505
MT	24.40	84.10	
NE	27.40	76.20	
NY			.620
NC			.550
ND	26.00	79.60	
OH	24.40	72.00	.600
OR	29.50	72.00	
PA			.600
SC			.545
SD	24.70	86.00	
TX	32.50	77.70	.620
UT	24.00	78.00	
WA			.650
WY	24.50	86.60	
US	26.50	79.90	.563

- 1/ Entire month.
2/ Mid-month.
3/ Market (table) eggs.

Milk and Milk Cows: Prices Received, by States, October and November 2002

State	October				November				
	Fluid Grade Milk 1/ Price	Fat Test	Manufacturing Grade Milk Price	Fat Test	All Milk 2/ Price	Fat Test	All Milk 2/3/ Price	Fat Test	Milk Cows 4/ Price
	Dol/Cwt	Pct	Dol/Cwt	Pct	Dol/Cwt	Pct	Dol/Cwt	Pct	Dol/Head
AZ	11.60	3.66			11.60	3.66	11.50	3.71	
CA	10.70	3.70	10.90	4.11	10.70	3.70	10.20	3.79	
FL	14.40	3.71			14.40	3.71	14.80	3.68	
ID	11.20	3.67	10.70	3.93	11.20	3.67	10.70	3.72	
IL	12.10	3.79	12.00	3.67	12.10	3.79	11.80	3.81	
IN	11.50	3.73	10.70	3.80	11.50	3.73	11.30	3.76	
IA	12.00	3.80	10.90	3.83	12.00	3.80	11.60	3.86	
KY	12.90	3.73			12.90	3.73	13.40	3.75	
MI	12.00	3.66	10.70	3.66	12.00	3.66	12.00	3.77	
MN	12.80	3.85	10.80	3.92	12.70	3.85	12.00	3.86	
MO	12.10	3.75	11.30	3.75	12.10	3.75	12.10	3.75	
NM	12.10	3.67			12.10	3.67	11.60	3.78	
NY	12.60	3.74			12.60	3.74	12.50	3.78	
OH	12.00	3.73	11.30	3.79	12.00	3.73	12.20	3.78	
PA	13.60	3.75	11.20	3.85	13.60	3.75	13.80	3.75	
TX	13.00	3.76			13.00	3.76	12.90	3.84	
VT	12.40	3.74			12.40	3.74	12.60	3.77	
VA	13.90	3.70			13.90	3.70	13.80	3.70	
WA	12.00	3.75			12.00	3.75	11.80	3.77	
WI	12.60	3.80	11.50	3.96	12.50	3.81	11.80	3.86	
US	12.10	3.74	11.20	3.92	12.10	3.74	11.70	3.79	

- 1/ Including milk diverted to manufacturing.
- 2/ Before deductions for hauling. Includes quality, quantity, and other premiums. Excludes hauling subsidies.
- 3/ Preliminary.
- 4/ Animals sold for dairy herd replacement only. Prices published Jan, Apr, Jul and Oct.

Parity Price Equivalent for Manufacturing Milk 1/: United States,
October and November 2002, with Comparisons

Item	Nov 2001	Oct 2002	Nov 2002
Parity Equivalent.....Dol per Cwt	29.03	30.05	30.14
Average Price F.O.B.....Dol per Cwt	12.40	11.20	2/10.50
Average Fat Test of Milk..Percent	3.95	3.92	2/3.97

- 1/ The parity price equivalent during 2002 is 90.5 percent of the parity price of all milk sold to plants, compared with 91.0 percent in 2001. For additional details, see January 2002 issue of "Agricultural Prices".
- 2/ Preliminary.

United States Parity Prices for Farm Products and Average Prices Received as Percent of Parity Prices Based on Data for November 2002, with Comparisons 1/

Commodity and Unit	: Adjusted: : : Base : : Prices :	Parity Prices Based on Data for			: Prices as Percent : of Parity			
		: Nov : : 2001 :	: Oct : : 2002 :	: Nov : : 2002 :	: Nov : : 2001:	: Oct : : 2002:	: Nov : : 2002:	
		----- Dollars -----			----- Percents -----			
Basic Commodities	:							
All Wheat, Bu	:	.579	9.57	9.67	9.68	30	45	44
Rice, Cwt	:	1.55	26.70	25.90	25.90	15	14	14
Corn, Bu	:	.392	6.53	6.55	6.55	28	36	35
Cotton, Lb	:							
American Upland	:	.0990	1.66	1.65	1.65	17	24	25
Extra Long Staple	:	.140	2.31	2.34	2.34			
Peanuts, Lb	:	.0401	.673	.670	.670	31	27	26
Tobacco, By Type, Lb	:							
Flue-Cured 11-14	:	.255	4.16	4.26	4.26	45	44	43
VA Fire-Cured, 21	:	.257	4.18	4.29	4.29			
KY-TN Fire-Cured, 22-23	:	.319	5.25	5.33	5.33			
Burley, 31	:	.274	4.44	4.58	4.58	45		43
Maryland, 32	:	.220	3.66	3.67	3.68			
Dark Air-Cured, 35-36	:	.270	4.44	4.51	4.51	45		
Sun-Cured, 37	:	.239	3.77	3.99	3.99			
PA Seedleaf, 41	:	.188	3.09	3.14	3.14			
Cigar Filler & Binder,	:							
42-44, 54-55	:	.218	3.54	3.64	3.64			
Puerto Rican Filler, 46	:	.173	2.81	2.89	2.89			
Cigar Binder, 51-52	:	.678	10.60	11.30	11.30			
	:							
Designated Nonbasic	:							
All Milk, Sold to	:							
Plants, Per Cwt	:	1.99	31.90	33.20	33.30	2/41	2/34	2/33
Honey, Extracted, Lb	:	3/.0930	1.49	1.55	1.55			
	:							
Wool and Mohair	:							
Wool, Lb	:	.0950	1.64	1.59	1.59			
Mohair, Lb	:	.315	4.37	5.26	5.26			
	:							
Other Nonbasic	:							
Barley, Bu	:	.385	6.39	6.43	6.43	36	41	44
Cottonseed, Ton	:	15.70	252.00	262.00	262.00	36	38	38
Dry Edible Beans, Cwt	:	2.90	47.50	48.40	48.50	48	35	34
Flaxseed, Bu	:	.684	11.20	11.40	11.40	39	51	53
Oats, Bu	:	.239	3.74	3.99	3.99	48	46	47
Potatoes, Cwt	:	.817	13.50	13.60	13.70	44	41	44
Rye, Bu	:	.341	5.44	5.69	5.70			
Sorghum Grain, Cwt	:	.666	11.20	11.10	11.10	29	39	39
Soybeans, Bu	:	.858	14.20	14.30	14.30	29	36	38
Sweetpotatoes, Cwt	:	2.18	34.00	36.40	36.40			
Apples, Fresh, Lb 4/	:	.0289	.484	.483	.483	49	62	55
Citrus (equiv on-tree), box:	:							
Grapefruit	:	.441	8.01	7.36	7.37	46	69	33
Lemons	:	1.08	19.50	18.00	18.00	77	93	77
Limes (FL)	:	1.26	20.60	21.00	21.10			
Oranges	:	.643	11.30	10.70	10.70	26	44	31
Tangerines	:	1.55	27.30	25.90	25.90	30	32	48
Temples (FL)	:	.527	9.60	8.80	8.81			
Beef Cattle, Cwt	:	9.56	157.00	160.00	160.00	41	40	42
Calves, Cwt	:	12.70	206.00	212.00	212.00	47	43	43
Hogs, Cwt	:	6.18	102.00	103.00	103.00	34	30	27
Lambs, Cwt	:	10.80	172.00	180.00	180.00	31	44	
Sheep, Cwt	:	4.57	71.80	76.30	76.40	38	35	
Eggs, Doz	:	.0933	1.54	1.56	1.56	2/42	2/36	2/46
Turkeys, Live, Lb	:	.0582	.951	.972	.973	47	38	41

--continued

Parity Prices Based on Data for November 2002, United States 1/ (continued)

Other Nonbasic Commodities	Adj Base Prices	Parity Prices	Other Nonbasic Commodities	Adj Base Prices	Parity Prices
	Dollars			Dollars	
Field Crops and Misc Commodities			Noncitrus Fruit		
Hops, Lb	.253	4.23	Peaches, cont.		
Spearmint Oil, Lb	1.64	27.40	Processing 5/ Excl Dried		
Tobacco, Lb Type 61	2.56	42.80	Clingstone, CA, Ton	32.50	543.00
Noncitrus Fruit			Pears, Ton		
Apples, Ton 6/ Processing	19.20	321.00	Fresh 4/	51.70	864.00
Apricots, Ton			Dried, CA 6/	162.00	2710.00
Fresh 7/	102.00	1700.00	Plums, CA, Ton		
Dried, CA	290.00	4850.00	Fresh, Equiv on-Tree	53.80	899.00
Avocados, Ton 7/	214.00	3580.00	Prunes, Dried, CA, Ton 6/	137.00	2290.00
Cherries			Prunes and Plums, Excl CA, Ton		
Sweet, Ton	173.00	2890.00	Fresh 9/	51.40	859.00
Tart, Lb	.0271	.453	Processing 6/ Excl Dried	24.10	403.00
Cranberry, Bbl 5/	6.66	111.00	Tree Nuts 10/		
Dates, CA, Ton 7/	157.00	2620.00	Almonds, Lb	.215	3.59
Grapes, Ton			Hazelnuts, Ton	118.00	1970.00
Raisin Variety	134.00	2240.00	Pistachio, Lb	.157	2.62
Other Dried	65.70	1100.00	Walnuts, Ton	183.00	3060.00
Kiwifruit, Ton	76.90	1280.00	Vegetables, Cwt 11/		
Nectarines			Fresh		
Fresh, Calif, Ton 7/	63.30	1060.00	Carrots 8/	2.00	33.40
Olives, CA			Cauliflower 8/	4.46	74.50
Canning, Ton 5/	97.40	1630.00	Celery 8/	2.00	33.40
Papayas (HI) Lb	.0505	.844	Honeydew Melons	2.71	45.30
Peaches			Lettuce	2.35	39.30
Fresh, Lb 4/	.0383	.640	Onions 8/	1.70	28.40
Dried, CA, Ton	103.00	1720.00	Tomatoes	4.38	73.20

- 1/ Parity prices are computed under the provisions of Title III, Subtitle a, Section 301 (a) of the Agricultural Adjustment Act of 1938 as amended by the Agricultural Acts of 1948, 1949, and 1956. See January "Agricultural Prices" for details on adjusted base price and parity price computations.
- 2/ Seasonally adjusted price as percentage of parity price.
- 3/ Wholesale extracted. Adjusted base price derived from state annual average prices weighted by production. For 1982 through 1985 the national averages are the support prices.
- 4/ Equivalent packinghouse-door returns for CA, NY (apples only), OR (except peaches), and WA. Price at point of first sale for other states.
- 5/ Equivalent returns for bulk fruit at first delivery point.
- 6/ Equivalent returns at processing plant door.
- 7/ Equivalent returns at packinghouse door.
- 8/ Includes some processing.
- 9/ Based on "as sold" prices for fresh fruit in all states.
- 10/ Prices in-shell basis except almonds which are shelled basis.
- 11/ F.O.B. shipping point prices.

Crops: Marketing Year Average Prices Received, by States
and United States, 2000 and 2001 Revised

State	Corn		Sorghum		Soybeans	
	2000	2001	2000	2001	2000	2001
	Dollars per Bu		Dollars per Cwt		Dollars per Bu	
AL	2.16	2.35	3.48	3.75	4.75	4.60
AZ	2.78	2.79	4.45	4.00		
AR	1.75	2.02	2.93	3.56	4.73	4.37
CA	2.44	2.45	4.11	4.38		
CO	2.08	2.13	3.27	3.27		
DE	2.01	2.15	3.21	3.48	4.50	4.25
FL	2.24	2.25			4.45	4.20
GA	2.06	2.32	3.55	3.30	4.43	4.35
ID	2.63	2.64				
IL	1.91	2.04	3.44	3.61	4.62	4.55
IN	1.90	1.98			4.61	4.42
IA	1.75	1.90			4.49	4.35
KS	2.00	2.03	3.19	3.24	4.50	4.16
KY	2.07	2.08	3.46	3.42	4.71	4.47
LA	1.75	2.20	2.95	3.75	4.86	4.39
MD	2.01	2.18	3.21	3.48	4.50	4.20
MI	1.90	1.97			4.54	4.47
MN	1.71	1.90			4.38	4.32
MS	1.91	1.99	3.07	3.70	4.71	4.39
MO	1.78	1.96	3.14	3.46	4.55	4.32
MT	1.53	1.89				
NE	1.90	1.94	3.28	3.23	4.44	4.19
NJ	1.97	2.09			4.35	4.15
NM	2.52	2.40	3.93	3.75		
NY	2.35	2.51			4.55	4.55
NC	2.01	2.36	3.57	3.75	4.51	4.29
ND	1.65	1.87			4.23	4.05
OH	1.90	2.00			4.63	4.46
OK	2.10	2.10	3.10	3.29	4.25	4.30
OR	2.41	2.54				
PA	2.09	2.33	3.20	3.75	4.37	4.26
SC	2.10	2.20	3.49	3.48	4.50	4.45
SD	1.61	1.75	2.70	3.06	4.27	4.13
TN	1.96	2.06	3.23	3.88	4.69	4.46
TX	2.18	2.29	3.28	3.64	4.40	4.60
UT	2.61	2.85				
VA	2.02	2.14	2.90	3.00	4.35	4.30
WA	2.53	2.56				
WV	2.08	2.29			4.66	4.33
WI	1.86	1.97			4.45	4.31
WY	2.02	2.30				
Year	United States					
2001	1.97		3.46		4.38	
2000	1.85		3.37		4.54	

Crops: Marketing Year Average Prices Received, by States
and United States, 2000 and 2001 Revised, (continued)

State	Flaxseed		Sunflower					
			All		Oil		Non-Oil	
	2000	2001	2000	2001	2000	2001	2000	2001
	Dollars per Bu		Dollars per Cwt					
CO			8.50	9.50	6.80	8.10	11.60	12.10
KS			6.87	8.95	5.57	8.28	11.10	11.40
MN	3.39	4.40	7.90	10.90	6.62	10.30	10.90	11.40
NE			8.50	9.20	6.80	8.10	11.60	11.20
ND	3.31	4.29	7.46	10.00	6.06	9.39	11.30	11.70
SD	3.04	3.81	5.86	9.18	5.73	9.08	10.60	11.20
TX			10.30	10.30	8.00	8.50	11.00	11.00
Year	United States							
2001	4.29		9.62		9.07		11.60	
2000	3.30		6.89		5.89		11.20	

Crops: Marketing Year Average Prices Received, by States
and United States, 2000 and 2001 Revised, (continued)

State	Dry Beans		Peanuts	
	2000	2001	2000	2001
	Dollars per Cwt		Dollars per Lb	
AL			0.266	0.242
CA	26.80	31.20		
CO	15.60	23.60		
FL			0.300	0.215
GA			0.286	0.227
ID	17.30	21.20		
KS	13.90	18.00		
MI	13.70	24.60		
MN	15.90	24.30		
MT	16.30	17.30		
NE	15.80	18.50		
NM		19.00	0.320	0.260
NY	18.80	24.70		
NC			0.273	0.248
ND	12.60	20.40		
OK			0.293	0.274
OR	17.90	20.50		
SC			0.254	0.259
SD	14.50	18.70		
TX	19.00	20.00	0.246	0.226
UT	20.60	27.00		
VA			0.263	0.251
WA	18.30	20.80		
WI	21.60	28.40		
WY	16.80	23.00		
Year	United States			
2001	22.10		0.274	
2000	15.50		0.234	

Prices Received: Corn, by State and Month,
for Marketing Years, 2000-2001 and 2001-2002 1/

State :	Jul :	Aug :	Sep :	Oct :	Nov :	Dec :	Jan 2/ :	Feb
Dollars per Bushel								
2001-2002								
CO :	2.10	2.17	2.08	2.12	1.98	2.05	2.09	2.03
IL :	1.95	1.99	1.94	1.85	1.91	2.06	2.01	1.98
IN :	1.97	2.01	1.93	1.83	1.83	1.92	1.98	1.99
IA :	1.79	1.83	1.81	1.78	1.80	1.91	1.88	1.86
KS :	2.03	1.96	1.99	2.02	1.99	2.04	2.01	1.95
KY :	2.12	2.13	2.00	1.90	1.94	2.16	2.15	2.14
MI :	1.89	1.96	1.93	1.82	1.75	1.90	1.93	1.90
MN :	1.72	1.73	1.69	1.68	1.71	1.79	1.81	1.79
MO :	1.90	1.97	1.98	1.81	1.82	1.89	1.96	1.98
NE :	1.86	1.90	1.87	1.86	1.85	1.91	1.92	1.90
NC :	2.30	2.14	2.16	2.18	2.29	2.45	2.29	2.44
ND 3/ :				1.72	1.66	1.79	1.74	1.75
OH :	1.95	2.01	1.97	1.86	1.86	1.99	2.03	2.00
PA :	2.38	2.33	2.32	2.14	2.22	2.35	2.35	2.36
SD :	1.69	1.69	1.65	1.56	1.62	1.72	1.72	1.76
TN :	2.40	2.10	1.97	1.86	2.28	2.24	2.26	2.18
TX :	2.32	2.29	2.35	2.35	2.23	2.26	2.28	2.29
WI :	1.87	1.93	1.95	1.86	1.84	1.91	1.86	1.99
US :	1.87	1.90	1.91	1.84	1.85	1.98	1.97	1.93
2000-2001								
CO :	2.02	1.81	1.89	2.00	2.07	2.10	2.16	2.09
IL :	1.66	1.54	1.64	1.80	1.92	2.03	1.97	2.00
IN :	1.65	1.63	1.67	1.75	1.83	2.06	2.03	2.01
IA :	1.58	1.43	1.46	1.66	1.83	1.89	1.86	1.87
KS :	1.74	1.68	1.90	1.96	2.07	2.07	2.07	2.02
KY :	1.85	1.95	1.85	1.85	2.00	2.23	2.18	2.28
MI :	1.76	1.51	1.59	1.74	1.86	1.88	2.04	1.96
MN :	1.57	1.40	1.43	1.60	1.70	1.79	1.81	1.80
MO :	1.82	1.69	1.60	1.63	1.74	1.93	1.92	2.01
NE :	1.67	1.52	1.60	1.81	1.86	1.99	1.97	1.95
NC :	2.33	2.07	1.79	1.95	2.02	2.09	2.38	2.36
ND 3/ :								
OH :	1.77	1.59	1.59	1.75	1.87	2.02	2.08	2.01
PA :	2.34	2.14	2.06	1.89	1.89	2.10	2.18	2.35
SD :	1.45	1.40	1.30	1.48	1.52	1.69	1.67	1.75
TN :	2.09	1.65	1.72	1.87	2.30	2.22	2.21	2.32
TX :	1.63	1.67	2.09	2.19	2.19	2.25	2.38	2.13
WI :	1.78	1.60	1.58	1.83	1.86	1.87	1.89	1.83
US :	1.64	1.52	1.61	1.74	1.86	1.97	1.98	1.96

See footnotes at end of table.

-- continued

Prices Received: Corn, by State and Month,
for Marketing Years, 2000-2001 and 2001-2002 (continued) 1/

State :	Mar	:	Apr	:	May	:	Jun	:	Jul	:	Aug	:	Sep
	Dollars per Bushel												
	2001-2002												
CO	2.07		2.04		2.02		2.13		2.49		2.50		2.77
IL	1.98		1.96		2.00		2.05		2.24		2.47		2.50
IN	1.91		1.91		2.05		2.07		2.25		2.58		2.55
IA	1.89		1.86		1.84		1.88		2.03		2.27		2.41
KS	1.97		1.98		1.96		2.06		2.22		2.44		2.49
KY	2.10		1.99		2.01		2.14		2.32		2.39		2.55
MI	1.92		1.88		1.92		1.97		2.16		2.44		2.41
MN	1.82		1.76		1.80		1.82		1.97		2.20		2.27
MO	2.00		1.93		1.97		1.97		2.12		2.34		2.38
NE	1.93		1.85		1.91		1.97		2.11		2.38		2.48
NC	2.41		2.37		2.43		2.40		2.68		2.84		2.82
ND 3/	1.83		1.90		1.82		1.90		2.01		2.25		2.33
OH	1.99		1.94		2.00		2.10		2.32		2.56		2.60
PA	2.36		2.37		2.42		2.48		2.73		2.87		3.00
SD	1.74		1.71		1.74		1.83		1.99		2.23		2.34
TN	2.14		2.25		2.15		2.28		2.42		2.54		2.52
TX	2.23		2.21		2.32		2.13		2.54		2.46		2.59
WI	1.84		1.88		1.85		1.98		2.08		2.29		2.41
US	1.94		1.91		1.93		1.97		2.13		2.38		2.47
	2000-2001												
CO	2.12		2.11		1.98		2.00		2.10		2.17		2.08
IL	2.00		1.92		1.86		1.83		1.95		1.99		1.94
IN	2.02		1.98		1.95		1.84		1.97		2.01		1.93
IA	1.88		1.83		1.72		1.66		1.79		1.83		1.81
KS	2.07		2.02		1.88		1.92		2.03		1.96		1.99
KY	2.20		2.08		2.08		2.07		2.12		2.13		2.00
MI	1.95		1.90		1.86		1.75		1.89		1.96		1.93
MN	1.76		1.77		1.68		1.67		1.72		1.73		1.69
MO	1.99		1.90		1.80		1.80		1.90		1.97		1.98
NE	1.98		1.95		1.81		1.77		1.86		1.90		1.87
NC	2.46		2.32		2.28		2.14		2.30		2.14		2.16
ND 3/													
OH	2.00		1.89		1.83		1.80		1.95		2.01		1.97
PA	2.30		2.28		2.31		2.25		2.38		2.33		2.32
SD	1.69		1.68		1.54		1.58		1.69		1.69		1.65
TN	2.29		2.29		2.39		2.44		2.40		2.10		1.97
TX	2.21		2.16		2.05		2.23		2.32		2.28		2.35
WI	1.81		1.85		1.78		1.84		1.87		1.93		1.95
US	1.96		1.89		1.82		1.76		1.87		1.90		1.91

1/ For 2000-2001, August 1 to July 31 for Texas; September 1 to August 31 for Illinois, Indiana, Iowa, Kansas, Kentucky, Missouri, North Carolina, Ohio, and Tennessee; October 1 to September 30 for all other monthly marketing estimating States. For 2001-2002, July 1 to June 30 for Texas; August 1 to July 31 for Tennessee; September 1 to August 31 for Illinois, Indiana, Iowa, Kansas, Kentucky, Missouri, Nebraska, North Carolina, Ohio, Pennsylvania, and South Dakota; October 1 to September 30 for all other monthly marketing estimating States.

2/ Second year.

3/ Estimates began in 2001.

Prices Received: Sorghum, by State and Month,
for Marketing Years, 2000-2001 and 2001-2002 1/

State	Jun	Jul	Aug	Sep	Oct	Nov	Dec	Jan 2/
	Dollars per Cwt							
	2001-2002							
AR	3.30	2.82	3.72	3.39	3.65	3.32	3.51	3.51
IL	3/	3/	3.93	3.57	3.47	3.36	4.05	3.74
KS	3.28	3.27	3.33	3.25	3.22	3.23	3.20	3.28
MO	3.43	2.99	3.52	3.62	3.45	3.16	3.42	3.40
NE	3.22	3.43	3.47	3.29	3.09	3.15	3.16	3.27
OK	3.14	3.36	3.15	3.33	3.36	3.35	3.30	3.29
TX	3.93	3.62	3.56	3.69	3.65	3.58	3.64	3.65
US	3.62	3.72	3.49	3.44	3.30	3.30	3.25	3.34
	2000-2001							
AR	3.30	2.60	2.84	2.90	3.44	3.75	3.91	3.50
IL	3.58	3/	2.81	2.67	3.19	3.51	3.78	3.48
KS	2.79	2.46	2.56	2.64	2.93	3.19	3.49	3.30
MO	3.15	2.44	2.45	2.79	2.95	3.29	3.34	3.44
NE	3.27	2.68	2.50	2.60	3.01	3.23	3.40	3.43
OK	2.99	2.90	2.60	2.52	3.01	3.45	3.27	3.46
TX	3.45	2.89	2.84	3.11	3.23	3.60	3.83	3.59
US	3.32	2.82	2.73	2.77	3.01	3.27	3.54	3.39

See footnotes at end of table.

-- continued

Prices Received: Sorghum, by State and Month,
for Marketing Years, 2000-2001 and 2001-2002 (continued) 1/

State :	Feb :	Mar :	Apr :	May :	Jun :	Jul :	Aug :	Sep
Dollars per Cwt								
2001-2002								
AR :	3.11	3/	3/	3/	3/	3/	3/	3/
IL :	3.68	3/	3/	3/	3.88	4.11	4.80	4.46
KS :	3.06	3.15	3.07	3.14	3.22	3.57	3.93	4.25
MO :	3.33	3.49	3.45	3.33	3.40	3.55	3.55	4.44
NE :	3.27	3.22	3.16	3.21	3.26	3.65	4.31	4.45
OK :	3.21	3.19	3.07	3.09	3.13	3.66	4.06	4.37
TX :	3.55	3.44	3.30	3.39	4.09	4.29	4.27	4.17
US :	3.26	3.23	3.13	3.17	3.83	4.06	4.21	4.30
2000-2001								
AR :	3.66	3.81	3.66	3.55	3.30	2.82	3.72	3.39
IL :	3.80	3.93	3/	3/	3/	3/	3.93	3.57
KS :	3.27	3.21	2.89	3.17	3.28	3.27	3.33	3.25
MO :	3.78	3.51	3.47	3.54	3.43	2.99	3.52	3.62
NE :	3.42	3.35	3.35	3.27	3.22	3.43	3.47	3.29
OK :	3.36	3.28	3.18	3.13	3.14	3.62	3.15	3.33
TX :	3.82	3.79	3.56	3.33	3.93	3.72	3.56	3.69
US :	3.47	3.29	3.04	3.21	3.62	3.72	3.49	3.44

- 1/ For 2000-2001, June 1 to May 31 for Texas; August 1 to July 31 for Arkansas and Oklahoma; September 1 to August 31 for Illinois, Kansas, and Missouri; October 1 to September 30 for Nebraska. For 2001-2002, June 1 to May 31 for Texas; August 1 to July 31 for Arkansas and Oklahoma; September 1 to August 31 for Illinois, Kansas, Missouri and Nebraska.
- 2/ Second year.
- 3/ Price not published to avoid disclosure of individual firms.
- 4/ Insufficient sales to establish a price.

Prices Received: Soybeans, by State and Month,
for Marketing Years, 2000-2001 and 2001-2002 1/

State :	Aug :	Sep :	Oct :	Nov :	Dec :	Jan 2/ :	Feb
Dollars per Bushel							
2001-2002							
AR :	4.97	4.60	4.24	4.28	4.37	4.35	4.31
IL :	4.91	4.55	4.23	4.28	4.36	4.33	4.34
IN :	5.15	4.60	4.17	4.18	4.25	4.29	4.34
IA :	4.87	4.60	4.05	4.14	4.14	4.11	4.15
KS :	4.94	4.64	3.89	4.06	4.07	4.08	4.02
KY :	5.02	4.57	4.25	4.23	4.35	4.45	4.46
LA :	4.70	4.76	4.29	4.25	4.29	4.32	4.40
MI :	4.91	4.76	4.06	4.09	4.16	4.24	4.26
MN :	4.63	4.32	3.94	3.96	4.03	4.01	4.00
MS :	4.66	4.72	4.25	4.14	4.37	4.26	4.30
MO :	4.90	4.54	4.08	4.11	4.24	4.22	4.26
NE :	4.80	4.39	4.00	4.09	4.06	4.11	4.13
NC :	5.04	4.62	4.03	4.10	4.12	4.25	4.32
ND 4/ :		4.10	3.83	3.86	3.84	3.92	3.90
OH :	5.04	4.51	4.18	4.27	4.37	4.38	4.35
SD :	4.59	4.14	3.87	3.96	3.96	3.96	3.98
TN :	5.05	4.67	4.30	4.33	4.46	4.43	4.47
WI :	4.69	4.73	4.01	4.08	4.35	4.13	4.34
US :	4.85	4.53	4.09	4.16	4.20	4.22	4.22
2000-2001							
AR :	4.38	4.66	4.66	4.73	4.94	4.91	4.60
IL :	4.52	4.66	4.55	4.62	4.86	4.74	4.51
IN :	4.63	4.71	4.51	4.57	4.93	4.74	4.53
IA :	4.32	4.53	4.41	4.60	4.75	4.53	4.40
KS :	4.50	4.57	4.46	4.55	4.70	4.53	4.36
KY :	4.74	4.81	4.62	4.58	4.94	4.88	4.67
LA :	5.11	5.11	4.88	4.80	4.97	4.83	4.60
MI :	4.50	4.75	4.50	4.55	4.73	4.67	4.45
MN :	4.28	4.41	4.26	4.44	4.59	4.55	4.28
MS :	4.89	4.92	4.77	4.62	4.92	4.88	4.57
MO :	4.44	4.51	4.48	4.49	4.78	4.69	4.53
NE :	4.34	4.55	4.37	4.46	4.68	4.54	4.29
NC :	4.72	4.77	4.44	4.43	4.55	4.57	4.48
ND 4/ :							
OH :	4.65	4.67	4.48	4.60	4.99	4.86	4.57
SD :	4.25	4.29	4.22	4.29	4.43	4.36	4.25
TN :	4.64	4.79	4.61	4.62	4.97	4.89	4.61
WI :	4.76	4.52	4.46	4.48	4.78	4.50	4.13
US :	4.45	4.59	4.45	4.55	4.78	4.68	4.46

See footnotes at end of table.

-- continued

Prices Received: Soybeans, by State and Month,
for Marketing Years, 2000-2001 and 2001-2002 (continued) 1/

State :	Mar	Apr	May	Jun	Jul	Aug
: Dollars per Bushel						
: 2001-2002						
AR :	4.53	4.64	4.68	5.04	5.63	5.59
IL :	4.48	4.58	4.76	4.99	5.51	5.73
IN :	4.56	4.63	4.79	5.05	5.51	5.67
IA :	4.29	4.36	4.57	4.84	5.26	5.40
KS :	4.35	4.42	4.69	4.76	5.39	5.61
KY :	4.54	4.69	4.78	5.06	5.62	5.54
LA :	4.41	4.45	3/	3/	5.51	5.86
MI :	4.44	4.66	4.60	4.97	5.46	5.56
MN :	4.16	4.28	4.46	4.75	5.16	5.32
MS :	4.45	4.52	4.76	4.76	3/	3/
MO :	4.41	4.51	4.66	4.86	5.44	5.45
NE :	4.27	4.38	4.52	4.73	5.23	5.43
NC :	4.56	4.62	4.78	5.16	5.79	5.72
ND 4/ :	4.03	4.10	4.30	4.56	4.99	5.12
OH :	4.56	4.64	4.87	5.20	5.63	5.59
SD :	4.09	4.19	4.44	4.64	5.05	5.29
TN :	4.56	4.59	4.72	4.89	5.60	5.64
WI :	4.34	4.61	4.61	4.81	5.21	5.31
US :	4.38	4.47	4.64	4.88	5.35	5.53
: 2000-2001						
AR :	4.46	4.24	4.37	4.58	4.84	4.97
IL :	4.49	4.31	4.47	4.58	4.91	4.91
IN :	4.52	4.25	4.43	4.62	4.98	5.15
IA :	4.29	4.19	4.26	4.42	4.77	4.87
KS :	4.22	4.01	4.22	4.42	4.87	4.94
KY :	4.56	4.38	4.47	4.66	5.05	5.02
LA :	4.36	4.30	4.37	4.50	5.19	4.70
MI :	4.42	4.29	4.39	4.43	4.81	4.91
MN :	4.27	4.12	4.12	4.28	4.57	4.63
MS :	4.50	4.29	4.35	4.54	3/	4.66
MO :	4.44	4.21	4.29	4.45	4.91	4.90
NE :	4.25	4.10	4.16	4.33	4.67	4.80
NC :	4.44	4.34	4.47	4.58	5.02	5.04
ND 4/ :						
OH :	4.41	4.30	4.46	4.68	5.05	5.04
SD :	4.20	4.01	4.03	4.22	4.56	4.59
TN :	4.52	4.42	4.49	4.60	5.17	5.05
WI :	4.20	4.23	4.17	4.42	4.68	4.69
US :	4.39	4.22	4.33	4.46	4.79	4.85

1/ For 2000-2001, September 1 to August 31 for all estimating States. For 2001-2002, August 1 to July 31 for Louisiana and Mississippi; September 1 to August 31 for all other monthly marketing estimating States.

2/ Second year.

3/ Prices not published to avoid disclosure of individual firms.

4/ Estimates began in 2001.

Prices Received: Flaxseed, by State and Month,
for Marketing Years, 2000-2001 and 2001-2002 1/

State :	Jul	Aug	Sep	Oct	Nov	Dec
Dollars per Bushel						
2001-2002						
ND :	4.27	4.09	4.11	4.22	4.33	4.55
SD :	3/	3/	3/	3/	4/	4/
US :	4.26	4.09	4.10	4.22	4.33	4.55
2000-2001						
ND :	3.25	3.06	3.14	3.22	3.39	3.45
SD :	3/	3.00	2.85	3/	4/	3/
US :	3.25	3.05	3.13	3.22	3.39	3.45

See footnotes at end of table.

-- continued

Prices Received: Flaxseed, by State and Month,
for Marketing Years, 2000-2001 and 2001-2002 (continued) 1/

State :	Jan 2/	Feb	Mar	Apr	May	Jun
Dollars per Bushel						
2001-2002						
ND :	4.22	4.75	4.75	4.80	5.02	5.29
SD :	4/	3/	4/	3/	4/	4/
US :	4.22	4.75	4.75	4.80	5.02	5.29
2000-2001						
ND :	3.47	3.43	3.90	3.70	3.91	4.10
SD :	3/	3/	4/	3/	4/	4/
US :	3.42	3.43	3.90	3.68	3.91	4.10

1/ July 1 to June 30 for all estimating States.

2/ Second year.

3/ Price not published to avoid disclosure of individual firms.

4/ Insufficient sales to establish a price.

Prices Received: All Sunflower, by State and Month,
for Marketing Years, 2000-2001 and 2001-2002 1/

State :	Sep	Oct	Nov	Dec	Jan 2/	Feb
:	Dollars per Cwt					
:	2001-2002					
KS 3/:						
MN :	3/	10.50	9.41	9.96	10.40	11.30
ND :	10.40	8.45	9.49	10.00	9.66	10.60
SD :	8.43	7.40	8.56	9.37	9.23	10.00
US :	8.64	8.18	9.10	9.71	9.52	10.00
:	2000-2001					
KS 3/:						
MN :	9.24	7.82	7.13	8.25	7.24	8.38
ND :	8.76	6.24	6.60	7.17	7.25	7.97
SD :	5.61	4.93	5.01	5.58	5.91	6.29
US :	6.31	5.76	6.20	6.49	6.92	7.29

See footnotes at end of table.

-- continued

Prices Received: All Sunflower, by State and Month,
for Marketing Years, 2000-2001 and 2001-2002 (continued) 1/

State :	Mar	Apr	May	Jun	Jul	Aug
:	Dollars per Cwt					
:	2001-2002					
KS 3/:						
MN :	3/	11.10	11.00	13.60	13.20	12.90
ND :	10.70	10.70	11.00	12.00	13.70	14.20
SD :	9.38	9.90	10.00	11.40	13.90	15.00
US :	10.20	10.50	10.50	11.80	13.80	12.90
:	2000-2001					
KS 3/:						
MN :	7.40	8.67	7.20	8.38	8.76	9.96
ND :	7.98	8.14	8.48	8.68	9.16	9.77
SD :	6.31	6.64	6.89	7.03	7.89	9.20
US :	7.46	7.67	7.99	8.40	8.71	9.48

1/ September 1 to August 31 for Kansas, Minnesota, North Dakota and South Dakota.

2/ Second year.

3/ Price not published to avoid disclosure of individual firms.

Prices Received: Oil Sunflower, by State and Month,
for Marketing Years, 2001-2002 and 2000-2001 1/

State :	Sep	Oct	Nov	Dec	Jan 2/	Feb
:	Dollars per Cwt					
:	2001-2002					
KS 3/:						
MN :	3/	8.30	8.51	9.34	10.00	3/
ND :	8.28	8.11	8.91	9.71	9.12	10.30
SD :	8.43	7.40	8.56	9.36	9.09	9.75
US :	7.79	7.74	8.56	9.45	8.95	9.67
:	2000-2001					
KS 3/:						
MN :	5.84	5.70	5.68	5.78	5.89	7.49
ND :	5.84	5.16	5.42	5.59	5.95	6.25
SD :	5.44	4.84	4.80	5.24	5.71	6.13
US :	5.39	5.00	5.21	5.50	5.84	6.22

See footnotes at end of table.

-- continued

Prices Received: Oil Sunflower, by State and Month,
for Marketing Years, 2000-2001 and 2001-2002 (continued) 1/

State :	Mar	Apr	May	Jun	Jul	Aug
:	Dollars per Cwt					
:	2001-2002					
KS 3/:						
MN :	3/	3/	3/	3/	3/	3/
ND :	10.70	10.20	10.80	11.30	13.50	14.80
SD :	9.38	9.62	10.10	11.30	14.40	15.40
US :	9.99	9.95	10.40	11.40	13.90	12.70
:	2000-2001					
KS 3/:						
MN :	6.87	7.83	6.90	3/	3/	3/
ND :	6.71	6.83	6.84	7.57	8.13	8.45
SD :	6.23	6.46	6.65	7.03	7.89	9.20
US :	6.47	6.70	6.75	7.39	8.01	8.52

1/ September 1 to August 31 for Kansas, Minnesota, North Dakota and South Dakota.

2/ Second year.

3/ Price not published to avoid disclosure of individual firms.

Prices Received: Non-Oil Sunflower, by State and Month,
for Marketing Years, 2000-2001 and 2001-2002 1/

State :	Sep	Oct	Nov	Dec	Jan 2/	Feb
:	Dollars per Cwt					
:	2001-2002					
KS 3/:						
MN :	3/	11.40	10.80	3/	10.50	11.30
ND :	11.90	10.60	11.30	11.20	11.20	11.40
SD :	4/	4/	4/	3/	3/	3/
US :	11.60	10.90	11.10	11.20	11.40	11.40
:	2000-2001					
KS 3/:						
MN :	11.30	10.70	3/	3/	3/	3/
ND :	14.20	11.30	10.90	11.10	11.10	11.30
SD :	3/	3/	3/	3/	9.78	10.40
US :	13.70	10.90	10.80	11.10	11.10	11.20

See footnotes at end of table.

-- continued

Prices Received: Non-Oil Sunflower, by State and Month,
for Marketing Years, 2000-2001 and 2001-2002 (continued) 1/

State :	Mar	Apr	May	Jun	Jul	Aug
:	Dollars per Cwt					
:	2001-2002					
KS 3/:						
MN :	3/	3/	3/	3/	3/	3/
ND :	10.60	11.40	11.40	12.80	13.80	13.90
SD :	4/	3/	3/	3/	3/	3/
US :	10.80	11.40	11.00	12.70	13.70	13.60
:	2000-2001					
KS 3/:						
MN :	3/	3/	3/	3/	3/	3/
ND :	11.00	11.50	11.40	11.20	11.10	11.20
SD :	10.60	3/	3/	4/	4/	4/
US :	11.10	11.40	11.30	11.40	11.10	11.10

1/ September 1 to August 31 for Kansas, Minnesota, North Dakota and South Dakota.

2/ Second year.

3/ Price not published to avoid disclosure of individual firms.

4/ Insufficient sales to establish a price.

Prices Received: Dry Beans, by State and Month,
for Marketing Years, 2000-2001 and 2001-2002 1/

State :	Sep	Oct	Nov	Dec	Jan 2/	Feb
Dollars per Cwt						
2001-2002						
CA :	27.20	28.60	31.50	31.20	31.80	31.60
CO :	20.50	19.90	19.20	21.00	24.50	26.10
ID :	18.60	18.70	19.20	19.60	20.90	22.40
MI :	21.20	23.50	25.30	24.50	24.60	24.20
MN :	19.00	24.50	24.50	25.00	23.40	25.80
NE :	17.90	17.70	17.50	17.80	18.90	20.00
ND :	15.80	16.60	20.80	19.50	19.90	28.30
US :	18.40	19.20	22.70	21.70	21.50	26.10
2000-2001						
CA :	27.20	27.10	27.20	26.60	26.90	26.90
CO :	15.20	15.50	15.50	15.60	15.10	15.10
ID :	17.20	17.90	17.60	17.00	16.90	16.90
MI :	13.70	15.10	13.70	13.00	12.50	12.80
MN :	19.00	18.10	15.70	16.00	15.10	14.10
NE :	16.90	16.00	15.70	14.80	15.20	14.70
ND :	13.10	12.90	12.60	12.20	11.30	10.70
US :	15.50	15.70	15.50	14.40	15.10	15.30

See footnotes at end of table.

-- continued

Prices Received: Dry Beans, by State and Month,
for Marketing Years, 2000-2001 and 2001-2002 (continued) 1/

State :	Mar	Apr	May	Jun	Jul	Aug
:	Dollars per Cwt					
:	2001-2002					
CA :	32.70	32.20	32.30	31.90	32.40	33.40
CO :	27.30	28.70	28.70	28.60	26.40	23.10
ID :	23.20	23.20	23.20	23.20	23.40	23.50
MI :	26.90	28.70	30.00	27.10	27.50	20.00
MN :	24.20	28.00	27.30	3/	3/	3/
NE :	19.80	20.10	20.70	20.50	20.30	19.90
ND :	28.10	28.80	28.90	28.90	23.40	21.00
US :	27.10	27.50	27.80	27.40	24.50	23.20
:	2000-2001					
CA :	26.60	26.80	26.80	26.30	26.30	27.00
CO :	15.10	15.50	15.60	16.20	17.00	17.70
ID :	17.00	17.20	17.10	17.50	17.70	18.00
MI :	13.10	11.90	12.60	13.90	16.00	18.10
MN :	16.30	16.00	13.80	12.40	11.30	14.90
NE :	14.90	15.10	15.60	15.50	16.10	16.90
ND :	11.70	11.60	12.30	13.90	14.10	14.90
US :	14.90	15.60	16.90	16.40	16.80	17.40

1/ September 1 to August 31 for all estimating States.

2/ Second year.

3/ Price not published to avoid disclosure of individual firms.

Prices Received: Peanuts, by State and Month,
for Marketing Years, 2000-2001 and 2001-2002 1/

State :	Aug	Sep	Oct	Nov	Dec	Jan 2/	Feb
:	Dollars per Pound						
:	2001-2002						
AL :	3/	0.255	0.235	3/	0.212	0.227	
FL :		0.238	0.207	0.158	0.152	3/	
GA :		0.247	0.212	0.199	0.154	3/	
NC :		0.282	0.263	0.205	0.181	0.176	
TX :	3/	3/	3/	3/	3/	3/	3/
VA :		0.280	0.269	0.175	0.172	3/	3/
US :	0.240	0.248	0.237	0.210	0.195	0.135	0.107
:	2000-2001						
AL :	3/	0.268	0.273	0.250	0.248	3/	
FL :		0.309	0.297	0.294	3/	3/	
GA :		0.294	0.288	0.277	3/	3/	
NC :		0.285	0.278	0.231	0.221	0.291	
TX :		3/	3/	3/	3/		
VA :		0.280	0.270	0.188	0.238	0.360	
US :		0.286	0.277	0.261	0.273	0.314	

- 1/ August 1 to July 31 for all estimating States.
2/ Second year.
3/ Price not published to avoid disclosure of individual firms.

Monthly Marketings - United States

United States: U.S. monthly marketing percentages for corn, sorghum, soybeans, flaxseed, sunflower and peanuts are based on the 12 months which are used for the U.S. marketing year. These months are consistent with the data used to weight U.S. marketing year average prices. Marketings are based on monthly probability surveys which obtain quantities of the crop purchased from producers and price information. Purchases are not identified by crop production year, but represent the commodity sold during the 12 months of the marketing year.

Crop Marketing Seasons of Specified Field Crops

Corn for Grain: For 2000-2001, August 1 to July 31 for Texas; September 1 to August 31 for Illinois, Indiana, Iowa, Kansas, Kentucky, Missouri, North Carolina, Ohio, and Tennessee; October 1 to September 30 for all other monthly marketing estimating States.

For 2001-2002, July 1 to June 30 for Texas; August 1 to July 31 for Tennessee; September 1 to August 31 for Illinois, Indiana, Iowa, Kansas, Kentucky, Missouri, Nebraska, North Carolina, Ohio, Pennsylvania, and South Dakota; October 1 to September 30 for all other monthly marketing estimating States.

Dry Edible Beans: September 1 to August 31 for all estimating States.

Flaxseed: July 1 to June 30 for all estimating States.

Peanuts: August 1 to July 31 for all estimating States.

Sorghum for Grain: For 2000-2001, June 1 to May 31 for Texas; August 1 to July 31 for Arkansas and Oklahoma; September 1 to August 31 for Illinois, Kansas, and Missouri; October 1 to September 30 for Nebraska.

For 2001-2002, June 1 to May 31 for Texas; August 1 to July 31 for Arkansas and Oklahoma; September 1 to August 31 for Illinois, Kansas, Missouri and Nebraska.

Soybeans: For 2000-2001, September 1 to August 31 for all estimating States.

For 2001-2002, August 1 to July 31 for Louisiana and Mississippi; September 1 to August 31 for all other monthly marketing estimating States.

Sunflowers: September 1 to August 31 for Kansas, Minnesota, North Dakota and South Dakota.

Field Crops: Farm Marketings, Percent of Sales by Crop
and Month, United States, 2000-2001 and 2001-2002 1/

Month	Crop Marketing Year							
	2000-2001		2001-2002		2000-2001		2001-2002	
	Percent							
	Corn		Sorghum		Soybeans			
Sep	11.3	7.8	8.7	7.6	8.7	4.5		
Oct	15.8	11.0	13.7	11.8	23.1	21.9		
Nov	8.6	13.3	8.1	17.5	8.2	10.9		
Dec	6.8	6.6	16.2	13.1	7.1	8.3		
Jan	15.0	12.5	8.9	10.8	14.0	16.0		
Feb	5.3	6.0	4.0	4.9	6.6	6.6		
Mar	6.4	6.2	5.0	3.7	6.4	9.1		
Apr	4.9	6.0	3.7	3.0	5.1	5.4		
May	4.6	6.3	2.5	3.9	6.5	4.2		
Jun	5.4	7.5	6.9	9.5	5.3	4.1		
Jul	8.2	8.8	12.2	6.1	5.3	5.0		
Aug	7.7	8.0	10.1	8.1	3.7	4.0		
Year	100.0	100.0	100.0	100.0	100.0	100.0		
	Flaxseed				Peanuts			
Jul	2.8	3.6						
Aug	10.6	5.4				0.2		
Sep	29.8	31.5			13.2	32.3		
Oct	24.1	23.9			54.7	40.6		
Nov	4.4	5.7			29.3	22.6		
Dec	7.0	7.5			2.2	1.8		
Jan	7.7	9.8			0.6	2.5		
Feb	2.3	3.0						
Mar	5.3	4.6						
Apr	2.3	2.0						
May	1.1	1.4						
Jun	2.6	1.6						
Year	100.0	100.0			100.0	100.0		
	Dry Beans				Sunflower			
Sep	12.5	14.6			6.1	2.9		
Oct	17.3	19.8			21.7	25.6		
Nov	10.5	10.8			11.0	16.3		
Dec	13.4	10.6			9.5	8.2		
Jan	10.0	14.0			13.0	13.0		
Feb	5.7	7.0			7.6	11.8		
Mar	6.9	5.7			10.9	5.0		
Apr	5.7	4.8			5.1	3.8		
May	5.1	3.9			2.9	2.2		
Jun	4.6	3.3			4.8	3.5		
Jul	4.1	2.5			4.6	3.6		
Aug	4.2	3.0			2.8	4.1		
Year	100.0	100.0			100.0	100.0		

1/ Revised for 2000-2001.

Corn: Farm Marketings, Percent of Sales, by Month
and State, 2000-2001 and 2001-2002 1/

State and Marketing Year		Jul	Aug	Sep	Oct	Nov	Dec	Jan	Feb	Mar	Apr	May	Jun	Jul	Aug	Sep
		Percent														
CO	2000-2001				14	15	14	16	8	8	5	5	5	4	3	3
	2001-2002				12	17	12	13	6	7	5	7	7	7	4	3
IL	2000-2001		10	12	5	7	22	6	8	6	6	5	7	6		
	2001-2002		7	10	8	7	17	6	7	7	6	8	9	8		
IN	2000-2001		14	15	8	6	17	6	7	5	5	5	8	4		
	2001-2002		7	13	23	7	12	8	4	5	4	5	6	6		
IA	2000-2001		11	17	7	5	11	4	6	6	5	6	11	11		
	2001-2002		7	7	15	5	9	6	7	7	8	8	11	10		
KS	2000-2001		18	22	12	11	16	3	3	3	2	2	5	3		
	2001-2002		6	21	14	15	13	6	4	4	5	5	3	4		
KY	2000-2001		14	15	6	5	22	9	9	3	3	4	6	4		
	2001-2002		13	12	5	5	21	8	8	7	6	5	5	5		
MI	2000-2001		9	14	12	12	7	7	6	4	5	11	7	6		
	2001-2002		9	27	8	10	4	3	5	3	5	10	9	7		
MN	2000-2001		20	8	8	11	5	6	5	5	6	9	11	6		
	2001-2002		10	10	4	7	5	4	4	6	13	15	13	9		
MO	2000-2001		32	12	5	4	15	4	5	3	3	3	4	10		
	2001-2002		24	15	7	6	11	6	4	5	6	6	5	5		
NE	2000-2001		14	11	11	12	6	7	5	4	6	10	9	5		
	2001-2002		6	13	15	8	11	6	7	6	7	6	8	7		
NC	2000-2001		36	19	7	3	4	3	3	3	3	3	13			
	2001-2002		31	9	6	20	4	5	5	3	4	1	2	10		
ND	2000-2001 2/		8	10	8	14	8	7	6	6	12	8	8	5		
	2001-2002															
OH	2000-2001		4	21	17	6	15	6	5	4	5	5	6	6		
	2001-2002		3	12	21	6	14	7	7	7	6	6	7	4		
PA	2000-2001		18	29	5	9	8	7	4	6	5	1	5	3		
	2001-2002		7	18	22	6	6	7	8	8	6	6	3	3		
SD	2000-2001		24	10	8	6	5	6	3	3	8	10	10	7		
	2001-2002		7	16	11	6	9	8	6	5	7	9	9	7		
TN	2000-2001		45	10	3	3	11	2	3	2	2	1	3	15		
	2001-2002	11	43	13	3	3	8	5	4	2	3	2	3			
TX	2000-2001		9	17	17	6	6	25	3	1	1	2	2	11		
	2001-2002	13	12	10	18	23	7	6	2	3	2	3	1			
WI	2000-2001		15	22	6	7	3	4	5	4	8	12	9	5		
	2001-2002		8	17	9	11	5	6	6	7	8	9	7	7		

1/ Sample survey reported marketings as percent of total used for calculating marketing year average prices.
2/ Estimates began in 2001.

Sorghum: Farm Marketings, Percent of Sales,
by Month and State, 2000-2001 and 2001-2002 1/

State and Marketing Year	Jun	Jul	Aug	Sep	Oct	Nov	Dec	Jan	Feb	Mar	Apr	May	Jun	Jul	Aug	Sep	

	Percent																
AR 2000-2001:		46	44	5	1	1	2	1									
2001-2002:		43	36	9	4	1	4	1						2			
IL 2000-2001:			1	32	35	1	18	4	2							7	
2001-2002:			29	29	10	6	9	4	3	2	3	3	1	1			
KS 2000-2001:			8	15	11	22	10	4	7	5	4	5	2	7			
2001-2002:			6	13	22	18	13	5	4	4	5	4	3	3			
MO 2000-2001:			28	22	11	5	12	3	4	5	2	1	2	5			
2001-2002:			30	20	12	6	9	2	4	6	4	2	2	3			
NE 2000-2001:				22	9	14	11	7	6	4	5	7	9	4	2		
2001-2002:				2	20	14	17	16	5	5	5	5	4	4	3		
OK 2000-2001:		10	18	8	14	18	15	3	5	2	3	2	2				
2001-2002:		5	4	11	23	19	18	3	3	4	3	5	2				
TX 2000-2001:	15	22	12	7	12	4	12	7	4	2	2	1					
2001-2002:	11	35	15	5	5	11	4	4	6	2	1	1					

1/ Sample survey reported marketings as percent of total used for calculating marketing year average prices.

Flaxseed: Farm Marketings, Percent of Sales,
by Month and State, 2000-2001 and 2001-2002 1/

State and Marketing Year	Jul	Aug	Sep	Oct	Nov	Dec	Jan	Feb	Mar	Apr	May	Jun

ND 2000-2001:	3	9	30	25	5	7	7	2	6	2	1	3
2001-2002:	3	5	31	24	6	8	10	3	5	2	1	2
SD 2000-2001:	7	41	17	1		8	21	1		4		
2001-2002:	18	1	74	5				1		1		

1/ Sample survey reported marketings as percent of total used for calculating marketing year average prices.

Soybeans: Farm Marketings, Percent of Sales,
by Month and State, 2000-2001 and 2001-2002 1/

State and Marketing Year	Aug	Sep	Oct	Nov	Dec	Jan	Feb	Mar	Apr	May	Jun	Jul	Aug
	Percent												
AR 2000-2001	7	21	20	17	15	4	3	3	3	1	3	3	
AR 2001-2002	8	23	23	12	20	4	4	2	1	1	1	1	
IL 2000-2001	7	16	6	6	19	8	9	6	9	6	5	3	
IL 2001-2002	4	14	8	8	21	6	11	7	5	4	7	5	
IN 2000-2001	14	28	6	5	14	7	6	5	6	3	4	2	
IN 2001-2002	9	30	13	6	12	6	7	5	2	3	4	3	
IA 2000-2001	8	22	7	7	11	5	6	7	7	7	8	5	
IA 2001-2002	3	18	8	9	14	8	11	7	6	5	6	5	
KS 2000-2001	9	18	9	12	14	6	6	4	7	6	4	5	
KS 2001-2002	3	24	16	11	16	8	8	4	6	2	1	1	
KY 2000-2001	3	16	15	5	25	10	8	4	5	4	3	2	
KY 2001-2002	2	14	15	6	29	10	11	6	3	1	2	1	
LA 2000-2001	20	32	9	5	13	4	2	1	3	2	1	8	
LA 2001-2002	9	11	34	19	6	11	2	3	1	1	2	1	
MI 2000-2001	6	25	11	9	14	6	5	7	8	5	3	1	
MI 2001-2002	2	25	20	6	9	4	6	2	2	7	9	8	
MN 2000-2001	12	19	7	8	13	6	6	5	7	6	6	5	
MN 2001-2002	3	20	7	9	12	6	8	4	5	9	10	7	

--continued

Soybeans: Farm Marketings, Percent of Sales,
by Month and State, 2000-2001 and 2001-2002 1/

State and Marketing Year	Aug	Sep	Oct	Nov	Dec	Jan	Feb	Mar	Apr	May	Jun	Jul	Aug
MS 2000-2001		13	16	7	10	18	6	4	4	3	2	9	8
MS 2001-2002	7	10	23	8	7	22	4	6	2	2	3	6	
MO 2000-2001		6	27	11	6	16	6	7	4	5	4	5	3
MO 2001-2002		3	23	16	8	16	8	9	4	4	3	3	3
NE 2000-2001		7	23	10	10	14	7	5	4	6	5	5	4
NE 2001-2002		2	28	14	11	15	6	8	5	3	2	3	3
NC 2000-2001		1	8	34	19	9	5	4	4	6	5	3	2
NC 2001-2002		1	18	32	12	10	5	7	5	4	2	3	1
ND 2000-2001 2/													
ND 2001-2002		4	25	8	10	15	8	8	4	2	6	7	3
OH 2000-2001		7	33	8	7	13	8	6	3	4	4	4	3
OH 2001-2002		4	28	11	6	15	8	9	5	3	4	4	3
SD 2000-2001		11	34	5	4	6	7	5	4	4	8	8	4
SD 2001-2002		6	29	5	7	13	7	9	6	5	4	4	5
TN 2000-2001		5	43	12	8	12	5	4	2	3	2	2	2
TN 2001-2002		10	40	17	5	12	4	3	2	1	1	3	2
WI 2000-2001		9	36	12	4	6	3	5	5	6	5	6	3
WI 2001-2002		2	21	17	9	16	6	8	7	5	3	4	2

1/ Sample survey reported marketings as percent of total used for calculating marketing year average prices.

2/ Estimates began in 2001.

Sunflower: Farm Marketings, Percent of Sales
by Month and State, 2000-2001 and 2001-2002 1/

State and Marketing Year	2000-2001	Sep	Oct	Nov	Dec	Jan	Feb	Mar	Apr	May	Jun	Jul	Aug
KS	19	13	9	21	7	6	11	2	3	5	1	3	
2001-2002	6	23	21	5	15	17	2	1	1	1	1	7	
MN	5	11	17	10	8	5	19	9	6	1	4	5	
2001-2002	4	16	20	4	7	11	7	3	7	8	8	5	
ND	3	21	13	9	15	7	9	6	3	5	5	4	
2001-2002	2	23	18	11	12	12	5	5	2	4	4	2	
SD	8	27	8	7	11	9	13	5	2	4	5	1	
2001-2002	2	35	8	6	14	5	8	5	4	5	4	4	

1/ Sample survey reported marketings as percent of total used for calculating marketing year average prices.

Dry Edible Beans: Farm Marketings, Percent of Sales,
by Month and State, 2000-2001 and 2001-2002 1/

State and Marketing Year	2000-2001	Sep	Oct	Nov	Dec	Jan	Feb	Mar	Apr	May	Jun	Jul	Aug
CA	5	10	11	9	11	8	7	9	12	6	6	6	
2001-2002	8	12	11	8	7	7	7	11	11	8	5	5	
CO	21	13	9	9	9	5	7	5	7	5	5	5	
2001-2002	22	9	8	8	14	10	9	4	6	6	2	2	
ID	9	12	11	10	12	11	9	7	5	7	4	3	
2001-2002	9	11	11	9	11	9	9	6	5	7	4	9	
MI	10	23	14	28	10	4	5	1	2	1	1	1	
2001-2002	5	13	23	18	11	9	7	4	2	2	1	5	
MN	16	19	10	5	5	9	6	7	6	5	8	4	
2001-2002	6	39	10	17	12	3	4	4	2	2	1		
NE	20	19	7	10	14	5	4	5	4	2	5	5	
2001-2002	29	23	4	9	11	4	2	4	4	2	4	4	
ND	11	16	9	6	8	5	10	9	6	8	5	7	
2001-2002	12	25	12	9	19	7	5	4	2	2	2	1	

1/ Sample survey reported marketings as percent of total used for calculating marketing year average prices.

Reliability of Prices Received Estimates

Definition: Prices received represent sales from producers to first buyers. They include all grades and qualities. The average commodity price from the survey multiplied by the total quantity marketed theoretically should give the total cash receipts for the commodity.

Survey Procedures: Primary sales data used to determine grain prices were obtained from probability samples of 2600 mills and elevators. These procedures ensure that virtually all grain moving into commercial channels has a chance of being included in the survey. Generally, States surveyed account for 90 percent or more of total U.S. production. Livestock prices are obtained from packers, stockyards, auctions, dealers, and market check data from AMS-USDA, private marketing organizations, and state commodity groups and agencies. Inter-farm sales of grain and livestock are not included since they represent very small percentages of the total marketings. Grain marketed for seed is also excluded. Fruit and vegetable prices are obtained from sample surveys and market check data from AMS-USDA, private marketing organizations, state agencies, and universities.

Summary and Estimation Procedures: Survey quantities sold are expanded by strata to state levels and used to weight average strata prices to a state average. State prices are then weighted to a U.S. price based on expanded marketings. Recommendations are prepared by the State Statistical Offices and reviewed by the Agricultural Statistics Board in Washington, D.C. State recommendations are reviewed for reasonableness with survey data, other States, and recent historic estimates.

Revisions: For most items, the current month's preliminary price represents a 3-5 day period around the 15th of the month. Previous month's prices represent actual dollars received for quantities sold during the entire month. Revisions are published in monthly issues of "**Agricultural Prices**".

Reliability: U.S. price estimates based on probability surveys generally have a sampling error of less than one percent for the major commodities such as corn, wheat, soybeans, cotton, and rice. Current methods of summarization for non-probability commodities are not designed directly to calculate sampling errors. However, analytical measures approximate the U.S. relative sampling errors at around five percent. Any nonsampling errors are attributed to such things as the inability to obtain correct information, differences in interpreting questions or definitions, mistakes in coding or processing the data, etc. Efforts are made at each step in the survey process to minimize these nonsampling errors.

Prices Paid by Farmers

The November Index of Prices Paid for Commodities and Services, Interest, Taxes, and Farm Wage Rates (PPITW) is 126 (1990-92=100), 0.8 percent higher than October 2002 and 3.3 percent above November 2001.

PRODUCTION INDEX: The November Farm Production, Goods, and Services Index, at 121, is unchanged from last month but 2.5 percent above last year. Lower prices in November for feed concentrates, diesel fuel, herbicides, and self-propelled machinery offset higher prices for feeder pigs, feeder cattle, feed supplements, and nitrogen fertilizers.

Feed: The Feed Index, at 117, is 0.8 percent less than October but 7.3 percent above last November. Since October, lower prices for feed concentrates, feed grains, and complete feeds more than offset higher prices for feed supplements and hays and forages.

Livestock and Poultry: The Index for Livestock and Poultry purchases, at 104, is 3.0 percent higher than last month but 2.8 percent below last year. Since October, prices were higher for feeder pigs and feeder cattle. The November feeder cattle price, at \$86.70 per cwt, is up \$2.00 per cwt from the October price.

Fertilizer: The Fertilizer Index, at 111, is up 0.9 percent from October and 2.8 percent more than November a year ago. Prices are higher in November for nitrogen fertilizers and potash and phosphate materials.

Agricultural Chemicals: The Chemical Index, at 116, is down 0.9 percent from last month and 3.3 percent below last November. Prices are lower in November for herbicides.

Fuels: The Fuels Index, at 137, is down 1.4 percent from a month earlier but 43 percent above November 2001. Compared to last month, prices are lower for diesel fuel and gasoline but higher for LP gas.

Farm Machinery: The November Farm Machinery Index, at 145, is unchanged from October and last November. Since October, prices are slightly lower for self-propelled machinery.

CONSUMER PRICE INDEX: The October 2002 Consumer Price Index for all urban consumers (CPI-U) rose 0.2 percent before seasonal adjustment to a level of 181.3 (1982-84=100). This compares to the September index of 181.0. The overall index for the 12-month period ending in October has increased 2.0 percent.

Indexes of Prices Paid by Farmers and Related Parity Ratios
United States, November 2002 With Comparisons

Indexes and Ratios	1910-14 = 100			1990-92 = 100			
	2001		2002	2001		2002	
	Nov	Oct	Nov	Nov	Oct	Nov	
Prices Paid by Farmers for	:						
Commodities & Services,	:						
Interest, Taxes, & Wage	:						
Rates (PPITW)	:	1629	1670	1671	122	125	126
Production	:	1142	*1174	1175	118	*121	121
Feed	:	532	*577	571	109	*118	117
Livestock and Poultry	:	1372	1285	1334	107	101	104
Seeds	:	1329	1426	1426	134	144	144
Fertilizer	:	398	*403	407	108	*110	111
Agricultural Chemicals	:	742	*725	717	120	*117	116
Fuels	:	744	*1076	1059	96	*139	137
Supplies & Repairs	:	914	*934	934	129	*132	132
Autos & Trucks	:	3153	3076	3093	119	116	116
Farm Machinery	:	3649	*3647	3633	145	*145	145
Building Material	:	1642	*1659	1654	121	122	122
Farm Services & Rent	:	1417	*1425	1425			
Farm Services	:				120	*120	120
Rent	:				117	119	119
Interest 1/	:	2845	2728	2728	114	109	109
Taxes 2/	:	3330	3378	3378	124	126	126
Wage Rates	:	5550	*5770	5770	148	*154	154
Production, Interest, Taxes,	:						
& Wage Rates (PITW)	:	1617	1659	1660	120	*123	124
Family Living-CPI 3/	:	1685	*1722	1722	132	134	134
Ratio (Received\Paid)	:				76	*77	77
Parity Ratio 4/	:	36	*37	37			
Parity Ratio Adjusted 5/	:	40	38	39			
PPITW Adjusted for	:						
Productivity 6/	:	1131	*1156	1156			
Crop Sector (PPITW)	:				125	*128	128
Livestock Sector (PPITW)	:				120	123	123
Farm Sector (Production)	:				112	*116	117
Non-Farm Sector (Production)	:				120	123	123

* Revised.

- 1/ Interest per acre on farm real estate debt and interest rate on farm non-real estate debt.
- 2/ Farm real estate taxes payable per acre.
- 3/ Bureau of Labor Statistics, Consumer Price Index for all urban consumers (CPI-U), for the previous month converted by the USDA.
- 4/ Ratio of index of prices received to PPITW (1910-14=100).
- 5/ Based on estimated cash receipts, from marketings and government payments, the preliminary adjustment factor is 1.052 for 2002 and the revised factor is 1.105 for 2001.
- 6/ PPITW is adjusted based on productivity trend for the prior 15 years.

Prices Paid Indexes and Annual Weights for Input Components and
Sub-Components United States, November 2002 With Comparisons

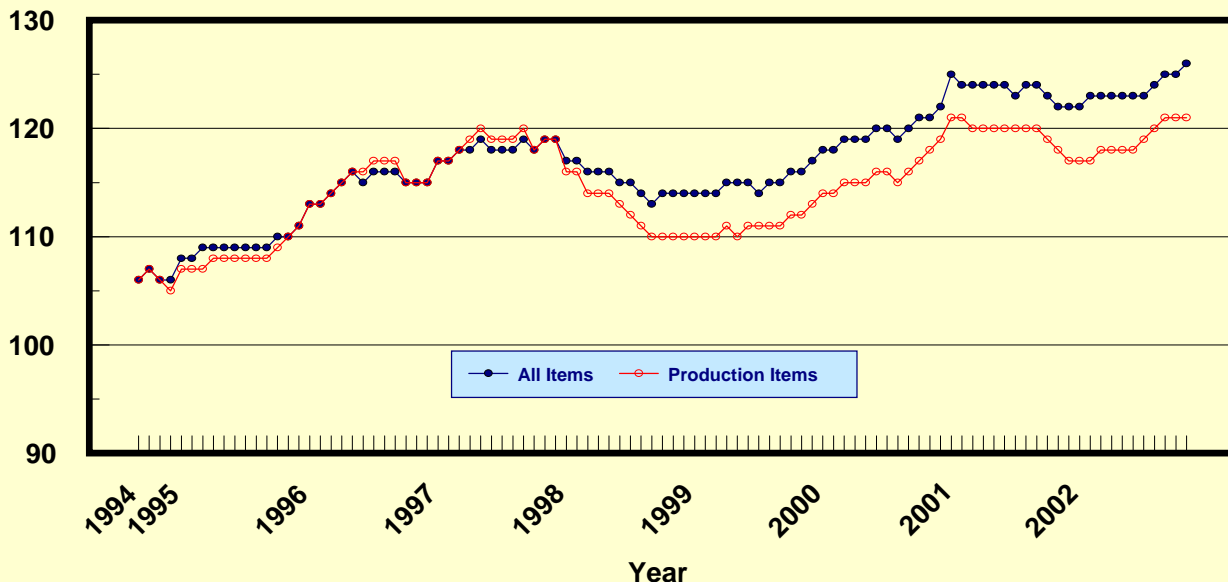
Index	Relative Weights		Input Indexes		
	5-Year Moving Average 1/		2001	2002	
	2001	2002	Nov	Oct	Nov
	---- Percent ----		---- (1990-92=100) ----		
Production Items	67.1	66.9	118	*121	121
Feed	11.5	11.3	109	*118	117
Feed Grains	1.6	1.6	82	103	102
Complete Feeds	5.6	5.5	111	*122	122
Hay/Forages	1.4	1.4	123	120	121
Concentrates	1.8	1.8	109	*112	102
Supplements	1.0	0.9	124	*132	138
Livestock & Poultry	6.7	6.8	107	101	104
Feeder Cattle	5.2	5.3	102	100	102
Feeder Pigs	0.5	0.5	110	73	98
Milk Cow Replacements	0.5	0.6	151	126	126
Poultry	0.4	0.4	109	109	109
Seeds	3.0	3.1	134	144	144
Field Crops	2.7	2.8	136	147	147
Grasses/Legumes	0.3	0.3	118	118	118
Fertilizer	4.8	4.7	108	*110	111
Mixed Fertilizer	2.1	2.1	106	104	104
Nitrogen	2.0	2.0	112	*116	118
Potash & Phosphate	0.7	0.7	107	110	111
Agricultural Chemicals	4.0	3.9	120	*117	116
Herbicides	2.5	2.5	113	*109	108
Insecticides	0.9	0.9	139	137	137
Fungicides/Other	0.6	0.6	120	119	119
Fuels	2.6	2.7	96	*139	137
Diesel	1.5	1.5	102	*142	138
Gasoline	0.7	0.8	86	*132	131
LP Gas	0.4	0.4	95	*146	148
Farm Supplies & Repairs	5.6	5.5	129	*132	132
Supplies	1.9	1.8	122	124	124
Repairs	3.7	3.7	132	*135	135
Autos & Trucks	1.7	1.7	119	116	116
Autos	0.2	0.2	112	109	110
Trucks	1.5	1.5	120	117	117
Farm Machinery	4.0	4.0	145	*145	145
Tractors	0.9	0.9	140	140	140
Self-Propelled	1.6	1.6	145	*142	141
Other Machinery	1.5	1.5	150	*152	152
Building Materials	2.8	3.1	121	122	122
Farm Services	12.4	12.3	120	*120	120
Custom Rates	1.3	1.3	121	120	120
Other Services	11.1	11.1	120	*120	120
Rent	7.9	7.7	117	119	119
Cash	4.0	4.2	143	143	143
Share	3.9	3.6	91	91	91
Interest	4.9	4.8	114	109	109
Taxes	3.1	3.0	124	126	126
Wage Rates	7.2	7.3	148	*154	154
Family Living-CPI	17.8	18.0	132	134	134

* Revised.

1/ Weights may not add due to rounding.

Prices Paid by Farmers, Major Indexes US, by Quarter and Month 1/

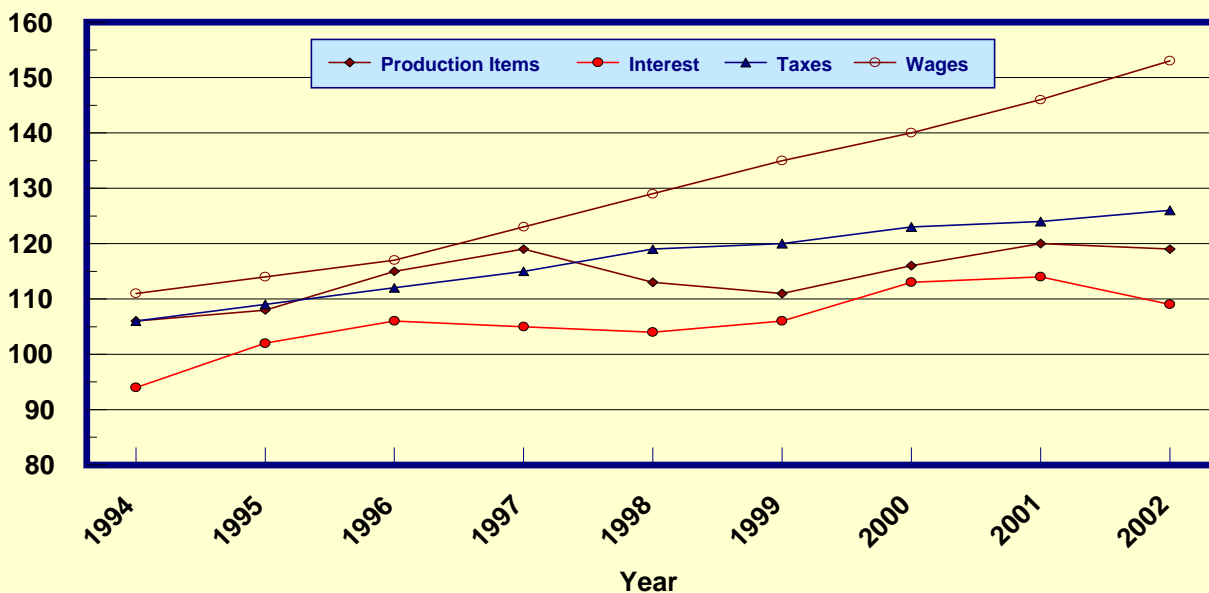
Percent (1990-92=100)



1/ Index values are monthly beginning in 1995.

Prices Paid by Farmers, Major Indexes US, Annual Averages 1/

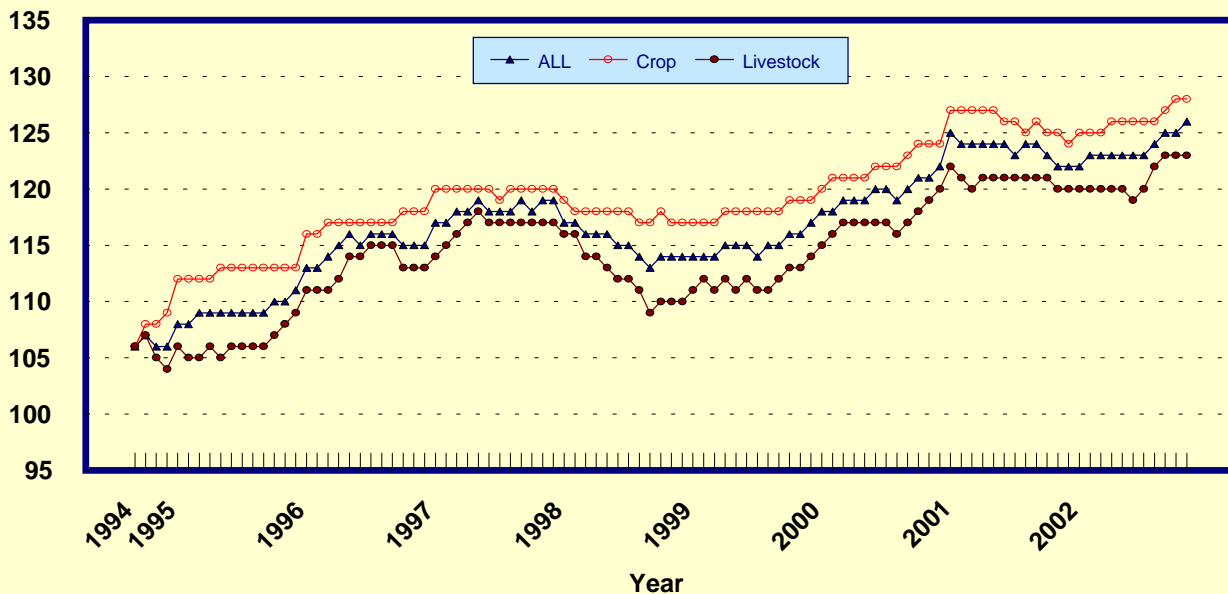
Percent (1990-92=100)



1/ Index values for 2002 are year-to-date averages.

Prices Paid by Farmers, Indexes, All Items US, By Farm Type 1/

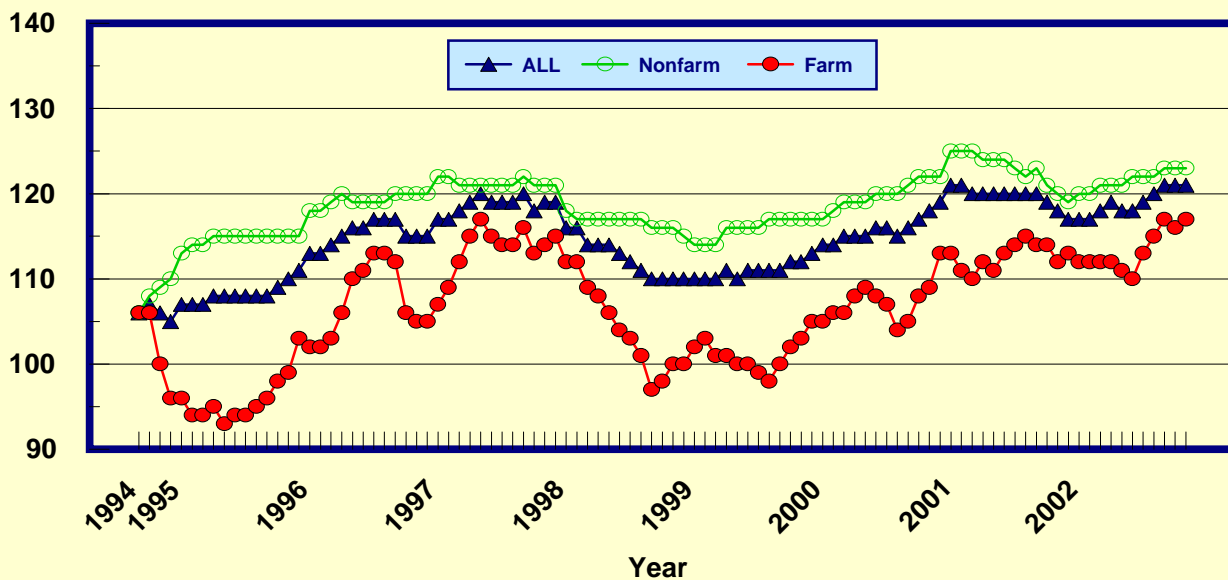
Percent (1990-92=100)



1/ Index values are monthly beginning in 1995.

Prices Paid by Farmers, Indexes, All Production Items US, By Sector Origin 1/

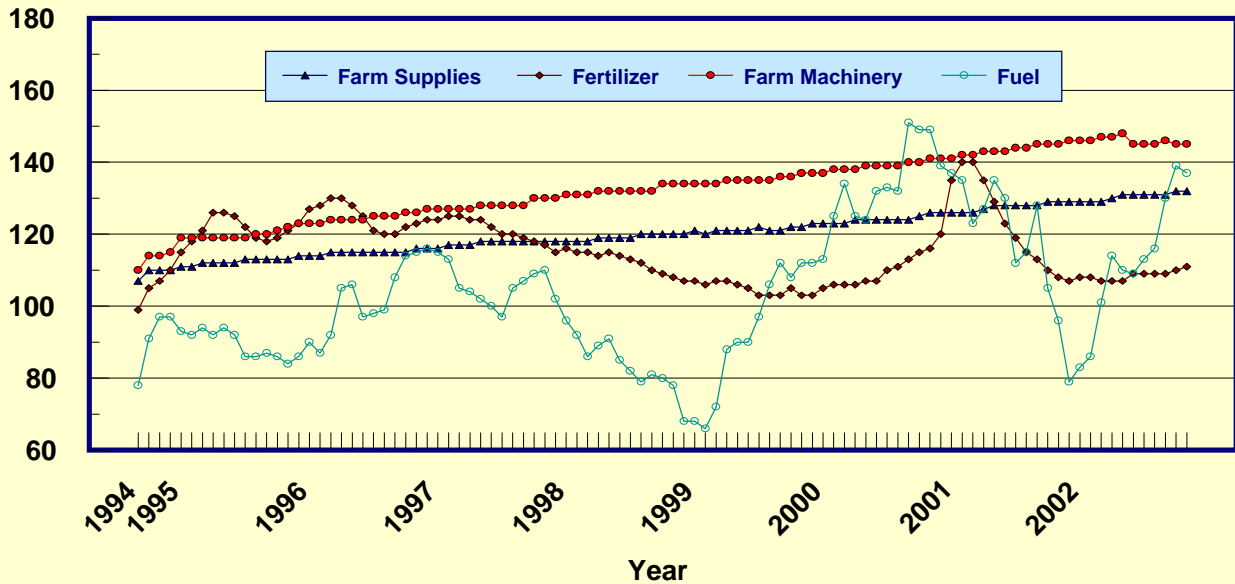
Percent (1990-92=100)



1/ Index values are monthly beginning in 1995.

Prices Paid by Farmers, Selected Production Indexes US, By Non-Farm Sector 1/

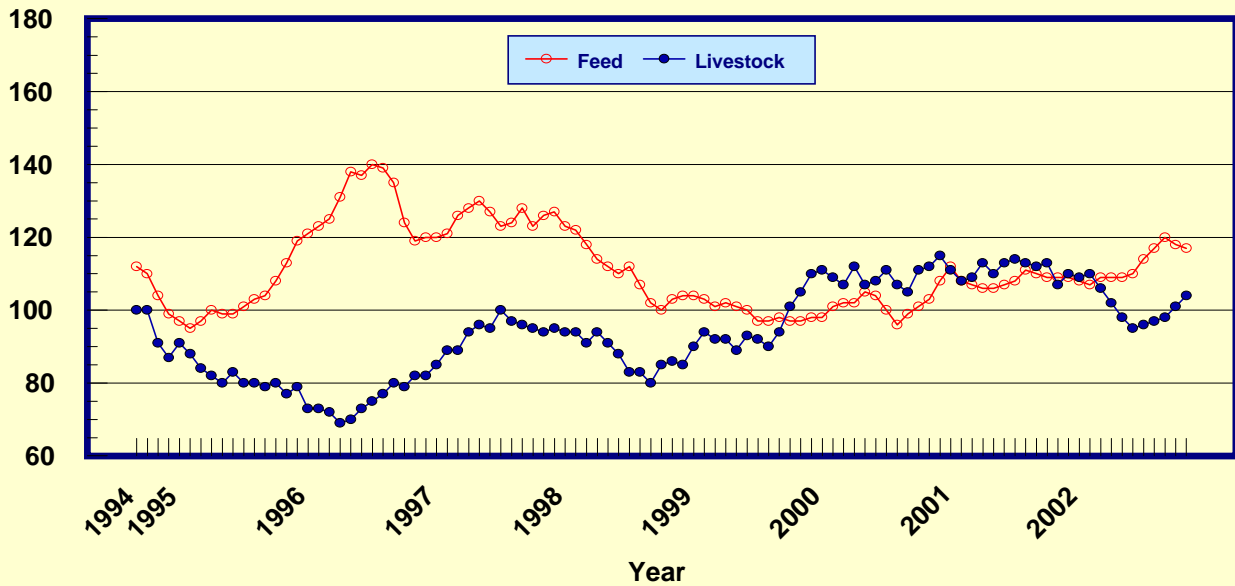
Percent (1990-92=100)



1/ Index values are monthly beginning in 1995.

Prices Paid by Farmers, Selected Production Indexes US, By Farm Sector 1/

Percent (1990-92=100)



1/ Index values are monthly beginning in 1995.

Feed Price Ratios: United States, November 2002 with Comparisons

Feed Price Ratio 1/	2001		2002	
	Nov	Oct	Nov	Nov
Broiler-Feed: Pounds of Broiler Grower Feed equal in value to 1 pound of broiler, live weight	8.1	4.6		4.7
Market Egg Feed: Pounds of Laying Feed equal in Value to 1 dozen eggs	11.5	6.6		10.5
Hog-Corn: Bushels of Corn equal in value to 100 pounds of hog, live weight	18.9	*13.1		11.9
Milk-Feed: Pounds of 16% Mixed Dairy Feed equal in value to 1 pound of Whole Milk	3.29	*2.47		2.39
Steer & Heifer-Corn: Bushels of Corn equal in value to 100 pounds of Steer & Heifers, live weight	36.6	*29.3		30.8
Turkey-Feed: Pounds of Turkey Grower equal in value to 1 pound of Turkey, live weight	9.6	*6.1		6.5

1/ Effective February 1998, prices of commercial prepared feeds are based on current U.S. prices received for corn, soybeans, alfalfa hay, and all wheat.
* Revised.

Prices Used to Calculate Feed Price Ratios:
United States, November 2002 with Comparisons

Commodity	Unit	2001		2002	
		Nov	Oct	Nov	Nov
Broilers, Live	Lb	0.390	0.280		0.290
Eggs, Market	Doz	0.486	0.348		0.563
Hogs, All	Cwt	35.00	*30.60		27.40
Milk, All	Cwt	14.40	*12.10		11.70
Steers and Heifers	Cwt	67.80	*68.50		70.90
Turkeys, Live	Lb	0.445	0.369		0.395
Corn	Bu	1.85	*2.34		2.30
Hay, Alfalfa, Baled	Ton	104.00	101.00		101.00
Soybeans	Bu	4.16	*5.19		5.43
Wheat, All	Bu	2.87	*4.37		4.23

* Revised.

November 2002 with Comparisons

Commodity	Unit	2001		2002	
		Nov	Oct	Nov	Nov
					Dollars
Feeders and Stockers					
Cattle and Calves	Cwt	86.70	84.70		86.70
Feeder Pigs	Cwt	101.00	67.00		90.00

Prices Paid by Farmers

Definition: Prices paid by farmers represent the average costs of inputs purchased by farmers and ranchers to produce agricultural commodities. Conceptually, the average price when multiplied by quantity purchased should equal total producer expenditures for the item.

Survey Procedures: The prices paid data are obtained from establishments that sell goods and services to farmers and ranchers. Annually, about 8,500 firms are randomly selected from lists by type of item sold with an average response rate in the range of 75-80 percent. Firms are asked to report the price for the specified item "most commonly bought by farmers" or that was the "volume seller". Approximately 135 items are surveyed each April to represent all production input items purchased. The survey reference period for most items is the 5 business days centered around the 15th of the month. Separate prices paid surveys are conducted for agricultural chemicals, fuels, feed, fertilizer, machinery, and seed.

Summary and Estimation Procedures: The annual April Paid Survey is summarized as a nonprobability survey. Average prices reported are aggregated to the region and U.S. level using weights available from expenditure data and other administrative sources. Price recommendations are prepared by the State Statistical Offices and Headquarters for review by the Agricultural Statistics Board in Washington, D.C. Also, the change in price level for individual items surveyed are combined to the regional and U.S. levels, and are published as prices paid indexes referenced to a specific base period. Prices paid indexes for new autos and trucks, building materials, farm supplies, motor supplies, and marketing containers are updated based on price changes measured in selected Bureau of Labor Statistics (BLS) indexes.

Revisions: Any revisions are published in the monthly and in annual issues of "Agricultural Prices". The basis for revision must be supported by additional data that directly affect the level of the estimate. More revisions are likely in April when separate prices paid surveys are conducted, in lieu of BLS indexes, by the USDA to measure price change.

Reliability: Current methods of summarization in April are not designed directly to calculate sampling errors. However, analytical measures approximate the U.S. relative sampling errors for major items around 10 percent. Any nonsampling errors are attributed to such things as the inability to obtain correct information, differences in interpreting questions or definitions, mistakes in coding or processing the data, etc. Efforts are made at each step in the survey process to minimize these nonsampling errors.

Program Change: Effective January 1, 1995, the National Agricultural Statistics Service updated the weights and changed the construction of its prices paid and received by farmers indexes. A Federal Register Notice dated October 28, 1994 discussed these program modifications.

A 1990-92 reference and base period replaced the 1977 reference and 1971-73 base weight period. Five-year moving average weights replaced the current fixed 1971-73 base period weights. The 1910-14=100 price indexes, required by statute for computing parity prices, were linked forward based on the changes in the new 1990-92=100 indexes. The new indexes were constructed by multiplying the ratios of the current prices to the base period prices by the moving average weights (adjusted for seasonal marketing patterns for the prices received indexes).

Information Contacts

General questions should be directed to **Linda Hutton**, Chief, Environmental, Economics and Demographics Branch at (202) 720-6146. Below are the commodity specialists to contact for additional information.

Crop Prices

Mark Harris, Chief, Crops Branch (202) 720-2127

Field Crops Section

Greg Thessen, Head (202) 720-2127

Dave DeWalt - Cotton (202) 720-5944

Herman Ellison - Oilseeds (202) 720-7369

Lance Honig - Wheat, Rye (202) 720-8068

Darin Jantzi - Corn, Proso Millet (202) 720-7235

Troy Joshua - Hay, Sorghum (202) 690-3234

Mark E. Miller - Oats, Sugarcane, Sugarbeets (202) 720-7621

Mark R. Miller - Peanuts, Rice, Barley (202) 720-7688

Fruit and Vegetable Section

Jim Smith, Head (202) 720-2127

Arvin Budge - Potatoes, Dry Beans (202) 720-4285

Kathy Broussard - Citrus (202) 720-5412

Debbie Flippin - Peaches, Pears, Hops, Pulse crops, Mint (202) 720-3250

Steve Gunn - Apples, Cherries (202) 720-4288

Mike Miller - Grapes, Tobacco (202) 720-7235

Biz Wallingsford - Vegetables, Onions, Strawberries (202) 720-2157

Livestock Prices

Dan Kerestes, Chief, Livestock Branch (202) 720-3570

Livestock Section

Wil Hundl, Head (202) 720-6880

Steve Anderson - Cattle (202) 720-3040

Scott Hollis - Sheep (202) 720-4751

Ty Kalaus - Milk (202) 690-3236

Rodger Ott - Hogs (202) 720-3106

Poultry and Specialty Commodities Section

Nathan Crisp, Head (202) 720-6351

Tom Kruchten - Broilers, Eggs (202) 690-4870

John Lange - Turkeys (202) 720-0585

Prices Paid and Indexes

Linda Hutton, Chief, Environmental, Economics and Demographics Branch (202) 720-6146

Economics Section

Larry Beard, Head (202) 720-4214

Tara Jackson - Feed, Fertilizer, Agricultural Chemicals, Seeds (202) 690-3229

Jim Williams - Prices Paid Indexes, Farm Supplies and Repairs, Farm Machinery, Fuels, Feeder Livestock, Poultry Chicks, Feed Price Ratios, Grazing Fees, Autos & Trucks (202) 690-3225

Rhonda Brandt - Prices Received Indexes (202) 720-5446

The United States Department of Agriculture (USDA) prohibits discrimination in all its programs on the basis of race, color, national origin, gender, religion, age, disability, political beliefs, sexual orientation, and marital or family status. (Not all prohibited bases apply to all programs.) Persons with disabilities who require alternative means for communication of program information (braille, large print, audiotape, etc.) should contact the USDA's TARGET Center at 202-720-2600 (voice and TDD).

To file a complaint of discrimination, write USDA, Director, Office of Civil Rights, Room 326-W, Whitten Building, 1400 Independence Avenue, SW, Washington, D.C., 20250-9410, or call 202-720-5964 (voice or TDD). USDA is an equal opportunity provider and employer.

ACCESS TO REPORTS!!

For your convenience, there are several ways to obtain NASS reports, data products, and services:

INTERNET ACCESS

All NASS reports are available free of charge on the worldwide Internet. For access, connect to the Internet and go to the NASS Home Page at: <http://www.usda.gov/nass/>. Select "Today's Reports" or Publications and then Reports Calendar or Publications and then Search, by Title or Subject.

E-MAIL SUBSCRIPTION

All NASS reports are available by subscription free of charge direct to your e-mail address. Starting with the NASS Home Page at <http://www.usda.gov/nass/>, click on **Publications**, then click on the **Subscribe by E-mail** button which takes you to the page describing e-mail delivery of reports. Finally, click on **Go to the Subscription Page** and follow the instructions.

AUTOFAX ACCESS

NASSFax service is available for some reports from your fax machine. Please call 202-720-2000, using the handset attached to your fax. Respond to the voice prompts. Document 0411 is a list of available reports.

----- PRINTED REPORTS OR DATA PRODUCTS

CALL OUR TOLL-FREE ORDER DESK: 800-999-6779 (U.S. and Canada)
Other areas, please call 703-605-6220 FAX: 703-605-6900
(Visa, MasterCard, check, or money order acceptable for payment.)

ASSISTANCE

For **assistance** with general agricultural statistics or further information about NASS or its products or services, contact the **Agricultural Statistics Hotline** at **800-727-9540**, 7:30 a.m. to 4:00 p.m. ET, or e-mail: nass@nass.usda.gov.
