

Released March 28, 2003, by the National Agricultural Statistics Service (NASS), Agricultural Statistics Board, U.S. Department of Agriculture. For information on "Agricultural Prices" or other assistance, see page B-9.

## March Farm Prices Received Index Unchanged From Last Month

The preliminary All Farm Products Index of Prices Received by Farmers in March is 99, based on 1990-92=100, unchanged from the February index. Higher prices for tomatoes, onions, oranges, and chicken eggs offset lower prices for cattle, dairy, strawberries, and wheat. The seasonal change in the mix of commodities farmers sell, based on the past 3 year average, also affects the overall index. Increased average marketings for strawberries, tomatoes, dairy, and asparagus offset decreases for cattle, cotton, corn, and oranges.

This preliminary All Farm Products Index is down 7 points (6.6 percent) from March 2002. Lower prices for lettuce, strawberries, potatoes, and celery more than offset higher prices for soybeans, corn, onions, and broilers.

The Food Commodities Index increased 1 point (1.0 percent) above last month to 97, but is 12 points (11.0 percent) below March last year.

## Prices Paid Index Unchanged

The March Index of Prices Paid for Commodities and Services, Interest, Taxes, and Farm Wage Rates (PPITW) is 128 percent of the 1990-92 average. The index is unchanged from February but 5 points (4.1 percent) above March 2002. Lower prices in March for feeder cattle, herbicides, feed grains, and feeder pigs are offset by higher prices for nitrogen fertilizers, diesel fuel, LP gas, and feed concentrates.

Index Summary Table

Index 1990-92=100	2002		2003	
	Feb	Mar	Feb	Mar
Prices Received	99	106	99	99
Prices Paid	123	123	128	128
Ratio 1/	80	86	77	77

1/ Ratio of index of prices received by farmers to index of prices paid.

## Prices Received by Farmers

The March All Farm Products Index is 99 percent of its 1990-92 base, unchanged from the February index but 6.6 percent below the March 2002 index.

**ALL CROPS:** The March index is 106, up 2.9 percent from February but down 9.4 percent from March 2002. From February, index increases for commercial vegetables, fruits and nuts, and potatoes and dry beans more than offset the index decreases for tobacco, food grains, and cotton.

**Food Grains:** The March index, at 100, is 3.8 percent below the previous month but 18 percent above March 2002. The March all wheat price, at \$3.49 per bushel, is down 19 cents from February but 62 cents above March 2002.

**Feed Grains & Hay:** The March index is 105, down 0.9 percent from last month but 15 percent above March 2002. The corn price, at \$2.30 per bushel, is down 4 cents from last month but 36 cents above March 2002. The all hay price, at \$92.80 per ton, is \$1.00 above February and 50 cents greater than last March. Grain sorghum, at \$3.97 per cwt, is down 17 cents from February but 74 cents above March last year.

**Oil-Bearing Crops:** The March index, at 100, is unchanged from February but 27 percent greater than March 2002. The soybean price, at \$5.58 per bushel, increased 3 cents from February and is \$1.20 above March 2002.

**Cotton:** The March index, at 73, is 2.7 percent below February but 55 percent above March 2002. The March price, at 44.5 cents per pound, is down 0.7 cents from the previous month but 16.1 cents above last March.

**Potatoes & Dry Beans:** The March index, at 113, is up 1.8 percent from last month but 22 percent below March 2002. The all potato price, at \$6.87 per cwt, is up 32 cents from February but \$1.39 below last March. The all dry bean price, at \$15.50 per cwt, is down \$3.90 from the previous month and \$11.60 below March 2002.

**Fruit & Nuts:** The March index, at 86, is up 2.4 percent from the previous month but 9.5 percent below March 2002. Since February, the orange price increased \$1.11 per box while the strawberry price dropped 26.8 cents per pound.

**Commercial Vegetables:** The March index, at 128, is up 14 percent from last month but 53 percent below March 2002. Price increases during March for tomatoes, onions, cauliflower, asparagus, and celery more than offset price declines for snap beans, sweet corn, lettuce, carrots, and broccoli. The tomato price is up significantly due to frequent rains in Florida reducing available supplies. Also, reduced supplies of onions and cauliflower pushed prices higher.

**LIVESTOCK & PRODUCTS:** The March index, at 94, is down 1.1 percent from last month and down 2.1 percent from March 2002. Compared with a year ago, prices are higher for all cattle, broilers, turkeys, and eggs but lower for all milk, hogs, and calves.

**Meat Animals:** The March index, at 93, is down 2.1 percent from last month but up 1.1 percent from last year. The March hog price of \$35.00 per cwt is up 70 cents from February but down \$1.00 from a year ago. The March beef cattle price of \$72.20 per cwt is down \$1.80 from last month but up \$1.60 from March 2002.

**Dairy Products:** The March index, at 84, is down 3.4 percent from February and 13 percent below March 2002. The March all milk price of \$11.00 per cwt is down 40 cents from February and down \$1.70 from last year. The fluid grade and manufactured grade milk prices are each down 40 cents from the previous month.

**Poultry & Eggs:** The March index, at 106, is up 2.9 percent from February and 5.0 percent above last year. March market egg prices, at 51.8 cents per dozen, increased 5.2 cents from February due to strength from exports. The March broiler price, at 34.0 cents per pound, is unchanged from February. Broiler stocks remain high with domestic demand good but exports weak. The March turkey price, at 35.1 cents per pound, is up 0.6 cent on limited volume.

**Table of Contents**

**Prices Received**

<b>U.S. Prices and Indexes</b>	<b>Page</b>	<b>Monthly State Prices, continued</b>	<b>Page</b>
Narrative .....	A-2	Cottonseed .....	A-17
Price Indexes .....	A-5	Cows, Beef .....	A-20
Price Index Charts .....	A-6-7	Cows, Milk .....	A-23
Prices Received		Eggs .....	A-22
U.S. Summary .....	A-8-9	Flaxseed .....	A-16
Charts .....	A-10-13	Fruit, Citrus .....	A-18
Selected Commodities ...	A-14	Hay .....	A-17
Upland Cotton and Rice		All Hogs .....	A-21
Prices and Marketings ..	A-17	Lambs .....	A-22
Parity Prices .....	A-24-25	Milk .....	A-23
Reliability Statement ....	A-26	Oats .....	A-15
<b>Monthly State Prices</b>		Peanuts .....	A-16
Apples .....	A-17	Potatoes .....	A-19
Barley .....	A-15	Sheep .....	A-22
Barrows and Gilts .....	A-21	Sorghum, Grain .....	A-15
Beans, Dry Edible .....	A-16	Soybeans .....	A-15
Beef Cattle .....	A-20	Sows .....	A-21
Calves .....	A-20	Steers and Heifers .....	A-20
Corn .....	A-15	Sunflower .....	A-16
Cotton .....	A-17	Tobacco .....	A-16
		Wheat .....	A-14
<b>Information Contacts</b> .....			B-9

**Table of Contents**

**Prices Paid**

	<b>Page</b>
Narrative .....	B-1
Indexes and Parity Ratios .....	B-2-3
Charts .....	B-4-6
Feed Ratios .....	B-7
Reliability Statement .....	B-8
<b>U.S. Average Prices</b>	
Feeder Livestock .....	B-7
Commodity Prices Used in Feed Price Ratios .....	B-7
<b>Information Contacts</b> .....	B-9

Index Numbers of Prices Received, United States, March 2003,  
with Comparisons

Index	1910-14=100			1990-92=100				
	: 2002		: 2003	: 2002		: 2003		
	:Average:							
	:1990-92:	Mar	: Feb	: Mar	: Mar	: Feb	: Mar	
All Farm Products	:	639	671	*628	630	106	99	99
All Crops	:	500	579	510	522	117	103	106
Food Grains	:	325	270	*331	317	85	*104	100
Feed Grains & Hay	:	363	327	*380	376	91	*106	105
Cotton	:	517	240	*382	376	47	*75	73
Tobacco	:	1263	1478	*1657	1383	98	109	91
Oil-Bearing Crops	:	554	432	*548	549	79	100	100
Fruit & Nuts	:	716	661	*584	600	95	*84	86
Commercial Vegetables	:	698	1813	*751	853	271	*112	128
Potatoes & Dry Beans	:	540	736	*561	571	145	*111	113
Other Crops	:	493	558	567	567	113	115	115
Livestock & Products	:	768	733	*729	718	96	95	94
Meat Animals	:	1021	937	*964	945	92	*95	93
Dairy Products	:	799	780	*701	676	97	*87	84
Poultry & Eggs	:	282	283	291	297	101	103	106
Food Commodities	:					109	*96	97

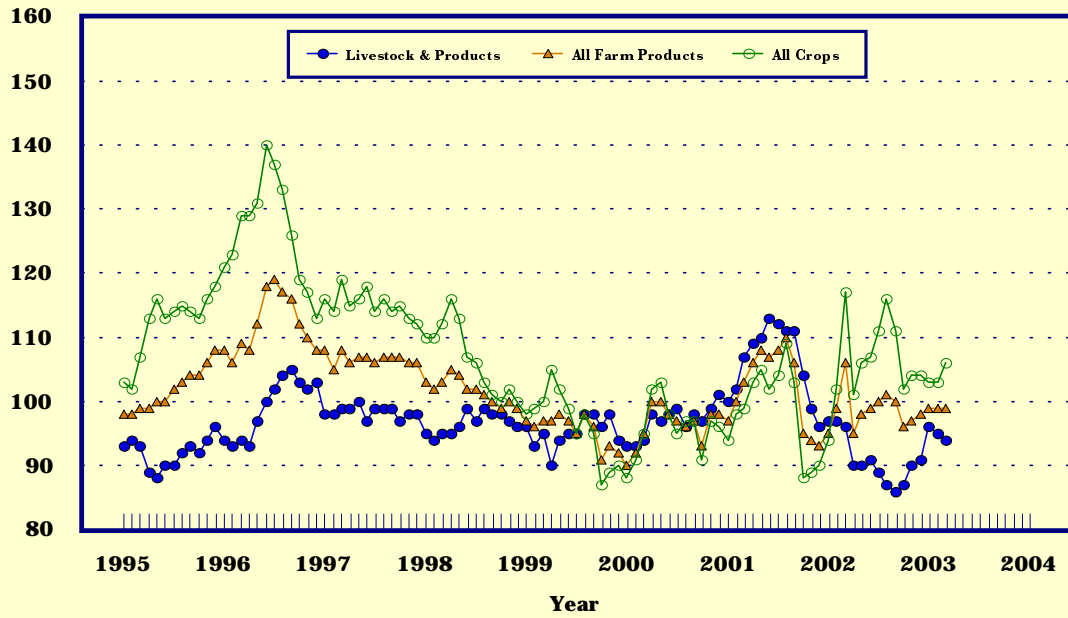
\* Revised.

Selected Index Numbers for Prices Received and Paid,  
1990-92=100, by Months, United States, 2002 and 2003

Month	Index of Prices Received						Index of Prices Paid			
	: All Farm		: All		: Livestock		: All		: Production	
	: Products	: Products	: Crops	: Crops	: Products	: Products	: Items	: Items	: Items	: Items
	: 2002	: 2003	: 2002	: 2003	: 2002	: 2003	: 2002	: 2003	: 2002	: 2003
Jan	: 95	99	94	103	97	96	122	127	117	122
Feb	: 99	99	102	103	97	95	123	128	117	124
Mar	: 106	99	117	106	96	94	123	128	118	124
Apr	: 95		101		90		123		118	
May	: 98		106		90		123		118	
Jun	: 99		107		91		123		118	
Jul	: 100		111		89		124		119	
Aug	: 101		116		87		124		120	
Sep	: 100		111		86		125		121	
Oct	: 96		102		87		125		121	
Nov	: 97		104		90		125		121	
Dec	: 98		104		91		126		121	

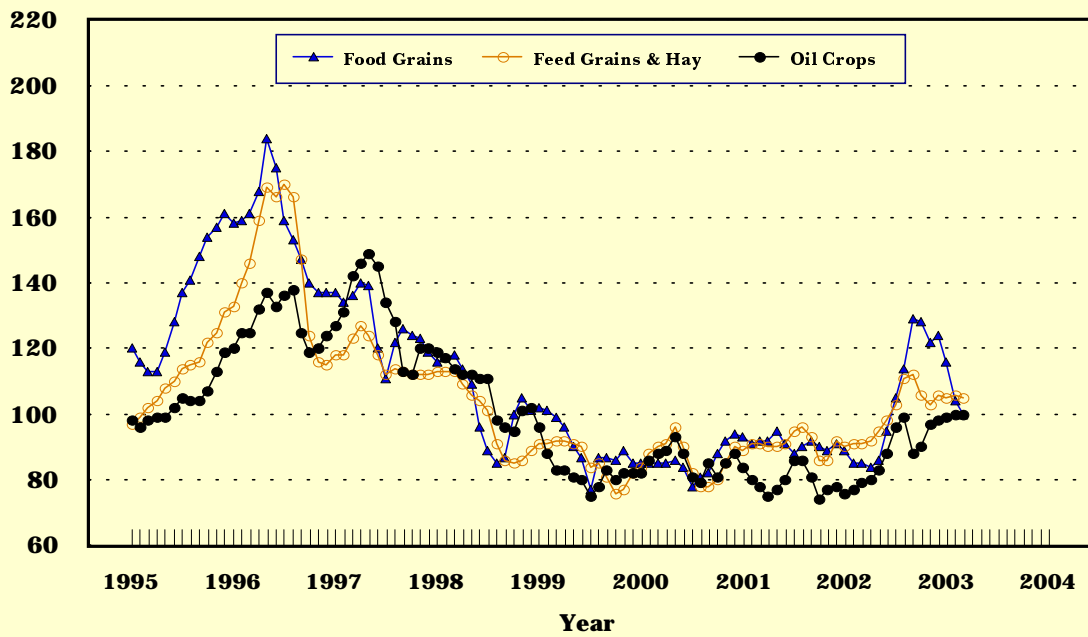
## Prices Received, Major Indexes, US

Index Values(1990-92=100)



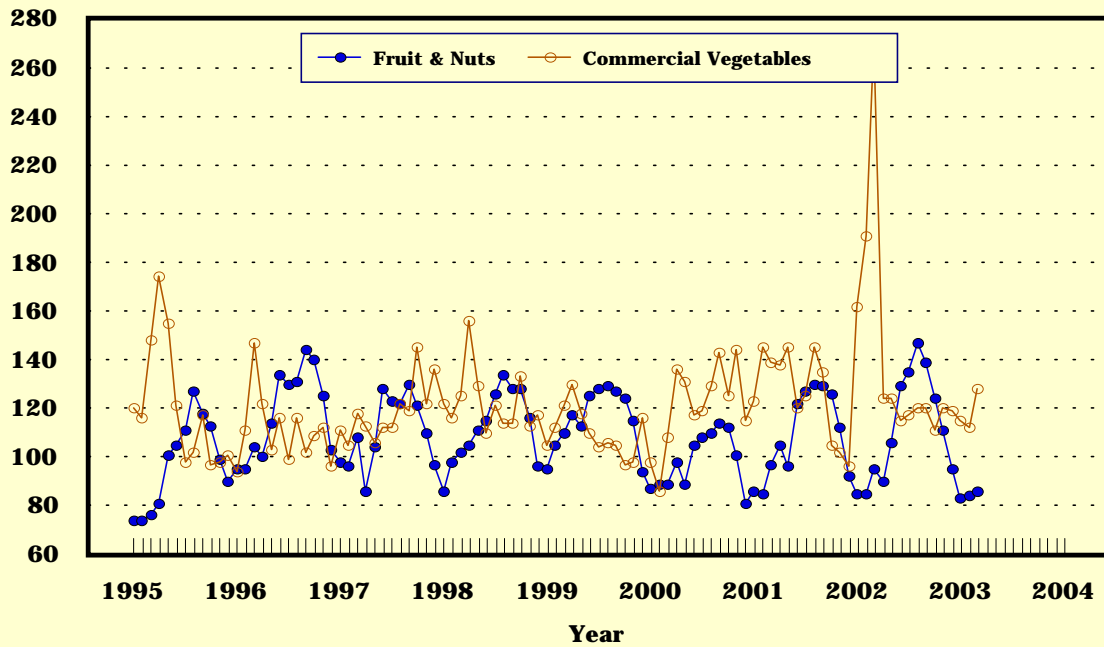
## Prices Received, Food, Feed & Oil Indexes, US

Index Values(1990-92=100)



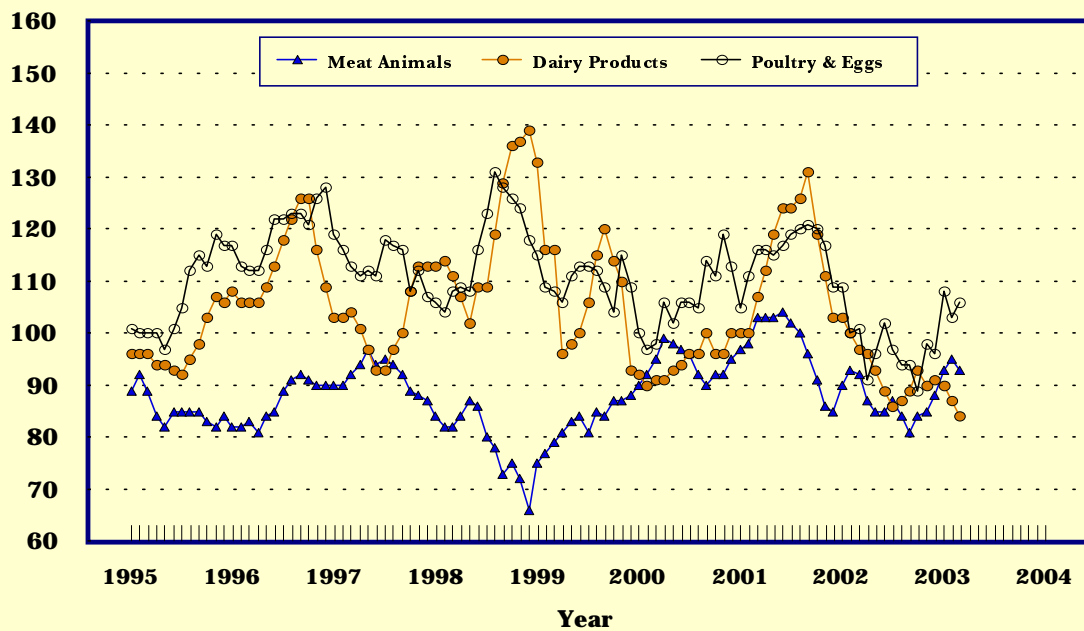
## Prices Received, Fruit/Vegetable Indexes, US

Index Values(1990-92=100)



## Prices Received, Livestock Product Indexes, US

Index Values(1990-92=100)



Prices Received, United States,  
March 2003, with Comparisons

Commodity	Unit	Average 1990-92	Entire Month		Preliminary
			Mar 2002	Feb 2003	Mar 2003
Dollars					
Field Crops					
Barley, All	Bu	2.12	2.17	2.87	2.92
Feed	Bu	1.90	1.75	2.20	2.35
Malting	Bu	2.43	2.59	3.06	3.14
Beans, Dry Edible	Cwt	19.10	27.10	19.40	15.50
Corn	Bu	2.30	1.94	2.34	2.30
Cotton, Upland	Lb	.606	.284	.452	.445
Cottonseed	Ton	96.00		111.00	
Flaxseed	Bu	4.27	4.75	6.19	6.30
Hay, All, Baled 1/	Ton	76.30	92.30	91.80	92.80
Alfalfa 1/	Ton	77.20	99.60	96.40	96.20
Other 1/	Ton	60.00	72.70	79.40	82.30
Oats	Bu	1.22	1.99	2.09	1.94
Peanuts, In-Shell	Lb	.304		.190	.212
Potatoes	Cwt	5.82	8.26	6.55	6.87
Rice, Rough	Cwt	7.07	3.99	4.03	4.05
Sorghum Grain	Cwt	3.75	3.23	4.14	3.97
Soybeans	Bu	5.61	4.38	5.55	5.58
Sunflower 2/	Cwt	9.50	10.20	12.50	12.50
Tobacco	Lb	1.740	1.700	1.905	1.590
Wheat, All	Bu	2.96	2.87	3.68	3.49
Winter	Bu	2.93	2.81	3.52	3.27
Durum	Bu	2.86	3.33	4.24	4.13
Other Spring	Bu	3.11	2.90	3.79	3.69
Hard Red Winter	Bu		2.72	3.51	
Soft Red Winter	Bu		2.68	3.36	
Hard Red Spring	Bu		2.88	3.81	
White	Bu	3.24	3.14	3.61	
Fruit					
Citrus-Equiv on-tree					
Grapefruit	Box	5.77	1.66	1.89	1.37
Lemons	Box	10.10	5.89	2.68	1.33
Oranges	Box	5.79	4.64	3.48	4.59
Tangelos	Box	5.82			
Tangerines	Box	15.11	10.15	10.23	10.19
Temples	Box	6.23	1.18	2.60	2.94
Noncitrus					
Apples, Fresh 4/	Lb	.212	.220	.246	.226
Grapes, Fresh 4/	Ton	506.00			
Peaches, Fresh 4/	Lb	.216			
Pears, Fresh 4/	Ton	370.00	267.00	366.00	378.00
Strawberries, Fresh	Lb	.560	.873	.879	.611

- 1/ Mid-month price.
- 2/ KS, MN, ND and SD average.
- 3/ Current prices not published to avoid disclosure of individual firms.
- 4/ Equivalent packinghouse-door returns for CA, MI, and NY (apples only), and WA (apples, peaches, and pears). Prices as sold for other states.

-- continued



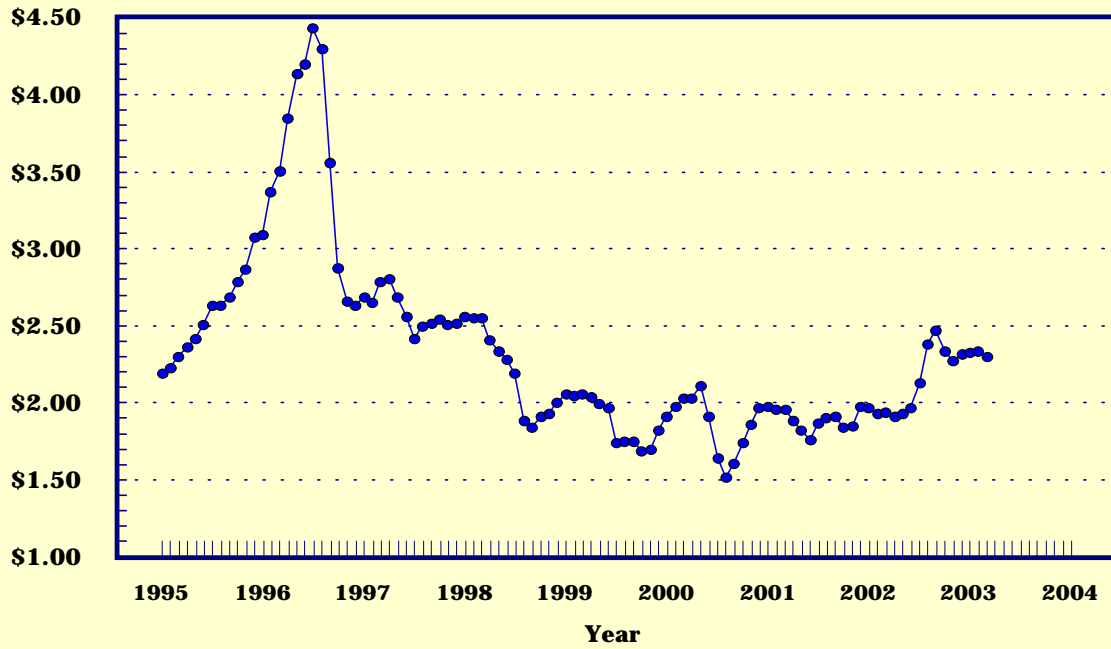
Prices Received, United States,  
March 2003, with Comparisons (continued)

Commodity	Unit	Average 1990-92	Entire Month		Preliminary
			Mar	Feb	Mar
			2002	2003	2003
Dollars					
Vegetables, Fresh 1/					
Asparagus	Cwt	79.80	119.00	96.30	98.70
Broccoli	Cwt	22.50	33.80	29.10	29.00
Cantaloupes 2/	Cwt	13.90			
Carrots	Cwt	13.20	21.10	19.10	19.00
Cauliflower	Cwt	26.80	44.10	30.50	37.60
Celery	Cwt	11.60	23.50	11.80	13.90
Corn, Sweet	Cwt	15.70	26.30	24.00	20.90
Cucumbers 2/	Cwt		22.90		
Lettuce	Cwt	11.90	86.40	10.90	10.20
Onions	Cwt	12.80	6.92	15.70	24.50
Snap Beans 2/	Cwt		42.10	61.40	42.60
Tomatoes	Cwt	32.30	38.50	29.80	55.40
Livestock					
Calves	Cwt	94.30	105.00	97.30	96.40
Cattle, All Beef	Cwt	72.90	70.60	74.00	72.20
Cows	Cwt	49.60	41.50	38.90	39.80
Steers & Heifers	Cwt	77.10	74.10	78.10	76.20
Milk Cows 3/	Head	1130.00			
Hogs, All	Cwt	47.70	36.00	34.30	35.00
Barrows & Gilts	Cwt	48.40	36.30	34.90	35.60
Sows	Cwt	39.50	30.00	23.20	24.20
Lambs	Cwt	56.20	66.70	92.40	
Sheep	Cwt	23.40	31.80	43.60	
Dairy and Poultry					
Milk, All 4/	Cwt	13.06	12.70	11.40	5/11.00
Fluid Grade	Cwt	13.10	12.70	11.40	5/11.00
Mfg Grade	Cwt	11.80	11.30	10.30	5/ 9.90
Broilers, Live 6/	Lb	.317	.320	.340	.340
Eggs, All 7/	Doz	.643	.685	.640	.687
Market 7/	Doz	.546	.515	.466	.518
Turkeys, Live 6/7/	Lb	.380	.329	.345	.351
Adjusted for Seasonal Variation					
Eggs, All	Doz	.545	.678	.615	.687
Milk, All 4/	Cwt	9.71	12.96	12.00	11.34

- 1/ F.O.B. shipping point.
- 2/ Monthly estimates began January 1995.
- 3/ Animals sold for dairy herd replacement only. Prices available for Jan, Apr, Jul, and Oct.
- 4/ Before deductions for hauling. Includes quality, quantity, and other premiums. Excludes hauling subsidies.
- 5/ Fat test percent: all milk 3.72, fluid milk 3.72, mfg grade 3.88.
- 6/ Liveweight equivalent price to producers, includes growers and contractors combined.
- 7/ Mid-month price.

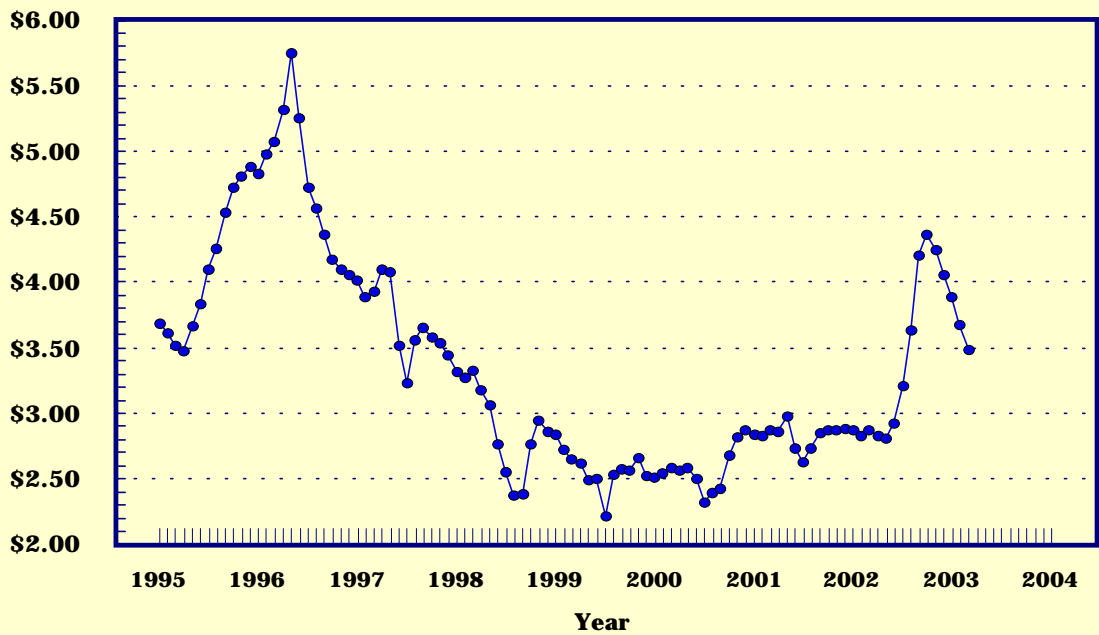
## Prices Received, Corn, US

Dollars per Bu



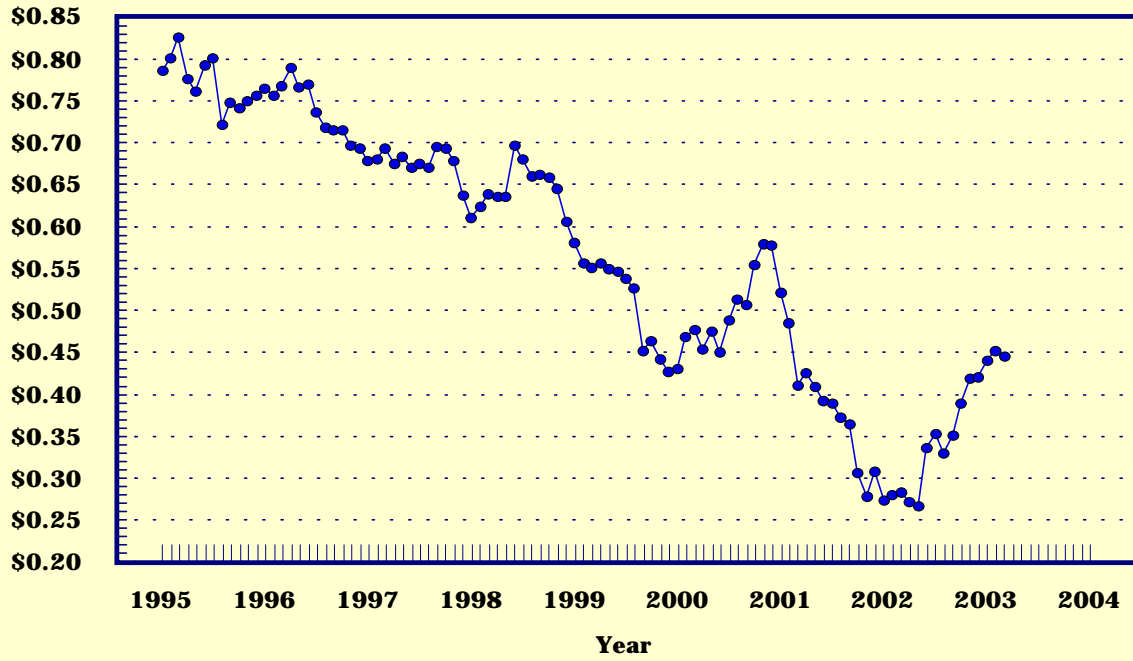
## Prices Received, Wheat, US

Dollars per Bu



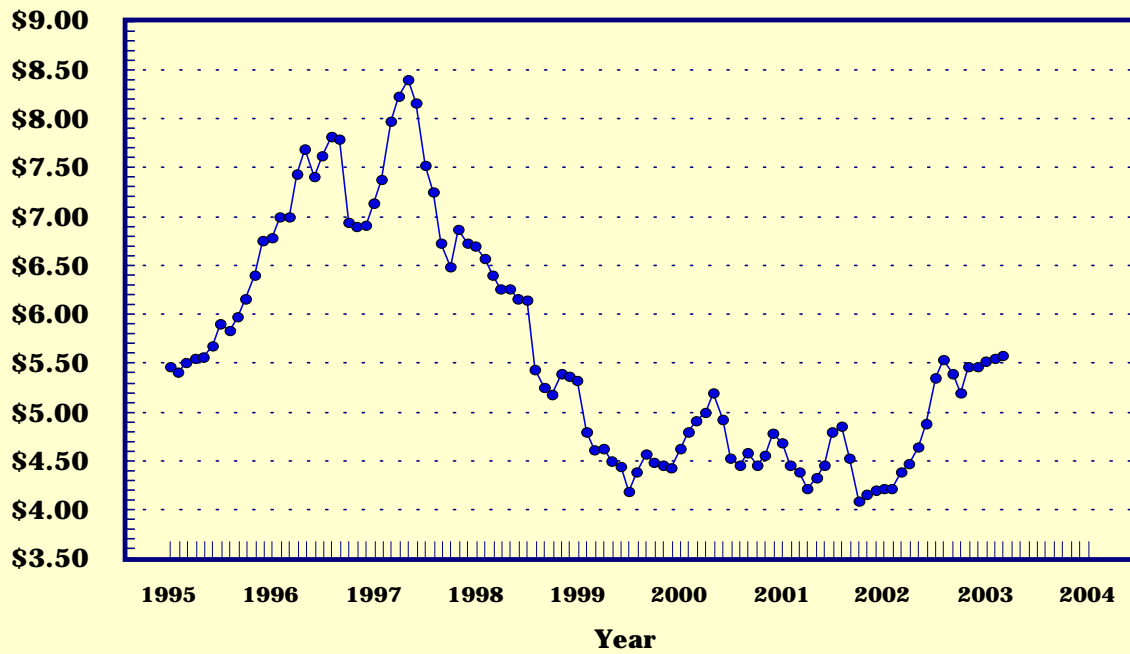
## Prices Received, Cotton, US

Dollars per Lb



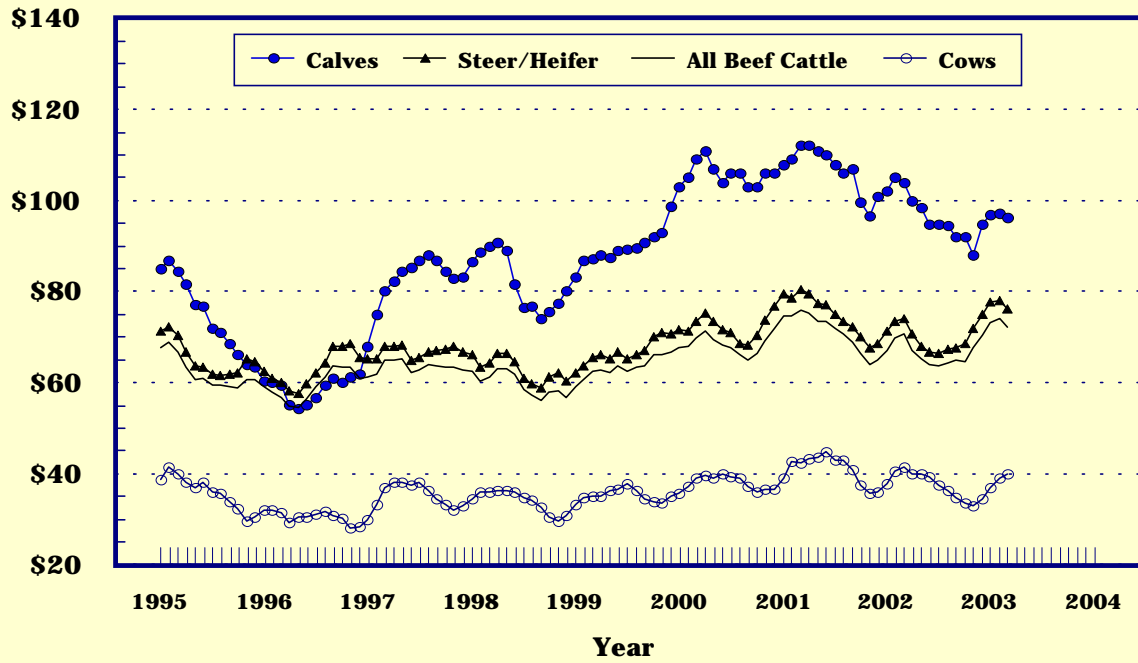
## Prices Received, Soybeans, US

Dollars per Bu



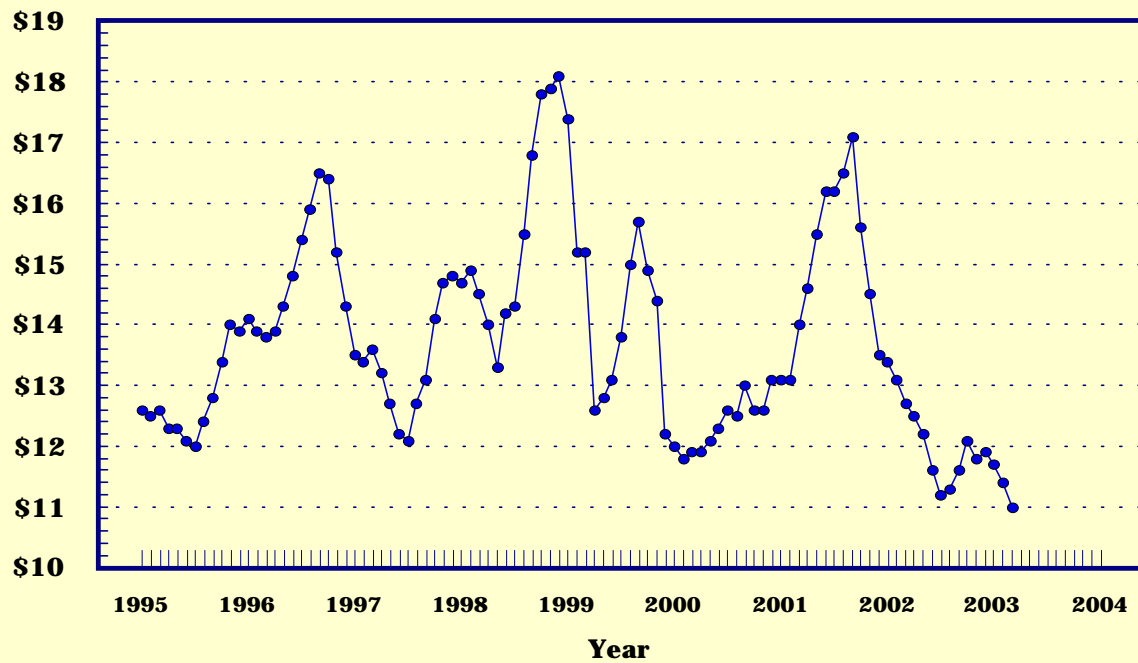
## Prices Received, Cattle, US

Dollars per Cwt



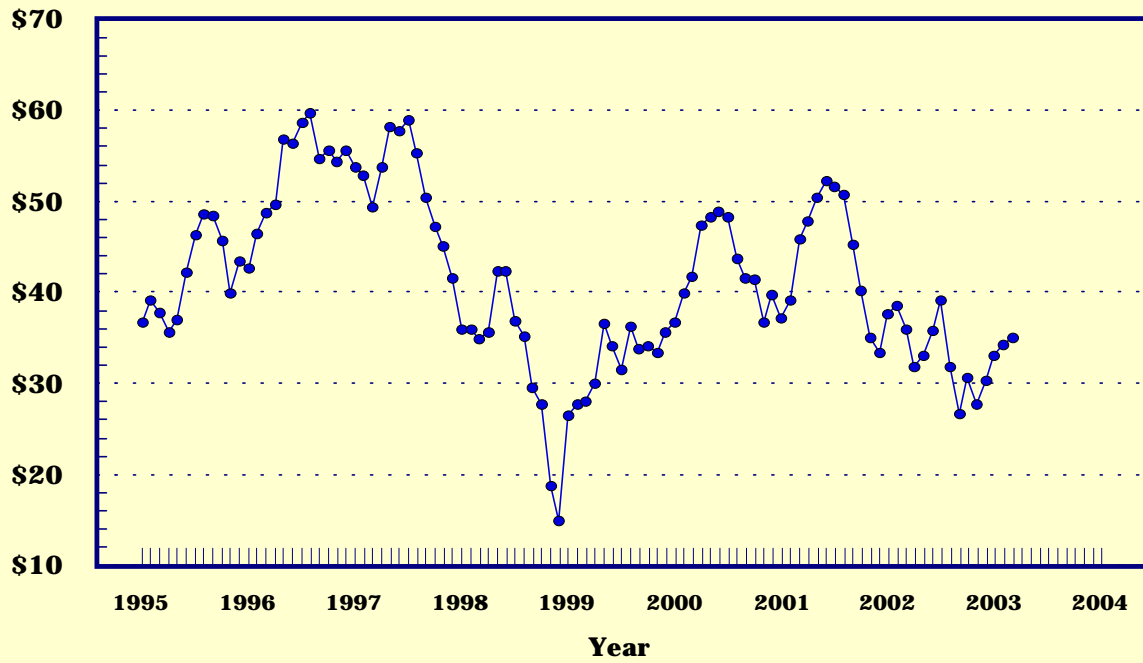
## Prices Received, Milk, US

Dollars per Cwt



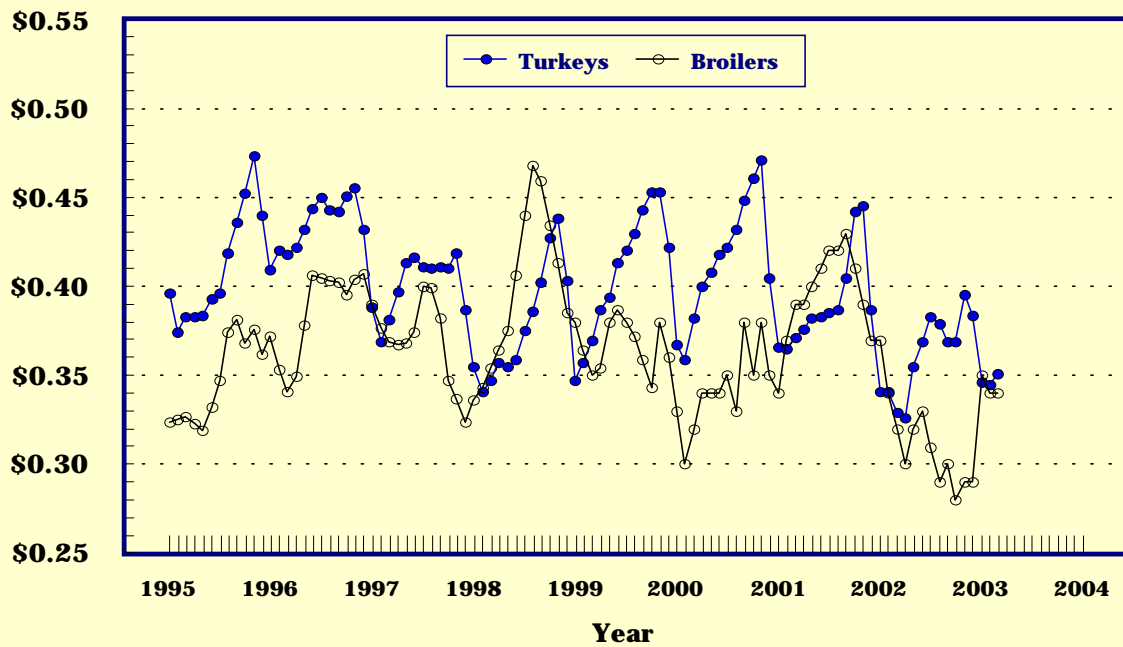
## Prices Received, Hogs, US

Dollars per Cwt



## Prices Received, Turkeys & Broilers, US

Dollars per Lb



Wheat: Prices Received, by States, February and March 2003

State	All Wheat		Winter Wheat		Durum Wheat 1/		Oth Spring Wheat	
	Feb 2/	Mar 3/	Feb 2/	Mar 3/	Feb 2/	Mar 3/	Feb 2/	Mar 3/
	Dollars per Bushel							
AR	3.39	4/	3.39	4/				
CA	4/	4/	4/	4/	5/	5/		
CO	3.50	3.31	3.50	3.31			4/	5/
ID	3.54	3.38	3.41	3.30			3.72	3.50
IL	3.42	3.20	3.42	3.20				
IN	3.04	2.94	3.04	2.94				
KS	3.48	3.29	3.48	3.29				
MI	3.17	3.00	3.17	3.00				
MN	3.79	3.70	5/	5/			3.79	3.70
MO	3.67	3.40	3.67	3.40				
MT	3.93	3.84	3.73	3.50	4.75	4.60	3.84	3.80
NE	3.55	3.35	3.55	3.35				
ND	3.85	3.79	3.53	5/	4.12	4.00	3.74	3.70
OH	3.31	3.03	3.31	3.03				
OK	3.46	3.21	3.46	3.21				
OR	3.64	3.27	3.64	3.25			3.68	3.35
SD	3.82	3.67	3.62	3.49			3.91	3.75
TX	3.21	3.17	3.21	3.17				
WA	3.76	3.33	3.73	3.29			3.88	3.53
US	3.68	3.49	3.52	3.27	4.24	4.13	3.79	3.69

- 1/ Durum discontinued September 2001 for MN and SD.  
 2/ Entire month.  
 3/ Mid-month.  
 4/ Price not published to avoid disclosure of individual firms.  
 5/ Insufficient sales to establish a price.

Prices Received for Selected Agricultural Commodities, by Months, United States, 2002 and 2003

Month	All Wheat		Corn		Soybeans		Beef Cattle 1/		All Hogs	
	2002	2003 2/	2002	2003 2/	2002	2003 2/	2002	2003 2/	2002	2003 2/
	Dollars per Bushel						Dollars per Cwt			
Jan	2.87	3.89	1.97	2.33	4.22	5.52	67.40	73.20	37.60	33.00
Feb	2.83	3.68	1.93	2.34	4.22	5.55	70.00	74.00	38.50	34.30
Mar	2.87	3.49	1.94	2.30	4.38	5.58	70.60	72.20	36.00	35.00
Apr	2.83		1.91		4.47		67.30		31.70	
May	2.81		1.93		4.64		65.10		33.20	
Jun	2.93		1.97		4.88		64.00		35.80	
Jul	3.21		2.13		5.35		63.70		39.20	
Aug	3.63		2.38		5.53		64.40		31.90	
Sep	4.21		2.47		5.39		64.50		26.50	
Oct	4.37		2.34		5.19		64.60		30.80	
Nov	4.25		2.27		5.46		67.30		27.80	
Dec	4.06		2.32		5.46		70.40		30.30	

- 1/ Cows, steers and heifers.  
 2/ Current month prices are mid-month; prices for previous months are for the entire month.

Grains: Prices Received, by States, February and March 2003

State	Barley 1/		Corn		Oats		Soybeans		Sorghum Grain	
	Feb 2/	Mar 3/	Feb 2/	Mar 3/	Feb 2/	Mar 3/	Feb 2/	Mar 3/	Feb 2/	Mar 3/
	----- Dollars per Bushel ----- Dollars per Cwt									
AL										
AR							5.74	5.75	4.48	4/
CA	4/	4/								
CO	2.81	2.82	2.53	2.50						
ID	3.17	3.11								
IL			2.35	2.35	5/	5/	5.68	5.70	4.50	4.40
IN			2.44	2.41			5.69	5.69		
IA			2.23	2.20	2.20	2.00	5.50	5.50		
KS			2.48	2.45			5.47	5.45	4.13	3.93
KY			2.73	2.65			5.77	5.75		
LA							5.61	4/		
MI			2.36	2.35	1.84	1.84	5.63	5.60		
MN	2.28	2.24	2.15	2.18	1.94	1.90	5.46	5.49		
MS							5.49	5.64		
MO			2.52	2.40			5.59	5.60	4.13	4.05
MT	2.81	2.89			1.83	5/				
NE			2.34	2.30	2.44	2.30	5.45	5.46	4.35	4.11
NC			2.98	2.99			5.57	5.67		
ND	2.87	2.96	2.17	2.20	1.79	1.50	5.38	5.40		
OH			2.50	2.44	4/	4/	5.69	5.72		
OK									4.00	3.89
OR	2.34	2.45			4/	5/				
PA			2.94	2.94	2.34	2.34				
SD	4/	4/	2.19	2.17	2.25	2.13	5.41	5.38		
TN			2.60	2.55			5.76	5.75		
TX			2.59	2.50	5/	5/			4.10	4.00
UT	2.52	2.46								
WA	2.76	2.55								
WI			2.20	2.20	1.77	1.70	5.29	5.40		
WY	3.06	3.43								
US	2.87	2.92	2.34	2.30	2.09	1.94	5.55	5.58	4.14	3.97

- 1/ The Three-State (MN, ND and SD) Feed Barley price for March 2003 is \$1.91.
- 2/ Entire month.
- 3/ Mid-month.
- 4/ Price not published to avoid disclosure of individual firms.
- 5/ Insufficient sales to establish a price.

Malting and Feed Barley: Prices Received Selected States, February and March 2003

State	Malting Barley		Feed Barley	
	Feb	Mar	Feb	Mar
	----- Dollars per Bushel -----			
ID	3.18	3.15	2.29	2.25
MN	2.30	2.25	2.02	2.05
MT	3.15	3.28	2.18	2.17
ND	3.06	3.15	1.94	1.90
SD	2/	2/	1/	2/
WY	1/	1/	2.09	2.10

- 1/ Price not published to avoid disclosure of individual firms.
- 2/ Insufficient sales to establish a price.

Field Crops: Prices Received, by States, February and March 2003

State	Dry Edible Beans		Sunflower		Flaxseed		Tobacco		Peanuts 4/5/	
	Feb 1/	Mar 2/	Feb 1/	Mar 2/	Feb 1/	Mar 2/	Feb 1/	Mar 3/	Feb 1/	Mar 3/
	Dollars per Cwt		Dollars per Bu		Dollars per Pound					
AL									7/	6/
CA	32.60	32.70								
CO	18.50	18.20								
FL									6/	6/
GA									7/	7/
ID	18.80	18.10								
IN							1.850	1.640		
KS			7/	7/						
KY							1.925	1.660		
MD										
MI	15.70	14.00								
MN	18.50	17.40	7/	7/						
MO										
NE	16.60	16.20								
NC									.266	.266
ND	12.70	12.30	12.50	12.50	6.19	6.30				
OH							1.835			
OK										
SC										
SD			12.60	12.50	6/	6/				
TN							1.800	1.260		
TX									6/	6/
VA							1.765		7/	7/
WV										
US	19.40	15.50	12.50	12.50	6.19	6.30	1.905	1.590	.190	.212

- 1/ Entire month.
- 2/ Mid-month.
- 3/ Based on sales through first half of month.
- 4/ In-shell.
- 5/ Includes additional loan peanuts at loan value.
- 6/ Sales volume insufficient to establish a state price, but all sales included in U.S. price.
- 7/ Price not published to avoid disclosure of individual firms.

Tobacco: Prices Received, by Area and Type, March 2003, with Comparisons

Class and Type	Type	Mar 2002	Feb 2003	Mar 2003 1/
Dollars per Pound				
Fire-cured				
Eastern District	22	1.815	1.590	1.270
Western District	23	1.635	1.615	1.345
Total Fire-cured	21-23	1.795	1.595	1.290
Light Air-cured				
Burley	31	2/	1.925	1.760
Southern MD Belt	32	1.680	3/	3/
Total Light Air-cured	31-32	1.680	1.925	1.760
Dark Air-cured				
One Sucker Belt	35	2/	1.035	4/
Green River Belt	36	2/	1.410	4/
Total Dark Air-cured	35-37	2/	1.285	4/
US	11-37	1.700	1.905	1.590

- 1/ Based on sales during the first half of the month.
- 2/ Markets closed in February 2002.
- 3/ Markets opened for Maryland type 32 on 3/25/03.
- 4/ Markets closed in February 2003.



Field Crops and Apples: Prices Received, by States,  
February and March 2003

State	Cotton, Upland		March			
	Feb 1/	Mar 2/	Cotton- seed 5/	Hay, Baled 3/ All	Alfalfa	Apples Fresh Use 1/4/
	Dollars per Pound		Dollars per Ton			Dol/Lb
AL	6/	6/				
AZ	6/	6/	98.00	98.00	90.00	
AR	.436	.432				
CA	6/	6/	95.00	97.00	81.00	.207
CO			112.00	109.00	145.00	
GA	.437	.430				
ID			87.00	90.00	68.00	
IL			96.00	105.00	76.00	
IA			78.00	81.00	57.00	
KS			87.00	90.00	70.00	
KY			73.00	105.00	61.00	
LA	.447	.452				
MI			103.00	105.00	90.00	.210
MN			69.00	73.00	49.00	
MS	.446	.430				
MO			69.00	112.00	53.00	
MT			84.00	85.00	72.00	
NE			81.00	82.00	76.00	
NV			96.00	95.00	100.00	
NM			143.00	147.00	121.00	
NY			107.00	135.00	85.00	.269
NC	.439	.432				
ND			67.00	74.00	52.00	
OH			120.00	168.00	96.00	.330
OK			85.00	98.00	64.00	
OR			84.00	85.00	80.00	
PA			145.00	168.00	133.00	.226
SD			80.00	84.00	60.00	
TN	.433	.436				
TX	.443	.443	75.00	146.00	64.00	
UT			88.00	90.00	63.00	
VA						
WA			113.00	103.00	132.00	.222
WI			74.00	80.00	55.00	
WY			113.00	114.00	109.00	
US	.452	.445	92.80	96.20	82.30	.226

1/ Entire month. 2/ Based on sales during the first half of the month.  
3/ Mid-month. 4/ Equivalent packinghouse-door returns for CA, MI, NY and WA. Price at point of first sale for other states. 5/ Marketing year August-February. 6/ Price not published to avoid disclosure of individual firms.

Upland Cotton and Rice: Prices Received and Marketings,  
United States, March 2003, with Comparisons

Item	Unit	Jan 2003 1/	Feb 2003 1/	Mar 2003 2/
Cotton, Upland				
Average Price	Dollars/Pound	.440	.452	.445
Marketings 3/	1,000 Bales	1980	1374	NA
Rice				
Average Price	Dollars/Cwt	4.29	4.03	4.05
Marketings 4/	1,000 Cwt	20748	14500	NA

1/ Entire month. 2/ Based on purchases for the first half of the month.  
3/ Expanded data from sample of about 60 percent of buyers. 4/ Purchases by private firms and rice (rough equivalent) shipped by cooperatives.

Citrus Fruit: Prices and Equivalent Returns, by Utilization,  
by State and United States, March 2003

Commodity And State	:	F.O.B. Packed Fresh	Equivalent Returns				
			Packinghouse-door		On-tree		
			All	Fresh	Process	All	Fresh
Dollars per Box 1/							
Grapefruit	:						
AZ	:	12.30	5.93	5.93		3.66	3.66
CA	:	14.30	7.68	7.93	-0.26	5.41	5.66 -2.53
FL	:	14.90	3.73	6.64	2.41	1.32	4.44 -0.09
White	:	16.60	3.08	7.60	2.45	0.70	5.40 0.05
Colored	:	14.50	4.39	6.40	2.35	1.95	4.20 -0.35
TX	:	13.90	2.42	4.11	0.80	1.28	2.94 -0.32
US	:	14.70	3.65	6.33	2.29	1.37	4.27 -0.11
Lemons	:						
AZ	:	18.50	7.94	8.61	0.23	3.68	4.35 -4.03
CA	:	19.20	5.51	9.31	0.23	1.25	5.05 -4.03
US	:	19.20	5.59	9.28	0.23	1.33	5.02 -4.03
Oranges	:						
AZ	:						
Valencia	:	19.10	12.32	12.32		9.93	9.93
CA	:	15.50	7.96	8.48	0.73	5.61	6.13 -1.63
Navel and Misc	:	15.50	7.91	8.40	0.79	5.56	6.05 -1.56
Valencia	:	15.90	8.39	9.12	0.36	6.00	6.73 -2.03
FL	:						
Valencia	:	14.00	6.20	6.10	6.20	4.09	3.90 4.10
TX	:	13.30	3.31	3.41	2.98	2.00	2.08 1.70
Early and Mids	:	13.30	3.35	3.41	2.98	2.02	2.08 1.70
Valencia	:	13.30	3.20	3.41	2.98	1.90	2.08 1.70
US	:	15.40	6.77	8.26	6.01	4.59	5.94 3.90
Tangerines	:						
AZ	:	19.60	12.01	12.69	0.73	9.57	10.25 -1.71
CA	:	23.90	16.45	16.99	0.35	14.01	14.55 -2.09
FL	:	23.00	11.40	14.00	5.90	7.57	10.30 1.80
US	:	23.30	13.42	15.39	5.50	10.19	12.34 1.52
Temples	:						
FL	:	17.00	5.23	9.30	4.30	2.94	7.10 2.00

1/ Net lbs. per box: Grapefruit-AZ & CA-67, FL-85, TX-80; Lemons-76;  
Oranges-AZ & CA-75, FL-90, TX-85; Tangelos-90; Tangerines-AZ & CA-75,  
FL-95.

Potatoes: Prices Received, by States,  
February and March 2003

State	Feb	Mar	State	Feb	Mar
	: Dollars per Cwt			: Dollars per Cwt	
AL			NC		
AZ			ND - All 1/	6.10	6.05
CA - All	17.00	15.00	- Fresh 2/	8.35	NA
- Winter	23.90	22.50	- Processing	5.15	NA
- Spring			OH	8.90	11.10
- Summer			OR	5.60	6.50
- Fall	8.65	8.60	PA	11.80	12.20
CO - All 1/	6.55	6.60	TX		
- Fresh 2/	7.03	NA	VA		
FL	28.80	25.10	WA - All	6.10	6.10
ID - All 1/	4.60	5.15	- Processing	5.60	NA
- Fresh 2/	4.60	NA	WI - All 1/	7.40	7.60
- Processing	4.60	NA	- Fresh 2/	7.30	NA
ME	7.10	7.35	- Processing	6.75	NA
MI	8.10	8.70			
MN	5.10	5.15	US - All 1/	6.55	6.87
NY	10.20	10.90	- Fresh 2/	8.36	NA
			- Processing	5.37	NA

- 1/ Average price of potatoes sold for all uses, including table stock, processing, seed and livestock feed.  
2/ Fresh market prices only, includes table stock prices.

Cattle: Prices Received, by States, February and March 2003

State	Cows 1/		Steers & Heifers:		Beef Cattle 4/		Calves	
	Feb 2/	Mar 3/	Feb 2/	Mar 3/	Feb 2/	Mar 3/	Feb 2/	Mar 3/
	Dollars per Cwt							
AZ	40.60	42.50	79.90	77.00	79.50	76.70	96.20	94.90
AR	35.60	36.30	76.50	76.40	64.20	64.40	89.40	89.50
CA	36.50	38.50	78.50	75.50	56.20	56.30	91.00	92.50
CO	41.10	39.90	78.90	77.00	78.50	76.60	90.30	90.30
FL	39.70	42.30	75.00	76.00	46.80	49.00	91.20	96.00
GA	38.80	40.20	72.10	72.10	50.80	53.00	90.60	89.50
ID	38.90	39.50	78.50	77.10	69.80	68.10	94.00	93.00
IL	38.00	37.50	78.00	76.50	77.20	75.70	92.50	91.50
IA	38.00	37.50	74.50	73.00	73.80	72.30	89.00	89.30
KS	39.70	40.80	79.20	76.90	78.00	75.80	99.30	99.60
KY	36.00	36.00	73.00	73.00	64.10	64.10	86.00	86.00
LA	37.70	38.00	75.40	73.00	48.30	47.80	89.60	88.00
MI	37.50	38.50	66.00	67.00	57.50	58.50	90.00	88.00
MN	40.60	42.50	75.10	74.00	66.10	65.80	86.90	88.00
MO	36.80	37.30	80.00	78.20	65.30	69.20	93.40	92.60
MT	40.80	41.10	80.00	76.20	73.70	71.30	93.50	94.00
NE	39.80	41.10	77.40	76.50	76.30	75.40	99.30	97.90
NM	39.80	41.60	80.10	75.50	64.00	63.30	94.20	92.70
ND	39.90	40.00	76.60	75.00	71.80	70.80	89.40	88.00
OH	33.70	32.00	71.10	69.00	67.40	65.30	74.60	74.00
OK	39.80	38.40	77.80	74.70	75.10	72.20	94.40	92.80
OR	39.30	40.50	77.00	76.00	65.70	65.40	91.00	92.00
PA	39.10	38.60	73.90	71.60	64.90	63.00	115.00	112.00
SD	39.40	39.80	77.80	74.20	73.60	70.80	95.70	96.10
TN	35.00	35.00	72.00	73.00	57.20	57.80	85.00	85.00
TX	37.20	38.30	79.90	76.80	76.90	73.70	97.70	97.10
VA	34.30	34.70	66.00	65.20	54.30	57.00	72.00	70.00
WI	39.80	40.00	69.60	70.00	52.30	52.60	118.00	110.00
WY	40.30	40.80	79.60	76.70	73.30	71.30	99.50	97.00
US	38.90	39.80	78.10	76.20	74.00	72.20	97.30	96.40

- 1/ Beef cows and cull dairy cows sold for slaughter.
- 2/ Entire month.
- 3/ Mid-month.
- 4/ "Cows" and "steers and heifers" combined.

Hogs: Prices Received, by States, February and March 2003

State	Sows		Barrows and Gilts		All Hogs	
	Feb 1/	Mar 2/	Feb 1/	Mar 2/	Feb 1/	Mar 2/
	Dollars per Cwt					
AR	23.50	24.10	33.20	33.40	32.20	32.50
IL	22.00	23.00	35.60	36.50	34.50	35.40
IN	24.60	25.70	34.50	34.60	33.60	33.80
IA	26.20	27.10	35.20	35.60	34.80	35.40
KS	24.00	23.50	33.20	34.40	32.00	33.20
MI	21.00	23.00	33.00	33.00	32.00	32.20
MN	23.40	24.50	35.00	36.00	34.90	35.90
MO	21.60	21.50	32.90	33.80	32.00	32.80
NE	23.90	24.50	36.80	37.50	36.50	37.20
NC	23.00	24.40	34.60	36.10	34.50	36.00
OH	23.90	25.00	35.50	36.20	34.70	35.40
OK	22.90	22.60	32.70	33.20	31.40	31.80
PA	21.60	22.60	34.60	35.60	32.70	33.70
SD	23.20	25.20	36.70	37.50	35.40	36.30
TX	21.30	22.10	32.60	33.20	30.90	31.80
WI	23.30	24.20	32.90	33.80	31.70	32.60
US	23.20	24.20	34.90	35.60	34.30	35.00

1/ Entire month.  
 2/ Mid-month.

Sheep and Poultry: Prices Received, by States,  
February and March 2003

State	February		March
	Sheep 1/	Lambs 1/	Eggs 2/3/
	---- Dollars per Cwt ----		Dol/Doz
AL			.520
AR			.440
CA	37.50	86.00	.500
CO	42.00	93.10	
CT			.610
FL			.510
GA			.484
ID	39.00	88.00	
IN			.550
IA	46.60	87.20	.440
KS	40.50	88.50	
ME			.730
MI			.540
MN	37.50	89.90	.510
MS			.440
MO			.440
MT	43.50	103.00	
NE	42.00	94.50	
NY			.560
NC			.500
ND	36.00	91.00	
OH	41.00	94.30	.534
OR	37.00	86.50	
PA			.590
SC			.510
SD	46.60	104.00	
TX	48.30	94.70	.530
UT	41.00	91.00	
WA			.575
WY	48.50	107.00	
US	43.60	92.40	.518

- 1/ Entire month.  
2/ Mid-month.  
3/ Market (table) eggs.

Milk and Milk Cows: Prices Received, by States, February and March 2003

State	February				March				
	Fluid Grade Milk 1/	Manufacturing Grade Milk	All Milk 2/		All Milk 2/3/			Milk Cows 4/	
	Price	Fat Test	Price	Fat Test	Price	Fat Test	Price	Fat Test	
	Dol/Cwt	Pct	Dol/Cwt	Pct	Dol/Cwt	Pct	Dol/Cwt	Pct	Dol/Head
AZ	10.80	3.58			10.80	3.58	10.50	3.55	
CA	10.00	3.75	10.30	4.10	10.00	3.75	9.80	3.69	
FL	14.30	3.57			14.30	3.57	13.80	3.53	
ID	10.30	3.63	10.30	3.98	10.30	3.63	10.10	3.58	
IL	11.50	3.75	11.00	3.64	11.50	3.75	10.90	3.70	
IN	11.00	3.77	9.70	3.84	10.90	3.77	10.40	3.75	
IA	11.80	3.82	10.40	3.94	11.70	3.83	11.20	3.81	
KY	12.40	3.74			12.40	3.74	12.00	3.71	
MI	11.60	3.69	9.90	3.73	11.60	3.69	11.00	3.68	
MN	11.60	3.77	9.70	3.83	11.50	3.77	11.00	3.77	
MO	11.70	3.71	10.40	3.82	11.60	3.71	11.20	3.71	
NM	11.00	3.68			11.00	3.68	10.60	3.65	
NY	12.10	3.80			12.10	3.80	11.70	3.79	
OH	11.50	3.77	10.90	3.92	11.50	3.78	11.20	3.76	
PA	13.00	3.85	10.30	3.90	13.00	3.85	12.80	3.80	
TX	12.00	3.74			12.00	3.74	11.70	3.70	
VT	11.90	3.80			11.90	3.80	11.50	3.75	
VA	13.60	3.77			13.60	3.77	13.20	3.75	
WA	11.30	3.69			11.30	3.69	11.00	3.68	
WI	11.50	3.78	10.40	3.90	11.50	3.78	11.00	3.79	
US	11.40	3.75	10.30	3.91	11.40	3.75	11.00	3.72	

- 1/ Including milk diverted to manufacturing.
- 2/ Before deductions for hauling. Includes quality, quantity, and other premiums. Excludes hauling subsidies.
- 3/ Preliminary.
- 4/ Animals sold for dairy herd replacement only. Prices published Jan, Apr, Jul and Oct.

Parity Price Equivalent for Manufacturing Milk 1/: United States, February and March 2003, with Comparisons

Item	Mar 2002	Feb 2003	Mar 2003
Parity Equivalent.....Dol per Cwt	29.14	30.19	30.37
Average Price F.O.B.....Dol per Cwt	11.30	10.30	2/ 9.90
Average Fat Test of Milk..Percent	3.88	3.91	2/3.88

- 1/ The parity price equivalent during 2003 is 90.4 percent of the parity price of all milk sold to plants, compared with 90.5 percent in 2002. For additional details, see January 2003 issue of "Agricultural Prices".
- 2/ Preliminary.

United States Parity Prices for Farm Products and Average Prices Received as  
Percent of Parity Prices Based on Data for March 2003, with Comparisons 1/

Commodity and Unit	: Adjusted: : Base : Prices	Parity Prices Based on Data for			: Prices as Percent : of Parity			
		: Mar : 2002	: Feb : 2003	: Mar : 2003	: Mar : 2002	: Feb : 2003	: Mar : 2003	
		----- Dollars -----			----- Percents -----			
Basic Commodities	:							
All Wheat, Bu	:	.569	9.38	9.63	9.71	31	38	36
Rice, Cwt	:	1.56	25.10	26.40	26.60	16	15	15
Corn, Bu	:	.389	6.35	6.59	6.64	31	36	35
Cotton, Lb	:							
American Upland	:	.100	1.60	1.69	1.71	18	27	26
Extra Long Staple	:	.140	2.27	2.37	2.39			
Peanuts, Lb	:	.0388	.650	.657	.662		29	32
Tobacco, By Type, Lb	:							
Flue-Cured 11-14	:	.256	4.13	4.33	4.37			
VA Fire-Cured, 21	:	.259	4.16	4.38	4.42			
KY-TN Fire-Cured, 22-23	:	.320	5.17	5.42	5.46	35	29	24
Burley, 31	:	.275	4.44	4.66	4.69		41	38
Maryland, 32	:	.218	3.56	3.69	3.72	47		
Dark Air-Cured, 35-36	:	.276	4.37	4.67	4.71		28	
Sun-Cured, 37	:	.243	3.87	4.11	4.15			
PA Seedleaf, 41	:	.199	3.05	3.37	3.40			
Cigar Filler & Binder, 42-44, 54-55	:	.221	3.53	3.74	3.77			
Puerto Rican Filler, 46	:	.163	2.80	2.76	2.78			
Cigar Binder, 51-52	:	.719	11.00	12.20	12.30			
Designated Nonbasic	:							
All Milk, Sold to Plants, Per Cwt	:	1.97	32.20	33.40	33.60	2/40	2/36	2/34
Honey, Extracted, Lb	:	3/.0938	1.51	1.59	1.60			
Wool and Mohair	:							
Wool, Lb	:	.0910	1.54	1.54	1.55			
Mohair, Lb	:	.325	5.10	5.50	5.55			
Other Nonbasic	:							
Barley, Bu	:	.385	6.24	6.52	6.57	35	44	44
Cottonseed, Ton	:	15.60	254.00	264.00	266.00		42	
Dry Edible Beans, Cwt	:	2.97	47.00	50.30	50.70	58	39	31
Flaxseed, Bu	:	.703	11.10	11.90	12.00	43	52	53
Oats, Bu	:	.243	3.87	4.11	4.15	51	51	47
Potatoes, Cwt	:	.813	13.20	13.80	13.90	63	47	49
Rye, Bu	:	.343	5.52	5.81	5.86			
Sorghum Grain, Cwt	:	.658	10.80	11.10	11.20	30	37	35
Soybeans, Bu	:	.851	13.90	14.40	14.50	32	39	38
Sweetpotatoes, Cwt	:	2.19	35.30	37.10	37.40			
Apples, Fresh, Lb 4/ Citrus (equiv on-tree), box:	:	.0287	.468	.486	.490	47	51	46
Grapefruit	:	.388	7.14	6.57	6.62	23	29	21
Lemons	:	1.10	17.50	18.60	18.80	34	14	7
Limes (FL)	:	1.31	20.40	22.20	22.40			
Oranges	:	.570	10.40	9.65	9.73	45	36	47
Tangerines	:	1.46	25.10	24.70	24.90	40	41	41
Temples (FL)	:	.463	8.54	7.84	7.90	14	33	37
Beef Cattle, Cwt	:	9.46	155.00	160.00	161.00	46	46	45
Calves, Cwt	:	12.70	206.00	215.00	217.00	51	45	44
Hogs, Cwt	:	6.03	100.00	102.00	103.00	36	34	34
Lambs, Cwt	:	10.90	175.00	185.00	186.00	38	50	
Sheep, Cwt	:	4.65	74.00	78.70	79.40	43	55	
Eggs, Doz	:	.0933	1.51	1.58	1.59	2/45	2/39	2/43
Turkeys, Live, Lb	:	.0579	.943	.980	.988	35	35	36

--continued



Parity Prices Based on Data for March 2003, United States 1/ (continued)

Other Nonbasic Commodities	Adj Base Prices	Parity Prices	Other Nonbasic Commodities	Adj Base Prices	Parity Prices
	Dollars			Dollars	
Field Crops and Misc Commodities			Noncitrus Fruit		
Hops, Lb	.255	4.35	Peaches, cont.		
Spearmint Oil, Lb	1.59	27.10	Processing 5/ Excl Dried		
Tobacco, Lb Type 61	2.51	42.80	Clingstone, CA, Ton	33.00	563.00
			Pears, Ton		
Noncitrus Fruit			Fresh 4/	51.70	883.00
Apples, Ton 6/ Processing	18.00	307.00	Dried, CA 6/	161.00	2750.00
Apricots, Ton			Plums, CA, Ton		
Fresh 7/	103.00	1760.00	Fresh, Equiv on-Tree	57.20	976.00
Dried, CA	284.00	4850.00	Prunes, Dried, CA, Ton 6/	132.00	2250.00
Avocados, Ton 7/	218.00	3720.00	Prunes and Plums, Excl CA, Ton		
Cherries			Fresh 9/	53.50	913.00
Sweet, Ton	181.00	3090.00	Processing 6/ Excl Dried	24.90	425.00
Tart, Lb	.0229	.391			
Cranberry, Bbl 5/	6.23	106.00	Tree Nuts 10/		
Dates, CA, Ton 7/	161.00	2750.00	Almonds, Lb	.211	3.60
Grapes, Ton			Hazelnuts, Ton	124.00	2120.00
Raisin Variety Other Dried	130.00	2220.00	Pistachio, Lb	.160	2.73
Kiwifruit, Ton	74.00	1260.00	Walnuts, Ton	181.00	3090.00
Nectarines					
Fresh, Calif, Ton 7/	64.10	1090.00	Vegetables, Cwt 11/		
Olives, CA			Fresh		
Canning, Ton 5/	96.80	1650.00	Carrots 8/	2.11	36.00
Papayas (HI) Lb	.0508	.867	Cauliflower 8/	4.53	77.30
Peaches			Celery 8/	2.00	34.10
Fresh, Lb 4/	.0397	.678	Honeydew Melons	2.78	47.50
Dried, CA, Ton	97.00	1660.00	Lettuce	2.47	42.20
			Onions 8/	1.66	28.30
			Tomatoes	4.31	73.60

- 1/ Parity prices are computed under the provisions of Title III, Subtitle a, Section 301 (a) of the Agricultural Adjustment Act of 1938 as amended by the Agricultural Acts of 1948, 1949, and 1956. See January "Agricultural Prices" for details on adjusted base price and parity price computations.
- 2/ Seasonally adjusted price as percentage of parity price.
- 3/ Wholesale extracted. Adjusted base price derived from state annual average prices weighted by production. For 1982 through 1985 the national averages are the support prices.
- 4/ Equivalent packinghouse-door returns for CA, NY (apples only), OR (except peaches), and WA. Price at point of first sale for other states.
- 5/ Equivalent returns for bulk fruit at first delivery point.
- 6/ Equivalent returns at processing plant door.
- 7/ Equivalent returns at packinghouse door.
- 8/ Includes some processing.
- 9/ Based on "as sold" prices for fresh fruit in all states.
- 10/ Prices in-shell basis except almonds which are shelled basis.
- 11/ F.O.B. shipping point prices.

## Reliability of Prices Received Estimates

**Definition:** Prices received represent sales from producers to first buyers. They include all grades and qualities. The average commodity price from the survey multiplied by the total quantity marketed theoretically should give the total cash receipts for the commodity.

**Survey Procedures:** Primary sales data used to determine grain prices were obtained from probability samples of 2600 mills and elevators. These procedures ensure that virtually all grain moving into commercial channels has a chance of being included in the survey. Generally, States surveyed account for 90 percent or more of total U.S. production. Livestock prices are obtained from packers, stockyards, auctions, dealers, and market check data from AMS-USDA, private marketing organizations, and state commodity groups and agencies. Inter-farm sales of grain and livestock are not included since they represent very small percentages of the total marketings. Grain marketed for seed is also excluded. Fruit and vegetable prices are obtained from sample surveys and market check data from AMS-USDA, private marketing organizations, state agencies, and universities.

**Summary and Estimation Procedures:** Survey quantities sold are expanded by strata to state levels and used to weight average strata prices to a state average. State prices are then weighted to a U.S. price based on expanded marketings. Recommendations are prepared by the State Statistical Offices and reviewed by the Agricultural Statistics Board in Washington, D.C. State recommendations are reviewed for reasonableness with survey data, other States, and recent historic estimates.

**Revisions:** For most items, the current month's preliminary price represents a 3-5 day period around the 15<sup>th</sup> of the month. Previous month's prices represent actual dollars received for quantities sold during the entire month. Revisions are published in monthly issues of "**Agricultural Prices**".

**Reliability:** U.S. price estimates based on probability surveys generally have a sampling error of less than one percent for the major commodities such as corn, wheat, soybeans, cotton, and rice. Current methods of summarization for non-probability commodities are not designed directly to calculate sampling errors. However, analytical measures approximate the U.S. relative sampling errors at around five percent. Any nonsampling errors are attributed to such things as the inability to obtain correct information, differences in interpreting questions or definitions, mistakes in coding or processing the data, etc. Efforts are made at each step in the survey process to minimize these nonsampling errors.

## Prices Paid by Farmers

The March Index of Prices Paid for Commodities and Services, Interest, Taxes, and Farm Wage Rates (PPITW) is 128 (1990-92=100), unchanged from February 2003 but 4.1 percent above March 2002.

**PRODUCTION INDEX:** The March Farm Production, Goods, and Services Index, at 124, is unchanged from last month but 5.1 percent above a year earlier. Lower prices in March for feeder cattle, herbicides, feed grains, and feeder pigs offset higher prices for nitrogen fertilizers, diesel fuel, LP gas, and feed concentrates.

**Feed:** The Feed Index, at 119, is the same as February but 9.2 percent above March 2002. Slightly lower prices during March for feed grains and feed supplements offset slightly higher prices for feed concentrates and hay and forages.

**Livestock and Poultry:** The Index for Livestock and Poultry purchases, at 98, is 3.0 percent lower than last month and 7.5 percent below last year. The March feeder cattle price, at \$78.00 per cwt, and the feeder pig price, at \$112.00, are down \$3.30 and \$5.00 per cwt, respectively, from February.

**Fertilizer:** The Fertilizer Index, at 126, is up 4.1 percent from February and 18 percent more than March a year ago. Higher prices for nitrogen fertilizers account for the index increase.

**Agricultural Chemicals:** The Chemical Index, at 116, is down 1.7 percent from last month and 2.5 percent below last March. Lower March prices for herbicides account for the index decline.

**Fuels:** The Fuels Index, at 187, is up 8.1 percent from a month earlier and 85 percent above March 2002. Compared to last month, prices are higher for diesel fuel, LP gas, and gasoline.

**Farm Machinery:** The March Farm Machinery Index is 145, unchanged from February but 1.4 percent below last March.

**CONSUMER PRICE INDEX:** The February 2003 Consumer Price Index for all urban consumers (CPI-U) increased 0.8 percent before seasonal adjustment to a level of 183.1 (1982-84=100). This compares to the January index of 181.7. For the 12-month period ending in February, the overall index has increased 3.0 percent.

Indexes of Prices Paid by Farmers and Related Parity Ratios  
United States, March 2003 With Comparisons

Indexes and Ratios	: 1910-14 = 100			: 1990-92 = 100		
	: 2002			: 2003		
	: Mar			: Feb		
	: Mar	: Feb	: Mar	: Mar	: Feb	: Mar
Prices Paid by Farmers for Commodities & Services, Interest, Taxes, & Wage Rates (PPITW)	: 1637	*1701	1707	123	*128	128
Production	: 1143	*1201	1206	118	*124	124
Feed	: 530	*579	582	109	*119	119
Livestock and Poultry	: 1359	*1296	1251	106	*101	98
Seeds	: 1329	1426	1426	134	144	144
Fertilizer	: 394	*444	463	107	121	126
Agricultural Chemicals	: 735	*731	719	119	*118	116
Fuels	: 783	*1336	1441	101	*173	187
Supplies & Repairs	: 917	936	936	129	132	132
Autos & Trucks	: 3093	*3074	3065	116	*116	115
Farm Machinery	: 3694	3650	3650	147	145	145
Building Material	: 1647	*1664	1671	121	122	123
Farm Services & Rent	: 1421	*1437	1437			
Farm Services	:			120	121	121
Rent	:			119	120	120
Interest 1/	: 2728	2599	2599	109	104	104
Taxes 2/	: 3378	3426	3426	126	128	128
Wage Rates	: 5796	6022	6022	155	161	161
Production, Interest, Taxes, & Wage Rates (PITW)	: 1624	*1693	1699	121	*126	126
Family Living-CPI 3/	: 1698	*1739	1739	133	*136	136
Ratio (Received\Paid)	:			86	*77	77
Parity Ratio 4/	: 41	37	37			
Parity Ratio Adjusted 5/ PPITW Adjusted for	: 44	40	40			
Productivity 6/	: 1149	*1174	1174			
Crop Sector (PPITW)	:			125	*131	131
Livestock Sector (PPITW)	:			120	*125	125
Farm Sector (Production)	:			112	117	116
Non-Farm Sector (Production)	:			121	*127	128

\* Revised.

- 1/ Interest per acre on farm real estate debt and interest rate on farm non-real estate debt.
- 2/ Farm real estate taxes payable per acre.
- 3/ Bureau of Labor Statistics, Consumer Price Index for all urban consumers (CPI-U), for the previous month converted by the USDA.
- 4/ Ratio of index of prices received to PPITW (1910-14=100).
- 5/ Based on estimated cash receipts, from marketings and government payments, the preliminary adjustment factor is 1.086 for 2003 and the revised factor is 1.069 for 2002.
- 6/ PPITW is adjusted based on productivity trend for the prior 15 years.

Prices Paid Indexes and Annual Weights for Input Components and  
Sub-Components United States, March 2003 With Comparisons

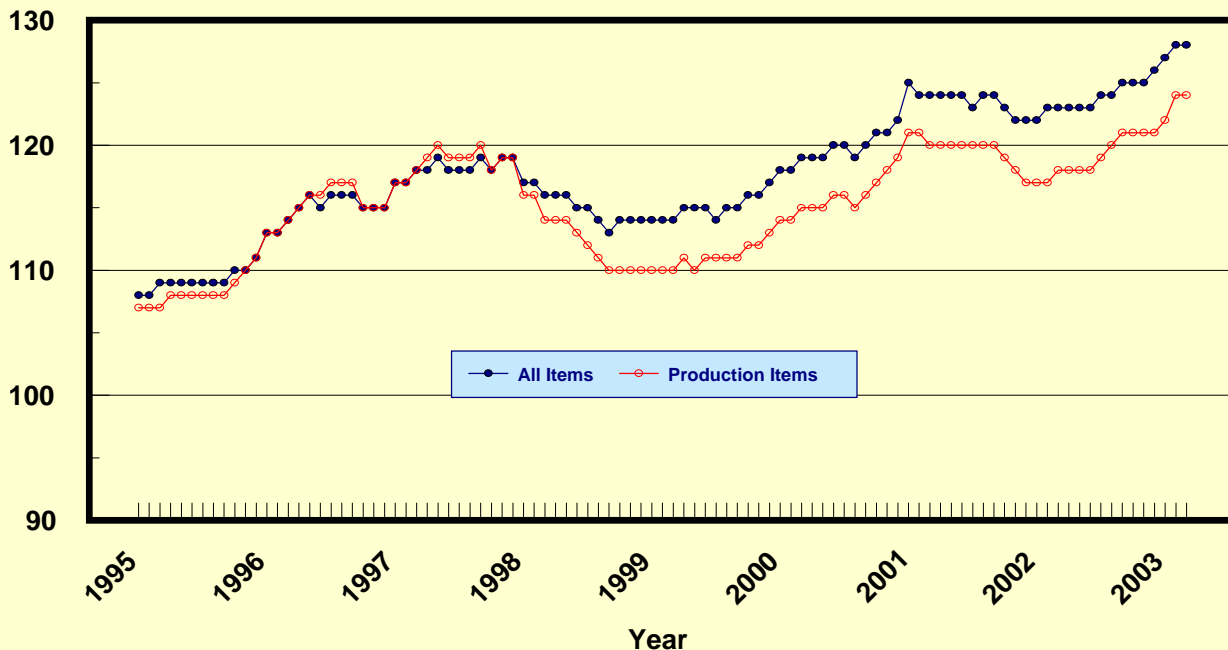
Index	Relative Weights		Input Indexes		
	5-Year Moving Average 1/		2002	2003	
	2002	2003	Mar	Feb	Mar
	Percent		(1990-92=100)		
Production Items	66.9	66.9	118	*124	124
Feed	11.3	11.3	109	*119	119
Feed Grains	1.6	1.6	85	103	101
Complete Feeds	5.5	5.5	111	*122	122
Hay/Forages	1.4	1.4	119	120	122
Concentrates	1.8	1.8	105	*113	119
Supplements	0.9	0.9	124	131	130
Livestock & Poultry	6.8	6.8	106	*101	98
Feeder Cattle	5.3	5.3	99	96	92
Feeder Pigs	0.5	0.5	138	*127	122
Milk Cow Replacements	0.6	0.6	143	121	121
Poultry	0.4	0.4	109	109	109
Seeds	3.1	3.1	134	144	144
Field Crops	2.8	2.8	136	147	147
Grasses/Legumes	0.3	0.3	118	118	118
Fertilizer	4.7	4.7	107	121	126
Mixed Fertilizer	2.1	2.1	104	*104	104
Nitrogen	2.0	2.0	110	*143	154
Potash & Phosphate	0.7	0.7	109	111	111
Agricultural Chemicals	3.9	3.9	119	*118	116
Herbicides	2.5	2.5	112	*111	108
Insecticides	0.9	0.9	138	137	137
Fungicides/Other	0.6	0.6	119	120	120
Fuels	2.7	2.7	101	*173	187
Diesel	1.5	1.5	100	*178	189
Gasoline	0.8	0.8	103	*150	158
LP Gas	0.4	0.4	107	*203	237
Farm Supplies & Repairs	5.5	5.5	129	132	132
Supplies	1.8	1.8	122	124	124
Repairs	3.7	3.7	133	136	136
Autos & Trucks	1.7	1.7	116	*116	115
Autos	0.2	0.2	111	109	108
Trucks	1.5	1.5	117	*117	116
Farm Machinery	4.0	4.0	147	145	145
Tractors	0.9	0.9	140	140	140
Self-Propelled	1.6	1.6	146	142	142
Other Machinery	1.5	1.5	152	152	152
Building Materials	3.1	3.1	121	122	123
Farm Services	12.3	12.3	120	121	121
Custom Rates	1.3	1.3	120	120	120
Other Services	11.1	11.1	120	121	121
Rent	7.7	7.7	119	120	120
Cash	4.2	4.2	143	145	145
Share	3.6	3.6	91	91	91
Interest	4.8	4.8	109	104	104
Taxes	3.0	3.0	126	128	128
Wage Rates	7.3	7.3	155	161	161
Family Living-CPI	18.0	18.0	133	*136	136

\* Revised.

1/ Weights may not add due to rounding.

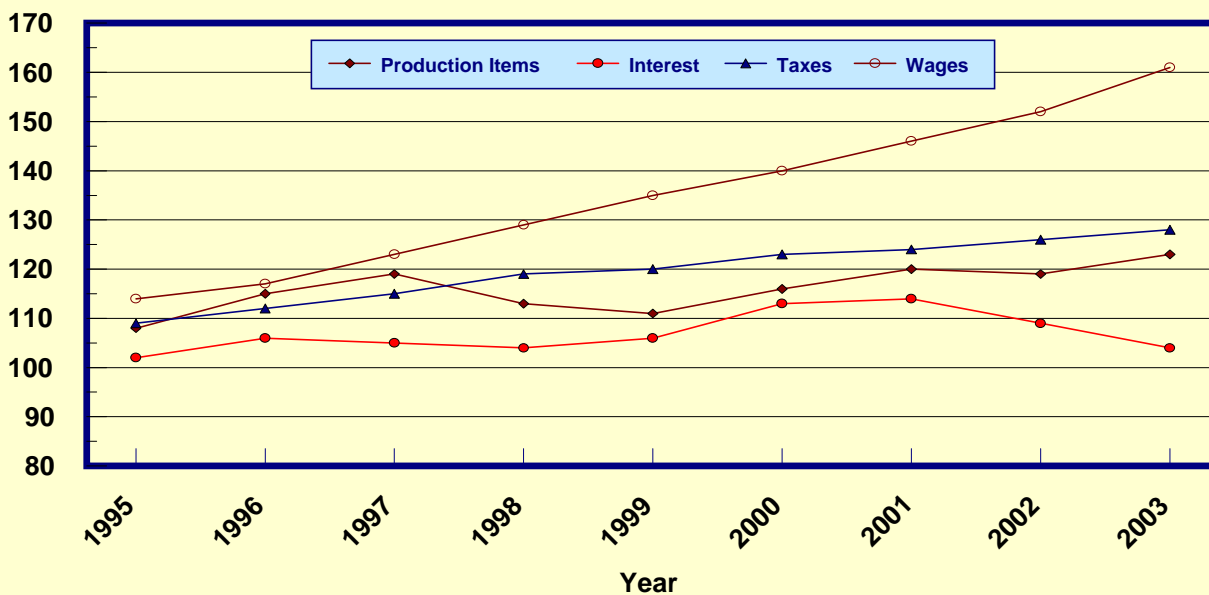
## Prices Paid by Farmers, Major Indexes US, by Quarter and Month 1/

Percent (1990-92=100)



## Prices Paid by Farmers, Major Indexes US, Annual Averages 1/

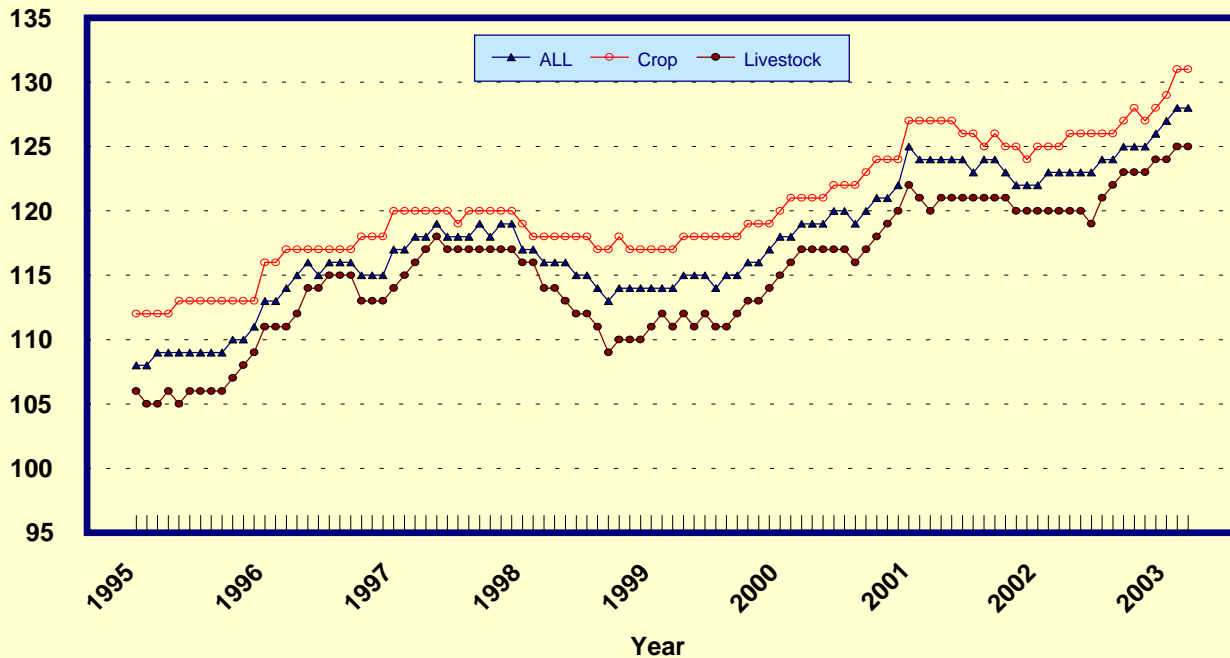
Percent (1990-92=100)



1/ Index values for 2003 are year-to-date averages.

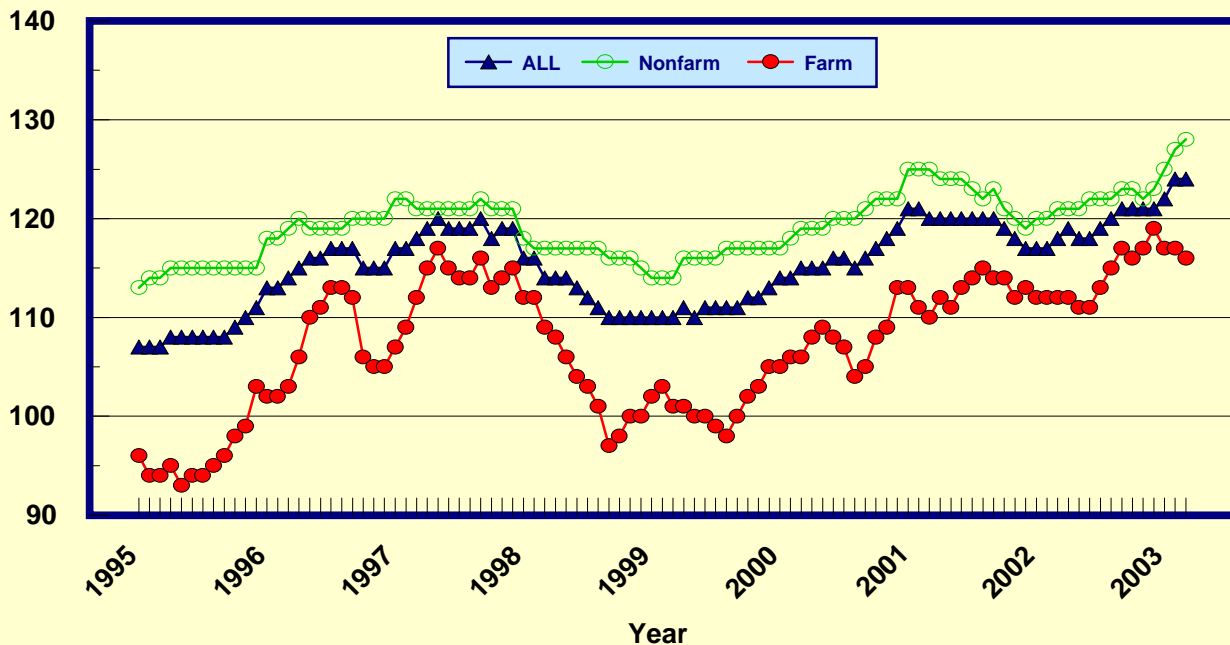
## Prices Paid by Farmers, Indexes, All Items US, By Farm Type 1/

Percent (1990-92=100)



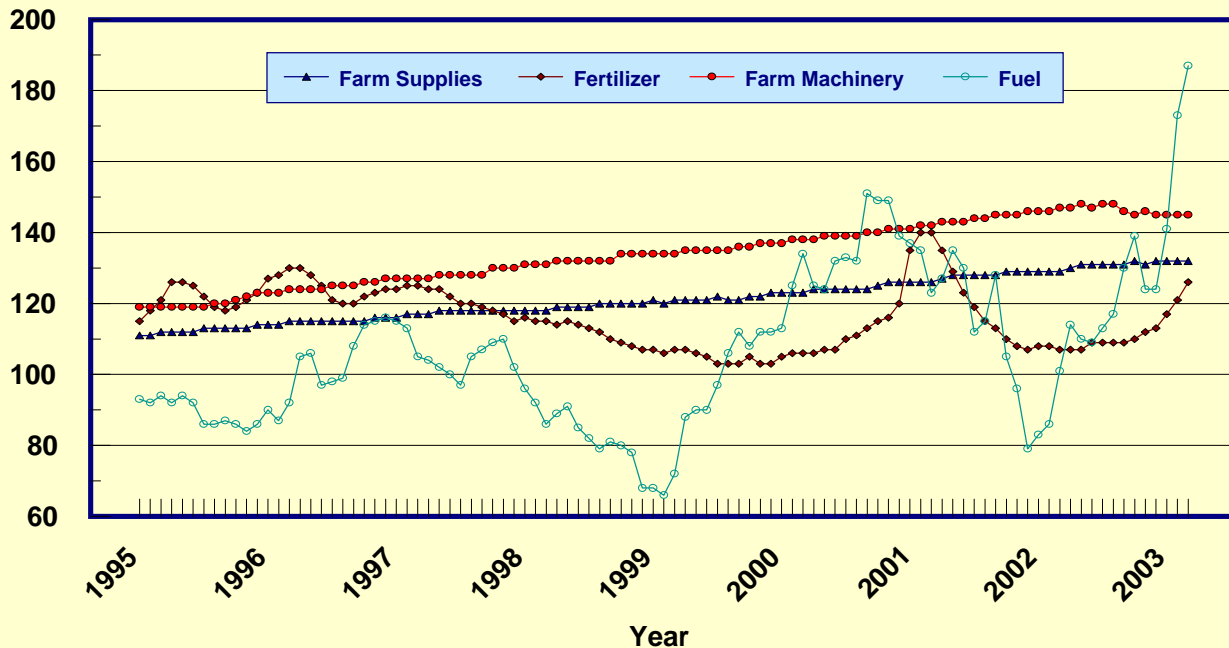
## Prices Paid by Farmers, Indexes, All Production Items US, By Sector Origin 1/

Percent (1990-92=100)



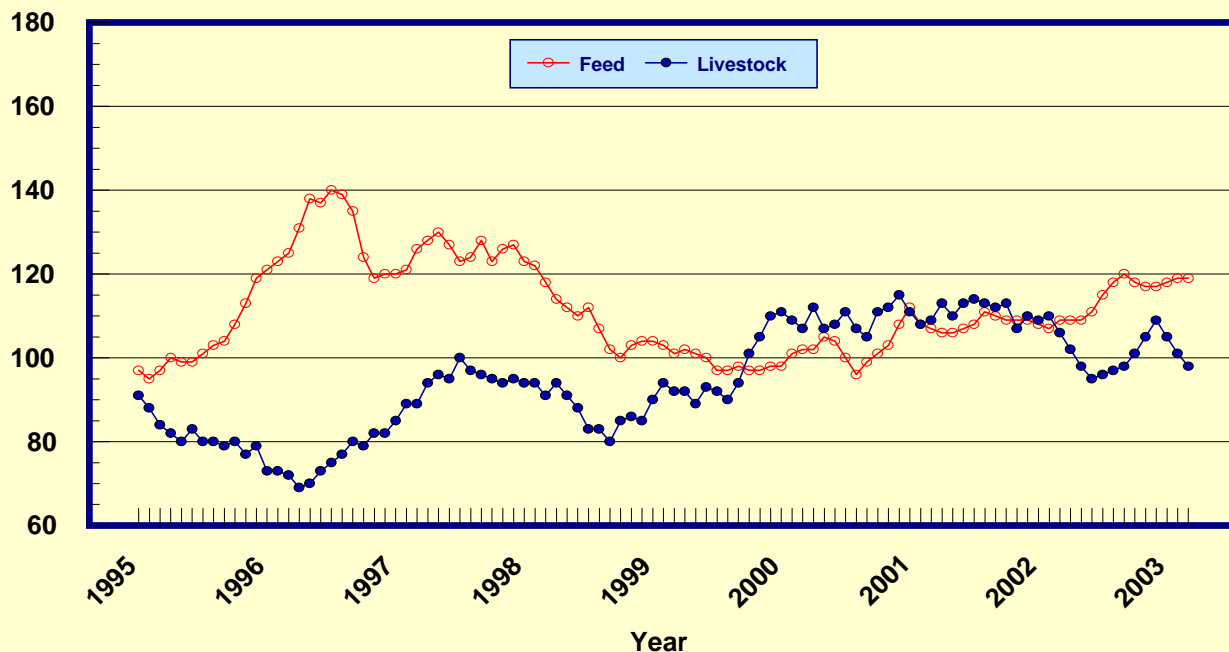
## Prices Paid by Farmers, Selected Production Indexes US, By Non-Farm Sector 1/

Percent (1990-92=100)



## Prices Paid by Farmers, Selected Production Indexes US, By Farm Sector 1/

Percent (1990-92=100)





Feed Price Ratios: United States, March 2003 with Comparisons

Feed Price Ratio 1/	2002		2003	
	Mar	Feb	Mar	Mar
Broiler-Feed: Pounds of Broiler Grower Feed equal in value to 1 pound of broiler, live weight	6.3	5.4	5.4	
Market Egg Feed: Pounds of Laying Feed equal in Value to 1 dozen eggs	11.6	*8.6	9.6	
Hog-Corn: Bushels of Corn equal in value to 100 pounds of hog, live weight	18.6	*14.7	15.2	
Milk-Feed: Pounds of 16% Mixed Dairy Feed equal in value to 1 pound of Whole Milk	2.89	*2.35	2.29	
Steer & Heifer-Corn: Bushels of Corn equal in value to 100 pounds of Steer & Heifers, live weight	38.2	*33.4	33.1	
Turkey-Feed: Pounds of Turkey Grower equal in value to 1 pound of Turkey, live weight	6.8	5.7	5.9	

1/ Effective June 1999, prices of commercial prepared feeds are based on current U.S. prices received for corn, soybeans, alfalfa hay, and all wheat.  
\* Revised.

Prices Used to Calculate Feed Price Ratios:  
United States, March 2003 with Comparisons

Commodity	Unit	2002		2003	
		Mar	Feb	Mar	Mar
Broilers, Live	Lb	0.320	0.340	0.340	
Eggs, Market	Doz	0.515	0.466	0.518	
Hogs, All	Cwt	36.00	*34.30	35.00	
Milk, All	Cwt	12.70	*11.40	11.00	
Steers and Heifers	Cwt	74.10	*78.10	76.20	
Turkeys, Live	Lb	0.329	0.345	0.351	
Corn	Bu	1.94	*2.34	2.30	
Hay, Alfalfa, Baled	Ton	99.60	96.40	96.20	
Soybeans	Bu	4.38	*5.55	5.58	
Wheat, All	Bu	2.87	*3.68	3.49	

\* Revised.

Feeder Livestock: Prices Paid, United States  
March 2003 with Comparisons

Commodity	Unit	2002		2003	
		Mar	Feb	Mar	Mar
Dollars					
Feeders and Stockers					
Cattle and Calves	Cwt	83.90	81.30	78.00	
Feeder Pigs	Cwt	127.00	*117.00	112.00	

## Prices Paid by Farmers

**Definition:** Prices paid by farmers represent the average costs of inputs purchased by farmers and ranchers to produce agricultural commodities. Conceptually, the average price when multiplied by quantity purchased should equal total producer expenditures for the item.

**Survey Procedures:** The prices paid data are obtained from establishments that sell goods and services to farmers and ranchers. In April every year, about 8,500 firms are randomly selected from lists by type of item sold with an average response rate in the range of 75-80 percent. Firms are asked to report the price for the specified item "most commonly bought by farmers" or that was the "volume seller". Approximately 135 items are surveyed each April to represent all production input items purchased. The survey reference period for most items is the 5 business days centered around the 15th of the month. Separate prices paid surveys are conducted for agricultural chemicals, fuels, feed, fertilizer, machinery, and seed.

**Summary and Estimation Procedures:** The annual April Prices Paid Survey is summarized as a nonprobability survey. Average prices reported are aggregated to the region and U.S. level using weights available from expenditure data and other administrative sources. Price recommendations are prepared by the State Statistical Offices and Headquarters for review by the Agricultural Statistics Board in Washington, D.C. Also, the change in price level for individual items surveyed are combined to the regional and U.S. levels, and are published as prices paid indexes referenced to a specific base period. Monthly prices paid indexes for new autos and trucks, building materials, farm supplies, motor supplies, and marketing containers are updated based on price changes measured in selected Bureau of Labor Statistics (BLS) indexes.

**Revisions:** Any revisions are published in the monthly and in annual issues of "Agricultural Prices". The basis for revision must be supported by additional data that directly affect the level of the estimate. More revisions are likely in April when separate prices paid surveys are conducted, in lieu of BLS indexes, by the USDA to measure price change.

**Reliability:** Current methods of summarization in April are not designed directly to calculate sampling errors. However, analytical measures approximate the U.S. relative sampling errors for major items around 10 percent. Any nonsampling errors are attributed to such things as the inability to obtain correct information, differences in interpreting questions or definitions, mistakes in coding or processing the data, etc. Efforts are made at each step in the survey process to minimize these nonsampling errors.

**Program Change:** Effective January 1, 1995, the National Agricultural Statistics Service updated the weights and changed the construction of its prices paid and received by farmers indexes. A Federal Register Notice dated October 28, 1994 discussed these program modifications.

A 1990-92 reference and base period replaced the 1977 reference and 1971-73 base weight period. Five-year moving average weights replaced the current fixed 1971-73 base period weights. The 1910-14=100 price indexes, required by statute for computing parity prices, were linked forward based on the changes in the new 1990-92=100 indexes. The new indexes were constructed by multiplying the ratios of the current prices to the base period prices by the moving average weights (adjusted for seasonal marketing patterns for the prices received indexes).

## Information Contacts

General questions should be directed to **Linda Hutton**, Chief, Environmental, Economics and Demographics Branch at (202) 720-6146. Below are the commodity specialists to contact for additional information.

### Crop Prices Received

**Mark Harris**, Chief, Crops Branch (202) 720-2127

Field Crops Section

**Greg Thessen**, Head (202) 720-2127

- Dave DeWalt** - Cotton, Cottonseed (202) 720-5944
- Herman Ellison** - Oilseeds (202) 720-7369
- Lance Honig** - Wheat, Rye (202) 720-8068
- Darin Jantzi** - Corn, Proso Millet (202) 720-7235
- Troy Joshua** - Hay, Oats (202) 690-3234
- Roy Karkosh** - Sugarcane, Sugarbeets, Barley, Sorghum (202) 690-8140
- Mark R. Miller** - Peanuts, Rice (202) 720-7688

Fruit and Vegetable Section

**Jim Smith**, Head (202) 720-2127

- Arvin Budge** - Potatoes, Dry Beans (202) 720-4285
- Kathy Broussard** - Citrus (202) 720-5412
- Debbie Flippin** - Peaches, Pears, Hops, Pulse crops, Mint (202) 720-3250
- Terry O'Connor** - Apples, Cherries, Apricots, Cranberries (202) 720-4288
- Mike Miller** - Grapes, Tobacco (202) 720-7235
- Biz Wallingsford** - Vegetables, Onions, Strawberries (202) 720-2157

### Livestock Prices Received

**Dan Kerestes**, Chief, Livestock Branch (202) 720-3570

Livestock Section

**Wil Hundl**, Head (202) 720-3570

- Steve Anderson** - Cattle (202) 720-3040
- Scott Hollis** - Sheep (202) 720-4751
- Ty Kalas** - Milk, Milk Cows (202) 690-3236
- Rodger Ott** - Hogs (202) 720-3106

Poultry and Specialty Commodities Section

**Nathan Crisp**, Head (202) 720-3570

- Tom Kruchten** - Broilers, Eggs (202) 690-4870
- John Lange** - Turkeys (202) 720-0585

### Indexes, Prices Paid, and Parity Prices

**Linda Hutton**, Chief, Environmental, Economics and Demographics Branch (202) 720-6146

Economics Section

**Larry Beard**, Head (202) 720-6146

- Tara Jackson** - Feed, Fertilizer, Agricultural Chemicals, Seeds (202) 690-3229
- Jim Williams** - Prices Paid Indexes, Farm Supplies and Repairs, Farm Machinery, Fuels, Feeder Livestock, Poultry Chicks, Feed Price Ratios, Grazing Fees, Autos & Trucks (202) 690-3225
- Rhonda Brandt** - Prices Received Indexes, Parity Prices (202) 720-5446

The next "Agricultural Prices" report will be released at 3:00 p.m. ET on April 30, 2003.

The United States Department of Agriculture (USDA) prohibits discrimination in all its programs on the basis of race, color, national origin, gender, religion, age, disability, political beliefs, sexual orientation, and marital or family status. (Not all prohibited bases apply to all programs.) Persons with disabilities who require alternative means for communication of program information (braille, large print, audiotape, etc.) should contact the USDA's TARGET Center at 202-720-2600 (voice and TDD).

To file a complaint of discrimination, write USDA, Director, Office of Civil Rights, Room 326-W, Whitten Building, 1400 Independence Avenue, SW, Washington, D.C., 20250-9410, or call 202-720-5964 (voice or TDD). USDA is an equal opportunity provider and employer.

## **ACCESS TO REPORTS!!**

---

For your convenience, there are several ways to obtain NASS reports, data products, and services:

### **INTERNET ACCESS**

All NASS reports are available free of charge on the worldwide Internet. For access, connect to the Internet and go to the NASS Home Page at: <http://www.usda.gov/nass/>. Select "Today's Reports" or Publications and then Reports Calendar or Publications and then Search, by Title or Subject.

### **E-MAIL SUBSCRIPTION**

All NASS reports are available by subscription free of charge direct to your e-mail address. Starting with the NASS Home Page at <http://www.usda.gov/nass/>, click on **Publications**, then click on the **Subscribe by E-mail** button which takes you to the page describing e-mail delivery of reports. Finally, click on **Go to the Subscription Page** and follow the instructions.

### **AUTOFAX ACCESS**

NASSFax service is available for some reports from your fax machine. Please call 202-720-2000, using the handset attached to your fax. Respond to the voice prompts. Document 0411 is a list of available reports.

-----

### **PRINTED REPORTS OR DATA PRODUCTS**

**CALL OUR TOLL-FREE ORDER DESK: 800-999-6779 (U.S. and Canada)**  
**Other areas, please call 703-605-6220      FAX: 703-605-6900**  
**(Visa, MasterCard, check, or money order acceptable for payment.)**

-----

### **ASSISTANCE**

For **assistance** with general agricultural statistics or further information about NASS or its products or services, contact the **Agricultural Statistics Hotline** at **800-727-9540**, 7:30 a.m. to 4:00 p.m. ET, or e-mail: [nass@nass.usda.gov](mailto:nass@nass.usda.gov).

---