

---

Released September 30, 2003, by the National Agricultural Statistics Service (NASS), Agricultural Statistics Board, U.S. Department of Agriculture. For information on "Agricultural Prices" see page 71, office hours 7:30 a.m. to 3:30 p.m. ET.

## September Farm Prices Received Index Unchanged From Last Month

The preliminary All Farm Products Index of Prices Received by Farmers in September is 109, based on 1990-92=100, unchanged from the August index. Since last month, a higher Livestock and Products Index more than offset a lower All Crops Index. Higher commodity prices for cattle, lettuce, dairy, and broccoli more than offset lower prices for tomatoes, eggs, potatoes, and grapes. The seasonal change in the mix of commodities farmers sell, based on the past 3-year average, also affects the overall index. Increased average marketings of soybeans, peanuts, corn, and apples more than offset decreased marketings of cattle, broilers, wheat, and grapes.

This preliminary All Farm Products Index is up 11 points (11.2 percent) from September 2002. Higher prices for cattle, hogs, broilers, and lettuce more than offset lower prices for corn, wheat, potatoes, and hay.

The Food Commodities Index also increased 1 point (0.9 percent) above last month to 111, and is 16 points (16.8 percent) above September last year.

## Prices Paid Index Up 1 Point

The September Index of Prices Paid for Commodities and Services, Interest, Taxes, and Farm Wage Rates (PPITW) is 128 percent of the 1990-92 average. The index is up 1 point from August and 3 points (2.4 percent) above September 2002. Higher prices in September for feeder cattle, gasoline, nitrogen fertilizers, and feeder pigs more than offset lower prices for complete feeds, feed concentrates, feed grains, and feed supplements.

**Index Summary Table**

Index 1990-92=100	2002		2003	
	Aug	Sep	Aug	Sep
Prices Received	100	98	109	109
Prices Paid	124	125	127	128
Ratio <sup>1</sup>	81	78	86	85

<sup>1</sup> Ratio of index of prices received by farmers to index of prices paid.

## Prices Received by Farmers

The September All Farm Products Index is 109 percent of its 1990-92 base, unchanged from the August index but 11 percent above the September 2002 index.

**ALL CROPS:** The index is 110, down 2.7 percent from August but up 0.9 percent from September 2002. From August, price increases for commercial vegetables, cotton, and tobacco were more than offset by price decreases in potatoes and dry beans, oil-bearing crops, feed grains and hay, food grains, and fruits and nuts.

**Food Grains:** The index, at 106, is down 1.9 percent from the previous month and 18 percent below September 2002. The September all wheat price, at \$3.29 per bushel, is down 5 cents from August and 92 cents below September 2002.

**Feed Grains & Hay:** The index is 98, down 3.9 percent from last month and 12 percent below September 2002. The corn price, at \$2.13 per bushel, is down 2 cents from August and 34 cents below the September 2002 price. The September corn production forecast is down 1 percent from August but up 10 percent from 2002. From August, hay, barley, sorghum, and corn prices all declined while oats remained the same.

**Oil-Bearing Crops:** The index, at 96, is down 5.0 percent from August but up 9.1 percent from September 2002. The soybean price, at \$6.04 per bushel, increased 36 cents from August and 65 cents from September 2002.

**Cotton:** The index, at 80, is up 5.3 percent from a month ago and 38 percent above September 2002. The cotton price, at 48.5 cents per pound, is up 2.2 cents from August and 13.3 cents above a year ago. Cotton production is forecast at 2 percent below last year's production.

**Potatoes & Dry Beans:** The index, at 91, is 13 percent below last month and down 12 percent from September 2002. The all potato price, at \$5.28 per cwt, is down 94 cents from the previous month and 87 cents below last September. Potato prices are declining as producers approach the height of the fall harvest season. The dry edible bean price, at \$17.20 per cwt, fell 40 cents from August and 70 cents below a year ago.

**Fruit & Nuts:** The fruit and nuts index, at 119, is down 0.8 percent from the previous month and 4.8 percent below September 2002. Price decreases in grapes, oranges, lemons, pears, and apples more than offset price increases for peaches, strawberries, and grapefruit. Increased supplies of grapes and low quality valencia oranges helped to lower the index.

**Commercial Vegetables:** The index, at 154, is up 10 percent from last month and 31 percent above September 2002. Price increases during September for lettuce, broccoli, cauliflower, and cucumbers more than offset decreases for tomatoes and onions. Rain damage and warmer than normal temperatures in California coupled with increased demand caused lettuce prices to increase.

**LIVESTOCK & PRODUCTS:** The index, at 108, is up 1.9 percent from last month and up 27 percent from September 2002. Compared with a year ago, prices are higher for all cattle, all milk, broilers, hogs, eggs, and calves, but lower for turkeys.

**Meat Animals:** The index, at 107, is up 2.9 percent from last month and 32 percent from last year. The September hog price of \$39.20 per cwt is down \$0.30 from August but up \$12.70 from a year ago. The September beef cattle price of \$84.00 is up \$4.10 from last month and up \$19.50 from September 2002.

**Dairy Products:** The index, at 107, is up 5.9 percent from August and 20 percent from September 2002. The September all milk price of \$14.00 per cwt is up \$0.80 from last month and is up \$2.40 from September 2002. The fluid grade milk price is up \$0.80 and the manufactured grade milk price is up \$0.50 from the previous month.

**Poultry & Eggs:** The index, at 112, is unchanged but 22 percent above a year ago. Market egg prices, at 63.4 cents per dozen, decreased 3.5 cents from August. The September broiler price, at 36.0 cents per pound, is unchanged from August. Broiler price strength came from high protein prices and steady supplies. The September turkey price, at 35.7 cents per pound, is up 3.5 cents from last month.

## Table of Contents

<b>U.S. Prices Received and Indexes</b>	<b>Page</b>	<b>Monthly State Prices, continued</b>	<b>Page</b>
Narrative .....	2	Cotton .....	17
Price Indexes .....	5	Cottonseed .....	17
Price Index Charts .....	6	Eggs .....	21
U.S. Prices Received Summary .....	8	Flaxseed .....	16
Charts .....	10	Fruit, Citrus .....	18
Selected Commodities .....	14	Hay .....	17
Upland Cotton & Rice Marketings ....	17	Hogs, All .....	20
Parity Prices .....	23	Barrows and Gilts .....	20
Reliability Statement .....	62	Sows .....	20
		Milk .....	22
		Oats .....	15
		Peanuts .....	16
		Potatoes .....	18
		Sheep .....	21
		Lambs .....	21
		Sorghum, Grain .....	15
		Soybeans .....	15
		Sunflowers .....	16
		Tobacco .....	16
		Wheat, All Classes .....	14
<b>Monthly State Prices Received</b>			
Apples .....	17		
Barley .....	15		
Beans, Dry Edible .....	16		
Beef Cattle, All .....	19		
Calves .....	19		
Cows, Beef .....	19		
Milk Cows .....	22		
Steers and Heifers .....	19		
Corn .....	15		
<b>Prices Received Special Features</b>			<b>Page</b>
<b>Crop Marketing Seasons</b> .....			25
<b>Monthly Prices by State and U.S.</b>			
Citrus .....			28
Potatoes .....			26
Soybeans .....			58
<b>Percent of Sales by Month, by State and U.S.</b>			
Soybeans .....			60
<b>Marketing Year Average Prices by State and U.S.</b>			
Citrus .....			49
Hops .....			56
Potatoes .....			27
Soybeans .....			56
<b>Monthly Prices Received, Monthly Farm Marketings, and Marketing Year Average Prices, United States</b>			
Corn .....			57
Sorghum .....			57

**Note:** NASS adjusted its Marketing Year Average (MYA) Price publication schedule to accommodate the 2002 Farm Security and Rural Investment Act. Final U.S. MYA prices for all commodities will be published as soon as possible after the end of the U.S. marketing year for each crop. Final State MYA prices for each crop will be published after the marketing year for all States is complete. For corn and sorghum, final State MYA prices will be published in the November 28th, 2003 *Agricultural Prices* report.

**Table of Contents (continued)**

<b>U.S. Prices Paid, Prices Paid Indexes and Ratios</b>	<b>Page</b>
Narrative .....	63
Indexes and Parity Ratios .....	64-65
Charts .....	66-68
Feed Price Ratios .....	69
Reliability Statement .....	70
 <b>U.S. Average Prices</b>	
Commodity Prices Used in Feed Price Ratios .....	69
Feeder Livestock .....	69
 <b>Information Contacts</b> .....	71

**Index Numbers of Prices Received, United States,  
September 2003, with Comparisons**

Index	1910-14=100				1990-92=100		
	Average 1990-92	2002	2003		2002	2003	
		Sep	Aug	Sep	Sep	Aug	Sep
All Farm Products	639	623	*693	694	98	*109	109
All Crops	500	537	*557	544	109	*113	110
Food Grains	325	409	*344	336	129	*108	106
Feed Grains & Hay	363	400	*363	349	112	*102	98
Cotton	517	298	*391	410	58	*76	80
Tobacco	1,263	1,574	*1,578	1,626	104	*104	107
Oil-Bearing Crops	554	483	*554	525	88	*101	96
Fruits & Nuts	716	870	*836	834	125	120	119
Commercial Vegetables	698	791	*933	1,030	118	*140	154
Potatoes & Dry Beans	540	528	*531	458	104	*105	91
Other Crops	493	558	567	567	113	115	115
Livestock & Products	768	655	*810	830	85	*106	108
Meat Animals	1,021	821	*1,061	1,087	81	*104	107
Dairy Products	799	713	*811	860	89	*101	107
Poultry & Eggs	282	258	*316	314	92	*112	112
Food Commodities					95	*110	111

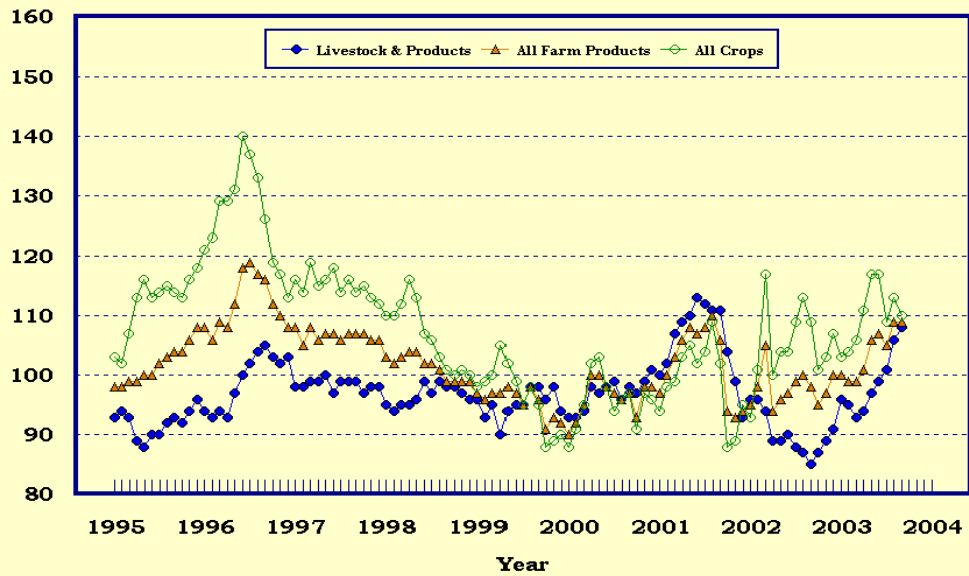
\* Revised.

**Selected Index Numbers for Prices Received and Paid,  
1990-92=100, by Months, United States, 2002 and 2003**

Month	Index of Prices Received						Index of Prices Paid			
	All Farm Products		All Crops		Livestock and Products		All Items		Production Items	
	2002	2003	2002	2003	2002	2003	2002	2003	2002	2003
Jan	95	100	93	103	96	96	122	126	117	122
Feb	98	99	101	104	96	95	122	127	117	123
Mar	105	99	117	106	94	93	123	128	118	124
Apr	94	101	100	111	89	94	123	128	118	123
May	96	106	104	117	89	97	123	127	118	123
Jun	97	107	104	117	90	99	123	128	118	123
Jul	99	105	109	109	88	101	123	127	119	123
Aug	100	109	113	113	87	106	124	127	120	123
Sep	98	109	109	110	85	108	125	128	121	124
Oct	95		101		87		125		121	
Nov	97		103		89		125		120	
Dec	100		107		91		125		121	

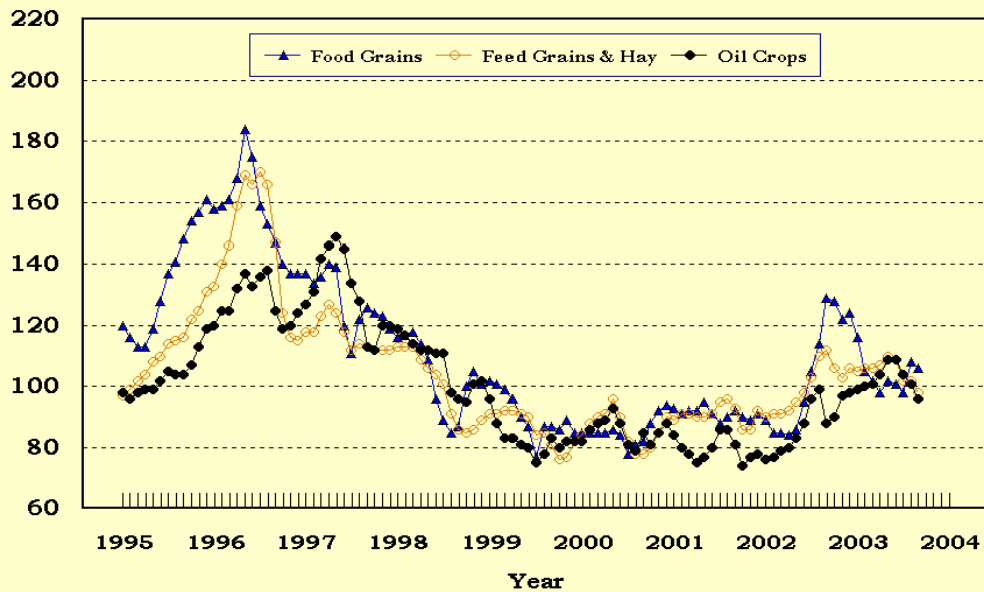
## Prices Received, Major Indexes, US

Index Values(1990-92=100)



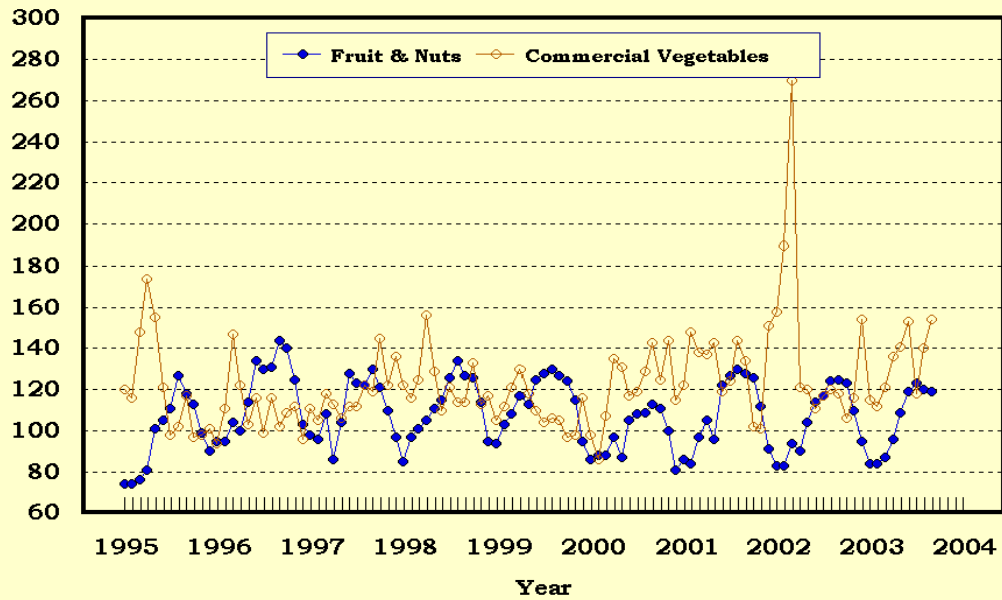
## Prices Received, Food, Feed, & Oil Indexes, US

Index Values(1990-92=100)



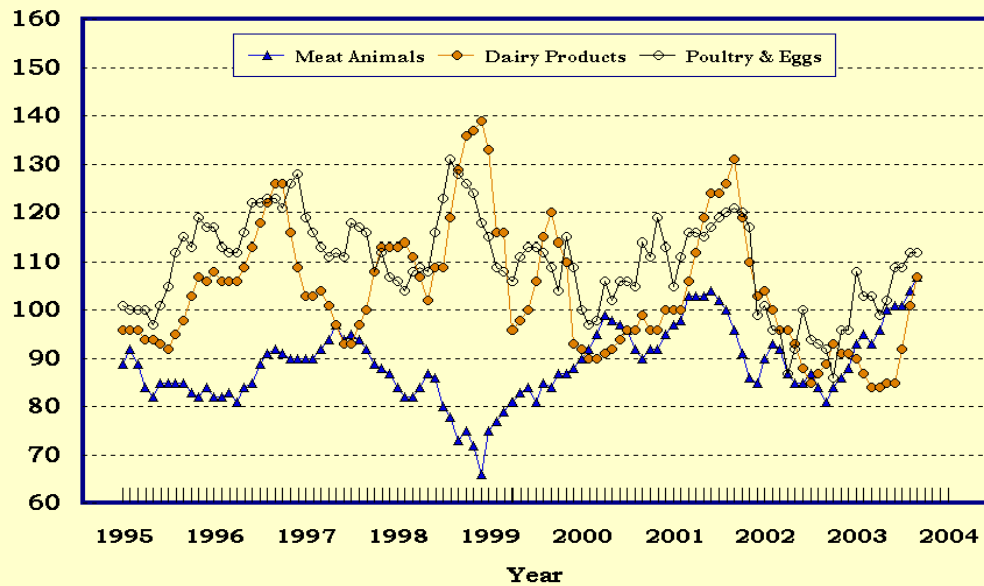
## Prices Received, Fruit/Vegetable Indexes, US

Index Values(1990-92=100)



## Prices Received, Livestock Product Indexes, US

Index Values(1990-92=100)



**Prices Received, United States,  
September 2003, with Comparisons**

Commodity	Unit	Average 1990-92	Entire Month		Preliminary
			Sep 2002	Aug 2003	Sep 2003
		<i>Dollars</i>	<i>Dollars</i>	<i>Dollars</i>	<i>Dollars</i>
<b>Field Crops</b>					
Barley, All	Bu	2.12	2.64	2.91	2.65
Feed	Bu	1.90	2.23	2.40	2.23
Malting	Bu	2.43	2.95	3.13	2.85
Beans, Dry Edible	Cwt	19.10	17.90	17.60	17.20
Chickpeas, All <sup>1</sup>	Cwt			20.40	( <sup>4</sup> )
Large <sup>1</sup>	Cwt			22.90	( <sup>4</sup> )
Small <sup>1</sup>	Cwt			( <sup>4</sup> )	( <sup>5</sup> )
Corn	Bu	2.30	2.47	2.15	2.13
Cotton, Upland	Lb	0.606	0.352	0.463	0.485
Cottonseed	Ton	96.00	95.00		100.00
Flaxseed	Bu	4.27	5.55	5.30	5.45
Hay, All, Baled <sup>2</sup>	Ton	76.30	93.00	85.30	84.20
Alfalfa <sup>2</sup>	Ton	77.20	101.00	91.00	89.00
Other <sup>2</sup>	Ton	60.00	71.40	69.10	70.10
Lentils <sup>1</sup>	Cwt			13.30	14.80
Oats	Bu	1.22	1.80	1.39	1.39
Peanuts, In-Shell	Lb	0.304	0.179	( <sup>5</sup> )	( <sup>5</sup> )
Peas, Dry Edible <sup>1</sup>	Cwt			6.79	6.48
Austrian Winter <sup>1</sup>	Cwt			12.90	( <sup>5</sup> )
Potatoes	Cwt	5.82	6.14	6.22	5.28
Rice, Rough	Cwt	7.07	3.94	5.27	5.46
Sorghum Grain	Cwt	3.75	4.30	3.93	3.83
Soybeans	Bu	5.61	5.39	5.68	6.04
Sunflowers, All	Cwt	9.50	13.10	10.90	11.40
Tobacco, Types 11-37	Lb	1.740	1.810	1.815	1.870
Wheat, All	Bu	2.96	4.21	3.34	3.29
Winter	Bu	2.93	4.15	3.28	3.25
Durum	Bu	2.86	4.18	3.78	3.54
Other Spring	Bu	3.11	4.30	3.39	3.33
Hard Red Winter	Bu		4.28	3.25	
Soft Red Winter	Bu		3.63	3.28	
Hard Red Spring	Bu		4.33	3.40	
White	Bu	3.24	4.05	3.40	
<b>Fruit</b>					
Citrus, Equiv on-tree					
Grapefruit	Box	5.77	5.23	7.23	8.07
Lemons	Box	10.10	18.43	11.10	8.35
Oranges	Box	5.79	5.33	4.27	2.80
Tangelos	Box	5.82			
Tangerines	Box	15.11			
Temples	Box	6.23			
Noncitrus, Fresh					
Apples <sup>3</sup>	Lb	0.212	0.300	0.258	0.251
Grapes <sup>3</sup>	Ton	506.00	640.00	740.00	680.00
Peaches <sup>3</sup>	Lb	0.216	0.278	0.190	0.262
Pears <sup>3</sup>	Ton	370.00	474.00	455.00	424.00
Strawberries	Lb	0.560	0.584	0.681	0.798

<sup>1</sup> Monthly estimates began July 2003.

<sup>2</sup> Mid-month price.

<sup>3</sup> Equivalent packinghouse-door returns for CA, MI, and NY (apples only), and WA (apples, peaches, and pears). Prices as sold for other states.

<sup>4</sup> Price not published to avoid disclosure of individual firms.

<sup>5</sup> Insufficient sales to establish a price.



**Prices Received, United States,  
September 2003, with Comparisons (continued)**

Commodity	Unit	Average 1990-92	Entire Month		Preliminary
			Sep 2002	Aug 2003	Sep 2003
		<i>Dollars</i>	<i>Dollars</i>	<i>Dollars</i>	<i>Dollars</i>
Vegetables, Fresh <sup>1</sup>					
Asparagus	Cwt	79.80		132.00	
Broccoli	Cwt	22.50	40.60	29.80	55.70
Cantaloupes <sup>2</sup>	Cwt		14.80	15.80	16.90
Carrots	Cwt	13.20	18.10	20.40	20.80
Cauliflower	Cwt	26.80	24.70	24.90	43.00
Celery	Cwt	11.60	11.70	11.80	13.00
Corn, Sweet	Cwt	15.70	22.50	19.00	19.50
Cucumbers <sup>2</sup>	Cwt		18.90	19.80	23.90
Lettuce	Cwt	11.90	14.30	21.50	28.10
Onions	Cwt	12.80	10.00	14.10	13.20
Snap Beans <sup>2</sup>	Cwt		70.20	58.80	60.40
Tomatoes	Cwt	32.30	23.70	49.50	32.10
Livestock					
Calves	Cwt	94.30	92.40	107.00	106.00
Cattle, All Beef	Cwt	72.90	64.50	79.90	84.00
Cows	Cwt	49.60	34.90	44.60	46.00
Steers & Heifers	Cwt	77.10	67.80	83.50	88.20
Milk Cows <sup>3</sup>	Head	1,130.00			
Hogs, All	Cwt	47.70	26.50	39.50	39.20
Barrows & Gilts	Cwt	48.40	27.10	39.90	39.70
Sows	Cwt	39.50	15.10	32.60	30.10
Lambs	Cwt	56.20	76.30	87.60	
Sheep	Cwt	23.40	24.50	28.30	
Dairy and Poultry					
Milk, All <sup>4 5</sup>	Cwt	13.06	11.60	13.20	14.00
Fluid Grade <sup>5</sup>	Cwt	13.10	11.60	13.20	14.00
Mfg Grade <sup>5</sup>	Cwt	11.80	10.40	13.20	13.70
Broilers, Live <sup>6</sup>	Lb	0.317	0.290	0.360	0.360
Eggs, All <sup>7</sup>	Doz	0.643	0.571	0.815	0.761
Market <sup>7</sup>	Doz	0.546	0.392	0.669	0.634
Turkeys, live <sup>6 7</sup>	Lb	0.380	0.372	0.322	0.357
Adjusted for Seasonal Variation					
Eggs, All	Doz	0.545	0.571	0.886	0.761
Milk, All <sup>4</sup>	Cwt	9.71	10.64	12.57	12.96

<sup>1</sup> F.O.B. shipping point.

<sup>2</sup> Monthly estimates began January 1995.

<sup>3</sup> Animals sold for dairy herd replacement only. Prices available for Jan, Apr, Jul, and Oct.

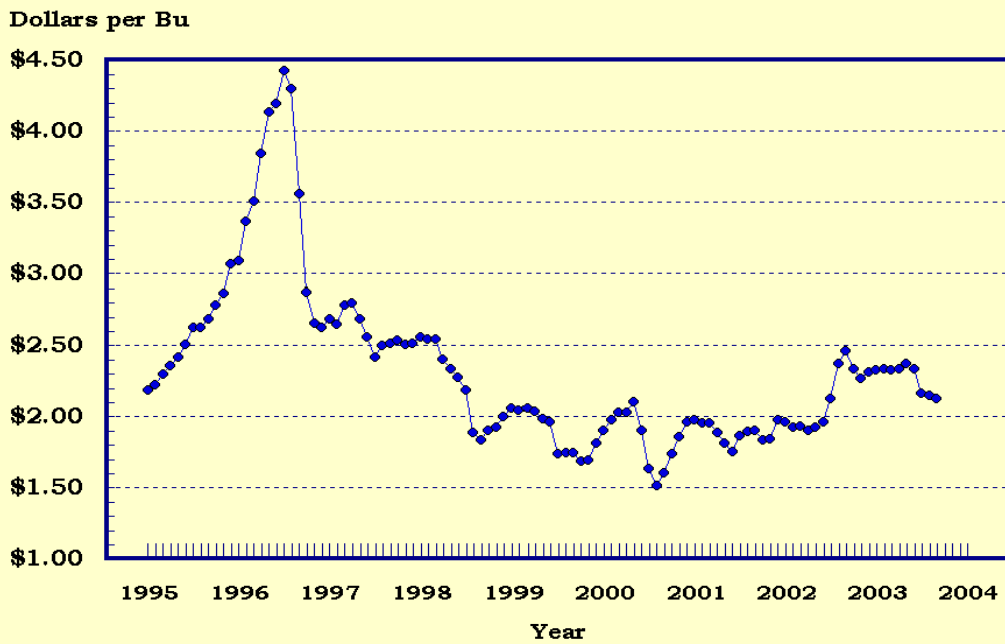
<sup>4</sup> Before deductions for hauling. Includes quality, quantity, and other premiums. Excludes hauling subsidies.

<sup>5</sup> September 2003 Fat test percent: all milk 3.61, fluid milk 3.61, mfg grade 3.72.

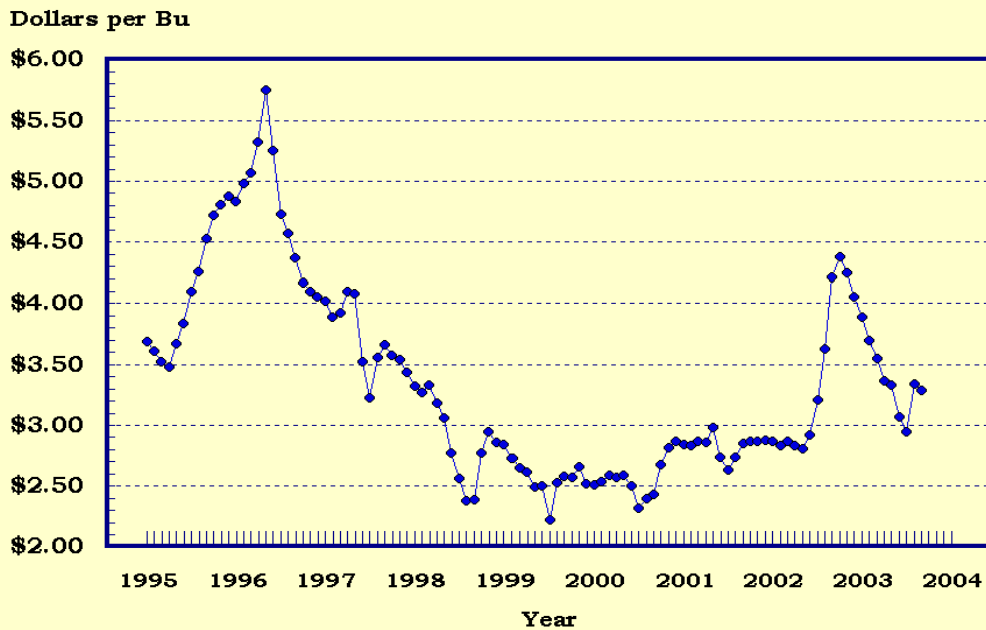
<sup>6</sup> Equivalent liveweight returns to producers for most States. Includes growers and contractors.

<sup>7</sup> Mid-month price.

### Prices Received, Corn, US

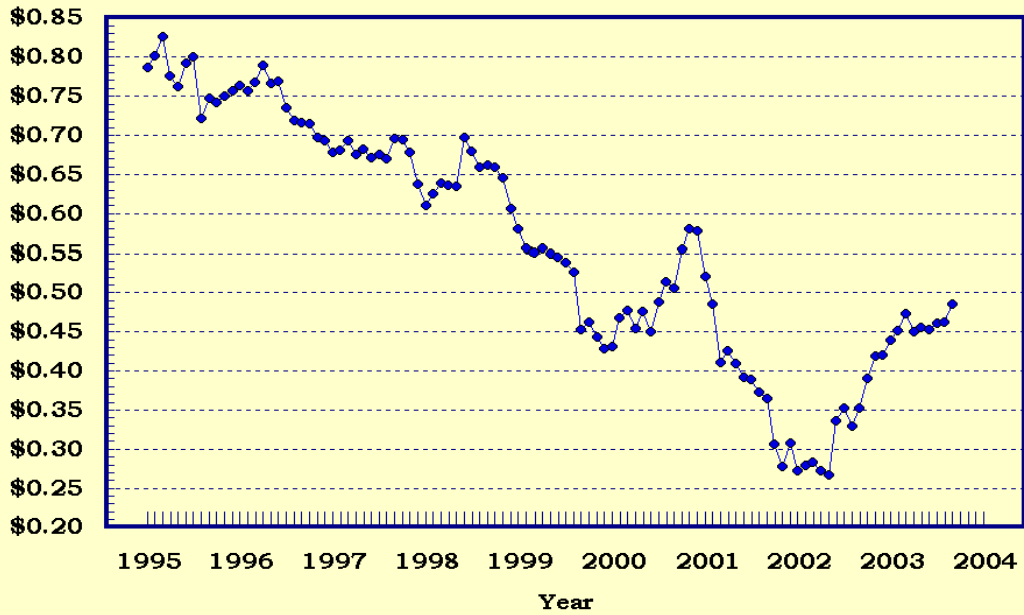


### Prices Received, Wheat, US



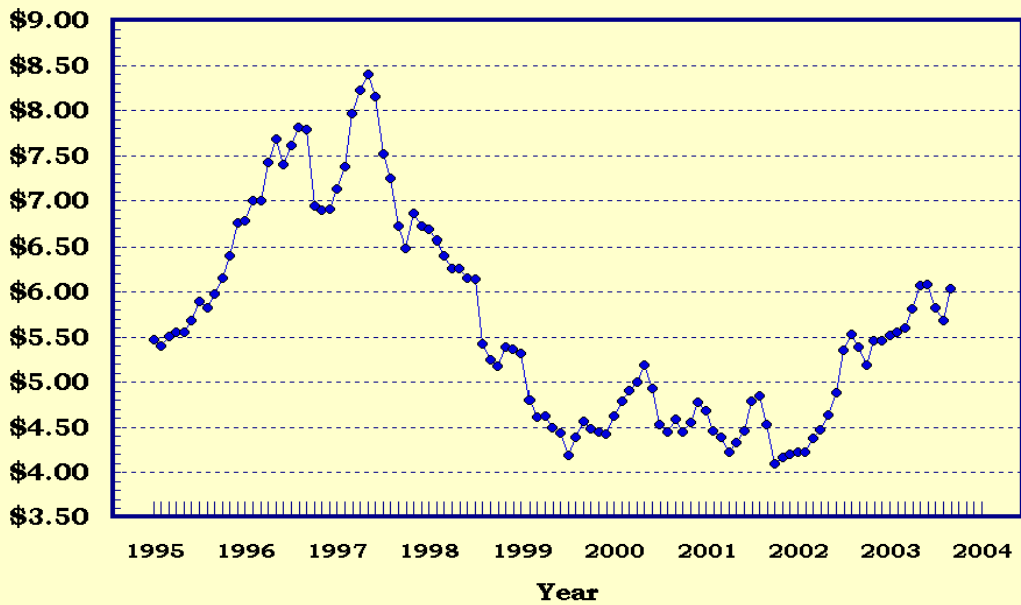
### Prices Received, Cotton, US

Dollars per Lb



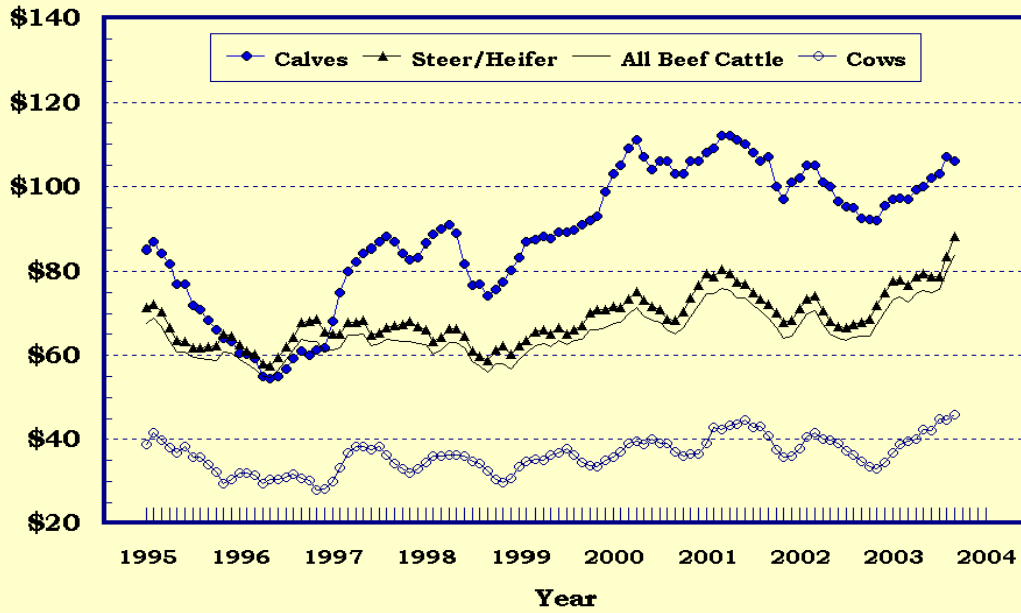
### Prices Received, Soybeans, US

Dollars per Bu



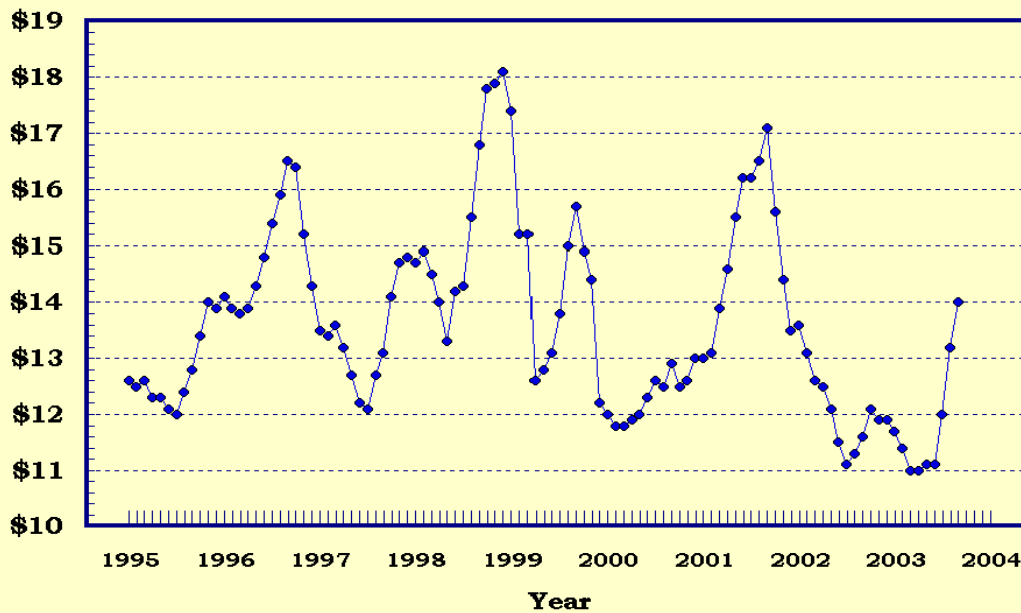
## Prices Received, Cattle, US

Dollars per Cwt



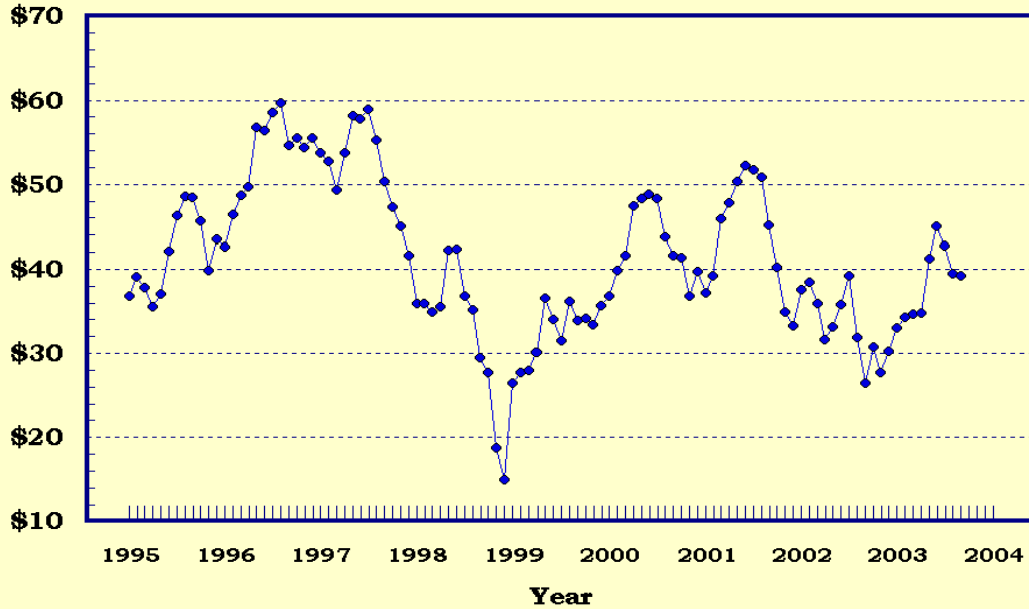
## Prices Received, Milk, US

Dollars per Cwt



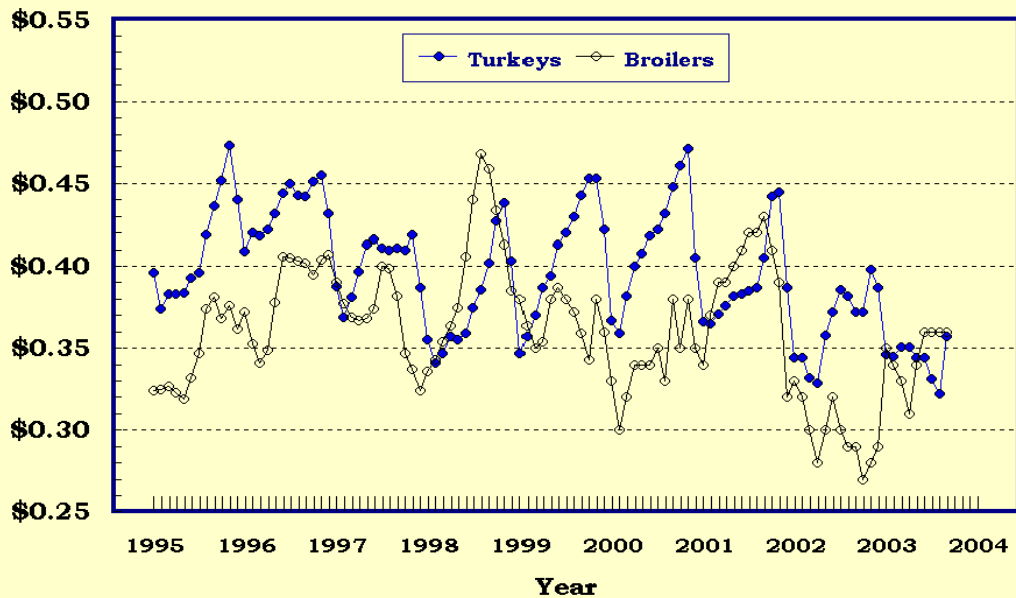
## Prices Received, Hogs, US

Dollars per Cwt



## Prices Received, Turkeys & Broilers, US

Dollars per Lb



**Wheat: Prices Received, by States, August and September 2003**

State	All Wheat		Winter Wheat		Durum Wheat		Oth Spring Wheat	
	Aug <sup>1</sup>	Sep <sup>2</sup>	Aug <sup>1</sup>	Sep <sup>2</sup>	Aug <sup>1</sup>	Sep <sup>2</sup>	Aug <sup>1</sup>	Sep <sup>2</sup>
	<i>Dollars per Bushel</i>	<i>Dollars per Bushel</i>	<i>Dollars per Bushel</i>	<i>Dollars per Bushel</i>	<i>Dollars per Bushel</i>	<i>Dollars per Bushel</i>	<i>Dollars per Bushel</i>	<i>Dollars per Bushel</i>
AR	3.33	3.28	3.33	3.28				
CA	( <sup>3</sup> )	( <sup>3</sup> )	( <sup>3</sup> )	( <sup>3</sup> )	( <sup>3</sup> )	( <sup>4</sup> )		
CO	3.14	3.07	3.14	3.07			3.86	( <sup>4</sup> )
ID	3.28	3.24	3.24	3.20			3.38	3.30
IL	3.40	3.20	3.40	3.20				
IN	3.38	3.19	3.38	3.19				
KS	3.30	3.15	3.30	3.15				
MI	3.26	3.05	3.26	3.05				
MN	3.51	3.27	3.26	3.33			3.51	3.27
MO	3.10	3.05	3.10	3.05				
MT	3.46	3.49	3.27	3.32	4.01	3.81	3.48	3.57
NE	3.12	3.10	3.12	3.10				
ND	3.40	3.25	2.88	3.00	3.73	3.45	3.35	3.20
OH	3.26	3.07	3.26	3.07				
OK	3.27	3.20	3.27	3.20				
OR	3.59	3.53	3.52	3.50			3.87	3.75
SD	3.24	3.37	3.07	3.16			3.29	3.43
TX	3.09	3.15	3.09	3.15				
WA	3.65	3.58	3.63	3.58			3.72	3.58
US	3.34	3.29	3.28	3.25	3.78	3.54	3.39	3.33

<sup>1</sup> Entire month.

<sup>2</sup> Mid-month.

<sup>3</sup> Price not published to avoid disclosure of individual firms.

<sup>4</sup> Insufficient sales to establish a price.

**Prices Received for Selected Agricultural Commodities, by Months,  
United States, 2002 and 2003 <sup>2</sup>**

Month	All Wheat		Corn		Soybeans		Beef Cattle <sup>1</sup>		All Hogs	
	2002	2003	2002	2003	2002	2003	2002	2003	2002	2003
	<i>Dollars per Bushel</i>	<i>Dollars per Bushel</i>	<i>Dollars per Bushel</i>	<i>Dollars per Bushel</i>	<i>Dollars per Bushel</i>	<i>Dollars per Bushel</i>	<i>Dollars per Cwt</i>	<i>Dollars per Cwt</i>	<i>Dollars per Cwt</i>	<i>Dollars per Cwt</i>
Jan	2.87	3.89	1.97	2.33	4.22	5.51	67.40	73.20	37.60	33.00
Feb	2.83	3.70	1.93	2.34	4.22	5.55	70.00	74.00	38.50	34.40
Mar	2.87	3.55	1.94	2.33	4.38	5.59	70.60	72.70	36.00	34.70
Apr	2.83	3.37	1.91	2.34	4.47	5.82	67.30	74.60	31.70	34.80
May	2.81	3.33	1.93	2.38	4.64	6.07	65.10	75.50	33.20	41.30
Jun	2.92	3.08	1.97	2.34	4.88	6.09	64.00	74.90	35.80	45.00
Jul	3.21	2.95	2.13	2.17	5.35	5.82	63.70	75.80	39.20	42.80
Aug	3.63	3.34	2.38	2.15	5.53	5.68	64.40	79.90	31.90	39.50
Sep	4.21	3.29	2.47	2.13	5.39	6.04	64.50	84.00	26.50	39.20
Oct	4.38		2.34		5.20		64.60		30.80	
Nov	4.25		2.28		5.46		67.30		27.80	
Dec	4.06		2.32		5.46		70.40		30.30	

<sup>1</sup> Cows, steers and heifers.

<sup>2</sup> Current month prices are mid-month; prices for previous months are for the entire month.

**Grains: Prices Received, by States, August and September 2003**

Month	All Barley <sup>1</sup>		Corn		Oats		Soybeans		Sorghum Grain	
	Aug <sup>2</sup>	Sep <sup>3</sup>	Aug <sup>2</sup>	Sep <sup>3</sup>	Aug <sup>2</sup>	Sep <sup>3</sup>	Aug <sup>2</sup>	Sep <sup>3</sup>	Aug <sup>2</sup>	Sep <sup>3</sup>
	<i>Dollars per Bushel</i>	<i>Dollars per Bushel</i>	<i>Dollars per Bushel</i>	<i>Dollars per Bushel</i>	<i>Dollars per Bushel</i>	<i>Dollars per Bushel</i>	<i>Dollars per Bushel</i>	<i>Dollars per Bushel</i>	<i>Dollars per Cwt</i>	<i>Dollars per Cwt</i>
AL							5.78	6.10	4.19	4.12
AR										
CA	2.65	( <sup>5</sup> )								
CO	3.08	3.08	2.33	2.23						
ID	3.19	3.14								
IL			2.16	2.10	1.30	( <sup>5</sup> )	5.67	6.10	3.87	4.00
IN			2.25	2.15			5.84	6.13		
IA			2.04	2.05	1.44	1.45	5.62	6.00		
KS			2.24	2.25			5.93	6.21	3.61	3.54
KY			2.32	2.20			5.79	6.15		
LA							5.81	6.09		
MI			2.23	2.20	1.53	1.50	5.91	6.20		
MN	2.29	2.33	2.03	2.02	1.25	1.23	5.62	5.85		
MS							5.73	6.06		
MO			2.28	2.15			5.75	6.20	3.47	3.55
MT	3.14	3.17			1.73	( <sup>4</sup> )				
NE			2.09	2.08	1.57	1.50	5.59	6.00	3.52	3.60
NC			2.84	2.42			5.53	6.03		
ND	2.59	2.29	2.10	2.04	1.22	1.05	5.34	5.65		
OH			2.31	2.24	1.74	1.75	5.83	6.20		
OK									3.55	3.57
OR	2.43	2.45			( <sup>4</sup> )	( <sup>4</sup> )				
PA			2.88	2.89	1.73	1.78				
SD	2.53	2.28	2.01	1.99	1.21	1.22	5.40	5.65		
TN			2.45	2.45			5.75	6.00		
TX			2.33	2.50	( <sup>5</sup> )	( <sup>4</sup> )			3.97	3.90
UT	2.25	2.19								
WA	2.74	2.42								
WI			2.15	2.20	1.31	1.30	5.66	5.80		
WY	3.46	3.48								
US	2.91	2.65	2.15	2.13	1.39	1.39	5.68	6.04	3.93	3.83

<sup>1</sup> The Three-State (MN, ND and SD) Feed Barley price for September 2003 is 1.89.

<sup>2</sup> Entire month.

<sup>3</sup> Mid-month.

<sup>4</sup> Price not published to avoid disclosure of individual firms.

<sup>5</sup> Insufficient sales to establish a price.

**Malting and Feed Barley: Prices Received Selected States,  
August and September 2003**

State	Malting Barley		Feed Barley	
	Aug <sup>1</sup>	Sep <sup>2</sup>	Aug <sup>1</sup>	Sep <sup>2</sup>
	<i>Dollars per Bushel</i>	<i>Dollars per Bushel</i>	<i>Dollars per Bushel</i>	<i>Dollars per Bushel</i>
ID	3.31	3.30	2.28	2.25
MN	( <sup>3</sup> )	( <sup>3</sup> )	2.18	2.29
MT	3.42	3.41	1.99	2.23
ND	2.77	2.40	1.83	1.85
SD	2.61	2.28	1.88	( <sup>4</sup> )
WY	( <sup>3</sup> )	( <sup>3</sup> )	1.95	2.00

<sup>1</sup> Entire month.

<sup>2</sup> Mid-month.

<sup>3</sup> Price not published to avoid disclosure of individual firms.

<sup>4</sup> Insufficient sales to establish a price.

**Field Crops: Prices Received, by States, August and September 2003**

State	Dry Edible Beans		All Sunflowers		Flaxseed		Tobacco		Peanuts <sup>4</sup>	
	Aug <sup>1</sup>	Sep <sup>2</sup>	Aug <sup>1</sup>	Sep <sup>2</sup>	Aug <sup>1</sup>	Sep <sup>2</sup>	Aug <sup>1</sup>	Sep <sup>3</sup>	Aug <sup>1</sup>	Sep <sup>3</sup>
	<i>Dollars per Cwt</i>	<i>Dollars per Cwt</i>	<i>Dollars per Cwt</i>	<i>Dollars per Cwt</i>	<i>Dollars per Bushel</i>	<i>Dollars per Bushel</i>	<i>Dollars per Pound</i>	<i>Dollars per Pound</i>	<i>Dollars per Pound</i>	<i>Dollars per Pound</i>
AL									( <sup>6</sup> )	( <sup>6</sup> )
CA	29.60	30.00								
CO	16.50	17.00								
FL							1.865	1.905	( <sup>6</sup> )	( <sup>6</sup> )
GA							1.835	1.915	( <sup>6</sup> )	( <sup>6</sup> )
ID	18.20	18.90								
IN										
KS			( <sup>5</sup> )	( <sup>5</sup> )						
KY										
MD										
MI	17.80	18.00								
MN	18.30	( <sup>5</sup> )	( <sup>5</sup> )	( <sup>5</sup> )						
MO										
NE	18.80	17.10								
NC							1.800	1.870	( <sup>6</sup> )	( <sup>6</sup> )
ND	15.30	14.80	11.50	11.30	5.30	5.45				
OH										
OK										
SC							1.795	1.875		
SD			9.20	10.20	5.20	( <sup>6</sup> )				
TN										
TX									( <sup>6</sup> )	( <sup>6</sup> )
VA							1.860	1.809	( <sup>6</sup> )	( <sup>6</sup> )
WV										
US	17.60	17.20	10.90	11.40	5.30	5.45	1.815	1.870	( <sup>6</sup> )	( <sup>6</sup> )

<sup>1</sup> Entire month.

<sup>2</sup> Mid-month.

<sup>3</sup> Based on sales through first half of month.

<sup>4</sup> In-Shell.

<sup>5</sup> Price not published to avoid disclosure of individual firms.

<sup>6</sup> Insufficient sales to establish a price.

**Tobacco: Prices Received, by Area and Type, September 2003, with Comparisons**

Class by Type	Type	Sep 2002	Aug 2003	Sep 2003 <sup>1</sup>
Dollars per Pound				
Flue-cured				
Northern Auction Area <sup>2</sup>	11-12	1.805	1.710	1.795
Northern Contract Area <sup>2</sup>	11-12	1.805	1.830	1.870
Southern Auction Area <sup>3</sup>	13-14	1.790	1.670	1.820
Southern Contract Area <sup>3</sup>	13-14	1.890	1.835	1.910
Total Flue-cured Area	11-14	1.810	1.815	1.870
US	11-37	1.810	1.815	1.870

<sup>1</sup> Based on sales during the first half of the month.

<sup>2</sup> Consists of Eastern NC Belt, Old and Middle Belts of NC and VA.

<sup>3</sup> Consists of GA-FL Belt, SC Belt, and NC Border Belt.



**Field Crops and Apples: Prices Received, by States, August and September 2003**

State	Cotton, Upland		September				Apples Fresh Use <sup>1 4</sup> <i>Dol/Lb</i>
	Aug <sup>1</sup> <i>Dollars per Pound</i>	Sep <sup>2</sup> <i>Dollars per Pound</i>	Cotton- seed <sup>5</sup> <i>Dollars per Ton</i>	Hay, Baled <sup>3</sup>			
				All <i>Dollars per Ton</i>	Alfalfa <i>Dollars per Ton</i>	Other <i>Dollars per Ton</i>	
AL	0.436	0.436	( <sup>7</sup> )				
AZ	( <sup>6</sup> )	( <sup>7</sup> )	151.00	84.00	85.00	80.00	
AR	0.447	0.444	( <sup>7</sup> )				
CA	( <sup>6</sup> )	( <sup>6</sup> )	( <sup>7</sup> )	84.00	85.00	76.00	0.226
CO				86.00	83.00	102.00	
GA	0.436	0.438	( <sup>7</sup> )				
ID				88.00	90.00	65.00	
IL				85.00	90.00	67.00	
IA				78.00	79.00	56.00	
KS				70.00	77.00	58.00	
KY				77.00	110.00	64.00	
LA	0.461	0.478	92.00				
MI				89.00	90.00	65.00	0.240
MN				66.00	73.00	52.00	
MS	0.444	0.468	93.00				
MO				67.00	104.00	52.00	
MT				75.00	76.00	71.00	
NE				56.00	56.00	52.00	
NV				92.00	89.00	128.00	
NM				137.00	140.00	116.00	
NY				119.00	150.00	100.00	0.268
NC	0.436	0.436	( <sup>7</sup> )				
ND				55.00	59.00	43.00	
OH				96.00	144.00	62.00	0.310
OK				77.00	99.00	56.00	
OR				96.00	99.00	83.00	
PA				135.00	151.00	118.00	0.208
SD				56.00	60.00	41.00	
TN	0.480	0.494	( <sup>7</sup> )				
TX	0.469	0.492	100.00	81.00	150.00	66.00	
UT				80.00	81.00	61.00	
VA							0.270
WA				95.00	90.00	130.00	0.260
WI				74.00	75.00	60.00	
WY				80.00	82.00	75.00	
US	0.463	0.485	100.00	84.20	89.00	70.10	0.251

- <sup>1</sup> Entire month.
- <sup>2</sup> Based on sales during the first half of the month.
- <sup>3</sup> Mid-month.
- <sup>4</sup> Equivalent packinghouse-door returns for CA, NY, and WA. Price at point of first sale for other States.
- <sup>5</sup> Marketing year August - February.
- <sup>6</sup> Price not published to avoid disclosure of individual firms.
- <sup>7</sup> Insufficient sales to establish a price.

**Upland Cotton and Rice: Prices Received and Marketings,  
United States, September 2003, with Comparisons**

Item	Unit	Jul 2003 <sup>1</sup>	Aug 2003 <sup>1</sup>	Sep 2003 <sup>2</sup>
Cotton, Upland Average Price Marketings <sup>3</sup>	Dollars per Pound	0.461	0.463	0.485
	1,000 Bales	273	420	NA
Rice Average Price Marketings <sup>4</sup>	Dollars per Cwt	5.09	5.27	5.46
	1,000 Cwt	13,294	9,692	NA

- <sup>1</sup> Entire month.
- <sup>2</sup> Based on purchases for the first half of the month.
- <sup>3</sup> Expanded data from sample of about 65 percent of buyers.
- <sup>4</sup> Purchases by private firms and rice (rough equivalent) shipped by cooperatives.

**Citrus Fruit: Prices and Equivalent Returns, by Utilization,  
by State and United States, September 2003**

Commodity, State and Type	F.O.B. Packed Fresh	Equivalent Returns <sup>1</sup>					
		Packinghouse-door			On-tree		
		All	Fresh	Process	All	Fresh	Process
		<i>Dollars per Box</i>	<i>Dollars per Box</i>	<i>Dollars per Box</i>	<i>Dollars per Box</i>	<i>Dollars per Box</i>	<i>Dollars per Box</i>
Grapefruit							
CA	18.60	10.34	12.22	-0.26	8.07	9.95	-2.53
US	18.60	10.34	12.22	-0.26	8.07	9.95	-2.53
Lemons							
AZ	29.90	11.58	19.80	0.20	7.23	15.45	-4.15
CA	29.20	13.21	19.10	0.20	8.86	14.75	-4.15
US	29.40	12.70	19.29	0.20	8.35	14.94	-4.15
Oranges							
CA							
Valencia	14.00	5.24	7.08	0.34	2.80	4.64	-2.10
US	14.00	5.24	7.08	0.34	2.80	4.64	-2.10

<sup>1</sup> Net lbs. per box: Grapefruit - AZ & CA-67, FL-85, TX-80; Lemons - 76; Oranges - AZ & CA-75, FL-90, TX-85; Tangelos - 90; Tangerines - AZ, CA-75, FL-95.

**Potatoes: Prices Received, by States, August and September 2003**

State	Aug	Sep	State	Aug	Sep
	<i>Dollars per Cwt</i>	<i>Dollars per Cwt</i>		<i>Dollars per Cwt</i>	<i>Dollars per Cwt</i>
AL	9.25		NC		
AZ			ND - All <sup>1</sup>		4.95
CA - All	16.60	14.20	- Fresh <sup>2</sup>		NA
- Winter			- Processing		NA
- Spring			OH	7.30	7.90
- Summer	16.60	14.20	OR	4.80	4.90
- Fall			PA	7.65	7.85
CO - All <sup>1</sup>	2.85	3.65	TX	10.90	11.40
- Fresh <sup>2</sup>	2.99	NA	VA	9.60	
FL			WA - All	5.45	4.95
ID - All <sup>1</sup>	4.80	4.90	- Processing	4.65	NA
- Fresh	5.00	NA	WI - All <sup>1</sup>	5.80	5.35
- Processing	4.70	NA	- Fresh <sup>2</sup>	6.00	NA
ME	6.15	5.45	- Processing	5.50	NA
MI	6.20	5.60			
MN	5.30	5.10	US - All <sup>1</sup>	6.22	5.28
NY	11.00	10.70	- Fresh <sup>2</sup>	9.22	NA
			- Processing	4.89	NA

<sup>1</sup> Average price of potatoes sold for all uses, including table stocks, processing, seed and livestock feed.

<sup>2</sup> Fresh market prices only, includes table stock prices.

**Cattle: Prices Received, by States, August and September 2003**

State	Cows <sup>1</sup>		Steers & Heifers		Beef Cattle <sup>4</sup>		Calves	
	Aug <sup>2</sup>	Sep <sup>3</sup>	Aug <sup>2</sup>	Sep <sup>3</sup>	Aug <sup>2</sup>	Sep <sup>3</sup>	Aug <sup>2</sup>	Sep <sup>3</sup>
	<i>Dollars per Cwt</i>	<i>Dollars per Cwt</i>	<i>Dollars per Cwt</i>	<i>Dollars per Cwt</i>	<i>Dollars per Cwt</i>	<i>Dollars per Cwt</i>	<i>Dollars per Cwt</i>	<i>Dollars per Cwt</i>
AZ	43.80	44.70	84.80	91.80	84.40	91.30	98.80	102.00
AR	40.00	40.60	86.80	89.70	62.00	71.50	93.30	98.00
CA	44.50	44.00	81.00	88.00	63.10	66.00	97.00	102.00
CO	47.80	50.40	92.80	95.10	92.30	94.70	109.00	106.00
FL	38.00	39.00	81.00	82.50	54.80	56.00	91.00	91.00
GA	41.60	43.70	79.00	82.60	54.70	56.90	96.40	99.80
ID	41.60	46.10	80.60	86.80	73.60	77.80	105.00	105.00
IL	42.00	43.00	81.80	85.00	81.00	84.20	102.00	103.00
IA	45.10	51.60	79.60	88.70	78.90	88.00	99.50	101.00
KS	45.00	45.50	82.50	87.00	82.10	86.20	111.00	113.00
KY	42.00	44.00	85.00	89.00	74.70	78.20	93.00	98.00
LA	40.70	42.00	80.50	83.00	55.40	57.20	92.60	96.00
MI	45.00	45.50	71.00	75.00	63.20	66.20	94.00	95.00
MN	50.70	51.50	77.90	79.00	71.40	72.40	97.70	99.00
MO	43.60	46.20	91.80	97.40	81.20	86.10	101.00	108.00
MT	47.50	48.80	86.60	87.60	78.00	84.10	106.00	105.00
NE	45.00	46.20	82.20	88.60	81.10	87.30	115.00	113.00
NM	45.50	47.20	90.70	93.70	72.60	75.60	103.00	106.00
ND	43.80	50.00	86.20	95.00	74.30	83.80	105.00	110.00
OH	41.00	42.00	77.90	80.00	74.20	76.20	84.30	86.00
OK	43.80	46.90	93.20	99.70	83.30	89.10	101.00	107.00
OR	44.80	44.80	85.00	87.00	72.90	74.30	94.00	95.50
PA	42.10	44.50	77.40	85.80	68.20	75.10	110.00	114.00
SD	45.30	49.10	83.40	92.10	77.30	86.90	115.00	121.00
TN	39.00	41.00	84.50	88.00	66.30	69.20	91.00	94.00
TX	40.40	43.10	81.60	87.90	78.70	84.80	106.00	106.00
VA	39.50	40.00	79.40	86.50	67.00	76.30	87.70	90.60
WI	46.70	48.10	75.20	77.30	58.70	60.40	128.00	132.00
WY	47.80	47.00	93.70	96.00	90.90	91.10	106.00	103.00
US	44.60	46.00	83.50	88.20	79.90	84.00	107.00	106.00

<sup>1</sup> Beef cows and cull dairy cows sold for slaughter.

<sup>2</sup> Entire month.

<sup>3</sup> Mid-month.

<sup>4</sup> "Cows" and "steers and heifers" combined.

**Hogs: Prices Received, by States, August and September 2003**

State	Sows		Barrows and Gilts		All Hogs	
	Aug <sup>1</sup>	Sep <sup>2</sup>	Aug <sup>1</sup>	Sep <sup>2</sup>	Aug <sup>1</sup>	Sep <sup>2</sup>
	<i>Dollars per Cwt</i>	<i>Dollars per Cwt</i>	<i>Dollars per Cwt</i>	<i>Dollars per Cwt</i>	<i>Dollars per Cwt</i>	<i>Dollars per Cwt</i>
AR	33.10	30.00	37.80	35.50	37.30	35.00
IL	31.00	28.00	43.00	41.00	42.00	40.00
IN	36.40	33.70	40.50	39.50	40.10	39.00
IA	32.70	28.10	36.30	37.10	36.20	37.00
KS	32.80	30.20	37.10	35.00	36.60	34.40
MI	33.00	31.00	40.00	38.00	39.40	37.40
MN	33.10	31.00	43.20	42.50	43.10	42.40
MO	30.60	29.10	37.10	35.10	36.40	34.60
NE	33.50	31.10	43.00	42.60	42.80	42.40
NC	33.60	30.50	42.70	42.90	42.60	42.80
OH	33.60	32.00	41.90	41.00	41.40	40.50
OK	31.30	28.90	35.20	36.00	34.70	35.10
PA	31.40	30.90	39.90	38.10	38.60	37.00
SD	33.10	31.60	44.40	42.00	42.80	40.80
TX	25.70	25.60	36.40	37.90	35.00	36.10
WI	36.60	35.00	46.00	47.70	44.80	46.00
US	32.60	30.10	39.90	39.70	39.50	39.20

<sup>1</sup> Entire month.

<sup>2</sup> Mid-month.

**Sheep and Poultry: Prices Received, by States, August and September 2003**

State	August		September
	Sheep <sup>1</sup>	Lambs <sup>1</sup>	Eggs <sup>2 3</sup>
	<i>Dollars per Cwt</i>	<i>Dollars per Cwt</i>	<i>Dollars per Dozen</i>
AL			0.630
AR			0.550
CA	29.50	83.00	0.710
CO	28.80	88.60	
CT			0.720
FL			0.660
GA			0.616
ID	28.00	82.00	
IN			0.650
IA	30.40	84.50	0.549
KS	25.00	82.00	
ME			0.830
MI			0.680
MN	23.00	82.00	0.610
MS			0.660
MO			0.540
MT	26.00	98.10	
NE	26.00	81.70	
NY			0.670
NC			0.645
ND	24.00	96.00	
OH	34.40	82.20	0.622
OR	29.00	87.00	
PA			0.700
SC			0.640
SD	27.60	98.00	
TX	35.10	88.60	0.590
UT	26.00	86.00	
WA			0.700
WY	28.10	96.20	
US	28.30	87.60	0.634

<sup>1</sup> Entire month.

<sup>2</sup> Mid-month.

<sup>3</sup> Market (table) eggs.

**Milk and Milk Cows: Prices Received, by States, August and September 2003**

State	August <sup>1</sup>						September		
	Fluid Grade Milk <sup>2</sup>		Manufacturing Grade Milk		All Milk <sup>3</sup>		All Milk <sup>3 4</sup>		Milk Cows <sup>5</sup>
	Price	Fat Test	Price	Fat Test	Price	Fat Test	Price	Fat Test	
	<i>Dol/Cwt</i>	<i>Percent</i>	<i>Dol/Cwt</i>	<i>Percent</i>	<i>Dol/Cwt</i>	<i>Percent</i>	<i>Dol/Cwt</i>	<i>Percent</i>	<i>Dol/Head</i>
AZ	13.00	3.54			13.00	3.54	14.00	3.57	
CA	12.30	3.58	13.60	3.95	12.31	3.58	12.60	3.62	
FL	15.00	3.56			15.00	3.56	17.00	3.57	
ID	12.70	3.46	14.00	3.67	12.70	3.46	13.00	3.54	
IL	14.10	3.52	14.00	3.50	14.10	3.52	14.50	3.55	
IN	12.40	3.54	12.70	3.54	12.40	3.54	13.60	3.55	
IA	13.00	3.58	13.00	3.45	13.00	3.58	14.50	3.67	
KY	13.50	3.54			13.50	3.54	15.50	3.61	
MI	13.00	3.46	11.80	3.46	13.00	3.46	14.50	3.52	
MN	14.50	3.59	12.70	3.52	14.40	3.59	15.20	3.68	
MO	12.80	3.53	13.20	3.75	12.80	3.54	14.50	3.62	
NM	12.20	3.44			12.20	3.44	13.40	3.46	
NY	13.60	3.55			13.60	3.55	14.90	3.63	
OH	13.30	3.54	12.50	3.65	13.30	3.55	14.40	3.61	
PA	13.90	3.60	13.50	3.60	13.90	3.60	14.80	3.65	
TX	13.30	3.58			13.30	3.58	14.10	3.65	
VT	13.20	3.57			13.20	3.57	14.10	3.60	
VA	14.40	3.51			14.40	3.51	15.50	3.60	
WA	12.20	3.52			12.20	3.52	13.30	3.57	
WI	14.20	3.56	13.40	3.59	14.20	3.56	14.80	3.65	
US	13.20	3.55	13.20	3.63	13.20	3.55	14.00	3.61	

<sup>1</sup> Entire month.

<sup>2</sup> Including milk diverted to manufacturing.

<sup>3</sup> Before deductions for hauling. Includes quality, quantity, and other premiums. Excludes hauling subsidies.

<sup>4</sup> Preliminary.

<sup>5</sup> Animals sold for dairy herd replacement only. Prices published January, April, July and October.

**Parity Price Equivalent for Manufacturing Milk <sup>1</sup>: United States,  
August and September 2003, with Comparisons**

Item	Unit	Sep 2002	Aug 2003	Sep 2003
Parity Equivalent	Dollars per Cwt	29.96	30.19	30.28
Average Price F.O.B <sup>2</sup>	Dollars per Cwt	10.40	13.20	13.70
Average Fat Test of Milk <sup>2</sup>	Percent	3.74	3.63	3.72

<sup>1</sup> The parity price equivalent during 2003 is 90.4 percent of the parity price of all milk sold to plants, compared with 90.5 percent in 2002. For additional details, see January 2003 issue of "Agricultural Prices".

<sup>2</sup> Preliminary for September 2003.

**United States Parity Prices for Farm Products and Average Prices Received as  
Percent of Parity Prices Based on Data for September 2003, with Comparisons <sup>1</sup>**

Commodity and Unit	Adjusted Base Prices	Parity Prices Based on Data for			Prices as Percent of Parity		
		Sep 2002	Aug 2003	Sep 2003	Sep 2002	Aug 2003	Sep 2003
	<i>Dollars</i>	<i>Dollars</i>	<i>Dollars</i>	<i>Dollars</i>	<i>Percent</i>	<i>Percent</i>	<i>Percent</i>
<b>Basic Commodities</b>							
All Wheat, Bu	0.569	9.62	9.64	9.67	44	35	34
Rice, Cwt	1.56	25.70	26.40	26.50	15	20	21
Corn, Bu	0.389	6.51	6.59	6.61	38	33	32
Cotton, Lb							
American Upland	0.100	1.64	1.69	1.70	21	27	29
Extra Long Staple	0.140	2.33	2.37	2.38			
Peanuts, Lb	0.0388	0.666	0.657	0.660	27		
Tobacco, By Type, Lb							
Flue-Cured 11-14	0.256	4.24	4.34	4.35	43	42	43
VA Fire-Cured, 21	0.259	4.27	4.39	4.40			
KY-TN Fire-Cured, 22-23	0.320	5.30	5.42	5.44			
Burley, 31	0.275	4.55	4.66	4.68			
Maryland, 32	0.218	3.65	3.69	3.71			
Dark Air-Cured, 35-36	0.276	4.48	4.68	4.69			
Sun-Cured, 37	0.243	3.97	4.12	4.13			
PA Seedleaf, 41	0.199	3.12	3.37	3.38			
Cigar Filler & Binder, 42-44, 54-55	0.221	3.62	3.74	3.76			
Puerto Rican Filler, 46	0.163	2.87	2.76	2.77			
Cigar Binder, 51-52	0.719	11.30	12.20	12.20			
<b>Designated Nonbasic</b>							
All Milk, Sold to Plants, Per Cwt <sup>2</sup>	1.97	33.10	33.40	33.50	32	38	39
Honey, Extracted, Lb <sup>3</sup>	0.0938	1.54	1.59	1.59			
<b>Wool and Mohair</b>							
Wool, Lb	0.0910	1.58	1.54	1.55			
Mohair, Lb	0.325	5.23	5.51	5.53			
<b>Other Nonbasic</b>							
Barley, Bu	0.385	6.39	6.52	6.55	41	45	40
Cottonseed, Ton	15.60	261.00	264.00	265.00	36		38
Dry Edible Beans, Cwt	2.97	48.20	50.30	50.50	37	35	34
Flaxseed, Bu	0.703	11.40	11.90	12.00	49	45	45
Oats, Bu	0.243	3.97	4.12	4.13	45	34	34
Potatoes, Cwt	0.813	13.60	13.80	13.80	45	45	38
Rye, Bu	0.343	5.66	5.81	5.83			
Sorghum Grain, Cwt	0.658	11.10	11.10	11.20	39	35	34
Soybeans Bu	0.851	14.30	14.40	14.50	38	39	42
Sweetpotatoes, Cwt	2.19	36.20	37.10	37.20			
Apples, Fresh, Lb <sup>4</sup>	0.0287	0.480	0.486	0.488	63	53	51
Citrus (equiv on-tree), Box							
Grapefruit	0.388	7.33	6.57	6.60	71	110	122
Lemons	1.10	17.90	18.60	18.70	103	60	45
Oranges	0.570	10.70	9.66	9.69	50	44	29
Tangerines	1.46	25.70	24.70	24.80			
Temples (FL)	0.463	8.75	7.84	7.87			
Beef Cattle, Cwt	9.46	159.00	160.00	161.00	41	50	52
Calves, Cwt	12.70	211.00	215.00	216.00	44	50	49
Hogs, Cwt	6.03	103.00	102.00	103.00	26	39	38
Lambs, Cwt	10.90	179.00	185.00	185.00	43	47	
Sheep, Cwt	4.65	75.90	78.80	79.10	32	36	
Eggs, Doz <sup>2</sup>	0.0933	1.55	1.58	1.59	37	56	48
Turkeys, Live, Lb	0.0579	0.967	0.981	0.984	38	33	36

--continued

**Parity Prices Based on Data for September 2003, United States <sup>1</sup> (continued)**

Other Nonbasic Commodities	Adj Base Prices	Parity Prices	Other Nonbasic Commodities	Adj Base Prices	Parity Prices
	<i>Dollars</i>	<i>Dollars</i>		<i>Dollars</i>	<i>Dollars</i>
Field Crops and Misc Commodities			Noncitrus Fruit		
Hops, Lb	0.255	4.34	Peaches, cont.		
Spearmint Oil, Lb	1.59	27.00	Processing <sup>5</sup>		
Tobacco, Lb			Excl Dried		
Type 61	2.51	42.70	Clingstone, CA, Ton	33.00	561.00
Noncitrus Fruit			Pears, Ton		
Apples, Ton <sup>6</sup>			Fresh <sup>4</sup>	51.70	879.00
Processing	18.00	306.00	Dried, CA <sup>6</sup>	161.00	2,740.00
Apricots, Ton			Plums, CA, Ton		
Fresh <sup>7</sup>	103.00	1,750.00	Fresh, Equiv on-Tree	57.20	972.00
Dried, CA	284.00	4,830.00	Prunes, Dried, CA, Ton <sup>6</sup>	132.00	2,240.00
Avocados, Ton <sup>7</sup>	218.00	3,710.00	Prunes and Plums, Excl CA, Ton		
Cherries Bbl			Fresh <sup>9</sup>	53.50	910.00
Sweet, Ton	181.00	3,080.00	Processing <sup>6</sup>	24.90	423.00
Tart, Lb	0.0229	0.389	Excl Dried		
Cranberry, Bbl <sup>5</sup>	6.23	106.00	Tree Nuts <sup>10</sup>		
Dates, CA, Ton <sup>7</sup>	161.00	2,740.00	Almonds, Lb	0.211	3.59
Grapes, Ton			Hazelnuts, Ton	124.00	2,110.00
Raisin Variety	130.00	2,210.00	Pistachio, Lb	0.160	2.72
Other Dried	68.50	1,160.00	Walnuts, Ton	181.00	3,080.00
Kiwifruit, Ton	74.00	1,260.00	Vegetables, Cwt <sup>11</sup>		
Nectarines			Fresh		
Fresh, CA, Ton <sup>7</sup>	64.10	1,090.00	Carrots <sup>8</sup>	2.11	35.90
Olives, CA			Cauliflower <sup>8</sup>	4.53	77.00
canning, Ton <sup>5</sup>	96.80	1,650.00	Celery <sup>8</sup>	2.00	34.00
Papayas (HA)	0.0508	0.864	Honeydew Melons	2.78	47.30
Peaches			Lettuce	2.47	42.00
Fresh, Lb <sup>4</sup>	0.0397	0.675	Onions <sup>8</sup>	1.66	28.20
Dried, CA, Ton	97.00	1,650.00	Tomatoes	4.31	73.30

<sup>1</sup> Parity prices are computed under the provisions of Title III, Subtitle a, Section 301 (a) of the Agricultural Adjustment Act of 1938 as amended by the Agricultural Acts of 1948, 1949, and 1956. See January "Agricultural Prices" for details on adjusted base price and parity price computations.

<sup>2</sup> Seasonally adjusted price as percentage of parity price.

<sup>3</sup> Wholesale extracted. Adjusted base price derived from state annual averages prices weighted by production. For 1982 through 1985 the national averages are the support prices.

<sup>4</sup> Equivalent packinghouse-door returns for CA, NY (apples only), OR (except peaches), and WA. Price at point of first sale for other states.

<sup>5</sup> Equivalent returns for bulk fruit at first delivery point.

<sup>6</sup> Equivalent returns at processing plant door.

<sup>7</sup> Equivalent returns at packinghouse door.

<sup>8</sup> Includes some processing.

<sup>9</sup> Based on "as sold" prices for fresh fruit in all states.

<sup>10</sup> Prices in-shell basis except almonds which are shelled basis.

<sup>11</sup> F.O.B. shipping point prices.



## Crop Marketing Seasons

**Corn for Grain:** September 1 to August 31 for U.S.; July 1 to June 30 for Texas; August 1 to July 31 for Alabama, Arkansas, Florida, Georgia, Louisiana, Mississippi, Oklahoma, South Carolina, and Tennessee; September 1 to August 31 for Arizona, California, Delaware, Illinois, Indiana, Iowa, Kansas, Kentucky, Maryland, Missouri, Nebraska, New Mexico, North Carolina, Ohio, Pennsylvania, South Dakota, Virginia, and West Virginia; October 1 to September 30 for all other States.

**Hops:** September 1 to August 31 for all States.

**Potatoes:** The marketing year extends over a 21 month period beginning in November preceding the specified crop year and extending into July the following year. November (previous year)-May for winter crop potatoes; April-August for spring crop potatoes; June-December for summer crop potatoes; July-July (following year) for fall potatoes.

**Sorghum for Grain:** September 1 to August 31 for U.S.; June 1 to May 31 for Texas; August 1 to July 31 for Alabama, Arkansas, Georgia, Louisiana, Mississippi, Oklahoma, South Carolina, and Tennessee; September 1 to August 31 for all other States.

**Soybeans:** September 1 to August 31 for U.S.; July 1 to June 30 for Texas; August 1 to July 31 for Louisiana and Mississippi; September 1 to August 31 for all other States.

**Oranges:**

Arizona	Nov 1 to Aug 31
California Navels	Nov 1 to Jun 15
California Valencias	Mar 15 to Dec 20
Florida Early & Midseason	Oct 1 to Apr 15
Florida Valencia	Feb 1 to Jul 31
Texas	Sep 25 to May 15

**Grapefruit:**

Arizona	Nov 1 to July 31
California	Nov 1 to Oct 31
Florida	Sep 10 to Jul 31
Texas	Oct 1 to May 30

**K-Early Citrus Fruit:**

Florida	Oct 1 to Nov 30
---------	-----------------

**Lemons:**

Arizona	Aug 15 to Mar 1
California	Aug 1 to Jul 31

**Limes:**

Florida	Apr 1 to Mar 31
---------	-----------------

**Tangelos:**

Florida	Oct 15 to Apr 15
---------	------------------

**Tangerines:**

Arizona	Nov 1 to Feb 1
California	Nov 1 to May 15
Florida	Oct 1 to Apr 1

**Temples:**

Florida	Dec 1 to May 1
---------	----------------

**Potatoes: Prices Received, Monthly and Marketing Year Average  
by State and U.S., 2002 <sup>1</sup>**

State	Jan	Feb	Mar	Apr	May	Jun
	<i>Dollars per Cwt</i>	<i>Dollars per Cwt</i>	<i>Dollars per Cwt</i>	<i>Dollars per Cwt</i>	<i>Dollars per Cwt</i>	<i>Dollars per Cwt</i>
AL						11.10
AK						
AZ					18.90	10.80
CA - All	17.50	18.60	15.00	25.20	24.10	18.40
Winter	20.60	23.60	28.10	34.80		
Spring					24.10	18.40
Summer						
Fall	8.20	8.40	8.40	8.60		
CO - All	9.15	9.95	10.50	9.60	11.50	13.30
Fresh	10.60	11.30	11.80	11.90	12.40	16.40
DE						
FL		25.60	31.00	10.70	10.40	11.90
ID - All	6.05	5.80	6.35	6.40	6.65	8.20
Fresh	7.40	7.60	8.20	8.10	8.90	11.00
Processing	5.20	5.00	5.10	5.20	5.20	5.50
IL						
IN						
KS						
ME	7.75	8.30	8.65	9.45	8.05	7.80
MD						
MA						
MI	7.80	8.25	9.20	9.40	9.15	10.00
MN	5.40	5.15	5.45	5.70	5.30	4.20
MO						
MT						
NE						
NV						
NJ						
NM						
NY	9.40	9.30	9.40	9.10		
NC						8.40
ND - All	6.10	5.95	6.50	6.80	6.85	5.10
Fresh	8.00	8.25	9.50	11.90	11.80	11.80
Processing	5.20	5.00	4.80	5.00	4.75	4.75
OH	8.05	8.95	9.50	9.00		
OR	7.15	6.20	8.05	8.50	8.00	8.10
PA	9.75	8.85	11.70	12.60	12.90	
RI						
SD						
TX					8.25	8.00
UT						
VA						10.30
WA - All	6.75	6.20	7.00	7.45	6.70	7.10
Processing	4.90	5.10	5.45	5.45	5.45	5.70
WI - All	7.35	8.15	7.85	9.10	8.65	7.65
Fresh	9.55	10.10	10.00	9.00	10.80	10.80
Processing	5.90	6.60	4.70	6.60	4.75	4.50
US - All	7.31	7.31	8.22	7.97	8.63	9.45
Fresh	10.40	11.50	13.10	12.00	14.70	16.30
Processing	5.47	5.34	5.40	5.71	6.03	5.92

See footnote(s) at end of table.

--continued

**Potatoes: Prices Received, Monthly and Marketing Year Average  
by State and U.S., 2002 <sup>1</sup> (continued)**

State	Jul	Aug	Sep	Oct	Nov	Dec	MYA
	<i>Dollars per Cwt</i>	<i>Dollars per Cwt</i>	<i>Dollars per Cwt</i>	<i>Dollars per Cwt</i>	<i>Dollars per Cwt</i>	<i>Dollars per Cwt</i>	<i>Dollars per Cwt</i>
AL	11.70	15.80					11.60
AK							20.00
AZ	9.65						13.40
CA - All	18.80	18.80	20.50	9.95	20.10	20.30	17.50
Winter					29.80	28.70	24.00
Spring	19.00						19.80
Summer	17.90	18.80	20.50				19.10
Fall				9.95	9.65	8.70	8.45
CO - All	15.00	10.80	7.50	6.50	7.25	7.15	6.40
Fresh	16.40	15.50	8.75	7.40	7.90	7.75	6.90
DE							10.00
FL							14.00
ID - All	8.75	7.05	5.40	5.15	5.35	5.10	5.00
Fresh	12.00	11.40	7.40	6.00	6.10	5.40	5.10
Processing	5.60	5.20	4.70	4.80	5.00	4.90	4.60
IL							5.80
IN							5.85
KS							8.25
ME	7.80	5.75	5.45	5.60	6.65	6.95	7.05
MD							9.30
MA							7.30
MI	9.70	7.20	6.50	6.40	7.05	7.40	7.80
MN	4.00	8.65	7.35	6.75	8.10	5.65	6.15
MO							6.50
MT							8.25
NE							6.10
NV							5.00
NJ							8.20
NM							6.55
NY		15.20	15.00	11.80	10.80	10.20	11.80
NC	8.20						8.35
ND - All		4.80	5.45	6.35	6.30	6.75	6.25
Fresh			11.20	10.30	8.90	9.60	8.65
Processing		4.80	4.75	4.85	4.85	4.35	5.15
OH	22.50	12.60	8.55	7.20	7.10	7.40	10.30
OR	8.15	5.35	5.55	4.70	5.25	5.60	5.65
PA		7.60	8.45	8.90	9.20	9.40	9.15
RI							7.75
SD							10.50
TX	12.30	12.00	13.00				10.70
UT							10.00
VA	14.10	4.50					12.70
WA - All	3.75	6.10	5.10	4.70	5.05	6.00	5.55
Processing	5.85	4.35	4.15	4.50	4.55	5.35	4.90
WI - All	8.90	8.90	5.50	6.25	7.35	6.85	6.90
Fresh	11.80	13.10	8.55	7.75	8.10	7.20	7.60
Processing	5.40	5.85	4.35	5.35	6.40	6.40	6.05
US - All	10.80	7.55	6.14	5.44	6.38	6.67	6.69
Fresh	16.70	15.30	10.80	7.99	8.83	8.65	9.23
Processing	6.12	4.97	4.88	4.91	5.22	5.52	5.23

<sup>1</sup> State Marketing Year Average Prices are computed by weighting state monthly prices by estimated sales for the month during the crop year. U.S. Marketing Year Average Price is computed by weighting state Marketing Year Average Prices by estimated sales for the crop year. Monthly prices refer to all potatoes sold in a given month regardless of the year harvested.

**Oranges: Average Prices and Equivalent Returns, United States  
September 2000 - August 2003**

State, Month, and Year	F.O.B. Packed	Equiv. P.H.D.			Equiv. On-Tree		
		All	Fresh	Proc.	All	Fresh	Proc.
US							
All Oranges							
	<i>Dollars per box</i>	<i>Dollars per box</i>	<i>Dollars per box</i>	<i>Dollars per box</i>	<i>Dollars per box</i>	<i>Dollars per box</i>	<i>Dollars per box</i>
Sep 2000	12.60	2.57	6.12	-0.13	0.29	3.85	-2.43
Oct	14.00	3.62	6.83	1.05	1.43	4.65	-1.14
Nov	16.60	5.20	9.23	4.25	3.20	7.03	2.30
Dec	15.60	4.95	8.24	4.31	2.95	6.03	2.36
Jan 2001	15.60	4.83	8.36	4.37	2.85	6.13	2.42
Feb	16.40	5.20	9.23	4.41	3.20	6.98	2.46
Mar	18.50	7.01	11.47	5.15	4.93	9.21	3.15
Apr	19.60	6.88	12.55	5.93	4.84	10.29	3.92
May	18.60	6.67	11.56	6.01	4.64	9.28	4.01
Jun	16.90	6.52	10.02	5.93	4.47	7.73	3.92
Jul	15.30	6.97	8.66	0.76	4.63	6.32	-1.58
Aug	15.60	7.35	8.96	0.76	5.01	6.62	-1.58
Sep	17.40	8.54	10.76	0.76	6.20	8.42	-1.58
Oct	16.50	7.42	9.32	1.65	5.21	7.11	-0.58
Nov	19.50	5.59	11.97	4.58	3.52	9.78	2.53
Dec	19.40	5.75	12.01	4.66	3.67	9.78	2.61
Jan 2002	20.20	5.94	12.86	4.80	3.86	10.60	2.75
Feb	20.10	6.16	12.77	4.81	4.07	10.48	2.75
Mar	19.10	7.13	11.88	5.93	4.99	9.57	3.83
Apr	19.50	6.92	12.34	6.06	4.78	10.01	3.95
May	17.30	6.68	10.31	6.19	4.55	7.98	4.09
Jun	14.70	6.36	7.82	6.05	4.20	5.47	3.94
Jul	14.30	6.49	7.49	0.74	4.10	5.10	-1.65
Aug	15.40	7.67	8.62	0.74	5.28	6.23	-1.65
Sep	15.50	7.72	8.72	0.74	5.33	6.33	-1.65
Oct	16.80	7.41	9.59	3.14	5.18	7.36	0.93
Nov	18.30	5.32	10.82	4.36	3.11	8.57	2.16
Dec	17.00	5.45	9.62	4.67	3.23	7.33	2.47
Jan 2003	14.80	5.21	7.34	4.88	3.00	5.04	2.68
Feb	13.90	5.38	6.57	5.01	3.14	4.22	2.80
Mar	16.00	6.42	8.66	5.71	4.17	6.29	3.49
Apr	17.20	6.67	10.07	5.95	4.43	7.69	3.74
May	17.30	6.68	10.14	5.93	4.43	7.76	3.72
Jun	16.40	6.69	9.38	5.41	4.41	6.97	3.20
Jul	14.70	6.35	7.71	0.73	3.91	5.27	-1.70
Aug	15.00	6.71	8.08	0.78	4.27	5.64	-1.66

**Oranges: Average Prices and Equivalent Returns, Arizona  
November 2000 - June 2003**

State, Month, and Year	F.O.B. Packed	Equiv. P.H.D.			Equiv. On-Tree		
		All	Fresh	Proc.	All	Fresh	Proc.
<b>AZ</b>							
<b>All Oranges</b>							
	<i>Dollars per box</i>	<i>Dollars per box</i>	<i>Dollars per box</i>	<i>Dollars per box</i>	<i>Dollars per box</i>	<i>Dollars per box</i>	<i>Dollars per box</i>
Nov	17.70	7.35	10.74	-0.14	5.04	8.43	-2.45
Dec	17.10	6.94	10.14	-0.14	4.63	7.83	-2.45
Jan 2001	17.00	7.04	10.04	-0.14	4.73	7.73	-2.45
Feb	16.80	5.01	9.84	-0.14	2.70	7.53	-2.45
Mar	14.20	7.27	7.51	-0.17	4.93	5.17	-2.50
Apr	12.50	5.86	5.86		3.52	3.52	
May	10.20	3.56	3.56		1.22	1.22	
Jun	9.88	3.24	3.24		0.90	0.90	
Nov	24.70	15.06	17.60	-0.15	12.71	15.25	-2.50
Dec	24.40	12.17	17.30	-0.15	9.82	14.95	-2.50
Jan 2002	24.40	14.36	17.30	-0.15	12.01	14.95	-2.50
Feb	21.60	11.57	14.50	-0.15	9.22	12.15	-2.50
Mar	18.90	10.58	11.96	-0.15	8.21	9.58	-2.50
Apr	10.20	3.42	3.42		1.03	1.03	
May	9.50	2.70	2.70		0.31	0.31	
Jun	9.42	2.64	2.64		0.25	0.25	
Jul	5.60	-1.18	-1.18		-3.57	-3.57	
Nov	20.40	10.27	13.30	0.42	7.93	10.95	-1.89
Dec	17.50	7.65	10.40	0.42	5.31	8.05	-1.89
Jan 2003	13.70	4.87	6.60	0.42	2.53	4.25	-1.89
Feb							
Mar	15.80	8.88	8.88		6.44	6.44	
Apr	9.70	2.73	2.73		0.29	0.29	
May	9.00	1.76	2.12	0.34	-0.68	-0.32	-2.10
Jun	4.80	-2.12	-2.12		-4.56	-4.56	
<b>AZ</b>							
<b>Navel and Miscellaneous</b>							
Nov	17.70	7.35	10.74	-0.14	5.04	8.43	-2.45
Dec	17.10	6.94	10.14	-0.14	4.63	7.83	-2.45
Jan 2001	17.00	7.04	10.04	-0.14	4.73	7.73	-2.45
Feb	16.80	5.01	9.84	-0.14	2.70	7.53	-2.45
Mar	15.30	6.93	8.34	-0.14	4.62	6.03	-2.45
Nov	24.70	15.06	17.60	-0.15	12.71	15.25	-2.50
Dec	24.40	12.17	17.30	-0.15	9.82	14.95	-2.50
Jan 2002	24.40	14.36	17.30	-0.15	12.01	14.95	-2.50
Feb	21.60	11.57	14.50	-0.15	9.22	12.15	-2.50
Mar	20.40	10.10	13.30	-0.15	7.75	10.95	-2.50
Nov	20.40	10.27	13.30	0.42	7.93	10.95	-1.89
Dec	17.50	7.65	10.40	0.42	5.31	8.05	-1.89
Jan 2003	13.70	4.87	6.60	0.42	2.53	4.25	-1.89

**Oranges: Average Prices and Equivalent Returns, Arizona and California  
September 2000 - August 2003**

State, Month, and Year		Equiv. P.H.D.			Equiv. On-Tree			
	F.O.B. Packed	All	Fresh	Proc.	All	Fresh	Proc.	
AZ		Valencias						
	<i>Dollars per box</i>	<i>Dollars per box</i>	<i>Dollars per box</i>	<i>Dollars per box</i>	<i>Dollars per box</i>	<i>Dollars per box</i>	<i>Dollars per box</i>	
Mar 2001	14.10	7.29	7.46	-0.18	4.95	5.12	-2.52	
Apr	12.50	5.86	5.86		3.52	3.52		
May	10.20	3.56	3.56		1.22	1.22		
Jun	9.88	3.24	3.24		0.90	0.90		
Mar 2002	17.80	11.02	11.02		8.63	8.63		
Apr	10.20	3.42	3.42		1.03	1.03		
May	9.48	2.70	2.70		0.31	0.31		
Jun	9.42	2.64	2.64		0.25	0.25		
Jul	5.60	-1.18	-1.18		-3.57	-3.57		
Mar 2003	15.80	8.88	8.88		6.44	6.44		
Apr	9.65	2.73	2.73		0.29	0.29		
May	9.04	1.76	2.12	0.34	-0.68	-0.32	-2.10	
Jun	4.80	-2.12	-2.12		-4.56	-4.56		
CA		All Oranges						
Sep 2000	12.70	2.59	6.19	-0.13	0.29	3.89	-2.43	
Oct	12.60	2.23	6.01	-0.13	-0.07	3.71	-2.43	
Nov	18.00	9.32	11.04	-0.14	7.01	8.73	-2.45	
Dec	16.90	8.82	9.94	-0.14	6.51	7.63	-2.45	
Jan 2001	16.50	8.61	9.54	-0.14	6.30	7.23	-2.45	
Feb	17.00	8.92	10.07	-0.14	6.61	7.76	-2.45	
Mar	19.40	10.62	12.52	-0.11	8.31	10.21	-2.42	
Apr	21.30	11.92	14.41	-0.01	9.60	12.09	-2.32	
May	20.20	11.57	13.44	0.34	9.24	11.11	-1.98	
Jun	16.70	8.40	10.10	0.76	6.06	7.76	-1.58	
Jul	15.30	6.97	8.66	0.76	4.63	6.32	-1.58	
Aug	15.60	7.35	8.96	0.76	5.01	6.62	-1.58	
Sep	17.40	8.54	10.76	0.76	6.20	8.42	-1.58	
Oct	16.30	7.23	9.66	0.76	4.89	7.32	-1.58	
Nov	26.50	17.45	19.40	-0.15	15.10	17.05	-2.50	
Dec	23.30	14.34	16.20	-0.15	11.99	13.85	-2.50	
Jan 2002	22.20	14.05	15.10	-0.15	11.70	12.75	-2.50	
Feb	21.00	12.36	13.87	-0.08	10.00	11.51	-2.43	
Mar	19.80	10.66	12.74	-0.02	8.31	10.39	-2.38	
Apr	20.40	10.70	13.36	0.10	8.34	11.00	-2.26	
May	18.10	9.45	11.23	0.52	7.07	8.86	-1.86	
Jun	14.60	6.53	7.82	0.74	4.14	5.43	-1.65	
Jul	14.30	6.52	7.52	0.74	4.13	5.13	-1.65	
Aug	15.40	7.67	8.62	0.74	5.28	6.23	-1.65	
Sep	15.50	7.72	8.72	0.74	5.33	6.33	-1.65	
Oct	15.80	7.78	9.02	0.74	5.39	6.63	-1.65	
Nov	20.70	11.95	13.46	0.40	9.54	11.05	-2.01	
Dec	17.90	9.84	10.66	0.40	7.43	8.25	-2.01	
Jan 2003	15.30	6.91	8.06	0.40	4.50	5.65	-2.01	
Feb	13.90	5.50	6.68	0.40	3.08	4.27	-2.01	
Mar	16.10	7.07	8.89	0.42	4.66	6.48	-1.99	
Apr	17.90	8.80	10.80	0.44	6.38	8.38	-1.97	
May	17.90	9.06	10.83	0.50	6.64	8.41	-1.92	
Jun	16.00	7.81	9.06	0.59	5.38	6.63	-1.84	
Jul	14.70	6.35	7.71	0.73	3.91	5.27	-1.70	
Aug	15.00	6.71	8.08	0.78	4.27	5.64	-1.66	

**Oranges: Average Prices and Equivalent Returns, California  
October 2000 - August 2003**

State, Month, and Year	Equiv. P.H.D.			Equiv. On-Tree			
	F.O.B. Packed	All	Fresh	Proc.	All	Fresh	Proc.
CA	Navels and Miscellaneous						
	<i>Dollars per box</i>	<i>Dollars per box</i>	<i>Dollars per box</i>	<i>Dollars per box</i>	<i>Dollars per box</i>	<i>Dollars per box</i>	<i>Dollars per box</i>
Oct 2000							
Nov	18.00	9.32	11.04	-0.14	7.01	8.73	-2.45
Dec	16.90	8.82	9.94	-0.14	6.51	7.63	-2.45
Jan 2001							
Feb	17.00	8.87	10.04	-0.14	6.56	7.73	-2.45
Mar	19.60	10.60	12.64	-0.14	8.29	10.33	-2.45
Apr	22.20	12.23	15.24	-0.14	9.92	12.93	-2.45
May	24.30	14.26	17.34	-0.14	11.95	15.03	-2.45
Jun	25.80	18.84	18.84		16.53	16.53	
Nov	26.50	17.45	19.40	-0.15	15.10	17.05	-2.50
Dec	23.30	14.34	16.20	-0.15	11.99	13.85	-2.50
Jan 2002							
Feb	20.90	12.33	13.80	-0.15	9.98	11.45	-2.50
Mar	20.00	10.81	12.90	-0.15	8.46	10.55	-2.50
Apr	21.60	11.68	14.50	-0.15	9.33	12.15	-2.50
May	24.20	14.64	17.10	-0.15	12.29	14.75	-2.50
Nov	20.70	11.95	13.46	0.40	9.54	11.05	-2.01
Dec	17.90	9.84	10.66	0.40	7.43	8.25	-2.01
Jan 2003							
Feb	13.80	5.36	6.56	0.40	2.95	4.15	-2.01
Mar	16.00	6.77	8.76	0.40	4.36	6.35	-2.01
Apr	18.20	8.56	10.96	0.40	6.15	8.55	-2.01
May	19.60	9.67	12.36	0.40	7.26	9.95	-2.01
Jun	22.40	10.62	15.16	0.40	8.21	12.75	-2.01
Jul	20.10	8.71	12.86	0.40	6.30	10.45	-2.01
CA	Valencias						
Feb 2001	17.70	11.06	11.06		8.72	8.72	
Mar	18.10	10.83	11.46	0.76	8.49	9.12	-1.58
Apr	18.80	10.98	12.16	0.76	8.64	9.82	-1.58
May	17.90	9.97	11.26	0.76	7.63	8.92	-1.58
Jun	16.40	8.07	9.76	0.76	5.73	7.42	-1.58
Jul	15.30	6.97	8.66	0.76	4.63	6.32	-1.58
Aug	15.60	7.35	8.96	0.76	5.01	6.62	-1.58
Sep	17.40	8.54	10.76	0.76	6.20	8.42	-1.58
Oct	16.30	7.23	9.66	0.76	4.89	7.32	-1.58
Feb 2002							
Mar	18.40	9.64	11.62	0.74	7.25	9.23	-1.65
Apr	16.70	7.88	9.92	0.74	5.49	7.53	-1.65
May	15.50	7.31	8.72	0.74	4.92	6.33	-1.65
Jun	14.60	6.53	7.82	0.74	4.14	5.43	-1.65
Jul	14.30	6.52	7.52	0.74	4.13	5.13	-1.65
Aug	15.40	7.67	8.62	0.74	5.28	6.23	-1.65
Sep	15.50	7.72	8.72	0.74	5.33	6.33	-1.65
Oct	15.80	7.78	9.02	0.74	5.39	6.63	-1.65
Feb 2003							
Mar	16.50	8.90	9.58	0.78	6.46	7.14	-1.66
Apr	17.30	9.51	10.38	0.78	7.07	7.94	-1.66
May	16.00	8.25	9.08	0.78	5.81	6.64	-1.66
Jun	14.50	6.92	7.58	0.78	4.48	5.14	-1.66
Jul	14.30	6.16	7.38	0.78	3.72	4.94	-1.66
Aug	15.00	6.71	8.08	0.78	4.27	5.64	-1.66

**Oranges: Average Prices and Equivalent Returns, Florida  
October 2000 - June 2003**

State, Month, and Year	F.O.B. Packed	Equiv. P.H.D.			Equiv. On-Tree		
		All	Fresh	Proc.	All	Fresh	Proc.
FL	All Oranges						
	<i>Dollars per box</i>	<i>Dollars per box</i>	<i>Dollars per box</i>	<i>Dollars per box</i>	<i>Dollars per box</i>	<i>Dollars per box</i>	<i>Dollars per box</i>
Oct 2000	15.70	6.16	7.90	4.13	4.13	5.80	2.18
Nov	14.20	4.54	6.40	4.39	2.58	4.30	2.44
Dec	13.10	4.45	5.30	4.40	2.50	3.20	2.45
Jan 2001	12.80	4.45	5.00	4.44	2.50	2.90	2.49
Feb	14.40	4.59	6.63	4.53	2.64	4.53	2.58
Mar	14.00	5.56	6.15	5.53	3.57	4.05	3.54
Apr	13.50	6.09	5.70	6.10	4.09	3.60	4.10
May	14.00	6.11	6.20	6.11	4.11	4.10	4.11
Jun	18.00	6.23	10.20	6.08	4.23	8.10	4.08
Oct	16.00	7.58	8.40	4.40	5.45	6.25	2.35
Nov	14.90	4.84	7.30	4.62	2.78	5.15	2.57
Dec	13.70	4.81	6.10	4.73	2.76	3.95	2.68
Jan 2002	14.10	4.90	6.50	4.85	2.85	4.35	2.80
Feb	14.20	4.95	6.60	4.92	2.90	4.45	2.87
Mar	15.20	6.24	7.57	6.19	4.15	5.42	4.10
Apr	14.00	6.27	6.40	6.27	4.17	4.25	4.17
May	14.80	6.34	7.20	6.32	4.24	5.05	4.22
Jun	16.10	6.34	8.50	6.26	4.24	6.35	4.16
Oct	17.70	7.14	10.20	3.63	4.97	8.05	1.43
Nov	15.60	4.67	8.10	4.41	2.48	5.95	2.21
Dec	15.60	4.92	8.10	4.72	2.73	5.95	2.52
Jan 2003	13.50	5.01	6.00	4.98	2.81	3.85	2.78
Feb	14.00	5.36	6.50	5.32	3.17	4.33	3.12
Mar	15.10	6.20	7.60	6.15	4.00	5.40	3.95
Apr	13.50	6.19	6.00	6.20	3.99	3.80	4.00
May	13.50	6.15	6.00	6.15	3.95	3.80	3.95
Jun	20.00	6.12	12.50	5.80	3.92	10.30	3.60
FL	Early and Midseason						
Oct 2000	15.70	5.90	7.90	3.57	3.87	5.80	1.62
Nov	14.20	3.91	6.40	3.71	1.95	4.30	1.76
Dec	13.10	3.91	5.30	3.82	1.95	3.20	1.87
Jan 2001	12.80	3.97	5.00	3.94	2.01	2.90	1.99
Feb	14.40	4.19	6.60	4.14	2.24	4.50	2.19
Mar	13.00	4.31	5.20	4.30	2.36	3.10	2.35
Oct	16.00	7.58	8.40	4.40	5.45	6.25	2.35
Nov	14.90	4.84	7.30	4.62	2.78	5.15	2.57
Dec	13.70	4.81	6.10	4.73	2.76	3.95	2.68
Jan 2002	14.10	4.90	6.50	4.85	2.85	4.35	2.80
Feb	14.20	4.95	6.60	4.92	2.90	4.45	2.87
Mar	13.10	6.19	5.50	6.19	4.14	3.35	4.14
Oct	17.70	7.14	10.20	3.63	4.97	8.05	1.43
Nov	15.60	4.67	8.10	4.41	2.48	5.95	2.21
Dec	15.60	4.92	8.10	4.72	2.73	5.95	2.52
Jan 2003	13.50	5.01	6.00	4.98	2.81	3.85	2.78
Feb	13.40	5.30	5.90	5.28	3.10	3.75	3.08



**Oranges: Average Prices and Equivalent Returns, Florida  
February 2001 - June 2003**

State, Month, and Year	F.O.B. Packed	Equiv. P.H.D.			Equiv. On-Tree		
		All	Fresh	Proc.	All	Fresh	Proc.
FL	Valencias						
	<i>Dollars per box</i>	<i>Dollars per box</i>	<i>Dollars per box</i>	<i>Dollars per box</i>	<i>Dollars per box</i>	<i>Dollars per box</i>	<i>Dollars per box</i>
Feb 2001	14.50	4.87	6.70	4.54	2.85	4.60	2.54
Mar	14.00	5.57	6.20	5.53	3.56	4.10	3.53
Apr	13.50	6.09	5.70	6.10	4.09	3.60	4.10
May	14.00	6.11	6.20	6.11	4.11	4.10	4.11
Jun	18.00	6.23	10.20	6.08	4.23	8.10	4.08
Feb 2002							
Mar	15.20	6.25	7.60	6.19	4.15	5.45	4.09
Apr	14.00	6.27	6.40	6.27	4.17	4.25	4.17
May	14.80	6.34	7.20	6.32	4.24	5.05	4.22
Jun	16.10	6.34	8.50	6.26	4.24	6.35	4.16
Feb 2003							
Mar	15.00	5.67	7.50	5.50	3.47	5.30	3.30
Apr	15.10	6.20	7.60	6.15	4.00	5.40	3.95
May	13.50	6.19	6.00	6.20	3.99	3.80	4.00
Jun	13.50	6.15	6.00	6.15	3.95	3.80	3.95
	20.00	6.12	12.50	5.80	3.92	10.30	3.60

**Oranges: Average Prices and Equivalent Returns, Texas  
October 2000 - May 2003**

State, Month, and Year	F.O.B. Packed	Equiv. P.H.D.			Equiv. On-Tree		
		All	Fresh	Proc.	All	Fresh	Proc.
TX							
	All Oranges						
	<i>Dollars per box</i>	<i>Dollars per box</i>	<i>Dollars per box</i>	<i>Dollars per box</i>	<i>Dollars per box</i>	<i>Dollars per box</i>	<i>Dollars per box</i>
Oct 2000	17.30	6.35	7.60	2.12	5.06	6.30	0.87
Nov	13.40	3.11	3.70	2.12	1.83	2.40	0.87
Dec	13.70	3.09	4.00	2.12	1.81	2.70	0.87
Jan 2001	10.30	1.48	0.60	2.12	0.21	-0.70	0.87
Feb	10.20	1.34	0.50	2.12	0.07	-0.80	0.87
Mar	11.20	1.71	1.50	2.12	0.43	0.20	0.87
Apr	12.90	2.98	3.18	2.12	1.69	1.88	0.87
May	13.70	3.62	4.00	2.12	2.33	2.70	0.87
Jun	13.70	2.75	4.00	2.12	1.48	2.70	0.87
Oct	19.60	8.62	9.90	2.55	7.33	8.60	1.30
Nov	15.80	5.51	6.10	2.55	4.21	4.80	1.30
Dec	14.20	4.04	4.50	2.55	2.75	3.20	1.30
Jan 2002	13.00	3.13	3.30	2.55	1.84	2.00	1.30
Feb	13.70	3.77	4.02	2.55	2.48	2.72	1.30
Mar	15.60	5.28	5.93	2.55	3.99	4.63	1.30
Apr	16.10	5.63	6.40	2.55	4.34	5.10	1.30
May	15.00	4.71	5.25	2.55	3.42	3.95	1.30
Oct	18.90	7.90	9.01	2.98	6.58	7.68	1.70
Nov	16.90	6.19	7.01	2.98	4.87	5.68	1.70
Dec	13.10	3.13	3.21	2.98	1.82	1.88	1.70
Jan 2003	11.80	2.32	1.91	2.98	1.01	0.58	1.70
Feb	12.90	3.00	3.01	2.98	1.69	1.68	1.70
Mar	13.30	3.34	3.41	2.98	2.02	2.08	1.70
Apr	19.40	7.67	9.51	2.98	6.35	8.18	1.70
May	20.00	9.65	10.11	2.98	8.32	8.78	1.70

**Oranges: Average Prices and Equivalent Returns, Texas  
October 2000 - May 2003**

State, Month, and Year	F.O.B. Packed	Equiv. P.H.D.			Equiv. On-Tree		
		All	Fresh	Proc.	All	Fresh	Proc.
TX							
Early and Midseason							
	<i>Dollars per box</i>	<i>Dollars per box</i>	<i>Dollars per box</i>	<i>Dollars per box</i>	<i>Dollars per box</i>	<i>Dollars per box</i>	<i>Dollars per box</i>
Oct 2000	17.30	6.35	7.60	2.12	5.06	6.30	0.87
Nov	13.40	3.11	3.70	2.12	1.83	2.40	0.87
Dec	13.70	3.09	4.00	2.12	1.81	2.70	0.87
Jan 2001	10.30	1.48	0.60	2.12	0.21	-0.70	0.87
Feb	10.20	1.34	0.50	2.12	0.07	-0.80	0.87
Mar	10.50	1.32	0.80	2.12	0.04	-0.50	0.87
Apr	11.30	1.60	1.60		0.30	0.30	
Oct	19.60	8.62	9.90	2.55	7.33	8.60	1.30
Nov	15.80	5.51	6.10	2.55	4.21	4.80	1.30
Dec	14.20	4.04	4.50	2.55	2.75	3.20	1.30
Jan 2002	13.00	3.13	3.30	2.55	1.84	2.00	1.30
Feb	13.60	3.68	3.90	2.55	2.39	2.60	1.30
Mar	13.80	3.84	4.10	2.55	2.55	2.80	1.30
Apr							
May	13.80	4.00	4.10	2.55	2.70	2.80	1.30
Oct	18.90	7.90	9.01	2.98	6.58	7.68	1.70
Nov	16.90	6.19	7.01	2.98	4.87	5.68	1.70
Dec	13.10	3.13	3.21	2.98	1.82	1.88	1.70
Jan 2003	11.80	2.32	1.91	2.98	1.01	0.58	1.70
Feb	12.90	3.00	3.01	2.98	1.69	1.68	1.70
Mar	13.30	3.34	3.41	2.98	2.02	2.08	1.70
TX							
Valencias							
Mar 2001	13.20	3.37	3.50	2.12	2.08	2.20	0.87
Apr	13.20	3.19	3.50	2.12	1.91	2.20	0.87
May	13.70	3.62	4.00	2.12	2.33	2.70	0.87
Jun	13.70	2.75	4.00	2.12	1.48	2.70	0.87
Feb 2002	15.90	5.29	6.20	2.55	4.00	4.90	1.30
Mar	15.90	5.49	6.20	2.55	4.20	4.90	1.30
Apr	16.10	5.63	6.40	2.55	4.34	5.10	1.30
May	16.10	5.25	6.40	2.55	3.96	5.10	1.30
Feb 2003	13.30	3.01	3.41	2.98	1.73	2.08	1.70
Mar	13.30	3.34	3.41	2.98	2.02	2.08	1.70
Apr	19.40	7.67	9.51	2.98	6.35	8.18	1.70
May	20.00	9.65	10.11	2.98	8.32	8.78	1.70

**Grapefruit: Average Prices and Equivalent Returns, United States  
September 2000 - August 2003**

State, Month, and Year	Equiv. P.H.D.			Equiv. On-Tree			
	F.O.B. Packed	All	Fresh	Proc.	All	Fresh	Proc.
US	All Grapefruit						
	<i>Dollars per box</i>	<i>Dollars per box</i>	<i>Dollars per box</i>	<i>Dollars per box</i>	<i>Dollars per box</i>	<i>Dollars per box</i>	<i>Dollars per box</i>
Sep 2000	15.50	8.21	9.17	-0.66	6.14	7.10	-2.80
Oct	16.20	6.98	7.95	1.83	4.99	6.00	-0.40
Nov	15.10	5.28	6.66	2.25	3.24	4.76	-0.07
Dec	14.40	4.60	5.93	2.47	2.49	4.00	0.09
Jan 2001	14.60	4.47	6.15	2.75	2.32	4.22	0.38
Feb	15.10	4.60	6.67	3.23	2.33	4.66	0.78
Mar	15.20	4.20	6.73	2.95	1.92	4.76	0.52
Apr	15.20	3.92	6.96	2.85	1.65	4.99	0.48
May	15.50	4.11	7.77	2.68	1.97	5.85	0.45
Jun	16.10	6.16	9.25	2.13	4.06	7.21	-0.06
Jul	16.00	8.28	9.87	-0.24	6.10	7.69	-2.42
Aug	15.50	7.16	9.37	-0.24	4.98	7.19	-2.42
Sep	16.30	9.06	10.17	-0.24	6.88	7.99	-2.42
Oct	18.80	9.09	10.66	2.86	6.93	8.63	0.20
Nov	16.50	6.24	7.96	2.95	4.06	5.98	0.37
Dec	15.60	5.35	7.14	2.73	3.13	5.17	0.14
Jan 2002	15.40	5.04	6.92	2.89	2.83	4.95	0.42
Feb	15.10	4.44	6.66	3.11	2.14	4.65	0.62
Mar	15.10	4.17	6.80	3.10	1.81	4.73	0.62
Apr	14.60	3.97	6.34	2.88	1.65	4.28	0.44
May	14.50	4.10	6.74	2.54	1.87	4.68	0.21
Jun	16.00	7.71	9.60	0.10	5.62	7.43	-1.65
Jul	16.30	8.50	10.05	-0.25	6.28	7.83	-2.47
Aug	16.00	7.50	9.75	-0.25	5.28	7.53	-2.47
Sep	14.60	7.45	8.35	-0.25	5.23	6.13	-2.47
Oct	17.30	7.39	9.50	0.96	5.17	7.38	-1.57
Nov	15.80	5.44	7.74	0.90	3.31	5.71	-1.43
Dec	15.10	4.55	7.12	1.62	2.29	5.02	-0.82
Jan 2003	15.00	4.44	7.07	2.03	2.19	5.00	-0.36
Feb	15.20	4.44	7.15	2.67	2.14	5.05	0.25
Mar	15.30	3.91	7.19	2.41	1.60	5.11	-0.01
Apr	15.80	4.19	8.24	2.34	1.90	6.13	-0.03
May	19.20	8.42	12.36	1.89	6.16	10.19	-0.54
Jun	22.00	13.24	15.62	-0.26	10.98	13.36	-2.52
Jul	19.60	11.10	13.22	-0.26	8.84	10.96	-2.52
Aug	18.10	9.49	11.72	-0.26	7.23	9.46	-2.52

**Grapefruit: Average Prices and Equivalent Returns, Arizona  
November 2000 - May 2003**

State, Month, and Year	F.O.B. Packed	Equiv. P.H.D.			Equiv. On-Tree		
		All	Fresh	Proc.	All	Fresh	Proc.
AZ	All Grapefruit						
	<i>Dollars per box</i>	<i>Dollars per box</i>	<i>Dollars per box</i>	<i>Dollars per box</i>	<i>Dollars per box</i>	<i>Dollars per box</i>	<i>Dollars per box</i>
Nov 2000	13.10	4.57	6.97	-0.24	2.39	4.79	-2.42
Dec	12.90	5.29	6.77	-0.24	3.12	4.59	-2.42
Jan 2001	12.50	5.08	6.37	-0.24	2.91	4.19	-2.42
Feb	11.60	3.74	5.47	-0.24	1.56	3.29	-2.42
Mar	15.20	6.45	9.07	-0.24	4.27	6.89	-2.42
Apr	14.10	7.01	7.97	-0.24	4.83	5.79	-2.42
May	12.40	5.75	6.27	-0.24	3.57	4.09	-2.42
Jun	12.10	5.45	5.97	-0.24	3.27	3.79	-2.42
Nov	13.10	6.86	6.85		4.61	4.62	
Dec	14.10	7.85	7.85		5.62	5.62	
Jan 2002	13.80	6.84	7.55	-0.25	4.61	5.32	-2.48
Feb	12.50	6.25	6.25		4.02	4.02	
Mar	12.10	5.86	5.85		3.62	3.62	
Apr	12.70	3.57	6.45	-0.25	1.36	4.22	-2.48
May	14.00	7.47	7.75	-0.25	5.24	5.52	-2.48
Jun	12.10	5.85	5.85		3.62	3.62	
Nov	13.60	7.22	7.22		4.95	4.95	
Dec	13.70	7.32	7.32		5.05	5.05	
Jan 2003	12.70	6.32	6.32		4.06	4.06	
Feb	13.30	6.93	6.93		4.67	4.67	
Mar	12.90	6.53	6.53		4.27	4.27	
Apr	14.90	8.52	8.52		6.25	6.25	
May	15.30	7.86	8.92	-0.26	5.59	6.65	-2.53

**Grapefruit: Average Prices and Equivalent Returns, California  
September 2000 - August 2003**

State, Month, and Year	F.O.B. Packed	Equiv. P.H.D.			Equiv. On-Tree		
		All	Fresh	Proc.	All	Fresh	Proc.
CA	All Grapefruit						
	<i>Dollars per box</i>	<i>Dollars per box</i>	<i>Dollars per box</i>	<i>Dollars per box</i>	<i>Dollars per box</i>	<i>Dollars per box</i>	<i>Dollars per box</i>
Sep 2000	15.40	8.34	9.39	-0.66	6.20	7.25	-2.80
Oct	16.80	9.06	10.79	-0.66	6.92	8.65	-2.80
Nov	18.10	10.09	11.97	-0.24	7.91	9.79	-2.42
Dec	17.70	10.59	11.57	-0.24	8.41	9.39	-2.42
Jan 2001	17.50	10.11	11.37	-0.24	7.93	9.19	-2.42
Feb	15.60	8.66	9.47	-0.24	6.48	7.29	-2.42
Mar	15.90	9.37	9.77	-0.24	7.19	7.59	-2.42
Apr	15.20	8.69	9.07	-0.24	6.51	6.89	-2.42
May	17.70	10.18	11.57	-0.24	8.00	9.39	-2.42
Jun	17.00	9.35	10.87	-0.24	7.17	8.69	-2.42
Jul	16.00	8.28	9.87	-0.24	6.10	7.69	-2.42
Aug	15.50	7.16	9.37	-0.24	4.98	7.19	-2.42
Sep	16.30	9.06	10.17	-0.24	6.88	7.99	-2.42
Oct	15.80	8.13	9.67	-0.24	5.95	7.49	-2.42
Nov	17.00	9.08	10.75	-0.25	6.86	8.53	-2.47
Dec	17.30	10.34	11.05	-0.25	8.12	8.83	-2.47
Jan 2002	17.00	9.65	10.75	-0.25	7.43	8.53	-2.47
Feb	16.40	9.65	10.15	-0.25	7.43	7.93	-2.47
Mar	12.20	5.78	5.95	-0.25	3.56	3.73	-2.47
Apr	13.30	6.81	7.05	-0.25	4.59	4.83	-2.47
May	15.60	8.23	9.35	-0.25	6.01	7.13	-2.47
Jun	16.20	8.57	9.95	-0.25	6.35	7.73	-2.47
Jul	16.30	8.50	10.05	-0.25	6.28	7.83	-2.47
Aug	16.00	7.50	9.75	-0.25	5.28	7.53	-2.47
Sep	14.60	7.45	8.35	-0.25	5.23	6.13	-2.47
Oct	15.10	7.48	8.85	-0.25	5.26	6.63	-2.47
Nov	20.90	12.52	14.52	-0.26	10.26	12.26	-2.52
Dec	20.80	13.16	14.42	-0.26	10.90	12.16	-2.52
Jan 2003	18.20	10.72	11.82	-0.26	8.46	9.56	-2.52
Feb	16.80	9.57	10.42	-0.26	7.31	8.16	-2.52
Mar	14.00	7.17	7.62	-0.26	4.91	5.36	-2.52
Apr	16.90	10.11	10.52	-0.26	7.85	8.26	-2.52
May	20.30	12.21	13.92	-0.26	9.95	11.66	-2.52
Jun	22.00	13.24	15.62	-0.26	10.98	13.36	-2.52
Jul	19.60	11.10	13.22	-0.26	8.84	10.96	-2.52
Aug	18.10	9.49	11.72	-0.26	7.23	9.46	-2.52

**Grapefruit: Average Prices and Equivalent Returns, Florida  
October 2000 - May 2003**

State, Month, and Year	F.O.B. Packed	Equiv. P.H.D.			Equiv. On-Tree		
		All	Fresh	Proc.	All	Fresh	Proc.
FL	All Grapefruit						
	<i>Dollars per box</i>	<i>Dollars per box</i>	<i>Dollars per box</i>	<i>Dollars per box</i>	<i>Dollars per box</i>	<i>Dollars per box</i>	<i>Dollars per box</i>
Oct	16.20	7.06	7.87	2.55	4.89	5.77	-0.02
Nov	14.70	5.20	6.42	2.67	2.94	4.32	0.07
Dec	14.40	4.73	6.09	2.77	2.44	3.99	0.20
Jan 2001	14.70	4.63	6.40	3.05	2.30	4.30	0.51
Feb	15.30	4.75	6.96	3.39	2.38	4.86	0.86
Mar	15.60	4.36	7.23	3.10	1.98	5.13	0.59
Apr	15.70	4.05	7.42	3.05	1.65	5.32	0.57
May	15.60	3.84	7.46	3.16	1.44	5.36	0.70
Jun	15.90	3.99	7.76	3.00	1.61	5.66	0.55
Oct	18.60	8.76	10.50	3.14	6.46	8.32	0.42
Nov	16.30	5.99	7.96	3.03	3.64	5.78	0.43
Dec	15.40	5.06	7.14	2.76	2.69	4.96	0.16
Jan 2002	15.60	5.16	7.33	3.13	2.76	5.15	0.52
Feb	15.30	4.54	7.04	3.26	2.10	4.86	0.69
Mar	15.60	4.29	7.35	3.19	1.85	5.16	0.66
Apr	14.90	4.05	6.60	3.05	1.61	4.42	0.51
May	14.00	3.81	5.91	2.95	1.37	3.73	0.40
Oct	17.00	7.13	9.28	1.02	4.77	7.04	-1.64
Nov	15.40	5.32	7.68	0.95	2.94	5.43	-1.68
Dec	14.90	4.46	7.18	1.72	2.05	4.93	-0.86
Jan 2003	15.00	4.38	7.26	2.18	1.98	5.01	-0.35
Feb	15.40	4.61	7.62	2.83	2.19	5.37	0.30
Mar	15.60	4.02	7.79	2.54	1.58	5.54	0.02
Apr	15.20	3.55	7.45	2.52	1.11	5.20	0.02
May	15.60	3.53	7.82	2.44	1.05	5.57	-0.09

**Grapefruit: Average Prices and Equivalent Returns, Florida  
October 2000 - May 2003**

State, Month, and Year	F.O.B. Packed	Equiv. P.H.D.			Equiv. On-Tree		
		All	Fresh	Proc.	All	Fresh	Proc.
FL		White Seedless					
	<i>Dollars per box</i>	<i>Dollars per box</i>	<i>Dollars per box</i>	<i>Dollars per box</i>	<i>Dollars per box</i>	<i>Dollars per box</i>	<i>Dollars per box</i>
Oct	18.50	7.86	9.53	1.14	5.71	7.43	-1.21
Nov	15.00	4.31	6.03	2.09	2.10	3.93	-0.26
Dec	16.70	4.94	7.73	2.66	2.71	5.63	0.31
Jan 2001	17.90	5.13	8.93	3.18	2.86	6.83	0.83
Feb	17.90	5.13	8.93	3.54	2.85	6.83	1.19
Mar	17.90	4.31	8.93	3.29	2.00	6.83	0.94
Apr	18.30	3.72	9.33	3.20	1.39	7.23	0.85
May	17.20	3.32	8.23	3.22	0.98	6.13	0.87
Jun	15.70	2.98	6.73	2.93	0.64	4.63	0.58
Nov	18.80	6.66	9.93	3.20	4.36	7.74	0.79
Dec	16.90	5.11	8.03	3.39	2.78	5.84	0.98
Jan 2002	17.40	5.17	8.53	3.38	2.83	6.34	0.97
Feb	17.40	4.41	8.53	3.42	2.05	6.34	1.01
Mar	17.80	4.10	8.93	3.37	1.71	6.74	0.96
Apr	17.00	3.82	8.13	3.23	1.44	5.94	0.82
May	15.10	3.18	6.23	3.10	0.78	4.04	0.69
Oct	18.80	7.51	10.83	1.40	5.19	8.54	-0.97
Nov	18.20	5.97	10.23	1.55	3.64	7.94	-0.82
Dec	17.80	4.32	9.83	2.15	1.98	7.54	-0.22
Jan 2003	18.00	4.24	10.03	2.60	1.89	7.74	0.23
Feb	17.80	4.37	9.83	3.00	2.02	7.54	0.63
Mar	16.70	3.34	8.73	2.50	0.98	6.44	0.13
Apr	16.70	2.88	8.73	2.50	0.52	6.44	0.13
May	15.90	2.72	7.93	2.40	0.35	5.64	0.03



**Grapefruit: Average Prices and Equivalent Returns, Florida  
October 2000 - May 2003**

State, Month, and Year	F.O.B. Packed	Equiv. P.H.D.			Equiv. On-Tree		
		All	Fresh	Proc.	All	Fresh	Proc.
FL	Colored Seedless						
	<i>Dollars per box</i>	<i>Dollars per box</i>	<i>Dollars per box</i>	<i>Dollars per box</i>	<i>Dollars per box</i>	<i>Dollars per box</i>	<i>Dollars per box</i>
Oct	15.50	6.81	7.40	3.18	4.63	5.30	0.50
Nov	14.60	5.41	6.50	2.87	3.14	4.40	0.19
Dec	13.80	4.66	5.70	2.83	2.36	3.60	0.15
Jan 2001	13.70	4.38	5.60	2.96	2.02	3.50	0.28
Feb	14.20	4.50	6.10	3.27	2.07	4.00	0.59
Mar	14.70	4.40	6.60	2.87	1.96	4.50	0.19
Apr	15.10	4.38	7.00	2.84	1.92	4.90	0.16
May	15.50	4.55	7.40	3.03	2.08	5.30	0.35
Jun	15.90	5.22	7.80	3.15	2.80	5.70	0.47
Oct	18.60	8.76	10.50	3.14	6.46	8.32	0.42
Nov	15.30	5.66	7.20	2.92	3.29	5.02	0.20
Dec	15.00	5.05	6.90	2.34	2.65	4.72	-0.38
Jan 2002	15.10	5.16	7.00	2.97	2.73	4.82	0.25
Feb	14.70	4.62	6.60	3.12	2.13	4.42	0.40
Mar	14.90	4.50	6.80	2.90	2.00	4.62	0.18
Apr	14.30	4.26	6.20	2.79	1.77	4.02	0.07
May	14.00	4.23	5.90	2.77	1.76	3.72	0.05
Oct	16.70	7.05	9.00	0.90	4.68	6.76	-1.85
Nov	14.80	5.12	7.10	0.65	2.73	4.86	-2.10
Dec	14.30	4.52	6.60	1.35	2.08	4.36	-1.40
Jan 2003	14.20	4.49	6.50	1.60	2.04	4.26	-1.15
Feb	14.60	4.82	6.90	2.60	2.33	4.66	-0.15
Mar	15.20	4.70	7.50	2.60	2.17	5.26	-0.15
Apr	14.90	4.39	7.20	2.55	1.84	4.96	-0.20
May	15.50	4.29	7.80	2.50	1.71	5.56	-0.25

**Grapefruit: Average Prices and Equivalent Returns, Texas  
September 2000 - May 2003**

State, Month, and Year	Equiv. P.H.D.			Equiv. On-Tree			
	F.O.B. Packed	All	Fresh	Proc.	All	Fresh	Proc.
TX	All Grapefruit						
	<i>Dollars per box</i>	<i>Dollars per box</i>	<i>Dollars per box</i>	<i>Dollars per box</i>	<i>Dollars per box</i>	<i>Dollars per box</i>	<i>Dollars per box</i>
Sep 2000	16.10	6.50	6.50		5.35	5.35	
Oct	16.10	5.42	6.50	0.60	4.27	5.35	-0.50
Nov	16.30	4.97	6.70	0.60	3.84	5.55	-0.50
Dec	13.90	3.13	4.30	0.60	2.00	3.15	-0.50
Jan 2001	13.50	2.65	3.90	0.60	1.52	2.75	-0.50
Feb	13.10	2.19	3.50	0.60	1.06	2.35	-0.50
Mar	12.80	1.99	3.20	0.60	0.87	2.05	-0.50
Apr	12.80	1.60	3.20	0.60	0.48	2.05	-0.50
May	12.20	1.31	2.60	0.60	0.19	1.45	-0.50
Jun	12.20	1.61	2.60	0.60	0.49	1.45	-0.50
Oct	21.80	12.04	12.20	0.60	10.89	11.05	-0.50
Nov	17.00	7.13	7.40	0.60	5.98	6.25	-0.50
Dec	15.90	6.14	6.30	0.60	4.99	5.15	-0.50
Jan 2002	14.20	3.52	4.60	0.60	2.38	3.45	-0.50
Feb	14.00	3.09	4.40	0.60	1.95	3.25	-0.50
Mar	12.50	1.88	2.90	0.60	0.75	1.75	-0.50
Apr	13.80	2.25	4.20	0.60	1.13	3.05	-0.50
May	14.20	1.96	4.60	0.60	0.84	3.45	-0.50
Jun	14.20	1.69	4.60	0.60	0.57	3.45	-0.50
Oct	21.30	9.54	11.51	0.80	8.38	10.34	-0.32
Nov	16.20	4.59	6.41	0.80	3.44	5.24	-0.32
Dec	13.90	2.92	4.11	0.80	1.77	2.94	-0.32
Jan 2003	13.80	2.79	4.01	0.80	1.64	2.84	-0.32
Feb	13.40	2.31	3.61	0.80	1.16	2.44	-0.32
Mar	13.90	2.49	4.11	0.80	1.35	2.94	-0.32
Apr	15.30	2.61	5.51	0.80	1.47	4.34	-0.32
May	15.50	4.68	5.71	0.80	3.52	4.54	-0.32

**Lemons: Average Prices and Equivalent Returns, United States  
August 2000 - July 2003**

State, Month, and Year	Equiv. P.H.D.			Equiv. On-Tree			
	F.O.B. Packed	All	Fresh	Proc.	All	Fresh	Proc.
US	All Lemons						
	<i>Dollars per box</i>	<i>Dollars per box</i>	<i>Dollars per box</i>	<i>Dollars per box</i>	<i>Dollars per box</i>	<i>Dollars per box</i>	<i>Dollars per box</i>
Aug 2000	38.10	17.54	28.60	1.40	13.44	24.50	-2.70
Sep	31.20	13.87	21.74	1.33	9.77	17.64	-2.77
Oct	25.00	9.04	15.46	1.22	4.94	11.36	-2.88
Nov	21.20	6.42	11.70	0.32	2.32	7.60	-3.78
Dec	20.60	5.88	11.15	0.32	1.78	7.05	-3.78
Jan 2001	20.00	4.86	10.47	0.32	0.76	6.37	-3.78
Feb	19.90	4.59	10.37	0.32	0.49	6.27	-3.78
Mar	22.20	5.37	12.69	0.32	1.27	8.59	-3.78
Apr	27.00	7.80	17.50	0.32	3.70	13.40	-3.78
May	28.80	9.54	19.30	0.32	5.44	15.20	-3.78
Jun	30.60	13.15	21.10	0.32	9.05	17.00	-3.78
Jul	36.30	19.96	26.80	0.32	15.86	22.70	-3.78
Aug	40.20	22.64	30.51	0.30	18.46	26.33	-3.88
Sep	36.90	19.61	27.22	0.30	15.43	23.04	-3.88
Oct	38.20	23.33	28.47	0.30	19.15	24.29	-3.88
Nov	33.90	19.13	24.21	0.24	14.95	20.03	-3.94
Dec	30.50	13.52	20.85	0.24	9.34	16.67	-3.94
Jan 2002	28.40	11.09	18.72	0.24	6.91	14.54	-3.94
Feb	26.50	8.78	16.79	0.24	4.60	12.61	-3.94
Mar	25.70	10.06	15.97	0.24	5.88	11.79	-3.94
Apr	28.10	12.65	18.41	0.24	8.47	14.23	-3.94
May	31.00	14.76	21.31	0.24	10.58	17.13	-3.94
Jun	35.90	19.68	26.21	0.24	15.50	22.03	-3.94
Jul	37.00	21.90	27.31	0.24	17.72	23.13	-3.94
Aug	39.50	24.54	29.62	0.22	20.28	25.36	-4.04
Sep	39.10	22.69	29.18	0.22	18.43	24.92	-4.04
Oct	36.40	19.45	26.47	0.22	15.19	22.21	-4.04
Nov	31.90	13.69	22.04	0.22	9.43	17.78	-4.04
Dec	26.90	10.28	17.00	0.22	6.02	12.74	-4.04
Jan 2003	24.00	7.61	14.12	0.22	3.35	9.86	-4.04
Feb	19.70	4.97	9.82	0.22	0.71	5.56	-4.04
Mar	19.70	4.73	9.77	0.22	0.47	5.51	-4.04
Apr	26.20	8.86	16.30	0.22	4.60	12.04	-4.04
May	30.50	9.75	20.62	0.22	5.49	16.36	-4.04
Jun	32.40	10.03	22.52	0.22	5.77	18.26	-4.04
Jul	33.10	10.63	23.22	0.22	6.37	18.96	-4.04

**Lemons: Average Prices and Equivalent Returns, Arizona  
September 2000 - April 2003**

State, Month, and Year	Equiv. P.H.D.			Equiv. On-Tree			
	F.O.B. Packed	All	Fresh	Proc.	All	Fresh	Proc.
AZ	All Lemons						
	<i>Dollars per box</i>	<i>Dollars per box</i>	<i>Dollars per box</i>	<i>Dollars per box</i>	<i>Dollars per box</i>	<i>Dollars per box</i>	<i>Dollars per box</i>
Sep	31.80	18.62	22.30	0.32	14.52	18.20	-3.78
Oct	24.70	11.02	15.20	0.32	6.92	11.10	-3.78
Nov	21.20	6.96	11.70	0.32	2.86	7.60	-3.78
Dec	20.30	5.99	10.80	0.32	1.89	6.70	-3.78
Jan 2001	19.90	4.92	10.40	0.32	0.82	6.30	-3.78
Feb	19.60	3.05	10.10	0.32	-1.05	6.00	-3.78
Mar	21.60	2.17	12.10	0.32	-1.93	8.00	-3.78
Sep	40.50	30.81	30.81		26.63	26.63	
Oct	40.10	28.48	30.41	0.24	24.30	26.23	-3.94
Nov	33.20	18.35	23.51	0.24	14.17	19.33	-3.94
Dec	30.00	13.21	20.31	0.24	9.03	16.13	-3.94
Jan 2002	28.80	11.97	19.11	0.24	7.79	14.93	-3.94
Feb	26.10	9.60	16.41	0.24	5.42	12.23	-3.94
Mar	24.00	6.60	14.31	0.24	2.41	10.13	-3.94
Sep	37.50	23.44	27.60	0.22	19.18	23.34	-4.04
Oct	37.40	20.94	27.50	0.22	16.68	23.24	-4.04
Nov	32.40	12.80	22.50	0.22	8.54	18.24	-4.04
Dec	26.60	8.99	16.70	0.22	4.73	12.44	-4.04
Jan 2003	23.70	7.02	13.80	0.22	2.76	9.54	-4.04
Feb	19.20	3.29	9.30	0.22	-0.97	5.04	-4.04
Mar	18.60	2.51	8.70	0.22	-1.75	4.44	-4.04
Apr	19.80	2.50	9.90	0.22	-1.76	5.64	-4.04

**Lemons: Average Prices and Equivalent Returns, California  
August 2000 - July 2003**

State, Month, and Year	Equiv. P.H.D.			Equiv. On-Tree			
	F.O.B. Packed	All	Fresh	Proc.	All	Fresh	Proc.
CA	All Lemons						
	<i>Dollars per box</i>	<i>Dollars per box</i>	<i>Dollars per box</i>	<i>Dollars per box</i>	<i>Dollars per box</i>	<i>Dollars per box</i>	<i>Dollars per box</i>
Aug 2000	38.10	17.54	28.60	1.40	13.44	24.50	-2.70
Sep	31.10	13.02	21.60	1.40	8.92	17.50	-2.70
Oct	25.10	8.33	15.60	1.40	4.23	11.50	-2.70
Nov	21.20	6.10	11.70	0.32	2.00	7.60	-3.78
Dec	20.90	5.82	11.40	0.32	1.72	7.30	-3.78
Jan 2001	20.00	4.83	10.50	0.32	0.73	6.40	-3.78
Feb	19.90	4.89	10.40	0.32	0.79	6.30	-3.78
Mar	22.20	5.52	12.70	0.32	1.42	8.60	-3.78
Apr	27.00	7.80	17.50	0.32	3.70	13.40	-3.78
May	28.80	9.54	19.30	0.32	5.44	15.20	-3.78
Jun	30.60	13.15	21.10	0.32	9.05	17.00	-3.78
Jul	36.30	19.96	26.80	0.32	15.86	22.70	-3.78
Aug	40.20	22.64	30.51	0.30	18.46	26.33	-3.88
Sep	36.80	19.37	27.11	0.30	15.19	22.93	-3.88
Oct	37.60	22.08	27.91	0.30	17.90	23.73	-3.88
Nov	34.40	19.70	24.71	0.24	15.52	20.53	-3.94
Dec	30.90	13.72	21.21	0.24	9.54	17.03	-3.94
Jan 2002	28.20	10.64	18.51	0.24	6.46	14.33	-3.94
Feb	26.60	8.58	16.91	0.24	4.40	12.73	-3.94
Mar	25.70	10.16	16.01	0.24	5.98	11.83	-3.94
Apr	28.10	12.65	18.41	0.24	8.47	14.23	-3.94
May	31.00	14.76	21.31	0.24	10.58	17.13	-3.94
Jun	35.90	19.68	26.21	0.24	15.50	22.03	-3.94
Jul	37.00	21.90	27.31	0.24	17.72	23.13	-3.94
Aug	39.50	24.54	29.62	0.22	20.28	25.36	-4.04
Sep	39.20	22.63	29.32	0.22	18.37	25.06	-4.04
Oct	36.00	18.98	26.12	0.22	14.72	21.86	-4.04
Nov	31.70	14.17	21.82	0.22	9.91	17.56	-4.04
Dec	27.00	10.89	17.12	0.22	6.63	12.86	-4.04
Jan 2003	24.10	7.81	14.22	0.22	3.55	9.96	-4.04
Feb	19.80	5.49	9.92	0.22	1.23	5.66	-4.04
Mar	19.70	4.91	9.82	0.22	0.65	5.56	-4.04
Apr	26.20	8.89	16.32	0.22	4.63	12.06	-4.04
May	30.50	9.75	20.62	0.22	5.49	16.36	-4.04
Jun	32.40	10.03	22.52	0.22	5.77	18.26	-4.04
Jul	33.10	10.63	23.22	0.22	6.37	18.96	-4.04

**Tangerines: Average Prices and Equivalent Returns, United States  
and Arizona, October 2000 - May 2003**

State, Month, and Year	F.O.B. Packed	Equiv. P.H.D.			Equiv. On-Tree		
		All	Fresh	Proc.	All	Fresh	Proc.
<b>US</b>							
<b>Tangerines</b>							
	<i>Dollars per box</i>	<i>Dollars per box</i>	<i>Dollars per box</i>	<i>Dollars per box</i>	<i>Dollars per box</i>	<i>Dollars per box</i>	<i>Dollars per box</i>
Oct 2000	21.10	9.18	11.21	0.61	5.59	7.67	-3.22
Nov	24.10	10.53	15.44	0.62	6.98	12.04	-3.23
Dec	21.20	9.84	12.77	0.49	6.47	9.47	-3.12
Jan 2001	25.40	11.53	17.47	1.71	8.29	14.43	-1.87
Feb	25.20	12.44	17.36	2.07	9.39	14.40	-1.17
Mar	26.60	13.87	18.79	2.84	10.74	15.85	-0.70
Apr	23.40	12.06	15.27	3.51	8.74	12.15	-0.30
May	34.00	15.08	25.00	3.98	11.29	21.40	-0.02
Oct	23.70	12.02	14.59	3.38	8.42	11.12	-0.70
Nov	25.70	12.03	16.84	3.29	8.43	13.48	-0.73
Dec	23.50	11.38	14.88	3.32	7.91	11.66	-0.74
Jan 2002	27.90	14.45	19.71	3.16	11.13	16.68	-0.78
Feb	24.80	13.08	16.70	3.73	9.86	13.72	-0.11
Mar	25.40	13.36	17.30	3.70	10.12	14.30	-0.12
Apr	27.90	16.69	20.22	3.44	13.70	17.42	-0.25
May	26.90	20.16	20.16		17.77	17.77	
Oct	23.90	11.88	14.53	2.60	8.30	11.18	-1.80
Nov	27.00	13.84	17.92	3.24	10.29	14.68	-1.08
Dec	25.90	13.57	17.29	4.27	10.16	14.22	0.01
Jan 2003	26.60	15.35	18.23	4.05	12.16	15.25	0.03
Feb	22.70	12.18	14.49	4.41	9.03	11.56	0.51
Mar	22.90	12.37	14.83	3.87	9.30	11.96	0.14
Apr	24.40	12.95	15.89	4.13	9.71	12.86	0.28
May	26.40	15.90	17.94	4.36	12.74	14.92	0.42
<b>AZ</b>							
<b>Tangerines</b>							
Nov	25.90	16.67	19.26	-0.18	14.33	16.92	-2.52
Dec	28.50	17.75	21.86	-0.18	15.41	19.52	-2.52
Jan 2001	26.70	14.69	20.06	-0.18	12.35	17.72	-2.52
Feb	24.20	10.26	17.56	-0.18	7.92	15.22	-2.52
Mar	16.80	6.64	10.16	-0.18	4.30	7.82	-2.52
Apr	4.50	-1.75	-2.14	-0.18	-4.09	-4.48	-2.52
Nov	23.80	17.02	17.02		14.63	14.63	
Dec	29.40	21.49	22.62	0.74	19.10	20.23	-1.65
Jan 2002	29.30	20.21	22.52	0.74	17.82	20.13	-1.65
Feb	19.00	11.11	12.22	0.74	8.72	9.83	-1.65
Mar	16.00	9.13	9.22	0.74	6.74	6.83	-1.65
Apr	10.40	3.19	3.62	0.74	0.80	1.23	-1.65
May	5.60	-1.18	-1.18		-3.57	-3.57	
Nov	28.00	21.08	21.08		18.64	18.64	
Dec	28.40	19.90	21.48	0.34	17.46	19.04	-2.10
Jan 2003	28.90	18.59	21.98	0.34	16.15	19.54	-2.10
Feb	25.60	16.45	18.68	0.34	14.01	16.24	-2.10
Mar	20.60	11.90	13.68	0.34	9.46	11.24	-2.10
Apr	24.60	17.68	17.68		15.24	15.24	

**Tangerines: Average Prices and Equivalent Returns, California  
and Florida, October 2000 - May 2003**

State, Month, and Year	Equiv. P.H.D.			Equiv. On-Tree			
	F.O.B. Packed	All	Fresh	Proc.	All	Fresh	Proc.
<b>CA</b>							
<b>Tangerines</b>							
	<i>Dollars per box</i>	<i>Dollars per box</i>	<i>Dollars per box</i>	<i>Dollars per box</i>	<i>Dollars per box</i>	<i>Dollars per box</i>	<i>Dollars per box</i>
Oct 2000	37.70	20.46	31.06	-0.18	18.12	28.72	-2.52
Nov	27.80	16.40	21.16	-0.18	14.06	18.82	-2.52
Dec	23.20	12.24	16.56	-0.18	9.90	14.22	-2.52
Jan 2001	21.90	11.42	15.26	-0.18	9.08	12.92	-2.52
Feb	25.60	13.91	18.96	-0.18	11.57	16.62	-2.52
Mar	28.70	18.10	22.06	-0.18	15.76	19.72	-2.52
Apr	14.60	7.18	7.96	-0.18	4.84	5.62	-2.52
Oct	40.60	30.51	33.82	0.74	28.12	31.43	-1.65
Nov	28.30	17.87	21.52	0.74	15.48	19.13	-1.65
Dec	23.30	15.98	16.52	0.74	13.59	14.13	-1.65
Jan 2002	27.60	19.02	20.82	0.74	16.63	18.43	-1.65
Feb	26.80	17.68	20.02	0.74	15.29	17.63	-1.65
Mar	25.30	15.80	18.52	0.74	13.41	16.13	-1.65
Apr	26.50	18.07	19.72	0.74	15.68	17.33	-1.65
May	27.70	20.92	20.92		18.53	18.53	
Oct	36.80	29.88	29.88		27.44	27.44	
Nov	30.70	21.84	23.78	0.72	19.40	21.34	-1.72
Dec	26.30	17.90	19.38	0.72	15.46	16.94	-1.72
Jan 2003	24.90	16.66	17.98	0.72	14.22	15.54	-1.72
Feb	22.40	13.39	15.48	0.34	10.95	13.04	-2.10
Mar	22.70	13.40	15.78	0.34	10.96	13.34	-2.10
Apr	25.40	14.87	18.48	0.34	12.43	16.04	-2.10
May	24.30	15.75	17.38	0.34	13.31	14.94	-2.10
<b>FL</b>							
<b>Tangerines</b>							
Oct 2000	19.20	8.48	10.20	0.70	4.80	6.60	-3.30
Nov	23.40	9.62	14.40	0.70	5.88	10.80	-3.30
Dec	20.00	8.53	11.00	0.70	4.84	7.40	-3.30
Jan 2001	26.70	10.81	17.70	2.35	7.03	14.10	-1.65
Feb	25.00	11.87	16.00	3.98	8.14	12.40	-0.02
Mar	25.00	11.15	16.00	3.98	7.39	12.40	-0.02
Apr	29.00	14.41	20.00	3.98	10.67	16.40	-0.02
May	34.00	15.08	25.00	3.98	11.29	21.40	-0.02
Oct	23.20	11.54	14.00	3.41	7.90	10.50	-0.69
Nov	25.40	11.39	16.20	3.41	7.67	12.70	-0.69
Dec	23.00	10.03	13.80	3.38	6.32	10.30	-0.72
Jan 2002	27.70	12.13	18.50	3.41	8.37	15.00	-0.69
Feb	25.00	11.41	15.80	4.28	7.68	12.30	0.18
Mar	27.00	12.61	17.80	4.28	8.88	14.30	0.18
Apr	32.00	16.25	22.80	4.28	12.53	19.30	0.18
Oct	23.20	11.13	13.70	2.60	7.50	10.30	-1.80
Nov	26.30	12.66	16.80	3.34	8.96	13.40	-1.06
Dec	25.40	11.81	15.90	4.55	8.05	12.50	0.15
Jan 2003	27.00	14.14	17.50	4.90	10.47	14.10	0.50
Feb	22.60	10.91	13.10	5.80	7.21	9.70	1.40
Mar	23.30	11.40	13.80	5.70	7.70	10.40	1.30
Apr	23.80	11.87	14.30	5.60	8.19	10.90	1.20
May	27.80	15.98	18.30	5.60	12.40	14.90	1.20

**Tangelos, and Temples: Average Prices and Equivalent Returns,  
Florida, November 2000 - March 2003**

State, Month, and Year	F.O.B. Packed	Equiv. P.H.D.			Equiv. On-Tree		
		All	Fresh	Proc.	All	Fresh	Proc.
FL							
Tangelos							
	<i>Dollars per box</i>	<i>Dollars per box</i>	<i>Dollars per box</i>	<i>Dollars per box</i>	<i>Dollars per box</i>	<i>Dollars per box</i>	<i>Dollars per box</i>
Nov	13.80	4.23	5.90	2.70	1.63	3.40	0.00
Dec	13.10	4.27	5.20	3.30	1.67	2.70	0.60
Jan 2001	16.00	3.99	8.10	2.55	1.34	5.60	-0.15
Feb	15.00	2.73	7.10	2.30	0.05	4.60	-0.40
Nov	15.00	4.80	6.80	2.50	2.30	4.40	-0.10
Dec	16.50	5.73	8.30	3.25	3.23	5.90	0.65
Jan 2002	16.00	4.33	7.80	3.50	1.77	5.40	0.90
Feb	32.00	5.18	23.80	3.50	2.59	21.40	0.90
Nov	17.20	5.68	8.80	3.50	3.26	6.50	1.00
Dec	15.60	5.28	7.20	4.20	2.85	4.90	1.70
Jan 2003	30.00	6.05	21.60	4.25	3.57	19.30	1.75
FL							
Temples							
Jan 2001	16.00	6.59	8.40	4.20	4.45	6.30	2.00
Feb	13.50	3.63	5.90	2.75	1.45	3.80	0.55
Mar	14.00	3.39	6.40	3.05	1.19	4.30	0.85
Jan 2002	16.50	6.37	8.50	3.70	4.12	6.30	1.40
Feb	14.50	4.16	6.50	3.50	1.89	4.30	1.20
Mar	11.70	3.44	3.70	3.40	1.16	1.50	1.10
Apr	11.50	3.40	3.50	3.40	1.11	1.30	1.10
Jan 2003	14.50	5.20	6.10	4.60	2.84	3.80	2.20
Feb	13.70	4.76	5.30	4.65	2.38	3.00	2.25
Mar	17.00	3.84	8.60	3.25	1.45	6.30	0.85



**Oranges: Marketing Year Average Prices Received,  
Crop Years, 2000-2001 and 2001-2002**

State, Variety, and Utilization	2000-2001			2001-2002		
	F.O.B. Packed	Equiv. P.H.D.	Equiv. On-Tree	F.O.B. Packed	Equiv. P.H.D.	Equiv. On-Tree
	<i>Dollars per box</i>	<i>Dollars per box</i>	<i>Dollars per box</i>	<i>Dollars per box</i>	<i>Dollars per box</i>	<i>Dollars per box</i>
<b>AZ</b>						
Navel & Misc.		6.54	4.23		12.74	10.39
Fresh	17.10	10.14	7.83	23.60	16.50	14.15
Processing		-0.14	-2.45		-0.15	-2.50
Valencias		5.04	2.70		3.42	1.03
Fresh	11.70	5.06	2.72	10.20	3.42	1.03
Processing		-0.18	-2.52			
All		5.84	3.51		8.26	5.89
Fresh	14.00	7.23	4.90	16.30	9.38	7.00
Processing		-0.14	-2.45		-0.15	-2.51
<b>CA</b>						
Navel & Misc.		9.98	7.67		12.88	10.53
Fresh	18.60	11.64	9.33	21.90	14.80	12.45
Processing		-0.14	-2.45		-0.15	-2.50
Valencias		8.43	6.09		7.51	5.12
Fresh	16.80	10.16	7.82	15.60	8.82	6.43
Processing		0.76	-1.58		0.74	-1.65
All		9.44	7.12		10.85	8.49
Fresh	18.00	11.14	8.82	19.60	12.59	10.23
Processing		0.23	-2.09		0.24	-2.13
<b>FL</b>						
Early/Mids.		4.56	2.60		4.94	2.88
Fresh	13.90	6.10	4.00	14.40	6.80	4.65
Processing		4.48	2.53		4.84	2.79
Valencias		6.02	4.02		6.30	4.20
Fresh	14.70	6.90	4.80	15.00	7.40	5.25
Processing		5.99	3.99		6.27	4.17
All		5.18	3.21		5.54	3.47
Fresh	14.20	6.39	4.29	14.60	6.99	4.84
Processing		5.13	3.16		5.48	3.41
<b>TX</b>						
Early/Mids.		2.38	1.10		4.52	3.23
Fresh	12.30	2.60	1.30	14.70	5.00	3.71
Processing		2.12	0.87		2.55	1.30
Valencias		3.32	2.03		5.51	4.22
Fresh	13.30	3.60	2.30	16.00	6.30	5.00
Processing		2.12	0.87		2.55	1.30
All		2.48	1.20		4.64	3.35
Fresh	12.50	2.75	1.45	14.90	5.15	3.86
Processing		2.12	0.87		2.55	1.30
<b>US</b>						
Early/Mids.						
Navels		5.54	3.53		6.30	4.20
Fresh	17.50	10.30	8.06	20.10	12.79	10.52
Processing		4.31	2.35		4.70	2.64
Valencias		6.36	4.30		6.46	4.32
Fresh	16.20	9.32	7.04	15.40	8.48	6.14
Processing		5.83	2.98		6.13	4.02
All		5.88	3.85		6.37	4.25
Fresh	17.10	9.97	7.71	18.40	11.26	8.97
Processing		4.96	2.98		5.34	3.26

**Oranges: Marketing Year Average Prices Received,  
Crop Year 2002-2003**

State, Variety, and Utilization	2002-2003		
	F.O.B. Packed	Equiv. P.H.D.	Equiv. On-Tree
	<i>Dollars per box</i>	<i>Dollars per box</i>	<i>Dollars per box</i>
<b>AZ</b>			
Navel & Misc.		7.13	4.79
Fresh	16.70	9.60	7.25
Processing		0.42	-1.89
Valencias		2.77	0.33
Fresh	9.85	2.93	0.49
Processing		0.34	-2.10
All		4.62	2.22
Fresh	12.40	5.37	2.96
Processing		0.41	-1.94
<b>CA</b>			
Navel & Misc.		7.98	5.57
Fresh	17.00	9.76	7.35
Processing		0.40	-2.01
Valencias		7.40	4.96
Fresh	15.30	8.38	5.94
Processing		0.78	-1.66
All		7.78	5.36
Fresh	16.40	9.27	6.85
Processing		0.50	-1.92
<b>FL</b>			
Early/Mids.		5.00	2.81
Fresh	15.50	8.00	5.85
Processing		4.81	2.61
Valencias		6.15	3.95
Fresh	15.00	7.50	5.30
Processing		6.11	3.91
All		5.52	3.32
Fresh	15.40	7.85	5.69
Processing		5.40	3.20
<b>TX</b>			
Early/Mids.		4.00	2.68
Fresh	14.30	4.41	3.08
Processing		2.98	1.70
Valencias		5.89	4.57
Fresh	16.70	6.81	5.48
Processing		2.98	1.70
All		4.26	2.95
Fresh	14.70	4.77	3.44
Processing		2.98	1.70
<b>US</b>			
Early/Mids.			
Navels		5.69	3.45
Fresh	16.60	9.29	6.95
Processing		4.55	2.34
Valencias		6.35	4.11
Fresh	15.20	8.17	5.77
Processing		5.97	3.77
All		5.97	3.73
Fresh	16.10	8.90	6.55
Processing		5.18	2.98

**Grapefruit: Marketing Year Average Prices Received,  
Crop Years, 2000-2001 and 2001-2002**

State, Variety, and Utilization	2000-2001			2001-2002		
	F.O.B. Packed	Equiv. P.H.D.	Equiv. On-Tree	F.O.B. Packed	Equiv. P.H.D.	Equiv. On-Tree
	<i>Dollars per box</i>	<i>Dollars per box</i>	<i>Dollars per box</i>	<i>Dollars per box</i>	<i>Dollars per box</i>	<i>Dollars per box</i>
AZ		5.42	3.24		6.73	4.50
Fresh	12.80	6.67	4.49	13.30	7.05	4.82
Processing		-0.24	-2.42		-0.25	-2.48
CA		8.77	6.59		8.05	5.83
Fresh	16.40	10.27	8.09	15.60	9.35	7.13
Processing		-0.24	-2.42		-0.25	-2.47
FL						
Seedless-Clrd		4.67	2.28		4.99	2.54
Fresh	14.50	6.40	4.30	15.20	7.10	4.92
Processing		2.97	0.29		2.89	0.17
Seedless-White <sup>1</sup>		4.37	2.07		4.33	1.96
Fresh	17.60	8.63	6.53	17.60	8.73	6.54
Processing		3.22	0.87		3.32	0.91
All		4.55	2.19		4.72	2.31
Fresh	15.20	6.91	4.81	15.70	7.43	5.25
Processing		3.10	0.59		3.12	0.56
TX		2.68	1.56		3.91	2.77
Fresh	13.90	4.30	3.15	15.20	5.60	4.45
Processing		0.60	-0.50		0.60	-0.50
US		4.69	2.50		4.92	2.64
Fresh	15.20	7.07	5.10	15.60	7.47	5.43
Processing		2.79	0.42		2.90	0.44

<sup>1</sup> Includes seedy type grapefruit beginning with 2000-2001 crop.

**Grapefruit: Marketing Year Average Prices Received,  
Crop Year 2002-2003**

State, Variety, and Utilization	2002-2003		
	F.O.B. Packed	Equiv. P.H.D.	Equiv. On-Tree
	<i>Dollars per box</i>	<i>Dollars per box</i>	<i>Dollars per box</i>
AZ		7.73	5.46
Fresh	14.50	8.12	5.85
Processing		-0.26	-2.53
CA		11.01	8.75
Fresh	19.00	12.62	10.36
Processing		-0.26	-2.52
FL			
Seedless-Clrd		4.96	2.49
Fresh	15.00	7.30	5.06
Processing		2.07	-0.68
Seedless-White <sup>1</sup>		3.97	1.62
Fresh	17.70	9.73	7.44
Processing		2.56	0.19
All		4.54	2.12
Fresh	15.60	7.80	5.55
Processing		2.35	-0.19
TX		3.45	2.30
Fresh	15.10	5.31	4.14
Processing		0.80	-0.32
US		5.02	2.75
Fresh	16.10	8.28	6.17
Processing		2.16	-0.25

<sup>1</sup> Includes seedy type grapefruit.

**Lemons, Limes, Tangelos, Tangerines, and Temples: Marketing Year  
Average Prices Received, Crop Years, 2000-2001 and 2001-2002**

State, Variety, and Utilization	2000-2001			2001-2002		
	F.O.B. Packed	Equiv. P.H.D.	Equiv. On-Tree	F.O.B. Packed	Equiv. P.H.D.	Equiv. On-Tree
	<i>Dollars per box</i>	<i>Dollars per box</i>	<i>Dollars per box</i>	<i>Dollars per box</i>	<i>Dollars per box</i>	<i>Dollars per box</i>
Lemons						
AZ		6.84	2.74		14.62	10.44
Fresh	22.20	12.70	8.60	31.10	21.41	17.23
Processing		0.32	-3.78		0.24	-3.94
CA		9.41	5.31		15.68	11.50
Fresh	27.50	18.00	13.90	32.50	22.81	18.63
Processing		0.50	-3.60		0.25	-3.93
US		9.06	4.96		15.54	11.36
Fresh	26.80	17.25	13.15	32.30	22.63	18.45
Processing		0.48	-3.62		0.25	-3.93
Limes						
FL		17.00	12.00		11.55	6.19
Fresh	29.50	19.00	14.00	26.40	13.50	8.15
Processing		2.30	-2.70		1.75	-3.60
Tangelos						
FL		3.90	1.27		5.00	2.47
Fresh	14.00	6.10	3.60	16.70	8.50	6.10
Processing		2.70	0.00		3.33	0.73
Tangerines						
AZ		13.67	11.33		15.83	13.44
Fresh	25.70	19.06	16.72	23.90	17.12	14.73
Processing		-0.18	-2.52		0.74	-1.65
CA		14.15	11.81		17.65	15.26
Fresh	24.90	18.26	15.92	26.40	19.62	17.23
Processing		-0.18	-2.52		0.74	-1.65
FL		10.14	6.40		11.53	7.81
Fresh	23.10	14.10	10.50	25.20	16.00	12.50
Processing		2.07	-1.93		3.36	-0.47
US		11.26	7.92		12.97	9.59
Fresh	23.70	15.46	12.26	25.40	16.99	13.84
Processing		1.57	-2.06		3.39	-0.57
Temples						
FL		4.23	2.05		4.46	2.19
Fresh	14.80	7.20	5.10	15.10	7.10	4.90
Processing		3.10	0.90		3.49	1.19

**Lemons, Limes, Tangelos, Tangerines, and Temples: Marketing Year  
Average Prices Received, Crop Year, 2002-2003**

State, Variety, and Utilization	2002-2003		
	F.O.B. Packed	Equiv. P.H.D.	Equiv. On-Tree
	<i>Dollars per box</i>	<i>Dollars per box</i>	<i>Dollars per box</i>
Lemons			
AZ		9.80	5.54
Fresh	28.70	18.80	14.54
Processing		0.22	-4.04
CA		10.98	6.72
Fresh	29.80	19.92	15.66
Processing		0.22	-4.04
US		10.85	6.59
Fresh	29.70	19.80	15.54
Processing		0.22	-4.04
Limes <sup>1</sup>			
FL			
Fresh			
Processing			
Tangelos			
FL		5.68	3.23
Fresh	18.50	10.10	7.80
Processing		4.14	1.64
Tangerines			
AZ		18.09	15.65
Fresh	27.50	20.58	18.14
Processing		0.34	-2.10
CA		15.78	13.34
Fresh	24.90	17.98	15.54
Processing		0.43	-2.01
FL		12.22	8.53
Fresh	24.90	15.40	12.00
Processing		4.38	-0.02
US		13.38	10.06
Fresh	25.00	16.41	13.34
Processing		3.77	-0.33
Temples			
FL		4.73	2.35
Fresh	14.50	6.10	3.80
Processing		4.31	1.91

<sup>1</sup> Estimates discontinued with the 2002-2003 crop.

**K-Early Citrus: Marketing Year Average Prices Received,  
Crop Years, 2000-2001 and 2001-2002 <sup>1</sup>**

State and Utilization	2000-2001			2001-2002		
	F.O.B. Packed	Equiv. P.H.D.	Equiv. On-Tree	F.O.B. Packed	Equiv. P.H.D.	Equiv. On-Tree
	<i>Dollars per box</i>	<i>Dollars per box</i>	<i>Dollars per box</i>	<i>Dollars per box</i>	<i>Dollars per box</i>	<i>Dollars per box</i>
FL		4.68	2.10		3.77	1.20
Fresh	15.00	7.10	4.60	15.00	6.80	4.40
Processing		2.00	-0.70		3.00	0.40

<sup>1</sup> Estimates discontinued with the 2002-2003 crop.

**Florida Grapefruit: Marketing Year Average Prices Received,  
Crop Years, 2000-2001 and 2001-2002**

Variety, Area, and Utilization	2000-2001			2001-2002		
	F.O.B. Packed	Equiv. P.H.D.	Equiv. On-Tree	F.O.B. Packed	Equiv. P.H.D.	Equiv. On-Tree
	<i>Dollars per box</i>	<i>Dollars per box</i>	<i>Dollars per box</i>	<i>Dollars per box</i>	<i>Dollars per box</i>	<i>Dollars per box</i>
White Seedless						
Interior		3.47	1.51		3.78	1.77
Fresh	16.20	8.80	6.70	17.50	10.10	8.00
Processing		3.19	1.23		3.78	1.77
Indian River		4.76	2.31		4.62	2.06
Fresh	17.70	8.60	6.50	17.60	8.50	6.30
Processing		3.23	0.64		3.32	0.64
Colored Seedless						
Interior		3.92	1.67		4.55	2.32
Fresh	13.00	5.90	3.80	14.80	7.80	5.70
Processing		2.97	0.65		2.88	0.57
Indian River		5.10	2.63		5.17	2.63
Fresh	15.00	6.60	4.50	15.30	6.90	4.70
Processing		2.97	-0.03		2.89	-0.11

**Florida Grapefruit: Marketing Year Average Prices Received,  
Crop Year 2002-2003**

Variety, Area, and Utilization	2002-2003		
	F.O.B. Packed	Equiv. P.H.D.	Equiv. On-Tree
	<i>Dollars per box</i>	<i>Dollars per box</i>	<i>Dollars per box</i>
White Seedless			
Interior		2.73	0.87
Fresh	14.70	7.10	5.00
Processing		2.55	0.70
Indian River		4.72	2.08
Fresh	18.00	10.00	7.70
Processing		2.57	-0.21
Colored Seedless			
Interior		4.11	1.85
Fresh	13.80	6.80	4.70
Processing		2.05	-0.33
Indian River		5.48	2.88
Fresh	15.50	7.50	5.20
Processing		2.10	-1.00

**Hops: Marketing Year Average Prices Received,  
by State and United States, 2001-2002**

State	2001		2002	
	<i>Dollars per Pound</i>		<i>Dollars per Pound</i>	
ID		1.59		1.58
OR		2.15		2.13
WA		1.81		1.95
US		1.85		1.94

**Soybeans: Marketing Year Average Prices Received, by States  
and United States, 2001 and 2002**

State	2001	2002	State	2001	2002
	<i>Dollars per Bu</i>	<i>Dollars per Bu</i>		<i>Dollars per Bu</i>	<i>Dollars per Bu</i>
AL	4.60	5.55	NJ	4.15	5.40
AR	4.37	5.65	NY	4.55	5.85
DE	4.25	5.70	NC	4.29	5.63
FL	4.20	5.35	ND	4.05	5.32
GA	4.35	5.45	OH	4.46	5.59
IL	4.55	5.66	OK	4.30	5.50
IN	4.42	5.55	PA	4.26	5.90
IA	4.35	5.54	SC	4.45	5.60
KS	4.16	5.49	SD	4.13	5.33
KY	4.47	5.74	TN	4.46	5.70
LA	4.39	5.52	TX	4.60	5.10
MD	4.20	5.70	VA	4.30	5.54
MI	4.47	5.62	WV	4.33	5.64
MN	4.32	5.42	WI	4.31	5.35
MS	4.39	5.52	US	4.38	5.53
MO	4.32	5.54			
NE	4.19	5.43			



**Corn: Monthly Prices Received, Monthly Farm Marketing Percentages, and Marketing Year Average Prices, United States, 2000-2001 through 2002-2003 <sup>1</sup>**

Month	Prices Received			Farm Marketing Percentages <sup>2</sup>		
	2000-2001	2001-2002	2002-2003	2000-2001	2001-2002	2002-2003
	<i>Dollars per Bushel</i>	<i>Dollars per Bushel</i>	<i>Dollars per Bushel</i>	<i>Percent</i>	<i>Percent</i>	<i>Percent</i>
Sep	1.61	1.91	2.47	11.3	7.8	7.1
Oct	1.74	1.84	2.34	15.8	11.0	14.0
Nov	1.86	1.85	2.28	8.6	13.3	13.9
Dec	1.97	1.98	2.32	6.8	6.6	8.2
Jan <sup>3</sup>	1.98	1.97	2.33	15.0	12.5	12.6
Feb	1.96	1.93	2.34	5.3	6.0	6.1
Mar	1.96	1.94	2.33	6.4	6.2	6.7
Apr	1.89	1.91	2.34	4.9	6.0	6.5
May	1.82	1.93	2.38	4.6	6.3	6.5
Jun	1.76	1.97	2.34	5.4	7.5	5.3
Jul	1.87	2.13	2.17	8.2	8.8	6.0
Aug	1.90	2.38	2.15	7.7	8.0	7.1
MYA	1.85	1.97	2.32	100.0	100.0	100.0

<sup>1</sup> Marketing year average (MYA) prices are weighted average prices for the U.S. marketing year of September - August.

<sup>2</sup> Monthly farm marketings, based on a sample survey, as percent of total used for calculating MYA prices.

<sup>3</sup> Second year.

**Sorghum: Monthly Prices Received, Monthly Farm Marketing Percentages, and Marketing Year Average Prices, United States, 2000-2001 through 2002-2003 <sup>1</sup>**

Month	Prices Received			Farm Marketing Percentages <sup>2</sup>		
	2000-2001	2001-2002	2002-2003	2000-2001	2001-2002	2002-2003
	<i>Dollars per Bushel</i>	<i>Dollars per Bushel</i>	<i>Dollars per Bushel</i>	<i>Percent</i>	<i>Percent</i>	<i>Percent</i>
Sep	2.77	3.44	4.30	8.7	7.6	8.8
Oct	3.01	3.30	4.33	13.7	11.8	7.0
Nov	3.27	3.30	4.40	8.1	17.5	19.6
Dec	3.54	3.25	4.33	16.2	13.1	16.3
Jan <sup>3</sup>	3.39	3.34	4.12	8.9	10.8	7.4
Feb	3.47	3.26	4.14	4.0	4.9	4.0
Mar	3.29	3.23	3.94	5.0	3.7	3.1
Apr	3.04	3.13	3.96	3.7	3.0	3.3
May	3.21	3.17	3.95	2.5	3.9	2.4
Jun	3.62	3.83	3.61	6.9	9.5	5.0
Jul	3.72	4.06	3.63	12.2	6.1	6.9
Aug	3.49	4.21	3.93	10.1	8.1	16.2
MYA	3.37	3.46	4.14	100.0	100.0	100.0

<sup>1</sup> Marketing year average (MYA) prices are weighted average prices for the U.S. marketing year of September - August.

<sup>2</sup> Monthly farm marketings, based on a sample survey, as percent of total used for calculating MYA prices.

<sup>3</sup> Second year.

**Prices Received: Soybeans, by State and Month,  
for Marketing Years, 2001-2002 and 2002-2003**

State	Aug	Sep	Oct	Nov	Dec	Jan <sup>1</sup>	Feb
	2002-2003						
	<i>Dollars per Bushel</i>	<i>Dollars per Bushel</i>	<i>Dollars per Bushel</i>	<i>Dollars per Bushel</i>	<i>Dollars per Bushel</i>	<i>Dollars per Bushel</i>	<i>Dollars per Bushel</i>
AR	5.59	5.59	5.44	5.73	5.63	5.68	5.74
IL	5.73	5.52	5.25	5.57	5.57	5.60	5.68
IN	5.67	5.53	5.24	5.53	5.61	5.62	5.69
IA	5.40	5.37	5.20	5.40	5.42	5.44	5.50
KS	5.61	5.43	5.20	5.43	5.41	5.43	5.47
KY	5.54	5.56	5.56	5.72	5.65	5.77	5.78
LA	5.86	5.63	5.42	5.46	5.43	5.46	5.61
MI	5.56	5.37	5.27	5.59	5.66	5.68	5.63
MN	5.32	5.19	5.09	5.27	5.33	5.39	5.46
MS	( <sup>2</sup> )	5.60	5.30	5.42	5.49	5.58	5.49
MO	5.45	5.41	5.21	5.46	5.49	5.49	5.59
NE	5.43	5.23	5.16	5.41	5.36	5.39	5.45
NC	5.72	5.68	5.41	5.44	5.42	5.52	5.57
ND	5.12	5.18	5.03	5.21	5.24	5.35	5.39
OH	5.59	5.47	5.27	5.52	5.61	5.63	5.69
SD	5.29	5.12	5.02	5.18	5.31	5.33	5.41
TN	5.64	5.68	5.47	5.76	5.72	5.69	5.76
WI	5.31	5.08	5.15	5.30	5.34	5.32	5.29
US	5.53	5.39	5.20	5.46	5.46	5.51	5.55
	2001-2002						
AR	4.97	4.60	4.24	4.28	4.37	4.35	4.31
IL	4.91	4.55	4.23	4.28	4.36	4.33	4.34
IN	5.15	4.60	4.17	4.18	4.25	4.29	4.34
IA	4.87	4.60	4.05	4.14	4.14	4.11	4.15
KS	4.94	4.64	3.89	4.06	4.07	4.08	4.02
KY	5.02	4.57	4.25	4.23	4.35	4.45	4.46
LA	4.70	4.76	4.29	4.25	4.29	4.32	4.40
MI	4.91	4.76	4.06	4.09	4.16	4.24	4.26
MN	4.63	4.32	3.94	3.96	4.03	4.01	4.00
MS	4.66	4.72	4.25	4.14	4.37	4.26	4.30
MO	4.90	4.54	4.08	4.11	4.24	4.22	4.26
NE	4.80	4.39	4.00	4.09	4.06	4.11	4.13
NC	5.04	4.62	4.03	4.10	4.12	4.25	4.32
ND <sup>4</sup>		4.10	3.83	3.86	3.84	3.92	3.90
OH	5.04	4.51	4.18	4.27	4.37	4.38	4.35
SD	4.59	4.14	3.87	3.96	3.96	3.96	3.98
TN	5.05	4.67	4.30	4.33	4.46	4.43	4.47
WI	4.69	4.73	4.01	4.08	4.35	4.13	4.34
US	4.85	4.53	4.09	4.16	4.20	4.22	4.22

See footnote(s) at end of table.

--continued

**Prices Received: Soybeans, by State and Month,  
for Marketing Years, 2001-2002 and 2002-2003 (continued)**

State	Mar	Apr	May	Jun	Jul	Aug
	2002-2003					
	<i>Dollars per Bushel</i>	<i>Dollars per Bushel</i>	<i>Dollars per Bushel</i>	<i>Dollars per Bushel</i>	<i>Dollars per Bushel</i>	<i>Dollars per Bushel</i>
AR	5.79	5.77	6.28	( <sup>3</sup> )	( <sup>3</sup> )	5.78
IL	5.73	5.97	6.17	6.20	5.93	5.67
IN	5.70	5.92	6.28	6.15	5.87	5.84
IA	5.54	5.76	6.02	6.11	5.80	5.62
KS	5.47	5.77	6.04	6.26	6.07	5.93
KY	5.83	6.00	6.25	6.16	5.98	5.79
LA	( <sup>2</sup> )	5.96	( <sup>2</sup> )	( <sup>3</sup> )	( <sup>2</sup> )	5.81
MI	5.73	5.94	6.28	6.08	6.04	5.91
MN	5.47	5.68	5.94	5.93	5.73	5.62
MS	5.29	5.95	6.27	5.87	( <sup>2</sup> )	5.73
MO	5.63	5.86	6.10	6.23	5.93	5.75
NE	5.50	5.76	6.04	6.01	5.81	5.59
NC	5.77	6.09	6.43	6.21	5.65	5.53
ND	5.44	5.59	5.86	5.87	5.64	5.34
OH	5.70	5.95	6.25	6.26	5.98	5.83
SD	5.48	5.66	5.92	5.95	5.63	5.40
TN	5.73	6.04	6.15	6.28	5.79	5.75
WI	5.22	5.67	5.92	6.01	5.62	5.66
US	5.59	5.82	6.07	6.09	5.82	5.68
	2001-2002					
AR	4.53	4.64	4.68	5.04	5.63	5.59
IL	4.48	4.58	4.76	4.99	5.51	5.73
IN	4.56	4.63	4.79	5.05	5.51	5.67
IA	4.29	4.36	4.57	4.84	5.26	5.40
KS	4.35	4.42	4.69	4.76	5.39	5.61
KY	4.54	4.69	4.78	5.06	5.62	5.54
LA	4.41	4.45	( <sup>2</sup> )	( <sup>2</sup> )	5.51	5.86
MI	4.44	4.66	4.60	4.97	5.46	5.56
MN	4.16	4.28	4.46	4.75	5.16	5.32
MS	4.45	4.52	4.76	4.76	( <sup>2</sup> )	( <sup>2</sup> )
MO	4.41	4.51	4.66	4.86	5.44	5.45
NE	4.27	4.38	4.52	4.73	5.23	5.43
NC	4.56	4.62	4.78	5.16	5.79	5.72
ND <sup>4</sup>	4.03	4.10	4.30	4.56	4.99	5.12
OH	4.56	4.64	4.87	5.20	5.63	5.59
SD	4.09	4.19	4.44	4.64	5.05	5.29
TN	4.56	4.59	4.72	4.89	5.60	5.64
WI	4.34	4.61	4.61	4.81	5.21	5.31
US	4.38	4.47	4.64	4.88	5.35	5.53

<sup>1</sup> Second year.

<sup>2</sup> Price not published to avoid disclosure of individual firms.

<sup>3</sup> Insufficient sales to establish a price.

<sup>4</sup> Estimates began in September 2001.

**Soybeans: Farm Marketings, Percent of Sales, by Month  
and State, 2001-2002 and 2002-2003<sup>1</sup>**

State and Marketing Year	Aug	Sep	Oct	Nov	Dec	Jan	Feb	Mar	Apr	May	Jun	Jul	Aug
	<i>Percent</i>	<i>Percent</i>	<i>Percent</i>	<i>Percent</i>	<i>Percent</i>	<i>Percent</i>	<i>Percent</i>	<i>Percent</i>	<i>Percent</i>	<i>Percent</i>	<i>Percent</i>	<i>Percent</i>	<i>Percent</i>
AR 2002-2003		6	18	29	16	17	6	2	2	1			3
2001-2002		8	23	23	12	20	4	4	2	1	1	1	1
IL 2002-2003		5	17	6	8	20	8	8	9	5	4	6	4
2001-2002		4	14	8	8	21	6	11	7	5	4	7	5
IN 2002-2003		8	35	7	7	12	7	4	5	4	3	4	4
2001-2002		9	30	13	6	12	6	7	5	2	3	4	3
IA 2002-2003		5	18	8	8	12	8	8	10	6	5	7	5
2001-2002		3	18	8	9	14	8	11	7	6	5	6	5
KS 2002-2003		4	17	16	15	16	10	5	6	4	4	2	1
2001-2002		3	24	16	11	16	8	8	4	6	2	1	1
KY 2002-2003		1	18	25	8	23	8	5	6	2	1	2	1
2001-2002		2	14	15	6	29	10	11	6	3	1	2	1
LA 2002-2003	7	17	26	22	11	8	5	1	1	1		1	
2001-2002	9	11	34	19	6	11	2	3	1	1	2	1	
MI 2002-2003		5	30	9	9	10	9	5	7	5	6	3	2
2001-2002		2	25	20	6	9	4	6	2	2	7	9	8
MN 2002-2003		7	18	11	10	12	9	7	7	6	5	5	3
2001-2002		3	20	7	9	12	6	8	4	5	9	10	7

--continued

**Soybeans: Farm Marketings, Percent of Sales, by Month  
and State, 2001-2002 and 2002-2003 (continued) <sup>1</sup>**

State and Marketing Year	Aug	Sep	Oct	Nov	Dec	Jan	Feb	Mar	Apr	May	Jun	Jul	Aug
	<i>Percent</i>	<i>Percent</i>	<i>Percent</i>	<i>Percent</i>	<i>Percent</i>	<i>Percent</i>	<i>Percent</i>	<i>Percent</i>	<i>Percent</i>	<i>Percent</i>	<i>Percent</i>	<i>Percent</i>	<i>Percent</i>
MS 2002-2003	5	17	14	12	9	20	7	2	3	2	1	8	
2001-2002	7	10	23	8	7	22	4	6	2	2	3	6	
MO 2002-2003		2	22	15	9	17	8	7	7	4	3	4	2
2001-2002		3	23	16	8	16	8	9	4	4	3	3	3
NE 2002-2003		6	23	12	11	14	9	6	7	4	3	3	2
2001-2002		2	28	14	11	15	6	8	5	3	2	3	3
NC 2002-2003		2	4	20	28	11	9	5	6	10	2	2	1
2001-2002		1	18	32	12	10	5	7	5	4	2	3	1
ND 2002-2003		5	20	12	12	15	10	7	8	4	3	3	1
2001-2002		4	25	8	10	15	8	8	4	2	6	7	3
OH 2002-2003		8	29	12	8	10	8	6	7	4	2	3	3
2001-2002		4	28	11	6	15	8	9	5	3	4	4	3
SD 2002-2003		6	25	8	9	11	11	9	7	5	4	3	2
2001-2002		6	29	5	7	13	7	9	6	5	4	4	5
TN 2002-2003		5	21	30	12	17	5	3	3	1	1	1	1
2001-2002		10	40	17	5	12	4	3	2	1	1	3	2
WI 2002-2003		4	31	19	8	8	4	4	8	4	4	4	2
2001-2002		2	21	17	9	16	6	8	7	5	3	4	2
US 2002-2003		5.8	21.1	10.3	9.3	14.4	8.3	6.6	7.5	4.7	3.8	4.6	3.6
2001-2002		4.5	21.9	10.9	8.3	16.0	6.6	9.1	5.4	4.2	4.1	5.0	4.0

<sup>1</sup> Monthly farm marketings, based on a sample survey, as a percent of total used for calculating marketing year average prices.

## Reliability of Prices Received Estimates

**Definition:** Prices received represent sales from producers to first buyers. They include all grades and qualities. The average commodity price from the survey multiplied by the total quantity marketed theoretically should give the total cash receipts for the commodity.

**Survey Procedures:** Primary sales data used to determine grain prices were obtained from probability samples of 2600 mills and elevators. These procedures ensure that virtually all grain moving into commercial channels has a chance of being included in the survey. Generally, States surveyed account for 90 percent or more of total U.S. production. Livestock prices are obtained from packers, stockyards, auctions, dealers, and market check data from AMS-USDA, private marketing organizations, and state commodity groups and agencies. Inter-farm sales of grain and livestock are not included since they represent very small percentages of the total marketings. Grain marketed for seed is also excluded. Fruit and vegetable prices are obtained from sample surveys and market check data from AMS-USDA, private marketing organizations, state agencies, and universities.

**Summary and Estimation Procedures:** Survey quantities sold are expanded by strata to state levels and used to weight average strata prices to a state average. State prices are then weighted to a U.S. price based on expanded marketings. Recommendations are prepared by the State Statistical Offices and reviewed by the Agricultural Statistics Board in Washington, D.C. State recommendations are reviewed for reasonableness with survey data, other States, and recent historic estimates.

**Revisions:** For most items, the current month's preliminary price represents a 3-5 day period around the 15<sup>th</sup> of the month. Previous month's prices represent actual dollars received for quantities sold during the entire month. Revisions are published in monthly issues of *Agricultural Prices*.

**Reliability:** U.S. price estimates based on probability surveys generally have a sampling error of less than one percent for the major commodities such as corn, wheat, soybeans, cotton, and rice. Current methods of summarization for non-probability commodities are not designed directly to calculate sampling errors. However, analytical measures approximate the U.S. relative sampling errors at around five percent. Any nonsampling errors are attributed to such things as the inability to obtain correct information, differences in interpreting questions or definitions, mistakes in coding or processing the data, etc. Efforts are made at each step in the survey process to minimize these nonsampling errors.

## Prices Paid by Farmers

The September Index of Prices Paid for Commodities and Services, Interest, Taxes, and Farm Wage Rates (PPITW) is 128 (1990-92=100), 0.8 percent higher than August 2003 and 2.4 percent above September 2002.

**PRODUCTION INDEX:** The September Farm Production, Goods, and Services Index, at 124, is up 0.8 percent from last month and 2.5 percent above last year. Higher prices in September for feeder cattle, gasoline, nitrogen fertilizers, and feeder pigs more than offset lower prices for complete feeds, feed concentrates, feed grains, and feed supplements.

**Feed:** The index, at 107, is 2.7 percent less than August and 10 percent below last September. Since August, prices are lower for complete feeds, feed concentrates, feed grains, feed supplements, and hay and forages.

**Livestock & Poultry:** The index for livestock and poultry purchases, at 116, is 8.4 percent higher than last month and 17 percent above last year. Since August, prices are higher for feeder cattle and feeder pigs. The September feeder cattle price is the highest on record, at \$103.10 per cwt. This is up \$9.50 per cwt from the August price. The September feeder pig price, at \$62.00 per cwt, rose \$3.50 per cwt.

**Fertilizer:** The index, at 125, is up 0.8 percent from August and 17 percent more than September a year ago. Since August, prices are higher for nitrogen fertilizers, potash and phosphate materials.

**Agricultural Chemicals:** The index, at 119, is unchanged from last month and last September.

**Fuels:** The fuels index, at 144, is up 0.7 percent from a month earlier and 11 percent above September 2002. Compared to last month, higher prices for gasoline more than offset lower prices for diesel fuel.

**Farm Machinery:** The index is 149, unchanged from August but 0.7 percent above last September.

**CONSUMER PRICE INDEX:** The August 2003 Consumer Price Index for all urban consumers (CPI-U) rose 0.4 percent before seasonal adjustment to a level of 184.6 (1982-84=100). This compares to the July index of 183.9. For the 12-month period ending in August, the overall index has increased 2.2 percent.

**Indexes of Prices Paid by Farmers and Related Parity Ratios  
United States, September 2003 With Comparisons**

Indexes and Ratios	1910-14 = 100			1990-92 = 100		
	2002	2003		2002	2003	
	Sep	Aug	Sep	Sep	Aug	Sep
Prices Paid by Farmers for Commodities & Services, Interest, Taxes, & Wage Rates (PPITW)	1,658	1,694	1,700	125	127	128
Production	*1,172	*1,197	1,204	121	123	124
Feed	*579	*538	524	*119	*110	107
Livestock and Poultry	1,259	1,371	1,487	99	107	116
Seeds	1,426	1,553	1,553	144	157	157
Fertilizer	*393	*454	459	107	*124	125
Agricultural Chemicals	*736	739	739	119	119	119
Fuels	1,001	*1,103	1,114	130	*143	144
Supplies & Repairs	929	*947	947	131	*133	133
Autos & Trucks	3,059	*3,020	3,022	115	*114	114
Farm Machinery	*3,716	*3,738	3,738	148	149	149
Building Material	1,663	*1,681	1,682	122	124	124
Farm Services & Rent	1,432	*1,454	1,454			
Farm Services				121	123	123
Rent				119	120	120
Interest <sup>1</sup>	2,615	2,599	2,599	104	104	104
Taxes <sup>2</sup>	3,378	3,426	3,426	126	128	128
Wage Rates	5,537	5,738	5,738	148	153	153
Production, Interest, Taxes, & Wage Rates (PITW)	1,644	*1,681	1,689	122	125	126
Family Living-CPI <sup>3</sup>	1,719	*1,753	1,753	134	*137	137
Ratio (Received/Paid) Parity Ratio <sup>4</sup>	38	41	41	78	*86	85
Parity Ratio Adjusted <sup>5</sup>	40	44	44			
PPITW Adjusted for Productivity <sup>6</sup>	1133	*1162	1163			
Crop Sector (PPITW)				127	*131	131
Livestock Sector (PPITW)				122	*123	124
Farm Sector (Production)				116	*116	118
Non-Farm Sector (Production)				123	*127	127

\* Revised.

<sup>1</sup> Interest per acre on farm real estate debt and interest rate on farm non-real estate debt.

<sup>2</sup> Farm real estate taxes payable per acre.

<sup>3</sup> Bureau of Labor Statistics, Consumer Price Index for all urban consumers (CPI-U), for the previous month converted by the USDA.

<sup>4</sup> Ratio of index of prices received to PPITW (1910-14=100).

<sup>5</sup> Based on estimated cash receipts, from marketings and government payments, the preliminary adjustment factor is 1.086 for 2003 and the revised factor is 1.069 for 2002.

<sup>6</sup> PPITW is adjusted based on productivity trend for the prior 15 years.



**Prices Paid Indexes and Annual Weights for Input Components and  
Sub-Components United States, September 2003 With Comparisons**

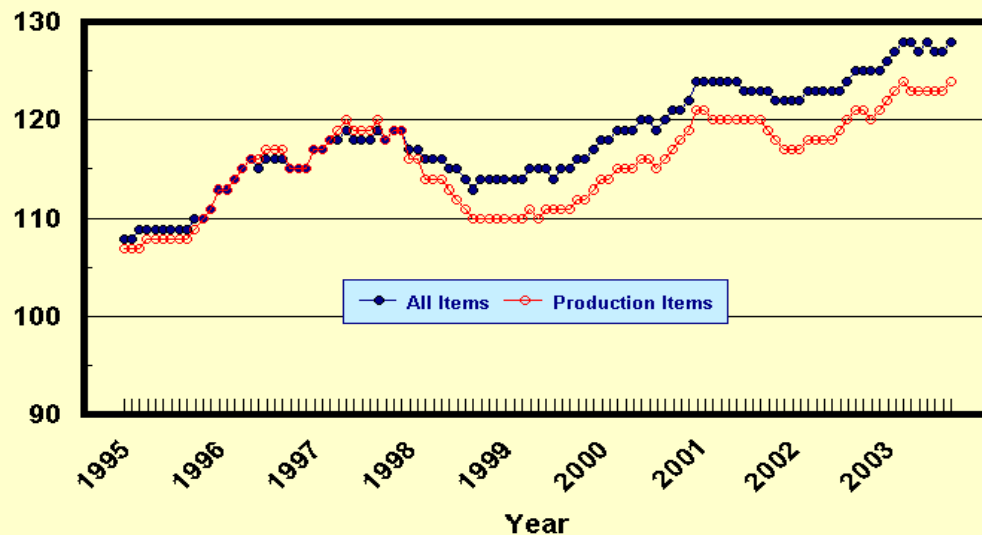
Index	Relative Weights 5-Year Moving Average <sup>1</sup>		Input Indexes		
	2002	2003	2002	2003	
	<i>Percent</i>	<i>Percent</i>	Sep <i>(1990-92=100)</i>	Aug <i>(1990-92=100)</i>	Sep <i>(1990-92=100)</i>
Production Items	66.9	66.7	121	123	124
Feed	11.3	11.0	*119	*110	107
Feed Grains	1.6	1.6	107	*95	93
Complete Feeds	5.5	5.4	*119	*110	107
Hay/Forages	1.4	1.4	*119	110	109
Concentrates	1.8	1.7	122	*115	108
Supplements	0.9	0.9	129	*132	129
Livestock & Poultry	6.8	7.2	99	107	116
Feeder Cattle	5.3	5.6	98	111	122
Feeder Pigs	0.5	0.6	40	64	67
Milk Cow Replacements	0.6	0.6	148	116	116
Poultry	0.4	0.4	111	111	111
Seeds	3.1	3.2	144	157	157
Field Crops	2.8	2.9	147	162	162
Grasses/Legumes	0.3	0.3	118	109	109
Fertilizer	4.7	4.5	107	*124	125
Mixed Fertilizer	2.1	2.0	*105	112	112
Nitrogen	2.0	1.9	*110	*140	142
Potash & Phosphate	0.7	0.6	*107	*111	114
Agricultural Chemicals	3.9	3.8	119	119	119
Herbicides	2.5	2.4	111	112	112
Insecticides	0.9	0.9	*140	148	148
Fungicides/Other	0.6	0.5	118	105	105
Fuels	2.7	2.7	130	*143	144
Diesel	1.5	1.5	130	*133	132
Gasoline	0.8	0.8	122	*149	156
LP Gas	0.4	0.4	143	*171	171
Farm Supplies & Repairs	5.5	5.5	131	*133	133
Supplies	1.8	1.8	124	124	124
Repairs	3.7	3.6	134	138	138
Autos & Trucks	1.7	1.8	115	*114	114
Autos	0.2	0.2	109	*107	107
Trucks	1.5	1.5	116	*115	115
Farm Machinery	4.0	4.0	148	149	149
Tractors	0.9	0.9	140	*141	141
Self-Propelled	1.6	1.6	147	148	148
Other Machinery	1.5	1.5	154	155	155
Building Materials	3.1	3.1	122	124	124
Farm Services	12.3	12.4	121	123	123
Custom Rates	1.3	1.3	120	120	120
Other Services	11.1	11.1	121	124	124
Rent	7.7	7.4	119	120	120
Cash	4.2	4.0	143	145	145
Share	3.6	3.4	91	91	91
Interest	4.8	4.7	104	104	104
Taxes	3.0	3.0	126	128	128
Wage Rates	7.3	7.4	148	153	153
Family Living-CPI	18.0	18.2	134	*137	137

\* Revised.

<sup>1</sup> Weights may not add due to rounding.

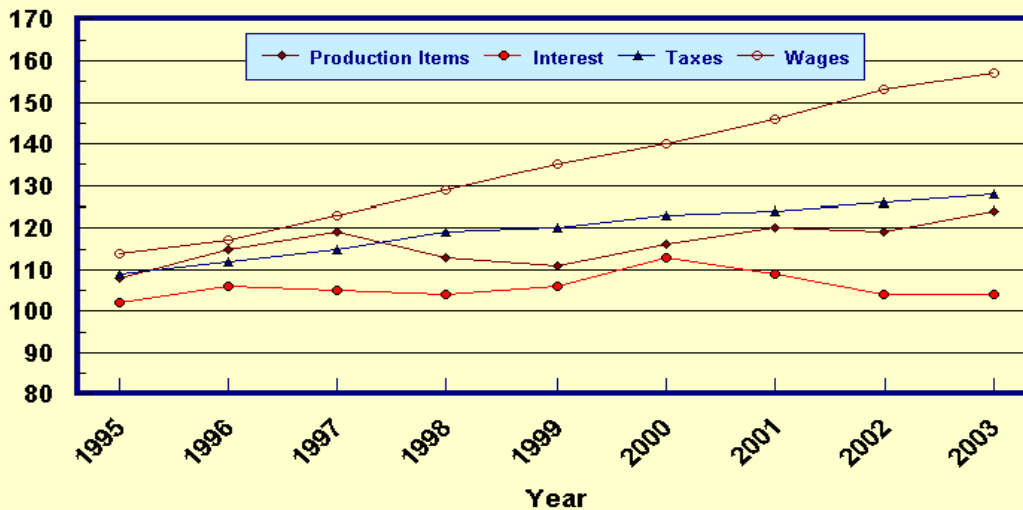
## Prices Paid by Farmers, Major Indexes US, by Quarter and Month

Percent (1990-92=100)



## Prices Paid by Farmers, Major Indexes US, Annual Averages 1/

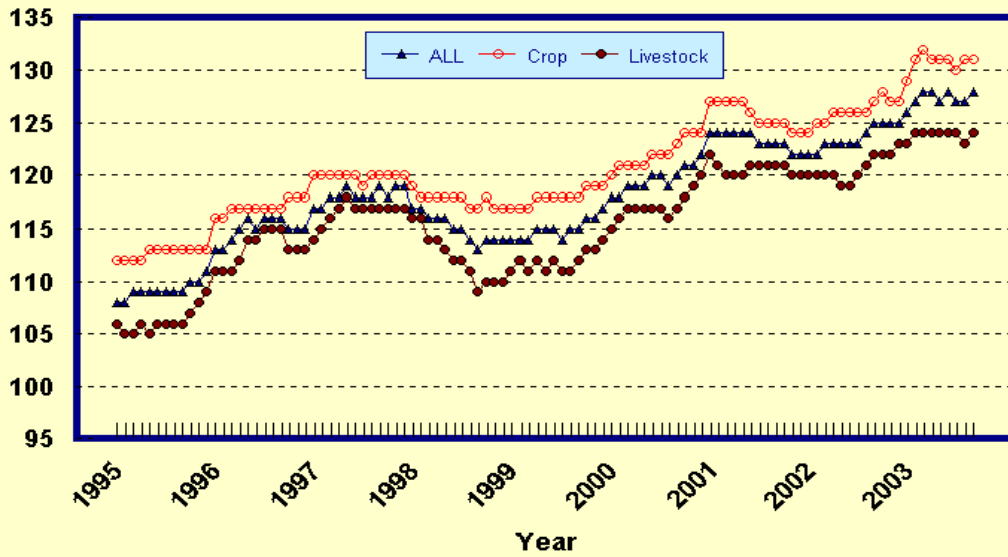
Percent (1990-92=100)



1/ Index values for 2003 are year-to-date averages.

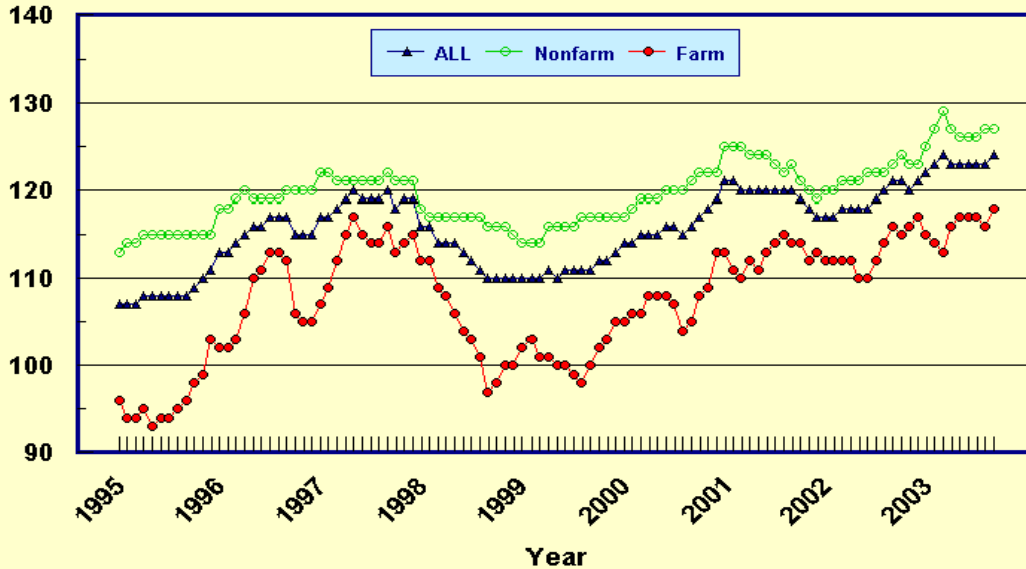
## Prices Paid by Farmers, Indexes, All Items US, By Farm Type

Percent (1990-92=100)



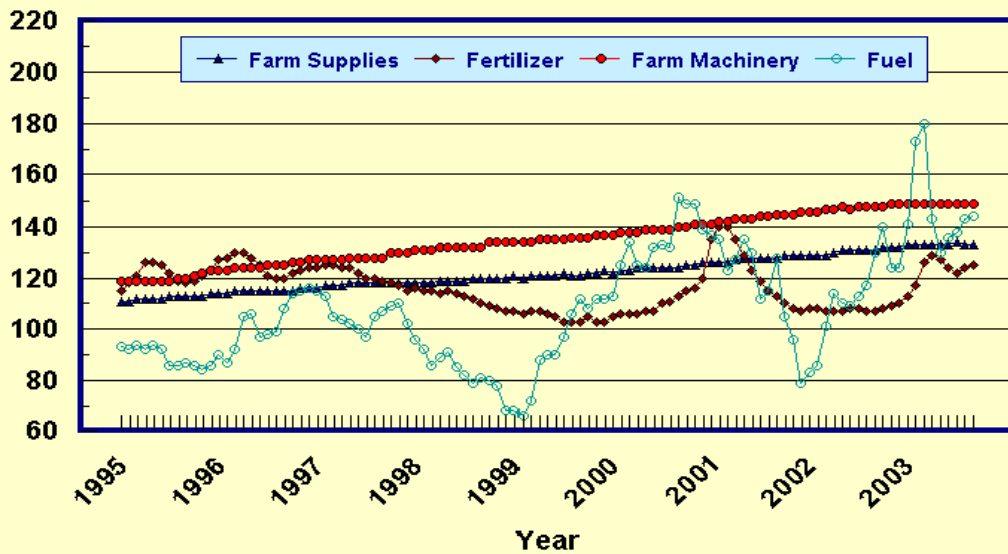
## Prices Paid by Farmers, Indexes, All Production Items US, By Sector Origin

Percent (1990-92=100)



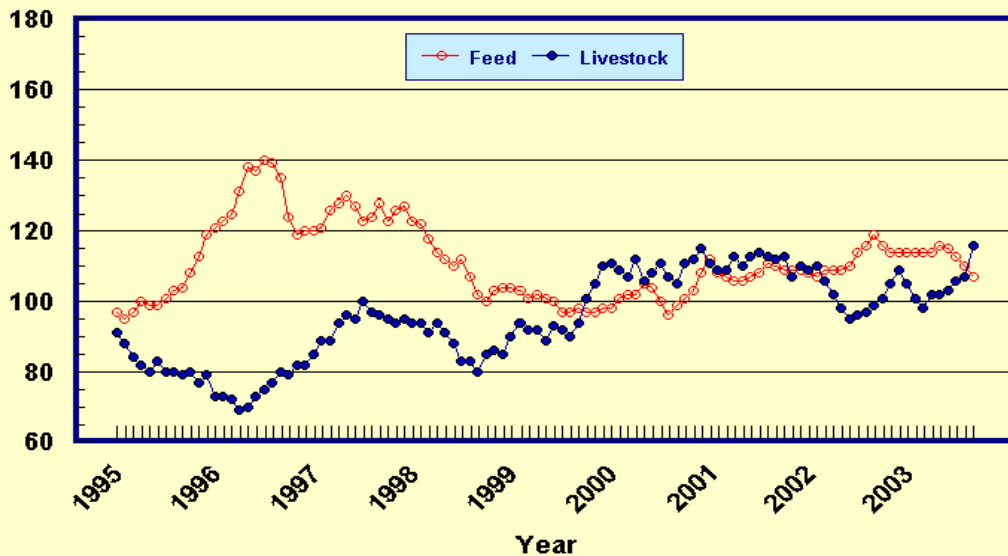
## Prices Paid by Farmers, Selected Production Indexes US, By Non-Farm Sector

Percent (1990-92=100)



## Prices Paid by Farmers, Selected Production Indexes US, By Farm Sector

Percent (1990-92=100)



**Feed Price Ratios: United States, September 2003 with Comparisons**

Feed Price Ratio <sup>1</sup>	2002	2003	
	Sep	Aug	Sep
Broiler-Feed: Pounds of Broiler Grower Feed equal in value to 1 pound of broiler, live weight	4.6	*5.8	5.6
Market Egg Feed: Pounds of Laying Feed equal in Value to 1 dozen eggs	7.1	*12.8	11.8
Hog-Corn: Bushels of Corn equal in value to 100 pounds of hog, live weight	10.7	*18.4	18.4
Milk-Feed: Pounds of 16% Mixed Dairy Feed equal in value to 1 pound of Whole Milk	2.30	*2.88	3.06
Steer & Heifer-Corn: Bushels of Corn equal in value to 100 pounds of Steer & Heifers, live weight	27.4	*38.8	41.4
Turkey-Feed: Pounds of Turkey Grower equal in value to 1 pound of Turkey, live weight	6.0	5.6	6.0

\* Revised.

<sup>1</sup> Effective January 1995, prices of commercial prepared feeds are based on current U.S. prices received for corn, soybeans, alfalfa hay, and all wheat.

**Prices Used to Calculate Feed Price Ratios:  
United States, September 2003 with Comparisons**

Commodity	Unit	2002	2003	
		Sep	Aug	Sep
Broilers, Live	Lb	0.290	*0.360	0.360
Eggs, Market	Doz	0.392	0.669	0.634
Hogs, All	Cwt	26.50	*39.50	39.20
Milk, All	Cwt	11.60	*13.20	14.00
Steers and Heifers	Cwt	67.80	*83.50	88.20
Turkeys, Live	Lb	0.372	0.322	0.357
Corn	Bu	2.47	*2.15	2.13
Hay, Alfalfa, Baled	Ton	101.00	91.00	89.00
Soybeans	Bu	5.39	*5.68	6.04
Wheat, All	Bu	4.21	*3.34	3.29

\* Revised.

**Feeder Livestock: Prices Paid, United States  
September 2003 with Comparisons**

Commodity	Unit	2002	2003	
		Sep	Aug	Sep
		<i>Dollars</i>	<i>Dollars</i>	<i>Dollars</i>
Feeders and Stockers				
Cattle and Calves	Cwt	83.30	93.60	103.10
Feeder Pigs	Cwt	37.00	58.50	62.00

## Prices Paid by Farmers

**Definition:** Prices paid by farmers represent the average costs of inputs purchased by farmers and ranchers to produce agricultural commodities. Conceptually, the average price when multiplied by quantity purchased should equal total producer expenditures for the item.

**Survey Procedures:** The prices paid data are obtained from establishments that sell goods and services to farmers and ranchers. Annually, about 8,500 firms are randomly selected from lists by type of item sold with an average response rate in the range of 75-80 percent. Firms are asked to report the price for the specified item "most commonly bought by farmers" or that was the "volume seller". Approximately 135 items are surveyed each April to represent all production input items purchased. The survey reference period for most items is the 5 business days centered around the 15th of the month. Separate prices paid surveys are conducted for, agricultural chemicals, fuels, feed, fertilizer, machinery, and seed.

**Summary and Estimation Procedures:** The annual April Prices Paid Survey is summarized as a nonprobability survey. Average prices reported are aggregated to the region and U.S. level using weights available from expenditure data and other administrative sources. Price recommendations are prepared by the State Statistical Offices and Headquarters for review by the Agricultural Statistics Board in Washington, D.C. Also, the change in price level for individual items surveyed are combined to the regional and U.S. levels, and are published as prices paid indexes referenced to a specific base period. Prices paid indexes for new autos and trucks, building materials, farm supplies, motor supplies, and marketing containers are updated based on price changes measured in selected Bureau of Labor Statistics (BLS) indexes.

**Revisions:** Any revisions are published in the monthly and in annual issues of *Agricultural Prices*. The basis for revision must be supported by additional data that directly affect the level of the estimate. More revisions are likely in April when separate prices paid surveys are conducted, in lieu of BLS indexes, by the USDA to measure price change.

**Reliability:** Current methods of summarization in April are not designed directly to calculate sampling errors. However, analytical measures approximate the U.S. relative sampling errors for major items around 10 percent. Any nonsampling errors are attributed to such things as the inability to obtain correct information, differences in interpreting questions or definitions, mistakes in coding or processing the data, etc. Efforts are made at each step in the survey process to minimize these nonsampling errors.

**Program Change:** Effective January 1, 1995, the National Agricultural Statistics Service updated the weights and changed the construction of its prices paid and received by farmers indexes. A Federal Register Notice dated October 28, 1994 discussed these program modifications.

A 1990-92 reference and base period replaced the 1977 reference and 1971-73 base weight period. Five-year moving average weights replaced the current fixed 1971-73 base period weights. The 1910-14=100 price indexes, required by statute for computing parity prices, were linked forward based on the changes in the new 1990-92=100 indexes. The new indexes were constructed by multiplying the ratios of the current prices to the base period prices by the moving average weights (adjusted for seasonal marketing patterns for the prices received indexes).

### Information Contacts

General questions should be directed to Linda Hutton, Chief, Environmental, Economics and Demographics Branch at (202) 720-6146. Below are the commodity specialists to contact for additional information.

#### Crop Prices Received

Mark Harris, Chief, Crops Branch .....	(202) 720-2127
Greg Thessen, Field Crops Section .....	(202) 720-2127
Dave DeWalt - Cotton, Cottonseed .....	(202) 720-5944
Herman Ellison - Oilseeds .....	(202) 720-7369
Lance Honig - Wheat, Rye .....	(202) 720-8068
Darin Jantzi - Corn, Proso Millet .....	(202) 720-9526
Troy Joshua - Hay, Oats .....	(202) 690-3234
Roy Karkosh - Sugarcane, Sugarbeets, Barley, Sorghum .....	(202) 690-8843
Mark R. Miller - Peanuts, Rice .....	(202) 720-7688
Jim Smith, Fruit and Vegetable Section .....	(202) 720-2127
Kathy Broussard - Citrus .....	(202) 720-5412
Debbie Flippin - Peaches, Pears, Hops, Pulses, Mint .....	(202) 720-3250
Terry O'Connor - Apples, Cherries, Apricots, Cranberries .....	(202) 720-4288
Mike Miller - Grapes, Tobacco, Potatoes, Dry Edible Beans .....	(202) 720-7235
Biz Wallingsford - Vegetables, Onions, Strawberries .....	(202) 720-2157

#### Livestock Prices Received

Dan Kerestes, Chief, Livestock Branch .....	(202) 720-3570
Wil Hundl, Livestock Section .....	(202) 720-3570
Steve Anderson - Cattle .....	(202) 720-3040
Scott Hollis - Sheep, Lambs, Wool, Mohair .....	(202) 720-4751
Ty Kalas - Milk, Milk Cows .....	(202) 690-3236
Dan Lofthus - Hogs .....	(202) 720-3106
Nathan Crisp, Poultry and Specialty Commodities Section .....	(202) 720-3570
Tom Kruchten - Broilers, Eggs .....	(202) 690-4870
John Lange - Turkeys .....	(202) 720-0585

#### Indexes, Prices Paid, and Parity Prices

Linda Hutton, Chief, Environmental, Economics and Demographics Branch .....	(202) 720-6146
Larry Beard, Economics Section .....	(202) 720-6146
Tara Jackson - Feed, Fertilizer, Ag Chemicals, Seeds .....	(202) 690-3229
Jim Williams - Prices Paid Indexes, Farm Supplies and Repairs, Farm Machinery, Fuels, Feeder Livestock, Poultry Chicks, Feed Price Ratios, Grazing Fees, Autos & Trucks .....	(202) 690-3225
Rhonda Brandt - Prices Received Indexes, Parity Prices .....	(202) 720-5446

The next "Agricultural Prices" report will be released at 3 p.m. ET on October 31, 2003.

The United States Department of Agriculture (USDA) prohibits discrimination in all its programs on the basis of race, color, national origin, gender, religion, age, disability, political beliefs, sexual orientation, and marital or family status. (Not all prohibited bases apply to all programs.) Persons with disabilities who require alternative means for communication of program information (braille, large print, audiotape, etc.) should contact the USDA's TARGET Center at 202-720-2600 (voice and TDD).

To file a complaint of discrimination, write USDA, Director, Office of Civil Rights, Room 326-W, Whitten Building, 1400 Independence Avenue, SW, Washington, D.C., 20250-9410, or call 202-720-5964 (voice or TDD). USDA is an equal opportunity provider and employer.

## ACCESS TO REPORTS!!

---

For your convenience, there are several ways to obtain NASS reports, data products, and services:

### INTERNET ACCESS

All NASS reports are available free of charge on the worldwide Internet. For access, connect to the Internet and go to the NASS Home Page at: <http://www.usda.gov/nass/>. Select "Today's Reports" or Publications and then Reports Calendar or Publications and then Search, by Title or Subject.

### E-MAIL SUBSCRIPTION

All NASS reports are available by subscription free of charge direct to your e-mail address. Starting with the NASS Home Page at <http://www.usda.gov/nass/>, click on **Publications**, then click on the **Subscribe by E-mail** button which takes you to the page describing e-mail delivery of reports. Finally, click on **Go to the Subscription Page** and follow the instructions.

-----

### PRINTED REPORTS OR DATA PRODUCTS

**CALL OUR TOLL-FREE ORDER DESK: 800-999-6779 (U.S. and Canada)**  
**Other areas, please call 703-605-6220      FAX: 703-605-6900**  
**(Visa, MasterCard, check, or money order acceptable for payment.)**

-----

### ASSISTANCE

For **assistance** with general agricultural statistics or further information about NASS or its products or services, contact the **Agricultural Statistics Hotline** at **800-727-9540**, 7:30 a.m. to 4:00 p.m. ET, or e-mail: [nass@nass.usda.gov](mailto:nass@nass.usda.gov).

---



# **USDA Data Users' Forum**

**October 20, 2003**

**Holiday Inn Mart Plaza**

**Chicago, Illinois**

The USDA's National Agricultural Statistics Service will hold a public forum for open exchange between Federal agricultural statistics agencies and data users on October 20, 2003. Agency representatives will provide updates on pending changes in the various statistical and information programs and will seek comments from data users. The USDA's Agricultural Marketing Service, Economic Research Service, Foreign Agricultural Service, and World Agricultural Outlook Board, as well as the U.S. Census Bureau's Foreign Trade Division, will also participate in the forum.

For registration details or additional information about the Data Users' Forum, see the NASS homepage at [www.usda.gov/nass/](http://www.usda.gov/nass/) or contact Karlyn McCutcheon of NASS at (202) 690-8141 or at [karlyn\\_mccutcheon@nass.usda.gov](mailto:karlyn_mccutcheon@nass.usda.gov).

This Data Users' Forum precedes an Industry Outlook Meeting that will be held at the same location on October 21, 2003. The outlook meeting brings together analysts from various commodity sectors to discuss the outlook situation. For more information about the outlook meeting and to register for it, contact the Livestock Marketing Information Center at (720) 544-2941 or (720) 544-2940.