

Released January 30, 2004, by the National Agricultural Statistics Service (NASS), Agricultural Statistics Board, U.S. Department of Agriculture. For information on "Agricultural Prices" see page 88, office hours 7:30 a.m. to 4:00 p.m. ET.

## Update Alert

### December 2, 2004

Grapes, Excl Raisin Varieties Dried, Adjusted Base Price was corrected to \$68.20 from \$44.20 and the Parity Price was corrected to \$1,180.00 from \$764.00 on pages 27 and 34.

### February 10, 2004

The September 2003 All Farm Products prices received index was corrected to 110 on pages 5 and 48. The May 2003 All Crops prices received index was corrected to 116 on page 48. Prices received index charts were corrected on pages 7-9. The January 2004 PPITW index (1910-14=100) was corrected to 1729 on pages 59 and 67. The January 2004 PITW index (1910-14=100) was corrected to 1725 on pages 59 and 67. The January 2004 Items Used for Production index (1910-14=100) was corrected to 1230 on pages 59 and 68. The January 2004 Feed index (1990-92=100) was corrected to 123 on pages 60 and 68. The January 2004 Feed index (1910-14=100) was corrected to 599 on page 68. The January 2004 Feed Grains index was corrected to 107 on pages 60 and 78. All January 2004 Feed Price Ratios on page 64 were corrected. The January 2004 Corn price was corrected to 2.46 on page 64. Many of the January 2004 Parity Prices were corrected on pages 26-27 and 33-36 as a result of the PPITW changing. The January 2004 Manufacturing Milk Parity Price Equivalent was corrected to \$30.83 on page 25. Footnote four was corrected on page 37.

## January Farm Prices Received Index Down 2 Points From Last Month

The preliminary All Farm Products Index of Prices Received by Farmers in January, at 111, based on 1990-92=100, is 2 points (1.8 percent) below the December Index. The Livestock Products Index is down 5 points (4.5 percent) from December while the All Crops Index is unchanged. Lower prices received for cattle, lettuce, milk, and tomatoes more than offset higher commodity prices for broilers, soybeans, corn, and eggs. The seasonal change in the mix of commodities farmers sell, based on the past 3-year average, also affects the overall index. Increased average marketings of cattle, soybeans, corn, and strawberries offset decreased marketings of cotton, grapes, tobacco, and cottonseed.

This preliminary All Farm Products Index is up 11 points (11 percent) from January 2003. The Food Commodities Index, at 112, is 3 points (2.6 percent) below last month but 14 points (14 percent) above January 2003.

## Prices Paid Index Unchanged

The January Index of Prices Paid for Commodities and Services, Interest, Taxes, and Farm Wage Rates (PPITW) is 130 percent of the 1990-92 average. The index is unchanged from December but 4 points (3.2 percent) above January 2003. Lower prices in January for feeder cattle, feed concentrates, herbicides, and insecticides offset higher prices paid for complete feeds, nitrogen fertilizers, feed grains, and LP gas.

Index Summary Table

Index 1990-92=100	2002	2003		2004
	Dec	Jan	Dec	Jan
Prices Received	100	100	113	111
Prices Paid	125	126	130	130
Ratio <sup>1</sup>	80	79	87	85

<sup>1</sup> Ratio of index of prices received by farmers to index of prices paid by farmers.

## Prices Received by Farmers

The January All Farm Products Index is 111 percent of its 1990-92 base, down 1.8 percent from the December index but up 11 percent from the January 2003 index.

**ALL CROPS:** The index is 115, unchanged from December but 12 percent above January 2003. Index increases from December for feed grains and hay, oil-bearing crops, potatoes and dry beans, and other crops offset index decreases for commercial vegetables, fruits and nuts, tobacco, and cotton.

**Food Grains:** The index, at 122, unchanged from the previous month but 4.3 percent above a year ago. The January all wheat price, at \$3.73 per bushel, is up 4 cents from December but 16 cents below January 2003. The rice price, at \$7.71 per cwt., is up 14 cents from December and \$3.05 above a year ago.

**Feed Grains & Hay:** The index is 107, up 2.9 percent from last month and 1.9 percent above January 2003. The corn price, at \$2.46 per bushel, is up 14 cents from December and 13 cents above a year ago. The all hay price, at \$79.30 per ton, is \$2.00 below December and \$12.10 below last January. Grain sorghum, at \$4.44 per cwt, is up 23 cents from December and 32 cents above January last year.

**Oil-Bearing Crops:** The index, at 139, is up 10 percent from December and 40 percent above the same month last year. The soybean price, at \$7.82 per bushel, increased 65 cents from December and is \$2.31 above January 2003.

**Cotton:** The index, at 105, is down 0.9 percent from December but 40 percent above January 2003. The January price, at 63.8 cents per pound, is down 0.3 cents from the previous month but 18.3 cents above last January.

**Potatoes & Dry Beans:** The index, at 97, is up 2.1 percent from December but 10 percent below a year ago. The all potato price, at \$5.70 per cwt, is up 10 cents from December but 97 cents below last January. The all dry bean price, at \$17.40 per cwt, is up 20 cents from the previous month and \$1.00 above January 2003.

**Fruit & Nuts:** The fruit and nut index, at 88, is down 4.3 percent from the previous month but 8.6 percent above January 2003. Since December, prices decreased for grapefruit, lemons, tangelos, pears.

**Commercial Vegetables:** The index, at 138, is down 15 percent from last month but up 20 percent from last January. Price decreases during January for broccoli, cauliflower, lettuce, and tomatoes more than offset price increases for celery, cucumbers, onions, and snap beans.

**LIVESTOCK & PRODUCTS:** The index, at 107, is down 4.5 percent from last month but up 11 percent from January 2003. Compared with a year ago, prices are higher for broilers, all cattle, dairy, eggs, calves, hogs, and turkeys.

**Meat Animals:** The index, at 100, is down 9.9 percent from last month but up 7.5 percent from last year. The January hog price of \$35.70 per cwt is up \$1.50 from December and \$2.70 from a year ago. The January beef cattle price of \$77.40 is down \$13.10 from last month but up \$4.20 from January 2003.

**Dairy Products:** The index, at 100, is down 4.8 percent from December but 11 percent above January 2003. The January all milk price of \$13.10 per cwt is down 60 cents from December but up \$1.40 from last year. The fluid grade milk price is down 70 cents from last month while the manufactured grade milk price is down 20 cents.

**Poultry & Eggs:** The index, at 133, is up 9.9 percent from December and 23 percent above a year ago. January market egg prices, at 80.6 cents per dozen, increased 6.7 cents from December reflecting a seasonal increase and a strong demand for proteins. The January broiler price, at 43.0 cents per pound, is up 5.0 cents per pound from December. The highest broiler price since October 1998 is due to sharp decreases in international supplies. January turkey prices, averaging 34.9 cents per pound, are down 2.8 cents from the previous month.

## Table of Contents

<b>U.S. Prices Received and Indexes</b>	<b>Page</b>	<b>Monthly State Prices, continued</b>	<b>Page</b>
Narrative .....	2	Cotton .....	19
Price Indexes .....	5	Cottonseed .....	19
Price Index Charts .....	6	Eggs .....	24
U.S. Prices Received Summary .....	10	Flaxseed .....	18
Charts .....	12	Fruit, Citrus .....	20
Selected Commodities .....	16	Hay .....	19
Upland Cotton & Rice Marketings .....	19	Hogs, All .....	23
Parity Prices .....	26	Barrows and Gilts .....	23
Reliability Statement .....	57	Sows .....	23
<b>Monthly State Prices Received</b>		Milk .....	25
Apples .....	19	Oats .....	17
Barley .....	17	Peanuts .....	18
Beans, Dry Edible .....	18	Potatoes .....	21
Beef Cattle, All .....	22	Sheep .....	24
Calves .....	22	Lambs .....	24
Cows, Beef .....	22	Sorghum, Grain .....	17
Milk Cows .....	25	Soybeans .....	17
Steers and Heifers .....	22	Sunflowers .....	18
Corn .....	17	Tobacco .....	18
		Wheat, All Classes .....	16
<b>Prices Received Special Features</b>			<b>Page</b>
<b>Crop Marketing Seasons</b> .....			28
<b>Monthly Price Revisions</b>			
Apples .....			30
Grapes .....			30
Peaches .....			30
Pears .....			30
Rice .....			29
<b>Monthly Marketings</b>			
Rice .....			29
<b>Marketing Year Average Prices</b>			
Rice .....			29
Sweet Potatoes .....			28
<b>Index of Prices Received: U.S., All Groups, Monthly and Annual, 2000-2004</b> .....			48
<b>Annual Parity Price Calculations</b>			
Authority for Parity Prices, Method of Computation and Prices .....			31
Adjusted Base Prices & January 2004 Parity Prices .....			33
Average Base Period Prices, U.S., 1910-14 .....			37
Annual Average Prices Received for Parity Computations, U.S., by Years, 1994-2003 .....			38
Parity Price Equivalent for Manufacturing Grade Milk .....			56

## Table of Contents (continued)

<b>U.S. Prices Paid, Prices Paid Indexes and Ratios</b>	<b>Page</b>
Narrative .....	58
Indexes and Parity Ratios .....	59
Charts .....	61
Feed Price Ratios .....	64
Reliability Statement .....	87
<b>U.S. Average Prices</b>	
Commodity Prices Used in Feed Price Ratios .....	64
Feeder Livestock .....	64
<b>Special Features</b>	
Private Non-Irrigated Grazing Fee Rates for Cattle by Selected States and Regions .....	65
Prices Paid Index for Beef Cattle Production .....	66
Prices Paid Survey Estimates, Month Published and Level .....	86
Index of Prices Paid: 1910-14=100 and 1990-92=100 Monthly and Annual Average, United States, 1999-2003 .....	67-85
PPITW, PITW, Production Items .....	67-68
Index Component Items, Interest, Taxes, Wage Rates, Farm and Non Farm Origin .....	68-75
Ratios .....	76
Crop Sector, Livestock Sector, and PPITW adjusted for Productivity .....	77
Index Sub-Components (1990-92=100): Monthly and Annual Averages .....	78-85
<b>Information Contacts</b> .....	88

**Index Numbers of Prices Received, United States,  
January 2004, with Comparisons**

Index	1910-14=100				1990-92=100		
	Average 1990-92	2003		2004	2003		2004
		Jan	Dec	Jan	Jan	Dec	Jan
All Farm Products	639	632	*720	708	100	*113	111
All Crops	500	508	*566	569	103	*115	115
Food Grains	325	372	*386	389	117	*122	122
Feed Grains & Hay	363	375	*370	384	105	*104	107
Cotton	517	385	*542	539	75	*106	105
Tobacco	1,263	1,817	1,717	1,713	120	114	113
Oil-Bearing Crops	554	540	*692	758	99	*126	139
Fruits & Nuts	716	567	*645	612	81	*92	88
Commercial Vegetables	698	768	*1,082	924	115	*162	138
Potatoes & Dry Beans	540	549	*481	489	108	95	97
Other Crops	493	564	*564	569	114	*114	115
Livestock & Products	768	734	*858	822	96	*112	107
Meat Animals	1,021	949	*1,124	1,014	93	*111	100
Dairy Products	799	719	842	805	90	105	100
Poultry & Eggs	282	303	339	373	108	121	133
Food Commodities					98	*115	112

\* Revised.

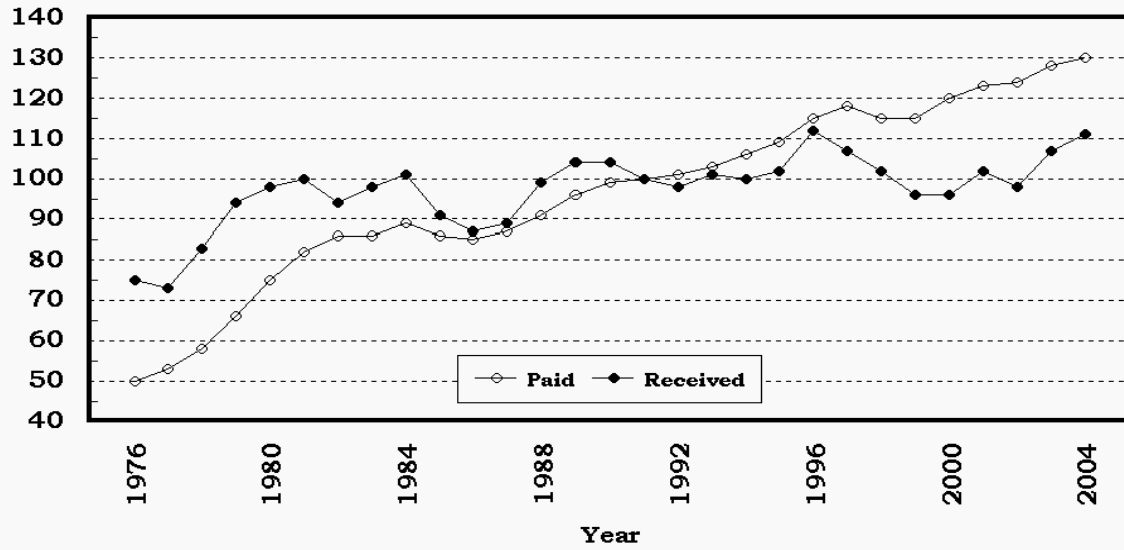
**Selected Index Numbers for Prices Received and Paid,  
1990-92=100, by Months, United States, 2003 and 2004**

Month	Index of Prices Received						Index of Prices Paid			
	All Farm Products		All Crops		Livestock and Products		All Items		Production Items	
	2003	2004	2003	2004	2003	2004	2003	2004	2003	2004
Jan	100	111	103	115	96	107	126	130	122	127
Feb	99		104		95		128		123	
Mar	99		106		93		128		124	
Apr	101		111		93		128		124	
May	106		116		97		127		123	
Jun	107		117		99		128		124	
Jul	105		109		101		127		124	
Aug	109		113		106		127		123	
Sep	110		111		110		129		125	
Oct	113		111		116		130		126	
Nov	117		117		117		130		127	
Dec	113		115		112		130		127	

## Prices Received vs Prices Paid

Annual Average Indexes\*

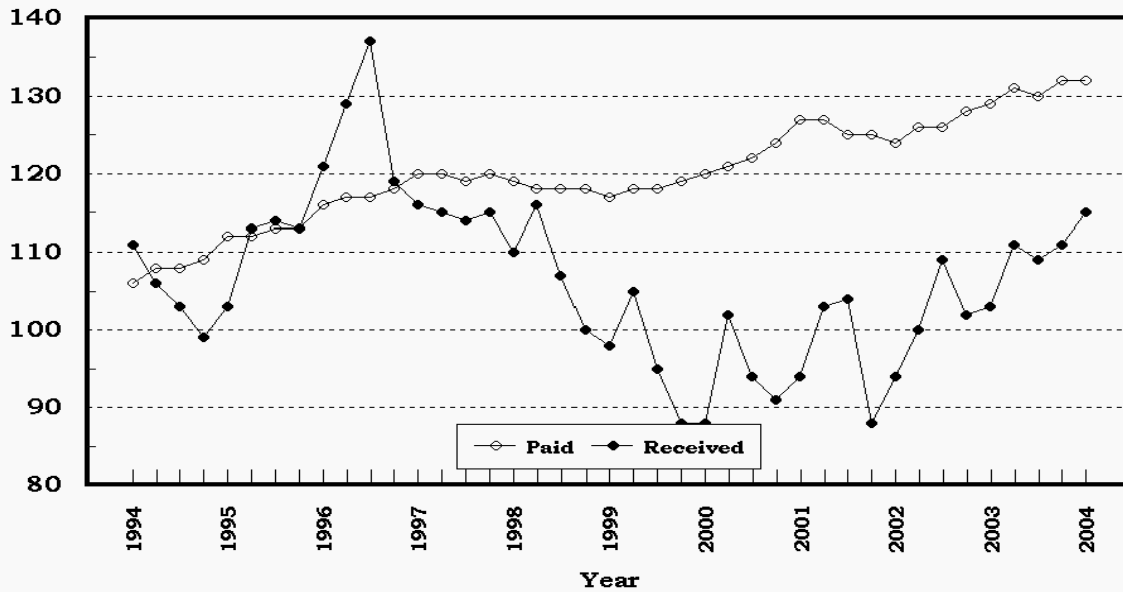
Index Values (1990-92=100)



\* Index values for 2004 are year-to-date averages.

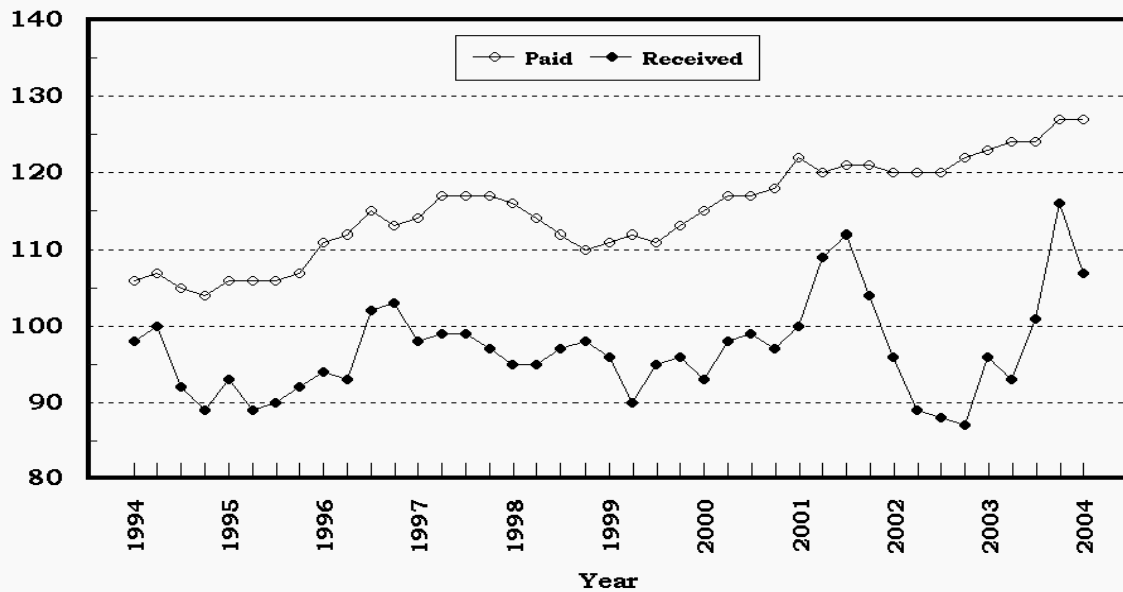
**Crop Farm Index: Prices Received and Prices Paid**  
All Items, U.S., 1994-2004, By Quarter

Index Values (1990-92=100)



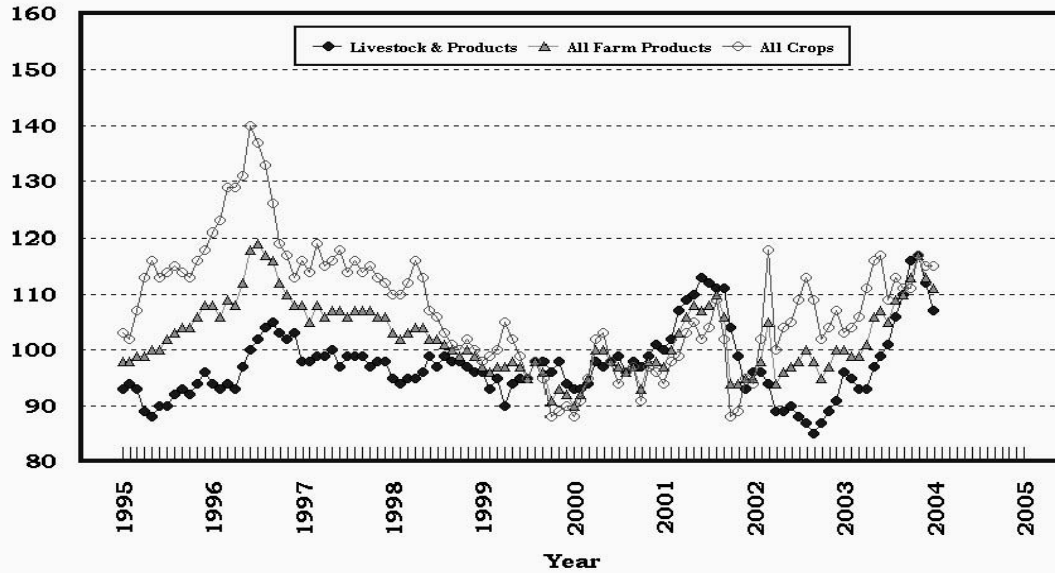
**Livestock Farm Index: Prices Received and Prices Paid**  
All Items, U.S., 1994-2004, By Quarter

Index Values (1990-92=100)



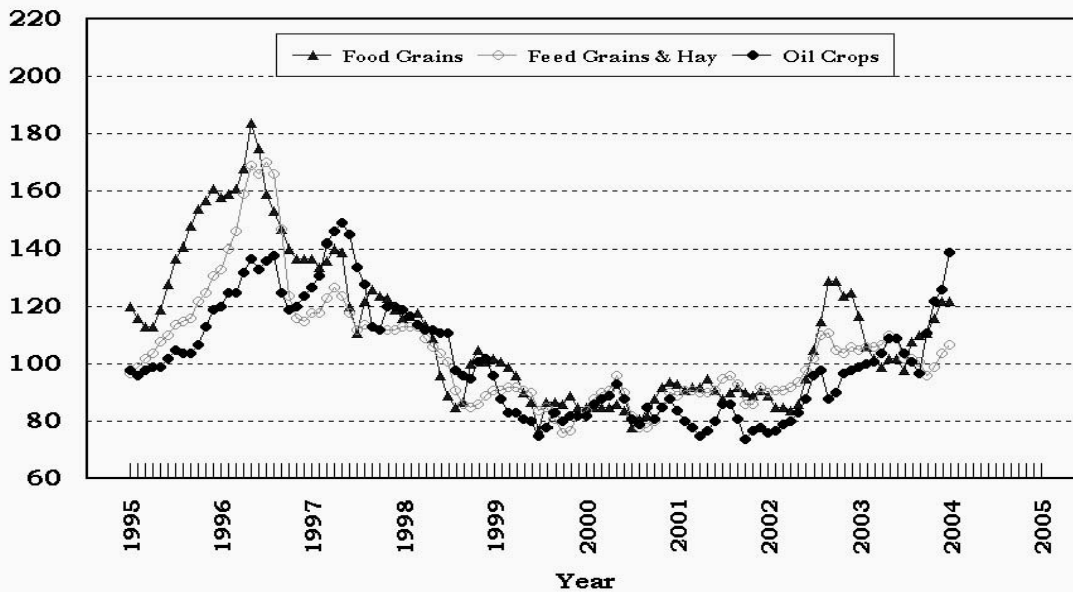
## Prices Received, Major Indexes, US

Index Values(1990-92=100)



## Prices Received, Food, Feed, & Oil Indexes, US

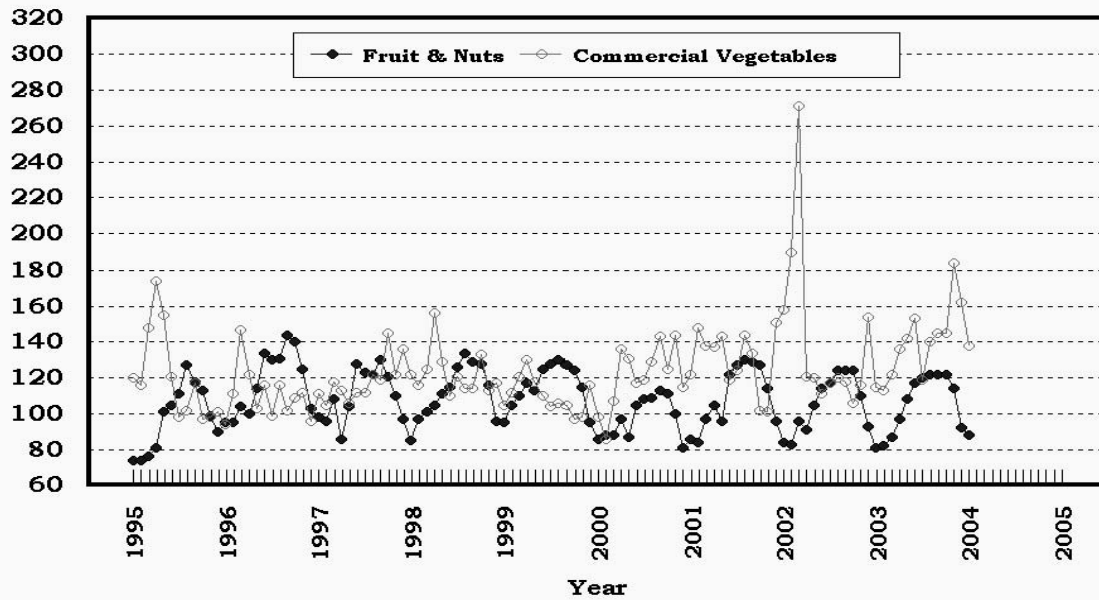
Index Values(1990-92=100)





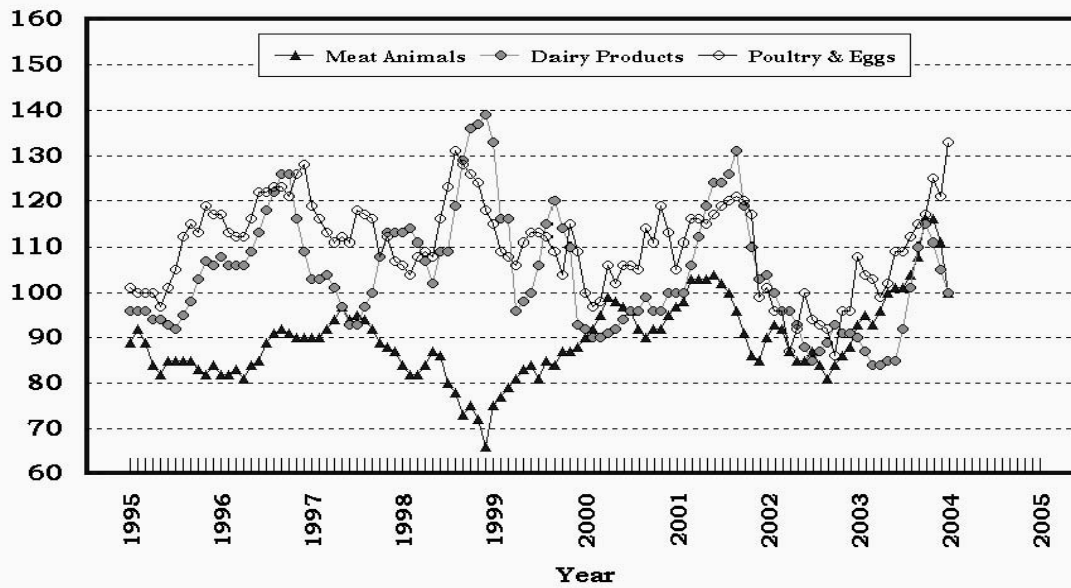
## Prices Received, Fruit/Vegetable Indexes, US

Index Values(1990-92=100)



## Prices Received, Livestock Product Indexes, US

Index Values(1990-92=100)



**Prices Received, United States,  
January 2004, with Comparisons**

Commodity	Unit	Average 1990-92	Entire Month		Preliminary
			Jan 2003	Dec 2003	Jan 2004
		<i>Dollars</i>	<i>Dollars</i>	<i>Dollars</i>	<i>Dollars</i>
<b>Field Crops</b>					
Barley, All	Bu	2.12	2.85	2.94	2.70
Feed	Bu	1.90	2.17	2.30	2.20
Malting	Bu	2.43	3.07	3.22	3.00
Beans, Dry Edible	Cwt	19.10	16.40	17.20	17.40
Chickpeas, All <sup>1</sup>	Cwt			14.50	13.90
Large <sup>1</sup>	Cwt			14.30	13.90
Small <sup>1</sup>	Cwt			16.00	( <sup>5</sup> )
Corn	Bu	2.30	2.33	2.32	2.46
Cotton, Upland	Lb	0.606	0.455	0.641	0.638
Cottonseed	Ton	96.00	105.00	127.00	127.00
Flaxseed	Bu	4.27	5.71	6.22	6.15
Hay, All, Baled <sup>2</sup>	Ton	76.30	91.40	81.30	79.30
Alfalfa <sup>2</sup>	Ton	77.20	98.50	87.90	83.60
Other <sup>2</sup>	Ton	60.00	78.10	66.90	71.40
Lentils <sup>1</sup>	Cwt			19.00	18.60
Oats	Bu	1.22	2.04	1.58	1.50
Peanuts, In-Shell	Lb	0.304	0.191	0.196	0.206
Peas, Dry Edible <sup>1</sup>	Cwt			9.15	8.92
Austrian Winter <sup>1</sup>	Cwt			11.40	( <sup>5</sup> )
Potatoes	Cwt	5.82	6.67	5.60	5.70
Rice, Rough	Cwt	7.07	4.66	7.57	7.71
Sorghum Grain	Cwt	3.75	4.12	4.21	4.44
Soybeans	Bu	5.61	5.51	7.17	7.82
Sunflowers, All	Cwt	9.50	12.10	11.60	12.00
Tobacco, Types 11-37	Lb	1.740	2.090	1.975	1.970
Wheat, All	Bu	2.96	3.89	3.69	3.73
Winter	Bu	2.93	3.66	3.63	3.70
Durum	Bu	2.86	4.23	3.96	4.03
Other Spring	Bu	3.11	4.03	3.75	3.73
Hard Red Winter	Bu		3.66	3.64	
Soft Red Winter	Bu		3.50	3.76	
Hard Red Spring	Bu		4.05	3.76	
White	Bu	3.24	3.73	3.54	
<b>Fruit</b>					
Citrus, Equiv on-tree					
Grapefruit	Box	5.77	2.19	2.89	2.21
Lemons	Box	10.10	3.35	3.80	3.30
Oranges	Box	5.79	3.00	2.44	2.36
Tangelos	Box	5.82	3.57	4.52	1.60
Tangerines	Box	15.11	12.16	7.82	13.13
Temples	Box	6.23	2.84		2.11
Noncitrus, Fresh					
Apples <sup>3</sup>	Lb	0.212	0.258	0.285	0.301
Grapes <sup>3</sup>	Ton	506.00		740.00	
Peaches <sup>3</sup>	Lb	0.216			
Pears <sup>3</sup>	Ton	370.00	408.00	392.00	376.00
Strawberries	Lb	0.560	1.090	1.870	1.830

<sup>1</sup> Monthly estimates began July 2003.

<sup>2</sup> Mid-month price.

<sup>3</sup> Equivalent packinghouse-door returns for CA, MI, and NY (apples only), and WA (apples, peaches, and pears). Prices as sold for other states.

<sup>4</sup> Price not published to avoid disclosure of individual firms.

<sup>5</sup> Insufficient sales to establish a price.

**Prices Received, United States,  
January 2004, with Comparisons (continued)**

Commodity	Unit	Average 1990-92	Entire Month		Preliminary
			Jan 2003	Dec 2003	Jan 2004
		<i>Dollars</i>	<i>Dollars</i>	<i>Dollars</i>	<i>Dollars</i>
<b>Vegetables, Fresh <sup>1</sup></b>					
Asparagus	Cwt	79.80	98.90		
Broccoli	Cwt	22.50	25.20	52.80	41.60
Cantaloupes <sup>2</sup>	Cwt				
Carrots	Cwt	13.20	19.30	24.30	24.30
Cauliflower	Cwt	26.80	24.60	81.50	32.40
Celery	Cwt	11.60	8.29	15.30	21.50
Corn, Sweet	Cwt	15.70	29.00	29.90	28.60
Cucumbers <sup>2</sup>	Cwt		27.60	19.90	28.60
Lettuce	Cwt	11.90	12.10	25.70	16.50
Onions	Cwt	12.80	12.30	16.10	16.80
Snap Beans <sup>2</sup>	Cwt		75.30	48.10	80.00
Tomatoes	Cwt	32.30	47.20	33.70	24.40
<b>Livestock</b>					
Calves	Cwt	94.30	96.80	112.00	105.00
Cattle, All Beef	Cwt	72.90	73.20	90.50	77.40
Cows	Cwt	49.60	36.90	49.40	45.80
Steers & Heifers	Cwt	77.10	77.80	95.70	81.20
Milk Cows <sup>3</sup>	Head	1,130.00	1,380.00		1,390.00
Hogs, All	Cwt	47.70	33.00	34.20	35.70
Barrows & Gilts	Cwt	48.40	33.50	34.60	36.10
Sows	Cwt	39.50	22.20	28.10	28.80
Lambs	Cwt	56.20	92.00	98.40	
Sheep	Cwt	23.40	41.30	44.40	
<b>Dairy and Poultry</b>					
Milk, All <sup>4 5</sup>	Cwt	13.06	11.70	13.70	13.10
Fluid Grade <sup>5</sup>	Cwt	13.10	11.80	13.80	13.10
Mfg Grade <sup>5</sup>	Cwt	11.80	10.50	12.70	12.50
Broilers, Live <sup>6</sup>	Lb	0.317	0.350	0.380	0.430
Eggs, All <sup>7</sup>	Doz	0.643	0.636	0.868	0.926
Market <sup>7</sup>	Doz	0.546	0.489	0.739	0.806
Turkeys, live <sup>6 7</sup>	Lb	0.380	0.346	0.377	0.349
<b>Adjusted for Seasonal Variation</b>					
Eggs, All	Doz	0.545	0.610	0.775	0.874
Milk, All <sup>4</sup>	Cwt	9.71	11.82	13.70	13.65

<sup>1</sup> F.O.B. shipping point.

<sup>2</sup> Monthly estimates began January 1995.

<sup>3</sup> Animals sold for dairy herd replacement only. Prices available for Jan, Apr, Jul, and Oct.

<sup>4</sup> Before deductions for hauling. Includes quality, quantity, and other premiums. Excludes hauling subsidies.

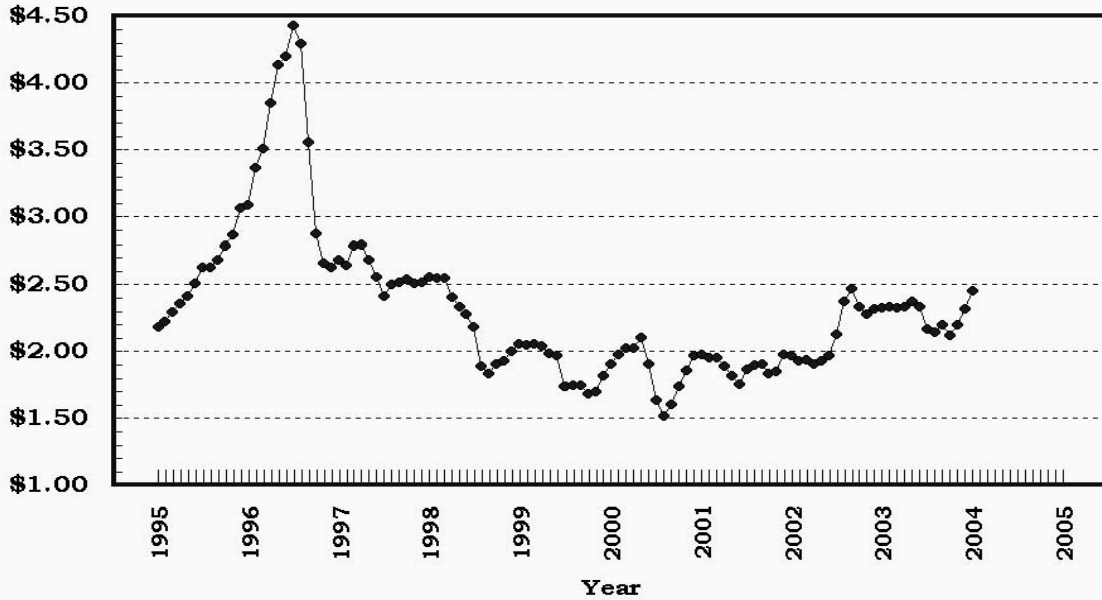
<sup>5</sup> January 2004 Fat test percent: all milk 3.79, fluid milk 3.78, mfg grade 3.95.

<sup>6</sup> Equivalent liveweight returns to producers for most States. Includes growers and contractors.

<sup>7</sup> Mid-month price.

## Prices Received, Corn, US

Dollars per Bu



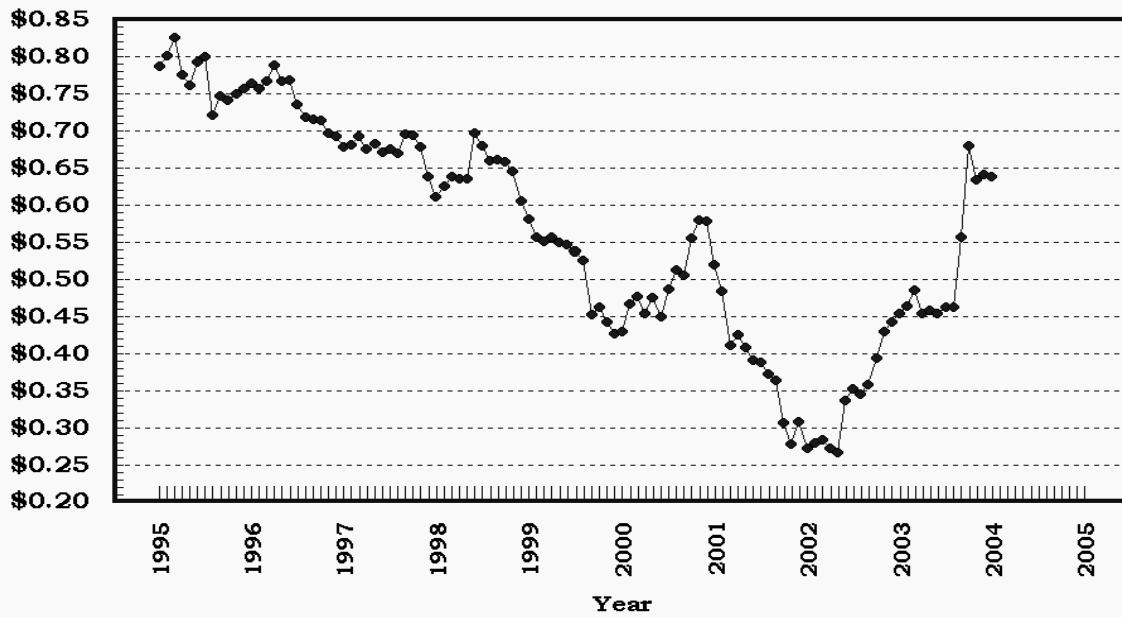
## Prices Received, Wheat, US

Dollars per Bu



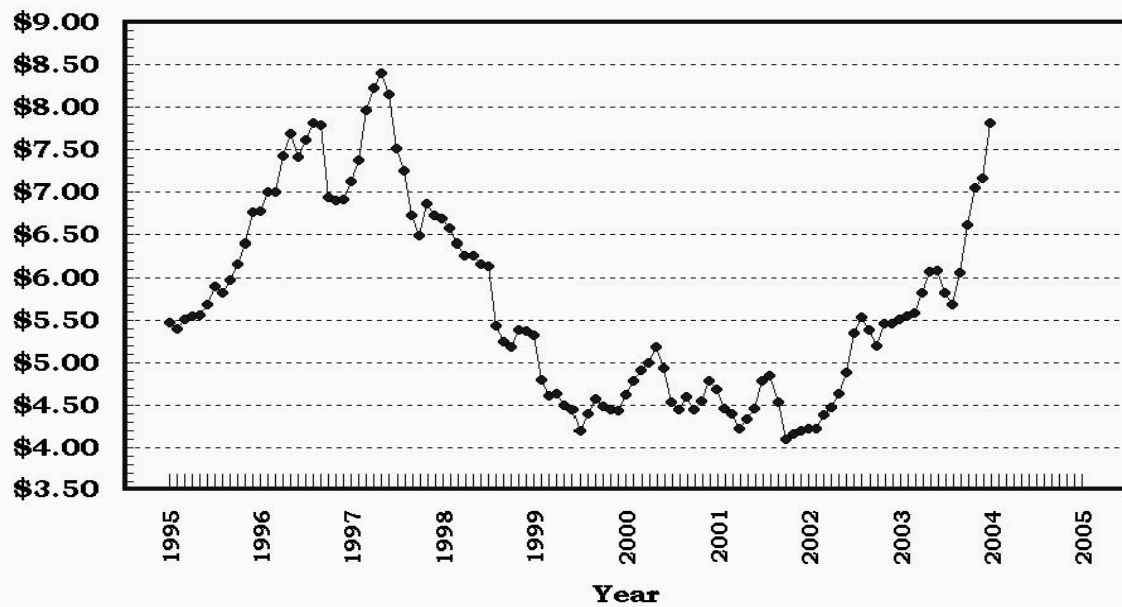
## Prices Received, Cotton, US

Dollars per Lb



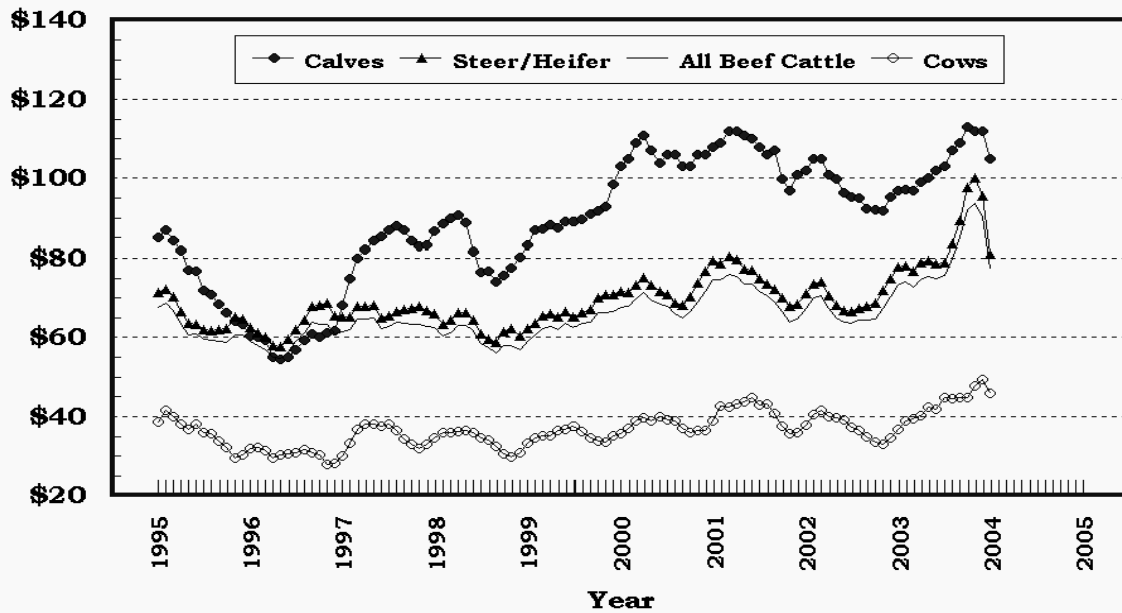
## Prices Received, Soybeans, US

Dollars per Bu



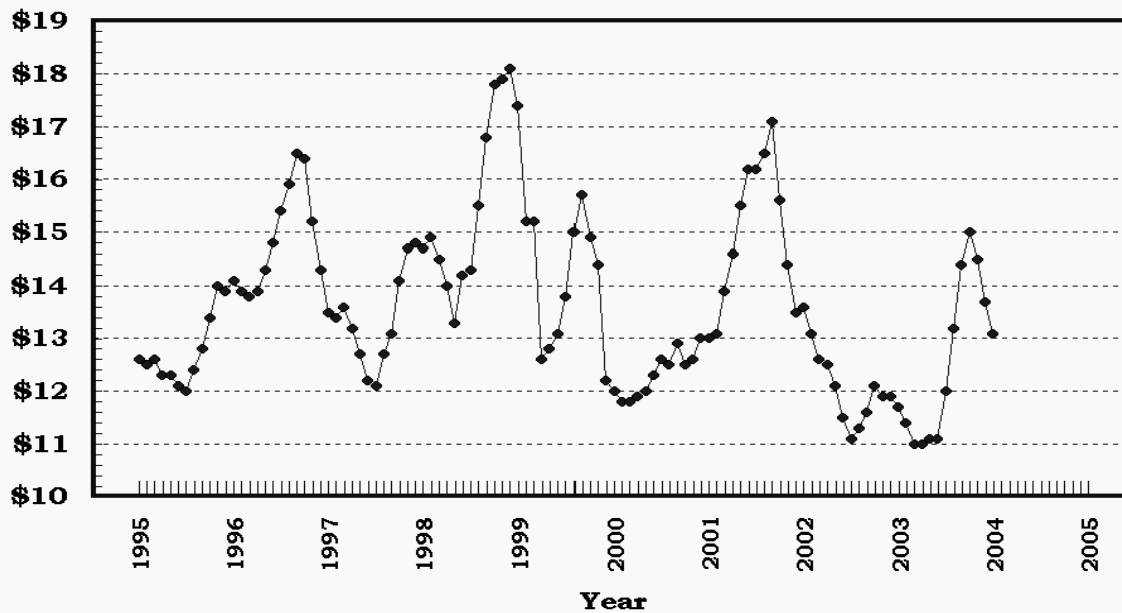
## Prices Received, Cattle, US

Dollars per Cwt



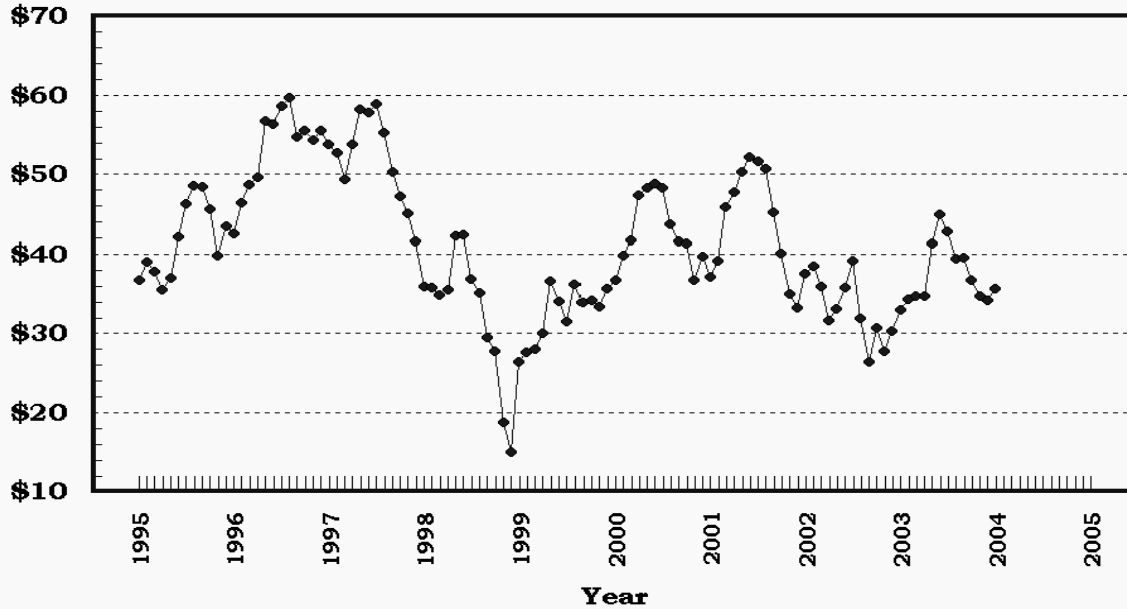
## Prices Received, Milk, US

Dollars per Cwt



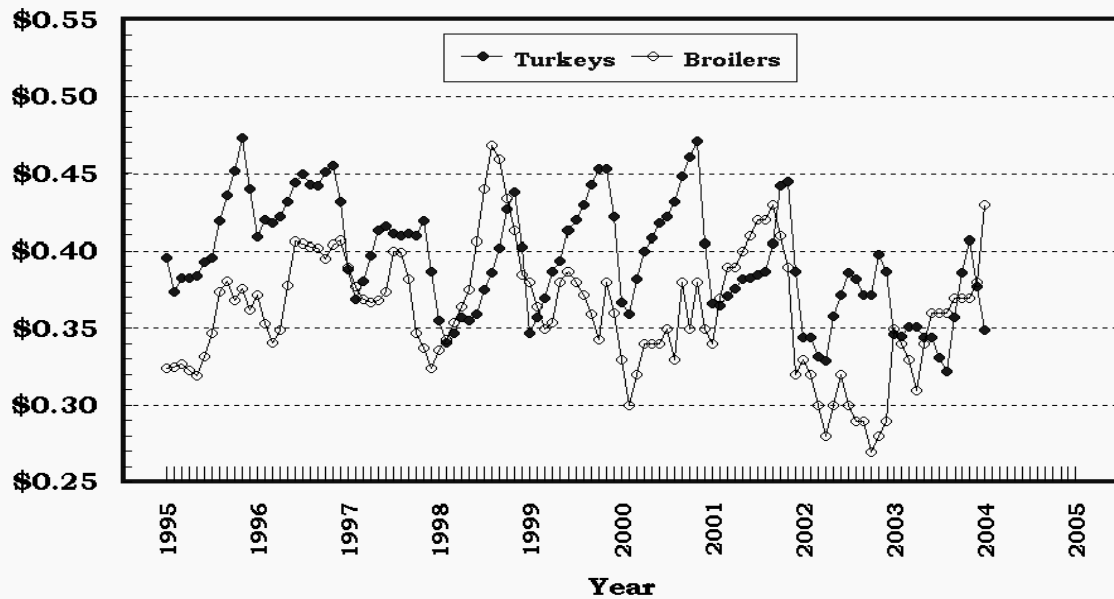
## Prices Received, Hogs, US

Dollars per Cwt



## Prices Received, Turkeys & Broilers, US

Dollars per Lb



**Wheat: Prices Received, by States, December 2003 and January 2004**

State	All Wheat		Winter Wheat		Durum Wheat		Oth Spring Wheat	
	Dec <sup>1</sup>	Jan <sup>2</sup>	Dec <sup>1</sup>	Jan <sup>2</sup>	Dec <sup>1</sup>	Jan <sup>2</sup>	Dec <sup>1</sup>	Jan <sup>2</sup>
	<i>Dollars per Bushel</i>	<i>Dollars per Bushel</i>	<i>Dollars per Bushel</i>	<i>Dollars per Bushel</i>	<i>Dollars per Bushel</i>	<i>Dollars per Bushel</i>	<i>Dollars per Bushel</i>	<i>Dollars per Bushel</i>
AR	4.08	( <sup>3</sup> )	4.08	( <sup>3</sup> )				
CA	( <sup>3</sup> )	( <sup>3</sup> )	( <sup>3</sup> )	( <sup>4</sup> )	( <sup>3</sup> )	( <sup>3</sup> )		
CO	3.62	3.68	3.62	3.67			3.92	( <sup>3</sup> )
ID	3.52	3.65	3.42	3.55			3.71	3.85
IL	3.69	3.70	3.69	3.70				
IN	4.00	3.84	4.00	3.84				
KS	3.70	3.71	3.70	3.71				
MI	3.63	3.60	3.63	3.60				
MN	3.69	3.79	4.14	4.19			3.69	3.79
MO	3.73	3.75	3.73	3.75				
MT	3.75	3.81	3.62	3.67	3.90	3.97	3.80	3.86
NE	3.52	3.60	3.52	3.60				
ND	3.77	3.72	3.12	3.20	3.98	4.00	3.74	3.65
OH	3.65	3.72	3.65	3.72				
OK	3.74	3.79	3.74	3.79				
OR	3.69	3.74	3.65	3.70			3.91	4.00
SD	3.62	3.66	3.51	3.60			3.76	3.73
TX	3.68	3.90	3.68	3.90				
WA	3.63	3.69	3.60	3.67			3.76	3.80
US	3.69	3.73	3.63	3.70	3.96	4.03	3.75	3.73

<sup>1</sup> Entire month.

<sup>2</sup> Mid-month.

<sup>3</sup> Price not published to avoid disclosure of individual firms.

<sup>4</sup> Insufficient sales to establish a price.

**Prices Received for Selected Agricultural Commodities, by Months,  
United States, 2003 and 2004 <sup>1</sup>**

Month	All Wheat		Corn		Soybeans		Beef Cattle <sup>2</sup>		All Hogs	
	2003	2004	2003	2004	2003	2004	2003	2004	2003	2004
	<i>Dollars per Bushel</i>	<i>Dollars per Bushel</i>	<i>Dollars per Bushel</i>	<i>Dollars per Bushel</i>	<i>Dollars per Bushel</i>	<i>Dollars per Bushel</i>	<i>Dollars per Cwt</i>	<i>Dollars per Cwt</i>	<i>Dollars per Cwt</i>	<i>Dollars per Cwt</i>
Jan	3.89	3.73	2.33	2.46	5.51	7.82	73.20	77.40	33.00	35.70
Feb	3.70		2.34		5.55		74.00		34.40	
Mar	3.55		2.33		5.59		72.70		34.70	
Apr	3.37		2.34		5.82		74.60		34.80	
May	3.33		2.38		6.07		75.50		41.30	
Jun	3.08		2.34		6.09		74.90		45.00	
Jul	2.95		2.17		5.82		75.80		42.80	
Aug	3.34		2.15		5.68		79.90		39.50	
Sep	3.39		2.20		6.06		85.10		39.60	
Oct	3.45		2.12		6.61		92.00		36.80	
Nov	3.59		2.20		7.05		93.70		34.80	
Dec	3.69		2.32		7.17		90.50		34.20	

<sup>1</sup> Current month prices are mid-month; prices for previous months are for the entire month.

<sup>2</sup> Cows, steers and heifers.



**Grains: Prices Received, by States, December 2003 and January 2004**

Month	All Barley <sup>1</sup>		Corn		Oats		Soybeans		Sorghum Grain	
	Dec <sup>2</sup>	Jan <sup>3</sup>	Dec <sup>2</sup>	Jan <sup>3</sup>	Dec <sup>2</sup>	Jan <sup>3</sup>	Dec <sup>2</sup>	Jan <sup>3</sup>	Dec <sup>2</sup>	Jan <sup>3</sup>
	<i>Dollars per Bushel</i>	<i>Dollars per Bushel</i>	<i>Dollars per Bushel</i>	<i>Dollars per Bushel</i>	<i>Dollars per Bushel</i>	<i>Dollars per Bushel</i>	<i>Dollars per Bushel</i>	<i>Dollars per Bushel</i>	<i>Dollars per Cwt</i>	<i>Dollars per Cwt</i>
AL										
AR										
CA							( <sup>4</sup> )	( <sup>4</sup> )	( <sup>4</sup> )	( <sup>4</sup> )
CO	( <sup>4</sup> )	( <sup>5</sup> )								
CO	2.87	2.87	2.34	2.58						
ID	3.25	3.14								
IL			2.34	2.45	1.89	( <sup>5</sup> )	7.13	7.60	4.62	4.80
IN			2.47	2.54			7.44	8.22		
IA			2.28	2.40	1.59	1.55	7.35	8.00		
KS			2.47	2.65			7.46	7.94	4.15	4.40
KY			2.44	2.65			7.25	8.15		
LA							7.38	7.98		
MI			2.23	2.45	1.96	1.80	7.06	8.10		
MN	( <sup>4</sup> )	( <sup>4</sup> )	2.14	2.32	1.43	1.48	7.06	7.55		
MS							6.28	( <sup>4</sup> )		
MO			2.41	2.55			7.43	8.05	4.20	4.40
MT	3.08	3.05			1.58	( <sup>4</sup> )				
NE			2.28	2.40	1.40	1.40	7.14	7.75	4.14	4.30
NC			2.71	2.92			7.07	7.94		
ND	2.66	2.60	2.11	2.25	( <sup>4</sup> )	1.50	6.65	7.65		
OH			2.30	2.51	1.74	1.75	7.23	7.87		
OK									4.22	4.46
OR	2.52	2.50			( <sup>4</sup> )	( <sup>4</sup> )				
PA			2.76	2.89	( <sup>4</sup> )	( <sup>4</sup> )				
SD	2.25	2.21	2.11	2.38	1.40	1.44	7.04	7.77		
TN			2.61	2.75			7.15	7.50		
TX			2.62	2.74	( <sup>5</sup> )	( <sup>5</sup> )			4.30	4.58
UT	2.44	2.30								
WA	2.59	2.46								
WI			2.24	2.35	1.45	1.40	6.92	7.50		
WY	3.39	2.73								
US	2.94	2.70	2.32	2.46	1.58	1.50	7.17	7.82	4.21	4.44

<sup>1</sup> The Three-State (MN, ND and SD) Feed Barley price for January 2004 is \$2.15.

<sup>2</sup> Entire month.

<sup>3</sup> Mid-month.

<sup>4</sup> Price not published to avoid disclosure of individual firms.

<sup>5</sup> Insufficient sales to establish a price.

**Malting and Feed Barley: Prices Received Selected States, December 2003 and January 2004**

State	Malting Barley		Feed Barley	
	Dec <sup>1</sup>	Jan <sup>2</sup>	Dec <sup>1</sup>	Jan <sup>2</sup>
	<i>Dollars per Bushel</i>	<i>Dollars per Bushel</i>	<i>Dollars per Bushel</i>	<i>Dollars per Bushel</i>
ID	3.38	3.35	2.22	2.30
MN	( <sup>3</sup> )	( <sup>3</sup> )	( <sup>3</sup> )	( <sup>3</sup> )
MT	3.51	( <sup>3</sup> )	2.16	2.05
ND	2.91	2.90	2.22	2.15
SD	2.26	2.21	1.77	( <sup>4</sup> )
WY	( <sup>3</sup> )	( <sup>3</sup> )	2.06	2.00

<sup>1</sup> Entire month.

<sup>2</sup> Mid-month.

<sup>3</sup> Price not published to avoid disclosure of individual firms.

<sup>4</sup> Insufficient sales to establish a price.

**Field Crops: Prices Received, by States, December 2003 and January 2004**

State	Dry Edible Beans		All Sunflowers		Flaxseed		Tobacco		Peanuts <sup>4</sup>	
	Dec <sup>1</sup>	Jan <sup>2</sup>	Dec <sup>1</sup>	Jan <sup>2</sup>	Dec <sup>1</sup>	Jan <sup>2</sup>	Dec <sup>1</sup>	Jan <sup>3</sup>	Dec <sup>1</sup>	Jan <sup>3</sup>
	<i>Dollars per Cwt</i>	<i>Dollars per Cwt</i>	<i>Dollars per Cwt</i>	<i>Dollars per Cwt</i>	<i>Dollars per Bushel</i>	<i>Dollars per Bushel</i>	<i>Dollars per Pound</i>	<i>Dollars per Pound</i>	<i>Dollars per Pound</i>	<i>Dollars per Pound</i>
AL									0.186	( <sup>5</sup> )
CA	35.60	33.80								
CO	16.10	16.30								
FL									( <sup>5</sup> )	( <sup>6</sup> )
GA									0.190	( <sup>6</sup> )
ID	17.90	17.10								
IN							1.940	1.945		
KS			( <sup>5</sup> )	( <sup>5</sup> )						
KY							1.980	1.970		
MD										
MI	19.00	19.00								
MN	20.20	20.00	13.50	13.60						
MO										
NE	15.40	15.60								
NC							1.940	1.915	0.226	( <sup>5</sup> )
ND	14.90	15.30	11.80	12.30	6.22	6.15				
OH							1.950	1.905		
OK										
SC										
SD			10.90	11.00	6.00	( <sup>6</sup> )				
TN							1.965	1.960		
TX									( <sup>5</sup> )	( <sup>5</sup> )
VA							1.815	1.935	( <sup>5</sup> )	( <sup>6</sup> )
WV										
US	17.20	17.40	11.60	12.00	6.22	6.15	1.975	1.970	0.196	0.206

<sup>1</sup> Entire month.

<sup>2</sup> Mid-month.

<sup>3</sup> Based on sales through first half of month.

<sup>4</sup> In-Shell.

<sup>5</sup> Price not published to avoid disclosure of individual firms.

<sup>6</sup> Insufficient sales to establish a price.

**Tobacco: Prices Received, by Area and Type, January 2004, with Comparisons**

Class by Type	Type	Jan 2003	Dec 2003	Jan 2004 <sup>1</sup>
		<i>Dollars per Pound</i>	<i>Dollars per Pound</i>	<i>Dollars per Pound</i>
Fire-cured				
VA Belt	21	1.830	1.665	1.140
Eastern District <sup>2</sup>	22	2.435		1.855
Western District <sup>2</sup>	23	2.465		2.140
Total Fire-cured	21-23	2.435	1.665	2.005
Light Air-cured				
Burley	31	1.975	1.980	1.975
Total Light Air-cured	31-32	1.975	1.980	1.975
Dark Air-cured				
One Sucker Belt	35	1.810	1.510	1.215
Green River Belt	36	2.015	1.935	1.780
Sun-cured Belt	37	1.465	1.730	0.870
Total Dark Air-cured	35-37	1.870	1.705	1.660
US	11-37	2.090	1.975	1.970

<sup>1</sup> Based on sales during the first half of the month.

<sup>2</sup> Markets opened in January 2004.

**Field Crops and Apples: Prices Received, by States,  
December 2003 and January 2004**

State	Cotton, Upland		January				Apples Fresh Use <sup>1,4</sup>
	Dec <sup>1</sup>	Jan <sup>2</sup>	Cotton- seed <sup>5</sup>	Hay, Baled <sup>3</sup>			
				All	Alfalfa	Other	
<i>Dollars per Pound</i>	<i>Dollars per Pound</i>	<i>Dollars per Ton</i>	<i>Dollars per Ton</i>	<i>Dollars per Ton</i>	<i>Dollars per Ton</i>	<i>Doll/Lb</i>	
AL	( <sup>6</sup> )	( <sup>6</sup> )	89.00				
AZ	( <sup>6</sup> )	( <sup>6</sup> )	148.00	85.00	85.00	80.00	
AR	0.670	0.618	( <sup>7</sup> )				
CA	0.754	0.750	( <sup>6</sup> )	88.00	92.00	70.00	0.271
CO				82.00	83.00	73.00	
GA	0.629	0.660	101.00				
ID				84.00	86.00	65.00	
IL				89.00	95.00	73.00	
IA				86.00	87.00	63.00	
KS				65.00	74.00	54.00	
KY				68.00	100.00	58.00	
LA	0.624	0.609	( <sup>7</sup> )				
MI				99.00	100.00	85.00	0.185
MN				68.00	72.00	53.00	
MS	0.617	0.618	( <sup>7</sup> )				
MO				68.00	109.00	55.00	
MT				72.00	74.00	67.00	
NE				52.00	53.00	47.00	
NV				93.00	91.00	103.00	
NM				137.00	140.00	115.00	
NY				107.00	120.00	100.00	0.225
NC	0.669	0.680	109.00				
ND				53.00	58.00	39.00	
OH				85.00	122.00	60.00	0.290
OK				83.00	100.00	58.00	
OR				97.00	99.00	90.00	
PA				129.00	149.00	121.00	0.191
SD				59.00	62.00	45.00	
TN	0.608	0.613	( <sup>7</sup> )				
TX	0.624	0.624	136.00	72.00	143.00	69.00	
UT				83.00	84.00	71.00	
VA							0.250
WA				93.00	85.00	115.00	0.324
WI				91.00	95.00	60.00	
WY				76.00	77.00	72.00	
US	0.641	0.638	127.00	79.30	83.60	71.40	0.301

<sup>1</sup> Entire month.

<sup>2</sup> Based on sales during the first half of the month.

<sup>3</sup> Mid-month.

<sup>4</sup> Equivalent packinghouse-door returns for CA, NY, and WA. Price at point of first sale for other States.

<sup>5</sup> Marketing year August - February.

<sup>6</sup> Price not published to avoid disclosure of individual firms.

<sup>7</sup> Insufficient sales to establish a price.

**Upland Cotton and Rice: Prices Received and Marketings,  
United States, January 2004, with Comparisons**

Item	Unit	Nov 2003 <sup>1</sup>	Dec 2003 <sup>1</sup>	Jan 2004 <sup>2</sup>
Cotton, Upland Average Price Marketings <sup>3</sup>	Dollars per Pound	0.634	0.641	0.638
	1,000 Bales	1,912	1,938	NA
Rice Average Price Marketings <sup>4</sup>	Dollars per Cwt	6.99	7.57	7.71
	1,000 Cwt	11,750	16,424	NA

<sup>1</sup> Entire month.

<sup>2</sup> Based on purchases for the first half of the month.

<sup>3</sup> Expanded data from sample of about 65 percent of buyers.

<sup>4</sup> Purchases by private firms and rice (rough equivalent) shipped by cooperatives.

**Citrus Fruit: Prices and Equivalent Returns, by Utilization,  
by State and United States, January 2004**

Commodity, State and Type	F.O.B. Packed Fresh	Equivalent Returns <sup>1</sup>					
		Packinghouse-door			On-tree		
		All	Fresh	Process	All	Fresh	Process
	<i>Dollars per Box</i>	<i>Dollars per Box</i>	<i>Dollars per Box</i>	<i>Dollars per Box</i>	<i>Dollars per Box</i>	<i>Dollars per Box</i>	<i>Dollars per Box</i>
Grapefruit							
AZ	15.50	8.99	8.99		6.67	8.04	
CA	19.60	11.76	13.09	-0.27	9.44	10.77	-2.59
FL	14.90	4.36	7.11	1.81	1.93	4.85	-0.78
White	15.80	3.65	7.80	1.70	1.28	5.50	-0.70
Colored	14.60	4.76	6.90	1.90	2.30	4.65	-0.85
TX	14.60	3.65	4.61	0.80	2.50	3.44	-0.32
US	15.10	4.51	7.07	1.74	2.21	4.96	-0.77
Lemons							
AZ	22.30	8.82	12.20	0.20	4.47	7.85	-4.15
CA	22.40	7.02	12.30	0.20	2.67	7.95	-4.15
US	22.40	7.65	12.26	0.20	3.30	7.91	-4.15
Oranges							
AZ							
Navel and Misc	16.80	7.38	9.42	-0.18	4.92	6.96	-2.64
CA							
Navel and Misc	18.50	10.30	11.12	0.38	7.84	8.66	-2.08
FL							
Early and Mids	13.90	3.88	6.40	3.80	1.78	4.25	1.70
TX							
Early and Mids	13.30	2.98	3.21	2.55	1.64	1.86	1.25
US	17.30	4.50	9.76	3.77	2.36	7.41	1.67
Tangelos							
FL	15.00	3.96	6.60	2.25	1.60	4.30	-0.15
Tangerines							
AZ	27.80	17.34	20.74	0.70	14.85	18.25	-1.79
CA	28.40	20.22	21.34	0.32	17.73	18.85	-2.17
FL	28.70	14.80	19.20	3.30	11.12	15.80	-1.10
US	28.40	16.33	20.02	2.73	13.13	17.02	-1.26
Temples							
FL	14.50	4.45	6.10	2.50	2.11	3.80	0.10

<sup>1</sup> Net lbs. per box: Grapefruit - AZ & CA-67, FL-85, TX-80; Lemons - 76; Oranges - AZ & CA-75, FL-90, TX-85; Tangelos - 90; Tangerines - AZ, CA-75, FL-95.

**Potatoes: Prices Received, by States, December 2003 and January 2004**

State	Dec	Jan	State	Dec	Jan
	<i>Dollars per Cwt</i>	<i>Dollars per Cwt</i>		<i>Dollars per Cwt</i>	<i>Dollars per Cwt</i>
AL			NC		
AZ			ND - All <sup>1</sup>	5.25	5.20
CA - All	15.40	16.20	- Fresh <sup>2</sup>	4.80	NA
- Winter	19.60	19.40	- Processing	5.20	NA
- Spring			OH	6.35	6.85
- Summer			OR	5.40	5.45
- Fall	9.70	9.65	PA	7.45	7.50
CO - All <sup>1</sup>	4.75	4.80	TX		
- Fresh <sup>2</sup>	4.70	NA	VA		
FL			WA - All	5.75	5.75
ID - All <sup>1</sup>	4.10	4.15	- Processing	5.20	NA
- Fresh <sup>2</sup>	3.70	NA	WI - All <sup>1</sup>	5.95	5.90
- Processing	4.30	NA	- Fresh <sup>2</sup>	5.15	NA
ME	5.75	5.80	- Processing	6.35	NA
MI	7.05	7.30			
MN	5.15	5.15	US - All <sup>1</sup>	5.60	5.70
NY	8.80	8.90	- Fresh <sup>2</sup>	6.03	NA
			- Processing	5.25	NA

<sup>1</sup> Average price of potatoes sold for all uses, including table stocks, processing, seed and livestock feed.

<sup>2</sup> Fresh market prices only, includes table stock prices.

**Cattle: Prices Received, by States, December 2003 and January 2004**

State	Cows <sup>1</sup>		Steers & Heifers		Beef Cattle <sup>4</sup>		Calves	
	Dec <sup>2</sup>	Jan <sup>3</sup>	Dec <sup>2</sup>	Jan <sup>3</sup>	Dec <sup>2</sup>	Jan <sup>3</sup>	Dec <sup>2</sup>	Jan <sup>3</sup>
	<i>Dollars per Cwt</i>	<i>Dollars per Cwt</i>	<i>Dollars per Cwt</i>	<i>Dollars per Cwt</i>	<i>Dollars per Cwt</i>	<i>Dollars per Cwt</i>	<i>Dollars per Cwt</i>	<i>Dollars per Cwt</i>
AZ	49.40	42.30	91.90	83.60	91.50	83.20	109.00	102.00
AR	43.00	42.00	91.20	84.50	76.70	71.80	106.00	98.00
CA	46.00	43.50	94.50	80.00	69.80	62.10	109.00	110.00
CO	51.80	44.70	101.00	92.30	101.00	91.80	118.00	111.00
FL	48.10	47.20	84.70	82.50	62.70	57.80	108.00	105.00
GA	49.40	49.00	85.30	79.80	61.60	59.20	106.00	99.50
ID	48.50	40.10	93.60	79.40	81.00	68.80	109.00	96.00
IL	49.00	45.00	98.00	84.00	97.00	83.20	100.00	87.00
IA	49.80	47.90	93.10	82.90	92.20	82.20	99.50	89.50
KS	48.10	44.60	92.50	77.10	91.20	75.80	117.00	114.00
KY	47.00	46.00	88.00	83.00	78.20	74.10	99.00	98.00
LA	45.00	45.00	89.30	85.00	59.20	57.80	103.00	99.00
MI	48.00	45.00	80.00	73.00	70.40	64.60	94.00	90.00
MN	54.30	48.00	94.20	83.00	85.00	75.00	99.80	92.00
MO	48.20	45.30	96.50	92.10	86.40	78.10	111.00	107.00
MT	51.50	45.40	98.90	95.40	90.40	85.90	114.00	114.00
NE	51.80	46.60	100.00	84.40	98.60	83.30	123.00	118.00
NM	50.70	47.00	96.40	90.90	75.80	72.00	112.00	98.30
ND	50.00	47.00	99.50	96.00	87.10	86.20	112.00	112.00
OH	45.00	42.00	83.80	78.00	79.90	74.40	90.00	85.00
OK	49.40	45.40	99.30	88.20	88.80	79.20	112.00	106.00
OR	48.00	44.50	88.50	80.00	76.40	69.40	100.00	95.30
PA	48.00	46.50	92.00	85.00	80.60	75.00	120.00	110.00
SD	46.90	44.30	98.10	90.70	84.80	82.80	115.00	114.00
TN	45.00	45.00	89.00	85.00	71.40	69.00	99.00	99.00
TX	45.70	45.70	94.60	76.60	89.70	73.80	110.00	102.00
VA	41.60	41.00	87.50	83.50	67.80	65.20	98.00	98.00
WI	51.00	47.10	87.20	81.00	66.20	61.30	128.00	122.00
WY	49.80	42.00	104.00	85.00	87.70	76.40	124.00	112.00
US	49.40	45.80	95.70	81.20	90.50	77.40	112.00	105.00

<sup>1</sup> Beef cows and cull dairy cows sold for slaughter.

<sup>2</sup> Entire month.

<sup>3</sup> Mid-month.

<sup>4</sup> "Cows" and "steers and heifers" combined.

**Hogs: Prices Received, by States, December 2003 and January 2004**

State	Sows		Barrows and Gilts		All Hogs	
	Dec <sup>1</sup>	Jan <sup>2</sup>	Dec <sup>1</sup>	Jan <sup>2</sup>	Dec <sup>1</sup>	Jan <sup>2</sup>
	<i>Dollars per Cwt</i>	<i>Dollars per Cwt</i>	<i>Dollars per Cwt</i>	<i>Dollars per Cwt</i>	<i>Dollars per Cwt</i>	<i>Dollars per Cwt</i>
AR	27.90	27.90	33.50	35.00	32.90	34.30
IL	26.00	27.00	37.00	39.00	36.10	38.00
IN	31.40	31.30	34.50	35.60	34.20	35.20
IA	29.90	29.60	32.60	34.00	32.50	33.90
KS	27.80	29.40	33.50	36.30	32.80	35.40
MI	29.00	29.00	34.00	34.50	33.60	34.10
MN	27.50	29.00	36.20	38.00	36.10	37.90
MO	26.80	27.70	30.80	33.20	30.60	32.80
NE	27.90	27.50	36.40	38.00	36.20	37.80
NC	28.00	28.40	35.60	37.80	35.50	37.70
OH	28.50	29.00	34.90	36.00	34.50	35.60
OK	26.50	27.00	33.20	33.80	32.20	32.80
PA	28.50	28.50	35.90	37.10	34.80	35.80
SD	27.00	29.00	37.40	39.00	36.30	37.70
TX	28.00	27.50	39.00	39.80	37.40	37.50
WI	26.30	27.80	35.00	36.60	33.90	35.50
US	28.10	28.80	34.60	36.10	34.20	35.70

<sup>1</sup> Entire month.

<sup>2</sup> Mid-month.

**Sheep and Poultry: Prices Received, by States, December 2003 and January 2004**

State	December		January
	Sheep <sup>1</sup>	Lambs <sup>1</sup>	Eggs <sup>2 3</sup>
	<i>Dollars per Cwt</i>	<i>Dollars per Cwt</i>	<i>Dollars per Dozen</i>
AL			0.750
AR			0.760
CA	42.50	87.00	0.860
CO	41.00	98.60	
CT			0.930
FL			0.810
GA			0.803
ID	38.00	90.00	
IN			0.800
IA	42.30	89.20	0.762
KS	36.00	92.00	
ME			1.010
MI			0.840
MN	36.70	88.60	0.830
MS			0.820
MO			0.760
MT	43.00	108.00	
NE	38.80	90.50	
NY			0.820
NC			0.850
ND	42.00	101.00	
OH	39.20	93.10	0.763
OR	34.50	90.00	
PA			0.800
SC			0.840
SD	52.10	112.00	
TX	51.80	113.00	0.820
UT	38.00	98.00	
WA			0.910
WY	52.20	114.00	
US	44.40	98.40	0.806

<sup>1</sup> Entire month.

<sup>2</sup> Mid-month.

<sup>3</sup> Market (table) eggs.



**Milk and Milk Cows: Prices Received, by States, December 2003 and January 2004**

State	December <sup>1</sup>						January		
	Fluid Grade Milk <sup>2</sup>		Manufacturing Grade Milk		All Milk <sup>3</sup>		All Milk <sup>3 4</sup>		Milk Cows <sup>5</sup>
	Price	Fat Test	Price	Fat Test	Price	Fat Test	Price	Fat Test	
	<i>Dol/Cwt</i>	<i>Percent</i>	<i>Dol/Cwt</i>	<i>Percent</i>	<i>Dol/Cwt</i>	<i>Percent</i>	<i>Dol/Cwt</i>	<i>Percent</i>	<i>Dol/Head</i>
AZ	13.30	3.71			13.30	3.71	12.60	3.65	1,450
CA	12.00	3.82	11.80	4.15	12.00	3.82	11.70	3.80	1,350
FL	17.80	3.68			17.80	3.68	15.90	3.65	1,490
ID	12.30	3.76	12.30	3.77	12.30	3.76	12.20	3.71	1,450
IL	14.00	3.80	13.70	3.66	14.00	3.80	13.30	3.80	1,450
IN	13.40	3.81	12.60	3.97	13.40	3.82	12.50	3.86	1,400
IA	14.30	3.86	12.80	3.93	14.30	3.86	13.30	3.84	1,400
KY	15.40	3.75			15.40	3.75	14.00	3.74	1,310
MI	14.00	3.75	11.70	3.76	14.00	3.75	13.20	3.74	1,450
MN	13.90	3.84	12.10	3.87	13.80	3.84	13.20	3.82	1,350
MO	14.50	3.74	13.10	3.99	14.40	3.75	13.40	3.81	1,240
NM	13.40	3.68			13.40	3.68	12.40	3.70	1,360
NY	14.70	3.76			14.70	3.76	13.80	3.80	1,330
OH	14.10	3.81	13.20	4.01	14.10	3.82	13.60	3.86	1,400
PA	15.90	3.80	13.20	4.05	15.90	3.80	15.00	3.85	1,350
TX	14.60	3.78			14.60	3.78	14.00	3.76	1,410
VT	14.70	3.76			14.70	3.76	13.60	3.76	1,350
VA	15.80	3.70			15.80	3.70	15.00	3.70	1,370
WA	13.60	3.83			13.60	3.83	13.00	3.72	1,420
WI	14.10	3.82	13.00	4.00	14.10	3.83	13.80	3.82	1,450
US	13.80	3.79	12.70	3.98	13.70	3.79	13.10	3.79	1,390

<sup>1</sup> Entire month.

<sup>2</sup> Including milk diverted to manufacturing.

<sup>3</sup> Before deductions for hauling. Includes quality, quantity, and other premiums. Excludes hauling subsidies.

<sup>4</sup> Preliminary.

<sup>5</sup> Animals sold for dairy herd replacement only. Prices published January, April, July and October.

**Parity Price Equivalent for Manufacturing Milk <sup>1</sup>: United States,  
December 2003 and January 2004, with Comparisons**

Item	Unit	Jan 2003	Dec 2003	Jan 2004
Parity Equivalent	Dollars per Cwt	29.83	30.92	30.83
Average Price F.O.B <sup>2</sup>	Dollars per Cwt	10.50	12.70	12.50
Average Fat Test of Milk <sup>2</sup>	Percent	3.93	3.98	3.95

<sup>1</sup> The parity price equivalent during 2004 is 90.4 percent of the parity price of all milk sold to plants, compared with 90.4 percent in 2003. For additional details, see January 2004 issue of "Agricultural Prices".

<sup>2</sup> Preliminary for January 2004.

**United States Parity Prices for Farm Products and Average Prices Received as  
Percent of Parity Prices Based on Data for January 2004, with Comparisons <sup>1</sup>**

Commodity and Unit	Adjusted Base Prices	Parity Prices Based on Data for			Prices as Percent of Parity		
		Jan 2003	Dec 2003	Jan 2004	Jan 2003	Dec 2003	Jan 2004
	<i>Dollars</i>	<i>Dollars</i>	<i>Dollars</i>	<i>Dollars</i>	<i>Percent</i>	<i>Percent</i>	<i>Percent</i>
<b>Basic Commodities</b>							
All Wheat, Bu	0.564	9.53	9.88	9.75	41	37	38
Rice, Cwt	1.63	26.10	27.10	28.20	18	28	27
Corn, Bu	0.379	6.51	6.75	6.55	36	34	38
Cotton, Lb							
American Upland	0.113	1.67	1.74	1.95	27	37	33
Extra Long Staple	0.144	2.34	2.43	2.49			
Peanuts, Lb	0.0370	0.650	0.674	0.640	29	29	32
Tobacco, By Type, Lb							
Flue-Cured 11-14	0.259	4.29	4.44	4.48			
VA Fire-Cured, 21	0.257	4.34	4.50	4.44	42	37	26
KY-TN Fire-Cured, 22-23	0.322	5.36	5.56	5.57	46		
Burley, 31	0.277	4.60	4.77	4.79	43	42	41
Maryland, 32	0.215	3.65	3.78	3.72			
Dark Air-Cured, 35-36	0.282	4.62	4.79	4.88	40		
Sun-Cured, 37	0.246	4.07	4.22	4.25	36	41	20
PA Seedleaf, 41	0.206	3.33	3.45	3.56			
Cigar Filler & Binder, 42-44, 54-55	0.225	3.70	3.84	3.89			
Puerto Rican Filler, 46	0.162	2.73	2.83	2.80			
Cigar Binder, 51-52	0.736	12.00	12.50	12.70			
<b>Designated Nonbasic</b>							
All Milk, Sold to							
Plants, Per Cwt <sup>2</sup>	1.97	33.00	34.20	34.10	36	40	40
Honey, Extracted, Lb <sup>3</sup>	0.1050	1.57	1.63	1.82			
<b>Wool and Mohair</b>							
Wool, Lb	0.0880	1.52	1.58	1.52			
Mohair, Lb	0.334	5.44	5.64	5.77			
<b>Other Nonbasic</b>							
Barley, Bu	0.376	6.44	6.68	6.50	44	44	42
Cottonseed, Ton	15.80	261.00	271.00	273.00	40	47	47
Dry Edible Beans, Cwt	2.92	49.70	51.60	50.50	33	33	34
Flaxseed, Bu	0.728	11.80	12.20	12.60	48	51	49
Oats, Bu	0.221	4.07	4.22	3.82	50	37	39
Potatoes, Cwt	0.854	13.60	14.10	14.80	49	40	39
Rye, Bu	0.353	5.74	5.95	6.10			
Sorghum Grain, Cwt	0.616	11.00	11.40	10.70	37	37	41
Soybeans Bu	0.892	14.20	14.80	15.40	39	48	51
Sweetpotatoes, Cwt	2.25	36.70	38.00	38.90			
Apples, Fresh, Lb <sup>4</sup>	0.0296	0.480	0.498	0.512	54	57	59
Citrus (equiv on-tree), Box							
Grapefruit	0.387	6.50	6.74	6.69	34	43	33
Lemons	1.10	18.40	19.10	19.00	18	20	17
Oranges	0.618	9.54	9.90	10.70	31	25	22
Tangerines	1.42	24.40	25.30	24.60	50	31	53
Temples (FL)	0.451	7.75	8.04	7.80	37		
Beef Cattle, Cwt	9.55	158.00	164.00	165.00	46	55	47
Calves, Cwt	12.80	213.00	220.00	221.00	45	51	48
Hogs, Cwt	5.91	101.00	105.00	102.00	33	33	35
Lambs, Cwt	11.30	182.00	189.00	195.00	51	52	
Sheep, Cwt	4.70	77.80	80.70	81.30	53	55	
Eggs, Doz <sup>2</sup>	0.0949	1.56	1.62	1.64	39	48	53
Turkeys, Live, Lb	0.0574	0.969	1.010	0.992	36	37	35

--continued

**Parity Prices Based on Data for January 2004, United States <sup>1</sup> (continued)**

Other Nonbasic Commodities	Adj Base Prices	Parity Prices	Other Nonbasic Commodities	Adj Base Prices	Parity Prices
	<i>Dollars</i>	<i>Dollars</i>		<i>Dollars</i>	<i>Dollars</i>
Field Crops and Misc Commodities			Noncitrus Fruit		
Hops, Lb	0.256	4.43	Peaches, cont.		
Spearmint Oil, Lb	1.53	26.50	Processing <sup>5</sup>		
Tobacco, Lb			Excl Dried		
Type 61	2.51	43.40	Clingstone, CA, Ton	32.80	567.00
Noncitrus Fruit			Pears, Ton		
Apples, Ton <sup>6</sup>			Fresh <sup>4</sup>	51.60	892.00
Processing	17.90	309.00	Dried, CA <sup>6</sup>	166.00	2,870.00
Apricots, Ton			Plums, CA, Ton		
Fresh <sup>7</sup>	99.70	1,720.00	Fresh, Equiv on-Tree	57.40	992.00
Dried, CA	273.00	4,720.00	Prunes, Dried, CA, Ton <sup>6</sup>	129.00	2,230.00
Avocados, Ton <sup>7</sup>	238.00	4,120.00	Prunes and Plums, Excl CA, Ton		
Cherries Bbl			Fresh <sup>9</sup>	56.90	984.00
Sweet, Ton	184.00	3,180.00	Processing <sup>6</sup>		
Tart, Lb	0.0267	0.462	Excl Dried	26.30	455.00
Cranberry, Bbl <sup>5</sup>	5.92	102.00	Tree Nuts <sup>10</sup>		
Dates, CA, Ton <sup>7</sup>	170.00	2,940.00	Almonds, Lb	0.204	3.53
Grapes, Ton			Hazelnuts, Ton	130.00	2,250.00
Raisin Variety	121.00	2,090.00	Pistachio, Lb	0.159	2.75
Other Dried	68.20	1,180.00	Walnuts, Ton	176.00	3,040.00
Kiwifruit, Ton	80.80	1,400.00	Vegetables, Cwt <sup>11</sup>		
Nectarines			Fresh		
Fresh, CA, Ton <sup>7</sup>	63.00	1,090.00	Carrots <sup>8</sup>	2.21	38.20
Olives, CA			Cauliflower <sup>8</sup>	4.55	78.70
canning, Ton <sup>5</sup>	95.50	1,650.00	Celery <sup>8</sup>	1.98	34.20
Papayas (HA)	0.0520	0.899	Honeydew Melons	2.79	48.20
Peaches			Lettuce	2.50	43.20
Fresh, Lb <sup>4</sup>	0.0408	0.705	Onions <sup>8</sup>	1.68	29.00
Dried, CA, Ton	92.50	1,600.00	Tomatoes	4.39	75.90

<sup>1</sup> Parity prices are computed under the provisions of Title III, Subtitle a, Section 301 (a) of the Agricultural Adjustment Act of 1938 as amended by the Agricultural Acts of 1948, 1949, and 1956. See January "Agricultural Prices" for details on adjusted base price and parity price computations.

<sup>2</sup> Seasonally adjusted price as percentage of parity price.

<sup>3</sup> Wholesale extracted. Adjusted base price derived from state annual averages prices weighted by production. For 1982 through 1985 the national averages are the support prices.

<sup>4</sup> Equivalent packinghouse-door returns for CA, NY (apples only), OR (except peaches), and WA. Price at point of first sale for other states.

<sup>5</sup> Equivalent returns for bulk fruit at first delivery point.

<sup>6</sup> Equivalent returns at processing plant door.

<sup>7</sup> Equivalent returns at packinghouse door.

<sup>8</sup> Includes some processing.

<sup>9</sup> Based on "as sold" prices for fresh fruit in all states.

<sup>10</sup> Prices in-shell basis except almonds which are shelled basis.

<sup>11</sup> F.O.B. shipping point prices.

## Crop Marketing Seasons for Specified Field Crops

**Apples (Fresh):** July 1 to June 30 for U.S.; June 1 to May 31 for Arkansas, California, Georgia, Illinois, Iowa, Indiana, Kansas, Kentucky, Michigan, Missouri, New Mexico, North Carolina, Ohio, South Carolina, Tennessee, Wisconsin; August 1 to July 31 for Oregon and Washington; July 1 - June 30 for Arizona, Colorado, Connecticut, Idaho, Maine, Maryland, Massachusetts, New Hampshire, New Jersey, New York, Pennsylvania, Rhode Island, Utah, Vermont, Virginia, West Virginia.

**Grapes (Fresh):** May 25 to April 30 for U.S.; June 5 to July 15 for Arizona; May 25 to April 30 for California; July 10 to October 31 for Arkansas, Georgia, Michigan, Missouri, New York, North Carolina, Ohio, and Pennsylvania.

**Peaches (Fresh):** May 1 to October 31 for U.S.; May 20 to August 31 for Georgia and South Carolina; June 1 to September 30 for Alabama, Arkansas, California, Colorado, Illinois, Kentucky, Louisiana, Missouri, North Carolina, Ohio, Oklahoma, Tennessee, Texas, Utah, and Virginia, August 1 to September 30 for Connecticut, Massachusetts, Idaho, Michigan, and New York; July 1 to September 30 for Indiana, Maryland, New Jersey, Oregon, Pennsylvania, Washington, and West Virginia.

**Pears (Fresh):** July to June for U.S.; July 1 - April 30 for California; August 10 to May 31 for Oregon and Washington; July 1 to December 15 for Colorado, Connecticut, Michigan, New York, Pennsylvania, and Utah.

**Rice:** August 1 to July 31 for U.S.; July 1 to June 30 for Louisiana and Texas; August 1 to July 31 for Arkansas and Mississippi; October 1 to September 30 for California; September 1 to August 31 for Missouri.

**Sweet Potatoes:** July - June for U.S.; July 1 - June 30 for Alabama and California; July 1 - May 31 for Georgia, Louisiana, North Carolina and Texas; August 1 - May 31 for South Carolina, and Virginia; and August 1 - July 31 for New Jersey.

**Sweet Potatoes: Marketing Year Average Prices Received,  
by State and United States, 2001-2003**

State	2001 <i>Dollars per Cwt</i>	2002 <i>Dollars per Cwt</i>	2003 <sup>1</sup> <i>Dollars per Cwt</i>
AL	18.20	14.80	25.40
CA	26.90	23.10	34.50
GA <sup>2</sup>	13.00		
LA	13.30	14.50	19.40
MS	13.60	16.50	20.30
NJ	19.60	23.20	29.00
NC	12.00	14.00	14.50
SC	13.00	15.20	15.50
TX	18.70	16.80	17.20
VA	14.80	14.00	16.30
US	15.40	16.70	20.80

<sup>1</sup> Preliminary.

<sup>2</sup> Estimates discontinued in 2002.

**Rice: Marketing Year Average Prices Received,  
by States and United States, 2001 and 2002**

State	2001	2002
	All	
	<i>Dollars per Cwt</i>	<i>Dollars per Cwt</i>
AR	3.93	4.16
CA	5.28	6.32
LA	4.47	4.14
MS	4.15	4.94
MO	3.70	3.90
TX	4.61	4.16
US <sup>1</sup>	4.25	4.49
	Length of Grain	
US: Long	4.10	4.15
Medium & Short	4.82	5.90

<sup>1</sup> Based on state prices weighted by marketings for August through July.

**All Rice: Monthly Prices Received, Monthly Farm Marketing Percentages, and  
Marketing Year Average Prices, United States, 2000-2001 through 2002-2003 <sup>1</sup>**

Month	Prices Received			Farm Marketings <sup>2</sup>		
	2000-2001	2001-2002	2002-2003	2000-2001	2001-2002	2002-2003
	<i>Dollars per Cwt</i>	<i>Dollars per Cwt</i>	<i>Dollars per Cwt</i>	<i>1,000 Cwt</i>	<i>1,000 Cwt</i>	<i>1,000 Cwt</i>
Aug	5.72	5.01	3.94	8,802	12,443	10,892
Sep	5.53	4.67	4.09	10,616	9,496	12,313
Oct	5.57	4.39	4.03	13,183	12,415	14,429
Nov	5.72	4.25	4.24	12,393	11,093	12,338
Dec	5.69	4.29	4.46	12,689	11,215	15,059
Jan <sup>3</sup>	5.86	4.30	4.66	15,204	16,415	19,860
Feb	5.72	4.16	4.24	12,465	11,694	13,141
Mar	5.66	3.99	4.31	11,700	9,718	14,553
Apr	5.68	3.94	4.61	11,870	11,270	14,502
May	5.40	3.98	4.84	9,087	9,841	10,113
Jun	5.14	3.92	5.43	7,951	8,884	9,691
Jul	5.32	3.81	5.31	8,588	8,288	11,755
MYA	5.61	4.25	4.49	134,548	132,772	158,646

<sup>1</sup> Marketing year average (MYA) prices are weighted average prices for the U.S. marketing year of August - July.

<sup>2</sup> Purchases from producers as reported by private firms and rice (rough equivalent) shipped from producers as reported by cooperative mills.

<sup>3</sup> Second year.

**Apples for Fresh Use: Prices Received, United States,  
July 1999 - December 2003 <sup>1</sup>**

Year	Jul	Aug	Sep	Oct	Nov	Dec	Jan <sup>2</sup>	Feb	Mar	Apr	May	Jun
	<i>Dollars per Pound</i>	<i>Dollars per Pound</i>	<i>Dollars per Pound</i>	<i>Dollars per Pound</i>	<i>Dollars per Pound</i>	<i>Dollars per Pound</i>	<i>Dollars per Pound</i>	<i>Dollars per Pound</i>	<i>Dollars per Pound</i>	<i>Dollars per Pound</i>	<i>Dollars per Pound</i>	<i>Dollars per Pound</i>
1999	0.124	0.184	0.232	0.235	0.233	0.237	0.235	0.211	0.205	0.197	0.182	0.163
2000	0.162	0.188	0.237	0.206	0.179	0.175	0.158	0.152	0.146	0.157	0.152	0.149
2001	0.152	0.173	0.212	0.248	0.235	0.231	0.221	0.216	0.220	0.218	0.215	0.220
2002	0.206	0.245	0.300	0.301	0.268	0.263	0.258	0.246	0.226	0.234	0.218	0.224
2003	0.200	0.258	0.251	0.273	0.274	0.285						

<sup>1</sup> Equivalent packinghouse-door returns for CA, NY, and WA; price at point of first sale for other States.

<sup>2</sup> January of the following year.

**Peaches for Fresh Use: Monthly Prices Received,  
United States, May 1999 - September 2003 <sup>1</sup>**

Year	May	Jun	Jul	Aug	Sep	
	<i>Dollars per Pound</i>	<i>Dollars per Pound</i>	<i>Dollars per Pound</i>	<i>Dollars per Pound</i>	<i>Dollars per Pound</i>	
1999		0.366	0.270	0.257	0.232	0.319
2000		0.332	0.264	0.238	0.219	0.345
2001		0.395	0.338	0.288	0.216	0.318
2002		0.475	0.275	0.205	0.278	0.278
2003		0.433	0.228	0.242	0.202	0.227

<sup>1</sup> Equivalent packinghouse-door returns for CA and WA; price at point of first sale for other states.

**Pears for Fresh Use: Monthly Prices Received,  
United States, July 1999 - December 2003 <sup>1</sup>**

Year	Jul	Aug	Sep	Oct	Nov	Dec	Jan <sup>2</sup>	Feb	Mar	Apr	May	Jun
	<i>Dollars per Ton</i>	<i>Dollars per Ton</i>	<i>Dollars per Ton</i>	<i>Dollars per Ton</i>	<i>Dollars per Ton</i>	<i>Dollars per Ton</i>	<i>Dollars per Ton</i>	<i>Dollars per Ton</i>	<i>Dollars per Ton</i>	<i>Dollars per Ton</i>	<i>Dollars per Ton</i>	<i>Dollars per Ton</i>
1999	200	185	330	505	532	521	489	458	340	344	272	235
2000	233	249	315	403	339	347	313	252	296	337	417	( <sup>3</sup> )
2001	405	394	415	390	374	363	282	276	267	267	267	337
2002	312	460	474	458	442	437	408	366	378	367	397	453
2003	320	301	346	355	342	392						

<sup>1</sup> Equivalent packinghouse-door returns for CA, NY, and WA; price at point of first sale for other States.

<sup>2</sup> January of the following year.

<sup>3</sup> Insufficient sales to establish a price.

**Grapes for Fresh Use: Monthly Prices Received,  
United State, May 1999 - December 2003**

Year	May	Jun	Jul	Aug	Sep	Oct	Nov	Dec
	<i>Dollars per Ton</i>	<i>Dollars per Ton</i>	<i>Dollars per Ton</i>	<i>Dollars per Ton</i>	<i>Dollars per Ton</i>	<i>Dollars per Ton</i>	<i>Dollars per Ton</i>	<i>Dollars per Ton</i>
1999	1,300	880	695	765	555	525	595	595
2000	915	675	515	615	535	705	765	765
2001	790	1,190	630	600	670	640	640	850
2002	1,000	905	830	650	640	590	610	720
2003	950	1,000	790	670	630	610	660	740

## Parity Prices

Parity prices based on data for January 2004 and adjusted base price data from which parity prices are computed, are presented in the table on pages 33 through 36. Annual average prices for 1994 through 2003 for use in parity computations, and ten-year averages for 1993-2002 and 1994-2003 are shown on pages 38 through 49.

Parity Prices shown on the following pages are computed under the provisions of Title III, Subtitle A, Section 301(a) of the Agricultural Adjustment Act of 1938 as amended by the Agricultural Acts of 1948, 1949, 1954, and 1956.

The major provisions of the amended Act relating to the calculation of parity prices are as follows:

"(1) (A) The 'parity price' for any agricultural commodity, as of any date, shall be determined by multiplying the adjusted base price of such commodity as of such date by the parity index as of such date.

"(B) The 'adjusted base price' of any agricultural commodity, as of any date, shall be (i) the average of the prices received by farmers for such commodity, at such time as the Secretary may select during each year of the ten-year period ending on the 31st of December last before such date, or during each marketing season beginning in such period if the Secretary determines use of a calendar year basis to be impracticable, divided by (ii) the ratio of the general level of prices received by farmers for agricultural commodities during the period January 1910 to December 1914, inclusive.

"(C) The 'parity index', as of any date, shall be the ratio of (i) the general level of prices for articles and services that farmers buy, wages paid hired farm labor, interest on farm indebtedness secured by farm real estate, and taxes on farm real estate, for the calendar month ending last before such date to (ii) the general level of such prices, wages, rates, and taxes during the period January 1910 to December 1914, inclusive.

"(D) The prices and indexes provided for herein, and the data used in computing them, shall be determined by the Secretary, whose determination shall be final."

Section 301(a) (1) (F) outlines authority for the Secretary of Agriculture to make special adjustments in the method of computing parity prices for particular commodities if the method outlined in the Act results in parity prices seriously out of line with those of other commodities.

The parity prices shown in this report are based on the provisions of the amended Act. Briefly, the actual method of computation is as follows:

a. The average of prices received by farmers for individual commodities for the 10 preceding years is calculated (for 2004 this is the 1994-2003 average). An allowance for unredeemed loans and other supplemental payments resulting from price support programs, such as the deficiency payments for grains and cotton, is included for those commodities for which applicable.

b. This 10-year average is divided by the average of the Index of Prices Received by Farmers for the same 10 preceding calendar years, adjusted to include an allowance for unredeemed loans and other supplemental price support operations, to give an "adjusted base price".

c. Parity prices are computed by multiplying the "adjusted base prices" by the current Parity Index (the Index of Prices Paid by Farmers, including Interest, Taxes, and Wage Rates, 1910-14=100).

Parity prices are calculated in terms of prices received by farmers in the local markets in which they ordinarily sell. This means that the parity prices apply to the average of all classes and grades of the commodity as sold by all farmers in the United States, except as otherwise specified. Fruits and vegetables for fresh use and for processing are usually considered separate commodities and separate parity prices are calculated. The Agricultural Marketing Agreement Act of 1937 provided for parity prices for certain commodities covered by a marketing agreement or order program. Under present legislation, U.S. parity prices, with appropriate adjustments where needed, may be used for the purpose of this Act.

The indexes used in the computation of parity prices are published currently in "*Agricultural Prices*".

For the purpose of illustrating the computation of parity prices, the calculation of the parity price for corn based on data for January 2004 is given below.

The 120-month, January 1994-December 2003 average of prices received by farmers for corn was \$2.62 per bushel, adjusted to allow for unredeemed loans and other supplemental payments resulting from price support operations. The 120-month average of the Index of Prices Received by Farmers, adjusted to include an allowance for unredeemed loans, etc., was 692 (1910-14=100). Dividing \$2.62 by 6.92 gives \$0.379 per bushel, the adjusted base price which is multiplied by 1728 percent, the Parity Index (1910-14=100), based on data for January 2004. This gives \$6.55 per bushel, the parity price of corn during February 2004.

### **The Parity Ratio**

The parity ratio (the Index of Prices Received by Farmers for the products they sell divided by the Parity Index (1910-14=100)) provides an indication of the per unit purchasing power of farm commodities generally in terms of the goods and services currently bought by farmers, in relation to purchasing power of farm products in the 1910-14 base period. Thus, a Parity Ratio less than 100 indicates that the average per unit purchasing power of all farm products is lower than during the 1910-14 period.

The parity ratio is a measure of price relationships; not a measure of farm income, farmers' total purchasing power, or farmers' welfare. The latter depends upon a number of factors other than price relationships, such as changes in production efficiency and technology, quantities of farm products sold, and supplementary income, including that from off-farm jobs and federal programs.

An adjusted parity ratio is computed and published which incorporates supplementary income for federal farm programs. A "preliminary adjusted parity ratio reflecting government payments" based on the forecast of direct government payments for the year is published each quarter in "*Agricultural Prices*".



**Adjusted Base Prices and United States Parity Prices  
Based on Data for January, 2004**

Commodity and Unit	Adjusted Base Prices <sup>1</sup>	Parity Prices Based on data for Jan 2004 <sup>2</sup>
	<i>Dollars</i>	<i>Dollars</i>
<b>Basic Commodities</b>		
All Wheat, Bu <sup>3</sup>	0.564	9.75
Rice, Cwt <sup>3</sup>	1.63	28.20
Corn, Bu <sup>3</sup>	0.379	6.55
Cotton, Lb		
American Upland <sup>3</sup>	0.113	1.95
Extra Long Staple	0.144	2.49
Peanuts, Lb	0.0370	0.640
Tobacco, Lb		
Flue-Cured, Types 11-14	0.259	4.48
VA Fire-Cured, Type 21	0.257	4.44
KY-TN Fire-Cured, Types 22-23	0.322	5.57
Burley, Type 31	0.277	4.79
Maryland, Type 32	0.215	3.72
Dark Air-Cured, Types 35-36	0.282	4.88
Sun-Cured, Type 37	0.246	4.25
PA SeedLeaf, Type 41	0.206	3.56
Cigar Filler & Binder, Types 42-44, 54-55	0.225	3.89
Puerto Rican Filler, Type 46	0.162	2.80
Cigar Binder, Types 51-52	0.736	12.70
<b>Designated Nonbasic Commodities</b>		
Soybeans, Bu <sup>3</sup>	0.892	15.40
All Milk Sold to Plants, Cwt	1.97	34.10
Honey, Wholesale, Lb Extracted	0.105	1.82
Wool and Mohair		
Wool, Lb <sup>3</sup>	0.0880	1.52
Mohair, Lb	0.334	5.77
<b>Other Nonbasic Commodities</b>		
Field Crops and Misc		
All Barley, Bu <sup>3</sup>	0.376	6.50
Cottonseed, Ton	15.80	273.00
All Dry Edible Beans, Cwt	2.92	50.50
Flaxseed, Bu	0.728	12.60
All Hay, Baled, Ton	12.90	223.00
Hops, Lb	0.256	4.43
Oats, Bu <sup>3</sup>	0.221	3.82
Peppermint Oil <sup>3</sup>	1.78	30.80
All Potatoes, Cwt	0.854	14.80
Rye, Bu	0.353	6.10
Sorghum Grain, Cwt <sup>3</sup>	0.616	10.70
Spearmint Oil, Lb	1.53	26.50
Sweetpotatoes, Cwt	2.25	38.90
Tobacco, Cigar Wrapper Type 61, Lb	2.51	43.40

See footnote(s) at end of table.

--continued

**Adjusted Base Prices and United States Parity Prices  
Based on Data for January, 2004**

Commodity and Unit	Adjusted Base Prices <sup>1</sup>	Parity Prices Based on data for Jan 2004 <sup>2</sup>
	<i>Dollars</i>	<i>Dollars</i>
Fruit, Citrus (Equiv On-Tree) Box		
Grapefruit <sup>13</sup>	0.387	6.69
Lemons <sup>13</sup>	1.100	19.00
Oranges <sup>13</sup>	0.618	10.70
Tangerines <sup>13</sup>	1.42	24.60
Temples <sup>13</sup>	0.451	7.80
Fruit, Deciduous and Other		
Apples		
Fresh, Lb <sup>4</sup>	0.0296	0.512
Processing, Ton <sup>13</sup>	17.90	309.00
Apricots, Ton		
Fresh	99.70	1,720.00
Processing		
Dried (CA)	273.00	4,720.00
Excl Dried	40.00	692.00
Avocados, Ton <sup>13</sup>	238.00	4,120.00
Cherries		
Sweet, Ton	184.00	3,180.00
Tart, Lb <sup>13</sup>	0.0267	0.462
Cranberries, Bbl <sup>13</sup>	5.92	102.00
Dates (CA) Ton <sup>5</sup>	170.00	2,940.00
Grapes, Ton		
Raisin Varieties Dried (CA)	121.00	2,090.00
Excl Raisin Varieties Dried	68.20	1,180.00
Kiwifruit, Ton <sup>13</sup>	80.80	1,400.00
Nectarines (CA), Ton		
Fresh <sup>5</sup>	63.00	1,090.00
Processing <sup>6</sup>	3.73	64.50
Olives (CA), Ton <sup>7</sup>		
Processing		
Crushed for oil	19.30	334.00
Excl crushed	82.90	1,430.00
Canning	95.50	1,650.00
Papayas (HI), Fresh, Lb	0.0520	0.899
Peaches		
Fresh, Lb <sup>4 7</sup>	0.0408	0.705
Processing		
Dried (CA), Ton <sup>6</sup>	92.50	1,600.00
Excluding Dried, Ton		
Clingstone (CA), Ton <sup>7</sup>	32.80	567.00
Freestone, Ton <sup>6</sup>	26.90	465.00
Pears		
Fresh, Ton <sup>4</sup>	51.60	892.00
Processing, Ton <sup>6</sup>		
Dried (CA)	166.00	2,870.00
Excluding Dried	28.30	489.00

See footnote(s) at end of table.

--continued

**Adjusted Base Prices and United States Parity Prices  
Based on Data for January, 2004**

Commodity and Unit	Adjusted Base Prices <sup>1</sup>	Parity Prices Based on data for Jan 2004 <sup>2</sup>
	<i>Dollars</i>	<i>Dollars</i>
Fruit, Deciduous and Other, Cont		
Plums (CA) Equiv On-Tree		
Fresh, Ton <sup>8</sup>	57.40	992.00
Processing, Ton	3.67	63.50
Prunes, Dried (CA), Ton <sup>13</sup>	129.00	2,230.00
Prunes & Plums (EX CA) Ton		
Fresh <sup>8</sup>	56.90	984.00
Processing <sup>6</sup>	26.30	455.00
Strawberries, Lb		
Fresh <sup>6</sup>	0.0980	1.690
Processing	0.0409	0.707
Sugar Crops, Ton		
Sugarbeets <sup>10 13</sup>	5.59	96.70
Sugarcane <sup>10 13</sup>	4.05	70.00
Tree Nuts <sup>11</sup>		
Almonds, Lb	0.204	3.53
Hazelnuts, Ton	130.00	2,250.00
Pecans, All, Ton	266.00	4,600.00
Pistachio, All, Lb	0.159	2.75
Walnuts, Ton <sup>13</sup>	176.00	3,040.00
Vegetables, Fresh, Cwt <sup>9</sup>		
Asparagus	16.60	287.00
Broccoli <sup>12</sup>	4.12	71.20
Carrots <sup>12</sup>	2.21	38.20
Cauliflower <sup>12</sup>	4.55	78.70
Celery <sup>12</sup>	1.98	34.20
Honeydew Melons	2.79	48.20
Lettuce	2.50	43.20
Onions <sup>12</sup>	1.68	29.00
Sweet Corn	2.62	45.30
Tomatoes	4.39	75.90
Vegetables, Processing, Ton <sup>6</sup>		
Asparagus	166.00	2,870.00
Green Peas	38.40	664.00
Snap Beans	24.30	420.00
Sweet Corn	10.50	182.00
Tomatoes	8.97	155.00
Livestock and Products		
Beef Cattle, Cwt	9.55	165.00
Calves, Cwt	12.80	221.00
Eggs, Doz	0.0949	1.64
Hogs, Cwt	5.91	102.00
Lambs, Cwt	11.30	195.00
Sheep, Cwt	4.70	81.30
Turkeys, Lb	0.0574	0.992

See footnote(s) at end of table.

--continued

**Adjusted Base Prices and United States Parity Prices  
Based on Data for January, 2004**

Commodity and Unit	Adjusted Base Prices <sup>1</sup>	Parity Prices Based on data for Jan 2004 <sup>2</sup>
	<i>Dollars</i>	<i>Dollars</i>
Discontinued Nonbasic Commodities		
Field Crops and Misc <sup>14</sup>		
Crude Pine Gum, Bbl	13.90	240.00
Dry Field Peas, Cwt	1.89	32.70
Popcorn, Cwt	1.81	31.30
Tobacco, Type 62, Lb	0.858	14.80
Fruit, Deciduous and Other <sup>16</sup>		
Berries, Processing, Lb		
Blackberries	0.620	1.07
Black Raspberries	0.106	1.83
Boysenberries/Youngberries	0.0879	1.52
Gooseberries	0.0373	0.645
Loganberries	0.0603	1.04
Red Raspberries	0.0844	1.46
Seed Crops, Cwt <sup>14</sup>		
Alfalfa	19.30	334.00
Bentgrass	18.90	327.00
Chewings Fescue	10.00	173.00
Crimson Clover	8.40	145.00
Hairy Vetch	5.81	100.00
Ladino Clover	24.70	427.00
Lespedeza	8.31	144.00
Merion KY Bluegrass	22.00	380.00
Orchardgrass	7.16	124.00
Red Clover	12.00	207.00
Red Fescue	10.10	175.00
Tall Fescue	3.67	63.50
Timothy	6.40	111.00
Vegetables, Fresh, Cwt <sup>14</sup>		
Artichokes	4.55	78.70
Cabbage	1.38	23.90
Cantaloupes	2.13	36.80
Cucumbers	2.28	39.40
Eggplant	2.41	41.70
Escarole	3.10	53.60
Garlic	2.93	50.70
Green Peppers	3.60	62.20
Snap Beans	4.51	78.00
Spinach	3.95	68.30
Watermelon	0.846	14.60
Vegetables, Processing, Ton <sup>14</sup>		
Beets	7.79	135.00
Cabbage	6.01	104.00
Lima Beans	67.00	1,160.00
Spinach	14.50	251.00
Livestock and Products <sup>14</sup>		
Beeswax, Lb	0.291	5.03

See footnote(s) at end of table.

--continued

**Adjusted Base Price and United States Parity Prices  
Based on data for January 2004 (continued)**

- 1 Adjusted base price 1910-14 derived by dividing the average of 10 season average prices 1994-2003, including an allowance where appropriate for unredeemed loans and other supplemental payments resulting from price support operations, by 692 percent (120-month, Jan 1994-Dec 2003 average of the index of prices received by farmers adjusted to include an allowance for unredeemed loans and other supplemental payments) unless otherwise noted.
- 2 These parity prices are the legally applicable parity prices for the following calendar month.
- 3 Equivalent packinghouse-door returns for CA, MI, NY (apples only), and WA (apples, peaches, and pears). Prices as sold for other states.
- 4 Equivalent packinghouse-door returns for CA, MI, NY (apples only), and WA (apples, peaches, and pears). Prices "as sold" for other states.
- 5 Equivalent returns at packinghouse-door.
- 6 Equivalent returns at processing plant door.
- 7 Equivalent returns for bulk fruit at first delivery point.
- 8 Based on 'as sold' prices for fresh fruit in all states.
- 9 Average F.O.B. shipping point prices.
- 10 Relates to prices including average conditional payments per ton made under the sugar acts of 1937 and 1948. Crop deficiency and abandonment payments not included.
- 11 Prices on in-shell basis except almonds which are on shelled basis.
- 12 Includes some processing.
- 13 The 2003 marketing year average prices are not yet available for these commodities. Therefore, the adjusted base prices are brought forward from 2002, except citrus items (excluding limes) and cranberries.
- 14 Monthly and/or season average prices are no longer estimated for these items. Therefore, the adjusted base price is brought forward from July 1986.

**Average Base Period Prices Received by Farmers, US, 1910-14**

Commodity	Price Per Unit	Average Jan 1910-Dec 1914	Commodity	Price Per Unit	Average Jan 1910-Dec 1914
All Wheat	Dol/Bu	0.880	Sweetpotatoes	Dol/Cwt	1.61
Rice Rough	Dol/Cwt	1.81	Dry Edible Beans	Dol/Cwt	3.39
Corn	Dol/Bu	0.649	All Beef Cattle	Dol/Cwt	5.52
Oats	Dol/Bu	0.399	Calves	Dol/Cwt	6.84
All Barley	Dol/Bu	0.617	All Hogs	Dol/Cwt	7.29
All Hay, Baled	Dol/Ton	11.90	Lambs	Dol/Cwt	5.96
Cotton	Ct/Lb	11.92	Sheep	Dol/Cwt	4.59
Peanuts	Ct/Lb	4.83	All Milk	Dol/Cwt	1.61
Cottonseed	Dol/Ton	21.80	All Eggs	Ct/Doz	21.6
Flaxseed	Dol/Bu	1.68	Turkeys, Live	Ct/Lb	14.3
Potatoes	Dol/Cwt	1.13	Wool	Ct/Lb	17.8

**Prices Received by Farmers used to Calculate Parity Prices  
for Agricultural Commodities, United States, 1994 - 2003 <sup>1</sup>**

Commodity and Unit	1994	1995	1996	1997	1998	1999	2000
	(1910-14=100)						
Index of Prices Received by Farmers	634	646	712	678	644	607	611
	Calendar Year Average Prices <sup>3</sup>						
	<i>Dollars</i>	<i>Dollars</i>	<i>Dollars</i>	<i>Dollars</i>	<i>Dollars</i>	<i>Dollars</i>	<i>Dollars</i>
Basic Commodities							
Corn, Bu	2.41	2.56	3.55	2.60	2.20	1.89	1.86
Cotton, Upland, Lb	0.661	0.772	0.741	0.679	0.646	0.516	0.498
Cotton, Long Staple, Lb	1.025	1.228	1.070	1.014	0.924	0.852	1.003
Tobacco, Type 32, Lb	1.481	1.573	1.856	1.576	1.291	1.345	1.387
All Wheat, Bu	3.52	4.09	4.77	3.71	2.90	2.58	2.57
Rice, Cwt	8.20	7.60	9.62	10.01	9.40	7.60	5.69
Designated Nonbasic Comm							
All Milk, Cwt	13.00	12.80	14.90	13.30	15.50	14.40	12.30
Other Nonbasic Comm							
Field Crops and Misc							
All Barley, Bu	2.01	2.47	3.07	2.39	2.13	1.99	2.14
All Dry Beans, Cwt	24.60	21.90	23.70	20.90	20.40	17.90	15.10
Flaxseed, Bu	4.49	5.05	5.92	6.11	5.72	4.38	3.45
All Hay, Baled, Ton	88.90	83.20	88.90	102.80	89.70	78.70	80.40
Oats, Bu	1.29	1.45	2.01	1.72	1.34	1.15	1.17
Rye, Bu	2.70	2.90	3.70	3.75	2.49	2.28	2.49
Sorghum, Cwt	3.97	4.51	5.93	4.10	3.54	2.86	3.10
Soybeans, Bu	6.11	5.85	7.27	7.40	5.93	4.57	4.73
Sweetpotatoes, Cwt	14.00	15.90	14.40	15.80	15.30	17.60	15.30
Fruit							
Apples, Fresh, Lb <sup>4</sup>	0.183	0.205	0.242	0.194	0.184	0.176	0.195
Livestock and Products							
Beef Cattle, Cwt	66.50	62.20	59.30	63.30	59.70	63.30	68.40
Calves, Cwt	87.10	74.80	58.70	82.30	82.30	89.60	105.80
Eggs, Doz	0.609	0.639	0.758	0.696	0.665	0.609	0.636
All Hogs, Cwt	39.50	41.80	53.30	52.00	32.50	32.30	42.90
Lambs, Cwt	64.80	78.30	88.30	90.50	72.50	74.50	80.30
Sheep, Cwt	31.60	28.60	30.30	38.10	31.90	30.70	33.80
Turkeys, Lb	0.407	0.411	0.435	0.401	0.379	0.407	0.414

See footnote(s) at end of table.

--continued

**Prices Received by Farmers used to Calculate Parity Prices  
for Agricultural Commodities, United States, 1994 - 2003 <sup>1</sup> (continued)**

Commodity and Unit	2001	2002	2003	1993-02 Average	1994-03 Average	
					As Computed	For Parity Purposes <sup>2</sup>
	(1910-14=100)					
Index of Prices Received by Farmers	650	622	677	645	648	692
	Calendar Year Average Prices <sup>3</sup>					
	<i>Dollars</i>	<i>Dollars</i>	<i>Dollars</i>	<i>Dollars</i>	<i>Dollars</i>	<i>Dollars</i>
Basic Commodities						
Corn, Bu	1.89	2.13	2.27	2.33	2.34	2.62
Cotton, Upland, Lb	0.389	0.336	0.518	0.578	0.576	0.780
Cotton, Long Staple, Lb	0.856	0.860	1.150	0.970	0.998	0.999
Tobacco, Type 32, Lb	1.554	1.364	1.432	1.486	1.486	
All Wheat, Bu	2.83	3.41	3.44	3.36	3.38	3.90
Rice, Cwt	5.12	4.07	5.48	7.33	7.28	11.30
Designated Nonbasic Comm						
All Milk, Cwt	15.00	12.10	12.50	13.60	13.60	
Other Nonbasic Comm						
Field Crops and Misc						
All Barley, Bu	2.14	2.39	2.87	2.27	2.36	2.60
All Dry Beans, Cwt	17.50	22.60	17.80	20.50	20.20	
Flaxseed, Bu	4.00	5.23	6.02	4.86	5.04	
All Hay, Baled, Ton	95.20	93.70	88.80	88.40	89.00	
Oats, Bu	1.42	1.88	1.72	1.48	1.51	1.53
Rye, Bu	2.60	2.93	3.38	2.37	2.44	
Sorghum, Cwt	3.38	3.80	3.97	3.88	3.91	4.26
Soybeans, Bu	4.43	4.93	6.09	5.73	5.73	6.17
Sweetpotatoes, Cwt	15.40	16.70	20.80	15.60	16.10	
Fruit						
Apples, Fresh, Lb <sup>4</sup>	0.180	0.241	0.246	0.198	0.205	
Livestock and Products						
Beef Cattle, Cwt	71.20	66.60	80.20	65.40	66.10	
Calves, Cwt	106.70	97.60	104.00	88.10	88.90	
Eggs, Doz	0.604	0.598	0.752	0.644	0.657	
All Hogs, Cwt	44.10	33.30	37.60	41.70	40.90	
Lambs, Cwt	67.60	73.30	94.60	75.50	78.50	78.50
Sheep, Cwt	35.80	28.90	35.50	31.90	32.50	
Turkeys, Lb	0.391	0.365	0.355	0.400	0.397	

See footnote(s) at end of table.

--continued

**Prices Received by Farmers used to Calculate Parity Prices  
for Agricultural Commodities, United States, 1994-2003 <sup>1</sup>**

Commodity and Unit	1994	1995	1996	1997	1998	1999
	Marketing Year Average Prices <sup>3</sup>					
	<i>Dollars</i>	<i>Dollars</i>	<i>Dollars</i>	<i>Dollars</i>	<i>Dollars</i>	<i>Dollars</i>
<b>Basic Commodities</b>						
Peanuts, Lb <sup>18</sup>	0.289	0.293	0.281	0.283	0.284	0.254
Tobacco, Lb						
Types 11-14	1.698	1.790	1.834	1.720	1.756	1.737
Type 21	1.612	1.640	1.790	2.125	1.936	1.819
Ky-Tn Fire-Cured,						
Types 22-23	2.092	2.172	2.245	2.256	2.225	2.298
Burley, Type 31	1.841	1.854	1.922	1.885	1.903	1.899
Types 35-36	1.685	1.762	1.952	2.017	2.017	2.039
Sun-Cured, Type 37	1.476	1.555	1.782	1.908	1.709	1.590
PA Seedleaf, Type 41	1.000	1.450	1.550	1.600	1.300	1.300
Cigar Filler & Binder						
Types 42-44, 54-55	1.450	1.450	1.486	1.505	1.498	1.490
Puerto Rican Filler,						
Type 46 <sup>7</sup>						
Types 51-52	3.060	3.890	6.279	7.273	5.499	4.737
<b>Designated Nonbasic Comm</b>						
Honey, Wholesale, Lb						
Extracted <sup>8</sup>	0.528	0.685	0.888	0.752	0.655	0.601
Wool and Mohair <sup>9</sup>						
Wool, Lb	0.780	1.040	0.700	0.840	0.600	0.380
Mohair, Lb	2.56	1.84	1.92	2.25	2.49	3.46
<b>Other Nonbasic Comm</b>						
Field Crops and Misc						
Cottonseed, Ton	101.00	106.00	126.00	121.00	129.00	89.00
Hops, Lb	1.81	1.71	1.65	1.60	1.69	1.69
Peppermint Oil, Lb	14.60	13.80	13.60	12.90	11.90	10.70
Potatoes, Cwt	5.56	6.75	4.91	5.64	5.56	5.77
Spearmint Oil, Lb	12.50	12.30	12.00	11.90	11.00	9.70

See footnote(s) at end of table.

--continued



**Prices Received by Farmers used to Calculate Parity Prices  
for Agricultural Commodities, United States, 1994-2003 <sup>1</sup> (continued)**

Commodity and Unit	2000	2001	2002	2003	1993-02 Average	1994-03 Average
	Marketing Year Average Prices <sup>3</sup>					
	<i>Dollars</i>	<i>Dollars</i>	<i>Dollars</i>	<i>Dollars</i>	<i>Dollars</i>	<i>Dollars</i>
<b>Basic Commodities</b>						
Peanuts, Lb <sup>18</sup>	0.274	0.234	0.182	0.188	0.268	0.256
Tobacco, Lb						
Types 11-14	1.793	1.857	1.820	1.853	1.769	1.786
Type 21	1.637	1.759	1.884	1.641	1.792	1.784
Ky-Tn Fire-Cured, Types 22-23	2.163	2.149	2.378	2.301	2.217	2.228
Burley, Type 31	1.963	1.973	1.974	1.990	1.903	1.920
Types 35-36	1.965	1.829	2.101	2.165	1.908	1.953
Sun-Cured, Type 37	1.800	1.686	1.778	1.707	1.681	1.699
PA Seedleaf, Type 41	<sup>(20)</sup>	1.650	1.450	1.600	1.361	1.426
Cigar Filler & Binder Types 42-44, 54-55	1.550	1.650	1.750	1.750	1.526	1.558
Puerto Rican Filler, Type 46 <sup>7</sup>						
Types 51-52	4.916	5.589	5.369	4.250	4.961	5.086
<b>Designated Nonbasic Comm</b>						
Honey, Wholesale, Lb Extracted <sup>8</sup>	0.597	0.704	1.286	<sup>(6)</sup>	0.724	<sup>(6)</sup>
Wool and Mohair <sup>9</sup>						
Wool, Lb	0.330	0.360	0.530	<sup>(6)</sup>	0.607	<sup>(6)</sup>
Mohair, Lb	4.04	2.13	1.58	<sup>(6)</sup>	2.31	<sup>(6)</sup>
<b>Other Nonbasic Comm</b>						
Field Crops and Misc						
Cottonseed, Ton	105.00	90.50	101.00	117.00	108.00	109.00
Hops, Lb	1.87	1.85	1.91	1.90	1.75	1.77
Peppermint Oil, Lb	10.80	10.90	11.90	12.00	12.40	12.30
Potatoes, Cwt	5.08	6.99	6.69	<sup>(6)</sup>	5.91	<sup>(6)</sup>
Spearmint Oil, Lb	9.06	9.10	9.12	9.50	10.90	10.60

See footnote(s) at end of table.

--continued

**Prices Received by Farmers used to Calculate Parity Prices  
for Agricultural Commodities, United States, 1994-2003 <sup>1</sup>**

Commodity and Unit	1994	1995	1996	1997	1998	1999
	Marketing Year Average Prices <sup>3</sup>					
	<i>Dollars</i>	<i>Dollars</i>	<i>Dollars</i>	<i>Dollars</i>	<i>Dollars</i>	<i>Dollars</i>
Nonbasic Commodities						
Tobacco, Cigar Wrapper Type 61, Lb	17.80	( <sup>6</sup> )	( <sup>6</sup> )	( <sup>6</sup> )	( <sup>6</sup> )	( <sup>6</sup> )
Fruit, Citrus (Equiv On-Tree) Box <sup>10</sup>						
Grapefruit	2.30	2.32	1.93	2.00	3.17	3.87
Lemons	7.52	6.37	8.36	6.57	8.85	9.49
Oranges	4.23	4.79	4.22	4.29	5.47	3.58
Tangerines	12.21	11.10	9.48	8.84	12.55	7.15
Temples	3.47	4.44	3.22	3.07	5.12	2.55
Fruit, Deciduous and Other						
Apples, Ton <sup>11</sup> Processing	114.00	159.00	171.00	130.00	94.60	128.00
Apricots, Ton Fresh <sup>14</sup>	546.00	900.00	1,170.00	558.00	579.00	638.00
Processing <sup>11</sup> Dried (CA)	1,890.00	2,090.00	2,240.00	1,810.00	1,860.00	( <sup>20</sup> )
Excl Dried	305.00	282.00	285.00	273.00	260.00	295.00
Avocados, Ton	1,380.00	1,300.00	1,430.00	1,560.00	2,160.00	1,940.00
Cherries						
Sweet, Ton	1,040.00	1,260.00	1,470.00	1,250.00	1,090.00	1,100.00
Tart, Lb	0.163	0.059	0.161	0.159	0.145	0.218
Cranberries, Bbl	49.30	53.40	65.90	63.70	36.60	17.20
Dates, (CA) Ton	750.00	780.00	1,090.00	1,100.00	1,220.00	1,240.00
Grapes, Ton						
Raisin Varieties						
Dried (CA)	923.00	980.00	1,070.00	908.00	1,250.00	1,220.00
Excl Raisin Var Dr	376.00	399.00	483.00	497.00	508.00	522.00
Kiwifruit, Ton <sup>12</sup>	491.00	459.00	470.00	518.00	744.00	634.00
Nectarines, (CA) Ton						
Fresh <sup>12</sup>	286.00	( <sup>20</sup> )	( <sup>20</sup> )	( <sup>20</sup> )	( <sup>20</sup> )	437.00
Processing <sup>11</sup>	25.00	( <sup>20</sup> )	( <sup>20</sup> )	( <sup>20</sup> )	( <sup>20</sup> )	27.90
Olives (CA), Ton						
Processing <sup>13</sup> Crushed for Oil	11.00	11.00	11.00	11.00	11.00	200.00
Excl Crushed	489.00	681.00	643.00	665.00	481.00	394.00
Canning <sup>13</sup>	551.00	779.00	745.00	760.00	590.00	513.00

See footnote(s) at end of table.

--continued

**Prices Received by Farmers used to Calculate Parity Prices  
for Agricultural Commodities, United States, 1994-2003 <sup>1</sup> (continued)**

Commodity and Unit	2000	2001	2002	2003	1993-02 Average	1994-03 Average
	Marketing Year Average Prices <sup>3</sup>					
	<i>Dollars</i>	<i>Dollars</i>	<i>Dollars</i>	<i>Dollars</i>	<i>Dollars</i>	<i>Dollars</i>
Nonbasic Commodities						
Tobacco, Cigar Wrapper Type 61, Lb	( <sup>6</sup> )	( <sup>6</sup> )	( <sup>6</sup> )	( <sup>6</sup> )	17.40	( <sup>6</sup> )
Fruit, Citrus (Equip On-Tree) Box <sup>10</sup>						
Grapefruit	2.50	2.64	2.75	( <sup>6</sup> )	2.68	( <sup>6</sup> )
Lemons	4.96	11.36	6.59	( <sup>6</sup> )	7.63	( <sup>6</sup> )
Oranges	3.85	4.25	3.73	( <sup>6</sup> )	4.28	( <sup>6</sup> )
Tangerines	7.92	9.59	10.06	( <sup>6</sup> )	9.85	( <sup>6</sup> )
Temples	2.05	2.19	2.35	( <sup>6</sup> )	3.12	( <sup>6</sup> )
Fruit, Deciduous and Other						
Apples, Ton <sup>11</sup>						
Processing	101.00	108.00	130.00	( <sup>20</sup> )	124.00	( <sup>6</sup> )
Apricots, Ton						
Fresh <sup>14</sup>	573.00	650.00	678.00	618.00	710.00	690.00
Processing <sup>11</sup>						
Dried (CA)	1,860.00	1,960.00	1,590.00	1,760.00	1,950.00	1,890.00
Excl Dried	283.00	257.00	268.00	261.00	278.00	277.00
Avocados, Ton	1,380.00	1,670.00	1,920.00	( <sup>6</sup> )	1,650.00	( <sup>6</sup> )
Cherries						
Sweet, Ton	1,340.00	1,230.00	1,550.00	1,390.00	1,252.00	1,272.00
Tart, Lb	0.187	0.186	0.448	0.371	0.185	0.210
Cranberries, Bbl	18.10	23.80	30.20	31.80	40.80	39.00
Dates, (CA) Ton	1,230.00	1,360.00	1,550.00	1,430.00	1,111.00	1,175.00
Grapes, Ton						
Raisin Varieties						
Dried (CA)	569.00	570.00	393.00	520.00	882.00	840.00
Excl Raisin Var Dr	510.00	558.00	490.00	( <sup>6</sup> )	472.00	( <sup>6</sup> )
Kiwifruit, Ton <sup>12</sup>	455.00	667.00	783.00	( <sup>6</sup> )	559.00	( <sup>6</sup> )
Nectarines, (CA) Ton						
Fresh <sup>12</sup>	407.00	480.00	382.00	436.00	443.00	436.00
Processing <sup>11</sup>	24.00	26.00	( <sup>20</sup> )	( <sup>20</sup> )	26.10	25.80
Olives (CA), Ton						
Processing <sup>13</sup>						
Crushed for Oil	300.00	300.00	240.00	238.00	110.60	133.30
Excl Crushed	677.00	681.00	593.00	439.00	579.00	574.00
Canning <sup>13</sup>	769.00	770.00	662.00	475.00	670.00	661.00

See footnote(s) at end of table.

--continued

**Prices Received by Farmers used to Calculate Parity Prices  
for Agricultural Commodities, United States, 1994-2003 <sup>1</sup>**

Commodity and Unit	1994	1995	1996	1997	1998	1999
	Marketing Year Average Prices <sup>3</sup>					
	<i>Dollars</i>	<i>Dollars</i>	<i>Dollars</i>	<i>Dollars</i>	<i>Dollars</i>	<i>Dollars</i>
Papayas (HI), Fresh, Lb	0.243	0.435	0.448	0.529	0.350	0.402
Peaches						
Fresh, Lb <sup>14</sup>	0.188	0.260	0.331	0.244	0.306	0.290
Processing <sup>11</sup>						
Dried (CA), Ton	856.00	894.00	726.00	612.00	544.50	619.50
Excluding Dried, Ton						
Clingstone CA, Ton	180.00	213.00	219.00	260.00	219.00	225.00
Freestone, Ton	187.00	187.00	181.00	194.00	186.00	185.00
Pears						
Fresh, Ton <sup>4</sup>	258.00	343.00	496.00	329.00	373.00	393.00
Processing, Ton <sup>11</sup>						
Dried (CA)	942.00	919.00	1,290.00	1,020.00	1,500.00	1,040.00
Excluding Dried	184.00	177.00	223.00	213.00	199.00	184.00
Plums (CA), Ton						
Fresh <sup>20</sup>	( <sup>20</sup> )	( <sup>20</sup> )	( <sup>20</sup> )	( <sup>20</sup> )	( <sup>20</sup> )	( <sup>20</sup> )
Processing <sup>20</sup>	( <sup>20</sup> )	( <sup>20</sup> )	( <sup>20</sup> )	( <sup>20</sup> )	( <sup>20</sup> )	( <sup>20</sup> )
Prunes, Dried, CA, Ton <sup>11</sup>	1,090.00	1,040.00	839.00	883.00	764.00	861.00
Prunes & Plums, Ex CA, Ton						
Fresh <sup>14</sup>	255.00	441.00	575.00	448.00	476.00	232.00
Processing <sup>11</sup>	105.00	145.00	267.00	134.00	162.00	182.00
Strawberries, Lb						
Fresh <sup>15 16</sup>	0.602	0.604	0.565	0.656	0.741	0.735
Processing	0.291	0.262	0.204	0.271	0.319	0.330
Sugar Crops, Ton <sup>17</sup>						
Sugarbeets	38.80	38.10	45.40	38.80	36.40	37.20
Sugarcane	29.20	29.50	28.30	28.10	27.30	25.60

See footnote(s) at end of table.

--continued

**Prices Received by Farmers used to Calculate Parity Prices  
for Agricultural Commodities, United States, 1994-2003 <sup>1</sup> (continued)**

Commodity and Unit	2000	2001	2002	2003	1993-02 Average	1994-03 Average
	Marketing Year Average Prices <sup>3</sup>					
	<i>Dollars</i>	<i>Dollars</i>	<i>Dollars</i>	<i>Dollars</i>	<i>Dollars</i>	<i>Dollars</i>
Papayas (HI), Fresh, Lb	0.316	0.279	0.277	0.324	0.351	0.360
Peaches						
Fresh, Lb <sup>14</sup>	0.279	0.309	0.311	0.301	0.274	0.282
Processing <sup>11</sup>						
Dried (CA), Ton	728.00	514.00	456.00	446.00	666.00	640.00
Excluding Dried, Ton						
Clingstone CA, Ton	250.00	244.00	247.00	215.00	228.00	227.00
Freestone, Ton	176.00	190.00	184.00	194.00	186.00	186.00
Pears						
Fresh, Ton <sup>4</sup>	318.00	333.00	359.00	369.00	348.00	357.00
Processing, Ton <sup>11</sup>						
Dried (CA)	909.00	1,210.00	1,315.00	1,350.00	1,112.00	1,150.00
Excluding Dried	190.00	175.00	206.00	207.00	196.00	196.00
Plums (CA), Ton						
Fresh <sup>20</sup>	( <sup>20</sup> )	( <sup>20</sup> )	( <sup>20</sup> )	( <sup>20</sup> )	395.00	397.00
Processing <sup>20</sup>	( <sup>20</sup> )	( <sup>20</sup> )	( <sup>20</sup> )	( <sup>20</sup> )	22.00	25.40
Prunes, Dried, CA, Ton <sup>11</sup>	770.00	726.00	810.00	730.00	890.00	851.00
Prunes & Plums, Ex CA, Ton						
Fresh <sup>14</sup>	321.00	345.00	396.00	446.00	370.00	394.00
Processing <sup>11</sup>	178.00	185.00	204.00	257.00	172.00	182.00
Strawberries, Lb						
Fresh <sup>15 16</sup>	0.649	0.758	0.714	0.755	0.656	0.678
Processing	0.245	0.292	0.331	0.281	0.283	0.283
Sugar Crops, Ton <sup>17</sup>						
Sugarbeets	34.20	39.80	39.30	( <sup>6</sup> )	38.70	( <sup>6</sup> )
Sugarcane	26.10	29.00	28.40	( <sup>6</sup> )	28.00	( <sup>6</sup> )

See footnote(s) at end of table.

--continued

**Prices Received by Farmers used to Calculate Parity Prices  
for Agricultural Commodities, United States, 1994-2003 <sup>1</sup>**

Commodity and Unit	1994	1995	1996	1997	1998	1999
	Marketing Year Average Prices <sup>3</sup>					
	<i>Dollars</i>	<i>Dollars</i>	<i>Dollars</i>	<i>Dollars</i>	<i>Dollars</i>	<i>Dollars</i>
Tree Nuts <sup>18</sup>						
Almonds, Lb	1.34	2.48	2.08	1.56	1.41	0.86
Hazelnuts, Ton	835.00	913.00	860.00	899.00	964.00	890.00
Pecans, All, Ton	2,080.00	2,020.00	1,282.00	1,548.00	2,420.00	1,628.00
Pistachio, All Lb	0.92	1.09	1.16	1.13	1.03	1.33
Walnuts, Ton	1,030.00	1,400.00	1,580.00	1,430.00	1,050.00	886.00
Vegetables, Fresh, Cwt <sup>15</sup>						
Asparagus	100.00	113.00	92.90	108.00	124.00	131.00
Broccoli <sup>19</sup>	27.50	29.30	27.10	28.50	29.50	24.10
Carrots <sup>19</sup>	12.90	16.70	13.40	12.90	12.00	16.80
Cauliflower <sup>19</sup>	28.20	33.20	32.90	31.60	32.80	30.00
Celery <sup>19</sup>	11.80	16.30	10.50	14.70	12.30	12.00
Honeydew Melons	16.40	20.60	17.00	18.90	21.10	21.60
Lettuce	13.30	23.50	14.70	17.50	16.10	13.30
Onions <sup>19</sup>	9.80	9.90	10.50	12.60	13.80	9.78
Sweet Corn	17.20	18.30	16.90	17.70	17.20	17.20
Tomatoes	27.40	25.50	28.10	31.70	35.20	25.90
Vegetables, Proc. Ton <sup>11</sup>						
Asparagus	1,050.00	1,150.00	1,210.00	1,220.00	1,200.00	1,180.00
Green Peas	254.00	267.00	284.00	288.00	282.00	275.00
Snap Beans	166.00	173.00	178.00	176.00	172.00	173.00
Sweet Corn	68.50	75.60	78.50	74.90	73.30	71.10
Tomatoes	62.10	63.20	62.30	60.70	65.30	71.10

See footnote(s) at end of table.

--continued

**Prices Received by Farmers used to Calculate Parity Prices  
for Agricultural Commodities, United States, 1994-2003 <sup>1</sup> (continued)**

Commodity and Unit	2000	2001	2002	2003	1993-02 Average	1994-03 Average
	Marketing Year Average Prices <sup>3</sup>					
	<i>Dollars</i>	<i>Dollars</i>	<i>Dollars</i>	<i>Dollars</i>	<i>Dollars</i>	<i>Dollars</i>
Tree Nuts <sup>18</sup>						
Almonds, Lb	0.97	0.91	1.11	1.42	1.47	1.41
Hazelnuts, Ton	891.00	701.00	1,000.00	1,050.00	859.00	900.00
Pecans, All, Ton	2,280.00	1,188.00	1,910.00	2,000.00	1,750.00	1,840.00
Pistachio, All Lb	1.01	1.01	1.10	1.15	1.10	1.10
Walnuts, Ton	1,240.00	1,120.00	1,080.00	( <sup>6</sup> )	1,220.00	( <sup>6</sup> )
Vegetables, Fresh, Cwt <sup>15</sup>						
Asparagus	117.00	140.00	110.00	116.00	113.20	115.20
Broccoli <sup>19</sup>	30.40	26.00	30.70	31.50	28.00	28.50
Carrots <sup>19</sup>	13.10	17.20	19.00	19.10	14.60	15.30
Cauliflower <sup>19</sup>	32.00	29.20	32.00	33.00	31.20	31.50
Celery <sup>19</sup>	18.50	14.40	12.80	13.60	13.80	13.70
Honeydew Melons	19.20	21.10	18.00	18.90	19.20	19.30
Lettuce	17.40	17.90	21.20	18.20	17.10	17.30
Onions <sup>19</sup>	11.30	11.40	12.40	15.00	11.60	11.60
Sweet Corn	18.20	19.50	19.20	19.10	17.90	18.10
Tomatoes	30.80	30.40	32.30	37.00	29.90	30.40
Vegetables, Proc. Ton <sup>11</sup>						
Asparagus	1,180.00	1,040.00	1,110.00	1,170.00	1,135.00	1,151.00
Green Peas	248.00	264.00	252.00	250.00	267.00	266.00
Snap Beans	171.00	161.00	151.00	157.00	170.00	168.00
Sweet Corn	73.40	72.90	68.20	70.80	72.90	72.70
Tomatoes	59.80	59.20	58.20	58.60	62.20	62.10

<sup>1</sup> Average used to compute "adjusted base prices". 2004 and 1994-2003 averages are preliminary. <sup>2</sup> Includes an allowance for price support operations as authorized by the Secretary of Agriculture, January 30, 1956. This entry is omitted for commodities not affected by the adjustment. <sup>3</sup> Simple average of monthly prices. Due to rounding differences, the 10-year average of these data might differ slightly from the 120-month averages shown in the 1993-2002 and 1994-2003 columns. <sup>4</sup> Equivalent packinghouse-door returns for CA, NY (applies only starting in 1985), OR (except peaches), and WA. Prices "as sold" for other states. <sup>5</sup> Unless otherwise noted these prices are the averages for the marketing season computed by weighting state prices by quantities sold. <sup>6</sup> Not available. <sup>7</sup> Price for year harvested, from Tobacco Division, AMS. <sup>8</sup> For 1984 through 1986 the national averages are the support prices. <sup>9</sup> Average local market price; does not include incentive payment per pound, the 1993-2002 and 1994-2003 averages for parity purposes include this allowance. <sup>10</sup> Consistent with legislation quoted in this report, citrus prices shown for 2002 relate to the citrus crop designated as 2002-2003 in the production reports. <sup>11</sup> Equivalent returns at processing plant door. <sup>12</sup> Equivalent returns at packinghouse-door. <sup>13</sup> Equivalent returns for bulk fruit at first delivery point. <sup>14</sup> Based on "as sold" prices for fresh fruit in all states. <sup>15</sup> Average F.O.B. shipping point prices. <sup>16</sup> Includes strawberries for processing in states where the processing crop is not estimated separately. <sup>17</sup> Prices include average conditional payments per ton made under the sugar acts of 1937 and 1948. Crop deficiency and abandonment payments not included. <sup>18</sup> Prices on in-shell basis except almonds which are on shelled basis. <sup>19</sup> Includes some processing. <sup>20</sup> Marketing year average prices not published to avoid disclosure of individual firms.

**Indexes of Prices Received by Farmers, by Months and Annual Average,  
United States, 2000-2004**

Year	Jan	Feb	Mar	Apr	May	Jun	Jul	Aug	Sep	Oct	Nov	Dec	Avg <sup>1</sup>
All Farm Products 1910-14 = 100													
2000	573	584	601	637	635	624	613	612	618	592	622	622	611
2001	613	635	656	672	684	682	684	699	674	600	595	600	650
2002	602	625	667	598	610	616	626	633	623	606	618	636	622
2003	632	628	628	643	671	682	665	693	702	718	745	720	677
2004	708												708
1990-92 = 100													
2000	90	92	95	100	100	98	97	96	97	93	98	98	96
2001	97	100	103	106	108	107	108	110	106	94	94	95	102
2002	95	98	105	94	96	97	98	100	98	95	97	100	98
2003	100	99	99	101	106	107	105	109	110	113	117	113	107
2004	111												111
All Crops 1910-14 = 100													
2000	436	450	469	504	508	485	466	476	479	448	477	472	473
2001	465	484	489	506	517	502	512	537	505	435	441	471	489
2002	462	501	580	494	515	517	537	556	537	501	513	530	520
2003	508	511	522	548	574	577	537	558	546	547	579	566	548
2004	569												569
1990-92 = 100													
2000	88	91	95	102	103	98	94	96	97	91	97	96	96
2001	94	98	99	103	105	102	104	109	102	88	89	95	99
2002	94	102	118	100	104	105	109	113	109	102	104	107	106
2003	103	104	106	111	116	117	109	113	111	111	117	115	111
2004	115												115

<sup>1</sup> Simple average required for parity regulations. Weighted 1990-92 average equals 100. Average is year-to-date for current year.



**Indexes of Prices Received by Farmers, by Months and Annual Average,  
United States, 2000-2004**

Year	Jan	Feb	Mar	Apr	May	Jun	Jul	Aug	Sep	Oct	Nov	Dec	Avg <sup>1</sup>
Food Grains 1910-14 = 100													
2000	269	270	271	271	273	267	249	258	259	280	293	300	272
2001	296	291	293	292	303	289	279	286	292	286	281	290	290
2002	284	270	271	267	274	302	333	365	411	410	394	396	331
2003	372	336	326	316	326	323	311	344	350	353	368	386	343
2004	389												389
1990-92 = 100													
2000	85	85	85	85	86	84	78	81	82	88	92	94	85
2001	93	91	92	92	95	91	88	90	92	90	89	91	91
2002	89	85	85	84	86	95	105	115	129	129	124	125	104
2003	117	106	102	99	102	102	98	108	110	111	116	122	108
2004	122												122
Feed Grains and Hay 1910-14 = 100													
2000	302	315	323	325	342	322	294	280	277	285	303	324	308
2001	319	324	325	323	322	324	339	342	331	307	308	330	325
2002	322	325	327	328	337	351	364	394	398	377	370	378	356
2003	375	380	380	381	392	391	366	364	359	343	352	370	371
2004	384												384
1990-92 = 100													
2000	84	88	90	91	96	90	82	78	78	80	85	90	86
2001	89	91	91	90	90	91	95	96	93	86	86	92	91
2002	90	91	91	92	94	98	102	110	111	105	104	106	100
2003	105	106	106	107	110	109	102	102	101	96	99	104	104
2004	107												107

<sup>1</sup> Simple average required for parity regulations. Weighted 1990-92 average equals 100. Average is year-to-date for current year.

**Indexes of Prices Received by Farmers, by Months and Annual Average,  
United States, 2000-2004**

Year	Jan	Feb	Mar	Apr	May	Jun	Jul	Aug	Sep	Oct	Nov	Dec	Avg <sup>1</sup>
Cotton 1910-14 = 100													
2000	364	396	403	384	402	381	412	434	428	469	490	489	421
2001	440	410	347	360	346	331	329	315	309	259	235	260	328
2002	231	237	240	230	226	285	298	292	303	333	363	374	284
2003	385	393	411	384	388	385	391	391	471	575	536	542	438
2004	539												539
1990-92 = 100													
2000	71	77	79	75	79	74	81	85	83	92	96	95	82
2001	86	80	68	70	67	65	64	62	60	51	46	51	64
2002	45	46	47	45	44	56	58	57	59	65	71	73	56
2003	75	77	80	75	76	75	76	76	92	112	105	106	85
2004	105												105
Tobacco 1910-14 = 100													
2000	1683	1713	1652	1365				1474	1604	1613	1696	1722	1614
2001	1735	1752	1496	1235			1622	1574	1639	1657	1722	1709	1614
2002	1761	1704	1478				1617	1561	1574	1609	1704	1735	1638
2003	1817	1796	1552	1065			1570	1578	1635	1639	1726	1717	1610
2004	1713												1713
1990-92 = 100													
2000	111	113	109	90				97	106	107	112	114	107
2001	115	116	99	82			107	104	108	109	114	113	107
2002	116	113	98				107	103	104	106	113	115	108
2003	120	119	103	70			104	104	108	108	114	114	106
2004	113												113

<sup>1</sup> Simple average required for parity regulations. Weighted 1990-92 average equals 100. Average is year-to-date for current year.

<sup>2</sup> Missing data indicates insufficient sales volume to establish a price.

**Indexes of Prices Received by Farmers, by Months and Annual Average,  
United States, 2000-2004**

Year	Jan	Feb	Mar	Apr	May	Jun	Jul	Aug	Sep	Oct	Nov	Dec	Avg <sup>1</sup>
Oil-Bearing Crops 1910-14 = 100													
2000	451	471	479	487	507	480	442	432	464	444	464	481	467
2001	458	438	428	412	423	437	468	473	445	407	422	427	437
2002	415	419	432	440	455	483	528	538	483	494	530	537	480
2003	540	548	550	571	594	597	570	554	529	608	665	692	585
2004	758												758
1990-92 = 100													
2000	82	86	88	89	93	88	81	79	85	81	85	88	85
2001	84	80	78	75	77	80	86	86	81	74	77	78	80
2002	76	77	79	80	83	88	96	98	88	90	97	98	88
2003	99	100	101	104	109	109	104	101	97	111	122	126	107
2004	139												139
Fruit and Nuts 1910-14 = 100													
2000	598	614	611	677	609	732	753	761	790	776	698	564	682
2001	601	588	677	731	671	852	888	907	900	884	794	669	764
2002	589	582	670	633	732	798	815	864	869	863	765	649	736
2003	567	575	605	679	752	813	841	848	854	849	794	645	735
2004	612												612
1990-92 = 100													
2000	86	88	88	97	87	105	108	109	113	111	100	81	98
2001	86	84	97	105	96	122	127	130	129	127	114	96	109
2002	84	83	96	91	105	114	117	124	124	124	110	93	105
2003	81	82	87	97	108	117	120	122	122	122	114	92	105
2004	88												88

<sup>1</sup> Simple average required for parity regulations. Weighted 1990-92 average equals 100. Average is year-to-date for current year.

**Indexes of Prices Received by Farmers, by Months and Annual Average,  
United States, 2000-2004**

Year	Jan	Feb	Mar	Apr	May	Jun	Jul	Aug	Sep	Oct	Nov	Dec	Avg <sup>1</sup>
Commercial Vegetables 1910-14 = 100													
2000	655	572	718	906	873	785	795	862	957	834	963	769	807
2001	815	988	920	916	953	796	829	961	896	682	676	1008	870
2002	1055	1271	1810	808	801	739	779	799	791	712	775	1031	948
2003	768	753	813	911	947	1022	794	934	969	969	1229	1082	933
2004	924												924
1990-92 = 100													
2000	98	86	107	136	131	117	119	129	143	125	144	115	121
2001	122	148	138	137	143	119	124	144	134	102	101	151	130
2002	158	190	271	121	120	111	117	120	118	106	116	154	142
2003	115	113	122	136	142	153	119	140	145	145	184	162	140
2004	138												138
Potatoes and Dry Beans 1910-14 = 100													
2000	475	496	519	545	529	511	559	464	406	384	383	395	472
2001	409	450	437	466	453	486	532	632	516	461	538	578	497
2002	620	645	715	699	748	806	884	651	520	466	524	547	652
2003	549	560	557	630	606	544	541	532	437	418	474	481	527
2004	489												489
1990-92 = 100													
2000	94	98	103	108	105	101	110	92	80	76	76	78	93
2001	81	89	86	92	90	96	105	125	102	91	106	114	98
2002	123	127	141	138	148	159	175	129	103	92	104	108	129
2003	108	111	110	124	120	108	107	105	86	83	94	95	104
2004	97												97

<sup>1</sup> Simple average required for parity regulations. Weighted 1990-92 average equals 100. Average is year-to-date for current year.

**Indexes of Prices Received by Farmers, by Months and Annual Average,  
United States, 2000-2004**

Year	Jan	Feb	Mar	Apr	May	Jun	Jul	Aug	Sep	Oct	Nov	Dec	Avg <sup>1</sup>
Other Crops 1910-14 = 100													
2000	541	541	541	541	541	541	541	541	541	541	541	541	541
2001	554	554	554	554	554	554	554	554	554	554	554	554	554
2002	561	561	561	561	561	561	561	561	561	561	561	561	561
2003	564	564	564	564	564	564	564	564	564	564	564	564	564
2004	569												569
1990-92 = 100													
2000	110	110	110	110	110	110	110	110	110	110	110	110	110
2001	112	112	112	112	112	112	112	112	112	112	112	112	112
2002	114	114	114	114	114	114	114	114	114	114	114	114	114
2003	114	114	114	114	114	114	114	114	114	114	114	114	114
2004	115												115
Food Commodities 1990-92 = 100													
2000	90	91	94	101	100	98	98	98	99	94	100	98	97
2001	97	101	105	108	110	109	109	113	109	96	97	96	104
2002	96	99	108	93	95	95	97	97	95	93	96	99	97
2003	98	96	96	99	105	107	104	110	112	116	122	115	107
2004	112												112

<sup>1</sup> Simple average required for parity regulations. Weighted 1990-92 average equals 100. Average is year-to-date for current year.

**Indexes of Prices Received by Farmers, by Months and Annual Average,  
United States, 2000-2004**

Year	Jan	Feb	Mar	Apr	May	Jun	Jul	Aug	Sep	Oct	Nov	Dec	Avg <sup>1</sup>
Livestock and Products 1910-14 = 100													
2000	710	710	723	756	745	754	757	738	750	744	763	775	744
2001	764	780	821	833	846	864	857	852	848	798	760	716	812
2002	735	734	723	684	681	689	678	669	655	664	684	698	691
2003	734	728	716	717	741	759	775	810	846	889	900	858	789
2004	822												822
1990-92 = 100													
2000	93	93	94	98	97	98	99	96	98	97	99	101	97
2001	100	102	107	109	110	113	112	111	111	104	99	93	106
2002	96	96	94	89	89	90	88	87	85	87	89	91	90
2003	96	95	93	93	97	99	101	106	110	116	117	112	103
2004	107												107
Meat Animals 1910-14 = 100													
2000	913	933	962	1009	991	983	975	938	916	933	939	968	955
2001	987	999	1047	1052	1046	1055	1033	1016	976	925	873	862	989
2002	916	947	937	884	868	868	882	859	821	857	869	896	884
2003	949	964	948	973	1014	1028	1026	1060	1102	1175	1183	1124	1046
2004	1014												1014
1990-92 = 100													
2000	90	92	95	99	98	97	96	92	90	92	92	95	94
2001	97	98	103	103	103	104	102	100	96	91	86	85	97
2002	90	93	92	87	85	85	87	84	81	84	86	88	87
2003	93	95	93	96	100	101	101	104	108	116	116	111	103
2004	100												100

<sup>1</sup> Simple average required for parity regulations. Weighted 1990-92 average equals 100. Average is year-to-date for current year.

**Indexes of Prices Received by Farmers, by Months and Annual Average,  
United States, 2000-2004**

Year	Jan	Feb	Mar	Apr	May	Jun	Jul	Aug	Sep	Oct	Nov	Dec	Avg <sup>1</sup>
Dairy Products 1910-14 = 100													
2000	737	725	725	731	737	756	774	768	793	768	774	799	757
2001	799	805	854	897	953	996	996	1014	1051	959	885	830	920
2002	836	805	774	768	744	707	682	694	713	744	731	731	744
2003	719	701	676	676	682	682	737	811	885	922	891	842	769
2004	805												805
1990-92 = 100													
2000	92	90	90	91	92	94	96	96	99	96	96	100	94
2001	100	100	106	112	119	124	124	126	131	119	110	103	115
2002	104	100	96	96	93	88	85	87	89	93	91	91	93
2003	90	87	84	84	85	85	92	101	110	115	111	105	96
2004	100												100
Poultry and Eggs 1910-14 = 100													
2000	282	273	276	297	287	297	299	296	320	311	334	319	299
2001	296	312	326	325	324	330	335	337	341	338	329	278	323
2002	284	271	271	244	257	280	265	262	258	243	269	270	265
2003	303	291	291	279	288	307	307	316	322	330	352	339	310
2004	373												373
1990-92 = 100													
2000	100	97	98	106	102	106	106	105	114	111	119	113	106
2001	105	111	116	116	115	117	119	120	121	120	117	99	115
2002	101	96	96	87	92	100	94	93	92	86	96	96	94
2003	108	104	103	99	102	109	109	112	115	117	125	121	110
2004	133												133

<sup>1</sup> Simple average required for parity regulations. Weighted 1990-92 average equals 100. Average is year-to-date for current year.

## Parity Price Equivalent for Manufacturing Grade Milk

By direction of the Secretary of Agriculture, the parity price equivalent for manufacturing grade milk is determined as follows: (1) Based on data for the 10 calendar years immediately preceding, compute the ratio of (a) the average price received by farmers, f.o.b. plant, for all manufacturing grade milk to (b) the average price by farmers, f.o.b. plant, for all milk sold to plants and dealers. (2) The parity price for all milk sold to plants is multiplied by the resulting ratio of (a) to (b) to determine the parity price equivalent for manufacturing milk. The parity price equivalent for manufacturing milk is not in itself a parity price but rather is an administrative determination based on the above price relationship.

The ratio is computed in January of each year and is used throughout the calendar year. The ratio to be used during 2004 is 90.4, unchanged from 2003. The parity price for all milk sold to plants is \$34.00 per cwt. This price multiplied by 90.4 percent, results in \$30.74 per cwt as the parity price equivalent for manufacturing milk of average milkfat content. In 2003, the simple average of monthly fat tests for manufacturing grade milk was 3.82 percent. The fat test ranged from a low of 3.62 in July to a high of 3.98 percent in December.

### Average price January 2003 - December 2003

a. Manufacturing grade milk .....	12.30
b. All milk sold at wholesale to plants and dealers .....	13.60
c. Ratio a/b .....	90.4

### Parity price equivalent for manufacturing grade milk - United States

a. January 2003 .....	29.83
b. December 2003 .....	30.92
c. January 2004 .....	30.74

**Manufacturing Grade Milk: Average Price Per Cwt Received <sup>1</sup>,  
by Months, United States, January 1994-December 2003**

Year	Jan	Feb	Mar	Apr	May	Jun	Jul	Aug	Sep	Oct	Nov	Dec
	<i>Dollars</i>	<i>Dollars</i>	<i>Dollars</i>	<i>Dollars</i>	<i>Dollars</i>	<i>Dollars</i>	<i>Dollars</i>	<i>Dollars</i>	<i>Dollars</i>	<i>Dollars</i>	<i>Dollars</i>	<i>Dollars</i>
1994	12.30	12.20	12.40	12.50	11.40	11.00	11.10	11.40	11.90	12.20	12.00	11.50
1995	11.40	11.70	11.70	11.20	11.00	11.10	11.00	11.30	12.10	12.80	13.10	12.90
1996	12.80	12.60	12.60	12.90	13.40	13.60	14.00	14.60	15.30	14.60	12.40	11.80
1997	12.10	12.50	12.40	11.60	10.90	10.80	10.80	11.90	12.70	13.20	13.60	13.60
1998	13.50	13.50	12.90	12.10	11.40	13.10	14.10	14.70	15.40	16.80	17.40	17.40
1999	15.40	12.40	12.50	12.00	11.60	12.00	13.40	15.40	15.10	12.70	11.10	10.80
2000	10.70	10.30	10.10	10.20	10.10	10.40	10.80	10.70	11.40	10.60	10.40	10.80
2001	10.70	11.10	12.20	12.80	14.20	14.90	14.90	15.20	16.00	14.30	12.40	12.50
2002	12.50	11.90	11.30	11.30	11.10	10.30	9.60	9.90	10.40	11.30	10.70	10.70
2003	10.50	10.30	9.80	9.90	10.10	10.20	11.50	13.20	14.10	14.70	13.80	12.70

<sup>1</sup> Before hauling costs are deducted and including premiums paid to farmers.



## Reliability of Prices Received Estimates

**Definition:** Prices received represent sales from producers to first buyers. They include all grades and qualities. The average commodity price from the survey multiplied by the total quantity marketed theoretically should give the total cash receipts for the commodity.

**Survey Procedures:** Primary sales data used to determine grain prices were obtained from probability samples of 2600 mills and elevators. These procedures ensure that virtually all grain moving into commercial channels has a chance of being included in the survey. Generally, States surveyed account for 90 percent or more of total U.S. production. Livestock prices are obtained from packers, stockyards, auctions, dealers, and market check data from AMS-USDA, private marketing organizations, and state commodity groups and agencies. Inter-farm sales of grain and livestock are not included since they represent very small percentages of the total marketings. Grain marketed for seed is also excluded. Fruit and vegetable prices are obtained from sample surveys and market check data from AMS-USDA, private marketing organizations, state agencies, and universities.

**Summary and Estimation Procedures:** Survey quantities sold are expanded by strata to state levels and used to weight average strata prices to a state average. State prices are then weighted to a U.S. price based on expanded marketings. Recommendations are prepared by the State Statistical Offices and reviewed by the Agricultural Statistics Board in Washington, D.C. State recommendations are reviewed for reasonableness with survey data, other States, and recent historic estimates.

**Revisions:** For most items, the current month's preliminary price represents a 3-5 day period around the 15<sup>th</sup> of the month. Previous month's prices represent actual dollars received for quantities sold during the entire month. Revisions are published in monthly issues of *Agricultural Prices*.

**Reliability:** U.S. price estimates based on probability surveys generally have a sampling error of less than one percent for the major commodities such as corn, wheat, soybeans, cotton, and rice. Current methods of summarization for non-probability commodities are not designed directly to calculate sampling errors. However, analytical measures approximate the U.S. relative sampling errors at around five percent. Any nonsampling errors are attributed to such things as the inability to obtain correct information, differences in interpreting questions or definitions, mistakes in coding or processing the data, etc. Efforts are made at each step in the survey process to minimize these nonsampling errors.

## Prices Paid by Farmers

The January Index of Prices Paid for Commodities and Services, Interest, Taxes, and Farm Wage Rates (PPITW) is 130 (1990-92=100), unchanged from December 2003 but 3.2 percent above January 2003.

**PRODUCTION INDEX:** The index, at 127, is unchanged from last month but 4.1 percent above last year. Lower prices in January for feeder cattle, feed concentrates, herbicides, and insecticides offset higher prices paid for complete feeds, nitrogen fertilizers, feed grains, and LP gas.

**Feed:** The index, at 123, is 0.8 percent above December and 7.9 percent above last January. Since December, lower prices for feed concentrates and hay & forages partially offset higher prices for complete feeds, feed grains, and feed supplements.

**Livestock & Poultry:** The index for livestock and poultry purchases, at 112, is 5.9 percent lower than last month but 6.7 percent above last year. Since December, lower prices for feeder cattle more than offset higher prices for feeder pigs and milk cows. The January feeder cattle price, at \$95.30 per cwt, is down \$7.70 per cwt from the December price. The January feeder pig price increased \$6.00 to \$94.00 per cwt. Milk cows, at \$1,390 per head, are up \$20 since October.

**Fertilizer:** The index, at 132, is up 2.3 percent from December and 18 percent more than January a year ago. Since December, prices are higher for nitrogen fertilizers and potash & phosphate materials.

**Agricultural Chemicals:** The index, at 119, is down 1.7 percent from last month and 2.5 percent below last January. Prices for herbicides, insecticides, and other chemicals are lower.

**Fuels:** The index, at 148, is up 5.0 percent from a month earlier and 5.7 percent above January 2003. Compared to last month, prices are higher for LP gas, diesel fuel, and gasoline.

**Farm Machinery:** The index is 150, unchanged from December but 0.7 percent above last January.

**CONSUMER PRICE INDEX:** The December 2003 Consumer Price Index for all urban consumers (CPI-U) decreased 0.1 percent before seasonal adjustment to a level of 184.3 (1982-84=100). This compares to the November index of 184.5. For the 12-month period ending in December, the overall index has increased 1.9 percent.

**Indexes of Prices Paid by Farmers and Related Parity Ratios  
United States, January 2004 With Comparisons**

Indexes and Ratios	1910-14 = 100			1990-92 = 100		
	2003		2004	2003		2004
	Jan	Dec	Jan	Jan	Dec	Jan
Prices Paid by Farmers for Commodities & Services, Interest, Taxes, & Wage Rates (PPITW)	1,684	*1,727	1,729	126	130	130
Production	1,183	*1,230	1,230	122	*127	127
Feed	556	*596	599	114	*122	123
Livestock and Poultry	1,340	*1,520	1,438	105	119	112
Seeds	1,426	1,553	1,553	144	157	157
Fertilizer	412	*472	482	112	*129	132
Agricultural Chemicals	752	*745	737	122	*121	119
Fuels	1,080	*1,088	1,143	140	*141	148
Supplies & Repairs	941	*949	949	133	*134	134
Autos & Trucks	3,083	*3,050	3,061	116	115	115
Farm Machinery	3,731	*3,760	3,760	149	150	150
Building Material	1,655	*1,701	1,701	122	*125	125
Farm Services & Rent	1,440	1,442	1,447			
Farm Services				121	122	122
Rent				120	120	120
Interest <sup>1</sup>	2,599	2,599	2,616	104	104	104
Taxes <sup>2</sup>	3,426	3,426	3,474	128	128	130
Wage Rates	6,035	5,848	5,848	161	156	156
Production, Interest, Taxes, & Wage Rates (PITW)	1,675	*1,722	1,725	125	*128	128
Family Living-CPI <sup>3</sup>	1,726	*1,750	1,750	135	137	137
Ratio (Received/Paid) Parity Ratio <sup>4</sup>	38	42	41	79	*87	85
Parity Ratio Adjusted PPITW Adjusted for Productivity <sup>5</sup>	41	*45	43			
	1177	*1175	1189			
Crop Sector (PPITW)				129	*132	132
Livestock Sector (PPITW)				123	*128	127
Farm Sector (Production)				115	*126	124
Non-Farm Sector (Production)				125	127	128

\* Revised.

<sup>1</sup> Interest per acre on farm real estate debt and interest rate on farm non-real estate debt.

<sup>2</sup> Farm real estate taxes payable per acre.

<sup>3</sup> Bureau of Labor Statistics, Consumer Price Index for all urban consumers (CPI-U), for the previous month converted by the USDA.

<sup>4</sup> Ratio of index of prices received to PPITW (1910-14=100).

<sup>5</sup> PPITW is adjusted based on productivity trend for the prior 15 years.

**Prices Paid Indexes and Annual Weights for Input Components and  
Sub-Components United States, January 2004 With Comparisons**

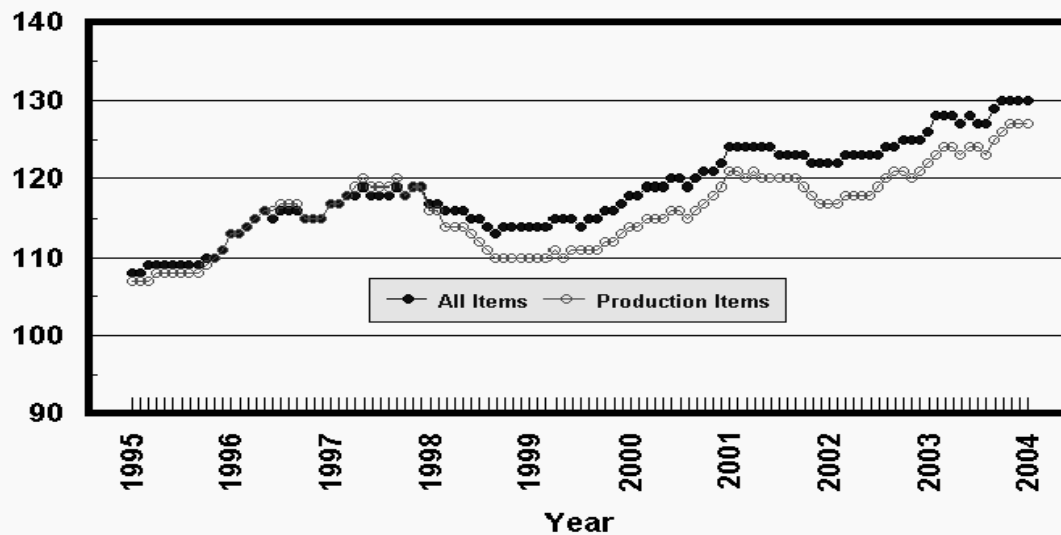
Index	Relative Weights 5-Year Moving Average <sup>1</sup>		Input Indexes		
	2003	2004	2003		2004
			Jan	Dec	Jan
	<i>Percent</i>	<i>Percent</i>	<i>(1990-92=100)</i>	<i>(1990-92=100)</i>	<i>(1990-92=100)</i>
Production Items	66.7	66.2	122	*127	127
Feed	11.0	10.7	114	*122	123
Feed Grains	1.6	1.5	102	*102	107
Complete Feeds	5.4	5.2	115	*123	126
Hay/Forages	1.4	1.3	121	106	106
Concentrates	1.7	1.7	104	*140	131
Supplements	0.9	0.9	135	*140	141
Livestock & Poultry	7.2	7.4	105	119	112
Feeder Cattle	5.6	5.8	99	122	113
Feeder Pigs	0.6	0.6	138	*96	102
Milk Cow Replacements	0.6	0.6	121	121	123
Poultry	0.4	0.4	111	111	111
Seeds	3.2	3.3	144	157	157
Field Crops	2.9	3.0	147	162	162
Grasses/Legumes	0.3	0.3	118	109	109
Fertilizer	4.5	4.4	112	*129	132
Mixed Fertilizer	2.0	1.9	107	114	114
Nitrogen	1.9	1.8	122	*150	156
Potash & Phosphate	0.6	0.6	102	*111	114
Agricultural Chemicals	3.8	3.7	122	*121	119
Herbicides	2.4	2.4	112	*112	110
Insecticides	0.9	0.9	145	*148	147
Fungicides/Other	0.5	0.5	125	*115	113
Fuels	2.7	2.7	140	*141	148
Diesel	1.5	1.5	136	*135	139
Gasoline	0.8	0.8	132	*132	138
LP Gas	0.4	0.4	173	*184	204
Farm Supplies & Repairs	5.5	5.4	133	*134	134
Supplies	1.8	1.8	124	125	125
Repairs	3.6	3.6	137	138	138
Autos & Trucks	1.8	1.8	116	115	115
Autos	0.2	0.2	109	108	108
Trucks	1.5	1.6	117	116	116
Farm Machinery	4.0	4.0	149	150	150
Tractors	0.9	0.9	140	143	143
Self-Propelled	1.6	1.6	148	149	149
Other Machinery	1.5	1.5	155	155	155
Building Materials	3.1	3.3	122	*125	125
Farm Services	12.4	12.4	121	122	122
Custom Rates	1.3	1.3	125	125	125
Other Services	11.1	11.1	121	*121	122
Rent	7.4	7.1	120	120	120
Cash	4.0	3.8	145	145	145
Share	3.4	3.3	91	91	91
Interest	4.7	4.7	104	104	104
Taxes	3.0	3.0	128	128	130
Wage Rates	7.4	7.6	161	156	156
Family Living-CPI	18.2	18.5	135	137	137

\* Revised.

<sup>1</sup> Weights may not add due to rounding.

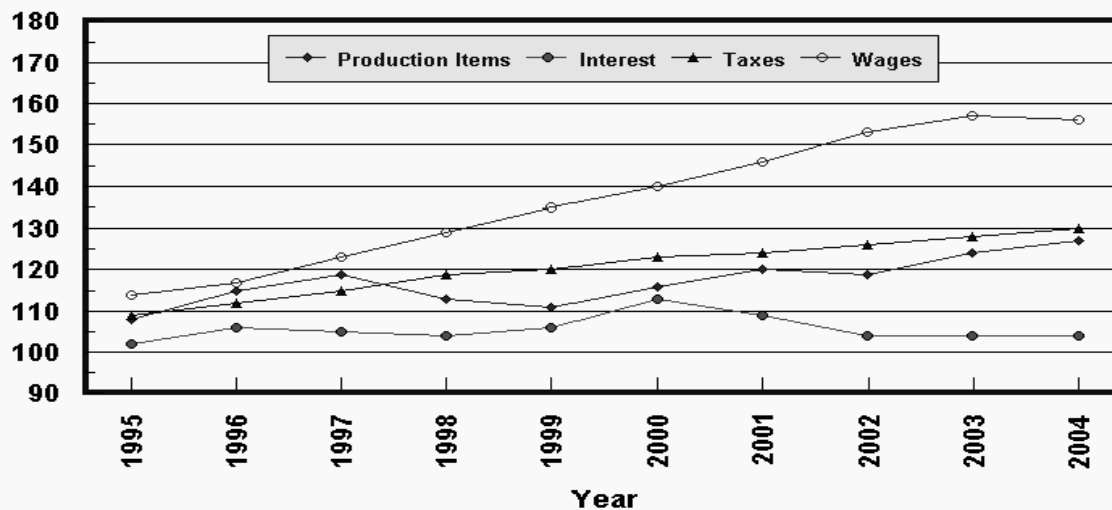
## Prices Paid by Farmers, Major Indexes US, by Quarter and Month

Percent (1990-92=100)



## Prices Paid by Farmers, Major Indexes US, Annual Averages 1/

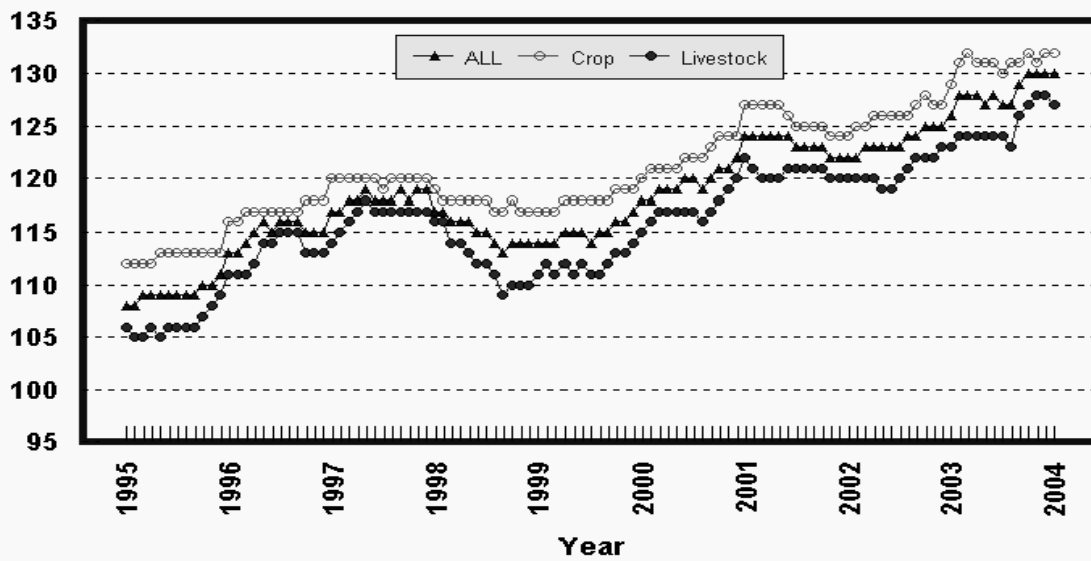
Percent (1990-92=100)



1/ Index values for 2004 are year-to-date averages.

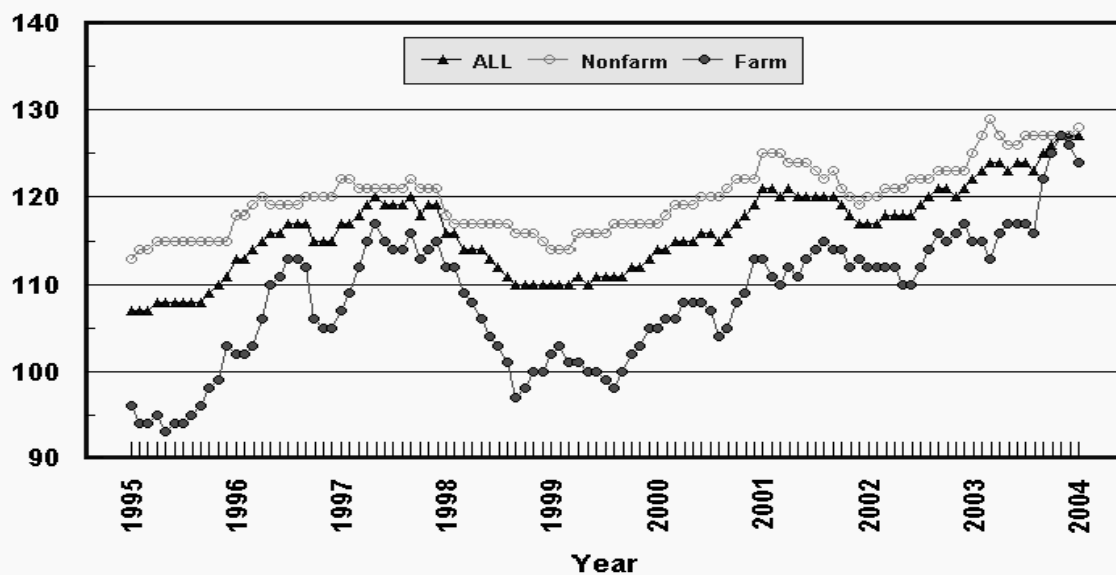
## Prices Paid by Farmers, Indexes, All Items US, By Farm Type

Percent (1990-92=100)



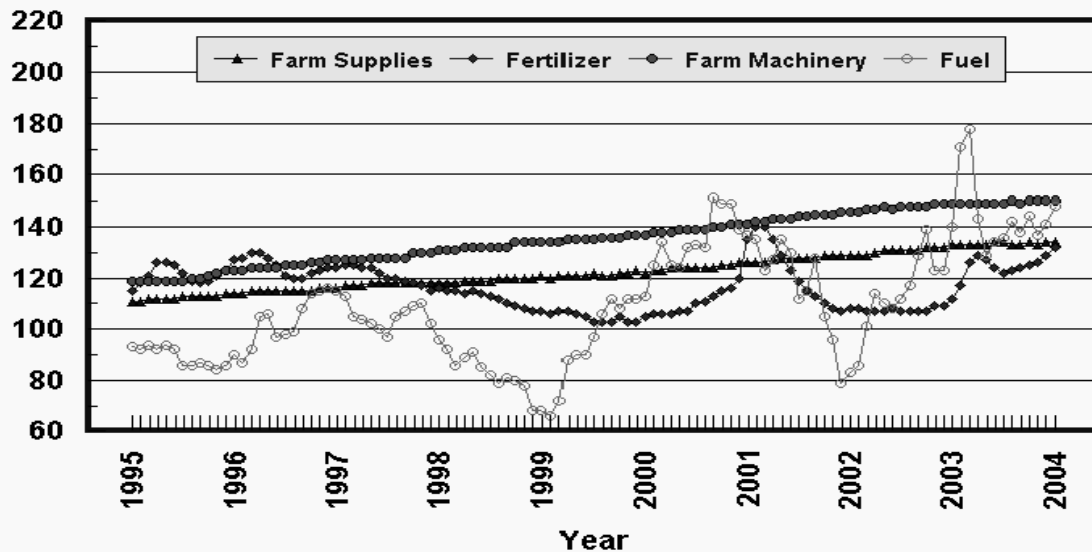
## Prices Paid by Farmers, Indexes, All Production Items US, By Sector Origin

Percent (1990-92=100)



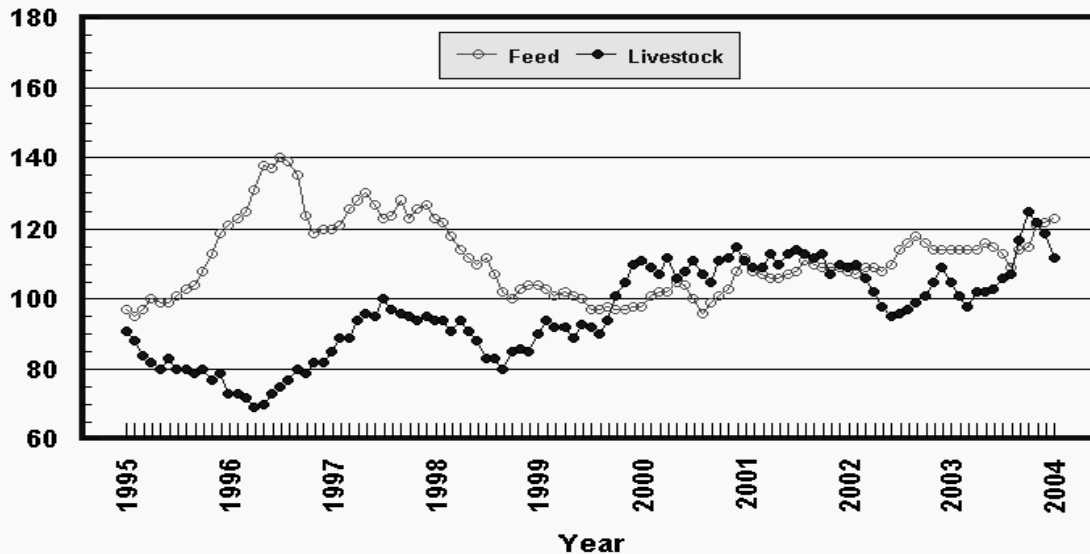
## Prices Paid by Farmers, Selected Production Indexes US, By Non-Farm Sector

Percent (1990-92=100)



## Prices Paid by Farmers, Selected Production Indexes US, By Farm Sector

Percent (1990-92=100)



**Feed Price Ratios: United States, January 2004 with Comparisons**

Feed Price Ratio <sup>1</sup>	2003		2004
	Jan	Dec	Jan
Broiler-Feed: Pounds of Broiler Grower Feed equal in value to 1 pound of broiler, live weight	5.6	5.1	5.4
Market Egg Feed: Pounds of Laying Feed equal in Value to 1 dozen eggs	9.0	*12.1	12.3
Hog-Corn: Bushels of Corn equal in value to 100 pounds of hog, live weight	14.2	*14.7	14.5
Milk-Feed: Pounds of 16% Mixed Dairy Feed equal in value to 1 pound of Whole Milk	2.40	*2.81	2.62
Steer & Heifer-Corn: Bushels of Corn equal in value to 100 pounds of Steer & Heifers, live weight	33.4	*41.3	33.0
Turkey-Feed: Pounds of Turkey Grower equal in value to 1 pound of Turkey, live weight	5.7	5.6	4.9

\* Revised.

<sup>1</sup> Effective January 1995, prices of commercial prepared feeds are based on current U.S. prices received for corn, soybeans, alfalfa hay, and all wheat.

**Prices Used to Calculate Feed Price Ratios:  
United States, January 2004 with Comparisons**

Commodity	Unit	2003		2004
		Jan	Dec	Jan
Broilers, Live	Lb	0.350	0.380	0.430
Eggs, Market	Doz	0.489	0.739	0.806
Hogs, All	Cwt	33.00	*34.20	35.70
Milk, All	Cwt	11.70	13.70	13.10
Steers and Heifers	Cwt	77.80	*95.70	81.20
Turkeys, Live	Lb	0.346	0.377	0.349
Corn	Bu	2.33	2.32	2.46
Hay, Alfalfa, Baled	Ton	98.50	87.90	83.60
Soybeans	Bu	5.51	*7.17	7.82
Wheat, All	Bu	3.89	*3.69	3.73

\* Revised.

**Feeder Livestock: Prices Paid, United States  
January 2004 with Comparisons**

Commodity	Unit	2003		2004
		Jan	Dec	Jan
		<i>Dollars</i>	<i>Dollars</i>	<i>Dollars</i>
Feeders and Stockers Cattle and Calves	Cwt	84.00	103.00	95.30
Feeder Pigs	Cwt	127.00	*88.00	94.00

\* Revised.



**Grazing Fee Rates for Cattle by Selected States and Regions**

State	Survey Average Rates <sup>1</sup>					
	Animal Unit <sup>2</sup>		Cow-Calf		Per Head	
	2002	2003	2002	2003	2002	2003
	<i>Dollars per Month</i>	<i>Dollars per Month</i>	<i>Dollars per Month</i>	<i>Dollars per Month</i>	<i>Dollars per Month</i>	<i>Dollars per Month</i>
AZ	7.30	7.50	( <sup>7</sup> )	( <sup>7</sup> )	7.80	8.50
CA	12.80	13.50	16.50	17.50	14.00	14.30
CO	12.60	13.00	14.90	14.60	12.80	13.50
ID	11.70	12.00	13.70	14.00	12.20	12.60
KS	13.00	13.50	16.00	16.50	13.00	13.50
MT	15.10	15.20	17.30	17.40	16.30	15.90
NE	20.90	21.60	25.00	26.00	22.00	23.40
NV	10.50	10.50	11.50	11.80	11.50	11.80
NM	8.80	8.60	10.70	12.40	9.90	10.00
ND	12.50	13.50	13.50	14.50	12.00	14.00
OK	7.50	7.00	8.50	9.00	7.50	7.50
OR	11.80	12.50	12.60	14.80	10.20	12.20
SD	16.90	17.30	19.10	20.20	18.00	19.20
TX	9.00	8.50	10.00	9.00	9.20	9.00
UT	11.60	11.60	13.70	13.40	12.10	12.50
WA	9.60	11.20	11.00	11.70	9.60	11.20
WY	13.50	13.40	15.60	15.50	14.00	13.90
17-State <sup>3</sup>	12.30	12.30	14.20	14.40	12.70	13.10
16-State <sup>4</sup>	13.50	13.80	15.80	16.40	14.00	14.60
11-State <sup>5</sup>	12.50	12.80	14.60	15.10	13.00	13.40
9-State <sup>6</sup>	12.20	12.10	14.10	14.10	12.60	12.90

<sup>1</sup> The average rates are estimates (rates over \$10.00 are rounded to the nearest dime) based on survey indications of monthly lease rates for private, non-irrigated grazing land from the January Agricultural Survey.

<sup>2</sup> Includes animal unit plus cow-calf rates. Cow-calf rate converted to animal unit (AUM) using (1 aum=cow-calf \*0.833).

<sup>3</sup> 17 Western States: All States listed.

<sup>4</sup> 16 Western States: All States except Texas.

<sup>5</sup> 11 Western States: AZ, CA, CO, ID, MT, NV, NM, OR, UT, WA, and WY.

<sup>6</sup> 9 Great Plains States: CO, KS, NE, NM, ND, OK, SD, TX, and WY.

<sup>7</sup> Insufficient data.

The data presented in the following tables are calculated and published for use by the Forest Service, USDA and the Bureau of Land Management, USDI in computing Public Land Grazing Fees.

**2003 Prices Paid Index for Beef Cattle Production (1964-68=100) <sup>1</sup>: 593**

<sup>1</sup> The Index of Prices Paid by Farmers and Ranchers for Beef Cattle Production input items is for the period of November 2002 through October 2003. The components of this index include the production indexes of Fuels & Energy, Farm & Motor Supplies, Building & Fencing Materials, Interest, Farm Wage Rates, and Farm Services. These components are weighted to the overall index value by their importance in the cost of producing beef cattle, the weights are unchanged from a year earlier.

**Beef Cattle: Prices Received, Selected Regions, 2003 <sup>1</sup>**

State	Beef Cattle
	<i>Dollars Per Cwt</i>
9 Great Plains States <sup>2</sup>	77.56
11 Western States <sup>3</sup>	75.33
16 Western States <sup>4</sup>	76.53
17 Western States <sup>5</sup>	76.45

<sup>1</sup> Average for November 2002 through October 2003, except NV, UT, and WA which are marketing year averages.

<sup>2</sup> CO, KS, NE, NM, ND, OK, SD, TX, and WY.

<sup>3</sup> AZ, CA, CO, ID, MT, NM, NV, OR, UT, WA, and WY.

<sup>4</sup> Eleven Western States plus KS, NE, ND, OK, and SD.

<sup>5</sup> Sixteen Western States plus TX.

**Prices Paid Indexes: Monthly and Annual Average  
United States, 2000-04**

Year	Jan	Feb	Mar	Apr	May	Jun	Jul	Aug	Sep	Oct	Nov	Dec	Avg <sup>1</sup>
Commodities and Services, Interest, Taxes, and Wage Rates (PPITW) 1910-14 = 100													
2000	1567	1577	1585	1587	1587	1594	1593	1583	1596	1611	1616	1626	1594
2001	1656	1651	1646	1646	1646	1647	1641	1642	1644	1636	1626	1620	1642
2002	1628	1628	1634	1639	1634	1637	1640	1648	1657	1666	1661	1666	1645
2003	1684	1698	1704	1700	1696	1699	1694	1695	1711	1725	1727	1727	1705
2004	1729												1729
1990-92 = 100													
2000	118	118	119	119	119	120	120	119	120	121	121	122	120
2001	124	124	124	124	124	124	123	123	123	123	122	122	123
2002	122	122	123	123	123	123	123	124	124	125	125	125	124
2003	126	128	128	128	127	128	127	127	129	130	130	130	128
2004	130												130
Items Used for Production, Interest, Taxes, and Wage Rates (PITW) 1910-14 = 100													
2000	1560	1569	1576	1579	1578	1585	1583	1570	1585	1602	1609	1620	1585
2001	1654	1647	1640	1639	1637	1638	1631	1632	1633	1625	1614	1608	1633
2002	1616	1615	1620	1624	1618	1621	1625	1633	1643	1653	1648	1654	1631
2003	1675	1689	1694	1690	1686	1688	1683	1682	1701	1718	1722	1722	1696
2004	1725												1725
1990-92 = 100													
2000	116	117	117	118	117	118	118	117	118	119	120	121	118
2001	123	123	122	122	122	122	121	122	122	121	120	120	122
2002	120	120	121	121	120	121	121	122	122	123	123	123	121
2003	125	126	126	126	126	126	125	125	127	128	128	128	126
2004	128												128

<sup>1</sup> Simple average and is year-to-date for current year.

**Prices Paid Indexes: Monthly and Annual Average  
United States, 2000-04**

Year	Jan	Feb	Mar	Apr	May	Jun	Jul	Aug	Sep	Oct	Nov	Dec	Avg <sup>1</sup>
Items Used for Production 1910-14 = 100													
2000	1102	1110	1116	1119	1118	1124	1125	1114	1127	1136	1142	1152	1124
2001	1176	1170	1164	1169	1167	1168	1162	1164	1165	1152	1142	1137	1161
2002	1139	1138	1143	1149	1143	1146	1154	1162	1171	1172	1168	1173	1155
2003	1183	1196	1200	1200	1196	1198	1199	1198	1215	1227	1230	1230	1206
2004	1230												1230
1990-92 = 100													
2000	114	114	115	115	115	116	116	115	116	117	118	119	116
2001	121	121	120	121	120	120	120	120	120	119	118	117	120
2002	117	117	118	118	118	118	119	120	121	121	120	121	119
2003	122	123	124	124	123	124	124	123	125	126	127	127	124
2004	127												127
Feed 1910-14 = 100													
2000	480	492	499	497	513	506	490	469	484	495	504	529	497
2001	545	529	520	518	518	521	529	542	538	533	532	534	530
2002	529	524	530	534	529	539	555	568	576	566	557	556	547
2003	556	559	556	555	567	562	551	534	558	562	592	596	562
2004	599												599
1990-92 = 100													
2000	98	101	102	102	105	104	100	96	99	101	103	108	102
2001	112	108	107	106	106	107	108	111	110	109	109	109	109
2002	108	107	109	109	108	110	114	116	118	116	114	114	112
2003	114	114	114	114	116	115	113	109	114	115	121	122	115
2004	123												123

<sup>1</sup> Simple average and is year-to-date for current year.

**Prices Paid Indexes: Monthly and Annual Average  
United States, 2000-04**

Year	Jan	Feb	Mar	Apr	May	Jun	Jul	Aug	Sep	Oct	Nov	Dec	Avg <sup>1</sup>
Livestock and Poultry 1910-14 = 100													
2000	1417	1391	1374	1428	1349	1381	1423	1372	1344	1415	1436	1465	1400
2001	1418	1387	1399	1440	1403	1442	1454	1440	1430	1446	1373	1401	1419
2002	1394	1405	1361	1301	1250	1212	1223	1245	1259	1287	1340	1394	1306
2003	1340	1297	1254	1309	1303	1322	1353	1371	1493	1603	1564	1520	1394
2004	1438												1438
1990-92 = 100													
2000	111	109	107	112	106	108	111	107	105	111	112	115	110
2001	111	109	109	113	110	113	114	113	112	113	107	110	111
2002	109	110	106	102	98	95	96	97	99	101	105	109	102
2003	105	101	98	102	102	103	106	107	117	125	122	119	109
2004	112												112
Seeds 1910-14 = 100													
2000	1196	1196	1196	1238	1238	1238	1238	1238	1238	1238	1238	1238	1228
2001	1238	1238	1238	1329	1329	1329	1329	1329	1329	1329	1329	1329	1306
2002	1329	1329	1329	1426	1426	1426	1426	1426	1426	1426	1426	1426	1402
2003	1426	1426	1426	1553	1553	1553	1553	1553	1553	1553	1553	1553	1521
2004	1553												1553
1990-92 = 100													
2000	121	121	121	125	125	125	125	125	125	125	125	125	124
2001	125	125	125	134	134	134	134	134	134	134	134	134	132
2002	134	134	134	144	144	144	144	144	144	144	144	144	142
2003	144	144	144	157	157	157	157	157	157	157	157	157	154
2004	157												157

<sup>1</sup> Simple average and is year-to-date for current year.

**Prices Paid Indexes: Monthly and Annual Average  
United States, 2000-04**

Year	Jan	Feb	Mar	Apr	May	Jun	Jul	Aug	Sep	Oct	Nov	Dec	Avg <sup>1</sup>
Fertilizer 1910-14 = 100													
2000	384	388	388	390	391	391	403	406	414	422	427	440	404
2001	497	513	513	495	473	452	436	421	412	403	398	393	451
2002	394	395	394	391	392	397	394	393	391	394	398	400	394
2003	412	427	463	471	465	454	448	452	455	459	462	472	453
2004	482												482
1990-92 = 100													
2000	105	106	106	106	107	107	110	111	113	115	116	120	110
2001	135	140	140	135	129	123	119	115	113	110	108	107	123
2002	108	108	107	107	107	108	107	107	107	107	109	109	108
2003	112	117	126	129	127	124	122	123	124	125	126	129	124
2004	132												132
Agricultural Chemicals 1910-14 = 100													
2000	738	740	742	737	742	743	743	742	744	743	739	744	741
2001	761	748	746	747	747	745	743	741	739	739	742	739	745
2002	739	731	735	733	734	736	738	739	741	736	738	750	738
2003	752	752	744	746	746	748	748	748	746	752	753	745	748
2004	737												737
1990-92 = 100													
2000	119	120	120	119	120	120	120	120	120	120	120	120	120
2001	123	121	121	121	121	120	120	120	120	120	120	120	121
2002	120	118	119	119	119	119	119	120	120	119	119	121	119
2003	122	122	120	121	121	121	121	121	121	122	122	121	121
2004	119												119

<sup>1</sup> Simple average and is year-to-date for current year.

**Prices Paid Indexes: Monthly and Annual Average  
United States, 2000-04**

Year	Jan	Feb	Mar	Apr	May	Jun	Jul	Aug	Sep	Oct	Nov	Dec	Avg <sup>1</sup>
Fuels 1910-14 = 100													
2000	875	967	1036	963	954	1017	1028	1016	1165	1152	1154	1070	1033
2001	1061	1043	948	983	1044	1004	861	889	985	807	744	608	915
2002	644	661	783	878	852	836	868	900	997	1074	949	950	866
2003	1080	1322	1371	1105	992	1031	1050	1092	1063	1114	1058	1088	1114
2004	1143												1143
1990-92 = 100													
2000	113	125	134	125	124	132	133	132	151	149	149	139	134
2001	137	135	123	127	135	130	112	115	128	105	96	79	119
2002	83	86	101	114	110	108	112	117	129	139	123	123	112
2003	140	171	178	143	129	134	136	142	138	144	137	141	144
2004	148												148
Farm Supplies and Repairs 1910-14 = 100													
2000	869	871	872	878	878	879	882	882	883	886	891	893	880
2001	895	895	896	900	905	906	911	912	912	912	913	913	906
2002	915	918	917	925	927	927	929	929	929	935	935	935	927
2003	941	941	942	947	947	948	952	952	950	953	947	949	947
2004	949												949
1990-92 = 100													
2000	122	123	123	124	124	124	124	124	124	125	125	126	124
2001	126	126	126	127	128	128	128	128	128	129	129	129	128
2002	129	129	129	130	131	131	131	131	131	132	132	132	131
2003	133	133	133	133	133	134	134	134	134	134	133	134	134
2004	134												134

<sup>1</sup> Simple average and is year-to-date for current year.

**Prices Paid Indexes: Monthly and Annual Average  
United States, 2000-04**

Year	Jan	Feb	Mar	Apr	May	Jun	Jul	Aug	Sep	Oct	Nov	Dec	Avg <sup>1</sup>
Autos and Trucks 1910-14 = 100													
2000	3175	3165	3173	3182	3178	3168	3154	3142	3126	3129	3151	3172	3160
2001	3179	3171	3158	3155	3145	3132	3120	3099	3093	3117	3153	3169	3141
2002	3146	3107	3093	3086	3073	3061	3054	3041	3059	3076	3093	3099	3082
2003	3083	3074	3076	3061	3047	3029	3018	3020	3016	3014	3040	3050	3044
2004	3061												3061
1990-92 = 100													
2000	119	119	119	120	120	119	119	118	118	118	119	119	119
2001	120	119	119	119	118	118	117	117	116	117	119	119	118
2002	118	117	116	116	116	115	115	114	115	116	116	117	116
2003	116	116	116	115	115	114	113	114	113	113	114	115	115
2004	115												115
Farm Machinery 1910-14 = 100													
2000	3442	3452	3461	3474	3481	3484	3489	3495	3511	3521	3530	3538	3490
2001	3544	3561	3568	3580	3589	3594	3602	3607	3627	3643	3649	3654	3602
2002	3668	3674	3694	3700	3703	3699	3704	3705	3719	3724	3730	3730	3704
2003	3731	3732	3733	3737	3737	3737	3742	3757	3742	3759	3760	3760	3744
2004	3760												3760
1990-92 = 100													
2000	137	138	138	138	139	139	139	139	140	140	141	141	139
2001	141	142	142	143	143	143	144	144	145	145	145	146	144
2002	146	146	147	147	148	147	148	148	148	148	149	149	148
2003	149	149	149	149	149	149	149	150	149	150	150	150	149
2004	150												150

<sup>1</sup> Simple average and is year-to-date for current year.



**Prices Paid Indexes: Monthly and Annual Average  
United States, 2000-04**

Year	Jan	Feb	Mar	Apr	May	Jun	Jul	Aug	Sep	Oct	Nov	Dec	Avg <sup>1</sup>
<b>Building Materials 1910-14 = 100</b>													
2000	1644	1648	1654	1657	1651	1653	1648	1644	1643	1642	1641	1639	1647
2001	1636	1641	1642	1644	1657	1658	1652	1652	1649	1643	1642	1639	1646
2002	1642	1642	1647	1652	1655	1656	1658	1669	1663	1658	1653	1652	1654
2003	1655	1663	1665	1671	1671	1672	1679	1680	1695	1696	1701	1701	1679
2004	1701												1701
<b>1990-92 = 100</b>													
2000	121	121	122	122	121	122	121	121	121	121	121	121	121
2001	120	121	121	121	122	122	122	122	121	121	121	121	121
2002	121	121	121	122	122	122	122	123	122	122	122	122	122
2003	122	122	123	123	123	123	124	124	125	125	125	125	124
2004	125												125
<b>Farm Services and Rent <sup>2</sup> 1910-14 = 100</b>													
2000	1365	1367	1369	1369	1369	1379	1381	1381	1382	1377	1374	1375	1374
2001	1413	1413	1416	1416	1418	1430	1434	1432	1430	1423	1417	1417	1422
2002	1422	1422	1421	1420	1421	1432	1432	1433	1432	1426	1424	1425	1426
2003	1440	1441	1441	1444	1446	1455	1457	1457	1457	1448	1442	1442	1448
2004	1447												1447
<b>Farm Services 1990-92 = 100</b>													
2000	117	118	118	118	118	119	119	119	120	119	118	119	119
2001	120	120	120	120	120	122	122	122	122	121	120	120	121
2002	120	120	120	119	120	121	121	121	121	120	120	120	120
2003	121	122	122	122	122	123	124	124	124	123	122	122	123
2004	122												122
<b>Rent 1990-92 = 100</b>													
2000	110	110	110	110	110	110	110	110	110	110	110	110	110
2001	117	117	117	117	117	117	117	117	117	117	117	117	117
2002	119	119	119	119	119	119	119	119	119	119	119	119	119
2003	120	120	120	120	120	120	120	120	120	120	120	120	120
2004	120												120

<sup>1</sup> Simple average and is year-to-date for current year.

<sup>2</sup> For the 1990-92=100 base period, the Farm Services and Rent Index is separated.

**Prices Paid Indexes: Monthly and Annual Average  
United States, 2000-04**

Year	Jan	Feb	Mar	Apr	May	Jun	Jul	Aug	Sep	Oct	Nov	Dec	Avg <sup>1</sup>
Interest 1910-14 = 100													
2000	2825	2825	2825	2825	2825	2825	2825	2825	2825	2825	2825	2825	2825
2001	2738	2738	2738	2738	2738	2738	2738	2738	2738	2738	2738	2738	2738
2002	2615	2615	2615	2615	2615	2615	2615	2615	2615	2615	2615	2615	2615
2003	2599	2599	2599	2599	2599	2599	2599	2599	2599	2599	2599	2599	2599
2004	2616												2616
1990-92 = 100													
2000	113	113	113	113	113	113	113	113	113	113	113	113	113
2001	109	109	109	109	109	109	109	109	109	109	109	109	109
2002	104	104	104	104	104	104	104	104	104	104	104	104	104
2003	104	104	104	104	104	104	104	104	104	104	104	104	104
2004	104												104
Taxes 1910-14 = 100													
2000	3281	3281	3281	3281	3281	3281	3281	3281	3281	3281	3281	3281	3281
2001	3330	3330	3330	3330	3330	3330	3330	3330	3330	3330	3330	3330	3330
2002	3378	3378	3378	3378	3378	3378	3378	3378	3378	3378	3378	3378	3378
2003	3426	3426	3426	3426	3426	3426	3426	3426	3426	3426	3426	3426	3426
2004	3474												3474
1990-92 = 100													
2000	123	123	123	123	123	123	123	123	123	123	123	123	123
2001	124	124	124	124	124	124	124	124	124	124	124	124	124
2002	126	126	126	126	126	126	126	126	126	126	126	126	126
2003	128	128	128	128	128	128	128	128	128	128	128	128	128
2004	130												130
Wage Rates 1910-14 = 100													
2000	5234	5234	5234	5227	5227	5227	5124	5124	5124	5357	5357	5357	5236
2001	5596	5596	5596	5369	5369	5369	5357	5357	5357	5550	5550	5550	5468
2002	5796	5796	5796	5705	5705	5705	5537	5537	5537	5783	5783	5783	5705
2003	6035	6035	6035	5919	5919	5919	5738	5738	5738	5848	5848	5848	5885
2004	5848												5848
1990-92 = 100													
2000	140	140	140	140	140	140	137	137	137	143	143	143	140
2001	150	150	150	144	144	144	143	143	143	148	148	148	146
2002	155	155	155	153	153	153	148	148	148	155	155	155	153
2003	161	161	161	158	158	158	153	153	153	156	156	156	157
2004	156												156

<sup>1</sup> Simple average and is year-to-date for current year.

**Prices Paid Indexes: Monthly and Annual Average  
United States, 2000-04**

Year	Jan	Feb	Mar	Apr	May	Jun	Jul	Aug	Sep	Oct	Nov	Dec	Avg <sup>1</sup>
Family Living 1910-14 = 100													
2000	1603	1613	1626	1627	1629	1637	1641	1641	1650	1653	1654	1653	1636
2001	1663	1670	1673	1680	1688	1691	1686	1686	1693	1688	1685	1678	1682
2002	1682	1689	1698	1708	1708	1709	1711	1716	1719	1722	1722	1718	1709
2003	1726	1739	1749	1746	1743	1745	1747	1753	1759	1757	1752	1750	1747
2004	1750												1750
1990-92 = 100													
2000	125	126	127	127	127	128	128	128	129	129	129	129	128
2001	130	130	131	131	132	132	132	132	132	132	132	131	131
2002	131	132	133	133	133	133	134	134	134	134	134	134	133
2003	135	136	137	136	136	136	136	137	137	137	137	137	136
2004	137												137
Production Items With Farm Origin <sup>2</sup> 1990-92 = 100													
2000	105	106	106	108	108	108	107	104	105	108	109	113	107
2001	113	111	110	112	111	113	114	115	114	114	112	113	113
2002	112	112	112	112	110	110	112	114	116	115	116	117	113
2003	115	115	113	116	117	117	117	116	122	125	127	126	119
2004	124												124
Production Items With Non-Farm Origin <sup>3</sup> 1990-92 = 100													
2000	117	118	119	119	119	120	120	120	121	122	122	122	120
2001	125	125	125	124	124	124	123	122	123	121	120	119	123
2002	120	120	121	121	121	122	122	122	123	123	123	123	122
2003	125	127	129	127	126	126	127	127	127	127	127	127	127
2004	128												128

<sup>1</sup> Simple average and is year-to-date for current year.

<sup>2</sup> Feed, livestock and poultry purchases, and seed.

<sup>3</sup> Fertilizer, agricultural chemicals, fuels, farm supplies and repairs, autos and trucks, farm machinery, building materials, and farm services and rent.

**Prices Paid Indexes: Monthly and Annual Average  
United States, 2000-04**

Year	Jan	Feb	Mar	Apr	May	Jun	Jul	Aug	Sep	Oct	Nov	Dec	Avg <sup>1</sup>
Parity Ratio <sup>2</sup> 1910-14 = 100													
2000	37	37	38	40	40	39	38	39	39	37	38	38	38
2001	37	38	40	41	42	41	42	43	41	37	37	37	40
2002	37	38	41	36	37	38	38	38	38	36	37	38	38
2003	38	37	37	38	40	40	39	41	41	42	43	42	40
2004	41												41
Adjusted Parity Ratio <sup>3</sup> 1910-14 = 100													
2000	41	41	42	45	45	44	43	43	43	41	43	43	43
2001	41	42	44	45	46	46	46	47	45	40	40	41	44
2002	39	41	43	39	39	40	40	41	40	38	39	40	40
2003	41	40	40	41	43	43	42	44	44	45	47	45	43
2004	43												43
Ratio 1990-92 = 100													
2000	76	78	80	84	84	82	81	81	81	77	81	80	80
2001	78	81	83	85	87	86	88	89	86	76	77	78	83
2002	78	80	85	76	78	79	80	81	79	76	78	80	79
2003	79	77	77	79	83	84	83	86	85	87	90	87	83
2004	85												85

<sup>1</sup> Simple average and is year-to-date for current year.

<sup>2</sup> Ratio of index of prices received by farmers to index of prices paid for commodities and services, interest, taxes, and wage rates.

<sup>3</sup> Ratio of the index of prices received by farmers after adjustment for government payments to the index of prices paid for commodities and services, interest, taxes, and wage rates.

**Prices Paid Indexes: Monthly and Annual Average  
United States, 2000-04**

Year	Jan	Feb	Mar	Apr	May	Jun	Jul	Aug	Sep	Oct	Nov	Dec	Avg <sup>1</sup>
Crop Sector (PPITW) 1990-92 = 100													
2000	120	121	121	121	121	122	122	122	123	124	124	124	122
2001	127	127	127	127	127	126	125	125	125	125	124	124	126
2002	124	125	125	126	126	126	126	126	127	128	127	127	126
2003	129	131	132	131	131	131	130	131	131	132	131	132	131
2004	132												132
Livestock Sector (PPITW) 1990-92 = 100													
2000	115	116	117	117	117	117	117	116	117	118	119	120	117
2001	122	121	120	120	120	121	121	121	121	121	120	120	121
2002	120	120	120	120	119	119	120	121	122	122	122	123	121
2003	123	124	124	124	124	124	124	123	126	127	128	128	125
2004	127												127
Commodities and Services, Interest, Taxes, and Wage Rates Adjusted for Productivity 1910-14 = 100													
2000	1079	1083	1086	1086	1086	1089	1083	1081	1084	1103	1104	1105	1089
2001	1131	1131	1131	1117	1118	1119	1116	1116	1118	1128	1126	1124	1123
2002	1140	1141	1143	1139	1139	1139	1129	1131	1133	1152	1151	1151	1141
2003	1177	1181	1184	1174	1173	1174	1161	1162	1166	1175	1175	1175	1173
2004	1189												1189

<sup>1</sup> Simple average and is year-to-date for current year.

**Prices Paid Index Sub-Components: Monthly and Annual Average  
United States, 2000-04**

Year	Jan	Feb	Mar	Apr	May	Jun	Jul	Aug	Sep	Oct	Nov	Dec	Avg <sup>1</sup>
Feed Sub-Components													
Feed Grains													
1990-92 = 100													
2000	81	84	87	87	90	83	72	67	70	75	81	86	80
2001	85	85	84	81	79	79	83	83	84	81	82	86	83
2002	86	84	85	83	84	88	94	104	107	103	101	103	94
2003	102	103	102	102	104	101	94	95	96	94	97	102	99
2004	107												107
Complete Feeds													
1990-92 = 100													
2000	102	103	104	104	105	105	104	100	101	103	104	108	104
2001	114	112	109	107	106	107	108	113	112	112	111	112	110
2002	111	110	111	112	110	113	115	116	118	117	116	115	114
2003	115	114	114	112	113	113	113	110	113	113	121	123	115
2004	126												126
Hay and Forages													
1990-92 = 100													
2000	97	99	100	102	109	108	105	104	107	108	109	109	105
2001	110	113	117	127	130	122	121	123	124	123	123	123	121
2002	120	118	119	125	125	121	118	119	119	121	120	120	120
2003	121	122	120	125	129	122	117	110	109	110	105	106	116
2004	106												106
Concentrates													
1990-92 = 100													
2000	93	100	104	100	108	109	104	96	108	109	109	121	105
2001	122	107	104	104	107	115	117	116	111	110	109	103	110
2002	105	102	105	104	106	109	118	121	121	110	105	104	109
2003	104	110	110	112	119	118	118	112	129	132	150	140	121
2004	131												131

<sup>1</sup> Simple average and is year-to-date for current year.

**Prices Paid Index Sub-Components: Monthly and Annual Average  
United States, 2000-04**

Year	Jan	Feb	Mar	Apr	May	Jun	Jul	Aug	Sep	Oct	Nov	Dec	Avg <sup>1</sup>
Supplements 1990-92 = 100													
2000	118	120	119	117	116	113	111	110	112	115	116	123	116
2001	127	124	119	119	116	117	117	120	121	119	124	125	121
2002	123	124	124	123	118	123	126	128	129	133	134	135	127
2003	135	134	134	131	130	134	132	128	134	138	138	140	134
2004	141												141
Livestock and Poultry Sub-Components Feeder Cattle 1990-92 = 100													
2000	109	105	102	107	101	106	111	107	104	111	113	114	108
2001	109	105	106	109	106	112	111	110	110	110	102	104	108
2002	102	103	99	95	92	91	94	96	98	100	102	105	98
2003	99	96	92	99	99	102	107	111	122	130	126	122	109
2004	113												113
Feeder Pigs 1990-92 = 100													
2000	126	137	147	159	136	118	114	103	98	101	106	118	122
2001	125	133	136	143	127	115	111	109	106	105	110	123	120
2002	138	146	138	111	88	59	52	46	40	73	102	126	93
2003	138	127	123	119	109	104	82	64	73	97	94	96	102
2004	102												102
Milk Cow Replacements 1990-92 = 100													
2000	118	118	118	119	119	119	120	120	120	120	120	120	119
2001	117	117	117	124	124	124	141	141	141	151	151	151	133
2002	143	143	143	152	152	152	148	148	148	127	127	127	143
2003	121	121	121	115	115	115	116	116	116	121	121	121	118
2004	123												123

<sup>1</sup> Simple average and is year-to-date for current year.

**Prices Paid Index Sub-Components: Monthly and Annual Average  
United States, 2000-04**

Year	Jan	Feb	Mar	Apr	May	Jun	Jul	Aug	Sep	Oct	Nov	Dec	Avg <sup>1</sup>
Poultry 1990-92 = 100													
2000	107	107	107	107	107	107	107	107	107	107	107	107	107
2001	110	110	110	110	110	110	110	110	110	110	110	110	110
2002	111	111	111	111	111	111	111	111	111	111	111	111	111
2003	111	111	111	111	111	111	111	111	111	111	111	111	111
2004	111												111
Seeds Sub-Components Field Crops 1990-92 = 100													
2000	121	121	121	126	126	126	126	126	126	126	126	126	125
2001	126	126	126	136	136	136	136	136	136	136	136	136	134
2002	136	136	136	147	147	147	147	147	147	147	147	147	144
2003	147	147	147	162	162	162	162	162	162	162	162	162	158
2004	162												162
Grasses and Legumes 1990-92 = 100													
2000	121	121	121	115	115	115	115	115	115	115	115	115	117
2001	115	115	115	118	118	118	118	118	118	118	118	118	117
2002	118	118	118	118	118	118	118	118	118	118	118	118	118
2003	118	118	118	109	109	109	109	109	109	109	109	109	111
2004	109												109
Fertilizer Sub-Components Mixed Fertilizer 1990-92 = 100													
2000	109	108	108	108	108	108	107	107	107	107	107	107	108
2001	109	111	111	111	111	110	110	109	107	106	106	106	109
2002	105	104	104	104	104	104	105	105	106	106	106	106	105
2003	107	107	112	113	113	113	112	113	113	113	113	114	112
2004	114												114

<sup>1</sup> Simple average and is year-to-date for current year.



**Prices Paid Index Sub-Components: Monthly and Annual Average  
United States, 2000-04**

Year	Jan	Feb	Mar	Apr	May	Jun	Jul	Aug	Sep	Oct	Nov	Dec	Avg <sup>1</sup>
Nitrogen 1990-92 = 100													
2000	97	101	103	104	104	107	115	116	120	125	129	137	113
2001	171	180	179	167	155	142	133	124	121	115	112	111	143
2002	111	111	110	110	110	113	111	110	108	110	113	115	111
2003	122	131	147	150	147	141	138	139	141	143	145	150	141
2004	156												156
Potash and Phosphate 1990-92 = 100													
2000	114	116	109	111	111	103	103	105	108	110	108	110	109
2001	110	111	113	113	110	108	107	106	105	106	107	100	108
2002	106	109	109	108	106	106	105	105	105	105	104	102	106
2003	102	103	112	113	112	108	107	109	109	109	109	111	109
2004	114												114
Agricultural Chemicals Sub-Components Herbicides 1990-92 = 100													
2000	112	112	111	111	111	111	111	111	111	111	111	111	111
2001	111	112	112	112	112	112	112	112	112	112	113	113	112
2002	112	111	112	112	111	111	111	111	112	110	110	112	111
2003	112	112	112	112	112	112	112	112	112	113	113	112	112
2004	110												110
Insecticides 1990-92 = 100													
2000	140	142	144	142	146	146	146	146	147	147	144	146	145
2001	159	145	144	144	144	144	143	142	141	140	139	138	144
2002	139	138	138	137	138	139	140	140	141	142	143	144	140
2003	145	146	146	147	147	148	148	148	148	149	149	148	147
2004	147												147

<sup>1</sup> Simple average and is year-to-date for current year.

**Prices Paid Index Sub-Components: Monthly and Annual Average  
United States, 2000-04**

Year	Jan	Feb	Mar	Apr	May	Jun	Jul	Aug	Sep	Oct	Nov	Dec	Avg <sup>1</sup>
Fungicides and Other 1990-92 = 100													
2000	119	119	119	119	119	119	120	120	120	120	120	120	120
2001	120	120	121	121	121	121	121	120	120	120	120	120	120
2002	120	120	119	119	120	121	121	122	123	123	124	124	121
2003	125	126	114	115	115	115	115	115	115	116	116	115	117
2004	113												113
Fuels Sub-Components Diesel 1990-92 = 100													
2000	113	127	133	123	121	125	130	134	160	159	159	146	136
2001	139	132	119	123	133	129	116	117	131	108	102	80	119
2002	84	86	100	110	106	104	110	114	130	139	120	121	110
2003	136	172	179	141	121	124	128	133	126	140	132	135	139
2004	139												139
Gasoline 1990-92 = 100													
2000	111	125	137	128	135	154	138	128	139	129	128	112	130
2001	117	116	109	124	137	126	105	113	127	98	86	76	111
2002	81	85	103	118	115	114	117	119	123	136	120	113	112
2003	132	156	168	140	132	139	142	149	154	144	133	132	143
2004	138												138
LP Gas 1990-92 = 100													
2000	119	117	136	126	111	114	137	132	136	152	155	162	133
2001	175	187	166	151	143	144	105	113	115	103	95	78	131
2002	87	88	107	121	118	113	113	124	139	149	142	152	121
2003	173	201	193	158	151	163	158	160	154	165	166	184	169
2004	204												204

<sup>1</sup> Simple average and is year-to-date for current year.

**Prices Paid Index Sub-Components: Monthly and Annual Average  
United States, 2000-04**

Year	Jan	Feb	Mar	Apr	May	Jun	Jul	Aug	Sep	Oct	Nov	Dec	Avg <sup>1</sup>
Farm Supplies & Repairs Sub-Components													
Supplies 1990-92 = 100													
2000	117	117	117	118	117	118	118	118	118	119	119	119	118
2001	119	119	119	119	122	122	122	122	123	122	122	122	121
2002	121	122	122	123	124	124	124	124	124	124	124	124	123
2003	124	124	124	124	124	124	125	125	124	125	125	125	124
2004	125												125
Repairs 1990-92 = 100													
2000	125	126	126	127	127	127	128	128	128	128	129	129	127
2001	130	130	130	130	130	130	131	131	131	132	132	132	131
2002	133	133	133	134	134	134	134	134	134	136	136	136	134
2003	137	137	137	138	138	138	139	139	139	139	138	138	138
2004	138												138
Autos and Trucks Sub-Components													
Autos 1990-92 = 100													
2000	112	112	112	112	112	112	112	111	111	111	112	112	112
2001	112	112	112	112	111	111	111	110	110	110	112	112	111
2002	112	111	111	110	110	109	109	108	109	109	110	110	110
2003	109	109	109	108	108	107	107	107	107	107	108	108	108
2004	108												108
Trucks 1990-92 = 100													
2000	120	120	120	121	121	120	120	119	119	119	120	120	120
2001	121	120	120	120	119	119	118	118	117	118	120	120	119
2002	119	118	117	117	116	116	116	115	116	117	117	117	117
2003	117	117	117	116	116	115	114	115	114	114	115	116	116
2004	116												116

<sup>1</sup> Simple average and is year-to-date for current year.

**Prices Paid Index Sub-Components: Monthly and Annual Average  
United States, 2000-04**

Year	Jan	Feb	Mar	Apr	May	Jun	Jul	Aug	Sep	Oct	Nov	Dec	Avg <sup>1</sup>
Farm Machinery Sub-Components													
Tractors													
1990-92 = 100													
2000	135	136	136	136	136	136	136	136	137	138	138	138	137
2001	138	138	138	138	138	138	138	138	139	139	139	140	138
2002	140	140	140	140	140	140	140	140	140	140	140	140	140
2003	140	140	141	141	141	141	142	142	142	142	143	143	142
2004	143												143
Self Propelled													
1990-92 = 100													
2000	136	136	136	137	137	137	138	138	139	140	140	140	138
2001	141	142	142	143	143	143	143	144	145	145	145	145	143
2002	145	146	146	147	147	147	147	147	147	147	148	148	147
2003	148	148	148	148	148	148	148	149	148	149	149	149	148
2004	149												149
Other Machinery													
1990-92 = 100													
2000	140	141	141	142	142	142	142	142	143	143	143	144	142
2001	144	144	144	145	146	146	147	147	148	149	150	150	147
2002	151	151	152	153	153	153	153	153	154	154	155	155	153
2003	155	155	155	155	155	155	155	155	155	155	155	155	155
2004	155												155
Farm Services Sub-Components													
Custom Rates													
1990-92 = 100													
2000	120	120	120	120	120	120	120	120	120	120	120	120	120
2001	121	121	121	121	121	121	121	121	121	121	121	121	121
2002	120	120	120	120	120	120	120	120	120	120	120	120	120
2003	125	125	125	125	125	125	125	125	125	125	125	125	125
2004	125												125

<sup>1</sup> Simple average and is year-to-date for current year.

**Prices Paid Index Sub-Components: Monthly and Annual Average  
United States, 2000-04**

Year	Jan	Feb	Mar	Apr	May	Jun	Jul	Aug	Sep	Oct	Nov	Dec	Avg <sup>1</sup>
Other Services 1990-92 = 100													
2000	117	117	118	118	118	119	119	119	120	119	118	118	118
2001	119	119	120	120	120	122	122	122	122	121	120	120	121
2002	120	120	120	119	120	121	121	121	121	120	120	120	120
2003	121	121	121	122	122	123	124	124	124	122	122	121	122
2004	122												122
Rent Sub-Components Cash 1990-92 = 100													
2000	139	139	139	139	139	139	139	139	139	139	139	139	139
2001	143	143	143	143	143	143	143	143	143	143	143	143	143
2002	143	143	143	143	143	143	143	143	143	143	143	143	143
2003	145	145	145	145	145	145	145	145	145	145	145	145	145
2004	145												145
Share 1990-92 = 100													
2000	83	83	83	83	83	83	83	83	83	83	83	83	83
2001	91	91	91	91	91	91	91	91	91	91	91	91	91
2002	91	91	91	91	91	91	91	91	91	91	91	91	91
2003	91	91	91	91	91	91	91	91	91	91	91	91	91
2004	91												91

<sup>1</sup> Simple average and is year-to-date for current year.

**Prices Paid Survey Estimates, Month Published and Level**

Survey	2004 Program Schedule <sup>1</sup>	
	Survey and Publication Month	Level of Estimates
Feed	Apr	Farm Production Regions and US
Feeder Livestock	Monthly	US
Seed	Apr	US
Fertilizer	Apr	Fertilizer Regions and US
Agricultural Chemicals	Apr	US
Fuels	Apr	Farm Production Regions and US
Farm Machinery	Apr	US
Grazing Fees	Jan <sup>2</sup>	States and Regions

<sup>1</sup> Data collection and publication schedule for average prices paid by producers.

<sup>2</sup> Survey estimates for previous year.

## Prices Paid by Farmers

**Definition:** Prices paid by farmers represent the average costs of inputs purchased by farmers and ranchers to produce agricultural commodities. Conceptually, the average price when multiplied by quantity purchased should equal total producer expenditures for the item.

**Survey Procedures:** The prices paid data are obtained from establishments that sell goods and services to farmers and ranchers. Annually, about 8,500 firms are randomly selected from lists by type of item sold with an average response rate in the range of 75-80 percent. Firms are asked to report the price for the specified item "most commonly bought by farmers" or that was the "volume seller". Approximately 135 items are surveyed each April to represent all production input items purchased. The survey reference period for most items is the 5 business days centered around the 15th of the month. Separate prices paid surveys are conducted for, agricultural chemicals, fuels, feed, fertilizer, machinery, and seed.

**Summary and Estimation Procedures:** The annual April Prices Paid Survey is summarized as a nonprobability survey. Average prices reported are aggregated to the region and U.S. level using weights available from expenditure data and other administrative sources. Price recommendations are prepared by the State Statistical Offices and Headquarters for review by the Agricultural Statistics Board in Washington, D.C. Also, the change in price level for individual items surveyed are combined to the regional and U.S. levels, and are published as prices paid indexes referenced to a specific base period. Prices paid indexes for new autos and trucks, building materials, farm supplies, motor supplies, and marketing containers are updated based on price changes measured in selected Bureau of Labor Statistics (BLS) indexes.

**Revisions:** Any revisions are published in the monthly and in annual issues of *Agricultural Prices*. The basis for revision must be supported by additional data that directly affect the level of the estimate. More revisions are likely in April when separate prices paid surveys are conducted, in lieu of BLS indexes, by the USDA to measure price change.

**Reliability:** Current methods of summarization in April are not designed directly to calculate sampling errors. However, analytical measures approximate the U.S. relative sampling errors for major items around 10 percent. Any nonsampling errors are attributed to such things as the inability to obtain correct information, differences in interpreting questions or definitions, mistakes in coding or processing the data, etc. Efforts are made at each step in the survey process to minimize these nonsampling errors.

**Program Change:** Effective January 1, 1995, the National Agricultural Statistics Service updated the weights and changed the construction of its prices paid and received by farmers indexes. A Federal Register Notice dated October 28, 1994 discussed these program modifications.

A 1990-92 reference and base period replaced the 1977 reference and 1971-73 base weight period. Five-year moving average weights replaced the current fixed 1971-73 base period weights. The 1910-14=100 price indexes, required by statute for computing parity prices, were linked forward based on the changes in the new 1990-92=100 indexes. The new indexes were constructed by multiplying the ratios of the current prices to the base period prices by the moving average weights (adjusted for seasonal marketing patterns for the prices received indexes).

### Information Contacts

General questions should be directed to Linda Hutton, Chief, Environmental, Economics and Demographics Branch at (202) 720-6146. Below are the commodity specialists to contact for additional information.

#### Crop Prices Received

Joe Prusacki Chief, Crops Branch .....	(202) 720-2127
Greg Thessen, Field Crops Section .....	(202) 720-2127
Dave DeWalt - Cotton, Cottonseed .....	(202) 720-5944
Herman Ellison - Oilseeds .....	(202) 720-7369
Lance Honig - Wheat, Rye .....	(202) 720-8068
Darin Jantzi - Corn, Proso Millet, Flaxseed .....	(202) 720-9526
Troy Joshua - Hay, Oats, Sorghum .....	(202) 690-3234
Mark R. Miller - Peanuts, Rice .....	(202) 720-7688
Brian Young - Sugarcane, Sugarbeets, Barley .....	(202) 720-7621
Jim Smith, Fruit and Vegetable Section .....	(202) 720-2127
Kathy Broussard - Citrus .....	(202) 720-5412
Debbie Flippin - Peaches, Pears, Hops, Pulses, Mint .....	(202) 720-3250
Terry O'Connor - Apples, Cherries, Apricots, Cranberries .....	(202) 720-4288
Mike Miller - Grapes, Tobacco .....	(202) 720-7235
Cathy Scherrer, Potatoes, Dry Edible Beans, Sweet Potatoes .....	(202) 720-4285
Biz Wallingsford - Vegetables, Onions, Strawberries .....	(202) 720-2157

#### Livestock Prices Received

Dan Kerestes, Chief, Livestock Branch .....	(202) 720-3570
Wil Hundl, Livestock Section .....	(202) 720-3570
Steve Anderson - Cattle .....	(202) 720-3040
Scott Hollis - Sheep, Lambs, Wool, Mohair .....	(202) 720-4751
Ty Kalaus - Milk, Milk Cows .....	(202) 690-3236
Dan Lofthus - Hogs .....	(202) 720-3106
Nathan Crisp, Poultry and Specialty Commodities Section .....	(202) 720-3570
Tom Kruchten - Broilers, Eggs .....	(202) 690-4870
John Lange - Turkeys .....	(202) 720-0585

#### Indexes, Prices Paid, and Parity Prices

Linda Hutton, Chief, Environmental, Economics and Demographics Branch .....	(202) 720-6146
Kevin Hintzman, Economics Section .....	(202) 720-6146
Tara Jackson - Feed, Fertilizer, Ag Chemicals, Seeds .....	(202) 690-3229
Jim Williams - Prices Paid Indexes, Farm Supplies and Repairs, Farm Machinery, Fuels, Feeder Livestock, Poultry Chicks, Feed Price Ratios, Grazing Fees, Autos & Trucks .....	(202) 690-3225
Rhonda Brandt - Prices Received Indexes, Parity Prices .....	(202) 720-5446



The next "Agricultural Prices" report will be released at 3 p.m. ET on February 27, 2004.

The United States Department of Agriculture (USDA) prohibits discrimination in all its programs on the basis of race, color, national origin, gender, religion, age, disability, political beliefs, sexual orientation, and marital or family status. (Not all prohibited bases apply to all programs.) Persons with disabilities who require alternative means for communication of program information (braille, large print, audiotape, etc.) should contact the USDA's TARGET Center at 202-720-2600 (voice and TDD).

To file a complaint of discrimination, write USDA, Director, Office of Civil Rights, Room 326-W, Whitten Building, 1400 Independence Avenue, SW, Washington, D.C., 20250-9410, or call 202-720-5964 (voice or TDD). USDA is an equal opportunity provider and employer.

## ACCESS TO REPORTS!!

---

For your convenience, there are several ways to obtain NASS reports, data products, and services:

### INTERNET ACCESS

All NASS reports are available free of charge on the worldwide Internet. For access, connect to the Internet and go to the NASS Home Page at <http://www.usda.gov/nass/>. Select "Today's Reports" or Publications and then Reports Calendar or Publications and then Search, by Title or Subject.

### E-MAIL SUBSCRIPTION

All NASS reports are available by subscription free of charge direct to your e-mail address. Starting with the NASS Home Page at <http://www.usda.gov/nass/>, click on **Publications**, then click on the **Subscribe by E-mail** button which takes you to the page describing e-mail delivery of reports. Finally, click on **Go to the Subscription Page** and follow the instructions.

### AUTOFAX ACCESS

NASSFax service is available for some reports from your fax machine. Please call 202-720-2000, using the handset attached to your fax. Respond to the voice prompts. Document 0411 is a list of available reports.

-----

### PRINTED REPORTS OR DATA PRODUCTS

**CALL OUR TOLL-FREE ORDER DESK: 800-999-6779 (U.S. and Canada)**  
**Other areas, please call 703-605-6220      FAX: 703-605-6900**  
**(Visa, MasterCard, check, or money order acceptable for payment.)**

-----

### ASSISTANCE

For **assistance** with general agricultural statistics or further information about NASS or its products or services, contact the **Agricultural Statistics Hotline** at **800-727-9540**, 7:30 a.m. to 4:00 p.m. ET, or e-mail: [nass@nass.usda.gov](mailto:nass@nass.usda.gov).

---