

Released February 27, 2004, by the National Agricultural Statistics Service (NASS), Agricultural Statistics Board, U.S. Department of Agriculture. For information on "Agricultural Prices" see page 64, office hours 7:30 a.m. to 4:00 p.m. ET.

## February Farm Prices Received Index Up 2 Points From Last Month

The preliminary All Farm Products Index of Prices Received by Farmers in February at 113, based on 1990-92=100, is 2 points (1.8 percent) above the January Index. The Livestock Products Index increased 1 point (0.9 percent) from January while the All Crops Index increased 2 points (1.8 percent). Producers received higher commodity prices for soybeans, broilers, corn, and hogs. Lower prices were received for cattle, lettuce, eggs, and broccoli. The seasonal change in the mix of commodities farmers sell, based on the past 3-year average, also affects the overall index. Increased average marketings of milk, cattle, broilers, and eggs offset decreased marketings of soybeans, corn, tobacco, and wheat.

This preliminary All Farm Products Index is up 14 points (14 percent) from February 2003. The Food Commodities Index increased 2 points (1.8 percent) from last month to 114, and is 18 points (19 percent) above February 2003.

## Prices Paid Index Unchanged

The February Index of Prices Paid for Commodities and Services, Interest, Taxes, and Farm Wage Rates (PPITW) is 130 percent of the 1990-92 average. The index is unchanged from January but 2 points (1.6 percent) above February 2003. Lower prices in February for feeder cattle, feed concentrates, herbicides, and insecticides offset higher prices for complete feeds, nitrogen fertilizers, feed grains, and LP gas.

**Index Summary Table**

Index 1990-92=100	2003	2003	2004	2004
	Jan	Feb	Jan	Feb
Prices Received	100	99	111	113
Prices Paid	126	128	130	130
Ratio <sup>1</sup>	79	77	85	87

<sup>1</sup> Ratio of index of prices received by farmers to index of prices paid by farmers.

## Prices Received by Farmers

The February All Farm Products Index is 113 percent of its 1990-92 base, up 1.8 percent from the January index and up 14 percent from the February 2003 index.

**ALL CROPS:** The February index is 115, up 1.8 percent from January and 11 percent above February 2003. Index increases from January for fruits and nuts, oil-bearing crops, and feed grains and hay offset decreases for commercial vegetables, food grains, and tobacco. The index remains unchanged for potatoes and dry beans and other crops.

**Food Grains:** The February index, at 119, is down 3.3 percent from the previous month but 12 percent above February 2003. The February all wheat price, at \$3.68 per bushel, is unchanged from January but 2 cents below February 2003.

**Feed Grains & Hay:** The February index is 110, up 4.8 percent from last month and 3.8 percent above February 2003. The corn price, at \$2.55 per bushel, is up 16 cents from January and 21 cents above February 2003. The all hay price, at \$79.90 per ton, is 60 cents above January but \$11.50 below last February. Grain sorghum, at \$4.58 per cwt, is up 22 cents from January and 44 cents above February last year.

**Oil-Bearing Crops:** The February index, at 142, is up 9.2 percent from January and 42 percent above February 2003. The soybean price, at \$7.99 per bushel, is up 65 cents from January and is \$2.44 above February 2003.

**Cotton:** The February index, at 102, is down 1.0 percent from January but 32 percent above February 2003. The February price, at 61.6 cents per pound, is down 0.9 cents from the previous month but 15.1 cents above last February.

**Potatoes & Dry Beans:** The February index, at 97, is unchanged from January but 13 percent below February 2003. The all potato price, at \$5.62 per cwt, is down 13 cents from January and 71 cents below last February. The all dry bean price, at \$19.60 per cwt, is up \$2.60 from the previous month and 40 cents above February 2003.

**Fruits & Nuts:** The February index, at 96, is up 13 percent from the previous month and 17 percent above February 2003. Price increases for oranges and grapefruit more than offset price decreases for strawberries, apples, and pears.

**Commercial Vegetables:** The February index, at 129, is down 5.8 percent from last month but 14 percent above February 2003. Price decreases for lettuce, broccoli, and tomatoes more than offset price increases for onions, cauliflower, and carrots.

**LIVESTOCK & PRODUCTS:** The February index, at 111, is up 0.9 percent from last month and up 17 percent from February 2003. Compared with a year ago, prices are higher for broilers, dairy, all cattle, eggs, hogs, calves, and turkeys.

**Meat Animals:** The February index, at 104, is unchanged from last month but up 9.5 percent from last year. The February hog price of \$43.20 per cwt is up \$6.40 from January and up \$8.90 from this same time a year ago. The February beef cattle price of \$77.80 is down \$3.10 from last month but up \$3.90 from February 2003.

**Dairy Products:** The February index, at 102, is up 1.0 percent from January and up 17 percent from February 2003. The February all milk price of \$13.30 per cwt is up 10 cents from January and up \$1.90 from last year. The fluid grade milk price is up 10 cents from last month while the manufactured grade milk price is up 30 cents.

**Poultry & Eggs:** The index, at 139, is up 4.5 percent from January and 34 percent above a year ago, due to strong broiler and egg prices. February market egg prices, at 74.5 cents per dozen, decreased 6.1 cents from January reflecting a seasonal decrease. However, egg prices remain relatively high due to strong protein demand. The February broiler price, at 47.0 cents per pound, increased 4.0 cents from January. The highest broiler price since November 2000 is due to high protein demand and a decrease in worldwide supplies. The February turkey price, at 35.0 cents per pound, is up fractionally from last month.

## Table of Contents

<b>U.S. Prices Received and Indexes</b>	<b>Page</b>	<b>Monthly State Prices, continued</b>	<b>Page</b>
Narrative .....	2	Cotton .....	17
Price Indexes .....	5	Cottonseed .....	17
Price Index Charts .....	6	Eggs .....	22
U.S. Prices Received Summary .....	8	Flaxseed .....	16
Charts .....	10	Fruit, Citrus .....	18
Selected Commodities .....	14	Hay .....	17
Upland Cotton & Rice Marketings .....	17	Hogs, All .....	21
Parity Prices .....	24	Barrows and Gilts .....	21
Reliability Statement .....	55	Sows .....	21
 		Milk .....	23
<b>Monthly State Prices Received</b>		Oats .....	15
Apples .....	17	Peanuts .....	16
Barley .....	15	Potatoes .....	19
Beans, Dry Edible .....	16	Sheep .....	22
Beef Cattle, All .....	20	Lambs .....	22
Calves .....	20	Sorghum, Grain .....	15
Cows, Beef .....	20	Soybeans .....	15
Milk Cows .....	23	Sunflowers .....	16
Steers and Heifers .....	20	Tobacco .....	16
Corn .....	15	Wheat, All Classes .....	14
<b>Prices Received Special Features</b>			<b>Page</b>
<b>Marketing Seasons</b> .....			26
<b>Monthly Price Revisions</b>			
Apples .....			52
Cattle .....			34
Hogs .....			43
Potatoes .....			28
Sheep .....			47
<b>Marketing Year Average Prices</b>			
Apricots .....			53
Cattle .....			30
Dried Figs .....			53
Hogs .....			32
Grapes, California Raisin .....			54
Grapes, Concord .....			54
Mohair .....			51
Nectarines .....			53
Peaches .....			54
Pears .....			53
Plums .....			53
Potatoes .....			27
Sheep .....			33
Wool .....			51
<b>Livestock Inventory Values</b> .....			48
<b>Other Hay, Baled</b>			
Used to Compute Grazing Fees for Eastern National Forests .....			52

**Table of Contents (continued)**

<b>U.S. Prices Paid, Prices Paid Indexes and Ratios</b>	<b>Page</b>
Narrative .....	56
Indexes and Parity Ratios .....	57
Charts .....	59
Feed Price Ratios .....	62
Reliability Statement .....	63
 <b>U.S. Average Prices</b>	
Commodity Prices Used in Feed Price Ratios .....	63
Feeder Livestock .....	63
 <b>Information Contacts</b> .....	 64

**Index Numbers of Prices Received, United States,  
February 2004, with Comparisons**

Index	1910-14=100				1990-92=100		
	Average 1990-92	2003	2004		2003	2004	
		Feb	Jan	Feb	Feb	Jan	Feb
All Farm Products	639	628	*706	718	99	111	113
All Crops	500	511	*556	569	104	*113	115
Food Grains	325	336	389	379	106	*123	119
Feed Grains & Hay	363	380	*375	395	106	*105	110
Cotton	517	393	*528	521	77	*103	102
Tobacco	1,263	1,796	*1,709	1,670	119	113	110
Oil-Bearing Crops	554	548	*714	777	100	*130	142
Fruits & Nuts	716	575	*594	670	82	*85	96
Commercial Vegetables	698	753	*916	861	113	*137	129
Potatoes & Dry Beans	540	560	*490	493	111	97	97
Other Crops	493	564	569	569	114	115	115
Livestock & Products	768	728	*842	853	95	*110	111
Meat Animals	1,021	964	*1,057	1,055	95	*104	104
Dairy Products	799	701	*811	817	87	*101	102
Poultry & Eggs	282	291	373	390	104	133	139
Food Commodities					96	112	114

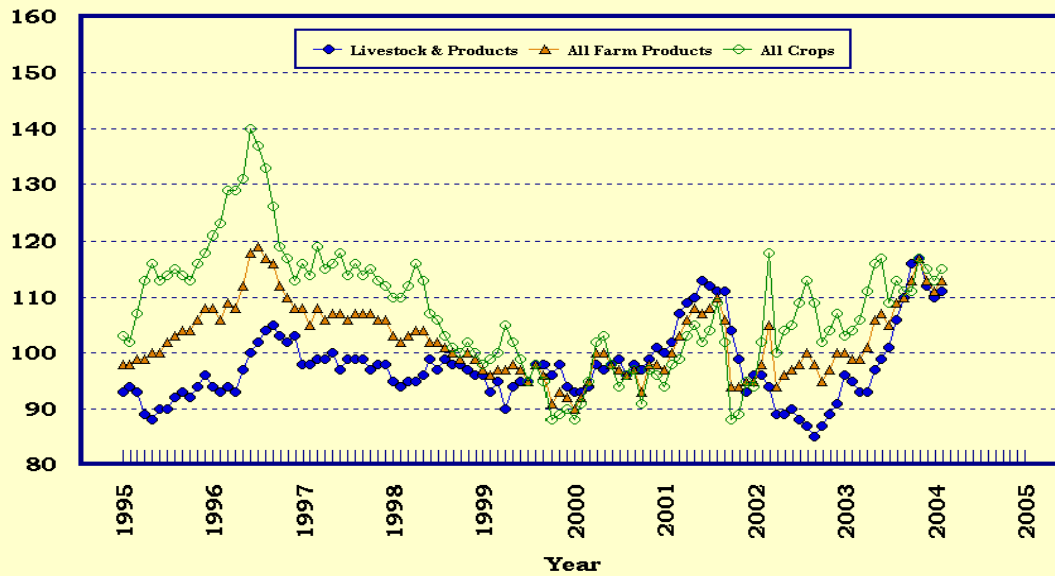
\* Revised.

**Selected Index Numbers for Prices Received and Paid,  
1990-92=100, by Months, United States, 2003 and 2004**

Month	Index of Prices Received						Index of Prices Paid			
	All Farm Products		All Crops		Livestock and Products		All Items		Production Items	
	2003	2004	2003	2004	2003	2004	2003	2004	2003	2004
Jan	100	111	103	113	96	110	126	130	122	127
Feb	99	113	104	115	95	111	128	130	123	127
Mar	99		106		93		128		124	
Apr	101		111		93		128		124	
May	106		116		97		127		123	
Jun	107		117		99		128		124	
Jul	105		109		101		127		124	
Aug	109		113		106		127		123	
Sep	110		111		110		129		125	
Oct	113		111		116		130		126	
Nov	117		117		117		130		127	
Dec	113		115		112		130		127	

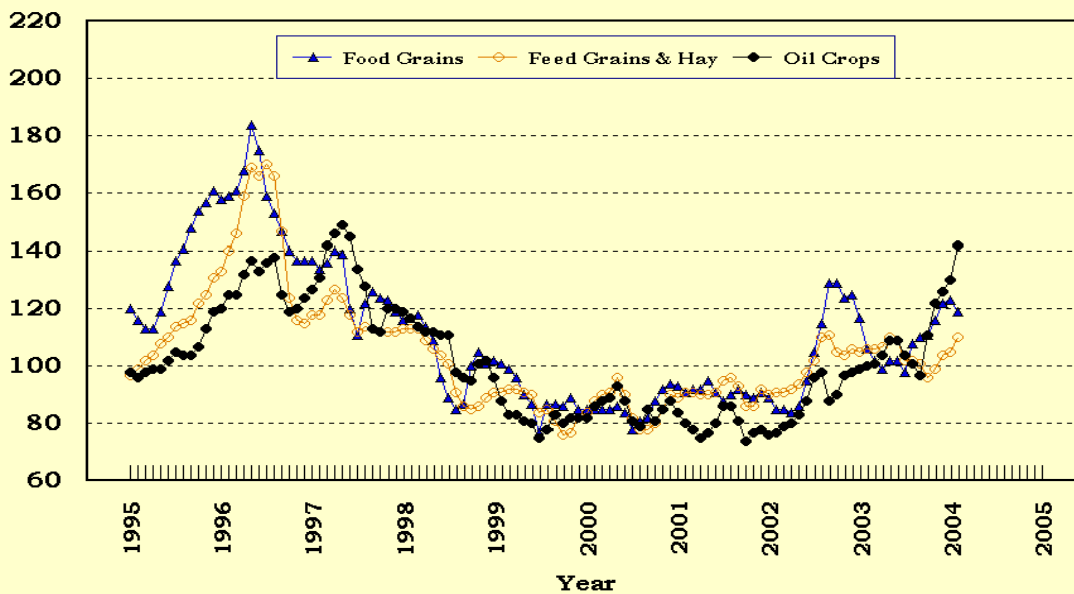
## Prices Received, Major Indexes, US

Index Values(1990-92=100)



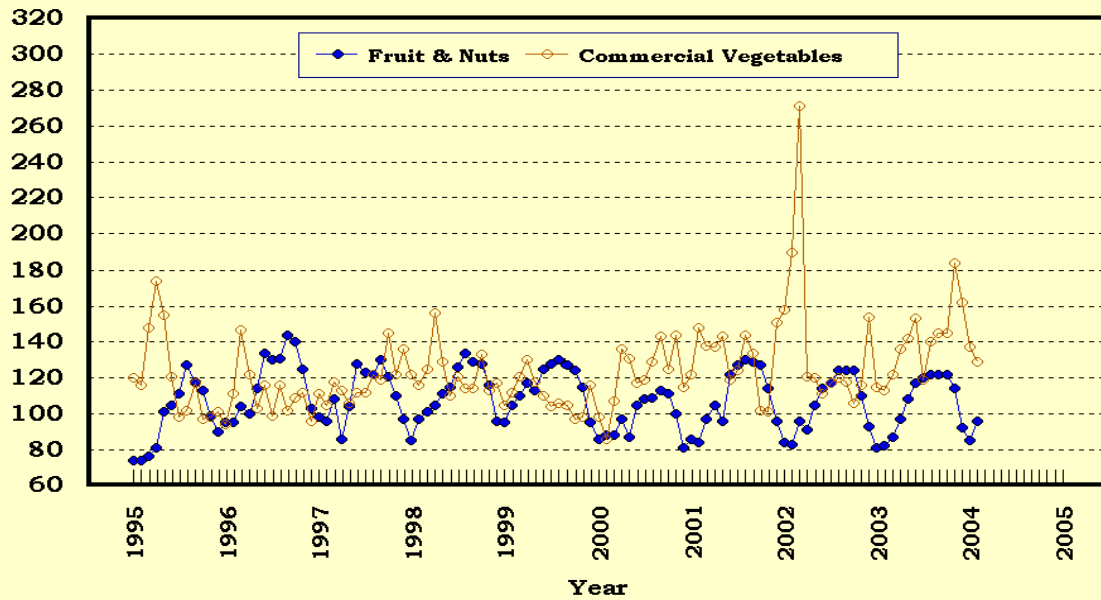
## Prices Received, Food, Feed, & Oil Indexes, US

Index Values(1990-92=100)



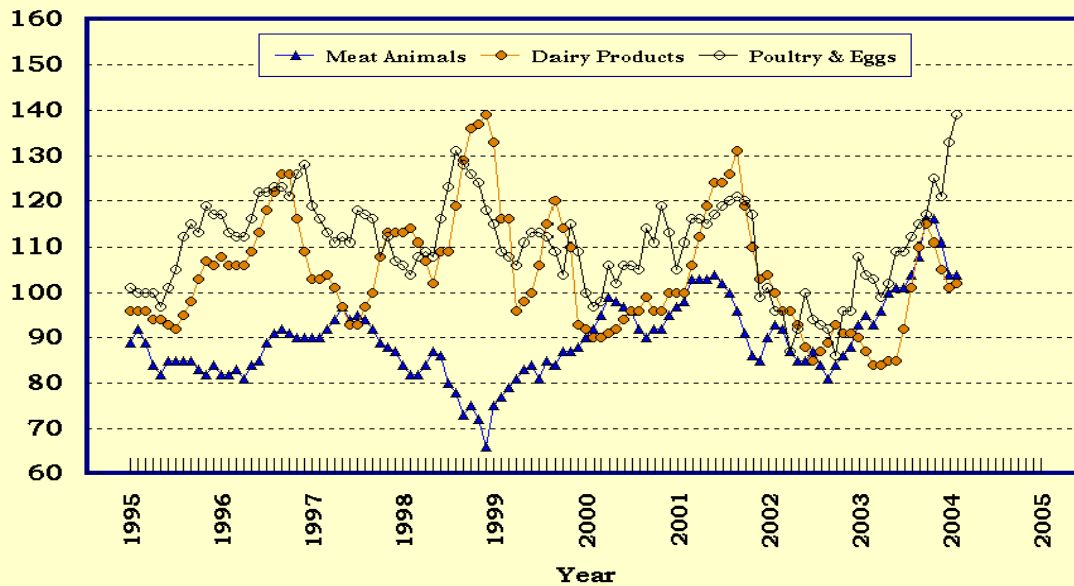
## Prices Received, Fruit/Vegetable Indexes, US

Index Values(1990-92=100)



## Prices Received, Livestock Product Indexes, US

Index Values(1990-92=100)



**Prices Received, United States,  
February 2004, with Comparisons**

Commodity	Unit	Average 1990-92	Entire Month		Preliminary
			Feb 2003	Jan 2004	Feb 2004
		<i>Dollars</i>	<i>Dollars</i>	<i>Dollars</i>	<i>Dollars</i>
<b>Field Crops</b>					
Barley, All	Bu	2.12	2.87	2.71	2.62
Feed	Bu	1.90	2.20	2.15	2.13
Malting	Bu	2.43	3.06	2.97	2.88
Beans, Dry Edible	Cwt	19.10	19.20	17.00	19.60
Chickpeas, All <sup>1</sup>	Cwt			14.50	( <sup>5</sup> )
Large <sup>1</sup>	Cwt			14.50	( <sup>5</sup> )
Small <sup>1</sup>	Cwt			( <sup>5</sup> )	( <sup>5</sup> )
Corn	Bu	2.30	2.34	2.39	2.55
Cotton, Upland	Lb	0.606	0.465	0.625	0.616
Cottonseed	Ton	96.00	110.00	127.00	140.00
Flaxseed	Bu	4.27	6.25	6.09	6.20
Hay, All, Baled <sup>2</sup>	Ton	76.30	91.40	79.30	79.90
Alfalfa <sup>2</sup>	Ton	77.20	96.20	83.60	84.70
Other <sup>2</sup>	Ton	60.00	81.70	71.40	69.90
Lentils <sup>1</sup>	Cwt			18.20	19.10
Oats	Bu	1.22	2.11	1.46	1.51
Peanuts, In-Shell	Lb	0.304	0.196	0.207	0.213
Peas, Dry Edible <sup>1</sup>	Cwt			7.36	8.21
Austrian Winter <sup>1</sup>	Cwt			9.20	12.10
Potatoes	Cwt	5.82	6.33	5.75	5.62
Rice, Rough	Cwt	7.07	4.24	8.19	7.55
Sorghum Grain	Cwt	3.75	4.14	4.36	4.58
Soybeans	Bu	5.61	5.55	7.34	7.99
Sunflowers, All	Cwt	9.50	12.50	12.10	12.40
Tobacco, Types 11-37	Lb	1.740	2.065	1.965	1.920
Wheat, All	Bu	2.96	3.70	3.68	3.68
Winter	Bu	2.93	3.52	3.66	3.60
Durum	Bu	2.86	4.28	3.97	4.03
Other Spring	Bu	3.11	3.82	3.66	3.75
Hard Red Winter	Bu			3.51	3.67
Soft Red Winter	Bu			3.36	3.70
Hard Red Spring	Bu			3.84	3.67
White	Bu	3.24	3.60	3.61	
<b>Fruit</b>					
Citrus, Equiv on-tree					
Grapefruit	Box	5.77	2.14	2.21	2.25
Lemons	Box	10.10	0.71	3.30	2.73
Oranges	Box	5.79	3.14	2.36	2.93
Tangelos	Box	5.82		1.60	
Tangerines	Box	15.11	9.03	13.13	8.70
Temples	Box	6.23	2.38	2.11	0.43
Noncitrus, Fresh					
Apples <sup>3</sup>	Lb	0.212	0.246	0.301	0.294
Grapes <sup>3</sup>	Ton	506.00			
Peaches <sup>3</sup>	Lb	0.216			
Pears <sup>3</sup>	Ton	370.00	322.00	376.00	346.00
Strawberries	Lb	0.560	0.877	1.510	1.320

<sup>1</sup> Monthly estimates began July 2003.

<sup>2</sup> Mid-month price.

<sup>3</sup> Equivalent packinghouse-door returns for CA, MI, and NY (apples only), and WA (apples, peaches, and pears). Prices as sold for other states.

<sup>4</sup> Price not published to avoid disclosure of individual firms.

<sup>5</sup> Insufficient sales to establish a price.



**Prices Received, United States,  
February 2004, with Comparisons**

Commodity	Unit	Average 1990-92	Entire Month		Preliminary
			Feb 2003	Jan 2004	Feb 2004
		<i>Dollars</i>	<i>Dollars</i>	<i>Dollars</i>	<i>Dollars</i>
Vegetables, Fresh <sup>1</sup>					
Asparagus	Cwt	79.80	96.30		
Broccoli	Cwt	22.50	40.90	33.60	24.70
Cantaloupes <sup>2</sup>	Cwt				
Carrots	Cwt	13.20	19.10	24.50	24.80
Cauliflower	Cwt	26.80	30.70	27.30	38.00
Celery	Cwt	11.60	11.80	20.80	20.80
Corn, Sweet	Cwt	15.70	24.00	30.80	20.20
Cucumbers <sup>2</sup>	Cwt			28.10	22.20
Lettuce	Cwt	11.90	11.80	15.40	13.30
Onions	Cwt	12.80	14.90	18.20	20.00
Snap Beans <sup>2</sup>	Cwt		61.40	76.20	60.20
Tomatoes	Cwt	32.30	31.70	34.50	26.70
Livestock					
Calves	Cwt	94.30	97.20	110.00	110.00
Cattle, All Beef	Cwt	72.90	73.90	80.90	77.80
Cows <sup>3</sup>	Cwt	49.60	38.90	46.10	46.20
Steers & Heifers	Cwt	77.10	78.20	85.40	81.60
Milk Cows <sup>4</sup>	Head	1,130.00		1,390.00	
Hogs, All	Cwt	47.70	34.30	36.80	43.20
Barrows & Gilts	Cwt	48.40	34.90	37.20	43.70
Sows	Cwt	39.50	23.40	28.40	34.20
Lambs	Cwt	56.20	92.40	104.00	
Sheep	Cwt	23.40	44.00	43.80	
Dairy and Poultry					
Milk, All <sup>5 6</sup>	Cwt	13.06	11.40	13.20	13.30
Fluid Grade <sup>6</sup>	Cwt	13.10	11.40	13.20	13.30
Mfg Grade <sup>6</sup>	Cwt	11.80	10.30	12.30	12.60
Broilers, Live <sup>7</sup>	Lb	0.317	0.340	0.430	0.470
Eggs, All <sup>8</sup>	Doz	0.643	0.593	0.926	0.875
Market <sup>8</sup>	Doz	0.546	0.433	0.806	0.745
Turkeys, live <sup>7 8</sup>	Lb	0.380	0.345	0.349	0.350
Adjusted for Seasonal Variation					
Eggs, All	Doz	0.545	0.570	0.874	0.833
Milk, All <sup>5</sup>	Cwt	9.71	12.00	13.75	14.15

<sup>1</sup> F.O.B. shipping point.

<sup>2</sup> Monthly estimates began January 1995.

<sup>3</sup> Beef cows and cull dairy cows sold for slaughter.

<sup>4</sup> Animals sold for dairy herd replacement only. Prices available for Jan, Apr, Jul, and Oct.

<sup>5</sup> Before deductions for hauling. Includes quality, quantity, and other premiums. Excludes hauling subsidies.

<sup>6</sup> February 2004 Fat test percent: all milk 3.75, fluid milk 3.75, mfg grade 3.89.

<sup>7</sup> Equivalent liveweight returns to producers for most States. Includes growers and contractors.

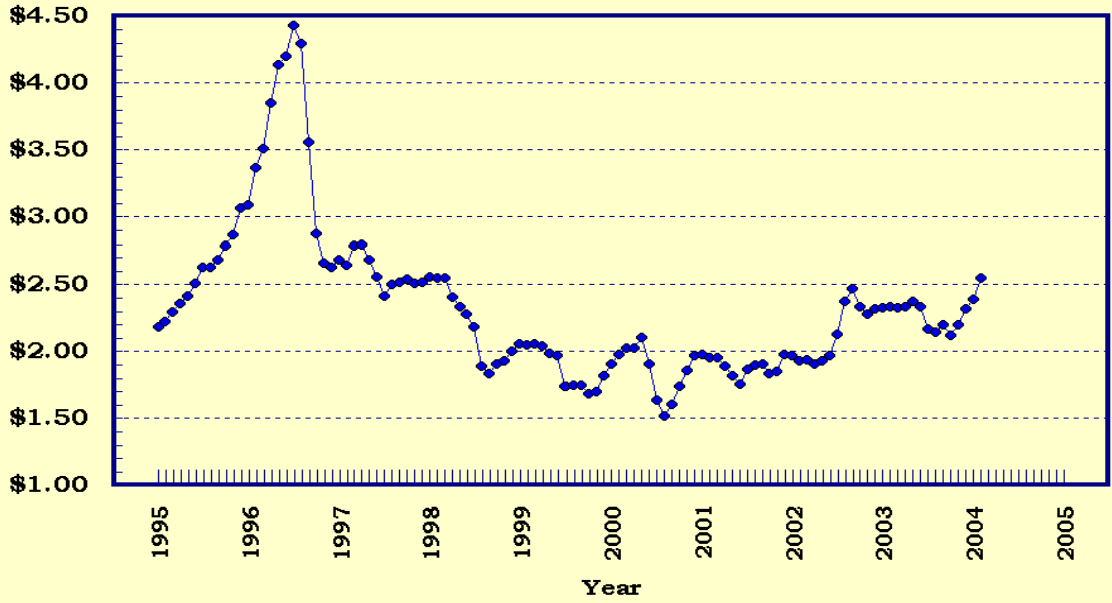
<sup>8</sup> Mid-month price.

<sup>9</sup> Price not published to avoid disclosure of individual firms.

<sup>10</sup> Insufficient sales to establish a price.

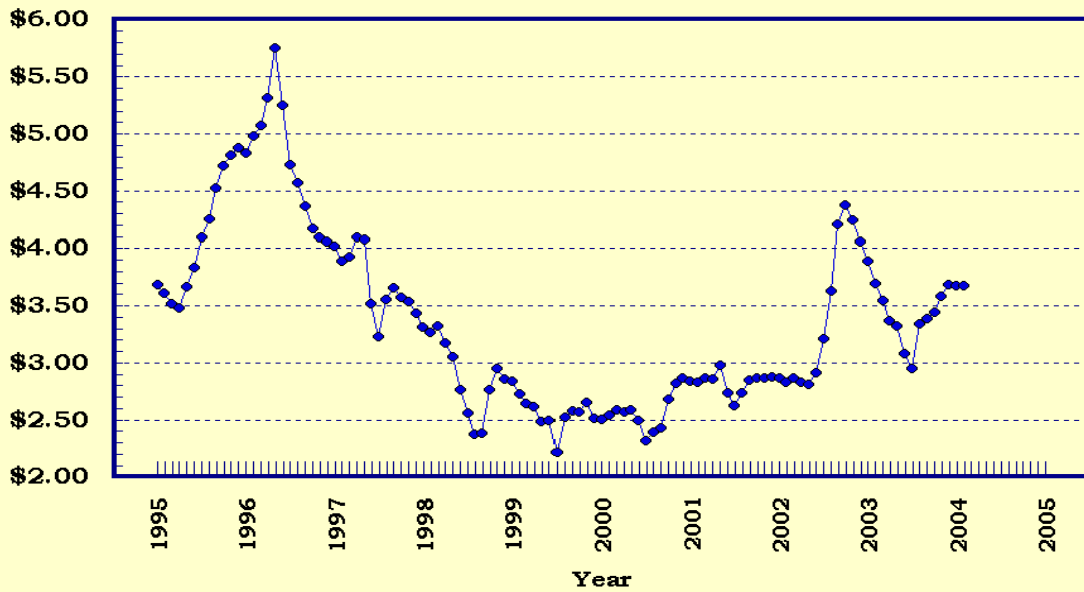
### Prices Received, Corn, US

Dollars per Bu



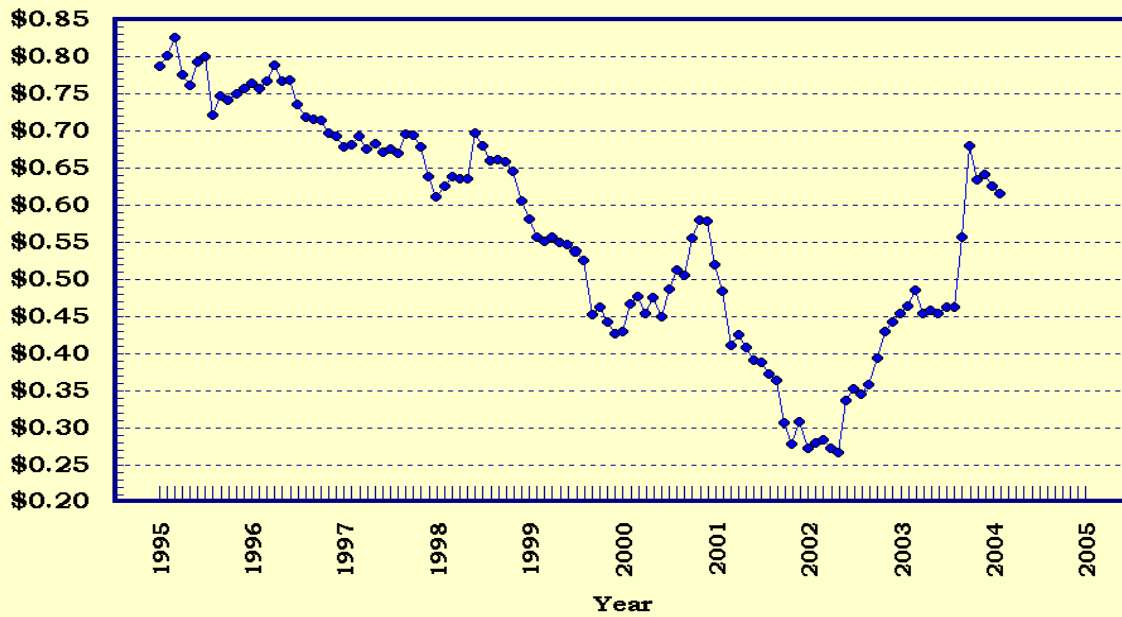
### Prices Received, Wheat, US

Dollars per Bu



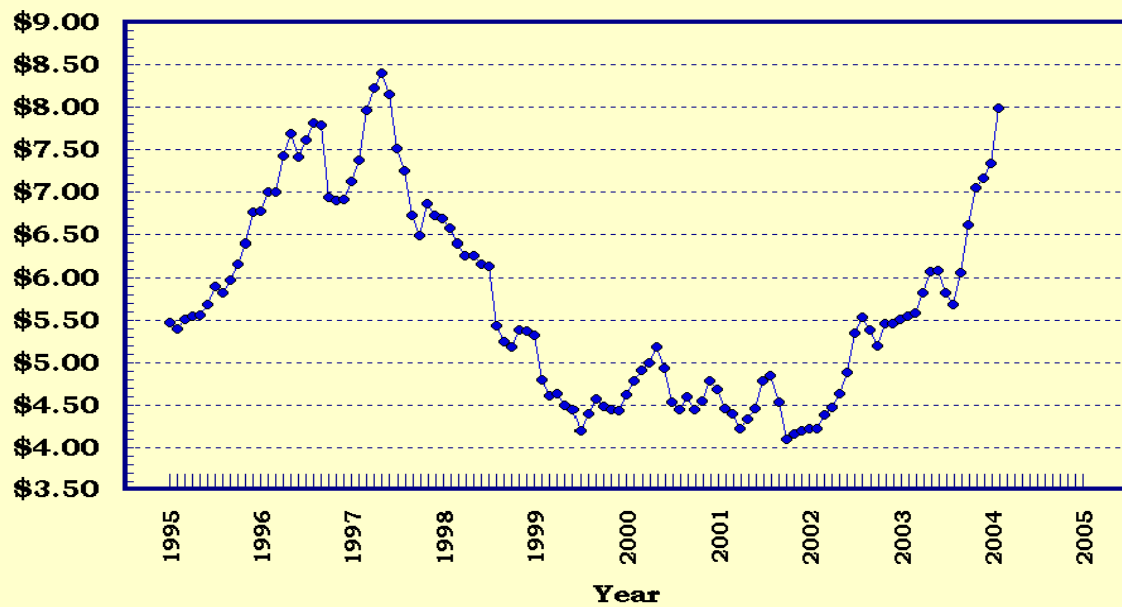
## Prices Received, Cotton, US

Dollars per Lb



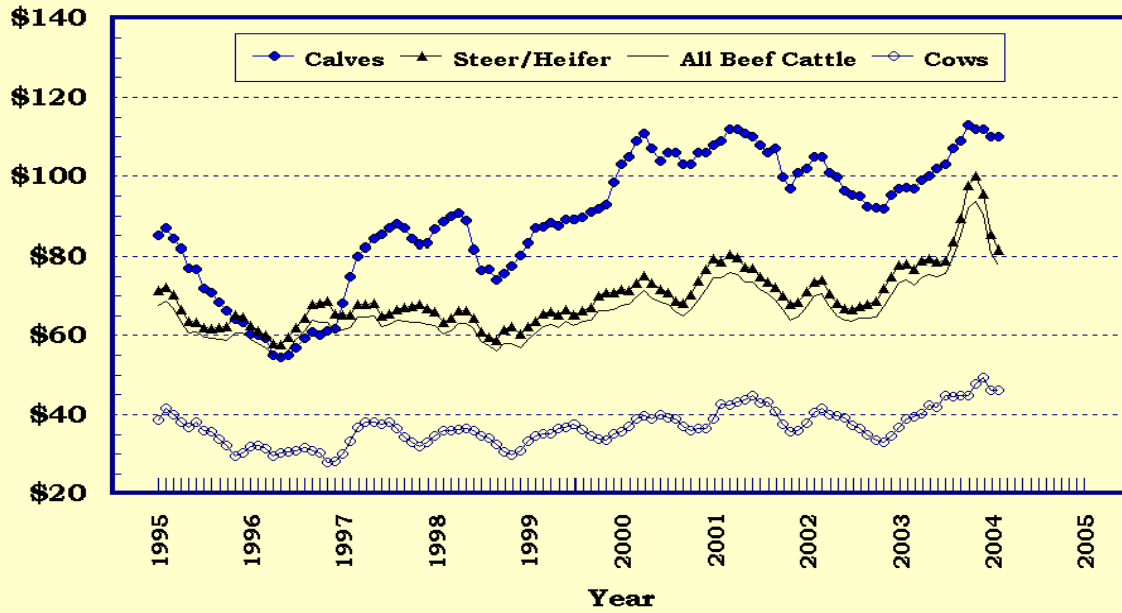
## Prices Received, Soybeans, US

Dollars per Bu



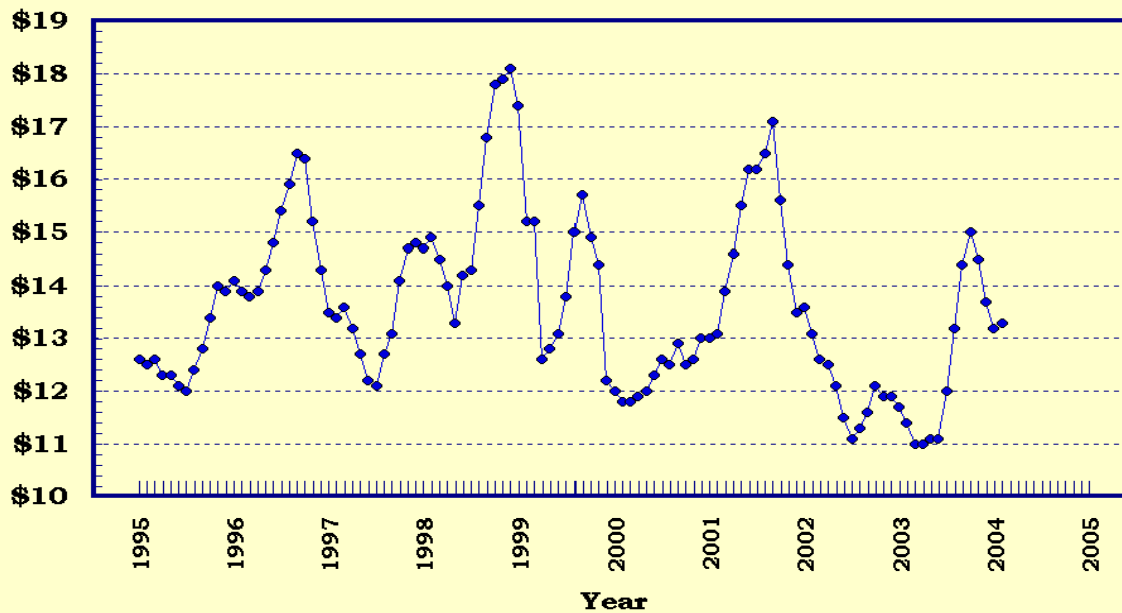
## Prices Received, Cattle, US

Dollars per Cwt



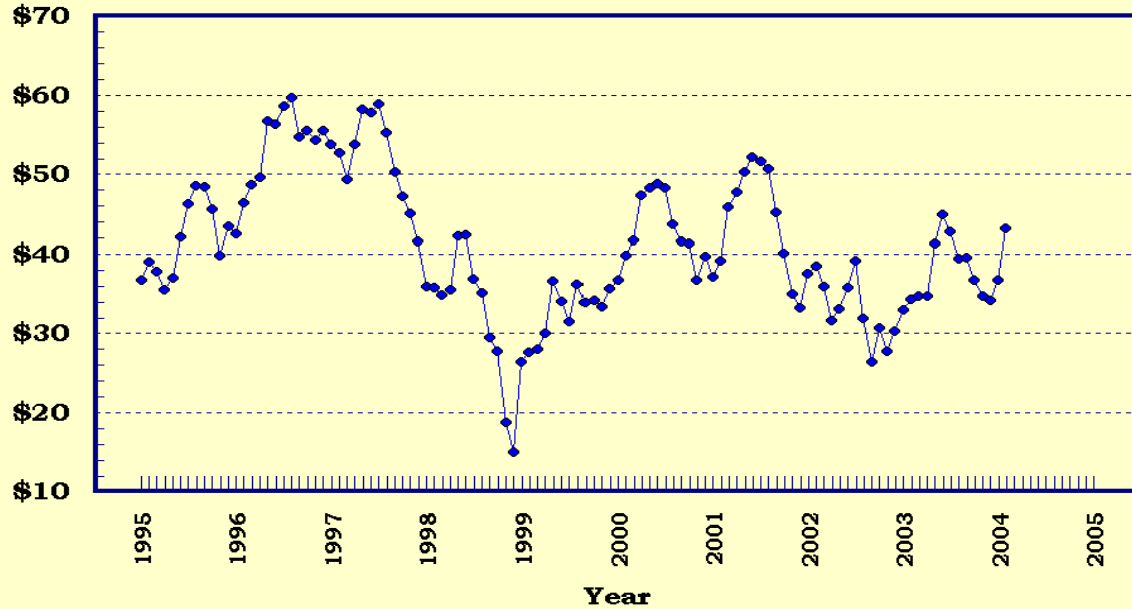
## Prices Received, Milk, US

Dollars per Cwt



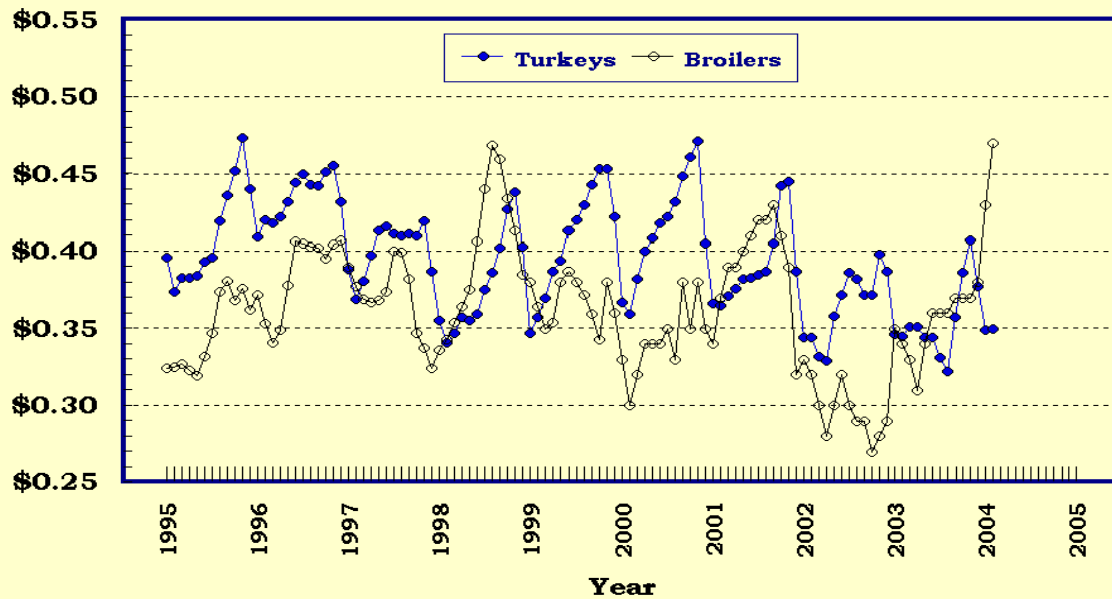
## Prices Received, Hogs, US

Dollars per Cwt



## Prices Received, Turkeys & Broilers, US

Dollars per Lb



**Wheat: Prices Received, by States, January and February 2004**

State	All Wheat		Winter Wheat		Durum Wheat		Oth Spring Wheat	
	Jan <sup>1</sup>	Feb <sup>2</sup>	Jan <sup>1</sup>	Feb <sup>2</sup>	Jan <sup>1</sup>	Feb <sup>2</sup>	Jan <sup>1</sup>	Feb <sup>2</sup>
	<i>Dollars per Bushel</i>	<i>Dollars per Bushel</i>	<i>Dollars per Bushel</i>	<i>Dollars per Bushel</i>	<i>Dollars per Bushel</i>	<i>Dollars per Bushel</i>	<i>Dollars per Bushel</i>	<i>Dollars per Bushel</i>
AR	( <sup>3</sup> )	( <sup>3</sup> )	( <sup>3</sup> )	( <sup>3</sup> )				
CA	( <sup>3</sup> )	( <sup>3</sup> )	( <sup>3</sup> )	( <sup>3</sup> )	( <sup>4</sup> )	( <sup>4</sup> )		
CO	3.68	3.54	3.68	3.54			( <sup>3</sup> )	( <sup>4</sup> )
ID	3.45	3.50	3.38	3.40			3.59	3.70
IL	3.68	3.70	3.68	3.70				
IN	3.91	3.85	3.91	3.85				
KS	3.67	3.58	3.67	3.58				
MI	3.58	3.60	3.58	3.60				
MN	3.75	3.77	( <sup>4</sup> )	( <sup>4</sup> )			3.75	3.77
MO	3.59	3.60	3.59	3.60				
MT	3.72	3.82	3.54	3.60	3.98	4.00	3.80	3.96
NE	3.58	3.53	3.58	3.53				
ND	3.63	3.70	3.27	3.20	3.96	4.05	3.59	3.65
OH	3.70	3.62	3.70	3.62				
OK	3.80	3.64	3.80	3.64				
OR	3.72	3.77	3.70	3.75			3.88	3.90
SD	3.70	3.74	3.63	3.50			3.72	3.82
TX	3.65	3.55	3.65	3.55				
WA	3.82	3.83	3.79	3.80			3.94	3.94
US	3.68	3.68	3.66	3.60	3.97	4.03	3.66	3.75

<sup>1</sup> Entire month.

<sup>2</sup> Mid-month.

<sup>3</sup> Price not published to avoid disclosure of individual firms.

<sup>4</sup> Insufficient sales to establish a price.

**Prices Received for Selected Agricultural Commodities, by Months,  
United States, 2003 and 2004 <sup>1</sup>**

Month	All Wheat		Corn		Soybeans		Beef Cattle <sup>2</sup>		All Hogs	
	2003	2004	2003	2004	2003	2004	2003	2004	2003	2004
	<i>Dollars per Bushel</i>	<i>Dollars per Bushel</i>	<i>Dollars per Bushel</i>	<i>Dollars per Bushel</i>	<i>Dollars per Bushel</i>	<i>Dollars per Bushel</i>	<i>Dollars per Cwt</i>	<i>Dollars per Cwt</i>	<i>Dollars per Cwt</i>	<i>Dollars per Cwt</i>
Jan	3.89	3.68	2.33	2.39	5.51	7.34	72.90	80.90	32.90	36.80
Feb	3.70	3.68	2.34	2.55	5.55	7.99	73.90	77.80	34.30	43.20
Mar	3.55		2.33		5.59		72.60		34.70	
Apr	3.37		2.34		5.82		74.50		34.80	
May	3.33		2.38		6.07		75.50		41.30	
Jun	3.08		2.34		6.09		74.90		45.00	
Jul	2.95		2.17		5.82		75.80		42.70	
Aug	3.34		2.15		5.68		79.30		39.60	
Sep	3.39		2.20		6.06		84.90		39.70	
Oct	3.45		2.12		6.61		91.50		36.70	
Nov	3.59		2.20		7.05		93.40		34.70	
Dec	3.69		2.32		7.17		90.40		34.20	

<sup>1</sup> Current month prices are mid-month; prices for previous months are for the entire month.

<sup>2</sup> Cows, steers and heifers.

**Grains: Prices Received, by States, January and February 2004**

Month	All Barley <sup>1</sup>		Corn		Oats		Soybeans		Sorghum Grain	
	Jan <sup>2</sup>	Feb <sup>3</sup>	Jan <sup>2</sup>	Feb <sup>3</sup>	Jan <sup>2</sup>	Feb <sup>3</sup>	Jan <sup>2</sup>	Feb <sup>3</sup>	Jan <sup>2</sup>	Feb <sup>3</sup>
	<i>Dollars per Bushel</i>	<i>Dollars per Bushel</i>	<i>Dollars per Bushel</i>	<i>Dollars per Bushel</i>	<i>Dollars per Bushel</i>	<i>Dollars per Bushel</i>	<i>Dollars per Bushel</i>	<i>Dollars per Bushel</i>	<i>Dollars per Cwt</i>	<i>Dollars per Cwt</i>
AL							7.37	8.11	( <sup>4</sup> )	( <sup>4</sup> )
AR										
CA	( <sup>4</sup> )	( <sup>5</sup> )								
CO	3.03	3.03	2.51	2.72						
ID	2.95	3.05								
IL			2.37	2.50	( <sup>4</sup> )	( <sup>4</sup> )	7.29	7.80	4.76	4.90
IN			2.50	2.70			7.38	8.33		
IA			2.33	2.55	1.62	1.55	7.61	8.00		
KS			2.63	2.78			7.80	7.99	4.34	4.57
KY			2.46	2.80			7.19	8.35		
LA							7.46	8.21		
MI			2.35	2.50	1.88	2.00	7.25	8.00		
MN	( <sup>4</sup> )	( <sup>4</sup> )	2.28	2.42	1.47	1.44	7.53	8.00		
MS							6.88	8.09		
MO			2.47	2.60			7.48	7.90	4.49	4.55
MT	2.52	2.55			( <sup>4</sup> )	( <sup>5</sup> )				
NE			2.38	2.50	1.87	1.40	7.26	7.70	4.33	4.50
NC			2.89	3.07			7.37	7.93		
ND	2.55	2.50	2.18	2.40	1.34	1.30	6.75	7.80		
OH			2.39	2.51	1.67	1.70	7.28	8.20		
OK									4.35	4.59
OR	2.43	2.55			( <sup>4</sup> )	( <sup>4</sup> )				
PA			2.95	3.10	1.98	2.04				
SD	( <sup>4</sup> )	( <sup>5</sup> )	2.29	2.56	1.52	1.55	7.36	7.97		
TN			2.44	2.85			7.30	8.30		
TX			2.79	2.99	( <sup>5</sup> )	( <sup>5</sup> )			4.36	4.60
UT	2.39	2.61								
WA	2.55	2.56								
WI			2.31	2.45	1.64	1.50	7.16	7.80		
WY	3.21	3.02								
US	2.71	2.62	2.39	2.55	1.46	1.51	7.34	7.99	4.36	4.58

<sup>1</sup> The Three-State (MN, ND and SD) Feed Barley price for February 2004 is \$1.90.

<sup>2</sup> Entire month.

<sup>3</sup> Mid-month.

<sup>4</sup> Price not published to avoid disclosure of individual firms.

<sup>5</sup> Insufficient sales to establish a price.

**Malting and Feed Barley: Prices Received Selected States, January and February 2004**

State	Malting Barley		Feed Barley	
	Jan <sup>1</sup>	Feb <sup>2</sup>	Jan <sup>1</sup>	Feb <sup>2</sup>
	<i>Dollars per Bushel</i>	<i>Dollars per Bushel</i>	<i>Dollars per Bushel</i>	<i>Dollars per Bushel</i>
ID	3.26	3.30	2.42	2.45
MN	( <sup>3</sup> )	( <sup>3</sup> )	1.97	1.99
MT	3.40	( <sup>3</sup> )	2.03	2.07
ND	2.77	2.70	1.91	1.90
SD	( <sup>4</sup> )	( <sup>4</sup> )	1.74	( <sup>4</sup> )
WY	( <sup>3</sup> )	( <sup>3</sup> )	2.10	2.15

<sup>1</sup> Entire month.

<sup>2</sup> Mid-month.

<sup>3</sup> Price not published to avoid disclosure of individual firms.

<sup>4</sup> Insufficient sales to establish a price.

**Field Crops: Prices Received, by States, January and February 2004**

State	Dry Edible Beans		All Sunflowers		Flaxseed		Tobacco		Peanuts <sup>4</sup>	
	Jan <sup>1</sup>	Feb <sup>2</sup>	Jan <sup>1</sup>	Feb <sup>2</sup>	Jan <sup>1</sup>	Feb <sup>2</sup>	Jan <sup>1</sup>	Feb <sup>3</sup>	Jan <sup>1</sup>	Feb <sup>3</sup>
	<i>Dollars per Cwt</i>	<i>Dollars per Cwt</i>	<i>Dollars per Cwt</i>	<i>Dollars per Cwt</i>	<i>Dollars per Bushel</i>	<i>Dollars per Bushel</i>	<i>Dollars per Pound</i>	<i>Dollars per Pound</i>	<i>Dollars per Pound</i>	<i>Dollars per Pound</i>
AL									0.201	( <sup>5</sup> )
CA	35.00	37.00								
CO	18.20	16.70								
FL									( <sup>5</sup> )	( <sup>5</sup> )
GA									0.203	( <sup>6</sup> )
ID	17.60	18.50								
IN							1.940	1.900		
KS			( <sup>5</sup> )	( <sup>5</sup> )						
KY							1.970	1.925		
MD										
MI	18.80	19.50								
MN	20.10	( <sup>5</sup> )	13.00	( <sup>5</sup> )						
MO										
NE	15.50	15.70								
NC							1.915	( <sup>6</sup> )	0.261	0.241
ND	15.30	15.20	12.10	12.70	6.15	6.20				
OH							1.905	1.835		
OK										
SC										
SD			11.80	11.90	( <sup>5</sup> )	( <sup>6</sup> )				
TN							1.950	1.900		
TX									( <sup>5</sup> )	( <sup>5</sup> )
VA							1.930	( <sup>6</sup> )	( <sup>5</sup> )	( <sup>5</sup> )
WV										
US	17.00	19.60	12.10	12.40	6.09	6.20	1.965	1.920	0.207	0.213

<sup>1</sup> Entire month.

<sup>2</sup> Mid-month.

<sup>3</sup> Based on sales through first half of month.

<sup>4</sup> In-Shell.

<sup>5</sup> Price not published to avoid disclosure of individual firms.

<sup>6</sup> Insufficient sales to establish a price.

**Tobacco: Prices Received, by Area and Type, February 2004, with Comparisons**

Class by Type	Type	Feb 2003	Jan 2004	Feb 2004 <sup>1</sup>
		<i>Dollars per Pound</i>	<i>Dollars per Pound</i>	<i>Dollars per Pound</i>
Fire-cured				
VA Belt	21	( <sup>2</sup> )	1.140	( <sup>2</sup> )
Eastern District	22	2.455	1.850	1.955
Western District	23	2.100	2.075	1.930
Total Fire-cured	21-23	2.410	1.970	1.950
Light Air-cured				
Burley	31	1.920	1.975	1.945
Total Light Air-cured	31-32	1.920	1.975	1.945
Dark Air-cured				
One Sucker Belt	35	1.530	1.185	1.215
Green River Belt	36	1.495	1.725	1.100
Sun-cured Belt	37	( <sup>2</sup> )	0.870	( <sup>2</sup> )
Total Dark Air-cured	35-37	1.520	1.565	1.155
US	11-37	2.065	1.965	1.920

<sup>1</sup> Based on sales during the first half of the month.

<sup>2</sup> Insufficient sales to establish a price.



**Field Crops and Apples: Prices Received, by States, January and February 2004**

State	Cotton, Upland		February				Apples Fresh Use <sup>1 4</sup> <i>Dol/Lb</i>
	Jan <sup>1</sup>	Feb <sup>2</sup>	Cotton- seed <sup>5</sup> <i>Dollars per Ton</i>	Hay, Baled <sup>3</sup>			
				All <i>Dollars per Ton</i>	Alfalfa <i>Dollars per Ton</i>	Other <i>Dollars per Ton</i>	
	<i>Dollars per Pound</i>	<i>Dollars per Pound</i>	<i>Dollars per Ton</i>	<i>Dollars per Ton</i>	<i>Dollars per Ton</i>	<i>Dollars per Ton</i>	
AL	0.616	0.609	( <sup>7</sup> )				
AZ	0.647	0.619	( <sup>6</sup> )	85.00	85.00	80.00	
AR	0.633	0.611	( <sup>7</sup> )				
CA	0.696	0.686	( <sup>6</sup> )	90.00	92.00	81.00	0.183
CO				83.00	84.00	70.00	
GA	0.631	0.614	104.00				
ID				83.00	84.00	60.00	
IL				90.00	95.00	78.00	
IA				81.00	83.00	61.00	
KS				65.00	76.00	51.00	
KY				67.00	100.00	58.00	
LA	0.630	0.611	( <sup>7</sup> )				
MI				103.00	105.00	90.00	0.185
MN				68.00	70.00	51.00	
MS	0.618	0.615	( <sup>7</sup> )				
MO				67.00	108.00	55.00	
MT				73.00	75.00	66.00	
NE				52.00	53.00	47.00	
NV				94.00	90.00	130.00	
NM				138.00	141.00	116.00	
NY				120.00	130.00	100.00	0.217
NC	0.668	0.606	( <sup>7</sup> )				
ND				54.00	59.00	43.00	
OH				91.00	133.00	53.00	0.270
OK				80.00	101.00	52.00	
OR				92.00	91.00	95.00	
PA				127.00	150.00	121.00	0.196
SD				61.00	64.00	48.00	
TN	0.623	0.611	( <sup>7</sup> )				
TX	0.597	0.585	138.00	69.00	150.00	63.00	
UT				77.00	78.00	66.00	
VA							0.240
WA				90.00	83.00	115.00	0.331
WI				98.00	105.00	55.00	
WY				71.00	72.00	66.00	
US	0.625	0.616	140.00	79.90	84.70	69.90	0.294

<sup>1</sup> Entire month.

<sup>2</sup> Based on sales during the first half of the month.

<sup>3</sup> Mid-month.

<sup>4</sup> Equivalent packinghouse-door returns for CA, NY, and WA. Price at point of first sale for other States.

<sup>5</sup> Marketing year August - February.

<sup>6</sup> Price not published to avoid disclosure of individual firms.

<sup>7</sup> Insufficient sales to establish a price.

**Upland Cotton and Rice: Prices Received and Marketings,  
United States, February 2004, with Comparisons**

Item	Unit	Dec 2003 <sup>1</sup>	Jan 2004 <sup>1</sup>	Feb 2004 <sup>2</sup>
Cotton, Upland				
Average Price	Dollars per Pound	0.641	0.625	0.616
Marketings <sup>3</sup>	1,000 Bales	1,938	1,546	NA
Rice				
Average Price	Dollars per Cwt	7.57	8.19	7.55
Marketings <sup>4</sup>	1,000 Cwt	16,424	19,884	NA

<sup>1</sup> Entire month.

<sup>2</sup> Based on purchases for the first half of the month.

<sup>3</sup> Expanded data from sample of about 65 percent of buyers.

<sup>4</sup> Purchases by private firms and rice (rough equivalent) shipped by cooperatives.

**Citrus Fruit: Prices and Equivalent Returns, by Utilization,  
by State and United States, February 2004**

Commodity, State and Type	F.O.B. Packed Fresh	Equivalent Returns <sup>1</sup>					
		Packinghouse-door			On-tree		
		All	Fresh	Process	All	Fresh	Process
	<i>Dollars per Box</i>	<i>Dollars per Box</i>	<i>Dollars per Box</i>	<i>Dollars per Box</i>	<i>Dollars per Box</i>	<i>Dollars per Box</i>	<i>Dollars per Box</i>
Grapefruit							
AZ	15.80	9.29	9.29		6.97	6.97	
CA	17.90	10.59	11.39	-0.27	8.27	9.07	-2.59
FL	15.30	4.63	7.55	2.18	2.19	5.29	-0.40
White	15.90	4.11	7.90	2.10	1.74	5.60	-0.30
Colored	15.10	4.98	7.40	2.25	2.49	5.15	-0.50
TX	14.30	3.15	4.31	0.80	2.00	3.14	-0.32
US	15.30	4.55	7.17	2.08	2.25	5.07	-0.40
Lemons							
AZ	23.10	7.34	13.00	0.20	2.99	8.65	-4.15
CA	23.80	7.02	13.70	0.20	2.67	9.35	-4.15
US	23.70	7.08	13.56	0.20	2.73	9.21	-4.15
Oranges							
AZ							
Navel and Misc	15.10	5.79	7.72	-0.18	3.33	5.26	-2.64
CA							
Navel and Misc	18.70	10.65	11.32	0.38	8.19	8.86	-2.08
FL							
Early and Mids	12.50	4.00	5.01	3.98	1.90	2.83	1.88
Valencia	12.00	3.91	4.50	3.90	1.81	2.35	1.80
Valencia	13.00	5.50	5.50	5.50	3.38	3.30	3.40
TX							
Early and Mids	12.60	2.53	2.51	2.55	1.20	1.16	1.25
US	17.80	5.08	10.34	3.92	2.93	7.95	1.82
Tangerines							
AZ	22.10	11.44	15.04	0.70	8.95	12.55	-1.79
CA	24.80	16.72	17.74	0.32	14.23	15.25	-2.17
FL	22.50	10.03	13.00	3.50	6.32	9.60	-0.90
US	23.10	11.92	14.78	2.84	8.70	11.80	-1.13
Temples							
FL	12.00	2.80	3.60	2.45	0.43	1.30	0.05

<sup>1</sup> Net lbs. per box: Grapefruit - AZ & CA-67, FL-85, TX-80; Lemons - 76; Oranges - AZ & CA-75, FL-90, TX-85; Tangelos - 90; Tangerines - AZ, CA-75, FL-95.

**Potatoes: Prices Received, by States, January and February 2004**

State	Jan	Feb	State	Jan	Feb
	<i>Dollars per Cwt</i>	<i>Dollars per Cwt</i>		<i>Dollars per Cwt</i>	<i>Dollars per Cwt</i>
AL			NC		
AZ			ND - All <sup>1</sup>	5.80	4.70
CA - All	17.00	16.60	- Fresh <sup>2</sup>	5.40	NA
- Winter	19.30	19.10	- Processing	5.90	NA
- Spring			OH	6.40	7.15
- Summer			OR	5.30	5.40
- Fall	9.65	9.65	PA	7.75	8.05
CO - All <sup>1</sup>	5.05	5.15	TX		
- Fresh <sup>2</sup>	4.80	NA	VA		
FL			WA - All	5.90	5.65
ID - All <sup>1</sup>	4.05	4.15	- Processing	5.15	NA
- Fresh <sup>2</sup>	3.70	NA	WI - All <sup>1</sup>	5.60	5.75
- Processing	4.30	NA	- Fresh <sup>2</sup>	4.10	NA
ME	5.85	5.90	- Processing	6.40	NA
MI	7.10	7.40			
MN	5.15	5.45	US - All <sup>1</sup>	5.75	5.62
NY	8.90	8.90	- Fresh <sup>2</sup>	6.20	NA
			- Processing	5.36	NA

<sup>1</sup> Average price of potatoes sold for all uses, including table stocks, processing, seed and livestock feed.

<sup>2</sup> Fresh market prices only, includes table stock prices.

**Cattle: Prices Received, by States, January and February 2004**

State	Cows <sup>1</sup>		Steers & Heifers		Beef Cattle <sup>4</sup>		Calves	
	Jan <sup>2</sup>	Feb <sup>3</sup>	Jan <sup>2</sup>	Feb <sup>3</sup>	Jan <sup>2</sup>	Feb <sup>3</sup>	Jan <sup>2</sup>	Feb <sup>3</sup>
	<i>Dollars per Cwt</i>	<i>Dollars per Cwt</i>	<i>Dollars per Cwt</i>	<i>Dollars per Cwt</i>	<i>Dollars per Cwt</i>	<i>Dollars per Cwt</i>	<i>Dollars per Cwt</i>	<i>Dollars per Cwt</i>
AZ	46.30	44.50	91.00	90.00	90.60	89.50	109.00	110.00
AR	41.50	42.40	87.10	88.20	73.40	74.50	104.00	99.60
CA	42.00	40.00	82.00	79.00	62.40	59.90	109.00	102.00
CO	45.40	47.10	94.10	89.60	93.60	89.20	114.00	114.00
FL	46.00	44.60	84.60	86.70	54.50	53.90	106.00	110.00
GA	48.30	47.20	82.20	81.80	59.50	59.70	103.00	105.00
ID	41.90	40.30	81.60	80.10	70.90	71.30	105.00	105.00
IL	44.00	43.00	86.00	78.00	85.20	77.30	95.00	93.00
IA	44.70	46.40	90.60	80.70	89.70	80.00	106.00	108.00
KS	46.40	48.30	81.70	76.80	80.30	75.90	116.00	114.00
KY	44.00	45.00	84.00	82.00	74.40	73.10	99.00	98.00
LA	44.50	46.00	87.00	89.00	57.30	58.00	102.00	106.00
MI	45.00	47.00	73.00	72.00	64.60	64.50	90.00	95.00
MN	48.70	49.50	80.90	79.50	73.50	72.60	105.00	95.00
MO	44.30	45.50	92.30	92.30	77.90	76.40	109.00	108.00
MT	45.30	46.80	94.20	93.50	80.00	83.70	117.00	111.00
NE	47.60	48.60	86.10	81.20	84.90	80.20	120.00	115.00
NM	49.10	47.00	92.00	87.50	73.60	71.30	99.70	101.00
ND	49.90	50.00	90.60	90.00	86.90	84.00	113.00	111.00
OH	39.90	40.00	79.40	75.00	75.50	71.50	87.10	83.00
OK	45.90	47.50	87.90	84.60	82.00	79.40	107.00	106.00
OR	44.50	44.40	86.90	84.00	74.20	72.10	99.00	98.00
PA	46.80	47.20	79.90	76.20	71.30	68.70	110.00	115.00
SD	44.60	47.30	92.60	85.70	84.40	79.20	114.00	111.00
TN	43.00	42.00	87.00	85.00	69.40	67.80	101.00	98.00
TX	45.40	45.90	87.00	86.70	83.30	83.80	106.00	111.00
VA	41.50	42.00	82.20	81.20	64.70	66.70	98.00	95.60
WI	47.30	47.80	79.80	75.50	61.00	59.40	130.00	126.00
WY	47.10	47.00	92.50	92.00	85.20	85.30	118.00	115.00
US	46.10	46.20	85.40	81.60	80.90	77.80	110.00	110.00

<sup>1</sup> Beef cows and cull dairy cows sold for slaughter.

<sup>2</sup> Entire month.

<sup>3</sup> Mid-month.

<sup>4</sup> "Cows" and "steers and heifers" combined.

**Hogs: Prices Received, by States, January and February 2004**

State	Sows		Barrows and Gilts		All Hogs	
	Jan <sup>1</sup>	Feb <sup>2</sup>	Jan <sup>1</sup>	Feb <sup>2</sup>	Jan <sup>1</sup>	Feb <sup>2</sup>
	<i>Dollars per Cwt</i>	<i>Dollars per Cwt</i>	<i>Dollars per Cwt</i>	<i>Dollars per Cwt</i>	<i>Dollars per Cwt</i>	<i>Dollars per Cwt</i>
AR	28.10	34.60	36.30	40.50	35.50	39.90
IL	27.00	32.00	41.00	48.00	39.90	46.70
IN	31.60	37.30	37.90	44.50	37.30	43.80
IA	29.60	37.10	34.50	42.00	34.40	41.80
KS	29.30	33.80	37.20	41.70	36.20	40.70
MI	29.00	32.00	34.50	40.00	34.10	39.40
MN	29.10	35.00	37.30	45.00	37.20	44.90
MO	28.00	31.60	34.90	41.40	34.40	40.60
NE	28.50	34.90	39.30	43.70	39.10	43.50
NC	28.90	35.60	39.40	46.00	39.30	45.90
OH	30.80	35.00	38.60	43.00	38.10	42.50
OK	27.10	32.80	34.80	39.30	33.60	38.30
PA	28.50	32.00	37.30	41.30	36.00	39.90
SD	26.50	35.00	39.80	45.00	38.10	43.70
TX	25.20	29.20	37.60	41.60	35.20	39.70
WI	26.60	34.10	35.30	43.30	34.20	42.10
US	28.40	34.20	37.20	43.70	36.80	43.20

<sup>1</sup> Entire month.

<sup>2</sup> Mid-month.

**Sheep and Poultry: Prices Received, by States, January and February 2004**

State	January		February
	Sheep <sup>1</sup>	Lambs <sup>1</sup>	Eggs <sup>2 3</sup>
	<i>Dollars per Cwt</i>	<i>Dollars per Cwt</i>	<i>Dollars per Dozen</i>
AL			0.780
AR			0.660
CA	36.00	89.00	0.830
CO	35.10	103.00	
CT			0.840
FL			0.810
GA			0.783
ID	37.00	91.00	
IN			0.700
IA	45.20	90.20	0.681
KS	37.00	96.00	
ME			0.890
MI			0.780
MN	34.30	90.60	0.740
MS			0.760
MO			0.670
MT	43.90	114.00	
NE	43.50	99.00	
NY			0.810
NC			0.760
ND	43.00	102.00	
OH	46.60	96.20	0.693
OR	35.50	91.00	
PA			0.780
SC			0.750
SD	44.90	115.00	
TX	48.40	120.00	0.740
UT	34.00	102.00	
WA			0.890
WY	45.00	117.00	
US	43.80	104.00	0.745

<sup>1</sup> Entire month.

<sup>2</sup> Mid-month.

<sup>3</sup> Market (table) eggs.

**Milk and Milk Cows: Prices Received, by States, January and February 2004**

State	January <sup>1</sup>						February		
	Fluid Grade Milk <sup>2</sup>		Manufacturing Grade Milk		All Milk <sup>3</sup>		All Milk <sup>3 4</sup>		Milk Cows <sup>5</sup>
	Price	Fat Test	Price	Fat Test	Price	Fat Test	Price	Fat Test	
	<i>Dol/Cwt</i>	<i>Percent</i>	<i>Dol/Cwt</i>	<i>Percent</i>	<i>Dol/Cwt</i>	<i>Percent</i>	<i>Dol/Cwt</i>	<i>Percent</i>	<i>Dol/Head</i>
AZ	12.60	3.67			12.60	3.67	12.90	3.65	
CA	11.80	3.76	11.90	4.06	11.80	3.76	12.20	3.72	
FL	16.10	3.67			16.10	3.67	16.00	3.63	
ID	12.10	3.74	12.70	3.87	12.10	3.74	12.10	3.73	
IL	13.30	3.77	13.00	3.62	13.30	3.77	13.30	3.80	
IN	12.60	3.85	11.70	4.00	12.60	3.86	12.80	3.84	
IA	13.40	3.75	12.30	3.91	13.40	3.75	13.40	3.75	
KY	14.20	3.73			14.20	3.73	14.30	3.65	
MI	13.30	3.74	11.70	3.75	13.30	3.74	13.40	3.72	
MN	13.50	3.83	11.70	3.84	13.40	3.83	13.40	3.80	
MO	13.40	3.75	12.40	4.00	13.40	3.76	13.40	3.72	
NM	12.60	3.66			12.60	3.66	12.80	3.66	
NY	13.70	3.76			13.70	3.76	13.70	3.75	
OH	13.40	3.79	13.00	3.95	13.40	3.80	13.50	3.76	
PA	14.90	3.75	12.70	3.95	14.90	3.75	15.00	3.80	
TX	13.80	3.77			13.80	3.77	14.00	3.72	
VT	13.90	3.76			13.90	3.76	13.90	3.75	
VA	14.80	3.69			14.80	3.69	14.90	3.67	
WA	13.20	3.82			13.20	3.82	13.30	3.81	
WI	13.70	3.83	12.50	3.94	13.70	3.83	14.00	3.81	
US	13.20	3.77	12.30	3.94	13.20	3.77	13.30	3.75	

<sup>1</sup> Entire month.

<sup>2</sup> Including milk diverted to manufacturing.

<sup>3</sup> Before deductions for hauling. Includes quality, quantity, and other premiums. Excludes hauling subsidies.

<sup>4</sup> Preliminary.

<sup>5</sup> Animals sold for dairy herd replacement only. Prices published January, April, July and October.

**Parity Price Equivalent for Manufacturing Milk <sup>1</sup>: United States,  
January and February 2004, with Comparisons**

Item	Unit	Feb 2003	Jan 2004	Feb 2004
Parity Equivalent	Dollars per Cwt	30.19	30.83	30.83
Average Price F.O.B <sup>2</sup>	Dollars per Cwt	10.30	12.30	12.60
Average Fat Test of Milk <sup>2</sup>	Percent	3.91	3.94	3.89

<sup>1</sup> The parity price equivalent during 2004 is 90.4 percent of the parity price of all milk sold to plants, compared with 90.4 percent in 2003. For additional details, see January 2004 issue of "Agricultural Prices".

<sup>2</sup> Preliminary for February 2004.

**United States Parity Prices for Farm Products and Average Prices Received as  
Percent of Parity Prices Based on Data for February 2004, with Comparisons<sup>1</sup>**

Commodity and Unit	Adjusted Base Prices	Parity Prices Based on Data for			Prices as Percent of Parity		
		Feb 2003	Jan 2004	Feb 2004	Feb 2003	Jan 2004	Feb 2004
	<i>Dollars</i>	<i>Dollars</i>	<i>Dollars</i>	<i>Dollars</i>	<i>Percent</i>	<i>Percent</i>	<i>Percent</i>
<b>Basic Commodities</b>							
All Wheat, Bu	0.564	9.63	9.75	9.76	38	38	38
Rice, Cwt	1.63	26.40	28.20	28.20	16	29	27
Corn, Bu	0.379	6.59	6.55	6.56	36	36	39
Cotton, Lb							
American Upland	0.113	1.69	1.95	1.95	28	32	32
Extra Long Staple	0.144	2.37	2.49	2.49			
Peanuts, Lb	0.0370	0.657	0.640	0.640	30	32	33
Tobacco, By Type, Lb							
Flue-Cured 11-14	0.259	4.33	4.48	4.48			
VA Fire-Cured, 21	0.257	4.38	4.44	4.45		26	
KY-TN Fire-Cured, 22-23	0.322	5.42	5.57	5.57	44	35	35
Burley, 31	0.277	4.66	4.79	4.79	41	41	41
Maryland, 32	0.215	3.69	3.72	3.72			
Dark Air-Cured, 35-36	0.282	4.67	4.88	4.88	33	32	24
Sun-Cured, 37	0.246	4.11	4.25	4.26		20	
PA Seedleaf, 41	0.206	3.37	3.56	3.56			
Cigar Filler & Binder, 42-44, 54-55	0.225	3.74	3.89	3.89			
Puerto Rican Filler, 46	0.162	2.76	2.80	2.80			
Cigar Binder, 51-52	0.736	12.20	12.70	12.70			
<b>Designated Nonbasic</b>							
All Milk, Sold to Plants, Per Cwt <sup>2</sup>	1.97	33.40	34.10	34.10	36	40	41
Honey, Extracted, Lb <sup>3</sup>	0.1050	1.59	1.82	1.82			
<b>Wool and Mohair</b>							
Wool, Lb	0.0880	1.54	1.52	1.52	34		47
Mohair, Lb	0.334	5.50	5.77	5.78			
<b>Other Nonbasic</b>							
Barley, Bu	0.376	6.52	6.50	6.50	44	42	40
Cottonseed, Ton	15.80	264.00	273.00	273.00	42	47	51
Dry Edible Beans, Cwt	2.92	50.30	50.50	50.50	38	34	39
Flaxseed, Bu	0.728	11.90	12.60	12.60	53	48	49
Oats, Bu	0.221	4.11	3.82	3.82	51	38	40
Potatoes, Cwt	0.854	13.80	14.80	14.80	46	39	38
Rye, Bu	0.353	5.81	6.10	6.11			
Sorghum Grain, Cwt	0.616	11.10	10.70	10.70	37	41	43
Soybeans Bu	0.892	14.40	15.40	15.40	39	48	52
Sweetpotatoes, Cwt	2.25	37.10	38.90	38.90			
Apples, Fresh, Lb <sup>4</sup>	0.0296	0.486	0.512	0.512	51	59	57
Citrus (equiv on-tree), Box							
Grapefruit	0.387	6.57	6.69	6.70	33	33	34
Lemons	1.10	18.60	19.00	19.00	4	17	14
Oranges	0.618	9.65	10.70	10.70	33	22	27
Tangerines	1.42	24.70	24.60	24.60	37	53	35
Temples (FL)	0.451	7.84	7.80	7.80	30	27	6
Beef Cattle, Cwt	9.55	160.00	165.00	165.00	46	49	47
Calves, Cwt	12.80	215.00	221.00	221.00	45	50	50
Hogs, Cwt	5.91	102.00	102.00	102.00	34	36	43
Lambs, Cwt	11.30	185.00	195.00	195.00	50	53	
Sheep, Cwt	4.70	78.70	81.30	81.30	56	54	
Eggs, Doz <sup>2</sup>	0.0949	1.58	1.64	1.64	36	53	51
Turkeys, Live, Lb	0.0574	0.980	0.992	0.993	35	35	35

--continued



**Parity Prices Based on Data for February 2004, United States <sup>1</sup> (continued)**

Other Nonbasic Commodities	Adj Base Prices	Parity Prices	Other Nonbasic Commodities	Adj Base Prices	Parity Prices
	<i>Dollars</i>	<i>Dollars</i>		<i>Dollars</i>	<i>Dollars</i>
Field Crops and Misc Commodities			Noncitrus Fruit		
Hops, Lb	0.256	4.43	Peaches, cont.		
Spearmint Oil, Lb	1.53	26.50	Processing <sup>5</sup>		
Tobacco, Lb			Excl Dried		
Type 61	2.51	43.40	Clingstone, CA, Ton	32.80	567.00
Noncitrus Fruit			Pears, Ton		
Apples, Ton <sup>6</sup>			Fresh <sup>4</sup>	51.60	893.00
Processing	17.90	310.00	Dried, CA <sup>6</sup>	166.00	2,870.00
Apricots, Ton			Plums, CA, Ton		
Fresh <sup>7</sup>	99.70	1,720.00	Fresh, Equiv on-Tree	57.40	993.00
Dried, CA	273.00	4,720.00	Prunes, Dried, CA, Ton <sup>6</sup>	129.00	2,230.00
Avocados, Ton <sup>7</sup>	238.00	4,120.00	Prunes and Plums, Excl CA, Ton		
Cherries Bbl			Fresh <sup>9</sup>	56.90	984.00
Sweet, Ton	184.00	3,180.00	Processing <sup>6</sup>		
Tart, Lb	0.0267	0.462	Excl Dried	26.30	455.00
Cranberry, Bbl <sup>5</sup>	5.92	102.00	Tree Nuts <sup>10</sup>		
Dates, CA, Ton <sup>7</sup>	170.00	2,940.00	Almonds, Lb	0.204	3.53
Grapes, Ton			Hazelnuts, Ton	130.00	2,250.00
Raisin Variety	121.00	2,090.00	Pistachio, Lb	0.159	2.75
Other Dried	44.20	765.00	Walnuts, Ton	176.00	3,040.00
Kiwifruit, Ton	80.80	1,400.00	Vegetables, Cwt <sup>11</sup>		
Nectarines			Fresh		
Fresh, CA, Ton <sup>7</sup>	63.00	1,090.00	Carrots <sup>8</sup>	2.21	38.20
Olives, CA			Cauliflower <sup>8</sup>	4.55	78.70
canning, Ton <sup>5</sup>	95.50	1,650.00	Celery <sup>8</sup>	1.98	34.30
Papayas (HA)	0.0520	0.900	Honeydew Melons	2.79	48.30
Peaches			Lettuce	2.50	43.30
Fresh, Lb <sup>4</sup>	0.0408	0.706	Onions <sup>8</sup>	1.68	29.10
Dried, CA, Ton	92.50	1,600.00	Tomatoes	4.39	75.90

<sup>1</sup> Parity prices are computed under the provisions of Title III, Subtitle a, Section 301 (a) of the Agricultural Adjustment Act of 1938 as amended by the Agricultural Acts of 1948, 1949, and 1956. See January "Agricultural Prices" for details on adjusted base price and parity price computations.

<sup>2</sup> Seasonally adjusted price as percentage of parity price.

<sup>3</sup> Wholesale extracted. Adjusted base price derived from state annual averages prices weighted by production. For 1982 through 1985 the national averages are the support prices.

<sup>4</sup> Equivalent packinghouse-door returns for CA, NY (apples only), OR (except peaches), and WA. Price at point of first sale for other states.

<sup>5</sup> Equivalent returns for bulk fruit at first delivery point.

<sup>6</sup> Equivalent returns at processing plant door.

<sup>7</sup> Equivalent returns at packinghouse door.

<sup>8</sup> Includes some processing.

<sup>9</sup> Based on "as sold" prices for fresh fruit in all states.

<sup>10</sup> Prices in-shell basis except almonds which are shelled basis.

<sup>11</sup> F.O.B. shipping point prices.

## Marketing Seasons for Specified Commodities

**Apples (Fresh):** July 1 to June 30 for U.S.; June 1 to May 31 for Arkansas, California, Georgia, Illinois, Iowa, Indiana, Kansas, Kentucky, Michigan, Missouri, New Mexico, North Carolina, Ohio, South Carolina, Tennessee, Wisconsin; August 1 to July 31 for Oregon and Washington; July 1 - June 30 for Arizona, Colorado, Connecticut, Idaho, Maine, Maryland, Massachusetts, New Hampshire, New Jersey, New York, Pennsylvania, Rhode Island, Utah, Vermont, Virginia, West Virginia.

**Apricots:** May 25 to August 20 for fresh fruit in California, Utah, and Washington; June 15 to August 15 for processed fruit in California, Utah, and Washington; June 20 to August 20 for dried fruit in California.

**Dried Figs:** June 20 to October 31 for U.S. and California.

**Grapes (Concord):** September 10 to November 1 for New York and Pennsylvania.

**Grapes (Raisin):** September 1 to May 31 for California and US.

**Nectarines:** June 10 to August 31 for U. S. and California.

**Plums:** May 25 to September 30 for fresh fruit in California; June 1 to September 30 for processed fruit in California.

**Peaches (Fresh):** May 1 to October 31 for U.S.; May 20 to August 31 for Georgia and South Carolina; June 1 to September 30 for Alabama, Arkansas, California, Colorado, Illinois, Kentucky, Louisiana, Missouri, North Carolina, Ohio, Oklahoma, Tennessee, Texas, Utah, and Virginia; August 1 to September 30 for Connecticut, Massachusetts, Idaho, Michigan, and New York; July 1 to September 30 for Indiana, Maryland, New Jersey, Oregon, Pennsylvania, Washington, and West Virginia.

**Pears (Equivalent On-Tree):** July to June for U.S.; July 1 - April 30 for California; August 10 to May 31 for Oregon and Washington; July 1 to December 15 for Colorado, Connecticut, Michigan, New York, Pennsylvania, and Utah.

**Potatoes:** The marketing year extends over a 21 month period beginning in November preceding the specified crop year and extending into July the following year. November (previous year)-May for winter crop potatoes; April-August for spring crop potatoes; June-December for summer crop potatoes; July-July (following year) for fall potatoes.

**Cattle, Lambs, Mohair, Sheep, Turkeys, and Wool:** January 1 - December 31 for U.S. and all States.

**Potatoes: Marketing Year Average Prices Received,  
by States and United States, 2002 and 2003 <sup>1</sup>**

State	2002	2003 <sup>2</sup>	State	2002	2003 <sup>2</sup>
	<i>Dollars per Cwt</i>	<i>Dollars per Cwt</i>		<i>Dollars per Cwt</i>	<i>Dollars per Cwt</i>
AL	11.60	9.25	NV	4.55	4.25
AK	20.00	20.00	NJ	8.20	5.70
AZ	13.40	10.20	NM	6.55	4.35
CA - All	17.50	14.50	NY	11.80	9.50
Winter	24.00	26.70	NC	8.35	5.85
Spring	19.80	12.60	ND - All	6.25	5.20
Summer	19.10	14.30	Fresh	8.65	4.75
Fall	8.45	9.85	Processing	5.15	5.15
CO - All	6.40	4.85	OH	10.30	7.15
Fresh	6.90	4.80	OR	5.65	5.10
DE	10.00	9.50	PA	9.15	6.95
FL	14.00	13.80	RI	7.75	6.80
ID - All	5.00	4.40	SD	6.60	7.15
Fresh	5.10	4.20	TX	10.70	10.40
Processing	4.60	4.30	UT	10.00	8.40
IL	5.80	5.10	VA	12.70	8.40
IN	5.85	6.00	WA - All	5.55	5.05
KS	8.25	4.75	Processing	4.90	4.65
ME	7.05	6.25	WI - All	6.90	5.75
MD	9.30	8.80	Fresh	7.60	5.30
MA	7.30	5.60	Processing	6.05	5.75
MI	7.80	7.05			
MN	6.15	5.40	US - All	6.69	5.85
MO	6.50	5.75	Fresh	9.23	7.19
MT	8.25	8.00	Processing	5.23	5.06
NE	6.10	5.30			

<sup>1</sup> State Marketing Year Average Prices are computed by weighting state monthly prices by estimated sales for the month during the crop year. U.S. Marketing Year Average Price is computed by weighting state Marketing Year Average Prices by estimated sales for the crop year.

<sup>2</sup> Preliminary.

**Potatoes: Prices Received, Monthly by State and U.S., 2003 <sup>1</sup>**

State	Jan	Feb	Mar	Apr	May	Jun
	<i>Dollars per Cwt</i>	<i>Dollars per Cwt</i>	<i>Dollars per Cwt</i>	<i>Dollars per Cwt</i>	<i>Dollars per Cwt</i>	<i>Dollars per Cwt</i>
AL						10.10
AZ				12.30	9.15	9.20
CA - All	18.00	15.50	15.90	19.50	14.60	11.40
Winter	25.60	23.40	23.80	29.00		
Spring					16.20	11.80
Summer						
Fall	8.80	8.70	8.60	7.95	7.40	6.95
CO - All	7.00	6.60	6.80	6.10	5.10	4.15
Fresh	7.60	7.05	6.85	6.05	5.60	4.60
FL		27.50	23.50	13.90	12.10	11.10
ID - All	4.75	4.60	4.85	5.40	5.00	4.00
Fresh	5.20	4.60	4.10	4.70	3.60	3.30
Processing	4.50	4.60	4.40	4.50	4.00	4.30
ME	7.10	7.10	7.45	8.10	8.15	7.40
MI	7.75	8.10	8.70	9.10	9.30	
MN	5.70	5.30	5.80	6.30	5.00	4.40
NY	9.85	10.20	10.90	10.20		
NC						6.00
ND - All	6.60	6.15	5.95	6.95	6.90	6.10
Fresh	11.20	8.35	7.05	5.65	4.70	3.50
Processing	4.70	5.15	5.00	5.55	6.40	6.35
OH	8.15	8.65	8.30			
OR	6.15	5.60	6.85	7.25	6.70	5.40
PA	9.85	11.80	10.20	11.20	9.85	
TX					9.45	
VA						9.15
WA - All	6.30	6.15	6.10	6.15	5.55	5.25
Processing	5.75	5.60	5.60	5.60	5.60	5.50
WI - All	6.75	7.40	7.20	7.05	6.35	5.90
Fresh	6.25	7.30	6.40	5.70	5.40	5.80
Processing	7.30	6.75	6.95	7.00	6.45	6.00
US - All	6.41	6.33	6.87	6.94	6.96	6.68
Fresh	8.09	8.18	8.83	8.46	8.37	8.56
Processing	5.38	5.32	5.29	5.37	5.66	5.69

See footnote(s) at end of table.

--continued

**Potatoes: Prices Received, Monthly by State and U.S., 2003<sup>1</sup> (continued)**

State	Jul	Aug	Sep	Oct	Nov	Dec
	<i>Dollars per Cwt</i>	<i>Dollars per Cwt</i>	<i>Dollars per Cwt</i>	<i>Dollars per Cwt</i>	<i>Dollars per Cwt</i>	<i>Dollars per Cwt</i>
AL	8.50	8.10				
AZ	11.70					
CA - All	12.30	14.80	13.20	10.50	14.90	15.20
Winter					22.70	19.60
Spring	11.80					
Summer	15.80	14.80	13.20	11.90		
Fall	6.70			10.20	10.40	9.70
CO - All	5.05	3.40	4.70	5.00	5.05	4.75
Fresh	5.60	3.30	4.80	5.40	5.25	4.65
FL						
ID - All	3.70	4.80	4.30	4.20	4.30	4.10
Fresh	2.40	5.00	4.20	4.00	4.50	3.70
Processing	4.60	4.70	4.30	4.30	4.20	4.30
ME	7.15	6.15	5.25	5.45	5.90	5.75
MI	8.70	6.20	5.40	5.30	6.70	7.05
MN	4.55	5.90	4.90	5.00	4.95	5.15
NY		11.00	10.70	9.80	9.00	8.80
NC	5.65					
ND - All	6.00		5.30	5.00	5.00	5.25
Fresh			5.00	4.90	5.15	4.80
Processing	6.00		5.30	5.00	4.80	5.20
OH	10.80	7.30	7.40	6.55	7.30	6.35
OR	4.50	4.85	4.45	4.50	5.25	5.45
PA		6.50	6.45	6.65	7.25	7.45
TX	12.00	10.90	11.40			
VA	8.60	6.70				
WA - All	4.70	5.35	4.50	4.45	5.35	5.75
Processing	6.35	4.65	4.20	4.20	4.60	5.20
WI - All		5.80	5.15	5.35	5.45	5.95
Fresh		6.00	5.75	5.80	5.70	5.15
Processing		5.50	4.80	5.00	5.30	6.35
US - All	6.30	5.75	5.35	4.91	5.42	5.70
Fresh	8.43	8.20	7.37	6.24	6.56	6.13
Processing	4.85	4.77	4.69	5.54	4.90	5.37

<sup>1</sup> Monthly prices refer to all potatoes sold in a given month regardless of the year harvested.

**Cattle: Marketing Year Average Prices Received  
by States and United States, 2002-2003**

State	Cows <sup>1</sup>		Steer & Heifers		All Beef <sup>2</sup>	
	2002	2003	2002	2003	2002	2003
	<i>Dollars per Cwt</i>	<i>Dollars per Cwt</i>	<i>Dollars per Cwt</i>	<i>Dollars per Cwt</i>	<i>Dollars per Cwt</i>	<i>Dollars per Cwt</i>
AL	35.10	36.80	75.00	82.70	63.50	68.60
AK	70.00	70.00	90.00	90.00	79.50	80.00
AZ	35.20	42.50	69.40	83.50	69.10	83.30
AR	35.20	39.00	75.40	82.80	63.90	70.10
CA	35.90	41.10	68.40	83.20	50.80	62.00
CO	38.00	45.60	77.70	88.40	77.40	88.10
CT	40.00	45.00	60.00	70.00	55.00	64.00
DE	43.30	47.80	68.20	81.80	66.00	78.60
FL	37.80	40.50	74.90	78.10	47.90	50.50
GA	37.80	41.20	70.40	77.10	49.20	53.60
HI	29.00	27.60	47.80	50.10	41.40	41.60
ID	35.20	41.60	68.30	82.30	60.10	72.40
IL	38.60	42.80	67.40	85.20	66.80	84.30
IN	40.10	42.70	66.80	84.50	57.80	70.40
IA	36.90	43.40	66.40	82.40	65.80	81.60
KS	36.40	42.80	69.40	83.90	68.60	82.90
KY	37.00	43.20	73.80	81.20	64.90	72.30
LA	37.00	40.50	73.90	78.20	49.00	53.20
ME	40.00	47.00	65.00	73.00	60.00	67.00
MD	43.30	47.80	68.20	81.80	66.00	78.60
MA	40.00	45.00	55.00	70.00	50.00	65.00
MI	39.00	41.60	60.50	72.00	54.20	63.00
MN	39.60	47.70	64.70	81.80	60.00	73.40
MS	36.90	38.90	70.30	78.10	60.40	63.70
MO	36.30	41.80	79.50	88.00	69.40	77.00
MT	38.10	45.60	80.70	90.40	70.50	82.20
NE	36.00	44.00	69.10	85.00	68.10	83.80
NV	34.40	41.60	79.10	94.00	67.90	80.90
NH	38.00	45.00	65.00	73.00	60.00	67.00
NJ	37.00	41.00	54.00	61.00	42.00	46.00
NM	38.60	43.30	78.30	88.20	62.70	69.50
NY	36.20	40.30	57.50	69.00	37.10	42.30
NC	36.50	42.50	73.30	79.80	59.40	65.70
ND	36.30	44.50	79.70	86.90	71.50	77.20
OH	35.40	38.80	66.00	77.40	62.90	73.80
OK	37.00	42.80	78.00	85.70	73.60	80.60
OR	36.90	44.70	74.60	82.00	63.30	70.70
PA	38.80	42.10	65.20	79.70	58.40	70.30
RI	40.00	45.00	60.00	70.00	50.00	64.00
SC	40.60	43.70	66.60	74.70	60.30	67.00
SD	37.50	44.80	75.20	85.30	69.60	78.70
TN	35.10	38.70	73.80	81.20	58.30	64.20
TX	36.50	40.30	70.00	83.10	67.10	79.50
UT	37.20	42.00	71.90	83.00	69.50	81.00
VT	38.00	45.00	65.00	73.00	60.00	67.00
VA	34.70	36.60	69.90	76.40	59.10	63.80
WA	36.90	43.90	75.50	89.00	69.70	83.80
WV	34.10	37.40	69.00	75.70	53.50	56.90
WI	38.40	44.50	64.40	76.60	49.40	58.00
WY	38.00	45.70	79.50	91.80	71.90	85.50
US	37.30	42.90	70.10	84.20	66.50	79.70

See footnote(s) at end of table.

--continued

**Cattle: Marketing Year Average Prices Received  
by States and United States, 2002-2003 (continued)**

State	Calves		Milk Cows <sup>3</sup>	
	2002	2003	2002	2003
	<i>Dollars per Cwt</i>	<i>Dollars per Cwt</i>	<i>Dollars per Head</i>	<i>Dollars per Head</i>
AL	90.00	96.10	1,550	1,350
AK	90.00	95.00	1,500	1,500
AZ	98.30	99.50	1,660	1,400
AR	86.00	94.20	1,450	1,300
CA	85.40	96.60	1,740	1,300
CO	91.80	104.00	1,740	1,460
CT	60.00	65.00	1,500	1,250
DE	88.00	89.00	1,590	1,400
FL	88.20	96.60	1,800	1,520
GA	87.00	95.80	1,650	1,410
HI	68.00	70.00	1,200	1,300
ID	88.60	100.00	1,650	1,440
IL	94.30	98.20	1,520	1,370
IN	80.40	86.10	1,520	1,300
IA	89.10	96.60	1,500	1,350
KS	98.20	107.00	1,510	1,300
KY	84.90	92.00	1,550	1,340
LA	88.00	93.00	1,500	1,330
ME	60.00	65.00	1,450	1,250
MD	88.00	89.00	1,650	1,420
MA	65.00	68.00	1,500	1,300
MI	104.00	92.50	1,580	1,370
MN	85.40	94.60	1,500	1,290
MS	82.20	93.40	1,470	1,200
MO	92.30	101.00	1,450	1,260
MT	90.10	106.00	1,510	1,320
NE	100.00	110.00	1,620	1,370
NV	92.40	112.00	1,750	1,350
NH	65.00	68.00	1,550	1,300
NJ	97.00	87.00	1,630	1,470
NM	93.60	101.00	1,680	1,410
NY	98.50	92.30	1,530	1,280
NC	82.00	86.70	1,690	1,490
ND	89.60	105.00	1,310	1,160
OH	78.50	84.00	1,570	1,350
OK	92.50	101.00	1,500	1,340
OR	85.30	94.30	1,600	1,350
PA	112.00	116.00	1,590	1,350
RI	60.00	65.00	1,500	1,250
SC	83.60	93.20	1,690	1,450
SD	96.20	107.00	1,390	1,210
TN	81.80	90.00	1,500	1,350
TX	95.50	102.00	1,650	1,390
UT	93.10	103.00	1,550	1,270
VT	65.00	68.00	1,550	1,350
VA	81.40	87.10	1,590	1,390
WA	82.90	97.30	1,640	1,370
WV	74.00	81.70	1,540	1,350
WI	129.00	122.00	1,540	1,370
WY	92.60	109.00	1,450	1,250
US	96.40	102.00	1,600	1,340

<sup>1</sup> Beef cows and cull dairy cows sold for slaughter.

<sup>2</sup> "Cows" and "Steer and Heifers" continued.

<sup>3</sup> Calendar year average.

**Hogs: Marketing Year Average Prices Received by Farmers,  
by States and United States, 2002-2003**

State	Barrows & Gilts		Sows		All	
	2002	2003	2002	2003	2002	2003
	<i>Dollars per Cwt</i>	<i>Dollars per Cwt</i>	<i>Dollars per Cwt</i>	<i>Dollars per Cwt</i>	<i>Dollars per Cwt</i>	<i>Dollars per Cwt</i>
AL	33.30	35.50	24.30	26.00	31.70	33.80
AK	65.00	70.00	50.00	55.00	61.50	66.00
AZ	39.30	44.80	24.40	27.30	39.20	44.80
AR	31.70	35.80	21.90	27.50	30.70	35.00
CA	34.20	35.80	21.50	23.70	34.20	35.70
CO	37.20	40.70	24.80	30.90	36.20	40.30
CT	33.00	35.00	24.00	26.00	31.70	33.20
DE	32.00	36.40	22.10	27.30	31.40	35.90
FL	32.90	35.30	22.10	23.00	28.50	30.00
GA	34.40	37.40	22.10	26.90	33.20	36.40
HI	87.10	87.70	45.90	46.40	84.00	84.70
ID	38.50	40.00	27.50	28.50	38.10	39.40
IL	34.50	39.80	21.70	27.00	33.40	38.70
IN	33.10	37.60	25.50	30.80	32.40	37.00
IA	34.30	36.50	26.10	30.40	34.20	36.40
KS	32.60	36.20	22.30	28.00	31.30	35.20
KY	31.40	36.80	22.30	27.60	31.00	36.40
LA	28.80	34.30	18.30	22.80	26.20	31.40
ME	33.00	35.00	24.00	26.00	31.70	33.20
MD	32.00	36.40	22.10	27.30	31.40	35.90
MA	33.00	35.00	24.00	26.00	31.70	33.20
MI	31.50	35.70	21.70	27.50	30.70	35.00
MN	34.70	38.50	23.80	28.40	34.60	38.40
MS	31.40	35.30	19.50	23.80	31.30	35.20
MO	31.00	34.80	20.30	26.30	30.10	34.10
MT	37.00	41.20	26.00	28.70	35.90	39.70
NE	36.90	39.60	23.20	28.40	36.60	39.30
NV	34.60	36.60	21.00	27.40	33.20	35.70
NH	33.00	35.00	24.00	26.00	31.70	33.20
NJ	30.00	33.00	22.00	25.00	26.00	30.40
NM	29.80	35.90	21.20	25.20	28.50	34.50
NY	32.30	34.40	18.90	22.60	30.90	33.20
NC	34.10	38.50	22.70	27.90	34.00	38.30
ND	36.60	39.90	20.80	23.70	36.40	39.70
OH	33.80	38.80	23.40	28.00	33.20	38.10
OK	30.80	34.30	21.50	26.50	29.50	33.30
OR	37.50	41.40	20.10	21.80	37.20	41.00
PA	31.90	37.10	21.30	26.60	30.30	35.50
RI	33.00	35.00	24.00	26.00	31.70	33.20
SC	34.00	37.00	22.00	27.20	33.30	36.50
SD	36.30	40.10	22.10	28.00	34.60	38.60
TN	33.00	37.00	23.00	27.00	32.10	36.00
TX	29.90	35.30	21.60	23.80	28.70	33.60
UT	39.40	46.30	25.40	29.00	39.30	46.10
VT	33.00	35.00	24.00	26.00	31.70	33.20
VA	32.50	35.20	23.40	27.00	31.90	35.00
WA	37.90	40.40	25.00	30.20	36.40	39.30
WV	33.70	39.30	24.90	25.70	32.00	36.10
WI	29.90	38.10	20.90	29.10	28.70	36.90
WY	34.00	37.80	24.00	31.20	31.30	36.20
US	34.00	37.70	22.80	27.90	33.40	37.20



**Sheep and Lambs: Marketing Year Average Prices Received  
by States and United States, 2002-2003**

State	Sheep		Lambs	
	2002	2003	2002	2003
	<i>Dollars per Cwt</i>	<i>Dollars per Cwt</i>	<i>Dollars per Cwt</i>	<i>Dollars per Cwt</i>
AZ	33.00	38.00	74.00	89.00
CA	27.10	31.30	69.40	88.00
CO	25.60	33.00	73.30	96.10
ID	29.90	33.70	72.60	87.60
IL	27.00	35.90	68.00	92.90
IN	28.00	35.60	68.60	92.90
IA	29.00	34.10	72.10	89.50
KS	25.70	31.30	70.90	89.70
MI	26.00	35.00	70.00	86.00
MN	22.30	27.50	71.10	89.30
MO	28.00	35.00	70.00	91.00
MT	26.60	34.80	80.30	103.00
NE	27.40	33.20	73.60	90.60
NV	24.10	36.00	72.80	91.00
N ENG <sup>1</sup>	35.00	40.00	110.00	115.00
NM	31.80	37.00	75.50	89.20
NY	32.20	40.50	92.10	102.00
ND	23.60	30.10	72.10	96.20
OH	23.80	33.50	75.10	91.40
OK	29.00	32.00	74.00	89.00
OR	25.50	31.90	68.00	88.20
PA	30.00	39.10	90.00	107.00
SD	30.00	37.20	79.10	106.00
TX	35.30	39.60	75.90	97.10
UT	25.40	29.90	75.60	92.00
VA	26.80	32.20	80.60	93.00
WA	28.60	34.00	69.00	90.40
WV	25.30	31.40	77.00	90.60
WI	24.50	31.20	71.80	87.10
WY	29.10	39.60	78.90	104.00
Oth St <sup>2</sup>	29.00	35.00	75.00	88.00
US	27.90	34.90	73.80	94.40

<sup>1</sup> Includes CT, ME, MA, NH, RI, and VT.

<sup>2</sup> Other States include AL, AK, AR, DE, FL, GA, HI, KY, LA, MD, MS, NJ, NC, SC, and TN.

**Cows <sup>1</sup>: Monthly Prices Received by State 2003  
and United States, 2002-2003**

State	Jan	Feb	Mar	Apr	May	Jun
	<i>Dollars per Cwt</i>	<i>Dollars per Cwt</i>	<i>Dollars per Cwt</i>	<i>Dollars per Cwt</i>	<i>Dollars per Cwt</i>	<i>Dollars per Cwt</i>
AZ	36.30	40.60	43.00	41.40	42.00	39.40
AR	33.70	35.60	35.50	37.10	39.00	38.80
CA	35.00	36.50	39.00	39.50	42.00	38.50
CO	39.40	41.10	40.50	41.00	43.70	44.90
FL	37.80	39.70	40.00	38.90	40.00	40.70
GA	36.80	38.80	38.90	39.30	40.20	41.20
ID	35.90	38.90	39.00	40.00	42.10	39.20
IL	38.00	38.00	37.50	39.00	39.20	38.50
IA	37.40	38.00	39.90	40.00	42.20	42.50
KS	37.70	39.70	39.90	40.20	42.70	43.70
KY	32.00	36.00	36.00	38.00	41.00	41.00
LA	34.80	37.70	37.90	37.50	37.90	39.20
MI	36.00	37.50	39.00	40.00	42.50	42.00
MN	38.30	40.60	42.80	44.10	47.20	46.80
MO	34.50	36.80	36.30	38.40	40.70	42.00
MT	37.40	40.80	39.80	43.50	45.60	45.70
NE	37.50	39.80	39.80	40.30	42.40	43.00
NM	37.40	39.80	40.30	39.70	41.00	42.00
ND	36.00	39.90	40.20	42.80	44.70	44.20
OH	31.50	33.70	34.20	36.40	38.80	38.40
OK	37.10	39.80	39.30	40.40	41.10	42.30
OR	38.20	39.30	40.50	40.70	42.00	42.00
PA	37.80	39.10	38.00	39.20	42.20	41.40
SD	38.40	39.40	40.20	40.40	47.00	46.80
TN	33.00	35.00	34.00	37.00	39.00	39.00
TX	35.20	37.20	37.70	38.40	38.70	38.90
VA	31.60	34.30	33.90	34.60	37.30	36.90
WI	38.10	39.80	39.80	40.70	43.60	44.50
WY	39.00	40.30	40.90	42.10	44.00	44.30
US						
2003	36.90	38.90	39.50	40.20	42.40	41.90
2002	37.90	40.60	41.50	40.10	39.80	39.20

See footnote(s) at end of table.

--continued

**Cows <sup>1</sup>: Monthly Prices Received by State 2003  
and United States, 2002-2003 (continued)**

State	Jul	Aug	Sep	Oct	Nov	Dec
	<i>Dollars per Cwt</i>	<i>Dollars per Cwt</i>	<i>Dollars per Cwt</i>	<i>Dollars per Cwt</i>	<i>Dollars per Cwt</i>	<i>Dollars per Cwt</i>
AZ	43.50	43.80	42.50	42.40	43.00	49.40
AR	41.20	40.00	39.30	40.30	42.30	43.00
CA	44.50	44.50	42.00	42.00	44.00	46.00
CO	47.50	47.80	49.10	48.50	51.70	51.80
FL	41.00	38.00	40.50	38.20	43.00	48.10
GA	42.30	41.60	41.10	41.60	45.40	49.40
ID	42.40	41.60	43.20	42.90	44.60	48.50
IL	40.00	42.00	44.00	48.00	49.00	49.00
IA	44.60	45.10	46.80	47.20	48.30	49.80
KS	45.30	45.00	45.40	44.20	45.70	48.10
KY	43.00	42.00	43.00	42.00	45.00	47.00
LA	41.40	40.70	42.00	43.80	44.00	45.00
MI	44.00	45.00	45.50	46.00	48.00	48.00
MN	49.80	50.70	51.10	52.30	54.30	54.30
MO	44.70	43.60	44.10	45.60	46.60	48.20
MT	48.20	47.50	49.10	49.60	49.80	51.50
NE	46.00	45.00	46.00	46.50	50.50	51.80
NM	46.00	45.50	46.20	45.00	48.50	50.70
ND	46.20	43.80	46.20	47.00	47.30	50.00
OH	39.40	41.00	41.00	41.00	43.10	45.00
OK	44.00	43.80	44.10	44.90	47.50	49.40
OR	44.00	44.80	47.00	46.50	47.00	48.00
PA	44.00	42.10	43.40	43.40	47.30	46.90
SD	48.80	45.30	47.20	48.90	49.60	46.90
TN	41.00	39.00	39.00	41.00	43.00	45.00
TX	42.20	40.40	42.00	40.40	44.30	45.70
VA	40.10	39.50	38.60	37.00	38.00	41.60
WI	45.50	46.70	47.30	46.20	50.10	51.00
WY	48.00	47.80	47.50	49.40	50.10	49.80
US						
2003	44.90	44.50	44.80	44.60	47.70	49.20
2002	37.40	36.40	34.90	33.60	33.00	34.60

<sup>1</sup> Beef cows and cull dairy cows sold for slaughter.

**Steers & Heifers: Monthly Prices Received by State 2003  
and United States, 2002-2003**

State	Jan	Feb	Mar	Apr	May	Jun
	<i>Dollars per Cwt</i>	<i>Dollars per Cwt</i>	<i>Dollars per Cwt</i>	<i>Dollars per Cwt</i>	<i>Dollars per Cwt</i>	<i>Dollars per Cwt</i>
AZ	77.50	79.90	77.80	78.80	79.30	78.40
AR	76.20	76.50	76.00	78.00	79.30	81.40
CA	77.50	78.50	76.00	78.50	78.50	77.00
CO	81.90	78.90	76.90	79.90	85.10	83.40
FL	73.70	75.00	75.20	76.30	75.80	77.90
GA	70.80	72.10	71.40	73.90	73.90	75.60
ID	76.70	78.50	76.00	77.40	80.40	77.00
IL	78.00	78.00	76.90	80.00	80.70	78.80
IA	76.80	74.50	73.90	75.70	76.40	75.80
KS	78.50	79.20	76.90	78.60	79.20	77.40
KY	74.00	73.00	73.00	76.00	78.00	80.00
LA	74.60	75.40	74.30	75.70	75.30	77.60
MI	63.00	66.00	67.00	68.00	70.00	72.00
MN	73.90	75.10	74.30	76.50	76.20	75.30
MO	80.30	80.00	79.50	83.70	85.00	86.40
MT	82.70	80.00	76.40	82.90	84.00	79.90
NE	77.50	77.40	78.00	80.30	80.30	79.30
NM	80.90	80.10	76.10	78.20	80.10	83.20
ND	81.30	76.60	77.70	78.70	80.10	79.00
OH	71.00	71.10	72.00	73.20	75.00	74.90
OK	80.70	77.80	75.80	76.80	77.90	83.80
OR	76.00	77.00	76.00	79.00	81.50	80.00
PA	72.60	73.90	71.90	74.60	77.00	76.40
SD	82.00	77.80	75.20	77.50	78.70	79.20
TN	74.00	72.00	73.00	77.00	79.00	80.00
TX	77.20	79.90	77.30	79.00	78.50	78.40
VA	68.00	66.00	66.90	70.50	72.20	68.50
WI	68.90	69.60	69.60	72.70	73.10	74.60
WY	83.30	79.60	77.70	80.10	80.00	85.20
US						
2003	77.70	78.20	76.70	78.80	79.60	78.60
2002	71.20	73.50	74.10	70.60	68.10	66.90

--continued

**Steers & Heifers: Monthly Prices Received by State 2003  
and United States, 2002-2003 (continued)**

State	Jul	Aug	Sep	Oct	Nov	Dec
	<i>Dollars per Cwt</i>	<i>Dollars per Cwt</i>	<i>Dollars per Cwt</i>	<i>Dollars per Cwt</i>	<i>Dollars per Cwt</i>	<i>Dollars per Cwt</i>
AZ	83.60	84.80	91.40	92.10	92.30	91.90
AR	84.50	86.80	89.00	89.70	90.40	91.20
CA	76.50	81.00	88.50	96.00	97.50	94.50
CO	89.10	92.80	96.80	100.00	101.00	101.00
FL	79.60	81.00	83.10	83.00	84.20	84.70
GA	78.40	79.00	81.70	82.50	84.00	85.30
ID	75.90	80.60	87.90	95.90	97.30	93.60
IL	77.30	81.80	90.00	102.00	105.00	98.00
IA	73.90	79.60	86.70	97.80	101.00	93.10
KS	77.60	82.50	89.70	99.10	100.00	92.50
KY	83.00	85.00	89.00	88.00	87.00	88.00
LA	80.20	80.50	82.40	86.40	86.00	89.30
MI	70.00	71.00	75.00	77.00	80.00	80.00
MN	74.10	77.90	84.20	96.40	100.00	94.20
MO	90.50	91.80	96.20	97.10	96.30	96.50
MT	84.60	86.60	90.50	96.20	98.50	98.90
NE	77.70	82.20	89.40	101.00	103.00	100.00
NM	88.30	90.70	92.80	95.60	96.40	96.40
ND	78.40	86.20	95.30	100.00	98.70	99.50
OH	74.00	77.90	82.60	87.30	87.90	83.80
OK	88.50	93.20	98.60	100.00	99.70	99.30
OR	81.00	85.00	88.00	89.00	90.00	88.50
PA	75.40	77.40	86.00	92.50	95.60	92.00
SD	79.90	83.40	92.70	103.00	102.00	98.10
TN	84.00	84.50	88.00	87.00	88.00	89.00
TX	77.50	81.60	86.70	93.50	97.70	94.60
VA	78.60	79.40	86.50	84.50	87.00	87.50
WI	72.70	75.20	82.50	83.80	94.50	87.20
WY	89.10	93.70	99.90	108.00	105.00	104.00
US						
2003	78.90	82.90	89.30	97.80	99.90	95.60
2002	66.50	67.30	67.80	68.60	71.90	75.00

**Beef Cattle <sup>1</sup>: Monthly Prices Received by State 2003  
and United States, 2002-2003**

State	Jan	Feb	Mar	Apr	May	Jun
	<i>Dollars per Cwt</i>	<i>Dollars per Cwt</i>	<i>Dollars per Cwt</i>	<i>Dollars per Cwt</i>	<i>Dollars per Cwt</i>	<i>Dollars per Cwt</i>
AZ	77.10	79.50	77.50	78.40	78.90	78.00
AR	64.30	64.20	63.90	65.70	67.20	69.90
CA	55.00	56.70	56.80	59.40	61.00	58.50
CO	81.50	78.50	76.50	79.50	84.70	83.00
FL	45.30	46.80	47.00	45.60	46.40	47.40
GA	48.00	50.80	51.90	51.80	51.70	52.90
ID	65.70	69.80	67.10	68.40	71.20	67.90
IL	77.20	77.20	76.10	79.20	79.90	78.00
IA	76.00	73.80	73.20	75.30	75.70	75.10
KS	76.90	78.00	75.80	77.10	77.70	77.10
KY	63.90	64.10	64.10	66.90	69.10	70.60
LA	46.70	48.30	48.10	48.60	49.50	51.10
MI	54.90	57.50	58.60	59.60	61.80	63.00
MN	67.10	66.10	66.40	67.80	69.50	67.90
MO	66.60	65.30	70.00	72.80	73.90	74.00
MT	76.40	73.70	69.40	75.80	66.00	56.30
NE	76.30	76.30	76.90	79.10	79.20	78.20
NM	62.20	64.00	63.20	65.10	66.80	68.80
ND	76.30	71.80	73.60	72.60	65.20	56.00
OH	67.10	67.40	68.20	69.50	71.40	71.30
OK	75.00	75.10	72.20	72.40	71.60	77.20
OR	64.70	65.70	65.40	67.50	69.70	68.60
PA	63.60	64.90	63.10	65.40	68.00	67.30
SD	74.60	73.60	71.70	72.70	73.00	71.70
TN	57.60	57.20	57.40	61.00	63.00	63.60
TX	73.40	76.90	74.10	75.80	74.90	74.90
VA	52.30	54.30	58.00	62.20	58.90	56.50
WI	51.00	52.30	52.30	54.10	56.00	57.10
WY	75.30	73.30	72.20	74.00	68.50	75.40
US						
2003	72.90	73.90	72.60	74.50	75.50	74.90
2002	67.40	70.00	70.60	67.30	65.10	64.00

See footnote(s) at end of table.

--continued

**Beef Cattle <sup>1</sup>: Monthly Prices Received by State 2003  
and United States, 2002-2003 (continued)**

State	Jul	Aug	Sep	Oct	Nov	Dec
	<i>Dollars per Cwt</i>	<i>Dollars per Cwt</i>	<i>Dollars per Cwt</i>	<i>Dollars per Cwt</i>	<i>Dollars per Cwt</i>	<i>Dollars per Cwt</i>
AZ	83.20	84.40	90.90	91.60	91.80	91.50
AR	71.50	72.80	74.10	74.90	76.00	76.70
CA	61.50	62.80	64.80	67.40	69.70	70.70
CO	88.70	92.30	96.30	99.50	101.00	101.00
FL	51.80	52.60	55.40	54.30	53.70	60.50
GA	54.60	54.70	54.90	55.50	58.10	61.60
ID	68.20	73.60	78.10	81.10	79.90	81.00
IL	76.60	81.00	89.10	101.00	104.00	97.00
IA	73.30	78.90	85.90	96.80	99.90	92.20
KS	77.30	82.10	88.80	97.50	98.40	91.20
KY	73.40	74.70	78.00	77.00	76.90	78.20
LA	54.60	55.40	56.90	59.60	59.10	59.20
MI	62.20	63.20	66.20	67.70	70.40	70.40
MN	69.00	71.40	75.90	84.50	88.60	85.00
MO	79.10	81.20	84.70	85.80	86.40	86.40
MT	66.80	78.00	85.90	90.60	88.80	90.40
NE	76.70	81.10	88.10	99.40	101.00	98.60
NM	72.20	72.60	74.60	76.40	75.80	75.80
ND	56.20	74.30	82.00	87.80	80.70	87.10
OH	70.50	74.20	78.40	82.70	83.40	79.90
OK	83.20	83.30	88.20	89.00	92.40	88.80
OR	69.90	72.90	75.70	76.30	77.10	76.40
PA	67.20	68.20	74.90	79.70	83.00	80.30
SD	72.10	77.30	87.20	97.00	92.60	84.80
TN	66.80	66.30	68.40	68.60	70.00	71.40
TX	75.00	78.70	83.60	87.70	92.40	89.70
VA	65.10	67.00	76.00	74.50	74.30	67.80
WI	56.90	58.70	62.10	62.00	68.70	66.20
WY	87.50	90.90	96.80	99.20	84.10	87.70
US						
2003	75.80	79.30	84.90	91.50	93.40	90.40
2002	63.70	64.40	64.50	64.60	67.30	70.40

<sup>1</sup> "Cows" and "Steers and Heifers" combined.

**Calves: Monthly Prices Received by State 2003  
and United States, 2002-2003**

State	Jan	Feb	Mar	Apr	May	Jun
	<i>Dollars per Cwt</i>	<i>Dollars per Cwt</i>	<i>Dollars per Cwt</i>	<i>Dollars per Cwt</i>	<i>Dollars per Cwt</i>	<i>Dollars per Cwt</i>
AZ	100.00	96.20	93.60	94.00	90.00	90.50
AR	87.30	89.40	90.10	91.10	90.60	90.60
CA	93.00	91.00	92.00	95.00	94.00	93.00
CO	92.00	90.30	91.60	96.80	101.00	104.00
FL	88.40	91.20	93.10	93.20	92.10	90.20
GA	88.90	90.60	89.70	92.70	91.30	94.00
ID	92.00	94.00	94.00	96.00	96.00	97.00
IL	90.50	92.50	94.00	95.50	96.00	96.00
IA	94.90	89.00	91.40	93.00	94.00	95.40
KS	98.40	99.30	100.00	100.00	103.00	105.00
KY	84.00	86.00	86.00	90.00	91.00	91.00
LA	89.70	89.60	88.80	89.30	88.40	90.50
MI	92.00	90.00	88.00	88.00	91.00	95.00
MN	89.50	86.90	92.00	93.70	94.00	95.00
MO	93.00	93.40	93.70	96.70	96.80	97.40
MT	95.80	93.50	93.50	95.40	99.00	97.00
NE	101.00	99.30	99.40	106.00	109.00	107.00
NM	92.70	94.20	92.90	95.90	92.60	94.50
ND	89.90	89.40	91.70	91.40	96.00	99.00
OH	74.00	74.60	80.00	80.10	81.00	83.60
OK	91.60	94.40	95.40	96.40	94.90	97.10
OR	88.50	91.00	91.70	93.50	93.20	91.50
PA	110.00	115.00	112.00	113.00	117.00	113.00
SD	98.10	95.70	97.10	100.00	101.00	107.00
TN	83.00	85.00	85.00	88.00	88.00	88.00
TX	94.20	97.70	96.20	99.50	97.60	98.20
VA	71.50	72.00	79.00	86.00	86.00	81.80
WI	119.00	118.00	111.00	108.00	114.00	122.00
WY	101.00	99.50	99.70	100.00	109.00	106.00
US						
2003	96.80	97.20	96.70	98.90	100.00	101.00
2002	102.00	105.00	105.00	101.00	99.50	96.50

--continued



**Calves: Monthly Prices Received by State 2003  
and United States, 2002-2003 (continued)**

State	Jul	Aug	Sep	Oct	Nov	Dec
	<i>Dollars per Cwt</i>	<i>Dollars per Cwt</i>	<i>Dollars per Cwt</i>	<i>Dollars per Cwt</i>	<i>Dollars per Cwt</i>	<i>Dollars per Cwt</i>
AZ	95.40	98.80	108.00	109.00	108.00	109.00
AR	92.90	93.30	95.50	98.60	101.00	106.00
CA	93.00	97.00	99.00	100.00	101.00	109.00
CO	107.00	109.00	112.00	114.00	113.00	118.00
FL	94.50	91.00	95.00	105.00	107.00	108.00
GA	96.30	96.40	98.60	101.00	102.00	106.00
ID	99.00	105.00	105.00	108.00	108.00	109.00
IL	96.00	102.00	104.00	108.00	108.00	100.00
IA	92.60	99.50	107.00	103.00	99.90	99.50
KS	109.00	111.00	113.00	115.00	116.00	117.00
KY	92.00	93.00	98.00	96.00	98.00	99.00
LA	93.60	92.60	95.90	101.00	101.00	103.00
MI	93.00	94.00	95.00	95.00	95.00	94.00
MN	88.30	97.70	100.00	99.70	97.60	99.80
MO	101.00	101.00	106.00	107.00	106.00	111.00
MT	102.00	106.00	106.00	107.00	110.00	114.00
NE	110.00	115.00	116.00	117.00	120.00	123.00
NM	101.00	103.00	107.00	109.00	111.00	112.00
ND	100.00	105.00	108.00	108.00	110.00	112.00
OH	82.00	84.30	89.30	87.70	95.10	90.00
OK	100.00	101.00	105.00	109.00	110.00	112.00
OR	91.00	94.00	97.00	99.50	100.00	100.00
PA	110.00	110.00	118.00	128.00	130.00	120.00
SD	107.00	115.00	117.00	117.00	115.00	115.00
TN	91.00	91.00	93.00	95.00	97.00	99.00
TX	102.00	106.00	107.00	109.00	108.00	110.00
VA	86.00	87.70	93.50	90.90	97.60	98.00
WI	121.00	128.00	131.00	131.00	132.00	128.00
WY	99.90	106.00	109.00	115.00	115.00	124.00
US						
2003	102.00	106.00	109.00	112.00	111.00	112.00
2002	95.20	94.90	92.40	92.00	91.90	95.30

**Milk Cows <sup>1</sup>: Monthly Prices Received by State 2003  
and United States, 2002-2003**

State	Jan	Apr	Jul	Oct
	<i>Dollars per Head</i>	<i>Dollars per Head</i>	<i>Dollars per Head</i>	<i>Dollars per Head</i>
AZ	1,450	1,350	1,350	1,450
CA	1,380	1,250	1,230	1,350
FL	1,600	1,500	1,450	1,510
ID	1,450	1,350	1,400	1,550
IL	1,450	1,310	1,350	1,360
IN	1,300	1,250	1,250	1,350
IA	1,340	1,290	1,330	1,450
KY	1,350	1,330	1,310	1,360
MI	1,400	1,350	1,350	1,400
MN	1,270	1,290	1,300	1,310
MO	1,260	1,220	1,250	1,300
NM	1,470	1,350	1,380	1,430
NY	1,300	1,250	1,250	1,300
OH	1,380	1,350	1,320	1,350
PA	1,400	1,300	1,300	1,350
TX	1,360	1,350	1,380	1,460
VT	1,400	1,350	1,300	1,350
VA	1,440	1,400	1,380	1,350
WA	1,370	1,290	1,350	1,450
WI	1,380	1,330	1,330	1,420
US				
2003	1,380	1,300	1,310	1,380
2002	1,610	1,710	1,670	1,430

<sup>1</sup> Cows sold for dairy herd replacement.

**All Hogs <sup>1</sup>: Monthly Prices Received by States 2003,  
and United States, 2002-2003**

State	Dec <sup>2</sup>	Jan	Feb	Mar	Apr	May
	<i>Dollars per Cwt</i>	<i>Dollars per Cwt</i>	<i>Dollars per Cwt</i>	<i>Dollars per Cwt</i>	<i>Dollars per Cwt</i>	<i>Dollars per Cwt</i>
AR	29.70	30.10	32.20	32.90	32.70	40.00
IL	31.10	33.00	34.50	35.30	36.50	43.30
IN	30.60	32.20	33.60	34.40	35.10	41.20
IA	30.40	34.60	34.80	34.90	34.90	40.10
KS	28.40	30.70	32.00	33.30	32.90	39.50
MI	28.40	29.20	32.00	32.20	32.70	37.40
MN	30.40	32.10	34.90	35.30	34.70	42.50
MO	28.00	30.40	32.00	32.10	32.30	39.10
NE	32.60	34.40	36.50	37.10	36.90	43.70
NC	30.80	33.60	34.50	35.50	35.90	43.60
OH	32.10	33.80	34.70	35.80	35.80	41.80
OK	27.70	29.60	31.40	31.40	31.20	37.70
PA	29.30	30.80	32.70	32.40	32.80	37.80
SD	31.40	32.70	35.40	35.80	35.50	43.30
TX	27.50	29.30	30.90	31.40	31.30	35.30
WI	26.50	28.70	31.70	33.40	34.10	41.80
US						
2003	30.30	32.90	34.30	34.70	34.80	41.30
2002	33.30	37.60	38.50	36.00	31.70	33.20
	Jun	Jul	Aug	Sep	Oct	Nov
	<i>Dollars per Cwt</i>	<i>Dollars per Cwt</i>	<i>Dollars per Cwt</i>	<i>Dollars per Cwt</i>	<i>Dollars per Cwt</i>	<i>Dollars per Cwt</i>
AR	43.20	40.20	37.30	36.40	35.60	34.30
IL	47.90	44.40	42.00	43.30	40.10	35.80
IN	45.60	43.00	40.10	40.50	36.80	34.00
IA	43.20	41.30	36.20	38.70	34.80	34.00
KS	42.90	39.90	36.60	36.80	34.80	34.20
MI	41.10	40.40	39.40	37.40	36.50	33.70
MN	47.30	45.60	43.10	40.30	39.50	36.30
MO	42.40	39.40	36.40	36.70	33.00	30.50
NE	48.20	45.50	42.80	41.20	39.00	36.30
NC	47.50	44.40	42.60	41.30	37.50	35.90
OH	46.30	44.50	41.40	40.20	39.80	34.40
OK	40.40	38.70	34.70	34.60	32.20	31.40
PA	41.70	41.00	38.60	37.90	37.10	34.90
SD	46.30	44.30	42.80	40.30	38.60	36.30
TX	37.00	35.90	35.00	37.60	36.50	37.80
WI	47.50	46.90	44.80	45.00	39.90	34.60
US						
2003	45.00	42.70	39.60	39.70	36.70	34.70
2002	35.80	39.20	31.90	26.50	30.80	27.80

<sup>1</sup> "Sows" and "Barrows & Gilts" combined.

<sup>2</sup> Preceding year.

**Barrows and Gilts: Monthly Prices Received by States 2003  
and United States, 2002-2003**

State	Dec <sup>1</sup>	Jan	Feb	Mar	Apr	May
	<i>Dollars per Cwt</i>	<i>Dollars per Cwt</i>	<i>Dollars per Cwt</i>	<i>Dollars per Cwt</i>	<i>Dollars per Cwt</i>	<i>Dollars per Cwt</i>
AR	30.50	31.00	33.20	33.80	33.40	41.30
IL	32.00	34.00	35.60	36.30	37.50	44.50
IN	31.20	32.90	34.50	35.10	35.70	42.10
IA	30.50	34.80	35.20	35.00	35.00	40.20
KS	29.30	32.10	33.20	34.30	33.90	41.30
MI	29.00	30.00	33.00	33.00	33.50	38.00
MN	30.50	32.20	35.00	35.40	34.80	42.60
MO	28.50	31.10	32.90	33.00	33.00	39.90
NE	32.80	34.70	36.80	37.30	37.10	44.00
NC	30.90	33.70	34.60	35.60	36.00	43.80
OH	33.20	34.50	35.50	36.50	36.60	42.60
OK	28.70	31.00	32.70	32.70	32.10	39.20
PA	30.50	32.50	34.60	34.20	34.50	39.70
SD	32.60	34.50	36.70	37.20	36.80	44.90
TX	28.60	31.40	32.60	32.90	32.50	37.20
WI	27.60	29.90	32.90	34.50	35.20	43.20
US						
2003	30.70	33.50	34.90	35.20	35.30	41.80
2002	33.70	38.30	39.00	36.30	32.00	33.60
	Jun	Jul	Aug	Sep	Oct	Nov
	<i>Dollars per Cwt</i>	<i>Dollars per Cwt</i>	<i>Dollars per Cwt</i>	<i>Dollars per Cwt</i>	<i>Dollars per Cwt</i>	<i>Dollars per Cwt</i>
AR	44.70	40.90	37.80	37.00	36.10	34.90
IL	49.50	45.50	43.00	44.50	41.00	36.50
IN	46.80	43.60	40.50	41.10	37.00	34.10
IA	43.40	41.40	36.30	38.80	34.90	34.00
KS	44.70	40.80	37.10	37.70	35.30	34.80
MI	42.00	41.00	40.00	38.00	37.00	34.00
MN	47.50	45.70	43.20	40.40	39.60	36.30
MO	43.50	40.20	37.10	37.40	33.20	30.70
NE	48.50	45.70	43.00	41.40	39.20	36.50
NC	47.70	44.50	42.70	41.40	37.60	36.00
OH	47.30	45.30	41.90	41.10	40.10	34.70
OK	42.20	39.50	35.20	35.50	32.70	32.00
PA	44.00	42.70	39.90	39.20	38.40	35.90
SD	48.80	46.30	44.40	41.60	39.60	37.40
TX	39.40	38.00	36.40	39.60	38.40	38.90
WI	48.90	48.00	46.00	46.40	41.00	35.60
US						
2003	45.70	43.20	39.90	40.10	37.00	34.90
2002	36.60	40.20	32.60	27.10	31.40	28.10

<sup>1</sup> Preceding year.

**Sows: Monthly Prices Received by States 2003  
and United States, 2002-2003**

State	Dec <sup>1</sup>	Jan	Feb	Mar	Apr	May
	<i>Dollars per Cwt</i>	<i>Dollars per Cwt</i>	<i>Dollars per Cwt</i>	<i>Dollars per Cwt</i>	<i>Dollars per Cwt</i>	<i>Dollars per Cwt</i>
AR	22.00	22.30	23.50	24.60	26.30	28.20
IL	21.00	21.00	22.00	24.00	25.00	29.00
IN	24.90	25.40	24.60	26.80	29.50	31.90
IA	24.40	23.90	26.20	27.80	29.30	29.80
KS	21.40	21.20	24.00	25.10	26.40	28.60
MI	21.00	20.00	21.00	23.00	24.00	30.00
MN	23.10	21.70	23.40	25.00	27.10	30.40
MO	20.40	20.40	21.60	22.10	23.00	26.40
NE	24.00	22.10	23.90	25.70	27.40	29.20
NC	22.30	21.70	23.00	24.20	26.10	28.10
OH	23.70	24.10	23.90	24.70	26.30	29.00
OK	21.10	20.40	22.90	23.20	25.00	27.80
PA	22.80	21.10	21.60	22.00	22.90	27.20
SD	21.80	20.60	23.20	23.50	23.80	30.00
TX	21.50	20.40	21.30	21.60	22.40	23.60
WI	19.30	20.50	23.30	25.80	26.50	32.80
US						
2003	22.30	21.70	23.40	24.20	25.80	29.00
2002	25.00	26.80	27.70	30.00	25.30	23.50
	Jun	Jul	Aug	Sep	Oct	Nov
	<i>Dollars per Cwt</i>	<i>Dollars per Cwt</i>	<i>Dollars per Cwt</i>	<i>Dollars per Cwt</i>	<i>Dollars per Cwt</i>	<i>Dollars per Cwt</i>
AR	29.70	34.20	33.10	30.50	31.00	29.20
IL	30.00	32.00	31.00	30.00	30.00	28.00
IN	33.20	37.30	36.40	34.30	34.50	32.60
IA	32.70	34.00	32.70	32.50	33.70	30.40
KS	30.50	33.50	32.80	31.10	31.30	29.20
MI	31.00	33.00	33.00	31.00	31.00	30.00
MN	31.30	33.90	33.10	31.40	31.60	29.40
MO	27.10	32.00	30.60	29.70	29.90	27.60
NE	32.00	35.20	33.50	31.60	31.30	28.90
NC	29.50	34.40	33.60	30.40	30.80	29.10
OH	32.80	33.70	33.60	31.50	30.30	28.90
OK	28.80	33.20	31.30	28.90	28.80	27.60
PA	28.90	31.50	31.40	30.20	29.50	29.00
SD	30.80	33.20	33.10	31.10	31.00	29.00
TX	24.70	27.30	25.70	26.00	25.50	28.30
WI	38.20	39.80	36.60	36.00	32.90	27.80
US						
2003	30.30	33.10	32.60	30.80	31.40	29.10
2002	21.00	19.90	19.00	15.10	19.20	20.80

<sup>1</sup> Preceding year.

**Lambs: Monthly Prices Received by State 2003  
and United States, 2002-2003**

State	Jan	Feb	Mar	Apr	May	Jun
	<i>Dollars per Cwt</i>	<i>Dollars per Cwt</i>	<i>Dollars per Cwt</i>	<i>Dollars per Cwt</i>	<i>Dollars per Cwt</i>	<i>Dollars per Cwt</i>
CA	82.00	86.00	90.50	90.00	91.00	92.00
CO	93.90	93.10	98.90	97.40	102.00	98.90
ID	89.00	88.00	88.00	88.00	99.00	96.00
IA	86.10	87.20	92.90	90.00	93.90	97.90
KS	85.40	88.50	94.00	91.00	97.00	93.00
MN	86.20	89.90	95.40	91.70	100.00	96.40
MT	103.00	103.00	107.00	93.00	100.00	103.00
NE	88.50	94.50	105.00	97.00	98.00	94.00
ND	90.00	91.00	91.00	86.00	95.00	97.00
OH	88.00	94.30	96.00	96.00	102.00	98.60
OR	85.00	86.50	86.50	86.50	88.00	90.00
SD	102.00	104.00	104.00	98.70	105.00	101.00
TX	96.30	94.70	101.00	91.20	95.70	97.40
UT	91.00	91.00	93.00	93.00	97.00	96.00
WY	101.00	107.00	107.00	92.00	102.00	103.00
US						
2003	92.60	92.40	97.10	93.70	97.60	96.90
2002	65.60	67.80	66.70	64.70	64.40	72.90
	Jul	Aug	Sep	Oct	Nov	Dec
	<i>Dollars per Cwt</i>	<i>Dollars per Cwt</i>	<i>Dollars per Cwt</i>	<i>Dollars per Cwt</i>	<i>Dollars per Cwt</i>	<i>Dollars per Cwt</i>
CA	85.00	83.00	88.50	89.00	87.50	87.00
CO	93.20	88.60	96.30	96.30	97.80	98.60
ID	84.00	82.00	85.00	94.00	94.00	90.00
IA	88.00	84.50	87.20	87.40	89.10	89.20
KS	83.00	82.00	86.00	91.00	91.00	92.00
MN	85.30	82.00	87.10	87.90	89.90	88.60
MT	92.80	98.10	106.00	106.00	116.00	108.00
NE	84.00	81.70	87.70	90.00	90.00	90.50
ND	90.00	96.00	98.00	102.00	102.00	101.00
OH	88.30	82.20	87.00	87.00	90.30	93.10
OR	88.00	87.00	88.00	89.00	88.50	90.00
SD	92.00	98.00	108.00	112.00	119.00	112.00
TX	90.80	88.60	95.10	95.10	112.00	113.00
UT	90.00	86.00	87.00	94.00	97.00	98.00
WY	89.20	96.20	103.00	115.00	115.00	114.00
US						
2003	89.30	88.60	95.10	96.80	99.70	97.70
2002	75.60	75.30	76.30	79.60	84.00	87.20

**Sheep: Monthly Prices Received by State 2003  
and United States, 2002-2003**

State	Jan	Feb	Mar	Apr	May	Jun
	<i>Dollars per Cwt</i>	<i>Dollars per Cwt</i>	<i>Dollars per Cwt</i>	<i>Dollars per Cwt</i>	<i>Dollars per Cwt</i>	<i>Dollars per Cwt</i>
CA	37.00	37.50	32.00	32.00	30.00	29.00
CO	37.00	42.00	35.70	30.30	29.20	31.40
ID	38.00	39.00	39.00	34.00	35.00	36.00
IA	39.50	46.60	40.10	31.50	32.70	34.50
KS	36.50	40.50	34.50	29.00	28.00	26.00
MN	31.40	37.50	30.90	23.60	25.20	24.30
MT	43.50	43.50	43.00	31.10	33.90	29.10
NE	40.00	42.00	39.50	31.50	31.00	28.20
ND	30.00	36.00	30.00	25.00	26.00	24.00
OH	37.20	41.00	33.00	26.00	28.90	33.50
OR	35.00	37.00	35.00	34.00	33.00	32.00
SD	47.40	46.60	40.90	29.80	32.20	26.30
TX	46.30	48.30	47.30	35.50	35.40	33.50
UT	39.00	41.00	37.00	28.00	26.00	27.00
WY	44.20	48.50	46.30	30.60	31.60	29.70
US						
2003	42.50	44.00	40.90	31.10	31.30	30.30
2002	34.80	34.30	31.80	26.00	25.30	23.50
	Jul	Aug	Sep	Oct	Nov	Dec
	<i>Dollars per Cwt</i>	<i>Dollars per Cwt</i>	<i>Dollars per Cwt</i>	<i>Dollars per Cwt</i>	<i>Dollars per Cwt</i>	<i>Dollars per Cwt</i>
CA	28.00	29.50	32.50	36.00	40.50	42.50
CO	30.40	28.80	30.00	34.60	39.40	41.00
ID	32.00	28.00	30.00	34.00	37.00	38.00
IA	30.60	30.40	38.00	38.00	35.80	42.30
KS	25.00	25.00	28.00	32.00	36.00	36.00
MN	20.40	23.00	24.70	26.50	32.30	36.70
MT	26.20	26.00	32.00	35.70	42.70	43.00
NE	27.20	26.00	28.60	35.00	36.50	38.80
ND	22.00	24.00	30.00	34.00	40.00	42.00
OH	32.20	34.40	38.00	38.90	36.30	39.20
OR	30.00	29.00	30.50	32.50	33.50	34.50
SD	26.00	27.60	35.40	38.40	47.00	52.10
TX	34.90	35.10	35.20	37.60	47.40	51.80
UT	26.00	26.00	28.00	30.00	34.00	38.00
WY	25.90	28.10	36.40	35.40	47.50	52.20
US						
2003	29.40	29.20	32.50	35.00	40.50	45.10
2002	25.60	25.60	24.50	25.60	31.30	38.70

**All Cattle and Calves: Value per Head and Total Value,  
by States and United States, January 1, 2003-2004 <sup>1</sup>**

State	Value per Head		Total Value	
	2003	2004	2003	2004
	<i>Dollars</i>	<i>Dollars</i>	<i>1,000 Dollars</i>	<i>1,000 Dollars</i>
AL	570	630	820,800	856,800
AK	820	870	10,250	10,875
AZ	760	820	638,400	697,000
AR	620	710	1,147,000	1,349,000
CA	930	1,030	4,882,500	5,356,000
CO	770	920	2,040,500	2,208,000
CT	1,010	910	56,560	49,140
DE	1,000	860	21,000	21,500
FL	670	720	1,172,500	1,252,800
GA	600	650	774,000	812,500
HI	560	580	84,560	90,480
ID	880	980	1,760,000	1,969,800
IL	710	850	965,600	1,113,500
IN	720	830	619,200	688,900
IA	730	840	2,591,500	2,898,000
KS	670	800	4,254,500	5,320,000
KY	630	710	1,530,900	1,647,200
LA	640	680	550,400	578,000
ME	980	920	91,140	83,720
MD	980	910	235,200	213,850
MA	1,020	930	51,000	44,640
MI	840	910	831,600	937,300
MN	770	840	1,886,500	2,016,000
MS	570	650	609,900	663,000
MO	670	770	3,015,000	3,349,500
MT	820	950	2,009,000	2,280,000
NE	720	880	4,464,000	5,500,000
NV	750	840	382,500	428,400
NH	1,060	950	42,400	37,050
NJ	1,010	990	46,460	45,540
NM	780	860	1,209,000	1,298,600
NY	960	960	1,392,000	1,363,200
NC	600	630	540,000	554,400
ND	840	920	1,579,200	1,610,000
OH	810	860	988,200	1,057,800
OK	650	730	3,510,000	3,723,000
OR	760	810	1,033,600	1,166,400
PA	930	970	1,515,900	1,590,800
RI	900	870	4,950	4,785
SC	590	650	256,650	276,250
SD	790	910	2,923,000	3,321,500
TN	590	650	1,339,300	1,436,500
TX	610	700	8,540,000	9,730,000
UT	760	790	668,800	679,400
VT	1,070	1,050	304,950	299,250
VA	610	670	994,300	1,031,800
WA	870	970	957,000	1,086,400
WV	600	670	243,000	254,600
WI	1,010	1,040	3,383,500	3,484,000
WY	760	890	980,400	1,246,000
US	728	819	69,948,620	77,733,180

<sup>1</sup> 2003 revised.



**Hogs: Value per Head and Total Value by States  
and United States, December 1, 2002-2003<sup>1</sup>**

State	Value per Head		Total Value	
	2002	2003	2002	2003
	<i>Dollars</i>	<i>Dollars</i>	<i>1,000 Dollars</i>	<i>1,000 Dollars</i>
AL	70	66	11,550	10,890
AK	170	180	204	270
AZ	76	71	10,868	9,017
AR	69	64	21,045	19,840
CA	92	86	12,420	11,610
CO	75	60	59,250	46,200
CT	92	86	350	327
DE	68	64	1,496	1,152
FL	74	69	2,590	2,070
GA	63	61	21,735	17,995
HI	140	140	3,360	3,220
ID	72	68	1,584	1,768
IL	71	65	294,650	256,750
IN	74	69	236,800	213,900
IA	75	70	1,170,000	1,106,000
KS	65	62	99,450	101,060
KY	54	54	19,980	20,520
LA	76	71	1,520	1,420
ME	76	71	456	462
MD	70	66	3,150	2,640
MA	76	71	1,254	1,030
MI	81	79	69,660	75,050
MN	85	79	510,000	505,600
MS	76	71	20,900	21,655
MO	61	57	179,950	168,150
MT	74	69	13,690	11,730
NE	76	71	224,200	205,900
NV	92	86	598	430
NH	84	79	269	229
NJ	84	79	1,260	948
NM	76	71	228	178
NY	70	66	6,020	4,818
NC	58	54	562,600	534,600
ND	74	69	11,396	10,350
OH	76	71	109,440	107,920
OK	59	57	138,060	133,380
OR	76	71	2,356	1,917
PA	67	69	72,360	75,900
RI	74	69	215	179
SC	59	59	17,700	17,700
SD	77	74	100,870	93,240
TN	61	57	13,420	12,255
TX	62	67	57,660	62,310
UT	76	71	50,920	46,860
VT	92	86	230	181
VA	59	62	23,600	22,940
WA	84	79	2,016	1,896
WV	74	69	814	690
WI	69	64	35,880	31,360
WY	84	79	9,660	9,796
US	71	66	4,209,683	3,986,301

<sup>1</sup> 2002 revised.

**Sheep and Lambs, Angora Goats: Value per Head and Total Value,  
by States and United States, January 1, 2003-2004 <sup>1</sup>**

State	Sheep and Lambs				Angora Goats			
	Value per Head		Total Value		Value per Head		Total Value	
	2003	2004	2003	2004	2003	2004	2003	2004
	<i>Dollars</i>	<i>Dollars</i>	<i>1,000 Dollars</i>	<i>1,000 Dollars</i>	<i>Dollars</i>	<i>Dollars</i>	<i>1,000 Dollars</i>	<i>1,000 Dollars</i>
AZ	115	121	13,225	13,794	60.00	65.00	1,800	1,950
CA	108	113	78,840	76,840				
CO	95	116	36,100	41,760				
ID	99	124	25,740	32,240				
IL	153	158	10,404	9,954				
IN	166	171	8,300	7,695				
IA	126	130	32,130	32,500				
KS	111	114	9,990	11,400				
MI	120	131	10,200	10,873				
MN	98	121	14,210	16,940				
MO	110	129	7,370	7,740				
MT	98	120	30,380	36,000				
NE	122	134	11,834	13,668				
NV	112	125	8,960	9,375				
N ENG <sup>2</sup>	200	195	9,400	8,385				
NM	100	113	17,500	18,080	60.00	65.00	900	650
NY	135	136	9,720	9,520				
ND	100	113	11,500	10,961				
OH	136	146	20,400	20,440				
OK	120	139	9,000	9,730				
OR	93	117	21,855	25,155				
PA	136	142	12,920	12,070				
SD	97	119	36,860	44,030				
TX <sup>3</sup>	79	96	82,160	105,600	55.00	63.00	13,200	13,860
UT	102	128	31,620	33,920				
VA	122	131	7,564	7,205				
WA	116	120	6,380	5,520				
WV	100	109	3,400	3,706				
WI	142	146	11,786	12,118				
WY	91	112	41,860	48,160				
Oth <sup>4</sup>	126	133	22,680	25,935				
US <sup>5</sup>	104	118	654,288	721,314	55.80	63.30	15,900	16,460

<sup>1</sup> 2003 Revised.

<sup>2</sup> N ENG includes CT, ME, MA, NH, RI, and VT.

<sup>3</sup> All goat values for Texas are: 2003, per head-\$92, total-\$110,400; 2004, per head-\$96, total-\$115,200.

<sup>4</sup> Other States include AL, AK, AR, DE, FL, GA, HI, KY, LA, MD, MS, NJ, NC, SC, and TN.

<sup>5</sup> 3 States for Angora Goats.

**Wool and Mohair: Marketing Year Average Prices Received,  
by States and United States, 2002-2003 <sup>1</sup>**

	Wool		Mohair	
	2002	2003	2002	2003
	<i>Dollars per Pound</i>	<i>Dollars per Pound</i>	<i>Dollars per Pound</i>	<i>Dollars per Pound</i>
AZ	0.32	0.34	1.40	1.40
CA	0.45	0.79		
CO	0.57	0.74		
ID	0.67	0.86		
IL	0.23	0.23		
IN	0.16	0.19		
IA	0.18	0.29		
KS	0.30	0.45		
MI	0.14	0.30		
MN	0.20	0.30		
MO	0.20	0.42		
MT	0.76	1.03		
NE	0.30	0.35		
NV	0.85	0.95		
N ENG <sup>2</sup>	0.40	0.35		
NM	0.80	1.10	1.40	1.25
NY	0.20	0.27		
ND	0.60	0.60		
OH	0.15	0.23		
OK	0.25	0.40		
OR	0.38	0.58		
PA	0.25	0.27		
SD	0.45	0.76		
TX	0.68	0.90	1.60	1.70
UT	0.60	0.80		
VA	0.26	0.33		
WA	0.47	0.63		
WV	0.22	0.28		
WI	0.15	0.25		
WY	0.73	1.10		
Oth <sup>3</sup>	0.62	0.56		
US <sup>4</sup>	0.53	0.72	1.58	1.66

<sup>1</sup> Average local market for wool and mohair sold.

<sup>2</sup> Includes CT, ME, MA, NH, RI and VT.

<sup>3</sup> Other States include AL, AK, AR, DE, FL, GA, HI, KY, LA, MD, MS, NJ, NC, SC, and TN.

<sup>4</sup> 3 States for Mohair.

**Other Hay, Baled: Prices Received, Selected Regions,  
Marketing Year Average, 2001-2003 <sup>1</sup>**

Region	3-Year Avg
	<i>Dollars Per Ton</i>
Appalachia <sup>2</sup>	63.10
Corn Belt <sup>3</sup>	60.50
Florida	94.60
Lake States <sup>4</sup>	49.60
Northeast <sup>5</sup>	107.20
Southeast/Delta <sup>6</sup>	53.80

<sup>1</sup> Prices provided to the Forest Service, USDA to compute Eastern National Forest grazing fees.

<sup>2</sup> KY, NC, TN, VA, and WV.

<sup>3</sup> IL, IN, MO, and OH.

<sup>4</sup> MI, MN, and WI.

<sup>5</sup> ME, NH, NY, PA, and VT.

<sup>6</sup> AL, AR, GA, LA, MS, and SC.

**Apples for Fresh Use: Monthly Average Prices, by State and United States,  
July 2002 - August 2003 <sup>1 2</sup>**

State	2002						2003
	Jul	Aug	Sep	Oct	Nov	Dec	Jan
	<i>Dollars per Pound</i>	<i>Dollars per Pound</i>	<i>Dollars per Pound</i>	<i>Dollars per Pound</i>	<i>Dollars per Pound</i>	<i>Dollars per Pound</i>	<i>Dollars per Pound</i>
CA		0.333	0.339	0.291	0.226	0.219	0.262
MI		0.210	0.250	0.240	0.230	0.230	0.210
NY			0.288	0.297	0.282	0.276	0.278
OH	0.228	0.290	0.305	0.305	0.296	0.311	0.309
PA		0.220	0.202	0.207	0.212	0.242	0.221
VA			0.214	0.223	0.170	0.180	0.196
WA			0.305	0.316	0.283	0.268	0.256
US	0.206	0.245	0.300	0.301	0.268	0.263	0.258
State	2003						
	Feb	Mar	Apr	May	Jun	Jul	Aug
	<i>Dollars per Pound</i>	<i>Dollars per Pound</i>	<i>Dollars per Pound</i>	<i>Dollars per Pound</i>	<i>Dollars per Pound</i>	<i>Dollars per Pound</i>	<i>Dollars per Pound</i>
CA	0.203	0.207					0.402
MI	0.210	0.210	0.190	0.200			0.165
NY	0.272	0.269	0.270	0.296	0.346		
OH	0.320	0.317	0.307	0.302	0.280		0.340
PA	0.238	0.226	0.214	0.202	0.179	0.208	0.214
VA	0.180						
WA	0.246	0.228	0.228	0.212	0.215	0.200	0.203
US	0.246	0.226	0.234	0.218	0.224	0.200	0.258

<sup>1</sup> Equivalent packinghouse-door returns for CA, NY, and WA; price at point of first sale for other states.

<sup>2</sup> Prices for July and August 2003 are preliminary for all states and the U.S. except WA. These two months represent the start of the 2003 crop marketing season in most states, but in WA they are the final months of the 2002 crop marketing season.

**Pears: Equivalent On-tree Returns,  
by State and United States, 2001-2003**

State and Variety	Fresh			Processed			All		
	2001	2002	2003	2001	2002	2003	2001	2002	2003
	<i>Dollars per Ton</i>	<i>Dollars per Ton</i>	<i>Dollars per Ton</i>	<i>Dollars per Ton</i>	<i>Dollars per Ton</i>	<i>Dollars per Ton</i>	<i>Dollars per Ton</i>	<i>Dollars per Ton</i>	<i>Dollars per Ton</i>
Bartlett									
CA	287	240	160	201	200	205	224	211	190
OR	418	466	412	136	175	170	248	290	286
WA	440	485	427	114	198	193	193	278	266
US	364	357	316	158	196	196	215	245	235
Other <sup>1</sup>									
US	259	300	324						

<sup>1</sup> Pears other than Bartlett; missing data unavailable or not published to avoid disclosure.

**Dried Figs: Equivalent Returns for Bulk Fruit at First Delivery Point,  
by Utilization, California, 2001-2003**

	2001	2002	2003
	<i>Dollars per Ton</i>	<i>Dollars per Ton</i>	<i>Dollars per Ton</i>
Dried Figs			
Standard Grades (Dried Basis)	1,020	972	1,480
Substandard Grades (Dried Basis)	60	50	60
All Dried Figs (Dried Basis)	923	868	1,320
All Dried Figs (Fresh Basis)	308	289	441

**Apricots, Nectarines and Plums: Equivalent Returns,  
California, 2001-2003 <sup>1</sup>**

	Equivalent First Delivery Point Returns			Equivalent On-tree Returns		
	2001	2002	2003	2001	2002	2003
	<b>Plums</b>					
	<i>Dollars per Ton</i>	<i>Dollars per Ton</i>	<i>Dollars per Ton</i>	<i>Dollars per Ton</i>	<i>Dollars per Ton</i>	<i>Dollars per Ton</i>
All Sales	306	386	418	223	303	335
	<b>Nectarines</b>					
All Sales	464	382	436			
	<b>Apricots</b>					
Fresh	551	490	492	452	391	392
Processing	260	271	264	198	201	199
All Sales	319	306	316	247	234	241

<sup>1</sup> Missing data not available or not published to avoid disclosure.

**Concord Grapes for Processing: Marketing Year Average Prices,  
New York and Pennsylvania, 2001-2003**

State	2001	2002	2003
	<i>Dollars per Ton</i>	<i>Dollars per Ton</i>	<i>Dollars per Ton</i>
NY	287	266	187
PA	292	280	222

**Grapes: Equivalent First Delivery Point Returns,  
by Utilization and Variety Group, California, 2001-2003 <sup>1</sup>**

Variety and Utilization	2001	2002	2003
	<i>Dollars per Ton</i>	<i>Dollars per Ton</i>	<i>Dollars per Ton</i>
Raisin Varieties Dried by Variety or Type			
Natural Thompson Seedless	534	360	
Natural Muscats	572	628	
Natural Sultanas	531	504	
Natural Zante Currents	1,019	807	
Dehydrated, All Types	1,021	773	

<sup>1</sup> Missing data are not available.

**Peaches for Fresh Use: Marketing Year Average Prices and Equivalent Returns  
by State and United States, 2001-2003 <sup>1</sup>**

State	As Sold			Equivalent Packinghouse-door Returns <sup>2</sup>			Equivalent On-tree Returns		
	2001	2002	2003	2001	2002	2003	2001	2002	2003
	<i>Dollars per Pound</i>	<i>Dollars per Pound</i>	<i>Dollars per Pound</i>	<i>Dollars per Pound</i>	<i>Dollars per Pound</i>	<i>Dollars per Pound</i>	<i>Dollars per Pound</i>	<i>Dollars per Pound</i>	<i>Dollars per Pound</i>
AL	0.418	0.440	0.470	0.418	0.440	0.470			
CA									
Freestone	0.393	0.412	0.396	0.214	0.209	0.203	0.187	0.182	0.176
CT	0.650	0.700	0.700	0.650	0.700	0.700			
GA							0.165	0.271	0.171
IL	0.420	0.470	0.512	0.420	0.470	0.512			
IN	0.583	0.733	0.716	0.583	0.733	0.716			
KY	0.487	0.545	0.557	0.487	0.545	0.557			
LA	0.871	0.751	0.815	0.871	0.751	0.815			
MD	0.373	0.396	0.478	0.373	0.396	0.478			
MA	0.700	0.800	0.800	0.700	0.800	0.800			
MI	0.375	0.370	0.200	0.375	0.370	0.200			
MO	0.365	0.420	0.620	0.365	0.420	0.620			
OH	0.490	0.496	0.498	0.490	0.496	0.498			
OK	0.459	0.577	0.618	0.459	0.577	0.618			
SC	0.443	0.357	0.395	0.443	0.357	0.395			
TN	0.484	0.470	0.514	0.484	0.470	0.514			
TX	0.570	0.600	0.730	0.570	0.600	0.730			
VA	0.317	0.410	0.378	0.317	0.410	0.378			
WV	0.300	0.310	0.370	0.300	0.310	0.370			
US	0.393	0.412	0.396	0.309	0.311	0.301			

<sup>1</sup> Some missing data are not published to avoid disclosure of individual operations.

<sup>2</sup> "Packinghouse-door" equivalents for CA; all other states are "As Sold".

## Reliability of Prices Received Estimates

**Definition:** Prices received represent sales from producers to first buyers. They include all grades and qualities. The average commodity price from the survey multiplied by the total quantity marketed theoretically should give the total cash receipts for the commodity.

**Survey Procedures:** Primary sales data used to determine grain prices were obtained from probability samples of 2600 mills and elevators. These procedures ensure that virtually all grain moving into commercial channels has a chance of being included in the survey. Generally, States surveyed account for 90 percent or more of total U.S. production. Livestock prices are obtained from packers, stockyards, auctions, dealers, and market check data from AMS-USDA, private marketing organizations, and state commodity groups and agencies. Inter-farm sales of grain and livestock are not included since they represent very small percentages of the total marketings. Grain marketed for seed is also excluded. Fruit and vegetable prices are obtained from sample surveys and market check data from AMS-USDA, private marketing organizations, state agencies, and universities.

**Summary and Estimation Procedures:** Survey quantities sold are expanded by strata to state levels and used to weight average strata prices to a state average. State prices are then weighted to a U.S. price based on expanded marketings. Recommendations are prepared by the State Statistical Offices and reviewed by the Agricultural Statistics Board in Washington, D.C. State recommendations are reviewed for reasonableness with survey data, other States, and recent historic estimates.

**Revisions:** For most items, the current month's preliminary price represents a 3-5 day period around the 15<sup>th</sup> of the month. Previous month's prices represent actual dollars received for quantities sold during the entire month. Revisions are published in monthly issues of *Agricultural Prices*.

**Reliability:** U.S. price estimates based on probability surveys generally have a sampling error of less than one percent for the major commodities such as corn, wheat, soybeans, cotton, and rice. Current methods of summarization for non-probability commodities are not designed directly to calculate sampling errors. However, analytical measures approximate the U.S. relative sampling errors at around five percent. Any nonsampling errors are attributed to such things as the inability to obtain correct information, differences in interpreting questions or definitions, mistakes in coding or processing the data, etc. Efforts are made at each step in the survey process to minimize these nonsampling errors.

## Prices Paid by Farmers

The February Index of Prices Paid for Commodities and Services, Interest, Taxes, and Farm Wage Rates (PPITW) is 130 (1990-92=100), unchanged from January 2004 but 1.6 percent above February 2003.

**PRODUCTION INDEX:** The index, at 127, is unchanged from last month but 3.3 percent above last year. Lower prices in February for feeder cattle, feed concentrates, herbicides, and insecticides offset higher prices for complete feeds, nitrogen fertilizers, feed grains, and LP gas.

**Feed:** The index, at 123, is 0.8 percent more than January and 7.9 percent above last February. Since January, higher prices for complete feeds, feed grains, and feed supplements more than offset lower prices for feed concentrates.

**Livestock & Poultry:** The index for livestock and poultry purchases, at 110, is 2.7 percent below last month but 8.9 percent greater than last year. Since January, lower prices for feeder cattle more than offset higher prices for feeder pigs. The February feeder cattle price, at \$90.90 per cwt, is down \$4.40 per cwt from the January price. The February feeder pig price increased \$12.50 to \$108.00 per cwt.

**Fertilizer:** The index, at 135, is 2.3 percent above January and 15 percent more than a year ago. Since January, prices are higher for nitrogen fertilizers, potash & phosphate materials, and mixed fertilizers.

**Agricultural Chemicals:** The index, at 118, is down 0.8 percent from last month and 3.3 percent below last February. Prices are lower in February for herbicides, insecticides, and other chemicals.

**Fuels:** The index, at 151, is up 4.1 percent from a month earlier but 12 percent below February 2003. Compared to last month, prices are higher for LP gas, gasoline, and diesel fuel.

**Farm Machinery:** The index is 150, unchanged from January but 0.7 percent above last February.

**CONSUMER PRICE INDEX:** The January 2004 Consumer Price Index for all urban consumers (CPI-U) rose 0.5 percent before seasonal adjustment to a level of 185.2 (1982-84=100). This compares to the December index of 184.3. For the 12-month period ending in February, the overall index has increased 1.9 percent.



**Indexes of Prices Paid by Farmers and Related Parity Ratios  
United States, February 2004 With Comparisons**

Indexes and Ratios	1910-14 = 100			1990-92 = 100		
	2003	2004		2003	2004	
	Feb	Jan	Feb	Feb	Jan	Feb
Prices Paid by Farmers for Commodities & Services, Interest, Taxes, & Wage Rates (PPITW)	1,698	*1,728	1,730	128	130	130
Production	1,196	*1,229	1,231	123	127	127
Feed	559	*597	602	114	*122	123
Livestock and Poultry	1,297	*1,440	1,402	101	*113	110
Seeds	1,426	1,553	1,553	144	157	157
Fertilizer	427	482	493	117	132	135
Agricultural Chemicals	752	737	729	122	119	118
Fuels	1,322	*1,120	1,165	171	*145	151
Supplies & Repairs	941	949	949	133	134	134
Autos & Trucks	3,074	*3,050	3,061	116	115	115
Farm Machinery	3,732	3,760	3,760	149	150	150
Building Material	1,663	1,701	1,701	122	125	125
Farm Services & Rent	1,441	*1,449	1,449			
Rent				122	*123	123
Interest <sup>1</sup>	2,599	2,616	2,616	104	104	104
Taxes <sup>2</sup>	3,426	3,474	3,474	128	130	130
Wage Rates	6,035	5,848	5,848	161	156	156
Production, Interest, Taxes, & Wage Rates (PITW)	1,689	*1,723	1,725	126	128	128
Family Living-CPI <sup>3</sup>	1,739	1,750	1,750	136	137	137
Ratio (Received/Paid)				77	85	87
Parity Ratio <sup>4</sup>	37	41	42			
Parity Ratio Adjusted <sup>5</sup>	40	43	43			
PPITW Adjusted for Productivity <sup>6</sup>	1181	1189	1189			
Crop Sector (PPITW)				131	132	132
Livestock Sector (PPITW)				124	127	127
Farm Sector (Production)				115	124	124
Non-Farm Sector (Production)				127	128	128

\* Revised.

<sup>1</sup> Interest per acre on farm real estate debt and interest rate on farm non-real estate debt.

<sup>2</sup> Farm real estate taxes payable per acre.

<sup>3</sup> Bureau of Labor Statistics, Consumer Price Index for all urban consumers (CPI-U), for the previous month converted by the USDA.

<sup>4</sup> Ratio of index of prices received to PPITW (1910-14=100).

<sup>5</sup> Based on estimated cash receipts, from marketings and government payments, the preliminary adjustment factor is 1.048 for 2004 and the revised factor is 1.082 for 2003.

<sup>6</sup> PPITW is adjusted based on productivity trend for the prior 15 years.

**Prices Paid Indexes and Annual Weights for Input Components and  
Sub-Components United States, February 2004 With Comparisons**

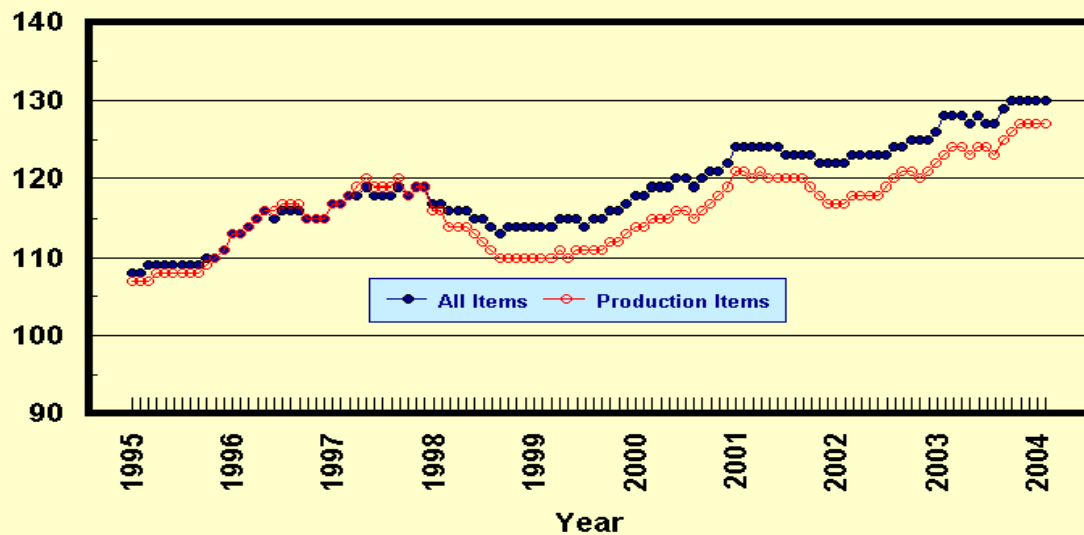
Index	Relative Weights 5-Year Moving Average <sup>1</sup>		Input Indexes		
	2003	2004	2003	2004	
	<i>Percent</i>	<i>Percent</i>	Feb <i>(1990-92=100)</i>	Jan <i>(1990-92=100)</i>	Feb <i>(1990-92=100)</i>
Production Items	66.7	66.2	123	127	127
Feed	11.0	10.7	114	*122	123
Feed Grains	1.6	1.5	103	*104	110
Complete Feeds	5.4	5.2	114	126	129
Hay/Forages	1.4	1.3	122	106	106
Concentrates	1.7	1.7	110	131	122
Supplements	0.9	0.9	134	141	142
Livestock & Poultry	7.2	7.4	101	*113	110
Feeder Cattle	5.6	5.8	96	113	107
Feeder Pigs	0.6	0.6	127	*104	118
Milk Cow Replacements	0.6	0.6	121	123	123
Poultry	0.4	0.4	111	111	111
Seeds	3.2	3.3	144	157	157
Field Crops	2.9	3.0	147	162	162
Grasses/Legumes	0.3	0.3	118	109	109
Fertilizer	4.5	4.4	117	132	135
Mixed Fertilizer	2.0	1.9	107	114	115
Nitrogen	1.9	1.8	131	156	162
Potash & Phosphate	0.6	0.6	103	114	116
Agricultural Chemicals	3.8	3.7	122	119	118
Herbicides	2.4	2.4	112	110	109
Insecticides	0.9	0.9	146	147	146
Fungicides/Other	0.5	0.5	126	113	112
Fuels	2.7	2.7	171	*145	151
Diesel	1.5	1.5	172	*138	140
Gasoline	0.8	0.8	156	*131	136
LP Gas	0.4	0.4	201	204	226
Farm Supplies & Repairs	5.5	5.4	133	134	134
Supplies	1.8	1.8	124	125	125
Repairs	3.6	3.6	137	138	138
Autos & Trucks	1.8	1.8	116	115	115
Autos	0.2	0.2	109	108	108
Trucks	1.5	1.6	117	116	116
Farm Machinery	4.0	4.0	149	150	150
Tractors	0.9	0.9	140	143	143
Self-Propelled	1.6	1.6	148	149	149
Other Machinery	1.5	1.5	155	155	155
Building Materials	3.1	3.3	122	125	125
Farm Services	12.4	12.4	122	*123	123
Custom Rates	1.3	1.3	125	125	125
Other Services	11.1	11.1	121	*123	123
Rent	7.4	7.1	120	120	120
Cash	4.0	3.8	145	145	145
Share	3.4	3.3	91	91	91
Interest	4.7	4.7	104	104	104
Taxes	3.0	3.0	128	130	130
Wage Rates	7.4	7.6	161	156	156
Family Living-CPI	18.2	18.5	136	137	137

\* Revised.

<sup>1</sup> Weights may not add due to rounding.

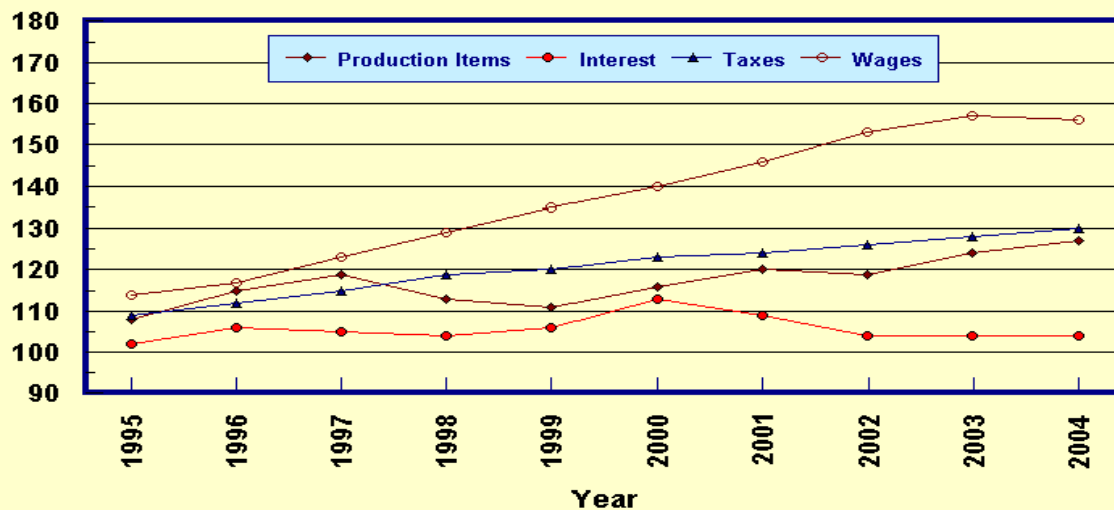
## Prices Paid by Farmers, Major Indexes US, by Quarter and Month

Percent (1990-92=100)



## Prices Paid by Farmers, Major Indexes US, Annual Averages 1/

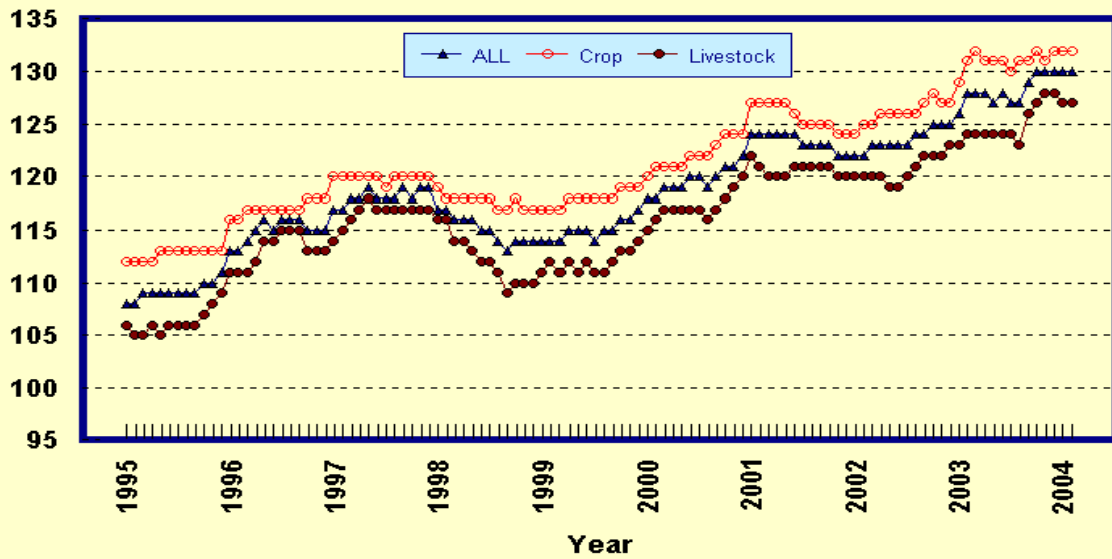
Percent (1990-92=100)



1/ Index values for 2004 are year-to-date averages.

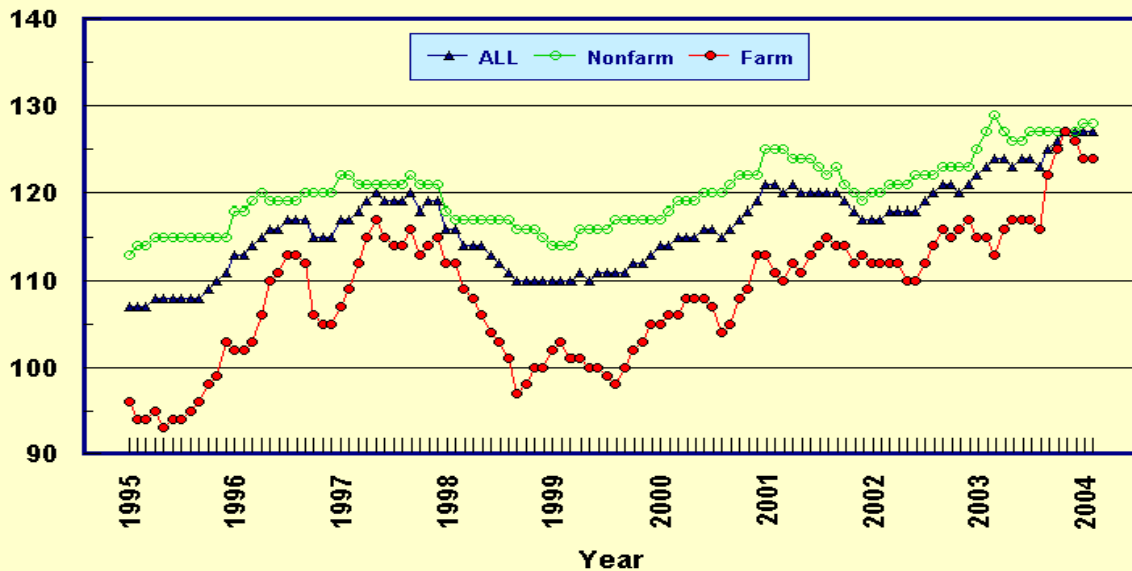
## Prices Paid by Farmers, Indexes, All Items US, By Farm Type

Percent (1990-92=100)



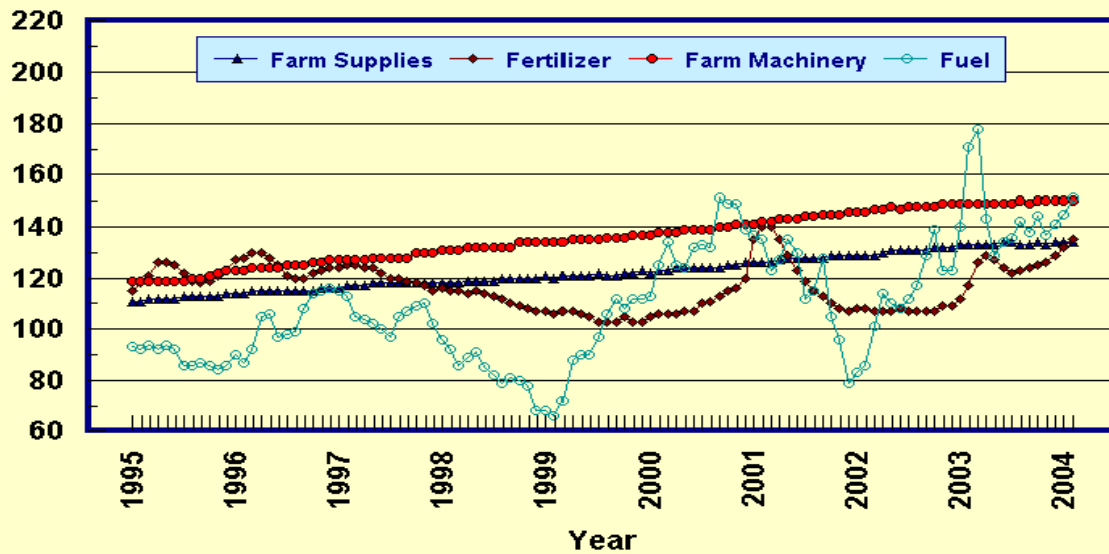
## Prices Paid by Farmers, Indexes, All Production Items US, By Sector Origin

Percent (1990-92=100)



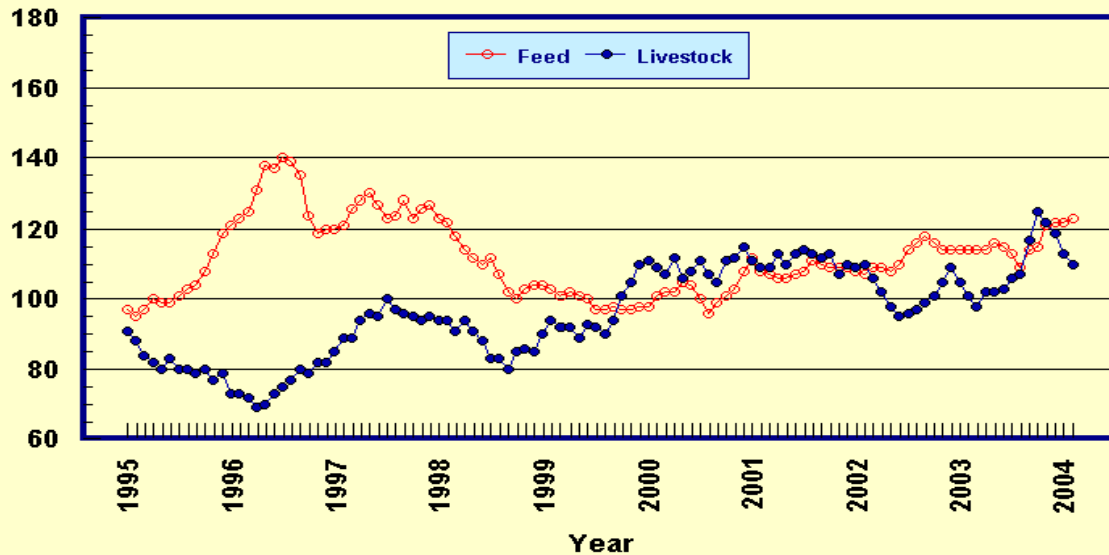
## Prices Paid by Farmers, Selected Production Indexes US, By Non-Farm Sector

Percent (1990-92=100)



## Prices Paid by Farmers, Selected Production Indexes US, By Farm Sector

Percent (1990-92=100)



**Feed Price Ratios: United States, February 2004 with Comparisons**

Feed Price Ratio <sup>1</sup>	2003	2004	
	Feb	Jan	Feb
Broiler-Feed: Pounds of Broiler Grower Feed equal in value to 1 pound of broiler, live weight	5.4	*5.6	5.7
Market Egg Feed: Pounds of Laying Feed equal in Value to 1 dozen eggs	8.0	*12.9	11.0
Hog-Corn: Bushels of Corn equal in value to 100 pounds of hog, live weight	14.7	*15.4	16.9
Milk-Feed: Pounds of 16% Mixed Dairy Feed equal in value to 1 pound of Whole Milk	2.35	*2.71	2.60
Steer & Heifer-Corn: Bushels of Corn equal in value to 100 pounds of Steer & Heifers, live weight	33.4	*35.7	32.0
Turkey-Feed: Pounds of Turkey Grower equal in value to 1 pound of Turkey, live weight	5.7	*5.1	4.8

\* Revised.

<sup>1</sup> Effective January 1995, prices of commercial prepared feeds are based on current U.S. prices received for corn, soybeans, alfalfa hay, and all wheat.

**Prices Used to Calculate Feed Price Ratios:  
United States, February 2004 with Comparisons**

Commodity	Unit	2003	2004	
		Feb	Jan	Feb
Broilers, Live	Lb	0.340	0.430	0.470
Eggs, Market	Doz	0.433	0.806	0.745
Hogs, All	Cwt	34.30	*36.80	43.20
Milk, All	Cwt	11.40	*13.20	13.30
Steers and Heifers	Cwt	78.20	*85.40	81.60
Turkeys, Live	Lb	0.345	0.349	0.350
Corn	Bu	2.34	*2.39	2.55
Hay, Alfalfa, Baled	Ton	96.20	83.60	84.70
Soybeans	Bu	5.55	*7.34	7.99
Wheat, All	Bu	3.70	*3.68	3.68

\* Revised.

**Feeder Livestock: Prices Paid, United States  
February 2004 with Comparisons**

Commodity	Unit	2003	2004	
		Feb	Jan	Feb
		<i>Dollars</i>	<i>Dollars</i>	<i>Dollars</i>
Feeders and Stockers				
Cattle and Calves	Cwt	81.30	95.30	90.90
Feeder Pigs	Cwt	117.00	*95.50	108.00

\* Revised.

## Prices Paid by Farmers

**Definition:** Prices paid by farmers represent the average costs of inputs purchased by farmers and ranchers to produce agricultural commodities. Conceptually, the average price when multiplied by quantity purchased should equal total producer expenditures for the item.

**Survey Procedures:** The prices paid data are obtained from establishments that sell goods and services to farmers and ranchers. Annually, about 8,500 firms are randomly selected from lists by type of item sold with an average response rate in the range of 75-80 percent. Firms are asked to report the price for the specified item "most commonly bought by farmers" or that was the "volume seller". Approximately 135 items are surveyed each April to represent all production input items purchased. The survey reference period for most items is the 5 business days centered around the 15th of the month. Separate prices paid surveys are conducted for, agricultural chemicals, fuels, feed, fertilizer, machinery, and seed.

**Summary and Estimation Procedures:** The annual April Prices Paid Survey is summarized as a nonprobability survey. Average prices reported are aggregated to the region and U.S. level using weights available from expenditure data and other administrative sources. Price recommendations are prepared by the State Statistical Offices and Headquarters for review by the Agricultural Statistics Board in Washington, D.C. Also, the change in price level for individual items surveyed are combined to the regional and U.S. levels, and are published as prices paid indexes referenced to a specific base period. Prices paid indexes for new autos and trucks, building materials, farm supplies, motor supplies, and marketing containers are updated based on price changes measured in selected Bureau of Labor Statistics (BLS) indexes.

**Revisions:** Any revisions are published in the monthly and in annual issues of *Agricultural Prices*. The basis for revision must be supported by additional data that directly affect the level of the estimate. More revisions are likely in April when separate prices paid surveys are conducted, in lieu of BLS indexes, by the USDA to measure price change.

**Reliability:** Current methods of summarization in April are not designed directly to calculate sampling errors. However, analytical measures approximate the U.S. relative sampling errors for major items around 10 percent. Any nonsampling errors are attributed to such things as the inability to obtain correct information, differences in interpreting questions or definitions, mistakes in coding or processing the data, etc. Efforts are made at each step in the survey process to minimize these nonsampling errors.

**Program Change:** Effective January 1, 1995, the National Agricultural Statistics Service updated the weights and changed the construction of its prices paid and received by farmers indexes. A Federal Register Notice dated October 28, 1994 discussed these program modifications.

A 1990-92 reference and base period replaced the 1977 reference and 1971-73 base weight period. Five-year moving average weights replaced the current fixed 1971-73 base period weights. The 1910-14=100 price indexes, required by statute for computing parity prices, were linked forward based on the changes in the new 1990-92=100 indexes. The new indexes were constructed by multiplying the ratios of the current prices to the base period prices by the moving average weights (adjusted for seasonal marketing patterns for the prices received indexes).

### Information Contacts

General questions should be directed to Linda Hutton, Chief, Environmental, Economics and Demographics Branch at (202) 720-6146. Below are the commodity specialists to contact for additional information.

#### Crop Prices Received

Joe Prusacki Chief, Crops Branch .....	(202) 720-2127
Greg Thessen, Field Crops Section .....	(202) 720-2127
Dave DeWalt - Cotton, Cottonseed .....	(202) 720-5944
Herman Ellison - Oilseeds .....	(202) 720-7369
Lance Honig - Wheat, Rye .....	(202) 720-8068
Darin Jantzi - Corn, Proso Millet, Flaxseed .....	(202) 720-9526
Troy Joshua - Hay, Oats, Sorghum .....	(202) 690-3234
Mark R. Miller - Peanuts, Rice .....	(202) 720-7688
Brian Young - Sugarcane, Sugarbeets, Barley .....	(202) 720-7621
Jim Smith, Fruit and Vegetable Section .....	(202) 720-2127
Jorge Garcia-Pratts - Citrus .....	(202) 720-5412
Debbie Flippin - Peaches, Pears, Hops, Pulses, Mint .....	(202) 720-3250
Terry O'Connor - Apples, Apricots, Cherries, Cranberries, Plums, Prunes .....	(202) 720-4288
Mike Miller - Grapes, Tobacco .....	(202) 720-7235
Cathy Scherrer, Potatoes, Dry Edible Beans, Sweet Potatoes .....	(202) 720-4285
Biz Wallingsford - Vegetables, Onions, Strawberries .....	(202) 720-2157

#### Livestock Prices Received

Dan Kerestes, Chief, Livestock Branch .....	(202) 720-3570
Wil Hundl, Livestock Section .....	(202) 720-3570
Steve Anderson - Cattle .....	(202) 720-3040
Scott Hollis - Sheep, Lambs, Wool, Mohair .....	(202) 720-4751
Ty Kalaus - Milk, Milk Cows .....	(202) 690-3236
Dan Lofthus - Hogs .....	(202) 720-3106
Nathan Crisp, Poultry and Specialty Commodities Section .....	(202) 720-3570
Tom Kruchten - Broilers, Eggs .....	(202) 690-4870
John Lange - Turkeys .....	(202) 720-0585

#### Indexes, Prices Paid, and Parity Prices

Linda Hutton, Chief, Environmental, Economics and Demographics Branch .....	(202) 720-6146
Kevin Hintzman, Economics Section .....	(202) 720-6146
Tara Jackson - Feed, Fertilizer, Ag Chemicals, Seeds .....	(202) 690-3229
Jim Williams - Prices Paid Indexes, Farm Supplies and Repairs, Farm Machinery, Fuels, Feeder Livestock, Poultry Chicks, Feed Price Ratios, Grazing Fees, Autos & Trucks .....	(202) 690-3225
Rhonda Brandt - Prices Received Indexes, Parity Prices .....	(202) 720-5446



The next "Agricultural Prices" report will be released at 3 p.m. ET on March 30, 2004.

The United States Department of Agriculture (USDA) prohibits discrimination in all its programs on the basis of race, color, national origin, gender, religion, age, disability, political beliefs, sexual orientation, and marital or family status. (Not all prohibited bases apply to all programs.) Persons with disabilities who require alternative means for communication of program information (braille, large print, audiotape, etc.) should contact the USDA's TARGET Center at 202-720-2600 (voice and TDD).

To file a complaint of discrimination, write USDA, Director, Office of Civil Rights, Room 326-W, Whitten Building, 1400 Independence Avenue, SW, Washington, D.C., 20250-9410, or call 202-720-5964 (voice or TDD). USDA is an equal opportunity provider and employer.

## ACCESS TO REPORTS!!

---

For your convenience, there are several ways to obtain NASS reports, data products, and services:

### INTERNET ACCESS

All NASS reports are available free of charge on the worldwide Internet. For access, connect to the Internet and go to the NASS Home Page at: [www.usda.gov/nass/](http://www.usda.gov/nass/). Select "Today's Reports" or Publications and then Reports Calendar or Publications and then Search, by Title or Subject.

### E-MAIL SUBSCRIPTION

All NASS reports are available by subscription free of charge direct to your e-mail address. Starting with the NASS Home Page at [www.usda.gov/nass/](http://www.usda.gov/nass/), click on **Publications**, then click on the **Subscribe by E-mail** button which takes you to the page describing e-mail delivery of reports. Finally, click on **Go to the Subscription Page** and follow the instructions.

-----

### PRINTED REPORTS OR DATA PRODUCTS

**CALL OUR TOLL-FREE ORDER DESK: 800-999-6779 (U.S. and Canada)**  
**Other areas, please call 703-605-6220      FAX: 703-605-6900**  
**(Visa, MasterCard, check, or money order acceptable for payment.)**

-----

### ASSISTANCE

For **assistance** with general agricultural statistics or further information about NASS or its products or services, contact the **Agricultural Statistics Hotline** at **800-727-9540**, 7:30 a.m. to 4:00 p.m. ET, or e-mail: [nass@nass.usda.gov](mailto:nass@nass.usda.gov).

---