

Released May 28, 2004, by the National Agricultural Statistics Service (NASS), Agricultural Statistics Board, U.S. Department of Agriculture. For information on *Agricultural Prices* see page 44, office hours 7:30 a.m. to 4:00 p.m. ET.

May Farm Prices Received Index Reaches Third Consecutive Record High

The preliminary All Farm Products Index of Prices Received by Farmers in May at 132, based on 1990-92=100, is 7 points (5.6 percent) above the April Index. This is the highest index level since records began in 1910. The Livestock Products Index, also at a record high, increased 9 points (7.1 percent) from April while the All Crops Index increased 4 points (3.3 percent). Producers received higher commodity prices for milk, hogs, cattle, and broilers. Lower prices were received for lettuce, eggs, corn, and tomatoes. The seasonal change in the mix of commodities farmers sell, based on the past 3-year average, also affects the overall index. Increased average marketings of cantaloups, grapes, sweet corn, and broilers offset decreased marketings of cattle, milk, apples, and asparagus. The preliminary All Farm Products Index is up 27 points (26 percent) from May 2003.

The Food Commodities Index increased 9 points (7.1 percent) from last month to 135. The index stands 31 points (30 percent) above May 2003.

Prices Paid Index Up 1 Point

The May Index of Prices Paid for Commodities and Services, Interest, Taxes, and Farm Wage Rates (PPITW) is 134 percent of the 1990-92 average. The index is up 1 point from April and 7 points (5.5 percent) above May 2003. Higher prices in May for complete feeds, feeder cattle, hay and forages, and gasoline more than offset lower prices for feed concentrates, feed grains, feeder pigs, and nitrogen fertilizers.

Index Summary Table

Index 1990-92=100	2003	2003	2004	2004
	Apr	May	Apr	May
Prices Received	101	105	125	132
Prices Paid	128	127	133	134
Ratio ¹	79	83	94	99

¹ Ratio of index of prices received by farmers to index of prices paid by farmers.

Prices Received by Farmers

The May Prices Received by Farmers Index for All Farm Products is 132 percent of its 1990-92 base, up 5.6 percent from the April index and 26 percent above the May 2003 index.

ALL CROPS: The May index is 127, up 3.3 percent from April and 10 percent above May 2003. From April, index increases for fruits and nuts and commercial vegetables more than offset an index decrease for food grains.

Food Grains: The May index, at 123, is down 3.2 percent from the previous month but 21 percent above May 2003. The May all wheat price, at \$3.73 per bushel, is down 16 cents from April but 40 cents above May 2003.

Feed Grains & Hay: The May index, at 124, is unchanged from last month but 13 percent above May 2003. The corn price, at \$2.78 per bushel, is down 11 cents from last month but 40 cents above May 2003. The all hay price, at \$101.00 per ton, is \$11.40 above April and \$3.00 above last May.

Oil-Bearing Crops: The May index, at 171, is unchanged from April but 57 percent above May 2003. The soybean price, at \$9.60 per bushel, is down 2 cents from April but \$3.53 above May 2003.

Potatoes & Dry Beans: The May index, at 116, is unchanged from last month but 0.9 percent below May 2003. The all potato price, at \$6.75 per cwt, is down 9 cents from the previous month and 21 cents below last May. The dry edible bean price, at \$21.80 per cwt, is \$2.20 above last month and up \$2.70 from May 2003.

Cotton: The May index, at 101, is unchanged from April but 33 percent above May 2003. The May price, at 61.2 cents per pound, is unchanged from the previous month but 15.3 cents above last May.

Fruits & Nuts: The May fruit and nut index, at 113, is up 23 percent from the previous month and 5.6 percent above May 2003. The grapefruit price, at \$3.87 per box, is up \$2.06 from April but \$2.29 below May 2003. The price for strawberries, at \$62.30 per cwt, is up \$9.90 from last month but down \$1.90 from May 2003.

Commercial Vegetables: The May index, at 136, is up 0.7 percent from last month but 1.4 percent less than May 2003. The broccoli price, at \$31.00 per cwt, is \$7.10 above last month and \$1.30 greater than May 2003. In contrast, the lettuce price, at \$10.30 per cwt, decreased \$4.40 from a month ago and is \$10.90 below last May.

LIVESTOCK & PRODUCTS: The May index, at 135, is up 7.1 percent from last month and up 41 percent from May 2003. Compared with a year ago, prices are higher for dairy, broilers, all cattle, hogs, calves, eggs, and turkeys.

Meat Animals: The May index, at 122, is up 8.0 percent from last month and up 22 percent from last year. The May beef cattle price of \$88.40 is up \$3.60 from last month and up \$12.90 from May 2003. The May hog price of \$57.80 per cwt is up \$10.40 from April and up \$16.50 from this same time a year ago.

Dairy Products: The May index, at 155, is up 12 percent from April and up 85 percent from May 2003. The May all milk price of \$20.30 per cwt is up \$2.10 from April and up \$9.30 from last year. The fluid grade milk price is up \$2.10 from last month and the manufactured grade milk price is up \$1.30.

Poultry & Eggs: The index, at 141, is up 0.7 percent from April and 37 percent above a year ago, due to increased prices for broilers and turkeys. May market egg prices, at 46.8 cents per dozen, decreased 14.6 cents from April, continuing the decrease from the post Easter period. The May broiler price, at 50.0 cents per pound, reached a new record high due to strong domestic and increasing global demand. The May turkey price, at 40.4 cents per pound, is up 1.7 cents from last month. Cumulative placement of turkey poults is 4 percent below last year.

Table of Contents

U.S. Prices Received and Indexes	Page	Monthly State Prices, continued	Page
Narrative	2	Cotton, Upland	17
Price Indexes	5	Cottonseed	17
Price Index Charts	6	Eggs	22
U.S. Prices Received Summary	8	Flaxseed	16
Charts	10	Fruit, Citrus	18
Selected Commodities	14	Hay	17
Upland Cotton & Rice Marketings	17	Hogs, All	21
Parity Prices	24	Barrows and Gilts	21
Reliability Statement	34	Sows	21
 		Milk	23
Monthly State Prices Received		Oats	15
Apples	17	Peanuts	16
Barley	15	Potatoes	19
Beans, Dry Edible	16	Sheep	22
Beef Cattle, All	20	Lambs	22
Calves	20	Sorghum, Grain	15
Cows, Beef	20	Soybeans	15
Milk Cows	23	Sunflowers, All	16
Steers and Heifers	20	Tobacco	16
Corn	15	Wheat, All Classes	14
Prices Received Special Features			Page
Marketing Seasons for Specified Commodities			26
Marketing Year Average Prices			
Tobacco, All			26
By Type			27
Monthly Price Revisions			
Tobacco, by Type			29
All			33

Table of Contents (continued)

U.S. Prices Paid, Prices Paid Indexes and Ratios	Page
Narrative	35
Indexes and Parity Ratios	36
Charts	38
Feed Ratios	41
Reliability Statement	43
 U.S. Average Prices	
Commodity Prices Used in Feed Price Ratios	41
Feeder Livestock	41
 Special Features	
Feed: Price Ratios, January 2001 - May 2004	42
 Information Contacts	44

**Index Numbers of Prices Received, United States,
May 2004, with Comparisons**

Index	1910-14=100				1990-92=100		
	Average 1990-92	2003	2004		2003	2004	
		May	Apr	May	May	Apr	May
All Farm Products	639	667	*793	836	105	*125	132
All Crops	500	569	*606	626	115	*123	127
Food Grains	325	326	*402	390	102	*127	123
Feed Grains & Hay	363	392	*445	442	110	124	124
Cotton	517	388	*517	517	76	*101	101
Tobacco	1,263		574			38	
Oil-Bearing Crops	554	594	*935	934	109	*171	171
Fruits & Nuts	716	746	*639	788	107	*92	113
Commercial Vegetables	698	922	*905	907	138	*135	136
Potatoes & Dry Beans	540	592	*585	586	117	*116	116
Other Crops	493	564	569	569	114	115	115
Livestock & Products	768	740	*968	1,039	96	*126	135
Meat Animals	1,021	1,014	*1,150	1,237	100	*113	122
Dairy Products	799	676	*1,118	1,247	84	*139	155
Poultry & Eggs	282	288	*392	398	103	140	141
Food Commodities					104	*126	135

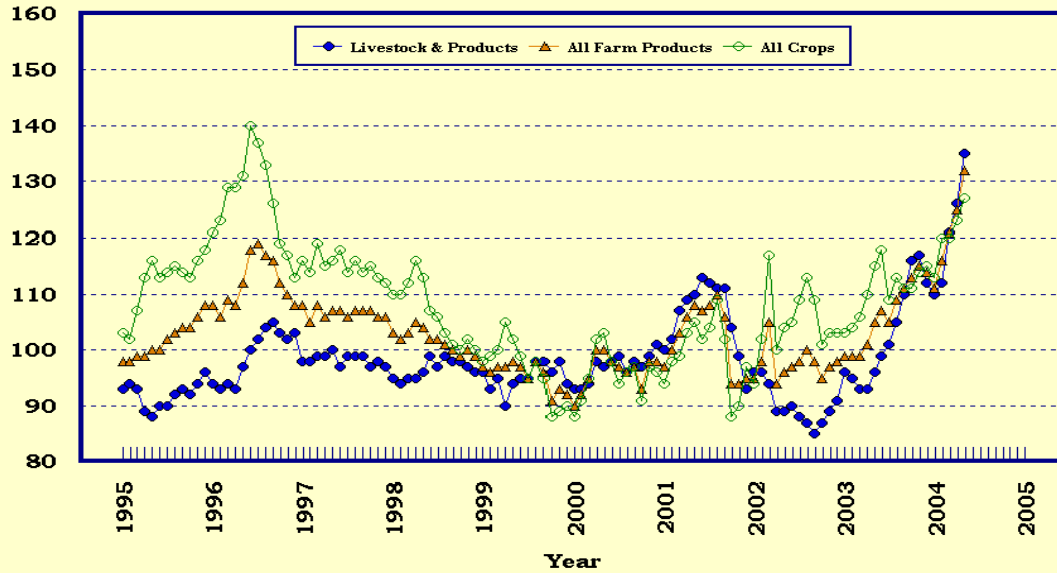
* Revised.

**Selected Index Numbers for Prices Received and Paid,
1990-92=100, by Months, United States, 2003 and 2004**

Month	Index of Prices Received						Index of Prices Paid			
	All Farm Products		All Crops		Livestock and Products		All Items		Production Items	
	2003	2004	2003	2004	2003	2004	2003	2004	2003	2004
Jan	99	111	103	113	96	110	127	131	122	127
Feb	99	116	104	120	95	112	128	131	123	128
Mar	99	121	106	120	93	121	128	133	124	130
Apr	101	125	110	123	93	126	128	133	124	131
May	105	132	115	127	96	135	127	134	123	132
Jun	107		118		99		128		123	
Jul	105		109		101		127		123	
Aug	109		113		105		127		123	
Sep	111		111		110		129		125	
Oct	113		111		116		130		126	
Nov	115		114		117		130		127	
Dec	114		115		112		130		127	

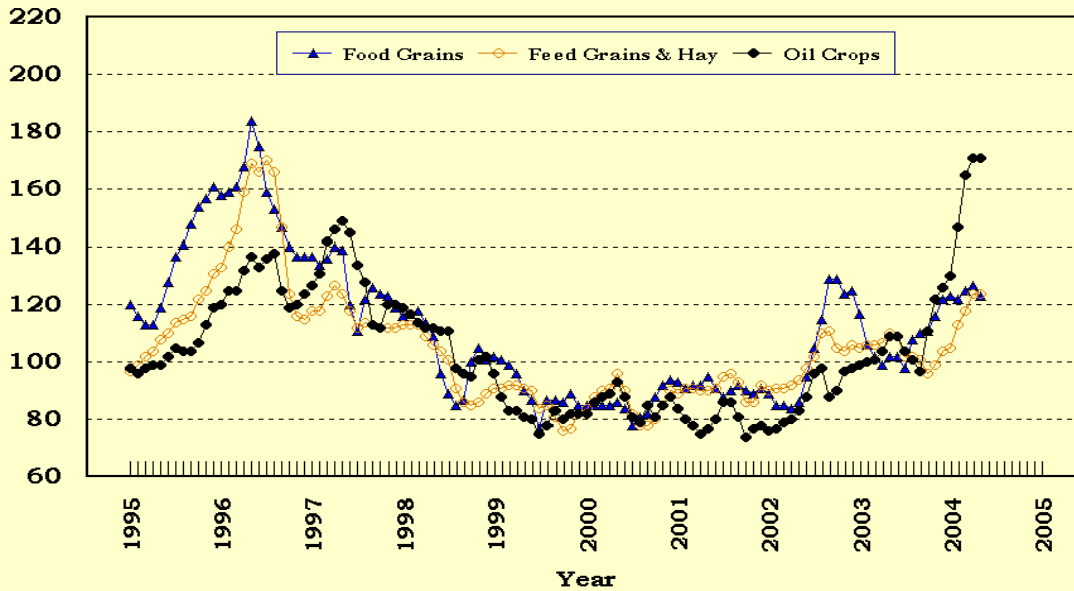
Prices Received, Major Indexes, US

Index Values(1990-92=100)



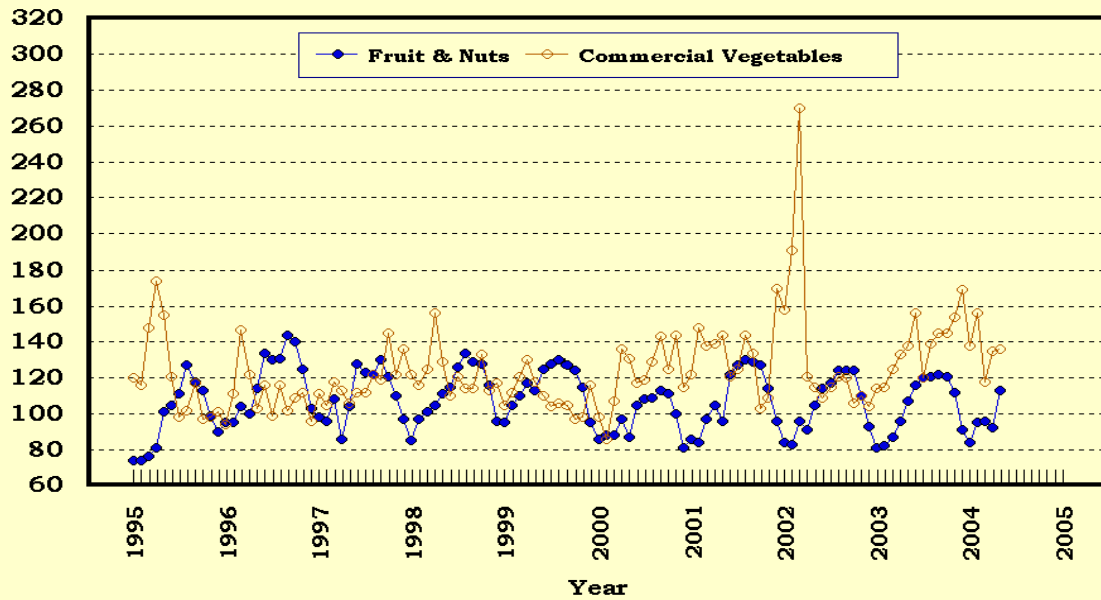
Prices Received, Food, Feed, & Oil Indexes, US

Index Values(1990-92=100)



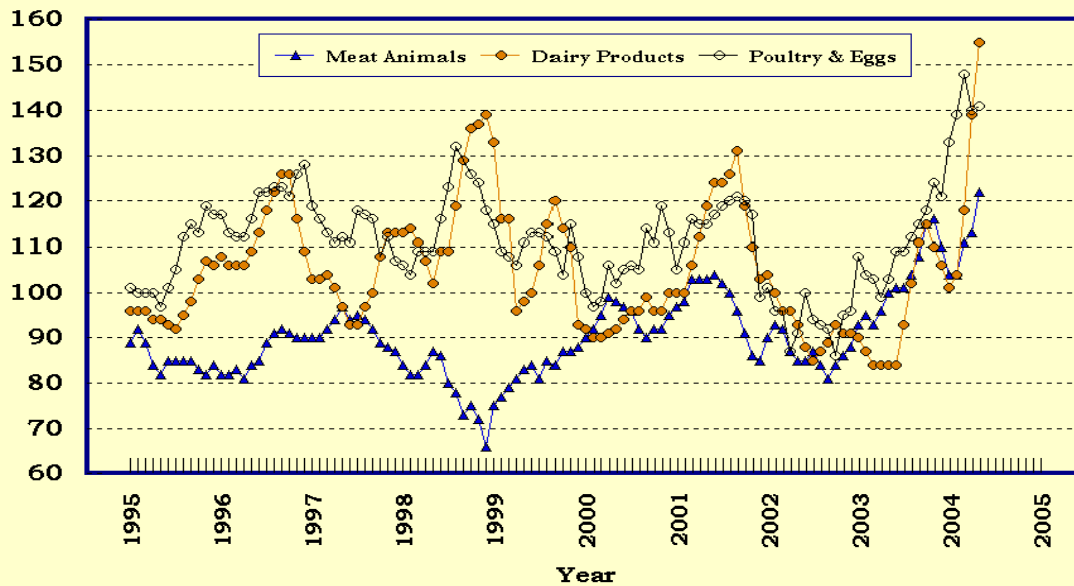
Prices Received, Fruit/Vegetable Indexes, US

Index Values(1990-92=100)



Prices Received, Livestock Product Indexes, US

Index Values(1990-92=100)



**Prices Received, United States,
May 2004, with Comparisons**

Commodity	Unit	Average 1990-92	Entire Month		Preliminary
			May 2003	Apr 2004	May 2004
		<i>Dollars</i>	<i>Dollars</i>	<i>Dollars</i>	<i>Dollars</i>
Field Crops					
Barley, All	Bu	2.12	2.91	2.78	2.79
Feed	Bu	1.90	2.33	2.16	2.29
Malting	Bu	2.43	3.19	3.04	3.04
Beans, Dry Edible	Cwt	19.10	19.10	19.60	21.80
Chickpeas, All ¹	Cwt			22.70	(⁵)
Large ¹	Cwt			23.10	(⁵)
Small ¹	Cwt			(⁵)	(⁶)
Corn	Bu	2.30	2.38	2.89	2.78
Cotton, Upland	Lb	0.606	0.459	0.612	0.612
Cottonseed ⁴	Ton	96.00			
Flaxseed	Bu	4.27	6.05	6.98	7.15
Hay, All, Baled ²	Ton	76.30	98.00	89.60	101.00
Alfalfa ²	Ton	77.20	100.00	92.70	109.00
Other ²	Ton	60.00	88.40	76.00	74.90
Lentils ¹	Cwt			18.90	19.50
Oats	Bu	1.22	1.95	1.62	1.64
Peanuts, In-Shell	Lb	0.304	0.196	0.201	0.210
Peas, Dry Edible ¹	Cwt			9.06	9.08
Austrian Winter ¹	Cwt			(⁶)	(⁶)
Potatoes	Cwt	5.82	6.96	6.84	6.75
Rice, Rough	Cwt	7.07	4.84	8.13	7.86
Sorghum Grain	Cwt	3.75	3.95	5.09	4.60
Soybeans	Bu	5.61	6.07	9.62	9.60
Sunflowers, All	Cwt	9.50	12.20	13.50	13.90
Tobacco, Types 11-37	Lb	1.740	(⁶)	0.660	(⁶)
Wheat, All	Bu	2.96	3.33	3.89	3.73
Winter	Bu	2.93	3.19	3.79	3.64
Durum	Bu	2.86	3.99	4.22	4.19
Other Spring	Bu	3.11	3.55	3.94	3.90
Hard Red Winter	Bu		3.21	3.76	
Soft Red Winter	Bu		3.18	3.84	
Hard Red Spring	Bu		3.60	3.94	
White	Bu	3.24	3.13	3.91	
Fruit					
Citrus, Equiv on-tree					
Grapefruit	Box	5.77	6.16	1.81	3.87
Lemons	Box	10.10	5.49	7.85	6.57
Oranges	Box	5.79	4.43	3.62	3.62
Tangelos	Box	5.82			
Tangerines	Box	15.11	12.74	10.73	15.24
Temples	Box	6.23			
Noncitrus, Fresh					
Apples ³	Lb	0.212	0.218	0.299	0.294
Grapes ³	Ton	506.00	950.00	(⁶)	2,030.00
Peaches ³	Lb	0.216	0.433		0.455
Pears ³	Ton	370.00	397.00	363.00	457.00
Strawberries	Cwt	56.00	64.20	52.40	62.30

¹ Monthly estimates began July 2003.

² Mid-month price.

³ Equivalent packinghouse-door returns for CA, MI, and NY (apples only), and WA (apples, peaches, and pears). Prices as sold for other states.

⁴ Marketing year August - February.

⁵ Price not published to avoid disclosure of individual firms.

⁶ Insufficient sales to establish a price.

**Prices Received, United States,
May 2004, with Comparisons**

Commodity	Unit	Average 1990-92	Entire Month		Preliminary
			May 2003	Apr 2004	May 2004
		<i>Dollars</i>	<i>Dollars</i>	<i>Dollars</i>	<i>Dollars</i>
Vegetables, Fresh ¹					
Asparagus	Cwt	79.80	106.00	139.00	132.00
Broccoli	Cwt	22.50	29.70	23.90	31.00
Cantaloupes ²	Cwt		24.30		28.30
Carrots	Cwt	13.20	19.90	24.20	24.90
Cauliflower	Cwt	26.80		23.60	33.90
Celery	Cwt	11.60	11.00	15.60	19.30
Corn, Sweet	Cwt	15.70	16.60	19.80	20.60
Cucumbers ²	Cwt		20.20	23.30	16.90
Lettuce	Cwt	11.90	21.20	14.70	10.30
Onions	Cwt	12.80	32.00	17.50	20.00
Snap Beans ²	Cwt		45.30	48.60	40.40
Tomatoes	Cwt	32.30	23.70	47.90	44.40
Livestock					
Calves	Cwt	94.30	100.00	117.00	122.00
Cattle, All Beef	Cwt	72.90	75.50	84.80	88.40
Cows ³	Cwt	49.60	42.40	50.50	52.40
Steers & Heifers	Cwt	77.10	79.60	88.90	92.60
Milk Cows ⁴	Head	1,130.00		1,580.00	
Hogs, All	Cwt	47.70	41.30	47.40	57.80
Barrows & Gilts	Cwt	48.40	41.80	47.70	58.50
Sows	Cwt	39.50	29.00	40.50	43.10
Lambs	Cwt	56.20	97.60	100.00	
Sheep	Cwt	23.40	31.30	37.10	
Dairy and Poultry					
Milk, All ^{5 6}	Cwt	13.06	11.00	18.20	20.30
Fluid Grade ⁶	Cwt	13.10	11.00	18.20	20.30
Mfg Grade ⁶	Cwt	11.80	10.20	19.40	20.70
Broilers, Live ⁷	Lb	0.317	0.340	0.480	0.500
Eggs, All ⁸	Doz	0.643	0.587	0.768	0.645
Market ⁸	Doz	0.546	0.397	0.614	0.468
Turkeys, live ^{7 8}	Lb	0.380	0.349	0.387	0.404
Adjusted for Seasonal Variation					
Eggs, All	Doz	0.545	0.588	0.732	0.626
Milk, All ⁵	Cwt	9.71	11.83	18.96	20.71

¹ F.O.B. shipping point.

² Monthly estimates began January 1995.

³ Beef cows and cull dairy cows sold for slaughter.

⁴ Animals sold for dairy herd replacement only. Prices available for Jan, Apr, Jul, and Oct.

⁵ Before deductions for hauling. Includes quality, quantity, and other premiums. Excludes hauling subsidies.

⁶ May 2004 Fat test percent: all milk 3.61, fluid milk 3.60, mfg grade 3.77.

⁷ Equivalent liveweight returns to producers for most States. Includes growers and contractors.

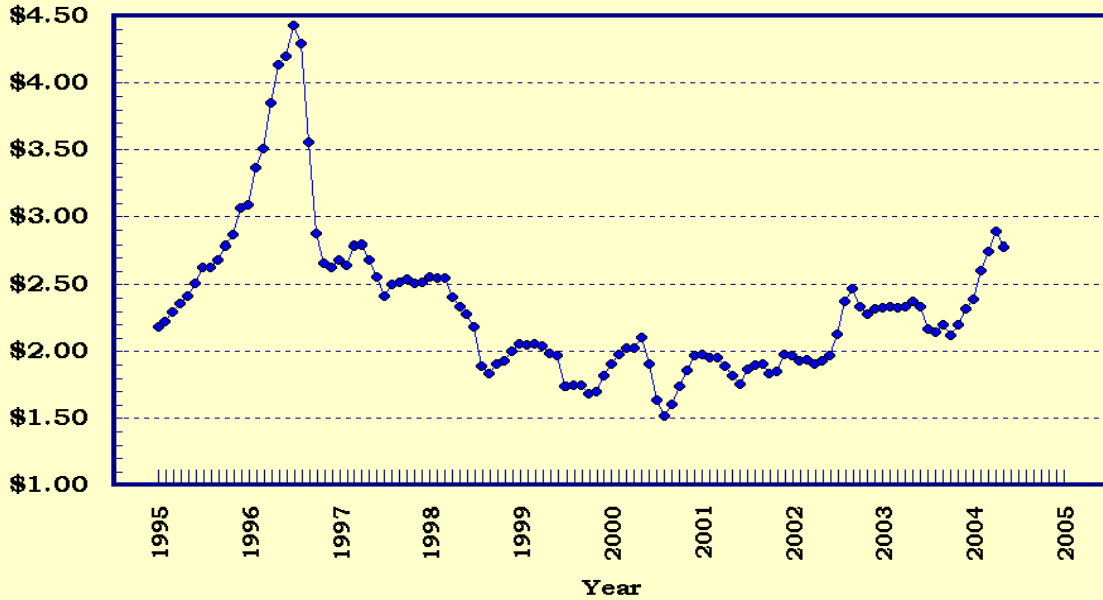
⁸ Mid-month price.

⁹ Price not published to avoid disclosure of individual firms.

¹⁰ Insufficient sales to establish a price.

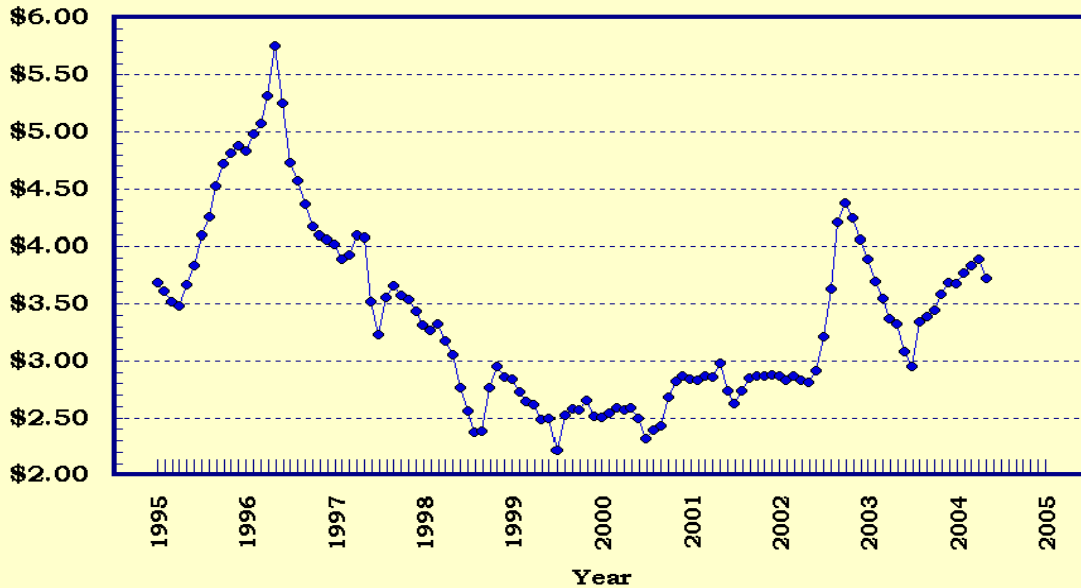
Prices Received, Corn, US

Dollars per Bu



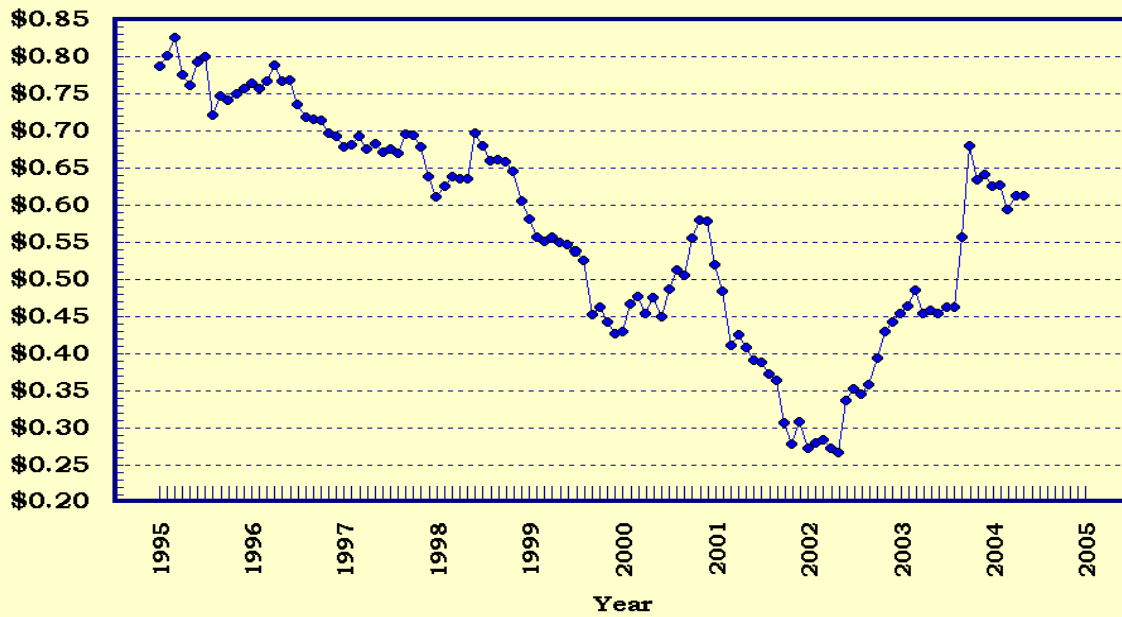
Prices Received, Wheat, US

Dollars per Bu



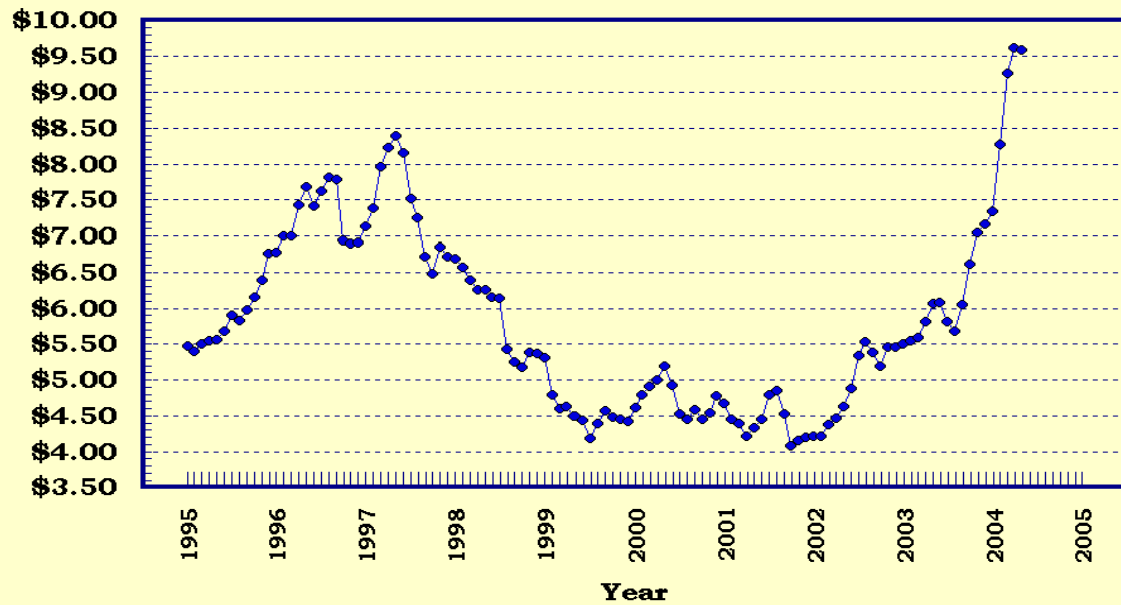
Prices Received, Cotton, US

Dollars per Lb



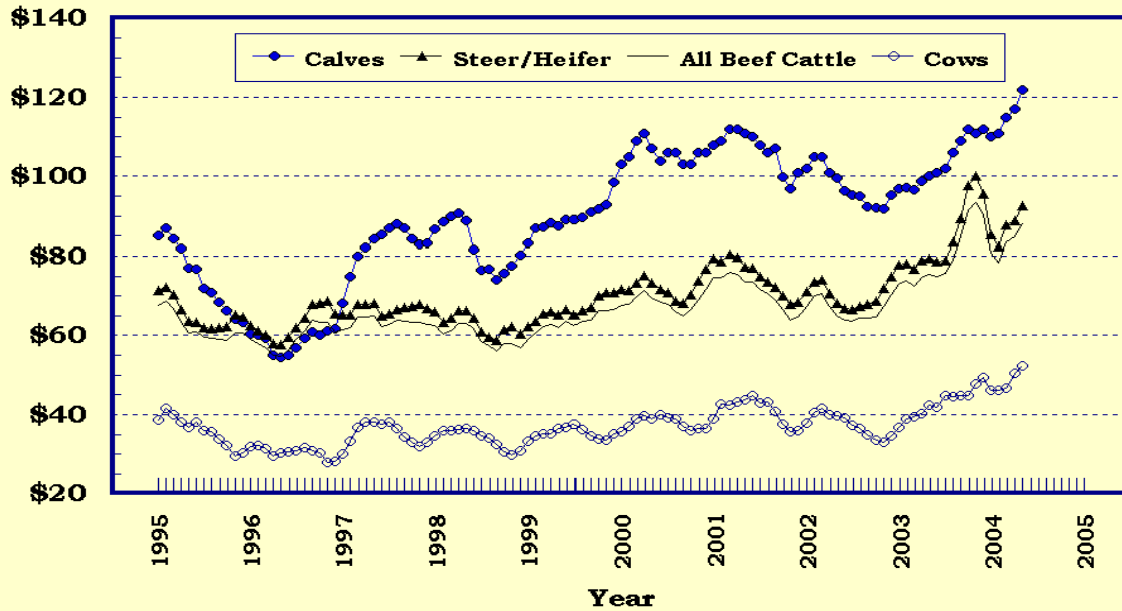
Prices Received, Soybeans, US

Dollars per Bu



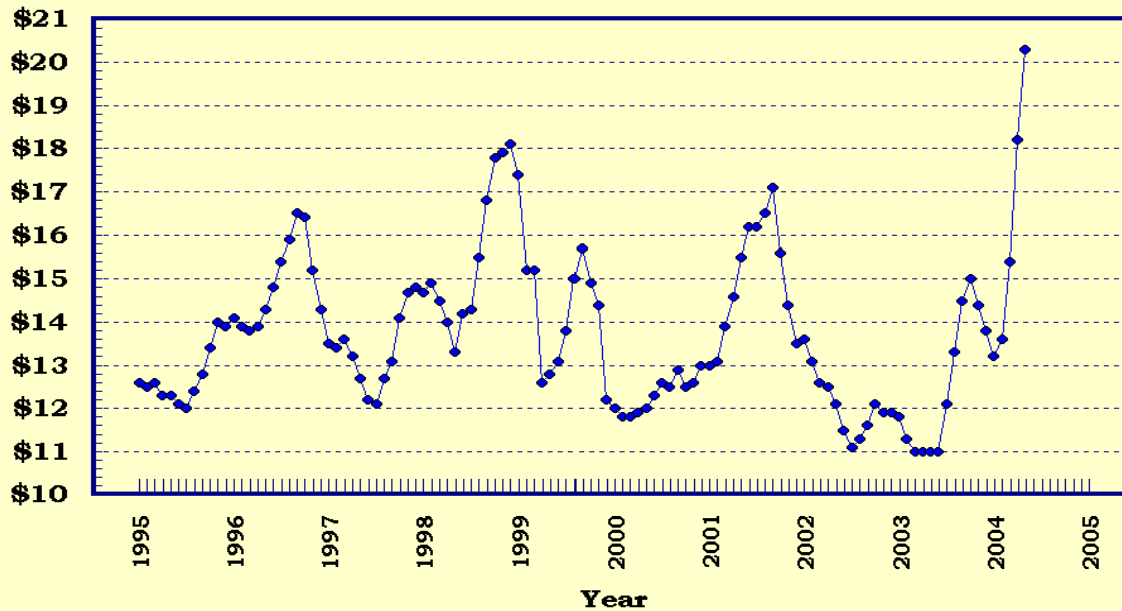
Prices Received, Cattle, US

Dollars per Cwt



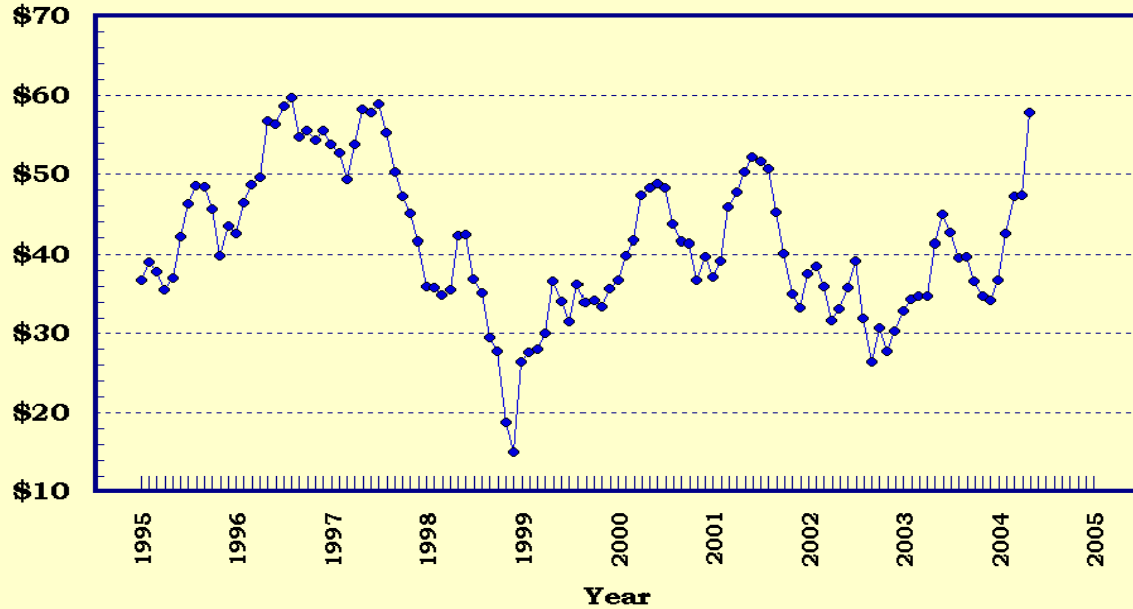
Prices Received, Milk, US

Dollars per Cwt



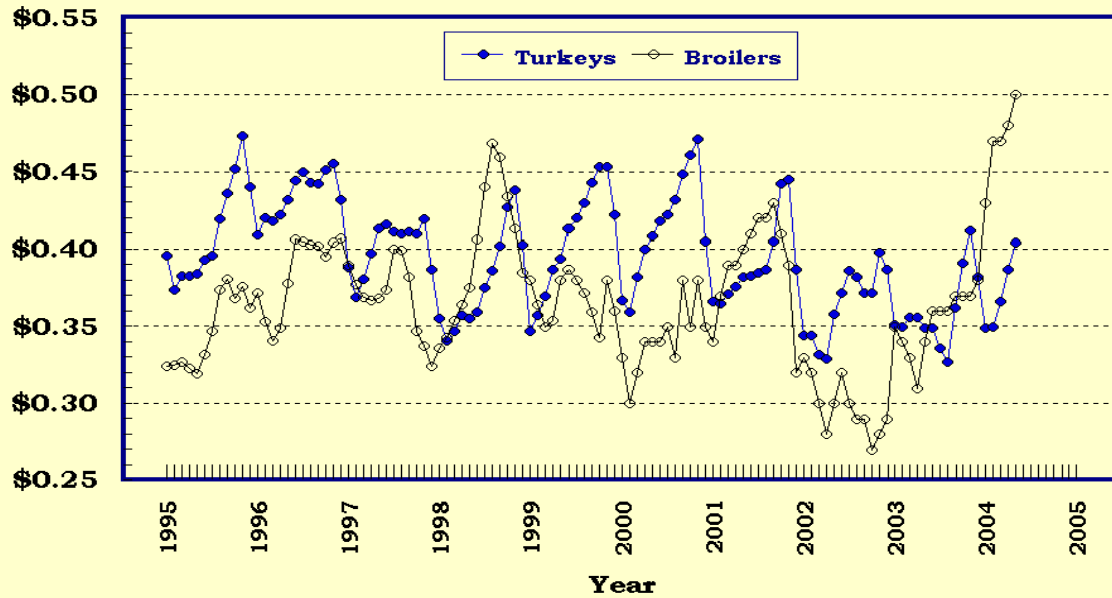
Prices Received, Hogs, US

Dollars per Cwt



Prices Received, Turkeys & Broilers, US

Dollars per Lb



Wheat: Prices Received, by States, April and May 2004

State	All Wheat		Winter Wheat		Durum Wheat		Oth Spring Wheat	
	Apr ¹	May ²	Apr ¹	May ²	Apr ¹	May ²	Apr ¹	May ²
	<i>Dollars per Bushel</i>	<i>Dollars per Bushel</i>	<i>Dollars per Bushel</i>	<i>Dollars per Bushel</i>	<i>Dollars per Bushel</i>	<i>Dollars per Bushel</i>	<i>Dollars per Bushel</i>	<i>Dollars per Bushel</i>
AR	(³)	(³)	(³)	(³)				
CA	3.92	(³)	3.92	(³)	(⁴)	(⁴)		
CO	3.79	3.51	3.79	3.51			(³)	(⁴)
ID	3.76	3.78	3.68	3.75			3.91	3.85
IL	3.96	3.70	3.96	3.70				
IN	3.81	3.48	3.81	3.48				
KS	3.80	3.56	3.80	3.56				
MI	3.74	3.35	3.74	3.35				
MN	3.97	3.94	(⁴)	(⁴)			3.97	3.94
MO	3.80	3.50	3.80	3.50				
MT	3.93	3.98	3.77	3.81	4.15	4.15	3.99	4.06
NE	3.62	3.55	3.62	3.55				
ND	3.97	3.91	3.35	3.20	4.26	4.20	3.88	3.80
OH	3.89	3.53	3.89	3.53				
OK	3.81	3.53	3.81	3.53				
OR	4.01	3.89	3.97	3.85			4.22	4.15
SD	3.79	3.72	3.65	3.61			3.93	3.84
TX	3.87	3.70	3.87	3.70				
WA	4.24	3.93	4.20	3.89			4.40	4.09
US	3.89	3.73	3.79	3.64	4.22	4.19	3.94	3.90

¹ Entire month.

² Mid-month.

³ Price not published to avoid disclosure of individual firms.

⁴ Insufficient sales to establish a price.

**Prices Received for Selected Agricultural Commodities, by Months,
United States, 2003 and 2004 ¹**

Month	All Wheat		Corn		Soybeans		Beef Cattle ²		All Hogs	
	2003	2004	2003	2004	2003	2004	2003	2004	2003	2004
	<i>Dollars per Bushel</i>	<i>Dollars per Bushel</i>	<i>Dollars per Bushel</i>	<i>Dollars per Bushel</i>	<i>Dollars per Bushel</i>	<i>Dollars per Bushel</i>	<i>Dollars per Cwt</i>	<i>Dollars per Cwt</i>	<i>Dollars per Cwt</i>	<i>Dollars per Cwt</i>
Jan	3.89	3.68	2.33	2.39	5.51	7.34	72.90	80.90	32.90	36.80
Feb	3.70	3.77	2.34	2.61	5.55	8.28	73.90	78.50	34.30	42.60
Mar	3.55	3.84	2.33	2.75	5.59	9.27	72.60	83.40	34.70	47.20
Apr	3.37	3.89	2.34	2.89	5.82	9.62	74.50	84.80	34.80	47.40
May	3.33	3.73	2.38	2.78	6.07	9.60	75.50	88.40	41.30	57.80
Jun	3.08		2.34		6.09		74.90		45.00	
Jul	2.95		2.17		5.82		75.80		42.70	
Aug	3.34		2.15		5.68		79.30		39.60	
Sep	3.39		2.20		6.06		84.90		39.70	
Oct	3.45		2.12		6.61		91.50		36.70	
Nov	3.59		2.20		7.05		93.40		34.70	
Dec	3.69		2.32		7.17		90.40		34.20	

¹ Current month prices are mid-month; prices for previous months are for the entire month.

² Cows, steers and heifers.

Grains: Prices Received, by States, April and May 2004

Month	Barley ¹		Corn		Oats		Soybeans		Sorghum Grain	
	Apr ²	May ³	Apr ²	May ³	Apr ²	May ³	Apr ²	May ³	Apr ²	May ³
	<i>Dollars per Bushel</i>	<i>Dollars per Bushel</i>	<i>Dollars per Bushel</i>	<i>Dollars per Bushel</i>	<i>Dollars per Bushel</i>	<i>Dollars per Bushel</i>	<i>Dollars per Bushel</i>	<i>Dollars per Bushel</i>	<i>Dollars per Cwt</i>	<i>Dollars per Cwt</i>
AL							9.06	9.65	(⁴)	(⁴)
AR										
CA	(⁴)	(⁵)								
CO	(⁴)	(⁴)	2.85	2.92						
ID	3.18	3.16								
IL			2.97	2.85	1.80	(⁵)	9.51	9.50	(⁴)	5.00
IN			3.07	2.91			9.76	9.81		
IA			2.81	2.70	1.73	1.70	9.67	9.80		
KS			3.04	2.87			9.82	9.52	5.00	4.50
KY			3.09	3.00			9.82	9.75		
LA							(⁴)	(⁴)		
MI			2.92	2.76	2.07	2.13	9.57	9.62		
MN	(⁴)	(⁴)	2.75	2.68	1.61	1.58	9.66	9.55		
MS							9.74	9.68		
MO			3.01	2.80			9.56	9.40	4.92	4.60
MT	2.84	2.84			(⁴)	(⁵)				
NE			2.82	2.75	1.35	1.40	9.58	9.35	5.08	4.60
NC			3.37	3.25			8.93	9.73		
ND	2.50	2.59	2.70	2.75	1.45	1.40	9.09	9.00		
OH			2.99	2.79	1.86	(⁵)	9.81	9.66		
OK									5.21	4.85
OR	2.62	2.55			(⁴)	(⁴)				
PA			3.46	3.43	2.11	2.15				
SD	1.70	(⁵)	2.87	2.80	1.57	1.58	9.54	9.64		
TN			3.01	2.95			9.79	9.80		
TX			(⁴)	(⁴)	(⁵)	(⁵)			5.35	5.05
UT	2.72	2.67								
WA	2.57	2.52								
WI			2.80	2.70	1.75	1.60	9.32	9.60		
WY	2.11	2.15								
US	2.78	2.79	2.89	2.78	1.62	1.64	9.62	9.60	5.09	4.60

¹ The Three-State (MN, ND and SD) Feed Barley price for May 2004 is \$1.95.

² Entire month.

³ Mid-month.

⁴ Price not published to avoid disclosure of individual firms.

⁵ Insufficient sales to establish a price.

**Malting and Feed Barley: Prices Received Selected States,
April and May 2004**

State	Malting Barley		Feed Barley	
	Apr ¹	May ²	Apr ¹	May ²
	<i>Dollars per Bushel</i>	<i>Dollars per Bushel</i>	<i>Dollars per Bushel</i>	<i>Dollars per Bushel</i>
ID	3.37	3.40	2.40	2.45
MN	(³)	(³)	1.82	1.82
MT	3.17	3.10	2.08	2.13
ND	2.74	2.80	1.96	1.95
SD	(⁴)	(⁴)	1.70	(⁴)
WY	(⁴)	(⁴)	2.11	2.15

¹ Entire month.

² Mid-month.

³ Price not published to avoid disclosure of individual firms.

⁴ Insufficient sales to establish a price.

Field Crops: Prices Received, by States, April and May 2004

State	Dry Edible Beans		All Sunflowers		Flaxseed		Tobacco		Peanuts ⁴	
	Apr ¹	May ²	Apr ¹	May ²	Apr ¹	May ²	Apr ¹	May ³	Apr ¹	May ³
	<i>Dollars per Cwt</i>	<i>Dollars per Cwt</i>	<i>Dollars per Cwt</i>	<i>Dollars per Cwt</i>	<i>Dollars per Bushel</i>	<i>Dollars per Bushel</i>	<i>Dollars per Pound</i>	<i>Dollars per Pound</i>	<i>Dollars per Pound</i>	<i>Dollars per Pound</i>
AL									(⁵)	(⁵)
CA	34.80	36.50								
CO	18.20	18.20								
FL							(⁶)	(⁶)	(⁵)	(⁵)
GA							(⁶)	(⁶)	(⁵)	(⁵)
ID	19.30	19.60								
IN							(⁶)	(⁶)		
KS			(⁵)	(⁵)						
KY							(⁶)	(⁶)		
MD							0.660	(⁶)		
MI	20.10	20.90								
MN	19.10	20.50	14.90	(⁵)						
MO										
NE	17.80	16.70								
NC							(⁶)	(⁶)	(⁵)	(⁵)
ND	17.50	18.50	13.40	13.70	6.98	7.15	(⁶)	(⁶)		
OH							(⁶)	(⁶)		
OK							(⁶)	(⁶)		
SC							(⁶)	(⁶)		
SD			13.00	13.50	6.22	(⁶)		(⁶)		
TN							(⁶)	(⁶)		
TX									(⁵)	(⁵)
VA							(⁶)	(⁶)	(⁵)	(⁶)
WV										
US	19.60	21.80	13.50	13.90	6.98	7.15	0.660	(⁶)	0.201	0.210

¹ Entire month.

² Mid-month.

³ Based on sales through first half of month.

⁴ In-Shell.

⁵ Price not published to avoid disclosure of individual firms.

⁶ Insufficient sales to establish a price.

Field Crops and Apples: Prices Received, by States, April and May 2004

State	Cotton, Upland		May				Apples Fresh Use ^{1 4} <i>Dol/Lb</i>
	Apr ¹	May ²	Cotton- seed ⁵ <i>Dollars per Ton</i>	Hay, Baled ³			
				All <i>Dollars per Ton</i>	Alfalfa <i>Dollars per Ton</i>	Other <i>Dollars per Ton</i>	
	<i>Dollars per Pound</i>	<i>Dollars per Pound</i>					
AL	0.615	0.615					
AZ	(⁶)	(⁶)		111.00	112.00	87.00	
AR	0.615	0.615					
CA	0.682	0.692		121.00	127.00	88.00	
CO				81.00	82.00	74.00	
GA	0.605	0.609					
ID				99.00	100.00	70.00	
IL				87.00	95.00	70.00	
IA				90.00	93.00	68.00	
KS				73.00	81.00	56.00	
KY				75.00	100.00	64.00	
LA	0.615	0.615					
MI				99.00	100.00	80.00	0.180
MN				67.00	68.00	48.00	
MS	0.615	0.615					
MO				69.00	105.00	52.00	
MT				71.00	72.00	67.00	
NE				48.00	48.00	44.00	
NV				90.00	90.00	90.00	
NM				138.00	141.00	116.00	
NY				112.00	130.00	100.00	0.221
NC	0.566	(⁶)					
ND				56.00	61.00	45.00	
OH				101.00	115.00	54.00	0.310
OK				84.00	97.00	59.00	
OR				96.00	97.00	93.00	
PA				137.00	150.00	119.00	0.202
SD				63.00	64.00	51.00	
TN	0.618	0.615					
TX	0.598	0.597		77.00	135.00	63.00	
UT				90.00	90.00	75.00	
VA							
WA				89.00	82.00	115.00	0.311
WI				78.00	85.00	50.00	
WY				69.00	70.00	66.00	
US	0.612	0.612		101.00	109.00	74.90	0.294

¹ Entire month.

² Based on sales during the first half of the month.

³ Mid-month.

⁴ Equivalent packinghouse-door returns for CA, NY, and WA. Price at point of first sale for other States.

⁵ Marketing year August - February.

⁶ Price not published to avoid disclosure of individual firms.

⁷ Insufficient sales to establish a price.

**Upland Cotton and Rice: Prices Received and Marketings,
United States, May 2004, with Comparisons**

Item	Unit	Mar 2004 ¹	Apr 2004 ¹	May 2004 ²
Cotton, Upland				
Average Price	Dollars per Pound	0.594	0.612	0.612
Marketings ³	1,000 Bales	167	473	NA
Rice				
Average Price	Dollars per Cwt	8.01	8.13	7.86
Marketings ⁴	1,000 Cwt	14,046	11,891	NA

¹ Entire month.

² Based on purchases for the first half of the month.

³ Expanded data from sample of about 65 percent of buyers.

⁴ Purchases by private firms and rice (rough equivalent) shipped by cooperatives.

**Citrus Fruit: Prices and Equivalent Returns, by Utilization,
by State and United States, May 2004**

Commodity, State and Type	F.O.B. Packed Fresh	Equivalent Returns ¹					
		Packinghouse-door			On-tree		
		All	Fresh	Process	All	Fresh	Process
	<i>Dollars per Box</i>	<i>Dollars per Box</i>	<i>Dollars per Box</i>	<i>Dollars per Box</i>	<i>Dollars per Box</i>	<i>Dollars per Box</i>	<i>Dollars per Box</i>
Grapefruit							
AZ	17.70	11.19	11.19		8.87	8.87	
CA	19.80	11.70	13.29	-0.27	9.38	10.97	-2.59
FL	15.30	4.04	7.55	2.63	1.57	5.29	0.08
White	16.80	3.18	8.80	2.50	0.79	6.50	0.10
Colored	15.00	4.73	7.30	2.80	2.19	5.05	0.05
TX	17.80	3.29	7.81	1.20	2.15	6.64	0.08
US	18.10	5.94	10.62	1.99	3.87	8.53	-0.08
Lemons							
CA	30.80	10.92	20.70	0.20	6.57	16.35	-4.15
US	30.80	10.92	20.70	0.20	6.57	16.35	-4.15
Oranges							
CA	19.70	11.30	12.45	0.37	8.82	9.97	-2.10
Navel and Misc	20.80	11.58	13.42	0.38	9.12	10.96	-2.08
Valencia	18.50	10.97	11.44	0.32	8.48	8.95	-2.17
FL							
Valencia	12.50	5.20	5.00	5.20	3.09	2.80	3.10
TX							
Valencia	15.90	5.66	5.81	2.55	4.31	4.46	1.25
US	18.10	5.75	10.78	5.15	3.62	8.38	3.05
Tangerines							
CA	5.20	-1.86	-1.86		-4.35	-4.35	
FL	35.00	23.01	25.50	5.60	19.49	22.10	1.20
US	29.10	18.58	20.06	5.60	15.24	16.84	1.20

¹ Net lbs. per box: Grapefruit - AZ & CA-67, FL-85, TX-80; Lemons - 76; Oranges - AZ & CA-75, FL-90, TX-85; Tangelos - 90; Tangerines - AZ, CA-75, FL-95; Temples - 90.

Potatoes: Prices Received, by States, April and May 2004

State	Apr	May	State	Apr	May
	<i>Dollars per Cwt</i>	<i>Dollars per Cwt</i>		<i>Dollars per Cwt</i>	<i>Dollars per Cwt</i>
AL			NC		
AZ	17.80	15.00	ND - All ¹	5.60	5.25
CA - All	21.10	14.70	- Fresh ²	4.00	NA
- Winter	24.10		- Processing	5.70	NA
- Spring		15.00	OH	6.95	
- Summer			OR	6.60	6.60
- Fall	10.50	10.30	PA	7.30	7.00
CO - All ¹	4.55	4.35	TX		9.10
- Fresh ²	4.20	NA	VA		
FL	15.90	10.20	WA - All	6.30	5.75
ID - All ¹	4.95	4.90	- Processing	5.65	NA
- Fresh ²	3.70	NA	WI - All ¹	6.10	5.45
- Processing	4.40	NA	- Fresh ²	3.85	NA
ME	6.30	6.70	- Processing	7.30	NA
MI	8.25	8.40			
MN	5.15	5.05	US - All ¹	6.84	6.75
NY	9.20		- Fresh ²	8.42	NA
			- Processing	5.59	NA

¹ Average price of potatoes sold for all uses, including table stocks, processing, seed and livestock feed.

² Fresh market prices only, includes table stock prices.

Cattle: Prices Received, by States, April and May 2004

State	Cows ¹		Steers & Heifers		Beef Cattle ⁴		Calves	
	Apr ²	May ³	Apr ²	May ³	Apr ²	May ³	Apr ²	May ³
	<i>Dollars per Cwt</i>	<i>Dollars per Cwt</i>	<i>Dollars per Cwt</i>	<i>Dollars per Cwt</i>	<i>Dollars per Cwt</i>	<i>Dollars per Cwt</i>	<i>Dollars per Cwt</i>	<i>Dollars per Cwt</i>
AZ	51.00	50.00	98.00	101.00	97.50	100.00	120.00	113.00
AR	45.70	47.00	94.10	100.00	79.60	84.10	111.00	120.00
CA	48.50	48.00	87.00	91.50	70.40	72.80	115.00	109.00
CO	51.70	53.40	95.20	102.00	94.80	102.00	117.00	121.00
FL	46.80	48.40	91.20	94.50	56.10	59.90	117.00	120.00
GA	48.30	50.80	91.00	94.60	63.70	65.70	114.00	118.00
ID	49.50	51.10	85.70	89.10	77.00	80.00	111.00	113.00
IL	47.00	50.00	89.00	95.00	88.20	94.10	110.00	118.00
IA	50.40	56.70	88.50	89.00	88.10	88.40	114.00	116.00
KS	49.70	51.80	87.70	89.30	86.20	87.80	120.00	128.00
KY	47.00	51.00	91.00	98.00	80.40	86.70	111.00	116.00
LA	47.60	51.00	93.90	98.00	61.00	65.60	108.00	111.00
MI	48.00	53.00	76.00	81.00	67.60	72.60	100.00	110.00
MN	55.20	56.00	85.70	88.00	79.90	81.90	114.00	120.00
MO	50.70	53.40	100.00	106.00	88.20	92.90	116.00	123.00
MT	52.20	54.60	95.20	96.70	79.70	76.10	114.00	112.00
NE	51.70	53.90	89.60	93.20	88.50	92.00	123.00	127.00
NM	49.70	52.80	95.90	102.00	80.20	84.30	115.00	119.00
ND	53.20	53.50	93.50	95.00	83.00	82.60	112.00	110.00
OH	45.80	49.00	81.20	85.00	77.70	81.40	104.00	109.00
OK	50.20	52.80	94.30	101.00	90.30	96.70	117.00	122.00
OR	48.00	51.00	94.70	95.70	80.70	82.30	107.00	107.00
PA	49.00	52.70	83.40	89.90	74.50	80.20	110.00	120.00
SD	51.90	53.10	91.20	96.60	86.10	88.80	116.00	120.00
TN	48.00	49.00	94.00	100.00	75.60	79.60	111.00	115.00
TX	49.30	50.50	88.00	92.10	84.90	88.40	118.00	123.00
VA	45.00	52.00	90.30	97.70	79.90	80.30	107.00	111.00
WI	52.00	55.20	85.20	92.00	65.90	70.70	139.00	144.00
WY	51.20	52.00	94.60	98.00	89.40	88.80	115.00	114.00
US	50.50	52.40	88.90	92.60	84.80	88.40	117.00	122.00

¹ Beef cows and cull dairy cows sold for slaughter.

² Entire month.

³ Mid-month.

⁴ "Cows" and "steers and heifers" combined.

Hogs: Prices Received, by States, April and May 2004

State	Sows		Barrows and Gilts		All Hogs	
	Apr ¹	May ²	Apr ¹	May ²	Apr ¹	May ²
	<i>Dollars per Cwt</i>	<i>Dollars per Cwt</i>	<i>Dollars per Cwt</i>	<i>Dollars per Cwt</i>	<i>Dollars per Cwt</i>	<i>Dollars per Cwt</i>
AR	40.80	43.50	42.90	50.10	42.70	49.40
IL	39.00	42.00	50.50	58.00	49.60	56.70
IN	44.20	47.20	48.10	57.30	47.70	56.40
IA	44.40	47.50	48.90	61.70	48.90	61.60
KS	41.00	43.50	43.80	55.00	43.40	53.40
MI	39.00	40.00	43.50	48.00	43.10	47.40
MN	42.60	46.00	47.60	56.00	47.60	55.90
MO	39.70	43.20	44.90	54.30	44.50	53.60
NE	40.80	44.60	48.50	57.60	48.30	57.30
NC	40.90	43.40	48.20	61.40	48.10	61.20
OH	42.80	45.00	48.00	60.00	47.60	59.00
OK	40.00	42.00	40.70	51.70	40.60	50.20
PA	38.00	39.00	45.50	52.50	44.40	50.50
SD	40.00	42.00	49.40	57.00	48.50	55.40
TX	33.00	36.40	41.30	48.90	40.30	47.20
WI	35.10	43.10	44.40	56.10	43.20	54.40
US	40.50	43.10	47.70	58.50	47.40	57.80

¹ Entire month.

² Mid-month.

Sheep and Poultry: Prices Received, by States, April and May 2004

State	April		May
	Sheep ¹	Lambs ¹	Eggs ^{2 3}
	<i>Dollars per Cwt</i>	<i>Dollars per Cwt</i>	<i>Dollars per Dozen</i>
AL			0.480
AR			0.430
CA	35.00	91.00	0.510
CO	37.30	101.00	
CT			0.560
FL			0.520
GA			0.487
ID	38.00	99.00	
IN			0.480
IA	38.20	95.80	0.387
KS	37.00	96.00	
ME			0.650
MI			0.450
MN	32.20	97.90	0.470
MS			0.430
MO			0.380
MT	34.80	107.00	
NE	32.70	109.00	
NY			0.540
NC			0.430
ND	35.00	96.00	
OH	33.20	113.00	0.444
OR	37.00	94.50	
PA			0.530
SC			0.440
SD	36.80	106.00	
TX	43.50	104.00	0.400
UT	34.00	103.00	
WA			0.753
WY	36.60	110.00	
US	37.10	100.00	0.468

¹ Entire month.

² Mid-month.

³ Market (table) eggs.

Milk and Milk Cows: Prices Received, by States, April and May 2004

State	April ¹						May		
	Fluid Grade Milk ²		Manufacturing Grade Milk		All Milk ³		All Milk ^{3 4}		Milk Cows ⁵
	Price	Fat Test	Price	Fat Test	Price	Fat Test	Price	Fat Test	
	<i>Dol/Cwt</i>	<i>Percent</i>	<i>Dol/Cwt</i>	<i>Percent</i>	<i>Dol/Cwt</i>	<i>Percent</i>	<i>Dol/Cwt</i>	<i>Percent</i>	<i>Dol/Head</i>
AZ	17.30	3.51			17.30	3.51	19.80	3.50	
CA	17.50	3.64	20.50	3.90	17.53	3.64	19.00	3.60	
FL	17.70	3.57			17.70	3.57	23.70	3.52	
ID	18.80	3.56	20.40	3.83	18.80	3.56	19.50	3.52	
IL	18.90	3.65	19.80	3.57	18.90	3.65	21.20	3.60	
IN	18.20	3.66	19.20	3.75	18.30	3.66	20.70	3.61	
IA	18.50	3.63	18.90	3.74	18.50	3.63	21.00	3.57	
KY	16.70	3.58			16.70	3.58	22.20	3.51	
MI	18.00	3.60	18.00	3.67	18.00	3.60	20.60	3.54	
MN	20.20	3.74	19.20	3.78	20.20	3.74	21.70	3.69	
MO	17.30	3.58	17.70	3.68	17.30	3.58	20.50	3.57	
NM	16.60	3.53			16.60	3.53	19.40	3.50	
NY	17.50	3.66			17.50	3.66	20.00	3.60	
OH	18.00	3.66	17.60	3.82	18.00	3.67	20.50	3.61	
PA	18.00	3.70	20.40	3.80	18.00	3.70	20.80	3.65	
TX	17.70	3.64			17.70	3.64	20.00	3.61	
VT	17.50	3.66			17.50	3.66	20.20	3.63	
VA	17.30	3.55			17.30	3.55	20.70	3.53	
WA	17.50	3.63			17.50	3.63	19.50	3.60	
WI	20.40	3.75	19.50	3.89	20.40	3.76	21.50	3.69	
US	18.20	3.65	19.40	3.83	18.20	3.65	20.30	3.61	

¹ Entire month.

² Including milk diverted to manufacturing.

³ Before deductions for hauling. Includes quality, quantity, and other premiums. Excludes hauling subsidies.

⁴ Preliminary.

⁵ Animals sold for dairy herd replacement only. Prices published January, April, July and October.

**Parity Price Equivalent for Manufacturing Milk ¹: United States,
April and May 2004, with Comparisons**

Item	Unit	May 2003	Apr 2004	May 2004
Parity Equivalent	Dollars per Cwt	30.20	31.64	31.82
Average Price F.O.B ²	Dollars per Cwt	10.20	19.40	20.70
Average Fat Test of Milk ²	Percent	3.75	3.83	3.77

¹ The parity price equivalent during 2004 is 90.4 percent of the parity price of all milk sold to plants, compared with 90.4 percent in 2003. For additional details, see January 2004 issue of "Agricultural Prices".

² Preliminary for May 2004.

**United States Parity Prices for Farm Products and Average Prices Received as
Percent of Parity Prices Based on Data for May 2004, with Comparisons ¹**

Commodity and Unit	Adjusted Base Prices	Parity Prices Based on Data for			Prices as Percent of Parity		
		May 2003	Apr 2004	May 2004	May 2003	Apr 2004	May 2004
	<i>Dollars</i>	<i>Dollars</i>	<i>Dollars</i>	<i>Dollars</i>	<i>Percent</i>	<i>Percent</i>	<i>Percent</i>
Basic Commodities							
All Wheat, Bu	0.564	9.66	10.00	10.10	34	39	37
Rice, Cwt	1.63	26.50	28.90	29.10	18	28	27
Corn, Bu	0.379	6.60	6.73	6.78	36	43	41
Cotton, Lb							
American Upland	0.113	1.70	2.01	2.02	27	30	30
Extra Long Staple	0.144	2.38	2.56	2.57			
Peanuts, Lb	0.0370	0.658	0.657	0.662	30	31	32
Tobacco, By Type, Lb							
Flue-Cured 11-14	0.259	4.34	4.60	4.63			
VA Fire-Cured, 21	0.257	4.40	4.56	4.60			
KY-TN Fire-Cured, 22-23	0.322	5.43	5.72	5.76			
Burley, 31	0.277	4.67	4.92	4.95			
Maryland, 32	0.215	3.70	3.82	3.84		17	
Dark Air-Cured, 35-36	0.282	4.68	5.01	5.04			
Sun-Cured, 37	0.246	4.12	4.37	4.40			
PA Seedleaf, 41	0.206	3.38	3.66	3.68			
Cigar Filler & Binder, 42-44, 54-55	0.225	3.75	4.00	4.02			
Puerto Rican Filler, 46	0.162	2.77	2.88	2.90			
Cigar Binder, 51-52	0.736	12.20	13.10	13.20			
Designated Nonbasic							
All Milk, Sold to Plants, Per Cwt ²	1.97	33.40	35.00	35.20	35	54	59
Honey, Extracted, Lb ³	0.1050	1.59	1.86	1.88			
Wool and Mohair							
Wool, Lb	0.0880	1.54	1.56	1.57			
Mohair, Lb	0.334	5.52	5.93	5.97			
Other Nonbasic							
Barley, Bu	0.376	6.53	6.68	6.72	45	42	42
Cottonseed, Ton	15.80	265.00	281.00	283.00			
Dry Edible Beans, Cwt	2.92	50.40	51.90	52.20	38	38	42
Flaxseed, Bu	0.728	11.90	12.90	13.00	51	54	55
Oats, Bu	0.221	4.12	3.92	3.95	47	41	42
Potatoes, Cwt	0.854	13.80	15.20	15.30	50	45	44
Rye, Bu	0.353	5.82	6.27	6.31			
Sorghum Grain, Cwt	0.616	11.20	10.90	11.00	35	47	42
Soybeans Bu	0.892	14.40	15.80	15.90	42	61	60
Sweetpotatoes, Cwt	2.25	37.20	40.00	40.20			
Apples, Fresh, Lb ⁴	0.0296	0.487	0.526	0.529	45	57	56
Citrus (equiv on-tree), Box							
Grapefruit	0.387	6.58	6.87	6.92	94	26	56
Lemons	1.10	18.70	19.50	19.70	29	40	33
Oranges	0.618	9.67	11.00	11.00	46	33	33
Tangerines	1.42	24.80	25.20	25.40	51	43	60
Temples (FL)	0.451	7.86	8.01	8.06			
Beef Cattle, Cwt	9.55	161.00	170.00	171.00	47	50	52
Calves, Cwt	12.80	216.00	227.00	229.00	46	52	53
Hogs, Cwt	5.91	102.00	105.00	106.00	40	45	55
Lambs, Cwt	11.30	185.00	201.00	202.00	53	50	
Sheep, Cwt	4.70	78.90	83.50	84.00	40	44	
Eggs, Doz ²	0.0949	1.58	1.69	1.70	37	43	37
Turkeys, Live, Lb	0.0574	0.983	1.020	1.030	36	38	39

--continued

Parity Prices Based on Data for May 2004, United States ¹ (continued)

Other Nonbasic Commodities	Adj Base Prices	Parity Prices	Other Nonbasic Commodities	Adj Base Prices	Parity Prices
	<i>Dollars</i>	<i>Dollars</i>		<i>Dollars</i>	<i>Dollars</i>
Field Crops and Misc Commodities			Noncitrus Fruit		
Hops, Lb	0.256	4.58	Peaches, cont.		
Spearmint Oil, Lb	1.53	27.40	Processing ⁵		
Tobacco, Lb			Excl Dried		
Type 61	2.51	44.90	Clingstone, CA, Ton	32.80	586.00
Noncitrus Fruit			Pears, Ton		
Apples, Ton ⁶			Fresh ⁴	51.60	923.00
Processing	17.90	320.00	Dried, CA ⁶	166.00	2,970.00
Apricots, Ton			Plums, CA, Ton		
Fresh ⁷	99.70	1,780.00	Fresh, Equiv on-Tree	57.40	1,030.00
Dried, CA	273.00	4,880.00	Prunes, Dried, CA, Ton ⁶	129.00	2,310.00
Avocados, Ton ⁷	238.00	4,260.00	Prunes and Plums, Excl CA, Ton		
Cherries Bbl			Fresh ⁹	56.90	1,020.00
Sweet, Ton	184.00	3,290.00	Processing ⁶		
Tart, Lb	0.0267	0.477	Excl Dried	26.30	470.00
Cranberry, Bbl ⁵	5.92	106.00	Tree Nuts ¹⁰		
Dates, CA, Ton ⁷	170.00	3,040.00	Almonds, Lb	0.204	3.65
Grapes, Ton			Hazelnuts, Ton	130.00	2,320.00
Raisin Variety	121.00	2,160.00	Pistachio, Lb	0.159	2.84
Other Dried	44.20	790.00	Walnuts, Ton	176.00	3,150.00
Kiwifruit, Ton	80.80	1,440.00	Vegetables, Cwt ¹¹		
Nectarines			Fresh		
Fresh, CA, Ton ⁷	63.00	1,130.00	Carrots ⁸	2.21	39.50
Olives, CA			Cauliflower ⁸	4.55	81.40
canning, Ton ⁵	95.50	1,710.00	Celery ⁸	1.98	35.40
Papayas (HA)	0.0520	0.930	Honeydew Melons	2.79	49.90
Peaches			Lettuce	2.50	44.70
Fresh, Lb ⁴	0.0408	0.730	Onions ⁸	1.68	30.00
Dried, CA, Ton	92.50	1,650.00	Tomatoes	4.39	78.50

¹ Parity prices are computed under the provisions of Title III, Subtitle a, Section 301 (a) of the Agricultural Adjustment Act of 1938 as amended by the Agricultural Acts of 1948, 1949, and 1956. See January "Agricultural Prices" for details on adjusted base price and parity price computations.

² Seasonally adjusted price as percentage of parity price.

³ Wholesale extracted. Adjusted base price derived from state annual averages prices weighted by production. For 1982 through 1985 the national averages are the support prices.

⁴ Equivalent packinghouse-door returns for CA, NY (apples only), OR (except peaches), and WA. Price at point of first sale for other states.

⁵ Equivalent returns for bulk fruit at first delivery point.

⁶ Equivalent returns at processing plant door.

⁷ Equivalent returns at packinghouse door.

⁸ Includes some processing.

⁹ Based on "as sold" prices for fresh fruit in all states.

¹⁰ Prices in-shell basis except almonds which are shelled basis.

¹¹ F.O.B. shipping point prices.

Marketing Seasons for Specified Commodities

Flue-cured tobacco: July 1 to November 30 for the U.S. and all states.

Fire-cured tobacco: December 1 to March 31 for the U.S.; January 1 to March 31 for Kentucky and Tennessee; December 1 to January 31 for Virginia.

Light Air-cured Tobacco: November 1 to May 31 for the U.S.; November 1 to February 28 for Indiana, Kentucky, Missouri, North Carolina, Ohio, Tennessee, Virginia, and West Virginia; March 1 to May 31 for Maryland and Pennsylvania.

Dark Air-cured Tobacco: December 1 to February 28 for the U.S. and all states.

**Tobacco, Types 11-61: Marketing Year Average Price,
by State, 2002-2003 ¹**

State	2002	2003	State	2002	2003
	<i>Dollars per Pound</i>	<i>Dollars per Pound</i>		<i>Dollars per Pound</i>	<i>Dollars per Pound</i>
CT ²	5.450	3.500	OH	1.963	1.954
FL	1.879	1.851	PA	1.379	1.367
GA	1.845	1.855	SC	1.774	1.830
IN	1.944	1.949	TN	2.066	2.107
KY	2.015	2.027	VA	1.876	1.868
MD	1.480	1.730	WV	1.967	1.978
MA ²	5.250	3.700	WI	1.750	1.746
MO	1.900	1.940	CT & MA ³	22.500	
NC	1.821	1.856			

¹ 2002 and 2003 revised.

² Price includes type 51 only. Shade type 61 is not included in State totals to avoid disclosure.

³ Includes type 61 only. CT and MA combined to avoid disclosure. Price not available for 2003.

**Tobacco: Marketing Year Average Price, by Class, Type,
State, and United States, 2002-2003 ¹**

Class and State	Type	2002 <i>Dollars per Pound</i>	2003 <i>Dollars per Pound</i>
Flue-cured:			
Old Belts			
NC	11	1.829	1.857
VA	11	1.854	1.849
US	11	1.838	1.855
Eastern NC Belt			
NC	12	1.815	1.856
NC Border & SC Belt			
NC	13	1.803	1.840
SC	13	1.774	1.830
US	13	1.786	1.834
GA-FL Belt			
FL	14	1.879	1.851
GA	14	1.845	1.855
US	14	1.851	1.854
Total Flue-cured	11-14	1.820	1.851
Fire-cured:			
VA Belt			
VA	21	1.884	1.641
Eastern District			
KY	22	2.398	2.480
TN	22	2.374	2.492
US	22	2.382	2.488
Western District			
KY	23	2.362	2.450
TN	23	2.408	2.424
US	23	2.368	2.447
KY-TN Fired-cured	22-23	2.378	2.475
Total Fire-cured	21-23	2.357	2.455
Air-cured:			
Light Air-cured:			
Burley			
IN	31	1.944	1.949
KY	31	1.980	1.982
MO	31	1.900	1.940
NC	31	1.948	1.950
OH	31	1.963	1.954
TN	31	1.968	1.975
VA	31	1.975	1.972
WV	31	1.967	1.978
US	31	1.974	1.977
Southern MD Belt			
MD	32	1.480	1.730
PA	32	1.250	1.300
US	32	1.348	1.463
Total Light Air-cured	31-32	1.965	1.970
Dark Air-cured			
One-Sucker Belt			
KY	35	2.135	2.223
TN	35	2.029	2.016
US	35	2.117	2.189
Green River Belt			
KY	36	2.061	2.086
KY-TN Dark Air-cured	35-36	2.101	2.157

See footnote(s) at end of table.

--continued

**Tobacco: Marketing Year Average Price, by Class, Type,
State, and United States, 2002-2003 ¹ (continued)**

Class and State	Type	2002	2003
		<i>Dollars per Pound</i>	<i>Dollars per Pound</i>
VA Sun-cured Belt			
VA	37	1.778	1.707
Total Dark Air-cured	35-37	2.098	2.154
All Cures Other Than Cigar	11-37	1.896	1.925
Cigar Filler:			
PA Seedleaf			
PA	41	1.450	1.400
Cigar Binder:			
CT Valley Broadleaf			
CT	51	5.450	3.500
MA	51	5.250	3.700
US	51	5.372	3.584
WI Binder, Southern			
WI	54	1.750	1.750
WI Binder, Northern			
WI	55	1.750	1.730
Total WI Binder	54-55	1.750	1.746
Total Binder	51-55	3.608	2.561
Cigar Wrapper:			
CT Valley Shade-grown			
CT ²	61		
MA ²	61		
US ²	61	22.500	
Total Cigar Types ³	41-61	4.524	2.086
US All Tobacco ⁴	11-61	1.936	1.961

¹ 2002 and 2003 revised.

² CT and MA Type 61 price for 2002 combined to avoid disclosure of individual operations. Price not available for 2003.

³ The 2003 price excludes type 61.

⁴ The 2003 price includes an estimate for CT and MA type 61. Used 2002 CT and MA type 61 price to compute the 2003 price.

**Tobacco: Prices Received Monthly by Type, State
and United States, July 2002 - April 2003¹**

Cure, Area and State	Type	2002					
		Jul	Aug	Sep	Oct	Nov	Dec
		<i>Dollars per Pound</i>	<i>Dollars per Pound</i>	<i>Dollars per Pound</i>	<i>Dollars per Pound</i>	<i>Dollars per Pound</i>	<i>Dollars per Pound</i>
Flue-cured Areas:							
Northern Auction ²	11-12	1.920	1.825	1.805	1.875	1.810	(⁴)
Northern Contract ²	11-12	1.870	1.780	1.805	1.850	1.835	(⁴)
Southern Auction ³	13-14	1.865	1.745	1.790	1.780	(⁴)	(⁴)
Southern Contract ³	13-14	1.780	1.855	1.890	1.885	(⁴)	(⁴)
Total Flue-cured Area	11-14	1.850	1.795	1.810	1.850	1.815	(⁴)
Fire-cured:							
VA Belt							
VA	21	(⁴)	(⁴)	(⁴)	(⁴)	(⁴)	1.900
Eastern District							
KY	22	(⁴)	(⁴)	(⁴)	(⁴)	(⁴)	(⁴)
TN	22	(⁴)	(⁴)	(⁴)	(⁴)	(⁴)	(⁴)
US	22	(⁴)	(⁴)	(⁴)	(⁴)	(⁴)	(⁴)
Western District							
KY	23	(⁴)	(⁴)	(⁴)	(⁴)	(⁴)	(⁴)
TN	23	(⁴)	(⁴)	(⁴)	(⁴)	(⁴)	(⁴)
US	23	(⁴)	(⁴)	(⁴)	(⁴)	(⁴)	(⁴)
KY-TN Fire-cured	22-23	(⁴)	(⁴)	(⁴)	(⁴)	(⁴)	(⁴)
Total Fire-cured	21-23	(⁴)	(⁴)	(⁴)	(⁴)	(⁴)	1.900
Air-cured:							
Light Air-cured:							
Burley							
IN	31	(⁴)	(⁴)	(⁴)	(⁴)	1.960	1.980
KY	31	(⁴)	(⁴)	(⁴)	(⁴)	1.980	1.985
NC	31	(⁴)	(⁴)	(⁴)	(⁴)	1.950	1.950
OH	31	(⁴)	(⁴)	(⁴)	(⁴)	1.985	1.975
TN	31	(⁴)	(⁴)	(⁴)	(⁴)	1.975	1.975
VA	31	(⁴)	(⁴)	(⁴)	(⁴)	1.990	1.975
US	31	(⁴)	(⁴)	(⁴)	(⁴)	1.980	1.980
Southern MD Belt							
MD	32	(⁴)	(⁴)	(⁴)	(⁴)	(⁴)	(⁴)
Total Light Air-cured	31-32	(⁴)	(⁴)	(⁴)	(⁴)	1.980	1.980
Dark Air-cured							
One-Sucker Belt							
KY	35	(⁴)	(⁴)	(⁴)	(⁴)	(⁴)	2.360
TN	35	(⁴)	(⁴)	(⁴)	(⁴)	(⁴)	2.260
US	35	(⁴)	(⁴)	(⁴)	(⁴)	(⁴)	2.345
Green River Belt							
KY	36	(⁴)	(⁴)	(⁴)	(⁴)	(⁴)	2.135
KY-TN Dark Air-cured	35-36	(⁴)	(⁴)	(⁴)	(⁴)	(⁴)	2.290
VA Sun-cured Belt							
VA	37	(⁴)	(⁴)	(⁴)	(⁴)	(⁴)	1.820
Total Dark Air-cured	35-37	(⁴)	(⁴)	(⁴)	(⁴)	(⁴)	2.285
Total All Cures	11-37	1.850	1.795	1.810	1.850	1.960	2.000

See footnote(s) at end of table.

--continued

**Tobacco: Prices Received Monthly by Type, State
and United States, July 2002 - April 2003 ¹ (continued)**

Cure, Area and State	Type	2003			
		Jan	Feb	Mar	Apr
		<i>Dollars per Pound</i>	<i>Dollars per Pound</i>	<i>Dollars per Pound</i>	<i>Dollars per Pound</i>
Flue-cured Areas:					
Northern Auction ²	11-12	(⁴)	(⁴)	(⁴)	(⁴)
Northern Contract ²	11-12	(⁴)	(⁴)	(⁴)	(⁴)
Southern Auction ³	13-14	(⁴)	(⁴)	(⁴)	(⁴)
Southern Contract ³	13-14	(⁴)	(⁴)	(⁴)	(⁴)
Total Flue-cured Area	11-14	(⁴)	(⁴)	(⁴)	(⁴)
Fire-cured:					
VA Belt					
VA	21	1.830	(⁴)	(⁴)	(⁴)
Eastern District					
KY	22	2.455	2.425	1.900	(⁴)
TN	22	2.420	2.460	1.970	(⁴)
US	22	2.435	2.455	1.950	(⁴)
Western District					
KY	23	2.450	2.085	1.735	(⁴)
TN	23	2.545	2.190	1.800	(⁴)
US	23	2.465	2.100	1.740	(⁴)
KY-TN Fire-cured	22-23	2.445	2.410	1.910	(⁴)
Total Fire-cured	21-23	2.435	2.410	1.910	(⁴)
Air-cured:					
Light Air-cured:					
Burley					
IN	31	1.945	1.845	1.640	(⁴)
KY	31	1.985	1.940	1.760	(⁴)
NC	31	1.930	(⁴)	(⁴)	(⁴)
OH	31	1.970	1.840	(⁴)	(⁴)
TN	31	1.965	1.865	(⁴)	(⁴)
VA	31	1.955	1.780	(⁴)	(⁴)
US	31	1.980	1.920	1.750	(⁴)
Southern MD Belt					
MD	32	(⁴)	(⁴)	1.560	1.225
Total Light Air-cured	31-32	1.980	1.920	1.625	1.225
Dark Air-cured					
One-Sucker Belt					
KY	35	1.780	1.525	(⁴)	(⁴)
TN	35	1.885	1.550	(⁴)	(⁴)
US	35	1.810	1.530	(⁴)	(⁴)
Green River Belt					
KY	36	2.015	1.495	(⁴)	(⁴)
KY-TN Dark Air-cured	35-36	1.870	1.520	(⁴)	(⁴)
VA Sun-cured Belt					
VA	37	1.465	(⁴)	(⁴)	(⁴)
Total Dark Air-cured	35-37	1.870	1.520	(⁴)	(⁴)
Total All Cures	11-37	2.090	2.070	1.805	1.225

¹ Revised.

² Consists of Eastern NC Belt, and Old and Middle Belts in NC and VA.

³ Consists of GA-FL Belt, SC Belt, and NC Border Belt.

⁴ Insufficient sales to establish a price.

**Tobacco: Prices Received Monthly by Type, State
and United States, July 2003 - April 2004¹**

Cure, Area and State	Type	2003					
		Jul	Aug	Sep	Oct	Nov	Dec
		<i>Dollars per Pound</i>	<i>Dollars per Pound</i>	<i>Dollars per Pound</i>	<i>Dollars per Pound</i>	<i>Dollars per Pound</i>	<i>Dollars per Pound</i>
Flue-cured Areas:							
Northern Auction ²	11-12	1.840	1.775	1.870	1.895	1.815	(⁴)
Northern Contract ²	11-12	1.885	1.810	1.880	1.900	(⁴)	(⁴)
Southern Auction ³	13-14	1.750	1.785	1.880	1.845	(⁴)	(⁴)
Southern Contract ³	13-14	1.705	1.840	1.910	1.880	(⁴)	(⁴)
Total Flue-cured Area	11-14	1.790	1.805	1.880	1.890	1.815	(⁴)
Fire-cured:							
VA Belt							
VA	21	(⁴)	(⁴)	(⁴)	(⁴)	(⁴)	1.665
Eastern District							
KY	22	(⁴)	(⁴)	(⁴)	(⁴)	(⁴)	(⁴)
TN	22	(⁴)	(⁴)	(⁴)	(⁴)	(⁴)	(⁴)
US	22	(⁴)	(⁴)	(⁴)	(⁴)	(⁴)	(⁴)
Western District							
KY	23	(⁴)	(⁴)	(⁴)	(⁴)	(⁴)	(⁴)
TN	23	(⁴)	(⁴)	(⁴)	(⁴)	(⁴)	(⁴)
US	23	(⁴)	(⁴)	(⁴)	(⁴)	(⁴)	(⁴)
KY-TN Fire-cured	22-23	(⁴)	(⁴)	(⁴)	(⁴)	(⁴)	(⁴)
Total Fire-cured	21-23	(⁴)	(⁴)	(⁴)	(⁴)	(⁴)	1.665
Air-cured:							
Light Air-cured:							
Burley							
IN	31	(⁴)	(⁴)	(⁴)	(⁴)	1.965	1.945
KY	31	(⁴)	(⁴)	(⁴)	(⁴)	1.990	1.985
NC	31	(⁴)	(⁴)	(⁴)	(⁴)	1.970	1.945
OH	31	(⁴)	(⁴)	(⁴)	(⁴)	1.990	1.965
TN	31	(⁴)	(⁴)	(⁴)	(⁴)	1.985	1.970
VA	31	(⁴)	(⁴)	(⁴)	(⁴)	1.975	1.970
US	31	(⁴)	(⁴)	(⁴)	(⁴)	1.985	1.980
Southern MD Belt							
MD	32	(⁴)	(⁴)	(⁴)	(⁴)	(⁴)	(⁴)
Total Light Air-cured	31-32	(⁴)	(⁴)	(⁴)	(⁴)	1.985	1.980
Dark Air-cured							
One-Sucker Belt							
KY	35	(⁴)	(⁴)	(⁴)	(⁴)	(⁴)	2.460
TN	35	(⁴)	(⁴)	(⁴)	(⁴)	(⁴)	2.190
US	35	(⁴)	(⁴)	(⁴)	(⁴)	(⁴)	2.430
Green River Belt							
KY	36	(⁴)	(⁴)	(⁴)	(⁴)	(⁴)	2.300
KY-TN Dark Air-cured	35-36	(⁴)	(⁴)	(⁴)	(⁴)	(⁴)	2.405
VA Sun-cured Belt							
VA	37	(⁴)	(⁴)	(⁴)	(⁴)	(⁴)	1.730
Total Dark Air-cured	35-37	(⁴)	(⁴)	(⁴)	(⁴)	(⁴)	2.395
Total All Cures	11-37	1.790	1.805	1.880	1.890	1.985	1.995

See footnote(s) at end of table.

--continued

**Tobacco: Prices Received Monthly by Type, State
and United States, July 2003 - April 2004 ¹ (continued)**

Cure, Area and State	Type	2004			
		Jan	Feb	Mar	Apr
		<i>Dollars per Pound</i>	<i>Dollars per Pound</i>	<i>Dollars per Pound</i>	<i>Dollars per Pound</i>
Flue-cured Areas:					
Northern Auction ²	11-12	(⁴)	(⁴)	(⁴)	(⁴)
Northern Contract ²	11-12	(⁴)	(⁴)	(⁴)	(⁴)
Southern Auction ³	13-14	(⁴)	(⁴)	(⁴)	(⁴)
Southern Contract ³	13-14	(⁴)	(⁴)	(⁴)	(⁴)
Total Flue-cured Area	11-14	(⁴)	(⁴)	(⁴)	(⁴)
Fire-cured:					
VA Belt					
VA	21	1.140	(⁴)	(⁴)	(⁴)
Eastern District					
KY	22	2.490	2.530	2.285	(⁴)
TN	22	2.540	2.530	2.260	(⁴)
US	22	2.515	2.530	2.265	(⁴)
Western District					
KY	23	2.480	2.340	(⁴)	(⁴)
TN	23	2.425	2.325	(⁴)	(⁴)
US	23	2.470	2.340	(⁴)	(⁴)
KY-TN Fire-cured	22-23	2.495	2.500	2.265	(⁴)
Total Fire-cured	21-23	2.495	2.500	2.265	(⁴)
Air-cured:					
Light Air-cured:					
Burley					
IN	31	1.945	1.910	(⁴)	(⁴)
KY	31	1.980	1.955	(⁴)	(⁴)
NC	31	1.925	(⁴)	(⁴)	(⁴)
OH	31	1.920	1.840	(⁴)	(⁴)
TN	31	1.970	1.940	(⁴)	(⁴)
VA	31	1.965	(⁴)	(⁴)	(⁴)
US	31	1.970	1.950	(⁴)	(⁴)
Southern MD Belt					
MD	32	(⁴)	(⁴)	1.775	0.660
Total Light Air-cured	31-32	1.970	1.950	1.775	0.660
Dark Air-cured					
One-Sucker Belt					
KY	35	1.875	1.665	(⁴)	(⁴)
TN	35	1.865	2.135	(⁴)	(⁴)
US	35	1.870	1.840	(⁴)	(⁴)
Green River Belt					
KY	36	2.045	1.310	(⁴)	(⁴)
KY-TN Dark Air-cured	35-36	1.945	1.675	(⁴)	(⁴)
VA Sun-cured Belt					
VA	37	0.870	(⁴)	(⁴)	(⁴)
Total Dark Air-cured	35-37	1.945	1.675	(⁴)	(⁴)
Total All Cures	11-37	2.095	2.175	2.105	0.660

¹ Revised.

² Consists of Eastern NC Belt, and Old and Middle Belts in NC and VA.

³ Consists of GA-FL Belt, SC Belt, and NC Border Belt.

⁴ Insufficient sales to establish a price.

**Tobacco, Types 11-37: Prices Received Monthly, by State
and United States, July 2002 - April 2003 ¹**

State	2002						2003			
	Jul	Aug	Sep	Oct	Nov	Dec	Jan	Feb	Mar	Apr
	<i>Dollars per Pound</i>	<i>Dollars per Pound</i>	<i>Dollars per Pound</i>	<i>Dollars per Pound</i>	<i>Dollars per Pound</i>	<i>Dollars per Pound</i>	<i>Dollars per Pound</i>	<i>Dollars per Pound</i>	<i>Dollars per Pound</i>	<i>Dollars per Pound</i>
FL	1.795	1.895	1.920	(²)	(²)	(²)	(²)	(²)	(²)	(²)
GA	1.775	1.845	1.885	1.885	(²)	(²)	(²)	(²)	(²)	(²)
IN	(²)	(²)	(²)	(²)	1.960	1.980	1.945	1.845	1.640	(²)
KY	(²)	(²)	(²)	(²)	1.980	2.010	2.085	1.985	1.805	(²)
MD	(²)	(²)	(²)	(²)	(²)	(²)	(²)	(²)	1.560	1.225
NC	1.875	1.780	1.810	1.850	1.850	1.950	1.930	(²)	(²)	(²)
OH	(²)	(²)	(²)	(²)	1.985	1.975	1.970	1.840	(²)	(²)
SC	1.845	1.750	1.770	1.750	(²)	(²)	(²)	(²)	(²)	(²)
TN	(²)	(²)	(²)	(²)	1.975	1.980	2.170	2.290	1.965	(²)
VA	1.915	1.860	1.790	1.895	1.925	1.960	1.925	1.780	(²)	(²)
US	1.850	1.795	1.810	1.850	1.960	2.000	2.090	2.070	1.805	1.225

¹ Revised.

² Insufficient sales to establish a price.

**Tobacco, Types 11-37: Prices Received Monthly, by State
and United States, July 2003 - April 2004 ¹**

State	2003						2004			
	Jul	Aug	Sep	Oct	Nov	Dec	Jan	Feb	Mar	Apr
	<i>Dollars per Pound</i>	<i>Dollars per Pound</i>	<i>Dollars per Pound</i>	<i>Dollars per Pound</i>	<i>Dollars per Pound</i>	<i>Dollars per Pound</i>	<i>Dollars per Pound</i>	<i>Dollars per Pound</i>	<i>Dollars per Pound</i>	<i>Dollars per Pound</i>
FL	1.705	1.865	1.895	(²)	(²)	(²)	(²)	(²)	(²)	(²)
GA	1.705	1.835	1.910	1.880	(²)	(²)	(²)	(²)	(²)	(²)
IN	(²)	(²)	(²)	(²)	1.965	1.945	1.945	1.910	(²)	(²)
KY	(²)	(²)	(²)	(²)	1.990	2.010	2.080	2.050	2.285	(²)
MD	(²)	(²)	(²)	(²)	(²)	(²)	(²)	(²)	1.775	0.660
NC	1.855	1.795	1.885	1.900	1.930	1.945	1.925	(²)	(²)	(²)
OH	(²)	(²)	(²)	(²)	1.990	1.965	1.920	1.840	(²)	(²)
SC	1.765	1.790	1.875	1.830	(²)	(²)	(²)	(²)	(²)	(²)
TN	(²)	(²)	(²)	(²)	1.985	1.975	2.210	2.410	2.260	(²)
VA	1.935	1.845	1.830	1.885	1.960	1.930	1.950	(²)	(²)	(²)
US	1.790	1.805	1.880	1.890	1.985	1.995	2.095	2.175	2.105	0.660

¹ Revised.

² Insufficient sales to establish a price.

Reliability of Prices Received Estimates

Definition: Prices received represent sales from producers to first buyers. They include all grades and qualities. The average commodity price from the survey multiplied by the total quantity marketed theoretically should give the total cash receipts for the commodity.

Survey Procedures: Primary sales data used to determine grain prices were obtained from probability samples of 2600 mills and elevators. These procedures ensure that virtually all grain moving into commercial channels has a chance of being included in the survey. Generally, States surveyed account for 90 percent or more of total U.S. production. Livestock prices are obtained from packers, stockyards, auctions, dealers, and market check data from AMS-USDA, private marketing organizations, and state commodity groups and agencies. Inter-farm sales of grain and livestock are not included since they represent very small percentages of the total marketings. Grain marketed for seed is also excluded. Fruit and vegetable prices are obtained from sample surveys and market check data from AMS-USDA, private marketing organizations, state agencies, and universities.

Summary and Estimation Procedures: Survey quantities sold are expanded by strata to state levels and used to weight average strata prices to a state average. State prices are then weighted to a U.S. price based on expanded marketings. Recommendations are prepared by the State Statistical Offices and reviewed by the Agricultural Statistics Board in Washington, D.C. State recommendations are reviewed for reasonableness with survey data, other States, and recent historic estimates.

Revisions: For most items, the current month's preliminary price represents a 3-5 day period around the 15th of the month. Previous month's prices represent actual dollars received for quantities sold during the entire month. Revisions are published in monthly issues of *Agricultural Prices*.

Reliability: U.S. price estimates based on probability surveys generally have a sampling error of less than one percent for the major commodities such as corn, wheat, soybeans, cotton, and rice. Current methods of summarization for non-probability commodities are not designed directly to calculate sampling errors. However, analytical measures approximate the U.S. relative sampling errors at around five percent. Any nonsampling errors are attributed to such things as the inability to obtain correct information, differences in interpreting questions or definitions, mistakes in coding or processing the data, etc. Efforts are made at each step in the survey process to minimize these nonsampling errors.

Prices Paid by Farmers

The May Index of Prices Paid for Commodities and Services, Interest, Taxes, and Farm Wage Rates (PPITW) is 134 (1990-92=100), 0.8 percent higher than April 2004 and 5.5 percent above May 2003.

PRODUCTION INDEX: The May index, at 132, is up 0.8 percent from last month and 7.3 percent above last year. Higher prices in May for complete feeds, feeder cattle, hay and forages, and gasoline more than offset lower prices for feed concentrates, feed grains, feeder pigs, and nitrogen fertilizers.

Feed: The May index, at 133, is 1.5 percent more than April and 15 percent above last May. Since April, higher prices for complete feeds, hay and forages, and feed supplements more than offset lower prices for feed concentrates and feed grains.

Livestock & Poultry: The May index for livestock and poultry purchases, at 126, is 4.1 percent higher than last month and 24 percent above last year. Since April, higher prices for feeder cattle more than offset lower prices for feeder pigs. The May feeder cattle price, at \$107.10 per cwt, is up \$6.10 from the April price. May feeder pigs averaged \$112.00 per cwt, down \$4.00 from April.

Fertilizer: The May index, at 137, is unchanged from April but 7.9 percent above May a year ago. Since April, slightly lower prices for nitrogen fertilizers and potash and phosphate materials offset slightly higher prices for mixed fertilizers.

Agricultural Chemicals: The May index, at 120, is down 0.8 percent from last month and 0.8 percent below last May. The Agricultural Chemical subcomponent index prices declined slightly.

Fuels: The May index, at 157, is up 4.0 percent from a month earlier and 23 percent above May 2003. Compared to last month, prices are higher for gasoline, diesel fuel, and LP gas.

Farm Machinery: The May index is 163, up 1.2 percent from April and 9.4 percent above last May. Since April, prices are higher for other machinery and self-propelled machinery.

CONSUMER PRICE INDEX: The April 2004 Consumer Price Index for all urban consumers (CPI-U) rose 0.3 percent before seasonal adjustment to a level of 188.0 (1982-84=100). This compares to the March index of 187.4. For the 12-month period ending in April, the overall index has increased 2.3 percent.

**Indexes of Prices Paid by Farmers and Related Parity Ratios
United States, May 2004 With Comparisons**

Indexes and Ratios	1910-14 = 100			1990-92 = 100		
	2003	2004		2003	2004	
	May	Apr	May	May	Apr	May
Prices Paid by Farmers for Commodities & Services, Interest, Taxes, & Wage Rates (PPITW)	1,696	1,776	1,788	127	133	134
Production	1,196	*1,270	1,284	123	131	132
Feed	566	*639	649	116	131	133
Livestock & Poultry	1,304	*1,548	1,615	102	121	126
Seeds	1,553	1,564	1,564	157	158	158
Fertilizer	465	502	501	127	137	137
Agricultural Chemicals	746	745	745	121	121	120
Fuels	988	1,168	1,213	128	151	157
Farm Supplies & Repairs	947	*966	966	133	*136	136
Autos & Trucks	3,047	*3,042	3,037	115	114	114
Farm Machinery	3,750	4,040	4,093	149	161	163
Building Materials	1,671	*1,788	1,821	123	*132	134
Farm Services & Rent	1,446	1,449	1,449			
Farm Services				122	123	123
Rent				120	120	120
Interest ¹	2,599	2,616	2,616	104	104	104
Taxes ²	3,426	3,474	3,474	128	130	130
Wage Rates	5,919	*5,957	5,957	158	*159	159
Production, Interest, Taxes, & Wage Rates (PITW)	1,686	*1,773	1,788	125	132	133
Family Living-CPI ³	1,743	*1,786	1,786	136	139	139
Ratio (Received/Paid) Parity Ratio ⁴	39	*45	47	83	*94	99
Parity Ratio Adjusted ⁵	43	*47	49			
PPITW Adjusted for Productivity ⁶	1173	*1210	1212			
Crop Sector (PPITW)				131	135	135
Livestock Sector (PPITW)				124	132	133
Farm Sector (Production)				117	132	135
Non-Farm Sector (Production)				126	*131	131

* Revised.

¹ Interest per acre on farm real estate debt and interest rate on farm non-real estate debt.

² Farm real estate taxes payable per acre.

³ Bureau of Labor Statistics, Consumer Price Index for all urban consumers (CPI-U), for the previous month converted by the USDA.

⁴ Ratio of index of prices received to PPITW (1910-14=100).

⁵ Based on estimated cash receipts, from marketings and government payments, the preliminary adjustment factor is 1.048 for 2004 and the revised factor is 1.082 for 2003.

⁶ PPITW is adjusted based on productivity trend for the prior 15 years.

**Prices Paid Indexes and Annual Weights for Input Components and
Sub-Components United States, May 2004 With Comparisons**

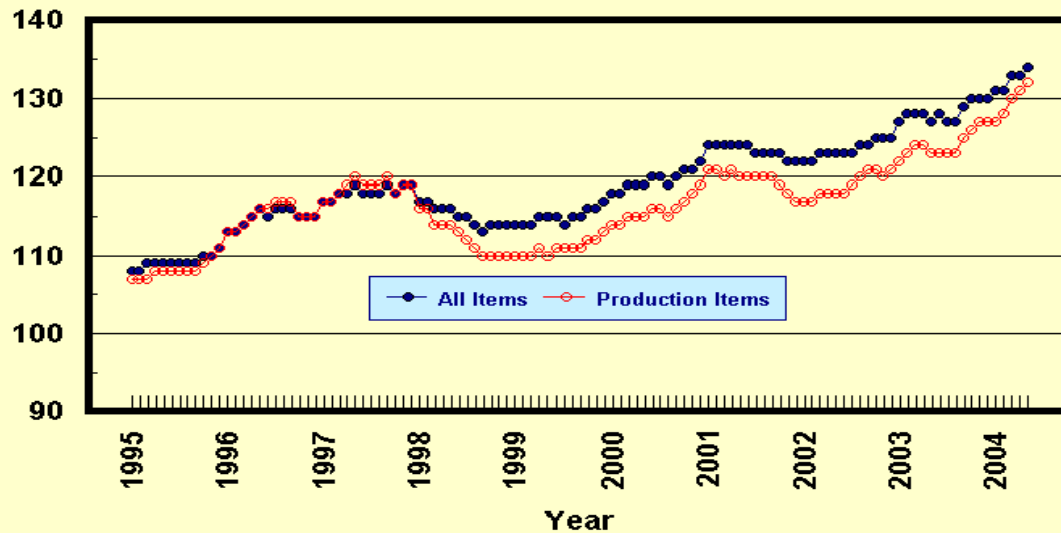
Index	Relative Weights 5-Year Moving Average ¹		Input Indexes		
	2003	2004	2003	2004	
	Percent	Percent	May <i>(1990-92=100)</i>	Apr <i>(1990-92=100)</i>	May <i>(1990-92=100)</i>
Production Items	66.7	66.2	123	131	132
Feed	11.0	10.7	116	131	133
Feed Grains	1.6	1.5	104	*124	119
Complete Feeds	5.4	5.2	113	130	139
Hay/Forages	1.4	1.3	129	115	127
Concentrates	1.7	1.7	119	149	126
Supplements	0.9	0.9	130	138	141
Livestock & Poultry	7.2	7.4	102	121	126
Feeder Cattle	5.6	5.8	99	119	126
Feeder Pigs	0.6	0.6	109	*126	122
Milk Cow Replacements	0.6	0.6	115	140	140
Poultry	0.4	0.4	112	112	112
Seeds	3.2	3.3	157	158	158
Field Crops	2.9	3.0	162	163	163
Grasses/Legumes	0.3	0.3	109	111	111
Fertilizer	4.5	4.4	127	137	137
Mixed Fertilizer	2.0	1.9	113	122	123
Nitrogen	1.9	1.8	146	157	156
Potash & Phosphate	0.6	0.6	112	123	123
Agricultural Chemicals	3.8	3.7	121	121	120
Herbicides	2.4	2.4	112	113	113
Insecticides	0.9	0.9	147	143	143
Fungicides/Other	0.5	0.5	115	116	116
Fuels	2.7	2.7	128	151	157
Diesel	1.5	1.5	121	149	154
Gasoline	0.8	0.8	131	152	163
LP Gas	0.4	0.4	150	158	159
Farm Supplies & Repairs	5.5	5.4	133	*136	136
Supplies	1.8	1.8	124	126	126
Repairs	3.6	3.6	138	*141	141
Autos & Trucks	1.8	1.8	115	114	114
Autos	0.2	0.2	108	108	107
Trucks	1.5	1.6	116	115	115
Farm Machinery	4.0	4.0	149	161	163
Tractors	0.9	0.9	141	146	146
Self-Propelled	1.6	1.6	149	167	167
Other Machinery	1.5	1.5	155	164	169
Building Materials	3.1	3.3	123	*132	134
Farm Services	12.4	12.4	122	123	123
Custom Rates	1.3	1.3	125	125	125
Other Services	11.1	11.1	122	*122	122
Rent	7.4	7.1	120	120	120
Cash	4.0	3.8	145	145	145
Share	3.4	3.3	91	91	91
Interest	4.7	4.7	104	104	104
Taxes	3.0	3.0	128	130	130
Wage Rates	7.4	7.6	158	*159	159
Family Living-CPI	18.2	18.5	136	139	139

* Revised.

¹ Weights may not add due to rounding.

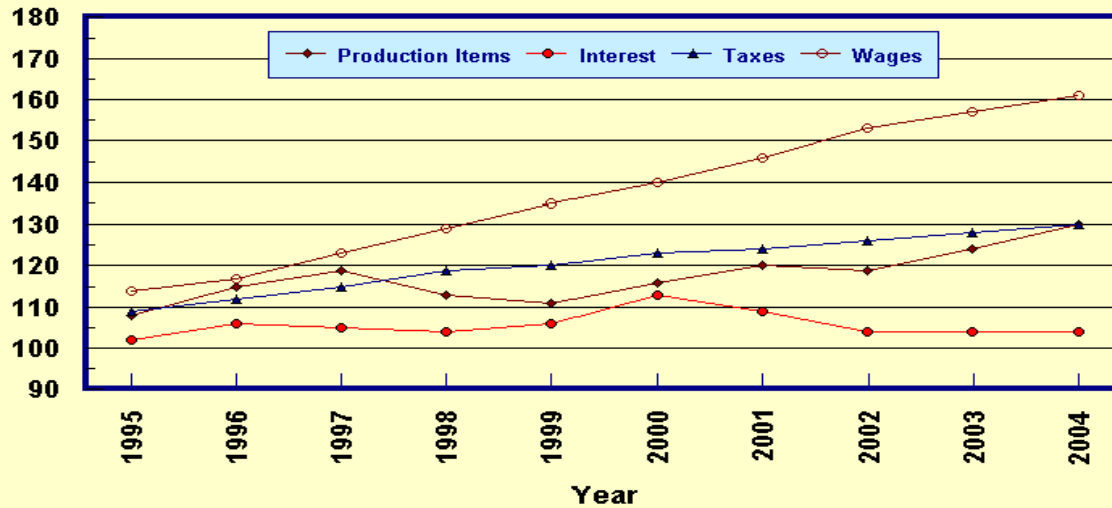
Prices Paid by Farmers, Major Indexes US, by Quarter and Month

Percent (1990-92=100)



Prices Paid by Farmers, Major Indexes US, Annual Averages 1/

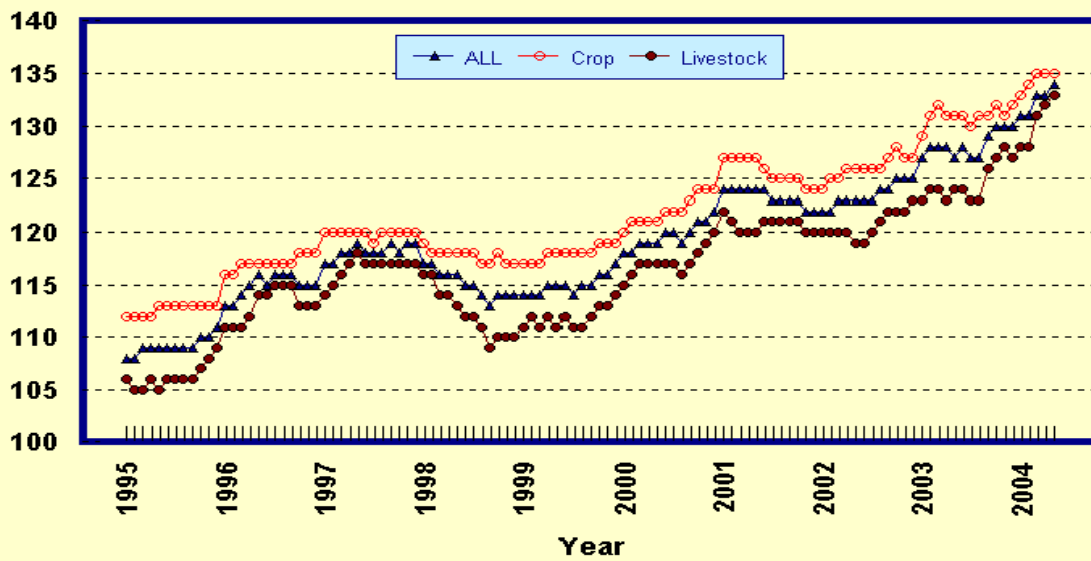
Percent (1990-92=100)



1/ Index values for 2004 are year-to-date averages.

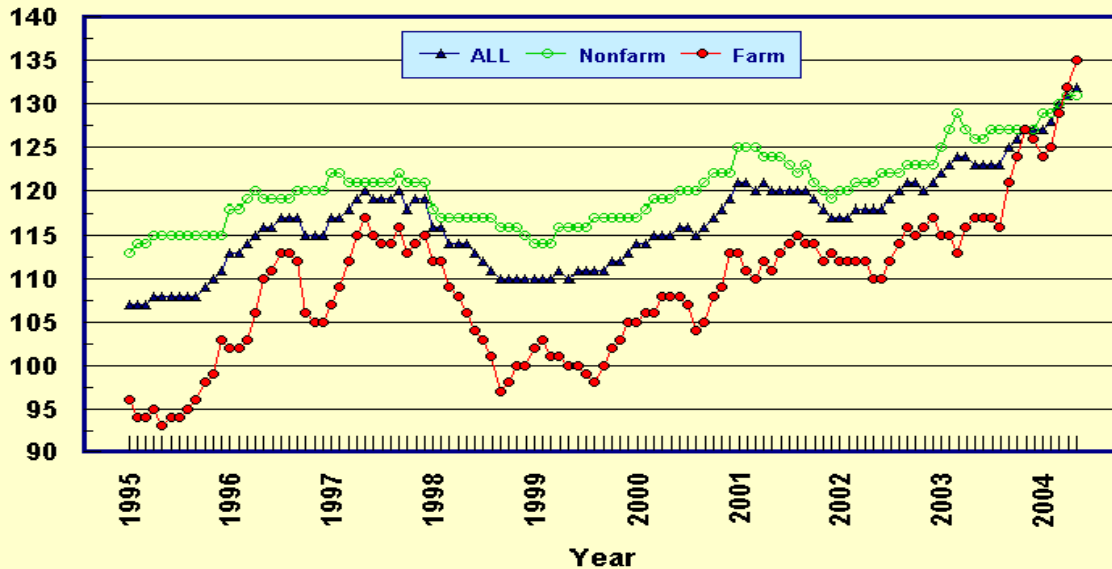
Prices Paid by Farmers, Indexes, All Items US, By Farm Type

Percent (1990-92=100)



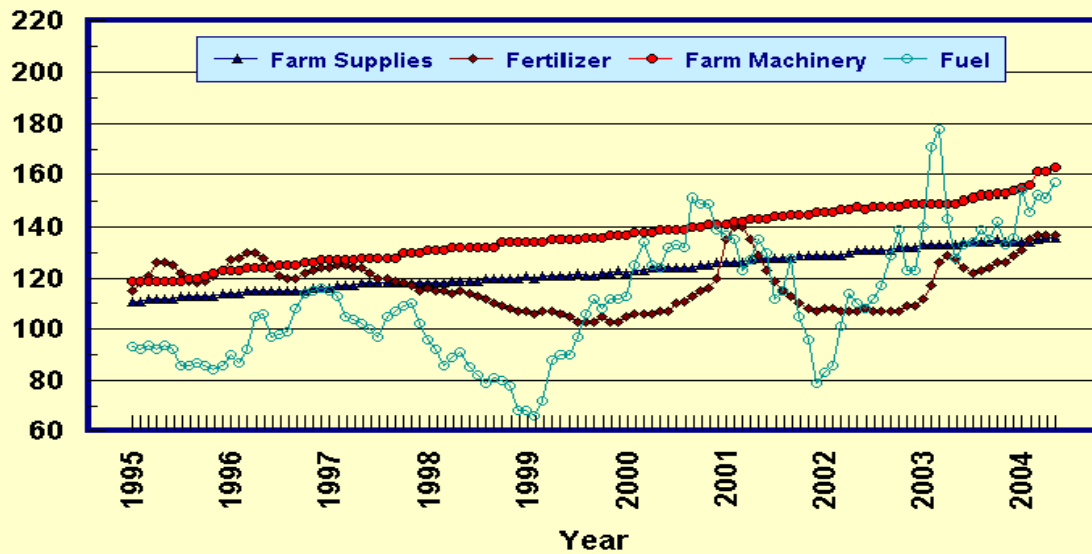
Prices Paid by Farmers, Indexes, All Production Items US, By Sector Origin

Percent (1990-92=100)



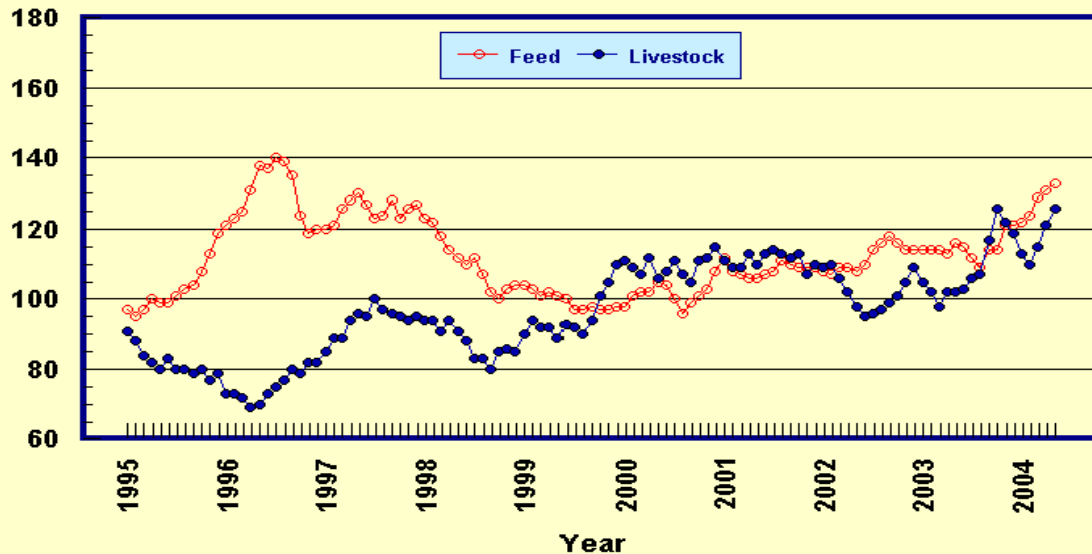
Prices Paid by Farmers, Selected Production Indexes US, By Non-Farm Sector

Percent (1990-92=100)



Prices Paid by Farmers, Selected Production Indexes US, By Farm Sector

Percent (1990-92=100)



Feed Price Ratios: United States, May 2004 with Comparisons

Feed Price Ratio ¹	2003	2004	
	May	Apr	May
Broiler-Feed: Pounds of Broiler Grower Feed equal in value to 1 pound of broiler, live weight	5.1	*4.9	5.2
Market Egg Feed: Pounds of Laying Feed equal in Value to 1 dozen eggs	6.9	*7.8	6.1
Hog-Corn: Bushels of Corn equal in value to 100 pounds of hog, live weight	17.4	*16.4	20.8
Milk-Feed: Pounds of 16% Mixed Dairy Feed equal in value to 1 pound of Whole Milk	2.19	*3.13	3.36
Steer & Heifer-Corn: Bushels of Corn equal in value to 100 pounds of Steer & Heifers, live weight	33.4	*30.8	33.3
Turkey-Feed: Pounds of Turkey Grower equal in value to 1 pound of Turkey, live weight	5.7	4.6	4.9

* Revised.

¹ Effective January 1995, prices of commercial prepared feeds are based on current U.S. prices received for corn, soybeans, alfalfa hay, and all wheat.

**Prices Used to Calculate Feed Price Ratios:
United States, May 2004 with Comparisons**

Commodity	Unit	2003	2004	
		May	Apr	May
Broilers, Live	Lb	0.340	0.480	0.500
Eggs, Market	Doz	0.397	0.614	0.468
Hogs, All	Cwt	41.30	*47.40	57.80
Milk, All	Cwt	11.00	*18.20	20.30
Steers and Heifers	Cwt	79.60	*88.90	92.60
Turkeys, Live	Lb	0.349	0.387	0.404
Corn	Bu	2.38	*2.89	2.78
Hay, Alfalfa, Baled	Ton	100.00	92.70	109.00
Soybeans	Bu	6.07	*9.62	9.60
Wheat, All	Bu	3.33	*3.89	3.73

* Revised.

**Feeder Livestock: Prices Paid, United States
May 2004 with Comparisons**

Commodity	Unit	2003	2004	
		May	Apr	May
		<i>Dollars</i>	<i>Dollars</i>	<i>Dollars</i>
Feeders and Stockers				
Cattle and Calves	Cwt	84.00	101.00	107.10
Feeder Pigs	Cwt	100.00	*116.00	112.00

* Revised.

**Feed Price Ratios, Monthly, United States,
January 2001 - May 2004 ¹**

Year	Jan	Feb	Mar	Apr	May	Jun	Jul	Aug	Sep	Oct	Nov	Dec	Avg ²
Broiler-Feed Ratio ³													
2001	6.4	7.2	7.6	7.9	8.1	8.3	7.9	7.8	8.4	8.6	8.1	6.4	7.7
2002	6.6	6.5	5.9	5.5	5.7	5.9	5.0	4.4	4.6	4.5	4.5	4.7	5.3
2003	5.6	5.4	5.2	4.8	5.1	5.4	5.7	5.8	5.7	5.4	5.1	5.1	5.4
2004	5.6	5.5	5.0	4.9	5.2								
Market Egg-Feed Ratios ⁴													
2001	11.0	11.2	11.6	11.3	8.6	8.6	7.9	8.5	8.5	10.3	11.5	9.4	9.9
2002	10.2	8.5	11.6	7.4	6.7	9.5	7.5	8.0	7.1	6.6	10.5	8.9	8.5
2003	9.0	8.0	9.5	9.3	6.9	8.8	9.8	12.8	11.6	12.6	15.7	12.1	10.5
2004	12.9	10.7	13.3	7.8	6.1								
Turkey-Feed Ratio ⁵													
2001	7.3	7.5	7.7	8.0	8.1	8.2	7.9	7.8	8.3	9.6	9.6	8.1	8.2
2002	7.2	7.3	6.9	6.8	7.3	7.3	6.9	6.3	6.0	6.1	6.5	6.4	6.8
2003	5.7	5.7	5.9	5.9	5.7	5.7	5.8	5.6	5.9	6.2	6.2	5.6	5.8
2004	5.1	4.6	4.5	4.6	4.9								
Milk-Feed Ratio ⁶													
2001	3.03	3.06	3.22	3.29	3.47	3.74	3.62	3.64	3.75	3.55	3.29	2.99	3.39
2002	3.07	3.00	2.87	2.81	2.64	2.55	2.36	2.20	2.30	2.46	2.44	2.44	2.60
2003	2.40	2.35	2.27	2.25	2.19	2.23	2.58	2.88	3.11	3.24	3.05	2.81	2.61
2004	2.71	2.61	2.80	3.13	3.36								
Hog-Corn Ratio ⁷													
2001	18.8	20.0	23.4	25.3	27.7	29.7	27.6	26.7	23.7	21.8	18.9	16.8	23.4
2002	19.1	19.9	18.6	16.6	17.2	18.2	18.4	13.8	10.7	13.2	12.2	13.1	15.9
2003	14.2	14.7	14.9	14.9	17.4	19.2	19.7	18.4	18.0	17.4	15.8	14.7	16.6
2004	15.4	16.3	17.2	16.4	20.8								
Steer & Heifer-Corn Feed Ratio ⁸													
2001	40.1	40.2	41.1	42.1	42.5	43.8	40.1	38.7	37.7	38.1	36.6	34.6	39.6
2002	36.1	38.1	38.2	37.0	35.3	34.0	31.2	28.2	27.4	29.3	31.5	32.3	33.2
2003	33.4	33.4	32.9	33.7	33.4	33.6	36.3	38.8	40.6	46.1	45.5	41.3	37.4
2004	35.7	31.5	32.0	30.8	33.3								

¹ Quarterly commercial feed surveys discontinued in January 1995. Comparable complete feeds are based on US prices for Corn, Alfalfa Hay, Soybeans, and All Wheat.

² Simple average of monthly ratios, January through December.

³ Number of pounds of Broiler Grower Feed (corn-58 pounds, soybeans-42 pounds) equal in value to one pound of Broilers, live weight.

⁴ Number of pounds of Laying Feed (corn-75 pounds, soybeans-25 pounds) equal in value to one dozen Market Eggs.

⁵ Number of pounds of Turkey Grower Feed (corn-51 pounds, soybeans-28 pounds, all wheat-21 pounds) equal in value to one pound of Turkeys, live weight.

⁶ Number of pounds of 16% protein Mixed Dairy Feed (corn-51 pounds, soybeans-8 pounds, alfalfa hay-41 pounds) equal in value to one pound of All Milk.

⁷ Number of bushels of corn equal in value to 100 pounds of All Hogs, live weight.

⁸ Number of bushels of corn equal in value to 100 pounds of Steers & Heifers, live weight.

Prices Paid by Farmers

Definition: Prices paid by farmers represent the average costs of inputs purchased by farmers and ranchers to produce agricultural commodities. Conceptually, the average price when multiplied by quantity purchased should equal total producer expenditures for the item.

Survey Procedures: The prices paid data are obtained from establishments that sell goods and services to farmers and ranchers. Annually, about 8,500 firms are randomly selected from lists by type of item sold with an average response rate in the range of 75-80 percent. Firms are asked to report the price for the specified item "most commonly bought by farmers" or that was the "volume seller". Approximately 135 items are surveyed each April to represent all production input items purchased. The survey reference period for most items is the 5 business days centered around the 15th of the month. Separate prices paid surveys are conducted for, agricultural chemicals, fuels, feed, fertilizer, machinery, and seed.

Summary and Estimation Procedures: The annual April Prices Paid Survey is summarized as a nonprobability survey. Average prices reported are aggregated to the region and U.S. level using weights available from expenditure data and other administrative sources. Price recommendations are prepared by the State Statistical Offices and Headquarters for review by the Agricultural Statistics Board in Washington, D.C. Also, the change in price level for individual items surveyed are combined to the regional and U.S. levels, and are published as prices paid indexes referenced to a specific base period. Prices paid indexes for new autos and trucks, building materials, farm supplies, motor supplies, and marketing containers are updated based on price changes measured in selected Bureau of Labor Statistics (BLS) indexes.

Revisions: Any revisions are published in the monthly and in annual issues of *Agricultural Prices*. The basis for revision must be supported by additional data that directly affect the level of the estimate. More revisions are likely in April when separate prices paid surveys are conducted, in lieu of BLS indexes, by the USDA to measure price change.

Reliability: Current methods of summarization in April are not designed directly to calculate sampling errors. However, analytical measures approximate the U.S. relative sampling errors for major items around 10 percent. Any nonsampling errors are attributed to such things as the inability to obtain correct information, differences in interpreting questions or definitions, mistakes in coding or processing the data, etc. Efforts are made at each step in the survey process to minimize these nonsampling errors.

Program Change: Effective January 1, 1995, the National Agricultural Statistics Service updated the weights and changed the construction of its prices paid and received by farmers indexes. A Federal Register Notice dated October 28, 1994 discussed these program modifications.

A 1990-92 reference and base period replaced the 1977 reference and 1971-73 base weight period. Five-year moving average weights replaced the current fixed 1971-73 base period weights. The 1910-14=100 price indexes, required by statute for computing parity prices, were linked forward based on the changes in the new 1990-92=100 indexes. The new indexes were constructed by multiplying the ratios of the current prices to the base period prices by the moving average weights (adjusted for seasonal marketing patterns for the prices received indexes).

Information Contacts

General questions should be directed to Linda Hutton, Chief, Environmental, Economics and Demographics Branch at (202) 720-6146. Below are the commodity specialists to contact for additional information.

Crop Prices Received

Joe Prusacki Chief, Crops Branch	(202) 720-2127
Greg Thessen, Field Crops Section	(202) 720-2127
Lance Honig - Wheat, Rye	(202) 720-8068
Darin Jantzi - Corn, Proso Millet, Flaxseed	(202) 720-9526
Troy Joshua - Cotton, Cottonseed, Hay, Oats, Sorghum	(202) 720-5944
Jason Lamprecht - Soybeans, Sunflower, Other Oilseeds	(202) 720-7369
Mark R. Miller - Peanuts, Rice	(202) 720-7688
Brian Young - Sugarcane, Sugarbeets, Barley	(202) 720-7621
Jim Smith, Fruit and Vegetable Section	(202) 720-2127
Jorge Garcia-Pratts - Citrus	(202) 720-5412
Debbie Flippin - Peaches, Pears, Hops, Pulses, Mint	(202) 720-3250
Terry O'Connor - Apples, Apricots, Cherries, Cranberries, Plums, Prunes	(202) 720-4288
Mike Miller - Grapes, Tobacco	(202) 720-7235
Cathy Scherrer, Potatoes, Dry Edible Beans, Sweet Potatoes	(202) 720-4285
Biz Wallingsford - Vegetables, Onions, Strawberries	(202) 720-2157

Livestock Prices Received

Dan Kerestes, Chief, Livestock Branch	(202) 720-3570
Wil Hundl, Livestock Section	(202) 720-3570
Steve Anderson - Cattle	(202) 720-3040
Scott Hollis - Sheep, Lambs, Wool, Mohair	(202) 720-4751
Ty Kalaus - Milk, Milk Cows	(202) 690-3236
Dan Lofthus - Hogs	(202) 720-3106
Nathan Crisp, Poultry and Specialty Commodities Section	(202) 720-3570
Tom Kruchten - Broilers, Eggs	(202) 690-4870
John Lange - Turkeys	(202) 720-0585

Indexes, Prices Paid, and Parity Prices

Linda Hutton, Chief, Environmental, Economics and Demographics Branch	(202) 720-6146
Kevin Hintzman, Economics Section	(202) 720-6146
Tara Jackson - Feed, Fertilizer, Ag Chemicals, Seeds	(202) 690-3229
Jim Williams - Prices Paid Indexes, Farm Supplies and Repairs, Farm Machinery, Fuels, Feeder Livestock, Poultry Chicks, Feed Price Ratios, Grazing Fees, Autos & Trucks	(202) 690-3225
Rhonda Brandt - Prices Received Indexes, Parity Prices	(202) 720-5446

The next *Agricultural Prices* report will be released at 3 p.m. ET on June 29, 2004.

ACCESS TO REPORTS!!

For your convenience, there are several ways to obtain NASS reports, data products, and services:

INTERNET ACCESS

All NASS reports are available free of charge on the worldwide Internet. For access, connect to the Internet and go to the NASS Home Page at: www.usda.gov/nass/. Select "Today's Reports" or Publications and then Reports Calendar or Publications and then Search, by Title or Subject.

E-MAIL SUBSCRIPTION

All NASS reports are available by subscription free of charge direct to your e-mail address. Starting with the NASS Home Page at www.usda.gov/nass/, click on **Publications**, then click on the **Subscribe by E-mail** button which takes you to the page describing e-mail delivery of reports. Finally, click on **Go to the Subscription Page** and follow the instructions.

PRINTED REPORTS OR DATA PRODUCTS

CALL OUR TOLL-FREE ORDER DESK: 800-999-6779 (U.S. and Canada)
Other areas, please call 703-605-6220 FAX: 703-605-6900
(Visa, MasterCard, check, or money order acceptable for payment.)

ASSISTANCE

For **assistance** with general agricultural statistics or further information about NASS or its products or services, contact the **Agricultural Statistics Hotline** at **800-727-9540**, 7:30 a.m. to 4:00 p.m. ET, or e-mail: nass@nass.usda.gov.

The United States Department of Agriculture (USDA) prohibits discrimination in all its programs on the basis of race, color, national origin, gender, religion, age, disability, political beliefs, sexual orientation, and marital or family status. (Not all prohibited bases apply to all programs.) Persons with disabilities who require alternative means for communication of program information (braille, large print, audiotape, etc.) should contact the USDA's TARGET Center at 202-720-2600 (voice and TDD).

To file a complaint of discrimination, write USDA, Director, Office of Civil Rights, Room 326-W, Whitten Building, 1400 Independence Avenue, SW, Washington, D.C., 20250-9410, or call 202-720-5964 (voice or TDD). USDA is an equal opportunity provider and employer.
