

Released July 30, 2004, by the National Agricultural Statistics Service (NASS), Agricultural Statistics Board, U.S. Department of Agriculture. For information on *Agricultural Prices* see page 73, office hours 7:30 a.m. to 4:00 p.m. ET.

## July Farm Prices Received Index Down 6 Points From Last Month

The preliminary All Farm Products Index of Prices Received by Farmers in July at 122, based on 1990-92=100, is 6 points (4.7 percent) below the June Index. Declines occurred in both the Crop Price Index and the Livestock Price Index. The Crop Index, declined 6 points (4.9 percent) from June while the Livestock Index decreased 5 points (3.8 percent). Producers received higher commodity prices for oranges, asparagus, sweet corn, and snap beans. Lower prices were received for dairy, corn, soybeans, and cattle. The seasonal change in the mix of commodities farmers sell, based on the past 3-year average, also affects the overall index. Increased average marketings of grapes, wheat, tomatoes, and hay offset decreased marketings of dairy, cantaloup, asparagus, and oranges. The preliminary All Farm Products Index is up 17 points (16 percent) from July 2003.

The Food Commodities Index declined 5 points (3.8 percent) from last month to 125, twenty points (19 percent) above July 2003.

## Prices Paid Index Unchanged

The July Index of Prices Paid for Commodities and Services, Interest, Taxes, and Farm Wage Rates (PPITW) is 134 percent of the 1990-92 average. The index is unchanged from June but 7 points (5.5 percent) above July 2003. Lower prices in July for feed concentrates, complete feeds, feed grains, and hay & forages are offset by higher prices for feeder cattle, milk cows, nitrogen fertilizers, and diesel fuel.

**Index Summary Table**

Index 1990-92=100	2003	2003	2004	2004
	Jun	Jul	Jun	Jul
Prices Received	107	105	128	122
Prices Paid	127	127	134	134
Ratio <sup>1</sup>	84	83	96	91

<sup>1</sup> Ratio of index of prices received by farmers to index of prices paid by farmers.

## Prices Received by Farmers

The July All Farm Product Index is 122 percent of its 1990-92 base, down 4.7 percent from the June index but 16 percent above the July 2003 index.

**ALL CROPS:** The July index is 116, down 4.9 percent from June but 6.4 percent above July 2003. From June, index decreases for feed grains and hay, oil-bearing crops, and food grains more than offset an index increase for fruits and nuts.

**Food Grains:** The July index, at 114, is 5.8 percent below the previous month but 16 percent greater than July 2003. The July all wheat price, at \$3.36 per bushel, is down 22 cents from the June price but 41 cents above July 2003.

**Feed Grains & Hay:** The July index is 110, down 9.8 percent from last month but 7.8 percent above July 2003. The corn price, at \$2.42 per bushel, is down 37 cents from June but 25 cents above the July 2003 price. The all hay price, at \$90.40 per ton, is down \$4.80 from last month but \$1.40 above July 2003.

**Oil-Bearing Crops:** The July index, at 147, is down 8.7 percent from the June index but 41 percent above July 2003. The soybean price, at \$8.21 per bushel, is down 84 cents from June but \$2.39 above July 2003.

**Cotton:** The July index, at 98, is down 2.0 percent from last month but 29 percent above July 2003. The cotton price, at 59.3 cents per pound, is down 1.2 cents from June but 13 cents above July 2003.

**Potatoes & Dry Beans:** The July index, at 111, is unchanged from the June index but 5.7 percent above July 2003. The all potato price, at \$6.59 per cwt, is up 10 cents from the previous month and 29 cents above last July.

**Fruits & Nuts:** The July index, at 127, is up 4.1 percent from the previous month and 5.0 percent above July 2003. Price increases for oranges and lemons more than offset price decreases for grapes, strawberries, and apples.

**Commercial Vegetables:** The July index, at 108, is down 5.3 percent from last month and 11 percent below July 2003. Price decreases for head lettuce, onions, and cauliflower more than offset price increases for asparagus, sweet corn, and snap beans.

**LIVESTOCK & PRODUCTS:** The July index, at 128, is down 3.8 percent from last month but up 27 percent from July 2003. Compared with a year ago, prices are higher for broilers, dairy, all cattle, hogs, turkeys, and calves, but lower for eggs.

**Meat Animals:** The July index, at 121, is down 0.8 percent from last month but up 20 percent from last year. The July hog price of \$56.90 per cwt is up \$0.30 from June and up \$14.20 from this same time a year ago. The July beef cattle price of \$87.50 is down \$2.00 from last month but up \$11.70 from July 2003.

**Dairy Products:** The July index, at 124, is down 11 percent from June but up 33 percent from July 2003. The July all milk price of \$16.20 per cwt is down \$2.00 from June but up \$4.10 from last year. The fluid grade milk price is down \$2.10 from last month while the manufactured grade milk price is down \$2.00.

**Poultry & Eggs:** The index, at 145, is down 1.4 percent from June but 33 percent above a year ago due to strong protein demand. July market egg prices are 39.9 cents per dozen, a 20 percent decrease from June. The July broiler price is 52.0 cents per pound, equal to the record high set last month. This high price is due to continued strong domestic protein demand, the summer barbecue season, and foreign demand. The July turkey price, at 43.6 cents per pound, is up 1.6 cents from last month. Cumulative placements of turkey poulters for the slaughter market are 5 percent below last year.

## Table of Contents

<b>U.S. Prices Received and Indexes</b>	<b>Page</b>	<b>Monthly State Prices, continued</b>	<b>Page</b>
Narrative .....	2	Cotton .....	19
Price Indexes .....	5	Cottonseed .....	19
Price Index Charts .....	6	Eggs .....	24
U.S. Prices Received Summary .....	10	Flaxseed .....	18
Charts .....	12	Fruit, Citrus .....	20
Selected Commodities .....	16	Hay .....	19
Upland Cotton & Rice Marketings ....	19	Hogs, All .....	23
Parity Prices .....	26	Barrows and Gilts .....	23
Reliability Statement .....	45	Sows .....	23
<b>Monthly State Prices Received</b>		Milk .....	25
Apples .....	19	Oats .....	17
Barley .....	17	Peanuts .....	18
Beans, Dry Edible .....	18	Potatoes .....	21
Beef Cattle, All .....	22	Sheep .....	24
Calves .....	22	Lambs .....	24
Cows, Beef .....	22	Sorghum, Grain .....	17
Milk Cows .....	25	Soybeans .....	17
Steers and Heifers .....	22	Sunflower, All .....	18
Corn .....	17	Tobacco .....	18
		Wheat, All Classes .....	16
<b>Prices Received Special Features</b>			<b>Page</b>
<b>Marketing Years for Specified Commodities</b> .....			28
<b>Marketing Year Average Prices</b>			
Cranberries .....			29
Sugarbeets .....			29
Sugarcane .....			29
<b>Monthly Price Revisions</b>			
Apples .....			30
Grapes .....			30
Onions .....			32
Peaches .....			31
Pears .....			31
<b>Seasonal Adjustment Factors</b>			
All Eggs .....			36
All Milk .....			36
<b>Indexes of Prices Received: U.S., All Groups, Monthly and Annual, 2000-2004</b> .....			37

## Table of Contents (continued)

<b>U.S. Prices Paid, Prices Paid Indexes and Ratios</b>	<b>Page</b>
Narrative .....	46
Indexes and Parity Ratios .....	47-48
Charts .....	49-51
Feed Price Ratios .....	52
Reliability Statement .....	72
<b>U.S. Average Prices</b>	
Commodity Prices Used in Feed Price Ratios .....	52
Feeder Livestock .....	52
<b>Special Features</b>	
Index of Prices Paid: 1910-14=100 and 1990-92=100 Monthly and Annual Average, United States, 2000-2004 .....	53-70
PPITW, PITW, Production Items .....	53-54
Index Component Items, Interest, Taxes, Wage Rates, Farm and Non Farm Origin .....	54-61
Ratios .....	62
Crop Sector, Livestock Sector, and PPITW adjusted for Productivity .....	63
Index Sub-Components (1990-92=100): Monthly and Annual Averages .....	64-71
<b>Information Contacts</b> .....	73

**Index Numbers of Prices Received, United States,  
July 2004, with Comparisons**

Index	1910-14=100				1990-92=100		
	Average 1990-92	2003	2004		2003	2004	
		Jul	Jun	Jul	Jul	Jun	Jul
All Farm Products	639	667	*814	776	105	*128	122
All Crops	500	539	*604	571	109	*122	116
Food Grains	325	311	*385	363	98	*121	114
Feed Grains & Hay	363	366	*438	393	102	*122	110
Cotton	517	391	*511	501	76	100	98
Tobacco <sup>1</sup>	1,263	1,557			103		
Oil-Bearing Crops	554	570	*879	802	104	*161	147
Fruits & Nuts	716	846	*851	885	121	*122	127
Commercial Vegetables	698	812	*760	725	121	*114	108
Potatoes & Dry Beans	540	532	*560	562	105	*111	111
Other Crops	493	564	569	569	114	115	115
Livestock & Products	768	775	*1,020	980	101	133	128
Meat Animals	1,021	1,025	*1,244	1,227	101	122	121
Dairy Products	799	744	*1,118	996	93	*139	124
Poultry & Eggs	282	307	412	407	109	147	145
Food Commodities					105	*130	125

\* Revised.

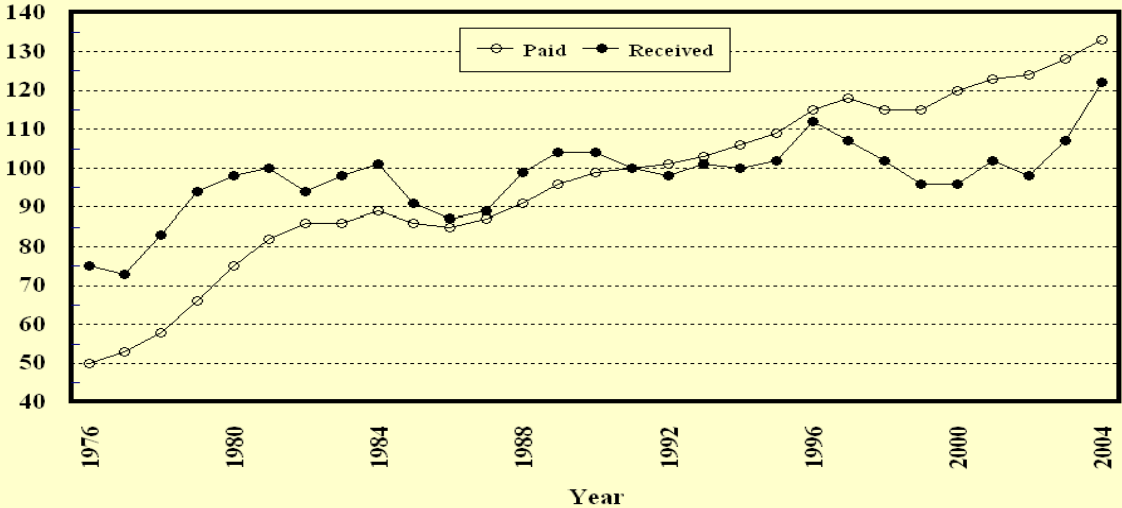
<sup>1</sup> Insufficient sales to establish a price.

**Selected Index Numbers for Prices Received and Paid,  
1990-92=100, by Months, United States, 2003 and 2004**

Month	Index of Prices Received						Index of Prices Paid			
	All Farm Products		All Crops		Livestock and Products		All Items		Production Items	
	2003	2004	2003	2004	2003	2004	2003	2004	2003	2004
Jan	99	111	103	113	96	110	127	130	122	126
Feb	99	116	103	121	95	112	128	131	123	127
Mar	99	121	106	120	93	121	128	132	124	128
Apr	101	125	110	123	93	126	128	133	124	131
May	105	129	116	124	96	133	127	134	123	132
Jun	107	128	118	122	99	133	127	134	123	132
Jul	105	122	109	116	101	128	127	134	123	131
Aug	109		113		105		127		123	
Sep	111		111		110		128		125	
Oct	113		111		116		129		126	
Nov	116		115		117		129		126	
Dec	114		116		112		129		126	

# Prices Received vs Prices Paid Annual Average Indexes\*

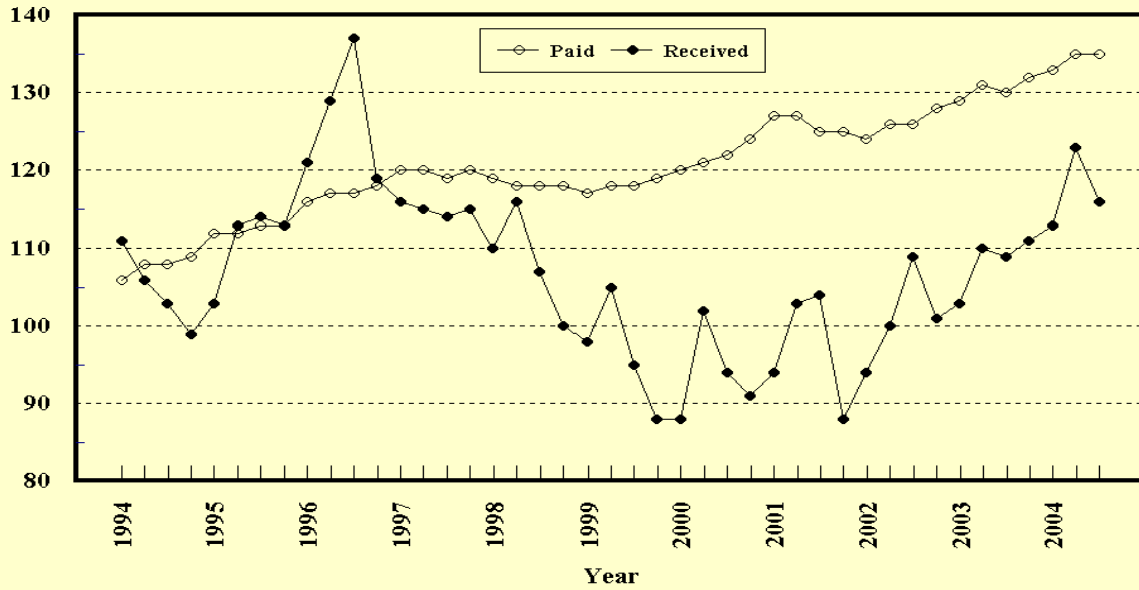
Index Values (1990-92=100)



\* Index values for 2004 are year-to-date averages.

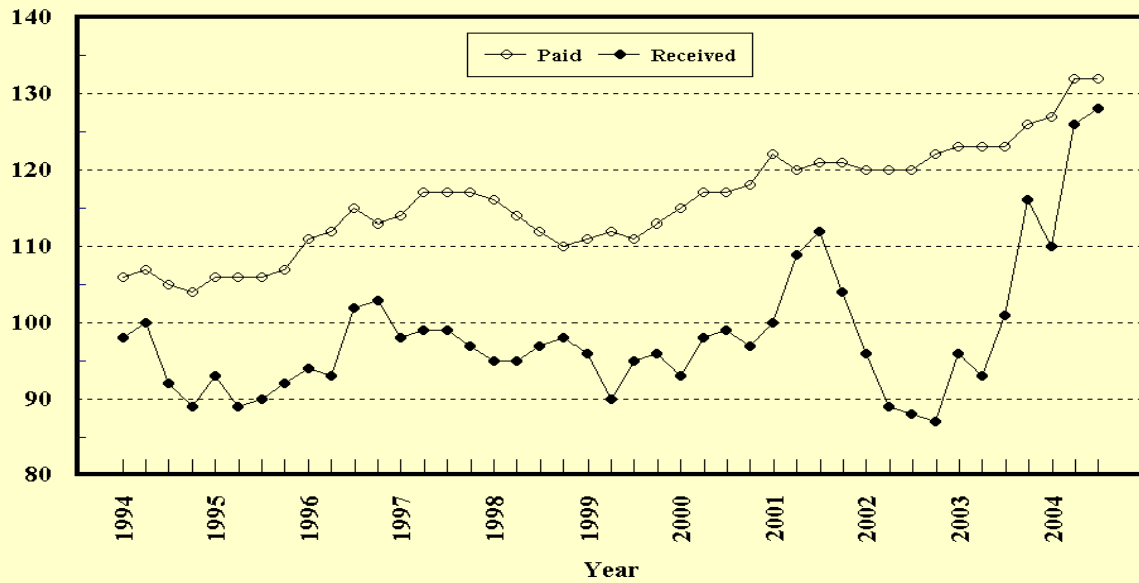
**Crop Farm Index: Prices Received and Prices Paid**  
All Items, U.S., 1994-2004, By Quarter

Index Values (1990-92=100)



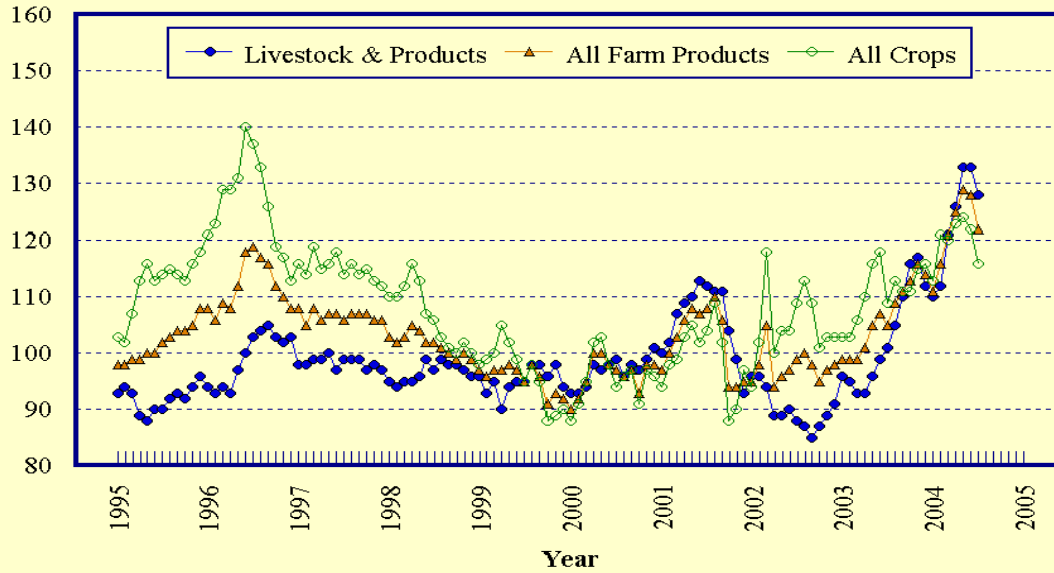
**Livestock Farm Index: Prices Received and Prices Paid**  
All Items, U.S., 1994-2004, By Quarter

Index Values (1990-92=100)



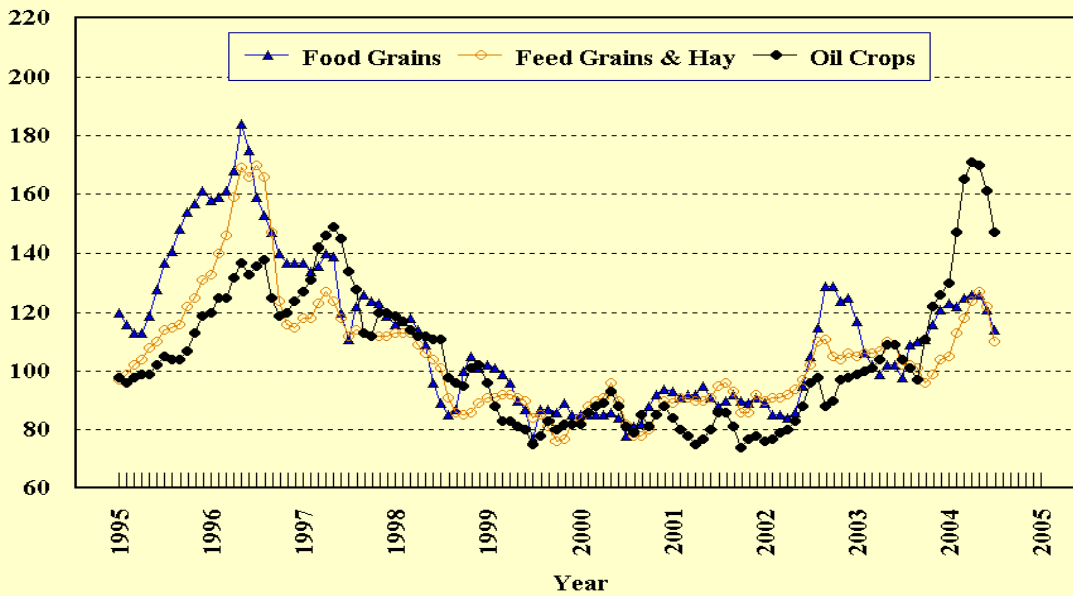
## Prices Received, Major Indexes, US

Index Values(1990-92=100)



## Prices Received, Food, Feed, & Oil Indexes, US

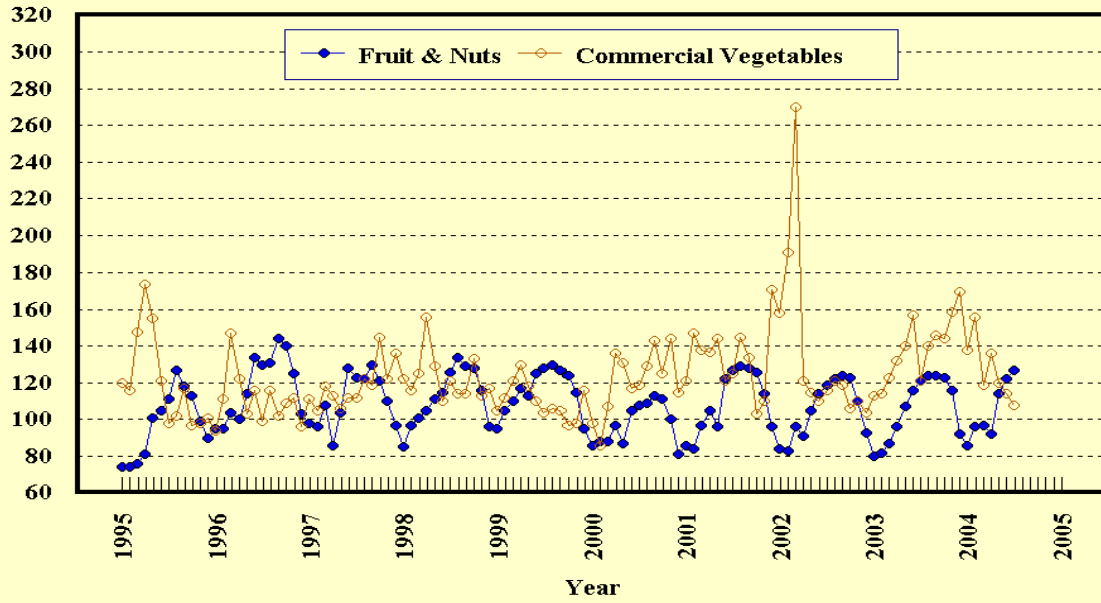
Index Values(1990-92=100)





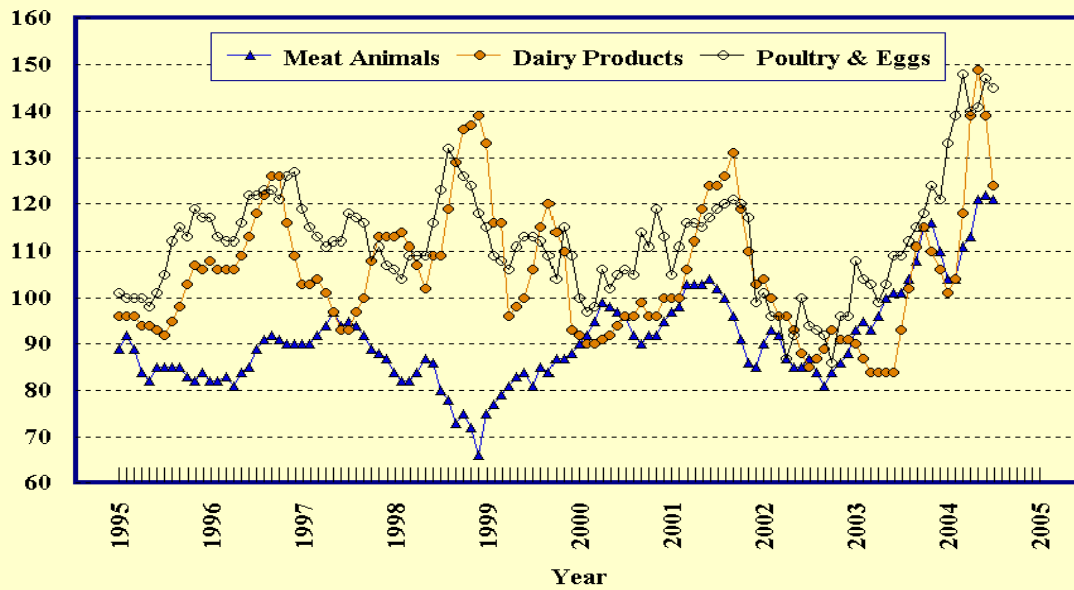
## Prices Received, Fruit/Vegetable Indexes, US

Index Values(1990-92=100)



## Prices Received, Livestock Product Indexes, US

Index Values(1990-92=100)



**Prices Received, United States,  
July 2004, with Comparisons**

Commodity	Unit	Average 1990-92	Entire Month		Preliminary
			Jul 2003	Jun 2004	Jul 2004
		<i>Dollars</i>	<i>Dollars</i>	<i>Dollars</i>	<i>Dollars</i>
<b>Field Crops</b>					
Barley, All	Bu	2.12	2.74	2.64	2.50
Feed	Bu	1.90	2.22	2.20	2.08
Malting	Bu	2.43	3.08	2.81	2.81
Beans, Dry Edible	Cwt	19.10	17.20	20.10	19.10
Chickpeas, All <sup>1</sup>	Cwt			21.60	( <sup>6</sup> )
Large <sup>1</sup>	Cwt			21.80	( <sup>6</sup> )
Small <sup>1</sup>	Cwt			( <sup>5</sup> )	( <sup>6</sup> )
Corn	Bu	2.30	2.17	2.79	2.42
Cotton, Upland	Lb	0.606	0.463	0.605	0.593
Cottonseed <sup>4</sup>	Ton	96.00			
Flaxseed	Bu	4.27	6.38	7.25	7.65
Hay, All, Baled <sup>2</sup>	Ton	76.30	89.00	95.20	90.40
Alfalfa <sup>2</sup>	Ton	77.20	92.70	102.00	98.40
Other <sup>2</sup>	Ton	60.00	77.80	76.90	70.90
Lentils <sup>1</sup>	Cwt			20.80	( <sup>6</sup> )
Oats	Bu	1.22	1.46	1.61	1.50
Peanuts, In-Shell	Lb	0.304	( <sup>5</sup> )	0.199	( <sup>5</sup> )
Peas, Dry Edible <sup>1</sup>	Cwt			8.71	( <sup>5</sup> )
Austrian Winter <sup>1</sup>	Cwt			( <sup>6</sup> )	( <sup>6</sup> )
Potatoes	Cwt	5.82	6.30	6.49	6.59
Rice, Rough	Cwt	7.07	5.31	8.69	8.76
Sorghum Grain	Cwt	3.75	3.63	4.58	4.07
Soybeans	Bu	5.61	5.82	9.05	8.21
Sunflower, All	Cwt	9.50	11.60	13.40	14.70
Tobacco, Types 11-37	Lb	1.740	1.790	( <sup>6</sup> )	( <sup>6</sup> )
Wheat, All	Bu	2.96	2.95	3.58	3.36
Winter	Bu	2.93	2.89	3.47	3.31
Durum	Bu	2.86	3.85	4.40	3.99
Other Spring	Bu	3.11	3.31	3.87	3.60
Hard Red Winter	Bu		2.82	3.48	
Soft Red Winter	Bu		3.02	3.41	
Hard Red Spring	Bu		3.31	3.87	
White	Bu	3.24	3.20	3.81	
<b>Fruit</b>					
Citrus, Equiv on-tree					
Grapefruit	Box	5.77	8.84	9.65	9.43
Lemons	Box	10.10	6.37	8.30	16.55
Oranges	Box	5.79	3.91	3.94	9.81
Tangelos	Box	5.82			
Tangerines	Box	15.11			
Temples	Box	6.23			
Noncitrus, Fresh					
Apples <sup>3</sup>	Lb	0.212	0.208	0.301	0.295
Grapes <sup>3</sup>	Ton	506.00	780.00	900.00	640.00
Peaches <sup>3</sup>	Lb	0.216	0.262	0.233	0.233
Pears <sup>3</sup>	Ton	370.00	335.00	( <sup>6</sup> )	470.00
Strawberries	Cwt	56.00	66.70	66.30	60.80

<sup>1</sup> Monthly estimates began July 2003.

<sup>2</sup> Mid-month price.

<sup>3</sup> Equivalent packinghouse-door returns for CA, MI, and NY (apples only), and WA (apples, peaches, and pears). Prices as sold for other states.

<sup>4</sup> Marketing year August - February.

<sup>5</sup> Price not published to avoid disclosure of individual firms.

<sup>6</sup> Insufficient sales to establish a price.

**Prices Received, United States,  
July 2004, with Comparisons**

Commodity	Unit	Average 1990-92	Entire Month		Preliminary
			Jul 2003	Jun 2004	Jul 2004
		<i>Dollars</i>	<i>Dollars</i>	<i>Dollars</i>	<i>Dollars</i>
Vegetables, Fresh <sup>1</sup>					
Asparagus	Cwt	79.80	189.00	107.00	242.00
Broccoli	Cwt	22.50	27.00	28.70	24.90
Cantaloupes <sup>2</sup>	Cwt		16.40	13.20	14.20
Carrots	Cwt	13.20	19.90	22.50	20.70
Cauliflower	Cwt	26.80	27.60	46.20	26.80
Celery	Cwt	11.60	12.80	13.80	12.80
Corn, Sweet	Cwt	15.70	21.30	15.20	21.20
Cucumbers <sup>2</sup>	Cwt		22.80	18.10	22.70
Lettuce	Cwt	11.90	11.90	13.30	10.20
Onions	Cwt	12.80	16.70	18.00	14.30
Snap Beans <sup>2</sup>	Cwt		43.70	27.60	50.80
Tomatoes	Cwt	32.30	37.60	21.90	23.10
Livestock					
Calves	Cwt	94.30	102.00	125.00	128.00
Cattle, All Beef	Cwt	72.90	75.80	89.50	87.50
Cows <sup>3</sup>	Cwt	49.60	44.90	53.60	55.90
Steers & Heifers	Cwt	77.10	78.90	93.50	91.10
Milk Cows <sup>4</sup>	Head	1,130.00	1,310.00		1,720.00
Hogs, All	Cwt	47.70	42.70	56.60	56.90
Barrows & Gilts	Cwt	48.40	43.20	57.10	57.30
Sows	Cwt	39.50	33.10	46.30	49.10
Lambs	Cwt	56.20	89.30	105.00	
Sheep	Cwt	23.40	29.40	32.10	
Dairy and Poultry					
Milk, All <sup>5 6</sup>	Cwt	13.06	12.10	18.20	16.20
Fluid Grade <sup>6</sup>	Cwt	13.10	12.10	18.30	16.20
Mfg Grade <sup>6</sup>	Cwt	11.80	11.80	16.90	14.90
Broilers, Live <sup>7</sup>	Lb	0.317	0.360	0.520	0.520
Eggs, All <sup>8</sup>	Doz	0.643	0.687	0.672	0.589
Market <sup>8</sup>	Doz	0.546	0.524	0.496	0.399
Turkeys, live <sup>7 8</sup>	Lb	0.380	0.336	0.420	0.436
Adjusted for Seasonal Variation					
Eggs, All	Doz	0.545	0.723	0.781	0.647
Milk, All <sup>5</sup>	Cwt	9.71	11.98	18.20	16.53

<sup>1</sup> F.O.B. shipping point.

<sup>2</sup> Monthly estimates began January 1995.

<sup>3</sup> Beef cows and cull dairy cows sold for slaughter.

<sup>4</sup> Animals sold for dairy herd replacement only. Prices available for Jan, Apr, Jul, and Oct.

<sup>5</sup> Before deductions for hauling. Includes quality, quantity, and other premiums. Excludes hauling subsidies.

<sup>6</sup> July 2004 Fat test percent: all milk 3.54, fluid milk 3.54, mfg grade 3.64.

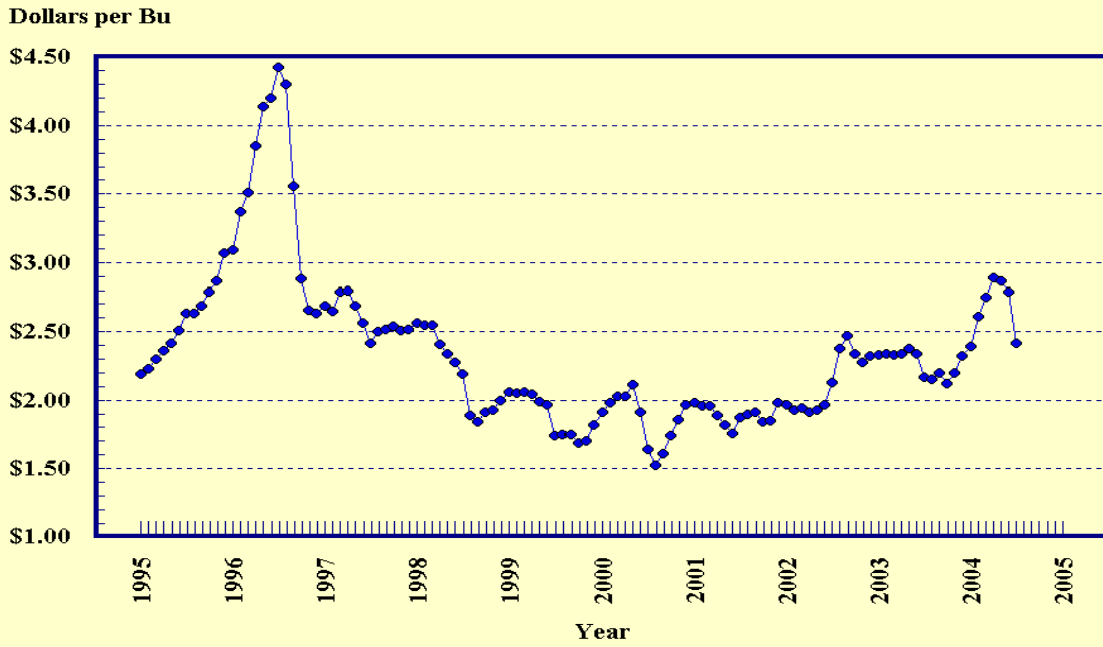
<sup>7</sup> Equivalent liveweight returns to producers for most States. Includes growers and contractors.

<sup>8</sup> Mid-month price.

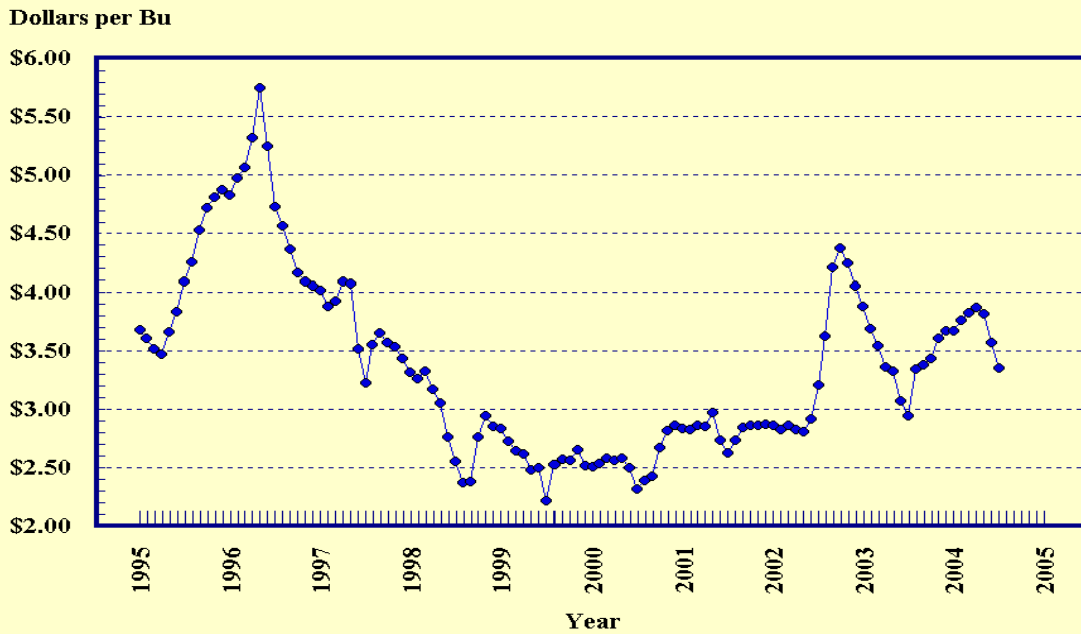
<sup>9</sup> Price not published to avoid disclosure of individual firms.

<sup>10</sup> Insufficient sales to establish a price.

### Prices Received, Corn, US

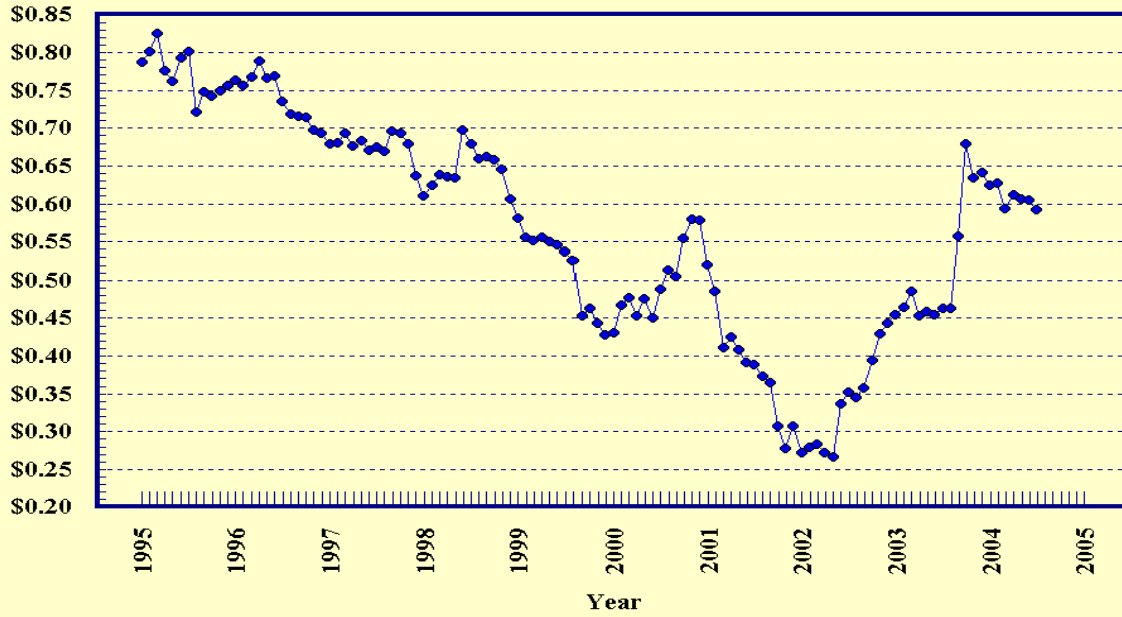


### Prices Received, Wheat, US



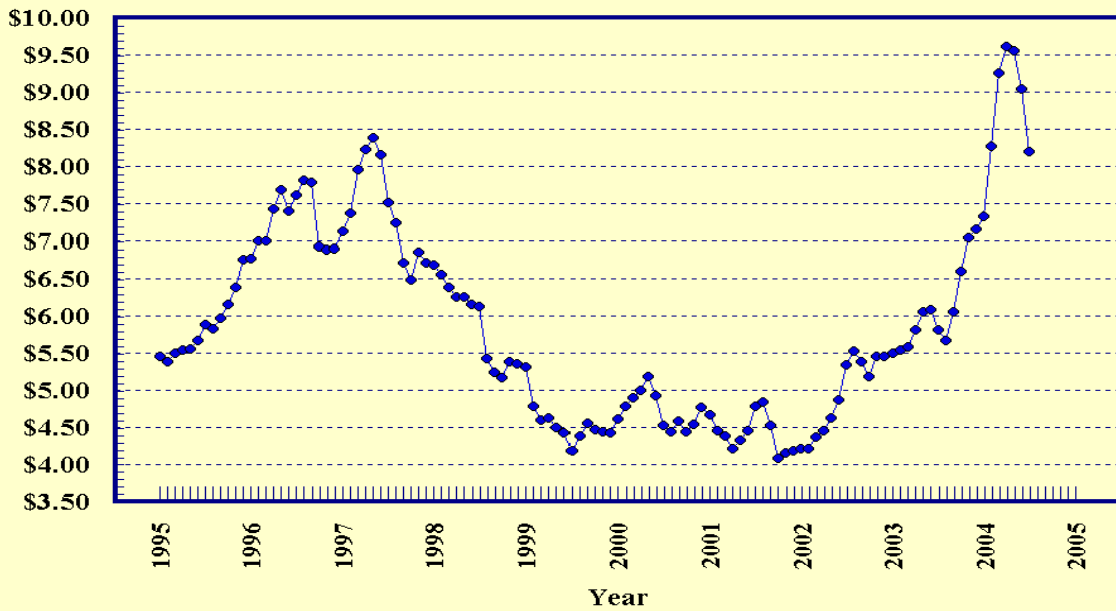
### Prices Received, Cotton, US

Dollars per Lb



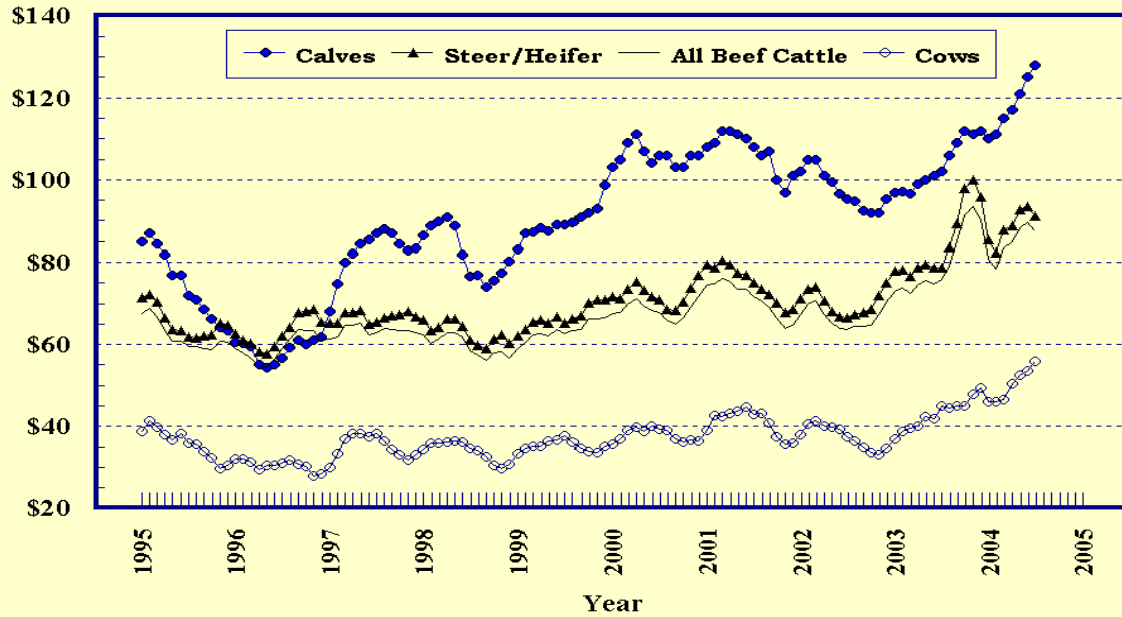
### Prices Received, Soybeans, US

Dollars per Bu



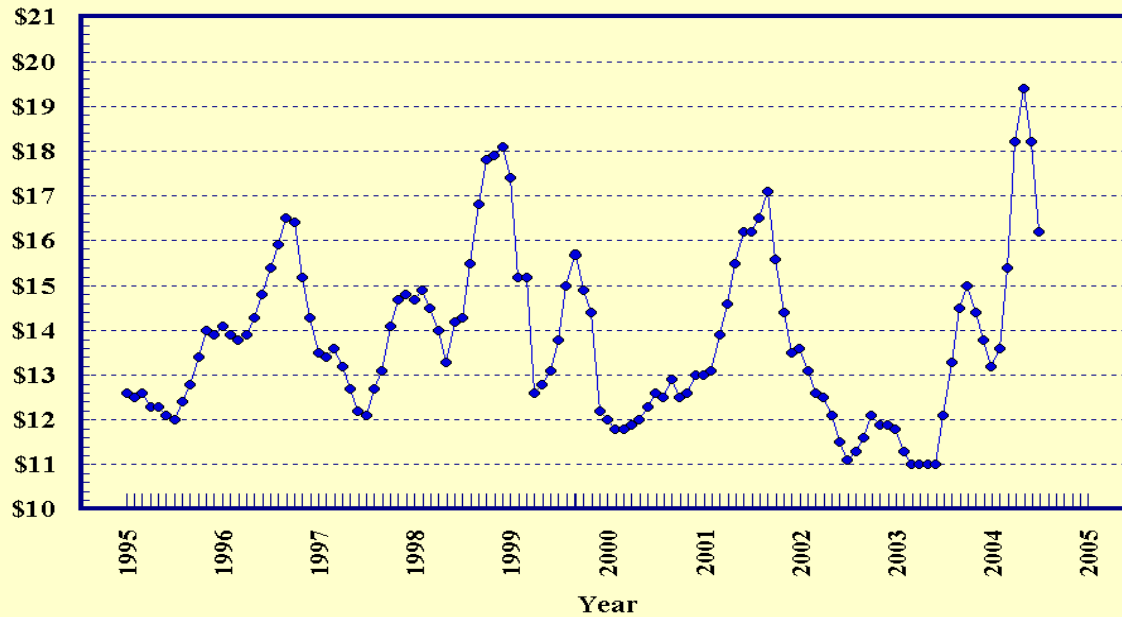
## Prices Received, Cattle, US

Dollars per Cwt



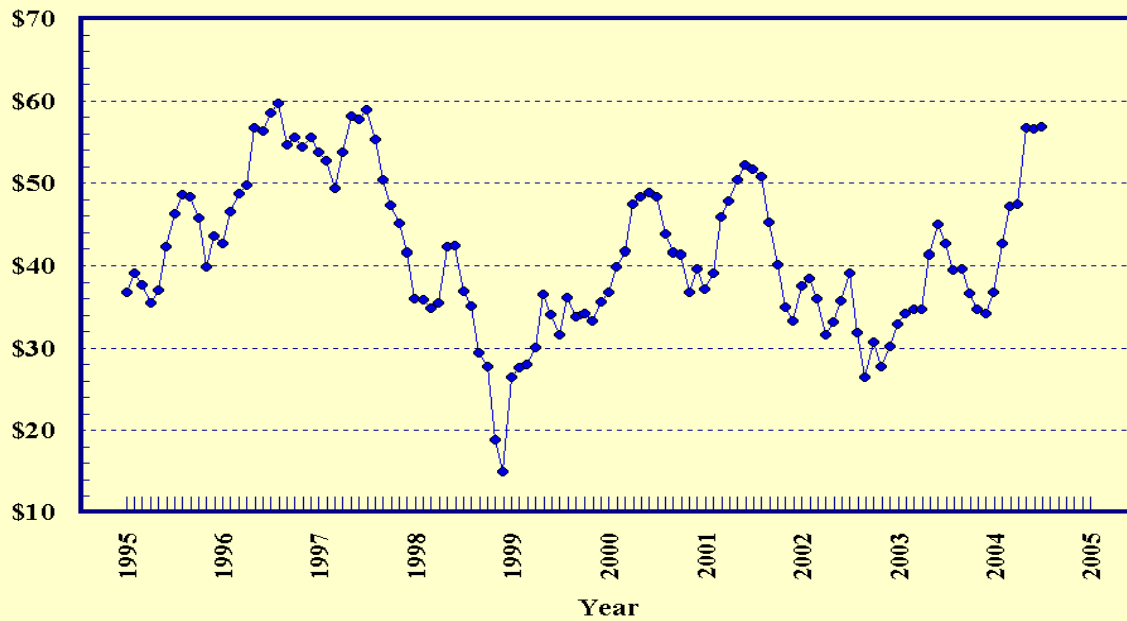
## Prices Received, Milk, US

Dollars per Cwt



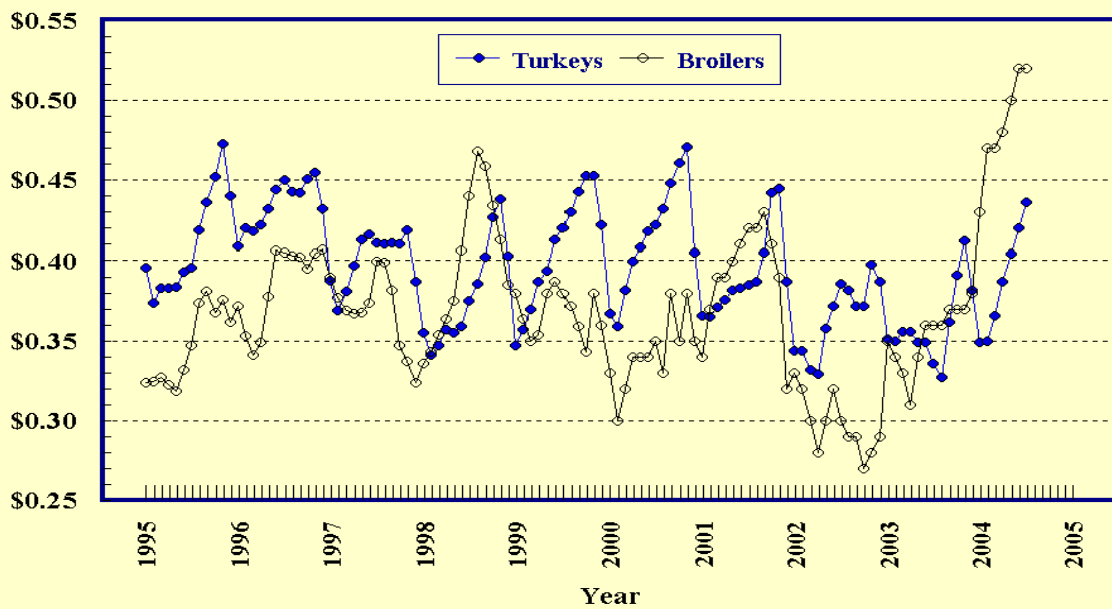
## Prices Received, Hogs, US

Dollars per Cwt



## Prices Received, Turkeys & Broilers, US

Dollars per Lb



**Wheat: Prices Received, by States, June and July 2004**

State	All Wheat		Winter Wheat		Durum Wheat		Oth Spring Wheat	
	Jun <sup>1</sup>	Jul <sup>2</sup>	Jun <sup>1</sup>	Jul <sup>2</sup>	Jun <sup>1</sup>	Jul <sup>2</sup>	Jun <sup>1</sup>	Jul <sup>2</sup>
	<i>Dollars per Bushel</i>	<i>Dollars per Bushel</i>	<i>Dollars per Bushel</i>	<i>Dollars per Bushel</i>	<i>Dollars per Bushel</i>	<i>Dollars per Bushel</i>	<i>Dollars per Bushel</i>	<i>Dollars per Bushel</i>
AR	3.62	3.35	3.62	3.35				
CA	4.22	3.83	3.90	( <sup>3</sup> )	4.48	( <sup>3</sup> )		
CO	3.51	3.29	3.51	3.29			( <sup>4</sup> )	( <sup>4</sup> )
ID	3.92	3.85	3.82	3.80			4.03	3.95
IL	3.32	3.25	3.32	3.25				
IN	3.37	3.10	3.37	3.10				
KS	3.42	3.36	3.42	3.36				
MI	3.16	3.10	3.16	3.10				
MN	3.86	3.61	( <sup>4</sup> )	( <sup>4</sup> )			3.86	3.61
MO	3.28	3.30	3.28	3.30				
MT	3.76	3.61	3.50	3.42	4.26	3.91	3.92	3.75
NE	3.56	3.45	3.56	3.45				
ND	3.82	3.64	( <sup>3</sup> )	( <sup>3</sup> )	4.11	3.95	3.73	3.55
OH	3.32	3.14	3.32	3.14				
OK	3.47	3.36	3.47	3.36				
OR	3.88	3.72	3.84	3.70			4.13	3.85
SD	3.74	3.45	3.54	3.31			3.86	3.53
TX	3.40	3.24	3.40	3.24				
WA	3.89	3.69	3.83	3.66			4.10	3.83
US	3.58	3.36	3.47	3.31	4.40	3.99	3.87	3.60

<sup>1</sup> Entire month.

<sup>2</sup> Mid-month.

<sup>3</sup> Price not published to avoid disclosure of individual firms.

<sup>4</sup> Insufficient sales to establish a price.

**Prices Received for Selected Agricultural Commodities, by Months,  
United States, 2003 and 2004 <sup>1</sup>**

Month	All Wheat		Corn		Soybeans		Beef Cattle <sup>2</sup>		All Hogs	
	2003	2004	2003	2004	2003	2004	2003	2004	2003	2004
	<i>Dollars per Bushel</i>	<i>Dollars per Bushel</i>	<i>Dollars per Bushel</i>	<i>Dollars per Bushel</i>	<i>Dollars per Bushel</i>	<i>Dollars per Bushel</i>	<i>Dollars per Cwt</i>	<i>Dollars per Cwt</i>	<i>Dollars per Cwt</i>	<i>Dollars per Cwt</i>
Jan	3.89	3.68	2.33	2.39	5.51	7.34	72.90	80.90	32.90	36.80
Feb	3.70	3.77	2.34	2.61	5.55	8.28	73.90	78.50	34.30	42.60
Mar	3.55	3.83	2.33	2.75	5.59	9.27	72.60	83.40	34.70	47.20
Apr	3.37	3.88	2.34	2.89	5.82	9.62	74.50	84.80	34.80	47.40
May	3.33	3.82	2.38	2.87	6.07	9.57	75.50	88.40	41.30	56.80
Jun	3.08	3.58	2.34	2.79	6.09	9.05	74.90	89.50	45.00	56.60
Jul	2.95	3.36	2.17	2.42	5.82	8.21	75.80	87.50	42.70	56.90
Aug	3.35		2.15		5.68		79.30		39.60	
Sep	3.39		2.20		6.06		84.90		39.70	
Oct	3.44		2.12		6.61		91.50		36.70	
Nov	3.61		2.20		7.05		93.40		34.70	
Dec	3.68		2.32		7.17		90.40		34.20	

<sup>1</sup> Current month prices are mid-month; prices for previous months are for the entire month.

<sup>2</sup> Cows, steers and heifers.



**Grains: Prices Received, by States, June and July 2004**

Month	All Barley <sup>1</sup>		Corn		Oats		Soybeans		Sorghum Grain	
	Jun <sup>2</sup>	Jul <sup>3</sup>	Jun <sup>2</sup>	Jul <sup>3</sup>	Jun <sup>2</sup>	Jul <sup>3</sup>	Jun <sup>2</sup>	Jul <sup>3</sup>	Jun <sup>2</sup>	Jul <sup>3</sup>
	<i>Dollars per Bushel</i>	<i>Dollars per Bushel</i>	<i>Dollars per Bushel</i>	<i>Dollars per Bushel</i>	<i>Dollars per Bushel</i>	<i>Dollars per Bushel</i>	<i>Dollars per Bushel</i>	<i>Dollars per Bushel</i>	<i>Dollars per Cwt</i>	<i>Dollars per Cwt</i>
AL							8.54	8.26	( <sup>5</sup> )	( <sup>4</sup> )
AR										
CA	2.76	( <sup>4</sup> )								
CO	( <sup>4</sup> )	( <sup>4</sup> )	2.97	2.66						
ID	3.32	3.22								
IL			2.87	2.50	( <sup>4</sup> )	( <sup>5</sup> )	9.01	8.30	( <sup>4</sup> )	4.50
IN			2.82	2.42			9.44	8.40		
IA			2.77	2.35	1.80	1.50	9.25	8.05		
KS			2.94	2.47			8.86	7.93	4.44	3.66
KY			3.05	2.55			9.12	8.10		
LA							( <sup>4</sup> )	( <sup>4</sup> )		
MI			2.77	2.40	2.09	2.05	9.01	8.70		
MN	( <sup>4</sup> )	( <sup>4</sup> )	2.62	2.31	1.57	1.48	9.18	8.06		
MS							( <sup>4</sup> )	( <sup>4</sup> )		
MO			2.98	2.40			9.37	7.90	4.83	4.25
MT	2.45	2.32			( <sup>4</sup> )	( <sup>5</sup> )				
NE			2.82	2.45	1.70	1.50	9.03	8.50	4.64	4.00
NC			3.23	2.84			8.80	8.55		
ND	2.49	2.44	2.82	2.45	1.14	1.25	7.92	7.65		
OH			2.93	2.55	1.87	( <sup>5</sup> )	8.98	8.64		
OK									( <sup>4</sup> )	4.30
OR	( <sup>4</sup> )	2.25			( <sup>5</sup> )	( <sup>5</sup> )				
PA			3.52	3.09	2.16	1.98				
SD	2.43	2.39	2.79	2.35	1.57	1.32	9.13	8.35		
TN			2.72	2.55			8.98	8.00		
TX			3.11	2.79	1.74	( <sup>5</sup> )			4.60	4.11
UT	2.51	2.25								
WA	2.59	2.16								
WI			2.78	2.40	1.70	1.60	9.04	8.30		
WY	1.92	1.85								
US	2.64	2.50	2.79	2.42	1.61	1.50	9.05	8.21	4.58	4.07

<sup>1</sup> The Three-State (MN, ND and SD) Feed Barley price for July 2004 is \$1.95.

<sup>2</sup> Entire month.

<sup>3</sup> Mid-month.

<sup>4</sup> Price not published to avoid disclosure of individual firms.

<sup>5</sup> Insufficient sales to establish a price.

**Malting and Feed Barley: Prices Received Selected States,  
June and July 2004**

State	Malting Barley		Feed Barley	
	Jun <sup>1</sup>	Jul <sup>2</sup>	Jun <sup>1</sup>	Jul <sup>2</sup>
	<i>Dollars per Bushel</i>	<i>Dollars per Bushel</i>	<i>Dollars per Bushel</i>	<i>Dollars per Bushel</i>
ID	3.40	3.40	2.49	2.50
MN	( <sup>3</sup> )	( <sup>3</sup> )	1.86	1.61
MT	3.11	( <sup>3</sup> )	2.04	1.84
ND	2.65	2.65	2.02	1.95
SD	2.47	2.39	2.10	( <sup>4</sup> )
WY	( <sup>4</sup> )	( <sup>4</sup> )	1.92	1.85

<sup>1</sup> Entire month.

<sup>2</sup> Mid-month.

<sup>3</sup> Price not published to avoid disclosure of individual firms.

<sup>4</sup> Insufficient sales to establish a price.

**Field Crops: Prices Received, by States, June and July 2004**

State	Dry Edible Beans		All Sunflower		Flaxseed		Tobacco		Peanuts <sup>4</sup>	
	Jun <sup>1</sup>	Jul <sup>2</sup>	Jun <sup>1</sup>	Jul <sup>2</sup>	Jun <sup>1</sup>	Jul <sup>2</sup>	Jun <sup>1</sup>	Jul <sup>3</sup>	Jun <sup>1</sup>	Jul <sup>3</sup>
	<i>Dollars per Cwt</i>	<i>Dollars per Cwt</i>	<i>Dollars per Cwt</i>	<i>Dollars per Cwt</i>	<i>Dollars per Bushel</i>	<i>Dollars per Bushel</i>	<i>Dollars per Pound</i>	<i>Dollars per Pound</i>	<i>Dollars per Pound</i>	<i>Dollars per Pound</i>
AL									( <sup>5</sup> )	( <sup>6</sup> )
CA	34.50	( <sup>5</sup> )								
CO	19.60	18.40								
FL							( <sup>6</sup> )	( <sup>6</sup> )	( <sup>5</sup> )	( <sup>6</sup> )
GA							( <sup>6</sup> )	( <sup>6</sup> )	0.197	( <sup>5</sup> )
ID	19.60	19.60								
IN							( <sup>6</sup> )	( <sup>6</sup> )		
KS			( <sup>5</sup> )	( <sup>5</sup> )						
KY							( <sup>6</sup> )	( <sup>6</sup> )		
MD							( <sup>6</sup> )	( <sup>6</sup> )		
MI	19.90	20.20								
MN	17.80	17.90	16.20	( <sup>5</sup> )						
MO										
NE	17.40	16.70								
NC							( <sup>6</sup> )	( <sup>6</sup> )	( <sup>5</sup> )	( <sup>6</sup> )
ND	18.00	17.60	13.30	15.30	7.25	7.65				
OH							( <sup>6</sup> )	( <sup>6</sup> )		
OK										
SC							( <sup>6</sup> )	( <sup>6</sup> )		
SD			13.00	12.10	( <sup>6</sup> )	( <sup>6</sup> )				
TN							( <sup>6</sup> )	( <sup>6</sup> )		
TX									( <sup>5</sup> )	( <sup>6</sup> )
VA							( <sup>6</sup> )	( <sup>6</sup> )	0.237	( <sup>6</sup> )
WV										
US	20.10	19.10	13.40	14.70	7.25	7.65	( <sup>6</sup> )	( <sup>6</sup> )	0.199	( <sup>5</sup> )

<sup>1</sup> Entire month.

<sup>2</sup> Mid-month.

<sup>3</sup> Based on sales through first half of month.

<sup>4</sup> In-Shell.

<sup>5</sup> Price not published to avoid disclosure of individual firms.

<sup>6</sup> Insufficient sales to establish a price.

**Field Crops and Apples: Prices Received, by States, June and July 2004**

State	Cotton, Upland		July				Apples Fresh Use <sup>1 4</sup> <i>Dol/Lb</i>
	Jun <sup>1</sup>	Jul <sup>2</sup>	Cotton- seed <sup>5</sup> <i>Dollars per Ton</i>	Hay, Baled <sup>3</sup>			
				All <i>Dollars per Ton</i>	Alfalfa <i>Dollars per Ton</i>	Other <i>Dollars per Ton</i>	
	<i>Dollars per Pound</i>	<i>Dollars per Pound</i>					
AL	0.601	0.594					
AZ	( <sup>6</sup> )	( <sup>6</sup> )		100.00	100.00	95.00	
AR	0.601	0.601					
CA	( <sup>6</sup> )	( <sup>6</sup> )		110.00	112.00	99.00	
CO				82.00	83.00	75.00	
GA	0.598	0.598					
ID				102.00	105.00	65.00	
IL				86.00	91.00	71.00	
IA				78.00	82.00	57.00	
KS				65.00	75.00	56.00	
KY				66.00	100.00	61.00	
LA	0.595	0.601					
MI				84.00	90.00	70.00	
MN				65.00	71.00	52.00	
MS	0.601	0.593					
MO				61.00	100.00	46.00	
MT				77.00	78.00	74.00	
NE				51.00	52.00	47.00	
NV				104.00	103.00	116.00	
NM				116.00	119.00	101.00	
NY				116.00	144.00	85.00	
NC	0.579	( <sup>6</sup> )					
ND				63.00	66.00	50.00	
OH				82.00	112.00	55.00	
OK				73.00	98.00	55.00	
OR				109.00	113.00	92.00	
PA				120.00	143.00	108.00	0.202
SD				65.00	67.00	57.00	
TN	0.596	0.563					
TX	0.570	0.572		80.00	135.00	62.00	
UT				90.00	90.00	80.00	
VA							
WA				103.00	100.00	120.00	0.304
WI				84.00	90.00	45.00	
WY				69.00	70.00	65.00	
US	0.605	0.593		90.40	98.40	70.90	0.295

<sup>1</sup> Entire month.

<sup>2</sup> Based on sales during the first half of the month.

<sup>3</sup> Mid-month.

<sup>4</sup> Equivalent packinghouse-door returns for CA, NY, and WA. Price at point of first sale for other States.

<sup>5</sup> Marketing year August - February.

<sup>6</sup> Price not published to avoid disclosure of individual firms.

<sup>7</sup> Insufficient sales to establish a price.

**Upland Cotton and Rice: Prices Received and Marketings,  
United States, July 2004, with Comparisons**

Item	Unit	May 2004 <sup>1</sup>	Jun 2004 <sup>1</sup>	Jul 2004 <sup>2</sup>
Cotton, Upland				
Average Price	Dollars per Pound	0.606	0.605	0.593
Marketings <sup>3</sup>	1,000 Bales	360	403	NA
Rice				
Average Price	Dollars per Cwt	8.27	8.69	8.76
Marketings <sup>4</sup>	1,000 Cwt	10,473	10,277	NA

<sup>1</sup> Entire month.

<sup>2</sup> Based on purchases for the first half of the month.

<sup>3</sup> Expanded data from sample of about 65 percent of buyers.

<sup>4</sup> Purchases by private firms and rice (rough equivalent) shipped by cooperatives.

**Citrus Fruit: Prices and Equivalent Returns, by Utilization,  
by State and United States, July 2004**

Commodity, State and Type	F.O.B. Packed Fresh	Equivalent Returns <sup>1</sup>					
		Packinghouse-door			On-tree		
		All	Fresh	Process	All	Fresh	Process
	<i>Dollars per Box</i>	<i>Dollars per Box</i>	<i>Dollars per Box</i>	<i>Dollars per Box</i>	<i>Dollars per Box</i>	<i>Dollars per Box</i>	<i>Dollars per Box</i>
Grapefruit							
CA	19.90	11.75	13.39	-0.27	9.43	11.07	-2.59
US	19.90	11.75	13.39	-0.27	9.43	11.07	-2.59
Lemons							
CA	36.50	20.90	26.40	0.20	16.55	22.05	-4.15
US	36.50	20.90	26.40	0.20	16.55	22.05	-4.15
Oranges							
CA Valencia	20.10	12.30	13.04	0.32	9.81	10.55	-2.17
US	20.10	12.30	13.04	0.32	9.81	10.55	-2.17

<sup>1</sup> Net lbs. per box: Grapefruit - AZ & CA-67, FL-85, TX-80; Lemons - 76; Oranges - AZ & CA-75, FL-90, TX-85; Tangelos - 90; Tangerines - AZ, CA-75, FL-95; Temples - 90.

**Potatoes: Prices Received, by States, June and July 2004**

State	Jun	Jul	State	Jun	Jul
	<i>Dollars per Cwt</i>	<i>Dollars per Cwt</i>		<i>Dollars per Cwt</i>	<i>Dollars per Cwt</i>
AL	12.20	12.00	NC	5.95	5.85
AZ	9.80		ND - All <sup>1</sup>	5.75	
CA - All	12.40	12.80	- Fresh <sup>2</sup>	3.15	NA
- Winter			- Processing	5.90	NA
- Spring	12.50	12.70	OH		
- Summer		13.40	OR	5.65	5.40
- Fall	10.10		PA	8.45	
CO - All <sup>1</sup>	3.70	3.75	TX	9.50	8.95
- Fresh <sup>2</sup>	3.95	NA	VA		8.30
FL	7.50		WA - All	5.90	4.65
ID - All <sup>1</sup>	4.05	4.00	- Processing	5.45	NA
- Fresh <sup>2</sup>	3.50	NA	WI - All <sup>1</sup>	4.60	
- Processing	4.30	NA	- Fresh <sup>2</sup>	3.30	NA
ME	7.05	7.15	- Processing	7.00	NA
MI					
MN	4.70	4.75	US - All <sup>1</sup>	6.49	6.59
NY			- Fresh <sup>2</sup>	9.03	NA
			- Processing	5.35	NA

<sup>1</sup> Average price of potatoes sold for all uses, including table stocks, processing, seed and livestock feed.

<sup>2</sup> Fresh market prices only, includes table stock prices.

**Cattle: Prices Received, by States, June and July 2004**

State	Cows <sup>1</sup>		Steers & Heifers		Beef Cattle <sup>4</sup>		Calves	
	Jun <sup>2</sup>	Jul <sup>3</sup>	Jun <sup>2</sup>	Jul <sup>3</sup>	Jun <sup>2</sup>	Jul <sup>3</sup>	Jun <sup>2</sup>	Jul <sup>3</sup>
	<i>Dollars per Cwt</i>	<i>Dollars per Cwt</i>	<i>Dollars per Cwt</i>	<i>Dollars per Cwt</i>	<i>Dollars per Cwt</i>	<i>Dollars per Cwt</i>	<i>Dollars per Cwt</i>	<i>Dollars per Cwt</i>
AZ	51.90	53.00	105.00	106.00	104.00	105.00	119.00	122.00
AR	49.00	51.80	107.00	108.00	89.60	91.10	121.00	126.00
CA	48.80	53.00	93.30	93.30	73.30	74.80	110.00	112.00
CO	57.00	60.00	108.00	113.00	107.00	112.00	130.00	140.00
FL	51.40	54.30	98.20	98.20	61.70	64.00	124.00	127.00
GA	53.30	55.50	100.00	102.00	69.20	71.30	122.00	126.00
ID	52.00	52.00	91.10	93.10	81.70	83.60	123.00	129.00
IL	51.20	52.20	95.00	85.00	94.10	84.30	119.00	115.00
IA	55.70	62.20	87.50	80.50	86.90	80.10	120.00	118.00
KS	53.80	55.10	88.90	82.50	88.50	82.20	138.00	142.00
KY	52.00	54.00	103.00	105.00	90.80	92.80	118.00	121.00
LA	50.60	53.00	101.00	104.00	66.20	70.30	115.00	121.00
MI	54.00	55.00	84.00	79.00	75.00	71.80	120.00	117.00
MN	58.70	60.00	87.10	85.00	79.40	78.30	126.00	120.00
MO	53.60	56.80	113.00	117.00	96.40	102.00	128.00	138.00
MT	56.20	59.10	112.00	114.00	93.00	100.00	125.00	129.00
NE	56.80	59.60	93.00	89.40	91.90	88.50	134.00	137.00
NM	54.20	58.40	104.00	110.00	86.60	90.40	122.00	127.00
ND	56.40	58.00	97.90	99.00	68.00	72.40	130.00	129.00
OH	49.90	51.00	87.40	82.00	83.70	78.90	110.00	105.00
OK	53.80	56.60	110.00	114.00	97.10	106.00	129.00	129.00
OR	51.50	51.50	100.00	102.00	85.50	86.90	109.00	110.00
PA	52.70	53.50	88.20	83.80	79.00	75.90	115.00	110.00
SD	54.80	58.10	100.00	94.40	89.60	85.30	134.00	124.00
TN	51.00	53.00	106.00	108.00	84.00	86.00	118.00	120.00
TX	51.20	53.50	93.90	92.80	90.10	90.00	126.00	132.00
VA	52.40	53.10	102.00	105.00	83.20	86.80	117.00	119.00
WI	54.90	57.10	88.30	84.50	68.90	68.60	142.00	141.00
WY	55.60	56.00	112.00	112.00	102.00	101.00	127.00	124.00
US	53.60	55.90	93.50	91.10	89.50	87.50	125.00	128.00

<sup>1</sup> Beef cows and cull dairy cows sold for slaughter.

<sup>2</sup> Entire month.

<sup>3</sup> Mid-month.

<sup>4</sup> "Cows" and "steers and heifers" combined.

**Hogs: Prices Received, by States, June and July 2004**

State	Sows		Barrows and Gilts		All Hogs	
	Jun <sup>1</sup>	Jul <sup>2</sup>	Jun <sup>1</sup>	Jul <sup>2</sup>	Jun <sup>1</sup>	Jul <sup>2</sup>
	<i>Dollars per Cwt</i>	<i>Dollars per Cwt</i>	<i>Dollars per Cwt</i>	<i>Dollars per Cwt</i>	<i>Dollars per Cwt</i>	<i>Dollars per Cwt</i>
AR	46.80	50.70	53.60	54.50	52.90	54.10
IL	45.00	47.00	59.00	58.00	57.90	57.10
IN	50.50	54.50	57.10	56.80	56.50	56.60
IA	48.10	52.10	58.60	58.50	58.40	58.40
KS	47.90	50.30	53.80	55.80	53.00	55.10
MI	43.00	47.00	53.00	55.00	52.20	54.40
MN	50.00	51.50	55.70	57.00	55.60	57.00
MO	46.70	49.60	54.10	53.90	53.60	53.50
NE	47.40	50.40	58.00	58.40	57.80	58.20
NC	46.60	49.90	57.70	58.20	57.60	58.10
OH	47.00	50.00	57.70	56.00	57.00	55.60
OK	45.80	49.50	52.60	53.00	51.60	52.50
PA	41.90	46.00	54.90	56.00	53.00	54.50
SD	46.40	50.00	59.00	58.00	57.20	56.80
TX	39.90	42.30	51.60	55.00	49.70	52.50
WI	46.80	46.30	56.70	56.20	55.40	54.90
US	46.30	49.10	57.10	57.30	56.60	56.90

<sup>1</sup> Entire month.

<sup>2</sup> Mid-month.

**Sheep and Poultry: Prices Received, by States, June and July 2004**

State	June		July
	Sheep <sup>1</sup>	Lambs <sup>1</sup>	Eggs <sup>2 3</sup>
	<i>Dollars per Cwt</i>	<i>Dollars per Cwt</i>	<i>Dollars per Dozen</i>
AL			0.410
AR			0.370
CA	28.00	94.00	0.460
CO	30.50	111.00	
CT			0.500
FL			0.460
GA			0.382
ID	38.00	105.00	
IN			0.370
IA	34.70	104.00	0.350
KS	26.00	97.00	
ME			0.600
MI			0.410
MN	25.00	98.30	0.410
MS			0.370
MO			0.350
MT	33.50	117.00	
NE	34.10	107.00	
NY			0.430
NC			0.360
ND	29.00	104.00	
OH	37.80	105.00	0.382
OR	37.00	94.00	
PA			0.430
SC			0.390
SD	29.50	114.00	
TX	37.70	105.00	0.350
UT	25.00	101.00	
WA			0.570
WY	30.60	111.00	
US	32.10	105.00	0.399

<sup>1</sup> Entire month.

<sup>2</sup> Mid-month.

<sup>3</sup> Market (table) eggs.



**Milk and Milk Cows: Prices Received, by States, June and July 2004**

State	June <sup>1</sup>						July		
	Fluid Grade Milk <sup>2</sup>		Manufacturing Grade Milk		All Milk <sup>3</sup>		All Milk <sup>3 4</sup>		Milk Cows <sup>5</sup>
	Price	Fat Test	Price	Fat Test	Price	Fat Test	Price	Fat Test	
	<i>Dol/Cwt</i>	<i>Percent</i>	<i>Dol/Cwt</i>	<i>Percent</i>	<i>Dol/Cwt</i>	<i>Percent</i>	<i>Dol/Cwt</i>	<i>Percent</i>	<i>Dol/Head</i>
AZ	18.30	3.54			18.30	3.54	17.30	3.52	1,750
CA	16.30	3.54	16.20	3.73	16.30	3.54	14.30	3.54	1,700
FL	25.20	3.54			25.20	3.54	22.10	3.58	1,900
ID	15.90	3.50	16.60	3.70	15.90	3.50	14.40	3.48	1,850
IL	19.20	3.58	18.20	3.56	19.20	3.58	17.40	3.57	1,700
IN	18.70	3.54	17.30	3.58	18.60	3.54	16.70	3.54	1,750
IA	18.30	3.59	17.30	3.60	18.30	3.59	17.00	3.56	1,700
KY	20.40	3.51			20.40	3.51	19.40	3.50	1,640
MI	19.00	3.51	15.90	3.53	19.00	3.51	16.50	3.45	1,800
MN	18.40	3.69	17.20	3.67	18.40	3.69	16.50	3.63	1,570
MO	19.40	3.53	17.60	3.63	19.30	3.53	17.40	3.53	1,560
NM	17.40	3.40			17.40	3.40	16.90	3.40	1,830
NY	19.70	3.55			19.70	3.55	17.00	3.52	1,620
OH	19.10	3.56	16.20	3.65	19.00	3.56	18.00	3.52	1,700
PA	20.70	3.55	18.00	3.60	20.70	3.55	18.80	3.50	1,750
TX	18.90	3.57			18.90	3.57	17.40	3.57	1,800
VT	19.50	3.55			19.50	3.55	17.40	3.54	1,750
VA	20.30	3.50			20.30	3.50	18.00	3.50	1,700
WA	18.30	3.59			18.30	3.59	16.40	3.55	1,900
WI	18.40	3.65	17.10	3.72	18.30	3.65	15.30	3.60	1,700
US	18.30	3.56	16.90	3.68	18.20	3.56	16.20	3.54	1,720

<sup>1</sup> Entire month.

<sup>2</sup> Including milk diverted to manufacturing.

<sup>3</sup> Before deductions for hauling. Includes quality, quantity, and other premiums. Excludes hauling subsidies.

<sup>4</sup> Preliminary.

<sup>5</sup> Animals sold for dairy herd replacement only. Prices published January, April, July and October.

**Parity Price Equivalent for Manufacturing Milk <sup>1</sup>: United States,  
June and July 2004, with Comparisons**

Item	Unit	Jul 2003	Jun 2004	Jul 2004
Parity Equivalent	Dollars per Cwt	30.19	32.00	31.64
Average Price F.O.B <sup>2</sup>	Dollars per Cwt	11.80	16.90	14.90
Average Fat Test of Milk <sup>2</sup>	Percent	3.63	3.68	3.64

<sup>1</sup> The parity price equivalent during 2004 is 90.4 percent of the parity price of all milk sold to plants, compared with 90.4 percent in 2003. For additional details, see January 2004 issue of "Agricultural Prices".

<sup>2</sup> Preliminary for July 2004.

**United States Parity Prices for Farm Products and Average Prices Received as  
Percent of Parity Prices Based on Data for July 2004, with Comparisons <sup>1</sup>**

Commodity and Unit	Adjusted Base Prices	Parity Prices Based on Data for			Prices as Percent of Parity		
		Jul 2003	Jun 2004	Jul 2004	Jul 2003	Jun 2004	Jul 2004
	<i>Dollars</i>	<i>Dollars</i>	<i>Dollars</i>	<i>Dollars</i>	<i>Percent</i>	<i>Percent</i>	<i>Percent</i>
<b>Basic Commodities</b>							
All Wheat, Bu	0.564	9.66	10.10	10.00	31	35	34
Rice, Cwt	1.63	26.50	29.30	29.00	20	30	30
Corn, Bu	0.379	6.60	6.81	6.74	33	41	36
Cotton, Lb							
American Upland	0.113	1.70	2.03	2.01	27	30	30
Extra Long Staple	0.144	2.38	2.59	2.56			
Peanuts, Lb	0.0370	0.658	0.665	0.658		30	
Tobacco, By Type, Lb							
Flue-Cured 11-14	0.259	4.34	4.65	4.61	42		
VA Fire-Cured, 21	0.257	4.40	4.62	4.57			
KY-TN Fire-Cured, 22-23	0.322	5.43	5.79	5.73			
Burley, 31	0.277	4.67	4.98	4.93			
Maryland, 32	0.215	3.70	3.86	3.82			
Dark Air-Cured, 35-36	0.282	4.68	5.07	5.01			
Sun-Cured, 37	0.246	4.12	4.42	4.37			
PA Seedleaf, 41	0.206	3.38	3.70	3.66			
Cigar Filler & Binder, 42-44, 54-55	0.225	3.75	4.04	4.00			
Puerto Rican Filler, 46	0.162	2.77	2.91	2.88			
Cigar Binder, 51-52	0.736	12.20	13.20	13.10			
<b>Designated Nonbasic</b>							
All Milk, Sold to Plants, Per Cwt <sup>2</sup>	1.97	33.40	35.40	35.00	36	51	47
Honey, Extracted, Lb <sup>3</sup>	0.1050	1.59	1.89	1.87			
<b>Wool and Mohair</b>							
Wool, Lb	0.0880	1.54	1.58	1.56			
Mohair, Lb	0.334	5.52	6.00	5.94			
<b>Other Nonbasic</b>							
Barley, Bu	0.376	6.53	6.76	6.69	42	39	37
Cottonseed, Ton	15.80	265.00	284.00	281.00			
Dry Edible Beans, Cwt	2.92	50.40	52.50	51.90	34	38	37
Flaxseed, Bu	0.728	11.90	13.10	12.90	54	55	59
Oats, Bu	0.221	4.12	3.97	3.93	35	41	38
Potatoes, Cwt	0.854	13.80	15.30	15.20	46	42	43
Rye, Bu	0.353	5.82	6.34	6.28			
Sorghum Grain, Cwt	0.616	11.20	11.10	11.00	32	41	37
Soybeans Bu	0.892	14.40	16.00	15.90	40	57	52
Sweetpotatoes, Cwt	2.25	37.20	40.40	40.00			
Apples, Fresh, Lb <sup>4</sup>	0.0296	0.487	0.532	0.526	43	57	56
Citrus (equiv on-tree), Box							
Grapefruit	0.387	6.58	6.95	6.88	134	139	137
Lemons	1.10	18.70	19.80	19.60	34	42	84
Oranges	0.618	9.67	11.10	11.00	40	35	89
Tangerines	1.42	24.80	25.50	25.20			
Temples (FL)	0.451	7.86	8.10	8.02			
Beef Cattle, Cwt	9.55	161.00	172.00	170.00	47	52	51
Calves, Cwt	12.80	216.00	230.00	228.00	47	54	56
Hogs, Cwt	5.91	102.00	106.00	105.00	42	53	54
Lambs, Cwt	11.30	185.00	203.00	201.00	48	52	
Sheep, Cwt	4.70	78.90	84.50	83.60	37	38	
Eggs, Doz <sup>2</sup>	0.0949	1.58	1.71	1.69	45	46	38
Turkeys, Live, Lb	0.0574	0.983	1.030	1.020	34	41	43

--continued

**Parity Prices Based on Data for July 2004, United States <sup>1</sup> (continued)**

Other Nonbasic Commodities	Adj Base Prices	Parity Prices	Other Nonbasic Commodities	Adj Base Prices	Parity Prices
	<i>Dollars</i>	<i>Dollars</i>		<i>Dollars</i>	<i>Dollars</i>
Field Crops and Misc Commodities			Noncitrus Fruit		
Hops, Lb	0.256	4.55	Peaches, cont.		
Spearmint Oil, Lb	1.53	27.20	Processing <sup>5</sup>		
Tobacco, Lb			Excl Dried		
Type 61	2.51	44.60	Clingstone, CA, Ton	32.80	583.00
Noncitrus Fruit			Pears, Ton		
Apples, Ton <sup>6</sup>			Fresh <sup>4</sup>	51.60	917.00
Processing	17.90	318.00	Dried, CA <sup>6</sup>	166.00	2,950.00
Apricots, Ton			Plums, CA, Ton		
Fresh <sup>7</sup>	99.70	1,770.00	Fresh, Equiv on-Tree	57.40	1,020.00
Dried, CA	273.00	4,850.00	Prunes, Dried, CA, Ton <sup>6</sup>	129.00	2,290.00
Avocados, Ton <sup>7</sup>	238.00	4,230.00	Prunes and Plums, Excl CA, Ton		
Cherries Bbl			Fresh <sup>9</sup>	56.90	1,010.00
Sweet, Ton	184.00	3,270.00	Processing <sup>6</sup>		
Tart, Lb	0.0267	0.475	Excl Dried	26.30	468.00
Cranberry, Bbl <sup>5</sup>	5.92	105.00	Tree Nuts <sup>10</sup>		
Dates, CA, Ton <sup>7</sup>	170.00	3,020.00	Almonds, Lb	0.204	3.63
Grapes, Ton			Hazelnuts, Ton	130.00	2,310.00
Raisin Variety	121.00	2,150.00	Pistachio, Lb	0.159	2.83
Other Dried	44.20	786.00	Walnuts, Ton	176.00	3,130.00
Kiwifruit, Ton	80.80	1,440.00	Vegetables, Cwt <sup>11</sup>		
Nectarines			Fresh		
Fresh, CA, Ton <sup>7</sup>	63.00	1,120.00	Carrots <sup>8</sup>	2.21	39.30
Olives, CA			Cauliflower <sup>8</sup>	4.55	80.90
canning, Ton <sup>5</sup>	95.50	1,700.00	Celery <sup>8</sup>	1.98	35.20
Papayas (HA)	0.0520	0.925	Honeydew Melons	2.79	49.60
Peaches			Lettuce	2.50	44.50
Fresh, Lb <sup>4</sup>	0.0408	0.725	Onions <sup>8</sup>	1.68	29.90
Dried, CA, Ton	92.50	1,640.00	Tomatoes	4.39	78.10

<sup>1</sup> Parity prices are computed under the provisions of Title III, Subtitle a, Section 301 (a) of the Agricultural Adjustment Act of 1938 as amended by the Agricultural Acts of 1948, 1949, and 1956. See January "Agricultural Prices" for details on adjusted base price and parity price computations.

<sup>2</sup> Seasonally adjusted price as percentage of parity price.

<sup>3</sup> Wholesale extracted. Adjusted base price derived from state annual averages prices weighted by production. For 1982 through 1985 the national averages are the support prices.

<sup>4</sup> Equivalent packinghouse-door returns for CA, NY (apples only), OR (except peaches), and WA. Price at point of first sale for other states.

<sup>5</sup> Equivalent returns for bulk fruit at first delivery point.

<sup>6</sup> Equivalent returns at processing plant door.

<sup>7</sup> Equivalent returns at packinghouse door.

<sup>8</sup> Includes some processing.

<sup>9</sup> Based on "as sold" prices for fresh fruit in all states.

<sup>10</sup> Prices in-shell basis except almonds which are shelled basis.

<sup>11</sup> F.O.B. shipping point prices.

## Marketing Year for Specified Commodities

**Apples (Fresh):** July 1 to June 30 for U.S.; June 1 to May 31 for Arkansas, California, Georgia, Illinois, Iowa, Indiana, Kansas, Kentucky, Michigan, Missouri, New Mexico, North Carolina, Ohio, South Carolina, Tennessee, Wisconsin; August 1 to July 31 for Oregon and Washington; July 1 - June 30 for Arizona, Colorado, Connecticut, Idaho, Maine, Maryland, Massachusetts, New Hampshire, New Jersey, New York, Pennsylvania, Rhode Island, Utah, Vermont, Virginia, West Virginia.

**Cranberries:** September 5 to December 20 for U.S.; September 5 to December 20 for Massachusetts, New Jersey, Oregon, Washington, and Wisconsin.

**Grapes (Fresh):** May 25 to April 30 for U.S.; June 5 to July 15 for Arizona; May 25 to April 30 for California; July 10 to October 31 for Arkansas, Georgia, Michigan, Missouri, New York, North Carolina, Ohio, and Pennsylvania.

**Onions:** January 1 to December 31 for the U.S.; April 1 to July 31 for spring; May 1 to September 30 for summer (non-storage); September 1 to April 30 for summer (storage).

**Peaches (Fresh):** May 1 to October 31 for U.S.; May 20 to August 31 for Georgia and South Carolina; June 1 to September 30 for Alabama, Arkansas, California, Colorado, Illinois, Kentucky, Louisiana, Missouri, North Carolina, Ohio, Oklahoma, Tennessee, Texas, Utah, and Virginia; August 1 to September 30 for Connecticut, Massachusetts, Idaho, Michigan, and New York; July 1 to September 30 for Indiana, Maryland, New Jersey, Oregon, Pennsylvania, Washington, and West Virginia.

**Pears (Fresh):** July to June for U.S.; July 1 - April 30 for California; August 10 to May 31 for Oregon and Washington; July 1 to December 15 for Colorado, Connecticut, Michigan, New York, Pennsylvania, and Utah.

**Sugarbeets:** September 1 to August 31 for US and all estimating States. Estimating States are California, Colorado, Idaho, Michigan, Minnesota, Montana, Nebraska, North Dakota, Ohio, Oregon, Washington, and Wyoming.

**Sugarcane:** October 1 to September 30 for US and all estimating States. Estimating States are Florida, Hawaii, Louisiana, and Texas.

**Cranberries: Marketing Year Average Prices Received by Growers 2001-2003 <sup>1</sup>**

State	2001	2002	2003
	<i>Dollars per Barrel</i>	<i>Dollars per Barrel</i>	<i>Dollars per Barrel</i>
MA	24.00	32.80	33.90
NJ	23.10	31.90	31.50
OR	22.50	32.60	34.20
WA	28.20	36.00	35.40
WI	23.70	31.70	33.70
US	23.80	32.20	33.60

<sup>1</sup> Weighted average of co-op and independent sales. Co-op prices represent pool proceeds less returns for processing non-cranberry products, capital stock dividends, capital stock retains, and other retains.

**Sugar Crops: Marketing Year Average Price Received and Value of Production, United States, 2003 Crop <sup>1</sup>**

	Sugarbeets		Sugarcane <sup>2</sup>		
	Price	Value of Production	For Sugar		Sugar and Seed
			Price	Value of Production	Value of Production
	<i>Dollars per Ton</i>	<i>1,000 Dollars</i>	<i>Dollars per Ton</i>	<i>1,000 Dollars</i>	<i>1,000 Dollars</i>
US	40.30	1,231,075	29.60	947,090	1,001,685

<sup>1</sup> Preliminary. Final prices and value of production by States will be published in "Crop Values" February 2005.

<sup>2</sup> Includes FL, HI, LA, and TX.

**Apples for Fresh Use: Prices Received, by State, July 2001 - June 2004  
and United States, July 1999 - June 2004**

State	2001						2002					
	Jul	Aug	Sep	Oct	Nov	Dec	Jan	Feb	Mar	Apr	May	Jun
	<i>Dollars per Pound</i>	<i>Dollars per Pound</i>	<i>Dollars per Pound</i>	<i>Dollars per Pound</i>	<i>Dollars per Pound</i>	<i>Dollars per Pound</i>	<i>Dollars per Pound</i>	<i>Dollars per Pound</i>	<i>Dollars per Pound</i>	<i>Dollars per Pound</i>	<i>Dollars per Pound</i>	<i>Dollars per Pound</i>
CA		0.269	0.186	0.275	0.265	0.210	0.113	0.129	0.130			
MI		0.150	0.205	0.180	0.165	0.165	0.160	0.165	0.155	0.155	0.150	0.145
NY			0.203	0.195	0.187	0.179	0.176	0.175	0.181	0.183	0.188	0.215
OH	0.285	0.290	0.280	0.280	0.272	0.272	0.248	0.253	0.256	0.249	0.242	0.250
PA	0.210	0.170	0.210	0.200	0.200	0.190	0.200	0.210	0.140	0.140		
VA		0.220	0.225	0.235	0.216	0.200	0.200	0.190	0.190	0.190		
WA	0.146	0.147	0.221	0.257	0.246	0.246	0.237	0.229	0.230	0.227	0.221	0.204
State	2002						2003					
	Jul	Aug	Sep	Oct	Nov	Dec	Jan	Feb	Mar	Apr	May	Jun
	<i>Dollars per Pound</i>	<i>Dollars per Pound</i>	<i>Dollars per Pound</i>	<i>Dollars per Pound</i>	<i>Dollars per Pound</i>	<i>Dollars per Pound</i>	<i>Dollars per Pound</i>	<i>Dollars per Pound</i>	<i>Dollars per Pound</i>	<i>Dollars per Pound</i>	<i>Dollars per Pound</i>	<i>Dollars per Pound</i>
CA		0.333	0.339	0.291	0.226	0.219	0.262	0.203	0.207			
MI		0.210	0.250	0.240	0.230	0.230	0.210	0.210	0.210	0.190	0.200	
NY			0.288	0.297	0.282	0.276	0.278	0.272	0.269	0.270	0.296	
OH	0.228	0.290	0.305	0.305	0.296	0.311	0.309	0.320	0.317	0.307	0.302	
PA		0.220	0.202	0.207	0.212	0.242	0.221	0.238	0.226	0.214	0.202	
VA			0.214	0.223	0.170	0.180	0.196	0.180				
WA	0.207	0.233	0.305	0.316	0.283	0.268	0.256	0.246	0.228	0.228	0.212	0.204
State	2003						2004					
	Jul	Aug	Sep	Oct	Nov	Dec	Jan	Feb	Mar	Apr	May	Jun
	<i>Dollars per Pound</i>	<i>Dollars per Pound</i>	<i>Dollars per Pound</i>	<i>Dollars per Pound</i>	<i>Dollars per Pound</i>	<i>Dollars per Pound</i>	<i>Dollars per Pound</i>	<i>Dollars per Pound</i>	<i>Dollars per Pound</i>	<i>Dollars per Pound</i>	<i>Dollars per Pound</i>	<i>Dollars per Pound</i>
CA		0.402	0.226	0.227	0.266	0.266	0.271	0.183	0.267			
MI		0.200	0.235	0.210	0.190	0.185	0.185	0.185	0.190	0.190	0.180	0.180
NY			0.265	0.259	0.232	0.229	0.222	0.216	0.216	0.217	0.220	0.218
OH		0.320	0.324	0.321	0.278	0.298	0.279	0.276	0.278	0.273	0.278	
PA	0.208	0.214	0.214	0.220	0.215	0.215	0.202	0.202	0.202	0.202	0.202	
VA			0.230	0.225	0.225	0.220	0.215	0.210	0.210			
WA			0.301	0.297	0.321	0.299	0.330	0.329	0.328	0.320	0.313	0.313
	Jul	Aug	Sep	Oct	Nov	Dec	Jan <sup>2</sup>	Feb	Mar	Apr	May	Jun
United States												
1999	0.124	0.184	0.232	0.235	0.233	0.237	0.235	0.211	0.205	0.197	0.182	0.163
2000	0.162	0.188	0.237	0.206	0.179	0.175	0.158	0.152	0.146	0.157	0.152	0.149
2001	0.151	0.167	0.213	0.247	0.235	0.231	0.218	0.216	0.220	0.218	0.215	0.204
2002	0.207	0.254	0.301	0.301	0.274	0.265	0.255	0.247	0.231	0.230	0.216	0.204
2003	0.208	0.346	0.271	0.279	0.297	0.279	0.304	0.302	0.305	0.299	0.297	0.301

<sup>1</sup> Equivalent packinghouse-door returns for CA, NY, and WA; prices at point of first sale for other states.

<sup>2</sup> January of the following year.

**Grapes for Fresh Use: Monthly Average Prices Received,  
United States, May 1998 - December 2003**

Year	May	Jun	Jul	Aug	Sep	Oct	Nov	Dec
	<i>Dollars Per Ton</i>	<i>Dollars Per Ton</i>	<i>Dollars Per Ton</i>	<i>Dollars Per Ton</i>	<i>Dollars Per Ton</i>	<i>Dollars Per Ton</i>	<i>Dollars Per Ton</i>	<i>Dollars Per Ton</i>
1998	( <sup>1</sup> )	570	580	800	580	570	600	550
1999	1,300	880	695	765	555	525	595	595
2000	915	675	515	615	535	705	765	765
2001	790	1,190	630	600	670	640	640	850
2002	1,000	905	830	650	640	590	610	720
2003	950	990	780	660	620	610	660	740

<sup>1</sup> Insufficient sales to establish a price.

**Peaches for Fresh Use: Monthly Average Prices Received,  
United States, 1998-2003 <sup>1</sup>**

State	May	Jun	Jul	Aug	Sep
	<i>Dollars per Pound</i>	<i>Dollars per Pound</i>	<i>Dollars per Pound</i>	<i>Dollars per Pound</i>	<i>Dollars per Pound</i>
1998	0.328	0.254	0.280	0.286	0.300
1999	0.366	0.270	0.257	0.232	0.319
2000	0.332	0.264	0.238	0.219	0.345
2001	0.395	0.338	0.288	0.210	0.297
2002	0.481	0.289	0.264	0.243	0.278
2003	0.472	0.254	0.262	0.227	0.245

<sup>1</sup> Equivalent packinghouse-door returns for CA and WA; price at point of first sale for other states.

**Pears for Fresh Use: Monthly Average Prices Received,  
United States, July 1998 - June 2004 <sup>1</sup>**

Year	Jul	Aug	Sep	Oct	Nov	Dec	Jan <sup>2</sup>	Feb	Mar	Apr	May	Jun
	<i>Dollars Per Ton</i>	<i>Dollars Per Ton</i>	<i>Dollars Per Ton</i>	<i>Dollars Per Ton</i>	<i>Dollars Per Ton</i>	<i>Dollars Per Ton</i>	<i>Dollars Per Ton</i>	<i>Dollars Per Ton</i>	<i>Dollars Per Ton</i>	<i>Dollars Per Ton</i>	<i>Dollars Per Ton</i>	<i>Dollars Per Ton</i>
1998	365	396	422	392	352	314	347	350	327	332	324	388
1999	200	185	330	505	532	521	489	458	340	344	272	235
2000	233	249	315	403	339	347	313	252	296	337	417	( <sup>3</sup> )
2001	345	338	391	380	356	339	301	288	286	283	272	270
2002	322	316	366	419	402	398	333	322	318	316	319	( <sup>3</sup> )
2003	335	272	293	413	388	384	352	331	335	359	443	( <sup>3</sup> )

<sup>1</sup> Equivalent packinghouse-door returns for CA, NY, and WA; price at point of first sale for other States.

<sup>2</sup> January for the following year.

<sup>3</sup> Insufficient sales to establish a price.

**Vegetables for Fresh Market: Prices Received Monthly,  
by States and United States, 2001-2003, continued**

State and Year	Jan	Feb	Mar	Apr	May	Jun
<b>Spring Onions</b>						
	<i>Dollars per Cwt</i>	<i>Dollars per Cwt</i>	<i>Dollars per Cwt</i>	<i>Dollars per Cwt</i>	<i>Dollars per Cwt</i>	<i>Dollars per Cwt</i>
AZ						
2001					7.29	9.02
2002					8.05	8.41
2003					13.00	8.56
CA						
2001				16.30	13.00	12.70
2002				13.70	13.70	15.00
2003				38.60	29.80	20.00
TX						
2001				18.10	18.10	18.60
2002				20.80	21.00	23.60
2003				43.70	35.70	22.00
US						
2001				23.00	18.30	16.90
2002				21.70	19.20	19.30
2003				42.00	32.20	24.10
<b>Summer Onions Non-Storage</b>						
NM						
2001						15.60
2002						12.40
2003						17.20
TX						
2001						
2002						
2003						
WA						
2001						20.60
2002						27.10
2003						34.60
US						
2001						16.00
2002						13.00
2003						18.90
<b>Summer Onions Storage</b>						
CA						
2001						
2002	11.60	11.20	11.20			
2003	18.70	22.70	33.40			
CO						
2001	14.80	15.40				
2002	11.50	11.50				
2003						
ID						
2001	10.80	10.50	10.70	5.90		
2002	7.30	5.60	5.70	4.80		
2003	8.70	12.20	13.70	12.70		
MI						
2001	12.90	12.70	13.00			
2002	12.90	12.70	12.50			
2003	11.70	11.50	13.50			



**Vegetables for Fresh Market: Prices Received Monthly,  
by States and United States, 2001-2003, continued**

State and Year	Jul	Aug	Sep	Oct	Nov	Dec
<b>Spring Onions</b>						
	<i>Dollars per Cwt</i>	<i>Dollars per Cwt</i>	<i>Dollars per Cwt</i>	<i>Dollars per Cwt</i>	<i>Dollars per Cwt</i>	<i>Dollars per Cwt</i>
AZ						
2001	6.60					
2002	10.00					
2003						
CA						
2001	14.50					
2002	14.20					
2003	15.10					
TX						
2001	20.00					
2002						
2003						
US						
2001	17.30					
2002	18.30					
2003	16.50					
<b>Summer Onions Non-Storage</b>						
NM						
2001	14.30	12.60				
2002	13.00	11.60				
2003	13.70	12.00				
TX						
2001	21.00	17.80				
2002	22.50	21.20				
2003	23.50	29.70	26.00	17.80		
WA						
2001	19.20	18.00				
2002	22.90	24.60				
2003	34.10	31.10				
US						
2001	16.40	14.10				
2002	16.00	14.60				
2003	17.70	17.30	26.00	17.80		
<b>Summer Onions Storage</b>						
CA						
2001	14.50	12.60	12.80	12.60	11.90	11.90
2002	14.20	12.50	11.00	11.30	11.40	12.10
2003	15.10	12.00	13.10	15.10	11.30	12.00
CO						
2001		13.30	13.20	11.50	11.40	11.50
2002	15.50	15.60	14.10	14.00	14.00	14.00
2003		14.00	14.90	15.90	16.50	17.00
ID						
2001		8.50	8.20	7.30	7.30	6.90
2002		6.90	7.60	7.70	7.60	7.90
2003		8.10	9.00	10.40	11.00	12.00
MI						
2001			13.90	11.90	11.90	11.00
2002			13.40	13.40	13.80	11.00
2003			15.20	14.00	14.00	14.30

Summer storage onions continued on next page.

**Vegetables for Fresh Market: Prices Received Monthly,  
by States and United States, 2001-2003, continued**

State and Year	Jan	Feb	Mar	Apr	May	Jun
	<b>Summer Onions Storage</b>					
	<i>Dollars per Cwt</i>	<i>Dollars per Cwt</i>	<i>Dollars per Cwt</i>	<i>Dollars per Cwt</i>	<i>Dollars per Cwt</i>	<i>Dollars per Cwt</i>
NY						
2001	13.10	13.60	14.00	14.00		
2002	9.70	8.90	7.50	8.20		
2003	10.80	11.40	13.00	17.50	17.30	
OH						
2001						
2002						
2003						
OR-Malheur						
2001	12.40	9.70	11.50	8.10		
2002	6.80	5.30	5.30	5.10	4.80	
2003	8.10	11.80	14.70	15.30		
OR-Other						
2001	11.90	9.50	11.10	6.90		
2002	8.30	8.30	5.10	3.40	3.45	
2003	7.60	10.80	12.70	8.90		
WA						
2001	6.90	5.20	5.10	7.10	6.90	
2002	8.00	6.90	5.30	4.70	5.20	
2003	10.10	14.80	20.60	36.10		
US						
2001	10.70	9.69	9.96	8.27	6.90	
2002	8.89	7.95	6.11	5.22	4.68	
2003	9.97	13.30	16.00	22.40	17.30	
	<b>All Summer Onions</b>					
US						
2001	10.70	9.69	9.96	8.27	6.90	16.00
2002	8.89	7.95	6.11	5.22	4.68	13.00
2003	9.97	13.30	16.00	22.40	17.30	18.90
	<b>All Onions</b>					
US						
2001	10.70	9.69	9.96	12.70	17.90	16.70
2002	8.89	7.95	6.11	15.40	17.30	16.90
2003	9.97	13.30	16.00	35.00	32.00	22.10

**Vegetables for Fresh Market: Prices Received Monthly,  
by States and United States, 2001-2003, continued**

State and Year	Jul	Aug	Sep	Oct	Nov	Dec
	<b>Summer Onions Storage</b>					
	<i>Dollars per Cwt</i>	<i>Dollars per Cwt</i>	<i>Dollars per Cwt</i>	<i>Dollars per Cwt</i>	<i>Dollars per Cwt</i>	<i>Dollars per Cwt</i>
NY						
2001		12.90	11.70	11.00	10.30	10.30
2002		14.00	12.70	12.50	12.10	9.90
2003		18.00	13.50	13.30	15.50	13.80
OH						
2001		15.00	15.00	15.00	15.00	15.00
2002	18.00	14.00	14.00	13.00	12.00	
2003	18.00	18.00	14.00	14.00	14.00	
OR-Malheur						
2001		7.30	7.40	6.30	6.70	6.30
2002		4.70	7.70	6.60	7.20	8.10
2003		12.20	11.00	13.10	14.60	11.20
OR-Other						
2001		8.60	5.50	7.80	5.50	8.40
2002		6.70	5.10	5.10	6.80	6.60
2003		12.60	12.60	12.60	15.90	10.40
WA						
2001		10.80	9.85	9.20	8.70	8.10
2002	11.40	9.70	8.60	8.10	8.30	9.00
2003	13.20	10.10	10.50	11.80	13.30	13.30
US						
2001	14.50	11.70	10.20	9.61	8.85	8.93
2002	14.10	10.90	8.97	8.81	9.18	10.20
2003	14.80	12.00	12.00	12.50	13.90	12.70
	<b>All Summer Onions</b>					
US						
2001	15.90	12.30	10.20	9.61	8.85	8.93
2002	15.30	12.00	8.97	8.81	9.18	10.20
2003	16.80	13.00	12.20	12.60	13.90	12.70
	<b>All Onions</b>					
US						
2001	16.40	13.70	10.20	9.61	8.85	8.93
2002	15.90	12.40	8.97	8.81	9.18	10.20
2003	16.70	13.80	12.20	12.60	13.90	12.70

## Seasonal Adjustment Factors - All Eggs and All Milk

Base prices used in calculating parity prices are averages of prices received by farmers for several years; therefore, any seasonal variation is largely averaged out. To facilitate comparisons with parity prices, monthly prices for all eggs and all milk are adjusted for seasonal variation.

The table below presents the adjustment factors which will be used the next 12 months. The seasonally adjusted price is calculated by dividing the monthly price by the adjustment factor. The factors are based on prices for the years 1994-2003.

**Seasonal Adjustment Factors, Eggs and Milk,  
United States**

Year and Month	Eggs	Milk <sup>1</sup>
2004		
Jul	91	98
Aug	101	102
Sep	95	106
Oct	103	106
Nov	112	104
Dec	105	101
2005		
Jan	106	98
Feb	99	96
Mar	104	96
Apr	103	97
May	86	98
Jun	96	100

<sup>1</sup> All milk sold to plants and dealers.

**Indexes of Prices Received by Farmers, by Months and Annual Average,  
United States, 2000-2004**

Year	Jan	Feb	Mar	Apr	May	Jun	Jul	Aug	Sep	Oct	Nov	Dec	Avg <sup>1</sup>
All Farm Products 1910-14 = 100													
2000	573	584	601	637	635	624	613	612	618	592	622	622	611
2001	613	635	656	672	685	683	684	698	674	600	597	607	650
2002	601	625	667	597	608	614	626	633	623	606	616	620	620
2003	631	627	629	639	669	683	667	694	704	717	736	723	677
2004	708	735	769	793	821	814	776						774
1990-92 = 100													
2000	90	92	95	100	100	98	97	96	97	93	98	98	96
2001	97	100	103	106	108	107	108	110	106	94	94	95	102
2002	95	98	105	94	96	97	99	100	98	95	97	98	98
2003	99	99	99	101	105	107	105	109	111	113	116	114	107
2004	111	116	121	125	129	128	122						122
All Crops 1910-14 = 100													
2000	436	450	469	504	508	485	466	476	479	448	477	472	473
2001	464	483	489	506	518	503	512	537	505	436	444	479	490
2002	462	501	580	493	511	515	538	555	537	500	510	508	518
2003	506	510	523	542	572	580	539	559	549	548	568	570	547
2004	558	594	594	607	612	604	571						591
1990-92 = 100													
2000	88	91	95	102	103	98	94	96	97	91	97	96	96
2001	94	98	99	103	105	102	104	109	102	88	90	97	99
2002	94	102	118	100	104	104	109	113	109	101	103	103	105
2003	103	103	106	110	116	118	109	113	111	111	115	116	111
2004	113	121	120	123	124	122	116						120

<sup>1</sup> Simple average required for parity regulations. Weighted 1990-92 average equals 100. Average is year-to-date for current year.

**Indexes of Prices Received by Farmers, by Months and Annual Average,  
United States, 2000-2004**

Year	Jan	Feb	Mar	Apr	May	Jun	Jul	Aug	Sep	Oct	Nov	Dec	Avg <sup>1</sup>
Food Grains 1910-14 = 100													
2000	269	270	271	271	273	267	249	258	259	280	293	300	272
2001	296	291	293	292	303	289	279	286	292	286	281	290	290
2002	284	270	271	267	274	302	333	365	411	410	394	396	331
2003	372	336	326	316	326	323	311	345	350	352	370	385	343
2004	389	388	396	402	401	385	363						389
1990-92 = 100													
2000	85	85	85	85	86	84	78	81	82	88	92	94	85
2001	93	91	92	92	95	91	88	90	92	90	89	91	91
2002	89	85	85	84	86	95	105	115	129	129	124	125	104
2003	117	106	102	99	102	102	98	109	110	111	116	121	108
2004	123	122	125	126	126	121	114						122
Feed Grains and Hay 1910-14 = 100													
2000	302	315	323	325	342	322	294	280	277	285	303	324	308
2001	319	324	325	323	322	324	339	342	331	307	308	330	325
2002	322	325	327	328	337	346	364	394	398	377	370	378	356
2003	375	380	380	381	392	391	366	364	359	343	352	370	371
2004	375	403	421	445	453	438	393						418
1990-92 = 100													
2000	84	88	90	91	96	90	82	78	78	80	85	90	86
2001	89	91	91	90	90	91	95	96	93	86	86	92	91
2002	90	91	91	92	94	97	102	110	111	105	104	106	99
2003	105	106	106	107	110	109	102	102	101	96	99	104	104
2004	105	113	118	124	127	122	110						117

<sup>1</sup> Simple average required for parity regulations. Weighted 1990-92 average equals 100. Average is year-to-date for current year.

**Indexes of Prices Received by Farmers, by Months and Annual Average,  
United States, 2000-2004**

Year	Jan	Feb	Mar	Apr	May	Jun	Jul	Aug	Sep	Oct	Nov	Dec	Avg <sup>1</sup>
Cotton 1910-14 = 100													
2000	364	396	403	384	402	381	412	434	428	469	490	489	421
2001	440	410	347	360	346	331	329	315	309	259	235	260	328
2002	231	237	240	230	226	285	298	292	303	333	363	374	284
2003	385	393	411	384	388	385	391	391	471	575	536	542	438
2004	528	530	502	517	512	511	501						514
1990-92 = 100													
2000	71	77	79	75	79	74	81	85	83	92	96	95	82
2001	86	80	68	70	67	65	64	62	60	51	46	51	64
2002	45	46	47	45	44	56	58	57	59	65	71	73	56
2003	75	77	80	75	76	75	76	76	92	112	105	106	85
2004	103	103	98	101	100	100	98						100
Tobacco 1910-14 = 100													
2000	1683	1713	1652	1365				1474	1604	1613	1696	1722	1614
2001	1735	1752	1496	1235			1622	1574	1639	1657	1722	1709	1614
2002	1761	1704	1478				1609	1561	1574	1609	1739	1735	1641
2003	1817	1800	1570	1065			1557	1570	1635	1643	1726	1735	1612
2004	1822	1891	1830	574									1529
1990-92 = 100													
2000	111	113	109	90				97	106	107	112	114	107
2001	115	116	99	82			107	104	108	109	114	113	107
2002	116	113	98				106	103	104	106	115	115	108
2003	120	119	104	70			103	104	108	109	114	115	107
2004	120	125	121	38									101

<sup>1</sup> Simple average required for parity regulations. Weighted 1990-92 average equals 100. Average is year-to-date for current year.

<sup>2</sup> Missing data indicates insufficient sales volume to establish a price.

**Indexes of Prices Received by Farmers, by Months and Annual Average,  
United States, 2000-2004**

Year	Jan	Feb	Mar	Apr	May	Jun	Jul	Aug	Sep	Oct	Nov	Dec	Avg <sup>1</sup>
Oil-Bearing Crops 1910-14 = 100													
2000	451	471	479	487	507	480	442	432	464	444	464	481	467
2001	458	438	428	412	423	437	468	473	445	407	422	427	437
2002	415	419	432	440	455	483	528	538	483	494	530	537	480
2003	540	548	550	571	594	597	570	554	529	608	665	692	585
2004	714	805	901	935	931	879	802						852
1990-92 = 100													
2000	82	86	88	89	93	88	81	79	85	81	85	88	85
2001	84	80	78	75	77	80	86	86	81	74	77	78	80
2002	76	77	79	80	83	88	96	98	88	90	97	98	88
2003	99	100	101	104	109	109	104	101	97	111	122	126	107
2004	130	147	165	171	170	161	147						156
Fruit and Nuts 1910-14 = 100													
2000	598	614	611	677	609	732	753	761	790	776	698	564	682
2001	600	588	677	731	671	850	885	900	896	883	793	667	762
2002	586	581	668	633	731	795	831	850	866	860	766	648	735
2003	560	570	606	669	749	811	846	866	866	860	807	640	738
2004	598	673	675	642	798	851	885						732
1990-92 = 100													
2000	86	88	88	97	87	105	108	109	113	111	100	81	98
2001	86	84	97	105	96	122	127	129	128	126	114	96	109
2002	84	83	96	91	105	114	119	122	124	123	110	93	105
2003	80	82	87	96	107	116	121	124	124	123	116	92	106
2004	86	96	97	92	114	122	127						105

<sup>1</sup> Simple average required for parity regulations. Weighted 1990-92 average equals 100. Average is year-to-date for current year.



**Indexes of Prices Received by Farmers, by Months and Annual Average,  
United States, 2000-2004**

Year	Jan	Feb	Mar	Apr	May	Jun	Jul	Aug	Sep	Oct	Nov	Dec	Avg <sup>1</sup>
Commercial Vegetables 1910-14 = 100													
2000	655	572	718	906	873	785	795	862	957	834	963	769	807
2001	810	979	923	916	964	806	838	968	893	689	732	1143	888
2002	1054	1279	1806	806	772	734	774	809	797	705	737	696	914
2003	754	760	824	882	936	1048	812	937	979	960	1060	1136	924
2004	924	1043	795	910	800	760	725						851
1990-92 = 100													
2000	98	86	107	136	131	117	119	129	143	125	144	115	121
2001	121	147	138	137	144	121	125	145	134	103	110	171	133
2002	158	191	270	121	115	110	116	121	119	106	110	104	137
2003	113	114	123	132	140	157	121	140	146	144	159	170	138
2004	138	156	119	136	120	114	108						127
Potatoes and Dry Beans 1910-14 = 100													
2000	475	496	519	545	529	511	559	464	406	384	383	395	472
2001	409	450	437	466	453	486	532	632	516	461	538	578	497
2002	620	645	715	699	748	806	884	651	520	466	524	547	652
2003	531	544	573	589	592	560	532	497	466	435	479	488	524
2004	490	508	533	585	563	560	562						543
1990-92 = 100													
2000	94	98	103	108	105	101	110	92	80	76	76	78	93
2001	81	89	86	92	90	96	105	125	102	91	106	114	98
2002	123	127	141	138	148	159	175	129	103	92	104	108	129
2003	105	107	113	116	117	111	105	98	92	86	95	96	103
2004	97	100	105	116	111	111	111						107

<sup>1</sup> Simple average required for parity regulations. Weighted 1990-92 average equals 100. Average is year-to-date for current year.

**Indexes of Prices Received by Farmers, by Months and Annual Average,  
United States, 2000-2004**

Year	Jan	Feb	Mar	Apr	May	Jun	Jul	Aug	Sep	Oct	Nov	Dec	Avg <sup>1</sup>
Other Crops 1910-14 = 100													
2000	541	541	541	541	541	541	541	541	541	541	541	541	541
2001	554	554	554	554	554	554	554	554	554	554	554	554	554
2002	561	561	561	561	561	561	561	561	561	561	561	561	561
2003	564	564	564	564	564	564	564	564	564	564	564	564	564
2004	569	569	569	569	569	569	569	569	569	569	569	569	569
1990-92 = 100													
2000	110	110	110	110	110	110	110	110	110	110	110	110	110
2001	112	112	112	112	112	112	112	112	112	112	112	112	112
2002	114	114	114	114	114	114	114	114	114	114	114	114	114
2003	114	114	114	114	114	114	114	114	114	114	114	114	114
2004	115	115	115	115	115	115	115	115	115	115	115	115	115
Food Commodities 1990-92 = 100													
2000	90	91	94	101	100	98	98	98	99	94	100	98	97
2001	97	101	105	108	110	110	110	113	109	96	97	98	105
2002	96	100	108	93	94	95	97	97	95	93	96	95	97
2003	97	96	97	99	104	107	105	110	113	116	120	116	107
2004	113	117	123	127	131	130	125						124

<sup>1</sup> Simple average required for parity regulations. Weighted 1990-92 average equals 100. Average is year-to-date for current year.

**Indexes of Prices Received by Farmers, by Months and Annual Average,  
United States, 2000-2004**

Year	Jan	Feb	Mar	Apr	May	Jun	Jul	Aug	Sep	Oct	Nov	Dec	Avg <sup>1</sup>
Livestock and Products 1910-14 = 100													
2000	710	710	723	756	745	754	757	738	750	744	763	775	744
2001	764	780	821	833	846	864	857	852	848	798	760	716	812
2002	735	734	723	684	681	689	678	668	655	664	684	698	691
2003	735	726	715	717	740	758	775	809	847	886	895	859	789
2004	842	859	932	968	1023	1020	980						946
1990-92 = 100													
2000	93	93	94	98	97	98	99	96	98	97	99	101	97
2001	100	102	107	109	110	113	112	111	111	104	99	93	106
2002	96	96	94	89	89	90	88	87	85	87	89	91	90
2003	96	95	93	93	96	99	101	105	110	116	117	112	103
2004	110	112	121	126	133	133	128						123
Meat Animals 1910-14 = 100													
2000	913	933	962	1009	991	983	975	938	916	933	939	968	955
2001	987	999	1047	1052	1046	1055	1033	1016	976	925	873	862	989
2002	916	947	937	884	867	868	882	859	821	857	869	896	884
2003	946	963	946	972	1014	1027	1025	1054	1100	1169	1179	1123	1043
2004	1057	1060	1131	1150	1232	1244	1227						1157
1990-92 = 100													
2000	90	92	95	99	98	97	96	92	90	92	92	95	94
2001	97	98	103	103	103	104	102	100	96	91	86	85	97
2002	90	93	92	87	85	85	87	84	81	84	86	88	87
2003	93	95	93	96	100	101	101	104	108	115	116	110	103
2004	104	104	111	113	121	122	121						114

<sup>1</sup> Simple average required for parity regulations. Weighted 1990-92 average equals 100. Average is year-to-date for current year.

**Indexes of Prices Received by Farmers, by Months and Annual Average,  
United States, 2000-2004**

Year	Jan	Feb	Mar	Apr	May	Jun	Jul	Aug	Sep	Oct	Nov	Dec	Avg <sup>1</sup>
Dairy Products 1910-14 = 100													
2000	737	725	725	731	737	756	774	768	793	768	774	799	757
2001	799	805	854	897	953	996	996	1014	1051	959	885	830	920
2002	836	805	774	768	744	707	682	694	713	744	731	731	744
2003	725	694	676	676	676	676	744	817	891	922	885	848	769
2004	811	836	946	1118	1192	1118	996						1002
1990-92 = 100													
2000	92	90	90	91	92	94	96	96	99	96	96	100	94
2001	100	100	106	112	119	124	124	126	131	119	110	103	115
2002	104	100	96	96	93	88	85	87	89	93	91	91	93
2003	90	87	84	84	84	84	93	102	111	115	110	106	96
2004	101	104	118	139	149	139	124						125
Poultry and Eggs 1910-14 = 100													
2000	282	273	275	297	287	297	299	296	320	311	334	319	299
2001	296	312	326	325	324	330	335	337	341	338	329	278	323
2002	284	271	271	244	257	280	265	262	258	243	269	270	265
2003	303	291	291	279	288	307	307	316	322	331	350	340	310
2004	373	390	416	392	398	412	407						398
1990-92 = 100													
2000	100	97	98	106	102	105	106	105	114	111	119	113	106
2001	105	111	116	116	115	117	119	120	121	120	117	99	115
2002	101	96	96	87	92	100	94	93	92	86	96	96	94
2003	108	104	103	99	103	109	109	112	115	118	124	121	110
2004	133	139	148	140	141	147	145						142

<sup>1</sup> Simple average required for parity regulations. Weighted 1990-92 average equals 100. Average is year-to-date for current year.

## Reliability of Prices Received Estimates

**Definition:** Prices received represent sales from producers to first buyers. They include all grades and qualities. The average commodity price from the survey multiplied by the total quantity marketed theoretically should give the total cash receipts for the commodity.

**Survey Procedures:** Primary sales data used to determine grain prices were obtained from probability samples of 2600 mills and elevators. These procedures ensure that virtually all grain moving into commercial channels has a chance of being included in the survey. Generally, States surveyed account for 90 percent or more of total U.S. production. Livestock prices are obtained from packers, stockyards, auctions, dealers, and market check data from AMS-USDA, private marketing organizations, and state commodity groups and agencies. Inter-farm sales of grain and livestock are not included since they represent very small percentages of the total marketings. Grain marketed for seed is also excluded. Fruit and vegetable prices are obtained from sample surveys and market check data from AMS-USDA, private marketing organizations, state agencies, and universities.

**Summary and Estimation Procedures:** Survey quantities sold are expanded by strata to state levels and used to weight average strata prices to a state average. State prices are then weighted to a U.S. price based on expanded marketings. Recommendations are prepared by the State Statistical Offices and reviewed by the Agricultural Statistics Board in Washington, D.C. State recommendations are reviewed for reasonableness with survey data, other States, and recent historic estimates.

**Revisions:** For most items, the current month's preliminary price represents a 3-5 day period around the 15<sup>th</sup> of the month. Previous month's prices represent actual dollars received for quantities sold during the entire month. Revisions are published in monthly issues of *Agricultural Prices*.

**Reliability:** U.S. price estimates based on probability surveys generally have a sampling error of less than one percent for the major commodities such as corn, wheat, soybeans, cotton, and rice. Current methods of summarization for non-probability commodities are not designed directly to calculate sampling errors. However, analytical measures approximate the U.S. relative sampling errors at around five percent. Any nonsampling errors are attributed to such things as the inability to obtain correct information, differences in interpreting questions or definitions, mistakes in coding or processing the data, etc. Efforts are made at each step in the survey process to minimize these nonsampling errors.

## Prices Paid by Farmers

The July Index of Prices Paid for Commodities and Services, Interest, Taxes, and Farm Wage Rates (PPITW) is 134 (1990-92=100), unchanged from June 2004 but 5.5 percent above July 2003.

**PRODUCTION INDEX:** The July index, at 131, is down 0.8 percent from last month but 6.5 percent above last year. Lower prices in July for feed concentrates, complete feeds, feed grains, and hay & forages more than offset higher prices for feeder cattle, milk cows, nitrogen fertilizers, and diesel fuel.

**Feed:** The July Index, at 118, is 6.3 percent less than June but 6.3 percent above last July. Since June, prices are lower for feed concentrates, complete feeds, feed grains, hay & forages, and feed supplements.

**Livestock & Poultry:** The July index for livestock and poultry purchases, at 136, is 1.5 percent higher than last month and 28 percent above last year. Since June, higher prices for feeder cattle and milk cows more than offset lower prices for feeder pigs. The July feeder cattle price, at \$117.80 per cwt, is up \$1.70 per cwt from the June price. July feeder pigs averaged \$100.00 per cwt, down \$7.00 per cwt from June.

**Fertilizer:** The July index, at 135, is unchanged from June but 11 percent more than July a year ago. Since June, slightly lower prices for potash and phosphate materials and mixed fertilizers offset slightly higher prices for nitrogen fertilizers.

**Agricultural Chemicals:** The July index, at 121, is unchanged from last month and last July.

**Fuels:** The July index, at 151, is unchanged from a month earlier but 14 percent above July 2003. Compared to last month, prices are slightly lower for gasoline but slightly higher for diesel fuel.

**Farm Machinery:** The July index is 160, unchanged from June but 6.7 percent above last July.

**CONSUMER PRICE INDEX:** The June 2004 Consumer Price Index for all urban consumers (CPI-U) rose 0.3 percent before seasonal adjustment to a level of 189.7 (1982-84=100). This compares to the May index of 189.1. For the 12-month period ending in June, the overall index has increased 3.3 percent.

**Indexes of Prices Paid by Farmers and Related Parity Ratios  
United States, July 2004 With Comparisons**

Indexes and Ratios	1910-14 = 100			1990-92 = 100		
	2003	2004		2003	2004	
	Jul	Jun	Jul	Jul	Jun	Jul
Prices Paid by Farmers for Commodities & Services, Interest, Taxes, & Wage Rates (PPITW)	1,691	*1,788	1,778	127	*134	134
Production	1,195	*1,280	1,269	123	*132	131
Feed	543	*616	574	111	*126	118
Livestock & Poultry	1,354	1,715	1,740	106	134	136
Seeds	1,553	1,564	1,564	157	158	158
Fertilizer	449	*494	496	122	*135	135
Agricultural Chemicals	747	*748	749	121	121	121
Fuels	1,021	*1,163	1,162	132	*151	151
Farm Supplies & Repairs	952	967	967	134	136	136
Autos & Trucks	3,018	*3,021	3,013	113	*114	113
Farm Machinery	3,767	*4,016	4,018	150	*160	160
Building Materials	1,679	*1,829	1,841	124	*135	135
Farm Services & Rent	1,457	*1,464	1,464			
Farm Services				124	*125	125
Rent				120	120	120
Interest <sup>1</sup>	2,599	2,616	2,616	104	104	104
Taxes <sup>2</sup>	3,426	3,474	3,474	128	130	130
Wage Rates	5,738	5,957	5,957	153	159	159
Production, Interest, Taxes, & Wage Rates (PITW)	1,679	*1,784	1,772	125	*133	132
Family Living-CPI <sup>3</sup>	1,747	*1,802	1,802	136	*141	141
Ratio (Received/Paid)				83	96	91
Parity Ratio <sup>4</sup>	39	46	44			
Parity Ratio Adjusted <sup>5</sup>	43	48	46			
PPITW Adjusted for Productivity <sup>6</sup>	1,160	1,215	1,213			
Crop Sector (PPITW)				130	135	135
Livestock Sector (PPITW)				123	*133	132
Farm Sector (Production)				116	*134	130
Non-Farm Sector (Production)				126	131	131

\* Revised.

<sup>1</sup> Interest per acre on farm real estate debt and interest rate on farm non-real estate debt.

<sup>2</sup> Farm real estate taxes payable per acre.

<sup>3</sup> Bureau of Labor Statistics, Consumer Price Index for all urban consumers (CPI-U), for the previous month converted by the USDA.

<sup>4</sup> Ratio of index of prices received to PPITW (1910-14=100).

<sup>5</sup> Based on estimated cash receipts, from marketings and government payments, the preliminary adjustment factor is 1.048 for 2004 and the revised factor is 1.082 for 2003.

<sup>6</sup> PPITW is adjusted based on productivity trend for the prior 15 years.

**Prices Paid Indexes and Annual Weights for Input Components and  
Sub-Components United States, July 2004 With Comparisons**

Index	Relative Weights 5-Year Moving Average <sup>1</sup>		Input Indexes		
	2003	2004	2003	2004	
	<i>Percent</i>	<i>Percent</i>	Jul <i>(1990-92=100)</i>	Jun <i>(1990-92=100)</i>	Jul <i>(1990-92=100)</i>
Production Items	66.7	66.2	123	*132	131
Feed	11.0	10.7	111	*126	118
Feed Grains	1.6	1.5	94	*119	104
Complete Feeds	5.4	5.2	111	*126	121
Hay/Forages	1.4	1.3	117	123	117
Concentrates	1.7	1.7	113	*134	116
Supplements	0.9	0.9	130	*131	125
Livestock & Poultry	7.2	7.4	106	134	136
Feeder Cattle	5.6	5.8	107	137	139
Feeder Pigs	0.6	0.6	82	116	109
Milk Cow Replacements	0.6	0.6	116	140	152
Poultry	0.4	0.4	112	112	112
Seeds	3.2	3.3	157	158	158
Field Crops	2.9	3.0	162	163	163
Grasses/Legumes	0.3	0.3	109	111	111
Fertilizer	4.5	4.4	122	*135	135
Mixed Fertilizer	2.0	1.9	113	*121	120
Nitrogen	1.9	1.8	138	*155	158
Potash & Phosphate	0.6	0.6	107	*119	116
Agricultural Chemicals	3.8	3.7	121	121	121
Herbicides	2.4	2.4	112	113	114
Insecticides	0.9	0.9	147	144	144
Fungicides/Other	0.5	0.5	115	117	117
Fuels	2.7	2.7	132	*151	151
Diesel	1.5	1.5	125	*142	144
Gasoline	0.8	0.8	137	*157	152
LP Gas	0.4	0.4	153	*174	174
Farm Supplies & Repairs	5.5	5.4	134	136	136
Supplies	1.8	1.8	125	127	127
Repairs	3.6	3.6	139	141	141
Autos & Trucks	1.8	1.8	113	*114	113
Autos	0.2	0.2	107	*107	107
Trucks	1.5	1.6	114	*115	114
Farm Machinery	4.0	4.0	150	*160	160
Tractors	0.9	0.9	142	*148	148
Self-Propelled	1.6	1.6	152	167	167
Other Machinery	1.5	1.5	153	*160	160
Building Materials	3.1	3.3	124	*135	135
Farm Services	12.4	12.4	124	*125	125
Custom Rates	1.3	1.3	125	125	125
Other Services	11.1	11.1	124	*125	125
Rent	7.4	7.1	120	120	120
Cash	4.0	3.8	145	145	145
Share	3.4	3.3	91	91	91
Interest	4.7	4.7	104	104	104
Taxes	3.0	3.0	128	130	130
Wage Rates	7.4	7.6	153	159	159
Family Living-CPI	18.2	18.5	136	*141	141

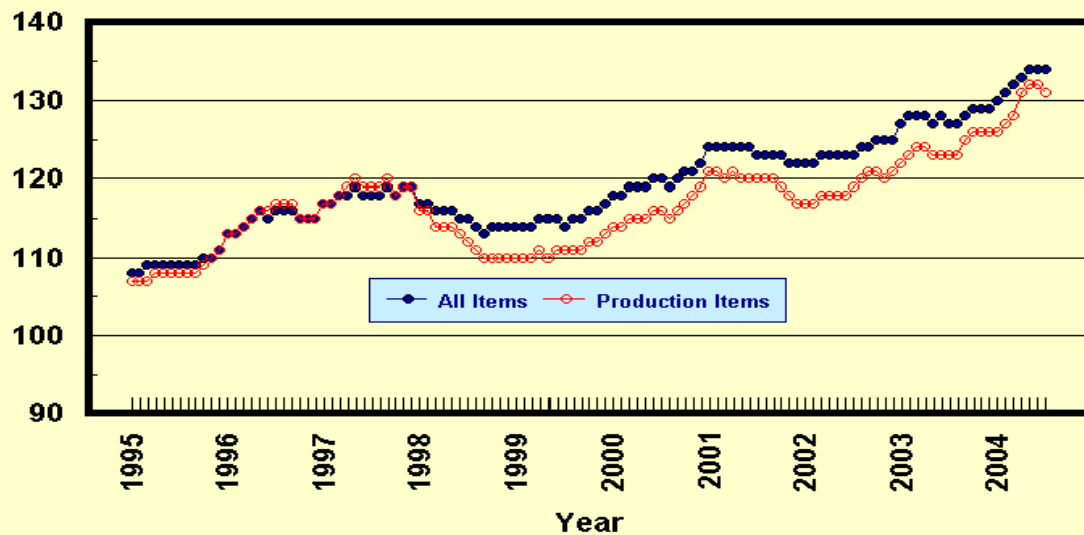
\* Revised.

<sup>1</sup> Weights may not add due to rounding.



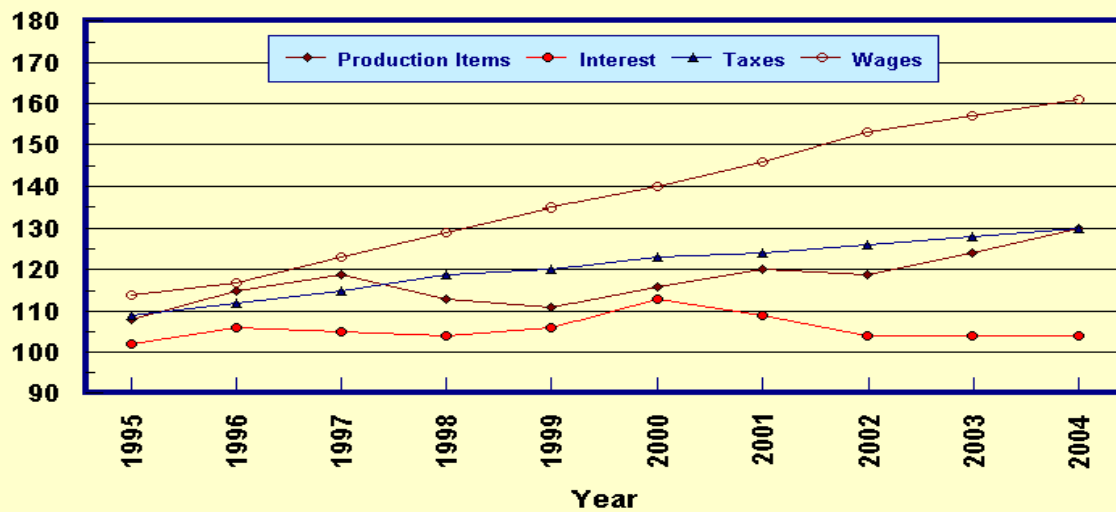
## Prices Paid by Farmers, Major Indexes US, by Quarter and Month

Percent (1990-92=100)



## Prices Paid by Farmers, Major Indexes US, Annual Averages 1/

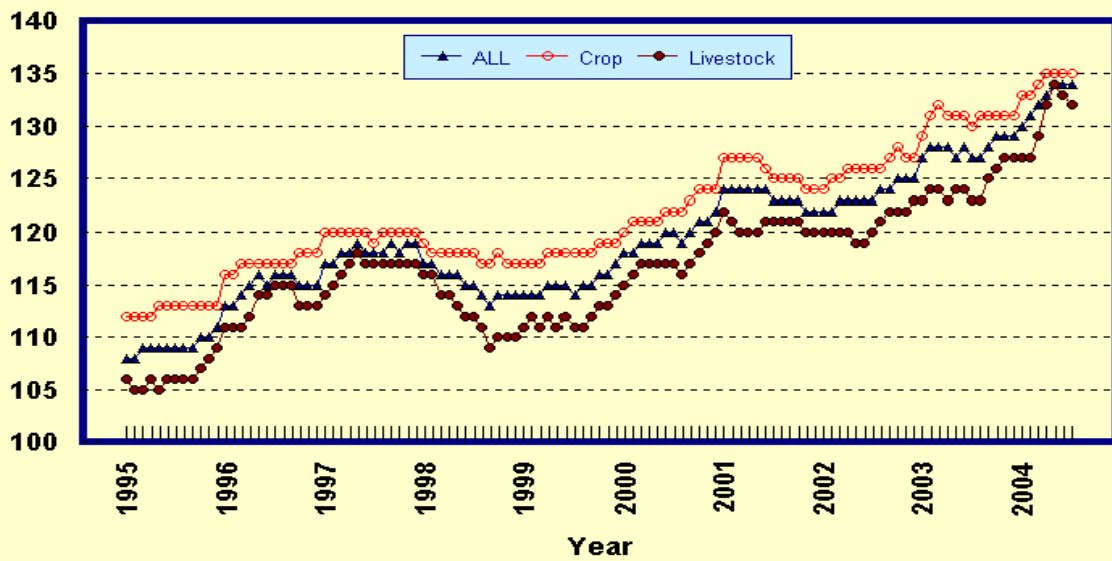
Percent (1990-92=100)



1/ Index values for 2004 are year-to-date averages.

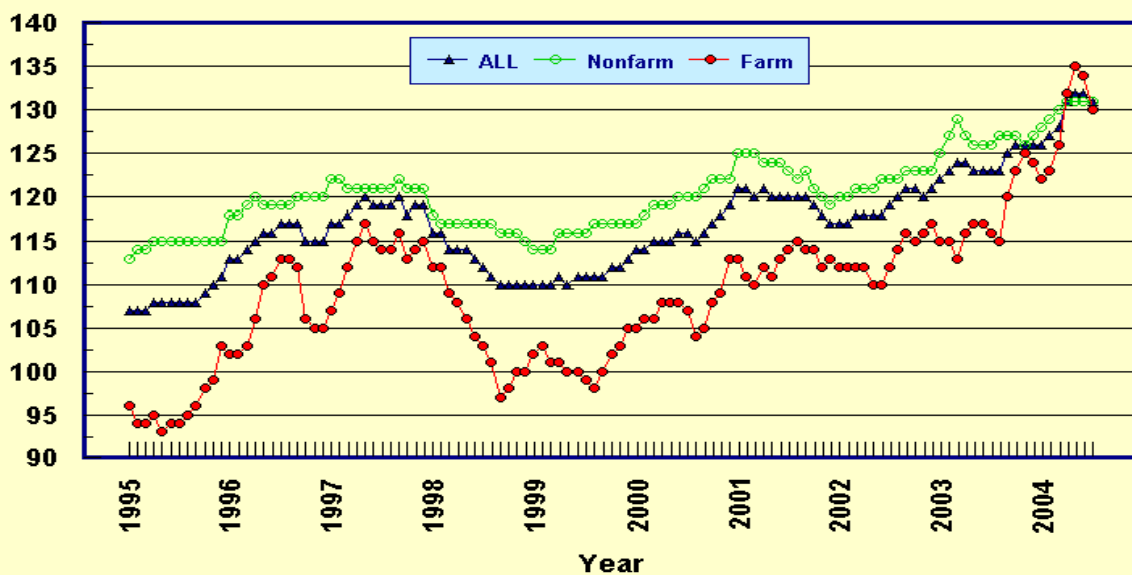
## Prices Paid by Farmers, Indexes, All Items US, By Farm Type

Percent (1990-92=100)



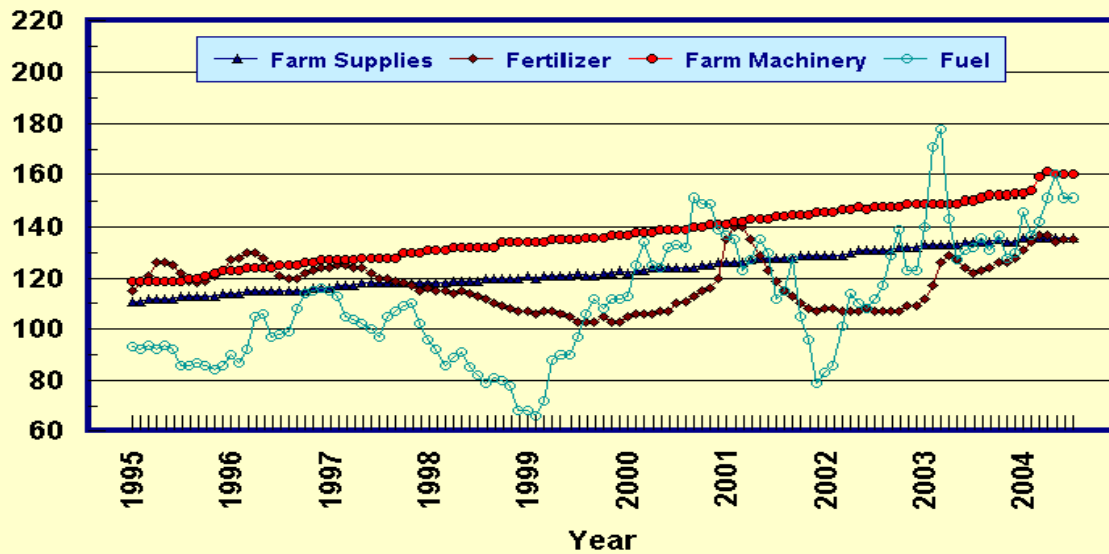
## Prices Paid by Farmers, Indexes, All Production Items US, By Sector Origin

Percent (1990-92=100)



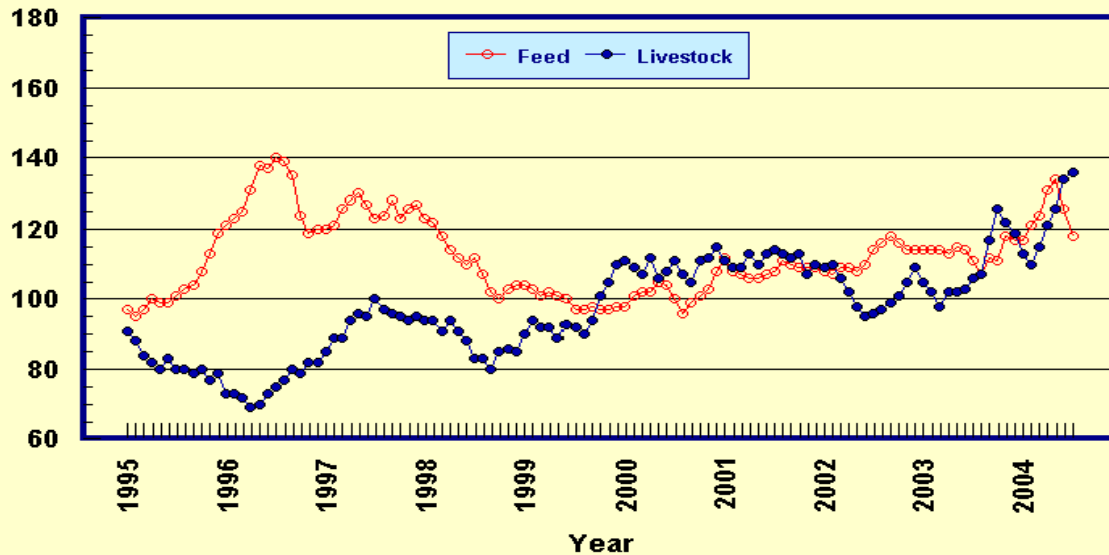
## Prices Paid by Farmers, Selected Production Indexes US, By Non-Farm Sector

Percent (1990-92=100)



## Prices Paid by Farmers, Selected Production Indexes US, By Farm Sector

Percent (1990-92=100)



**Feed Price Ratios: United States, July 2004 with Comparisons**

Feed Price Ratio <sup>1</sup>	2003	2004	
	Jul	Jun	Jul
Broiler-Feed: Pounds of Broiler Grower Feed equal in value to 1 pound of broiler, live weight	5.7	*5.6	6.3
Market Egg Feed: Pounds of Laying Feed equal in Value to 1 dozen eggs	9.8	*6.6	6.0
Hog-Corn: Bushels of Corn equal in value to 100 pounds of hog, live weight	19.7	*20.3	23.5
Milk-Feed: Pounds of 16% Mixed Dairy Feed equal in value to 1 pound of Whole Milk	2.60	*3.12	3.05
Steer & Heifer-Corn: Bushels of Corn equal in value to 100 pounds of Steer & Heifers, live weight	36.4	*33.5	37.6
Turkey-Feed: Pounds of Turkey Grower equal in value to 1 pound of Turkey, live weight	5.9	*5.2	6.0

\* Revised.

<sup>1</sup> Effective January 1995, prices of commercial prepared feeds are based on current U.S. prices received for corn, soybeans, alfalfa hay, and all wheat.

**Prices Used to Calculate Feed Price Ratios:  
United States, July 2004 with Comparisons**

Commodity	Unit	2003	2004	
		Jul	Jun	Jul
Broilers, Live	Lb	0.360	0.520	0.520
Eggs, Market	Doz	0.524	0.496	0.399
Hogs, All	Cwt	42.70	*56.60	56.90
Milk, All	Cwt	12.10	*18.20	16.20
Steers and Heifers	Cwt	78.90	*93.50	91.10
Turkeys, Live	Lb	0.336	0.420	0.436
Corn	Bu	2.17	*2.79	2.42
Hay, Alfalfa, Baled	Ton	92.70	102.00	98.40
Soybeans	Bu	5.82	*9.05	8.21
Wheat, All	Bu	2.95	*3.58	3.36

\* Revised.

**Feeder Livestock: Prices Paid, United States  
July 2004 with Comparisons**

Commodity	Unit	2003	2004	
		Jul	Jun	Jul
		<i>Dollars</i>	<i>Dollars</i>	<i>Dollars</i>
Feeders and Stockers Cattle and Calves	Cwt	90.50	116.10	117.80
Feeder Pigs	Cwt	75.00	107.00	100.00

**Prices Paid Indexes: Monthly and Annual Average  
United States, 2000-2004**

Year	Jan	Feb	Mar	Apr	May	Jun	Jul	Aug	Sep	Oct	Nov	Dec	Avg <sup>1</sup>
Commodities and Services, Interest, Taxes, and Wage Rates (PPITW) 1910-14 = 100													
2000	1567	1577	1585	1587	1587	1594	1593	1583	1596	1611	1616	1626	1594
2001	1656	1651	1646	1646	1646	1647	1641	1642	1644	1636	1626	1620	1642
2002	1628	1628	1634	1639	1634	1637	1640	1648	1657	1666	1661	1666	1645
2003	1684	1698	1704	1699	1695	1696	1691	1690	1707	1719	1720	1718	1702
2004	1733	1738	1755	1776	1789	1788	1778						1765
1990-92 = 100													
2000	118	118	119	119	119	120	120	119	120	121	121	122	120
2001	124	124	124	124	124	124	123	123	123	123	122	122	123
2002	122	122	123	123	123	123	123	124	124	125	125	125	124
2003	127	128	128	128	127	127	127	127	128	129	129	129	128
2004	130	131	132	133	134	134	134						133
Items Used for Production, Interest, Taxes, and Wage Rates (PITW) 1910-14 = 100													
2000	1560	1569	1576	1579	1578	1585	1583	1570	1585	1602	1609	1620	1585
2001	1654	1647	1640	1639	1637	1638	1631	1632	1633	1625	1614	1608	1633
2002	1616	1615	1620	1624	1618	1621	1625	1633	1644	1653	1648	1654	1631
2003	1675	1689	1694	1689	1685	1685	1679	1676	1695	1710	1713	1711	1692
2004	1727	1731	1750	1773	1788	1784	1772						1761
1990-92 = 100													
2000	116	117	117	118	117	118	118	117	118	119	120	121	118
2001	123	123	122	122	122	122	121	122	122	121	120	120	122
2002	120	120	121	121	120	121	121	122	122	123	123	123	121
2003	125	126	126	126	125	125	125	125	126	127	128	127	126
2004	129	129	130	132	133	133	132						131

<sup>1</sup> Simple average and is year-to-date for current year.

**Prices Paid Indexes: Monthly and Annual Average  
United States, 2000-2004**

Year	Jan	Feb	Mar	Apr	May	Jun	Jul	Aug	Sep	Oct	Nov	Dec	Avg <sup>1</sup>
Items Used for Production 1910-14 = 100													
2000	1102	1110	1116	1119	1118	1124	1125	1114	1127	1136	1142	1152	1124
2001	1176	1170	1164	1169	1167	1168	1162	1164	1165	1152	1142	1137	1161
2002	1139	1138	1143	1149	1143	1146	1154	1162	1171	1172	1168	1173	1155
2003	1183	1196	1200	1199	1195	1196	1195	1193	1210	1220	1222	1220	1202
2004	1225	1229	1246	1270	1283	1280	1269						1257
1990-92 = 100													
2000	114	114	115	115	115	116	116	115	116	117	118	119	116
2001	121	121	120	121	120	120	120	120	120	119	118	117	120
2002	117	117	118	118	118	118	119	120	121	121	120	121	119
2003	122	123	124	124	123	123	123	123	125	126	126	126	124
2004	126	127	128	131	132	132	131						130
Feed 1910-14 = 100													
2000	480	492	499	497	513	506	490	469	484	495	504	529	497
2001	545	529	520	518	518	521	529	542	538	533	532	534	530
2002	529	524	530	534	529	539	555	568	576	566	557	556	547
2003	556	559	556	553	563	556	543	523	546	544	574	573	554
2004	571	589	603	639	652	616	574						606
1990-92 = 100													
2000	98	101	102	102	105	104	100	96	99	101	103	108	102
2001	112	108	107	106	106	107	108	111	110	109	109	109	109
2002	108	107	109	109	108	110	114	116	118	116	114	114	112
2003	114	114	114	113	115	114	111	107	112	111	118	117	113
2004	117	121	124	131	134	126	118						124

<sup>1</sup> Simple average and is year-to-date for current year.

**Prices Paid Indexes: Monthly and Annual Average  
United States, 2000-2004**

Year	Jan	Feb	Mar	Apr	May	Jun	Jul	Aug	Sep	Oct	Nov	Dec	Avg <sup>1</sup>
Livestock and Poultry 1910-14 = 100													
2000	1417	1391	1374	1428	1349	1381	1423	1372	1344	1415	1436	1465	1400
2001	1418	1387	1399	1440	1403	1442	1454	1440	1430	1446	1373	1401	1419
2002	1394	1405	1361	1301	1251	1213	1223	1245	1259	1287	1341	1395	1306
2003	1342	1299	1255	1310	1304	1323	1354	1372	1494	1605	1565	1522	1395
2004	1440	1410	1471	1548	1615	1715	1740						1563
1990-92 = 100													
2000	111	109	107	112	106	108	111	107	105	111	112	115	110
2001	111	109	109	113	110	113	114	113	112	113	107	110	111
2002	109	110	106	102	98	95	96	97	99	101	105	109	102
2003	105	102	98	102	102	103	106	107	117	126	122	119	109
2004	113	110	115	121	126	134	136						122
Seeds 1910-14 = 100													
2000	1196	1196	1196	1238	1238	1238	1238	1238	1238	1238	1238	1238	1227
2001	1238	1238	1238	1329	1329	1329	1329	1329	1329	1329	1329	1329	1306
2002	1329	1329	1329	1426	1426	1426	1426	1426	1426	1426	1426	1426	1402
2003	1426	1426	1426	1553	1553	1553	1553	1553	1553	1553	1553	1553	1521
2004	1553	1553	1553	1564	1564	1564	1564						1559
1990-92 = 100													
2000	121	121	121	125	125	125	125	125	125	125	125	125	124
2001	125	125	125	134	134	134	134	134	134	134	134	134	132
2002	134	134	134	144	144	144	144	144	144	144	144	144	142
2003	144	144	144	157	157	157	157	157	157	157	157	157	154
2004	157	157	157	158	158	158	158						158

<sup>1</sup> Simple average and is year-to-date for current year.

**Prices Paid Indexes: Monthly and Annual Average  
United States, 2000-2004**

Year	Jan	Feb	Mar	Apr	May	Jun	Jul	Aug	Sep	Oct	Nov	Dec	Avg <sup>1</sup>
Fertilizer 1910-14 = 100													
2000	384	388	388	390	391	391	403	406	414	422	427	440	404
2001	497	513	513	495	473	452	436	421	412	403	398	393	451
2002	394	395	394	391	392	397	394	393	391	394	398	400	394
2003	412	427	463	471	465	454	449	452	456	460	463	468	453
2004	480	492	503	502	493	494	496						494
1990-92 = 100													
2000	105	106	106	106	107	107	110	111	113	115	116	120	110
2001	135	140	140	135	129	123	119	115	113	110	108	107	123
2002	108	108	107	107	107	108	107	107	107	107	109	109	108
2003	112	117	126	129	127	124	122	123	124	126	126	128	124
2004	131	134	137	137	134	135	135						135
Agricultural Chemicals 1910-14 = 100													
2000	738	740	742	737	742	743	743	742	744	743	739	744	741
2001	761	748	746	747	747	745	743	741	739	739	742	739	745
2002	739	731	735	733	734	736	738	739	741	736	738	750	738
2003	752	752	744	746	746	747	747	746	746	748	750	744	747
2004	745	747	746	745	746	748	749						747
1990-92 = 100													
2000	119	120	120	119	120	120	120	120	120	120	120	120	120
2001	123	121	121	121	121	120	120	120	120	120	120	120	121
2002	120	118	119	119	119	119	119	120	120	119	119	121	119
2003	122	122	120	121	121	121	121	121	121	121	121	120	121
2004	121	121	121	121	121	121	121						121

<sup>1</sup> Simple average and is year-to-date for current year.



**Prices Paid Indexes: Monthly and Annual Average  
United States, 2000-2004**

Year	Jan	Feb	Mar	Apr	May	Jun	Jul	Aug	Sep	Oct	Nov	Dec	Avg <sup>1</sup>
Fuels 1910-14 = 100													
2000	875	967	1036	963	954	1017	1028	1016	1165	1152	1154	1070	1033
2001	1061	1043	948	983	1044	1004	861	889	985	807	744	608	915
2002	644	661	783	878	852	836	868	900	997	1074	949	950	866
2003	1080	1322	1371	1105	983	1012	1021	1051	1014	1056	990	1004	1084
2004	1124	1058	1100	1168	1232	1163	1162						1144
1990-92 = 100													
2000	113	125	134	125	124	132	133	132	151	149	149	139	134
2001	137	135	123	127	135	130	112	115	128	105	96	79	119
2002	83	86	101	114	110	108	112	117	129	139	123	123	112
2003	140	171	178	143	127	131	132	136	131	137	128	130	140
2004	146	137	142	151	160	151	151						148
Farm Supplies and Repairs 1910-14 = 100													
2000	869	871	872	878	878	879	882	882	883	886	891	893	880
2001	895	895	896	900	905	906	911	912	912	912	913	913	906
2002	915	918	917	925	927	927	929	929	929	935	935	935	927
2003	941	941	942	947	947	948	952	952	952	956	954	954	949
2004	965	965	963	966	967	967	967						966
1990-92 = 100													
2000	122	123	123	124	124	124	124	124	124	125	125	126	124
2001	126	126	126	127	128	128	128	128	128	129	129	129	128
2002	129	129	129	130	131	131	131	131	131	132	132	132	131
2003	133	133	133	133	133	134	134	134	134	135	134	134	134
2004	136	136	136	136	136	136	136						136

<sup>1</sup> Simple average and is year-to-date for current year.

**Prices Paid Indexes: Monthly and Annual Average  
United States, 2000-2004**

Year	Jan	Feb	Mar	Apr	May	Jun	Jul	Aug	Sep	Oct	Nov	Dec	Avg <sup>1</sup>
Autos and Trucks 1910-14 = 100													
2000	3175	3165	3173	3182	3178	3168	3154	3142	3126	3129	3151	3172	3160
2001	3179	3171	3158	3155	3145	3132	3120	3099	3093	3117	3153	3169	3141
2002	3146	3107	3093	3086	3073	3061	3054	3041	3059	3076	3093	3099	3082
2003	3083	3074	3076	3061	3047	3029	3018	3020	3016	3014	3040	3050	3044
2004	3052	3060	3046	3042	3029	3021	3013						3038
1990-92 = 100													
2000	119	119	119	120	120	119	119	118	118	118	119	119	119
2001	120	119	119	119	118	118	117	117	116	117	119	119	118
2002	118	117	116	116	116	115	115	114	115	116	116	117	116
2003	116	116	116	115	115	114	113	114	113	113	114	115	115
2004	115	115	115	114	114	114	113						114
Farm Machinery 1910-14 = 100													
2000	3442	3452	3461	3474	3481	3484	3489	3495	3511	3521	3530	3538	3490
2001	3544	3561	3568	3580	3589	3594	3602	3607	3627	3643	3649	3654	3602
2002	3668	3674	3694	3700	3703	3699	3704	3705	3719	3724	3730	3730	3704
2003	3731	3732	3733	3737	3746	3754	3767	3791	3801	3811	3820	3828	3771
2004	3849	3861	3980	4040	4015	4016	4018						3968
1990-92 = 100													
2000	137	138	138	138	139	139	139	139	140	140	141	141	139
2001	141	142	142	143	143	143	144	144	145	145	145	146	144
2002	146	146	147	147	148	147	148	148	148	148	149	149	148
2003	149	149	149	149	149	150	150	151	152	152	152	153	150
2004	153	154	159	161	160	160	160						158

<sup>1</sup> Simple average and is year-to-date for current year.

**Prices Paid Indexes: Monthly and Annual Average  
United States, 2000-2004**

Year	Jan	Feb	Mar	Apr	May	Jun	Jul	Aug	Sep	Oct	Nov	Dec	Avg <sup>1</sup>
Building Materials 1910-14 = 100													
2000	1644	1648	1654	1657	1651	1653	1648	1644	1643	1642	1641	1639	1647
2001	1636	1641	1642	1644	1657	1658	1652	1652	1649	1643	1642	1639	1646
2002	1642	1642	1647	1652	1655	1656	1658	1669	1663	1658	1653	1652	1654
2003	1655	1663	1665	1671	1671	1672	1679	1680	1694	1696	1701	1701	1679
2004	1704	1738	1757	1788	1817	1829	1841						1782
1990-92 = 100													
2000	121	121	122	122	121	122	121	121	121	121	121	121	121
2001	120	121	121	121	122	122	122	122	121	121	121	121	121
2002	121	121	121	122	122	122	122	123	122	122	122	122	122
2003	122	122	123	123	123	123	124	124	125	125	125	125	124
2004	125	128	129	132	134	135	135						131
Farm Services and Rent <sup>2</sup> 1910-14 = 100													
2000	1365	1367	1369	1369	1369	1379	1381	1381	1382	1377	1374	1375	1374
2001	1413	1413	1416	1416	1418	1430	1434	1432	1430	1423	1417	1417	1422
2002	1422	1422	1421	1420	1421	1432	1432	1433	1432	1426	1424	1425	1426
2003	1440	1441	1441	1444	1446	1455	1457	1457	1457	1447	1442	1442	1447
2004	1449	1448	1449	1449	1453	1464	1464						1454
Farm Services 1990-92 = 100													
2000	117	118	118	118	118	119	119	119	120	119	118	119	119
2001	120	120	120	120	120	122	122	122	122	121	120	120	121
2002	120	120	120	119	120	121	121	121	121	120	120	120	120
2003	121	122	122	122	122	123	124	124	124	122	122	122	123
2004	123	123	123	123	123	125	125						124
Rent 1990-92 = 100													
2000	110	110	110	110	110	110	110	110	110	110	110	110	110
2001	117	117	117	117	117	117	117	117	117	117	117	117	117
2002	119	119	119	119	119	119	119	119	119	119	119	119	119
2003	120	120	120	120	120	120	120	120	120	120	120	120	120
2004	120	120	120	120	120	120	120						120

<sup>1</sup> Simple average and is year-to-date for current year.

<sup>2</sup> For the 1990-92=100 base period, the Farm Services and Rent Index is separated.

**Prices Paid Indexes: Monthly and Annual Average  
United States, 2000-2004**

Year	Jan	Feb	Mar	Apr	May	Jun	Jul	Aug	Sep	Oct	Nov	Dec	Avg <sup>1</sup>
Interest 1910-14 = 100													
2000	2825	2825	2825	2825	2825	2825	2825	2825	2825	2825	2825	2825	2825
2001	2738	2738	2738	2738	2738	2738	2738	2738	2738	2738	2738	2738	2738
2002	2615	2615	2615	2615	2615	2615	2615	2615	2615	2615	2615	2615	2615
2003	2599	2599	2599	2599	2599	2599	2599	2599	2599	2599	2599	2599	2599
2004	2616	2616	2616	2616	2616	2616	2616						2616
1990-92 = 100													
2000	113	113	113	113	113	113	113	113	113	113	113	113	113
2001	109	109	109	109	109	109	109	109	109	109	109	109	109
2002	104	104	104	104	104	104	104	104	104	104	104	104	104
2003	104	104	104	104	104	104	104	104	104	104	104	104	104
2004	104	104	104	104	104	104	104						104
Taxes 1910-14 = 100													
2000	3281	3281	3281	3281	3281	3281	3281	3281	3281	3281	3281	3281	3281
2001	3330	3330	3330	3330	3330	3330	3330	3330	3330	3330	3330	3330	3330
2002	3378	3378	3378	3378	3378	3378	3378	3378	3378	3378	3378	3378	3378
2003	3426	3426	3426	3426	3426	3426	3426	3426	3426	3426	3426	3426	3426
2004	3474	3474	3474	3474	3474	3474	3474						3474
1990-92 = 100													
2000	123	123	123	123	123	123	123	123	123	123	123	123	123
2001	124	124	124	124	124	124	124	124	124	124	124	124	124
2002	126	126	126	126	126	126	126	126	126	126	126	126	126
2003	128	128	128	128	128	128	128	128	128	128	128	128	128
2004	130	130	130	130	130	130	130						130
Wage Rates 1910-14 = 100													
2000	5234	5234	5234	5227	5227	5227	5124	5124	5124	5357	5357	5357	5236
2001	5596	5596	5596	5369	5369	5369	5357	5357	5357	5550	5550	5550	5468
2002	5796	5796	5796	5705	5705	5705	5537	5537	5537	5783	5783	5783	5705
2003	6035	6035	6035	5919	5919	5919	5738	5738	5738	5848	5848	5848	5885
2004	6080	6080	6080	5957	5957	5957	5957						6010
1990-92 = 100													
2000	140	140	140	140	140	140	137	137	137	143	143	143	140
2001	150	150	150	144	144	144	143	143	143	148	148	148	146
2002	155	155	155	153	153	153	148	148	148	155	155	155	153
2003	161	161	161	158	158	158	153	153	153	156	156	156	157
2004	163	163	163	159	159	159	159						161

<sup>1</sup> Simple average and is year-to-date for current year.

**Prices Paid Indexes: Monthly and Annual Average  
United States, 2000-2004**

Year	Jan	Feb	Mar	Apr	May	Jun	Jul	Aug	Sep	Oct	Nov	Dec	Avg <sup>1</sup>
Family Living 1910-14 = 100													
2000	1603	1613	1626	1627	1629	1637	1641	1641	1650	1653	1654	1653	1636
2001	1663	1670	1673	1680	1688	1691	1686	1686	1693	1688	1685	1678	1682
2002	1682	1689	1698	1708	1708	1709	1711	1716	1719	1722	1722	1718	1709
2003	1726	1739	1749	1746	1743	1745	1747	1753	1759	1757	1752	1750	1747
2004	1759	1768	1780	1786	1796	1802	1802						1785
1990-92 = 100													
2000	125	126	127	127	127	128	128	128	129	129	129	129	128
2001	130	130	131	131	132	132	132	132	132	132	132	131	131
2002	131	132	133	133	133	133	134	134	134	134	134	134	133
2003	135	136	137	136	136	136	136	137	137	137	137	137	136
2004	137	138	139	139	140	141	141						139
Production Items With Farm Origin <sup>2</sup> 1990-92 = 100													
2000	105	106	106	108	108	108	107	104	105	108	109	113	107
2001	113	111	110	112	111	113	114	115	114	114	112	113	113
2002	112	112	112	112	110	110	112	114	116	115	116	117	113
2003	115	115	113	116	117	117	116	115	120	123	125	124	118
2004	122	123	126	132	135	134	130						129
Production Items With Non-Farm Origin <sup>3</sup> 1990-92 = 100													
2000	117	118	119	119	119	120	120	120	121	122	122	122	120
2001	125	125	125	124	124	124	123	122	123	121	120	119	123
2002	120	120	121	121	121	122	122	122	123	123	123	123	122
2003	125	127	129	127	126	126	126	127	127	127	126	127	127
2004	128	129	130	131	131	131	131						130

<sup>1</sup> Simple average and is year-to-date for current year.

<sup>2</sup> Feed, livestock and poultry purchases, and seed.

<sup>3</sup> Fertilizer, agricultural chemicals, fuels, farm supplies and repairs, autos and trucks, farm machinery, building materials, and farm services and rent.

**Prices Paid Indexes: Monthly and Annual Average  
United States, 2000-2004**

Year	Jan	Feb	Mar	Apr	May	Jun	Jul	Aug	Sep	Oct	Nov	Dec	Avg <sup>1</sup>
Parity Ratio <sup>2</sup> 1910-14 = 100													
2000	37	37	38	40	40	39	38	39	39	37	38	38	38
2001	37	38	40	41	42	41	42	43	41	37	37	37	40
2002	37	38	41	36	37	38	38	38	38	36	37	37	38
2003	37	37	37	38	39	40	39	41	41	42	43	42	40
2004	41	42	44	45	46	46	44						44
Adjusted Parity Ratio <sup>3</sup> 1910-14 = 100													
2000	41	41	42	45	45	44	43	43	43	41	43	43	43
2001	41	42	44	45	46	46	46	47	45	40	41	41	44
2002	39	41	43	39	39	40	40	41	40	38	39	39	40
2003	41	40	40	41	43	44	43	44	45	45	46	46	43
2004	43	44	46	47	48	48	46						46
Ratio 1990-92 = 100													
2000	76	78	80	84	84	82	81	81	81	77	81	80	80
2001	78	81	83	85	87	86	88	89	86	76	77	78	83
2002	78	80	85	76	78	79	80	81	79	76	78	78	79
2003	78	77	77	79	83	84	83	86	87	88	90	88	83
2004	85	89	92	94	96	96	91						92

<sup>1</sup> Simple average and is year-to-date for current year.

<sup>2</sup> Ratio of index of prices received by farmers to index of prices paid for commodities and services, interest, taxes, and wage rates.

<sup>3</sup> Ratio of the index of prices received by farmers after adjustment for government payments to the index of prices paid for commodities and services, interest, taxes, and wage rates.

**Prices Paid Indexes: Monthly and Annual Average  
United States, 2000-2004**

Year	Jan	Feb	Mar	Apr	May	Jun	Jul	Aug	Sep	Oct	Nov	Dec	Avg <sup>1</sup>
Crop Sector (PPITW) 1990-92 = 100													
2000	120	121	121	121	121	122	122	122	123	124	124	124	122
2001	127	127	127	127	127	126	125	125	125	125	124	124	126
2002	124	125	125	126	126	126	126	126	127	128	127	127	126
2003	129	131	132	131	131	131	130	131	131	131	131	131	131
2004	133	133	134	135	135	135	135						134
Livestock Sector (PPITW) 1990-92 = 100													
2000	115	116	117	117	117	117	117	116	117	118	119	120	117
2001	122	121	120	120	120	121	121	121	121	121	120	120	121
2002	120	120	120	120	119	119	120	121	122	122	122	123	121
2003	123	124	124	123	124	124	123	123	125	126	127	127	124
2004	127	127	129	132	134	133	132						131
Commodities and Services, Interest, Taxes, and Wage Rates Adjusted for Productivity 1910-14 = 100													
2000	1079	1083	1086	1086	1086	1089	1083	1081	1084	1103	1104	1105	1089
2001	1131	1131	1131	1117	1118	1119	1116	1116	1118	1128	1126	1124	1123
2002	1140	1141	1143	1139	1139	1139	1129	1131	1133	1152	1151	1151	1141
2003	1177	1181	1184	1174	1173	1174	1160	1161	1165	1174	1174	1173	1173
2004	1207	1210	1214	1210	1214	1215	1213						1212

<sup>1</sup> Simple average and is year-to-date for current year.

**Prices Paid Index Sub-Components: Monthly and Annual Average  
United States, 2000-2004**

Year	Jan	Feb	Mar	Apr	May	Jun	Jul	Aug	Sep	Oct	Nov	Dec	Avg <sup>1</sup>
Feed Sub-Components													
Feed Grains													
1990-92 = 100													
2000	81	84	87	87	90	83	72	67	70	75	81	86	80
2001	85	85	84	81	79	79	83	83	84	81	82	86	83
2002	86	84	85	83	84	88	94	104	107	103	101	103	94
2003	102	103	102	102	104	101	94	95	96	94	97	102	99
2004	104	113	119	124	123	119	104						115
Complete Feeds													
1990-92 = 100													
2000	102	103	104	104	105	105	104	100	101	103	104	108	104
2001	114	112	109	107	106	107	108	113	112	112	111	112	110
2002	111	110	111	112	110	113	115	116	118	117	116	115	114
2003	115	114	114	112	112	112	111	107	111	111	118	119	113
2004	118	123	122	130	130	126	121						124
Hay and Forages													
1990-92 = 100													
2000	97	99	100	102	109	108	105	104	107	108	109	109	105
2001	110	113	117	127	130	122	121	123	124	123	123	123	121
2002	120	118	119	125	125	121	118	119	119	121	120	120	120
2003	121	122	120	120	129	122	117	110	109	110	105	106	116
2004	106	106	107	115	127	123	117						114
Concentrates													
1990-92 = 100													
2000	93	100	104	100	108	109	104	96	108	109	109	121	105
2001	122	107	104	104	107	115	117	116	111	110	109	103	110
2002	105	102	105	104	106	109	118	121	121	110	105	104	109
2003	104	110	110	112	118	115	113	106	122	122	136	126	116
2004	124	124	141	149	156	134	116						135

<sup>1</sup> Simple average and is year-to-date for current year.



**Prices Paid Index Sub-Components: Monthly and Annual Average  
United States, 2000-2004**

Year	Jan	Feb	Mar	Apr	May	Jun	Jul	Aug	Sep	Oct	Nov	Dec	Avg <sup>1</sup>
Supplements 1990-92 = 100													
2000	118	120	119	117	116	113	111	110	112	115	116	123	116
2001	127	124	119	119	116	117	117	120	121	119	124	125	121
2002	123	124	124	123	118	123	126	128	129	133	134	135	127
2003	135	134	134	131	129	132	130	126	127	129	135	134	131
2004	134	134	135	138	138	131	125						134
Livestock and Poultry Sub-Components Feeder Cattle 1990-92 = 100													
2000	109	105	102	107	101	106	111	107	104	111	113	114	108
2001	109	105	106	109	106	112	111	110	110	110	102	104	108
2002	102	103	99	95	92	91	94	96	98	100	102	105	98
2003	99	96	92	99	99	102	107	111	122	130	126	122	109
2004	113	107	113	119	126	137	139						122
Feeder Pigs 1990-92 = 100													
2000	126	137	147	159	136	118	114	103	98	101	106	118	122
2001	125	133	136	143	127	115	111	109	106	105	110	123	120
2002	138	146	138	111	88	59	52	46	40	73	102	126	93
2003	138	127	123	119	109	104	82	64	73	97	94	96	102
2004	104	125	125	126	122	116	109						118
Milk Cow Replacements 1990-92 = 100													
2000	118	118	118	119	119	119	120	120	120	120	120	120	119
2001	117	117	117	124	124	124	141	141	141	151	151	151	133
2002	143	143	143	152	152	152	148	148	148	127	127	127	143
2003	122	122	122	115	115	115	116	116	116	122	122	122	119
2004	123	123	123	140	140	140	152						134

<sup>1</sup> Simple average and is year-to-date for current year.

**Prices Paid Index Sub-Components: Monthly and Annual Average  
United States, 2000-2004**

Year	Jan	Feb	Mar	Apr	May	Jun	Jul	Aug	Sep	Oct	Nov	Dec	Avg <sup>1</sup>
Poultry 1990-92 = 100													
2000	107	107	107	107	107	107	107	107	107	107	107	107	107
2001	110	110	110	110	110	110	110	110	110	110	110	110	110
2002	111	111	111	111	111	111	111	111	111	111	111	111	111
2003	112	112	112	112	112	112	112	112	112	112	112	112	112
2004	112	112	112	112	112	112	112	112	112	112	112	112	112
Seeds Sub-Components Field Crops 1990-92 = 100													
2000	121	121	121	126	126	126	126	126	126	126	126	126	125
2001	126	126	126	136	136	136	136	136	136	136	136	136	134
2002	136	136	136	147	147	147	147	147	147	147	147	147	144
2003	147	147	147	162	162	162	162	162	162	162	162	162	158
2004	162	162	162	163	163	163	163	163	163	163	163	163	163
Grasses and Legumes 1990-92 = 100													
2000	121	121	121	115	115	115	115	115	115	115	115	115	117
2001	115	115	115	118	118	118	118	118	118	118	118	118	117
2002	118	118	118	118	118	118	118	118	118	118	118	118	118
2003	118	118	118	109	109	109	109	109	109	109	109	109	111
2004	109	109	109	111	111	111	111	111	111	111	111	111	110
Fertilizer Sub-Components Mixed Fertilizer 1990-92 = 100													
2000	109	108	108	108	108	108	107	107	107	107	107	107	108
2001	109	111	111	111	111	110	110	109	107	106	106	106	109
2002	105	104	104	104	104	104	105	105	106	106	106	106	105
2003	107	107	112	113	113	113	113	113	114	114	115	115	112
2004	116	119	122	122	122	121	120	120	120	120	120	120	120

<sup>1</sup> Simple average and is year-to-date for current year.

**Prices Paid Index Sub-Components: Monthly and Annual Average  
United States, 2000-2004**

Year	Jan	Feb	Mar	Apr	May	Jun	Jul	Aug	Sep	Oct	Nov	Dec	Avg <sup>1</sup>
Nitrogen 1990-92 = 100													
2000	97	101	103	104	104	107	115	116	120	125	129	137	113
2001	171	180	179	167	155	142	133	124	121	115	112	111	143
2002	111	111	110	110	110	113	111	110	108	110	113	115	111
2003	122	131	147	150	146	141	138	139	141	142	144	146	141
2004	152	156	158	157	152	155	158						155
Potash and Phosphate 1990-92 = 100													
2000	114	116	109	111	111	103	103	105	108	110	108	110	109
2001	110	111	113	113	110	108	107	106	105	106	107	100	108
2002	106	109	109	108	106	106	105	105	105	105	104	102	106
2003	102	103	112	113	113	108	107	110	109	111	110	111	109
2004	114	118	124	123	122	119	116						119
Agricultural Chemicals Sub-Components Herbicides 1990-92 = 100													
2000	112	112	111	111	111	111	111	111	111	111	111	111	111
2001	111	112	112	112	112	112	112	112	112	112	113	113	112
2002	112	111	112	112	111	111	111	111	112	110	110	112	111
2003	112	112	112	112	112	112	112	112	112	113	113	112	112
2004	113	113	113	113	113	113	114						113
Insecticides 1990-92 = 100													
2000	140	142	144	142	146	146	146	146	147	147	144	146	145
2001	159	145	144	144	144	144	143	142	141	140	139	138	144
2002	139	138	138	137	138	139	140	140	141	142	143	144	140
2003	145	146	146	147	147	148	147	147	146	146	146	145	146
2004	144	144	144	143	143	144	144						144

<sup>1</sup> Simple average and is year-to-date for current year.

**Prices Paid Index Sub-Components: Monthly and Annual Average  
United States, 2000-2004**

Year	Jan	Feb	Mar	Apr	May	Jun	Jul	Aug	Sep	Oct	Nov	Dec	Avg <sup>1</sup>
Fungicides and Other 1990-92 = 100													
2000	119	119	119	119	119	119	120	120	120	120	120	120	120
2001	120	120	121	121	121	121	121	120	120	120	120	120	120
2002	120	120	119	119	120	121	121	122	123	123	124	124	121
2003	125	126	114	115	115	115	115	115	116	116	116	116	117
2004	116	116	116	116	117	117	117						116
Fuels Sub-Components Diesel 1990-92 = 100													
2000	113	127	133	123	121	125	130	134	160	159	159	146	136
2001	139	132	119	123	133	129	116	117	131	108	102	80	119
2002	84	86	100	110	106	104	110	114	130	139	120	121	110
2003	136	172	179	141	120	122	125	129	121	133	125	127	136
2004	140	132	138	149	151	142	144						142
Gasoline 1990-92 = 100													
2000	111	125	137	128	135	154	138	128	139	129	128	112	130
2001	117	116	109	124	137	126	105	113	127	98	86	76	111
2002	81	85	103	118	115	114	117	119	123	136	120	113	112
2003	132	156	168	140	131	136	137	142	145	134	123	120	139
2004	136	138	144	152	170	157	152						150
LP Gas 1990-92 = 100													
2000	119	117	136	126	111	114	137	132	136	152	155	162	133
2001	175	187	166	151	143	144	105	113	115	103	95	78	131
2002	87	88	107	121	118	113	113	124	139	149	142	152	121
2003	173	201	193	158	150	159	153	153	147	160	154	165	164
2004	190	158	159	158	174	174	174						170

<sup>1</sup> Simple average and is year-to-date for current year.

**Prices Paid Index Sub-Components: Monthly and Annual Average  
United States, 2000-2004**

Year	Jan	Feb	Mar	Apr	May	Jun	Jul	Aug	Sep	Oct	Nov	Dec	Avg <sup>1</sup>
Farm Supplies & Repairs Sub-Components													
Supplies 1990-92 = 100													
2000	117	117	117	118	117	118	118	118	118	119	119	119	118
2001	119	119	119	119	122	122	122	122	123	122	122	122	121
2002	121	122	122	123	124	124	124	124	124	124	124	124	123
2003	124	124	124	124	124	124	125	125	125	125	125	126	125
2004	126	126	126	126	127	127	127						126
Repairs 1990-92 = 100													
2000	125	126	126	127	127	127	128	128	128	128	129	129	127
2001	130	130	130	130	130	130	131	131	131	132	132	132	131
2002	133	133	133	134	134	134	134	134	134	136	136	136	134
2003	137	137	137	138	138	138	139	139	139	139	139	139	138
2004	141	141	140	141	141	141	141						141
Autos and Trucks Sub-Components													
Autos 1990-92 = 100													
2000	112	112	112	112	112	112	112	111	111	111	112	112	112
2001	112	112	112	112	111	111	111	110	110	110	112	112	111
2002	112	111	111	110	110	109	109	108	109	109	110	110	110
2003	109	109	109	108	108	107	107	107	107	107	108	108	108
2004	108	108	108	108	108	107	107						108
Trucks 1990-92 = 100													
2000	120	120	120	121	121	120	120	119	119	119	120	120	120
2001	121	120	120	120	119	119	118	118	117	118	120	120	119
2002	119	118	117	117	116	116	116	115	116	117	117	117	117
2003	117	117	117	116	116	115	114	115	114	114	115	116	116
2004	116	116	116	115	115	115	114						115

<sup>1</sup> Simple average and is year-to-date for current year.

**Prices Paid Index Sub-Components: Monthly and Annual Average  
United States, 2000-2004**

Year	Jan	Feb	Mar	Apr	May	Jun	Jul	Aug	Sep	Oct	Nov	Dec	Avg <sup>1</sup>
Farm Machinery Sub-Components													
Tractors													
1990-92 = 100													
2000	135	136	136	136	136	136	136	136	137	138	138	138	137
2001	138	138	138	138	138	138	138	138	139	139	139	140	138
2002	140	140	140	140	140	140	140	140	140	140	140	140	140
2003	140	140	141	141	141	141	142	143	144	144	145	145	142
2004	145	145	146	146	148	148	148						147
Self Propelled													
1990-92 = 100													
2000	136	136	136	137	137	137	138	138	139	140	140	140	138
2001	141	142	142	143	143	143	143	144	145	145	145	145	143
2002	145	146	146	147	147	147	147	147	147	147	148	148	147
2003	148	148	148	148	149	150	152	154	156	157	158	160	152
2004	162	164	165	167	167	167	167						166
Other Machinery													
1990-92 = 100													
2000	140	141	141	142	142	142	142	142	143	143	143	144	142
2001	144	144	144	145	146	146	147	147	148	149	150	150	147
2002	151	151	152	153	153	153	153	153	154	154	155	155	153
2003	155	155	155	155	154	154	153	152	152	151	150	150	153
2004	149	149	160	164	160	160	160						157
Farm Services Sub-Components													
Custom Rates													
1990-92 = 100													
2000	120	120	120	120	120	120	120	120	120	120	120	120	120
2001	121	121	121	121	121	121	121	121	121	121	121	121	121
2002	120	120	120	120	120	120	120	120	120	120	120	120	120
2003	125	125	125	125	125	125	125	125	125	125	125	125	125
2004	125	125	125	125	125	125	125						125

<sup>1</sup> Simple average and is year-to-date for current year.

**Prices Paid Index Sub-Components: Monthly and Annual Average  
United States, 2000-2004**

Year	Jan	Feb	Mar	Apr	May	Jun	Jul	Aug	Sep	Oct	Nov	Dec	Avg <sup>1</sup>
Other Services 1990-92 = 100													
2000	117	117	118	118	118	119	119	119	120	119	118	118	118
2001	119	119	120	120	120	122	122	122	122	121	120	120	121
2002	120	120	120	119	120	121	121	121	121	120	120	120	120
2003	121	121	121	122	122	123	124	124	124	122	121	121	122
2004	122	122	123	122	123	125	125						123
Rent Sub-Components Cash 1990-92 = 100													
2000	139	139	139	139	139	139	139	139	139	139	139	139	139
2001	143	143	143	143	143	143	143	143	143	143	143	143	143
2002	143	143	143	143	143	143	143	143	143	143	143	143	143
2003	145	145	145	145	145	145	145	145	145	145	145	145	145
2004	145	145	145	145	145	145	145						145
Share 1990-92 = 100													
2000	83	83	83	83	83	83	83	83	83	83	83	83	83
2001	91	91	91	91	91	91	91	91	91	91	91	91	91
2002	91	91	91	91	91	91	91	91	91	91	91	91	91
2003	91	91	91	91	91	91	91	91	91	91	91	91	91
2004	91	91	91	91	91	91	91						91

<sup>1</sup> Simple average and is year-to-date for current year.

## Prices Paid by Farmers

**Definition:** Prices paid by farmers represent the average costs of inputs purchased by farmers and ranchers to produce agricultural commodities. Conceptually, the average price when multiplied by quantity purchased should equal total producer expenditures for the item.

**Survey Procedures:** The prices paid data are obtained from establishments that sell goods and services to farmers and ranchers. Annually, about 8,500 firms are randomly selected from lists by type of item sold with an average response rate in the range of 75-80 percent. Firms are asked to report the price for the specified item "most commonly bought by farmers" or that was the "volume seller". Approximately 135 items are surveyed each April to represent all production input items purchased. The survey reference period for most items is the 5 business days centered around the 15th of the month. Separate prices paid surveys are conducted for, agricultural chemicals, fuels, feed, fertilizer, machinery, and seed.

**Summary and Estimation Procedures:** The annual April Prices Paid Survey is summarized as a nonprobability survey. Average prices reported are aggregated to the region and U.S. level using weights available from expenditure data and other administrative sources. Price recommendations are prepared by the State Statistical Offices and Headquarters for review by the Agricultural Statistics Board in Washington, D.C. Also, the change in price level for individual items surveyed are combined to the regional and U.S. levels, and are published as prices paid indexes referenced to a specific base period. Prices paid indexes for new autos and trucks, building materials, farm supplies, motor supplies, and marketing containers are updated based on price changes measured in selected Bureau of Labor Statistics (BLS) indexes.

**Revisions:** Any revisions are published in the monthly and in annual issues of *Agricultural Prices*. The basis for revision must be supported by additional data that directly affect the level of the estimate. More revisions are likely in April when separate prices paid surveys are conducted, in lieu of BLS indexes, by the USDA to measure price change.

**Reliability:** Current methods of summarization in April are not designed directly to calculate sampling errors. However, analytical measures approximate the U.S. relative sampling errors for major items around 10 percent. Any nonsampling errors are attributed to such things as the inability to obtain correct information, differences in interpreting questions or definitions, mistakes in coding or processing the data, etc. Efforts are made at each step in the survey process to minimize these nonsampling errors.

**Program Change:** Effective January 1, 1995, the National Agricultural Statistics Service updated the weights and changed the construction of its prices paid and received by farmers indexes. A Federal Register Notice dated October 28, 1994 discussed these program modifications.

A 1990-92 reference and base period replaced the 1977 reference and 1971-73 base weight period. Five-year moving average weights replaced the current fixed 1971-73 base period weights. The 1910-14=100 price indexes, required by statute for computing parity prices, were linked forward based on the changes in the new 1990-92=100 indexes. The new indexes were constructed by multiplying the ratios of the current prices to the base period prices by the moving average weights (adjusted for seasonal marketing patterns for the prices received indexes).



### Information Contacts

General questions should be directed to Linda Hutton, Chief, Environmental, Economics and Demographics Branch at (202) 720-6146. Below are the commodity specialists to contact for additional information.

#### Crop Prices Received

Joe Prusacki Chief, Crops Branch .....	(202) 720-2127
Greg Thessen, Field Crops Section .....	(202) 720-2127
Lance Honig - Wheat, Rye .....	(202) 720-8068
Darin Jantzi - Corn, Proso Millet, Flaxseed .....	(202) 720-9526
Troy Joshua - Cotton, Cottonseed .....	(202) 720-5944
Dennis Koong - Hay, Oats, Sorghum .....	(202) 690-3234
Jason Lamprecht - Soybeans, Sunflower, Other Oilseeds .....	(202) 720-7369
Mark R. Miller - Peanuts, Rice .....	(202) 720-7688
Brian Young - Sugarcane, Sugarbeets, Barley .....	(202) 720-7621
Jim Smith, Fruit and Vegetable Section .....	(202) 720-2127
Debbie Flippin - Peaches, Pears, Hops, Pulses, Mint .....	(202) 720-3250
Jorge Garcia-Pratts - Citrus .....	(202) 720-5412
Terry O'Connor - Apples, Apricots, Cherries, Cranberries, Plums, Prunes .....	(202) 720-4288
Mike Miller - Grapes, Tobacco .....	(202) 720-7235
Cathy Scherrer, Potatoes, Dry Edible Beans, Sweet Potatoes .....	(202) 720-4285
Biz Wallingsford - Vegetables, Onions, Strawberries .....	(202) 720-2157

#### Livestock Prices Received

Dan Kerestes, Chief, Livestock Branch .....	(202) 720-3570
Wil Hundl, Livestock Section .....	(202) 720-3570
Scott Hollis - Sheep, Lambs, Wool, Mohair .....	(202) 720-4751
Ty Kalaus - Milk, Milk Cows .....	(202) 690-3236
Dan Lofthus - Hogs .....	(202) 720-3106
Mike Miller - Cattle .....	(202) 720-3040
Nathan Crisp, Poultry and Specialty Commodities Section .....	(202) 720-3570
Tom Kruchten - Broilers, Eggs .....	(202) 690-4870
John Lange - Turkeys .....	(202) 720-0585

#### Indexes, Prices Paid, and Parity Prices

Linda Hutton, Chief, Environmental, Economics and Demographics Branch .....	(202) 720-6146
Kevin Hintzman, Economics Section .....	(202) 720-6146
Eric Barnes - Farm Supplies and Repairs, Farm Machinery, Fuels, Feeder Livestock, Poultry Chicks, Feed Price Ratios, Grazing Fees, Autos & Trucks .....	(202) 690-3225
Daryl Brinkman - Prices Received Indexes, Parity Prices .....	(202) 720-8844
Tara Jackson - Prices Paid Indexes, Prices Paid for Feed, Fertilizer, Agricultural Chemicals, Seeds .....	(202) 690-3229

The next *Agricultural Prices* report will be released at 3 p.m. ET on August 31, 2004.

## ACCESS TO REPORTS!!

---

For your convenience, there are several ways to obtain NASS reports, data products, and services:

### INTERNET ACCESS

All NASS reports are available free of charge on the worldwide Internet. For access, connect to the Internet and go to the NASS Home Page at: [www.usda.gov/nass/](http://www.usda.gov/nass/). Select "Today's Reports" or Publications and then Reports Calendar or Publications and then Search, by Title or Subject.

### E-MAIL SUBSCRIPTION

All NASS reports are available by subscription free of charge direct to your e-mail address. Starting with the NASS Home Page at [www.usda.gov/nass/](http://www.usda.gov/nass/), click on **Publications**, then click on the **Subscribe by E-mail** button which takes you to the page describing e-mail delivery of reports. Finally, click on **Go to the Subscription Page** and follow the instructions.

-----

### PRINTED REPORTS OR DATA PRODUCTS

**CALL OUR TOLL-FREE ORDER DESK: 800-999-6779 (U.S. and Canada)**  
**Other areas, please call 703-605-6220      FAX: 703-605-6900**  
**(Visa, MasterCard, check, or money order acceptable for payment.)**

-----

### ASSISTANCE

For **assistance** with general agricultural statistics or further information about NASS or its products or services, contact the **Agricultural Statistics Hotline** at **800-727-9540**, 7:30 a.m. to 4:00 p.m. ET, or e-mail: [nass@nass.usda.gov](mailto:nass@nass.usda.gov).

The United States Department of Agriculture (USDA) prohibits discrimination in all its programs on the basis of race, color, national origin, gender, religion, age, disability, political beliefs, sexual orientation, and marital or family status. (Not all prohibited bases apply to all programs.) Persons with disabilities who require alternative means for communication of program information (braille, large print, audiotape, etc.) should contact the USDA's TARGET Center at 202-720-2600 (voice and TDD).

To file a complaint of discrimination, write USDA, Director, Office of Civil Rights, Room 326-W, Whitten Building, 1400 Independence Avenue, SW, Washington, D.C., 20250-9410, or call 202-720-5964 (voice or TDD). USDA is an equal opportunity provider and employer.