

Released August 31, 2004, by the National Agricultural Statistics Service (NASS), Agricultural Statistics Board, U.S. Department of Agriculture. For information on *Agricultural Prices* see page 68, office hours 7:30 a.m. to 4:00 p.m. ET.

August Farm Prices Received Index Down 4 Points From Last Month

The preliminary All Farm Products Index of Prices Received by Farmers in August at 120, based on 1990-92=100, is 4 points (3.2 percent) below the July Index. Declines occurred in both the Crop Price Index and the Livestock Price Index. The Crop Index, declined 2 points (1.7 percent) from July while the Livestock Index decreased 6 points (4.7 percent). Producers received higher commodity prices for lettuce, tomatoes, strawberries, and cantaloup. Lower prices were received for broilers, soybeans, dairy, and corn. The seasonal change in the mix of commodities farmers sell, based on the past 3-year average, also affects the overall index. Increased average marketings of tobacco, cattle, grapes, and sweet corn offset decreased marketings of wheat, hay, dairy, and broilers. The preliminary All Farm Products Index is up 11 points (10 percent) from August 2003.

The Food Commodities Index declined 3 points (2.4 percent) from last month to 124. The index stands 14 points (13 percent) above August 2003.

Prices Paid Index Up 1 Point

The August Index of Prices Paid for Commodities and Services, Interest, Taxes, and Farm Wage Rates (PPITW) is 135 percent of the 1990-92 average. The index is up 1 point from July and 8 points (6.3 percent) above August 2003. Higher prices in August for complete feeds, diesel fuel, feeder cattle, and nitrogen fertilizers, more than offset lower prices for feed grains, other machinery, feed supplements, and feed concentrates.

Index Summary Table

Index 1990-92=100	2003		2004	
	Jul	Aug	Jul	Aug
Prices Received	105	109	124	120
Prices Paid	127	127	134	135
Ratio ¹	83	86	93	89

¹ Ratio of index of prices received by farmers to index of prices paid by farmers.

Prices Received by Farmers

The August All Farm Product Index is 120 percent of its 1990-92 base, down 3.2 percent from the July index but 10 percent above the August 2003 index.

ALL CROPS: The August index is 118, down 1.7 percent from July but 4.4 percent above August 2003. From July, index decreases for oil-bearing crops, feed grains and hay, and food grains more than offset index increases for commercial vegetables, potatoes and dry beans, and fruits and nuts.

Food Grains: The August index, at 107, is 7.0 percent below the previous month and 1.8 percent less than August 2003. The August all wheat price, at \$3.13 per bushel, is down 24 cents from the July price and 22 cents below August 2003.

Feed Grains & Hay: The August index is 105, down 7.1 percent from last month but 2.9 percent above August 2003. The corn price, at \$2.27 per bushel, is down 24 cents from July but 12 cents above the August 2003 price. The all hay price, at \$89.80 per ton, is down 60 cents from last month but \$4.80 above August 2003.

Oil-Bearing Crops: The August index, at 112, is down 26 percent from the July index but 11 percent above August 2003. The soybean price, at \$6.34 per bushel, is down \$2.12 from July but 66 cents above August 2003.

Cotton: The August index, at 87, is down 3.3 percent from last month but 14 percent above August 2003. The cotton price, at 52.5 cents per pound, is down 2.0 cents from July but 6.2 cents above August 2003.

Potatoes & Dry Beans: The August index, at 108, is 6.9 percent above the July index and 10 percent above August 2003. The all potato price, at \$6.31 per cwt, is up 40 cents from the previous month and 56 cents above last August.

Fruits & Nuts: The August index, at 127, is 0.8 percent above the previous month and 2.4 percent above August 2003. Price increases for strawberries, pears, and oranges more than offset price decreases for grapes, peaches, and apples.

Commercial Vegetables: The August index, at 151, is up 21 percent from last month and 7.9 percent above August 2003. Price increases for head lettuce, tomatoes, and snap beans more than offset price decreases for carrots, onions, and celery.

LIVESTOCK & PRODUCTS: The August index, at 122, is down 4.7 percent from last month but up 16 percent from August 2003. Compared with a year ago, prices are higher for all cattle, broilers, dairy, hogs, calves, and turkeys but lower for eggs.

Meat Animals: The August index, at 121, is down 0.8 percent from last month but up 16 percent from last year. The August hog price of \$56.00 per cwt is down \$1.10 from July but up \$16.40 from this same time a year ago. The August beef cattle price of \$88.10 is down \$0.40 from last month but up \$8.80 from August 2003.

Dairy Products: The August index, at 115, is down 6.5 percent from July but up 13 percent from August 2003. The August all milk price of \$15.00 per cwt is down \$1.00 from July but up \$1.70 from last year. The fluid grade milk price is down \$0.90 from last month while the manufactured grade milk price is down \$0.40 from last month.

Poultry & Eggs: The August index, at 131, is down 9.7 percent from July but 17 percent above a year ago due to strong protein demand. The August market egg price is 33.4 cents per dozen, a 16 percent decrease from July. The August broiler price is 46.0 cents per pound, a decrease of 12 percent from the previous record high July price. The August turkey price, at 45.4 cents per pound, is up 1.8 cents from last month. Cumulative placements of turkey poults for the slaughter market are 4 percent below last year.

Table of Contents

U.S. Prices Received and Indexes	Page	Monthly State Prices, continued	Page
Narrative	2	Cotton	17
Price Indexes	5	Cottonseed	17
Price Index Charts	6	Eggs	22
U.S. Prices Received Summary	8	Flaxseed	16
Charts	10	Fruit, Citrus	18
Selected Commodities	14	Hay	17
Upland Cotton & Rice Marketings	17	Hogs, All	21
Parity Prices	24	Barrows and Gilts	21
Reliability Statement	59	Sows	21
 Monthly State Prices Received		Milk	23
Apples	17	Oats	15
Barley	15	Peanuts	16
Beans, Dry Edible	16	Potatoes	19
Beef Cattle, All	20	Sheep	22
Calves	20	Lambs	22
Cows, Beef	20	Sorghum, Grain	15
Milk Cows	23	Soybeans	15
Steers and Heifers	20	Sunflower, All	16
Corn	15	Tobacco	16
		Wheat, All Classes	14
 Prices Received Special Features			Page
Marketing Year for Specified Commodities			26
 Marketing Year Average Prices			
Wheat by Class			26
Barley			27
Oats			27
Peanuts			27
Wheat			28
Rye			28
Hay			29
 Monthly Prices Received, Monthly Farm Marketings, and Marketing Year Average Prices			
Rice, Year-to-date			26
 Monthly Prices			
Barley			30
Oats			36
Wheat			38
Wheat by Class			45
Hay			46
Peanuts			52
 Monthly Farm Marketing Percentages			
Barley			53
Oats			54
Wheat			55
Hay			56
Peanuts			58

Note: NASS adjusted its Marketing Year Average (MYA) Price publication schedule to accommodate the 2002 Farm Security and Rural Investment Act. Final U.S. MYA prices for all commodities will be published as soon as possible after the end of the U.S. marketing year for each crop. Final State MYA prices for each crop will be published after the marketing year for all States is complete. For rice, final State MYA prices will be published in the January 31st, 2005 *Agricultural Prices* report.

Table of Contents (continued)

U.S. Prices Paid, Prices Paid Indexes and Ratios	Page
Narrative	60
Indexes and Parity Ratios	61
Charts	63
Feed Price Ratios	66
Reliability Statement	67
 U.S. Average Prices	
Commodity Prices Used in Feed Price Ratios	66
Feeder Livestock	66
 Information Contacts	68

**Index Numbers of Prices Received, United States,
August 2004, with Comparisons**

Index	1910-14=100				1990-92=100		
	Average 1990-92	2003	2004		2003	2004	
		Aug	Jul	Aug	Aug	Jul	Aug
All Farm Products	639	694	*790	764	109	*124	120
All Crops	500	559	593	582	113	*120	118
Food Grains	325	345	*364	341	109	*115	107
Feed Grains & Hay	363	364	*402	375	102	*113	105
Cotton	517	391	*461	444	76	*90	87
Tobacco ¹	1,263	1,570			104		
Oil-Bearing Crops	554	554	*824	615	101	*151	112
Fruits & Nuts	716	866	*883	886	124	*126	127
Commercial Vegetables	698	937	*838	1,012	140	*125	151
Potatoes & Dry Beans	540	497	*514	546	98	*101	108
Other Crops	493	564	569	569	114	115	115
Livestock & Products	768	809	*982	938	105	128	122
Meat Animals	1,021	1,054	*1,240	1,235	104	*122	121
Dairy Products	799	817	*983	922	102	*123	115
Poultry & Eggs	282	316	407	367	112	145	131
Food Commodities					110	*127	124

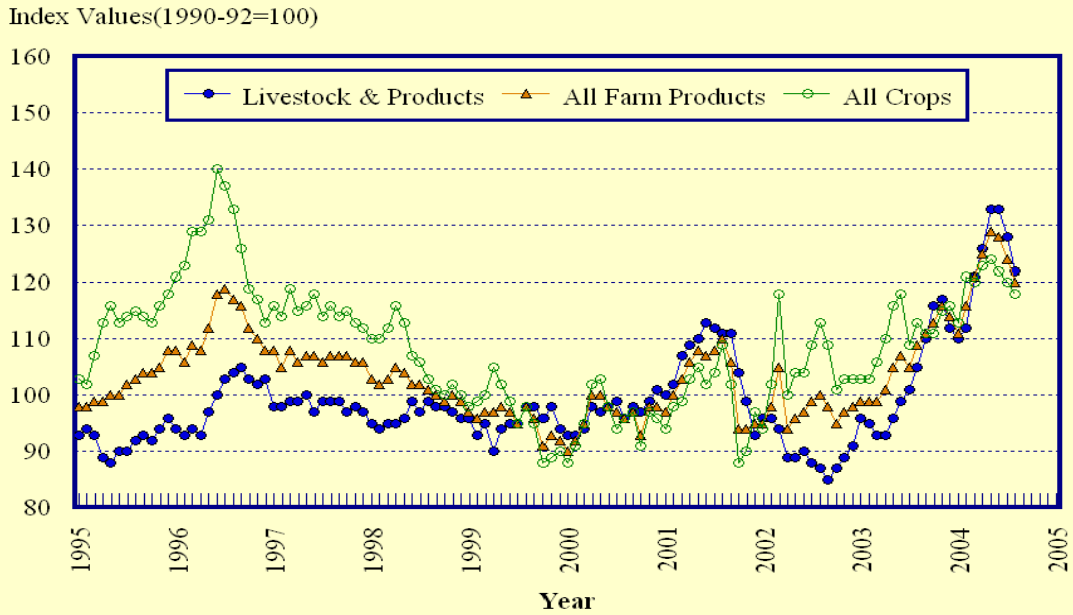
* Revised.

¹ Insufficient sales to establish a price.

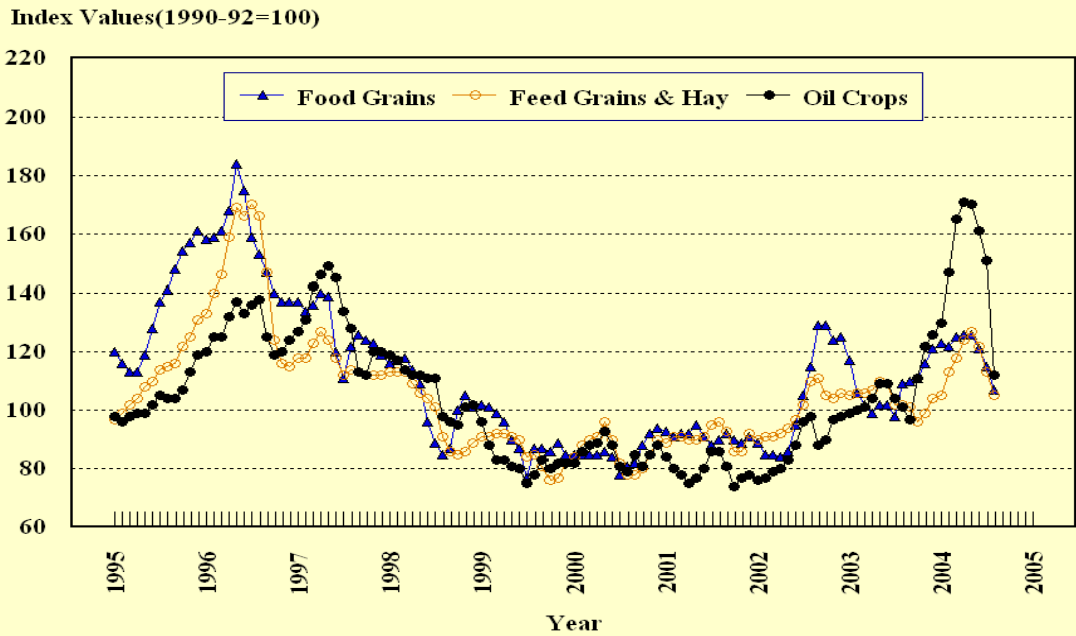
**Selected Index Numbers for Prices Received and Paid,
1990-92=100, by Months, United States, 2003 and 2004**

Month	Index of Prices Received						Index of Prices Paid			
	All Farm Products		All Crops		Livestock and Products		All Items		Production Items	
	2003	2004	2003	2004	2003	2004	2003	2004	2003	2004
Jan	99	111	103	113	96	110	127	130	122	126
Feb	99	116	103	121	95	112	128	131	123	127
Mar	99	121	106	120	93	121	128	132	124	128
Apr	101	125	110	123	93	126	128	133	124	131
May	105	129	116	124	96	133	127	134	123	132
Jun	107	128	118	122	99	133	127	134	123	132
Jul	105	124	109	120	101	128	127	134	123	132
Aug	109	120	113	118	105	122	127	135	123	133
Sep	111		111		110		128		125	
Oct	113		111		116		129		126	
Nov	116		115		117		129		126	
Dec	114		116		112		129		126	

Prices Received, Major Indexes, US

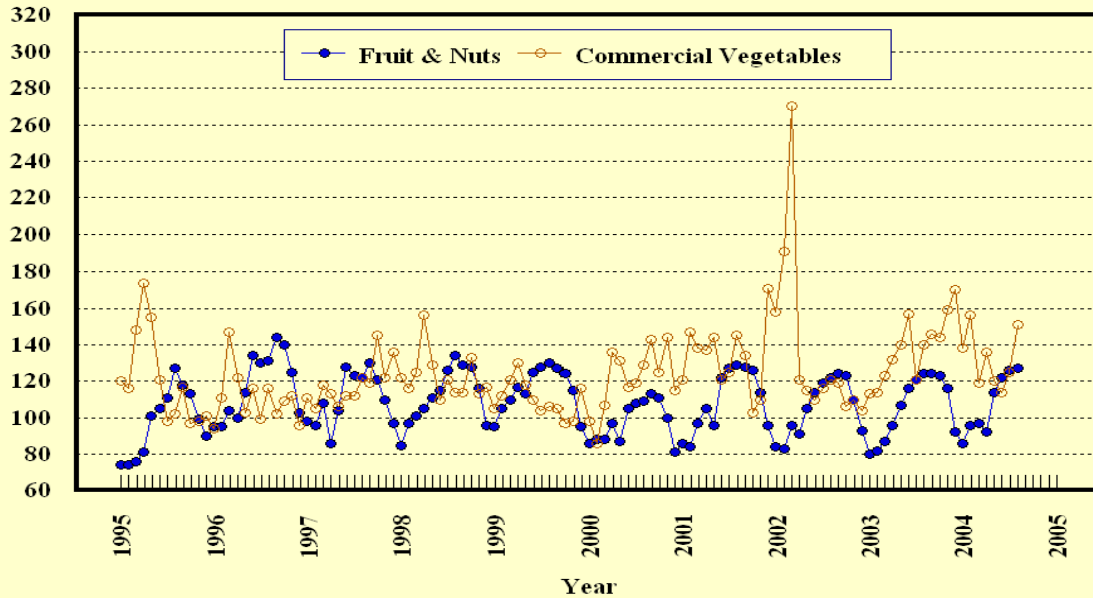


Prices Received, Food, Feed, & Oil Indexes, US



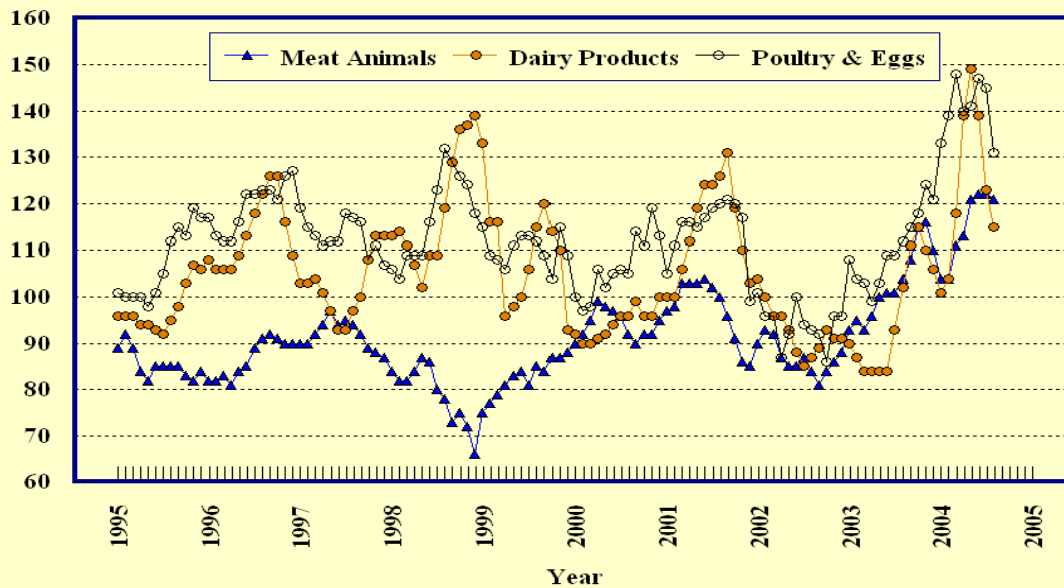
Prices Received, Fruit/Vegetable Indexes, US

Index Values(1990-92=100)



Prices Received, Livestock Product Indexes, US

Index Values(1990-92=100)



**Prices Received, United States,
August 2004, with Comparisons**

Commodity	Unit	Average 1990-92	Entire Month		Preliminary
			Aug 2003	Jul 2004	Aug 2004
		<i>Dollars</i>	<i>Dollars</i>	<i>Dollars</i>	<i>Dollars</i>
Field Crops					
Barley, All	Bu	2.12	2.91	2.54	2.45
Feed	Bu	1.90	2.39	2.21	1.83
Malting	Bu	2.43	3.12	2.67	2.87
Beans, Dry Edible	Cwt	19.10	18.00	19.30	20.00
Chickpeas, All	Cwt		20.40	26.90	(⁴)
Large	Cwt		22.90	27.00	(⁴)
Small	Cwt		(⁴)	(⁴)	(⁵)
Corn	Bu	2.30	2.15	2.51	2.27
Cotton, Upland	Lb	0.606	0.463	0.545	0.525
Cottonseed ³	Ton	96.00			99.00
Flaxseed	Bu	4.27	5.30	7.33	6.90
Hay, All, Baled ¹	Ton	76.30	85.00	90.40	89.80
Alfalfa ¹	Ton	77.20	91.90	98.40	97.40
Other ¹	Ton	60.00	66.70	70.90	70.00
Lentils	Cwt		13.30	18.00	13.80
Oats	Bu	1.22	1.39	1.37	1.31
Peanuts, In-Shell	Lb	0.304	(⁵)	0.174	(⁵)
Peas, Dry Edible	Cwt		6.79	8.28	6.42
Austrian Winter	Cwt		12.90	10.90	(⁵)
Potatoes	Cwt	5.82	5.75	5.91	6.31
Rice, Rough	Cwt	7.07	5.47	8.79	8.49
Sorghum Grain	Cwt	3.75	3.93	4.27	3.87
Soybeans	Bu	5.61	5.68	8.46	6.34
Sunflower, All	Cwt	9.50	10.90	13.30	13.00
Tobacco, Types 11-37	Lb	1.740	1.805	1.700	1.715
Wheat, All	Bu	2.96	3.35	3.37	3.13
Winter	Bu	2.93	3.28	3.32	3.02
Durum	Bu	2.86	3.78	4.11	3.83
Other Spring	Bu	3.11	3.42	3.55	3.24
Hard Red Winter	Bu		3.25	3.35	
Soft Red Winter	Bu		3.28	3.24	
Hard Red Spring	Bu		3.43	3.55	
White	Bu	3.24	3.42	3.46	
Fruit					
Citrus, Equiv on-tree					
Grapefruit	Box	5.77	7.23	9.43	7.68
Lemons	Box	10.10	11.10	16.55	14.70
Oranges	Box	5.79	4.27	9.81	10.28
Tangelos	Box	5.82			
Tangerines	Box	15.11			
Temples	Box	6.23			
Noncitrus, Fresh					
Apples ²	Lb	0.212	0.346	0.295	0.273
Grapes ²	Ton	506.00	660.00	640.00	600.00
Peaches ²	Lb	0.216	0.227	0.233	0.213
Pears ²	Ton	370.00	272.00	470.00	553.00
Strawberries	Cwt	56.00	68.10	59.50	70.00

¹ Mid-month price.

² Equivalent packinghouse-door returns for CA, MI, and NY (apples only), and WA (apples, peaches, and pears). Prices as sold for other states.

³ Marketing year August - February.

⁴ Price not published to avoid disclosure of individual firms.

⁵ Insufficient sales to establish a price.

**Prices Received, United States,
August 2004, with Comparisons**

Commodity	Unit	Average 1990-92	Entire Month		Preliminary
			Aug 2003	Jul 2004	Aug 2004
		<i>Dollars</i>	<i>Dollars</i>	<i>Dollars</i>	<i>Dollars</i>
Vegetables, Fresh ¹					
Asparagus	Cwt	79.80	132.00	231.00	
Broccoli	Cwt	22.50	29.80	24.20	29.10
Cantaloupes ²	Cwt		15.70	14.30	17.20
Carrots	Cwt	13.20	20.50	20.20	17.90
Cauliflower	Cwt	26.80	25.30	27.50	27.80
Celery	Cwt	11.60	11.90	11.70	9.84
Corn, Sweet	Cwt	15.70	20.10	20.20	21.70
Cucumbers ²	Cwt		20.40	25.50	27.10
Lettuce	Cwt	11.90	21.50	21.00	27.80
Onions	Cwt	12.80	13.80	15.00	14.10
Snap Beans ²	Cwt		61.10	49.80	70.80
Tomatoes	Cwt	32.30	41.00	22.90	31.70
Livestock					
Calves	Cwt	94.30	106.00	131.00	131.00
Cattle, All Beef	Cwt	72.90	79.30	88.50	88.10
Cows ³	Cwt	49.60	44.50	56.30	55.50
Steers & Heifers	Cwt	77.10	82.90	91.80	91.50
Milk Cows ⁴	Head	1,130.00		1,720.00	
Hogs, All	Cwt	47.70	39.60	57.10	56.00
Barrows & Gilts	Cwt	48.40	39.90	57.50	56.30
Sows	Cwt	39.50	32.60	49.20	49.40
Lambs	Cwt	56.20	88.60	102.00	
Sheep	Cwt	23.40	29.20	37.40	
Dairy and Poultry					
Milk, All ^{5 6}	Cwt	13.06	13.30	16.00	15.00
Fluid Grade ⁶	Cwt	13.10	13.30	16.00	15.10
Mfg Grade ⁶	Cwt	11.80	13.20	14.30	13.90
Broilers, Live ⁷	Lb	0.317	0.360	0.520	0.460
Eggs, All ⁸	Doz	0.643	0.808	0.589	0.530
Market ⁸	Doz	0.546	0.668	0.399	0.334
Turkeys, live ^{7 8}	Lb	0.380	0.327	0.436	0.454
Adjusted for Seasonal Variation					
Eggs, All	Doz	0.545	0.887	0.647	0.525
Milk, All ⁵	Cwt	9.71	12.67	16.33	14.71

¹ F.O.B. shipping point.

² Monthly estimates began January 1995.

³ Beef cows and cull dairy cows sold for slaughter.

⁴ Animals sold for dairy herd replacement only. Prices available for Jan, Apr, Jul, and Oct.

⁵ Before deductions for hauling. Includes quality, quantity, and other premiums. Excludes hauling subsidies.

⁶ August 2004 Fat test percent: all milk 3.58, fluid milk 3.58, mfg grade 3.70.

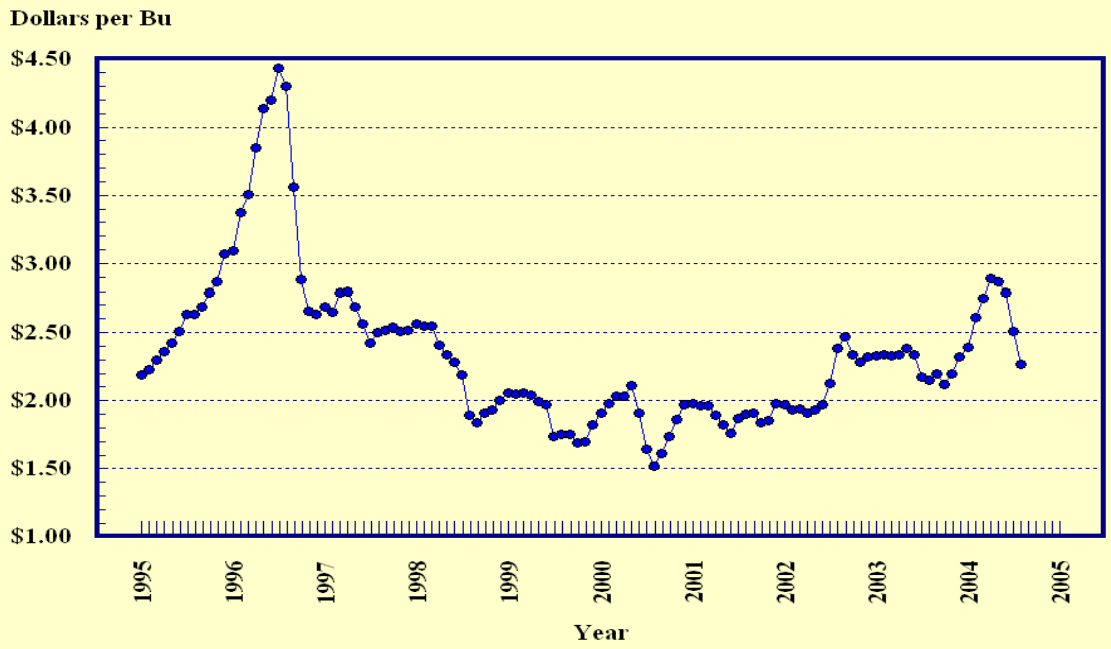
⁷ Equivalent liveweight returns to producers for most States. Includes growers and contractors.

⁸ Mid-month price.

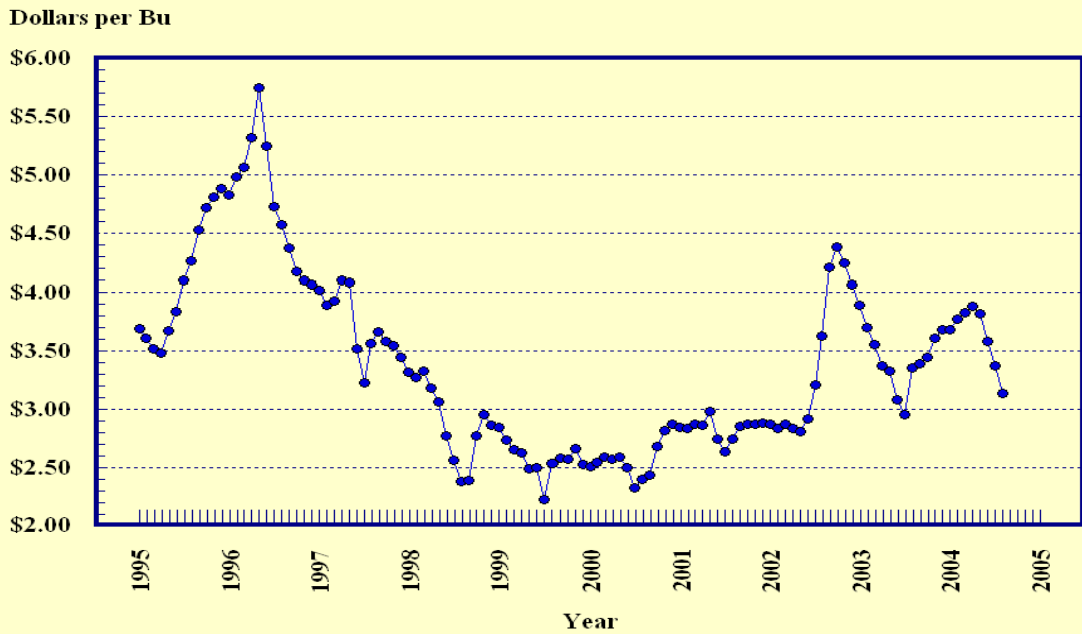
⁹ Price not published to avoid disclosure of individual firms.

¹⁰ Insufficient sales to establish a price.

Prices Received, Corn, US

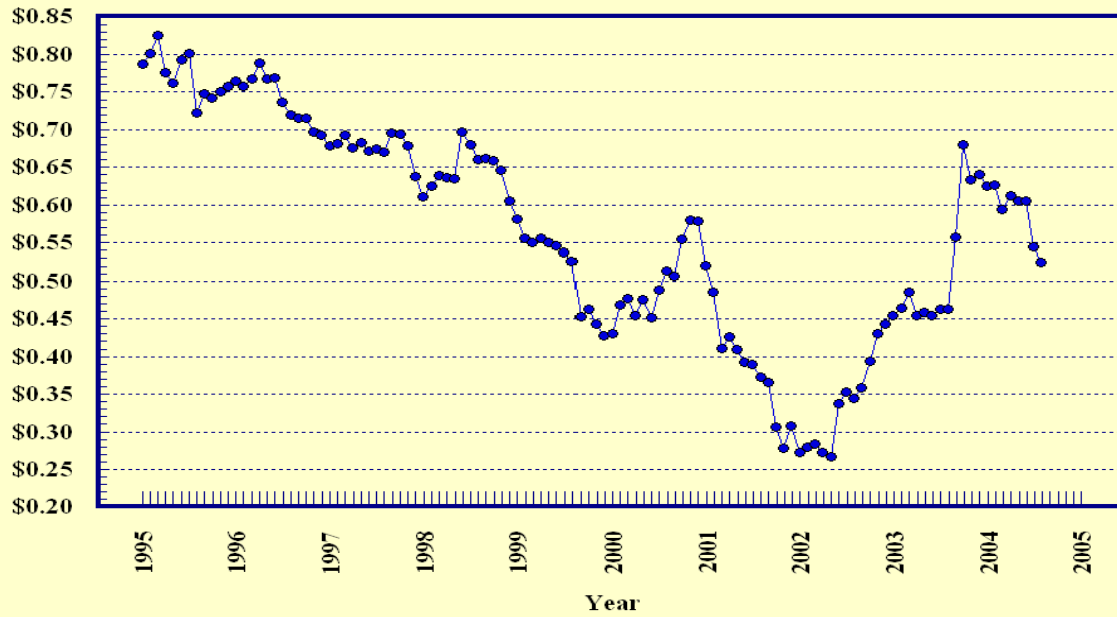


Prices Received, Wheat, US



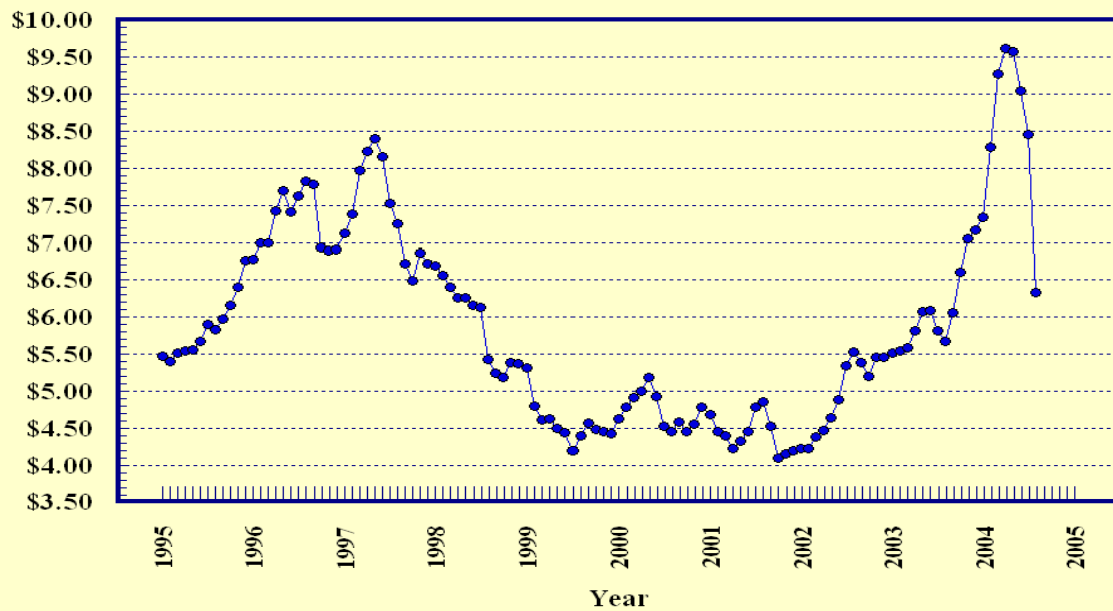
Prices Received, Cotton, US

Dollars per Lb



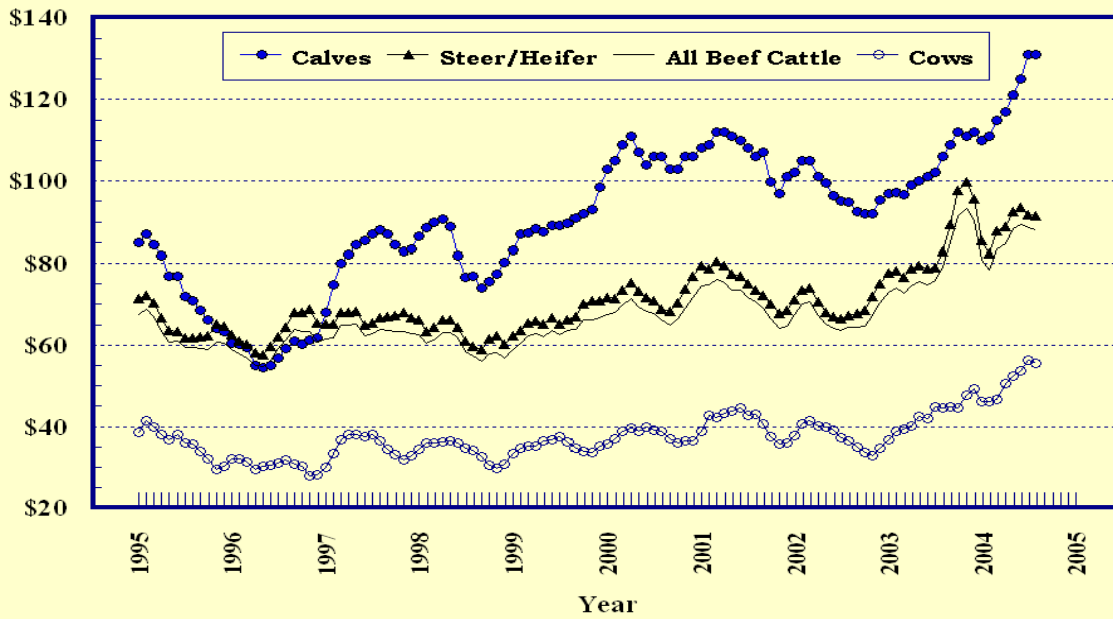
Prices Received, Soybeans, US

Dollars per Bu



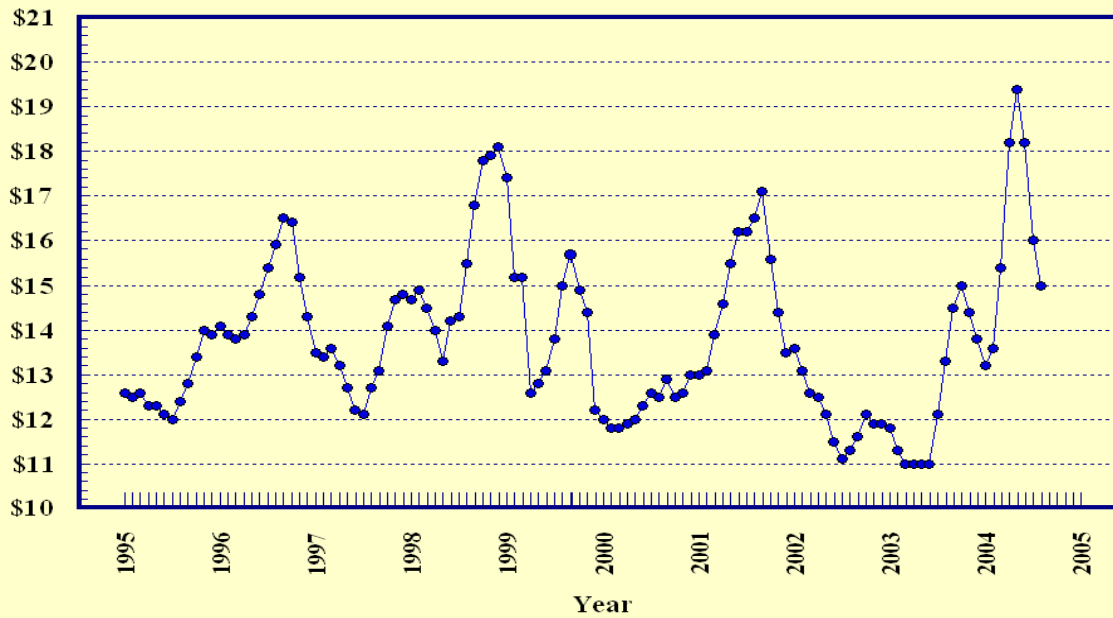
Prices Received, Cattle, US

Dollars per Cwt



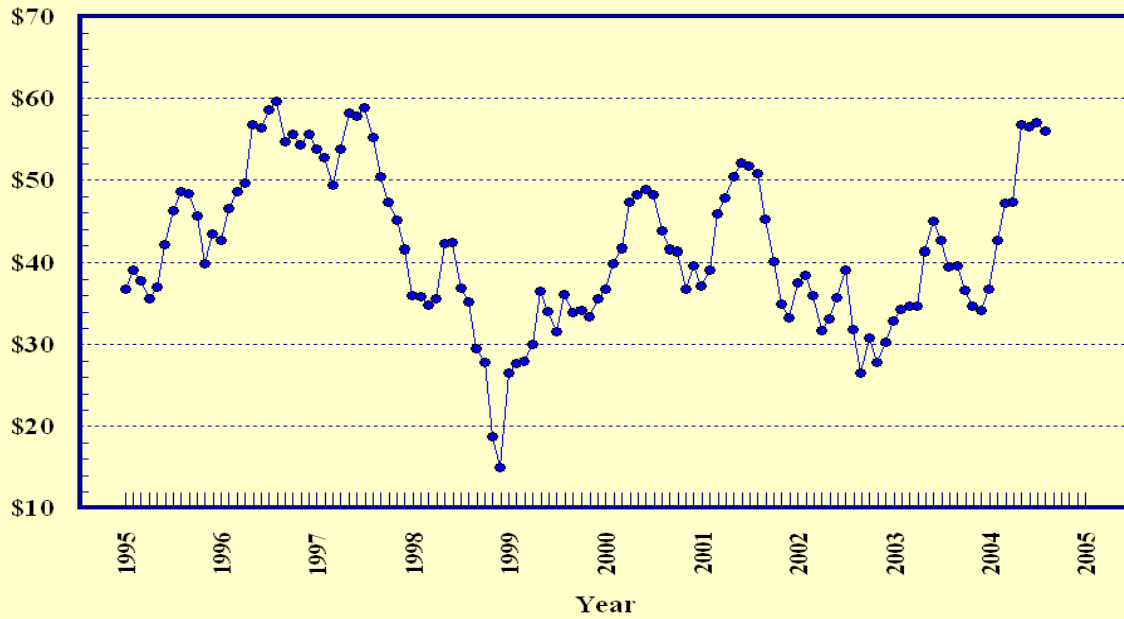
Prices Received, Milk, US

Dollars per Cwt



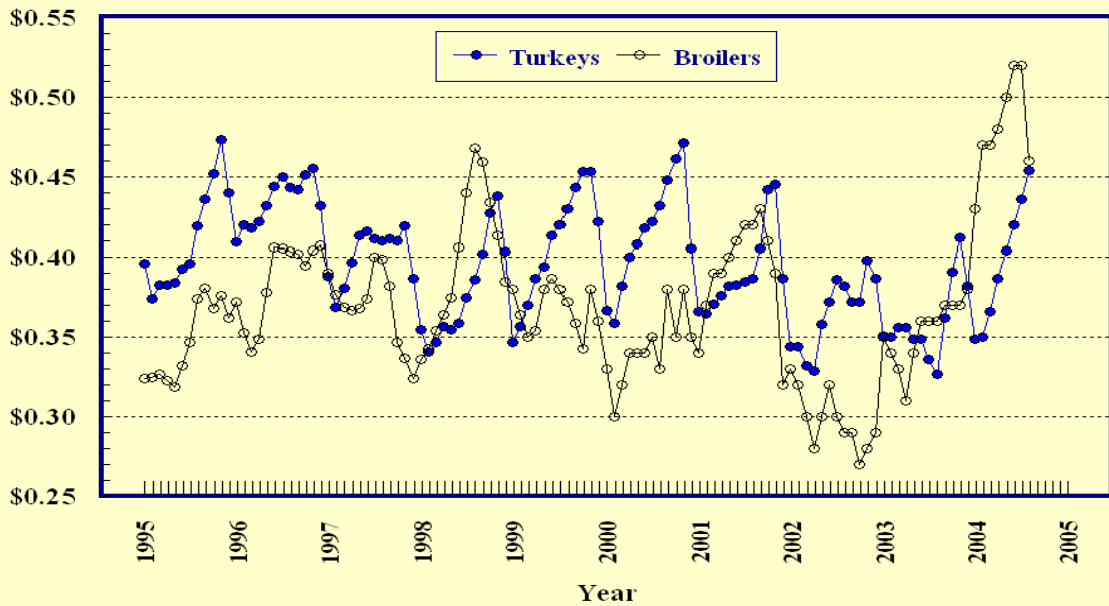
Prices Received, Hogs, US

Dollars per Cwt



Prices Received, Turkeys & Broilers, US

Dollars per Lb



Wheat: Prices Received, by States, July and August 2004

State	All Wheat		Winter Wheat		Durum Wheat		Oth Spring Wheat	
	Jul ¹	Aug ²	Jul ¹	Aug ²	Jul ¹	Aug ²	Jul ¹	Aug ²
	<i>Dollars per Bushel</i>	<i>Dollars per Bushel</i>	<i>Dollars per Bushel</i>	<i>Dollars per Bushel</i>	<i>Dollars per Bushel</i>	<i>Dollars per Bushel</i>	<i>Dollars per Bushel</i>	<i>Dollars per Bushel</i>
AR	3.37	2.90	3.37	2.90				
CA	3.76	3.15	3.56	3.14	4.26	(³)		
CO	3.32	2.85	3.32	2.85			(⁴)	(⁴)
ID	3.80	3.50	3.78	3.45			3.85	3.60
IL	3.24	3.00	3.24	3.00				
IN	3.29	2.74	3.29	2.74				
KS	3.32	2.89	3.32	2.89				
MI	3.05	2.75	3.05	2.75				
MN	3.61	3.38	3.16	3.04			3.61	3.38
MO	3.25	2.90	3.25	2.90				
MT	3.87	3.41	3.66	2.94	4.22	3.88	3.85	3.41
NE	3.36	3.10	3.36	3.10				
ND	3.51	3.19	3.53	2.85	3.91	3.80	3.38	3.05
OH	3.29	3.03	3.29	3.03				
OK	3.32	2.95	3.32	2.95				
OR	3.83	3.52	3.76	3.50			4.13	3.60
SD	3.25	2.91	3.22	2.86			3.37	3.07
TX	3.34	2.89	3.34	2.89				
WA	3.68	3.55	3.61	3.51			3.90	3.66
US	3.37	3.13	3.32	3.02	4.11	3.83	3.55	3.24

¹ Entire month.

² Mid-month.

³ Price not published to avoid disclosure of individual firms.

⁴ Insufficient sales to establish a price.

**Prices Received for Selected Agricultural Commodities, by Months,
United States, 2003 and 2004 ¹**

Month	All Wheat		Corn		Soybeans		Beef Cattle ²		All Hogs	
	2003	2004	2003	2004	2003	2004	2003	2004	2003	2004
	<i>Dollars per Bushel</i>	<i>Dollars per Bushel</i>	<i>Dollars per Bushel</i>	<i>Dollars per Bushel</i>	<i>Dollars per Bushel</i>	<i>Dollars per Bushel</i>	<i>Dollars per Cwt</i>	<i>Dollars per Cwt</i>	<i>Dollars per Cwt</i>	<i>Dollars per Cwt</i>
Jan	3.89	3.68	2.33	2.39	5.51	7.34	72.90	80.90	32.90	36.80
Feb	3.70	3.77	2.34	2.61	5.55	8.28	73.90	78.50	34.30	42.60
Mar	3.55	3.83	2.33	2.75	5.59	9.27	72.60	83.40	34.70	47.20
Apr	3.37	3.88	2.34	2.89	5.82	9.62	74.50	84.80	34.80	47.40
May	3.33	3.82	2.38	2.87	6.07	9.57	75.50	88.40	41.30	56.80
Jun	3.08	3.57	2.34	2.79	6.09	9.05	74.90	89.50	45.00	56.60
Jul	2.95	3.37	2.17	2.51	5.82	8.46	75.80	88.50	42.70	57.10
Aug	3.35	3.13	2.15	2.27	5.68	6.34	79.30	88.10	39.60	56.00
Sep	3.39		2.20		6.06		84.90		39.70	
Oct	3.44		2.12		6.61		91.50		36.70	
Nov	3.61		2.20		7.05		93.40		34.70	
Dec	3.68		2.32		7.17		90.40		34.20	

¹ Current month prices are mid-month; prices for previous months are for the entire month.

² Cows, steers and heifers.

Grains: Prices Received, by States, July and August 2004

Month	Barley ¹		Corn		Oats		Soybeans		Sorghum Grain	
	Jul ²	Aug ³	Jul ²	Aug ³	Jul ²	Aug ³	Jul ²	Aug ³	Jul ²	Aug ³
	<i>Dollars per Bushel</i>	<i>Dollars per Bushel</i>	<i>Dollars per Bushel</i>	<i>Dollars per Bushel</i>	<i>Dollars per Bushel</i>	<i>Dollars per Bushel</i>	<i>Dollars per Bushel</i>	<i>Dollars per Bushel</i>	<i>Dollars per Cwt</i>	<i>Dollars per Cwt</i>
AL							8.25	5.90	(⁴)	3.70
AR										
CA	2.84	2.50								
CO	2.19	(⁴)	2.90	2.65						
ID	3.27	3.26								
IL			2.49	2.30	1.46	1.40	8.36	6.30	(⁴)	3.75
IN			2.59	2.27			8.90	6.20		
IA			2.48	2.15	1.40	1.40	8.58	6.45		
KS			2.67	2.34			8.40	6.06	3.44	3.30
KY			2.71	2.30			8.71	5.90		
LA							(⁴)	(⁴)		
MI			2.42	2.20	1.66	1.50	8.24	6.30		
MN	2.45	2.38	2.47	2.30	1.30	1.21	8.38	6.65		
MS							8.25	6.20		
MO			2.58	2.25			8.37	6.20	3.80	3.55
MT	1.92	1.79			(⁴)	(⁵)				
NE			2.57	2.35	1.23	1.20	7.91	6.30	3.84	3.55
NC			3.08	2.64			7.56	6.52		
ND	2.42	2.09	2.51	2.20	1.18	1.10	7.51	5.80		
OH			2.54	2.41	1.77	(⁵)	8.51	6.30		
OK									3.81	3.55
OR	2.26	2.00			(⁴)	(⁴)				
PA			2.98	2.86	1.74	1.70				
SD	2.41	1.91	2.28	2.12	1.29	1.25	8.03	6.13		
TN			2.73	2.40			7.62	5.90		
TX			2.52	2.51	(⁴)				4.32	4.05
UT	2.42	2.17								
WA	2.38	2.09								
WI			2.59	2.20	1.51	1.35	8.58	6.10		
WY	1.92	3.44								
US	2.54	2.45	2.51	2.27	1.37	1.31	8.46	6.34	4.27	3.87

¹ The Three-State (MN, ND and SD) Feed Barley price for August 2004 is \$1.47.

² Entire month.

³ Mid-month.

⁴ Price not published to avoid disclosure of individual firms.

⁵ Insufficient sales to establish a price.

**Malting and Feed Barley: Prices Received Selected States,
July and August 2004**

State	Malting Barley		Feed Barley	
	Jul ¹	Aug ²	Jul ¹	Aug ²
	<i>Dollars per Bushel</i>	<i>Dollars per Bushel</i>	<i>Dollars per Bushel</i>	<i>Dollars per Bushel</i>
ID	3.37	3.35	2.50	2.40
MN	(³)	(³)	1.93	1.93
MT	(³)	2.28	1.91	1.77
ND	2.54	2.30	1.86	1.45
SD	2.41	1.91	(⁴)	(⁴)
WY	(⁴)	(³)	1.92	1.85

¹ Entire month.

² Mid-month.

³ Price not published to avoid disclosure of individual firms.

⁴ Insufficient sales to establish a price.

Field Crops: Prices Received, by States, July and August 2004

State	Dry Edible Beans		All Sunflower		Flaxseed		Tobacco		Peanuts ⁴	
	Jul ¹	Aug ²	Jul ¹	Aug ²	Jul ¹	Aug ²	Jul ¹	Aug ³	Jul ¹	Aug ³
	<i>Dollars per Cwt</i>	<i>Dollars per Cwt</i>	<i>Dollars per Cwt</i>	<i>Dollars per Cwt</i>	<i>Dollars per Bushel</i>	<i>Dollars per Bushel</i>	<i>Dollars per Pound</i>	<i>Dollars per Pound</i>	<i>Dollars per Pound</i>	<i>Dollars per Pound</i>
AL									(⁵)	(⁵)
CA	35.80	39.00								
CO	19.70	19.10								
FL							1.655	1.710	(⁶)	(⁶)
GA							1.690	1.730	(⁵)	(⁶)
ID	20.20	19.90								
IN							(⁶)	(⁶)		
KS			(⁵)	(⁵)						
KY							(⁶)	(⁶)		
MD							(⁶)	(⁶)		
MI	20.90	20.00								
MN	19.10	19.20	14.30	(⁵)						
MO										
NE	17.30	16.90								
NC							(⁵)	1.710	(⁶)	(⁶)
ND	17.90	17.60	13.60	14.00	7.33	6.90				
OH							(⁶)	(⁶)		
OK										
SC							(⁶)	1.710		
SD			12.40	11.60	(⁶)	(⁶)				
TN							(⁶)	(⁶)		
TX									(⁵)	(⁵)
VA							(⁵)	1.690	(⁶)	(⁶)
WV										
US	19.30	20.00	13.30	13.00	7.33	6.90	1.700	1.715	0.174	(⁶)

¹ Entire month.

² Mid-month.

³ Based on sales through first half of month.

⁴ In-Shell.

⁵ Price not published to avoid disclosure of individual firms.

⁶ Insufficient sales to establish a price.

Tobacco: Prices Received, by Area and Type, August 2004, with Comparisons

Class by Type	Type	Aug 2003	Jul 2004	Aug 2004 ¹
Dollars per Pound				
Flue-cured				
Northern Auction Area ²	11-12	1.775	(⁵)	1.615
Northern Contract Area ²	11-12	1.810	(⁴)	1.735
Southern Auction Area ³	13-14	1.785	(⁵)	1.575
Southern Contract Area ³	13-14	1.840	1.680	1.745
Total Flue-cured Area	11-14	1.805	1.700	1.715
US	11-37	1.805	1.700	1.715

¹ Based on sales during the first half of the month.

² Consists of Eastern NC Belt, Old and Middle Belts of NC and VA.

³ Consists of GA-FL Belt, SC Belt, and NC Border Belt.

⁴ Price not published to avoid disclosure of individual firms.

⁵ Insufficient sales to establish a price.

Field Crops and Apples: Prices Received, by States, July and August 2004

State	Cotton, Upland		August				Apples Fresh Use ^{1 4} <i>Dol/Lb</i>
	Jul ¹	Aug ²	Cotton- seed ⁵ <i>Dollars per Ton</i>	Hay, Baled ³			
				All <i>Dollars per Ton</i>	Alfalfa <i>Dollars per Ton</i>	Other <i>Dollars per Ton</i>	
	<i>Dollars per Pound</i>	<i>Dollars per Pound</i>	<i>Dollars per Ton</i>	<i>Dollars per Ton</i>	<i>Dollars per Ton</i>	<i>Dollars per Ton</i>	
AL	(⁶)	(⁶)	(⁷)				
AZ	(⁶)	(⁶)	(⁷)	91.00	90.00	100.00	
AR	0.533	(⁶)	(⁷)				
CA	(⁶)	(⁶)	(⁷)	108.00	109.00	105.00	0.241
CO				85.00	86.00	80.00	
GA	0.585	0.575	(⁷)				
ID				108.00	110.00	65.00	
IL				87.00	91.00	71.00	
IA				81.00	84.00	59.00	
KS				65.00	74.00	52.00	
KY				71.00	100.00	58.00	
LA	0.572	0.555	(⁷)				
MI				95.00	95.00	70.00	0.240
MN				61.00	70.00	48.00	
MS	0.576	0.550	(⁷)				
MO				57.00	96.00	44.00	
MT				76.00	77.00	74.00	
NE				50.00	51.00	47.00	
NV				102.00	101.00	123.00	
NM				117.00	120.00	98.00	
NY				98.00	110.00	81.00	(⁷)
NC	0.565	0.453	(⁷)				
ND				58.00	64.00	49.00	
OH				101.00	120.00	59.00	0.330
OK				73.00	96.00	54.00	
OR				111.00	115.00	98.00	
PA				129.00	145.00	114.00	0.202
SD				59.00	62.00	47.00	
TN	0.480	0.515	(⁷)				
TX	0.432	0.479	99.00	77.00	135.00	62.00	
UT				87.00	87.00	80.00	
VA							0.290
WA				104.00	100.00	125.00	0.286
WI				70.00	75.00	50.00	
WY				71.00	72.00	66.00	
US	0.545	0.525	99.00	89.80	97.40	70.00	0.273

¹ Entire month.

² Based on sales during the first half of the month.

³ Mid-month.

⁴ Equivalent packinghouse-door returns for CA, NY, and WA. Price at point of first sale for other States.

⁵ Marketing year August - February.

⁶ Price not published to avoid disclosure of individual firms.

⁷ Insufficient sales to establish a price.

**Upland Cotton and Rice: Prices Received and Marketings,
United States, August 2004, with Comparisons**

Item	Unit	Jun 2004 ¹	Jul 2004 ¹	Aug 2004 ²
Cotton, Upland				
Average Price	Dollars per Pound	0.605	0.545	0.525
Marketings ³	1,000 Bales	403	418	NA
Rice				
Average Price	Dollars per Cwt	8.69	8.79	8.49
Marketings ⁴	1,000 Cwt	10,277	9,202	NA

¹ Entire month.

² Based on purchases for the first half of the month.

³ Expanded data from sample of about 65 percent of buyers.

⁴ Purchases by private firms and rice (rough equivalent) shipped by cooperatives.

**Citrus Fruit: Prices and Equivalent Returns, by Utilization,
by State and United States, August 2004**

Commodity, State and Type	F.O.B. Packed Fresh	Equivalent Returns ¹					
		Packinghouse-door			On-tree		
		All	Fresh	Process	All	Fresh	Process
	<i>Dollars per Box</i>	<i>Dollars per Box</i>	<i>Dollars per Box</i>	<i>Dollars per Box</i>	<i>Dollars per Box</i>	<i>Dollars per Box</i>	<i>Dollars per Box</i>
Grapefruit							
CA	19.60	10.00	13.09	-0.27	7.68	10.77	-2.59
US	19.60	10.00	13.09	-0.27	7.68	10.77	-2.59
Lemons							
CA	35.80	19.05	25.70	0.20	14.70	21.35	-4.15
US	35.80	19.05	25.70	0.20	14.70	21.35	-4.15
Oranges							
CA	20.50	12.77	13.44	0.32	10.28	10.95	-2.17
Valencia	20.50	12.77	13.44	0.32	10.28	10.95	-2.17
US	20.50	12.77	13.44	0.32	10.28	10.95	-2.17

¹ Net lbs. per box: Grapefruit - AZ & CA-67, FL-85, TX-80; Lemons - 76; Oranges - AZ & CA-75, FL-90, TX-85; Tangelos - 90; Tangerines - AZ, CA-75, FL-95; Temples - 90.

Potatoes: Prices Received, by States, July and August 2004

State	Jul	Aug	State	Jul	Aug
	<i>Dollars per Cwt</i>	<i>Dollars per Cwt</i>		<i>Dollars per Cwt</i>	<i>Dollars per Cwt</i>
AL	12.00	7.90	NC	5.80	
AZ			ND - All ¹	5.60	
CA - All	12.80	13.30	- Fresh ²		NA
- Winter			- Processing	5.60	NA
- Spring	12.70		OH	10.50	8.85
- Summer	13.30	13.30	OR	5.45	5.90
- Fall			PA	7.60	7.30
CO - All ¹	3.50		TX	8.95	8.50
- Fresh ²	3.80	NA	VA	8.30	
FL			WA - All	5.55	6.40
ID - All ¹	4.00	4.40	- Processing	6.20	NA
- Fresh ²	3.50	NA	WI - All ¹		6.00
- Processing	4.30	NA	- Fresh ²		NA
ME	7.05		- Processing		NA
MI	7.35	5.50			
MN	4.75	6.50	US - All ¹	5.91	6.31
NY			- Fresh ²	7.92	NA
			- Processing	5.07	NA

¹ Average price of potatoes sold for all uses, including table stocks, processing, seed and livestock feed.

² Fresh market prices only, includes table stock prices.

Cattle: Prices Received, by States, July and August 2004

State	Cows ¹		Steers & Heifers		Beef Cattle ⁴		Calves	
	Jul ²	Aug ³	Jul ²	Aug ³	Jul ²	Aug ³	Jul ²	Aug ³
	<i>Dollars per Cwt</i>	<i>Dollars per Cwt</i>	<i>Dollars per Cwt</i>	<i>Dollars per Cwt</i>	<i>Dollars per Cwt</i>	<i>Dollars per Cwt</i>	<i>Dollars per Cwt</i>	<i>Dollars per Cwt</i>
AZ	52.20	54.30	106.00	106.00	105.00	105.00	125.00	131.00
AR	52.20	51.80	107.00	108.00	90.60	91.10	125.00	124.00
CA	53.70	53.80	93.50	92.50	75.20	73.90	112.00	112.00
CO	61.00	56.90	113.00	115.00	112.00	114.00	145.00	140.00
FL	54.30	54.10	99.20	104.00	67.80	70.10	127.00	132.00
GA	54.40	54.00	104.00	104.00	71.30	71.00	126.00	126.00
ID	53.00	53.20	92.20	91.20	83.20	84.40	129.00	127.00
IL	52.20	53.20	85.00	86.00	84.30	85.30	118.00	125.00
IA	57.00	53.20	83.70	84.00	83.20	83.40	116.00	114.00
KS	57.20	56.20	83.30	83.50	83.00	83.20	147.00	143.00
KY	54.00	52.00	105.00	107.00	92.80	93.80	120.00	123.00
LA	53.30	52.00	104.00	105.00	70.50	71.60	122.00	123.00
MI	55.00	55.00	79.00	77.00	71.80	70.40	117.00	120.00
MN	61.00	59.00	83.70	83.00	78.90	78.00	117.00	120.00
MO	57.40	56.00	117.00	119.00	102.00	105.00	141.00	134.00
MT	59.10	57.90	114.00	110.00	97.00	101.00	128.00	137.00
NE	60.70	57.60	90.60	90.80	89.70	89.80	138.00	136.00
NM	59.00	58.60	111.00	114.00	90.20	92.90	129.00	131.00
ND	57.60	57.00	100.00	99.00	69.50	71.70	139.00	140.00
OH	50.20	52.00	83.50	80.00	80.20	77.20	107.00	110.00
OK	58.00	55.70	114.00	116.00	106.00	107.00	133.00	134.00
OR	52.00	52.50	101.00	100.00	86.30	85.80	110.00	107.00
PA	53.40	53.80	83.00	81.50	75.30	74.30	110.00	113.00
SD	58.30	57.10	94.60	95.00	85.50	88.90	125.00	131.00
TN	52.00	51.00	107.00	108.00	85.00	85.20	120.00	120.00
TX	54.10	53.40	92.60	92.70	89.90	89.90	132.00	135.00
VA	53.00	51.40	105.00	103.00	86.80	87.00	117.00	118.00
WI	57.30	57.10	85.00	85.70	68.90	69.10	141.00	147.00
WY	59.50	59.00	116.00	113.00	111.00	108.00	138.00	140.00
US	56.30	55.50	91.80	91.50	88.50	88.10	131.00	131.00

¹ Beef cows and cull dairy cows sold for slaughter.

² Entire month.

³ Mid-month.

⁴ "Cows" and "steers and heifers" combined.

Hogs: Prices Received, by States, July and August 2004

State	Sows		Barrows and Gilts		All Hogs	
	Jul ¹	Aug ²	Jul ¹	Aug ²	Jul ¹	Aug ²
	<i>Dollars per Cwt</i>	<i>Dollars per Cwt</i>	<i>Dollars per Cwt</i>	<i>Dollars per Cwt</i>	<i>Dollars per Cwt</i>	<i>Dollars per Cwt</i>
AR	50.80	50.10	55.80	55.60	55.30	55.10
IL	48.00	47.00	59.00	54.00	58.10	53.40
IN	54.30	54.60	56.60	56.30	56.40	56.10
IA	54.20	53.60	59.10	58.30	59.00	58.20
KS	51.80	50.90	56.10	55.70	55.60	55.10
MI	47.00	47.00	55.00	54.50	54.40	53.90
MN	51.80	51.00	57.00	56.50	56.90	56.40
MO	49.70	49.80	53.70	53.20	53.30	52.80
NE	50.60	50.50	59.00	58.50	58.80	58.30
NC	50.10	49.60	57.80	54.90	57.70	54.80
OH	49.40	47.00	57.70	56.00	57.20	55.50
OK	49.10	47.50	52.20	50.30	51.70	49.90
PA	46.70	43.70	55.10	54.20	53.80	52.60
SD	47.20	48.00	59.40	59.00	57.60	57.50
TX	40.80	42.50	54.30	54.00	51.60	52.50
WI	47.00	45.00	54.30	52.10	53.40	51.20
US	49.20	49.40	57.50	56.30	57.10	56.00

¹ Entire month.

² Mid-month.

Sheep and Poultry: Prices Received, by States, July and August 2004

State	July		August
	Sheep ¹	Lambs ¹	Eggs ^{2 3}
	<i>Dollars per Cwt</i>	<i>Dollars per Cwt</i>	<i>Dollars per Dozen</i>
AL			0.330
AR			0.330
CA	28.50	89.00	0.380
CO	43.70	109.00	
CT			0.480
FL			0.370
GA			0.341
ID	39.00	100.00	
IN			0.300
IA	43.60	95.00	0.290
KS	32.00	95.00	
ME			0.540
MI			0.350
MN	30.00	95.20	0.340
MS			0.330
MO			0.290
MT	37.20	112.00	
NE	37.60	99.20	
NY			0.400
NC			0.320
ND	32.00	103.00	
OH	37.20	93.80	0.319
OR	36.00	95.00	
PA			0.370
SC			0.340
SD	39.50	109.00	
TX	40.10	109.00	0.290
UT	33.00	103.00	
WA			0.390
WY	40.90	107.00	
US	37.40	102.00	0.334

¹ Entire month.

² Mid-month.

³ Market (table) eggs.

Milk and Milk Cows: Prices Received, by States, July and August 2004

State	July ¹						August		
	Fluid Grade Milk ²		Manufacturing Grade Milk		All Milk ³		All Milk ^{3 4}		Milk Cows ⁵
	Price	Fat Test	Price	Fat Test	Price	Fat Test	Price	Fat Test	
	<i>Dol/Cwt</i>	<i>Percent</i>	<i>Dol/Cwt</i>	<i>Percent</i>	<i>Dol/Cwt</i>	<i>Percent</i>	<i>Dol/Cwt</i>	<i>Percent</i>	<i>Dol/Head</i>
AZ	16.40	3.58			16.40	3.58	14.60	3.59	
CA	13.60	3.58	13.80	3.80	13.60	3.58	13.30	3.61	
FL	22.10	3.57			22.10	3.57	18.80	3.59	
ID	13.90	3.47	13.60	3.68	13.90	3.47	13.20	3.50	
IL	16.60	3.57	15.80	3.54	16.60	3.57	15.60	3.60	
IN	16.50	3.55	15.00	3.53	16.40	3.55	15.10	3.55	
IA	16.70	3.59	15.50	3.59	16.70	3.59	16.00	3.63	
KY	19.00	3.51			19.00	3.51	17.30	3.52	
MI	16.90	3.51	14.20	3.52	16.90	3.51	15.40	3.51	
MN	16.00	3.65	14.20	3.59	15.90	3.65	15.00	3.65	
MO	18.00	3.55	15.00	3.62	17.90	3.55	15.90	3.55	
NM	15.50	3.43			15.50	3.43	15.00	3.44	
NY	17.70	3.55			17.70	3.55	15.60	3.54	
OH	16.90	3.55	14.10	3.63	16.80	3.55	16.00	3.55	
PA	18.70	3.55	15.00	3.60	18.70	3.55	17.10	3.55	
TX	16.70	3.59			16.70	3.59	16.00	3.60	
VT	17.40	3.55			17.40	3.55	16.00	3.55	
VA	18.70	3.50			18.70	3.50	17.30	3.50	
WA	16.30	3.59			16.30	3.59	14.90	3.60	
WI	16.40	3.62	14.30	3.65	16.30	3.62	15.80	3.64	
US	16.00	3.57	14.30	3.65	16.00	3.57	15.00	3.58	

¹ Entire month.

² Including milk diverted to manufacturing.

³ Before deductions for hauling. Includes quality, quantity, and other premiums. Excludes hauling subsidies.

⁴ Preliminary.

⁵ Animals sold for dairy herd replacement only. Prices published January, April, July and October.

**Parity Price Equivalent for Manufacturing Milk ¹: United States,
July and August 2004, with Comparisons**

Item	Unit	Aug 2003	Jul 2004	Aug 2004
Parity Equivalent	Dollars per Cwt	30.19	31.64	31.91
Average Price F.O.B ²	Dollars per Cwt	13.20	14.30	13.90
Average Fat Test of Milk ²	Percent	3.62	3.65	3.70

¹ The parity price equivalent during 2004 is 90.4 percent of the parity price of all milk sold to plants, compared with 90.4 percent in 2003. For additional details, see January 2004 issue of "Agricultural Prices".

² Preliminary for August 2004.

**United States Parity Prices for Farm Products and Average Prices Received as
Percent of Parity Prices Based on Data for August 2004, with Comparisons ¹**

Commodity and Unit	Adjusted Base Prices	Parity Prices Based on Data for			Prices as Percent of Parity		
		Aug 2003	Jul 2004	Aug 2004	Aug 2003	Jul 2004	Aug 2004
	<i>Dollars</i>	<i>Dollars</i>	<i>Dollars</i>	<i>Dollars</i>	<i>Percent</i>	<i>Percent</i>	<i>Percent</i>
Basic Commodities							
All Wheat, Bu	0.564	9.64	10.00	10.10	35	34	31
Rice, Cwt	1.63	26.40	29.00	29.20	21	30	29
Corn, Bu	0.379	6.59	6.74	6.79	33	37	33
Cotton, Lb							
American Upland	0.113	1.69	2.01	2.02	27	27	26
Extra Long Staple	0.144	2.37	2.56	2.58			
Peanuts, Lb	0.0370	0.657	0.658	0.663		26	
Tobacco, By Type, Lb							
Flue-Cured 11-14	0.259	4.34	4.61	4.64	42	37	37
VA Fire-Cured, 21	0.257	4.39	4.57	4.61			
KY-TN Fire-Cured, 22-23	0.322	5.42	5.73	5.77			
Burley, 31	0.277	4.66	4.93	4.96			
Maryland, 32	0.215	3.69	3.82	3.85			
Dark Air-Cured, 35-36	0.282	4.68	5.01	5.05			
Sun-Cured, 37	0.246	4.12	4.37	4.41			
PA Seedleaf, 41	0.206	3.37	3.66	3.69			
Cigar Filler & Binder, 42-44, 54-55	0.225	3.74	4.00	4.03			
Puerto Rican Filler, 46	0.162	2.76	2.88	2.90			
Cigar Binder, 51-52	0.736	12.20	13.10	13.20			
Designated Nonbasic							
All Milk, Sold to Plants, Per Cwt ²	1.97	33.40	35.00	35.30	38	47	42
Honey, Extracted, Lb ³	0.1050	1.59	1.87	1.88			
Wool and Mohair							
Wool, Lb	0.0880	1.54	1.56	1.58			
Mohair, Lb	0.334	5.51	5.94	5.99			
Other Nonbasic							
Barley, Bu	0.376	6.52	6.69	6.74	45	38	36
Cottonseed, Ton	15.80	264.00	281.00	283.00			35
Dry Edible Beans, Cwt	2.92	50.30	51.90	52.30	36	37	38
Flaxseed, Bu	0.728	11.90	12.90	13.00	45	57	53
Oats, Bu	0.221	4.12	3.93	3.96	34	35	33
Potatoes, Cwt	0.854	13.80	15.20	15.30	42	39	41
Rye, Bu	0.353	5.81	6.28	6.33			
Sorghum Grain, Cwt	0.616	11.10	11.00	11.00	35	39	35
Soybeans Bu	0.892	14.40	15.90	16.00	39	53	40
Sweetpotatoes, Cwt	2.25	37.10	40.00	40.30			
Apples, Fresh, Lb ⁴	0.0296	0.486	0.526	0.530	71	56	52
Citrus (equiv on-tree), Box							
Grapefruit	0.387	6.57	6.88	6.94	110	137	111
Lemons	1.10	18.60	19.60	19.70	60	84	75
Oranges	0.618	9.66	11.00	11.10	44	89	93
Tangerines	1.42	24.70	25.20	25.40			
Temples (FL)	0.451	7.84	8.02	8.08			
Beef Cattle, Cwt	9.55	160.00	170.00	171.00	50	52	52
Calves, Cwt	12.80	215.00	228.00	229.00	49	57	57
Hogs, Cwt	5.91	102.00	105.00	106.00	39	54	53
Lambs, Cwt	11.30	185.00	201.00	202.00	48	51	
Sheep, Cwt	4.70	78.80	83.60	84.20	37	45	
Eggs, Doz ²	0.0949	1.58	1.69	1.70	56	38	31
Turkeys, Live, Lb	0.0574	0.981	1.020	1.030	33	43	44

--continued

Parity Prices Based on Data for August 2004, United States ¹ (continued)

Other Nonbasic Commodities	Adj Base Prices	Parity Prices	Other Nonbasic Commodities	Adj Base Prices	Parity Prices
	<i>Dollars</i>	<i>Dollars</i>		<i>Dollars</i>	<i>Dollars</i>
Field Crops and Misc Commodities			Noncitrus Fruit		
Hops, Lb	0.256	4.59	Peaches, cont.		
Spearmint Oil, Lb	1.53	27.40	Processing ⁵		
Tobacco, Lb			Excl Dried		
Type 61	2.51	45.00	Clingstone, CA, Ton	32.80	588.00
Noncitrus Fruit			Pears, Ton		
Apples, Ton ⁶			Fresh ⁴	51.60	925.00
Processing	17.90	321.00	Dried, CA ⁶	166.00	2,970.00
Apricots, Ton			Plums, CA, Ton		
Fresh ⁷	99.70	1,790.00	Fresh, Equiv on-Tree	57.40	1,030.00
Dried, CA	273.00	4,890.00	Prunes, Dried, CA, Ton ⁶	129.00	2,310.00
Avocados, Ton ⁷	238.00	4,260.00	Prunes and Plums, Excl CA, Ton		
Cherries Bbl			Fresh ⁹	56.90	1,020.00
Sweet, Ton	184.00	3,300.00	Processing ⁶		
Tart, Lb	0.0267	0.478	Excl Dried	26.30	471.00
Cranberry, Bbl ⁵	5.92	106.00	Tree Nuts ¹⁰		
Dates, CA, Ton ⁷	170.00	3,050.00	Almonds, Lb	0.204	3.66
Grapes, Ton			Hazelnuts, Ton	130.00	2,330.00
Raisin Variety	121.00	2,170.00	Pistachio, Lb	0.159	2.85
Other Dried	44.20	792.00	Walnuts, Ton	176.00	3,150.00
Kiwifruit, Ton	80.80	1,450.00	Vegetables, Cwt ¹¹		
Nectarines			Fresh		
Fresh, CA, Ton ⁷	63.00	1,130.00	Carrots ⁸	2.21	39.60
Olives, CA			Cauliflower ⁸	4.55	81.50
canning, Ton ⁵	95.50	1,710.00	Celery ⁸	1.98	35.50
Papayas (HA)	0.0520	0.932	Honeydew Melons	2.79	50.00
Peaches			Lettuce	2.50	44.80
Fresh, Lb ⁴	0.0408	0.731	Onions ⁸	1.68	30.10
Dried, CA, Ton	92.50	1,660.00	Tomatoes	4.39	78.70

¹ Parity prices are computed under the provisions of Title III, Subtitle a, Section 301 (a) of the Agricultural Adjustment Act of 1938 as amended by the Agricultural Acts of 1948, 1949, and 1956. See January "Agricultural Prices" for details on adjusted base price and parity price computations.

² Seasonally adjusted price as percentage of parity price.

³ Wholesale extracted. Adjusted base price derived from state annual averages prices weighted by production. For 1982 through 1985 the national averages are the support prices.

⁴ Equivalent packinghouse-door returns for CA, NY (apples only), OR (except peaches), and WA. Price at point of first sale for other states.

⁵ Equivalent returns for bulk fruit at first delivery point.

⁶ Equivalent returns at processing plant door.

⁷ Equivalent returns at packinghouse door.

⁸ Includes some processing.

⁹ Based on "as sold" prices for fresh fruit in all states.

¹⁰ Prices in-shell basis except almonds which are shelled basis.

¹¹ F.O.B. shipping point prices.

Marketing Year for Specified Commodities

Barley: June 1 to May 31 for U.S.; June 1 to May 31 for Arizona, California, Delaware, Kentucky, Maryland, New Jersey, North Carolina, Pennsylvania, Virginia; August 1 to July 31 for Alaska, Maine; July 1 to June 30 for all other states.

Hay: April 1 to May 31 for U.S.; April 1 to March 31 for Arizona; May 1 to April 30 for Alabama, Arkansas, California, Colorado, Florida, Georgia, Kansas, Kentucky, Louisiana, Mississippi, Missouri, Nevada, New Mexico, North Carolina, Oklahoma, Pennsylvania, South Carolina, Tennessee, Texas, Utah, and Virginia; June 1 to May 31 for all other States.

Oats: June 1 to May 31 for U.S.; May 1 to April 30 for Georgia and Texas; June 1 to May 31 for North Carolina, Oklahoma, and South Carolina; August 1 to July 31 for Maine and New York; September 1 to August 31 for Alaska; July 1 to June 30 for all other States.

Peanuts: August 1 to July 31 for U.S. and all States.

Rice: August 1 to July 31 for U.S.; July 1 to June 30 for Louisiana and Texas; August 1 to July 31 for Arkansas and Mississippi; October 1 to September 30 for California; September 1 to August 31 for Missouri.

Wheat: June 1 to May 31 for U.S.; May 1 to April 30 for Alabama, Florida, Georgia, Louisiana, Mississippi, and Texas; June 1 to May 31 for Arizona, Arkansas, California, Delaware, Illinois, Indiana, Kansas, Kentucky, Maryland, Missouri, New Mexico, North Carolina, Oklahoma, South Carolina, Tennessee, and Virginia; July 1 to June 30 for all other States.

**Wheat by Class, Marketing Year Average Prices,
United States, 2002-2003 and 2003-2004**

Year	Class			
	Hard Red Winter	Soft Red Winter	Hard Red Spring	White
	<i>Dollars per Bushel</i>	<i>Dollars per Bushel</i>	<i>Dollars per Bushel</i>	<i>Dollars per Bushel</i>
2003-2004	3.23	3.17	3.63	3.54
2002-2003	3.43	3.08	3.83	3.68

**All Rice: Monthly Prices Received, Monthly Farm Marketing Percentages, and
Marketing Year Average Prices, United States, 2001-2002 through 2003-2004¹**

Month	Prices Received			Farm Marketings ²		
	2001-2002	2002-2003	2003-2004 ⁴	2001-2002	2002-2003	2003-2004 ⁴
	<i>Dollars per Cwt</i>	<i>Dollars per Cwt</i>	<i>Dollars per Cwt</i>	<i>1,000 Cwt</i>	<i>1,000 Cwt</i>	<i>1,000 Cwt</i>
Aug	5.01	3.94	5.47	12,443	10,892	9,681
Sep	4.67	4.09	6.18	9,496	12,313	15,963
Oct	4.39	4.03	6.44	12,415	14,429	19,247
Nov	4.25	4.24	6.99	11,093	12,338	11,750
Dec	4.29	4.46	7.57	11,215	15,059	16,424
Jan ³	4.30	4.66	8.19	16,415	19,860	19,884
Feb	4.16	4.24	7.74	11,694	13,141	12,921
Mar	3.99	4.31	8.01	9,718	14,553	14,046
Apr	3.94	4.61	8.13	11,270	14,502	11,891
May	3.98	4.84	8.27	9,841	10,113	10,473
Jun	3.92	5.43	8.69	8,884	9,691	10,277
Jul	3.81	5.31	8.79	8,288	11,755	9,202
MYA	4.25	4.49	7.49	132,772	158,646	161,759

¹ Marketing year average (MYA) prices are weighted average prices for the U.S. marketing year of August - July.

² Purchases from producers as reported by private firms and rice (rough equivalent) shipped from producers as reported by cooperative mills.

³ Second year.

⁴ Year-to-date prices only. Final monthly and MYA prices will be published in the January 2005 "Agricultural Prices" release.

**Crops: Marketing Year Average Prices Received, by States
and United States, 2002 and 2003**

State	Barley						Oats		Peanuts	
	All		Feed		Malting		2002	2003	2002	2003
	2002	2003	2002	2003	2002	2003				
	<i>Dollars per Bu</i>	<i>Dollars per Bu</i>	<i>Dollars per Bu</i>	<i>Dollars per Bu</i>	<i>Dollars per Bu</i>	<i>Dollars per Bu</i>	<i>Dollars per Bu</i>	<i>Dollars per Bu</i>	<i>Dollars per LB</i>	<i>Dollars per LB</i>
AL									0.164	0.183
AK	3.55	3.55					2.60	2.55		
AZ	2.55	2.84								
CA	2.49	2.77	(¹)	2.77			2.90	2.00		
CO	3.04	3.05	2.26	2.15	(¹)	(¹)	2.90	2.06		
DE	1.35	1.60								
FL									0.178	0.185
GA							2.10	1.70	0.175	0.187
ID	3.04	3.15	2.37	2.34	3.10	3.32	1.80	1.50		
IL							1.77	1.66		
IN							1.85	1.90		
IA							1.78	1.54		
KS	1.85	2.15					1.89	1.45		
KY	1.51	1.80								
ME	1.70	1.30					1.45	1.10		
MD	1.40	1.80								
MI	1.60	1.70					1.80	1.65		
MN	2.62	2.52	1.87	2.15	2.74	2.73	1.65	1.39		
MO							1.85	1.65		
MT	2.86	2.93	2.19	2.09	3.16	3.37	2.02	1.70		
NE	1.85	1.90					2.00	1.53		
NV	3.00	3.30								
NJ	1.60	1.95								
NM									0.190	0.230
NY	1.96	2.09					1.92	1.81		
NC	1.75	1.90					1.90	1.90	0.219	0.229
ND	2.56	2.59	1.89	1.95	2.92	2.78	1.68	1.33		
OH	1.70	1.80					1.76	1.78		
OK							2.10	1.80	0.170	0.183
OR	2.36	2.47	2.36	2.47			2.36	1.98		
PA	1.70	2.13					2.08	1.81		
SC							1.90	1.75	0.167	0.216
SD	2.51	2.37	1.87	1.89	3.21	2.46	1.99	1.43		
TX							1.72	2.20	0.182	0.195
UT	2.42	2.30	2.42	2.30			2.55	2.30		
VA	1.44	1.55							0.233	0.229
WA	2.60	2.66	(¹)	2.63	(¹)	(¹)	1.75	1.63		
WI	1.70	1.90					1.65	1.45		
WY	3.23	3.46	2.09	1.98	(¹)	(¹)	2.20	1.80		
US	2.72	2.83	2.16	2.29	3.01	3.08	1.81	1.48	0.182	0.193

¹ Price estimates not published to avoid disclosure of individual firms.

**Crops: Marketing Year Average Prices Received, by States
and United States, 2002 and 2003 (continued)**

State	Wheat								Rye	
	Winter		Durum		Other Spring		All		2002	2003
	2002	2003	2002	2003	2002	2003	2002	2003		
<i>Dollars per Bu</i>	<i>Dollars per Bu</i>	<i>Dollars per Bu</i>	<i>Dollars per Bu</i>	<i>Dollars per Bu</i>	<i>Dollars per Bu</i>	<i>Dollars per Bu</i>	<i>Dollars per Bu</i>	<i>Dollars per Bu</i>	<i>Dollars per Bu</i>	
AL	3.10	3.20					3.10	3.20		
AZ	3.75	3.90	4.40	4.65			4.35	4.64		
AR	2.90	3.08					2.90	3.08		
CA	3.47	3.42	3.96	4.51			3.61	3.54		
CO	3.63	3.32			3.66	3.85	3.63	3.32		
DE	3.15	3.10					3.15	3.10		
FL	2.40	3.00					2.40	3.00		
GA	2.50	3.05					2.50	3.05	6.00	4.00
ID	3.66	3.38			3.68	3.68	3.67	3.49		
IL	3.01	3.20					3.01	3.20		
IN	3.18	3.21					3.18	3.21		
IA	2.85	2.85					2.85	2.85		
KS	3.41	3.15					3.41	3.15		
KY	3.01	3.17					3.01	3.17		
LA	3.00	3.30					3.00	3.30		
MD	3.15	3.15					3.15	3.15		
MI	3.28	3.25					3.28	3.25		
MN	3.56	3.67	4.00	4.15	3.86	3.66	3.86	3.66		
MS	2.70	3.34					2.70	3.34		
MO	3.03	3.09					3.03	3.09		
MT	3.73	3.56	4.49	4.07	4.08	3.78	4.04	3.73		
NE	3.60	3.22					3.60	3.22		
NV	3.45	3.35			3.60	3.60	3.55	3.45		
NJ	3.10	3.10					3.10	3.10		
NM	3.45	3.30					3.45	3.30		
NY	3.28	2.43					3.28	2.43		
NC	2.75	2.85					2.75	2.85		
ND	3.54	3.01	4.01	3.93	3.74	3.57	3.80	3.63	2.69	2.12
OH	3.16	3.20					3.16	3.20		
OK	3.37	3.31					3.37	3.31	4.00	3.90
OR	3.68	3.66			3.93	3.95	3.72	3.70		
PA	3.40	3.31					3.40	3.31		
SC	2.60	3.00					2.60	3.00		
SD	3.73	3.32	4.20	4.12	3.86	3.58	3.81	3.46	3.35	2.25
TN	2.92	3.17					2.92	3.17		
TX	3.02	3.06					3.02	3.06		
UT	4.60	3.95			5.05	4.55	4.65	4.00		
VA	2.82	2.98					2.82	2.98		
WA	3.78	3.70			4.03	3.95	3.83	3.75		
WV	3.10	3.13					3.10	3.13		
WI	3.05	3.20			3.10	3.55	3.05	3.20		
WY	3.70	3.40			3.90	3.15	3.70	3.40		
Oth Sts ¹									2.81	2.67
US	3.41	3.27	4.05	3.97	3.82	3.62	3.56	3.40	3.38	3.00

¹ Other States include IL, KS, MI, MN, NE, NY, NC, PA, SC, TX, and WI.

**Crops: Marketing Year Average Prices Received, by States
and United States, 2002 and 2003 (continued)**

State	Hay					
	Alfalfa		Other		All	
	2002	2003	2002	2003	2002	2003
	<i>Dollars per Ton</i>	<i>Dollars per Ton</i>	<i>Dollars per Ton</i>	<i>Dollars per Ton</i>	<i>Dollars per Ton</i>	<i>Dollars per Ton</i>
AL			57.00	58.00	57.00	58.00
AK					215.00	225.00
AZ	100.00	89.50	93.50	85.50	99.50	89.00
AR	130.00	132.00	53.00	48.00	60.00	55.50
CA	98.00	93.00	79.50	77.00	95.50	90.50
CO	114.00	85.50	136.00	95.00	116.00	86.00
CT	169.00	170.00	136.00	140.00	143.00	145.00
DE	162.00	162.00	153.00	153.00	158.00	158.00
FL			97.00	90.00	97.00	90.00
GA			57.00	62.00	57.00	62.00
ID	96.50	88.50	74.00	66.50	95.00	87.50
IL	95.00	92.50	72.00	70.00	89.50	87.00
IN	142.00	114.00	86.00	72.00	131.00	105.00
IA	85.00	82.00	58.50	59.50	82.00	79.50
KS	97.00	76.50	72.50	55.50	87.50	68.50
KY	102.00	107.00	59.00	62.50	68.50	73.00
LA			45.00	51.00	45.00	51.00
ME	141.00	145.00	106.00	106.00	109.00	110.00
MD	162.00	128.00	153.00	144.00	156.00	139.00
MA	169.00	175.00	140.00	140.00	147.00	147.00
MI	86.50	97.00	68.00	78.50	84.50	93.00
MN	74.50	71.00	50.00	54.00	67.50	66.50
MS			41.50	42.00	41.50	42.00
MO	111.00	106.00	54.00	52.00	67.50	64.00
MT	85.00	75.00	74.50	68.50	82.50	73.50
NE	85.50	55.00	79.50	50.50	85.00	54.00
NV	101.00	91.50	108.00	111.00	102.00	93.00
NH	170.00	170.00	133.00	135.00	139.00	140.00
NJ	127.00	145.00	101.00	115.00	110.00	125.00
NM	143.00	144.00	117.00	118.00	140.00	142.00
NY	128.00	132.00	87.50	98.00	106.00	113.00
NC	125.00	110.00	80.00	60.00	81.50	61.50
ND	70.00	58.00	49.00	41.00	64.50	52.50
OH	147.00	148.00	73.50	66.50	113.00	121.00
OK	98.00	93.50	55.00	52.00	79.50	67.00
OR	101.00	94.00	97.50	77.50	100.00	88.50
PA	151.00	156.00	122.00	123.00	134.00	137.00
RI	171.00	175.00	139.00	140.00	143.00	145.00
SC			70.00	65.00	70.00	65.00
SD	82.00	63.50	60.50	47.00	78.00	60.50
TN	116.00	110.00	55.00	54.00	56.00	55.00
TX	152.00	151.00	63.00	63.50	77.00	74.00
UT	96.50	82.00	59.00	68.00	94.50	81.50
VT	140.00	140.00	105.00	105.00	112.00	111.00
VA	126.00	111.00	92.50	85.00	97.50	88.50
WA	107.00	86.50	129.00	122.00	111.00	93.50
WV	113.00	103.00	57.00	52.00	63.50	57.50
WI	73.50	83.50	46.50	54.00	70.00	79.00
WY	111.00	80.00	106.00	73.00	110.00	79.00
US	100.00	90.80	73.80	70.90	92.40	85.50

**Prices Received: All Barley, by State and Month,
for Marketing Years, 2002-2003 and 2003-2004 ¹**

State	May	Jun	Jul	Aug	Sept	Oct	Nov
	2003-2004						
	<i>Dollars per Bushel</i>	<i>Dollars per Bushel</i>	<i>Dollars per Bushel</i>	<i>Dollars per Bushel</i>	<i>Dollars per Bushel</i>	<i>Dollars per Bushel</i>	<i>Dollars per Bushel</i>
CA	(³)	2.80	2.70	2.65	(³)	3.03	(³)
CO	2.62	2.21	2.22	3.08	3.09	2.98	3.07
ID	3.11	3.10	2.91	3.20	3.16	2.95	3.12
MN	3.09	(³)	2.35	2.29	2.35	(³)	2.65
MT	2.44	2.26	2.95	3.14	3.03	2.68	2.57
ND	2.91	3.01	2.79	2.59	2.55	2.75	2.73
OR	2.23	2.34	2.36	2.43	2.53	2.48	2.64
SD	3.28	2.83	2.61	2.54	2.23	1.99	2.37
UT	2.54	2.57	2.12	2.25	2.35	2.25	2.28
WA	2.81	2.68	2.74	2.73	2.64	2.61	2.66
WY	2.16	2.11	3.47	3.46	3.49	3.28	3.53
US	2.91	2.99	2.74	2.91	2.88	2.74	2.83
	2002-2003						
CA	(³)	(³)	(³)	(³)	(³)	(⁴)	(⁴)
CO	1.96	(³)	2.67	3.00	3.00	3.20	3.14
ID	2.80	2.74	2.89	3.05	2.97	2.90	3.02
MN	(³)	2.15	1.97	1.75	1.93	2.36	2.11
MT	2.50	2.34	2.61	3.07	2.77	2.77	2.79
ND	1.72	1.70	1.73	2.05	2.10	2.27	2.71
OR	1.98	2.06	2.08	2.30	2.43	2.55	2.54
SD	1.58	1.34	1.58	1.74	1.95	1.84	1.90
UT	2.27	2.34	2.15	2.27	2.46	2.43	2.45
WA	1.82	1.83	2.37	2.29	2.66	2.60	2.70
WY	1.92	1.92	(³)	3.25	3.25	3.26	(³)
US	2.24	2.09	2.14	2.68	2.64	2.64	2.79

See footnote(s) at end of table.

--continued

**Prices Received: All Barley, by State and Month,
for Marketing Years, 2002-2003 and 2003-2004 (continued) ¹**

State	Dec	Jan ²	Feb	Mar	Apr	May	Jun
	2003-2004						
	<i>Dollars per Bushel</i>	<i>Dollars per Bushel</i>	<i>Dollars per Bushel</i>	<i>Dollars per Bushel</i>	<i>Dollars per Bushel</i>	<i>Dollars per Bushel</i>	<i>Dollars per Bushel</i>
CA	(³)	(³)	(⁴)	(³)	(³)	(³)	2.76
CO	2.87	3.03	2.96	(³)	(³)	(³)	(³)
ID	3.28	2.89	3.14	3.22	3.18	3.00	3.32
MN	(³)	(³)	(³)	(³)	(³)	(³)	(³)
MT	3.03	2.52	2.98	3.01	2.86	2.81	2.45
ND	2.63	2.52	2.57	2.48	2.51	2.50	2.48
OR	2.52	2.43	2.47	2.30	2.62	2.58	(³)
SD	2.25	(³)	2.26	2.27	1.70	2.40	2.43
UT	2.44	2.39	2.74	2.59	2.72	2.71	2.51
WA	2.56	2.53	2.65	2.48	2.54	2.73	2.59
WY	3.39	3.21	2.11	3.70	2.11	2.16	1.92
US	2.93	2.69	2.73	2.77	2.78	2.78	2.63
	2002-2003						
CA	(³)	(³)	(³)	(³)	(³)	(³)	2.80
CO	3.06	2.99	2.81	2.16	2.73	2.62	2.21
ID	3.09	3.05	3.15	3.03	3.14	3.11	3.10
MN	2.55	3.04	2.28	2.51	2.49	3.09	(³)
MT	2.96	2.82	2.80	2.95	2.88	2.44	2.26
ND	2.89	2.79	2.87	2.81	2.79	2.91	3.01
OR	2.51	2.36	2.34	2.35	2.51	2.23	2.34
SD	(⁴)	2.50	2.10	(³)	3.22	3.28	2.83
UT	2.56	2.58	2.52	2.58	2.75	2.54	2.57
WA	2.62	2.63	2.76	2.63	2.69	2.81	2.68
WY	3.23	2.41	3.06	2.16	2.61	2.16	2.11
US	2.91	2.85	2.87	2.83	2.85	2.91	2.99

¹ Marketing year: June-May for US; June-May for CA; July-June for all other estimated States.

² Second year.

³ Price not published to avoid disclosure of individual firms.

⁴ Insufficient sales to establish a price.

**Prices Received: Feed Barley, by State and Month,
for Marketing Years, 2002-2003 and 2003-2004 ¹**

State	May	Jun	Jul	Aug	Sep	Oct	Nov
	2003-2004						
	<i>Dollars per Bushel</i>	<i>Dollars per Bushel</i>	<i>Dollars per Bushel</i>	<i>Dollars per Bushel</i>	<i>Dollars per Bushel</i>	<i>Dollars per Bushel</i>	<i>Dollars per Bushel</i>
CA	(³)	2.80	2.70	2.65	(³)	3.03	(³)
CO	(³)	(³)	2.22	2.07	2.09	(³)	2.20
ID	2.57	2.23	2.27	2.28	2.27	2.22	2.32
MN	(³)	(³)	2.18	2.18	1.87	2.22	1.80
MT	2.13	2.12	2.00	1.99	2.10	2.07	2.16
ND	1.93	2.19	1.94	1.83	1.81	1.93	1.98
OR	(³)	(³)	2.36	2.43	2.53	2.48	2.64
SD	(⁴)	2.00	1.96	1.88	1.85	1.90	(⁴)
UT	(³)	(³)	2.12	2.25	2.35	2.25	2.28
WA	(³)	(³)	2.57	2.71	2.60	2.58	2.60
WY	2.16	2.11	2.09	1.95	1.68	1.92	1.88
US	2.33	2.33	2.22	2.39	2.27	2.24	2.43
	2002-2003						
CA	2.28	(³)	(³)	(³)	(³)	(⁴)	(⁴)
CO	1.92	(³)	(³)	(³)	(³)	(³)	(³)
ID	2.21	2.08	2.08	2.21	2.40	2.41	2.44
MN	(³)	(³)	1.66	1.71	1.77	1.78	(³)
MT	2.14	1.92	2.09	2.09	2.13	2.22	2.23
ND	1.53	1.58	1.59	1.71	1.83	1.91	2.01
OR	1.98	2.06	(³)	(³)	(³)	(³)	(³)
SD	1.58	1.34	1.58	1.74	1.95	1.84	(³)
UT	2.27	2.34	(³)	(³)	(³)	(³)	(³)
WA	(³)	(³)	(³)	(³)	(³)	(³)	(³)
WY	1.92	1.92	(³)	2.04	2.04	2.11	(⁴)
US	1.89	1.83	1.88	2.05	2.23	2.26	2.32

See footnote(s) at end of table.

--continued

**Prices Received: Feed Barley, by State and Month,
for Marketing Years, 2002-2003 and 2003-2004 (continued) ¹**

State	Dec	Jan ²	Feb	Mar	Apr	May	Jun
	2003-2004						
	<i>Dollars per Bushel</i>	<i>Dollars per Bushel</i>	<i>Dollars per Bushel</i>	<i>Dollars per Bushel</i>	<i>Dollars per Bushel</i>	<i>Dollars per Bushel</i>	<i>Dollars per Bushel</i>
CA	(³)	(³)	(⁴)	(³)	(³)	(³)	2.76
CO	2.20	(³)	(³)	(³)	(³)	(³)	(³)
ID	2.23	2.33	2.35	2.55	2.40	2.54	2.49
MN	(³)	1.96	2.04	1.83	1.82	1.89	1.86
MT	2.16	2.03	2.11	2.15	2.10	2.01	2.04
ND	2.13	1.91	1.91	1.98	1.96	2.01	2.01
OR	2.52	2.43	2.47	(³)	2.62	2.58	(³)
SD	1.77	1.73	(⁴)	(³)	1.70	(⁴)	2.10
UT	2.44	2.39	2.74	2.59	2.72	2.71	2.51
WA	2.54	2.50	2.58	2.46	2.56	2.61	2.53
WY	2.06	2.10	2.11	2.30	2.11	2.16	1.92
US	2.26	2.15	2.16	2.19	2.17	2.39	2.20
	2002-2003						
CA	(³)	(³)	(³)	(³)	(³)	(³)	2.80
CO	(³)	(³)	(³)	(³)	(³)	(³)	(³)
ID	2.46	2.37	2.36	2.45	2.23	2.57	2.23
MN	1.92	1.94	2.02	2.09	1.95	(³)	(³)
MT	2.23	2.21	2.18	2.16	2.24	2.13	2.12
ND	2.00	1.99	1.96	2.13	2.00	1.93	2.19
OR	(³)	(³)	(³)	(³)	(³)	(³)	(³)
SD	(⁴)	2.02	2.10	(⁴)	(³)	(⁴)	2.00
UT	(³)	(³)	(³)	(³)	(³)	(³)	(³)
WA	(³)	(³)	(³)	(³)	(³)	(³)	(³)
WY	2.14	2.05	2.09	2.16	2.14	2.16	2.11
US	2.14	2.17	2.20	2.30	2.20	2.33	2.33

¹ Marketing year: June-May for US; June-May for CA; July-June for all other estimated States.

² Second year.

³ Price not published to avoid disclosure of individual firms.

⁴ Insufficient sales to establish a price.

**Prices Received: Malting Barley, by State and Month,
for Marketing Years, 2002-2003 and 2003-2004 ¹**

State	May	Jun	Jul	Aug	Sep	Oct	Nov
	2003-2004						
	<i>Dollars per Bushel</i>	<i>Dollars per Bushel</i>	<i>Dollars per Bushel</i>	<i>Dollars per Bushel</i>	<i>Dollars per Bushel</i>	<i>Dollars per Bushel</i>	<i>Dollars per Bushel</i>
ID	3.17	3.14	3.10	3.31	3.30	3.29	3.26
MN	3.33	(³)	2.79	2.48	2.45	(³)	(³)
MT	3.19	3.04	3.39	3.42	3.40	3.22	2.97
ND	3.17	3.37	3.04	2.77	2.75	3.00	2.84
SD	(³)	(³)	2.74	2.61	2.41	2.09	2.37
WA	(³)	(³)	(³)	(³)	(³)	(³)	(³)
US	3.19	3.19	3.08	3.12	3.10	3.11	3.03
	2002-2003						
ID	2.98	2.92	2.96	3.11	3.05	3.03	3.07
MN	(⁴)	(³)	(³)	(³)	2.26	2.40	(³)
MT	2.95	3.01	2.94	3.22	3.11	3.07	3.09
ND	1.83	1.93	2.00	2.23	2.42	2.50	3.05
SD	(⁴)	(⁴)	(⁴)	(⁴)	(⁴)	(⁴)	(⁴)
WA	(⁴)	(⁴)	(³)	(³)	(³)	(³)	(³)
US	2.57	2.49	2.49	2.93	2.95	2.89	3.07

See footnote(s) at end of table.

--continued

**Prices Received: Malting Barley, by State and Month,
for Marketing Years, 2002-2003 and 2003-2004 (continued) ¹**

State	Dec	Jan ²	Feb	Mar	Apr	May	Jun
	2003-2004						
	<i>Dollars per Bushel</i>	<i>Dollars per Bushel</i>	<i>Dollars per Bushel</i>	<i>Dollars per Bushel</i>	<i>Dollars per Bushel</i>	<i>Dollars per Bushel</i>	<i>Dollars per Bushel</i>
ID	3.38	3.25	3.40	3.39	3.37	3.38	3.40
MN	(³)	(³)	(³)	(³)	(³)	(³)	(³)
MT	3.51	3.40	3.43	(³)	3.22	(³)	3.11
ND	2.89	2.72	2.76	2.65	2.75	2.88	2.62
SD	2.26	(⁴)	2.26	2.28	(⁴)	2.40	2.47
WA	(³)	(³)	(³)	(³)	(³)	(³)	(³)
US	3.20	2.94	2.96	2.97	3.04	3.14	2.79
	2002-2003						
ID	3.12	3.09	3.17	3.13	3.18	3.17	3.14
MN	2.79	3.05	2.30	2.59	2.65	3.33	(³)
MT	3.21	3.12	3.15	3.33	3.23	3.19	3.04
ND	3.32	3.08	3.06	3.05	3.14	3.17	3.37
SD	(⁴)	3.00	(⁴)	(³)	(³)	(³)	(³)
WA	(³)	(³)	(³)	(³)	(³)	(³)	(³)
US	3.24	3.07	3.06	3.07	3.11	3.19	3.19

¹ Marketing year: June-May for US; June-May for CA; July-June for all other estimated States.

² Second year.

³ Price not published to avoid disclosure of individual firms.

⁴ Insufficient sales to establish a price.

**Prices Received: Oats, by State and Month,
for Marketing Years, 2002-2003 and 2003-2004 ¹**

State	May	Jun	Jul	Aug	Sep	Oct	Nov
	2003-2004						
	<i>Dollars per Bushel</i>	<i>Dollars per Bushel</i>	<i>Dollars per Bushel</i>	<i>Dollars per Bushel</i>	<i>Dollars per Bushel</i>	<i>Dollars per Bushel</i>	<i>Dollars per Bushel</i>
IL	1.96	(³)	1.38	1.30	1.81	2.02	1.48
IA	1.99	1.75	1.49	1.45	1.49	1.75	1.57
MI	2.13	2.22	1.79	1.53	1.52	1.51	1.63
MN	1.78	1.59	1.35	1.25	1.30	1.34	1.32
MT	(³)	(³)	(³)	1.73	(⁴)	(³)	(³)
NE	2.29	2.00	1.49	1.57	1.39	1.39	1.25
ND	1.67	1.57	1.39	1.22	1.16	1.11	1.13
OH	(³)	1.90	1.92	1.74	1.77	1.69	1.67
OR	(³)	(³)	(³)	(³)	(³)	1.84	(³)
PA	2.38	2.38	1.83	1.73	1.73	1.69	(³)
SD	1.98	1.85	1.31	1.25	1.39	1.35	1.27
TX	(⁴)	(⁴)	(³)	(⁴)	(³)	(³)	(⁴)
WI	1.88	1.71	1.44	1.31	1.35	1.37	1.45
US	1.95	1.83	1.46	1.39	1.39	1.44	1.29
	2002-2003						
IL	2.00	1.96	1.82	1.77	1.84	2.00	(⁴)
IA	2.20	2.07	1.67	1.77	1.72	1.89	1.83
MI	2.34	2.30	1.80	1.70	1.66	(³)	1.64
MN	1.77	1.91	1.60	1.59	1.60	1.62	1.64
MT	2.22	2.24	(³)	2.18	1.87	1.98	1.85
NE	2.20	1.88	1.71	2.03	2.24	2.32	2.33
ND	1.63	1.74	1.61	1.56	1.56	1.70	1.72
OH	1.91	2.27	1.71	1.71	2.00	1.91	2.12
OR	2.40	(⁴)	(⁴)	(³)	2.65	2.50	(⁴)
PA	2.28	1.99	1.65	1.69	1.92	2.04	2.25
SD	2.06	2.06	1.78	1.79	1.90	2.02	2.11
TX	(³)	(³)	(³)	(⁴)	(³)	(³)	(³)
WI	1.75	1.78	1.67	1.58	1.82	1.62	1.61
US	1.99	1.95	1.69	1.67	1.80	1.80	1.91

See footnote(s) at end of table.

--continued

**Prices Received: Oats, by State and Month,
for Marketing Years, 2002-2003 and 2003-2004 (continued) ¹**

State	Dec	Jan ²	Feb	Mar	Apr	May	Jun
	2003-2004						
	<i>Dollars per Bushel</i>	<i>Dollars per Bushel</i>	<i>Dollars per Bushel</i>	<i>Dollars per Bushel</i>	<i>Dollars per Bushel</i>	<i>Dollars per Bushel</i>	<i>Dollars per Bushel</i>
IL	1.89	(³)	(³)	(³)	1.80	(³)	(³)
IA	1.59	1.62	1.84	1.86	1.72	1.86	1.80
MI	1.96	1.88	(³)	2.07	2.07	2.07	2.09
MN	1.43	1.47	1.49	1.67	1.61	1.65	1.58
MT	1.57	1.64	1.66	1.60	2.03	1.67	(³)
NE	1.40	1.87	1.28	1.64	1.35	(³)	1.70
ND	(³)	1.33	1.21	1.40	1.50	1.26	1.19
OH	1.74	1.67	1.70	1.94	1.85	1.90	1.87
OR	1.86	(³)	2.11	1.99	(³)	(³)	(³)
PA	(³)	1.98	(³)	2.04	2.11	(³)	2.16
SD	1.40	1.50	1.53	1.53	1.57	1.61	1.56
TX	(³)	(³)	(³)	(³)	(³)	(³)	1.74
WI	1.46	1.64	1.64	1.68	1.75	1.68	1.70
US	1.58	1.48	1.58	1.60	1.63	1.70	1.61
	2002-2003						
IL	(³)	(³)	(³)	(³)	(³)	1.96	(³)
IA	1.93	2.13	2.20	2.21	2.03	1.99	1.75
MI	1.82	1.97	1.84	2.39	2.15	2.13	2.22
MN	1.82	2.00	1.94	1.85	1.87	1.78	1.59
MT	1.76	(³)	(³)	(³)	(³)	(³)	(³)
NE	2.23	2.04	2.44	2.23	2.48	2.29	2.00
ND	1.70	1.79	1.83	1.75	1.73	1.67	1.57
OH	2.29	2.35	(³)	2.22	2.10	(³)	1.90
OR	(³)	(³)	(³)	(³)	(³)	(³)	(³)
PA	2.24	2.30	2.34	2.27	2.28	2.38	2.38
SD	2.17	2.18	2.25	2.13	2.00	1.98	1.85
TX	(³)	(³)	(³)	(³)	(³)	(³)	(³)
WI	1.76	1.78	1.77	1.83	1.90	1.88	1.71
US	1.95	2.04	2.11	2.08	1.98	1.95	1.83

¹ Marketing year: June - May for US; May-April for GA, TX; June-May for NC, OK, SC; August-July for ME, NY; September-August for AK; July-June for all other estimated States.

² Second year.

³ Price not published to avoid disclosure of individual firms.

⁴ Insufficient sales to establish a price.

**Prices Received: All Wheat, by State and Month,
for Marketing Years, 2002-2003 and 2003-2004 ¹**

State	May	Jun	Jul	Aug	Sep	Oct	Nov
	2003-2004						
	<i>Dollars per Bushel</i>	<i>Dollars per Bushel</i>	<i>Dollars per Bushel</i>	<i>Dollars per Bushel</i>	<i>Dollars per Bushel</i>	<i>Dollars per Bushel</i>	<i>Dollars per Bushel</i>
AR	3.32	3.15	2.89	3.31	3.32	(³)	(³)
CA	(³)	3.75	3.39	3.45	3.40	3.32	3.53
CO	3.19	3.02	2.80	3.14	3.23	3.30	3.50
ID	3.20	3.27	3.07	3.29	3.38	3.36	3.42
IL	3.20	2.90	3.03	3.40	3.39	3.30	3.68
IN	3.08	3.05	3.07	3.35	3.35	3.53	3.71
KS	3.26	2.84	2.80	3.27	3.18	3.34	3.62
MI	3.20	(³)	3.11	3.27	3.19	3.21	3.50
MN	3.63	3.51	3.42	3.51	3.43	3.55	3.61
MO	3.22	2.91	2.87	3.10	3.24	3.26	3.54
MT	3.64	3.68	3.51	3.46	3.61	3.61	3.76
NE	3.29	3.11	2.81	3.12	3.20	3.27	3.44
ND	3.54	3.46	3.34	3.40	3.44	3.53	3.66
OH	3.09	3.09	3.05	3.26	3.36	3.29	3.59
OK	3.09	2.82	2.83	3.27	3.28	3.36	3.65
OR	3.12	3.26	3.68	3.59	3.55	3.41	3.60
SD	3.47	3.42	3.05	3.24	3.24	3.42	3.44
TX	3.05	2.94	2.88	3.09	3.17	3.26	3.41
WA	3.27	3.41	3.46	3.75	3.62	3.68	3.71
US	3.33	3.08	2.95	3.35	3.39	3.44	3.61
	2002-2003						
AR	(³)	2.84	2.97	3.25	3.75	3.84	3.83
CA	(³)	3.54	(³)	(³)	(³)	(³)	(³)
CO	2.67	2.89	3.23	3.67	4.23	4.46	4.12
ID	3.05	3.12	3.09	3.52	4.06	4.08	4.00
IL	2.61	2.77	2.93	3.25	3.51	3.85	3.87
IN	3.88	2.90	3.06	3.44	3.69	3.89	4.03
KS	2.61	2.98	3.27	3.71	4.33	4.56	4.27
MI	2.48	2.69	3.11	3.34	3.54	3.76	3.87
MN	3.00	3.03	3.35	3.75	4.21	4.39	4.43
MO	2.78	2.83	2.97	3.33	3.46	3.80	4.20
MT	3.03	3.09	3.36	3.65	4.37	4.59	4.49
NE	2.71	2.97	3.31	3.76	4.20	4.57	4.26
ND	2.81	2.94	3.26	3.54	4.26	4.34	4.17
OH	2.47	2.72	3.03	3.33	3.78	3.85	3.82
OK	2.92	2.87	3.26	3.61	4.33	4.51	4.12
OR	3.16	3.23	3.53	3.74	4.28	4.26	4.05
SD	2.84	2.97	3.37	3.82	4.39	4.59	4.48
TX	2.68	2.70	3.16	3.61	4.17	4.33	4.02
WA	3.14	3.26	3.42	3.78	4.17	4.31	4.18
US	2.81	2.92	3.21	3.63	4.21	4.38	4.25

See footnote(s) at end of table.

--continued

**Prices Received: All Wheat, by State and Month,
for Marketing Years, 2002-2003 and 2003-2004 (continued) ¹**

State	Dec	Jan ²	Feb	Mar	Apr	May	Jun
	2003-2004						
	<i>Dollars per Bushel</i>	<i>Dollars per Bushel</i>	<i>Dollars per Bushel</i>	<i>Dollars per Bushel</i>	<i>Dollars per Bushel</i>	<i>Dollars per Bushel</i>	<i>Dollars per Bushel</i>
AR	4.08	(³)	(³)	(³)	(³)	3.62	3.62
CA	3.60	(³)	3.66	(³)	3.92	3.98	4.22
CO	3.62	3.68	3.61	3.74	3.79	3.69	3.51
ID	3.53	3.48	3.59	3.72	3.75	3.88	3.92
IL	3.69	3.68	3.77	3.86	3.96	3.84	3.32
IN	4.01	3.91	3.63	3.84	3.81	3.87	3.37
KS	3.69	3.67	3.63	3.73	3.79	3.76	3.42
MI	3.65	3.56	3.75	3.64	3.74	3.63	3.18
MN	3.69	3.75	3.82	3.76	3.97	3.94	3.84
MO	3.73	3.59	3.68	3.74	3.80	3.83	3.28
MT	3.74	3.72	3.81	3.89	3.94	4.02	3.76
NE	3.52	3.58	3.61	3.63	3.62	3.73	3.56
ND	3.73	3.64	3.83	3.95	3.95	3.96	3.73
OH	3.65	3.70	3.72	3.81	3.89	3.58	3.32
OK	3.74	3.80	3.68	3.83	3.81	3.58	3.47
OR	3.69	3.72	3.87	3.88	4.01	3.99	3.88
SD	3.62	3.65	3.81	3.79	3.79	3.86	3.74
TX	3.68	3.65	3.51	3.67	3.87	3.57	3.40
WA	3.62	3.79	3.91	3.98	4.14	4.17	3.89
US	3.68	3.68	3.77	3.83	3.88	3.82	3.57
	2002-2003						
AR	3.59	3.33	3.39	3.15	3.10	3.32	3.15
CA	(³)	(³)	(³)	(³)	(³)	(³)	3.75
CO	3.90	3.81	3.51	3.24	3.22	3.19	3.02
ID	3.89	3.97	3.52	3.28	3.04	3.20	3.27
IL	3.64	3.51	3.42	3.20	3.07	3.20	2.90
IN	3.76	3.32	3.04	3.03	3.03	3.08	3.05
KS	3.85	3.56	3.48	3.23	3.20	3.26	2.84
MI	3.39	3.53	3.17	3.35	3.26	3.20	(³)
MN	4.27	4.04	3.79	3.87	3.45	3.63	3.51
MO	3.95	3.67	3.67	3.25	3.17	3.22	2.91
MT	4.43	4.15	3.98	4.00	3.71	3.64	3.68
NE	4.02	3.70	3.53	3.39	3.22	3.29	3.11
ND	3.99	4.01	3.89	3.70	3.49	3.54	3.46
OH	3.48	3.39	3.31	2.90	2.84	3.09	3.09
OK	3.71	3.54	3.46	3.16	3.14	3.09	2.82
OR	4.00	3.88	3.64	3.43	3.39	3.12	3.26
SD	4.17	3.87	3.82	3.60	3.42	3.47	3.42
TX	3.49	3.26	3.21	3.09	3.02	3.05	2.94
WA	4.02	3.80	3.76	3.44	3.39	3.27	3.41
US	4.06	3.89	3.70	3.55	3.37	3.33	3.08

¹ Marketing year: June-May for US; May-April for TX; June-May for AR, CA, IL, IN, KS, MO, and OK. July-June for all other monthly estimated States.

² Second year.

³ Price not published to avoid disclosure of individual firms.

⁴ Insufficient sales to establish a price.

**Prices Received: Winter Wheat, by State and Month,
for Marketing Years, 2002-2003 and 2003-2004 ¹**

State	May	Jun	Jul	Aug	Sep	Oct	Nov
	2003-2004						
	<i>Dollars per Bushel</i>	<i>Dollars per Bushel</i>	<i>Dollars per Bushel</i>	<i>Dollars per Bushel</i>	<i>Dollars per Bushel</i>	<i>Dollars per Bushel</i>	<i>Dollars per Bushel</i>
AR	3.32	3.15	2.89	3.31	3.32	(³)	(³)
CA	3.07	3.38	3.24	3.45	(³)	3.32	3.45
CO	3.19	3.02	2.80	3.14	3.21	3.29	3.50
ID	3.07	3.14	2.93	3.25	3.27	3.30	3.24
IL	3.20	2.90	3.03	3.40	3.39	3.30	3.68
IN	3.08	3.05	3.07	3.35	3.35	3.53	3.71
KS	3.26	2.84	2.80	3.27	3.18	3.34	3.62
MI	3.20	(³)	3.11	3.27	3.19	3.21	3.50
MN	(⁴)	(³)	(³)	3.26	(³)	(³)	(⁴)
MO	3.22	2.91	2.87	3.10	3.24	3.26	3.54
MT	3.38	3.25	3.15	3.27	3.36	3.55	3.64
NE	3.29	3.11	2.81	3.12	3.20	3.27	3.44
ND	(³)	(³)	2.93	2.88	2.91	3.14	3.43
OH	3.09	3.09	3.05	3.26	3.36	3.29	3.59
OK	3.09	2.82	2.83	3.27	3.28	3.36	3.65
OR	3.12	3.24	3.46	3.52	3.49	3.38	3.56
SD	3.30	3.14	2.88	3.08	3.22	3.31	3.35
TX	3.05	2.94	2.88	3.09	3.17	3.26	3.41
WA	3.17	3.30	3.40	3.65	3.57	3.60	3.65
US	3.19	2.94	2.89	3.28	3.31	3.37	3.56
	2002-2003						
AR	(³)	2.84	2.97	3.25	3.75	3.84	3.83
CA	3.01	(³)	3.36	(³)	(³)	(³)	(³)
CO	2.67	2.89	3.23	3.68	4.23	4.47	4.12
ID	3.02	3.10	3.08	3.54	4.14	4.06	4.00
IL	2.61	2.77	2.93	3.25	3.51	3.85	3.87
IN	3.88	2.90	3.06	3.44	3.69	3.89	4.03
KS	2.61	2.98	3.27	3.71	4.33	4.56	4.27
MI	2.48	2.69	3.11	3.34	3.54	3.76	3.87
MN	(³)	(³)	3.26	3.38	4.39	(³)	(³)
MO	2.78	2.83	2.97	3.33	3.46	3.80	4.20
MT	3.01	3.10	3.41	3.65	3.99	4.06	4.28
NE	2.71	2.97	3.31	3.76	4.20	4.57	4.26
ND	(³)	2.87	3.25	3.34	4.02	4.07	3.71
OH	2.47	2.72	3.03	3.33	3.78	3.85	3.82
OK	2.61	2.87	3.26	3.61	4.33	4.51	4.12
OR	3.09	3.21	3.41	3.70	4.26	4.22	4.04
SD	2.66	2.86	3.39	3.93	4.36	4.57	4.51
TX	2.68	2.70	3.16	3.61	4.17	4.33	4.02
WA	3.05	3.26	3.39	3.76	4.11	4.28	4.16
US	2.73	2.90	3.19	3.63	4.15	4.32	4.18

See footnote(s) at end of table.

--continued

**Prices Received: Winter Wheat, by State and Month,
for Marketing Years, 2002-2003 and 2003-2004 (continued) ¹**

State	Dec	Jan ²	Feb	Mar	Apr	May	Jun
	2003-2004						
	<i>Dollars per Bushel</i>	<i>Dollars per Bushel</i>	<i>Dollars per Bushel</i>	<i>Dollars per Bushel</i>	<i>Dollars per Bushel</i>	<i>Dollars per Bushel</i>	<i>Dollars per Bushel</i>
AR	4.08	(³)	(³)	(³)	(³)	3.62	3.62
CA	(³)	(³)	3.51	(³)	3.92	3.98	3.90
CO	3.62	3.68	3.61	3.74	3.79	3.69	3.51
ID	3.43	3.40	3.46	3.57	3.67	3.72	3.83
IL	3.69	3.68	3.77	3.86	3.96	3.84	3.32
IN	4.01	3.91	3.63	3.84	3.81	3.87	3.37
KS	3.69	3.67	3.63	3.73	3.79	3.76	3.42
MI	3.65	3.56	3.75	3.64	3.74	3.63	3.18
MN	4.11	(⁴)	(⁴)	(³)	(⁴)	(⁴)	(⁴)
MO	3.73	3.59	3.68	3.74	3.80	3.83	3.28
MT	3.61	3.54	3.60	3.66	3.77	3.88	3.50
NE	3.52	3.58	3.61	3.63	3.62	3.73	3.56
ND	3.16	3.27	(⁴)	3.29	3.35	(³)	(³)
OH	3.65	3.70	3.72	3.81	3.89	3.58	3.32
OK	3.74	3.80	3.68	3.83	3.81	3.58	3.47
OR	3.65	3.70	3.84	3.85	3.97	3.98	3.84
SD	3.51	3.54	3.64	3.60	3.65	3.67	3.60
TX	3.68	3.65	3.51	3.67	3.87	3.57	3.40
WA	3.59	3.77	3.84	3.95	4.09	4.05	3.83
US	3.62	3.66	3.67	3.76	3.79	3.72	3.47
	2002-2003						
AR	3.59	3.33	3.39	3.15	3.10	3.32	3.15
CA	(³)	(³)	(³)	(³)	(³)	3.07	3.38
CO	3.90	3.81	3.51	3.25	3.22	3.19	3.02
ID	4.00	3.68	3.39	3.08	2.93	3.07	3.14
IL	3.64	3.51	3.42	3.20	3.07	3.20	2.90
IN	3.76	3.32	3.04	3.03	3.03	3.08	3.05
KS	3.85	3.56	3.48	3.23	3.20	3.26	2.84
MI	3.39	3.53	3.17	3.35	3.26	3.20	(³)
MN	(⁴)	(³)	(⁴)	(³)	(³)	(⁴)	(³)
MO	3.95	3.67	3.67	3.25	3.17	3.22	2.91
MT	4.20	3.98	3.75	3.73	3.32	3.38	3.25
NE	4.02	3.70	3.53	3.39	3.22	3.29	3.11
ND	3.07	2.91	3.52	3.56	(³)	(³)	(³)
OH	3.48	3.39	3.31	2.90	2.84	3.09	3.09
OK	3.71	3.54	3.46	3.16	3.14	3.09	2.82
OR	3.93	3.87	3.64	3.42	3.36	3.12	3.24
SD	4.03	3.76	3.62	3.49	3.37	3.30	3.14
TX	3.49	3.26	3.21	3.09	3.02	3.05	2.94
WA	3.96	3.74	3.73	3.36	3.20	3.17	3.30
US	3.87	3.66	3.52	3.30	3.19	3.19	2.94

¹ Marketing year: June-May for US; May-April for TX; June-May for AR, CA, IL, IN, KS, MO, and OK. July-June for all other monthly estimated States.

² Second year.

³ Price not published to avoid disclosure of individual firms.

⁴ Insufficient sales to establish a price.

**Prices Received: Other Spring Wheat, by State and Month,
for Marketing Years, 2002-2003 and 2003-2004 ¹**

State	May	Jun	Jul	Aug	Sep	Oct	Nov
	2003-2004						
	<i>Dollars per Bushel</i>	<i>Dollars per Bushel</i>	<i>Dollars per Bushel</i>	<i>Dollars per Bushel</i>	<i>Dollars per Bushel</i>	<i>Dollars per Bushel</i>	<i>Dollars per Bushel</i>
CO	(³)	(⁴)	(³)	3.86	4.02	3.72	3.87
ID	3.42	3.50	3.34	3.38	3.55	3.52	3.68
MN	3.63	3.51	3.42	3.51	3.43	3.55	3.61
MT	3.65	3.63	3.43	3.48	3.52	3.60	3.83
ND	3.47	3.34	3.19	3.35	3.33	3.46	3.62
OR	3.13	3.43	4.26	3.87	3.81	3.56	3.84
SD	3.61	3.50	3.33	3.29	3.25	3.46	3.64
WA	3.60	3.74	3.68	4.01	3.78	3.91	3.91
US	3.55	3.45	3.31	3.42	3.42	3.53	3.68
	2002-2003						
CO	(³)	(³)	3.32	3.46	4.14	4.33	4.27
ID	3.11	3.15	3.10	3.49	3.91	4.15	4.01
MN	3.00	3.03	3.35	3.76	4.21	4.39	4.44
MT	2.94	3.07	3.31	3.63	4.46	4.66	4.48
ND	2.74	2.90	3.25	3.56	4.29	4.34	4.03
OR	3.39	3.31	3.93	3.97	4.39	4.50	4.12
SD	2.86	2.98	3.35	3.78	4.40	4.61	4.46
WA	3.37	3.28	3.56	3.89	4.41	4.43	4.29
US	2.91	2.98	3.31	3.66	4.30	4.45	4.26

See footnote(s) at end of table.

--continued

**Prices Received: Other Spring Wheat, by State and Month,
for Marketing Years, 2002-2003 and 2003-2004 (continued)¹**

State	Dec	Jan ²	Feb	Mar	Apr	May	Jun
	2003-2004						
	<i>Dollars per Bushel</i>	<i>Dollars per Bushel</i>	<i>Dollars per Bushel</i>	<i>Dollars per Bushel</i>	<i>Dollars per Bushel</i>	<i>Dollars per Bushel</i>	<i>Dollars per Bushel</i>
CO	3.92	(³)	(³)	(³)	(³)	(⁴)	(⁴)
ID	3.72	3.62	3.79	3.92	3.90	4.10	4.02
MN	3.69	3.75	3.82	3.76	3.97	3.94	3.84
MT	3.80	3.80	3.93	3.97	3.99	4.04	3.92
ND	3.69	3.59	3.79	3.90	3.88	3.94	3.63
OR	3.93	3.88	4.08	4.07	4.22	4.09	4.13
SD	3.76	3.73	3.86	3.90	3.93	4.01	3.85
WA	3.75	3.89	4.16	4.10	4.34	4.48	4.11
US	3.72	3.67	3.84	3.90	3.94	4.01	3.83
	2002-2003						
CO	4.02	(³)	(³)	3.13	(⁴)	(³)	(⁴)
ID	3.79	4.17	3.75	3.49	3.17	3.42	3.50
MN	4.27	4.04	3.79	3.87	3.45	3.63	3.51
MT	4.45	4.13	3.92	3.95	3.69	3.65	3.63
ND	3.92	3.95	3.76	3.57	3.35	3.47	3.34
OR	4.35	3.95	3.68	3.50	3.59	3.13	3.43
SD	4.24	3.96	3.91	3.71	3.45	3.61	3.50
WA	4.28	4.04	3.88	3.75	3.86	3.60	3.74
US	4.15	4.03	3.82	3.72	3.48	3.55	3.45

¹ Marketing year: June-May for US; May-April for TX; June-May for AR, CA, IL, IN, KS, MO, and OK. July-June for all other monthly estimated States.

² Second year.

³ Price not published to avoid disclosure of individual firms.

⁴ Insufficient sales to establish a price.

**Prices Received: Durum Wheat, by State and Month,
for Marketing Years, 2002-2003 and 2003-2004 ¹**

State	May	Jun	Jul	Aug	Sep	Oct	Nov
	2003-2004						
	<i>Dollars per Bushel</i>	<i>Dollars per Bushel</i>	<i>Dollars per Bushel</i>	<i>Dollars per Bushel</i>	<i>Dollars per Bushel</i>	<i>Dollars per Bushel</i>	<i>Dollars per Bushel</i>
CA	(³)	(³)	(³)	(³)	(³)	(⁴)	(³)
MT	4.37	4.41	4.07	4.01	4.16	4.00	3.95
ND	3.86	3.83	3.76	3.73	3.89	3.86	3.94
US	3.99	3.99	3.85	3.78	3.95	3.89	3.95
	2002-2003						
CA	(⁴)	(³)	(³)	(³)	(³)	(³)	(³)
MT	3.77	3.53	3.61	3.78	4.41	4.97	5.04
ND	3.26	3.21	3.29	3.47	4.17	4.35	4.45
US	3.41	3.41	3.44	3.54	4.18	4.43	4.52

**Prices Received: Durum Wheat, by State and Month,
for Marketing Years, 2002-2003 and 2003-2004 ¹**

State	Dec	Jan ²	Feb	Mar	Apr	May	Jun
	2003-2004						
	<i>Dollars per Bushel</i>	<i>Dollars per Bushel</i>	<i>Dollars per Bushel</i>	<i>Dollars per Bushel</i>	<i>Dollars per Bushel</i>	<i>Dollars per Bushel</i>	<i>Dollars per Bushel</i>
CA	(³)	(⁴)	(³)	(³)	(⁴)	(⁴)	4.48
MT	3.90	3.98	3.99	4.11	4.15	4.36	4.26
ND	3.97	3.95	4.09	4.15	4.21	4.08	4.11
US	3.95	3.96	4.08	4.14	4.19	4.21	4.40
	2002-2003						
CA	(³)	(³)	(⁴)	(⁴)	(⁴)	(³)	(³)
MT	4.74	4.62	4.75	4.74	4.27	4.37	4.41
ND	4.19	4.15	4.17	4.01	3.83	3.86	3.83
US	4.26	4.23	4.28	4.14	3.93	3.99	3.99

¹ Marketing year: June-May for US; May-April for TX; June-May for AR, CA, IL, IN, KS, MO, and OK. July-June for all other monthly estimated States.

² Second year.

³ Price not published to avoid disclosure of individual firms.

⁴ Insufficient sales to establish a price.

**Prices Received: Wheat by Class, United States, by Month,
for Marketing Years, 2002-2003 and 2003-2004 ¹**

Year	Jun	Jul	Aug	Sep	Oct	Nov
	Hard Red Winter					
	<i>Dollars per Bushel</i>	<i>Dollars per Bushel</i>	<i>Dollars per Bushel</i>	<i>Dollars per Bushel</i>	<i>Dollars per Bushel</i>	<i>Dollars per Bushel</i>
2003-2004	2.88	2.82	3.25	3.23	3.36	3.56
2002-2003	2.91	3.27	3.69	4.28	4.49	4.23
	Soft Red Winter					
2003-2004	3.07	3.02	3.28	3.34	3.27	3.61
2002-2003	2.82	3.00	3.32	3.63	3.82	3.94
	Hard Red Spring					
2003-2004	3.46	3.31	3.43	3.42	3.54	3.70
2002-2003	2.97	3.31	3.66	4.33	4.49	4.28
	White					
2003-2004	3.24	3.20	3.42	3.45	3.42	3.54
2002-2003	3.18	3.26	3.64	4.05	4.20	4.08
Year	Dec	Jan ²	Feb	Mar	Apr	May
	Hard Red Winter					
	<i>Dollars per Bushel</i>	<i>Dollars per Bushel</i>	<i>Dollars per Bushel</i>	<i>Dollars per Bushel</i>	<i>Dollars per Bushel</i>	<i>Dollars per Bushel</i>
2003-2004	3.64	3.66	3.64	3.74	3.76	3.67
2002-2003	3.86	3.66	3.51	3.32	3.21	3.21
	Soft Red Winter					
2003-2004	3.77	3.69	3.70	3.80	3.84	3.81
2002-2003	3.67	3.50	3.36	3.10	3.05	3.18
	Hard Red Spring					
2003-2004	3.73	3.68	3.85	3.91	3.94	4.02
2002-2003	4.17	4.05	3.84	3.79	3.52	3.60
	White					
2003-2004	3.53	3.63	3.73	3.81	3.89	3.93
2002-2003	3.92	3.73	3.60	3.29	3.14	3.13

¹ Marketing year: June - May for U.S. and all estimating States.

² Second year.

**Prices Received: All Hay, by State and Month,
for Marketing Years, 2002-2003 and 2003-2004 ¹**

State	Apr	May	Jun	Jul	Aug	Sep	Oct
	2003-2004						
	<i>Dollars per Ton</i>	<i>Dollars per Ton</i>	<i>Dollars per Ton</i>	<i>Dollars per Ton</i>	<i>Dollars per Ton</i>	<i>Dollars per Ton</i>	<i>Dollars per Ton</i>
AZ	94.00	100.00	97.00	89.00	87.00	85.00	83.00
CA	98.00	94.00	88.00	84.00	85.00	86.00	90.00
CO	108.00	101.00	90.00	90.00	88.00	86.00	86.00
ID	89.00	87.00	89.00	84.00	85.00	89.00	92.00
IL	88.00	86.00	86.00	82.00	85.00	84.00	83.00
IA	78.00	76.00	75.00	70.00	73.00	78.00	80.00
KS	84.00	77.00	69.00	68.00	71.00	70.00	69.00
KY	75.00	78.00	72.00	70.00	82.00	77.00	78.00
MI	99.00	99.00	92.00	92.00	85.00	85.00	79.00
MN	68.00	72.00	68.00	64.00	68.00	66.00	62.00
MO	68.00	65.00	63.00	60.00	60.00	64.00	65.00
MT	78.00	76.00	79.00	75.00	74.00	75.00	75.00
NE	80.00	77.00	69.00	62.00	56.00	55.00	56.00
NV	91.00	93.00	95.00	100.00	96.00	91.00	90.00
NM	142.00	146.00	151.00	142.00	140.00	139.00	131.00
NY	116.00	100.00	122.00	125.00	126.00	119.00	126.00
ND	63.00	62.00	54.00	50.00	49.00	55.00	49.00
OH	133.00	143.00	153.00	127.00	120.00	125.00	99.00
OK	77.00	64.00	65.00	63.00	66.00	63.00	70.00
OR	90.00	93.00	96.00	89.00	93.00	91.00	90.00
PA	145.00	148.00	163.00	151.00	134.00	134.00	136.00
SD	83.00	79.00	72.00	60.00	58.00	55.00	58.00
TX	63.00	78.00	81.00	84.00	77.00	81.00	83.00
UT	92.00	99.00	92.00	82.00	82.00	80.00	75.00
WA	107.00	123.00	116.00	91.00	90.00	83.00	86.00
WI	80.00	71.00	58.00	68.00	71.00	66.00	69.00
WY	113.00	104.00	95.00	85.00	83.00	81.00	80.00
US	94.50	96.50	95.50	88.10	85.00	84.40	83.70
	2002-2003						
AZ	103.00	104.00	106.00	100.00	94.00	94.00	93.00
CA	119.00	115.00	98.00	92.00	88.00	89.00	94.00
CO	96.00	98.00	107.00	117.00	122.00	121.00	119.00
ID	102.00	107.00	95.00	100.00	98.00	96.00	101.00
IL	88.00	86.00	89.00	89.00	88.00	89.00	91.00
IA	86.00	88.00	84.00	81.00	82.00	82.00	82.00
KS	82.00	88.00	81.00	87.00	86.00	93.00	88.00
KY	73.00	67.00	62.00	63.00	68.00	73.00	67.00
MI	84.00	74.00	54.00	63.00	85.00	84.00	89.00
MN	59.00	60.00	67.00	66.00	67.00	69.00	62.00
MO	72.00	68.00	66.00	61.00	68.00	71.00	69.00
MT	91.00	89.00	88.00	84.00	84.00	83.00	83.00
NE	60.00	61.00	64.00	79.00	90.00	92.00	91.00
NV	113.00	105.00	108.00	110.00	104.00	103.00	100.00
NM	136.00	136.00	138.00	141.00	140.00	141.00	140.00
NY	105.00	119.00	109.00	107.00	103.00	95.00	111.00
ND	49.00	48.00	58.00	61.00	76.00	68.00	66.00
OH	102.00	117.00	105.00	85.00	101.00	108.00	121.00
OK	76.00	76.00	77.00	76.00	76.00	79.00	82.00
OR	108.00	109.00	112.00	103.00	108.00	106.00	101.00
PA	134.00	133.00	128.00	117.00	120.00	133.00	130.00
SD	59.00	59.00	66.00	77.00	82.00	78.00	78.00
TX	78.00	81.00	86.00	83.00	80.00	78.00	77.00
UT	91.00	93.00	94.00	93.00	100.00	97.00	95.00
WA	128.00	126.00	118.00	112.00	110.00	109.00	106.00
WI	60.00	64.00	67.00	60.00	64.00	67.00	72.00
WY	103.00	103.00	104.00	108.00	109.00	110.00	110.00
US	98.30	103.00	93.70	91.70	92.40	93.00	93.80

See footnote(s) at end of table.

--continued

**Prices Received: All Hay, by State and Month,
for Marketing Years, 2002-2003 and 2003-2004 (continued) ¹**

State	Nov	Dec	Jan ²	Feb	Mar	Apr	May
	2003-2004						
	<i>Dollars per Ton</i>	<i>Dollars per Ton</i>	<i>Dollars per Ton</i>	<i>Dollars per Ton</i>	<i>Dollars per Ton</i>	<i>Dollars per Ton</i>	<i>Dollars per Ton</i>
AZ	83.00	80.00	85.00	85.00	84.00	90.00	111.00
CA	93.00	87.00	88.00	95.00	103.00	121.00	121.00
CO	88.00	86.00	82.00	83.00	83.00	81.00	81.00
ID	91.00	90.00	85.00	83.00	85.00	81.00	100.00
IL	87.00	87.00	90.00	91.00	95.00	93.00	91.00
IA	80.00	82.00	86.00	81.00	87.00	90.00	90.00
KS	73.00	66.00	65.00	66.00	67.00	68.00	73.00
KY	78.00	74.00	68.00	67.00	71.00	72.00	75.00
MI	94.00	96.00	96.00	101.00	97.00	109.00	95.00
MN	69.00	69.00	67.00	67.00	66.00	66.00	67.00
MO	65.00	66.00	66.00	67.00	65.00	66.00	69.00
MT	74.00	75.00	72.00	73.00	70.00	70.00	71.00
NE	55.00	53.00	52.00	52.00	50.00	49.00	48.00
NV	95.00	90.00	92.00	94.00	90.00	93.00	90.00
NM	133.00	135.00	135.00	136.00	139.00	136.00	138.00
NY	106.00	109.00	107.00	111.00	107.00	109.00	112.00
ND	51.00	55.00	49.00	55.00	54.00	55.00	55.00
OH	110.00	110.00	101.00	106.00	94.00	100.00	100.00
OK	77.00	71.00	75.00	70.00	65.00	75.00	84.00
OR	86.00	88.00	84.00	82.00	83.00	84.00	87.00
PA	133.00	143.00	134.00	129.00	123.00	130.00	137.00
SD	61.00	61.00	59.00	62.00	62.00	62.00	63.00
TX	72.00	68.00	72.00	69.00	69.00	67.00	77.00
UT	70.00	87.00	83.00	78.00	75.00	81.00	90.00
WA	87.00	91.00	89.00	94.00	89.00	89.00	112.00
WI	90.00	97.00	91.00	100.00	93.00	80.00	92.00
WY	79.00	78.00	76.00	71.00	71.00	68.00	69.00
US	81.50	80.60	80.10	81.20	81.80	88.90	101.00
	2002-2003						
AZ	103.00	95.00	94.00	100.00	98.00	94.00	100.00
CA	95.00	94.00	98.00	100.00	99.00	98.00	94.00
CO	116.00	116.00	116.00	116.00	112.00	108.00	101.00
ID	98.00	94.00	88.00	84.00	87.00	89.00	87.00
IL	92.00	90.00	90.00	88.00	96.00	88.00	86.00
IA	79.00	87.00	86.00	78.00	80.00	78.00	76.00
KS	92.00	90.00	87.00	85.00	81.00	84.00	77.00
KY	71.00	74.00	68.00	70.00	75.00	75.00	78.00
MI	104.00	99.00	95.00	98.00	103.00	99.00	99.00
MN	67.00	69.00	68.00	70.00	68.00	68.00	72.00
MO	69.00	67.00	69.00	68.00	69.00	68.00	65.00
MT	81.00	84.00	85.00	80.00	82.00	78.00	76.00
NE	89.00	88.00	85.00	84.00	81.00	80.00	77.00
NV	101.00	102.00	98.00	95.00	96.00	91.00	93.00
NM	141.00	140.00	139.00	142.00	143.00	142.00	146.00
NY	99.00	103.00	106.00	108.00	108.00	116.00	100.00
ND	62.00	61.00	65.00	63.00	67.00	63.00	62.00
OH	130.00	131.00	120.00	127.00	113.00	133.00	143.00
OK	86.00	85.00	84.00	78.00	79.00	77.00	64.00
OR	99.00	95.00	95.00	92.00	86.00	90.00	93.00
PA	136.00	140.00	137.00	135.00	147.00	145.00	148.00
SD	77.00	78.00	80.00	81.00	81.00	83.00	79.00
TX	74.00	70.00	66.00	70.00	71.00	63.00	78.00
UT	95.00	92.00	93.00	91.00	88.00	92.00	99.00
WA	109.00	110.00	108.00	110.00	109.00	107.00	123.00
WI	72.00	69.00	78.00	81.00	76.00	80.00	71.00
WY	110.00	112.00	112.00	112.00	113.00	113.00	104.00
US	93.20	91.10	91.40	91.40	92.80	94.50	96.50

¹ Marketing year: April - May for US; April-March for AZ; May-April for AR, CA, CO, GA, KS, KY, MO, NV, NM, OK, PA, TX and UT; June-May for all other monthly estimated States.

² Second year.

**Prices Received: Alfalfa Hay, by State and Month,
for Marketing Years, 2002-2003 and 2003-2004 ¹**

State	Apr	May	Jun	Jul	Aug	Sep	Oct
	2003-2004						
	<i>Dollars per Ton</i>	<i>Dollars per Ton</i>	<i>Dollars per Ton</i>	<i>Dollars per Ton</i>	<i>Dollars per Ton</i>	<i>Dollars per Ton</i>	<i>Dollars per Ton</i>
AZ	94.00	100.00	98.00	90.00	88.00	85.00	83.00
CA	99.00	97.00	90.00	85.00	86.00	88.00	94.00
CO	104.00	100.00	88.00	88.00	86.00	83.00	85.00
ID	89.00	87.00	90.00	85.00	87.00	90.00	92.00
IL	94.00	94.00	91.00	89.00	89.00	90.00	92.00
IA	79.00	79.00	76.00	74.00	75.00	79.00	81.00
KS	90.00	78.00	74.00	74.00	84.00	77.00	77.00
KY	105.00	110.00	110.00	110.00	115.00	110.00	115.00
MI	100.00	100.00	95.00	95.00	90.00	90.00	85.00
MN	70.00	73.00	71.00	70.00	75.00	73.00	72.00
MO	111.00	107.00	106.00	104.00	102.00	104.00	106.00
MT	81.00	79.00	79.00	75.00	76.00	76.00	77.00
NE	80.00	77.00	69.00	62.00	56.00	56.00	57.00
NV	90.00	93.00	96.00	100.00	95.00	89.00	88.00
NM	146.00	148.00	153.00	144.00	141.00	140.00	133.00
NY	145.00	130.00	145.00	140.00	140.00	150.00	140.00
ND	68.00	68.00	62.00	53.00	56.00	59.00	56.00
OH	163.00	162.00	177.00	160.00	148.00	144.00	133.00
OK	89.00	81.00	86.00	94.00	95.00	95.00	95.00
OR	90.00	94.00	102.00	100.00	97.00	94.00	91.00
PA	165.00	161.00	176.00	163.00	152.00	151.00	152.00
SD	84.00	80.00	73.00	62.00	60.00	60.00	62.00
TX	137.00	153.00	155.00	155.00	150.00	150.00	160.00
UT	93.00	99.00	93.00	83.00	83.00	81.00	76.00
WA	102.00	105.00	113.00	85.00	84.00	80.00	80.00
WI	85.00	75.00	60.00	70.00	75.00	70.00	75.00
WY	114.00	105.00	95.00	86.00	84.00	82.00	81.00
US	96.20	101.00	101.00	93.80	91.90	90.10	89.10
	2002-2003						
AZ	103.00	105.00	107.00	101.00	95.00	95.00	93.00
CA	121.00	116.00	101.00	95.00	90.00	92.00	98.00
CO	94.00	95.00	100.00	115.00	121.00	120.00	117.00
ID	102.00	107.00	96.00	102.00	99.00	98.00	102.00
IL	94.00	94.00	93.00	93.00	94.00	95.00	94.00
IA	87.00	88.00	86.00	85.00	85.00	83.00	83.00
KS	90.00	90.00	87.00	98.00	102.00	105.00	98.00
KY	95.00	95.00	95.00	100.00	95.00	105.00	100.00
MI	85.00	75.00	55.00	65.00	85.00	85.00	90.00
MN	61.00	61.00	73.00	75.00	80.00	79.00	75.00
MO	108.00	107.00	107.00	106.00	110.00	110.00	111.00
MT	93.00	90.00	88.00	85.00	86.00	85.00	87.00
NE	61.00	62.00	65.00	82.00	90.00	92.00	91.00
NV	112.00	104.00	108.00	110.00	104.00	102.00	98.00
NM	137.00	139.00	140.00	144.00	144.00	145.00	144.00
NY	120.00	130.00	130.00	125.00	115.00	120.00	125.00
ND	53.00	52.00	60.00	67.00	79.00	74.00	72.00
OH	135.00	135.00	135.00	115.00	134.00	140.00	154.00
OK	95.00	89.00	95.00	94.00	101.00	106.00	106.00
OR	109.00	110.00	115.00	107.00	109.00	106.00	101.00
PA	151.00	147.00	140.00	139.00	136.00	148.00	150.00
SD	63.00	63.00	67.00	81.00	86.00	84.00	84.00
TX	151.00	149.00	143.00	153.00	152.00	153.00	157.00
UT	92.00	93.00	96.00	94.00	103.00	99.00	97.00
WA	115.00	116.00	115.00	108.00	106.00	106.00	103.00
WI	70.00	70.00	70.00	65.00	70.00	70.00	75.00
WY	104.00	104.00	104.00	109.00	110.00	111.00	111.00
US	103.00	108.00	101.00	100.00	101.00	101.00	102.00

See footnote(s) at end of table.

--continued

**Prices Received: Alfalfa Hay, by State and Month,
for Marketing Years, 2002-2003 and 2003-2004 (continued) ¹**

State	Nov	Dec	Jan ²	Feb	Mar	Apr	May
	2003-2004						
	<i>Dollars per Ton</i>	<i>Dollars per Ton</i>	<i>Dollars per Ton</i>	<i>Dollars per Ton</i>	<i>Dollars per Ton</i>	<i>Dollars per Ton</i>	<i>Dollars per Ton</i>
AZ	83.00	80.00	85.00	85.00	84.00	90.00	112.00
CA	98.00	89.00	89.00	97.00	105.00	126.00	127.00
CO	87.00	85.00	83.00	84.00	84.00	81.00	82.00
ID	92.00	92.00	86.00	84.00	86.00	82.00	100.00
IL	94.00	94.00	95.00	95.00	97.00	97.00	95.00
IA	85.00	84.00	87.00	83.00	88.00	91.00	93.00
KS	79.00	73.00	74.00	76.00	78.00	75.00	81.00
KY	115.00	110.00	100.00	100.00	100.00	100.00	100.00
MI	100.00	100.00	100.00	105.00	100.00	115.00	100.00
MN	72.00	73.00	72.00	70.00	68.00	70.00	68.00
MO	107.00	109.00	109.00	108.00	107.00	106.00	105.00
MT	76.00	76.00	73.00	75.00	72.00	71.00	73.00
NE	56.00	54.00	53.00	53.00	51.00	49.00	48.00
NV	94.00	87.00	91.00	90.00	88.00	90.00	90.00
NM	139.00	138.00	140.00	141.00	142.00	141.00	141.00
NY	125.00	140.00	120.00	130.00	125.00	120.00	130.00
ND	57.00	60.00	58.00	59.00	58.00	59.00	61.00
OH	146.00	143.00	122.00	133.00	116.00	119.00	115.00
OK	96.00	100.00	100.00	100.00	98.00	93.00	97.00
OR	90.00	96.00	90.00	86.00	87.00	87.00	89.00
PA	153.00	156.00	149.00	150.00	147.00	151.00	150.00
SD	64.00	64.00	62.00	64.00	64.00	63.00	64.00
TX	152.00	150.00	143.00	150.00	142.00	140.00	135.00
UT	70.00	87.00	84.00	78.00	75.00	81.00	90.00
WA	80.00	82.00	82.00	80.00	80.00	82.00	95.00
WI	95.00	105.00	95.00	110.00	95.00	85.00	105.00
WY	80.00	79.00	77.00	72.00	72.00	70.00	70.00
US	86.80	87.00	84.80	85.10	86.20	93.00	109.00
	2002-2003						
AZ	103.00	95.00	94.00	100.00	98.00	94.00	100.00
CA	101.00	95.00	99.00	102.00	99.00	99.00	97.00
CO	114.00	114.00	114.00	113.00	109.00	104.00	100.00
ID	100.00	95.00	90.00	85.00	90.00	89.00	87.00
IL	95.00	95.00	96.00	95.00	105.00	94.00	94.00
IA	83.00	90.00	88.00	81.00	81.00	79.00	79.00
KS	98.00	100.00	97.00	90.00	90.00	90.00	78.00
KY	105.00	110.00	100.00	105.00	105.00	105.00	110.00
MI	105.00	100.00	95.00	100.00	105.00	100.00	100.00
MN	76.00	74.00	74.00	73.00	73.00	70.00	73.00
MO	113.00	112.00	114.00	113.00	112.00	111.00	107.00
MT	83.00	86.00	87.00	82.00	85.00	81.00	79.00
NE	89.00	89.00	86.00	84.00	82.00	80.00	77.00
NV	100.00	101.00	97.00	94.00	95.00	90.00	93.00
NM	145.00	144.00	143.00	146.00	147.00	146.00	148.00
NY	115.00	130.00	135.00	140.00	135.00	145.00	130.00
ND	68.00	67.00	71.00	71.00	74.00	68.00	68.00
OH	166.00	170.00	167.00	169.00	171.00	163.00	162.00
OK	101.00	100.00	102.00	94.00	90.00	89.00	81.00
OR	98.00	96.00	97.00	93.00	85.00	90.00	94.00
PA	150.00	154.00	160.00	160.00	168.00	165.00	161.00
SD	83.00	82.00	84.00	84.00	84.00	84.00	80.00
TX	160.00	160.00	164.00	160.00	146.00	137.00	153.00
UT	97.00	94.00	94.00	93.00	90.00	93.00	99.00
WA	103.00	104.00	103.00	103.00	103.00	102.00	105.00
WI	75.00	70.00	80.00	85.00	80.00	85.00	75.00
WY	111.00	112.00	112.00	113.00	114.00	114.00	105.00
US	101.00	98.00	98.50	96.20	96.70	96.20	101.00

¹ Marketing year: April - May for US; April-March for AZ; May-April for AR, CA, CO, GA, KS, KY, MO, NV, NM, OK, PA, TX and UT; June-May for all other monthly estimated States.

² Second year.

**Prices Received: Other Hay, by State and Month,
for Marketing Years, 2002-2003 and 2003-2004 ¹**

State	Apr	May	Jun	Jul	Aug	Sep	Oct
	2003-2004						
	<i>Dollars per Ton</i>	<i>Dollars per Ton</i>	<i>Dollars per Ton</i>	<i>Dollars per Ton</i>	<i>Dollars per Ton</i>	<i>Dollars per Ton</i>	<i>Dollars per Ton</i>
AZ	87.00	95.00	90.00	85.00	82.00	80.00	85.00
CA	85.00	76.00	81.00	78.00	77.00	72.00	69.00
CO	145.00	145.00	130.00	119.00	107.00	102.00	96.00
ID	67.00	69.00	70.00	68.00	66.00	65.00	65.00
IL	71.00	71.00	68.00	68.00	65.00	67.00	70.00
IA	57.00	56.00	58.00	54.00	55.00	56.00	57.00
KS	70.00	65.00	59.00	59.00	58.00	58.00	58.00
KY	61.00	64.00	64.00	64.00	67.00	64.00	67.00
MI	75.00	85.00	75.00	75.00	65.00	65.00	60.00
MN	50.00	55.00	55.00	54.00	58.00	52.00	53.00
MO	52.00	50.00	50.00	49.00	51.00	52.00	52.00
MT	69.00	68.00	72.00	73.00	68.00	69.00	72.00
NE	76.00	74.00	65.00	60.00	55.00	52.00	51.00
NV	95.00	90.00	90.00	95.00	120.00	128.00	111.00
NM	120.00	121.00	126.00	118.00	116.00	116.00	109.00
NY	90.00	80.00	100.00	110.00	100.00	100.00	100.00
ND	46.00	48.00	43.00	39.00	40.00	43.00	40.00
OH	91.00	81.00	91.00	69.00	59.00	62.00	65.00
OK	55.00	52.00	53.00	50.00	51.00	52.00	58.00
OR	91.00	92.00	82.00	73.00	80.00	78.00	86.00
PA	132.00	131.00	145.00	130.00	124.00	118.00	118.00
SD	59.00	61.00	53.00	51.00	48.00	41.00	45.00
TX	58.00	58.00	62.00	60.00	58.00	66.00	70.00
UT	76.00	76.00	72.00	70.00	72.00	61.00	60.00
WA	126.00	135.00	142.00	128.00	120.00	110.00	125.00
WI	55.00	55.00	35.00	55.00	55.00	40.00	45.00
WY	109.00	99.00	89.00	82.00	77.00	75.00	75.00
US	86.60	77.90	76.10	71.10	66.70	67.30	69.20
	2002-2003						
AZ	96.00	97.00	99.00	95.00	89.00	90.00	90.00
CA	90.00	88.00	80.00	77.00	77.00	68.00	77.00
CO	114.00	122.00	134.00	133.00	133.00	131.00	134.00
ID	78.00	80.00	75.00	78.00	75.00	74.00	77.00
IL	71.00	71.00	71.00	71.00	71.00	71.00	72.00
IA	60.00	60.00	59.00	60.00	61.00	61.00	58.00
KS	66.00	67.00	69.00	69.00	70.00	74.00	74.00
KY	52.00	55.00	55.00	58.00	55.00	61.00	58.00
MI	60.00	60.00	50.00	50.00	65.00	65.00	75.00
MN	42.00	43.00	50.00	50.00	50.00	50.00	50.00
MO	58.00	56.00	56.00	54.00	53.00	53.00	53.00
MT	84.00	82.00	82.00	76.00	77.00	75.00	75.00
NE	52.00	54.00	56.00	72.00	89.00	89.00	90.00
NV	117.00	112.00	111.00	108.00	111.00	115.00	113.00
NM	111.00	114.00	115.00	117.00	117.00	117.00	117.00
NY	90.00	105.00	90.00	90.00	80.00	80.00	85.00
ND	37.00	37.00	39.00	46.00	54.00	52.00	50.00
OH	55.00	55.00	54.00	57.00	58.00	64.00	76.00
OK	63.00	57.00	50.00	49.00	53.00	55.00	55.00
OR	104.00	105.00	105.00	95.00	104.00	105.00	100.00
PA	116.00	114.00	107.00	105.00	105.00	116.00	118.00
SD	40.00	40.00	46.00	62.00	66.00	60.00	62.00
TX	72.00	65.00	72.00	61.00	61.00	62.00	64.00
UT	57.00	57.00	57.00	56.00	57.00	58.00	58.00
WA	145.00	145.00	137.00	131.00	128.00	128.00	124.00
WI	35.00	45.00	40.00	30.00	30.00	40.00	55.00
WY	98.00	98.00	98.00	104.00	105.00	106.00	106.00
US	79.50	75.60	74.70	71.40	71.30	71.40	74.50

See footnote(s) at end of table.

--continued

**Prices Received: Other Hay, by State and Month,
for Marketing Years, 2002-2003 and 2003-2004 (continued) ¹**

State	Nov	Dec	Jan ²	Feb	Mar	Apr	May
	2003-2004						
	<i>Dollars per Ton</i>	<i>Dollars per Ton</i>	<i>Dollars per Ton</i>	<i>Dollars per Ton</i>	<i>Dollars per Ton</i>	<i>Dollars per Ton</i>	<i>Dollars per Ton</i>
AZ	80.00	78.00	80.00	80.00	79.00	85.00	87.00
CA	63.00	72.00	81.00	85.00	93.00	88.00	88.00
CO	95.00	90.00	73.00	70.00	79.00	78.00	74.00
ID	65.00	68.00	65.00	60.00	70.00	65.00	70.00
IL	70.00	69.00	73.00	78.00	75.00	74.00	70.00
IA	62.00	61.00	63.00	61.00	62.00	67.00	68.00
KS	56.00	56.00	54.00	51.00	54.00	54.00	56.00
KY	67.00	64.00	58.00	58.00	58.00	58.00	64.00
MI	80.00	85.00	85.00	90.00	90.00	90.00	80.00
MN	55.00	54.00	53.00	51.00	53.00	51.00	48.00
MO	53.00	53.00	55.00	55.00	53.00	54.00	52.00
MT	69.00	68.00	67.00	66.00	65.00	65.00	66.00
NE	50.00	50.00	47.00	47.00	45.00	45.00	44.00
NV	105.00	118.00	103.00	130.00	107.00	109.00	90.00
NM	114.00	113.00	115.00	116.00	117.00	116.00	116.00
NY	90.00	95.00	100.00	100.00	90.00	100.00	100.00
ND	40.00	43.00	39.00	43.00	40.00	42.00	45.00
OH	65.00	66.00	60.00	53.00	49.00	51.00	54.00
OK	55.00	52.00	52.00	53.00	51.00	54.00	59.00
OR	77.00	70.00	71.00	75.00	77.00	81.00	84.00
PA	122.00	129.00	121.00	121.00	116.00	116.00	119.00
SD	50.00	49.00	45.00	48.00	48.00	45.00	51.00
TX	60.00	60.00	69.00	63.00	63.00	62.00	63.00
UT	60.00	76.00	71.00	66.00	62.00	70.00	75.00
WA	110.00	115.00	115.00	125.00	125.00	120.00	125.00
WI	65.00	50.00	65.00	55.00	85.00	55.00	45.00
WY	74.00	73.00	72.00	66.00	66.00	66.00	66.00
US	67.50	66.50	70.20	72.10	72.00	75.50	78.30
	2002-2003						
AZ	92.00	90.00	91.00	93.00	90.00	87.00	95.00
CA	76.00	90.00	90.00	87.00	95.00	85.00	76.00
CO	145.00	133.00	138.00	138.00	145.00	145.00	145.00
ID	75.00	71.00	68.00	66.00	68.00	67.00	69.00
IL	72.00	72.00	72.00	72.00	76.00	71.00	71.00
IA	56.00	58.00	60.00	58.00	57.00	57.00	56.00
KS	74.00	76.00	76.00	76.00	70.00	70.00	65.00
KY	61.00	64.00	58.00	61.00	61.00	61.00	64.00
MI	90.00	90.00	85.00	85.00	90.00	75.00	85.00
MN	50.00	49.00	49.00	49.00	49.00	50.00	55.00
MO	53.00	53.00	55.00	54.00	53.00	52.00	50.00
MT	75.00	75.00	76.00	73.00	72.00	69.00	68.00
NE	86.00	81.00	78.00	82.00	76.00	76.00	74.00
NV	112.00	110.00	105.00	100.00	100.00	95.00	90.00
NM	119.00	118.00	117.00	120.00	121.00	120.00	121.00
NY	85.00	90.00	90.00	90.00	85.00	90.00	80.00
ND	49.00	48.00	49.00	48.00	52.00	46.00	48.00
OH	90.00	93.00	88.00	90.00	84.00	91.00	81.00
OK	60.00	61.00	57.00	57.00	61.00	55.00	52.00
OR	101.00	92.00	86.00	89.00	88.00	91.00	92.00
PA	119.00	128.00	128.00	129.00	133.00	132.00	131.00
SD	58.00	61.00	60.00	60.00	60.00	59.00	61.00
TX	62.00	61.00	62.00	63.00	64.00	58.00	58.00
UT	58.00	58.00	60.00	63.00	63.00	76.00	76.00
WA	127.00	126.00	126.00	125.00	130.00	126.00	135.00
WI	55.00	60.00	60.00	60.00	50.00	55.00	55.00
WY	106.00	107.00	107.00	109.00	109.00	109.00	99.00
US	73.90	76.30	78.10	81.70	77.90	86.60	77.90

¹ Marketing year: April - May for US; April-March for AZ; May-April for AR, CA, CO, GA, KS, KY, MO, NV, NM, OK, PA, TX and UT; June-May for all other monthly estimated States.

² Second year.

**Prices Received: Peanuts, by State and Month,
for Marketing Years, 2002-2003 and 2003-2004 ¹**

State	Aug	Sep	Oct	Nov	Dec	Jan ²
	2003-2004					
	<i>Dollars per Pound</i>	<i>Dollars per Pound</i>	<i>Dollars per Pound</i>	<i>Dollars per Pound</i>	<i>Dollars per Pound</i>	<i>Dollars per Pound</i>
AL	(⁴)	0.181	0.184	0.186	0.186	0.201
FL	(⁴)	(³)	(³)	(³)	(³)	(³)
GA	(⁴)	0.182	0.180	0.187	0.190	0.203
NC	(⁴)	(⁴)	(³)	0.192	0.226	0.265
TX	(⁴)	(⁴)	(³)	(³)	(³)	(³)
VA	(⁴)	(⁴)	(³)	(³)	(³)	(³)
US	(⁴)	0.183	0.185	0.184	0.196	0.206
	2002-2003					
AL	(⁴)	0.175	0.171	0.161	0.140	(³)
FL	(⁴)	0.179	0.179	0.170	0.162	(³)
GA	(⁴)	0.179	0.174	0.171	0.166	(⁴)
NC	(⁴)	(⁴)	0.211	0.211	(³)	0.252
TX	(⁴)	(⁴)	(³)	(³)	(³)	(⁴)
VA	(⁴)	(³)	0.195	0.209	0.202	(⁴)
US	(⁴)	0.179	0.179	0.180	0.175	0.191

See footnote(s) at end of table.

--continued

**Prices Received: Peanuts, by State and Month,
for Marketing Years, 2002-2003 and 2003-2004**

State	Feb	Mar	Apr	May	Jun	Jul
	2003-2004					
	<i>Dollars per Pound</i>	<i>Dollars per Pound</i>	<i>Dollars per Pound</i>	<i>Dollars per Pound</i>	<i>Dollars per Pound</i>	<i>Dollars per Pound</i>
AL	0.141	(²)	(²)	0.179	(²)	(²)
FL	(²)	(²)	(²)	(²)	(²)	(³)
GA	0.169	0.172	(²)	0.186	0.197	(²)
NC	0.226	0.249	(²)	(²)	(²)	(³)
TX	(²)	(²)	(²)	(²)	(²)	(²)
VA	(²)	(²)	(²)	(²)	0.237	(³)
US	0.189	0.186	0.198	0.206	0.203	0.174
	2002-2003					
AL	(²)	(²)	(²)	(²)	(²)	(³)
FL	(³)	(³)	(³)	(³)	(³)	(³)
GA	(²)	(²)	(³)	(²)	(²)	(²)
NC	0.266	(²)	(²)	(²)	(³)	(³)
TX	(³)	(³)	(³)	(²)	(³)	(³)
VA	(²)	(²)	(²)	(²)	(³)	(³)
US	0.196	0.226	0.184	0.196	0.177	(²)

¹ Marketing year: August 1 to July 31 for U.S. and all estimating States.

² Second year.

³ Price not published to avoid disclosure of individual firms.

⁴ Insufficient sales to establish a price.

**All Barley: Farm Marketings, Percent of Sales,
by Month and State, 2002-2003 and 2003-2004¹**

State and Marketing Year	Jun	Jul	Aug	Sep	Oct	Nov	Dec	Jan	Feb	Mar	Apr	May	Jun
	Percent												
CA 2003-2004	14	26	24	4	2	2	2	7		2	2	15	
2002-2003	40	41		7				2		1	2	7	
CO 2003-2004			23	26	5	18	5	20	3				
2002-2003		1	27	20	22	2	2	23	3				
ID 2003-2004		2	21	17	8	8	14	6	3	7	5	5	4
2002-2003		3	18	17	8	8	9	8	8	6	4	4	7
MN 2003-2004		14	15	6	14	3	5	8	9	9	4	5	8
2002-2003		5	4	3	9	2	5	40	10	11	8	2	1
MT 2003-2004		2	23	15	10	7	14	6	7	8	4	2	2
2002-2003		2	12	13	10	11	17	11	11	6	4	2	1
ND 2003-2004		5	18	11	8	7	9	8	8	9	4	2	11
2002-2003		6	11	10	9	8	20	18	6	4	4	2	2
OR 2003-2004		11	29	9	7	5	6	3	17	1	1	9	2
2002-2003		8	13	8	8	7	3	24	7	11	3	4	4
SD 2003-2004		20	18	18	7	7	10		5	7		2	6
2002-2003		3	15	10	5	5		14	1	9	7	12	19
UT 2003-2004		38	15	13	6	3	5	1	3	7	5	3	1
2002-2003		10	28	12	12	6	4	7	2	6	7	3	3
WA 2003-2004		2	36	16	10	18	7	2	2	2	1	2	2
2002-2003		4	13	27	14	15	7	7	5	4	2	2	
WY 2003-2004		8	66	15	2	4	4			1			
2002-2003			60	18	12	3	5	1		1			
US 2003-2004	2.7	4.7	23.6	14.7	8.6	9.0	10.6	7.0	5.7	6.8	3.6	3.0	
2002-2003	3.6	4.2	14.7	14.5	10.1	8.5	12.8	13.8	6.8	5.1	3.8	2.1	

¹ Monthly farm marketings, based on a sample survey, as a percent of total used for calculating marketing year average prices.

**Oats: Farm Marketings, Percent of Sales,
by Month and State, 2002-2003 and 2003-2004 ¹**

State and Marketing Year	May	Jun	Jul	Aug	Sep	Oct	Nov	Dec	Jan	Feb	Mar	Apr	May	Jun
	Percent													
IL 2003-2004			27	8	4	25	6	7	2	1	7	8	2	3
2002-2003			58	30	3	3			4			2		
IA 2003-2004			39	33	7	3		1	2	3	2	1	5	4
2002-2003			49	30	2	1		1	4	6	2	2	2	1
MI 2003-2004			9	55	8	6	2	2	2	2	5	5	1	3
2002-2003			16	50	7	5	1	2	2	1	5	4	6	1
MN 2003-2004			24	30	8	2	3	3	5	4	5	3	7	6
2002-2003			18	50	5	2	2	2	4	3	3	5	4	2
MT 2003-2004			13	11		5	2	2	7	9	33	11	4	3
2002-2003			4	16	30	4	10	5	11	11	1	5	1	2
NE 2003-2004			42	37	8	2	1	1	3		3			3
2002-2003			39	14	10	3	1	10	6	4	4	3	1	5
ND 2003-2004			6	11	10	8	7	10	13	3	10	15	3	4
2002-2003			3	17	10	10	4	10	13	13	5	3	4	8
OH 2003-2004			12	35	19	4	2	5	2	5	2	1	4	9
2002-2003			49	39	2	1	1	1	1		2	2	1	1
OR 2003-2004			2	6	5	16	3	23	10	7	16	11	1	
2002-2003				30	7	8		2	9	6			10	28
PA 2003-2004			22	52	5	1	1	1	2	4	2	6	2	2
2002-2003			24	5	5	5	6	8	5	6	15	8	7	6
SD 2003-2004			19	19	3	2	1	4	8	7	6	7	6	18
2002-2003			17	19	9	3	4	4	13	14	9	5	2	1
TX 2003-2004	6	55	23		11	11								
2002-2003		49	24		5	4	4	8						
WI 2003-2004			5	45	10	4	1	3	4	5	5	7	6	5
2002-2003			21	51	9	3	2	1	2	2	2	2	3	2
US 2003-2004		3.4	20.2	29.8	8.0	4.4	2.4	4.2	6.2	4.2	5.6	6.5	5.1	
2002-2003		4.2	24.4	31.5	6.5	3.6	2.3	3.5	6.4	6.7	4.6	3.5	2.8	

¹ Monthly farm marketings, based on a sample survey, as a percent of total used for calculating marketing year average prices.

**All Wheat: Farm Marketings, Percent of Sales,
by Month and State, 2002-2003 and 2003-2004 ¹**

State and Marketing Year	May	Jun	Jul	Aug	Sep	Oct	Nov	Dec	Jan	Feb	Mar	Apr	May	Jun
	Percent													
AR 2003-2004		61	34	1			2	1					1	
2002-2003		76	16	4	1				1				2	
CA 2003-2004		10	40	12	6	1	5	5	4	5	1	1	10	
2002-2003		22	34	17	9	8	3	4	1				2	
CO 2003-2004			23	14	7	8	10	9	8	5	7	6	2	1
2002-2003			26	13	14	5	6	6	7	6	3	6	6	2
ID 2003-2004			5	14	13	9	7	11	13	8	7	4	4	5
2002-2003			8	13	22	10	4	9	6	6	7	5	6	4
IL 2003-2004		11	49	16	10	1	1	3	6	1	2			
2002-2003		23	51	13	5	1		1	2	1	1	1	1	
IN 2003-2004		17	56	11	3			2	4	2	2	1	2	
2002-2003		12	56	14	3	1	3	4	2		2	2	1	
KS 2003-2004		9	40	13	5	6	6	5	5	3	5	2	1	
2002-2003		28	28	12	6	4	3	3	3	3	2	3	5	
MI 2003-2004			42	33	5	3	3	3	5	3	3			
2002-2003			49	19	8	6	1	1	4	2	1	2	2	5
MN 2003-2004			7	21	7	5	5	11	11	12	9	4	3	5
2002-2003			15	24	13	4	4	12	5	3	5	4	5	6
MO 2003-2004		14	47	9	8	3	2	2	7	2	3	1	2	
2002-2003		37	42	7	3	2	1	1	3	1	1	1	1	
MT 2003-2004			5	8	6	9	8	13	13	7	9	8	5	9
2002-2003			9	11	12	8	7	12	11	6	6	6	5	7
NE 2003-2004			29	10	10	12	8	7	6	4	5	3	2	4
2002-2003			48	15	11	4	2	3	4	2	3	3	3	2
ND 2003-2004			9	14	11	7	8	11	11	9	9	5	3	3
2002-2003			11	14	13	7	7	10	9	5	5	6	4	9
OH 2003-2004			58	12	11	2	1	2	4	1	2	1		6
2002-2003			69	11	6	3	2	1	2	2	1	1	1	1
OK 2003-2004		17	19	8	5	8	9	5	7	4	10	2	6	
2002-2003		29	20	11	8	4	3	4	3	3	3	5	7	
OR 2003-2004			7	14	12	7	8	10	11	10	8	5	5	3
2002-2003			11	18	11	10	3	4	9	4	8	5	10	7
SD 2003-2004			15	17	6	5	12	12	6	7	8	5	4	3
2002-2003			17	19	12	4	6	5	6	4	6	6	7	8
TX 2003-2004	6	34	30	6	4	2	4	2	4	1	6	1		
2002-2003	14	41	20	9	4	2	2	2	2	1	2	1		
WA 2003-2004			4	13	15	10	13	9	12	7	8	2	3	4
2002-2003			7	14	19	13	5	6	6	5	9	5	8	3
US 2003-2004		8.5	23.4	12.6	7.9	6.6	7.2	7.5	7.9	5.4	6.6	3.2	3.2	
2002-2003		16.3	22.0	13.3	10.5	5.7	4.2	5.9	5.4	3.7	4.0	4.0	5.0	

¹ Monthly farm marketings, based on a sample survey, as a percent of total used for calculating marketing year average prices.

**All Hay: Farm Marketings, Percent of Sales,
by Month and State, 2002-2003 and 2003-2004 ¹**

State and Marketing Year	Apr	May	Jun	Jul	Aug	Sep	Oct	Nov	Dec	Jan	Feb	Mar	Apr	May
	Percent													
AZ 2003-2004	11	13	10	11	9	8	6	8	5	4	6	9		
2002-2003	9	11	12	12	12	8	7	6	6	4	6	7		
CA 2003-2004		11	13	14	13	11	10	6	5	4	4	4	5	
2002-2003		9	10	13	15	11	10	6	5	4	4	5	8	
CO 2003-2004		3	6	12	9	9	8	7	10	10	15	5	6	
2002-2003		2	5	9	12	7	12	16	13	9	5	6	4	
ID 2003-2004			10	10	11	15	10	10	5	7	8	6	5	3
2002-2003			16	14	15	13	8	6	8	4	5	3	4	4
IL 2003-2004			16	12	9	8	5	6	11	9	10	7	4	3
2002-2003			17	10	9	8	5	6	9	10	9	9	5	3
IA 2003-2004			11	13	5	7	5	16	15	11	7	4	3	3
2002-2003			11	13	5	7	5	16	15	11	7	4	3	3
KS 2003-2004		4	5	5	6	6	7	14	15	13	11	10	4	
2002-2003		4	7	12	15	10	7	10	12	8	7	4	4	
KY 2003-2004		4	11	9	6	7	8	9	10	12	12	8	4	
2002-2003		5	14	12	6	6	8	8	10	11	11	6	3	
MI 2003-2004			13	12	11	8	7	8	8	8	8	7	6	4
2002-2003			16	13	8	5	7	8	11	9	9	6	5	3
MN 2003-2004			11	14	12	9	7	7	8	6	8	9	5	4
2002-2003			8	13	10	8	6	9	7	8	10	10	7	4
MO 2003-2004		4	14	9	11	8	6	8	10	11	10	6	3	
2002-2003		5	12	12	11	7	6	8	10	10	9	7	3	
MT 2003-2004			3	7	8	7	9	18	14	11	9	7	4	3
2002-2003			3	8	11	10	12	18	12	9	6	5	3	3
NE 2003-2004			3	5	6	10	12	14	15	11	9	6	5	4
2002-2003			6	9	6	9	10	11	15	11	9	8	4	2
NV 2003-2004		2	4	9	10	9	8	13	12	9	9	10	5	
2002-2003		2	6	12	14	14	10	9	8	7	7	7	4	

See footnote(s) at end of table.

--continued

**All Hay: Farm Marketings, Percent of Sales,
by Month and State, 2002-2003 and 2003-2004¹ (continued)**

State and Marketing Year	Apr	May	Jun	Jul	Aug	Sep	Oct	Nov	Dec	Jan	Feb	Mar	Apr	May
	Percent													
NM 2003-2004		15	18	19	14	12	10	2	3	2	2	2	1	
2002-2003		14	16	15	15	14	11	5	3	2	2	1	2	
NY 2003-2004			7	10	4	3	4	10	13	13	11	11	8	6
2002-2003			16	11	9	5	9	7	9	9	7	7	7	4
ND 2003-2004			2	3	6	8	11	16	11	11	11	10	7	4
2002-2003			4	9	5	9	15	15	11	10	6	10	5	1
OH 2003-2004			19	16	11	10	7	6	7	7	6	5	3	3
2002-2003			17	12	11	10	6	7	8	7	7	6	4	5
OK 2003-2004		8	13	17	16	10	7	5	7	6	4	4	3	
2002-2003		5	9	15	13	11	9	8	8	7	6	5	4	
OR 2003-2004			12	12	10	10	10	9	9	7	7	6	4	4
2002-2003			9	12	11	12	11	10	8	7	7	6	4	3
PA 2003-2004		5	9	10	5	5	5	6	7	15	14	11	8	
2002-2003		4	5	10	7	6	8	9	10	14	13	8	6	
SD 2003-2004			3	3	4	6	7	11	8	17	16	13	7	5
2002-2003			7	8	7	12	13	11	10	10	7	8	4	3
TX 2003-2004		1	1	1	13	13	11	13	14	12	9	7	5	
2002-2003		6	11	11	12	12	11	10	8	7	5	4	3	
UT 2003-2004		4	12	10	10	10	9	9	9	7	7	7	6	
2002-2003		3	9	12	14	11	12	9	9	6	5	5	5	
WA 2003-2004			12	12	10	10	8	8	8	8	6	7	5	6
2002-2003			17	12	13	12	10	6	6	6	5	5	4	4
WI 2003-2004			15	11	11	7	5	8	11	7	7	7	6	5
2002-2003			12	17	10	8	6	6	7	7	8	8	7	4
WY 2003-2004			3	7	11	12	12	18	9	10	6	6	4	2
2002-2003			5	10	13	12	12	15	11	7	5	5	3	2
US 2003-2004	0.5	4.0	9.8	10.5	9.9	9.5	8.5	9.2	8.8	8.4	8.0	6.6	4.6	1.7
2002-2003	0.5	3.9	10.2	12.0	12.1	10.2	9.2	8.9	8.5	7.0	6.2	5.5	4.4	1.4

¹ Monthly farm marketings, based on a sample survey, as a percent of total used for calculating marketing year average prices.

**Peanuts: Farm Marketings, Percent of Sales, by Month
and State, 2002-2003 and 2003-2004¹**

State and Marketing Year	Aug	Sep	Oct	Nov	Dec	Jan	Feb	Mar	Apr	May	Jun	Jul
	Percent											
AL 2003-2004 2002-2003		3.0 14.0	18.0 34.0	8.0 13.0	13.0 5.0	11.0 9.0	11.0 8.0	8.0 6.0	7.0 8.0	11.0 2.0	8.0 1.0	2.0
FL 2003-2004 2002-2003		16.0 37.0	10.0 49.0	1.0 11.0	8.0 2.0	11.0 1.0	18.0	10.0	24.0		2.0	
GA 2003-2004 2002-2003		5.0 26.0	14.0 58.0	11.0 9.0	10.0 2.0	8.0	15.0	9.0 2.0	12.0	6.0 1.0	9.0	1.0 2.0
NM 2003-2004 ² 2002-2003 ²												
NC 2003-2004 2002-2003			4.0 47.0	13.0 10.0	14.0 19.0	10.0 7.0	33.0 6.0	8.0 5.0	9.0 4.0	6.0 2.0	3.0	
OK 2003-2004 ² 2002-2003 ²												
SC 2003-2004 ² 2002-2003 ²												
TX 2003-2004 2002-2003		1.0	12.0 35.0	10.0 47.0	7.0 16.0	12.0	16.0	11.0	19.0	7.0 1.0	5.0	1.0
VA 2003-2004 2002-2003			19.0 41.0	11.0 6.0	16.0 9.0	1.0 6.0	4.0 5.0	2.0 26.0	20.0 3.0	18.0 4.0	9.0	
US 2003-2004 2002-2003		3.7 14.5	13.2 46.7	9.7 18.1	10.0 7.9	9.7 2.8	16.3 2.4	9.3 3.6	13.3 2.0	6.7 1.1	7.0 0.2	1.1 0.7

¹ Monthly farm marketings, based on a sample survey, as a percent of total used for calculating marketing year average prices.

² Sales by month not available.

Reliability of Prices Received Estimates

Definition: Prices received represent sales from producers to first buyers. They include all grades and qualities. The average commodity price from the survey multiplied by the total quantity marketed theoretically should give the total cash receipts for the commodity.

Survey Procedures: Primary sales data used to determine grain prices were obtained from probability samples of 2600 mills and elevators. These procedures ensure that virtually all grain moving into commercial channels has a chance of being included in the survey. Generally, States surveyed account for 90 percent or more of total U.S. production. Livestock prices are obtained from packers, stockyards, auctions, dealers, and market check data from AMS-USDA, private marketing organizations, and state commodity groups and agencies. Inter-farm sales of grain and livestock are not included since they represent very small percentages of the total marketings. Grain marketed for seed is also excluded. Fruit and vegetable prices are obtained from sample surveys and market check data from AMS-USDA, private marketing organizations, state agencies, and universities.

Summary and Estimation Procedures: Survey quantities sold are expanded by strata to state levels and used to weight average strata prices to a state average. State prices are then weighted to a U.S. price based on expanded marketings. Recommendations are prepared by the State Statistical Offices and reviewed by the Agricultural Statistics Board in Washington, D.C. State recommendations are reviewed for reasonableness with survey data, other States, and recent historic estimates.

Revisions: For most items, the current month's preliminary price represents a 3-5 day period around the 15th of the month. Previous month's prices represent actual dollars received for quantities sold during the entire month. Revisions are published in monthly issues of *Agricultural Prices*.

Reliability: U.S. price estimates based on probability surveys generally have a sampling error of less than one percent for the major commodities such as corn, wheat, soybeans, cotton, and rice. Current methods of summarization for non-probability commodities are not designed directly to calculate sampling errors. However, analytical measures approximate the U.S. relative sampling errors at around five percent. Any nonsampling errors are attributed to such things as the inability to obtain correct information, differences in interpreting questions or definitions, mistakes in coding or processing the data, etc. Efforts are made at each step in the survey process to minimize these nonsampling errors.

Prices Paid by Farmers

The August Index of Prices Paid for Commodities and Services, Interest, Taxes, and Farm Wage Rates (PPITW) is 135 (1990-92=100), 0.7 percent higher than July 2004 and 6.3 percent above August 2003.

PRODUCTION INDEX: The August index, at 133, is up 0.8 percent from last month and 8.1 percent above last year. Higher prices in August for complete feeds, diesel fuel, feeder cattle, and nitrogen fertilizers more than offset lower prices for feed grains, other machinery, feed supplements, and feed concentrates.

Feed: The August index, at 125, is the same as July but 16 percent above last August. Since July, lower prices for feed grains, feed supplements, feed concentrates, and hay and forages offset higher prices for complete feeds.

Livestock & Poultry: The August index for livestock and poultry purchases, at 137, is 0.7 percent higher than last month and 28 percent above last year. Since July, higher prices for feeder cattle more than offset lower prices for feeder pigs. The August feeder cattle price, at \$119.20 per cwt, is up \$1.40 per cwt from the July price. August feeder pigs average \$98.00 per cwt, down \$2.00 per cwt from July.

Fertilizer: The August index, at 136, is unchanged from July but 11 percent more than August a year ago. Since July, lower prices for potash and phosphate materials offset higher prices for nitrogen fertilizers.

Agricultural Chemicals: The August index, at 121, is unchanged from last month and last August.

Fuels: The August index, at 166, is up 3.1 percent from a month earlier and 20 percent above August 2003. Compared to last month, prices are higher for diesel fuel and LP gas but lower for gasoline.

Farm Machinery: The August index is 157, down 1.3 percent from July but 4.0 percent above last August.

CONSUMER PRICE INDEX: The July 2004 Consumer Price Index for all urban consumers (CPI-U) decreased 0.2 percent before seasonal adjustment to a level of 189.4 (1982-84=100). This compares to the June index of 189.7. For the 12-month period ending in July, the overall index has increased 3.0 percent.

**Indexes of Prices Paid by Farmers and Related Parity Ratios
United States, August 2004 With Comparisons**

Indexes and Ratios	1910-14 = 100			1990-92 = 100		
	2003	2004		2003	2004	
	Aug	Jul	Aug	Aug	Jul	Aug
Prices Paid by Farmers for Commodities & Services, Interest, Taxes, & Wage Rates (PPITW)	1,691	*1,789	1,792	127	134	135
Production	1,194	*1,285	1,288	123	*132	133
Feed	525	*612	612	108	*125	125
Livestock & Poultry	1,372	1,740	1,755	107	136	137
Seeds	1,553	1,564	1,564	157	158	158
Fertilizer	452	*497	500	123	*136	136
Agricultural Chemicals	747	*747	746	121	121	121
Fuels	1,061	*1,242	1,282	138	*161	166
Farm Supplies & Repairs	952	*972	972	134	*137	137
Autos & Trucks	3,020	*2,994	2,967	114	113	112
Farm Machinery	3,783	*3,982	3,949	151	*159	157
Building Materials	1,680	*1,834	1,840	124	135	135
Farm Services & Rent	1,457	1,464	1,464			
Farm Services				124	125	125
Rent				120	120	120
Interest ¹	2,599	2,616	2,616	104	104	104
Taxes ²	3,426	3,474	3,474	128	130	130
Wage Rates	5,738	*5,880	5,880	153	*157	157
Production, Interest, Taxes, & Wage Rates (PITW)	1,677	*1,787	1,790	125	*133	133
Family Living-CPI ³	1,753	*1,799	1,799	137	141	141
Ratio (Received/Paid)				86	*93	89
Parity Ratio ⁴	41	44	43			
Parity Ratio Adjusted ⁵	44	46	45			
PPITW Adjusted for Productivity ⁶	1,161	*1,209	1,209			
Crop Sector (PPITW)				131	135	135
Livestock Sector (PPITW)				123	*133	134
Farm Sector (Production)				115	*134	135
Non-Farm Sector (Production)				127	*132	132

* Revised.

¹ Interest per acre on farm real estate debt and interest rate on farm non-real estate debt.

² Farm real estate taxes payable per acre.

³ Bureau of Labor Statistics, Consumer Price Index for all urban consumers (CPI-U), for the previous month converted by the USDA.

⁴ Ratio of index of prices received to PPITW (1910-14=100).

⁵ Based on estimated cash receipts, from marketings and government payments, the preliminary adjustment factor is 1.048 for 2004 and the revised factor is 1.082 for 2003.

⁶ PPITW is adjusted based on productivity trend for the prior 15 years.

**Prices Paid Indexes and Annual Weights for Input Components and
Sub-Components United States, August 2004 With Comparisons**

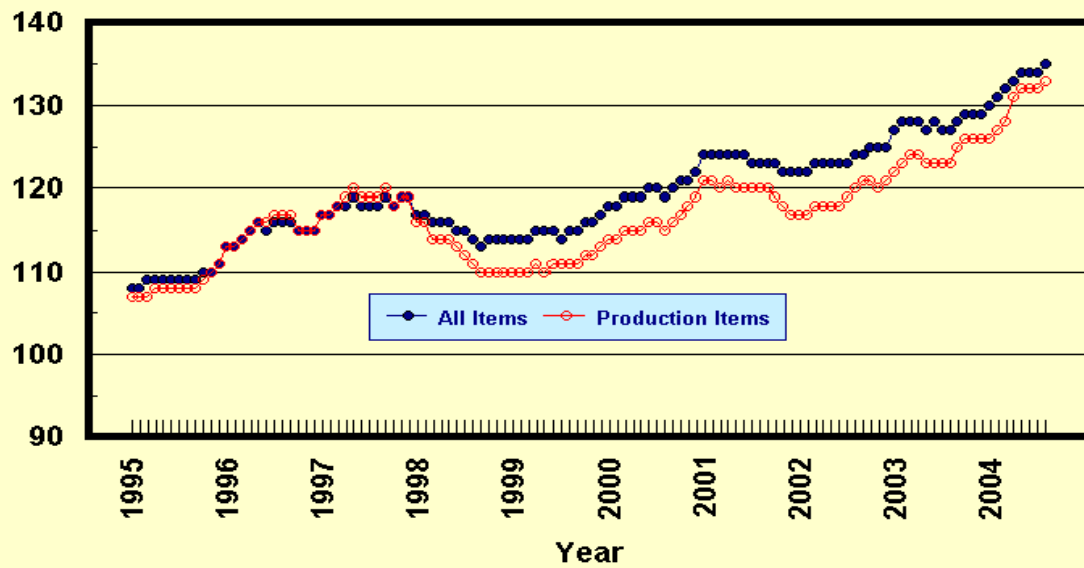
Index	Relative Weights 5-Year Moving Average ¹		Input Indexes		
	2003	2004	2003	2004	
	<i>Percent</i>	<i>Percent</i>	Aug <i>(1990-92=100)</i>	Jul <i>(1990-92=100)</i>	Aug <i>(1990-92=100)</i>
Production Items	66.7	66.2	123	*132	133
Feed	11.0	10.7	108	*125	125
Feed Grains	1.6	1.5	95	*108	98
Complete Feeds	5.4	5.2	108	*130	135
Hay/Forages	1.4	1.3	109	117	115
Concentrates	1.7	1.7	107	*132	130
Supplements	0.9	0.9	126	*127	123
Livestock & Poultry	7.2	7.4	107	136	137
Feeder Cattle	5.6	5.8	111	139	141
Feeder Pigs	0.6	0.6	64	109	107
Milk Cow Replacements	0.6	0.6	116	152	152
Poultry	0.4	0.4	112	112	112
Seeds	3.2	3.3	157	158	158
Field Crops	2.9	3.0	162	163	163
Grasses/Legumes	0.3	0.3	109	111	111
Fertilizer	4.5	4.4	123	*136	136
Mixed Fertilizer	2.0	1.9	113	*121	121
Nitrogen	1.9	1.8	139	*157	160
Potash & Phosphate	0.6	0.6	110	116	114
Agricultural Chemicals	3.8	3.7	121	121	121
Herbicides	2.4	2.4	112	*113	113
Insecticides	0.9	0.9	147	144	144
Fungicides/Other	0.5	0.5	115	117	117
Fuels	2.7	2.7	138	*161	166
Diesel	1.5	1.5	130	*153	161
Gasoline	0.8	0.8	144	*164	161
LP Gas	0.4	0.4	155	*185	198
Farm Supplies & Repairs	5.5	5.4	134	*137	137
Supplies	1.8	1.8	125	127	127
Repairs	3.6	3.6	139	*142	142
Autos & Trucks	1.8	1.8	114	113	112
Autos	0.2	0.2	107	*106	106
Trucks	1.5	1.6	115	114	113
Farm Machinery	4.0	4.0	151	*159	157
Tractors	0.9	0.9	143	148	148
Self-Propelled	1.6	1.6	153	167	167
Other Machinery	1.5	1.5	153	*157	153
Building Materials	3.1	3.3	124	135	135
Farm Services	12.4	12.4	124	125	125
Custom Rates	1.3	1.3	125	125	125
Other Services	11.1	11.1	124	125	125
Rent	7.4	7.1	120	120	120
Cash	4.0	3.8	145	145	145
Share	3.4	3.3	91	91	91
Interest	4.7	4.7	104	104	104
Taxes	3.0	3.0	128	130	130
Wage Rates	7.4	7.6	153	*157	157
Family Living-CPI	18.2	18.5	137	141	141

* Revised.

¹ Weights may not add due to rounding.

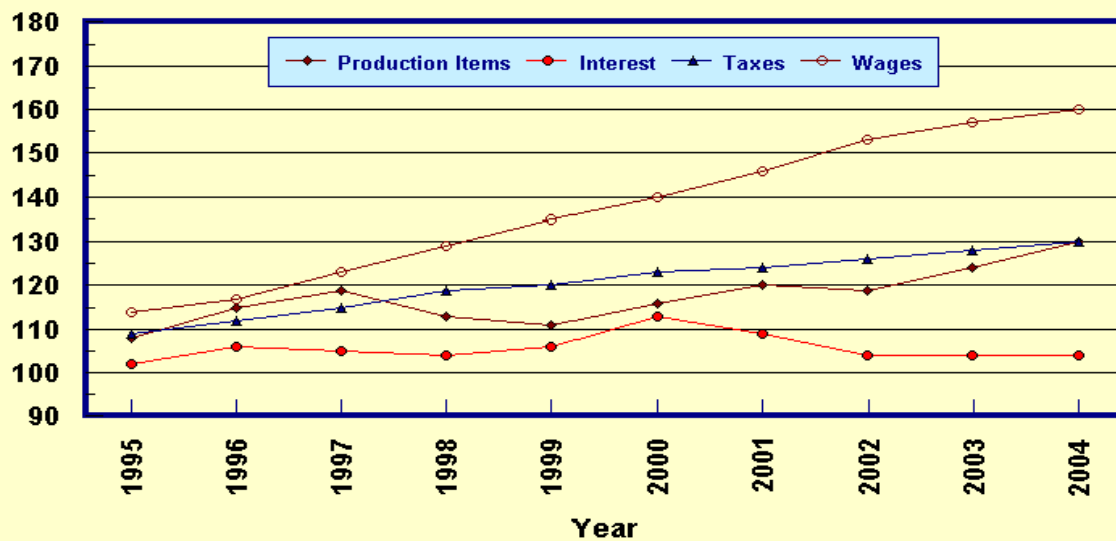
Prices Paid by Farmers, Major Indexes US, by Quarter and Month

Percent (1990-92=100)



Prices Paid by Farmers, Major Indexes US, Annual Averages 1/

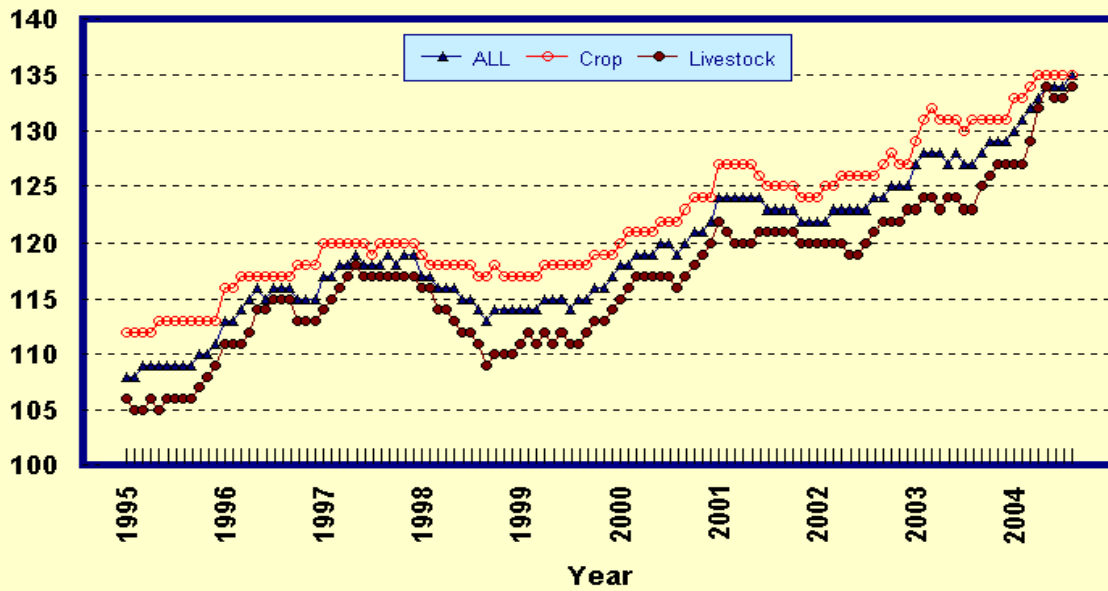
Percent (1990-92=100)



1/ Index values for 2004 are year-to-date averages.

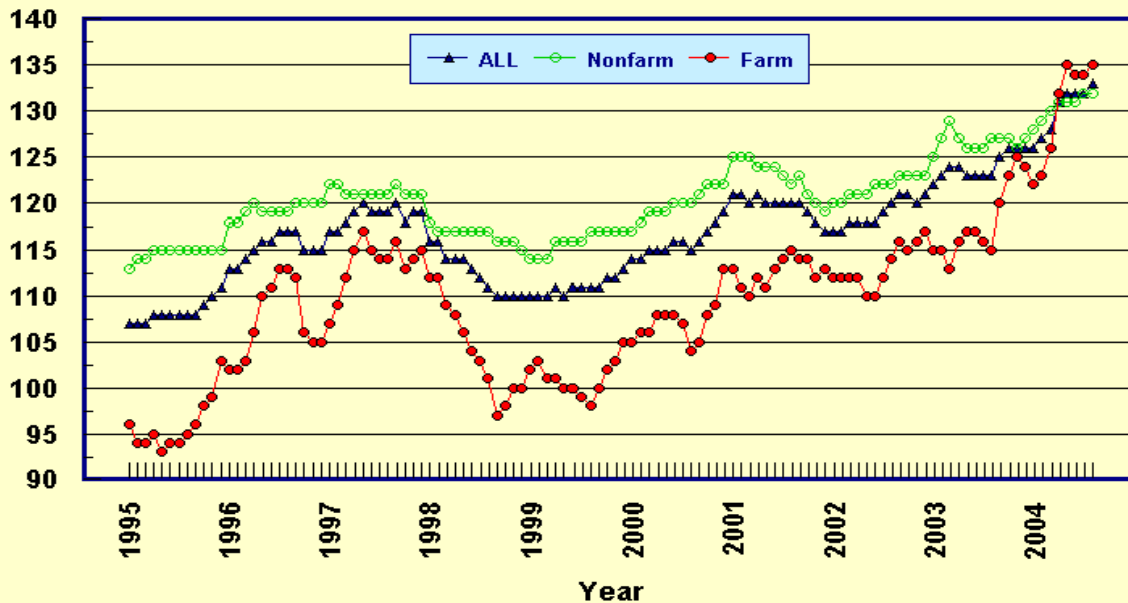
Prices Paid by Farmers, Indexes, All Items US, By Farm Type

Percent (1990-92=100)



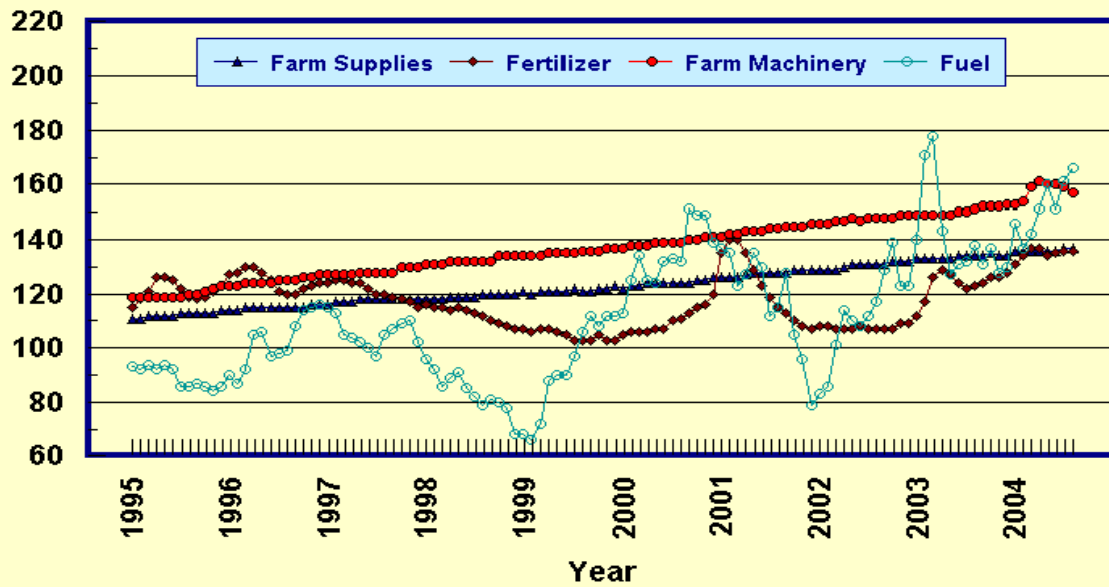
Prices Paid by Farmers, Indexes, All Production Items US, By Sector Origin

Percent (1990-92=100)



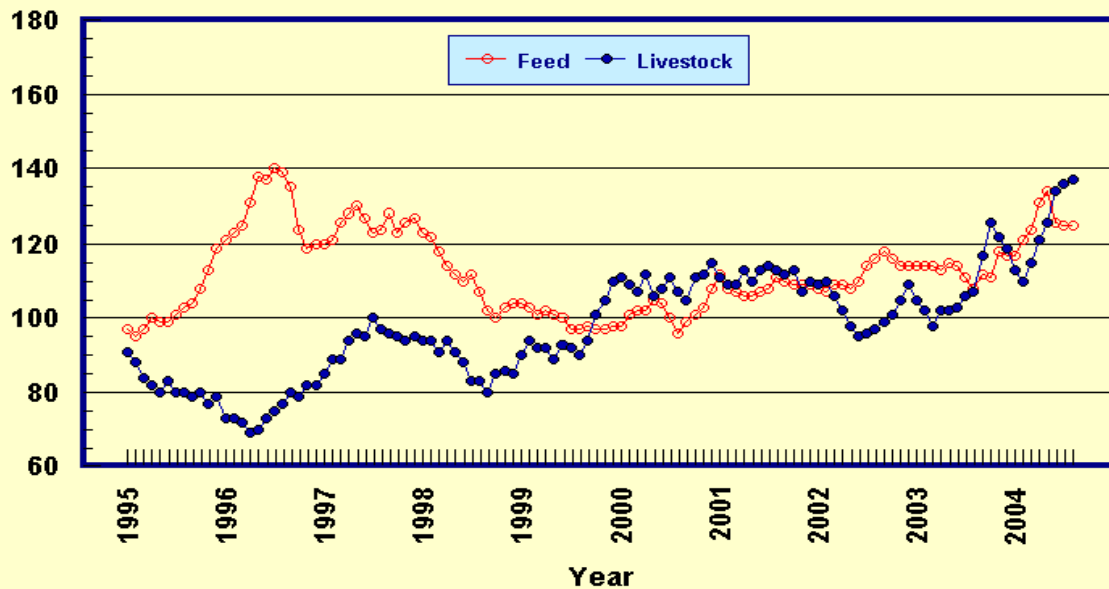
Prices Paid by Farmers, Selected Production Indexes US, By Non-Farm Sector

Percent (1990-92=100)



Prices Paid by Farmers, Selected Production Indexes US, By Farm Sector

Percent (1990-92=100)



Feed Price Ratios: United States, August 2004 with Comparisons

Feed Price Ratio ¹	2003	2004	
	Aug	Jul	Aug
Broiler-Feed: Pounds of Broiler Grower Feed equal in value to 1 pound of broiler, live weight	5.8	*6.1	6.8
Market Egg Feed: Pounds of Laying Feed equal in Value to 1 dozen eggs	12.7	*5.8	5.9
Hog-Corn: Bushels of Corn equal in value to 100 pounds of hog, live weight	18.4	*22.7	24.7
Milk-Feed: Pounds of 16% Mixed Dairy Feed equal in value to 1 pound of Whole Milk	2.89	*2.95	3.06
Steer & Heifer-Corn: Bushels of Corn equal in value to 100 pounds of Steer & Heifers, live weight	38.6	*36.6	40.3
Turkey-Feed: Pounds of Turkey Grower equal in value to 1 pound of Turkey, live weight	5.7	*5.9	7.4

* Revised.

¹ Effective January 1995, prices of commercial prepared feeds are based on current U.S. prices received for corn, soybeans, alfalfa hay, and all wheat.

**Prices Used to Calculate Feed Price Ratios:
United States, August 2004 with Comparisons**

Commodity	Unit	2003	2004	
		Aug	Jul	Aug
Broilers, Live	Lb	0.360	0.520	0.460
Eggs, Market	Doz	0.668	0.399	0.334
Hogs, All	Cwt	39.60	*57.10	56.00
Milk, All	Cwt	13.30	*16.00	15.00
Steers and Heifers	Cwt	82.90	*91.80	91.50
Turkeys, Live	Lb	0.327	0.436	0.454
Corn	Bu	2.15	*2.51	2.27
Hay, Alfalfa, Baled	Ton	91.90	98.40	97.40
Soybeans	Bu	5.68	*8.46	6.34
Wheat, All	Bu	3.35	*3.37	3.13

* Revised.

**Feeder Livestock: Prices Paid, United States
August 2004 with Comparisons**

Commodity	Unit	2003	2004	
		Aug	Jul	Aug
		<i>Dollars</i>	<i>Dollars</i>	<i>Dollars</i>
Feeders and Stockers				
Cattle and Calves	Cwt	93.60	117.80	119.20
Feeder Pigs	Cwt	58.50	100.00	98.00

Prices Paid by Farmers

Definition: Prices paid by farmers represent the average costs of inputs purchased by farmers and ranchers to produce agricultural commodities. Conceptually, the average price when multiplied by quantity purchased should equal total producer expenditures for the item.

Survey Procedures: The prices paid data are obtained from establishments that sell goods and services to farmers and ranchers. Annually, about 8,500 firms are randomly selected from lists by type of item sold with an average response rate in the range of 75-80 percent. Firms are asked to report the price for the specified item "most commonly bought by farmers" or that was the "volume seller". Approximately 135 items are surveyed each April to represent all production input items purchased. The survey reference period for most items is the 5 business days centered around the 15th of the month. Separate prices paid surveys are conducted for, agricultural chemicals, fuels, feed, fertilizer, machinery, and seed.

Summary and Estimation Procedures: The annual April Prices Paid Survey is summarized as a nonprobability survey. Average prices reported are aggregated to the region and U.S. level using weights available from expenditure data and other administrative sources. Price recommendations are prepared by the State Statistical Offices and Headquarters for review by the Agricultural Statistics Board in Washington, D.C. Also, the change in price level for individual items surveyed are combined to the regional and U.S. levels, and are published as prices paid indexes referenced to a specific base period. Prices paid indexes for new autos and trucks, building materials, farm supplies, motor supplies, and marketing containers are updated based on price changes measured in selected Bureau of Labor Statistics (BLS) indexes.

Revisions: Any revisions are published in the monthly and in annual issues of *Agricultural Prices*. The basis for revision must be supported by additional data that directly affect the level of the estimate. More revisions are likely in April when separate prices paid surveys are conducted, in lieu of BLS indexes, by the USDA to measure price change.

Reliability: Current methods of summarization in April are not designed directly to calculate sampling errors. However, analytical measures approximate the U.S. relative sampling errors for major items around 10 percent. Any nonsampling errors are attributed to such things as the inability to obtain correct information, differences in interpreting questions or definitions, mistakes in coding or processing the data, etc. Efforts are made at each step in the survey process to minimize these nonsampling errors.

Program Change: Effective January 1, 1995, the National Agricultural Statistics Service updated the weights and changed the construction of its prices paid and received by farmers indexes. A Federal Register Notice dated October 28, 1994 discussed these program modifications.

A 1990-92 reference and base period replaced the 1977 reference and 1971-73 base weight period. Five-year moving average weights replaced the current fixed 1971-73 base period weights. The 1910-14=100 price indexes, required by statute for computing parity prices, were linked forward based on the changes in the new 1990-92=100 indexes. The new indexes were constructed by multiplying the ratios of the current prices to the base period prices by the moving average weights (adjusted for seasonal marketing patterns for the prices received indexes).

Information Contacts

General questions should be directed to Linda Hutton, Chief, Environmental, Economics and Demographics Branch at (202) 720-6146. Below are the commodity specialists to contact for additional information.

Crop Prices Received

Joe Prusacki Chief, Crops Branch	(202) 720-2127
Greg Thessen, Field Crops Section	(202) 720-2127
Lance Honig - Wheat, Rye	(202) 720-8068
Darin Jantzi - Corn, Proso Millet, Flaxseed	(202) 720-9526
Troy Joshua - Cotton, Cottonseed	(202) 720-5944
Dennis Koong - Hay, Oats, Sorghum	(202) 690-3234
Jason Lamprecht - Soybeans, Sunflower, Other Oilseeds	(202) 720-7369
Mark R. Miller - Peanuts, Rice	(202) 720-7688
Brian Young - Sugarcane, Sugarbeets, Barley	(202) 720-7621
Jim Smith, Fruit and Vegetable Section	(202) 720-2127
Debbie Flippin - Peaches, Pears, Hops, Pulses, Mint	(202) 720-3250
Jorge Garcia-Pratts - Citrus	(202) 720-5412
Terry O'Connor - Apples, Apricots, Cherries, Cranberries, Plums, Prunes	(202) 720-4288
Mike Miller - Grapes, Tobacco	(202) 720-7235
Cathy Scherrer, Potatoes, Dry Edible Beans, Sweet Potatoes	(202) 720-4285
Biz Wallingsford - Vegetables, Onions, Strawberries	(202) 720-2157

Livestock Prices Received

Dan Kerestes, Chief, Livestock Branch	(202) 720-3570
Wil Hundl, Livestock Section	(202) 720-3570
Scott Hollis - Sheep, Lambs, Wool, Mohair	(202) 720-4751
Ty Kalaus - Milk, Milk Cows	(202) 690-3236
Dan Lofthus - Hogs	(202) 720-3106
Mike Miller - Cattle	(202) 720-3040
Nathan Crisp, Poultry and Specialty Commodities Section	(202) 720-3570
Tom Kruchten - Broilers, Eggs	(202) 690-4870
John Lange - Turkeys	(202) 720-0585

Indexes, Prices Paid, and Parity Prices

Linda Hutton, Chief, Environmental, Economics and Demographics Branch	(202) 720-6146
Kevin Hintzman, Economics Section	(202) 720-6146
Eric Barnes - Farm Supplies and Repairs, Farm Machinery, Fuels, Feeder Livestock, Poultry Chicks, Feed Price Ratios, Grazing Fees, Autos & Trucks	(202) 690-3225
Daryl Brinkman - Prices Received Indexes, Parity Prices	(202) 720-8844
Tara Jackson - Prices Paid Indexes, Prices Paid for Feed, Fertilizer, Agricultural Chemicals, Seeds	(202) 690-3229

ACCESS TO REPORTS!!

For your convenience, there are several ways to obtain NASS reports, data products, and services:

INTERNET ACCESS

All NASS reports are available free of charge on the worldwide Internet. For access, connect to the Internet and go to the NASS Home Page at: www.usda.gov/nass/. Select "Today's Reports" or Publications and then Reports Calendar or Publications and then Search, by Title or Subject.

E-MAIL SUBSCRIPTION

All NASS reports are available by subscription free of charge direct to your e-mail address. Starting with the NASS Home Page at www.usda.gov/nass/, click on **Publications**, then click on the **Subscribe by E-mail** button which takes you to the page describing e-mail delivery of reports. Finally, click on **Go to the Subscription Page** and follow the instructions.

PRINTED REPORTS OR DATA PRODUCTS

CALL OUR TOLL-FREE ORDER DESK: 800-999-6779 (U.S. and Canada)
Other areas, please call 703-605-6220 FAX: 703-605-6900
(Visa, MasterCard, check, or money order acceptable for payment.)

ASSISTANCE

For **assistance** with general agricultural statistics or further information about NASS or its products or services, contact the **Agricultural Statistics Hotline** at **800-727-9540**, 7:30 a.m. to 4:00 p.m. ET, or e-mail: nass@nass.usda.gov.

The United States Department of Agriculture (USDA) prohibits discrimination in all its programs on the basis of race, color, national origin, gender, religion, age, disability, political beliefs, sexual orientation, and marital or family status. (Not all prohibited bases apply to all programs.) Persons with disabilities who require alternative means for communication of program information (braille, large print, audiotape, etc.) should contact the USDA's TARGET Center at 202-720-2600 (voice and TDD).

To file a complaint of discrimination, write USDA, Director, Office of Civil Rights, Room 326-W, Whitten Building, 1400 Independence Avenue, SW, Washington, D.C., 20250-9410, or call 202-720-5964 (voice or TDD). USDA is an equal opportunity provider and employer.

USDA Data Users' Meeting

October 18, 2004

Hampton Inn & Suites

Chicago, Illinois

(312) 832-0330

The USDA's National Agricultural Statistics Service will be organizing an open forum for data users. The purpose will be to provide updates on pending changes in the various statistical and information programs and seek comments and input from data users. Other USDA agencies to be represented will include the Agricultural Marketing Service, the Economic Research Service, the Foreign Agricultural Service, and World Agricultural Outlook Board. The Foreign Trade Division from the Census Bureau will also be included in the meeting.

For registration details or additional information for the Data Users' Meeting, see the NASS homepage at www.usda.gov/nass/ or contact Karlyn McCutcheon (NASS) at (202) 690-8141 or at karlyn_mccutcheon@nass.usda.gov.

This Data Users' Meeting precedes an Industry Outlook meeting that will be held at the same location on October 19, 2004. The Outlook meeting brings together analysts from various commodity sectors to discuss the outlook situation. For more information about the outlook meeting and to register contact Jim Robb (Livestock and Marketing Information Center) at (720) 544-2941 or at robb@lmic.info.