

Released December 29, 2004, by the National Agricultural Statistics Service (NASS), Agricultural Statistics Board, U.S. Department of Agriculture. For information on *Agricultural Prices* see page 41, office hours 7:30 a.m. to 4:00 p.m. ET.

December Farm Prices Received Index Down 3 Points From Last Month

The preliminary All Farm Products Index of Prices Received by Farmers in December, at 112, based on 1990-92=100, is 3 points below the November Index. The Crop Index is down 8 points (7.1 percent) from November while the Livestock Index increased 1 point (0.8 percent). Producers received higher commodity prices for cattle, dairy, eggs, and cauliflower. Lower prices were received for tomatoes, oranges, corn, and cotton. The seasonal change in the mix of commodities farmers sell, based on the past 3-year average, also affects the overall index. Increased average marketings of dairy, tobacco, and wheat offset decreased marketings of cattle, grapes, and soybeans. The preliminary All Farm Products Index is down 2 points (1.8 percent) from December 2003.

The Food Commodities Index decreased 4 points (3.3 percent) from last month to 118. The index is up 2 points (1.7 percent) from December 2003.

Prices Paid Index Unchanged

The December Index of Prices Paid for Commodities and Services, Interest, Taxes, and Farm Wage Rates (PPITW) is 134 percent of the 1990-92 average. The index is unchanged from November but 5 points (3.9 percent) above December 2003. Lower prices in December for feeder cattle, diesel fuel, complete feeds, and gasoline, are offset by higher prices for feeder pigs, nitrogen fertilizers, LP gas, and feed concentrates.

Index Summary Table

Index 1990-92=100	2003		2004	
	Nov	Dec	Nov	Dec
Prices Received	116	114	115	112
Prices Paid	129	129	134	134
Ratio ¹	90	88	86	84

¹ Ratio of index of prices received by farmers to index of prices paid by farmers.

Prices Received by Farmers

The December All Farm Products Index is 112 percent of its 1990-92 base, down 2.6 percent from the November index and 1.8 percent below the December 2003 index.

ALL CROPS: The December index is 104, down 7.1 percent from November and 9.6 percent below the December 2003 index. Index decreases from November for fruits and nuts, commercial vegetables, cotton, feed grains and hay, and food grains more than offset index increases in tobacco, potatoes and dry beans, and oil-bearing crops.

Food Grains: The December index, at 113, is down 0.9 percent from the previous month and 6.6 percent less than December 2003. The all wheat price, at \$3.38 per bushel, is down 8 cents from the November price and 30 cents below last December. The rice price, at \$7.41 per cwt, is up 2 cents from November but 16 cents below a year ago.

Feed Grains & Hay: The December index is 91, down 1.1 percent from last month and 12 percent below December 2003. The corn price, at \$1.99 per bushel, is down 6 cents from November and is 32 cents below last year's December price. The all hay price, at \$84.30 per ton, is down \$1.90 from last month but \$3.90 above December 2003.

Oil-Bearing Crops: The December index, at 99, is up 2.1 percent from November but 21 percent below the previous December. The soybean price, at \$5.41 per bushel, increased 5 cents from November but decreased \$1.76 from the December 2003 price.

Cotton: The December index, at 68, is down 6.9 percent from a month ago and 35 percent below December 2003. The cotton price, at 41.0 cents per pound, is down 3.4 cents from November and 22 cents below a year ago.

Potatoes & Dry Beans: The December index, at 98, is up 2.1 percent from last month and 1.0 percent above December 2003. The all potato price, at \$5.10 per cwt, is up 6 cents from the previous month but 67 cents below last December. The all dry bean price, at \$27.10 per cwt, is up \$1.30 from last month and \$9.70 above December 2003.

Fruits & Nuts: The December index, at 102, is down 27 percent from the previous month but 9.7 percent above December 2003. Price decreases for oranges and apples more than offset price increases for grapes and grapefruit.

Commercial Vegetables: The December index, at 147, is 17 percent below last month and is down 14 percent from December 2003. Price decreases during December for tomatoes, celery, and sweet corn more than offset price increases for cauliflower, cantaloup, and broccoli.

LIVESTOCK & PRODUCTS: The December index, at 120, is up 0.8 percent from last month and up 7.1 percent from December 2003. Compared with a year ago, prices are higher for dairy, hogs, broilers, turkeys, and calves, but lower for eggs and all cattle.

Meat Animals: The December index, at 119, is up 0.8 percent from last month and up 8.2 percent from last year. The December hog price of \$54.50 per cwt is down \$1.20 from November but up \$20.30 from a year ago. The December beef cattle price of \$86.80 is up \$1.70 from last month but down \$3.60 from December 2003.

Dairy Products: The December index, at 126, is up 2.4 percent from November and up 19 percent from December 2003. The December all milk price of \$16.50 per cwt is up \$0.40 from last month and up \$2.70 from December 2003. The fluid grade milk price is up \$0.40 and the manufactured grade milk price is up \$0.30 from the previous month.

Poultry & Eggs: The December index, at 118, is unchanged from November but is down 2.5 percent from a year ago. December market egg prices, at 48.8 cents per dozen, increased 5.2 cents from November but were down 25.1 cents from last year. The December broiler price, at 39.0 cents per pound, was unchanged from November. The December turkey price, at 46.2 cents per pound, is down 2.8 cents from last month.

Table of Contents

U.S. Prices Received and Indexes	Page	Monthly State Prices, continued	Page
Narrative	2	Cottonseed	17
Price Indexes	5	Eggs	22
Price Index Charts	6	Flaxseed	16
U.S. Prices Received Summary	8	Fruit, Citrus	18
Charts	10	Hay	17
Selected Commodities	14	Hogs, All	21
Upland Cotton & Rice Marketings	17	Barrows and Gilts	21
Parity Prices	24	Sows	21
Reliability Statement	26	Milk	23
		Milk Cows	23
Monthly State Prices Received		Oats	15
Apples	17	Peanuts	16
Barley	15	Potatoes	19
Beans, Dry Edible	16	Rice	17
Beef Cattle, All	20	Sheep	22
Cows, Beef	20	Lambs	22
Steers and Heifers	20	Sorghum, Grain	15
Calves	20	Soybeans	15
Corn	15	Sunflower	16
Cotton	17	Tobacco	16
		Wheat, All Classes	14
Prices Received Special Features			Page
Marketing Year Average Prices by State and U.S.			
Hops			26
Calendar of Prices Received Features in the 2004 Agricultural Price Reports			37

Table of Contents (continued)

U.S. Prices Paid, Prices Paid Indexes and Ratios	Page
Narrative	27
Indexes and Parity Ratios	28
Charts	30
Feed Price Ratios	33
Reliability Statement	36
 U.S. Average Prices	
Commodity Prices Used in Feed Price Ratios	33
Feeder Livestock	33
 Special Features	
Feed: April Prices Paid, U.S. 1999-2004	34
Feeder Livestock: Annual Average Prices Paid, U.S., 1999-2004	34
Prices Paid Index for Beef Cattle Production	35
Beef Cattle Prices Received, Selected Regions	35
 Calendar of Prices Paid Features in the 2004 Agricultural Price Reports	40
 Information Contacts	41

**Index Numbers of Prices Received, United States,
December 2004, with Comparisons**

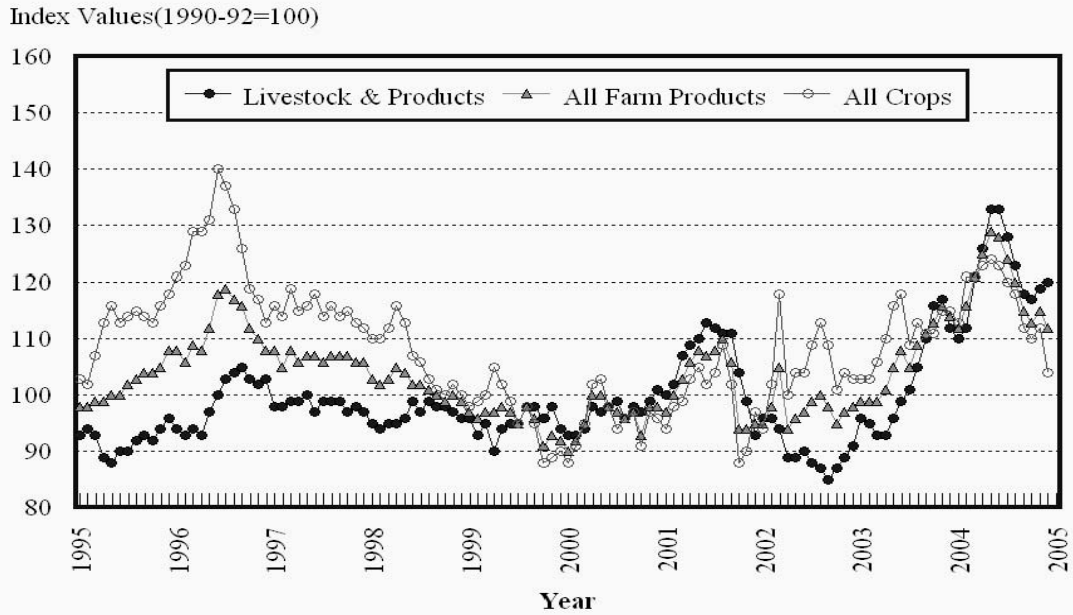
Index	1910-14=100				1990-92=100		
	Average 1990-92	2003	2004		2003	2004	
		Dec	Nov	Dec	Dec	Nov	Dec
All Farm Products	639	723	*732	711	114	*115	112
All Crops	500	569	*550	514	115	*112	104
Food Grains	325	385	*362	358	121	*114	113
Feed Grains & Hay	363	368	*330	325	103	*92	91
Cotton	517	535	*375	347	104	*73	68
Tobacco	1,263	1,735	*1,726	1,783	115	*114	118
Oil-Bearing Crops	554	692	*529	544	126	*97	99
Fruits & Nuts	716	648	981	716	93	*140	102
Commercial Vegetables	698	1,136	*1,182	983	170	*177	147
Potatoes & Dry Beans	540	493	*487	494	97	*96	98
Other Crops	493	564	569	569	114	115	115
Livestock & Products	768	859	*915	924	112	*119	120
Meat Animals	1,021	1,123	*1,201	1,205	110	*118	119
Dairy Products	799	848	*989	1,014	106	*123	126
Poultry & Eggs	282	340	332	332	121	118	118
Food Commodities					116	*122	118

* Revised.

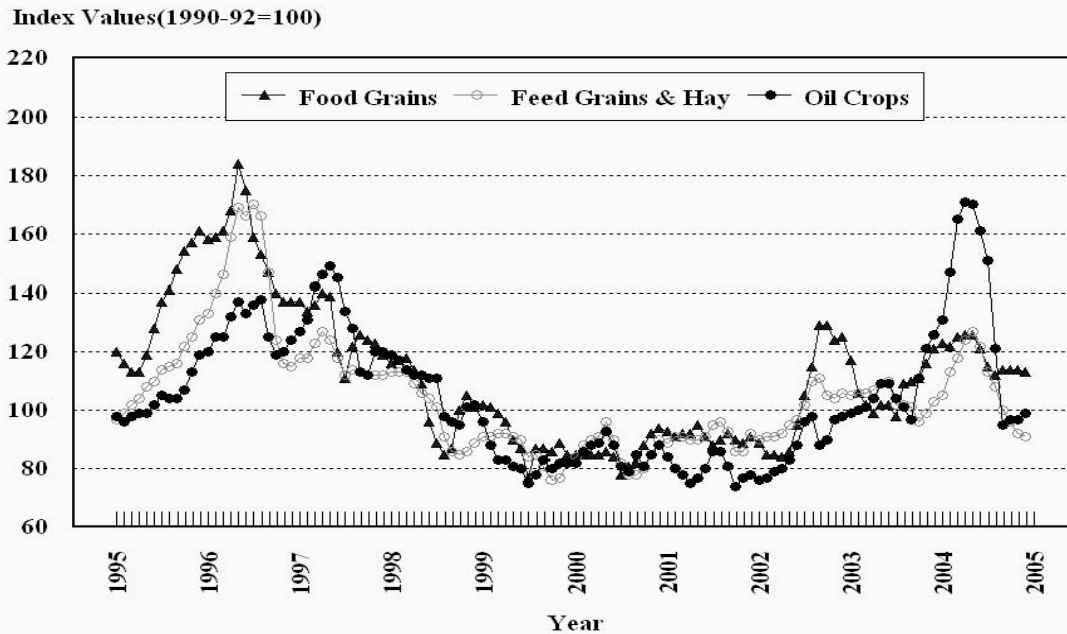
**Selected Index Numbers for Prices Received and Paid,
1990-92=100, by Months, United States, 2003 and 2004**

Month	Index of Prices Received						Index of Prices Paid			
	All Farm Products		All Crops		Livestock and Products		All Items		Production Items	
	2003	2004	2003	2004	2003	2004	2003	2004	2003	2004
Jan	99	112	103	113	96	110	127	130	122	126
Feb	99	116	103	121	95	112	128	131	123	127
Mar	99	121	106	120	93	121	128	132	124	129
Apr	101	125	110	123	93	126	128	133	124	131
May	105	129	116	124	96	133	127	135	123	132
Jun	108	128	118	123	99	133	127	135	123	132
Jul	105	124	109	120	101	128	127	135	123	133
Aug	109	120	113	118	105	123	127	134	123	132
Sep	111	115	111	112	110	118	128	134	125	131
Oct	113	113	111	110	116	117	129	135	126	132
Nov	116	115	115	112	117	119	129	134	126	131
Dec	114	112	115	104	112	120	129	134	126	130

Prices Received, Major Indexes, US

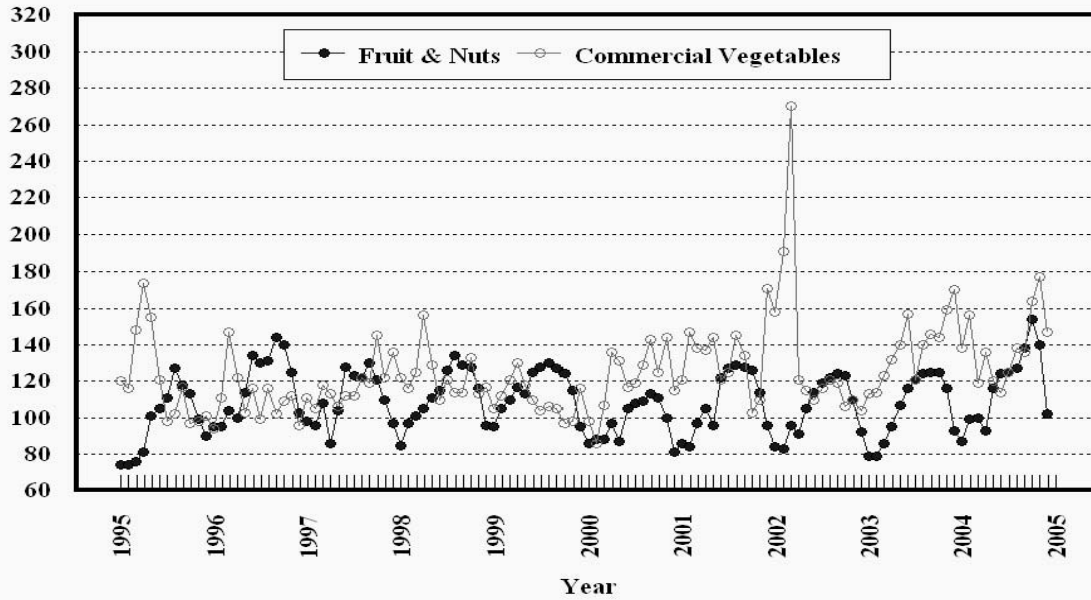


Prices Received, Food, Feed, & Oil Indexes, US



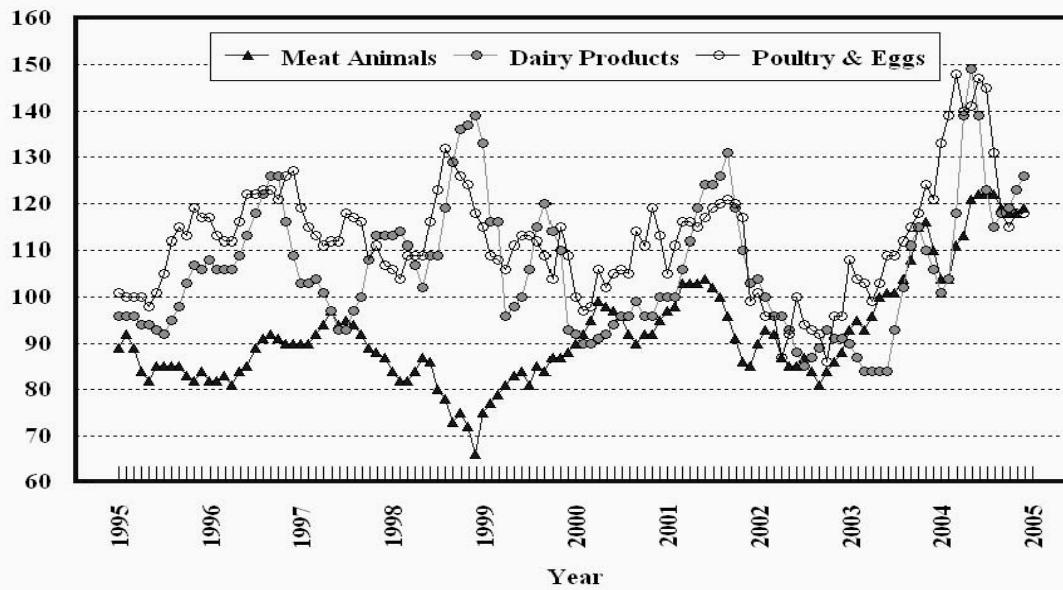
Prices Received, Fruit/Vegetable Indexes, US

Index Values(1990-92=100)



Prices Received, Livestock Product Indexes, US

Index Values(1990-92=100)



**Prices Received, United States,
December 2004, with Comparisons**

Commodity	Unit	Average 1990-92	Entire Month		Preliminary
			Dec 2003	Nov 2004	Dec 2004
		<i>Dollars</i>	<i>Dollars</i>	<i>Dollars</i>	<i>Dollars</i>
Field Crops					
Barley, All	Bu	2.12	2.93	2.51	2.46
Feed	Bu	1.90	2.26	1.78	1.61
Malting	Bu	2.43	3.20	2.95	2.82
Beans, Dry Edible	Cwt	19.10	17.40	25.80	27.10
Chickpeas, All	Cwt		16.20	23.00	(⁴)
Large	Cwt		16.20	23.00	(⁴)
Small	Cwt		(⁴)	(⁵)	(⁵)
Corn	Bu	2.30	2.31	2.05	1.99
Cotton, Upland	Lb	0.606	0.633	0.444	0.410
Cottonseed ³	Ton	96.00	127.00	104.00	111.00
Flaxseed	Bu	4.27	6.15	8.70	8.60
Hay, All, Baled ¹	Ton	76.30	80.60	86.20	84.30
Alfalfa ¹	Ton	77.20	87.00	94.00	92.40
Other ¹	Ton	60.00	66.50	67.80	67.10
Lentils	Cwt		18.10	15.80	15.60
Oats	Bu	1.22	1.58	1.49	1.42
Peanuts, In-Shell	Lb	0.304	0.196	0.202	0.226
Peas, Dry Edible	Cwt		7.36	6.01	5.73
Austrian Winter	Cwt		11.40	9.40	(⁵)
Potatoes	Cwt	5.82	5.77	5.04	5.10
Rice, Rough	Cwt	7.07	7.57	7.39	7.41
Sorghum Grain	Cwt	3.75	4.20	3.06	2.94
Soybeans	Bu	5.61	7.17	5.36	5.41
Sunflower, All	Cwt	9.50	11.70	13.00	13.90
Tobacco, Types 11-37	Lb	1.740	1.995	1.985	2.050
Wheat, All	Bu	2.96	3.68	3.46	3.38
Winter	Bu	2.93	3.62	3.39	3.29
Durum	Bu	2.86	3.95	3.77	3.64
Other Spring	Bu	3.11	3.72	3.56	3.45
Hard Red Winter	Bu		3.64	3.37	
Soft Red Winter	Bu		3.77	2.93	
Hard Red Spring	Bu		3.73	3.56	
White	Bu	3.24	3.53	3.53	
Fruit					
Citrus, Equiv on-tree					
Grapefruit	Box	5.77	3.57	14.22	14.55
Lemons	Box	10.10	3.83	9.37	8.20
Oranges	Box	5.79	2.55	7.41	2.62
Tangelos	Box	5.82	7.50	6.76	2.84
Tangerines	Box	15.11	8.63	11.61	12.71
Temples	Box	6.23			
Noncitrus, Fresh					
Apples ²	Lb	0.212	0.279	0.239	0.223
Grapes ²	Ton	506.00	740.00	1,080.00	1,150.00
Peaches ²	Lb	0.216			
Pears ²	Ton	370.00	384.00	484.00	489.00
Strawberries	Cwt	56.00		190.00	182.00

¹ Mid-month price.

² Equivalent packinghouse-door returns for CA, MI, and NY (apples only), and WA (apples, peaches, and pears). Prices as sold for other states.

³ Marketing year August - February.

⁴ Price not published to avoid disclosure of individual firms.

⁵ Insufficient sales to establish a price.

**Prices Received, United States,
December 2004, with Comparisons**

Commodity	Unit	Average 1990-92	Entire Month		Preliminary
			Dec 2003	Nov 2004	Dec 2004
		<i>Dollars</i>	<i>Dollars</i>	<i>Dollars</i>	<i>Dollars</i>
Vegetables, Fresh ¹					
Asparagus	Cwt	79.80		128.00	
Broccoli	Cwt	22.50	40.00	43.70	47.10
Cantaloupes ²	Cwt		25.00	20.50	33.80
Carrots	Cwt	13.20	24.30	17.10	18.00
Cauliflower	Cwt	26.80	75.50	43.10	59.20
Celery	Cwt	11.60	14.50	18.10	13.40
Corn, Sweet	Cwt	15.70	22.60	28.00	23.10
Cucumbers ²	Cwt			17.60	19.50
Lettuce	Cwt	11.90	21.30	17.00	17.50
Onions	Cwt	12.80	12.70	9.47	9.42
Snap Beans ²	Cwt		61.20	51.70	51.80
Tomatoes	Cwt	32.30	29.10	124.00	66.00
Livestock					
Calves	Cwt	94.30	112.00	124.00	121.00
Cattle, All Beef	Cwt	72.90	90.40	85.10	86.80
Cows ³	Cwt	49.60	49.20	48.90	48.70
Steers & Heifers	Cwt	77.10	95.60	90.20	91.90
Milk Cows ⁴	Head	1,130.00			
Hogs, All	Cwt	47.70	34.20	55.70	54.50
Barrows & Gilts	Cwt	48.40	34.60	56.10	54.90
Sows	Cwt	39.50	28.10	45.70	46.00
Lambs	Cwt	56.20	97.70	101.00	
Sheep	Cwt	23.40	45.10	41.50	
Dairy and Poultry					
Milk, All ^{5 6}	Cwt	13.06	13.80	16.10	16.50
Fluid Grade ⁶	Cwt	13.10	13.80	16.10	16.50
Mfg Grade ⁶	Cwt	11.80	12.70	15.60	15.90
Broilers, Live ⁷	Lb	0.317	0.380	0.390	0.390
Eggs, All ⁸	Doz	0.643	0.868	0.612	0.654
Market ⁸	Doz	0.546	0.739	0.436	0.488
Turkeys, live ^{7 8}	Lb	0.380	0.382	0.490	0.462
Adjusted for Seasonal Variation					
Eggs, All	Doz	0.545	0.775	0.546	0.623
Milk, All ⁵	Cwt	9.71	13.80	15.48	16.34

¹ F.O.B. shipping point.

² Monthly estimates began January 1995.

³ Beef cows and cull dairy cows sold for slaughter.

⁴ Animals sold for dairy herd replacement only. Prices available for Jan, Apr, Jul, and Oct.

⁵ Before deductions for hauling. Includes quality, quantity, and other premiums. Excludes hauling subsidies.

⁶ December 2004 Fat test percent: all milk 3.81, fluid milk 3.80, mfg grade 4.03.

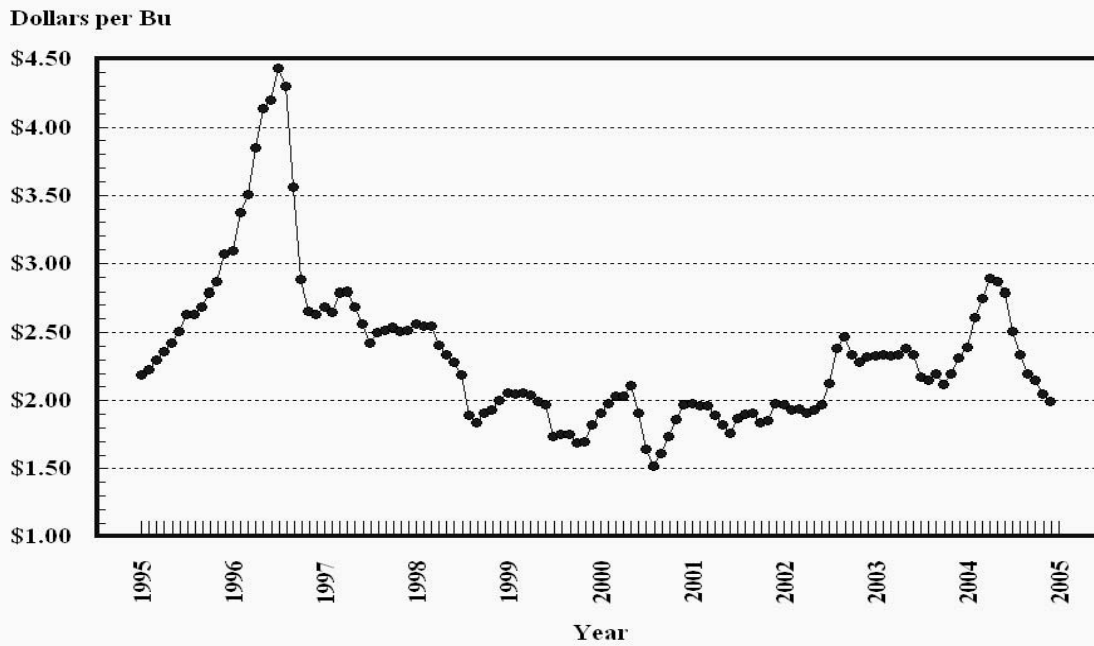
⁷ Equivalent liveweight returns to producers for most States. Includes growers and contractors.

⁸ Mid-month price.

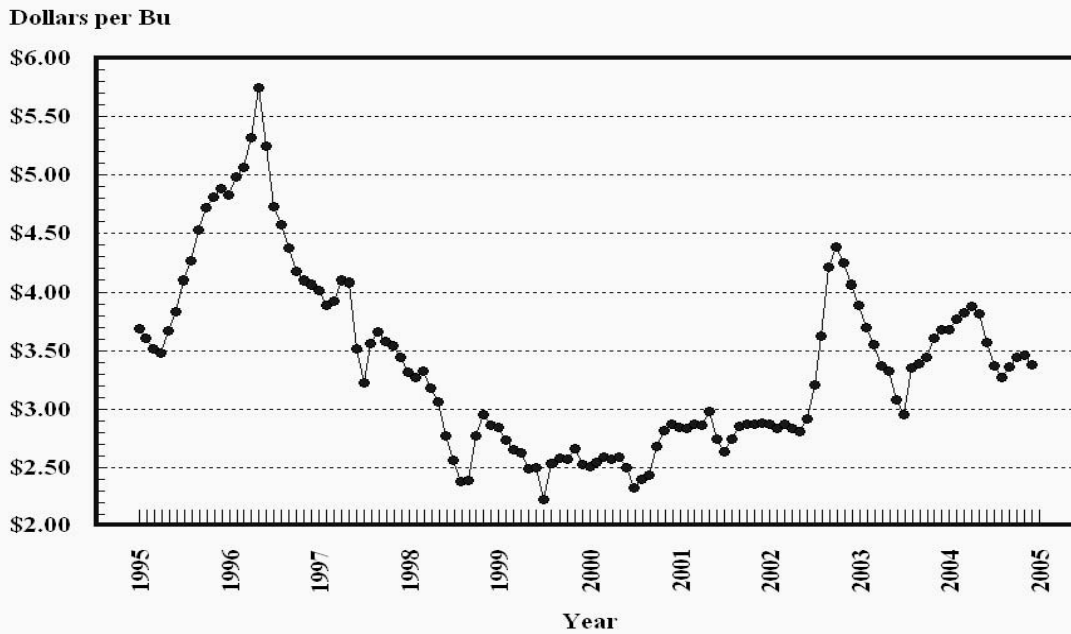
⁹ Price not published to avoid disclosure of individual firms.

¹⁰ Insufficient sales to establish a price.

Prices Received, Corn, US

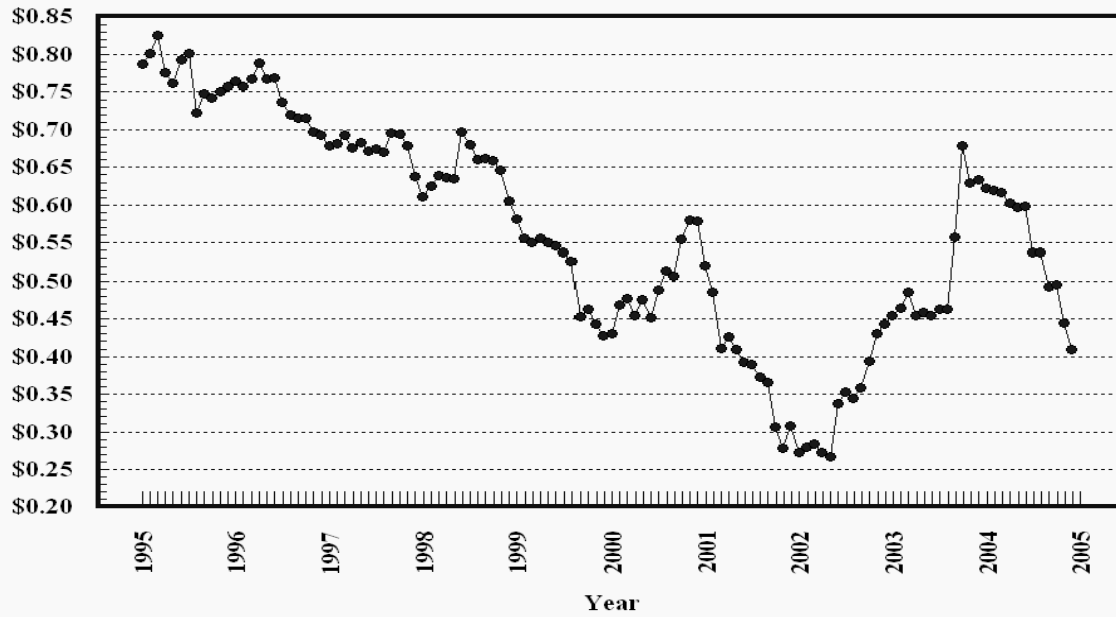


Prices Received, Wheat, US



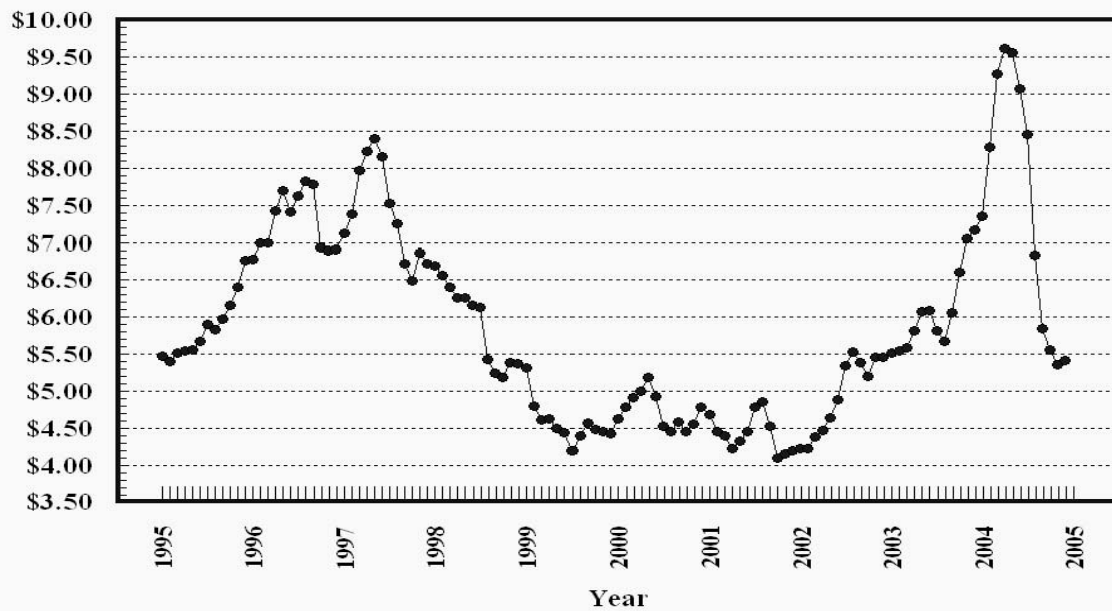
Prices Received, Cotton, US

Dollars per Lb



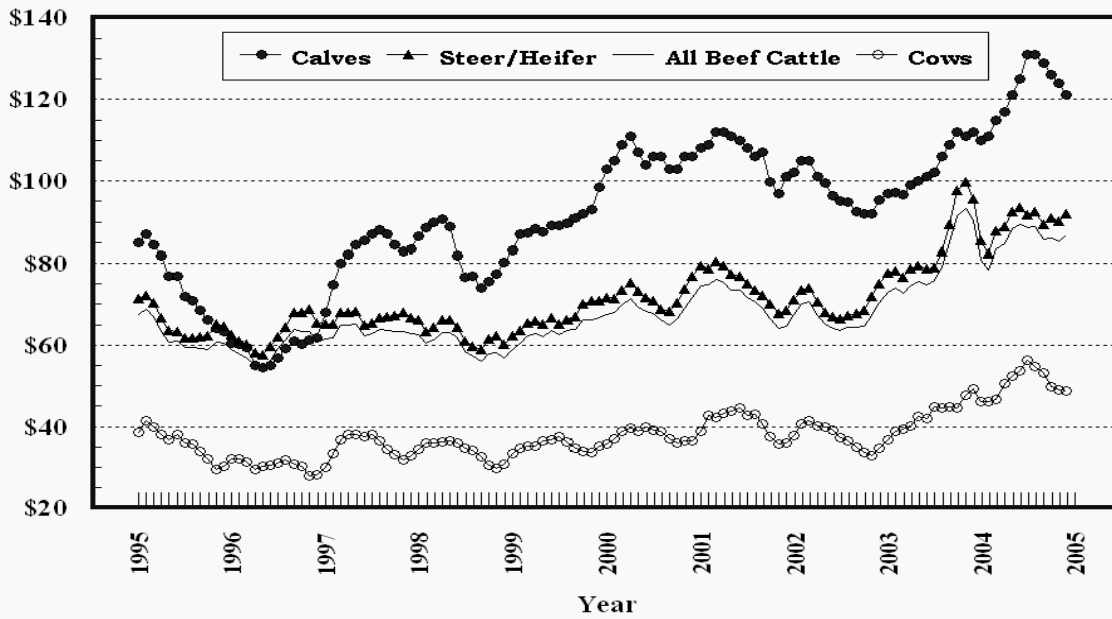
Prices Received, Soybeans, US

Dollars per Bu



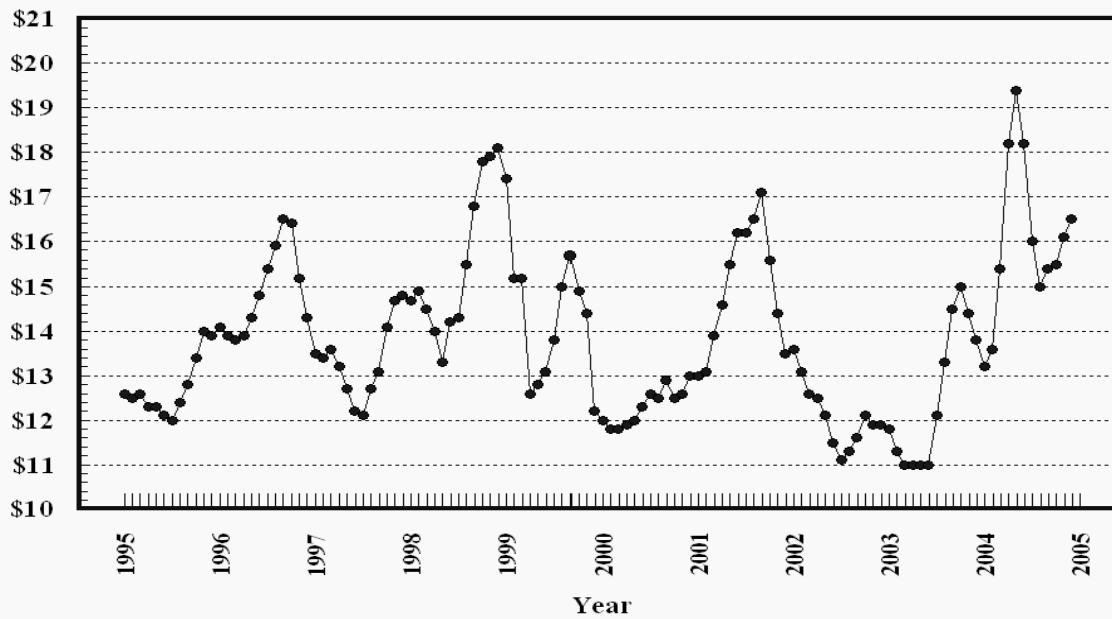
Prices Received, Cattle, US

Dollars per Cwt



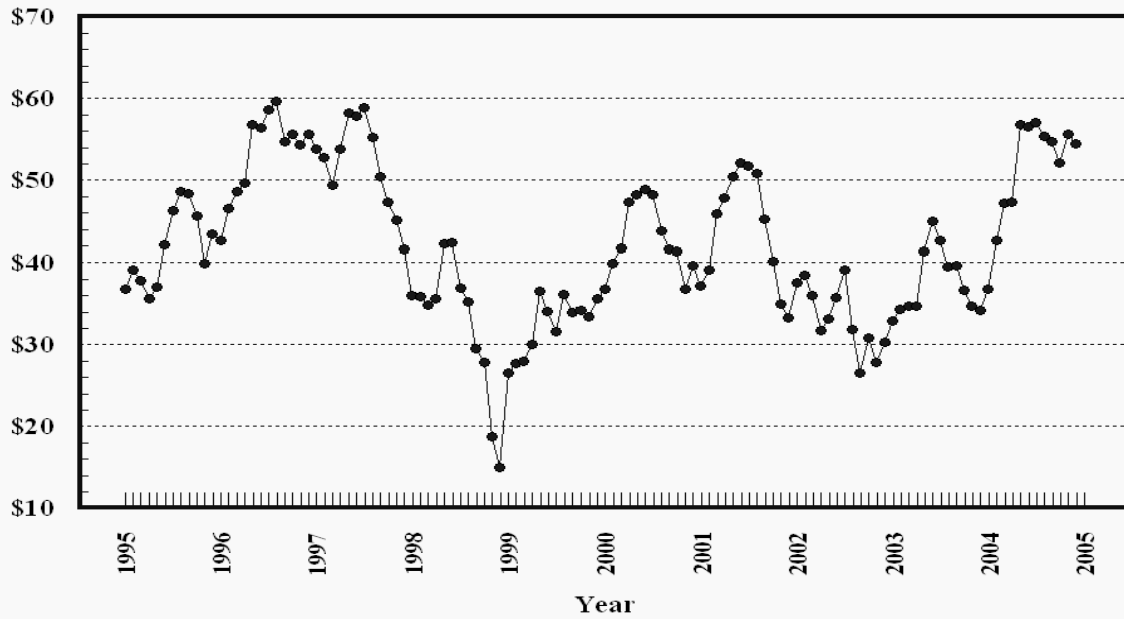
Prices Received, Milk, US

Dollars per Cwt



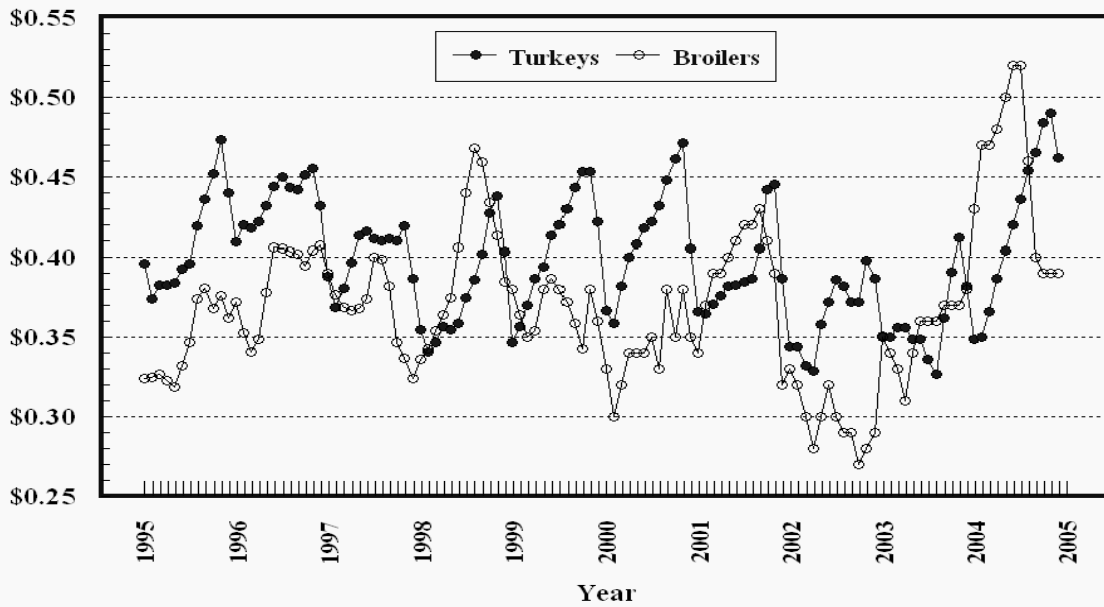
Prices Received, Hogs, US

Dollars per Cwt



Prices Received, Turkeys & Broilers, US

Dollars per Lb



Wheat: Prices Received, by State, November and December 2004

State	All Wheat		Winter Wheat		Durum Wheat		Oth Spring Wheat	
	Nov ¹	Dec ²	Nov ¹	Dec ²	Nov ¹	Dec ²	Nov ¹	Dec ²
	<i>Dollars per Bushel</i>	<i>Dollars per Bushel</i>	<i>Dollars per Bushel</i>	<i>Dollars per Bushel</i>	<i>Dollars per Bushel</i>	<i>Dollars per Bushel</i>	<i>Dollars per Bushel</i>	<i>Dollars per Bushel</i>
AR	(³)	(³)	(³)	(³)				
CA	(³)	(³)	(³)	(³)	(⁴)	(⁴)		
CO	3.35	3.22	3.35	3.22			(³)	(³)
ID	3.50	3.52	3.35	3.40			3.74	3.70
IL	3.27	3.30	3.27	3.30				
IN	2.83	2.78	2.83	2.78				
KS	3.33	3.24	3.33	3.24				
MI	2.80	2.85	2.80	2.85				
MN	3.31	3.22	2.36	2.22			3.31	3.23
MO	3.00	2.95	3.00	2.95				
MT	3.72	3.63	3.48	3.40	3.85	3.82	3.86	3.75
NE	3.37	3.25	3.37	3.25				
ND	3.38	3.31	2.77	2.55	3.75	3.60	3.32	3.25
OH	2.86	2.86	2.86	2.86				
OK	3.42	3.27	3.42	3.27				
OR	3.73	3.71	3.64	3.65			4.17	4.00
SD	3.53	3.42	3.23	3.23			3.70	3.53
TX	3.20	3.12	3.20	3.12				
WA	3.75	3.70	3.64	3.59			4.10	4.04
US	3.46	3.38	3.39	3.29	3.77	3.64	3.56	3.45

¹ Entire month.

² Mid-month.

³ Price not published to avoid disclosure of individual firms.

⁴ Insufficient sales to establish a price.

**Prices Received for Selected Agricultural Commodities, by Months,
United States, 2003 and 2004 ¹**

Month	All Wheat		Corn		Soybeans		Beef Cattle ²		All Hogs	
	2003	2004	2003	2004	2003	2004	2003	2004	2003	2004
	<i>Dollars per Bushel</i>	<i>Dollars per Bushel</i>	<i>Dollars per Bushel</i>	<i>Dollars per Bushel</i>	<i>Dollars per Bushel</i>	<i>Dollars per Bushel</i>	<i>Dollars per Cwt</i>	<i>Dollars per Cwt</i>	<i>Dollars per Cwt</i>	<i>Dollars per Cwt</i>
Jan	3.89	3.68	2.33	2.39	5.51	7.35	72.90	80.90	32.90	36.80
Feb	3.70	3.77	2.34	2.61	5.55	8.28	73.90	78.50	34.30	42.60
Mar	3.55	3.83	2.33	2.75	5.59	9.28	72.60	83.40	34.70	47.20
Apr	3.37	3.88	2.34	2.89	5.82	9.62	74.50	84.80	34.80	47.40
May	3.33	3.82	2.38	2.87	6.07	9.56	75.50	88.40	41.30	56.80
Jun	3.08	3.57	2.34	2.79	6.09	9.08	74.90	89.50	45.00	56.60
Jul	2.95	3.37	2.17	2.51	5.82	8.46	75.80	88.50	42.70	57.10
Aug	3.35	3.27	2.15	2.34	5.68	6.83	79.30	88.90	39.60	55.40
Sep	3.39	3.36	2.20	2.20	6.06	5.84	84.90	85.80	39.70	54.80
Oct	3.44	3.44	2.12	2.15	6.60	5.56	91.50	86.10	36.70	52.10
Nov	3.61	3.46	2.20	2.05	7.05	5.36	93.40	85.10	34.70	55.70
Dec	3.68	3.38	2.31	1.99	7.17	5.41	90.40	86.80	34.20	54.50

¹ Current month prices are mid-month; prices for previous months are for the entire month.

² Cows, steers and heifers.

Grains: Prices Received, by State, November and December 2004

Month	All Barley ¹		Corn		Oats		Soybeans		Sorghum Grain	
	Nov ²	Dec ³	Nov ²	Dec ³	Nov ²	Dec ³	Nov ²	Dec ³	Nov ²	Dec ³
	<i>Dollars per Bushel</i>	<i>Dollars per Bushel</i>	<i>Dollars per Bushel</i>	<i>Dollars per Bushel</i>	<i>Dollars per Bushel</i>	<i>Dollars per Bushel</i>	<i>Dollars per Bushel</i>	<i>Dollars per Bushel</i>	<i>Dollars per Cwt</i>	<i>Dollars per Cwt</i>
AL							5.65	5.60	(⁴)	(⁴)
AR										
CA	(⁴)	(⁵)								
CO	2.99	3.10	2.42	1.96						
ID	3.02	3.01								
IL			2.08	2.10	(⁵)	(⁵)	5.37	5.50	3.27	3.30
IN			1.82	1.87			5.22	5.35		
IA			2.00	1.90	1.42	1.55	5.33	5.45		
KS			2.29	1.89			5.05	5.04	3.02	2.81
KY			2.11	2.00			5.65	5.50		
LA							5.75	5.40		
MI			1.92	1.80	1.95	1.90	5.38	5.30		
MN	2.29	2.21	2.03	2.04	1.25	1.27	5.73	5.60		
MS							5.56	5.54		
MO			1.89	1.90			5.26	5.40	2.79	2.85
MT	2.92	2.70			(⁴)	(⁵)				
NE			2.13	2.00	1.56	1.60	5.18	5.30	3.04	2.95
NC			2.23	2.39			5.39	5.21		
ND	2.05	1.98	2.12	1.90	(⁵)	(⁵)	5.73	5.50		
OH			1.95	2.08	(⁴)	(⁵)	5.24	5.49		
OK									3.16	3.12
OR	1.88	1.95			(⁴)	(⁴)				
PA			2.26	2.07	1.67	1.69				
SD	2.09	2.10	1.76	1.59	1.53	1.65	5.21	5.16		
TN			2.62	2.60			5.31	5.30		
TX			2.68	2.14	(⁵)	(⁵)			3.48	3.36
UT	2.39	1.97								
WA	2.18	2.22								
WI			2.19	2.05	1.40	1.40	5.40	5.30		
WY	3.42	3.39								
US	2.51	2.46	2.05	1.99	1.49	1.42	5.36	5.41	3.06	2.94

¹ The Three-State (MN, ND and SD) Feed Barley price for December 2004 is \$1.35.

² Entire month.

³ Mid-month.

⁴ Price not published to avoid disclosure of individual firms.

⁵ Insufficient sales to establish a price.

Malting and Feed Barley: Prices Received Selected State, November and December 2004

State	Malting Barley		Feed Barley	
	Nov ¹	Dec ²	Nov ¹	Dec ²
	<i>Dollars per Bushel</i>	<i>Dollars per Bushel</i>	<i>Dollars per Bushel</i>	<i>Dollars per Bushel</i>
ID	3.07	3.10	2.23	2.20
MN	(³)	(³)	1.66	1.52
MT	(³)	(³)	1.69	1.65
ND	2.52	2.40	1.44	1.35
SD	2.09	2.10	(⁴)	(⁴)
WY	(³)	(³)	1.68	1.70

¹ Entire month.

² Mid-month.

³ Price not published to avoid disclosure of individual firms.

⁴ Insufficient sales to establish a price.

Field Crops: Prices Received, by State, November and December 2004

State	Dry Edible Beans		All Sunflower		Flaxseed		Tobacco		Peanuts ⁴	
	Nov ¹	Dec ²	Nov ¹	Dec ²	Nov ¹	Dec ²	Nov ¹	Dec ³	Nov ¹	Dec ³
	<i>Dollars per Cwt</i>	<i>Dollars per Cwt</i>	<i>Dollars per Cwt</i>	<i>Dollars per Cwt</i>	<i>Dollars per Bushel</i>	<i>Dollars per Bushel</i>	<i>Dollars per Pound</i>	<i>Dollars per Pound</i>	<i>Dollars per Pound</i>	<i>Dollars per Pound</i>
AL									0.198	0.186
CA	36.80	36.90								
CO	28.70	28.80								
FL							(⁶)	(⁶)	(⁵)	(⁵)
GA							(⁶)	(⁶)	0.199	0.194
ID	22.40	27.00								
IN							1.990	1.975		
KS			(⁵)	(⁵)						
KY							1.990	1.985		
MD							(⁶)	(⁶)		
MI	23.70	23.00								
MN	24.40	25.60	15.80	17.30						
MO										
NE	23.80	24.30								
NC							1.910	1.930	0.255	0.249
ND	26.30	28.50	13.70	14.40	8.70	8.60				
OH							2.010	1.980		
OK										
SC							(⁶)	(⁶)		
SD			11.80	13.70	(⁶)	(⁶)				
TN							1.985	2.465		
TX									(⁵)	(⁵)
VA							1.910	1.860	0.250	(⁵)
WV										
US	25.80	27.10	13.00	13.90	8.70	8.60	1.985	2.050	0.202	0.226

¹ Entire month.

² Mid-month.

³ Based on sales through first half of month.

⁴ In-Shell.

⁵ Price not published to avoid disclosure of individual firms.

⁶ Insufficient sales to establish a price.

Tobacco: Prices Received, by Area and Type, December 2004, with Comparisons

Class by Type	Type	Dec 2003	Nov 2004	Dec 2004 ¹
		<i>Dollars per Pound</i>	<i>Dollars per Pound</i>	<i>Dollars per Pound</i>
Total Flue-cured Area ²	11-14		1.855	
Fire-cured				
VA Belt	21	1.665	1.755	1.810
Total Fire-cured	21-23	1.665	1.755	1.810
Light Air-cured				
Burley	31	1.980	1.990	2.060
Total Light Air-cured	31-32	1.980	1.990	2.060
Dark Air-cured				
One Sucker Belt	35	2.430	1.730	1.365
Green River Belt ³	36	2.300		1.690
Sun-cured Belt ³	37	1.730		1.475
Total Dark Air-cured	35-37	2.395	1.730	1.610
US	11-37	1.995	1.985	2.050

¹ Based on sales during the first half of the month.

² Markets closed in November of both 2003 and 2004.

³ Markets opened in December 2004.

Field Crops and Apples: Prices Received, by State, November and December 2004

State	Cotton, Upland		December				Apples Fresh Use ^{1 4} <i>Dol/Lb</i>
	Nov ¹ <i>Dollars per Pound</i>	Dec ² <i>Dollars per Pound</i>	Cotton- seed ⁵ <i>Dollars per Ton</i>	Hay, Baled ³			
				All <i>Dollars per Ton</i>	Alfalfa <i>Dollars per Ton</i>	Other <i>Dollars per Ton</i>	
AL	0.456	0.456	92.00				
AZ	0.497	0.517	159.00	95.00	95.00	90.00	
AR	0.451	0.489	99.00				
CA	0.561	0.544	155.00	120.00	125.00	87.00	0.213
CO				86.00	86.00	81.00	
GA	0.444	0.429	84.00				
ID				108.00	112.00	65.00	
IL				86.00	92.00	70.00	
IA				82.00	85.00	58.00	
KS				61.00	71.00	49.00	
KY				67.00	100.00	58.00	
LA	0.462	0.409	81.00				
MI				99.00	100.00	75.00	0.210
MN				71.00	75.00	55.00	
MS	0.479	0.452	88.00				
MO				57.00	99.00	44.00	
MT				81.00	82.00	74.00	
NE				51.00	51.00	50.00	
NV				102.00	102.00	104.00	
NM				117.00	120.00	98.00	
NY				108.00	145.00	90.00	0.218
NC	0.380	0.374	93.00				
ND				56.00	61.00	45.00	
OH				96.00	128.00	53.00	0.290
OK				74.00	93.00	49.00	
OR				99.00	101.00	96.00	
PA				126.00	141.00	114.00	0.223
SD				66.00	69.00	51.00	
TN	0.456	0.456	109.00				
TX	0.395	0.372	107.00	74.00	122.00	69.00	
UT				87.00	87.00	83.00	
VA							0.280
WA				108.00	105.00	115.00	0.223
WI				79.00	85.00	45.00	
WY				75.00	76.00	70.00	
US	0.444	0.410	111.00	84.30	92.40	67.10	0.223

¹ Entire month.

² Based on sales during the first half of the month.

³ Mid-month.

⁴ Equivalent packinghouse-door returns for CA, NY, and WA. Price at point of first sale for other States.

⁵ Marketing year August - February.

⁶ Price not published to avoid disclosure of individual firms.

⁷ Insufficient sales to establish a price.

**Upland Cotton and Rice: Prices Received and Marketings,
United States, December 2004, with Comparisons**

Item	Unit	Oct 2004 ¹	Nov 2004 ¹	Dec 2004 ²
Cotton, Upland				
Average Price	Dollars per Pound	0.495	0.444	0.410
Marketings ³	1,000 Bales	923	1,437	NA
Rice				
Average Price	Dollars per Cwt	7.59	7.39	7.41
Marketings ⁴	1,000 Cwt	13,422	11,314	NA

¹ Entire month.

² Based on purchases for the first half of the month.

³ Marketings based on a survey of cotton buyers in the major producing States - AL, AZ, AR, CA, GA, LA, MS, NC, TN, and TX.

⁴ Purchases by private firms and rice (rough equivalent) shipped by cooperatives.

**Citrus Fruit: Prices and Equivalent Returns, by Utilization,
by State and United States, December 2004**

Commodity, State and Type	F.O.B. Packed Fresh	Equivalent Returns ¹					
		Packinghouse-door			On-tree		
		All	Fresh	Process	All	Fresh	Process
	<i>Dollars per Box</i>	<i>Dollars per Box</i>	<i>Dollars per Box</i>	<i>Dollars per Box</i>	<i>Dollars per Box</i>	<i>Dollars per Box</i>	<i>Dollars per Box</i>
Grapefruit							
AZ	24.20	17.56	17.56		15.19	15.19	
CA	23.50	15.38	16.86	-0.28	13.01	14.49	-2.65
FL	29.00	16.86	20.44	8.27	14.20	17.94	5.22
White	30.90	17.29	21.90	9.30	14.64	19.40	6.40
Colored	28.60	16.75	20.10	7.90	14.09	17.60	4.80
TX	34.20	17.00	24.01	1.20	15.83	22.82	0.06
US	30.00	16.85	21.09	6.42	14.55	18.89	3.86
Lemons							
AZ	30.20	13.29	19.90	0.18	8.86	15.47	-4.25
CA	31.20	12.33	20.90	0.18	7.90	16.47	-4.25
US	30.90	12.63	20.57	0.18	8.20	16.14	-4.25
Oranges							
AZ							
Navel and Misc	22.10	10.52	14.57	0.38	8.01	12.06	-2.13
CA							
Navel and Misc	21.60	12.97	14.07	0.38	10.46	11.56	-2.13
FL							
Early and Mids	16.70	4.14	8.70	3.85	1.93	6.35	1.65
TX							
Early and Mids	18.70	6.60	8.41	2.04	5.24	7.04	0.71
US	19.40	4.85	11.56	3.82	2.62	9.17	1.62
Tangelos							
FL	15.70	5.37	6.70	3.00	2.84	4.20	0.40
Tangerines							
AZ	24.20	17.00	17.00		14.46	14.46	
CA	33.40	24.20	26.20	0.30	21.66	23.66	-2.24
FL	28.00	14.36	18.00	3.00	10.52	14.40	-1.60
US	29.00	16.27	19.71	2.81	12.71	16.38	-1.64

¹ Net lbs. per box: Grapefruit - AZ & CA-67, FL-85, TX-80; Lemons - 76; Oranges - AZ & CA-75, FL-90, TX-85; Tangelos - 90; Tangerines - AZ, CA-75, FL-95; Temples - 90.

Potatoes: Prices Received, by State, November and December 2004

State	Nov	Dec	State	Nov	Dec
	<i>Dollars per Cwt</i>	<i>Dollars per Cwt</i>		<i>Dollars per Cwt</i>	<i>Dollars per Cwt</i>
AL			NC		
AZ			ND - All ¹	5.85	5.40
CA - All	8.40	7.80	- Fresh ²	6.15	NA
- Winter	16.40	16.40	- Processing	5.65	NA
- Spring			OH	7.30	7.70
- Summer			OR	4.70	4.65
- Fall	7.50	7.55	PA	7.20	7.50
CO - All ¹	4.80	4.85	TX		
- Fresh ²	4.85	NA	VA		
FL			WA - All	4.75	4.85
ID - All ¹	4.15	4.15	- Processing	4.55	NA
- Fresh ²	3.60	NA	WI - All ¹	5.10	5.10
- Processing	4.40	NA	- Fresh ²	4.80	NA
ME	6.15	6.15	- Processing	5.50	NA
MI	6.80	7.10			
MN	5.70	5.50	US - All ¹	5.04	5.10
NY	7.40	7.40	- Fresh ²	5.23	NA
			- Processing	4.94	NA

¹ Average price of potatoes sold for all uses, including table stocks, processing, seed and livestock feed.

² Fresh market prices only, includes table stock prices.

Cattle: Prices Received, by State, November and December 2004

State	Cows ¹		Steers & Heifers		Beef Cattle ⁴		Calves	
	Nov ²	Dec ³	Nov ²	Dec ³	Nov ²	Dec ³	Nov ²	Dec ³
	<i>Dollars per Cwt</i>	<i>Dollars per Cwt</i>	<i>Dollars per Cwt</i>	<i>Dollars per Cwt</i>	<i>Dollars per Cwt</i>	<i>Dollars per Cwt</i>	<i>Dollars per Cwt</i>	<i>Dollars per Cwt</i>
AZ	50.70	53.40	105.00	104.00	104.00	103.00	122.00	120.00
AR	45.70	45.00	99.00	101.00	83.00	84.20	119.00	119.00
CA	44.60	45.60	88.80	90.30	65.40	66.20	120.00	120.00
CO	49.60	48.60	110.00	106.00	109.00	105.00	127.00	126.00
FL	51.10	49.50	95.70	95.60	69.80	69.30	126.00	124.00
GA	50.50	50.00	95.20	93.00	65.30	64.60	121.00	118.00
ID	45.70	46.40	88.70	89.90	74.50	77.70	116.00	118.00
IL	49.40	48.40	85.00	83.00	84.30	82.30	114.00	108.00
IA	48.70	48.10	88.10	89.10	87.30	88.30	117.00	112.00
KS	49.10	48.70	86.00	88.80	84.90	87.60	134.00	134.00
KY	49.00	47.00	97.00	94.00	85.50	82.70	112.00	109.00
LA	48.70	48.00	98.10	98.00	66.50	64.00	117.00	116.00
MI	48.00	48.00	75.00	75.00	66.90	66.90	115.00	115.00
MN	51.00	50.50	80.00	82.00	73.90	75.40	107.00	108.00
MO	48.20	47.50	105.00	102.00	93.60	90.60	121.00	121.00
MT	49.30	50.50	110.00	112.00	88.10	90.50	126.00	128.00
NE	51.10	50.60	90.00	93.10	88.80	91.80	130.00	131.00
NM	51.40	52.00	106.00	105.00	82.50	81.20	124.00	124.00
ND	49.90	50.50	110.00	111.00	95.00	98.90	124.00	125.00
OH	46.40	46.00	81.50	82.00	78.00	78.40	104.00	100.00
OK	49.90	48.80	109.00	105.00	101.00	97.70	126.00	124.00
OR	45.80	46.00	96.50	95.00	81.30	80.30	110.00	111.00
PA	47.30	47.10	78.70	80.60	70.50	71.90	110.00	109.00
SD	49.70	49.00	104.00	102.00	94.20	88.20	129.00	129.00
TN	48.00	47.00	98.00	98.00	78.00	77.60	111.00	110.00
TX	48.90	48.30	90.00	92.40	85.90	88.00	127.00	123.00
VA	44.60	45.20	92.40	89.70	80.00	70.60	106.00	104.00
WI	49.70	48.50	81.50	82.00	63.10	62.60	140.00	137.00
WY	50.80	52.00	114.00	112.00	92.50	94.00	130.00	131.00
US	48.90	48.70	90.20	91.90	85.10	86.80	124.00	121.00

¹ Beef cows and cull dairy cows sold for slaughter.

² Entire month.

³ Mid-month.

⁴ "Cows" and "steers and heifers" combined.

Hogs: Prices Received, by State, November and December 2004

State	Sows		Barrows and Gilts		All Hogs	
	Nov ¹	Dec ²	Nov ¹	Dec ²	Nov ¹	Dec ²
	<i>Dollars per Cwt</i>	<i>Dollars per Cwt</i>	<i>Dollars per Cwt</i>	<i>Dollars per Cwt</i>	<i>Dollars per Cwt</i>	<i>Dollars per Cwt</i>
AR	47.10	47.90	53.30	54.10	52.70	53.50
IL	43.50	45.50	58.00	58.30	56.80	57.30
IN	47.80	49.30	53.90	54.60	53.30	54.10
IA	51.60	49.60	57.80	56.30	57.70	56.20
KS	45.50	48.70	54.00	54.50	53.10	53.80
MI	44.00	44.00	52.00	52.00	51.40	51.40
MN	47.10	46.50	56.20	56.00	56.20	56.00
MO	45.80	46.30	50.20	51.10	49.90	50.80
NE	47.30	48.30	56.80	56.80	56.60	56.60
NC	47.50	46.40	57.50	53.40	57.40	53.30
OH	47.10	45.00	53.60	52.00	53.20	51.60
OK	44.50	44.20	49.60	48.00	48.80	47.40
PA	43.30	43.40	51.80	52.90	50.50	51.50
SD	43.90	46.00	58.60	59.00	56.70	57.60
TX	39.70	40.70	54.00	54.00	51.90	52.00
WI	42.30	42.30	49.90	47.50	48.90	46.80
US	45.70	46.00	56.10	54.90	55.70	54.50

¹ Entire month.

² Mid-month.

Sheep and Poultry: Prices Received, by State, November and December 2004

State	November		December
	Sheep ¹	Lambs ¹	Eggs ^{2 3}
	<i>Dollars per Cwt</i>	<i>Dollars per Cwt</i>	<i>Dollars per Dozen</i>
AL			0.500
AR			0.500
CA	36.50	86.50	0.540
CO	43.00	98.90	
CT			0.590
FL			0.530
GA			0.455
ID	44.00	92.00	
IN			0.490
IA	44.30	90.10	0.400
KS	40.00	92.00	
ME			0.670
MI			0.520
MN	35.00	92.20	0.430
MS			0.495
MO			0.410
MT	45.30	116.00	
NE	38.00	89.00	
NY			0.500
NC			0.520
ND	38.00	107.00	
OH	42.80	88.00	0.530
OR	37.00	95.00	
PA			0.550
SC			0.480
SD	43.50	121.00	
TX	47.70	114.00	0.470
UT	37.00	98.00	
WA			0.540
WY	40.50	118.00	
US	41.50	101.00	0.488

¹ Entire month.

² Mid-month.

³ Market (table) eggs.

Milk and Milk Cows: Prices Received, by State, November and December 2004

State	November ¹						December		
	Fluid Grade Milk ²		Manufacturing Grade Milk		All Milk ³		All Milk ^{3 4}		Milk Cows ⁵
	Price	Fat Test	Price	Fat Test	Price	Fat Test	Price	Fat Test	
	<i>Dol/Cwt</i>	<i>Percent</i>	<i>Dol/Cwt</i>	<i>Percent</i>	<i>Dol/Cwt</i>	<i>Percent</i>	<i>Dol/Cwt</i>	<i>Percent</i>	<i>Dol/Head</i>
AZ	15.60	3.73			15.60	3.73	16.50	3.71	
CA	14.40	3.78	15.20	4.08	14.42	3.79	14.30	3.84	
FL	18.60	3.64			18.60	3.64	18.70	3.64	
ID	15.50	3.72	16.80	4.19	15.50	3.72	16.50	3.78	
IL	16.60	3.76	15.80	3.67	16.60	3.76	17.20	3.80	
IN	16.70	3.81	14.90	3.94	16.60	3.82	17.30	3.82	
IA	16.60	3.82	15.80	3.95	16.60	3.82	17.00	3.84	
KY	16.80	3.72			16.80	3.72	16.90	3.75	
MI	16.20	3.72	14.90	3.82	16.20	3.72	17.00	3.73	
MN	16.60	3.87	15.10	3.92	16.60	3.87	17.10	3.85	
MO	16.40	3.75	15.80	3.96	16.40	3.76	17.00	3.80	
NM	15.20	3.72			15.20	3.72	16.20	3.70	
NY	16.80	3.78			16.80	3.78	17.00	3.78	
OH	16.90	3.77	14.90	3.96	16.80	3.78	17.40	3.84	
PA	17.70	3.80	16.30	3.95	17.70	3.80	18.30	3.85	
TX	16.30	3.84			16.30	3.84	16.80	3.85	
VT	16.90	3.78			16.90	3.78	17.50	3.80	
VA	17.20	3.66			17.20	3.66	17.30	3.66	
WA	15.70	3.79			15.70	3.79	16.50	3.81	
WI	16.90	3.82	16.20	4.00	16.90	3.83	17.40	3.81	
US	16.10	3.78	15.60	4.00	16.10	3.79	16.50	3.81	

¹ Entire month.

² Including milk diverted to manufacturing.

³ Before deductions for hauling. Includes quality, quantity, and other premiums. Excludes hauling subsidies.

⁴ Preliminary.

⁵ Animals sold for dairy herd replacement only. Prices published January, April, July and October.

**Parity Price Equivalent for Manufacturing Milk ¹: United States,
November and December 2004, with Comparisons**

Item	Unit	Dec 2003	Nov 2004	Dec 2004
Parity Equivalent	Dollars per Cwt	30.92	31.82	31.64
Average Price F.O.B ²	Dollars per Cwt	12.70	15.60	15.90
Average Fat Test of Milk ²	Percent	3.97	4.00	4.03

¹ The parity price equivalent during 2004 is 90.4 percent of the parity price of all milk sold to plants, compared with 90.4 percent in 2003. For additional details, see January 2004 issue of "Agricultural Prices".

² Preliminary for December 2004.

**United States Parity Prices for Farm Products and Average Prices Received as
Percent of Parity Prices Based on Data for December 2004, with Comparisons ¹**

Commodity and Unit	Adjusted Base Prices	Parity Prices Based on Data for			Prices as Percent of Parity		
		Dec 2003	Nov 2004	Dec 2004	Dec 2003	Nov 2004	Dec 2004
	<i>Dollars</i>	<i>Dollars</i>	<i>Dollars</i>	<i>Dollars</i>	<i>Percent</i>	<i>Percent</i>	<i>Percent</i>
Basic Commodities							
All Wheat, Bu	0.564	9.88	10.10	10.00	37	34	34
Rice, Cwt	1.63	27.10	29.10	29.00	28	25	26
Corn, Bu	0.379	6.75	6.77	6.74	34	30	30
Cotton, Lb							
American Upland	0.113	1.74	2.02	2.01	36	22	20
Extra Long Staple	0.144	2.43	2.57	2.56			
Peanuts, Lb	0.0370	0.674	0.660	0.658	29	31	34
Tobacco, By Type, Lb							
Flue-Cured 11-14	0.259	4.44	4.62	4.61		40	
VA Fire-Cured, 21	0.257	4.50	4.59	4.57	37	38	40
KY-TN Fire-Cured, 22-23	0.322	5.56	5.75	5.73			
Burley, 31	0.277	4.77	4.94	4.93	42	40	42
Maryland, 32	0.215	3.78	3.84	3.82			
Dark Air-Cured, 35-36	0.282	4.79	5.03	5.01			
Sun-Cured, 37	0.246	4.22	4.39	4.37	41		34
PA Seedleaf, 41	0.206	3.45	3.68	3.66			
Cigar Filler & Binder, 42-44, 54-55	0.225	3.84	4.02	4.00			
Puerto Rican Filler, 46	0.162	2.83	2.89	2.88			
Cigar Binder, 51-52	0.736	12.50	13.10	13.10			
Designated Nonbasic							
All Milk, Sold to Plants, Per Cwt ²	1.97	34.20	35.20	35.00	40	44	47
Honey, Extracted, Lb ³	0.1050	1.63	1.87	1.87			
Wool and Mohair							
Wool, Lb	0.0880	1.58	1.57	1.56			
Mohair, Lb	0.334	5.64	5.96	5.94			
Other Nonbasic							
Barley, Bu	0.376	6.68	6.71	6.69	44	37	37
Cottonseed, Ton	15.80	271.00	282.00	281.00	47	37	40
Dry Edible Beans, Cwt	2.92	51.60	52.10	51.90	33	50	52
Flaxseed, Bu	0.728	12.20	13.00	12.90	51	67	67
Oats, Bu	0.221	4.22	3.94	3.93	37	38	36
Potatoes, Cwt	0.854	14.10	15.20	15.20	40	34	34
Rye, Bu	0.353	5.95	6.30	6.28			
Sorghum Grain, Cwt	0.616	11.40	11.00	11.00	37	28	27
Soybeans Bu	0.892	14.80	15.90	15.90	48	34	34
Sweetpotatoes, Cwt	2.25	38.00	40.20	40.00			
Apples, Fresh, Lb ⁴	0.0296	0.498	0.528	0.526	57	45	42
Citrus (equiv on-tree), Box							
Grapefruit	0.387	6.74	6.91	6.88	53	206	211
Lemons	1.10	19.10	19.60	19.60	20	48	42
Oranges	0.618	9.90	11.00	11.00	26	67	24
Tangerines	1.42	25.30	25.30	25.20	34	46	50
Temples (FL)	0.451	8.04	8.05	8.02			
Beef Cattle, Cwt	9.55	164.00	170.00	170.00	55	50	51
Calves, Cwt	12.80	220.00	228.00	228.00	51	54	53
Hogs, Cwt	5.91	105.00	105.00	105.00	33	53	52
Lambs, Cwt	11.30	189.00	202.00	201.00	52	50	
Sheep, Cwt	4.70	80.70	83.90	83.60	56	49	
Eggs, Doz ²	0.0949	1.62	1.69	1.69	44	32	37
Turkeys, Live, Lb	0.0574	1.010	1.020	1.020	38	48	45

--continued

Parity Prices Based on Data for December 2004, United States ¹ (continued)

Other Nonbasic Commodities	Adj Base Prices	Parity Prices	Other Nonbasic Commodities	Adj Base Prices	Parity Prices
	<i>Dollars</i>	<i>Dollars</i>		<i>Dollars</i>	<i>Dollars</i>
Field Crops and Misc Commodities			Noncitrus Fruit		
Hops, Lb	0.256	4.55	Peaches, cont.		
Spearmint Oil, Lb	1.53	27.20	Processing ⁵		
Tobacco, Lb			Excl Dried		
Type 61	2.51	44.60	Clingstone, CA, Ton	32.80	583.00
Noncitrus Fruit			Pears, Ton		
Apples, Ton ⁶			Fresh ⁴	51.60	917.00
Processing	17.90	318.00	Dried, CA ⁶	166.00	2,950.00
Apricots, Ton			Plums, CA, Ton		
Fresh ⁷	99.70	1,770.00	Fresh, Equiv on-Tree	57.40	1,020.00
Dried, CA	273.00	4,850.00	Prunes, Dried, CA, Ton ⁶	129.00	2,290.00
Avocados, Ton ⁷	238.00	4,230.00	Prunes and Plums, Excl CA, Ton		
Cherries Bbl			Fresh ⁹	56.90	1,010.00
Sweet, Ton	184.00	3,270.00	Processing ⁶		
Tart, Lb	0.0267	0.475	Excl Dried	26.30	468.00
Cranberry, Bbl ⁵	5.92	105.00	Tree Nuts ¹⁰		
Dates, CA, Ton ⁷	170.00	3,020.00	Almonds, Lb	0.204	3.63
Grapes, Ton			Hazelnuts, Ton	130.00	2,310.00
Raisin Variety	121.00	2,150.00	Pistachio, Lb	0.159	2.83
Other Dried	68.20	1,210.00	Walnuts, Ton	176.00	3,130.00
Kiwifruit, Ton	80.80	1,440.00	Vegetables, Cwt ¹¹		
Nectarines			Fresh		
Fresh, CA, Ton ⁷	63.00	1,120.00	Carrots ⁸	2.21	39.30
Olives, CA			Cauliflower ⁸	4.55	80.90
canning, Ton ⁵	95.50	1,700.00	Celery ⁸	1.98	35.20
Papayas (HA)	0.0520	0.925	Honeydew Melons	2.79	49.60
Peaches			Lettuce	2.50	44.50
Fresh, Lb ⁴	0.0408	0.725	Onions ⁸	1.68	29.90
Dried, CA, Ton	92.50	1,640.00	Tomatoes	4.39	78.10

¹ Parity prices are computed under the provisions of Title III, Subtitle a, Section 301 (a) of the Agricultural Adjustment Act of 1938 as amended by the Agricultural Acts of 1948, 1949, and 1956. See January "Agricultural Prices" for details on adjusted base price and parity price computations.

² Seasonally adjusted price as percentage of parity price.

³ Wholesale extracted. Adjusted base price derived from state annual averages prices weighted by production. For 1982 through 1985 the national averages are the support prices.

⁴ Equivalent packinghouse-door returns for CA, NY (apples only), OR (except peaches), and WA. Price at point of first sale for other states.

⁵ Equivalent returns for bulk fruit at first delivery point.

⁶ Equivalent returns at processing plant door.

⁷ Equivalent returns at packinghouse door.

⁸ Includes some processing.

⁹ Based on "as sold" prices for fresh fruit in all states.

¹⁰ Prices in-shell basis except almonds which are shelled basis.

¹¹ F.O.B. shipping point prices.

**Hops: Marketing Year Average Prices Received,
by State and United States, 2003-2004**

State	2003	2004
	<i>Dollars per Pound</i>	<i>Dollars per Pound</i>
ID	1.62	1.60
OR	2.31	2.31
WA	1.79	1.85
US	1.86	1.90

Reliability of Prices Received Estimates

Definition: Prices received represent sales from producers to first buyers. They include all grades and qualities. The average commodity price from the survey multiplied by the total quantity marketed theoretically should give the total cash receipts for the commodity.

Survey Procedures: Primary sales data used to determine grain prices were obtained from probability samples of about 2000 mills and elevators. These procedures ensure that virtually all grain moving into commercial channels has a chance of being included in the survey. Generally, States surveyed account for 90 percent or more of total U.S. production. Livestock prices are obtained from packers, stockyards, auctions, dealers, and market check data from AMS-USDA, private marketing organizations, and state commodity groups and agencies. Inter-farm sales of grain and livestock are not included since they represent very small percentages of the total marketings. Grain marketed for seed is also excluded. Fruit and vegetable prices are obtained from sample surveys and market check data from AMS-USDA, private marketing organizations, state agencies, and universities.

Summary and Estimation Procedures: Survey quantities sold are expanded by strata to state levels and used to weight average strata prices to a state average. State prices are then weighted to a U.S. price based on expanded marketings. Recommendations are prepared by the State Statistical Offices and reviewed by the Agricultural Statistics Board in Washington, D.C. State recommendations are reviewed for reasonableness with survey data, other States, and recent historic estimates.

Revisions: For most items, the current month's preliminary price represents a 3-5 day period around the 15th of the month. Previous month's prices represent actual dollars received for quantities sold during the entire month. Revisions are published in monthly issues of *Agricultural Prices*.

Reliability: U.S. price estimates based on probability surveys generally have a sampling error of less than one percent for the major commodities such as corn, wheat, soybeans, cotton, and rice. Current methods of summarization for non-probability commodities are not designed directly to calculate sampling errors. However, analytical measures approximate the U.S. relative sampling errors at around five percent. Any nonsampling errors are attributed to such things as the inability to obtain correct information, differences in interpreting questions or definitions, mistakes in coding or processing the data, etc. Efforts are made at each step in the survey process to minimize these nonsampling errors.

Prices Paid by Farmers

The December Index of Prices Paid for Commodities and Services, Interest, Taxes, and Farm Wage Rates (PPITW) is 134 (1990-92=100), unchanged from November 2004 but 3.9 percent above December 2003.

PRODUCTION INDEX: The December index, at 130, is down 0.8 percent from last month but 3.2 percent above last year. Lower prices in December for feeder cattle, diesel fuel, complete feeds, and gasoline more than offset higher prices for feeder pigs, nitrogen fertilizers, LP gas, and feed concentrates.

Feed: The December index, at 101, is 1.0 percent less than November and 14 percent below last December. Since November, lower prices for complete feeds, feed grains, hay and forages, and feed supplements more than offset higher prices for feed concentrates.

Livestock & Poultry: The December index for livestock and poultry purchases, at 133, is 2.9 percent lower than last month but 12 percent above last year. Since November, lower prices for feeder cattle more than offset higher prices for feeder pigs. The December feeder cattle price at \$109.70 per cwt, is down \$6.10 per cwt from the November price. December feeder pigs averaged \$155.00 per cwt, up \$17.00 per cwt from November.

Fertilizer: The December index, at 149, is up 2.1 percent from November and 16 percent more than December a year ago. Since November, prices are higher for nitrogen fertilizers, potash and phosphate materials, and mixed fertilizers.

Agricultural Chemicals: The December index, at 120, is unchanged from last month.

Fuels: The December index, at 186, is down 4.6 percent from a month earlier but 43 percent above December 2003. Compared to last month, prices are lower for diesel fuel and gasoline but higher for LP gas.

Farm Machinery: The December Farm Machinery Index is 165, unchanged from November but 7.1 percent above last December. Since November, prices are lower for self-propelled machinery.

CONSUMER PRICE INDEX: The November 2004 Consumer Price Index for all urban consumers (CPI-U) rose 0.1 percent before seasonal adjustment to a level of 191.0 (1982-4=100). This compares to the October index of 190.9. For the 12-month period ending in November, the overall index has increased 3.5 percent.

**Indexes of Prices Paid by Farmers and Related Parity Ratios
United States, December 2004 With Comparisons**

Indexes and Ratios	1910-14 = 100			1990-92 = 100		
	2003	2004		2003	2004	
	Dec	Nov	Dec	Dec	Nov	Dec
Prices Paid by Farmers for Commodities & Services, Interest, Taxes, & Wage Rates (PPITW)	1,719	1,785	1,778	129	134	134
Production	1,221	1,274	1,266	126	131	130
Feed	574	*499	493	117	*102	101
Livestock & Poultry	1,522	*1,752	1,699	119	137	133
Seeds	1,553	1,564	1,564	157	158	158
Fertilizer	469	*534	544	128	146	149
Agricultural Chemicals	744	*745	744	120	*120	120
Fuels	1,001	*1,503	1,438	130	*195	186
Farm Supplies & Repairs	954	985	985	134	139	139
Autos & Trucks	3,050	*3,034	3,084	115	*114	116
Farm Machinery	3,875	*4,149	4,132	154	*165	165
Building Materials	1,701	*1,865	1,864	125	137	137
Farm Services & Rent	1,442	*1,454	1,454			
Farm Services				122	*123	123
Rent				120	120	120
Interest ¹	2,599	2,616	2,616	104	104	104
Taxes ²	3,426	3,474	3,474	128	130	130
Wage Rates	5,848	6,009	6,009	156	161	161
Production, Interest, Taxes, & Wage Rates (PITW)	1,712	1,779	1,770	127	132	132
Family Living-CPI ³	1,750	*1,814	1,814	137	142	142
Ratio (Received/Paid)				88	*86	84
Parity Ratio ⁴	42	41	40			
Parity Ratio Adjusted ⁵	46	43	42			
PPITW Adjusted for Productivity ⁶	1,173	1,220	1,219			
Crop Sector (PPITW)				131	138	137
Livestock Sector (PPITW)				127	*130	129
Farm Sector (Production)				124	*123	121
Non-Farm Sector (Production)				127	*135	135

* Revised.

¹ Interest per acre on farm real estate debt and interest rate on farm non-real estate debt.

² Farm real estate taxes payable per acre.

³ Bureau of Labor Statistics, Consumer Price Index for all urban consumers (CPI-U), for the previous month converted by the USDA.

⁴ Ratio of index of prices received to PPITW (1910-14=100).

⁵ Based on estimated cash receipts, from marketings and government payments, the preliminary adjustment factor is 1.048 for 2004 and the revised factor is 1.082 for 2003.

⁶ PPITW is adjusted based on productivity trend for the prior 15 years.

**Prices Paid Indexes and Annual Weights for Input Components and
Sub-Components United States, December 2004 With Comparisons**

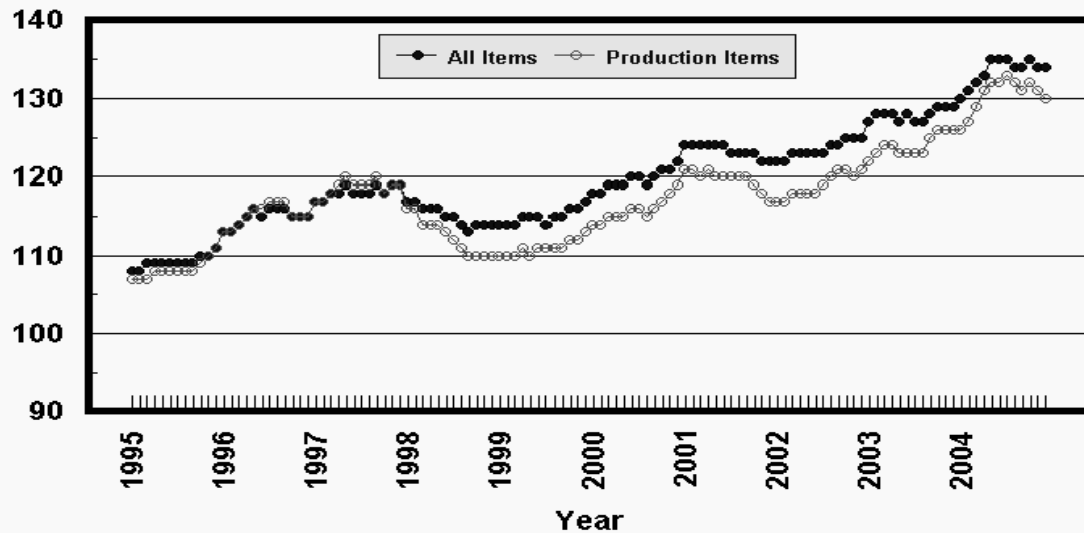
Index	Relative Weights 5-Year Moving Average ¹		Input Indexes		
	2003	2004	2003	2004	
	<i>Percent</i>	<i>Percent</i>	Dec <i>(1990-92=100)</i>	Nov <i>(1990-92=100)</i>	Dec <i>(1990-92=100)</i>
Production Items	66.7	66.2	126	131	130
Feed	11.0	10.7	117	*102	101
Feed Grains	1.6	1.5	101	*88	85
Complete Feeds	5.4	5.2	119	*105	104
Hay/Forages	1.4	1.3	105	111	110
Concentrates	1.7	1.7	127	*91	93
Supplements	0.9	0.9	135	*116	114
Livestock & Poultry	7.2	7.4	119	137	133
Feeder Cattle	5.6	5.8	122	137	130
Feeder Pigs	0.6	0.6	96	*150	169
Milk Cow Replacements	0.6	0.6	122	145	145
Poultry	0.4	0.4	112	112	112
Seeds	3.2	3.3	157	158	158
Field Crops	2.9	3.0	162	163	163
Grasses/Legumes	0.3	0.3	109	111	111
Fertilizer	4.5	4.4	128	146	149
Mixed Fertilizer	2.0	1.9	115	*127	128
Nitrogen	1.9	1.8	147	172	176
Potash & Phosphate	0.6	0.6	111	*125	129
Agricultural Chemicals	3.8	3.7	120	*120	120
Herbicides	2.4	2.4	112	*113	113
Insecticides	0.9	0.9	145	*143	143
Fungicides/Other	0.5	0.5	116	*116	116
Fuels	2.7	2.7	130	*195	186
Diesel	1.5	1.5	127	*199	187
Gasoline	0.8	0.8	120	*169	159
LP Gas	0.4	0.4	163	*231	240
Farm Supplies & Repairs	5.5	5.4	134	139	139
Supplies	1.8	1.8	126	129	129
Repairs	3.6	3.6	139	144	144
Autos & Trucks	1.8	1.8	115	*114	116
Autos	0.2	0.2	108	*108	110
Trucks	1.5	1.6	116	*115	117
Farm Machinery	4.0	4.0	154	*165	165
Tractors	0.9	0.9	145	147	147
Self-Propelled	1.6	1.6	160	*174	173
Other Machinery	1.5	1.5	155	167	167
Building Materials	3.1	3.3	125	137	137
Farm Services	12.4	12.4	122	*123	123
Custom Rates	1.3	1.3	125	125	125
Other Services	11.1	11.1	121	*123	123
Rent	7.4	7.1	120	120	120
Cash	4.0	3.8	145	145	145
Share	3.4	3.3	91	91	91
Interest	4.7	4.7	104	104	104
Taxes	3.0	3.0	128	130	130
Wage Rates	7.4	7.6	156	161	161
Family Living-CPI	18.2	18.5	137	142	142

* Revised.

¹ Weights may not add due to rounding.

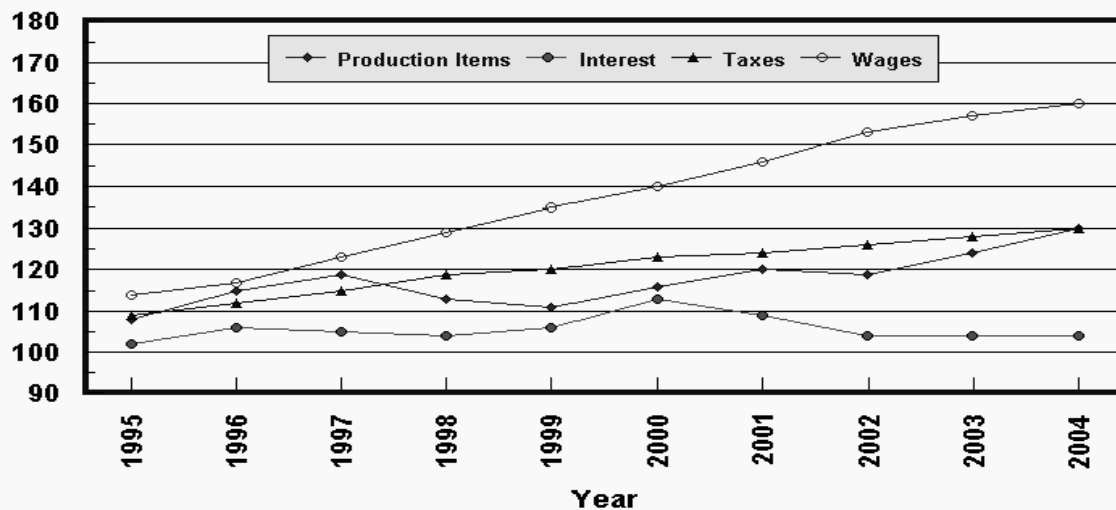
Prices Paid by Farmers, Major Indexes US, by Quarter and Month

Percent (1990-92=100)



Prices Paid by Farmers, Major Indexes US, Annual Averages 1/

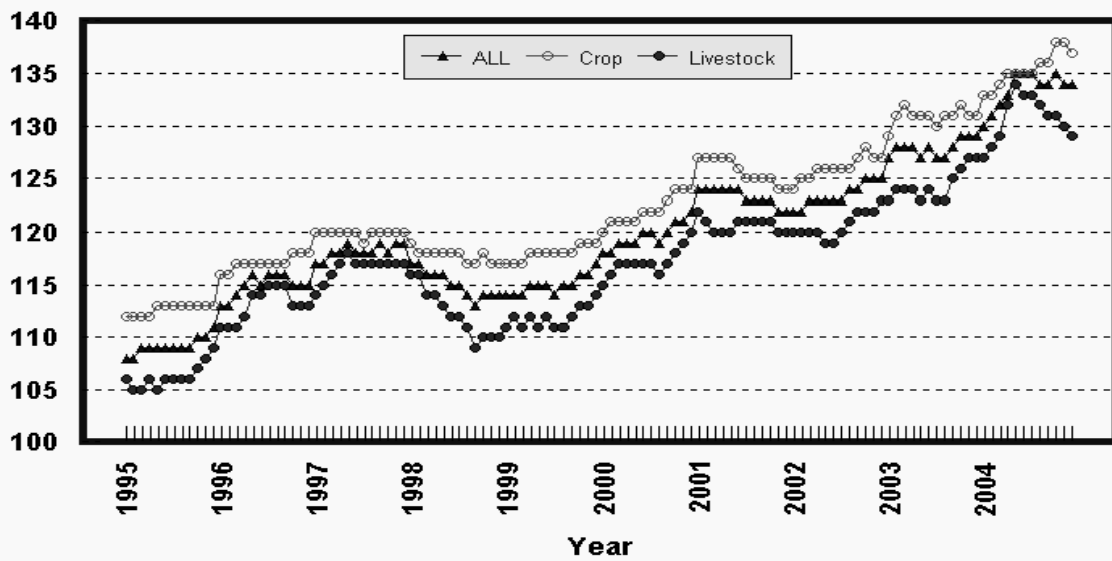
Percent (1990-92=100)



1/ Index values for 2004 are year-to-date averages.

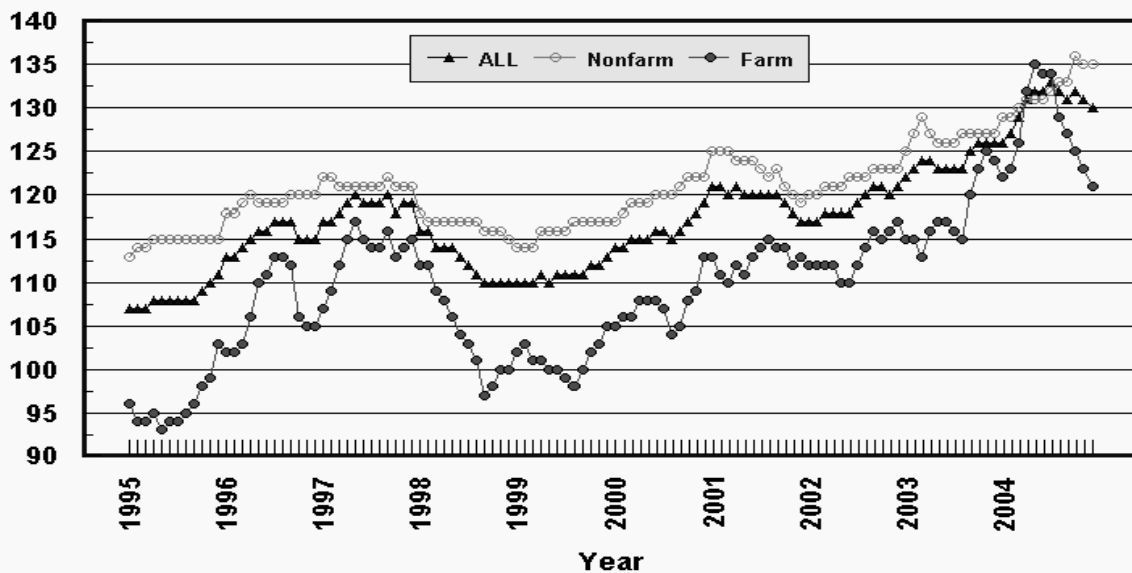
Prices Paid by Farmers, Indexes, All Items US, By Farm Type

Percent (1990-92=100)



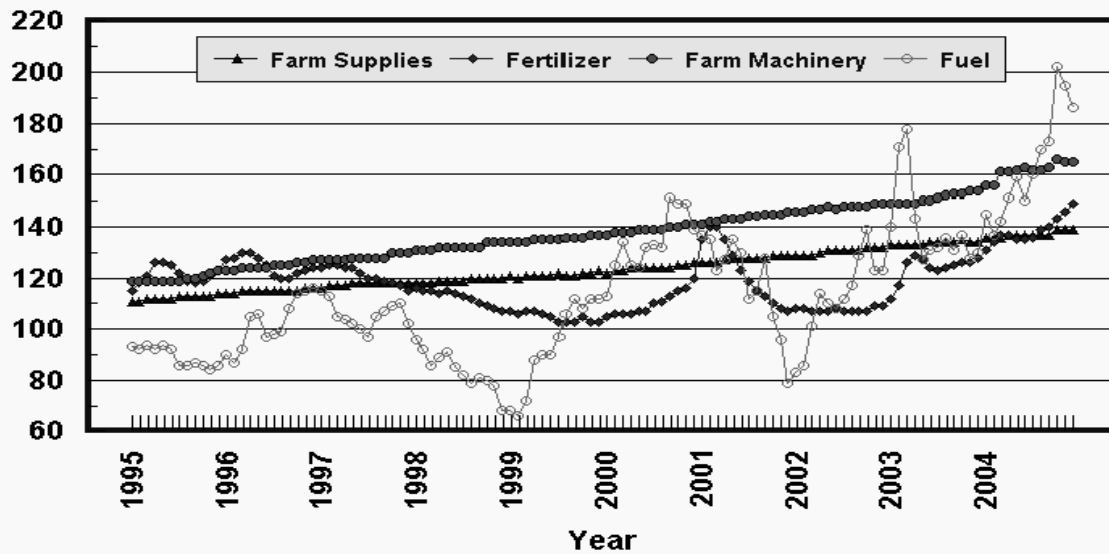
Prices Paid by Farmers, Indexes, All Production Items US, By Sector Origin

Percent (1990-92=100)



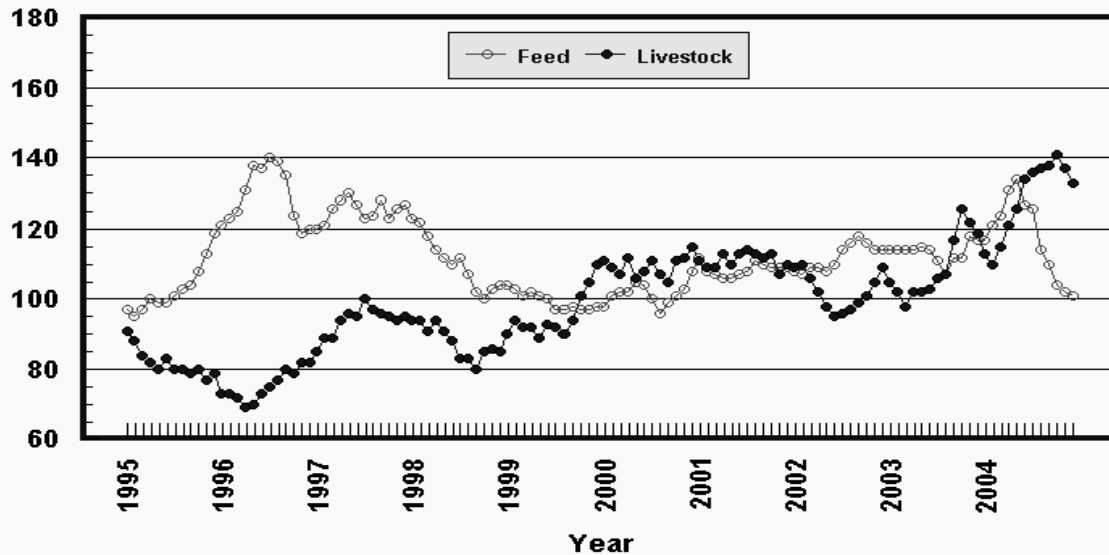
Prices Paid by Farmers, Selected Production Indexes US, By Non-Farm Sector

Percent (1990-92=100)



Prices Paid by Farmers, Selected Production Indexes US, By Farm Sector

Percent (1990-92=100)



Feed Price Ratios: United States, December 2004 with Comparisons

Feed Price Ratio ¹	2003	2004	
	Dec	Nov	Dec
Broiler-Feed: Pounds of Broiler Grower Feed equal in value to 1 pound of broiler, live weight	5.1	*6.6	6.7
Market Egg Feed: Pounds of Laying Feed equal in Value to 1 dozen eggs	12.2	*8.8	9.9
Hog-Corn: Bushels of Corn equal in value to 100 pounds of hog, live weight	14.8	*27.2	27.4
Milk-Feed: Pounds of 16% Mixed Dairy Feed equal in value to 1 pound of Whole Milk	2.85	*3.57	3.73
Steer & Heifer-Corn: Bushels of Corn equal in value to 100 pounds of Steer & Heifers, live weight	41.4	*44.0	46.2
Turkey-Feed: Pounds of Turkey Grower equal in value to 1 pound of Turkey, live weight	5.7	*8.8	8.4

* Revised.

¹ Effective January 1995, prices of commercial prepared feeds are based on current U.S. prices received for corn, soybeans, alfalfa hay, and all wheat.

**Prices Used to Calculate Feed Price Ratios:
United States, December 2004 with Comparisons**

Commodity	Unit	2003	2004	
		Dec	Nov	Dec
Broilers, Live	Lb	0.380	0.390	0.390
Eggs, Market	Doz	0.739	0.436	0.488
Hogs, All	Cwt	34.20	*55.70	54.50
Milk, All	Cwt	13.80	*16.10	16.50
Steers and Heifers	Cwt	95.60	*90.20	91.90
Turkeys, Live	Lb	0.382	0.490	0.462
Corn	Bu	2.31	*2.05	1.99
Hay, Alfalfa, Baled	Ton	87.00	94.00	92.40
Soybeans	Bu	7.17	*5.36	5.41
Wheat, All	Bu	3.68	*3.46	3.38

* Revised.

**Feeder Livestock: Prices Paid, United States
December 2004 with Comparisons**

Commodity	Unit	2003	2004	
		Dec	Nov	Dec
		<i>Dollars</i>	<i>Dollars</i>	<i>Dollars</i>
Feeders and Stockers				
Cattle and Calves	Cwt	103.00	115.80	109.70
Feeder Pigs	Cwt	88.00	*138.00	155.00

* Revised.

Feed: April Prices Paid, United States, 1999-2004 ¹

Item	Unit	1999	2000	2001	2002	2003	2004
		<i>Dollars</i>	<i>Dollars</i>	<i>Dollars</i>	<i>Dollars</i>	<i>Dollars</i>	<i>Dollars</i>
Alfalfa Meal	Cwt	12.80	12.50	13.40	14.40	15.00	14.90
Alfalfa Pellets	"	12.80	12.40	13.40	14.40	15.30	15.20
Bran	"	13.40	13.20	13.40	13.60	13.70	14.80
Beef Cattle Conc., 32-36% Protein	Ton	258	261	279	277	290	342
Corn Meal	Cwt	7.54	7.67	7.59	8.06	9.90	9.84
Cottonseed Meal, 41%	"	14.60	14.90	15.70	15.80	16.60	18.40
Dairy Feed							
14% Protein ²	Ton	167	170	176	175	183	200
16% Protein ²	"	180	175	184	190	200	218
18% Protein ²	"	181	179	185	194	207	229
20% Protein ²	"	186	183	184	191	201	233
32% Protein Conc.	"	272	287	291	298	311	381
Hog Feed							
14-18% Protein ^{2 3}	"	200	203	215	216	223	256
38-42% Protein Conc.	"	280	297	302	307	322	415
Molasses, Liquid	Cwt	12.00	12.00	12.40	12.90	13.30	14.20
Poultry Feed							
Broiler Grower ²	Ton	242	226	232	259	234	278
Chick Starter ²	"	242	249	239	240	241	299
Laying Feed ²	"	208	206	212	225	232	249
Turkey Grower ²	"	261	255	259	264	279	315
Soybean Meal, 44%	Cwt	12.20	13.00	13.40	13.50	14.50	19.60
Stock Salt	50 Lb	3.99	4.01	4.05	4.12	4.30	4.53
Trace Mineral Blocks	50 Lb	4.98	5.02	5.14	5.24	5.40	5.53
		Index (1990-92=100)					
Feed Prices Paid Index ⁴	Pct	100	102	109	112	114	121

¹ April survey only, quarterly surveys discontinued January 1995.

² Complete ration feed, fed without mixing or supplementation.

³ Excluding pig starter.

⁴ Annual average for all years.

Feeder Livestock: Annual Average Prices Paid, United States, 1999-2004

Item	Unit	1999	2000	2001	2002	2003	2004
		<i>Dollars</i>	<i>Dollars</i>	<i>Dollars</i>	<i>Dollars</i>	<i>Dollars</i>	<i>Dollars</i>
Broiler Chicks	100	20.30	20.50	20.60	21.10	21.20	(¹)
Egg-Type Chicks	100	52.60	48.00	53.90	*52.00	52.50	(¹)
Feeders and Stockers							
Cattle and Calves	Cwt	79.10	91.00	91.30	83.20	92.00	109.20
Feeder Pigs	Cwt	76.90	112.00	110.50	85.80	93.80	114.50
Turkey Poults	Each	1.14	1.14	1.15	1.15	1.15	(¹)
		Index (1990-92=100)					
Livestock and Poultry Prices Paid Index ²	Pct	95	110	111	102	109	127

* Revised.

¹ Annual average data are published in April 2005.

² Annual average.

The data presented in the following tables are calculated and published for use by the Forest Service, USDA and the Bureau of Land Management, USDI in computing Public Land Grazing Fees.

2004 Prices Paid Index for Beef Cattle Production (1964-68=100) ¹: 618

¹ The Index of Prices Paid by Farmers and Ranchers for Beef Cattle Production input items is for the period of November 2003 through October 2004. The components of this index include the production indexes of Fuels & Energy, Farm & Motor Supplies, Autos & Trucks, Tractors & self-propelled Machinery, Other Machinery, Building & Fencing Materials, Interest, Farm Wage Rates, and Farm Services. These components are weighted to the overall index value by their importance in the cost of producing beef cattle, the weights are unchanged from a year earlier.

Beef Cattle: Prices Received, Selected Regions, 2004 ¹

State	Beef Cattle
	<i>Dollars Per Cwt</i>
9 Great Plains States ²	89.86
11 Western States ³	88.53
16 Western States ⁴	89.40
17 Western States ⁵	88.81

¹ Average for November 2003 through October 2004, except NV, UT, and WA which are marketing year averages.

² CO, KS, NE, NM, ND, OK, SD, TX, and WY.

³ AZ, CA, CO, ID, MT, NM, NV, OR, UT, WA, and WY.

⁴ Eleven Western States plus KS, NE, ND, OK, and SD.

⁵ Sixteen Western States plus TX.

Prices Paid by Farmers

Definition: Prices paid by farmers represent the average costs of inputs purchased by farmers and ranchers to produce agricultural commodities. Conceptually, the average price when multiplied by quantity purchased should equal total producer expenditures for the item.

Survey Procedures: The prices paid data are obtained from establishments that sell goods and services to farmers and ranchers. Annually, about 8,500 firms are randomly selected from lists by type of item sold with an average response rate in the range of 75-80 percent. Firms are asked to report the price for the specified item "most commonly bought by farmers" or that was the "volume seller". Approximately 135 items are surveyed each April to represent all production input items purchased. The survey reference period for most items is the 5 business days centered around the 15th of the month. Separate prices paid surveys are conducted for, agricultural chemicals, fuels, feed, fertilizer, machinery, and seed.

Summary and Estimation Procedures: The annual April Prices Paid Survey is summarized as a nonprobability survey. Average prices reported are aggregated to the region and U.S. level using weights available from expenditure data and other administrative sources. Price recommendations are prepared by the State Statistical Offices and Headquarters for review by the Agricultural Statistics Board in Washington, D.C. Also, the change in price level for individual items surveyed are combined to the regional and U.S. levels, and are published as prices paid indexes referenced to a specific base period. Prices paid indexes for new autos and trucks, building materials, farm supplies, motor supplies, and marketing containers are updated based on price changes measured in selected Bureau of Labor Statistics (BLS) indexes.

Revisions: Any revisions are published in the monthly and in annual issues of *Agricultural Prices*. The basis for revision must be supported by additional data that directly affect the level of the estimate. More revisions are likely in April when separate prices paid surveys are conducted, in lieu of BLS indexes, by the USDA to measure price change.

Reliability: Current methods of summarization in April are not designed directly to calculate sampling errors. However, analytical measures approximate the U.S. relative sampling errors for major items around 10 percent. Any nonsampling errors are attributed to such things as the inability to obtain correct information, differences in interpreting questions or definitions, mistakes in coding or processing the data, etc. Efforts are made at each step in the survey process to minimize these nonsampling errors.

Program Change: Effective January 1, 1995, the National Agricultural Statistics Service updated the weights and changed the construction of its prices paid and received by farmers indexes. A Federal Register Notice dated October 28, 1994 discussed these program modifications.

A 1990-92 reference and base period replaced the 1977 reference and 1971-73 base weight period. Five-year moving average weights replaced the current fixed 1971-73 base period weights. The 1910-14=100 price indexes, required by statute for computing parity prices, were linked forward based on the changes in the new 1990-92=100 indexes. The new indexes were constructed by multiplying the ratios of the current prices to the base period prices by the moving average weights (adjusted for seasonal marketing patterns for the prices received indexes).

Calendar of Prices Received Features in the 2004 Agricultural Price Reports

Annual or Marketing Year Average Prices:	Month Published
Apricots, U.S.	Feb
Austrian Winter Peas, U.S.	Sep
Barley, U.S.	Jun
by State and U.S.	Aug
Broilers, by State and U.S.	Apr
Cattle, by State and U.S.	Feb
Chickens, Other by State and U.S.	Apr
Chickpeas, by State and U.S.	Nov
Citrus Crops (Grapefruit, Lemons, Limes, Oranges, Tangelos, Tangerines, Temples), by State and U.S.	Sep
Corn, U.S.	Sep
by State and U.S.	Nov
Cotton, by Type, State and U.S.	Oct
Cottonseed, by State and U.S.	Oct
Cranberries, by State and U.S.	Jul
Dry Beans, by State and U.S.	Nov
Dry Edible Peas, U.S.	Sep
Eggs, by State and U.S.	Apr
Figs, U.S.	Feb
Flaxseed, by State and U.S.	Nov
Goats, by State and U.S.	Feb
Grapes, by State	Feb
Hay, by State and U.S.	Aug
Other Hay, 3-year Average by Region	Feb
Hogs, by State and U.S.	Feb
Hops, by State and U.S.	Dec
Lentils, U.S.	Sep
Milk, Sold to Plants, by Grade, Price and Fat Test, by State and U.S.	Apr
Mohair, by State and U.S.	Feb
Oats, U.S.	Jun
by State and U.S.	Aug
Nectarines, U.S.	Feb
Peaches, by State and U.S.	Feb
Peanuts, by State and U.S.	Aug
Pears, by State and U.S.	Feb
Potatoes, by State and U.S., Preliminary	Feb
Final and Revised	Sep
Plums, U.S.	Feb
Rice, U.S. (year-to-date)	Aug
by State and U.S., by Length of Grain	Jan
Rye, by State and U.S.	Aug
Sheep and Lambs, by State and U.S.	Feb
Sorghum, by State and U.S.	Sep
Soybeans, by State and U.S.	Sep
Sweetpotatoes, by State and U.S., Preliminary	Jan
Final and Revised	Jun
Sugarbeets, U.S.	Jul
Sugarcane, U.S.	Jul
Sunflower, by State and U.S.	Nov
Tobacco, by Type, State and U.S.	May
Turkeys, by State and U.S.	Apr
Wheat, by Class, U.S.	Jun
by State and U.S.	Aug
Wool, by State and U.S.	Feb

Monthly Prices Received - Revised:**Month Published**

Apples, U.S.	Jan, Jul
by State	Feb, Jul
Austrian Winter Peas, U.S.	Sep
Barley, U.S.	Jun
by State and U.S.	Aug
Broilers, by State and U.S.	Apr
Cattle, by State and U.S.	Feb
Chickens, by State and U.S.	Apr
Chickpeas, by State and U.S.	Nov
Citrus Crops (Grapefruit, Lemons, Limes, Oranges, Tangelos, Tangerines, Temples), by State and U.S.	Sep
Corn, U.S.	Sep
by State and U.S.	Nov
Cotton, by Type, State and U.S.	Oct
Cottonseed, by State and U.S.	Oct
Dry Beans, by State and U.S.	Nov
Dry Edible Peas, U.S.	Sep
Eggs, by State and U.S.	Apr
Flaxseed, by State and U.S.	Nov
Grapes, U.S.	Jan, Jul
Hay, by State and U.S.	Aug
Hogs, by State and U.S.	Feb
Hops, by State and U.S.	Dec
Lentils, U.S.	Sep
Milk, Sold to Plants, by Grade, Price and Fat Test by State and U.S.	Apr
Milk Cows, by Quarter, by State and U.S.	Feb
Oats, U.S.	Jun
by State and U.S.	Aug
Onions, by State and U.S.	Apr, Jul
Peaches, U.S.	Jan, Jul
Peanuts, by State and U.S.	Aug
Pears, U.S.	Jan, Jul
Pears, U.S.	Jul
Potatoes, by State and U.S., Preliminary	Feb
Final and Revised	Sep
Rice, U.S. (year-to-date)	Aug
by State and U.S., by Length of Grain	Jan
Sheep and Lambs, by State and U.S.	Feb
Sorghum, by State and U.S.	Sep
Soybeans, by State and U.S.	Sep
Sunflower, by State and U.S.	Nov
Tobacco, by Type, State and U.S.	May
Turkeys, U.S.	Apr
Vegetable Crops, by State and U.S.	Apr
Wheat, by Type, U.S.	Jun
by State and U.S.	Aug

Monthly Marketing Percents:**Month Published**

Austrian Winter Peas, U.S.	Sep
Barley, U.S.	Jun
by State and U.S.	Aug
Chickpeas, by State and U.S.	Nov
Corn, U.S.	Sep
by State and U.S.	Nov
Cotton, Upland, by State and U.S.	Oct
Dry Beans, by State and U.S.	Nov
Dry Edible Peas, U.S.	Sep
Flaxseed, by State and U.S.	Nov

Hay, by State and U.S.	Aug
Lentils, U.S.	Sep
Oats, U.S.	Jun
by State and U.S.	Aug
Peanuts, by State and U.S.	Aug
Rice, U.S. (year-to-date)	Aug
Final	Jan
Sorghum, by State and U.S.	Sep
Soybeans, by State and U.S.	Sep
Sunflower, by State and U.S.	Nov
Tobacco, by State and U.S.	May
Wheat, U.S.	Jun
by State and U.S.	Aug

Prices Received Index Numbers - Revised:

Index of Prices Received by Farmers, U.S., by Month and Year	Jan, Apr, Jul, Oct
--	--------------------

Milk and Egg Prices Received, Adjusted for Seasonal Variation:

Seasonally Adjusted Prices, Revised, U.S.	Apr
Seasonal Adjustment Factors, U.S.	Jul

Parity Prices:

Method of Computing	Jan
Average Prices Used for Parity Computations	Jan
Manufacturing Milk: Method of Computing Parity Price Equivalent	Jan
Average Price Received, U.S.	Jan

Calendar of Prices Paid Features in the 2004 Agricultural Price Reports

Indexes (1910-1914=100):	Month Published
PPITW, PITW, Production Items, Component Items, Interest, Taxes and Wage Rates, Family Living, Farm and Non-Farm Origin, Crop and Livestock Sectors, Adjusted for Productivity, Ratio, Parity Ratio and Adjusted Parity Ratio	
Annual Average (1999-2004)	Jan, Apr, Jul, Oct
By Month (1999-2004)	Jan, Apr, Jul, Oct
U.S. Current Month, Previous Month, Previous Year	Monthly

Indexes (1990-1992=100):	Month Published
PPITW, PITW, Production Items, Component and Subcomponent Items, Interest, Taxes and Wage Rates, Family Living Farm and Non-Farm Origin, Crop and Livestock Sectors, Adjusted for Productivity, Ratio, Parity Ratio and Adjusted Parity Ratio	
Annual Average (2000-2004)	Jan, Apr, Jul, Oct
By Month (2000-2004)	Jan, Apr, Jul, Oct
U.S. Current Month, Previous Month, Previous Year	Monthly
Feed and Feeder Livestock & Poultry Annual Average, U.S. (1999-2004)	Dec

Prices Paid:	Month Published
Farm Machinery, U.S.	Apr
Feed, by Region and U.S.	Apr
Feed, U.S. (1999-2004)	Dec
Feeder Livestock, U.S.	Monthly
Poultry, Chicks and Poults, Annual Average	Apr
Fertilizer Materials, Mixed Fertilizer and Agricultural Limestone, by Region and U.S.	Apr
Field Seeds, Retail U.S.	Apr
Fuels, by Region and U.S.	Apr
Agricultural Chemicals, U.S.	Apr

Feed-Price Ratios:	Month Published
U.S. by Months and Annual Average, Jan 2001 - May 2004	May
U.S. Current Month, Previous Month, Previous Year	Monthly

Prices Paid Program Overview:	Month Published
Prices Paid Survey Months, Month Published and Geographic Levels of Estimates	Jan
Prices Paid Regions, and States Included	Apr

Private Grazing Fee Rates and Components of Federal Fees:	Month Published
Private Non-Irrigated Grazing Fee Rates, by State and Region	
(Data for 2003-2004 will be published in January 2005)	Jan
Prices Paid Index for Beef Cattle Production (1964-68=100)	Dec
Beef Cattle Prices Received, Selected Regions (November-October)	Dec
Other Hay Prices Received, Selected Eastern Regions	Feb

Information Contacts

General questions should be directed to Linda Hutton, Chief, Environmental, Economics and Demographics Branch at (202) 720-6146. Below are the commodity specialists to contact for additional information.

Crop Prices Received

Joe Prusacki Chief, Crops Branch	(202) 720-2127
Greg Thessen, Field Crops Section	(202) 720-2127
Lance Honig - Wheat, Rye	(202) 720-8068
Darin Jantzi - Corn, Proso Millet, Flaxseed	(202) 720-9526
Troy Joshua - Cotton, Cottonseed	(202) 720-5944
Dennis Koong - Hay, Oats, Sorghum	(202) 690-3234
Jason Lamprecht - Soybeans, Sunflower, Other Oilseeds	(202) 720-7369
Mark R. Miller - Peanuts, Rice	(202) 720-7688
Brian Young - Sugarcane, Sugarbeets, Barley	(202) 720-7621
Jim Smith, Fruit and Vegetable Section	(202) 720-2127
Debbie Flippin - Peaches, Pears, Hops, Pulses, Mint	(202) 720-3250
Jorge Garcia-Pratts - Citrus	(202) 720-5412
Terry O'Connor - Apples, Apricots, Cherries, Cranberries, Plums, Prunes	(202) 720-4288
Leslie Colburn - Grapes, Tobacco	(202) 720-7235
Cathy Scherrer, Potatoes, Dry Edible Beans, Sweet Potatoes	(202) 720-4285
Biz Wallingsford - Vegetables, Onions, Strawberries	(202) 720-2157

Livestock Prices Received

Dan Kerestes, Chief, Livestock Branch	(202) 720-3570
Wil Hundl, Livestock Section	(202) 720-3570
Scott Hollis - Sheep, Lambs, Wool, Mohair	(202) 720-4751
Ty Kalaus - Milk, Milk Cows	(202) 690-3236
Dan Lofthus - Hogs	(202) 720-3106
Mike Miller - Cattle	(202) 720-3040
Nathan Crisp, Poultry and Specialty Commodities Section	(202) 720-3570
John Lange - Turkeys	(202) 720-0585
Sharyn Lavender - Eggs	(202) 720-3244
Jody Roberts - Broilers	(202) 690-8632

Indexes, Prices Paid, and Parity Prices

Linda Hutton, Chief, Environmental, Economics and Demographics Branch	(202) 720-6146
Kevin Hintzman, Economics Section	(202) 720-6146
Eric Barnes - Farm Supplies and Repairs, Farm Machinery, Fuels, Feeder Livestock, Poultry Chicks, Feed Price Ratios, Grazing Fees, Autos & Trucks	(202) 690-3225
Daryl Brinkman - Prices Received Indexes, Parity Prices	(202) 720-8844
Tara Jackson - Prices Paid Indexes, Prices Paid for Feed, Fertilizer, Agricultural Chemicals, Seeds	(202) 690-3229

ACCESS TO REPORTS!!

For your convenience, there are several ways to obtain NASS reports, data products, and services:

INTERNET ACCESS

All NASS reports are available free of charge on the worldwide Internet. For access, connect to the Internet and go to the NASS Home Page at: www.usda.gov/nass/. Select "Today's Reports" or Publications and then Reports Calendar or Publications and then Search, by Title or Subject.

E-MAIL SUBSCRIPTION

All NASS reports are available by subscription free of charge direct to your e-mail address. Starting with the NASS Home Page at www.usda.gov/nass/, click on **Publications**, then click on the **Subscribe by E-mail** button which takes you to the page describing e-mail delivery of reports. Finally, click on **Go to the Subscription Page** and follow the instructions.

PRINTED REPORTS OR DATA PRODUCTS

CALL OUR TOLL-FREE ORDER DESK: 800-999-6779 (U.S. and Canada)
Other areas, please call 703-605-6220 FAX: 703-605-6900
(Visa, MasterCard, check, or money order acceptable for payment.)

ASSISTANCE

For **assistance** with general agricultural statistics or further information about NASS or its products or services, contact the **Agricultural Statistics Hotline** at **800-727-9540**, 7:30 a.m. to 4:00 p.m. ET, or e-mail: nass@nass.usda.gov.

The United States Department of Agriculture (USDA) prohibits discrimination in all its programs on the basis of race, color, national origin, gender, religion, age, disability, political beliefs, sexual orientation, and marital or family status. (Not all prohibited bases apply to all programs.) Persons with disabilities who require alternative means for communication of program information (braille, large print, audiotape, etc.) should contact the USDA's TARGET Center at 202-720-2600 (voice and TDD).

To file a complaint of discrimination, write USDA, Director, Office of Civil Rights, Room 326-W, Whitten Building, 1400 Independence Avenue, SW, Washington, D.C., 20250-9410, or call 202-720-5964 (voice or TDD). USDA is an equal opportunity provider and employer.