

Released January 31, 2005, by the National Agricultural Statistics Service (NASS), Agricultural Statistics Board, U.S. Department of Agriculture. For information on *Agricultural Prices* see page 87, office hours 7:30 a.m. to 4:00 p.m. ET.

### Update Alert

The following were corrected in the January 2005 Agricultural Prices:

The January 2005 Adjusted Base Prices have been corrected for the following: Cottonseed from \$15.30 to \$15.50, and Rye from .349 to .355, and Tobacco, PA Seedleaf, 41 from 0.206 to 0.205 on pages 26 and 33. Fresh Pears from \$52.10 to \$52.90 on pages 27 and 34. Walnuts from \$172.00 to \$173.00 and Cauliflower from \$4.58 to \$4.60 on pages 27 and 35. Broccoli from \$4.20 to \$4.18 on page 35.

The January 2005 Parity Prices have been corrected for the following: Cottonseed from \$273.00 to \$276.00 and Rye from 6.22 to 6.33, and Tobacco, PA Seedleaf, 41 from 3.67 to 3.66 on pages 26 and 33. Fresh Pears from \$929.00 to \$943.00 on pages 27 and 34. Walnuts from \$3070.00 to \$3085.00 and Cauliflower from \$81.70 to \$82.00 on pages 27 and 35. Broccoli from \$74.00 to \$74.50 on page 35.

The 2003 Marketing Year Average Price for Cottonseed was corrected from \$121.00 to \$117.00.

### January Farm Prices Received Index Down 1 Point From Last Month

The preliminary All Farm Products Index of Prices Received by Farmers in January, at 110, based on 1990-92=100, is 1 point (0.9 percent) below the December Index. The Crop Index is down 3 points (2.9 percent) while the Livestock Index is up 1 point (0.8 percent). Producers received higher commodity prices for broilers, cattle, oranges, and snap beans. Lower prices were received for tomatoes, dairy, eggs, and broccoli. The seasonal change in the mix of commodities farmers sell, based on the past 3-year average, also affects the overall index. Increased average marketings of cattle, corn, soybeans, and strawberries offset decreased marketings of grapes, dairy, tobacco, and cotton.

This preliminary All Farm Products Index is down 2 points (1.8 percent) from January 2004. The Food Commodities Index, at 115, is 1 point (0.9 percent) below last month but 2 points (1.8 percent) above January 2004.

### Prices Paid Index Up 1 Point

The January Index of Prices Paid for Commodities and Services, Interest, Taxes, and Farm Wage Rates (PPITW) is 134 percent of the 1990-92 average. The index is up 1 point from December and 4 points (3.1 percent) above January 2004. Higher prices in January for self propelled machinery, feeder pigs, and nitrogen fertilizers offset lower prices for LP gas, gasoline, and feed grains.

Index Summary Table

Index 1990-92=100	2003	2004		2005
	Dec	Jan	Dec	Jan
Prices Received	114	112	111	110
Prices Paid	129	130	133	134
Ratio <sup>1</sup>	88	86	83	82

<sup>1</sup> Ratio of index of prices received by farmers to index of prices paid by farmers.

## Prices Received by Farmers

The January All Farm Products Index is 110 percent of its 1990-92 base, down 0.9 percent from the December index and down 1.8 percent from the January 2004 index.

**ALL CROPS:** The January index is 100, down 2.9 percent from December and 12 percent below January 2004. Index decreases from December for commercial vegetables, oil-bearing crops, feed grains and hay, and cotton more than offset index increases for tobacco and potatoes and dry beans.

**Food Grains:** The January index, at 113, is unchanged from the previous month but 8.9 percent below a year ago. The January all wheat price, at \$3.42 per bushel, is up 3 cents from December but 26 cents below January 2004. The rice price, at \$7.41 per cwt., is down 2 cents from December and \$1.16 below a year ago.

**Feed Grains & Hay:** The January index is 90, down 3.2 percent from last month and 14 percent below January 2004. The corn price, at \$1.98 per bushel, is down 6 cents from December and 41 cents below January 2004. The all hay price, at \$84.20 per ton, is 10 cents below December but \$4.10 above last January. Grain sorghum, at \$2.87 per cwt, is down 12 cents from December and \$1.49 below last January.

**Oil-Bearing Crops:** The January index, at 96, is down 4.0 percent from December and 27 percent below the same month last year. The soybean price, at \$5.32 per bushel, decreased 13 cents from December and is \$2.03 below January 2004.

**Cotton:** The January index, at 65, is down 3.0 percent from December and 37 percent below January 2004. The January price, at 39.4 cents per pound, is down 1.3 cents from the previous month and 22.8 cents below last January.

**Potatoes & Dry Beans:** The January index, at 101, is up 1.0 percent from December and 4.1 percent above a year ago. The all potato price, at \$5.35 per cwt, is up 8 cents from December but 40 cents below last January. The all dry bean price, at \$27.00 per cwt, is up 30 cents from the previous month and \$9.80 above January 2004.

**Fruits & Nuts:** The January index, at 107, is unchanged from the previous month but 23 percent above January 2004. Since December, price increases for oranges offset price decreases for grapefruit, lemons, and apples.

**Commercial Vegetables:** The January index, at 105, is down 17 percent from last month and down 23 percent from last January. Price decreases for tomatoes, broccoli, and cauliflower more than offset price increases for snap beans, carrots, and lettuce.

**LIVESTOCK & PRODUCTS:** The January index, at 121, is up 0.8 percent from last month and up 10 percent from January 2004. Compared with a year ago, prices are higher for cattle, dairy, hogs, calves, and turkeys but lower for eggs. The broilers prices were unchanged.

**Meat Animals:** The January index, at 120, is up 1.7 percent from last month and up 15 percent from last year. The January hog price of \$53.00 per cwt is up \$0.70 from December and up \$10.20 from a year ago. The January beef cattle price of \$89.10 is up \$2.30 from last month and up \$8.20 from January 2004.

**Dairy Products:** The January index, at 122, is down 3.2 percent from December but up 21 percent from January 2004. The January all milk price of \$15.90 per cwt is down \$0.50 from last month but up \$2.70 from December 2004. The fluid grade milk price is down \$0.50 and the manufactured grade milk price is down \$1.30 from the previous month.

**Poultry & Eggs:** The January index, at 122, is up 3.4 percent from December but down 8.3 percent from a year ago. The January market egg price of 37.3 cents per dozen is down 11.5 cents from December and down 43.3 cents from January 2004. The January broiler price of 43.0 cents per pound is up 4.0 cents from December and unchanged from January 2004. The January turkey price, at 39.3 cents per pound, is down 6.9 cents from last month.

## Table of Contents

<b>U.S. Prices Received and Indexes</b>	<b>Page</b>	<b>Monthly State Prices, continued</b>	<b>Page</b>
Narrative .....	2	Cotton .....	19
Price Indexes .....	5	Cottonseed .....	19
Price Index Charts .....	6	Eggs .....	24
U.S. Prices Received Summary .....	10	Flaxseed .....	18
Charts .....	12	Fruit, Citrus .....	20
Selected Commodities .....	16	Hay .....	19
Upland Cotton & Rice Marketings .....	19	Hogs, All .....	23
Parity Prices .....	26	Barrows and Gilts .....	23
Reliability Statement .....	57	Sows .....	23
<b>Monthly State Prices Received</b>		Milk .....	25
Apples .....	19	Oats .....	17
Barley .....	17	Peanuts .....	18
Beans, Dry Edible .....	18	Potatoes .....	21
Beef Cattle, All .....	22	Sheep .....	24
Calves .....	22	Lambs .....	24
Cows, Beef .....	22	Sorghum, Grain .....	17
Milk Cows .....	25	Soybeans .....	17
Steers and Heifers .....	22	Sunflower, All .....	18
Corn .....	17	Tobacco .....	18
		Wheat, All Classes .....	16
<b>Prices Received Special Features</b>			<b>Page</b>
<b>Marketing Year for Specified Commodities</b> .....			28
<b>Monthly Price Revisions</b>			
Apples .....			30
Grapes .....			30
Peaches .....			30
Pears .....			30
Rice .....			29
<b>Monthly Marketings</b>			
Rice .....			29
<b>Marketing Year Average Prices</b>			
Rice .....			29
Sweet Potatoes .....			28
<b>Index of Prices Received: U.S., All Groups, Monthly and Annual, 2000-2004</b> .....			48
<b>Annual Parity Price Calculations</b>			
Authority for Parity Prices, Method of Computation and Prices .....			31
Adjusted Base Prices & January 2004 Parity Prices .....			33
Average Base Period Prices, U.S., 1910-14 .....			37
Annual Average Prices Received for Parity Computations, U.S., by Years, 1994-2003 .....			38
Parity Price Equivalent for Manufacturing Grade Milk .....			56

## Table of Contents (continued)

<b>U.S. Prices Paid, Prices Paid Indexes and Ratios</b>	<b>Page</b>
Narrative .....	58
Indexes and Parity Ratios .....	59
Charts .....	61
Feed Price Ratios .....	64
Reliability Statement .....	86
<b>U.S. Average Prices</b>	
Commodity Prices Used in Feed Price Ratios .....	64
Feeder Livestock .....	64
<b>Special Features</b>	
Private Non-Irrigated Grazing Fee Rates for Cattle by Selected States and Regions .....	65
Prices Paid Index for Beef Cattle Production .....	66
Prices Paid Survey Estimates, Month Published and Level .....	85
Index of Prices Paid: 1910-14=100 and 1990-92=100 Monthly and Annual Average, United States, 1999-2003 .....	66-84
PPITW, PITW, Production Items .....	66-67
Index Component Items, Interest, Taxes, Wage Rates, Farm and Non Farm Origin .....	67-74
Ratios .....	75
Crop Sector, Livestock Sector, and PPITW adjusted for Productivity .....	76
Index Sub-Components (1990-92=100): Monthly and Annual Averages .....	77-84
<b>Information Contacts</b> .....	87

**Index Numbers of Prices Received, United States,  
January 2005, with Comparisons**

Index	1910-14=100				1990-92=100		
	Average 1990-92	2004		2005	2004		2005
		Jan	Dec	Jan	Jan	Dec	Jan
All Farm Products	639	709	*705	700	112	*111	110
All Crops	500	559	*510	493	113	*103	100
Food Grains	325	393	*359	360	124	*113	113
Feed Grains & Hay	363	376	*331	320	105	*93	90
Cotton	517	526	*344	333	103	*67	65
Tobacco	1,263	1,822	*1,722	1,717	120	*67	114
Oil-Bearing Crops	554	714	*545	525	131	*100	96
Fruits & Nuts	716	611	*745	744	87	*107	107
Commercial Vegetables	698	918	*840	702	137	*126	105
Potatoes & Dry Beans	540	491	*504	513	97	*100	101
Other Crops	493	569	*569	578	115	*115	117
Livestock & Products	768	842	*919	929	110	*120	121
Meat Animals	1,021	1,057	*1,195	1,224	104	*118	120
Dairy Products	799	811	*1,008	977	101	*126	122
Poultry & Eggs	282	373	*332	344	133	*118	122
Food Commodities					113	*116	115

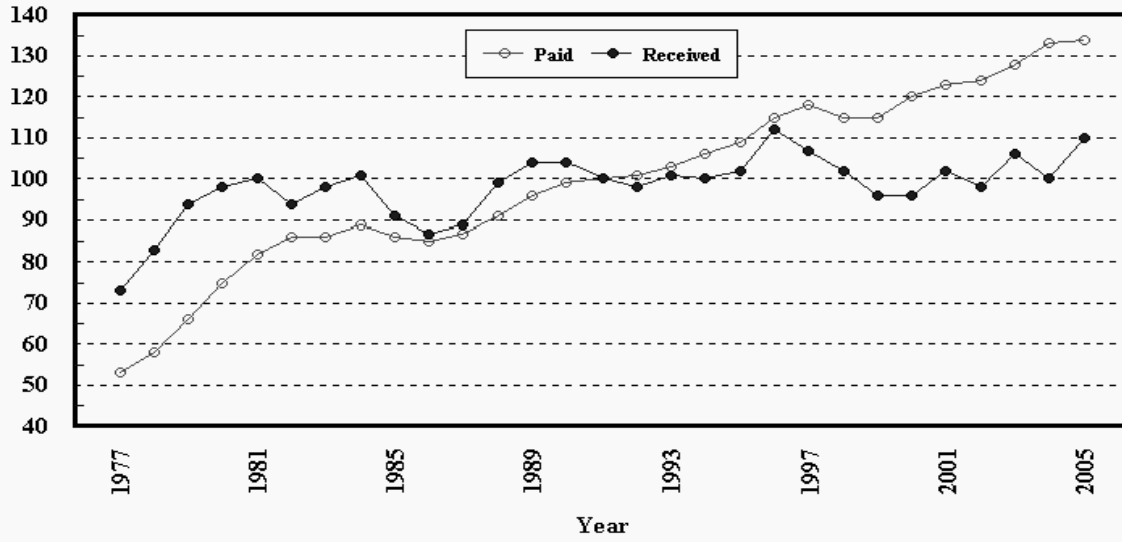
\* Revised.

**Selected Index Numbers for Prices Received and Paid,  
1990-92=100, by Month, United States, 2004 and 2005**

Month	Index of Prices Received						Index of Prices Paid			
	All Farm Products		All Crops		Livestock and Products		All Items		Production Items	
	2004	2005	2004	2005	2004	2005	2004	2005	2004	2005
Jan	112	110	113	100	110	121	130	134	127	131
Feb	116		121		112		131		127	
Mar	121		121		122		132		129	
Apr	125		123		126		133		131	
May	129		124		133		135		132	
Jun	128		122		133		135		132	
Jul	124		120		128		135		133	
Aug	121		118		123		134		132	
Sep	115		113		118		134		131	
Oct	114		111		117		135		132	
Nov	116		112		119		134		131	
Dec	111		103		120		133		130	

## Prices Received vs Prices Paid Annual Average Indexes\*

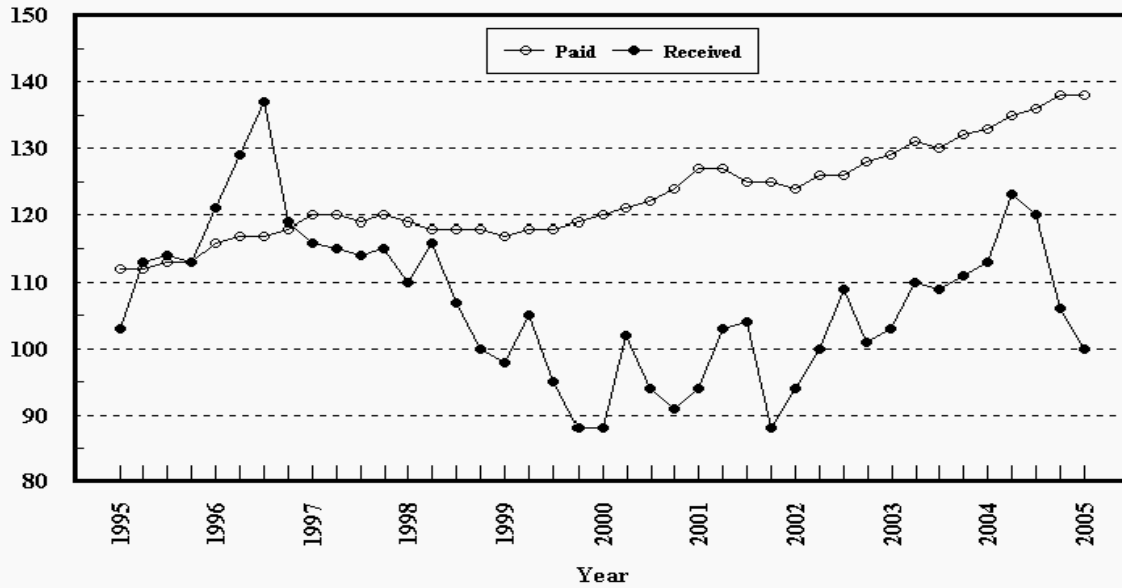
Index Values (1990-92=100)



\* Index values for 2005 are year-to-date averages.

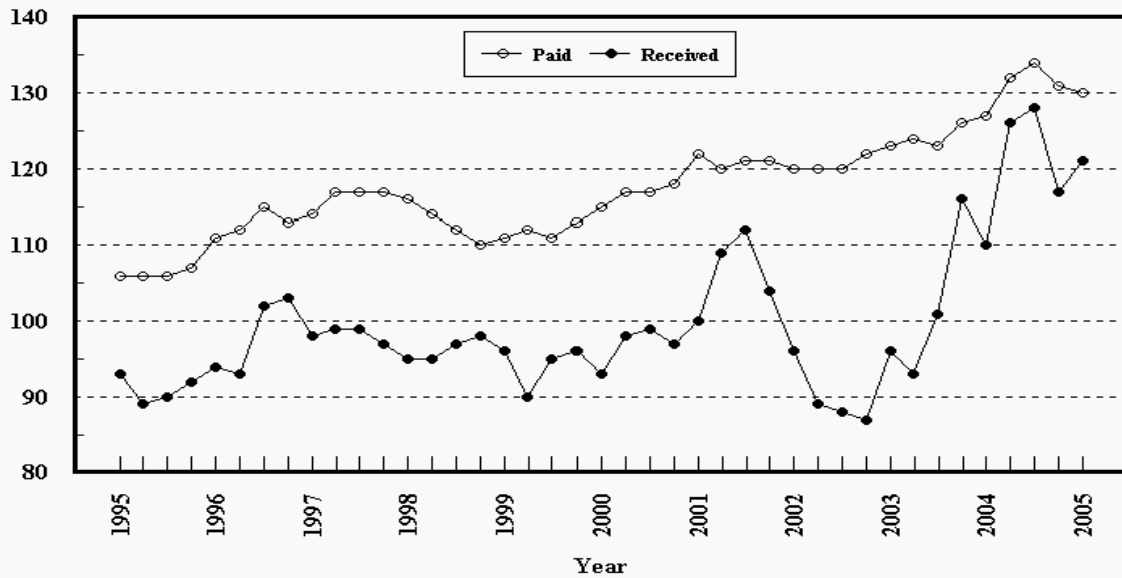
**Crop Farm Index: Prices Received and Prices Paid**  
All Items, U.S., 1994-2005, By Quarter

Index Values (1990-92=100)



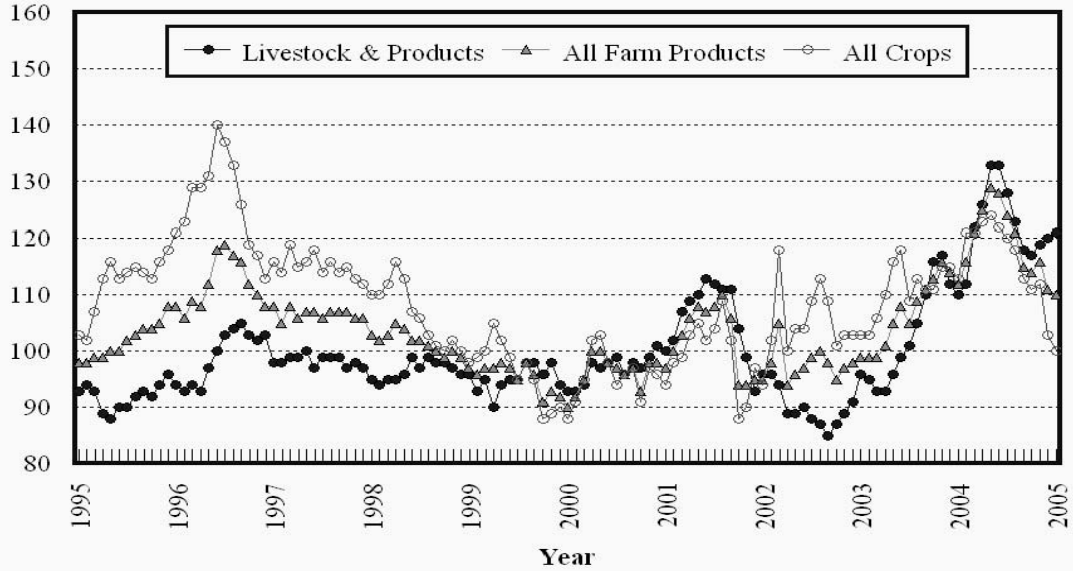
**Livestock Farm Index: Prices Received and Prices Paid**  
All Items, U.S., 1994-2005, By Quarter

Index Values (1990-92=100)



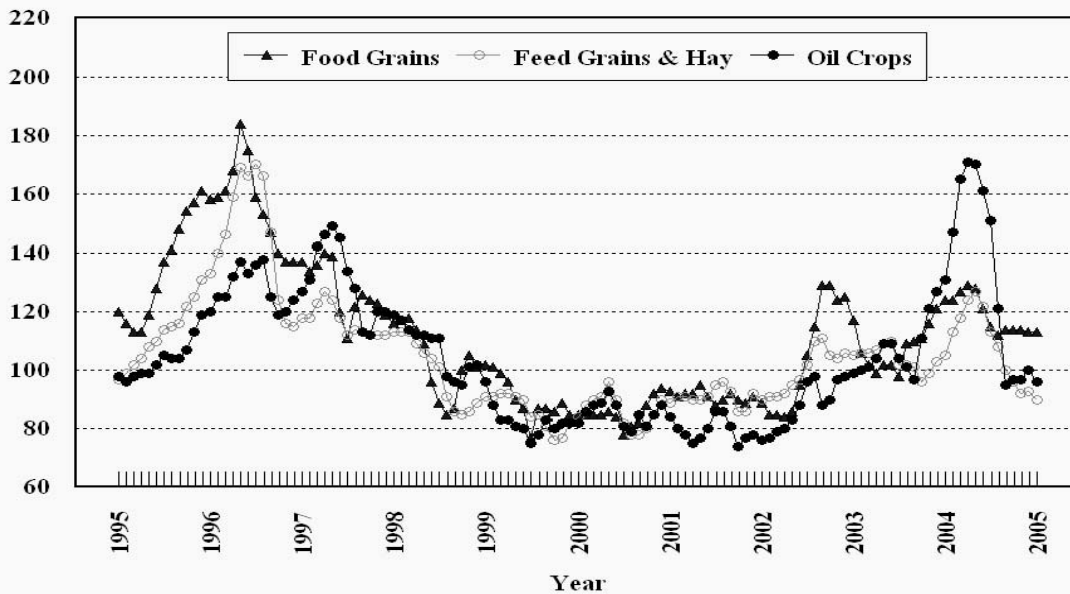
## Prices Received, Major Indexes, US

Index Values(1990-92=100)



## Prices Received, Food, Feed, & Oil Indexes, US

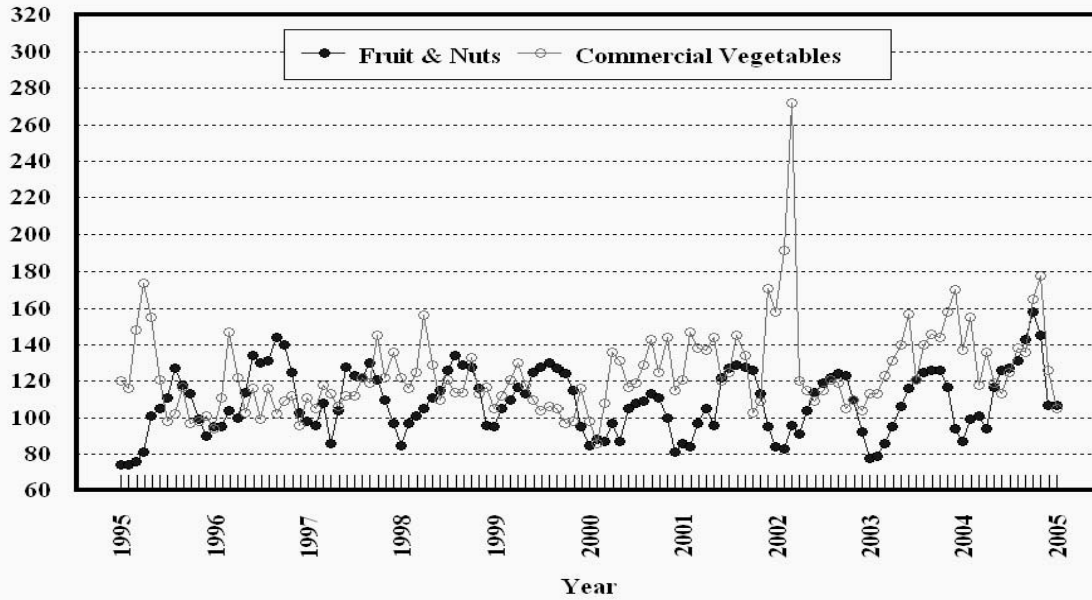
Index Values(1990-92=100)





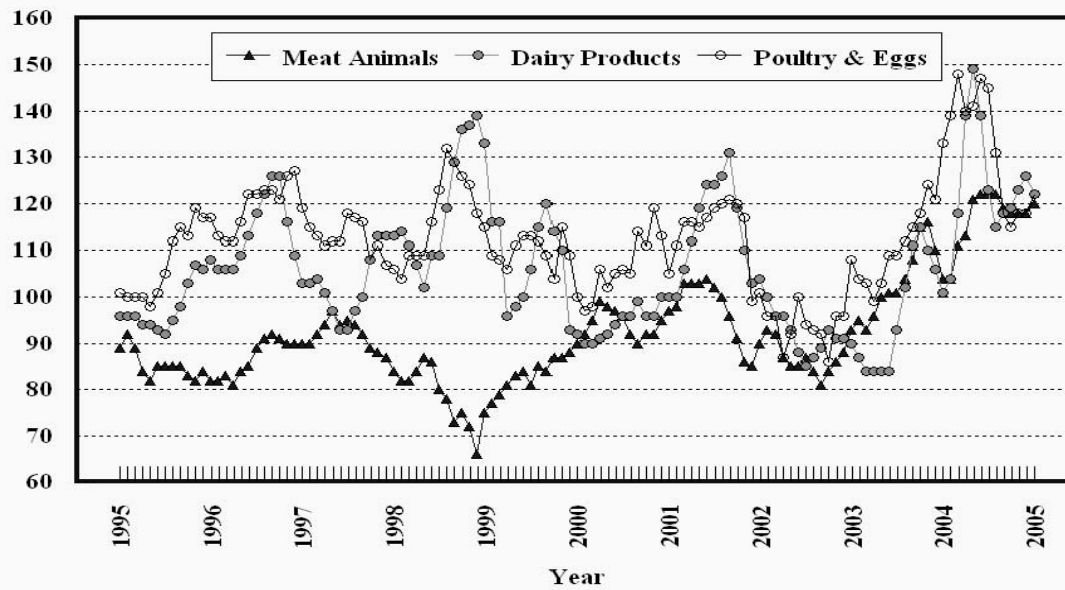
## Prices Received, Fruit/Vegetable Indexes, US

Index Values(1990-92=100)



## Prices Received, Livestock Product Indexes, US

Index Values(1990-92=100)



**Prices Received, United States,  
January 2005, with Comparisons**

Commodity	Unit	Average 1990-92	Entire Month		Preliminary
			Jan 2004	Dec 2004	Jan 2005
		<i>Dollars</i>	<i>Dollars</i>	<i>Dollars</i>	<i>Dollars</i>
<b>Field Crops</b>					
Barley, All	Bu	2.12	2.69	2.47	2.37
Feed	Bu	1.90	2.15	1.64	1.66
Malting	Bu	2.43	2.94	2.73	2.70
Beans, Dry Edible	Cwt	19.10	17.20	26.70	27.00
Chickpeas, All	Cwt		14.70	23.50	25.40
Large	Cwt		14.70	23.80	25.40
Small	Cwt		( <sup>4</sup> )	( <sup>4</sup> )	( <sup>5</sup> )
Corn	Bu	2.30	2.39	2.04	1.98
Cotton, Upland	Lb	0.606	0.622	0.407	0.394
Cottonseed <sup>3</sup>	Ton	96.00	126.00	111.00	112.00
Flaxseed	Bu	4.27	6.08	8.42	9.30
Hay, All, Baled <sup>1</sup>	Ton	76.30	80.10	84.30	84.20
Alfalfa <sup>1</sup>	Ton	77.20	84.80	92.40	90.90
Other <sup>1</sup>	Ton	60.00	70.20	67.10	70.60
Lentils	Cwt		18.30	15.40	14.00
Oats	Bu	1.22	1.48	1.56	1.51
Peanuts, In-Shell	Lb	0.304	0.206	0.183	0.186
Peas, Dry Edible	Cwt		7.45	5.65	5.16
Austrian Winter	Cwt		9.20	8.30	13.00
Potatoes	Cwt	5.82	5.75	5.27	5.35
Rice, Rough	Cwt	7.07	8.57	7.43	7.41
Sorghum Grain	Cwt	3.75	4.36	2.99	2.87
Soybeans	Bu	5.61	7.35	5.45	5.32
Sunflower, All	Cwt	9.50	12.10	13.50	13.80
Tobacco, Types 11-37	Lb	1.740	2.095	1.980	1.975
Wheat, All	Bu	2.96	3.68	3.39	3.42
Winter	Bu	2.93	3.66	3.34	3.31
Durum	Bu	2.86	3.96	3.57	3.54
Other Spring	Bu	3.11	3.67	3.46	3.56
Hard Red Winter	Bu		3.66	3.32	
Soft Red Winter	Bu		3.69	2.96	
Hard Red Spring	Bu		3.68	3.46	
White	Bu	3.24	3.63	3.52	
<b>Fruit</b>					
Citrus, Equiv on-tree					
Grapefruit	Box	5.77	2.99	14.55	12.52
Lemons	Box	10.10	2.64	8.20	6.54
Oranges	Box	5.79	2.45	2.62	2.99
Tangelos	Box	5.82	8.78	2.84	1.53
Tangerines	Box	15.11	11.46	12.71	15.96
Temples	Box	6.23	2.59		3.55
Noncitrus, Fresh					
Apples <sup>2</sup>	Lb	0.212	0.304	0.223	0.216
Grapes <sup>2</sup>	Ton	506.00		1,150.00	
Peaches <sup>2</sup>	Ton	432.00			
Pears <sup>2</sup>	Ton	370.00	352.00	489.00	495.00
Strawberries	Cwt	56.00	151.00	169.00	158.00

<sup>1</sup> Mid-month price.

<sup>2</sup> Equivalent packinghouse-door returns for CA, MI, and NY (apples only), and WA (apples, peaches, and pears). Prices as sold for other states.

<sup>3</sup> Marketing year August - February.

<sup>4</sup> Price not published to avoid disclosure of individual firms.

<sup>5</sup> Insufficient sales to establish a price.

**Prices Received, United States,  
January 2005, with Comparisons**

Commodity	Unit	Average 1990-92	Entire Month		Preliminary
			Jan 2004	Dec 2004	Jan 2005
		<i>Dollars</i>	<i>Dollars</i>	<i>Dollars</i>	<i>Dollars</i>
<b>Vegetables, Fresh <sup>1</sup></b>					
Asparagus	Cwt	79.80			
Broccoli	Cwt	22.50	33.60	44.00	24.50
Cantaloupes <sup>2</sup>	Cwt			33.80	
Carrots	Cwt	13.20	24.50	18.00	20.10
Cauliflower	Cwt	26.80	27.30	51.80	21.70
Celery	Cwt	11.60	20.80	13.40	12.80
Corn, Sweet	Cwt	15.70	30.80	16.60	14.50
Cucumbers <sup>2</sup>	Cwt		28.10	16.90	17.80
Lettuce	Cwt	11.90	15.40	14.00	14.40
Onions	Cwt	12.80	18.20	9.04	8.82
Snap Beans <sup>2</sup>	Cwt		76.20	50.10	68.40
Tomatoes	Cwt	32.30	34.50	47.10	16.90
<b>Livestock</b>					
Calves	Cwt	94.30	110.00	122.00	123.00
Cattle, All Beef	Cwt	72.90	80.90	86.80	89.10
Cows <sup>3</sup>	Cwt	49.60	46.10	48.70	50.00
Steers & Heifers	Cwt	77.10	85.40	91.80	94.20
Milk Cows <sup>4</sup>	Head	1,130.00	1,390.00		1,620.00
Hogs, All	Cwt	47.70	36.80	52.30	53.00
Barrows & Gilts	Cwt	48.40	37.20	52.60	53.30
Sows	Cwt	39.50	28.40	44.60	45.70
Lambs	Cwt	56.20	104.00	102.00	
Sheep	Cwt	23.40	43.80	44.80	
<b>Dairy and Poultry</b>					
Milk, All <sup>5 6</sup>	Cwt	13.06	13.20	16.40	15.90
Fluid Grade <sup>6</sup>	Cwt	13.10	13.20	16.40	15.90
Mfg Grade <sup>6</sup>	Cwt	11.80	12.30	16.00	14.70
Broilers, Live <sup>7</sup>	Lb	0.317	0.430	0.390	0.430
Eggs, All <sup>8</sup>	Doz	0.643	0.926	0.654	0.558
Market <sup>8</sup>	Doz	0.546	0.806	0.488	0.373
Turkeys, live <sup>7 8</sup>	Lb	0.380	0.349	0.462	0.393
<b>Adjusted for Seasonal Variation</b>					
Eggs, All	Doz	0.545	0.874	0.623	0.526
Milk, All <sup>5</sup>	Cwt	9.71	13.75	16.34	16.22

<sup>1</sup> F.O.B. shipping point.

<sup>2</sup> Monthly estimates began January 1995.

<sup>3</sup> Beef cows and cull dairy cows sold for slaughter.

<sup>4</sup> Animals sold for dairy herd replacement only. Prices available for Jan, Apr, Jul, and Oct.

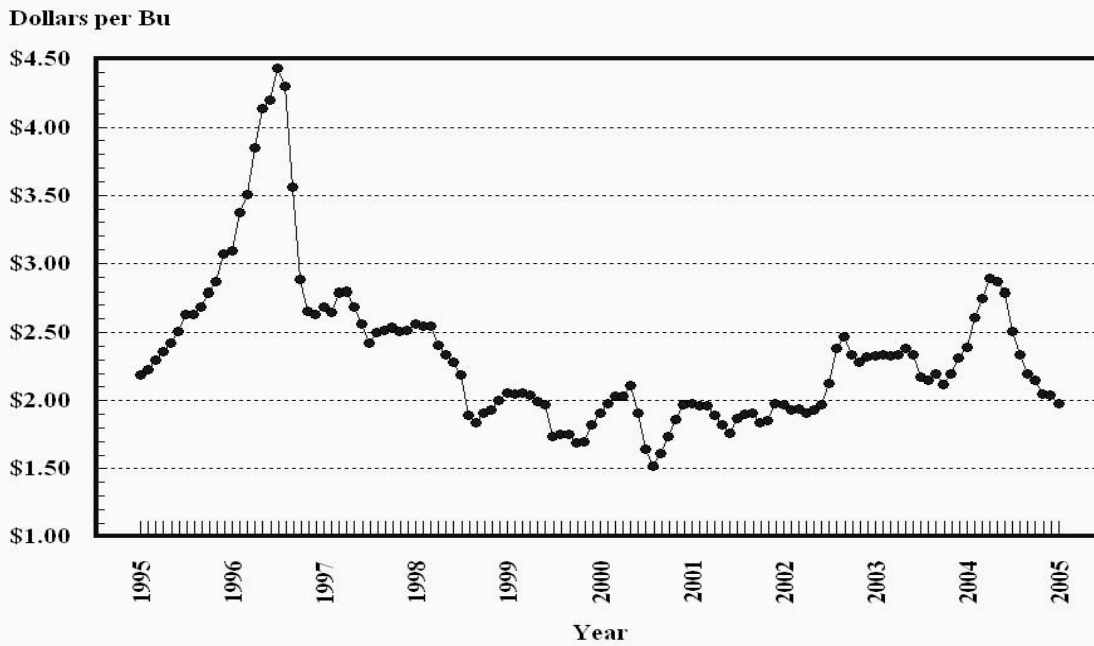
<sup>5</sup> Before deductions for hauling. Includes quality, quantity, and other premiums. Excludes hauling subsidies.

<sup>6</sup> January 2005 Fat test percent: all milk 3.77, fluid milk 3.77, mfg grade 3.96.

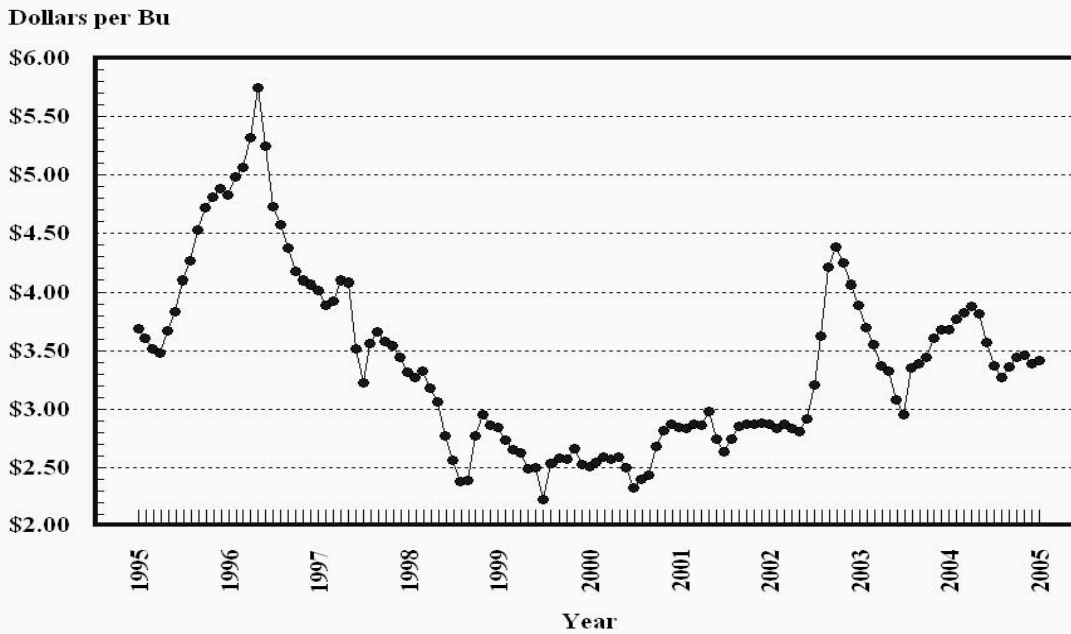
<sup>7</sup> Equivalent liveweight returns to producers for most States. Includes growers and contractors.

<sup>8</sup> Mid-month price.

### Prices Received, Corn, US

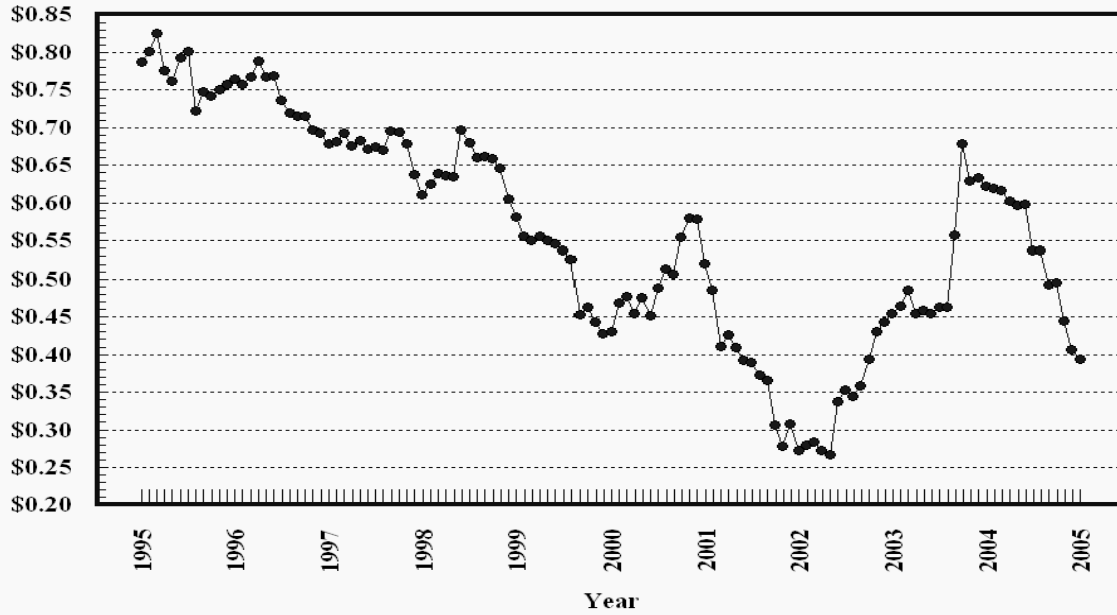


### Prices Received, Wheat, US



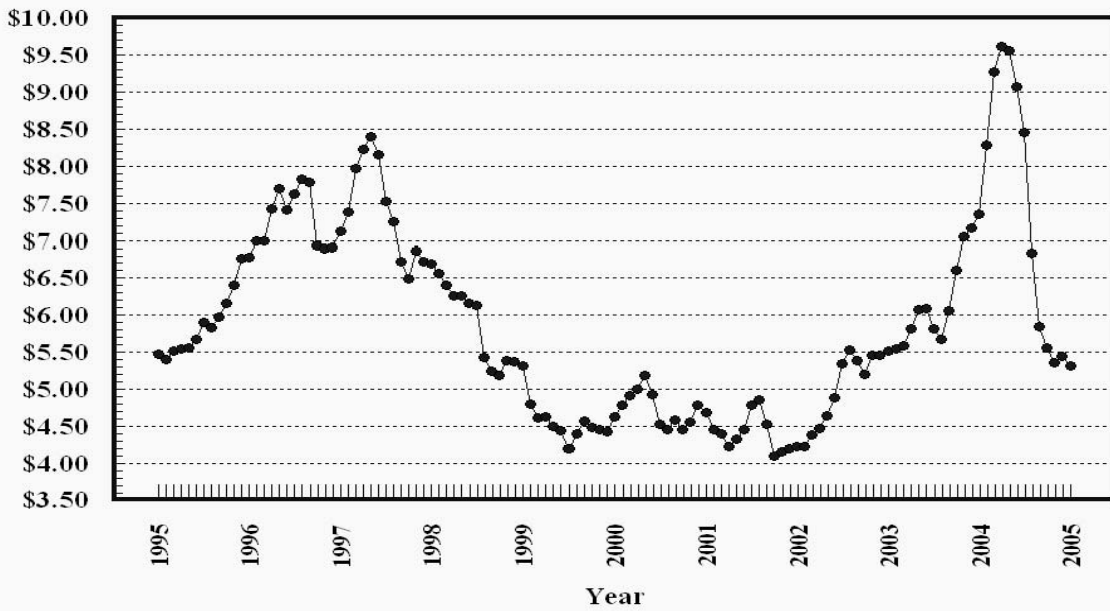
### Prices Received, Cotton, US

Dollars per Lb



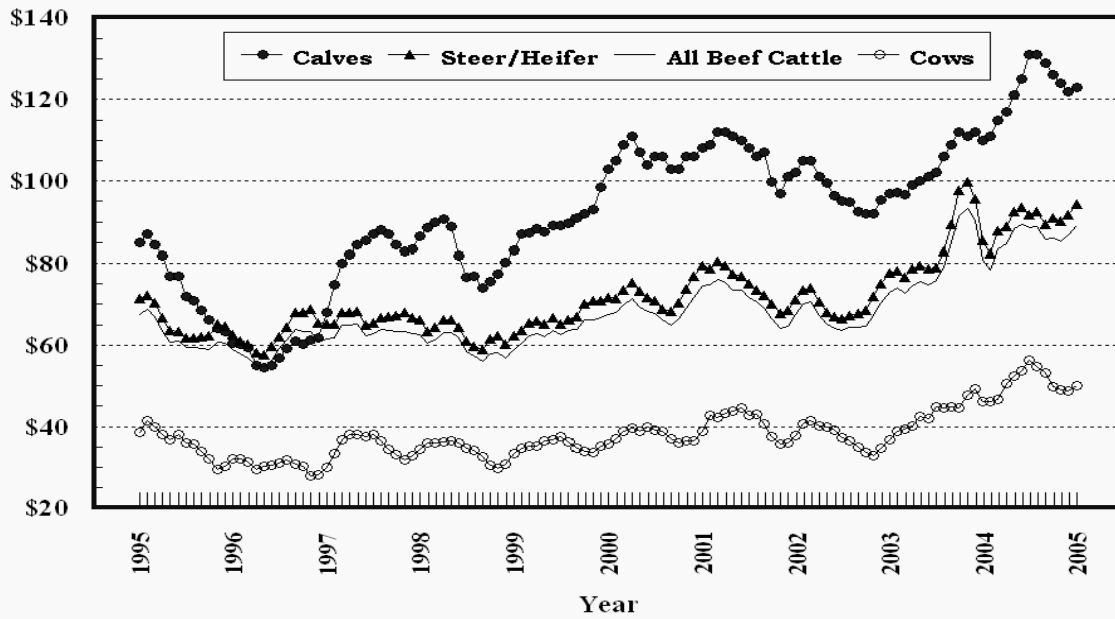
### Prices Received, Soybeans, US

Dollars per Bu



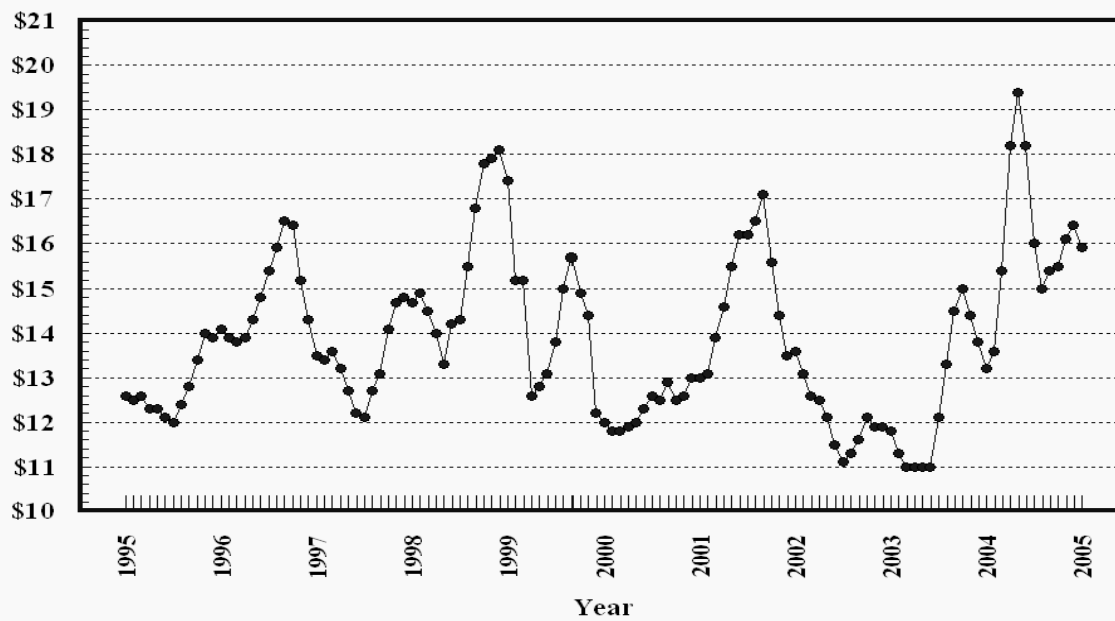
## Prices Received, Cattle, US

Dollars per Cwt



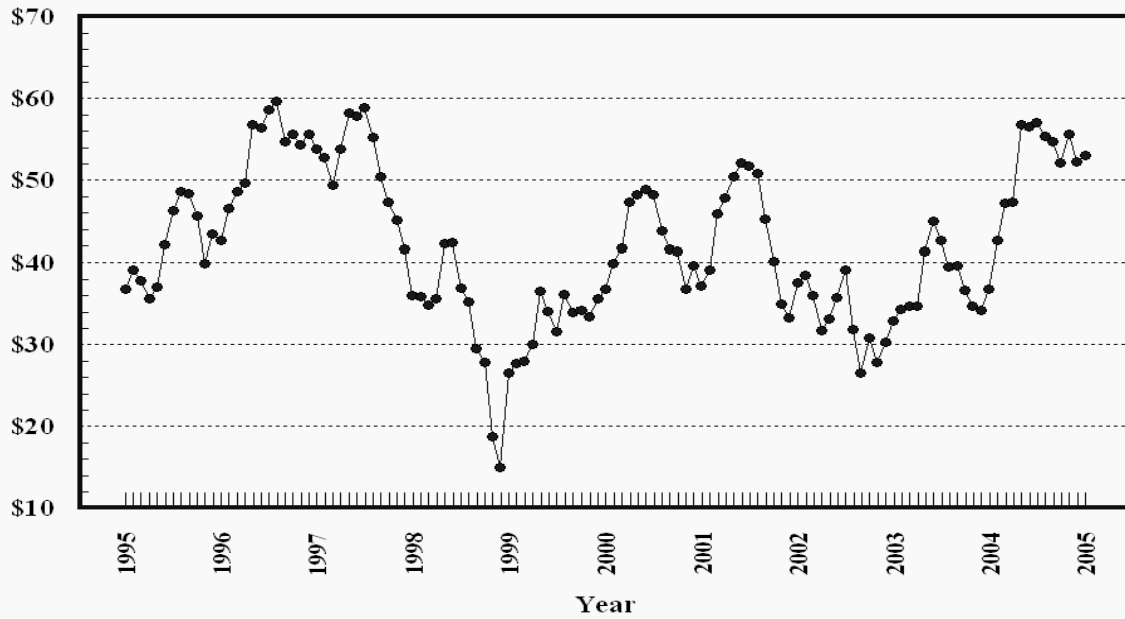
## Prices Received, Milk, US

Dollars per Cwt



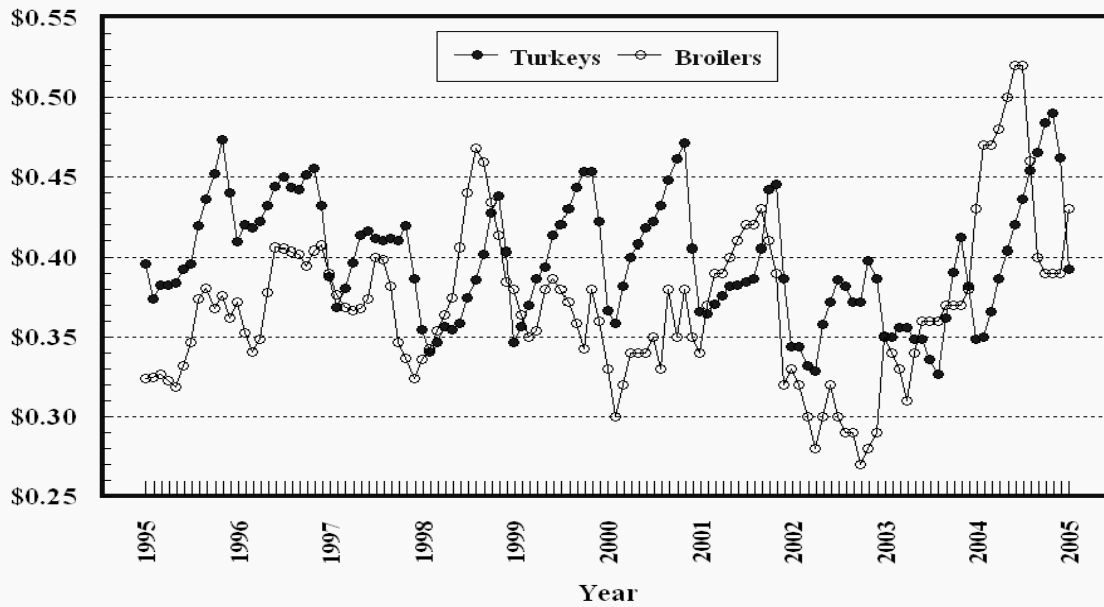
### Prices Received, Hogs, US

Dollars per Cwt



### Prices Received, Turkeys & Broilers, US

Dollars per Lb



**Wheat: Prices Received, by State, December 2004 and January 2005**

State	All Wheat		Winter Wheat		Durum Wheat		Oth Spring Wheat	
	Dec <sup>1</sup>	Jan <sup>2</sup>	Dec <sup>1</sup>	Jan <sup>2</sup>	Dec <sup>1</sup>	Jan <sup>2</sup>	Dec <sup>1</sup>	Jan <sup>2</sup>
	<i>Dollars per Bushel</i>	<i>Dollars per Bushel</i>	<i>Dollars per Bushel</i>	<i>Dollars per Bushel</i>	<i>Dollars per Bushel</i>	<i>Dollars per Bushel</i>	<i>Dollars per Bushel</i>	<i>Dollars per Bushel</i>
AR	( <sup>3</sup> )	( <sup>3</sup> )	( <sup>3</sup> )	( <sup>3</sup> )				
CA	( <sup>3</sup> )	( <sup>3</sup> )	( <sup>3</sup> )	( <sup>3</sup> )	( <sup>3</sup> )	( <sup>3</sup> )		
CO	3.31	3.24	3.32	3.25			3.19	( <sup>3</sup> )
ID	3.59	3.64	3.46	3.50			3.78	3.85
IL	3.13	3.20	3.13	3.20				
IN	3.06	2.77	3.06	2.77				
KS	3.27	3.28	3.27	3.28				
MI	2.83	2.90	2.83	2.90				
MN	3.29	3.33	2.60	2.68			3.30	3.34
MO	3.10	3.15	3.10	3.15				
MT	3.62	3.70	3.56	3.46	3.80	3.80	3.63	3.80
NE	3.23	3.25	3.23	3.25				
ND	3.29	3.39	2.62	2.70	3.49	3.45	3.27	3.40
OH	2.76	2.79	2.76	2.79				
OK	3.28	3.30	3.28	3.30				
OR	3.65	3.66	3.61	3.60			3.91	3.95
SD	3.40	3.54	3.17	3.36			3.63	3.72
TX	3.17	3.20	3.17	3.20				
WA	3.64	3.64	3.59	3.59			3.86	3.85
US	3.39	3.42	3.34	3.31	3.57	3.54	3.46	3.56

<sup>1</sup> Entire month.

<sup>2</sup> Mid-month.

<sup>3</sup> Price not published to avoid disclosure of individual firms.

<sup>4</sup> Insufficient sales to establish a price.

**Prices Received for Selected Agricultural Commodities, by Month,  
United States, 2004 and 2005 <sup>1</sup>**

Month	All Wheat		Corn		Soybeans		Beef Cattle <sup>2</sup>		All Hogs	
	2004	2005	2004	2005	2004	2005	2004	2005	2004	2005
	<i>Dollars per Bushel</i>	<i>Dollars per Bushel</i>	<i>Dollars per Bushel</i>	<i>Dollars per Bushel</i>	<i>Dollars per Bushel</i>	<i>Dollars per Bushel</i>	<i>Dollars per Cwt</i>	<i>Dollars per Cwt</i>	<i>Dollars per Cwt</i>	<i>Dollars per Cwt</i>
Jan	3.68	3.42	2.39	1.98	7.35	5.32	80.90	89.10	36.80	53.00
Feb	3.77		2.61		8.28		78.50		42.60	
Mar	3.83		2.75		9.28		83.40		47.20	
Apr	3.88		2.89		9.62		84.80		47.40	
May	3.82		2.87		9.56		88.40		56.80	
Jun	3.57		2.79		9.08		89.50		56.60	
Jul	3.37		2.51		8.46		88.50		57.10	
Aug	3.27		2.34		6.83		88.90		55.40	
Sep	3.36		2.20		5.84		85.80		54.80	
Oct	3.44		2.15		5.56		86.10		52.10	
Nov	3.46		2.05		5.36		85.10		55.70	
Dec	3.39		2.04		5.45		86.80		52.30	

<sup>1</sup> Current month prices are mid-month; prices for previous months are for the entire month.

<sup>2</sup> Cows, steers and heifers.



**Grains: Prices Received, by State, December 2004 and January 2005**

Month	All Barley <sup>1</sup>		Corn		Oats		Soybeans		Sorghum Grain	
	Dec <sup>2</sup>	Jan <sup>3</sup>	Dec <sup>2</sup>	Jan <sup>3</sup>	Dec <sup>2</sup>	Jan <sup>3</sup>	Dec <sup>2</sup>	Jan <sup>3</sup>	Dec <sup>2</sup>	Jan <sup>3</sup>
	<i>Dollars per Bushel</i>	<i>Dollars per Bushel</i>	<i>Dollars per Bushel</i>	<i>Dollars per Bushel</i>	<i>Dollars per Bushel</i>	<i>Dollars per Bushel</i>	<i>Dollars per Bushel</i>	<i>Dollars per Bushel</i>	<i>Dollars per Cwt</i>	<i>Dollars per Cwt</i>
AL										
AR										
CA										
CO	( <sup>4</sup> )	( <sup>5</sup> )					5.72	5.55	( <sup>4</sup> )	( <sup>4</sup> )
ID	2.84	2.95	2.22	1.88						
IL	2.92	2.69								
IN			2.17	2.10	1.54	( <sup>4</sup> )	5.59	5.50	3.20	3.20
IA			1.96	1.85			5.48	5.27		
KS			1.99	1.95	1.69	1.65	5.32	5.15		
KY			2.01	1.84			5.04	4.92	2.84	2.77
LA			2.12	2.05			5.61	5.45		
MI							5.57	5.38		
MN	2.00	1.99	1.88	1.85	2.11	2.00	5.47	5.45		
MS			1.97	1.93	1.46	1.41	5.56	5.43		
MO							5.86	5.50		
MT	2.89	3.03	1.95	1.90			5.33	5.20	2.80	2.80
NE			2.01	1.95	( <sup>4</sup> )	( <sup>5</sup> )				
NC			2.46	2.35	1.59	1.60	5.24	5.20	2.87	2.85
ND	2.21	2.10	1.84	1.70	1.27	1.15	5.22	4.99		
OH			1.95	1.89	( <sup>4</sup> )	( <sup>5</sup> )	5.50	5.20		
OK							5.39	5.29	3.12	3.03
OR	1.90	2.00			( <sup>4</sup> )	( <sup>4</sup> )				
PA			2.10	2.19	1.72	1.65				
SD	2.00	( <sup>5</sup> )	1.81	1.65	1.53	1.61	5.28	5.16		
TN			2.33	2.30			5.61	5.50		
TX			2.51	2.01	( <sup>5</sup> )	( <sup>5</sup> )			3.55	3.32
UT	( <sup>4</sup> )	1.94								
WA	1.95	2.04								
WI			2.11	1.95	1.57	1.55	5.31	5.25		
WY	( <sup>4</sup> )	2.95								
US	2.47	2.37	2.04	1.98	1.56	1.51	5.45	5.32	2.99	2.87

<sup>1</sup> The Three-State (MN, ND and SD) Feed Barley price is discontinued.

<sup>2</sup> Entire month.

<sup>3</sup> Mid-month.

<sup>4</sup> Price not published to avoid disclosure of individual firms.

<sup>5</sup> Insufficient sales to establish a price.

**Malting and Feed Barley: Prices Received Selected State,  
December 2004 and January 2005**

State	Malting Barley		Feed Barley	
	Dec <sup>1</sup>	Jan <sup>2</sup>	Dec <sup>1</sup>	Jan <sup>2</sup>
	<i>Dollars per Bushel</i>	<i>Dollars per Bushel</i>	<i>Dollars per Bushel</i>	<i>Dollars per Bushel</i>
ID	3.10	3.00	1.99	1.95
MN	( <sup>3</sup> )	( <sup>3</sup> )	( <sup>3</sup> )	( <sup>3</sup> )
MT	3.10	3.27	1.61	1.55
ND	2.43	2.40	1.45	1.40
SD	2.02	2.10	1.70	( <sup>4</sup> )
WY	( <sup>3</sup> )	( <sup>3</sup> )	( <sup>4</sup> )	1.68

<sup>1</sup> Entire month.

<sup>2</sup> Mid-month.

<sup>3</sup> Price not published to avoid disclosure of individual firms.

<sup>4</sup> Insufficient sales to establish a price.

**Field Crops: Prices Received, by State, December 2004 and January 2005**

State	Dry Edible Beans		All Sunflower		Flaxseed		Tobacco		Peanuts <sup>4</sup>	
	Dec <sup>1</sup>	Jan <sup>2</sup>	Dec <sup>1</sup>	Jan <sup>2</sup>	Dec <sup>1</sup>	Jan <sup>2</sup>	Dec <sup>1</sup>	Jan <sup>3</sup>	Dec <sup>1</sup>	Jan <sup>3</sup>
	<i>Dollars per Cwt</i>	<i>Dollars per Cwt</i>	<i>Dollars per Cwt</i>	<i>Dollars per Cwt</i>	<i>Dollars per Bushel</i>	<i>Dollars per Bushel</i>	<i>Dollars per Pound</i>	<i>Dollars per Pound</i>	<i>Dollars per Pound</i>	<i>Dollars per Pound</i>
AL									0.183	( <sup>5</sup> )
CA	38.40	42.50								
CO	30.20	28.80								
FL							( <sup>6</sup> )	( <sup>6</sup> )	( <sup>6</sup> )	( <sup>6</sup> )
GA							( <sup>6</sup> )	( <sup>6</sup> )	0.180	0.182
ID	24.80	26.90								
IN							1.975	1.960		
KS			12.70	12.30						
KY							1.985	1.980		
MD							( <sup>6</sup> )	( <sup>6</sup> )		
MI	23.60	23.00								
MN	( <sup>5</sup> )	( <sup>5</sup> )	16.70	( <sup>5</sup> )						
MO										
NE	24.60	24.40								
NC							1.925	1.960	0.188	0.240
ND	25.70	26.50	13.90	14.60	8.42	9.30				
OH							1.980	1.975		
OK										
SC							( <sup>6</sup> )	( <sup>6</sup> )		
SD			12.70	13.80	( <sup>6</sup> )	( <sup>6</sup> )				
TN							1.970	1.965		
TX									( <sup>5</sup> )	( <sup>5</sup> )
VA							1.860	1.815	0.187	( <sup>6</sup> )
WV										
US	26.70	27.00	13.50	13.80	8.42	9.30	1.980	1.975	0.183	0.186

<sup>1</sup> Entire month.

<sup>2</sup> Mid-month.

<sup>3</sup> Based on sales through first half of month.

<sup>4</sup> In-Shell.

<sup>5</sup> Price not published to avoid disclosure of individual firms.

<sup>6</sup> Insufficient sales to establish a price.

**Tobacco: Prices Received, by Area and Type, January 2005, with Comparisons**

Class by Type	Type	Jan 2004	Dec 2004	Jan 2005 <sup>1</sup>
		<i>Dollars per Pound</i>	<i>Dollars per Pound</i>	<i>Dollars per Pound</i>
Fire-cured				
VA Belt	21	1.140	1.810	1.490
Eastern District <sup>2</sup>	22	2.515		1.655
Western District <sup>2</sup>	23	2.470		1.840
Total Fire-cured	21-23	2.495	1.810	1.690
Light Air-cured				
Burley	31	1.970	1.985	1.985
Total Light Air-cured	31-32	1.970	1.985	1.985
Dark Air-cured				
One Sucker Belt	35	1.870	1.345	1.200
Green River Belt	36	2.045	1.690	1.555
Sun-cured Belt	37	0.870	1.475	1.170
Total Dark Air-cured	35-37	1.945	1.560	1.435
US	11-37	2.095	1.980	1.975

<sup>1</sup> Based on sales during the first half of the month.

<sup>2</sup> Markets opened in January 2005.

**Field Crops and Apples: Prices Received, by State,  
December 2004 and January 2005**

State	Upland Cotton		January				Apples Fresh Use <sup>1 4</sup>
	Dec <sup>1</sup>	Jan <sup>2</sup>	Cotton- seed <sup>5</sup>	Hay, Baled <sup>3</sup>			
				All	Alfalfa	Other	
	<i>Dollars per Pound</i>	<i>Dollars per Pound</i>	<i>Dollars per Ton</i>	<i>Dollars per Ton</i>	<i>Dollars per Ton</i>	<i>Dollars per Ton</i>	<i>Dol/Lb</i>
AL	0.425	( <sup>6</sup> )	97.00				
AZ	0.504	0.458	161.00	103.00	103.00	100.00	
AR	0.461	0.412	( <sup>7</sup> )				
CA	0.545	( <sup>6</sup> )	145.00	114.00	120.00	83.00	0.154
CO				85.00	86.00	81.00	
GA	0.426	0.426	91.00				
ID				105.00	106.00	73.00	
IL				85.00	89.00	69.00	
IA				91.00	93.00	62.00	
KS				62.00	69.00	50.00	
KY				72.00	105.00	61.00	
LA	0.446	0.447	( <sup>7</sup> )				
MI				104.00	105.00	75.00	0.190
MN				73.00	79.00	56.00	
MS	0.436	0.424	90.00				
MO				54.00	97.00	43.00	
MT				76.00	78.00	68.00	
NE				51.00	51.00	49.00	
NV				105.00	102.00	126.00	
NM				120.00	123.00	100.00	
NY				108.00	140.00	90.00	0.223
NC	0.387	0.404	92.00				
ND				57.00	63.00	46.00	
OH				121.00	142.00	80.00	0.320
OK				76.00	95.00	51.00	
OR				98.00	98.00	97.00	
PA				127.00	155.00	116.00	0.230
SD				63.00	65.00	51.00	
TN	0.443	( <sup>6</sup> )	( <sup>7</sup> )				
TX	0.359	0.364	106.00	69.00	120.00	67.00	
UT				85.00	85.00	75.00	
VA							0.280
WA				107.00	105.00	115.00	0.214
WI				92.00	100.00	45.00	
WY				73.00	74.00	68.00	
US	0.407	0.394	112.00	84.20	90.90	70.60	0.216

<sup>1</sup> Entire month.

<sup>2</sup> Based on sales during the first half of the month.

<sup>3</sup> Mid-month.

<sup>4</sup> Equivalent packinghouse-door returns for CA, NY, and WA. Price at point of first sale for other States.

<sup>5</sup> Marketing year August - February.

<sup>6</sup> Price not published to avoid disclosure of individual firms.

<sup>7</sup> Insufficient sales to establish a price.

**Upland Cotton and Rice: Prices Received and Marketings,  
United States, January 2005, with Comparisons**

Item	Unit	Nov 2004 <sup>1</sup>	Dec 2004 <sup>1</sup>	Jan 2005 <sup>2</sup>
Upland Cotton				
Average Price	Dollars per Pound	0.444	0.407	0.394
Marketings <sup>3</sup>	1,000 Bales	1,437	2,292	NA
Rice				
Average Price	Dollars per Cwt	7.39	7.43	7.41
Marketings <sup>4</sup>	1,000 Cwt	11,314	13,416	NA

<sup>1</sup> Entire month.

<sup>2</sup> Based on purchases for the first half of the month.

<sup>3</sup> Marketings based on a survey of cotton buyers in the major producing States - AL, AZ, AR, CA, GA, LA, MS, NC, TN, and TX.

<sup>4</sup> Purchases by private firms and rice (rough equivalent) shipped by cooperatives.

**Citrus Fruit: Prices and Equivalent Returns, by Utilization,  
by State and United States, January 2005**

Commodity, State and Type	F.O.B. Packed Fresh	Equivalent Returns <sup>1</sup>					
		Packinghouse-door			On-tree		
		All	Fresh	Process	All	Fresh	Process
	<i>Dollars per Box</i>	<i>Dollars per Box</i>	<i>Dollars per Box</i>	<i>Dollars per Box</i>	<i>Dollars per Box</i>	<i>Dollars per Box</i>	<i>Dollars per Box</i>
Grapefruit							
AZ	25.60	18.96	18.96		16.59	16.59	
CA	24.00	15.58	17.36	-0.28	13.21	14.99	-2.65
FL	27.70	15.62	19.07	9.07	12.95	16.57	6.06
White	28.00	14.60	19.00	9.35	11.92	16.50	6.45
Colored	27.60	16.21	19.10	8.80	13.54	16.60	5.70
TX	30.60	12.76	20.41	1.20	11.59	19.22	0.06
US	28.40	14.68	19.37	5.95	12.52	17.29	3.67
Lemons							
AZ	30.70	12.60	20.40	0.18	8.17	15.97	-4.25
CA	29.30	10.47	19.00	0.18	6.04	14.57	-4.25
US	29.70	10.97	19.36	0.18	6.54	14.93	-4.25
Oranges							
AZ							
Navel and Misc	19.30	9.37	11.77	0.38	6.86	9.26	-2.13
CA							
Navel and Misc	20.00	9.88	12.47	0.38	7.37	9.96	-2.13
FL							
Early and Mids	14.20	4.48	6.20	4.40	2.27	3.85	2.20
TX							
Early and Mids	19.00	6.72	8.71	2.04	5.36	7.34	0.71
US	18.40	5.22	10.57	4.25	2.99	8.19	2.05
Tangelos							
FL	16.00	4.10	7.00	3.10	1.53	4.50	0.50
Tangerines							
AZ	27.30	18.38	20.10	-0.26	15.84	17.56	-2.80
CA	28.50	19.30	21.30	0.30	16.76	18.76	-2.24
FL	33.00	19.40	23.00	4.45	15.61	19.40	-0.15
US	30.60	19.19	21.96	3.25	15.96	18.86	-0.78
Temples							
FL	18.00	6.10	9.00	3.00	3.55	6.50	0.40

<sup>1</sup> Net lbs. Per box: Grapefruit - AZ & CA-67, FL-85, TX-80; Lemons - 76; Oranges - AZ & CA-75, FL-90, TX-85; Tangelos - 90; Tangerines - AZ, CA-75, FL-95; Temples - 90.

**Potatoes: Prices Received, by State, December 2004 and January 2005**

State	Dec	Jan	State	Dec	Jan
	<i>Dollars per Cwt</i>	<i>Dollars per Cwt</i>		<i>Dollars per Cwt</i>	<i>Dollars per Cwt</i>
AL			NC		
AZ			ND - All <sup>1</sup>	6.00	6.05
CA - All	9.85	11.20	- Fresh <sup>2</sup>	6.40	NA
- Winter	16.40	16.40	- Processing	5.70	NA
- Spring			OH	7.10	7.10
- Summer			OR	4.85	4.95
- Fall	7.55	7.55	PA	8.10	8.25
CO - All <sup>1</sup>	4.60	4.65	TX		
- Fresh <sup>2</sup>	4.55	NA	VA		
FL			WA - All	5.25	5.30
ID - All <sup>1</sup>	3.90	3.80	- Processing	5.10	NA
- Fresh <sup>2</sup>	3.50	NA	WI - All <sup>1</sup>	5.80	5.65
- Processing	4.10	NA	- Fresh <sup>2</sup>	5.40	NA
ME	6.35	6.40	- Processing	6.15	NA
MI	6.95	7.15			
MN	5.55	5.45	US - All <sup>1</sup>	5.27	5.35
NY	7.40	7.75	- Fresh <sup>2</sup>	5.52	NA
			- Processing	5.09	NA

<sup>1</sup> Average price of potatoes sold for all uses, including table stocks, processing, seed and livestock feed.

<sup>2</sup> Fresh market prices only, includes table stock prices.

**Cattle: Prices Received, by State, December 2004 and January 2005**

State	Cows <sup>1</sup>		Steers & Heifers		Beef Cattle <sup>4</sup>		Calves	
	Dec <sup>2</sup>	Jan <sup>3</sup>	Dec <sup>2</sup>	Jan <sup>3</sup>	Dec <sup>2</sup>	Jan <sup>3</sup>	Dec <sup>2</sup>	Jan <sup>3</sup>
	<i>Dollars per Cwt</i>	<i>Dollars per Cwt</i>	<i>Dollars per Cwt</i>	<i>Dollars per Cwt</i>	<i>Dollars per Cwt</i>	<i>Dollars per Cwt</i>	<i>Dollars per Cwt</i>	<i>Dollars per Cwt</i>
AZ	51.60	51.60	104.00	104.00	103.00	103.00	120.00	120.00
AR	44.20	45.20	100.00	101.00	83.30	84.30	120.00	120.00
CA	46.10	47.50	90.80	91.60	68.00	68.70	120.00	125.00
CO	49.00	52.80	106.00	108.00	105.00	107.00	126.00	126.00
FL	49.50	49.00	95.70	95.70	70.30	72.40	124.00	123.00
GA	50.40	50.20	93.00	92.00	64.90	64.00	118.00	119.00
ID	46.90	47.20	89.90	92.10	77.90	80.00	117.00	115.00
IL	48.60	50.00	83.00	88.00	82.30	87.20	112.00	114.00
IA	47.30	50.90	91.80	96.00	90.90	95.10	118.00	119.00
KS	48.20	51.20	88.40	90.40	87.20	88.80	133.00	127.00
KY	48.00	47.00	95.00	95.00	83.70	83.50	110.00	110.00
LA	48.40	50.00	98.50	100.00	64.40	65.00	115.00	116.00
MI	48.00	49.00	75.00	78.00	66.90	69.30	115.00	118.00
MN	50.60	51.00	82.50	84.00	75.50	76.70	109.00	110.00
MO	47.40	49.10	102.00	105.00	90.50	88.20	121.00	123.00
MT	49.30	50.60	109.00	105.00	87.50	93.00	127.00	128.00
NE	50.80	52.20	93.30	96.30	92.00	95.00	130.00	133.00
NM	51.20	51.30	106.00	107.00	84.10	84.70	125.00	125.00
ND	49.10	51.00	108.00	110.00	98.60	104.00	120.00	122.00
OH	43.60	44.00	79.40	81.00	75.80	77.30	103.00	105.00
OK	49.10	51.20	106.00	106.00	99.70	100.00	126.00	120.00
OR	46.00	45.50	95.00	96.00	80.30	80.90	110.00	110.00
PA	47.50	49.60	81.20	83.70	72.40	74.80	110.00	115.00
SD	47.10	50.30	99.60	105.00	86.00	95.70	127.00	132.00
TN	46.00	47.00	97.00	97.00	76.60	77.00	110.00	111.00
TX	48.20	48.70	92.00	93.70	87.60	89.70	124.00	124.00
VA	45.20	44.20	89.70	91.10	70.60	70.90	104.00	108.00
WI	48.60	51.40	82.40	84.40	62.80	65.30	137.00	140.00
WY	50.50	51.00	106.00	105.00	92.70	96.90	129.00	128.00
US	48.70	50.00	91.80	94.20	86.80	89.10	122.00	123.00

<sup>1</sup> Beef cows and cull dairy cows sold for slaughter.

<sup>2</sup> Entire month.

<sup>3</sup> Mid-month.

<sup>4</sup> "Cows" and "steers and heifers" combined.

**Hogs: Prices Received, by State, December 2004 and January 2005 <sup>3</sup>**

State	Sows		Barrows and Gilts		All Hogs	
	Dec <sup>1</sup>	Jan <sup>2</sup>	Dec <sup>1</sup>	Jan <sup>2</sup>	Dec <sup>1</sup>	Jan <sup>2</sup>
	<i>Dollars per Cwt</i>	<i>Dollars per Cwt</i>	<i>Dollars per Cwt</i>	<i>Dollars per Cwt</i>	<i>Dollars per Cwt</i>	<i>Dollars per Cwt</i>
AR	46.60	46.20	52.20	51.00	51.60	50.50
IL	43.20	43.60	54.00	55.00	53.10	54.10
IN	47.30	49.00	51.00	51.00	50.60	50.80
IA	46.20	49.70	54.20	55.40	54.10	55.30
KS	44.30	46.30	49.40	50.80	48.80	50.20
MN	46.40	48.00	52.20	52.50	52.20	52.50
MO	44.60	45.00	47.60	46.80	47.40	46.70
NE	44.00	45.00	53.50	53.60	53.30	53.40
NC	45.80	45.30	52.80	54.10	52.70	54.00
OH	44.50	46.00	51.20	51.20	50.70	50.80
OK	44.00	44.00	49.00	48.70	48.30	48.00
PA	42.90	43.50	51.00	51.00	49.80	49.90
SD	41.20	45.00	54.40	56.00	52.90	54.60
US	44.60	45.70	52.60	53.30	52.30	53.00

<sup>1</sup> Entire month.

<sup>2</sup> Mid-month.

<sup>3</sup> Monthly prices for MI, TX, and WI will no longer be published due to program changes.

**Sheep and Poultry: Prices Received, by State, December 2004 and January 2005**

State	December		January
	Sheep <sup>1</sup>	Lambs <sup>1</sup>	Eggs <sup>2 3</sup>
	<i>Dollars per Cwt</i>	<i>Dollars per Cwt</i>	<i>Dollars per Dozen</i>
AL			0.360
AR			0.380
CA	42.50	90.50	0.420
CO	44.00	102.00	
CT			0.470
FL			0.400
GA			0.380
ID	44.00	100.00	
IN			0.360
IA	44.80	95.00	0.350
KS	42.00	97.00	
ME			0.550
MI			0.350
MN	39.00	98.80	0.360
MS			0.380
MO			0.360
MT	51.10	117.00	
NE	42.40	98.00	
NY			0.390
NC			0.340
ND	40.00	108.00	
OH	42.80	96.60	0.359
OR	40.00	96.00	
PA			0.380
SC			0.350
SD	49.60	120.00	
TX	52.20	115.00	0.350
UT	41.00	99.00	
WA			0.430
WY	45.00	116.00	
US	44.80	102.00	0.373

<sup>1</sup> Entire month.

<sup>2</sup> Mid-month.

<sup>3</sup> Market (table) eggs.



**Milk and Milk Cows: Prices Received, by State, December 2004 and January 2005**

State	December <sup>1</sup>						January		
	Fluid Grade Milk <sup>2</sup>		Manufacturing Grade Milk		All Milk <sup>3</sup>		All Milk <sup>3 4</sup>		Milk Cows <sup>5</sup>
	Price	Fat Test	Price	Fat Test	Price	Fat Test	Price	Fat Test	
	<i>Dol/Cwt</i>	<i>Percent</i>	<i>Dol/Cwt</i>	<i>Percent</i>	<i>Dol/Cwt</i>	<i>Percent</i>	<i>Dol/Cwt</i>	<i>Percent</i>	<i>Dol/Head</i>
AZ	15.90	3.71			15.90	3.71	15.70	3.70	1,750
CA	14.70	3.83	15.50	4.15	14.72	3.84	14.40	3.82	1,600
FL	18.70	3.64			18.70	3.64	20.90	3.64	1,860
ID	15.10	3.71	16.00	4.15	15.10	3.71	14.00	3.69	1,600
IL	16.80	3.77	16.50	3.65	16.80	3.77	16.20	3.76	1,610
IN	17.00	3.80	15.40	3.98	16.90	3.81	16.30	3.80	1,550
IA	16.80	3.79	16.00	3.97	16.80	3.79	16.20	3.78	1,560
KY	17.00	3.75			17.00	3.75	18.50	3.73	1,550
MI	16.80	3.71	14.40	3.78	16.80	3.71	16.30	3.70	1,700
MN	17.10	3.85	15.80	3.93	17.10	3.85	16.00	3.84	1,530
MO	16.60	3.77	16.50	4.01	16.60	3.78	17.50	3.78	1,400
NM	15.50	3.74			15.50	3.74	15.40	3.72	1,740
NY	16.90	3.76			16.90	3.76	16.90	3.75	1,500
OH	17.20	3.76	16.50	4.03	17.20	3.77	16.70	3.76	1,620
PA	18.00	3.70	17.40	3.90	18.00	3.70	17.90	3.70	1,600
TX	16.60	3.85			16.60	3.85	16.30	3.75	1,660
VT	17.00	3.76			17.00	3.76	16.80	3.75	1,700
VA	17.40	3.68			17.40	3.68	17.40	3.68	1,630
WA	16.10	3.77			16.10	3.77	15.90	3.75	1,650
WI	17.60	3.83	16.60	4.02	17.60	3.84	15.80	3.81	1,690
US	16.40	3.78	16.00	4.03	16.40	3.79	15.90	3.77	1,620

<sup>1</sup> Entire month.

<sup>2</sup> Including milk diverted to manufacturing.

<sup>3</sup> Before deductions for hauling. Includes quality, quantity, and other premiums. Excludes hauling subsidies.

<sup>4</sup> Preliminary.

<sup>5</sup> Animals sold for dairy herd replacement only. Prices published January, April, July and October.

**Parity Price Equivalent for Manufacturing Milk <sup>1</sup>: United States,  
December 2004 and January 2005, with Comparisons**

Item	Unit	Jan 2004	Dec 2004	Jan 2005
Parity Equivalent	Dollars per Cwt	30.83	31.64	32.08
Average Price F.O.B <sup>2</sup>	Dollars per Cwt	12.30	16.00	14.70
Average Fat Test of Milk <sup>2</sup>	Percent	3.94	4.03	3.96

<sup>1</sup> The parity price equivalent during 2005 is 91.4 percent of the parity price of all milk sold to plants, compared with 90.4 percent in 2004. For additional details, see January 2005 issue of "Agricultural Prices".

<sup>2</sup> Preliminary for January 2005.

**United States Parity Prices for Farm Products and Average Prices Received as  
Percent of Parity Prices Based on Data for January 2005, with Comparisons <sup>1</sup>**

Commodity and Unit	Adjusted Base Price	Parity Price Based on Data for			Price as Percent of Parity		
		Jan 2004	Dec 2004	Jan 2005	Jan 2004	Dec 2004	Jan 2005
	<i>Dollars</i>	<i>Dollars</i>	<i>Dollars</i>	<i>Dollars</i>	<i>Percent</i>	<i>Percent</i>	<i>Percent</i>
<b>Basic Commodities</b>							
All Wheat, Bu	0.555	9.75	10.00	9.90	38	34	35
Rice, Cwt	1.38	28.20	29.00	24.60	30	26	30
Corn, Bu	0.372	6.55	6.74	6.63	36	30	30
Cotton, Lb							
American Upland	0.095	1.95	2.01	1.69	32	20	23
Extra Long Staple	0.142	2.49	2.56	2.53			
Peanuts, Lb	0.0350	0.640	0.658	0.624	32	28	30
Tobacco, By Type, Lb							
Flue-Cured 11-14	0.255	4.48	4.61	4.55			
VA Fire-Cured, 21	0.256	4.44	4.57	4.56	26	40	33
KY-TN Fire-Cured, 22-23	0.323	5.57	5.73	5.76	45		
Burley, 31	0.274	4.79	4.93	4.89	41	40	41
Maryland, 32	0.210	3.72	3.82	3.74			
Dark Air-Cured, 35-36	0.284	4.88	5.01	5.06	40		
Sun-Cured, 37	0.241	4.25	4.37	4.30	20	34	37
PA Seedleaf, 41	0.205	3.56	3.66	3.66			
Cigar Filler & Binder, 42-44, 54-55	0.225	3.89	4.00	4.01			
Puerto Rican Filler, 46	0.159	2.80	2.88	2.83			
Cigar Binder, 51-52	0.747	12.70	13.10	13.30			
<b>Designated Nonbasic</b>							
All Milk, Sold to Plants, Per Cwt <sup>2</sup>	1.97	34.10	35.00	35.10	40	46	46
Honey, Extracted, Lb <sup>3</sup>	0.1280	1.82	1.87	2.28			
<b>Wool and Mohair</b>							
Wool, Lb	0.0910	1.52	1.56	1.62			
Mohair, Lb	0.333	5.77	5.94	5.94			
<b>Other Nonbasic</b>							
Barley, Bu	0.377	6.50	6.69	6.72	41	37	35
Cottonseed, Ton	15.50	273.00	281.00	276.00	46	40	41
Dry Edible Beans, Cwt	2.82	50.50	51.90	50.30	34	51	54
Flaxseed, Bu	0.753	12.60	12.90	13.40	48	65	69
Oats, Bu	0.221	3.82	3.93	3.94	39	40	38
Potatoes, Cwt	0.838	14.80	15.20	14.90	39	35	36
Rye, Bu	0.355	6.10	6.28	6.33			
Sorghum Grain, Cwt	0.607	10.70	11.00	10.80	41	27	27
Soybeans, Bu	0.900	15.40	15.90	16.00	48	34	33
Sweetpotatoes, Cwt	2.31	38.90	40.00	41.20			
Apples, Fresh, Lb <sup>4</sup>	0.0292	0.512	0.526	0.521	58	42	41
Citrus (equiv on-tree), Box							
Grapefruit	0.394	6.69	6.88	7.03	45	211	178
Lemons	1.12	19.00	19.60	20.00	14	42	33
Oranges	0.574	10.70	11.00	10.20	23	24	29
Tangerines	1.35	24.60	25.20	24.10	47	50	66
Temples (FL)	0.379	7.80	8.02	6.76	33		53
Beef Cattle, Cwt	9.65	165.00	170.00	172.00	49	51	52
Calves, Cwt	13.10	221.00	228.00	234.00	50	54	53
Hogs, Cwt	5.97	102.00	105.00	106.00	36	50	50
Lambs, Cwt	11.70	195.00	201.00	209.00	53	51	
Sheep, Cwt	4.72	81.30	83.60	84.20	54	54	
Eggs, Doz <sup>2</sup>	0.0940	1.64	1.69	1.68	53	37	31
Turkeys, Live, Lb	0.0565	0.992	1.020	1.010	35	45	39

-continued

**Parity Prices Based on Data for January 2005, United States <sup>1</sup> (Continued)**

Other Nonbasic Commodities	Adj Base Price	Parity Price	Other Nonbasic Commodities	Adj Base Price	Parity Price
	<i>Dollars</i>	<i>Dollars</i>		<i>Dollars</i>	<i>Dollars</i>
Field Crops and Misc Commodities			Noncitrus Fruit		
Hops, Lb	0.251	4.48	Peaches, cont. Processing <sup>5</sup>		
Spearmint Oil, Lb	1.46	26.00	Excl Dried		
Tobacco, Lb			Clingstone, CA, Ton	33.50	597.00
Type 61	3.21	57.20	Pears, Ton		
Noncitrus Fruit			Fresh <sup>4</sup>	52.90	943.00
Apples, Ton <sup>6</sup>			Dried, CA <sup>6</sup>	164.00	2,920.00
Processing	18.30	326.00	Plums, CA, Ton		
Apricots, Ton			Fresh, Equiv		
Fresh <sup>7</sup>	99.00	1,770.00	On-Tree	66.70	1,190.00
Dried, CA	270.00	4,810.00	Prunes, Dried, CA, Ton <sup>6</sup>	127.00	2,260.00
Avocados, Ton <sup>7</sup>	234.00	4,170.00	Prunes and Plums, Excl CA, Ton		
Cherries Bbl			Fresh <sup>9</sup>	58.90	1,050.00
Sweet, Ton	188.00	3,350.00	Processing <sup>6</sup>		
Tart, Lb	0.0319	0.569	Excl Dried	27.50	490.00
Cranberry, Bbl <sup>5</sup>	5.69	101.00	Tree Nuts <sup>10</sup>		
Dates, CA, Ton <sup>7</sup>	181.00	3,230.00	Almonds, Lb	0.213	3.80
Grapes, Ton			Hazelnuts, Ton	135.00	2,410.00
Raisin Variety	124.00	2,210.00	Pistachio, Lb	0.159	2.83
Other Dried	70.50	1,260.00	Walnuts, Ton	173.00	3,085.00
Kiwifruit, Ton	91.30	1,630.00	Vegetables, Cwt <sup>11</sup>		
Nectarines			Fresh		
Fresh, CA, Ton <sup>7</sup>	62.60	1,120.00	Carrots <sup>8</sup>	2.28	40.70
Olives, CA			Cauliflower <sup>8</sup>	4.60	82.00
Canning, Ton <sup>5</sup>	95.70	1,710.00	Celery <sup>8</sup>	1.97	35.10
Papayas (HA)	0.0528	0.941	Honeydew Melons	2.75	49.00
Peaches			Lettuce	2.50	44.60
Fresh, Ton <sup>4</sup>	81.57	1,454.00	Onions <sup>8</sup>	1.65	29.40
Dried, CA, Ton	84.00	1,500.00	Tomatoes	4.44	79.20

<sup>1</sup> Parity prices are computed under the provisions of Title III, Subtitle a, Section 301 (a) of the Agricultural Adjustment Act of 1938 as amended by the Agricultural Acts of 1948, 1949, and 1956. See January "Agricultural Prices" for details on adjusted base price and parity price computations.

<sup>2</sup> Seasonally adjusted price as percentage of parity price.

<sup>3</sup> Wholesale extracted. Adjusted base price derived from state annual averages prices weighted by production. For 1982 through 1985 the national averages are the support prices.

<sup>4</sup> Equivalent packinghouse-door returns for CA, NY (apples only), OR (except peaches), and WA. Price at point of first sale for other states.

<sup>5</sup> Equivalent returns for bulk fruit at first delivery point.

<sup>6</sup> Equivalent returns at processing plant door.

<sup>7</sup> Equivalent returns at packinghouse door.

<sup>8</sup> Includes some processing.

<sup>9</sup> Based on "as sold" prices for fresh fruit in all states.

<sup>10</sup> Prices in-shell basis except almonds which are shelled basis.

<sup>11</sup> F.O.B. shipping point prices.

## Marketing Year for Specified Commodities

**Apples (Fresh):** July 1 to June 30 for U.S.; June 1 to May 31 for Arkansas, California, Georgia, Illinois, Iowa, Indiana, Kansas, Kentucky, Michigan, Missouri, New Mexico, North Carolina, Ohio, South Carolina, Tennessee, Wisconsin; August 1 to July 31 for Oregon and Washington;  
July 1 - June 30 for Arizona, Colorado, Connecticut, Idaho, Maine, Maryland, Massachusetts, New Hampshire, New Jersey, New York, Pennsylvania, Rhode Island, Utah, Vermont, Virginia, West Virginia.

**Grapes (Fresh):** May 25 to April 30 for U.S.; June 5 to July 15 for Arizona; May 25 to April 30 for California; July 10 to October 31 for Arkansas, Georgia, Michigan, Missouri, New York, North Carolina, Ohio, and Pennsylvania.

**Peaches (Fresh):** May 1 to October 31 for U.S.; May 20 to August 31 for Georgia and South Carolina; June 1 to September 30 for Alabama, Arkansas, California, Colorado, Illinois, Kentucky, Louisiana, Missouri, North Carolina, Ohio, Oklahoma, Tennessee, Texas, Utah, and Virginia, August 1 to September 30 for Connecticut, Massachusetts, Idaho, Michigan, and New York; July 1 to September 30 for Indiana, Maryland, New Jersey, Oregon, Pennsylvania, Washington, and West Virginia.

**Pears (Fresh):** July to June for U.S.; July 1 - April 30 for California; August 10 to May 31 for Oregon and Washington; July 1 to December 15 for Colorado, Connecticut, Michigan, New York, Pennsylvania, and Utah.

**Rice:** August 1 to July 31 for U.S.; July 1 to June 30 for Louisiana and Texas; August 1 to July 31 for Arkansas and Mississippi; October 1 to September 30 for California; September 1 to August 31 for Missouri.

**Sweet Potatoes:** July - June for U.S.; July 1 - June 30 for Alabama and California; July 1 - May 31 for Georgia, Louisiana, North Carolina and Texas; August 1 - May 31 for South Carolina, and Virginia; and August 1 - July 31 for New Jersey.

**Sweet Potatoes: Marketing Year Average Prices Received,  
by State and United States, 2002-2004**

State	2002 <i>Dollars per Cwt</i>	2003 <i>Dollars per Cwt</i>	2004 <sup>1</sup> <i>Dollars per Cwt</i>
AL	14.80	25.50	20.80
CA	23.10	25.20	23.30
LA	14.50	20.00	17.80
MS	16.50	20.80	19.80
NJ	23.20	25.80	25.40
NC	14.00	14.50	13.50
SC	15.20	12.50	11.20
TX	16.80	19.00	18.00
VA	14.00	12.20	11.10
US	16.80	19.20	17.50

<sup>1</sup> Preliminary.

**Rice: Marketing Year Average Prices Received,  
by State and United States, 2002 and 2003**

State	2002	2003
	All	
	<i>Dollars per Cwt</i>	<i>Dollars per Cwt</i>
AR	4.16	7.70
CA	6.32	10.40
LA	4.14	7.68
MS	4.94	7.34
MO	3.90	7.20
TX	4.16	7.35
US <sup>1</sup>	4.49	8.08
	Length of Grain	
US: Long	4.15	7.60
Medium & Short	5.90	9.94

<sup>1</sup> Based on state prices weighted by marketings for August through July.

**All Rice: Monthly Prices Received, Monthly Farm Marketing Percentages, and  
Marketing Year Average Prices, United States, 2001-2002 through 2003-2004 <sup>1</sup>**

Month	Prices Received			Farm Marketings <sup>2</sup>		
	2001-2002	2002-2003	2003-2004	2001-2002	2002-2003	2003-2004
	<i>Dollars per Cwt</i>	<i>Dollars per Cwt</i>	<i>Dollars per Cwt</i>	<i>1,000 Cwt</i>	<i>1,000 Cwt</i>	<i>1,000 Cwt</i>
Aug	5.01	3.94	5.93	12,443	10,892	8,542
Sep	4.67	4.09	6.56	9,496	12,313	13,489
Oct	4.39	4.03	7.15	12,415	14,429	16,507
Nov	4.25	4.24	7.80	11,093	12,338	11,217
Dec	4.29	4.46	8.55	11,215	15,059	16,408
Jan <sup>3</sup>	4.30	4.66	8.57	16,415	19,860	19,554
Feb	4.16	4.24	8.23	11,694	13,141	12,641
Mar	3.99	4.31	8.45	9,718	14,553	12,861
Apr	3.94	4.61	8.65	11,270	14,502	10,176
May	3.98	4.84	8.82	9,841	10,113	8,723
Jun	3.92	5.43	9.30	8,884	9,691	9,021
Jul	3.81	5.31	9.37	8,288	11,755	8,180
MYA	4.25	4.49	8.08	132,772	158,646	147,319

<sup>1</sup> Marketing year average (MYA) prices are weighted average prices for the U.S. marketing year of August - July.

<sup>2</sup> Purchases from producers as reported by private firms and rice (rough equivalent) shipped from producers as reported by cooperative mills.

<sup>3</sup> Second year.

**Apples for Fresh Use: Prices Received, United States,  
July 2000 - December 2004 <sup>1</sup>**

Year	Jul	Aug	Sep	Oct	Nov	Dec	Jan <sup>2</sup>	Feb	Mar	Apr	May	Jun
	<i>Dollars per Pound</i>	<i>Dollars per Pound</i>	<i>Dollars per Pound</i>	<i>Dollars per Pound</i>	<i>Dollars per Pound</i>	<i>Dollars per Pound</i>	<i>Dollars per Pound</i>	<i>Dollars per Pound</i>	<i>Dollars per Pound</i>	<i>Dollars per Pound</i>	<i>Dollars per Pound</i>	<i>Dollars per Pound</i>
2000	0.162	0.188	0.237	0.206	0.179	0.175	0.158	0.152	0.146	0.157	0.152	0.149
2001	0.151	0.167	0.213	0.247	0.235	0.231	0.218	0.216	0.220	0.218	0.215	0.204
2002	0.207	0.254	0.301	0.301	0.274	0.265	0.255	0.247	0.231	0.230	0.216	0.204
2003	0.208	0.346	0.271	0.279	0.297	0.279	0.304	0.302	0.305	0.299	0.297	0.301
2004	0.295	0.273	0.272	0.271	0.239	0.223						

<sup>1</sup> Equivalent packinghouse-door returns for CA, NY, and WA; price at point of first sale for other States.

<sup>2</sup> January of the following year.

**Peaches for Fresh Use: Monthly Prices Received,  
United States, May 2000 - September 2004 <sup>1</sup>**

Year	May	Jun	Jul	Aug	Sep
	<i>Dollars per Ton</i>	<i>Dollars per Ton</i>	<i>Dollars per Ton</i>	<i>Dollars per Ton</i>	<i>Dollars per Ton</i>
2000	664.000	528.000	476.000	438.000	690.000
2001	790.000	676.000	576.000	420.000	594.000
2002	962.000	578.000	528.000	486.000	556.000
2003	945.000	509.000	524.000	455.000	489.000
2004	918.000	476.000	407.000	427.000	522.000

<sup>1</sup> Equivalent packinghouse-door returns for CA and WA; price at point of first sale for other states.

**Pears for Fresh Use: Monthly Prices Received,  
United States, July 2000 - December 2004 <sup>1</sup>**

Year	Jul	Aug	Sep	Oct	Nov	Dec	Jan <sup>2</sup>	Feb	Mar	Apr	May	Jun
	<i>Dollars per Ton</i>	<i>Dollars per Ton</i>	<i>Dollars per Ton</i>	<i>Dollars per Ton</i>	<i>Dollars per Ton</i>	<i>Dollars per Ton</i>	<i>Dollars per Ton</i>	<i>Dollars per Ton</i>	<i>Dollars per Ton</i>	<i>Dollars per Ton</i>	<i>Dollars per Ton</i>	<i>Dollars per Ton</i>
2000	233	249	315	403	339	347	313	252	296	337	417	( <sup>3</sup> )
2001	345	338	391	380	356	339	301	288	286	283	272	270
2002	322	316	366	419	402	398	333	322	318	316	319	( <sup>3</sup> )
2003	335	272	293	413	388	384	352	331	335	359	443	( <sup>3</sup> )
2004	325	388	412	437	436	413	495					

<sup>1</sup> Equivalent packinghouse-door returns for CA, NY, and WA; price at point of first sale for other States.

<sup>2</sup> January of the following year.

<sup>3</sup> Insufficient sales to establish a price.

**Grapes for Fresh Use: Monthly Prices Received,  
United State, May 2000 - December 2004**

Year	May	Jun	Jul	Aug	Sep	Oct	Nov	Dec
	<i>Dollars per Ton</i>	<i>Dollars per Ton</i>	<i>Dollars per Ton</i>	<i>Dollars per Ton</i>	<i>Dollars per Ton</i>	<i>Dollars per Ton</i>	<i>Dollars per Ton</i>	<i>Dollars per Ton</i>
2000	915	675	515	615	535	705	765	765
2001	790	1,190	630	600	670	640	640	850
2002	1,000	905	830	650	640	590	610	720
2003	930	970	760	650	620	600	660	730
2004	1,530	810	560	550	670	820	1,020	1,150

## Parity Prices

Parity prices based on data for January 2005 and adjusted base price data from which parity prices are computed, are presented in the table on pages 33 through 36. Annual average prices for 1995 through 2004 for use in parity computations, and ten-year averages for 1994-2003 and 1995-2004 are shown on pages 38 through 47.

Parity Prices shown on the following pages are computed under the provisions of Title III, Subtitle A, Section 301(a) of the Agricultural Adjustment Act of 1938 as amended by the Agricultural Acts of 1948, 1949, 1954, and 1956.

The major provisions of the amended Act relating to the calculation of parity prices are as follows:

"(1) (A) The 'parity price' for any agricultural commodity, as of any date, shall be determined by multiplying the adjusted base price of such commodity as of such date by the parity index as of such date.

"(B) The 'adjusted base price' of any agricultural commodity, as of any date, shall be (i) the average of the prices received by farmers for such commodity, at such time as the Secretary may select during each year of the ten-year period ending on the 31st of December last before such date, or during each marketing season beginning in such period if the Secretary determines use of a calendar year basis to be impracticable, divided by (ii) the ratio of the general level of prices received by farmers for agricultural commodities during the period January 1910 to December 1914, inclusive.

"(C) The 'parity index', as of any date, shall be the ratio of (i) the general level of prices for articles and services that farmers buy, wages paid hired farm labor, interest on farm indebtedness secured by farm real estate, and taxes on farm real estate, for the calendar month ending last before such date to (ii) the general level of such prices, wages, rates, and taxes during the period January 1910 to December 1914, inclusive.

"(D) The prices and indexes provided for herein, and the data used in computing them, shall be determined by the Secretary, whose determination shall be final."

Section 301(a) (1) (F) outlines authority for the Secretary of Agriculture to make special adjustments in the method of computing parity prices for particular commodities if the method outlined in the Act results in parity prices seriously out of line with those of other commodities.

The parity prices shown in this report are based on the provisions of the amended Act. Briefly, the actual method of computation is as follows:

a. The average of prices received by farmers for individual commodities for the 10 preceding years is calculated (for 2005 this is the 1995-2004 average). An allowance for unredeemed loans and other supplemental payments resulting from price support programs, such as the deficiency payments for grains and cotton, is included for those commodities for which applicable.

b. This 10-year average is divided by the average of the Index of Prices Received by Farmers for the same 10 preceding calendar years, adjusted to include an allowance for unredeemed loans and other supplemental price support operations, to give an "adjusted base price".

c. Parity prices are computed by multiplying the "adjusted base prices" by the current Parity Index (the Index of Prices Paid by Farmers, including Interest, Taxes, and Wage Rates, 1910-14=100).

Parity prices are calculated in terms of prices received by farmers in the local markets in which they ordinarily sell. This means that the parity prices apply to the average of all classes and grades of the commodity as sold by all farmers in the United States, except as otherwise specified. Fruits and vegetables for fresh use and for processing are usually considered separate commodities and separate parity prices are calculated. The Agricultural Marketing Agreement Act of 1937 provided for parity prices for certain commodities covered by a marketing agreement or order program. Under present legislation, U.S. parity prices, with appropriate adjustments where needed, may be used for the purpose of this Act.

The indexes used in the computation of parity prices are published currently in "*Agricultural Prices*".

For the purpose of illustrating the computation of parity prices, the calculation of the parity price for corn based on data for January 2005 is given below.

The 120-month, January 1995-December 2004 average of prices received by farmers for corn was \$2.62 per bushel, adjusted to allow for unredeemed loans and other supplemental payments resulting from price support operations. The 120-month average of the Index of Prices Received by Farmers, adjusted to include an allowance for unredeemed loans, etc., was 705 (1910-14=100). Dividing \$2.62 by 7.05 gives \$0.372 per bushel, the adjusted base price which is multiplied by 1783 percent, the Parity Index (1910-14=100), based on data for January 2005. This gives \$6.63 per bushel, the parity price of corn during February 2005.

### **The Parity Ratio**

The parity ratio (the Index of Prices Received by Farmers for the products they sell divided by the Parity Index (1910-14=100)) provides an indication of the per unit purchasing power of farm commodities generally in terms of the goods and services currently bought by farmers, in relation to purchasing power of farm products in the 1910-14 base period. Thus, a Parity Ratio less than 100 indicates that the average per unit purchasing power of all farm products is lower than during the 1910-14 period.

The parity ratio is a measure of price relationships; not a measure of farm income, farmers' total purchasing power, or farmers' welfare. The latter depends upon a number of factors other than price relationships, such as changes in production efficiency and technology, quantities of farm products sold, and supplementary income, including that from off-farm jobs and federal programs.

An adjusted parity ratio is computed and published which incorporates supplementary income for federal farm programs. A "preliminary adjusted parity ratio reflecting government payments" based on the forecast of direct government payments for the year is published each quarter in "*Agricultural Prices*".



**Adjusted Base Prices and United States Parity Prices  
Based on Data for January, 2005**

Commodity and Unit	Adjusted Base Price <sup>1</sup>	Parity Price Based on data for Jan 2005 <sup>2</sup>
	<i>Dollars</i>	<i>Dollars</i>
<b>Basic Commodities</b>		
All Wheat, Bu <sup>3</sup>	0.555	9.90
Rice, Cwt <sup>3</sup>	1.38	24.60
Corn, Bu <sup>3</sup>	0.372	6.63
Cotton, Lb		
American Upland <sup>3</sup>	0.095	1.69
Extra Long Staple	0.142	2.53
Peanuts, Lb	0.035	0.624
Tobacco, Lb		
Flue-Cured, Types 11-14	0.255	4.55
VA Fire-Cured, Type 21	0.256	4.56
KY-TN Fire-Cured, Types 22-23	0.323	5.76
Burley, Type 31	0.274	4.89
Maryland, Type 32	0.210	3.74
Dark Air-Cured, Types 35-36	0.284	5.06
Sun-Cured, Type 37	0.241	4.30
PA SeedLeaf, Type 41	0.205	3.66
Cigar Filler & Binder, Types 42-44, 54-55	0.225	4.01
Puerto Rican Filler, Type 46	0.159	2.83
Cigar Binder, Types 51-52	0.747	13.30
<b>Designated Nonbasic Commodities</b>		
Soybeans, Bu <sup>3</sup>	0.900	16.00
All Milk Sold to Plants, Cwt	1.97	35.10
Honey, Wholesale, Lb Extracted	0.128	2.28
<b>Wool and Mohair</b>		
Wool, Lb <sup>3</sup>	0.091	1.62
Mohair, Lb	0.333	5.94
<b>Other Nonbasic Commodities</b>		
<b>Field Crops and Misc</b>		
All Barley, Bu <sup>3</sup>	0.377	6.72
Cottonseed, Ton	15.50	276.00
All Dry Edible Beans, Cwt	2.82	50.30
Flaxseed, Bu	0.753	13.40
All Hay, Baled, Ton	12.60	224.70
Hops, Lb	0.251	4.48
Oats, Bu <sup>3</sup>	0.221	3.94
Peppermint Oil, Lb <sup>3</sup>	1.70	30.30
All Potatoes, Cwt	0.838	14.90
Rye, Bu	0.355	6.33
Sorghum Grain, Cwt <sup>3</sup>	0.607	10.80
Spearmint Oil, Lb	1.46	26.00
Sweet Potatoes, Cwt	2.31	41.20
Tobacco, Cigar Wrapper Type 61, Lb	3.21	57.20

See footnote(s) at end of table.

-continued

**Adjusted Base Prices and United States Parity Prices  
Based on Data for January, 2005**

Commodity and Unit	Adjusted Base Price <sup>1</sup>	Parity Price Based on data for Jan 2005 <sup>2</sup>
	<i>Dollars</i>	<i>Dollars</i>
Fruit, Citrus (Equiv On-Tree) Box		
Grapefruit <sup>13</sup>	0.394	7.03
Lemons <sup>13</sup>	1.120	20.00
Oranges <sup>13</sup>	0.574	10.20
Tangerines <sup>13</sup>	1.35	24.10
Temples <sup>13</sup>	0.379	6.76
Fruit, Deciduous and Other		
Apples		
Fresh, Lb <sup>4</sup>	0.029	0.521
Processing, Ton <sup>13</sup>	18.30	326.00
Apricots, Ton		
Fresh	99.00	1,770.00
Processing		
Dried (CA)	270.00	4,810.00
Excl Dried	39.00	695.00
Avocados, Ton <sup>13</sup>	234.00	4,170.00
Cherries		
Sweet, Ton	188.00	3,350.00
Tart, Lb <sup>13</sup>	0.032	0.569
Cranberries, Bbl <sup>13</sup>	5.69	101.00
Dates (CA), Ton <sup>5</sup>	181.00	3,230.00
Grapes, Ton		
Raisin Varieties Dried (CA)	124.00	2,210.00
Excl Raisin Varieties Dried	70.50	1,260.00
Kiwifruit, Ton <sup>13</sup>	91.30	1,630.00
Nectarines (CA), Ton		
Fresh <sup>5</sup>	62.60	1,120.00
Processing <sup>6</sup>	3.69	65.80
Olives (CA), Ton <sup>7</sup>		
Processing		
Crushed for oil	26.11	466.00
Excl crushed	82.00	1,462.00
Canning	95.70	1,706.00
Papayas (HI), Fresh, Lb	0.053	0.941
Peaches		
Fresh, Ton <sup>4 7</sup>	81.57	1,454.00
Processing		
Dried (CA), Ton <sup>6</sup>	84.00	1,500.00
Excluding Dried, Ton		
Clingstone (CA), Ton <sup>7</sup>	33.50	597.00
Freestone, Ton <sup>6</sup>	28.20	503.00
Pears		
Fresh, Ton <sup>4</sup>	52.90	943.00
Processing, Ton <sup>6</sup>		
Dried (CA)	164.00	2,920.00
Excluding Dried	27.40	489.00

See footnote(s) at end of table.

—continued

**Adjusted Base Prices and United States Parity Prices  
Based on Data for January, 2005**

Commodity and Unit	Adjusted Base Price <sup>1</sup>	Parity Price Based on data for Jan 2005 <sup>2</sup>
	<i>Dollars</i>	<i>Dollars</i>
Fruit, Deciduous and Other, Cont		
Plums (CA) Equiv On-Tree		
Fresh, Ton <sup>8</sup>	66.70	1,190.00
Processing, Ton	4.16	74.20
Prunes, Dried (CA), Ton <sup>13</sup>	127.00	2,264.00
Prunes & Plums (EX CA), Ton		
Fresh <sup>8</sup>	58.90	1,050.00
Processing <sup>6</sup>	27.50	490.00
Strawberries, Lb		
Fresh <sup>6</sup>	0.099	1.76
Processing	0.040	0.708
Sugar Crops, Ton		
Sugarbeets <sup>10 13</sup>	5.56	99.10
Sugarcane <sup>10 13</sup>	3.99	71.10
Tree Nuts <sup>11</sup>		
Almonds, Lb	0.213	3.80
Hazelnuts, Ton	135.00	2,410.00
Pecans, All, Lb	0.139	2.48
Pistachio, All, Lb	0.159	2.83
Walnuts, Ton <sup>13</sup>	173.00	3,085.00
Vegetables, Fresh, Cwt <sup>9</sup>		
Asparagus	16.80	300.00
Broccoli <sup>12</sup>	4.18	74.50
Carrots <sup>12</sup>	2.28	40.70
Cauliflower <sup>12</sup>	4.60	82.00
Celery <sup>12</sup>	1.97	35.10
Honeydew Melons	2.75	49.00
Lettuce	2.50	44.60
Onions <sup>12</sup>	1.65	29.40
Sweet Corn	2.62	46.70
Tomatoes	4.44	79.20
Vegetables, Processing, Ton <sup>6</sup>		
Asparagus	101.00	1,801.00
Green Peas	37.70	672.00
Snap Beans	23.70	423.00
Sweet Corn	10.35	185.00
Tomatoes	8.80	157.00
Livestock and Products		
Beef Cattle, Cwt	9.65	172.00
Calves, Cwt	13.10	234.00
Eggs, Doz	0.094	1.68
Hogs, Cwt	5.97	106.00
Lambs, Cwt	11.70	209.00
Sheep, Cwt	4.72	84.20
Turkeys, Lb	0.057	1.01

See footnote(s) at end of table.

-continued

**Adjusted Base Prices and United States Parity Prices  
Based on Data for January, 2005**

Commodity and Unit	Adjusted Base Price <sup>1</sup>	Parity Price Based on data for Jan 2005 <sup>2</sup>
	<i>Dollars</i>	<i>Dollars</i>
Discontinued Nonbasic Commodities <sup>14</sup>		
Field Crops and Misc		
Crude Pine Gum, Bbl	13.90	248.00
Dry Field Peas, Cwt	1.89	33.70
Popcorn, Cwt	1.81	32.30
Tobacco, Type 62, Lb <sup>15</sup>	0.858	15.30
Puerto Rican Filler, Type 46, Lb	0.159	2.83
Fruit, Deciduous and Other		
Berries, Processing, Lb		
Blackberries	0.620	11.10
Black Raspberries	0.106	1.89
Boysenberries/Youngberries	0.088	1.57
Gooseberries	0.037	0.670
Loganberries	0.060	1.08
Red Raspberries	0.084	1.50
Seed Crops, Cwt		
Alfalfa	19.30	344.00
Bentgrass	18.90	337.00
Chewings Fescue	8.40	150.00
Crimson Clover	10.00	178.00
Hairy Vetch	5.81	104.00
Ladino Clover	24.70	440.00
Lespedeza	8.31	148.00
Merion KY Bluegrass	22.00	392.00
Orchardgrass	7.16	128.00
Red Clover	12.00	214.00
Red Fescue	10.10	180.00
Tall Fescue	3.67	65.40
Timothy	6.40	114.00
Vegetables, Fresh, Cwt		
Artichokes	4.55	81.10
Cabbage	1.38	24.60
Cantaloupes	2.13	38.00
Cucumbers	2.28	40.70
Eggplant	2.41	43.00
Escarole	3.10	55.30
Garlic	2.93	52.20
Green Peppers	3.60	64.20
Snap Beans	4.51	80.40
Spinach	3.95	70.40
Watermelon	0.846	15.10
Vegetables, Processing, Ton		
Beets	7.79	139.00
Cabbage	6.01	107.00
Lima Beans	67.00	1,195.00
Spinach	14.50	259.00
Livestock and Products		
Beeswax, Lb	0.291	5.20

See footnote(s) at end of table.

-continued

**Adjusted Base Price and United States Parity Prices  
Based on data for January 2005 (continued)**

- <sup>1</sup> Adjusted base price 1910-14 derived by dividing the average of 10 season average prices 1995-2004, including an allowance where appropriate for unredeemed loans and other supplemental payments resulting from price support operations, by 705 percent (120-month, Jan 1995-Dec 2004 average of the index of prices received by farmers adjusted to include an allowance for unredeemed loans and other supplemental payments) unless otherwise noted.
- <sup>2</sup> These parity prices are the legally applicable parity prices for the following calendar month.
- <sup>3</sup> Adjusted base price 1910-14 derived from 120-month, Jan 1995-Dec 2004 average including an allowance where appropriate for unredeemed loans and other supplemental payments resulting from price support operations.
- <sup>4</sup> Equivalent packinghouse-door returns for CA, MI, NY (apples only), and WA (apples, peaches, and pears). Prices "as sold" for other states.
- <sup>5</sup> Equivalent returns at packinghouse-door.
- <sup>6</sup> Equivalent returns at processing plant door.
- <sup>7</sup> Equivalent returns for bulk fruit at first delivery point.
- <sup>8</sup> Based on 'as sold' prices for fresh fruit in all states.
- <sup>9</sup> Average F.O.B. shipping point prices.
- <sup>10</sup> Relates to prices including average conditional payments per ton made under the sugar acts of 1937 and 1948. Crop deficiency and abandonment payments not included.
- <sup>11</sup> Prices on in-shell basis except almonds which are on shelled basis.
- <sup>12</sup> Includes some processing.
- <sup>13</sup> The 2004 marketing year average prices are not yet available for these commodities. Therefore, the adjusted base prices are brought forward from 2003, except citrus items (excluding limes) and cranberries.
- <sup>14</sup> Monthly and/or season average prices are no longer estimated for these items. Therefore, the adjusted base price is brought forward from July 1986.
- <sup>15</sup> Monthly and/or season average prices are no longer estimated for this item. The adjusted base price is brought forward from 1988.

**Average Base Period Prices Received by Farmers, US, 1910-14**

Commodity	Price Per Unit	Average Jan 1910-Dec 1914	Commodity	Price Per Unit	Average Jan 1910-Dec 1914
All Wheat	Dol/Bu	0.880	Sweet Potatoes	Dol/Cwt	1.61
Rice Rough	Dol/Cwt	1.81	Dry Edible Beans	Dol/Cwt	3.39
Corn	Dol/Bu	0.649	All Beef Cattle	Dol/Cwt	5.52
Oats	Dol/Bu	0.399	Calves	Dol/Cwt	6.84
All Barley	Dol/Bu	0.617	All Hogs	Dol/Cwt	7.29
All Hay, Baled	Dol/Ton	11.90	Lambs	Dol/Cwt	5.96
Cotton	Ct/Lb	11.92	Sheep	Dol/Cwt	4.59
Peanuts	Ct/Lb	4.83	All Milk	Dol/Cwt	1.61
Cottonseed	Dol/Ton	21.80	All Eggs	Ct/Doz	21.6
Flaxseed	Dol/Bu	1.68	Turkeys, Live	Ct/Lb	14.3
Potatoes	Dol/Cwt	1.13	Wool	Ct/Lb	17.8

**Prices Received by Farmers used to Calculate Parity Prices  
for Agricultural Commodities, United States, 1995 - 2004 <sup>1</sup>**

Commodity and Unit	1995	1996	1997	1998	1999	2000	2001
	(1910-14=100)						
Index of Prices Received by Farmers	646	712	678	645	607	611	650
	Calendar Year Average Prices <sup>3</sup>						
	<i>Dollars</i>	<i>Dollars</i>	<i>Dollars</i>	<i>Dollars</i>	<i>Dollars</i>	<i>Dollars</i>	<i>Dollars</i>
Basic Commodities							
Corn, Bu	2.56	3.55	2.60	2.20	1.89	1.86	1.89
Cotton, Upland, Lb	0.772	0.741	0.679	0.646	0.516	0.498	0.389
All Wheat, Bu	4.09	4.77	3.71	2.90	2.58	2.57	2.83
Rice, Cwt	7.60	9.62	10.01	9.40	7.60	5.69	5.12
Designated Nonbasic Comm							
All Milk, Cwt	12.80	14.90	13.30	15.50	14.40	12.30	15.00
Other Nonbasic Comm							
Field Crops and Misc							
All Barley, Bu	2.47	3.07	2.39	2.13	1.99	2.14	2.14
All Dry Beans, Cwt	21.90	23.70	20.90	20.40	17.90	15.10	17.50
Flaxseed, Bu	5.05	5.92	6.11	5.72	4.38	3.45	4.00
All Hay, Baled, Ton	83.20	88.90	102.80	89.70	78.70	80.40	95.20
Oats, Bu	1.45	2.01	1.72	1.34	1.15	1.17	1.42
Sorghum, Cwt	4.51	5.93	4.10	3.54	2.86	3.10	3.38
Soybeans, Bu	5.85	7.27	7.40	5.93	4.57	4.73	4.43
Fruit							
Apples, Fresh, Lb <sup>4</sup>	0.205	0.242	0.194	0.184	0.176	0.195	0.180
Livestock and Products							
Beef Cattle, Cwt	62.20	59.30	63.30	59.70	63.30	68.40	71.20
Calves, Cwt	74.80	58.70	82.30	82.30	89.60	105.80	106.70
Eggs, Doz	0.639	0.758	0.696	0.665	0.609	0.636	0.604
All Hogs, Cwt	41.80	53.30	52.00	32.50	32.30	42.90	44.10
Lambs, Cwt	78.30	88.30	90.50	72.50	74.50	80.30	67.60
Sheep, Cwt	28.60	30.30	38.10	31.90	30.70	33.80	35.80
Turkeys, Lb	0.411	0.435	0.401	0.379	0.407	0.414	0.391

See footnote(s) at end of table.

-continued

**Prices Received by Farmers used to Calculate Parity Prices  
for Agricultural Commodities, United States, 1995 - 2004 <sup>1</sup> (continued)**

Commodity and Unit	2002	2003	2004	1994-03 Average	1995-04 Average	
					As Computed	For Parity Purposes <sup>2</sup>
(1910-14=100)						
Index of Prices Received by Farmers	620	677	758	648	660	705
Calendar Year Average Prices <sup>3</sup>						
	<i>Dollars</i>	<i>Dollars</i>	<i>Dollars</i>	<i>Dollars</i>	<i>Dollars</i>	<i>Dollars</i>
Basic Commodities						
Corn, Bu	2.13	2.27	2.46	2.34	2.34	2.62
Cotton, Upland, Lb	0.336	0.518	0.548	0.576	0.564	0.670
All Wheat, Bu	3.41	3.44	3.57	3.38	3.39	3.91
Rice, Cwt	4.07	5.48	8.12	7.28	7.27	9.70
Designated Nonbasic Comm						
All Milk, Cwt	12.10	12.50	16.00	13.60	13.90	
Other Nonbasic Comm						
Field Crops and Misc						
All Barley, Bu	2.39	2.87	2.62	2.36	2.42	2.66
All Dry Beans, Cwt	22.60	17.80	21.30	20.20	19.90	
Flaxseed, Bu	5.23	6.02	7.20	5.04	5.31	
All Hay, Baled, Ton	93.70	88.80	88.00	89.00	88.90	
Oats, Bu	1.88	1.72	1.51	1.51	1.54	1.56
Sorghum, Cwt	3.80	3.97	4.12	3.91	3.93	4.28
Soybeans, Bu	4.93	6.09	7.55	5.73	5.88	6.32
Fruit						
Apples, Fresh, Lb <sup>4</sup>	0.241	0.246	0.200	0.205	0.206	
Livestock and Products						
Beef Cattle, Cwt	66.60	80.20	85.60	66.10	68.00	
Calves, Cwt	97.60	104.00	121.80	88.90	92.30	
Eggs, Doz	0.598	0.752	0.702	0.657	0.666	
All Hogs, Cwt	33.30	37.60	51.40	40.90	42.10	
Lambs, Cwt	73.30	94.60	102.10	78.50	82.20	82.30
Sheep, Cwt	28.90	35.50	39.30	32.50	33.30	
Turkeys, Lb	0.365	0.355	0.422	0.397	0.398	

See footnote(s) at end of table.

-continued

**Prices Received by Farmers used to Calculate Parity Prices  
for Agricultural Commodities, United States, 1995-2004 <sup>1</sup>**

Commodity and Unit	1995	1996	1997	1998	1999	2000
	Marketing Year Average Prices <sup>5</sup>					
	<i>Dollars</i>	<i>Dollars</i>	<i>Dollars</i>	<i>Dollars</i>	<i>Dollars</i>	<i>Dollars</i>
<b>Basic Commodities</b>						
Cotton, Long Staple, Lb	1.228	1.070	1.014	0.924	0.852	1.003
Peanuts, Lb <sup>18</sup>	0.293	0.281	0.283	0.284	0.254	0.274
Tobacco, Lb						
Types 11-14	1.790	1.834	1.720	1.756	1.737	1.793
Type 21	1.640	1.790	2.125	1.936	1.819	1.637
Ky-Tn Fire-Cured,						
Types 22-23	2.172	2.245	2.256	2.225	2.298	2.163
Burley, Type 31	1.854	1.922	1.885	1.903	1.899	1.963
Type 32	1.573	1.856	1.576	1.291	1.345	1.387
Types 35-36	1.762	1.952	2.017	2.017	2.039	1.965
Sun-Cured, Type 37	1.555	1.782	1.908	1.709	1.590	1.800
PA Seedleaf, Type 41	1.450	1.550	1.600	1.300	1.300	( <sup>20</sup> )
Cigar Filler & Binder						
Types 42-44, 54-55	1.450	1.486	1.505	1.498	1.490	1.550
Types 51-52	3.890	6.279	7.273	5.499	4.737	4.916
<b>Designated Nonbasic Comm</b>						
Honey, Wholesale, Lb						
Extracted <sup>8</sup>	0.685	0.888	0.752	0.660	0.600	0.600
Wool and Mohair <sup>9</sup>						
Wool, Lb	1.040	0.700	0.840	0.600	0.380	0.330
Mohair, Lb	1.84	1.92	2.25	2.49	3.46	4.04
<b>Other Nonbasic Comm</b>						
Field Crops and Misc						
Cottonseed, Ton	106.00	126.00	121.00	129.00	89.00	105.00
Hops, Lb	1.71	1.65	1.60	1.69	1.69	1.87
Peppermint Oil, Lb	13.80	13.60	12.90	11.90	10.70	10.80
Potatoes, Cwt	6.75	4.91	5.64	5.56	5.76	5.08
Rye, Bu	2.90	3.70	3.75	2.50	2.27	2.60
Spearmint Oil, Lb	12.30	12.00	11.90	11.00	9.75	9.06
Sweet Potatoes, Cwt	15.90	14.40	15.80	15.30	17.60	15.30

See footnote(s) at end of table.

-continued



**Prices Received by Farmers used to Calculate Parity Prices  
for Agricultural Commodities, United States, 1995-2004 <sup>1</sup> (continued)**

Commodity and Unit	2001	2002	2003	2004	1994-03 Average	1995-04 Average
	Marketing Year Average Prices <sup>5</sup>					
	<i>Dollars</i>	<i>Dollars</i>	<i>Dollars</i>	<i>Dollars</i>	<i>Dollars</i>	<i>Dollars</i>
<b>Basic Commodities</b>						
Cotton, Long Staple, Lb	0.856	0.860	1.210	0.993	0.998	1.001
Peanuts, Lb <sup>18</sup>	0.234	0.182	0.193	0.196	0.256	0.247
Tobacco, Lb						
Types 11-14	1.857	1.820	1.851	1.846	1.786	1.800
Type 21	1.759	1.884	1.641	1.798	1.784	1.803
Ky-Tn Fire-Cured, Types 22-23	2.149	2.378	2.475	2.399	2.228	2.276
Burley, Type 31	1.973	1.974	1.977	1.987	1.920	1.934
Type 32	1.554	1.348	1.463	1.404	1.486	1.480
Types 35-36	1.829	2.101	2.157	2.148	1.953	1.999
Sun-Cured, Type 37	1.686	1.778	1.707	1.476	1.699	1.699
PA Seedleaf, Type 41	1.650	1.450	1.400	1.400	1.426	1.446
Cigar Filler & Binder Types 42-44, 54-55	1.650	1.750	1.746	1.750	1.558	1.588
Types 51-52	5.589	5.372	3.584	5.500	5.086	5.264
<b>Designated Nonbasic Comm</b>						
Honey, Wholesale, Lb Extracted <sup>8</sup>	0.710	1.327	1.404	( <sup>6</sup> )	0.815	( <sup>6</sup> )
Wool and Mohair <sup>9</sup>						
Wool, Lb	0.350	0.530	0.730	0.800	0.628	0.644
Mohair, Lb	2.13	1.58	1.66	1.97	2.39	2.35
<b>Other Nonbasic Comm</b>						
Field Crops and Misc						
Cottonseed, Ton	90.50	101.00	117.00	105.00	109.00	109.00
Hops, Lb	1.85	1.91	1.86	1.90	1.77	1.77
Peppermint Oil, Lb	10.90	11.90	12.00	11.90	12.30	12.00
Potatoes, Cwt	6.99	6.67	5.89	( <sup>6</sup> )	5.88	( <sup>6</sup> )
Rye, Bu	2.86	3.32	3.00	3.10	2.47	2.50
Spearmint Oil, Lb	9.09	9.11	9.29	9.48	10.60	10.30
Sweet Potatoes, Cwt	15.30	16.80	19.20	17.50	16.10	16.30

See footnote(s) at end of table.

-continued

**Prices Received by Farmers used to Calculate Parity Prices  
for Agricultural Commodities, United States, 1995-2004 <sup>1</sup>**

Commodity and Unit	1995	1996	1997	1998	1999	2000
	Marketing Year Average Prices <sup>5</sup>					
	<i>Dollars</i>	<i>Dollars</i>	<i>Dollars</i>	<i>Dollars</i>	<i>Dollars</i>	<i>Dollars</i>
Nonbasic Commodities						
Tobacco, Cigar Wrapper Type 61, Lb	( <sup>6</sup> )	( <sup>6</sup> )	( <sup>6</sup> )	( <sup>6</sup> )	( <sup>6</sup> )	25.30
Fruit, Citrus (Equiv On-Tree) Box <sup>10</sup>						
Grapefruit	2.32	1.93	2.00	3.17	3.87	2.50
Lemons	6.37	8.36	6.57	8.85	9.49	4.96
Oranges	4.79	4.22	4.29	5.47	3.58	3.85
Tangerines	11.10	9.48	8.84	12.55	7.15	7.92
Temples	4.44	3.22	3.07	5.12	2.55	2.05
Fruit, Deciduous and Other						
Apples, Ton <sup>11</sup> Processing	159.00	171.00	130.00	95.10	128.00	101.00
Apricots, Ton Fresh <sup>14</sup>	900.00	1,170.00	558.00	579.00	638.00	573.00
Processing <sup>11</sup> Dried (CA)	2,090.00	2,240.00	1,810.00	1,860.00	( <sup>20</sup> )	1,860.00
Excl Dried	282.00	285.00	274.00	259.00	295.00	283.00
Avocados, Ton	1,300.00	1,430.00	1,560.00	2,160.00	1,950.00	1,400.00
Cherries						
Sweet, Ton	1,260.00	1,470.00	1,250.00	1,100.00	1,100.00	1,340.00
Tart, Lb	0.059	0.161	0.159	0.145	0.218	0.187
Cranberries, Bbl	53.40	65.90	63.70	36.60	17.20	18.10
Dates, (CA) Ton	780.00	1,090.00	1,100.00	1,220.00	1,240.00	1,230.00
Grapes, Ton						
Raisin Varieties						
Dried (CA)	980.00	1,070.00	908.00	1,250.00	1,220.00	569.00
Excl Raisin Var Dr	399.00	483.00	497.00	508.00	522.00	510.00
Kiwifruit, Ton <sup>12</sup>	459.00	470.00	518.00	744.00	634.00	455.00
Nectarines, (CA) Ton						
Fresh <sup>12</sup>	( <sup>20</sup> )	( <sup>20</sup> )	( <sup>20</sup> )	( <sup>20</sup> )	437.00	407.00
Processing <sup>11</sup>	( <sup>20</sup> )	( <sup>20</sup> )	( <sup>20</sup> )	( <sup>20</sup> )	27.90	24.00
Olives (CA), Ton						
Processing <sup>13</sup> Crushed for Oil	11.00	11.00	11.00	11.00	200.00	300.00
Excl Crushed	681.00	643.00	665.00	481.00	394.00	677.00
Canning <sup>13</sup>	779.00	745.00	760.00	590.00	513.00	769.00

See footnote(s) at end of table.

-continued

**Prices Received by Farmers used to Calculate Parity Prices  
for Agricultural Commodities, United States, 1995-2004 <sup>1</sup> (continued)**

Commodity and Unit	2001	2002	2003	2004	1994-03 Average	1995-04 Average
	Marketing Year Average Prices <sup>5</sup>					
	<i>Dollars</i>	<i>Dollars</i>	<i>Dollars</i>	<i>Dollars</i>	<i>Dollars</i>	<i>Dollars</i>
Nonbasic Commodities						
Tobacco, Cigar Wrapper Type 61, Lb	23.00	22.50	( <sup>6</sup> )	( <sup>6</sup> )	( <sup>6</sup> )	( <sup>6</sup> )
Fruit, Citrus (Equip On-Tree) Box <sup>10</sup>						
Grapefruit	2.64	2.93	3.48	( <sup>6</sup> )	2.71	( <sup>6</sup> )
Lemons	11.36	6.53	8.57	( <sup>6</sup> )	7.86	( <sup>6</sup> )
Oranges	4.25	3.56	3.25	( <sup>6</sup> )	4.15	( <sup>6</sup> )
Tangerines	9.59	10.07	9.17	( <sup>6</sup> )	9.81	( <sup>6</sup> )
Temples	2.19	2.01	1.00	( <sup>6</sup> )	2.91	( <sup>6</sup> )
Fruit, Deciduous and Other						
Apples, Ton <sup>11</sup>						
Processing	108.00	130.00	132.00	( <sup>20</sup> )	127.00	( <sup>6</sup> )
Apricots, Ton						
Fresh <sup>14</sup>	650.00	678.00	618.00	672.00	690.00	700.00
Processing <sup>11</sup>						
Dried (CA)	1,960.00	1,590.00	1,760.00	1,950.00	1,890.00	1,900.00
Excl Dried	257.00	268.00	262.00	281.00	277.00	275.00
Avocados, Ton	1,670.00	1,920.00	1,690.00	( <sup>6</sup> )	1,650.00	( <sup>6</sup> )
Cherries						
Sweet, Ton	1,230.00	1,550.00	1,410.00	1,570.00	1,275.00	1,328.00
Tart, Lb	0.186	0.448	0.359	0.332	0.210	0.225
Cranberries, Bbl	23.80	32.20	33.70	34.90	39.00	38.00
Dates, (CA) Ton	1,360.00	1,550.00	1,640.00	1,520.00	1,175.00	12.73
Grapes, Ton						
Raisin Varieties						
Dried (CA)	570.00	393.00	563.00	1,230.00	845.00	875.00
Excl Raisin Var Dr	558.00	490.00	478.00	521.00	482.00	497.00
Kiwifruit, Ton <sup>12</sup>	667.00	783.00	853.00	( <sup>6</sup> )	607.00	( <sup>6</sup> )
Nectarines, (CA) Ton						
Fresh <sup>12</sup>	480.00	382.00	436.00	342.00	436.00	441.00
Processing <sup>11</sup>	26.00	( <sup>20</sup> )	( <sup>20</sup> )	( <sup>20</sup> )	25.90	( <sup>6</sup> )
Olives (CA), Ton						
Processing <sup>13</sup>						
Crushed for Oil	300.00	240.00	238.00	519.00	133.30	184.10
Excl Crushed	673.00	573.00	409.00	583.00	569.00	578.00
Canning <sup>13</sup>	770.00	662.00	458.00	701.00	660.00	675.00

See footnote(s) at end of table.

-continued

**Prices Received by Farmers used to Calculate Parity Prices  
for Agricultural Commodities, United States, 1995-2004 <sup>1</sup>**

Commodity and Unit	1995	1996	1997	1998	1999	2000
	Marketing Year Average Prices <sup>5</sup>					
	<i>Dollars</i>	<i>Dollars</i>	<i>Dollars</i>	<i>Dollars</i>	<i>Dollars</i>	<i>Dollars</i>
Papayas (HI), Fresh, Lb	0.435	0.448	0.529	0.350	0.402	0.316
Peaches						
Fresh, Ton <sup>14</sup>	520.00	662.00	488.00	602.00	572.00	552.00
Processing <sup>11</sup>						
Dried (CA), Ton	894.00	726.00	612.00	544.50	620.00	728.00
Excluding Dried, Ton						
Clingstone CA, Ton	213.00	219.00	260.00	219.00	225.00	250.00
Freestone, Ton	198.00	191.00	206.00	196.00	196.00	206.00
Pears						
Fresh, Ton <sup>4</sup>	343.00	496.00	329.00	375.00	388.00	321.00
Processing, Ton <sup>11</sup>						
Dried (CA)	919.00	1,290.00	1,020.00	1,500.00	1,040.00	909.00
Excluding Dried	177.00	223.00	213.00	199.00	184.00	190.00
Plums (CA), Ton						
Fresh <sup>20</sup>	( <sup>20</sup> )	( <sup>20</sup> )	( <sup>20</sup> )	( <sup>20</sup> )	( <sup>20</sup> )	( <sup>20</sup> )
Processing <sup>20</sup>	( <sup>20</sup> )	( <sup>20</sup> )	( <sup>20</sup> )	( <sup>20</sup> )	( <sup>20</sup> )	( <sup>20</sup> )
Prunes, Dried, CA, Ton <sup>11</sup>	1,040.00	839.00	883.00	764.00	861.00	770.00
Prunes & Plums, Ex CA, Ton						
Fresh <sup>14</sup>	441.00	575.00	448.00	476.00	232.00	321.00
Processing <sup>11</sup>	145.00	267.00	134.00	162.00	182.00	178.00
Strawberries, Lb						
Fresh <sup>15 16</sup>	0.604	0.565	0.656	0.741	0.744	0.649
Processing	0.262	0.204	0.271	0.319	0.330	0.245
Sugar Crops, Ton <sup>17</sup>						
Sugarbeets	38.10	45.40	38.80	36.40	37.20	34.20
Sugarcane	29.50	28.30	28.10	27.30	25.60	26.10

See footnote(s) at end of table.

-continued

**Prices Received by Farmers used to Calculate Parity Prices  
for Agricultural Commodities, United States, 1995-2004 <sup>1</sup> (continued)**

Commodity and Unit	2001	2002	2003	2004	1994-03 Average	1995-04 Average
	Marketing Year Average Prices <sup>5</sup>					
	<i>Dollars</i>	<i>Dollars</i>	<i>Dollars</i>	<i>Dollars</i>	<i>Dollars</i>	<i>Dollars</i>
Papayas (HI), Fresh, Lb	0.279	0.277	0.319	0.361	0.360	0.372
Peaches						
Fresh, Ton <sup>14</sup>	614.00	612.00	582.00	548.00	558.00	576.00
Processing <sup>11</sup>						
Dried (CA), Ton	514.00	456.00	446.00	382.00	640.00	592.00
Excluding Dried, Ton						
Clingstone CA, Ton	244.00	247.00	215.00	263.00	227.00	236.00
Freestone, Ton	207.00	199.00	204.00	184.00	186.00	199.00
Pears						
Fresh, Ton <sup>4</sup>	334.00	361.00	357.00	421.00	356.00	373.00
Processing, Ton <sup>11</sup>						
Dried (CA)	1,210.00	1,315.00	1,350.00	1,040.00	1,150.00	1,159.00
Excluding Dried	175.00	202.00	206.00	160.00	196.00	193.00
Plums (CA), Ton						
Fresh <sup>20</sup>	( <sup>20</sup> )	( <sup>20</sup> )	( <sup>20</sup> )	( <sup>20</sup> )	450.00	470.00
Processing <sup>20</sup>	( <sup>20</sup> )	( <sup>20</sup> )	( <sup>20</sup> )	( <sup>20</sup> )	27.40	29.30
Prunes, Dried, CA, Ton <sup>11</sup>	726.00	810.00	772.00	1,500.00	856.00	897.00
Prunes & Plums, Ex CA, Ton						
Fresh <sup>14</sup>	345.00	396.00	446.00	466.00	394.00	415.00
Processing <sup>11</sup>	185.00	204.00	254.00	228.00	182.00	194.00
Strawberries, Lb						
Fresh <sup>15 16</sup>	0.758	0.713	0.749	0.788	0.678	0.697
Processing	0.292	0.331	0.281	0.263	0.283	0.280
Sugar Crops, Ton <sup>17</sup>						
Sugarbeets	39.80	39.60	41.40	( <sup>6</sup> )	39.00	( <sup>6</sup> )
Sugarcane	29.00	28.40	29.50	( <sup>6</sup> )	28.10	( <sup>6</sup> )

See footnote(s) at end of table.

-continued

**Prices Received by Farmers used to Calculate Parity Prices  
for Agricultural Commodities, United States, 1995-2004 <sup>1</sup>**

Commodity and Unit	1995	1996	1997	1998	1999	2000
	Marketing Year Average Prices <sup>5</sup>					
	<i>Dollars</i>	<i>Dollars</i>	<i>Dollars</i>	<i>Dollars</i>	<i>Dollars</i>	<i>Dollars</i>
Tree Nuts <sup>18</sup>						
Almonds, Lb	2.48	2.08	1.56	1.41	0.86	0.97
Hazelnuts, Ton	913.00	860.00	899.00	964.00	890.00	891.00
Pecans, All, Lb	1.010	0.641	0.774	1.210	0.814	1.140
Pistachio, All, Lb	1.09	1.16	1.13	1.03	1.33	1.01
Walnuts, Ton	1,400.00	1,580.00	1,430.00	1,050.00	886.00	1,240.00
Vegetables, Fresh, Cwt <sup>15</sup>						
Asparagus	113.00	92.90	108.00	124.00	131.00	117.00
Broccoli <sup>19</sup>	29.30	27.10	28.50	30.20	24.10	31.20
Carrots	16.70	13.40	12.90	12.20	16.80	13.10
Cauliflower	33.20	32.90	31.60	34.50	29.70	32.10
Celery <sup>19</sup>	16.30	10.50	14.70	11.70	12.00	18.50
Honeydew Melons	20.60	17.00	18.90	21.60	21.10	19.20
Lettuce	23.50	14.70	17.50	16.20	13.30	17.30
Onions <sup>19</sup>	9.90	10.50	12.60	13.00	9.74	11.20
Sweet Corn	18.30	16.90	17.70	17.20	16.90	18.50
Tomatoes	25.50	28.10	31.70	35.20	25.80	30.70
Vegetables, Proc., Ton <sup>11</sup>						
Asparagus	1,150.00	1,210.00	1,220.00	1,200.00	1,180.00	1,180.00
Green Peas	267.00	284.00	288.00	282.00	275.00	248.00
Snap Beans	173.00	178.00	176.00	172.00	173.00	171.00
Sweet Corn	75.60	78.50	74.90	73.30	71.10	73.40
Tomatoes	63.20	62.30	60.70	65.30	71.10	59.80

See footnote(s) at end of table.

-continued

**Prices Received by Farmers used to Calculate Parity Prices  
for Agricultural Commodities, United States, 1995-2004 <sup>1</sup> (continued)**

Commodity and Unit	2001	2002	2003	2004	1994-03 Average	1995-04 Average
	Marketing Year Average Prices <sup>5</sup>					
	<i>Dollars</i>	<i>Dollars</i>	<i>Dollars</i>	<i>Dollars</i>	<i>Dollars</i>	<i>Dollars</i>
Tree Nuts <sup>18</sup>						
Almonds, Lb	0.91	1.11	1.57	2.04	1.41	1.50
Hazelnuts, Ton	701.00	1,000.00	1,030.00	1,370.00	900.00	952.00
Pecans, All, Lb	0.594	0.955	0.984	1.670	0.916	0.979
Pistachio, All, Lb	1.01	1.10	1.22	1.26	1.10	1.10
Walnuts, Ton	1,120.00	1,170.00	1,150.00	( <sup>6</sup> )	1,210.00	( <sup>6</sup> )
Vegetables, Fresh, Cwt <sup>15</sup>						
Asparagus	140.00	110.00	115.00	131.00	115.10	118.20
Broccoli <sup>19</sup>	26.50	31.40	32.70	33.70	28.90	29.50
Carrots	17.10	19.10	19.10	20.30	15.30	16.10
Cauliflower	29.20	32.20	35.10	33.00	31.90	32.40
Celery <sup>19</sup>	14.40	12.80	13.40	15.10	13.60	13.90
Honeydew Melons	21.10	18.10	18.80	17.60	19.30	19.40
Lettuce	17.90	21.10	18.10	16.80	17.30	17.60
Onions <sup>19</sup>	10.70	12.10	14.50	11.80	11.40	11.60
Sweet Corn	19.50	19.20	19.30	21.30	18.10	18.50
Tomatoes	30.00	31.60	37.40	37.20	30.30	31.30
Vegetables, Proc., Ton <sup>11</sup>						
Asparagus	1,040.00	1,110.00	1,170.00	1,180.00	1,151.00	1,164.00
Green Peas	264.00	253.00	250.00	251.00	267.00	266.00
Snap Beans	161.00	151.00	157.00	160.00	168.00	167.00
Sweet Corn	73.00	68.00	70.40	72.10	72.70	73.00
Tomatoes	59.20	58.20	58.70	58.60	62.10	61.70

<sup>1</sup> Average used to compute "adjusted base prices". 2004 and 1994-2003 averages are preliminary. <sup>2</sup> Includes an allowance for price support operations as authorized by the Secretary of Agriculture, January 30, 1956. This entry is omitted for commodities not affected by the adjustment. <sup>3</sup> Simple average of monthly prices. Due to rounding differences, the 10-year average of these data might differ slightly from the 120-month averages shown in the 1994-2003 and 1995-2004 columns. <sup>4</sup> Equivalent packinghouse-door returns for CA, NY (applies only starting in 1985), OR (except peaches), and WA. Prices "as sold" for other states. <sup>5</sup> Unless otherwise noted these prices are the averages for the marketing season computed by weighting state prices by quantities sold. <sup>6</sup> Not available. <sup>7</sup> Price for year harvested, from Tobacco Division, AMS. <sup>8</sup> For 1984 through 1986 the national averages are the support prices. <sup>9</sup> Average local market price; does not include incentive payment per pound, the 1993-2002 and 1994-2003 averages for parity purposes include this allowance. <sup>10</sup> Consistent with legislation quoted in this report, citrus prices shown for 2003 relate to the citrus crop designated as 2003-2004 in the production reports. <sup>11</sup> Equivalent returns at processing plant door. <sup>12</sup> Equivalent returns at packinghouse-door. <sup>13</sup> Equivalent returns for bulk fruit at first delivery point. <sup>14</sup> Based on "as sold" prices for fresh fruit in all states. <sup>15</sup> Average F.O.B. shipping point prices. <sup>16</sup> Includes strawberries for processing in states where the processing crop is not estimated separately. <sup>17</sup> Prices include average conditional payments per ton made under the sugar acts of 1937 and 1948. Crop deficiency and abandonment payments not included. <sup>18</sup> Prices on in-shell basis except almonds which are on shelled basis. <sup>19</sup> Includes some processing. <sup>20</sup> Marketing year average prices not published to avoid disclosure of individual firms.

**Indexes of Prices Received by Farmers, by Month and Annual Average,  
United States, 2001-2005**

Year	Jan	Feb	Mar	Apr	May	Jun	Jul	Aug	Sep	Oct	Nov	Dec	Avg <sup>1</sup>
All Farm Products 1910-14 = 100													
2001	613	635	656	672	685	682	684	698	674	600	597	607	650
2002	601	625	667	597	608	614	626	632	623	606	616	619	620
2003	631	626	629	639	668	683	667	694	705	718	736	723	677
2004	709	736	770	793	820	813	789	766	733	722	735	705	758
2005	700												
1990-92 = 100													
2001	97	100	103	106	108	107	108	110	106	94	94	95	102
2002	95	98	105	94	96	97	99	100	98	95	97	98	98
2003	99	99	99	101	105	108	105	109	111	113	116	114	107
2004	112	116	121	125	129	128	124	121	115	114	116	111	119
2005	110												
All Crops 1910-14 = 100													
2001	464	483	489	506	518	503	512	537	505	436	444	479	490
2002	462	501	580	493	511	515	537	555	537	500	510	507	517
2003	506	509	523	541	570	580	539	559	550	549	568	570	547
2004	559	595	596	607	611	604	592	584	556	547	555	510	576
2005	493												
1990-92 = 100													
2001	94	98	99	103	105	102	104	109	102	88	90	97	99
2002	94	102	118	100	104	104	109	113	109	101	103	103	105
2003	103	103	106	110	116	118	109	113	111	111	115	115	111
2004	113	121	121	123	124	122	120	118	113	111	112	103	117
2005	100												

<sup>1</sup> Simple average required for parity regulations. Weighted 1990-92 average equals 100. Average is year-to-date for current year.



**Indexes of Prices Received by Farmers, by Month and Annual Average,  
United States, 2001-2005**

Year	Jan	Feb	Mar	Apr	May	Jun	Jul	Aug	Sep	Oct	Nov	Dec	Avg <sup>1</sup>
Food Grains 1910-14 = 100													
2001	296	291	293	292	303	289	279	286	292	286	281	290	290
2002	284	270	271	267	274	302	333	365	411	410	394	396	331
2003	372	336	326	316	326	323	311	345	350	352	370	385	343
2004	393	395	402	408	407	386	366	356	363	363	362	359	380
2005	360												
1990-92 = 100													
2001	93	91	92	92	95	91	88	90	92	90	89	91	91
2002	89	85	85	84	86	95	105	115	129	129	124	125	104
2003	117	106	102	99	102	102	98	109	110	111	116	121	108
2004	124	124	127	129	128	121	115	112	114	114	114	113	120
2005	113												
Feed Grains and Hay 1910-14 = 100													
2001	319	324	325	323	322	324	339	342	331	307	308	330	325
2002	322	325	327	328	339	346	364	394	398	377	370	378	356
2003	375	380	380	382	391	392	365	363	360	342	353	368	371
2004	376	404	421	444	453	438	402	386	359	343	330	331	391
2005	320												
1990-92 = 100													
2001	89	91	91	90	90	91	95	96	93	86	86	92	91
2002	90	91	91	92	95	97	102	110	111	105	104	106	100
2003	105	106	106	107	109	110	102	102	101	96	99	103	104
2004	105	113	118	124	127	122	113	108	100	96	92	93	109
2005	90												

<sup>1</sup> Simple average required for parity regulations. Weighted 1990-92 average equals 100. Average is year-to-date for current year.

**Indexes of Prices Received by Farmers, by Month and Annual Average,  
United States, 2001-2005**

Year	Jan	Feb	Mar	Apr	May	Jun	Jul	Aug	Sep	Oct	Nov	Dec	Avg <sup>1</sup>
Cotton 1910-14 = 100													
2001	440	410	347	360	346	331	329	315	309	259	235	260	328
2002	231	237	240	230	226	285	298	292	303	333	363	374	284
2003	385	393	411	384	388	385	391	391	471	573	533	535	437
2004	526	523	521	510	505	506	455	454	417	418	375	344	463
2005	333												
1990-92 = 100													
2001	86	80	68	70	67	65	64	62	60	51	46	51	64
2002	45	46	47	45	44	56	58	57	59	65	71	73	56
2003	75	77	80	75	76	75	76	76	92	112	104	104	85
2004	103	102	102	100	99	99	89	89	81	82	73	67	91
2005	65												
Tobacco 1910-14 = 100													
2001	1735	1752	1496	1235			1622	1574	1639	1657	1722	1709	1614
2002	1761	1704	1478				1609	1561	1574	1609	1739	1735	1641
2003	1817	1800	1570	1065			1557	1570	1635	1643	1726	1735	1612
2004	1822	1891	1830	574			1478	1530	1635	1657	1726	1722	1418
2005	1717												
1990-92 = 100													
2001	115	116	99	82			107	104	108	109	114	113	107
2002	116	113	98				106	103	104	106	115	115	108
2003	120	119	104	70			103	104	108	109	114	115	107
2004	120	125	121	38			98	101	108	109	114	114	98
2005	114												

<sup>1</sup> Simple average required for parity regulations. Weighted 1990-92 average equals 100. Average is year-to-date for current year.

<sup>2</sup> Missing data indicates insufficient sales volume to establish a price.

**Indexes of Prices Received by Farmers, by Month and Annual Average,  
United States, 2001-2005**

Year	Jan	Feb	Mar	Apr	May	Jun	Jul	Aug	Sep	Oct	Nov	Dec	Avg <sup>1</sup>
Oil-Bearing Crops 1910-14 = 100													
2001	458	438	428	412	423	437	468	473	445	407	422	427	437
2002	415	419	432	440	455	483	528	538	483	494	530	537	480
2003	540	548	550	571	594	597	570	552	529	607	664	692	585
2004	714	805	901	935	930	882	824	661	519	529	528	545	731
2005	525												
1990-92 = 100													
2001	84	80	78	75	77	80	86	86	81	74	77	78	80
2002	76	77	79	80	83	88	96	98	88	90	97	98	88
2003	99	100	101	104	109	109	104	101	97	111	121	127	107
2004	131	147	165	171	170	161	151	121	95	97	97	100	134
2005	96												
Fruit and Nuts 1910-14 = 100													
2001	597	587	676	730	670	849	885	900	896	883	792	666	761
2002	585	580	668	632	729	794	831	849	866	859	767	642	734
2003	547	549	602	662	743	813	845	872	880	878	816	655	739
2004	611	694	707	656	816	879	887	916	997	1106	1014	745	836
2005	744												
1990-92 = 100													
2001	86	84	97	105	96	122	127	129	128	126	113	95	109
2002	84	83	96	91	104	114	119	122	124	123	110	92	105
2003	78	79	86	95	106	116	121	125	126	126	117	94	106
2004	87	99	101	94	117	126	127	131	143	158	145	107	120
2005	107												

<sup>1</sup> Simple average required for parity regulations. Weighted 1990-92 average equals 100. Average is year-to-date for current year.

**Indexes of Prices Received by Farmers, by Month and Annual Average,  
United States, 2001-2005**

Year	Jan	Feb	Mar	Apr	May	Jun	Jul	Aug	Sep	Oct	Nov	Dec	Avg <sup>1</sup>
Commercial Vegetables 1910-14 = 100													
2001	810	980	923	916	964	805	837	968	894	688	731	1144	888
2002	1054	1283	1816	803	770	731	771	807	795	704	735	694	914
2003	753	757	823	878	932	1047	809	937	979	960	1058	1134	922
2004	918	1038	789	906	795	755	835	920	907	1102	1192	840	916
2005	702												
1990-92 = 100													
2001	121	147	138	137	144	120	125	145	134	103	109	171	133
2002	158	192	272	120	115	109	115	121	119	105	110	104	137
2003	113	113	123	131	140	157	121	140	146	144	158	170	138
2004	137	155	118	136	119	113	125	138	136	165	178	126	137
2005	105												
Potatoes and Dry Beans 1910-14 = 100													
2001	409	450	437	466	453	486	532	632	516	461	538	578	497
2002	620	645	715	699	748	806	884	651	520	466	524	547	652
2003	533	554	567	592	590	559	570	483	458	443	481	494	527
2004	491	508	530	585	563	560	513	521	488	452	487	504	517
2005	513												
1990-92 = 100													
2001	81	89	86	92	90	96	105	125	102	91	106	114	98
2002	123	127	141	138	148	159	175	129	103	92	104	108	129
2003	105	110	112	117	117	110	113	96	90	87	95	98	104
2004	97	100	105	116	111	111	101	103	96	89	96	100	102
2005	101												

<sup>1</sup> Simple average required for parity regulations. Weighted 1990-92 average equals 100. Average is year-to-date for current year.

**Indexes of Prices Received by Farmers, by Month and Annual Average,  
United States, 2001-2005**

Year	Jan	Feb	Mar	Apr	May	Jun	Jul	Aug	Sep	Oct	Nov	Dec	Avg <sup>1</sup>
Other Crops 1910-14 = 100													
2001	554	554	554	554	554	554	554	554	554	554	554	554	554
2002	561	561	561	561	561	561	561	561	561	561	561	561	561
2003	564	564	564	564	564	564	564	564	564	564	564	564	564
2004	569	569	569	569	569	569	569	569	569	569	569	569	569
2005	578												
1990-92 = 100													
2001	112	112	112	112	112	112	112	112	112	112	112	112	112
2002	114	114	114	114	114	114	114	114	114	114	114	114	114
2003	114	114	114	114	114	114	114	114	114	114	114	114	114
2004	115	115	115	115	115	115	115	115	115	115	115	115	115
2005	117												
Food Commodities 1990-92 = 100													
2001	97	101	105	108	110	110	110	113	109	96	97	98	105
2002	96	100	108	93	94	95	97	97	95	93	95	95	97
2003	97	96	96	99	104	107	105	110	113	116	120	116	107
2004	113	117	123	127	131	131	127	124	118	118	123	116	122
2005	115												

<sup>1</sup> Simple average required for parity regulations. Weighted 1990-92 average equals 100. Average is year-to-date for current year.

**Indexes of Prices Received by Farmers, by Month and Annual Average,  
United States, 2001-2005**

Year	Jan	Feb	Mar	Apr	May	Jun	Jul	Aug	Sep	Oct	Nov	Dec	Avg <sup>1</sup>
Livestock and Products 1910-14 = 100													
2001	764	780	821	833	846	864	857	852	848	798	760	716	812
2002	735	734	723	684	681	689	678	669	655	664	684	698	691
2003	735	727	715	717	740	758	776	809	847	887	895	859	789
2004	842	859	932	968	1023	1020	982	940	907	900	915	919	934
2005	929												
1990-92 = 100													
2001	100	102	107	109	110	113	112	111	111	104	99	93	106
2002	96	96	94	89	89	90	88	87	85	87	89	91	90
2003	96	95	93	93	96	99	101	105	110	116	117	112	103
2004	110	112	122	126	133	133	128	123	118	117	119	120	122
2005	121												
Meat Animals 1910-14 = 100													
2001	987	999	1047	1052	1046	1055	1033	1016	976	925	873	862	989
2002	916	948	937	884	867	868	882	859	821	857	869	896	884
2003	946	963	946	972	1014	1027	1025	1054	1100	1169	1179	1123	1043
2004	1057	1060	1131	1150	1232	1244	1240	1240	1206	1198	1201	1195	1180
2005	1224												
1990-92 = 100													
2001	97	98	103	103	103	104	102	100	96	91	86	85	97
2002	90	93	92	87	85	85	87	84	81	84	86	88	87
2003	93	95	93	96	100	101	101	104	108	115	116	110	103
2004	104	104	111	113	121	122	122	122	119	118	118	118	116
2005	120												

<sup>1</sup> Simple average required for parity regulations. Weighted 1990-92 average equals 100. Average is year-to-date for current year.

**Indexes of Prices Received by Farmers, by Month and Annual Average,  
United States, 2001-2005**

Year	Jan	Feb	Mar	Apr	May	Jun	Jul	Aug	Sep	Oct	Nov	Dec	Avg <sup>1</sup>
Dairy Products 1910-14 = 100													
2001	799	805	854	897	953	996	996	1014	1051	959	885	830	920
2002	836	805	774	768	744	707	682	694	713	744	731	731	744
2003	725	694	676	676	676	676	744	817	891	922	885	848	769
2004	811	836	946	1118	1192	1118	983	922	946	953	989	1008	985
2005	977												
1990-92 = 100													
2001	100	100	106	112	119	124	124	126	131	119	110	103	115
2002	104	100	96	96	93	88	85	87	89	93	91	91	93
2003	90	87	84	84	84	84	93	102	111	115	110	106	96
2004	101	104	118	139	149	139	123	115	118	119	123	126	123
2005	122												
Poultry and Eggs 1910-14 = 100													
2001	296	312	326	325	324	330	335	337	341	338	329	278	323
2002	284	271	271	244	257	280	265	262	258	243	269	270	265
2003	303	291	291	279	288	307	307	316	322	330	350	340	310
2004	373	390	416	392	398	412	407	367	331	323	332	332	373
2005	344												
1990-92 = 100													
2001	105	111	116	116	115	117	119	120	121	120	117	99	115
2002	101	96	96	87	92	100	94	93	92	86	96	96	94
2003	108	104	103	99	103	109	109	112	115	118	124	121	110
2004	133	139	148	140	141	147	145	131	118	115	118	118	133
2005	122												

<sup>1</sup> Simple average required for parity regulations. Weighted 1990-92 average equals 100. Average is year-to-date for current year.

## Parity Price Equivalent for Manufacturing Grade Milk

By direction of the Secretary of Agriculture, the parity price equivalent for manufacturing grade milk is determined as follows: (1) Based on data for the 10 calendar years immediately preceding, compute the ratio of (a) the average price received by farmers, f.o.b. plant, for all manufacturing grade milk to (b) the average price by farmers, f.o.b. plant, for all milk sold to plants and dealers. (2) The parity price for all milk sold to plants is multiplied by the resulting ratio of (a) to (b) to determine the parity price equivalent for manufacturing milk. The parity price equivalent for manufacturing milk is not in itself a parity price but rather is an administrative determination based on the above price relationship.

The ratio is computed in January of each year and is used throughout the calendar year. The ratio to be used during 2005 is 91.4, up 1 point from 2004. The parity price for all milk sold to plants is \$35.10 per cwt. This price multiplied by 91.4 percent, results in \$32.08 per cwt as the parity price equivalent for manufacturing milk of average milkfat content. In 2004, the simple average of monthly fat tests for manufacturing grade milk was 3.83 percent. The fat test ranged from a low of 3.65 in July to a high of 4.03 percent in December.

### Average price January 1995 - December 2004

a. Manufacturing grade milk .....	12.70
b. All milk sold at wholesale to plants and dealers .....	13.90
c. Ratio a/b .....	91.4

### Parity price equivalent for manufacturing grade milk - United States

a. January 2004 .....	30.83
b. December 2004 .....	31.64
c. January 2005 .....	32.08

### Manufacturing Grade Milk: Average Price Per Cwt Received <sup>1</sup>, by Month, United States, January 1995-December 2004

Year	Jan	Feb	Mar	Apr	May	Jun	Jul	Aug	Sep	Oct	Nov	Dec
	<i>Dollars</i>	<i>Dollars</i>	<i>Dollars</i>	<i>Dollars</i>	<i>Dollars</i>	<i>Dollars</i>	<i>Dollars</i>	<i>Dollars</i>	<i>Dollars</i>	<i>Dollars</i>	<i>Dollars</i>	<i>Dollars</i>
1995	11.40	11.70	11.70	11.20	11.00	11.10	11.00	11.30	12.10	12.80	13.10	12.90
1996	12.80	12.60	12.60	12.90	13.40	13.60	14.00	14.60	15.30	14.60	12.40	11.80
1997	12.10	12.50	12.40	11.60	10.90	10.80	10.80	11.90	12.70	13.20	13.60	13.60
1998	13.50	13.50	12.90	12.10	11.40	13.10	14.10	14.70	15.40	16.80	17.40	17.40
1999	15.40	12.40	12.50	12.00	11.60	12.00	13.40	15.40	15.10	12.70	11.10	10.80
2000	10.70	10.30	10.10	10.20	10.10	10.40	10.80	10.70	11.40	10.60	10.40	10.80
2001	10.70	11.10	12.20	12.80	14.20	14.90	14.90	15.20	16.00	14.30	12.40	12.50
2002	12.50	11.90	11.40	11.30	11.10	10.30	9.60	9.90	10.40	11.30	10.70	10.70
2003	10.70	10.40	9.90	10.00	10.20	10.20	11.80	13.20	14.10	14.60	13.80	12.70
2004	12.30	12.80	15.20	19.40	19.20	16.90	14.30	14.10	14.60	14.70	15.60	16.00

<sup>1</sup> Before hauling costs are deducted and including premiums paid to farmers.



## Reliability of Prices Received Estimates

**Definition:** Prices received represent sales from producers to first buyers. They include all grades and qualities. The average commodity price from the survey multiplied by the total quantity marketed theoretically should give the total cash receipts for the commodity.

**Survey Procedures:** Primary sales data used to determine grain prices were obtained from probability samples of about 2000 mills and elevators. These procedures ensure that virtually all grain moving into commercial channels has a chance of being included in the survey. Generally, States surveyed account for 90 percent or more of total U.S. production. Livestock prices are obtained from packers, stockyards, auctions, dealers, and market check data from AMS-USDA, private marketing organizations, and state commodity groups and agencies. Inter-farm sales of grain and livestock are not included since they represent very small percentages of the total marketings. Grain marketed for seed is also excluded. Fruit and vegetable prices are obtained from sample surveys and market check data from AMS-USDA, private marketing organizations, state agencies, and universities.

**Summary and Estimation Procedures:** Survey quantities sold are expanded by strata to state levels and used to weight average strata prices to a state average. State prices are then weighted to a U.S. price based on expanded marketings. Recommendations are prepared by the State Statistical Offices and reviewed by the Agricultural Statistics Board in Washington, D.C. State recommendations are reviewed for reasonableness with survey data, other States, and recent historic estimates.

**Revisions:** For most items, the current month's preliminary price represents a 3-5 day period around the 15<sup>th</sup> of the month. Previous month's prices represent actual dollars received for quantities sold during the entire month. Revisions are published in monthly issues of *Agricultural Prices*.

**Reliability:** U.S. price estimates based on probability surveys generally have a sampling error of less than one percent for the major commodities such as corn, wheat, soybeans, cotton, and rice. Current methods of summarization for non-probability commodities are not designed directly to calculate sampling errors. However, analytical measures approximate the U.S. relative sampling errors at around five percent. Any nonsampling errors are attributed to such things as the inability to obtain correct information, differences in interpreting questions or definitions, mistakes in coding or processing the data, etc. Efforts are made at each step in the survey process to minimize these nonsampling errors.

## Prices Paid by Farmers

The January Index of Prices Paid for Commodities and Services, Interest, Taxes, and Farm Wage Rates (PPITW) is 134 (1990-92=100), up 1 point from December 2004 and 3.1 percent above January 2004.

**PRODUCTION INDEX:** The January index, at 131, is up 0.8 percent from last month and 3.1 percent above last year. Higher prices in January for self-propelled machinery, feeder pigs, and nitrogen fertilizers more than offset lower prices for LP gas, diesel fuel, and feed grains.

**Feed:** The January index, at 101, is 1.0 percent less than December and 14 percent below last January. Since December, lower prices for feed grains, complete feeds, and feed concentrates more than offset higher prices for hay & forages and feed supplements.

**Livestock & Poultry:** The January index for livestock and poultry purchases, at 134, is 0.8 percent higher than last month and 19 percent above last year. Since December, higher prices for feeder pigs more than offset lower prices for feeder cattle and milk cows. The January feeder cattle price, at \$109.50 per cwt, is down \$0.20 per cwt from the December price. January feeder pigs averaged \$169.00 per cwt, up \$8.00 per cwt from December.

**Fertilizer:** The January index, at 148, is up 0.7 percent from December and 13 percent more than January a year ago. Since December, prices are higher for nitrogen fertilizers, mixed fertilizers, and potash & phosphate materials.

**Agricultural Chemicals:** The January index, at 120, is down 0.8 percent from last month and January 2004.

**Fuels:** The January index, at 158, is down 4.8 percent from a month earlier but 9 percent above January 2004. Compared to last month, prices are lower for diesel fuel, and gasoline but higher for LP gas.

**Farm Machinery:** The January Farm Machinery Index is 173, up 2.4 percent from December and 11 percent above last January. Since December, prices are higher for self-propelled machinery.

**CONSUMER PRICE INDEX:** The December 2004 Consumer Price Index for all urban consumers (CPI-U) decreased 0.4 percent before seasonal adjustment to a level of 190.3 (1982-4=100). This compares to the November index of 191.0. For the 12-month period ending in December, the overall index has increased 3.3 percent.

**Indexes of Prices Paid by Farmers and Related Parity Ratios  
United States, January 2005 With Comparisons**

Indexes and Ratios	1910-14 = 100			1990-92 = 100		
	2004		2005	2004		2005
	Jan	Dec	Jan	Jan	Dec	Jan
Prices Paid by Farmers for Commodities & Services, Interest, Taxes, & Wage Rates (PPITW)	1,735	*1,773	1,783	130	*133	134
Production	1,228	*1,262	1,270	127	130	131
Feed	573	*497	495	117	*102	101
Livestock and Poultry	1,440	*1,706	1,710	113	133	134
Seeds	1,553	1,564	1,564	157	158	158
Fertilizer	481	*538	542	131	*147	148
Agricultural Chemicals	745	*748	741	121	*121	120
Fuels	1,121	*1,280	1,223	145	*166	158
Supplies & Repairs	965	*987	987	136	139	139
Autos & Trucks	3,052	*3,067	3,100	115	*115	117
Farm Machinery	3,901	*4,239	4,334	156	*169	173
Building Material	1,704	*1,871	1,878	125	*138	138
Farm Services & Rent	1,451	*1,456	1,483			
Rent				123	*124	126
Interest <sup>1</sup>	2,593	*2,593	2,643	103	*103	105
Taxes <sup>2</sup>	3,474	3,474	3,542	130	130	132
Wage Rates	6,080	6,009	6,009	163	161	161
Production, Interest, Taxes, & Wage Rates (PITW)	1,729	*1,765	1,778	129	*131	132
Family Living-CPI <sup>3</sup>	1,759	*1,807	1,807	137	*141	141
Ratio (Received/Paid) Parity Ratio <sup>4</sup>	41	40	39	86	*83	82
Parity Ratio Adjusted PPITW Adjusted for Productivity <sup>5</sup>	43	42	43			
	1206	*1215	1210			
Crop Sector (PPITW)				133	137	138
Livestock Sector (PPITW)				127	129	130
Farm Sector (Production)				122	121	122
Non-Farm Sector (Production)				129	*134	135

\* Revised.

<sup>1</sup> Interest per acre on farm real estate debt and interest rate on farm non-real estate debt.

<sup>2</sup> Farm real estate taxes payable per acre.

<sup>3</sup> Bureau of Labor Statistics, Consumer Price Index for all urban consumers (CPI-U), for the previous month converted by the USDA.

<sup>4</sup> Ratio of index of prices received to PPITW (1910-14=100).

<sup>5</sup> PPITW is adjusted based on productivity trend for the prior 15 years.

**Prices Paid Indexes and Annual Weights for Input Components and  
Sub-Components United States, January 2005 With Comparisons**

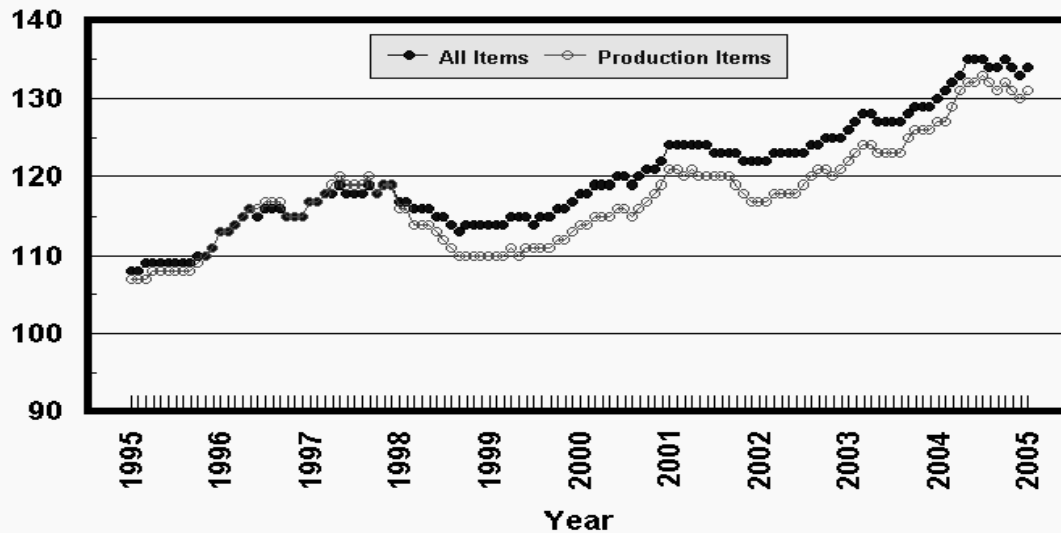
Index	Relative Weights 5-Year Moving Average <sup>1</sup>		Input Indexes		
	2004	2005	2004		2005
			Jan	Dec	Jan
	<i>Percent</i>	<i>Percent</i>	<i>(1990-92=100)</i>	<i>(1990-92=100)</i>	<i>(1990-92=100)</i>
Production Items	66.2	66.4	127	130	131
Feed	10.7	10.7	117	*102	101
Feed Grains	1.5	1.5	104	*87	84
Complete Feeds	5.2	5.2	119	*105	105
Hay/Forages	1.3	1.3	106	110	111
Concentrates	1.7	1.7	125	*91	90
Supplements	0.9	0.9	135	*117	117
Livestock & Poultry	7.4	7.7	113	133	134
Feeder Cattle	5.8	6.0	113	130	129
Feeder Pigs	0.6	0.6	104	*175	184
Milk Cow Replacements	0.6	0.6	123	145	144
Poultry	0.4	0.5	112	112	112
Seeds	3.3	3.5	157	158	158
Field Crops	3.0	3.2	162	163	163
Grasses/Legumes	0.3	0.3	109	111	111
Fertilizer	4.4	4.3	131	*147	148
Mixed Fertilizer	1.9	1.9	117	128	129
Nitrogen	1.8	1.8	152	*173	175
Potash & Phosphate	0.6	0.6	114	*126	127
Agricultural Chemicals	3.7	3.6	121	*121	120
Herbicides	2.4	2.3	113	*114	112
Insecticides	0.9	0.8	144	*144	143
Fungicides/Other	0.5	0.5	116	*117	116
Fuels	2.7	2.7	145	*166	158
Diesel	1.5	1.6	140	*169	164
Gasoline	0.8	0.8	136	*145	142
LP Gas	0.4	0.4	188	*198	171
Farm Supplies & Repairs	5.4	5.2	136	139	139
Supplies	1.8	1.7	126	129	129
Repairs	3.6	3.5	141	144	144
Autos & Trucks	1.8	1.8	115	*115	117
Autos	0.2	0.2	108	*108	109
Trucks	1.6	1.5	116	*116	118
Farm Machinery	4.0	4.0	156	*169	173
Tractors	0.9	0.9	145	147	147
Self-Propelled	1.6	1.6	162	*182	191
Other Machinery	1.5	1.5	155	*168	169
Building Materials	3.3	3.6	125	*138	138
Farm Services	12.4	12.4	123	*124	126
Custom Rates	1.3	1.3	125	125	125
Other Services	11.1	11.1	123	*124	126
Rent	7.1	6.9	120	120	123
Cash	3.8	3.7	145	145	147
Share	3.3	3.2	91	91	94
Interest	4.7	4.5	103	*103	105
Taxes	3.0	2.9	130	130	132
Wage Rates	7.6	7.6	163	161	161
Family Living-CPI	18.5	18.6	137	*141	141

\* Revised.

<sup>1</sup> Weights may not add due to rounding.

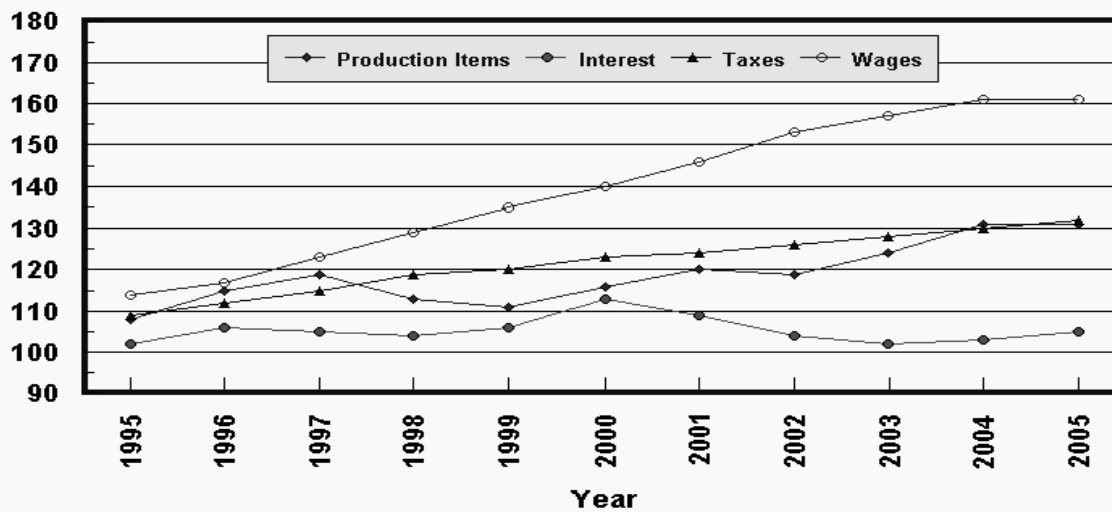
## Prices Paid by Farmers, Major Indexes US, by Quarter and Month

Percent (1990-92=100)



## Prices Paid by Farmers, Major Indexes US, Annual Averages 1/

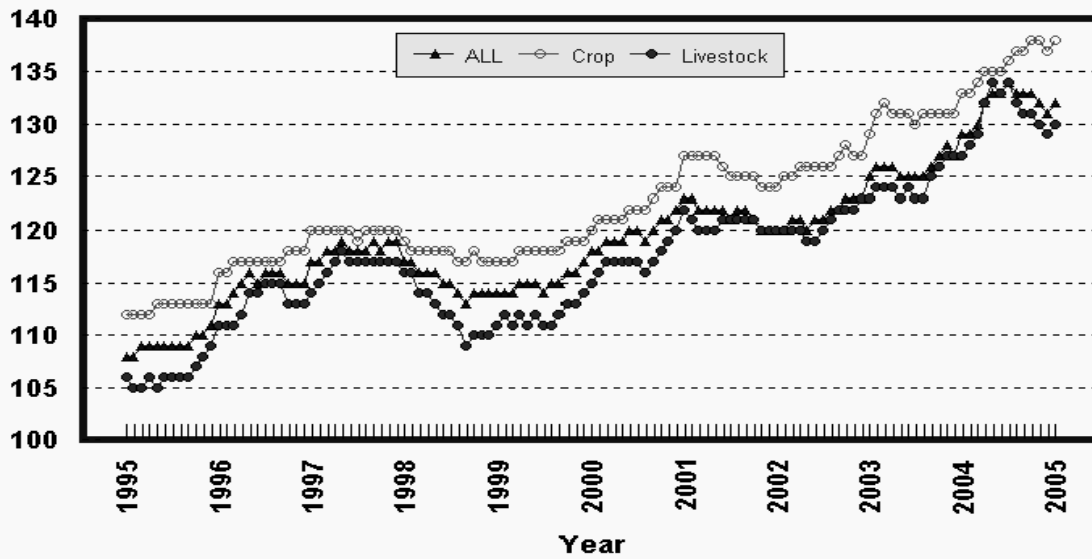
Percent (1990-92=100)



1/ Index values for 2004 are year-to-date averages.

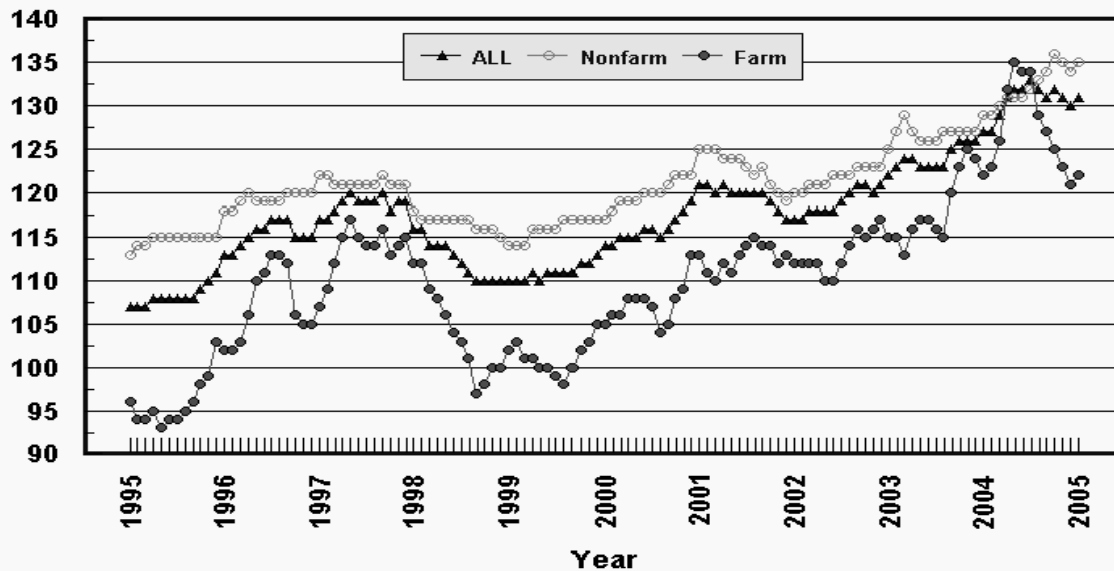
## Prices Paid by Farmers, Indexes, All Items US, By Farm Type

Percent (1990-92=100)



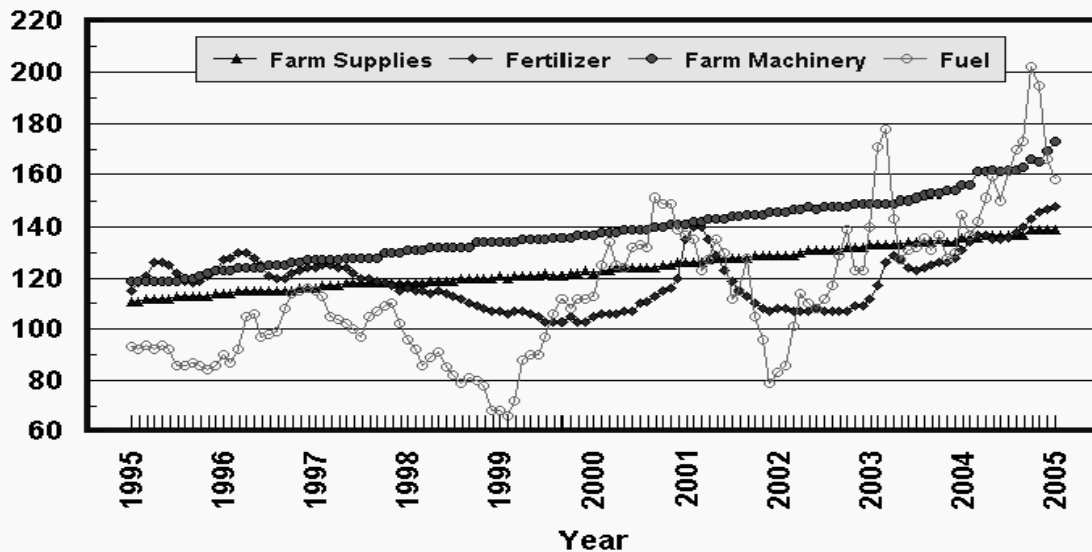
## Prices Paid by Farmers, Indexes, All Production Items US, By Sector Origin

Percent (1990-92=100)



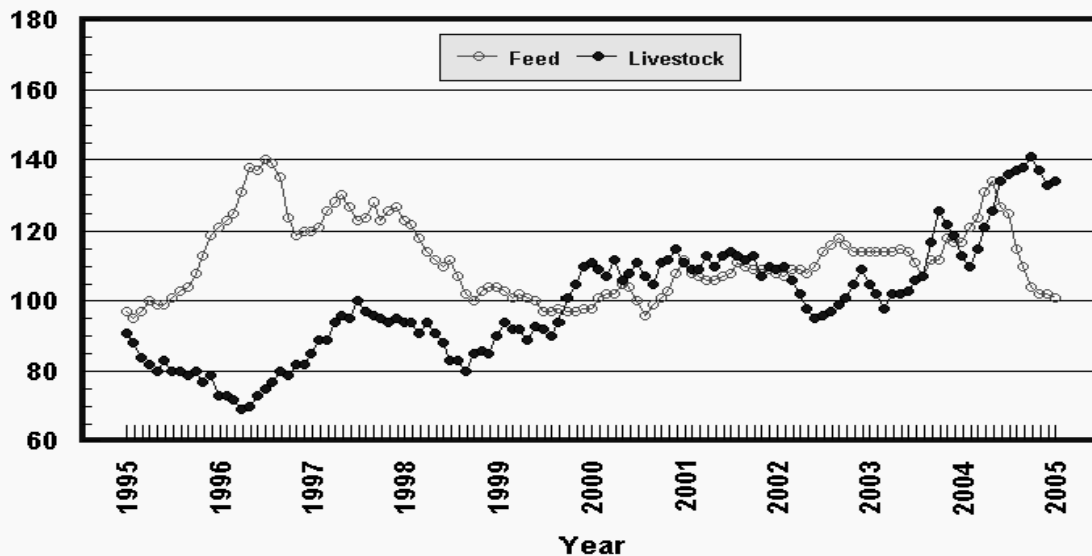
## Prices Paid by Farmers, Selected Production Indexes US, By Non-Farm Sector

Percent (1990-92=100)



## Prices Paid by Farmers, Selected Production Indexes US, By Farm Sector

Percent (1990-92=100)



**Feed Price Ratios: United States, January 2005 with Comparisons**

Feed Price Ratio <sup>1</sup>	2004		2005
	Jan	Dec	Jan
Broiler-Feed: Pounds of Broiler Grower Feed equal in value to 1 pound of broiler, live weight	5.6	*6.6	7.4
Market Egg Feed: Pounds of Laying Feed equal in Value to 1 dozen eggs	12.9	*9.8	7.7
Hog-Corn: Bushels of Corn equal in value to 100 pounds of hog, live weight	15.4	*25.6	26.8
Milk-Feed: Pounds of 16% Mixed Dairy Feed equal In value to 1 pound of Whole Milk	2.70	*3.66	3.63
Steer & Heifer-Corn: Bushels of Corn equal In value to 100 pounds of Steer & Heifers, Live weight	35.7	*45.0	47.6
Turkey-Feed: Pounds of Turkey Grower equal in Value to 1 pound of Turkey, live weight	5.1	*8.3	7.2

\* Revised.

<sup>1</sup> Effective January 1995, prices of commercial prepared feeds are based on current U.S. prices received for corn, soybeans, alfalfa hay, and all wheat.

**Prices Used to Calculate Feed Price Ratios:  
United States, January 2005 with Comparisons**

Commodity	Unit	2004		2005
		Jan	Dec	Jan
Broilers, Live	Lb	0.430	0.390	0.430
Eggs, Market	Doz	0.806	0.488	0.373
Hogs, All	Cwt	36.80	*52.30	53.00
Milk, All	Cwt	13.20	*16.40	15.90
Steers and Heifers	Cwt	85.40	*91.80	94.20
Turkeys, Live	Lb	0.349	0.462	0.393
Corn	Bu	2.39	*2.04	1.98
Hay, Alfalfa, Baled	Ton	84.80	92.40	90.90
Soybeans	Bu	7.35	*5.45	5.32
Wheat, All	Bu	3.68	3.39	3.42

\* Revised.

**Feeder Livestock: Prices Paid, United States  
January 2005 with Comparisons**

Commodity	Unit	2004		2005
		Jan	Dec	Jan
		<i>Dollars</i>	<i>Dollars</i>	<i>Dollars</i>
Feeders and Stockers				
Cattle and Calves	Cwt	95.30	109.70	109.50
Feeder Pigs	Cwt	95.50	*161.00	169.00

\* Revised.



**Grazing Fee Rates for Cattle by Selected States and Regions**

State	Survey Average Rates <sup>1</sup>					
	Animal Unit <sup>2</sup>		Cow-Calf		Per Head	
	2003	2004	2003	2004	2003	2004
	<i>Dollars per Month</i>	<i>Dollars per Month</i>	<i>Dollars per Month</i>	<i>Dollars per Month</i>	<i>Dollars per Month</i>	<i>Dollars per Month</i>
AZ	7.50	8.00	( <sup>7</sup> )	( <sup>7</sup> )	8.50	9.00
CA	13.50	14.50	17.50	19.50	14.30	15.50
CO	13.00	13.50	14.60	15.00	13.50	14.00
ID	12.00	12.20	14.00	14.20	12.60	12.60
KS	13.50	13.00	16.50	16.50	13.50	13.50
MT	15.20	15.90	17.40	17.40	15.90	16.20
NE	21.60	23.00	26.00	27.50	23.40	25.20
NV	10.50	10.60	11.80	12.00	11.80	12.00
NM	8.60	9.70	12.40	11.90	10.00	11.00
ND	13.50	13.00	14.50	14.20	14.00	13.50
OK	7.00	8.00	9.00	10.00	7.50	8.50
OR	12.50	13.00	14.80	15.10	12.20	12.50
SD	17.30	17.60	20.20	21.50	19.20	19.20
TX	8.50	10.00	9.00	10.80	9.00	9.80
UT	11.60	11.80	13.40	13.80	12.50	13.10
WA	11.20	10.80	11.70	12.50	11.20	10.80
WY	13.40	13.90	15.50	16.00	13.90	14.30
17-State <sup>3</sup>	12.30	13.10	14.40	15.30	13.10	13.70
16-State <sup>4</sup>	13.80	14.30	16.40	17.10	14.60	15.20
11-State <sup>5</sup>	12.80	13.30	15.10	15.50	13.40	13.80
9-State <sup>6</sup>	12.10	13.00	14.10	15.10	12.90	13.60

<sup>1</sup> The average rates are estimates based on survey indications of monthly lease rates for private, non-irrigated grazing land from the January Cattle Survey.

<sup>2</sup> Includes animal unit plus cow-calf rates. Cow-calf rate converted to animal unit (AUM) using (1 aum=cow-calf \*0.833).

<sup>3</sup> 17 Western States: All States listed.

<sup>4</sup> 16 Western States: All States except Texas.

<sup>5</sup> 11 Western States: AZ, CA, CO, ID, MT, NV, NM, OR, UT, WA, and WY.

<sup>6</sup> 9 Great Plains States: CO, KS, NE, NM, ND, OK, SD, TX, and WY.

<sup>7</sup> Insufficient data.

**Prices Paid Indexes: Monthly and Annual Average  
United States, 2001-2005**

Year	Jan	Feb	Mar	Apr	May	Jun	Jul	Aug	Sep	Oct	Nov	Dec	Avg <sup>1</sup>
Commodities and Services, Interest, Taxes, and Wage Rates (PPITW) 1910-14 = 100													
2001	1656	1651	1646	1646	1646	1647	1641	1642	1644	1636	1626	1620	1642
2002	1627	1628	1634	1639	1634	1637	1640	1648	1657	1666	1661	1666	1645
2003	1683	1697	1703	1699	1693	1696	1690	1690	1706	1718	1721	1718	1701
2004	1735	1740	1758	1777	1791	1791	1796	1790	1786	1793	1786	1773	1776
2005	1783												1783
1990-92 = 100													
2001	124	124	124	124	124	124	123	123	123	123	122	122	123
2002	122	122	123	123	123	123	123	124	124	125	125	125	124
2003	126	127	128	128	127	127	127	127	128	129	129	129	128
2004	130	131	132	133	135	135	135	134	134	135	134	133	133
2005	134												134
Items Used for Production, Interest, Taxes, and Wage Rates (PITW) 1910-14 = 100													
2001	1654	1647	1640	1639	1637	1638	1631	1632	1633	1625	1614	1608	1633
2002	1615	1615	1620	1624	1618	1621	1625	1633	1643	1653	1648	1654	1631
2003	1674	1688	1693	1689	1682	1685	1677	1676	1695	1710	1714	1711	1691
2004	1729	1733	1753	1775	1790	1788	1795	1788	1783	1789	1780	1765	1772
2005	1778												1778
1990-92 = 100													
2001	123	123	122	122	122	122	121	122	122	121	120	120	122
2002	120	120	121	121	120	121	121	122	122	123	123	123	121
2003	125	126	126	126	125	125	125	125	126	127	128	127	126
2004	129	129	130	132	133	133	134	133	133	133	132	131	132
2005	132												132

<sup>1</sup> Simple average and is year-to-date for current year.

**Prices Paid Indexes: Monthly and Annual Average  
United States, 2001-2005**

Year	Jan	Feb	Mar	Apr	May	Jun	Jul	Aug	Sep	Oct	Nov	Dec	Avg <sup>1</sup>
Items Used for Production 1910-14 = 100													
2001	1176	1170	1164	1169	1167	1168	1162	1164	1165	1152	1142	1137	1161
2002	1139	1138	1143	1149	1143	1146	1154	1162	1171	1172	1168	1173	1155
2003	1183	1196	1200	1200	1194	1196	1195	1193	1210	1221	1224	1221	1203
2004	1228	1232	1249	1272	1285	1284	1287	1280	1276	1283	1275	1262	1268
2005	1270												1270
1990-92 = 100													
2001	121	121	120	121	120	120	120	120	120	119	118	117	120
2002	117	117	118	118	118	118	119	120	121	121	120	121	119
2003	122	123	124	124	123	123	123	123	125	126	126	126	124
2004	127	127	129	131	132	132	133	132	131	132	131	130	131
2005	131												131
Feed 1910-14 = 100													
2001	545	529	520	518	518	521	529	542	538	533	532	534	530
2002	529	524	530	534	529	539	555	568	576	566	557	556	547
2003	556	559	556	555	560	556	541	523	546	545	576	574	554
2004	573	592	606	639	652	622	608	562	536	507	499	497	574
2005	495												495
1990-92 = 100													
2001	112	108	107	106	106	107	108	111	110	109	109	109	109
2002	108	107	109	109	108	110	114	116	118	116	114	114	112
2003	114	114	114	114	115	114	111	107	112	112	118	117	114
2004	117	121	124	131	134	127	125	115	110	104	102	102	118
2005	101												101

<sup>1</sup> Simple average and is year-to-date for current year.

**Prices Paid Indexes: Monthly and Annual Average  
United States, 2001-2005**

Year	Jan	Feb	Mar	Apr	May	Jun	Jul	Aug	Sep	Oct	Nov	Dec	Avg <sup>1</sup>
Livestock and Poultry 1910-14 = 100													
2001	1418	1387	1399	1440	1403	1442	1454	1440	1430	1446	1373	1401	1419
2002	1394	1405	1361	1301	1251	1213	1223	1245	1259	1287	1341	1395	1306
2003	1342	1299	1255	1310	1304	1323	1354	1372	1494	1605	1565	1522	1395
2004	1440	1410	1471	1548	1615	1715	1740	1756	1766	1798	1752	1706	1643
2005	1710												1710
1990-92 = 100													
2001	111	109	109	113	110	113	114	113	112	113	107	110	111
2002	109	110	106	102	98	95	96	97	99	101	105	109	102
2003	105	102	98	102	102	103	106	107	117	126	122	119	109
2004	113	110	115	121	126	134	136	137	138	141	137	133	128
2005	134												134
Seeds 1910-14 = 100													
2001	1238	1238	1238	1329	1329	1329	1329	1329	1329	1329	1329	1329	1306
2002	1329	1329	1329	1426	1426	1426	1426	1426	1426	1426	1426	1426	1402
2003	1426	1426	1426	1553	1553	1553	1553	1553	1553	1553	1553	1553	1521
2004	1553	1553	1553	1564	1564	1564	1564	1564	1564	1564	1564	1564	1561
2005	1564												1564
1990-92 = 100													
2001	125	125	125	134	134	134	134	134	134	134	134	134	132
2002	134	134	134	144	144	144	144	144	144	144	144	144	142
2003	144	144	144	157	157	157	157	157	157	157	157	157	154
2004	157	157	157	158	158	158	158	158	158	158	158	158	158
2005	158												158

<sup>1</sup> Simple average and is year-to-date for current year.

**Prices Paid Indexes: Monthly and Annual Average  
United States, 2001-2005**

Year	Jan	Feb	Mar	Apr	May	Jun	Jul	Aug	Sep	Oct	Nov	Dec	Avg <sup>1</sup>
Fertilizer 1910-14 = 100													
2001	497	513	513	495	473	452	436	421	412	403	398	393	451
2002	394	395	394	391	392	397	394	393	391	394	398	400	394
2003	412	427	463	471	466	454	449	453	457	461	463	469	454
2004	481	493	504	502	494	496	498	507	512	524	534	538	507
2005	542												542
1990-92 = 100													
2001	135	140	140	135	129	123	119	115	113	110	108	107	123
2002	108	108	107	107	107	108	107	107	107	107	109	109	108
2003	112	117	126	129	127	124	123	124	125	126	126	128	124
2004	131	134	137	137	135	135	136	138	140	143	146	147	138
2005	148												148
Agricultural Chemicals 1910-14 = 100													
2001	761	748	746	747	747	745	743	741	739	739	742	739	745
2002	739	731	735	733	734	736	738	739	741	736	738	750	738
2003	752	752	744	746	746	747	747	746	746	748	750	744	747
2004	745	747	747	745	746	747	751	750	752	755	755	748	749
2005	741												741
1990-92 = 100													
2001	123	121	121	121	121	120	120	120	120	120	120	120	121
2002	120	118	119	119	119	119	119	120	120	119	119	121	119
2003	122	122	120	121	121	121	121	121	121	121	121	120	121
2004	121	121	121	121	121	121	121	121	122	122	122	121	121
2005	120												120

<sup>1</sup> Simple average and is year-to-date for current year.

**Prices Paid Indexes: Monthly and Annual Average  
United States, 2001-2005**

Year	Jan	Feb	Mar	Apr	May	Jun	Jul	Aug	Sep	Oct	Nov	Dec	Avg <sup>1</sup>
Fuels 1910-14 = 100													
2001	1061	1043	948	983	1044	1004	861	889	985	807	744	608	915
2002	644	661	783	878	852	836	868	900	997	1074	949	950	866
2003	1080	1322	1371	1105	983	1011	1020	1050	1012	1054	988	1001	1083
2004	1121	1055	1096	1168	1227	1159	1240	1309	1337	1555	1503	1280	1254
2005	1223												1223
1990-92 = 100													
2001	137	135	123	127	135	130	112	115	128	105	96	79	119
2002	83	86	101	114	110	108	112	117	129	139	123	123	112
2003	140	171	178	143	127	131	132	136	131	137	128	130	140
2004	145	137	142	151	159	150	161	170	173	202	195	166	163
2005	158												158
Farm Supplies and Repairs 1910-14 = 100													
2001	895	895	896	900	905	906	911	912	912	912	913	913	906
2002	915	918	917	925	927	927	929	929	929	935	935	935	927
2003	941	941	942	947	947	948	952	952	952	956	954	954	949
2004	965	965	963	971	972	972	975	976	976	985	985	987	974
2005	987												987
1990-92 = 100													
2001	126	126	126	127	128	128	128	128	128	129	129	129	128
2002	129	129	129	130	131	131	131	131	131	132	132	132	131
2003	133	133	133	133	133	134	134	134	134	135	134	134	134
2004	136	136	136	137	137	137	137	137	137	139	139	139	137
2005	139												139

<sup>1</sup> Simple average and is year-to-date for current year.

**Prices Paid Indexes: Monthly and Annual Average  
United States, 2001-2005**

Year	Jan	Feb	Mar	Apr	May	Jun	Jul	Aug	Sep	Oct	Nov	Dec	Avg <sup>1</sup>
Autos and Trucks 1910-14 = 100													
2001	3179	3171	3158	3155	3145	3132	3120	3099	3093	3117	3153	3169	3141
2002	3146	3107	3093	3086	3073	3061	3054	3041	3059	3076	3093	3099	3082
2003	3083	3074	3076	3061	3047	3029	3018	3020	3016	3014	3040	3050	3044
2004	3052	3060	3046	3042	3029	3021	2994	2969	2969	2985	3034	3067	3022
2005	3100												3100
1990-92 = 100													
2001	120	119	119	119	118	118	117	117	116	117	119	119	118
2002	118	117	116	116	116	115	115	114	115	116	116	117	116
2003	116	116	116	115	115	114	113	114	113	113	114	115	115
2004	115	115	115	114	114	114	113	112	112	112	114	115	114
2005	117												117
Farm Machinery 1910-14 = 100													
2001	3544	3561	3568	3580	3589	3594	3602	3607	3627	3643	3649	3654	3602
2002	3668	3674	3694	3700	3703	3699	3704	3705	3719	3724	3730	3730	3704
2003	3731	3732	3733	3737	3751	3766	3784	3815	3831	3846	3861	3875	3789
2004	3901	3919	4049	4040	4052	4051	4062	4066	4082	4166	4149	4239	4065
2005	4334												4334
1990-92 = 100													
2001	141	142	142	143	143	143	144	144	145	145	145	146	144
2002	146	146	147	147	148	147	148	148	148	148	149	149	148
2003	149	149	149	149	150	150	151	152	153	153	154	154	151
2004	156	156	161	161	162	161	162	162	163	166	165	169	162
2005	173												173

<sup>1</sup> Simple average and is year-to-date for current year.

**Prices Paid Indexes: Monthly and Annual Average  
United States, 2001-2005**

Year	Jan	Feb	Mar	Apr	May	Jun	Jul	Aug	Sep	Oct	Nov	Dec	Avg <sup>1</sup>
<b>Building Materials</b> 1910-14 = 100													
2001	1636	1641	1642	1644	1657	1658	1652	1652	1649	1643	1642	1639	1646
2002	1642	1642	1647	1652	1655	1656	1658	1669	1663	1658	1653	1652	1654
2003	1655	1663	1665	1671	1671	1672	1679	1680	1694	1696	1701	1701	1679
2004	1704	1738	1757	1800	1824	1824	1831	1856	1870	1866	1865	1871	1817
2005	1878												1878
<b>1990-92 = 100</b>													
2001	120	121	121	121	122	122	122	122	121	121	121	121	121
2002	121	121	121	122	122	122	122	123	122	122	122	122	122
2003	122	122	123	123	123	123	124	124	125	125	125	125	124
2004	125	128	129	133	134	134	135	137	138	137	137	138	134
2005	138												138
<b>Farm Services and Rent <sup>2</sup></b> 1910-14 = 100													
2001	1413	1413	1416	1416	1418	1430	1434	1432	1430	1423	1417	1417	1422
2002	1422	1422	1421	1420	1421	1432	1432	1433	1432	1426	1424	1425	1426
2003	1440	1441	1441	1444	1446	1455	1457	1457	1457	1447	1442	1442	1447
2004	1451	1451	1452	1452	1456	1467	1467	1470	1469	1460	1457	1456	1459
2005	1483												1483
<b>Farm Services</b> 1990-92 = 100													
2001	120	120	120	120	120	122	122	122	122	121	120	120	121
2002	120	120	120	119	120	121	121	121	121	120	120	120	120
2003	121	122	122	122	122	123	124	124	124	122	122	122	123
2004	123	123	123	123	124	125	125	125	125	124	124	124	124
2005	126												126
<b>Rent</b> 1990-92 = 100													
2001	117	117	117	117	117	117	117	117	117	117	117	117	117
2002	119	119	119	119	119	119	119	119	119	119	119	119	119
2003	120	120	120	120	120	120	120	120	120	120	120	120	120
2004	120	120	120	120	120	120	120	120	120	120	120	120	120
2005	123												123

<sup>1</sup> Simple average and is year-to-date for current year.

<sup>2</sup> For the 1990-92=100 base period, the Farm Services and Rent Index is separated.



**Prices Paid Indexes: Monthly and Annual Average  
United States, 2001-2005**

Year	Jan	Feb	Mar	Apr	May	Jun	Jul	Aug	Sep	Oct	Nov	Dec	Avg <sup>1</sup>
Interest 1910-14 = 100													
2001	2738	2738	2738	2738	2738	2738	2738	2738	2738	2738	2738	2738	2738
2002	2614	2614	2614	2614	2614	2614	2614	2614	2614	2614	2614	2614	2614
2003	2560	2560	2560	2560	2560	2560	2560	2560	2560	2560	2560	2560	2560
2004	2593	2593	2593	2593	2593	2593	2593	2593	2593	2593	2593	2593	2593
2005	2643												2643
1990-92 = 100													
2001	109	109	109	109	109	109	109	109	109	109	109	109	109
2002	104	104	104	104	104	104	104	104	104	104	104	104	104
2003	102	102	102	102	102	102	102	102	102	102	102	102	102
2004	103	103	103	103	103	103	103	103	103	103	103	103	103
2005	105												105
Taxes 1910-14 = 100													
2001	3330	3330	3330	3330	3330	3330	3330	3330	3330	3330	3330	3330	3330
2002	3378	3378	3378	3378	3378	3378	3378	3378	3378	3378	3378	3378	3378
2003	3426	3426	3426	3426	3426	3426	3426	3426	3426	3426	3426	3426	3426
2004	3474	3474	3474	3474	3474	3474	3474	3474	3474	3474	3474	3474	3474
2005	3542												3542
1990-92 = 100													
2001	124	124	124	124	124	124	124	124	124	124	124	124	124
2002	126	126	126	126	126	126	126	126	126	126	126	126	126
2003	128	128	128	128	128	128	128	128	128	128	128	128	128
2004	130	130	130	130	130	130	130	130	130	130	130	130	130
2005	132												132
Wage Rates 1910-14 = 100													
2001	5596	5596	5596	5369	5369	5369	5357	5357	5357	5550	5550	5550	5468
2002	5796	5796	5796	5705	5705	5705	5537	5537	5537	5783	5783	5783	5705
2003	6035	6035	6035	5919	5919	5919	5738	5738	5738	5848	5848	5848	5885
2004	6080	6080	6080	5964	5964	5964	6074	6074	6074	6009	6009	6009	6032
2005	6009												6009
1990-92 = 100													
2001	150	150	150	144	144	144	143	143	143	148	148	148	146
2002	155	155	155	153	153	153	148	148	148	155	155	155	153
2003	161	161	161	158	158	158	153	153	153	156	156	156	157
2004	163	163	163	159	159	159	162	162	162	161	161	161	161
2005	161												161

<sup>1</sup> Simple average and is year-to-date for current year.

**Prices Paid Indexes: Monthly and Annual Average  
United States, 2001-2005**

Year	Jan	Feb	Mar	Apr	May	Jun	Jul	Aug	Sep	Oct	Nov	Dec	Avg <sup>1</sup>
Family Living 1910-14 = 100													
2001	1663	1670	1673	1680	1688	1691	1686	1686	1693	1688	1685	1678	1682
2002	1682	1689	1698	1708	1708	1709	1711	1716	1719	1722	1722	1718	1709
2003	1726	1739	1749	1746	1743	1745	1747	1753	1759	1757	1752	1750	1747
2004	1759	1768	1780	1786	1796	1802	1799	1800	1804	1813	1814	1807	1794
2005	1807												1807
1990-92 = 100													
2001	130	130	131	131	132	132	132	132	132	132	132	131	131
2002	131	132	133	133	133	133	134	134	134	134	134	134	133
2003	135	136	137	136	136	136	136	137	137	137	137	137	136
2004	137	138	139	139	140	141	141	141	141	142	142	141	140
2005	141												141
Production Items With Farm Origin <sup>2</sup> 1990-92 = 100													
2001	113	111	110	112	111	113	114	115	114	114	112	113	113
2002	112	112	112	112	110	110	112	114	116	115	116	117	113
2003	115	115	113	116	117	117	116	115	120	123	125	124	118
2004	122	123	126	132	135	134	134	129	127	125	123	121	128
2005	122												122
Production Items With Non-Farm Origin <sup>3</sup> 1990-92 = 100													
2001	125	125	125	124	124	124	123	122	123	121	120	119	123
2002	120	120	121	121	121	122	122	122	123	123	123	123	122
2003	125	127	129	127	126	126	126	127	127	127	127	127	127
2004	129	129	130	131	131	131	132	133	134	136	135	134	132
2005	135												135

<sup>1</sup> Simple average and is year-to-date for current year.

<sup>2</sup> Feed, livestock and poultry purchases, and seed.

<sup>3</sup> Fertilizer, agricultural chemicals, fuels, farm supplies and repairs, autos and trucks, farm machinery, building materials, and farm services and rent.

**Prices Paid Indexes: Monthly and Annual Average  
United States, 2001-2005**

Year	Jan	Feb	Mar	Apr	May	Jun	Jul	Aug	Sep	Oct	Nov	Dec	Avg <sup>1</sup>
Parity Ratio <sup>2</sup> 1910-14 = 100													
2001	37	38	40	41	42	41	42	43	41	37	37	37	40
2002	37	38	41	36	37	38	38	38	38	36	37	37	38
2003	37	37	37	38	39	40	39	41	41	42	43	42	40
2004	41	42	44	45	46	45	44	43	41	40	41	40	43
2005	39												39
Adjusted Parity Ratio <sup>3</sup> 1910-14 = 100													
2001	41	42	44	45	46	46	46	47	45	40	41	41	44
2002	39	41	43	39	39	40	40	41	40	38	39	39	40
2003	40	40	40	40	42	43	42	44	44	45	46	45	43
2004	43	44	46	47	48	48	46	45	43	42	43	42	43
2005	43												43
Ratio 1990-92 = 100													
2001	78	81	83	85	87	86	88	89	86	76	77	78	83
2002	78	80	85	76	78	79	80	81	79	76	78	78	79
2003	79	78	77	79	83	85	83	86	87	88	90	88	84
2004	86	89	92	94	96	95	92	90	86	84	87	83	90
2005	82												82

<sup>1</sup> Simple average and is year-to-date for current year.

<sup>2</sup> Ratio of index of prices received by farmers to index of prices paid for commodities and services, interest, taxes, and wage rates.

<sup>3</sup> Ratio of the index of prices received by farmers after adjustment for government payments to the index of prices paid for commodities and services, interest, taxes, and wage rates.

**Prices Paid Indexes: Monthly and Annual Average  
United States, 2001-2005**

Year	Jan	Feb	Mar	Apr	May	Jun	Jul	Aug	Sep	Oct	Nov	Dec	Avg <sup>1</sup>
Crop Sector (PPITW) 1990-92 = 100													
2001	127	127	127	127	127	126	125	125	125	125	124	124	126
2002	124	125	125	126	126	126	126	126	127	128	127	127	126
2003	129	131	132	131	131	131	130	131	131	131	131	131	131
2004	133	133	134	135	135	135	136	137	137	138	138	137	136
2005	138												138
Livestock Sector (PPITW) 1990-92 = 100													
2001	122	121	120	120	120	121	121	121	121	121	120	120	121
2002	120	120	120	120	119	119	120	121	122	122	122	123	121
2003	123	124	124	124	123	123	123	123	125	126	127	127	124
2004	127	128	129	132	134	133	134	132	131	131	130	129	131
2005	130												130
Commodities and Services, Interest, Taxes, and Wage Rates Adjusted for Productivity 1910-14 = 100													
2001	1131	1131	1131	1117	1118	1119	1116	1116	1118	1128	1126	1124	1123
2002	1139	1140	1142	1139	1138	1138	1128	1130	1132	1151	1150	1150	1141
2003	1174	1179	1181	1172	1171	1171	1158	1159	1163	1172	1172	1171	1170
2004	1206	1209	1213	1209	1213	1214	1222	1222	1222	1220	1218	1215	1215
2005	1210												1210

<sup>1</sup> Simple average and is year-to-date for current year.

**Prices Paid Index Sub-Components: Monthly and Annual Average  
United States, 2001-2005**

Year	Jan	Feb	Mar	Apr	May	Jun	Jul	Aug	Sep	Oct	Nov	Dec	Avg <sup>1</sup>
Feed Sub-Components Feed Grains 1990-92 = 100													
2001	85	85	84	81	79	79	83	83	84	81	82	86	83
2002	86	84	85	83	84	88	94	104	107	103	101	103	94
2003	102	103	102	102	104	101	94	95	96	94	97	101	99
2004	104	113	119	124	123	119	108	101	95	91	88	87	106
2005	84												84
Complete Feeds 1990-92 = 100													
2001	114	112	109	107	106	107	108	113	112	112	111	112	110
2002	111	110	111	112	110	113	115	116	118	117	116	115	114
2003	115	114	114	112	112	112	111	107	111	111	118	119	113
2004	119	123	122	130	131	128	128	120	115	107	105	105	119
2005	105												105
Hay and Forages 1990-92 = 100													
2001	110	113	117	127	130	122	121	123	124	123	123	123	121
2002	120	118	119	125	127	121	118	119	119	121	120	120	121
2003	121	122	120	125	123	122	113	109	108	109	106	105	115
2004	106	107	108	115	129	123	117	115	111	115	111	110	114
2005	111												111
Concentrates 1990-92 = 100													
2001	122	107	104	104	107	115	117	116	111	110	109	103	110
2002	105	102	105	104	106	109	118	121	121	110	105	104	109
2003	104	110	110	112	118	115	114	106	123	123	137	127	117
2004	125	126	143	149	156	135	134	110	100	89	91	91	121
2005	90												90

<sup>1</sup> Simple average and is year-to-date for current year.

**Prices Paid Index Sub-Components: Monthly and Annual Average  
United States, 2001-2005**

Year	Jan	Feb	Mar	Apr	May	Jun	Jul	Aug	Sep	Oct	Nov	Dec	Avg <sup>1</sup>
Supplements 1990-92 = 100													
2001	127	124	119	119	116	117	117	120	121	119	124	125	121
2002	123	124	124	123	118	123	126	128	129	133	134	135	127
2003	135	134	134	131	129	132	130	126	127	130	135	135	132
2004	135	134	135	138	133	130	125	121	124	118	116	117	127
2005	117												117
Livestock and Poultry Sub-Components Feeder Cattle 1990-92 = 100													
2001	109	105	106	109	106	112	111	110	110	110	102	104	108
2002	102	103	99	95	92	91	94	96	98	100	102	105	98
2003	99	96	92	99	99	102	107	111	122	130	126	122	109
2004	113	107	113	119	126	137	139	141	141	143	137	130	129
2005	129												129
Feeder Pigs 1990-92 = 100													
2001	125	133	136	143	127	115	111	109	106	105	110	123	120
2002	138	146	138	111	88	59	52	46	40	73	102	126	93
2003	138	127	123	119	109	104	82	64	73	97	94	96	102
2004	104	125	125	126	122	116	109	108	116	129	150	175	125
2005	184												184
Milk Cow Replacements 1990-92 = 100													
2001	117	117	117	124	124	124	141	141	141	151	151	151	133
2002	143	143	143	152	152	152	148	148	148	127	127	127	143
2003	122	122	122	115	115	115	116	116	116	122	122	122	119
2004	123	123	123	140	140	140	152	152	152	145	145	145	140
2005	144												144

<sup>1</sup> Simple average and is year-to-date for current year.

**Prices Paid Index Sub-Components: Monthly and Annual Average  
United States, 2001-2005**

Year	Jan	Feb	Mar	Apr	May	Jun	Jul	Aug	Sep	Oct	Nov	Dec	Avg <sup>1</sup>
Poultry 1990-92 = 100													
2001	110	110	110	110	110	110	110	110	110	110	110	110	110
2002	111	111	111	111	111	111	111	111	111	111	111	111	111
2003	112	112	112	112	112	112	112	112	112	112	112	112	112
2004	112	112	112	112	112	112	112	112	112	112	112	112	112
2005	112	112	112	112	112	112	112	112	112	112	112	112	112
Seeds Sub-Components Field Crops 1990-92 = 100													
2001	126	126	126	136	136	136	136	136	136	136	136	136	134
2002	136	136	136	147	147	147	147	147	147	147	147	147	144
2003	147	147	147	162	162	162	162	162	162	162	162	162	158
2004	162	162	162	163	163	163	163	163	163	163	163	163	163
2005	163	163	163	163	163	163	163	163	163	163	163	163	163
Grasses and Legumes 1990-92 = 100													
2001	115	115	115	118	118	118	118	118	118	118	118	118	117
2002	118	118	118	118	118	118	118	118	118	118	118	118	118
2003	118	118	118	109	109	109	109	109	109	109	109	109	111
2004	109	109	109	111	111	111	111	111	111	111	111	111	111
2005	111	111	111	111	111	111	111	111	111	111	111	111	111
Fertilizer Sub-Components Mixed Fertilizer 1990-92 = 100													
2001	109	111	111	111	111	110	110	109	107	106	106	106	109
2002	105	104	104	104	104	104	105	105	106	106	106	106	105
2003	107	107	112	113	113	113	113	113	114	114	115	115	112
2004	117	119	122	122	122	121	121	123	124	127	127	128	123
2005	129	129	129	129	129	129	129	129	129	129	129	129	129

<sup>1</sup> Simple average and is year-to-date for current year.

**Prices Paid Index Sub-Components: Monthly and Annual Average  
United States, 2001-2005**

Year	Jan	Feb	Mar	Apr	May	Jun	Jul	Aug	Sep	Oct	Nov	Dec	Avg <sup>1</sup>
Nitrogen 1990-92 = 100													
2001	171	180	179	167	155	142	133	124	121	115	112	111	143
2002	111	111	110	110	110	113	111	110	108	110	113	115	111
2003	122	131	147	150	146	141	138	139	141	142	144	147	141
2004	152	156	158	157	152	155	157	162	162	167	172	173	160
2005	175												175
Potash and Phosphate 1990-92 = 100													
2001	110	111	113	113	110	108	107	106	105	106	107	100	108
2002	106	109	109	108	106	106	105	105	105	105	104	102	106
2003	102	103	112	113	113	108	107	110	110	111	110	111	109
2004	114	119	124	123	122	119	117	118	120	122	125	126	121
2005	127												127
Agricultural Chemicals Sub-Components Herbicides 1990-92 = 100													
2001	111	112	112	112	112	112	112	112	112	112	113	113	112
2002	112	111	112	112	111	111	111	111	112	110	110	112	111
2003	112	112	112	112	112	112	112	112	112	113	113	112	112
2004	113	113	113	113	113	113	114	114	114	115	115	114	114
2005	112												112
Insecticides 1990-92 = 100													
2001	159	145	144	144	144	144	143	142	141	140	139	138	144
2002	139	138	138	137	138	139	140	140	141	142	143	144	140
2003	145	146	146	147	147	148	147	147	146	146	146	145	146
2004	144	144	144	143	143	144	144	144	144	145	145	144	144
2005	143												143

<sup>1</sup> Simple average and is year-to-date for current year.



**Prices Paid Index Sub-Components: Monthly and Annual Average  
United States, 2001-2005**

Year	Jan	Feb	Mar	Apr	May	Jun	Jul	Aug	Sep	Oct	Nov	Dec	Avg <sup>1</sup>
Fungicides and Other 1990-92 = 100													
2001	120	120	121	121	121	121	121	120	120	120	120	120	120
2002	120	120	119	119	120	121	121	122	123	123	124	124	121
2003	125	126	114	115	115	115	115	115	116	116	116	116	117
2004	116	116	117	116	116	117	117	117	117	118	118	117	117
2005	116												116
Fuels Sub-Components Diesel 1990-92 = 100													
2001	139	132	119	123	133	129	116	117	131	108	102	80	119
2002	84	86	100	110	106	104	110	114	130	139	120	121	110
2003	136	172	179	141	120	122	125	129	121	133	125	127	136
2004	140	132	138	149	151	142	153	168	176	208	199	169	160
2005	164												164
Gasoline 1990-92 = 100													
2001	117	116	109	124	137	126	105	113	127	98	86	76	111
2002	81	85	103	118	115	114	117	119	123	136	120	113	112
2003	132	156	168	140	131	136	137	142	145	134	123	120	139
2004	136	138	143	152	170	156	164	155	158	180	169	145	156
2005	142												142
LP Gas 1990-92 = 100													
2001	175	187	166	151	143	144	105	113	115	103	95	78	131
2002	87	88	107	121	118	113	113	124	139	149	142	152	121
2003	173	201	193	158	149	159	152	153	147	159	153	163	163
2004	188	157	157	158	171	171	184	205	193	221	231	198	186
2005	171												171

<sup>1</sup> Simple average and is year-to-date for current year.

**Prices Paid Index Sub-Components: Monthly and Annual Average  
United States, 2001-2005**

Year	Jan	Feb	Mar	Apr	May	Jun	Jul	Aug	Sep	Oct	Nov	Dec	Avg <sup>1</sup>
Farm Supplies & Repairs Sub-Components													
Supplies 1990-92 = 100													
2001	119	119	119	119	122	122	122	122	123	122	122	122	121
2002	121	122	122	123	124	124	124	124	124	124	124	124	123
2003	124	124	124	124	124	124	125	125	125	125	125	126	125
2004	126	126	126	127	127	127	127	127	127	129	129	129	127
2005	129												129
Repairs 1990-92 = 100													
2001	130	130	130	130	130	130	131	131	131	132	132	132	131
2002	133	133	133	134	134	134	134	134	134	136	136	136	134
2003	137	137	137	138	138	138	139	139	139	139	139	139	138
2004	141	141	140	142	142	142	143	143	143	144	144	144	142
2005	144												144
Autos and Trucks Sub-Components													
Autos 1990-92 = 100													
2001	112	112	112	112	111	111	111	110	110	110	112	112	111
2002	112	111	111	110	110	109	109	108	109	109	110	110	110
2003	109	109	109	108	108	107	107	107	107	107	108	108	108
2004	108	108	108	108	108	107	106	106	106	106	108	108	107
2005	109												109
Trucks 1990-92 = 100													
2001	121	120	120	120	119	119	118	118	117	118	120	120	119
2002	119	118	117	117	116	116	116	115	116	117	117	117	117
2003	117	117	117	116	116	115	114	115	114	114	115	116	116
2004	116	116	116	115	115	115	114	113	113	113	115	116	115
2005	118												118

<sup>1</sup> Simple average and is year-to-date for current year.

**Prices Paid Index Sub-Components: Monthly and Annual Average  
United States, 2001-2005**

Year	Jan	Feb	Mar	Apr	May	Jun	Jul	Aug	Sep	Oct	Nov	Dec	Avg <sup>1</sup>
Farm Machinery Sub-Components Tractors 1990-92 = 100													
2001	138	138	138	138	138	138	138	138	139	139	139	140	138
2002	140	140	140	140	140	140	140	140	140	140	140	140	140
2003	140	140	141	141	141	141	142	143	144	144	145	145	142
2004	145	145	146	146	147	147	148	147	148	148	147	147	147
2005	147												147
Self Propelled 1990-92 = 100													
2001	141	142	142	143	143	143	143	144	145	145	145	145	143
2002	145	146	146	147	147	147	147	147	147	147	148	148	147
2003	148	148	148	148	149	150	152	154	156	157	158	160	152
2004	162	164	165	167	167	167	167	167	167	175	174	182	169
2005	191												191
Other Machinery 1990-92 = 100													
2001	144	144	144	145	146	146	147	147	148	149	150	150	147
2002	151	151	152	153	153	153	153	153	154	154	155	155	153
2003	155	155	155	155	155	155	155	155	155	155	155	155	155
2004	155	155	167	164	165	165	165	165	167	167	167	168	164
2005	169												169
Farm Services Sub-Components Custom Rates 1990-92 = 100													
2001	121	121	121	121	121	121	121	121	121	121	121	121	121
2002	120	120	120	120	120	120	120	120	120	120	120	120	120
2003	125	125	125	125	125	125	125	125	125	125	125	125	125
2004	125	125	125	125	125	125	125	125	125	125	125	125	125
2005	125												125

<sup>1</sup> Simple average and is year-to-date for current year.

**Prices Paid Index Sub-Components: Monthly and Annual Average  
United States, 2001-2005**

Year	Jan	Feb	Mar	Apr	May	Jun	Jul	Aug	Sep	Oct	Nov	Dec	Avg <sup>1</sup>
Other Services 1990-92 = 100													
2001	119	119	120	120	120	122	122	122	122	121	120	120	121
2002	120	120	120	119	120	121	121	121	121	120	120	120	120
2003	121	121	121	122	122	123	124	124	124	122	121	121	122
2004	123	123	123	123	123	125	125	125	125	124	124	124	124
2005	126												126
Rent Sub-Components Cash 1990-92 = 100													
2001	143	143	143	143	143	143	143	143	143	143	143	143	143
2002	143	143	143	143	143	143	143	143	143	143	143	143	143
2003	145	145	145	145	145	145	145	145	145	145	145	145	145
2004	145	145	145	145	145	145	145	145	145	145	145	145	145
2005	147												147
Share 1990-92 = 100													
2001	91	91	91	91	91	91	91	91	91	91	91	91	91
2002	91	91	91	91	91	91	91	91	91	91	91	91	91
2003	91	91	91	91	91	91	91	91	91	91	91	91	91
2004	91	91	91	91	91	91	91	91	91	91	91	91	91
2005	94												94

<sup>1</sup> Simple average and is year-to-date for current year.

**Prices Paid Survey Estimates, Month Published and Level**

Survey	2004 Program Schedule <sup>1</sup>	
	Survey and Publication Month	Level of Estimates
Feed	Apr	Farm Production Regions and US
Feeder Livestock	Monthly	US
Seed	Apr	US
Fertilizer	Apr	Fertilizer Regions and US
Agricultural Chemicals	Apr	US
Fuels	Apr	Farm Production Regions and US
Farm Machinery	Apr	US
Grazing Fees	Jan <sup>2</sup>	States and Regions

<sup>1</sup> Data collection and publication schedule for average prices paid by producers.

<sup>2</sup> Survey estimates for previous year.

## Prices Paid by Farmers

**Definition:** Prices paid by farmers represent the average costs of inputs purchased by farmers and ranchers to produce agricultural commodities. Conceptually, the average price when multiplied by quantity purchased should equal total producer expenditures for the item.

**Survey Procedures:** The prices paid data are obtained from establishments that sell goods and services to farmers and ranchers. Annually, about 8,500 firms are randomly selected from lists by type of item sold with an average response rate in the range of 75-80 percent. Firms are asked to report the price for the specified item "most commonly bought by farmers" or that was the "volume seller". Approximately 135 items are surveyed each April to represent all production input items purchased. The survey reference period for most items is the 5 business days centered around the 15th of the month. Separate prices paid surveys are conducted for, agricultural chemicals, fuels, feed, fertilizer, machinery, and seed.

**Summary and Estimation Procedures:** The annual April Prices Paid Survey is summarized as a nonprobability survey. Average prices reported are aggregated to the region and U.S. level using weights available from expenditure data and other administrative sources. Price recommendations are prepared by the State Statistical Offices and Headquarters for review by the Agricultural Statistics Board in Washington, D.C. Also, the change in price level for individual items surveyed are combined to the regional and U.S. levels, and are published as prices paid indexes referenced to a specific base period. Prices paid indexes for new autos and trucks, building materials, farm supplies, motor supplies, and marketing containers are updated based on price changes measured in selected Bureau of Labor Statistics (BLS) indexes.

**Revisions:** Any revisions are published in the monthly and in annual issues of *Agricultural Prices*. The basis for revision must be supported by additional data that directly affect the level of the estimate. More revisions are likely in April when separate prices paid surveys are conducted, in lieu of BLS indexes, by the USDA to measure price change.

**Reliability:** Current methods of summarization in April are not designed directly to calculate sampling errors. However, analytical measures approximate the U.S. relative sampling errors for major items around 10 percent. Any nonsampling errors are attributed to such things as the inability to obtain correct information, differences in interpreting questions or definitions, mistakes in coding or processing the data, etc. Efforts are made at each step in the survey process to minimize these nonsampling errors.

**Program Change:** Effective January 1, 1995, the National Agricultural Statistics Service updated the weights and changed the construction of its prices paid and received by farmers indexes. A Federal Register Notice dated October 28, 1994 discussed these program modifications.

A 1990-92 reference and base period replaced the 1977 reference and 1971-73 base weight period. Five-year moving average weights replaced the current fixed 1971-73 base period weights. The 1910-14=100 price indexes, required by statute for computing parity prices, were linked forward based on the changes in the new 1990-92=100 indexes. The new indexes were constructed by multiplying the ratios of the current prices to the base period prices by the moving average weights (adjusted for seasonal marketing patterns for the prices received indexes).

## Information Contacts

General questions should be directed to Linda Hutton, Chief, Environmental, Economics and Demographics Branch at (202) 720-6146. Below are the commodity specialists to contact for additional information.

### Crop Prices Received

Joe Prusacki Chief, Crops Branch .....	(202) 720-2127
Greg Thessen, Field Crops Section .....	(202) 720-2127
Lance Honig - Wheat, Rye .....	(202) 720-8068
Darin Jantzi - Corn, Proso Millet, Flaxseed .....	(202) 720-9526
Troy Joshua - Cotton, Cottonseed .....	(202) 720-5944
Dennis Koong - Hay, Oats, Sorghum .....	(202) 690-3234
Jason Lamprecht - Soybeans, Sunflower, Other Oilseeds .....	(202) 720-7369
Mark R. Miller - Peanuts, Rice .....	(202) 720-7688
Brian Young - Sugarcane, Sugarbeets, Barley .....	(202) 720-7621
Jim Smith, Fruit and Vegetable Section .....	(202) 720-2127
Debbie Flippin - Peaches, Pears, Hops, Pulses, Mint .....	(202) 720-3250
Jorge Garcia-Pratts - Citrus .....	(202) 720-5412
Terry O'Connor - Apples, Apricots, Cherries, Cranberries, Plums, Prunes .....	(202) 720-4288
Leslie Colburn - Grapes, Tobacco .....	(202) 720-7235
Cathy Scherrer, Potatoes, Dry Edible Beans, Sweet Potatoes .....	(202) 720-4285
Biz Wallingsford - Vegetables, Onions, Strawberries .....	(202) 720-2157

### Livestock Prices Received

Dan Kerestes, Chief, Livestock Branch .....	(202) 720-3570
Wil Hundl, Livestock Section .....	(202) 720-3570
Scott Hollis - Sheep, Lambs, Wool, Mohair .....	(202) 720-4751
Ty Kalas - Milk, Milk Cows .....	(202) 690-3236
Dan Lofthus - Hogs .....	(202) 720-3106
Mike Miller - Cattle .....	(202) 720-3040
Nathan Crisp, Poultry and Specialty Commodities Section .....	(202) 720-3570
John Lange - Turkeys .....	(202) 720-0585
Sharyn Lavender - Eggs .....	(202) 720-3244
Jody Roberts - Broilers .....	(202) 690-8632

### Indexes, Prices Paid, and Parity Prices

Linda Hutton, Chief, Environmental, Economics and Demographics Branch .....	(202) 720-6146
Kevin Hintzman, Economics Section .....	(202) 720-6146
Eric Barnes - Farm Supplies and Repairs, Farm Machinery, Fuels, Feeder Livestock, Poultry Chicks, Feed Price Ratios, Grazing Fees, Autos & Trucks .....	(202) 690-4752
Daryl Brinkman - Prices Received Indexes, Parity Prices .....	(202) 720-8844
Tara Jackson - Prices Paid Indexes, Prices Paid for Feed, Fertilizer, Agricultural Chemicals, Seeds .....	(202) 690-3229

## ACCESS TO REPORTS!!

---

For your convenience, there are several ways to obtain NASS reports, data products, and services:

### INTERNET ACCESS

All NASS reports are available free of charge on the worldwide Internet. For access, connect to the Internet and go to the NASS Home Page at: [www.usda.gov/nass/](http://www.usda.gov/nass/). Select "Today's Reports" or Publications and then Reports Calendar or Publications and then Search, by Title or Subject.

### E-MAIL SUBSCRIPTION

All NASS reports are available by subscription free of charge direct to your e-mail address. Starting with the NASS Home Page at [www.usda.gov/nass/](http://www.usda.gov/nass/), click on **Publications**, then click on the **Subscribe by E-mail** button which takes you to the page describing e-mail delivery of reports. Finally, click on **Go to the Subscription Page** and follow the instructions.

-----

### PRINTED REPORTS OR DATA PRODUCTS

**CALL OUR TOLL-FREE ORDER DESK: 800-999-6779 (U.S. and Canada)**  
**Other areas, please call 703-605-6220      FAX: 703-605-6900**  
**(Visa, MasterCard, check, or money order acceptable for payment.)**

-----

### ASSISTANCE

For **assistance** with general agricultural statistics or further information about NASS or its products or services, contact the **Agricultural Statistics Hotline** at **800-727-9540**, 7:30 a.m. to 4:00 p.m. ET, or e-mail: [nass@nass.usda.gov](mailto:nass@nass.usda.gov).

The United States Department of Agriculture (USDA) prohibits discrimination in all its programs on the basis of race, color, national origin, gender, religion, age, disability, political beliefs, sexual orientation, and marital or family status. (Not all prohibited bases apply to all programs.) Persons with disabilities who require alternative means for communication of program information (braille, large print, audiotape, etc.) should contact the USDA's TARGET Center at 202-720-2600 (voice and TDD).

To file a complaint of discrimination, write USDA, Director, Office of Civil Rights, Room 326-W, Whitten Building, 1400 Independence Avenue, SW, Washington, D.C., 20250-9410, or call 202-720-5964 (voice or TDD). USDA is an equal opportunity provider and employer.