

Released February 28, 2005, by the National Agricultural Statistics Service (NASS), Agricultural Statistics Board, U.S. Department of Agriculture. For information on *Agricultural Prices* see page 73, office hours 7:30 a.m. to 4:00 p.m. ET.

## February Farm Prices Received Index Up 2 Points From Last Month

The preliminary All Farm Products Index of Prices Received by Farmers in February, at 113, based on 1990-92=100, is 2 points (1.8 percent) above the January Index. The Crop Index is up 5 points (5.0 percent) while the Livestock Index is down 1 point (0.8 percent). Producers received higher prices for tomatoes, oranges, broccoli, and celery. Lower prices were received for corn, dairy, hogs, and soybeans. The seasonal change in the mix of commodities farmers sell, based on the past 3-year average, also affects the overall index. Increased average marketings of dairy, cattle, broilers, and strawberries offset decreased marketings of corn, soybeans, tobacco, and wheat.

This preliminary All Farm Products Index is down 3 points (2.6 percent) from February 2004. The Food Commodities Index, at 117, is 2 points (1.7 percent) above last month but unchanged from February 2004.

## Prices Paid Index Unchanged

The February Index of Prices Paid for Commodities and Services, Interest, Taxes, and Farm Wage Rates (PPITW) is 134 percent of the 1990-92 average. The index is unchanged from January but 3 points (2.3 percent) above February 2004. Lower prices in February for self-propelled machinery, feed grains, and LP gas were offset by higher prices for feed concentrates, complete feeds, feed supplements, and other machinery.

**Index Summary Table**

Index 1990-92=100	2004		2005	
	Jan	Feb	Jan	Feb
Prices Received	112	116	111	113
Prices Paid	130	131	134	134
Ratio <sup>1</sup>	86	89	83	84

<sup>1</sup> Ratio of index of prices received by farmers to index of prices paid by farmers.

## Prices Received by Farmers

The February All Farm Products Index is 113 percent of its 1990-92 base, up 1.8 percent from the January index but 2.6 percent below the February 2004 index.

**ALL CROPS:** The February index is 106, up 5.0 percent from January but 12 percent below February 2004. Index increases from January for fruits and nuts and commercial vegetables more than offset price decreases for potatoes and dry beans, food grains, cotton, feed grains and hay, oil-bearing crops, and tobacco.

**Food Grains:** The February index, at 109, is down 3.5 percent from the previous month and 12 percent below February 2004. The February all wheat price, at \$3.38 per bushel, is down 4 cents from the January price and 39 cents below February 2004. The February rice price, at \$6.83 per cwt, is down 33 cents from the January price and \$1.40 below a year ago.

**Feed Grains & Hay:** The February index is 93, down 2.1 percent from last month and 18 percent below February 2004. The corn price, at \$2.02 per bushel, is down 10 cents from January and 59 cents below February 2004. The all hay price, at \$84.70 per ton, is up 50 cents from last month and \$3.50 above February 2004.

**Oil-Bearing Crops:** The February index, at 98, is down 2.0 percent from the January index and 33 percent below February 2004. The soybean price, at \$5.39 per bushel, decreased 18 cents from January and is \$2.89 below February 2004.

**Cotton:** The February index, at 63, is down 3.1 percent from a month ago and 38 percent below February 2004. The cotton price, at 38.1 cents per pound, is down 1.5 cents from January and 23.8 cents below a year ago.

**Potatoes & Dry Beans:** The February index, at 101, is 3.8 percent below last month but 1 percent above February 2004. The all potato price, at \$5.44 per cwt, is down 15 cents from the previous month and 43 cents below last February. The dry edible bean price, at \$28.30 per cwt, is 90 cents above last month and \$10.80 above a year ago.

**Fruits & Nuts:** The February index, at 122, is 17 percent above the previous month and 23 percent above February 2004. Price increases during February for oranges more than offset price decreases for strawberries, grapefruit, and apples.

**Commercial Vegetables:** The February index, at 113, is up 14 percent from last month but 27 percent below February 2004. Price increases for tomatoes, broccoli, and celery more than offset price decreases for lettuce and onions.

**LIVESTOCK & PRODUCTS:** The February index, at 120, is down 0.8 percent from last month but up 7.1 percent from February 2004. Compared with a year ago, prices are higher for cattle, hogs, dairy, calves, and turkeys, but lower for broilers and eggs.

**Meat Animals:** The February index, at 120, is down 0.8 percent from last month but up 15 percent from last year. The February hog price of \$50.40 per cwt is down \$2.80 from January but up \$7.80 from a year ago. The February beef cattle price of \$89.60 is up \$0.20 from last month and up \$11.10 from February 2004.

**Dairy Products:** The February index, at 118, is down 3.3 percent from January but up 13 percent from February 2004. The February all milk price of \$15.40 per cwt is down \$0.50 from last month but up \$1.80 from January 2004. The fluid grade milk price is down \$0.50 and the manufactured grade milk price is down \$0.10 from the previous month.

**Poultry & Eggs:** The February index, at 120, is down 1.6 percent from January and 14 percent below a year ago. February market egg prices, at 35.8 cents per dozen, decreased 1.5 cents from January reflecting a seasonal decrease. The February broiler price, at 43.0 cents per pound, was unchanged from January but 4 cents below a year ago. The February turkey price, averaging 38.0 cents per pound, is down 1.3 cents from the previous month.

## Table of Contents

<b>U.S. Prices Received and Indexes</b>	<b>Page</b>	<b>Monthly State Prices, continued</b>	<b>Page</b>
Narrative .....	2	Cottonseed .....	17
Price Indexes .....	5	Eggs .....	22
Price Index Charts .....	6	Flaxseed .....	16
U.S. Prices Received Summary .....	8	Fruit, Citrus .....	18
Charts .....	10	Hay .....	17
Selected Commodities .....	14	Hogs, All .....	21
Upland Cotton & Rice Marketings .....	17	Barrows and Gilts .....	21
Parity Prices .....	24	Sows .....	21
Reliability Statement .....	64	Milk .....	23
		Milk Cows .....	23
		Oats .....	15
<b>Monthly State Prices Received</b>		Peanuts .....	16
Apples .....	17	Potatoes .....	19
Barley .....	15	Sheep .....	22
Beans, Dry Edible .....	16	Lambs .....	22
Beef Cattle, All .....	20	Sorghum, Grain .....	15
Calves .....	20	Soybeans .....	15
Cows, Beef .....	20	Sunflower, All .....	16
Steers and Heifers .....	20	Tobacco .....	16
Corn .....	15	Wheat, All Classes .....	14
Cotton .....	17		
<b>Prices Received Special Features</b>			<b>Page</b>
<b>Marketing Year for Specified Commodities</b> .....			26
<b>Monthly Price Revisions</b>			
Apples .....			52
Cattle .....			34
Hogs .....			43
Lambs .....			46
Potatoes .....			28
Sheep .....			47
<b>Marketing Year Average Prices</b>			
Apricots .....			53
Cattle .....			30
Dried Figs .....			53
Hogs .....			32
Grapes, California Raisin .....			54
Grapes, Concord .....			54
Mohair .....			51
Peaches .....			54
Pears .....			53
Plums .....			53
Potatoes .....			27
Sheep .....			33
Wool .....			51
<b>Livestock Inventory Values</b> .....			48
<b>Other Hay, Baled</b>			
Used to Compute Grazing Fees for Eastern National Forests .....			52
<b>Corrected Tables From January 2005 Agricultural Price Report</b>			
January Parity Prices .....			55
Adjusted Base Prices & January 2005 Parity Prices .....			57
Annual Average Prices Received for Parity Computations, U.S., by Years, 1995-2004 .....			62

**Table of Contents (continued)**

<b>U.S. Prices Paid, Prices Paid Indexes and Ratios</b>	<b>Page</b>
Narrative .....	65
Indexes and Parity Ratios .....	66
Charts .....	68
Feed Price Ratios .....	71
Reliability Statement .....	72
 <b>U.S. Average Prices</b>	
Commodity Prices Used in Feed Price Ratios .....	71
Feeder Livestock .....	71
 <b>Information Contacts</b> .....	73

**Index Numbers of Prices Received, United States,  
February 2005, with Comparisons**

Index	1910-14=100				1990-92=100		
	Average 1990-92	2004	2005		2004	2005	
		Feb	Jan	Feb	Feb	Jan	Feb
All Farm Products	639	736	*705	720	116	*111	113
All Crops	500	595	*500	521	121	*101	106
Food Grains	325	395	*358	348	124	113	109
Feed Grains & Hay	363	404	*338	332	113	*95	93
Cotton	517	523	*335	322	102	65	63
Tobacco	1,263	1,891	*1,713	1,691	125	*113	112
Oil-Bearing Crops	554	805	*548	534	147	*100	98
Fruits & Nuts	716	694	*726	851	99	*104	122
Commercial Vegetables	698	1,038	*659	753	155	*99	113
Potatoes & Dry Beans	540	508	*532	511	100	*105	101
Other Crops	493	569	578	578	115	117	117
Livestock & Products	768	859	*931	917	112	121	120
Meat Animals	1,021	1,060	*1,229	1,221	104	*121	120
Dairy Products	799	836	977	946	104	122	118
Poultry & Eggs	282	390	344	337	139	122	120
Food Commodities					117	115	117

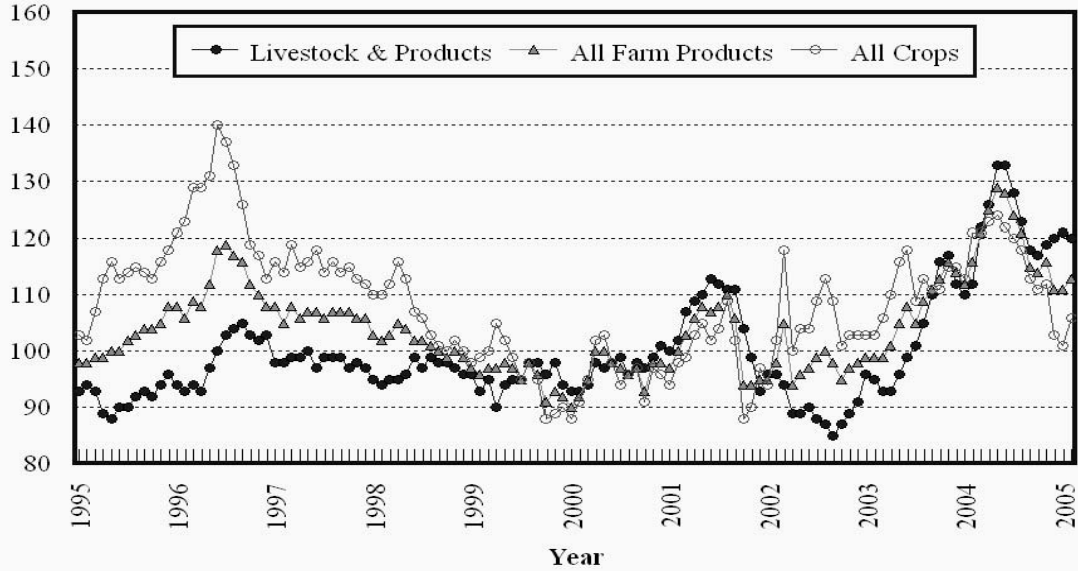
\* Revised.

**Selected Index Numbers for Prices Received and Paid,  
1990-92=100, by Month, United States, 2004 and 2005**

Month	Index of Prices Received						Index of Prices Paid			
	All Farm Products		All Crops		Livestock and Products		All Items		Production Items	
	2004	2005	2004	2005	2004	2005	2004	2005	2004	2005
Jan	112	111	113	101	110	121	130	134	127	130
Feb	116	113	121	106	112	120	131	134	127	131
Mar	121		121		122		132		129	
Apr	125		123		126		133		131	
May	129		124		133		135		132	
Jun	128		122		133		135		132	
Jul	124		120		128		135		133	
Aug	121		118		123		134		132	
Sep	115		113		118		134		131	
Oct	114		111		117		135		132	
Nov	116		112		119		134		131	
Dec	111		103		120		133		130	

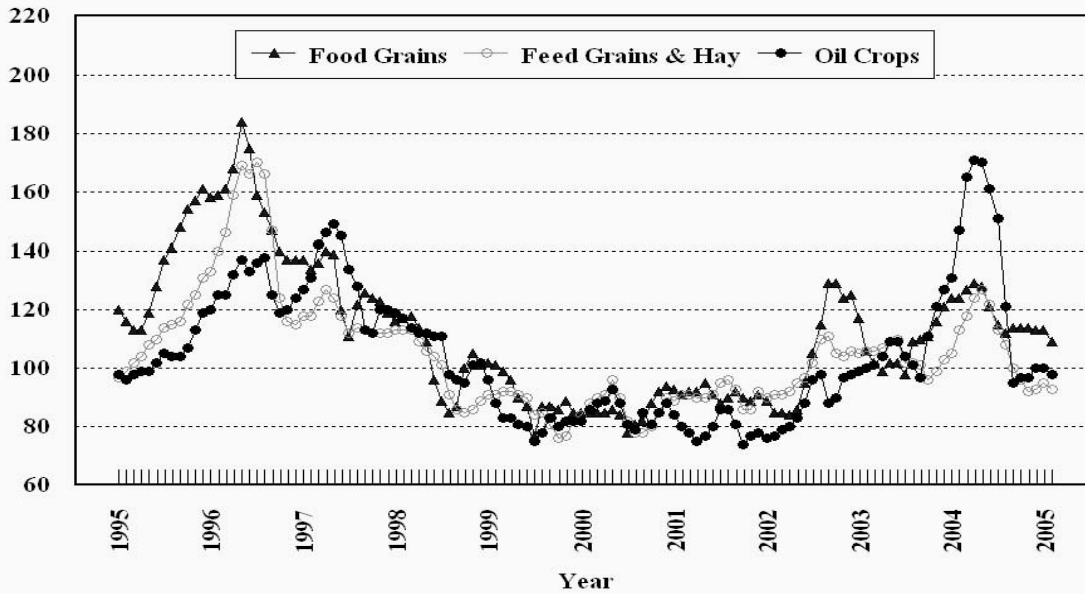
## Prices Received, Major Indexes, US

Index Values(1990-92=100)



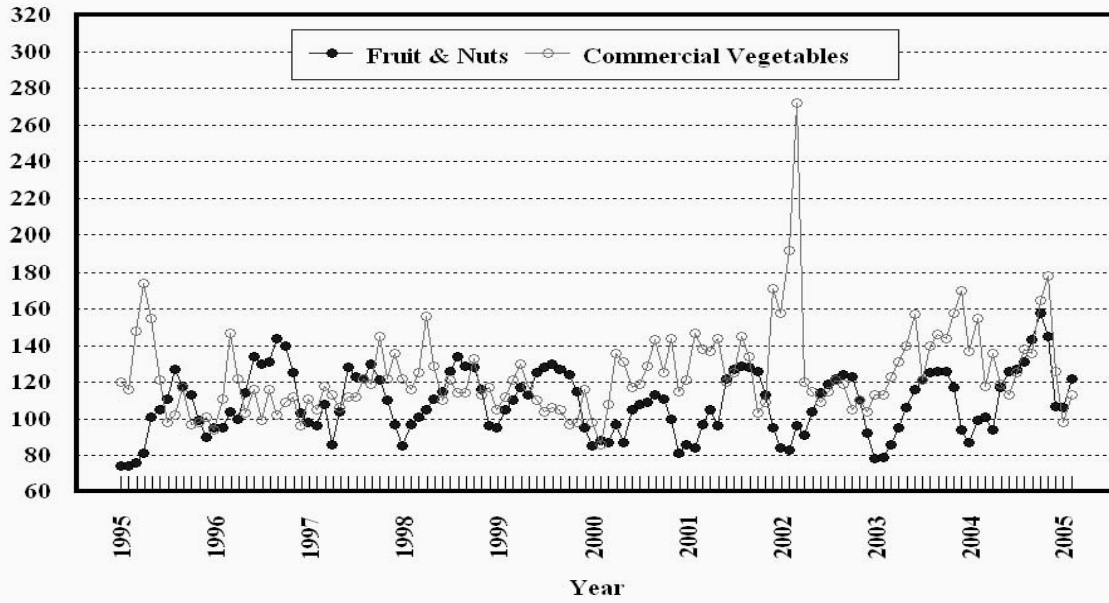
## Prices Received, Food, Feed, & Oil Indexes, US

Index Values(1990-92=100)



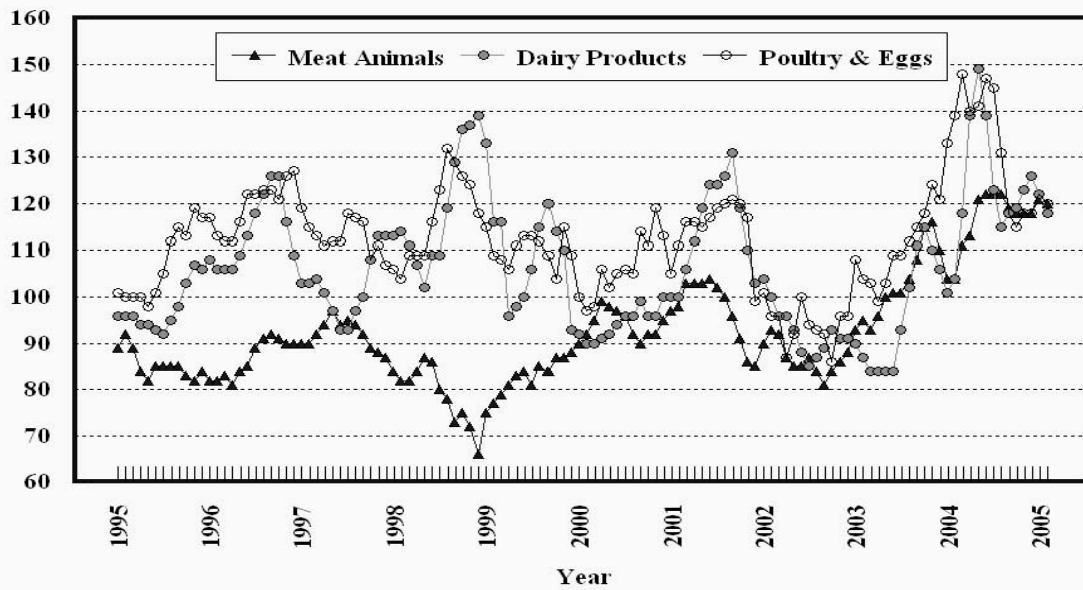
## Prices Received, Fruit/Vegetable Indexes, US

Index Values(1990-92=100)



## Prices Received, Livestock Product Indexes, US

Index Values(1990-92=100)



**Prices Received, United States,  
February 2005, with Comparisons**

Commodity	Unit	Average 1990-92	Entire Month		Preliminary
			Feb 2004	Jan 2005	Feb 2005
		<i>Dollars</i>	<i>Dollars</i>	<i>Dollars</i>	<i>Dollars</i>
<b>Field Crops</b>					
Barley, All	Bu	2.12	2.73	2.42	2.48
Feed	Bu	1.90	2.16	1.65	1.74
Malting	Bu	2.43	2.96	2.75	2.77
Beans, Dry Edible	Cwt	19.10	17.50	27.40	28.30
Chickpeas, All	Cwt		18.90	23.60	28.20
Large	Cwt		19.10	23.60	28.20
Small	Cwt		( <sup>4</sup> )	( <sup>5</sup> )	( <sup>5</sup> )
Corn	Bu	2.30	2.61	2.12	2.02
Cotton, Upland	Lb	0.606	0.619	0.396	0.381
Cottonseed <sup>3</sup>	Ton	96.00	140.00	112.00	112.00
Flaxseed	Bu	4.27	6.39	8.90	10.50
Hay, All, Baled <sup>1</sup>	Ton	76.30	81.20	84.20	84.70
Alfalfa <sup>1</sup>	Ton	77.20	85.10	90.90	91.90
Other <sup>1</sup>	Ton	60.00	72.10	70.60	70.00
Lentils	Cwt		19.10	14.60	14.20
Oats	Bu	1.22	1.58	1.64	1.58
Peanuts, In-Shell	Lb	0.304	0.189	0.189	0.189
Peas, Dry Edible	Cwt		8.34	5.87	5.94
Austrian Winter	Cwt		10.90	8.40	10.00
Potatoes	Cwt	5.82	5.87	5.59	5.44
Rice, Rough	Cwt	7.07	8.23	7.16	6.83
Sorghum Grain	Cwt	3.75	4.76	2.95	2.98
Soybeans	Bu	5.61	8.28	5.57	5.39
Sunflower, All	Cwt	9.50	12.80	13.70	13.60
Tobacco, Types 11-37	Lb	1.740	2.175	1.970	1.945
Wheat, All	Bu	2.96	3.77	3.42	3.38
Winter	Bu	2.93	3.67	3.27	3.24
Durum	Bu	2.86	4.08	3.62	3.59
Other Spring	Bu	3.11	3.84	3.60	3.55
Hard Red Winter	Bu		3.64	3.23	
Soft Red Winter	Bu		3.70	3.12	
Hard Red Spring	Bu		3.85	3.61	
White	Bu	3.24	3.73	3.49	
<b>Fruit</b>					
Citrus, Equiv on-tree					
Grapefruit	Box	5.77	2.80	12.52	11.46
Lemons	Box	10.10	3.91	6.54	6.32
Oranges	Box	5.79	3.02	2.99	3.59
Tangelos	Box	5.82	2.95	1.53	1.93
Tangerines	Box	15.11	8.47	15.96	14.07
Temples	Box	6.23	0.37	3.55	2.44
Noncitrus, Fresh					
Apples <sup>2</sup>	Lb	0.212	0.300	0.216	0.208
Grapes <sup>2 5</sup>	Ton	506.00			
Peaches <sup>2 5</sup>	Ton	432.00			
Pears <sup>2</sup>	Ton	370.00	331.00	495.00	491.00
Strawberries	Cwt	56.00	127.00	140.00	121.00

<sup>1</sup> Mid-month price.

<sup>2</sup> Equivalent packinghouse-door returns for CA, MI, and NY (apples only), and WA (apples, peaches, and pears). Prices as sold for other states.

<sup>3</sup> Marketing year August - February.

<sup>4</sup> Price not published to avoid disclosure of individual firms.

<sup>5</sup> Insufficient sales to establish a price.



**Prices Received, United States,  
February 2005, with Comparisons**

Commodity	Unit	Average 1990-92	Entire Month		Preliminary
			Feb 2004	Jan 2005	Feb 2005
		<i>Dollars</i>	<i>Dollars</i>	<i>Dollars</i>	<i>Dollars</i>
<b>Vegetables, Fresh <sup>1</sup></b>					
Asparagus	Cwt	79.80	271.00		
Broccoli	Cwt	22.50	28.50	22.70	30.00
Cantaloupes <sup>2</sup>	Cwt				
Carrots	Cwt	13.20	24.90	20.30	20.80
Cauliflower	Cwt	26.80	42.20	27.40	38.10
Celery	Cwt	11.60	24.40	12.90	16.30
Corn, Sweet	Cwt	15.70	20.70	20.30	27.50
Cucumbers <sup>2</sup>	Cwt		22.20	19.30	
Lettuce	Cwt	11.90	19.80	11.60	10.60
Onions	Cwt	12.80	21.30	8.65	7.43
Snap Beans <sup>2</sup>	Cwt		43.50	68.80	77.90
Tomatoes	Cwt	32.30	36.30	18.20	35.90
<b>Livestock</b>					
Calves	Cwt	94.30	111.00	125.00	128.00
Cattle, All Beef	Cwt	72.90	78.50	89.40	89.60
Cows <sup>3</sup>	Cwt	49.60	46.00	50.50	52.80
Steers & Heifers	Cwt	77.10	82.30	94.40	93.80
Milk Cows <sup>4</sup>	Head	1,130.00		1,620.00	
Hogs, All	Cwt	47.70	42.60	53.20	50.40
Barrows & Gilts	Cwt	48.40	43.00	53.50	50.70
Sows	Cwt	39.50	34.60	45.60	45.50
Lambs	Cwt	56.20	106.00	114.00	
Sheep	Cwt	23.40	40.80	53.50	
<b>Dairy and Poultry</b>					
Milk, All <sup>5 6</sup>	Cwt	13.06	13.60	15.90	15.40
Fluid Grade <sup>6</sup>	Cwt	13.10	13.60	15.90	15.40
Mfg Grade <sup>6</sup>	Cwt	11.80	12.80	14.90	14.80
Broilers, Live <sup>7</sup>	Lb	0.317	0.470	0.430	0.430
Eggs, All <sup>8</sup>	Doz	0.643	0.875	0.558	0.549
Market <sup>8</sup>	Doz	0.546	0.745	0.373	0.358
Turkeys, live <sup>7 8</sup>	Lb	0.380	0.350	0.393	0.380
<b>Adjusted for Seasonal Variation</b>					
Eggs, All	Doz	0.545	0.770	0.526	0.555
Milk, All <sup>5</sup>	Cwt	9.71	14.47	16.22	16.04

<sup>1</sup> F.O.B. shipping point.

<sup>2</sup> Monthly estimates began January 1995.

<sup>3</sup> Beef cows and cull dairy cows sold for slaughter.

<sup>4</sup> Animals sold for dairy herd replacement only. Prices available for Jan, Apr, Jul, and Oct.

<sup>5</sup> Before deductions for hauling. Includes quality, quantity, and other premiums. Excludes hauling subsidies.

<sup>6</sup> February 2005 Fat test percent: all milk 3.73, fluid milk 3.73, mfg grade 3.89.

<sup>7</sup> Equivalent liveweight returns to producers for most States. Includes growers and contractors.

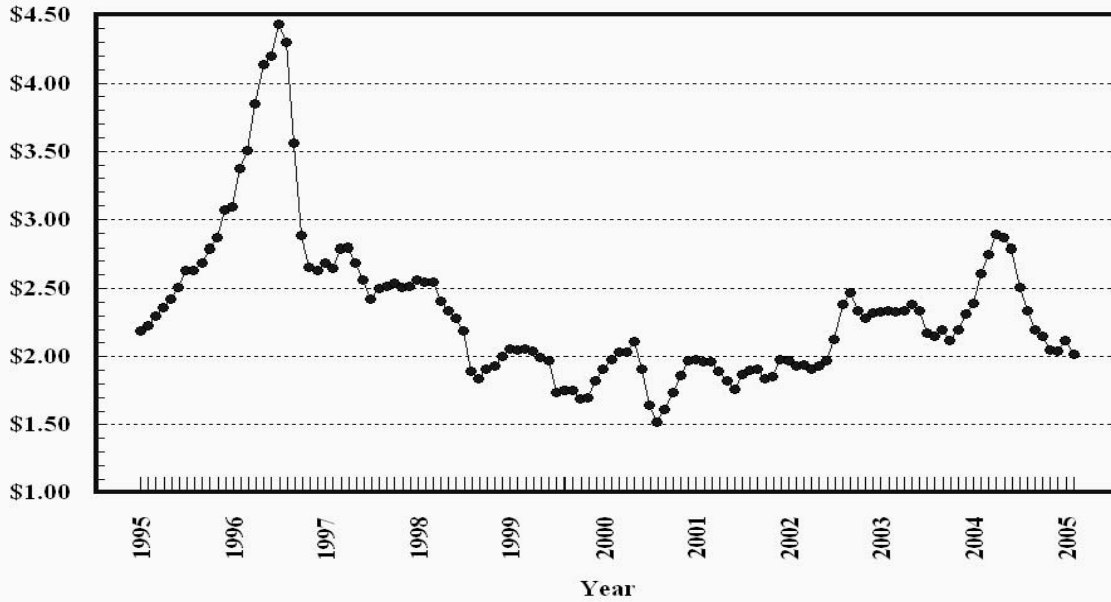
<sup>8</sup> Mid-month price.

<sup>9</sup> Price not published to avoid disclosure of individual firms.

<sup>10</sup> Insufficient sales to establish a price.

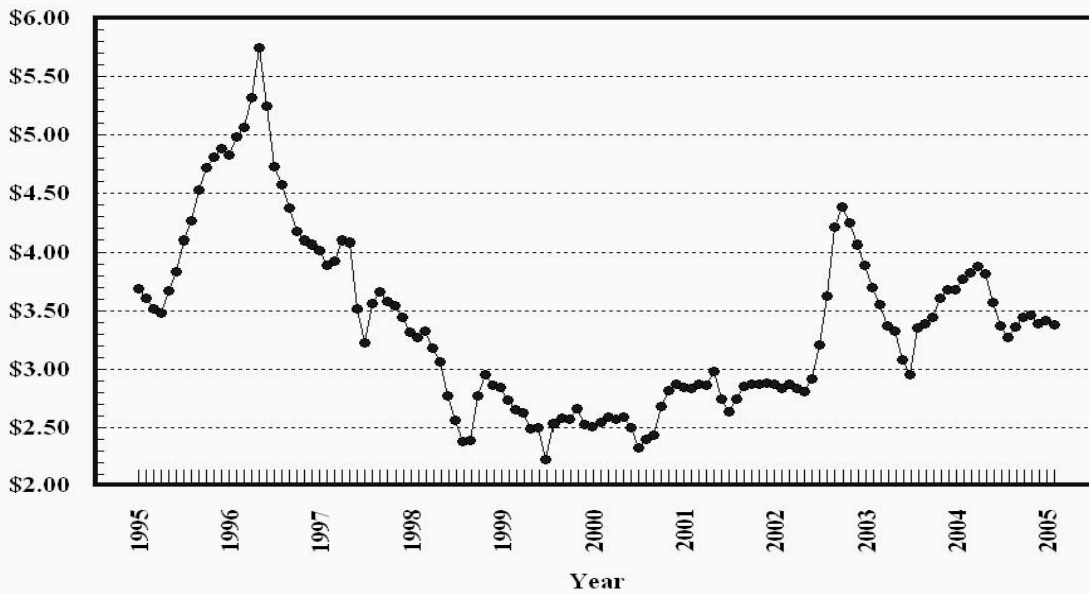
### Prices Received, Corn, US

Dollars per Bu



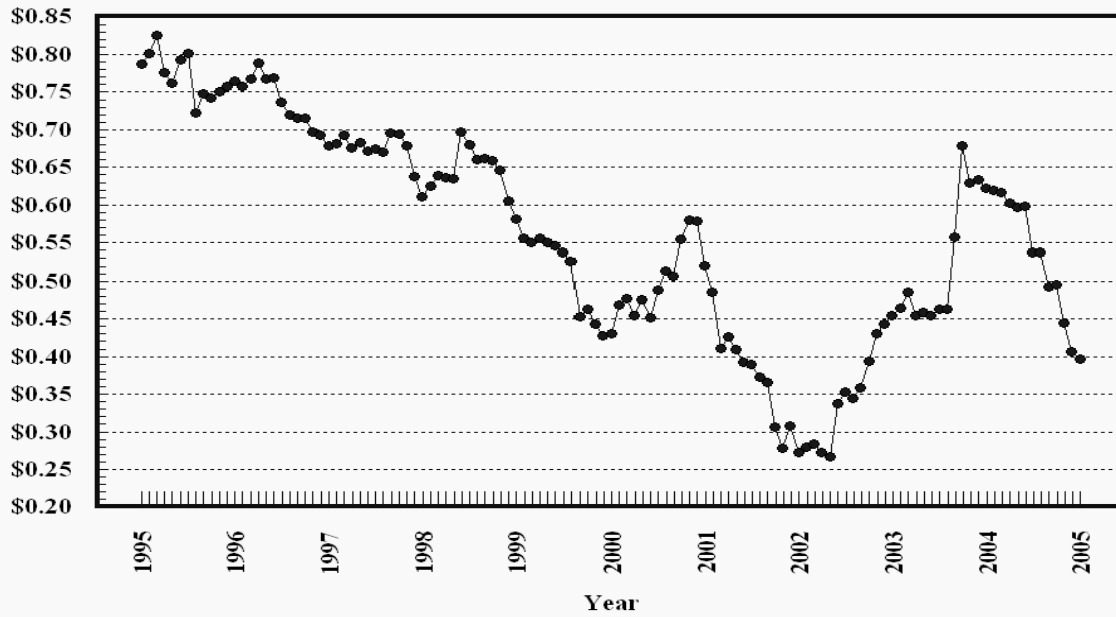
### Prices Received, Wheat, US

Dollars per Bu



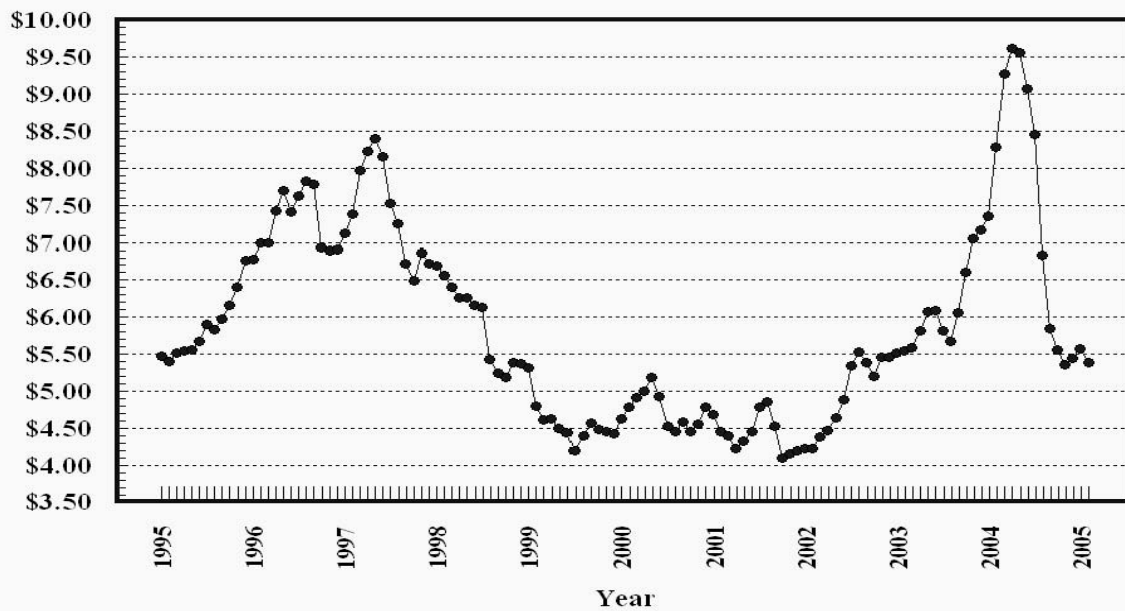
## Prices Received, Cotton, US

Dollars per Lb



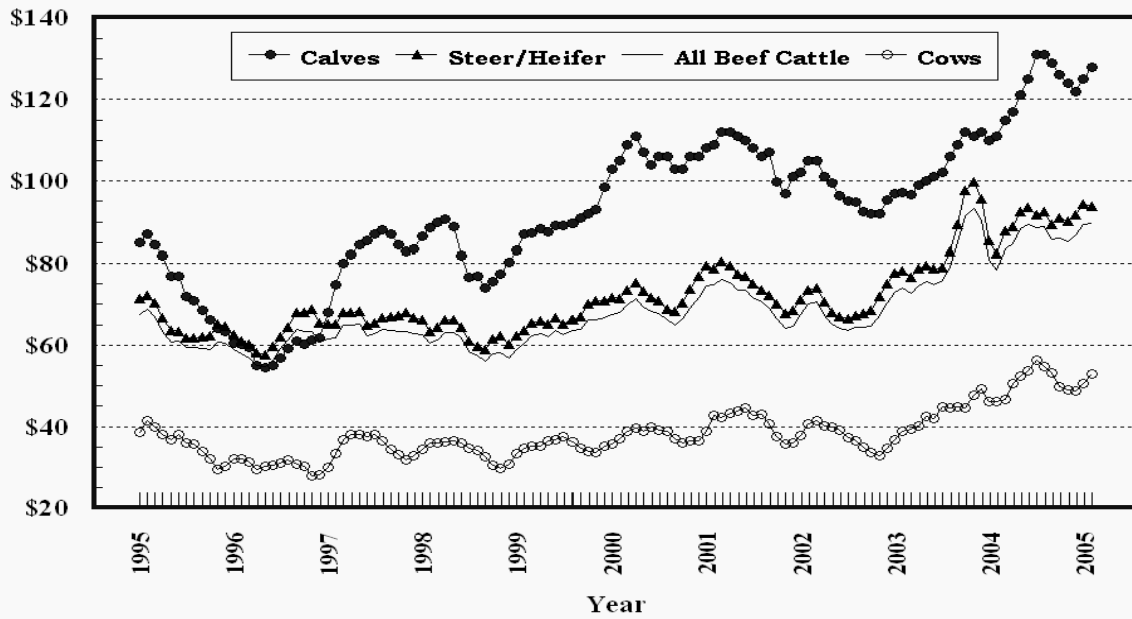
## Prices Received, Soybeans, US

Dollars per Bu



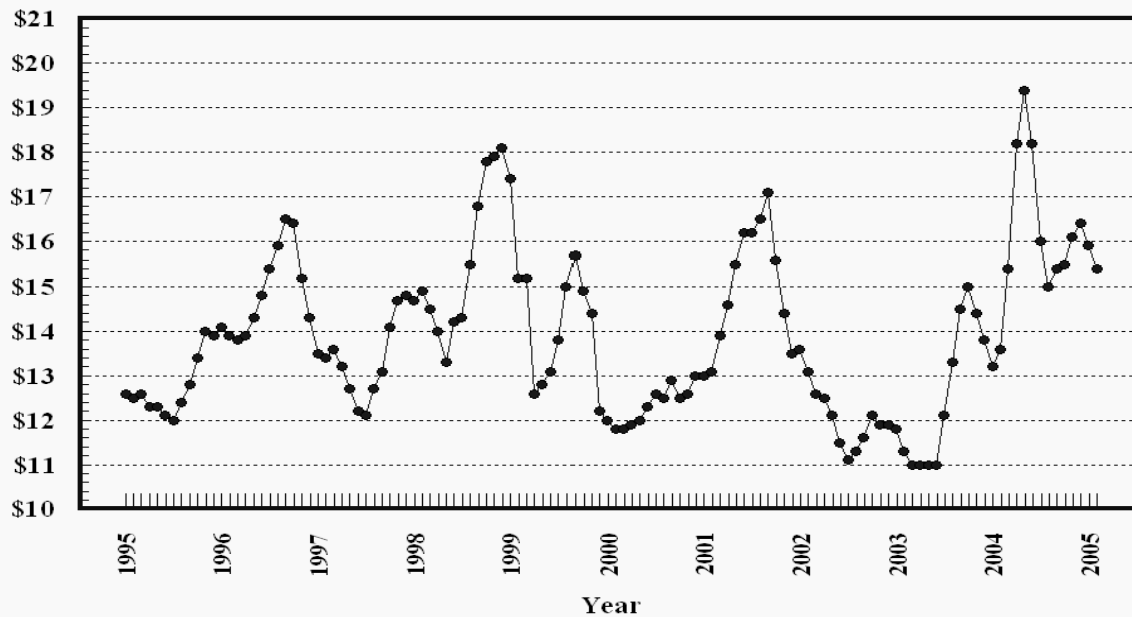
## Prices Received, Cattle, US

Dollars per Cwt



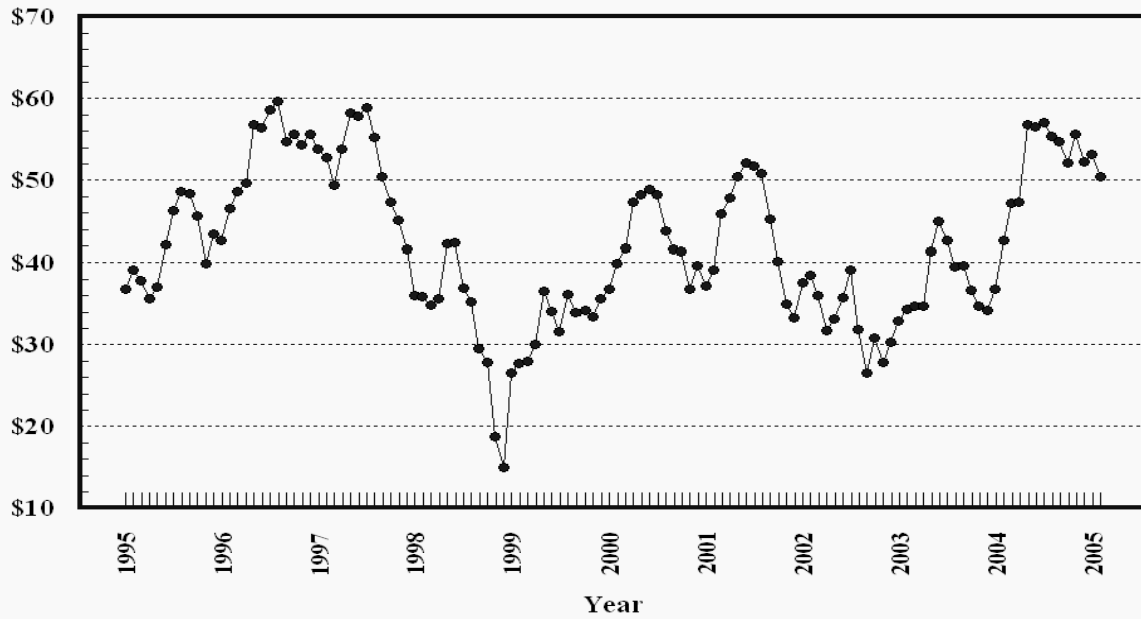
## Prices Received, Milk, US

Dollars per Cwt



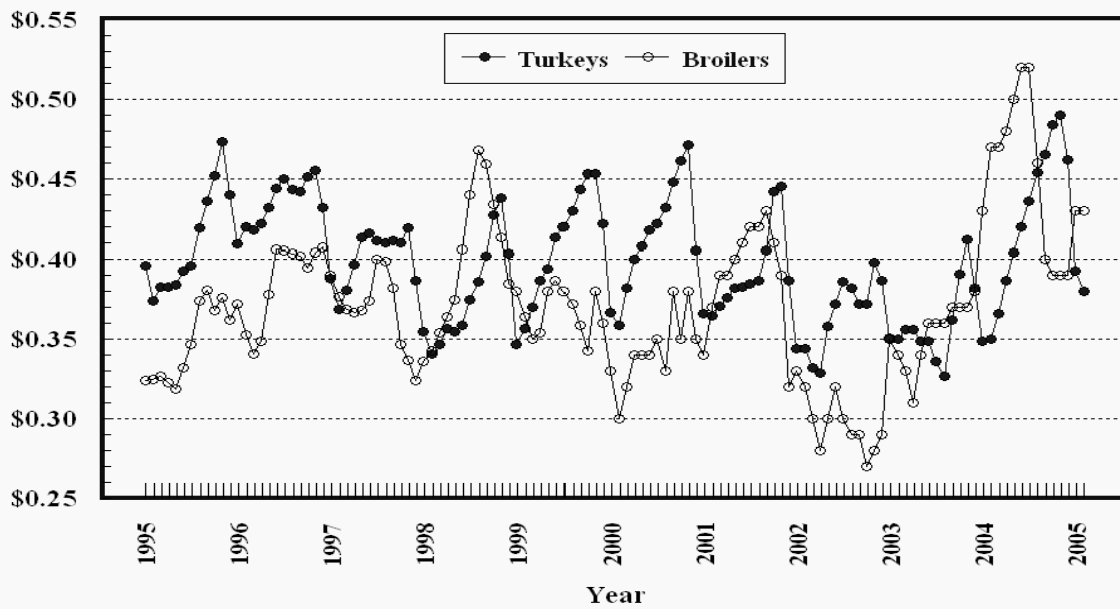
### Prices Received, Hogs, US

Dollars per Cwt



### Prices Received, Turkeys & Broilers, US

Dollars per Lb



**Wheat: Prices Received, by State, January and February 2005**

State	All Wheat		Winter Wheat		Durum Wheat		Oth Spring Wheat	
	Jan <sup>1</sup>	Feb <sup>2</sup>	Jan <sup>1</sup>	Feb <sup>2</sup>	Jan <sup>1</sup>	Feb <sup>2</sup>	Jan <sup>1</sup>	Feb <sup>2</sup>
	<i>Dollars per Bushel</i>	<i>Dollars per Bushel</i>	<i>Dollars per Bushel</i>	<i>Dollars per Bushel</i>	<i>Dollars per Bushel</i>	<i>Dollars per Bushel</i>	<i>Dollars per Bushel</i>	<i>Dollars per Bushel</i>
AR	( <sup>3</sup> )	( <sup>3</sup> )	( <sup>3</sup> )	( <sup>3</sup> )				
CA	( <sup>3</sup> )	( <sup>3</sup> )	( <sup>3</sup> )	( <sup>3</sup> )	( <sup>3</sup> )	( <sup>3</sup> )		
CO	3.30	3.15	3.30	3.15			( <sup>3</sup> )	( <sup>3</sup> )
ID	3.65	3.57	3.45	3.45			3.90	3.75
IL	3.25	3.25	3.25	3.25				
IN	3.22	2.87	3.22	2.87				
KS	3.11	3.17	3.11	3.17				
MI	2.81	2.80	2.81	2.80				
MN	3.35	3.29	( <sup>3</sup> )	( <sup>3</sup> )			3.35	3.30
MO	3.28	3.20	3.28	3.20				
MT	3.69	3.59	3.52	3.35	3.68	3.75	3.85	3.79
NE	3.26	3.15	3.26	3.15				
ND	3.50	3.45	2.67	2.50	3.59	3.55	3.50	3.45
OH	2.96	2.97	2.96	2.97				
OK	3.28	3.14	3.28	3.14				
OR	3.72	3.65	3.67	3.60			4.01	3.90
SD	3.36	3.27	3.24	3.05			3.48	3.49
TX	3.17	3.13	3.17	3.13				
WA	3.77	3.75	3.49	3.60			4.20	4.09
US	3.42	3.38	3.27	3.24	3.62	3.59	3.60	3.55

<sup>1</sup> Entire month.

<sup>2</sup> Mid-month.

<sup>3</sup> Price not published to avoid disclosure of individual firms.

<sup>4</sup> Insufficient sales to establish a price.

**Prices Received for Selected Agricultural Commodities, by Month, United States, 2004 and 2005 <sup>1</sup>**

Month	All Wheat		Corn		Soybeans		Beef Cattle <sup>2</sup>		All Hogs	
	2004	2005	2004	2005	2004	2005	2004	2005	2004	2005
	<i>Dollars per Bushel</i>	<i>Dollars per Bushel</i>	<i>Dollars per Bushel</i>	<i>Dollars per Bushel</i>	<i>Dollars per Bushel</i>	<i>Dollars per Bushel</i>	<i>Dollars per Cwt</i>	<i>Dollars per Cwt</i>	<i>Dollars per Cwt</i>	<i>Dollars per Cwt</i>
Jan	3.68	3.42	2.39	2.12	7.35	5.57	81.10	89.40	36.60	53.20
Feb	3.77	3.38	2.61	2.02	8.28	5.39	78.50	89.60	42.60	50.40
Mar	3.83		2.75		9.28		83.70		47.20	
Apr	3.88		2.89		9.62		85.00		47.40	
May	3.82		2.87		9.56		88.50		56.60	
Jun	3.57		2.79		9.08		89.80		56.70	
Jul	3.37		2.51		8.46		88.10		57.10	
Aug	3.27		2.34		6.83		87.70		55.30	
Sep	3.36		2.20		5.84		85.90		54.80	
Oct	3.44		2.15		5.56		86.50		52.20	
Nov	3.46		2.05		5.36		85.40		55.60	
Dec	3.39		2.04		5.45		86.80		52.30	

<sup>1</sup> Current month prices are mid-month; prices for previous months are for the entire month.

<sup>2</sup> Cows, steers and heifers.

**Grains: Prices Received, by State, January and February 2005**

Month	All Barley <sup>1</sup>		Corn		Oats		Soybeans		Sorghum Grain	
	Jan <sup>2</sup>	Feb <sup>3</sup>	Jan <sup>2</sup>	Feb <sup>3</sup>	Jan <sup>2</sup>	Feb <sup>3</sup>	Jan <sup>2</sup>	Feb <sup>3</sup>	Jan <sup>2</sup>	Feb <sup>3</sup>
	<i>Dollars per Bushel</i>	<i>Dollars per Bushel</i>	<i>Dollars per Bushel</i>	<i>Dollars per Bushel</i>	<i>Dollars per Bushel</i>	<i>Dollars per Bushel</i>	<i>Dollars per Bushel</i>	<i>Dollars per Bushel</i>	<i>Dollars per Cwt</i>	<i>Dollars per Cwt</i>
AL										
AR										
CA	( <sup>4</sup> )	( <sup>5</sup> )					5.82	5.36	( <sup>4</sup> )	( <sup>4</sup> )
CO	2.97	3.18	2.22	2.10						
ID	2.88	2.83								
IL			2.23	2.20	( <sup>4</sup> )	( <sup>4</sup> )	5.67	5.65	3.37	3.35
IN			2.09	1.90			5.58	5.31		
IA			2.02	2.00	1.77	1.90	5.36	5.30		
KS			2.00	1.87			5.07	5.01	2.83	2.81
KY			2.36	2.00			5.82	5.45		
LA							5.93	5.20		
MI			2.00	1.90	2.21	2.30	5.36	5.30		
MN	2.56	2.48	1.94	1.91	1.45	1.48	5.53	5.48		
MS							6.34	5.32		
MO			1.93	1.90			5.34	5.30	2.89	3.00
MT	2.77	2.71			( <sup>4</sup> )	( <sup>5</sup> )				
NE			2.04	2.05	1.74	1.60	5.24	5.20	2.90	2.95
NC			2.57	2.36			5.29	5.13		
ND	2.13	2.17	1.91	1.60	1.22	1.25	5.59	5.50		
OH			2.13	2.13	2.04	( <sup>5</sup> )	5.55	5.50		
OK									3.15	3.21
OR	2.04	2.10			( <sup>4</sup> )	( <sup>4</sup> )				
PA			2.32	2.22	( <sup>4</sup> )	( <sup>4</sup> )				
SD	( <sup>5</sup> )	( <sup>5</sup> )	1.75	1.66	1.68	1.61	5.36	5.19		
TN			2.16	2.05			5.66	5.50		
TX			2.42	2.20	( <sup>5</sup> )	( <sup>5</sup> )			3.55	3.35
UT	2.10	1.76								
WA	2.12	2.28								
WI			2.15	2.10	1.62	1.60	5.35	5.30		
WY	2.79	2.59								
US	2.42	2.48	2.12	2.02	1.64	1.58	5.57	5.39	2.95	2.98

<sup>1</sup> The Three-State (MN, ND and SD) Feed Barley price is discontinued.

<sup>2</sup> Entire month.

<sup>3</sup> Mid-month.

<sup>4</sup> Price not published to avoid disclosure of individual firms.

<sup>5</sup> Insufficient sales to establish a price.

**Malting and Feed Barley: Prices Received Selected State, January and February 2005**

State	Malting Barley		Feed Barley	
	Jan <sup>1</sup>	Feb <sup>2</sup>	Jan <sup>1</sup>	Feb <sup>2</sup>
	<i>Dollars per Bushel</i>	<i>Dollars per Bushel</i>	<i>Dollars per Bushel</i>	<i>Dollars per Bushel</i>
ID	3.04	3.05	1.97	1.95
MN	( <sup>3</sup> )	( <sup>3</sup> )	1.17	1.21
MT	3.06	2.99	1.67	1.66
ND	2.46	2.45	1.47	1.50
SD	( <sup>4</sup> )	( <sup>4</sup> )	( <sup>4</sup> )	( <sup>4</sup> )
WY	( <sup>3</sup> )	( <sup>3</sup> )	1.63	1.60

<sup>1</sup> Entire month.

<sup>2</sup> Mid-month.

<sup>3</sup> Price not published to avoid disclosure of individual firms.

<sup>4</sup> Insufficient sales to establish a price.

**Field Crops: Prices Received, by State, January and February 2005**

State	Dry Edible Beans		All Sunflower		Flaxseed		Tobacco		Peanuts <sup>4</sup>	
	Jan <sup>1</sup>	Feb <sup>2</sup>	Jan <sup>1</sup>	Feb <sup>2</sup>	Jan <sup>1</sup>	Feb <sup>2</sup>	Jan <sup>1</sup>	Feb <sup>3</sup>	Jan <sup>1</sup>	Feb <sup>3</sup>
	<i>Dollars per Cwt</i>	<i>Dollars per Cwt</i>	<i>Dollars per Cwt</i>	<i>Dollars per Cwt</i>	<i>Dollars per Bushel</i>	<i>Dollars per Bushel</i>	<i>Dollars per Pound</i>	<i>Dollars per Pound</i>	<i>Dollars per Pound</i>	<i>Dollars per Pound</i>
AL									( <sup>5</sup> )	( <sup>5</sup> )
CA	40.70	42.20								
CO	29.00	29.30								
FL							( <sup>6</sup> )	( <sup>6</sup> )	( <sup>5</sup> )	( <sup>5</sup> )
GA							( <sup>6</sup> )	( <sup>6</sup> )	0.179	0.185
ID	26.50	27.50					1.970	2.000		
IN										
KS			12.60	11.80						
KY							1.980	1.950		
MD							( <sup>6</sup> )	( <sup>6</sup> )		
MI	27.10	25.00								
MN	27.90	( <sup>5</sup> )	16.30	16.40						
MO										
NE	23.80	24.10								
NC							1.925	( <sup>6</sup> )	0.230	0.253
ND	26.40	26.00	14.10	14.10	8.90	10.50				
OH							1.980	1.965		
OK										
SC							( <sup>6</sup> )	( <sup>6</sup> )		
SD			13.40	13.90	( <sup>6</sup> )	( <sup>6</sup> )				
TN							1.950	1.875	( <sup>5</sup> )	( <sup>5</sup> )
TX									( <sup>5</sup> )	( <sup>6</sup> )
VA							1.865	( <sup>6</sup> )	( <sup>5</sup> )	( <sup>6</sup> )
WV										
US	27.40	28.30	13.70	13.60	8.90	10.50	1.970	1.945	0.189	0.189

<sup>1</sup> Entire month.

<sup>2</sup> Mid-month.

<sup>3</sup> Based on sales through first half of month.

<sup>4</sup> In-Shell.

<sup>5</sup> Price not published to avoid disclosure of individual firms.

<sup>6</sup> Insufficient sales to establish a price.

**Tobacco: Prices Received, by Area and Type, February 2005, with Comparisons**

Class by Type	Type	Feb 2004	Jan 2005	Feb 2005 <sup>1</sup>
		<i>Dollars per Pound</i>	<i>Dollars per Pound</i>	<i>Dollars per Pound</i>
Fire-cured				
VA Belt	21	( <sup>2</sup> )	1.490	( <sup>2</sup> )
Eastern District	22	2.530	1.570	1.640
Western District	23	2.340	1.735	1.775
Total Fire-cured	21-23	2.500	1.630	1.640
Light Air-cured				
Burley	31	1.950	1.985	1.970
Total Light Air-cured	31-32	1.950	1.985	1.970
Dark Air-cured				
One Sucker Belt	35	1.840	1.150	( <sup>2</sup> )
Green River Belt	36	1.310	1.465	1.150
Sun-cured Belt	37	( <sup>2</sup> )	1.170	( <sup>2</sup> )
Total Dark Air-cured	35-37	1.675	1.285	1.150
US	11-37	2.175	1.970	1.945

<sup>1</sup> Based on sales during the first half of the month.

<sup>2</sup> Insufficient sales to establish a price.



**Field Crops and Apples: Prices Received, by State, January and February 2005**

State	Cotton, Upland		February				Apples Fresh Use <sup>1 4</sup>
	Jan <sup>1</sup>	Feb <sup>2</sup>	Cotton- seed <sup>5</sup>	Hay, Baled <sup>3</sup>			
				All	Alfalfa	Other	
<i>Dollars per Pound</i>	<i>Dollars per Pound</i>	<i>Dollars per Ton</i>	<i>Dollars per Ton</i>	<i>Dollars per Ton</i>	<i>Dollars per Ton</i>	<i>Dol/Lb</i>	
AL	0.397	0.383	( <sup>7</sup> )				
AZ	0.481	( <sup>6</sup> )	166.00	110.00	110.00	106.00	
AR	0.404	0.425	( <sup>7</sup> )				
CA	0.531	0.522	( <sup>6</sup> )	124.00	130.00	92.00	0.285
CO				84.00	85.00	73.00	
GA	0.414	0.397	( <sup>7</sup> )				
ID				100.00	101.00	64.00	
IL				87.00	92.00	67.00	
IA				82.00	85.00	55.00	
KS				63.00	72.00	52.00	
KY				70.00	105.00	61.00	
LA	0.414	0.399	( <sup>7</sup> )				
MI				97.00	100.00	75.00	0.190
MN				77.00	81.00	54.00	
MS	0.400	0.399	( <sup>7</sup> )				
MO				55.00	98.00	43.00	
MT				72.00	74.00	66.00	
NE				51.00	51.00	48.00	
NV				107.00	106.00	118.00	
NM				120.00	123.00	100.00	
NY				108.00	140.00	90.00	0.227
NC	0.403	0.400	( <sup>6</sup> )				
ND				58.00	62.00	44.00	
OH				102.00	120.00	68.00	0.300
OK				71.00	92.00	47.00	
OR				96.00	97.00	95.00	
PA				113.00	138.00	106.00	0.220
SD				60.00	62.00	48.00	
TN	0.399	0.399	( <sup>7</sup> )				
TX	0.369	0.361	105.00	68.00	120.00	64.00	
UT				91.00	91.00	80.00	
VA							0.250
WA				105.00	100.00	115.00	0.203
WI				88.00	95.00	55.00	
WY				73.00	74.00	68.00	
US	0.396	0.381	112.00	84.70	91.90	70.00	0.208

<sup>1</sup> Entire month.

<sup>2</sup> Based on sales during the first half of the month.

<sup>3</sup> Mid-month.

<sup>4</sup> Equivalent packinghouse-door returns for CA, NY, and WA. Price at point of first sale for other States.

<sup>5</sup> Marketing year August - February.

<sup>6</sup> Price not published to avoid disclosure of individual firms.

<sup>7</sup> Insufficient sales to establish a price.

**Upland Cotton and Rice: Prices Received and Marketings,  
United States, February 2005, with Comparisons**

Item	Unit	Dec 2004 <sup>1</sup>	Jan 2005 <sup>1</sup>	Feb 2005 <sup>2</sup>
Cotton, Upland				
Average Price	Dollars per Pound	0.407	0.396	0.381
Marketings <sup>3</sup>	1,000 Bales	2,292	3,698	NA
Rice				
Average Price	Dollars per Cwt	7.43	7.16	6.83
Marketings <sup>4</sup>	1,000 Cwt	13,416	19,746	NA

<sup>1</sup> Entire month.

<sup>2</sup> Based on purchases for the first half of the month.

<sup>3</sup> Marketings based on a survey of cotton buyers in the major producing States - AL, AZ, AR, CA, GA, LA, MS, NC, TN, and TX.

<sup>4</sup> Purchases by private firms and rice (rough equivalent) shipped by cooperatives.

**Citrus Fruit: Prices and Equivalent Returns, by Utilization,  
by State and United States, February 2005**

Commodity, State and Type	F.O.B. Packed Fresh	Equivalent Returns <sup>1</sup>					
		Packinghouse-door			On-tree		
		All	Fresh	Process	All	Fresh	Process
	<i>Dollars per Box</i>	<i>Dollars per Box</i>	<i>Dollars per Box</i>	<i>Dollars per Box</i>	<i>Dollars per Box</i>	<i>Dollars per Box</i>	<i>Dollars per Box</i>
Grapefruit							
AZ	15.00	8.36	8.36		5.99	5.99	
CA	22.40	15.06	15.76	-0.28	12.69	13.39	-2.65
FL	27.00	14.64	18.40	10.36	11.88	15.90	7.32
White	25.60	12.32	16.60	9.30	9.59	14.10	6.40
Colored	27.30	15.34	18.80	10.80	12.58	16.30	7.70
TX	34.60	11.65	24.41	1.20	10.48	23.22	0.06
US	28.50	13.76	19.63	7.38	11.46	17.45	4.96
Lemons							
AZ	29.50	8.05	19.20	0.18	3.62	14.77	-4.25
CA	30.80	11.11	20.50	0.18	6.68	16.07	-4.25
US	30.70	10.75	20.38	0.18	6.32	15.95	-4.25
Oranges							
AZ							
Navel and Misc	18.80	8.94	11.27	0.38	6.43	8.76	-2.13
CA							
Navel and Misc	19.80	10.33	12.27	0.38	7.82	9.76	-2.13
FL	14.40	5.04	6.40	5.00	2.83	4.03	2.80
Early and Mids	13.80	5.02	5.80	5.00	2.81	3.45	2.80
Valencia	16.00	6.84	8.00	4.10	4.50	5.60	1.90
TX							
Early and Mids	18.60	6.10	8.32	2.04	4.75	6.95	0.71
US	18.90	5.83	11.18	4.85	3.59	8.74	2.65
Tangelos							
FL	19.00	4.52	10.00	3.80	1.93	7.50	1.20
Tangerines							
AZ	29.10	11.83	21.90	-0.26	9.29	19.36	-2.80
CA	28.90	18.87	21.70	0.30	16.33	19.16	-2.24
FL	29.00	16.54	19.00	7.20	12.73	15.40	2.60
US	29.00	17.31	20.26	4.47	14.07	17.15	0.67
Temples							
FL	16.00	5.01	7.00	4.20	2.44	4.50	1.60

<sup>1</sup> Net lbs. Per box: Grapefruit - AZ & CA-67, FL-85, TX-80; Lemons - 76; Oranges - AZ & CA-75, FL-90, TX-85; Tangelos - 90; Tangerines - AZ, CA-75, FL-95; Temples - 90.

**Potatoes: Prices Received, by State, January and February 2005**

State	Jan	Feb	State	Jan	Feb
	<i>Dollars per Cwt</i>	<i>Dollars per Cwt</i>		<i>Dollars per Cwt</i>	<i>Dollars per Cwt</i>
AL <sup>1</sup>			NC <sup>1</sup>		
AZ <sup>1</sup>			ND - All <sup>2</sup>	6.20	5.80
CA - All	14.10	14.30	- Fresh <sup>3</sup>	6.25	NA
- Winter	18.50	18.80	- Processing	6.00	NA
- Spring <sup>1</sup>			OH	6.90	6.90
- Summer <sup>1</sup>			OR	4.80	5.05
- Fall	7.55	7.55	PA	8.65	9.05
CO - All <sup>2</sup>	4.70	4.65	TX <sup>1</sup>		
- Fresh <sup>3</sup>	4.50	NA	VA <sup>1</sup>		
FL <sup>1</sup>			WA - All	5.35	5.25
ID - All <sup>2</sup>	4.10	4.00	- Processing	5.15	NA
- Fresh <sup>3</sup>	3.10	NA	WI - All <sup>2</sup>	5.75	6.35
- Processing	4.60	NA	- Fresh <sup>3</sup>	5.15	NA
ME	5.95	6.20	- Processing	6.30	NA
MI	7.15	7.40			
MN	5.75	5.60	US - All <sup>2</sup>	5.59	5.44
NY	7.75	7.85	- Fresh <sup>3</sup>	5.89	NA
			- Processing	5.34	NA

<sup>1</sup> No potatoes being marketed.

<sup>2</sup> Average price of potatoes sold for all uses, including table stocks, processing, seed and livestock feed.

<sup>3</sup> Fresh market prices only, includes table stock prices.

**Cattle: Prices Received, by State, January and February 2005**

State	Cows <sup>1</sup>		Steers & Heifers		Beef Cattle <sup>4</sup>		Calves	
	Jan <sup>2</sup>	Feb <sup>3</sup>	Jan <sup>2</sup>	Feb <sup>3</sup>	Jan <sup>2</sup>	Feb <sup>3</sup>	Jan <sup>2</sup>	Feb <sup>3</sup>
	<i>Dollars per Cwt</i>	<i>Dollars per Cwt</i>	<i>Dollars per Cwt</i>	<i>Dollars per Cwt</i>	<i>Dollars per Cwt</i>	<i>Dollars per Cwt</i>	<i>Dollars per Cwt</i>	<i>Dollars per Cwt</i>
AZ	54.40	56.40	106.00	107.00	105.00	106.00	125.00	129.00
AR	46.20	48.90	101.00	101.00	84.60	85.40	123.00	125.00
CA	46.90	47.80	91.20	91.80	68.60	69.40	123.00	120.00
CO	52.30	55.90	108.00	105.00	107.00	105.00	128.00	129.00
FL	50.70	53.30	96.60	98.10	73.70	77.00	128.00	130.00
GA	51.30	53.60	93.80	96.00	65.30	68.90	120.00	124.00
ID	48.00	50.70	92.60	92.90	80.60	83.60	119.00	123.00
IL	50.50	51.00	88.00	88.00	87.30	87.30	114.00	115.00
IA	49.60	51.80	95.50	95.60	94.60	94.70	120.00	124.00
KS	51.30	55.50	89.90	90.30	88.40	89.30	127.00	135.00
KY	47.00	49.00	96.00	96.00	84.20	84.70	113.00	117.00
LA	50.70	52.00	101.00	104.00	65.80	66.60	117.00	122.00
MI	49.00	50.00	78.00	79.00	69.30	70.30	118.00	120.00
MN	52.10	55.50	84.80	85.00	78.30	79.10	118.00	121.00
MO	49.50	52.60	105.00	105.00	88.40	87.20	124.00	127.00
MT	51.50	53.90	107.00	104.00	95.90	92.00	127.00	124.00
NE	53.10	55.50	96.60	94.40	95.30	93.20	132.00	134.00
NM	51.80	55.70	106.00	106.00	82.70	85.90	125.00	127.00
ND	51.70	53.00	106.00	103.00	101.00	97.00	126.00	123.00
OH	45.10	48.00	81.60	82.00	77.90	78.60	106.00	109.00
OK	51.20	54.70	104.00	104.00	100.00	101.00	123.00	128.00
OR	46.70	47.20	96.30	98.20	81.40	82.90	112.00	112.00
PA	50.10	51.90	84.90	84.50	75.90	76.00	115.00	116.00
SD	51.50	51.80	105.00	103.00	95.90	97.40	131.00	131.00
TN	48.00	51.00	97.00	99.00	77.40	79.80	115.00	119.00
TX	48.80	51.60	94.20	94.80	90.10	91.80	128.00	132.00
VA	45.00	47.20	93.30	96.20	72.50	78.10	111.00	120.00
WI	51.30	54.90	84.00	84.80	65.00	67.50	144.00	144.00
WY	51.80	53.00	105.00	104.00	94.40	96.40	134.00	135.00
US	50.50	52.80	94.40	93.80	89.40	89.60	125.00	128.00

<sup>1</sup> Beef cows and cull dairy cows sold for slaughter.

<sup>2</sup> Entire month.

<sup>3</sup> Mid-month.

<sup>4</sup> "Cows" and "steers and heifers" combined.

**Hogs: Prices Received, by State, January and February 2005**

State	Sows		Barrows and Gilts		All Hogs	
	Jan <sup>1</sup>	Feb <sup>2</sup>	Jan <sup>1</sup>	Feb <sup>2</sup>	Jan <sup>1</sup>	Feb <sup>2</sup>
	<i>Dollars per Cwt</i>	<i>Dollars per Cwt</i>	<i>Dollars per Cwt</i>	<i>Dollars per Cwt</i>	<i>Dollars per Cwt</i>	<i>Dollars per Cwt</i>
AR	46.50	46.70	50.20	47.50	49.80	47.40
IL	44.10	44.00	55.00	54.50	54.10	53.70
IN	47.80	48.00	51.70	49.60	51.30	49.40
IA	48.60	48.60	54.80	51.20	54.70	51.10
KS	46.10	45.70	51.10	47.50	50.50	47.30
MN	46.50	46.00	53.00	49.50	53.00	49.50
MO	45.50	45.10	46.20	45.60	46.20	45.60
NE	48.00	46.50	54.40	51.70	54.30	51.60
NC	45.10	45.70	54.50	51.60	54.40	51.50
OH	46.80	47.00	51.70	51.00	51.50	50.80
OK	43.70	43.00	47.50	44.00	46.90	43.90
PA	44.70	44.20	53.00	51.60	51.80	50.50
SD	43.70	44.00	55.70	52.00	54.10	51.20
US	45.60	45.50	53.50	50.70	53.20	50.40

<sup>1</sup> Entire month.

<sup>2</sup> Mid-month.

**Sheep and Poultry: Prices Received, by State, January and February 2005**

State	January		February
	Sheep <sup>1</sup>	Lambs <sup>1</sup>	Eggs <sup>2 3</sup>
	<i>Dollars per Cwt</i>	<i>Dollars per Cwt</i>	<i>Dollars per Dozen</i>
AL			0.350
AR			0.350
CA	46.50	100.00	0.430
CO	46.60	114.00	
CT			0.480
FL			0.360
GA			0.370
ID	45.00	102.00	
IN			0.350
IA	54.30	110.00	0.320
KY	53.00	121.00	
ME			0.560
MI			0.350
MN	45.00	109.00	0.350
MS			0.375
MO	54.00	119.00	0.310
MT	59.50	126.00	
NE	50.00	108.00	
NY			0.370
NC			0.350
ND	48.00	116.00	
OH	49.00	110.00	0.350
OR	46.00	101.00	
PA	52.00	125.00	0.360
SC			0.340
SD	58.60	125.00	
TX	59.40	126.00	0.350
VA	48.00	120.00	
WA			0.430
WV	44.00	118.00	
WY	57.80	118.00	
US	53.50	114.00	0.358

<sup>1</sup> Entire month.

<sup>2</sup> Mid-month.

<sup>3</sup> Market (table) eggs.

**Milk and Milk Cows: Prices Received, by State, January and February 2005**

State	January <sup>1</sup>						February		Milk Cows <sup>5</sup>
	Fluid Grade Milk <sup>2</sup>		Manufacturing Grade Milk		All Milk <sup>3</sup>		All Milk <sup>3 4</sup>		
	Price	Fat Test	Price	Fat Test	Price	Fat Test	Price	Fat Test	
	<i>Dol/Cwt</i>	<i>Percent</i>	<i>Dol/Cwt</i>	<i>Percent</i>	<i>Dol/Cwt</i>	<i>Percent</i>	<i>Dol/Cwt</i>	<i>Percent</i>	<i>Dol/Head</i>
AZ	15.70	3.67			15.70	3.67	15.20	3.63	
CA	14.00	3.78	14.40	3.97	14.01	3.78	13.40	3.74	
CO	15.70	3.63			15.70	3.63	15.50	3.61	
FL	20.90	3.61			20.90	3.61	17.90	3.57	
ID	14.70	3.69	16.20	4.02	14.70	3.69	15.50	3.68	
IL	16.30	3.76	15.60	3.62	16.30	3.76	16.40	3.75	
IN	16.90	3.76	14.90	3.98	16.80	3.77	16.10	3.75	
IA	16.70	3.78	15.40	3.90	16.70	3.78	16.50	3.75	
KS	15.50	3.76			15.50	3.76	15.40	3.72	
KY	17.30	3.71			17.30	3.71	16.20	3.65	
MI	16.40	3.72	14.10	3.79	16.40	3.72	15.90	3.70	
MN	15.80	3.82	14.20	3.87	15.80	3.82	16.00	3.80	
MO	16.90	3.72	15.30	3.94	16.80	3.73	15.70	3.70	
NM	15.70	3.68			15.70	3.68	14.90	3.66	
NY	16.70	3.74			16.70	3.74	15.70	3.74	
OH	16.70	3.76	15.40	3.99	16.60	3.77	15.80	3.76	
OR	15.90	3.74			15.90	3.74	15.40	3.72	
PA	17.90	3.75	14.70	3.80	17.90	3.75	16.80	3.75	
TX	17.00	3.77			17.00	3.77	16.50	3.74	
VT	16.70	3.74			16.70	3.74	15.90	3.73	
VA	17.90	3.64			17.90	3.64	16.40	3.62	
WA	15.90	3.74			15.90	3.74	15.40	3.72	
WI	16.30	3.80	15.20	3.94	16.30	3.80	16.50	3.79	
US	15.90	3.75	14.90	3.93	15.90	3.75	15.40	3.73	

<sup>1</sup> Entire month.

<sup>2</sup> Including milk diverted to manufacturing.

<sup>3</sup> Before deductions for hauling. Includes quality, quantity, and other premiums. Excludes hauling subsidies.

<sup>4</sup> Preliminary.

<sup>5</sup> Animals sold for dairy herd replacement only. Prices published January, April, July and October.

**Parity Price Equivalent for Manufacturing Milk <sup>1</sup>: United States,  
January and February 2005, with Comparisons**

Item	Unit	Feb 2004	Jan 2005	Feb 2005
Parity Equivalent	Dollars per Cwt	30.83	32.08	32.17
Average Price F.O.B <sup>2</sup>	Dollars per Cwt	12.80	14.90	14.80
Average Fat Test of Milk <sup>2</sup>	Percent	3.91	3.93	3.89

<sup>1</sup> The parity price equivalent during 2005 is 91.4 percent of the parity price of all milk sold to plants, compared with 90.4 percent in 2004. For additional details, see January 2005 issue of "Agricultural Prices".

<sup>2</sup> Preliminary for February 2005.

**United States Parity Prices for Farm Products and Average Prices Received as  
Percent of Parity Prices Based on Data for February 2005, with Comparisons <sup>1</sup>**

Commodity and Unit	Adjusted Base Price	Parity Price Based on Data for			Price as Percent of Parity		
		Feb 2004	Jan 2004	Feb 2005	Feb 2004	Jan 2004	Feb 2005
	<i>Dollars</i>	<i>Dollars</i>	<i>Dollars</i>	<i>Dollars</i>	<i>Percent</i>	<i>Percent</i>	<i>Percent</i>
<b>Basic Commodities</b>							
All Wheat, Bu	0.555	9.76	9.90	9.91	38	35	34
Rice, Cwt	1.38	28.20	24.60	24.60	30	29	28
Corn, Bu	0.372	6.56	6.63	6.64	36	32	30
Cotton, Lb							
American Upland	0.095	1.95	1.69	1.70	32	23	22
Extra Long Staple	0.142	2.49	2.53	2.54			
Peanuts, Lb	0.0350	0.640	0.624	0.625	32	30	30
Tobacco, By Type, Lb							
Flue-Cured 11-14	0.255	4.48	4.55	4.55			
VA Fire-Cured, 21	0.256	4.45	4.56	4.57	26	40	33
KY-TN Fire-Cured, 22-23	0.323	5.57	5.76	5.77	45		
Burley, 31	0.274	4.79	4.89	4.89	41	41	41
Maryland, 32	0.210	3.72	3.74	3.75			
Dark Air-Cured, 35-36	0.284	4.88	5.06	5.07	40		
Sun-Cured, 37	0.241	4.26	4.30	4.30	20	34	33
PA Seedleaf, 41	0.205	3.56	3.66	3.66			
Cigar Filler & Binder, 42-44, 54-55	0.225	3.89	4.01	4.02			
Puerto Rican Filler, 46	0.159	2.80	2.83	2.84			
Cigar Binder, 51-52	0.747	12.70	13.30	13.30			
<b>Designated Nonbasic</b>							
All Milk, Sold to Plants, Per Cwt <sup>2</sup>	1.97		35.10	35.20		46	46
Honey, Extracted, Lb <sup>3</sup>	0.1280	1.82	2.28	2.28			
<b>Wool and Mohair</b>							
Wool, Lb	0.0910	1.52	1.62	1.63	47		49
Mohair, Lb	0.333	5.78	5.94	5.95	29		33
<b>Other Nonbasic</b>							
Barley, Bu	0.377	6.50	6.72	6.73	41	36	37
Cottonseed, Ton	15.50	273.00	276.00	277.00	46	41	40
Dry Edible Beans, Cwt	2.82	50.50	50.30	50.40	34	54	56
Flaxseed, Bu	0.753	12.60	13.40	13.40	48	66	78
Oats, Bu	0.221	3.82	3.94	3.95	39	42	40
Potatoes, Cwt	0.838	14.80	14.90	15.00	39	38	36
Rye, Bu	0.355	6.11	6.33	6.34			
Sorghum Grain, Cwt	0.607	10.70	10.80	10.80	41	27	28
Soybeans, Bu	0.900	15.40	16.00	16.10	48	35	33
Sweetpotatoes, Cwt	2.31	38.90	41.20	41.30			
Apples, Fresh, Lb <sup>4</sup>	0.0292	0.512	0.521	0.522	58	43	41
Citrus (equiv on-tree), Box							
Grapefruit	0.394	6.70	7.03	7.04	45	178	163
Lemons	1.12	19.00	20.00	20.00	14	33	32
Oranges	0.574	10.70	10.20	10.30	23	29	35
Tangerines	1.35	24.60	24.10	24.10	47	66	58
Temples (FL)	0.379	7.80	6.76	6.77	33	53	36
Beef Cattle, Cwt	9.65	165.00	172.00	172.00	49	52	52
Calves, Cwt	13.10	221.00	234.00	234.00	50	53	55
Hogs, Cwt	5.97	102.00	106.00	107.00	36	50	47
Lambs, Cwt	11.70	195.00	209.00	209.00	53	55	
Sheep, Cwt	4.72	81.30	84.20	84.30	54	64	
Eggs, Doz <sup>2</sup>	0.0940	1.64	1.68	1.68	51	31	33
Turkeys, Live, Lb	0.0565	0.993	1.010	1.010	35	39	38

--continued



**Parity Prices Based on Data for February 2005, United States <sup>1</sup> (Continued)**

Other Nonbasic Commodities	Adj Base Price	Parity Price	Other Nonbasic Commodities	Adj Base Price	Parity Price
	<i>Dollars</i>	<i>Dollars</i>		<i>Dollars</i>	<i>Dollars</i>
Field Crops and Misc Commodities			Noncitrus Fruit		
Hops, Lb	0.251	4.48	Peaches, cont. Processing <sup>5</sup>		
Spearmint Oil, Lb	1.46	26.10	Excl Dried Clingstone, CA, Ton	33.50	598.00
Tobacco, Lb Type 61	3.21	57.30	Pears, Ton Fresh <sup>4</sup>	52.90	945.00
Noncitrus Fruit			Dried, CA <sup>6</sup>	164.00	2,930.00
Apples, Ton <sup>6</sup>			Plums, CA, Ton Fresh, Equiv On-Tree	66.70	1,190.00
Processing	18.30	327.00	Prunes, Dried, CA, Ton <sup>6</sup>	127.00	2,270.00
Apricots, Ton Fresh <sup>7</sup>	99.00	1,770.00	Prunes and Plums, Excl CA, Ton Fresh <sup>9</sup>	58.90	1,050.00
Dried, CA	270.00	4,820.00	Processing <sup>6</sup> Excl Dried	27.50	491.00
Avocados, Ton <sup>7</sup>	234.00	4,180.00	Tree Nuts <sup>10</sup>		
Cherries Bbl Sweet, Ton	188.00	3,360.00	Almonds, Lb	0.213	3.80
Tart, Lb	0.0319	0.570	Hazelnuts, Ton	135.00	2,410.00
Cranberry, Bbl <sup>5</sup>	5.69	102.00	Pistachio, Lb	0.159	2.84
Dates, CA, Ton <sup>7</sup>	181.00	3,230.00	Walnuts, Ton	173.00	3,090.00
Grapes, Ton			Vegetables, Cwt <sup>11</sup>		
Raisin Variety	124.00	2,210.00	Fresh		
Other Dried	70.50	1,260.00	Carrots <sup>8</sup>	2.28	40.70
Kiwifruit, Ton	91.30	1,630.00	Cauliflower <sup>8</sup>	4.60	82.20
Nectarines			Celery <sup>8</sup>	1.97	35.20
Fresh, CA, Ton <sup>7</sup>	62.60	1,120.00	Honeydew Melons	2.75	49.10
Olives, CA			Lettuce	2.50	44.70
Canning, Ton <sup>5</sup>	95.70	1,710.00	Onions <sup>8</sup>	1.65	29.50
Papayas (HA)	0.0528	0.943	Tomatoes	4.44	79.30
Peaches					
Fresh, Ton <sup>4</sup>	81.57	1,460.00			
Dried, CA, Ton	84.00	1,500.00			

<sup>1</sup> Parity prices are computed under the provisions of Title III, Subtitle a, Section 301 (a) of the Agricultural Adjustment Act of 1938 as amended by the Agricultural Acts of 1948, 1949, and 1956. See January "Agricultural Prices" for details on adjusted base price and parity price computations.

<sup>2</sup> Seasonally adjusted price as percentage of parity price.

<sup>3</sup> Wholesale extracted. Adjusted base price derived from state annual averages prices weighted by production. For 1982 through 1985 the national averages are the support prices.

<sup>4</sup> Equivalent packinghouse-door returns for CA, NY (apples only), OR (except peaches), and WA. Price at point of first sale for other states.

<sup>5</sup> Equivalent returns for bulk fruit at first delivery point.

<sup>6</sup> Equivalent returns at processing plant door.

<sup>7</sup> Equivalent returns at packinghouse door.

<sup>8</sup> Includes some processing.

<sup>9</sup> Based on "as sold" prices for fresh fruit in all states.

<sup>10</sup> Prices in-shell basis except almonds which are shelled basis.

<sup>11</sup> F.O.B. shipping point prices.

## Marketing Year for Specified Commodities

**Apples (Fresh):** July 1 to June 30 for U.S.; June 1 to May 31 for Arkansas, California, Georgia, Illinois, Iowa, Indiana, Kansas, Kentucky, Michigan, Missouri, New Mexico, North Carolina, Ohio, South Carolina, Tennessee, Wisconsin; August 1 to July 31 for Oregon and Washington;  
July 1 - June 30 for Arizona, Colorado, Connecticut, Idaho, Maine, Maryland, Massachusetts, New Hampshire, New Jersey, New York, Pennsylvania, Rhode Island, Utah, Vermont, Virginia, West Virginia.

**Apricots:** May 25 to August 20 for fresh fruit in California, Utah, and Washington; June 15 to August 15 for processed fruit in California, Utah, and Washington; June 20 to August 20 for dried fruit in California.

**Dried Figs:** June 20 to October 31 for U.S. and California.

**Grapes (Concord):** September 10 to November 1 for New York and Pennsylvania.

**Grapes (Raisin):** September 1 to May 31 for California and US.

**Nectarines:** June 10 to August 31 for U. S. and California.

**Plums:** May 25 to September 30 for fresh fruit in California; June 1 to September 30 for processed fruit in California.

**Peaches (Fresh):** May 1 to October 31 for U.S.; May 20 to August 31 for Georgia and South Carolina; June 1 to September 30 for Alabama, Arkansas, California, Colorado, Illinois, Kentucky, Louisiana, Missouri, North Carolina, Ohio, Oklahoma, Tennessee, Texas, Utah, and Virginia; August 1 to September 30 for Connecticut, Massachusetts, Idaho, Michigan, and New York; July 1 to September 30 for Indiana, Maryland, New Jersey, Oregon, Pennsylvania, Washington, and West Virginia.

**Pears (Equivalent On-Tree):** July to June for U.S.; July 1 - April 30 for California; August 10 to May 31 for Oregon and Washington; July 1 to December 15 for Colorado, Connecticut, Michigan, New York, Pennsylvania, and Utah.

**Potatoes:** The marketing year extends over a 21 month period beginning in November preceding the specified crop year and extending into July the following year. November (previous year)-May for winter crop potatoes; April-August for spring crop potatoes; June-December for summer crop potatoes; July-July (following year) for fall potatoes.

**Cattle, Lambs, Mohair, Sheep, Turkeys, and Wool:** January 1 - December 31 for U.S. and all States.

**Potatoes: Marketing Year Average Prices Received,  
by States and United States, 2003 and 2004 <sup>1</sup>**

State	2003	2004	State	2003	2004
	<i>Dollars per Cwt</i>	<i>Dollars per Cwt</i>		<i>Dollars per Cwt</i>	<i>Dollars per Cwt</i>
AL	9.25	7.55	NV	4.25	4.20
AK	19.70	19.60	NJ	5.70	6.00
AZ	10.20	12.40	NM	4.80	5.90
CA - All	14.80	14.00	NY	9.65	8.05
Winter	26.70	22.70	NC	5.85	5.95
Spring	12.60	13.40	ND - All	5.45	5.75
Summer	16.40	14.40	Fresh	4.70	6.00
Fall	9.20	7.55	Processing	5.50	5.55
CO - All	4.60	4.90	OH	6.80	7.20
Fresh	4.55	4.85	OR	5.35	4.65
DE	9.50	7.00	PA	7.05	7.50
FL	13.80	10.60	RI	7.00	7.50
ID - All	4.40	4.20	SD <sup>2</sup>	7.10	
Fresh	3.85	3.60	TX	10.40	8.50
Processing	4.30	4.35	UT <sup>2</sup>	11.10	
IL	5.10	5.05	VA	7.80	7.90
IN	6.00	6.10	WA - All	5.25	4.90
KS	4.75	7.05	Processing	4.80	4.55
ME	6.05	6.45	WI - All	5.70	5.70
MD	8.80	7.85	Fresh	4.90	4.90
MA	6.00	6.20	Processing	6.00	6.05
MI	7.05	6.70			
MN	5.05	5.90	US - All	5.89	5.62
MO	5.75	5.45	Fresh	7.32	6.60
MT	7.60	5.40	Processing	5.10	5.00
NE	5.05	5.60			

<sup>1</sup> State Marketing Year Average Prices are computed by weighting state monthly prices by estimated sales for the month during the crop year. U.S. Marketing Year Average Price is computed by weighting state Marketing Year Average Prices by estimated sales for the crop year.

<sup>2</sup> Estimates discontinued in 2004.

**Potatoes: Prices Received, Monthly by State and U.S., 2004 <sup>1</sup>**

State	Jan	Feb	Mar	Apr	May	Jun
	<i>Dollars per Cwt</i>	<i>Dollars per Cwt</i>	<i>Dollars per Cwt</i>	<i>Dollars per Cwt</i>	<i>Dollars per Cwt</i>	<i>Dollars per Cwt</i>
AL						9.30
AZ				17.80	10.90	9.80
CA - All	15.60	17.30	21.10	21.00	14.20	12.40
Winter	20.20	20.20	29.70	25.20		
Spring					14.60	12.80
Summer						
Fall	8.95	8.90	9.15	9.55	9.40	9.15
CO - All	4.95	4.70	5.00	4.65	4.00	3.70
Fresh	4.80	4.60	4.35	4.20	4.15	3.95
FL		20.50	25.00	14.50	8.15	7.65
ID - All	4.10	4.05	4.30	4.95	5.00	4.05
Fresh	3.70	3.40	3.80	3.70	3.60	3.50
Processing	4.30	4.40	4.00	4.40	4.50	4.30
ME	5.80	5.70	6.10	6.30	6.75	7.05
MI	7.15	7.40	7.90	8.60	8.65	
MN	5.15	5.05	5.05	5.15	4.95	4.70
NY	8.95	8.90	9.45	9.30		
NC						5.95
ND - All	5.80	5.60	5.90	5.70	5.60	5.70
Fresh	5.40	5.15	4.60	4.00	3.15	3.15
Processing	5.90	5.60	6.00	5.70	5.85	5.80
OH	6.40	6.00	5.10	8.70		
OR	5.30	5.60	6.70	6.65	6.40	5.65
PA	7.80	7.35	7.00	7.30	8.30	
TX					7.20	7.55
VA						7.00
WA - All	5.85	5.75	5.80	6.25	5.60	5.95
Processing	5.15	5.40	5.45	5.65	5.40	5.45
WI - All	5.60	6.25	5.70	6.10	6.15	5.15
Fresh	4.10	3.80	3.80	3.85	3.30	3.30
Processing	6.40	7.25	6.40	7.30	8.00	7.00
US - All	5.70	5.87	6.09	6.62	6.47	6.16
Fresh	6.27	6.69	7.20	7.83	7.76	8.79
Processing	5.29	5.39	5.24	5.54	5.64	5.19

See footnote(s) at end of table.

--continued

**Potatoes: Prices Received, Monthly by State and U.S., 2004<sup>1</sup> (continued)**

State	Jul	Aug	Sep	Oct	Nov	Dec
	<i>Dollars per Cwt</i>	<i>Dollars per Cwt</i>	<i>Dollars per Cwt</i>	<i>Dollars per Cwt</i>	<i>Dollars per Cwt</i>	<i>Dollars per Cwt</i>
AL	6.85	6.25				
AZ						
CA - All	13.30	14.40	15.10	8.00	10.90	12.40
Winter					16.40	16.40
Spring	13.00					
Summer	13.90	14.40	15.10	15.20		
Fall				7.35	7.50	7.55
CO - All	3.50	7.05	6.00	5.40	4.80	4.60
Fresh	3.80	7.15	6.60	5.80	4.85	4.55
FL						
ID - All	4.00	5.00	4.45	4.15	4.15	3.90
Fresh	3.50	5.50	4.20	3.30	3.60	3.50
Processing	4.30	4.90	4.50	4.50	4.40	4.10
ME	7.05	5.95	5.15	5.70	6.15	6.35
MI	7.35	5.80	5.50	5.80	6.80	6.95
MN	4.75	6.15	6.15	5.65	5.70	5.55
NY		9.20	9.20	8.90	7.40	7.40
NC	5.90					
ND - All	5.60	5.80	5.25	5.35	5.85	6.00
Fresh		9.40	6.20	6.10	6.15	6.40
Processing	5.60	5.40	5.00	5.00	5.65	5.70
OH	10.50	7.05	6.70	7.30	7.30	7.10
OR	5.45	4.65	4.40	4.35	4.75	4.85
PA	7.60	6.80	6.85	7.20	7.20	8.10
TX	8.95	8.50	11.00			
VA	8.20	7.05				
WA - All	5.55	5.30	4.55	4.25	4.75	5.25
Processing	6.20	4.45	4.15	4.10	4.55	5.10
WI - All		6.25	5.50	4.70	5.10	5.80
Fresh		7.10	5.90	4.20	4.80	5.40
Processing		5.00	5.15	5.50	5.50	6.15
US - All	6.46	5.77	5.19	4.71	5.10	5.36
Fresh	9.12	8.44	6.73	5.42	5.43	5.82
Processing	5.13	4.62	4.61	4.49	4.94	5.09

<sup>1</sup> Monthly prices refer to all potatoes sold in a given month regardless of the year harvested.

**Cattle: Marketing Year Average Prices Received  
by States and United States, 2003-2004**

State	Cows <sup>1</sup>		Steer & Heifers		All Beef <sup>2</sup>	
	2003	2004	2003	2004	2003	2004
	<i>Dollars per Cwt</i>	<i>Dollars per Cwt</i>	<i>Dollars per Cwt</i>	<i>Dollars per Cwt</i>	<i>Dollars per Cwt</i>	<i>Dollars per Cwt</i>
AL	36.80	46.60	82.70	96.40	68.60	80.70
AK	70.00	80.00	90.00	100.00	80.00	90.00
AZ	42.50	50.60	83.50	102.00	83.30	101.00
AR	39.00	46.10	82.80	97.90	70.10	82.60
CA	41.10	47.20	83.20	88.30	62.00	68.70
CO	45.60	51.30	88.40	105.00	88.10	104.00
CT	45.00	50.00	70.00	70.00	64.00	65.00
DE	47.80	52.00	81.80	82.80	78.60	80.00
FL	40.50	49.40	78.10	94.00	50.50	63.20
GA	41.20	51.20	77.10	92.70	53.60	66.10
HI	27.60	27.70	50.10	50.50	41.60	45.30
ID	41.60	47.70	82.30	88.20	72.40	78.00
IL	42.80	47.70	85.20	86.30	84.30	85.50
IN	42.70	49.80	84.50	83.00	70.40	72.20
IA	43.40	49.90	82.40	87.50	81.60	86.80
KS	42.80	49.80	83.90	85.70	82.90	84.80
KY	43.20	49.70	81.20	95.10	72.30	84.30
LA	40.50	48.20	78.20	95.60	53.20	63.70
ME	47.00	53.00	73.00	82.00	67.00	78.00
MD	47.80	52.00	81.80	82.80	78.60	80.00
MA	45.00	46.00	70.00	75.00	65.00	70.00
MI	41.60	50.40	72.00	76.60	63.00	68.70
MN	47.70	53.60	81.80	82.60	73.40	76.20
MS	38.90	46.40	78.10	95.30	63.70	70.60
MO	41.80	50.30	88.00	105.00	77.00	92.30
MT	45.60	51.40	90.40	106.00	82.20	91.00
NE	44.00	52.60	85.00	89.90	83.80	88.70
NV	41.60	42.30	94.00	107.00	80.90	89.40
NH	45.00	50.00	73.00	80.00	67.00	75.00
NJ	41.00	49.00	61.00	67.00	46.00	52.00
NM	43.30	51.50	88.20	104.00	69.50	82.00
NY	40.30	46.40	69.00	69.50	42.30	47.70
NC	42.50	50.00	79.80	96.10	65.70	79.80
ND	44.50	52.50	86.90	99.30	77.20	89.80
OH	38.80	44.90	77.40	81.40	73.80	77.70
OK	42.80	51.50	85.70	101.00	80.60	96.60
OR	44.70	48.60	82.00	96.40	70.70	82.30
PA	42.10	49.20	79.70	81.90	70.30	73.30
RI	45.00	46.00	70.00	70.00	64.00	65.00
SC	43.70	51.80	74.70	91.00	67.00	81.20
SD	44.80	51.20	85.30	97.50	78.70	89.30
TN	38.70	47.70	81.20	97.80	64.20	77.90
TX	40.30	49.30	83.10	89.90	79.50	86.50
UT	42.00	43.00	83.00	93.00	81.00	90.00
VT	45.00	50.00	73.00	75.00	67.00	70.00
VA	36.60	45.90	76.40	94.50	63.80	79.20
WA	43.90	50.40	89.00	102.00	83.80	94.00
WV	37.40	45.00	75.70	91.20	56.90	67.20
WI	44.50	51.40	76.60	83.70	58.00	65.00
WY	45.70	52.50	91.80	107.00	85.50	98.80
US	42.90	50.30	84.20	90.20	79.70	85.90

See footnote(s) at end of table.

--continued

**Cattle: Marketing Year Average Prices Received  
by States and United States, 2003-2004 (continued)**

State	Calves		Milk Cows <sup>3</sup>	
	2003	2004	2003	2004
	<i>Dollars per Cwt</i>	<i>Dollars per Cwt</i>	<i>Dollars per Head</i>	<i>Dollars per Head</i>
AL	96.10	125.00	1,350	1,600
AK	95.00	100.00	1,500	1,500
AZ	99.50	120.00	1,400	1,610
AR	94.20	117.00	1,300	1,530
CA	96.60	111.00	1,300	1,560
CO	104.00	126.00	1,460	1,810
CT	65.00	80.00	1,250	1,500
DE	89.00	101.00	1,400	1,570
FL	96.60	121.00	1,520	1,730
GA	95.80	118.00	1,410	1,640
HI	70.00	90.00	1,300	1,500
ID	100.00	117.00	1,440	1,690
IL	98.20	112.00	1,370	1,590
IN	86.10	103.00	1,300	1,610
IA	96.60	115.00	1,350	1,600
KS	107.00	130.00	1,300	1,510
KY	92.00	112.00	1,340	1,540
LA	93.00	113.00	1,330	1,520
ME	65.00	80.00	1,250	1,430
MD	89.00	101.00	1,420	1,600
MA	68.00	85.00	1,300	1,500
MI	92.50	109.00	1,370	1,640
MN	94.60	113.00	1,290	1,500
MS	93.40	116.00	1,200	1,450
MO	101.00	121.00	1,260	1,490
MT	106.00	125.00	1,320	1,600
NE	110.00	129.00	1,370	1,600
NV	112.00	126.00	1,350	1,660
NH	68.00	85.00	1,300	1,550
NJ	87.00	106.00	1,470	1,600
NM	101.00	119.00	1,410	1,610
NY	92.30	110.00	1,280	1,510
NC	86.70	108.00	1,490	1,680
ND	105.00	123.00	1,160	1,340
OH	84.00	103.00	1,350	1,580
OK	101.00	122.00	1,340	1,500
OR	94.30	107.00	1,350	1,600
PA	116.00	111.00	1,350	1,550
RI	65.00	75.00	1,250	1,500
SC	93.20	113.00	1,450	1,660
SD	107.00	125.00	1,210	1,440
TN	90.00	112.00	1,350	1,500
TX	102.00	123.00	1,390	1,650
UT	103.00	123.00	1,270	1,510
VT	68.00	80.00	1,350	1,560
VA	87.10	109.00	1,390	1,590
WA	97.30	114.00	1,370	1,710
WV	81.70	101.00	1,350	1,510
WI	122.00	140.00	1,370	1,590
WY	109.00	130.00	1,250	1,500
US	102.00	119.00	1,340	1,580

<sup>1</sup> Beef cows and cull dairy cows sold for slaughter.

<sup>2</sup> "Cows" and "Steer and Heifers" combined.

<sup>3</sup> Calendar year average.

**Hogs: Marketing Year Average Prices Received by Farmers,  
by States and United States, 2003-2004**

State	Barrows & Gilts		Sows		All	
	2003	2004	2003	2004	2003	2004
	<i>Dollars per Cwt</i>	<i>Dollars per Cwt</i>	<i>Dollars per Cwt</i>	<i>Dollars per Cwt</i>	<i>Dollars per Cwt</i>	<i>Dollars per Cwt</i>
AL	35.50	45.10	26.00	39.00	33.80	43.90
AK	70.00	75.00	55.00	65.00	66.00	73.00
AZ	44.80	59.40	27.30	42.30	44.70	59.30
AR	35.80	48.10	27.50	41.30	35.00	47.40
CA	35.80	49.60	23.70	33.70	35.70	49.50
CO	40.70	52.80	30.90	44.60	40.30	52.70
CT	35.00	48.00	26.00	37.00	33.20	45.50
DE	36.40	45.20	27.30	36.40	35.90	44.70
FL	35.30	45.60	23.00	36.20	30.00	43.70
GA	37.40	51.20	26.90	41.00	36.40	50.30
HI	87.70	89.80	46.40	47.30	84.70	87.00
ID	40.00	49.50	28.50	40.50	39.40	49.00
IL	39.80	51.90	27.00	39.00	38.70	50.80
IN	37.60	49.40	30.80	44.10	37.00	48.90
IA	36.50	50.00	30.40	41.00	36.40	49.90
KS	36.20	48.20	28.00	41.50	35.20	47.40
KY	36.80	48.40	27.60	40.30	36.40	48.10
LA	34.30	47.20	22.80	34.90	31.40	44.10
ME	35.00	48.00	26.00	37.00	33.20	45.50
MD	36.40	45.20	27.30	36.40	35.90	44.60
MA	35.00	48.00	26.00	37.00	33.20	45.50
MI	35.70	46.60	27.50	38.60	35.00	45.90
MN	38.50	49.90	28.40	42.90	38.40	49.80
MS	35.30	46.80	23.80	39.30	35.20	46.70
MO	34.80	46.60	26.30	40.80	34.10	46.10
MT	41.20	53.90	28.70	41.30	39.70	52.30
NE	39.60	51.00	28.40	40.90	39.30	50.80
NV	36.60	46.40	27.40	37.00	35.70	45.80
NH	35.00	48.00	26.00	37.00	33.20	45.50
NJ	33.00	43.00	25.00	35.00	30.40	41.80
NM	35.90	48.80	25.20	36.30	34.50	48.30
NY	34.40	45.30	22.60	35.50	33.20	43.80
NC	38.50	50.70	27.90	40.80	38.30	50.60
ND	39.90	51.70	23.70	35.80	39.70	51.40
OH	38.80	50.00	28.00	40.40	38.10	49.30
OK	34.30	44.80	26.50	39.80	33.30	44.10
OR	41.40	51.80	21.80	30.50	41.00	51.60
PA	37.10	48.20	26.60	38.30	35.50	46.70
RI	35.00	48.00	26.00	37.00	33.20	45.50
SC	37.00	49.50	27.20	41.10	36.50	49.00
SD	40.10	51.90	28.00	39.70	38.60	50.40
TN	37.00	48.00	27.00	41.00	36.00	47.30
TX	35.30	46.80	23.80	34.70	33.60	44.90
UT	45.60	54.00	29.00	42.85	45.40	53.90
VT	35.00	48.00	26.00	37.00	33.20	45.50
VA	35.20	47.10	27.00	36.00	35.00	46.60
WA	40.40	49.60	30.20	41.20	39.30	48.90
WV	39.30	50.00	25.70	36.50	36.10	46.10
WI	38.10	47.40	29.10	38.60	36.90	46.30
WY	37.80	47.80	31.20	42.30	36.20	46.70
US	37.60	49.80	27.90	40.30	37.20	49.30



**Sheep and Lambs: Marketing Year Average Prices Received  
by States and United States, 2003-2004**

State	Sheep		Lambs	
	2003	2004	2003	2004
	<i>Dollars per Cwt</i>	<i>Dollars per Cwt</i>	<i>Dollars per Cwt</i>	<i>Dollars per Cwt</i>
AZ	38.00	40.00	89.00	95.00
CA	31.30	32.20	88.00	90.40
CO	33.00	38.50	96.10	101.00
ID	33.70	40.40	87.60	95.60
IL	35.90	41.90	92.90	100.00
IN	35.60	39.30	92.90	102.00
IA	34.10	41.60	89.50	94.90
KS	31.30	35.00	89.70	95.80
MI	35.00	40.00	86.00	94.00
MN	27.50	33.50	89.30	94.70
MO	35.00	40.00	91.00	101.00
MT	34.80	39.50	103.00	112.00
NE	33.20	37.60	90.60	98.30
NV	36.00	38.00	91.00	98.00
N ENG <sup>1</sup>	40.00	45.00	115.00	125.00
NM	37.00	42.00	89.20	100.00
NY	40.50	44.50	102.00	114.00
ND	30.10	36.60	96.20	103.00
OH	33.50	39.10	91.40	98.50
OK	32.00	36.00	89.00	96.00
OR	31.90	36.10	88.20	94.40
PA	39.10	43.50	107.00	115.00
SD	37.20	40.90	106.00	115.00
TX	39.60	43.40	97.10	110.00
UT	29.90	33.80	92.00	101.00
VA	32.20	42.80	93.00	101.00
WA	34.00	38.00	90.40	96.00
WV	31.40	36.90	90.60	102.00
WI	31.20	37.00	87.10	92.50
WY	39.60	40.30	104.00	114.00
Oth St <sup>2</sup>	35.00	38.00	88.00	96.00
US	34.90	38.80	94.40	101.00

<sup>1</sup> Includes CT, ME, MA, NH, RI, and VT.

<sup>2</sup> Other States include AL, AK, AR, DE, FL, GA, HI, KY, LA, MD, MS, NJ, NC, SC, and TN.

**Cows <sup>1</sup>: Monthly Prices Received by State 2004  
and United States, 2003-2004**

State	Jan	Feb	Mar	Apr	May	Jun
	<i>Dollars per Cwt</i>	<i>Dollars per Cwt</i>	<i>Dollars per Cwt</i>	<i>Dollars per Cwt</i>	<i>Dollars per Cwt</i>	<i>Dollars per Cwt</i>
AZ	46.30	46.00	47.10	51.00	51.10	51.90
AR	41.50	42.50	42.40	45.70	46.40	49.00
CA	42.00	41.50	44.00	48.50	48.60	48.80
CO	45.40	46.70	46.40	51.70	54.10	57.00
FL	46.00	44.60	45.50	46.80	47.20	51.40
GA	48.30	47.30	47.10	48.30	51.20	53.30
ID	41.90	42.20	44.50	49.50	51.00	52.00
IL	44.00	41.00	45.00	47.00	50.00	51.20
IA	44.70	43.30	46.20	50.40	53.80	55.70
KS	46.40	47.40	48.60	49.70	51.70	53.80
KY	44.00	44.00	44.00	47.00	51.00	52.00
LA	44.50	45.10	45.00	47.60	49.00	50.60
MI	45.00	47.00	46.00	48.00	53.00	54.00
MN	48.70	48.50	49.20	55.20	56.70	58.70
MO	44.30	45.10	45.40	50.70	53.40	53.60
MT	45.30	47.60	48.60	52.20	55.10	56.20
NE	47.60	48.60	49.10	51.70	53.80	56.80
NM	49.10	47.20	48.00	49.70	51.80	54.20
ND	49.90	48.20	48.10	54.90	55.90	56.40
OH	39.90	40.00	41.60	45.80	49.40	49.90
OK	45.90	47.10	47.00	50.20	51.80	53.80
OR	44.50	44.30	46.50	48.00	50.50	51.50
PA	46.80	46.00	45.10	49.00	52.60	52.70
SD	44.60	47.50	49.00	51.90	53.10	54.80
TN	43.00	42.00	43.00	48.00	50.00	51.00
TX	45.40	46.00	45.30	49.30	49.40	51.20
VA	41.50	41.90	41.00	45.00	52.40	52.40
WI	47.30	47.00	47.10	52.00	54.90	54.90
WY	47.10	47.10	48.90	51.20	53.50	55.60
US						
2004	46.10	46.00	46.50	50.60	52.50	53.70
2003	36.90	38.90	39.50	40.20	42.40	41.90

See footnote(s) at end of table.

--continued

**Cows <sup>1</sup>: Monthly Prices Received by State 2004  
and United States, 2003-2004 (continued)**

State	Jul	Aug	Sep	Oct	Nov	Dec
	<i>Dollars per Cwt</i>	<i>Dollars per Cwt</i>	<i>Dollars per Cwt</i>	<i>Dollars per Cwt</i>	<i>Dollars per Cwt</i>	<i>Dollars per Cwt</i>
AZ	52.20	54.50	52.90	52.00	50.70	51.60
AR	52.20	50.70	48.80	45.90	45.70	44.20
CA	53.70	52.30	49.70	47.50	44.60	46.10
CO	61.00	56.20	56.10	51.00	49.60	49.00
FL	54.30	54.20	52.50	50.30	51.10	49.50
GA	54.40	54.20	54.70	50.90	50.50	50.40
ID	53.00	52.90	51.10	47.60	45.70	46.90
IL	52.20	53.20	52.30	49.20	49.40	48.60
IA	57.00	53.10	52.70	48.50	48.70	47.30
KS	57.20	57.60	54.90	49.90	49.10	48.20
KY	54.00	53.00	52.00	50.00	49.00	48.00
LA	53.30	51.90	50.40	47.60	48.70	48.40
MI	55.00	55.00	52.00	48.00	48.00	48.00
MN	61.00	57.90	56.10	52.30	51.00	50.60
MO	57.40	55.00	53.60	49.50	48.20	47.40
MT	59.10	58.80	55.00	51.20	49.30	49.30
NE	60.70	56.10	55.70	52.70	51.10	50.80
NM	59.00	58.60	54.60	52.60	51.40	51.20
ND	57.60	55.20	54.80	52.10	49.90	49.10
OH	50.20	47.10	45.00	44.10	46.40	43.60
OK	58.00	58.70	54.90	50.70	49.90	49.10
OR	52.00	51.50	49.50	47.50	45.80	46.00
PA	53.40	53.70	51.20	48.10	47.30	47.50
SD	58.30	55.50	54.70	52.00	49.70	47.10
TN	52.00	51.00	51.00	48.00	48.00	46.00
TX	54.10	53.50	52.20	48.70	48.90	48.20
VA	53.00	48.60	47.10	45.20	44.60	45.20
WI	57.30	55.70	54.50	50.50	49.70	48.60
WY	59.50	56.80	56.50	54.00	50.80	50.50
US						
2004	56.30	54.70	53.10	49.80	48.70	48.60
2003	44.90	44.50	44.80	44.60	47.70	49.20

<sup>1</sup> Beef cows and cull dairy cows sold for slaughter.

**Steers & Heifers: Monthly Prices Received by State 2004  
and United States, 2003-2004**

State	Jan	Feb	Mar	Apr	May	Jun
	<i>Dollars per Cwt</i>	<i>Dollars per Cwt</i>	<i>Dollars per Cwt</i>	<i>Dollars per Cwt</i>	<i>Dollars per Cwt</i>	<i>Dollars per Cwt</i>
AZ	91.00	89.00	95.60	98.00	100.00	105.00
AR	87.10	87.20	91.90	94.10	101.00	107.00
CA	82.00	80.00	85.50	87.00	90.50	93.30
CO	94.10	89.90	92.00	95.20	104.00	108.00
FL	84.60	88.70	89.80	91.20	97.60	98.20
GA	82.20	83.60	88.60	89.30	95.10	100.00
ID	81.60	79.20	88.50	85.70	90.30	91.10
IL	86.00	79.00	87.00	89.00	95.00	95.00
IA	90.60	84.30	88.30	88.50	89.00	87.50
KS	81.70	80.30	87.40	87.70	90.00	88.90
KY	84.00	85.00	89.00	91.00	97.00	103.00
LA	87.00	88.40	92.30	93.90	97.70	101.00
MI	73.00	72.00	75.00	76.00	81.00	84.00
MN	80.90	77.60	82.00	85.70	88.00	87.10
MO	92.30	94.00	98.60	100.00	107.00	113.00
MT	94.20	92.30	96.00	95.20	99.00	112.00
NE	86.10	83.60	88.80	89.60	92.40	93.00
NM	92.00	88.00	93.50	95.90	103.00	104.00
ND	90.60	88.40	91.60	93.50	100.00	97.90
OH	79.40	76.10	79.90	81.20	85.70	87.40
OK	87.90	86.40	90.70	94.30	102.00	110.00
OR	86.90	85.90	93.00	94.70	96.30	100.00
PA	79.90	76.20	81.90	83.40	88.20	88.20
SD	92.60	86.60	89.90	91.20	97.20	100.00
TN	87.00	87.00	91.00	94.00	101.00	106.00
TX	87.00	81.60	87.30	88.00	91.60	93.90
VA	82.20	81.70	81.80	90.30	98.20	102.00
WI	79.80	76.90	82.40	85.20	88.90	88.30
WY	92.50	87.60	98.00	94.60	102.00	112.00
US						
2004	85.50	82.30	88.00	88.90	92.60	93.80
2003	77.70	78.20	76.70	78.80	79.60	78.60

--continued

**Steers & Heifers: Monthly Prices Received by State 2004  
and United States, 2003-2004 (Continued)**

State	Jul	Aug	Sep	Oct	Nov	Dec
	<i>Dollars per Cwt</i>	<i>Dollars per Cwt</i>	<i>Dollars per Cwt</i>	<i>Dollars per Cwt</i>	<i>Dollars per Cwt</i>	<i>Dollars per Cwt</i>
AZ	106.00	109.00	107.00	107.00	105.00	104.00
AR	107.00	107.00	104.00	103.00	99.00	100.00
CA	93.50	90.00	88.00	89.00	88.80	90.80
CO	113.00	115.00	111.00	111.00	110.00	106.00
FL	99.20	104.00	101.00	98.80	95.70	95.70
GA	102.00	103.00	98.20	94.30	95.20	93.00
ID	92.20	89.50	88.70	90.70	88.70	89.90
IL	85.00	84.00	82.00	83.00	85.00	83.00
IA	83.70	88.00	86.70	85.30	88.10	91.80
KS	83.30	84.40	82.60	86.00	86.00	88.40
KY	105.00	108.00	103.00	100.00	97.00	95.00
LA	104.00	105.00	100.00	98.70	98.10	98.50
MI	79.00	77.00	77.00	75.00	74.00	75.00
MN	83.70	81.80	80.70	79.80	80.00	82.50
MO	117.00	118.00	112.00	110.00	105.00	102.00
MT	114.00	108.00	109.00	115.00	110.00	109.00
NE	90.60	89.40	88.50	91.20	90.00	93.30
NM	111.00	114.00	111.00	111.00	106.00	106.00
ND	100.00	107.00	110.00	111.00	110.00	108.00
OH	83.50	81.40	80.80	82.30	81.50	79.40
OK	114.00	113.00	111.00	112.00	109.00	106.00
OR	101.00	101.00	98.00	99.00	96.50	95.00
PA	83.00	81.00	78.60	79.30	78.70	81.20
SD	94.60	97.70	103.00	109.00	104.00	99.60
TN	107.00	108.00	102.00	100.00	98.00	97.00
TX	92.60	92.00	90.30	91.30	90.00	92.00
VA	105.00	105.00	102.00	98.60	92.40	89.70
WI	85.00	84.90	84.10	81.90	81.50	82.40
WY	116.00	117.00	117.00	118.00	114.00	106.00
US						
2004	91.40	91.00	89.50	91.10	90.20	91.90
2003	78.90	82.90	89.30	97.80	99.90	95.60

**Beef Cattle <sup>1</sup>: Monthly Prices Received by State 2004  
and United States, 2003-2004**

State	Jan	Feb	Mar	Apr	May	Jun
	<i>Dollars per Cwt</i>	<i>Dollars per Cwt</i>	<i>Dollars per Cwt</i>	<i>Dollars per Cwt</i>	<i>Dollars per Cwt</i>	<i>Dollars per Cwt</i>
AZ	90.60	88.60	95.10	97.50	99.50	104.00
AR	73.40	73.80	77.10	79.60	84.60	89.60
CA	62.40	60.80	66.00	70.40	72.90	73.30
CO	93.60	89.50	91.50	94.80	104.00	107.00
FL	54.50	53.90	55.70	56.10	58.80	61.70
GA	59.50	60.40	63.70	63.10	66.10	69.20
ID	70.90	71.10	77.90	77.00	80.90	81.70
IL	85.20	78.20	86.20	88.20	94.10	94.10
IA	89.70	83.50	87.50	88.10	88.30	86.90
KS	80.30	79.30	86.20	86.20	88.50	88.50
KY	74.40	75.20	78.20	80.40	86.00	90.80
LA	57.30	57.20	58.20	61.00	64.10	66.20
MI	64.60	64.50	66.30	67.60	72.60	75.00
MN	73.50	70.60	74.80	79.90	80.50	79.40
MO	77.90	77.40	86.90	88.20	93.60	96.40
MT	80.00	83.40	86.00	79.70	81.90	93.00
NE	84.90	82.60	87.60	88.50	91.20	91.90
NM	73.60	71.70	77.10	80.20	85.60	86.60
ND	86.90	84.40	86.80	83.50	80.80	68.00
OH	75.50	72.50	76.10	77.70	82.10	83.70
OK	82.00	83.30	86.80	90.30	95.50	97.10
OR	74.20	73.40	79.10	80.70	82.60	85.50
PA	71.30	68.30	72.30	74.50	78.90	79.00
SD	84.40	80.00	85.80	86.10	89.30	89.60
TN	69.40	69.00	71.80	75.60	80.60	84.00
TX	83.30	79.10	83.90	84.90	87.80	90.10
VA	64.70	67.00	70.80	79.90	80.80	83.20
WI	61.00	59.60	61.90	65.90	69.20	68.90
WY	85.20	80.70	90.10	89.40	97.20	102.00
US						
2004	81.10	78.50	83.70	85.00	88.50	89.80
2003	72.90	73.90	72.60	74.50	75.50	74.90

See footnote(s) at end of table.

--continued

**Beef Cattle <sup>1</sup>: Monthly Prices Received by State 2004  
and United States, 2003-2004 (continued)**

State	Jul	Aug	Sep	Oct	Nov	Dec
	<i>Dollars per Cwt</i>	<i>Dollars per Cwt</i>	<i>Dollars per Cwt</i>	<i>Dollars per Cwt</i>	<i>Dollars per Cwt</i>	<i>Dollars per Cwt</i>
AZ	105.00	108.00	106.00	106.00	104.00	103.00
AR	90.60	90.10	87.40	85.90	83.00	83.30
CA	75.20	72.30	69.60	67.80	65.40	68.50
CO	112.00	114.00	110.00	110.00	109.00	105.00
FL	67.80	71.10	71.90	69.20	69.80	70.30
GA	70.60	70.80	69.50	65.70	65.30	64.90
ID	83.20	82.90	80.40	78.60	74.50	77.90
IL	84.30	83.40	81.40	82.30	84.30	82.30
IA	83.20	87.30	86.00	84.60	87.30	90.90
KS	83.00	84.10	82.00	84.90	84.90	87.20
KY	92.80	94.80	90.80	88.00	85.50	83.70
LA	70.50	71.50	68.80	66.50	66.50	64.40
MI	71.80	70.40	69.50	66.90	66.20	66.90
MN	78.90	77.30	75.50	74.90	73.90	75.50
MO	102.00	104.00	99.20	96.70	93.60	90.50
MT	97.00	97.20	93.90	104.00	88.10	87.50
NE	89.70	88.40	87.50	90.00	88.80	92.00
NM	90.20	91.80	89.00	88.80	82.50	84.10
ND	69.50	83.70	96.20	101.00	95.00	98.60
OH	80.20	78.00	77.20	78.50	78.00	75.80
OK	106.00	105.00	105.00	106.00	101.00	99.70
OR	86.30	86.20	83.50	83.60	81.30	80.30
PA	75.30	73.90	71.50	71.20	70.50	72.40
SD	85.50	90.90	97.20	103.00	94.20	86.00
TN	85.00	85.20	81.60	79.20	78.00	76.60
TX	89.90	89.30	87.60	86.60	85.90	87.60
VA	86.80	87.50	89.90	87.40	80.00	70.60
WI	68.90	68.00	66.90	63.70	63.10	62.80
WY	111.00	111.00	112.00	101.00	92.50	92.70
US						
2004	88.10	87.70	85.90	86.50	85.40	86.80
2003	75.80	79.30	84.90	91.50	93.40	90.40

<sup>1</sup> "Cows" and "Steers and Heifers" combined.

**Calves: Monthly Prices Received by State 2004  
and United States, 2003-2004**

State	Jan	Feb	Mar	Apr	May	Jun
	<i>Dollars per Cwt</i>	<i>Dollars per Cwt</i>	<i>Dollars per Cwt</i>	<i>Dollars per Cwt</i>	<i>Dollars per Cwt</i>	<i>Dollars per Cwt</i>
AZ	109.00	112.00	118.00	120.00	113.00	119.00
AR	104.00	107.00	108.00	111.00	119.00	121.00
CA	109.00	101.00	110.00	115.00	107.00	110.00
CO	114.00	115.00	117.00	117.00	121.00	130.00
FL	106.00	110.00	116.00	117.00	122.00	124.00
GA	103.00	107.00	113.00	114.00	118.00	122.00
ID	105.00	106.00	110.00	111.00	116.00	123.00
IL	95.00	97.00	104.00	110.00	118.00	119.00
IA	106.00	104.00	107.00	114.00	122.00	120.00
KS	116.00	116.00	120.00	120.00	127.00	138.00
KY	99.00	101.00	108.00	111.00	115.00	118.00
LA	102.00	105.00	107.00	108.00	112.00	115.00
MI	90.00	95.00	95.00	100.00	110.00	120.00
MN	105.00	97.70	111.00	114.00	115.00	126.00
MO	109.00	111.00	116.00	116.00	123.00	128.00
MT	117.00	112.00	114.00	114.00	117.00	125.00
NE	120.00	116.00	123.00	123.00	126.00	134.00
NM	99.70	105.00	111.00	115.00	121.00	122.00
ND	113.00	110.00	113.00	114.00	115.00	130.00
OH	87.10	93.30	97.50	104.00	105.00	110.00
OK	107.00	110.00	115.00	117.00	121.00	129.00
OR	99.00	100.00	104.00	107.00	106.00	109.00
PA	110.00	115.00	110.00	110.00	115.00	115.00
SD	114.00	111.00	118.00	116.00	122.00	134.00
TN	101.00	102.00	109.00	111.00	115.00	118.00
TX	106.00	111.00	118.00	118.00	124.00	126.00
VA	98.00	99.00	101.00	107.00	112.00	117.00
WI	130.00	130.00	137.00	139.00	143.00	142.00
WY	118.00	122.00	123.00	115.00	122.00	127.00
US						
2004	110.00	111.00	115.00	117.00	121.00	125.00
2003	96.80	97.20	96.70	98.90	100.00	101.00

--continued



**Calves: Monthly Prices Received by State 2004  
and United States, 2003-2004 (continued)**

State	Jul	Aug	Sep	Oct	Nov	Dec
	<i>Dollars per Cwt</i>	<i>Dollars per Cwt</i>	<i>Dollars per Cwt</i>	<i>Dollars per Cwt</i>	<i>Dollars per Cwt</i>	<i>Dollars per Cwt</i>
AZ	125.00	133.00	128.00	125.00	122.00	120.00
AR	125.00	125.00	120.00	120.00	119.00	120.00
CA	112.00	108.00	112.00	113.00	120.00	120.00
CO	145.00	139.00	135.00	128.00	127.00	126.00
FL	127.00	134.00	130.00	127.00	126.00	124.00
GA	126.00	127.00	123.00	120.00	122.00	118.00
ID	129.00	128.00	123.00	121.00	116.00	117.00
IL	118.00	125.00	121.00	117.00	114.00	112.00
IA	116.00	117.00	125.00	121.00	117.00	118.00
KS	147.00	144.00	136.00	137.00	134.00	133.00
KY	120.00	123.00	118.00	114.00	112.00	110.00
LA	122.00	123.00	120.00	116.00	117.00	115.00
MI	117.00	120.00	117.00	118.00	116.00	115.00
MN	117.00	118.00	119.00	121.00	107.00	109.00
MO	141.00	135.00	126.00	123.00	121.00	121.00
MT	128.00	139.00	128.00	127.00	126.00	127.00
NE	138.00	147.00	133.00	132.00	130.00	130.00
NM	129.00	131.00	126.00	125.00	124.00	125.00
ND	139.00	136.00	129.00	126.00	124.00	120.00
OH	107.00	113.00	108.00	107.00	104.00	103.00
OK	133.00	130.00	125.00	127.00	126.00	126.00
OR	110.00	112.00	112.00	113.00	110.00	110.00
PA	110.00	110.00	110.00	111.00	110.00	110.00
SD	125.00	143.00	134.00	130.00	129.00	127.00
TN	120.00	121.00	115.00	113.00	111.00	110.00
TX	132.00	135.00	131.00	128.00	127.00	124.00
VA	117.00	118.00	114.00	113.00	106.00	104.00
WI	141.00	150.00	149.00	146.00	140.00	137.00
WY	138.00	138.00	136.00	132.00	130.00	129.00
US						
2004	130.00	131.00	128.00	126.00	123.00	122.00
2003	102.00	106.00	109.00	112.00	111.00	112.00

**Milk Cows<sup>1</sup>: Monthly Prices Received by State 2004  
and United States, 2003-2004**

State	Jan	Apr	Jul	Oct
	<i>Dollars per Head</i>	<i>Dollars per Head</i>	<i>Dollars per Head</i>	<i>Dollars per Head</i>
AZ	1,450	1,600	1,750	1,650
CA	1,350	1,550	1,700	1,650
FL	1,490	1,700	1,900	1,810
ID	1,450	1,650	1,850	1,800
IL	1,450	1,600	1,700	1,620
IN	1,400	1,650	1,750	1,650
IA	1,400	1,680	1,700	1,610
KY	1,310	1,550	1,640	1,640
MI	1,450	1,600	1,800	1,700
MN	1,350	1,600	1,570	1,460
MO	1,240	1,550	1,560	1,600
NM	1,360	1,590	1,830	1,670
NY	1,330	1,490	1,620	1,580
OH	1,400	1,560	1,700	1,640
PA	1,350	1,500	1,750	1,600
TX	1,410	1,650	1,800	1,730
VT	1,350	1,500	1,750	1,650
VA	1,370	1,600	1,700	1,670
WA	1,420	1,720	1,900	1,800
WI	1,450	1,600	1,700	1,620
US				
2004	1,390	1,580	1,720	1,640
2003	1,380	1,300	1,310	1,380

<sup>1</sup> Cows sold for dairy herd replacement.

**All Hogs <sup>1</sup>: Monthly Prices Received by States 2004,  
and United States, 2003-2004**

State	Dec <sup>2</sup>	Jan	Feb	Mar	Apr	May
	<i>Dollars per Cwt</i>	<i>Dollars per Cwt</i>	<i>Dollars per Cwt</i>	<i>Dollars per Cwt</i>	<i>Dollars per Cwt</i>	<i>Dollars per Cwt</i>
AR	32.90	35.50	40.40	43.80	42.70	52.50
IL	36.00	39.90	46.00	49.00	49.50	58.50
IN	34.20	37.30	44.10	47.70	47.70	56.60
IA	32.50	34.40	40.40	48.60	48.80	59.20
KS	32.80	36.20	40.50	43.80	43.40	53.40
MI	33.60	34.10	39.40	43.40	43.10	49.20
MN	36.10	37.20	43.70	46.70	47.50	54.90
MO	30.60	34.30	40.80	44.80	44.40	53.90
NE	36.20	39.10	44.80	48.10	48.30	56.90
NC	35.50	39.30	44.60	48.00	48.10	58.20
OH	34.50	38.10	44.60	48.20	47.60	56.40
OK	32.20	33.60	38.00	40.60	40.60	49.20
PA	34.80	36.00	42.70	45.20	44.40	52.40
SD	36.30	38.10	44.20	48.00	48.50	58.20
TX	37.40	35.10	38.00	39.90	40.30	47.70
WI	34.00	34.30	40.80	43.60	43.60	54.20
US						
2004	34.10	36.60	42.60	47.20	47.40	56.60
2003	30.30	32.90	34.30	34.70	34.80	41.30
	<b>Jun</b>	<b>Jul</b>	<b>Aug</b>	<b>Sep</b>	<b>Oct</b>	<b>Nov</b>
	<i>Dollars per Cwt</i>	<i>Dollars per Cwt</i>	<i>Dollars per Cwt</i>	<i>Dollars per Cwt</i>	<i>Dollars per Cwt</i>	<i>Dollars per Cwt</i>
AR	52.90	55.30	52.70	52.90	50.50	52.70
IL	57.80	58.00	55.20	54.20	51.40	56.70
IN	56.50	56.40	54.20	53.50	51.20	53.30
IA	58.50	59.00	57.30	57.20	53.20	57.70
KS	53.00	55.60	52.80	52.80	49.20	53.10
MI	52.10	54.40	53.70	51.20	51.00	52.10
MN	55.60	56.90	57.10	54.00	55.20	56.10
MO	53.50	53.20	50.00	50.00	48.10	49.80
NE	57.80	58.80	57.10	55.70	53.90	56.60
NC	57.60	57.70	55.60	56.50	52.80	57.40
OH	57.00	57.20	52.80	53.60	51.80	53.00
OK	51.60	51.70	49.50	48.70	45.90	48.80
PA	53.00	53.80	52.00	51.00	49.70	50.50
SD	57.20	57.60	55.90	55.40	52.60	56.70
TX	49.70	51.50	52.00	51.00	48.40	51.90
WI	55.50	53.50	50.80	49.80	47.00	49.00
US						
2004	56.70	57.10	55.30	54.80	52.20	55.60
2003	45.00	42.70	39.60	39.70	36.70	34.70

<sup>1</sup> "Sows" and "Barrows & Gilts" combined.

<sup>2</sup> Preceding year.

**Barrows and Gilts: Monthly Prices Received by States 2004  
and United States, 2003-2004**

State	Dec <sup>1</sup>	Jan	Feb	Mar	Apr	May
	<i>Dollars per Cwt</i>	<i>Dollars per Cwt</i>	<i>Dollars per Cwt</i>	<i>Dollars per Cwt</i>	<i>Dollars per Cwt</i>	<i>Dollars per Cwt</i>
AR	33.50	36.30	40.90	44.10	42.90	53.50
IL	37.00	41.00	47.00	50.00	50.50	60.00
IN	34.50	37.90	44.60	48.10	48.10	57.50
IA	32.60	34.50	40.50	48.70	48.90	59.30
KS	33.50	37.20	41.10	44.20	43.80	54.90
MI	34.00	34.50	40.00	44.00	43.50	50.00
MN	36.20	37.30	43.80	46.80	47.60	55.00
MO	30.80	34.90	41.50	45.30	44.90	54.70
NE	36.40	39.30	45.00	48.20	48.50	57.20
NC	35.60	39.40	44.70	48.10	48.20	58.30
OH	34.90	38.60	45.40	48.80	48.00	57.40
OK	33.20	34.80	38.70	40.70	40.70	50.50
PA	35.90	37.30	44.40	46.40	45.50	54.70
SD	37.40	39.80	46.20	49.20	49.40	59.80
TX	39.00	37.60	39.90	40.90	41.30	49.60
WI	35.00	35.30	41.90	44.70	44.40	55.40
US						
2004	34.50	37.00	43.00	47.60	47.70	57.30
2003	30.70	33.50	34.90	35.20	35.30	41.80
	<b>Jun</b>	<b>Jul</b>	<b>Aug</b>	<b>Sep</b>	<b>Oct</b>	<b>Nov</b>
	<i>Dollars per Cwt</i>	<i>Dollars per Cwt</i>	<i>Dollars per Cwt</i>	<i>Dollars per Cwt</i>	<i>Dollars per Cwt</i>	<i>Dollars per Cwt</i>
AR	53.60	55.80	53.20	54.10	51.40	53.30
IL	59.00	59.00	56.00	55.50	52.50	58.00
IN	57.10	56.60	54.40	54.30	51.80	53.90
IA	58.60	59.10	57.40	57.30	53.30	57.80
KS	53.80	56.10	53.30	54.40	50.20	54.00
MI	53.00	55.00	54.50	52.00	52.00	53.00
MN	55.70	57.00	57.20	54.10	55.30	56.20
MO	54.10	53.70	50.60	50.90	48.70	50.20
NE	58.00	59.00	57.30	56.00	54.10	56.80
NC	57.70	57.80	55.70	56.60	52.90	57.50
OH	57.70	57.70	53.20	54.20	52.90	53.60
OK	52.60	52.20	50.00	50.10	46.90	49.60
PA	54.90	55.10	53.60	53.00	51.10	51.80
SD	59.00	59.40	57.50	57.00	54.00	58.60
TX	51.60	54.30	53.70	53.20	50.30	54.00
WI	56.70	54.30	52.00	51.00	48.10	49.90
US						
2004	57.20	57.60	55.80	55.40	52.70	56.10
2003	45.70	43.20	39.90	40.10	37.00	34.90

<sup>1</sup> Preceding year.

**Sows: Monthly Prices Received by States 2004  
and United States, 2003-2004**

State	Dec <sup>1</sup>	Jan	Feb	Mar	Apr	May
	<i>Dollars per Cwt</i>	<i>Dollars per Cwt</i>	<i>Dollars per Cwt</i>	<i>Dollars per Cwt</i>	<i>Dollars per Cwt</i>	<i>Dollars per Cwt</i>
AR	27.90	28.10	36.30	40.80	40.80	43.70
IL	26.00	27.00	34.00	39.00	39.00	43.00
IN	31.40	31.60	39.10	43.90	44.20	47.90
IA	29.90	29.60	37.00	41.30	44.40	46.80
KS	27.80	29.30	36.30	40.20	41.00	44.30
MI	29.00	29.00	32.00	36.00	39.00	41.00
MN	27.50	29.10	36.90	41.10	42.60	46.30
MO	26.80	28.00	34.10	40.10	39.70	43.70
NE	27.90	28.50	36.20	42.10	40.80	44.20
NC	28.00	28.90	35.50	40.80	40.90	43.50
OH	28.50	30.80	35.10	40.80	42.80	43.20
OK	26.50	27.10	33.90	40.10	40.00	42.30
PA	28.50	28.50	33.00	38.10	38.00	39.10
SD	27.00	26.50	31.10	36.90	40.00	45.10
TX	28.00	25.20	28.20	33.20	33.00	36.80
WI	26.30	26.60	32.80	35.40	38.10	45.50
US						
2004	28.20	28.30	34.60	39.90	40.70	43.50
2003	22.30	21.70	23.40	24.20	25.80	29.00
	Jun	Jul	Aug	Sep	Oct	Nov
	<i>Dollars per Cwt</i>	<i>Dollars per Cwt</i>	<i>Dollars per Cwt</i>	<i>Dollars per Cwt</i>	<i>Dollars per Cwt</i>	<i>Dollars per Cwt</i>
AR	46.80	50.80	48.40	42.20	42.00	47.10
IL	45.00	48.00	46.00	41.00	40.50	43.50
IN	50.50	54.30	52.60	45.90	45.40	47.80
IA	48.10	54.20	47.00	43.50	44.50	51.60
KS	47.90	51.80	49.00	42.40	42.00	45.50
MI	43.00	47.00	46.00	43.00	41.00	42.00
MN	50.00	51.80	49.70	43.60	43.10	47.10
MO	46.70	49.70	46.10	41.70	41.10	45.80
NE	47.40	50.60	45.40	42.50	41.90	47.30
NC	46.60	50.10	47.90	41.80	42.80	47.50
OH	47.00	49.40	43.70	42.70	39.30	45.10
OK	45.80	49.10	46.90	40.80	40.60	44.50
PA	41.90	46.70	42.60	39.90	41.70	43.30
SD	46.40	47.20	46.00	43.30	42.60	43.90
TX	39.90	40.80	40.80	38.70	37.50	39.70
WI	46.80	47.00	42.30	41.30	38.60	42.30
US						
2004	46.50	49.40	46.90	42.20	41.80	45.20
2003	30.30	33.10	32.60	30.80	31.40	29.10

<sup>1</sup> Preceding year.

**Lambs: Monthly Prices Received by State 2004  
and United States, 2003-2004**

State	Jan	Feb	Mar	Apr	May	Jun
	<i>Dollars per Cwt</i>	<i>Dollars per Cwt</i>	<i>Dollars per Cwt</i>	<i>Dollars per Cwt</i>	<i>Dollars per Cwt</i>	<i>Dollars per Cwt</i>
CA	89.00	93.00	96.00	91.00	91.50	94.00
CO	103.00	107.00	100.00	101.00	106.00	111.00
ID	91.00	95.00	97.00	99.00	107.00	105.00
IA	90.20	100.00	102.00	95.80	104.00	104.00
KS	96.00	101.00	100.00	96.00	100.00	97.00
MN	90.60	99.80	99.10	97.90	101.00	98.30
MT	114.00	123.00	121.00	107.00	111.00	117.00
NE	99.00	103.00	111.00	109.00	112.00	107.00
ND	102.00	104.00	97.00	96.00	100.00	104.00
OH	96.20	107.00	115.00	113.00	110.00	105.00
OR	91.00	94.00	93.00	94.50	94.50	94.00
SD	115.00	117.00	115.00	106.00	112.00	114.00
TX	120.00	122.00	118.00	104.00	104.00	105.00
UT	102.00	106.00	104.00	103.00	103.00	101.00
WY	117.00	121.00	108.00	110.00	112.00	111.00
US						
2004	103.00	106.00	103.00	100.00	103.00	105.00
2003	92.60	92.40	97.10	93.70	97.60	96.70
	Jul	Aug	Sep	Oct	Nov	Dec
	<i>Dollars per Cwt</i>	<i>Dollars per Cwt</i>	<i>Dollars per Cwt</i>	<i>Dollars per Cwt</i>	<i>Dollars per Cwt</i>	<i>Dollars per Cwt</i>
CA	89.00	86.00	87.50	86.50	86.50	90.50
CO	109.00	96.50	96.60	95.20	98.90	102.00
ID	100.00	94.00	95.00	91.00	92.00	100.00
IA	95.00	92.00	90.00	88.00	90.10	95.00
KS	95.00	91.00	91.00	90.00	92.00	97.00
MN	95.20	90.50	90.20	88.80	92.20	98.80
MT	112.00	109.00	110.00	109.00	116.00	117.00
NE	99.20	89.70	89.00	89.00	89.00	98.00
ND	103.00	100.00	108.00	100.00	107.00	108.00
OH	93.80	87.80	91.90	87.80	88.00	96.60
OR	95.00	94.00	95.00	95.00	95.00	94.50
SD	109.00	114.00	115.00	115.00	121.00	120.00
TX	109.00	97.40	101.00	107.00	114.00	115.00
UT	103.00	100.00	105.00	98.00	98.00	97.00
WY	107.00	113.00	115.00	118.00	118.00	116.00
US						
2004	101.00	97.90	100.00	97.70	99.90	102.00
2003	89.40	88.60	95.10	96.80	99.70	97.70

**Sheep: Monthly Prices Received by State 2004  
and United States, 2003-2004**

State	Jan	Feb	Mar	Apr	May	Jun
	<i>Dollars per Cwt</i>	<i>Dollars per Cwt</i>	<i>Dollars per Cwt</i>	<i>Dollars per Cwt</i>	<i>Dollars per Cwt</i>	<i>Dollars per Cwt</i>
CA	36.00	43.00	43.00	35.00	32.50	28.00
CO	35.10	33.10	33.10	37.30	33.90	30.50
ID	37.00	39.00	37.00	38.00	39.00	38.00
IA	45.20	46.20	37.60	38.20	33.40	34.70
KS	37.00	36.00	32.00	37.00	33.00	26.00
MN	34.30	37.80	30.50	32.20	29.60	25.00
MT	43.90	39.00	32.90	34.80	39.50	33.50
NE	43.50	43.00	35.10	32.70	36.20	34.10
ND	43.00	40.00	36.00	35.00	36.00	29.00
OH	46.60	40.90	35.10	33.20	36.90	37.80
OR	35.50	36.40	36.00	37.00	38.00	37.00
SD	44.90	44.00	34.40	36.80	35.50	29.50
TX	48.40	46.80	40.40	43.50	41.80	37.70
UT	34.00	36.00	31.00	34.00	30.00	25.00
WY	45.00	40.00	37.60	36.60	34.00	30.60
US						
2004	42.40	40.80	36.70	36.70	36.00	31.30
2003	42.50	44.00	40.90	31.10	31.30	30.30
	Jul	Aug	Sep	Oct	Nov	Dec
	<i>Dollars per Cwt</i>	<i>Dollars per Cwt</i>	<i>Dollars per Cwt</i>	<i>Dollars per Cwt</i>	<i>Dollars per Cwt</i>	<i>Dollars per Cwt</i>
CA	28.50	30.50	35.00	36.50	36.50	42.50
CO	43.70	40.60	44.40	39.90	43.00	44.00
ID	39.00	40.00	43.00	43.00	44.00	44.00
IA	43.60	42.70	46.00	46.00	44.30	44.80
KS	32.00	36.00	39.00	37.00	40.00	42.00
MN	30.00	35.00	35.00	37.10	35.00	39.00
MT	37.20	43.20	41.70	40.70	45.30	51.10
NE	37.60	38.60	39.00	39.30	38.00	42.40
ND	32.00	35.00	36.00	40.00	38.00	40.00
OH	37.20	40.60	47.90	43.00	42.80	42.80
OR	36.00	35.00	35.00	36.00	37.00	36.50
SD	39.50	40.20	41.40	42.10	43.50	49.60
TX	40.10	43.20	46.40	43.30	47.70	52.20
UT	33.00	33.00	38.00	35.00	37.00	39.00
WY	40.90	40.70	42.30	42.60	40.50	45.00
US						
2004	37.10	37.30	41.20	40.40	41.40	44.60
2003	28.60	29.20	32.50	35.00	40.50	45.10

**All Cattle and Calves: Value per Head and Total Value,  
by States and United States, January 1, 2004-2005 <sup>1</sup>**

State	Value per Head		Total Value	
	2004	2005	2004	2005
	<i>Dollars</i>	<i>Dollars</i>	<i>1,000 Dollars</i>	<i>1,000 Dollars</i>
AL	630	750	856,800	990,000
AK	870	980	11,745	14,210
AZ	840	1,020	722,400	928,200
AR	710	810	1,349,000	1,539,000
CA	980	1,130	5,096,000	6,102,000
CO	920	1,000	2,208,000	2,500,000
CT	910	1,070	49,140	59,920
DE	860	990	21,500	22,770
FL	720	810	1,252,800	1,409,400
GA	650	770	812,500	931,700
HI	580	630	90,480	97,650
ID	980	1,080	1,960,000	2,235,600
IL	850	860	1,113,500	1,186,800
IN	830	940	688,900	799,000
IA	850	900	2,932,500	3,240,000
KS	800	830	5,320,000	5,519,500
KY	700	810	1,624,000	1,822,500
LA	680	780	578,000	670,800
ME	920	1,100	83,720	101,200
MD	910	1,010	213,850	237,350
MA	930	1,100	44,640	52,800
MI	940	1,060	968,200	1,070,600
MN	870	950	2,088,000	2,280,000
MS	650	780	663,000	834,600
MO	760	850	3,306,000	3,782,500
MT	950	1,080	2,280,000	2,538,000
NE	880	910	5,500,000	5,778,500
NV	840	900	428,400	450,000
NH	950	1,170	37,050	46,800
NJ	990	1,110	45,540	48,840
NM	860	1,090	1,298,600	1,635,000
NY	960	1,230	1,363,200	1,734,300
NC	630	760	554,400	661,200
ND	920	1,070	1,610,000	1,829,700
OH	870	950	1,070,100	1,235,000
OK	730	820	3,723,000	4,428,000
OR	810	960	1,166,400	1,372,800
PA	950	1,080	1,558,000	1,760,400
RI	870	1,010	4,785	5,555
SC	650	780	279,500	339,300
SD	910	1,010	3,321,500	3,787,500
TN	650	770	1,436,500	1,670,900
TX	700	780	9,730,000	10,764,000
UT	790	940	679,400	808,400
VT	1,050	1,300	299,250	357,500
VA	660	770	1,016,400	1,262,800
WA	970	1,110	1,086,400	1,198,800
WV	670	780	254,600	315,900
WI	1,060	1,190	3,551,000	3,986,500
WY	890	1,020	1,246,000	1,377,000
US	818	916	77,594,700	87,820,795

<sup>1</sup> 2004 revised.



**Hogs: Value per Head and Total Value by States  
and United States, December 1, 2003-2004<sup>1</sup>**

State	Value per Head		Total Value	
	2003	2004	2003	2004
	<i>Dollars</i>	<i>Dollars</i>	<i>1,000 Dollars</i>	<i>1,000 Dollars</i>
AL	66	100	10,890	18,000
AK	180	190	270	323
AZ	72	110	9,144	14,960
AR	73	98	22,630	32,340
CA	87	130	11,745	18,200
CO	64	95	48,000	76,000
CT	87	130	348	546
DE	64	98	768	1,470
FL	69	110	2,070	2,200
GA	61	92	17,995	25,300
HI	140	160	3,220	3,520
ID	68	100	1,768	2,100
IL	65	100	260,000	400,000
IN	69	110	213,900	346,500
IA	70	110	1,113,000	1,771,000
KS	62	93	102,300	159,960
KY	54	79	20,520	27,650
LA	72	110	1,440	1,760
ME	72	110	396	550
MD	66	100	1,980	2,600
MA	72	110	864	1,320
MI	79	110	75,050	103,400
MN	79	120	513,500	780,000
MS	71	110	21,655	34,650
MO	57	85	168,150	246,500
MT	69	110	11,730	18,150
NE	72	110	208,800	313,500
NV	87	130	479	715
NH	79	120	229	432
NJ	79	120	948	1,320
NM	72	110	180	275
NY	66	100	4,818	8,400
NC	54	84	540,000	823,200
ND	69	110	10,350	18,590
OH	72	110	109,440	159,500
OK	57	81	135,660	194,400
OR	72	110	1,944	2,970
PA	69	99	76,590	106,920
RI	69	110	138	220
SC	59	90	17,700	27,000
SD	74	110	94,720	146,300
TN	57	88	12,255	18,920
TX	67	88	62,310	86,240
UT	72	110	47,520	75,900
VT	87	130	157	260
VA	62	87	23,560	32,625
WA	79	120	2,133	3,120
WV	69	110	690	1,100
WI	65	90	31,200	38,700
WY	79	120	9,796	13,680
US	67	102	4,024,949	6,163,286

<sup>1</sup> 2003 revised.

**Sheep and Lambs, Angora Goats: Value per Head and Total Value,  
by States and United States, January 1, 2004-2005 <sup>1</sup>**

State	Sheep and Lambs				Angora Goats			
	Value per Head		Total Value		Value per Head		Total Value	
	2004	2005	2004	2005	2004	2005	2004	2005
	<i>Dollars</i>	<i>Dollars</i>	<i>1,000 Dollars</i>	<i>1,000 Dollars</i>	<i>Dollars</i>	<i>Dollars</i>	<i>1,000 Dollars</i>	<i>1,000 Dollars</i>
AZ	121	135	13,794	13,500	65.00	70.00	1,950	1,610
CA	113	121	76,840	81,070				
CO	116	127	41,760	46,355				
ID	124	136	32,240	36,720				
IL	158	180	9,954	12,420				
IN	171	182	8,550	9,100				
IA	130	147	32,500	36,015				
KS	114	130	11,400	13,780				
KY	146	151	3,796	4,832				
MD	129	143	3,225	3,289				
MI	131	145	10,873	12,035				
MN	121	132	16,940	19,140				
MO	129	145	7,740	9,425				
MT	120	130	36,000	39,650				
NE	134	146	13,668	14,162				
NV	125	133	9,375	9,310				
N ENG <sup>2</sup>	195	200	8,385	9,100				
NM	113	119	18,080	17,255	65.00	65.00	650	650
NY	136	144	9,520	10,800				
NC	144	154	2,880	3,080				
ND	113	136	11,300	14,280				
OH	146	163	20,440	23,146				
OK	139	151	10,425	10,570				
OR	117	120	25,155	27,000				
PA	142	146	12,780	14,600				
SD	119	135	44,030	50,625				
TN	129	144	2,838	3,312				
TX <sup>3</sup>	96	105	105,600	112,350	63.00	67.00	13,860	14,070
UT	128	138	33,920	37,260				
VA	131	140	7,205	8,540				
WA	120	134	5,520	6,164				
WV	109	127	3,706	3,937				
WI	146	169	12,118	14,365				
WY	112	130	48,160	58,500				
Oth <sup>4</sup>	132	134	13,068	13,601				
US <sup>5</sup>	119	130	723,785	799,288	63.30	67.20	16,460	16,330

<sup>1</sup> 2004 Revised.

<sup>2</sup> N ENG includes CT, ME, MA, NH, RI, and VT.

<sup>3</sup> All goat values for Texas are: 2004, per head-\$96, total-\$115,200; 2005, per head-\$109, total-\$136,250.

<sup>4</sup> Other States include AL, AK, AR, DE, FL, GA, HI, LA, MS, NJ, and SC.

<sup>5</sup> 3 States for Angora Goats.

**Wool and Mohair: Marketing Year Average Prices Received,  
by States and United States, 2003-2004 <sup>1</sup>**

	Wool		Mohair	
	2003	2004	2003	2004
	<i>Dollars per Pound</i>	<i>Dollars per Pound</i>	<i>Dollars per Pound</i>	<i>Dollars per Pound</i>
AZ	0.34	0.30	1.40	1.10
CA	0.79	0.82		1.70
CO	0.74	0.85		
ID	0.86	0.88		
IL	0.23	0.26		
IN	0.19	0.21		
IA	0.29	0.34		
KS	0.45	0.57		
KY	0.24	0.31		
MD	0.34	0.41		
MI	0.30	0.45		
MN	0.30	0.37		
MO	0.42	0.40		
MT	1.03	1.17		
NE	0.35	0.43		
NV	0.95	0.94		
N ENG <sup>2</sup>	0.35	0.45		
NM	1.10	1.00	1.25	1.10
NY	0.27	0.21		
NC	0.42	0.38		
ND	0.60	0.75		
OH	0.23	0.34		
OK	0.40	0.50		
OR	0.58	0.65		
PA	0.27	0.27		
SD	0.76	0.72		
TN	0.67	0.63		
TX	0.90	1.02	1.70	2.10
UT	0.80	0.83		
VA	0.33	0.40		
WA	0.63	0.80		
WV	0.28	0.43		
WI	0.25	0.30		
WY	1.10	1.17		
Oth <sup>3</sup>	0.56	0.65		1.50
US	0.73	0.80	1.66	1.97

<sup>1</sup> Average local market for wool and mohair sold.

<sup>2</sup> Includes CT, ME, MA, NH, RI and VT.

<sup>3</sup> Other States include AL, AK, AR, DE, FL, GA, HI, LA, MS, NJ, and SC.

**Other Hay, Baled: Prices Received, Selected Regions,  
Marketing Year Average, 2002-2004 <sup>1</sup>**

Region	3-Year Avg
	<i>Dollars Per Ton</i>
Appalachia <sup>2</sup>	63.10
Corn Belt <sup>3</sup>	56.10
Florida	92.60
Lake States <sup>4</sup>	55.10
Northeast <sup>5</sup>	107.50
Southeast/Delta <sup>6</sup>	51.80

<sup>1</sup> Prices provided to the Forest Service, USDA to compute Eastern National Forest grazing fees.

<sup>2</sup> KY, NC, TN, VA, and WV.

<sup>3</sup> IL, IN, MO, and OH.

<sup>4</sup> MI, MN, and WI.

<sup>5</sup> ME, NH, NY, PA, and VT.

<sup>6</sup> AL, AR, GA, LA, MS, and SC.

**Apples for Fresh Use: Monthly Average Prices, by State and United States,  
July 2003 - August 2004 <sup>1,2</sup>**

State	2003						2004
	Jul	Aug	Sep	Oct	Nov	Dec	Jan
	<i>Dollars per Pound</i>	<i>Dollars per Pound</i>	<i>Dollars per Pound</i>	<i>Dollars per Pound</i>	<i>Dollars per Pound</i>	<i>Dollars per Pound</i>	<i>Dollars per Pound</i>
CA		0.402	0.226	0.227	0.266	0.266	0.271
MI		0.200	0.235	0.210	0.190	0.185	0.185
NY			0.265	0.259	0.232	0.229	0.222
OH		0.320	0.324	0.321	0.278	0.298	0.279
PA	0.208	0.214	0.214	0.220	0.215	0.215	0.202
VA			0.230	0.225	0.225	0.220	0.215
WA			0.301	0.297	0.320	0.310	0.330
US	0.208	0.346	0.270	0.278	0.305	0.288	0.304

State	2004						
	Feb	Mar	Apr	May	Jun	Jul	Aug
	<i>Dollars per Pound</i>	<i>Dollars per Pound</i>	<i>Dollars per Pound</i>	<i>Dollars per Pound</i>	<i>Dollars per Pound</i>	<i>Dollars per Pound</i>	<i>Dollars per Pound</i>
CA	0.183	0.267					0.241
MI	0.185	0.190	0.190	0.180	0.180		0.240
NY	0.216	0.216	0.217	0.220	0.218		
OH	0.276	0.278	0.273	0.278			0.330
PA	0.202	0.202	0.202	0.202		0.202	0.202
VA	0.210	0.210					0.290
WA	0.329	0.328	0.320	0.313	0.309	0.300	0.282
US	0.300	0.304	0.298	0.296	0.296	0.295	0.273

<sup>1</sup> Equivalent packinghouse-door returns for CA, NY, and WA; price at point of first sale for other states.

<sup>2</sup> Prices for July and August 2004 are preliminary for all states and the U.S. except WA. These two months represent the start of the 2004 crop marketing season in most states, but in WA they are the final months of the 2003 crop marketing season.

**Pears: Equivalent On-tree Returns,  
by State and United States, 2002-2004**

State and Variety	Fresh			Processed			All		
	2002	2003	2004	2002	2003	2004	2002	2003	2004
	<i>Dollars per Ton</i>	<i>Dollars per Ton</i>	<i>Dollars per Ton</i>	<i>Dollars per Ton</i>	<i>Dollars per Ton</i>	<i>Dollars per Ton</i>	<i>Dollars per Ton</i>	<i>Dollars per Ton</i>	<i>Dollars per Ton</i>
Bartlett									
CA	240	160	231	200	196	221	212	186	223
OR	466	404	450	175	157	130	290	281	279
WA	450	470	433	163	170	135	243	266	224
US	357	336	359	196	188	191	245	235	245
Other <sup>1</sup>									
US	293	290	363						

<sup>1</sup> Pears other than Bartlett; missing data unavailable or not published to avoid disclosure.

**Dried Figs: Equivalent Returns for Bulk Fruit at First Delivery Point,  
by Utilization, California, 2002-2004**

	2002	2003	2004
	<i>Dollars per Ton</i>	<i>Dollars per Ton</i>	<i>Dollars per Ton</i>
Dried Figs			
Standard Grades (Dried Basis)	1,010	938	1,050
Substandard Grades (Dried Basis)	50	60	60
All Dried Figs (Dried Basis)	902	828	944
All Dried Figs (Fresh Basis)	301	276	315

**Apricots and Plums: Equivalent Returns,  
California, 2002-2004**

	Equivalent First Delivery Point Returns			Equivalent On-tree Returns		
	2002	2003	2004	2002	2003	2004
	<b>Plums</b>					
	<i>Dollars per Ton</i>	<i>Dollars per Ton</i>	<i>Dollars per Ton</i>	<i>Dollars per Ton</i>	<i>Dollars per Ton</i>	<i>Dollars per Ton</i>
All Sales	386	418	516	303	335	435
	<b>Apricots</b>					
Fresh	490	492	538	391	392	438
Processing	271	264	283	201	199	218
All Sales	306	316	334	234	241	259

**Concord Grapes for Processing: Marketing Year Average Prices,  
New York and Pennsylvania, 2002-2004**

State	2002	2003	2004
	<i>Dollars per Ton</i>	<i>Dollars per Ton</i>	<i>Dollars per Ton</i>
NY	266	187	174
PA	280	222	221

**Grapes: Equivalent First Delivery Point Returns,  
by Utilization and Variety Group, California, 2002-2004 <sup>1</sup>**

Variety and Utilization	2002	2003	2004
	<i>Dollars per Ton</i>	<i>Dollars per Ton</i>	<i>Dollars per Ton</i>
Raisin Varieties Dried by Variety or Type			
Natural Thompson Seedless	360	528	
Natural Muscats	628	515	
Natural Sultanas	504	495	
Natural Zante Currents	807	992	
Dehydrated, All Types	773	887	

<sup>1</sup> Missing data are not available.

**Peaches for Fresh Use: Marketing Year Average Prices and Equivalent Returns  
by State and United States, 2002-2004 <sup>1</sup>**

State	As Sold			Equivalent Packinghouse-door Returns <sup>2</sup>			Equivalent On-tree Returns		
	2002	2003	2004	2002	2003	2004	2002	2003	2004
	<i>Dollars per Ton</i>	<i>Dollars per Ton</i>	<i>Dollars per Ton</i>	<i>Dollars per Ton</i>	<i>Dollars per Ton</i>	<i>Dollars per Ton</i>	<i>Dollars per Ton</i>	<i>Dollars per Ton</i>	<i>Dollars per Ton</i>
AL	880	940	661	880	940	661			
CA									
Freestone	824	792	341	418	406	341	364	352	287
CT	1,400	1,400	1,600	1,400	1,400	1,600			
GA							542	342	448
IL	940	1,020	770	940	1,020	770			
IN	1,470	1,430	1,380	1,470	1,430	1,380			
KY	1,090	1,110	1,290	1,090	1,110	1,290			
LA	1,500	1,630	1,420	1,500	1,630	1,420			
MD	792	956	563	792	956	563			
MA	1,600	1,600	1,500	1,600	1,600	1,500			
MI	740	400	660	740	400	660			
MO	840	860	780	840	860	780			
NY	520	840	920	520	840	920			
OH	992	996	1,000	992	996	1,000			
OK	1,150	1,240	1,030	1,150	1,240	1,030			
SC	714	790	573	714	790	573			
TN	940	1,030	1,070	940	1,030	1,070			
TX	1,200	1,460	1,540	1,200	1,460	1,540			
VA	820	756	660	820	756	660			
WV	620	740	478	620	740	478			
US	612	581	548	822	782	548			

<sup>1</sup> Some missing data are not published to avoid disclosure of individual operations.

<sup>2</sup> "Packinghouse-door" equivalents for CA; all other states are "As Sold".

**United States Parity Prices for Farm Products and Average Prices Received as  
Percent of Parity Prices Based on Data for February 2005, with Comparisons <sup>1</sup>**

Commodity and Unit	Adjusted Base Price	Parity Price Based on Data for			Price as Percent of Parity		
		Jan 2004	Dec 2004	Jan 2005	Jan 2004	Dec 2004	Jan 2005
	<i>Dollars</i>	<i>Dollars</i>	<i>Dollars</i>	<i>Dollars</i>	<i>Percent</i>	<i>Percent</i>	<i>Percent</i>
<b>Basic Commodities</b>							
All Wheat, Bu	0.555	9.75	10.00	9.90	38	34	35
Rice, Cwt	1.38	28.20	29.00	24.60	30	26	30
Corn, Bu	0.372	6.55	6.74	6.63	36	30	30
Cotton, Lb							
American Upland	0.095	1.95	2.01	1.69	32	20	23
Extra Long Staple	0.142	2.49	2.56	2.53			
Peanuts, Lb	0.0350	0.640	0.658	0.624	32	28	30
Tobacco, By Type, Lb							
Flue-Cured 11-14	0.255	4.48	4.61	4.55			
VA Fire-Cured, 21	0.256	4.44	4.57	4.56	26	40	33
KY-TN Fire-Cured, 22-23	0.323	5.57	5.73	5.76	45		
Burley, 31	0.274	4.79	4.93	4.89	41	40	41
Maryland, 32	0.210	3.72	3.82	3.74			
Dark Air-Cured, 35-36	0.284	4.88	5.01	5.06	40		
Sun-Cured, 37	0.241	4.25	4.37	4.30	20	34	37
PA Seedleaf, 41	*0.205	3.56	3.66	*3.66			
Cigar Filler & Binder, 42-44, 54-55	0.225	3.89	4.00	4.01			
Puerto Rican Filler, 46	0.159	2.80	2.88	2.83			
Cigar Binder, 51-52	0.747	12.70	13.10	13.30			
<b>Designated Nonbasic</b>							
All Milk, Sold to Plants, Per Cwt <sup>2</sup>	1.97	34.10	35.00	35.10	40	46	46
Honey, Extracted, Lb <sup>3</sup>	0.1280	1.82	1.87	2.28			
<b>Wool and Mohair</b>							
Wool, Lb	0.0910	1.52	1.56	1.62			
Mohair, Lb	0.333	5.77	5.94	5.94			
<b>Other Nonbasic</b>							
Barley, Bu	0.377	6.50	6.69	6.72	41	37	35
Cottonseed, Ton	*15.50	273.00	281.00	*276.00	46	40	41
Dry Edible Beans, Cwt	2.82	50.50	51.90	50.30	34	51	54
Flaxseed, Bu	0.753	12.60	12.90	13.40	48	65	69
Oats, Bu	0.221	3.82	3.93	3.94	39	40	38
Potatoes, Cwt	0.838	14.80	15.20	14.90	39	35	36
Rye, Bu	*0.355	6.10	6.28	*6.33			
Sorghum Grain, Cwt	0.607	10.70	11.00	10.80	41	27	27
Soybeans, Bu	0.900	15.40	15.90	16.00	48	34	33
Sweetpotatoes, Cwt	2.31	38.90	40.00	41.20			
Apples, Fresh, Lb <sup>4</sup>	0.0292	0.512	0.526	0.521	58	42	41
Citrus (equiv on-tree), Box							
Grapefruit	0.394	6.69	6.88	7.03	45	211	178
Lemons	1.12	19.00	19.60	20.00	14	42	33
Oranges	0.574	10.70	11.00	10.20	23	24	29
Tangerines	1.35	24.60	25.20	24.10	47	50	66
Temples (FL)	0.379	7.80	8.02	6.76	33		53
Beef Cattle, Cwt	9.65	165.00	170.00	172.00	49	51	52
Calves, Cwt	13.10	221.00	228.00	234.00	50	54	53
Hogs, Cwt	5.97	102.00	105.00	106.00	36	50	50
Lambs, Cwt	11.70	195.00	201.00	209.00	53	51	
Sheep, Cwt	4.72	81.30	83.60	84.20	54	54	
Eggs, Doz <sup>2</sup>	0.0940	1.64	1.69	1.68	53	37	31
Turkeys, Live, Lb	0.0565	0.992	1.020	1.010	35	45	39

See footnote(s) at end of table.

--continued

**Parity Prices Based on Data for February 2005, United States <sup>1</sup> (Continued)**

Other Nonbasic Commodities	Adj Base Price	Parity Price	Other Nonbasic Commodities	Adj Base Price	Parity Price
	<i>Dollars</i>	<i>Dollars</i>		<i>Dollars</i>	<i>Dollars</i>
Field Crops and Misc Commodities			Noncitrus Fruit		
Hops, Lb	0.251	4.48	Peaches, cont. Processing <sup>5</sup>		
Spearmint Oil, Lb	1.46	26.00	Excl Dried Clingstone, CA, Ton	33.50	597.00
Tobacco, Lb Type 61	3.21	57.20	Pears, Ton Fresh <sup>4</sup>	*52.90	*943.00
Noncitrus Fruit			Dried, CA <sup>6</sup>	164.00	2,920.00
Apples, Ton <sup>6</sup>			Plums, CA, Ton Fresh, Equiv On-Tree	66.70	1,190.00
Processing	18.30	326.00	Prunes, Dried, CA, Ton <sup>6</sup>	127.00	2,260.00
Apricots, Ton Fresh <sup>7</sup>	99.00	1,770.00	Prunes and Plums, Excl CA, Ton Fresh <sup>9</sup>	58.90	1,050.00
Dried, CA	270.00	4,810.00	Processing <sup>6</sup> Excl Dried	27.50	490.00
Avocados, Ton <sup>7</sup>	234.00	4,170.00	Tree Nuts <sup>10</sup>		
Cherries Bbl Sweet, Ton	188.00	3,350.00	Almonds, Lb	0.213	3.80
Tart, Lb	0.0319	0.569	Hazelnuts, Ton	135.00	2,410.00
Cranberry, Bbl <sup>5</sup>	5.69	101.00	Pistachio, Lb	0.159	2.83
Dates, CA, Ton <sup>7</sup>	181.00	3,230.00	Walnuts, Ton	*173.00	*3,085.00
Grapes, Ton			Vegetables, Cwt <sup>11</sup>		
Raisin Variety	124.00	2,210.00	Fresh		
Other Dried	70.50	1,260.00	Carrots <sup>8</sup>	2.28	40.70
Kiwifruit, Ton	91.30	1,630.00	Cauliflower <sup>8</sup>	*4.60	*82.00
Nectarines			Celery <sup>8</sup>	1.97	35.10
Fresh, CA, Ton <sup>7</sup>	62.60	1,120.00	Honeydew Melons	2.75	49.00
Olives, CA			Lettuce	2.50	44.60
Canning, Ton <sup>5</sup>	95.70	1,710.00	Onions <sup>8</sup>	1.65	29.40
Papayas (HA)	0.0528	0.941	Tomatoes	4.44	79.20
Peaches					
Fresh, Ton <sup>4</sup>	81.57	1,450.00			
Dried, CA, Ton	84.00	1,500.00			

<sup>1</sup> Parity prices are computed under the provisions of Title III, Subtitle a, Section 301 (a) of the Agricultural Adjustment Act of 1938 as amended by the Agricultural Acts of 1948, 1949, and 1956. See January "Agricultural Prices" for details on adjusted base price and parity price computations.

<sup>2</sup> Seasonally adjusted price as percentage of parity price.

<sup>3</sup> Wholesale extracted. Adjusted base price derived from state annual averages prices weighted by production. For 1982 through 1985 the national averages are the support prices.

<sup>4</sup> Equivalent packinghouse-door returns for CA, NY (apples only), OR (except peaches), and WA. Price at point of first sale for other states.

<sup>5</sup> Equivalent returns for bulk fruit at first delivery point.

<sup>6</sup> Equivalent returns at processing plant door.

<sup>7</sup> Equivalent returns at packinghouse door.

<sup>8</sup> Includes some processing.

<sup>9</sup> Based on "as sold" prices for fresh fruit in all states.

<sup>10</sup> Prices in-shell basis except almonds which are shelled basis.

<sup>11</sup> F.O.B. shipping point prices.

\* Corrected from the January 2005 Agricultural Price Report.



**Adjusted Base Prices and United States Parity Prices  
Based on Data for January, 2005**

Commodity and Unit	Adjusted Base Price <sup>1</sup>	Parity Price Based on data for Jan 2005 <sup>2</sup>
	<i>Dollars</i>	<i>Dollars</i>
<b>Basic Commodities</b>		
All Wheat, Bu <sup>3</sup>	0.555	9.90
Rice, Cwt <sup>3</sup>	1.38	24.60
Corn, Bu <sup>3</sup>	0.372	6.63
Cotton, Lb		
American Upland <sup>3</sup>	0.095	1.69
Extra Long Staple	0.142	2.53
Peanuts, Lb	0.035	0.624
Tobacco, Lb		
Flue-Cured, Types 11-14	0.255	4.55
VA Fire-Cured, Type 21	0.256	4.56
KY-TN Fire-Cured, Types 22-23	0.323	5.76
Burley, Type 31	0.274	4.89
Maryland, Type 32	0.210	3.74
Dark Air-Cured, Types 35-36	0.284	5.06
Sun-Cured, Type 37	0.241	4.30
PA SeedLeaf, Type 41	*0.205	*3.66
Cigar Filler & Binder, Types 42-44, 54-55	0.225	4.01
Puerto Rican Filler, Type 46	0.159	2.83
Cigar Binder, Types 51-52	0.747	13.30
<b>Designated Nonbasic Commodities</b>		
Soybeans, Bu <sup>3</sup>	0.900	16.00
All Milk Sold to Plants, Cwt	1.97	35.10
Honey, Wholesale, Lb Extracted	0.128	2.28
<b>Wool and Mohair</b>		
Wool, Lb <sup>3</sup>	0.091	1.62
Mohair, Lb	0.333	5.94
<b>Other Nonbasic Commodities</b>		
<b>Field Crops and Misc</b>		
All Barley, Bu <sup>3</sup>	0.377	6.72
Cottonseed, Ton	*15.50	*276.00
All Dry Edible Beans, Cwt	2.82	50.30
Flaxseed, Bu	0.753	13.40
All Hay, Baled, Ton	12.60	224.70
Hops, Lb	0.251	4.48
Oats, Bu <sup>3</sup>	0.221	3.94
Peppermint Oil, Lb <sup>3</sup>	1.70	30.30
All Potatoes, Cwt	0.838	14.90
Rye, Bu	*0.355	*6.33
Sorghum Grain, Cwt <sup>3</sup>	0.607	10.80
Spearmint Oil, Lb	1.46	26.00
Sweet Potatoes, Cwt	2.31	41.20
Tobacco, Cigar Wrapper Type 61, Lb	3.21	57.20

**Adjusted Base Prices and United States Parity Prices  
Based on Data for January, 2005**

Commodity and Unit	Adjusted Base Price <sup>1</sup>	Parity Price Based on data for Jan 2005 <sup>2</sup>
	<i>Dollars</i>	<i>Dollars</i>
Fruit, Citrus (Equiv On-Tree) Box		
Grapefruit <sup>13</sup>	0.394	7.03
Lemons <sup>13</sup>	1.120	20.00
Oranges <sup>13</sup>	0.574	10.20
Tangerines <sup>13</sup>	1.35	24.10
Temples <sup>13</sup>	0.379	6.76
Fruit, Deciduous and Other		
Apples		
Fresh, Lb <sup>4</sup>	0.029	0.521
Processing, Ton <sup>13</sup>	18.30	326.00
Apricots, Ton		
Fresh	99.00	1,770.00
Processing		
Dried (CA)	270.00	4,810.00
Excl Dried	39.00	695.00
Avocados, Ton <sup>13</sup>	234.00	4,170.00
Cherries		
Sweet, Ton	188.00	3,350.00
Tart, Lb <sup>13</sup>	0.032	0.569
Cranberries, Bbl <sup>13</sup>	5.69	101.00
Dates (CA), Ton <sup>5</sup>	181.00	3,230.00
Grapes, Ton		
Raisin Varieties Dried (CA)	124.00	2,210.00
Excl Raisin Varieties Dried	70.50	1,260.00
Kiwifruit, Ton <sup>13</sup>	91.30	1,630.00
Nectarines (CA), Ton		
Fresh <sup>5</sup>	62.60	1,120.00
Processing <sup>6</sup>	3.69	65.80
Olives (CA), Ton <sup>7</sup>		
Processing		
Crushed for oil	26.11	466.00
Excl crushed	82.00	1,462.00
Canning	95.70	1,706.00
Papayas (HI), Fresh, Lb	0.053	0.941
Peaches		
Fresh, Ton <sup>4 7</sup>	81.57	1,454.00
Processing		
Dried (CA), Ton <sup>6</sup>	84.00	1,500.00
Excluding Dried, Ton		
Clingstone (CA), Ton <sup>7</sup>	33.50	597.00
Freestone, Ton <sup>6</sup>	28.20	503.00
Pears		
Fresh, Ton <sup>4</sup>	*52.90	*943.00
Processing, Ton <sup>6</sup>		
Dried (CA)	164.00	2,920.00
Excluding Dried	27.40	489.00

See footnote(s) at end of table.

--continued

**Adjusted Base Prices and United States Parity Prices  
Based on Data for January, 2005**

Commodity and Unit	Adjusted Base Price <sup>1</sup>	Parity Price Based on data for Jan 2005 <sup>2</sup>
	<i>Dollars</i>	<i>Dollars</i>
Fruit, Deciduous and Other, Cont		
Plums (CA) Equiv On-Tree		
Fresh, Ton <sup>8</sup>	66.70	1,190.00
Processing, Ton	4.16	74.20
Prunes, Dried (CA), Ton <sup>13</sup>	127.00	2,264.00
Prunes & Plums (EX CA), Ton		
Fresh <sup>8</sup>	58.90	1,050.00
Processing <sup>6</sup>	27.50	490.00
Strawberries, Lb		
Fresh <sup>6</sup>	0.099	1.76
Processing	0.040	0.708
Sugar Crops, Ton		
Sugarbeets <sup>10 13</sup>	5.56	99.10
Sugarcane <sup>10 13</sup>	3.99	71.10
Tree Nuts <sup>11</sup>		
Almonds, Lb	0.213	3.80
Hazelnuts, Ton	135.00	2,410.00
Pecans, All, Lb	0.139	2.48
Pistachio, All, Lb	0.159	2.83
Walnuts, Ton <sup>13</sup>	*173.00	*3,085.00
Vegetables, Fresh, Cwt <sup>9</sup>		
Asparagus	16.80	300.00
Broccoli <sup>12</sup>	*4.18	*74.50
Carrots <sup>12</sup>	2.28	40.70
Cauliflower <sup>12</sup>	*4.60	*82.00
Celery <sup>12</sup>	1.97	35.10
Honeydew Melons	2.75	49.00
Lettuce	2.50	44.60
Onions <sup>12</sup>	1.65	29.40
Sweet Corn	2.62	46.70
Tomatoes	4.44	79.20
Vegetables, Processing, Ton <sup>6</sup>		
Asparagus	101.00	1,801.00
Green Peas	37.70	672.00
Snap Beans	23.70	423.00
Sweet Corn	10.35	185.00
Tomatoes	8.80	157.00
Livestock and Products		
Beef Cattle, Cwt	9.65	172.00
Calves, Cwt	13.10	234.00
Eggs, Doz	0.094	1.68
Hogs, Cwt	5.97	106.00
Lambs, Cwt	11.70	209.00
Sheep, Cwt	4.72	84.20
Turkeys, Lb	0.057	1.01

See footnote(s) at end of table.

--continued

**Adjusted Base Prices and United States Parity Prices  
Based on Data for January, 2005**

Commodity and Unit	Adjusted Base Price <sup>1</sup>	Parity Price Based on data for Jan 2005 <sup>2</sup>
	<i>Dollars</i>	<i>Dollars</i>
Discontinued Nonbasic Commodities <sup>14</sup>		
Field Crops and Misc		
Crude Pine Gum, Bbl	13.90	248.00
Dry Field Peas, Cwt	1.89	33.70
Popcorn, Cwt	1.81	32.30
Tobacco, Type 62, Lb <sup>15</sup>	0.858	15.30
Puerto Rican Filler, Type 46, Lb	0.159	2.83
Fruit, Deciduous and Other		
Berries, Processing, Lb		
Blackberries	0.620	11.10
Black Raspberries	0.106	1.89
Boysenberries/Youngberries	0.088	1.57
Gooseberries	0.037	0.670
Loganberries	0.060	1.08
Red Raspberries	0.084	1.50
Seed Crops, Cwt		
Alfalfa	19.30	344.00
Bentgrass	18.90	337.00
Chewings Fescue	8.40	150.00
Crimson Clover	10.00	178.00
Hairy Vetch	5.81	104.00
Ladino Clover	24.70	440.00
Lespedeza	8.31	148.00
Merion KY Bluegrass	22.00	392.00
Orchardgrass	7.16	128.00
Red Clover	12.00	214.00
Red Fescue	10.10	180.00
Tall Fescue	3.67	65.40
Timothy	6.40	114.00
Vegetables, Fresh, Cwt		
Artichokes	4.55	81.10
Cabbage	1.38	24.60
Cantaloupes	2.13	38.00
Cucumbers	2.28	40.70
Eggplant	2.41	43.00
Escarole	3.10	55.30
Garlic	2.93	52.20
Green Peppers	3.60	64.20
Snap Beans	4.51	80.40
Spinach	3.95	70.40
Watermelon	0.846	15.10
Vegetables, Processing, Ton		
Beets	7.79	139.00
Cabbage	6.01	107.00
Lima Beans	67.00	1,195.00
Spinach	14.50	259.00
Livestock and Products		
Beeswax, Lb	0.291	5.20

See footnote(s) at end of table.

--continued

**Adjusted Base Price and United States Parity Prices  
Based on data for January 2005 (continued)**

- <sup>1</sup> Adjusted base price 1910-14 derived by dividing the average of 10 season average prices 1995-2004, including an allowance where appropriate for unredeemed loans and other supplemental payments resulting from price support operations, by 705 percent (120-month, Jan 1995-Dec 2004 average of the index of prices received by farmers adjusted to include an allowance for unredeemed loans and other supplemental payments) unless otherwise noted.
- <sup>2</sup> These parity prices are the legally applicable parity prices for the following calendar month.
- <sup>3</sup> Adjusted base price 1910-14 derived from 120-month, Jan 1995-Dec 2004 average including an allowance where appropriate for unredeemed loans and other supplemental payments resulting from price support operations.
- <sup>4</sup> Equivalent packinghouse-door returns for CA, MI, NY (apples only), and WA (apples, peaches, and pears). Prices "as sold" for other states.
- <sup>5</sup> Equivalent returns at packinghouse-door.
- <sup>6</sup> Equivalent returns at processing plant door.
- <sup>7</sup> Equivalent returns for bulk fruit at first delivery point.
- <sup>8</sup> Based on 'as sold' prices for fresh fruit in all states.
- <sup>9</sup> Average F.O.B. shipping point prices.
- <sup>10</sup> Relates to prices including average conditional payments per ton made under the sugar acts of 1937 and 1948. Crop deficiency and abandonment payments not included.
- <sup>11</sup> Prices on in-shell basis except almonds which are on shelled basis.
- <sup>12</sup> Includes some processing.
- <sup>13</sup> The 2004 marketing year average prices are not yet available for these commodities. Therefore, the adjusted base prices are brought forward from 2003, except citrus items (excluding limes) and cranberries.
- <sup>14</sup> Monthly and/or season average prices are no longer estimated for these items. Therefore, the adjusted base price is brought forward from July 1986.
- <sup>15</sup> Monthly and/or season average prices are no longer estimated for this item. The adjusted base price is brought forward from 1988.
- \* Corrected from January 2005 Agricultural Prices Report.

**Prices Received by Farmers used to Calculate Parity Prices  
for Agricultural Commodities, United States, 1995-2004 <sup>1</sup>**

Commodity and Unit	1995	1996	1997	1998	1999	2000
	Marketing Year Average Prices <sup>5</sup>					
	Dollars	Dollars	Dollars	Dollars	Dollars	Dollars
<b>Basic Commodities</b>						
Cotton, Long Staple, Lb	1.228	1.070	1.014	0.924	0.852	1.003
Peanuts, Lb <sup>18</sup>	0.293	0.281	0.283	0.284	0.254	0.274
Tobacco, Lb						
Types 11-14	1.790	1.834	1.720	1.756	1.737	1.793
Type 21	1.640	1.790	2.125	1.936	1.819	1.637
Ky-Tn Fire-Cured,						
Types 22-23	2.172	2.245	2.256	2.225	2.298	2.163
Burley, Type 31	1.854	1.922	1.885	1.903	1.899	1.963
Type 32	1.573	1.856	1.576	1.291	1.345	1.387
Types 35-36	1.762	1.952	2.017	2.017	2.039	1.965
Sun-Cured, Type 37	1.555	1.782	1.908	1.709	1.590	1.800
PA Seedleaf, Type 41	1.450	1.550	1.600	1.300	1.300	( <sup>20</sup> )
Cigar Filler & Binder						
Types 42-44, 54-55	1.450	1.486	1.505	1.498	1.490	1.550
Types 51-52	3.890	6.279	7.273	5.499	4.737	4.916
<b>Designated Nonbasic Comm</b>						
Honey, Wholesale, Lb						
Extracted <sup>8</sup>	0.685	0.888	0.752	0.655	0.601	0.597
Wool and Mohair <sup>9</sup>						
Wool, Lb	1.040	0.700	0.840	0.600	0.380	0.330
Mohair, Lb	1.84	1.92	2.25	2.49	3.46	4.04
<b>Other Nonbasic Comm</b>						
Field Crops and Misc						
Cottonseed, Ton	106.00	126.00	121.00	129.00	89.00	
Hops, Lb	1.71	1.65	1.60	1.69	1.69	1.87
Peppermint Oil, Lb	13.80	13.60	12.90	11.90	10.70	10.80
Potatoes, Cwt	6.75	4.91	5.64	5.56	5.77	5.08
Rye, Bu	2.90	3.70	3.75	2.49	2.27	
Spearmint Oil, Lb	12.30	12.00	11.90	11.00	9.70	9.06
Sweet Potatoes, Cwt	15.90	14.40	15.80	15.30	17.60	15.30

See footnote(s) at end of table.

--continued

**Prices Received by Farmers used to Calculate Parity Prices  
for Agricultural Commodities, United States, 1995-2004 <sup>1</sup> (continued)**

Commodity and Unit	2001	2002	2003	2004	1994-03 Average	1995-04 Average
	Marketing Year Average Prices <sup>5</sup>					
	<i>Dollars</i>	<i>Dollars</i>	<i>Dollars</i>	<i>Dollars</i>	<i>Dollars</i>	<i>Dollars</i>
<b>Basic Commodities</b>						
Cotton, Long Staple, Lb					0.998	1.001
Peanuts, Lb <sup>18</sup>	0.234	0.182	0.193	0.196	0.256	0.247
Tobacco, Lb						
Types 11-14	1.857	1.820	1.851	1.846	1.786	1.800
Type 21					1.784	1.803
Ky-Tn Fire-Cured, Types 22-23					2.228	2.276
Burley, Type 31	1.973	1.974	1.977	1.987	1.920	1.934
Type 32	1.554	1.348	1.463	1.404	1.486	1.480
Types 35-36					1.953	1.999
Sun-Cured, Type 37	1.686	1.778	1.707	1.476	1.699	1.699
PA Seedleaf, Type 41					1.426	1.446
Cigar Filler & Binder Types 42-44, 54-55					1.558	1.588
Types 51-52					5.086	5.264
<b>Designated Nonbasic Comm</b>						
Honey, Wholesale, Lb Extracted <sup>8</sup>	0.704	1.286	( <sup>6</sup> )	( <sup>6</sup> )	0.815	( <sup>6</sup> )
<b>Wool and Mohair <sup>9</sup></b>						
Wool, Lb					0.628	0.644
Mohair, Lb					2.39	2.35
<b>Other Nonbasic Comm</b>						
<b>Field Crops and Misc</b>						
Cottonseed, Ton	90.50	101.00	*117.00		109.00	109.00
Hops, Lb	1.85	1.91	1.86	1.90	1.77	1.77
Peppermint Oil, Lb	10.90	11.90	12.00	11.90	12.30	12.00
Potatoes, Cwt					5.88	( <sup>6</sup> )
Rye, Bu					2.47	2.50
Spearmint Oil, Lb	9.09	9.11	9.29	9.48	10.60	10.30
Sweet Potatoes, Cwt		16.80	19.20	17.50	16.10	16.30

<sup>1</sup> Average used to compute "adjusted base prices". 2004 and 1994-2003 averages are preliminary. <sup>2</sup> Includes an allowance for price support operations as authorized by the Secretary of Agriculture, January 30, 1956. This entry is omitted for commodities not affected by the adjustment. <sup>3</sup> Simple average of monthly prices. Due to rounding differences, the 10-year average of these data might differ slightly from the 120-month averages shown in the 1994-2003 and 1995-2004 columns. <sup>4</sup> Equivalent packinghouse-door returns for CA, NY (applies only starting in 1985), OR (except peaches), and WA. Prices "as sold" for other states. <sup>5</sup> Unless otherwise noted these prices are the averages for the marketing season computed by weighting state prices by quantities sold. <sup>6</sup> Not available. <sup>7</sup> Price for year harvested, from Tobacco Division, AMS. <sup>8</sup> For 1984 through 1986 the national averages are the support prices. <sup>9</sup> Average local market price; does not include incentive payment per pound, the 1993-2002 and 1994-2003 averages for parity purposes include this allowance. <sup>10</sup> Consistent with legislation quoted in this report, citrus prices shown for 2003 relate to the citrus crop designated as 2003-2004 in the production reports. <sup>11</sup> Equivalent returns at processing plant door. <sup>12</sup> Equivalent returns at packinghouse-door. <sup>13</sup> Equivalent returns for bulk fruit at first delivery point. <sup>14</sup> Based on "as sold" prices for fresh fruit in all states. <sup>15</sup> Average F.O.B. shipping point prices. <sup>16</sup> Includes strawberries for processing in states where the processing crop is not estimated separately. <sup>17</sup> Prices include average conditional payments per ton made under the sugar acts of 1937 and 1948. Crop deficiency and abandonment payments not included. <sup>18</sup> Prices on in-shell basis except almonds which are on shelled basis. <sup>19</sup> Includes some processing. <sup>20</sup> Marketing year average prices not published to avoid disclosure of individual firms.

\* Corrected from January 2005 Agricultural Prices Report.

## Reliability of Prices Received Estimates

**Definition:** Prices received represent sales from producers to first buyers. They include all grades and qualities. The average commodity price from the survey multiplied by the total quantity marketed theoretically should give the total cash receipts for the commodity.

**Survey Procedures:** Primary sales data used to determine grain prices were obtained from probability samples of about 2000 mills and elevators. These procedures ensure that virtually all grain moving into commercial channels has a chance of being included in the survey. Generally, States surveyed account for 90 percent or more of total U.S. production. Livestock prices are obtained from packers, stockyards, auctions, dealers, and market check data from AMS-USDA, private marketing organizations, and state commodity groups and agencies. Inter-farm sales of grain and livestock are not included since they represent very small percentages of the total marketings. Grain marketed for seed is also excluded. Fruit and vegetable prices are obtained from sample surveys and market check data from AMS-USDA, private marketing organizations, state agencies, and universities.

**Summary and Estimation Procedures:** Survey quantities sold are expanded by strata to state levels and used to weight average strata prices to a state average. State prices are then weighted to a U.S. price based on expanded marketings. Recommendations are prepared by the State Statistical Offices and reviewed by the Agricultural Statistics Board in Washington, D.C. State recommendations are reviewed for reasonableness with survey data, other States, and recent historic estimates.

**Revisions:** For most items, the current month's preliminary price represents a 3-5 day period around the 15<sup>th</sup> of the month. Previous month's prices represent actual dollars received for quantities sold during the entire month. Revisions are published in monthly issues of *Agricultural Prices*.

**Reliability:** U.S. price estimates based on probability surveys generally have a sampling error of less than one percent for the major commodities such as corn, wheat, soybeans, cotton, and rice. Current methods of summarization for non-probability commodities are not designed directly to calculate sampling errors. However, analytical measures approximate the U.S. relative sampling errors at around five percent. Any nonsampling errors are attributed to such things as the inability to obtain correct information, differences in interpreting questions or definitions, mistakes in coding or processing the data, etc. Efforts are made at each step in the survey process to minimize these nonsampling errors.



## Prices Paid by Farmers

The February Index of Prices Paid for Commodities and Services, Interest, Taxes, and Farm Wage Rates (PPITW) is 134 (1990-92=100), unchanged from January 2005 but 2.3 percent above February 2004.

**PRODUCTION INDEX:** The February index, at 131, is up 0.8 percent from last month and 3.1 percent above last year. Higher prices in February for feed concentrates, complete feeds, and feed supplements more than offset lower prices for self-propelled machinery, feed grains, and LP gas.

**Feed:** The index, at 104, is 2.0 percent more than January but 14 percent below last February. Since January, higher prices for feed concentrates, complete feeds, and feed supplements more than offset lower prices for feed grains.

**Livestock & Poultry:** The February index for livestock and poultry purchases, at 134, is unchanged from last month but 22 percent above last year. Since January, higher prices for feeder pigs offset slightly lower prices for feeder cattle. The February feeder cattle price, at \$109.40 per cwt, is down \$0.10 per cwt from the January price. February feeder pigs averaged \$173.00 per cwt, up \$3.00 per cwt from January.

**Fertilizer:** The February index, at 149, is up 0.7 percent from January and 11 percent more than February a year ago. Since January, prices are higher for mixed fertilizer and potash & phosphate.

**Agricultural Chemicals:** The February index, at 121, is unchanged from last month and February 2004.

**Fuels:** The February index, at 143, is up 1.4 percent from a month earlier and 4.4 percent above February 2004. Compared to last month, prices are higher for diesel fuel and gasoline but lower for LP gas.

**Farm Machinery:** The February index is 173, unchanged from January but 11 percent above last February. Since January, lower prices for self-propelled machinery offset higher prices for other machinery and tractors.

**CONSUMER PRICE INDEX:** The January 2005 Consumer Price Index for all urban consumers (CPI-U) rose 0.2 percent before seasonal adjustment to a level of 190.7 (1982-84=100). This compares to the December index of 190.3. For the 12-month period ending in January, the overall index has increased 3.0 percent.

**Indexes of Prices Paid by Farmers and Related Parity Ratios  
United States, February 2005 With Comparisons**

Indexes and Ratios	1910-14 = 100			1990-92 = 100		
	2004	2005		2004	2005	
	Feb	Jan	Feb	Feb	Jan	Feb
Prices Paid by Farmers for Commodities & Services, Interest, Taxes, & Wage Rates (PPITW)	1,740	*1,778	1,786	131	134	134
Production	1,232	*1,265	1,272	127	*130	131
Feed	592	*499	508	121	*102	104
Livestock & Poultry	1,410	*1,711	1,714	110	134	134
Seeds	1,553	1,564	1,564	157	158	158
Fertilizer	493	542	547	134	148	149
Agricultural Chemicals	747	*750	750	121	*121	121
Fuels	1,055	*1,090	1,100	137	*141	143
Farm Supplies & Repairs	965	*989	1,000	136	139	141
Autos & Trucks	3,060	*3,067	3,091	115	*115	116
Farm Machinery	3,919	4,334	4,336	156	173	173
Building Materials	1,738	*1,871	1,892	128	138	139
Farm Services & Rent	1,451	1,483	1,485			
Rent				123	126	126
Interest <sup>1</sup>	2,593	2,643	2,643	103	105	105
Taxes <sup>2</sup>	3,474	3,542	3,542	130	132	132
Wage Rates	6,080	6,009	6,009	163	161	161
Production, Interest, Taxes, & Wage Rates (PITW)	1,733	*1,772	1,780	129	132	132
Family Living-CPI <sup>3</sup>	1,768	1,807	1,811	138	141	141
Ratio (Received/Paid) Parity Ratio <sup>4</sup>	42	*40	40	89	*83	84
Parity Ratio Adjusted <sup>5</sup>	44	*44	45			
PPITW Adjusted for Productivity <sup>6</sup>	1,209	*1,209	1,211			
Crop Sector (PPITW)				133	*137	138
Livestock Sector (PPITW)				128	*129	130
Farm Sector (Production)				123	122	123
Non-Farm Sector (Production)				129	*134	135

\* Revised.

<sup>1</sup> Interest per acre on farm real estate debt and interest rate on farm non-real estate debt.

<sup>2</sup> Farm real estate taxes payable per acre.

<sup>3</sup> Bureau of Labor Statistics, Consumer Price Index for all urban consumers (CPI-U), for the previous month converted by the USDA.

<sup>4</sup> Ratio of index of prices received to PPITW (1910-14=100).

<sup>5</sup> Based on estimated cash receipts, from marketings and government payments, the preliminary adjustment factor is 1.105 for 2005 and the revised factor is 1.048 for 2004.

<sup>6</sup> PPITW is adjusted based on productivity trend for the prior 15 years.

**Prices Paid Indexes and Annual Weights for Input Components and  
Sub-Components United States, February 2005 With Comparisons**

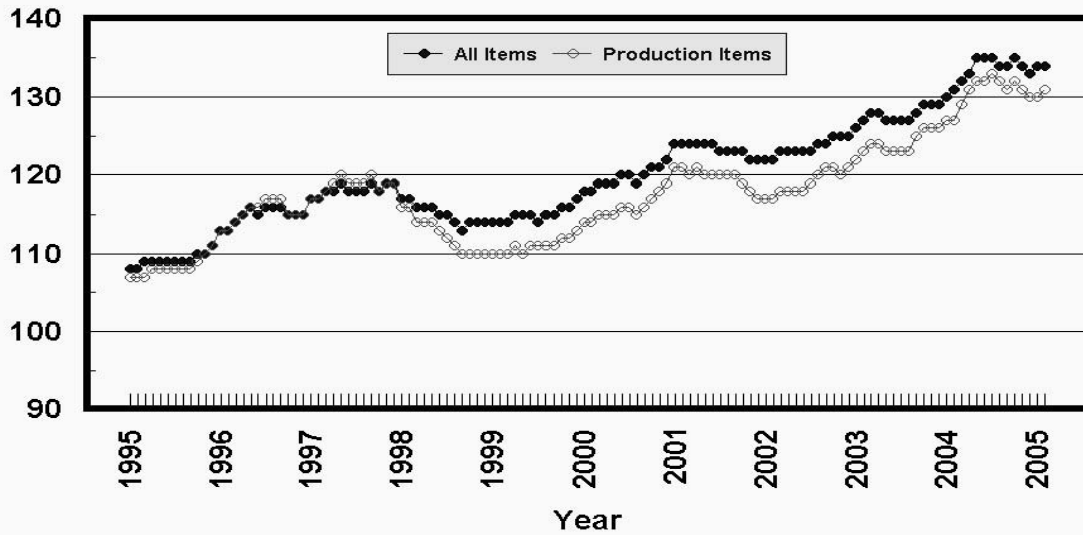
Index	Relative Weights 5-Year Moving Average <sup>1</sup>		Input Indexes		
	2004	2005	2004	2005	
			Feb	Jan	Feb
	<i>Percent</i>	<i>Percent</i>	<i>(1990-92=100)</i>	<i>(1990-92=100)</i>	<i>(1990-92=100)</i>
Production Items	66.2	66.4	127	*130	131
Feed	10.7	10.7	121	*102	104
Feed Grains	1.5	1.5	113	*90	87
Complete Feeds	5.2	5.2	123	105	106
Hay/Forages	1.3	1.3	107	111	111
Concentrates	1.7	1.7	126	90	97
Supplements	0.9	0.9	134	117	123
Livestock & Poultry	7.4	7.7	110	134	134
Feeder Cattle	5.8	6.0	107	129	129
Feeder Pigs	0.6	0.6	125	*185	188
Milk Cow Replacements	0.6	0.6	123	144	144
Poultry	0.4	0.5	112	112	112
Seeds	3.3	3.5	157	158	158
Field Crops	3.0	3.2	162	163	163
Grasses/Legumes	0.3	0.3	109	111	111
Fertilizer	4.4	4.3	134	148	149
Mixed Fertilizer	1.9	1.9	119	129	131
Nitrogen	1.8	1.8	156	175	175
Potash & Phosphate	0.6	0.6	119	127	128
Agricultural Chemicals	3.7	3.6	121	*121	121
Herbicides	2.4	2.3	113	*114	114
Insecticides	0.9	0.8	144	*144	144
Fungicides/Other	0.5	0.5	116	*117	117
Fuels	2.7	2.7	137	*141	143
Diesel	1.5	1.6	132	*143	146
Gasoline	0.8	0.8	138	*124	129
LP Gas	0.4	0.4	157	171	159
Farm Supplies & Repairs	5.4	5.2	136	139	141
Supplies	1.8	1.7	126	129	130
Repairs	3.6	3.5	141	144	146
Autos & Trucks	1.8	1.8	115	*115	116
Autos	0.2	0.2	108	*108	109
Trucks	1.6	1.5	116	*116	117
Farm Machinery	4.0	4.0	156	173	173
Tractors	0.9	0.9	145	147	152
Self-Propelled	1.6	1.6	164	191	185
Other Machinery	1.5	1.5	155	169	172
Building Materials	3.3	3.6	128	138	139
Farm Services	12.4	12.4	123	126	126
Custom Rates	1.3	1.3	125	125	125
Other Services	11.1	11.1	123	126	126
Rent	7.1	6.9	120	123	123
Cash	3.8	3.7	145	147	147
Share	3.3	3.2	91	94	94
Interest	4.7	4.5	103	105	105
Taxes	3.0	2.9	130	132	132
Wage Rates	7.6	7.6	163	161	161
Family Living-CPI	18.5	18.6	138	141	141

\* Revised.

<sup>1</sup> Weights may not add due to rounding.

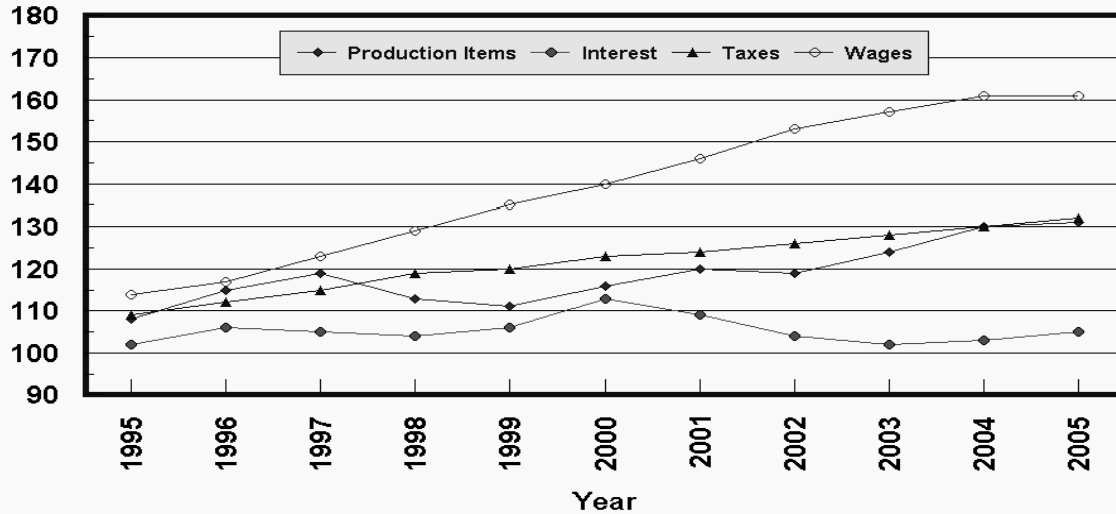
## Prices Paid by Farmers, Major Indexes US, by Quarter and Month

Percent (1990-92=100)



## Prices Paid by Farmers, Major Indexes US, Annual Averages 1/

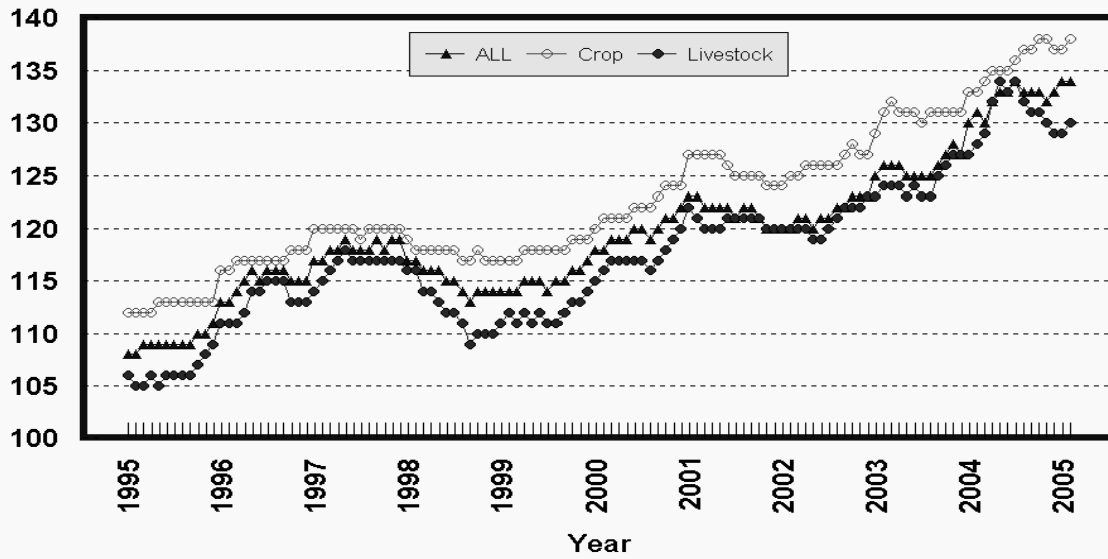
Percent (1990-92=100)



1/ Index values for 2004 are year-to-date averages.

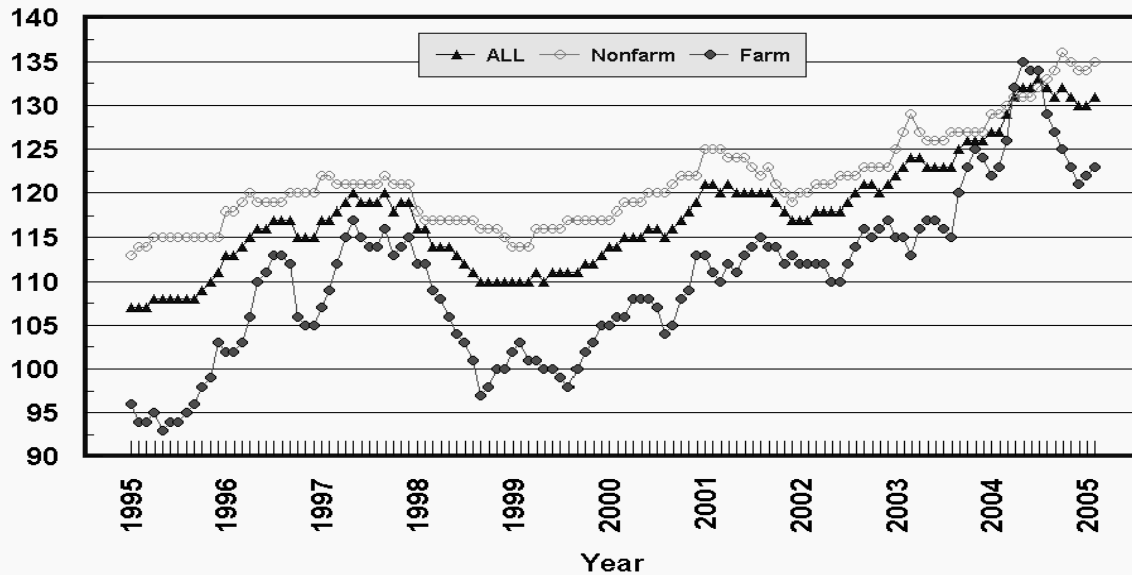
## Prices Paid by Farmers, Indexes, All Items US, By Farm Type

Percent (1990-92=100)



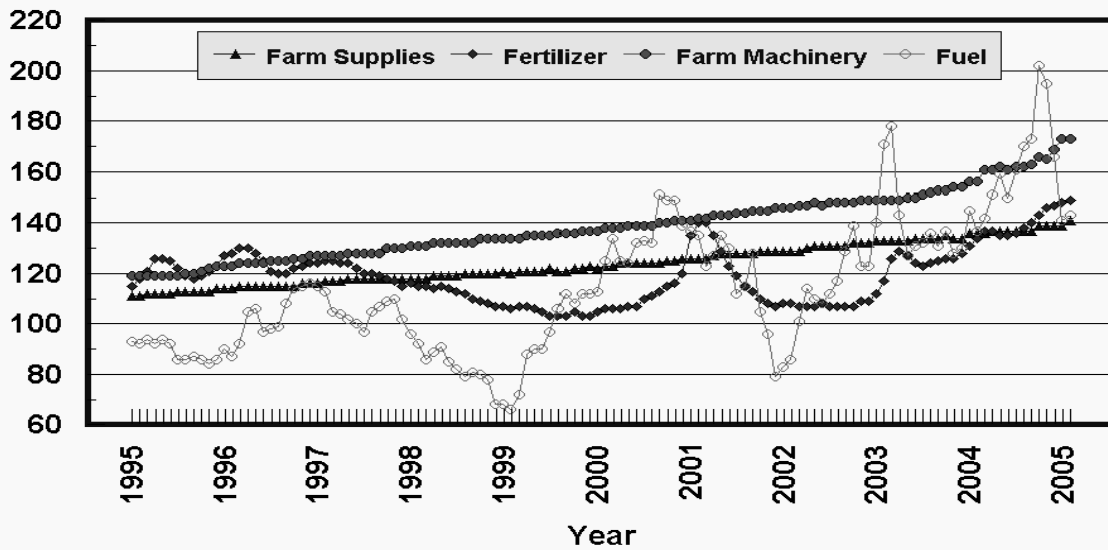
## Prices Paid by Farmers, Indexes, All Production Items US, By Sector Origin

Percent (1990-92=100)



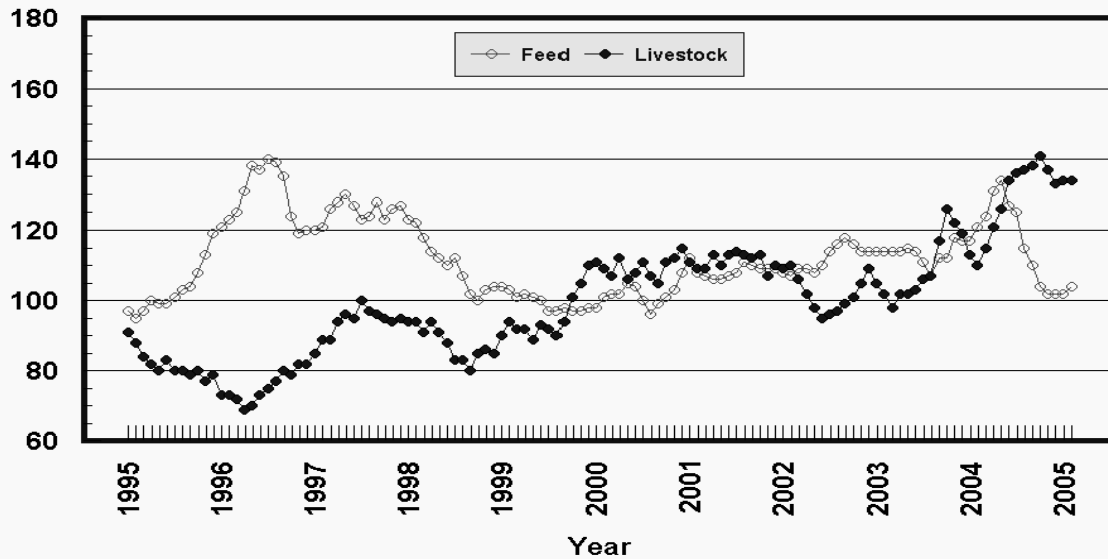
## Prices Paid by Farmers, Selected Production Indexes US, By Non-Farm Sector

Percent (1990-92=100)



## Prices Paid by Farmers, Selected Production Indexes US, By Farm Sector

Percent (1990-92=100)



**Feed Price Ratios: United States, February 2005 with Comparisons**

Feed Price Ratio <sup>1</sup>	2004	2005	
	Feb	Jan	Feb
Broiler-Feed: Pounds of Broiler Grower Feed equal in value to 1 pound of broiler, live weight	5.5	*7.1	7.3
Market Egg Feed: Pounds of Laying Feed equal in Value to 1 dozen eggs	10.7	*7.2	7.2
Hog-Corn: Bushels of Corn equal in value to 100 pounds of hog, live weight	16.3	*25.1	25.0
Milk-Feed: Pounds of 16% Mixed Dairy Feed equal in value to 1 pound of Whole Milk	2.60	*3.50	3.47
Steer & Heifer-Corn: Bushels of Corn equal in value to 100 pounds of Steer & Heifers, Live weight	31.5	*44.5	46.4
Turkey-Feed: Pounds of Turkey Grower equal in Value to 1 pound of Turkey, live weight	4.6	*6.9	6.9

\* Revised.

<sup>1</sup> Effective January 1995, prices of commercial prepared feeds are based on current U.S. prices received for corn, soybeans, alfalfa hay, and all wheat.

**Prices Used to Calculate Feed Price Ratios:  
United States, February 2005 with Comparisons**

Commodity	Unit	2004	2005	
		Feb	Jan	Feb
Broilers, Live	Lb	0.470	0.430	0.430
Eggs, Market	Doz	0.745	0.373	0.358
Hogs, All	Cwt	42.60	*53.20	50.40
Milk, All	Cwt	13.60	15.90	15.40
Steers and Heifers	Cwt	82.30	*94.40	93.80
Turkeys, Live	Lb	0.350	0.393	0.380
Corn	Bu	2.61	*2.12	2.02
Hay, Alfalfa, Baled	Ton	85.10	90.90	91.90
Soybeans	Bu	8.28	*5.57	5.39
Wheat, All	Bu	3.77	3.42	3.38

\* Revised.

**Feeder Livestock: Prices Paid, United States  
February 2005 with Comparisons**

Commodity	Unit	2004	2005	
		Feb	Jan	Feb
		<i>Dollars</i>	<i>Dollars</i>	<i>Dollars</i>
Feeders and Stockers				
Cattle and Calves	Cwt	90.90	109.50	109.40
Feeder Pigs	Cwt	110.00	*170.00	173.00

\* Revised.

## Prices Paid by Farmers

**Definition:** Prices paid by farmers represent the average costs of inputs purchased by farmers and ranchers to produce agricultural commodities. Conceptually, the average price when multiplied by quantity purchased should equal total producer expenditures for the item.

**Survey Procedures:** The prices paid data are obtained from establishments that sell goods and services to farmers and ranchers. Annually, about 8,500 firms are randomly selected from lists by type of item sold with an average response rate in the range of 75-80 percent. Firms are asked to report the price for the specified item "most commonly bought by farmers" or that was the "volume seller". Approximately 135 items are surveyed each April to represent all production input items purchased. The survey reference period for most items is the 5 business days centered around the 15th of the month. Separate prices paid surveys are conducted for, agricultural chemicals, fuels, feed, fertilizer, machinery, and seed.

**Summary and Estimation Procedures:** The annual April Prices Paid Survey is summarized as a nonprobability survey. Average prices reported are aggregated to the region and U.S. level using weights available from expenditure data and other administrative sources. Price recommendations are prepared by the State Statistical Offices and Headquarters for review by the Agricultural Statistics Board in Washington, D.C. Also, the change in price level for individual items surveyed are combined to the regional and U.S. levels, and are published as prices paid indexes referenced to a specific base period. Prices paid indexes for new autos and trucks, building materials, farm supplies, motor supplies, and marketing containers are updated based on price changes measured in selected Bureau of Labor Statistics (BLS) indexes.

**Revisions:** Any revisions are published in the monthly and in annual issues of *Agricultural Prices*. The basis for revision must be supported by additional data that directly affect the level of the estimate. More revisions are likely in April when separate prices paid surveys are conducted, in lieu of BLS indexes, by the USDA to measure price change.

**Reliability:** Current methods of summarization in April are not designed directly to calculate sampling errors. However, analytical measures approximate the U.S. relative sampling errors for major items around 10 percent. Any nonsampling errors are attributed to such things as the inability to obtain correct information, differences in interpreting questions or definitions, mistakes in coding or processing the data, etc. Efforts are made at each step in the survey process to minimize these nonsampling errors.

**Program Change:** Effective January 1, 1995, the National Agricultural Statistics Service updated the weights and changed the construction of its prices paid and received by farmers indexes. A Federal Register Notice dated October 28, 1994 discussed these program modifications.

A 1990-92 reference and base period replaced the 1977 reference and 1971-73 base weight period. Five-year moving average weights replaced the current fixed 1971-73 base period weights. The 1910-14=100 price indexes, required by statute for computing parity prices, were linked forward based on the changes in the new 1990-92=100 indexes. The new indexes were constructed by multiplying the ratios of the current prices to the base period prices by the moving average weights (adjusted for seasonal marketing patterns for the prices received indexes).



## Information Contacts

General questions should be directed to Linda Hutton, Chief, Environmental, Economics and Demographics Branch at (202) 720-6146. Below are the commodity specialists to contact for additional information.

### Crop Prices Received

Joe Prusacki Chief, Crops Branch .....	(202) 720-2127
Greg Thessen, Field Crops Section .....	(202) 720-2127
Lance Honig - Wheat, Rye .....	(202) 720-8068
Darin Jantzi - Corn, Proso Millet, Flaxseed .....	(202) 720-9526
Troy Joshua - Cotton, Cottonseed .....	(202) 720-5944
Dennis Koong - Hay, Oats, Sorghum .....	(202) 720-7688
Jason Lamprecht - Soybeans, Sunflower, Other Oilseeds .....	(202) 720-7369
Dennis Koong - Peanuts, Rice .....	(202) 720-7688
Brian Young - Sugarcane, Sugarbeets, Barley .....	(202) 720-7621
Jim Smith, Fruit and Vegetable Section .....	(202) 720-2127
Debbie Flippin - Peaches, Pears, Hops, Pulses, Mint .....	(202) 720-3250
Jorge Garcia-Pratts - Citrus .....	(202) 720-5412
Terry O'Connor - Apples, Apricots, Cherries, Cranberries, Plums, Prunes .....	(202) 720-4288
Leslie Colburn - Grapes, Tobacco .....	(202) 720-7235
Cathy Scherrer, Potatoes, Dry Edible Beans, Sweet Potatoes .....	(202) 720-4285
Biz Wallingsford - Vegetables, Onions, Strawberries .....	(202) 720-2157

### Livestock Prices Received

Dan Kerestes, Chief, Livestock Branch .....	(202) 720-3570
Wil Hundl, Livestock Section .....	(202) 720-3570
Scott Hollis - Sheep, Lambs, Wool, Mohair .....	(202) 720-4751
Ty Kalas - Milk, Milk Cows .....	(202) 690-3236
Dan Lofthus - Hogs .....	(202) 720-3106
Mike Miller - Cattle .....	(202) 720-3040
Nathan Crisp, Poultry and Specialty Commodities Section .....	(202) 720-3570
John Lange - Turkeys .....	(202) 720-0585
Sharyn Lavender - Eggs .....	(202) 720-3244
Jody Roberts - Broilers .....	(202) 690-8632

### Indexes, Prices Paid, and Parity Prices

Linda Hutton, Chief, Environmental, Economics and Demographics Branch .....	(202) 720-6146
Kevin Hintzman, Economics Section .....	(202) 720-6146
Eric Barnes - Farm Supplies and Repairs, Farm Machinery, Fuels, Feeder Livestock, Poultry Chicks, Feed Price Ratios, Grazing Fees, Autos & Trucks .....	(202) 690-4752
Daryl Brinkman - Prices Received Indexes, Parity Prices .....	(202) 720-8844
Tara Jackson - Prices Paid Indexes, Prices Paid for Feed, Fertilizer, Agricultural Chemicals, Seeds .....	(202) 690-3229

## ACCESS TO REPORTS!!

---

For your convenience, there are several ways to obtain NASS reports, data products, and services:

### INTERNET ACCESS

All NASS reports are available free of charge on the worldwide Internet. For access, connect to the Internet and go to the NASS Home Page at: [www.usda.gov/nass/](http://www.usda.gov/nass/). Select "Today's Reports" or Publications and then Reports Calendar or Publications and then Search, by Title or Subject.

### E-MAIL SUBSCRIPTION

All NASS reports are available by subscription free of charge direct to your e-mail address. Starting with the NASS Home Page at [www.usda.gov/nass/](http://www.usda.gov/nass/), click on **Publications**, then click on the **Subscribe by E-mail** button which takes you to the page describing e-mail delivery of reports. Finally, click on **Go to the Subscription Page** and follow the instructions.

-----

### PRINTED REPORTS OR DATA PRODUCTS

**CALL OUR TOLL-FREE ORDER DESK: 800-999-6779 (U.S. and Canada)**  
**Other areas, please call 703-605-6220      FAX: 703-605-6900**  
**(Visa, MasterCard, check, or money order acceptable for payment.)**

-----

### ASSISTANCE

For **assistance** with general agricultural statistics or further information about NASS or its products or services, contact the **Agricultural Statistics Hotline** at **800-727-9540**, 7:30 a.m. to 4:00 p.m. ET, or e-mail: [nass@nass.usda.gov](mailto:nass@nass.usda.gov).

The United States Department of Agriculture (USDA) prohibits discrimination in all its programs on the basis of race, color, national origin, gender, religion, age, disability, political beliefs, sexual orientation, and marital or family status. (Not all prohibited bases apply to all programs.) Persons with disabilities who require alternative means for communication of program information (braille, large print, audiotape, etc.) should contact the USDA's TARGET Center at 202-720-2600 (voice and TDD).

To file a complaint of discrimination, write USDA, Director, Office of Civil Rights, Room 326-W, Whitten Building, 1400 Independence Avenue, SW, Washington, D.C., 20250-9410, or call 202-720-5964 (voice or TDD). USDA is an equal opportunity provider and employer.