

Released March 30, 2005, by the National Agricultural Statistics Service (NASS), Agricultural Statistics Board, U.S. Department of Agriculture. For information on *Agricultural Prices* see page 35, office hours 7:30 a.m. to 4:00 p.m. ET.

March Farm Prices Received Index Up 4 Points From Last Month

The preliminary All Farm Products Index of Prices Received by Farmers in March, at 118, based on 1990-92=100, is 4 points (3.5 percent) above the February Index. The Crop Index is up 7 points (6.6 percent) while the Livestock Index is up 3 points (2.5 percent). Producers received higher commodity prices for cattle, soybeans, lettuce, and corn. Lower prices were received for strawberries, grapefruit, apples, and eggs. The seasonal change in the mix of commodities farmers sell, based on the past 3-year average, also affects the overall index. Increased average marketings of strawberries, dairy, broilers, and tomatoes offset decreased marketings of cattle, corn, oranges, and cotton.

This preliminary All Farm Products Index is down 3 points (2.5 percent) from March 2004. The Food Commodities Index, at 122, is 4 points (3.4 percent) above last month but down 1 point (0.8 percent) from March 2004.

Prices Paid Index Unchanged

The March Index of Prices Paid for Commodities and Services, Interest, Taxes, and Farm Wage Rates (PPITW) was 135 percent of the 1990-92 average. The index was unchanged from February but 3 points (2.3 percent) above March 2004. Lower prices in March for complete feeds, feed supplements, nitrogen fertilizers, and herbicides were offset by higher prices for feeder cattle, diesel fuel, other machinery, LP gas, and gasoline.

Index Summary Table

Index 1990-92=100	2004		2005	
	Feb	Mar	Feb	Mar
Prices Received	116	121	114	118
Prices Paid	131	132	135	135
Ratio ¹	89	92	84	87

¹ Ratio of index of prices received by farmers to index of prices paid by farmers.

Prices Received by Farmers

The March All Farm Products Index is 118 percent of its 1990-92 base, up 3.5 percent from the revised February index but 2.5 percent below the March 2004 index.

ALL CROPS: The March index is 113, up 6.6 percent from February but 6.6 percent below March 2004. Index increases from February were observed for all crop commodities except "other crops" which is unchanged.

Food Grains: The March index, at 114, is up 4.6 percent from the previous month but 10 percent below March 2004. The March all wheat price, at \$3.53 per bushel, is up 17 cents from the February price but 30 cents below March 2004. The March rice price, at \$6.97 per cwt, is up 18 cents from February but \$1.48 below a year ago.

Feed Grains & Hay: The March index is 95, up 5.6 percent from last month but 19 percent below March 2004. The corn price, at \$2.03 per bushel, is up 8 cents from February but 72 cents below March 2004. The all hay price, at \$89.10 per ton, is up \$4.40 from last month and \$7.30 above March 2004. Grain sorghum, at \$3.17 per cwt, is up 22 cents from February but \$1.67 below March last year.

Oil-Bearing Crops: The March index, at 113, is up 14 percent from the February index but 32 percent below March 2004. The soybean price, at \$6.28 per bushel, increased 86 cents from February but is \$3.00 below March 2004.

Cotton: The March index, at 70, is up 9.4 percent from a month ago but 31 percent below March 2004. The cotton price, at 42.2 cents per pound, is up 3.2 cents from February but 19.4 cents below a year ago.

Potatoes & Dry Beans: The March index, at 110, is 4.8 percent above both last month and March 2004. The all potato price, at \$6.16 per cwt, is up 40 cents from the previous month and 7 cents above last March. The dry edible bean price, at \$27.40 per cwt, is 40 cents below last month but \$7.20 above a year ago.

Fruits & Nuts: The March index, at 122, is 0.8 percent above the previous month and 21 percent above March 2004. Price decreases during March for strawberries, grapefruit, and apples were more than offset by price increases for oranges and lemons.

Commercial Vegetables: The March index, at 138, is up 13 percent from last month and 17 percent above March 2004. Price increases for lettuce, broccoli, and celery more than offset price decreases for tomatoes, cauliflower, and onions.

Livestock & Products: The March index, at 122, is up 2.5 percent from last month but unchanged from March 2004. Compared with a year ago, prices are higher for cattle, hogs, calves, turkeys, and dairy but lower for broilers and eggs.

Meat Animals: The March index, at 123, is up 2.5 percent from last month and up 11 percent from last year. The March hog price, at \$51.50 per cwt, is up \$0.80 from February and up \$4.30 from a year ago. The March beef cattle price of \$91.90 is up \$2.90 from last month and up \$8.20 from March 2004.

Dairy Products: The March index, at 119, is the same as a month ago but up 0.8 percent from a year ago. The March all milk price of \$15.60 is up \$0.10 from last month and up \$0.20 from February 2004. The fluid grade milk price is up \$0.10 and the manufactured grade milk price is down \$0.30 from the previous month.

Poultry & Eggs: The March index, at 122, is up 1.7 percent from February but 18 percent below a year ago. March market egg prices, at 32.7 cents per dozen, decreased 3.1 cents from February reflecting a seasonal decrease. The March broiler price, at 44.0 cents per pound, was up 1 cent from February but 3 cents below a year ago. The March turkey price, averaging 38.1 cents per pound, is up 0.1 cent from the previous month and up 1.5 cents from a year earlier.

Table of Contents

U.S. Prices Received and Indexes	Page	Monthly State Prices, continued	Page
Narrative	2	Cotton	17
Price Indexes	5	Cottonseed	17
Price Index Charts	6	Eggs	22
U.S. Prices Received Summary	8	Flaxseed	16
Charts	10	Hay	17
Selected Commodities	14	Hogs, All	21
Upland Cotton & Rice Marketings	17	Barrows and Gilts	21
Parity Prices	24	Sows	21
Reliability Statement	26	Milk	23
		Milk Cows	23
Monthly State Prices Received		Oats	15
Apples	17	Peanuts	16
Barley	15	Potatoes	19
Beans, Dry Edible	16	Sheep	22
Beef Cattle, All	20	Lambs	22
Calves	20	Sorghum, Grain	15
Cows, Beef	20	Soybeans	15
Steers and Heifers	20	Sunflower, All	16
Citrus Fruit	18	Tobacco	16
Corn	15	Wheat, All Classes	14

Table of Contents (continued)

U.S. Prices Paid, Prices Paid Indexes and Ratios	Page
Narrative	27
Indexes and Parity Ratios	28
Charts	30
Feed Price Ratios	33
Reliability Statement	34
U.S. Average Prices	
Prices Used to Calculate Feed Price Ratios	33
Feeder Livestock	33
Information Contacts	35

**Index Numbers of Prices Received, United States,
March 2005, with Comparisons**

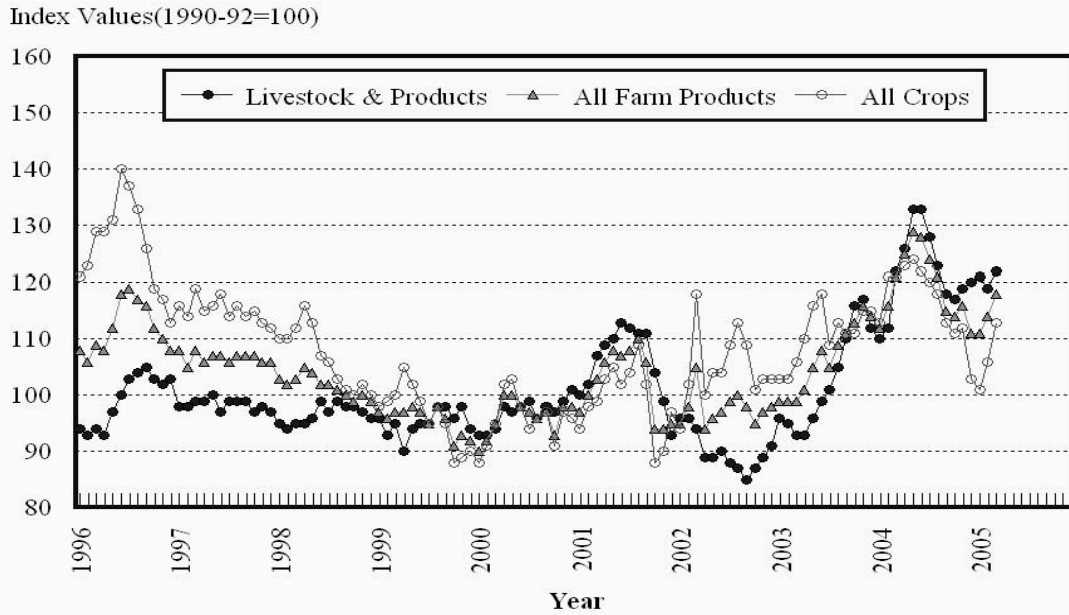
Index	1910-14=100				1990-92=100		
	Average 1990-92	2004	2005		2004	2005	
		Mar	Feb	Mar	Mar	Feb	Mar
All Farm Products	639	770	*722	749	121	*114	118
All Crops	500	596	*524	559	121	106	113
Food Grains	325	402	*345	361	127	109	114
Feed Grains & Hay	363	421	*323	338	118	*90	95
Cotton	517	521	*330	357	102	*64	70
Tobacco	1,263	1,830	*1,704	1,730	121	*113	114
Oil-Bearing Crops	554	901	*540	619	165	*99	113
Fruits & Nuts	716	707	*844	850	101	*121	122
Commercial Vegetables	698	789	*815	925	118	*122	138
Potatoes & Dry Beans	540	530	*533	559	105	*105	110
Other Crops	493	569	578	578	115	117	117
Livestock & Products	768	932	917	934	122	*119	122
Meat Animals	1,021	1,131	*1,216	1,249	111	120	123
Dairy Products	799	946	*953	959	118	*119	119
Poultry & Eggs	282	416	*338	342	148	120	122
Food Commodities					123	*118	122

* Revised.

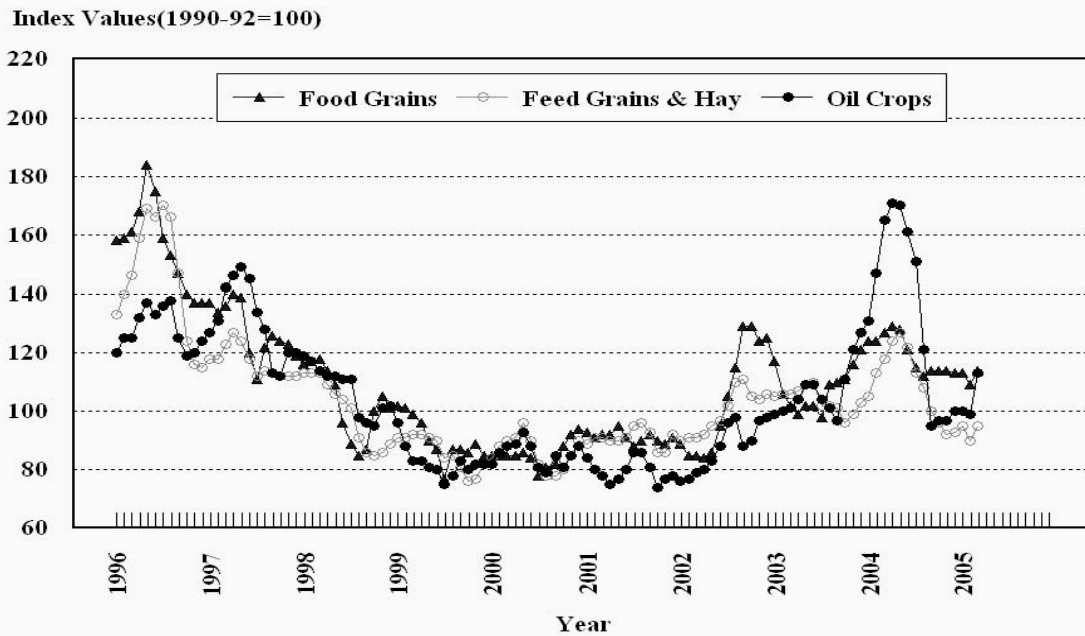
**Selected Index Numbers for Prices Received and Paid,
1990-92=100, by Month, United States, 2004 and 2005**

Month	Index of Prices Received						Index of Prices Paid			
	All Farm Products		All Crops		Livestock and Products		All Items		Production Items	
	2004	2005	2004	2005	2004	2005	2004	2005	2004	2005
Jan	112	111	113	101	110	121	130	134	127	130
Feb	116	114	121	106	112	119	131	135	127	131
Mar	121	118	121	113	122	122	132	135	129	132
Apr	125		123		126		133		131	
May	129		124		133		135		132	
Jun	128		122		133		135		132	
Jul	124		120		128		135		133	
Aug	121		118		123		134		132	
Sep	115		113		118		134		131	
Oct	114		111		117		135		132	
Nov	116		112		119		134		131	
Dec	111		103		120		133		130	

Prices Received, Major Indexes, US

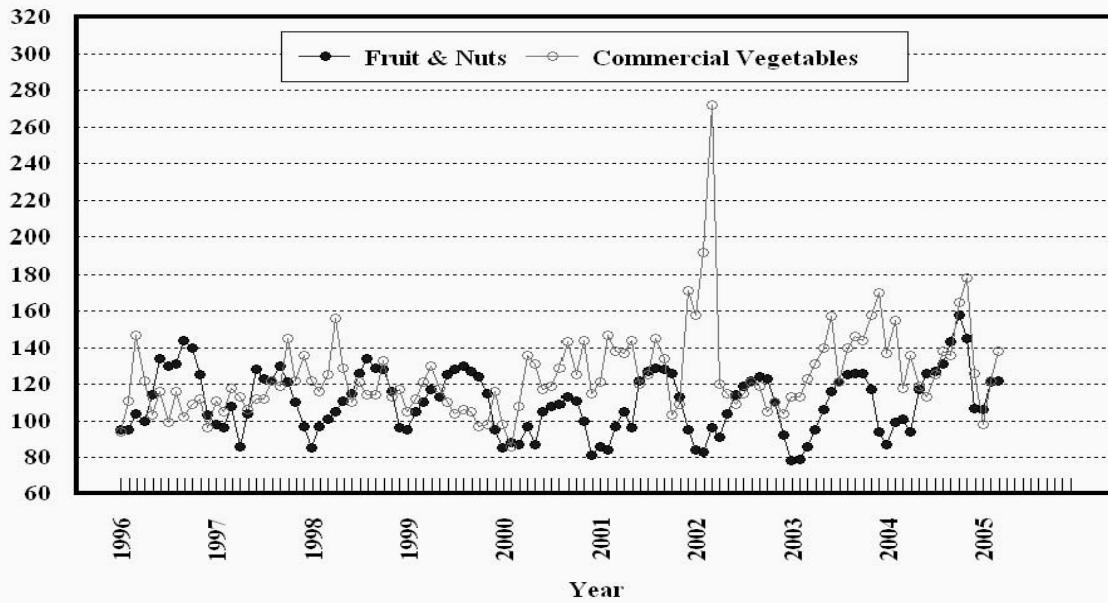


Prices Received, Food, Feed, & Oil Indexes, US



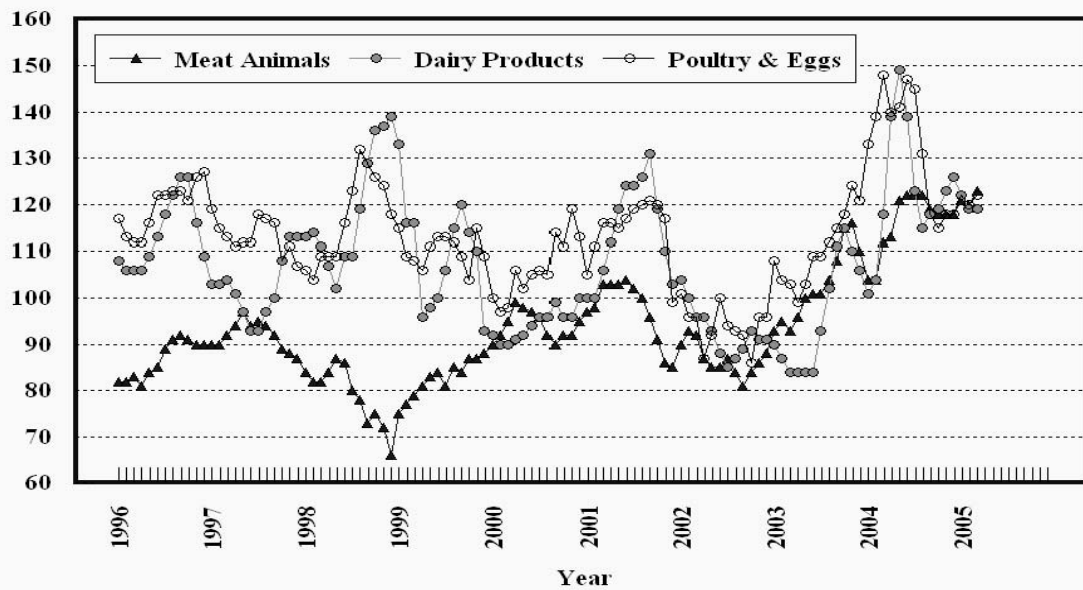
Prices Received, Fruit/Vegetable Indexes, US

Index Values(1990-92=100)



Prices Received, Livestock Product Indexes, US

Index Values(1990-92=100)



**Prices Received, United States,
March 2005, with Comparisons**

Commodity	Unit	Average 1990-92	Entire Month		Preliminary
			Mar 2004	Feb 2005	Mar 2005
		<i>Dollars</i>	<i>Dollars</i>	<i>Dollars</i>	<i>Dollars</i>
Field Crops					
Barley, All	Bu	2.12	2.77	2.37	2.48
Feed	Bu	1.90	2.19	1.62	1.77
Malting	Bu	2.43	2.97	2.64	2.76
Beans, Dry Edible	Cwt	19.10	20.20	27.80	27.40
Chickpeas, All	Cwt		26.10	28.80	31.20
Large	Cwt		26.40	29.90	31.20
Small	Cwt		(⁴)	(⁴)	(⁵)
Corn	Bu	2.30	2.75	1.95	2.03
Cotton, Upland	Lb	0.606	0.616	0.390	0.422
Cottonseed ³	Ton	96.00		112.00	
Flaxseed	Bu	4.27	6.53	11.00	11.90
Hay, All, Baled ¹	Ton	76.30	81.80	84.70	89.10
Alfalfa ¹	Ton	77.20	86.20	91.90	96.40
Other ¹	Ton	60.00	72.00	70.00	70.40
Lentils	Cwt		20.30	13.90	13.30
Oats	Bu	1.22	1.60	1.66	1.60
Peanuts, In-Shell	Lb	0.304	0.186	0.186	0.186
Peas, Dry Edible	Cwt		9.23	5.97	5.71
Austrian Winter	Cwt		10.00	9.50	(⁴)
Potatoes	Cwt	5.82	6.09	5.76	6.16
Rice, Rough	Cwt	7.07	8.45	6.79	6.97
Sorghum Grain	Cwt	3.75	4.84	2.95	3.17
Soybeans	Bu	5.61	9.28	5.42	6.28
Sunflower, All	Cwt	9.50	13.10	15.10	15.10
Tobacco, Types 11-37	Lb	1.740	2.105	1.960	1.990
Wheat, All	Bu	2.96	3.83	3.36	3.53
Winter	Bu	2.93	3.76	3.27	3.44
Durum	Bu	2.86	4.14	3.71	3.64
Other Spring	Bu	3.11	3.90	3.50	3.65
Hard Red Winter	Bu		3.74	3.25	
Soft Red Winter	Bu		3.80	3.13	
Hard Red Spring	Bu		3.91	3.50	
White	Bu	3.24	3.81	3.47	
Fruit					
Citrus, Equiv on-tree					
Grapefruit	Box	5.77	2.38	11.46	9.85
Lemons	Box	10.10	7.37	6.32	7.39
Oranges	Box	5.79	3.68	3.59	4.26
Tangelos	Box	5.82		1.93	
Tangerines	Box	15.11	9.69	14.07	14.34
Temples	Box	6.23	0.52	2.44	1.90
Noncitrus, Fresh					
Apples ²	Lb	0.212	0.304	0.208	0.186
Grapes ^{2 5}	Ton	506.00			
Peaches ^{2 5}	Ton	432.00			
Pears ²	Ton	370.00	335.00	491.00	502.00
Strawberries	Cwt	56.00	69.10	115.00	87.00

¹ Mid-month price.

² Equivalent packinghouse-door returns for CA, MI, and NY (apples only), and WA (apples, peaches, and pears). Prices as sold for other states.

³ Marketing year August - February.

⁴ Price not published to avoid disclosure of individual firms.

⁵ Insufficient sales to establish a price.

**Prices Received, United States,
March 2005, with Comparisons**

Commodity	Unit	Average 1990-92	Entire Month		Preliminary
			Mar 2004	Feb 2005	Mar 2005
		<i>Dollars</i>	<i>Dollars</i>	<i>Dollars</i>	<i>Dollars</i>
Vegetables, Fresh ¹					
Asparagus	Cwt	79.80	121.00		119.00
Broccoli	Cwt	22.50	21.60	33.30	41.90
Cantaloupes ²	Cwt				
Carrots	Cwt	13.20	24.60	21.00	21.20
Cauliflower	Cwt	26.80	24.20	37.40	29.60
Celery	Cwt	11.60	13.90	22.90	30.10
Corn, Sweet	Cwt	15.70	20.20	29.70	25.70
Cucumbers ²	Cwt		30.30		40.20
Lettuce	Cwt	11.90	10.40	11.20	13.80
Onions	Cwt	12.80	12.80	7.29	6.47
Snap Beans ²	Cwt		42.50	77.70	84.50
Tomatoes	Cwt	32.30	42.20	45.60	42.80
Livestock					
Calves	Cwt	94.30	115.00	128.00	132.00
Cattle, All Beef	Cwt	72.90	83.70	89.00	91.90
Cows ³	Cwt	49.60	46.50	52.40	53.60
Steers & Heifers	Cwt	77.10	88.00	93.30	96.30
Milk Cows ⁴	Head	1,130.00			
Hogs, All	Cwt	47.70	47.20	50.70	51.50
Barrows & Gilts	Cwt	48.40	47.60	51.00	51.80
Sows	Cwt	39.50	39.90	45.00	43.80
Lambs	Cwt	56.20	103.00	114.00	
Sheep	Cwt	23.40	36.70	51.30	
Dairy and Poultry					
Milk, All ^{5 6}	Cwt	13.06	15.40	15.50	15.60
Fluid Grade ⁶	Cwt	13.10	15.40	15.50	15.60
Mfg Grade ⁶	Cwt	11.80	15.20	14.90	14.60
Broilers, Live ⁷	Lb	0.317	0.470	0.430	0.440
Eggs, All ⁸	Doz	0.643	1.100	0.551	0.527
Market ⁸	Doz	0.546	1.000	0.358	0.327
Turkeys, live ^{7 8}	Lb	0.380	0.366	0.380	0.381
Adjusted for Seasonal Variation					
Eggs, All	Doz	0.545	1.100	0.557	0.507
Milk, All ⁵	Cwt	9.71	16.21	16.15	16.25

¹ F.O.B. shipping point.

² Monthly estimates began January 1995.

³ Beef cows and cull dairy cows sold for slaughter.

⁴ Animals sold for dairy herd replacement only. Prices available for Jan, Apr, Jul, and Oct.

⁵ Before deductions for hauling. Includes quality, quantity, and other premiums. Excludes hauling subsidies.

⁶ March 2005 Fat test percent: all milk 3.69, fluid milk 3.68, mfg grade 3.87.

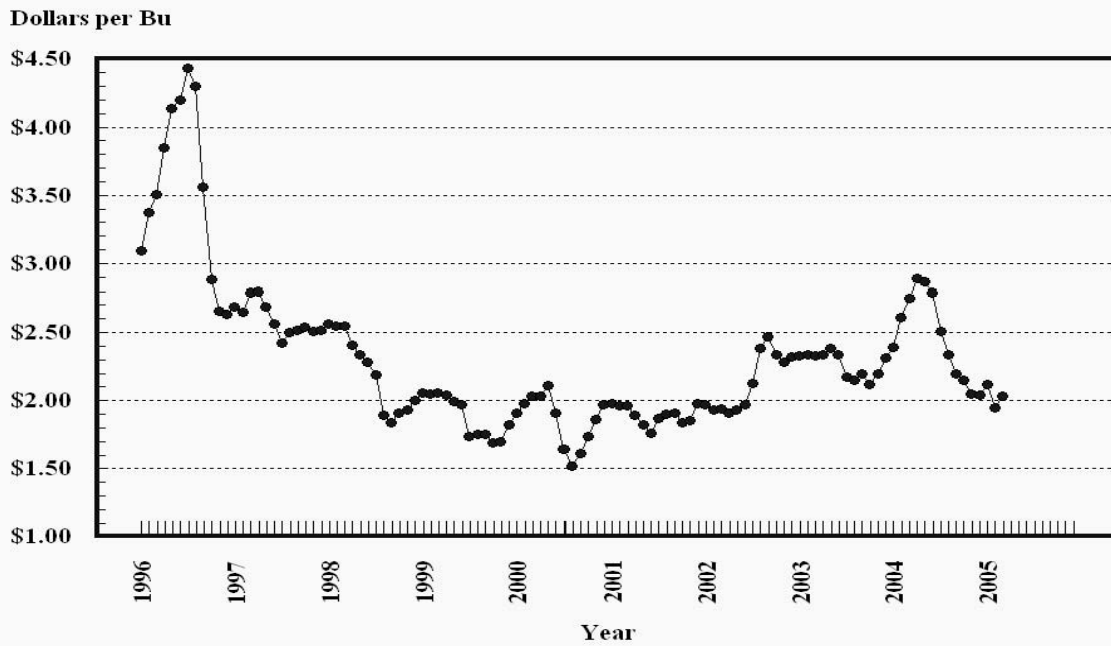
⁷ Equivalent liveweight returns to producers for most States. Includes growers and contractors.

⁸ Mid-month price.

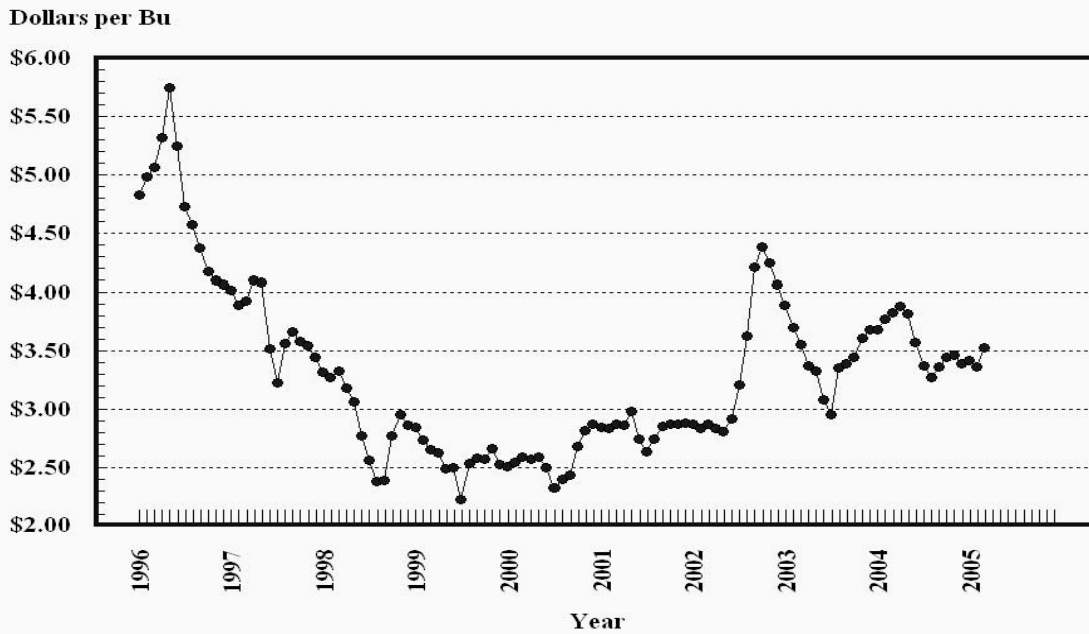
⁹ Price not published to avoid disclosure of individual firms.

¹⁰ Insufficient sales to establish a price.

Prices Received, Corn, US

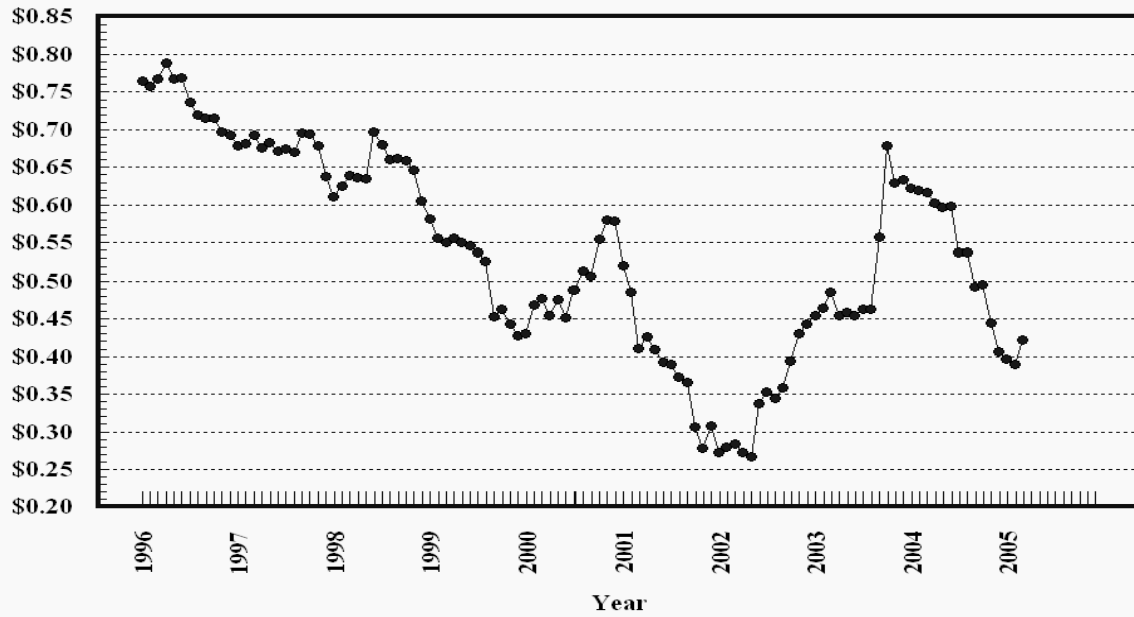


Prices Received, Wheat, US



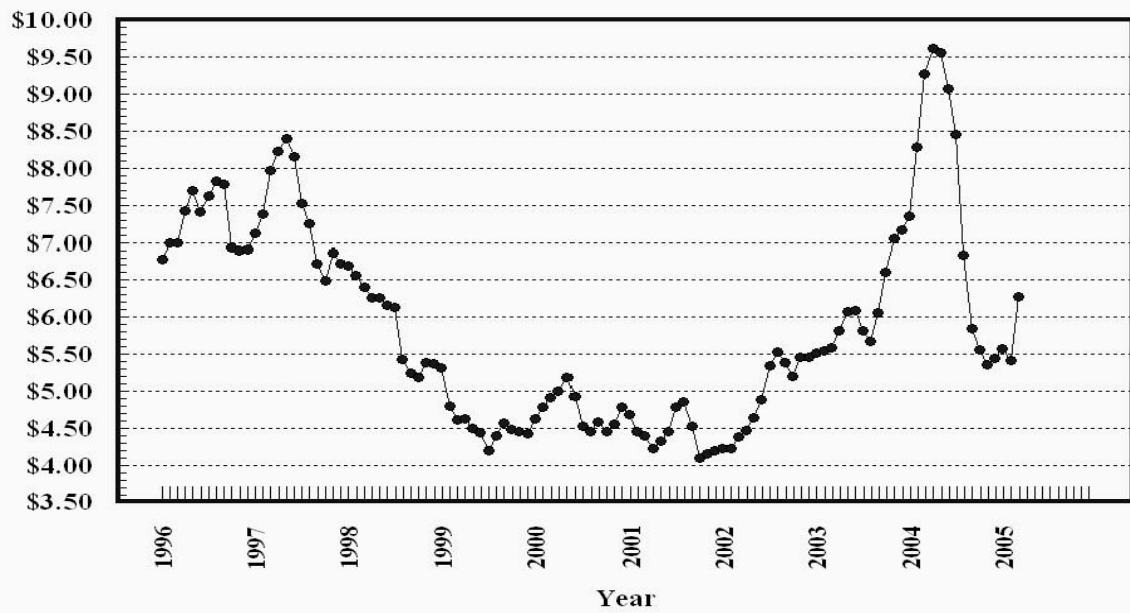
Prices Received, Cotton, US

Dollars per Lb



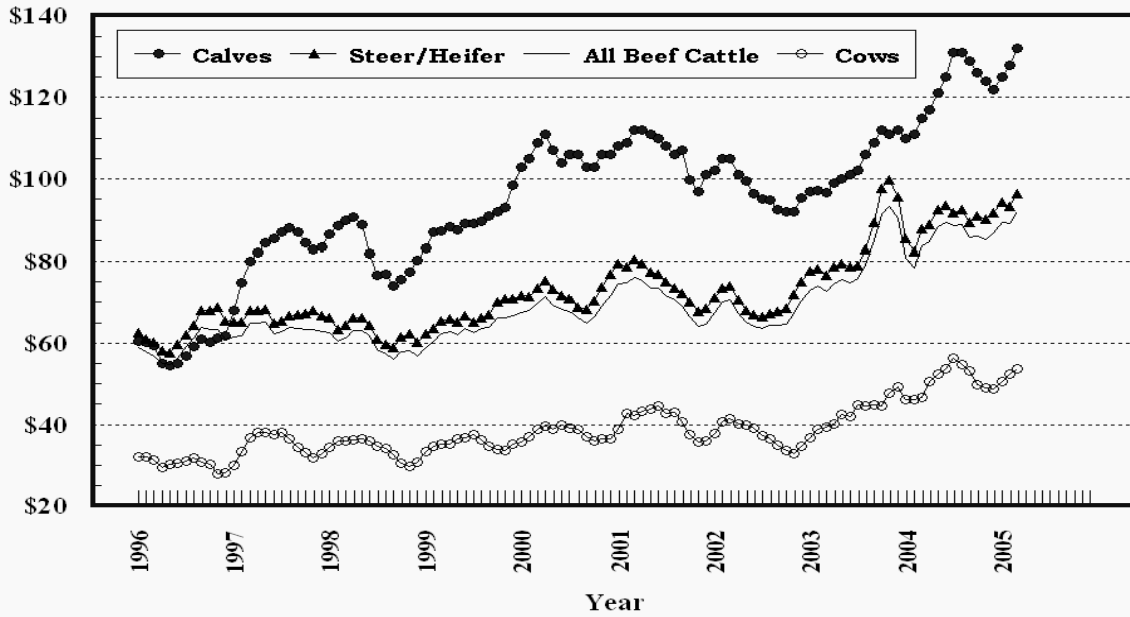
Prices Received, Soybeans, US

Dollars per Bu



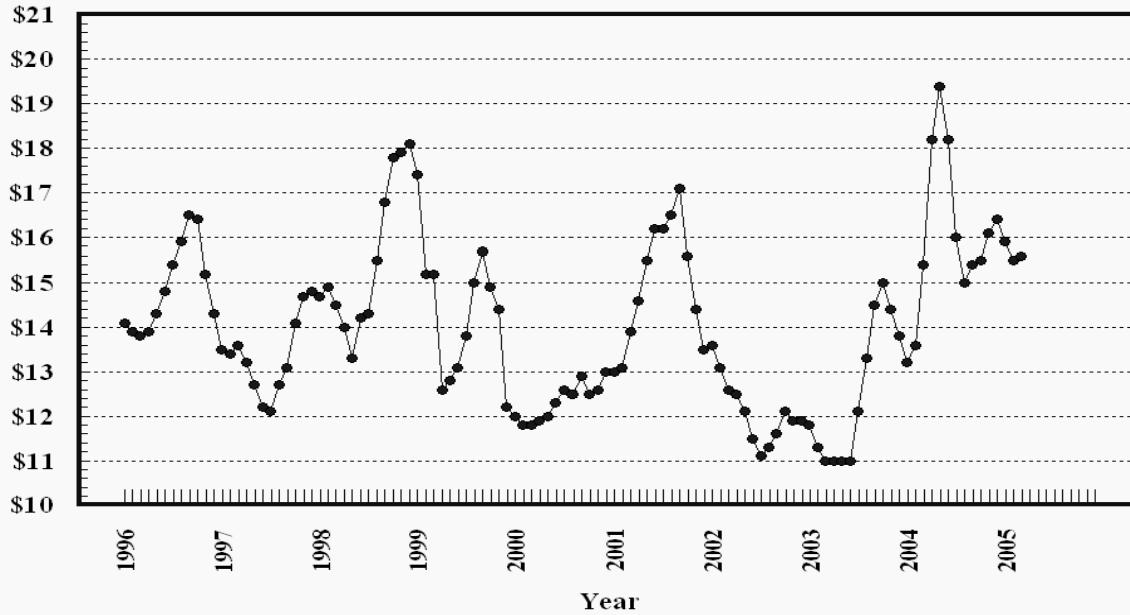
Prices Received, Cattle, US

Dollars per Cwt



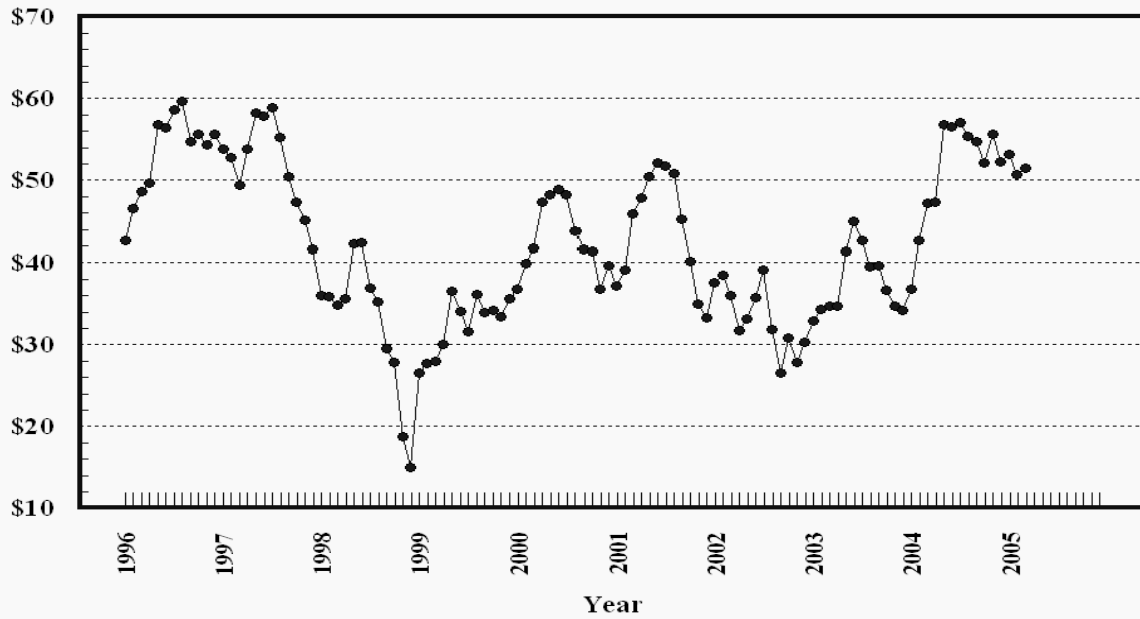
Prices Received, Milk, US

Dollars per Cwt



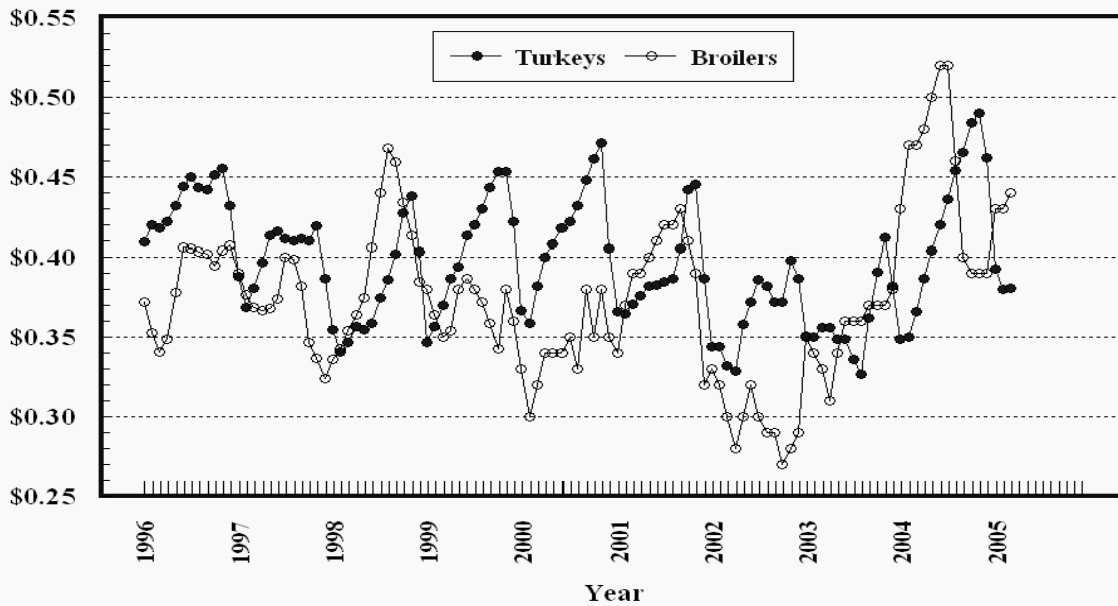
Prices Received, Hogs, US

Dollars per Cwt



Prices Received, Turkeys & Broilers, US

Dollars per Lb



Wheat: Prices Received, by State, February and March 2005

State	All Wheat		Winter Wheat		Durum Wheat		Oth Spring Wheat	
	Feb ¹	Mar ²	Feb ¹	Mar ²	Feb ¹	Mar ²	Feb ¹	Mar ²
	<i>Dollars per Bushel</i>	<i>Dollars per Bushel</i>	<i>Dollars per Bushel</i>	<i>Dollars per Bushel</i>	<i>Dollars per Bushel</i>	<i>Dollars per Bushel</i>	<i>Dollars per Bushel</i>	<i>Dollars per Bushel</i>
AR	(³)	(³)	(³)	(³)				
CA	(³)	(³)	(³)	(³)	(³)	(³)		
CO	3.25	3.32	3.25	3.32			(³)	(³)
ID	3.68	3.70	3.46	3.50			3.94	4.00
IL	3.50	3.50	3.50	3.50				
IN	2.98	3.39	2.98	3.39				
KS	3.26	3.40	3.26	3.40				
MI	2.95	3.40	2.95	3.40				
MN	3.30	3.42	2.86	3.06			3.30	3.42
MO	3.31	3.55	3.31	3.55				
MT	3.61	3.74	3.39	3.38	3.76	3.84	3.77	4.03
NE	3.20	3.35	3.20	3.35				
ND	3.39	3.45	2.80	2.85	3.65	3.55	3.35	3.45
OH	2.87	3.42	2.87	3.42				
OK	3.27	3.37	3.27	3.37				
OR	3.72	3.71	3.66	3.65			4.09	4.00
SD	3.47	3.51	3.19	3.29			3.67	3.67
TX	3.15	3.41	3.15	3.41				
WA	3.63	3.79	3.53	3.70			3.94	4.05
US	3.36	3.53	3.27	3.44	3.71	3.64	3.50	3.65

¹ Entire month.

² Mid-month.

³ Price not published to avoid disclosure of individual firms.

⁴ Insufficient sales to establish a price.

**Prices Received for Selected Agricultural Commodities, by Month,
United States, 2004 and 2005 ¹**

Month	All Wheat		Corn		Soybeans		Beef Cattle ²		All Hogs	
	2004	2005	2004	2005	2004	2005	2004	2005	2004	2005
	<i>Dollars per Bushel</i>	<i>Dollars per Bushel</i>	<i>Dollars per Bushel</i>	<i>Dollars per Bushel</i>	<i>Dollars per Bushel</i>	<i>Dollars per Bushel</i>	<i>Dollars per Cwt</i>	<i>Dollars per Cwt</i>	<i>Dollars per Cwt</i>	<i>Dollars per Cwt</i>
Jan	3.68	3.42	2.39	2.12	7.35	5.57	81.10	89.40	36.60	53.20
Feb	3.77	3.36	2.61	1.95	8.28	5.42	78.50	89.00	42.60	50.70
Mar	3.83	3.53	2.75	2.03	9.28	6.28	83.70	91.90	47.20	51.50
Apr	3.88		2.89		9.62		85.00		47.40	
May	3.82		2.87		9.56		88.50		56.60	
Jun	3.57		2.79		9.08		89.80		56.70	
Jul	3.37		2.51		8.46		88.10		57.10	
Aug	3.27		2.34		6.83		87.70		55.30	
Sep	3.36		2.20		5.84		85.90		54.80	
Oct	3.44		2.15		5.56		86.50		52.20	
Nov	3.46		2.05		5.36		85.40		55.60	
Dec	3.39		2.04		5.45		86.80		52.30	

¹ Current month prices are mid-month; prices for previous months are for the entire month.

² Cows, steers and heifers.

Grains: Prices Received, by State, February and March 2005

Month	All Barley ¹		Corn		Oats		Soybeans		Sorghum Grain	
	Feb ²	Mar ³	Feb ²	Mar ³	Feb ²	Mar ³	Feb ²	Mar ³	Feb ²	Mar ³
	<i>Dollars per Bushel</i>	<i>Dollars per Bushel</i>	<i>Dollars per Bushel</i>	<i>Dollars per Bushel</i>	<i>Dollars per Bushel</i>	<i>Dollars per Bushel</i>	<i>Dollars per Bushel</i>	<i>Dollars per Bushel</i>	<i>Dollars per Cwt</i>	<i>Dollars per Cwt</i>
AL							5.64	6.30	(⁴)	(⁴)
AR										
CA	(⁴)	(⁴)								
CO	2.34	2.55	2.03	2.08						
ID	3.05	3.08								
IL			2.02	2.10	(⁴)	(⁴)	5.49	6.30	3.67	3.70
IN			2.00	2.06			5.42	6.46		
IA			1.88	1.95	1.90	1.85	5.32	6.20		
KS			1.90	2.05			5.21	6.02	2.87	3.09
KY			2.13	2.15			5.66	6.35		
LA							5.59	6.30		
MI			1.86	2.00	2.15	2.10	5.31	6.30		
MN	(⁴)	(⁴)	1.86	1.99	1.42	1.40	5.45	6.46		
MS							5.63	6.44		
MO			1.95	2.10			5.37	6.35	3.18	3.45
MT	2.77	2.93			(⁴)	(⁵)				
NE			1.89	2.00	1.70	1.60	5.29	6.10	2.87	3.15
NC			2.30	2.44			5.56	6.35		
ND	2.05	1.89	1.63	1.65	1.21	1.20	5.34	6.10		
OH			1.97	2.13	1.95	(⁵)	5.39	6.45		
OK									3.02	3.29
OR	2.09	2.10			(⁴)	(⁴)				
PA			2.35	2.47	2.04	2.00				
SD	1.96	2.05	1.76	1.82	1.69	1.62	5.44	6.08		
TN			2.05	2.20			5.49	6.30		
TX			2.37	2.25	(⁴)	(⁵)			3.54	3.50
UT	1.96	1.60								
WA	2.08	2.18								
WI			2.06	2.15	1.72	1.65	5.35	6.25		
WY	(⁴)	3.51								
US	2.37	2.48	1.95	2.03	1.66	1.60	5.42	6.28	2.95	3.17

¹ The Three-State (MN, ND and SD) Feed Barley price is discontinued.

² Entire month.

³ Mid-month.

⁴ Price not published to avoid disclosure of individual firms.

⁵ Insufficient sales to establish a price.

Malting and Feed Barley: Prices Received Selected State, February and March 2005

State	Malting Barley		Feed Barley	
	Feb ¹	Mar ²	Feb ¹	Mar ²
	<i>Dollars per Bushel</i>	<i>Dollars per Bushel</i>	<i>Dollars per Bushel</i>	<i>Dollars per Bushel</i>
ID	3.32	3.35	2.00	2.00
MN	(³)	(³)	1.24	1.23
MT	3.13	(³)	1.61	1.74
ND	2.26	2.05	1.40	1.40
SD	1.97	2.05	1.70	(⁴)
WY	(³)	(³)	(⁴)	1.65

¹ Entire month.

² Mid-month.

³ Price not published to avoid disclosure of individual firms.

⁴ Insufficient sales to establish a price.

Field Crops: Prices Received, by State, February and March 2005

State	Dry Edible Beans		All Sunflower		Flaxseed		Tobacco		Peanuts ⁴	
	Feb ¹	Mar ²	Feb ¹	Mar ²	Feb ¹	Mar ²	Feb ¹	Mar ³	Feb ¹	Mar ³
	<i>Dollars per Cwt</i>	<i>Dollars per Cwt</i>	<i>Dollars per Cwt</i>	<i>Dollars per Cwt</i>	<i>Dollars per Bushel</i>	<i>Dollars per Bushel</i>	<i>Dollars per Pound</i>	<i>Dollars per Pound</i>	<i>Dollars per Pound</i>	<i>Dollars per Pound</i>
AL									0.177	(⁵)
CA	37.00	37.80								
CO	29.80	29.20								
FL							(⁶)	(⁶)	(⁵)	(⁵)
GA							(⁶)	(⁶)	0.185	(⁵)
ID	26.40	25.70								
IN							1.995	(⁶)		
KS			13.30	13.40						
KY							1.970	1.990		
MD							(⁶)	(⁶)		
MI	22.30	24.00								
MN	28.20	27.70	16.70	(⁵)						
MO										
NE	24.50	24.10								
NC							(⁶)	(⁶)	0.218	(⁵)
ND	29.00	28.20	16.10	15.70	11.00	11.90				
OH							1.965	(⁶)		
OK										
SC							(⁶)	(⁶)		
SD			14.60	14.20	(⁶)	(⁶)				
TN							1.875	(⁶)		
TX									(⁵)	(⁵)
VA							(⁶)	(⁶)	(⁵)	(⁶)
WV										
US	27.80	27.40	15.10	15.10	11.00	11.90	1.960	1.990	0.186	0.186

¹ Entire month.

² Mid-month.

³ Based on sales through first half of month.

⁴ In-Shell.

⁵ Price not published to avoid disclosure of individual firms.

⁶ Insufficient sales to establish a price.

Tobacco: Prices Received, by Area and Type, March 2005, with Comparisons

Class by Type	Type	Mar 2004	Feb 2005	Mar 2005 ¹
		<i>Dollars per Pound</i>	<i>Dollars per Pound</i>	<i>Dollars per Pound</i>
Fire-cured				
Eastern District	22	2.265	1.555	(²)
Western District	23	(²)	1.750	(²)
Total Fire-cured	21-23	2.265	1.605	(²)
Light Air-cured				
Burley	31	(²)	1.975	1.990
Southern MD Belt	32	1.775	(²)	(²)
Total Light Air-cured	31-32	1.775	1.975	1.990
Dark Air-cured				
One Sucker Belt	35	(²)	(²)	(²)
Green River Belt	36	(²)	1.150	(²)
Total Dark Air-cured	35-37	(²)	1.150	(²)
US	11-37	2.105	1.960	1.990

¹ Based on sales during the first half of the month.

² Insufficient sales to establish a price.

Field Crops and Apples: Prices Received, by State, February and March 2005

State	Cotton, Upland		March				Apples Fresh Use ^{1 4} <i>Dol/Lb</i>
	Feb ¹ <i>Dollars per Pound</i>	Mar ² <i>Dollars per Pound</i>	Cotton- seed ⁵ <i>Dollars per Ton</i>	Hay, Baled ³			
				All <i>Dollars per Ton</i>	Alfalfa <i>Dollars per Ton</i>	Other <i>Dollars per Ton</i>	
AL	(⁶)	(⁶)					
AZ	0.476	(⁶)		112.00	112.00	110.00	
AR	0.410	0.436					
CA	0.523	(⁶)		126.00	132.00	94.00	0.335
CO				84.00	84.00	90.00	
GA	0.405	0.420					
ID				99.00	101.00	75.00	
IL				92.00	94.00	70.00	
IA				84.00	85.00	55.00	
KS				69.00	79.00	48.00	
KY				76.00	110.00	60.00	
LA	0.404	0.429					
MI				96.00	100.00	75.00	0.185
MN				70.00	74.00	51.00	
MS	0.404	0.400					
MO				56.00	98.00	44.00	
MT				74.00	76.00	69.00	
NE				50.00	50.00	48.00	
NV				114.00	112.00	127.00	
NM				121.00	124.00	101.00	
NY				121.00	150.00	95.00	0.223
NC	0.404	0.400					
ND				59.00	63.00	46.00	
OH				117.00	142.00	67.00	0.300
OK				71.00	89.00	47.00	
OR				99.00	105.00	89.00	
PA				120.00	140.00	107.00	0.225
SD				61.00	63.00	49.00	
TN	0.406	0.419					
TX	0.369	0.392		68.00	120.00	64.00	
UT				98.00	99.00	80.00	
VA							0.230
WA				103.00	100.00	115.00	0.180
WI				83.00	90.00	45.00	
WY				75.00	76.00	70.00	
US	0.390	0.422		89.10	96.40	70.40	0.186

¹ Entire month.

² Based on sales during the first half of the month.

³ Mid-month.

⁴ Equivalent packinghouse-door returns for CA, NY, and WA. Price at point of first sale for other States.

⁵ Marketing year August - February.

⁶ Price not published to avoid disclosure of individual firms.

**Upland Cotton and Rice: Prices Received and Marketings,
United States, March 2005, with Comparisons**

Item	Unit	Jan 2005 ¹	Feb 2005 ¹	Mar 2005 ²
Cotton, Upland				
Average Price	Dollars per Pound	0.396	0.390	0.422
Marketings ³	1,000 Bales	3,698	1,847	NA
Rice				
Average Price	Dollars per Cwt	7.16	6.79	6.97
Marketings ⁴	1,000 Cwt	19,746	15,867	NA

¹ Entire month.

² Based on purchases for the first half of the month.

³ Marketings based on a survey of cotton buyers in the major producing States - AL, AZ, AR, CA, GA, LA, MS, NC, TN, and TX.

⁴ Purchases by private firms and rice (rough equivalent) shipped by cooperatives.

**Citrus Fruit: Prices and Equivalent Returns, by Utilization,
by State and United States, March 2005**

Commodity, State and Type	F.O.B. Packed Fresh	Equivalent Returns ¹					
		Packinghouse-door			On-tree		
		All	Fresh	Process	All	Fresh	Process
	<i>Dollars per Box</i>	<i>Dollars per Box</i>	<i>Dollars per Box</i>	<i>Dollars per Box</i>	<i>Dollars per Box</i>	<i>Dollars per Box</i>	<i>Dollars per Box</i>
Grapefruit							
AZ	18.50	11.86	11.86		9.49	9.49	
CA	22.20	15.01	15.56	-0.28	12.64	13.19	-2.65
FL	26.80	13.20	18.22	8.96	10.44	15.72	5.97
White	26.40	9.61	17.40	8.50	6.76	14.90	5.60
Colored	26.80	15.00	18.30	9.50	12.28	15.80	6.40
TX	32.10	9.44	21.91	1.20	8.28	20.72	0.06
US	27.90	12.11	19.02	6.32	9.85	16.87	3.96
Lemons							
CA	30.30	11.82	20.00	0.18	7.39	15.57	-4.25
US	30.30	11.82	20.00	0.18	7.39	15.57	-4.25
Oranges							
AZ	22.70	15.51	15.51		12.97	12.97	
Navel and Misc	15.00	7.47	7.47		4.96	4.96	
Valencia	23.10	15.90	15.90		13.36	13.36	
CA	19.60	9.76	12.12	0.37	7.25	9.62	-2.13
Navel and Misc	19.20	9.21	11.67	0.38	6.70	9.16	-2.13
Valencia	21.00	12.22	13.94	0.32	9.73	11.45	-2.17
FL	15.00	5.31	7.01	5.24	3.11	4.63	3.04
Early and Mids	14.10	5.62	6.10	5.60	3.41	3.75	3.40
Valencia	15.30	5.20	7.30	5.10	2.99	4.90	2.90
TX	18.90	6.77	8.62	2.04	5.41	7.25	0.71
Early and Mids	18.90	7.02	8.61	2.04	5.66	7.24	0.71
Valencia	19.00	5.10	8.71	2.04	3.75	7.34	0.71
US	19.00	6.54	11.43	4.87	4.26	8.96	2.65
Tangerines							
AZ	20.70	10.22	13.50	-0.26	7.68	10.96	-2.80
CA	28.60	18.26	21.40	0.30	15.72	18.86	-2.24
FL	30.00	16.92	20.00	6.75	13.09	16.40	2.15
US	29.10	17.50	20.65	4.09	14.34	17.63	0.33
Temples							
FL	14.50	4.48	5.50	4.25	1.90	3.00	1.65

¹ Net lbs. per box: Grapefruit - AZ & CA-67, FL-85, TX-80; Lemons - 76; Oranges - AZ & CA-75, FL-90, TX-85; Tangelos - 90; Tangerines - AZ, CA-75, FL-95; Temples - 90.

Potatoes: Prices Received, by State, February and March 2005

State	Feb	Mar	State	Feb	Mar
	<i>Dollars per Cwt</i>	<i>Dollars per Cwt</i>		<i>Dollars per Cwt</i>	<i>Dollars per Cwt</i>
AL ¹			NC ¹		
AZ ¹			ND - All ²	6.10	5.85
CA - All ²	14.30	16.40	- Fresh ³	5.95	NA
- Winter	18.80	21.60	- Processing	6.10	NA
- Spring ¹			OH	7.20	6.05
- Summer ¹			OR	4.75	5.85
- Fall	7.55	7.55	PA	7.75	8.30
CO - All ²	4.40	4.95	TX ¹		
- Fresh ³	4.25	NA	VA ¹		
FL	25.50	24.00	WA - All ²	5.50	5.40
ID - All ²	4.05	4.60	- Processing	5.25	NA
- Fresh ³	2.60	NA	WI - All ²	5.90	5.60
- Processing	4.60	NA	- Fresh ³	4.35	NA
ME	6.55	6.85	- Processing	6.20	NA
MI	7.40	7.80			
MN	5.55	5.60	US - All ²	5.76	6.16
NY	7.85	7.35	- Fresh ³	6.53	NA
			- Processing	5.26	NA

¹ No potatoes being marketed.

² Average price of potatoes sold for all uses, including table stocks, processing, seed and livestock feed.

³ Fresh market prices only, includes table stock prices.

Cattle: Prices Received, by State, February and March 2005

State	Cows ¹		Steers & Heifers		Beef Cattle ⁴		Calves	
	Feb ²	Mar ³	Feb ²	Mar ³	Feb ²	Mar ³	Feb ²	Mar ³
	<i>Dollars per Cwt</i>	<i>Dollars per Cwt</i>	<i>Dollars per Cwt</i>	<i>Dollars per Cwt</i>	<i>Dollars per Cwt</i>	<i>Dollars per Cwt</i>	<i>Dollars per Cwt</i>	<i>Dollars per Cwt</i>
AZ	56.40	51.30	106.00	108.00	106.00	107.00	131.00	129.00
AR	48.20	48.50	102.00	104.00	85.90	87.40	127.00	128.00
CA	47.80	46.70	90.20	93.40	68.60	70.10	118.00	120.00
CO	56.10	56.90	105.00	109.00	105.00	108.00	131.00	134.00
FL	52.80	53.30	96.70	97.50	76.30	76.90	128.00	130.00
GA	53.20	55.10	95.90	98.90	68.60	72.60	125.00	131.00
ID	50.50	53.50	91.60	95.80	82.60	85.60	122.00	127.00
IL	51.00	53.00	88.00	91.00	87.30	90.20	115.00	119.00
IA	53.30	56.50	94.70	98.00	93.90	97.20	122.00	125.00
KS	53.80	53.80	89.00	91.50	87.90	90.40	134.00	138.00
KY	50.00	51.00	97.00	104.00	85.70	91.30	117.00	127.00
LA	52.00	53.00	103.00	105.00	66.30	67.60	123.00	126.00
MI	50.00	52.00	79.00	82.00	70.30	73.00	120.00	125.00
MN	54.80	57.00	84.60	87.00	78.30	80.70	120.00	123.00
MO	51.80	53.00	106.00	110.00	87.60	97.50	127.00	135.00
MT	54.40	55.70	106.00	106.00	93.60	89.90	127.00	131.00
NE	55.60	55.60	94.20	98.70	93.00	97.40	137.00	135.00
NM	54.60	53.70	104.00	105.00	84.20	86.50	126.00	130.00
ND	55.40	57.00	103.00	106.00	94.90	98.70	128.00	130.00
OH	48.00	53.00	83.00	86.00	79.50	82.70	109.00	115.00
OK	53.50	56.60	102.00	106.00	99.60	104.00	126.00	137.00
OR	47.40	47.80	95.50	100.00	81.10	84.30	116.00	118.00
PA	51.40	52.20	84.50	88.40	75.90	79.00	116.00	125.00
SD	52.30	57.50	101.00	102.00	95.60	97.60	132.00	136.00
TN	50.00	50.00	100.00	104.00	80.00	82.40	120.00	125.00
TX	51.20	51.90	94.70	95.90	91.70	92.40	133.00	138.00
VA	47.40	48.00	95.20	98.30	77.50	84.70	119.00	122.00
WI	53.40	57.40	83.90	90.40	66.20	71.30	148.00	154.00
WY	54.80	55.00	106.00	107.00	98.80	99.20	137.00	135.00
US	52.40	53.60	93.30	96.30	89.00	91.90	128.00	132.00

¹ Beef cows and cull dairy cows sold for slaughter.

² Entire month.

³ Mid-month.

⁴ "Cows" and "steers and heifers" combined.

Hogs: Prices Received, by State, February and March 2005

State	Sows		Barrows and Gilts		All Hogs	
	Feb ¹	Mar ²	Feb ¹	Mar ²	Feb ¹	Mar ²
	<i>Dollars per Cwt</i>	<i>Dollars per Cwt</i>	<i>Dollars per Cwt</i>	<i>Dollars per Cwt</i>	<i>Dollars per Cwt</i>	<i>Dollars per Cwt</i>
AR	43.60	43.60	47.30	50.60	46.90	49.90
IL	43.30	42.30	52.50	49.00	51.80	48.50
IN	49.40	47.50	49.30	50.20	49.30	50.00
IA	46.10	44.00	52.20	54.80	52.00	54.60
KS	45.30	44.20	48.00	50.50	47.60	49.80
MN	45.20	44.20	51.90	54.00	51.90	53.90
MO	44.50	43.00	46.00	48.00	45.90	47.60
NE	43.60	42.00	52.40	52.40	52.20	52.20
NC	45.60	44.70	50.90	48.60	50.80	48.60
OH	46.30	45.00	49.60	48.00	49.40	47.90
OK	43.30	42.30	45.30	45.00	45.00	44.60
PA	43.60	42.50	51.50	52.40	50.30	50.90
SD	44.30	42.00	52.50	54.00	51.70	52.80
US	45.00	43.80	51.00	51.80	50.70	51.50

¹ Entire month.

² Mid-month.

Sheep and Poultry: Prices Received, by State, February and March 2005

State	February		March
	Sheep ¹	Lambs ¹	Eggs ^{2 3}
	<i>Dollars per Cwt</i>	<i>Dollars per Cwt</i>	<i>Dollars per Dozen</i>
AL			0.320
AR			0.320
CA	45.00	101.00	0.410
CO	43.50	115.00	
CT			0.420
FL			0.330
GA			0.339
ID	43.00	106.00	
IN			0.300
IA	51.00	111.00	0.290
KY	50.00	116.00	
ME			0.480
MI			0.320
MN	43.00	114.00	0.320
MS			0.326
MO	52.40	123.00	0.290
MT	52.90	132.00	
NE	48.40	109.00	
NY			0.340
NC			0.330
ND	46.00	119.00	
OH	52.00	114.00	0.329
OR	45.00	107.00	
PA	55.50	127.00	0.330
SC			0.310
SD	53.90	131.00	
TX	60.80	123.00	0.330
VA	49.00	116.00	
WA			0.400
WV	45.00	123.00	
WY	52.40	122.00	
US	51.30	114.00	0.327

¹ Entire month.

² Mid-month.

³ Market (table) eggs.

Milk and Milk Cows: Prices Received, by State, February and March 2005

State	February ¹						March		
	Fluid Grade Milk ²		Manufacturing Grade Milk		All Milk ³		All Milk ^{3 4}		Milk Cows ⁵
	Price	Fat Test	Price	Fat Test	Price	Fat Test	Price	Fat Test	
	<i>Dol/Cwt</i>	<i>Percent</i>	<i>Dol/Cwt</i>	<i>Percent</i>	<i>Dol/Cwt</i>	<i>Percent</i>	<i>Dol/Cwt</i>	<i>Percent</i>	<i>Dol/Head</i>
AZ	15.00	3.64			15.00	3.64	15.30	3.60	
CA	14.50	3.76	14.90	4.08	14.51	3.77	14.50	3.72	
CO	15.00	3.59			15.00	3.59	15.50	3.57	
FL	18.00	3.60			18.00	3.60	19.60	3.58	
ID	14.00	3.66	15.80	3.91	14.00	3.66	14.00	3.60	
IL	15.90	3.70	15.90	3.60	15.90	3.70	16.10	3.66	
IN	16.20	3.74	14.90	3.84	16.10	3.75	16.40	3.72	
IA	16.20	3.74	14.90	3.88	16.20	3.74	16.40	3.70	
KS	14.80	3.72			14.80	3.72	15.00	3.68	
KY	15.90	3.68			15.90	3.68	16.70	3.64	
MI	15.70	3.68	14.00	3.80	15.70	3.68	16.10	3.65	
MN	15.90	3.78	14.40	3.83	15.90	3.78	15.90	3.76	
MO	15.40	3.68	14.80	3.85	15.40	3.69	16.10	3.65	
NM	14.70	3.65			14.70	3.65	15.60	3.60	
NY	15.70	3.72			15.70	3.72	16.00	3.70	
OH	16.20	3.74	15.00	3.88	16.20	3.75	16.40	3.73	
OR	15.20	3.66			15.20	3.66	15.50	3.64	
PA	16.90	3.70	15.40	3.80	16.90	3.70	17.00	3.65	
TX	15.80	3.75			15.80	3.75	16.00	3.69	
VT	15.80	3.72			15.80	3.72	16.00	3.70	
VA	16.40	3.62			16.40	3.62	16.90	3.60	
WA	15.20	3.66			15.20	3.66	15.50	3.64	
WI	16.10	3.76	15.00	3.89	16.10	3.76	15.90	3.75	
US	15.50	3.72	14.90	3.92	15.50	3.72	15.60	3.69	

¹ Entire month.

² Including milk diverted to manufacturing.

³ Before deductions for hauling. Includes quality, quantity, and other premiums. Excludes hauling subsidies.

⁴ Preliminary.

⁵ Animals sold for dairy herd replacement only. Prices published January, April, July and October.

**Parity Price Equivalent for Manufacturing Milk ¹: United States,
February and March 2005, with Comparisons**

Item	Unit	Mar 2004	Feb 2005	Mar 2005
Parity Equivalent	Dollars per Cwt	31.10	32.17	32.45
Average Price F.O.B ²	Dollars per Cwt	15.20	14.90	14.60
Average Fat Test of Milk ²	Percent	3.86	3.92	3.87

¹ The parity price equivalent during 2005 is 91.4 percent of the parity price of all milk sold to plants, compared with 90.4 percent in 2004. For additional details, see January 2005 issue of "Agricultural Prices".

² Preliminary for March 2005.

**United States Parity Prices for Farm Products and Average Prices Received as
Percent of Parity Prices Based on Data for March 2005, with Comparisons ¹**

Commodity and Unit	Adjusted Base Price	Parity Price Based on Data for			Price as Percent of Parity		
		Mar 2004	Feb 2005	Mar 2005	Mar 2004	Feb 2005	Mar 2005
	<i>Dollars</i>	<i>Dollars</i>	<i>Dollars</i>	<i>Dollars</i>	<i>Percent</i>	<i>Percent</i>	<i>Percent</i>
Basic Commodities							
All Wheat, Bu	0.555	9.84	9.91	10.00	39	34	35
Rice, Cwt	1.38	28.40	24.60	24.90	30	28	28
Corn, Bu	0.372	6.61	6.64	6.71	42	29	30
Cotton, Lb							
American Upland	0.095	1.97	1.70	1.71	31	23	25
Extra Long Staple	0.142	2.51	2.54	2.56			
Peanuts, Lb	0.0350	0.645	0.625	0.631	29	30	29
Tobacco, By Type, Lb							
Flue-Cured 11-14	0.255	4.52	4.55	4.60			
VA Fire-Cured, 21	0.256	4.48	4.57	4.62		33	
KY-TN Fire-Cured, 22-23	0.323	5.62	5.77	5.83			
Burley, 31	0.274	4.83	4.89	4.94		40	
Maryland, 32	0.210	3.75	3.75	3.79	47		
Dark Air-Cured, 35-36	0.284	4.92	5.07	5.12			
Sun-Cured, 37	0.241	4.29	4.30	4.35		33	
PA Seedleaf, 41	0.205	3.59	3.66	3.70			
Cigar Filler & Binder, 42-44, 54-55	0.225	3.92	4.02	4.06			
Puerto Rican Filler, 46	0.159	2.83	2.84	2.87			
Cigar Binder, 51-52	0.747	12.80	13.30	13.50			
Designated Nonbasic							
All Milk, Sold to Plants, Per Cwt ²	1.97		35.20	35.50		46	46
Honey, Extracted, Lb ³	0.1280	1.83	2.28	2.28			
Wool and Mohair							
Wool, Lb	0.0910	1.53	1.63	1.64		49	
Mohair, Lb	0.333	5.82	5.95	6.01		33	
Other Nonbasic							
Barley, Bu	0.377	6.56	6.73	6.80	42	35	36
Cottonseed, Ton	15.50	276.00	277.00	280.00	51	40	40
Dry Edible Beans, Cwt	2.82	50.90	50.40	50.90	40	55	54
Flaxseed, Bu	0.753	12.70	13.40	13.60	51	82	88
Oats, Bu	0.221	3.85	3.95	3.99	42	42	40
Potatoes, Cwt	0.838	14.90	15.00	15.10	41	38	41
Rye, Bu	0.355	6.16	6.34	6.40			
Sorghum Grain, Cwt	0.607	10.70	10.80	11.00	45	27	29
Soybeans, Bu	0.900	15.60	16.10	16.20	59	34	39
Sweetpotatoes, Cwt	2.31	39.20	41.30	41.70			
Apples, Fresh, Lb ⁴	0.0292	0.516	0.522	0.527	42	43	41
Citrus (equiv on-tree), Box							
Grapefruit	0.394	6.75	7.04	7.11	35	163	139
Lemons	1.12	19.20	20.00	20.20	38	32	37
Oranges	0.574	10.80	10.30	10.40	34	35	41
Tangerines	1.35	24.80	24.10	24.40	39	58	59
Temples (FL)	0.379	7.87	6.77	6.84	7	36	28
Beef Cattle, Cwt	9.65	167.00	172.00	174.00	50	52	53
Calves, Cwt	13.10	223.00	234.00	236.00	52	55	56
Hogs, Cwt	5.97	103.00	107.00	108.00	46	47	48
Lambs, Cwt	11.70	197.00	209.00	211.00	52	55	
Sheep, Cwt	4.72	82.00	84.30	85.10	45	61	
Eggs, Doz ²	0.0940	1.66	1.68	1.70	66	33	31
Turkeys, Live, Lb	0.0565	1.000	1.010	1.020	37	38	37

--continued

Parity Prices Based on Data for March 2005, United States ¹ (continued)

Other Nonbasic Commodities	Adj Base Price	Parity Price	Other Nonbasic Commodities	Adj Base Price	Parity Price
	<i>Dollars</i>	<i>Dollars</i>		<i>Dollars</i>	<i>Dollars</i>
Field Crops and Misc Commodities			Noncitrus Fruit		
Hops, Lb	0.251	4.53	Peaches, cont. Processing ⁵		
Spearmint Oil, Lb	1.46	26.30	Excl Dried		
Tobacco, Lb Type 61	3.21	57.90	Clingstone, CA, Ton	33.50	604.00
			Pears, Ton		
Noncitrus Fruit			Fresh ⁴	52.90	954.00
Apples, Ton ⁶			Dried, CA ⁶	164.00	2,960.00
Processing	18.30	330.00	Plums, CA, Ton		
Apricots, Ton			Fresh, Equiv		
Fresh ⁷	99.00	1,790.00	on-Tree	66.70	1,200.00
Dried, CA	270.00	4,870.00	Prunes, Dried, CA, Ton ⁶	127.00	2,290.00
Avocados, Ton ⁷	234.00	4,220.00	Prunes and Plums, Excl CA, Ton		
Cherries Bbl			Fresh ⁹	58.90	1,060.00
Sweet, Ton	188.00	3,390.00	Processing ⁶		
Tart, Lb	0.0319	0.575	Excl Dried	27.50	496.00
Cranberry, Bbl ⁵	5.69	103.00			
Dates, CA, Ton ⁷	181.00	3,270.00	Tree Nuts ¹⁰		
Grapes, Ton			Almonds, Lb	0.213	3.84
Raisin Variety	124.00	2,240.00	Hazelnuts, Ton	135.00	2,440.00
Other Dried	70.50	1,270.00	Pistachio, Lb	0.159	2.87
Kiwifruit, Ton	91.30	1,650.00	Walnuts, Ton	173.00	3,120.00
Nectarines			Vegetables, Cwt ¹¹		
Fresh, CA, Ton ⁷	62.60	1,130.00	Fresh		
Olives, CA			Carrots ⁸	2.28	41.10
canning, Ton ⁵	95.70	1,730.00	Cauliflower ⁸	4.60	83.00
Papayas (HA)	0.0528		Celery ⁸	1.97	35.50
Peaches			Honeydew Melons	2.75	49.60
Fresh, Ton ⁴	81.57	1,470.00	Lettuce	2.50	45.10
Dried, CA, Ton	84.00	1,520.00	Onions ⁸	1.65	29.80
			Tomatoes	4.44	80.10

¹ Parity prices are computed under the provisions of Title III, Subtitle a, Section 301 (a) of the Agricultural Adjustment Act of 1938 as amended by the Agricultural Acts of 1948, 1949, and 1956. See January "Agricultural Prices" for details on adjusted base price and parity price computations.

² Seasonally adjusted price as percentage of parity price.

³ Wholesale extracted. Adjusted base price derived from state annual averages prices weighted by production. For 1982 through 1985 the national averages are the support prices.

⁴ Equivalent packinghouse-door returns for CA, NY (apples only), OR (except peaches), and WA. Price at point of first sale for other states.

⁵ Equivalent returns for bulk fruit at first delivery point.

⁶ Equivalent returns at processing plant door.

⁷ Equivalent returns at packinghouse door.

⁸ Includes some processing.

⁹ Based on "as sold" prices for fresh fruit in all states.

¹⁰ Prices in-shell basis except almonds which are shelled basis.

¹¹ F.O.B. shipping point prices.

Reliability of Prices Received Estimates

Definition: Prices received represent sales from producers to first buyers. They include all grades and qualities. The average commodity price from the survey multiplied by the total quantity marketed theoretically should give the total cash receipts for the commodity.

Survey Procedures: Primary sales data used to determine grain prices were obtained from probability samples of about 2000 mills and elevators. These procedures ensure that virtually all grain moving into commercial channels has a chance of being included in the survey. Generally, States surveyed account for 90 percent or more of total U.S. production. Livestock prices are obtained from packers, stockyards, auctions, dealers, and market check data from AMS-USDA, private marketing organizations, and state commodity groups and agencies. Inter-farm sales of grain and livestock are not included since they represent very small percentages of the total marketings. Grain marketed for seed is also excluded. Fruit and vegetable prices are obtained from sample surveys and market check data from AMS-USDA, private marketing organizations, state agencies, and universities.

Summary and Estimation Procedures: Survey quantities sold are expanded by strata to state levels and used to weight average strata prices to a state average. State prices are then weighted to a U.S. price based on expanded marketings. Recommendations are prepared by the State Statistical Offices and reviewed by the Agricultural Statistics Board in Washington, D.C. State recommendations are reviewed for reasonableness with survey data, other States, and recent historic estimates.

Revisions: For most items, the current month's preliminary price represents a 3-5 day period around the 15th of the month. Previous month's prices represent actual dollars received for quantities sold during the entire month. Revisions are published in monthly issues of *Agricultural Prices*.

Reliability: U.S. price estimates based on probability surveys generally have a sampling error of less than one percent for the major commodities such as corn, wheat, soybeans, cotton, and rice. Current methods of summarization for non-probability commodities are not designed directly to calculate sampling errors. However, analytical measures approximate the U.S. relative sampling errors at around five percent. Any nonsampling errors are attributed to such things as the inability to obtain correct information, differences in interpreting questions or definitions, mistakes in coding or processing the data, etc. Efforts are made at each step in the survey process to minimize these nonsampling errors.

Prices Paid by Farmers

The March Index of Prices Paid for Commodities and Services, Interest, Taxes, and Farm Wage Rates (PPITW) is 135 (1990-92=100), unchanged from February 2005 but 2.3 percent above March 2004.

PRODUCTION INDEX: The March index, at 132, is up 0.8 percent from last month and 2.3 percent above last year. Higher prices paid in March for feeder cattle, diesel fuel, other machinery, LP gas, and gasoline more than offset lower prices for complete feeds, feed supplements, nitrogen fertilizers, and herbicides.

Feed: The March index, at 98, is 1.0 percent less than February and 21 percent below last March. Compared to last month, lower prices for complete feeds and feed supplements more than offset rising prices for feed grains and hay & forages.

Livestock and Poultry: The March index for livestock and poultry purchases, at 138, is 3.0 percent higher than last month and 20 percent above March 2004. Since February, prices are higher for feeder cattle and feeder pigs. The March feeder cattle price, at \$112.90 per cwt, is up \$3.50 per cwt from the February price. March feeder pigs average \$180.00 per cwt, up \$9.00 per cwt from February.

Fertilizer: The March index, at 147, is unchanged from February but 7.3 percent more than March a year ago. Since February, prices paid for nitrogen fertilizers are slightly lower.

Agricultural Chemicals: The March index, at 121, is unchanged from last month and March 2004. March prices paid for herbicides are slightly lower. Other subcomponents in the index were unchanged.

Fuels: The March index, at 161, is up 7.3 percent from a month earlier and 13 percent above March 2004. Compared to last month, prices are higher for diesel fuel, LP gas, and gasoline.

Farm Machinery: The March index is 177, up 1.1 percent from February and 9.9 percent above last March. Since February, prices for other machinery are higher.

CONSUMER PRICE INDEX: The February 2005 Consumer Price Index for all urban consumers (CPI-U) rose 0.1 percent before seasonal adjustment to a level of 191.8 (1982-84=100). This compares to the January index of 190.7. For the 12-month period ending in February, the overall index has increased 3.0 percent.

**Indexes of Prices Paid by Farmers and Related Parity Ratios
United States, March 2005 With Comparisons**

Indexes and Ratios	1910-14 = 100			1990-92 = 100		
	2004	2005		2004	2005	
	Mar	Feb	Mar	Mar	Feb	Mar
Prices Paid by Farmers for Commodities & Services, Interest, Taxes, & Wage Rates (PPITW)	1,758	*1,796	1,804	132	*135	135
Production	1,249	*1,273	1,282	129	131	132
Feed	606	*506	500	124	*99	98
Livestock & Poultry	1,471	*1,711	1,762	115	134	138
Seeds	1,553	1,564	1,564	157	158	158
Fertilizer	504	547	545	137	*147	147
Agricultural Chemicals	747	*749	747	121	121	121
Fuels	1,096	*1,123	1,206	142	*150	161
Farm Supplies & Repairs	963	1,000	1,000	136	141	141
Autos & Trucks	3,046	3,091	3,093	115	116	116
Farm Machinery	4,049	4,336	4,391	161	*175	177
Building Materials	1,757	1,892	1,910	129	*141	142
Farm Services & Rent	1,452	*1,489	1,489			
Farm Services				123	*127	127
Rent				120	123	123
Interest ¹	2,593	2,643	2,643	103	105	105
Taxes ²	3,474	3,542	3,542	130	132	132
Wage Rates	6,080	*6,339	6,339	163	*169	169
Production, Interest, Taxes, & Wage Rates (PITW)	1,753	*1,792	1,802	130	*133	134
Family Living-CPI ³	1,780	1,811	1,811	139	*142	142
Ratio (Received/Paid) Parity Ratio ⁴	44	40	42	92	84	87
Parity Ratio Adjusted ⁵	46	*44	46			
PPITW Adjusted for Productivity ⁶	1,213	*1,237	1,238			
Crop Sector (PPITW)				134	*139	140
Livestock Sector (PPITW)				129	130	131
Farm Sector (Production)				126	*121	121
Non-Farm Sector (Production)				130	*136	137

* Revised.

¹ Interest per acre on farm real estate debt and interest rate on farm non-real estate debt.

² Farm real estate taxes payable per acre.

³ Bureau of Labor Statistics, Consumer Price Index for all urban consumers (CPI-U), for the previous month converted by the USDA.

⁴ Ratio of index of prices received to PPITW (1910-14=100).

⁵ Based on estimated cash receipts, from marketings and government payments, the preliminary adjustment factor is 1.105 for 2005 and the revised factor is 1.048 for 2004.

⁶ PPITW is adjusted based on productivity trend for the prior 15 years.

**Prices Paid Indexes and Annual Weights for Input Components and
Sub-Components United States, March 2005 With Comparisons**

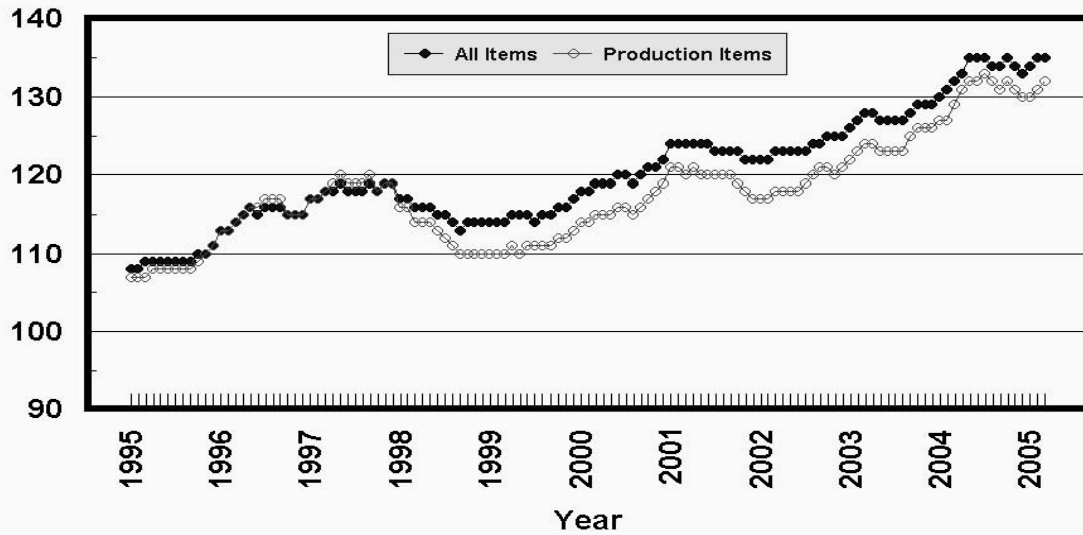
Index	Relative Weights 5-Year Moving Average ¹		Input Indexes		
	2004	2005	2004	2005	
	<i>Percent</i>	<i>Percent</i>	Mar <i>(1990-92=100)</i>	Feb <i>(1990-92=100)</i>	Mar <i>(1990-92=100)</i>
Production Items	66.2	66.4	129	131	132
Feed	10.7	10.7	124	*99	98
Feed Grains	1.5	1.5	119	*84	88
Complete Feeds	5.2	5.2	122	*102	99
Hay/Forages	1.3	1.3	108	111	115
Concentrates	1.7	1.7	143	*89	89
Supplements	0.9	0.9	135	*107	97
Livestock & Poultry	7.4	7.7	115	134	138
Feeder Cattle	5.8	6.0	113	129	133
Feeder Pigs	0.6	0.6	125	*186	196
Milk Cow Replacements	0.6	0.6	123	144	144
Poultry	0.4	0.5	112	112	112
Seeds	3.3	3.5	157	158	158
Field Crops	3.0	3.2	162	163	163
Grasses/Legumes	0.3	0.3	109	111	111
Fertilizer	4.4	4.3	137	*147	147
Mixed Fertilizer	1.9	1.9	122	*129	129
Nitrogen	1.8	1.8	158	*174	173
Potash & Phosphate	0.6	0.6	124	*127	127
Agricultural Chemicals	3.7	3.6	121	121	121
Herbicides	2.4	2.3	113	114	113
Insecticides	0.9	0.8	144	144	144
Fungicides/Other	0.5	0.5	117	117	117
Fuels	2.7	2.7	142	*150	161
Diesel	1.5	1.6	138	*151	164
Gasoline	0.8	0.8	143	*133	143
LP Gas	0.4	0.4	157	*176	182
Farm Supplies & Repairs	5.4	5.2	136	141	141
Supplies	1.8	1.7	126	130	130
Repairs	3.6	3.5	140	*147	147
Autos & Trucks	1.8	1.8	115	116	116
Autos	0.2	0.2	108	109	109
Trucks	1.6	1.5	116	117	117
Farm Machinery	4.0	4.0	161	*175	177
Tractors	0.9	0.9	146	*147	147
Self-Propelled	1.6	1.6	165	*191	191
Other Machinery	1.5	1.5	167	*174	180
Building Materials	3.3	3.6	129	*141	142
Farm Services	12.4	12.4	123	*127	127
Custom Rates	1.3	1.3	125	125	125
Other Services	11.1	11.1	123	*127	127
Rent	7.1	6.9	120	123	123
Cash	3.8	3.7	145	147	147
Share	3.3	3.2	91	94	94
Interest	4.7	4.5	103	105	105
Taxes	3.0	2.9	130	132	132
Wage Rates	7.6	7.6	163	*169	169
Family Living-CPI	18.5	18.6	139	*142	142

* Revised.

¹ Weights may not add due to rounding.

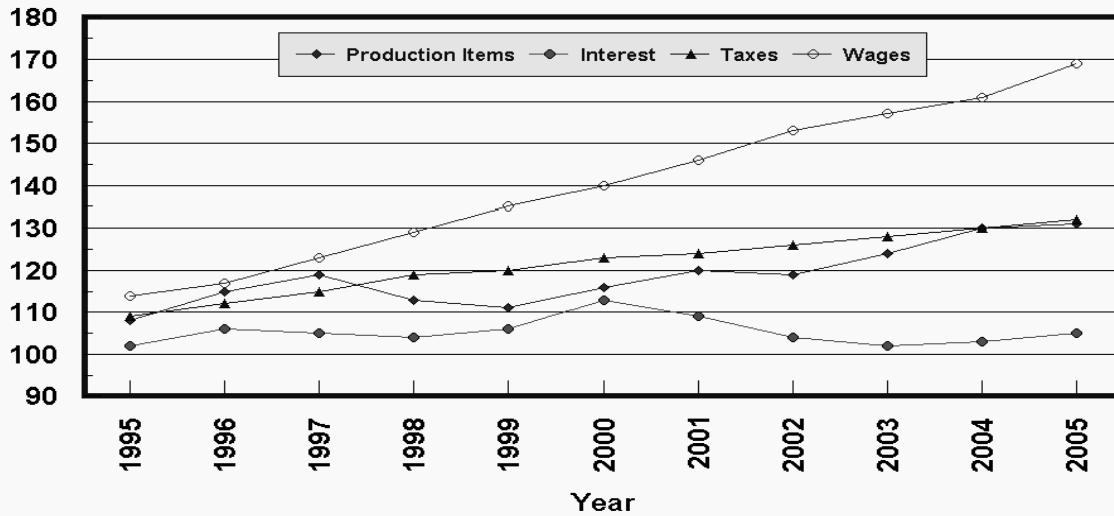
Prices Paid by Farmers, Major Indexes US, by Quarter and Month

Percent (1990-92=100)



Prices Paid by Farmers, Major Indexes US, Annual Averages 1/

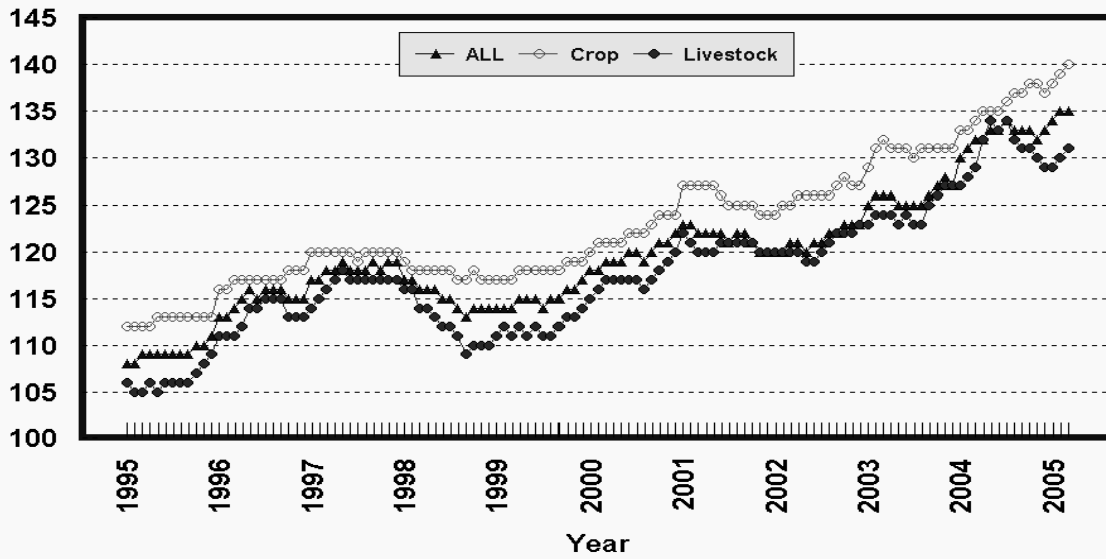
Percent (1990-92=100)



1/ Index values for 2005 are year-to-date averages.

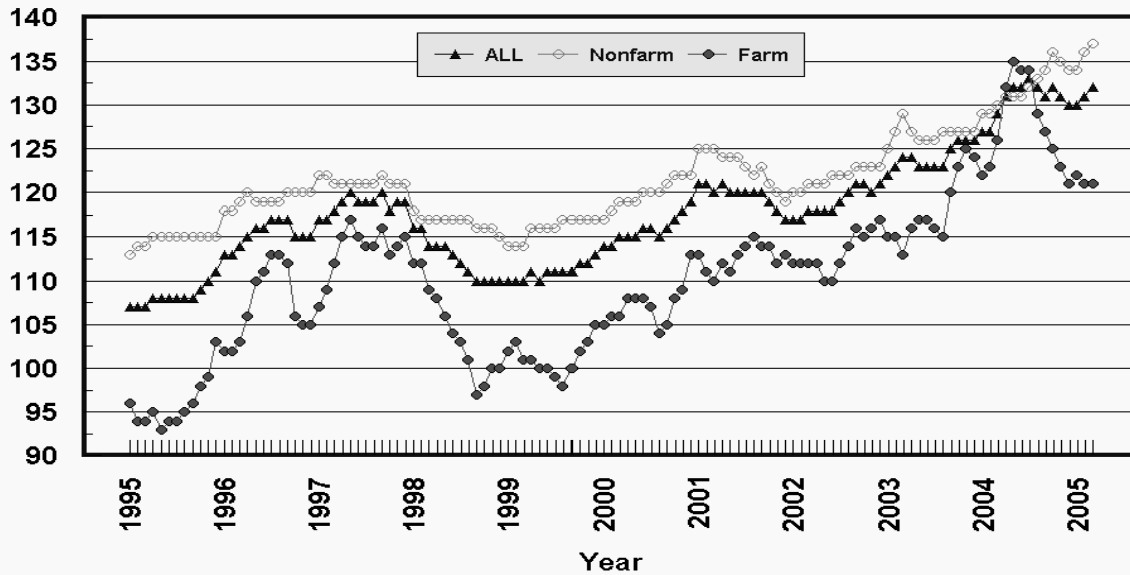
Prices Paid by Farmers, Indexes, All Items US, By Farm Type

Percent (1990-92=100)



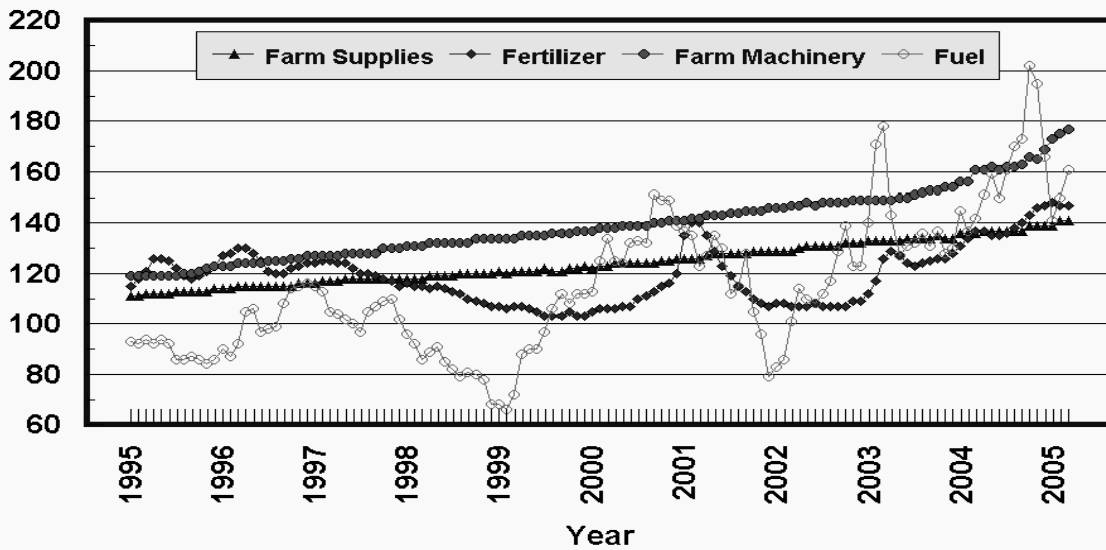
Prices Paid by Farmers, Indexes, All Production Items US, By Sector Origin

Percent (1990-92=100)



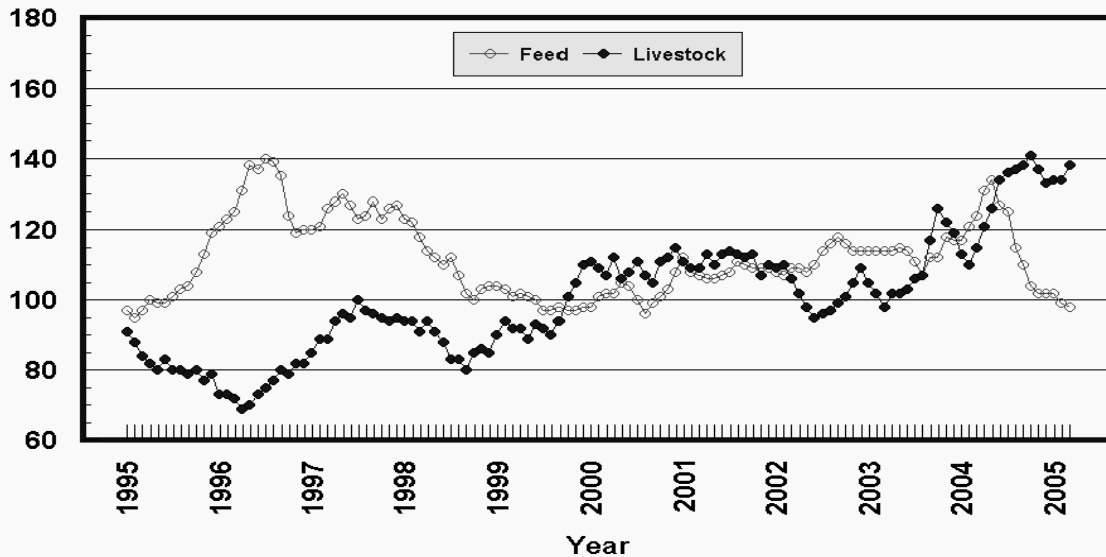
Prices Paid by Farmers, Selected Production Indexes US, By Non-Farm Sector

Percent (1990-92=100)



Prices Paid by Farmers, Selected Production Indexes US, By Farm Sector

Percent (1990-92=100)



Feed Price Ratios: United States, March 2005 with Comparisons

Feed Price Ratio ¹	2004	2005	
	Mar	Feb	Mar
Broiler-Feed: Pounds of Broiler Grower Feed equal in value to 1 pound of broiler, live weight	5.0	*7.4	6.8
Market Egg Feed: Pounds of Laying Feed equal in Value to 1 dozen eggs	13.2	*7.4	6.1
Hog-Corn: Bushels of Corn equal in value to 100 pounds of hog, live weight	17.2	*26.0	25.4
Milk-Feed: Pounds of 16% Mixed Dairy Feed equal in value to 1 pound of Whole Milk	2.80	*3.54	3.35
Steer & Heifer-Corn: Bushels of Corn equal in value to 100 pounds of Steer & Heifers, live weight	32.0	*47.8	47.4
Turkey-Feed: Pounds of Turkey Grower equal in value to 1 pound of Turkey, live weight	4.5	6.9	6.3

* Revised.

¹ Effective January 1995, prices of commercial prepared feeds are based on current U.S. prices received for corn, soybeans, alfalfa hay, and all wheat.

**Prices Used to Calculate Feed Price Ratios:
United States, March 2005 with Comparisons**

Commodity	Unit	2004	2005	
		Mar	Feb	Mar
Broilers, Live	Lb	0.470	0.430	0.440
Eggs, Market	Doz	1.000	0.358	0.327
Hogs, All	Cwt	47.20	*50.70	51.50
Milk, All	Cwt	15.40	*15.50	15.60
Steers and Heifers	Cwt	88.00	*93.30	96.30
Turkeys, Live	Lb	0.366	0.380	0.381
Corn	Bu	2.75	*1.95	2.03
Hay, Alfalfa, Baled	Ton	86.20	*91.90	96.40
Soybeans	Bu	9.28	*5.42	6.28
Wheat, All	Bu	3.83	*3.36	3.53

* Revised.

**Feeder Livestock: Prices Paid, United States
March 2005 with Comparisons**

Commodity	Unit	2004	2005	
		Mar	Feb	Mar
		<i>Dollars</i>	<i>Dollars</i>	<i>Dollars</i>
Feeders and Stockers Cattle and Calves	Cwt	96.10	109.40	112.90
Feeder Pigs	Cwt	115.00	*171.00	180.00

* Revised.

Prices Paid by Farmers

Definition: Prices paid by farmers represent the average costs of inputs purchased by farmers and ranchers to produce agricultural commodities. Conceptually, the average price when multiplied by quantity purchased should equal total producer expenditures for the item.

Survey Procedures: The prices paid data are obtained from establishments that sell goods and services to farmers and ranchers. Annually, about 8,500 firms are randomly selected from lists by type of item sold with an average response rate in the range of 75-80 percent. Firms are asked to report the price for the specified item "most commonly bought by farmers" or that was the "volume seller". Approximately 135 items are surveyed each April to represent all production input items purchased. The survey reference period for most items is the 5 business days centered around the 15th of the month. Separate prices paid surveys are conducted for, agricultural chemicals, fuels, feed, fertilizer, machinery, and seed.

Summary and Estimation Procedures: The annual April Prices Paid Survey is summarized as a nonprobability survey. Average prices reported are aggregated to the region and U.S. level using weights available from expenditure data and other administrative sources. Price recommendations are prepared by the State Statistical Offices and Headquarters for review by the Agricultural Statistics Board in Washington, D.C. Also, the change in price level for individual items surveyed are combined to the regional and U.S. levels, and are published as prices paid indexes referenced to a specific base period. Prices paid indexes for new autos and trucks, building materials, farm supplies, motor supplies, and marketing containers are updated based on price changes measured in selected Bureau of Labor Statistics (BLS) indexes.

Revisions: Any revisions are published in the monthly and in annual issues of *Agricultural Prices*. The basis for revision must be supported by additional data that directly affect the level of the estimate. More revisions are likely in April when separate prices paid surveys are conducted, in lieu of BLS indexes, by the USDA to measure price change.

Reliability: Current methods of summarization in April are not designed directly to calculate sampling errors. However, analytical measures approximate the U.S. relative sampling errors for major items around 10 percent. Any nonsampling errors are attributed to such things as the inability to obtain correct information, differences in interpreting questions or definitions, mistakes in coding or processing the data, etc. Efforts are made at each step in the survey process to minimize these nonsampling errors.

Program Change: Effective January 1, 1995, the National Agricultural Statistics Service updated the weights and changed the construction of its prices paid and received by farmers indexes. A Federal Register Notice dated October 28, 1994 discussed these program modifications.

A 1990-92 reference and base period replaced the 1977 reference and 1971-73 base weight period. Five-year moving average weights replaced the current fixed 1971-73 base period weights. The 1910-14=100 price indexes, required by statute for computing parity prices, were linked forward based on the changes in the new 1990-92=100 indexes. The new indexes were constructed by multiplying the ratios of the current prices to the base period prices by the moving average weights (adjusted for seasonal marketing patterns for the prices received indexes).

Information Contacts

General questions should be directed to Linda Hutton, Chief, Environmental, Economics and Demographics Branch at (202) 720-6146. Below are the commodity specialists to contact for additional information.

Crop Prices Received

Joe Prusacki Chief, Crops Branch	(202) 720-2127
Greg Thessen, Field Crops Section	(202) 720-2127
Lance Honig - Wheat, Rye	(202) 720-8068
Darin Jantzi - Corn, Proso Millet, Flaxseed	(202) 720-9526
Troy Joshua - Cotton, Cottonseed	(202) 720-5944
Dennis Koong - Hay, Oats, Sorghum	(202) 720-7688
Jason Lamprecht - Soybeans, Sunflower, Other Oilseeds	(202) 720-7369
Dennis Koong - Peanuts, Rice	(202) 720-7688
Brian Young - Sugarcane, Sugarbeets, Barley	(202) 720-7621
Jim Smith, Fruit and Vegetable Section	(202) 720-2127
Debbie Flippin - Peaches, Pears, Hops, Pulses, Mint	(202) 720-3250
Jorge Garcia-Pratts - Citrus	(202) 720-5412
Terry O'Connor - Apples, Apricots, Cherries, Cranberries, Plums, Prunes	(202) 720-4288
Leslie Colburn - Grapes, Tobacco	(202) 720-7235
Cathy Scherrer, Potatoes, Dry Edible Beans, Sweet Potatoes	(202) 720-4285
Biz Wallingsford - Vegetables, Onions, Strawberries	(202) 720-2157

Livestock Prices Received

Dan Kerestes, Chief, Livestock Branch	(202) 720-3570
Bill Weaver, Livestock Section	(202) 720-3570
Scott Hollis - Sheep, Lambs, Wool, Mohair	(202) 720-4751
Ty Kalas - Milk, Milk Cows	(202) 690-3236
Dan Lofthus - Hogs	(202) 720-3106
Mike Miller - Cattle	(202) 720-3040
Wilbert Hundl, Poultry and Specialty Commodities Section	(202) 720-3570
John Lange - Turkeys	(202) 720-0585
Sharyn Lavender - Eggs	(202) 720-3244
Jody Roberts - Broilers	(202) 690-8632

Indexes, Prices Paid, and Parity Prices

Linda Hutton, Chief, Environmental, Economics and Demographics Branch	(202) 720-6146
Kevin Hintzman, Economics Section	(202) 720-6146
Eric Barnes - Farm Supplies and Repairs, Farm Machinery, Fuels, Feeder Livestock, Poultry Chicks, Feed Price Ratios, Grazing Fees, Autos & Trucks	(202) 690-4752
Daryl Brinkman - Prices Received Indexes, Parity Prices	(202) 720-8844
Tara Jackson - Prices Paid Indexes, Prices Paid for Feed, Fertilizer, Agricultural Chemicals, Seeds	(202) 690-3229

ACCESS TO REPORTS!!

For your convenience, there are several ways to obtain NASS reports, data products, and services:

INTERNET ACCESS

All NASS reports are available free of charge on the worldwide Internet. For access, connect to the Internet and go to the NASS Home Page at: www.usda.gov/nass/. Select "Today's Reports" or Publications and then Reports Calendar or Publications and then Search, by Title or Subject.

E-MAIL SUBSCRIPTION

All NASS reports are available by subscription free of charge direct to your e-mail address. Starting with the NASS Home Page at www.usda.gov/nass/, click on **Publications**, then click on the **Subscribe by E-mail** button which takes you to the page describing e-mail delivery of reports. Finally, click on **Go to the Subscription Page** and follow the instructions.

PRINTED REPORTS OR DATA PRODUCTS

CALL OUR TOLL-FREE ORDER DESK: 800-999-6779 (U.S. and Canada)
Other areas, please call 703-605-6220 FAX: 703-605-6900
(Visa, MasterCard, check, or money order acceptable for payment.)

ASSISTANCE

For **assistance** with general agricultural statistics or further information about NASS or its products or services, contact the **Agricultural Statistics Hotline** at **800-727-9540**, 7:30 a.m. to 4:00 p.m. ET, or e-mail: nass@nass.usda.gov.

The U.S. Department of Agriculture (USDA) prohibits discrimination in all its programs and activities on the basis of race, color, national origin, sex, religion, age, disability, political beliefs, sexual orientation, and marital or family status. (Not all prohibited bases apply to all programs.) Persons with disabilities who require alternative means for communication of program information (Braille, large print, audiotape, etc.) should contact USDA's TARGET Center at 202-720-2600 (voice and TDD).

To file a complaint of discrimination, write USDA, Director, Office of Civil Rights, Room 326-W, Whitten Building, 14th and Independence Avenue, SW, Washington, DC 20250-9410 or call 202-720-5964 (voice and TDD). USDA is an equal opportunity provider and employer.