

Released May 31, 2005, by the National Agricultural Statistics Service (NASS), Agricultural Statistics Board, U.S. Department of Agriculture. For information on *Agricultural Prices* see page 41, office hours 7:30 a.m. to 4:00 p.m. ET.

May Farm Prices Received Index unchanged From Last Month

The preliminary All Farm Products Index of Prices Received by Farmers in May, at 122, based on 1990-92=100, is unchanged from April. The Crop and Livestock Indices are unchanged. Producers received higher commodity prices for hogs, strawberries, hay, and potatoes. Lower prices were received for lettuce, broccoli, asparagus, and dairy. The overall index is also affected by the 3-year average seasonal change in the mix of commodities producers sell. Increased average marketings of cantaloup, sweet corn, grapes, and broilers offset decreased marketings of cattle, dairy, calves, and asparagus.

Preliminary All Farm Products Index is down 7 points (5.4 percent) from May 2004. The Food Commodities Index, at 126, is unchanged from last month but 5 points (3.8 percent) below May 2004.

Prices Paid Index Unchanged

The May Index of Prices Paid for Commodities and Services, Interest, Taxes, and Farm Wage Rates (PPITW) is 139 percent of the 1990-92 average. The index is unchanged from April but 4 points (3.0 percent) above May 2004. Lower prices in May for feeder pigs, diesel fuel, feed grains, and gasoline offset higher prices for hay and forages, nitrogen fertilizers, complete feeds, and feeder cattle.

Index Summary Table

Index 1990-92=100	2004		2005	
	Apr	May	Apr	May
Prices Received	125	129	122	122
Prices Paid	133	135	139	139
Ratio ¹	94	96	88	88

¹ Ratio of index of prices received by farmers to index of prices paid by farmers.

Prices Received by Farmers

The May All Farm Products Index is 122 percent of its 1990-92 base, unchanged from the April index but 5.4 percent below the May 2004 index.

ALL CROPS: The May index is 121, unchanged from April but 2.4 percent below May 2004. From April, index increases for feed grains & hay, fruits & nuts, and potatoes & dry beans offset the index decreases for food grains and commercial vegetables.

Food Grains: The May index, at 108, is down 1.8 percent from last month and 16 percent below May 2004. The May all wheat price, at \$3.28 per bushel, is down 7 cents from April and down 54 cents from May 2004.

Feed Grains & Hay: The May index is 97, up 2.1 percent from last month but 24 percent below May 2004. The corn price, at \$1.92 per bushel, is down 8 cents from last month and 95 cents below May 2004. The all hay price, at \$107 per ton, is \$10.10 above April and up \$6.00 from last May. Grain sorghum, at \$2.86 per cwt, is down 10 cents from April and \$1.96 below May last year.

Oil-Bearing Crops: The May index, at 109, is unchanged from April but 36 percent lower than May 2004. The soybean price, at \$6.09 per bushel, increased 6 cents from April but is \$3.47 below May 2004.

Cotton: The May index, at 70, is down 1.4 percent from April and 29 percent below May 2004. The May price, at 42.2 cents per pound, is down 0.9 cents from the previous month and 17.5 cents below last May.

Potatoes & Dry Beans: The May index, at 117, is up 5.4 percent from both last month and May 2004. The all potato price, at \$6.71 per cwt, is up 54 cents from April and 24 cents above last May. The all dry bean price, at \$25.50 per cwt, is down \$3.30 from the previous month but \$5.60 above May 2004.

Fruits & Nuts: The May index, at 128, is up 16 percent from April and 9.4 percent higher than May 2004. Price increases for strawberries, grapefruit, and lemons more than offset the price decrease for tangerines.

Commercial Vegetables: The May index, at 155, is down 17 percent from last month but 30 percent above May 2004. Price decreases during May for lettuce, broccoli, and asparagus more than offset price increases for sweet corn, onions, and snap beans.

LIVESTOCK & PRODUCTS: The May index, at 122, is unchanged from last month but down 8.3 percent from May 2004. Compared with a year ago, prices are higher for cattle, calves, and turkeys but lower for dairy, broilers, eggs, and hogs.

Meat Animals: The May index, at 126, is unchanged from last month but 4.1 percent higher than last year. The May hog price, at \$55.40 per cwt, is up \$4.20 from April but \$1.20 lower than a year ago. The May beef cattle price of \$92.90 is down \$1.10 from last month but \$4.40 higher than May 2004.

Dairy Products: The May index, at 114, is down 1.7 percent from a month ago and 23 percent lower than a year ago. The May all milk price of \$14.90 is down 30 cents from last month and down \$4.40 from May 2004. The fluid grade milk price is down 30 cents from the previous month and the manufactured grade milk price is 50 cents below April.

Poultry & Eggs: The May index, at 122, is up 0.8 percent from April but 13 percent below a year ago. May market egg prices, at 23.6 cents per dozen, decreased 2.5 cents from April. The May broiler price, at 44.0 cents per pound, was unchanged from April but 6 cents below a year ago. The May turkey price, averaging 41.1 cents per pound, is up 1.9 cents from the previous month and up 1.0 cent from a year earlier.

Table of Contents

U.S. Prices Received and Indexes	Page	Monthly State Prices, continued	Page
Narrative	2	Cotton, Upland	17
Price Indexes	5	Cottonseed	17
Price Index Charts	6	Eggs	22
U.S. Prices Received Summary	8	Flaxseed	16
Charts	10	Hay	17
Selected Commodities	14	Hogs, All	21
Upland Cotton & Rice Marketings	17	Barrows and Gilts	21
Parity Prices	24	Sows	21
Reliability Statement	31	Milk	23
		Milk Cows	23
Monthly State Prices Received		Oats	15
Apples	17	Peanuts	16
Barley	15	Potatoes	19
Beans, Dry Edible	16	Sheep	22
Beef Cattle, All	20	Lambs	22
Calves	20	Sorghum, Grain	15
Cows, Beef	20	Soybeans	15
Steers and Heifers	20	Sunflower, All	16
Citrus Fruit	18	Tobacco	16
Corn	15	Wheat, All Classes	14
Prices Received Special Features			
		Page	
Marketing Year for Specified Commodities		26	
Marketing Year Average Prices			
Tobacco, All and By Type		see May Crop Production: 2005	
		http://usda.mannlib.cornell.edu/reports/nassr/field/pcp-bb/2005	
Monthly Price Revisions			
Tobacco, by Type		27	
All		26	

Table of Contents (continued)

U.S. Prices Paid, Prices Paid Indexes and Ratios	Page
Narrative	32
Indexes and Parity Ratios	33
Charts	35
Feed Ratios	38
Reliability Statement	40
 U.S. Average Prices	
Prices Used to Calculate Feed Price Ratios	38
Feeder Livestock	38
 Special Features	
Feed: Price Ratios, January 2002 - May 2005	39
 Information Contacts	41

**Index Numbers of Prices Received, United States,
May 2005, with Comparisons**

Index	1910-14=100				1990-92=100		
	Average 1990-92	2004	2005		2004	2005	
		May	Apr	May	May	Apr	May
All Farm Products	639	819	*774	774	129	*122	122
All Crops	500	611	*599	599	124	*121	121
Food Grains	325	407	*348	344	128	*110	108
Feed Grains & Hay	363	453	*341	346	127	*95	97
Cotton	517	505	*364	357	99	*71	70
Tobacco	1,263						
Oil-Bearing Crops	554	930	*594	598	170	*109	109
Fruits & Nuts	716	816	*771	897	117	*110	128
Commercial Vegetables	698	795	*1,247	1,035	119	*187	155
Potatoes & Dry Beans	540	563	*564	595	111	*111	117
Other Crops	493	569	578	578	115	117	117
Livestock & Products	768	1,021	*938	938	133	*122	122
Meat Animals	1,021	1,232	*1,277	1,283	121	*126	126
Dairy Products	799	1,186	*934	916	148	*116	114
Poultry & Eggs	282	398	341	344	141	121	122
Food Commodities					131	*126	126

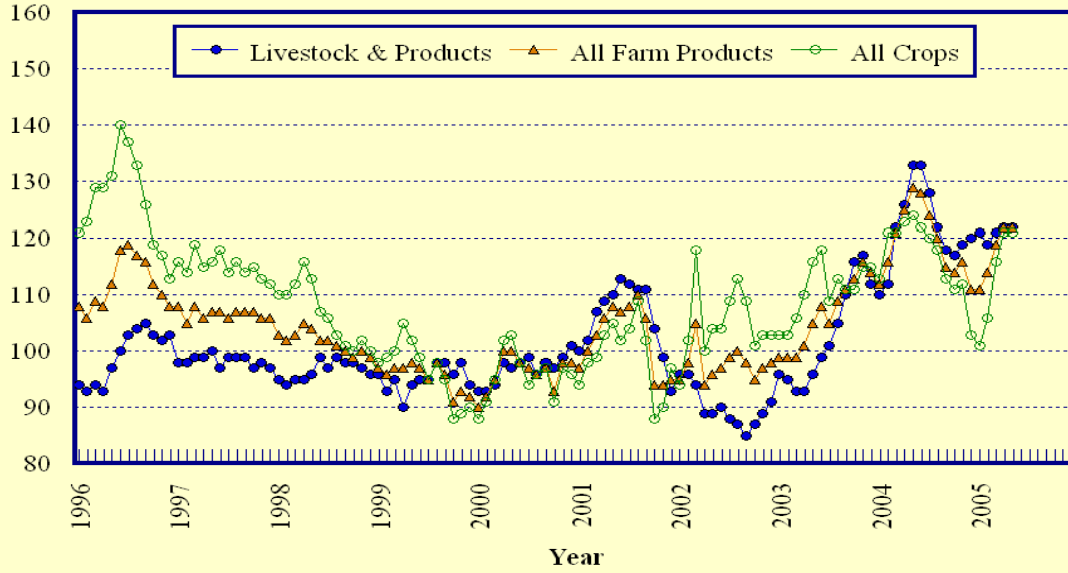
* Revised.

**Selected Index Numbers for Prices Received and Paid,
1990-92=100, by Month, United States, 2004 and 2005**

Month	Index of Prices Received						Index of Prices Paid			
	All Farm Products		All Crops		Livestock and Products		All Items		Production Items	
	2004	2005	2004	2005	2004	2005	2004	2005	2004	2005
Jan	112	111	113	101	110	121	130	137	127	134
Feb	116	114	121	106	112	119	131	137	127	134
Mar	121	119	121	116	122	121	132	139	129	136
Apr	125	122	123	121	126	122	133	139	131	138
May	129	122	124	121	133	122	135	139	133	138
Jun	128		122		133		135		133	
Jul	124		120		128		135		133	
Aug	120		118		122		135		133	
Sep	115		113		118		135		133	
Oct	114		111		117		136		134	
Nov	116		112		119		135		133	
Dec	111		103		120		134		132	

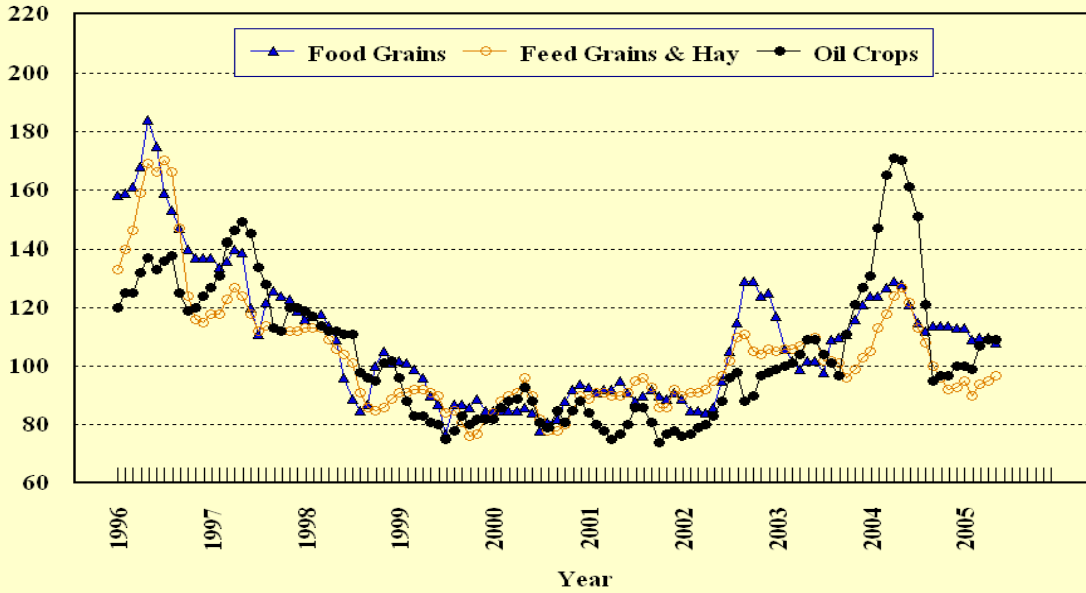
Prices Received, Major Indexes, US

Index Values(1990-92=100)



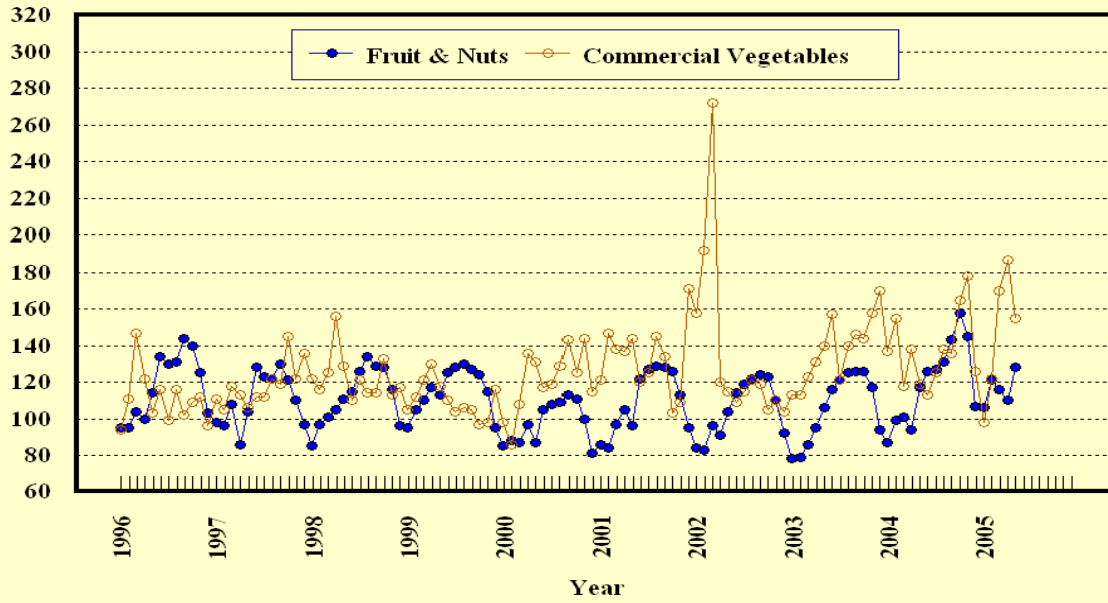
Prices Received, Food, Feed, & Oil Indexes, US

Index Values(1990-92=100)



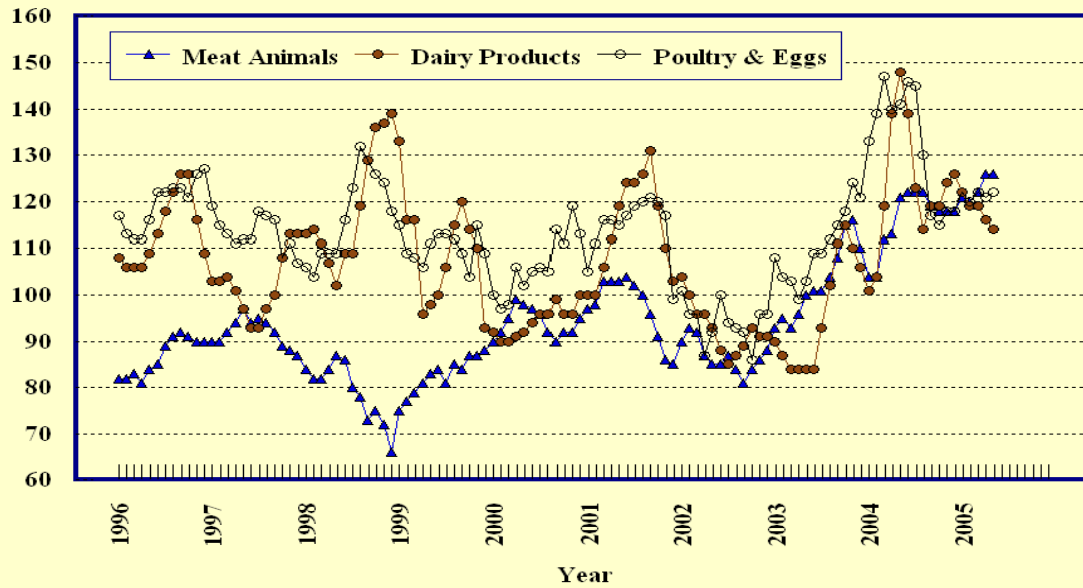
Prices Received, Fruit/Vegetable Indexes, US

Index Values(1990-92=100)



Prices Received, Livestock Product Indexes, US

Index Values(1990-92=100)



**Prices Received, United States,
May 2005, with Comparisons**

Commodity	Unit	Average 1990-92	Entire Month		Preliminary
			May 2004	Apr 2005	May 2005
		<i>Dollars</i>	<i>Dollars</i>	<i>Dollars</i>	<i>Dollars</i>
Field Crops					
Barley, All	Bu	2.12	2.78	2.32	2.53
Feed	Bu	1.90	2.39	1.54	1.91
Malting	Bu	2.43	3.14	2.74	3.02
Beans, Dry Edible	Cwt	19.10	19.90	28.80	25.50
Chickpeas, All	Cwt		23.00	22.90	18.80
Large	Cwt		23.30	22.90	18.80
Small	Cwt		(⁴)	(⁴)	(⁵)
Corn	Bu	2.30	2.87	2.00	1.92
Cotton, Upland	Lb	0.606	0.597	0.431	0.422
Cottonseed ³	Ton	96.00			
Flaxseed	Bu	4.27	7.10	12.30	13.00
Hay, All, Baled ¹	Ton	76.30	101.00	96.90	107.00
Alfalfa ¹	Ton	77.20	109.00	103.00	116.00
Other ¹	Ton	60.00	78.30	75.40	76.10
Lentils	Cwt		19.10	13.00	12.10
Oats	Bu	1.22	1.70	1.65	1.58
Peanuts, In-Shell	Lb	0.304	0.206	0.180	0.189
Peas, Dry Edible	Cwt		8.89	5.44	4.66
Austrian Winter	Cwt		10.60	8.70	(⁵)
Potatoes	Cwt	5.82	6.47	6.17	6.71
Rice, Rough	Cwt	7.07	8.82	7.06	7.00
Sorghum Grain	Cwt	3.75	4.82	2.96	2.86
Soybeans	Bu	5.61	9.56	6.03	6.09
Sunflower, All	Cwt	9.50	13.70	15.20	14.80
Tobacco, Types 11-37	Lb	1.740	(⁵)	(⁵)	(⁵)
Wheat, All	Bu	2.96	3.82	3.35	3.28
Winter	Bu	2.93	3.72	3.27	3.13
Durum	Bu	2.86	4.21	3.63	3.57
Other Spring	Bu	3.11	4.01	3.39	3.52
Hard Red Winter	Bu		3.67	3.18	
Soft Red Winter	Bu		3.81	3.16	
Hard Red Spring	Bu		4.02	3.38	
White	Bu	3.24	3.93	3.52	
Fruit					
Citrus, Equiv on-tree					
Grapefruit	Box	5.77	3.85	9.04	11.27
Lemons	Box	10.10	12.37	9.61	12.27
Oranges	Box	5.79	3.60	5.02	5.07
Tangelos	Box	5.82			
Tangerines	Box	15.11	20.59	17.43	15.22
Temples	Box	6.23			
Noncitrus, Fresh					
Apples ²	Lb	0.212	0.296	0.170	0.172
Grapes ²	Ton	506.00	1,530.00	(⁵)	1,270.00
Peaches ²	Ton	432.00	918.00	(⁵)	600.00
Pears ²	Ton	370.00	443.00	510.00	553.00
Strawberries	Cwt	56.00	64.50	62.50	76.30

¹ Mid-month price.

² Equivalent packinghouse-door returns for CA, MI, and NY (apples only), and WA (apples, peaches, and pears). Prices as sold for other states.

³ Marketing year August - February.

⁴ Price not published to avoid disclosure of individual firms.

⁵ Insufficient sales to establish a price.

**Prices Received, United States,
May 2005, with Comparisons**

Commodity	Unit	Average 1990-92	Entire Month		Preliminary
			May 2004	Apr 2005	May 2005
		<i>Dollars</i>	<i>Dollars</i>	<i>Dollars</i>	<i>Dollars</i>
Vegetables, Fresh ¹					
Asparagus	Cwt	79.80	128.00	183.00	134.00
Broccoli	Cwt	22.50	27.20	40.20	22.60
Cantaloupes ²	Cwt		15.60		29.40
Carrots	Cwt	13.20	24.90	21.10	21.20
Cauliflower	Cwt	26.80	28.80	36.80	26.80
Celery	Cwt	11.60	15.00	20.80	19.70
Corn, Sweet	Cwt	15.70	18.10	25.40	30.10
Cucumbers ²	Cwt		14.30	25.50	22.00
Lettuce	Cwt	11.90	10.50	29.70	14.50
Onions	Cwt	12.80	18.10	16.30	19.00
Snap Beans ²	Cwt		22.70	63.60	68.10
Tomatoes	Cwt	32.30	32.20	62.50	56.10
Livestock					
Calves	Cwt	94.30	121.00	140.00	141.00
Cattle, All Beef	Cwt	72.90	88.50	94.00	92.90
Cows ³	Cwt	49.60	52.50	57.10	58.70
Steers & Heifers	Cwt	77.10	92.60	98.30	96.90
Milk Cows ⁴	Head	1,130.00		1,770.00	
Hogs, All	Cwt	47.70	56.60	51.20	55.40
Barrows & Gilts	Cwt	48.40	57.30	51.50	56.10
Sows	Cwt	39.50	43.50	41.70	41.70
Lambs	Cwt	56.20	103.00	114.00	
Sheep	Cwt	23.40	36.00	44.40	
Dairy and Poultry					
Milk, All ^{5 6}	Cwt	13.06	19.30	15.20	14.90
Fluid Grade ⁶	Cwt	13.10	19.30	15.20	14.90
Mfg Grade ⁶	Cwt	11.80	18.80	14.70	14.20
Broilers, Live ⁷	Lb	0.317	0.500	0.440	0.440
Eggs, All ⁸	Doz	0.643	0.645	0.469	0.452
Market ⁸	Doz	0.546	0.472	0.261	0.236
Turkeys, live ^{7 8}	Lb	0.380	0.401	0.392	0.411
Adjusted for Seasonal Variation					
Eggs, All	Doz	0.545	0.626	0.455	0.526
Milk, All ⁵	Cwt	9.71	19.70	15.70	15.20

¹ F.O.B. shipping point.

² Monthly estimates began January 1995.

³ Beef cows and cull dairy cows sold for slaughter.

⁴ Animals sold for dairy herd replacement only. Prices available for Jan, Apr, Jul, and Oct.

⁵ Before deductions for hauling. Includes quality, quantity, and other premiums. Excludes hauling subsidies.

⁶ May 2005 Fat test percent: all milk 3.60, fluid milk 3.59, mfg grade 3.78.

⁷ Equivalent liveweight returns to producers for most States. Includes growers and contractors.

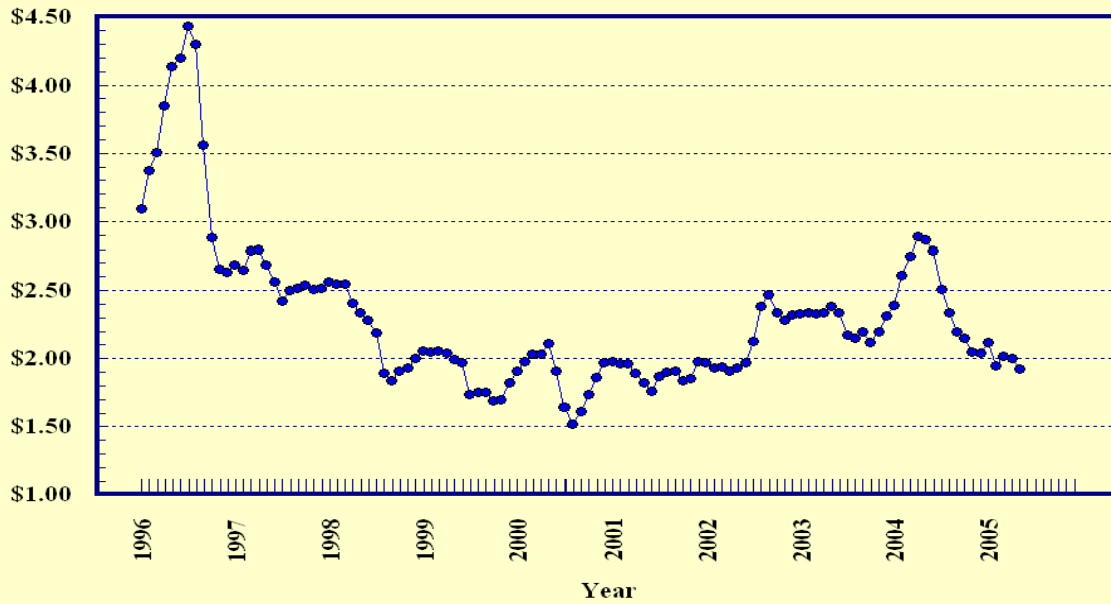
⁸ Mid-month price.

⁹ Price not published to avoid disclosure of individual firms.

¹⁰ Insufficient sales to establish a price.

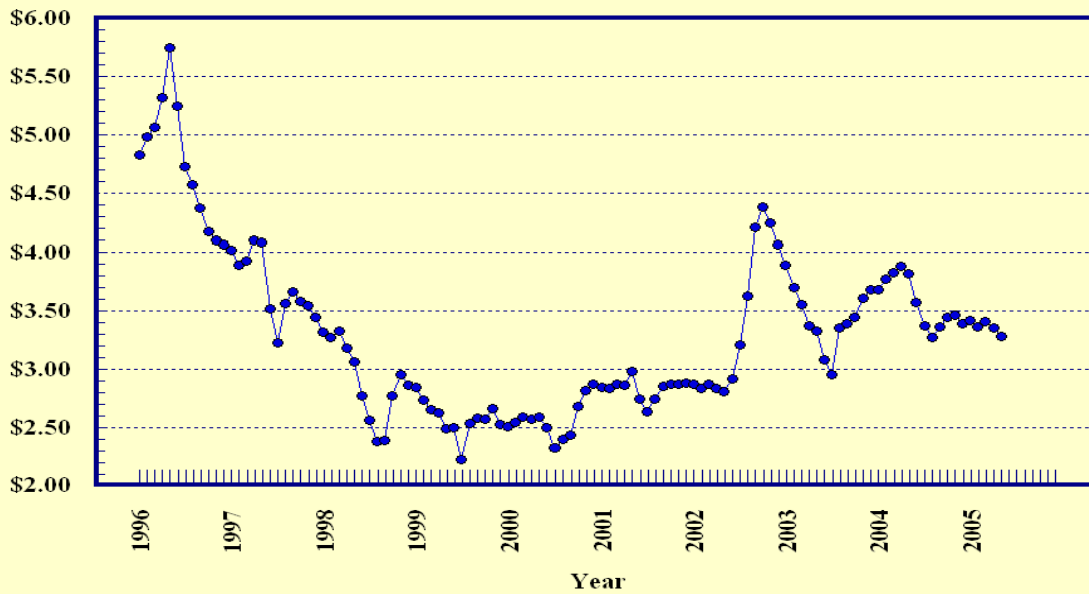
Prices Received, Corn, US

Dollars per Bu



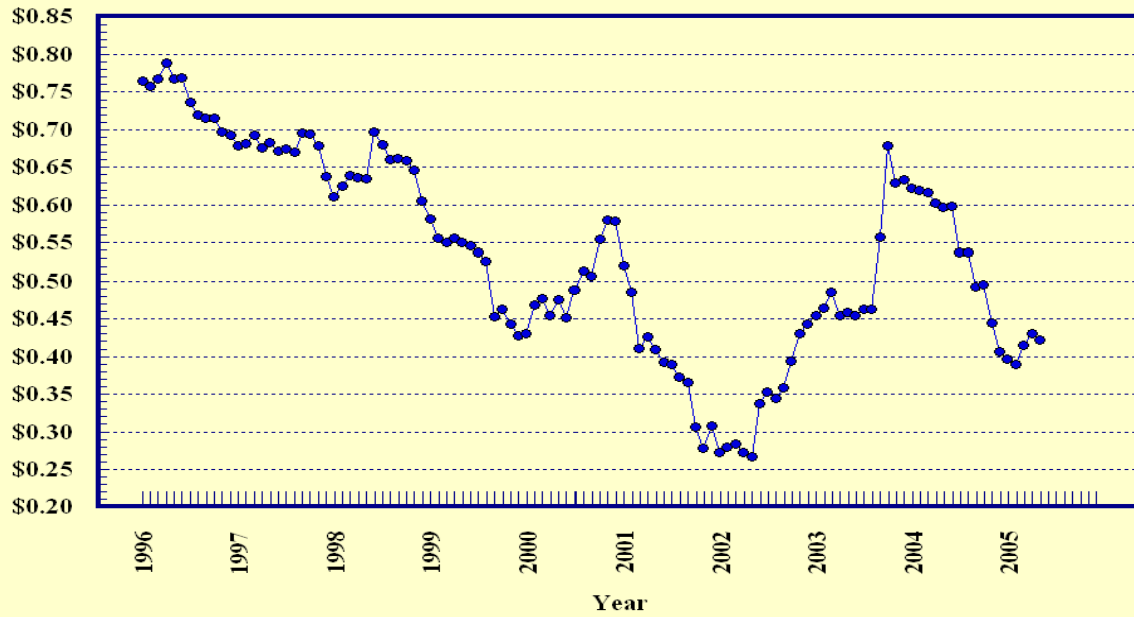
Prices Received, Wheat, US

Dollars per Bu



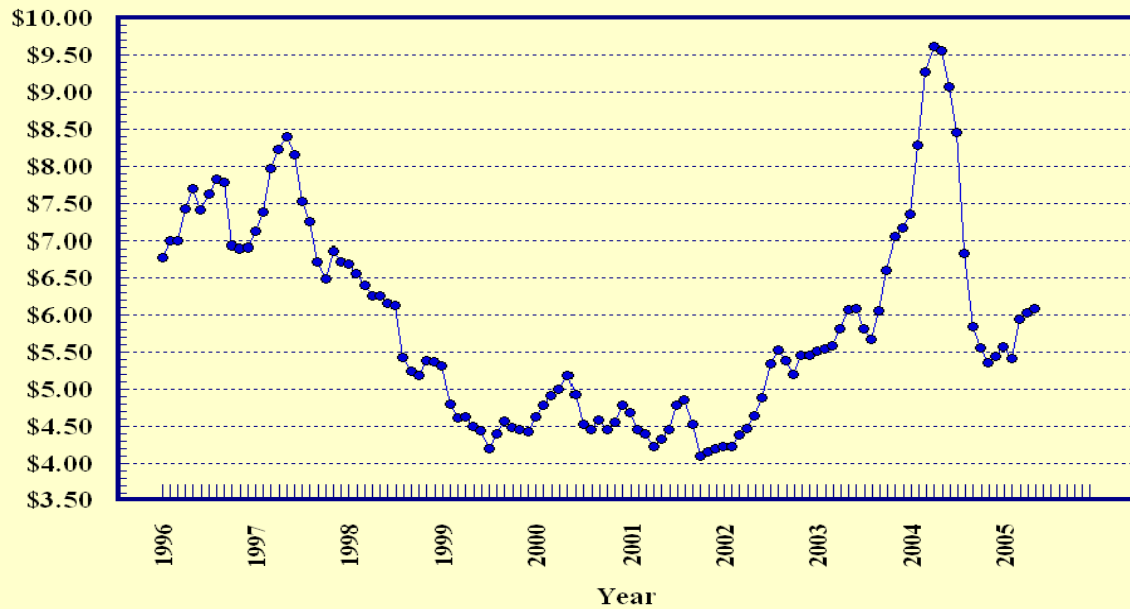
Prices Received, Cotton, US

Dollars per Lb



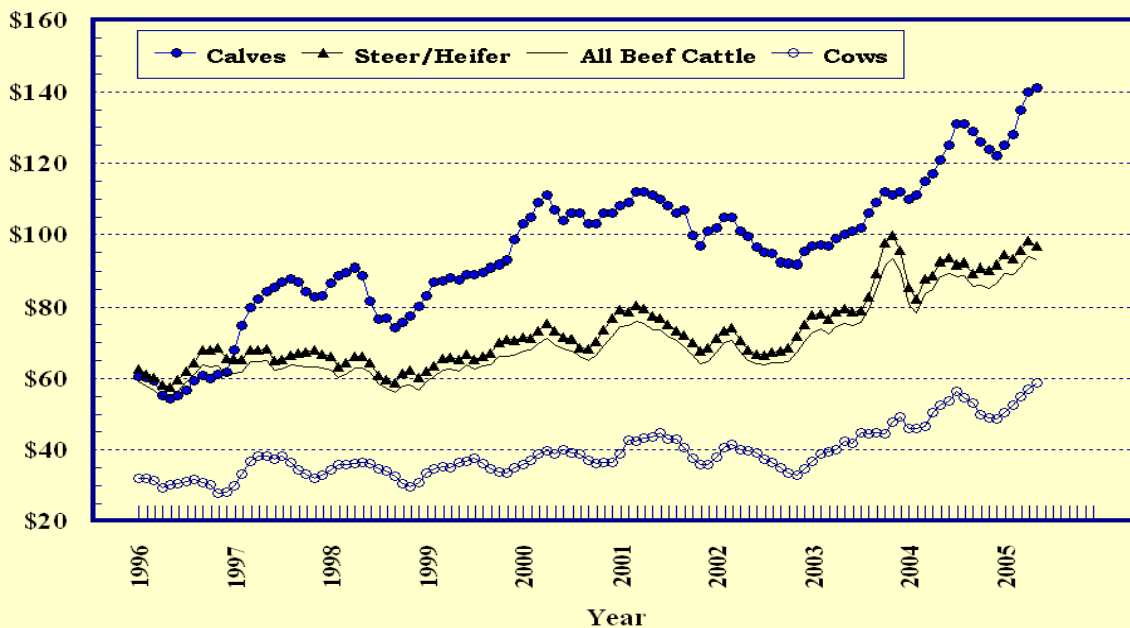
Prices Received, Soybeans, US

Dollars per Bu



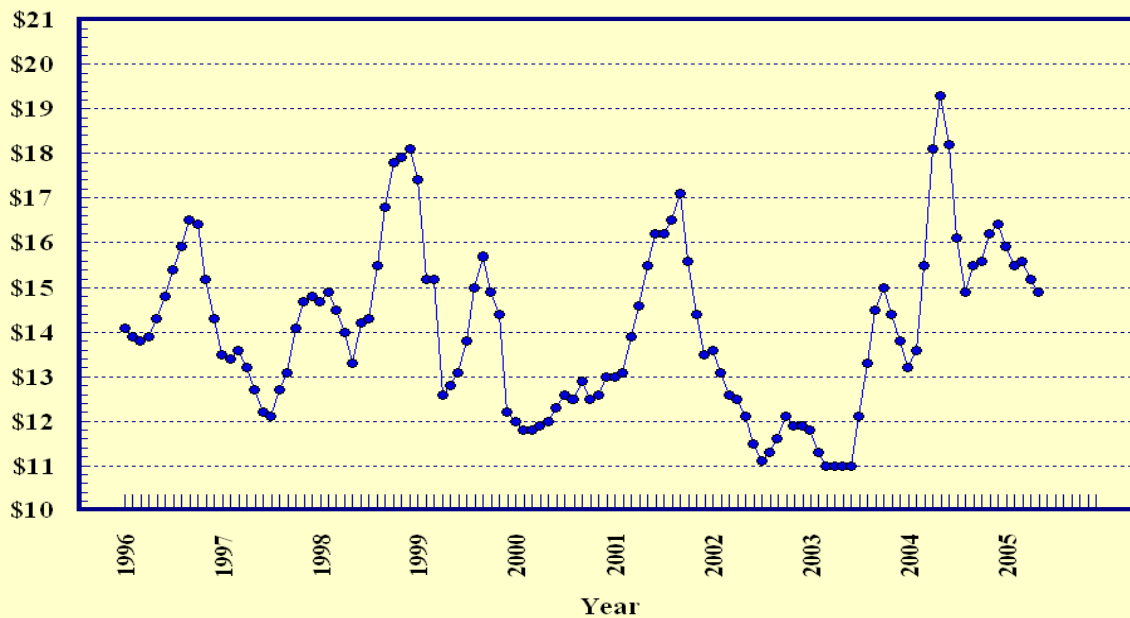
Prices Received, Cattle, US

Dollars per Cwt



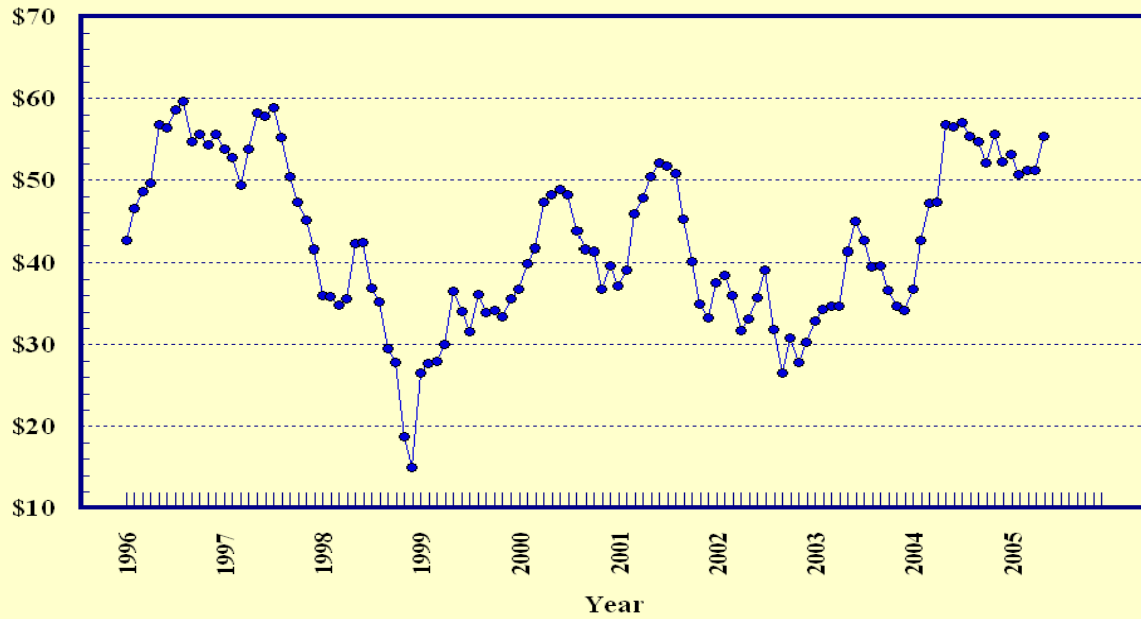
Prices Received, Milk, US

Dollars per Cwt



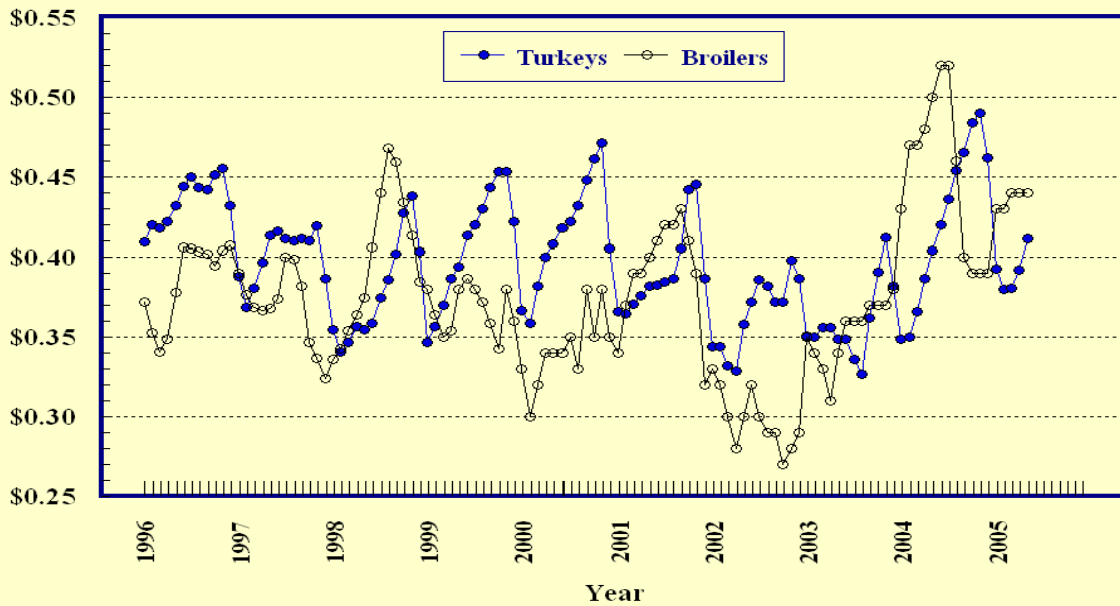
Prices Received, Hogs, US

Dollars per Cwt



Prices Received, Turkeys & Broilers, US

Dollars per Lb



Wheat: Prices Received, by State, April and May 2005

State	All Wheat		Winter Wheat		Durum Wheat		Oth Spring Wheat	
	Apr ¹	May ²	Apr ¹	May ²	Apr ¹	May ²	Apr ¹	May ²
	<i>Dollars per Bushel</i>	<i>Dollars per Bushel</i>	<i>Dollars per Bushel</i>	<i>Dollars per Bushel</i>	<i>Dollars per Bushel</i>	<i>Dollars per Bushel</i>	<i>Dollars per Bushel</i>	<i>Dollars per Bushel</i>
AR	(³)	(³)	(³)	(³)				
CA	(³)	(⁴)	(³)	(⁴)	(⁴)	(⁴)		
CO	3.19	2.92	3.19	2.92			(⁴)	(⁴)
ID	3.58	3.59	3.42	3.45			3.78	3.80
IL	3.32	3.20	3.32	3.20				
IN	2.97	2.86	2.97	2.86				
KS	3.12	3.01	3.12	3.01				
MI	3.09	2.90	3.09	2.90				
MN	3.29	3.20	3.43	2.61			3.27	3.29
MO	3.22	3.10	3.22	3.10				
MT	3.50	3.65	3.40	3.39	3.80	3.66	3.46	3.83
NE	3.18	3.05	3.18	3.05				
ND	3.28	3.33	2.22	2.30	3.51	3.50	3.22	3.30
OH	3.06	2.92	3.06	2.92				
OK	3.11	3.00	3.11	3.00				
OR	3.69	3.57	3.60	3.53			4.10	3.75
SD	3.30	3.50	3.12	3.29			3.41	3.62
TX	2.75	2.91	2.75	2.91				
WA	3.62	3.58	3.57	3.54			3.80	3.74
US	3.35	3.28	3.27	3.13	3.63	3.57	3.39	3.52

¹ Entire month.

² Mid-month.

³ Price not published to avoid disclosure of individual firms.

⁴ Insufficient sales to establish a price.

**Prices Received for Selected Agricultural Commodities, by Month,
United States, 2004 and 2005 ¹**

Month	All Wheat		Corn		Soybeans		Beef Cattle ²		All Hogs	
	2004	2005	2004	2005	2004	2005	2004	2005	2004	2005
	<i>Dollars per Bushel</i>	<i>Dollars per Bushel</i>	<i>Dollars per Bushel</i>	<i>Dollars per Bushel</i>	<i>Dollars per Bushel</i>	<i>Dollars per Bushel</i>	<i>Dollars per Cwt</i>	<i>Dollars per Cwt</i>	<i>Dollars per Cwt</i>	<i>Dollars per Cwt</i>
Jan	3.68	3.42	2.39	2.12	7.35	5.57	81.10	89.40	36.60	53.20
Feb	3.77	3.36	2.61	1.95	8.28	5.42	78.50	89.00	42.60	50.70
Mar	3.83	3.41	2.75	2.02	9.28	5.95	83.70	91.30	47.20	51.20
Apr	3.88	3.35	2.89	2.00	9.62	6.03	85.00	94.00	47.40	51.20
May	3.82	3.28	2.87	1.92	9.56	6.09	88.50	92.90	56.60	55.40
Jun	3.57		2.79		9.08		89.80		56.70	
Jul	3.37		2.51		8.46		88.10		57.10	
Aug	3.27		2.34		6.83		87.70		55.30	
Sep	3.36		2.20		5.84		85.90		54.80	
Oct	3.44		2.15		5.56		86.50		52.20	
Nov	3.46		2.05		5.36		85.40		55.60	
Dec	3.39		2.04		5.45		86.80		52.30	

¹ Current month prices are mid-month; prices for previous months are for the entire month.

² Cows, steers and heifers.

Grains: Prices Received, by States, April and May 2005

State	All Barley ¹		Corn		Oats		Soybeans		Sorghum Grain	
	Apr ²	May ³	Apr ²	May ³	Apr ²	May ³	Apr ²	May ³	Apr ²	May ³
	<i>Dollars per Bushel</i>	<i>Dollars per Bushel</i>	<i>Dollars per Bushel</i>	<i>Dollars per Bushel</i>	<i>Dollars per Bushel</i>	<i>Dollars per Bushel</i>	<i>Dollars per Bushel</i>	<i>Dollars per Bushel</i>	<i>Dollars per Cwt</i>	<i>Dollars per Cwt</i>
AL							6.23	6.30	(⁵)	(⁵)
AR										
CA	(⁴)	(⁴)								
CO	(⁴)	(⁴)	2.11	1.93						
ID	3.04	2.95								
IL			2.09	2.05	(⁴)	(⁴)	6.13	6.15	3.51	3.50
IN			1.97	1.91			6.00	6.17		
IA			1.95	1.80	1.84	1.80	5.95	6.05		
KS			1.90	1.80			6.02	5.93	2.91	2.77
KY			2.19	2.05			6.17	6.20		
LA							6.11	(⁴)		
MI			1.88	1.85	2.12	2.10	5.97	6.00		
MN	1.93	2.01	1.90	1.89	1.47	1.42	6.13	6.11		
MS							6.15	6.35		
MO			2.03	1.90			6.10	6.10	(⁴)	3.25
MT	2.84	2.91			1.74	(⁵)				
NE			1.92	1.90	1.91	1.80	5.97	6.05	2.99	3.00
NC			2.34	2.31			6.05	6.30		
ND	1.96	2.02	1.86	1.80	(⁵)	(⁵)	5.87	5.80		
OH			1.99	1.97	2.08	(⁵)	6.05	6.10		
OK									2.94	2.82
OR	2.17	2.20			(⁵)	(⁵)				
PA			2.37	2.29	1.99	1.98				
SD	1.92	2.10	1.82	1.75	1.56	1.50	6.00	6.02		
TN			2.34	2.15			6.14	6.15		
TX			2.30	2.06	(⁵)	(⁵)			3.09	3.17
UT	2.04	(⁴)								
WA	2.21	2.20								
WI			2.20	2.10	1.72	1.70	5.86	5.95		
WY	1.68	1.70								
US	2.32	2.53	2.00	1.92	1.65	1.58	6.03	6.09	2.96	2.86

¹ The Three-State (MN, ND and SD) Feed Barley price is discontinued.

² Entire month.

³ Mid-month.

⁴ Price not published to avoid disclosure of individual firms.

⁵ Insufficient sales to establish a price.

**Malting and Feed Barley: Prices Received Selected State,
April and May 2005**

State	Malting Barley		Feed Barley	
	Apr ¹	May ²	Apr ¹	May ²
	<i>Dollars per Bushel</i>	<i>Dollars per Bushel</i>	<i>Dollars per Bushel</i>	<i>Dollars per Bushel</i>
ID	3.40	3.40	2.06	2.10
MN	2.14	2.30	1.50	1.38
MT	3.27	3.37	1.66	1.67
ND	2.34	2.40	1.33	1.30
SD	1.92	2.10	(⁴)	(⁴)
WY	(⁴)	(⁴)	1.68	1.70

¹ Entire month.

² Mid-month.

³ Price not published to avoid disclosure of individual firms.

⁴ Insufficient sales to establish a price.

Field Crops: Prices Received, by State, April and May 2005

State	Dry Edible Beans		All Sunflower		Flaxseed		Tobacco		Peanuts ⁴	
	Apr ¹	May ²	Apr ¹	May ²	Apr ¹	May ²	Apr ¹	May ³	Apr ¹	May ³
	<i>Dollars per Cwt</i>	<i>Dollars per Cwt</i>	<i>Dollars per Cwt</i>	<i>Dollars per Cwt</i>	<i>Dollars per Bushel</i>	<i>Dollars per Bushel</i>	<i>Dollars per Pound</i>	<i>Dollars per Pound</i>	<i>Dollars per Pound</i>	<i>Dollars per Pound</i>
AL									(⁵)	(⁵)
CA	37.90	37.00								
CO	27.60	(⁵)								
FL							(⁶)	(⁶)	(⁶)	(⁶)
GA							(⁶)	(⁶)	(⁵)	(⁶)
ID	25.30	25.40								
IN							(⁶)	(⁶)		
KS			14.00	12.40						
KY							(⁶)	(⁶)		
MD							(⁶)	(⁶)		
MI	23.50	23.00								
MN	(⁵)	(⁵)	19.10	(⁵)						
MO										
NE	23.80	23.00								
NC							(⁶)	(⁶)	(⁵)	(⁵)
ND	23.90	22.50	16.10	16.00	12.30	13.00				
OH							(⁶)	(⁶)		
OK										
SC							(⁶)	(⁶)		
SD			14.30	13.80	12.20	(⁶)				
TN							(⁶)	(⁶)		
TX									(⁵)	(⁵)
VA							(⁶)	(⁶)	(⁵)	(⁵)
WV										
US	28.80	25.50	15.20	14.80	12.30	13.00	(⁶)	(⁶)	0.180	0.189

¹ Entire month.

² Mid-month.

³ Based on sales through first half of month.

⁴ In-Shell.

⁵ Price not published to avoid disclosure of individual firms.

⁶ Insufficient sales to establish a price.

Field Crops and Apples: Prices Received, by State, April and May 2005

State	Cotton, Upland		May				Apples Fresh Use ^{1,4} Dol/Lb
	Apr ¹	May ²	Cotton- seed ⁵ Dollars per Ton	Hay, Baled ³			
				All Dollars per Ton	Alfalfa Dollars per Ton	Other Dollars per Ton	
	<i>Dollars per Pound</i>	<i>Dollars per Pound</i>					
AL	0.395	0.395					
AZ	(⁶)	(⁶)		130.00	130.00	125.00	
AR	0.407	0.398					
CA	(⁶)	(⁶)		142.00	149.00	100.00	
CO				78.00	78.00	75.00	
GA	0.403	0.395					
ID				101.00	101.00	77.00	
IL				88.00	92.00	69.00	
IA				76.00	80.00	53.00	
KS				59.00	63.00	51.00	
KY				81.00	115.00	67.00	
LA	0.402	0.402					
MI				93.00	95.00	65.00	0.180
MN				73.00	75.00	50.00	
MS	0.395	0.395					
MO				58.00	98.00	45.00	
MT				75.00	76.00	73.00	
NE				48.00	48.00	46.00	
NV				105.00	102.00	130.00	
NM				119.00	122.00	99.00	
NY				112.00	145.00	90.00	0.218
NC	0.395	0.395					
ND				57.00	61.00	46.00	
OH				119.00	140.00	56.00	0.240
OK				80.00	95.00	55.00	
OR				102.00	110.00	90.00	
PA				128.00	141.00	110.00	0.191
SD				60.00	61.00	49.00	
TN	0.395	0.395					
TX	0.433	0.435		74.00	120.00	62.00	
UT				90.00	90.00	80.00	
VA							
WA				104.00	100.00	110.00	0.168
WI				100.00	110.00	65.00	
WY				73.00	74.00	68.00	
US	0.431	0.422		107.00	116.00	76.10	0.172

¹ Entire month.

² Based on sales during the first half of the month.

³ Mid-month.

⁴ Equivalent packinghouse-door returns for CA, NY, and WA. Price at point of first sale for other States.

⁵ Marketing year August - February.

⁶ Price not published to avoid disclosure of individual firms.

**Upland Cotton and Rice: Prices Received and Marketings,
United States, May 2005, with Comparisons**

Item	Unit	Mar 2005 ¹	Apr 2005 ¹	May 2005 ²
Cotton, Upland				
Average Price	Dollars per Pound	0.415	0.431	0.422
Marketings ³	1,000 Bales	1,354	934	NA
Rice				
Average Price	Dollars per Cwt	6.88	7.06	7.00
Marketings ⁴	1,000 Cwt	16,580	15,829	NA

¹ Entire month.

² Based on purchases for the first half of the month.

³ Marketings based on a survey of cotton buyers in the major producing States - AL, AZ, AR, CA, GA, LA, MS, NC, TN, and TX.

⁴ Purchases by private firms and rice (rough equivalent) shipped by cooperatives.

**Citrus Fruit: Prices and Equivalent Returns, by Utilization,
by State and United States, May 2005**

Commodity, State and Type	F.O.B. Packed Fresh	Equivalent Returns ¹					
		Packinghouse-door			On-tree		
		All	Fresh	Process	All	Fresh	Process
	<i>Dollars per Box</i>	<i>Dollars per Box</i>	<i>Dollars per Box</i>	<i>Dollars per Box</i>	<i>Dollars per Box</i>	<i>Dollars per Box</i>	<i>Dollars per Box</i>
Grapefruit							
AZ	24.10	17.46	17.46		15.09	15.09	
CA	29.60	20.27	22.96	-0.28	17.90	20.59	-2.65
FL	24.50	11.30	15.85	6.76	8.55	13.35	3.75
White	26.00	9.13	17.00	5.20	6.37	14.50	2.30
Colored	24.00	12.45	15.50	8.10	9.71	13.00	5.00
TX	28.80	7.18	18.61	1.20	6.02	17.42	0.06
US	28.40	13.17	20.67	2.05	11.27	18.58	0.43
Lemons							
CA	34.70	16.70	24.40	0.18	12.27	19.97	-4.25
US	34.70	16.70	24.40	0.18	12.27	19.97	-4.25
Oranges							
AZ							
Valencia	10.50	3.30	3.30		0.76	0.76	
CA	20.70	10.65	13.40	0.37	8.15	10.90	-2.14
Navel and Misc	21.50	9.69	13.97	0.38	7.18	11.46	-2.13
Valencia	19.90	11.92	12.84	0.32	9.43	10.35	-2.17
FL							
Valencia	15.00	6.66	7.00	6.65	4.45	4.60	4.45
TX							
Valencia	14.60	3.69	4.31	2.04	2.33	2.94	0.71
US	19.50	7.32	12.10	6.38	5.07	9.63	4.16
Tangerines							
CA	29.00	20.11	21.80	0.30	17.57	19.26	-2.24
FL	33.00	17.57	23.00	6.70	13.63	19.40	2.10
US	31.10	18.59	22.42	5.83	15.22	19.33	1.51

¹ Net lbs. per box: Grapefruit - AZ & CA-67, FL-85, TX-80; Lemons - 76; Oranges - AZ & CA-75, FL-90, TX-85; Tangelos - 90; Tangerines - AZ, CA-75, FL-95; Temples - 90.

Potatoes: Prices Received, by State, April and May 2005

State	Apr	May	State	Apr	May
	<i>Dollars per Cwt</i>	<i>Dollars per Cwt</i>		<i>Dollars per Cwt</i>	<i>Dollars per Cwt</i>
AL ¹			NC ¹		
AZ	22.10	11.80	ND - All ²	6.25	6.05
CA - All ²	16.50	15.50	- Fresh ³	5.45	NA
- Winter	22.30		- Processing	6.00	NA
- Spring		17.30	OH ¹		
- Summer ¹			OR	6.70	7.00
- Fall	7.70	7.70	PA	8.65	8.80
CO - All ²	4.60	4.50	TX		11.60
- Fresh ³	4.30	NA	VA ¹		
FL	17.50	12.60	WA - All ²	5.00	4.80
ID - All ²	4.40	4.30	- Processing	4.70	NA
- Fresh ³	2.30	NA	WI - All ²	6.50	5.50
- Processing	4.40	NA	- Fresh ³	3.35	NA
ME	6.90	7.15	- Processing	7.70	NA
MI	8.50	8.75			
MN	5.00	5.05	US - All ²	6.17	6.71
NY	7.05		- Fresh ³	7.24	NA
			- Processing	5.39	NA

¹ No potatoes being marketed.

² Average price of potatoes sold for all uses, including table stocks, processing, seed, and livestock feed.

³ Fresh market prices only, includes table stock prices.

Cattle: Prices Received, by State, April and May 2005

State	Cows ¹		Steers & Heifers		Beef Cattle ⁴		Calves	
	Apr ²	May ³	Apr ²	May ³	Apr ²	May ³	Apr ²	May ³
	<i>Dollars per Cwt</i>	<i>Dollars per Cwt</i>	<i>Dollars per Cwt</i>	<i>Dollars per Cwt</i>	<i>Dollars per Cwt</i>	<i>Dollars per Cwt</i>	<i>Dollars per Cwt</i>	<i>Dollars per Cwt</i>
AZ	56.50	60.10	114.00	112.00	113.00	111.00	137.00	135.00
AR	52.00	54.00	110.00	112.00	92.60	94.60	136.00	137.00
CA	54.30	55.60	94.30	92.90	75.50	75.00	127.00	132.00
CO	57.80	60.60	112.00	112.00	111.00	111.00	139.00	140.00
FL	54.40	55.00	107.00	107.00	81.20	82.00	135.00	136.00
GA	56.40	59.10	105.00	107.00	73.90	75.40	136.00	135.00
ID	55.80	58.00	96.20	94.70	86.50	85.90	130.00	133.00
IL	54.00	56.00	94.00	92.00	93.20	91.30	128.00	127.00
IA	59.00	63.50	96.00	93.40	95.60	92.80	136.00	134.00
KS	56.30	58.10	95.60	94.10	94.00	92.70	146.00	147.00
KY	52.00	55.00	109.00	111.00	95.30	97.60	132.00	134.00
LA	54.00	56.00	109.00	111.00	70.00	73.10	131.00	131.00
MI	56.00	56.00	85.00	87.00	76.30	77.70	130.00	135.00
MN	59.70	60.50	90.20	88.50	84.40	83.20	142.00	143.00
MO	56.00	58.00	116.00	117.00	102.00	102.00	141.00	141.00
MT	59.50	62.00	107.00	109.00	86.10	83.60	134.00	140.00
NE	60.60	63.60	98.50	95.30	97.40	94.30	146.00	150.00
NM	56.40	59.10	111.00	109.00	92.40	92.00	136.00	137.00
ND	61.00	61.50	108.00	109.00	96.70	94.80	138.00	139.00
OH	52.50	55.50	89.80	89.00	86.10	85.70	125.00	124.00
OK	56.80	58.00	108.00	108.00	105.00	105.00	139.00	140.00
OR	52.00	53.50	105.00	105.00	89.10	89.60	125.00	124.00
PA	55.30	58.30	89.60	89.70	80.70	81.50	127.00	130.00
SD	60.80	61.70	105.00	103.00	99.30	95.60	138.00	136.00
TN	54.00	58.00	112.00	114.00	88.80	91.60	133.00	134.00
TX	54.70	55.40	97.70	97.60	94.30	93.80	145.00	144.00
VA	52.80	58.00	105.00	109.00	93.00	89.60	132.00	133.00
WI	58.20	58.90	91.00	90.20	72.00	72.00	166.00	171.00
WY	60.80	62.00	111.00	111.00	105.00	101.00	144.00	144.00
US	57.10	58.70	98.30	96.90	94.00	92.90	140.00	141.00

¹ Beef cows and cull dairy cows sold for slaughter.

² Entire month.

³ Mid-month.

⁴ "Cows" and "steers and heifers" combined.

Hogs: Prices Received, by State, April and May 2005

State	Sows		Barrows and Gilts		All Hogs	
	Apr ¹	May ²	Apr ¹	May ²	Apr ¹	May ²
	<i>Dollars per Cwt</i>	<i>Dollars per Cwt</i>	<i>Dollars per Cwt</i>	<i>Dollars per Cwt</i>	<i>Dollars per Cwt</i>	<i>Dollars per Cwt</i>
AR	41.50	41.40	48.80	54.80	48.10	53.50
IL	39.40	40.00	54.00	59.00	52.80	57.50
IN	44.60	45.10	49.40	55.50	49.00	54.60
IA	42.50	42.50	53.10	56.00	53.00	55.90
KS	42.30	42.20	49.30	54.80	48.30	53.00
MN	41.40	42.50	51.10	57.50	51.00	57.30
MO	41.70	41.70	46.10	52.40	45.80	51.80
NE	40.40	40.40	52.60	57.60	52.40	57.30
NC	41.90	42.60	52.30	56.60	52.20	56.50
OH	41.60	42.30	49.60	56.00	49.20	55.30
OK	40.80	41.00	43.80	49.00	43.40	47.80
PA	40.60	40.50	48.10	53.00	47.00	51.10
SD	41.20	42.00	53.60	57.00	52.40	55.40
US	41.70	41.70	51.50	56.10	51.20	55.40

¹ Entire month.

² Mid-month.

Sheep and Poultry: Prices Received, by State, April and May 2005

State	April		May
	Sheep ¹	Lambs ¹	Eggs ^{2 3}
	<i>Dollars per Cwt</i>	<i>Dollars per Cwt</i>	<i>Dollars per Dozen</i>
AL			0.240
AR			0.220
CA	40.50	99.00	0.320
CO	36.80	120.00	
CT			0.350
FL			0.270
GA			0.250
ID	41.00	109.00	
IN			0.220
IA	43.90	110.00	0.199
KY	45.00	121.00	
ME			0.410
MI			0.240
MN	34.60	110.00	0.230
MS			0.220
MO	46.10	123.00	0.180
MT	43.40	115.00	
NE	39.00	121.00	
NY			0.230
NC			0.210
ND	42.00	113.00	
OH	41.30	122.00	0.231
OR	44.00	105.00	
PA	45.90	136.00	0.240
SC			0.230
SD	44.20	124.00	
TX	56.90	119.00	0.230
VA	42.00	121.00	
WA			0.290
WV	39.80	134.00	
WY	48.00	115.00	
US	44.40	114.00	0.236

¹ Entire month.

² Mid-month.

³ Market (table) eggs.

Milk and Milk Cows: Prices Received, by State, April and May 2005

State	April ¹						May		
	Fluid Grade Milk ²		Manufacturing Grade Milk		All Milk ³		All Milk ^{3 4}		Milk Cows ⁵
	Price	Fat Test	Price	Fat Test	Price	Fat Test	Price	Fat Test	
	<i>Dol/Cwt</i>	<i>Percent</i>	<i>Dol/Cwt</i>	<i>Percent</i>	<i>Dol/Cwt</i>	<i>Percent</i>	<i>Dol/Cwt</i>	<i>Percent</i>	<i>Dol/Head</i>
AZ	14.70	3.52			14.70	3.52	14.40	3.53	
CA	14.10	3.63	14.80	3.91	14.12	3.64	13.70	3.61	
CO	14.90	3.55			14.90	3.55	14.90	3.51	
FL	18.20	3.53			18.20	3.53	18.90	3.53	
ID	14.80	3.61	14.50	3.83	14.80	3.61	14.20	3.56	
IL	15.80	3.63	15.90	3.59	15.80	3.63	15.50	3.60	
IN	15.70	3.66	14.40	3.81	15.60	3.67	15.10	3.61	
IA	15.50	3.65	14.40	3.78	15.50	3.65	15.40	3.61	
KS	14.30	3.57			14.30	3.57	14.10	3.52	
KY	15.90	3.57			15.90	3.57	16.00	3.52	
MI	15.40	3.59	13.70	3.66	15.40	3.59	15.20	3.52	
MN	15.60	3.72	14.10	3.78	15.60	3.72	14.90	3.67	
MO	15.30	3.57	14.60	3.69	15.30	3.57	15.20	3.54	
NM	14.30	3.53			14.30	3.53	14.20	3.50	
NY	15.50	3.67			15.50	3.67	15.10	3.62	
OH	15.90	3.64	15.00	3.84	15.90	3.65	15.50	3.61	
OR	14.90	3.64			14.90	3.64	14.80	3.60	
PA	16.60	3.65	14.70	3.80	16.60	3.65	16.10	3.55	
TX	15.00	3.64			15.00	3.64	14.80	3.60	
VT	15.80	3.73			15.80	3.73	15.60	3.67	
VA	16.20	3.55			16.20	3.55	16.30	3.52	
WA	14.90	3.64			14.90	3.64	14.80	3.60	
WI	15.90	3.71	14.80	3.83	15.90	3.71	15.60	3.66	
US	15.20	3.64	14.70	3.84	15.20	3.64	14.90	3.60	

¹ Entire month.

² Including milk diverted to manufacturing.

³ Before deductions for hauling. Includes quality, quantity, and other premiums. Excludes hauling subsidies.

⁴ Preliminary.

⁵ Animals sold for dairy herd replacement only. Prices published January, April, July and October.

**Parity Price Equivalent for Manufacturing Milk ¹: United States,
April and May 2005, with Comparisons**

Item	Unit	May 2004	Apr 2005	May 2005
Parity Equivalent	Dollars per Cwt	31.82	33.45	33.45
Average Price F.O.B ²	Dollars per Cwt	18.80	14.70	14.20
Average Fat Test of Milk ²	Percent	3.75	3.84	3.78

¹ The parity price equivalent during 2005 is 91.4 percent of the parity price of all milk sold to plants, compared with 90.4 percent in 2004. For additional details, see January 2005 issue of "Agricultural Prices".

² Preliminary for May 2005.

**United States Parity Prices for Farm Products and Average Prices Received as
Percent of Parity Prices Based on Data for May 2005, with Comparisons¹**

Commodity and Unit	Adjusted Base Price	Parity Price Based on Data for			Price as Percent of Parity		
		May 2004	Apr 2005	May 2005	May 2004	Apr 2005	May 2005
	<i>Dollars</i>	<i>Dollars</i>	<i>Dollars</i>	<i>Dollars</i>	<i>Percent</i>	<i>Percent</i>	<i>Percent</i>
Basic Commodities							
All Wheat, Bu	0.555	10.10	10.30	10.30	38	33	32
Rice, Cwt	1.38	29.10	25.70	25.60	30	27	27
Corn, Bu	0.372	6.78	6.92	6.91	42	29	28
Cotton, Lb							
American Upland	0.095	2.02	1.77	1.76	30	24	24
Extra Long Staple	0.142	2.57	2.64	2.64			
Peanuts, Lb	0.0350	0.662	0.651	0.650	31	28	29
Designated Nonbasic							
All Milk, Sold to Plants, Per Cwt ²	1.97	35.20	36.60	36.60	56	43	42
Honey, Extracted, Lb ³	0.1280	1.88	2.28	2.28			
Wool and Mohair							
Wool, Lb	0.0910	1.57	1.69	1.69			
Mohair, Lb	0.333	5.97	6.19	6.18			
Other Nonbasic							
Barley, Bu	0.377	6.72	7.01	7.00	41	33	36
Cottonseed, Ton	15.50	283.00	288.00	288.00	49	39	39
Dry Edible Beans, Cwt	2.82	52.20	52.50	52.40	38	55	49
Flaxseed, Bu	0.753	13.00	14.00	14.00	55	88	93
Oats, Bu	0.221	3.95	4.11	4.10	43	40	39
Potatoes, Cwt	0.838	15.30	15.60	15.60	43	40	43
Rye, Bu	0.355	6.31	6.60	6.59			
Sorghum Grain, Cwt	0.607	11.00	11.30	11.30	44	26	25
Soybeans, Bu	0.900	15.90	16.70	16.70	60	36	36
Sweetpotatoes, Cwt	2.31	40.20	43.00	42.90			
Apples, Fresh, Lb ⁴	0.0292	0.529	0.543	0.542	40	41	40
Citrus (equiv on-tree), Box							
Grapefruit	0.394	6.92	7.33	7.32	56	123	154
Lemons	1.12	19.70	20.80	20.80	63	46	59
Oranges	0.574	11.00	10.70	10.70	33	47	47
Tangerines	1.35	25.40	25.10	25.10	46	69	61
Temples (FL)	0.379	8.06	7.05	7.04			
Beef Cattle, Cwt	9.65	171.00	179.00	179.00	52	53	52
Calves, Cwt	13.10	229.00	244.00	243.00	53	57	58
Hogs, Cwt	5.97	106.00	111.00	111.00	54	46	50
Lambs, Cwt	11.70	202.00	218.00	217.00		52	
Sheep, Cwt	4.72	84.00	87.80	87.70		51	
Eggs, Doz ²	0.0940	1.70	1.75	1.75	37	26	30
Turkeys, Live, Lb	0.0565	1.030	1.050	1.050	39	37	39

--continued

Parity Prices Based on Data for May 2005, United States ¹ (continued)

Other Nonbasic Commodities	Adj Base Base	Parity Price	Other Nonbasic Commodities	Adj Base Base	Parity Price
	<i>Dollars</i>	<i>Dollars</i>		<i>Dollars</i>	<i>Dollars</i>
Field Crops and Misc Commodities			Olives, CA canning, Ton ⁵	95.70	1,780.00
Hops, Lb	0.251	4.66	Papayas (HA)		0.980
Spearmint Oil, Lb	1.46	27.10	Peaches		
Tobacco, Lb			Fresh, Ton ⁴	81.57	1,510.00
Flue-Cured, 11-14	0.255	4.74	Dried, CA, Ton	84.00	1,560.00
VA Fire-Cured, 21	0.256	4.75			
KY-TN Fire-Cured, 22-23	0.323	6.00	Noncitrus Fruit		
Burley, 31	0.274	5.09	Peaches, cont.		
Maryland, 32	0.210	3.90	Processing ⁵		
Dark Air-Cured, 35-36	0.284	5.27	Excl Dried		
Sun-Cured, 37	0.241	4.48	Clingstone, CA, Ton	33.50	622.00
PA Seedleaf, 41	0.205	3.81	Pears, Ton		
Cigar Filler & Binder, 42-44, 54-55	0.225	4.18	Fresh ⁴	52.90	982.00
Puerto Rican Filler, 46	0.159	2.95	Dried, CA ⁶	164.00	3,050.00
Cigar Binder, 51-52	0.747	13.90	Plums, CA, Ton		
Type 61	3.21	59.60	Fresh, Equiv on-Tree	66.70	1,240.00
Noncitrus Fruit			Prunes, Dried, CA, Ton ⁶	127.00	2,360.00
Apples, Ton ⁶			Prunes and Plums, Excl CA, Ton		
Processing	18.30	340.00	Fresh ⁹	58.90	1,090.00
Apricots, Ton			Processing ⁶		
Fresh ⁷	99.00	1,840.00	Excl Dried	27.50	511.00
Dried, CA	270.00	5,010.00	Tree Nuts ¹⁰		
Avocados, Ton ⁷	234.00	4,350.00	Almonds, Lb	0.213	3.96
Cherries Bbl			Hazelnuts, Ton	135.00	2,510.00
Sweet, Ton	188.00	3,490.00	Pistachio, Lb	0.159	2.95
Tart, Lb	0.0319	0.592	Walnuts, Ton	173.00	3,210.00
Cranberry, Bbl ⁵	5.69	106.00	Vegetables, Cwt ¹¹		
Dates, CA, Ton ⁷	181.00	3,360.00	Fresh		
Grapes, Ton			Carrots ⁸	2.28	42.30
Raisin Variety	124.00	2,300.00	Cauliflower ⁸	4.60	85.40
Other Dried	70.50	1,310.00	Celery ⁸	1.97	36.60
Kiwifruit, Ton	91.30	1,700.00	Honeydew Melons	2.75	51.10
Nectarines			Lettuce	2.50	46.40
Fresh, CA, Ton ⁷	62.60	1,160.00	Onions ⁸	1.65	30.60
			Tomatoes	4.44	82.50

¹ Parity prices are computed under the provisions of Title III, Subtitle a, Section 301 (a) of the Agricultural Adjustment Act of 1938 as amended by the Agricultural Acts of 1948, 1949, and 1956. See January "Agricultural Prices" for details on adjusted base price and parity price computations.

² Seasonally adjusted price as percentage of parity price.

³ Wholesale extracted. Adjusted base price derived from state annual averages prices weighted by production. For 1982 through 1985 the national averages are the support prices.

⁴ Equivalent packinghouse-door returns for CA, NY (apples only), OR (except peaches), and WA. Price at point of first sale for other states.

⁵ Equivalent returns for bulk fruit at first delivery point.

⁶ Equivalent returns at processing plant door.

⁷ Equivalent returns at packinghouse door.

⁸ Includes some processing.

⁹ Based on "as sold" prices for fresh fruit in all states.

¹⁰ Prices in-shell basis except almonds which are shelled basis.

¹¹ F.O.B. shipping point prices.

Marketing Year for Specified Commodities

Flue-cured tobacco: July 1 to November 30 for the U.S. and all states.

Fire-cured tobacco: December 1 to March 31 for the U.S.; January 1 to March 31 for Kentucky and Tennessee; December 1 to January 31 for Virginia.

Light Air-cured Tobacco: November 1 to May 31 for the U.S.; November 1 to February 28 for Indiana, Kentucky, Missouri, North Carolina, Ohio, Tennessee, Virginia, and West Virginia; March 1 to May 31 for Maryland and Pennsylvania.

Dark Air-cured Tobacco: December 1 to February 28 for the U.S. and all states.

**Tobacco, Types 11-37: Prices Received Monthly, by State
and United States, July 2003 - April 2004 ¹**

State	2003						2004			
	Jul	Aug	Sep	Oct	Nov	Dec	Jan	Feb	Mar	Apr
	<i>Dollars per Pound</i>	<i>Dollars per Pound</i>	<i>Dollars per Pound</i>	<i>Dollars per Pound</i>	<i>Dollars per Pound</i>	<i>Dollars per Pound</i>	<i>Dollars per Pound</i>	<i>Dollars per Pound</i>	<i>Dollars per Pound</i>	<i>Dollars per Pound</i>
FL	1.705	1.865	1.895	(²)	(²)	(²)	(²)	(²)	(²)	(²)
GA	1.705	1.835	1.910	1.880	(²)	(²)	(²)	(²)	(²)	(²)
IN	(²)	(²)	(²)	(²)	1.965	1.945	1.945	1.910	(²)	(²)
KY	(²)	(²)	(²)	(²)	1.990	2.010	2.080	2.050	2.285	(²)
MD	(²)	(²)	(²)	(²)	(²)	(²)	(²)	(²)	1.775	0.660
NC	1.855	1.795	1.885	1.900	1.930	1.945	1.925	(²)	(²)	(²)
OH	(²)	(²)	(²)	(²)	1.990	1.965	1.920	1.840	(²)	(²)
SC	1.765	1.790	1.875	1.830	(²)	(²)	(²)	(²)	(²)	(²)
TN	(²)	(²)	(²)	(²)	1.985	1.975	2.210	2.410	2.260	(²)
VA	1.935	1.845	1.830	1.885	1.960	1.930	1.950	(²)	(²)	(²)
US	1.790	1.805	1.880	1.890	1.985	1.995	2.095	2.175	2.105	0.660

¹ Revised.

² Insufficient sales to establish a price.

**Tobacco, Types 11-37: Prices Received Monthly, by State
and United States, July 2004 - April 2005 ¹**

State	2004						2005			
	Jul	Aug	Sep	Oct	Nov	Dec	Jan	Feb	Mar	Apr
	<i>Dollars per Pound</i>	<i>Dollars per Pound</i>	<i>Dollars per Pound</i>	<i>Dollars per Pound</i>	<i>Dollars per Pound</i>	<i>Dollars per Pound</i>	<i>Dollars per Pound</i>	<i>Dollars per Pound</i>	<i>Dollars per Pound</i>	<i>Dollars per Pound</i>
FL	1.650	1.805	1.915	1.920	(²)	(²)	(²)	(²)	(²)	(²)
GA	1.690	1.800	1.895	1.870	(²)	(²)	(²)	(²)	(²)	(²)
IN	(²)	(²)	(²)	(²)	1.990	1.975	1.970	1.995	(²)	(²)
KY	(²)	(²)	(²)	(²)	2.015	2.015	2.105	2.130	2.000	(²)
MD	(²)	(²)	(²)	(²)	(²)	(²)	(²)	(²)	1.430	(²)
NC	(³)	1.750	1.900	1.915	1.870	1.935	1.935	(²)	(²)	(²)
OH	(²)	(²)	(²)	(²)	2.010	1.980	1.980	1.970	(²)	(²)
SC	(²)	1.745	1.855	1.825	(²)	(²)	(²)	(²)	(²)	(²)
TN	(²)	(²)	(²)	(²)	1.990	1.990	2.300	2.365	(²)	(²)
VA	(³)	1.740	1.880	1.930	1.960	1.925	1.945	(²)	(²)	(²)
US	1.710	1.755	1.895	1.910	1.985	2.005	2.135	2.205	1.455	(²)

¹ Revised.

² Insufficient sales to establish a price.

³ Price not published to avoid disclosure of individual firms.

**Tobacco: Prices Received Monthly by Type, State
and United States, July 2003 - April 2004 ¹**

Cure, Area and State	Type	2003					
		Jul	Aug	Sep	Oct	Nov	Dec
		<i>Dollars per Pound</i>	<i>Dollars per Pound</i>	<i>Dollars per Pound</i>	<i>Dollars per Pound</i>	<i>Dollars per Pound</i>	<i>Dollars per Pound</i>
Flue-cured Areas:							
Northern Auction ²	11-12	1.840	1.775	1.870	1.895	1.815	(⁴)
Northern Contract ²	11-12	1.885	1.810	1.880	1.900	(⁴)	(⁴)
Southern Auction ³	13-14	1.750	1.785	1.880	1.845	(⁴)	(⁴)
Southern Contract ³	13-14	1.705	1.840	1.910	1.880	(⁴)	(⁴)
Total Flue-cured Area	11-14	1.790	1.805	1.880	1.890	1.815	(⁴)
Fire-cured:							
VA Belt							
VA	21	(⁴)	(⁴)	(⁴)	(⁴)	(⁴)	1.665
Eastern District							
KY	22	(⁴)	(⁴)	(⁴)	(⁴)	(⁴)	(⁴)
TN	22	(⁴)	(⁴)	(⁴)	(⁴)	(⁴)	(⁴)
US	22	(⁴)	(⁴)	(⁴)	(⁴)	(⁴)	(⁴)
Western District							
KY	23	(⁴)	(⁴)	(⁴)	(⁴)	(⁴)	(⁴)
TN	23	(⁴)	(⁴)	(⁴)	(⁴)	(⁴)	(⁴)
US	23	(⁴)	(⁴)	(⁴)	(⁴)	(⁴)	(⁴)
KY-TN Fire-cured	22-23	(⁴)	(⁴)	(⁴)	(⁴)	(⁴)	(⁴)
Total Fire-cured	21-23	(⁴)	(⁴)	(⁴)	(⁴)	(⁴)	1.665
Air-cured:							
Light Air-cured:							
Burley							
IN	31	(⁴)	(⁴)	(⁴)	(⁴)	1.965	1.945
KY	31	(⁴)	(⁴)	(⁴)	(⁴)	1.990	1.985
NC	31	(⁴)	(⁴)	(⁴)	(⁴)	1.970	1.945
OH	31	(⁴)	(⁴)	(⁴)	(⁴)	1.990	1.965
TN	31	(⁴)	(⁴)	(⁴)	(⁴)	1.985	1.970
VA	31	(⁴)	(⁴)	(⁴)	(⁴)	1.975	1.970
US	31	(⁴)	(⁴)	(⁴)	(⁴)	1.985	1.980
Southern MD Belt							
MD	32	(⁴)	(⁴)	(⁴)	(⁴)	(⁴)	(⁴)
Total Light Air-cured	31-32	(⁴)	(⁴)	(⁴)	(⁴)	1.985	1.980
Dark Air-cured							
One-Sucker Belt							
KY	35	(⁴)	(⁴)	(⁴)	(⁴)	(⁴)	2.460
TN	35	(⁴)	(⁴)	(⁴)	(⁴)	(⁴)	2.190
US	35	(⁴)	(⁴)	(⁴)	(⁴)	(⁴)	2.430
Green River Belt							
KY	36	(⁴)	(⁴)	(⁴)	(⁴)	(⁴)	2.300
KY-TN Dark Air-cured	35-36	(⁴)	(⁴)	(⁴)	(⁴)	(⁴)	2.405
VA Sun-cured Belt							
VA	37	(⁴)	(⁴)	(⁴)	(⁴)	(⁴)	1.730
Total Dark Air-cured	35-37	(⁴)	(⁴)	(⁴)	(⁴)	(⁴)	2.395
Total All Cures	11-37	1.790	1.805	1.880	1.890	1.985	1.995

See footnote(s) at end of table.

--continued

**Tobacco: Prices Received Monthly by Type, State
and United States, July 2003 - April 2004 ¹ (continued)**

Cure, Area and State	Type	2004			
		Jan	Feb	Mar	Apr
		<i>Dollars per Pound</i>	<i>Dollars per Pound</i>	<i>Dollars per Pound</i>	<i>Dollars per Pound</i>
Flue-cured Areas:					
Northern Auction ²	11-12	(⁴)	(⁴)	(⁴)	(⁴)
Northern Contract ²	11-12	(⁴)	(⁴)	(⁴)	(⁴)
Southern Auction ³	13-14	(⁴)	(⁴)	(⁴)	(⁴)
Southern Contract ³	13-14	(⁴)	(⁴)	(⁴)	(⁴)
Total Flue-cured Area	11-14	(⁴)	(⁴)	(⁴)	(⁴)
Fire-cured:					
VA Belt					
VA	21	1.140	(⁴)	(⁴)	(⁴)
Eastern District					
KY	22	2.490	2.530	2.285	(⁴)
TN	22	2.540	2.530	2.260	(⁴)
US	22	2.515	2.530	2.265	(⁴)
Western District					
KY	23	2.480	2.340	(⁴)	(⁴)
TN	23	2.425	2.325	(⁴)	(⁴)
US	23	2.470	2.340	(⁴)	(⁴)
KY-TN Fire-cured	22-23	2.495	2.500	2.265	(⁴)
Total Fire-cured	21-23	2.495	2.500	2.265	(⁴)
Air-cured:					
Light Air-cured:					
Burley					
IN	31	1.945	1.910	(⁴)	(⁴)
KY	31	1.980	1.955	(⁴)	(⁴)
NC	31	1.925	(⁴)	(⁴)	(⁴)
OH	31	1.920	1.840	(⁴)	(⁴)
TN	31	1.970	1.940	(⁴)	(⁴)
VA	31	1.965	(⁴)	(⁴)	(⁴)
US	31	1.970	1.950	(⁴)	(⁴)
Southern MD Belt					
MD	32	(⁴)	(⁴)	1.775	0.660
Total Light Air-cured	31-32	1.970	1.950	1.775	0.660
Dark Air-cured					
One-Sucker Belt					
KY	35	1.875	1.665	(⁴)	(⁴)
TN	35	1.865	2.135	(⁴)	(⁴)
US	35	1.870	1.840	(⁴)	(⁴)
Green River Belt					
KY	36	2.045	1.310	(⁴)	(⁴)
KY-TN Dark Air-cured	35-36	1.945	1.675	(⁴)	(⁴)
VA Sun-cured Belt					
VA	37	0.870	(⁴)	(⁴)	(⁴)
Total Dark Air-cured	35-37	1.945	1.675	(⁴)	(⁴)
Total All Cures	11-37	2.095	2.175	2.105	0.660

¹ Revised.

² Consists of Eastern NC Belt, and Old and Middle Belts in NC and VA.

³ Consists of GA-FL Belt, SC Belt, and NC Border Belt.

⁴ Insufficient sales to establish a price.

**Tobacco: Prices Received Monthly by Type, State
and United States, July 2004 - April 2005 ¹**

Cure, Area and State	Type	2004					
		Jul	Aug	Sep	Oct	Nov	Dec
		<i>Dollars per Pound</i>	<i>Dollars per Pound</i>	<i>Dollars per Pound</i>	<i>Dollars per Pound</i>	<i>Dollars per Pound</i>	<i>Dollars per Pound</i>
Flue-cured Areas:							
Northern Auction ²	11-12	(⁴)	1.715	1.895	1.920	1.885	(⁴)
Northern Contract ²	11-12	(⁵)	1.765	1.905	1.930	1.855	(⁴)
Southern Auction ³	13-14	(⁴)	1.750	1.865	1.845	(⁴)	(⁴)
Southern Contract ³	13-14	1.680	1.800	1.900	1.875	(⁴)	(⁴)
Total Flue-cured Area	11-14	1.710	1.755	1.895	1.910	1.860	(⁴)
Fire-cured:							
VA Belt							
VA	21	(⁴)	(⁴)	(⁴)	(⁴)	1.770	1.825
Eastern District							
KY	22	(⁴)	(⁴)	(⁴)	(⁴)	(⁴)	(⁴)
TN	22	(⁴)	(⁴)	(⁴)	(⁴)	(⁴)	(⁴)
US	22	(⁴)	(⁴)	(⁴)	(⁴)	(⁴)	(⁴)
Western District							
KY	23	(⁴)	(⁴)	(⁴)	(⁴)	(⁴)	(⁴)
TN	23	(⁴)	(⁴)	(⁴)	(⁴)	(⁴)	(⁴)
US	23	(⁴)	(⁴)	(⁴)	(⁴)	(⁴)	(⁴)
KY-TN Fire-cured	22-23	(⁴)	(⁴)	(⁴)	(⁴)	(⁴)	(⁴)
Total Fire-cured	21-23	(⁴)	(⁴)	(⁴)	(⁴)	1.770	1.825
Air-cured:							
Light Air-cured:							
Burley							
IN	31	(⁴)	(⁴)	(⁴)	(⁴)	1.990	1.975
KY	31	(⁴)	(⁴)	(⁴)	(⁴)	2.000	2.000
NC	31	(⁴)	(⁴)	(⁴)	(⁴)	1.955	1.935
OH	31	(⁴)	(⁴)	(⁴)	(⁴)	2.010	1.980
TN	31	(⁴)	(⁴)	(⁴)	(⁴)	1.990	1.980
VA	31	(⁴)	(⁴)	(⁴)	(⁴)	1.985	1.970
US	31	(⁴)	(⁴)	(⁴)	(⁴)	2.000	1.990
Southern MD Belt							
MD	32	(⁴)	(⁴)	(⁴)	(⁴)	(⁴)	(⁴)
Total Light Air-cured	31-32	(⁴)	(⁴)	(⁴)	(⁴)	2.000	1.990
Dark Air-cured							
One-Sucker Belt							
KY	35	(⁴)	(⁴)	(⁴)	(⁴)	2.915	2.330
TN	35	(⁴)	(⁴)	(⁴)	(⁴)	(⁴)	2.220
US	35	(⁴)	(⁴)	(⁴)	(⁴)	2.915	2.310
Green River Belt							
KY	36	(⁴)	(⁴)	(⁴)	(⁴)	(⁴)	2.180
KY-TN Dark Air-cured	35-36	(⁴)	(⁴)	(⁴)	(⁴)	2.915	2.260
VA Sun-cured Belt							
VA	37	(⁴)	(⁴)	(⁴)	(⁴)	(⁴)	1.495
Total Dark Air-cured	35-37	(⁴)	(⁴)	(⁴)	(⁴)	2.915	2.245
Total All Cures	11-37	1.710	1.755	1.895	1.910	1.985	2.005

See footnote(s) at end of table.

--continued

**Tobacco: Prices Received Monthly by Type, State
and United States, July 2004 - April 2005 ¹ (continued)**

Cure, Area and State	Type	2005			
		Jan	Feb	Mar	Apr
		<i>Dollars per Pound</i>	<i>Dollars per Pound</i>	<i>Dollars per Pound</i>	<i>Dollars per Pound</i>
Flue-cured Areas:					
Northern Auction ²	11-12	(⁴)	(⁴)	(⁴)	(⁴)
Northern Contract ²	11-12	(⁴)	(⁴)	(⁴)	(⁴)
Southern Auction ³	13-14	(⁴)	(⁴)	(⁴)	(⁴)
Southern Contract ³	13-14	(⁴)	(⁴)	(⁴)	(⁴)
Total Flue-cured Area	11-14	(⁴)	(⁴)	(⁴)	(⁴)
Fire-cured:					
VA Belt					
VA	21	1.505	(⁴)	(⁴)	(⁴)
Eastern District					
KY	22	2.505	2.715	(⁴)	(⁴)
TN	22	2.630	2.450	(⁴)	(⁴)
US	22	2.575	2.500	(⁴)	(⁴)
Western District					
KY	23	2.515	2.545	(⁴)	(⁴)
TN	23	2.485	2.600	(⁴)	(⁴)
US	23	2.510	2.550	(⁴)	(⁴)
KY-TN Fire-cured	22-23	2.550	2.510	(⁴)	(⁴)
Total Fire-cured	21-23	2.550	2.510	(⁴)	(⁴)
Air-cured:					
Light Air-cured:					
Burley					
IN	31	1.970	1.995	(⁴)	(⁴)
KY	31	2.000	1.990	2.000	(⁴)
NC	31	1.935	(⁴)	(⁴)	(⁴)
OH	31	1.980	1.970	(⁴)	(⁴)
TN	31	1.975	1.930	(⁴)	(⁴)
VA	31	1.965	(⁴)	(⁴)	(⁴)
US	31	1.990	1.985	2.000	(⁴)
Southern MD Belt					
MD	32	(⁴)	(⁴)	1.430	(⁴)
Total Light Air-cured	31-32	1.990	1.985	1.455	(⁴)
Dark Air-cured					
One-Sucker Belt					
KY	35	1.925	(⁴)	(⁴)	(⁴)
TN	35	2.015	(⁴)	(⁴)	(⁴)
US	35	1.945	(⁴)	(⁴)	(⁴)
Green River Belt					
KY	36	1.890	1.495	(⁴)	(⁴)
KY-TN Dark Air-cured	35-36	1.935	1.495	(⁴)	(⁴)
VA Sun-cured Belt					
VA	37	1.180	(⁴)	(⁴)	(⁴)
Total Dark Air-cured	35-37	1.930	1.495	(⁴)	(⁴)
Total All Cures	11-37	2.135	2.205	1.455	(⁴)

¹ Revised.

² Consists of Eastern NC Belt, and Old and Middle Belts in NC and VA.

³ Consists of GA-FL Belt, SC Belt, and NC Border Belt.

⁴ Insufficient sales to establish a price.

⁵ Price not published to avoid disclosure of individual firms.

Reliability of Prices Received Estimates

Definition: Prices received represent sales from producers to first buyers. They include all grades and qualities. The average commodity price from the survey multiplied by the total quantity marketed theoretically should give the total cash receipts for the commodity.

Survey Procedures: Primary sales data used to determine grain prices were obtained from probability samples of about 2000 mills and elevators. These procedures ensure that virtually all grain moving into commercial channels has a chance of being included in the survey. Generally, States surveyed account for 90 percent or more of total U.S. production. Livestock prices are obtained from packers, stockyards, auctions, dealers, and market check data from AMS-USDA, private marketing organizations, and state commodity groups and agencies. Inter-farm sales of grain and livestock are not included since they represent very small percentages of the total marketings. Grain marketed for seed is also excluded. Fruit and vegetable prices are obtained from sample surveys and market check data from AMS-USDA, private marketing organizations, state agencies, and universities.

Summary and Estimation Procedures: Survey quantities sold are expanded by strata to state levels and used to weight average strata prices to a state average. State prices are then weighted to a U.S. price based on expanded marketings. Recommendations are prepared by the State Statistical Offices and reviewed by the Agricultural Statistics Board in Washington, D.C. State recommendations are reviewed for reasonableness with survey data, other States, and recent historic estimates.

Revisions: For most items, the current month's preliminary price represents a 3-5 day period around the 15th of the month. Previous month's prices represent actual dollars received for quantities sold during the entire month. Revisions are published in monthly issues of *Agricultural Prices*.

Reliability: U.S. price estimates based on probability surveys generally have a sampling error of less than one percent for the major commodities such as corn, wheat, soybeans, cotton, and rice. Current methods of summarization for non-probability commodities are not designed directly to calculate sampling errors. However, analytical measures approximate the U.S. relative sampling errors at around five percent. Any nonsampling errors are attributed to such things as the inability to obtain correct information, differences in interpreting questions or definitions, mistakes in coding or processing the data, etc. Efforts are made at each step in the survey process to minimize these nonsampling errors.

Prices Paid by Farmers

The May Index of Prices Paid for Commodities and Services, Interest, Taxes, and Farm Wage Rates (PPITW) is 139 (1990-92=100), unchanged from April 2005 but 3.0 percent above May 2004.

PRODUCTION INDEX: The May index, at 138, is unchanged from last month but 3.8 percent above last year. Lower prices in May for feeder pigs, diesel fuel, feed grains, and gasoline offset higher prices for hay and forages, nitrogen fertilizers, complete feeds, and feeder cattle.

Feed: The May index, at 117, is 0.9 percent above April but 13 percent below last May. Since April, higher prices for hay and forages, complete feeds, and feed concentrates more than offset lower prices for feed grains and feed supplements.

Livestock and Poultry: The May index for livestock and poultry purchases, at 140, is 0.7 percent lower than last month but 11 percent above last year. Since April, lower prices for feeder pigs more than offset higher prices for feeder cattle. The May feeder cattle price, at \$116.90 per cwt, is up \$1.10 per cwt from the April price. May feeder pigs averaged \$154.00 per cwt, down \$24.00 per cwt from April.

Fertilizer: The May index, at 162, is up 2.5 percent from April and 19 percent more than May a year ago. Since April, prices paid for all fertilizer subcomponents are higher.

Agricultural Chemicals: The May index, at 120, is unchanged from last month and last May.

Fuels: The May Index, at 205, is down 2.4 percent from a month earlier but 29 percent above May 2004. Compared to last month, prices are lower for diesel fuel and gasoline but higher for LP gas.

Farm Machinery: The May index is 170, down 0.6 percent from April but 5.6 percent above last May. Since April, lower prices for other machinery account for the decline.

CONSUMER PRICE INDEX: The April 2005 Consumer Price Index for all urban consumers (CPI-U) rose 0.7 percent before seasonal adjustment to a level of 194.6 (1982-84=100). This compares to the March index of 193.3. For the 12-month period ending in April, the overall index has increased 3.5 percent.

**Indexes of Prices Paid by Farmers and Related Parity Ratios
United States, May 2005 With Comparisons**

Indexes and Ratios	1910-14 = 100			1990-92 = 100		
	2004	2005		2004	2005	
	May	Apr	May	May	Apr	May
Prices Paid by Farmers for Commodities & Services, Interest, Taxes, & Wage Rates (PPITW)	1,793	*1,855	1,857	135	*139	139
Production	1,287	*1,339	1,341	133	138	138
Feed	658	*565	574	135	*116	117
Livestock & Poultry	1,613	*1,806	1,793	126	*141	140
Seeds	1,564	1,694	1,694	158	171	171
Fertilizer	497	579	592	136	158	162
Agricultural Chemicals	744	740	745	120	120	120
Fuels	1,229	1,624	1,580	159	210	205
Farm Supplies & Repairs	972	*1,009	1,009	137	142	142
Autos & Trucks	3,029	*3,062	3,052	114	115	115
Farm Machinery	4,047	4,282	4,275	161	171	170
Building Materials	1,824	*1,916	1,917	134	141	141
Farm Services & Rent	1,456	*1,492	1,492			
Rent				124	127	127
Interest ¹	2,593	2,643	2,643	103	105	105
Taxes ²	3,474	3,542	3,542	130	132	132
Wage Rates	5,964	*6,035	6,035	159	*161	161
Production, Interest, Taxes, & Wage Rates (PITW)	1,792	*1,857	1,858	133	*138	138
Family Living-CPI ³	1,796	*1,848	1,848	140	*144	144
Ratio (Received/Paid) Parity Ratio ⁴	46	*42	42	96	*88	88
Parity Ratio Adjusted ⁵	48	*46	46			
PPITW Adjusted for Productivity ⁶	1,214	*1,230	1,231			
Crop Sector (PPITW)				135	*142	142
Livestock Sector (PPITW)				134	136	136
Farm Sector (Production)				135	*134	134
Non-Farm Sector (Production)				131	140	140

* Revised.

¹ Interest per acre on farm real estate debt and interest rate on farm non-real estate debt.

² Farm real estate taxes payable per acre.

³ Bureau of Labor Statistics, Consumer Price Index for all urban consumers (CPI-U), for the previous month converted by the USDA.

⁴ Ratio of index of prices received to PPITW (1910-14=100).

⁵ Based on estimated cash receipts, from marketings and government payments, the preliminary adjustment factor is 1.105 for 2005 and the revised factor is 1.048 for 2004.

⁶ PPITW is adjusted based on productivity trend for the prior 15 years.

**Prices Paid Indexes and Annual Weights for Input Components and
Sub-Components United States, May 2005 With Comparisons**

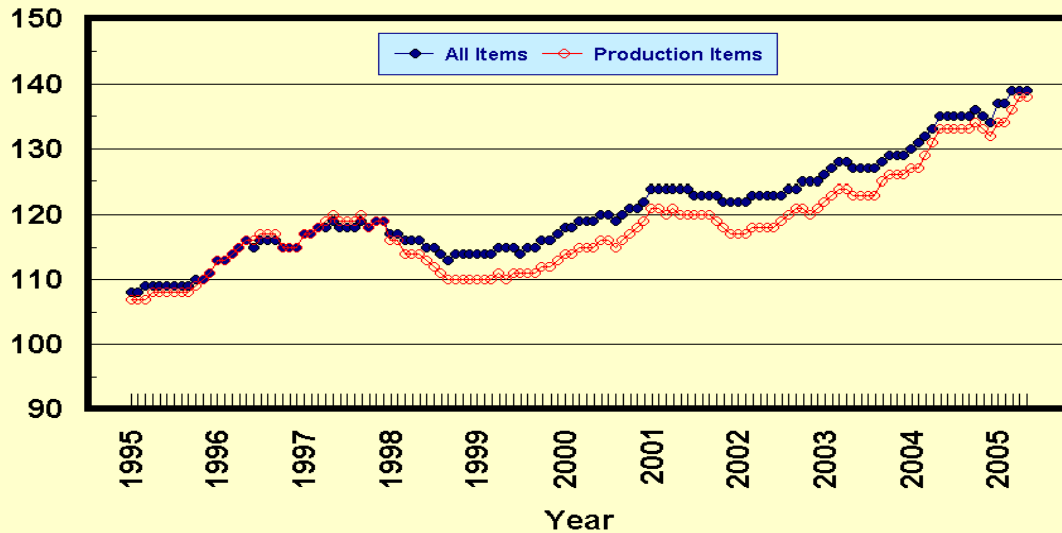
Index	Relative Weights 5-Year Moving Average ¹		Input Indexes		
	2004	2005	2004	2005	
	<i>Percent</i>	<i>Percent</i>	May <i>(1990-92=100)</i>	Apr <i>(1990-92=100)</i>	May <i>(1990-92=100)</i>
Production Items	66.2	66.4	133	138	138
Feed	10.7	10.7	135	*116	117
Feed Grains	1.5	1.5	123	*86	83
Complete Feeds	5.2	5.2	132	116	118
Hay/Forages	1.3	1.3	129	123	133
Concentrates	1.7	1.7	159	124	125
Supplements	0.9	0.9	135	140	136
Livestock & Poultry	7.4	7.7	126	*141	140
Feeder Cattle	5.8	6.0	126	137	138
Feeder Pigs	0.6	0.6	122	*194	168
Milk Cow Replacements	0.6	0.6	140	157	157
Poultry	0.4	0.5	110	110	110
Seeds	3.3	3.5	158	171	171
Field Crops	3.0	3.2	163	177	177
Grasses/Legumes	0.3	0.3	111	118	118
Fertilizer	4.4	4.3	136	158	162
Mixed Fertilizer	1.9	1.9	122	135	137
Nitrogen	1.8	1.8	153	183	190
Potash & Phosphate	0.6	0.6	124	155	155
Agricultural Chemicals	3.7	3.6	120	120	120
Herbicides	2.4	2.3	113	113	113
Insecticides	0.9	0.8	142	139	140
Fungicides/Other	0.5	0.5	117	120	120
Fuels	2.7	2.7	159	210	205
Diesel	1.5	1.6	151	224	216
Gasoline	0.8	0.8	170	192	186
LP Gas	0.4	0.4	170	191	195
Farm Supplies & Repairs	5.4	5.2	137	142	142
Supplies	1.8	1.7	127	131	131
Repairs	3.6	3.5	142	*148	148
Autos & Trucks	1.8	1.8	114	115	115
Autos	0.2	0.2	108	*109	108
Trucks	1.6	1.5	115	116	116
Farm Machinery	4.0	4.0	161	171	170
Tractors	0.9	0.9	147	153	153
Self-Propelled	1.6	1.6	167	176	176
Other Machinery	1.5	1.5	164	175	174
Building Materials	3.3	3.6	134	141	141
Farm Services	12.4	12.4	124	127	127
Custom Rates	1.3	1.3	125	125	125
Other Services	11.1	11.1	123	127	127
Rent	7.1	6.9	120	123	123
Cash	3.8	3.7	145	147	147
Share	3.3	3.2	91	94	94
Interest	4.7	4.5	103	105	105
Taxes	3.0	2.9	130	132	132
Wage Rates	7.6	7.6	159	*161	161
Family Living-CPI	18.5	18.6	140	*144	144

* Revised.

¹ Weights may not add due to rounding.

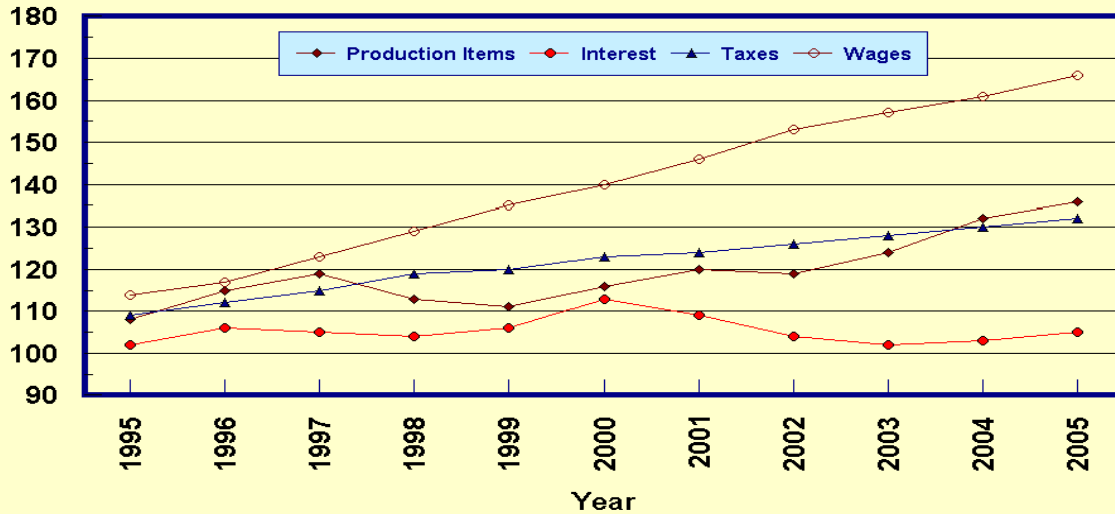
Prices Paid by Farmers, Major Indexes US, by Quarter and Month

Percent (1990-92=100)



Prices Paid by Farmers, Major Indexes US, Annual Averages 1/

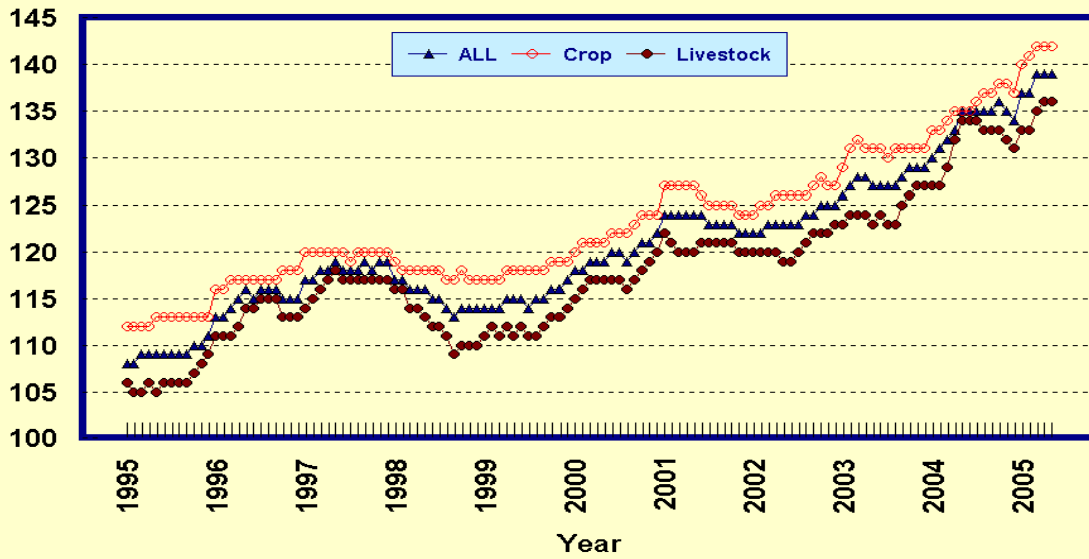
Percent (1990-92=100)



1/ Index values for 2005 are year-to-date averages.

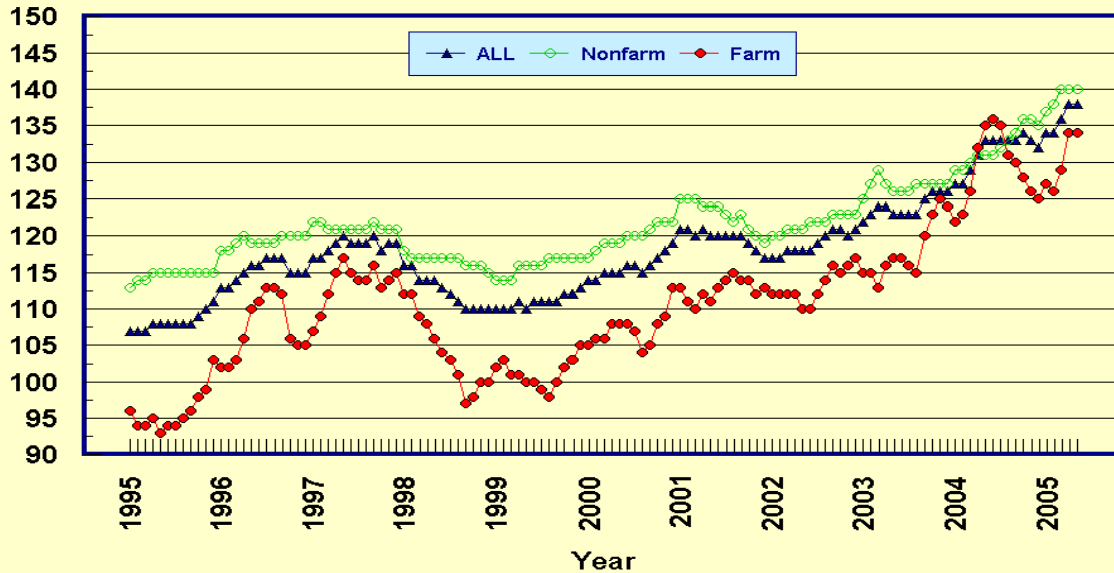
Prices Paid by Farmers, Indexes, All Items US, By Farm Type

Percent (1990-92=100)



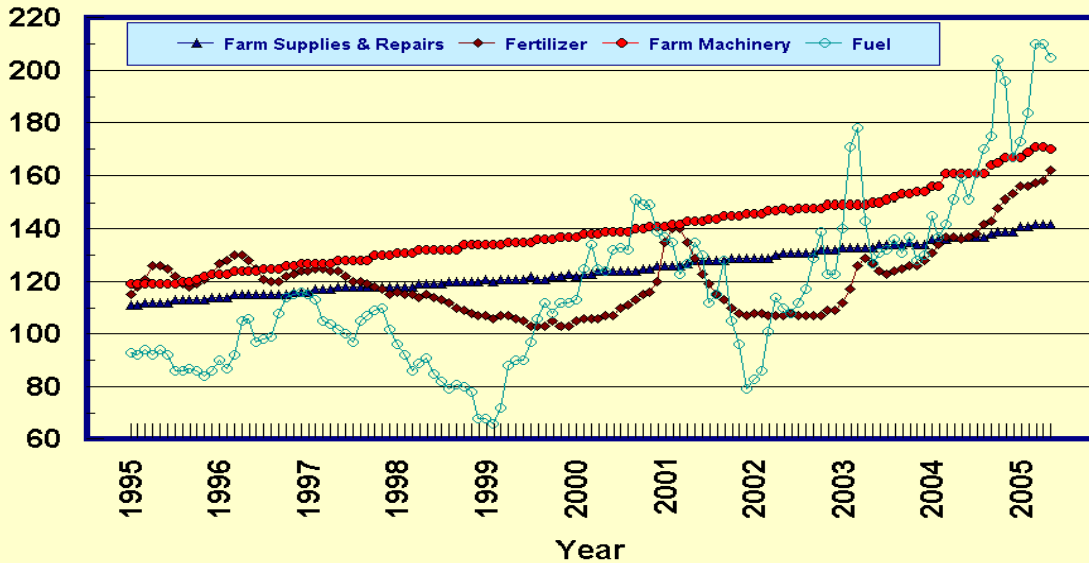
Prices Paid by Farmers, Indexes, All Production Items US, By Sector Origin

Percent (1990-92=100)



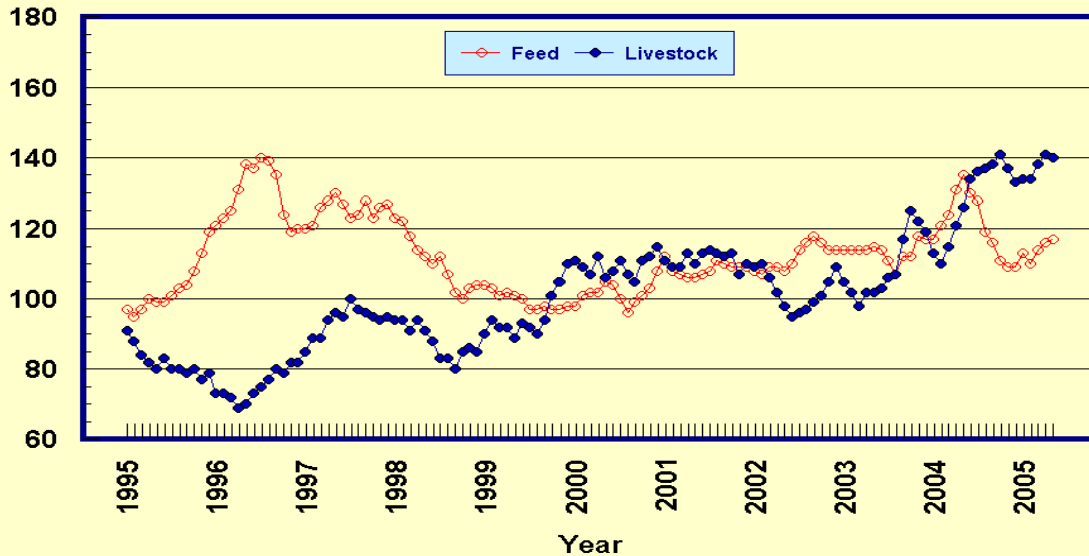
Prices Paid by Farmers, Selected Production Indexes US, By Non-Farm Sector

Percent (1990-92=100)



Prices Paid by Farmers, Selected Production Indexes US, By Farm Sector

Percent (1990-92=100)



Feed Price Ratios: United States, May 2005 with Comparisons

Feed Price Ratio ¹	2004	2005	
	May	Apr	May
Broiler-Feed: Pounds of Broiler Grower Feed equal in value to 1 pound of broiler, live weight	5.2	*7.0	7.0
Market Egg Feed: Pounds of Laying Feed equal in Value to 1 dozen eggs	6.0	*5.0	4.6
Hog-Corn: Bushels of Corn equal in value to 100 pounds of hog, live weight	19.7	*25.6	28.9
Milk-Feed: Pounds of 16% Mixed Dairy Feed equal in value to 1 pound of Whole Milk	3.15	*3.21	3.02
Steer & Heifer-Corn: Bushels of Corn equal in value to 100 pounds of Steer & Heifers, live weight	32.3	*49.2	50.5
Turkey-Feed: Pounds of Turkey Grower equal in value to 1 pound of Turkey, live weight	4.8	*6.7	7.2

* Revised.

¹ Effective January 1995, prices of commercial prepared feeds are based on current U.S. prices received for corn, soybeans, alfalfa hay, and all wheat.

**Prices Used to Calculate Feed Price Ratios:
United States, May 2005 with Comparisons**

Commodity	Unit	2004	2005	
		May	Apr	May
Broilers, Live	Lb	0.500	0.440	0.440
Eggs, Market	Doz	0.472	0.261	0.236
Hogs, All	Cwt	56.60	*51.20	55.40
Milk, All	Cwt	19.30	*15.20	14.90
Steers and Heifers	Cwt	92.60	*98.30	96.90
Turkeys, Live	Lb	0.401	0.392	0.411
Corn	Bu	2.87	*2.00	1.92
Hay, Alfalfa, Baled	Ton	109.00	103.00	116.00
Soybeans	Bu	9.56	*6.03	6.09
Wheat, All	Bu	3.82	*3.35	3.28

* Revised.

**Feeder Livestock: Prices Paid, United States
May 2005 with Comparisons**

Commodity	Unit	2004	2005	
		May	Apr	May
		<i>Dollars</i>	<i>Dollars</i>	<i>Dollars</i>
Feeders and Stockers Cattle and Calves	Cwt	107.10	115.80	116.90
Feeder Pigs	Cwt	112.00	*178.00	154.00

* Revised.

**Feed Price Ratios, Monthly, United States,
January 2002 - May 2005 ¹**

Year	Jan	Feb	Mar	Apr	May	Jun	Jul	Aug	Sep	Oct	Nov	Dec	Avg ²
Broiler-Feed Ratio ³													
2002	6.6	6.5	5.9	5.5	5.7	5.9	5.0	4.6	4.6	4.5	4.5	4.7	5.3
2003	5.6	5.4	5.2	4.8	5.1	5.4	5.7	5.8	5.7	5.4	5.1	5.1	5.4
2004	5.6	5.5	5.0	4.9	5.2	5.6	6.1	6.4	6.3	6.4	6.6	6.6	5.9
2005	7.1	7.4	7.0	7.0	7.0								7.1
Market Egg-Feed Ratios ⁴													
2002	10.2	8.5	11.6	7.4	6.7	9.5	7.5	7.9	7.1	6.6	10.5	9.6	8.6
2003	9.7	8.5	9.5	9.3	6.9	8.8	9.8	12.7	11.6	12.6	15.7	12.2	10.6
2004	12.9	10.7	13.2	7.8	6.0	6.6	5.8	5.6	6.5	5.8	8.8	9.8	8.3
2005	7.2	7.4	6.3	5.0	4.6								6.1
Turkey-Feed Ratio ⁵													
2002	7.2	7.3	6.9	6.8	7.3	7.3	6.9	6.3	6.0	6.1	6.5	6.4	6.8
2003	5.8	5.8	6.0	5.9	5.7	5.8	5.9	5.7	6.0	6.3	6.3	5.7	5.9
2004	5.1	4.6	4.5	4.5	4.8	5.2	5.9	7.0	7.9	8.4	8.8	8.3	6.2
2005	6.9	6.9	6.6	6.7	7.2								6.9
Milk-Feed Ratio ⁶													
2002	3.07	3.00	2.87	2.81	2.64	2.55	2.36	2.27	2.30	2.46	2.44	2.45	2.60
2003	2.42	2.33	2.27	2.25	2.18	2.19	2.59	2.89	3.11	3.23	3.05	2.85	2.61
2004	2.70	2.60	2.80	3.11	3.15	3.12	2.95	2.98	3.25	3.29	3.57	3.66	3.10
2005	3.50	3.54	3.38	3.21	3.02								3.33
Hog-Corn Ratio ⁷													
2002	19.1	19.9	18.6	16.6	17.2	18.2	18.4	13.4	10.7	13.2	12.2	13.1	15.9
2003	14.1	14.7	14.9	14.9	17.4	19.2	19.7	18.4	18.0	17.3	15.8	14.8	16.6
2004	15.3	16.3	17.2	16.4	19.7	20.3	22.7	23.6	24.9	24.3	27.1	25.6	21.1
2005	25.1	26.0	25.3	25.6	28.9								26.2
Steer & Heifer-Corn Feed Ratio ⁸													
2002	36.1	38.1	38.2	37.0	35.3	34.0	31.2	28.3	27.4	29.3	31.5	32.3	33.2
2003	33.3	33.4	32.9	33.7	33.4	33.6	36.4	38.6	40.6	46.1	45.4	41.4	37.4
2004	35.8	31.5	32.0	30.8	32.3	33.6	36.4	38.9	40.7	42.4	44.0	45.0	36.9
2005	44.5	47.8	47.3	49.2	50.5								47.9

¹ Quarterly commercial feed surveys discontinued in January 1995. Comparable complete feeds are based on US prices for Corn, Alfalfa Hay, Soybeans, and All Wheat.

² Simple average of monthly ratios, January through December.

³ Number of pounds of Broiler Grower Feed (corn-58 pounds, soybeans-42 pounds) equal in value to one pound of Broilers, live weight.

⁴ Number of pounds of Laying Feed (corn-75 pounds, soybeans-25 pounds) equal in value to one dozen Market Eggs.

⁵ Number of pounds of Turkey Grower Feed (corn-51 pounds, soybeans-28 pounds, all wheat-21 pounds) equal in value to one pound of Turkeys, live weight.

⁶ Number of pounds of 16% protein Mixed Dairy Feed (corn-51 pounds, soybeans-8 pounds, alfalfa hay-41 pounds) equal in value to one pound of All Milk.

⁷ Number of bushels of corn equal in value to 100 pounds of All Hogs, live weight.

⁸ Number of bushels of corn equal in value to 100 pounds of Steers & Heifers, live weight.

Prices Paid by Farmers

Definition: Prices paid by farmers represent the average costs of inputs purchased by farmers and ranchers to produce agricultural commodities. Conceptually, the average price when multiplied by quantity purchased should equal total producer expenditures for the item.

Survey Procedures: The prices paid data are obtained from establishments that sell goods and services to farmers and ranchers. Annually, about 8,500 firms are randomly selected from lists by type of item sold with an average response rate in the range of 75-80 percent. Firms are asked to report the price for the specified item "most commonly bought by farmers" or that was the "volume seller". Approximately 135 items are surveyed each April to represent all production input items purchased. The survey reference period for most items is the 5 business days centered around the 15th of the month. Separate prices paid surveys are conducted for, agricultural chemicals, fuels, feed, fertilizer, machinery, and seed.

Summary and Estimation Procedures: The annual April Prices Paid Survey is summarized as a nonprobability survey. Average prices reported are aggregated to the region and U.S. level using weights available from expenditure data and other administrative sources. Price recommendations are prepared by the State Statistical Offices and Headquarters for review by the Agricultural Statistics Board in Washington, D.C. Also, the change in price level for individual items surveyed are combined to the regional and U.S. levels, and are published as prices paid indexes referenced to a specific base period. Prices paid indexes for new autos and trucks, building materials, farm supplies, motor supplies, and marketing containers are updated based on price changes measured in selected Bureau of Labor Statistics (BLS) indexes.

Revisions: Any revisions are published in the monthly and in annual issues of *Agricultural Prices*. The basis for revision must be supported by additional data that directly affect the level of the estimate. More revisions are likely in April when separate prices paid surveys are conducted, in lieu of BLS indexes, by the USDA to measure price change.

Reliability: Current methods of summarization in April are not designed directly to calculate sampling errors. However, analytical measures approximate the U.S. relative sampling errors for major items around 10 percent. Any nonsampling errors are attributed to such things as the inability to obtain correct information, differences in interpreting questions or definitions, mistakes in coding or processing the data, etc. Efforts are made at each step in the survey process to minimize these nonsampling errors.

Program Change: Effective January 1, 1995, the National Agricultural Statistics Service updated the weights and changed the construction of its prices paid and received by farmers indexes. A Federal Register Notice dated October 28, 1994 discussed these program modifications.

A 1990-92 reference and base period replaced the 1977 reference and 1971-73 base weight period. Five-year moving average weights replaced the current fixed 1971-73 base period weights. The 1910-14=100 price indexes, required by statute for computing parity prices, were linked forward based on the changes in the new 1990-92=100 indexes. The new indexes were constructed by multiplying the ratios of the current prices to the base period prices by the moving average weights (adjusted for seasonal marketing patterns for the prices received indexes).

Information Contacts

General questions should be directed to Linda Hutton, Chief, Environmental, Economics and Demographics Branch at (202) 720-6146. Below are the commodity specialists to contact for additional information.

Crop Prices Received

Joe Prusacki Chief, Crops Branch	(202) 720-2127
Greg Thessen, Field Crops Section	(202) 720-2127
Lance Honig - Wheat, Rye	(202) 720-8068
Darin Jantzi - Corn, Proso Millet, Flaxseed	(202) 720-9526
Troy Joshua - Cotton, Cottonseed	(202) 720-5944
Travis Thorson - Hay, Oats, Sorghum	(202) 690-3234
Jason Lamprecht - Soybeans, Sunflower, Other Oilseeds	(202) 720-7369
Dennis Koong - Peanuts, Rice	(202) 720-7688
Brian Young - Sugarcane, Sugarbeets, Barley	(202) 720-7621
Jim Smith, Fruit and Vegetable Section	(202) 720-2127
Debbie Flippin - Peaches, Pears, Hops, Pulses, Mint	(202) 720-3250
Jorge Garcia-Pratts - Citrus	(202) 720-5412
Terry O'Connor - Apples, Apricots, Cherries, Cranberries, Plums, Prunes	(202) 720-4288
Leslie Colburn - Grapes, Tobacco	(202) 720-7235
Cathy Scherrer, Potatoes, Dry Edible Beans, Sweet Potatoes	(202) 720-4285
Biz Wallingsford - Vegetables, Onions, Strawberries	(202) 720-2157

Livestock Prices Received

Dan Kerestes, Chief, Livestock Branch	(202) 720-3570
Bill Weaver, Livestock Section	(202) 720-3570
Scott Hollis - Sheep, Lambs, Wool, Mohair	(202) 720-4751
Ty Kalas - Milk, Milk Cows	(202) 690-3236
Bruce Boess - Hogs	(202) 720-3106
Mike Miller - Cattle	(202) 720-3040
Wilbert Hundl, Poultry and Specialty Commodities Section	(202) 720-3570
John Lange - Turkeys	(202) 720-0585
Sharyn Lavender - Eggs	(202) 720-3244
Jody Roberts - Broilers	(202) 690-8632

Indexes, Prices Paid, and Parity Prices

Linda Hutton, Chief, Environmental, Economics and Demographics Branch	(202) 720-6146
Kevin Hintzman, Economics Section	(202) 720-6146
Eric Barnes - Farm Supplies and Repairs, Farm Machinery, Fuels, Feeder Livestock, Poultry Chicks, Feed Price Ratios, Grazing Fees, Autos & Trucks	(202) 690-4752
Daryl Brinkman - Prices Received Indexes, Parity Prices	(202) 720-8844
Tara Jackson - Prices Paid Indexes, Prices Paid for Feed, Fertilizer, Agricultural Chemicals, Seeds	(202) 690-3229

ACCESS TO REPORTS!!

For your convenience, there are several ways to obtain NASS reports, data products, and services:

INTERNET ACCESS

All NASS reports are available free of charge on the worldwide Internet. For access, connect to the Internet and go to the NASS Home Page at: www.usda.gov/nass/. Select "Today's Reports" or Publications and then Reports Calendar or Publications and then Search, by Title or Subject.

E-MAIL SUBSCRIPTION

All NASS reports are available by subscription free of charge direct to your e-mail address. Starting with the NASS Home Page at www.usda.gov/nass/, click on **Publications**, then click on the **Subscribe by E-mail** button which takes you to the page describing e-mail delivery of reports. Finally, click on **Go to the Subscription Page** and follow the instructions.

PRINTED REPORTS OR DATA PRODUCTS

CALL OUR TOLL-FREE ORDER DESK: 800-999-6779 (U.S. and Canada)
Other areas, please call 703-605-6220 FAX: 703-605-6900
(Visa, MasterCard, check, or money order acceptable for payment.)

ASSISTANCE

For **assistance** with general agricultural statistics or further information about NASS or its products or services, contact the **Agricultural Statistics Hotline** at **800-727-9540**, 7:30 a.m. to 4:00 p.m. ET, or e-mail: nass@nass.usda.gov.

The U.S. Department of Agriculture (USDA) prohibits discrimination in all its programs and activities on the basis of race, color, national origin, sex, religion, age, disability, political beliefs, sexual orientation, and marital or family status. (Not all prohibited bases apply to all programs.) Persons with disabilities who require alternative means for communication of program information (Braille, large print, audiotape, etc.) should contact USDA's TARGET Center at 202-720-2600 (voice and TDD).

To file a complaint of discrimination, write USDA, Director, Office of Civil Rights, Room 326-W, Whitten Building, 14th and Independence Avenue, SW, Washington, DC 20250-9410 or call 202-720-5964 (voice and TDD). USDA is an equal opportunity provider and employer.