

Released June 29, 2005, by the National Agricultural Statistics Service (NASS), Agricultural Statistics Board, U.S. Department of Agriculture. For information on *Agricultural Prices* see page 40, office hours 7:30 a.m. to 4:00 p.m. ET.

Update Alert

The following were corrected in the June 2005 Agricultural Prices:
The narrative for the Crop Index on the face page is changed from “up 2 points (1.7 percent)” to “up 3 points (2.5 percent)”. The narrative for the Food Commodities Index on the face page is changed from “decreased 1 point (0.8 percent) from last month and 8 points” to “is unchanged from last month but decreased 8 points”. The 1990-92=100 indices for May 2005 for All Crops is corrected from 119 to 118 and the Food Commodities Index changed from 124 to 123.

June Farm Prices Received Index Unchanged From Last Month

The preliminary All Farm Products Index of Prices Received by Farmers in June, at 120, based on 1990-92=100, is unchanged from May. The Crop Index is up 3 points (2.5 percent), but the Livestock Index decreased 3 points (2.5 percent). Producers received higher commodity prices for lettuce, soybeans, broccoli, grapefruit, and potatoes. Lower prices were received for cattle, hogs, strawberries, dairy products, and tomatoes. The overall index is also affected by the seasonal change based on a 3-year average mix of commodities a producer sells. Increased average marketings of wheat, grapes, hay, and cantaloupe offset decreased marketings of tomatoes, oranges, sweet corn, and strawberries.

Preliminary All Farm Products Index is down 8 points (6.3 percent) from June 2004. The Food Commodities Index, at 123, is unchanged from last month but decreased 8 points (6.1 percent) from June 2004.

Prices Paid Index Unchanged

The June Index of Prices Paid for Commodities and Services, Interest, Taxes, and Farm Wage Rates (PPITW) is 139 percent of the 1990-92 average. The index is unchanged from May but 4 points (3.0 percent) above June 2004. Lower prices in June for feeder pigs, LP gas, hay and forages, and feed supplements offset higher prices for diesel fuel, feeder cattle, complete feeds, and nitrogen fertilizers.

Index Summary Table

Index 1990-92=100	2004		2005	
	May	Jun	May	Jun
Prices Received	129	128	120	120
Prices Paid	135	135	139	139
Ratio ¹	96	95	86	86

¹ Ratio of index of prices received by farmers to index of prices paid by farmers.

Prices Received by Farmers

The June All Farm Products Index is 120 percent of its 1990-92 base, unchanged from the May index but 6.3 percent below the June 2004 index.

ALL CROPS: The June index is 121, up 2.5 percent from May but 0.8 percent below June 2004. From May, index increases for fruit & nuts, oil-bearing crops, commercial vegetables, potatoes & dry beans, and feed grains & hay more than offset the index decreases for cotton and food grains.

Food Grains: The June index, at 107, is 1.8 percent below the previous month and 12 percent below June 2004. The June all wheat price, at \$3.17 per bushel, is down 14 cents from May and 38 cents from June 2004.

Feed Grains & Hay: The June index, at 102, is up 3.0 percent from last month but 16 percent below June 2004. The corn price, at \$2.01 per bushel, is up 2 cents from last month but 78 cents below June 2004. The all hay price, at \$102 per ton, is \$5.00 below May but \$6.80 above last June. Grain sorghum, at \$3.40 per cwt, is up 34 cents from May but \$1.18 below June last year.

Oil-Bearing Crops: The June index, at 121, is 9.0 percent above May but 25 percent below June 2004. The soybean price, at \$6.72 per bushel, increased 52 cents from May but is \$2.36 below June 2004.

Cotton: The June index, at 67, is down 2.9 percent from May and 32 percent below June 2004. The June price, at 40.7 cents per pound, is down 1.3 cents from the previous month and 19.2 cents below last June.

Potatoes & Dry Beans: The June index, at 127, is up 4.1 percent from last month and 20 percent above June 2004. The all potato price, at \$7.38 per cwt, is up 66 cents from May and \$1.22 from last June. The all dry bean price, at \$25.10 per cwt, is down \$6.80 from the previous month but \$5.10 above June 2004.

Fruits & Nuts: The June index, at 141, is up 13 percent from May and 12 percent higher than June 2004. Price increases for grapefruit, oranges, and lemons more than offset price decreases for peaches, grapes, and apples.

Commercial Vegetables: The June index, at 148, is up 7.2 percent from last month and 31 percent above June 2004. Price increases during June for lettuce, broccoli, and sweet corn more than offset price declines for tomatoes, celery, and snap beans.

LIVESTOCK & PRODUCTS: The June index, at 119, is 2.5 percent below last month and 11 percent from June 2004. Compared with a year ago, prices are lower for dairy, broilers, eggs, hogs, and cattle but higher for calves and turkeys.

Meat Animals: The June index, at 121, is down 3.2 percent from last month and 1.6 percent lower than last year. The June hog price, at \$51.00 per cwt, is down \$3.90 from May and \$5.70 lower than a year ago. The June beef cattle price of \$89.50 is down \$2.90 from last month and 30 cents lower than June 2004.

Dairy Products: The June index, at 112, is down 0.9 percent from a month ago and 19 percent lower than a year ago. The June all milk price of \$14.60 is down 20 cents from last month and \$3.60 from June 2004. The fluid grade milk price is down 20 cents but the manufactured grade milk price is unchanged from the previous month.

Poultry & Eggs: The June index, at 123, is up 0.8 percent from May but 16 percent below a year ago. June market egg prices, at 23.1 cents per dozen, decreased 0.5 cents from May. The June broiler price, at 44.0 cents per pound, was unchanged from May but 8 cents below a year ago. The June turkey price, averaging 42.5 cents per pound, is up 1.4 cents from the previous month and 0.8 cents from a year earlier.

Table of Contents

U.S. Prices Received and Indexes	Page	Monthly State Prices, continued	Page
Narrative	2	Cotton, Upland	17
Price Indexes	5	Cottonseed	17
Price Index Charts	6	Eggs	22
U.S. Prices Received Summary	8	Flaxseed	16
Charts	10	Hay	17
Selected Commodities	14	Hogs, All	21
Upland Cotton & Rice Marketings	17	Barrows and Gilts	21
Parity Prices	24	Sows	21
Reliability Statement	31	Milk	23
		Milk Cows	23
		Oats	15
Monthly State Prices Received		Peanuts	16
Apples	17	Potatoes	19
Barley	15	Sheep	22
Beans, Dry Edible	16	Lambs	22
Beef Cattle, All	20	Sorghum, Grain	15
Calves	20	Soybeans	15
Cows, Beef	20	Sunflower, All	16
Steers and Heifers	20	Tobacco	16
Citrus Fruit	18	Wheat, All Classes	14
Corn	15		
Prices Received Special Features			
			Page
Marketing Year for Specified Commodities			26
Marketing Year Average Prices, State and U.S.			
Sweet Potatoes			26
Monthly Prices Received, Monthly Farm Marketing Percentages, and Marketing Year Average Prices, U.S.			
Oats			26
All Barley			27
Malting Barley			27
Feed Barley			28
All Wheat			28
Winter Wheat			29
Durum Wheat			29
Other Spring Wheat			29
Hard Red Spring Wheat			30
Hard Red Winter Wheat			30
Soft Red Winter Wheat			30
White Wheat			30

Note: NASS adjusted its Marketing Year Average (MYA) Price publication schedule to accommodate the 2002 Farm Security and Rural Investment Act. Final U.S. MYA prices for all commodities will be published as soon as possible after the end of the U.S. marketing year for each crop. Final State MYA prices for each crop will be published after the marketing year for all States is complete. For barley, oats, and wheat, final State MYA prices will be published in the August 31st *Agricultural Prices* report.

Table of Contents (continued)

U.S. Prices Paid, Prices Paid Indexes and Ratios	Page
Narrative	32
Indexes and Parity Ratios	33
Charts	35
Feed Ratios	38
Reliability Statement	39
 U.S. Average Prices	
Prices Used to Calculate Feed Price Ratios	38
Feeder Livestock	38
 Information Contacts	40

**Index Numbers of Prices Received, United States,
June 2005, with Comparisons**

Index	1910-14=100				1990-92=100		
	Average 1990-92	2004	2005		2004	2005	
		Jun	May	Jun	Jun	May	Jun
All Farm Products	639	813	*762	762	128	*120	120
All Crops	500	603	*582	598	122	*118	121
Food Grains	325	384	*347	338	121	*109	107
Feed Grains & Hay	363	438	*354	365	122	*99	102
Cotton	517	506	*355	344	99	*69	67
Tobacco	1,263						
Oil-Bearing Crops	554	882	*609	661	161	*111	121
Fruits & Nuts	716	879	*876	985	126	*125	141
Commercial Vegetables	698	755	*924	990	113	*138	148
Potatoes & Dry Beans	540	535	*616	645	106	*122	127
Other Crops	493	569	578	578	115	117	117
Livestock & Products	768	1,020	*934	913	133	122	119
Meat Animals	1,021	1,248	*1,276	1,228	123	*125	121
Dairy Products	799	1,118	*910	897	139	*113	112
Poultry & Eggs	282	411	344	345	146	122	123
Food Commodities					131	*123	123

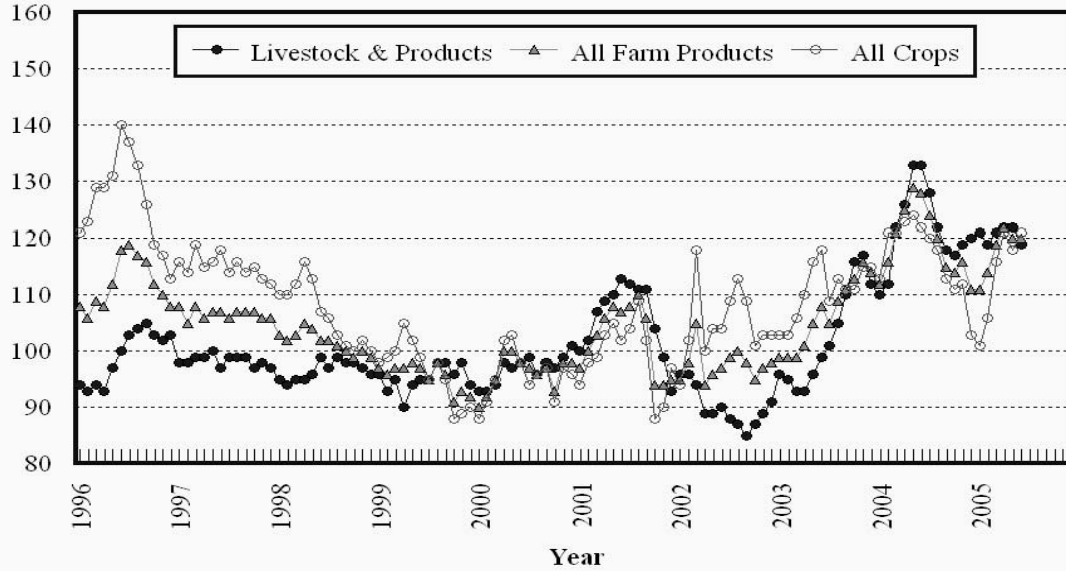
* Revised.

**Selected Index Numbers for Prices Received and Paid,
1990-92=100, by Month, United States, 2004 and 2005**

Month	Index of Prices Received						Index of Prices Paid			
	All Farm Products		All Crops		Livestock and Products		All Items		Production Items	
	2004	2005	2004	2005	2004	2005	2004	2005	2004	2005
Jan	112	111	113	101	110	121	130	137	127	134
Feb	116	114	121	106	112	119	131	137	127	134
Mar	121	119	121	116	122	121	132	139	129	136
Apr	125	122	123	121	126	122	133	139	131	138
May	129	120	124	119	133	122	135	139	133	138
Jun	128	120	122	121	133	119	135	139	133	138
Jul	124		120		128		135		133	
Aug	120		118		122		135		133	
Sep	115		113		118		135		133	
Oct	114		111		117		136		134	
Nov	116		112		119		135		133	
Dec	111		103		120		134		132	

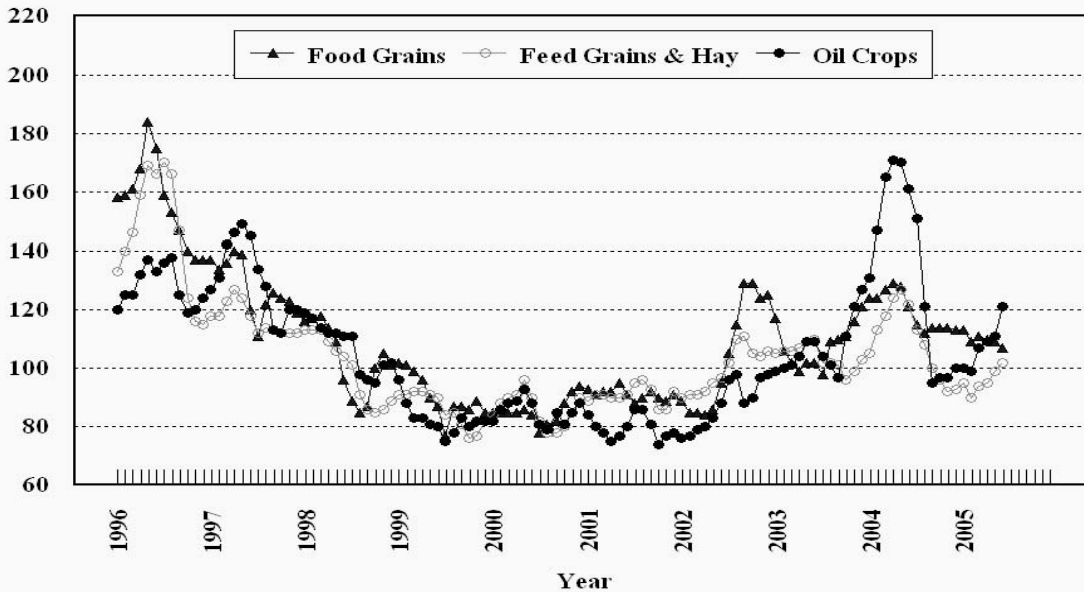
Prices Received, Major Indexes, US

Index Values(1990-92=100)



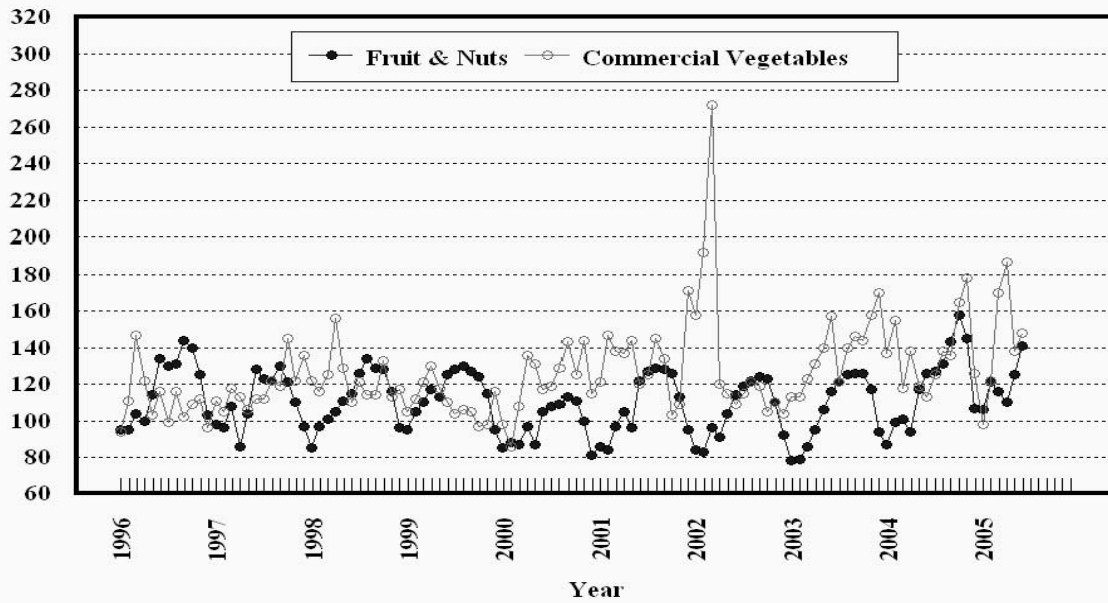
Prices Received, Food, Feed, & Oil Indexes, US

Index Values(1990-92=100)



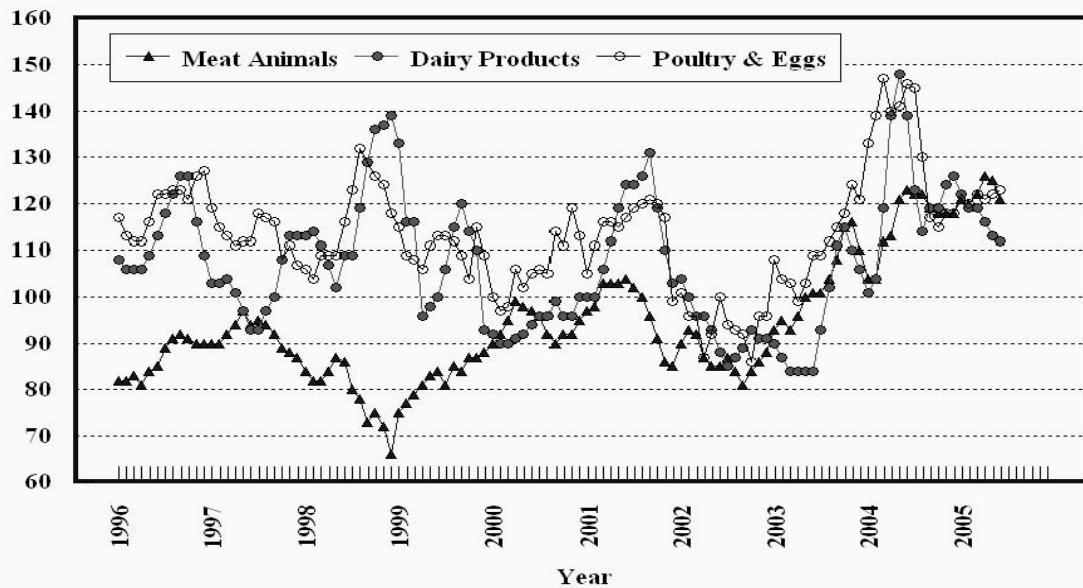
Prices Received, Fruit/Vegetable Indexes, US

Index Values(1990-92=100)



Prices Received, Livestock Product Indexes, US

Index Values(1990-92=100)



**Prices Received, United States,
June 2005, with Comparisons**

Commodity	Unit	Average 1990-92	Entire Month		Preliminary
			Jun 2004	May 2005	Jun 2005
		<i>Dollars</i>	<i>Dollars</i>	<i>Dollars</i>	<i>Dollars</i>
Field Crops					
Barley, All	Bu	2.12	2.63	2.46	2.36
Feed	Bu	1.90	2.20	1.71	1.66
Malting	Bu	2.43	2.79	2.90	2.79
Beans, Dry Edible	Cwt	19.10	20.00	31.90	25.10
Chickpeas, All	Cwt		20.80	22.30	(⁵)
Large	Cwt		22.00	22.40	(⁵)
Small	Cwt		(⁴)	(⁴)	(⁵)
Corn	Bu	2.30	2.79	1.99	2.01
Cotton, Upland	Lb	0.606	0.599	0.420	0.407
Cottonseed ³	Ton	96.00			
Flaxseed	Bu	4.27	7.23	11.60	9.10
Hay, All, Baled ¹	Ton	76.30	95.20	107.00	102.00
Alfalfa ¹	Ton	77.20	102.00	116.00	112.00
Other ¹	Ton	60.00	76.90	76.10	73.60
Lentils	Cwt		21.00	12.20	11.80
Oats	Bu	1.22	1.61	1.64	1.56
Peanuts, In-Shell	Lb	0.304	0.203	0.178	0.178
Peas, Dry Edible	Cwt		8.68	5.26	5.18
Austrian Winter	Cwt		(⁵)	(⁴)	(⁵)
Potatoes	Cwt	5.82	6.16	6.72	7.38
Rice, Rough	Cwt	7.07	9.30	6.97	7.01
Sorghum Grain	Cwt	3.75	4.58	3.06	3.40
Soybeans	Bu	5.61	9.08	6.20	6.72
Sunflower, All	Cwt	9.50	13.50	15.50	14.80
Tobacco, Types 11-37	Lb	1.740	(⁵)	(⁵)	(⁵)
Wheat, All	Bu	2.96	3.55	3.31	3.17
Winter	Bu	2.93	3.46	3.23	3.06
Durum	Bu	2.86	4.35	3.67	3.62
Other Spring	Bu	3.11	3.83	3.37	3.54
Hard Red Winter	Bu		3.46	3.17	
Soft Red Winter	Bu		3.41	3.09	
Hard Red Spring	Bu		3.83	3.37	
White	Bu	3.24	3.81	3.50	
Fruit					
Citrus, Equiv on-tree					
Grapefruit	Box	5.77	9.43	11.27	18.23
Lemons	Box	10.10	14.85	12.27	15.58
Oranges	Box	5.79	4.13	5.07	5.40
Tangelos	Box	5.82			
Tangerines	Box	15.11		15.22	
Temples	Box	6.23			
Noncitrus, Fresh					
Apples ²	Lb	0.212	0.301	0.172	0.163
Grapes ²	Ton	506.00	810.00	1,270.00	1,180.00
Peaches ²	Ton	432.00	476.00	600.00	502.00
Pears ²	Ton	370.00	(⁵)	553.00	(⁵)
Strawberries	Cwt	56.00	66.90	69.20	60.10

¹ Mid-month price.

² Equivalent packinghouse-door returns for CA, MI, and NY (apples only), and WA (apples, peaches, and pears). Prices as sold for other states.

³ Marketing year August - February.

⁴ Price not published to avoid disclosure of individual firms.

⁵ Insufficient sales to establish a price.

**Prices Received, United States,
June 2005, with Comparisons**

Commodity	Unit	Average 1990-92	Entire Month		Preliminary
			Jun 2004	May 2005	Jun 2005
		<i>Dollars</i>	<i>Dollars</i>	<i>Dollars</i>	<i>Dollars</i>
Vegetables, Fresh ¹					
Asparagus	Cwt	79.80	113.00	130.00	137.00
Broccoli	Cwt	22.50	28.70	22.40	37.80
Cantaloupes ²	Cwt		12.20	20.30	19.90
Carrots	Cwt	13.20	22.50	21.20	21.00
Cauliflower	Cwt	26.80	46.20	29.70	39.70
Celery	Cwt	11.60	13.80	15.50	9.45
Corn, Sweet	Cwt	15.70	22.80	25.60	27.30
Cucumbers ²	Cwt		17.20	29.40	33.20
Lettuce	Cwt	11.90	13.30	13.90	16.40
Onions	Cwt	12.80	16.50	17.40	21.90
Snap Beans ²	Cwt		28.20	47.80	39.30
Tomatoes	Cwt	32.30	21.70	53.00	49.20
Livestock					
Calves	Cwt	94.30	125.00	141.00	140.00
Cattle, All Beef	Cwt	72.90	89.80	92.40	89.50
Cows ³	Cwt	49.60	53.70	58.50	57.30
Steers & Heifers	Cwt	77.10	93.80	96.40	93.10
Milk Cows ⁴	Head	1,130.00			
Hogs, All	Cwt	47.70	56.70	54.90	51.00
Barrows & Gilts	Cwt	48.40	57.20	55.40	51.30
Sows	Cwt	39.50	46.50	42.60	44.60
Lambs	Cwt	56.20	105.00	115.00	
Sheep	Cwt	23.40	31.30	44.50	
Dairy and Poultry					
Milk, All ^{5 6}	Cwt	13.06	18.20	14.80	14.60
Fluid Grade ⁶	Cwt	13.10	18.20	14.80	14.60
Mfg Grade ⁶	Cwt	11.80	16.80	14.20	14.20
Broilers, Live ⁷	Lb	0.317	0.520	0.440	0.440
Eggs, All ⁸	Doz	0.643	0.665	0.452	0.450
Market ⁸	Doz	0.546	0.497	0.236	0.231
Turkeys, live ^{7 8}	Lb	0.380	0.417	0.411	0.425
Adjusted for Seasonal Variation					
Eggs, All	Doz	0.545	0.773	0.526	0.469
Milk, All ⁵	Cwt	9.71	18.20	15.10	14.60

¹ F.O.B. shipping point.

² Monthly estimates began January 1995.

³ Beef cows and cull dairy cows sold for slaughter.

⁴ Animals sold for dairy herd replacement only. Prices available for Jan, Apr, Jul, and Oct.

⁵ Before deductions for hauling. Includes quality, quantity, and other premiums. Excludes hauling subsidies.

⁶ June 2005 Fat test percent: all milk 3.57, fluid milk 3.57, mfg grade 3.73.

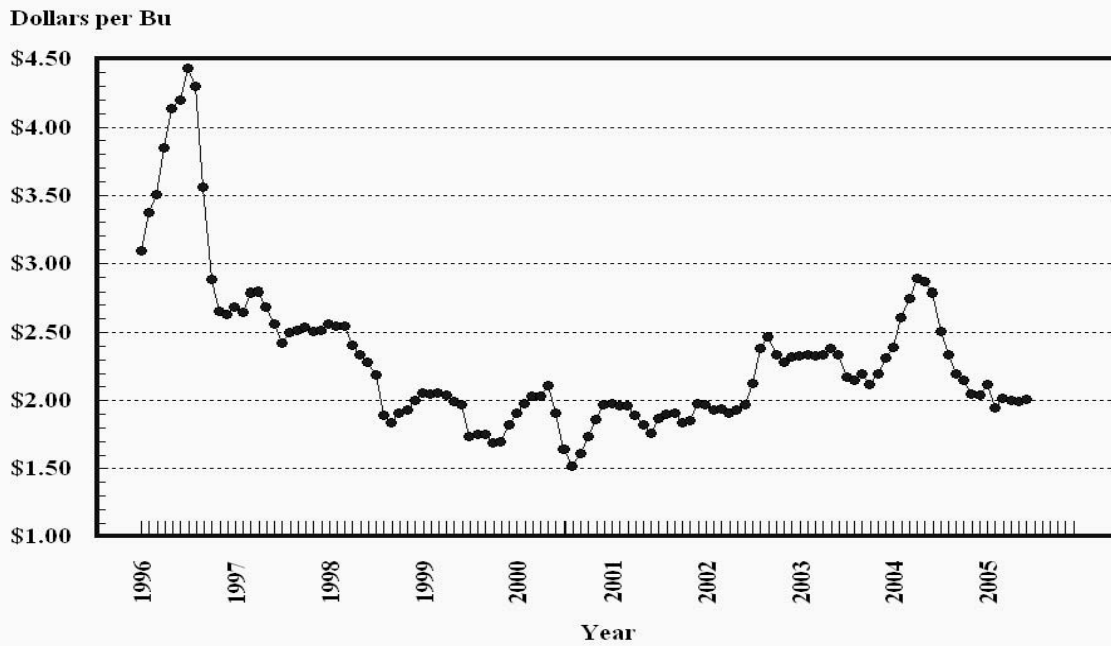
⁷ Equivalent liveweight returns to producers for most States. Includes growers and contractors.

⁸ Mid-month price.

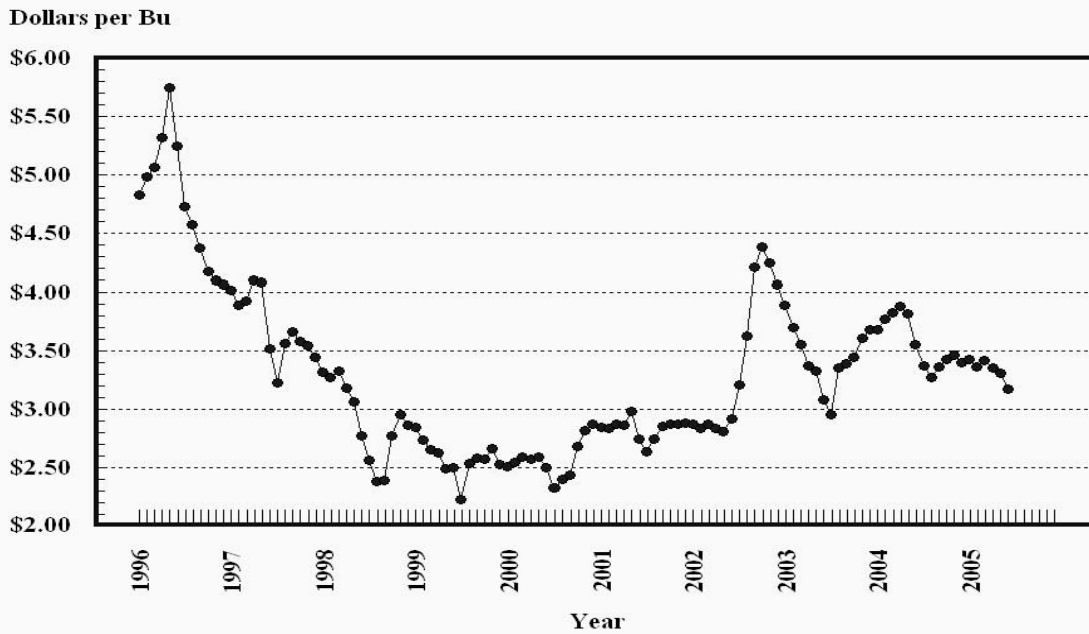
⁹ Price not published to avoid disclosure of individual firms.

¹⁰ Insufficient sales to establish a price.

Prices Received, Corn, US

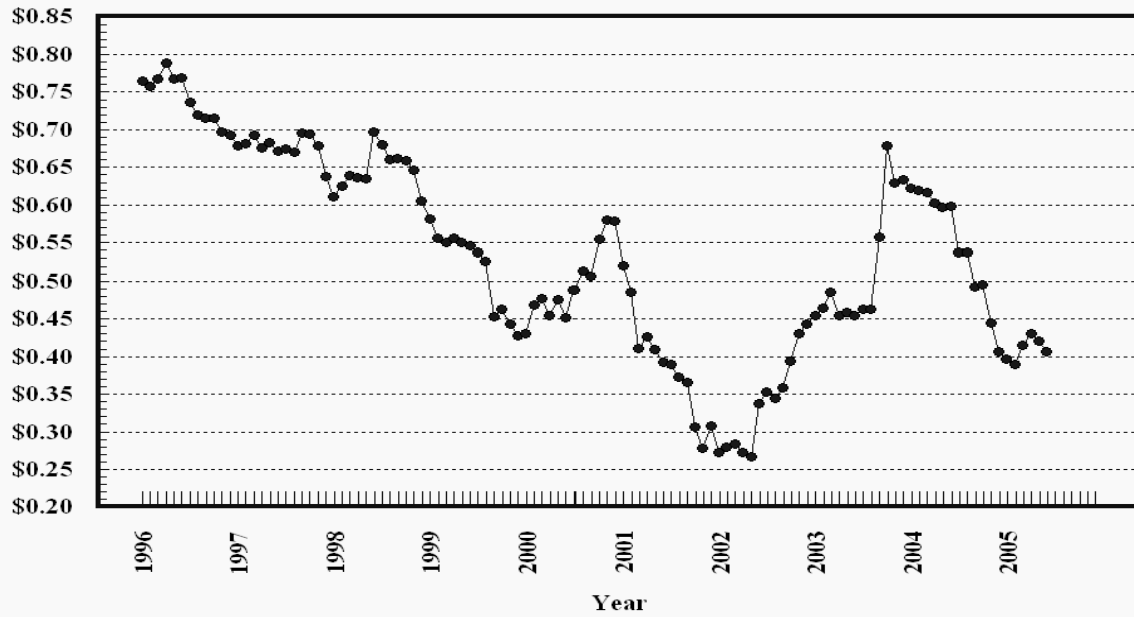


Prices Received, Wheat, US



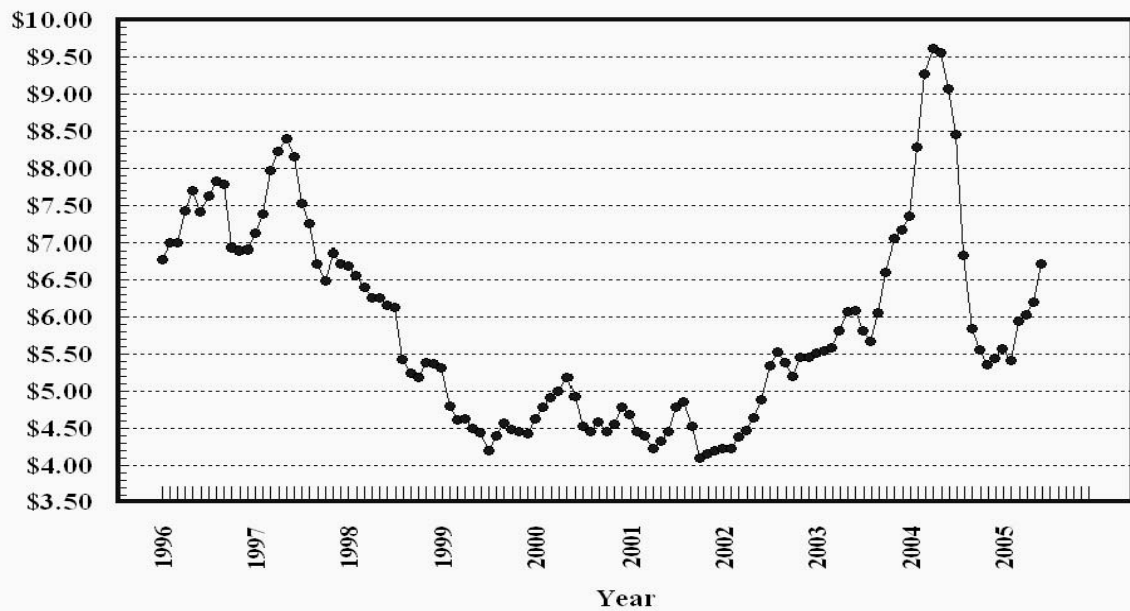
Prices Received, Cotton, US

Dollars per Lb



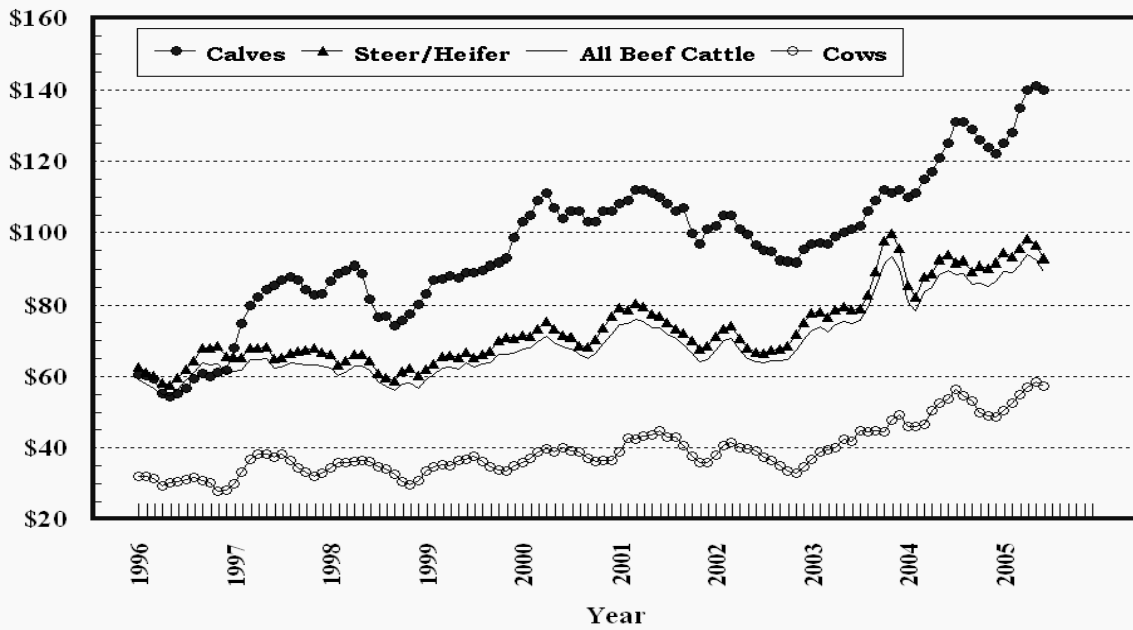
Prices Received, Soybeans, US

Dollars per Bu



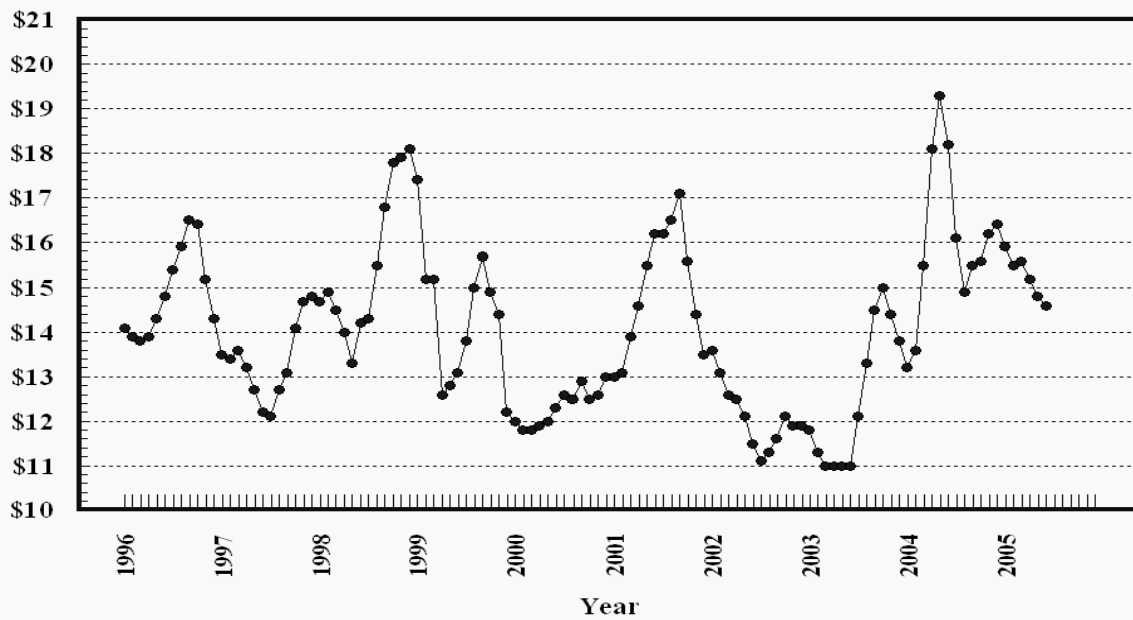
Prices Received, Cattle, US

Dollars per Cwt



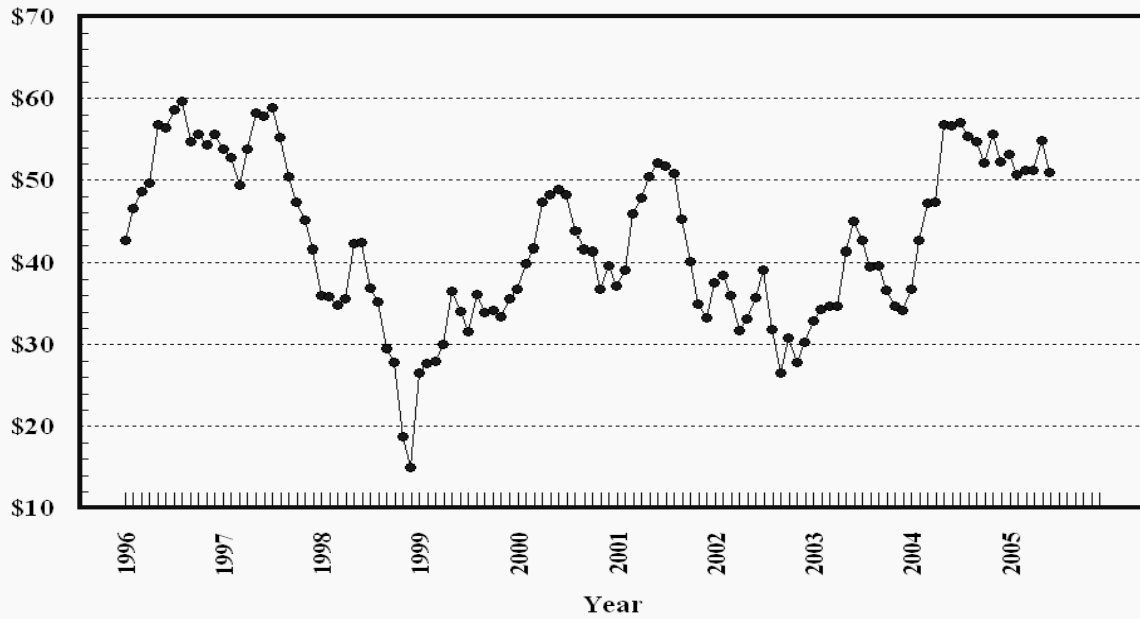
Prices Received, Milk, US

Dollars per Cwt



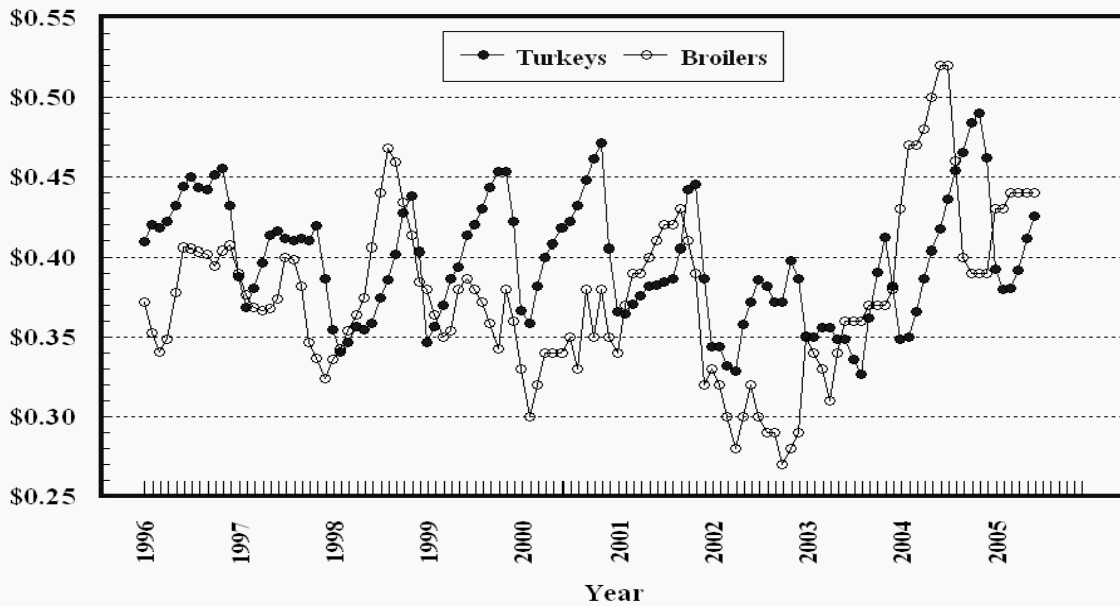
Prices Received, Hogs, US

Dollars per Cwt



Prices Received, Turkeys & Broilers, US

Dollars per Lb



Wheat: Prices Received, by State, May and June 2005

State	All Wheat		Winter Wheat		Durum Wheat		Oth Spring Wheat	
	May ¹	Jun ²	May ¹	Jun ²	May ¹	Jun ²	May ¹	Jun ²
	<i>Dollars per Bushel</i>	<i>Dollars per Bushel</i>	<i>Dollars per Bushel</i>	<i>Dollars per Bushel</i>	<i>Dollars per Bushel</i>	<i>Dollars per Bushel</i>	<i>Dollars per Bushel</i>	<i>Dollars per Bushel</i>
AR	(³)	(³)	(³)	(³)				
CA	3.64	(³)	(³)	(³)	(³)	(³)		
CO	3.12	2.99	3.12	2.99			(⁴)	(⁴)
ID	3.54	3.59	3.44	3.45			3.69	3.80
IL	3.25	3.30	3.25	3.30				
IN	3.08	2.99	3.08	2.99				
KS	3.16	2.97	3.16	2.97				
MI	3.00	2.90	3.00	2.90				
MN	3.37	3.49	(⁴)	(⁴)			3.37	3.49
MO	3.24	3.15	3.24	3.15				
MT	3.35	3.59	3.34	3.24	3.65	3.67	3.30	3.75
NE	3.20	3.10	3.20	3.10				
ND	3.32	3.31	2.59	2.45	3.63	3.40	3.28	3.30
OH	3.03	3.05	3.03	3.05				
OK	3.19	3.05	3.19	3.05				
OR	3.69	3.60	3.64	3.55			3.96	3.85
SD	3.29	3.39	3.16	3.03			3.37	3.62
TX	2.97	2.98	2.97	2.98				
WA	3.63	3.76	3.54	3.57			3.83	4.21
US	3.31	3.17	3.23	3.06	3.67	3.62	3.37	3.54

¹ Entire month.

² Mid-month.

³ Price not published to avoid disclosure of individual firms.

⁴ Insufficient sales to establish a price.

Prices Received for Selected Agricultural Commodities, by Month, United States, 2004 and 2005 ¹

Month	All Wheat		Corn		Soybeans		Beef Cattle ²		All Hogs	
	2004	2005	2004	2005	2004	2005	2004	2005	2004	2005
	<i>Dollars per Bushel</i>	<i>Dollars per Bushel</i>	<i>Dollars per Bushel</i>	<i>Dollars per Bushel</i>	<i>Dollars per Bushel</i>	<i>Dollars per Bushel</i>	<i>Dollars per Cwt</i>	<i>Dollars per Cwt</i>	<i>Dollars per Cwt</i>	<i>Dollars per Cwt</i>
Jan	3.68	3.43	2.39	2.12	7.35	5.57	81.10	89.40	36.60	53.20
Feb	3.77	3.36	2.61	1.95	8.28	5.42	78.50	89.00	42.60	50.70
Mar	3.83	3.42	2.75	2.02	9.28	5.95	83.70	91.30	47.20	51.20
Apr	3.88	3.35	2.89	2.00	9.62	6.03	85.00	94.00	47.40	51.20
May	3.82	3.31	2.87	1.99	9.56	6.20	88.50	92.40	56.60	54.90
Jun	3.55	3.17	2.79	2.01	9.08	6.72	89.80	89.50	56.70	51.00
Jul	3.37		2.51		8.46		88.10		57.10	
Aug	3.27		2.34		6.83		87.70		55.30	
Sep	3.36		2.20		5.84		85.90		54.80	
Oct	3.43		2.15		5.56		86.50		52.20	
Nov	3.46		2.05		5.36		85.40		55.60	
Dec	3.40		2.04		5.45		86.80		52.30	

¹ Current month prices are mid-month; prices for previous months are for the entire month.

² Cows, steers and heifers.

Grains: Prices Received, by States, May and June 2005

State	All Barley ¹		Corn		Oats		Soybeans		Sorghum Grain	
	May ²	Jun ³	May ²	Jun ³	May ²	Jun ³	May ²	Jun ³	May ²	Jun ³
	<i>Dollars per Bushel</i>	<i>Dollars per Bushel</i>	<i>Dollars per Bushel</i>	<i>Dollars per Bushel</i>	<i>Dollars per Bushel</i>	<i>Dollars per Bushel</i>	<i>Dollars per Bushel</i>	<i>Dollars per Bushel</i>	<i>Dollars per Cwt</i>	<i>Dollars per Cwt</i>
AL							6.45	6.95	(⁴)	(⁵)
AR										
CA	(⁴)	(⁴)								
CO	(⁴)	(⁴)	2.16	2.08						
ID	3.19	3.10								
IL			2.05	2.10	(⁴)	(⁴)	6.21	6.80	3.75	3.90
IN			2.02	2.06			6.32	6.85		
IA			1.93	1.90	1.70	1.75	6.10	6.70		
KS			2.00	2.00			6.16	6.47	2.99	3.12
KY			2.21	2.20			6.49	6.80		
LA							6.22	7.08		
MI			1.93	2.00	2.01	2.00	6.04	6.60		
MN	(⁴)	(⁴)	1.90	1.97	1.41	1.43	6.26	6.68		
MS							6.13	6.71		
MO			2.04	2.10			6.29	6.90	3.51	3.65
MT	2.80	2.69			1.92	(⁵)				
NE			1.93	2.00	1.66	1.70	6.16	6.60	3.15	3.25
NC			2.49	2.66			6.47	6.91		
ND	2.00	1.97	1.86	1.90	1.32	1.25	6.00	6.30		
OH			2.01	2.13	(⁴)	(⁵)	6.29	6.91		
OK									2.97	3.25
OR	2.16	2.10			(⁵)	(⁵)				
PA			2.54	2.38	1.96	1.99				
SD	1.94	(⁵)	1.84	1.89	1.53	1.53	6.11	6.49		
TN			2.45	2.45			6.38	6.70		
TX			2.31	2.20	(⁴)	(⁵)			3.21	3.52
UT	(⁴)	(⁴)								
WA	2.21	2.13								
WI			2.11	2.10	1.81	1.70	6.08	6.55		
WY	1.63	1.60								
US	2.46	2.36	1.99	2.01	1.64	1.56	6.20	6.72	3.06	3.40

¹ The Three-State (MN, ND and SD) Feed Barley price is discontinued.

² Entire month.

³ Mid-month.

⁴ Price not published to avoid disclosure of individual firms.

⁵ Insufficient sales to establish a price.

**Malting and Feed Barley: Prices Received Selected State,
May and June 2005**

State	Malting Barley		Feed Barley	
	May ¹	Jun ²	May ¹	Jun ²
	<i>Dollars per Bushel</i>	<i>Dollars per Bushel</i>	<i>Dollars per Bushel</i>	<i>Dollars per Bushel</i>
ID	3.37	3.40	1.88	1.90
MN	(³)	(³)	1.41	1.38
MT	3.20	3.07	1.71	1.65
ND	2.42	2.35	1.54	1.40
SD	1.95	(⁴)	1.70	(⁴)
WY	(⁴)	(⁴)	1.63	1.60

¹ Entire month.

² Mid-month.

³ Price not published to avoid disclosure of individual firms.

⁴ Insufficient sales to establish a price.

Field Crops: Prices Received, by State, May and June 2005

State	Dry Edible Beans		All Sunflower		Flaxseed		Tobacco		Peanuts ⁴	
	May ¹	Jun ²	May ¹	Jun ²	May ¹	Jun ²	May ¹	Jun ³	May ¹	Jun ³
	<i>Dollars per Cwt</i>	<i>Dollars per Cwt</i>	<i>Dollars per Cwt</i>	<i>Dollars per Cwt</i>	<i>Dollars per Bushel</i>	<i>Dollars per Bushel</i>	<i>Dollars per Pound</i>	<i>Dollars per Pound</i>	<i>Dollars per Pound</i>	<i>Dollars per Pound</i>
AL									(⁵)	(⁶)
CA	35.40	(⁵)								
CO	28.70	(⁵)								
FL									(⁶)	(⁶)
GA									(⁵)	(⁶)
ID	23.10	26.40								
IN										
KS			15.50	13.90						
KY										
MD										
MI	25.20	23.00								
MN	26.10	(⁵)	17.00	(⁵)						
MO										
NE	23.00	23.10								
NC									0.209	(⁵)
ND	23.40	21.90	14.40	14.30	11.60	9.10				
OH										
OK										
SC										
SD			16.10	15.30	(⁶)	(⁶)				
TN										
TX									(⁵)	(⁵)
VA									0.239	(⁶)
WV										
US	31.90	25.10	15.50	14.80	11.60	9.10	(⁶)	(⁶)	0.178	0.178

¹ Entire month.

² Mid-month.

³ Based on sales through first half of month.

⁴ In-Shell.

⁵ Price not published to avoid disclosure of individual firms.

⁶ Insufficient sales to establish a price.

Field Crops and Apples: Prices Received, by State, May and June 2005

State	Cotton, Upland		June				Apples Fresh Use ^{1 4} <i>Dol/Lb</i>
	May ¹	Jun ²	Cotton- seed ⁵ <i>Dollars per Ton</i>	Hay, Baled ³			
				All <i>Dollars per Ton</i>	Alfalfa <i>Dollars per Ton</i>	Other <i>Dollars per Ton</i>	
	<i>Dollars per Pound</i>	<i>Dollars per Pound</i>					
AL	0.395	0.395					
AZ	(⁶)	(⁶)		130.00	130.00	125.00	
AR	0.396	0.395					
CA	0.550	(⁶)		133.00	141.00	99.00	
CO				86.00	87.00	75.00	
GA	0.395	0.395					
ID				104.00	106.00	68.00	
IL				83.00	89.00	68.00	
IA				77.00	79.00	53.00	
KS				67.00	76.00	52.00	
KY				76.00	115.00	67.00	
LA	0.398	(⁶)					
MI				78.00	85.00	60.00	0.175
MN				71.00	76.00	53.00	
MS	0.395	0.395					
MO				56.00	95.00	44.00	
MT				76.00	77.00	67.00	
NE				47.00	47.00	46.00	
NV				115.00	113.00	129.00	
NM				125.00	128.00	105.00	
NY				119.00	140.00	100.00	0.255
NC	0.395	0.395					
ND				56.00	63.00	41.00	
OH				129.00	160.00	50.00	
OK				78.00	98.00	58.00	
OR				120.00	124.00	110.00	
PA				130.00	143.00	107.00	0.185
SD				62.00	63.00	47.00	
TN	0.395	0.395					
TX	0.376	0.372		79.00	125.00	67.00	
UT				95.00	95.00	85.00	
VA							
WA				111.00	110.00	115.00	0.158
WI				102.00	105.00	70.00	
WY				73.00	73.00	67.00	
US	0.420	0.407		102.00	112.00	73.60	0.163

¹ Entire month.

² Based on sales during the first half of the month.

³ Mid-month.

⁴ Equivalent packinghouse-door returns for CA, NY, and WA. Price at point of first sale for other States.

⁵ Marketing year August - February.

⁶ Price not published to avoid disclosure of individual firms.

**Upland Cotton and Rice: Prices Received and Marketings,
United States, June 2005, with Comparisons**

Item	Unit	Apr 2005 ¹	May 2005 ¹	Jun 2005 ²
Cotton, Upland				
Average Price	Dollars per Pound	0.431	0.420	0.407
Marketings ³	1,000 Bales	934	559	NA
Rice				
Average Price	Dollars per Cwt	7.06	6.97	7.01
Marketings ⁴	1,000 Cwt	15,829	11,565	NA

¹ Entire month.

² Based on purchases for the first half of the month.

³ Marketings based on a survey of cotton buyers in the major producing States - AL, AZ, AR, CA, GA, LA, MS, NC, TN, and TX.

⁴ Purchases by private firms and rice (rough equivalent) shipped by cooperatives.

**Citrus Fruit: Prices and Equivalent Returns, by Utilization,
by State and United States, June 2005**

Commodity, State and Type	F.O.B. Packed Fresh	Equivalent Returns ¹					
		Packinghouse-door			On-tree		
		All	Fresh	Process	All	Fresh	Process
	<i>Dollars per Box</i>	<i>Dollars per Box</i>	<i>Dollars per Box</i>	<i>Dollars per Box</i>	<i>Dollars per Box</i>	<i>Dollars per Box</i>	<i>Dollars per Box</i>
Grapefruit							
CA	30.40	20.60	23.76	-0.28	18.23	21.39	-2.65
US	30.40	20.60	23.76	-0.28	18.23	21.39	-2.65
Lemons							
CA	37.10	20.01	26.80	0.18	15.58	22.37	-4.25
US	37.10	20.01	26.80	0.18	15.58	22.37	-4.25
Oranges							
AZ							
Valencia	5.60	-1.60	-1.60		-4.14	-4.14	
CA	19.80	11.62	12.73	0.34	9.13	10.24	-2.16
Navel and Misc	23.40	11.79	15.87	0.38	9.28	13.36	-2.13
Valencia	19.50	11.60	12.44	0.32	9.11	9.95	-2.17
FL							
Valencia	17.50	7.03	9.50	6.90	4.82	7.10	4.70
TX							
US	19.20	7.65	11.86	6.80	5.40	9.40	4.60

¹ Net lbs. per box: Grapefruit - AZ & CA-67, FL-85, TX-80; Lemons - 76; Oranges - AZ & CA-75, FL-90, TX-85; Tangelos - 90; Tangerines - AZ, CA-75, FL-95; Temples - 90.

Potatoes: Prices Received, by State, May and June 2005

State	May	Jun	State	May	Jun
	<i>Dollars per Cwt</i>	<i>Dollars per Cwt</i>		<i>Dollars per Cwt</i>	<i>Dollars per Cwt</i>
AL		21.10	NC		5.95
AZ	13.00	10.80	ND - All ¹	5.85	5.85
CA - All ¹	16.00	14.80	- Fresh ³	6.00	NA
- Winter ²			- Processing	6.20	NA
- Spring	16.60	15.80	OH ²		
- Summer ²			OR	7.15	5.70
- Fall	7.90	8.30	PA	8.90	8.00
CO - All ¹	4.25	4.45	TX	11.00	11.60
- Fresh ³	4.35	NA	VA ²		
FL	11.50	12.40	WA - All ¹	5.15	5.70
ID - All ¹	4.45	4.30	- Processing	5.05	NA
- Fresh ³	2.80	NA	WI - All ¹	6.15	4.75
- Processing	4.60	NA	- Fresh ³	3.40	NA
ME	7.35	7.50	- Processing	7.55	NA
MI	8.75				
MN	4.85	4.40	US - All ¹	6.72	7.38
NY ²			- Fresh ³	9.00	NA
			- Processing	5.75	NA

¹ Average price of potatoes sold for all uses, including table stocks, processing, seed, and livestock feed.

² No potatoes being marketed.

³ Fresh market prices only, includes table stock prices.

Cattle: Prices Received, by State, May and June 2005

State	Cows ¹		Steers & Heifers		Beef Cattle ⁴		Calves	
	May ²	Jun ³	May ²	Jun ³	May ²	Jun ³	May ²	Jun ³
	<i>Dollars per Cwt</i>	<i>Dollars per Cwt</i>	<i>Dollars per Cwt</i>	<i>Dollars per Cwt</i>	<i>Dollars per Cwt</i>	<i>Dollars per Cwt</i>	<i>Dollars per Cwt</i>	<i>Dollars per Cwt</i>
AZ	60.60	58.30	109.00	106.00	109.00	106.00	130.00	124.00
AR	53.00	52.50	112.00	116.00	94.30	97.00	136.00	135.00
CA	55.50	55.40	92.20	89.10	75.30	73.30	128.00	125.00
CO	59.60	56.60	111.00	110.00	110.00	109.00	141.00	142.00
FL	54.50	56.50	107.00	104.00	84.70	84.10	137.00	138.00
GA	58.50	57.60	106.00	103.00	74.70	73.00	135.00	134.00
ID	58.40	57.20	94.50	90.10	85.80	82.20	134.00	129.00
IL	56.00	55.00	91.00	85.00	90.30	84.40	128.00	130.00
IA	60.50	59.00	90.50	84.80	89.90	84.30	142.00	143.00
KS	58.70	57.70	93.10	90.30	91.70	90.00	149.00	147.00
KY	55.00	55.00	112.00	109.00	98.30	96.00	133.00	130.00
LA	55.00	55.00	110.00	105.00	72.10	70.50	129.00	127.00
MI	56.00	56.00	87.00	85.00	77.70	76.30	135.00	137.00
MN	61.40	59.00	88.50	84.00	83.40	79.30	144.00	147.00
MO	57.90	56.60	118.00	119.00	103.00	102.00	142.00	137.00
MT	61.40	58.80	113.00	105.00	84.10	69.40	140.00	132.00
NE	62.70	62.20	95.20	91.00	94.20	90.10	148.00	148.00
NM	59.40	57.90	108.00	107.00	91.50	89.80	136.00	136.00
ND	62.50	60.00	111.00	110.00	90.10	77.50	139.00	137.00
OH	55.10	54.00	93.30	89.00	89.50	85.50	127.00	126.00
OK	57.60	57.00	108.00	109.00	104.00	105.00	140.00	134.00
OR	53.50	55.00	111.00	110.00	93.80	93.50	128.00	126.00
PA	57.90	56.30	89.90	84.90	81.60	77.50	127.00	127.00
SD	61.40	61.10	101.00	101.00	93.90	91.80	135.00	141.00
TN	58.00	56.00	115.00	113.00	92.20	90.20	134.00	131.00
TX	55.20	54.40	97.30	93.20	93.50	89.70	144.00	142.00
VA	58.00	57.00	110.00	109.00	90.20	89.20	132.00	130.00
WI	58.70	56.80	93.00	84.80	73.10	68.60	176.00	165.00
WY	61.80	60.00	112.00	110.00	99.50	97.50	140.00	138.00
US	58.50	57.30	96.40	93.10	92.40	89.50	141.00	140.00

¹ Beef cows and cull dairy cows sold for slaughter.

² Entire month.

³ Mid-month.

⁴ "Cows" and "steers and heifers" combined.

Hogs: Prices Received, by State, May and June 2005

State	Sows		Barrows and Gilts		All Hogs	
	May ¹	Jun ²	May ¹	Jun ²	May ¹	Jun ²
	<i>Dollars per Cwt</i>	<i>Dollars per Cwt</i>	<i>Dollars per Cwt</i>	<i>Dollars per Cwt</i>	<i>Dollars per Cwt</i>	<i>Dollars per Cwt</i>
AR	42.50	44.70	52.90	46.30	51.90	46.10
IL	41.50	42.80	58.00	52.50	56.70	51.70
IN	46.50	48.10	54.20	48.80	53.50	48.70
IA	44.80	47.40	56.80	53.20	56.70	53.10
KS	43.30	44.20	53.00	46.70	51.60	46.40
MN	43.40	44.00	55.60	51.00	55.50	51.00
MO	42.50	43.80	51.10	45.30	50.60	45.20
NE	40.50	42.30	56.30	51.40	56.00	51.20
NC	43.20	45.70	55.20	52.00	55.10	51.90
OH	42.70	45.00	56.50	53.00	55.50	52.40
OK	40.90	43.50	49.00	46.00	47.80	45.60
PA	41.10	43.10	53.00	46.60	51.20	46.10
SD	41.80	43.20	57.10	51.10	55.40	50.00
US	42.60	44.60	55.40	51.30	54.90	51.00

¹ Entire month.

² Mid-month.

Sheep and Poultry: Prices Received, by State, May and June 2005

State	May		June
	Sheep ¹	Lambs ¹	Eggs ^{2 3}
	<i>Dollars per Cwt</i>	<i>Dollars per Cwt</i>	<i>Dollars per Dozen</i>
AL			0.210
AR			0.240
CA	48.00	103.00	0.290
CO	38.40	115.00	
CT			0.360
FL			0.250
GA			0.249
ID	43.00	114.00	
IN			0.220
IA	39.10	114.00	0.180
KY	45.00	115.00	
ME			0.430
MI			0.270
MN	38.00	115.00	0.210
MS			0.250
MO	48.50	113.00	0.160
MT	44.30	125.00	
NE	37.90	113.00	
NY			0.260
NC			0.210
ND	44.00	114.00	
OH	41.40	128.00	0.253
OR	47.50	104.00	
PA	51.30	130.00	0.220
SC			0.230
SD	42.20	134.00	
TX	48.00	117.00	0.230
VA	47.00	125.00	
WA			0.290
WV	42.80	124.00	
WY	42.80	119.00	
US	44.50	115.00	0.231

¹ Entire month.

² Mid-month.

³ Market (table) eggs.

Milk and Milk Cows: Prices Received, by State, May and June 2005

State	May ¹						June		
	Fluid Grade Milk ²		Manufacturing Grade Milk		All Milk ³		All Milk ^{3 4}		Milk Cows ⁵
	Price	Fat Test	Price	Fat Test	Price	Fat Test	Price	Fat Test	
	<i>Dol/Cwt</i>	<i>Percent</i>	<i>Dol/Cwt</i>	<i>Percent</i>	<i>Dol/Cwt</i>	<i>Percent</i>	<i>Dol/Cwt</i>	<i>Percent</i>	<i>Dol/Head</i>
AZ	14.40	3.53			14.40	3.53	14.10	3.53	
CA	13.60	3.60	14.40	3.90	13.62	3.61	13.50	3.57	
CO	14.50	3.52			14.50	3.52	14.20	3.50	
FL	18.80	3.51			18.80	3.51	17.70	3.52	
ID	14.00	3.57	13.50	3.77	14.00	3.57	14.20	3.52	
IL	15.50	3.61	15.10	3.56	15.50	3.61	15.40	3.60	
IN	15.30	3.58	13.90	3.69	15.20	3.59	15.00	3.56	
IA	15.30	3.65	14.10	3.74	15.30	3.65	15.00	3.60	
KS	13.80	3.49			13.80	3.49	13.20	3.43	
KY	15.80	3.53			15.80	3.53	15.00	3.52	
MI	15.00	3.56	13.40	3.62	15.00	3.56	14.70	3.54	
MN	15.00	3.71	13.40	3.73	15.00	3.71	15.10	3.65	
MO	15.00	3.54	14.00	3.60	15.00	3.54	14.60	3.54	
NM	13.50	3.48			13.50	3.48	13.30	3.46	
NY	15.20	3.62			15.20	3.62	14.80	3.57	
OH	15.40	3.60	14.90	3.72	15.40	3.61	15.00	3.56	
OR	14.50	3.58			14.50	3.58	14.30	3.56	
PA	16.50	3.60	13.60	3.60	16.50	3.60	16.30	3.55	
TX	14.50	3.61			14.50	3.61	14.30	3.61	
VT	15.50	3.70			15.50	3.70	15.10	3.64	
VA	16.00	3.49			16.00	3.49	15.50	3.47	
WA	14.50	3.58			14.50	3.58	14.30	3.56	
WI	15.30	3.69	14.20	3.77	15.30	3.69	15.20	3.64	
US	14.80	3.60	14.20	3.79	14.80	3.61	14.60	3.57	

¹ Entire month.

² Including milk diverted to manufacturing.

³ Before deductions for hauling. Includes quality, quantity, and other premiums. Excludes hauling subsidies.

⁴ Preliminary.

⁵ Animals sold for dairy herd replacement only. Prices published January, April, July and October.

**Parity Price Equivalent for Manufacturing Milk ¹: United States,
May and June 2005, with Comparisons**

Item	Unit	Jun 2004	May 2005	Jun 2005
Parity Equivalent	Dollars per Cwt	32.00	33.45	33.36
Average Price F.O.B ²	Dollars per Cwt	16.80	14.20	14.20
Average Fat Test of Milk ²	Percent	3.70	3.79	3.73

¹ The parity price equivalent during 2005 is 91.4 percent of the parity price of all milk sold to plants, compared with 90.4 percent in 2004. For additional details, see January 2005 issue of "Agricultural Prices".

² Preliminary for June 2005.

**United States Parity Prices for Farm Products and Average Prices Received as
Percent of Parity Prices Based on Data for June 2005, with Comparisons ¹**

Commodity and Unit	Adjusted Base Price	Parity Price Based on Data for			Price as Percent of Parity		
		Jun 2004	May 2005	Jun 2005	Jun 2004	May 2005	Jun 2005
	<i>Dollars</i>	<i>Dollars</i>	<i>Dollars</i>	<i>Dollars</i>	<i>Percent</i>	<i>Percent</i>	<i>Percent</i>
Basic Commodities							
All Wheat, Bu	0.555	10.10	10.30	10.30	35	32	31
Rice, Cwt	1.38	29.30	25.60	25.60	32	27	27
Corn, Bu	0.372	6.81	6.91	6.90	41	29	29
Cotton, Lb							
American Upland	0.095	2.03	1.76	1.76	30	24	23
Extra Long Staple	0.142	2.59	2.64	2.63			
Peanuts, Lb	0.0350	0.665	0.650	0.649	31	27	27
Designated Nonbasic							
All Milk, Sold to Plants, Per Cwt ²	1.97	35.40	36.60	36.50	51	41	40
Honey, Extracted, Lb ³	0.1280	1.89	2.28	2.28			
Wool and Mohair							
Wool, Lb	0.0910	1.58	1.69	1.69			
Mohair, Lb	0.333	6.00	6.18	6.18			
Other Nonbasic							
Barley, Bu	0.377	6.76	7.00	6.99	39	35	34
Cottonseed, Ton	15.50	284.00	288.00	288.00	49	39	39
Dry Edible Beans, Cwt	2.82	52.50	52.40	52.30	38	61	48
Flaxseed, Bu	0.753	13.10	14.00	14.00	55	83	65
Oats, Bu	0.221	3.97	4.10	4.10	41	40	38
Potatoes, Cwt	0.838	15.30	15.60	15.50	40	43	48
Rye, Bu	0.355	6.34	6.59	6.59			
Sorghum Grain, Cwt	0.607	11.10	11.30	11.30	41	27	30
Soybeans, Bu	0.900	16.00	16.70	16.70	57	37	40
Sweetpotatoes, Cwt	2.31	40.40	42.90	42.90			
Apples, Fresh, Lb ⁴	0.0292	0.532	0.542	0.542	40	41	40
Citrus (equiv on-tree), Box							
Grapefruit	0.394	6.95	7.32	7.31	136	154	249
Lemons	1.12	19.80	20.80	20.80	75	59	75
Oranges	0.574	11.10	10.70	10.60	37	47	51
Tangerines	1.35	25.50	25.10	25.00		61	
Temples (FL)	0.379	8.10	7.04	7.03			
Beef Cattle, Cwt	9.65	172.00	179.00	179.00	52	52	50
Calves, Cwt	13.10	230.00	243.00	243.00	54	58	58
Hogs, Cwt	5.97	106.00	111.00	111.00	53	49	46
Lambs, Cwt	11.70	203.00	217.00	217.00		53	
Sheep, Cwt	4.72	84.50	87.70	87.60		51	
Eggs, Doz ²	0.0940	1.71	1.75	1.74	45	30	27
Turkeys, Live, Lb	0.0565	1.030	1.050	1.050	40	39	40

--continued

Parity Prices Based on Data for June 2005, United States ¹ (continued)

Other Nonbasic Commodities	Adj Base Base	Parity Price	Other Nonbasic Commodities	Adj Base Base	Parity Price
	<i>Dollars</i>	<i>Dollars</i>		<i>Dollars</i>	<i>Dollars</i>
Field Crops and Misc Commodities			Olives, CA		
Hops, Lb	0.251	4.66	canning, Ton ⁵	95.70	1,780.00
Spearmint Oil, Lb	1.46	27.10	Papayas (HA)	0.0528	0.979
Tobacco, Lb			Peaches		
Flue-Cured, 11-14	0.255	4.73	Fresh, Ton ⁴	81.57	1,510.00
VA Fire-Cured, 21	0.256	4.75	Dried, CA, Ton	84.00	1,560.00
KY-TN Fire-Cured, 22-23	0.323	5.99	Noncitrus Fruit		
Burley, 31	0.274	5.08	Peaches, cont.		
Maryland, 32	0.210	3.90	Processing ⁵		
Dark Air-Cured, 35-36	0.284	5.27	Excl Dried		
Sun-Cured, 37	0.241	4.47	Clingstone, CA, Ton	33.50	621.00
PA Seedleaf, 41	0.205	3.80	Pears, Ton		
Cigar Filler & Binder, 42-44, 54-55	0.225	4.17	Fresh ⁴	52.90	981.00
Puerto Rican Filler, 46	0.159	2.95	Dried, CA ⁶	164.00	3,040.00
Cigar Binder, 51-52	0.747	13.90	Plums, CA, Ton		
Type 61	3.21	59.50	Fresh, Equiv on-Tree	66.70	1,240.00
Noncitrus Fruit			Prunes, Dried, CA, Ton ⁶	127.00	2,360.00
Apples, Ton ⁶			Prunes and Plums, Excl CA, Ton		
Processing	18.30	339.00	Fresh ⁹	58.90	1,090.00
Apricots, Ton			Processing ⁶		
Fresh ⁷	99.00	1,840.00	Excl Dried	27.50	510.00
Dried, CA	270.00	5,010.00	Tree Nuts ¹⁰		
Avocados, Ton ⁷	234.00	4,340.00	Almonds, Lb	0.213	3.95
Cherries Bbl			Hazelnuts, Ton	135.00	2,500.00
Sweet, Ton	188.00	3,490.00	Pistachio, Lb	0.159	2.95
Tart, Lb	0.0319	0.592	Walnuts, Ton	173.00	3,210.00
Cranberry, Bbl ⁵	5.69	106.00	Vegetables, Cwt ¹¹		
Dates, CA, Ton ⁷	181.00	3,360.00	Fresh		
Grapes, Ton			Carrots ⁸	2.28	42.30
Raisin Variety	124.00	2,300.00	Cauliflower ⁸	4.60	85.30
Other Dried	70.50	1,310.00	Celery ⁸	1.97	36.50
Kiwifruit, Ton	91.30	1,690.00	Honeydew Melons	2.75	51.00
Nectarines			Lettuce	2.50	46.40
Fresh, CA, Ton ⁷	62.60	1,160.00	Onions ⁸	1.65	30.60
			Tomatoes	4.44	82.40

¹ Parity prices are computed under the provisions of Title III, Subtitle a, Section 301 (a) of the Agricultural Adjustment Act of 1938 as amended by the Agricultural Acts of 1948, 1949, and 1956. See January "Agricultural Prices" for details on adjusted base price and parity price computations.

² Seasonally adjusted price as percentage of parity price.

³ Wholesale extracted. Adjusted base price derived from state annual averages prices weighted by production. For 1982 through 1985 the national averages are the support prices.

⁴ Equivalent packinghouse-door returns for CA, NY (apples only), OR (except peaches), and WA. Price at point of first sale for other states.

⁵ Equivalent returns for bulk fruit at first delivery point.

⁶ Equivalent returns at processing plant door.

⁷ Equivalent returns at packinghouse door.

⁸ Includes some processing.

⁹ Based on "as sold" prices for fresh fruit in all states.

¹⁰ Prices in-shell basis except almonds which are shelled basis.

¹¹ F.O.B. shipping point prices.

Marketing Year for Specified Commodities

Barley: June 1 to May 31 for U.S.; June 1 to May 31 for Arizona, California, Delaware, Kentucky, Maryland, New Jersey, North Carolina, Pennsylvania, Virginia; August 1 to July 31 for Alaska, Maine; July 1 to June 30 for all other states.

Oats: June 1 to May 31 for U.S.; May 1 to April 30 for Georgia and Texas; June 1 to May 31 for North Carolina, Oklahoma, and South Carolina; August 1 to July 31 for Maine and New York; September 1 to August 31 for Alaska; July 1 to June 30 for all other States.

Sweet Potatoes: September 1 to August 31 for U.S. and all States.

Wheat: June 1 to May 31 for U.S.; May 1 to April 30 for Alabama, Florida, Georgia, Louisiana, Mississippi, and Texas; June 1 to May 31 for Arizona, Arkansas, California, Delaware, Illinois, Indiana, Kansas, Kentucky, Maryland, Missouri, New Mexico, North Carolina, Oklahoma, South Carolina, Tennessee, and Virginia; July 1 to June 30 for all other States.

**Sweet Potatoes: Marketing Year Average Prices Received,
by State and United States, 2002-2004**

State	2002	2003	2004 ¹
	Dollars per Cwt		
AL	14.80	25.50	20.80
CA	23.10	25.20	25.00
LA	14.50	20.00	17.70
MS	16.50	20.80	17.70
NJ	23.20	25.80	26.30
NC	14.00	14.50	13.50
SC	15.20	12.50	15.00
TX	16.80	19.00	16.80
VA	14.00	12.20	12.80
US ¹	16.80	19.20	17.50

¹ Revised.

**Oats: Monthly Prices Received, Monthly Farm Marketing Percentages, and
Marketing Year Average Prices, United States, 2002-2003 through 2004-2005 ¹**

Month	Prices Received			Farm Marketing Percentages ²		
	2002-2003	2003-2004	2004-2005	2002-2003	2003-2004	2004-2005
	<i>Dollars per Bushel</i>	<i>Dollars per Bushel</i>	<i>Dollars per Bushel</i>	<i>Percent</i>	<i>Percent</i>	<i>Percent</i>
Jun	1.95	1.83	1.61	4.2	3.4	6.9
Jul	1.69	1.46	1.36	24.4	20.2	15.6
Aug	1.67	1.39	1.32	31.5	29.8	26.2
Sep	1.80	1.39	1.42	6.5	8.0	11.4
Oct	1.80	1.44	1.45	3.6	4.4	6.0
Nov	1.91	1.29	1.51	2.3	2.4	3.1
Dec	1.95	1.58	1.60	3.5	4.2	3.9
Jan ³	2.04	1.48	1.64	6.4	6.2	5.9
Feb	2.11	1.58	1.67	6.7	4.2	6.2
Mar	2.08	1.60	1.73	4.6	5.6	6.4
Apr	1.98	1.63	1.65	3.5	6.5	5.1
May	1.95	1.70	1.64	2.8	5.1	3.3
MYA ¹	1.81	1.48	1.48	100.0	100.0	100.0

¹ Marketing year average (MYA) prices are weighted average prices for the U.S. marketing year of June - May.

² Monthly farm marketings, based on a sample survey, as percent of total used for calculating MYA prices.

³ Second year.

All Barley: Monthly Prices Received, Monthly Farm Marketing Percentages, and Marketing Year Average Prices, United States, 2002-2003 through 2004-2005 ¹

Month	Prices Received			Farm Marketing Percentages ²		
	2002-2003	2003-2004	2004-2005	2002-2003	2003-2004	2004-2005
	<i>Dollars per Bushel</i>	<i>Dollars per Bushel</i>	<i>Dollars per Bushel</i>	<i>Percent</i>	<i>Percent</i>	<i>Percent</i>
Jun	2.09	2.99	2.63	3.6	2.7	5.7
Jul	2.14	2.74	2.54	4.2	4.7	6.7
Aug	2.68	2.91	2.77	14.7	23.6	14.9
Sep	2.64	2.88	2.43	14.5	14.7	12.1
Oct	2.64	2.74	2.29	10.1	8.6	7.8
Nov	2.79	2.83	2.45	8.5	9.0	7.6
Dec	2.91	2.93	2.49	12.8	10.6	9.6
Jan ³	2.85	2.69	2.41	13.8	7.0	9.7
Feb	2.87	2.73	2.31	6.8	5.7	8.1
Mar	2.83	2.77	2.49	5.1	6.8	8.0
Apr	2.85	2.78	2.26	3.8	3.6	5.9
May	2.91	2.78	2.46	2.1	3.0	3.9
MYA ¹	2.72	2.83	2.48	100.0	100.0	100.0

¹ Marketing year average (MYA) prices are weighted average prices for the U.S. marketing year of June - May.

² Monthly farm marketings, based on a sample survey, as percent of total used for calculating MYA prices.

³ Second year.

Malting Barley: Monthly Prices Received, Monthly Farm Marketing Percentages, and Marketing Year Average Prices, United States, 2002-2003 through 2004-2005 ¹

Month	Prices Received			Farm Marketing Percentages ²		
	2002-2003	2003-2004	2004-2005	2002-2003	2003-2004	2004-2005
	<i>Dollars per Bushel</i>	<i>Dollars per Bushel</i>	<i>Dollars per Bushel</i>	<i>Percent</i>	<i>Percent</i>	<i>Percent</i>
Jun	2.49	3.19	2.79	2.1	3.0	5.9
Jul	2.49	3.08	2.68	2.7	4.1	6.8
Aug	2.93	3.12	3.06	16.1	24.1	16.3
Sep	2.95	3.10	2.91	12.3	15.5	10.7
Oct	2.89	3.11	2.73	9.5	7.3	6.9
Nov	3.07	3.03	2.83	8.0	8.8	7.0
Dec	3.24	3.20	2.74	13.8	10.9	10.7
Jan ³	3.07	2.94	2.73	15.8	7.0	9.9
Feb	3.06	2.96	2.58	8.1	5.9	8.4
Mar	3.07	2.97	2.74	5.3	7.4	8.9
Apr	3.11	3.04	2.76	4.2	3.7	5.0
May	3.19	3.14	2.90	2.1	2.3	3.5
MYA ¹	3.01	3.08	2.81	100.0	100.0	100.0

¹ Marketing year average (MYA) prices are weighted average prices for the U.S. marketing year of June - May.

² Monthly farm marketings, based on a sample survey, as percent of total used for calculating MYA prices.

³ Second year.

Feed Barley: Monthly Prices Received, Monthly Farm Marketing Percentages, and Marketing Year Average Prices, United States, 2002-2003 through 2004-2005 ¹

Month	Prices Received			Farm Marketing Percentages ²		
	2002-2003	2003-2004	2004-2005	2002-2003	2003-2004	2004-2005
	<i>Dollars per Bushel</i>	<i>Dollars per Bushel</i>	<i>Dollars per Bushel</i>	<i>Percent</i>	<i>Percent</i>	<i>Percent</i>
Jun	1.83	2.33	2.20	6.5	2.0	5.1
Jul	1.88	2.22	2.21	7.1	5.9	6.5
Aug	2.05	2.39	1.83	11.9	22.5	11.5
Sep	2.23	2.27	1.64	18.5	12.7	15.2
Oct	2.26	2.24	1.58	11.5	11.7	9.9
Nov	2.32	2.43	1.78	9.4	9.5	9.0
Dec	2.14	2.26	1.66	11.1	9.9	7.3
Jan ³	2.17	2.15	1.65	9.9	7.1	9.3
Feb	2.20	2.16	1.60	4.4	5.4	7.3
Mar	2.30	2.19	1.67	4.5	5.5	6.1
Apr	2.20	2.17	1.56	3.2	3.3	8.1
May	2.33	2.39	1.71	2.0	4.5	4.7
MYA ¹	2.16	2.29	1.73	100.0	100.0	100.0

¹ Marketing year average (MYA) prices are weighted average prices for the U.S. marketing year of June - May.

² Monthly farm marketings, based on a sample survey, as percent of total used for calculating MYA prices.

³ Second year.

All Wheat: Monthly Prices Received, Monthly Farm Marketing Percentages, and Marketing Year Average Prices, United States, 2002-2003 through 2004-2005 ¹

Month	Prices Received			Farm Marketing Percentages ²		
	2002-2003	2003-2004	2004-2005	2002-2003	2003-2004	2004-2005
	<i>Dollars per Bushel</i>	<i>Dollars per Bushel</i>	<i>Dollars per Bushel</i>	<i>Percent</i>	<i>Percent</i>	<i>Percent</i>
Jun	2.92	3.08	3.55	16.3	8.5	10.9
Jul	3.21	2.95	3.37	22.0	23.4	12.4
Aug	3.63	3.35	3.27	13.3	12.6	9.0
Sep	4.21	3.39	3.36	10.5	7.9	11.0
Oct	4.38	3.44	3.43	5.7	6.6	7.0
Nov	4.25	3.61	3.46	4.2	7.2	7.8
Dec	4.06	3.68	3.40	5.9	7.5	8.6
Jan ³	3.89	3.68	3.43	5.4	7.9	9.7
Feb	3.70	3.77	3.36	3.7	5.4	9.5
Mar	3.55	3.83	3.42	4.0	6.6	7.1
Apr	3.37	3.88	3.35	4.0	3.2	3.4
May	3.33	3.82	3.31	5.0	3.2	3.6
MYA ¹	3.56	3.40	3.40	100.0	100.0	100.0

¹ Marketing year average (MYA) prices are weighted average prices for the U.S. marketing year of June - May.

² Monthly farm marketings, based on a sample survey, as percent of total used for calculating MYA prices.

³ Second year.

**Monthly Prices Received and Marketing Year Average Prices,
United States, 2002-2003 through 2004-2005¹**

Month	Winter Wheat		
	2002-2003	2003-2004	2004-2005
	<i>Dollars per Bushel</i>	<i>Dollars per Bushel</i>	<i>Dollars per Bushel</i>
Jun	2.90	2.94	3.46
Jul	3.19	2.89	3.31
Aug	3.63	3.28	3.19
Sep	4.15	3.31	3.26
Oct	4.32	3.37	3.34
Nov	4.18	3.56	3.39
Dec	3.87	3.62	3.34
Jan ²	3.66	3.66	3.28
Feb	3.52	3.67	3.27
Mar	3.30	3.76	3.32
Apr	3.19	3.79	3.27
May	3.19	3.72	3.23
MYA ¹	3.41	3.27	3.32

¹ Marketing year average (MYA) prices are weighted average prices for the U.S. marketing year of June - May.

² Second year.

**Monthly Prices Received and Marketing Year Average Prices,
United States, 2002-2003 through 2004-2005¹**

Month	Durum Wheat			Other Spring Wheat		
	2002-2003	2003-2004	2004-2005	2002-2003	2003-2004	2004-2005
	<i>Dollars per Bushel</i>	<i>Dollars per Bushel</i>	<i>Dollars per Bushel</i>	<i>Dollars per Bushel</i>	<i>Dollars per Bushel</i>	<i>Dollars per Bushel</i>
Jun	3.41	3.99	4.35	2.98	3.45	3.83
Jul	3.44	3.85	4.09	3.31	3.31	3.55
Aug	3.54	3.78	3.86	3.66	3.42	3.38
Sep	4.18	3.95	3.89	4.30	3.42	3.48
Oct	4.43	3.89	3.87	4.45	3.53	3.50
Nov	4.52	3.95	3.79	4.26	3.68	3.57
Dec	4.26	3.95	3.67	4.15	3.72	3.48
Jan ²	4.23	3.96	3.64	4.03	3.67	3.61
Feb	4.28	4.08	3.72	3.82	3.84	3.49
Mar	4.14	4.14	3.70	3.72	3.90	3.51
Apr	3.93	4.19	3.63	3.48	3.94	3.39
May	3.99	4.21	3.67	3.55	4.01	3.37
MYA ¹	4.05	3.97	3.85	3.82	3.62	3.51

¹ Marketing year average (MYA) prices are weighted average prices for the U.S. marketing year of June - May.

² Second year.

**Monthly Prices Received and Marketing Year Average Prices,
United States, 2002-2003 through 2004-2005¹**

Month	Hard Red Spring Wheat			Hard Red Winter Wheat		
	2002-2003	2003-2004	2004-2005	2002-2003	2003-2004	2004-2005
	<i>Dollars per Bushel</i>	<i>Dollars per Bushel</i>	<i>Dollars per Bushel</i>	<i>Dollars per Bushel</i>	<i>Dollars per Bushel</i>	<i>Dollars per Bushel</i>
Jun	2.97	3.46	3.83	2.91	2.88	3.46
Jul	3.31	3.31	3.54	3.27	2.82	3.34
Aug	3.66	3.43	3.36	3.69	3.25	3.11
Sep	4.33	3.42	3.48	4.28	3.23	3.21
Oct	4.49	3.54	3.50	4.49	3.36	3.25
Nov	4.28	3.70	3.57	4.23	3.56	3.37
Dec	4.17	3.73	3.48	3.86	3.64	3.32
Jan ²	4.05	3.68	3.62	3.66	3.66	3.24
Feb	3.84	3.85	3.49	3.51	3.64	3.25
Mar	3.79	3.91	3.52	3.32	3.74	3.29
Apr	3.52	3.94	3.38	3.21	3.76	3.18
May	3.60	4.02	3.37	3.21	3.67	3.17
MYA ¹	3.83	3.63	3.51	3.43	3.23	3.29

¹ Marketing year average (MYA) prices are weighted average prices for the U.S. marketing year of June - May.

² Second year.

**Monthly Prices Received and Marketing Year Average Prices,
United States, 2002-2003 through 2004-2005¹**

Month	Soft Red Winter Wheat			White Wheat		
	2002-2003	2003-2004	2004-2005	2002-2003	2003-2004	2004-2005
	<i>Dollars per Bushel</i>	<i>Dollars per Bushel</i>	<i>Dollars per Bushel</i>	<i>Dollars per Bushel</i>	<i>Dollars per Bushel</i>	<i>Dollars per Bushel</i>
Jun	2.82	3.07	3.41	3.18	3.24	3.81
Jul	3.00	3.02	3.24	3.26	3.20	3.46
Aug	3.32	3.28	3.04	3.64	3.42	3.52
Sep	3.63	3.34	2.96	4.05	3.45	3.51
Oct	3.82	3.27	2.96	4.20	3.42	3.52
Nov	3.94	3.61	2.93	4.08	3.54	3.54
Dec	3.67	3.77	2.94	3.92	3.53	3.51
Jan ²	3.50	3.69	3.12	3.73	3.63	3.49
Feb	3.36	3.70	3.13	3.60	3.73	3.47
Mar	3.10	3.80	3.32	3.29	3.81	3.50
Apr	3.05	3.84	3.16	3.14	3.89	3.51
May	3.18	3.81	3.09	3.13	3.93	3.50
MYA ¹	3.08	3.17	3.21	3.68	3.54	3.52

¹ Marketing year average (MYA) prices are weighted average prices for the U.S. marketing year of June - May.

² Second year.

Reliability of Prices Received Estimates

Definition: Prices received represent sales from producers to first buyers. They include all grades and qualities. The average commodity price from the survey multiplied by the total quantity marketed theoretically should give the total cash receipts for the commodity.

Survey Procedures: Primary sales data used to determine grain prices were obtained from probability samples of about 2000 mills and elevators. These procedures ensure that virtually all grain moving into commercial channels has a chance of being included in the survey. Generally, States surveyed account for 90 percent or more of total U.S. production. Livestock prices are obtained from packers, stockyards, auctions, dealers, and market check data from AMS-USDA, private marketing organizations, and state commodity groups and agencies. Inter-farm sales of grain and livestock are not included since they represent very small percentages of the total marketings. Grain marketed for seed is also excluded. Fruit and vegetable prices are obtained from sample surveys and market check data from AMS-USDA, private marketing organizations, state agencies, and universities.

Summary and Estimation Procedures: Survey quantities sold are expanded by strata to state levels and used to weight average strata prices to a state average. State prices are then weighted to a U.S. price based on expanded marketings. Recommendations are prepared by the State Statistical Offices and reviewed by the Agricultural Statistics Board in Washington, D.C. State recommendations are reviewed for reasonableness with survey data, other States, and recent historic estimates.

Revisions: For most items, the current month's preliminary price represents a 3-5 day period around the 15th of the month. Previous month's prices represent actual dollars received for quantities sold during the entire month. Revisions are published in monthly issues of *Agricultural Prices*.

Reliability: U.S. price estimates based on probability surveys generally have a sampling error of less than one percent for the major commodities such as corn, wheat, soybeans, cotton, and rice. Current methods of summarization for non-probability commodities are not designed directly to calculate sampling errors. However, analytical measures approximate the U.S. relative sampling errors at around five percent. Any nonsampling errors are attributed to such things as the inability to obtain correct information, differences in interpreting questions or definitions, mistakes in coding or processing the data, etc. Efforts are made at each step in the survey process to minimize these nonsampling errors.

Prices Paid by Farmers

The June Index of Prices Paid for Commodities and Services, Interest, Taxes, and Farm Wage Rates (PPITW) is 139 (1990-92=100), unchanged from May 2005 but 3.0 percent above June 2004.

PRODUCTION INDEX: The June index, at 138, is unchanged from last month but 3.8 percent above last year. Lower prices in June for feeder pigs, LP gas, hay and forages, and feed supplements offset higher prices for diesel fuel, feeder cattle, complete feeds, and nitrogen fertilizers.

Feed: The June index, at 117, is the same as May but 10.0 percent below last June. Since May, slightly lower prices for hay and forages and feed supplements offset slightly higher prices for complete feeds, feed concentrates, and feed grains.

Livestock and Poultry: The June index for livestock and poultry purchases, at 139, is 0.7 percent lower than last month but 3.7 percent above last year. Since May, lower prices for feeder pigs more than offset higher prices for feeder cattle. The June feeder cattle price, at \$118.50 per cwt, is up \$1.60 per cwt from the May price. June feeder pigs averaged \$128.00 per cwt, down \$23.00 per cwt from May.

Fertilizer: The June index, at 160, is up 0.6 percent from May and 17 percent more than June a year ago. Since May, higher prices for nitrogen fertilizers and potash and phosphate materials more than offset lower prices for mixed fertilizers.

Agricultural Chemicals: The June index, at 120, is unchanged from last month and last June.

Fuels: The June index, at 204, is up 0.5 percent from a month earlier and 35 percent above June 2004. Compared with last month, prices are higher for diesel fuel but lower for LP gas and gasoline.

Farm Machinery: The June index is 171, unchanged from May but 6.2 percent above last June. Since May, prices are higher for tractors.

CONSUMER PRICE INDEX: The May 2005 Consumer Price Index for all urban consumers (CPI-U) decreased 0.1 percent before seasonal adjustment to a level of 194.4 (1982-84=100). This compares with the April index of 194.6. For the 12-month period ending in May, the overall index has increased 2.8 percent.

**Indexes of Prices Paid by Farmers and Related Parity Ratios
United States, June 2005 With Comparisons**

Indexes and Ratios	1910-14 = 100			1990-92 = 100		
	2004	2005		2004	2005	
	Jun	May	Jun	Jun	May	Jun
Prices Paid by Farmers for Commodities & Services, Interest, Taxes, & Wage Rates (PPITW)	1,794	*1,855	1,855	135	139	139
Production	1,288	*1,339	1,339	133	138	138
Feed	633	*573	573	130	117	117
Livestock & Poultry	1,714	*1,789	1,783	134	140	139
Seeds	1,564	*1,694	1,694	158	171	171
Fertilizer	501	*583	586	137	*159	160
Agricultural Chemicals	743	*741	742	120	120	120
Fuels	1,162	*1,566	1,577	151	*203	204
Farm Supplies & Repairs	972	*1,014	1,014	137	*143	143
Autos & Trucks	3,021	*3,060	3,058	114	115	115
Farm Machinery	4,041	*4,291	4,300	161	*171	171
Building Materials	1,824	*1,912	1,907	134	141	140
Farm Services & Rent	1,467	*1,495	1,495			
Rent				125	127	127
Interest ¹	2,593	2,643	2,643	103	105	105
Taxes ²	3,474	3,542	3,542	130	132	132
Wage Rates	5,964	6,035	6,035	159	161	161
Production, Interest, Taxes, & Wage Rates (PITW)	1,793	*1,856	1,857	133	138	138
Family Living-CPI ³	1,802	*1,846	1,846	141	144	144
Ratio (Received/Paid) Parity Ratio ⁴	45	*41	41	95	*86	86
Parity Ratio Adjusted ⁵	47	*45	45			
PPITW Adjusted for Productivity ⁶	1,215	*1,230	1,230			
Crop Sector (PPITW)				135	142	142
Livestock Sector (PPITW)				134	136	136
Farm Sector (Production)				136	134	134
Non-Farm Sector (Production)				131	140	140

* Revised.

¹ Interest per acre on farm real estate debt and interest rate on farm non-real estate debt.

² Farm real estate taxes payable per acre.

³ Bureau of Labor Statistics, Consumer Price Index for all urban consumers (CPI-U), for the previous month converted by the USDA.

⁴ Ratio of index of prices received to PPITW (1910-14=100).

⁵ Based on estimated cash receipts, from marketings and government payments, the preliminary adjustment factor is 1.105 for 2005 and the revised factor is 1.048 for 2004.

⁶ PPITW is adjusted based on productivity trend for the prior 15 years.

**Prices Paid Indexes and Annual Weights for Input Components and
Sub-Components United States, June 2005 With Comparisons**

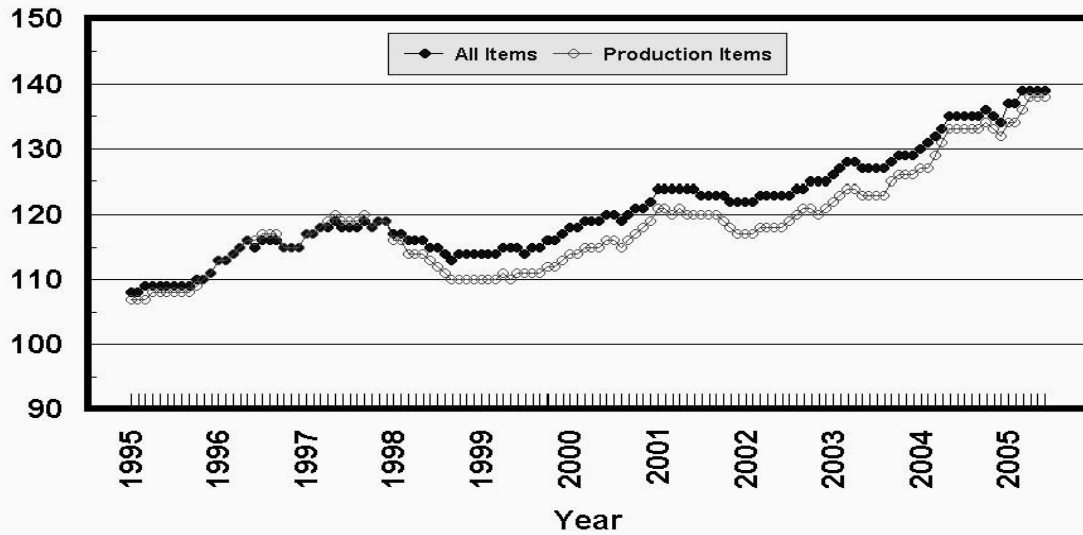
Index	Relative Weights 5-Year Moving Average ¹		Input Indexes		
	2004	2005	2004	2005	
	<i>Percent</i>	<i>Percent</i>	Jun <i>(1990-92=100)</i>	May <i>(1990-92=100)</i>	Jun <i>(1990-92=100)</i>
Production Items	66.2	66.4	133	138	138
Feed	10.7	10.7	130	117	117
Feed Grains	1.5	1.5	119	*86	87
Complete Feeds	5.2	5.2	130	*117	118
Hay/Forages	1.3	1.3	123	133	128
Concentrates	1.7	1.7	139	*126	128
Supplements	0.9	0.9	135	*133	126
Livestock & Poultry	7.4	7.7	134	140	139
Feeder Cattle	5.8	6.0	137	138	140
Feeder Pigs	0.6	0.6	116	*164	139
Milk Cow Replacements	0.6	0.6	140	157	157
Poultry	0.4	0.5	110	110	110
Seeds	3.3	3.5	158	171	171
Field Crops	3.0	3.2	163	177	177
Grasses/Legumes	0.3	0.3	111	118	118
Fertilizer	4.4	4.3	137	*159	160
Mixed Fertilizer	1.9	1.9	122	*134	134
Nitrogen	1.8	1.8	156	*186	188
Potash & Phosphate	0.6	0.6	124	*156	158
Agricultural Chemicals	3.7	3.6	120	120	120
Herbicides	2.4	2.3	113	113	113
Insecticides	0.9	0.8	141	*139	139
Fungicides/Other	0.5	0.5	117	120	120
Fuels	2.7	2.7	151	*203	204
Diesel	1.5	1.6	143	*219	226
Gasoline	0.8	0.8	157	*187	184
LP Gas	0.4	0.4	168	*172	156
Farm Supplies & Repairs	5.4	5.2	137	*143	143
Supplies	1.8	1.7	127	*132	132
Repairs	3.6	3.5	142	148	148
Autos & Trucks	1.8	1.8	114	115	115
Autos	0.2	0.2	107	108	108
Trucks	1.6	1.5	115	116	116
Farm Machinery	4.0	4.0	161	*171	171
Tractors	0.9	0.9	147	*155	156
Self-Propelled	1.6	1.6	167	176	176
Other Machinery	1.5	1.5	164	*175	175
Building Materials	3.3	3.6	134	141	140
Farm Services	12.4	12.4	125	127	127
Custom Rates	1.3	1.3	125	125	125
Other Services	11.1	11.1	125	*128	128
Rent	7.1	6.9	120	123	123
Cash	3.8	3.7	145	147	147
Share	3.3	3.2	91	94	94
Interest	4.7	4.5	103	105	105
Taxes	3.0	2.9	130	132	132
Wage Rates	7.6	7.6	159	161	161
Family Living-CPI	18.5	18.6	141	144	144

* Revised.

¹ Weights may not add due to rounding.

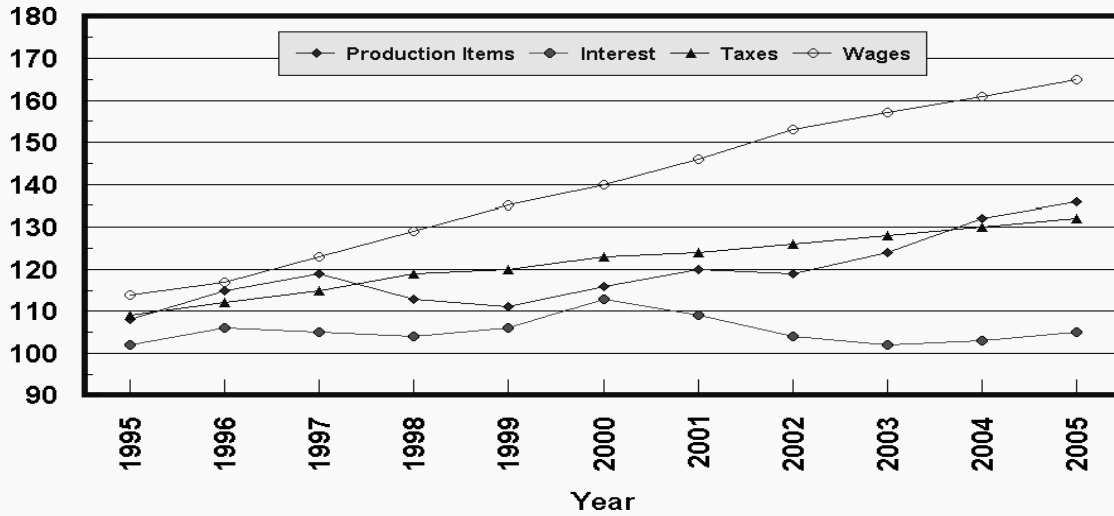
Prices Paid by Farmers, Major Indexes US, by Quarter and Month

Percent (1990-92=100)



Prices Paid by Farmers, Major Indexes US, Annual Averages 1/

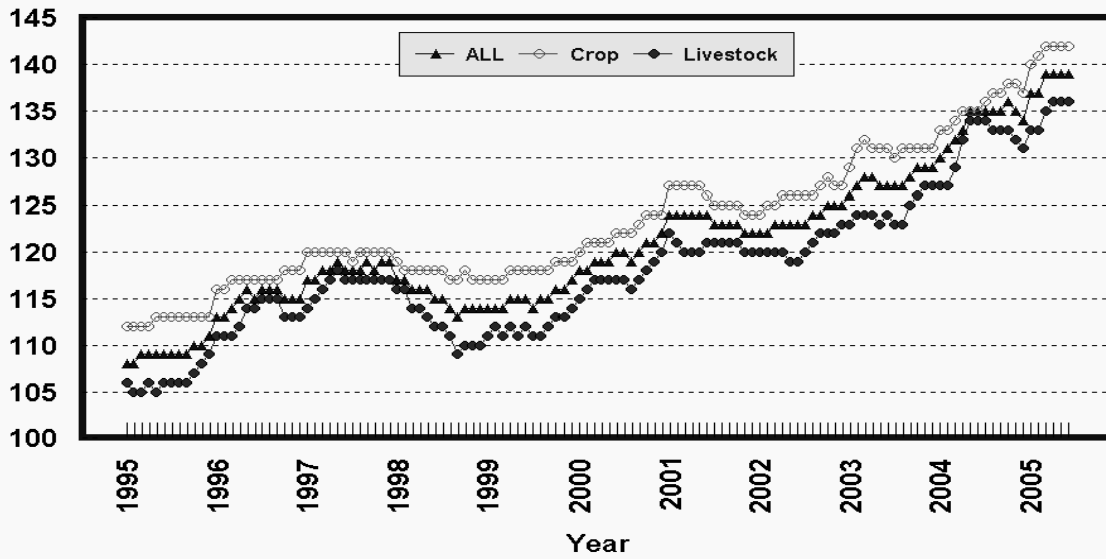
Percent (1990-92=100)



1/ Index values for 2005 are year-to-date averages.

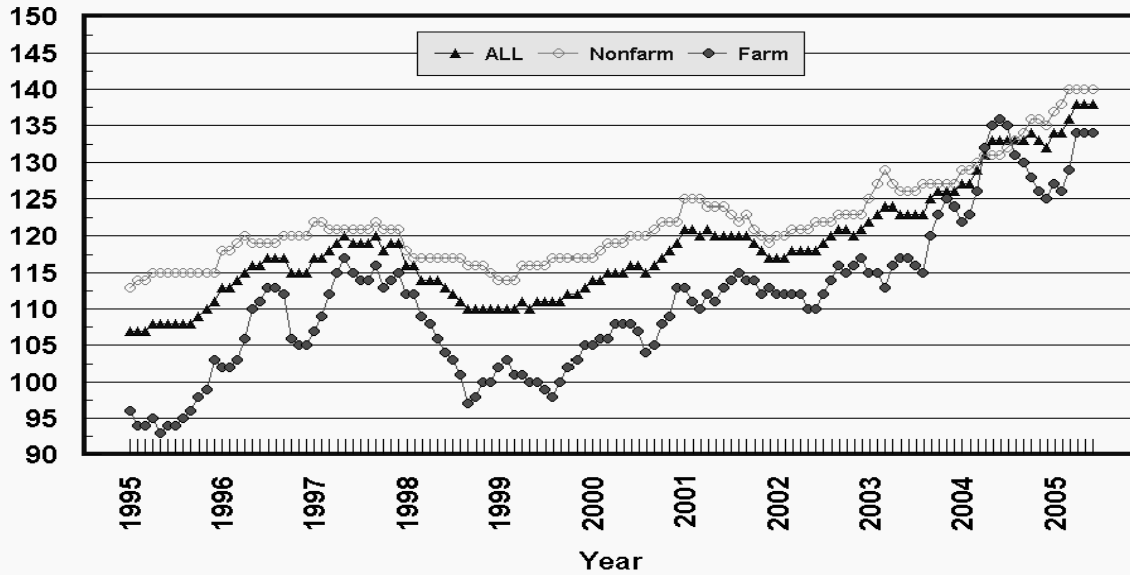
Prices Paid by Farmers, Indexes, All Items US, By Farm Type

Percent (1990-92=100)



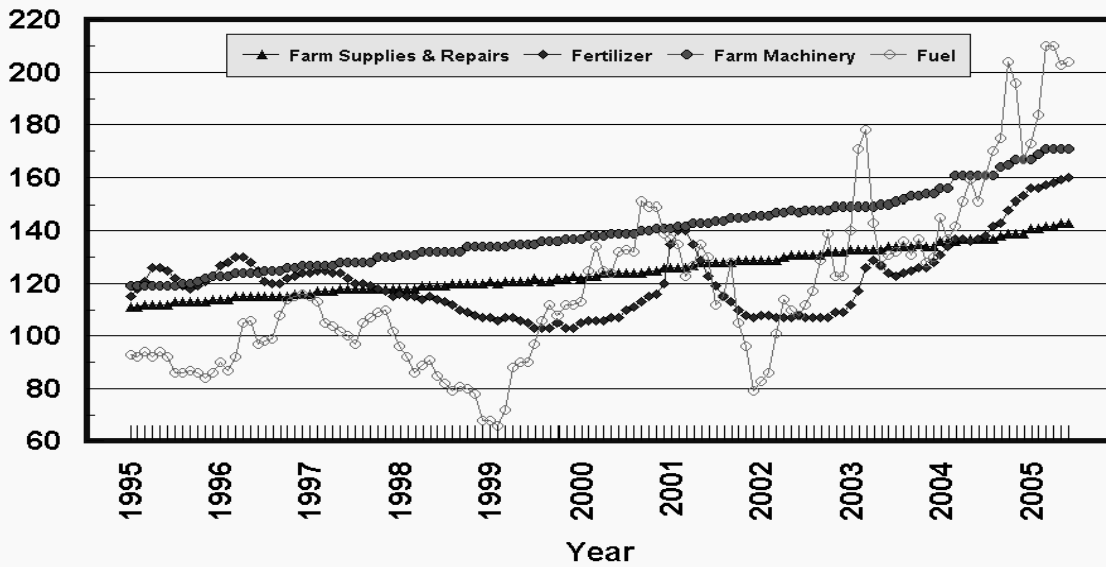
Prices Paid by Farmers, Indexes, All Production Items US, By Sector Origin

Percent (1990-92=100)



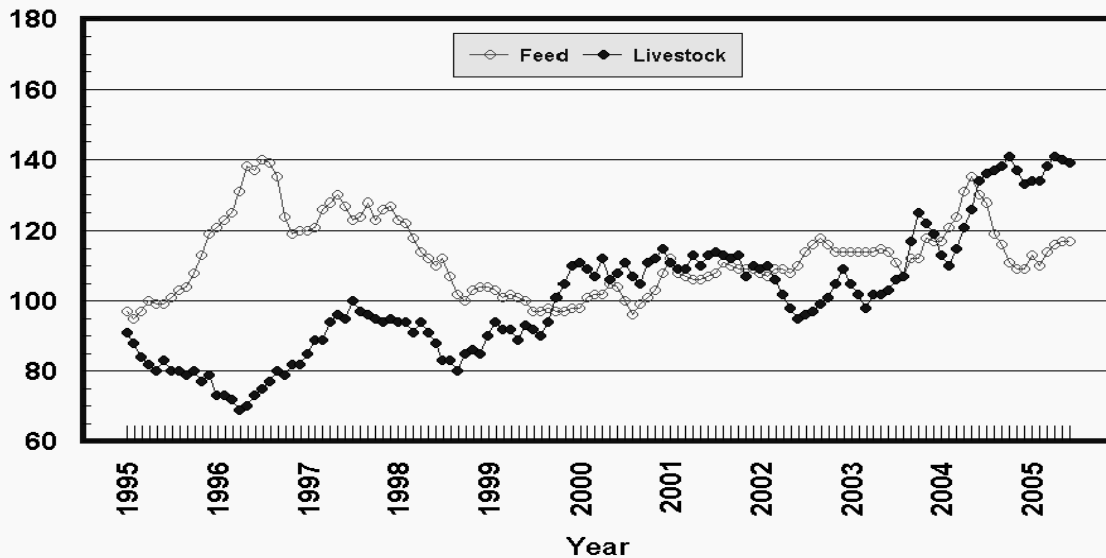
Prices Paid by Farmers, Selected Production Indexes US, By Non-Farm Sector

Percent (1990-92=100)



Prices Paid by Farmers, Selected Production Indexes US, By Farm Sector

Percent (1990-92=100)



Feed Price Ratios: United States, June 2005 with Comparisons

Feed Price Ratio ¹	2004	2005	
	Jun	May	Jun
Broiler-Feed: Pounds of Broiler Grower Feed equal in value to 1 pound of broiler, live weight	5.6	*6.9	6.5
Market Egg Feed: Pounds of Laying Feed equal in Value to 1 dozen eggs	6.6	*4.5	4.2
Hog-Corn: Bushels of Corn equal in value to 100 pounds of hog, live weight	20.3	*27.6	25.4
Milk-Feed: Pounds of 16% Mixed Dairy Feed equal in value to 1 pound of Whole Milk	3.12	*2.95	2.91
Steer & Heifer-Corn: Bushels of Corn equal in value to 100 pounds of Steer & Heifers, live weight	33.6	*48.4	46.3
Turkey-Feed: Pounds of Turkey Grower equal in value to 1 pound of Turkey, live weight	5.2	*7.0	7.0

* Revised.

¹ Effective January 1995, prices of commercial prepared feeds are based on current U.S. prices received for corn, soybeans, alfalfa hay, and all wheat.

**Prices Used to Calculate Feed Price Ratios:
United States, June 2005 with Comparisons**

Commodity	Unit	2004	2005	
		Jun	May	Jun
Broilers, Live	Lb	0.520	0.440	0.440
Eggs, Market	Doz	0.497	0.236	0.231
Hogs, All	Cwt	56.70	*54.90	51.00
Milk, All	Cwt	18.20	*14.80	14.60
Steers and Heifers	Cwt	93.80	*96.40	93.10
Turkeys, Live	Lb	0.417	0.411	0.425
Corn	Bu	2.79	*1.99	2.01
Hay, Alfalfa, Baled	Ton	102.00	116.00	112.00
Soybeans	Bu	9.08	*6.20	6.72
Wheat, All	Bu	3.55	*3.31	3.17

* Revised.

**Feeder Livestock: Prices Paid, United States
June 2005 with Comparisons**

Commodity	Unit	2004	2005	
		Jun	May	Jun
		<i>Dollars</i>	<i>Dollars</i>	<i>Dollars</i>
Feeders and Stockers Cattle and Calves	Cwt	116.10	116.90	118.50
Feeder Pigs	Cwt	107.00	*151.00	128.00

* Revised.

Prices Paid by Farmers

Definition: Prices paid by farmers represent the average costs of inputs purchased by farmers and ranchers to produce agricultural commodities. Conceptually, the average price when multiplied by quantity purchased should equal total producer expenditures for the item.

Survey Procedures: The prices paid data are obtained from establishments that sell goods and services to farmers and ranchers. Annually, about 8,500 firms are randomly selected from lists by type of item sold with an average response rate in the range of 75-80 percent. Firms are asked to report the price for the specified item "most commonly bought by farmers" or that was the "volume seller". Approximately 135 items are surveyed each April to represent all production input items purchased. The survey reference period for most items is the 5 business days centered around the 15th of the month. Separate prices paid surveys are conducted for, agricultural chemicals, fuels, feed, fertilizer, machinery, and seed.

Summary and Estimation Procedures: The annual April Prices Paid Survey is summarized as a nonprobability survey. Average prices reported are aggregated to the region and U.S. level using weights available from expenditure data and other administrative sources. Price recommendations are prepared by the State Statistical Offices and Headquarters for review by the Agricultural Statistics Board in Washington, D.C. Also, the change in price level for individual items surveyed are combined to the regional and U.S. levels, and are published as prices paid indexes referenced to a specific base period. Prices paid indexes for new autos and trucks, building materials, farm supplies, motor supplies, and marketing containers are updated based on price changes measured in selected Bureau of Labor Statistics (BLS) indexes.

Revisions: Any revisions are published in the monthly and in annual issues of *Agricultural Prices*. The basis for revision must be supported by additional data that directly affect the level of the estimate. More revisions are likely in April when separate prices paid surveys are conducted, in lieu of BLS indexes, by the USDA to measure price change.

Reliability: Current methods of summarization in April are not designed directly to calculate sampling errors. However, analytical measures approximate the U.S. relative sampling errors for major items around 10 percent. Any nonsampling errors are attributed to such things as the inability to obtain correct information, differences in interpreting questions or definitions, mistakes in coding or processing the data, etc. Efforts are made at each step in the survey process to minimize these nonsampling errors.

Program Change: Effective January 1, 1995, the National Agricultural Statistics Service updated the weights and changed the construction of its prices paid and received by farmers indexes. A Federal Register Notice dated October 28, 1994 discussed these program modifications.

A 1990-92 reference and base period replaced the 1977 reference and 1971-73 base weight period. Five-year moving average weights replaced the current fixed 1971-73 base period weights. The 1910-14=100 price indexes, required by statute for computing parity prices, were linked forward based on the changes in the new 1990-92=100 indexes. The new indexes were constructed by multiplying the ratios of the current prices to the base period prices by the moving average weights (adjusted for seasonal marketing patterns for the prices received indexes).

Information Contacts

General questions should be directed to Linda Hutton, Chief, Environmental, Economics and Demographics Branch at (202) 720-6146. Below are the commodity specialists to contact for additional information.

Crop Prices Received

Joe Prusacki Chief, Crops Branch	(202) 720-2127
Greg Thessen, Field Crops Section	(202) 720-2127
Lance Honig - Wheat, Rye	(202) 720-8068
Darin Jantzi - Corn, Proso Millet, Flaxseed	(202) 720-9526
Troy Joshua - Cotton, Cottonseed	(202) 720-5944
Travis Thorson - Hay, Oats, Sorghum	(202) 690-3234
Jason Lamprecht - Soybeans, Sunflower, Other Oilseeds	(202) 720-7369
Dennis Koong - Peanuts, Rice	(202) 720-7688
Brian Young - Sugarcane, Sugarbeets, Barley	(202) 720-7621
Jim Smith, Fruit and Vegetable Section	(202) 720-2127
Debbie Flippin - Peaches, Pears, Hops, Pulses, Mint	(202) 720-3250
Jorge Garcia-Pratts - Citrus	(202) 720-5412
Terry O'Connor - Apples, Apricots, Cherries, Cranberries, Plums, Prunes	(202) 720-4288
Leslie Colburn - Grapes, Tobacco	(202) 720-7235
Cathy Scherrer, Potatoes, Dry Edible Beans, Sweet Potatoes	(202) 720-4285
Biz Wallingsford - Vegetables, Onions, Strawberries	(202) 720-2157

Livestock Prices Received

Dan Kerestes, Chief, Livestock Branch	(202) 720-3570
Bill Weaver, Livestock Section	(202) 720-3570
Scott Hollis - Sheep, Lambs, Wool, Mohair	(202) 720-4751
Ty Kalas - Milk, Milk Cows	(202) 690-3236
Bruce Boess - Hogs	(202) 720-3106
Mike Miller - Cattle	(202) 720-3040
Wilbert Hundl, Poultry and Specialty Commodities Section	(202) 720-3570
John Lange - Turkeys	(202) 720-0585
Sharyn Lavender - Eggs	(202) 720-3244
Jody Roberts - Broilers	(202) 690-8632

Indexes, Prices Paid, and Parity Prices

Linda Hutton, Chief, Environmental, Economics and Demographics Branch	(202) 720-6146
Kevin Hintzman, Economics Section	(202) 720-6146
Eric Barnes - Farm Supplies and Repairs, Farm Machinery, Fuels, Feeder Livestock, Poultry Chicks, Feed Price Ratios, Grazing Fees, Autos & Trucks	(202) 690-4752
Daryl Brinkman - Prices Received Indexes, Parity Prices	(202) 720-8844
Tara Jackson - Prices Paid Indexes, Prices Paid for Feed, Fertilizer, Agricultural Chemicals, Seeds	(202) 690-3229

ACCESS TO REPORTS!!

For your convenience, there are several ways to obtain NASS reports, data products, and services:

INTERNET ACCESS

All NASS reports are available free of charge on the worldwide Internet. For access, connect to the Internet and go to the NASS Home Page at: www.usda.gov/nass/. Select "Today's Reports" or Publications and then Reports Calendar or Publications and then Search, by Title or Subject.

E-MAIL SUBSCRIPTION

All NASS reports are available by subscription free of charge direct to your e-mail address. Starting with the NASS Home Page at www.usda.gov/nass/, click on **Publications**, then click on the **Subscribe by E-mail** button which takes you to the page describing e-mail delivery of reports. Finally, click on **Go to the Subscription Page** and follow the instructions.

PRINTED REPORTS OR DATA PRODUCTS

CALL OUR TOLL-FREE ORDER DESK: 800-999-6779 (U.S. and Canada)
Other areas, please call 703-605-6220 FAX: 703-605-6900
(Visa, MasterCard, check, or money order acceptable for payment.)

ASSISTANCE

For **assistance** with general agricultural statistics or further information about NASS or its products or services, contact the **Agricultural Statistics Hotline** at **800-727-9540**, 7:30 a.m. to 4:00 p.m. ET, or e-mail: nass@nass.usda.gov.

The U.S. Department of Agriculture (USDA) prohibits discrimination in all its programs and activities on the basis of race, color, national origin, sex, religion, age, disability, political beliefs, sexual orientation, and marital or family status. (Not all prohibited bases apply to all programs.) Persons with disabilities who require alternative means for communication of program information (Braille, large print, audiotape, etc.) should contact USDA's TARGET Center at 202-720-2600 (voice and TDD).

To file a complaint of discrimination, write USDA, Director, Office of Civil Rights, Room 326-W, Whitten Building, 14th and Independence Avenue, SW, Washington, DC 20250-9410 or call 202-720-5964 (voice and TDD). USDA is an equal opportunity provider and employer.