

Released July 29, 2005, by the National Agricultural Statistics Service (NASS), Agricultural Statistics Board, U.S. Department of Agriculture. For information on *Agricultural Prices* see page 66, office hours 7:30 a.m. to 4:00 p.m. ET.

July Farm Prices Received Index Decreased 1 Point From Last Month

The preliminary All Farm Products Index of Prices Received by Farmers in July, at 119, based on 1990-92=100, decreased 1 point (0.8 percent) from June. The Crop Index is down 3 points (2.5 percent) while the Livestock Index was unchanged. Producers received lower commodity prices for lettuce, cattle, grapes, and broccoli. Higher prices were received for corn, asparagus, eggs, and milk. The overall index is also affected by the seasonal change based on a 3-year average mix of commodities a producer sells. Increased average marketings of grapes, wheat, and tomatoes offset decreased marketings of milk, cantaloupes, and asparagus.

Preliminary All Farm Products Index is down 5 points (4.0 percent) from July 2004. The Food Commodities Index, at 121, decreased 1 point (0.8 percent) from last month and declined 6 points (4.7 percent) from July 2004.

Prices Paid Index is unchanged

The July Index of Prices Paid for Commodities and Services, Interest, Taxes, and Farm Wage Rates (PPITW) is 140 percent of the 1990-92 average. The index is unchanged from June but 5 points above (3.7 percent) July 2004. Lower prices in July for feeder cattle, feeder pigs, and hay & forages offset higher prices for diesel fuel, feed concentrates, gasoline, and complete feeds.

Index Summary Table

Index 1990-92=100	2004		2005	
	Jun	Jul	Jun	Jul
Prices Received	128	124	120	119
Prices Paid	135	135	140	140
Ratio ¹	95	92	86	85

¹ Ratio of index of prices received by farmers to index of prices paid by farmers.

Prices Received by Farmers

The July All Farm Products Index is 119 percent of its 1990-92 base, down 0.8 percent from the June index and 4.0 percent below the July 2004 index.

ALL CROPS: The July index is 119, down 2.5 percent from June and 0.8 percent below July 2004. From June, index decreases for commercial vegetables and cotton more than offset the index increases for potatoes & dry beans, feed grains & hay, and oil-bearing crops.

Food Grains: The July index, at 109, is 0.9 percent above the previous month but 5.2 percent below July 2004. The July all wheat price, at \$3.25 per bushel, is up 2 cents from June but down 12 cents from July 2004.

Feed Grains & Hay: The July index is 107, up 3.9 percent from last month but 5.3 percent below July 2004. The corn price, at \$2.15 per bushel, is up 12 cents from last month but 36 cents below July 2004. The all hay price, at \$99.70 per ton, is \$2.30 below June but up \$9.30 from last July. Grain sorghum, at \$4.11 per cwt, is 26 cents above June but 16 cents below July last year.

Oil-Bearing Crops: The July index, at 123, is 3.4 percent above June but 19 percent lower than July 2004. The soybean price, at \$6.84 per bushel, increased 26 cents from June but is \$1.62 below July 2004.

Cotton: The July index, at 69, is down 5.5 percent from June and 22 percent below July 2004. The July price, at 42.1 cents per pound, is down 1.9 cents from the previous month and 11.7 cents below last July.

Potatoes & Dry Beans: The July index, at 147, is up 11 percent from last month and 35 percent above July 2004. The all potato price, at \$8.73 per cwt, is up \$1.07 from June and \$2.27 above last July. The all dry bean price, at \$24.40 per cwt, is down \$3.10 from the previous month but \$5.20 above July 2004.

Fruits & Nuts: The July index, at 145, is up 0.7 percent from June and 14 percent higher than July 2004. Price increases for peaches and oranges more than offset price decreases for grapes and strawberries.

Commercial Vegetables: The July index, at 128, is down 12 percent from last month but 2.4 percent above July 2004. Price decreases during July for lettuce, broccoli, and cucumbers more than offset price increases for sweet corn, asparagus, and cantaloup.

LIVESTOCK & PRODUCTS: The July index, at 118, is unchanged from last month but down 7.8 percent from July 2004. Compared with a year ago, prices are higher for calves and turkeys but lower for broilers, dairy, hogs, eggs, and cattle.

Meat Animals: The July index, at 116, is down 2.5 percent from last month and 4.1 percent lower than last year. The July hog price, at \$49.30 per cwt, is down 30 cents from June and \$7.80 lower than a year ago. The July beef cattle price of \$86.30 is down \$2.20 from last month and \$1.80 lower than July 2004.

Dairy Products: The July index, at 113, is up 1.8 percent from a month ago but 8.1 percent lower than a year ago. The July all milk price of \$14.80 is up 30 cents from last month but down \$1.30 from July 2004. The fluid grade milk price and the manufactured grade milk price are each up 30 cents from the previous month.

Poultry & Eggs: The July index, at 126, is up 2.4 percent from June but 13 percent below a year ago. July market egg prices, at 32.6 cents per dozen, increased 9.5 cents from June. The July broiler price, at 44.0 cents per pound, was unchanged from June but 8.0 cents below a year ago. The July turkey price, averaging 45.0 cents per pound, is up 2.5 cents from the previous month and 1.7 cents from a year earlier.

Table of Contents

U.S. Prices Received and Indexes	Page	Monthly State Prices, continued	Page
Narrative	2	Cotton	19
Price Indexes	5	Cottonseed	19
Price Index Charts	6	Eggs	24
U.S. Prices Received Summary	10	Flaxseed	18
Charts	12	Hay	19
Selected Commodities	16	Hogs, All	23
Upland Cotton & Rice Marketings	19	Barrows and Gilts	23
Parity Prices	26	Sows	23
Reliability Statement	38	Milk	25
		Milk Cows	25
		Oats	17
Monthly State Prices Received		Peanuts	18
Apples	19	Potatoes	21
Barley	17	Sheep	24
Beans, Dry Edible	18	Lambs	24
Beef Cattle, All	22	Sorghum, Grain	17
Calves	22	Soybeans	17
Cows, Beef	22	Sunflower, All	18
Steers and Heifers	22	Tobacco	18
Fruit, Citrus	20	Wheat, All Classes	16
Corn	17		
Prices Received Special Features			Page
Marketing Year for Specified Commodities			28
Marketing Year Average Prices			
Cranberries		see July 2005 Noncitrus Fruits and Nuts 2004 Summary http://usda.mannlib.cornell.edu/reports/nassr/fruit/pnf-bb/	
Sugarbeets			28
Sugarcane			28
Monthly Price Revisions			
Apples		see July 2005 Noncitrus Fruits and Nuts 2004 Summary http://usda.mannlib.cornell.edu/reports/nassr/fruit/pnf-bb/	
Grapes		see July 2005 Noncitrus Fruits and Nuts 2004 Summary http://usda.mannlib.cornell.edu/reports/nassr/fruit/pnf-bb/	
Onions		see July 2005 Vegetables http://usda.mannlib.cornell.edu/reports/nassr/fruit/pvg-bb/2005/	
Peaches		see July 2005 Noncitrus Fruits and Nuts 2004 Summary http://usda.mannlib.cornell.edu/reports/nassr/fruit/pnf-bb/	
Pears		see July 2005 Noncitrus Fruits and Nuts 2004 Summary http://usda.mannlib.cornell.edu/reports/nassr/fruit/pnf-bb/	
Seasonal Adjustment Factors			
All Eggs			29
All Milk			29
Indexes of Prices Received: U.S., All Groups, Monthly and Annual, 2001-2005			30

Table of Contents (continued)

U.S. Prices Paid, Prices Paid Indexes and Ratios	Page
Narrative	39
Indexes and Parity Ratios	40
Charts	42
Feed Price Ratios	45
Reliability Statement	65
U.S. Average Prices	
Prices Used to Calculate Feed Price Ratios	45
Feeder Livestock	45
Special Features	
Index of Prices Paid: 1910-14=100 and 1990-92=100 Monthly and Annual Average, United States, 2000-2004	46-64
PPITW, PITW, Production Items	46-47
Index Component Items, Interest, Taxes, Wage Rates, Farm and Non Farm Origin	47-54
Ratios	55
Crop Sector, Livestock Sector, and PPITW adjusted for Productivity	56
Index Sub-Components (1990-92=100): Monthly and Annual Averages	57-64
Information Contacts	66

**Index Numbers of Prices Received, United States,
July 2005, with Comparisons**

Index	1910-14=100				1990-92=100		
	Average 1990-92	2004	2005		2004	2005	
		Jul	Jun	Jul	Jul	Jun	Jul
All Farm Products	639	789	*760	754	124	120	119
All Crops	500	593	*600	588	120	*122	119
Food Grains	325	366	*344	346	115	*108	109
Feed Grains & Hay	363	402	*370	381	113	*103	107
Cotton	517	455	*372	356	89	*73	69
Tobacco ¹	1,263						
Oil-Bearing Crops	554	824	*650	672	151	*119	123
Fruits & Nuts	716	887	*1,006	1,013	127	*144	145
Commercial Vegetables	698	835	*975	853	125	*146	128
Potatoes & Dry Beans	540	553	*674	742	109	*133	147
Other Crops	493	569	578	578	115	117	117
Livestock & Products	768	981	*905	906	128	*118	118
Meat Animals	1,021	1,235	*1,210	1,183	121	*119	116
Dairy Products	799	989	*891	910	123	*111	113
Poultry & Eggs	282	406	345	354	144	123	126
Food Commodities					127	*122	121

* Revised.

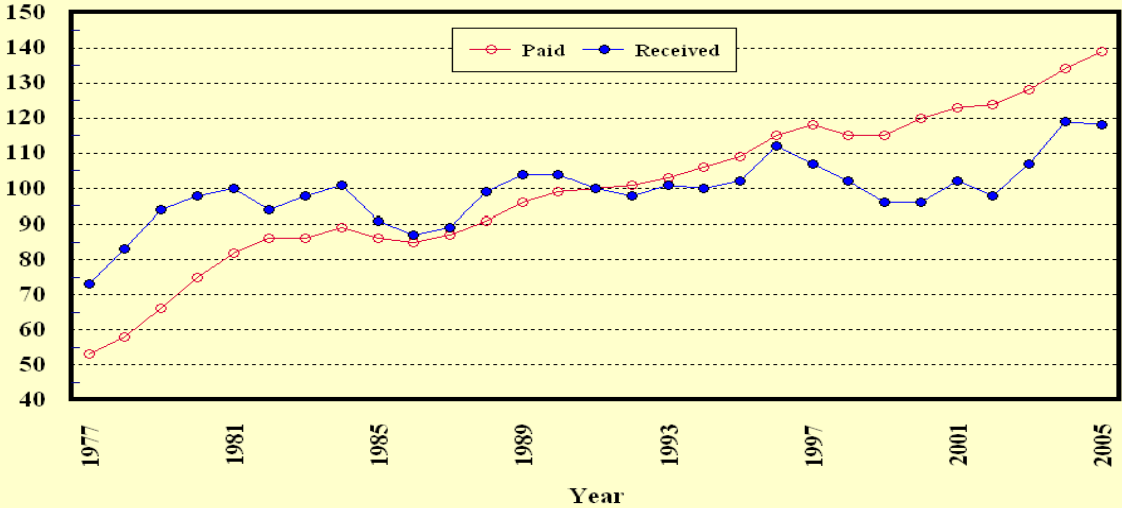
¹ Monthly prices discontinued July 2005.

**Selected Index Numbers for Prices Received and Paid,
1990-92=100, by Month, United States, 2004 and 2005**

Month	Index of Prices Received						Index of Prices Paid			
	All Farm Products		All Crops		Livestock and Products		All Items		Production Items	
	2004	2005	2004	2005	2004	2005	2004	2005	2004	2005
Jan	112	111	113	102	110	121	130	137	127	134
Feb	116	114	121	107	112	119	131	137	127	134
Mar	121	119	121	116	122	121	132	139	129	136
Apr	125	122	123	122	126	122	133	139	131	138
May	129	120	124	118	133	122	135	139	133	138
Jun	128	120	122	122	133	118	135	140	133	139
Jul	124	119	120	119	128	118	135	140	133	140
Aug	120		118		122		135		133	
Sep	115		113		118		135		133	
Oct	114		111		118		136		134	
Nov	116		113		119		135		133	
Dec	111		104		120		134		132	

Prices Received vs Prices Paid Annual Average Indexes*

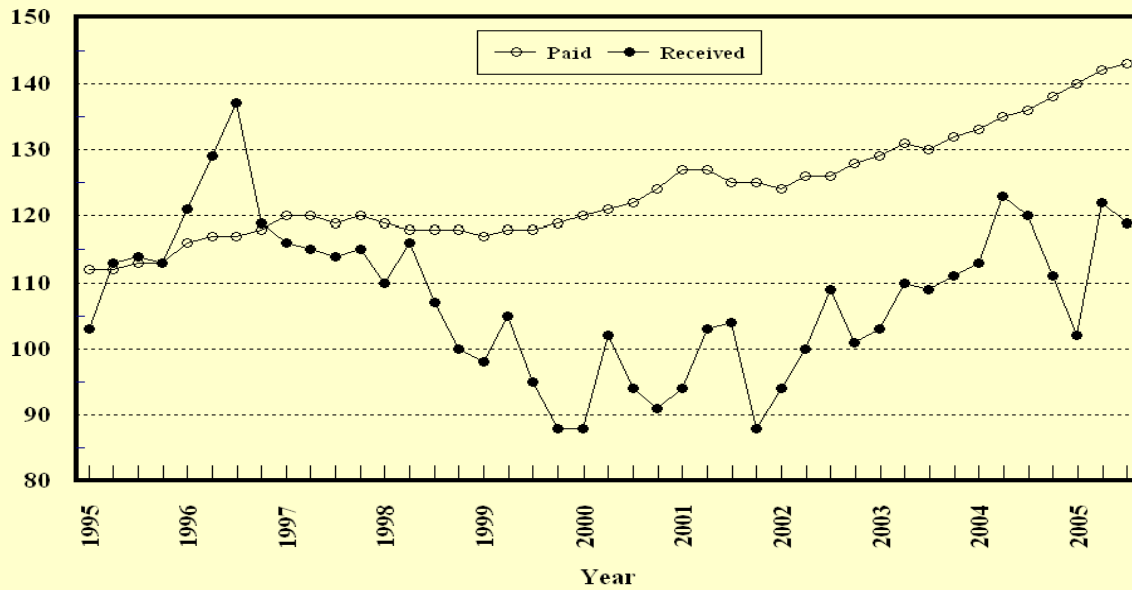
Index Values (1990-92=100)



* Index values for 2005 are year-to-date averages.

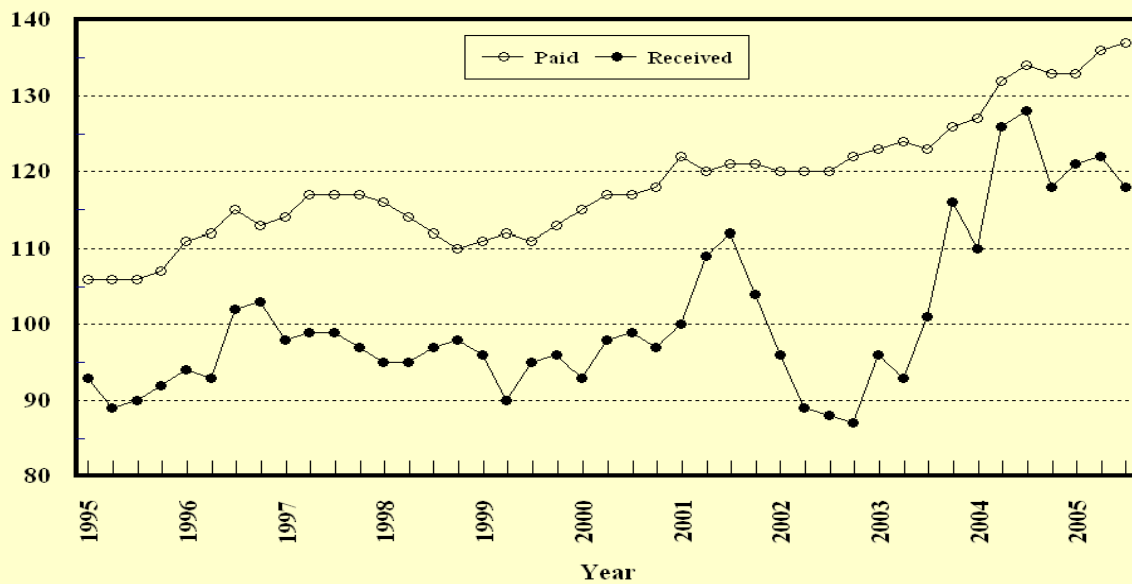
Crop Farm Index: Prices Received and Prices Paid
All Items, U.S., 1994-2005, By Quarter

Index Values (1990-92=100)

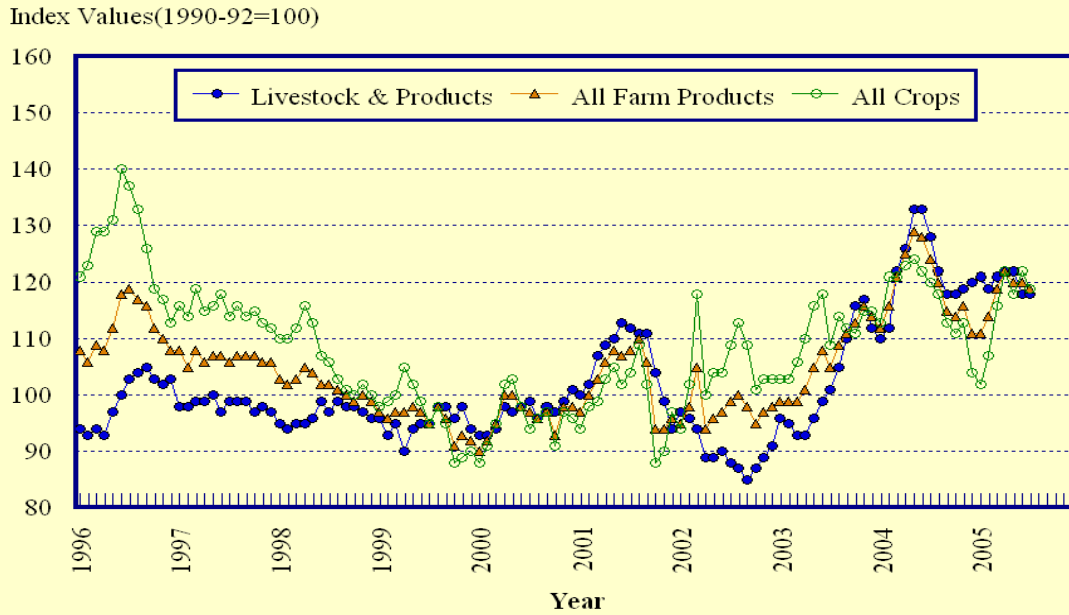


Livestock Farm Index: Prices Received and Prices Paid
All Items, U.S., 1994-2005, By Quarter

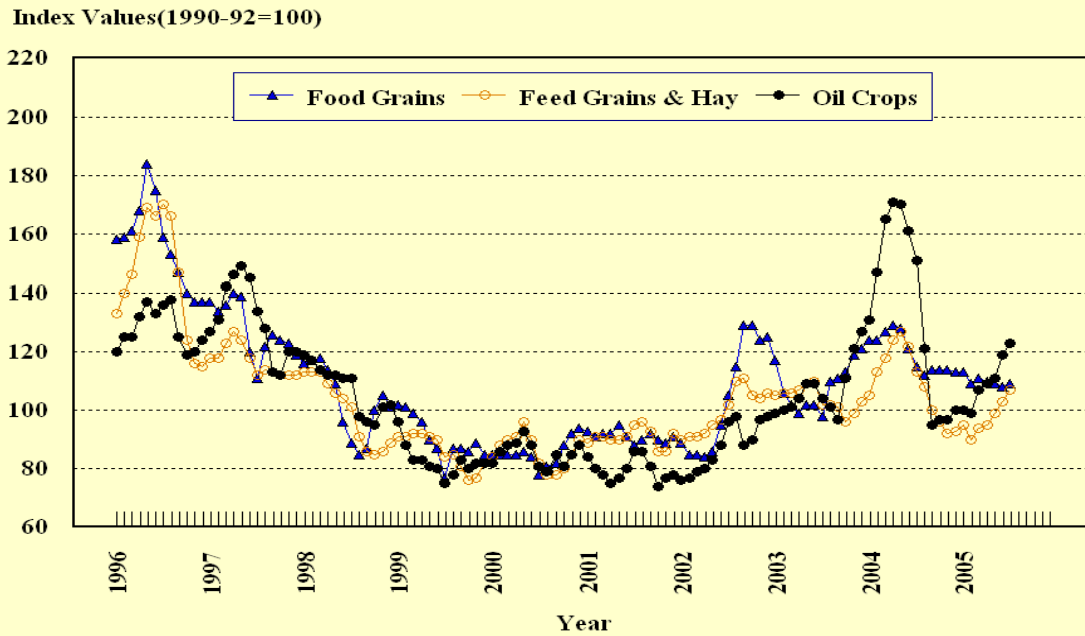
Index Values (1990-92=100)



Prices Received, Major Indexes, US

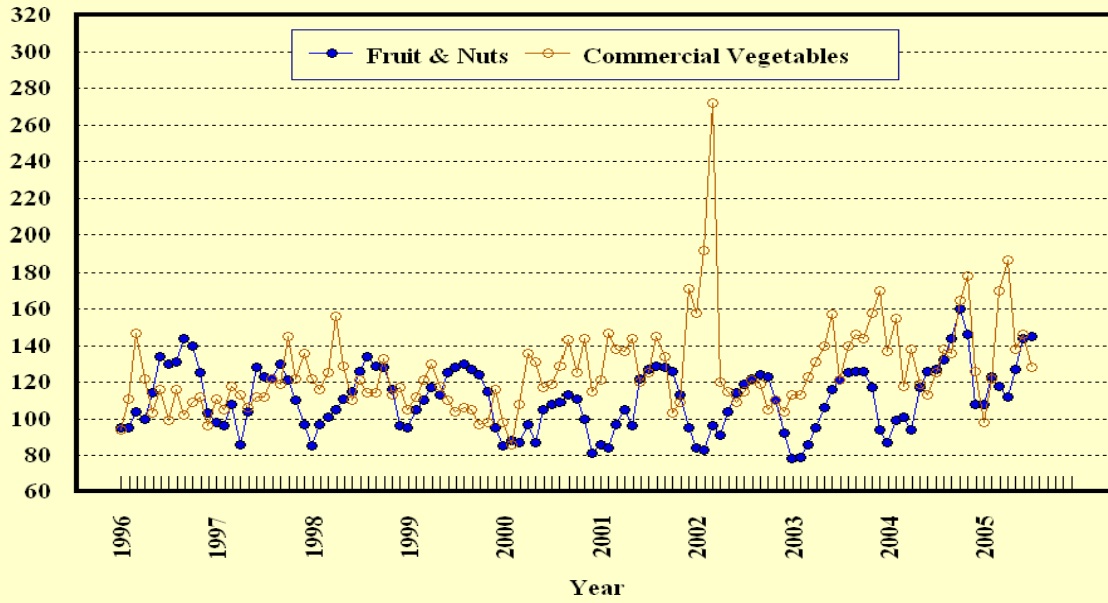


Prices Received, Food, Feed, & Oil Indexes, US



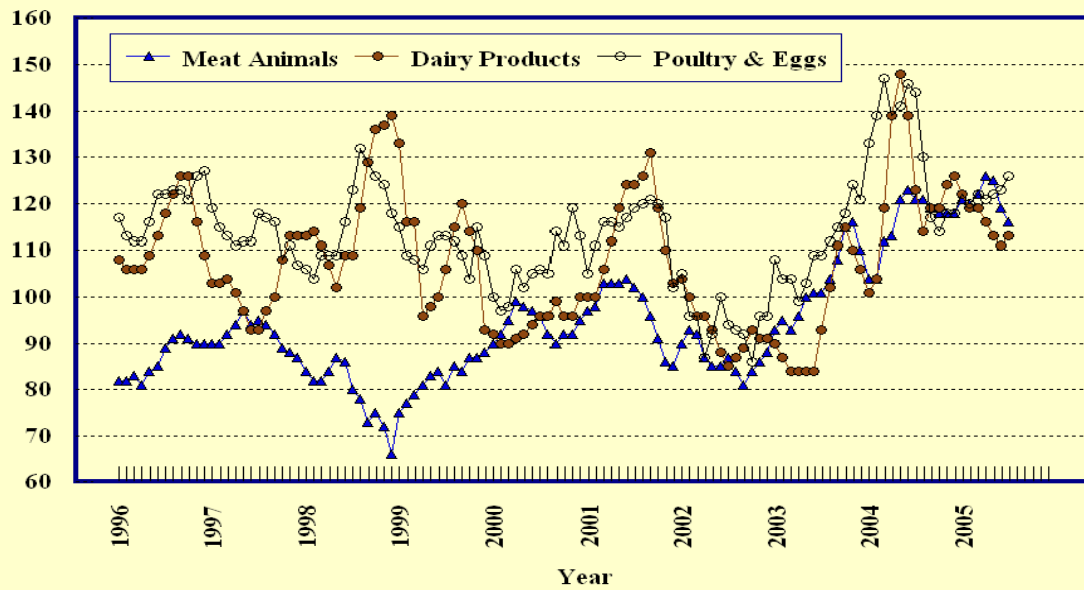
Prices Received, Fruit/Vegetable Indexes, US

Index Values(1990-92=100)



Prices Received, Livestock Product Indexes, US

Index Values(1990-92=100)



**Prices Received, United States,
July 2005, with Comparisons**

Commodity	Unit	Average 1990-92	Entire Month		Preliminary
			Jul 2004	Jun 2005	Jul 2005
		<i>Dollars</i>	<i>Dollars</i>	<i>Dollars</i>	<i>Dollars</i>
Field Crops					
Barley, All	Bu	2.12	2.54	2.57	2.27
Feed	Bu	1.90	2.21	2.07	1.80
Malting	Bu	2.43	2.68	2.88	2.60
Beans, Dry Edible	Cwt	19.10	19.20	27.50	24.40
Chickpeas, All	Cwt		27.10	38.60	32.10
Large	Cwt		27.20	39.40	32.60
Small	Cwt		(⁴)	(⁴)	(⁴)
Corn	Bu	2.30	2.51	2.03	2.15
Cotton, Upland	Lb	0.606	0.538	0.440	0.421
Cottonseed ³	Ton	96.00			
Flaxseed	Bu	4.27	7.33	11.20	10.00
Hay, All, Baled ¹	Ton	76.30	90.40	102.00	99.70
Alfalfa ¹	Ton	77.20	98.40	112.00	109.00
Other ¹	Ton	60.00	70.90	73.60	75.90
Lentils	Cwt		18.00	12.00	11.50
Oats	Bu	1.22	1.36	1.91	1.63
Peanuts, In-Shell	Lb	0.304	0.174	0.176	(⁴)
Peas, Dry Edible	Cwt		8.28	5.49	5.21
Austrian Winter	Cwt		10.90	9.40	(⁴)
Potatoes	Cwt	5.82	6.46	7.66	8.73
Rice, Rough	Cwt	7.07	9.37	6.94	6.74
Sorghum Grain	Cwt	3.75	4.27	3.85	4.11
Soybeans	Bu	5.61	8.46	6.58	6.84
Sunflower, All	Cwt	9.50	13.30	15.60	15.70
Tobacco, Types 11-37	Lb	1.740	1.710	(⁵)	(⁶)
Wheat, All	Bu	2.96	3.37	3.23	3.25
Winter	Bu	2.93	3.31	3.15	3.20
Durum	Bu	2.86	4.09	3.67	3.52
Other Spring	Bu	3.11	3.55	3.53	3.51
Hard Red Winter	Bu		3.34	3.12	
Soft Red Winter	Bu		3.24	3.26	
Hard Red Spring	Bu		3.54	3.53	
White	Bu	3.24	3.46	3.48	
Fruit					
Citrus, Equiv on-tree					
Grapefruit	Box	5.77	8.69	18.23	16.49
Lemons	Box	10.10	14.61	15.58	15.61
Oranges	Box	5.79	8.85	5.40	7.11
Tangelos	Box	5.82			
Tangerines	Box	15.11			
Temples	Box	6.23			
Noncitrus, Fresh					
Apples ²	Lb	0.212	0.300	0.162	0.153
Grapes ²	Ton	506.00	570.00	1,180.00	720.00
Peaches ²	Ton	432.00	407.00	502.00	553.00
Pears ²	Ton	370.00	325.00	(⁵)	550.00
Strawberries	Cwt	56.00	59.60	64.80	61.70

¹ Mid-month price.

² Equivalent packinghouse-door returns for CA, MI, and NY (apples only), and WA (apples, peaches, and pears). Prices as sold for other states.

³ Marketing year August - February.

⁴ Price not published to avoid disclosure of individual firms.

⁵ Insufficient sales to establish a price.

⁶ Monthly price estimates discontinued beginning in July 2005.

**Prices Received, United States,
July 2005, with Comparisons**

Commodity	Unit	Average 1990-92	Entire Month		Preliminary
			Jul 2004	Jun 2005	Jul 2005
		<i>Dollars</i>	<i>Dollars</i>	<i>Dollars</i>	<i>Dollars</i>
Vegetables, Fresh ¹					
Asparagus	Cwt	79.80	231.00	137.00	259.00
Broccoli	Cwt	22.50	24.20	39.70	24.40
Cantaloupes ²	Cwt		11.00	19.50	21.50
Carrots	Cwt	13.20	20.20	21.30	21.80
Cauliflower	Cwt	26.80	27.60	38.10	28.30
Celery	Cwt	11.60	12.00	9.62	11.50
Corn, Sweet	Cwt	15.70	21.80	26.40	30.40
Cucumbers ²	Cwt		25.00	28.50	18.80
Lettuce	Cwt	11.90	10.70	17.30	10.20
Onions	Cwt	12.80	16.40	22.40	21.20
Snap Beans ²	Cwt		50.40	39.40	54.60
Tomatoes	Cwt	32.30	23.40	38.70	33.20
Livestock					
Calves	Cwt	94.30	130.00	138.00	133.00
Cattle, All Beef	Cwt	72.90	88.10	88.50	86.30
Cows ³	Cwt	49.60	56.30	57.00	55.60
Steers & Heifers	Cwt	77.10	91.40	91.90	89.60
Milk Cows ⁴	Head	1,130.00	1,720.00		1,830.00
Hogs, All	Cwt	47.70	57.10	49.60	49.30
Barrows & Gilts	Cwt	48.40	57.60	49.90	49.80
Sows	Cwt	39.50	49.40	43.30	38.70
Lambs	Cwt	56.20	101.00	114.00	
Sheep	Cwt	23.40	37.10	40.90	
Dairy and Poultry					
Milk, All ^{5 6}	Cwt	13.06	16.10	14.50	14.80
Fluid Grade ⁶	Cwt	13.10	16.10	14.50	14.80
Mfg Grade ⁶	Cwt	11.80	14.20	13.80	14.10
Broilers, Live ⁷	Lb	0.317	0.520	0.440	0.440
Eggs, All ⁸	Doz	0.643	0.582	0.450	0.530
Market ⁸	Doz	0.546	0.403	0.231	0.326
Turkeys, live ^{7 8}	Lb	0.380	0.433	0.425	0.450
Adjusted for Seasonal Variation					
Eggs, All	Doz	0.545	0.640	0.469	0.589
Milk, All ⁵	Cwt	9.71	16.33	14.50	15.10

¹ F.O.B. shipping point.

² Monthly estimates began January 1995.

³ Beef cows and cull dairy cows sold for slaughter.

⁴ Animals sold for dairy herd replacement only. Prices available for Jan, Apr, Jul, and Oct.

⁵ Before deductions for hauling. Includes quality, quantity, and other premiums. Excludes hauling subsidies.

⁶ July 2005 Fat test percent: all milk 3.53, fluid milk 3.53, mfg grade 3.66.

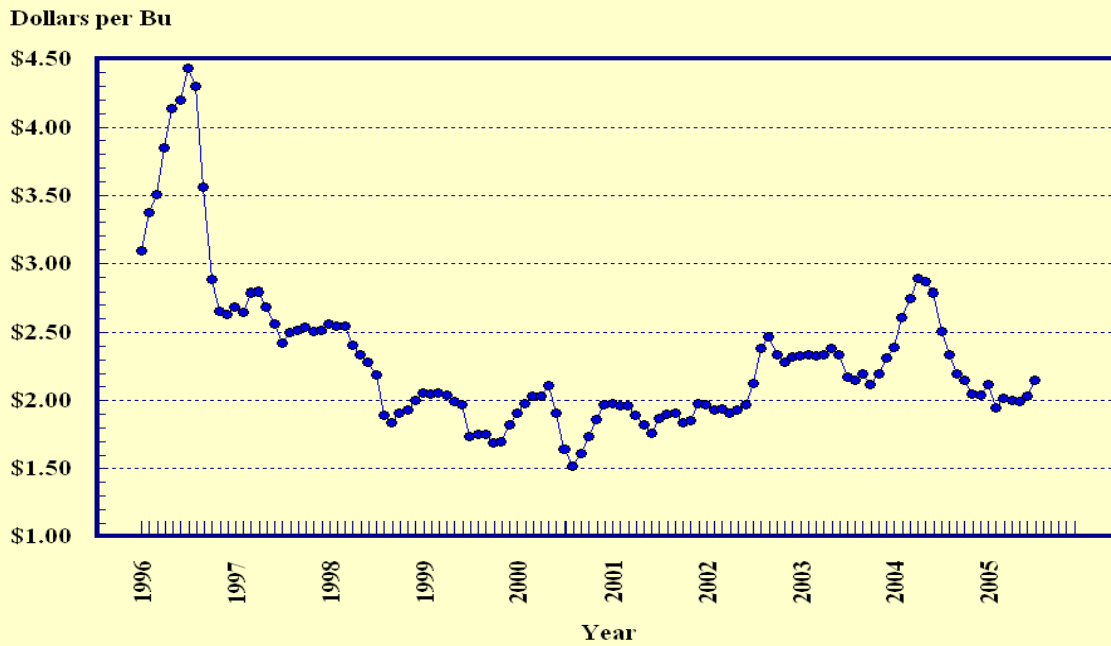
⁷ Equivalent liveweight returns to producers for most States. Includes growers and contractors.

⁸ Mid-month price.

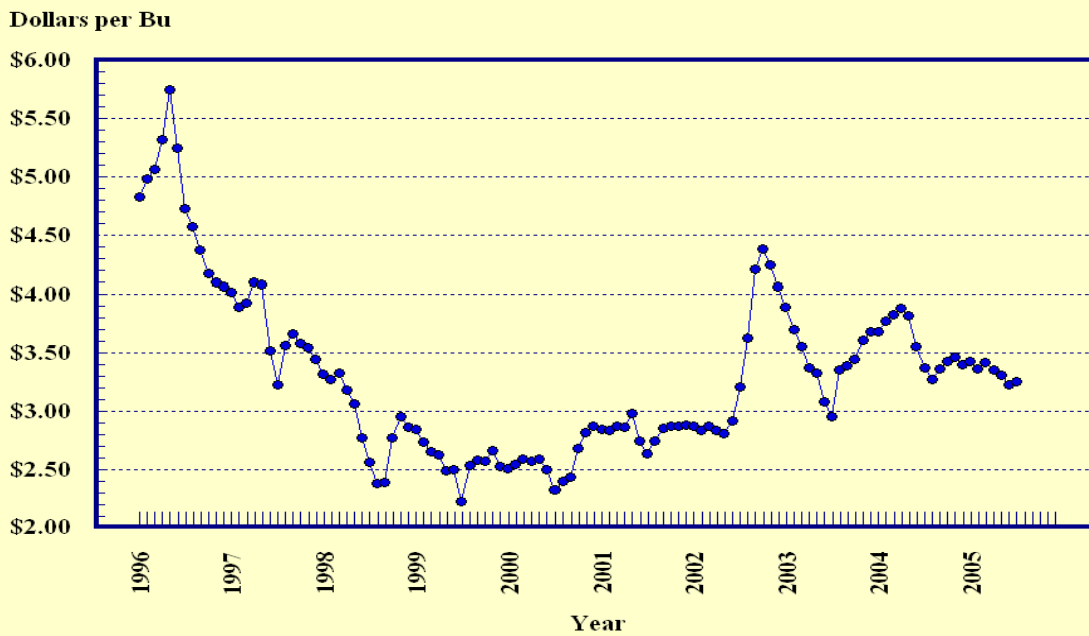
⁹ Price not published to avoid disclosure of individual firms.

¹⁰ Insufficient sales to establish a price.

Prices Received, Corn, US

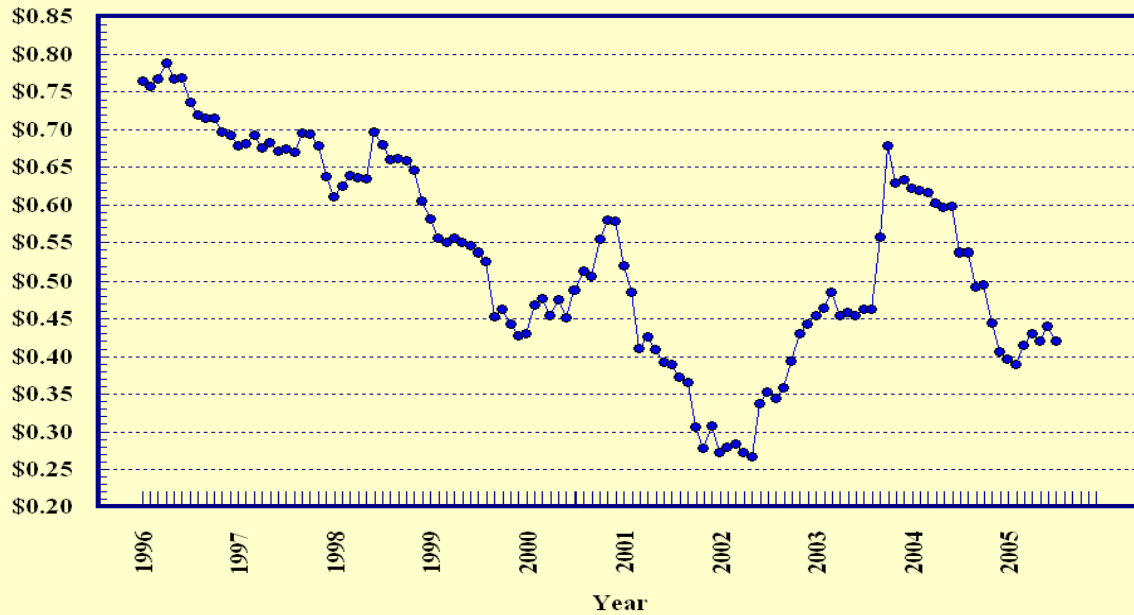


Prices Received, Wheat, US



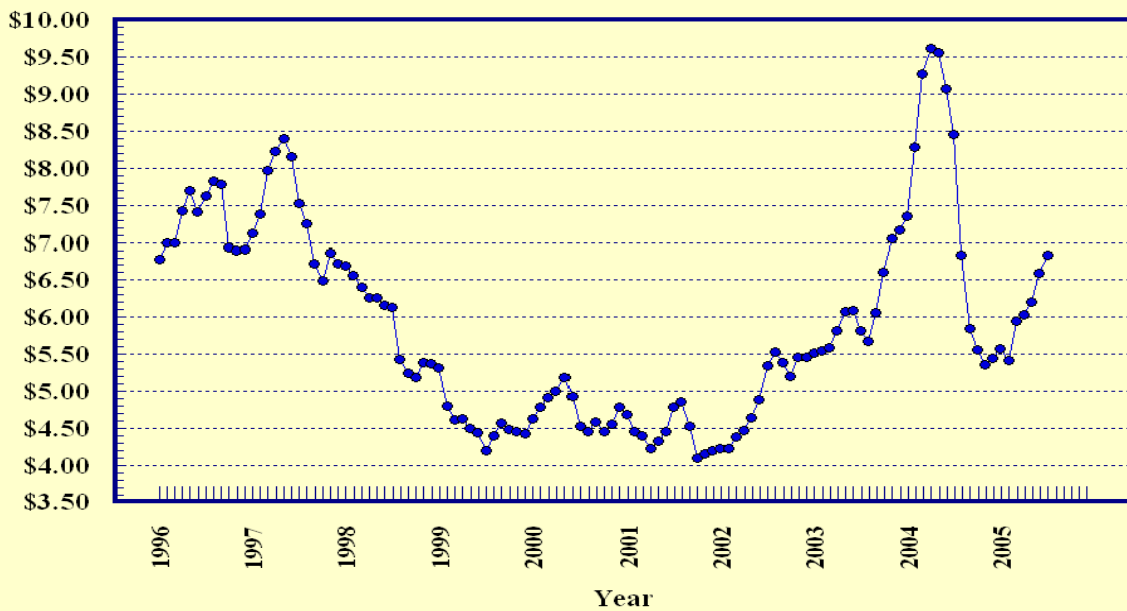
Prices Received, Cotton, US

Dollars per Lb



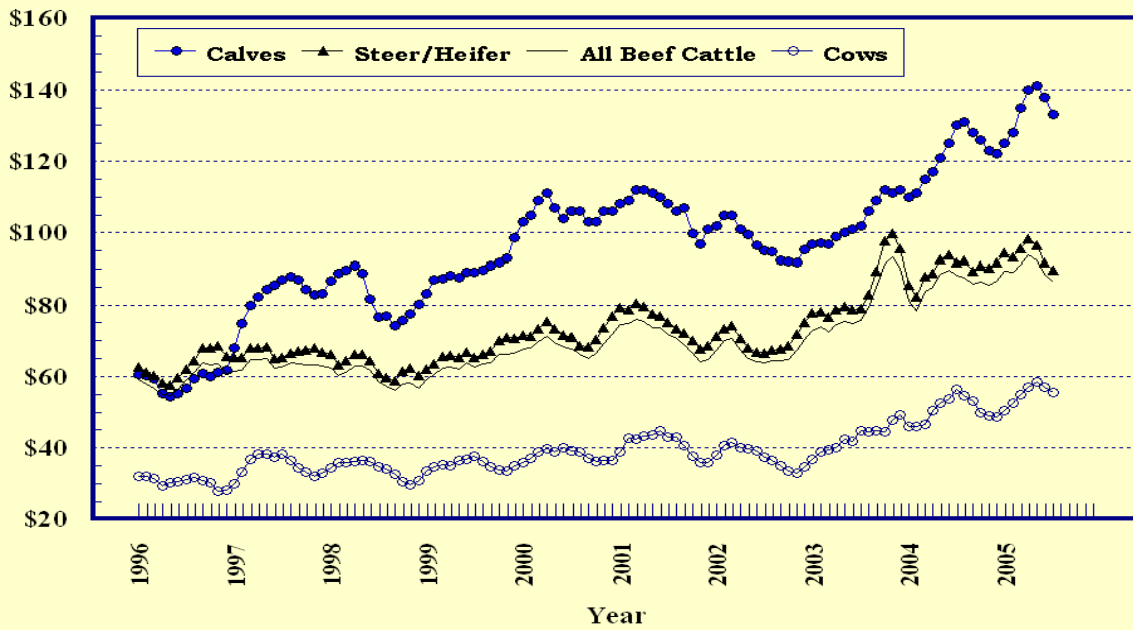
Prices Received, Soybeans, US

Dollars per Bu



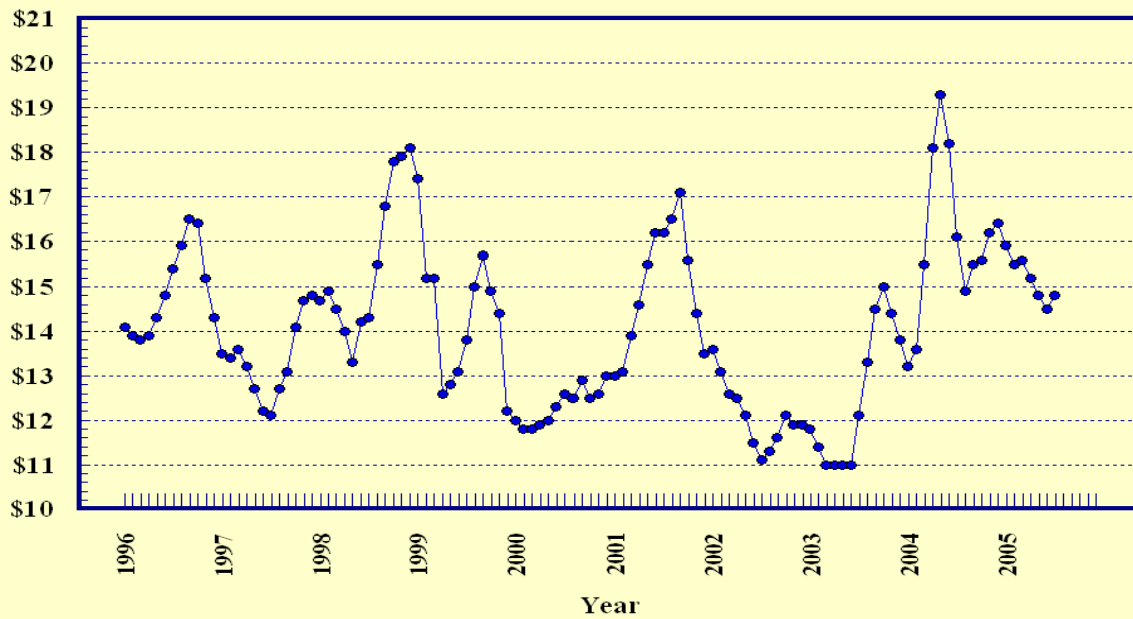
Prices Received, Cattle, US

Dollars per Cwt



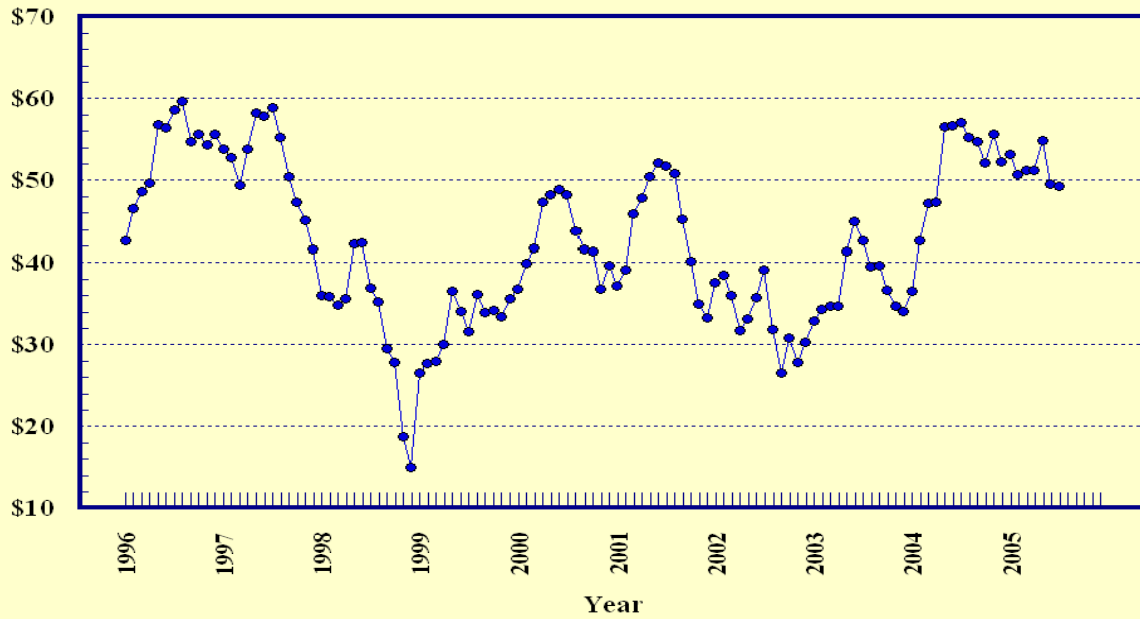
Prices Received, Milk, US

Dollars per Cwt



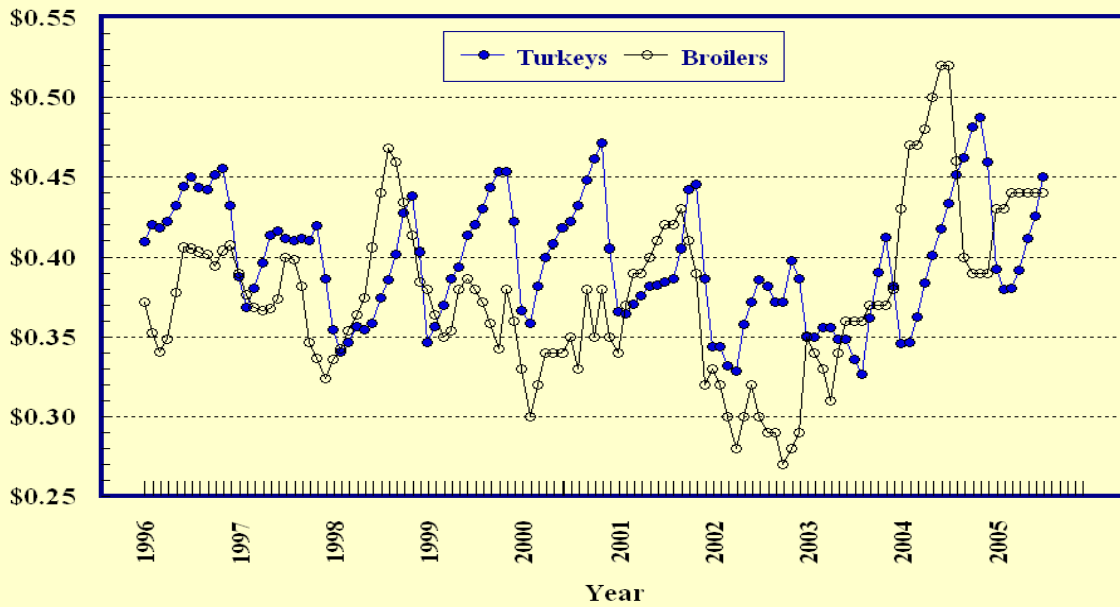
Prices Received, Hogs, US

Dollars per Cwt



Prices Received, Turkeys & Broilers, US

Dollars per Lb



Wheat: Prices Received, by State, June and July 2005

State	All Wheat		Winter Wheat		Durum Wheat		Oth Spring Wheat	
	Jun ¹	Jul ²	Jun ¹	Jul ²	Jun ¹	Jul ²	Jun ¹	Jul ²
	<i>Dollars per Bushel</i>	<i>Dollars per Bushel</i>	<i>Dollars per Bushel</i>	<i>Dollars per Bushel</i>	<i>Dollars per Bushel</i>	<i>Dollars per Bushel</i>	<i>Dollars per Bushel</i>	<i>Dollars per Bushel</i>
AR	3.36	(³)	3.36	(³)				
CA	3.44	(³)	(³)	(³)	(³)	(³)		
CO	3.22	3.20	3.22	3.20			(⁴)	(⁴)
ID	3.56	3.34	3.37	3.30	(⁴)	(⁴)	3.76	3.40
IL	3.26	3.40	3.26	3.40				
IN	3.11	3.22	3.11	3.22				
KS	3.11	3.15	3.11	3.15				
MI	3.03	3.20	3.03	3.20				
MN	3.30	3.28	(⁴)	(⁴)			3.30	3.28
MO	3.29	3.35	3.29	3.35				
MT	3.57	3.58	3.34	3.09	3.78	3.77	3.69	3.89
NE	3.12	3.15	3.12	3.15				
ND	3.51	3.43	2.70	2.60	3.70	3.45	3.47	3.45
OH	3.10	3.27	3.10	3.27				
OK	3.05	3.18	3.05	3.18				
OR	3.66	3.48	3.58	3.40			4.09	3.85
SD	3.64	3.37	3.20	3.01			3.78	3.49
TX	3.11	3.16	3.11	3.16				
WA	3.72	3.71	3.59	3.55			3.99	4.09
US	3.23	3.25	3.15	3.20	3.67	3.52	3.53	3.51

¹ Entire month.

² Mid-month.

³ Price not published to avoid disclosure of individual firms.

⁴ Insufficient sales to establish a price.

**Prices Received for Selected Agricultural Commodities, by Month,
United States, 2004 and 2005 ¹**

Month	All Wheat		Corn		Soybeans		Beef Cattle ²		All Hogs	
	2004	2005	2004	2005	2004	2005	2004	2005	2004	2005
	<i>Dollars per Bushel</i>	<i>Dollars per Bushel</i>	<i>Dollars per Bushel</i>	<i>Dollars per Bushel</i>	<i>Dollars per Bushel</i>	<i>Dollars per Bushel</i>	<i>Dollars per Cwt</i>	<i>Dollars per Cwt</i>	<i>Dollars per Cwt</i>	<i>Dollars per Cwt</i>
Jan	3.68	3.43	2.39	2.12	7.35	5.57	81.10	89.40	36.60	53.20
Feb	3.77	3.36	2.61	1.95	8.28	5.42	78.50	89.00	42.60	50.70
Mar	3.83	3.42	2.75	2.02	9.28	5.95	83.70	91.30	47.20	51.20
Apr	3.88	3.35	2.89	2.00	9.62	6.03	85.00	94.00	47.40	51.20
May	3.82	3.31	2.87	1.99	9.56	6.20	88.50	92.40	56.60	54.90
Jun	3.55	3.23	2.79	2.03	9.08	6.58	89.80	88.50	56.70	49.60
Jul	3.37	3.25	2.51	2.15	8.46	6.84	88.10	86.30	57.10	49.30
Aug	3.27		2.34		6.83		87.70		55.30	
Sep	3.36		2.20		5.84		85.90		54.80	
Oct	3.43		2.15		5.56		86.50		52.20	
Nov	3.46		2.05		5.36		85.40		55.60	
Dec	3.40		2.04		5.45		86.80		52.30	

¹ Current month prices are mid-month; prices for previous months are for the entire month.

² Cows, steers and heifers.

Grains: Prices Received, by State, June and July 2005

Month	All Barley ¹		Corn		Oats		Soybeans		Sorghum Grain	
	Jun ²	Jul ³	Jun ²	Jul ³	Jun ²	Jul ³	Jun ²	Jul ³	Jun ²	Jul ³
	<i>Dollars per Bushel</i>	<i>Dollars per Bushel</i>	<i>Dollars per Bushel</i>	<i>Dollars per Bushel</i>	<i>Dollars per Bushel</i>	<i>Dollars per Bushel</i>	<i>Dollars per Bushel</i>	<i>Dollars per Bushel</i>	<i>Dollars per Cwt</i>	<i>Dollars per Cwt</i>
AL							7.07	7.20	(⁴)	(⁵)
AR										
CA	(⁴)	(⁴)			(⁵)	(⁵)				
CO	(⁴)	(⁴)	2.17	2.20						
ID	3.25	3.26								
IL			2.12	2.30	2.20	(⁴)	6.65	6.90	3.58	3.90
IN			2.06	2.29			6.76	7.11		
IA			1.95	2.00	1.75	1.65	6.49	6.75		
KS			2.08	2.23	1.50	1.30	6.44	6.77	3.15	3.54
KY			2.26	2.35			6.84	7.00		
LA							6.92	(⁴)		
MI			2.00	2.30	1.65	1.73	6.55	6.80		
MN	1.67	1.69	1.94	2.08	1.48	1.50	6.48	6.67		
MS							6.73	6.97		
MO			2.08	2.30			6.66	7.05	3.77	4.20
MT	2.91	2.96			(⁴)	(⁵)				
NE			1.97	2.05	1.60	1.50	6.58	6.70	3.27	3.55
NY					(⁴)	(⁴)				
NC			2.52	2.65			6.47	7.00		
ND	1.97	1.98	1.87	1.95	(⁵)	(⁵)	6.27	6.50		
OH			2.11	2.32	(⁴)	(⁵)	6.76	7.00		
OK									3.15	3.61
OR	1.90	2.10			(⁴)	(⁴)				
PA			2.48	2.49	2.17	1.84				
SD	2.08	2.15	1.87	1.93	1.62	1.60	6.47	6.63		
TN			2.38	2.55			6.78	7.15		
TX			2.58	2.55	2.30	(⁴)			4.39	4.26
UT	2.10	2.23								
WA	2.41	2.23								
WI			2.12	2.25	1.65	1.70	6.29	6.70		
WY	1.75	1.65								
US	2.57	2.27	2.03	2.15	1.91	1.63	6.58	6.84	3.85	4.11

¹ The Three-State (MN, ND and SD) Feed Barley price is discontinued.

² Entire month.

³ Mid-month.

⁴ Price not published to avoid disclosure of individual firms.

⁵ Insufficient sales to establish a price.

Malting and Feed Barley: Prices Received Selected State, June and July 2005

State	Malting Barley		Feed Barley	
	Jun ¹	Jul ²	Jun ¹	Jul ²
	<i>Dollars per Bushel</i>	<i>Dollars per Bushel</i>	<i>Dollars per Bushel</i>	<i>Dollars per Bushel</i>
ID	3.39	3.40	2.00	2.00
MN	(³)	(³)	1.45	1.47
MT	3.32	(³)	1.60	1.39
ND	2.22	2.25	1.34	1.35
SD	2.08	2.15	(⁴)	(⁴)
WY	(⁴)	(⁴)	1.75	1.65

¹ Entire month.

² Mid-month.

³ Price not published to avoid disclosure of individual firms.

⁴ Insufficient sales to establish a price.

Field Crops: Prices Received, by State, June and July 2005

State	Dry Edible Beans		All Sunflower		Flaxseed		Tobacco ⁷		Peanuts ⁴	
	Jun ¹	Jul ²	Jun ¹	Jul ²	Jun ¹	Jul ²	Jun ¹	Jul ³	Jun ¹	Jul ³
	<i>Dollars per Cwt</i>	<i>Dollars per Cwt</i>	<i>Dollars per Cwt</i>	<i>Dollars per Cwt</i>	<i>Dollars per Bushel</i>	<i>Dollars per Bushel</i>	<i>Dollars per Pound</i>	<i>Dollars per Pound</i>	<i>Dollars per Pound</i>	<i>Dollars per Pound</i>
AL									(⁵)	(⁶)
CA	39.80	(⁵)								
CO	30.70	30.50								
FL									(⁶)	(⁶)
GA									(⁵)	(⁶)
ID	26.40	29.90								
IN										
KS			10.00	10.40						
KY										
MD										
MI	23.50	20.00								
MN	(⁵)	(⁵)	(⁵)	(⁵)						
MO										
NE	23.40	23.20								
NC									(⁵)	(⁶)
ND	22.90	21.70	16.10	16.00	11.20	10.00				
OH										
OK										
SC										
SD			14.90	15.30	(⁶)	(⁶)				
TN										
TX									(⁵)	(⁵)
VA									(⁵)	(⁶)
WV										
US	27.50	24.40	15.60	15.70	11.20	10.00	(⁶)		0.176	(⁵)

¹ Entire month.

² Mid-month.

³ Based on sales through first half of month.

⁴ In-Shell.

⁵ Price not published to avoid disclosure of individual firms.

⁶ Insufficient sales to establish a price.

⁷ Monthly price estimates discontinued beginning in July 2005.

Field Crops and Apples: Prices Received, by State, June and July 2005

State	Cotton, Upland		July				Apples Fresh Use ^{1,4} <i>Dol/Lb</i>
	Jun ¹	Jul ²	Cotton- seed ⁵ <i>Dollars per Ton</i>	Hay, Baled ³			
				All <i>Dollars per Ton</i>	Alfalfa <i>Dollars per Ton</i>	Other <i>Dollars per Ton</i>	
	<i>Dollars per Pound</i>	<i>Dollars per Pound</i>					
AL	(⁶)	(⁶)					
AZ	(⁶)	(⁶)		125.00	125.00	120.00	
AR	0.396	0.394					
CA	(⁶)	(⁶)		128.00	134.00	94.00	
CO				98.00	99.00	87.00	
GA	0.394	(⁶)					
ID				107.00	109.00	78.00	
IL				89.00	97.00	72.00	
IA				73.00	77.00	52.00	
KS				67.00	74.00	61.00	
KY				73.00	115.00	67.00	
LA	(⁶)	(⁶)					
MI				77.00	80.00	70.00	
MN				66.00	73.00	53.00	
MS	0.394	0.394					
MO				56.00	98.00	45.00	
MT				74.00	75.00	67.00	
NE				46.00	46.00	43.00	
NV				122.00	122.00	129.00	
NM				127.00	130.00	106.00	
NY				112.00	130.00	95.00	
NC	0.394	(⁶)					
ND				54.00	59.00	40.00	
OH				110.00	130.00	75.00	
OK				76.00	102.00	58.00	
OR				120.00	126.00	111.00	
PA				127.00	148.00	116.00	
SD				61.00	62.00	45.00	
TN	0.394	0.394					
TX	0.446	0.405		80.00	120.00	68.00	
UT				94.00	95.00	85.00	
VA							
WA				116.00	115.00	120.00	0.153
WI				109.00	115.00	80.00	
WY				72.00	73.00	67.00	
US	0.440	0.421		99.70	109.00	75.90	0.153

¹ Entire month.

² Based on sales during the first half of the month.

³ Mid-month.

⁴ Equivalent packinghouse-door returns for CA, NY, and WA. Price at point of first sale for other States.

⁵ Marketing year August - February.

⁶ Price not published to avoid disclosure of individual firms.

**Upland Cotton and Rice: Prices Received and Marketings,
United States, July 2005, with Comparisons**

Item	Unit	May 2005 ¹	Jun 2005 ¹	Jul 2005 ²
Cotton, Upland				
Average Price	Dollars per Pound	0.420	0.440	0.421
Marketings ³	1,000 Bales	559	592	NA
Rice				
Average Price	Dollars per Cwt	6.97	6.94	6.74
Marketings ⁴	1,000 Cwt	11,565	12,107	NA

¹ Entire month.

² Based on purchases for the first half of the month.

³ Marketings based on a survey of cotton buyers in the major producing States - AL, AZ, AR, CA, GA, LA, MS, NC, TN, and TX.

⁴ Purchases by private firms and rice (rough equivalent) shipped by cooperatives.

**Citrus Fruit: Prices and Equivalent Returns, by Utilization,
by State and United States, July 2005**

Commodity, State and Type	F.O.B. Packed Fresh	Equivalent Returns ¹					
		Packinghouse-door			On-tree		
		All	Fresh	Process	All	Fresh	Process
	<i>Dollars per Box</i>	<i>Dollars per Box</i>	<i>Dollars per Box</i>	<i>Dollars per Box</i>	<i>Dollars per Box</i>	<i>Dollars per Box</i>	<i>Dollars per Box</i>
Grapefruit							
CA	29.00	18.86	22.36	-0.28	16.49	19.99	-2.65
US	29.00	18.86	22.36	-0.28	16.49	19.99	-2.65
Lemons							
CA	36.50	20.04	26.20	0.18	15.61	21.77	-4.25
US	36.50	20.04	26.20	0.18	15.61	21.77	-4.25
Oranges							
CA Valencia	17.80	9.60	10.74	0.32	7.11	8.25	-2.17
US	17.80	9.60	10.74	0.32	7.11	8.25	-2.17

¹ Net lbs. per box: Grapefruit - AZ & CA-67, FL-85, TX-80; Lemons - 76; Oranges - AZ & CA-75, FL-90, TX-85; Tangelos - 90; Tangerines - AZ, CA-75, FL-95; Temples - 90.

Potatoes: Prices Received, by State, June and July 2005 ¹

State	Jun	Jul	State	Jun	Jul
	<i>Dollars per Cwt</i>	<i>Dollars per Cwt</i>		<i>Dollars per Cwt</i>	<i>Dollars per Cwt</i>
AL	21.10	16.30	NC	7.05	7.05
AZ	8.40	7.55	ND - All ²	6.10	
CA - All ²	15.00	16.30	- Fresh ³	5.85	
- Winter			- Processing	6.20	
- Spring	15.90	16.10	OH ⁴		
- Summer		19.10	OR	5.85	5.15
- Fall	8.30		PA ⁴		
CO - All ²	4.15	4.80	TX	12.70	19.70
- Fresh ³	4.40	NA	VA		11.60
FL	12.40		WA - All ²	5.85	5.25
ID - All ²	4.10	4.25	- Processing	5.35	NA
- Fresh ³	3.30	NA	WI - All ²		
- Processing	4.50	NA	- Fresh ³		
ME	7.45	7.55	- Processing		
MI					
MN	4.75	4.75	US - All ²	7.66	8.73
NY			- Fresh ³	11.86	NA
			- Processing	5.66	NA

¹ Missing data indicates no potatoes being marketed.

² Average price of potatoes sold for all uses, including table stocks, processing, seed, and livestock feed.

³ Fresh market prices only, includes table stock prices.

⁴ Estimates discontinued in 2005.

Cattle: Prices Received, by State, June and July 2005

State	Cows ¹		Steers & Heifers		Beef Cattle ⁴		Calves	
	Jun ²	Jul ³	Jun ²	Jul ³	Jun ²	Jul ³	Jun ²	Jul ³
	<i>Dollars per Cwt</i>	<i>Dollars per Cwt</i>	<i>Dollars per Cwt</i>	<i>Dollars per Cwt</i>	<i>Dollars per Cwt</i>	<i>Dollars per Cwt</i>	<i>Dollars per Cwt</i>	<i>Dollars per Cwt</i>
AZ	57.10	57.00	103.00	105.00	103.00	105.00	123.00	127.00
AR	51.90	51.70	110.00	108.00	92.60	91.10	130.00	127.00
CA	54.50	52.80	88.20	87.10	73.00	71.70	121.00	119.00
CO	56.10	54.80	109.00	109.00	108.00	108.00	144.00	139.00
FL	56.80	57.00	103.00	101.00	83.60	84.00	137.00	135.00
GA	58.20	57.90	102.00	98.60	73.10	71.70	132.00	126.00
ID	56.60	54.60	88.30	85.50	80.70	78.40	128.00	127.00
IL	53.50	52.00	85.00	80.00	84.40	79.40	130.00	120.00
IA	56.60	53.80	82.50	78.50	82.00	78.00	131.00	125.00
KS	58.00	57.00	88.60	86.80	88.30	86.50	146.00	140.00
KY	55.00	53.00	109.00	105.00	96.00	92.50	131.00	123.00
LA	54.80	53.00	106.00	100.00	70.70	69.00	125.00	118.00
MI	56.00	55.00	85.00	80.00	76.30	72.50	137.00	135.00
MN	59.10	58.00	82.20	78.50	78.00	74.80	140.00	136.00
MO	56.40	56.20	117.00	115.00	100.00	100.00	136.00	135.00
MT	59.60	57.90	106.00	103.00	73.50	77.70	131.00	134.00
NE	60.40	56.40	89.50	87.70	88.60	86.80	148.00	140.00
NM	57.80	56.20	107.00	106.00	89.80	87.10	135.00	134.00
ND	60.50	60.00	104.00	102.00	76.60	74.70	135.00	133.00
OH	53.30	53.00	87.10	83.00	83.70	80.00	126.00	116.00
OK	56.50	55.20	107.00	107.00	103.00	103.00	139.00	132.00
OR	56.00	55.20	108.00	101.00	92.40	87.30	122.00	119.00
PA	56.30	54.50	83.30	80.00	76.30	73.40	127.00	120.00
SD	60.00	58.30	99.60	89.40	90.50	81.60	139.00	129.00
TN	56.00	54.00	110.00	104.00	88.40	84.00	128.00	118.00
TX	54.20	53.70	92.90	89.00	89.40	86.50	140.00	136.00
VA	57.20	54.10	108.00	104.00	88.70	86.50	126.00	122.00
WI	57.30	56.70	82.30	80.80	67.80	66.80	166.00	155.00
WY	59.80	58.00	110.00	108.00	102.00	98.00	139.00	138.00
US	57.00	55.60	91.90	89.60	88.50	86.30	138.00	133.00

¹ Beef cows and cull dairy cows sold for slaughter.

² Entire month.

³ Mid-month.

⁴ "Cows" and "steers and heifers" combined.

Hogs: Prices Received, by State, June and July 2005

State	Sows		Barrows and Gilts		All Hogs	
	Jun ¹	Jul ²	Jun ¹	Jul ²	Jun ¹	Jul ²
	<i>Dollars per Cwt</i>	<i>Dollars per Cwt</i>	<i>Dollars per Cwt</i>	<i>Dollars per Cwt</i>	<i>Dollars per Cwt</i>	<i>Dollars per Cwt</i>
AR	44.50	39.90	47.10	46.30	46.80	45.70
IL	42.00	39.00	51.00	50.00	50.30	49.10
IN	47.90	43.80	48.80	49.00	48.70	48.50
IA	43.80	38.50	51.40	51.80	51.20	51.50
KS	43.60	37.60	46.90	47.80	46.50	46.60
MN	43.60	38.50	49.30	49.00	49.20	48.90
MO	42.60	37.90	45.00	45.40	44.80	44.70
NE	43.10	37.50	51.40	50.70	51.20	50.40
NC	44.70	39.20	50.10	50.20	50.00	50.10
OH	41.60	38.00	49.90	49.00	49.60	48.60
OK	43.10	37.10	43.30	44.10	43.30	43.10
PA	40.80	37.50	46.60	47.20	45.70	45.70
SD	41.10	39.00	51.70	51.00	50.20	49.20
US	43.30	38.70	49.90	49.80	49.60	49.30

¹ Entire month.

² Mid-month.

Sheep and Poultry: Prices Received, by State, June and July 2005

State	June		July
	Sheep ¹	Lambs ¹	Eggs ^{2 3}
	<i>Dollars per Cwt</i>	<i>Dollars per Cwt</i>	<i>Dollars per Dozen</i>
AL			0.310
AR			0.370
CA	40.00	104.00	0.370
CO	37.20	117.00	
CT			0.440
FL			0.340
GA			0.318
ID	41.00	114.00	
IN			0.320
IA	39.10	114.00	0.279
KY	42.00	111.00	
ME			0.500
MI			0.360
MN	38.00	118.00	0.310
MS			0.350
MO	42.40	107.00	0.260
MT	39.60	137.00	
NE	34.90	108.00	
NY			0.350
NC			0.330
ND	40.00	118.00	
OH	41.70	115.00	0.353
OR	43.00	104.00	
PA	49.60	121.00	0.320
SC			0.330
SD	41.40	130.00	
TX	46.90	105.00	0.300
VA	42.60	118.00	
WA			0.390
WV	42.70	117.00	
WY	37.10	132.00	
US	40.90	114.00	0.326

¹ Entire month.

² Mid-month.

³ Market (table) eggs.

Milk and Milk Cows: Prices Received, by State, June and July 2005

State	June ¹						July		
	Fluid Grade Milk ²		Manufacturing Grade Milk		All Milk ³		All Milk ^{3 4}		Milk Cows ⁵
	Price	Fat Test	Price	Fat Test	Price	Fat Test	Price	Fat Test	
	<i>Dol/Cwt</i>	<i>Percent</i>	<i>Dol/Cwt</i>	<i>Percent</i>	<i>Dol/Cwt</i>	<i>Percent</i>	<i>Dol/Cwt</i>	<i>Percent</i>	<i>Dol/Head</i>
AZ	14.20	3.52			14.20	3.52	14.60	3.51	1,850
CA	13.40	3.55	14.00	3.85	13.42	3.56	13.80	3.56	1,800
CO	14.20	3.48			14.20	3.48	14.70	3.46	2,100
FL	17.70	3.52			17.70	3.52	18.00	3.56	1,940
ID	14.00	3.53	13.60	3.67	14.00	3.53	14.50	3.49	2,000
IL	15.20	3.53	14.60	3.50	15.20	3.53	15.50	3.50	1,850
IN	14.80	3.52	13.50	3.52	14.70	3.52	15.30	3.52	1,750
IA	15.20	3.57	13.60	3.60	15.20	3.57	15.70	3.55	1,840
KS	13.70	3.42			13.70	3.42	14.30	3.42	1,760
KY	15.50	3.50			15.50	3.50	15.70	3.49	1,780
MI	14.60	3.48	13.10	3.50	14.60	3.48	15.00	3.45	1,900
MN	14.90	3.63	13.20	3.62	14.80	3.63	15.10	3.58	1,780
MO	14.70	3.52	13.70	3.60	14.70	3.52	15.40	3.52	1,700
NM	13.70	3.41			13.70	3.41	13.90	3.47	1,880
NY	14.90	3.55			14.90	3.55	14.90	3.54	1,700
OH	15.20	3.52	14.50	3.64	15.20	3.53	15.40	3.52	1,790
OR	14.30	3.58			14.30	3.58	14.80	3.57	2,000
PA	15.90	3.55	14.00	3.55	15.90	3.55	16.30	3.55	1,800
TX	14.40	3.57			14.40	3.57	14.50	3.58	1,930
VT	15.10	3.62			15.10	3.62	15.20	3.60	1,850
VA	15.10	3.48			15.10	3.48	15.50	3.47	1,850
WA	14.30	3.58			14.30	3.58	14.80	3.57	1,950
WI	15.00	3.58	13.70	3.63	14.90	3.58	15.20	3.52	1,830
US	14.50	3.55	13.80	3.69	14.50	3.55	14.80	3.53	1,830

¹ Entire month.

² Including milk diverted to manufacturing.

³ Before deductions for hauling. Includes quality, quantity, and other premiums. Excludes hauling subsidies.

⁴ Preliminary.

⁵ Animals sold for dairy herd replacement only. Prices published January, April, July and October.

**Parity Price Equivalent for Manufacturing Milk ¹: United States,
June and July 2005, with Comparisons**

Item	Unit	Jul 2004	Jun 2005	Jul 2005
Parity Equivalent	Dollars per Cwt	31.64	33.36	33.64
Average Price F.O.B ²	Dollars per Cwt	14.20	13.80	14.10
Average Fat Test of Milk ²	Percent	3.66	3.69	3.66

¹ The parity price equivalent during 2005 is 91.4 percent of the parity price of all milk sold to plants, compared with 90.4 percent in 2004. For additional details, see January 2005 issue of "Agricultural Prices".

² Preliminary for July 2005.

**United States Parity Prices for Farm Products and Average Prices Received as
Percent of Parity Prices Based on Data for July 2005, with Comparisons ¹**

Commodity and Unit	Adjusted Base Price	Parity Price Based on Data for			Price as Percent of Parity		
		Jul 2004	Jun 2005	Jul 2005	Jul 2004	Jun 2005	Jul 2005
	<i>Dollars</i>	<i>Dollars</i>	<i>Dollars</i>	<i>Dollars</i>	<i>Percent</i>	<i>Percent</i>	<i>Percent</i>
Basic Commodities							
All Wheat, Bu	0.555	10.00	10.30	10.40	34	31	31
Rice, Cwt	1.38	29.00	25.60	25.80	32	27	26
Corn, Bu	0.372	6.74	6.90	6.95	37	29	31
Cotton, Lb							
American Upland	0.095	2.01	1.76	1.78	27	25	24
Extra Long Staple	0.142	2.56	2.64	2.65			
Peanuts, Lb	0.0350	0.658	0.650	0.654	26	27	27
Designated Nonbasic							
All Milk, Sold to Plants, Per Cwt ²	1.97	35.00	36.50	36.80	47	40	41
Honey, Extracted, Lb ³	0.1280	1.89	2.28	2.28			
Wool and Mohair							
Wool, Lb	0.0910	1.56	1.69	1.70			
Mohair, Lb	0.333	5.94	6.18	6.22			
Other Nonbasic							
Barley, Bu	0.377	6.69	6.99	7.05	38	37	32
Cottonseed, Ton	15.50	281.00	288.00	290.00	50	39	39
Dry Edible Beans, Cwt	2.82	51.90	52.30	52.70	37	53	46
Flaxseed, Bu	0.753	12.90	14.00	14.10	57	80	71
Oats, Bu	0.221	3.93	4.10	4.13	35	47	39
Potatoes, Cwt	0.838	15.20	15.50	15.70	43	49	56
Rye, Bu	0.355	6.28	6.59	6.63			
Sorghum Grain, Cwt	0.607	11.00	11.30	11.30	39	34	36
Soybeans, Bu	0.900	15.90	16.70	16.80	53	39	41
Sweetpotatoes, Cwt	2.31	40.00	42.90	43.20			
Apples, Fresh, Lb ⁴	0.0292	0.526	0.542	0.546	40	41	40
Citrus (equiv on-tree), Box							
Grapefruit	0.394	6.88	7.31	7.36	126	249	224
Lemons	1.12	19.60	20.80	20.90	75	75	75
Oranges	0.574	11.00	10.60	10.70	80	51	66
Tangerines	1.35	25.20	25.00	25.20		61	
Temples (FL)	0.379	8.02	7.03	7.08			
Beef Cattle, Cwt	9.65	170.00	179.00	180.00	52	49	48
Calves, Cwt	13.10	228.00	243.00	245.00	57	57	54
Hogs, Cwt	5.97	105.00	111.00	112.00	54	45	44
Lambs, Cwt	11.70	201.00	217.00	219.00		53	
Sheep, Cwt	4.72	83.60	87.60	88.20		51	
Eggs, Doz ²	0.0940	1.69	1.74	1.76	38	27	33
Turkeys, Live, Lb	0.0565	1.020	1.050	1.060	42	40	42

--continued

Parity Prices Based on Data for July 2005, United States ¹ (continued)

Other Nonbasic Commodities	Adj Base Base	Parity Price	Other Nonbasic Commodities	Adj Base Base	Parity Price
	<i>Dollars</i>	<i>Dollars</i>		<i>Dollars</i>	<i>Dollars</i>
Field Crops and Misc Commodities			Olives, CA canning, Ton ⁵	95.70	1,790.00
Hops, Lb	0.251	4.69	Papayas (HA)	0.0528	0.987
Spearmint Oil, Lb	1.46	27.30	Peaches		
Tobacco, Lb			Fresh, Ton ⁴	81.57	1,520.00
Flue-Cured, 11-14	0.255	4.77	Dried, CA, Ton	84.00	1,570.00
VA Fire-Cured, 21	0.256	4.78			
KY-TN Fire-Cured, 22-23	0.323	6.04	Noncitrus Fruit		
Burley, 31	0.274	5.12	Peaches, cont. Processing ⁵		
Maryland, 32	0.210	3.92	Excl Dried		
Dark Air-Cured, 35-36	0.284	5.31	Clingstone, CA, Ton	33.50	626.00
Sun-Cured, 37	0.241	4.50	Pears, Ton		
PA Seedleaf, 41	0.205	3.83	Fresh ⁴	52.90	989.00
Cigar Filler & Binder, 42-44, 54-55	0.225	4.21	Dried, CA ⁶	164.00	3,070.00
Puerto Rican Filler, 46	0.159	2.97	Plums, CA, Ton		
Cigar Binder, 51-52	0.747	14.00	Fresh, Equiv on-Tree	66.70	1,250.00
Type 61	3.21	60.00	Prunes, Dried, CA, Ton ⁶	127.00	2,370.00
Noncitrus Fruit			Prunes and Plums, Excl CA, Ton		
Apples, Ton ⁶			Fresh ⁹	58.90	1,100.00
Processing	18.30	342.00	Processing ⁶		
Apricots, Ton			Excl Dried	27.50	514.00
Fresh ⁷	99.00	1,850.00	Tree Nuts ¹⁰		
Dried, CA	270.00	5,050.00	Almonds, Lb	0.213	3.98
Avocados, Ton ⁷	234.00	4,370.00	Hazelnuts, Ton	135.00	2,520.00
Cherries Bbl			Pistachio, Lb	0.159	2.97
Sweet, Ton	188.00	3,510.00	Walnuts, Ton	173.00	3,230.00
Tart, Lb	0.0319	0.596	Vegetables, Cwt ¹¹		
Cranberry, Bbl ⁵	5.69	106.00	Fresh		
Dates, CA, Ton ⁷	181.00	3,380.00	Carrots ⁸	2.28	42.60
Grapes, Ton			Cauliflower ⁸	4.60	86.00
Raisin Variety	124.00	2,320.00	Celery ⁸	1.97	36.80
Other Dried	70.50	1,320.00	Honeydew Melons	2.75	51.40
Kiwifruit, Ton	91.30	1,710.00	Lettuce	2.50	46.70
Nectarines			Onions ⁸	1.65	30.80
Fresh, CA, Ton ⁷	62.60	1,170.00	Tomatoes	4.44	83.00

¹ Parity prices are computed under the provisions of Title III, Subtitle a, Section 301 (a) of the Agricultural Adjustment Act of 1938 as amended by the Agricultural Acts of 1948, 1949, and 1956. See January "Agricultural Prices" for details on adjusted base price and parity price computations.

² Seasonally adjusted price as percentage of parity price.

³ Wholesale extracted. Adjusted base price derived from state annual averages prices weighted by production. For 1982 through 1985 the national averages are the support prices.

⁴ Equivalent packinghouse-door returns for CA, NY (apples only), OR (except peaches), and WA. Price at point of first sale for other states.

⁵ Equivalent returns for bulk fruit at first delivery point.

⁶ Equivalent returns at processing plant door.

⁷ Equivalent returns at packinghouse door.

⁸ Includes some processing.

⁹ Based on "as sold" prices for fresh fruit in all states.

¹⁰ Prices in-shell basis except almonds which are shelled basis.

¹¹ F.O.B. shipping point prices.

Marketing Year for Specified Commodities

Apples (Fresh): July 1 to June 30 for U.S.; June 1 to May 31 for Arkansas, California, Georgia, Illinois, Iowa, Indiana, Kansas, Kentucky, Michigan, Missouri, New Mexico, North Carolina, Ohio, South Carolina, Tennessee, Wisconsin; August 1 to July 31 for Oregon and Washington; July 1 - June 30 for Arizona, Colorado, Connecticut, Idaho, Maine, Maryland, Massachusetts, New Hampshire, New Jersey, New York, Pennsylvania, Rhode Island, Utah, Vermont, Virginia, West Virginia.

Cranberries: September 5 to December 20 for U.S.; September 5 to December 20 for Massachusetts, New Jersey, Oregon, Washington, and Wisconsin.

Grapes (Fresh): May 25 to April 30 for U.S.; June 5 to July 15 for Arizona; May 25 to April 30 for California; July 10 to October 31 for Arkansas, Georgia, Michigan, Missouri, New York, North Carolina, Ohio, and Pennsylvania.

Onions: January 1 to December 31 for the U.S.; April 1 to July 31 for spring; May 1 to September 30 for summer (non-storage); September 1 to April 30 for summer (storage).

Peaches (Fresh): May 1 to October 31 for U.S.; May 20 to August 31 for Georgia and South Carolina; June 1 to September 30 for Alabama, Arkansas, California, Colorado, Illinois, Kentucky, Louisiana, Missouri, North Carolina, Ohio, Oklahoma, Tennessee, Texas, Utah, and Virginia; August 1 to September 30 for Connecticut, Massachusetts, Idaho, Michigan, and New York; July 1 to September 30 for Indiana, Maryland, New Jersey, Oregon, Pennsylvania, Washington, and West Virginia.

Pears (Fresh): July to June for U.S.; July 1 - April 30 for California; August 10 to May 31 for Oregon and Washington; July 1 to December 15 for Colorado, Connecticut, Michigan, New York, Pennsylvania, and Utah.

Sugarbeets: September 1 to August 31 for US and all estimating States. Estimating States are California, Colorado, Idaho, Michigan, Minnesota, Montana, Nebraska, North Dakota, Ohio, Oregon, Washington, and Wyoming.

Sugarcane: October 1 to September 30 for US and all estimating States. Estimating States are Florida, Hawaii, Louisiana, and Texas.

**Sugar Crops: Marketing Year Average Price Received
and Value of Production, United States, 2004 Crop ¹**

	Sugarbeets ²		Sugarcane ³		
	Price	Value of Production	For Sugar		Sugar and Seed
			Price	Value of Production	Value of Production
	<i>Dollars per Ton</i>	<i>1,000 Dollars</i>	<i>Dollars per Ton</i>	<i>1,000 Dollars</i>	<i>1,000 Dollars</i>
US	36.80	1,101,871	27.10	739,485	786,844

¹ Preliminary. Final prices and value of production by States will be published in "Crop Values" February 2006.

² Includes CA, CO, ID, MI, MN, MT, NE, ND, OH, OR, WA, and WY

³ Includes FL, HI, LA, and TX.

Seasonal Adjustment Factors - All Eggs and All Milk

Base prices used in calculating parity prices are averages of prices received by farmers for several years; therefore, any seasonal variation is largely averaged out. To facilitate comparisons with parity prices, monthly prices for all eggs and all milk are adjusted for seasonal variation.

The table below presents the adjustment factors which will be used the next 12 months. The seasonally adjusted price is calculated by dividing the monthly price by the adjustment factor. The factors are based on prices for the years 1994-2003.

**Seasonal Adjustment Factors, Eggs and Milk,
United States**

Year and Month	Eggs	Milk ¹
2005		
Jul	90	98
Aug	98	102
Sep	94	105
Oct	96	105
Nov	116	103
Dec	113	99
2006		
Jan	107	98
Feb	99	96
Mar	109	96
Apr	100	100
May	85	99
Jun	94	101

¹ All milk sold to plants and dealers.

**Indexes of Prices Received by Farmers, by Month and Annual Average,
United States, 2001-2005**

Year	Jan	Feb	Mar	Apr	May	Jun	Jul	Aug	Sep	Oct	Nov	Dec	Avg ¹
All Farm Products 1910-14 = 100													
2001	613	635	656	672	685	682	684	698	674	600	597	609	650
2002	604	625	667	597	608	614	626	632	623	606	616	619	620
2003	631	626	629	639	668	683	667	694	705	718	737	723	677
2004	709	736	771	793	819	813	789	763	734	723	736	706	758
2005	707	723	757	775	763	760	754						748
1990-92 = 100													
2001	97	100	103	106	108	107	108	110	106	94	94	96	102
2002	95	98	105	94	96	97	99	100	98	95	97	98	98
2003	99	99	99	101	105	108	105	109	111	113	116	114	107
2004	112	116	121	125	129	128	124	120	115	114	116	111	119
2005	111	114	119	122	120	120	119						118
All Crops 1910-14 = 100													
2001	464	483	489	506	518	503	512	537	505	436	444	479	490
2002	462	501	580	493	511	515	537	555	537	500	510	507	517
2003	506	509	523	541	570	580	539	560	550	549	569	570	547
2004	559	595	596	608	611	603	593	584	557	548	555	511	577
2005	502	526	573	600	583	600	588						567
1990-92 = 100													
2001	94	98	99	103	105	102	104	109	102	88	90	97	99
2002	94	102	118	100	104	104	109	113	109	101	103	103	105
2003	103	103	106	110	116	118	109	114	112	111	115	115	111
2004	113	121	121	123	124	122	120	118	113	111	113	104	117
2005	102	107	116	122	118	122	119						115

¹ Simple average required for parity regulations. Weighted 1990-92 average equals 100. Average is year-to-date for current year.

**Indexes of Prices Received by Farmers, by Month and Annual Average,
United States, 2001-2005**

Year	Jan	Feb	Mar	Apr	May	Jun	Jul	Aug	Sep	Oct	Nov	Dec	Avg ¹
Food Grains 1910-14 = 100													
2001	296	291	293	292	303	289	279	286	292	286	281	290	290
2002	284	270	271	267	274	302	333	365	411	410	394	396	331
2003	372	336	326	316	326	323	311	349	353	359	379	385	345
2004	393	395	402	408	407	384	366	356	363	363	362	360	380
2005	359	345	351	348	347	344	346						349
1990-92 = 100													
2001	93	91	92	92	95	91	88	90	92	90	89	91	91
2002	89	85	85	84	86	95	105	115	129	129	124	125	104
2003	117	106	102	99	102	102	98	110	111	113	119	121	108
2004	124	124	127	129	128	121	115	112	114	114	114	113	120
2005	113	109	111	110	109	108	109						110
Feed Grains and Hay 1910-14 = 100													
2001	319	324	325	323	322	324	339	342	331	307	308	330	325
2002	322	325	327	328	339	346	364	394	398	377	370	378	356
2003	375	380	380	382	391	392	365	363	360	342	353	368	371
2004	376	404	421	444	453	438	402	386	359	343	330	332	391
2005	338	323	337	340	354	370	381						349
1990-92 = 100													
2001	89	91	91	90	90	91	95	96	93	86	86	92	91
2002	90	91	91	92	95	97	102	110	111	105	104	106	100
2003	105	106	106	107	109	110	102	102	101	96	99	103	104
2004	105	113	118	124	127	122	113	108	100	96	92	93	109
2005	95	90	94	95	99	103	107						98

¹ Simple average required for parity regulations. Weighted 1990-92 average equals 100. Average is year-to-date for current year.

**Indexes of Prices Received by Farmers, by Month and Annual Average,
United States, 2001-2005**

Year	Jan	Feb	Mar	Apr	May	Jun	Jul	Aug	Sep	Oct	Nov	Dec	Avg ¹
Cotton 1910-14 = 100													
2001	440	410	347	360	346	331	329	315	309	259	235	260	328
2002	231	237	240	230	226	285	298	292	303	333	363	374	284
2003	385	393	411	384	388	385	391	391	471	573	533	535	437
2004	526	523	521	510	505	506	455	454	417	418	375	344	463
2005	335	330	351	364	355	372	356						352
1990-92 = 100													
2001	86	80	68	70	67	65	64	62	60	51	46	51	64
2002	45	46	47	45	44	56	58	57	59	65	71	73	56
2003	75	77	80	75	76	75	76	76	92	112	104	104	85
2004	103	102	102	100	99	99	89	89	81	82	73	67	91
2005	65	64	68	71	69	73	69						68
Tobacco ³ 1910-14 = 100													
2001	1735	1752	1496	1235			1622	1574	1639	1657	1722	1709	1614
2002	1761	1704	1478				1609	1561	1574	1609	1739	1735	1641
2003	1817	1800	1570	1065			1557	1570	1635	1643	1726	1735	1612
2004	1822	1891	1830	574					1648	1661	1726	1743	1421
2005	1857	1917	1265										1443
1990-92 = 100													
2001	115	116	99	82			107	104	108	109	114	113	107
2002	116	113	98				106	103	104	106	115	115	108
2003	120	119	104	70			103	104	108	109	114	115	107
2004	120	125	121	38					109	110	114	115	94
2005	123	127	84										96

¹ Simple average required for parity regulations. Weighted 1990-92 average equals 100. Average is year-to-date for current year.

² Missing data indicates insufficient sales volume to establish a price.

³ Monthly prices discontinued July 2005.

**Indexes of Prices Received by Farmers, by Month and Annual Average,
United States, 2001-2005**

Year	Jan	Feb	Mar	Apr	May	Jun	Jul	Aug	Sep	Oct	Nov	Dec	Avg ¹
Oil-Bearing Crops 1910-14 = 100													
2001	458	438	428	412	423	437	468	473	445	407	422	427	437
2002	415	419	432	440	455	483	528	538	483	494	530	537	480
2003	540	548	550	571	594	597	570	552	529	607	664	692	585
2004	714	805	901	935	930	882	824	661	519	529	528	545	731
2005	548	540	588	594	609	650	672						600
1990-92 = 100													
2001	84	80	78	75	77	80	86	86	81	74	77	78	80
2002	76	77	79	80	83	88	96	98	88	90	97	98	88
2003	99	100	101	104	109	109	104	101	97	111	121	127	107
2004	131	147	165	171	170	161	151	121	95	97	97	100	134
2005	100	99	107	109	111	119	123						110
Fruit and Nuts 1910-14 = 100													
2001	597	587	676	730	670	849	885	900	896	883	792	666	761
2002	585	580	668	632	729	794	831	849	866	859	767	642	734
2003	547	549	602	662	743	813	845	872	880	878	816	655	739
2004	611	694	707	656	816	879	887	923	1005	1115	1022	755	839
2005	753	860	826	783	886	1006	1013						875
1990-92 = 100													
2001	86	84	97	105	96	122	127	129	128	126	113	95	109
2002	84	83	96	91	104	114	119	122	124	123	110	92	105
2003	78	79	86	95	106	116	121	125	126	126	117	94	106
2004	87	99	101	94	117	126	127	132	144	160	146	108	120
2005	108	123	118	112	127	144	145						125

¹ Simple average required for parity regulations. Weighted 1990-92 average equals 100. Average is year-to-date for current year.

**Indexes of Prices Received by Farmers, by Month and Annual Average,
United States, 2001-2005**

Year	Jan	Feb	Mar	Apr	May	Jun	Jul	Aug	Sep	Oct	Nov	Dec	Avg ¹
Commercial Vegetables 1910-14 = 100													
2001	810	980	923	916	964	805	837	968	894	688	731	1144	888
2002	1054	1283	1816	803	770	731	771	807	795	704	735	694	914
2003	753	757	823	878	932	1047	809	937	979	960	1058	1134	922
2004	918	1038	789	923	795	755	835	920	907	1102	1192	840	918
2005	658	815	1137	1247	924	975	853						944
1990-92 = 100													
2001	121	147	138	137	144	120	125	145	134	103	109	171	133
2002	158	192	272	120	115	109	115	121	119	105	110	104	137
2003	113	113	123	131	140	157	121	140	146	144	158	170	138
2004	137	155	118	138	119	113	125	138	136	165	178	126	137
2005	98	122	170	187	138	146	128						141
Potatoes and Dry Beans 1910-14 = 100													
2001	409	450	437	466	453	486	532	632	516	461	538	578	497
2002	620	645	715	699	748	806	884	651	520	466	524	547	652
2003	533	554	567	592	590	559	570	483	458	443	481	494	527
2004	488	504	530	568	558	535	553	508	483	451	491	504	514
2005	532	533	560	564	616	674	742						603
1990-92 = 100													
2001	81	89	86	92	90	96	105	125	102	91	106	114	98
2002	123	127	141	138	148	159	175	129	103	92	104	108	129
2003	105	110	112	117	117	110	113	96	90	87	95	98	104
2004	96	100	105	112	110	106	109	100	95	89	97	100	102
2005	105	105	111	111	122	133	147						119

¹ Simple average required for parity regulations. Weighted 1990-92 average equals 100. Average is year-to-date for current year.

**Indexes of Prices Received by Farmers, by Month and Annual Average,
United States, 2001-2005**

Year	Jan	Feb	Mar	Apr	May	Jun	Jul	Aug	Sep	Oct	Nov	Dec	Avg ¹
Other Crops 1910-14 = 100													
2001	554	554	554	554	554	554	554	554	554	554	554	554	554
2002	561	561	561	561	561	561	561	561	561	561	561	561	561
2003	564	564	564	564	564	564	564	564	564	564	564	564	564
2004	569	569	569	569	569	569	569	569	569	569	569	569	569
2005	578	578	578	578	578	578	578	578	578	578	578	578	578
1990-92 = 100													
2001	112	112	112	112	112	112	112	112	112	112	112	112	112
2002	114	114	114	114	114	114	114	114	114	114	114	114	114
2003	114	114	114	114	114	114	114	114	114	114	114	114	114
2004	115	115	115	115	115	115	115	115	115	115	115	115	115
2005	117	117	117	117	117	117	117	117	117	117	117	117	117
Food Commodities 1990-92 = 100													
2001	97	101	105	108	110	109	110	113	109	96	97	98	104
2002	96	100	108	93	94	95	97	97	95	93	95	95	97
2003	97	96	96	99	104	107	105	110	113	116	120	116	107
2004	113	117	123	127	131	131	127	123	118	118	123	116	122
2005	115	118	124	126	123	122	121						121

¹ Simple average required for parity regulations. Weighted 1990-92 average equals 100. Average is year-to-date for current year.

**Indexes of Prices Received by Farmers, by Month and Annual Average,
United States, 2001-2005**

Year	Jan	Feb	Mar	Apr	May	Jun	Jul	Aug	Sep	Oct	Nov	Dec	Avg ¹
Livestock and Products 1910-14 = 100													
2001	764	780	821	833	846	864	857	852	848	798	760	722	812
2002	742	734	723	684	681	689	678	669	655	664	684	698	692
2003	735	728	715	717	740	758	776	809	847	887	895	859	789
2004	842	859	934	967	1021	1020	981	933	908	902	916	918	933
2005	931	917	932	938	934	905	906						923
1990-92 = 100													
2001	100	102	107	109	110	113	112	111	111	104	99	94	106
2002	97	96	94	89	89	90	88	87	85	87	89	91	90
2003	96	95	93	93	96	99	101	105	110	116	117	112	103
2004	110	112	122	126	133	133	128	122	118	118	119	120	122
2005	121	119	121	122	122	118	118						120
Meat Animals 1910-14 = 100													
2001	987	999	1047	1052	1046	1055	1033	1016	976	925	873	862	989
2002	916	948	937	884	867	868	882	859	821	857	869	896	884
2003	946	963	946	972	1014	1027	1025	1054	1100	1169	1179	1123	1043
2004	1058	1060	1134	1152	1232	1248	1235	1228	1206	1203	1202	1195	1179
2005	1229	1216	1244	1277	1276	1210	1183						1234
1990-92 = 100													
2001	97	98	103	103	103	104	102	100	96	91	86	85	97
2002	90	93	92	87	85	85	87	84	81	84	86	88	87
2003	93	95	93	96	100	101	101	104	108	115	116	110	103
2004	104	104	112	113	121	123	121	121	119	118	118	118	116
2005	121	120	122	126	125	119	116						121

¹ Simple average required for parity regulations. Weighted 1990-92 average equals 100. Average is year-to-date for current year.

**Indexes of Prices Received by Farmers, by Month and Annual Average,
United States, 2001-2005**

Year	Jan	Feb	Mar	Apr	May	Jun	Jul	Aug	Sep	Oct	Nov	Dec	Avg ¹
Dairy Products 1910-14 = 100													
2001	799	805	854	897	953	996	996	1014	1051	959	885	830	920
2002	836	805	774	768	744	707	682	694	713	744	731	731	744
2003	725	701	676	676	676	676	744	817	891	922	885	848	770
2004	811	836	953	1112	1186	1118	989	916	953	959	996	1008	986
2005	977	953	959	934	910	891	910						933
1990-92 = 100													
2001	100	100	106	112	119	124	124	126	131	119	110	103	115
2002	104	100	96	96	93	88	85	87	89	93	91	91	93
2003	90	87	84	84	84	84	93	102	111	115	110	106	96
2004	101	104	119	139	148	139	123	114	119	119	124	126	123
2005	122	119	119	116	113	111	113						116
Poultry and Eggs 1910-14 = 100													
2001	296	312	326	325	324	330	335	337	341	338	329	287	323
2002	295	271	271	244	257	280	265	262	258	243	269	270	265
2003	303	291	291	279	289	307	307	316	322	330	350	339	310
2004	373	390	414	392	397	411	406	367	330	322	331	332	372
2005	343	338	342	341	344	345	354						344
1990-92 = 100													
2001	105	111	116	116	115	117	119	120	121	120	117	102	115
2002	105	96	96	87	92	100	94	93	92	86	96	96	94
2003	108	104	104	99	103	109	109	112	115	118	124	121	111
2004	133	139	147	139	141	146	144	130	117	114	118	118	132
2005	122	120	122	121	122	123	126						122

¹ Simple average required for parity regulations. Weighted 1990-92 average equals 100. Average is year-to-date for current year.

Reliability of Prices Received Estimates

Definition: Prices received represent sales from producers to first buyers. They include all grades and qualities. The average commodity price from the survey multiplied by the total quantity marketed theoretically should give the total cash receipts for the commodity.

Survey Procedures: Primary sales data used to determine grain prices were obtained from probability samples of about 2000 mills and elevators. These procedures ensure that virtually all grain moving into commercial channels has a chance of being included in the survey. Generally, States surveyed account for 90 percent or more of total U.S. production. Livestock prices are obtained from packers, stockyards, auctions, dealers, and market check data from AMS-USDA, private marketing organizations, and state commodity groups and agencies. Inter-farm sales of grain and livestock are not included since they represent very small percentages of the total marketings. Grain marketed for seed is also excluded. Fruit and vegetable prices are obtained from sample surveys and market check data from AMS-USDA, private marketing organizations, state agencies, and universities.

Summary and Estimation Procedures: Survey quantities sold are expanded by strata to state levels and used to weight average strata prices to a state average. State prices are then weighted to a U.S. price based on expanded marketings. Recommendations are prepared by the State Statistical Offices and reviewed by the Agricultural Statistics Board in Washington, D.C. State recommendations are reviewed for reasonableness with survey data, other States, and recent historic estimates.

Revisions: For most items, the current month's preliminary price represents a 3-5 day period around the 15th of the month. Previous month's prices represent actual dollars received for quantities sold during the entire month. Revisions are published in monthly issues of *Agricultural Prices*.

Reliability: U.S. price estimates based on probability surveys generally have a sampling error of less than one percent for the major commodities such as corn, wheat, soybeans, cotton, and rice. Current methods of summarization for non-probability commodities are not designed directly to calculate sampling errors. However, analytical measures approximate the U.S. relative sampling errors at around five percent. Any nonsampling errors are attributed to such things as the inability to obtain correct information, differences in interpreting questions or definitions, mistakes in coding or processing the data, etc. Efforts are made at each step in the survey process to minimize these nonsampling errors.

Prices Paid by Farmers

The July Index of Prices Paid for Commodities and Services, Interest, Taxes, and Farm Wage Rates (PPITW), at 140 (1990-92=100), is unchanged from June 2005 but up 3.7 percent from July 2004.

PRODUCTION INDEX: The July index, at 140, increased 0.7 percent from last month and 5.3 percent from last year. Lower prices in July for feeder cattle, feeder pigs, and hay & forages offset higher prices for diesel fuel, feed concentrates, gasoline, and complete feeds.

Feed: The July index, at 122, increased 1.7 percent from June but decreased 4.7 percent from last July. Since June, higher prices for feed concentrates, complete feeds, feed grains, and feed supplements more than offset lower prices for hay & forages.

Livestock and Poultry: The July index for livestock and poultry purchases, at 136, decreased 2.2 percent from last month but is unchanged from last year. Since June, lower prices for feeder cattle and feeder pigs more than offset higher prices for milk cows. The July feeder cattle price, at \$115.90 per cwt, is down \$2.60 per cwt from the June price. July feeder pigs averaged \$106.00 per cwt, down \$22.00 per cwt from June.

Fertilizer: The July index, at 160, is up 0.6 percent from June and 16 percent from July a year ago. Since June, prices are higher for mixed fertilizers, nitrogen fertilizers, and potash & phosphate materials.

Agricultural Chemicals: The July index, at 120, is unchanged from June and last July.

Fuels: The July index, at 225, is up 4.2 percent from a month earlier and 40 percent from July 2004. Compared with last month, prices are higher for diesel fuel, gasoline, and LP gas.

Farm Machinery: The July index, at 171, is unchanged from June but up 6.2 percent from last July. Since June, lower prices for other machinery offset higher prices for tractors.

CONSUMER PRICE INDEX: The June 2005 Consumer Price Index for all urban consumers (CPI-U) increased 0.1 percent before seasonal adjustment to a level of 194.5 (1982-84=100). This compares with the May index of 194.4. For the 12-month period ending in June, the overall index has increased 2.5 percent.

**Indexes of Prices Paid by Farmers and Related Parity Ratios
United States, July 2005 With Comparisons**

Indexes and Ratios	1910-14 = 100			1990-92 = 100		
	2004	2005		2004	2005	
	Jul	Jun	Jul	Jul	Jun	Jul
Prices Paid by Farmers for Commodities & Services, Interest, Taxes, & Wage Rates (PPITW)	1,801	*1,866	1,869	135	*140	140
Production	1,293	*1,351	1,355	133	*139	140
Feed	625	*584	598	128	*120	122
Livestock & Poultry	1,739	1,783	1,733	136	139	136
Seeds	1,564	1,694	1,694	158	171	171
Fertilizer	506	*584	585	138	*159	160
Agricultural Chemicals	745	*741	741	120	120	120
Fuels	1,245	*1,667	1,736	161	*216	225
Farm Supplies & Repairs	975	1,014	1,014	137	143	143
Autos & Trucks	2,994	*3,042	3,025	113	*114	114
Farm Machinery	4,047	*4,293	4,295	161	171	171
Building Materials	1,831	*1,917	1,923	135	*141	142
Farm Services & Rent	1,467	*1,509	1,509			
Rent				125	*129	129
Interest ¹	2,593	2,643	2,643	103	105	105
Taxes ²	3,474	3,542	3,542	130	132	132
Wage Rates	6,074	6,035	6,035	162	161	161
Production, Interest, Taxes, & Wage Rates (PITW)	1,802	*1,870	1,874	134	*139	140
Family Living-CPI ³	1,799	*1,847	1,847	141	144	144
Ratio (Received/Paid)				92	86	85
Parity Ratio ⁴	44	41	40			
Parity Ratio Adjusted ⁵	46	45	45			
PPITW Adjusted for Productivity ⁶	1,223	*1,232	1,233			
Crop Sector (PPITW)				136	*143	143
Livestock Sector (PPITW)				134	*137	137
Farm Sector (Production)				135	*135	135
Non-Farm Sector (Production)				132	*141	142

* Revised.

¹ Interest per acre on farm real estate debt and interest rate on farm non-real estate debt.

² Farm real estate taxes payable per acre.

³ Bureau of Labor Statistics, Consumer Price Index for all urban consumers (CPI-U), for the previous month converted by the USDA.

⁴ Ratio of index of prices received to PPITW (1910-14=100).

⁵ Based on estimated cash receipts, from marketings and government payments, the preliminary adjustment factor is 1.105 for 2005 and the revised factor is 1.048 for 2004.

⁶ PPITW is adjusted based on productivity trend for the prior 15 years.

**Prices Paid Indexes and Annual Weights for Input Components and
Sub-Components United States, July 2005 With Comparisons**

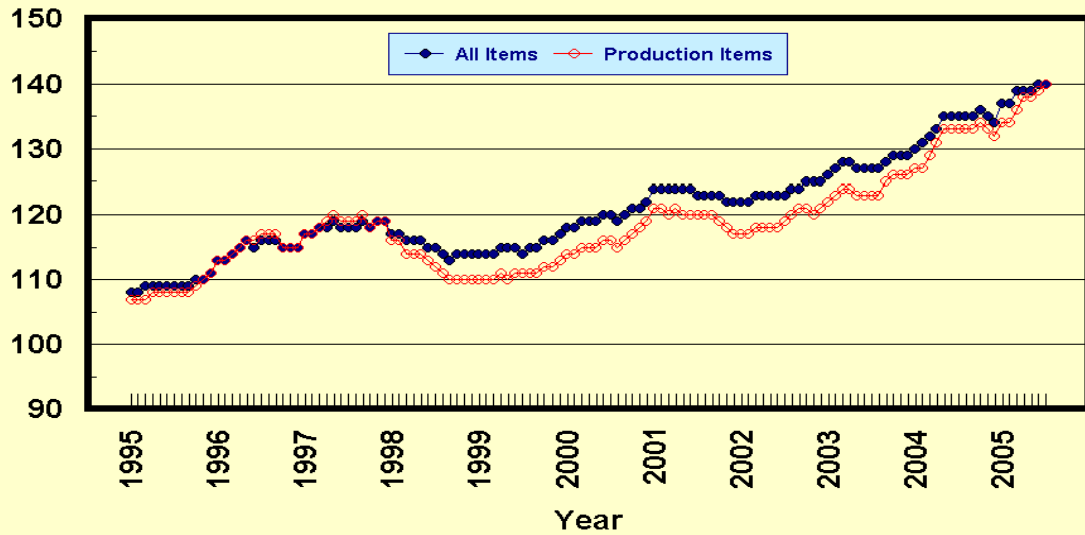
Index	Relative Weights 5-Year Moving Average ¹		Input Indexes		
	2004	2005	2004	2005	
			Jul	Jun	Jul
	<i>Percent</i>	<i>Percent</i>	<i>(1990-92=100)</i>	<i>(1990-92=100)</i>	<i>(1990-92=100)</i>
Production Items	66.2	66.4	133	*139	140
Feed	10.7	10.7	128	*120	122
Feed Grains	1.5	1.5	108	*90	95
Complete Feeds	5.2	5.2	132	*119	121
Hay/Forages	1.3	1.3	117	128	127
Concentrates	1.7	1.7	141	*132	138
Supplements	0.9	0.9	133	*138	143
Livestock & Poultry	7.4	7.7	136	139	136
Feeder Cattle	5.8	6.0	139	140	137
Feeder Pigs	0.6	0.6	109	139	115
Milk Cow Replacements	0.6	0.6	152	157	162
Poultry	0.4	0.5	110	110	110
Seeds	3.3	3.5	158	171	171
Field Crops	3.0	3.2	163	177	177
Grasses/Legumes	0.3	0.3	111	118	118
Fertilizer	4.4	4.3	138	*159	160
Mixed Fertilizer	1.9	1.9	122	*135	135
Nitrogen	1.8	1.8	159	*186	186
Potash & Phosphate	0.6	0.6	124	*157	158
Agricultural Chemicals	3.7	3.6	120	120	120
Herbicides	2.4	2.3	114	113	113
Insecticides	0.9	0.8	140	139	139
Fungicides/Other	0.5	0.5	118	*119	119
Fuels	2.7	2.7	161	*216	225
Diesel	1.5	1.6	155	*239	248
Gasoline	0.8	0.8	165	*188	200
LP Gas	0.4	0.4	180	*176	180
Farm Supplies & Repairs	5.4	5.2	137	143	143
Supplies	1.8	1.7	127	132	132
Repairs	3.6	3.5	143	148	148
Autos & Trucks	1.8	1.8	113	*114	114
Autos	0.2	0.2	106	108	108
Trucks	1.6	1.5	114	*115	115
Farm Machinery	4.0	4.0	161	171	171
Tractors	0.9	0.9	148	*155	156
Self-Propelled	1.6	1.6	167	176	176
Other Machinery	1.5	1.5	163	175	175
Building Materials	3.3	3.6	135	*141	142
Farm Services	12.4	12.4	125	*129	129
Custom Rates	1.3	1.3	125	125	125
Other Services	11.1	11.1	125	*130	130
Rent	7.1	6.9	120	123	123
Cash	3.8	3.7	145	147	147
Share	3.3	3.2	91	94	94
Interest	4.7	4.5	103	105	105
Taxes	3.0	2.9	130	132	132
Wage Rates	7.6	7.6	162	161	161
Family Living-CPI	18.5	18.6	141	144	144

* Revised.

¹ Weights may not add due to rounding.

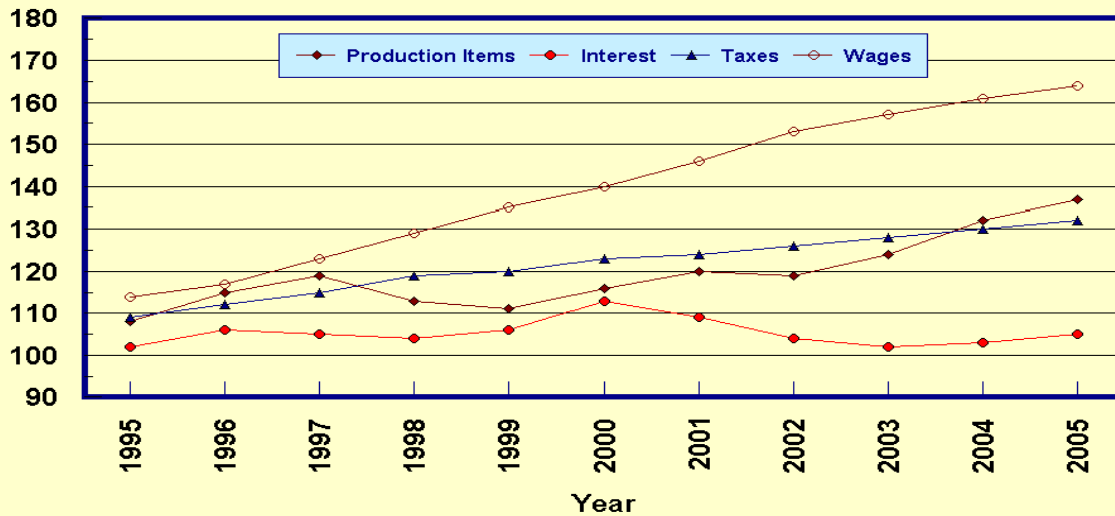
Prices Paid by Farmers, Major Indexes US, by Quarter and Month

Percent (1990-92=100)



Prices Paid by Farmers, Major Indexes US, Annual Averages 1/

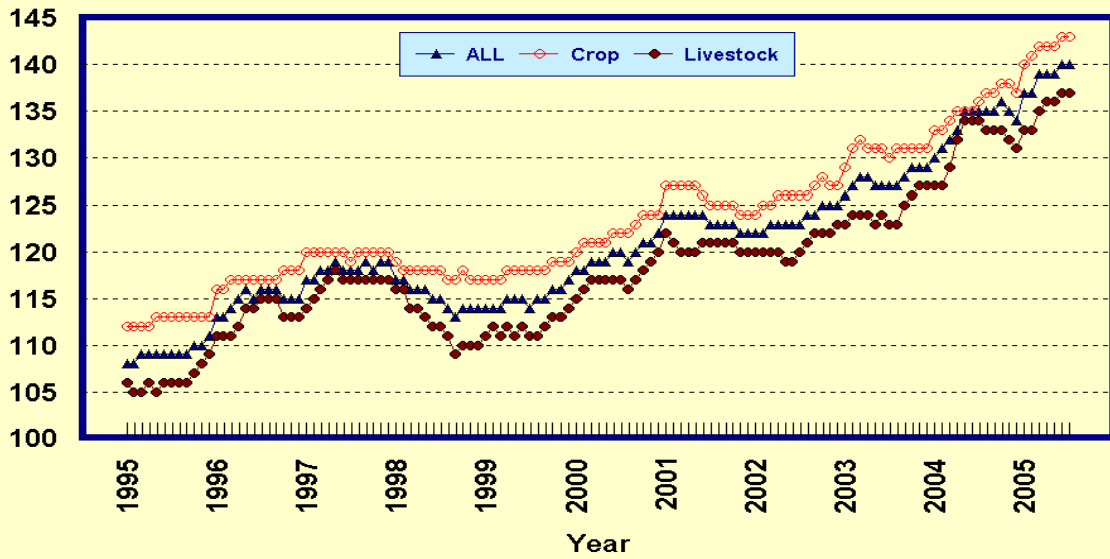
Percent (1990-92=100)



1/ Index values for 2005 are year-to-date averages.

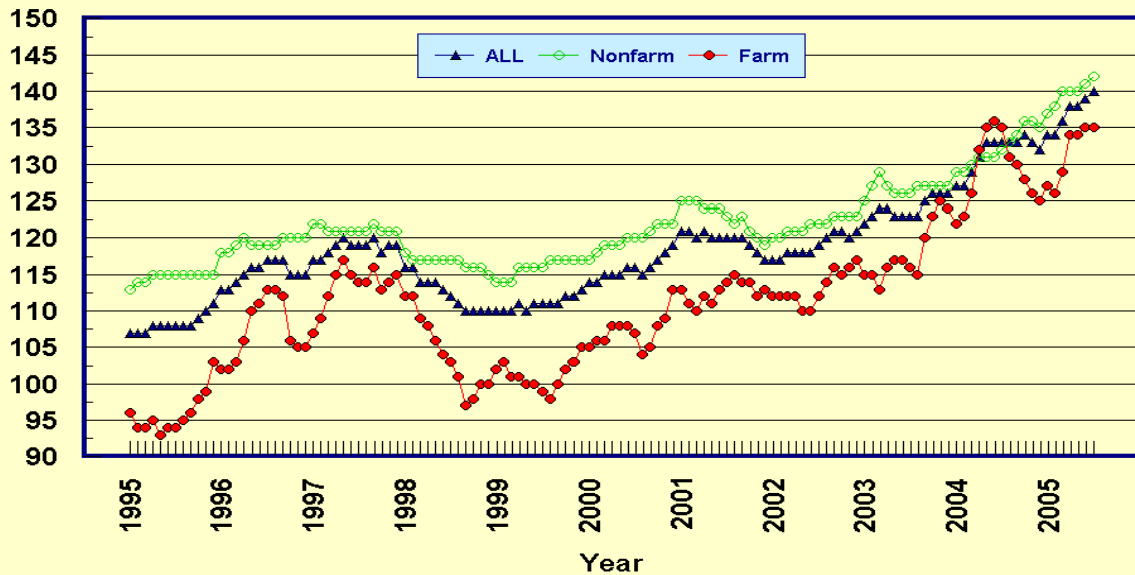
Prices Paid by Farmers, Indexes, All Items US, By Farm Type

Percent (1990-92=100)



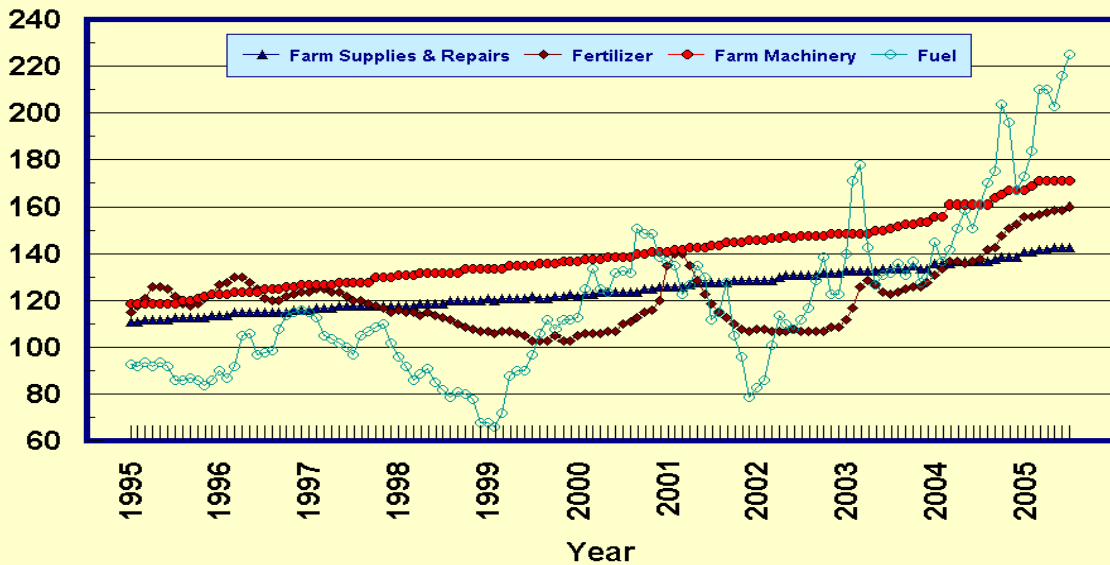
Prices Paid by Farmers, Indexes, All Production Items US, By Sector Origin

Percent (1990-92=100)



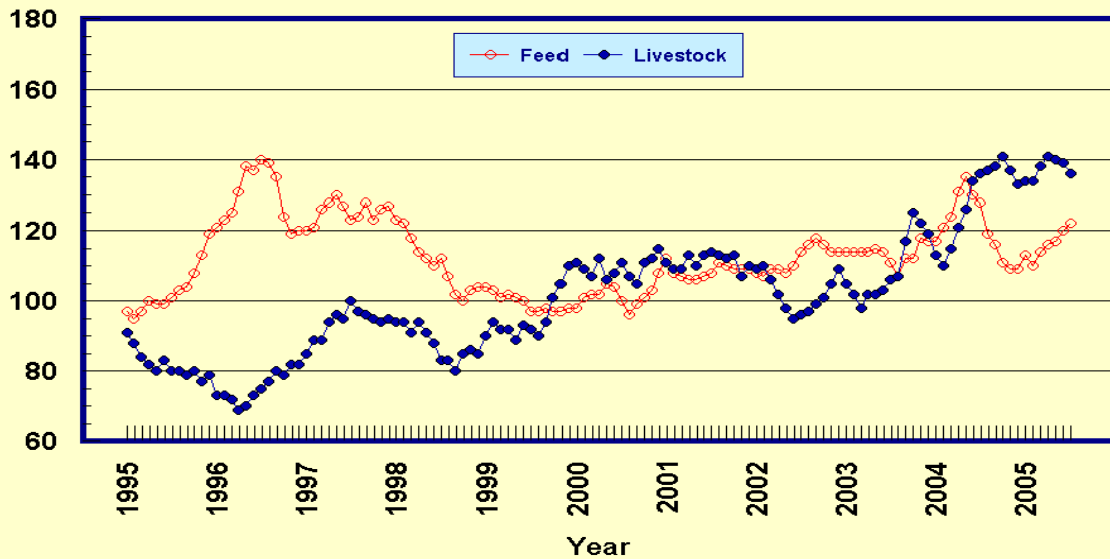
Prices Paid by Farmers, Selected Production Indexes US, By Non-Farm Sector

Percent (1990-92=100)



Prices Paid by Farmers, Selected Production Indexes US, By Farm Sector

Percent (1990-92=100)



Feed Price Ratios: United States, July 2005 with Comparisons

Feed Price Ratio ¹	2004	2005	
	Jul	Jun	Jul
Broiler-Feed: Pounds of Broiler Grower Feed equal in value to 1 pound of broiler, live weight	6.1	*6.6	6.3
Market Egg Feed: Pounds of Laying Feed equal in Value to 1 dozen eggs	5.9	4.2	5.7
Hog-Corn: Bushels of Corn equal in value to 100 pounds of hog, live weight	22.7	*24.4	22.9
Milk-Feed: Pounds of 16% Mixed Dairy Feed equal in value to 1 pound of Whole Milk	2.96	*2.89	2.90
Steer & Heifer-Corn: Bushels of Corn equal in value to 100 pounds of Steer & Heifers, live weight	36.4	*45.3	41.7
Turkey-Feed: Pounds of Turkey Grower equal in value to 1 pound of Turkey, live weight	5.8	7.0	7.2

* Revised.

¹ Effective January 1995, prices of commercial prepared feeds are based on current U.S. prices received for corn, soybeans, alfalfa hay, and all wheat.

**Prices Used to Calculate Feed Price Ratios:
United States, July 2005 with Comparisons**

Commodity	Unit	2004	2005	
		Jul	Jun	Jul
Broilers, Live	Lb	0.520	0.440	0.440
Eggs, Market	Doz	0.403	0.231	0.326
Hogs, All	Cwt	57.10	*49.60	49.30
Milk, All	Cwt	16.10	*14.50	14.80
Steers and Heifers	Cwt	91.40	*91.90	89.60
Turkeys, Live	Lb	0.433	0.425	0.450
Corn	Bu	2.51	*2.03	2.15
Hay, Alfalfa, Baled	Ton	98.40	112.00	109.00
Soybeans	Bu	8.46	*6.58	6.84
Wheat, All	Bu	3.37	*3.23	3.25

* Revised.

**Feeder Livestock: Prices Paid, United States
July 2005 with Comparisons**

Commodity	Unit	2004	2005	
		Jul	Jun	Jul
		<i>Dollars</i>	<i>Dollars</i>	<i>Dollars</i>
Feeders and Stockers Cattle and Calves	Cwt	117.80	118.50	115.90
Feeder Pigs	Cwt	100.00	128.00	106.00

**Prices Paid Indexes: Monthly and Annual Average
United States, 2001-2005**

Year	Jan	Feb	Mar	Apr	May	Jun	Jul	Aug	Sep	Oct	Nov	Dec	Avg ¹
Commodities and Services, Interest, Taxes, and Wage Rates (PPITW) 1910-14 = 100													
2001	1656	1651	1646	1646	1646	1647	1641	1642	1644	1636	1626	1620	1642
2002	1627	1628	1634	1639	1634	1637	1640	1648	1657	1666	1661	1666	1645
2003	1683	1697	1703	1699	1693	1695	1690	1690	1706	1718	1721	1718	1701
2004	1735	1739	1758	1777	1793	1794	1801	1797	1797	1805	1799	1786	1782
2005	1818	1823	1846	1855	1855	1866	1869						1847
1990-92 = 100													
2001	124	124	124	124	124	124	123	123	123	123	122	122	123
2002	122	122	123	123	123	123	123	124	124	125	125	125	124
2003	126	127	128	128	127	127	127	127	128	129	129	129	128
2004	130	131	132	133	135	135	135	135	135	136	135	134	134
2005	137	137	139	139	139	140	140						139
Items Used for Production, Interest, Taxes, and Wage Rates (PITW) 1910-14 = 100													
2001	1654	1647	1640	1639	1637	1638	1631	1632	1633	1625	1614	1608	1633
2002	1615	1615	1620	1624	1618	1621	1625	1633	1643	1653	1648	1654	1631
2003	1673	1688	1692	1688	1682	1685	1677	1675	1695	1710	1714	1711	1691
2004	1729	1733	1753	1775	1792	1793	1802	1796	1796	1804	1795	1781	1779
2005	1819	1823	1849	1857	1856	1870	1874						1850
1990-92 = 100													
2001	123	123	122	122	122	122	121	122	122	121	120	120	122
2002	120	120	121	121	120	121	121	122	122	123	123	123	121
2003	125	126	126	126	125	125	125	125	126	127	128	127	126
2004	129	129	130	132	133	133	134	134	134	134	134	133	132
2005	135	136	138	138	138	139	140						138

¹ Simple average and is year-to-date for current year.

**Prices Paid Indexes: Monthly and Annual Average
United States, 2001-2005**

Year	Jan	Feb	Mar	Apr	May	Jun	Jul	Aug	Sep	Oct	Nov	Dec	Avg ¹
Items Used for Production 1910-14 = 100													
2001	1176	1170	1164	1169	1167	1168	1162	1164	1165	1152	1142	1137	1161
2002	1139	1138	1143	1149	1143	1146	1154	1162	1171	1172	1168	1173	1155
2003	1183	1196	1200	1200	1194	1196	1195	1193	1210	1221	1224	1221	1203
2004	1228	1231	1249	1272	1287	1288	1293	1287	1287	1296	1289	1276	1274
2005	1297	1300	1323	1339	1339	1351	1355						1329
1990-92 = 100													
2001	121	121	120	121	120	120	120	120	120	119	118	117	120
2002	117	117	118	118	118	118	119	120	121	121	120	121	119
2003	122	123	124	124	123	123	123	123	125	126	126	126	124
2004	127	127	129	131	133	133	133	133	133	134	133	132	132
2005	134	134	136	138	138	139	140						137
Feed 1910-14 = 100													
2001	545	529	520	518	518	521	529	542	538	533	532	534	530
2002	529	524	530	534	529	539	555	568	576	566	557	556	547
2003	556	559	556	555	560	556	541	523	546	545	576	574	554
2004	573	592	606	639	658	633	625	582	564	541	531	531	590
2005	551	538	557	565	573	584	598						567
1990-92 = 100													
2001	112	108	107	106	106	107	108	111	110	109	109	109	109
2002	108	107	109	109	108	110	114	116	118	116	114	114	112
2003	114	114	114	114	115	114	111	107	112	112	118	117	114
2004	117	121	124	131	135	130	128	119	116	111	109	109	121
2005	113	110	114	116	117	120	122						116

¹ Simple average and is year-to-date for current year.

**Prices Paid Indexes: Monthly and Annual Average
United States, 2001-2005**

Year	Jan	Feb	Mar	Apr	May	Jun	Jul	Aug	Sep	Oct	Nov	Dec	Avg ¹
Livestock and Poultry 1910-14 = 100													
2001	1418	1387	1399	1440	1403	1442	1454	1440	1430	1446	1373	1401	1419
2002	1394	1405	1361	1301	1251	1213	1223	1245	1259	1287	1341	1395	1306
2003	1340	1298	1254	1308	1303	1322	1353	1371	1492	1604	1564	1521	1394
2004	1439	1403	1470	1546	1613	1714	1739	1754	1764	1796	1750	1704	1641
2005	1710	1710	1760	1806	1789	1783	1733						1756
1990-92 = 100													
2001	111	109	109	113	110	113	114	113	112	113	107	110	111
2002	109	110	106	102	98	95	96	97	99	101	105	109	102
2003	105	102	98	102	102	103	106	107	117	125	122	119	109
2004	113	110	115	121	126	134	136	137	138	141	137	133	128
2005	134	134	138	141	140	139	136						137
Seeds 1910-14 = 100													
2001	1238	1238	1238	1329	1329	1329	1329	1329	1329	1329	1329	1329	1306
2002	1329	1329	1329	1426	1426	1426	1426	1426	1426	1426	1426	1426	1402
2003	1426	1426	1426	1553	1553	1553	1553	1553	1553	1553	1553	1553	1521
2004	1553	1553	1553	1564	1564	1564	1564	1564	1564	1564	1564	1564	1561
2005	1564	1564	1564	1694	1694	1694	1694						1638
1990-92 = 100													
2001	125	125	125	134	134	134	134	134	134	134	134	134	132
2002	134	134	134	144	144	144	144	144	144	144	144	144	142
2003	144	144	144	157	157	157	157	157	157	157	157	157	154
2004	157	157	157	158	158	158	158	158	158	158	158	158	158
2005	158	158	158	171	171	171	171						165

¹ Simple average and is year-to-date for current year.

**Prices Paid Indexes: Monthly and Annual Average
United States, 2001-2005**

Year	Jan	Feb	Mar	Apr	May	Jun	Jul	Aug	Sep	Oct	Nov	Dec	Avg ¹
Fertilizer 1910-14 = 100													
2001	497	513	513	495	473	452	436	421	412	403	398	393	451
2002	394	395	394	391	392	397	394	393	391	394	398	400	394
2003	412	427	463	471	466	454	449	453	457	461	463	469	454
2004	481	493	504	502	497	501	506	519	526	542	554	562	516
2005	570	571	576	579	583	584	585						578
1990-92 = 100													
2001	135	140	140	135	129	123	119	115	113	110	108	107	123
2002	108	108	107	107	107	108	107	107	107	107	109	109	108
2003	112	117	126	129	127	124	123	124	125	126	126	128	124
2004	131	134	137	137	136	137	138	142	143	148	151	153	141
2005	156	156	157	158	159	159	160						158
Agricultural Chemicals 1910-14 = 100													
2001	761	748	746	747	747	745	743	741	739	739	742	739	745
2002	739	731	735	733	734	736	738	739	741	736	738	750	738
2003	752	752	744	746	746	747	747	746	746	748	750	744	747
2004	745	747	747	745	744	743	745	742	741	737	735	734	742
2005	732	729	726	740	741	741	741						736
1990-92 = 100													
2001	123	121	121	121	121	120	120	120	120	120	120	120	121
2002	120	118	119	119	119	119	119	120	120	119	119	121	119
2003	122	122	120	121	121	121	121	121	121	121	121	120	121
2004	121	121	121	121	120	120	120	120	120	119	119	119	120
2005	118	118	117	120	120	120	120						119

¹ Simple average and is year-to-date for current year.

**Prices Paid Indexes: Monthly and Annual Average
United States, 2001-2005**

Year	Jan	Feb	Mar	Apr	May	Jun	Jul	Aug	Sep	Oct	Nov	Dec	Avg ¹
Fuels 1910-14 = 100													
2001	1061	1043	948	983	1044	1004	861	889	985	807	744	608	915
2002	644	661	783	878	852	836	868	900	997	1074	949	950	866
2003	1080	1322	1371	1105	983	1011	1020	1050	1012	1054	988	1001	1083
2004	1121	1055	1096	1168	1229	1162	1245	1315	1347	1574	1514	1293	1260
2005	1335	1417	1622	1624	1566	1667	1736						1567
1990-92 = 100													
2001	137	135	123	127	135	130	112	115	128	105	96	79	119
2002	83	86	101	114	110	108	112	117	129	139	123	123	112
2003	140	171	178	143	127	131	132	136	131	137	128	130	140
2004	145	137	142	151	159	151	161	170	175	204	196	167	163
2005	173	184	210	210	203	216	225						203
Farm Supplies and Repairs 1910-14 = 100													
2001	895	895	896	900	905	906	911	912	912	912	913	913	906
2002	915	918	917	925	927	927	929	929	929	935	935	935	927
2003	941	941	942	947	947	948	952	952	952	956	954	954	949
2004	965	965	963	971	972	972	975	976	981	985	986	989	975
2005	1000	1003	1004	1009	1014	1014	1014						1008
1990-92 = 100													
2001	126	126	126	127	128	128	128	128	128	129	129	129	128
2002	129	129	129	130	131	131	131	131	131	132	132	132	131
2003	133	133	133	133	133	134	134	134	134	135	134	134	134
2004	136	136	136	137	137	137	137	137	138	139	139	139	137
2005	141	141	142	142	143	143	143						142

¹ Simple average and is year-to-date for current year.

**Prices Paid Indexes: Monthly and Annual Average
United States, 2001-2005**

Year	Jan	Feb	Mar	Apr	May	Jun	Jul	Aug	Sep	Oct	Nov	Dec	Avg ¹
Autos and Trucks 1910-14 = 100													
2001	3179	3171	3158	3155	3145	3132	3120	3099	3093	3117	3153	3169	3141
2002	3146	3107	3093	3086	3073	3061	3054	3041	3059	3076	3093	3099	3082
2003	3083	3074	3076	3061	3047	3029	3018	3020	3016	3014	3040	3050	3044
2004	3052	3060	3046	3042	3029	3021	2994	2969	2969	2985	3034	3067	3022
2005	3091	3093	3071	3062	3060	3042	3025						3063
1990-92 = 100													
2001	120	119	119	119	118	118	117	117	116	117	119	119	118
2002	118	117	116	116	116	115	115	114	115	116	116	117	116
2003	116	116	116	115	115	114	113	114	113	113	114	115	115
2004	115	115	115	114	114	114	113	112	112	112	114	115	114
2005	116	116	115	115	115	114	114						115
Farm Machinery 1910-14 = 100													
2001	3544	3561	3568	3580	3589	3594	3602	3607	3627	3643	3649	3654	3601
2002	3668	3674	3694	3700	3703	3699	3704	3705	3719	3724	3730	3730	3704
2003	3731	3732	3733	3737	3751	3766	3784	3815	3831	3846	3861	3875	3788
2004	3901	3919	4049	4040	4047	4041	4047	4047	4105	4130	4183	4200	4059
2005	4198	4247	4288	4282	4291	4293	4295						4271
1990-92 = 100													
2001	141	142	142	143	143	143	144	144	145	145	145	146	144
2002	146	146	147	147	148	147	148	148	148	148	149	149	148
2003	149	149	149	149	150	150	151	152	153	153	154	154	151
2004	156	156	161	161	161	161	161	161	164	165	167	167	162
2005	167	169	171	171	171	171	171						170

¹ Simple average and is year-to-date for current year.

**Prices Paid Indexes: Monthly and Annual Average
United States, 2001-2005**

Year	Jan	Feb	Mar	Apr	May	Jun	Jul	Aug	Sep	Oct	Nov	Dec	Avg ¹
Building Materials 1910-14 = 100													
2001	1636	1641	1642	1644	1657	1658	1652	1652	1649	1643	1642	1639	1646
2002	1642	1642	1647	1652	1655	1656	1658	1669	1663	1658	1653	1652	1654
2003	1655	1663	1665	1671	1671	1672	1679	1680	1694	1696	1701	1701	1679
2004	1704	1738	1757	1800	1824	1824	1831	1856	1868	1867	1866	1871	1817
2005	1892	1910	1915	1916	1912	1917	1923						1912
1990-92 = 100													
2001	120	121	121	121	122	122	122	122	121	121	121	121	121
2002	121	121	121	122	122	122	122	123	122	122	122	122	122
2003	122	122	123	123	123	123	124	124	125	125	125	125	124
2004	125	128	129	133	134	134	135	137	137	137	137	138	134
2005	139	141	141	141	141	141	142						141
Farm Services and Rent ² 1910-14 = 100													
2001	1413	1413	1416	1416	1418	1430	1434	1432	1430	1423	1417	1417	1422
2002	1422	1422	1421	1420	1421	1432	1432	1433	1432	1426	1424	1425	1426
2003	1440	1441	1441	1444	1446	1455	1457	1457	1457	1447	1442	1442	1447
2004	1451	1451	1452	1452	1456	1467	1467	1470	1468	1460	1456	1456	1459
2005	1485	1491	1490	1492	1495	1509	1509						1496
Farm Services 1990-92 = 100													
2001	120	120	120	120	120	122	122	122	122	121	120	120	121
2002	120	120	120	119	120	121	121	121	121	120	120	120	120
2003	121	122	122	122	122	123	124	124	124	122	122	122	123
2004	123	123	123	123	124	125	125	125	125	124	124	124	124
2005	126	127	127	127	127	129	129						127
Rent 1990-92 = 100													
2001	117	117	117	117	117	117	117	117	117	117	117	117	117
2002	119	119	119	119	119	119	119	119	119	119	119	119	119
2003	120	120	120	120	120	120	120	120	120	120	120	120	120
2004	120	120	120	120	120	120	120	120	120	120	120	120	120
2005	123	123	123	123	123	123	123						123

¹ Simple average and is year-to-date for current year.

² For the 1990-92=100 base period, the Farm Services and Rent Index is separated.

**Prices Paid Indexes: Monthly and Annual Average
United States, 2001-2005**

Year	Jan	Feb	Mar	Apr	May	Jun	Jul	Aug	Sep	Oct	Nov	Dec	Avg ¹
Interest 1910-14 = 100													
2001	2738	2738	2738	2738	2738	2738	2738	2738	2738	2738	2738	2738	2738
2002	2614	2614	2614	2614	2614	2614	2614	2614	2614	2614	2614	2614	2614
2003	2560	2560	2560	2560	2560	2560	2560	2560	2560	2560	2560	2560	2560
2004	2593	2593	2593	2593	2593	2593	2593	2593	2593	2593	2593	2593	2593
2005	2643	2643	2643	2643	2643	2643	2643	2643					2643
1990-92 = 100													
2001	109	109	109	109	109	109	109	109	109	109	109	109	109
2002	104	104	104	104	104	104	104	104	104	104	104	104	104
2003	102	102	102	102	102	102	102	102	102	102	102	102	102
2004	103	103	103	103	103	103	103	103	103	103	103	103	103
2005	105	105	105	105	105	105	105	105					105
Taxes 1910-14 = 100													
2001	3330	3330	3330	3330	3330	3330	3330	3330	3330	3330	3330	3330	3330
2002	3378	3378	3378	3378	3378	3378	3378	3378	3378	3378	3378	3378	3378
2003	3426	3426	3426	3426	3426	3426	3426	3426	3426	3426	3426	3426	3426
2004	3474	3474	3474	3474	3474	3474	3474	3474	3474	3474	3474	3474	3474
2005	3542	3542	3542	3542	3542	3542	3542	3542					3542
1990-92 = 100													
2001	124	124	124	124	124	124	124	124	124	124	124	124	124
2002	126	126	126	126	126	126	126	126	126	126	126	126	126
2003	128	128	128	128	128	128	128	128	128	128	128	128	128
2004	130	130	130	130	130	130	130	130	130	130	130	130	130
2005	132	132	132	132	132	132	132	132					132
Wage Rates 1910-14 = 100													
2001	5596	5596	5596	5369	5369	5369	5357	5357	5357	5550	5550	5550	5468
2002	5796	5796	5796	5705	5705	5705	5537	5537	5537	5783	5783	5783	5705
2003	6035	6035	6035	5919	5919	5919	5738	5738	5738	5848	5848	5848	5885
2004	6080	6080	6080	5964	5964	5964	6074	6074	6074	6022	6022	6022	6035
2005	6339	6339	6339	6035	6035	6035	6035						6165
1990-92 = 100													
2001	150	150	150	144	144	144	143	143	143	148	148	148	146
2002	155	155	155	153	153	153	148	148	148	155	155	155	153
2003	161	161	161	158	158	158	153	153	153	156	156	156	157
2004	163	163	163	159	159	159	162	162	162	161	161	161	161
2005	169	169	169	161	161	161	161						164

¹ Simple average and is year-to-date for current year.

**Prices Paid Indexes: Monthly and Annual Average
United States, 2001-2005**

Year	Jan	Feb	Mar	Apr	May	Jun	Jul	Aug	Sep	Oct	Nov	Dec	Avg ¹
Family Living 1910-14 = 100													
2001	1663	1670	1673	1680	1688	1691	1686	1686	1693	1688	1685	1678	1682
2002	1682	1689	1698	1708	1708	1709	1711	1716	1719	1722	1722	1718	1709
2003	1726	1739	1749	1746	1743	1745	1747	1753	1759	1757	1752	1750	1747
2004	1759	1768	1780	1786	1796	1802	1799	1800	1804	1813	1814	1807	1794
2005	1811	1822	1836	1848	1846	1847	1847						1837
1990-92 = 100													
2001	130	130	131	131	132	132	132	132	132	132	132	131	131
2002	131	132	133	133	133	133	134	134	134	134	134	134	133
2003	135	136	137	136	136	136	136	137	137	137	137	137	136
2004	137	138	139	139	140	141	141	141	141	142	142	141	140
2005	141	142	143	144	144	144	144						143
Production Items With Farm Origin ² 1990-92 = 100													
2001	113	111	110	112	111	113	114	115	114	114	112	113	113
2002	112	112	112	112	110	110	112	114	116	115	116	117	113
2003	115	115	113	116	117	117	116	115	120	123	125	124	118
2004	122	123	126	132	135	136	135	131	130	128	126	125	129
2005	127	126	129	134	134	135	135						133
Production Items With Non-Farm Origin ³ 1990-92 = 100													
2001	125	125	125	124	124	124	123	122	123	121	120	119	123
2002	120	120	121	121	121	122	122	122	123	123	123	123	122
2003	125	127	129	127	126	126	126	127	127	127	127	127	127
2004	129	129	130	131	131	131	132	133	134	136	136	135	132
2005	137	138	140	140	140	141	142						140

¹ Simple average and is year-to-date for current year.

² Feed, livestock and poultry purchases, and seed.

³ Fertilizer, agricultural chemicals, fuels, farm supplies and repairs, autos and trucks, farm machinery, building materials, and farm services and rent.

**Prices Paid Indexes: Monthly and Annual Average
United States, 2001-2005**

Year	Jan	Feb	Mar	Apr	May	Jun	Jul	Aug	Sep	Oct	Nov	Dec	Avg ¹
Parity Ratio ² 1910-14 = 100													
2001	37	38	40	41	42	41	42	43	41	37	37	38	40
2002	37	38	41	36	37	38	38	38	38	36	37	37	38
2003	37	37	37	38	39	40	39	41	41	42	43	42	40
2004	41	42	44	45	46	45	44	42	41	40	41	40	43
2005	39	40	41	42	41	41	40						41
Adjusted Parity Ratio ³ 1910-14 = 100													
2001	41	42	44	45	46	46	46	47	45	40	41	42	44
2002	39	41	43	39	39	40	40	41	40	38	39	39	40
2003	40	40	40	40	42	43	42	44	44	45	46	45	43
2004	43	44	46	47	48	47	46	44	43	42	43	41	45
2005	43	44	45	46	45	45	45						45
Ratio 1990-92 = 100													
2001	78	81	83	85	87	86	88	89	86	76	77	79	83
2002	78	80	85	76	78	79	80	81	79	76	78	78	79
2003	79	78	77	79	83	85	83	86	87	88	90	88	84
2004	86	89	92	94	96	95	92	89	85	84	86	83	89
2005	81	83	86	88	86	86	85						85

¹ Simple average and is year-to-date for current year.

² Ratio of index of prices received by farmers to index of prices paid for commodities and services, interest, taxes, and wage rates.

³ Ratio of the index of prices received by farmers after adjustment for government payments to the index of prices paid for commodities and services, interest, taxes, and wage rates.

**Prices Paid Indexes: Monthly and Annual Average
United States, 2001-2005**

Year	Jan	Feb	Mar	Apr	May	Jun	Jul	Aug	Sep	Oct	Nov	Dec	Avg ¹
Crop Sector (PPITW) 1990-92 = 100													
2001	127	127	127	127	127	126	125	125	125	125	124	124	126
2002	124	125	125	126	126	126	126	126	127	128	127	127	126
2003	129	131	132	131	131	131	130	131	131	131	131	131	131
2004	133	133	134	135	135	135	136	137	137	138	138	137	136
2005	140	141	142	142	142	143	143						142
Livestock Sector (PPITW) 1990-92 = 100													
2001	122	121	120	120	120	121	121	121	121	121	120	120	121
2002	120	120	120	120	119	119	120	121	122	122	122	123	121
2003	123	124	124	124	123	123	123	123	125	126	127	127	124
2004	127	127	129	132	134	134	134	133	133	133	132	131	132
2005	133	133	135	136	136	137	137						135
Commodities and Services, Interest, Taxes, and Wage Rates Adjusted for Productivity 1910-14 = 100													
2001	1131	1131	1131	1117	1118	1119	1116	1116	1118	1128	1126	1124	1123
2002	1139	1140	1142	1139	1138	1138	1128	1130	1132	1151	1150	1150	1140
2003	1174	1179	1181	1172	1171	1171	1158	1159	1163	1172	1172	1171	1170
2004	1206	1209	1213	1209	1214	1215	1223	1223	1223	1223	1222	1218	1217
2005	1240	1243	1249	1230	1230	1232	1233						1237

¹ Simple average and is year-to-date for current year.

**Prices Paid Index Sub-Components: Monthly and Annual Average
United States, 2001-2005**

Year	Jan	Feb	Mar	Apr	May	Jun	Jul	Aug	Sep	Oct	Nov	Dec	Avg ¹
Feed Sub-Components													
Feed Grains													
1990-92 = 100													
2001	85	85	84	81	79	79	83	83	84	81	82	86	83
2002	86	84	85	83	84	88	94	104	107	103	101	103	94
2003	102	103	102	102	104	101	94	95	96	94	97	101	99
2004	104	113	119	124	123	119	108	101	95	91	88	87	106
2005	90	84	87	86	86	90	95						88
Complete Feeds													
1990-92 = 100													
2001	114	112	109	107	106	107	108	113	112	112	111	112	110
2002	111	110	111	112	110	113	115	116	118	117	116	115	114
2003	115	114	114	112	112	112	111	107	111	111	118	119	113
2004	119	123	122	130	132	130	132	124	120	113	112	112	122
2005	115	113	115	116	117	119	121						117
Hay and Forages													
1990-92 = 100													
2001	110	113	117	127	130	122	121	123	124	123	123	123	121
2002	120	118	119	125	127	121	118	119	119	121	120	120	121
2003	121	122	120	125	123	122	113	109	108	109	106	105	115
2004	106	107	108	115	129	123	117	115	111	115	111	110	114
2005	111	111	115	123	133	128	127						121
Concentrates													
1990-92 = 100													
2001	122	107	104	104	107	115	117	116	111	110	109	103	110
2002	105	102	105	104	106	109	118	121	121	110	105	104	109
2003	104	110	110	112	118	115	114	106	123	123	137	127	117
2004	125	126	143	149	159	139	141	118	113	107	105	103	127
2005	113	114	122	124	126	132	138						124

¹ Simple average and is year-to-date for current year.

**Prices Paid Index Sub-Components: Monthly and Annual Average
United States, 2001-2005**

Year	Jan	Feb	Mar	Apr	May	Jun	Jul	Aug	Sep	Oct	Nov	Dec	Avg ¹
Supplements 1990-92 = 100													
2001	127	124	119	119	116	117	117	120	121	119	124	125	121
2002	123	124	124	123	118	123	126	128	129	133	134	135	127
2003	135	134	134	131	129	132	130	126	127	130	135	135	132
2004	135	134	135	138	135	135	133	130	134	132	133	134	134
2005	143	133	137	140	133	138	143						138
Livestock and Poultry Sub-Components Feeder Cattle 1990-92 = 100													
2001	109	105	106	109	106	112	111	110	110	110	102	104	108
2002	102	103	99	95	92	91	94	96	98	100	102	105	98
2003	99	96	92	99	99	102	107	111	122	130	126	122	109
2004	113	107	113	119	126	137	139	141	141	143	137	130	129
2005	129	129	133	137	138	140	137						135
Feeder Pigs 1990-92 = 100													
2001	125	133	136	143	127	115	111	109	106	105	110	123	120
2002	138	146	138	111	88	59	52	46	40	73	102	126	93
2003	138	127	123	119	109	104	82	64	73	97	94	96	102
2004	104	120	125	126	122	116	109	108	116	129	150	175	125
2005	185	186	195	194	164	139	115						168
Milk Cow Replacements 1990-92 = 100													
2001	117	117	117	124	124	124	141	141	141	151	151	151	133
2002	143	143	143	152	152	152	148	148	148	127	127	127	143
2003	122	122	122	115	115	115	116	116	116	122	122	122	119
2004	123	123	123	140	140	140	152	152	152	145	145	145	140
2005	144	144	144	157	157	157	162						152

¹ Simple average and is year-to-date for current year.

**Prices Paid Index Sub-Components: Monthly and Annual Average
United States, 2001-2005**

Year	Jan	Feb	Mar	Apr	May	Jun	Jul	Aug	Sep	Oct	Nov	Dec	Avg ¹
Poultry 1990-92 = 100													
2001	110	110	110	110	110	110	110	110	110	110	110	110	110
2002	111	111	111	111	111	111	111	111	111	111	111	111	111
2003	110	110	110	110	110	110	110	110	110	110	110	110	110
2004	110	110	110	110	110	110	110	110	110	110	110	110	110
2005	110	110	110	110	110	110	110	110	110	110	110	110	110
Seeds Sub-Components Field Crops 1990-92 = 100													
2001	126	126	126	136	136	136	136	136	136	136	136	136	134
2002	136	136	136	147	147	147	147	147	147	147	147	147	144
2003	147	147	147	162	162	162	162	162	162	162	162	162	158
2004	162	162	162	163	163	163	163	163	163	163	163	163	163
2005	163	163	163	177	177	177	177	177	177	177	177	177	171
Grasses and Legumes 1990-92 = 100													
2001	115	115	115	118	118	118	118	118	118	118	118	118	117
2002	118	118	118	118	118	118	118	118	118	118	118	118	118
2003	118	118	118	109	109	109	109	109	109	109	109	109	111
2004	109	109	109	111	111	111	111	111	111	111	111	111	111
2005	111	111	111	118	118	118	118	118	118	118	118	118	115
Fertilizer Sub-Components Mixed Fertilizer 1990-92 = 100													
2001	109	111	111	111	111	110	110	109	107	106	106	106	109
2002	105	104	104	104	104	104	105	105	106	106	106	106	105
2003	107	107	112	113	113	113	113	113	114	114	115	115	112
2004	117	119	122	122	122	122	122	124	125	128	130	131	124
2005	133	133	135	135	134	135	135	135	135	135	135	135	134

¹ Simple average and is year-to-date for current year.

**Prices Paid Index Sub-Components: Monthly and Annual Average
United States, 2001-2005**

Year	Jan	Feb	Mar	Apr	May	Jun	Jul	Aug	Sep	Oct	Nov	Dec	Avg ¹
Nitrogen 1990-92 = 100													
2001	171	180	179	167	155	142	133	124	121	115	112	111	143
2002	111	111	110	110	110	113	111	110	108	110	113	115	111
2003	122	131	147	150	146	141	138	139	141	142	144	147	141
2004	152	156	158	157	153	156	159	165	166	172	176	179	162
2005	180	180	182	183	186	186	186						183
Potash and Phosphate 1990-92 = 100													
2001	110	111	113	113	110	108	107	106	105	106	107	100	108
2002	106	109	109	108	106	106	105	105	105	105	104	102	106
2003	102	103	112	113	113	108	107	110	110	111	110	111	109
2004	114	119	124	123	124	124	124	128	133	137	144	147	128
2005	150	153	153	155	156	157	158						155
Agricultural Chemicals Sub-Components Herbicides 1990-92 = 100													
2001	111	112	112	112	112	112	112	112	112	112	113	113	112
2002	112	111	112	112	111	111	111	111	112	110	110	112	111
2003	112	112	112	112	112	112	112	112	112	113	113	112	112
2004	113	113	113	113	113	113	114	114	114	113	113	113	113
2005	113	113	113	113	113	113	113						113
Insecticides 1990-92 = 100													
2001	159	145	144	144	144	144	143	142	141	140	139	138	144
2002	139	138	138	137	138	139	140	140	141	142	143	144	140
2003	145	146	146	147	147	148	147	147	146	146	146	145	146
2004	144	144	144	143	142	141	140	139	137	136	134	133	140
2005	132	130	129	139	139	139	139						135

¹ Simple average and is year-to-date for current year.

**Prices Paid Index Sub-Components: Monthly and Annual Average
United States, 2001-2005**

Year	Jan	Feb	Mar	Apr	May	Jun	Jul	Aug	Sep	Oct	Nov	Dec	Avg ¹
Fungicides and Other 1990-92 = 100													
2001	120	120	121	121	121	121	121	120	120	120	120	120	120
2002	120	120	119	119	120	121	121	122	123	123	124	124	121
2003	125	126	114	115	115	115	115	115	116	116	116	116	117
2004	116	116	117	116	117	117	118	118	119	118	119	119	118
2005	119	119	119	120	120	119	119						119
Fuels Sub-Components Diesel 1990-92 = 100													
2001	139	132	119	123	133	129	116	117	131	108	102	80	119
2002	84	86	100	110	106	104	110	114	130	139	120	121	110
2003	136	172	179	141	120	122	125	129	121	133	125	127	136
2004	140	132	138	149	151	143	155	171	178	212	204	173	162
2005	181	192	224	224	219	239	248						218
Gasoline 1990-92 = 100													
2001	117	116	109	124	137	126	105	113	127	98	86	76	111
2002	81	85	103	118	115	114	117	119	123	136	120	113	112
2003	132	156	168	140	131	136	137	142	145	134	123	120	139
2004	136	138	143	152	170	157	165	156	160	183	172	148	157
2005	158	170	191	192	187	188	200						184
LP Gas 1990-92 = 100													
2001	175	187	166	151	143	144	105	113	115	103	95	78	131
2002	87	88	107	121	118	113	113	124	139	149	142	152	121
2003	173	201	193	158	149	159	152	153	147	159	153	163	163
2004	188	157	157	158	170	168	180	199	189	216	216	186	182
2005	171	175	193	191	172	176	180						180

¹ Simple average and is year-to-date for current year.

**Prices Paid Index Sub-Components: Monthly and Annual Average
United States, 2001-2005**

Year	Jan	Feb	Mar	Apr	May	Jun	Jul	Aug	Sep	Oct	Nov	Dec	Avg ¹
Farm Supplies & Repairs Sub-Components													
Supplies 1990-92 = 100													
2001	119	119	119	119	122	122	122	122	123	122	122	122	121
2002	121	122	122	123	124	124	124	124	124	124	124	124	123
2003	124	124	124	124	124	124	125	125	125	125	125	126	125
2004	126	126	126	127	127	127	127	127	128	129	129	129	127
2005	130	130	131	131	132	132	132	132					131
Repairs 1990-92 = 100													
2001	130	130	130	130	130	130	131	131	131	132	132	132	131
2002	133	133	133	134	134	134	134	134	134	136	136	136	134
2003	137	137	137	138	138	138	139	139	139	139	139	139	138
2004	141	141	140	142	142	142	143	143	144	144	144	144	143
2005	146	147	147	148	148	148	148	148					147
Autos and Trucks Sub-Components													
Autos 1990-92 = 100													
2001	112	112	112	112	111	111	111	110	110	110	112	112	111
2002	112	111	111	110	110	109	109	108	109	109	110	110	110
2003	109	109	109	108	108	107	107	107	107	107	108	108	108
2004	108	108	108	108	108	107	106	106	106	106	108	108	107
2005	109	109	109	109	108	108	108	108					109
Trucks 1990-92 = 100													
2001	121	120	120	120	119	119	118	118	117	118	120	120	119
2002	119	118	117	117	116	116	116	115	116	117	117	117	117
2003	117	117	117	116	116	115	114	115	114	114	115	116	116
2004	116	116	116	115	115	115	114	113	113	113	115	116	115
2005	117	117	117	116	116	115	115	115					116

¹ Simple average and is year-to-date for current year.

**Prices Paid Index Sub-Components: Monthly and Annual Average
United States, 2001-2005**

Year	Jan	Feb	Mar	Apr	May	Jun	Jul	Aug	Sep	Oct	Nov	Dec	Avg ¹
Farm Machinery Sub-Components													
Tractors													
1990-92 = 100													
2001	138	138	138	138	138	138	138	138	139	139	139	140	138
2002	140	140	140	140	140	140	140	140	140	140	140	140	140
2003	140	140	141	141	141	141	142	143	144	144	145	145	142
2004	145	145	146	146	147	147	148	148	148	149	149	149	147
2005	154	154	153	153	155	155	156						154
Self Propelled													
1990-92 = 100													
2001	141	142	142	143	143	143	143	144	145	145	145	145	143
2002	145	146	146	147	147	147	147	147	147	147	148	148	147
2003	148	148	148	148	149	150	152	154	156	157	158	160	152
2004	162	164	165	167	167	167	167	167	171	174	174	181	169
2005	176	176	176	176	176	176	176						176
Other Machinery													
1990-92 = 100													
2001	144	144	144	145	146	146	147	147	148	149	150	150	147
2002	151	151	152	153	153	153	153	153	154	154	155	155	153
2003	155	155	155	155	155	155	155	155	155	155	155	155	155
2004	155	155	167	164	164	164	163	163	165	164	170	163	163
2005	166	171	176	175	175	175	175						173
Farm Services Sub-Components													
Custom Rates													
1990-92 = 100													
2001	121	121	121	121	121	121	121	121	121	121	121	121	121
2002	120	120	120	120	120	120	120	120	120	120	120	120	120
2003	125	125	125	125	125	125	125	125	125	125	125	125	125
2004	125	125	125	125	125	125	125	125	125	125	125	125	125
2005	125	125	125	125	125	125	125						125

¹ Simple average and is year-to-date for current year.

**Prices Paid Index Sub-Components: Monthly and Annual Average
United States, 2001-2005**

Year	Jan	Feb	Mar	Apr	May	Jun	Jul	Aug	Sep	Oct	Nov	Dec	Avg ¹
Other Services 1990-92 = 100													
2001	119	119	120	120	120	122	122	122	122	121	120	120	121
2002	120	120	120	119	120	121	121	121	121	120	120	120	120
2003	121	121	121	122	122	123	124	124	124	122	121	121	122
2004	123	123	123	123	123	125	125	125	125	124	124	124	124
2005	126	127	127	127	128	130	130						128
Rent Sub-Components Cash 1990-92 = 100													
2001	143	143	143	143	143	143	143	143	143	143	143	143	143
2002	143	143	143	143	143	143	143	143	143	143	143	143	143
2003	145	145	145	145	145	145	145	145	145	145	145	145	145
2004	145	145	145	145	145	145	145	145	145	145	145	145	145
2005	147	147	147	147	147	147	147						147
Share 1990-92 = 100													
2001	91	91	91	91	91	91	91	91	91	91	91	91	91
2002	91	91	91	91	91	91	91	91	91	91	91	91	91
2003	91	91	91	91	91	91	91	91	91	91	91	91	91
2004	91	91	91	91	91	91	91	91	91	91	91	91	91
2005	94	94	94	94	94	94	94						94

¹ Simple average and is year-to-date for current year.

Prices Paid by Farmers

Definition: Prices paid by farmers represent the average costs of inputs purchased by farmers and ranchers to produce agricultural commodities. Conceptually, the average price when multiplied by quantity purchased should equal total producer expenditures for the item.

Survey Procedures: The prices paid data are obtained from establishments that sell goods and services to farmers and ranchers. Annually, about 8,500 firms are randomly selected from lists by type of item sold with an average response rate in the range of 75-80 percent. Firms are asked to report the price for the specified item "most commonly bought by farmers" or that was the "volume seller". Approximately 135 items are surveyed each April to represent all production input items purchased. The survey reference period for most items is the 5 business days centered around the 15th of the month. Separate prices paid surveys are conducted for, agricultural chemicals, fuels, feed, fertilizer, machinery, and seed.

Summary and Estimation Procedures: The annual April Prices Paid Survey is summarized as a nonprobability survey. Average prices reported are aggregated to the region and U.S. level using weights available from expenditure data and other administrative sources. Price recommendations are prepared by the State Statistical Offices and Headquarters for review by the Agricultural Statistics Board in Washington, D.C. Also, the change in price level for individual items surveyed are combined to the regional and U.S. levels, and are published as prices paid indexes referenced to a specific base period. Prices paid indexes for new autos and trucks, building materials, farm supplies, motor supplies, and marketing containers are updated based on price changes measured in selected Bureau of Labor Statistics (BLS) indexes.

Revisions: Any revisions are published in the monthly and in annual issues of *Agricultural Prices*. The basis for revision must be supported by additional data that directly affect the level of the estimate. More revisions are likely in April when separate prices paid surveys are conducted, in lieu of BLS indexes, by the USDA to measure price change.

Reliability: Current methods of summarization in April are not designed directly to calculate sampling errors. However, analytical measures approximate the U.S. relative sampling errors for major items around 10 percent. Any nonsampling errors are attributed to such things as the inability to obtain correct information, differences in interpreting questions or definitions, mistakes in coding or processing the data, etc. Efforts are made at each step in the survey process to minimize these nonsampling errors.

Program Change: Effective January 1, 1995, the National Agricultural Statistics Service updated the weights and changed the construction of its prices paid and received by farmers indexes. A Federal Register Notice dated October 28, 1994 discussed these program modifications.

A 1990-92 reference and base period replaced the 1977 reference and 1971-73 base weight period. Five-year moving average weights replaced the current fixed 1971-73 base period weights. The 1910-14=100 price indexes, required by statute for computing parity prices, were linked forward based on the changes in the new 1990-92=100 indexes. The new indexes were constructed by multiplying the ratios of the current prices to the base period prices by the moving average weights (adjusted for seasonal marketing patterns for the prices received indexes).

Information Contacts

General questions should be directed to Linda Hutton, Chief, Environmental, Economics and Demographics Branch at (202) 720-6146. Below are the commodity specialists to contact for additional information.

Crop Prices Received

Joe Prusacki Chief, Crops Branch	(202) 720-2127
Greg Thessen, Field Crops Section	(202) 720-2127
Scott Cox - Wheat, Rye	(202) 720-8068
Ty Kalas - Corn, Proso Millet, Flaxseed	(202) 720-9526
Troy Joshua - Cotton, Cottonseed	(202) 720-5944
Travis Thorson - Hay, Oats, Sorghum	(202) 690-3234
Jason Lamprecht - Soybeans, Sunflower, Other Oilseeds	(202) 720-7369
Dennis Koong - Peanuts, Rice	(202) 720-7688
Brian Young - Sugarcane, Sugarbeets, Barley	(202) 720-7621
Jim Smith, Fruit and Vegetable Section	(202) 720-2127
Debbie Flippin - Peaches, Pears, Hops, Pulses, Mint	(202) 720-3250
Jorge Garcia-Pratts - Citrus	(202) 720-5412
Terry O'Connor - Apples, Apricots, Cherries, Cranberries, Plums, Prunes	(202) 720-4288
Leslie Colburn - Grapes, Tobacco	(202) 720-7235
Cathy Scherrer, Potatoes, Dry Edible Beans, Sweet Potatoes	(202) 720-4285
Biz Wallingsford - Vegetables, Onions, Strawberries	(202) 720-2157

Livestock Prices Received

Dan Kerestes, Chief, Livestock Branch	(202) 720-3570
Bill Weaver, Livestock Section	(202) 720-3570
Scott Hollis - Sheep, Lambs, Wool, Mohair	(202) 720-4751
Ann Summa - Milk, Milk Cows	(202) 720-3278
Bruce Boess - Hogs	(202) 720-3106
Mike Miller - Cattle	(202) 720-3040
Wilbert Hundl, Poultry and Specialty Commodities Section	(202) 720-3570
John Lange - Turkeys	(202) 720-0585
Sharyn Lavender - Eggs	(202) 720-3244
Jody Roberts - Broilers	(202) 690-8632

Indexes, Prices Paid, and Parity Prices

Linda Hutton, Chief, Environmental, Economics and Demographics Branch	(202) 720-6146
Kevin Hintzman, Economics Section	(202) 720-6146
Eric Barnes - Farm Supplies and Repairs, Farm Machinery, Fuels, Feeder Livestock, Poultry Chicks, Feed Price Ratios, Grazing Fees, Autos & Trucks	(202) 690-4752
Daryl Brinkman - Prices Received Indexes, Parity Prices	(202) 720-8844
Tara Jackson - Prices Paid Indexes, Prices Paid for Feed, Fertilizer, Agricultural Chemicals, Seeds	(202) 690-3229

ACCESS TO REPORTS!!

For your convenience, there are several ways to obtain NASS reports, data products, and services:

INTERNET ACCESS

All NASS reports are available free of charge on the worldwide Internet. For access, connect to the Internet and go to the NASS Home Page at: www.usda.gov/nass/. Select "Today's Reports" or Publications and then Reports Calendar or Publications and then Search, by Title or Subject.

E-MAIL SUBSCRIPTION

All NASS reports are available by subscription free of charge direct to your e-mail address. Starting with the NASS Home Page at www.usda.gov/nass/, click on **Publications**, then click on the **Subscribe by E-mail** button which takes you to the page describing e-mail delivery of reports. Finally, click on **Go to the Subscription Page** and follow the instructions.

PRINTED REPORTS OR DATA PRODUCTS

CALL OUR TOLL-FREE ORDER DESK: 800-999-6779 (U.S. and Canada)
Other areas, please call 703-605-6220 FAX: 703-605-6900
(Visa, MasterCard, check, or money order acceptable for payment.)

ASSISTANCE

For **assistance** with general agricultural statistics or further information about NASS or its products or services, contact the **Agricultural Statistics Hotline** at **800-727-9540**, 7:30 a.m. to 4:00 p.m. ET, or e-mail: nass@nass.usda.gov.

The U.S. Department of Agriculture (USDA) prohibits discrimination in all its programs and activities on the basis of race, color, national origin, sex, religion, age, disability, political beliefs, sexual orientation, and marital or family status. (Not all prohibited bases apply to all programs.) Persons with disabilities who require alternative means for communication of program information (Braille, large print, audiotape, etc.) should contact USDA's TARGET Center at 202-720-2600 (voice and TDD).

To file a complaint of discrimination, write USDA, Director, Office of Civil Rights, Room 326-W, Whitten Building, 14th and Independence Avenue, SW, Washington, DC 20250-9410 or call 202-720-5964 (voice and TDD). USDA is an equal opportunity provider and employer.