

Released August 31, 2005, by the National Agricultural Statistics Service (NASS), Agricultural Statistics Board, U.S. Department of Agriculture. For information on *Agricultural Prices* see page 68, office hours 7:30 a.m. to 4:00 p.m. ET.

August Farm Prices Received Index Decreased 1 Point From Last Month

The preliminary All Farm Products Index of Prices Received by Farmers in August, at 117, based on 1990-92=100, decreased 1 point (0.8 percent) from July. The Crop Index is down 2 points (1.7 percent) while the Livestock Index decreased 1 point (0.8 percent). Producers received lower commodity prices for corn, soybeans, eggs, and sweet corn. Higher prices were received for lettuce, peaches, strawberries, and turkeys. The overall index is also affected by the seasonal change based on a 3-year average mix of commodities a producer sells. Increased average marketings of cattle, grapes, sweet corn, and calves offset decreased marketings of wheat, hay, milk, and broilers.

Preliminary All Farm Products Index is down 3 points (2.5 percent) from August 2004. The Food Commodities Index, at 120, is unchanged from last month but decreased 3 points (2.4 percent) from August 2004.

Prices Paid Index is Unchanged

The August Index of Prices Paid for Commodities and Services, Interest, Taxes, and Farm Wage Rates (PPITW) is 141 percent of the 1990-92 average. The index is unchanged from July but 6 points (4.4 percent) above August 2004. Higher prices in August for feed concentrates, diesel fuel, and complete feeds offset lower prices for feeder cattle, feed grains, and feeder pigs.

Index Summary Table

Index 1990-92=100	2004		2005	
	Jul	Aug	Jul	Aug
Prices Received	124	120	118	117
Prices Paid	135	135	141	141
Ratio ¹	92	89	84	83

¹ Ratio of index of prices received by farmers to index of prices paid by farmers.

Prices Received by Farmers

The August All Farm Products Index is 117 percent of its 1990-92 base, down 0.8 percent from the July index and 2.5 percent below the August 2004 index.

ALL CROPS: The August index is 116, down 1.7 percent from July and 2.5 percent below August 2004. From July, index decreases for potatoes & dry beans, oil-bearing crops, feed grains & hay, and cotton more than offset the index increases for commercial vegetables and fruits & nuts.

Food Grains: The August index, at 107, is unchanged from the previous month but 4.5 percent below August 2004. The August all wheat price, at \$3.21 per bushel, is up 1 cent from July but down 6 cents from August 2004.

Feed Grains & Hay: The August index is 99, down 5.7 percent from last month and 9.2 percent below August 2004. The corn price, at \$1.89 per bushel, is down 22 cents from last month and 45 cents below August 2004. The all hay price, at \$99.70 per ton, is unchanged from July but up \$7.50 from last August. Grain sorghum, at \$3.68 per cwt, is 26 cents below July and down 33 cents from August last year.

Oil-Bearing Crops: The August index, at 108, is down 9.2 percent from July and 11 percent below August 2004. The soybean price, at \$6.09 per bushel, decreased 56 cents from July and is 74 cents below August 2004.

Cotton: The August index, at 67, is down 5.6 percent from July and 25 percent below August 2004. The August price, at 40.8 cents per pound, is down 2.4 cents from the previous month and 12.9 cents below last August.

Potatoes & Dry Beans: The August index, at 128, is down 13 percent from last month but 28 percent above August 2004. The all potato price, at \$7.51 per cwt, is down \$1.18 from July but up \$1.74 from last August. The all dry bean price, at \$22.40 per cwt, is down \$3.00 from the previous month but \$1.50 above August 2004.

Fruits & Nuts: The August index, at 148, is up 1.4 percent from July and 12 percent higher than August 2004. Price increases for peaches, strawberries, and apples more than offset price decreases for grapes, lemons, and oranges.

Commercial Vegetables: The August index, at 127, is up 5.0 percent from last month but 8.0 percent below August 2004. Price increases during August for lettuce, snap beans, and broccoli more than offset price declines for sweet corn, onions, and cantaloupes.

LIVESTOCK & PRODUCTS: The August index, at 117, is 0.8 percent below last month and down 4.1 percent from August 2004. Compared with a year ago, prices are lower for broilers, dairy, hogs, eggs, and cattle but higher for turkeys. Calves are unchanged from a year ago.

Meat Animals: The August index, at 116, is unchanged from last month but 4.1 percent lower than last year. The August hog price, at \$50.00 per cwt, is up 20 cents from July but \$5.30 lower than a year ago. The August beef cattle price of \$84.70 is down 60 cents from last month and \$3.00 lower than August 2004.

Dairy Products: The August index, at 113, is unchanged from a month ago but 0.9 percent lower than a year ago. The August all milk price of \$14.70 is down 10 cents from last month and 20 cents from August 2004. The fluid grade milk price is down 10 cents and the manufactured grade milk price is 20 cents below last month.

Poultry & Eggs: The August index, at 125, is down 0.8 percent from July and 3.8 percent below a year ago. August market egg prices, at 25.7 cents per dozen, decreased 6.9 cents from July. The August broiler price, at 44.0 cents per pound, was unchanged from July but 2.0 cents below a year ago. The August turkey price, averaging 46.9 cents per pound, is up 1.9 cents from the previous month and 1.8 cents above a year earlier.

Table of Contents

U.S. Prices Received and Indexes	Page	Monthly State Prices, continued	Page
Narrative	2	Cotton	17
Price Indexes	5	Cottonseed	17
Price Index Charts	6	Eggs	22
U.S. Prices Received Summary	8	Flaxseed	16
Charts	10	Hay	17
Selected Commodities	14	Hogs, All	21
Upland Cotton & Rice Marketings	17	Barrows and Gilts	21
Parity Prices	24	Sows	21
Reliability Statement	59	Milk	23
		Milk Cows	23
		Oats	15
Monthly State Prices Received		Peanuts	16
Apples	17	Potatoes	19
Barley	15	Sheep	22
Beans, Dry Edible	16	Lambs	22
Beef Cattle, All	20	Sorghum, Grain	15
Calves	20	Soybeans	15
Cows, Beef	20	Sunflower, All	16
Steers and Heifers	20	Tobacco	16
Citrus Fruit	18	Wheat, All Classes	14
Corn	15		
Prices Received Special Features			Page
Marketing Year for Specified Commodities			26
Marketing Year Average Prices			
Wheat by Class			26
Barley			27
Oats			27
Peanuts			27
Wheat			28
Rye			28
Hay			29
Monthly Prices Received, Monthly Farm Marketings, and Marketing Year Average Prices			
Rice, Year-to-date			26
Monthly Prices			
Barley			30
Oats			36
Wheat			38
Wheat by Class			45
Hay			46
Peanuts			52
Monthly Farm Marketing Percentages			
Barley			53
Oats			54
Wheat			55
Hay			56
Peanuts			58

Table of Contents (continued)

U.S. Prices Paid, Prices Paid Indexes and Ratios	Page
Narrative	60
Indexes and Parity Ratios	61
Charts	63
Feed Price Ratios	66
Reliability Statement	67
 U.S. Average Prices	
Prices Used to Calculate Feed Price Ratios	66
Feeder Livestock	66
 Information Contacts	 68

**Index Numbers of Prices Received, United States,
August 2005, with Comparisons**

Index	1910-14=100				1990-92=100		
	Average 1990-92	2004	2005		2004	2005	
		Aug	Jul	Aug	Aug	Jul	Aug
All Farm Products	639	764	*747	741	120	*118	117
All Crops	500	585	*580	572	119	*118	116
Food Grains	325	357	*341	339	112	*107	107
Feed Grains & Hay	363	389	*377	354	109	*105	99
Cotton	517	454	*365	345	89	*71	67
Tobacco ¹	1,263						
Oil-Bearing Crops	554	661	*653	593	121	*119	108
Fruits & Nuts	716	923	*1,019	1,034	132	*146	148
Commercial Vegetables	698	920	*806	849	138	*121	127
Potatoes & Dry Beans	540	508	*743	646	100	147	128
Other Crops	493	569	578	578	115	117	117
Livestock & Products	768	933	*903	899	122	118	117
Meat Animals	1,021	1,228	*1,175	1,176	121	116	116
Dairy Products	799	916	910	903	114	113	113
Poultry & Eggs	282	367	354	350	130	126	125
Food Commodities					123	*120	120

* Revised.

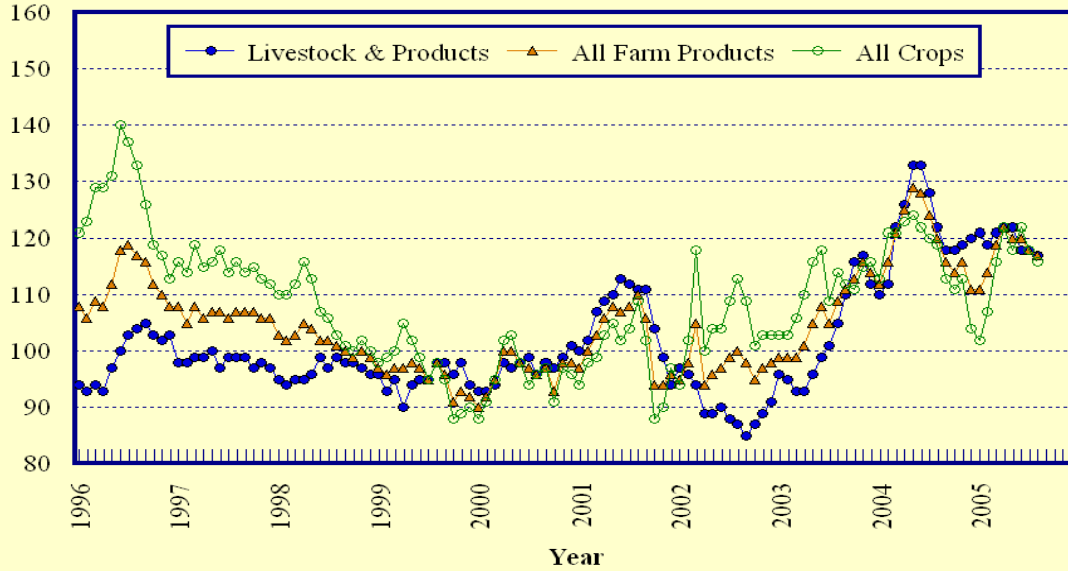
¹ Monthly prices discontinued July 2005.

**Selected Index Numbers for Prices Received and Paid,
1990-92=100, by Month, United States, 2004 and 2005**

Month	Index of Prices Received						Index of Prices Paid			
	All Farm Products		All Crops		Livestock and Products		All Items		Production Items	
	2004	2005	2004	2005	2004	2005	2004	2005	2004	2005
Jan	112	111	113	102	110	121	130	137	127	134
Feb	116	114	121	107	112	119	131	137	127	134
Mar	121	119	121	116	122	121	132	139	129	136
Apr	125	122	123	122	126	122	133	139	131	138
May	129	120	124	118	133	122	135	139	133	138
Jun	128	120	122	122	133	118	135	140	133	139
Jul	124	118	120	118	128	118	135	141	133	140
Aug	120	117	119	116	122	117	135	141	133	140
Sep	116		113		118		135		133	
Oct	114		111		118		136		134	
Nov	116		113		119		135		133	
Dec	111		104		120		134		132	

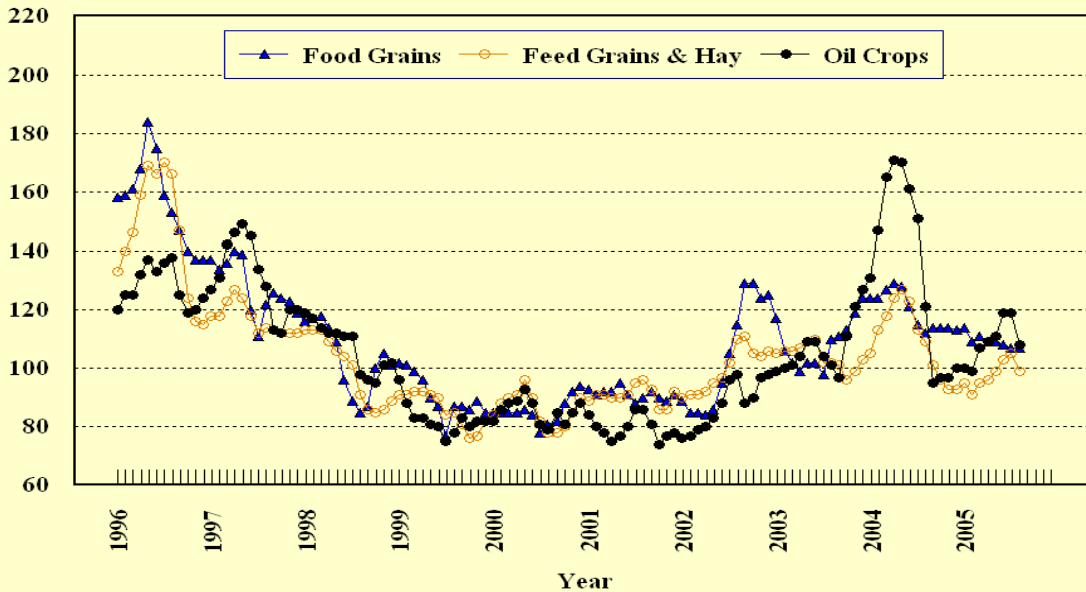
Prices Received, Major Indexes, US

Index Values(1990-92=100)



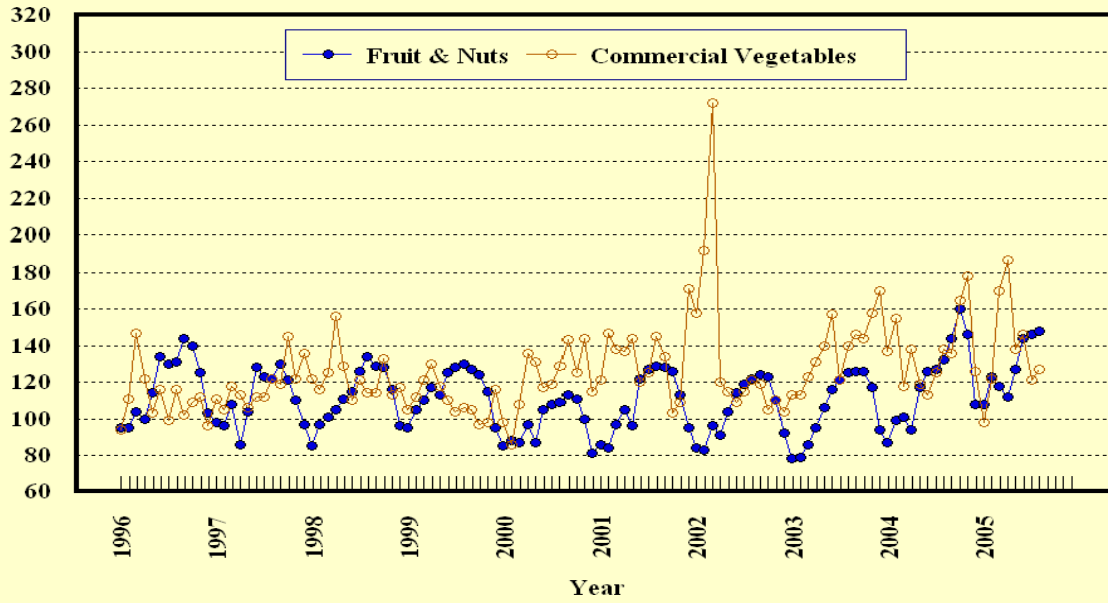
Prices Received, Food, Feed, & Oil Indexes, US

Index Values(1990-92=100)



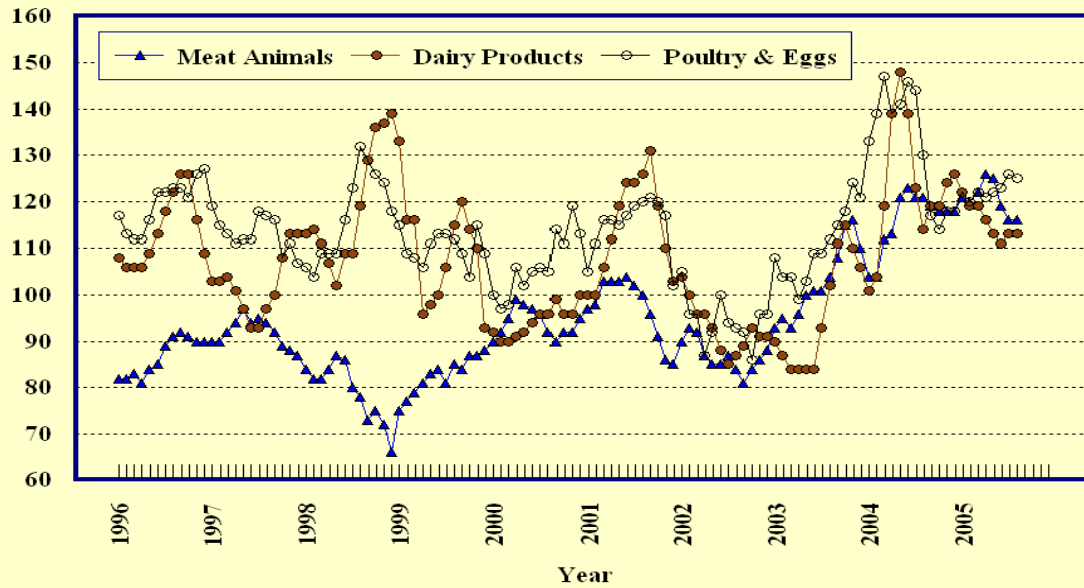
Prices Received, Fruit/Vegetable Indexes, US

Index Values(1990-92=100)



Prices Received, Livestock Product Indexes, US

Index Values(1990-92=100)



**Prices Received, United States,
August 2005, with Comparisons**

Commodity	Unit	Average 1990-92	Entire Month		Preliminary
			Aug 2004	Jul 2005	Aug 2005
		<i>Dollars</i>	<i>Dollars</i>	<i>Dollars</i>	<i>Dollars</i>
Field Crops					
Barley, All	Bu	2.12	2.77	2.38	2.75
Feed	Bu	1.90	1.83	1.98	1.90
Malting	Bu	2.43	3.06	2.66	3.03
Beans, Dry Edible	Cwt	19.10	20.90	25.40	22.40
Chickpeas, All	Cwt		26.60	27.90	31.30
Large	Cwt		27.20	28.20	31.60
Small	Cwt		(⁴)	(⁴)	(⁴)
Corn	Bu	2.30	2.34	2.11	1.89
Cotton, Upland	Lb	0.606	0.537	0.432	0.408
Cottonseed ³	Ton	96.00	99.00		102.00
Flaxseed	Bu	4.27	6.90	10.40	8.50
Hay, All, Baled ¹	Ton	76.30	92.20	99.70	99.70
Alfalfa ¹	Ton	77.20	99.30	109.00	109.00
Other ¹	Ton	60.00	71.90	75.90	74.80
Lentils	Cwt		13.70	11.80	10.70
Oats	Bu	1.22	1.32	1.59	1.53
Peanuts, In-Shell	Lb	0.304	0.190	0.160	0.173
Peas, Dry Edible	Cwt		6.05	5.21	4.42
Austrian Winter	Cwt		8.98	9.28	(⁵)
Potatoes	Cwt	5.82	5.77	8.69	7.51
Rice, Rough	Cwt	7.07	8.96	6.78	6.53
Sorghum Grain	Cwt	3.75	4.01	3.94	3.68
Soybeans	Bu	5.61	6.83	6.65	6.09
Sunflower, All	Cwt	9.50	13.60	15.10	13.30
Tobacco, Types 11-37 ⁶	Lb	1.740	1.755		
Wheat, All	Bu	2.96	3.27	3.20	3.21
Winter	Bu	2.93	3.19	3.15	3.11
Durum	Bu	2.86	3.86	3.71	3.41
Other Spring	Bu	3.11	3.38	3.45	3.33
Hard Red Winter	Bu		3.11	3.13	
Soft Red Winter	Bu		3.04	3.19	
Hard Red Spring	Bu		3.36	3.45	
White	Bu	3.24	3.52	3.36	
Fruit					
Citrus, Equiv on-tree					
Grapefruit	Box	5.77	7.91	16.49	13.50
Lemons	Box	10.10	14.70	15.61	11.75
Oranges	Box	5.79	8.49	7.11	5.97
Tangelos	Box	5.82			
Tangerines	Box	15.11			
Temples	Box	6.23			
Noncitrus, Fresh					
Apples ²	Lb	0.212	0.268	0.153	0.202
Grapes ²	Ton	506.00	560.00	720.00	670.00
Peaches ²	Ton	432.00	427.00	553.00	646.00
Pears ²	Ton	370.00	382.00	550.00	490.00
Strawberries	Cwt	56.00	76.90	66.00	75.80

¹ Mid-month price.

² Equivalent packinghouse-door returns for CA, MI, and NY (apples only), and WA (apples, peaches, and pears). Prices as sold for other states.

³ Marketing year August - February.

⁴ Price not published to avoid disclosure of individual firms.

⁵ Insufficient sales to establish a price.

⁶ Monthly price estimates discontinued beginning in July 2005.

**Prices Received, United States,
August 2005, with Comparisons**

Commodity	Unit	Average 1990-92	Entire Month		Preliminary
			Aug 2004	Jul 2005	Aug 2005
		<i>Dollars</i>	<i>Dollars</i>	<i>Dollars</i>	<i>Dollars</i>
Vegetables, Fresh ¹					
Asparagus	Cwt	79.80	218.00	226.00	208.00
Broccoli	Cwt	22.50	29.70	22.40	26.40
Cantaloupes ²	Cwt		14.40	18.40	14.70
Carrots	Cwt	13.20	18.00	21.80	23.40
Cauliflower	Cwt	26.80	26.30	25.60	32.90
Celery	Cwt	11.60	10.00	10.40	9.95
Corn, Sweet	Cwt	15.70	22.90	25.30	21.00
Cucumbers ²	Cwt		28.70	21.70	22.20
Lettuce	Cwt	11.90	17.10	11.00	14.70
Onions	Cwt	12.80	13.40	20.10	16.50
Snap Beans ²	Cwt		67.40	54.30	74.00
Tomatoes	Cwt	32.30	37.80	30.20	26.60
Livestock					
Calves	Cwt	94.30	131.00	132.00	131.00
Cattle, All Beef	Cwt	72.90	87.70	85.30	84.70
Cows ³	Cwt	49.60	54.70	53.80	51.90
Steers & Heifers	Cwt	77.10	91.00	88.40	88.00
Milk Cows ⁴	Head	1,130.00		1,830.00	
Hogs, All	Cwt	47.70	55.30	49.80	50.00
Barrows & Gilts	Cwt	48.40	55.80	50.30	50.50
Sows	Cwt	39.50	46.90	37.70	38.60
Lambs	Cwt	56.20	97.90	109.00	
Sheep	Cwt	23.40	37.30	40.30	
Dairy and Poultry					
Milk, All ^{5 6}	Cwt	13.06	14.90	14.80	14.70
Fluid Grade ⁶	Cwt	13.10	14.90	14.90	14.80
Mfg Grade ⁶	Cwt	11.80	14.20	14.20	14.00
Broilers, Live ⁷	Lb	0.317	0.460	0.440	0.440
Eggs, All ⁸	Doz	0.643	0.526	0.530	0.470
Market ⁸	Doz	0.546	0.337	0.326	0.257
Turkeys, live ^{7 8}	Lb	0.380	0.451	0.450	0.469
Adjusted for Seasonal Variation					
Eggs, All	Doz	0.545	0.525	0.589	0.480
Milk, All ⁵	Cwt	9.71	14.71	15.10	14.41

¹ F.O.B. shipping point.

² Monthly estimates began January 1995.

³ Beef cows and cull dairy cows sold for slaughter.

⁴ Animals sold for dairy herd replacement only. Prices available for Jan, Apr, Jul, and Oct.

⁵ Before deductions for hauling. Includes quality, quantity, and other premiums. Excludes hauling subsidies.

⁶ August 2005 Fat test percent: all milk 3.55, fluid milk 3.54, mfg grade 3.71.

⁷ Equivalent liveweight returns to producers for most States. Includes growers and contractors.

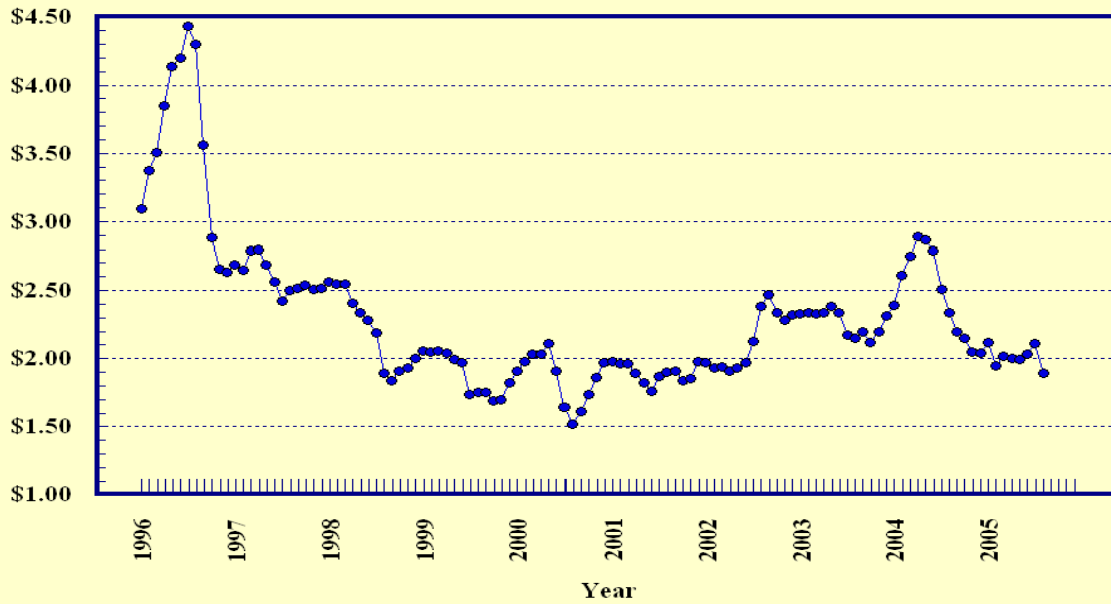
⁸ Mid-month price.

⁹ Price not published to avoid disclosure of individual firms.

¹⁰ Insufficient sales to establish a price.

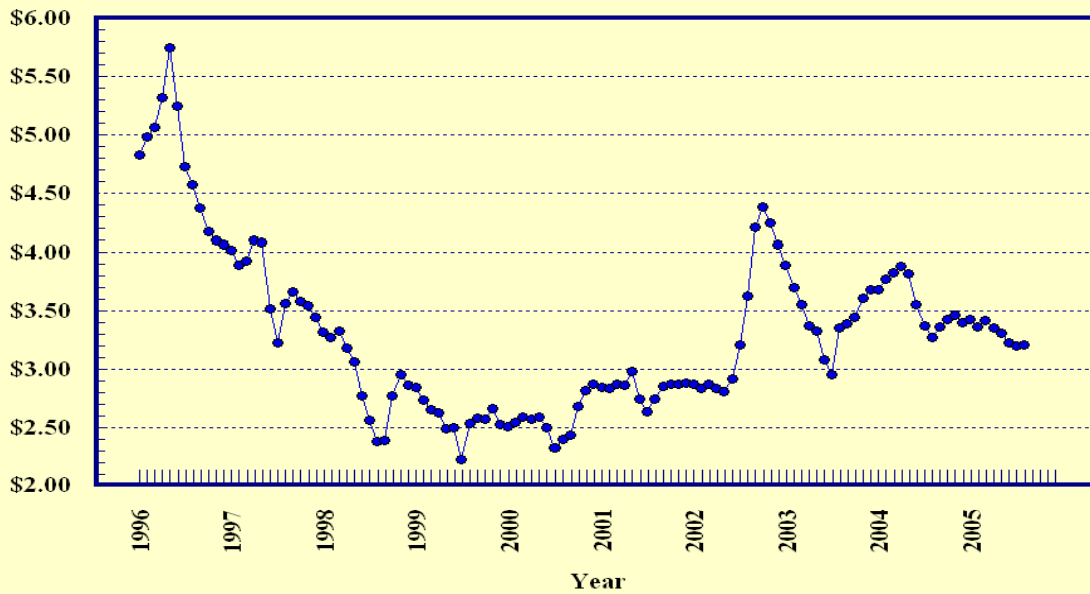
Prices Received, Corn, US

Dollars per Bu



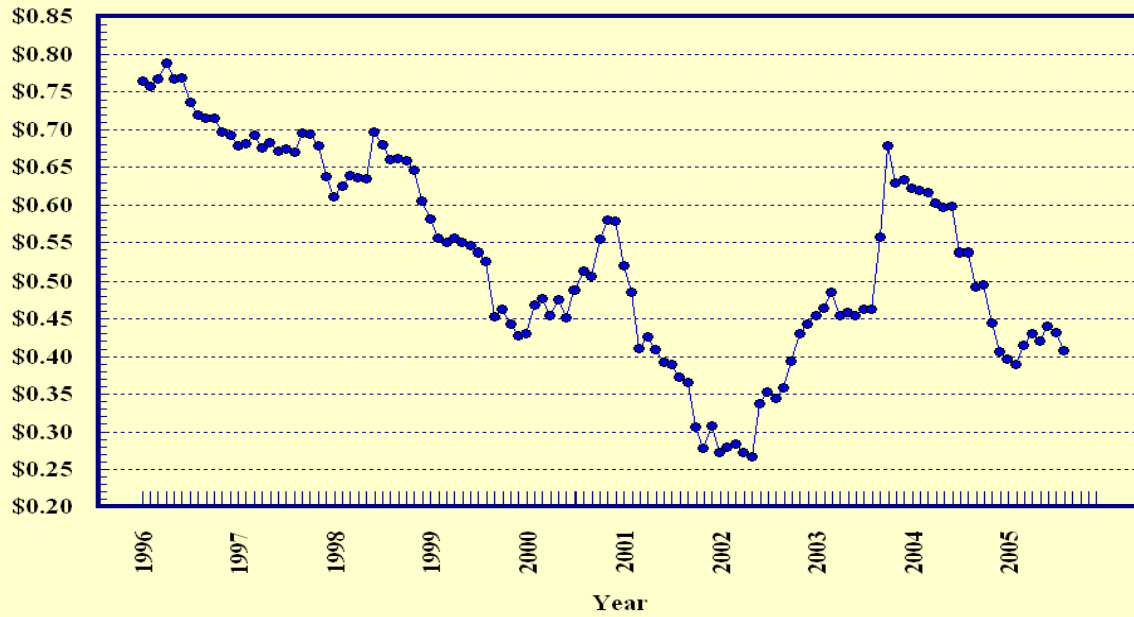
Prices Received, Wheat, US

Dollars per Bu



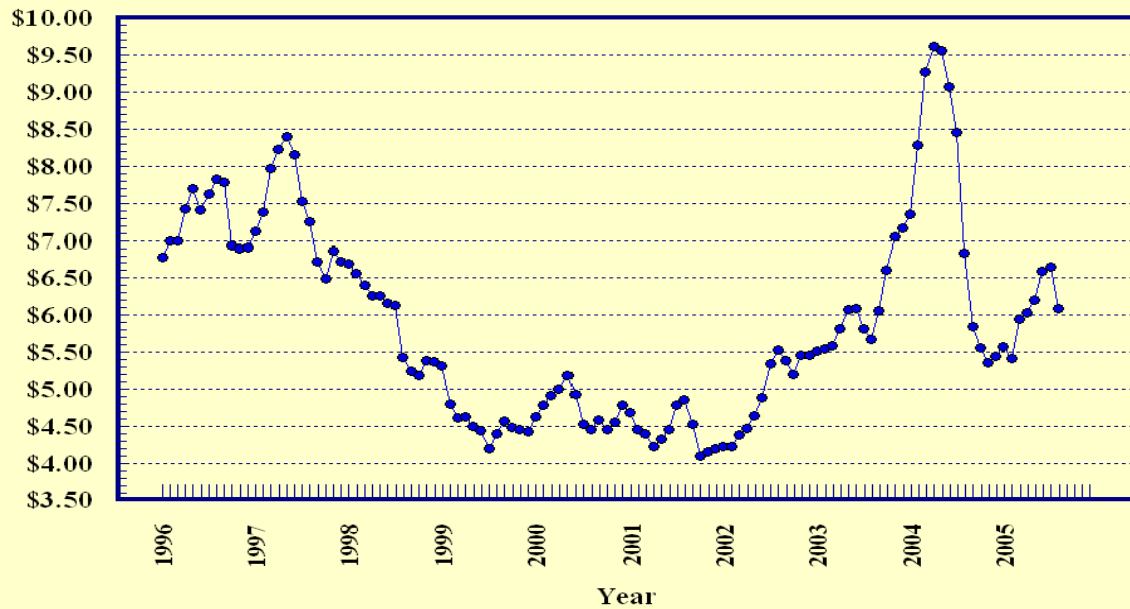
Prices Received, Cotton, US

Dollars per Lb



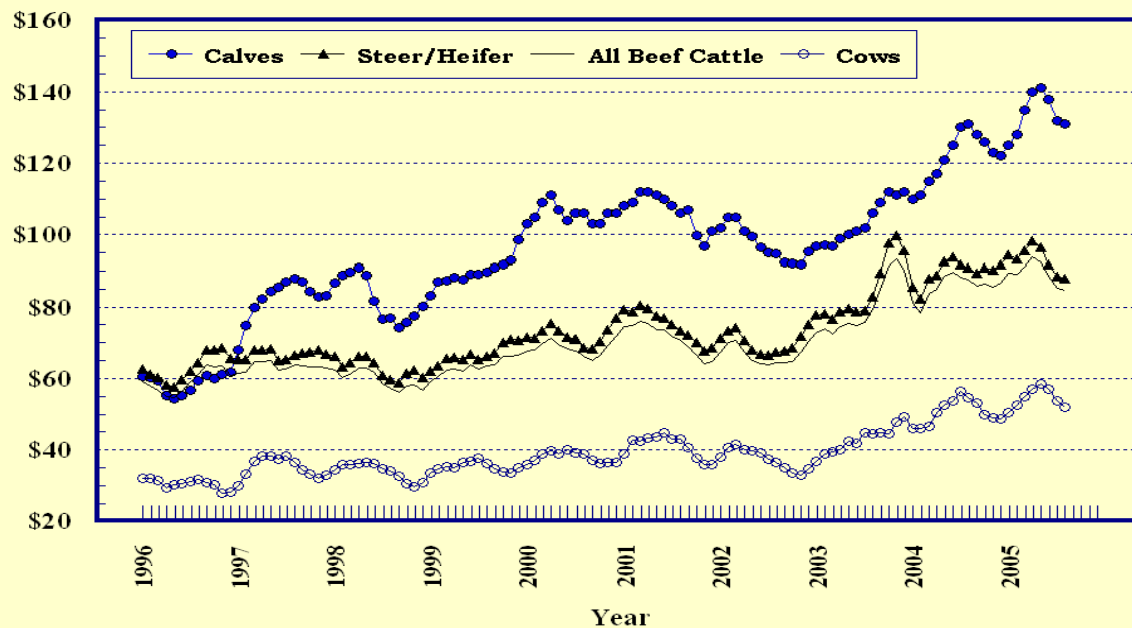
Prices Received, Soybeans, US

Dollars per Bu



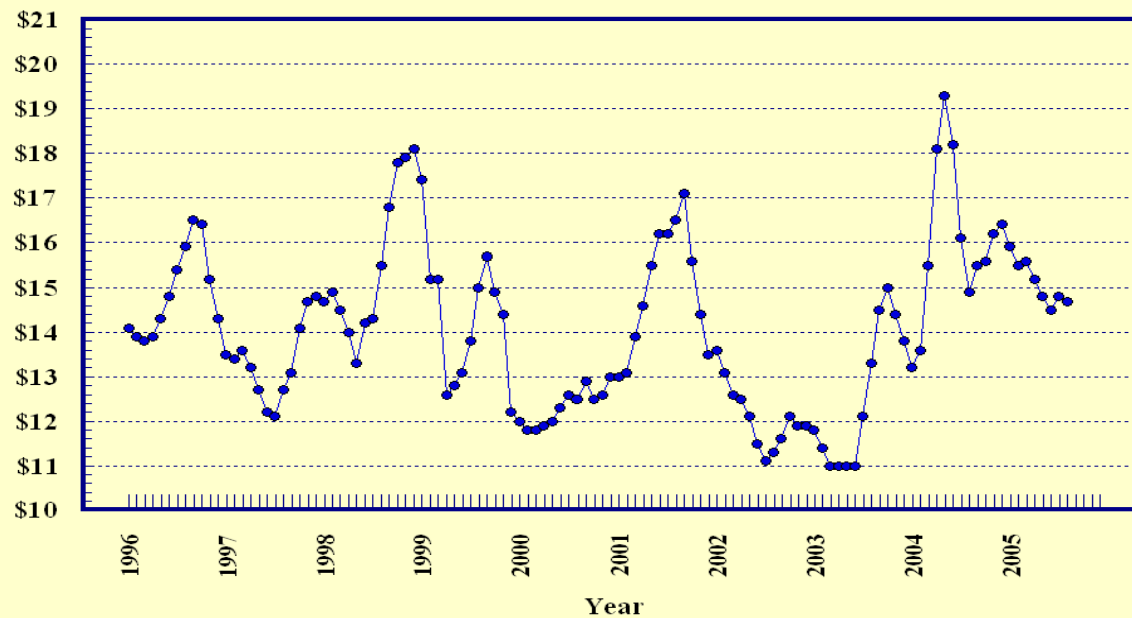
Prices Received, Cattle, US

Dollars per Cwt



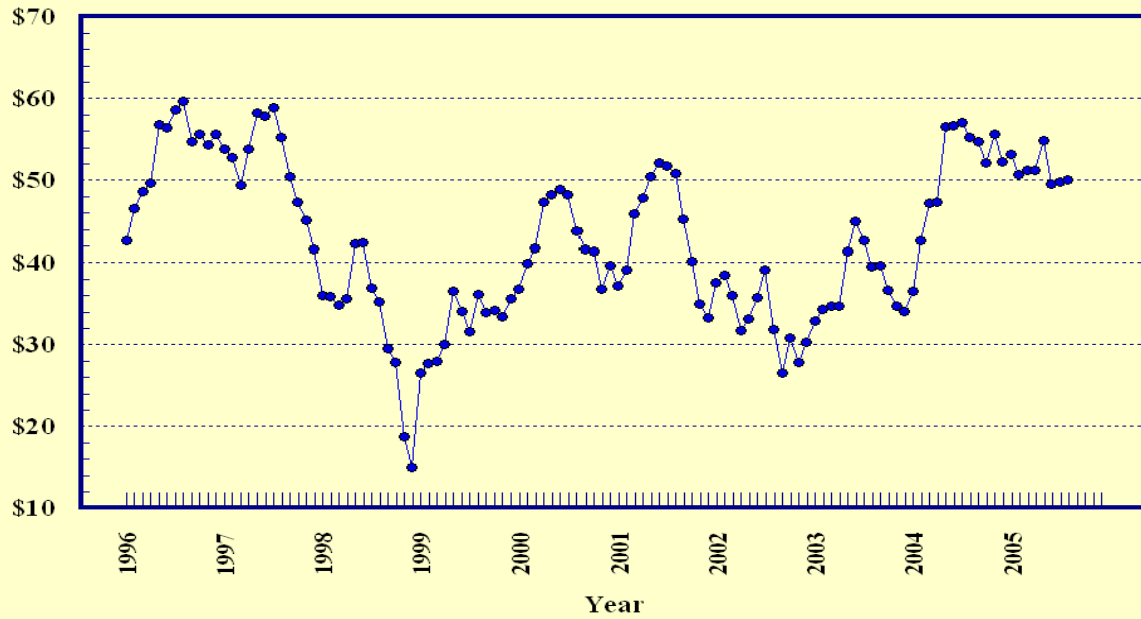
Prices Received, Milk, US

Dollars per Cwt



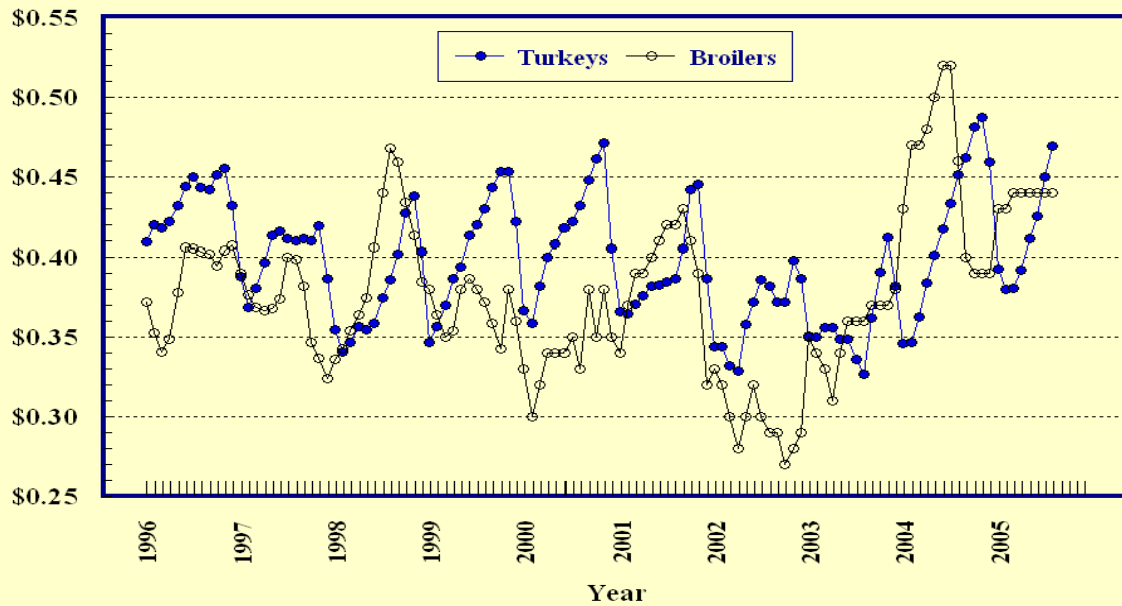
Prices Received, Hogs, US

Dollars per Cwt



Prices Received, Turkeys & Broilers, US

Dollars per Lb



Wheat: Prices Received, by State, July and August 2005

State	All Wheat		Winter Wheat		Durum Wheat		Oth Spring Wheat	
	Jul ¹	Aug ²	Jul ¹	Aug ²	Jul ¹	Aug ²	Jul ¹	Aug ²
	<i>Dollars per Bushel</i>	<i>Dollars per Bushel</i>	<i>Dollars per Bushel</i>	<i>Dollars per Bushel</i>	<i>Dollars per Bushel</i>	<i>Dollars per Bushel</i>	<i>Dollars per Bushel</i>	<i>Dollars per Bushel</i>
AR	3.28	3.05	3.28	3.05				
CA	(³)	(³)	(³)	(³)	(³)	(³)		
CO	3.06	3.06	3.06	3.06			(⁴)	(⁴)
ID	3.55	3.39	3.29	3.15	(³)	(⁴)	3.83	3.75
IL	3.22	3.00	3.22	3.00				
IN	3.18	2.88	3.18	2.88				
KS	3.12	3.13	3.12	3.13				
MI	3.18	3.00	3.18	3.00				
MN	3.21	3.10	(³)	(³)			3.21	3.10
MO	3.38	3.20	3.38	3.20				
MT	3.38	3.29	3.21	2.96	3.53	3.43	3.43	3.45
NE	3.10	3.08	3.10	3.08				
ND	3.37	3.25	2.54	2.53	3.48	3.40	3.35	3.25
OH	3.18	2.97	3.18	2.97				
OK	3.13	3.15	3.13	3.15				
OR	3.70	3.38	3.45	3.25			4.21	4.00
SD	3.25	3.21	3.06	2.99			3.57	3.28
TX	3.14	3.12	3.14	3.12				
WA	3.51	3.52	3.35	3.34			3.81	3.95
US	3.20	3.21	3.15	3.11	3.71	3.41	3.45	3.33

¹ Entire month.

² Mid-month.

³ Price not published to avoid disclosure of individual firms.

⁴ Insufficient sales to establish a price.

**Prices Received for Selected Agricultural Commodities, by Month,
United States, 2004 and 2005 ¹**

Month	All Wheat		Corn		Soybeans		Beef Cattle ²		All Hogs	
	2004	2005	2004	2005	2004	2005	2004	2005	2004	2005
	<i>Dollars per Bushel</i>	<i>Dollars per Bushel</i>	<i>Dollars per Bushel</i>	<i>Dollars per Bushel</i>	<i>Dollars per Bushel</i>	<i>Dollars per Bushel</i>	<i>Dollars per Cwt</i>	<i>Dollars per Cwt</i>	<i>Dollars per Cwt</i>	<i>Dollars per Cwt</i>
Jan	3.68	3.43	2.39	2.12	7.35	5.57	81.10	89.40	36.60	53.20
Feb	3.77	3.36	2.61	1.95	8.28	5.42	78.50	89.00	42.60	50.70
Mar	3.83	3.42	2.75	2.02	9.28	5.95	83.70	91.30	47.20	51.20
Apr	3.88	3.35	2.89	2.00	9.62	6.03	85.00	94.00	47.40	51.20
May	3.82	3.31	2.87	1.99	9.56	6.20	88.50	92.40	56.60	54.90
Jun	3.55	3.23	2.79	2.03	9.08	6.58	89.80	88.50	56.70	49.60
Jul	3.37	3.20	2.51	2.11	8.46	6.65	88.10	85.30	57.10	49.80
Aug	3.27	3.21	2.34	1.89	6.83	6.09	87.70	84.70	55.30	50.00
Sep	3.36		2.20		5.84		85.90		54.80	
Oct	3.43		2.15		5.56		86.50		52.20	
Nov	3.46		2.05		5.36		85.40		55.60	
Dec	3.40		2.04		5.45		86.80		52.30	

¹ Current month prices are mid-month; prices for previous months are for the entire month.

² Cows, steers and heifers.

Grains: Prices Received, by States, July and August 2005

State	All Barley ¹		Corn		Oats		Soybeans		Sorghum Grain	
	Jul ²	Aug ³	Jul ²	Aug ³	Jul ²	Aug ³	Jul ²	Aug ³	Jul ²	Aug ³
	<i>Dollars per Bushel</i>	<i>Dollars per Bushel</i>	<i>Dollars per Bushel</i>	<i>Dollars per Bushel</i>	<i>Dollars per Bushel</i>	<i>Dollars per Bushel</i>	<i>Dollars per Bushel</i>	<i>Dollars per Bushel</i>	<i>Dollars per Cwt</i>	<i>Dollars per Cwt</i>
AL							7.03	6.25	(⁴)	(⁴)
AR										
CA	(⁴)	(⁴)			(⁴)	(⁵)				
CO	(⁴)	(⁴)	2.28	2.03						
ID	3.22	3.27								
IL			2.23	2.00	1.77	1.70	6.78	6.15	(⁴)	3.30
IN			2.20	1.93			6.93	6.24		
IA			2.00	1.75	1.69	1.70	6.58	6.00		
KS			2.17	1.91	1.17	1.23	6.71	5.90	3.44	2.98
KY			2.35	2.10			6.87	6.15		
LA							(⁴)	(⁴)		
MI			2.17	1.90	2.06	1.90	6.81	6.10		
MN	1.99	2.03	1.97	1.80	1.44	1.32	6.45	6.04		
MS							(⁴)	(⁴)		
MO			2.15	1.95			6.77	6.05	3.64	3.50
MT	2.97	2.96			(⁴)	(⁵)				
NE			2.04	1.85	1.49	1.50	6.60	6.00	3.60	3.20
NY					(⁴)	(⁴)				
NC			2.58	2.38			6.65	6.21		
ND	1.90	2.02	1.88	1.75	1.18	1.15	6.32	6.00		
OH			2.21	1.93	1.90	(⁵)	6.80	6.23		
OK									3.31	3.20
OR	2.11	2.25			(⁴)	(⁵)				
PA			2.56	2.40	1.58	1.49				
SD	2.06	2.15	1.91	1.64	1.53	1.49	6.36	5.95		
TN			2.45	2.15			6.84	6.15		
TX			(⁴)	(⁴)	(⁵)	(⁵)			4.22	3.88
UT	2.03	2.03								
WA	2.30	2.23								
WI			2.17	2.00	1.61	1.60	6.40	6.00		
WY	(⁴)	3.28								
US	2.38	2.75	2.11	1.89	1.59	1.53	6.65	6.09	3.94	3.68

¹ The Three-State (MN, ND and SD) Feed Barley price is discontinued.

² Entire month.

³ Mid-month.

⁴ Price not published to avoid disclosure of individual firms.

⁵ Insufficient sales to establish a price.

**Malting and Feed Barley: Prices Received Selected State,
July and August 2005**

State	Malting Barley		Feed Barley	
	Jul ¹	Aug ²	Jul ¹	Aug ²
	<i>Dollars per Bushel</i>	<i>Dollars per Bushel</i>	<i>Dollars per Bushel</i>	<i>Dollars per Bushel</i>
ID	3.44	3.40	2.03	2.05
MN	(³)	(³)	1.33	1.39
MT	3.27	3.27	1.54	1.43
ND	2.17	2.20	1.37	1.30
SD	2.06	2.15	(⁴)	(⁴)
WY	(³)	(³)	(⁴)	1.75

¹ Entire month.

² Mid-month.

³ Price not published to avoid disclosure of individual firms.

⁴ Insufficient sales to establish a price.

Field Crops: Prices Received, by State, July and August 2005

State	Dry Edible Beans		All Sunflower		Flaxseed		Tobacco ⁷		Peanuts ⁴	
	Jul ¹	Aug ²	Jul ¹	Aug ²	Jul ¹	Aug ²	Jul	Aug	Jul ¹	Aug ³
	<i>Dollars per Cwt</i>	<i>Dollars per Cwt</i>	<i>Dollars per Cwt</i>	<i>Dollars per Cwt</i>	<i>Dollars per Bushel</i>	<i>Dollars per Bushel</i>	<i>Dollars per Pound</i>	<i>Dollars per Pound</i>	<i>Dollars per Pound</i>	<i>Dollars per Pound</i>
AL									0.154	(⁵)
CA	35.10	(⁵)								
CO	30.10	29.00								
FL									(⁶)	(⁶)
GA									0.155	0.169
ID	27.20	27.70								
IN										
KS			10.70	9.90						
KY										
MD										
MI	20.40	20.00								
MN	(⁵)	(⁵)	(⁵)	(⁵)						
MO										
NE	22.40	22.40								
NC									(⁵)	(⁵)
ND	20.90	18.00	15.00	15.20	10.40	8.50				
OH										
OK										
SC										
SD			14.80	13.40	(⁶)	(⁶)				
TN										
TX									(⁵)	(⁵)
VA									(⁵)	(⁵)
WV										
US	25.40	22.40	15.10	13.30	10.40	8.50			0.160	0.173

¹ Entire month.

² Mid-month.

³ Based on sales through first half of month.

⁴ In-Shell.

⁵ Price not published to avoid disclosure of individual firms.

⁶ Insufficient sales to establish a price.

⁷ Monthly price estimates discontinued beginning in July 2005.

Field Crops and Apples: Prices Received, by State, July and August 2005

State	Cotton, Upland		August				Apples Fresh Use ^{1 4} <i>Dol/Lb</i>
	Jul ¹	Aug ²	Cotton- seed ⁵ <i>Dollars per Ton</i>	Hay, Baled ³			
				All <i>Dollars per Ton</i>	Alfalfa <i>Dollars per Ton</i>	Other <i>Dollars per Ton</i>	
	<i>Dollars per Pound</i>	<i>Dollars per Pound</i>	<i>Dollars per Ton</i>	<i>Dollars per Ton</i>	<i>Dollars per Ton</i>	<i>Dollars per Ton</i>	
AL	0.396	0.396	(⁷)				
AZ	(⁶)	(⁷)	(⁷)	123.00	123.00	120.00	
AR	0.396	0.396	(⁷)				
CA	(⁶)	(⁷)	(⁷)	130.00	134.00	106.00	0.383
CO				105.00	105.00	105.00	
GA	0.408	0.401	(⁷)				
ID				109.00	112.00	78.00	
IL				94.00	98.00	75.00	
IA				77.00	79.00	55.00	
KS				66.00	70.00	57.00	
KY				79.00	115.00	67.00	
LA	(⁶)	(⁶)	(⁷)				
MI				90.00	90.00	70.00	
MN				62.00	72.00	48.00	
MS	0.396	0.396	(⁷)				
MO				56.00	98.00	45.00	
MT				74.00	76.00	68.00	
NE				46.00	47.00	43.00	
NV				128.00	127.00	138.00	
NM				130.00	132.00	108.00	
NY				104.00	120.00	85.00	
NC	0.418	0.396	(⁷)				
ND				53.00	59.00	37.00	
OH				117.00	137.00	71.00	0.350
OK				77.00	100.00	59.00	
OR				114.00	116.00	107.00	
PA				130.00	146.00	115.00	0.208
SD				59.00	62.00	50.00	
TN	0.396	0.399	(⁷)				
TX	0.433	0.431	102.00	81.00	120.00	67.00	
UT				90.00	90.00	85.00	
VA							
WA				112.00	110.00	120.00	0.163
WI				109.00	115.00	75.00	
WY				74.00	75.00	69.00	
US	0.432	0.408	102.00	99.70	109.00	74.80	0.202

¹ Entire month.

² Based on sales during the first half of the month.

³ Mid-month.

⁴ Equivalent packinghouse-door returns for CA, NY, and WA. Price at point of first sale for other States.

⁵ Marketing year August - February.

⁶ Price not published to avoid disclosure of individual firms.

**Upland Cotton and Rice: Prices Received and Marketings,
United States, August 2005, with Comparisons**

Item	Unit	Jun 2005 ¹	Jul 2005 ¹	Aug 2005 ²
Cotton, Upland				
Average Price	Dollars per Pound	0.440	0.432	0.408
Marketings ³	1,000 Bales	592	416	NA
Rice				
Average Price	Dollars per Cwt	6.96	6.78	6.53
Marketings ⁴	1,000 Cwt	12,215	12,241	NA

¹ Entire month.

² Based on purchases for the first half of the month.

³ Marketings based on a survey of cotton buyers in the major producing States - AL, AZ, AR, CA, GA, LA, MS, NC, TN, and TX.

⁴ Purchases by private firms and rice (rough equivalent) shipped by cooperatives.

**Citrus Fruit: Prices and Equivalent Returns, by Utilization,
by State and United States, August 2005**

Commodity, State and Type	F.O.B. Packed Fresh	Equivalent Returns ¹					
		Packinghouse-door			On-tree		
		All	Fresh	Process	All	Fresh	Process
	<i>Dollars per Box</i>	<i>Dollars per Box</i>	<i>Dollars per Box</i>	<i>Dollars per Box</i>	<i>Dollars per Box</i>	<i>Dollars per Box</i>	<i>Dollars per Box</i>
Grapefruit							
CA	26.70	15.87	20.06	-0.28	13.50	17.69	-2.65
US	26.70	15.87	20.06	-0.28	13.50	17.69	-2.65
Lemons							
CA	32.40	16.27	21.90	0.16	11.75	17.38	-4.36
US	32.40	16.27	21.90	0.16	11.75	17.38	-4.36
Oranges							
CA							
Valencia	16.90	8.46	9.84	0.32	5.97	7.35	-2.17
US	16.90	8.46	9.84	0.32	5.97	7.35	-2.17

¹ Net lbs. per box: Grapefruit - AZ & CA-67, FL-85, TX-80; Lemons - 76; Oranges - AZ & CA-75, FL-90, TX-85; Tangelos - 90; Tangerines - AZ, CA-75, FL-95; Temples - 90.

Potatoes: Prices Received, by State, July and August 2005 ¹

State	Jul	Aug	State	Jul	Aug
	<i>Dollars per Cwt</i>	<i>Dollars per Cwt</i>		<i>Dollars per Cwt</i>	<i>Dollars per Cwt</i>
AL	16.20	8.25	NC	7.05	
AZ	8.85	14.30	ND - All ²	6.50	
CA - All ²	16.40	18.50	- Fresh ³		
- Winter			- Processing	6.50	
- Spring	16.10		OH ⁴		
- Summer	18.10	18.50	OR	5.50	5.50
- Fall			PA ⁴		
CO - All ²	4.75	5.90	TX	20.00	22.00
- Fresh ³	5.00	NA	VA	11.60	
FL			WA - All ²	5.35	6.50
ID - All ²	4.15	4.35	- Processing	5.50	NA
- Fresh ³	3.70	NA	WI - All ²		7.50
- Processing	4.40	NA	- Fresh ³		NA
ME	7.70		- Processing		NA
MI	8.30	7.50			
MN	4.85	10.40	US - All ²	8.69	7.51
NY		11.30	- Fresh ³	13.66	NA
			- Processing	5.18	NA

¹ Missing data indicates no potatoes being marketed.

² Average price of potatoes sold for all uses, including table stocks, processing, seed, and livestock feed.

³ Fresh market prices only, includes table stock prices.

⁴ Estimates discontinued in 2005.

Cattle: Prices Received, by State, July and August 2005

State	Cows ¹		Steers & Heifers		Beef Cattle ⁴		Calves	
	Jul ²	Aug ³	Jul ²	Aug ³	Jul ²	Aug ³	Jul ²	Aug ³
	<i>Dollars per Cwt</i>	<i>Dollars per Cwt</i>	<i>Dollars per Cwt</i>	<i>Dollars per Cwt</i>	<i>Dollars per Cwt</i>	<i>Dollars per Cwt</i>	<i>Dollars per Cwt</i>	<i>Dollars per Cwt</i>
AZ	56.30	54.00	102.00	103.00	102.00	103.00	125.00	126.00
AR	49.40	47.70	105.00	106.00	88.30	88.50	125.00	124.00
CA	51.20	49.60	85.40	85.10	70.00	69.10	117.00	112.00
CO	52.60	51.80	108.00	107.00	107.00	106.00	136.00	134.00
FL	54.60	52.50	96.90	98.10	83.40	82.10	130.00	132.00
GA	52.80	53.00	97.10	98.50	67.90	68.50	122.00	123.00
ID	52.10	47.30	83.20	85.00	76.00	78.20	125.00	120.00
IL	52.00	52.00	80.00	81.50	79.40	80.90	118.00	120.00
IA	54.00	52.00	78.00	77.50	77.50	77.00	130.00	128.00
KS	56.50	54.00	85.10	85.00	84.80	84.70	138.00	137.00
KY	52.00	50.00	103.00	104.00	90.80	91.00	120.00	121.00
LA	51.80	52.50	99.80	102.00	68.10	70.80	119.00	119.00
MI	54.00	53.00	80.00	78.00	72.20	70.50	135.00	134.00
MN	56.20	54.00	78.50	78.00	75.60	74.90	133.00	139.00
MO	53.80	50.90	113.00	112.00	98.20	98.60	125.00	128.00
MT	56.20	52.50	102.00	104.00	74.10	82.40	129.00	135.00
NE	55.00	53.90	86.20	87.00	85.30	86.00	140.00	140.00
NM	55.30	53.80	105.00	106.00	86.10	85.10	133.00	132.00
ND	55.00	55.00	93.00	95.00	68.30	77.00	135.00	137.00
OH	51.00	49.50	80.90	80.00	77.90	77.00	118.00	115.00
OK	53.60	53.60	107.00	107.00	104.00	104.00	129.00	130.00
OR	53.00	47.00	99.00	98.00	85.20	82.70	116.00	112.00
PA	53.40	50.90	78.60	77.30	72.00	70.40	120.00	116.00
SD	55.70	52.90	88.50	95.00	80.30	88.30	129.00	132.00
TN	51.00	51.00	103.00	106.00	82.20	84.00	116.00	118.00
TX	52.60	52.60	88.80	87.30	86.30	84.90	134.00	134.00
VA	52.20	49.80	102.00	106.00	84.60	88.60	117.00	117.00
WI	54.50	51.30	79.50	80.50	65.00	63.60	158.00	161.00
WY	57.10	56.00	107.00	106.00	102.00	101.00	131.00	135.00
US	53.80	51.90	88.40	88.00	85.30	84.70	132.00	131.00

¹ Beef cows and cull dairy cows sold for slaughter.

² Entire month.

³ Mid-month.

⁴ "Cows" and "steers and heifers" combined.

Hogs: Prices Received, by State, July and August 2005

State	Sows		Barrows and Gilts		All Hogs	
	Jul ¹	Aug ²	Jul ¹	Aug ²	Jul ¹	Aug ²
	<i>Dollars per Cwt</i>	<i>Dollars per Cwt</i>	<i>Dollars per Cwt</i>	<i>Dollars per Cwt</i>	<i>Dollars per Cwt</i>	<i>Dollars per Cwt</i>
AR	38.80	38.80	47.20	48.30	46.40	47.40
IL	36.80	37.30	52.00	51.60	50.80	50.50
IN	42.30	43.10	49.70	49.50	49.00	48.90
IA	39.80	40.50	51.80	52.00	51.60	51.80
KS	37.40	38.50	47.00	48.10	45.80	46.90
MN	37.80	39.00	50.30	51.50	50.20	51.40
MO	36.50	37.20	45.80	46.50	44.90	45.50
NE	36.20	37.10	51.50	52.20	51.20	51.90
NC	38.80	38.80	50.50	49.60	50.40	49.50
OH	37.60	38.40	50.40	49.40	49.60	48.70
OK	36.50	37.20	44.10	45.10	43.00	43.90
PA	36.00	36.50	47.40	46.90	45.70	45.30
SD	36.80	37.80	51.90	52.30	49.60	50.30
US	37.70	38.60	50.30	50.50	49.80	50.00

¹ Entire month.

² Mid-month.

Sheep and Poultry: Prices Received, by State, July and August 2005

State	July		August
	Sheep ¹	Lambs ¹	Eggs ^{2 3}
	<i>Dollars per Cwt</i>	<i>Dollars per Cwt</i>	<i>Dollars per Dozen</i>
AL			0.270
AR			0.350
CA	37.00	101.00	0.300
CO	37.90	117.00	
CT			0.370
FL			0.290
GA			0.247
ID	39.00	110.00	
IN			0.250
IA	42.00	106.00	0.200
KY	45.00	98.00	
ME			0.450
MI			0.250
MN	38.00	109.00	0.250
MS			0.270
MO	41.60	97.00	0.200
MT	35.70	126.00	
NE	38.50	104.00	
NY			0.293
NC			0.230
ND	41.00	117.00	
OH	43.60	100.00	0.280
OR	43.00	100.00	
PA	51.00	110.00	0.260
SC			0.260
SD	39.60	128.00	
TX	45.90	96.60	0.270
VA	39.00	106.00	
WA			0.290
WV	38.30	104.00	
WY	41.10	131.00	
US	40.30	109.00	0.257

¹ Entire month.

² Mid-month.

³ Market (table) eggs.

Milk and Milk Cows: Prices Received, by State, July and August 2005

State	July ¹						August		
	Fluid Grade Milk ²		Manufacturing Grade Milk		All Milk ³		All Milk ^{3 4}		Milk Cows ⁵
	Price	Fat Test	Price	Fat Test	Price	Fat Test	Price	Fat Test	
	<i>Dol/Cwt</i>	<i>Percent</i>	<i>Dol/Cwt</i>	<i>Percent</i>	<i>Dol/Cwt</i>	<i>Percent</i>	<i>Dol/Cwt</i>	<i>Percent</i>	<i>Dol/Head</i>
AZ	14.80	3.52			14.80	3.52	14.80	3.53	
CA	13.80	3.55	14.80	3.88	13.83	3.56	13.90	3.59	
CO	14.70	3.45			14.70	3.45	14.40	3.46	
FL	18.00	3.58			18.00	3.58	18.70	3.62	
ID	14.30	3.50	13.60	3.66	14.30	3.50	14.10	3.53	
IL	15.50	3.51	14.80	3.51	15.50	3.51	15.40	3.52	
IN	15.30	3.49	13.50	3.53	15.20	3.49	15.20	3.50	
IA	15.30	3.53	13.60	3.55	15.30	3.53	15.20	3.56	
KS	14.10	3.42			14.10	3.42	13.90	3.45	
KY	16.20	3.51			16.20	3.51	16.70	3.53	
MI	15.00	3.45	14.00	3.47	15.00	3.45	15.00	3.47	
MN	15.00	3.58	13.40	3.57	15.00	3.58	14.40	3.59	
MO	15.20	3.51	13.80	3.60	15.10	3.51	15.30	3.55	
NM	14.00	3.43			14.00	3.43	14.20	3.49	
NY	15.00	3.50			15.00	3.50	14.90	3.50	
OH	15.40	3.49	14.50	3.60	15.40	3.50	15.30	3.52	
OR	14.80	3.56			14.80	3.56	14.80	3.56	
PA	16.30	3.50	13.80	3.50	16.30	3.50	16.30	3.50	
TX	15.00	3.59			15.00	3.59	15.20	3.62	
VT	15.80	3.55			15.80	3.55	15.70	3.57	
VA	16.00	3.47			16.00	3.47	16.20	3.49	
WA	14.80	3.56			14.80	3.56	14.80	3.58	
WI	15.40	3.54	13.80	3.58	15.30	3.54	14.70	3.55	
US	14.90	3.52	14.20	3.68	14.80	3.53	14.70	3.55	

¹ Entire month.

² Including milk diverted to manufacturing.

³ Before deductions for hauling. Includes quality, quantity, and other premiums. Excludes hauling subsidies.

⁴ Preliminary.

⁵ Animals sold for dairy herd replacement only. Prices published January, April, July and October.

**Parity Price Equivalent for Manufacturing Milk ¹: United States,
July and August 2005, with Comparisons**

Item	Unit	Aug 2004	Jul 2005	Aug 2005
Parity Equivalent	Dollars per Cwt	31.91	33.64	33.82
Average Price F.O.B ²	Dollars per Cwt	14.20	14.20	14.00
Average Fat Test of Milk ²	Percent	3.69	3.68	3.71

¹ The parity price equivalent during 2005 is 91.4 percent of the parity price of all milk sold to plants, compared with 90.4 percent in 2004. For additional details, see January 2005 issue of "Agricultural Prices".

² Preliminary for August 2005.

**United States Parity Prices for Farm Products and Average Prices Received as
Percent of Parity Prices Based on Data for August 2005, with Comparisons ¹**

Commodity and Unit	Adjusted Base Price	Parity Price Based on Data for			Price as Percent of Parity		
		Aug 2004	Jul 2005	Aug 2005	Aug 2004	Jul 2005	Aug 2005
	<i>Dollars</i>	<i>Dollars</i>	<i>Dollars</i>	<i>Dollars</i>	<i>Percent</i>	<i>Percent</i>	<i>Percent</i>
Basic Commodities							
All Wheat, Bu	0.555	10.10	10.40	10.40	32	31	31
Rice, Cwt	1.38	29.20	25.80	25.90	31	26	25
Corn, Bu	0.372	6.79	6.95	6.99	34	30	27
Cotton, Lb							
American Upland	0.095	2.02	1.78	1.78	27	24	23
Extra Long Staple	0.142	2.58	2.65	2.67			
Peanuts, Lb	0.0350	0.663	0.654	0.657	29	24	26
Designated Nonbasic							
All Milk, Sold to Plants, Per Cwt ²	1.97	35.30	36.80	37.00	41	41	39
Honey, Extracted, Lb ³	0.1280	1.88	2.28	2.28			
Wool and Mohair							
Wool, Lb	0.0910	1.58	1.70	1.71			
Mohair, Lb	0.333	5.99	6.22	6.25			
Other Nonbasic							
Barley, Bu	0.377	6.74	7.05	7.08	41	34	39
Cottonseed, Ton	15.50	283.00	290.00	291.00	35	39	35
Dry Edible Beans, Cwt	2.82	52.30	52.70	53.00	40	48	42
Flaxseed, Bu	0.753	13.00	14.10	14.10	53	74	60
Oats, Bu	0.221	3.96	4.13	4.15	33	38	37
Potatoes, Cwt	0.838	15.30	15.70	15.70	38	55	48
Rye, Bu	0.355	6.33	6.63	6.67			
Sorghum Grain, Cwt	0.607	11.00	11.30	11.40	36	35	32
Soybeans, Bu	0.900	16.00	16.80	16.90	43	40	36
Sweetpotatoes, Cwt	2.31	40.30	43.20	43.40			
Apples, Fresh, Lb ⁴	0.0292	0.530	0.546	0.548	37	41	39
Citrus (equiv on-tree), Box							
Grapefruit	0.394	6.94	7.36	7.40	114	224	182
Lemons	1.12	19.70	20.90	21.00	75	75	56
Oranges	0.574	11.10	10.70	10.80	76	66	55
Tangerines	1.35	25.40	25.20	25.40			
Temples (FL)	0.379	8.08	7.08	7.12			
Beef Cattle, Cwt	9.65	171.00	180.00	181.00	51	47	47
Calves, Cwt	13.10	229.00	245.00	246.00	57	54	53
Hogs, Cwt	5.97	106.00	112.00	112.00	52	44	45
Lambs, Cwt	11.70	202.00	219.00	220.00	48	50	
Sheep, Cwt	4.72	84.20	88.20	88.60	44	46	
Eggs, Doz ²	0.0940	1.70	1.76	1.77	31	33	27
Turkeys, Live, Lb	0.0565	1.030	1.060	1.060	44	42	44

--continued

Parity Prices Based on Data for August 2005, United States ¹ (continued)

Other Nonbasic Commodities	Adj Base Base	Parity Price	Other Nonbasic Commodities	Adj Base Base	Parity Price
	<i>Dollars</i>	<i>Dollars</i>		<i>Dollars</i>	<i>Dollars</i>
Field Crops and Misc Commodities			Olives, CA canning, Ton ⁵	95.70	1,800.00
Hops, Lb	0.251	4.71	Papayas (HA)	0.0528	0.992
Spearmint Oil, Lb	1.46	27.40	Peaches		
Tobacco, Lb			Fresh, Ton ⁴	81.57	1,530.00
Flue-Cured, 11-14	0.255	4.79	Dried, CA, Ton	84.00	1,580.00
VA Fire-Cured, 21	0.256	4.81			
KY-TN Fire-Cured, 22-23	0.323	6.07	Noncitrus Fruit		
Burley, 31	0.274	5.15	Peaches, cont. Processing ⁵		
Maryland, 32	0.210	3.94	Excl Dried		
Dark Air-Cured, 35-36	0.284	5.33	Clingstone, CA, Ton	33.50	629.00
Sun-Cured, 37	0.241	4.53	Pears, Ton		
PA Seedleaf, 41	0.205	3.85	Fresh ⁴	52.90	993.00
Cigar Filler & Binder, 42-44, 54-55	0.225	4.23	Dried, CA ⁶	164.00	3,080.00
Puerto Rican Filler, 46	0.159	2.99	Plums, CA, Ton		
Cigar Binder, 51-52	0.747	14.00	Fresh, Equiv on-Tree	66.70	1,250.00
Type 61	3.21	60.30	Prunes, Dried, CA, Ton ⁶	127.00	2,390.00
Noncitrus Fruit			Prunes and Plums, Excl CA, Ton		
Apples, Ton ⁶			Fresh ⁹	58.90	1,110.00
Processing	18.30	344.00	Processing ⁶		
Apricots, Ton			Excl Dried	27.50	516.00
Fresh ⁷	99.00	1,860.00	Tree Nuts ¹⁰		
Dried, CA	270.00	5,070.00	Almonds, Lb	0.213	4.00
Avocados, Ton ⁷	234.00	4,390.00	Hazelnuts, Ton	135.00	2,540.00
Cherries Bbl			Pistachio, Lb	0.159	2.99
Sweet, Ton	188.00	3,530.00	Walnuts, Ton	173.00	3,250.00
Tart, Lb	0.0319	0.599	Vegetables, Cwt ¹¹		
Cranberry, Bbl ⁵	5.69	107.00	Fresh		
Dates, CA, Ton ⁷	181.00	3,400.00	Carrots ⁸	2.28	42.80
Grapes, Ton			Cauliflower ⁸	4.60	86.40
Raisin Variety	124.00	2,330.00	Celery ⁸	1.97	37.00
Other Dried	70.50	1,320.00	Honeydew Melons	2.75	51.60
Kiwifruit, Ton	91.30	1,710.00	Lettuce	2.50	47.00
Nectarines			Onions ⁸	1.65	31.00
Fresh, CA, Ton ⁷	62.60	1,180.00	Tomatoes	4.44	83.40

¹ Parity prices are computed under the provisions of Title III, Subtitle a, Section 301 (a) of the Agricultural Adjustment Act of 1938 as amended by the Agricultural Acts of 1948, 1949, and 1956. See January "Agricultural Prices" for details on adjusted base price and parity price computations.

² Seasonally adjusted price as percentage of parity price.

³ Wholesale extracted. Adjusted base price derived from state annual averages prices weighted by production. For 1982 through 1985 the national averages are the support prices.

⁴ Equivalent packinghouse-door returns for CA, NY (apples only), OR (except peaches), and WA. Price at point of first sale for other states.

⁵ Equivalent returns for bulk fruit at first delivery point.

⁶ Equivalent returns at processing plant door.

⁷ Equivalent returns at packinghouse door.

⁸ Includes some processing.

⁹ Based on "as sold" prices for fresh fruit in all states.

¹⁰ Prices in-shell basis except almonds which are shelled basis.

¹¹ F.O.B. shipping point prices.

Marketing Year for Specified Commodities

Barley: June 1 to May 31 for U.S.; June 1 to May 31 for Arizona, California, Delaware, Kentucky, Maryland, New Jersey, North Carolina, Pennsylvania, Virginia; August 1 to July 31 for Alaska, Maine; July 1 to June 30 for all other states.

Hay: April 1 to May 31 for U.S.; April 1 to March 31 for Arizona; May 1 to April 30 for Alabama, Arkansas, California, Colorado, Florida, Georgia, Kansas, Kentucky, Louisiana, Mississippi, Missouri, Nevada, New Mexico, North Carolina, Oklahoma, Pennsylvania, South Carolina, Tennessee, Texas, Utah, and Virginia; June 1 to May 31 for all other States.

Oats: June 1 to May 31 for U.S.; May 1 to April 30 for Alabama, Georgia, and Texas; June 1 to May 31 for North Carolina, Oklahoma, South Carolina, and Virginia; August 1 to July 31 for Maine and New York; September 1 to August 31 for Alaska; July 1 to June 30 for all other States.

Peanuts: August 1 to July 31 for U.S. and all States.

Rice: August 1 to July 31 for U.S.; July 1 to June 30 for Louisiana and Texas; August 1 to July 31 for Arkansas and Mississippi; October 1 to September 30 for California; September 1 to August 31 for Missouri.

Wheat: June 1 to May 31 for U.S.; May 1 to April 30 for Alabama, Florida, Georgia, Louisiana, Mississippi, and Texas; June 1 to May 31 for Arizona, Arkansas, California, Delaware, Illinois, Indiana, Kansas, Kentucky, Maryland, Missouri, New Mexico, North Carolina, Oklahoma, South Carolina, Tennessee, and Virginia; July 1 to June 30 for all other States.

**Wheat by Class, Marketing Year Average Prices,
United States, 2003-2004 and 2004-2005**

Year	Class			
	Hard Red Winter	Soft Red Winter	Hard Red Spring	White
	<i>Dollars per Bushel</i>	<i>Dollars per Bushel</i>	<i>Dollars per Bushel</i>	<i>Dollars per Bushel</i>
2004-2005	3.29	3.21	3.51	3.52
2003-2004	3.23	3.17	3.63	3.54

**All Rice: Monthly Prices Received, Monthly Farm Marketing Percentages, and
Marketing Year Average Prices, United States, 2002-2003 through 2004-2005 ¹**

Month	Prices Received			Farm Marketings ²		
	2002-2003	2003-2004	2004-2005 ⁴	2002-2003	2003-2004	2004-2005 ⁴
Aug	3.94	5.93	8.96	10,892	8,542	8,993
Sep	4.09	6.56	8.47	12,313	13,489	13,114
Oct	4.03	7.15	7.60	14,429	16,507	13,431
Nov	4.24	7.80	7.36	12,338	11,217	11,912
Dec	4.46	8.55	7.37	15,059	16,408	13,249
Jan ³	4.66	8.57	7.37	19,860	19,554	21,691
Feb	4.24	8.23	6.88	13,141	12,641	15,545
Mar	4.31	8.45	6.94	14,553	12,861	16,224
Apr	4.61	8.65	6.96	14,502	10,176	15,136
May	4.84	8.82	7.00	10,113	8,723	12,545
Jun	5.43	9.30	6.96	9,691	9,021	12,215
Jul	5.31	9.37	6.78	11,755	8,180	12,241
MYA	4.49	8.08	7.33	158,646	147,319	166,296

¹ Marketing year average (MYA) prices are weighted average prices for the U.S. marketing year of August - July.

² Purchases from producers as reported by private firms and rice (rough equivalent) shipped from producers as reported by cooperative mills.

³ Second year.

⁴ Year-to-date prices and marketings including late reports and revised data for August 2004-June 2005. Final monthly prices and marketings and MYA prices will be published in the January 2006 "Agricultural Prices" report.

**Crops: Marketing Year Average Prices Received, by States
and United States, 2003 and 2004**

State	Barley						Oats		Peanuts	
	All		Feed		Malting		2003	2004	2003	2004
	2003	2004	2003	2004	2003	2004				
	<i>Dollars per Bu</i>	<i>Dollars per Bu</i>	<i>Dollars per Bu</i>	<i>Dollars per Bu</i>	<i>Dollars per Bu</i>	<i>Dollars per Bu</i>	<i>Dollars per Bu</i>	<i>Dollars per Bu</i>	<i>Dollars per LB</i>	<i>Dollars per LB</i>
AL									0.183	0.178
AK	3.55	3.45					2.55	2.45		
AZ	2.84	2.80								
CA	2.77	2.65	2.77	2.65			2.00	2.00		
CO	3.05	2.82	2.15	(¹)	(¹)	(¹)	2.06	2.02		
DE	1.60	1.78								
FL									0.185	0.181
GA							1.70	1.70	0.187	0.185
ID	3.15	3.02	2.34	2.04	3.32	3.22	1.50	1.25		
IL							1.66	1.57		
IN							1.90	1.80		
IA							1.54	1.49		
KS	2.15	1.87					1.45	1.25		
KY	1.80	2.02								
ME	1.30	1.58					1.10	1.20		
MD	1.80	1.92								
MI	1.70	1.80					1.65	1.72		
MN	2.52	2.22	2.15	1.55	2.73	2.46	1.39	1.31		
MO							1.65	1.65		
MT	2.93	2.85	2.09	1.65	3.37	3.20	1.70	1.70		
NE	1.90	1.80					1.53	1.51		
NV	3.30	3.30								
NJ	1.95	2.10								
NM									0.230	0.240
NY	2.09	2.05					1.81	1.80		
NC	1.90	2.10					1.90	2.00	0.229	0.216
ND	2.59	2.12	1.95	1.46	2.78	2.40	1.33	1.18		
OH	1.80	1.90					1.78	1.78		
OK							1.80	1.70	0.183	0.186
OR	2.47	1.94	2.47	1.94			1.98	1.85		
PA	2.13	2.20					1.81	1.89		
SC							1.75	2.05	0.216	0.210
SD	2.37	2.02	1.89	1.59	2.46	2.03	1.43	1.49		
TX							2.20	1.91	0.195	0.192
UT	2.30	2.21	2.30	2.21			2.30	1.95		
VA	1.55	1.73							0.229	0.208
WA	2.66	2.02	2.63	1.86	(¹)	2.91	1.63	1.50		
WI	1.90	2.00					1.45	1.52		
WY	3.46	3.41	1.98	1.72	(¹)	3.44	1.80	1.55		
US	2.83	2.48	2.29	1.73	3.08	2.81	1.48	1.48	0.193	0.189

¹ Price estimates not published to avoid disclosure of individual firms.

**Crops: Marketing Year Average Prices Received, by States
and United States, 2003 and 2004**

State	Wheat								Rye	
	Winter		Durum		Other Spring		All		2003	2004
	2003	2004	2003	2004	2003	2004	2003	2004		
<i>Dollars per Bu</i>	<i>Dollars per Bu</i>	<i>Dollars per Bu</i>	<i>Dollars per Bu</i>	<i>Dollars per Bu</i>	<i>Dollars per Bu</i>	<i>Dollars per Bu</i>	<i>Dollars per Bu</i>	<i>Dollars per Bu</i>	<i>Dollars per Bu</i>	
AL	3.20	3.55					3.20	3.55		
AZ	3.90	3.50	4.65	4.25			4.64	4.25		
AR	3.08	3.49					3.08	3.49		
CA	3.42	3.54	4.51	4.37			3.54	3.80		
CO	3.32	3.25			3.85	3.29	3.32	3.25		
DE	3.10	3.05					3.10	3.05		
FL	3.00	3.45					3.00	3.45		
GA	3.05	3.45					3.05	3.45	4.00	4.00
ID	3.38	3.45			3.68	3.82	3.49	3.61		
IL	3.20	3.19					3.20	3.19		
IN	3.21	3.24					3.21	3.24		
IA	2.85	3.05					2.85	3.05		
KS	3.15	3.25					3.15	3.25		
KY	3.17	2.96					3.17	2.96		
LA	3.30	3.40					3.30	3.40		
MD	3.15	3.10					3.15	3.10		
MI	3.25	3.01					3.25	3.01		
MN	3.67	3.00	4.15	3.14	3.66	3.33	3.66	3.32		
MS	3.34	3.37					3.34	3.37		
MO	3.09	3.24					3.09	3.24		
MT	3.56	3.41	4.07	3.86	3.78	3.69	3.73	3.61		
NE	3.22	3.23					3.22	3.23		
NV	3.35	3.45			3.60	3.80	3.45	3.60		
NJ	3.10	3.30					3.10	3.30		
NM	3.30	3.15					3.30	3.15		
NY	2.43	2.80					2.43	2.80		
NC	2.85	3.10					2.85	3.10		
ND	3.01	2.76	3.93	3.71	3.57	3.36	3.63	3.40	2.12	2.00
OH	3.20	3.16					3.20	3.16		
OK	3.31	3.32					3.31	3.32	3.90	4.20
OR	3.66	3.64			3.95	3.97	3.70	3.69		
PA	3.31	3.40					3.31	3.40		
SC	3.00	3.20					3.00	3.20		
SD	3.32	3.19	4.12	3.80	3.58	3.49	3.46	3.37	2.25	2.90
TN	3.17	3.48					3.17	3.48		
TX	3.06	3.34					3.06	3.34		
UT	3.95	3.80			4.55	4.05	4.00	3.84		
VA	2.98	2.95					2.98	2.95		
WA	3.70	3.58			3.95	3.99	3.75	3.68		
WV	3.13	3.04					3.13	3.04		
WI	3.20	2.65			3.55	3.10	3.20	2.65		
WY	3.40	3.20			3.15	3.25	3.40	3.20		
Oth Sts ¹									2.67	3.02
US	3.27	3.32	3.97	3.85	3.62	3.51	3.40	3.40	2.93	3.26

¹ Other States include IL, KS, MI, MN, NE, NY, NC, PA, SC, TX, and WI.

**Crops: Marketing Year Average Prices Received, by States
and United States, 2003 and 2004**

State	Hay					
	Alfalfa		Other		All	
	2003	2004	2003	2004	2003	2004
	<i>Dollars per Ton</i>	<i>Dollars per Ton</i>	<i>Dollars per Ton</i>	<i>Dollars per Ton</i>	<i>Dollars per Ton</i>	<i>Dollars per Ton</i>
AL			58.00	57.00	58.00	57.00
AK			225.00	230.00	225.00	230.00
AZ	89.50	99.50	85.50	95.00	89.00	99.50
AR	132.00	126.00	48.00	46.00	55.50	54.00
CA	93.00	118.00	77.00	95.50	90.50	115.00
CO	85.50	85.00	95.00	80.00	86.00	84.00
CT	170.00	192.00	140.00	150.00	145.00	156.00
DE	162.00	124.00	153.00	130.00	158.00	127.00
FL			90.00	93.00	90.00	93.00
GA			62.00	55.00	62.00	55.00
ID	88.50	108.00	66.50	68.00	87.50	106.00
IL	92.50	91.50	70.00	69.50	87.00	86.50
IN	114.00	104.00	72.00	70.00	105.00	97.00
IA	82.00	85.50	59.50	59.50	79.50	83.00
KS	76.50	73.00	55.50	52.00	68.50	68.00
KY	107.00	103.00	62.50	59.00	73.00	71.00
LA			51.00	55.00	51.00	55.00
ME	145.00	160.00	106.00	119.00	110.00	122.00
MD	128.00	124.00	144.00	130.00	139.00	129.00
MA	175.00	185.00	140.00	145.00	147.00	152.00
MI	97.00	97.50	78.50	71.50	93.00	94.50
MN	71.00	74.50	54.00	51.00	66.50	68.50
MS			42.00	45.40	42.00	45.40
MO	106.00	99.00	52.00	45.00	64.00	58.50
MT	75.00	77.00	68.50	70.00	73.50	76.00
NE	55.00	51.00	50.50	49.00	54.00	50.50
NV	91.50	101.00	111.00	117.00	93.00	102.00
NH	170.00	185.00	135.00	145.00	140.00	151.00
NJ	145.00	146.00	115.00	109.00	125.00	122.00
NM	144.00	124.00	118.00	102.00	142.00	121.00
NY	132.00	139.00	98.00	89.00	113.00	115.00
NC	110.00	120.00	60.00	60.00	61.50	61.00
ND	58.00	63.50	41.00	46.00	52.50	58.50
OH	148.00	125.00	66.50	60.00	121.00	101.00
OK	93.50	92.50	52.00	46.50	67.00	70.50
OR	94.00	108.00	77.50	95.50	88.50	105.00
PA	156.00	143.00	123.00	112.00	137.00	122.00
RI	175.00	188.00	140.00	149.00	145.00	159.00
SC			65.00	63.00	65.00	63.00
SD	63.50	65.00	47.00	50.00	60.50	62.50
TN	110.00	105.00	54.00	51.00	55.00	52.00
TX	151.00	131.00	63.50	63.00	74.00	77.00
UT	82.00	89.00	68.00	80.00	81.50	88.50
VT	140.00	153.00	105.00	114.00	111.00	122.00
VA	111.00	117.00	85.00	84.00	88.50	88.50
WA	86.50	109.00	122.00	119.00	93.50	111.00
WV	103.00	100.00	52.00	57.00	57.50	61.50
WI	83.50	84.00	54.00	50.00	79.00	79.00
WY	80.00	74.50	73.00	69.50	79.00	73.50
US	90.80	98.60	70.90	74.60	85.50	92.00

**Prices Received: All Barley, by State and Month,
for Marketing Years, 2003-2004 and 2004-2005 ¹**

State	May	Jun	Jul	Aug	Sept	Oct	Nov
	2004-2005						
	<i>Dollars per Bushel</i>	<i>Dollars per Bushel</i>	<i>Dollars per Bushel</i>	<i>Dollars per Bushel</i>	<i>Dollars per Bushel</i>	<i>Dollars per Bushel</i>	<i>Dollars per Bushel</i>
CA	(³)	2.75	2.84	(³)	(³)	(³)	(³)
CO	(³)	(³)	2.19	2.56	3.11	2.69	2.99
ID	3.00	3.32	3.27	3.13	2.91	2.74	2.84
MN	(³)	(³)	2.45	1.99	1.64	1.86	2.31
MT	2.81	2.45	1.92	3.11	2.93	2.62	2.92
ND	2.50	2.48	2.42	2.25	1.94	1.98	2.02
OR	2.58	(³)	2.24	1.76	1.86	1.73	1.88
SD	2.40	2.43	2.41	2.01	1.93	1.33	2.09
UT	2.71	2.51	2.42	2.30	2.05	1.96	2.39
WA	2.73	2.59	2.38	1.98	1.72	2.16	2.19
WY	2.16	1.92	1.92	3.44	3.44	2.96	3.42
US	2.78	2.63	2.54	2.77	2.43	2.29	2.45
	2003-2004						
CA	(³)	2.80	2.70	2.65	(³)	3.03	(³)
CO	2.62	2.21	2.22	3.08	3.09	2.98	3.07
ID	3.11	3.10	2.91	3.20	3.16	2.95	3.12
MN	3.09	(³)	2.35	2.29	2.35	(³)	2.65
MT	2.44	2.26	2.95	3.14	3.03	2.68	2.57
ND	2.91	3.01	2.79	2.59	2.55	2.75	2.73
OR	2.23	2.34	2.36	2.43	2.53	2.48	2.64
SD	3.28	2.83	2.61	2.54	2.23	1.99	2.37
UT	2.54	2.57	2.12	2.25	2.35	2.25	2.28
WA	2.81	2.68	2.74	2.73	2.64	2.61	2.66
WY	2.16	2.11	3.47	3.46	3.49	3.28	3.53
US	2.91	2.99	2.74	2.91	2.88	2.74	2.83

See footnote(s) at end of table.

--continued

**Prices Received: All Barley, by State and Month,
for Marketing Years, 2003-2004 and 2004-2005 (continued) ¹**

State	Dec	Jan ²	Feb	Mar	Apr	May	Jun
	2004-2005						
	<i>Dollars per Bushel</i>	<i>Dollars per Bushel</i>	<i>Dollars per Bushel</i>	<i>Dollars per Bushel</i>	<i>Dollars per Bushel</i>	<i>Dollars per Bushel</i>	<i>Dollars per Bushel</i>
CA	(³)	(³)	(³)	(³)	(³)	(³)	(³)
CO	2.84	2.81	2.34	2.51	(³)	(³)	(³)
ID	2.92	2.88	3.05	3.11	3.04	3.19	3.25
MN	2.03	2.56	(³)	2.41	1.94	(³)	1.67
MT	2.89	2.77	2.77	2.72	2.84	2.80	2.91
ND	2.23	2.13	2.04	2.27	1.90	2.00	1.93
OR	1.90	2.04	2.09	2.11	2.17	2.16	1.90
SD	2.00	2.04	1.96	1.98	1.92	1.94	2.08
UT	1.91	2.11	1.96	1.89	2.04	(³)	2.10
WA	1.94	2.12	2.07	2.11	2.18	2.21	2.33
WY	(³)	2.79	(³)	(³)	1.68	1.63	1.75
US	2.49	2.41	2.31	2.49	2.26	2.46	2.57
	2003-2004						
CA	(³)	(³)	(⁴)	(³)	(³)	(³)	2.75
CO	2.87	3.03	2.96	(³)	(³)	(³)	(³)
ID	3.28	2.89	3.14	3.22	3.18	3.00	3.32
MN	(³)	(³)	(³)	(³)	(³)	(³)	(³)
MT	3.03	2.52	2.98	3.01	2.86	2.81	2.45
ND	2.63	2.52	2.57	2.48	2.51	2.50	2.48
OR	2.52	2.43	2.47	2.30	2.62	2.58	(³)
SD	2.25	(³)	2.26	2.27	1.70	2.40	2.43
UT	2.44	2.39	2.74	2.59	2.72	2.71	2.51
WA	2.56	2.53	2.65	2.48	2.54	2.73	2.59
WY	3.39	3.21	2.11	3.70	2.11	2.16	1.92
US	2.93	2.69	2.73	2.77	2.78	2.78	2.63

¹ Marketing year: June-May for US; June-May for CA; July-June for all other estimated States.

² Second year.

³ Price not published to avoid disclosure of individual firms.

⁴ Insufficient sales to establish a price.

**Prices Received: Feed Barley, by State and Month,
for Marketing Years, 2003-2004 and 2004-2005 ¹**

State	May	Jun	Jul	Aug	Sep	Oct	Nov
	2004-2005						
	<i>Dollars per Bushel</i>	<i>Dollars per Bushel</i>	<i>Dollars per Bushel</i>	<i>Dollars per Bushel</i>	<i>Dollars per Bushel</i>	<i>Dollars per Bushel</i>	<i>Dollars per Bushel</i>
CA	(³)	2.75	2.84	(³)	(³)	(³)	(³)
CO	(³)	(³)	(³)	(³)	(³)	(³)	(³)
ID	2.54	2.49	2.50	2.28	1.88	1.72	1.92
MN	1.89	1.86	1.93	1.57	1.42	1.37	1.66
MT	2.01	2.04	1.91	1.67	1.61	1.57	1.69
ND	2.01	2.01	1.86	1.46	1.42	1.41	1.45
OR	2.58	(³)	2.24	1.76	1.86	1.73	1.88
SD	(⁴)	2.10	(⁴)	1.57	(⁴)	1.33	(⁴)
UT	2.71	2.51	2.42	2.30	2.05	1.96	2.39
WA	2.61	2.53	2.18	1.96	1.71	1.71	1.96
WY	2.16	1.92	1.92	1.92	1.68	1.68	1.68
US	2.39	2.20	2.21	1.83	1.64	1.58	1.78
	2003-2004						
CA	(³)	2.80	2.70	2.65	(³)	3.03	(³)
CO	(³)	(³)	2.22	2.07	2.09	(³)	2.20
ID	2.57	2.23	2.27	2.28	2.27	2.22	2.32
MN	(³)	(³)	2.18	2.18	1.87	2.22	1.80
MT	2.13	2.12	2.00	1.99	2.10	2.07	2.16
ND	1.93	2.19	1.94	1.83	1.81	1.93	1.98
OR	(³)	(³)	2.36	2.43	2.53	2.48	2.64
SD	(⁴)	2.00	1.96	1.88	1.85	1.90	(⁴)
UT	(³)	(³)	2.12	2.25	2.35	2.25	2.28
WA	(³)	(³)	2.57	2.71	2.60	2.58	2.60
WY	2.16	2.11	2.09	1.95	1.68	1.92	1.88
US	2.33	2.33	2.22	2.39	2.27	2.24	2.43

See footnote(s) at end of table.

--continued

**Prices Received: Feed Barley, by State and Month,
for Marketing Years, 2003-2004 and 2004-2005 (continued) ¹**

State	Dec	Jan ²	Feb	Mar	Apr	May	Jun
	2004-2005						
	<i>Dollars per Bushel</i>	<i>Dollars per Bushel</i>	<i>Dollars per Bushel</i>	<i>Dollars per Bushel</i>	<i>Dollars per Bushel</i>	<i>Dollars per Bushel</i>	<i>Dollars per Bushel</i>
CA	(³)	(³)	(³)	(³)	(³)	(³)	(³)
CO	(³)	(³)	(³)	(³)	(³)	(³)	(³)
ID	1.99	1.97	2.00	2.14	2.12	1.88	2.00
MN	(³)	1.17	1.24	(³)	1.50	1.41	1.44
MT	1.64	1.67	1.61	1.65	1.66	1.71	1.60
ND	1.47	1.46	1.43	1.39	1.41	1.54	1.34
OR	1.90	2.04	2.09	2.11	2.17	2.16	1.90
SD	1.70	(⁴)	1.70	(⁴)	(⁴)	1.70	(⁴)
UT	1.91	2.11	1.96	1.89	2.04	(³)	2.10
WA	1.94	1.98	2.05	2.09	2.11	2.13	2.13
WY	(⁴)	1.63	(⁴)	(⁴)	1.68	1.63	1.75
US	1.66	1.65	1.60	1.67	1.56	1.71	2.07
	2003-2004						
CA	(³)	(³)	(⁴)	(³)	(³)	(³)	2.75
CO	2.20	(³)	(³)	(³)	(³)	(³)	(³)
ID	2.23	2.33	2.35	2.55	2.40	2.54	2.49
MN	(³)	1.96	2.04	1.83	1.82	1.89	1.86
MT	2.16	2.03	2.11	2.15	2.10	2.01	2.04
ND	2.13	1.91	1.91	1.98	1.96	2.01	2.01
OR	2.52	2.43	2.47	(³)	2.62	2.58	(³)
SD	1.77	1.73	(⁴)	(³)	1.70	(⁴)	2.10
UT	2.44	2.39	2.74	2.59	2.72	2.71	2.51
WA	2.54	2.50	2.58	2.46	2.56	2.61	2.53
WY	2.06	2.10	2.11	2.30	2.11	2.16	1.92
US	2.26	2.15	2.16	2.19	2.17	2.39	2.20

¹ Marketing year: June-May for US; June-May for CA; July-June for all other estimated States.

² Second year.

³ Price not published to avoid disclosure of individual firms.

⁴ Insufficient sales to establish a price.

**Prices Received: Malting Barley, by State and Month,
for Marketing Years, 2003-2004 and 2004-2005 ¹**

State	May	Jun	Jul	Aug	Sep	Oct	Nov
	2004-2005						
	<i>Dollars per Bushel</i>	<i>Dollars per Bushel</i>	<i>Dollars per Bushel</i>	<i>Dollars per Bushel</i>	<i>Dollars per Bushel</i>	<i>Dollars per Bushel</i>	<i>Dollars per Bushel</i>
ID	3.38	3.40	3.37	3.29	3.17	2.95	3.00
MN	(³)	(³)	(³)	(³)	(³)	(³)	(³)
MT	(³)	3.11	(³)	3.40	3.27	2.99	(³)
ND	2.88	2.62	2.55	2.50	2.28	2.36	2.34
SD	2.40	2.47	2.41	2.09	1.93	(⁴)	2.09
WA	(³)	(³)	(³)	(³)	(³)	(³)	(³)
US	3.14	2.79	2.68	3.06	2.91	2.73	2.83
	2003-2004						
ID	3.17	3.14	3.10	3.31	3.30	3.29	3.26
MN	3.33	(³)	2.79	2.48	2.45	(³)	(³)
MT	3.19	3.04	3.39	3.42	3.40	3.22	2.97
ND	3.17	3.37	3.04	2.77	2.75	3.00	2.84
SD	(³)	(³)	2.74	2.61	2.41	2.09	2.37
WA	(³)	(³)	(³)	(³)	(³)	(³)	(³)
US	3.19	3.19	3.08	3.12	3.10	3.11	3.03

See footnote(s) at end of table.

--continued

**Prices Received: Malting Barley, by State and Month,
for Marketing Years, 2003-2004 and 2004-2005 (continued) ¹**

State	Dec	Jan ²	Feb	Mar	Apr	May	Jun
	2004-2005						
	<i>Dollars per Bushel</i>	<i>Dollars per Bushel</i>	<i>Dollars per Bushel</i>	<i>Dollars per Bushel</i>	<i>Dollars per Bushel</i>	<i>Dollars per Bushel</i>	<i>Dollars per Bushel</i>
ID	3.10	3.04	3.32	3.42	3.40	3.37	3.39
MN	(³)	(³)	(³)	2.49	2.14	(³)	(³)
MT	3.10	3.06	3.13	3.20	3.27	3.20	3.32
ND	2.44	2.46	2.26	2.46	2.36	2.42	2.20
SD	2.02	2.04	1.97	1.98	1.92	1.95	2.08
WA	(⁴)	(³)	(³)	(³)	(³)	(³)	(³)
US	2.74	2.73	2.58	2.74	2.76	2.90	2.88
	2003-2004						
ID	3.38	3.25	3.40	3.39	3.37	3.38	3.40
MN	(³)	(³)	(³)	(³)	(³)	(³)	(³)
MT	3.51	3.40	3.43	(³)	3.22	(³)	3.11
ND	2.89	2.72	2.76	2.65	2.75	2.88	2.62
SD	2.26	(⁴)	2.26	2.28	(⁴)	2.40	2.47
WA	(³)	(³)	(³)	(³)	(³)	(³)	(³)
US	3.20	2.94	2.96	2.97	3.04	3.14	2.79

¹ Marketing year: June-May for US; June-May for CA; July-June for all other estimated States.

² Second year.

³ Price not published to avoid disclosure of individual firms.

⁴ Insufficient sales to establish a price.

**Prices Received: Oats, by State and Month,
for Marketing Years, 2003-2004 and 2004-2005 ¹**

State	May	Jun	Jul	Aug	Sep	Oct	Nov
	2004-2005						
	<i>Dollars per Bushel</i>	<i>Dollars per Bushel</i>	<i>Dollars per Bushel</i>	<i>Dollars per Bushel</i>	<i>Dollars per Bushel</i>	<i>Dollars per Bushel</i>	<i>Dollars per Bushel</i>
IL	(³)	(³)	1.46	1.33	1.55	(³)	(⁴)
IA	1.86	1.80	1.39	1.34	1.41	1.51	1.42
MI	2.07	2.09	1.66	1.55	1.60	1.49	1.96
MN	1.65	1.58	1.31	1.21	1.33	1.33	1.26
MT	1.67	(³)	(³)	1.56	1.76	(⁴)	(³)
NE	(³)	1.70	1.24	1.26	1.27	1.77	1.56
ND	1.26	1.19	1.18	1.04	1.12	(⁴)	(⁴)
OH	1.90	1.87	1.77	1.75	1.57	1.68	(³)
OR	(³)	(⁴)	(⁴)	(³)	(³)	1.63	(³)
PA	(³)	2.16	1.74	1.73	1.71	1.69	1.67
SD	1.61	1.56	1.26	1.29	1.47	1.44	1.53
TX	(³)	1.74	(³)	(³)	(⁴)	(⁴)	(⁴)
WI	1.68	1.70	1.53	1.37	1.43	1.47	1.57
US	1.70	1.61	1.36	1.32	1.42	1.45	1.51
	2003-2004						
IL	1.96	(³)	1.38	1.30	1.81	2.02	1.48
IA	1.99	1.75	1.49	1.45	1.49	1.75	1.57
MI	2.13	2.22	1.79	1.53	1.52	1.51	1.63
MN	1.78	1.59	1.35	1.25	1.30	1.34	1.32
MT	(³)	(³)	(³)	1.73	(⁴)	(³)	(³)
NE	2.29	2.00	1.49	1.57	1.39	1.39	1.25
ND	1.67	1.57	1.39	1.22	1.16	1.11	1.13
OH	(³)	1.90	1.92	1.74	1.77	1.69	1.67
OR	(³)	(³)	(³)	(³)	(³)	1.84	(³)
PA	2.38	2.38	1.83	1.73	1.73	1.69	(³)
SD	1.98	1.85	1.31	1.25	1.39	1.35	1.27
TX	(⁴)	(⁴)	(³)	(⁴)	(³)	(³)	(⁴)
WI	1.88	1.71	1.44	1.31	1.35	1.37	1.45
US	1.95	1.83	1.46	1.39	1.39	1.44	1.29

See footnote(s) at end of table.

--continued

**Prices Received: Oats, by State and Month,
for Marketing Years, 2003-2004 and 2004-2005 (continued) ¹**

State	Dec	Jan ²	Feb	Mar	Apr	May	Jun
	2004-2005						
	<i>Dollars per Bushel</i>	<i>Dollars per Bushel</i>	<i>Dollars per Bushel</i>	<i>Dollars per Bushel</i>	<i>Dollars per Bushel</i>	<i>Dollars per Bushel</i>	<i>Dollars per Bushel</i>
IL	1.54	(³)	(³)	1.94	(³)	(³)	2.20
IA	1.69	1.76	1.90	1.94	1.84	1.70	1.74
MI	2.10	2.21	2.15	2.23	2.12	2.01	1.65
MN	1.45	1.45	1.42	1.55	1.47	1.41	1.47
MT	1.73	(³)	(³)	(³)	1.74	1.92	(³)
NE	1.59	1.74	1.70	1.78	1.91	1.66	1.60
ND	1.26	1.22	1.22	1.39	(⁴)	1.32	1.50
OH	(³)	2.04	1.95	(³)	2.08	(³)	(³)
OR	(³)	(³)	(³)	(⁴)	(⁴)	(⁴)	(³)
PA	(³)	(³)	2.04	(³)	1.99	1.96	2.17
SD	1.65	1.69	1.69	1.63	1.56	1.53	1.62
TX	(⁴)	(⁴)	(³)	(⁴)	(⁴)	(³)	2.30
WI	1.52	1.54	1.72	1.67	1.72	1.81	1.66
US	1.60	1.64	1.67	1.73	1.65	1.64	1.75
	2003-2004						
IL	1.89	(³)	(³)	(³)	1.80	(³)	(³)
IA	1.59	1.62	1.84	1.86	1.72	1.86	1.80
MI	1.96	1.88	(³)	2.07	2.07	2.07	2.09
MN	1.43	1.47	1.49	1.67	1.61	1.65	1.58
MT	1.57	1.64	1.66	1.60	2.03	1.67	(³)
NE	1.40	1.87	1.28	1.64	1.35	(³)	1.70
ND	(³)	1.33	1.21	1.40	1.50	1.26	1.19
OH	1.74	1.67	1.70	1.94	1.85	1.90	1.87
OR	1.86	(³)	2.11	1.99	(³)	(³)	(⁴)
PA	(³)	1.98	(³)	2.04	2.11	(³)	2.16
SD	1.40	1.50	1.53	1.53	1.57	1.61	1.56
TX	(⁴)	(⁴)	(⁴)	(⁴)	(⁴)	(³)	1.74
WI	1.46	1.64	1.64	1.68	1.75	1.68	1.70
US	1.58	1.48	1.58	1.60	1.63	1.70	1.61

¹ Marketing year: June - May for US; May-April for GA, TX; June-May for NC, OK, SC; August-July for ME, NY; September-August for AK; July-June for all other estimated States.

² Second year.

³ Price not published to avoid disclosure of individual firms.

⁴ Insufficient sales to establish a price.

**Prices Received: All Wheat, by State and Month,
for Marketing Years, 2003-2004 and 2004-2005 ¹**

State	May	Jun	Jul	Aug	Sep	Oct	Nov
	2004-2005						
	<i>Dollars per Bushel</i>	<i>Dollars per Bushel</i>	<i>Dollars per Bushel</i>	<i>Dollars per Bushel</i>	<i>Dollars per Bushel</i>	<i>Dollars per Bushel</i>	<i>Dollars per Bushel</i>
AR	3.62	3.61	3.37	3.11	3.00	(³)	(³)
CA	3.98	4.17	3.76	(³)	(³)	3.20	(³)
CO	3.69	3.51	3.31	3.06	3.19	3.17	3.36
ID	3.88	3.92	3.80	3.61	3.59	3.56	3.54
IL	3.84	3.32	3.24	3.02	2.73	3.09	3.27
IN	3.87	3.37	3.28	3.01	3.09	2.90	2.85
KS	3.76	3.42	3.32	3.00	3.21	3.19	3.33
MI	3.63	3.18	3.05	3.04	3.06	2.91	2.79
MN	3.94	3.84	3.61	3.23	3.29	3.17	3.34
MO	3.83	3.28	3.25	3.19	3.25	3.07	3.00
MT	4.02	3.76	3.87	3.45	3.57	3.67	3.72
NE	3.73	3.56	3.33	3.03	3.17	3.11	3.38
ND	3.96	3.73	3.50	3.38	3.37	3.34	3.39
OH	3.58	3.32	3.29	3.02	3.01	2.94	2.86
OK	3.58	3.47	3.32	3.08	3.31	3.25	3.42
OR	3.99	3.88	3.80	3.65	3.67	3.68	3.73
SD	3.86	3.74	3.25	3.14	3.36	3.45	3.52
TX	3.57	3.40	3.34	3.28	3.14	3.03	3.20
WA	4.17	3.89	3.68	3.79	3.67	3.63	3.74
US	3.82	3.55	3.37	3.27	3.36	3.43	3.46
	2003-2004						
AR	3.32	3.15	2.89	3.31	3.32	(³)	(³)
CA	(³)	3.75	3.39	3.45	3.40	3.32	3.53
CO	3.19	3.02	2.80	3.14	3.23	3.30	3.50
ID	3.20	3.27	3.07	3.29	3.38	3.36	3.42
IL	3.20	2.90	3.03	3.40	3.39	3.30	3.68
IN	3.08	3.05	3.07	3.35	3.35	3.53	3.71
KS	3.26	2.84	2.80	3.27	3.18	3.34	3.62
MI	3.20	(³)	3.11	3.27	3.19	3.21	3.50
MN	3.63	3.51	3.42	3.51	3.43	3.55	3.61
MO	3.22	2.91	2.87	3.10	3.24	3.26	3.54
MT	3.64	3.68	3.51	3.46	3.61	3.61	3.76
NE	3.29	3.11	2.81	3.12	3.20	3.27	3.44
ND	3.54	3.46	3.34	3.40	3.44	3.53	3.66
OH	3.09	3.09	3.05	3.26	3.36	3.29	3.59
OK	3.09	2.82	2.83	3.27	3.28	3.36	3.65
OR	3.12	3.26	3.68	3.59	3.55	3.41	3.60
SD	3.47	3.42	3.05	3.24	3.24	3.42	3.44
TX	3.05	2.94	2.88	3.09	3.17	3.26	3.41
WA	3.27	3.41	3.46	3.75	3.62	3.68	3.71
US	3.33	3.08	2.95	3.35	3.39	3.44	3.61

See footnote(s) at end of table.

--continued

**Prices Received: All Wheat, by State and Month,
for Marketing Years, 2003-2004 and 2004-2005 (continued) ¹**

State	Dec	Jan ²	Feb	Mar	Apr	May	Jun
	2004-2005						
	<i>Dollars per Bushel</i>	<i>Dollars per Bushel</i>	<i>Dollars per Bushel</i>	<i>Dollars per Bushel</i>	<i>Dollars per Bushel</i>	<i>Dollars per Bushel</i>	<i>Dollars per Bushel</i>
AR	(³)	(³)	(³)	(³)	(³)	(³)	3.36
CA	(³)	(³)	(³)	(³)	(³)	3.64	3.44
CO	3.31	3.31	3.25	3.31	3.19	3.12	3.22
ID	3.60	3.65	3.68	3.70	3.60	3.54	3.56
IL	3.13	3.25	3.50	3.57	3.32	3.25	3.26
IN	3.06	3.24	2.98	3.25	2.97	3.08	3.11
KS	3.27	3.11	3.26	3.29	3.12	3.16	3.11
MI	2.80	2.79	2.95	3.21	3.09	3.00	3.03
MN	3.31	3.35	3.30	3.42	3.29	3.37	3.26
MO	3.10	3.28	3.31	3.25	3.22	3.24	3.29
MT	3.62	3.69	3.61	3.57	3.51	3.35	3.57
NE	3.23	3.26	3.20	3.29	3.18	3.20	3.12
ND	3.36	3.50	3.39	3.40	3.28	3.32	3.49
OH	2.77	2.96	2.87	3.21	3.06	3.03	3.10
OK	3.28	3.28	3.27	3.32	3.11	3.19	3.05
OR	3.65	3.72	3.72	3.65	3.69	3.69	3.66
SD	3.40	3.42	3.47	3.44	3.30	3.29	3.64
TX	3.17	3.17	3.15	3.22	2.75	2.97	3.11
WA	3.62	3.77	3.64	3.61	3.61	3.63	3.60
US	3.40	3.43	3.36	3.42	3.35	3.31	3.23
	2003-2004						
AR	4.08	(³)	(³)	(³)	(³)	3.62	3.61
CA	3.60	(³)	3.66	(³)	3.92	3.98	4.17
CO	3.62	3.68	3.61	3.74	3.79	3.69	3.51
ID	3.53	3.48	3.59	3.72	3.75	3.88	3.92
IL	3.69	3.68	3.77	3.86	3.96	3.84	3.32
IN	4.01	3.91	3.63	3.84	3.81	3.87	3.37
KS	3.69	3.67	3.63	3.73	3.79	3.76	3.42
MI	3.65	3.56	3.75	3.64	3.74	3.63	3.18
MN	3.69	3.75	3.82	3.76	3.97	3.94	3.84
MO	3.73	3.59	3.68	3.74	3.80	3.83	3.28
MT	3.74	3.72	3.81	3.89	3.94	4.02	3.76
NE	3.52	3.58	3.61	3.63	3.62	3.73	3.56
ND	3.73	3.64	3.83	3.95	3.95	3.96	3.73
OH	3.65	3.70	3.72	3.81	3.89	3.58	3.32
OK	3.74	3.80	3.68	3.83	3.81	3.58	3.47
OR	3.69	3.72	3.87	3.88	4.01	3.99	3.88
SD	3.62	3.65	3.81	3.79	3.79	3.86	3.74
TX	3.68	3.65	3.51	3.67	3.87	3.57	3.40
WA	3.62	3.79	3.91	3.98	4.14	4.17	3.89
US	3.68	3.68	3.77	3.83	3.88	3.82	3.55

¹ Marketing year: June-May for US; May-April for TX; June-May for AR, CA, IL, IN, KS, MO, and OK. July-June for all other monthly estimated States.

² Second year.

³ Price not published to avoid disclosure of individual firms.

⁴ Insufficient sales to establish a price.

**Prices Received: Winter Wheat, by State and Month,
for Marketing Years, 2003-2004 and 2004-2005 ¹**

State	May	Jun	Jul	Aug	Sep	Oct	Nov
	2004-2005						
	<i>Dollars per Bushel</i>	<i>Dollars per Bushel</i>	<i>Dollars per Bushel</i>	<i>Dollars per Bushel</i>	<i>Dollars per Bushel</i>	<i>Dollars per Bushel</i>	<i>Dollars per Bushel</i>
AR	3.62	3.61	3.37	3.11	3.00	(³)	(³)
CA	3.98	3.84	3.56	(³)	(³)	3.21	(³)
CO	3.69	3.51	3.31	3.06	3.19	3.17	3.36
ID	3.72	3.83	3.78	3.55	3.37	3.45	3.46
IL	3.84	3.32	3.24	3.02	2.73	3.09	3.27
IN	3.87	3.37	3.28	3.01	3.09	2.90	2.85
KS	3.76	3.42	3.32	3.00	3.21	3.19	3.33
MI	3.63	3.18	3.05	3.04	3.06	2.91	2.79
MN	(⁴)	(⁴)	3.16	2.64	2.83	2.76	2.38
MO	3.83	3.28	3.25	3.19	3.25	3.07	3.00
MT	3.88	3.50	3.63	3.30	3.22	3.39	3.48
NE	3.73	3.56	3.33	3.03	3.17	3.11	3.38
ND	(³)	(³)	3.53	2.70	2.68	2.70	2.78
OH	3.58	3.32	3.29	3.02	3.01	2.94	2.86
OK	3.58	3.47	3.32	3.08	3.31	3.25	3.42
OR	3.98	3.84	3.73	3.65	3.61	3.64	3.64
SD	3.67	3.60	3.22	3.10	3.15	3.12	3.23
TX	3.57	3.40	3.34	3.28	3.14	3.03	3.20
WA	4.05	3.83	3.61	3.64	3.59	3.59	3.63
US	3.72	3.46	3.31	3.19	3.26	3.34	3.39
	2003-2004						
AR	3.32	3.15	2.89	3.31	3.32	(³)	(³)
CA	3.07	3.38	3.24	3.45	(³)	3.32	3.45
CO	3.19	3.02	2.80	3.14	3.21	3.29	3.50
ID	3.07	3.14	2.93	3.25	3.27	3.30	3.24
IL	3.20	2.90	3.03	3.40	3.39	3.30	3.68
IN	3.08	3.05	3.07	3.35	3.35	3.53	3.71
KS	3.26	2.84	2.80	3.27	3.18	3.34	3.62
MI	3.20	(³)	3.11	3.27	3.19	3.21	3.50
MN	(⁴)	(³)	(³)	3.26	(³)	(³)	(⁴)
MO	3.22	2.91	2.87	3.10	3.24	3.26	3.54
MT	3.38	3.25	3.15	3.27	3.36	3.55	3.64
NE	3.29	3.11	2.81	3.12	3.20	3.27	3.44
ND	(³)	(³)	2.93	2.88	2.91	3.14	3.43
OH	3.09	3.09	3.05	3.26	3.36	3.29	3.59
OK	3.09	2.82	2.83	3.27	3.28	3.36	3.65
OR	3.12	3.24	3.46	3.52	3.49	3.38	3.56
SD	3.30	3.14	2.88	3.08	3.22	3.31	3.35
TX	3.05	2.94	2.88	3.09	3.17	3.26	3.41
WA	3.17	3.30	3.40	3.65	3.57	3.60	3.65
US	3.19	2.94	2.89	3.28	3.31	3.37	3.56

See footnote(s) at end of table.

--continued

**Prices Received: Winter Wheat, by State and Month,
for Marketing Years, 2003-2004 and 2004-2005 (continued) ¹**

State	Dec	Jan ²	Feb	Mar	Apr	May	Jun
	2004-2005						
	<i>Dollars per Bushel</i>	<i>Dollars per Bushel</i>	<i>Dollars per Bushel</i>	<i>Dollars per Bushel</i>	<i>Dollars per Bushel</i>	<i>Dollars per Bushel</i>	<i>Dollars per Bushel</i>
AR	(³)	(³)	(³)	(³)	(³)	(³)	3.36
CA	(³)	(³)	(³)	(³)	(³)	(³)	(³)
CO	3.32	3.31	3.25	3.31	3.19	3.12	3.22
ID	3.47	3.45	3.46	3.43	3.45	3.44	3.37
IL	3.13	3.25	3.50	3.57	3.32	3.25	3.26
IN	3.06	3.24	2.98	3.25	2.97	3.08	3.11
KS	3.27	3.11	3.26	3.29	3.12	3.16	3.11
MI	2.80	2.79	2.95	3.21	3.09	3.00	3.03
MN	2.62	(³)	2.86	2.60	3.43	(⁴)	(³)
MO	3.10	3.28	3.31	3.25	3.22	3.24	3.29
MT	3.56	3.52	3.39	3.34	3.40	3.34	3.34
NE	3.23	3.26	3.20	3.29	3.18	3.20	3.12
ND	2.62	2.66	2.76	2.86	2.23	2.59	2.73
OH	2.77	2.96	2.87	3.21	3.06	3.03	3.10
OK	3.28	3.28	3.27	3.32	3.11	3.19	3.05
OR	3.61	3.67	3.66	3.64	3.60	3.64	3.58
SD	3.17	3.29	3.19	3.24	3.12	3.16	3.20
TX	3.17	3.17	3.15	3.22	2.75	2.97	3.11
WA	3.58	3.49	3.53	3.50	3.56	3.54	3.49
US	3.34	3.28	3.27	3.32	3.27	3.23	3.15
	2003-2004						
AR	4.08	(³)	(³)	(³)	(³)	3.62	3.61
CA	(³)	(³)	3.51	(³)	3.92	3.98	3.84
CO	3.62	3.68	3.61	3.74	3.79	3.69	3.51
ID	3.43	3.40	3.46	3.57	3.67	3.72	3.83
IL	3.69	3.68	3.77	3.86	3.96	3.84	3.32
IN	4.01	3.91	3.63	3.84	3.81	3.87	3.37
KS	3.69	3.67	3.63	3.73	3.79	3.76	3.42
MI	3.65	3.56	3.75	3.64	3.74	3.63	3.18
MN	4.11	(⁴)	(⁴)	(³)	(⁴)	(⁴)	(⁴)
MO	3.73	3.59	3.68	3.74	3.80	3.83	3.28
MT	3.61	3.54	3.60	3.66	3.77	3.88	3.50
NE	3.52	3.58	3.61	3.63	3.62	3.73	3.56
ND	3.16	3.27	(⁴)	3.29	3.35	(³)	(³)
OH	3.65	3.70	3.72	3.81	3.89	3.58	3.32
OK	3.74	3.80	3.68	3.83	3.81	3.58	3.47
OR	3.65	3.70	3.84	3.85	3.97	3.98	3.84
SD	3.51	3.54	3.64	3.60	3.65	3.67	3.60
TX	3.68	3.65	3.51	3.67	3.87	3.57	3.40
WA	3.59	3.77	3.84	3.95	4.09	4.05	3.83
US	3.62	3.66	3.67	3.76	3.79	3.72	3.46

¹ Marketing year: June-May for US; May-April for TX; June-May for AR, CA, IL, IN, KS, MO, and OK. July-June for all other monthly estimated States.

² Second year.

³ Price not published to avoid disclosure of individual firms.

⁴ Insufficient sales to establish a price.

**Prices Received: Other Spring Wheat, by State and Month,
for Marketing Years, 2003-2004 and 2004-2005 ¹**

State	May	Jun	Jul	Aug	Sep	Oct	Nov
	2004-2005						
	<i>Dollars per Bushel</i>	<i>Dollars per Bushel</i>	<i>Dollars per Bushel</i>	<i>Dollars per Bushel</i>	<i>Dollars per Bushel</i>	<i>Dollars per Bushel</i>	<i>Dollars per Bushel</i>
CO	(⁴)	(⁴)	(⁴)	(⁴)	(⁴)	(⁴)	(³)
ID	4.10	4.02	3.85	3.72	3.84	3.76	3.70
MN	3.94	3.84	3.61	3.23	3.29	3.17	3.34
MT	4.04	3.92	3.89	3.43	3.64	3.77	3.86
ND	3.94	3.63	3.36	3.32	3.33	3.26	3.34
OR	4.09	4.13	4.11	3.67	4.00	3.94	4.17
SD	4.01	3.85	3.37	3.17	3.45	3.60	3.70
WA	4.48	4.11	3.90	4.14	3.93	3.79	4.07
US	4.01	3.83	3.55	3.38	3.48	3.50	3.57
	2003-2004						
CO	(³)	(⁴)	(³)	3.86	4.02	3.72	3.87
ID	3.42	3.50	3.34	3.38	3.55	3.52	3.68
MN	3.63	3.51	3.42	3.51	3.43	3.55	3.61
MT	3.65	3.63	3.43	3.48	3.52	3.60	3.83
ND	3.47	3.34	3.19	3.35	3.33	3.46	3.62
OR	3.13	3.43	4.26	3.87	3.81	3.56	3.84
SD	3.61	3.50	3.33	3.29	3.25	3.46	3.64
WA	3.60	3.74	3.68	4.01	3.78	3.91	3.91
US	3.55	3.45	3.31	3.42	3.42	3.53	3.68

See footnote(s) at end of table.

--continued

**Prices Received: Other Spring Wheat, by State and Month,
for Marketing Years, 2003-2004 and 2004-2005 (continued)¹**

State	Dec	Jan ²	Feb	Mar	Apr	May	Jun
	2004-2005						
	<i>Dollars per Bushel</i>	<i>Dollars per Bushel</i>	<i>Dollars per Bushel</i>	<i>Dollars per Bushel</i>	<i>Dollars per Bushel</i>	<i>Dollars per Bushel</i>	<i>Dollars per Bushel</i>
CO	3.19	(³)	(³)	(³)	(⁴)	(⁴)	(⁴)
ID	3.78	3.90	3.94	3.95	3.80	3.69	3.76
MN	3.32	3.35	3.30	3.45	3.27	3.37	3.26
MT	3.63	3.85	3.77	3.72	3.47	3.30	3.69
ND	3.33	3.50	3.35	3.36	3.22	3.28	3.45
OR	3.91	4.01	4.09	3.75	4.10	3.96	4.09
SD	3.64	3.54	3.67	3.59	3.41	3.37	3.78
WA	3.81	4.20	3.95	3.98	3.80	3.83	3.85
US	3.48	3.61	3.49	3.51	3.39	3.37	3.51
	2003-2004						
CO	3.92	(³)	(³)	(³)	(³)	(⁴)	(⁴)
ID	3.72	3.62	3.79	3.92	3.90	4.10	4.02
MN	3.69	3.75	3.82	3.76	3.97	3.94	3.84
MT	3.80	3.80	3.93	3.97	3.99	4.04	3.92
ND	3.69	3.59	3.79	3.90	3.88	3.94	3.63
OR	3.93	3.88	4.08	4.07	4.22	4.09	4.13
SD	3.76	3.73	3.86	3.90	3.93	4.01	3.85
WA	3.75	3.89	4.16	4.10	4.34	4.48	4.11
US	3.72	3.67	3.84	3.90	3.94	4.01	3.83

¹ Marketing year: June-May for US; May-April for TX; June-May for AR, CA, IL, IN, KS, MO, and OK. July-June for all other monthly estimated States.

² Second year.

³ Price not published to avoid disclosure of individual firms.

⁴ Insufficient sales to establish a price.

**Prices Received: Durum Wheat, by State and Month,
for Marketing Years, 2003-2004 and 2004-2005 ¹**

State	May	Jun	Jul	Aug	Sep	Oct	Nov
	2004-2005						
	<i>Dollars per Bushel</i>	<i>Dollars per Bushel</i>	<i>Dollars per Bushel</i>	<i>Dollars per Bushel</i>	<i>Dollars per Bushel</i>	<i>Dollars per Bushel</i>	<i>Dollars per Bushel</i>
CA	(⁴)	4.47	4.26	(³)	(⁴)	(³)	(⁴)
MT	4.36	4.26	4.14	3.92	4.08	4.03	3.85
ND	4.08	4.11	3.89	3.84	3.83	3.81	3.77
US	4.21	4.35	4.09	3.86	3.89	3.87	3.79
	2003-2004						
CA	(³)	(³)	(³)	(³)	(³)	(⁴)	(³)
MT	4.37	4.41	4.07	4.01	4.16	4.00	3.95
ND	3.86	3.83	3.76	3.73	3.89	3.86	3.94
US	3.99	3.99	3.85	3.78	3.95	3.89	3.95

**Prices Received: Durum Wheat, by State and Month,
for Marketing Years, 2003-2004 and 2004-2005 ¹**

State	Dec	Jan ²	Feb	Mar	Apr	May	Jun
	2004-2005						
	<i>Dollars per Bushel</i>	<i>Dollars per Bushel</i>	<i>Dollars per Bushel</i>	<i>Dollars per Bushel</i>	<i>Dollars per Bushel</i>	<i>Dollars per Bushel</i>	<i>Dollars per Bushel</i>
CA	(³)	(³)	(³)	(³)	(⁴)	(³)	(³)
MT	3.80	3.68	3.76	3.94	3.80	3.65	3.78
ND	3.62	3.60	3.66	3.60	3.51	3.63	3.70
US	3.67	3.64	3.72	3.70	3.63	3.67	3.67
	2003-2004						
CA	(³)	(⁴)	(³)	(³)	(⁴)	(⁴)	4.47
MT	3.90	3.98	3.99	4.11	4.15	4.36	4.26
ND	3.97	3.95	4.09	4.15	4.21	4.08	4.11
US	3.95	3.96	4.08	4.14	4.19	4.21	4.35

¹ Marketing year: June-May for US; May-April for TX; June-May for AR, CA, IL, IN, KS, MO, and OK. July-June for all other monthly estimated States.

² Second year.

³ Price not published to avoid disclosure of individual firms.

⁴ Insufficient sales to establish a price.

**Prices Received: Wheat by Class, United States, by Month,
for Marketing Years, 2003-2004 and 2004-2005 ¹**

Year	Jun	Jul	Aug	Sep	Oct	Nov
	Hard Red Winter					
	<i>Dollars per Bushel</i>	<i>Dollars per Bushel</i>	<i>Dollars per Bushel</i>	<i>Dollars per Bushel</i>	<i>Dollars per Bushel</i>	<i>Dollars per Bushel</i>
2004-2005	3.46	3.34	3.11	3.21	3.25	3.37
2003-2004	2.88	2.82	3.25	3.23	3.36	3.56
	Soft Red Winter					
2004-2005	3.41	3.24	3.04	2.96	2.96	2.93
2003-2004	3.07	3.02	3.28	3.34	3.27	3.61
	Hard Red Spring					
2004-2005	3.83	3.54	3.36	3.48	3.50	3.57
2003-2004	3.46	3.31	3.43	3.42	3.54	3.70
	White					
2004-2005	3.81	3.46	3.52	3.51	3.52	3.54
2003-2004	3.24	3.20	3.42	3.45	3.42	3.54
Year	Dec	Jan ²	Feb	Mar	Apr	May
	Hard Red Winter					
	<i>Dollars per Bushel</i>	<i>Dollars per Bushel</i>	<i>Dollars per Bushel</i>	<i>Dollars per Bushel</i>	<i>Dollars per Bushel</i>	<i>Dollars per Bushel</i>
2004-2005	3.32	3.24	3.25	3.29	3.18	3.17
2003-2004	3.64	3.66	3.64	3.74	3.76	3.67
	Soft Red Winter					
2004-2005	2.94	3.12	3.13	3.32	3.16	3.09
2003-2004	3.77	3.69	3.70	3.80	3.84	3.81
	Hard Red Spring					
2004-2005	3.48	3.62	3.49	3.52	3.38	3.37
2003-2004	3.73	3.68	3.85	3.91	3.94	4.02
	White					
2004-2005	3.51	3.49	3.47	3.50	3.51	3.50
2003-2004	3.53	3.63	3.73	3.81	3.89	3.93

¹ Marketing year: June - May for U.S. and all estimating States.

² Second year.

**Prices Received: All Hay, by State and Month,
for Marketing Years, 2003-2004 and 2004-2005 ¹**

State	Apr	May	Jun	Jul	Aug	Sep	Oct
	2004-2005						
	<i>Dollars per Ton</i>	<i>Dollars per Ton</i>	<i>Dollars per Ton</i>	<i>Dollars per Ton</i>	<i>Dollars per Ton</i>	<i>Dollars per Ton</i>	<i>Dollars per Ton</i>
AZ	90.00	110.00	105.00	100.00	91.00	90.00	95.00
CA	121.00	118.00	112.00	108.00	107.00	110.00	115.00
CO	81.00	81.00	82.00	82.00	85.00	85.00	85.00
ID	81.00	99.00	104.00	102.00	108.00	104.00	117.00
IL	93.00	87.00	85.00	86.00	87.00	87.00	82.00
IA	90.00	90.00	84.00	79.00	82.00	80.00	83.00
KS	68.00	79.00	76.00	70.00	67.00	64.00	68.00
KY	72.00	75.00	65.00	65.00	69.00	72.00	70.00
MI	109.00	99.00	84.00	84.00	95.00	89.00	98.00
MN	66.00	67.00	68.00	65.00	61.00	68.00	62.00
MO	66.00	69.00	66.00	61.00	57.00	57.00	58.00
MT	70.00	71.00	73.00	77.00	76.00	77.00	76.00
NE	49.00	48.00	49.00	51.00	50.00	52.00	51.00
NV	93.00	90.00	99.00	103.00	102.00	97.00	99.00
NM	136.00	138.00	121.00	118.00	118.00	116.00	118.00
NY	109.00	112.00	119.00	115.00	97.00	109.00	124.00
ND	55.00	56.00	56.00	63.00	58.00	61.00	59.00
OH	100.00	101.00	90.00	82.00	101.00	106.00	93.00
OK	75.00	80.00	73.00	68.00	64.00	63.00	72.00
OR	84.00	88.00	109.00	111.00	108.00	104.00	113.00
PA	130.00	130.00	125.00	123.00	128.00	125.00	118.00
SD	62.00	63.00	66.00	65.00	58.00	60.00	63.00
TX	67.00	87.00	85.00	84.00	82.00	74.00	73.00
UT	81.00	90.00	88.00	90.00	87.00	85.00	86.00
WA	89.00	101.00	112.00	112.00	114.00	112.00	116.00
WI	80.00	94.00	85.00	56.00	67.00	72.00	78.00
WY	68.00	69.00	70.00	69.00	71.00	73.00	77.00
US	89.60	102.00	95.60	92.20	92.20	91.40	92.80
	2003-2004						
AZ	94.00	100.00	97.00	89.00	87.00	85.00	83.00
CA	98.00	94.00	88.00	84.00	85.00	86.00	90.00
CO	108.00	101.00	90.00	90.00	88.00	86.00	86.00
ID	89.00	87.00	89.00	84.00	85.00	88.00	92.00
IL	88.00	86.00	86.00	82.00	85.00	85.00	83.00
IA	78.00	76.00	75.00	70.00	73.00	78.00	80.00
KS	84.00	77.00	69.00	68.00	71.00	70.00	69.00
KY	75.00	78.00	72.00	70.00	82.00	77.00	78.00
MI	99.00	99.00	92.00	92.00	85.00	89.00	79.00
MN	68.00	72.00	68.00	64.00	68.00	66.00	62.00
MO	68.00	65.00	63.00	60.00	60.00	67.00	65.00
MT	78.00	76.00	79.00	75.00	74.00	75.00	75.00
NE	80.00	77.00	69.00	62.00	56.00	56.00	56.00
NV	91.00	93.00	95.00	100.00	96.00	92.00	90.00
NM	142.00	146.00	151.00	142.00	140.00	137.00	131.00
NY	116.00	100.00	122.00	125.00	126.00	119.00	126.00
ND	63.00	62.00	54.00	50.00	49.00	55.00	49.00
OH	133.00	143.00	153.00	127.00	120.00	96.00	99.00
OK	77.00	64.00	65.00	63.00	66.00	73.00	70.00
OR	90.00	93.00	96.00	89.00	93.00	91.00	90.00
PA	145.00	148.00	163.00	151.00	134.00	135.00	136.00
SD	83.00	79.00	72.00	60.00	58.00	56.00	58.00
TX	63.00	78.00	81.00	84.00	77.00	81.00	83.00
UT	92.00	99.00	92.00	82.00	82.00	80.00	75.00
WA	107.00	123.00	116.00	91.00	90.00	84.00	86.00
WI	80.00	71.00	58.00	68.00	71.00	67.00	69.00
WY	113.00	104.00	95.00	85.00	83.00	80.00	80.00
US	94.50	96.50	95.50	88.10	85.00	84.40	83.70

See footnote(s) at end of table.

--continued

**Prices Received: All Hay, by State and Month,
for Marketing Years, 2003-2004 and 2004-2005 (continued) ¹**

State	Nov	Dec	Jan ²	Feb	Mar	Apr	May
	2004-2005						
	<i>Dollars per Ton</i>	<i>Dollars per Ton</i>	<i>Dollars per Ton</i>	<i>Dollars per Ton</i>	<i>Dollars per Ton</i>	<i>Dollars per Ton</i>	<i>Dollars per Ton</i>
AZ	97.00	95.00	103.00	110.00	112.00	115.00	130.00
CA	117.00	114.00	116.00	125.00	127.00	135.00	142.00
CO	85.00	85.00	84.00	85.00	85.00	83.00	78.00
ID	114.00	108.00	105.00	100.00	99.00	106.00	101.00
IL	86.00	86.00	85.00	87.00	92.00	89.00	88.00
IA	83.00	82.00	89.00	82.00	83.00	81.00	79.00
KS	64.00	65.00	65.00	67.00	70.00	65.00	59.00
KY	71.00	68.00	73.00	76.00	87.00	86.00	81.00
MI	104.00	99.00	104.00	97.00	96.00	99.00	93.00
MN	72.00	71.00	73.00	77.00	70.00	63.00	73.00
MO	57.00	57.00	54.00	55.00	56.00	56.00	58.00
MT	77.00	77.00	75.00	74.00	75.00	74.00	76.00
NE	51.00	51.00	51.00	51.00	50.00	48.00	48.00
NV	104.00	102.00	104.00	106.00	113.00	102.00	105.00
NM	115.00	117.00	118.00	118.00	121.00	118.00	119.00
NY	121.00	121.00	125.00	117.00	110.00	96.00	112.00
ND	57.00	56.00	57.00	58.00	59.00	58.00	56.00
OH	110.00	96.00	121.00	102.00	112.00	118.00	117.00
OK	73.00	77.00	73.00	68.00	74.00	77.00	80.00
OR	103.00	100.00	96.00	100.00	102.00	100.00	99.00
PA	123.00	119.00	128.00	112.00	112.00	115.00	128.00
SD	64.00	66.00	62.00	60.00	61.00	61.00	60.00
TX	70.00	75.00	72.00	73.00	74.00	72.00	74.00
UT	92.00	87.00	85.00	91.00	98.00	92.00	90.00
WA	116.00	108.00	107.00	104.00	105.00	105.00	111.00
WI	88.00	78.00	98.00	85.00	93.00	97.00	111.00
WY	76.00	75.00	73.00	73.00	72.00	73.00	73.00
US	88.70	86.00	87.80	88.20	92.60	99.40	107.00
	2003-2004						
AZ	83.00	80.00	85.00	85.00	84.00	90.00	110.00
CA	93.00	85.00	88.00	95.00	103.00	121.00	118.00
CO	88.00	85.00	82.00	83.00	83.00	81.00	81.00
ID	91.00	91.00	85.00	83.00	85.00	81.00	99.00
IL	87.00	89.00	90.00	91.00	95.00	93.00	87.00
IA	80.00	82.00	86.00	81.00	87.00	90.00	90.00
KS	73.00	65.00	65.00	66.00	67.00	68.00	79.00
KY	78.00	74.00	68.00	67.00	71.00	72.00	75.00
MI	94.00	99.00	96.00	101.00	97.00	109.00	99.00
MN	69.00	70.00	67.00	67.00	66.00	66.00	67.00
MO	65.00	66.00	66.00	67.00	65.00	66.00	69.00
MT	74.00	75.00	72.00	73.00	70.00	70.00	71.00
NE	55.00	53.00	52.00	52.00	50.00	49.00	48.00
NV	95.00	90.00	92.00	94.00	90.00	93.00	90.00
NM	133.00	135.00	135.00	136.00	139.00	136.00	138.00
NY	106.00	109.00	107.00	111.00	107.00	109.00	112.00
ND	51.00	55.00	49.00	55.00	54.00	55.00	56.00
OH	110.00	104.00	101.00	106.00	94.00	100.00	101.00
OK	77.00	81.00	75.00	70.00	65.00	75.00	80.00
OR	86.00	91.00	84.00	82.00	83.00	84.00	88.00
PA	133.00	141.00	134.00	129.00	123.00	130.00	130.00
SD	61.00	61.00	59.00	62.00	62.00	62.00	63.00
TX	72.00	68.00	72.00	69.00	69.00	67.00	87.00
UT	70.00	86.00	83.00	78.00	75.00	81.00	90.00
WA	87.00	90.00	89.00	94.00	89.00	89.00	101.00
WI	90.00	98.00	91.00	100.00	93.00	80.00	94.00
WY	79.00	79.00	76.00	71.00	71.00	68.00	69.00
US	81.50	80.60	80.10	81.20	81.80	89.60	102.00

¹ Marketing year: April - May for US; April-March for AZ; May-April for CA, CO, KS, KY, MO, NV, NM, OK, PA, TX and UT; June-May for all other monthly estimated States.

² Second year.

**Prices Received: Alfalfa Hay, by State and Month,
for Marketing Years, 2003-2004 and 2004-2005 ¹**

State	Apr	May	Jun	Jul	Aug	Sep	Oct
	2004-2005						
	<i>Dollars per Ton</i>	<i>Dollars per Ton</i>	<i>Dollars per Ton</i>	<i>Dollars per Ton</i>	<i>Dollars per Ton</i>	<i>Dollars per Ton</i>	<i>Dollars per Ton</i>
AZ	90.00	112.00	106.00	100.00	90.00	90.00	95.00
CA	126.00	122.00	115.00	109.00	109.00	113.00	119.00
CO	81.00	82.00	82.00	83.00	86.00	86.00	86.00
ID	82.00	100.00	105.00	105.00	110.00	105.00	120.00
IL	97.00	95.00	92.00	91.00	91.00	92.00	90.00
IA	91.00	93.00	87.00	82.00	84.00	85.00	84.00
KS	75.00	81.00	79.00	75.00	74.00	66.00	78.00
KY	100.00	100.00	100.00	100.00	100.00	100.00	100.00
MI	115.00	100.00	90.00	90.00	95.00	90.00	99.00
MN	70.00	68.00	74.00	71.00	70.00	76.00	75.00
MO	106.00	105.00	103.00	100.00	96.00	98.00	98.00
MT	71.00	73.00	74.00	78.00	77.00	79.00	78.00
NE	49.00	48.00	49.00	52.00	51.00	52.00	51.00
NV	90.00	90.00	99.00	103.00	101.00	97.00	98.00
NM	141.00	141.00	123.00	119.00	120.00	118.00	120.00
NY	120.00	130.00	140.00	144.00	110.00	135.00	150.00
ND	59.00	61.00	61.00	66.00	64.00	66.00	65.00
OH	119.00	115.00	114.00	112.00	120.00	120.00	122.00
OK	93.00	95.00	95.00	93.00	91.00	87.00	93.00
OR	87.00	89.00	112.00	114.00	111.00	109.00	117.00
PA	151.00	150.00	142.00	143.00	145.00	139.00	140.00
SD	63.00	64.00	67.00	67.00	62.00	64.00	67.00
TX	140.00	135.00	140.00	135.00	135.00	130.00	129.00
UT	81.00	90.00	88.00	90.00	87.00	85.00	86.00
WA	82.00	95.00	110.00	110.00	110.00	110.00	115.00
WI	85.00	105.00	90.00	60.00	70.00	80.00	80.00
WY	70.00	70.00	70.00	70.00	72.00	75.00	79.00
US	92.70	108.00	102.00	98.70	99.30	97.50	100.00
	2003-2004						
AZ	94.00	100.00	98.00	90.00	88.00	85.00	83.00
CA	99.00	97.00	90.00	85.00	86.00	88.00	94.00
CO	104.00	100.00	88.00	88.00	86.00	83.00	85.00
ID	89.00	87.00	90.00	85.00	87.00	90.00	92.00
IL	94.00	94.00	91.00	89.00	89.00	90.00	92.00
IA	79.00	79.00	76.00	74.00	75.00	79.00	81.00
KS	90.00	78.00	74.00	74.00	84.00	77.00	77.00
KY	105.00	110.00	110.00	110.00	115.00	110.00	115.00
MI	100.00	100.00	95.00	95.00	90.00	90.00	85.00
MN	70.00	73.00	71.00	70.00	75.00	73.00	72.00
MO	111.00	107.00	106.00	104.00	102.00	104.00	106.00
MT	81.00	79.00	79.00	75.00	76.00	76.00	77.00
NE	80.00	77.00	69.00	62.00	56.00	56.00	57.00
NV	90.00	93.00	96.00	100.00	95.00	89.00	88.00
NM	146.00	148.00	153.00	144.00	141.00	140.00	133.00
NY	145.00	130.00	145.00	140.00	140.00	150.00	140.00
ND	68.00	68.00	62.00	53.00	56.00	59.00	56.00
OH	163.00	162.00	177.00	160.00	148.00	144.00	133.00
OK	89.00	81.00	86.00	94.00	95.00	95.00	95.00
OR	90.00	94.00	102.00	100.00	97.00	94.00	91.00
PA	165.00	161.00	176.00	163.00	152.00	151.00	152.00
SD	84.00	80.00	73.00	62.00	60.00	60.00	62.00
TX	137.00	153.00	155.00	155.00	150.00	150.00	160.00
UT	93.00	99.00	93.00	83.00	83.00	81.00	76.00
WA	102.00	105.00	113.00	85.00	84.00	80.00	80.00
WI	85.00	75.00	60.00	70.00	75.00	70.00	75.00
WY	114.00	105.00	95.00	86.00	84.00	82.00	81.00
US	96.20	101.00	101.00	93.80	91.90	90.10	89.10

See footnote(s) at end of table.

--continued

**Prices Received: Alfalfa Hay, by State and Month,
for Marketing Years, 2003-2004 and 2004-2005 (continued) ¹**

State	Nov	Dec	Jan ²	Feb	Mar	Apr	May
	2004-2005						
	<i>Dollars per Ton</i>	<i>Dollars per Ton</i>	<i>Dollars per Ton</i>	<i>Dollars per Ton</i>	<i>Dollars per Ton</i>	<i>Dollars per Ton</i>	<i>Dollars per Ton</i>
AZ	98.00	95.00	103.00	110.00	112.00	115.00	130.00
CA	122.00	119.00	121.00	131.00	133.00	141.00	149.00
CO	86.00	86.00	86.00	85.00	84.00	84.00	78.00
ID	115.00	112.00	106.00	101.00	101.00	107.00	101.00
IL	93.00	92.00	89.00	92.00	94.00	93.00	92.00
IA	84.00	85.00	93.00	85.00	85.00	82.00	80.00
KS	67.00	71.00	69.00	72.00	79.00	69.00	63.00
KY	100.00	100.00	105.00	105.00	110.00	110.00	115.00
MI	105.00	100.00	105.00	100.00	100.00	100.00	95.00
MN	76.00	75.00	79.00	81.00	74.00	68.00	75.00
MO	99.00	99.00	97.00	98.00	98.00	97.00	98.00
MT	78.00	78.00	76.00	75.00	76.00	75.00	76.00
NE	51.00	51.00	51.00	51.00	50.00	48.00	48.00
NV	103.00	102.00	102.00	106.00	112.00	100.00	102.00
NM	121.00	120.00	123.00	123.00	124.00	124.00	122.00
NY	145.00	145.00	140.00	140.00	150.00	120.00	145.00
ND	62.00	61.00	63.00	62.00	63.00	62.00	61.00
OH	144.00	128.00	142.00	120.00	134.00	138.00	139.00
OK	91.00	96.00	93.00	91.00	89.00	93.00	95.00
OR	106.00	103.00	98.00	100.00	103.00	100.00	106.00
PA	145.00	141.00	155.00	138.00	140.00	146.00	141.00
SD	68.00	69.00	65.00	62.00	63.00	62.00	61.00
TX	128.00	122.00	120.00	120.00	120.00	124.00	120.00
UT	92.00	87.00	85.00	91.00	99.00	92.00	90.00
WA	115.00	105.00	105.00	100.00	100.00	100.00	110.00
WI	90.00	85.00	105.00	90.00	100.00	105.00	120.00
WY	77.00	76.00	74.00	74.00	74.00	74.00	74.00
US	95.20	92.10	94.50	94.00	98.60	105.00	116.00
	2003-2004						
AZ	83.00	80.00	85.00	85.00	84.00	90.00	112.00
CA	98.00	89.00	89.00	97.00	105.00	126.00	122.00
CO	87.00	85.00	83.00	84.00	84.00	81.00	82.00
ID	92.00	92.00	86.00	84.00	86.00	82.00	100.00
IL	94.00	94.00	95.00	95.00	97.00	97.00	95.00
IA	85.00	84.00	87.00	83.00	88.00	91.00	93.00
KS	79.00	73.00	74.00	76.00	78.00	75.00	81.00
KY	115.00	110.00	100.00	100.00	100.00	100.00	100.00
MI	100.00	100.00	100.00	105.00	100.00	115.00	100.00
MN	72.00	73.00	72.00	70.00	68.00	70.00	68.00
MO	107.00	109.00	109.00	108.00	107.00	106.00	105.00
MT	76.00	76.00	73.00	75.00	72.00	71.00	73.00
NE	56.00	54.00	53.00	53.00	51.00	49.00	48.00
NV	94.00	87.00	91.00	90.00	88.00	90.00	90.00
NM	139.00	138.00	140.00	141.00	142.00	141.00	141.00
NY	125.00	140.00	120.00	130.00	125.00	120.00	130.00
ND	57.00	60.00	58.00	59.00	58.00	59.00	61.00
OH	146.00	143.00	122.00	133.00	116.00	119.00	115.00
OK	96.00	100.00	100.00	100.00	98.00	93.00	95.00
OR	90.00	96.00	90.00	86.00	87.00	87.00	89.00
PA	153.00	156.00	149.00	150.00	147.00	151.00	150.00
SD	64.00	64.00	62.00	64.00	64.00	63.00	64.00
TX	152.00	150.00	143.00	150.00	142.00	140.00	135.00
UT	70.00	87.00	84.00	78.00	75.00	81.00	90.00
WA	80.00	82.00	82.00	80.00	80.00	82.00	95.00
WI	95.00	105.00	95.00	110.00	95.00	85.00	105.00
WY	80.00	79.00	77.00	72.00	72.00	70.00	70.00
US	86.80	87.00	84.80	85.10	86.20	92.70	108.00

¹ Marketing year: April - May for US; April-March for AZ; May-April for CA, CO, KS, KY, MO, NV, NM, OK, PA, TX and UT; June-May for all other monthly estimated States.

² Second year.

**Prices Received: Other Hay, by State and Month,
for Marketing Years, 2003-2004 and 2004-2005 ¹**

State	Apr	May	Jun	Jul	Aug	Sep	Oct
	2004-2005						
	<i>Dollars per Ton</i>	<i>Dollars per Ton</i>	<i>Dollars per Ton</i>	<i>Dollars per Ton</i>	<i>Dollars per Ton</i>	<i>Dollars per Ton</i>	<i>Dollars per Ton</i>
AZ	85.00	87.00	95.00	95.00	100.00	95.00	100.00
CA	88.00	94.00	96.00	106.00	96.00	96.00	93.00
CO	78.00	74.00	74.00	75.00	80.00	80.00	80.00
ID	65.00	70.00	70.00	65.00	65.00	65.00	70.00
IL	74.00	70.00	69.00	71.00	71.00	71.00	69.00
IA	67.00	68.00	62.00	57.00	59.00	62.00	58.00
KS	54.00	56.00	58.00	56.00	52.00	49.00	51.00
KY	58.00	58.00	58.00	58.00	58.00	58.00	58.00
MI	90.00	80.00	70.00	70.00	70.00	70.00	75.00
MN	51.00	48.00	50.00	52.00	48.00	51.00	49.00
MO	54.00	52.00	50.00	46.00	44.00	44.00	45.00
MT	65.00	66.00	69.00	73.00	74.00	70.00	69.00
NE	45.00	44.00	48.00	47.00	47.00	49.00	50.00
NV	109.00	90.00	110.00	116.00	123.00	103.00	120.00
NM	116.00	116.00	101.00	101.00	98.00	96.00	98.00
NY	100.00	100.00	100.00	85.00	81.00	85.00	80.00
ND	42.00	45.00	44.00	50.00	49.00	47.00	44.00
OH	51.00	54.00	48.00	55.00	59.00	59.00	63.00
OK	54.00	50.00	46.00	50.00	42.00	40.00	49.00
OR	81.00	84.00	98.00	99.00	97.00	84.00	101.00
PA	116.00	119.00	116.00	108.00	114.00	116.00	110.00
SD	45.00	51.00	50.00	57.00	47.00	50.00	51.00
TX	62.00	63.00	65.00	62.00	62.00	58.00	60.00
UT	70.00	75.00	80.00	80.00	80.00	78.00	80.00
WA	120.00	125.00	120.00	120.00	125.00	120.00	120.00
WI	55.00	45.00	45.00	40.00	50.00	45.00	50.00
WY	66.00	66.00	66.00	65.00	66.00	69.00	73.00
US	76.20	79.70	75.90	74.80	71.90	74.30	73.80
	2003-2004						
AZ	87.00	95.00	90.00	85.00	82.00	80.00	85.00
CA	85.00	76.00	81.00	78.00	77.00	72.00	69.00
CO	145.00	145.00	130.00	119.00	107.00	102.00	96.00
ID	67.00	69.00	70.00	68.00	66.00	65.00	65.00
IL	71.00	71.00	68.00	68.00	65.00	67.00	70.00
IA	57.00	56.00	58.00	54.00	55.00	56.00	57.00
KS	70.00	65.00	59.00	59.00	58.00	58.00	58.00
KY	61.00	64.00	64.00	64.00	67.00	64.00	67.00
MI	75.00	85.00	75.00	75.00	65.00	65.00	60.00
MN	50.00	55.00	55.00	54.00	58.00	52.00	53.00
MO	52.00	50.00	50.00	49.00	51.00	52.00	52.00
MT	69.00	68.00	72.00	73.00	68.00	69.00	72.00
NE	76.00	74.00	65.00	60.00	55.00	52.00	51.00
NV	95.00	90.00	90.00	95.00	120.00	128.00	111.00
NM	120.00	121.00	126.00	118.00	116.00	116.00	109.00
NY	90.00	80.00	100.00	110.00	100.00	100.00	100.00
ND	46.00	48.00	43.00	39.00	40.00	43.00	40.00
OH	91.00	81.00	91.00	69.00	59.00	62.00	65.00
OK	55.00	52.00	53.00	50.00	51.00	52.00	58.00
OR	91.00	92.00	82.00	73.00	80.00	78.00	86.00
PA	132.00	131.00	145.00	130.00	124.00	118.00	118.00
SD	59.00	61.00	53.00	51.00	48.00	41.00	45.00
TX	58.00	58.00	62.00	60.00	58.00	66.00	70.00
UT	76.00	76.00	72.00	70.00	72.00	61.00	60.00
WA	126.00	135.00	142.00	128.00	120.00	110.00	125.00
WI	55.00	55.00	35.00	55.00	55.00	40.00	45.00
WY	109.00	99.00	89.00	82.00	77.00	75.00	75.00
US	86.60	77.90	76.10	71.10	66.70	67.30	69.20

See footnote(s) at end of table.

--continued

**Prices Received: Other Hay, by State and Month,
for Marketing Years, 2003-2004 and 2004-2005 (continued) ¹**

State	Nov	Dec	Jan ²	Feb	Mar	Apr	May
	2004-2005						
	<i>Dollars per Ton</i>	<i>Dollars per Ton</i>	<i>Dollars per Ton</i>	<i>Dollars per Ton</i>	<i>Dollars per Ton</i>	<i>Dollars per Ton</i>	<i>Dollars per Ton</i>
AZ	90.00	90.00	100.00	106.00	110.00	112.00	125.00
CA	87.00	84.00	88.00	92.00	92.00	96.00	100.00
CO	81.00	81.00	81.00	73.00	90.00	90.00	75.00
ID	70.00	65.00	73.00	64.00	75.00	83.00	77.00
IL	70.00	70.00	69.00	67.00	70.00	71.00	69.00
IA	58.00	58.00	62.00	55.00	55.00	53.00	53.00
KS	56.00	49.00	50.00	52.00	48.00	51.00	51.00
KY	58.00	58.00	61.00	61.00	64.00	64.00	67.00
MI	75.00	75.00	75.00	75.00	75.00	70.00	65.00
MN	52.00	55.00	56.00	54.00	51.00	45.00	50.00
MO	45.00	44.00	43.00	43.00	44.00	44.00	45.00
MT	68.00	70.00	66.00	67.00	69.00	66.00	71.00
NE	50.00	50.00	49.00	48.00	48.00	47.00	46.00
NV	122.00	104.00	126.00	118.00	127.00	130.00	130.00
NM	99.00	98.00	100.00	100.00	101.00	101.00	99.00
NY	90.00	90.00	90.00	90.00	95.00	70.00	90.00
ND	46.00	45.00	46.00	44.00	46.00	46.00	46.00
OH	69.00	53.00	80.00	68.00	70.00	65.00	55.00
OK	46.00	52.00	47.00	42.00	54.00	51.00	55.00
OR	96.00	93.00	91.00	99.00	99.00	99.00	88.00
PA	117.00	114.00	116.00	106.00	107.00	109.00	110.00
SD	49.00	51.00	51.00	48.00	49.00	52.00	49.00
TX	60.00	69.00	67.00	64.00	64.00	63.00	62.00
UT	88.00	83.00	75.00	80.00	80.00	80.00	80.00
WA	120.00	115.00	115.00	115.00	120.00	120.00	115.00
WI	65.00	50.00	65.00	50.00	50.00	55.00	85.00
WY	72.00	70.00	68.00	68.00	68.00	68.00	68.00
US	73.50	72.40	73.30	74.20	77.80	81.60	75.40
	2003-2004						
AZ	80.00	78.00	80.00	80.00	79.00	85.00	87.00
CA	63.00	72.00	81.00	85.00	93.00	88.00	94.00
CO	95.00	90.00	73.00	70.00	79.00	78.00	74.00
ID	65.00	68.00	65.00	60.00	70.00	65.00	70.00
IL	70.00	69.00	73.00	78.00	75.00	74.00	70.00
IA	62.00	61.00	63.00	61.00	62.00	67.00	68.00
KS	56.00	56.00	54.00	51.00	54.00	54.00	56.00
KY	67.00	64.00	58.00	58.00	58.00	58.00	58.00
MI	80.00	85.00	85.00	90.00	90.00	90.00	80.00
MN	55.00	54.00	53.00	51.00	53.00	51.00	48.00
MO	53.00	53.00	55.00	55.00	53.00	54.00	52.00
MT	69.00	68.00	67.00	66.00	65.00	65.00	66.00
NE	50.00	50.00	47.00	47.00	45.00	45.00	44.00
NV	105.00	118.00	103.00	130.00	107.00	109.00	90.00
NM	114.00	113.00	115.00	116.00	117.00	116.00	116.00
NY	90.00	95.00	100.00	100.00	90.00	100.00	100.00
ND	40.00	43.00	39.00	43.00	40.00	42.00	45.00
OH	65.00	66.00	60.00	53.00	49.00	51.00	54.00
OK	55.00	52.00	52.00	53.00	51.00	54.00	50.00
OR	77.00	70.00	71.00	75.00	77.00	81.00	84.00
PA	122.00	129.00	121.00	121.00	116.00	116.00	119.00
SD	50.00	49.00	45.00	48.00	48.00	45.00	51.00
TX	60.00	60.00	69.00	63.00	63.00	62.00	63.00
UT	60.00	76.00	71.00	66.00	62.00	70.00	75.00
WA	110.00	115.00	115.00	125.00	125.00	120.00	125.00
WI	65.00	50.00	65.00	55.00	85.00	55.00	45.00
WY	74.00	73.00	72.00	66.00	66.00	66.00	66.00
US	67.50	66.50	70.20	72.10	72.00	76.20	79.70

¹ Marketing year: April - May for US; April-March for AZ; May-April for CA, CO, KS, KY, MO, NV, NM, OK, PA, TX and UT; June-May for all other monthly estimated States.

² Second year.

**Prices Received: Peanuts, by State and Month,
for Marketing Years, 2003-2004 and 2004-2005 ¹**

State	Aug	Sep	Oct	Nov	Dec	Jan ²
	2004-2005					
	<i>Dollars per Pound</i>	<i>Dollars per Pound</i>	<i>Dollars per Pound</i>	<i>Dollars per Pound</i>	<i>Dollars per Pound</i>	<i>Dollars per Pound</i>
AL	(³)	(³)	0.184	0.198	0.183	(³)
FL	(³)	(³)	(³)	(³)	(⁴)	(³)
GA	(³)	0.190	0.191	0.199	0.180	0.179
NC	(⁴)	(³)	0.244	0.255	0.188	0.230
TX	(³)	(³)	(³)	(³)	(³)	(³)
VA	(⁴)	(³)	(³)	0.250	0.187	(³)
US	0.190	0.192	0.201	0.203	0.183	0.189
	2003-2004					
AL	(⁴)	0.181	0.184	0.186	0.186	0.201
FL	(⁴)	(³)	(³)	(³)	(³)	(³)
GA	(⁴)	0.182	0.180	0.187	0.190	0.203
NC	(⁴)	(⁴)	(³)	0.192	0.226	0.265
TX	(⁴)	(⁴)	(³)	(³)	(³)	(³)
VA	(⁴)	(⁴)	(³)	(³)	(³)	(³)
US	(⁴)	0.183	0.185	0.184	0.196	0.206

See footnote(s) at end of table.

--continued

**Prices Received: Peanuts, by State and Month,
for Marketing Years, 2003-2004 and 2004-2005**

State	Feb	Mar	Apr	May	Jun	Jul
	2004-2005					
	<i>Dollars per Pound</i>	<i>Dollars per Pound</i>	<i>Dollars per Pound</i>	<i>Dollars per Pound</i>	<i>Dollars per Pound</i>	<i>Dollars per Pound</i>
AL	0.177	0.176	(³)	(³)	(³)	0.154
FL	(³)	(⁴)	(⁴)	(⁴)	(⁴)	(⁴)
GA	0.185	0.176	(³)	(³)	(³)	0.155
NC	0.218	(³)	(³)	0.209	(³)	(³)
TX	(³)	(³)	(³)	(³)	(³)	(³)
VA	(³)	(³)	(³)	0.239	(³)	(³)
US	0.186	0.185	0.180	0.178	0.176	0.160
	2003-2004					
AL	0.141	(³)	(³)	0.179	(³)	(³)
FL	(³)	(³)	(³)	(³)	(³)	(⁴)
GA	0.169	0.172	(³)	0.186	0.197	(³)
NC	0.226	0.249	(³)	(³)	(³)	(⁴)
TX	(³)	(³)	(³)	(³)	(³)	(³)
VA	(³)	(³)	(³)	(³)	0.237	(⁴)
US	0.189	0.186	0.198	0.206	0.203	0.174

¹ Marketing year: August 1 to July 31 for U.S. and all estimating States.

² Second year.

³ Price not published to avoid disclosure of individual firms.

⁴ Insufficient sales to establish a price.

**All Barley: Farm Marketings, Percent of Sales,
by Month and State, 2003-2004 and 2004-2005¹**

State and Marketing Year	Jun	Jul	Aug	Sep	Oct	Nov	Dec	Jan	Feb	Mar	Apr	May	Jun
	Percent												
CA 2004-2005	22	46	10	3	2	1		1	2		1	12	
2003-2004	14	26	24	4	2	2	2	7		2	2	15	
CO 2004-2005		1	23	35	4	8	4	14	1	7	1	1	1
2003-2004			23	26	5	18	5	20	3				
ID 2004-2005		4	22	11	8	9	8	9	4	6	4	5	10
2003-2004		2	21	17	8	8	14	6	3	7	5	5	4
MN 2004-2005		14	17	4	2	8	11	12	10	8	5	4	5
2003-2004		14	15	6	14	3	5	8	9	9	4	5	8
MT 2004-2005		1	14	9	8	6	14	10	10	11	8	5	4
2003-2004		2	23	15	10	7	14	6	7	8	4	2	2
ND 2004-2005		10	9	9	7	6	10	11	11	10	8	4	5
2003-2004		5	18	11	8	7	9	8	8	9	4	2	11
OR 2004-2005		8	15	18	6	10	7	15	5	2	3	3	8
2003-2004		11	29	9	7	5	6	3	17	1	1	9	2
SD 2004-2005		6	4	11	1	10	11	9	15	12	5	8	8
2003-2004		20	18	18	7	7	10		5	7		2	6
UT 2004-2005		2	12	22	4	40	1	4	3	6	2	2	2
2003-2004		38	15	13	6	3	5	1	3	7	5	3	1
WA 2004-2005		3	10	26	22	14	7	7	3	2	2	2	2
2003-2004		2	36	16	10	18	7	2	2	2	1	2	2
WY 2004-2005			61	23	2	7	3	3	1				
2003-2004		8	66	15	2	4	4			1			
US 2004-2005	5.7	6.7	14.9	12.1	7.8	7.6	9.6	9.7	8.1	8.0	5.9	3.9	
2003-2004	2.7	4.7	23.6	14.7	8.6	9.0	10.6	7.0	5.7	6.8	3.6	3.0	

¹ Monthly farm marketings, based on a sample survey, as a percent of total used for calculating marketing year average prices.

**Oats: Farm Marketings, Percent of Sales,
by Month and State, 2003-2004 and 2004-2005 ¹**

State and Marketing Year	May	Jun	Jul	Aug	Sep	Oct	Nov	Dec	Jan	Feb	Mar	Apr	May	Jun
	Percent													
IL 2004-2005			22	22	22	11		1		1	17	1	2	1
2003-2004			27	8	4	25	6	7	2	1	7	8	2	3
IA 2004-2005			30	32	6	7	1	3	2	5	7	3	1	3
2003-2004			39	33	7	3		1	2	3	2	1	5	4
MI 2004-2005			2	28	32	3	2	4	3	4	4	5	4	9
2003-2004			9	55	8	6	2	2	2	2	5	5	1	3
MN 2004-2005			14	44	7	5	1	2	3	5	4	5	2	8
2003-2004			24	30	8	2	3	3	5	4	5	3	7	6
MT 2004-2005			7	9	12		9	28	2	19	2	2	9	1
2003-2004			13	11		5	2	2	7	9	33	11	4	3
NE 2004-2005			23	19	3	1	4	5	13	7	10	8	3	4
2003-2004			42	37	8	2	1	1	3		3			3
ND 2004-2005			18	21	18	3	3	7	7	8	5	3	3	4
2003-2004			6	11	10	8	7	10	13	3	10	15	3	4
OH 2004-2005			25	53	1	4		2	2	4	1	2	4	2
2003-2004			12	35	19	4	2	5	2	5	2	1	4	9
OR 2004-2005				31	17	17	10	8	7	2				8
2003-2004			2	6	5	16	3	23	10	7	16	11	1	
PA 2004-2005			18	20	3	8	2	3	4	10	11	7	8	6
2003-2004			22	52	5	1	1	1	2	4	2	6	2	2
SD 2004-2005			14	18	9	7	5	5	11	9	6	7	4	5
2003-2004			19	19	3	2	1	4	8	7	6	7	6	18
TX 2004-2005	23		13							4				
2003-2004		60	23		11	11								
WI 2004-2005			6	24	22	5	3	3	4	5	10	8	5	5
2003-2004			5	45	10	4	1	3	4	5	5	7	6	5
US 2004-2005		6.9	15.6	26.2	11.4	6.0	3.1	3.9	5.9	6.2	6.4	5.1	3.3	
2003-2004		3.4	20.2	29.8	8.0	4.4	2.4	4.2	6.2	4.2	5.6	6.5	5.1	

¹ Monthly farm marketings, based on a sample survey, as a percent of total used for calculating marketing year average prices.

**All Wheat: Farm Marketings, Percent of Sales,
by Month and State, 2003-2004 and 2004-2005 ¹**

State and Marketing Year	May	Jun	Jul	Aug	Sep	Oct	Nov	Dec	Jan	Feb	Mar	Apr	May	Jun
	Percent													
AR 2004-2005		71	10	5	3	1	2	1	2	2	2		1	
2003-2004		61	34	1			2	1					1	
CA 2004-2005		31	41	2	2	1	1	5	3	7	5	1	1	
2003-2004		10	40	12	6	1	5	5	4	5	1	1	10	
CO 2004-2005			12	8	10	6	10	11	10	14	10	3	2	4
2003-2004			23	14	7	8	10	9	8	5	7	6	2	1
ID 2004-2005			2	9	17	13	8	10	11	8	8	5	5	4
2003-2004			5	14	13	9	7	11	13	8	7	4	4	5
IL 2004-2005		18	36	17	10	1	1	2	4	5	4	1	1	
2003-2004		11	49	16	10	1	1	3	6	1	2			
IN 2004-2005		37	26	7	8	2	1	2	3	4	4	1	5	
2003-2004		17	56	11	3			2	4	2	2	1	2	
KS 2004-2005		13	14	7	10	5	9	11	8	12	7	2	2	
2003-2004		9	40	13	5	6	6	5	5	3	5	2	1	
MI 2004-2005			41	18	10	4	4	3	4	8	4	2	1	1
2003-2004			42	33	5	3	3	3	5	3	3			
MN 2004-2005			6	13	10	6	7	8	10	12	11	5	4	8
2003-2004			7	21	7	5	5	11	11	12	9	4	3	5
MO 2004-2005		30	29	12	7	2	2	2	5	6	3	1	1	
2003-2004		14	47	9	8	3	2	2	7	2	3	1	2	
MT 2004-2005			3	5	9	14	9	12	12	9	8	7	7	5
2003-2004			5	8	6	9	8	13	13	7	9	8	5	9
NE 2004-2005			27	11	13	3	5	6	8	9	7	3	3	5
2003-2004			29	10	10	12	8	7	6	4	5	3	2	4
ND 2004-2005			5	6	12	9	9	10	14	10	9	4	4	8
2003-2004			9	14	11	7	8	11	11	9	9	5	3	3
OH 2004-2005			56	11	9	2	2	3	4	5	5	1	1	1
2003-2004			58	12	11	2	1	2	4	1	2	1		6
OK 2004-2005		19	8	5	8	4	11	8	8	16	7	2	4	
2003-2004		17	19	8	5	8	9	5	7	4	10	2	6	
OR 2004-2005			8	16	15	9	10	8	11	7	7	4	3	2
2003-2004			7	14	12	7	8	10	11	10	8	5	5	3
SD 2004-2005			9	16	14	5	5	7	14	8	8	3	5	6
2003-2004			15	17	6	5	12	12	6	7	8	5	4	3
TX 2004-2005	16	32	15	8	6	3	3	4	6	4	2	1		
2003-2004	6	34	30	6	4	2	4	2	4	1	6	1		
WA 2004-2005			4	13	16	13	12	12	10	7	4	4	3	2
2003-2004			4	13	15	10	13	9	12	7	8	2	3	4
US 2004-2005		10.9	12.4	9.0	11.0	7.0	7.8	8.6	9.7	9.5	7.1	3.4	3.6	
2003-2004		8.5	23.4	12.6	7.9	6.6	7.2	7.5	7.9	5.4	6.6	3.2	3.2	

¹ Monthly farm marketings, based on a sample survey, as a percent of total used for calculating marketing year average prices.

**All Hay: Farm Marketings, Percent of Sales,
by Month and State, 2003-2004 and 2004-2005 ¹**

State and Marketing Year	Apr	May	Jun	Jul	Aug	Sep	Oct	Nov	Dec	Jan	Feb	Mar	Apr	May
	Percent													
AZ 2004-2005	9	10	10	10	9	10	9	7	7	6	6	7		
2003-2004	11	13	10	11	9	8	6	8	5	4	6	9		
CA 2004-2005		12	12	13	13	11	10	6	5	4	4	4	6	
2003-2004		11	13	14	13	11	10	6	5	4	4	4	5	
CO 2004-2005		3	7	11	10	11	11	10	9	9	9	6	4	
2003-2004		3	6	12	9	9	8	7	10	10	15	5	6	
ID 2004-2005			15	13	13	13	8	7	7	6	6	4	4	4
2003-2004			10	10	11	15	10	10	5	7	8	6	5	3
IL 2004-2005			16	13	10	9	5	6	10	9	9	7	4	2
2003-2004			16	12	9	8	5	6	11	9	10	7	4	3
IA 2004-2005			12	5	10	8	8	10	11	10	9	10	4	3
2003-2004			11	13	5	7	5	16	15	11	7	4	3	3
KS 2004-2005		5	10	10	6	8	7	11	15	11	8	5	4	
2003-2004		4	5	5	6	6	7	14	15	13	11	10	4	
KY 2004-2005		5	14	13	7	8	6	7	12	9	9	6	4	
2003-2004		4	11	9	6	7	8	9	10	12	12	8	4	
MI 2004-2005			14	12	9	6	6	8	9	10	9	7	6	4
2003-2004			13	12	11	8	7	8	8	8	8	7	6	4
MN 2004-2005			5	14	11	9	7	8	7	8	10	10	7	4
2003-2004			11	14	12	9	7	7	8	6	8	9	5	4
MO 2004-2005		5	11	11	12	8	6	8	10	11	9	6	3	
2003-2004		4	14	9	11	8	6	8	10	11	10	6	3	
MT 2004-2005			3	12	9	8	11	11	13	10	8	6	4	5
2003-2004			3	7	8	7	9	18	14	11	9	7	4	3
NE 2004-2005			6	9	7	9	11	13	14	10	8	6	4	3
2003-2004			3	5	6	10	12	14	15	11	9	6	5	4
NV 2004-2005		2	8	14	12	13	13	8	8	6	6	7	3	
2003-2004		2	4	9	10	9	8	13	12	9	9	10	5	

See footnote(s) at end of table.

--continued

**All Hay: Farm Marketings, Percent of Sales,
by Month and State, 2003-2004 and 2004-2005 ¹ (continued)**

State and Marketing Year	Apr	May	Jun	Jul	Aug	Sep	Oct	Nov	Dec	Jan	Feb	Mar	Apr	May
	Percent													
NM 2004-2005		15	18	19	14	12	10	2	3	2	2	2	1	
2003-2004		15	18	19	14	12	10	2	3	2	2	2	1	
NY 2004-2005			8	7	8	6	8	8	9	12	8	17	6	3
2003-2004			7	10	4	3	4	10	13	13	11	11	8	6
ND 2004-2005			4	8	6	12	16	17	10	8	6	7	4	2
2003-2004			2	3	6	8	11	16	11	11	11	10	7	4
OH 2004-2005			17	12	10	8	5	8	9	8	9	6	4	4
2003-2004			19	16	11	10	7	6	7	7	6	5	3	3
OK 2004-2005		6	11	15	14	10	7	6	7	8	6	5	5	
2003-2004		8	13	17	16	10	7	5	7	6	4	4	3	
OR 2004-2005			10	11	9	10	9	10	9	8	8	7	5	4
2003-2004			12	12	10	10	10	9	9	7	7	6	4	4
PA 2004-2005		3	9	12	7	12	10	8	9	9	9	6	6	
2003-2004		5	9	10	5	5	5	6	7	15	14	11	8	
SD 2004-2005			7	8	9	9	11	11	9	8	10	8	6	4
2003-2004			3	3	4	6	7	11	8	17	16	13	7	5
TX 2004-2005		6	10	10	10	10	10	10	10	10	6	5	3	
2003-2004		1	1	1	13	13	11	13	14	12	9	7	5	
UT 2004-2005		4	10	12	12	10	10	9	9	6	6	6	6	
2003-2004		4	12	10	10	10	9	9	9	7	7	7	6	
WA 2004-2005			9	12	11	11	10	10	8	7	6	6	5	5
2003-2004			12	12	10	10	8	8	8	8	6	7	5	6
WI 2004-2005			19	18	12	8	6	6	4	7	7	6	5	2
2003-2004			15	11	11	7	5	8	11	7	7	7	6	5
WY 2004-2005			7	7	10	13	13	16	9	8	6	6	4	1
2003-2004			3	7	11	12	12	18	9	10	6	6	4	2
US 2004-2005	0.4	4.6	10.4	11.6	10.4	10.2	9.3	8.5	8.5	7.5	6.8	5.9	4.5	1.4
2003-2004	0.5	4.0	9.8	10.5	9.9	9.5	8.5	9.2	8.8	8.4	8.0	6.6	4.6	1.7

¹ Monthly farm marketings, based on a sample survey, as a percent of total used for calculating marketing year average prices.

**Peanuts: Farm Marketings, Percent of Sales, by Month
and State, 2003-2004 and 2004-2005¹**

State and Marketing Year	Aug	Sep	Oct	Nov	Dec	Jan	Feb	Mar	Apr	May	Jun	Jul
	Percent											
AL 2004-2005 2003-2004	0.3	3.9 3.0	11.5 18.0	12.8 8.0	6.3 13.0	4.9 11.0	15.0 11.0	22.4 8.0	14.7 7.0	4.7 11.0	1.1 8.0	2.4 2.0
FL 2004-2005 2003-2004	0.8	6.7 16.0	11.6 10.0	12.5 1.0	7.9 8.0	1.5 11.0	31.3 18.0	8.6 10.0	6.9 24.0		12.2 2.0	
GA 2004-2005 2003-2004	0.5	8.6 5.0	20.0 14.0	13.1 11.0	12.0 10.0	13.2 8.0	10.2 15.0	9.1 9.0	6.5 12.0	1.6 6.0	2.2 9.0	3.0 1.0
NM 2004-2005 ² 2003-2004 ²												
NC 2004-2005 2003-2004		2.1	14.0 4.0	10.5 13.0	30.3 14.0	8.9 10.0	9.0 33.0	8.5 8.0	5.2 9.0	4.9 6.0	4.6 3.0	2.0
OK 2004-2005 ² 2003-2004 ²												
SC 2004-2005 ² 2003-2004 ²												
TX 2004-2005 2003-2004	0.7	1.2	12.8 12.0	19.3 10.0	9.9 7.0	7.7 12.0	11.4 16.0	14.1 11.0	9.6 19.0	4.3 7.0	1.6 5.0	7.4 1.0
VA 2004-2005 2003-2004		0.5	14.0 19.0	9.4 11.0	27.8 16.0	0.6 1.0	5.3 4.0	6.4 2.0	7.2 20.0	19.8 18.0	5.9 9.0	3.1
US 2004-2005 2003-2004	0.4	5.5 3.7	15.9 13.2	13.7 9.7	12.9 10.0	9.3 9.7	12.5 16.3	12.0 9.3	8.3 13.3	3.2 6.7	3.0 7.0	3.3 1.1

¹ Monthly farm marketings, based on a sample survey, as a percent of total used for calculating marketing year average prices.

² Sales by month not available.

Reliability of Prices Received Estimates

Definition: Prices received represent sales from producers to first buyers. They include all grades and qualities. The average commodity price from the survey multiplied by the total quantity marketed theoretically should give the total cash receipts for the commodity.

Survey Procedures: Primary sales data used to determine grain prices were obtained from probability samples of about 2000 mills and elevators. These procedures ensure that virtually all grain moving into commercial channels has a chance of being included in the survey. Generally, States surveyed account for 90 percent or more of total U.S. production. Livestock prices are obtained from packers, stockyards, auctions, dealers, and market check data from AMS-USDA, private marketing organizations, and state commodity groups and agencies. Inter-farm sales of grain and livestock are not included since they represent very small percentages of the total marketings. Grain marketed for seed is also excluded. Fruit and vegetable prices are obtained from sample surveys and market check data from AMS-USDA, private marketing organizations, state agencies, and universities.

Summary and Estimation Procedures: Survey quantities sold are expanded by strata to state levels and used to weight average strata prices to a state average. State prices are then weighted to a U.S. price based on expanded marketings. Recommendations are prepared by the State Statistical Offices and reviewed by the Agricultural Statistics Board in Washington, D.C. State recommendations are reviewed for reasonableness with survey data, other States, and recent historic estimates.

Revisions: For most items, the current month's preliminary price represents a 3-5 day period around the 15th of the month. Previous month's prices represent actual dollars received for quantities sold during the entire month. Revisions are published in monthly issues of *Agricultural Prices*.

Reliability: U.S. price estimates based on probability surveys generally have a sampling error of less than one percent for the major commodities such as corn, wheat, soybeans, cotton, and rice. Current methods of summarization for non-probability commodities are not designed directly to calculate sampling errors. However, analytical measures approximate the U.S. relative sampling errors at around five percent. Any nonsampling errors are attributed to such things as the inability to obtain correct information, differences in interpreting questions or definitions, mistakes in coding or processing the data, etc. Efforts are made at each step in the survey process to minimize these nonsampling errors.

Prices Paid by Farmers

The August Index of Prices Paid for Commodities and Services, Interest, Taxes, and Farm Wage Rates (PPITW), at 141 (1990-92=100), is unchanged from July 2005 but up 4.4 percent from August 2004.

PRODUCTION INDEX: The August index, at 140, is unchanged from last month but 5.3 percent above last year. Higher prices in August for feed concentrates, diesel fuel, and complete feeds offset lower prices for feeder cattle, feed grains, and feeder pigs.

Feed: The August index, at 126, increased 2.4 percent from July and 5.9 percent above last August. Since July, higher prices for feed concentrates, complete feeds, and feed supplements more than offset lower prices for feed grains and hay & forages.

Livestock & Poultry: The August index for livestock & poultry purchases, at 133, decreased 2.2 percent from last month and 2.9 percent below last August. Since July, lower prices for feeder cattle and feeder pigs account for the decrease in the index. The August feeder cattle price, at \$113.90 per cwt, is down \$2.00 per cwt from the July price. August feeder pigs averaged \$101.00 per cwt, down \$5.00 per cwt from July.

Fertilizer: The August index, at 161, is up 0.6 percent from July and 13 percent above August a year ago. Since July, higher prices for mixed fertilizers and potash & phosphate materials account for the increase.

Agricultural Chemicals: The August index, at 120, is unchanged from July and last August.

Fuels: The August index, at 236, is up 5.4 percent from a month earlier and 39 percent higher than August 2004. Compared with last month, prices are higher for all fuel subcomponents.

Farm Machinery: The August index, at 171, is unchanged from July but up 6.2 percent from last August. Since July, slightly higher prices for self-propelled machinery offset lower prices for tractors.

CONSUMER PRICE INDEX: The July 2005 Consumer Price Index for all urban consumers (CPI-U) increased 0.5 percent before seasonal adjustment to a level of 195.4 (1982-84=100). This compares with the June index of 194.5. For the 12-month period ending in July, the overall index has increased 3.2 percent.

**Indexes of Prices Paid by Farmers and Related Parity Ratios
United States, August 2005 With Comparisons**

Indexes and Ratios	1910-14 = 100			1990-92 = 100		
	2004	2005		2004	2005	
	Aug	Jul	Aug	Aug	Jul	Aug
Prices Paid by Farmers for Commodities & Services, Interest, Taxes, & Wage Rates (PPITW)	1,797	*1,873	1,878	135	*141	141
Production	1,287	*1,356	1,362	133	140	140
Feed	582	*602	614	119	*123	126
Livestock & Poultry	1,754	1,733	1,704	137	136	133
Seeds	1,564	1,694	1,694	158	171	171
Fertilizer	519	*586	589	142	160	161
Agricultural Chemicals	742	741	741	120	120	120
Fuels	1,315	*1,732	1,823	170	*224	236
Farm Supplies & Repairs	976	*1,017	1,017	137	143	143
Autos & Trucks	2,969	*2,991	2,941	112	*112	111
Farm Machinery	4,047	*4,293	4,293	161	171	171
Building Materials	1,856	*1,914	1,911	137	*141	141
Farm Services & Rent	1,470	*1,511	1,511			
Farm Services				125	129	129
Rent				120	123	123
Interest ¹	2,593	2,643	2,643	103	105	105
Taxes ²	3,474	3,542	3,542	130	132	132
Wage Rates	6,074	*6,067	6,067	162	*162	162
Production, Interest, Taxes, & Wage Rates (PITW)	1,796	*1,877	1,883	134	140	140
Family Living-CPI ³	1,800	*1,856	1,856	141	*145	145
Ratio (Received/Paid)				89	*84	83
Parity Ratio ⁴	43	40	39			
Parity Ratio Adjusted ⁵	45	*44	44			
PPITW Adjusted for Productivity ⁶	1,223	*1,237	1,238			
Crop Sector (PPITW)				137	*144	144
Livestock Sector (PPITW)				133	*138	138
Farm Sector (Production)				131	135	136
Non-Farm Sector (Production)				133	142	143

* Revised.

¹ Interest per acre on farm real estate debt and interest rate on farm non-real estate debt.

² Farm real estate taxes payable per acre.

³ Bureau of Labor Statistics, Consumer Price Index for all urban consumers (CPI-U), for the previous month converted by the USDA.

⁴ Ratio of index of prices received to PPITW (1910-14=100).

⁵ Based on estimated cash receipts, from marketings and government payments, the preliminary adjustment factor is 1.105 for 2005 and the revised factor is 1.048 for 2004.

⁶ PPITW is adjusted based on productivity trend for the prior 15 years.

**Prices Paid Indexes and Annual Weights for Input Components and
Sub-Components United States, August 2005 With Comparisons**

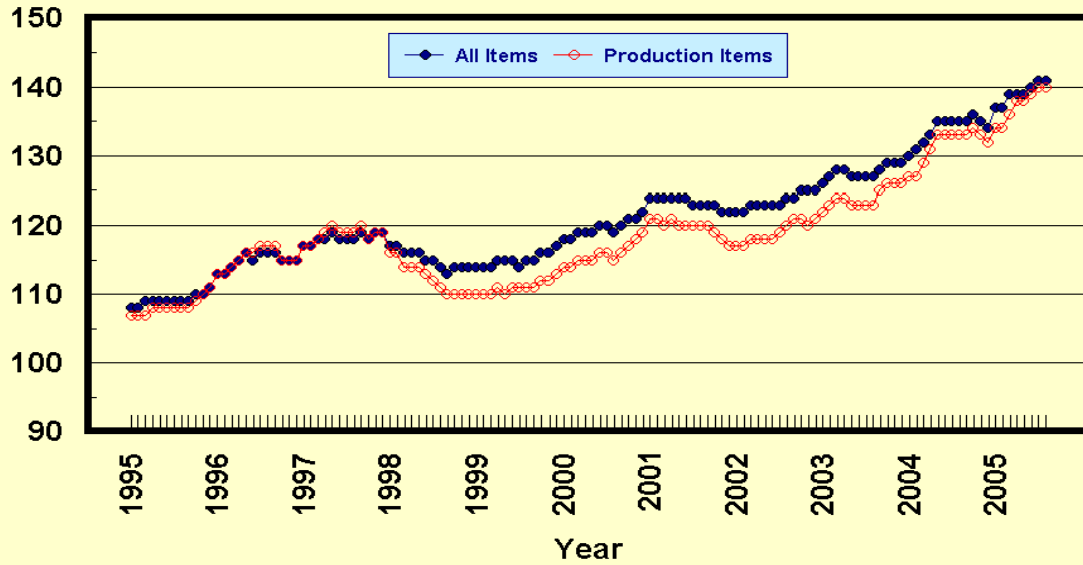
Index	Relative Weights 5-Year Moving Average ¹		Input Indexes		
	2004	2005	2004	2005	
	<i>Percent</i>	<i>Percent</i>	Aug <i>(1990-92=100)</i>	Jul <i>(1990-92=100)</i>	Aug <i>(1990-92=100)</i>
Production Items	66.2	66.4	133	140	140
Feed	10.7	10.7	119	*123	126
Feed Grains	1.5	1.5	101	*93	85
Complete Feeds	5.2	5.2	124	121	124
Hay/Forages	1.3	1.3	115	127	127
Concentrates	1.7	1.7	118	*144	157
Supplements	0.9	0.9	130	*142	146
Livestock & Poultry	7.4	7.7	137	136	133
Feeder Cattle	5.8	6.0	141	137	135
Feeder Pigs	0.6	0.6	108	115	110
Milk Cow Replacements	0.6	0.6	152	162	162
Poultry	0.4	0.5	110	110	110
Seeds	3.3	3.5	158	171	171
Field Crops	3.0	3.2	163	177	177
Grasses/Legumes	0.3	0.3	111	118	118
Fertilizer	4.4	4.3	142	160	161
Mixed Fertilizer	1.9	1.9	124	*136	138
Nitrogen	1.8	1.8	165	*185	183
Potash & Phosphate	0.6	0.6	128	*161	165
Agricultural Chemicals	3.7	3.6	120	120	120
Herbicides	2.4	2.3	114	113	113
Insecticides	0.9	0.8	139	139	139
Fungicides/Other	0.5	0.5	118	119	119
Fuels	2.7	2.7	170	*224	236
Diesel	1.5	1.6	171	*242	252
Gasoline	0.8	0.8	156	*208	223
LP Gas	0.4	0.4	199	*186	196
Farm Supplies & Repairs	5.4	5.2	137	143	143
Supplies	1.8	1.7	127	132	132
Repairs	3.6	3.5	143	*149	149
Autos & Trucks	1.8	1.8	112	*112	111
Autos	0.2	0.2	106	*107	106
Trucks	1.6	1.5	113	*113	111
Farm Machinery	4.0	4.0	161	171	171
Tractors	0.9	0.9	148	*155	154
Self-Propelled	1.6	1.6	167	176	177
Other Machinery	1.5	1.5	163	175	175
Building Materials	3.3	3.6	137	*141	141
Farm Services	12.4	12.4	125	129	129
Custom Rates	1.3	1.3	125	125	125
Other Services	11.1	11.1	125	130	130
Rent	7.1	6.9	120	123	123
Cash	3.8	3.7	145	147	147
Share	3.3	3.2	91	94	94
Interest	4.7	4.5	103	105	105
Taxes	3.0	2.9	130	132	132
Wage Rates	7.6	7.6	162	*162	162
Family Living-CPI	18.5	18.6	141	*145	145

* Revised.

¹ Weights may not add due to rounding.

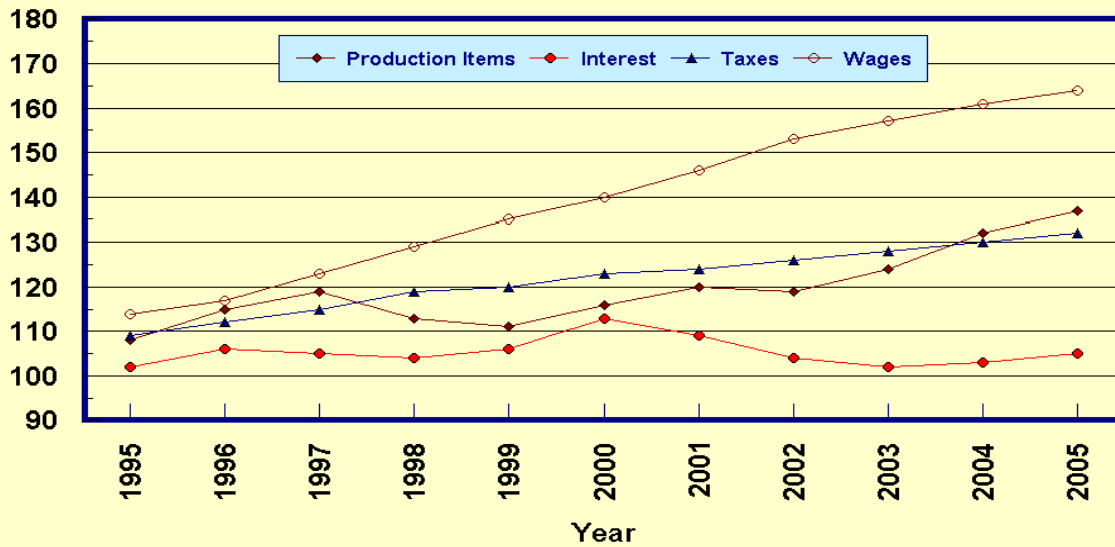
Prices Paid by Farmers, Major Indexes US, by Quarter and Month

Percent (1990-92=100)



Prices Paid by Farmers, Major Indexes US, Annual Averages 1/

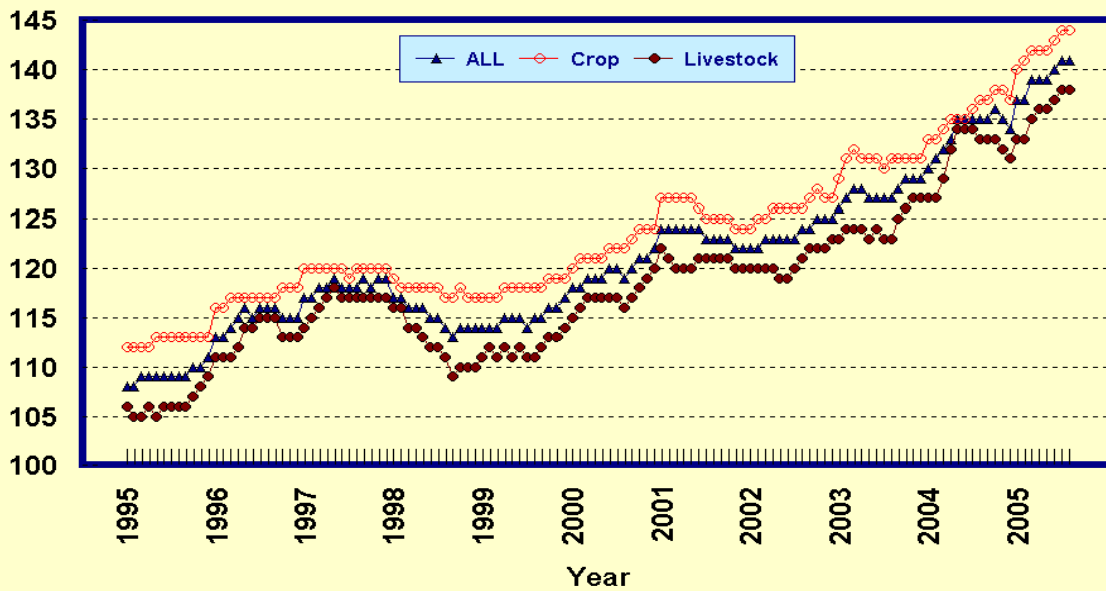
Percent (1990-92=100)



1/ Index values for 2005 are year-to-date averages.

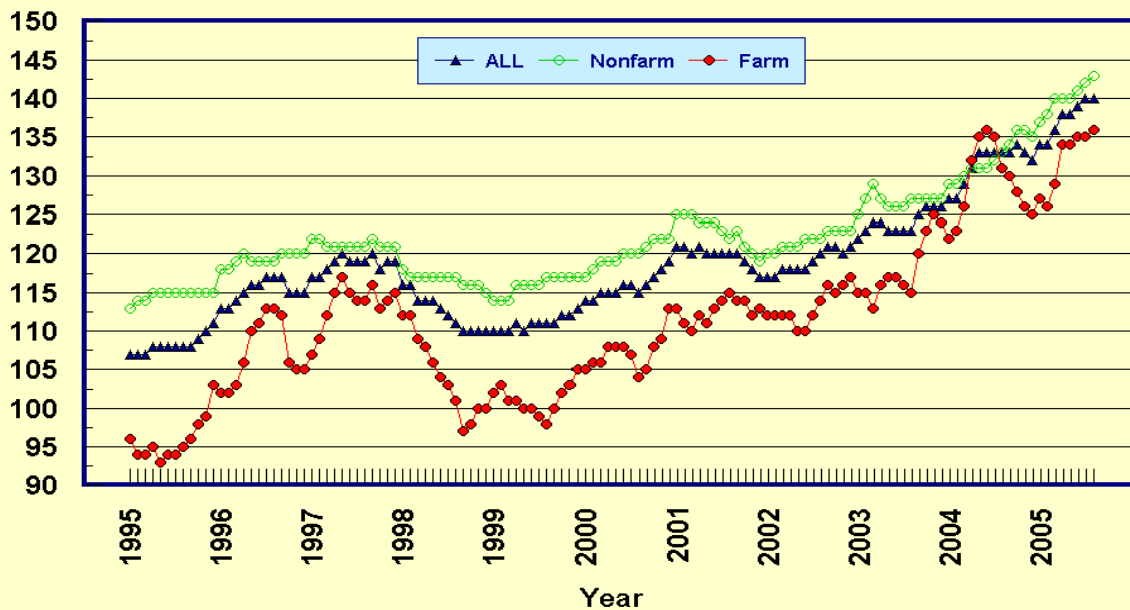
Prices Paid by Farmers, Indexes, All Items US, By Farm Type

Percent (1990-92=100)



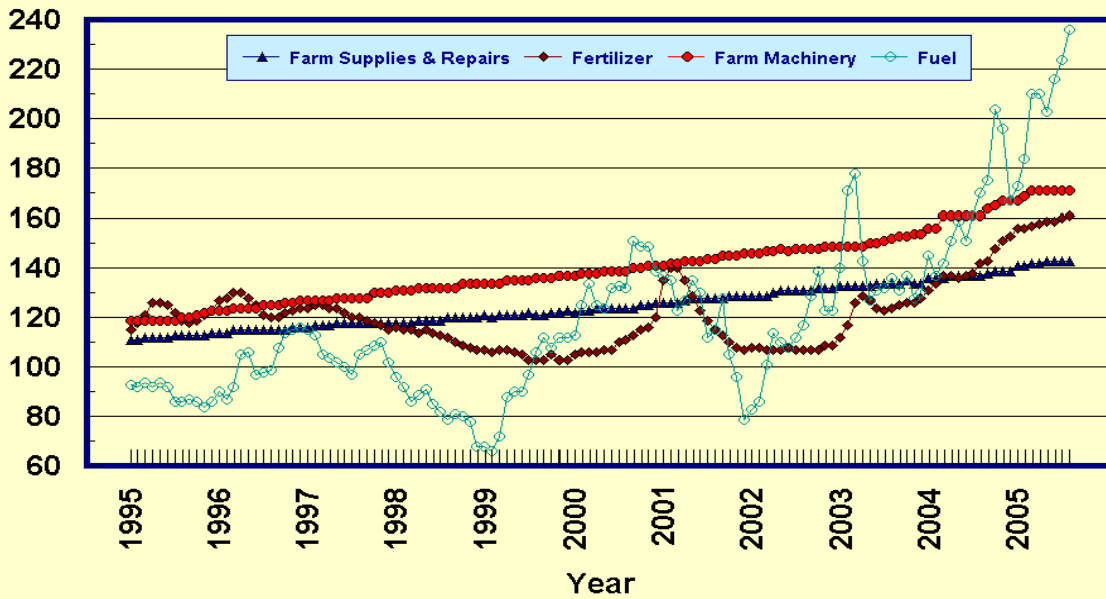
Prices Paid by Farmers, Indexes, All Production Items US, By Sector Origin

Percent (1990-92=100)



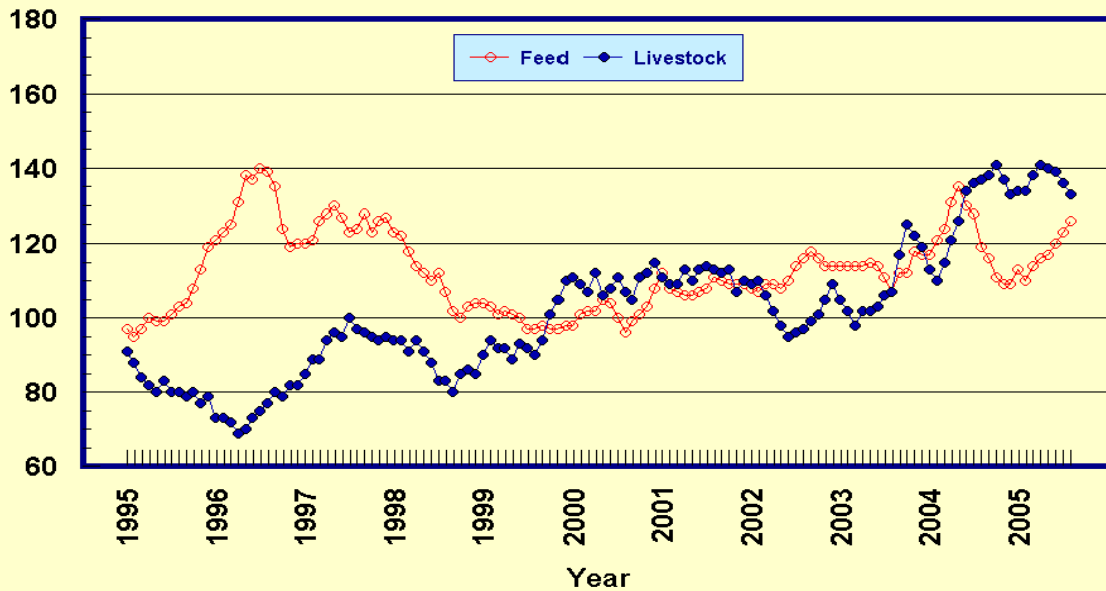
Prices Paid by Farmers, Selected Production Indexes US, By Non-Farm Sector

Percent (1990-92=100)



Prices Paid by Farmers, Selected Production Indexes US, By Farm Sector

Percent (1990-92=100)



Feed Price Ratios: United States, August 2005 with Comparisons

Feed Price Ratio ¹	2004	2005	
	Aug	Jul	Aug
Broiler-Feed: Pounds of Broiler Grower Feed equal in value to 1 pound of broiler, live weight	6.4	*6.4	7.1
Market Egg Feed: Pounds of Laying Feed equal in Value to 1 dozen eggs	5.6	*5.8	5.1
Hog-Corn: Bushels of Corn equal in value to 100 pounds of hog, live weight	23.6	*23.6	26.5
Milk-Feed: Pounds of 16% Mixed Dairy Feed equal in value to 1 pound of Whole Milk	2.93	*2.93	3.08
Steer & Heifer-Corn: Bushels of Corn equal in value to 100 pounds of Steer & Heifers, live weight	38.9	*41.9	46.6
Turkey-Feed: Pounds of Turkey Grower equal in value to 1 pound of Turkey, live weight	7.0	*7.3	8.2

* Revised.

¹ Effective January 1995, prices of commercial prepared feeds are based on current U.S. prices received for corn, soybeans, alfalfa hay, and all wheat.

**Prices Used to Calculate Feed Price Ratios:
United States, August 2005 with Comparisons**

Commodity	Unit	2004	2005	
		Aug	Jul	Aug
Broilers, Live	Lb	0.460	0.440	0.440
Eggs, Market	Doz	0.337	0.326	0.257
Hogs, All	Cwt	55.30	*49.80	50.00
Milk, All	Cwt	14.90	14.80	14.70
Steers and Heifers	Cwt	91.00	*88.40	88.00
Turkeys, Live	Lb	0.451	0.450	0.469
Corn	Bu	2.34	*2.11	1.89
Hay, Alfalfa, Baled	Ton	99.30	109.00	109.00
Soybeans	Bu	6.83	*6.65	6.09
Wheat, All	Bu	3.27	*3.20	3.21

* Revised.

**Feeder Livestock: Prices Paid, United States
August 2005 with Comparisons**

Commodity	Unit	2004	2005	
		Aug	Jul	Aug
		<i>Dollars</i>	<i>Dollars</i>	<i>Dollars</i>
Feeders and Stockers				
Cattle and Calves	Cwt	119.20	115.90	113.90
Feeder Pigs	Cwt	99.00	106.00	101.00

Prices Paid by Farmers

Definition: Prices paid by farmers represent the average costs of inputs purchased by farmers and ranchers to produce agricultural commodities. Conceptually, the average price when multiplied by quantity purchased should equal total producer expenditures for the item.

Survey Procedures: The prices paid data are obtained from establishments that sell goods and services to farmers and ranchers. Annually, about 8,500 firms are randomly selected from lists by type of item sold with an average response rate in the range of 75-80 percent. Firms are asked to report the price for the specified item "most commonly bought by farmers" or that was the "volume seller". Approximately 135 items are surveyed each April to represent all production input items purchased. The survey reference period for most items is the 5 business days centered around the 15th of the month. Separate prices paid surveys are conducted for, agricultural chemicals, fuels, feed, fertilizer, machinery, and seed.

Summary and Estimation Procedures: The annual April Prices Paid Survey is summarized as a nonprobability survey. Average prices reported are aggregated to the region and U.S. level using weights available from expenditure data and other administrative sources. Price recommendations are prepared by the State Statistical Offices and Headquarters for review by the Agricultural Statistics Board in Washington, D.C. Also, the change in price level for individual items surveyed are combined to the regional and U.S. levels, and are published as prices paid indexes referenced to a specific base period. Prices paid indexes for new autos and trucks, building materials, farm supplies, motor supplies, and marketing containers are updated based on price changes measured in selected Bureau of Labor Statistics (BLS) indexes.

Revisions: Any revisions are published in the monthly and in annual issues of *Agricultural Prices*. The basis for revision must be supported by additional data that directly affect the level of the estimate. More revisions are likely in April when separate prices paid surveys are conducted, in lieu of BLS indexes, by the USDA to measure price change.

Reliability: Current methods of summarization in April are not designed directly to calculate sampling errors. However, analytical measures approximate the U.S. relative sampling errors for major items around 10 percent. Any nonsampling errors are attributed to such things as the inability to obtain correct information, differences in interpreting questions or definitions, mistakes in coding or processing the data, etc. Efforts are made at each step in the survey process to minimize these nonsampling errors.

Program Change: Effective January 1, 1995, the National Agricultural Statistics Service updated the weights and changed the construction of its prices paid and received by farmers indexes. A Federal Register Notice dated October 28, 1994 discussed these program modifications.

A 1990-92 reference and base period replaced the 1977 reference and 1971-73 base weight period. Five-year moving average weights replaced the current fixed 1971-73 base period weights. The 1910-14=100 price indexes, required by statute for computing parity prices, were linked forward based on the changes in the new 1990-92=100 indexes. The new indexes were constructed by multiplying the ratios of the current prices to the base period prices by the moving average weights (adjusted for seasonal marketing patterns for the prices received indexes).

Information Contacts

General questions should be directed to Linda Hutton, Chief, Environmental, Economics and Demographics Branch at (202) 720-6146. Below are the commodity specialists to contact for additional information.

Crop Prices Received

Joe Prusacki Chief, Crops Branch	(202) 720-2127
Greg Thessen, Field Crops Section	(202) 720-2127
Scott Cox - Wheat, Rye	(202) 720-8068
Ty Kalas - Corn, Proso Millet, Flaxseed	(202) 720-9526
Troy Joshua - Cotton, Cottonseed	(202) 720-5944
Travis Thorson - Hay, Oats, Sorghum	(202) 690-3234
Jason Lamprecht - Soybeans, Sunflower, Other Oilseeds	(202) 720-7369
Dennis Koong - Peanuts, Rice	(202) 720-7688
Brian Young - Sugarcane, Sugarbeets, Barley	(202) 720-7621
Jim Smith, Fruit and Vegetable Section	(202) 720-2127
Debbie Flippin - Peaches, Pears, Hops, Pulses, Mint	(202) 720-3250
Jorge Garcia-Pratts - Citrus	(202) 720-5412
Terry O'Connor - Apples, Apricots, Cherries, Cranberries, Plums, Prunes	(202) 720-4288
Leslie Colburn - Grapes, Tobacco	(202) 720-7235
Cathy Scherrer, Potatoes, Dry Edible Beans, Sweet Potatoes	(202) 720-4285
Biz Wallingsford - Vegetables, Onions, Strawberries	(202) 720-2157

Livestock Prices Received

Dan Kerestes, Chief, Livestock Branch	(202) 720-3570
Bill Weaver, Livestock Section	(202) 720-3570
Scott Hollis - Sheep, Lambs, Wool, Mohair	(202) 720-4751
Ann Summa - Milk, Milk Cows	(202) 720-3278
Bruce Boess - Hogs	(202) 720-3106
Mike Miller - Cattle	(202) 720-3040
Wilbert Hundl, Poultry and Specialty Commodities Section	(202) 720-3570
John Lange - Turkeys	(202) 720-0585
Sharyn Lavender - Eggs	(202) 720-3244
Jody Roberts - Broilers	(202) 690-8632

Indexes, Prices Paid, and Parity Prices

Linda Hutton, Chief, Environmental, Economics and Demographics Branch	(202) 720-6146
Kevin Hintzman, Economics Section	(202) 720-6146
Eric Barnes - Farm Supplies and Repairs, Farm Machinery, Fuels, Feeder Livestock, Poultry Chicks, Feed Price Ratios, Grazing Fees, Autos & Trucks	(202) 690-4752
Daryl Brinkman - Prices Received Indexes, Parity Prices	(202) 720-8844
Tara Jackson - Prices Paid Indexes, Prices Paid for Feed, Fertilizer, Agricultural Chemicals, Seeds	(202) 690-3229

ACCESS TO REPORTS!!

For your convenience, there are several ways to obtain NASS reports, data products, and services:

INTERNET ACCESS

All NASS reports are available free of charge on the worldwide Internet. For access, connect to the Internet and go to the NASS Home Page at: www.usda.gov/nass/. Select "Today's Reports" or Publications and then Reports Calendar or Publications and then Search, by Title or Subject.

E-MAIL SUBSCRIPTION

All NASS reports are available by subscription free of charge direct to your e-mail address. Starting with the NASS Home Page at www.usda.gov/nass/, click on **Publications**, then click on the **Subscribe by E-mail** button which takes you to the page describing e-mail delivery of reports. Finally, click on **Go to the Subscription Page** and follow the instructions.

PRINTED REPORTS OR DATA PRODUCTS

CALL OUR TOLL-FREE ORDER DESK: 800-999-6779 (U.S. and Canada)
Other areas, please call 703-605-6220 FAX: 703-605-6900
(Visa, MasterCard, check, or money order acceptable for payment.)

ASSISTANCE

For **assistance** with general agricultural statistics or further information about NASS or its products or services, contact the **Agricultural Statistics Hotline** at **800-727-9540**, 7:30 a.m. to 4:00 p.m. ET, or e-mail: nass@nass.usda.gov.

The U.S. Department of Agriculture (USDA) prohibits discrimination in all its programs and activities on the basis of race, color, national origin, age, disability, and where applicable, sex, marital status, familial status, parental status, religion, sexual orientation, genetic information, political beliefs, reprisal, or because all or part of an individual's income is derived from any public assistance program. (Not all prohibited bases apply to all programs.) Persons with disabilities who require alternative means for communication of program information (Braille, large print, audiotape, etc.) should contact USDA's TARGET Center at (202) 720-2600 (voice and TDD).

To file a complaint of discrimination, write to USDA, Director, Office of Civil Rights, 1400 Independence Avenue, S.W., Washington, D.C. 20250-9410, or call (800) 795-3272 (voice) or (202) 720-6382 (TDD). USDA is an equal opportunity provider and employer.