



NASS

FACT FINDERS FOR AGRICULTURE
UNITED STATES DEPARTMENT OF AGRICULTURE

Washington, D.C.

Agricultural Prices

Released September 29, 2005, by the National Agricultural Statistics Service (NASS), Agricultural Statistics Board, U.S. Department of Agriculture. For information on *Agricultural Prices* see page 42, office hours 7:30 a.m. to 4:00 p.m. ET.

September Farm Prices Received Index Decreased 1 Point From Last Month

The preliminary All Farm Products Index of Prices Received by Farmers in September, at 116, based on 1990-92=100, decreased 1 point (0.9 percent) from August. The Crop Index is down 5 points (4.3 percent) but the Livestock Index increased 4 points (3.4 percent). Producers received lower commodity prices for corn, soybeans, hogs, onions, and potatoes. Higher prices were received for cattle, eggs, broilers, sweet corn, and tomatoes. The overall index is also affected by the seasonal change based on a 3-year average mix of commodities producers sell. Decreased average marketings of cattle, broilers, grapes, wheat, and dairy offset increased marketings of soybeans, peanuts, potatoes, corn, and apples.

Preliminary All Farm Products Index is unchanged from September 2004. The Food Commodities Index, at 121, increased 1 point (0.8 percent) from last month and 2 points (1.7 percent) from September 2004.

Prices Paid Index Up

The September Index of Prices Paid for Commodities and Services, Interest, Taxes, and Farm Wage Rates (PPITW) is 142 percent of the 1990-92 average. The index increased 1 point from August and is 7 points (5.2 percent) above September 2004. Higher prices for diesel fuel, feeder cattle, gasoline, and LP gas more than offset lower prices in September for feed concentrates, feed grains, feed supplements, and nitrogen fertilizers.

Index Summary Table

Index 1990-92=100	2004		2005	
	Aug	Sep	Aug	Sep
Prices Received	120	116	117	116
Prices Paid	135	135	141	142
Ratio ¹	89	86	83	82

¹ Ratio of index of prices received by farmers to index of prices paid by farmers.

Prices Received by Farmers

The September All Farm Products Index is 116 percent of its 1990-92 base, down 0.9 percent from the August index but unchanged from the September 2004 index.

ALL CROPS: The September index is 111, down 4.3 percent from August and 1.8 percent below September 2004. From August, index decreases for oil-bearing crops, feed grains & hay, and potatoes & dry beans more than offset the index increases for cotton, vegetables, and fruit.

Food Grains: The September index, at 110, is 1.9 percent above the previous month but 3.5 percent below a year ago. The September all wheat price, at \$3.34 per bushel, is up 10 cents from August but down 2 cents from September 2004.

Feed Grains & Hay: The September index is 89, down 11 percent from last month and 12 percent below a year ago. The corn price, at \$1.73 per bushel, is down 22 cents from last month and 47 cents below September 2004. The all hay price, at \$99.00 per ton, is down 70 cents from August but up \$7.60 from last September. Grain sorghum, at \$3.13 per cwt, is 56 cents below August and down 44 cents from September last year.

Oil-Bearing Crops: The September index, at 89, is down 18 percent from August and 6.3 percent lower than September 2004. The soybean price, at \$5.41 per bushel, decreased 74 cents from August and 42 cents from September 2004.

Cotton: The September index, at 78, is up 13 percent from August but 3.7 percent below last year. The September price, at 47.4 cents per pound, is up 5.3 cents from the previous month but 1.9 cents below last September.

Potatoes & Dry Beans: The September index, at 109, is down 6.8 percent from last month but 12 percent above September 2004. The all potato price, at \$6.40 per cwt, is down 44 cents from August but up \$1.08 from last September. The all dry bean price, at \$20.20 per cwt, is down \$1.10 from the previous month and \$2.70 from September 2004.

Fruits & Nuts: The September index, at 153, is up 3.4 percent from August and 4.8 percent higher than a year ago. Price increases for grapes, apples, and strawberries more than offset price decreases for peaches, lemons, and oranges.

Commercial Vegetables: The September index, at 138, is up 8.7 percent from last month and 1.5 percent above September 2004. Price increases during September for sweet corn, tomatoes, and cucumbers more than offset price declines for onions.

LIVESTOCK & PRODUCTS: The September index, at 121, is 3.4 percent above last month and up 2.5 percent from September 2004. Compared with a year ago, prices are higher for cattle, broilers, eggs, calves, and turkeys but lower for dairy and hogs.

Meat Animals: The September index, at 118, is up 1.7 percent last month but 0.8 percent lower than last year. The September hog price, at \$48.80 per cwt, is down \$2.20 from August and \$6.00 lower than a year ago. The September beef cattle price of \$87.50 is up \$3.00 from last month and \$1.60 higher than September 2004.

Dairy Products: The September index, at 116, is up 2.7 percent from last month but 2.5 percent lower than last September. The September all milk price of \$15.10 is up 30 cents from last month but down 40 cents from September 2004. The fluid grade milk price is up 30 cents and the manufactured grade milk price is up 50 cents from the previous month.

Poultry & Eggs: The September index, at 134, is up 7.2 percent from August and 15 percent above a year ago. September market egg prices, at 46.5 cents per dozen, increased 20.7 cents from August. The September broiler price, at 46.0 cents per pound, was up 2.0 cents from August and 6.0 cents above a year ago. The September turkey price, averaging 50.7 cents per pound, is up 3.8 cents from the previous month and 4.5 cents from a year earlier.

Table of Contents

U.S. Prices Received and Indexes	Page	Monthly State Prices, continued	Page
Narrative	2	Cotton	17
Price Indexes	5	Cottonseed	17
Price Index Charts	6	Eggs	20
U.S. Prices Received Summary	8	Flaxseed	16
Charts	10	Hay	17
Selected Commodities	14	Hogs, All	19
Upland Cotton & Rice Marketings	17	Barrows and Gilts	19
Parity Prices	22	Sows	19
Reliability Statement	33	Milk	21
		Milk Cows	21
		Oats	15
Monthly State Prices Received		Peanuts	16
Apples	17	Potatoes	18
Barley	15	Sheep	20
Beans, Dry Edible	16	Lambs	20
Beef Cattle, All	19	Sorghum, Grain	15
Calves	19	Soybeans	15
Cows, Beef	19	Sunflower, All	16
Steers and Heifers	19	Tobacco	16
Citrus Fruit	18	Wheat, All Classes	14
Corn	15		
Prices Received Special Features			Page
Marketing Year for Specified Commodities			24
Marketing Year Average Prices			
Citrus		see September 2005 Citrus Fruits	
		http://usda.mannlib.cornell.edu/reports/nassr/fruit/zcf-bb/	
Potatoes		see Potatoes 2004 Summary - September 2005	
		http://usda.mannlib.cornell.edu/reports/nassr/field/ppo-bbp/	
Sorghum			27
Soybeans			29
Monthly Prices Received, Monthly Farm Marketings, and Marketing Year Average Prices			
Austrian Winter Peas			26
Corn			26
Dry Edible Peas			25
Lentils			25
Monthly Prices			
Citrus		see September 2005 Citrus Fruits	
		http://usda.mannlib.cornell.edu/reports/nassr/fruit/zcf-bb/	
Potatoes		see Potatoes 2004 Summary - September 2005	
		http://usda.mannlib.cornell.edu/reports/nassr/field/ppo-bbp/	
Sorghum			28
Soybeans			30
Monthly Farm Marketing Percentages			
Sorghum			27
Soybeans			32

Table of Contents (continued)

U.S. Prices Paid, Prices Paid Indexes and Ratios	Page
Narrative	34
Indexes and Parity Ratios	35
Charts	37
Feed Price Ratios	40
Reliability Statement	41
U.S. Average Prices	
Prices Used to Calculate Feed Price Ratios	40
Feeder Livestock	40
Information Contacts	42

**Index Numbers of Prices Received, United States,
September 2005, with Comparisons**

Index	1910-14=100				1990-92=100		
	Average 1990-92	2004	2005		2004	2005	
		Sep	Aug	Sep	Sep	Aug	Sep
All Farm Products	639	735	*742	766	116	117	116
All Crops	500	560	*573	573	113	116	111
Food Grains	325	364	*342	350	114	*108	110
Feed Grains & Hay	363	362	*357	317	101	*100	89
Cotton	517	417	*356	401	81	*69	78
Tobacco ¹	1,263	1,648		1,265	81		78
Oil-Bearing Crops	554	518	*599	486	95	*109	89
Fruits & Nuts	716	1,019	*1,032	1,065	146	148	153
Commercial Vegetables	698	907	*846	923	136	127	138
Potatoes & Dry Beans	540	492	*591	553	97	*117	109
Other Crops	493	569	578	791	115	117	117
Livestock & Products	768	908	*901	919	118	117	121
Meat Animals	1,021	1,206	*1,177	1,123	119	116	118
Dairy Products	799	953	*910	981	119	113	116
Poultry & Eggs	282	330	350	356	117	125	134
Food Commodities					119	120	121

* Revised.

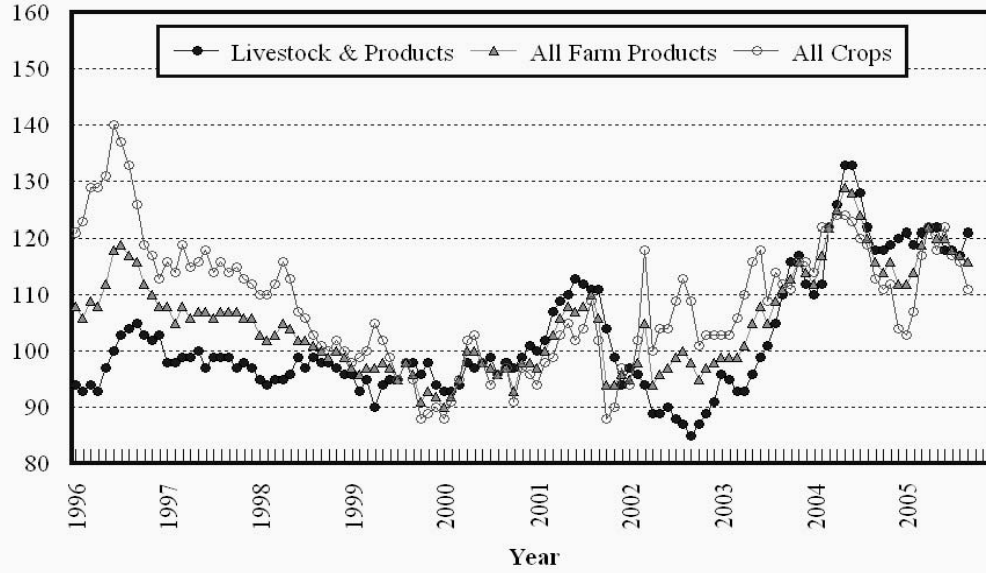
¹ Monthly prices discontinued July 2005.

**Selected Index Numbers for Prices Received and Paid,
1990-92=100, by Month, United States, 2004 and 2005**

Month	Index of Prices Received						Index of Prices Paid			
	All Farm Products		All Crops		Livestock and Products		All Items		Production Items	
	2004	2005	2004	2005	2004	2005	2004	2005	2004	2005
Jan	112	112	114	103	110	121	130	137	127	134
Feb	117	114	122	107	112	119	131	137	127	134
Mar	122	119	122	117	122	121	132	139	129	136
Apr	125	122	124	122	126	122	133	139	131	138
May	129	120	124	118	133	122	135	139	133	138
Jun	128	120	123	122	133	118	135	140	133	139
Jul	124	118	120	117	128	118	135	141	133	140
Aug	120	117	119	116	122	117	135	141	133	140
Sep	116	116	113	111	118	121	135	142	133	141
Oct	114		111		118		136		134	
Nov	116		112		119		135		133	
Dec	112		104		120		134		132	

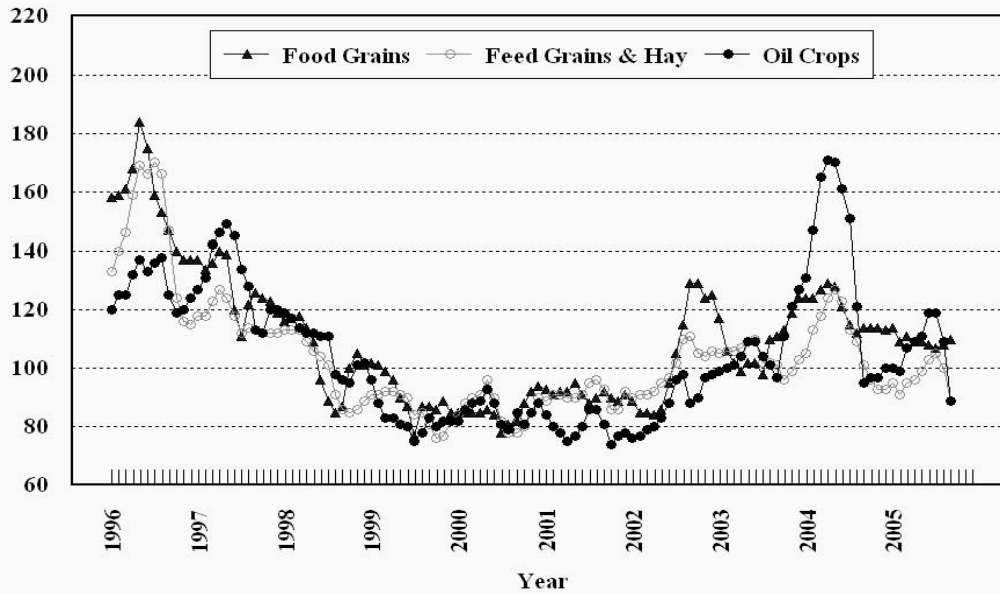
Prices Received, Major Indexes, US

Index Values(1990-92=100)



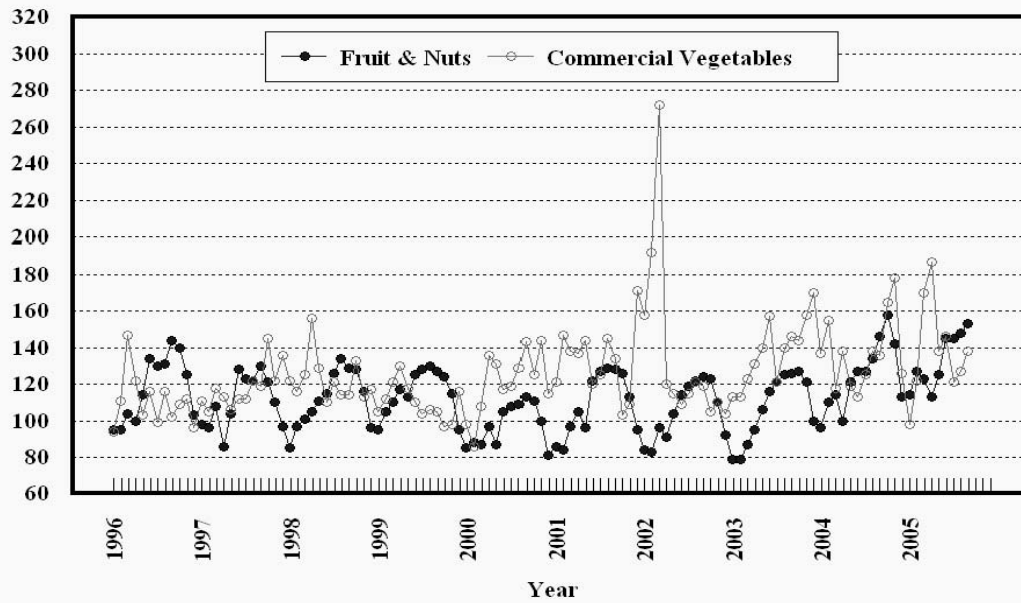
Prices Received, Food, Feed, & Oil Indexes, US

Index Values(1990-92=100)



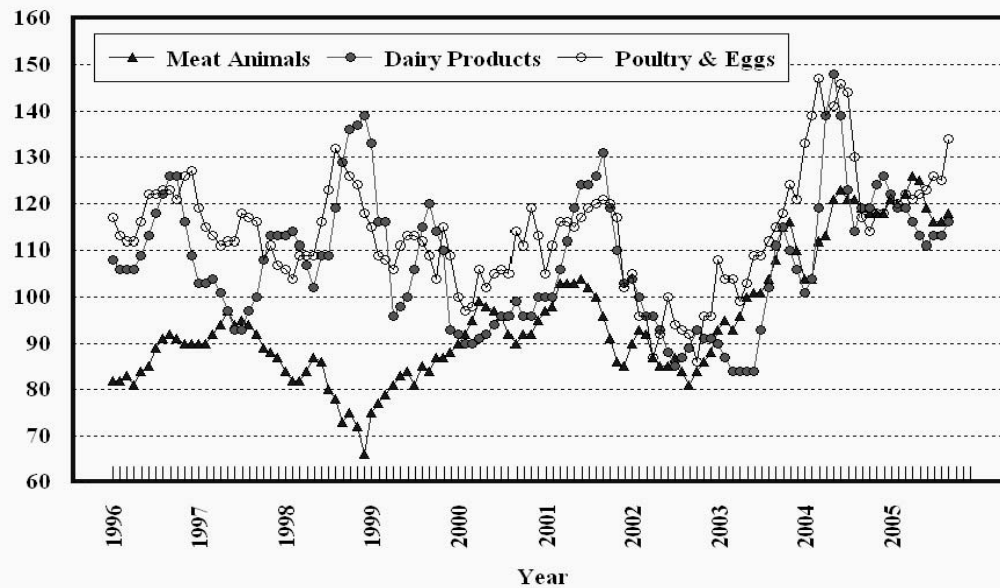
Prices Received, Fruit/Vegetable Indexes, US

Index Values(1990-92=100)



Prices Received, Livestock Product Indexes, US

Index Values(1990-92=100)



**Prices Received, United States,
September 2005, with Comparisons**

Commodity	Unit	Average 1990-92	Entire Month		Preliminary
			Sep 2004	Aug 2005	Sep 2005
		<i>Dollars</i>	<i>Dollars</i>	<i>Dollars</i>	<i>Dollars</i>
Field Crops					
Barley, All	Bu	2.12	2.43	2.52	2.60
Feed	Bu	1.90	1.64	1.79	1.89
Malting	Bu	2.43	2.91	2.88	2.91
Beans, Dry Edible	Cwt	19.10	22.90	21.30	20.20
Chickpeas, All	Cwt		26.90	18.60	29.10
Large	Cwt		26.90	24.90	29.30
Small	Cwt		(⁵)	(⁴)	(⁴)
Corn	Bu	2.30	2.20	1.95	1.73
Cotton, Upland	Lb	0.606	0.493	0.421	0.474
Cottonseed ³	Ton	96.00	89.00	102.00	96.00
Flaxseed	Bu	4.27	7.19	6.28	6.10
Hay, All, Baled ¹	Ton	76.30	91.40	99.70	99.00
Alfalfa ¹	Ton	77.20	97.50	109.00	107.00
Other ¹	Ton	60.00	74.30	74.80	74.60
Lentils	Cwt		15.50	11.80	11.60
Oats	Bu	1.22	1.42	1.47	1.54
Peanuts, In-Shell	Lb	0.304	0.192	0.169	0.176
Peas, Dry Edible	Cwt		5.90	4.24	4.14
Austrian Winter	Cwt		9.44	7.70	7.49
Potatoes	Cwt	5.82	5.32	6.84	6.40
Rice, Rough	Cwt	7.07	8.47	6.54	6.65
Sorghum Grain	Cwt	3.75	3.57	3.69	3.13
Soybeans	Bu	5.61	5.83	6.15	5.41
Sunflower, All	Cwt	9.50	12.90	14.20	13.90
Tobacco, Types 11-37 ⁶	Lb	1.740	1.895		
Wheat, All	Bu	2.96	3.36	3.24	3.34
Winter	Bu	2.93	3.26	3.16	3.23
Durum	Bu	2.86	3.89	3.39	3.34
Other Spring	Bu	3.11	3.48	3.43	3.51
Hard Red Winter	Bu		3.21	3.18	
Soft Red Winter	Bu		2.96	3.10	
Hard Red Spring	Bu		3.48	3.46	
White	Bu	3.24	3.51	3.12	
Fruit					
Citrus, Equiv on-tree					
Grapefruit	Box	5.77	15.47	13.50	18.57
Lemons	Box	10.10	16.29	11.75	10.27
Oranges	Box	5.79	15.85	4.90	4.57
Tangelos	Box	5.82			
Tangerines	Box	15.11			
Temples	Box	6.23			
Noncitrus, Fresh					
Apples ²	Lb	0.212	0.268	0.202	0.288
Grapes ²	Ton	506.00	680.00	670.00	780.00
Peaches ²	Ton	432.00	522.00	646.00	602.00
Pears ²	Ton	370.00	392.00	490.00	513.00
Strawberries	Cwt	56.00	99.10	78.00	83.90

¹ Mid-month price.

² Equivalent packinghouse-door returns for CA, MI, and NY (apples only), and WA (apples, peaches, and pears). Prices as sold for other states.

³ Marketing year August - February.

⁴ Price not published to avoid disclosure of individual firms.

⁵ Insufficient sales to establish a price.

⁶ Monthly price estimates discontinued beginning in July 2005.

**Prices Received, United States,
September 2005, with Comparisons**

Commodity	Unit	Average 1990-92	Entire Month		Preliminary
			Sep 2004	Aug 2005	Sep 2005
		<i>Dollars</i>	<i>Dollars</i>	<i>Dollars</i>	<i>Dollars</i>
Vegetables, Fresh ¹					
Asparagus	Cwt	79.80	204.00	237.00	
Broccoli	Cwt	22.50	57.00	30.50	32.10
Cantaloupes ²	Cwt		15.40	11.20	15.30
Carrots	Cwt	13.20	16.70	23.10	23.10
Cauliflower	Cwt	26.80	31.10	31.50	31.40
Celery	Cwt	11.60	11.90	11.10	14.20
Corn, Sweet	Cwt	15.70	24.10	21.20	26.20
Cucumbers ²	Cwt		29.40	23.80	33.70
Lettuce	Cwt	11.90	15.20	13.50	14.40
Onions	Cwt	12.80	11.30	17.20	14.80
Snap Beans ²	Cwt		68.10	73.00	73.30
Tomatoes	Cwt	32.30	38.20	28.60	40.20
Livestock					
Calves	Cwt	94.30	128.00	131.00	133.00
Cattle, All Beef	Cwt	72.90	85.90	84.50	87.50
Cows ³	Cwt	49.60	53.10	51.30	50.40
Steers & Heifers	Cwt	77.10	89.50	87.80	91.30
Milk Cows ⁴	Head	1,130.00			
Hogs, All	Cwt	47.70	54.80	51.00	48.80
Barrows & Gilts	Cwt	48.40	55.40	51.60	49.20
Sows	Cwt	39.50	42.20	38.60	38.00
Lambs	Cwt	56.20	100.00	108.00	
Sheep	Cwt	23.40	41.20	42.30	
Dairy and Poultry					
Milk, All ^{5 6}	Cwt	13.06	15.50	14.80	15.10
Fluid Grade ⁶	Cwt	13.10	15.50	14.80	15.10
Mfg Grade ⁶	Cwt	11.80	14.70	13.80	14.30
Broilers, Live ⁷	Lb	0.317	0.400	0.440	0.460
Eggs, All ⁸	Doz	0.643	0.538	0.470	0.643
Market ⁸	Doz	0.546	0.353	0.258	0.465
Turkeys, live ^{7 8}	Lb	0.380	0.462	0.469	0.507
Adjusted for Seasonal Variation					
Eggs, All	Doz	0.545	0.566	0.480	0.684
Milk, All ⁵	Cwt	9.71	14.62	14.51	14.38

¹ F.O.B. shipping point.

² Monthly estimates began January 1995.

³ Beef cows and cull dairy cows sold for slaughter.

⁴ Animals sold for dairy herd replacement only. Prices available for Jan, Apr, Jul, and Oct.

⁵ Before deductions for hauling. Includes quality, quantity, and other premiums. Excludes hauling subsidies.

⁶ September 2005 Fat test percent: all milk 3.61, fluid milk 3.60, mfg grade 3.79.

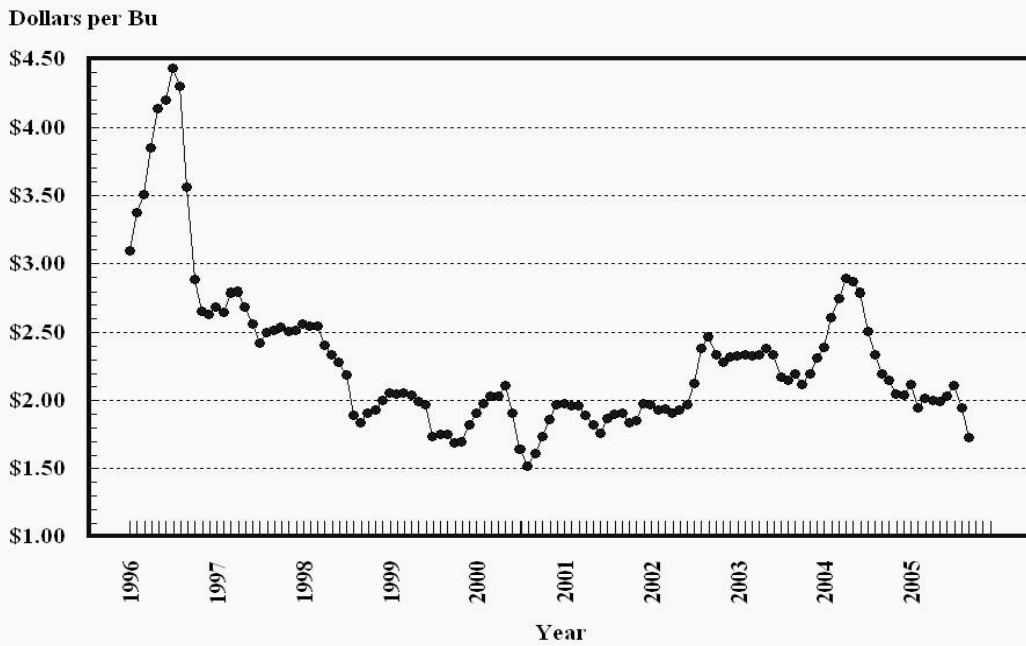
⁷ Equivalent liveweight returns to producers for most States. Includes growers and contractors.

⁸ Mid-month price.

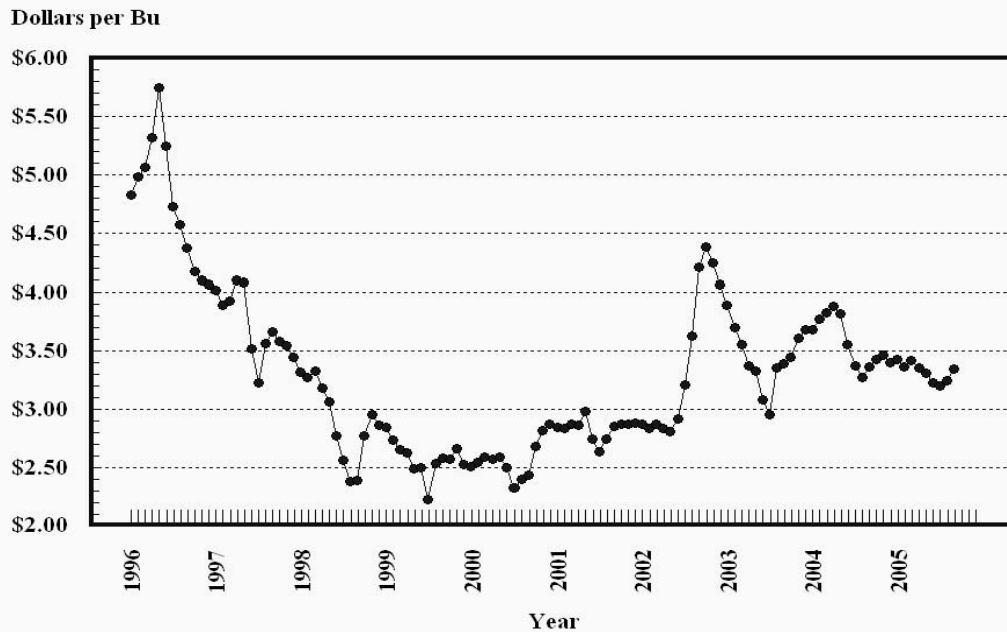
⁹ Price not published to avoid disclosure of individual firms.

¹⁰ Insufficient sales to establish a price.

Prices Received, Corn, US

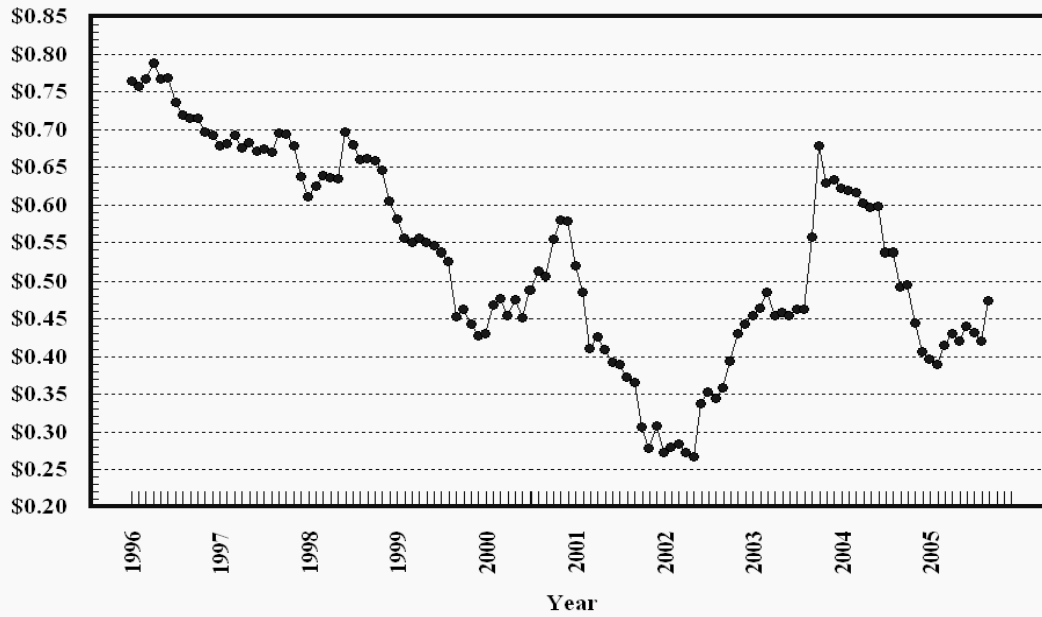


Prices Received, Wheat, US



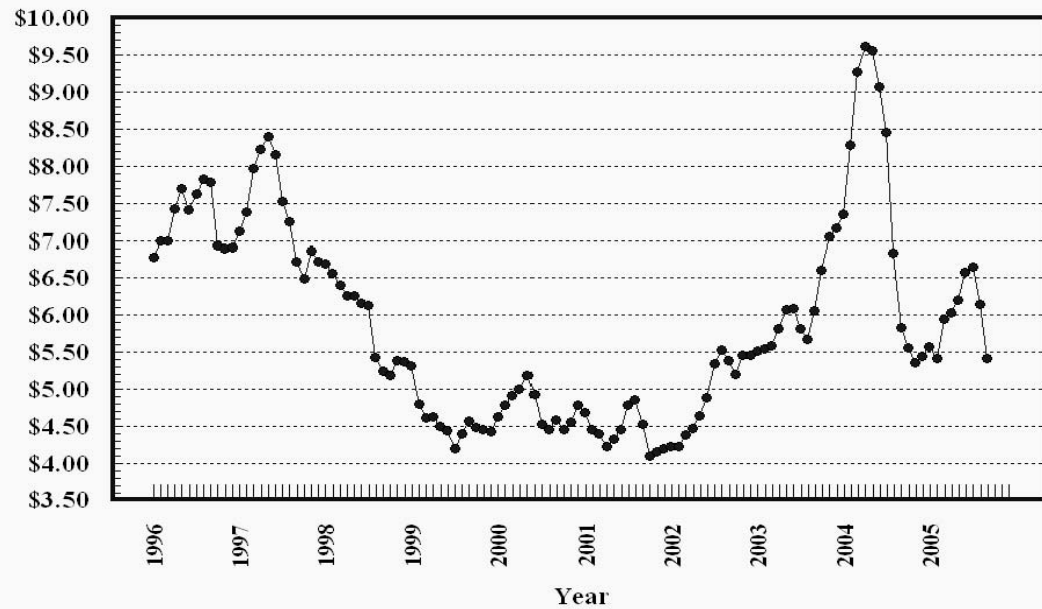
Prices Received, Cotton, US

Dollars per Lb



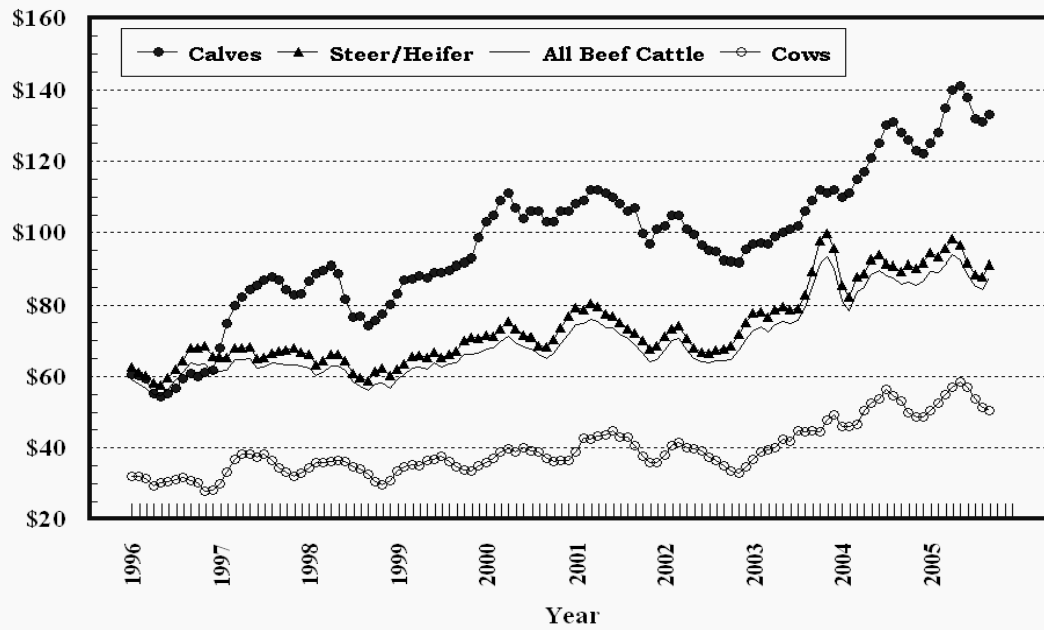
Prices Received, Soybeans, US

Dollars per Bu



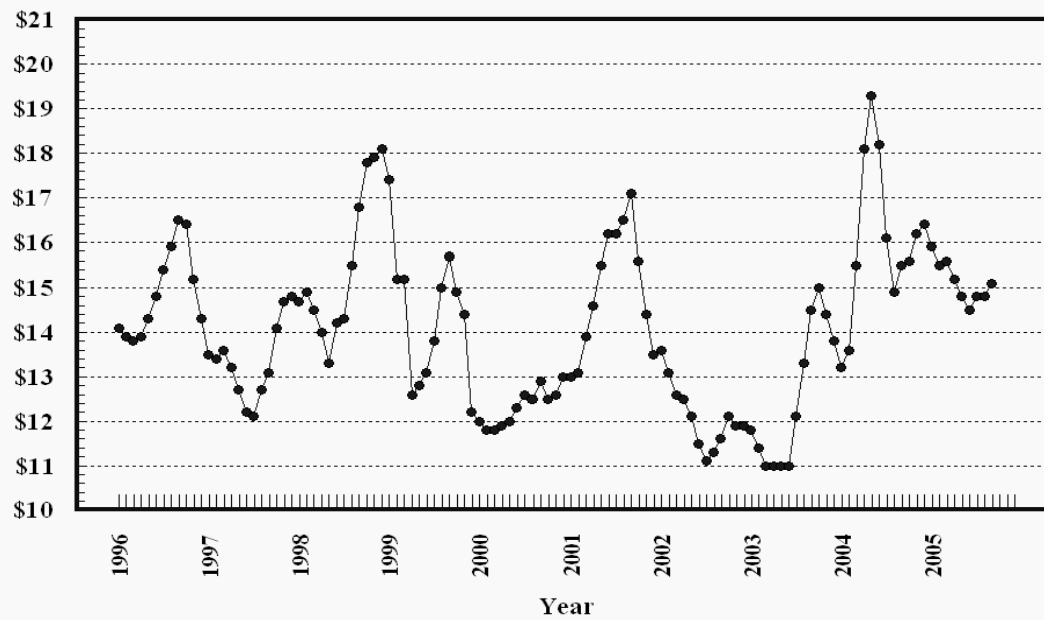
Prices Received, Cattle, US

Dollars per Cwt



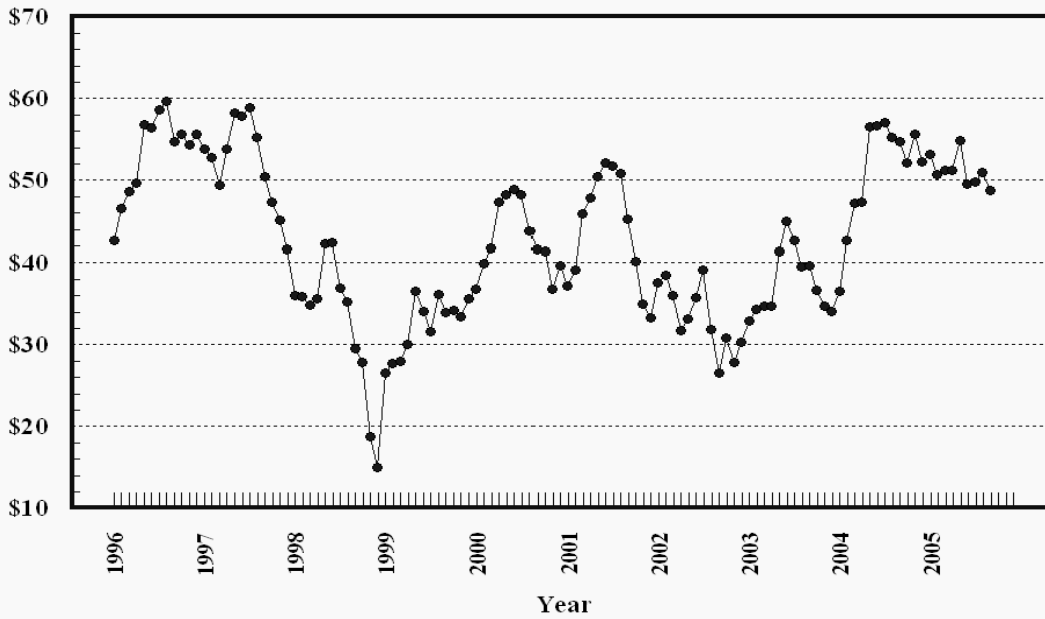
Prices Received, Milk, US

Dollars per Cwt



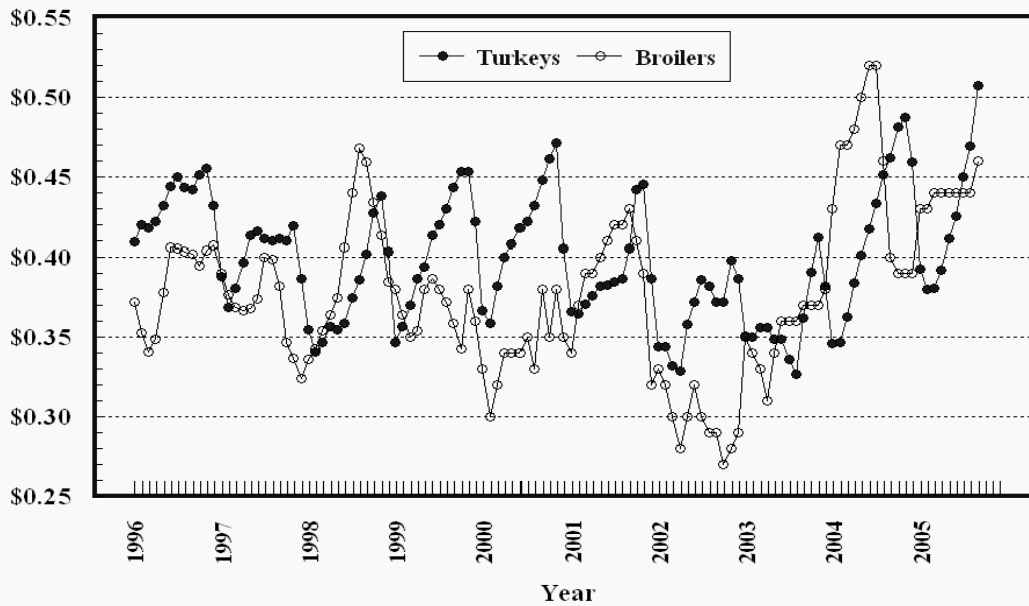
Prices Received, Hogs, US

Dollars per Cwt



Prices Received, Turkeys & Broilers, US

Dollars per Lb



Wheat: Prices Received, by State, August and September 2005

State	All Wheat		Winter Wheat		Durum Wheat		Oth Spring Wheat	
	Aug ¹	Sep ²	Aug ¹	Sep ²	Aug ¹	Sep ²	Aug ¹	Sep ²
	<i>Dollars per Bushel</i>	<i>Dollars per Bushel</i>	<i>Dollars per Bushel</i>	<i>Dollars per Bushel</i>	<i>Dollars per Bushel</i>	<i>Dollars per Bushel</i>	<i>Dollars per Bushel</i>	<i>Dollars per Bushel</i>
AR	3.11	2.86	3.11	(³)				
CA	(³)	(³)	(³)	(³)	(³)	(³)		
CO	2.96	3.29	2.96	3.29			(³)	(³)
ID	3.18	3.23	3.08	3.15	(³)	(⁴)	3.38	3.35
IL	3.16	3.00	3.16	3.00				
IN	2.92	2.91	2.92	2.91				
KS	3.17	3.34	3.17	3.34				
MI	3.06	3.00	3.06	3.00				
MN	3.20	3.30	3.00	2.82			3.20	3.30
MO	3.49	3.25	3.49	3.25				
MT	3.15	3.49	2.99	3.30	3.38	3.27	3.27	3.79
NE	3.14	3.25	3.14	3.25				
ND	3.26	3.37	2.58	2.60	3.37	3.35	3.31	3.40
OH	3.07	3.01	3.07	3.01				
OK	3.24	3.43	3.24	3.43				
OR	3.42	3.26	3.22	3.15			4.10	4.00
SD	3.40	3.53	2.99	3.19			3.56	3.66
TX	3.49	3.33	3.49	3.33				
WA	3.34	3.36	3.21	3.21			3.75	3.82
US	3.24	3.34	3.16	3.23	3.39	3.34	3.43	3.51

¹ Entire month.

² Mid-month.

³ Price not published to avoid disclosure of individual firms.

⁴ Insufficient sales to establish a price.

**Prices Received for Selected Agricultural Commodities, by Month,
United States, 2004 and 2005 ¹**

Month	All Wheat		Corn		Soybeans		Beef Cattle ²		All Hogs	
	2004	2005	2004	2005	2004	2005	2004	2005	2004	2005
	<i>Dollars per Bushel</i>	<i>Dollars per Bushel</i>	<i>Dollars per Bushel</i>	<i>Dollars per Bushel</i>	<i>Dollars per Bushel</i>	<i>Dollars per Bushel</i>	<i>Dollars per Cwt</i>	<i>Dollars per Cwt</i>	<i>Dollars per Cwt</i>	<i>Dollars per Cwt</i>
Jan	3.68	3.43	2.39	2.12	7.35	5.57	81.10	89.40	36.60	53.20
Feb	3.77	3.36	2.61	1.95	8.28	5.42	78.50	89.00	42.60	50.70
Mar	3.83	3.42	2.75	2.02	9.28	5.95	83.70	91.30	47.20	51.20
Apr	3.88	3.35	2.89	2.00	9.62	6.03	85.00	94.00	47.40	51.20
May	3.82	3.31	2.87	1.98	9.56	6.21	88.50	92.40	56.60	54.90
Jun	3.55	3.23	2.79	2.03	9.08	6.58	89.80	88.50	56.70	49.60
Jul	3.37	3.20	2.51	2.11	8.46	6.65	88.10	85.30	57.10	49.80
Aug	3.27	3.24	2.34	1.95	6.83	6.15	87.70	84.50	55.30	51.00
Sep	3.36	3.34	2.20	1.73	5.83	5.41	85.90	87.50	54.80	48.80
Oct	3.43		2.14		5.56		86.50		52.20	
Nov	3.46		2.05		5.36		85.40		55.60	
Dec	3.40		2.04		5.45		86.80		52.30	

¹ Current month prices are mid-month; prices for previous months are for the entire month.

² Cows, steers and heifers.

Grains: Prices Received, by State, August and September 2005

Month	All Barley ¹		Corn		Oats		Soybeans		Sorghum Grain	
	Aug ²	Sep ³	Aug ²	Sep ³	Aug ²	Sep ³	Aug ²	Sep ³	Aug ²	Sep ³
	<i>Dollars per Bushel</i>	<i>Dollars per Bushel</i>	<i>Dollars per Bushel</i>	<i>Dollars per Bushel</i>	<i>Dollars per Bushel</i>	<i>Dollars per Bushel</i>	<i>Dollars per Bushel</i>	<i>Dollars per Bushel</i>	<i>Dollars per Cwt</i>	<i>Dollars per Cwt</i>
AL							6.08	5.35	(⁴)	(⁴)
AR										
CA	2.28	(⁴)			(⁴)	(⁵)				
CO	2.74	(⁴)	2.22	1.90						
ID	3.06	3.14								
IL			2.03	1.70	1.84	1.80	6.20	5.40	4.05	3.40
IN			1.97	1.70			6.29	5.49		
IA			1.84	1.55	1.63	1.53	6.07	5.25		
KS			2.11	1.81	1.23	1.35	6.17	5.25	3.12	2.79
KY			2.21	1.85			6.32	5.35		
LA							6.17	5.70		
MI			2.03	1.80	1.75	1.70	6.27	5.50		
MN	(⁴)	2.18	1.82	1.66	1.40	1.42	6.11	5.40		
MS							6.08	5.56		
MO			2.11	1.80			6.24	5.45	3.59	3.05
MT	3.04	2.87			(⁴)	(⁴)				
NE			1.86	1.70	1.56	1.50	6.04	5.35	3.17	2.95
NY					1.67	1.65				
NC			2.47	2.07			6.26	5.84		
ND	1.63	1.69	1.82	1.70	1.22	1.40	5.82	5.30		
OH			2.01	1.72	1.75	(⁵)	6.41	5.54		
OK									3.42	3.20
OR	2.18	2.20			(⁵)	(⁵)				
PA			2.43	2.22	1.55	1.50				
SD	2.02	2.15	1.80	1.51	1.39	1.64	5.87	5.24		
TN			2.18	1.95			6.23	5.30		
TX			2.35	2.25	(⁵)	(⁵)			3.85	3.60
UT	2.17	1.98								
WA	2.14	2.17								
WI			2.01	1.85	1.43	1.50	6.25	5.45		
WY	3.30	3.31								
US	2.52	2.60	1.95	1.73	1.47	1.54	6.15	5.41	3.69	3.13

¹ The Three-State (MN, ND and SD) Feed Barley price is discontinued.

² Entire month.

³ Mid-month.

⁴ Price not published to avoid disclosure of individual firms.

⁵ Insufficient sales to establish a price.

Malting and Feed Barley: Prices Received Selected State, August and September 2005

State	Malting Barley		Feed Barley	
	Aug ¹	Sep ²	Aug ¹	Sep ²
	<i>Dollars per Bushel</i>	<i>Dollars per Bushel</i>	<i>Dollars per Bushel</i>	<i>Dollars per Bushel</i>
ID	3.27	3.25	2.10	2.10
MN	(³)	(³)	1.39	1.28
MT	3.27	3.07	1.47	1.56
ND	1.84	1.90	1.35	1.30
SD	2.03	2.15	1.26	(⁴)
WY	(³)	(³)	1.92	1.90

¹ Entire month.

² Mid-month.

³ Price not published to avoid disclosure of individual firms.

⁴ Insufficient sales to establish a price.

Field Crops: Prices Received, by State, August and September 2005

State	Dry Edible Beans		All Sunflower		Flaxseed		Tobacco ⁷		Peanuts ⁴	
	Aug ¹	Sep ²	Aug ¹	Sep ²	Aug ¹	Sep ²	Aug	Sep	Aug ¹	Sep ³
	<i>Dollars per Cwt</i>	<i>Dollars per Cwt</i>	<i>Dollars per Cwt</i>	<i>Dollars per Cwt</i>	<i>Dollars per Bushel</i>	<i>Dollars per Bushel</i>	<i>Dollars per Pound</i>	<i>Dollars per Pound</i>	<i>Dollars per Pound</i>	<i>Dollars per Pound</i>
AL									(⁵)	(⁵)
CA	(⁵)	(⁵)								
CO	25.00	24.00								
FL									(⁵)	(⁵)
GA									0.166	(⁵)
ID	25.30	20.60								
IN										
KS			13.20	17.20						
KY										
MD										
MI	20.60	20.00								
MN	(⁵)	(⁵)	(⁶)	(⁵)						
MO										
NE	19.80	18.70								
NC									(⁵)	(⁶)
ND	20.80	16.00	14.30	14.00	6.29	6.10				
OH										
OK										
SC										
SD			14.10	13.30	6.02	(⁶)				
TN										
TX									(⁵)	(⁵)
VA									(⁵)	(⁵)
WV										
US	21.30	20.20	14.20	13.90	6.28	6.10			0.169	0.176

¹ Entire month.

² Mid-month.

³ Based on sales through first half of month.

⁴ In-Shell.

⁵ Price not published to avoid disclosure of individual firms.

⁶ Insufficient sales to establish a price.

⁷ Monthly price estimates discontinued beginning in July 2005.

Field Crops and Apples: Prices Received, by State, August and September 2005

State	Cotton, Upland		September				Apples Fresh Use ^{1 4}
	Aug ¹	Sep ²	Cotton-seed ⁵	Hay, Baled ³			
				All	Alfalfa	Other	
	<i>Dollars per Pound</i>	<i>Dollars per Pound</i>	<i>Dollars per Ton</i>	<i>Dollars per Ton</i>	<i>Dollars per Ton</i>	<i>Dollars per Ton</i>	<i>Dol/Lb</i>
AL	0.397	(⁷)	(⁷)				
AZ	(⁷)	(⁶)	(⁷)	119.00	120.00	110.00	
AR	(⁶)	(⁶)	(⁷)				
CA	(⁶)	(⁶)	(⁷)	127.00	132.00	96.00	0.343
CO				106.00	106.00	105.00	
GA	0.397	(⁶)	(⁷)				
ID				116.00	117.00	79.00	
IL				95.00	101.00	78.00	
IA				75.00	80.00	55.00	
KS				72.00	74.00	57.00	
KY				87.00	120.00	70.00	
LA	0.398	(⁷)	(⁷)				
MI				94.00	95.00	75.00	0.235
MN				61.00	68.00	46.00	
MS	0.398	(⁶)	(⁷)				
MO				59.00	100.00	47.00	
MT				82.00	85.00	70.00	
NE				48.00	48.00	46.00	
NV				115.00	114.00	120.00	
NM				127.00	129.00	105.00	
NY				112.00	130.00	95.00	0.257
NC	0.397	(⁷)	(⁷)				
ND				52.00	57.00	38.00	
OH				116.00	130.00	70.00	0.330
OK				71.00	97.00	52.00	
OR				114.00	118.00	100.00	
PA				129.00	145.00	112.00	0.275
SD				64.00	68.00	52.00	
TN	0.397	(⁷)	(⁷)				
TX	0.461	0.470	96.00	81.00	126.00	68.00	
UT				94.00	95.00	80.00	
VA							0.300
WA				112.00	110.00	120.00	0.285
WI				109.00	120.00	70.00	
WY				73.00	74.00	69.00	
US	0.421	0.474	96.00	99.00	107.00	74.60	0.288

¹ Entire month.

² Based on sales during the first half of the month.

³ Mid-month.

⁴ Equivalent packinghouse-door returns for CA, MI, NY, and WA. Price at point of first sale for other States.

⁵ Marketing year August - February.

⁶ Price not published to avoid disclosure of individual firms.

⁷ Insufficient sales to establish a price.

**Upland Cotton and Rice: Prices Received and Marketings,
United States, September 2005, with Comparisons**

Item	Unit	Jul 2005 ¹	Aug 2005 ¹	Sep 2005 ²
Cotton, Upland	Average Price	0.432	0.421	0.474
	Marketings ³	416	1,233	NA
Rice	Average Price	6.78	6.54	6.65
	Marketings ⁴	12,241	13,260	NA

¹ Entire month.

² Based on purchases for the first half of the month.

³ Marketings based on a survey of cotton buyers in the major producing States - AL, AZ, AR, CA, GA, LA, MS, NC, TN, and TX.

⁴ Purchases by private firms and rice (rough equivalent) shipped by cooperatives.

**Citrus Fruit: Prices and Equivalent Returns, by Utilization,
by State and United States, September 2005**

Commodity, State and Type	F.O.B. Packed Fresh	Equivalent Returns ¹					
		Packinghouse-door			On-tree		
		All	Fresh	Process	All	Fresh	Process
	<i>Dollars per Box</i>	<i>Dollars per Box</i>	<i>Dollars per Box</i>	<i>Dollars per Box</i>	<i>Dollars per Box</i>	<i>Dollars per Box</i>	<i>Dollars per Box</i>
Grapefruit							
CA	29.70	20.94	23.06	-0.28	18.57	20.69	-2.65
US	29.70	20.94	23.06	-0.28	18.57	20.69	-2.65
Lemons							
AZ	28.10	14.30	17.59	0.16	9.78	13.07	-4.36
CA	28.90	14.82	18.39	0.16	10.30	13.87	-4.36
US	28.80	14.79	18.33	0.16	10.27	13.81	-4.36
Oranges							
CA Valencia	18.40	7.11	11.20	0.30	4.57	8.66	-2.24
US	18.40	7.11	11.20	0.30	4.57	8.66	-2.24

¹ Net lbs. per box: Grapefruit - AZ & CA-67, FL-85, TX-80; Lemons - 76; Oranges - AZ & CA-75, FL-90, TX-85; Tangelos - 90; Tangerines - AZ, CA-75, FL-95; Temples - 90.

Potatoes: Prices Received, by State, August and September 2005 ¹

State	Aug	Sep	State	Aug	Sep
	<i>Dollars per Cwt</i>	<i>Dollars per Cwt</i>		<i>Dollars per Cwt</i>	<i>Dollars per Cwt</i>
AL	8.25		NC		
AZ	14.30		ND - All ²		5.40
CA - All ²	18.60	18.40	- Fresh ³		NA
- Winter			- Processing		NA
- Spring			OH ⁴		
- Summer	18.60	18.40	OR	5.20	5.35
- Fall			PA ⁴		
CO - All ²	7.15	9.90	TX	15.80	12.70
- Fresh ³	8.45	NA	VA		
FL			WA - All ²	5.95	5.35
ID - All ²	4.75	5.90	- Processing	4.50	NA
- Fresh ³	5.20	NA	WI - All ²	7.60	6.85
- Processing	4.60	NA	- Fresh ³	9.30	NA
ME		5.35	- Processing	5.10	NA
MI	6.10	5.85			
MN	9.25	7.50	US - All ²	6.84	6.40
NY	11.30	12.70	- Fresh ³	11.41	NA
			- Processing	4.70	NA

¹ Missing data indicates no potatoes being marketed.

² Average price of potatoes sold for all uses, including table stocks, processing, seed, and livestock feed.

³ Fresh market prices only, includes table stock prices.

⁴ Estimates discontinued in 2005.

Cattle: Prices Received, by State, August and September 2005

State	Cows ¹		Steers & Heifers		Beef Cattle ⁴		Calves	
	Aug ²	Sep ³	Aug ²	Sep ³	Aug ²	Sep ³	Aug ²	Sep ³
	<i>Dollars per Cwt</i>	<i>Dollars per Cwt</i>	<i>Dollars per Cwt</i>	<i>Dollars per Cwt</i>	<i>Dollars per Cwt</i>	<i>Dollars per Cwt</i>	<i>Dollars per Cwt</i>	<i>Dollars per Cwt</i>
AZ	54.30	54.30	103.00	103.00	103.00	103.00	124.00	126.00
AR	48.30	46.20	106.00	106.00	88.70	88.10	126.00	129.00
CA	49.10	48.10	85.10	88.60	68.90	70.00	109.00	114.00
CO	51.40	52.60	108.00	109.00	107.00	108.00	135.00	136.00
FL	51.80	48.60	98.40	98.00	81.30	80.30	131.00	131.00
GA	52.80	51.00	98.90	99.80	68.50	67.60	123.00	124.00
ID	47.70	48.00	85.40	87.60	78.60	78.90	122.00	122.00
IL	52.00	52.00	81.50	82.00	80.90	81.40	116.00	116.00
IA	50.80	51.20	83.50	88.90	82.80	88.10	135.00	136.00
KS	53.00	53.20	85.40	88.90	85.10	88.20	138.00	139.00
KY	50.00	49.00	104.00	107.00	91.00	93.10	120.00	124.00
LA	51.50	48.00	102.00	103.00	70.20	68.40	121.00	122.00
MI	53.00	52.00	78.00	78.00	70.50	70.20	134.00	135.00
MN	52.90	52.50	78.00	80.00	74.00	75.60	130.00	136.00
MO	50.90	50.70	113.00	116.00	99.30	102.00	130.00	134.00
MT	52.40	53.10	106.00	106.00	91.00	96.50	136.00	143.00
NE	53.00	52.80	84.80	89.00	83.80	87.90	144.00	142.00
NM	54.20	53.30	107.00	111.00	86.40	87.90	135.00	133.00
ND	49.50	50.00	99.00	104.00	77.20	89.40	142.00	141.00
OH	49.00	48.00	80.40	82.00	77.30	78.60	114.00	114.00
OK	53.60	52.30	110.00	113.00	103.00	106.00	128.00	130.00
OR	47.00	47.00	98.00	99.00	82.70	83.40	111.00	116.00
PA	50.90	49.20	78.30	79.80	71.20	71.80	115.00	120.00
SD	52.60	53.30	94.40	99.50	87.70	94.00	132.00	135.00
TN	50.00	48.00	106.00	107.00	83.60	83.40	118.00	121.00
TX	51.50	49.20	87.20	92.00	84.70	89.00	135.00	137.00
VA	50.40	48.30	105.00	102.00	88.10	90.20	118.00	119.00
WI	50.60	50.50	79.60	84.20	62.80	64.70	161.00	164.00
WY	52.10	51.00	107.00	109.00	105.00	106.00	135.00	137.00
US	51.30	50.40	87.80	91.30	84.50	87.50	131.00	133.00

¹ Beef cows and cull dairy cows sold for slaughter.

² Entire month.

³ Mid-month.

⁴ "Cows" and "steers and heifers" combined.

Hogs: Prices Received, by State, August and September 2005

State	Sows		Barrows and Gilts		All Hogs	
	Aug ¹	Sep ²	Aug ¹	Sep ²	Aug ¹	Sep ²
	<i>Dollars per Cwt</i>	<i>Dollars per Cwt</i>	<i>Dollars per Cwt</i>	<i>Dollars per Cwt</i>	<i>Dollars per Cwt</i>	<i>Dollars per Cwt</i>
AR	38.90	38.70	48.50	45.40	47.50	44.70
IL	37.00	36.80	53.00	50.00	51.70	48.90
IN	42.80	42.70	50.20	48.00	49.50	47.50
IA	40.00	39.60	53.00	50.80	52.70	50.70
KS	38.70	37.70	48.50	45.10	47.30	44.10
MN	39.20	38.50	52.30	48.50	52.20	48.40
MO	37.40	37.20	46.90	44.90	45.90	44.20
NE	38.00	37.50	53.70	52.00	53.40	51.70
NC	38.80	38.70	51.70	49.40	51.60	49.30
OH	38.10	37.00	50.90	48.00	50.10	47.30
OK	37.00	36.80	45.20	43.20	44.00	42.20
PA	36.10	36.00	48.20	46.20	46.40	44.70
SD	39.70	37.70	52.90	51.60	51.10	49.90
US	38.60	38.00	51.60	49.20	51.00	48.80

¹ Entire month.

² Mid-month.

Sheep and Poultry: Prices Received, by State, August and September 2005

State	August		September
	Sheep ¹	Lambs ¹	Eggs ^{2 3}
	<i>Dollars per Cwt</i>	<i>Dollars per Cwt</i>	<i>Dollars per Dozen</i>
AL			0.450
AR			0.530
CA	40.00	96.00	0.500
CO	41.70	111.00	
CT			0.590
FL			0.500
GA			0.458
ID	37.00	108.00	
IN			0.490
IA	44.30	102.00	0.401
KY	45.00	102.00	
ME			0.650
MI			0.500
MN	38.00	104.00	0.480
MS			0.520
MO	46.90	104.00	0.390
MT	41.60	121.00	
NE	43.70	100.00	
NY			0.530
NC			0.470
ND	38.00	115.00	
OH	41.10	97.00	0.474
OR	37.60	100.00	
PA	50.50	109.00	0.430
SC			0.470
SD	43.80	125.00	
TX	50.30	97.50	0.460
VA	39.00	98.00	
WA			0.510
WV	40.50	97.60	
WY	45.10	120.00	
US	42.30	108.00	0.465

¹ Entire month.

² Mid-month.

³ Market (table) eggs.

Milk and Milk Cows: Prices Received, by State, August and September 2005

State	August ¹						September		
	Fluid Grade Milk ²		Manufacturing Grade Milk		All Milk ³		All Milk ^{3 4}		Milk Cows ⁵
	Price	Fat Test	Price	Fat Test	Price	Fat Test	Price	Fat Test	
	<i>Dol/Cwt</i>	<i>Percent</i>	<i>Dol/Cwt</i>	<i>Percent</i>	<i>Dol/Cwt</i>	<i>Percent</i>	<i>Dol/Cwt</i>	<i>Percent</i>	<i>Dol/Head</i>
AZ	14.90	3.52			14.90	3.52	15.10	3.60	
CA	13.50	3.58	14.30	3.92	13.52	3.59	14.10	3.64	
CO	14.70	3.47			14.70	3.47	14.60	3.51	
FL	18.60	3.59			18.60	3.59	17.90	3.63	
ID	14.10	3.53	13.00	3.69	14.10	3.53	14.50	3.60	
IL	15.40	3.53	14.60	3.52	15.40	3.53	15.60	3.60	
IN	15.30	3.48	13.20	3.50	15.20	3.48	15.50	3.52	
IA	15.20	3.56	13.20	3.58	15.20	3.56	15.30	3.65	
KS	14.30	3.44			14.30	3.44	14.40	3.50	
KY	16.60	3.50			16.60	3.50	16.40	3.56	
MI	15.30	3.45	13.40	3.47	15.30	3.45	15.40	3.51	
MN	14.90	3.59	13.50	3.58	14.90	3.59	15.40	3.67	
MO	15.40	3.52	13.30	3.60	15.30	3.52	15.40	3.62	
NM	14.20	3.47			14.20	3.47	14.50	3.50	
NY	15.10	3.52			15.10	3.52	15.20	3.59	
OH	15.50	3.50	13.70	3.62	15.40	3.51	15.70	3.60	
OR	14.80	3.58			14.80	3.58	15.00	3.65	
PA	16.60	3.50	13.40	3.55	16.60	3.50	16.80	3.55	
TX	15.20	3.63			15.20	3.63	15.80	3.70	
VT	15.70	3.57			15.70	3.57	15.80	3.63	
VA	16.60	3.43			16.60	3.43	16.20	3.45	
WA	14.80	3.58			14.80	3.58	15.00	3.65	
WI	15.10	3.55	13.50	3.61	15.00	3.55	15.50	3.62	
US	14.80	3.54	13.80	3.71	14.80	3.54	15.10	3.61	

¹ Entire month.

² Including milk diverted to manufacturing.

³ Before deductions for hauling. Includes quality, quantity, and other premiums. Excludes hauling subsidies.

⁴ Preliminary.

⁵ Animals sold for dairy herd replacement only. Prices published January, April, July and October.

**Parity Price Equivalent for Manufacturing Milk ¹: United States,
August and September 2005, with Comparisons**

Item	Unit	Sep 2004	Aug 2005	Sep 2005
Parity Equivalent	Dollars per Cwt	31.46	33.82	37.20
Average Price F.O.B ²	Dollars per Cwt	14.70	13.80	14.30
Average Fat Test of Milk ²	Percent	3.76	3.71	3.79

¹ The parity price equivalent during 2005 is 91.4 percent of the parity price of all milk sold to plants, compared with 90.4 percent in 2004. For additional details, see January 2005 issue of "Agricultural Prices".

² Preliminary for September 2005.

**United States Parity Prices for Farm Products and Average Prices Received as
Percent of Parity Prices Based on Data for September 2005, with Comparisons ¹**

Commodity and Unit	Adjusted Base Price	Parity Price Based on Data for			Price as Percent of Parity		
		Sep 2004	Aug 2005	Sep 2005	Sep 2004	Aug 2005	Sep 2005
	<i>Dollars</i>	<i>Dollars</i>	<i>Dollars</i>	<i>Dollars</i>	<i>Percent</i>	<i>Percent</i>	<i>Percent</i>
Basic Commodities							
All Wheat, Bu	0.555	9.98	10.40	10.50	34	31	32
Rice, Cwt	1.38	28.80	25.90	26.00	29	25	26
Corn, Bu	0.372	6.70	6.99	7.02	33	28	25
Cotton, Lb							
American Upland	0.095	2.00	1.78	1.79	25	24	26
Extra Long Staple	0.142	2.55	2.67	2.68			
Peanuts, Lb	0.0350	0.655	0.657	0.660	29	26	27
Designated Nonbasic							
All Milk, Sold to Plants, Per Cwt ²	1.97	34.80	37.00	37.20	42	39	39
Honey, Extracted, Lb ³	0.1280	1.86	2.28	2.28			
Wool and Mohair							
Wool, Lb	0.0910	1.56	1.71	1.72			
Mohair, Lb	0.333	5.91	6.25	6.28			
Other Nonbasic							
Barley, Bu	0.377	6.65	7.08	7.11	37	36	37
Cottonseed, Ton	15.50	280.00	291.00	292.00	32	35	33
Dry Edible Beans, Cwt	2.82	51.70	53.00	53.20	44	40	38
Flaxseed, Bu	0.753	12.90	14.10	14.20	56	45	43
Oats, Bu	0.221	3.91	4.15	4.17	36	35	37
Potatoes, Cwt	0.838	15.10	15.70	15.80	35	44	41
Rye, Bu	0.355	6.24	6.67	6.70			
Sorghum Grain, Cwt	0.607	10.90	11.40	11.50	33	32	27
Soybeans, Bu	0.900	15.80	16.90	17.00	37	36	32
Sweetpotatoes, Cwt	2.31	39.80	43.40	43.60			
Apples, Fresh, Lb ⁴	0.0292	0.524	0.548	0.551	37	41	39
Citrus (equiv on-tree), Box							
Grapefruit	0.394	6.85	7.40	7.43	226	182	250
Lemons	1.12	19.50	21.00	21.10	83	56	49
Oranges	0.574	10.90	10.80	10.80	145	45	42
Tangerines	1.35	25.10	25.40	25.50			
Temples (FL)	0.379	7.98	7.12	7.15			
Beef Cattle, Cwt	9.65	169.00	181.00	182.00	51	47	48
Calves, Cwt	13.10	226.00	246.00	247.00	57	53	54
Hogs, Cwt	5.97	105.00	112.00	113.00	52	46	43
Lambs, Cwt	11.70	200.00	220.00	221.00	50	49	
Sheep, Cwt	4.72	83.10	88.60	89.10	50	48	
Eggs, Doz ²	0.0940	1.68	1.77	1.77	34	27	39
Turkeys, Live, Lb	0.0565	1.020	1.060	1.070	45	44	47

--continued

Parity Prices Based on Data for September 2005, United States ¹ (continued)

Other Nonbasic Commodities	Adj Base Base	Parity Price	Other Nonbasic Commodities	Adj Base Base	Parity Price
	<i>Dollars</i>	<i>Dollars</i>		<i>Dollars</i>	<i>Dollars</i>
Field Crops and Misc Commodities			Olives, CA canning, Ton ⁵	95.70	1,810.00
Hops, Lb	0.251	4.74	Papayas (HA)	0.0528	0.996
Spearmint Oil, Lb	1.46	27.60	Peaches		
Tobacco, Lb			Fresh, Ton ⁴	81.57	1,540.00
Flue-Cured, 11-14	0.255	4.81	Dried, CA, Ton	84.00	1,590.00
VA Fire-Cured, 21	0.256	4.83			
KY-TN Fire-Cured, 22-23	0.323	6.10	Noncitrus Fruit		
Burley, 31	0.274	5.17	Peaches, cont.		
Maryland, 32	0.210	3.96	Processing ⁵		
Dark Air-Cured, 35-36	0.284	5.36	Excl Dried		
Sun-Cured, 37	0.241	4.55	Clingstone, CA, Ton	33.50	632.00
PA Seedleaf, 41	0.205	3.87	Pears, Ton		
Cigar Filler & Binder, 42-44, 54-55	0.225	4.25	Fresh ⁴	52.90	998.00
Puerto Rican Filler, 46	0.159	3.00	Dried, CA ⁶	164.00	3,090.00
Cigar Binder, 51-52	0.747	14.10	Plums, CA, Ton		
Type 61	3.21	60.60	Fresh, Equiv on-Tree	66.70	1,260.00
Noncitrus Fruit			Prunes, Dried, CA, Ton ⁶	127.00	2,400.00
Apples, Ton ⁶			Prunes and Plums, Excl CA, Ton		
Processing	18.30	345.00	Fresh ⁹	58.90	1,110.00
Apricots, Ton			Processing ⁶		
Fresh ⁷	99.00	1,870.00	Excl Dried	27.50	519.00
Dried, CA	270.00	5,090.00	Tree Nuts ¹⁰		
Avocados, Ton ⁷	234.00	4,420.00	Almonds, Lb	0.213	4.02
Cherries Bbl			Hazelnuts, Ton	135.00	2,550.00
Sweet, Ton	188.00	3,550.00	Pistachio, Lb	0.159	3.00
Tart, Lb	0.0319	0.602	Walnuts, Ton	173.00	3,260.00
Cranberry, Bbl ⁵	5.69	107.00	Vegetables, Cwt ¹¹		
Dates, CA, Ton ⁷	181.00	3,420.00	Fresh		
Grapes, Ton			Carrots ⁸	2.28	43.00
Raisin Variety	124.00	2,340.00	Cauliflower ⁸	4.60	86.80
Other Dried	70.50	1,330.00	Celery ⁸	1.97	37.20
Kiwifruit, Ton	91.30	1,720.00	Honeydew Melons	2.75	51.90
Nectarines			Lettuce	2.50	47.20
Fresh, CA, Ton ⁷	62.60	1,180.00	Onions ⁸	1.65	31.10
			Tomatoes	4.44	83.80

¹ Parity prices are computed under the provisions of Title III, Subtitle a, Section 301 (a) of the Agricultural Adjustment Act of 1938 as amended by the Agricultural Acts of 1948, 1949, and 1956. See January "Agricultural Prices" for details on adjusted base price and parity price computations.

² Seasonally adjusted price as percentage of parity price.

³ Wholesale extracted. Adjusted base price derived from state annual averages prices weighted by production. For 1982 through 1985 the national averages are the support prices.

⁴ Equivalent packinghouse-door returns for CA, NY (apples only), OR (except peaches), and WA. Price at point of first sale for other states.

⁵ Equivalent returns for bulk fruit at first delivery point.

⁶ Equivalent returns at processing plant door.

⁷ Equivalent returns at packinghouse door.

⁸ Includes some processing.

⁹ Based on "as sold" prices for fresh fruit in all states.

¹⁰ Prices in-shell basis except almonds which are shelled basis.

¹¹ F.O.B. shipping point prices.

Marketing Year for Specified Commodities

Corn for Grain: September 1 to August 31 for U.S.; July 1 to June 30 for Texas; August 1 to July 31 for Alabama, Arkansas, Florida, Georgia, Louisiana, Mississippi, North Carolina, Oklahoma, South Carolina, and Tennessee; September 1 to August 31 for Arizona, California, Delaware, Illinois, Indiana, Iowa, Kansas, Kentucky, Maryland, Missouri, Nebraska, New Mexico, Ohio, Pennsylvania, South Dakota, Virginia, and West Virginia; October 1 to September 30 for all other States.

Potatoes: The marketing year extends over a 21 month period beginning in November preceding the specified crop year and extending into July the following year. November (previous year)-May for winter crop potatoes; April-August for spring crop potatoes; June-December for summer crop potatoes; July-July (following year) for fall potatoes.

Sorghum for Grain: September 1 to August 31 for U.S.; June 1 to May 31 for Texas; August 1 to July 31 for Alabama, Arkansas, Georgia, Louisiana, Mississippi, Oklahoma, South Carolina, and Tennessee; September 1 to August 31 for all other States.

Soybeans: September 1 to August 31 for U.S.; July 1 to June 30 for Texas; August 1 to July 31 for Louisiana and Mississippi; September 1 to August 31 for all other States.

Austrian Winter Peas: July 1 to June 30 for U.S.; Idaho, Montana, and Oregon.

Dry Edible Peas: July 1 to June 30 for U.S.; Idaho, Montana, North Dakota, Oregon, and Washington.

Lentils: July 1 to June 30 for U.S.; Idaho, Montana, North Dakota, and Washington.

Oranges:

Arizona	Nov 1 to Aug 31
California Navels	Nov 1 to Jun 15
California Valencias	Mar 15 to Dec 20
Florida Early & Midseason	Oct 1 to Apr 15
Florida Valencia	Feb 1 to Jul 31
Texas	Sep 25 to May 15

Grapefruit:

Arizona	Nov 1 to July 31
California	Nov 1 to Oct 31
Florida	Sep 10 to Jul 31
Texas	Oct 1 to May 30

K-Early Citrus Fruit:

Florida	Oct 1 to Nov 30
---------	-----------------

Lemons:

Arizona	Aug 15 to Mar 1
California	Aug 1 to Jul 31

Limes:

Florida	Apr 1 to Mar 31
---------	-----------------

Tangelos:

Florida	Oct 15 to Apr 15
---------	------------------

Tangerines:

Arizona	Nov 1 to Feb 1
California	Nov 1 to May 15
Florida	Oct 1 to Apr 1

Temples:

Florida	Dec 1 to May 1
---------	----------------

**Lentils: Monthly Prices Received, Monthly Farm
Marketing Percentages, and Marketing Year Average Prices,
United States, 2002-2003 through 2004-2005^{1 2}**

Month	Prices Received			Farm Marketing Percentages ³		
	2002-2003	2003-2004	2004-2005	2002-2003	2003-2004	2004-2005
	<i>Dollars per Cwt</i>	<i>Dollars per Cwt</i>	<i>Dollars per Cwt</i>	<i>Percent</i>	<i>Percent</i>	<i>Percent</i>
Jul		15.80	17.30		0.4	0.5
Aug		13.30	13.80		9.4	7.3
Sep		15.10	15.50		19.8	16.8
Oct		16.90	15.30		15.6	12.1
Nov		18.30	15.60		11.3	9.7
Dec		18.10	15.10		7.9	6.5
Jan ⁴		18.30	15.00		12.7	6.7
Feb		19.10	13.80		12.4	10.9
Mar		20.30	13.50		5.6	13.1
Apr		18.90	13.10		2.6	7.9
May		19.10	12.30		1.3	4.7
Jun		21.00	12.10		1.0	3.8
MYA		17.20	14.40		100.0	100.0

¹ Marketing year average (MYA) prices are weighted average prices for the U.S. marketing year of July - June.

² No monthly price data available for the 2002-2003 marketing year.

³ Monthly farm marketings, based on a sample survey, as percent of total used for calculating MYA prices.

⁴ Second year.

**Dry Edible Peas: Monthly Prices Received, Monthly Farm
Marketing Percentages, and Marketing Year Average Prices,
United States, 2002-2003 through 2004-2005^{1 2}**

Month	Prices Received			Farm Marketing Percentages ³		
	2002-2003	2003-2004	2004-2005	2002-2003	2003-2004	2004-2005
	<i>Dollars per Cwt</i>	<i>Dollars per Cwt</i>	<i>Dollars per Cwt</i>	<i>Percent</i>	<i>Percent</i>	<i>Percent</i>
Jul		8.18	8.19		6.3	2.5
Aug		6.75	6.11		14.5	17.1
Sep		6.74	5.90		14.3	13.3
Oct		7.45	6.20		7.9	11.8
Nov		6.37	6.05		8.0	8.7
Dec		7.36	5.68		8.5	7.3
Jan ⁴		7.45	5.93		11.1	9.3
Feb		8.34	6.03		8.7	8.8
Mar		9.23	5.64		9.6	4.8
Apr		9.38	5.59		6.0	5.9
May		8.89	5.18		3.8	5.3
Jun		8.68	5.39		1.3	5.2
MYA		7.63	5.94		100.0	100.0

¹ Marketing year average (MYA) prices are weighted average prices for the U.S. marketing year of July - June.

² No monthly price data available for the 2002-2003 marketing year.

³ Monthly farm marketings, based on a sample survey, as percent of total used for calculating MYA prices.

⁴ Second year.

Austrian Winter Peas: Monthly Prices Received, Monthly Farm Marketing Percentages, and Marketing Year Average Prices, United States, 2002-2003 through 2004-2005^{1 2}

Month	Prices Received			Farm Marketing Percentages ³		
	2002-2003	2003-2004	2004-2005	2002-2003	2003-2004	2004-2005
	<i>Dollars per Cwt</i>	<i>Dollars per Cwt</i>	<i>Dollars per Cwt</i>	<i>Percent</i>	<i>Percent</i>	<i>Percent</i>
Jul		9.80	10.90		4.6	1.8
Aug		11.90	9.08		39.0	6.7
Sep		9.60	9.44		35.5	41.9
Oct		9.50	8.97		6.2	27.4
Nov		10.70	9.81		5.1	4.2
Dec		11.40	8.29		0.2	5.3
Jan ⁴		9.20	8.44		1.7	6.6
Feb		10.90	9.49		4.2	3.4
Mar		10.00	7.63		2.0	0.5
Apr		(⁵)	8.70		(⁵)	0.5
May		10.60	9.83		1.5	1.1
Jun		(⁵)	9.40		(⁵)	0.6
MYA		10.60	9.19		100.0	100.0

¹ Marketing year average (MYA) prices are weighted average prices for the U.S. marketing year of July - June.

² No monthly price data available for the 2002-2003 marketing year.

³ Monthly farm marketings, based on a sample survey, as percent of total used for calculating MYA prices.

⁴ Second year.

⁵ Insufficient sales to establish a price.

Corn: Monthly Prices Received, Monthly Farm Marketing Percentages, and Marketing Year Average Prices, United States, 2002-2003 through 2004-2005¹

Month	Prices Received			Farm Marketing Percentages ²		
	2002-2003	2003-2004	2004-2005	2002-2003	2003-2004	2004-2005
	<i>Dollars per Bushel</i>	<i>Dollars per Bushel</i>	<i>Dollars per Bushel</i>	<i>Percent</i>	<i>Percent</i>	<i>Percent</i>
Sep	2.47	2.20	2.20	7.1	7.0	7.8
Oct	2.34	2.12	2.14	14.0	15.6	11.7
Nov	2.28	2.20	2.05	13.9	11.6	11.7
Dec	2.32	2.31	2.04	8.2	8.7	8.6
Jan ³	2.33	2.39	2.12	12.6	16.7	12.4
Feb	2.34	2.61	1.95	6.1	7.2	8.4
Mar	2.33	2.75	2.02	6.7	8.0	8.2
Apr	2.34	2.89	2.00	6.5	5.7	5.2
May	2.38	2.87	1.98	6.5	3.3	5.9
Jun	2.34	2.79	2.03	5.3	5.3	7.2
Jul	2.17	2.51	2.11	6.0	5.6	7.0
Aug	2.15	2.34	1.95	7.1	5.3	5.9
MYA	2.32	2.42	2.06	100.0	100.0	100.0

¹ Marketing year average (MYA) prices are weighted average prices for the U.S. marketing year of September - August.

² Monthly farm marketings, based on a sample survey, as percent of total used for calculating MYA prices.

³ Second year.

**Sorghum: Marketing Year Average Prices Received, by States
and United States, 2003 and 2004**

State	2003	2004	State	2003	2004
	<i>Dollars per Cwt</i>	<i>Dollars per Cwt</i>		<i>Dollars per Cwt</i>	<i>Dollars per Cwt</i>
AL	4.10	4.00	MO	4.29	3.21
AZ	4.80	4.80	NE	4.19	3.08
AR	4.18	3.81	NM	4.45	3.30
CA	4.65	4.20	NC	4.10	3.57
CO	4.14	3.16	OK	4.16	3.14
DE	4.30	3.40	PA	4.64	4.16
GA	4.10	3.25	SC	4.11	3.25
IL	4.64	3.37	SD	4.00	3.30
KS	4.21	2.95	TN	4.30	3.87
KY	4.55	3.48	TX	4.13	3.99
LA	4.30	3.80	VA	3.70	2.82
MD	4.30	3.40			
MS	4.05	4.06	US	4.26	3.19

**Sorghum: Farm Marketings, Percent of Sales, by Month
and State, 2003-2004 and 2004-2005¹**

State and Marketing Year	Jun	Jul	Aug	Sep	Oct	Nov	Dec	Jan	Feb	Mar	Apr	May	Jun	Jul	Aug
	<i>Pct</i>	<i>Pct</i>	<i>Pct</i>	<i>Pct</i>	<i>Pct</i>	<i>Pct</i>	<i>Pct</i>	<i>Pct</i>	<i>Pct</i>	<i>Pct</i>	<i>Pct</i>	<i>Pct</i>	<i>Pct</i>	<i>Pct</i>	<i>Pct</i>
AR 2004-2005			30	51	7			8	1			1	1	1	
2003-2004			37	41	12	3	1	4	1			1			
IL 2004-2005				13	12	26	12	9	13	1	5	3	2	2	2
2003-2004					20	20	10	18	7	8	6	5	4	1	1
KS 2004-2005				3	6	18	20	16	13	6	5	4	5	3	1
2003-2004				5	13	20	23	17	7	6	3	2	2	1	1
MO 2004-2005				20	9	19	11	13	5	5	5	2	5	2	4
2003-2004				24	23	9	10	18	4	5	2	1	1	1	2
NE 2004-2005				1	6	22	11	12	12	10	3	6	7	6	4
2003-2004				3	20	20	18	18	6	7	3	1	1	1	2
OK 2004-2005			2	11	20	4	22	16	9	8	4	1	2	1	
2003-2004			17	4	7	19	23	19	3	3	4	1			
TX 2004-2005	12	22	26	6	7	3	11	6	3	2	1	1			
2003-2004	6	11	29	2	8	10	14	12	4	2	1	1			
US 2004-2005				5.0	7.4	15.2	17.3	13.8	10.2	5.7	3.8	3.1	6.4	6.8	5.3
2003-2004				5.3	11.9	15.2	18.0	15.3	5.3	4.2	2.0	1.2	4.8	7.5	9.3

¹ Monthly farm marketings, based on a sample survey, as a percent of total used for calculating marketing year average prices.

**Prices Received: Sorghum, by State and Month,
for Marketing Years, 2003-2004 and 2004-2005**

State	Jun	Jul	Aug	Sep	Oct	Nov	Dec	Jan ¹
2004-2005								
	<i>Dollars per Cwt</i>	<i>Dollars per Cwt</i>	<i>Dollars per Cwt</i>	<i>Dollars per Cwt</i>	<i>Dollars per Cwt</i>	<i>Dollars per Cwt</i>	<i>Dollars per Cwt</i>	<i>Dollars per Cwt</i>
AR	(³)	(²)	4.15	(²)	(²)	(²)	(²)	(²)
IL	(²)	(²)	(²)	3.21	3.26	3.27	3.20	3.37
KS	4.44	3.44	3.59	3.17	2.97	3.02	2.84	2.83
MO	4.83	3.80	3.88	3.83	2.89	2.79	2.80	2.89
NE	4.64	3.84	3.58	3.31	3.28	3.04	2.87	2.90
OK	(²)	3.81	3.57	3.34	3.11	3.16	3.12	3.15
TX	4.60	4.32	4.04	3.96	3.46	3.48	3.55	3.55
US	4.58	4.27	4.01	3.57	3.17	3.06	2.99	2.95
2003-2004								
AR	(²)	(³)	4.16	(²)	(²)	(²)	(²)	(²)
IL	4.16	4.00	3.87	3.82	4.07	4.16	4.62	4.76
KS	3.58	3.18	3.60	3.67	3.91	4.05	4.14	4.34
MO	4.05	3.84	3.47	(²)	4.10	4.04	4.20	4.49
NE	3.79	3.42	3.52	3.73	3.88	4.04	4.14	4.33
OK	3.62	3.49	3.55	3.59	3.92	4.16	4.22	4.35
TX	3.60	3.67	3.98	4.04	4.11	4.29	4.30	4.36
US	3.61	3.63	3.93	3.97	3.98	4.13	4.20	4.36

See footnote(s) at end of table.

--continued

**Prices Received: Sorghum, by State and Month,
for Marketing Years, 2003-2004 and 2004-2005 (continued)**

State	Feb	Mar	Apr	May	Jun	Jul	Aug
2004-2005							
	<i>Dollars per Cwt</i>	<i>Dollars per Cwt</i>	<i>Dollars per Cwt</i>	<i>Dollars per Cwt</i>	<i>Dollars per Cwt</i>	<i>Dollars per Cwt</i>	<i>Dollars per Cwt</i>
AR	(²)	(²)	(³)	(²)	(²)	(²)	(²)
IL	3.67	3.50	3.51	3.75	3.58	(²)	4.05
KS	2.88	2.90	2.91	2.99	3.34	3.44	3.12
MO	3.18	3.28	(²)	3.51	3.77	3.64	3.59
NE	2.87	3.03	2.99	3.14	3.26	3.60	3.17
OK	3.02	3.11	2.94	2.97	3.15	3.31	3.42
TX	3.54	3.93	3.10	3.21	4.39	4.22	3.85
US	2.96	3.04	2.96	3.05	3.77	3.94	3.69
2003-2004							
AR	(²)	(²)	(²)	(²)	(³)	(²)	4.15
IL	5.15	(²)	(²)	(²)	(²)	(²)	(²)
KS	4.66	4.69	5.00	4.67	4.44	3.44	3.59
MO	4.55	4.66	4.92	5.26	4.83	3.80	3.88
NE	4.53	4.82	5.08	4.71	4.64	3.84	3.58
OK	4.88	5.03	5.21	4.75	(²)	3.81	3.57
TX	4.98	5.22	5.35	4.93	4.60	4.32	4.04
US	4.76	4.84	5.09	4.82	4.58	4.27	4.01

¹ Second year.

² Price not published to avoid disclosure of individual firms.

³ Insufficient sales to establish a price.

**Soybeans: Marketing Year Average Prices Received, by States
and United States, 2003 and 2004**

State	2003	2004	State	2003	2004
	<i>Dollars per Bu</i>	<i>Dollars per Bu</i>		<i>Dollars per Bu</i>	<i>Dollars per Bu</i>
AL	7.25	6.25	NJ	7.35	5.45
AR	7.11	5.88	NY	7.80	5.40
DE	7.65	5.40	NC	7.29	5.56
FL	6.90	5.60	ND	6.62	5.75
GA	7.47	5.70	OH	7.20	5.74
IL	7.51	5.84	OK	7.40	5.70
IN	7.67	5.66	PA	7.33	5.43
IA	7.70	5.76	SC	7.60	5.60
KS	7.68	5.39	SD	6.96	5.58
KY	7.40	5.87	TN	7.05	5.58
LA	6.80	6.29	TX	7.00	5.85
MD	7.65	5.35	VA	7.67	5.32
MI	7.30	5.72	WV	7.54	5.34
MN	7.26	5.90	WI	7.11	5.70
MS	6.61	6.20			
MO	7.52	5.62	US	7.34	5.74
NE	7.02	5.54			

**Prices Received: Soybeans, by State and Month,
for Marketing Years, 2003-2004 and 2004-2005 ¹**

State	Aug	Sep	Oct	Nov	Dec	Jan ²	Feb
	2004-2005						
	<i>Dollars per Bushel</i>	<i>Dollars per Bushel</i>	<i>Dollars per Bushel</i>	<i>Dollars per Bushel</i>	<i>Dollars per Bushel</i>	<i>Dollars per Bushel</i>	<i>Dollars per Bushel</i>
AR	7.25	6.30	5.93	5.65	5.70	5.81	5.64
IL	6.50	5.91	5.57	5.37	5.59	5.67	5.49
IN	7.18	5.51	5.24	5.22	5.47	5.57	5.46
IA	6.80	5.96	5.62	5.36	5.32	5.37	5.33
KS	6.55	5.53	5.15	5.05	5.04	5.07	5.21
KY	6.59	6.01	5.76	5.65	5.61	5.82	5.65
LA	7.30	6.59	5.80	5.75	5.57	5.93	5.59
MI	7.18	5.83	5.41	5.37	5.44	5.38	5.31
MN	6.93	6.00	5.90	5.71	5.55	5.53	5.45
MS	6.99	6.43	5.69	5.56	5.86	6.34	5.63
MO	6.64	5.63	5.43	5.26	5.33	5.34	5.37
NE	6.56	5.81	5.50	5.18	5.24	5.24	5.29
NC	6.31	5.56	5.74	5.39	5.22	5.29	5.56
ND	6.58	6.11	6.06	5.72	5.50	5.59	5.36
OH	6.49	5.71	5.58	5.24	5.39	5.55	5.39
SD	6.35	5.73	5.32	5.21	5.28	5.34	5.44
TN	6.06	5.60	5.48	5.31	5.61	5.66	5.49
WI	6.58	5.94	5.71	5.39	5.28	5.33	5.35
US	6.83	5.83	5.56	5.36	5.45	5.57	5.42
	2003-2004						
AR	5.78	6.06	6.72	7.16	7.22	7.39	8.53
IL	5.67	6.06	6.57	6.94	7.13	7.29	8.37
IN	5.84	6.49	6.90	7.25	7.44	7.38	8.38
IA	5.62	6.06	6.58	7.14	7.34	7.62	8.39
KS	5.93	6.27	6.92	7.35	7.46	7.80	8.33
KY	5.79	6.05	6.80	7.24	7.29	7.25	8.11
LA	5.81	6.09	7.03	7.41	7.38	7.46	8.41
MI	5.91	6.16	6.55	6.96	7.06	7.25	8.21
MN	5.62	5.82	6.25	6.98	7.07	7.53	8.16
MS	5.73	6.19	6.74	6.64	6.28	6.88	8.57
MO	5.75	6.26	6.93	7.12	7.43	7.48	8.27
NE	5.59	5.91	6.47	7.11	7.14	7.26	8.19
NC	5.53	6.58	7.00	7.03	7.07	7.38	8.08
ND	5.34	5.66	6.13	6.75	6.65	6.70	7.72
OH	5.83	6.16	6.66	7.08	7.23	7.28	8.38
SD	5.40	5.83	6.47	6.95	7.04	7.37	8.08
TN	5.75	5.97	7.04	6.91	7.15	7.30	7.99
WI	5.66	6.13	6.50	6.73	6.93	7.16	7.86
US	5.68	6.06	6.60	7.05	7.17	7.35	8.28

See footnote(s) at end of table.

--continued

**Prices Received: Soybeans, by State and Month,
for Marketing Years, 2003-2004 and 2004-2005 (continued) ¹**

State	Mar	Apr	May	Jun	Jul	Aug
	2004-2005					
	<i>Dollars per Bushel</i>	<i>Dollars per Bushel</i>	<i>Dollars per Bushel</i>	<i>Dollars per Bushel</i>	<i>Dollars per Bushel</i>	<i>Dollars per Bushel</i>
AR	6.26	6.23	6.44	7.07	7.03	6.08
IL	6.03	6.13	6.21	6.65	6.78	6.20
IN	6.02	5.99	6.32	6.76	6.93	6.29
IA	5.85	5.95	6.12	6.50	6.58	6.07
KS	5.80	6.02	6.16	6.44	6.71	6.17
KY	6.12	6.17	6.49	6.84	6.87	6.32
LA	6.51	6.11	6.22	6.92	⁽³⁾	6.17
MI	6.06	5.97	6.04	6.55	6.81	6.27
MN	5.96	6.13	6.26	6.49	6.45	6.11
MS	6.20	6.15	6.13	6.73	⁽³⁾	6.08
MO	5.88	6.10	6.29	6.66	6.77	6.24
NE	5.88	5.97	6.17	6.59	6.60	6.04
NC	6.07	6.05	6.47	6.47	6.65	6.26
ND	5.74	5.88	6.00	6.24	6.28	5.82
OH	6.03	6.05	6.29	6.76	6.80	6.41
SD	5.83	6.00	6.11	6.47	6.36	5.87
TN	6.11	6.14	6.38	6.78	6.84	6.23
WI	5.81	5.86	6.08	6.29	6.40	6.25
US	5.95	6.03	6.21	6.58	6.65	6.15
	2003-2004					
AR	9.48	9.07	9.91	8.54	8.25	7.25
IL	9.32	9.51	9.36	9.01	8.36	6.50
IN	9.43	9.76	9.62	9.45	8.89	7.18
IA	9.44	9.67	9.72	9.34	8.58	6.80
KS	9.34	9.82	9.79	8.87	8.39	6.55
KY	9.04	9.82	8.94	9.12	8.71	6.59
LA	⁽³⁾	⁽³⁾	⁽³⁾	⁽³⁾	⁽³⁾	7.30
MI	9.01	9.57	9.54	9.01	8.24	7.18
MN	9.06	9.66	9.64	9.18	8.38	6.93
MS	9.49	9.74	9.14	⁽³⁾	8.25	6.99
MO	9.13	9.56	9.68	9.37	8.37	6.64
NE	9.15	9.58	9.72	9.03	7.91	6.56
NC	8.97	8.93	8.59	8.80	7.56	6.31
ND	8.59	9.20	9.12	8.09	7.56	6.58
OH	9.42	9.81	9.51	8.98	8.51	6.49
SD	9.14	9.54	9.61	9.12	8.04	6.35
TN	9.18	9.79	9.06	8.98	7.62	6.06
WI	9.15	9.31	9.68	8.97	8.59	6.58
US	9.28	9.62	9.56	9.08	8.46	6.83

¹ Marketing year: September 1 to August 31 for U.S.; August 1 to July 31 for Louisiana and Mississippi; September 1 to August 31 for all other monthly marketing estimating States.

² Second year.

³ Price not published to avoid disclosure of individual firms.

⁴ Insufficient sales to establish a price.

**Soybeans: Farm Marketings, Percent of Sales, by Month
and State, 2003-2004 and 2004-2005¹**

State and Marketing Year	Aug	Sep	Oct	Nov	Dec	Jan	Feb	Mar	Apr	May	Jun	Jul	Aug
	<i>Percent</i>	<i>Percent</i>	<i>Percent</i>	<i>Percent</i>	<i>Percent</i>	<i>Percent</i>	<i>Percent</i>	<i>Percent</i>	<i>Percent</i>	<i>Percent</i>	<i>Percent</i>	<i>Percent</i>	<i>Percent</i>
AR 2004-2005		10	12	18	15	17	13	9	2	1	1		2
2003-2004		8	23	18	16	24	2	1				1	7
IL 2004-2005		7	9	7	10	19	14	10	4	5	6	4	5
2003-2004		7	20	5	9	26	9	8	4	4	2	3	3
IN 2004-2005		22	16	7	6	9	13	8	3	4	5	3	4
2003-2004		11	32	4	4	16	7	6	4	4	4	5	3
IA 2004-2005		5	15	7	7	9	12	14	8	5	8	5	5
2003-2004		9	26	5	6	13	7	9	7	3	4	7	4
KS 2004-2005		7	16	14	12	9	15	11	5	5	3	1	2
2003-2004		5	25	15	13	14	10	8	3	3	1	2	1
KY 2004-2005		2	8	12	11	25	16	13	5	3	3	1	1
2003-2004		1	16	16	8	40	8	5	2	1	1	1	1
LA 2004-2005	18	27	16	11	6	9	7	4	1	1			
2003-2004	11	24	38	10	6	9	2						
MI 2004-2005		5	20	16	7	7	10	8	5	5	11	3	3
2003-2004		3	40	7	11	11	6	6	4	2	3	5	2
MN 2004-2005		3	19	7	10	9	11	13	5	5	8	5	5
2003-2004		13	27	7	9	11	8	7	4	4	3	5	2
MS 2004-2005	13	20	12	6	6	19	11	6	1	1	1	4	
2003-2004	10	25	23	9	4	20	2	1			6		
MO 2004-2005		4	14	16	10	11	12	14	5	4	4	3	3
2003-2004		2	25	18	8	24	7	6	2	2	2	2	2
NE 2004-2005		6	21	14	11	9	13	10	4	3	4	2	3
2003-2004		9	42	12	9	11	4	5	2	1	1	2	2
NC 2004-2005		1	4	31	25	7	11	7	4	4	2	2	2
2003-2004		3	8	38	22	11	6	5	2	2	1	1	1
ND 2004-2005		1	17	15	15	10	12	13	6	3	3	3	2
2003-2004		6	40	14	9	15	6	3	2	1	1	2	1
OH 2004-2005		11	19	11	7	8	11	12	5	5	5	3	3
2003-2004		7	45	8	6	15	7	5	2	1	1	2	1
SD 2004-2005		2	21	7	8	12	16	13	6	5	4	3	3
2003-2004		15	43	6	5	10	6	5	2	2	2	3	1
TN 2004-2005		10	19	22	14	16	9	5	1	1	1	1	1
2003-2004		5	30	32	6	13	3	3	1	1		1	5
WI 2004-2005		3	24	20	6	6	7	8	8	6	7	3	2
2003-2004		5	40	9	8	15	6	6	5	2	1	2	1
US 2004-2005		7.7	15.0	10.4	9.4	12.2	12.4	11.0	4.8	4.2	5.4	3.4	4.1
2003-2004		8.8	29.5	9.4	7.9	16.9	6.6	6.1	3.5	2.4	2.2	3.4	3.2

¹ Monthly farm marketings, based on a sample survey, as a percent of total used for calculating marketing year average prices.

Reliability of Prices Received Estimates

Definition: Prices received represent sales from producers to first buyers. They include all grades and qualities. The average commodity price from the survey multiplied by the total quantity marketed theoretically should give the total cash receipts for the commodity.

Survey Procedures: Primary sales data used to determine grain prices were obtained from probability samples of about 2000 mills and elevators. These procedures ensure that virtually all grain moving into commercial channels has a chance of being included in the survey. Generally, States surveyed account for 90 percent or more of total U.S. production. Livestock prices are obtained from packers, stockyards, auctions, dealers, and market check data from AMS-USDA, private marketing organizations, and state commodity groups and agencies. Inter-farm sales of grain and livestock are not included since they represent very small percentages of the total marketings. Grain marketed for seed is also excluded. Fruit and vegetable prices are obtained from sample surveys and market check data from AMS-USDA, private marketing organizations, state agencies, and universities.

Summary and Estimation Procedures: Survey quantities sold are expanded by strata to state levels and used to weight average strata prices to a state average. State prices are then weighted to a U.S. price based on expanded marketings. Recommendations are prepared by the State Statistical Offices and reviewed by the Agricultural Statistics Board in Washington, D.C. State recommendations are reviewed for reasonableness with survey data, other States, and recent historic estimates.

Revisions: For most items, the current month's preliminary price represents a 3-5 day period around the 15th of the month. Previous month's prices represent actual dollars received for quantities sold during the entire month. Revisions are published in monthly issues of *Agricultural Prices*.

Reliability: U.S. price estimates based on probability surveys generally have a sampling error of less than one percent for the major commodities such as corn, wheat, soybeans, cotton, and rice. Current methods of summarization for non-probability commodities are not designed directly to calculate sampling errors. However, analytical measures approximate the U.S. relative sampling errors at around five percent. Any nonsampling errors are attributed to such things as the inability to obtain correct information, differences in interpreting questions or definitions, mistakes in coding or processing the data, etc. Efforts are made at each step in the survey process to minimize these nonsampling errors.

Prices Paid by Farmers

The September Index of Prices Paid for Commodities and Services, Interest, Taxes, and Farm Wage Rates (PPITW) at 142 (1990-92=100), increased 1 point from August 2005 and 5.2 percent above September 2004.

PRODUCTION INDEX: The September index, at 141, increased 0.7 percent from last month and increased 6.0 percent from last year. Higher prices for diesel fuel, feeder cattle, gasoline, and LP gas more than offset lower prices in September for feed concentrates, feed grains, feed supplements, and nitrogen fertilizers

Feed: The September index, at 117, decreased 2.5 percent from August but is 0.9 percent above last September. Since August, lower prices for feed concentrates, feed grains, feed supplements, and hay & forages more than offset higher prices for complete feeds.

Livestock & Poultry: The September index for livestock and poultry purchases, at 138, increased 3.8 percent from last month but is unchanged from last year. Since August, prices are higher for feeder cattle and feeder pigs. The September feeder cattle price, at \$118.40 per cwt, is up \$4.50 per cwt from the August price. September feeder pigs averaged \$109.00 per cwt, up \$8.00 per cwt from August.

Fertilizer: The September index, at 159, is unchanged from August but up 11 percent from September a year ago. Since August, higher prices for potash and phosphate materials offset lower prices for nitrogen fertilizers and mixed fertilizers.

Agricultural Chemicals: The September index, at 122, increased 0.8 from August and 1.7 percent from last September.

Fuels: The September index, at 275, is up 14 percent from a month earlier and is 57 percent greater than September 2004. Compared with last month, prices are higher for diesel fuel, gasoline, and LP gas.

Farm Machinery: The September index, at 172, is unchanged from August but is 4.9 percent greater than last September. Since August, prices are higher for self-propelled machinery.

CONSUMER PRICE INDEX: The August 2005 Consumer Price Index for all urban consumers (CPI-U) increased 0.5 percent before seasonal adjustment to a level of 196.4 (1982-84=100). This compares with the July index of 195.4. For the 12-month period ending in August, the overall index has increased 3.6 percent.

**Indexes of Prices Paid by Farmers and Related Parity Ratios
United States, September 2005 With Comparisons**

Indexes and Ratios	1910-14 = 100			1990-92 = 100		
	2004	2005		2004	2005	
	Sep	Aug	Sep	Sep	Aug	Sep
Prices Paid by Farmers for Commodities & Services, Interest, Taxes, & Wage Rates (PPITW)	1,797	*1,874	1,887	135	141	142
Production	1,287	*1,355	1,369	133	140	141
Feed	564	*588	572	116	*120	117
Livestock & Poultry	1,764	1,704	1,766	138	133	138
Seeds	1,564	1,694	1,694	158	171	171
Fertilizer	526	*584	582	143	*159	159
Agricultural Chemicals	741	*746	751	120	*121	122
Fuels	1,347	*1,858	2,120	175	*241	275
Farm Supplies & Repairs	981	*1,018	1,018	138	143	143
Autos & Trucks	2,969	*2,959	2,926	112	111	110
Farm Machinery	4,105	*4,309	4,325	164	*172	172
Building Materials	1,868	*1,914	1,914	137	141	141
Farm Services & Rent	1,468	*1,510	1,510			
Farm Services				125	129	129
Rent				120	123	123
Interest ¹	2,593	2,643	2,643	103	105	105
Taxes ²	3,474	3,542	3,542	130	132	132
Wage Rates	6,074	6,067	6,067	162	162	162
Production, Interest, Taxes, & Wage Rates (PITW)	1,796	*1,876	1,892	134	140	141
Family Living-CPI ³	1,804	*1,865	1,865	141	*146	146
Ratio (Received\Paid) Parity Ratio ⁴	41	*40	41	86	83	82
Parity Ratio Adjusted ⁵	43	44	45			
PPITW Adjusted for Productivity ⁶	1,223	1,238	1,241			
Crop Sector (PPITW)				137	144	145
Livestock Sector (PPITW)				133	*137	138
Farm Sector (Production)				130	*133	133
Non-Farm Sector (Production)				134	143	145

* Revised.

¹ Interest per acre on farm real estate debt and interest rate on farm non-real estate debt.

² Farm real estate taxes payable per acre.

³ Bureau of Labor Statistics, Consumer Price Index for all urban consumers (CPI-U), for the previous month converted by the USDA.

⁴ Ratio of index of prices received to PPITW (1910-14=100).

⁵ Based on estimated cash receipts, from marketings and government payments, the preliminary adjustment factor is 1.105 for 2005 and the revised factor is 1.048 for 2004.

⁶ PPITW is adjusted based on productivity trend for the prior 15 years.

**Prices Paid Indexes and Annual Weights for Input Components and
Sub-Components United States, September 2005 With Comparisons**

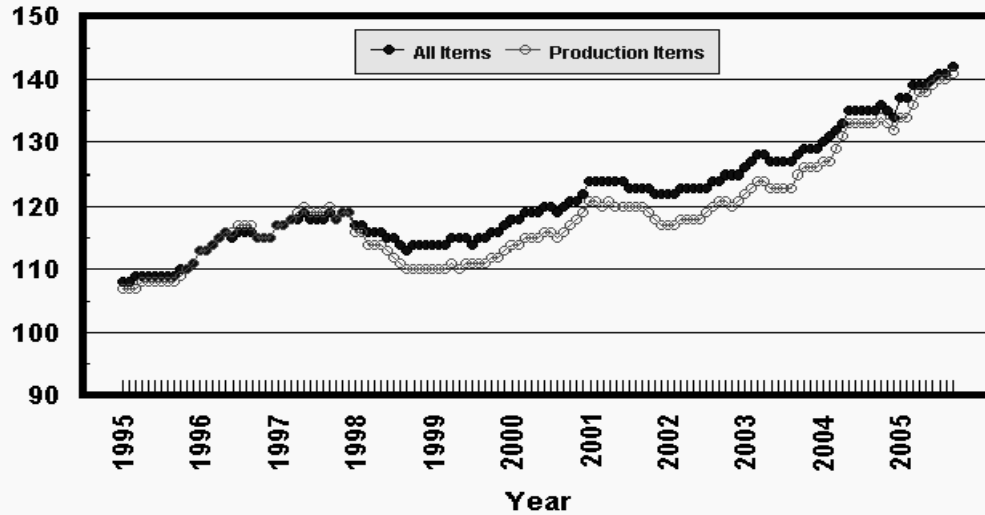
Index	Relative Weights 5-Year Moving Average ¹		Input Indexes		
	2004	2005	2004	2005	
	<i>Percent</i>	<i>Percent</i>	Sep <i>(1990-92=100)</i>	Aug <i>(1990-92=100)</i>	Sep <i>(1990-92=100)</i>
Production Items	66.2	66.4	133	140	141
Feed	10.7	10.7	116	*120	117
Feed Grains	1.5	1.5	95	*86	77
Complete Feeds	5.2	5.2	120	*122	123
Hay/Forages	1.3	1.3	111	127	125
Concentrates	1.7	1.7	113	*133	122
Supplements	0.9	0.9	134	*135	129
Livestock & Poultry	7.4	7.7	138	133	138
Feeder Cattle	5.8	6.0	141	135	140
Feeder Pigs	0.6	0.6	116	110	119
Milk Cow Replacements	0.6	0.6	152	162	162
Poultry	0.4	0.5	110	110	110
Seeds	3.3	3.5	158	171	171
Field Crops	3.0	3.2	163	177	177
Grasses/Legumes	0.3	0.3	111	118	118
Fertilizer	4.4	4.3	143	*159	159
Mixed Fertilizer	1.9	1.9	125	*136	136
Nitrogen	1.8	1.8	166	183	181
Potash & Phosphate	0.6	0.6	133	*163	166
Agricultural Chemicals	3.7	3.6	120	*121	122
Herbicides	2.4	2.3	114	*114	115
Insecticides	0.9	0.8	137	*140	141
Fungicides/Other	0.5	0.5	119	*120	121
Fuels	2.7	2.7	175	*241	275
Diesel	1.5	1.6	178	*257	291
Gasoline	0.8	0.8	160	*224	264
LP Gas	0.4	0.4	189	*206	228
Farm Supplies & Repairs	5.4	5.2	138	143	143
Supplies	1.8	1.7	128	*133	133
Repairs	3.6	3.5	144	149	149
Autos & Trucks	1.8	1.8	112	111	110
Autos	0.2	0.2	106	106	105
Trucks	1.6	1.5	113	*112	111
Farm Machinery	4.0	4.0	164	*172	172
Tractors	0.9	0.9	148	*155	155
Self-Propelled	1.6	1.6	171	*178	180
Other Machinery	1.5	1.5	165	175	175
Building Materials	3.3	3.6	137	141	141
Farm Services	12.4	12.4	125	129	129
Custom Rates	1.3	1.3	125	125	125
Other Services	11.1	11.1	125	130	130
Rent	7.1	6.9	120	123	123
Cash	3.8	3.7	145	147	147
Share	3.3	3.2	91	94	94
Interest	4.7	4.5	103	105	105
Taxes	3.0	2.9	130	132	132
Wage Rates	7.6	7.6	162	162	162
Family Living-CPI	18.5	18.6	141	*146	146

* Revised.

¹ Weights may not add due to rounding.

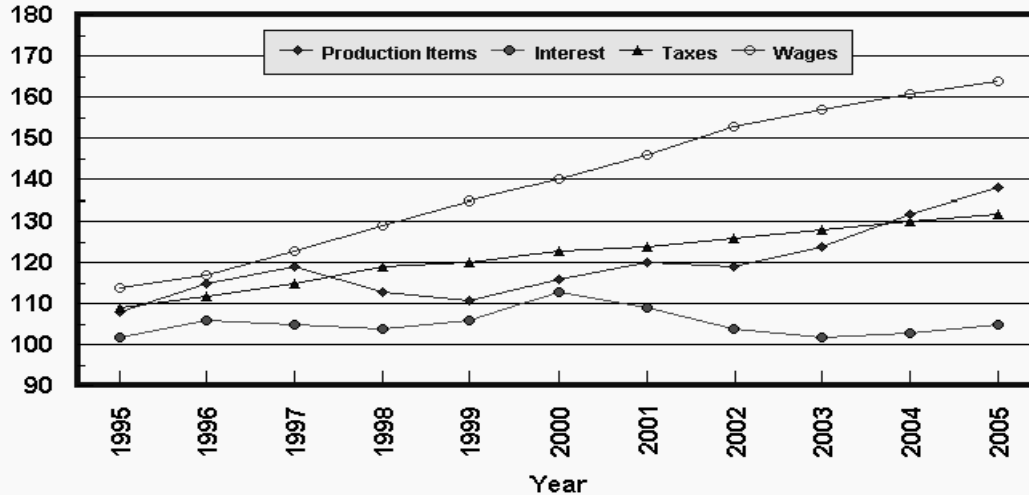
Prices Paid by Farmers, Major Indexes US, by Month

Percent (1990-92=100)



Prices Paid by Farmers, Major Indexes US, Annual Averages 1/

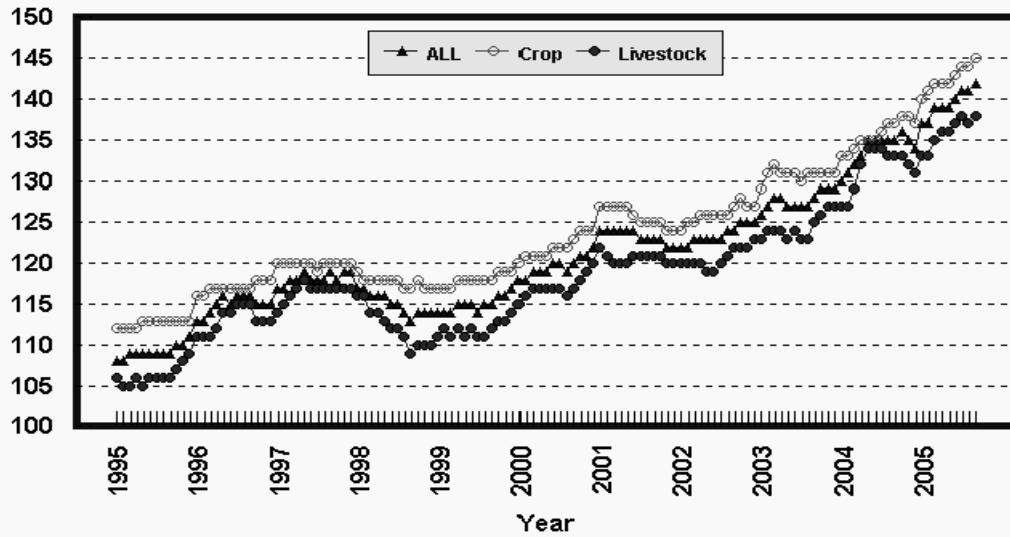
Percent (1990-92=100)



1/ Index values for 2005 are year-to-date averages.

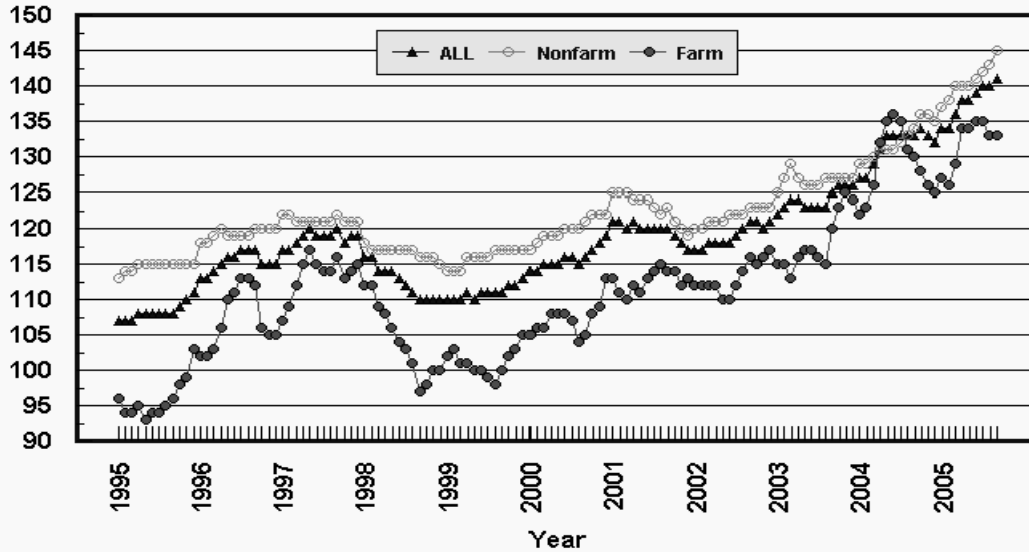
Prices Paid by Farmers, Indexes, All Items US, By Farm Type

Percent (1990-92=100)



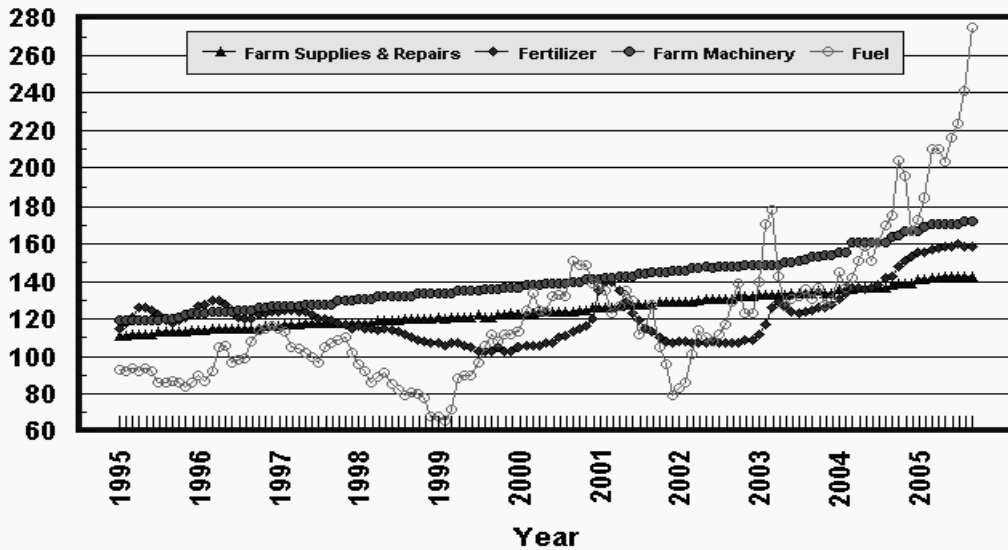
Prices Paid by Farmers, Indexes, All Production Items US, By Sector Origin

Percent (1990-92=100)



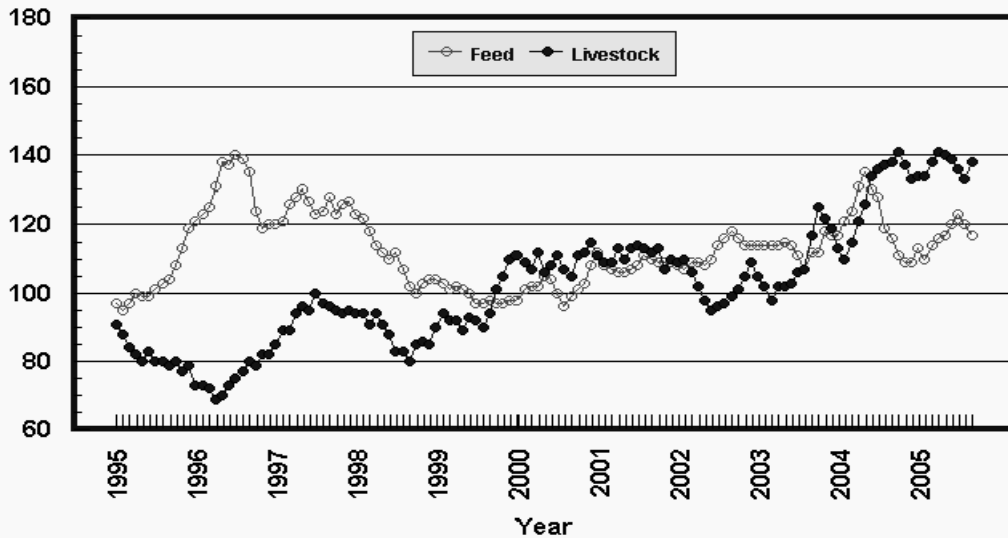
Prices Paid by Farmers, Selected Production Indexes US, By Non-Farm Sector

Percent (1990-92=100)



Prices Paid by Farmers, Selected Production Indexes US, By Farm Sector

Percent (1990-92=100)



Feed Price Ratios: United States, September 2005 with Comparisons

Feed Price Ratio ¹	2004	2005	
	Sep	Aug	Sep
Broiler-Feed: Pounds of Broiler Grower Feed equal in value to 1 pound of broiler, live weight	6.3	*7.0	8.2
Market Egg Feed: Pounds of Laying Feed equal in Value to 1 dozen eggs	6.5	*5.0	10.2
Hog-Corn: Bushels of Corn equal in value to 100 pounds of hog, live weight	24.9	*26.2	28.2
Milk-Feed: Pounds of 16% Mixed Dairy Feed equal in value to 1 pound of Whole Milk	3.22	*3.06	3.36
Steer & Heifer-Corn: Bushels of Corn equal in value to 100 pounds of Steer & Heifers, live weight	40.7	*45.0	52.8
Turkey-Feed: Pounds of Turkey Grower equal in value to 1 pound of Turkey, live weight	7.9	*8.1	9.6

* Revised.

¹ Effective January 1995, prices of commercial prepared feeds are based on current U.S. prices received for corn, soybeans, alfalfa hay, and all wheat.

**Prices Used to Calculate Feed Price Ratios:
United States, September 2005 with Comparisons**

Commodity	Unit	2004	2005	
		Sep	Aug	Sep
Broilers, Live	Lb	0.400	0.440	0.460
Eggs, Market	Doz	0.353	*0.258	0.465
Hogs, All	Cwt	54.80	*51.00	48.80
Milk, All	Cwt	15.50	*14.80	15.10
Steers and Heifers	Cwt	89.50	*87.80	91.30
Turkeys, Live	Lb	0.462	0.469	0.507
Corn	Bu	2.20	*1.95	1.73
Hay, Alfalfa, Baled	Ton	97.50	109.00	107.00
Soybeans	Bu	5.83	*6.15	5.41
Wheat, All	Bu	3.36	*3.24	3.34

* Revised.

**Feeder Livestock: Prices Paid, United States
September 2005 with Comparisons**

Commodity	Unit	2004	2005	
		Sep	Aug	Sep
		<i>Dollars</i>	<i>Dollars</i>	<i>Dollars</i>
Feeders and Stockers				
Cattle and Calves	Cwt	119.30	113.90	118.40
Feeder Pigs	Cwt	107.00	101.00	109.00

Prices Paid by Farmers

Definition: Prices paid by farmers represent the average costs of inputs purchased by farmers and ranchers to produce agricultural commodities. Conceptually, the average price when multiplied by quantity purchased should equal total producer expenditures for the item.

Survey Procedures: The prices paid data are obtained from establishments that sell goods and services to farmers and ranchers. Annually, about 8,500 firms are randomly selected from lists by type of item sold with an average response rate in the range of 75-80 percent. Firms are asked to report the price for the specified item "most commonly bought by farmers" or that was the "volume seller". Approximately 135 items are surveyed each April to represent all production input items purchased. The survey reference period for most items is the 5 business days centered around the 15th of the month. Separate prices paid surveys are conducted for, agricultural chemicals, fuels, feed, fertilizer, machinery, and seed.

Summary and Estimation Procedures: The annual April Prices Paid Survey is summarized as a nonprobability survey. Average prices reported are aggregated to the region and U.S. level using weights available from expenditure data and other administrative sources. Price recommendations are prepared by the State Statistical Offices and Headquarters for review by the Agricultural Statistics Board in Washington, D.C. Also, the change in price level for individual items surveyed are combined to the regional and U.S. levels, and are published as prices paid indexes referenced to a specific base period. Prices paid indexes for new autos and trucks, building materials, farm supplies, motor supplies, and marketing containers are updated based on price changes measured in selected Bureau of Labor Statistics (BLS) indexes.

Revisions: Any revisions are published in the monthly and in annual issues of *Agricultural Prices*. The basis for revision must be supported by additional data that directly affect the level of the estimate. More revisions are likely in April when separate prices paid surveys are conducted, in lieu of BLS indexes, by the USDA to measure price change.

Reliability: Current methods of summarization in April are not designed directly to calculate sampling errors. However, analytical measures approximate the U.S. relative sampling errors for major items around 10 percent. Any nonsampling errors are attributed to such things as the inability to obtain correct information, differences in interpreting questions or definitions, mistakes in coding or processing the data, etc. Efforts are made at each step in the survey process to minimize these nonsampling errors.

Program Change: Effective January 1, 1995, the National Agricultural Statistics Service updated the weights and changed the construction of its prices paid and received by farmers indexes. A Federal Register Notice dated October 28, 1994 discussed these program modifications.

A 1990-92 reference and base period replaced the 1977 reference and 1971-73 base weight period. Five-year moving average weights replaced the current fixed 1971-73 base period weights. The 1910-14=100 price indexes, required by statute for computing parity prices, were linked forward based on the changes in the new 1990-92=100 indexes. The new indexes were constructed by multiplying the ratios of the current prices to the base period prices by the moving average weights (adjusted for seasonal marketing patterns for the prices received indexes).

Information Contacts

General questions should be directed to Linda Hutton, Chief, Environmental, Economics and Demographics Branch at (202) 720-6146. Below are the commodity specialists to contact for additional information.

Crop Prices Received

Joe Prusacki Chief, Crops Branch	(202) 720-2127
Greg Thessen, Field Crops Section	(202) 720-2127
Scott Cox - Wheat, Rye	(202) 720-8068
Ty Kalas - Corn, Proso Millet, Flaxseed	(202) 720-9526
Troy Joshua - Cotton, Cottonseed	(202) 720-5944
Travis Thorson - Hay, Oats, Sorghum	(202) 690-3234
Jason Lamprecht - Soybeans, Sunflower, Other Oilseeds	(202) 720-7369
Dennis Koong - Peanuts, Rice	(202) 720-7688
Brian Young - Sugarcane, Sugarbeets, Barley	(202) 720-7621
Jim Smith, Fruit and Vegetable Section	(202) 720-2127
Debbie Flippin - Peaches, Pears, Hops, Pulses, Mint	(202) 720-3250
Jorge Garcia-Pratts - Citrus	(202) 720-5412
Terry O'Connor - Apples, Apricots, Cherries, Cranberries, Plums, Prunes	(202) 720-4288
Leslie Colburn - Grapes, Tobacco	(202) 720-7235
Cathy Scherrer, Potatoes, Dry Edible Beans, Sweet Potatoes	(202) 720-4285
Biz Wallingsford - Vegetables, Onions, Strawberries	(202) 720-2157

Livestock Prices Received

Dan Kerestes, Chief, Livestock Branch	(202) 720-3570
Bill Weaver, Livestock Section	(202) 720-3570
Scott Hollis - Sheep, Lambs, Wool, Mohair	(202) 720-4751
Ann Summa - Milk, Milk Cows	(202) 720-3278
Bruce Boess - Hogs	(202) 720-3106
Mike Miller - Cattle	(202) 720-3040
Wilbert Hundl, Poultry and Specialty Commodities Section	(202) 720-3570
John Lange - Turkeys	(202) 720-0585
Sharyn Lavender - Eggs	(202) 720-3244
Jody Roberts - Broilers	(202) 690-8632

Indexes, Prices Paid, and Parity Prices

Linda Hutton, Chief, Environmental, Economics and Demographics Branch	(202) 720-6146
Kevin Hintzman, Economics Section	(202) 720-6146
Eric Barnes - Farm Supplies and Repairs, Farm Machinery, Fuels, Feeder Livestock, Poultry Chicks, Feed Price Ratios, Grazing Fees, Autos & Trucks	(202) 690-4752
Daryl Brinkman - Prices Received Indexes, Parity Prices	(202) 720-8844
Tara Jackson - Prices Paid Indexes, Prices Paid for Feed, Fertilizer, Agricultural Chemicals, Seeds	(202) 690-3229

ACCESS TO REPORTS!!

For your convenience, there are several ways to obtain NASS reports, data products, and services:

INTERNET ACCESS

All NASS reports are available free of charge on the worldwide Internet. For access, connect to the Internet and go to the NASS Home Page at www.usda.gov/nass/. Select "Today's Reports" or Publications and then Reports Calendar or Publications and then Search, by Title or Subject.

E-MAIL SUBSCRIPTION

All NASS reports are available by subscription free of charge direct to your e-mail address. Starting with the NASS Home Page at www.usda.gov/nass/, click on **Publications**, then click on the **Subscribe by E-mail** button which takes you to the page describing e-mail delivery of reports. Finally, click on **Go to the Subscription Page** and follow the instructions.

PRINTED REPORTS OR DATA PRODUCTS

CALL OUR TOLL-FREE ORDER DESK: 800-999-6779 (U.S. and Canada)
Other areas, please call 703-605-6220 FAX: 703-605-6900
(Visa, MasterCard, check, or money order acceptable for payment.)

ASSISTANCE

For **assistance** with general agricultural statistics or further information about NASS or its products or services, contact the **Agricultural Statistics Hotline** at **800-727-9540**, 7:30 a.m. to 4:00 p.m. ET, or e-mail: nass@nass.usda.gov.

The U.S. Department of Agriculture (USDA) prohibits discrimination in all its programs and activities on the basis of race, color, national origin, age, disability, and where applicable, sex, marital status, familial status, parental status, religion, sexual orientation, genetic information, political beliefs, reprisal, or because all or part of an individual's income is derived from any public assistance program. (Not all prohibited bases apply to all programs.) Persons with disabilities who require alternative means for communication of program information (Braille, large print, audiotape, etc.) should contact USDA's TARGET Center at (202) 720-2600 (voice and TDD).

To file a complaint of discrimination, write to USDA, Director, Office of Civil Rights, 1400 Independence Avenue, S.W., Washington, D.C. 20250-9410, or call (800) 795-3272 (voice) or (202) 720-6382 (TDD). USDA is an equal opportunity provider and employer.

USDA Data Users' Meeting

October 17, 2005

Embassy Suites at O'Hare

Chicago, Illinois

(847) 678-4000

The USDA's National Agricultural Statistics Service will be organizing an open forum for data users. The purpose will be to provide updates on pending changes in the various statistical and information programs and seek comments and input from data users. Other USDA agencies to be represented will include the Agricultural Marketing Service, the Economic Research Service, the Foreign Agricultural Service, and World Agricultural Outlook Board. The Foreign Trade Division from the Census Bureau will also be included in the meeting.

For registration details or additional information for the Data Users' Meeting, see the NASS homepage at www.usda.gov/nass/ or contact Lynda Ford (NASS) at (202) 720-3896 or at lynda_ford@nass.usda.gov.

This Data Users' Meeting precedes an Industry Outlook meeting that will be held at the same location on October 18, 2005. The Outlook meeting brings together analysts from various commodity sectors to discuss the outlook situation. For more information about the outlook meeting and to register contact Jim Robb (Livestock and Marketing Information Center) at (720) 544-2941 or at robb@lmic.info.