

# Agricultural Prices

Released November 30, 2005, by the National Agricultural Statistics Service (NASS), Agricultural Statistics Board, U.S. Department of Agriculture. For information on *Agricultural Prices* see page 49, office hours 7:30 a.m. to 4:00 p.m. ET.

## November Farm Prices Received Index Increased 2 Points From Last Month

The preliminary All Farm Products Index of Prices Received by Farmers in November, at 113, based on 1990-92=100, increased 2 points (1.8 percent) from October. The Crop Index is up 1 point (1.0 percent) while the Livestock Index decreased 1 point (0.8 percent). Producers received higher commodity prices for eggs, oranges, potatoes, cucumbers, and cattle. Lower prices were received for lettuce, dairy, hogs, broilers, and tomatoes. The overall index is also affected by the seasonal change based on a 3-year average mix of commodities producers sell. Increased average marketings of dairy, cattle, cotton, and oranges offset decreased marketings of soybeans, potatoes, peanuts, and sweet corn.

Preliminary All Farm Products Index is down 2 points (1.7 percent) from November 2004. The Food Commodities Index, at 119, increased 3 points (2.6 percent) from last month but decreased 3 points (2.5 percent) from November 2004.

## Prices Paid Index Decreased 1 Point

The November Index of Prices Paid for Commodities and Services, Interest, Taxes, and Farm Wage Rates (PPITW) is 143 percent of the 1990-92 average. The index decreased 1 point (0.7 percent) from October but is 8 points (5.9 percent) above November 2004. Lower prices in November for diesel fuel, gasoline, complete feeds, and hays & forages offset higher prices for feed concentrates, nitrogen fertilizers, building materials, and feeder pigs.

Index Summary Table

Index 1990-92=100	2004		2005	
	Oct	Nov	Oct	Nov
Prices Received	114	115	111	113
Prices Paid	136	135	144	143
Ratio <sup>1</sup>	84	85	77	79

<sup>1</sup> Ratio of index of prices received by farmers to index of prices paid by farmers.

## Prices Received by Farmers

The November All Farm Products Index is 113 percent of its 1990-92 base, up 1.8 percent from the October index but 1.7 percent below the November 2004 index.

**ALL CROPS:** The November index is 104, up 1.0 percent from October but 7.1 percent below November 2004. From October, index increases for potato & dry beans and oil bearing commodities more than offset the index decreases for vegetables, feed grains & hay, and food grains.

**Food Grains:** The November index, at 111, is 0.9 percent below the previous month and 2.6 percent below a year ago. The November all wheat price, at \$3.36 per bushel, is down 7 cents from October and down 10 cents from November 2004.

**Feed Grains & Hay:** The November index is 84, down 2.3 percent from last month and 9.7 percent below a year ago. The corn price, at \$1.79 per bushel, is down 3 cents from last month and 26 cents below November 2004. The all hay price, at \$91.70 per ton, is \$6.00 below October but up \$3.00 from last November. Grain sorghum, at \$2.81 per cwt, is 18 cents below October and 25 cents below November last year.

**Oil-Bearing Crops:** The November index, at 99, is up 2.1 percent from both last month and November 2004. The soybean price, at \$5.68 per bushel, increased 1 cent from October and is 32 cents above November 2004.

**Cotton:** The November index, at 80, is unchanged from October but 13 percent above last year. The November price, at 48.2 cents per pound, is down 0.3 cent from the previous month but 5.0 cents above last November.

**Potatoes & Dry Beans:** The November index, at 104, is up 8.3 percent from both last month and November 2004. The all potato price, at \$6.09 per cwt, is up 55 cents from October and \$1.07 from last November. The all dry bean price, at \$18.90 per cwt, is up 10 cents from the previous month but \$7.00 below November 2004.

**Fruits & Nuts:** The November index, at 151, is unchanged from October but 7.1 percent higher than a year ago. Price increases for oranges, lemons, and strawberries offset price decreases for grapefruit and grapes.

**Commercial Vegetables:** The November index, at 108, is down 4.4 percent from last month and 39 percent from November 2004. Price decreases during November for lettuce and tomatoes more than offset price increases for cucumbers and snap beans.

**LIVESTOCK & PRODUCTS:** The November index, at 121, is 0.8 percent below last month but up 1.7 percent from November 2004. Compared with a year ago, prices are lower for dairy and hogs but higher for cattle, broilers, calves, turkeys, and eggs.

**Meat Animals:** The November index, at 121, is down 0.8 percent from last month but 2.5 percent higher than last year. The November hog price, at \$44.70 per cwt, is down \$2.30 from October and \$10.90 lower than a year ago. The November beef cattle price of \$91.60 is up 50 cents from last month and \$6.20 higher than November 2004.

**Dairy Products:** The November index, at 116, is down 2.5 percent from a month ago and 6.5 percent lower than November last year. The November all milk price, at \$15.10, is down 40 cents from last month and down \$1.10 from November 2004. The fluid grade milk price is down 40 cents and the manufactured grade milk price is down 70 cents from the previous month.

**Poultry & Eggs:** The November index, at 127, is up 1.6 percent from October and 7.6 percent above a year ago. November market egg price, at 48.2 cents per dozen, increased 16.8 cents from October and is 4.5 cents above November 2004. The November broiler price, at 42.0 cents per pound, was down 1.0 cent from October but 3.0 cents above a year ago. The November turkey price, averaging 54.9 cents per pound, is up 2.0 cents from the previous month and up 6.2 cents from a year earlier.

## Table of Contents

<b>U.S. Prices Received and Indexes</b>	<b>Page</b>	<b>Monthly State Prices, continued</b>	<b>Page</b>
Narrative .....	2	Cotton .....	17
Price Indexes .....	5	Cottonseed .....	17
Price Index Charts .....	6	Eggs .....	22
U.S. Prices Received Summary .....	8	Flaxseed .....	16
Charts .....	10	Grain Sorghum .....	15
Selected Commodities .....	14	Hay .....	17
Upland Cotton & Rice Marketings .....	17	Hogs, All .....	21
Parity Prices .....	24	Barrows and Gilts .....	21
Reliability Statement .....	40	Sows .....	21
 		Milk .....	23
<b>Monthly State Prices Received</b>		Milk Cows .....	23
Apples .....	17	Oats .....	15
Barley .....	15	Peanuts .....	16
Beans, Dry Edible .....	16	Potatoes .....	19
Beef Cattle, All .....	20	Sheep .....	22
Calves .....	20	Lambs .....	22
Cows, Beef .....	20	Soybeans .....	15
Steers and Heifers .....	20	Sunflower .....	16
Citrus Fruit .....	18	Wheat, All Classes .....	14
Corn .....	15		
<b>Prices Received Special Features</b>			<b>Page</b>
<b>Marketing Year for Specified Commodities</b> .....			26
<b>Monthly Prices by State and U.S.</b>			
Chickpeas, All .....			38
Chickpeas, Large .....			38
Chickpeas, Small .....			39
Corn .....			28
Dry Edible Beans .....			34
Flaxseed .....			30
Sunflower .....			31
<b>Percent of Sales by Month, by State and U.S.</b>			
Corn .....			35
Dry Edible Beans .....			37
Flaxseed .....			36
Sunflower .....			36
<b>Marketing Year Average Prices by State and U.S.</b>			
Corn .....			27
Dry Edible Beans .....			27
Flaxseed .....			26
Sunflower .....			26

**Table of Contents (continued)**

<b>U.S. Prices Paid, Prices Paid Indexes and Ratios</b>	<b>Page</b>
Narrative .....	41
Indexes and Parity Ratios .....	42
Charts .....	44
Feed Price Ratios .....	47
Reliability Statement .....	48
<b>U.S. Average Prices</b>	
Prices Used to Calculate Feed Price Ratios .....	44
Feeder Livestock .....	44
<b>Information Contacts</b> .....	49

**Index Numbers of Prices Received, United States,  
November 2005, with Comparisons**

Index	1910-14=100				1990-92=100		
	Average 1990-92	2004	2005		2004	2005	
		Nov	Oct	Nov	Nov	Oct	Nov
All Farm Products	639	733	*706	715	115	*111	113
All Crops	500	552	*508	515	112	*103	104
Food Grains	325	362	*357	354	114	*112	111
Feed Grains & Hay	363	331	*306	299	93	*86	84
Cotton	517	365	*410	407	71	*80	80
Tobacco <sup>1</sup>	1,263	1,726			114		
Oil-Bearing Crops	554	528	*531	540	97	*97	99
Fruits & Nuts	716	988	*1,051	1,056	141	151	151
Commercial Vegetables	698	1,192	*758	723	178	*113	108
Potatoes & Dry Beans	540	486	*484	524	96	*96	104
Other Crops	493	569	578	578	115	117	117
Livestock & Products	768	916	*935	931	119	122	121
Meat Animals	1,021	1,202	*1,237	1,231	118	122	121
Dairy Products	799	996	*953	928	124	*119	116
Poultry & Eggs	282	331	334	341	118	125	127
Food Commodities					122	*116	119

\* Revised.

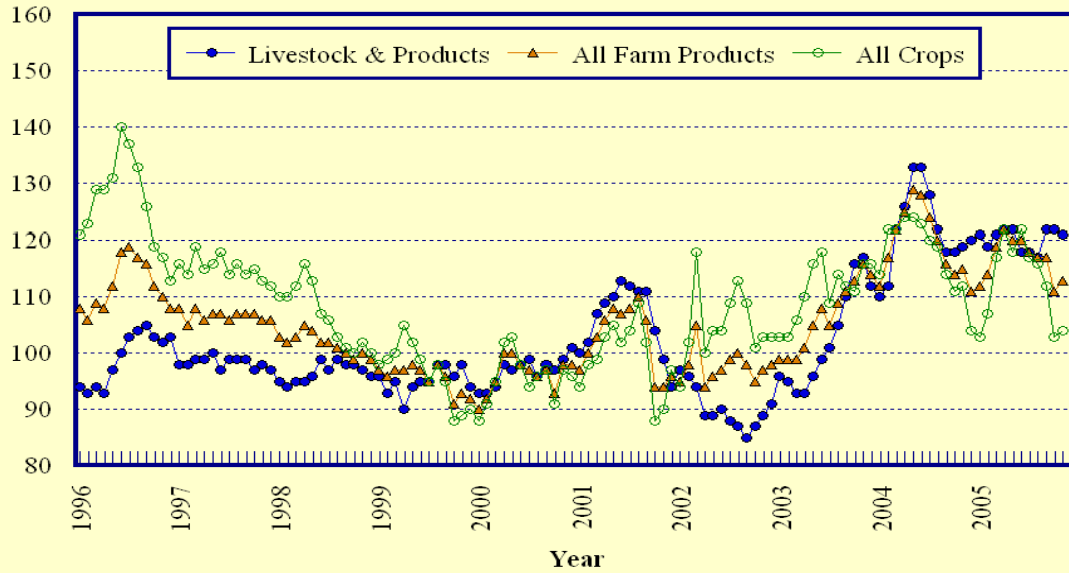
<sup>1</sup> Monthly prices discontinued July 2005.

**Selected Index Numbers for Prices Received and Paid,  
1990-92=100, by Month, United States, 2004 and 2005**

Month	Index of Prices Received						Index of Prices Paid			
	All Farm Products		All Crops		Livestock and Products		All Items		Production Items	
	2004	2005	2004	2005	2004	2005	2004	2005	2004	2005
Jan	112	112	114	103	110	121	130	137	127	134
Feb	117	114	122	107	112	119	131	137	127	134
Mar	122	119	122	117	122	121	132	139	129	136
Apr	125	122	124	122	126	122	133	139	131	138
May	129	120	124	118	133	122	135	139	133	138
Jun	128	120	123	122	133	118	135	140	133	139
Jul	124	118	120	117	128	118	135	141	133	140
Aug	120	117	119	116	122	117	135	141	133	140
Sep	116	117	114	112	118	122	135	142	133	141
Oct	114	111	111	103	118	122	136	144	134	144
Nov	115	113	112	104	119	121	135	143	133	143
Dec	111		104		120		134		132	

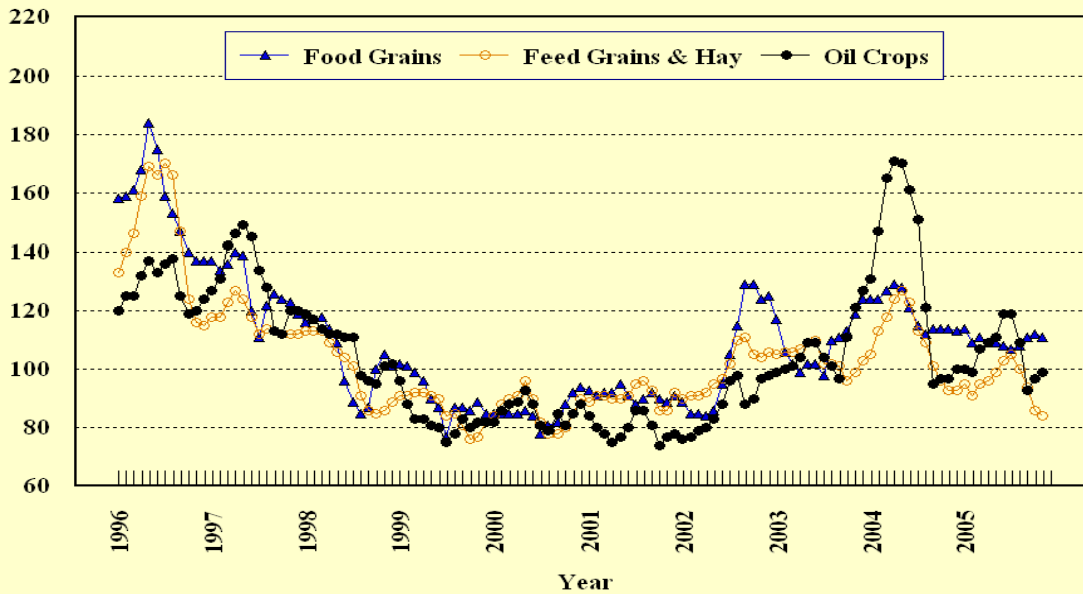
## Prices Received, Major Indexes, US

Index Values(1990-92=100)



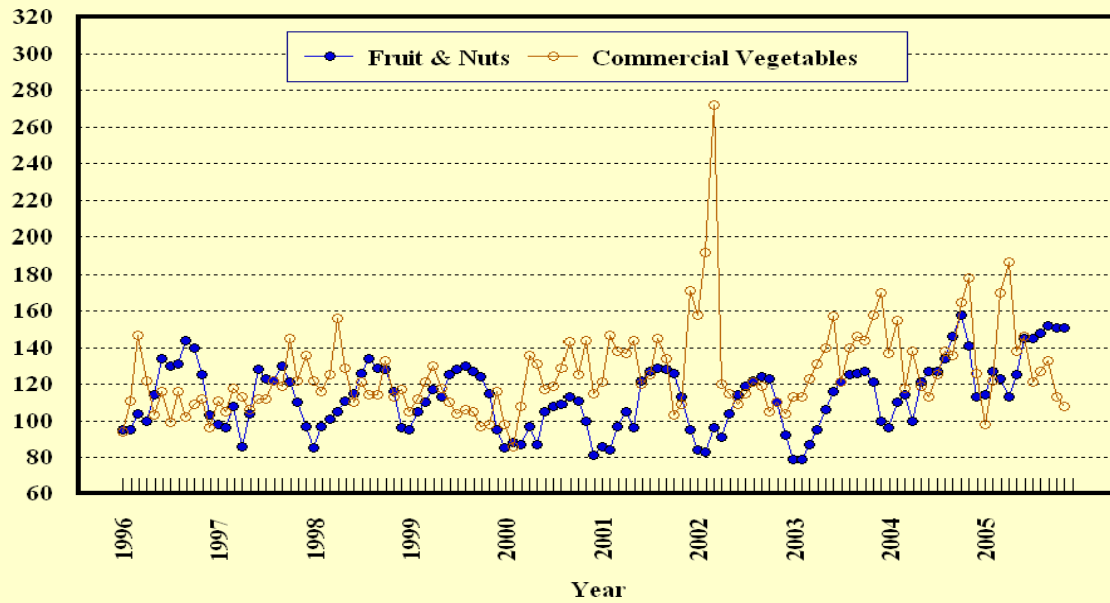
## Prices Received, Food, Feed, & Oil Indexes, US

Index Values(1990-92=100)



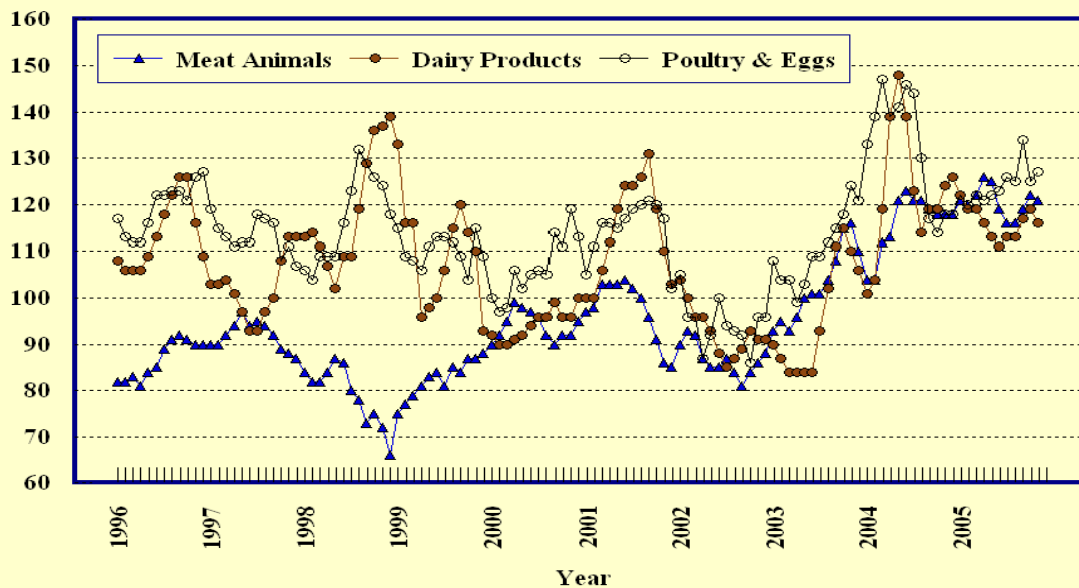
## Prices Received, Fruit/Vegetable Indexes, US

Index Values(1990-92=100)



## Prices Received, Livestock Product Indexes, US

Index Values(1990-92=100)



**Prices Received, United States,  
November 2005, with Comparisons**

Commodity	Unit	Average 1990-92	Entire Month		Preliminary
			Nov 2004	Oct 2005	Nov 2005
		<i>Dollars</i>	<i>Dollars</i>	<i>Dollars</i>	<i>Dollars</i>
<b>Field Crops</b>					
Barley, All	Bu	2.12	2.45	2.41	2.49
Feed	Bu	1.90	1.78	1.81	1.88
Malting	Bu	2.43	2.83	2.72	2.86
Beans, Dry Edible	Cwt	19.10	25.90	18.80	18.90
Chickpeas, All	Cwt		23.50	27.70	28.90
Large	Cwt		23.50	27.90	29.20
Small	Cwt		( <sup>5</sup> )	( <sup>4</sup> )	( <sup>4</sup> )
Corn	Bu	2.30	2.05	1.82	1.79
Cotton, Upland	Lb	0.606	0.432	0.485	0.482
Cottonseed <sup>3</sup>	Ton	96.00	104.00	89.40	92.60
Flaxseed	Bu	4.27	8.62	6.05	5.85
Hay, All, Baled <sup>1</sup>	Ton	76.30	88.70	97.70	91.70
Alfalfa <sup>1</sup>	Ton	77.20	95.20	106.00	97.50
Other <sup>1</sup>	Ton	60.00	73.50	76.50	76.30
Lentils	Cwt		15.60	11.80	11.50
Oats	Bu	1.22	1.51	1.59	1.46
Peanuts, In-Shell	Lb	0.304	0.203	0.175	0.171
Peas, Dry Edible	Cwt		6.05	4.50	4.63
Austrian Winter	Cwt		9.81	( <sup>4</sup> )	8.00
Potatoes	Cwt	5.82	5.02	5.54	6.09
Rice, Rough	Cwt	7.07	7.36	6.94	7.34
Sorghum Grain	Cwt	3.75	3.06	2.99	2.81
Soybeans	Bu	5.61	5.36	5.67	5.68
Sunflower, All	Cwt	9.50	12.80	12.80	11.50
Tobacco, Types 11-37 <sup>6</sup>	Lb	1.740	1.985		
Wheat, All	Bu	2.96	3.46	3.43	3.36
Winter	Bu	2.93	3.39	3.33	3.25
Durum	Bu	2.86	3.79	3.40	3.23
Other Spring	Bu	3.11	3.57	3.62	3.64
Hard Red Winter	Bu		3.37	3.45	
Soft Red Winter	Bu		2.93	2.99	
Hard Red Spring	Bu		3.57	3.68	
White	Bu	3.24	3.54	3.14	
<b>Fruit</b>					
Citrus, Equiv on-tree					
Grapefruit	Box	5.77	16.08	17.86	10.66
Lemons	Box	10.10	9.32	7.62	9.77
Oranges	Box	5.79	5.34	4.85	8.82
Tangelos	Box	5.82	4.13		3.93
Tangerines	Box	15.11	12.46	14.55	13.14
Temples	Box	6.23			
Noncitrus, Fresh					
Apples <sup>2</sup>	Lb	0.212	0.245	0.286	0.282
Grapes <sup>2</sup>	Ton	506.00	1,030.00	760.00	650.00
Peaches <sup>2</sup>	Ton	432.00			
Pears <sup>2</sup>	Ton	370.00	440.00	520.00	507.00
Strawberries	Cwt	56.00	190.00	67.70	90.80

<sup>1</sup> Mid-month price.

<sup>2</sup> Equivalent packinghouse-door returns for CA, MI, and NY (apples only), and WA (apples, peaches, and pears). Prices as sold for other states.

<sup>3</sup> Marketing year August - February.

<sup>4</sup> Price not published to avoid disclosure of individual firms.

<sup>5</sup> Insufficient sales to establish a price.

<sup>6</sup> Monthly price estimates discontinued beginning in July 2005.



**Prices Received, United States,  
November 2005, with Comparisons**

Commodity	Unit	Average 1990-92	Entire Month		Preliminary
			Nov 2004	Oct 2005	Nov 2005
		<i>Dollars</i>	<i>Dollars</i>	<i>Dollars</i>	<i>Dollars</i>
<b>Vegetables, Fresh <sup>1</sup></b>					
Asparagus	Cwt	79.80	128.00	256.00	
Broccoli	Cwt	22.50	44.20	22.40	20.50
Cantaloupes <sup>2</sup>	Cwt		22.00	14.40	13.50
Carrots	Cwt	13.20	17.20	21.30	22.00
Cauliflower	Cwt	26.80	43.80	19.70	23.00
Celery	Cwt	11.60	18.10	12.40	14.30
Corn, Sweet	Cwt	15.70	46.70	30.30	32.50
Cucumbers <sup>2</sup>	Cwt		13.40	30.00	45.50
Lettuce	Cwt	11.90	14.90	12.40	9.59
Onions	Cwt	12.80	9.01	11.30	10.60
Snap Beans <sup>2</sup>	Cwt		63.30	42.30	62.20
Tomatoes	Cwt	32.30	89.00	37.50	29.60
<b>Livestock</b>					
Calves	Cwt	94.30	123.00	134.00	132.00
Cattle, All Beef	Cwt	72.90	85.40	91.10	91.60
Cows <sup>3</sup>	Cwt	49.60	48.70	46.60	45.80
Steers & Heifers	Cwt	77.10	90.20	96.60	97.40
Milk Cows <sup>4</sup>	Head	1,130.00		1,870.00	
Hogs, All	Cwt	47.70	55.60	47.00	44.70
Barrows & Gilts	Cwt	48.40	56.10	47.30	45.00
Sows	Cwt	39.50	45.20	41.70	37.70
Lambs	Cwt	56.20	99.90	108.00	
Sheep	Cwt	23.40	41.40	43.70	
<b>Dairy and Poultry</b>					
Milk, All <sup>5 6</sup>	Cwt	13.06	16.20	15.50	15.10
Fluid Grade <sup>6</sup>	Cwt	13.10	16.20	15.50	15.10
Mfg Grade <sup>6</sup>	Cwt	11.80	15.90	14.90	14.20
Broilers, Live <sup>7</sup>	Lb	0.317	0.390	0.430	0.420
Eggs, All <sup>8</sup>	Doz	0.643	0.604	0.513	0.653
Market <sup>8</sup>	Doz	0.546	0.437	0.314	0.482
Turkeys, live <sup>7 8</sup>	Lb	0.380	0.487	0.529	0.549
<b>Adjusted for Seasonal Variation</b>					
Eggs, All	Doz	0.545	0.539	0.534	0.563
Milk, All <sup>5</sup>	Cwt	9.71	15.58	14.76	14.66

<sup>1</sup> F.O.B. shipping point.

<sup>2</sup> Monthly estimates began January 1995.

<sup>3</sup> Beef cows and cull dairy cows sold for slaughter.

<sup>4</sup> Animals sold for dairy herd replacement only. Prices available for Jan, Apr, Jul, and Oct.

<sup>5</sup> Before deductions for hauling. Includes quality, quantity, and other premiums. Excludes hauling subsidies.

<sup>6</sup> November 2005 Fat test percent: all milk 3.77, fluid milk 3.77, mfg grade 4.00.

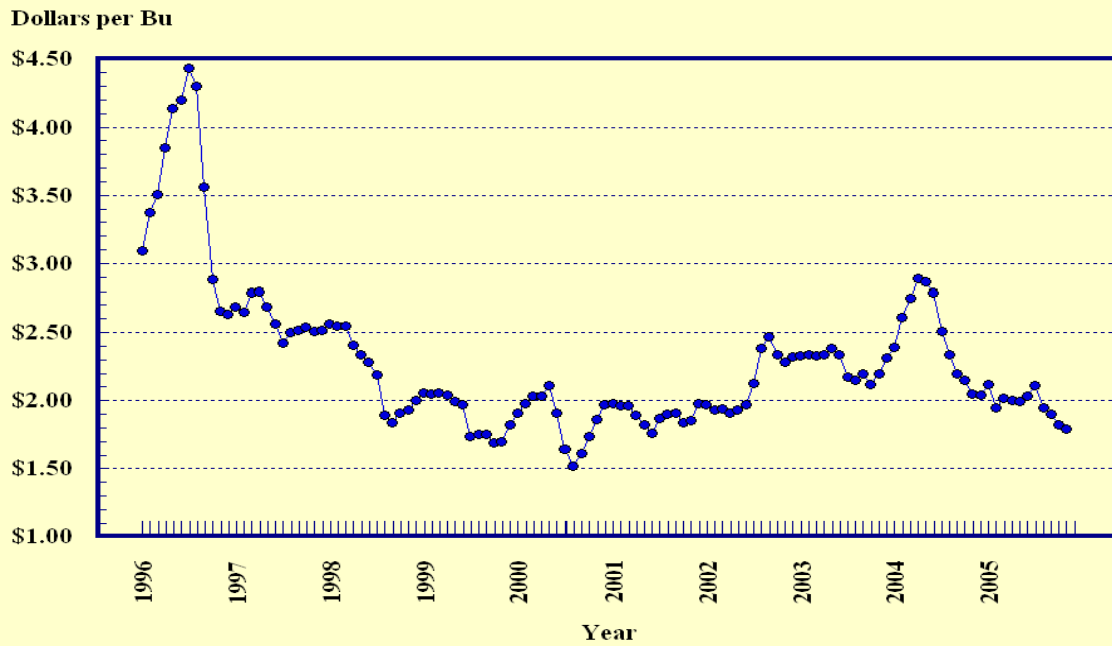
<sup>7</sup> Equivalent liveweight returns to producers for most States. Includes growers and contractors.

<sup>8</sup> Mid-month price.

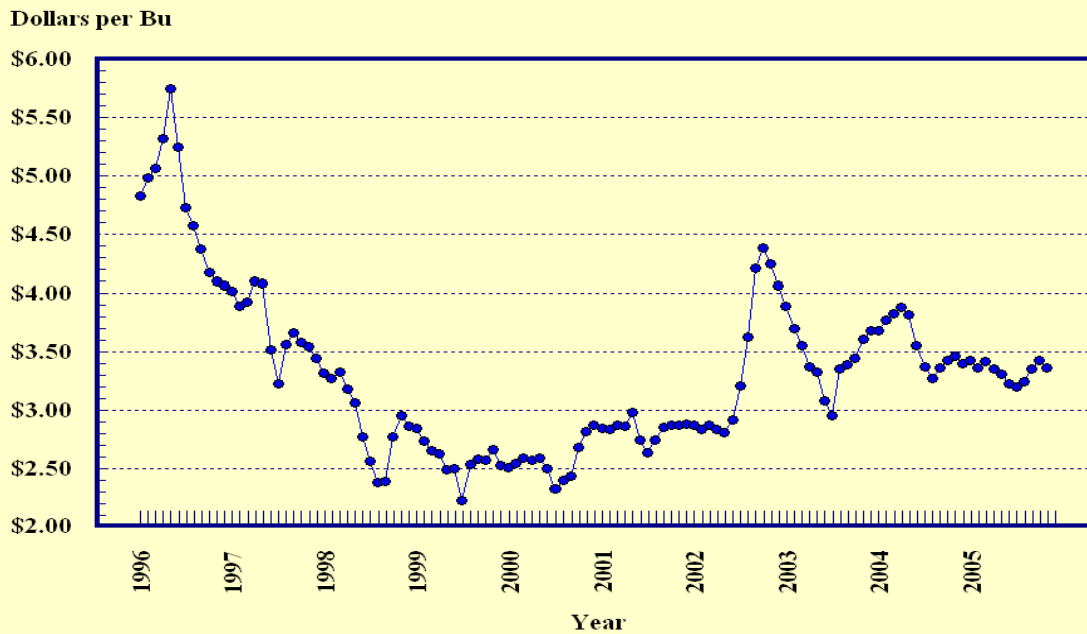
<sup>9</sup> Price not published to avoid disclosure of individual firms.

<sup>10</sup> Insufficient sales to establish a price.

## Prices Received, Corn, US

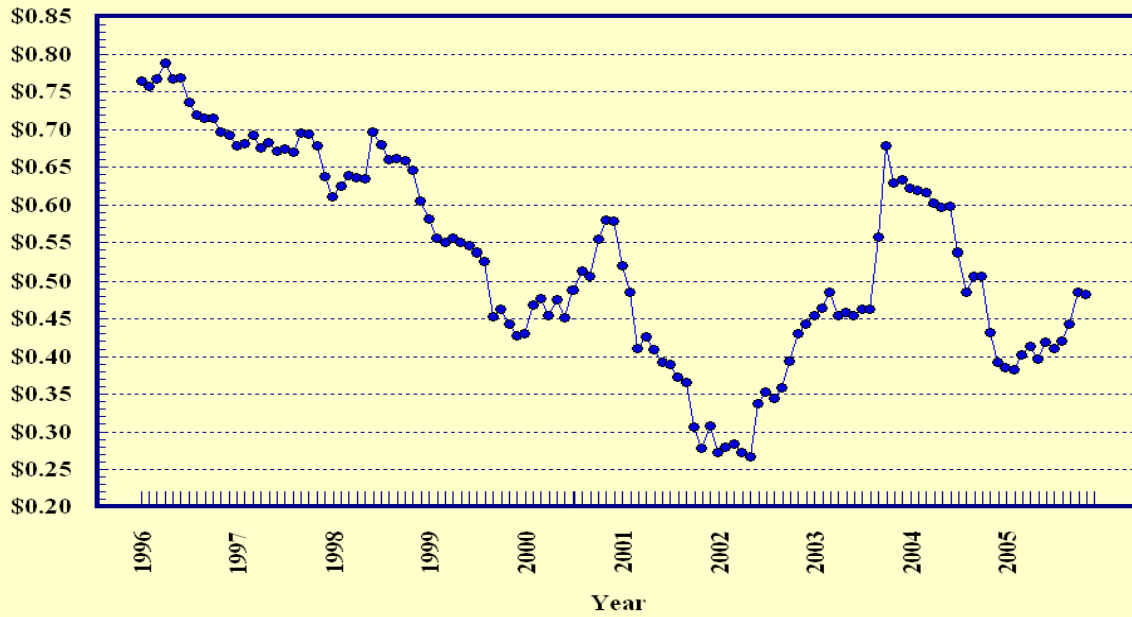


## Prices Received, Wheat, US



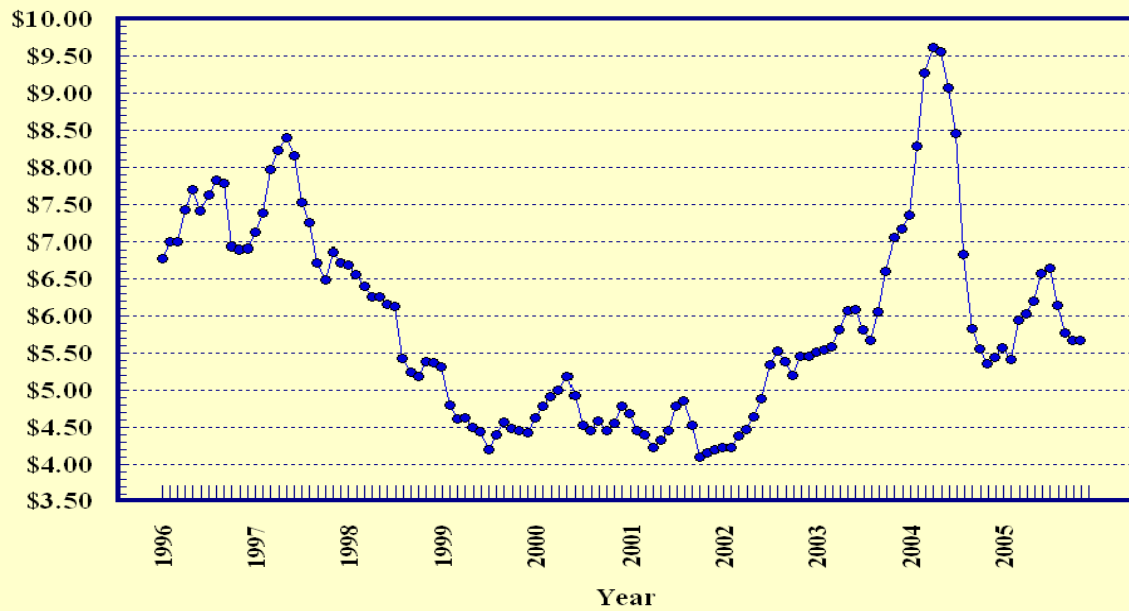
## Prices Received, Cotton, US

Dollars per Lb



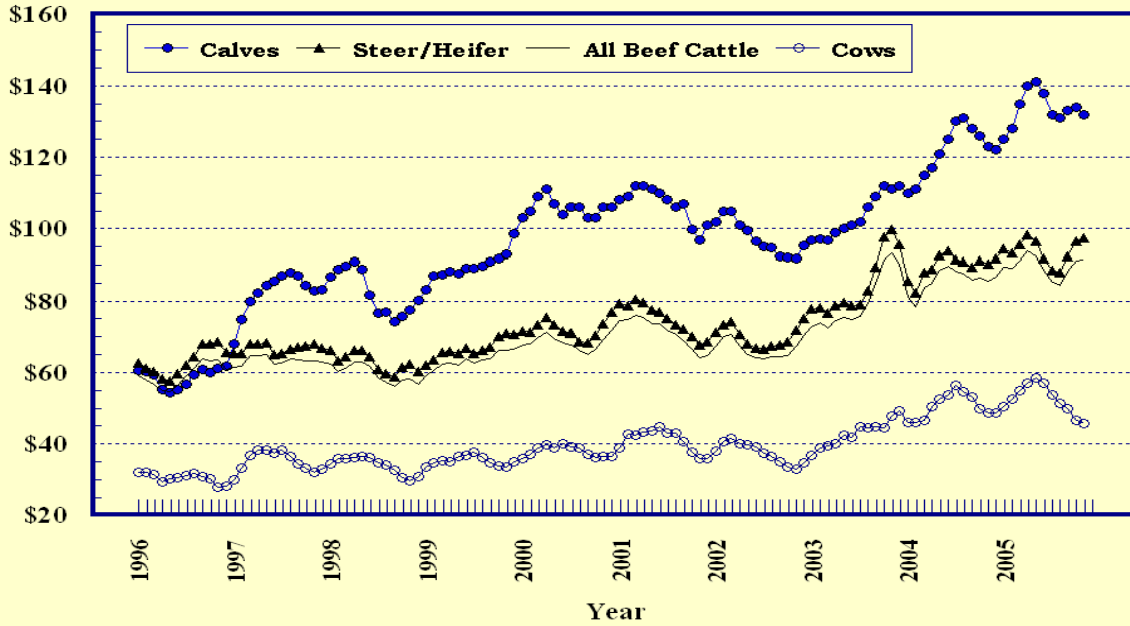
## Prices Received, Soybeans, US

Dollars per Bu



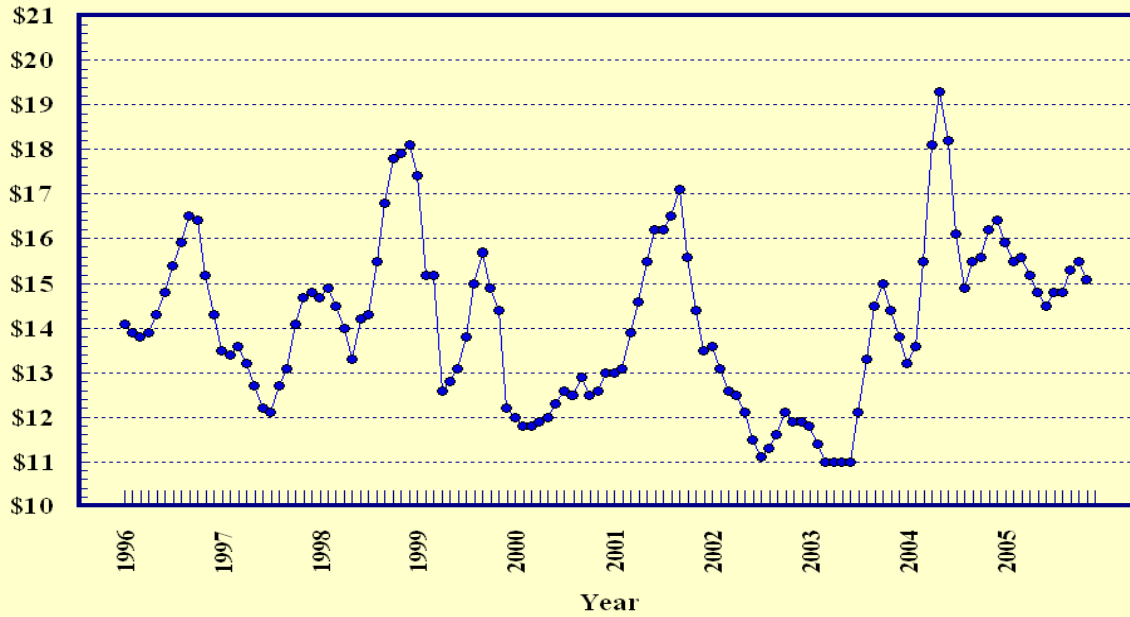
### Prices Received, Cattle, US

Dollars per Cwt



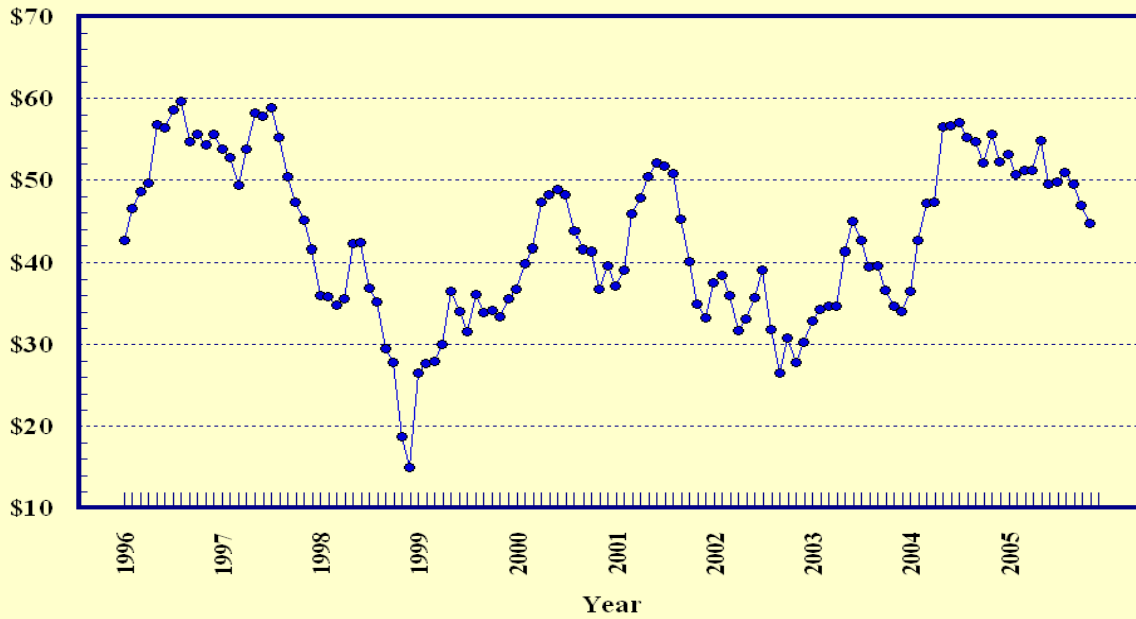
### Prices Received, Milk, US

Dollars per Cwt



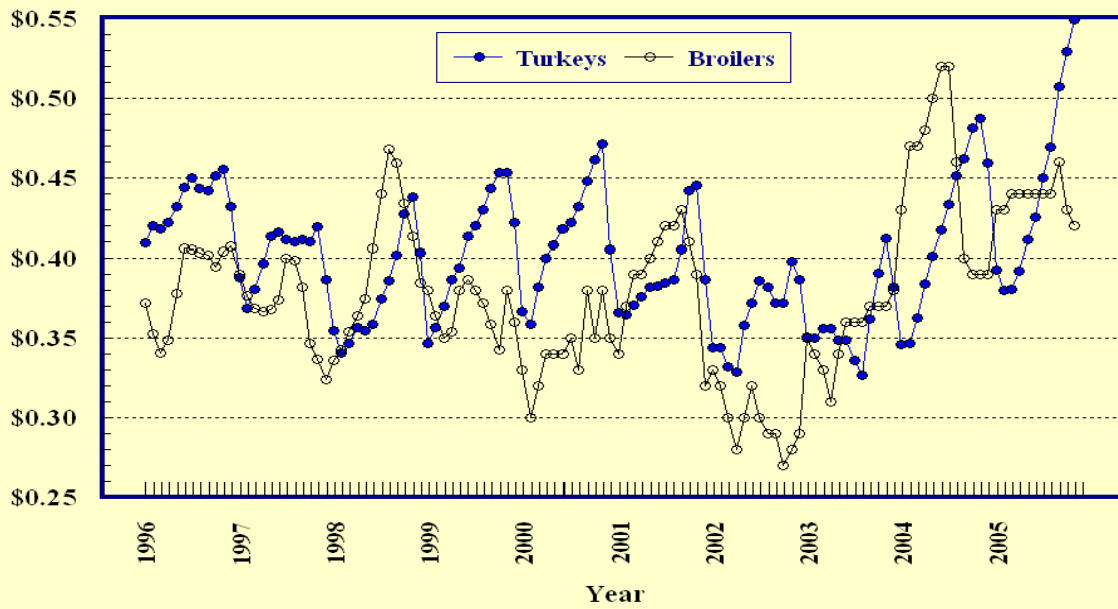
### Prices Received, Hogs, US

Dollars per Cwt



### Prices Received, Turkeys & Broilers, US

Dollars per Lb



**Wheat: Prices Received, by State, October and November 2005**

State	All Wheat		Winter Wheat		Durum Wheat		Oth Spring Wheat	
	Oct <sup>1</sup>	Nov <sup>2</sup>	Oct <sup>1</sup>	Nov <sup>2</sup>	Oct <sup>1</sup>	Nov <sup>2</sup>	Oct <sup>1</sup>	Nov <sup>2</sup>
	<i>Dollars per Bushel</i>	<i>Dollars per Bushel</i>	<i>Dollars per Bushel</i>	<i>Dollars per Bushel</i>	<i>Dollars per Bushel</i>	<i>Dollars per Bushel</i>	<i>Dollars per Bushel</i>	<i>Dollars per Bushel</i>
AR	2.79	2.77	( <sup>3</sup> )	( <sup>3</sup> )				
CA	( <sup>3</sup> )	( <sup>3</sup> )	( <sup>3</sup> )	( <sup>3</sup> )	( <sup>4</sup> )	( <sup>4</sup> )		
CO	3.40	3.27	3.40	3.27			( <sup>4</sup> )	( <sup>4</sup> )
ID	3.19	3.17	3.06	3.00	( <sup>3</sup> )	( <sup>3</sup> )	3.45	3.50
IL	2.93	2.90	2.93	2.90				
IN	3.02	2.70	3.02	2.70				
KS	3.48	3.31	3.48	3.31				
MI	2.99	2.70	2.99	2.70				
MN	3.49	3.50	( <sup>3</sup> )	3.15			3.49	3.50
MO	3.49	3.45	3.49	3.45				
MT	3.51	3.62	3.39	3.38	3.58	3.43	3.65	3.95
NE	3.42	3.30	3.42	3.30				
ND	3.54	3.51	2.91	2.90	3.30	3.20	3.61	3.60
OH	3.12	2.95	3.12	2.95				
OK	3.48	3.31	3.48	3.31				
OR	3.20	3.09	3.17	3.05			3.39	3.35
SD	3.72	3.61	3.45	3.32			3.92	3.82
TX	3.38	3.37	3.38	3.37				
WA	3.33	3.19	3.28	3.14			3.56	3.39
US	3.43	3.36	3.33	3.25	3.40	3.23	3.62	3.64

<sup>1</sup> Entire month.

<sup>2</sup> Mid-month.

<sup>3</sup> Price not published to avoid disclosure of individual firms.

<sup>4</sup> Insufficient sales to establish a price.

**Prices Received for Selected Agricultural Commodities, by Month, United States, 2004 and 2005 <sup>1</sup>**

Month	All Wheat		Corn		Soybeans		Beef Cattle <sup>2</sup>		All Hogs	
	2004	2005	2004	2005	2004	2005	2004	2005	2004	2005
	<i>Dollars per Bushel</i>	<i>Dollars per Bushel</i>	<i>Dollars per Bushel</i>	<i>Dollars per Bushel</i>	<i>Dollars per Bushel</i>	<i>Dollars per Bushel</i>	<i>Dollars per Cwt</i>	<i>Dollars per Cwt</i>	<i>Dollars per Cwt</i>	<i>Dollars per Cwt</i>
Jan	3.68	3.43	2.39	2.12	7.35	5.57	81.10	89.40	36.60	53.20
Feb	3.77	3.36	2.61	1.95	8.28	5.42	78.50	89.00	42.60	50.70
Mar	3.83	3.42	2.75	2.02	9.28	5.95	83.70	91.30	47.20	51.20
Apr	3.88	3.35	2.89	2.00	9.62	6.03	85.00	94.00	47.40	51.20
May	3.82	3.31	2.87	1.98	9.56	6.21	88.50	92.40	56.60	54.90
Jun	3.55	3.23	2.79	2.03	9.08	6.58	89.80	88.50	56.70	49.60
Jul	3.37	3.20	2.51	2.11	8.46	6.65	88.10	85.30	57.10	49.80
Aug	3.27	3.24	2.34	1.95	6.83	6.15	87.70	84.50	55.30	51.00
Sep	3.36	3.35	2.20	1.90	5.83	5.77	85.90	88.20	54.80	49.50
Oct	3.43	3.43	2.14	1.82	5.56	5.67	86.50	91.10	52.20	47.00
Nov	3.46	3.36	2.05	1.79	5.36	5.68	85.40	91.60	55.60	44.70
Dec	3.40		2.04		5.45		86.80		52.30	

<sup>1</sup> Current month prices are mid-month; prices for previous months are for the entire month.

<sup>2</sup> Cows, steers and heifers.

**Grains: Prices Received, by State, October and November 2005**

Month	All Barley <sup>1</sup>		Corn		Oats		Soybeans		Sorghum Grain	
	Oct <sup>2</sup>	Nov <sup>3</sup>	Oct <sup>2</sup>	Nov <sup>3</sup>	Oct <sup>2</sup>	Nov <sup>3</sup>	Oct <sup>2</sup>	Nov <sup>3</sup>	Oct <sup>2</sup>	Nov <sup>3</sup>
	<i>Dollars per Bushel</i>	<i>Dollars per Bushel</i>	<i>Dollars per Bushel</i>	<i>Dollars per Bushel</i>	<i>Dollars per Bushel</i>	<i>Dollars per Bushel</i>	<i>Dollars per Bushel</i>	<i>Dollars per Bushel</i>	<i>Dollars per Cwt</i>	<i>Dollars per Cwt</i>
AL							5.94	5.90	2.86	( <sup>4</sup> )
AR										
CA	( <sup>4</sup> )	( <sup>5</sup> )			( <sup>5</sup> )	( <sup>5</sup> )				
CO	3.15	( <sup>4</sup> )	2.28	2.10						
ID	2.71	2.89								
IL			1.83	1.90	( <sup>4</sup> )	( <sup>4</sup> )	5.68	5.90	2.97	3.10
IN			1.71	1.62			5.60	5.65		
IA			1.78	1.75	1.79	1.75	5.71	5.70		
KS			2.17	2.00	( <sup>4</sup> )	1.32	5.49	5.44	2.90	2.68
KY			1.89	2.00			5.70	5.75		
LA							5.81	5.73		
MI			1.71	1.60	1.88	1.90	5.78	5.60		
MN	( <sup>4</sup> )	( <sup>4</sup> )	1.69	1.69	1.38	1.39	5.71	5.65		
MS							5.74	5.76		
MO			1.74	1.85			5.57	5.70	( <sup>4</sup> )	3.25
MT	2.74	2.74			1.80	( <sup>5</sup> )				
NE			1.82	1.85	1.44	1.45	5.72	5.60	2.76	2.70
NY					( <sup>4</sup> )	( <sup>4</sup> )				
NC			2.20	2.07			5.78	5.69		
ND	1.90	1.97	1.76	1.70	1.52	( <sup>5</sup> )	5.58	5.40		
OH			1.77	1.86	1.42	( <sup>5</sup> )	5.70	5.85		
OK									3.26	3.10
OR	2.08	2.10			( <sup>5</sup> )	( <sup>5</sup> )				
PA			2.12	2.10	2.61	2.27				
SD	2.00	2.20	1.60	1.52	1.62	1.44	5.45	5.35		
TN			1.84	1.95			5.52	5.80		
TX			2.50	2.35	( <sup>4</sup> )	( <sup>4</sup> )			3.38	3.37
UT	( <sup>4</sup> )	( <sup>4</sup> )								
WA	2.31	2.23								
WI			1.84	1.75	1.42	1.49	5.70	5.50		
WY	2.87	2.99								
US	2.41	2.49	1.82	1.79	1.59	1.46	5.67	5.68	2.99	2.81

<sup>1</sup> The Three-State (MN, ND and SD) Feed Barley price is discontinued.

<sup>2</sup> Entire month.

<sup>3</sup> Mid-month.

<sup>4</sup> Price not published to avoid disclosure of individual firms.

<sup>5</sup> Insufficient sales to establish a price.

**Malting and Feed Barley: Prices Received Selected State, October and November 2005**

State	Malting Barley		Feed Barley	
	Oct <sup>1</sup>	Nov <sup>2</sup>	Oct <sup>1</sup>	Nov <sup>2</sup>
	<i>Dollars per Bushel</i>	<i>Dollars per Bushel</i>	<i>Dollars per Bushel</i>	<i>Dollars per Bushel</i>
ID	2.94	3.05	1.97	1.95
MN	( <sup>3</sup> )	( <sup>3</sup> )	1.46	1.43
MT	3.10	3.15	1.64	1.52
ND	2.16	2.30	1.44	1.35
SD	2.00	2.20	( <sup>4</sup> )	( <sup>4</sup> )
WY	( <sup>3</sup> )	( <sup>3</sup> )	1.49	1.50

<sup>1</sup> Entire month.

<sup>2</sup> Mid-month.

<sup>3</sup> Price not published to avoid disclosure of individual firms.

<sup>4</sup> Insufficient sales to establish a price.

**Field Crops: Prices Received, by State, October and November 2005**

State	Dry Edible Beans		All Sunflower		Flaxseed		Peanuts <sup>4</sup>	
	Oct <sup>1</sup>	Nov <sup>2</sup>	Oct <sup>1</sup>	Nov <sup>2</sup>	Oct <sup>1</sup>	Nov <sup>2</sup>	Oct <sup>1</sup>	Nov <sup>3</sup>
	<i>Dollars per Cwt</i>	<i>Dollars per Cwt</i>	<i>Dollars per Cwt</i>	<i>Dollars per Cwt</i>	<i>Dollars per Bushel</i>	<i>Dollars per Bushel</i>	<i>Dollars per Pound</i>	<i>Dollars per Pound</i>
AL							( <sup>5</sup> )	0.170
CA	37.80	36.80						
CO	18.40	18.00						
FL							0.172	0.166
GA							0.174	0.172
ID	20.80	21.60						
IN								
KS			14.70	12.20				
KY								
MD								
MI	19.10	19.00						
MN	( <sup>5</sup> )	( <sup>5</sup> )	17.80	( <sup>5</sup> )				
MO								
NE	16.90	16.00						
NC							0.176	0.182
ND	16.90	15.70	12.30	11.60	6.05	5.85		
OH								
OK								
SC								
SD			11.10	9.53	5.34	( <sup>6</sup> )		
TN								
TX							( <sup>5</sup> )	( <sup>5</sup> )
VA							( <sup>5</sup> )	( <sup>5</sup> )
WV								
US	18.80	18.90	12.80	11.50	6.05	5.85	0.175	0.171

<sup>1</sup> Entire month.

<sup>2</sup> Mid-month.

<sup>3</sup> Based on sales through first half of month.

<sup>4</sup> In-Shell.

<sup>5</sup> Price not published to avoid disclosure of individual firms.

<sup>6</sup> Insufficient sales to establish a price.



**Field Crops and Apples: Prices Received, by State, October and November 2005**

State	Cotton, Upland		November				Apples Fresh Use <sup>1 4</sup>	
	Oct <sup>1</sup>	Nov <sup>2</sup>	Cotton- seed <sup>5</sup>	Hay, Baled <sup>3</sup>				
				All	Alfalfa	Other		
<i>Dollars per Pound</i>	<i>Dollars per Pound</i>	<i>Dollars per Ton</i>	<i>Dollars per Ton</i>	<i>Dollars per Ton</i>	<i>Dollars per Ton</i>	<i>Dollars per Ton</i>	<i>Doll/Lb</i>	
AL	0.525	( <sup>6</sup> )	83.00					
AZ	( <sup>6</sup> )	( <sup>6</sup> )	( <sup>7</sup> )	119.00	120.00	110.00		
AR	0.494	0.490	89.00					
CA	0.606	0.571	149.00	131.00	139.00	88.00	0.309	
CO				101.00	101.00	100.00		
GA	0.516	0.498	74.00					
ID				117.00	118.00	82.00		
IL				94.00	101.00	77.00		
IA				80.00	81.00	58.00		
KS				65.00	71.00	50.00		
KY				86.00	120.00	70.00		
LA	0.477	0.497	87.00					
MI				94.00	95.00	80.00	0.210	
MN				75.00	79.00	53.00		
MS	0.499	0.496	83.00					
MO				63.00	105.00	50.00		
MT				72.00	72.00	74.00		
NE				47.00	47.00	45.00		
NV				123.00	122.00	130.00		
NM				123.00	125.00	104.00		
NY				109.00	120.00	95.00	0.268	
NC	0.472	0.454	82.00					
ND				50.00	54.00	39.00		
OH				113.00	133.00	89.00	0.325	
OK				82.00	98.00	58.00		
OR				112.00	116.00	102.00		
PA				135.00	160.00	128.00	0.230	
SD				64.00	67.00	51.00		
TN	0.489	0.484	81.00					
TX	0.445	0.445	102.00	87.00	129.00	80.00		
UT				99.00	100.00	82.00		
VA							0.290	
WA				116.00	115.00	120.00	0.287	
WI				117.00	120.00	80.00		
WY				75.00	76.00	71.00		
US	0.485	0.482	92.60	91.70	97.50	76.30	0.282	

<sup>1</sup> Entire month.

<sup>2</sup> Based on sales during the first half of the month.

<sup>3</sup> Mid-month.

<sup>4</sup> Equivalent packinghouse-door returns for CA, MI, NY, and WA. Price at point of first sale for other States.

<sup>5</sup> Marketing year August - February.

<sup>6</sup> Price not published to avoid disclosure of individual firms.

<sup>7</sup> Insufficient sales to establish a price.

**Upland Cotton and Rice: Prices Received and Marketings,  
United States, November 2005, with Comparisons**

Item	Unit	Sep 2005 <sup>1</sup>	Oct 2005 <sup>1</sup>	Nov 2005 <sup>2</sup>
Cotton, Upland				
Average Price	Dollars per Pound	0.443	0.485	0.482
Marketings <sup>3</sup>	1,000 Bales	518	911	NA
Rice				
Average Price	Dollars per Cwt	6.95	6.94	7.34
Marketings <sup>4</sup>	1,000 Cwt	13,584	13,860	NA

<sup>1</sup> Entire month.

<sup>2</sup> Based on purchases for the first half of the month.

<sup>3</sup> Marketings based on a survey of cotton buyers in the major producing States - AL, AZ, AR, CA, GA, LA, MS, NC, TN, and TX.

<sup>4</sup> Purchases by private firms and rice (rough equivalent) shipped by cooperatives.

**Citrus Fruit: Prices and Equivalent Returns, by Utilization,  
by State and United States, November 2005**

Commodity, State and Type	F.O.B. Packed Fresh	Equivalent Returns <sup>1</sup>					
		Packinghouse-door			On-tree		
		All	Fresh	Process	All	Fresh	Process
	<i>Dollars per Box</i>	<i>Dollars per Box</i>	<i>Dollars per Box</i>	<i>Dollars per Box</i>	<i>Dollars per Box</i>	<i>Dollars per Box</i>	<i>Dollars per Box</i>
Grapefruit							
AZ	30.40	23.76	23.76		21.39	21.39	
CA	22.70	13.49	15.93	-0.29	11.07	13.51	-2.71
FL	27.80	11.92	19.64	5.37	9.20	17.24	2.38
White	25.00	10.39	16.50	5.80	7.87	14.10	3.20
Colored	28.80	12.49	20.70	5.20	9.69	18.30	2.05
TX	30.90	17.35	20.51	2.00	16.14	19.30	0.79
US	28.20	13.09	19.56	5.01	10.66	17.47	2.16
Lemons							
AZ	28.30	12.02	17.79	-0.40	7.50	13.27	-4.92
CA	29.40	16.37	18.89	-0.40	11.85	14.37	-4.92
US	28.90	14.29	18.43	-0.40	9.77	13.91	-4.92
Oranges							
CA	23.50	13.91	15.97	0.34	11.39	13.46	-2.19
Navel and Misc	24.80	15.91	17.27	0.38	13.40	14.76	-2.13
Valencia	15.90	5.85	8.70	0.30	3.31	6.16	-2.24
FL							
Early and Mids	19.10	6.52	10.50	5.15	4.26	8.10	2.95
TX							
Early and Mids	19.40	7.94	8.90	2.04	6.55	7.50	0.68
US	22.80	11.23	15.08	3.97	8.82	12.61	1.69
Tangelos							
FL	18.00	6.67	8.80	3.25	3.93	6.05	0.55
Tangerines							
AZ	33.10	25.90	25.90		23.36	23.36	
CA	41.10	30.69	33.90	0.30	28.15	31.36	-2.24
FL	28.10	13.32	17.80	3.35	9.94	14.60	-0.45
US	30.80	16.37	21.24	3.17	13.14	18.18	-0.55

<sup>1</sup> Net lbs. per box: Grapefruit - AZ & CA-67, FL-85, TX-80; Lemons - 76; Oranges - AZ & CA-75, FL-90, TX-85; Tangelos - 90; Tangerines - AZ & CA-75, FL-95; Temples - 90.

**Potatoes: Prices Received, by State, October and November 2005 <sup>1</sup>**

State	Oct	Nov	State	Oct	Nov
	<i>Dollars per Cwt</i>	<i>Dollars per Cwt</i>		<i>Dollars per Cwt</i>	<i>Dollars per Cwt</i>
AL			NC		
AZ			ND - All <sup>2</sup>	6.20	6.20
CA - All <sup>2</sup>	15.50	12.30	- Fresh <sup>3</sup>	9.40	NA
- Winter		17.30	- Processing	4.95	NA
- Spring			OH <sup>4</sup>		
- Summer	15.50		OR	4.95	5.15
- Fall		9.65	PA <sup>4</sup>		
CO - All <sup>2</sup>	9.00	8.55	TX		
- Fresh <sup>3</sup>	9.70	NA	VA		
FL			WA - All <sup>2</sup>	4.65	5.05
ID - All <sup>2</sup>	4.95	5.00	- Processing	4.35	NA
- Fresh <sup>3</sup>	7.00	NA	WI - All <sup>2</sup>	7.30	7.45
- Processing	4.40	NA	- Fresh <sup>3</sup>	9.50	NA
ME	6.25	7.25	- Processing	5.30	NA
MI	6.90	7.20			
MN	6.55	6.30	US - All <sup>2</sup>	5.54	6.09
NY	12.50	12.90	- Fresh <sup>3</sup>	9.18	NA
			- Processing	4.61	NA

<sup>1</sup> Missing data indicates no potatoes being marketed.

<sup>2</sup> Average price of potatoes sold for all uses, including table stocks, processing, seed, and livestock feed.

<sup>3</sup> Fresh market prices only, includes table stock prices.

<sup>4</sup> Estimates discontinued in 2005.

**Cattle: Prices Received, by State, October and November 2005**

State	Cows <sup>1</sup>		Steers & Heifers		Beef Cattle <sup>4</sup>		Calves	
	Oct <sup>2</sup>	Nov <sup>3</sup>	Oct <sup>2</sup>	Nov <sup>3</sup>	Oct <sup>2</sup>	Nov <sup>3</sup>	Oct <sup>2</sup>	Nov <sup>3</sup>
	<i>Dollars per Cwt</i>	<i>Dollars per Cwt</i>	<i>Dollars per Cwt</i>	<i>Dollars per Cwt</i>	<i>Dollars per Cwt</i>	<i>Dollars per Cwt</i>	<i>Dollars per Cwt</i>	<i>Dollars per Cwt</i>
AZ	46.20	44.20	103.00	104.00	102.00	103.00	120.00	117.00
AR	42.60	41.90	107.00	106.00	87.70	86.80	127.00	128.00
CA	43.80	41.80	92.10	93.20	66.50	66.00	121.00	119.00
CO	49.50	48.20	116.00	118.00	115.00	117.00	133.00	135.00
FL	43.20	42.70	97.20	100.00	78.40	78.80	126.00	126.00
GA	45.50	45.10	97.50	97.60	63.20	62.40	122.00	122.00
ID	46.80	45.60	94.10	95.70	80.90	79.20	127.00	131.00
IL	49.00	48.00	88.50	88.00	87.70	87.20	119.00	120.00
IA	46.60	44.70	90.80	93.10	89.90	92.10	132.00	130.00
KS	48.00	47.00	94.50	95.30	93.10	93.90	140.00	145.00
KY	45.00	44.00	104.00	102.00	89.80	88.10	118.00	118.00
LA	41.80	42.00	100.00	100.00	63.30	62.90	119.00	119.00
MI	50.00	49.00	83.00	84.00	73.10	73.50	136.00	138.00
MN	49.00	49.00	85.50	85.00	78.90	78.50	136.00	133.00
MO	48.10	46.90	115.00	113.00	100.00	99.80	131.00	132.00
MT	47.70	49.10	119.00	120.00	105.00	109.00	138.00	143.00
NE	50.00	49.50	96.20	98.10	94.80	96.60	142.00	143.00
NM	46.30	46.00	110.00	111.00	85.80	83.10	130.00	128.00
ND	48.00	48.00	118.00	115.00	106.00	99.60	134.00	132.00
OH	43.90	43.00	90.80	92.00	86.10	87.10	118.00	115.00
OK	46.30	47.00	113.00	114.00	107.00	108.00	130.00	130.00
OR	44.00	43.00	101.00	101.00	83.90	83.60	117.00	119.00
PA	45.90	44.60	83.00	85.70	73.40	75.00	118.00	118.00
SD	49.60	49.40	118.00	115.00	110.00	103.00	141.00	143.00
TN	43.00	42.00	105.00	104.00	80.20	79.20	116.00	114.00
TX	42.80	42.20	94.20	94.80	88.50	89.50	133.00	131.00
VA	42.80	41.10	100.00	99.00	88.00	83.90	119.00	117.00
WI	48.20	47.50	87.60	89.80	64.70	65.30	170.00	167.00
WY	50.50	50.00	120.00	119.00	109.00	98.30	140.00	141.00
US	46.60	45.80	96.60	97.40	91.10	91.60	134.00	132.00

<sup>1</sup> Beef cows and cull dairy cows sold for slaughter.

<sup>2</sup> Entire month.

<sup>3</sup> Mid-month.

<sup>4</sup> "Cows" and "steers and heifers" combined.

**Hogs: Prices Received, by State, October and November 2005**

State	Sows		Barrows and Gilts		All Hogs	
	Oct <sup>1</sup>	Nov <sup>2</sup>	Oct <sup>1</sup>	Nov <sup>2</sup>	Oct <sup>1</sup>	Nov <sup>2</sup>
	<i>Dollars per Cwt</i>	<i>Dollars per Cwt</i>	<i>Dollars per Cwt</i>	<i>Dollars per Cwt</i>	<i>Dollars per Cwt</i>	<i>Dollars per Cwt</i>
AR	42.90	38.60	43.90	41.90	43.80	41.60
IL	39.90	35.90	48.00	45.00	47.40	44.30
IN	46.50	42.10	46.30	43.40	46.30	43.30
IA	43.30	38.50	48.30	46.40	48.20	46.30
KS	41.30	36.40	44.40	41.90	44.00	41.30
MN	41.80	38.00	48.50	46.00	48.50	46.00
MO	40.90	36.50	43.00	40.80	42.90	40.50
NE	41.40	37.80	49.20	47.10	49.00	46.90
NC	42.50	37.40	47.10	45.00	47.10	44.90
OH	42.30	39.00	46.60	44.00	46.40	43.80
OK	40.60	37.30	41.20	39.00	41.10	38.70
PA	39.40	36.70	45.10	42.00	44.20	41.20
SD	40.90	37.80	48.80	47.20	47.90	46.00
US	41.70	37.70	47.30	45.00	47.00	44.70

<sup>1</sup> Entire month.

<sup>2</sup> Mid-month.

**Sheep and Poultry: Prices Received, by State, October and November 2005**

State	October		November
	Sheep <sup>1</sup>	Lambs <sup>1</sup>	Eggs <sup>2 3</sup>
	<i>Dollars per Cwt</i>	<i>Dollars per Cwt</i>	<i>Dollars per Dozen</i>
AL			0.500
AR			0.500
CA	36.50	93.50	0.550
CO	42.40	109.00	
CT			0.620
FL			0.510
GA			0.455
ID	43.00	103.00	
IN			0.480
IA	48.90	93.00	0.433
KY	52.00	105.00	
ME			0.720
MI			0.450
MN	43.00	101.00	0.460
MS			0.495
MO	46.90	96.00	0.420
MT	42.60	119.00	
NE	49.20	98.10	
NY			0.510
NC			0.500
ND	45.00	113.00	
OH	46.80	101.00	0.500
OR	36.80	97.60	
PA	51.50	106.00	
SC			0.460
SD	44.70	132.00	0.490
TX	45.10	107.00	0.490
VA	46.00	106.00	
WA			0.550
WV	42.70	107.00	
WY	43.40	120.00	
US	43.70	108.00	0.482

<sup>1</sup> Entire month.

<sup>2</sup> Mid-month.

<sup>3</sup> Market (table) eggs.

**Milk and Milk Cows: Prices Received, by State, October and November 2005**

State	October <sup>1</sup>						November		
	Fluid Grade Milk <sup>2</sup>		Manufacturing Grade Milk		All Milk <sup>3</sup>		All Milk <sup>3 4</sup>		Milk Cows <sup>5</sup>
	Price	Fat Test	Price	Fat Test	Price	Fat Test	Price	Fat Test	
	<i>Dol/Cwt</i>	<i>Percent</i>	<i>Dol/Cwt</i>	<i>Percent</i>	<i>Dol/Cwt</i>	<i>Percent</i>	<i>Dol/Cwt</i>	<i>Percent</i>	<i>Dol/Head</i>
AZ	15.30	3.60			15.30	3.60	15.10	3.69	
CA	14.10	3.69	15.20	4.07	14.13	3.70	13.40	3.78	
CO	15.40	3.62			15.40	3.62	14.70	3.65	
FL	18.60	3.67			18.60	3.67	18.80	3.65	
ID	14.40	3.72	14.30	4.02	14.40	3.72	13.80	3.77	
IL	16.30	3.73	15.60	3.65	16.30	3.73	15.70	3.79	
IN	15.90	3.73	14.20	3.73	15.80	3.73	15.70	3.75	
IA	16.40	3.75	14.60	3.86	16.40	3.75	15.80	3.77	
KS	15.10	3.67			15.10	3.67	14.90	3.72	
KY	16.50	3.67			16.50	3.67	16.70	3.70	
MI	15.90	3.67	14.30	3.66	15.90	3.67	15.80	3.73	
MN	15.90	3.80	14.50	3.86	15.90	3.80	15.40	3.83	
MO	16.00	3.70	14.90	3.87	16.00	3.71	15.90	3.80	
NM	14.80	3.60			14.80	3.60	14.70	3.63	
NY	15.90	3.74			15.90	3.74	15.80	3.79	
OH	16.40	3.72	14.50	3.81	16.30	3.72	16.00	3.78	
OR	15.50	3.74			15.50	3.74	15.00	3.80	
PA	17.30	3.70	14.70	3.75	17.30	3.70	17.00	3.75	
TX	15.90	3.76			15.90	3.76	15.70	3.82	
VT	16.50	3.78			16.50	3.78	16.40	3.82	
VA	16.90	3.62			16.90	3.62	17.10	3.65	
WA	15.50	3.74			15.50	3.74	15.00	3.80	
WI	16.00	3.75	14.90	3.91	16.00	3.76	15.30	3.81	
US	15.50	3.71	14.90	3.93	15.50	3.72	15.10	3.77	

<sup>1</sup> Entire month.

<sup>2</sup> Including milk diverted to manufacturing.

<sup>3</sup> Before deductions for hauling. Includes quality, quantity, and other premiums. Excludes hauling subsidies.

<sup>4</sup> Preliminary.

<sup>5</sup> Animals sold for dairy herd replacement only. Prices published January, April, July and October.

**Parity Price Equivalent for Manufacturing Milk <sup>1</sup>: United States,  
October and November 2005, with Comparisons**

Item	Unit	Nov 2004	Oct 2005	Nov 2005
Parity Equivalent	Dollars per Cwt	31.82	34.28	34.37
Average Price F.O.B <sup>2</sup>	Dollars per Cwt	15.90	14.90	14.20
Average Fat Test of Milk <sup>2</sup>	Percent	3.99	3.93	4.00

<sup>1</sup> The parity price equivalent during 2005 is 91.4 percent of the parity price of all milk sold to plants, compared with 90.4 percent in 2004. For additional details, see January 2005 issue of "Agricultural Prices".

<sup>2</sup> Preliminary for November 2005.

**United States Parity Prices for Farm Products and Average Prices Received as  
Percent of Parity Prices Based on Data for November 2005, with Comparisons <sup>1</sup>**

Commodity and Unit	Adjusted Base Price	Parity Price Based on Data for			Price as Percent of Parity		
		Nov 2004	Oct 2005	Nov 2005	Nov 2004	Oct 2005	Nov 2005
	<i>Dollars</i>	<i>Dollars</i>	<i>Dollars</i>	<i>Dollars</i>	<i>Percent</i>	<i>Percent</i>	<i>Percent</i>
Basic Commodities							
All Wheat, Bu	0.555	10.10	10.60	10.60	34	32	32
Rice, Cwt	1.38	29.10	26.30	26.30	25	26	28
Corn, Bu	0.372	6.77	7.08	7.10	30	26	25
Cotton, Lb							
American Upland	0.095	2.02	1.81	1.81	21	27	27
Extra Long Staple	0.142	2.57	2.70	2.71			
Peanuts, Lb	0.0350	0.660	0.666	0.668	31	26	26
Designated Nonbasic							
All Milk, Sold to Plants, Per Cwt <sup>2</sup>	1.97	35.20	37.50	37.60	44	39	39
Honey, Extracted, Lb <sup>3</sup>	0.1280	1.87	2.28	2.28			
Wool and Mohair							
Wool, Lb	0.0910	1.57	1.73	1.74			
Mohair, Lb	0.333	5.96	6.34	6.36			
Other Nonbasic							
Barley, Bu	0.377	6.71	7.17	7.20	37	34	35
Cottonseed, Ton	15.50	282.00	295.00	296.00	37	30	31
Dry Edible Beans, Cwt	2.82	52.10	53.70	53.80	50	35	35
Flaxseed, Bu	0.753	13.00	14.30	14.40	66	42	41
Oats, Bu	0.221	3.94	4.21	4.22	38	38	35
Potatoes, Cwt	0.838	15.20	15.90	16.00	33	35	38
Rye, Bu	0.355	6.30	6.76	6.78			
Sorghum Grain, Cwt	0.607	11.00	11.60	11.60	28	26	24
Soybeans, Bu	0.900	15.90	17.10	17.20	34	33	33
Sweetpotatoes, Cwt	2.31	40.20	44.00	44.10			
Apples, Fresh, Lb <sup>4</sup>	0.0292	0.528	0.556	0.557	33	40	39
Citrus (equiv on-tree), Box							
Grapefruit	0.394	6.91	7.50	7.52	233	238	142
Lemons	1.12	19.60	21.30	21.40	48	36	46
Oranges	0.574	11.00	10.90	11.00	49	44	80
Tangerines	1.35	25.30	25.70	25.80	49	57	51
Temples (FL)	0.379	8.05	7.21	7.24			
Beef Cattle, Cwt	9.65	170.00	184.00	184.00	50	50	50
Calves, Cwt	13.10	228.00	249.00	250.00	54	54	53
Hogs, Cwt	5.97	105.00	114.00	114.00	53	41	39
Lambs, Cwt	11.70	202.00	223.00	223.00	48	49	
Sheep, Cwt	4.72	83.90	89.80	90.10	49	49	
Eggs, Doz <sup>2</sup>	0.0940	1.69	1.79	1.79	32	30	31
Turkeys, Live, Lb	0.0565	1.020	1.080	1.080	48	49	51

--continued



**Parity Prices Based on Data for November 2005, United States <sup>1</sup> (continued)**

Other Nonbasic Commodities	Adj Base Base	Parity Price	Other Nonbasic Commodities	Adj Base Base	Parity Price
	<i>Dollars</i>	<i>Dollars</i>		<i>Dollars</i>	<i>Dollars</i>
Field Crops and Misc Commodities			Olives, CA canning, Ton <sup>5</sup>	95.70	1,830.00
Hops, Lb	0.251	4.79	Papayas (HA)	0.0528	1.010
Spearmint Oil, Lb	1.46	27.90	Peaches		
Tobacco, Lb			Fresh, Ton <sup>4</sup>	81.57	1,560.00
Flue-Cured, 11-14	0.255	4.87	Dried, CA, Ton	84.00	1,600.00
VA Fire-Cured, 21	0.256	4.89			
KY-TN Fire-Cured, 22-23	0.323	6.17	Noncitrus Fruit		
Burley, 31	0.274	5.23	Peaches, cont. Processing <sup>5</sup>		
Maryland, 32	0.210	4.01	Excl Dried		
Dark Air-Cured, 35-36	0.284	5.42	Clingstone, CA, Ton	33.50	640.00
Sun-Cured, 37	0.241	4.60	Pears, Ton		
PA Seedleaf, 41	0.205	3.91	Fresh <sup>4</sup>	52.90	1,010.00
Cigar Filler & Binder, 42-44, 54-55	0.225	4.30	Dried, CA <sup>6</sup>	164.00	3,130.00
Puerto Rican Filler, 46	0.159	3.04	Plums, CA, Ton		
Cigar Binder, 51-52	0.747	14.30	Fresh, Equiv on-Tree	66.70	1,270.00
Type 61	3.21	61.30	Prunes, Dried, CA, Ton <sup>6</sup>	127.00	2,420.00
Noncitrus Fruit			Prunes and Plums, Excl CA, Ton		
Apples, Ton <sup>6</sup>			Fresh <sup>9</sup>	58.90	1,120.00
Processing	18.30	349.00	Processing <sup>6</sup>		
Apricots, Ton			Excl Dried	27.50	525.00
Fresh <sup>7</sup>	99.00	1,890.00	Tree Nuts <sup>10</sup>		
Dried, CA	270.00	5,150.00	Almonds, Lb	0.213	4.07
Avocados, Ton <sup>7</sup>	234.00	4,470.00	Hazelnuts, Ton	135.00	2,580.00
Cherries			Pistachio, Lb	0.159	3.04
Sweet, Ton	188.00	3,590.00	Walnuts, Ton	173.00	3,300.00
Tart, Lb	0.0319	0.609	Vegetables, Cwt <sup>11</sup>		
Cranberry, Bbl <sup>5</sup>	5.69	109.00	Fresh		
Dates, CA, Ton <sup>7</sup>	181.00	3,460.00	Carrots <sup>8</sup>	2.28	43.50
Grapes, Ton			Cauliflower <sup>8</sup>	4.60	87.80
Raisin Variety	124.00	2,370.00	Celery <sup>8</sup>	1.97	37.60
Other Dried	70.50	1,350.00	Honeydew Melons	2.75	52.50
Kiwifruit, Ton	91.30	1,740.00	Lettuce	2.50	47.70
Nectarines			Onions <sup>8</sup>	1.65	31.50
Fresh, CA, Ton <sup>7</sup>	62.60	1,200.00	Tomatoes	4.44	84.80

<sup>1</sup> Parity prices are computed under the provisions of Title III, Subtitle a, Section 301 (a) of the Agricultural Adjustment Act of 1938 as amended by the Agricultural Acts of 1948, 1949, and 1956. See January "Agricultural Prices" for details on adjusted base price and parity price computations.

<sup>2</sup> Seasonally adjusted price as percentage of parity price.

<sup>3</sup> Wholesale extracted. Adjusted base price derived from state annual averages prices weighted by production. For 1982 through 1985 the national averages are the support prices.

<sup>4</sup> Equivalent packinghouse-door returns for CA, NY (apples only), OR (except peaches), and WA. Price at point of first sale for other states.

<sup>5</sup> Equivalent returns for bulk fruit at first delivery point.

<sup>6</sup> Equivalent returns at processing plant door.

<sup>7</sup> Equivalent returns at packinghouse door.

<sup>8</sup> Includes some processing.

<sup>9</sup> Based on "as sold" prices for fresh fruit in all states.

<sup>10</sup> Prices in-shell basis except almonds which are shelled basis.

<sup>11</sup> F.O.B. shipping point prices.

## Marketing Year for Specified Commodities

**Corn for Grain:** September 1 to August 31 for U.S.; July 1 to June 30 for Texas; August 1 to July 31 for Alabama, Arkansas, Florida, Georgia, Louisiana, Mississippi, North Carolina (2004-2005 Marketing Year), Oklahoma, South Carolina, and Tennessee; September 1 to August 31 for Arizona, California, Delaware, Illinois, Indiana, Iowa, Kansas, Kentucky, Maryland, Missouri, Nebraska, New Mexico, North Carolina (2003-2004 Marketing Year), Ohio, Pennsylvania, South Dakota, Virginia, and West Virginia; October 1 to September 30 for all other States.

**Dry Edible Beans:** September 1 to August 31 for U.S. and all States.

**Chickpeas (Garbonzo):** September 1 to August 31 for U.S.

**Flaxseed:** July 1 to June 30 for U.S. and all States.

**Sorghum for Grain:** September 1 to August 31 for U.S.; June 1 to May 31 for Texas; August 1 to July 31 for Alabama, Arkansas, Georgia, Louisiana, Mississippi, Oklahoma, South Carolina, and Tennessee; September 1 to August 31 for all other States.

**Sunflower:** September 1 to August 31 for U.S.; July 1 to June 30 for Texas; August 1 to July 31 for Louisiana; September 1 to August 31 for all other States.

**Crops: Marketing Year Average Prices Received, by States  
and United States, 2003 and 2004**

State	Flaxseed		Sunflower					
			All		Oil		Non-Oil	
	2003	2004	2003	2004	2003	2004	2003	2004
	<i>Dollars per Bu</i>	<i>Dollars per Bu</i>	<i>Dollars per Cwt</i>	<i>Dollars per Cwt</i>	<i>Dollars per Cwt</i>	<i>Dollars per Cwt</i>	<i>Dollars per Cwt</i>	<i>Dollars per Cwt</i>
CO			11.50	12.40	10.60	11.00	13.80	16.30
KS			11.80	12.70	10.70	11.60	14.10	17.20
MN	6.70	10.30	14.20	16.70	12.70	14.40	16.00	18.60
MT	5.80	7.94						
NE			12.10	14.40	10.70	13.00	16.20	17.00
ND	5.88	8.05	12.20	14.10	11.30	13.00	15.70	18.50
SD	5.54	9.74	11.40	13.10	11.00	12.80	13.20	14.70
TX			14.40	14.20	12.00	13.20	15.50	14.70
Oth Sts <sup>1</sup>			12.50	13.70	12.00	13.30	16.20	17.30
US	5.88	8.07	12.10	13.70	11.30	12.80	15.20	17.20

<sup>1</sup> Other States include CA, GA, IL, LA, MI, MO, MT, NM, NY, OH, OK, PA, SC, UT, WA, WI, and WY.

**Crops: Marketing Year Average Prices Received, by States  
and United States, 2003 and 2004**

State	Corn		All Dry Beans	
	2003	2004	2003	2004
	<i>Dollars per Bu</i>	<i>Dollars per Bu</i>	<i>Dollars per Cwt</i>	<i>Dollars per Cwt</i>
AL	2.36	2.48		
AZ	3.28	3.03		
AR	2.37	2.39		
CA	2.90	2.65	35.30	36.90
CO	2.49	2.23	18.20	28.00
DE	2.87	2.19		
FL	2.55	2.30		
GA	2.45	2.20		
ID	2.94	2.82	19.20	25.10
IL	2.42	2.14		
IN	2.53	1.99		
IA	2.37	1.99		
KS	2.51	2.12	17.60	30.20
KY	2.53	2.24		
LA	2.40	2.45		
MD	2.83	2.17		
MI	2.37	1.97	19.30	22.50
MN	2.35	1.94	18.60	26.50
MS	2.28	2.43		
MO	2.46	2.03		
MT	2.65	2.42	18.20	28.70
NE	2.39	2.02	17.30	22.80
NJ	2.81	2.20		
NM	2.96	2.40	16.00	28.00
NY	2.82	2.37	22.60	27.90
NC	2.68	2.44		
ND	2.37	1.88	16.10	24.80
OH	2.45	2.04		
OK	2.60	2.53		
OR	3.08	2.75	19.10	26.50
PA	2.96	2.25		
SC	2.70	2.30		
SD	2.28	1.82	15.80	21.90
TN	2.37	2.17		
TX	2.59	2.60	20.00	22.00
UT	2.99	2.56	18.00	30.00
VA	2.57	2.17		
WA	3.00	2.97	21.00	24.50
WV	2.72	2.20		
WI	2.35	2.15	26.50	33.50
WY	2.50	2.48	17.40	25.90
US	2.42	2.06	18.40	25.70

**Prices Received: Corn, by State and Month,  
for Marketing Years, 2003-2004 and 2004-2005**

State	Jul	Aug	Sep	Oct	Nov	Dec	Jan <sup>1</sup>	Feb
2004-2005								
	<i>Dollars per Bushel</i>	<i>Dollars per Bushel</i>	<i>Dollars per Bushel</i>	<i>Dollars per Bushel</i>	<i>Dollars per Bushel</i>	<i>Dollars per Bushel</i>	<i>Dollars per Bushel</i>	<i>Dollars per Bushel</i>
CO	2.90	2.75	2.72	2.36	2.42	2.22	2.22	2.03
IL	2.49	2.35	2.20	2.22	2.08	2.17	2.23	2.02
IN	2.57	2.44	2.07	1.88	1.81	1.95	2.09	2.01
IA	2.48	2.23	2.14	2.16	2.00	1.99	2.04	1.88
KS	2.68	2.37	2.18	2.27	2.28	2.01	2.00	1.90
KY	2.71	2.40	2.33	2.16	2.11	2.12	2.37	2.13
MI	2.42	2.38	2.29	2.13	1.93	1.88	2.00	1.86
MN	2.47	2.27	2.17	2.13	2.03	1.93	1.94	1.86
MO	2.58	2.43	2.20	1.90	1.89	1.95	1.93	1.95
NE	2.57	2.35	2.15	2.15	2.13	2.01	2.04	1.89
NC	3.08	2.66	2.43	2.25	2.23	2.46	2.57	2.30
ND	2.52	2.53	2.37	2.22	2.10	1.85	1.91	1.64
OH	2.54	2.36	2.12	2.04	1.95	1.95	2.13	1.97
PA	2.98	2.90	2.40	2.06	2.26	2.10	2.32	2.35
SD	2.29	2.20	2.05	1.92	1.76	1.80	1.76	1.76
TN	2.73	2.28	2.10	2.24	2.42	2.33	2.16	2.05
TX	2.52	2.51	2.67	2.74	2.68	2.51	2.42	2.37
WI	2.59	2.34	2.29	2.26	2.24	2.12	2.14	2.07
US	2.51	2.34	2.20	2.14	2.05	2.04	2.12	1.95
2003-2004								
CO	2.39	2.33	2.36	2.27	2.30	2.34	2.51	2.61
IL	2.20	2.16	2.18	2.13	2.21	2.34	2.37	2.65
IN	2.28	2.25	2.27	2.15	2.25	2.46	2.50	2.75
IA	2.09	2.04	2.12	2.05	2.15	2.27	2.33	2.55
KS	2.26	2.24	2.23	2.39	2.46	2.48	2.63	2.81
KY	2.57	2.32	2.24	2.27	2.39	2.45	2.48	2.74
MI	2.26	2.23	2.28	2.06	2.09	2.23	2.35	2.62
MN	2.10	2.03	2.05	1.99	2.07	2.17	2.28	2.37
MO	2.36	2.28	2.21	2.19	2.30	2.41	2.47	2.72
NE	2.11	2.09	2.16	2.16	2.20	2.28	2.38	2.53
NC	3.00	2.84	2.50	2.52	2.67	2.73	2.90	3.05
ND	2.15	2.10	2.14	2.00	2.04	2.11	2.19	2.50
OH	2.37	2.31	2.31	2.13	2.17	2.30	2.39	2.67
PA	2.97	2.88	2.88	2.59	2.66	2.76	2.95	3.10
SD	2.01	2.01	2.01	1.95	2.02	2.11	2.29	2.49
TN	2.64	2.45	2.27	2.05	2.43	2.61	2.44	2.63
TX	2.41	2.33	2.42	2.54	2.54	2.62	2.79	2.93
WI	2.18	2.15	2.17	2.09	2.11	2.23	2.31	2.52
US	2.17	2.15	2.20	2.12	2.20	2.31	2.39	2.61

See footnote(s) at end of table.

--continued

**Prices Received: Corn, by State and Month,  
for Marketing Years, 2003-2004 and 2004-2005 (continued)**

State	Mar	Apr	May	Jun	Jul	Aug	Sep
	2004-2005						
	<i>Dollars per Bushel</i>	<i>Dollars per Bushel</i>	<i>Dollars per Bushel</i>	<i>Dollars per Bushel</i>	<i>Dollars per Bushel</i>	<i>Dollars per Bushel</i>	<i>Dollars per Bushel</i>
CO	2.21	2.11	2.16	2.17	2.28	2.22	2.21
IL	2.09	2.09	2.05	2.12	2.23	2.03	1.92
IN	2.01	1.96	2.02	2.07	2.20	1.97	1.80
IA	1.98	1.95	1.92	1.95	2.00	1.84	1.81
KS	2.00	1.90	2.00	2.08	2.17	2.11	2.10
KY	2.20	2.19	2.21	2.26	2.35	2.21	2.06
MI	1.94	1.88	1.93	2.00	2.17	2.03	1.83
MN	1.92	1.90	1.90	1.95	1.97	1.82	1.71
MO	2.02	2.03	2.04	2.08	2.15	2.11	1.82
NE	1.98	1.92	1.93	1.97	2.04	1.86	1.72
NC	2.45	2.34	2.49	2.52	2.58	2.47	2.22
ND	1.79	1.85	1.86	1.87	1.87	1.82	1.77
OH	2.01	1.99	2.01	2.11	2.21	2.01	1.78
PA	2.40	2.37	2.54	2.48	2.56	2.43	2.29
SD	1.83	1.82	1.84	1.87	1.91	1.80	1.71
TN	2.09	2.34	2.45	2.38	2.45	2.18	1.83
TX	2.37	2.30	2.31	2.58	( <sup>2</sup> )	2.35	2.48
WI	2.14	2.20	2.11	2.12	2.17	2.01	1.95
US	2.02	2.00	1.98	2.03	2.11	1.95	1.90
	2003-2004						
CO	2.71	2.85	2.98	2.97	2.90	2.75	2.72
IL	2.77	2.97	2.93	2.87	2.49	2.35	2.20
IN	2.96	3.07	3.08	2.80	2.57	2.44	2.07
IA	2.67	2.79	2.80	2.77	2.48	2.23	2.14
KS	2.92	3.04	2.97	2.94	2.68	2.37	2.18
KY	2.90	3.09	3.06	3.05	2.71	2.40	2.33
MI	2.78	2.92	2.82	2.77	2.42	2.38	2.29
MN	2.57	2.75	2.68	2.64	2.47	2.27	2.17
MO	2.86	3.01	2.99	2.98	2.58	2.43	2.20
NE	2.62	2.82	2.80	2.82	2.57	2.35	2.15
NC	3.23	3.37	3.39	3.23	3.08	2.66	2.43
ND	2.62	2.70	2.77	2.82	2.52	2.53	2.37
OH	2.83	2.99	2.96	2.93	2.54	2.36	2.12
PA	3.31	3.46	3.54	3.52	2.98	2.90	2.40
SD	2.66	2.87	2.90	2.83	2.29	2.20	2.05
TN	2.93	3.01	2.95	2.72	2.73	2.28	2.10
TX	3.17	( <sup>2</sup> )	2.89	3.11	2.52	2.51	2.67
WI	2.72	2.80	2.79	2.78	2.59	2.34	2.29
US	2.75	2.89	2.87	2.79	2.51	2.34	2.20

<sup>1</sup> Second year.

<sup>2</sup> Price not published to avoid disclosure of individual firms.

**Prices Received: Flaxseed, by State and Month,  
for Marketing Years, 2003-2004 and 2004-2005**

State	Jul	Aug	Sep	Oct	Nov	Dec
	2004-2005					
	<i>Dollars per Bushel</i>	<i>Dollars per Bushel</i>	<i>Dollars per Bushel</i>	<i>Dollars per Bushel</i>	<i>Dollars per Bushel</i>	<i>Dollars per Bushel</i>
ND	7.32	7.03	7.19	7.36	8.62	8.42
SD	( <sup>3</sup> )	6.21	7.25	7.92	( <sup>3</sup> )	( <sup>3</sup> )
US	7.32	6.94	7.19	7.36	8.62	8.42
	2003-2004					
ND	6.38	5.30	5.43	5.69	6.02	6.15
SD	( <sup>3</sup> )	5.20	5.50	( <sup>3</sup> )	5.86	6.00
US	6.38	5.30	5.43	5.69	6.02	6.15
	Jan <sup>1</sup>	Feb	Mar	Apr	May	Jun
	2004-2005					
ND	8.89	10.90	11.30	12.30	11.60	11.20
SD	( <sup>3</sup> )	( <sup>3</sup> )	11.90	12.20	( <sup>3</sup> )	( <sup>3</sup> )
US	8.89	10.90	11.40	12.30	11.60	11.20
	2003-2004					
ND	6.14	6.40	6.53	7.01	7.11	7.23
SD	5.34	6.00	( <sup>3</sup> )	6.22	6.81	( <sup>3</sup> )
US	6.08	6.39	6.53	7.01	7.10	7.23

<sup>1</sup> Second year.

<sup>2</sup> Price not published to avoid disclosure of individual firms.

<sup>3</sup> Insufficient sales to establish a price.

**Prices Received: All Sunflower, by State and Month,  
for Marketing Years, 2003-2004 and 2004-2005**

State	Sep	Oct	Nov	Dec	Jan <sup>1</sup>	Feb
2004-2005						
	<i>Dollars per Cwt</i>	<i>Dollars per Cwt</i>	<i>Dollars per Cwt</i>	<i>Dollars per Cwt</i>	<i>Dollars per Cwt</i>	<i>Dollars per Cwt</i>
KS	10.10	12.70	11.50	12.70	12.60	13.40
MN	13.80	15.90	15.80	16.80	16.30	16.70
ND	15.00	13.20	13.40	13.70	14.00	15.80
SD	12.50	11.60	11.80	12.70	13.30	14.50
US	12.80	12.60	12.80	13.40	13.70	15.00
2003-2004						
KS	<sup>(2)</sup>	<sup>(2)</sup>	<sup>(2)</sup>	<sup>(2)</sup>	<sup>(2)</sup>	<sup>(2)</sup>
MN	<sup>(2)</sup>	14.20	13.20	13.50	13.10	14.00
ND	10.60	11.30	11.80	11.90	12.20	12.80
SD	10.20	10.80	10.50	10.90	11.60	12.10
US	10.40	11.40	11.50	11.70	12.10	12.80
	Mar	Apr	May	Jun	Jul	Aug
2004-2005						
KS	15.70	14.00	15.50	9.87	10.70	13.20
MN	17.70	19.10	17.00	<sup>(2)</sup>	<sup>(2)</sup>	<sup>(2)</sup>
ND	14.80	16.10	14.50	15.60	15.10	14.40
SD	14.50	14.30	15.90	14.90	14.80	14.10
US	15.00	15.10	15.40	15.20	15.20	14.40
2003-2004						
KS	<sup>(2)</sup>	<sup>(2)</sup>	<sup>(2)</sup>	<sup>(2)</sup>	<sup>(2)</sup>	<sup>(2)</sup>
MN	<sup>(2)</sup>	14.90	15.30	15.90	14.30	15.80
ND	13.10	13.40	13.70	13.50	13.60	14.80
SD	12.40	13.00	13.30	13.00	12.40	11.60
US	13.10	13.50	13.70	13.50	13.30	13.60

<sup>1</sup> Second year.

<sup>2</sup> Price not published to avoid disclosure of individual firms.

<sup>3</sup> Insufficient sales to establish a price.

**Prices Received: Oil Sunflower, by State and Month,  
for Marketing Years, 2003-2004 and 2004-2005**

State	Sep	Oct	Nov	Dec	Jan <sup>1</sup>	Feb
2004-2005						
	<i>Dollars per Cwt</i>	<i>Dollars per Cwt</i>	<i>Dollars per Cwt</i>	<i>Dollars per Cwt</i>	<i>Dollars per Cwt</i>	<i>Dollars per Cwt</i>
KS	10.00	10.80	11.50	12.00	12.00	12.50
MN	13.80	13.80	13.20	<sup>(2)</sup>	14.60	<sup>(2)</sup>
ND	12.80	12.30	12.50	12.90	13.10	14.00
SD	12.40	11.60	11.70	12.20	12.90	13.90
US	12.00	11.60	12.20	12.60	12.90	13.80
2003-2004						
KS	<sup>(2)</sup>	<sup>(2)</sup>	<sup>(2)</sup>	<sup>(2)</sup>	<sup>(2)</sup>	<sup>(2)</sup>
MN	<sup>(2)</sup>	13.20	11.50	12.00	12.30	12.50
ND	10.10	10.50	10.60	11.10	11.20	12.00
SD	10.20	10.40	10.20	10.70	11.30	11.80
US	10.10	10.60	10.50	11.00	11.30	12.00
	Mar	Apr	May	Jun	Jul	Aug
2004-2005						
KS	11.70	12.30	12.30	9.87	10.70	10.50
MN	<sup>(2)</sup>	<sup>(2)</sup>	12.40	<sup>(3)</sup>	<sup>(3)</sup>	<sup>(2)</sup>
ND	13.50	14.20	13.50	14.30	14.30	14.10
SD	14.00	14.10	14.00	14.50	14.40	14.10
US	13.60	13.90	13.60	14.30	14.30	14.00
2003-2004						
KS	<sup>(2)</sup>	<sup>(2)</sup>	<sup>(2)</sup>	<sup>(2)</sup>	<sup>(2)</sup>	<sup>(2)</sup>
MN	12.50	13.20	13.30	<sup>(2)</sup>	13.50	14.50
ND	12.50	12.60	12.60	12.90	12.40	12.80
SD	12.30	12.70	13.00	12.60	12.60	11.50
US	12.40	12.70	12.80	12.80	12.50	12.20

<sup>1</sup> Second year.

<sup>2</sup> Price not published to avoid disclosure of individual firms.

<sup>3</sup> Insufficient sales to establish a price.



**Prices Received: Non-Oil Sunflower, by State and Month,  
for Marketing Years, 2003-2004 and 2004-2005**

State	Sep	Oct	Nov	Dec	Jan <sup>1</sup>	Feb
2004-2005						
	<i>Dollars per Cwt</i>	<i>Dollars per Cwt</i>	<i>Dollars per Cwt</i>	<i>Dollars per Cwt</i>	<i>Dollars per Cwt</i>	<i>Dollars per Cwt</i>
KS	<sup>(2)</sup>	<sup>(2)</sup>	<sup>(3)</sup>	<sup>(2)</sup>	<sup>(2)</sup>	<sup>(2)</sup>
MN	<sup>(3)</sup>	<sup>(2)</sup>	17.40	<sup>(2)</sup>	18.10	18.80
ND	20.20	17.80	18.20	17.20	17.80	19.40
SD	13.80	12.30	12.10	14.10	16.50	16.70
US	18.20	16.80	15.70	16.40	17.50	18.30
2003-2004						
KS	<sup>(2)</sup>	<sup>(2)</sup>	<sup>(2)</sup>	<sup>(2)</sup>	<sup>(2)</sup>	<sup>(2)</sup>
MN	<sup>(2)</sup>	15.70	<sup>(2)</sup>	<sup>(2)</sup>	15.50	15.90
ND	12.00	15.40	15.30	15.40	15.70	15.60
SD	12.10	13.30	<sup>(2)</sup>	<sup>(2)</sup>	<sup>(2)</sup>	14.90
US	12.30	14.90	14.70	15.30	15.60	15.40
	Mar	Apr	May	Jun	Jul	Aug
2004-2005						
KS	17.70	<sup>(2)</sup>	<sup>(2)</sup>	<sup>(3)</sup>	<sup>(3)</sup>	<sup>(2)</sup>
MN	<sup>(2)</sup>	19.50	18.50	<sup>(2)</sup>	<sup>(2)</sup>	<sup>(2)</sup>
ND	19.80	21.10	22.40	20.70	19.30	<sup>(2)</sup>
SD	16.70	<sup>(2)</sup>	17.50	<sup>(2)</sup>	<sup>(2)</sup>	<sup>(2)</sup>
US	18.40	20.30	18.20	20.50	19.80	15.60
2003-2004						
KS	<sup>(3)</sup>	<sup>(2)</sup>	<sup>(2)</sup>	<sup>(3)</sup>	<sup>(3)</sup>	<sup>(3)</sup>
MN	<sup>(2)</sup>	16.00	16.40	17.30	<sup>(2)</sup>	<sup>(2)</sup>
ND	15.80	16.20	16.60	16.50	17.70	18.70
SD	<sup>(2)</sup>	<sup>(2)</sup>	<sup>(2)</sup>	13.80	12.30	11.70
US	15.90	16.10	16.30	15.50	14.50	16.70

<sup>1</sup> Second year.

<sup>2</sup> Price not published to avoid disclosure of individual firms.

<sup>3</sup> Insufficient sales to establish a price.

**Prices Received: Dry Edible Beans, by State and Month,  
for Marketing Years, 2003-2004 and 2004-2005**

State	Sep	Oct	Nov	Dec	Jan <sup>1</sup>	Feb
2004-2005						
	<i>Dollars per Cwt</i>	<i>Dollars per Cwt</i>	<i>Dollars per Cwt</i>	<i>Dollars per Cwt</i>	<i>Dollars per Cwt</i>	<i>Dollars per Cwt</i>
CA	35.80	38.70	36.80	38.40	40.70	37.00
CO	26.10	25.90	28.70	30.20	29.00	29.80
ID	22.50	24.10	22.30	24.60	26.50	26.40
MI	22.00	23.60	23.70	23.60	27.10	22.30
MN	23.40	26.40	24.40	28.20	27.80	28.20
NE	21.80	22.10	23.60	23.90	23.80	24.30
ND	22.20	23.80	26.50	26.60	26.20	29.00
US	22.80	24.50	25.90	27.00	27.20	27.80
2003-2004						
CA	32.00	41.10	35.20	35.60	35.00	32.50
CO	18.00	18.00	17.90	16.10	18.20	16.30
ID	18.80	19.10	20.30	18.70	17.80	18.90
MI	18.40	18.70	18.80	19.00	18.80	20.50
MN	17.60	20.10	21.20	17.10	21.00	19.80
NE	18.70	16.50	16.40	15.40	15.50	15.70
ND	15.60	14.80	15.20	15.00	15.20	15.70
US	17.60	17.60	19.10	17.40	17.20	17.50
	Mar	Apr	May	Jun	Jul	Aug
2004-2005						
CA	37.20	37.90	35.50	39.80	35.10	( <sup>2</sup> )
CO	29.20	27.80	28.70	30.70	30.10	25.00
ID	27.40	25.90	24.60	28.50	27.20	27.40
MI	23.50	23.50	25.20	23.50	20.40	20.60
MN	26.60	( <sup>2</sup> )	26.10	( <sup>2</sup> )	( <sup>2</sup> )	( <sup>2</sup> )
NE	24.00	23.80	23.10	23.40	22.40	19.80
ND	26.30	24.80	23.30	23.20	21.40	20.80
US	26.60	28.70	31.10	27.70	25.40	21.40
2003-2004						
CA	36.30	34.80	31.10	34.50	35.80	36.30
CO	17.70	18.20	18.80	19.60	19.80	20.70
ID	18.30	19.30	20.10	19.60	20.20	20.00
MI	21.10	20.10	21.40	19.90	20.90	19.20
MN	18.70	19.10	20.10	19.00	19.10	19.60
NE	16.60	17.80	17.30	17.40	17.30	17.60
ND	16.80	17.50	18.20	18.10	17.90	17.70
US	20.20	19.60	19.90	20.00	19.20	20.90

<sup>1</sup> Second year.

<sup>2</sup> Price not published to avoid disclosure of individual firms.

**Corn: Farm Marketings, Percent of Sales, by Month  
and State, 2003-2004 and 2004-2005<sup>1</sup>**

Year	Jul	Aug	Sep	Oct	Nov	Dec	Jan	Feb	Mar	Apr	May	Jun	Jul	Aug	Sep
	<i>Pct</i>	<i>Pct</i>	<i>Pct</i>	<i>Pct</i>	<i>Pct</i>	<i>Pct</i>	<i>Pct</i>	<i>Pct</i>	<i>Pct</i>	<i>Pct</i>	<i>Pct</i>	<i>Pct</i>	<i>Pct</i>	<i>Pct</i>	<i>Pct</i>
CO 2003-2004				15	19	16	19	6	6	7	2	2	3	3	2
2004-2005				5	17	22	13	14	8	4	4	3	4	3	3
IL 2003-2004			5	15	9	10	26	7	8	5	3	4	4	4	
2004-2005			8	11	4	8	18	9	9	6	7	8	7	5	
IN 2003-2004			5	16	12	7	17	8	8	6	3	6	7	5	
2004-2005			8	21	9	5	11	8	7	4	5	8	7	7	
IA 2003-2004			7	18	11	6	12	7	9	7	4	6	7	6	
2004-2005			6	9	15	7	9	8	9	6	7	9	8	7	
KS 2003-2004			8	29	18	13	15	4	6	2	1	1	1	2	
2004-2005			11	19	16	14	10	10	5	2	3	3	4	3	
KY 2003-2004			13	14	5	6	28	9	9	4	3	3	3	3	
2004-2005			14	11	5	4	20	12	10	7	4	6	4	3	
MI 2003-2004				7	20	21	13	8	6	5	3	5	4	4	4
2004-2005				11	21	12	11	7	5	4	5	7	6	6	5
MN 2003-2004				12	7	7	10	7	6	5	4	14	12	9	7
2004-2005				10	16	10	10	8	8	5	7	7	8	6	5
MO 2003-2004			23	12	7	8	15	9	7	4	3	3	4	5	
2004-2005			20	15	6	8	11	8	8	4	4	5	6	5	
NE 2003-2004			5	15	16	12	14	8	9	6	3	4	4	4	
2004-2005			5	9	15	12	11	10	8	5	6	7	6	6	
NC 2003-2004			37	14	4	3	7	7	4	2	1	1	1	19	
2004-2005		17	37	11	6	4	5	6	5	2	3	2	2		
ND 2003-2004				9	13	11	15	11	9	7	5	6	6	6	2
2004-2005				3	14	17	13	9	8	6	3	8	9	5	5
OH 2003-2004			3	12	19	10	16	10	8	6	4	4	5	3	
2004-2005			4	22	13	7	10	8	9	6	5	6	6	4	
PA 2003-2004			4	10	19	12	11	9	9	4	6	5	5	6	
2004-2005			7	33	20	5	3	4	6	6	4	3	3	6	
SD 2003-2004			5	21	14	8	12	7	8	7	4	5	4	5	
2004-2005			3	5	22	13	9	9	7	4	6	6	9	7	
TN 2003-2004		6	46	16	2	3	12	3	4	3	1	2	2		
2004-2005		12	50	7	1	2	10	4	4	3	2	3	2		
TX 2003-2004	2	16	16	18	17	7	8	2	7	3	1	3			
2004-2005	3	9	12	26	21	10	8	4	2	2	2	1			
WI 2003-2004				10	22	10	17	6	8	6	3	3	4	4	7
2004-2005				6	23	10	9	5	6	6	6	9	9	4	7
US 2003-2004			7.0	15.6	11.6	8.7	16.7	7.2	8.0	5.7	3.3	5.3	5.6	5.3	
2004-2005			7.8	11.7	11.7	8.6	12.4	8.4	8.2	5.2	5.9	7.2	7.0	5.9	

<sup>1</sup> Monthly farm marketings, based on a sample survey, as a percent of total used for calculating marketing year average prices.

**All Sunflower: Farm Marketings, Percent of Sales, by Month  
and State, 2003-2004 and 2004-2005<sup>1</sup>**

Year	Sep	Oct	Nov	Dec	Jan	Feb	Mar	Apr	May	Jun	Jul	Aug
	<i>Percent</i>	<i>Percent</i>	<i>Percent</i>	<i>Percent</i>	<i>Percent</i>	<i>Percent</i>	<i>Percent</i>	<i>Percent</i>	<i>Percent</i>	<i>Percent</i>	<i>Percent</i>	<i>Percent</i>
KS 2003-2004	2	37	29	12	8	5	1	3				3
2004-2005	4	28	14	24	12	8	5	3	1			1
MN 2003-2004	1	24	7	6	11	18	11	5	3	4	8	2
2004-2005	3	6	24	16	14	16	9	5	2	1	3	1
ND 2003-2004	3	29	11	10	10	8	11	5	2	4	5	2
2004-2005	2	8	30	21	11	7	6	3	1	3	6	2
SD 2003-2004	10	34	9	8	5	7	7	4	3	4	7	2
2004-2005	3	9	27	13	13	10	7	6	3	4	3	2
US 2003-2004	4.3	30.4	11.6	9.1	8.6	8.1	9.4	4.6	2.1	3.7	5.6	2.5
2004-2005	2.5	11.2	26.2	18.9	12.2	8.6	6.3	4.1	1.9	2.5	3.7	1.9

<sup>1</sup> Monthly farm marketings, based on a sample survey, as a percent of total used for calculating marketing year average prices.

**Flaxseed: Farm Marketings, Percent of Sales, by Month  
and State, 2003-2004 and 2004-2005<sup>1</sup>**

Year	Jul	Aug	Sep	Oct	Nov	Dec	Jan	Feb	Mar	Apr	May	Jun
	<i>Percent</i>	<i>Percent</i>	<i>Percent</i>	<i>Percent</i>	<i>Percent</i>	<i>Percent</i>	<i>Percent</i>	<i>Percent</i>	<i>Percent</i>	<i>Percent</i>	<i>Percent</i>	<i>Percent</i>
ND 2003-2004	2	10	34	15	6	8	5	3	7	5	2	3
2004-2005	2	3	22	34	13	9	8	2	2	2	2	1
SD 2003-2004		9	9		2	4	60	7		2	7	
2004-2005		35	1	4					30	30		
US 2003-2004	2.1	9.7	33.5	15.0	5.5	8.1	5.7	3.4	6.9	4.6	2.3	3.2
2004-2005	2.4	3.5	22.0	33.9	13.0	8.5	7.2	1.7	2.4	2.7	1.4	1.3

<sup>1</sup> Monthly farm marketings, based on a sample survey, as a percent of total used for calculating marketing year average prices.

**Dry Edible Beans: Farm Marketings, Percent of Sales, by Month  
and State, 2003-2004 and 2004-2005<sup>1</sup>**

Year	Sep	Oct	Nov	Dec	Jan	Feb	Mar	Apr	May	Jun	Jul	Aug
	<i>Percent</i>	<i>Percent</i>	<i>Percent</i>	<i>Percent</i>	<i>Percent</i>	<i>Percent</i>	<i>Percent</i>	<i>Percent</i>	<i>Percent</i>	<i>Percent</i>	<i>Percent</i>	<i>Percent</i>
CA 2003-2004	10	9	9	12	7	6	18	8	5	6	3	7
2004-2005	4	11	5	6	4	5	4	9	38	4	9	1
CO 2003-2004	23	9	7	8	13	5	6	8	3	5	6	7
2004-2005	19	15	8	10	15	8	5	9	4	2	3	2
ID 2003-2004	8	11	10	16	7	7	11	3	5	10	2	10
2004-2005	2	13	18	15	8	7	10	5	10	8	1	3
MI 2003-2004	25	14	18	8	4	4	6	3	10	3	3	2
2004-2005	31	20	4	5	3	5	5	3	1	2	2	19
MN 2003-2004	46	16	2	8	4	4	5	1	2	1	5	6
2004-2005	7	28	14	21	10	4	10	2	1	1	1	1
NE 2003-2004	38	18	4	6	7	5	4	3	3	4	4	4
2004-2005	16	28	12	9	8	7	7	3	1	3	3	3
ND 2003-2004	17	13	4	12	10	9	9	7	6	4	6	3
2004-2005	6	37	12	12	10	5	4	2	3	2	4	3
US 2003-2004	22.1	13.5	7.2	10.3	8.3	6.5	8.3	5.2	5.8	4.3	4.8	3.7
2004-2005	12.4	26.4	10.2	10.4	7.7	5.4	5.4	3.3	6.6	2.4	3.6	6.2

<sup>1</sup> Monthly farm marketings, based on a sample survey, as a percent of total used for calculating marketing year average prices.

**Chickpeas, All (Garbanzo): Monthly Prices Received, Monthly Farm Marketing Percentages, and Marketing Year Average Prices, United States, 2002-2003 through 2004-2005<sup>1</sup>**

Month	Prices Received			Farm Marketing Percentages <sup>2</sup>		
	2002-2003 <sup>3</sup>	2003-2004	2004-2005	2002-2003 <sup>3</sup>	2003-2004	2004-2005
	<i>Dollars per Cwt</i>	<i>Dollars per Cwt</i>	<i>Dollars per Cwt</i>	<i>Percent</i>	<i>Percent</i>	<i>Percent</i>
Sep		19.80	26.80		13.7	10.8
Oct		16.90	24.40		11.9	30.1
Nov		23.90	23.50		11.3	6.5
Dec		16.20	24.10		7.8	8.6
Jan <sup>4</sup>		14.70	23.60		5.3	4.4
Feb		18.90	29.20		5.8	4.4
Mar		26.10	29.00		4.3	3.8
Apr		22.80	25.00		6.8	4.1
May		23.00	17.20		6.9	7.0
Jun		20.80	36.20		2.3	1.0
Jul		27.10	27.90		4.5	16.7
Aug		26.60	20.60		19.4	2.6
MYA		21.70	25.00		100.0	100.0

<sup>1</sup> Marketing year average (MYA) prices are weighted average prices for the U.S. marketing year of September - August.

<sup>2</sup> Monthly farm marketings, based on a sample survey, as percent of total used for calculating MYA prices.

<sup>3</sup> No monthly price or MYA price data available for the 2002-2003 marketing year.

<sup>4</sup> Second year.

**Chickpeas, Large (Garbanzo, larger than 20/64 in.): Monthly Prices Received, Monthly Farm Marketing Percentages, and Marketing Year Average Prices, United States, 2002-2003 through 2004-2005<sup>1</sup>**

Month	Prices Received			Farm Marketing Percentages <sup>2</sup>		
	2002-2003 <sup>3</sup>	2003-2004	2004-2005	2002-2003 <sup>3</sup>	2003-2004	2004-2005
	<i>Dollars per Cwt</i>	<i>Dollars per Cwt</i>	<i>Dollars per Cwt</i>	<i>Percent</i>	<i>Percent</i>	<i>Percent</i>
Sep		21.00	26.80		9.2	11.3
Oct		18.70	24.40		10.5	30.3
Nov		23.90	23.50		12.8	6.9
Dec		16.20	24.30		7.8	8.9
Jan <sup>4</sup>		14.70	23.70		6.0	4.6
Feb		19.10	30.10		6.4	4.5
Mar		26.40	29.30		4.8	4.0
Apr		23.30	25.00		7.5	4.3
May		23.30	19.10		7.5	5.4
Jun		22.00	36.60		2.3	1.0
Jul		27.20	28.20		5.1	17.1
Aug		27.20	25.70		20.1	1.7
MYA		22.40	25.60		100.0	100.0

<sup>1</sup> Marketing year average (MYA) prices are weighted average prices for the U.S. marketing year of September - August.

<sup>2</sup> Monthly farm marketings, based on a sample survey, as percent of total used for calculating MYA prices.

<sup>3</sup> No monthly price or MYA price data available for the 2002-2003 marketing year.

<sup>4</sup> Second year.

**Chickpeas, Small (Garbanzo, smaller than 20/64 in.): Monthly Prices Received,  
Monthly Farm Marketing Percentages, and Marketing Year Average Prices,  
United States, 2002-2003 through 2004-2005 <sup>1</sup>**

Month	Prices Received			Farm Marketing Percentages <sup>2</sup>		
	2002-2003 <sup>3</sup>	2003-2004	2004-2005	2002-2003 <sup>3</sup>	2003-2004	2004-2005
	<i>Dollars per Cwt</i>	<i>Dollars per Cwt</i>	<i>Dollars per Cwt</i>	<i>Percent</i>	<i>Percent</i>	<i>Percent</i>
Sep		18.00	( <sup>6</sup> )		46.6	( <sup>6</sup> )
Oct		10.60	22.60		22.7	25.7
Nov		( <sup>5</sup> )	( <sup>6</sup> )		( <sup>5</sup> )	( <sup>6</sup> )
Dec		( <sup>5</sup> )	( <sup>5</sup> )		( <sup>5</sup> )	( <sup>5</sup> )
Jan <sup>4</sup>		( <sup>5</sup> )	( <sup>5</sup> )		( <sup>5</sup> )	( <sup>5</sup> )
Feb		( <sup>5</sup> )	( <sup>5</sup> )		( <sup>5</sup> )	( <sup>5</sup> )
Mar		( <sup>5</sup> )	( <sup>5</sup> )		( <sup>5</sup> )	( <sup>5</sup> )
Apr		( <sup>5</sup> )	( <sup>5</sup> )		( <sup>5</sup> )	( <sup>5</sup> )
May		( <sup>5</sup> )	( <sup>5</sup> )		( <sup>5</sup> )	( <sup>5</sup> )
Jun		( <sup>5</sup> )	( <sup>5</sup> )		( <sup>5</sup> )	( <sup>5</sup> )
Jul		( <sup>5</sup> )	( <sup>5</sup> )		( <sup>5</sup> )	( <sup>5</sup> )
Aug		( <sup>5</sup> )	( <sup>5</sup> )		( <sup>5</sup> )	( <sup>5</sup> )
MYA		16.00	14.20		100.0	100.0

<sup>1</sup> Marketing year average (MYA) prices are weighted average prices for the U.S. marketing year of September - August.

<sup>2</sup> Monthly farm marketings, based on a sample survey, as percent of total used for calculating MYA prices.

<sup>3</sup> No monthly price or MYA price data available for the 2002-2003 marketing year.

<sup>4</sup> Second year.

<sup>5</sup> Price not published to avoid disclosure of individual firms.

<sup>6</sup> Insufficient sales to establish a price.

## Reliability of Prices Received Estimates

**Definition:** Prices received represent sales from producers to first buyers. They include all grades and qualities. The average commodity price from the survey multiplied by the total quantity marketed theoretically should give the total cash receipts for the commodity.

**Survey Procedures:** Primary sales data used to determine grain prices were obtained from probability samples of about 2000 mills and elevators. These procedures ensure that virtually all grain moving into commercial channels has a chance of being included in the survey. Generally, States surveyed account for 90 percent or more of total U.S. production. Livestock prices are obtained from packers, stockyards, auctions, dealers, and market check data from AMS-USDA, private marketing organizations, and state commodity groups and agencies. Inter-farm sales of grain and livestock are not included since they represent very small percentages of the total marketings. Grain marketed for seed is also excluded. Fruit and vegetable prices are obtained from sample surveys and market check data from AMS-USDA, private marketing organizations, state agencies, and universities.

**Summary and Estimation Procedures:** Survey quantities sold are expanded by strata to state levels and used to weight average strata prices to a state average. State prices are then weighted to a U.S. price based on expanded marketings. Recommendations are prepared by the State Statistical Offices and reviewed by the Agricultural Statistics Board in Washington, D.C. State recommendations are reviewed for reasonableness with survey data, other States, and recent historic estimates.

**Revisions:** For most items, the current month's preliminary price represents a 3-5 day period around the 15<sup>th</sup> of the month. Previous month's prices represent actual dollars received for quantities sold during the entire month. Revisions are published in monthly issues of *Agricultural Prices*.

**Reliability:** U.S. price estimates based on probability surveys generally have a sampling error of less than one percent for the major commodities such as corn, wheat, soybeans, cotton, and rice. Current methods of summarization for non-probability commodities are not designed directly to calculate sampling errors. However, analytical measures approximate the U.S. relative sampling errors at around five percent. Any nonsampling errors are attributed to such things as the inability to obtain correct information, differences in interpreting questions or definitions, mistakes in coding or processing the data, etc. Efforts are made at each step in the survey process to minimize these nonsampling errors.



## Prices Paid by Farmers

The November Index of Prices Paid for Commodities and Services, Interest, Taxes, and Farm Wage Rates (PPITW) at 143 (1990-92=100), decreased 0.7 percent from October 2005 but is up 5.9 percent from November 2004.

**PRODUCTION INDEX:** The November index, at 143, decreased 0.7 percent from last month but increased 7.5 percent from last year. Lower prices in November for diesel fuel, gasoline, complete feeds, and hays & forages offset higher prices for feed concentrates, nitrogen fertilizers, building materials, and feeder pigs.

**Feed:** The November index, at 115, decreased 0.9 percent from October but increased 5.5 percent from last November. Since October, slightly lower prices for complete feeds, hays & forages, and feed grains more than offset higher prices for feed concentrates and feed supplements.

**Livestock & Poultry:** The November index for livestock and poultry purchases, at 149, increased 0.7 percent from last month and 8.8 percent from last year. Since October, higher prices for feeder pigs account for most of the increase. The November feeder cattle price, at \$127.10 per cwt, is up 50 cents per cwt from the October price. November feeder pigs averaged \$135.00 per cwt, up \$7.00 per cwt from October.

**Fertilizer:** The November index, at 171, is up 2.4 percent from October and 13 percent from November a year ago. Since October, prices are higher for nitrogen fertilizers, mixed fertilizers, and potash & phosphate materials.

**Agricultural Chemicals:** The November index, at 122, is unchanged from October but up 2.5 percent from last November.

**Fuels:** The November index, at 260, is down 14 percent from a month earlier but up 33 percent from November 2004. Compared with last month, prices are lower for diesel fuel and gasoline but slightly higher for LP gas.

**Farm Machinery:** The November index, at 171, is unchanged from October but up 2.4 percent from last November.

**CONSUMER PRICE INDEX:** The October 2005 Consumer Price Index for all urban consumers (CPI-U) increased 0.2 percent before seasonal adjustment to a level of 199.2 (1982-84=100). This compares with the September index of 198.8. For the 12-month period ending in October, the overall index has increased 4.3 percent.

**Indexes of Prices Paid by Farmers and Related Parity Ratios  
United States, November 2005 With Comparisons**

Indexes and Ratios	1910-14 = 100			1990-92 = 100		
	2004	2005		2004	2005	
	Nov	Oct	Nov	Nov	Oct	Nov
Prices Paid by Farmers for Commodities & Services, Interest, Taxes, & Wage Rates (PPITW)	1,799	*1,920	1,909	135	*144	143
Production	1,289	*1,395	1,383	133	*144	143
Feed	531	*565	563	109	*116	115
Livestock & Poultry	1,750	1,887	1,901	137	148	149
Seeds	1,564	1,694	1,694	158	171	171
Fertilizer	554	*613	629	151	167	171
Agricultural Chemicals	735	751	754	119	*122	122
Fuels	1,514	*2,328	2,009	196	*302	260
Farm Supplies & Repairs	986	*1,024	1,024	139	144	144
Autos & Trucks	3,034	*3,000	3,026	114	*113	114
Farm Machinery	4,183	*4,297	4,297	167	171	171
Building Materials	1,866	*1,960	1,985	137	144	146
Farm Services & Rent	1,456	*1,505	1,505			
Farm Services				124	129	129
Rent				120	123	123
Interest <sup>1</sup>	2,593	2,643	2,643	103	105	105
Taxes <sup>2</sup>	3,474	3,542	3,542	130	132	132
Wage Rates	6,022	*6,209	6,209	161	*166	166
Production, Interest, Taxes, & Wage Rates (PITW)	1,795	*1,926	1,913	134	*143	142
Family Living-CPI <sup>3</sup>	1,814	*1,892	1,892	142	*148	148
Ratio (Received\Paid) Parity Ratio <sup>4</sup>	41	37	37	85	77	79
Parity Ratio Adjusted <sup>5</sup>	43	41	41			
PPITW Adjusted for Productivity <sup>6</sup>	1,222	*1,260	1,259			
Crop Sector (PPITW)				138	*148	147
Livestock Sector (PPITW)				132	*140	140
Farm Sector (Production)				126	*136	136
Non-Farm Sector (Production)				136	*148	146

\* Revised.

<sup>1</sup> Interest per acre on farm real estate debt and interest rate on farm non-real estate debt.

<sup>2</sup> Farm real estate taxes payable per acre.

<sup>3</sup> Bureau of Labor Statistics, Consumer Price Index for all urban consumers (CPI-U), for the previous month converted by the USDA.

<sup>4</sup> Ratio of index of prices received to PPITW (1910-14=100).

<sup>5</sup> Based on estimated cash receipts, from marketings and government payments, the preliminary adjustment factor is 1.105 for 2005 and the revised factor is 1.048 for 2004.

<sup>6</sup> PPITW is adjusted based on productivity trend for the prior 15 years.

**Prices Paid Indexes and Annual Weights for Input Components and Sub-Components United States, November 2005 With Comparisons**

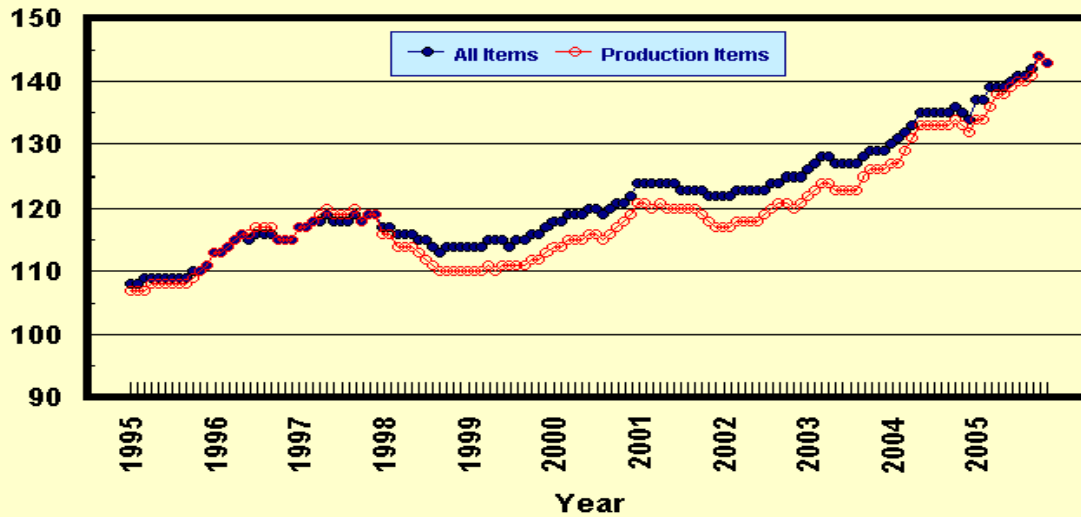
Index	Relative Weights 5-Year Moving Average <sup>1</sup>		Input Indexes		
	2004	2005	2004	2005	
	<i>Percent</i>	<i>Percent</i>	Nov <i>(1990-92=100)</i>	Oct <i>(1990-92=100)</i>	Nov <i>(1990-92=100)</i>
Production Items	66.2	66.4	133	*144	143
Feed	10.7	10.7	109	*116	115
Feed Grains	1.5	1.5	88	*79	78
Complete Feeds	5.2	5.2	112	117	115
Hay/Forages	1.3	1.3	111	126	119
Concentrates	1.7	1.7	105	*124	134
Supplements	0.9	0.9	133	*137	142
Livestock & Poultry	7.4	7.7	137	148	149
Feeder Cattle	5.8	6.0	137	150	150
Feeder Pigs	0.6	0.6	150	139	147
Milk Cow Replacements	0.6	0.6	145	166	166
Poultry	0.4	0.5	110	110	110
Seeds	3.3	3.5	158	171	171
Field Crops	3.0	3.2	163	177	177
Grasses/Legumes	0.3	0.3	111	118	118
Fertilizer	4.4	4.3	151	167	171
Mixed Fertilizer	1.9	1.9	130	*140	141
Nitrogen	1.8	1.8	176	*196	205
Potash & Phosphate	0.6	0.6	144	*166	167
Agricultural Chemicals	3.7	3.6	119	*122	122
Herbicides	2.4	2.3	113	115	115
Insecticides	0.9	0.8	134	*141	142
Fungicides/Other	0.5	0.5	119	*121	121
Fuels	2.7	2.7	196	*302	260
Diesel	1.5	1.6	204	*339	285
Gasoline	0.8	0.8	172	*247	209
LP Gas	0.4	0.4	216	*260	264
Farm Supplies & Repairs	5.4	5.2	139	144	144
Supplies	1.8	1.7	129	*135	135
Repairs	3.6	3.5	144	149	149
Autos & Trucks	1.8	1.8	114	*113	114
Autos	0.2	0.2	108	108	109
Trucks	1.6	1.5	115	*114	114
Farm Machinery	4.0	4.0	167	171	171
Tractors	0.9	0.9	149	155	155
Self-Propelled	1.6	1.6	174	*177	177
Other Machinery	1.5	1.5	170	175	175
Building Materials	3.3	3.6	137	144	146
Farm Services	12.4	12.4	124	129	129
Custom Rates	1.3	1.3	125	125	125
Other Services	11.1	11.1	124	*129	129
Rent	7.1	6.9	120	123	123
Cash	3.8	3.7	145	147	147
Share	3.3	3.2	91	94	94
Interest	4.7	4.5	103	105	105
Taxes	3.0	2.9	130	132	132
Wage Rates	7.6	7.6	161	*166	166
Family Living-CPI	18.5	18.6	142	*148	148

\* Revised.

<sup>1</sup> Weights may not add due to rounding.

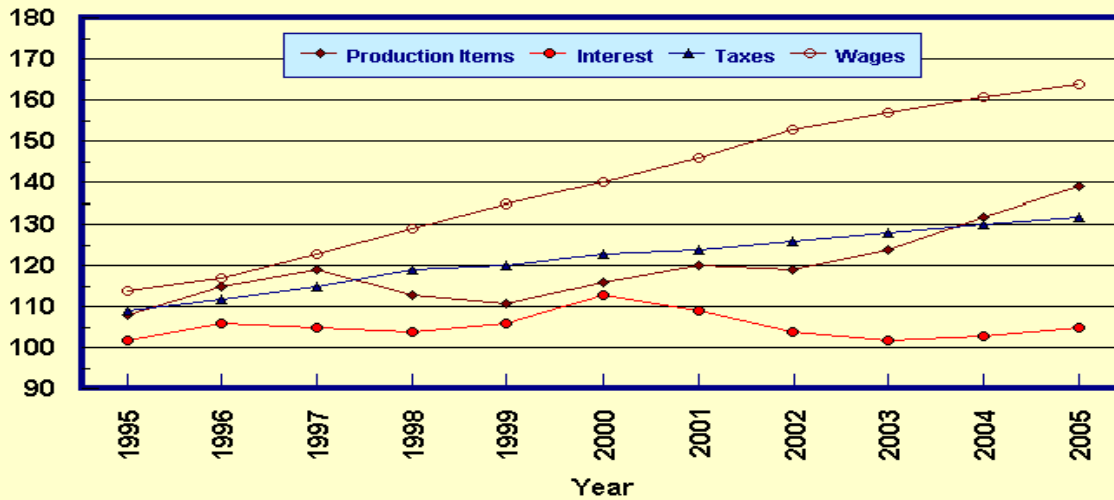
## Prices Paid by Farmers, Major Indexes US, by Month

Percent (1990-92=100)



## Prices Paid by Farmers, Major Indexes US, Annual Averages 1/

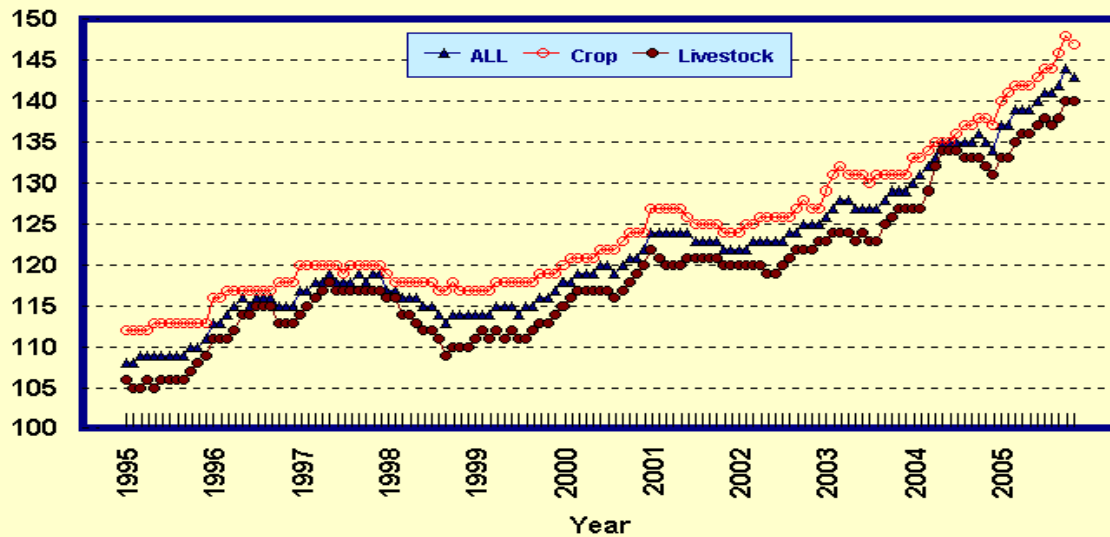
Percent (1990-92=100)



1/ Index values for 2005 are year-to-date averages.

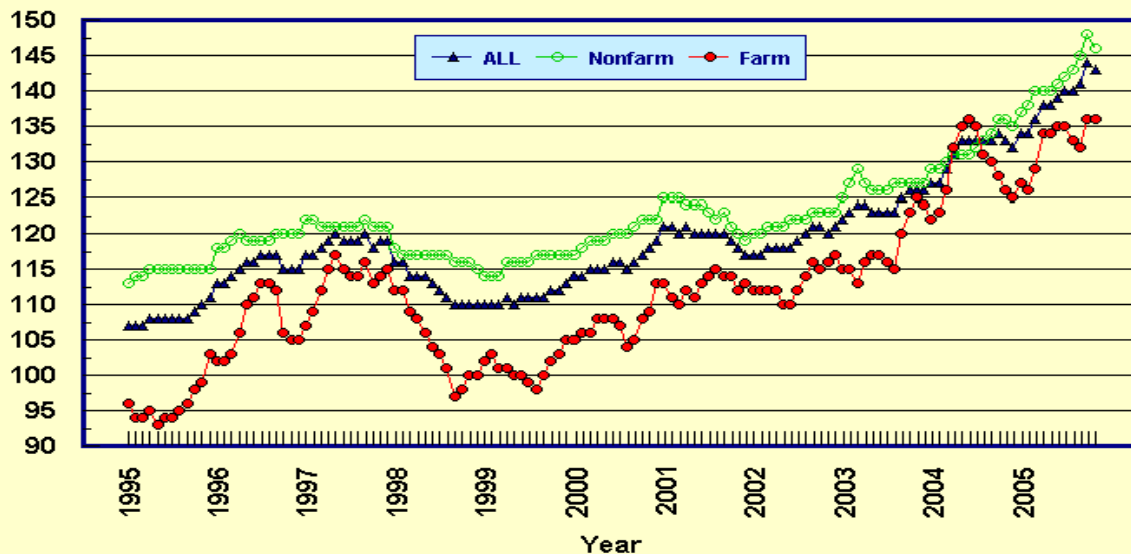
## Prices Paid by Farmers, Indexes, All Items US, By Farm Type

Percent (1990-92=100)



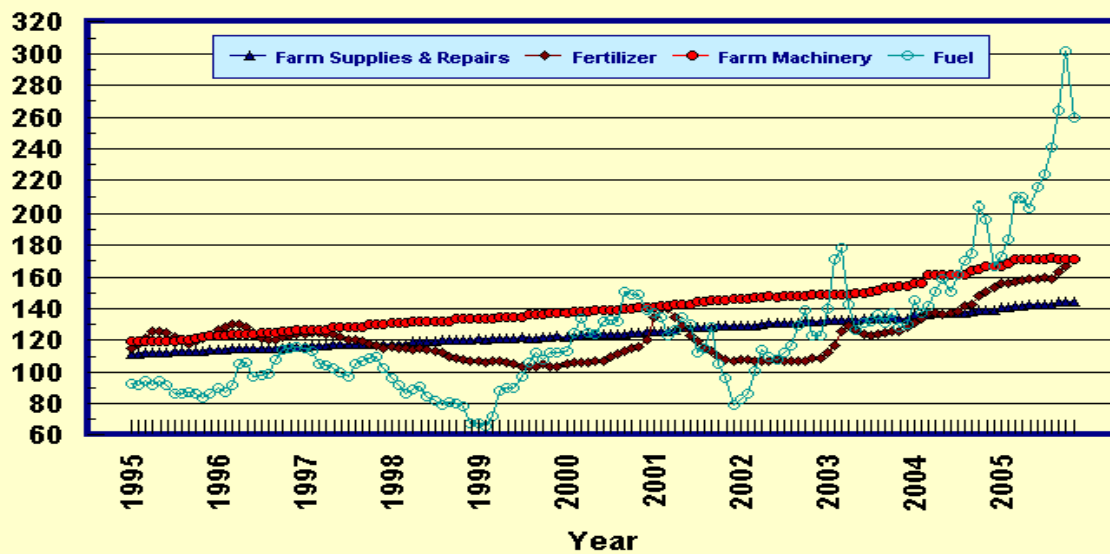
## Prices Paid by Farmers, Indexes, All Production Items US, By Sector Origin

Percent (1990-92=100)



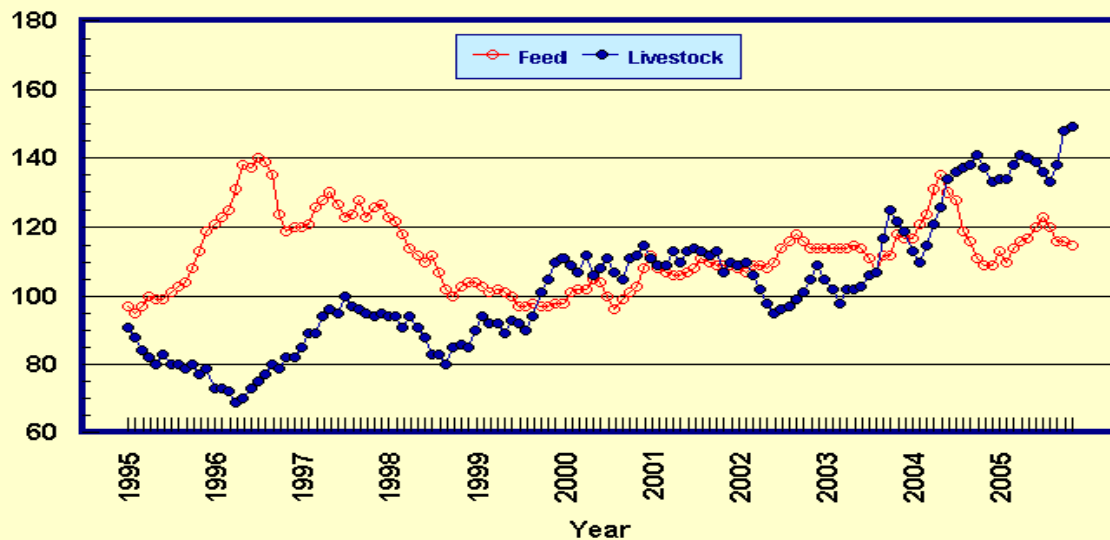
## Prices Paid by Farmers, Selected Production Indexes US, By Non-Farm Sector

Percent (1990-92=100)



## Prices Paid by Farmers, Selected Production Indexes US, By Farm Sector

Percent (1990-92=100)



**Feed Price Ratios: United States, November 2005 with Comparisons**

Feed Price Ratio <sup>1</sup>	2004	2005	
	Nov	Oct	Nov
Broiler-Feed: Pounds of Broiler Grower Feed equal in value to 1 pound of broiler, live weight	6.6	*7.3	7.2
Market Egg Feed: Pounds of Laying Feed equal in Value to 1 dozen eggs	8.8	*6.5	10.1
Hog-Corn: Bushels of Corn equal in value to 100 pounds of hog, live weight	27.1	*25.8	25.0
Milk-Feed: Pounds of 16% Mixed Dairy Feed equal in value to 1 pound of Whole Milk	3.57	*3.38	3.44
Steer & Heifer-Corn: Bushels of Corn equal in value to 100 pounds of Steer & Heifers, live weight	44.0	*53.1	54.4
Turkey-Feed: Pounds of Turkey Grower equal in value to 1 pound of Turkey, live weight	8.7	*9.6	10.1

\* Revised.

<sup>1</sup> Effective January 1995, prices of commercial prepared feeds are based on current U.S. prices received for corn, soybeans, alfalfa hay, and all wheat.

**Prices Used to Calculate Feed Price Ratios:  
United States, November 2005 with Comparisons**

Commodity	Unit	2004	2005	
		Nov	Oct	Nov
Broilers, Live	Lb	0.390	0.430	0.420
Eggs, Market	Doz	0.437	0.314	0.482
Hogs, All	Cwt	55.60	*47.00	44.70
Milk, All	Cwt	16.20	*15.50	15.10
Steers and Heifers	Cwt	90.20	*96.60	97.40
Turkeys, Live	Lb	0.487	0.529	0.549
Corn	Bu	2.05	*1.82	1.79
Hay, Alfalfa, Baled	Ton	95.20	106.00	97.50
Soybeans	Bu	5.36	*5.67	5.68
Wheat, All	Bu	3.46	*3.43	3.36

\* Revised.

**Feeder Livestock: Prices Paid, United States  
November 2005 with Comparisons**

Commodity	Unit	2004	2005	
		Nov	Oct	Nov
		<i>Dollars</i>	<i>Dollars</i>	<i>Dollars</i>
Feeders and Stockers				
Cattle and Calves	Cwt	115.80	126.60	127.10
Feeder Pigs	Cwt	138.00	128.00	135.00

## Prices Paid by Farmers

**Definition:** Prices paid by farmers represent the average costs of inputs purchased by farmers and ranchers to produce agricultural commodities. Conceptually, the average price when multiplied by quantity purchased should equal total producer expenditures for the item.

**Survey Procedures:** The prices paid data are obtained from establishments that sell goods and services to farmers and ranchers. Annually, about 8,500 firms are randomly selected from lists by type of item sold with an average response rate in the range of 75-80 percent. Firms are asked to report the price for the specified item "most commonly bought by farmers" or that was the "volume seller". Approximately 135 items are surveyed each April to represent all production input items purchased. The survey reference period for most items is the 5 business days centered around the 15th of the month. Separate prices paid surveys are conducted for, agricultural chemicals, fuels, feed, fertilizer, machinery, and seed.

**Summary and Estimation Procedures:** The annual April Prices Paid Survey is summarized as a nonprobability survey. Average prices reported are aggregated to the region and U.S. level using weights available from expenditure data and other administrative sources. Price recommendations are prepared by the State Statistical Offices and Headquarters for review by the Agricultural Statistics Board in Washington, D.C. Also, the change in price level for individual items surveyed are combined to the regional and U.S. levels, and are published as prices paid indexes referenced to a specific base period. Prices paid indexes for new autos and trucks, building materials, farm supplies, motor supplies, and marketing containers are updated based on price changes measured in selected Bureau of Labor Statistics (BLS) indexes.

**Revisions:** Any revisions are published in the monthly and in annual issues of *Agricultural Prices*. The basis for revision must be supported by additional data that directly affect the level of the estimate. More revisions are likely in April when separate prices paid surveys are conducted, in lieu of BLS indexes, by the USDA to measure price change.

**Reliability:** Current methods of summarization in April are not designed directly to calculate sampling errors. However, analytical measures approximate the U.S. relative sampling errors for major items around 10 percent. Any nonsampling errors are attributed to such things as the inability to obtain correct information, differences in interpreting questions or definitions, mistakes in coding or processing the data, etc. Efforts are made at each step in the survey process to minimize these nonsampling errors.

**Program Change:** Effective January 1, 1995, the National Agricultural Statistics Service updated the weights and changed the construction of its prices paid and received by farmers indexes. A Federal Register Notice dated October 28, 1994 discussed these program modifications.

A 1990-92 reference and base period replaced the 1977 reference and 1971-73 base weight period. Five-year moving average weights replaced the current fixed 1971-73 base period weights. The 1910-14=100 price indexes, required by statute for computing parity prices, were linked forward based on the changes in the new 1990-92=100 indexes. The new indexes were constructed by multiplying the ratios of the current prices to the base period prices by the moving average weights (adjusted for seasonal marketing patterns for the prices received indexes).



## Information Contacts

General questions should be directed to Linda Hutton, Chief, Environmental, Economics and Demographics Branch at (202) 720-6146. Below are the commodity specialists to contact for additional information.

### Crop Prices Received

Joe Prusacki Chief, Crops Branch .....	(202) 720-2127
Greg Thessen, Field Crops Section .....	(202) 720-2127
Scott Cox - Wheat, Rye .....	(202) 720-8068
Ty Kalaus - Corn, Proso Millet, Flaxseed .....	(202) 720-9526
Shiela Corley - Cotton, Cottonseed .....	(202) 720-5944
Travis Thorson - Hay, Oats, Sorghum .....	(202) 690-3234
Jason Lamprecht - Soybeans, Sunflower, Other Oilseeds .....	(202) 720-7369
Dennis Koong - Peanuts, Rice .....	(202) 720-7688
Brian Young - Sugarcane, Sugarbeets, Barley .....	(202) 720-7621
Jim Smith, Fruit and Vegetable Section .....	(202) 720-2127
Debbie Flippin - Peaches, Pears, Hops, Pulses, Mint .....	(202) 720-3250
Rich Holcomb - Citrus .....	(202) 720-5412
Terry O'Connor - Apples, Apricots, Cherries, Cranberries, Plums, Prunes .....	(202) 720-4288
Leslie Colburn - Grapes, Tobacco .....	(202) 720-7235
Cathy Scherrer, Potatoes, Dry Edible Beans, Sweet Potatoes .....	(202) 720-4285
Jim Smith - Vegetables, Onions, Strawberries .....	(202) 720-2127

### Livestock Prices Received

Dan Kerestes, Chief, Livestock Branch .....	(202) 720-3570
Bill Weaver, Livestock Section .....	(202) 720-3570
Scott Hollis - Sheep, Lambs, Wool, Mohair .....	(202) 720-4751
Ann Summa - Milk, Milk Cows .....	(202) 720-3278
Bruce Boess - Hogs .....	(202) 720-3106
Mike Miller - Cattle .....	(202) 720-3040
Wilbert Hundl, Poultry and Specialty Commodities Section .....	(202) 720-3570
John Lange - Turkeys .....	(202) 720-0585
Sharyn Lavender - Eggs .....	(202) 720-3244
Jody Roberts - Broilers .....	(202) 690-8632

### Indexes, Prices Paid, and Parity Prices

Linda Hutton, Chief, Environmental, Economics and Demographics Branch .....	(202) 720-6146
Kevin Hintzman, Economics Section .....	(202) 720-6146
Eric Barnes - Farm Supplies and Repairs, Farm Machinery, Fuels, Feeder Livestock, Poultry Chicks, Feed Price Ratios, Grazing Fees, Autos & Trucks .....	(202) 690-4752
Daryl Brinkman - Prices Received Indexes, Parity Prices .....	(202) 720-8844
Tara Jackson - Prices Paid Indexes, Prices Paid for Feed, Fertilizer, Agricultural Chemicals, Seeds .....	(202) 690-3229

## ACCESS TO REPORTS!!

---

For your convenience, there are several ways to obtain NASS reports, data products, and services:

### INTERNET ACCESS

All NASS reports are available free of charge on the worldwide Internet. For access, connect to the Internet and go to the NASS Home Page at: [www.usda.gov/nass/](http://www.usda.gov/nass/). Select "Today's Reports" or Publications and then Reports Calendar or Publications and then Search, by Title or Subject.

### E-MAIL SUBSCRIPTION

All NASS reports are available by subscription free of charge direct to your e-mail address. Starting with the NASS Home Page at [www.usda.gov/nass/](http://www.usda.gov/nass/), click on **Publications**, then click on the **Subscribe by E-mail** button which takes you to the page describing e-mail delivery of reports. Finally, click on **Go to the Subscription Page** and follow the instructions.

-----

### PRINTED REPORTS OR DATA PRODUCTS

**CALL OUR TOLL-FREE ORDER DESK: 800-999-6779 (U.S. and Canada)**  
**Other areas, please call 703-605-6220      FAX: 703-605-6900**  
**(Visa, MasterCard, check, or money order acceptable for payment.)**

-----

### ASSISTANCE

For **assistance** with general agricultural statistics or further information about NASS or its products or services, contact the **Agricultural Statistics Hotline** at **800-727-9540**, 7:30 a.m. to 4:00 p.m. ET, or e-mail: [nass@nass.usda.gov](mailto:nass@nass.usda.gov).

The U.S. Department of Agriculture (USDA) prohibits discrimination in all its programs and activities on the basis of race, color, national origin, age, disability, and where applicable, sex, marital status, familial status, parental status, religion, sexual orientation, genetic information, political beliefs, reprisal, or because all or part of an individual's income is derived from any public assistance program. (Not all prohibited bases apply to all programs.) Persons with disabilities who require alternative means for communication of program information (Braille, large print, audiotape, etc.) should contact USDA's TARGET Center at (202) 720-2600 (voice and TDD).

To file a complaint of discrimination, write to USDA, Director, Office of Civil Rights, 1400 Independence Avenue, S.W., Washington, D.C. 20250-9410, or call (800) 795-3272 (voice) or (202) 720-6382 (TDD). USDA is an equal opportunity provider and employer.