



NASS

FACT FINDERS FOR AGRICULTURE
UNITED STATES DEPARTMENT OF AGRICULTURE

Washington, D.C.

Agricultural Prices

Released October 31, 2006, by the National Agricultural Statistics Service (NASS), Agricultural Statistics Board, U.S. Department of Agriculture. For information on *Agricultural Prices* see page 69, office hours 7:30 a.m. to 4:00 p.m. ET.

October Farm Prices Received Index Down 2 Points From Last Month

The preliminary All Farm Products Index of Prices Received by Farmers in October, at 117 percent, based on 1990-92=100, decreased 2 points (1.7 percent) from September. The Crop Index is down 6 points (4.9 percent) but the Livestock Index is unchanged. Producers received lower commodity prices for lettuce, broilers, cattle, and tomatoes and higher prices for corn, wheat, turkeys, and milk. The overall index is also affected by the seasonal change based on a 3-year average mix of commodities producers sell. Decreased average marketings of milk, wheat, grapes, and sweet corn offset increased marketings of soybeans, corn, upland cotton, and sorghum grain.

Preliminary All Farm Products Index is up 6 points (5.4 percent) from October 2005. The Food Commodities Index, at 117, decreased 6 points (4.9 percent) from last month but increased 1 point (0.9 percent) from October 2005.

Prices Paid Index Unchanged

The October Index of Prices Paid for Commodities and Services, Interest, Taxes, and Farm Wage Rates (PPITW) is 146 percent of the 1990-92 average. The index is unchanged from September but 2 points (1.4 percent) above October 2005. Higher prices for feed grains, nitrogen fertilizers, herbicides, and feed concentrates offset lower prices in October for diesel fuel, feeder cattle, gasoline, and LP gas.

Index Summary Table

Index 1990-92=100	2005		2006	
	Sep	Oct	Sep	Oct
Prices Received	116	111	119	117
Prices Paid	142	144	146	146
Ratio ¹	82	77	82	80

¹ Ratio of index of prices received by farmers to index of prices paid by farmers.

Report Change: Monthly feeder cattle prices used in the Prices Paid program have been revised back to January 2005. The revised feeder cattle prices can be obtained at www.nass.usda.gov.

Prices Received by Farmers

The October All Farm Products Index is 117 percent of its 1990-92 base, down 1.7 percent from the September index but 5.4 percent above the October 2005 index.

ALL CROPS: The October index is 116, down 4.9 percent from September but 13 percent above October 2005. From September, index decreases for commercial vegetables, potatoes & dry beans, and cotton more than offset the index increases for feed grains & hay, food grains, and oil-bearing crops.

Food Grains: The October index, at 153, is 13 percent above the previous month and 35 percent above a year ago. The October all wheat price, at \$4.65 per bushel, is up 59 cents from September and \$1.22 above October 2005.

Feed Grains & Hay: The October index is 122, up 15 percent from last month and 44 percent above a year ago. The corn price, at \$2.72 per bushel, is up 52 cents from last month and 90 cents above October 2005. The all hay price, at \$107 per ton, is unchanged from September but up \$9.30 from last October. Sorghum grain, at \$5.14 per cwt, is 86 cents above September and \$2.15 above October last year.

Oil-Bearing Crops: The October index, at 94, is up 8.0 percent from September but 3.1 percent lower than October 2005. The soybean price, at \$5.46 per bushel, increased 22 cents from September but is 21 cents below October 2005.

Cotton: The October index, at 76, is down 2.6 percent from September and 5.0 percent below October last year. The October price, at 45.9 cents per pound, is down 1.4 cents from the previous month and 2.6 cents below last October.

Potatoes & Dry Beans: The October index, at 100, is down 6.5 percent from last month but 7.5 percent above October 2005. The all potato price, at \$5.74 per cwt, is down 61 cents from September but up 37 cents from last October. The all dry bean price, at \$19.90 per cwt, is up \$1.10 from both the previous month and October 2005.

Fruits & Nuts: The October index, at 177, is up 2.9 percent from September and 21 percent higher than a year ago. Price increases for oranges, pears, and grapefruit more than offset price decreases for grapes, apples, and strawberries.

Commercial Vegetables: The October index, at 131, is down 19 percent from last month but 14 percent above October 2005. Price decreases during October for lettuce, tomatoes, and broccoli more than offset price increases for celery, cantaloupes, and carrots.

LIVESTOCK & PRODUCTS: The October index, at 117, is unchanged last month but down 4.1 percent from October 2005. Compared with a year ago, prices are higher for turkeys and eggs and lower for milk, broilers, cattle, calves, and hogs.

Meat Animals: The October index, at 119, is down 1.7 percent from both last month and last year. The October hog price, at \$46.90 per cwt, is down \$2.00 from September and 10 cents lower than a year ago. The October beef cattle price of \$89.10 per cwt is down \$1.70 from last month and \$1.30 lower than October 2005.

Dairy Products: The October index, at 102, is up 3.0 percent from a month ago but 14 percent lower than October last year. The October all milk price of \$13.30 per cwt is up 40 cents from last month but down \$2.30 from October 2005. The fluid grade milk price is up 40 cents and the manufacturing grade milk price is up 10 cents from the previous month.

Poultry & Eggs: The October index, at 124, is down 0.8 percent from both September and a year ago. October market egg prices, at 38.2 cents per dozen, increased 1.0 cent from September and is 6.5 cents above October 2005. The October broiler price, at 40.0 cents per pound, is down 2.0 cents from September and 3.0 cents below a year ago. The October turkey price, averaging 63.4 cents per pound, is up 9.3 cents from the previous month and up 10.9 cents from a year earlier.

Table of Contents

U.S. Prices Received and Indexes	Page	Monthly State Prices, continued	Page
Narrative	2	Cotton	19
Price Indexes	5	Cottonseed	19
Price Index Charts	6	Eggs	24
U.S. Prices Received Summary	10	Flaxseed	18
Charts	12	Grain Sorghum	17
Selected Commodities	16	Hay	19
Upland Cotton & Rice Marketings	19	Hogs, All	23
Parity Prices	26	Barrows and Gilts	23
Reliability Statement	41	Sows	23
 Monthly State Prices Received		Milk	25
Apples	19	Milk Cows	25
Barley	17	Oats	17
Beans, Dry Edible	18	Peanuts	18
Beef Cattle, All	22	Potatoes	21
Calves	22	Sheep	24
Cows, Beef	22	Lambs	24
Steers and Heifers	22	Soybeans	17
Citrus Fruit	20	Sunflower, All	18
Corn	17	Wheat, All Classes	16
 Prices Received Special Features			Page
Marketing Year for Specified Commodities			28
 Monthly Prices Received, Monthly Farm Marketings, and Marketing Year Average Prices			
Cotton			28
 Index Revisions: U.S., All Groups, Monthly and Annual Average, 2002-2006			33

Table of Contents (continued)

U.S. Prices Paid, Prices Paid Indexes and Ratios	Page
Narrative	42
Indexes and Parity Ratios	43
Charts	45
Feed Price Ratios	48
Reliability Statement	68
U.S. Average Prices	
Prices Used to Calculate Feed Price Ratios	48
Feeder Livestock	48
Special Features	
Index of Prices Paid: 1910-14=100 and 1990-92=100 Monthly and Annual Average, United States, 1999-2003	49
PPITW, PITW, Production Items	49
Index Component Items, Interest, Taxes, Wage Rates, Farm and Non Farm Origin Ratios	50
Crop Sector, Livestock Sector, and PPITW adjusted for Productivity	58
Index Sub-Components (1990-92=100): Monthly and Annual Averages	59
Index Sub-Components (1990-92=100): Monthly and Annual Averages	60
Information Contacts	69

**Index Numbers of Prices Received, United States,
October 2006, with Comparisons**

Index	1910-14=100				1990-92=100		
	Average 1990-92	2005	2006		2005	2006	
		Oct	Sep	Oct	Oct	Sep	Oct
All Farm Products	639	704	*759	741	111	*119	117
All Crops	500	507	*601	574	103	*122	116
Food Grains	325	358	*431	485	113	*136	153
Feed Grains & Hay	363	306	*379	437	85	*106	122
Cotton	517	410	*400	388	80	*78	76
Tobacco ¹	1,263	1,363	1,363	1,363	90	90	90
Oil-Bearing Crops	554	531	*475	517	97	*87	94
Fruits & Nuts	716	1,019	*1,201	1,239	146	*172	177
Commercial Vegetables	698	769	*1,084	877	115	*162	131
Potatoes & Dry Beans	540	472	*542	504	93	*107	100
Other Crops	493	578	586	586	117	119	119
Livestock & Products	768	933	*897	897	122	*117	117
Meat Animals	1,021	1,231	*1,229	1,211	121	121	119
Dairy Products	799	959	*793	817	119	*99	102
Poultry & Eggs	282	334	334	331	125	125	124
Food Commodities					116	*123	117

* Revised.

¹ Monthly prices discontinued July 2005.

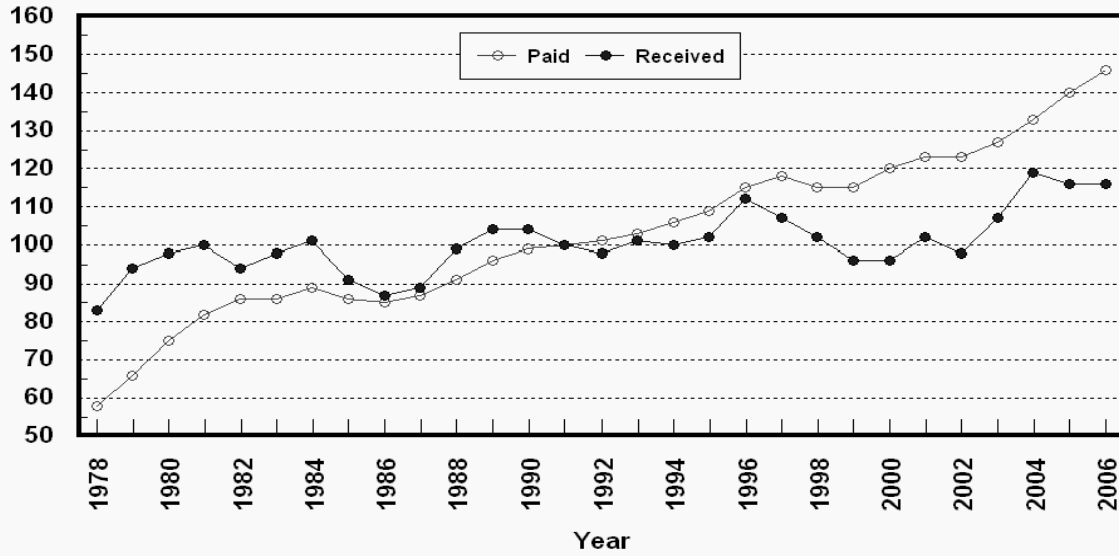
**Selected Index Numbers for Prices Received and Paid,
1990-92=100, by Month, United States, 2005 and 2006**

Month	Index of Prices Received						Index of Prices Paid			
	All Farm Products		All Crops		Livestock and Products		All Items		Production Items	
	2005	2006	2005	2006	2005	2006	2005	2006	2005	2006
Jan	111	113	102	108	121	118	136	146	133	144
Feb	114	113	107	113	119	114	136	145	133	143
Mar	118	113	115	117	121	110	138	145	136	143
Apr	121	112	120	122	122	105	139	146	138	145
May	119	115	115	127	121	104	139	146	138	145
Jun	118	117	119	126	117	110	140	147	139	146
Jul	116	117	115	123	117	110	140	147	139	146
Aug	116	120	115	126	117	115	141	147	140	146
Sep	116	119	111	122	122	117	142	146	141	145
Oct	111	117	103	116	122	117	144	146	143	144
Nov	112		105		121		142		141	
Dec	115		111		120		143		142	

Prices Received vs Prices Paid

Annual Average Indexes*

Percent (1990-92=100)

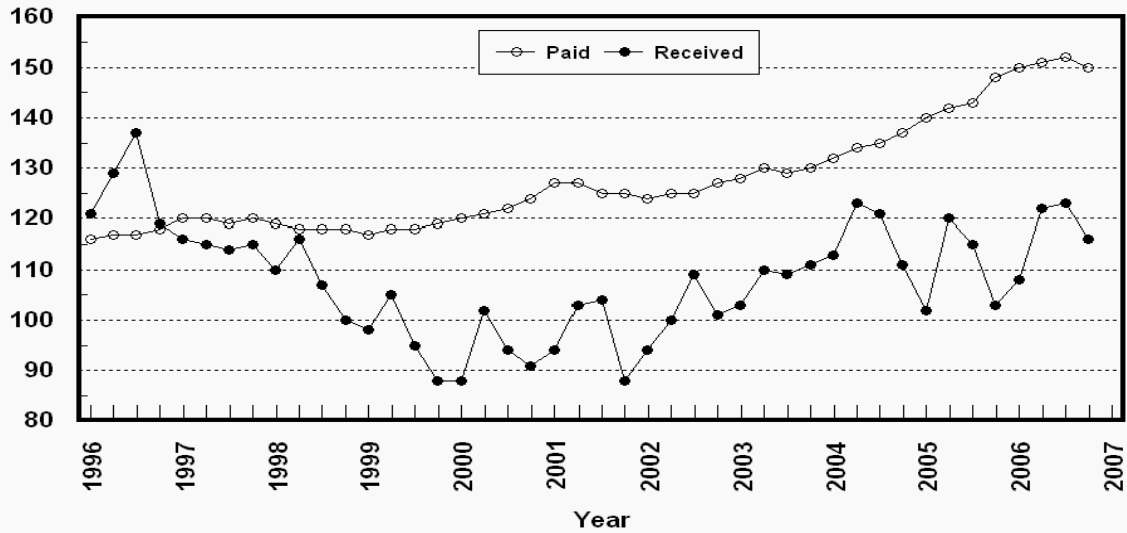


* Index values for 2006 are year-to-date averages.

Crop Farm Index: Prices Received and Prices Paid

All Items, U.S., 1996-2006, By Quarter

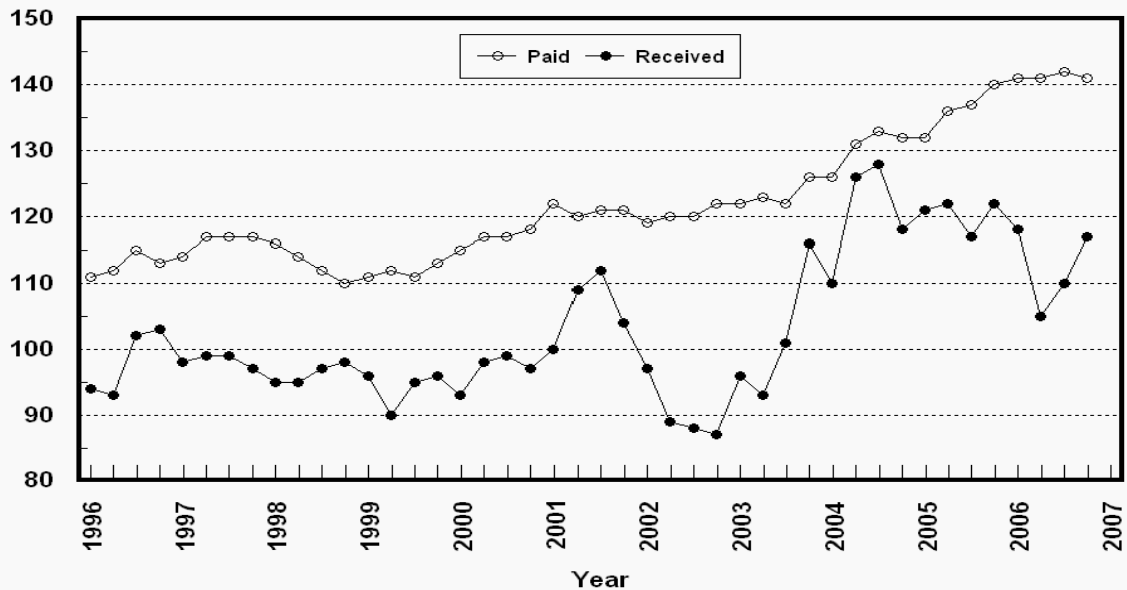
Percent (1990-92=100)



Livestock Farm Index: Prices Received and Prices Paid

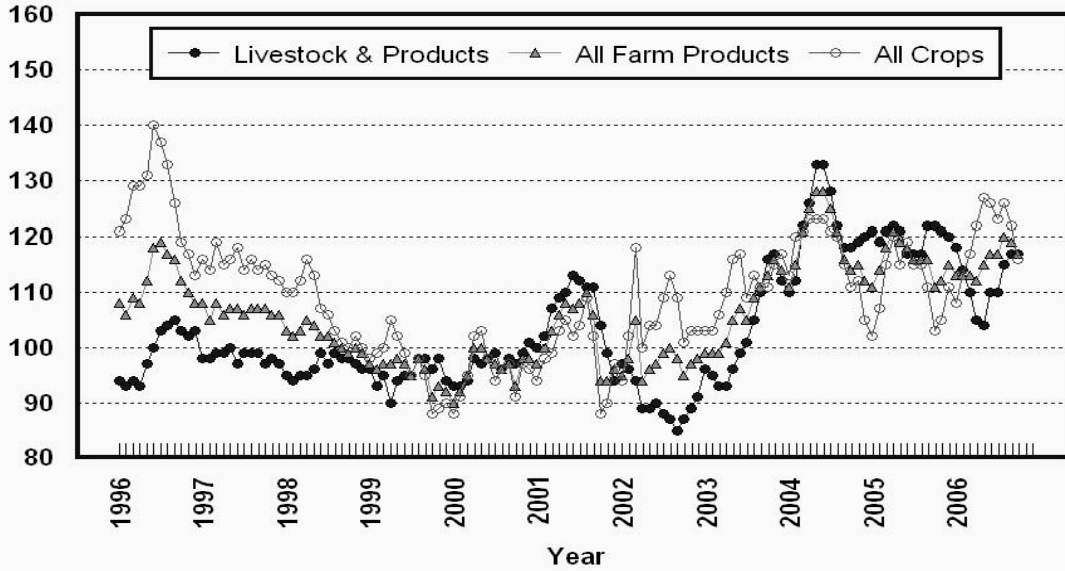
All Items, U.S., 1996-2006, By Quarter

Percent (1990-92=100)



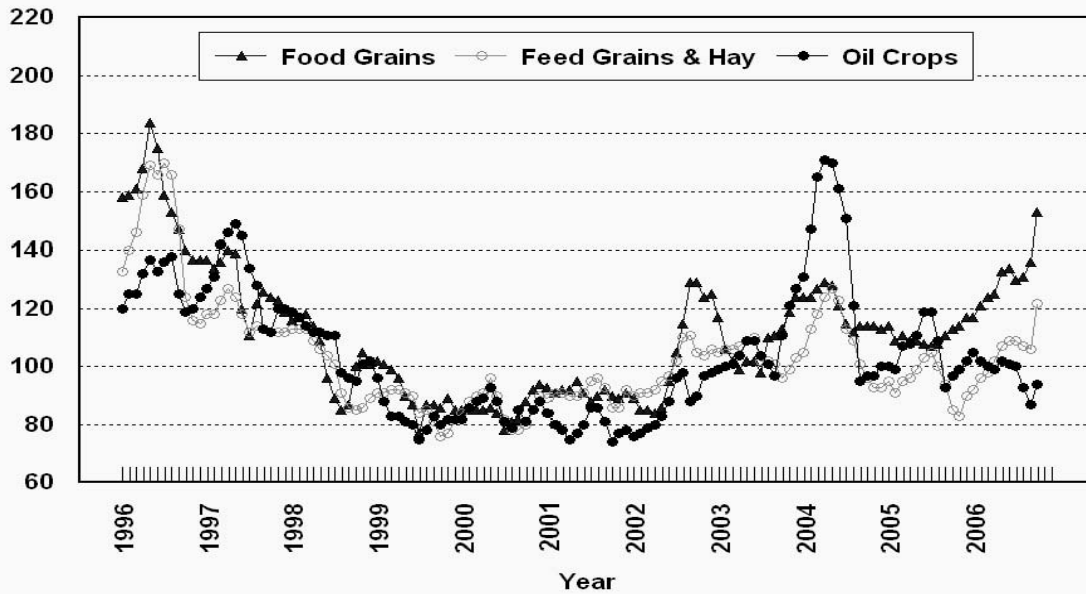
Prices Received, Major Indexes, US

Percent (1990-92=100)



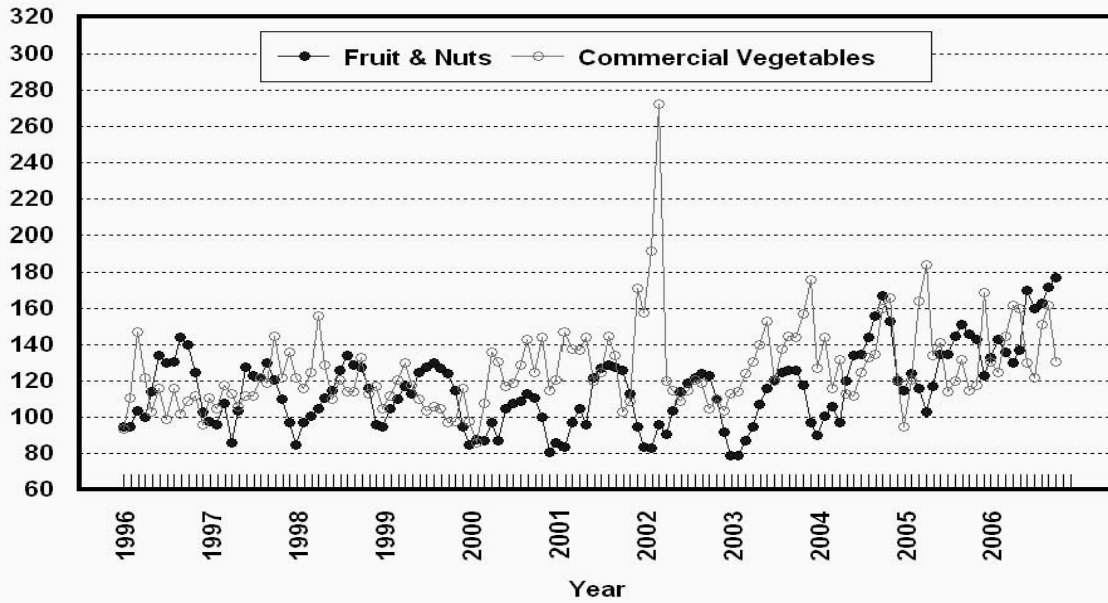
Prices Received, Food, Feed, & Oil Indexes, US

Percent (1990-92=100)



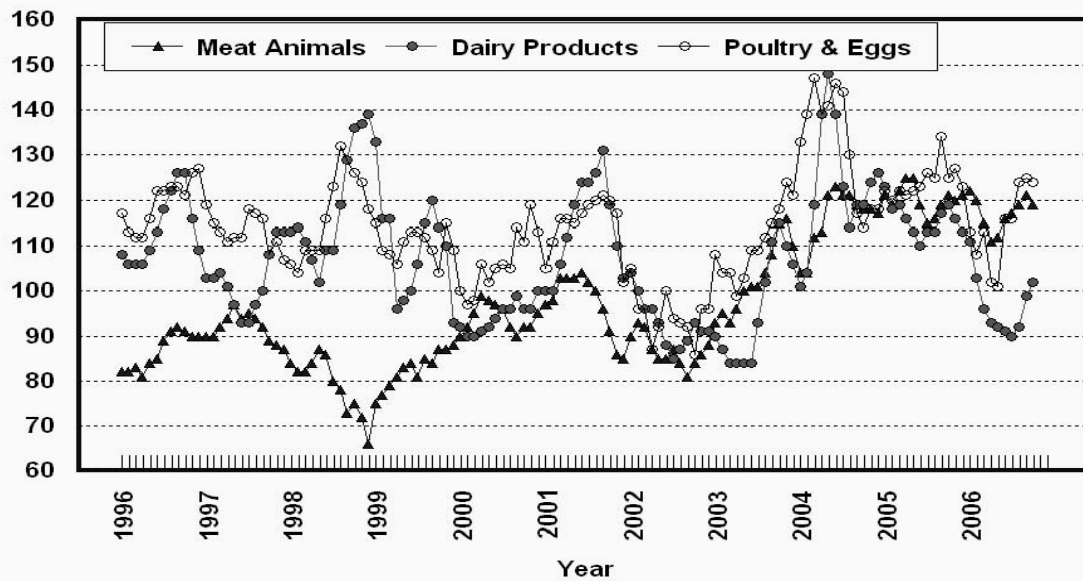
Prices Received, Fruit/Vegetable Indexes, US

Percent (1990-92=100)



Prices Received, Livestock Product Indexes, US

Percent (1990-92=100)



**Prices Received, United States,
October 2006, with Comparisons**

Commodity	Unit	Average 1990-92	Entire Month		Preliminary
			Oct 2005	Sep 2006	Oct 2006
		<i>Dollars</i>	<i>Dollars</i>	<i>Dollars</i>	<i>Dollars</i>
Field Crops					
Barley, All	Bu	2.12	2.41	2.56	2.94
Feed	Bu	1.90	1.81	2.33	2.77
Malting	Bu	2.43	2.73	2.73	3.07
Beans, Dry Edible	Cwt	19.10	18.80	18.80	19.90
Chickpeas, All	Cwt		27.70	25.40	28.00
Large	Cwt		27.90	25.50	28.00
Small	Cwt		(⁴)	(⁴)	(⁴)
Corn	Bu	2.30	1.82	2.20	2.72
Cotton, Upland	Lb	0.606	0.485	0.473	0.459
Cottonseed ³	Ton	96.00	89.10	99.10	97.70
Flaxseed	Bu	4.27	6.05	5.46	5.50
Hay, All, Baled ¹	Ton	76.30	97.70	107.00	107.00
Alfalfa ¹	Ton	77.20	105.00	112.00	112.00
Other ¹	Ton	60.00	79.00	93.00	93.80
Lentils	Cwt		11.80	12.10	12.40
Oats	Bu	1.22	1.59	1.70	1.83
Peanuts, In-Shell	Lb	0.304	0.174	0.173	0.174
Peas, Dry Edible	Cwt		4.51	5.71	5.84
Austrian Winter	Cwt		6.83	(⁴)	(⁴)
Potatoes	Cwt	5.82	5.37	6.35	5.74
Rice, Rough	Cwt	7.07	6.99	8.99	9.46
Sorghum Grain	Cwt	3.75	2.99	4.28	5.14
Soybeans	Bu	5.61	5.67	5.24	5.46
Sunflower, All	Cwt	9.50	12.80	11.70	12.50
Wheat, All	Bu	2.96	3.43	4.06	4.65
Winter	Bu	2.93	3.34	4.03	4.73
Durum	Bu	2.86	3.39	4.07	4.27
Other Spring	Bu	3.11	3.61	4.11	4.55
Hard Red Winter	Bu		3.46	4.43	
Soft Red Winter	Bu		2.99	3.22	
Hard Red Spring	Bu		3.67	4.16	
White	Bu	3.24	3.14	3.78	
Fruit					
Citrus, Equiv on-tree					
Grapefruit	Box	5.77	10.69	13.01	16.26
Lemons	Box	10.10	9.32	26.38	27.65
Oranges	Box	5.79	4.04	14.48	16.28
Tangelos ⁵	Box	5.82			
Tangerines	Box	15.11	15.81	(⁵)	4.53
Noncitrus, Fresh					
Apples ²	Lb	0.212	0.288	0.399	0.373
Grapes ²	Ton	506.00	610.00	870.00	730.00
Peaches ²	Ton	432.00		645.00	
Pears ²	Ton	370.00	440.00	511.00	607.00
Strawberries	Cwt	56.00	85.00	77.60	69.70

¹ Mid-month price.

² Equivalent packinghouse-door returns for CA, MI, and NY (apples only), and WA (apples, peaches, and pears). Prices as sold for other states.

³ Marketing year August - February.

⁴ Price not published to avoid disclosure of individual firms.

⁵ Insufficient sales to establish a price.

**Prices Received, United States,
October 2006, with Comparisons**

Commodity	Unit	Average 1990-92	Entire Month		Preliminary
			Oct 2005	Sep 2006	Oct 2006
		<i>Dollars</i>	<i>Dollars</i>	<i>Dollars</i>	<i>Dollars</i>
Vegetables, Fresh ¹					
Asparagus	Cwt	79.80	175.00		
Broccoli	Cwt	22.50	22.40	39.40	24.70
Cantaloupes ²	Cwt		12.90	9.29	12.20
Carrots	Cwt	13.20	21.40	19.30	19.60
Cauliflower	Cwt	26.80	19.70	47.10	20.10
Celery	Cwt	11.60	12.20	27.60	30.60
Corn, Sweet	Cwt	15.70	25.50	22.70	21.70
Cucumbers ²	Cwt		21.90	22.60	14.00
Lettuce	Cwt	11.90	12.40	16.30	10.80
Onions	Cwt	12.80	12.90	13.60	11.70
Snap Beans ²	Cwt		40.40	80.90	61.00
Tomatoes	Cwt	32.30	37.30	88.20	75.70
Livestock					
Calves	Cwt	94.30	135.00	135.00	131.00
Cattle, All Beef	Cwt	72.90	90.40	90.80	89.10
Cows ³	Cwt	49.60	46.60	47.10	46.00
Steers & Heifers	Cwt	77.10	96.10	95.80	94.40
Milk Cows ⁴	Head	1,130.00	1,870.00		1,650.00
Hogs, All	Cwt	47.70	47.00	48.90	46.90
Barrows & Gilts	Cwt	48.40	47.30	49.50	47.60
Sows	Cwt	39.50	41.60	35.50	36.80
Lambs	Cwt	56.20	108.00	98.50	
Sheep	Cwt	23.40	43.60	31.70	
Dairy and Poultry					
Milk, All ^{5 6}	Cwt	13.06	15.60	12.90	13.30
Fluid Grade ⁶	Cwt	13.10	15.60	12.90	13.30
Mfg Grade ⁶	Cwt	11.80	14.80	12.30	12.40
Broilers, Live ⁷	Lb	0.317	0.430	0.420	0.400
Eggs, All ⁸	Doz	0.643	0.511	0.560	0.567
Market ⁸	Doz	0.546	0.317	0.372	0.382
Turkeys, live ^{7 8}	Lb	0.380	0.525	0.541	0.634
Adjusted for Seasonal Variation ⁹					
Eggs, All	Doz	0.545	0.555	0.602	0.616
Milk, All ⁵	Cwt	9.71	15.15	12.60	12.90

¹ Beginning January 2006, point of first sale. F.O.B. shipping point for prior years.

² Monthly estimates began January 1995.

³ Beef cows and cull dairy cows sold for slaughter.

⁴ Animals sold for dairy herd replacement only. Prices available for Jan, Apr, Jul, and Oct.

⁵ Before deductions for hauling. Includes quality, quantity, and other premiums. Excludes hauling subsidies.

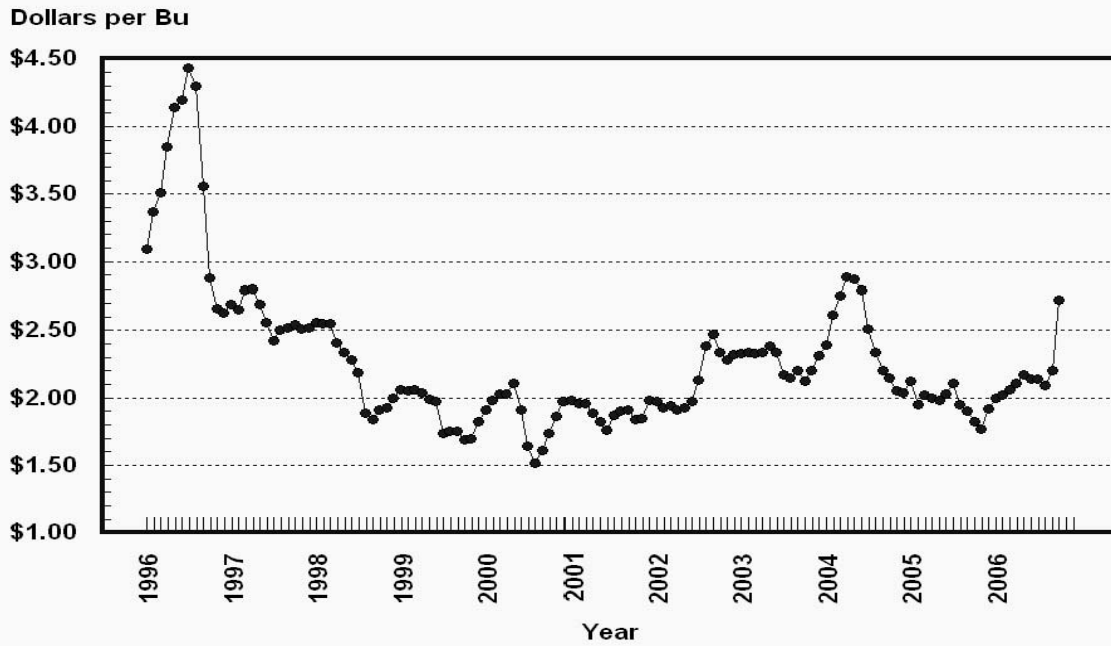
⁶ October 2006 Fat test percent: all milk, 3.74; fluid milk, 3.74; mfg grade, 3.96.

⁷ Equivalent liveweight returns to producers for most States. Includes growers and contractors.

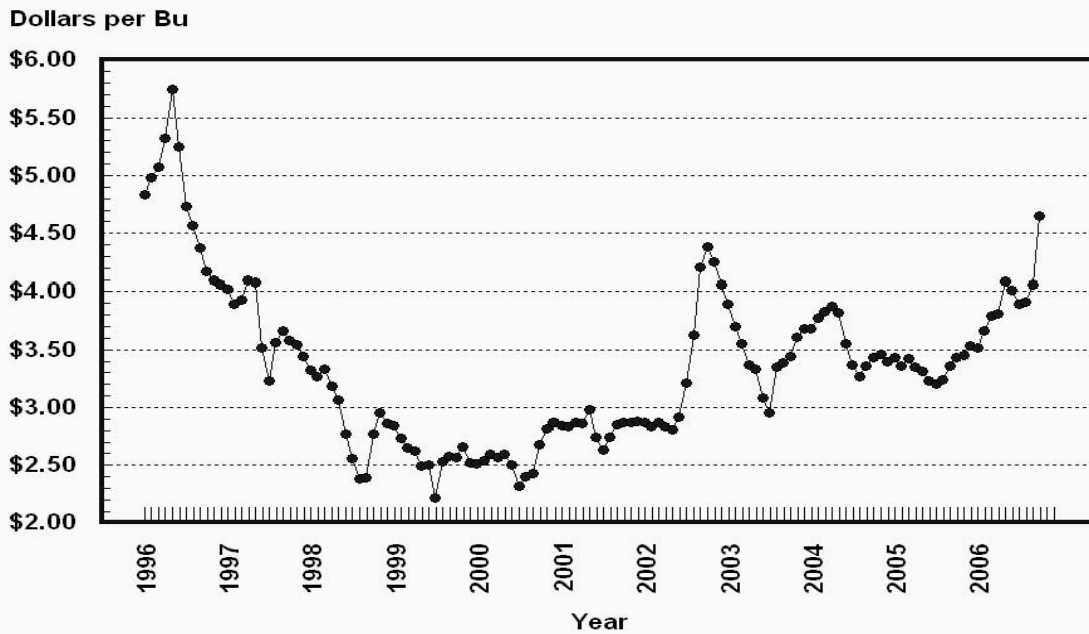
⁸ Mid-month price.

⁹ Seasonal adjustment factors are: All Eggs October 2005, 92; September 2006, 93; and October 2006, 92. All Milk October 2005, 103; September 2006, 102; and October 2006, 103.

Prices Received, Corn, US

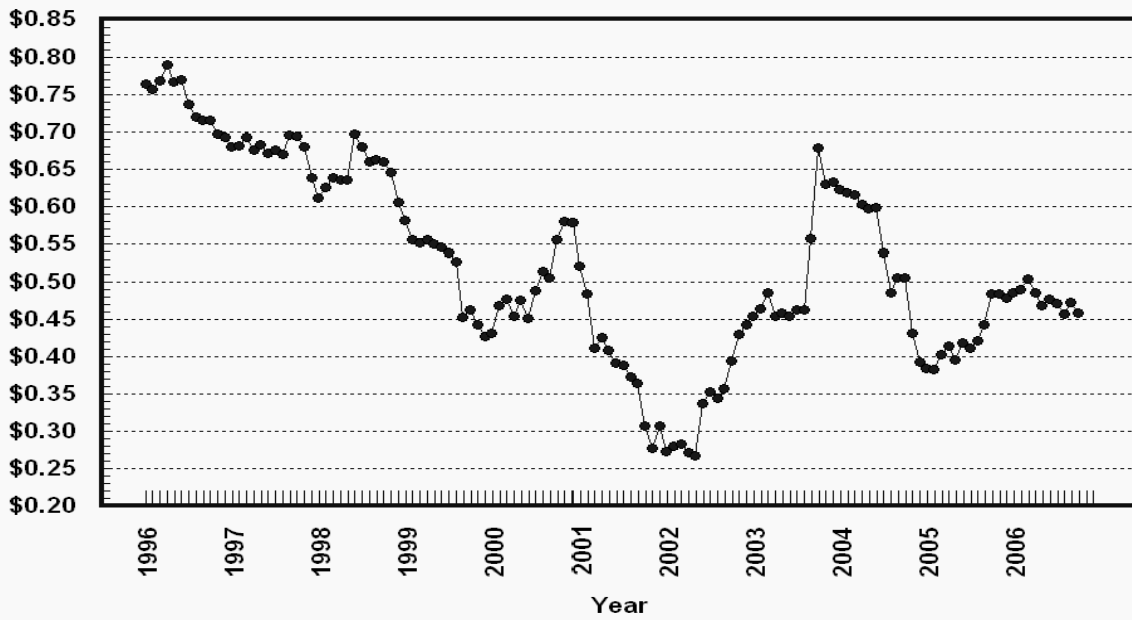


Prices Received, Wheat, US



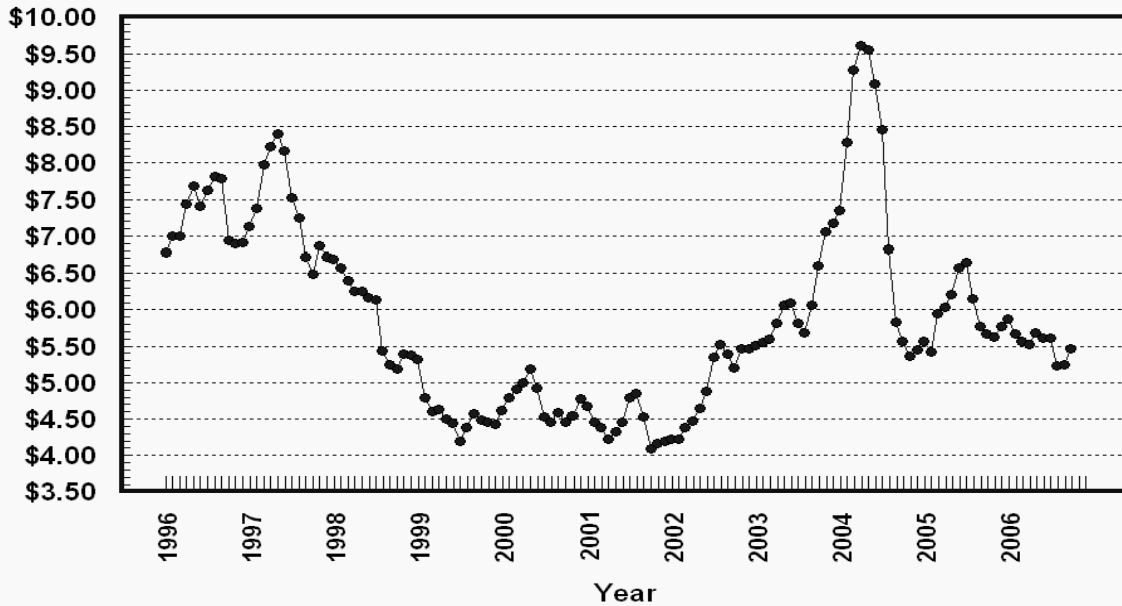
Prices Received, Cotton, US

Dollars per Lb



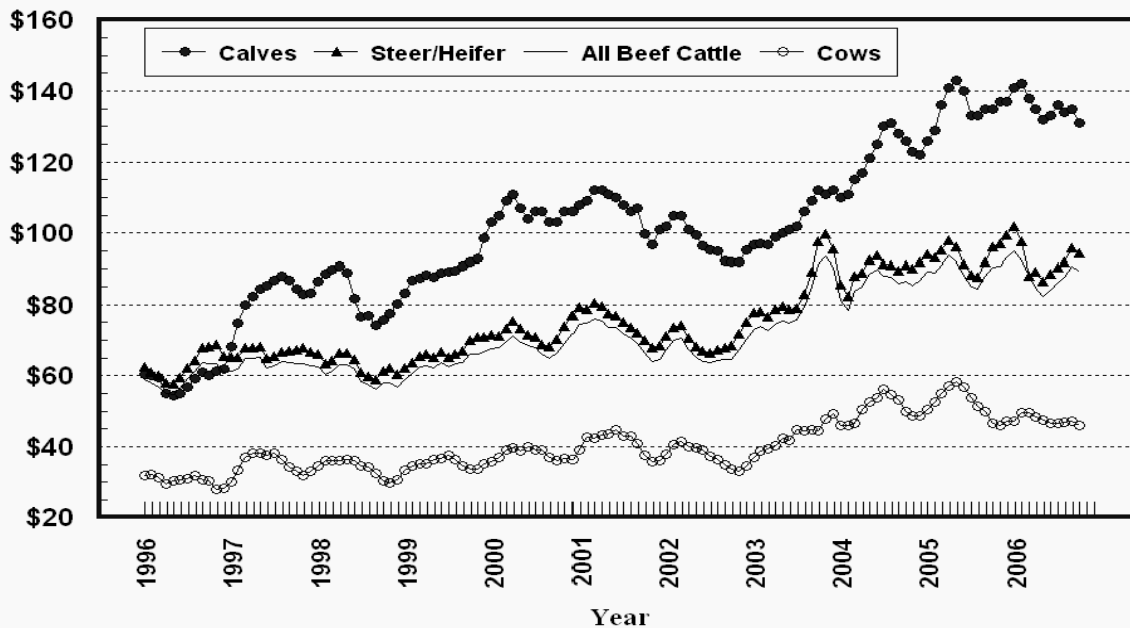
Prices Received, Soybeans, US

Dollars per Bu



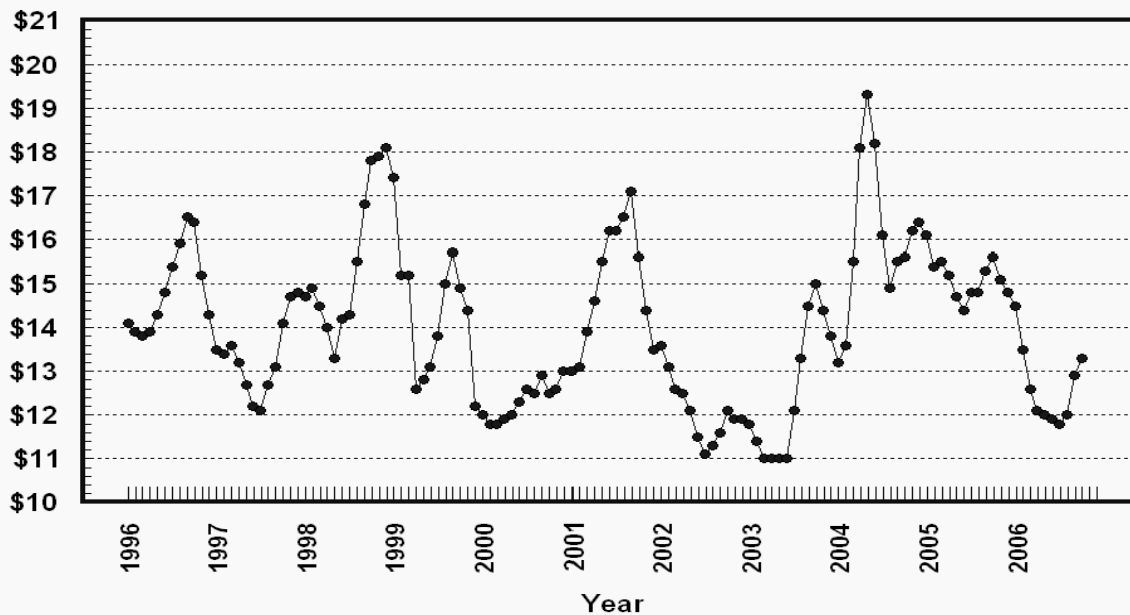
Prices Received, Cattle, US

Dollars per Cwt



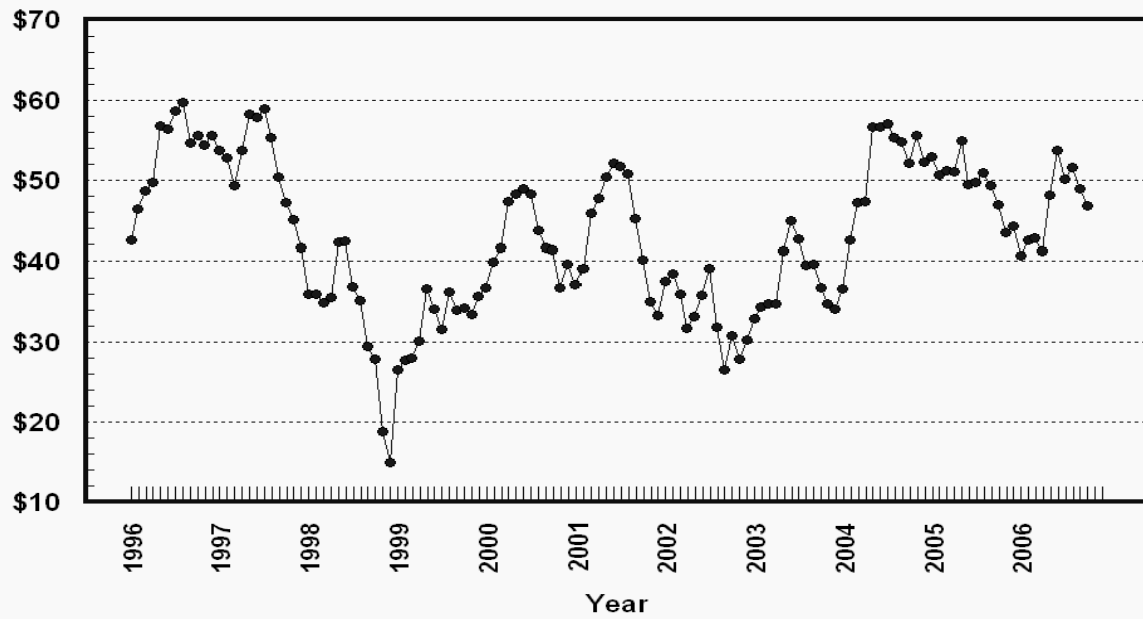
Prices Received, Milk, US

Dollars per Cwt



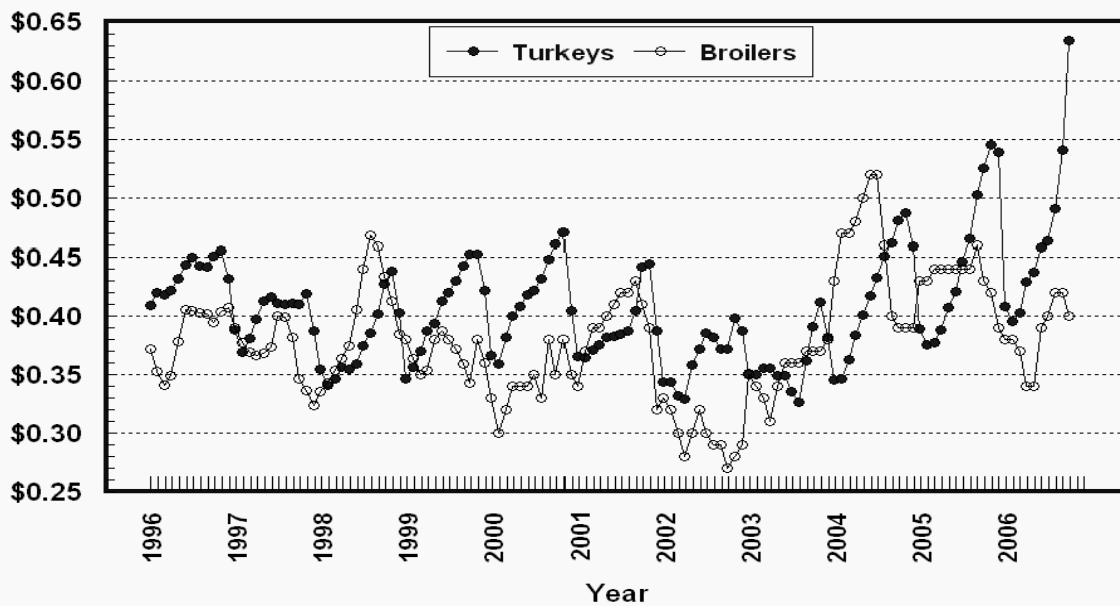
Prices Received, Hogs, US

Dollars per Cwt



Prices Received, Turkeys & Broilers, US

Dollars per Lb



Wheat: Prices Received, by State, September and October 2006

State	All Wheat		Winter Wheat		Durum Wheat		Oth Spring Wheat	
	Sep ¹	Oct ²	Sep ¹	Oct ²	Sep ¹	Oct ²	Sep ¹	Oct ²
	<i>Dollars per Bushel</i>	<i>Dollars per Bushel</i>	<i>Dollars per Bushel</i>	<i>Dollars per Bushel</i>	<i>Dollars per Bushel</i>	<i>Dollars per Bushel</i>	<i>Dollars per Bushel</i>	<i>Dollars per Bushel</i>
AR	3.63	4.10	3.63	4.10				
CA	4.09	4.30	3.64	4.30	(³)	(⁴)		
CO	4.28	4.93	4.28	4.93			(³)	(³)
ID	3.85	4.38	3.65	4.35	(³)	(³)	4.10	4.45
IL	3.36	4.50	3.36	4.50				
IN	3.31	4.47	3.31	4.47				
KS	4.51	4.99	4.51	4.99				
MI	3.23	4.00	3.23	4.00				
MN	4.22	4.78	4.35	4.55			4.22	4.78
MO	3.54	4.50	3.54	4.50				
MT	4.17	4.51	4.25	4.57	4.24	4.26	4.08	4.50
NE	4.43	4.65	4.43	4.65				
ND	4.04	4.42	3.95	4.30	4.01	4.30	4.05	4.45
OH	3.12	4.47	3.12	4.47				
OK	4.55	5.05	4.55	5.05				
OR	3.91	4.73	3.87	4.70			4.17	4.90
SD	4.22	4.61	4.27	4.64			4.15	4.57
TX	4.39	5.03	4.39	5.03				
WA	4.02	4.75	3.95	4.71			4.27	4.92
US	4.06	4.65	4.03	4.73	4.07	4.27	4.11	4.55

¹ Entire month.

² Mid-month.

³ Price not published to avoid disclosure of individual firms.

⁴ Insufficient sales to establish a price.

Prices Received for Selected Agricultural Commodities, by Month, United States, 2005 and 2006¹

Month	All Wheat		Corn		Soybeans		Beef Cattle ²		All Hogs	
	2005	2006	2005	2006	2005	2006	2005	2006	2005	2006
	<i>Dollars per Bushel</i>	<i>Dollars per Bushel</i>	<i>Dollars per Bushel</i>	<i>Dollars per Bushel</i>	<i>Dollars per Bushel</i>	<i>Dollars per Bushel</i>	<i>Dollars per Cwt</i>	<i>Dollars per Cwt</i>	<i>Dollars per Cwt</i>	<i>Dollars per Cwt</i>
Jan	3.43	3.52	2.12	2.00	5.57	5.87	89.10	95.10	53.00	40.70
Feb	3.36	3.66	1.95	2.02	5.42	5.67	88.80	92.40	50.70	42.60
Mar	3.42	3.79	2.02	2.06	5.95	5.57	91.00	88.10	51.20	42.80
Apr	3.35	3.81	2.00	2.11	6.03	5.52	93.70	84.80	51.10	41.30
May	3.31	4.09	1.98	2.17	6.21	5.68	92.10	82.20	54.90	48.20
Jun	3.23	4.01	2.03	2.14	6.58	5.62	88.00	84.20	49.50	53.80
Jul	3.20	3.89	2.11	2.14	6.65	5.61	85.00	86.10	49.80	50.20
Aug	3.24	3.91	1.95	2.09	6.15	5.23	84.40	87.70	51.00	51.60
Sep	3.36	4.06	1.90	2.20	5.77	5.24	88.00	90.80	49.40	48.90
Oct	3.43	4.65	1.82	2.72	5.67	5.46	90.40	89.10	47.00	46.90
Nov	3.45		1.77		5.62		90.80		43.50	
Dec	3.53		1.92		5.78		93.30		44.30	

¹ Current month prices are mid-month; prices for previous months are for the entire month.

² Cows, steers and heifers.

Grains: Prices Received, by State, September and October 2006

Month	All Barley ¹		Corn		Oats		Soybeans		Sorghum Grain	
	Sep ²	Oct ³	Sep ²	Oct ³	Sep ²	Oct ³	Sep ²	Oct ³	Sep ²	Oct ³
	<i>Dollars per Bushel</i>	<i>Dollars per Bushel</i>	<i>Dollars per Bushel</i>	<i>Dollars per Bushel</i>	<i>Dollars per Bushel</i>	<i>Dollars per Bushel</i>	<i>Dollars per Bushel</i>	<i>Dollars per Bushel</i>	<i>Dollars per Cwt</i>	<i>Dollars per Cwt</i>
AL							5.63	5.75	(⁴)	(⁴)
AR										
CA	(⁵)	(⁵)			(⁵)	(⁵)				
CO	(⁴)	(⁴)	2.43	3.00						
ID	2.70	3.28								
IL			2.20	2.80	(⁴)	2.40	5.24	5.70	(⁴)	4.80
IN			2.32	2.77			5.40	5.54		
IA			2.09	2.60	1.63	1.75	5.11	5.25		
KS			2.43	2.99	1.66	1.98	5.17	5.38	3.93	5.12
KY			2.34	3.00			5.37	5.80		
LA							5.50	5.74		
MI			2.05	2.50	1.68	1.50	5.32	5.40		
MN	2.51	2.64	1.96	2.50	1.69	1.83	5.07	5.30		
MS							5.74	5.81		
MO			2.23	2.90			5.18	5.60	4.12	5.30
MT	2.78	3.08			1.89	(⁴)				
NE			2.13	2.60	2.26	2.00	5.14	5.30	3.94	4.70
NY					1.51	1.43				
NC			2.50	2.96			5.30	5.50		
ND	2.31	2.38	1.99	2.30	1.59	1.90	5.27	5.20		
OH			2.18	2.74	1.32	(⁵)	5.37	5.77		
OK									4.30	5.45
OR	2.46	3.15			(⁵)	(⁵)				
PA			2.71	2.95	1.84	1.75				
SD	(⁴)	(⁴)	2.05	2.61	1.80	1.99	4.95	5.16		
TN			2.41	3.10			5.59	5.70		
TX			2.63	3.06	(⁵)	(⁵)			4.87	5.47
UT	2.58	2.77								
WA	2.68	3.33								
WI			2.09	2.50	1.65	1.80	4.97	5.20		
WY	3.10	3.17								
US	2.56	2.94	2.20	2.72	1.70	1.83	5.24	5.46	4.28	5.14

¹ The Three-State (MN, ND and SD) Feed Barley price is discontinued.

² Entire month.

³ Mid-month.

⁴ Price not published to avoid disclosure of individual firms.

⁵ Insufficient sales to establish a price.

Malting and Feed Barley: Prices Received Selected State, September and October 2006

State	Malting Barley		Feed Barley	
	Sep ¹	Oct ²	Sep ¹	Oct ²
	<i>Dollars per Bushel</i>	<i>Dollars per Bushel</i>	<i>Dollars per Bushel</i>	<i>Dollars per Bushel</i>
ID	2.87	3.40	2.36	2.95
MN	2.59	2.71	1.94	2.10
MT	2.92	3.21	1.95	2.33
ND	2.57	2.60	1.73	2.05
SD	(³)	(³)	(⁴)	(⁴)
WY	(³)	(³)	1.92	2.30

¹ Entire month.

² Mid-month.

³ Price not published to avoid disclosure of individual firms.

⁴ Insufficient sales to establish a price.

Field Crops: Prices Received, by State, September and October 2006

State	Dry Edible Beans		All Sunflower		Flaxseed		Peanuts ⁴	
	Sep ¹	Oct ²	Sep ¹	Oct ²	Sep ¹	Oct ²	Sep ¹	Oct ³
	<i>Dollars per Cwt</i>	<i>Dollars per Cwt</i>	<i>Dollars per Cwt</i>	<i>Dollars per Cwt</i>	<i>Dollars per Bushel</i>	<i>Dollars per Bushel</i>	<i>Dollars per Pound</i>	<i>Dollars per Pound</i>
AL							0.171	0.171
CA	38.30	46.60						
CO	19.60	19.60						
FL							0.166	0.173
GA							0.170	0.170
ID	20.80	22.20						
KS			11.50	11.80				
MI	19.20	19.00						
MN	22.60	(⁵)	16.20	17.70				
NE	19.20	19.90						
NC							0.213	(⁶)
ND	16.70	17.40	11.70	12.20	5.46	5.50		
SD			11.40	12.20	(⁶)	(⁶)		
TX							0.179	0.203
VA							0.163	0.196
US	18.80	19.90	11.70	12.50	5.46	5.50	0.173	0.174

¹ Entire month.

² Mid-month.

³ Based on sales through first half of month.

⁴ In-Shell.

⁵ Price not published to avoid disclosure of individual firms.

⁶ Insufficient sales to establish a price.

Field Crops and Apples: Prices Received, by State, September and October 2006

State	Cotton, Upland		October				Apples Fresh Use ^{1 4}
	Sep ¹	Oct ²	Cotton-seed ⁵	Hay, Baled ³			
				All	Alfalfa	Other	
<i>Dollars per Pound</i>	<i>Dollars per Pound</i>	<i>Dollars per Ton</i>	<i>Dollars per Ton</i>	<i>Dollars per Ton</i>	<i>Dollars per Ton</i>	<i>Dollars per Ton</i>	<i>Dol/Lb</i>
AL	(⁷)	(⁶)	95.00				
AZ	(⁶)	(⁶)	172.00	123.00	123.00	126.00	
AR	(⁶)	(⁶)	99.00				
CA	(⁶)	(⁶)	194.00	104.00	110.00	82.00	0.371
CO				134.00	135.00	124.00	
GA	(⁶)	(⁶)	93.00				
ID				120.00	121.00	91.00	
IL				95.00	102.00	76.00	
IA				82.00	83.00	60.00	
KS				102.00	115.00	78.00	
KY				84.00	120.00	70.00	
LA	(⁶)	0.481	96.00				
MI				98.00	100.00	80.00	0.295
MN				70.00	75.00	57.00	
MS	(⁶)	0.460	91.00				
MO				76.00	116.00	61.00	
MT				77.00	76.00	81.00	
NE				87.00	88.00	84.00	
NV				112.00	112.00	118.00	
NM				165.00	167.00	145.00	
NY				118.00	135.00	90.00	0.351
NC	(⁶)	(⁶)	90.00				
ND				63.00	69.00	49.00	
OH				108.00	130.00	68.00	0.390
OK				119.00	145.00	92.00	
OR				130.00	131.00	127.00	
PA				137.00	159.00	129.00	0.208
SD				76.00	81.00	64.00	
TN	(⁶)	(⁶)	102.00				
TX	0.457	0.454	108.00	129.00	160.00	122.00	
UT				96.00	99.00	71.00	
VA							0.190
WA				131.00	130.00	135.00	0.401
WI				48.00	50.00	38.00	
WY				90.00	91.00	88.00	
US	0.473	0.459	97.70	107.00	112.00	93.80	0.373

¹ Entire month.

² Based on sales during the first half of the month.

³ Mid-month.

⁴ Equivalent packinghouse-door returns for CA, MI, NY, and WA. Price at point of first sale for other States.

⁵ Marketing year August - February.

⁶ Price not published to avoid disclosure of individual firms.

⁷ Insufficient sales to establish a price.

**Upland Cotton and Rice: Prices Received and Marketings,
United States, October 2006, with Comparisons**

Item	Unit	Aug 2006 ¹	Sep 2006 ¹	Oct 2006 ²
Cotton, Upland				
Average Price	Dollars per Pound	0.458	0.473	0.459
Marketings ³	1,000 Bales	1,970	182	NA
Rice				
Average Price	Dollars per Cwt	8.65	8.99	9.46
Marketings ⁴	1,000 Cwt	12,801	10,176	NA

¹ Entire month.

² Based on purchases for the first half of the month.

³ Marketings based on a survey of cotton buyers in the major producing States - AL, AZ, AR, CA, GA, LA, MS, NC, TN, and TX.

⁴ Purchases by private firms and rice (rough equivalent) shipped by cooperatives.

**Citrus Fruit: Prices and Equivalent Returns, by Utilization,
by State and United States, October 2006**

Commodity, State and Type	F.O.B. Packed Fresh	Equivalent Returns ¹					
		Packinghouse-door			On-tree		
		All	Fresh	Process	All	Fresh	Process
	<i>Dollars per Box</i>	<i>Dollars per Box</i>	<i>Dollars per Box</i>	<i>Dollars per Box</i>	<i>Dollars per Box</i>	<i>Dollars per Box</i>	<i>Dollars per Box</i>
Grapefruit							
CA	29.60	18.69	20.54	-0.29	15.83	17.68	-3.15
TX	39.30	28.70	28.70		27.47	27.47	
US	30.00	19.06	20.87	-0.29	16.26	18.07	-3.15
Lemons							
AZ	49.60	35.25	39.53	-0.42	29.83	34.11	-5.84
CA	49.50	32.13	39.43	-0.42	26.71	34.01	-5.84
US	49.50	33.07	39.46	-0.42	27.65	34.04	-5.84
Oranges							
CA Valencia	29.40	18.84	21.53	1.41	16.35	19.04	-1.08
TX Early and Mids	26.90	15.09	16.19	2.98	13.66	14.76	1.59
US	29.30	18.74	21.37	1.44	16.28	18.91	-1.03
Tangerines							
FL	20.00	8.12	9.00	4.00	4.53	5.50	0.00
US	20.00	8.12	9.00	4.00	4.53	5.50	0.00

¹ Net lbs. per box: Grapefruit - AZ & CA-67, FL-85, TX-80; Lemons - 76; Oranges - AZ & CA-75, FL-90, TX-85; Tangelos - 90; Tangerines - AZ & CA-75, FL-95; Temples - 90.

Potatoes: Prices Received, by State, September and October 2006 ¹

State	Sep	Oct	State	Sep	Oct
	<i>Dollars per Cwt</i>	<i>Dollars per Cwt</i>		<i>Dollars per Cwt</i>	<i>Dollars per Cwt</i>
AL			NC		
AZ			ND - All ²	5.70	5.75
CA - All ²	19.10	18.70	- Fresh ³	6.10	NA
- Winter			- Processing	5.55	NA
- Spring			OR	5.90	5.15
- Summer	19.10	18.70	TX	18.40	
- Fall			VA		
CO - All ²	8.20	8.45	WA - All ²	5.55	5.15
- Fresh ³	9.15	NA	- Processing	5.00	NA
FL			WI - All ²	6.80	6.90
ID - All ²	5.15	5.10	- Fresh ³	9.75	NA
- Fresh ³	7.00	NA	- Processing	5.55	NA
- Processing	4.70	NA	US - All ²	6.35	5.74
ME	5.85	6.40	- Fresh ³	10.35	NA
MI	7.05	7.00	- Processing	5.10	NA
MN	7.05	6.80			
NY	14.90	14.30			

¹ Missing data indicates no potatoes being marketed.

² Average price of potatoes sold for all uses, including table stocks, processing, seed, and livestock feed.

³ Fresh market prices only, includes table stock prices.

Cattle: Prices Received, by State, September and October 2006

State	Cows ¹		Steers & Heifers		Beef Cattle ⁴		Calves	
	Sep ²	Oct ³	Sep ²	Oct ³	Sep ²	Oct ³	Sep ²	Oct ³
	<i>Dollars per Cwt</i>	<i>Dollars per Cwt</i>	<i>Dollars per Cwt</i>	<i>Dollars per Cwt</i>	<i>Dollars per Cwt</i>	<i>Dollars per Cwt</i>	<i>Dollars per Cwt</i>	<i>Dollars per Cwt</i>
AZ	47.80	43.30	111.00	104.00	93.30	87.00	133.00	125.00
AR	42.20	41.60	107.00	105.00	87.60	86.00	123.00	120.00
CA	44.90	43.10	92.50	91.30	68.70	67.20	113.00	114.00
CO	49.80	48.20	116.00	110.00	115.00	109.00	132.00	125.00
FL	44.20	42.90	102.00	96.00	83.30	77.90	118.00	111.00
GA	45.80	45.00	98.60	92.10	63.80	61.00	124.00	115.00
ID	45.70	43.10	92.80	91.00	82.40	77.60	122.00	115.00
IL	48.00	48.00	89.00	89.00	88.20	88.20	123.00	122.00
IA	52.40	50.40	91.80	90.20	91.00	89.40	133.00	123.00
KS	48.20	46.80	94.30	93.30	93.40	91.90	137.00	132.00
KY	46.00	44.00	107.00	99.00	92.40	85.80	125.00	115.00
LA	42.90	41.00	103.00	95.00	65.10	61.00	121.00	114.00
MI	49.50	49.00	83.50	82.50	73.30	72.50	134.00	134.00
MN	51.40	50.00	86.20	84.50	80.60	79.00	133.00	126.00
MO	48.40	44.60	116.00	112.00	101.00	97.20	135.00	126.00
MT	49.10	47.80	112.00	116.00	95.60	103.00	143.00	134.00
NE	50.90	48.90	93.70	94.60	92.40	93.20	138.00	134.00
NM	43.30	43.90	113.00	106.00	85.80	81.80	131.00	124.00
ND	50.00	48.00	112.00	110.00	93.40	98.20	130.00	127.00
OH	45.10	44.00	91.00	90.00	86.40	85.40	122.00	115.00
OK	46.10	46.40	115.00	107.00	106.00	99.10	128.00	125.00
OR	43.30	42.20	101.00	99.00	83.70	82.00	115.00	115.00
PA	46.40	45.50	84.00	83.00	74.20	73.30	139.00	138.00
SD	48.90	48.70	106.00	113.00	99.10	106.00	139.00	137.00
TN	44.00	43.00	106.00	99.00	81.20	76.60	120.00	111.00
TX	42.20	41.80	94.10	92.70	89.40	88.60	134.00	130.00
VA	41.00	41.60	99.00	97.00	86.80	79.80	119.00	111.00
WI	48.70	47.90	87.40	85.20	65.00	63.60	165.00	160.00
WY	51.00	49.50	114.00	112.00	106.00	99.50	142.00	138.00
US	47.10	46.00	95.80	94.40	90.80	89.10	135.00	131.00

¹ Beef cows and cull dairy cows sold for slaughter.

² Entire month.

³ Mid-month.

⁴ "Cows" and "steers and heifers" combined.

Hogs: Prices Received, by State, September and October 2006

State	Sows		Barrows and Gilts		All Hogs	
	Sep ¹	Oct ²	Sep ¹	Oct ²	Sep ¹	Oct ²
	<i>Dollars per Cwt</i>	<i>Dollars per Cwt</i>	<i>Dollars per Cwt</i>	<i>Dollars per Cwt</i>	<i>Dollars per Cwt</i>	<i>Dollars per Cwt</i>
AR	36.40	38.10	46.30	44.70	45.30	44.00
IL	34.10	35.00	50.00	47.00	48.70	46.00
IN	38.90	39.60	48.30	47.10	47.50	46.40
IA	35.70	37.50	51.10	49.60	50.90	48.80
KS	37.00	38.40	46.00	44.50	44.80	43.70
MN	36.70	38.00	51.50	48.50	51.30	48.30
MO	35.30	35.90	41.20	40.00	40.70	39.70
NE	36.80	38.80	51.40	50.10	51.10	49.90
NC	36.30	38.30	49.20	47.70	49.10	47.60
OH	34.80	36.00	47.70	46.00	46.70	45.20
OK	33.90	35.50	42.60	40.50	41.30	39.80
PA	33.00	34.50	46.20	43.30	44.20	42.00
SD	35.90	37.90	51.20	49.70	49.40	48.30
US	35.50	36.80	49.50	47.60	48.90	46.90

¹ Entire month.

² Mid-month.

Sheep and Poultry: Prices Received, by State, September and October 2006

State	September		October
	Sheep ¹	Lambs ¹	Eggs ^{2 3}
	<i>Dollars per Cwt</i>	<i>Dollars per Cwt</i>	<i>Dollars per Dozen</i>
AL			0.430
AR			0.380
CA	36.00	90.00	0.470
CO	35.00	98.00	
CT			0.490
FL			0.450
GA			0.429
ID	23.00	88.00	
IN			0.370
IA	42.80	95.00	0.322
KY	46.00	94.00	
ME			0.570
MI			0.330
MN	30.00	99.00	0.380
MS			0.380
MO	36.10	103.00	0.320
MT	22.20	104.00	
NE	36.60	87.80	
NY			0.370
NC			0.365
ND	38.00	108.00	
OH	34.70	85.10	0.420
OR	34.50	89.00	
PA	48.40	103.00	0.360
SC			0.410
SD	30.10	116.00	
TX	36.70	92.70	0.350
VA	37.00	97.00	
WA			0.450
WV	29.00	96.00	
WY	36.00	115.00	
US	31.70	98.50	0.382

¹ Entire month.

² Mid-month.

³ Market (table) eggs.

Milk and Milk Cows: Prices Received, by State, September and October 2006

State	September ¹						October		
	Fluid Grade Milk ²		Manufacturing Grade Milk		All Milk ³		All Milk ^{3 4}		Milk Cows ⁵
	Price	Fat Test	Price	Fat Test	Price	Fat Test	Price	Fat Test	
	<i>Dol/Cwt</i>	<i>Percent</i>	<i>Dol/Cwt</i>	<i>Percent</i>	<i>Dol/Cwt</i>	<i>Percent</i>	<i>Dol/Cwt</i>	<i>Percent</i>	<i>Dol/Head</i>
AZ	12.80	3.61			12.80	3.61	13.50	3.64	1,800
CA	11.60	3.62	12.30	4.08	11.62	3.63	11.60	3.70	1,600
CO	13.20	3.54			13.20	3.54	13.50	3.57	1,950
FL	14.90	3.71			14.90	3.71	16.50	3.72	1,850
ID	12.40	3.65	11.80	3.75	12.40	3.65	12.50	3.73	1,800
IL	14.10	3.70	13.80	3.61	14.10	3.70	14.20	3.77	1,610
IN	13.20	3.66	11.80	3.65	13.10	3.66	13.20	3.75	1,650
IA	13.30	3.64	12.80	3.84	13.30	3.64	13.90	3.75	1,640
KS	12.60	3.62			12.60	3.62	13.10	3.72	1,550
KY	13.60	3.66			13.60	3.66	14.90	3.76	1,600
MI	13.20	3.60	11.40	3.61	13.20	3.60	14.00	3.70	1,800
MN	13.50	3.71	11.70	3.75	13.40	3.71	13.50	3.82	1,580
MO	13.00	3.68	12.00	3.77	13.00	3.68	14.00	3.74	1,530
NM	12.60	3.61			12.60	3.61	13.00	3.64	1,630
NY	13.20	3.68			13.20	3.68	13.70	3.77	1,550
OH	13.40	3.66	12.20	3.77	13.40	3.66	14.10	3.73	1,680
OR	15.10	3.67			15.10	3.67	15.70	3.72	1,830
PA	14.10	3.70	12.40	3.75	14.10	3.70	15.00	3.75	1,650
TX	13.80	3.74			13.80	3.74	13.80	3.82	1,650
VT	13.60	3.72			13.60	3.72	13.80	3.75	1,700
VA	14.90	3.56			14.90	3.56	15.00	3.60	1,700
WA	12.40	3.67			12.40	3.67	13.00	3.72	1,700
WI	13.50	3.71	12.70	3.81	13.50	3.71	13.90	3.83	1,600
US	12.90	3.66	12.30	3.88	12.90	3.66	13.30	3.74	1,650

¹ Entire month.

² Including milk diverted to manufacturing.

³ Before deductions for hauling. Includes quality, quantity, and other premiums. Excludes hauling subsidies.

⁴ Preliminary.

⁵ Animals sold for dairy herd replacement only. Prices published January, April, July and October.

**Parity Price Equivalent for Manufacturing Grade Milk ¹: United States,
September and October 2006, with Comparisons**

Item	Unit	Oct 2005	Sep 2006	Oct 2006
Parity Equivalent	Dollars per Cwt	34.30	35.30	35.00
Average Price F.O.B ²	Dollars per Cwt	14.80	12.30	12.40
Average Fat Test of Milk ²	Percent	3.92	3.88	3.96

¹ The parity price equivalent during 2006 is 91.5 percent of the parity price of all milk sold to plants, compared with 91.4 percent in 2005. For additional details, see January 2006 issue of "Agricultural Prices".

² Preliminary for October 2006.

**Parity Prices for Farm Products and Average Prices Received as
Percent of Parity Prices, United States, with Comparisons ¹**

Commodity and Unit	Adjusted Base Price	Parity Price			Price as Percent of Parity		
		Oct 2005	Sep 2006	Oct 2006	Oct 2005	Sep 2006	Oct 2006
	<i>Dollars</i>	<i>Dollars</i>	<i>Dollars</i>	<i>Dollars</i>	<i>Percent</i>	<i>Percent</i>	<i>Percent</i>
Basic Commodities							
All Wheat, Bu	0.535	10.60	10.50	10.40	32	39	45
Rice, Cwt	1.45	26.30	28.40	28.10	27	32	34
Corn, Bu	0.398	7.08	7.80	7.72	26	28	35
Cotton, Lb							
American Upland	0.117	1.81	2.29	2.27	27	21	20
Extra Long Staple	0.138	2.70	2.70	2.68			
Peanuts, Lb	0.035	0.666	0.686	0.679	26	25	26
Designated Nonbasic							
All Milk, Sold to							
Plants, Per Cwt ²	1.97	37.50	38.60	38.20	38	31	32
Honey, Extracted, Lb ³	0.121	2.28	2.28	2.28			
Wool and Mohair							
Wool, Lb	0.083	1.73	1.63	1.61			
Mohair, Lb	0.339	6.34	6.64	6.57			
Other Nonbasic							
Barley, Bu	0.372	7.17	7.29	7.21	34	35	41
Canola, Cwt	1.38	29.90	27.00	26.80			
Cottonseed, Ton	15.40	295.00	302.00	299.00	30	33	33
Dry Edible Beans, Cwt	2.81	53.70	55.10	54.50	35	34	37
Flaxseed, Bu	0.795	14.30	15.60	15.40	42	35	36
Mustard Seed, Cwt	1.96	40.30	38.40	38.00			
Oats, Bu	0.221	4.21	4.33	4.29	38	39	43
Potatoes, Cwt	0.823	15.90	16.10	16.00	35	39	36
Rapeseed, Cwt	1.61	33.10	31.60	31.20			
Rye, Bu	0.355	6.76	6.96	6.88			
Safflower, Cwt	1.86	39.40	36.50	36.10			
Sorghum Grain, Cwt	0.617	11.60	12.10	12.00	26	35	43
Soybeans, Bu	0.880	17.10	17.20	17.10	33	30	32
All Sunflower, Cwt	1.68	32.00	32.80	32.50	41	38	37
Sweetpotatoes, Cwt	2.33	44.00	45.70	45.20			
Apples, Fresh, Lb ⁴	0.027	0.556	0.529	0.524	36	42	41
Citrus (equiv on-tree), Box							
Grapefruit	0.541	7.50	10.60	10.50	143	123	155
Lemons	1.16	21.30	22.80	22.50	37	116	123
Oranges	0.591	10.90	11.60	11.50	37	125	142
Tangerines	1.390	25.70	27.20	27.00	62		17
Temples (FL)	0.394	7.21	7.72	7.64			
Beef Cattle, Cwt	9.87	184.00	193.00	191.00	49	47	47
Calves, Cwt	13.70	249.00	269.00	266.00	54	50	49
Hogs, Cwt	5.99	114.00	117.00	116.00	41	42	40
Lambs, Cwt	11.90	223.00	233.00	231.00	49	41	
Sheep, Cwt	4.89	89.80	95.80	94.80	49	30	
Eggs, Doz ²	0.091	1.79	1.78	1.76	31	34	35
Turkeys, Live, Lb	0.056	1.080	1.100	1.090	49	49	58

¹ Parity prices are computed under the provisions of Title III, Subtitle a, Section 301 (a) of the Agricultural Adjustment Act of 1938 as amended by the Agricultural Acts of 1948, 1949, and 1956. See January "Agricultural Prices" for details on adjusted base price and parity price computations.

² Seasonally adjusted price as percentage of parity price.

³ Wholesale extracted. Adjusted base price derived from state annual averages prices weighted by production. For 1982 through 1985 the national averages are the support prices.

⁴ Equivalent packinghouse-door returns for CA, NY (apples only), OR (except peaches), and WA. Price at point of first sale for other states.

Parity Prices for Farm Products, October 2006, United States ¹

Other Nonbasic Commodities	Adjusted Base Price	Parity Price	Other Nonbasic Commodities	Adjusted Base Price	Parity Price
	<i>Dollars</i>	<i>Dollars</i>		<i>Dollars</i>	<i>Dollars</i>
Field Crops and Misc Commodities			Noncitrus Fruit, Continued		
Hops, Lb	0.247	4.79	Olives, CA canning, Ton ³	92.30	1,790.00
Spearmint Oil, Lb	1.44	27.90	Papayas (HI)	0.051	0.989
Tobacco, Lb			Peaches		
Flue-Cured, 11-14	0.247	4.79	Fresh, Ton ²	83.09	1,610.00
VA Fire-Cured, 21	0.258	5.00	Dried, CA, Ton	77.00	1,490.00
KY-TN Fire-Cured, 22-23	0.323	6.26	Processing ³		
Burley, 31	0.266	5.16	Excl Dried		
Maryland, 32	0.202	3.92	Clingstone, CA, Ton	33.40	648.00
Dark Air-Cured, 35-36	0.285	5.53	Pears, Ton		
Sun-Cured, 37	0.237	4.60	Fresh ²	54.50	1,060.00
PA Seedleaf, 41	0.201	3.90	Dried, CA ⁴	171.00	3,320.00
Cigar Filler & Binder, 42-44, 54-55	0.222	4.30	Plums, CA, Ton		
Puerto Rican Filler, 46	0.159	3.08	Fresh, Equiv on-Tree	60.10	1,170.00
Cigar Binder, 51-52	0.760	14.70	Prunes, Dried, CA, Ton ⁴	132.00	2,560.00
Type 61	3.21	62.20	Prunes and Plums, Excl CA, Ton		
Noncitrus Fruit			Fresh ⁷	62.40	1,210.00
Apples, Ton ⁴			Processing ⁴		
Processing	17.60	341.00	Excl Dried	28.80	558.00
Apricots, Ton			Tree Nuts ⁸		
Fresh ⁵	101.00	1,960.00	Almonds, Lb	0.221	4.29
Dried, CA	270.00	5,240.00	Hazelnuts, Ton	150.00	2,910.00
Avocados, Ton ⁵	233.00	4,520.00	Pistachio, Lb	0.168	3.26
Cherries			Walnuts, Ton	173.00	3,350.00
Sweet, Ton	195.00	3,780.00	Vegetables, Cwt ⁹		
Tart, Lb	0.034	0.659	Fresh		
Cranberry, Bbl ³	5.35	104.00	Carrots ⁶	2.30	44.60
Dates, CA, Ton ⁵	214.00	4,150.00	Cauliflower ⁶	4.44	86.10
Grapes, Ton			Celery ⁶	1.91	37.00
Raisin Variety	121.00	2,350.00	Honeydew Melons	2.64	51.20
Other Dried	70.80	1,370.00	Lettuce	2.36	45.80
Kiwifruit, Ton	89.20	1,730.00	Onions ⁶	1.65	32.00
Nectarines			Tomatoes	4.61	89.40
Fresh, CA, Ton ⁵	61.20	1,190.00			

¹ Parity prices are computed under the provisions of Title III, Subtitle a, Section 301 (a) of the Agricultural Adjustment Act of 1938 as amended by the Agricultural Acts of 1948, 1949, and 1956. See January "Agricultural Prices" for details on adjusted base price and parity price computations.

² Equivalent packinghouse-door returns for CA, NY (apples only), OR (except peaches), and WA. Price at point of first sale for other states.

³ Equivalent returns for bulk fruit at first delivery point.

⁴ Equivalent returns at processing plant door.

⁵ Equivalent returns at packinghouse door.

⁶ Includes some processing.

⁷ Based on "as sold" prices for fresh fruit in all states.

⁸ Prices in-shell basis except almonds which are shelled basis.

⁹ F.O.B. shipping point prices.

Marketing Year for Specified Commodities

Cotton: August 1 to July 31 for U.S. and all States.

Cottonseed: August 1 to February 28 for U.S. and all States.

**Crops: Marketing Year Average Prices Received, by States
and United States, 2004 and 2005**

State	Cotton				Cottonseed	
	Pima		Upland		2004	2005
	2004	2005	2004	2005		
	<i>Dollars per lb</i>	<i>Dollars per lb</i>	<i>Dollars per lb</i>	<i>Dollars per lb</i>	<i>Dollars per Ton</i>	<i>Dollars per Ton</i>
AL			0.406	0.487	91.00	81.50
AZ	*1.230	1.180	0.444	0.516	163.00	134.00
AR			0.411	0.470	99.50	90.00
CA	*1.280	1.260	0.516	0.604	150.00	146.00
FL			0.464	0.480	86.00	75.00
GA			0.428	0.488	85.00	74.00
KS			0.396	0.473	85.50	83.00
LA			0.414	0.470	102.00	87.50
MS			0.410	0.461	93.50	84.00
MO			0.410	0.467	91.50	78.00
NM	*1.140	1.100	0.480	0.540	118.00	108.00
NC			0.437	0.458	96.00	82.00
OK			0.396	0.473	76.00	72.00
SC			0.430	0.490	90.50	77.00
TN			0.405	0.469	99.50	85.50
TX	*1.130	1.120	0.402	0.464	104.00	101.00
VA			0.380	0.455	119.00	88.00
US	*1.270	1.240	0.416	0.477	107.00	96.00

* Revised.

**Cottonseed: Monthly and Marketing Year Average Prices
Received by State and U.S., August 2005 - February 2006 ¹**

State	Aug	Sep	Oct	Nov	Dec	Jan ²	Feb
	<i>Dollars Per Ton</i>	<i>Dollars Per Ton</i>	<i>Dollars Per Ton</i>	<i>Dollars Per Ton</i>	<i>Dollars Per Ton</i>	<i>Dollars Per Ton</i>	<i>Dollars Per Ton</i>
AL	(⁴)	(⁴)	85.00	83.00	76.00	81.00	70.00
AZ	(⁴)	(⁴)	149.00	134.00	131.00	136.00	127.00
AR	(⁴)	(⁴)	90.00	89.00	93.00	(⁴)	(⁴)
CA	(⁴)	(⁴)	169.00	149.00	136.00	(³)	(⁴)
GA	(⁴)	(⁴)	75.00	74.00	74.00	74.00	72.00
LA	(⁴)	(⁴)	88.00	87.00	(⁴)	(⁴)	(⁴)
MS	(⁴)	(⁴)	84.00	83.00	96.00	(⁴)	(⁴)
NC	(⁴)	(⁴)	83.00	82.00	79.00	86.00	92.00
TN	(⁴)	(⁴)	91.00	81.00	83.00	(⁴)	(⁴)
TX	102.00	96.00	101.00	102.00	102.00	100.00	99.00
US	102.00	96.00	89.10	95.60	97.40	102.00	99.00

¹ Monthly prices available only for major cotton producing States.

² Second year.

³ Not published to avoid disclosure of individual firms.

⁴ Insufficient movement to establish a price.

**Prices Received: Upland Cotton, by State and Month,
for Marketing Years, 2004-2005 and 2005-2006**

State	Aug	Sep	Oct	Nov	Dec	Jan ¹
	2005-2006					
	<i>Dollars per Pound</i>	<i>Dollars per Pound</i>	<i>Dollars per Pound</i>	<i>Dollars per Pound</i>	<i>Dollars per Pound</i>	<i>Dollars per Pound</i>
AL	0.397	(³)	0.525	0.525	0.506	0.506
AZ	(³)	(²)	(²)	0.537	0.524	0.541
AR	(²)	0.457	0.494	0.502	0.481	0.493
CA	(²)	0.547	0.606	0.574	0.679	0.610
GA	0.397	(²)	0.516	0.502	0.501	0.507
LA	0.398	0.459	0.477	0.485	0.473	0.492
MS	0.398	(²)	0.499	0.493	0.486	0.493
NC	0.397	(²)	0.472	0.445	0.461	0.488
TN	0.397	0.494	0.489	0.485	0.486	0.490
TX	0.461	0.423	0.445	0.449	0.459	0.474
US	0.421	0.441	0.485	0.485	0.480	0.486
	2004-2005					
AL	0.508	(²)	(²)	0.463	0.416	0.372
AZ	(²)	(²)	0.422	0.454	0.462	0.444
AR	0.489	(²)	0.458	0.422	0.422	0.389
CA	(²)	(²)	(²)	0.535	0.515	0.511
GA	0.509	0.596	0.526	0.448	0.422	0.401
LA	0.474	(²)	0.510	0.433	0.402	0.401
MS	0.500	(²)	0.476	0.463	0.417	0.372
NC	0.594	(²)	(²)	0.397	0.386	0.397
TN	0.477	(²)	0.444	0.430	0.410	0.370
TX	0.465	0.477	0.525	0.388	0.359	0.369
US	0.486	0.506	0.506	0.432	0.393	0.385

See footnote(s) at end of table.

--continued

**Prices Received: Upland Cotton, by State and Month,
for Marketing Years, 2004-2005 and 2005-2006 (continued)**

State	Feb	Mar	Apr	May	Jun	Jul
	2005-2006					
	<i>Dollars per Pound</i>	<i>Dollars per Pound</i>	<i>Dollars per Pound</i>	<i>Dollars per Pound</i>	<i>Dollars per Pound</i>	<i>Dollars per Pound</i>
AL	0.489	0.467	0.495	0.455	0.455	0.455
AZ	0.546	(²)	(²)	(²)	(²)	(²)
AR	0.481	0.471	0.463	0.455	0.455	0.457
CA	0.589	0.612	0.624	0.600	(²)	(²)
GA	0.491	0.471	0.478	0.462	0.464	0.455
LA	0.479	0.468	0.464	0.455	0.455	0.464
MS	0.482	0.467	0.464	0.455	0.456	0.455
NC	0.480	0.484	0.474	0.455	0.455	0.459
TN	0.480	0.468	0.467	0.454	0.467	0.461
TX	0.478	0.479	0.462	0.454	0.480	0.472
US	0.489	0.500	0.485	0.464	0.474	0.468
	2004-2005					
AL	(²)	0.371	0.373	0.374	(²)	0.376
AZ	0.471	0.461	(²)	(²)	(²)	(²)
AR	0.400	0.420	0.389	0.376	0.376	0.376
CA	0.498	(²)	(²)	0.517	(²)	(²)
GA	0.388	0.389	0.383	0.374	0.374	0.389
LA	0.388	0.414	0.382	0.377	(²)	(²)
MS	0.385	0.371	0.373	0.374	0.374	0.376
NC	0.399	0.371	0.373	0.374	0.374	0.403
TN	0.397	0.413	0.373	0.374	0.374	0.382
TX	0.369	0.395	0.433	0.376	0.446	0.433
US	0.383	0.403	0.414	0.396	0.419	0.411

¹ Second year.

² Not published to avoid disclosure of individual firms.

³ Insufficient movement to establish a price.

**Upland Cotton: Farm Marketings, Percent of Sales, by Month
and State, 2004-2005 and 2005-2006^{1 2}**

State and Marketing Year	Aug	Sep	Oct	Nov	Dec	Jan	Feb	Mar	Apr	May	Jun	Jul
	<i>Percent</i>	<i>Percent</i>	<i>Percent</i>	<i>Percent</i>	<i>Percent</i>	<i>Percent</i>	<i>Percent</i>	<i>Percent</i>	<i>Percent</i>	<i>Percent</i>	<i>Percent</i>	<i>Percent</i>
AL 2005-2006	12.0	0.0	5.4	26.7	18.4	6.5	6.2	5.9	3.1	6.6	5.5	3.7
2004-2005	8.8	2.4	3.5	3.1	8.7	34.0	12.1	11.5	9.2	2.4	2.1	2.2
AZ 2005-2006	0.0	5.1	3.0	10.5	14.2	14.1	9.8	15.2	1.4	10.2	8.3	8.3
2004-2005	0.4	1.9	5.2	17.7	11.7	17.0	5.7	8.8	9.8	10.0	8.3	3.4
AR 2005-2006	12.5	0.8	8.0	12.9	21.9	10.1	4.8	5.6	4.1	6.4	5.1	7.8
2004-2005	9.0	0.0	1.4	4.5	21.0	25.8	10.8	12.9	5.2	3.4	3.0	3.0
CA 2005-2006	0.7	6.5	2.4	9.6	8.1	4.2	10.2	31.8	9.5	4.3	6.3	6.3
2004-2005	1.5	3.6	12.3	20.7	4.6	13.5	8.0	4.6	10.3	7.3	6.1	7.5
GA 2005-2006	6.6	0.1	5.4	11.4	36.4	14.6	4.8	4.1	3.3	4.7	4.0	4.6
2004-2005	9.3	1.6	7.9	10.1	16.9	29.6	5.7	5.9	4.2	3.1	2.7	3.0
LA 2005-2006	6.9	3.9	15.9	19.6	20.2	8.4	3.5	4.1	3.1	4.5	3.5	6.3
2004-2005	8.5	1.7	4.0	14.1	18.1	25.9	5.8	9.2	4.1	3.0	2.6	3.0
MS 2005-2006	18.7	1.3	7.7	3.6	15.0	9.9	6.4	7.3	5.5	8.3	7.1	9.1
2004-2005	12.1	2.6	3.3	6.8	9.6	24.1	9.7	9.0	7.2	5.6	5.0	5.1
NC 2005-2006	1.0	0.2	14.0	40.6	29.4	9.0	2.1	1.0	0.5	0.7	0.6	0.9
2004-2005	2.9	7.4	30.3	30.0	18.1	6.9	2.5	0.5	0.4	0.3	0.3	0.4
TN 2005-2006	9.8	0.6	12.9	24.8	8.2	4.4	4.2	5.2	3.8	6.4	10.2	9.4
2004-2005	14.8	0.0	2.8	3.5	7.7	19.8	16.7	14.7	6.2	4.8	4.2	4.7
TX 2005-2006	7.0	6.0	3.4	7.7	23.0	24.8	11.1	8.0	2.8	2.2	2.6	1.3
2004-2005	6.3	6.8	6.6	6.2	15.0	22.6	15.8	8.1	5.4	2.3	3.6	1.3
US 2005-2006	8.2	3.4	6.1	12.2	22.2	16.1	7.9	7.8	3.4	4.4	4.2	4.3
2004-2005	7.3	4.1	6.6	8.8	14.3	23.1	11.6	8.5	5.8	3.5	3.7	2.6

¹ Monthly farm marketings, based on a sample survey, as a percent of total used for calculating marketing year average prices.

² Totals may not add to 100 percent due to rounding.

**Upland Cotton Monthly Marketings,
Marketing Years, 2004-2005 through 2005-2006**

Month	Upland Cotton ¹	
	2004-2005	2005-2006
	<i>1,000 Bales</i>	<i>1,000 Bales</i>
Aug	1,167	1,233
Sep	657	516
Oct	1,051	911
Nov	1,410	1,831
Dec	2,292	3,340
Jan ²	3,698	2,420
Feb	1,847	1,182
Mar	1,354	1,163
Apr	935	516
May	559	658
Jun	592	635
Jul	418	641
Year	15,979	15,045

¹ Marketings based on a survey of cotton buyers in the major producing States - AL, AZ, AR, CA, GA, LA, MS, NC, TN, and TX. Total may not add due to rounding.

² Second year.

**Indexes of Prices Received by Farmers, by Month and Annual Average,
United States, 2002-2006**

Year	Jan	Feb	Mar	Apr	May	Jun	Jul	Aug	Sep	Oct	Nov	Dec	Avg ¹
All Farm Products 1910-14 = 100													
2002	604	625	667	597	608	614	626	632	623	606	616	619	620
2003	631	627	629	639	668	681	667	693	704	719	737	727	677
2004	707	733	771	791	816	816	793	767	739	724	734	709	758
2005	708	721	752	769	754	751	738	738	738	704	713	730	735
2006	715	720	718	714	728	745	741	761	759	741			734
1990-92 = 100													
2002	95	98	105	94	96	97	99	100	98	95	97	98	98
2003	99	99	99	101	105	107	105	109	111	113	116	114	107
2004	111	115	121	125	128	128	125	121	116	114	115	112	119
2005	111	114	118	121	119	118	116	116	116	111	112	115	116
2006	113	113	113	112	115	117	117	120	119	117			116
All Crops 1910-14 = 100													
2002	462	501	580	493	511	515	537	555	537	500	510	507	517
2003	506	510	524	541	570	577	538	559	549	549	569	575	547
2004	556	590	597	605	607	608	599	590	565	549	553	516	578
2005	505	526	568	591	570	587	565	566	548	507	516	546	550
2006	533	558	576	603	627	620	608	620	601	574			592
1990-92 = 100													
2002	94	102	118	100	104	104	109	113	109	101	103	103	105
2003	103	103	106	110	116	117	109	113	111	111	115	117	111
2004	113	120	121	123	123	123	121	120	115	111	112	105	117
2005	102	107	115	120	115	119	115	115	111	103	105	111	112
2006	108	113	117	122	127	126	123	126	122	116			120

¹ Simple average required for parity regulations. Weighted 1990-92 average equals 100. Average is year-to-date for current year.

**Indexes of Prices Received by Farmers, by Month and Annual Average,
United States, 2002-2006**

Year	Jan	Feb	Mar	Apr	May	Jun	Jul	Aug	Sep	Oct	Nov	Dec	Avg ¹
Food Grains 1910-14 = 100													
2002	284	270	271	267	274	302	333	365	411	410	394	396	331
2003	372	336	326	316	326	323	311	349	353	359	379	393	345
2004	393	395	402	408	407	384	366	357	364	363	362	359	380
2005	361	347	352	347	347	344	341	342	352	358	363	372	352
2006	372	383	395	398	423	426	414	416	431	485			414
1990-92 = 100													
2002	89	85	85	84	86	95	105	115	129	129	124	125	104
2003	117	106	102	99	102	102	98	110	111	113	119	124	109
2004	124	124	127	129	128	121	115	112	114	114	114	113	120
2005	114	109	111	109	109	108	107	108	111	113	114	117	111
2006	117	121	124	125	133	134	130	131	136	153			130
Feed Grains and Hay 1910-14 = 100													
2002	322	325	327	328	339	346	364	394	398	377	370	378	356
2003	375	380	380	382	391	392	365	363	360	342	353	368	371
2004	376	404	421	445	454	438	405	389	362	345	331	333	392
2005	340	326	339	342	352	369	376	357	335	306	297	323	339
2006	327	342	350	363	384	390	391	382	379	437			375
1990-92 = 100													
2002	90	91	91	92	95	97	102	110	111	105	104	106	100
2003	105	106	106	107	109	110	102	102	101	96	99	103	104
2004	105	113	118	124	127	123	113	109	101	96	93	93	110
2005	95	91	95	96	99	103	105	100	94	85	83	90	95
2006	92	96	98	102	107	109	109	107	106	122			105

¹ Simple average required for parity regulations. Weighted 1990-92 average equals 100. Average is year-to-date for current year.

**Indexes of Prices Received by Farmers, by Month and Annual Average,
United States, 2002-2006**

Year	Jan	Feb	Mar	Apr	May	Jun	Jul	Aug	Sep	Oct	Nov	Dec	Avg ¹
Cotton													
1910-14 = 100													
2002	231	237	240	230	226	285	298	292	303	333	363	374	284
2003	385	393	411	384	388	385	391	391	471	573	533	535	437
2004	526	523	521	510	505	506	455	411	428	428	365	332	459
2005	325	324	341	350	335	354	347	356	374	410	410	405	361
2006	411	414	426	411	396	403	398	387	400	388			403
1990-92 = 100													
2002	45	46	47	45	44	56	58	57	59	65	71	73	56
2003	75	77	80	75	76	75	76	76	92	112	104	104	85
2004	103	102	102	100	99	99	89	80	83	83	71	65	90
2005	64	63	67	68	65	69	68	69	73	80	80	79	70
2006	80	81	83	80	77	79	78	76	78	76			79
Tobacco ²													
1910-14 = 100													
2002	1761	1704	1478				1609	1561	1574	1609	1739	1735	1641
2003	1817	1800	1570	1065			1557	1570	1635	1643	1726	1735	1612
2004	1822	1891	1830	574					1648	1661	1726	1743	1421
2005	1857	1917	1265	1265	1265	1265	1363	1363	1363	1363	1363	1363	1418
2006	1363	1363	1363	1363	1363	1363	1363	1363	1363	1363			1363
1990-92 = 100													
2002	116	113	98				106	103	104	106	115	115	108
2003	120	119	104	70			103	104	108	109	114	115	107
2004	120	125	121	38					109	110	114	115	94
2005	123	127	84	84	84	84	90	90	90	90	90	90	94
2006	90	90	90	90	90	90	90	90	90	90			90

¹ Simple average required for parity regulations. Weighted 1990-92 average equals 100. Average is year-to-date for current year.

² Monthly prices discontinued July 2005.

**Indexes of Prices Received by Farmers, by Month and Annual Average,
United States, 2002-2006**

Year	Jan	Feb	Mar	Apr	May	Jun	Jul	Aug	Sep	Oct	Nov	Dec	Avg ¹
Oil-Bearing Crops 1910-14 = 100													
2002	415	419	432	440	455	483	528	538	483	494	530	537	480
2003	540	548	550	571	594	597	570	552	529	607	664	692	585
2004	714	805	901	935	930	882	824	661	518	529	528	545	731
2005	548	539	587	594	610	648	653	599	510	531	539	559	576
2006	573	555	546	541	556	550	549	511	475	517			537
1990-92 = 100													
2002	76	77	79	80	83	88	96	98	88	90	97	98	88
2003	99	100	101	104	109	109	104	101	97	111	121	127	107
2004	131	147	165	171	170	161	151	121	95	97	97	100	134
2005	100	99	107	108	111	119	119	109	93	97	99	102	105
2006	105	102	100	99	102	101	100	93	87	94			98
Fruit and Nuts 1910-14 = 100													
2002	585	580	668	632	729	794	831	849	866	861	768	644	734
2003	549	553	606	664	745	810	845	871	879	877	827	675	742
2004	629	703	738	676	838	933	939	1008	1086	1167	1067	838	885
2005	802	863	807	716	818	939	943	1011	1052	1019	998	859	902
2006	926	996	947	910	960	1188	1114	1138	1201	1239			1062
1990-92 = 100													
2002	84	83	96	91	104	114	119	122	124	123	110	92	105
2003	79	79	87	95	107	116	121	125	126	126	118	97	106
2004	90	101	106	97	120	134	135	144	156	167	153	120	127
2005	115	124	116	103	117	135	135	145	151	146	143	123	129
2006	133	143	136	130	137	170	160	163	172	177			152

¹ Simple average required for parity regulations. Weighted 1990-92 average equals 100. Average is year-to-date for current year.

**Indexes of Prices Received by Farmers, by Month and Annual Average,
United States, 2002-2006**

Year	Jan	Feb	Mar	Apr	May	Jun	Jul	Aug	Sep	Oct	Nov	Dec	Avg ¹
Commercial Vegetables 1910-14 = 100													
2002	1054	1283	1816	803	770	731	771	807	795	704	735	694	914
2003	756	763	830	878	935	1024	805	925	969	962	1048	1177	923
2004	849	966	773	884	753	747	836	889	901	1067	1112	807	882
2005	636	806	1096	1230	897	942	765	801	884	769	791	1132	896
2006	874	835	966	1081	1067	870	814	1009	1084	877			948
1990-92 = 100													
2002	158	192	272	120	115	109	115	121	119	105	110	104	137
2003	113	114	124	131	140	153	120	138	145	144	157	176	138
2004	127	144	116	132	113	112	125	133	135	160	166	121	132
2005	95	121	164	184	134	141	114	120	132	115	118	169	134
2006	131	125	145	162	160	130	122	151	162	131			142
Potatoes and Dry Beans 1910-14 = 100													
2002	620	645	715	699	748	806	884	651	520	466	524	547	652
2003	533	554	567	592	590	559	570	483	458	443	479	493	527
2004	488	504	530	568	558	558	552	495	485	444	477	506	514
2005	535	535	578	566	576	573	622	574	491	472	533	576	553
2006	596	622	683	671	678	716	901	672	542	504			659
1990-92 = 100													
2002	123	127	141	138	148	159	175	129	103	92	104	108	129
2003	105	110	112	117	117	110	113	96	90	87	95	97	104
2004	96	100	105	112	110	110	109	98	96	88	94	100	102
2005	106	106	114	112	114	113	123	113	97	93	105	114	109
2006	118	123	135	133	134	141	178	133	107	100			130

¹ Simple average required for parity regulations. Weighted 1990-92 average equals 100. Average is year-to-date for current year.

**Indexes of Prices Received by Farmers, by Month and Annual Average,
United States, 2002-2006**

Year	Jan	Feb	Mar	Apr	May	Jun	Jul	Aug	Sep	Oct	Nov	Dec	Avg ¹
Other Crops 1910-14 = 100													
2002	561	561	561	561	561	561	561	561	561	561	561	561	561
2003	564	564	564	564	564	564	564	564	564	564	564	564	564
2004	569	569	569	569	569	569	569	569	569	569	569	569	569
2005	578	578	578	578	578	578	578	578	578	578	578	578	578
2006	586	586	586	586	586	586	586	586	586	586	586	586	586
1990-92 = 100													
2002	114	114	114	114	114	114	114	114	114	114	114	114	114
2003	114	114	114	114	114	114	114	114	114	114	114	114	114
2004	115	115	115	115	115	115	115	115	115	115	115	115	115
2005	117	117	117	117	117	117	117	117	117	117	117	117	117
2006	119	119	119	119	119	119	119	119	119	119	119	119	119
Food Commodities 1990-92 = 100													
2002	96	100	108	93	94	95	97	97	95	93	96	95	97
2003	97	96	97	99	104	106	105	110	113	116	120	117	107
2004	112	116	123	126	131	131	128	124	119	118	122	117	122
2005	116	117	123	125	122	121	118	119	121	116	119	122	120
2006	118	116	115	113	115	119	118	123	123	117			118

¹ Simple average required for parity regulations. Weighted 1990-92 average equals 100. Average is year-to-date for current year.

**Indexes of Prices Received by Farmers, by Month and Annual Average,
United States, 2002-2006**

Year	Jan	Feb	Mar	Apr	May	Jun	Jul	Aug	Sep	Oct	Nov	Dec	Avg ¹
Livestock and Products 1910-14 = 100													
2002	742	734	723	684	681	689	678	669	655	664	684	698	692
2003	735	728	715	717	740	758	776	809	847	887	895	859	789
2004	842	859	934	967	1021	1020	981	933	908	903	916	918	934
2005	932	915	930	937	931	901	901	901	936	933	928	918	922
2006	902	871	844	803	799	845	848	881	897	897			859
1990-92 = 100													
2002	97	96	94	89	89	90	88	87	85	87	89	91	90
2003	96	95	93	93	96	99	101	105	110	116	117	112	103
2004	110	112	122	126	133	133	128	122	118	118	119	120	122
2005	121	119	121	122	121	117	117	117	122	122	121	120	120
2006	118	114	110	105	104	110	110	115	117	117			112
Meat Animals 1910-14 = 100													
2002	916	948	937	884	867	868	882	859	821	857	869	896	884
2003	946	963	946	972	1014	1027	1025	1054	1100	1169	1179	1123	1043
2004	1058	1060	1134	1151	1232	1248	1234	1227	1206	1203	1201	1194	1179
2005	1226	1214	1241	1274	1274	1205	1172	1178	1207	1231	1222	1230	1223
2006	1238	1220	1170	1133	1134	1181	1185	1214	1229	1211			1192
1990-92 = 100													
2002	90	93	92	87	85	85	87	84	81	84	86	88	87
2003	93	95	93	96	100	101	101	104	108	115	116	110	103
2004	104	104	112	113	121	123	121	121	119	118	118	117	116
2005	121	119	122	125	125	119	115	116	119	121	120	121	120
2006	122	120	115	111	112	116	117	119	121	119			117

¹ Simple average required for parity regulations. Weighted 1990-92 average equals 100. Average is year-to-date for current year.

**Indexes of Prices Received by Farmers, by Month and Annual Average,
United States, 2002-2006**

Year	Jan	Feb	Mar	Apr	May	Jun	Jul	Aug	Sep	Oct	Nov	Dec	Avg ¹
Dairy Products 1910-14 = 100													
2002	836	805	774	768	744	707	682	694	713	744	731	731	744
2003	725	701	676	676	676	676	744	817	891	922	885	848	770
2004	811	836	953	1112	1186	1118	989	916	953	959	996	1008	986
2005	989	946	953	934	903	885	910	910	940	959	928	910	931
2006	891	830	774	744	737	731	725	737	793	817			778
1990-92 = 100													
2002	104	100	96	96	93	88	85	87	89	93	91	91	93
2003	90	87	84	84	84	84	93	102	111	115	110	106	96
2004	101	104	119	139	148	139	123	114	119	119	124	126	123
2005	123	118	119	116	113	110	113	113	117	119	116	113	116
2006	111	103	96	93	92	91	90	92	99	102			97
Poultry and Eggs 1910-14 = 100													
2002	295	271	271	244	257	280	265	262	258	243	269	270	265
2003	303	291	291	279	289	307	307	316	322	330	350	339	310
2004	373	390	414	392	397	411	406	367	330	322	331	332	372
2005	343	337	342	341	344	345	353	350	359	334	341	329	343
2006	304	290	302	273	270	311	309	332	334	331			306
1990-92 = 100													
2002	105	96	96	87	92	100	94	93	92	86	96	96	94
2003	108	104	104	99	103	109	109	112	115	118	124	121	111
2004	133	139	147	139	141	146	144	130	117	114	118	118	132
2005	122	120	122	121	122	123	126	125	134	125	127	123	124
2006	113	108	113	102	101	116	116	124	125	124			114

¹ Simple average required for parity regulations. Weighted 1990-92 average equals 100. Average is year-to-date for current year.

Reliability of Prices Received Estimates

Definition: Prices received represent sales from producers to first buyers. They include all grades and qualities. The average commodity price from the survey multiplied by the total quantity marketed theoretically should give the total cash receipts for the commodity.

Survey Procedures: Primary sales data used to determine grain prices were obtained from probability samples of about 2000 mills and elevators. These procedures ensure that virtually all grain moving into commercial channels has a chance of being included in the survey. Generally, States surveyed account for 90 percent or more of total U.S. production. Livestock prices are obtained from packers, stockyards, auctions, dealers, and market check data from AMS-USDA, private marketing organizations, and state commodity groups and agencies. Inter-farm sales of grain and livestock are not included since they represent very small percentages of the total marketings. Grain marketed for seed is also excluded. Fruit and vegetable prices are obtained from sample surveys and market check data from AMS-USDA, private marketing organizations, state agencies, and universities.

Summary and Estimation Procedures: Survey quantities sold are expanded by strata to state levels and used to weight average strata prices to a state average. State prices are then weighted to a U.S. price based on expanded marketings. Recommendations are prepared by the State Field Offices and reviewed by the Agricultural Statistics Board in Washington, D.C. State recommendations are reviewed for reasonableness with survey data, other States, and recent historic estimates.

Revisions: For most items, the current month's preliminary price represents a 3-5 day period around the 15th of the month. Previous month's prices represent actual dollars received for quantities sold during the entire month. Revisions are published in monthly issues of *Agricultural Prices*.

Reliability: U.S. price estimates based on probability surveys generally have a sampling error of less than one percent for the major commodities such as corn, wheat, soybeans, cotton, and rice. Current methods of summarization for non-probability commodities are not designed directly to calculate sampling errors. However, analytical measures approximate the U.S. relative sampling errors at around five percent. Any nonsampling errors are attributed to such things as the inability to obtain correct information, differences in interpreting questions or definitions, mistakes in coding or processing the data, etc. Efforts are made at each step in the survey process to minimize these nonsampling errors.

Prices Paid by Farmers

The October Index of Prices Paid for Commodities and Services, Interest, Taxes, and Farm Wage Rates (PPITW) at 146 (1990-92=100), is unchanged from September 2006 but up 1.4 percent from October 2005.

PRODUCTION INDEX: The October index, at 144, decreased 0.7 percent from last month but increased 0.7 percent from last year. Lower prices in October for diesel fuel, feeder cattle, gasoline, and LP gas more than offset higher prices for feed grains, nitrogen fertilizers, herbicides, and feed concentrates.

Feed: The October index, at 125, increased 2.5 percent from September and increased 6.8 percent from last October. Since September, higher prices for feed grains, feed concentrates, and hay & forages offset slightly lower prices for complete feeds and feed supplements.

Livestock & Poultry: The October index for livestock and poultry purchases, at 134, decreased 2.9 percent from last month and decreased 5.6 percent from last year. Since September, prices are lower for feeder cattle and milk cows. The October feeder cattle price, at \$115.20 per cwt, is down \$3.30 per cwt from the September price. October feeder pigs are unchanged from September and averaged \$115.00 per cwt.

Fertilizer: The October index, at 172, is up 1.8 percent from September but 1.7 percent below October a year ago. Since September, higher prices for nitrogen fertilizers and mixed fertilizers more than offset lower prices for potash & phosphate fertilizers.

Agricultural Chemicals: The October index, at 134, increased 2.3 percent from last month and 5.5 percent above last October. Prices are higher in October for herbicides, insecticides, and fungicides.

Fuels: The October index, at 191, is down 11 percent from September and 33 percent below October 2005. Compared with last month, prices are lower for diesel fuel, gasoline, and LP gas.

Farm Machinery: The October index, at 181, is unchanged from September but 4.0 percent above last October. Since September, higher prices for other machinery offset lower prices for tractors.

CONSUMER PRICE INDEX: The September 2006 Consumer Price Index for all urban consumers (CPI-U) decreased 0.5 percent before seasonal adjustment to a level of 202.9 (1982-84=100). This compares with the August index of 203.9. For the 12-month period ending in September, the overall index has increased 2.1 percent.

**Indexes of Prices Paid by Farmers and Related Parity Ratios
United States, October 2006 With Comparisons**

Indexes and Ratios	1910-14 = 100			1990-92 = 100		
	2005	2006		2005	2006	
	Oct	Sep	Oct	Oct	Sep	Oct
Prices Paid by Farmers for Commodities & Services, Interest, Taxes, & Wage Rates (PPITW)	1,915	*1,944	1,939	144	*146	146
Production	1,389	*1,402	1,396	143	*145	144
Feed	572	*597	611	117	*122	125
Livestock & Poultry	1,820	*1,761	1,719	142	*138	134
Seeds	1,694	1,838	1,838	171	186	186
Fertilizer	652	*629	642	175	*169	172
Agricultural Chemicals	743	*771	784	127	*131	134
Fuels	2,190	*1,656	1,474	284	*215	191
Farm Supplies & Repairs	1,006	*1,031	1,031	142	*145	145
Autos & Trucks	3,000	*2,952	2,944	113	111	111
Farm Machinery	4,520	*4,695	4,681	174	*181	181
Building Materials	1,959	*2,092	2,098	144	154	154
Farm Services & Rent	1,502	*1,570	1,570			
Farm Services				127	*132	132
Rent				125	131	131
Interest ¹	2,731	2,981	2,981	109	119	119
Taxes ²	3,383	3,426	3,426	126	128	128
Wage Rates	6,209	6,293	6,293	166	168	168
Production, Interest, Taxes, & Wage Rates (PITW)	1,920	*1,948	1,941	143	*145	145
Family Living-CPI ³	1,892	*1,927	1,927	148	151	151
Ratio (Received\Paid) Parity Ratio ⁴	37	*39	38	77	*82	80
Parity Ratio Adjusted ⁵	40	*42	41			
PPITW Adjusted for Productivity ⁶	1,259	*1,278	1,277			
Crop Sector (PPITW)				148	*150	150
Livestock Sector (PPITW)				140	*142	141
Farm Sector (Production)				135	*138	138
Non-Farm Sector (Production)				148	*148	147

* Revised.

¹ Interest per acre on farm real estate debt and interest rate on farm non-real estate debt.

² Farm real estate taxes payable per acre.

³ Bureau of Labor Statistics, Consumer Price Index for all urban consumers (CPI-U), for the previous month converted by the USDA.

⁴ Ratio of index of prices received to PPITW (1910-14=100).

⁵ Based on estimated cash receipts, from marketings and government payments, the preliminary adjustment factor is 1.079 for 2006 and the revised factor is 1.096 for 2005.

⁶ PPITW is adjusted based on productivity trend for the prior 15 years.

**Prices Paid Indexes and Annual Weights for Input Components and
Sub-Components United States, October 2006 With Comparisons**

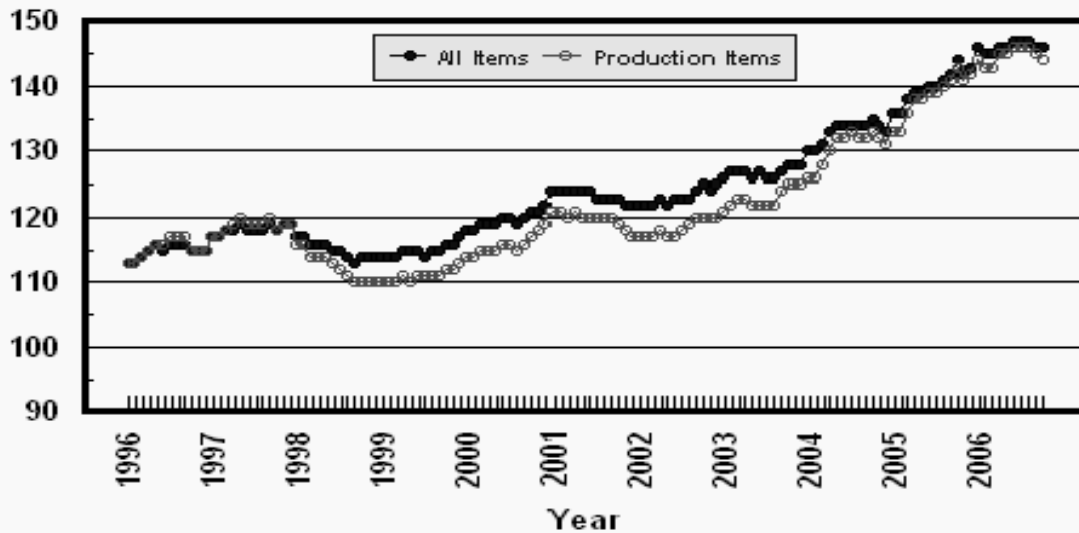
Index	Relative Weights 5-Year Moving Average ¹		Input Indexes		
	2005	2006	2005	2006	
	<i>Percent</i>	<i>Percent</i>	Oct <i>(1990-92=100)</i>	Sep <i>(1990-92=100)</i>	Oct <i>(1990-92=100)</i>
Production Items	66.4	66.8	143	*145	144
Feed	10.7	10.9	117	*122	125
Feed Grains	1.5	1.6	79	*97	119
Complete Feeds	5.2	5.3	119	*120	120
Hay/Forages	1.3	1.4	126	140	141
Concentrates	1.7	1.7	128	*121	123
Supplements	0.9	0.9	138	*149	148
Livestock & Poultry	7.7	7.6	142	*138	134
Feeder Cattle	6.0	6.0	143	*140	136
Feeder Pigs	0.6	0.6	139	*125	125
Milk Cow Replacements	0.6	0.6	166	149	146
Poultry	0.5	0.5	109	109	109
Seeds	3.5	3.6	171	186	186
Field Crops	3.2	3.3	177	191	191
Grasses/Legumes	0.3	0.3	118	133	133
Fertilizer	4.3	4.3	175	*169	172
Mixed Fertilizer	1.9	1.9	146	*150	151
Nitrogen	1.8	1.8	210	*191	199
Potash & Phosphate	0.6	0.6	160	*161	159
Agricultural Chemicals	3.6	3.5	127	*131	134
Herbicides	2.3	2.2	120	*127	129
Insecticides	0.8	0.8	145	*145	148
Fungicides/Other	0.5	0.5	125	*128	131
Fuels	2.7	2.9	284	*215	191
Diesel	1.6	1.7	318	*227	205
Gasoline	0.8	0.8	229	*191	169
LP Gas	0.4	0.4	256	*213	179
Farm Supplies & Repairs	5.2	5.0	142	*145	145
Supplies	1.7	1.7	132	*138	138
Repairs	3.5	3.3	147	149	149
Autos & Trucks	1.8	1.8	113	111	111
Autos	0.2	0.2	108	*109	109
Trucks	1.5	1.6	114	111	111
Farm Machinery	4.0	4.4	174	*181	181
Tractors	0.9	1.0	155	*160	158
Self-Propelled	1.6	1.7	181	188	188
Other Machinery	1.5	1.7	179	*186	186
Building Materials	3.6	4.0	144	154	154
Farm Services	12.4	12.2	127	*132	132
Custom Rates	1.3	1.3	121	123	123
Other Services	11.1	10.9	127	*133	133
Rent	6.9	6.7	125	131	131
Cash	3.7	3.6	151	159	159
Share	3.2	3.1	94	98	98
Interest	4.5	4.2	109	119	119
Taxes	2.9	2.9	126	128	128
Wage Rates	7.6	7.8	166	168	168
Family Living-CPI	18.6	18.4	148	151	151

* Revised.

¹ Weights may not add due to rounding.

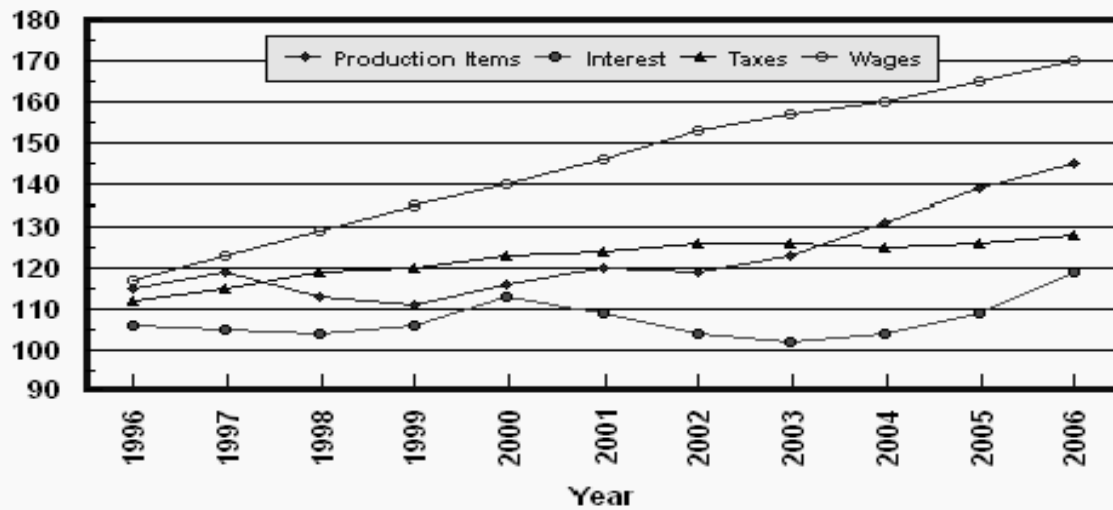
Prices Paid by Farmers, Major Indexes US, by Month

Percent (1990-92=100)



Prices Paid by Farmers, Major Indexes US, Annual Averages 1/

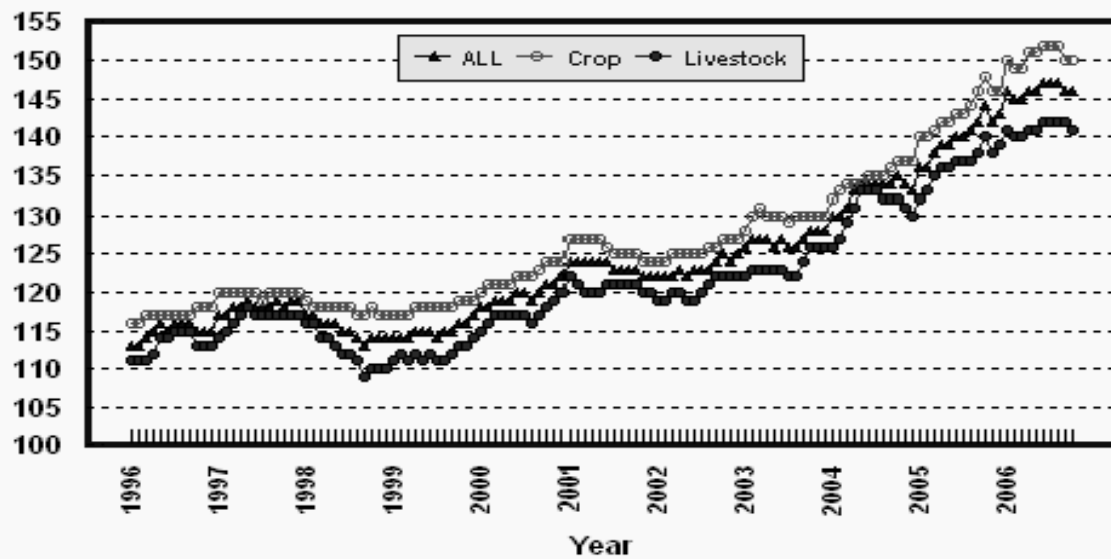
Percent (1990-92=100)



1/ Index values for 2006 are year-to-date averages.

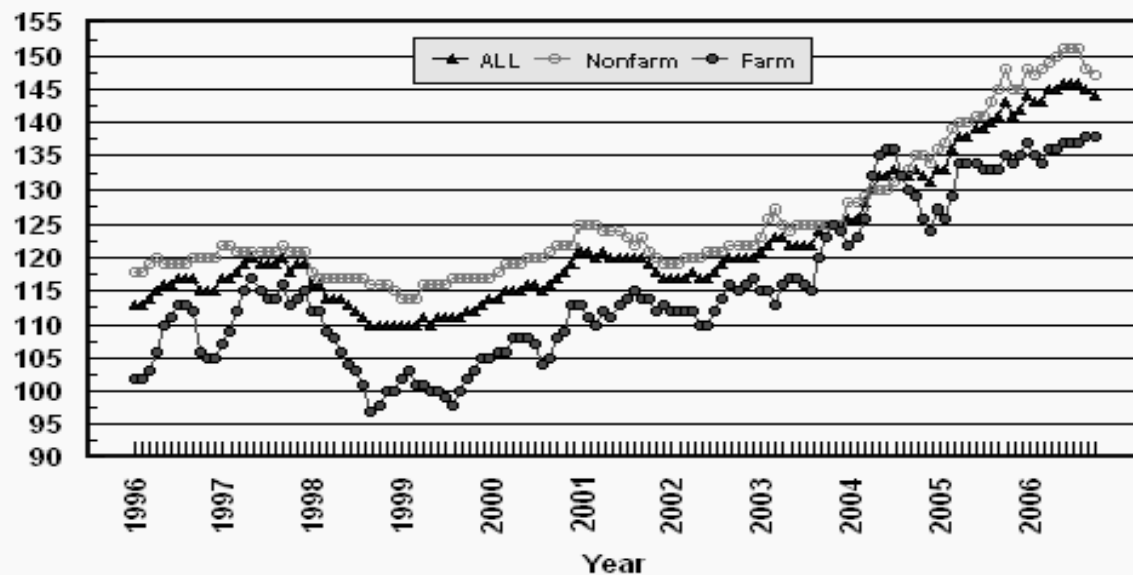
Prices Paid by Farmers, Indexes, All Items US, By Farm Type

Percent (1990-92=100)



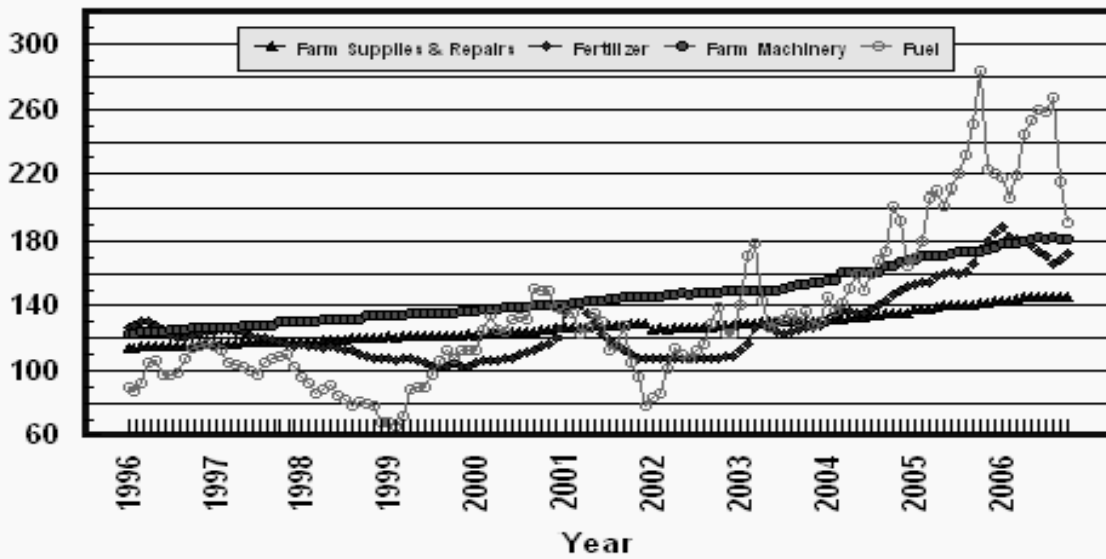
Prices Paid by Farmers, Indexes, All Production Items US, By Sector Origin

Percent (1990-92=100)



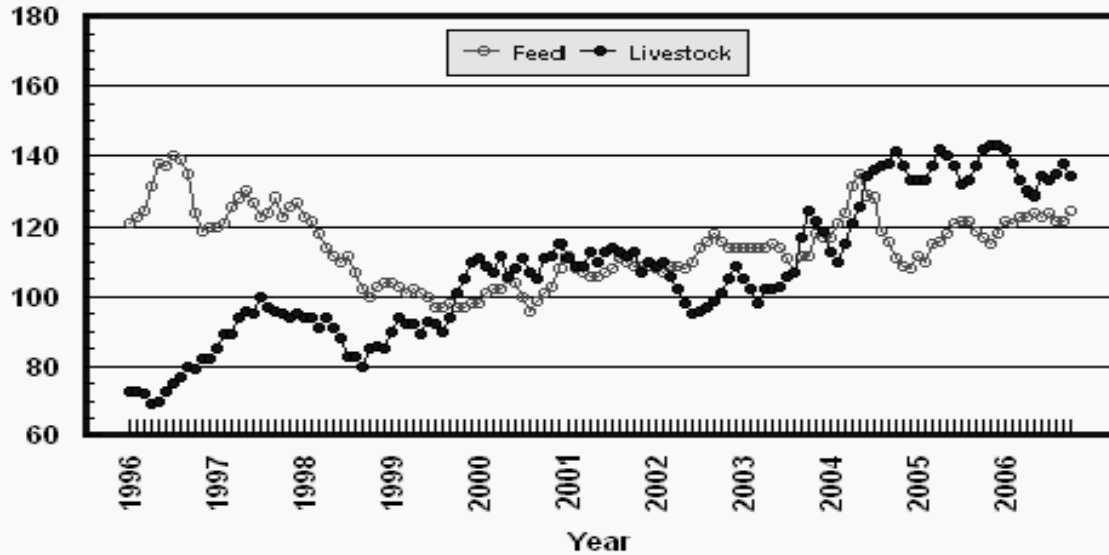
Prices Paid by Farmers, Selected Production Indexes US, By Non-Farm Sector

Percent (1990-92=100)



Prices Paid by Farmers, Selected Production Indexes US, By Farm Sector

Percent (1990-92=100)



Feed Price Ratios: United States, October 2006 with Comparisons

Feed Price Ratio ¹	2005	2006	
	Oct	Sep	Oct
Broiler-Feed: Pounds of Broiler Grower Feed equal in value to 1 pound of broiler, live weight	7.3	*7.1	6.0
Market Egg Feed: Pounds of Laying Feed equal in Value to 1 dozen eggs	6.6	*7.3	6.5
Hog-Corn: Bushels of Corn equal in value to 100 pounds of hog, live weight	25.8	*22.2	17.2
Milk-Feed: Pounds of 16% Mixed Dairy Feed equal in value to 1 pound of Whole Milk	3.42	*2.58	2.42
Steer & Heifer-Corn: Bushels of Corn equal in value to 100 pounds of Steer & Heifers, live weight	52.8	*43.5	34.7
Turkey-Feed: Pounds of Turkey Grower equal in value to 1 pound of Turkey, live weight	9.5	9.5	9.5

* Revised.

¹ Effective January 1995, prices of commercial prepared feeds are based on current U.S. prices received for corn, soybeans, alfalfa hay, and all wheat.

**Prices Used to Calculate Feed Price Ratios:
United States, October 2006 with Comparisons**

Commodity	Unit	Entire Month		Preliminary
		Oct 2005	Sep 2006	Oct 2006
Broilers, Live	Lb	0.430	0.420	0.400
Eggs, Market	Doz	0.317	0.372	0.382
Hogs, All	Cwt	47.00	48.90	46.90
Milk, All	Cwt	15.60	12.90	13.30
Steers and Heifers	Cwt	96.10	95.80	94.40
Turkeys, Live	Lb	0.525	0.541	0.634
Corn	Bu	1.82	2.20	2.72
Hay, Alfalfa, Baled	Ton	105.00	112.00	112.00
Soybeans	Bu	5.67	5.24	5.46
Wheat, All	Bu	3.43	4.06	4.65

**Feeder Livestock: Prices Paid, United States
October 2006 with Comparisons**

Commodity	Unit	2005	2006	
		Oct	Sep	Oct
		<i>Dollars</i>	<i>Dollars</i>	<i>Dollars</i>
Feeders and Stockers Cattle and Calves	Cwt	120.80	*118.50	115.20
Feeder Pigs	Cwt	128.00	115.00	115.00

* Revised.

**Prices Paid Indexes: Monthly and Annual Average
United States, 2002-2006**

Year	Jan	Feb	Mar	Apr	May	Jun	Jul	Aug	Sep	Oct	Nov	Dec	Avg ¹
Commodities and Services, Interest, Taxes, and Wage Rates (PPITW) 1910-14 = 100													
2002	1621	1622	1628	1633	1628	1631	1634	1642	1651	1659	1655	1660	1639
2003	1673	1686	1692	1688	1682	1684	1679	1678	1695	1707	1709	1707	1690
2004	1725	1730	1749	1768	1784	1785	1787	1781	1782	1796	1790	1776	1771
2005	1812	1817	1840	1854	1852	1862	1864	1873	1889	1915	1892	1898	1864
2006	1938	1928	1932	1944	1951	1960	1961	1959	1944	1939			1946
1990-92 = 100													
2002	122	122	122	123	122	123	123	123	124	125	124	125	123
2003	126	127	127	127	126	127	126	126	127	128	128	128	127
2004	130	130	131	133	134	134	134	134	134	135	134	133	133
2005	136	136	138	139	139	140	140	141	142	144	142	143	140
2006	146	145	145	146	146	147	147	147	146	146			146
Items Used for Production, Interest, Taxes, and Wage Rates (PITW) 1910-14 = 100													
2002	1608	1608	1613	1617	1610	1614	1617	1626	1636	1645	1640	1647	1623
2003	1661	1675	1679	1675	1669	1671	1664	1662	1681	1696	1700	1697	1678
2004	1718	1722	1742	1764	1781	1781	1784	1777	1778	1793	1784	1769	1766
2005	1812	1816	1841	1855	1854	1865	1866	1874	1889	1920	1896	1904	1866
2006	1950	1937	1940	1951	1957	1967	1967	1965	1948	1941			1952
1990-92 = 100													
2002	120	120	120	120	120	120	120	121	122	122	122	123	121
2003	124	125	125	125	124	124	124	124	125	126	127	126	125
2004	128	128	130	131	133	133	133	132	132	133	133	132	132
2005	135	135	137	138	138	139	139	140	141	143	141	142	139
2006	145	144	144	145	146	146	146	146	145	145			145

¹ Simple average and is year-to-date for current year.

**Prices Paid Indexes: Monthly and Annual Average
United States, 2002-2006**

Year	Jan	Feb	Mar	Apr	May	Jun	Jul	Aug	Sep	Oct	Nov	Dec	Avg ¹
Items Used for Production 1910-14 = 100													
2002	1131	1130	1135	1141	1135	1138	1146	1153	1162	1164	1159	1165	1147
2003	1172	1184	1188	1188	1182	1184	1183	1181	1198	1208	1212	1209	1191
2004	1218	1222	1240	1263	1278	1278	1284	1278	1279	1287	1279	1266	1264
2005	1290	1293	1315	1336	1335	1345	1345	1353	1366	1389	1367	1375	1342
2006	1397	1385	1388	1404	1409	1418	1419	1417	1402	1396			1404
1990-92 = 100													
2002	117	117	117	118	117	117	118	119	120	120	120	120	118
2003	121	122	123	123	122	122	122	122	124	125	125	125	123
2004	126	126	128	130	132	132	133	132	132	133	132	131	131
2005	133	133	136	138	138	139	139	140	141	143	141	142	139
2006	144	143	143	145	145	146	146	146	145	144			145
Feed 1910-14 = 100													
2002	529	524	530	534	529	539	555	568	576	566	557	556	547
2003	556	559	556	555	560	556	541	523	546	545	576	574	554
2004	573	592	606	639	658	632	626	583	567	543	533	525	590
2005	545	538	559	569	577	589	596	593	579	572	562	576	571
2006	594	591	599	602	604	599	605	594	597	611			600
1990-92 = 100													
2002	108	107	109	109	108	110	114	116	118	116	114	114	112
2003	114	114	114	114	115	114	111	107	112	112	118	117	114
2004	117	121	124	131	135	129	128	119	116	111	109	108	121
2005	112	110	115	116	118	121	122	122	119	117	115	118	117
2006	122	121	123	123	124	123	124	122	122	125			123

¹ Simple average and is year-to-date for current year.

**Prices Paid Indexes: Monthly and Annual Average
United States, 2002-2006**

Year	Jan	Feb	Mar	Apr	May	Jun	Jul	Aug	Sep	Oct	Nov	Dec	Avg ¹
Livestock and Poultry ² 1910-14 = 100													
2002	1395	1406	1362	1302	1252	1214	1224	1246	1260	1288	1342	1396	1307
2003	1342	1299	1255	1309	1304	1323	1354	1372	1494	1605	1565	1522	1395
2004	1442	1406	1473	1549	1616	1717	1742	1757	1767	1799	1753	1707	1644
2005	1699	1697	1754	1821	1785	1753	1684	1698	1754	1820	1824	1830	1760
2006	1816	1765	1705	1667	1652	1710	1707	1722	1761	1719			1722
1990-92 = 100													
2002	109	110	106	102	98	95	96	97	99	101	105	109	102
2003	105	102	98	102	102	103	106	107	117	125	122	119	109
2004	113	110	115	121	126	134	136	137	138	141	137	133	128
2005	133	133	137	142	140	137	132	133	137	142	143	143	138
2006	142	138	133	130	129	134	133	135	138	134			135
Seeds 1910-14 = 100													
2002	1329	1329	1329	1426	1426	1426	1426	1426	1426	1426	1426	1426	1402
2003	1426	1426	1426	1553	1553	1553	1553	1553	1553	1553	1553	1553	1521
2004	1553	1553	1553	1564	1564	1564	1564	1564	1564	1564	1564	1564	1561
2005	1564	1564	1564	1694	1694	1694	1694	1694	1694	1694	1694	1694	1662
2006	1694	1694	1694	1838	1838	1838	1838	1838	1838	1838	1838	1838	1795
1990-92 = 100													
2002	134	134	134	144	144	144	144	144	144	144	144	144	142
2003	144	144	144	157	157	157	157	157	157	157	157	157	154
2004	157	157	157	158	158	158	158	158	158	158	158	158	158
2005	158	158	158	171	171	171	171	171	171	171	171	171	168
2006	171	171	171	186	186	186	186	186	186	186	186	186	182

¹ Simple average and is year-to-date for current year.

² Monthly feeder cattle prices used in the Prices Paid program have been revised back to January 2005. The revised feeder cattle prices can be obtained at www.nass.usda.gov.

**Prices Paid Indexes: Monthly and Annual Average
United States, 2002-2006**

Year	Jan	Feb	Mar	Apr	May	Jun	Jul	Aug	Sep	Oct	Nov	Dec	Avg ¹
Fertilizer 1910-14 = 100													
2002	401	402	400	398	399	403	401	399	397	400	405	407	401
2003	419	434	471	479	473	462	457	460	464	469	471	477	461
2004	489	501	512	510	504	509	513	525	532	548	559	565	522
2005	572	574	575	589	596	600	598	600	619	652	670	690	611
2006	703	684	675	670	658	647	638	618	629	642			656
1990-92 = 100													
2002	108	108	107	107	107	108	107	107	107	107	109	109	108
2003	112	117	126	129	127	124	123	124	125	126	126	128	124
2004	131	134	137	137	135	136	138	141	143	147	150	152	140
2005	153	154	154	158	160	161	160	161	166	175	180	185	164
2006	189	183	181	180	177	174	171	166	169	172			176
Agricultural Chemicals 1910-14 = 100													
2002	701	694	697	696	697	698	700	702	703	698	700	711	700
2003	714	714	706	708	707	709	708	708	707	710	715	706	709
2004	708	711	710	707	708	710	715	706	707	704	703	705	708
2005	715	707	707	708	711	715	720	730	737	743	747	737	723
2006	743	743	741	737	756	756	761	758	771	784			755
1990-92 = 100													
2002	120	118	119	119	119	119	119	120	120	119	119	121	119
2003	122	122	120	121	121	121	121	121	121	121	122	120	121
2004	121	121	121	121	121	121	122	120	120	120	120	120	121
2005	122	120	121	121	121	122	123	124	126	127	127	126	123
2006	127	127	126	126	129	129	130	129	131	134			129

¹ Simple average and is year-to-date for current year.

**Prices Paid Indexes: Monthly and Annual Average
United States, 2002-2006**

Year	Jan	Feb	Mar	Apr	May	Jun	Jul	Aug	Sep	Oct	Nov	Dec	Avg ¹
Fuels 1910-14 = 100													
2002	644	661	783	878	852	836	868	900	997	1074	949	950	866
2003	1080	1322	1371	1105	983	1011	1020	1050	1012	1054	988	1001	1083
2004	1121	1055	1096	1168	1226	1156	1236	1303	1333	1553	1492	1271	1251
2005	1316	1393	1593	1624	1555	1636	1695	1792	1937	2190	1721	1705	1680
2006	1686	1595	1693	1882	1949	2008	2001	2063	1656	1474			1801
1990-92 = 100													
2002	83	86	101	114	110	108	112	117	129	139	123	123	112
2003	140	171	178	143	127	131	132	136	131	137	128	130	140
2004	145	137	142	151	159	150	160	169	173	201	193	165	162
2005	170	180	206	210	202	212	220	232	251	284	223	221	218
2006	218	207	219	244	253	260	259	267	215	191			233
Farm Supplies and Repairs 1910-14 = 100													
2002	888	891	890	898	900	900	903	902	903	908	908	908	900
2003	914	915	915	920	920	920	924	924	924	928	926	927	921
2004	937	938	936	944	945	946	949	949	955	959	960	964	949
2005	980	981	981	989	991	991	993	1002	1003	1006	1011	1012	995
2006	1014	1018	1020	1027	1028	1028	1029	1030	1031	1031			1026
1990-92 = 100													
2002	125	126	125	127	127	127	127	127	127	128	128	128	127
2003	129	129	129	130	130	130	130	130	130	131	131	131	130
2004	132	132	132	133	133	133	134	134	135	135	135	136	134
2005	138	138	138	139	140	140	140	141	141	142	142	143	140
2006	143	143	144	145	145	145	145	145	145	145			145

¹ Simple average and is year-to-date for current year.

**Prices Paid Indexes: Monthly and Annual Average
United States, 2002-2006**

Year	Jan	Feb	Mar	Apr	May	Jun	Jul	Aug	Sep	Oct	Nov	Dec	Avg ¹
Autos and Trucks 1910-14 = 100													
2002	3146	3107	3093	3086	3073	3061	3054	3041	3059	3076	3093	3099	3082
2003	3003	2991	2993	2979	2966	2949	2936	2938	2931	2934	2956	2966	2962
2004	3052	3060	3046	3042	3029	3021	2994	2969	2969	2985	3034	3067	3022
2005	3091	3093	3071	3062	3060	3042	2991	2959	2974	3000	3016	3019	3032
2006	3036	3040	3031	3019	2999	2985	2976	2961	2952	2944			2994
1990-92 = 100													
2002	118	117	116	116	116	115	115	114	115	116	116	117	116
2003	113	112	113	112	112	111	110	110	110	110	111	112	111
2004	115	115	115	114	114	114	113	112	112	112	114	115	114
2005	116	116	115	115	115	114	112	111	112	113	113	114	114
2006	114	114	114	114	113	112	112	111	111	111			113
Farm Machinery 1910-14 = 100													
2002	3788	3794	3816	3822	3824	3821	3826	3827	3841	3846	3853	3852	3826
2003	3853	3854	3855	3860	3875	3889	3909	3940	3956	3973	3988	4002	3913
2004	4029	4048	4182	4173	4181	4175	4182	4182	4243	4270	4326	4353	4195
2005	4386	4432	4427	4423	4442	4456	4474	4493	4506	4520	4544	4560	4472
2006	4605	4625	4644	4659	4680	4710	4698	4710	4695	4681			4671
1990-92 = 100													
2002	146	146	147	147	148	147	148	148	148	148	149	149	148
2003	149	149	149	149	150	150	151	152	153	153	154	154	151
2004	156	156	161	161	161	161	161	161	164	165	167	168	162
2005	169	171	171	171	171	172	173	173	174	174	175	176	173
2006	178	178	179	180	181	182	181	182	181	181			180

¹ Simple average and is year-to-date for current year.

**Prices Paid Indexes: Monthly and Annual Average
United States, 2002-2006**

Year	Jan	Feb	Mar	Apr	May	Jun	Jul	Aug	Sep	Oct	Nov	Dec	Avg ¹
Building Materials 1910-14 = 100													
2002	1642	1642	1647	1652	1655	1656	1658	1669	1663	1658	1653	1652	1654
2003	1655	1663	1665	1671	1671	1672	1679	1680	1694	1696	1701	1701	1679
2004	1704	1738	1757	1800	1824	1824	1831	1856	1868	1867	1866	1872	1817
2005	1892	1910	1914	1917	1913	1918	1921	1917	1935	1959	1976	1986	1930
2006	2013	2022	2028	2041	2057	2066	2080	2087	2092	2098			2058
1990-92 = 100													
2002	121	121	121	122	122	122	122	123	122	122	122	122	122
2003	122	122	123	123	123	123	124	124	125	125	125	125	124
2004	125	128	129	133	134	134	135	137	137	137	137	138	134
2005	139	141	141	141	141	141	141	141	142	144	145	146	142
2006	148	149	149	150	151	152	153	154	154	154			151
Farm Services and Rent ² 1910-14 = 100													
2002	1409	1408	1407	1405	1407	1418	1418	1418	1418	1411	1409	1410	1412
2003	1425	1426	1426	1429	1431	1440	1442	1442	1442	1432	1427	1427	1432
2004	1433	1433	1434	1434	1438	1449	1449	1453	1452	1444	1441	1444	1442
2005	1484	1484	1485	1487	1491	1505	1507	1507	1509	1502	1502	1501	1497
2006	1543	1545	1548	1548	1552	1567	1568	1569	1570	1570			1558
Farm Services 1990-92 = 100													
2002	118	118	117	117	117	119	119	119	119	118	118	118	118
2003	119	119	119	120	120	121	121	121	121	120	119	119	120
2004	120	120	120	120	121	122	122	123	123	122	121	122	121
2005	124	124	124	125	125	127	127	127	128	127	127	127	126
2006	129	129	129	129	130	132	132	132	132	132			131
Rent 1990-92 = 100													
2002	119	119	119	119	119	119	119	119	119	119	119	119	119
2003	120	120	120	120	120	120	120	120	120	120	120	120	120
2004	120	120	120	120	120	120	120	120	120	120	120	120	120
2005	125	125	125	125	125	125	125	125	125	125	125	125	125
2006	131	131	131	131	131	131	131	131	131	131			131

¹ Simple average and is year-to-date for current year.

² For the 1990-92=100 base period, the Farm Services and Rent Index is separated.

**Prices Paid Indexes: Monthly and Annual Average
United States, 2002-2006**

Year	Jan	Feb	Mar	Apr	May	Jun	Jul	Aug	Sep	Oct	Nov	Dec	Avg ¹
Interest 1910-14 = 100													
2002	2619	2619	2619	2619	2619	2619	2619	2619	2619	2619	2619	2619	2619
2003	2566	2566	2566	2566	2566	2566	2566	2566	2566	2566	2566	2566	2566
2004	2597	2597	2597	2597	2597	2597	2597	2597	2597	2597	2597	2597	2597
2005	2731	2731	2731	2731	2731	2731	2731	2731	2731	2731	2731	2731	2731
2006	2981	2981	2981	2981	2981	2981	2981	2981	2981	2981	2981	2981	2981
1990-92 = 100													
2002	104	104	104	104	104	104	104	104	104	104	104	104	104
2003	102	102	102	102	102	102	102	102	102	102	102	102	102
2004	104	104	104	104	104	104	104	104	104	104	104	104	104
2005	109	109	109	109	109	109	109	109	109	109	109	109	109
2006	119	119	119	119	119	119	119	119	119	119	119	119	119
Taxes 1910-14 = 100													
2002	3387	3387	3387	3387	3387	3387	3387	3387	3387	3387	3387	3387	3387
2003	3368	3368	3368	3368	3368	3368	3368	3368	3368	3368	3368	3368	3368
2004	3339	3339	3339	3339	3339	3339	3339	3339	3339	3339	3339	3339	3339
2005	3383	3383	3383	3383	3383	3383	3383	3383	3383	3383	3383	3383	3383
2006	3426	3426	3426	3426	3426	3426	3426	3426	3426	3426	3426	3426	3426
1990-92 = 100													
2002	126	126	126	126	126	126	126	126	126	126	126	126	126
2003	126	126	126	126	126	126	126	126	126	126	126	126	126
2004	125	125	125	125	125	125	125	125	125	125	125	125	125
2005	126	126	126	126	126	126	126	126	126	126	126	126	126
2006	128	128	128	128	128	128	128	128	128	128	128	128	128
Wage Rates 1910-14 = 100													
2002	5796	5796	5796	5705	5705	5705	5537	5537	5537	5783	5783	5783	5705
2003	6035	6035	6035	5919	5919	5919	5738	5738	5738	5848	5848	5848	5885
2004	6080	6080	6080	5964	5964	5964	5841	5841	5841	6022	6022	6022	5977
2005	6319	6319	6319	6041	6041	6041	6061	6061	6061	6209	6209	6209	6158
2006	6526	6526	6526	6319	6326	6326	6293	6293	6293	6293	6293	6293	6372
1990-92 = 100													
2002	155	155	155	153	153	153	148	148	148	155	155	155	153
2003	161	161	161	158	158	158	153	153	153	156	156	156	157
2004	163	163	163	159	159	159	156	156	156	161	161	161	160
2005	169	169	169	161	161	161	162	162	162	166	166	166	165
2006	174	174	174	169	169	169	168	168	168	168	168	168	170

¹ Simple average and is year-to-date for current year.

**Prices Paid Indexes: Monthly and Annual Average
United States, 2002-2006**

Year	Jan	Feb	Mar	Apr	May	Jun	Jul	Aug	Sep	Oct	Nov	Dec	Avg ¹
Family Living 1910-14 = 100													
2002	1682	1689	1698	1708	1708	1709	1711	1716	1719	1722	1722	1718	1709
2003	1726	1739	1749	1746	1743	1745	1747	1753	1759	1757	1752	1750	1747
2004	1759	1768	1780	1786	1796	1802	1799	1800	1804	1813	1814	1807	1794
2005	1811	1822	1836	1848	1846	1847	1856	1865	1888	1892	1877	1869	1855
2006	1883	1887	1898	1914	1923	1927	1933	1937	1927	1927	1927	1927	1916
1990-92 = 100													
2002	131	132	133	133	133	133	134	134	134	134	134	134	133
2003	135	136	137	136	136	136	136	137	137	137	137	137	136
2004	137	138	139	139	140	141	141	141	141	142	142	141	140
2005	141	142	143	144	144	144	145	146	147	148	147	146	145
2006	147	147	148	149	150	151	151	151	151	151	151	151	150
Production Items With Farm Origin ² 1990-92 = 100													
2002	112	112	112	112	110	110	112	114	116	115	116	117	113
2003	115	115	113	116	117	117	116	115	120	123	125	124	118
2004	122	123	126	132	135	136	136	132	130	129	126	124	129
2005	127	126	129	134	134	134	133	133	133	135	134	135	132
2006	137	135	134	136	136	137	137	137	138	138	138	138	137
Production Items With Non-Farm Origin ³ 1990-92 = 100													
2002	119	119	120	120	120	121	121	121	122	122	122	122	121
2003	123	126	127	125	124	125	125	125	125	125	125	125	125
2004	128	128	129	130	130	130	131	132	133	135	135	134	131
2005	136	137	139	140	140	141	141	143	145	148	145	145	142
2006	148	147	148	149	150	151	151	151	148	147	147	147	149

¹ Simple average and is year-to-date for current year.

² Feed, livestock and poultry purchases, and seed.

³ Fertilizer, agricultural chemicals, fuels, farm supplies and repairs, autos and trucks, farm machinery, building materials, and farm services and rent.

**Prices Paid Indexes: Monthly and Annual Average
United States, 2002-2006**

Year	Jan	Feb	Mar	Apr	May	Jun	Jul	Aug	Sep	Oct	Nov	Dec	Avg ¹
Parity Ratio ² 1910-14 = 100													
2002	37	39	41	37	37	38	38	38	38	37	37	37	38
2003	38	37	37	38	40	40	40	41	42	42	43	43	40
2004	41	42	44	45	46	46	44	43	41	40	41	40	43
2005	39	40	41	41	41	40	40	39	39	37	38	38	39
2006	37	37	37	37	37	38	38	39	39	38			38
Adjusted Parity Ratio ³ 1910-14 = 100													
2002	39	41	43	39	40	40	41	41	40	39	39	39	40
2003	41	40	40	41	43	44	43	45	45	45	47	46	43
2004	43	45	47	47	48	48	47	45	44	43	43	42	45
2005	43	43	45	45	45	44	43	43	43	40	41	42	43
2006	40	40	40	40	40	41	41	42	42	41			41
Ratio 1990-92 = 100													
2002	78	80	86	76	79	79	80	81	79	76	78	78	79
2003	79	78	78	80	83	84	83	87	87	88	91	89	84
2004	85	88	92	94	96	96	93	90	87	84	86	84	90
2005	82	84	86	87	86	84	83	82	82	77	79	80	83
2006	77	78	78	77	79	80	80	82	82	80			79

¹ Simple average and is year-to-date for current year.

² Ratio of index of prices received by farmers to index of prices paid for commodities and services, interest, taxes, and wage rates.

³ Ratio of the index of prices received by farmers after adjustment for government payments to the index of prices paid for commodities and services, interest, taxes, and wage rates.

**Prices Paid Indexes: Monthly and Annual Average
United States, 2002-2006**

Year	Jan	Feb	Mar	Apr	May	Jun	Jul	Aug	Sep	Oct	Nov	Dec	Avg ¹
Crop Sector (PPITW) 1990-92 = 100													
2002	124	124	125	125	125	125	125	126	126	127	127	127	126
2003	128	130	131	130	130	130	129	130	130	130	130	130	130
2004	132	133	134	134	134	135	135	135	136	137	137	137	135
2005	140	140	141	142	142	143	143	144	146	148	146	146	143
2006	150	149	149	151	151	152	152	152	150	150			151
Livestock Sector (PPITW) 1990-92 = 100													
2002	119	119	120	120	119	119	120	121	122	122	122	122	120
2003	122	123	123	123	123	123	122	122	124	126	126	126	124
2004	126	127	129	131	133	133	133	132	132	132	131	130	131
2005	132	133	135	136	136	137	137	137	138	140	138	139	137
2006	141	140	140	141	141	142	142	142	142	141			141
Commodities and Services, Interest, Taxes, and Wage Rates Adjusted for Productivity 1910-14 = 100													
2002	1138	1139	1142	1138	1137	1137	1127	1129	1131	1150	1149	1149	1139
2003	1158	1162	1164	1155	1154	1154	1141	1142	1146	1155	1155	1154	1153
2004	1201	1203	1208	1204	1208	1209	1200	1200	1200	1217	1216	1213	1207
2005	1237	1239	1245	1230	1229	1231	1234	1237	1243	1259	1253	1252	1241
2006	1287	1286	1288	1278	1281	1283	1281	1282	1278	1277			1282

¹ Simple average and is year-to-date for current year.

**Prices Paid Index Sub-Components: Monthly and Annual Average
United States, 2002-2006**

Year	Jan	Feb	Mar	Apr	May	Jun	Jul	Aug	Sep	Oct	Nov	Dec	Avg ¹
Feed Sub-Components													
Feed Grains													
1990-92 = 100													
2002	86	84	85	83	84	88	94	104	107	103	101	103	94
2003	102	103	102	102	104	101	94	95	96	94	97	101	99
2004	104	113	119	124	123	119	108	101	94	91	88	87	106
2005	90	84	87	86	85	90	93	86	84	79	78	83	85
2006	87	88	90	93	96	95	97	94	97	119			96
Complete Feeds													
1990-92 = 100													
2002	111	110	111	112	110	113	115	116	118	117	116	115	114
2003	115	114	114	112	112	112	111	107	111	111	118	119	113
2004	119	123	122	130	132	130	131	123	120	113	111	108	122
2005	111	112	114	116	118	119	121	123	120	119	115	117	117
2006	122	121	122	121	120	120	121	121	120	120			121
Hay and Forages													
1990-92 = 100													
2002	120	118	119	125	127	121	118	119	119	121	120	120	121
2003	121	122	120	125	123	122	113	109	108	109	106	105	115
2004	106	107	108	116	129	122	119	118	118	119	116	113	116
2005	115	115	121	128	136	125	126	127	127	126	122	122	124
2006	123	127	130	138	146	141	139	138	140	141			136
Concentrates													
1990-92 = 100													
2002	105	102	105	104	106	109	118	121	121	110	105	104	109
2003	104	110	110	112	118	115	114	106	123	123	137	127	117
2004	125	126	143	149	159	140	142	118	114	107	105	104	128
2005	114	113	122	124	128	140	138	136	129	128	126	133	128
2006	132	131	131	130	129	129	126	120	121	123			127

¹ Simple average and is year-to-date for current year.

**Prices Paid Index Sub-Components: Monthly and Annual Average
United States, 2002-2006**

Year	Jan	Feb	Mar	Apr	May	Jun	Jul	Aug	Sep	Oct	Nov	Dec	Avg ¹
Supplements 1990-92 = 100													
2002	123	124	124	123	118	123	126	128	129	133	134	135	127
2003	135	134	134	131	129	132	130	126	127	130	135	135	132
2004	135	134	135	138	136	136	134	131	135	133	135	138	135
2005	146	135	142	140	133	137	141	137	136	138	145	151	140
2006	154	151	157	153	150	150	158	151	149	148			152
Livestock and Poultry Sub-Components Feeder Cattle ² 1990-92 = 100													
2002	102	103	99	95	92	91	94	96	98	100	102	105	98
2003	99	96	92	99	99	102	107	111	122	130	126	122	109
2004	113	107	113	119	126	137	139	141	141	143	137	130	129
2005	128	128	133	138	137	137	132	134	138	143	142	141	136
2006	139	135	129	127	127	133	135	137	140	136			134
Feeder Pigs 1990-92 = 100													
2002	138	146	138	111	88	59	52	46	40	73	102	126	93
2003	138	127	123	119	109	104	82	64	73	97	94	96	102
2004	104	120	125	126	122	116	109	108	116	129	150	175	125
2005	185	186	195	194	164	139	115	110	122	139	148	170	156
2006	174	163	163	150	137	134	122	114	125	125			141
Milk Cow Replacements 1990-92 = 100													
2002	143	143	143	152	152	152	148	148	148	127	127	127	143
2003	122	122	122	115	115	115	116	116	116	122	122	122	119
2004	123	123	123	140	140	140	152	152	152	145	145	145	140
2005	144	144	144	157	157	157	162	162	162	166	166	166	157
2006	163	163	163	157	157	157	149	149	149	146			155

¹ Simple average and is year-to-date for current year.

² Monthly feeder cattle prices used in the Prices Paid program have been revised back to January 2005. The revised feeder cattle prices can be obtained at www.nass.usda.gov.

**Prices Paid Index Sub-Components: Monthly and Annual Average
United States, 2002-2006**

Year	Jan	Feb	Mar	Apr	May	Jun	Jul	Aug	Sep	Oct	Nov	Dec	Avg ¹
Poultry 1990-92 = 100													
2002	111	111	111	111	111	111	111	111	111	111	111	111	111
2003	110	110	110	110	110	110	110	110	110	110	110	110	110
2004	112	112	112	112	112	112	112	112	112	112	112	112	112
2005	109	109	109	109	109	109	109	109	109	109	109	109	109
2006	109	109	109	109	109	109	109	109	109	109	109	109	109
Seeds Sub-Components Field Crops 1990-92 = 100													
2002	136	136	136	147	147	147	147	147	147	147	147	147	144
2003	147	147	147	162	162	162	162	162	162	162	162	162	158
2004	162	162	162	163	163	163	163	163	163	163	163	163	163
2005	163	163	163	177	177	177	177	177	177	177	177	177	174
2006	177	177	177	191	191	191	191	191	191	191	191	191	187
Grasses and Legumes 1990-92 = 100													
2002	118	118	118	118	118	118	118	118	118	118	118	118	118
2003	118	118	118	109	109	109	109	109	109	109	109	109	111
2004	109	109	109	111	111	111	111	111	111	111	111	111	111
2005	111	111	111	118	118	118	118	118	118	118	118	118	116
2006	118	118	118	133	133	133	133	133	133	133	133	133	129
Fertilizer Sub-Components Mixed Fertilizer 1990-92 = 100													
2002	105	104	104	104	104	104	105	105	106	106	106	106	105
2003	107	107	112	113	113	113	113	113	114	114	115	115	112
2004	117	119	122	122	122	122	122	124	125	128	130	130	124
2005	133	133	134	135	136	135	137	138	143	146	147	148	139
2006	149	149	149	151	150	149	149	150	150	151	151	151	150

¹ Simple average and is year-to-date for current year.

**Prices Paid Index Sub-Components: Monthly and Annual Average
United States, 2002-2006**

Year	Jan	Feb	Mar	Apr	May	Jun	Jul	Aug	Sep	Oct	Nov	Dec	Avg ¹
Nitrogen 1990-92 = 100													
2002	111	111	110	110	110	113	111	110	108	110	113	115	111
2003	122	131	147	150	146	141	138	139	141	142	144	147	141
2004	152	156	158	157	153	156	158	163	164	170	174	176	161
2005	176	176	176	183	187	189	185	185	192	210	220	232	193
2006	236	226	220	213	209	203	197	183	191	199			208
Potash and Phosphate 1990-92 = 100													
2002	106	109	109	108	106	106	105	105	105	105	104	102	106
2003	102	103	112	113	113	108	107	110	110	111	110	111	109
2004	114	119	124	123	124	124	124	128	133	137	143	146	128
2005	150	152	152	155	155	160	160	162	160	160	161	163	158
2006	168	162	167	171	165	164	166	164	161	159			165
Agricultural Chemicals Sub-Components Herbicides 1990-92 = 100													
2002	112	111	112	112	111	111	111	111	111	110	110	112	111
2003	112	112	112	112	112	112	112	112	112	113	114	112	112
2004	113	113	114	113	113	113	114	113	113	112	112	112	113
2005	114	113	113	113	114	114	116	118	119	120	121	120	116
2006	121	122	122	121	125	125	125	125	127	129			124
Insecticides 1990-92 = 100													
2002	139	138	138	137	138	139	140	140	141	142	143	144	140
2003	145	146	146	147	147	147	147	146	146	146	147	145	146
2004	145	145	144	143	143	144	145	143	143	142	142	143	144
2005	145	143	143	143	143	143	143	144	145	145	145	142	144
2006	142	142	140	139	143	143	143	143	145	148			143

¹ Simple average and is year-to-date for current year.

**Prices Paid Index Sub-Components: Monthly and Annual Average
United States, 2002-2006**

Year	Jan	Feb	Mar	Apr	May	Jun	Jul	Aug	Sep	Oct	Nov	Dec	Avg ¹
Fungicides and Other 1990-92 = 100													
2002	120	120	120	119	120	121	121	122	123	123	124	124	121
2003	125	126	114	115	115	115	115	115	115	116	117	116	117
2004	116	117	117	116	117	117	118	117	118	117	117	118	117
2005	120	119	119	120	120	120	121	123	124	125	125	123	122
2006	124	124	124	123	126	126	127	126	128	131			126
Fuels Sub-Components Diesel 1990-92 = 100													
2002	84	86	100	110	106	104	110	114	130	139	120	121	110
2003	136	172	179	141	120	122	125	129	121	133	125	127	136
2004	140	132	138	149	151	143	154	170	178	210	202	172	162
2005	179	190	221	224	216	235	236	246	258	318	245	234	234
2006	229	226	235	259	270	280	270	286	227	205			249
Gasoline 1990-92 = 100													
2002	81	85	103	118	115	114	117	119	123	136	120	113	112
2003	132	156	168	140	131	136	137	142	145	134	123	120	139
2004	136	138	143	152	169	155	163	154	157	178	167	143	155
2005	152	163	182	192	185	184	202	214	239	229	180	183	192
2006	191	171	196	224	232	237	243	236	191	169			209
LP Gas 1990-92 = 100													
2002	87	88	107	121	118	113	113	124	139	149	142	152	121
2003	173	201	193	158	149	159	152	153	147	159	153	163	163
2004	188	157	157	158	170	167	178	197	186	212	211	182	180
2005	173	176	195	191	175	176	191	210	245	256	220	246	205
2006	229	201	202	220	225	226	252	254	213	179			220

¹ Simple average and is year-to-date for current year.

**Prices Paid Index Sub-Components: Monthly and Annual Average
United States, 2002-2006**

Year	Jan	Feb	Mar	Apr	May	Jun	Jul	Aug	Sep	Oct	Nov	Dec	Avg ¹
Farm Supplies & Repairs Sub-Components													
Supplies 1990-92 = 100													
2002	115	116	115	117	118	118	118	118	118	118	117	117	117
2003	118	118	118	118	118	118	119	119	119	119	119	119	119
2004	120	120	120	120	121	121	121	122	122	123	123	123	121
2005	124	124	125	126	127	127	127	131	131	132	133	134	128
2006	134	134	135	136	136	137	138	138	138	138			136
Repairs 1990-92 = 100													
2002	130	131	130	131	131	131	132	132	132	133	133	133	132
2003	134	134	135	135	136	136	136	136	136	137	136	136	136
2004	138	138	138	139	139	139	140	140	141	141	141	142	140
2005	145	145	145	146	146	146	146	146	146	147	147	147	146
2006	147	148	148	149	149	149	149	149	149	149			149
Autos and Trucks Sub-Components													
Autos 1990-92 = 100													
2002	112	111	111	110	110	109	109	108	109	109	110	110	110
2003	109	109	109	108	108	107	107	107	107	107	108	108	108
2004	108	108	108	108	108	107	106	106	106	106	108	108	107
2005	109	109	109	109	108	108	107	106	107	108	109	109	108
2006	110	110	110	109	109	109	109	108	109	109			109
Trucks 1990-92 = 100													
2002	119	118	117	117	116	116	116	115	116	117	117	117	117
2003	117	117	117	116	116	115	114	115	114	114	115	116	116
2004	116	116	116	115	115	115	114	113	113	113	115	116	115
2005	117	117	117	116	116	115	113	112	113	114	114	114	115
2006	115	115	115	114	113	113	112	112	111	111			113

¹ Simple average and is year-to-date for current year.

**Prices Paid Index Sub-Components: Monthly and Annual Average
United States, 2002-2006**

Year	Jan	Feb	Mar	Apr	May	Jun	Jul	Aug	Sep	Oct	Nov	Dec	Avg ¹
Farm Machinery Sub-Components													
Tractors 1990-92 = 100													
2002	140	140	140	140	140	140	140	140	140	140	140	140	140
2003	140	140	141	141	141	141	142	143	144	144	145	145	142
2004	145	145	146	146	147	147	148	148	148	149	149	149	147
2005	152	153	153	153	154	154	155	155	155	155	157	158	155
2006	158	159	159	159	161	159	164	163	160	158			160
Self Propelled 1990-92 = 100													
2002	145	146	146	147	147	147	147	147	147	147	148	148	147
2003	148	148	148	148	149	150	152	154	156	157	158	160	152
2004	162	164	165	167	167	166	167	167	171	174	173	176	168
2005	176	176	176	176	177	178	178	180	180	181	182	182	179
2006	185	185	186	187	188	192	188	188	188	188			188
Other Machinery 1990-92 = 100													
2002	151	151	152	153	153	153	153	153	154	154	155	155	153
2003	155	155	155	155	155	155	155	155	155	155	155	155	155
2004	155	155	167	164	164	164	164	163	165	165	171	170	164
2005	172	176	176	175	176	176	177	178	178	179	179	180	177
2006	182	183	184	185	185	185	185	186	186	186			185
Farm Services Sub-Components													
Custom Rates 1990-92 = 100													
2002	120	120	120	120	120	120	120	120	120	120	120	120	120
2003	125	125	125	125	125	125	125	125	125	125	125	125	125
2004	120	120	120	120	120	120	120	120	120	120	120	120	120
2005	121	121	121	121	121	121	121	121	121	121	121	121	121
2006	123	123	123	123	123	123	123	123	123	123			123

¹ Simple average and is year-to-date for current year.

**Prices Paid Index Sub-Components: Monthly and Annual Average
United States, 2002-2006**

Year	Jan	Feb	Mar	Apr	May	Jun	Jul	Aug	Sep	Oct	Nov	Dec	Avg ¹
Other Services 1990-92 = 100													
2002	117	117	117	117	117	119	119	119	119	118	117	118	118
2003	119	119	119	119	119	121	121	121	121	120	119	119	120
2004	120	120	120	120	121	123	123	123	123	122	121	122	122
2005	125	125	125	125	126	128	128	128	128	127	127	127	127
2006	129	129	130	130	130	133	133	133	133	133	133	133	131
Rent Sub-Components Cash 1990-92 = 100													
2002	143	143	143	143	143	143	143	143	143	143	143	143	143
2003	145	145	145	145	145	145	145	145	145	145	145	145	145
2004	145	145	145	145	145	145	145	145	145	145	145	145	145
2005	151	151	151	151	151	151	151	151	151	151	151	151	151
2006	159	159	159	159	159	159	159	159	159	159	159	159	159
Share 1990-92 = 100													
2002	91	91	91	91	91	91	91	91	91	91	91	91	91
2003	91	91	91	91	91	91	91	91	91	91	91	91	91
2004	91	91	91	91	91	91	91	91	91	91	91	91	91
2005	94	94	94	94	94	94	94	94	94	94	94	94	94
2006	98	98	98	98	98	98	98	98	98	98	98	98	98

¹ Simple average and is year-to-date for current year.

Prices Paid by Farmers

Definition: Prices paid by farmers represent the average costs of inputs purchased by farmers and ranchers to produce agricultural commodities. Conceptually, the average price when multiplied by quantity purchased should equal total producer expenditures for the item.

Survey Procedures: The prices paid data are obtained from establishments that sell goods and services to farmers and ranchers. Annually, about 8,500 firms are randomly selected from lists by type of item sold with an average response rate in the range of 75-80 percent. Firms are asked to report the price for the specified item "most commonly bought by farmers" or that was the "volume seller". Approximately 135 items are surveyed each April to represent all production input items purchased. The survey reference period for most items is the 5 business days centered around the 15th of the month. Separate prices paid surveys are conducted for agricultural chemicals, fuels, feed, fertilizer, machinery, and seed.

Summary and Estimation Procedures: The annual April Prices Paid Survey is summarized as a nonprobability survey. Average prices reported are aggregated to the region and U.S. level using weights available from expenditure data and other administrative sources. Price recommendations are prepared by the State Field Offices and Headquarters for review by the Agricultural Statistics Board in Washington, D.C. Also, the change in price level for individual items surveyed are combined to the regional and U.S. levels, and are published as prices paid indexes referenced to a specific base period. Prices paid indexes for new autos and trucks, building materials, farm supplies, motor supplies, and marketing containers are updated based on price changes measured in selected Bureau of Labor Statistics (BLS) indexes.

Revisions: Any revisions are published in the monthly and in annual issues of *Agricultural Prices*. The basis for revision must be supported by additional data that directly affect the level of the estimate. More revisions are likely in April when separate prices paid surveys are conducted, in lieu of BLS indexes, by the USDA to measure price change.

Reliability: Current methods of summarization in April are not designed directly to calculate sampling errors. However, analytical measures approximate the U.S. relative sampling errors for major items around 10 percent. Any nonsampling errors are attributed to such things as the inability to obtain correct information, differences in interpreting questions or definitions, mistakes in coding or processing the data, etc. Efforts are made at each step in the survey process to minimize these nonsampling errors.

Program Change: Effective January 1, 1995, the National Agricultural Statistics Service updated the weights and changed the construction of its prices paid and received by farmers indexes. A Federal Register Notice dated October 28, 1994 discussed these program modifications.

A 1990-92 reference and base period replaced the 1977 reference and 1971-73 base weight period. Five-year moving average weights replaced the current fixed 1971-73 base period weights. The 1910-14=100 price indexes, required by statute for computing parity prices, were linked forward based on the changes in the new 1990-92=100 indexes. The new indexes were constructed by multiplying the ratios of the current prices to the base period prices by the moving average weights (adjusted for seasonal marketing patterns for the prices received indexes).

Information Contacts

General questions should be directed to Chief, Environmental, Economics and Demographics Branch at (202) 720-6146. Below are the commodity specialists to contact for additional information.

Crop Prices Received

Jeff Geuder Chief, Crops Branch	(202) 720-2127
Greg Thessen, Field Crops Section	(202) 720-2127
Scott Cox - Wheat, Rye	(202) 720-8068
Ty Kalaus - Corn, Proso Millet, Flaxseed	(202) 720-9526
Shiela Corley - Cotton, Cottonseed	(202) 720-5944
Travis Thorson - Soybeans, Sunflower, Other Oilseeds	(202) 720-7369
King Whetstone - Hay, Oats, Sorghum	(202) 690-3234
Dennis Koong - Peanuts, Rice	(202) 720-7688
Brian Young - Sugarcane, Sugarbeets, Barley	(202) 720-7621
Jim Smith, Fruit and Vegetable Section	(202) 720-2127
Dan Norris - Peaches, Pears, Hops, Pulses, Mint	(202) 720-3250
Rich Holcomb - Citrus	(202) 720-5412
Jim Smith - Apples, Apricots, Cherries, Cranberries, Plums, Prunes	(202) 720-2127
Leslie Colburn - Grapes, Tobacco	(202) 720-7235
Cathy Scherrer - Potatoes, Dry Edible Beans, Sweet Potatoes	(202) 720-4285
Debbie Flippin - Vegetables, Onions, Strawberries	(202) 720-2157

Livestock Prices Received

Dan Kerestes, Chief, Livestock Branch	(202) 720-3570
Bill Weaver, Livestock Section	(202) 720-3570
Scott Hollis - Sheep, Lambs, Wool, Mohair	(202) 720-4751
Jason Hardegree- Milk, Milk Cows	(202) 720-3278
Bruce Boess - Hogs	(202) 720-3106
Mike Miller - Cattle	(202) 720-3040
Darin Jantzi, Poultry and Specialty Commodities Section	(202) 720-3570
Fleming Gibson - Turkeys	(202) 690-3237
Sharyn Lavender - Eggs, Broilers	(202) 720-3244

Indexes, Prices Paid, and Parity Prices

Vacant, Chief, Environmental, Economics and Demographics Branch	(202) 720-6146
Kevin Hintzman, Economics Section	(202) 720-6146
Jen Brown - Prices Paid Indexes, Prices Paid for Feed, Fertilizer, Agricultural Chemicals, Seeds, Farm Supplies and Repairs, Farm Machinery, Fuels, Feeder Livestock, Poultry Chicks, Feed Price Ratios, Autos & Trucks	(202) 720-5446
Daryl Brinkman - Prices Received Indexes, Parity Prices	(202) 720-8844
Jennifer Sissom - Grazing Fees	(202) 690-3229

ACCESS TO REPORTS!!

For your convenience, there are several ways to obtain NASS reports, data products, and services:

INTERNET ACCESS

All NASS reports are available free of charge on the worldwide Internet. For access, connect to the Internet and go to the NASS Home Page at: www.nass.usda.gov.

E-MAIL SUBSCRIPTION

All NASS reports are available by subscription free of charge direct to your e-mail address. Starting with the NASS Home Page at www.nass.usda.gov, under the right navigation, *Receive reports by Email*, click on **National** or **State**. Follow the instructions on the screen.

PRINTED REPORTS OR DATA PRODUCTS

CALL OUR TOLL-FREE ORDER DESK: 800-999-6779 (U.S. and Canada)
Other areas, please call 703-605-6220 FAX: 703-605-6900
(Visa, MasterCard, check, or money order acceptable for payment.)

ASSISTANCE

For **assistance** with general agricultural statistics or further information about NASS or its products or services, contact the **Agricultural Statistics Hotline** at **800-727-9540**, 7:30 a.m. to 4:00 p.m. ET, or e-mail: nass@nass.usda.gov.

The U.S. Department of Agriculture (USDA) prohibits discrimination in all its programs and activities on the basis of race, color, national origin, age, disability, and where applicable, sex, marital status, familial status, parental status, religion, sexual orientation, genetic information, political beliefs, reprisal, or because all or part of an individual's income is derived from any public assistance program. (Not all prohibited bases apply to all programs.) Persons with disabilities who require alternative means for communication of program information (Braille, large print, audiotape, etc.) should contact USDA's TARGET Center at (202) 720-2600 (voice and TDD).

To file a complaint of discrimination, write to USDA, Director, Office of Civil Rights, 1400 Independence Avenue, S.W., Washington, D.C. 20250-9410, or call (800) 795-3272 (voice) or (202) 720-6382 (TDD). USDA is an equal opportunity provider and employer.