



NASS

FACT FINDERS FOR AGRICULTURE
UNITED STATES DEPARTMENT OF AGRICULTURE

Washington, D.C.

Agricultural Prices

Released November 30, 2006, by the National Agricultural Statistics Service (NASS), Agricultural Statistics Board, U.S. Department of Agriculture. For information on *Agricultural Prices* see page 49, office hours 7:30 a.m. to 4:00 p.m. ET.

November Farm Prices Received Index Up 5 Points From Last Month

The preliminary All Farm Products Index of Prices Received by Farmers in November, at 121 percent, based on 1990-92=100, increased 5 points (4.3 percent) from October. The Crop Index is up 10 points (8.7 percent) but the Livestock Index decreased 1 point (0.9 percent). Producers received higher commodity prices for corn, soybeans, eggs, and milk. Lower prices were received for cattle, tomatoes, oranges, and hogs. The overall index is also affected by the seasonal change based on a 3-year average mix of commodities producers sell. Increased average marketings of milk, cattle, cotton, and oranges offset decreased marketings of soybeans, potatoes, peanuts, and lettuce.

The preliminary All Farm Products Index is up 9 points (8.0 percent) from November 2005. The Food Commodities Index, at 121, increased 4 points (3.4 percent) from last month and 2 points (1.7 percent) from November 2005.

Prices Paid Index Unchanged

The November Index of Prices Paid for Commodities and Services, Interest, Taxes, and Farm Wage Rates (PPITW) is 146 percent of the 1990-92 average. The index is unchanged from October but 4 points above (2.8 percent) November 2005. Higher prices for feed grains, feed supplements, feed concentrates, and complete feeds offset lower prices in November for feeder cattle, mixed fertilizers, LP gas, and herbicides.

Index Summary Table

Index 1990-92=100	2005		2006	
	Oct	Nov	Oct	Nov
Prices Received	111	112	116	121
Prices Paid	144	142	146	146
Ratio ¹	77	79	79	83

¹ Ratio of index of prices received by farmers to index of prices paid by farmers.

Prices Received by Farmers

The November All Farm Products Index is 121 percent of its 1990-92 base, up 4.3 percent from the October index and 8.0 percent above the November 2005 index.

ALL CROPS: The November index is 125, up 8.7 percent from October and 19 percent above November 2005. From October, index increases for feed grains & hay, oil-bearing crops, and potatoes & dry beans more than offset the index decreases for fruits & nuts and commercial vegetables.

Food Grains: The November index, at 152, is 0.7 percent above the previous month and 33 percent above a year ago. The November all wheat price, at \$4.62 per bushel, is up 3 cents from October and \$1.17 above November 2005.

Feed Grains & Hay: The November index is 137, up 18 percent from last month and 65 percent above a year ago. The corn price, at \$3.12 per bushel, is up 58 cents from last month and \$1.35 above November 2005. The all hay price, at \$106 per ton, is \$1.00 below October but up \$14.30 from last November. Sorghum grain, at \$5.88 per cwt, is 71 cents above October and \$3.06 above November last year.

Oil-Bearing Crops: The November index, at 108, is up 14 percent from October and 9.1 percent higher than November 2005. The soybean price, at \$6.15 per bushel, increased 63 cents from October and 53 cents from November 2005.

Cotton: The November index, at 77, is up 1.3 percent from October but 3.8 percent below last year. The November price, at 46.6 cents per pound, is up 0.5 cent from the previous month but 1.9 cents below last November.

Potatoes & Dry Beans: The November index, at 110, is up 6.8 percent from last month and 4.8 percent above November 2005. The all potato price, at \$6.43 per cwt, is up 46 cents from October and 17 cents above last November. The all dry bean price, at \$21.00 per cwt, is up \$1.30 from the previous month and \$3.00 above November 2005.

Fruits & Nuts: The November index, at 165, is down 7.3 percent from October but 15 percent higher than a year ago. Price decreases for oranges, apples, and grapefruit more than offset price increases for grapes and strawberries.

Commercial Vegetables: The November index, at 124, is down 3.9 percent from last month but 5.1 percent above November 2005. Price decreases during November for tomatoes and snap beans more than offset higher prices for lettuce, cauliflower, and broccoli.

LIVESTOCK & PRODUCTS: The November index, at 116, is 0.9 percent below last month and down 4.1 percent from November 2005. Compared with a year ago, prices are lower for beef cattle, milk, calves, and broilers but higher for eggs, turkeys, and hogs.

Meat Animals: The November index, at 112, is down 5.1 percent from last month and 6.7 percent lower than last year. The November hog price, at \$44.50 per cwt, is down \$2.00 from October but \$1.00 higher than a year ago. The November beef cattle price of \$84.40 per cwt is down \$4.10 from last month and \$6.40 lower than November 2005.

Dairy Products: The November index, at 106, is up 2.9 percent from a month ago but 8.6 percent lower than November last year. The November all milk price of \$13.80 per cwt is up 30 cents from last month but down \$1.30 from November 2005. The fluid grade milk price is up 30 cents and the manufacturing grade milk price is up 40 cents from the previous month.

Poultry & Eggs: The November index, at 133, is up 7.3 percent from October and 4.7 percent above a year ago. November market egg prices, at 67.5 cents per dozen, increased 29.3 cents from October and 19.1 cents from November 2005. The November broiler price, at 40.0 cents per pound, is unchanged from October but 2.0 cents below a year ago. The November turkey price, at 67.1 cents per pound, is up 3.7 cents from the previous month and up 12.6 cents from a year earlier.

Table of Contents

U.S. Prices Received and Indexes	Page	Monthly State Prices, continued	Page
Narrative	2	Cotton	17
Price Indexes	5	Cottonseed	17
Price Index Charts	6	Eggs	22
U.S. Prices Received Summary	8	Flaxseed	16
Charts	10	Grain Sorghum	15
Selected Commodities	14	Hay	17
Upland Cotton & Rice Marketings	17	Hogs, All	21
Parity Prices	24	Barrows and Gilts	21
Reliability Statement	40	Sows	21
 		Milk	23
Monthly State Prices Received		Milk Cows	23
Apples	17	Oats	15
Barley	15	Peanuts	16
Beans, Dry Edible	16	Potatoes	19
Beef Cattle, All	20	Sheep	22
Calves	20	Lambs	22
Cows, Beef	20	Soybeans	15
Steers and Heifers	20	Sunflower	16
Citrus Fruit	18	Wheat, All Classes	14
Corn	15		
Prices Received Special Features			Page
Marketing Year for Specified Commodities			26
Monthly Prices by State and U.S.			
Chickpeas, All			38
Chickpeas, Large			38
Chickpeas, Small			39
Corn			28
Dry Edible Beans			34
Flaxseed			30
Sunflower			31
Percent of Sales by Month, by State and U.S.			
Corn			35
Dry Edible Beans			37
Flaxseed			36
Sunflower			36
Marketing Year Average Prices by State and U.S.			
Canola			26
Corn			27
Dry Edible Beans			27
Flaxseed			26
Mustard Seed			27
Proso Millet			27
Rapeseed			27
Safflower			27
Sunflower			26

Table of Contents (continued)

U.S. Prices Paid, Prices Paid Indexes and Ratios	Page
Narrative	41
Indexes and Parity Ratios	42
Charts	44
Feed Price Ratios	47
Reliability Statement	48
U.S. Average Prices	
Prices Used to Calculate Feed Price Ratios	47
Feeder Livestock	47
Information Contacts	49

**Index Numbers of Prices Received, United States,
November 2006, with Comparisons**

Index	1910-14=100				1990-92=100		
	Average 1990-92	2005	2006		2005	2006	
		Nov	Oct	Nov	Nov	Oct	Nov
All Farm Products	639	713	*735	768	112	*116	121
All Crops	500	516	*567	618	105	*115	125
Food Grains	325	363	*480	482	114	*151	152
Feed Grains & Hay	363	297	*414	491	83	*116	137
Cotton	517	410	*390	394	80	76	77
Tobacco ¹	1,263	1,363	1,363	1,363	90	90	90
Oil-Bearing Crops	554	539	*521	590	99	*95	108
Fruits & Nuts	716	998	*1,240	1,150	143	*178	165
Commercial Vegetables	698	791	*860	825	118	*129	124
Potatoes & Dry Beans	540	533	*520	559	105	*103	110
Other Crops	493	578	586	586	117	119	119
Livestock & Products	768	928	*894	889	121	117	116
Meat Animals	1,021	1,222	*1,200	1,142	120	*118	112
Dairy Products	799	928	*830	848	116	*103	106
Poultry & Eggs	282	341	331	357	127	124	133
Food Commodities					119	117	121

* Revised.

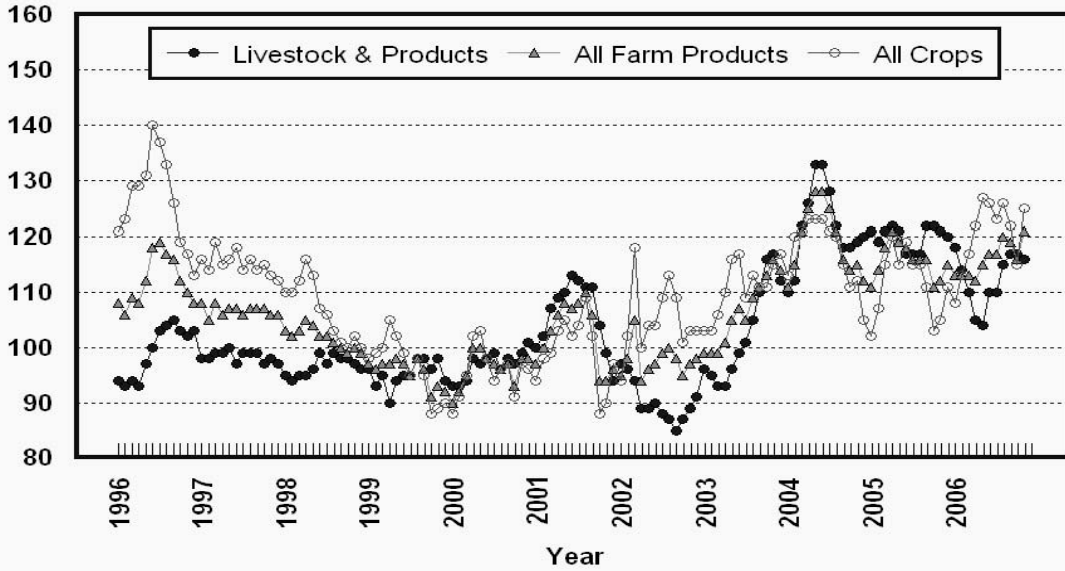
¹ Monthly prices discontinued July 2005.

**Selected Index Numbers for Prices Received and Paid,
1990-92=100, by Month, United States, 2005 and 2006**

Month	Index of Prices Received						Index of Prices Paid			
	All Farm Products		All Crops		Livestock and Products		All Items		Production Items	
	2005	2006	2005	2006	2005	2006	2005	2006	2005	2006
Jan	111	113	102	108	121	118	136	146	133	144
Feb	114	113	107	113	119	114	136	145	133	143
Mar	118	113	115	117	121	110	138	145	136	143
Apr	121	112	120	122	122	105	139	146	138	145
May	119	115	115	127	121	104	139	146	138	145
Jun	118	117	119	126	117	110	140	147	139	146
Jul	116	117	115	123	117	110	140	147	139	146
Aug	116	120	115	126	117	115	141	147	140	146
Sep	116	119	111	122	122	117	142	146	141	145
Oct	111	116	103	115	122	117	144	146	143	144
Nov	112	121	105	125	121	116	142	146	141	144
Dec	115		111		120		143		142	

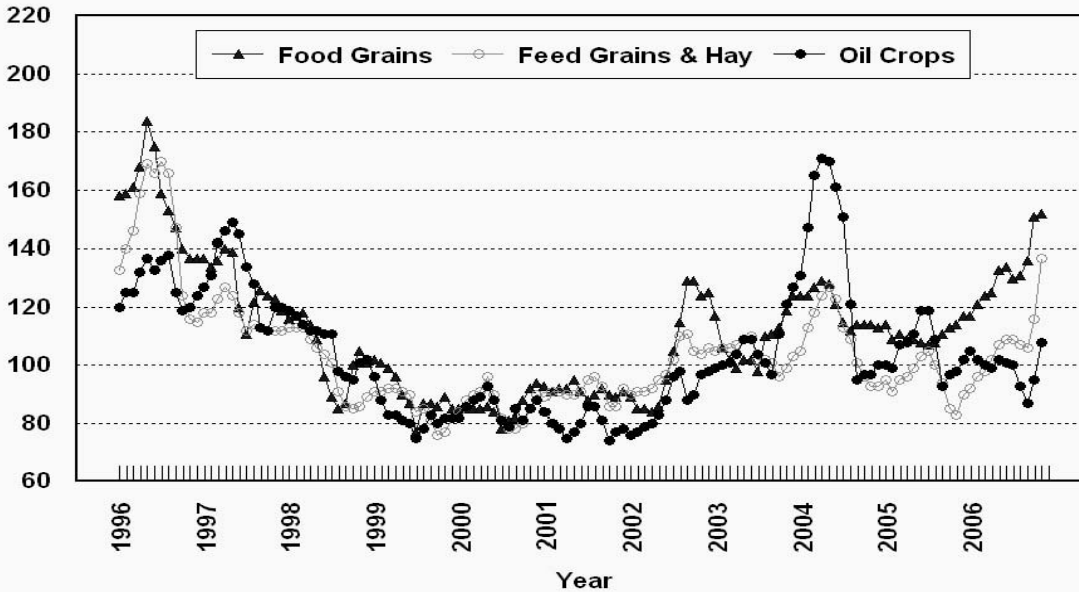
Prices Received, Major Indexes, US

Percent (1990-92=100)



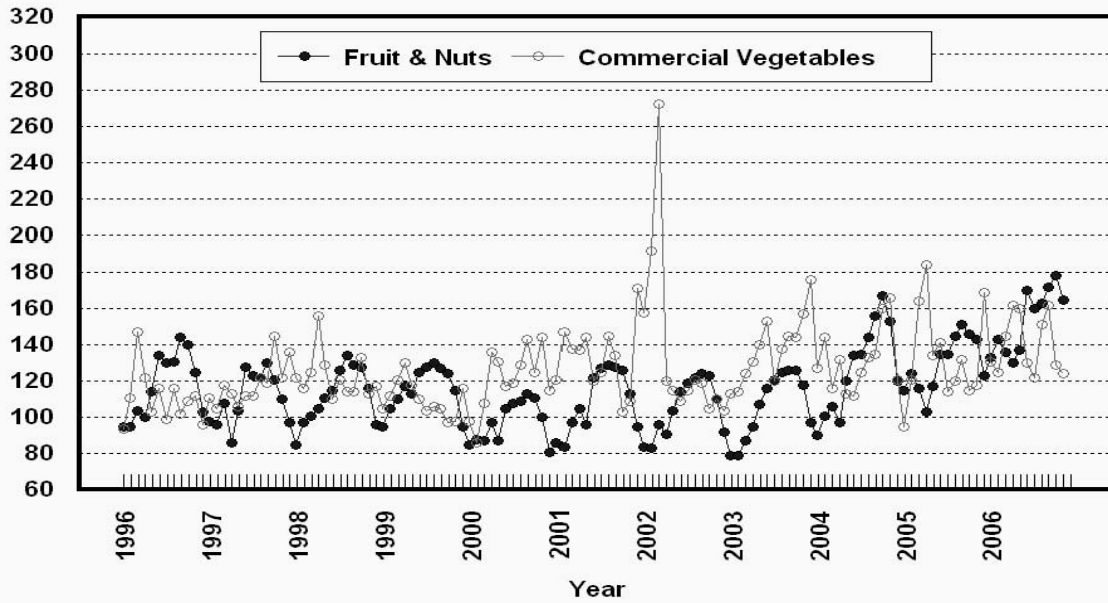
Prices Received, Food, Feed, & Oil Indexes, US

Percent (1990-92=100)



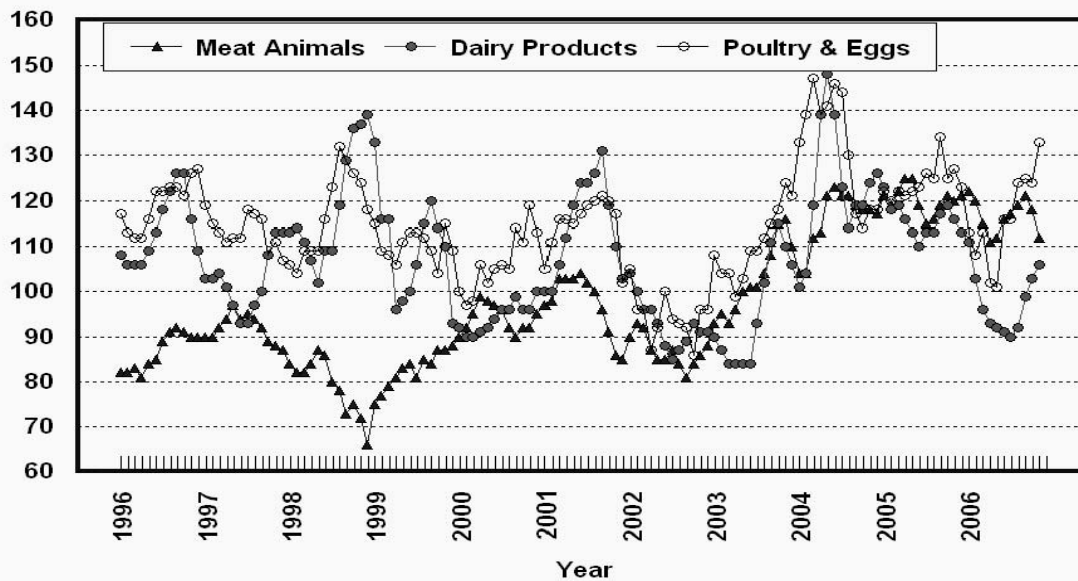
Prices Received, Fruit/Vegetable Indexes, US

Percent (1990-92=100)



Prices Received, Livestock Product Indexes, US

Percent (1990-92=100)



**Prices Received, United States,
November 2006, with Comparisons**

Commodity	Unit	Average 1990-92	Entire Month		Preliminary
			Nov 2005	Oct 2006	Nov 2006
		<i>Dollars</i>	<i>Dollars</i>	<i>Dollars</i>	<i>Dollars</i>
Field Crops					
Barley, All	Bu	2.12	2.58	2.76	3.14
Feed	Bu	1.90	1.91	2.68	3.07
Malting	Bu	2.43	2.89	2.84	3.22
Beans, Dry Edible	Cwt	19.10	18.00	19.70	21.00
Chickpeas, All	Cwt		25.20	21.30	27.00
Large	Cwt		25.40	25.00	27.20
Small	Cwt		(⁴)	15.90	14.00
Corn	Bu	2.30	1.77	2.54	3.12
Cotton, Upland	Lb	0.606	0.485	0.461	0.466
Cottonseed ³	Ton	96.00	95.60	97.70	108.00
Flaxseed	Bu	4.27	5.94	5.41	5.35
Hay, All, Baled ¹	Ton	76.30	91.70	107.00	106.00
Alfalfa ¹	Ton	77.20	98.30	112.00	109.00
Other ¹	Ton	60.00	80.00	93.80	98.10
Lentils	Cwt		11.30	11.00	12.00
Oats	Bu	1.22	1.64	1.77	1.97
Peanuts, In-Shell	Lb	0.304	0.175	0.172	0.172
Peas, Dry Edible	Cwt		4.80	5.80	6.20
Austrian Winter	Cwt		7.33	6.04	(⁴)
Potatoes	Cwt	5.82	6.26	5.97	6.43
Rice, Rough	Cwt	7.07	7.46	9.46	9.59
Sorghum Grain	Cwt	3.75	2.82	5.17	5.88
Soybeans	Bu	5.61	5.62	5.52	6.15
Sunflower, All	Cwt	9.50	12.20	12.10	12.50
Wheat, All	Bu	2.96	3.45	4.59	4.62
Winter	Bu	2.93	3.27	4.63	4.65
Durum	Bu	2.86	3.28	4.55	4.80
Other Spring	Bu	3.11	3.71	4.48	4.52
Hard Red Winter	Bu		3.41	4.86	
Soft Red Winter	Bu		2.81	3.83	
Hard Red Spring	Bu		3.77	4.52	
White	Bu	3.24	3.10	4.31	
Fruit					
Citrus, Equiv on-tree					
Grapefruit	Box	5.77	8.83	16.26	9.60
Lemons	Box	10.10	8.14	27.65	21.31
Oranges	Box	5.79	5.90	16.28	7.94
Tangelos ⁵	Box	5.82			
Tangerines	Box	15.11	13.66	4.53	14.49
Noncitrus, Fresh					
Apples ²	Lb	0.212	0.294	0.373	0.341
Grapes ²	Ton	506.00	490.00	730.00	840.00
Peaches ⁵	Ton	432.00			
Pears ²	Ton	370.00	458.00	607.00	596.00
Strawberries	Cwt	56.00	102.00	72.90	85.00

¹ Mid-month price.

² Equivalent packinghouse-door returns for CA, MI, and NY (apples only), and WA (apples, peaches, and pears). Prices as sold for other states.

³ Marketing year August - February.

⁴ Price not published to avoid disclosure of individual firms.

⁵ Insufficient sales to establish a price.

**Prices Received, United States,
November 2006, with Comparisons**

Commodity	Unit	Average 1990-92	Entire Month		Preliminary
			Nov 2005	Oct 2006	Nov 2006
		<i>Dollars</i>	<i>Dollars</i>	<i>Dollars</i>	<i>Dollars</i>
Vegetables, Fresh ¹					
Asparagus	Cwt	79.80			
Broccoli	Cwt	22.50	20.90	24.60	28.60
Cantaloupes ²	Cwt		15.90	18.90	22.60
Carrots	Cwt	13.20	23.10	19.60	20.60
Cauliflower	Cwt	26.80	25.50	20.90	37.90
Celery	Cwt	11.60	13.10	27.20	25.20
Corn, Sweet	Cwt	15.70	37.30	21.70	19.10
Cucumbers ²	Cwt		34.70	30.90	30.10
Lettuce	Cwt	11.90	9.81	11.80	13.30
Onions	Cwt	12.80	14.00	12.20	12.20
Snap Beans ²	Cwt		66.10	77.10	53.90
Tomatoes	Cwt	32.30	36.50	52.30	31.10
Livestock					
Calves	Cwt	94.30	137.00	127.00	119.00
Cattle, All Beef	Cwt	72.90	90.80	88.50	84.40
Cows ³	Cwt	49.60	45.90	45.90	43.70
Steers & Heifers	Cwt	77.10	97.10	94.00	90.00
Milk Cows ⁴	Head	1,130.00		1,650.00	
Hogs, All	Cwt	47.70	43.50	46.50	44.50
Barrows & Gilts	Cwt	48.40	43.80	47.00	44.80
Sows	Cwt	39.50	37.30	36.90	36.10
Lambs	Cwt	56.20	107.00	98.10	
Sheep	Cwt	23.40	46.20	31.10	
Dairy and Poultry					
Milk, All ^{5 6}	Cwt	13.06	15.10	13.50	13.80
Fluid Grade ⁶	Cwt	13.10	15.10	13.50	13.80
Mfg Grade ⁶	Cwt	11.80	14.30	12.70	13.10
Broilers, Live ⁷	Lb	0.317	0.420	0.400	0.400
Eggs, All ⁸	Doz	0.643	0.650	0.567	0.817
Market ⁸	Doz	0.546	0.484	0.382	0.675
Turkeys, live ^{7 8}	Lb	0.380	0.545	0.634	0.671
Adjusted for Seasonal Variation ⁹					
Eggs, All	Doz	0.545	0.559	0.620	0.697
Milk, All ⁵	Cwt	9.71	14.70	13.00	13.40

¹ Beginning January 2006, point of first sale. F.O.B. shipping point for prior years.

² Monthly estimates began January 1995.

³ Beef cows and cull dairy cows sold for slaughter.

⁴ Animals sold for dairy herd replacement only. Prices available for Jan, Apr, Jul, and Oct.

⁵ Before deductions for hauling. Includes quality, quantity, and other premiums. Excludes hauling subsidies.

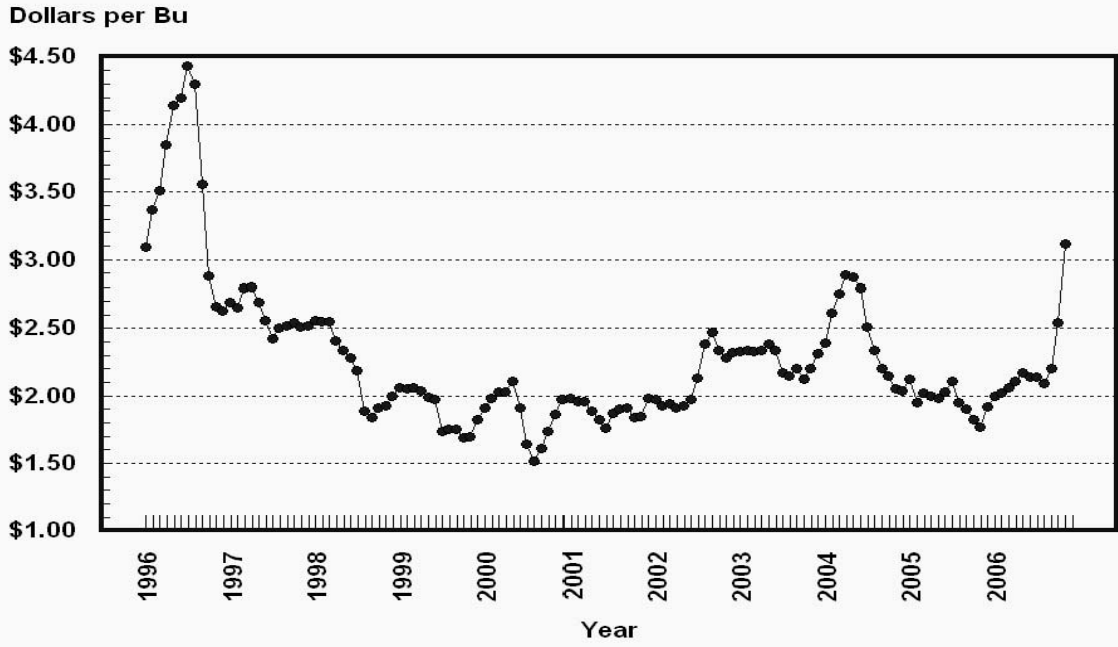
⁶ November 2006 Fat test percent: all milk, 3.81; fluid milk, 3.80; mfg grade, 4.06.

⁷ Equivalent liveweight returns to producers for most States. Includes growers and contractors.

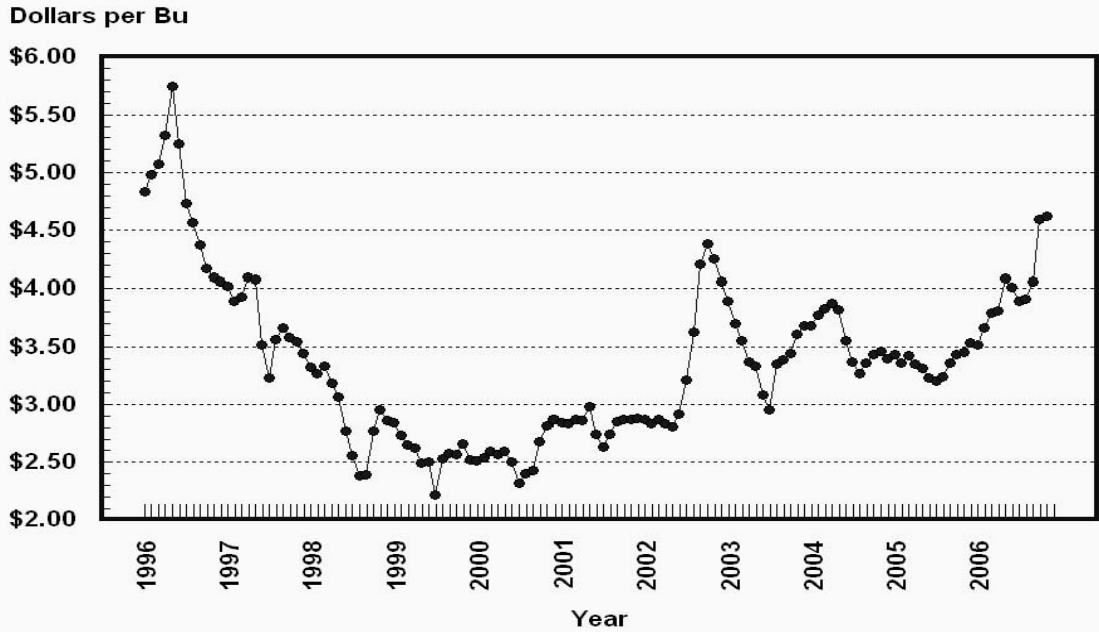
⁸ Mid-month price.

⁹ Seasonal adjustment factors are: All Eggs November 2005, 116; October 2006, 91; and November 2006, 117. All Milk November 2005, 103; October 2006, 104; and November 2006, 103.

Prices Received, Corn, US

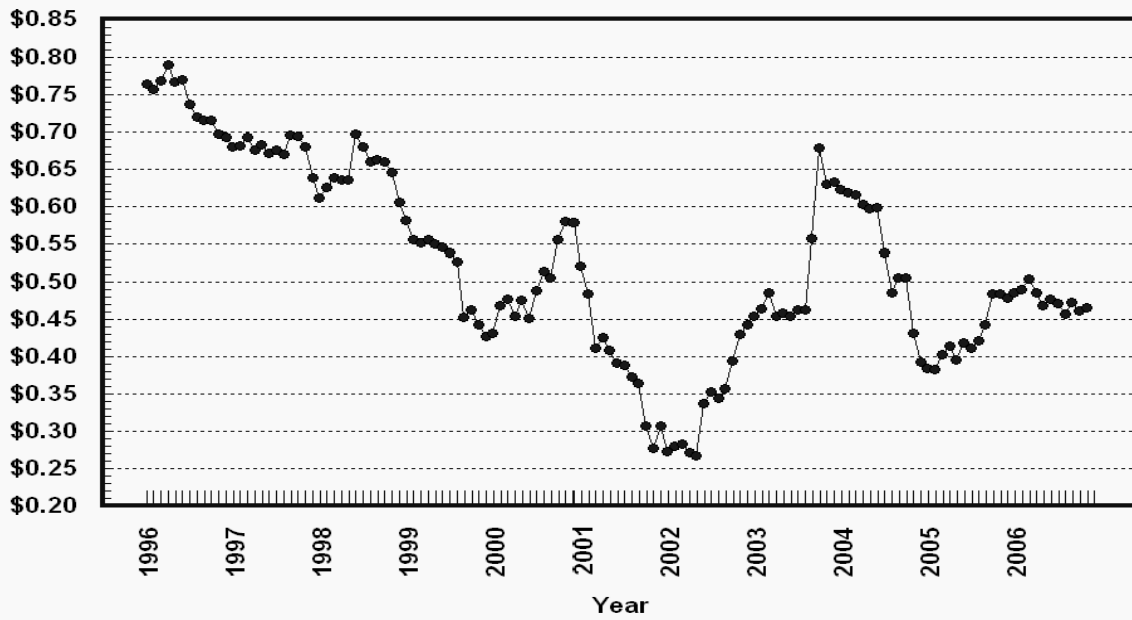


Prices Received, Wheat, US



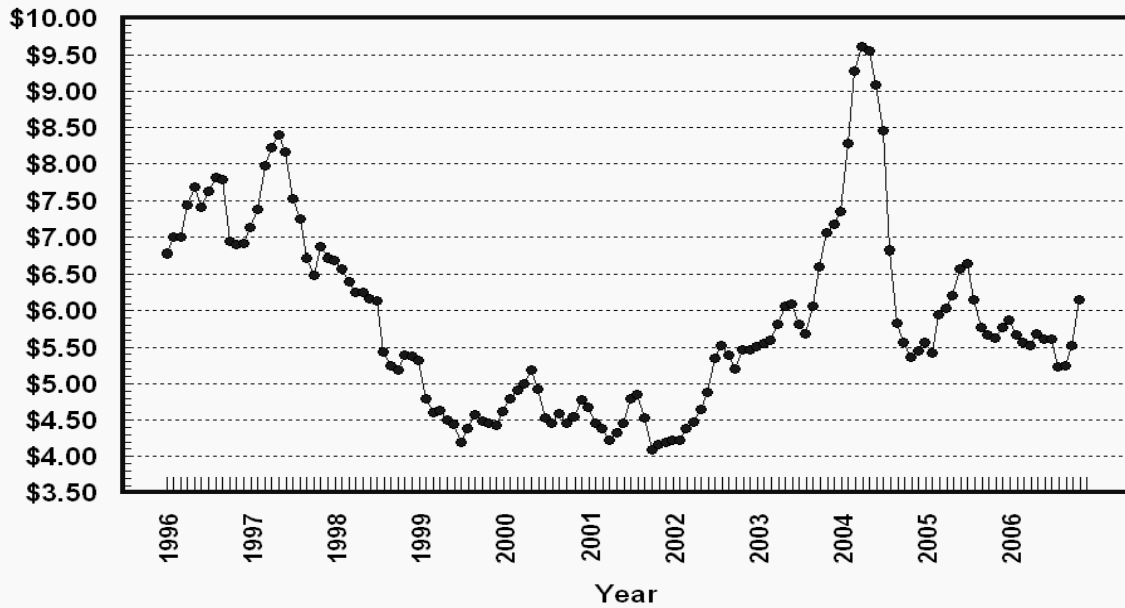
Prices Received, Cotton, US

Dollars per Lb



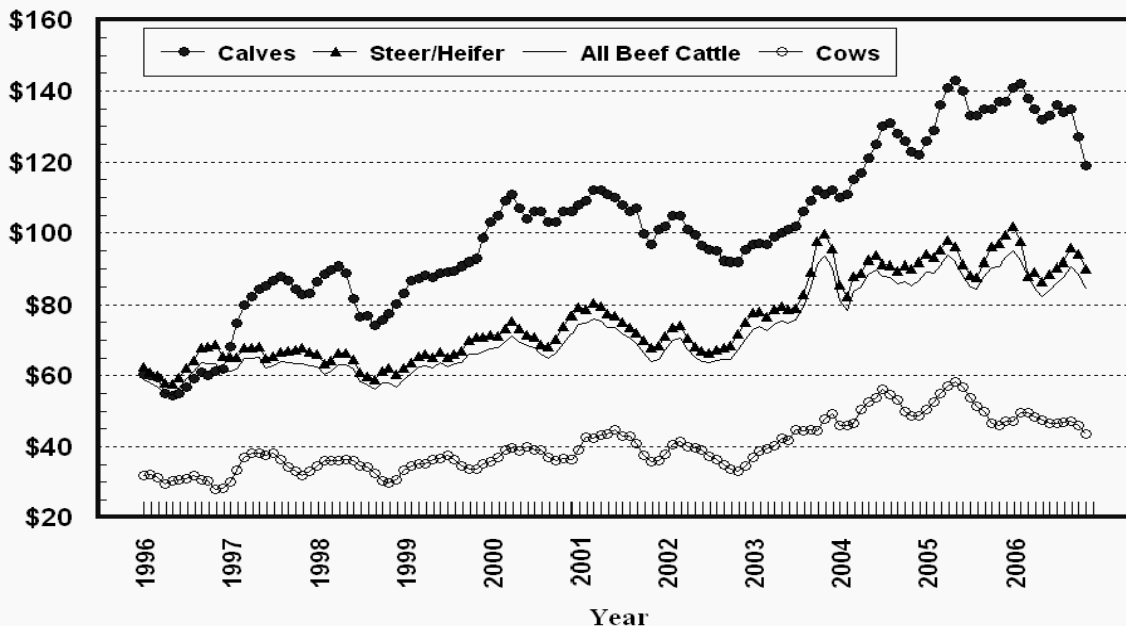
Prices Received, Soybeans, US

Dollars per Bu



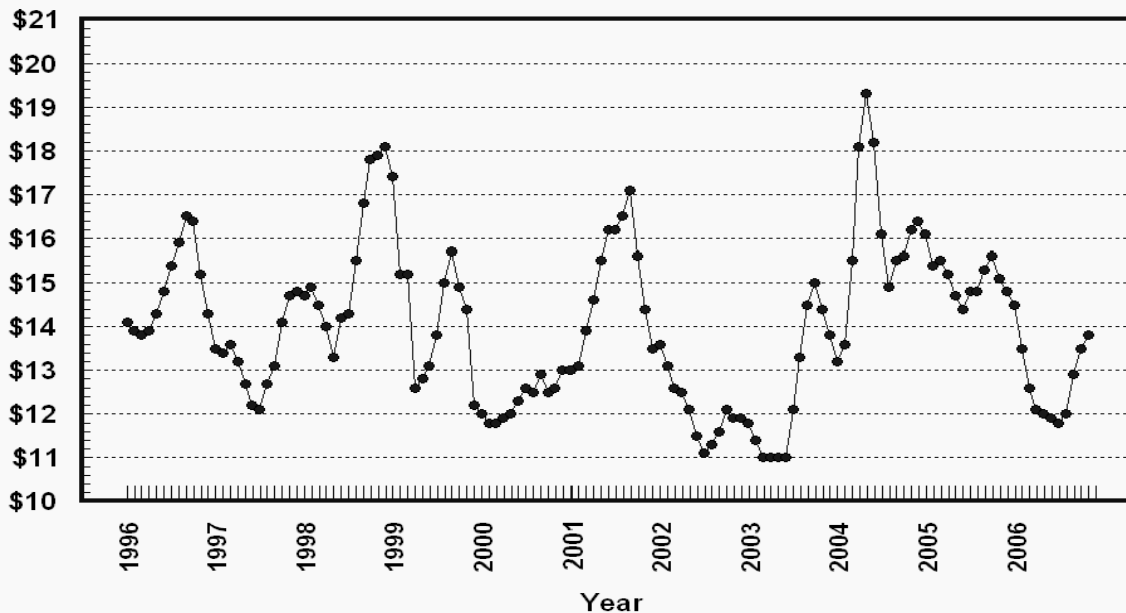
Prices Received, Cattle, US

Dollars per Cwt



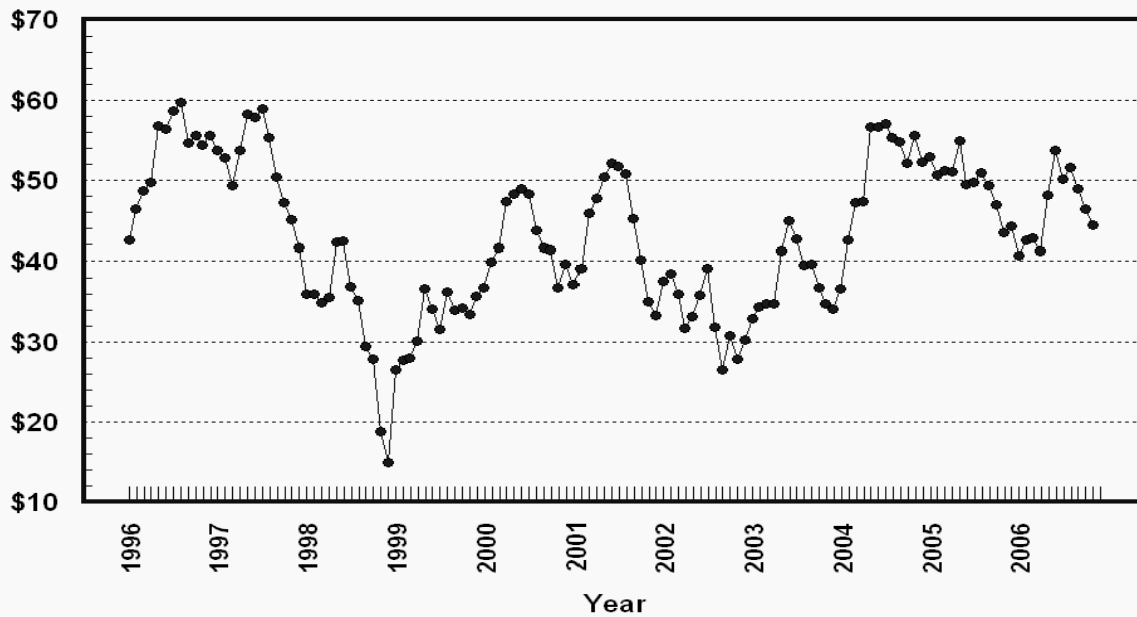
Prices Received, Milk, US

Dollars per Cwt



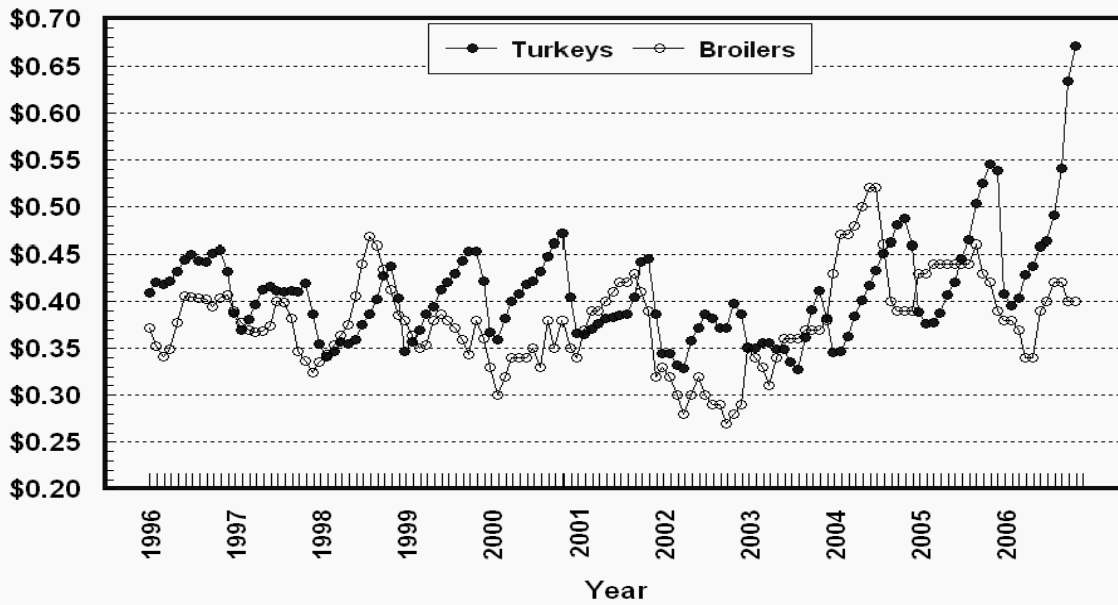
Prices Received, Hogs, US

Dollars per Cwt



Prices Received, Turkeys & Broilers, US

Dollars per Lb



Wheat: Prices Received, by State, October and November 2006

State	All Wheat		Winter Wheat		Durum Wheat		Oth Spring Wheat	
	Oct ¹	Nov ²	Oct ¹	Nov ²	Oct ¹	Nov ²	Oct ¹	Nov ²
	<i>Dollars per Bushel</i>	<i>Dollars per Bushel</i>	<i>Dollars per Bushel</i>	<i>Dollars per Bushel</i>	<i>Dollars per Bushel</i>	<i>Dollars per Bushel</i>	<i>Dollars per Bushel</i>	<i>Dollars per Bushel</i>
AR	4.32	4.35	4.32	4.35				
CA	4.20	(³)	4.05	(⁴)	(³)	(³)		
CO	4.82	4.82	4.82	4.82			(³)	(³)
ID	3.99	4.16	3.89	4.10	(³)	(³)	4.23	4.30
IL	4.09	4.05	4.09	4.05				
IN	3.51	3.91	3.51	3.91				
KS	4.93	4.80	4.93	4.80				
MI	3.76	3.80	3.76	3.80				
MN	4.54	4.50	4.12	4.30			4.54	4.50
MO	3.91	3.80	3.91	3.80				
MT	4.50	4.66	4.53	4.65	4.49	4.78	4.47	4.63
NE	4.88	4.80	4.88	4.80				
ND	4.46	4.48	4.20	4.25	4.56	4.80	4.44	4.40
OH	3.86	3.88	3.86	3.88				
OK	5.05	4.87	5.05	4.87				
OR	4.62	4.76	4.52	4.70			5.07	5.10
SD	4.48	4.60	4.52	4.59			4.42	4.62
TX	4.81	4.86	4.81	4.86				
WA	4.66	4.69	4.63	4.64			4.78	4.88
US	4.59	4.62	4.63	4.65	4.55	4.80	4.48	4.52

¹ Entire month.

² Mid-month.

³ Price not published to avoid disclosure of individual firms.

⁴ Insufficient sales to establish a price.

**Prices Received for Selected Agricultural Commodities, by Month,
United States, 2005 and 2006 ¹**

Month	All Wheat		Corn		Soybeans		Beef Cattle ²		All Hogs	
	2005	2006	2005	2006	2005	2006	2005	2006	2005	2006
	<i>Dollars per Bushel</i>	<i>Dollars per Bushel</i>	<i>Dollars per Bushel</i>	<i>Dollars per Bushel</i>	<i>Dollars per Bushel</i>	<i>Dollars per Bushel</i>	<i>Dollars per Cwt</i>	<i>Dollars per Cwt</i>	<i>Dollars per Cwt</i>	<i>Dollars per Cwt</i>
Jan	3.43	3.52	2.12	2.00	5.57	5.87	89.10	95.10	53.00	40.70
Feb	3.36	3.66	1.95	2.02	5.42	5.67	88.80	92.40	50.70	42.60
Mar	3.42	3.79	2.02	2.06	5.95	5.57	91.00	88.10	51.20	42.80
Apr	3.35	3.81	2.00	2.11	6.03	5.52	93.70	84.80	51.10	41.30
May	3.31	4.09	1.98	2.17	6.21	5.68	92.10	82.20	54.90	48.20
Jun	3.23	4.01	2.03	2.14	6.58	5.62	88.00	84.20	49.50	53.80
Jul	3.20	3.89	2.11	2.14	6.65	5.61	85.00	86.10	49.80	50.20
Aug	3.24	3.91	1.95	2.09	6.15	5.23	84.40	87.70	51.00	51.60
Sep	3.36	4.06	1.90	2.20	5.77	5.24	88.00	90.80	49.40	48.90
Oct	3.43	4.59	1.82	2.54	5.67	5.52	90.40	88.50	47.00	46.50
Nov	3.45	4.62	1.77	3.12	5.62	6.15	90.80	84.40	43.50	44.50
Dec	3.53		1.92		5.78		93.30		44.30	

¹ Current month prices are mid-month; prices for previous months are for the entire month.

² Cows, steers and heifers.

Grains: Prices Received, by State, October and November 2006

Month	All Barley ¹		Corn		Oats		Soybeans		Sorghum Grain	
	Oct ²	Nov ³	Oct ²	Nov ³	Oct ²	Nov ³	Oct ²	Nov ³	Oct ²	Nov ³
	<i>Dollars per Bushel</i>	<i>Dollars per Bushel</i>	<i>Dollars per Bushel</i>	<i>Dollars per Bushel</i>	<i>Dollars per Bushel</i>	<i>Dollars per Bushel</i>	<i>Dollars per Bushel</i>	<i>Dollars per Bushel</i>	<i>Dollars per Cwt</i>	<i>Dollars per Cwt</i>
AL							5.95	6.50	(⁴)	(⁴)
AR										
CA	(⁵)	(⁵)			(⁵)	(⁵)				
CO	2.47	(⁴)	2.68	3.37						
ID	2.98	3.36								
IL			2.62	3.20	(⁴)	2.00	5.65	6.30	(⁴)	5.40
IN			2.70	3.37			5.62	6.31		
IA			2.42	3.10	1.76	1.76	5.49	6.15		
KS			2.79	3.45	1.69	2.06	5.44	6.07	5.44	6.00
KY			2.63	3.50			5.85	6.50		
LA							5.87	6.44		
MI			2.42	3.10	1.88	1.88	5.47	6.00		
MN	2.52	2.63	2.35	2.90	1.88	1.98	5.30	5.95		
MS							6.05	6.25		
MO			2.53	3.20			5.50	6.25	4.69	5.50
MT	2.81	3.14			1.83	(⁵)				
NE			2.52	3.00	2.21	2.25	5.38	5.80	4.91	5.60
NY					(⁴)	(⁴)				
NC			2.82	3.55			5.72	6.14		
ND	2.41	2.64	2.23	2.65	1.70	1.70	5.34	5.60		
OH			2.56	3.16	(⁵)	(⁵)	5.67	6.31		
OK									5.28	6.08
OR	2.72	3.30			(⁵)	(⁵)				
PA			2.99	3.47	2.46	2.46				
SD	1.86	2.00	2.37	3.07	1.87	2.21	5.12	5.80		
TN			2.61	3.50			5.86	6.55		
TX			3.19	3.38	(⁵)	(⁵)			4.90	5.62
UT	2.95	3.24								
WA	3.21	3.59								
WI			2.45	3.00	1.84	2.00	5.43	5.85		
WY	(⁴)	(⁴)								
US	2.76	3.14	2.54	3.12	1.77	1.97	5.52	6.15	5.17	5.88

¹ The Three-State (MN, ND and SD) Feed Barley price is discontinued.

² Entire month.

³ Mid-month.

⁴ Price not published to avoid disclosure of individual firms.

⁵ Insufficient sales to establish a price.

Malting and Feed Barley: Prices Received Selected State, October and November 2006

State	Malting Barley		Feed Barley	
	Oct ¹	Nov ²	Oct ¹	Nov ²
	<i>Dollars per Bushel</i>	<i>Dollars per Bushel</i>	<i>Dollars per Bushel</i>	<i>Dollars per Bushel</i>
ID	3.16	3.50	2.77	3.10
MN	(³)	2.71	1.89	2.05
MT	2.99	3.31	2.08	2.47
ND	2.63	2.80	2.15	2.40
SD	(⁴)	(⁴)	1.86	2.00
WY	(³)	(³)	(⁴)	2.60

¹ Entire month.

² Mid-month.

³ Price not published to avoid disclosure of individual firms.

⁴ Insufficient sales to establish a price.

Field Crops: Prices Received, by State, October and November 2006

State	Dry Edible Beans		All Sunflower		Flaxseed		Peanuts ⁴	
	Oct ¹	Nov ²	Oct ¹	Nov ²	Oct ¹	Nov ²	Oct ¹	Nov ³
	<i>Dollars per Cwt</i>	<i>Dollars per Cwt</i>	<i>Dollars per Cwt</i>	<i>Dollars per Cwt</i>	<i>Dollars per Bushel</i>	<i>Dollars per Bushel</i>	<i>Dollars per Pound</i>	<i>Dollars per Pound</i>
AL							0.164	0.168
CA	49.10	50.10						
CO	19.70	20.70						
FL							(⁵)	(⁵)
GA							0.171	0.168
ID	22.70	23.30						
KS			11.30	11.90				
MI	18.80	19.00						
MN	22.70	22.40	13.40	14.30				
NE	19.80	20.60						
NC							0.182	0.181
ND	18.00	18.20	12.20	12.10	5.41	5.35		
SD			11.70	13.10	(⁶)	(⁶)		
TX							0.180	0.180
VA							0.166	(⁵)
US	19.70	21.00	12.10	12.50	5.41	5.35	0.172	0.172

¹ Entire month.

² Mid-month.

³ Based on sales through first half of month.

⁴ In-Shell.

⁵ Price not published to avoid disclosure of individual firms.

⁶ Insufficient sales to establish a price.

Field Crops and Apples: Prices Received, by State, October and November 2006

State	Cotton, Upland		November				Apples Fresh Use ^{1 4}
	Oct ¹	Nov ²	Cotton- seed ⁵	Hay, Baled ³			
				All	Alfalfa	Other	
<i>Dollars per Pound</i>	<i>Dollars per Pound</i>	<i>Dollars per Ton</i>	<i>Dollars per Ton</i>	<i>Dollars per Ton</i>	<i>Dollars per Ton</i>	<i>Dol/Lb</i>	
AL	0.456	0.444	89.00				
AZ	(⁶)	(⁶)	164.00	123.00	123.00	126.00	
AR	0.491	0.488	101.00				
CA	(⁶)	(⁶)	184.00	106.00	114.00	80.00	0.392
CO				137.00	138.00	124.00	
GA	0.510	0.530	93.00				
ID				122.00	124.00	97.00	
IL				98.00	104.00	80.00	
IA				85.00	86.00	61.00	
KS				104.00	115.00	78.00	
KY				86.00	120.00	70.00	
LA	0.475	0.475	100.00				
MI				97.00	100.00	85.00	0.265
MN				74.00	75.00	61.00	
MS	0.493	0.507	99.00				
MO				78.00	116.00	61.00	
MT				81.00	80.00	86.00	
NE				90.00	91.00	84.00	
NV				118.00	118.00	116.00	
NM				170.00	172.00	145.00	
NY				131.00	150.00	105.00	0.332
NC	0.411	(⁶)	89.00				
ND				67.00	71.00	50.00	
OH				113.00	138.00	81.00	0.390
OK				130.00	149.00	99.00	
OR				131.00	132.00	128.00	
PA				139.00	162.00	132.00	0.160
SD				78.00	82.00	68.00	
TN	0.501	0.500	102.00				
TX	0.440	0.448	121.00	136.00	166.00	131.00	
UT				98.00	99.00	75.00	
VA							0.180
WA				131.00	130.00	135.00	0.357
WI				53.00	55.00	40.00	
WY				93.00	94.00	91.00	
US	0.461	0.466	108.00	106.00	109.00	98.10	0.341

¹ Entire month.

² Based on sales during the first half of the month.

³ Mid-month.

⁴ Equivalent packinghouse-door returns for CA, MI, NY, and WA. Price at point of first sale for other States.

⁵ Marketing year August - February.

⁶ Price not published to avoid disclosure of individual firms.

⁷ Insufficient sales to establish a price.

**Upland Cotton and Rice: Prices Received and Marketings,
United States, November 2006, with Comparisons**

Item	Unit	Sep 2006 ¹	Oct 2006 ¹	Nov 2006 ²
Cotton, Upland				
Average Price	Dollars per Pound	0.473	0.461	0.466
Marketings ³	1,000 Bales	182	994	NA
Rice				
Average Price	Dollars per Cwt	8.99	9.46	9.59
Marketings ⁴	1,000 Cwt	10,176	13,364	NA

¹ Entire month.

² Based on purchases for the first half of the month.

³ Marketings based on a survey of cotton buyers in the major producing States - AL, AZ, AR, CA, GA, LA, MS, NC, TN, and TX.

⁴ Purchases by private firms and rice (rough equivalent) shipped by cooperatives.

**Citrus Fruit: Prices and Equivalent Returns, by Utilization,
by State and United States, November 2006**

Commodity, State and Type	F.O.B. Packed Fresh	Equivalent Returns ¹					
		Packinghouse-door			On-tree		
		All	Fresh	Process	All	Fresh	Process
	<i>Dollars per Box</i>	<i>Dollars per Box</i>	<i>Dollars per Box</i>	<i>Dollars per Box</i>	<i>Dollars per Box</i>	<i>Dollars per Box</i>	<i>Dollars per Box</i>
Grapefruit							
AZ	24.10	14.86	14.86		11.94	11.94	
CA	23.30	11.65	14.06	-0.30	8.73	11.14	-3.22
FL	25.10	12.14	16.62	2.83	9.60	14.27	-0.12
White	23.00	9.50	14.30	2.90	6.96	11.95	0.10
Colored	25.50	12.80	17.10	2.80	10.26	14.75	-0.20
TX	26.30	11.47	15.70	2.80	10.25	14.47	1.62
US	25.00	12.04	16.29	2.69	9.60	14.00	-0.07
Lemons							
AZ	43.20	25.14	33.13	-0.42	19.72	27.71	-5.84
CA	41.50	27.50	31.43	-0.42	22.08	26.01	-5.84
US	42.00	26.73	31.94	-0.42	21.31	26.52	-5.84
Oranges							
CA							
Navel and Misc	19.90	11.38	11.99	1.48	8.88	9.49	-1.02
FL							
Early and Mids	24.00	9.45	15.10	5.85	6.72	12.40	3.10
TX							
Early and Mids	19.60	7.30	8.89	2.98	5.88	7.46	1.59
US	20.80	10.51	12.62	5.29	7.94	10.10	2.60
Tangerines							
AZ	35.60	26.36	26.36		23.12	23.12	
CA	44.60	28.07	35.36	0.26	24.83	32.12	-2.98
FL	29.50	14.85	18.50	6.00	11.20	15.00	2.00
US	33.30	18.04	22.76	5.02	14.49	19.33	1.15

¹ Net lbs. per box: Grapefruit - AZ & CA-67, FL-85, TX-80; Lemons - 76; Oranges - AZ & CA-75, FL-90, TX-85; Tangelos - 90; Tangerines - AZ & CA-75, FL-95.

Potatoes: Prices Received, by State, October and November 2006 ¹

State	Oct	Nov	State	Oct	Nov
	<i>Dollars per Cwt</i>	<i>Dollars per Cwt</i>		<i>Dollars per Cwt</i>	<i>Dollars per Cwt</i>
AL			NC		
AZ			ND - All ²	7.40	6.25
CA - All ²	12.00	7.85	- Fresh ³	14.00	NA
- Winter			- Processing	5.10	NA
- Spring			OR	5.85	6.35
- Summer	18.70		TX		
- Fall	8.10	7.85	VA		
CO - All ²	8.35	8.40	WA - All ²	5.10	5.75
- Fresh ³	9.30	NA	- Processing	4.90	NA
FL			WI - All ²	7.80	7.50
ID - All ²	5.45	5.55	- Fresh ³	9.70	NA
- Fresh ³	6.60	NA	- Processing	5.55	NA
- Processing	5.10	NA	US - All ²	5.97	6.43
ME	6.05	6.90	- Fresh ³	9.38	NA
MI	6.85	8.10	- Processing	5.12	NA
MN	5.90	5.85			
NY	14.30	12.50			

¹ Missing data indicates no potatoes being marketed.

² Average price of potatoes sold for all uses, including table stocks, processing, seed, and livestock feed.

³ Fresh market prices only, includes table stock prices.

Cattle: Prices Received, by State, October and November 2006

State	Cows ¹		Steers & Heifers		Beef Cattle ⁴		Calves	
	Oct ²	Nov ³	Oct ²	Nov ³	Oct ²	Nov ³	Oct ²	Nov ³
	<i>Dollars per Cwt</i>	<i>Dollars per Cwt</i>	<i>Dollars per Cwt</i>	<i>Dollars per Cwt</i>	<i>Dollars per Cwt</i>	<i>Dollars per Cwt</i>	<i>Dollars per Cwt</i>	<i>Dollars per Cwt</i>
AZ	45.70	43.70	101.00	93.00	85.50	79.20	123.00	115.00
AR	42.00	41.00	105.00	93.60	86.10	77.80	121.00	112.00
CA	42.80	40.90	91.00	87.40	66.90	64.20	113.00	104.00
CO	47.70	43.40	109.00	101.00	108.00	100.00	124.00	112.00
FL	43.40	43.40	92.30	87.00	73.50	67.80	111.00	107.00
GA	45.80	44.30	91.20	84.30	61.20	57.50	113.00	109.00
ID	44.00	41.30	91.20	87.00	78.00	71.90	114.00	107.00
IL	47.00	46.00	88.00	85.00	87.20	84.20	115.00	108.00
IA	48.50	45.00	87.60	85.50	86.80	84.70	115.00	105.00
KS	47.00	44.00	92.70	88.80	91.30	87.50	132.00	126.00
KY	45.00	43.00	98.00	87.00	85.30	76.40	114.00	104.00
LA	41.90	41.00	95.60	88.00	61.80	57.90	115.00	104.00
MI	49.00	47.00	82.50	81.00	72.50	70.80	132.00	130.00
MN	49.70	46.50	84.30	83.00	78.40	76.80	125.00	113.00
MO	45.10	42.10	107.00	95.40	93.40	84.70	121.00	110.00
MT	47.10	42.40	114.00	111.00	103.00	96.60	131.00	128.00
NE	49.20	45.90	93.20	89.50	91.90	88.20	131.00	121.00
NM	43.70	41.60	105.00	97.00	81.70	75.90	124.00	114.00
ND	47.00	44.00	110.00	108.00	94.90	91.40	124.00	120.00
OH	45.00	44.00	87.60	83.00	83.30	79.10	111.00	99.00
OK	45.80	42.10	107.00	98.50	93.50	86.10	122.00	111.00
OR	42.70	40.70	97.10	89.00	80.80	74.50	114.00	103.00
PA	45.20	43.90	82.10	82.70	72.50	72.60	125.00	113.00
SD	47.80	43.20	110.00	99.90	103.00	89.70	133.00	120.00
TN	43.00	42.00	97.00	87.00	75.40	69.00	110.00	100.00
TX	42.00	41.50	94.50	90.90	90.30	86.00	126.00	118.00
VA	40.70	40.00	93.50	83.00	82.40	71.80	109.00	96.80
WI	47.50	44.50	83.30	81.00	62.50	59.80	157.00	153.00
WY	47.10	45.00	112.00	110.00	88.60	87.30	132.00	127.00
US	45.90	43.70	94.00	90.00	88.50	84.40	127.00	119.00

¹ Beef cows and cull dairy cows sold for slaughter.

² Entire month.

³ Mid-month.

⁴ "Cows" and "steers and heifers" combined.

Hogs: Prices Received, by State, October and November 2006

State	Sows		Barrows and Gilts		All Hogs	
	Oct ¹	Nov ²	Oct ¹	Nov ²	Oct ¹	Nov ²
	<i>Dollars per Cwt</i>	<i>Dollars per Cwt</i>	<i>Dollars per Cwt</i>	<i>Dollars per Cwt</i>	<i>Dollars per Cwt</i>	<i>Dollars per Cwt</i>
AR	38.00	37.20	43.90	43.10	43.30	42.50
IL	34.80	33.60	48.00	45.50	46.90	44.50
IN	40.40	39.40	46.20	44.30	45.80	44.00
IA	38.00	37.00	48.50	46.00	48.30	45.90
KS	38.40	36.70	43.90	43.10	43.20	42.30
MN	37.50	35.50	48.20	46.50	48.10	46.40
MO	36.80	35.80	38.70	37.90	38.60	37.80
NE	39.00	37.90	48.30	47.90	48.10	47.70
NC	37.80	37.50	47.40	44.00	47.30	43.90
OH	36.10	35.00	46.20	44.00	45.70	43.60
OK	35.60	34.90	40.20	39.20	39.50	38.60
PA	34.40	34.00	43.40	42.40	42.10	41.10
SD	36.90	34.90	48.70	47.70	47.30	46.00
US	36.90	36.10	47.00	44.80	46.50	44.50

¹ Entire month.

² Mid-month.

Sheep and Poultry: Prices Received, by State, October and November 2006

State	October		November
	Sheep ¹	Lambs ¹	Eggs ^{2 3}
	<i>Dollars per Cwt</i>	<i>Dollars per Cwt</i>	<i>Dollars per Dozen</i>
AL			0.630
AR			0.684
CA	36.00	91.50	0.770
CO	32.00	95.00	
CT			0.770
FL			0.680
GA			0.699
ID	23.00	88.00	
IN			0.680
IA	40.90	91.50	0.610
KY	42.00	98.00	
ME			0.840
MI			0.620
MN	29.00	97.00	0.730
MS			0.730
MO	36.30	95.00	0.600
MT	25.60	104.00	
NE	33.00	84.20	
NY			0.690
NC			0.637
ND	37.00	102.00	
OH	34.80	91.00	0.730
OR	36.00	96.00	
PA	43.00	110.00	0.650
SC			0.670
SD	27.10	115.00	
TX	37.00	99.80	0.640
VA	36.00	101.00	
WA			0.750
WV	30.00	99.00	
WY	30.50	115.00	
US	31.10	98.10	0.675

¹ Entire month.

² Mid-month.

³ Market (table) eggs.

Milk and Milk Cows: Prices Received, by State, October and November 2006

State	October ¹						November		Milk Cows ⁵
	Fluid Grade Milk ²		Manufacturing Grade Milk		All Milk ³		All Milk ^{3 4}		
	Price	Fat Test	Price	Fat Test	Price	Fat Test	Price	Fat Test	
	<i>Dol/Cwt</i>	<i>Percent</i>	<i>Dol/Cwt</i>	<i>Percent</i>	<i>Dol/Cwt</i>	<i>Percent</i>	<i>Dol/Cwt</i>	<i>Percent</i>	<i>Dol/Head</i>
AZ	13.50	3.66			13.50	3.66	13.60	3.69	
CA	11.80	3.69	12.60	4.17	11.82	3.70	12.50	3.77	
CO	13.90	3.61			13.90	3.61	14.00	3.65	
FL	16.50	3.74			16.50	3.74	16.50	3.73	
ID	12.50	3.72	11.70	3.84	12.50	3.72	12.60	3.78	
IL	14.70	3.80	14.30	3.70	14.70	3.80	14.80	3.83	
IN	13.80	3.78	12.20	3.81	13.70	3.78	13.70	3.79	
IA	13.80	3.76	13.10	4.00	13.80	3.76	13.90	3.79	
KS	13.10	3.73			13.10	3.73	13.20	3.80	
KY	14.60	3.75			14.60	3.75	14.70	3.79	
MI	14.00	3.73	11.50	3.74	14.00	3.73	14.10	3.77	
MN	13.90	3.83	12.30	3.90	13.90	3.83	14.30	3.87	
MO	14.00	3.77	12.60	3.93	13.90	3.78	14.00	3.80	
NM	13.10	3.66			13.10	3.66	13.20	3.68	
NY	14.10	3.78			14.10	3.78	14.20	3.84	
OH	14.60	3.78	12.90	3.89	14.50	3.78	14.70	3.84	
OR	15.30	3.76			15.30	3.76	15.60	3.82	
PA	15.20	3.80	12.80	3.95	15.20	3.80	15.40	3.85	
TX	14.30	3.79			14.30	3.79	14.40	3.87	
VT	14.60	3.82			14.60	3.82	14.80	3.84	
VA	16.00	3.71			16.00	3.71	16.10	3.73	
WA	13.20	3.76			13.20	3.76	13.50	3.82	
WI	14.10	3.83	13.00	3.98	14.10	3.84	14.50	3.88	
US	13.50	3.75	12.70	4.01	13.50	3.75	13.80	3.81	

¹ Entire month.

² Including milk diverted to manufacturing.

³ Before deductions for hauling. Includes quality, quantity, and other premiums. Excludes hauling subsidies.

⁴ Preliminary.

⁵ Animals sold for dairy herd replacement only. Prices published January, April, July and October.

**Parity Price Equivalent for Manufacturing Grade Milk ¹: United States,
October and November 2006, with Comparisons**

Item	Unit	Nov 2005	Oct 2006	Nov 2006
Parity Equivalent	Dollars per Cwt	34.40	35.00	35.00
Average Price F.O.B ²	Dollars per Cwt	14.30	12.70	13.10
Average Fat Test of Milk ²	Percent	4.03	4.01	4.06

¹ The parity price equivalent during 2006 is 91.5 percent of the parity price of all milk sold to plants, compared with 91.4 percent in 2005. For additional details, see January 2006 issue of "Agricultural Prices".

² Preliminary for November 2006.

**Parity Prices for Farm Products and Average Prices Received as
Percent of Parity Prices, United States, with Comparisons ¹**

Commodity and Unit	Adjusted Base Price	Parity Price			Price as Percent of Parity		
		Nov 2005	Oct 2006	Nov 2006	Nov 2005	Oct 2006	Nov 2006
	<i>Dollars</i>	<i>Dollars</i>	<i>Dollars</i>	<i>Dollars</i>	<i>Percent</i>	<i>Percent</i>	<i>Percent</i>
Basic Commodities							
All Wheat, Bu	0.535	10.60	10.40	10.40	33	44	44
Rice, Cwt	1.45	26.30	28.10	28.10	28	34	34
Corn, Bu	0.398	7.10	7.72	7.72	25	33	40
Cotton, Lb							
American Upland	0.117	1.81	2.27	2.27	27	20	21
Extra Long Staple	0.138	2.71	2.68	2.68			
Peanuts, Lb	0.035	0.668	0.679	0.679	26	25	25
Designated Nonbasic							
All Milk, Sold to Plants, Per Cwt ²	1.97	37.60	38.20	38.20	38	31	32
Honey, Extracted, Lb ³	0.121	2.28	2.28	2.28			
Wool and Mohair							
Wool, Lb	0.083	1.74	1.61	1.61			
Mohair, Lb	0.339	6.36	6.57	6.57			
Other Nonbasic							
Barley, Bu	0.372	7.20	7.21	7.21	36	38	44
Canola, Cwt	1.38	30.00	26.80	26.80			
Cottonseed, Ton	15.40	296.00	299.00	299.00	32	33	36
Dry Edible Beans, Cwt	2.81	53.80	54.50	54.50	33	36	39
Flaxseed, Bu	0.795	14.40	15.40	15.40	41	35	35
Mustard Seed, Cwt	1.96	40.50	38.00	38.00			
Oats, Bu	0.221	4.22	4.29	4.29	39	41	46
Potatoes, Cwt	0.823	16.00	16.00	16.00	39	37	40
Rapeseed, Cwt	1.61	40.30	31.20	31.20			
Rye, Bu	0.355	5.78	6.88	6.88			
Safflower, Cwt	1.86	39.50	36.10	36.10			
Sorghum Grain, Cwt	0.617	11.60	12.00	12.00	24	43	49
Soybeans, Bu	0.880	17.20	17.10	17.10	33	32	36
All Sunflower, Cwt	1.68	32.10	32.50	32.50	41	38	37
Sweetpotatoes, Cwt	2.33	44.10	45.20	45.20			
Apples, Fresh, Lb ⁴	0.027	0.557	0.524	0.524	37	43	41
Citrus (equiv on-tree), Box							
Grapefruit	0.541	7.52	10.50	10.50	117	155	91
Lemons	1.16	21.40	22.50	22.50	38	123	95
Oranges	0.591	11.00	11.50	11.50	54	142	69
Tangerines	1.390	25.80	27.00	27.00	53	17	54
Temples (FL)	0.394	7.24	7.64	7.64			
Beef Cattle, Cwt	9.87	184.00	191.00	191.00	49	46	44
Calves, Cwt	13.70	250.00	266.00	266.00	55	48	45
Hogs, Cwt	5.99	114.00	116.00	116.00	38	40	38
Lambs, Cwt	11.90	223.00	231.00	231.00	48	42	
Sheep, Cwt	4.89	90.10	94.80	94.80	51	33	
Eggs, Doz ²	0.091	1.79	1.76	1.76	31	35	40
Turkeys, Live, Lb	0.056	1.080	1.090	1.090	50	58	62

¹ Parity prices are computed under the provisions of Title III, Subtitle a, Section 301 (a) of the Agricultural Adjustment Act of 1938 as amended by the Agricultural Acts of 1948, 1949, and 1956. See January "Agricultural Prices" for details on adjusted base price and parity price computations.

² Seasonally adjusted price as percentage of parity price.

³ Wholesale extracted. Adjusted base price derived from state annual averages prices weighted by production. For 1982 through 1985 the national averages are the support prices.

⁴ Equivalent packinghouse-door returns for CA, NY (apples only), OR (except peaches), and WA. Price at point of first sale for other states.

Parity Prices for Farm Products, November 2006, United States ¹

Other Nonbasic Commodities	Adjusted Base Price	Parity Price	Other Nonbasic Commodities	Adjusted Base Price	Parity Price
	<i>Dollars</i>	<i>Dollars</i>		<i>Dollars</i>	<i>Dollars</i>
Field Crops and Misc Commodities			Noncitrus Fruit, Continued		
Hops, Lb	0.247	4.79	Olives, CA canning, Ton ³	92.30	1,790.00
Spearmint Oil, Lb	1.44	27.90	Papayas (HI)	0.051	0.989
Tobacco, Lb			Peaches		
Flue-Cured, 11-14	0.247	4.79	Fresh, Ton ²	83.09	1,610.00
VA Fire-Cured, 21	0.258	5.00	Dried, CA, Ton	77.00	1,490.00
KY-TN Fire-Cured, 22-23	0.323	6.26	Processing ³		
Burley, 31	0.266	5.16	Excl Dried		
Maryland, 32	0.202	3.92	Clingstone, CA, Ton	33.40	648.00
Dark Air-Cured, 35-36	0.285	5.53	Pears, Ton		
Sun-Cured, 37	0.237	4.60	Fresh ²	54.50	1,060.00
PA Seedleaf, 41	0.201	3.90	Dried, CA ⁴	171.00	3,320.00
Cigar Filler & Binder, 42-44, 54-55	0.222	4.30	Plums, CA, Ton		
Puerto Rican Filler, 46	0.159	3.08	Fresh, Equiv on-Tree	60.10	1,170.00
Cigar Binder, 51-52	0.760	14.70	Prunes, Dried, CA, Ton ⁴	132.00	2,560.00
Type 61	3.21	62.20	Prunes and Plums, Excl CA, Ton		
Noncitrus Fruit			Fresh ⁷	62.40	1,210.00
Apples, Ton ⁴			Processing ⁴		
Processing	17.60	341.00	Excl Dried	28.80	558.00
Apricots, Ton			Tree Nuts ⁸		
Fresh ⁵	101.00	1,960.00	Almonds, Lb	0.221	4.29
Dried, CA	270.00	5,240.00	Hazelnuts, Ton	150.00	2,910.00
Avocados, Ton ⁵	233.00	4,520.00	Pistachio, Lb	0.168	3.26
Cherries			Walnuts, Ton	173.00	3,350.00
Sweet, Ton	195.00	3,780.00	Vegetables, Cwt ⁹		
Tart, Lb	0.034	0.659	Fresh		
Cranberry, Bbl ³	5.35	104.00	Carrots ⁶	2.30	44.60
Dates, CA, Ton ⁵	214.00	4,150.00	Cauliflower ⁶	4.44	86.10
Grapes, Ton			Celery ⁶	1.91	37.00
Raisin Variety	121.00	2,350.00	Honeydew Melons	2.64	51.20
Other Dried	70.80	1,370.00	Lettuce	2.36	45.80
Kiwifruit, Ton	89.20	1,730.00	Onions ⁶	1.65	32.00
Nectarines			Tomatoes	4.61	89.40
Fresh, CA, Ton ⁵	61.20	1,190.00			

¹ Parity prices are computed under the provisions of Title III, Subtitle a, Section 301 (a) of the Agricultural Adjustment Act of 1938 as amended by the Agricultural Acts of 1948, 1949, and 1956. See January "Agricultural Prices" for details on adjusted base price and parity price computations.

² Equivalent packinghouse-door returns for CA, NY (apples only), OR (except peaches), and WA. Price at point of first sale for other states.

³ Equivalent returns for bulk fruit at first delivery point.

⁴ Equivalent returns at processing plant door.

⁵ Equivalent returns at packinghouse door.

⁶ Includes some processing.

⁷ Based on "as sold" prices for fresh fruit in all states.

⁸ Prices in-shell basis except almonds which are shelled basis.

⁹ F.O.B. shipping point prices.

Marketing Year for Specified Commodities

Corn for Grain: September 1 to August 31 for U.S.; July 1 to June 30 for Texas; August 1 to July 31 for Alabama, Arkansas, Florida, Georgia, Louisiana, Mississippi, North Carolina, Oklahoma, South Carolina, and Tennessee; September 1 to August 31 for Arizona, California, Delaware, Illinois, Indiana, Iowa, Kansas, Kentucky, Maryland, Missouri, Nebraska, New Mexico, Ohio, Pennsylvania, South Dakota, Virginia, and West Virginia; October 1 to September 30 for all other States.

Dry Edible Beans: September 1 to August 31 for U.S. and all States.

Chickpeas (Garbonzo): September 1 to August 31 for U.S.

Flaxseed: July 1 to June 30 for U.S. and all States.

Sunflower: September 1 to August 31 for U.S.; July 1 to June 30 for Texas; August 1 to July 31 for Louisiana; September 1 to August 31 for all other States.

**Crops: Marketing Year Average Prices Received, by States
and United States, 2004 and 2005**

State	Flaxseed		Sunflower					
			All		Oil		Non-Oil	
	2004	2005	2004	2005	2004	2005	2004	2005
	<i>Dollars per Bu</i>	<i>Dollars per Bu</i>	<i>Dollars per Cwt</i>	<i>Dollars per Cwt</i>	<i>Dollars per Cwt</i>	<i>Dollars per Cwt</i>	<i>Dollars per Cwt</i>	<i>Dollars per Cwt</i>
CO			12.40	12.70	11.00	10.20	16.30	18.40
KS			12.70	11.70	11.60	8.68	17.20	18.40
MN	10.30	5.73	16.70	16.80	14.40	12.80	18.60	18.30
MT	7.94	6.20						
NE			14.40	14.10	13.00	11.60	17.00	17.40
ND	8.05	5.94	14.10	12.10	13.00	10.90	18.50	17.20
SD	9.74	5.67	13.10	11.40	12.80	10.80	14.70	14.60
TX			14.20	15.40	13.20	10.50	14.70	18.50
Oth Sts ¹			13.70	13.60	13.30	12.60	17.40	18.50
US	8.07	5.94	13.70	12.10	12.80	10.50	17.20	17.30

¹ For 2004, other States include CA, GA, IL, LA, MI, MO, MT, NM, NY, OH, OK, PA, SC, UT, WA, WI, and WY. For 2005, other states include CA, IL, MI, MO, MT OK, WI, and WY.

**Canola: Selected States and United States,
Market Year Average Prices, 2004 and 2005**

State	2004	2005
	<i>Dollars per Cwt</i>	<i>Dollars per Cwt</i>
MN		9.08
MT ¹		9.00
ND	10.70	9.64
Oth Sts ²	11.70	9.55
US	10.70	9.62

¹ Estimates began as part of the federal program in 2005.

² For 2004, other States include AL, AZ, CA, GA, ID, IN, KS, MI, MT, NY, OR, PA, SC, SD, and WA. For 2005, other States include ID, MI, OK, OR, and WA.

**Crops: Marketing Year Average Prices Received, by States
and United States, 2004 and 2005**

State	Corn		All Dry Beans	
	2004	2005	2004	2005
	<i>Dollars per Bu</i>	<i>Dollars per Bu</i>	<i>Dollars per Cwt</i>	<i>Dollars per Cwt</i>
AL	2.48	2.50		
AZ	3.03	3.18		
AR	2.39	2.15		
CA	2.65	2.70	36.90	41.00
CO	2.23	2.23	28.00	18.70
DE	2.19	2.25		
FL	2.30	2.00		
GA	2.20	2.20		
ID	2.82	2.68	25.10	20.60
IL	2.14	2.08		
IN	1.99	2.00		
IA	1.99	1.94		
KS	2.12	2.07	30.20	17.40
KY	2.24	2.21		
LA	2.45	2.25		
MD	2.17	2.19		
MI	1.97	1.88	22.50	19.60
MN	1.94	1.86	26.50	20.10
MS	2.43	2.22		
MO	2.03	2.03		
MT	2.42	2.54	28.70	18.60
NE	2.02	1.92	22.80	17.30
NJ	2.20	2.12		
NM	2.40	2.60	28.00	32.00
NY	2.37	2.29	27.90	21.40
NC	2.44	2.33		
ND	1.88	1.80	24.80	15.50
OH	2.04	1.98		
OK	2.53	2.39		
OR	2.75	2.59	26.50	22.40
PA	2.25	2.30		
SC	2.30	2.19		
SD	1.82	1.79	21.90	20.00
TN	2.17	2.07		
TX	2.60	2.47	22.00	20.10
UT	2.56	2.77	30.00	17.50
VA	2.17	2.14		
WA	2.97	2.81	24.50	21.80
WV	2.20	2.17		
WI	2.15	1.94	33.50	29.00
WY	2.48	2.45	25.90	18.70
US	2.06	2.00	25.70	18.50

**Proso Millet: Marketing Year Average Prices Received,
by State and United States, 2004 and 2005**

State	2004	2005
	<i>Dollars per Bu</i>	<i>Dollars per Bu</i>
CO	2.70	3.10
NE	3.05	3.35
SD	2.90	3.15
US	2.83	3.19

**Other Oilseeds: Marketing Year Average Prices Received,
United States, 2004 and 2005**

Year	Rapeseed	Safflower	Mustard Seed
	<i>Dollars per Cwt</i>	<i>Dollars per Cwt</i>	<i>Dollars per Cwt</i>
2005	14.30	12.60	13.50
2004	14.10	12.10	15.20

**Prices Received: Corn, by State and Month,
for Marketing Years, 2004-2005 and 2005-2006**

State	Jul	Aug	Sep	Oct	Nov	Dec	Jan ¹	Feb
2005-2006								
	<i>Dollars per Bushel</i>	<i>Dollars per Bushel</i>	<i>Dollars per Bushel</i>	<i>Dollars per Bushel</i>	<i>Dollars per Bushel</i>	<i>Dollars per Bushel</i>	<i>Dollars per Bushel</i>	<i>Dollars per Bushel</i>
CO	2.28	2.22	2.21	2.28	2.19	2.11	2.16	2.18
IL	2.23	2.03	1.92	1.83	1.87	2.01	2.06	2.08
IN	2.20	1.97	1.80	1.72	1.71	2.04	2.09	2.07
IA	2.00	1.84	1.81	1.78	1.74	1.87	1.87	1.95
KS	2.17	2.11	2.10	2.17	1.92	1.90	1.98	2.03
KY	2.35	2.21	2.05	1.89	1.99	2.11	2.21	2.25
MI	2.17	2.03	1.83	1.71	1.62	1.66	1.85	1.93
MN	1.97	1.82	1.71	1.69	1.63	1.72	1.79	1.83
MO	2.15	2.11	1.81	1.74	1.77	2.05	2.11	2.16
NE	2.04	1.86	1.72	1.82	1.79	1.80	1.91	1.94
NC	2.58	2.47	2.22	2.20	2.00	2.32	2.49	2.54
ND	1.87	1.82	1.77	1.73	1.67	1.73	1.72	1.80
OH	2.21	2.01	1.78	1.77	1.69	1.93	1.98	2.09
PA	2.56	2.43	2.29	2.12	2.06	2.14	2.24	2.36
SD	1.91	1.80	1.71	1.60	1.56	1.73	1.76	1.81
TN	2.45	2.18	1.83	1.84	2.06	2.22	2.22	2.28
TX	(²)	2.35	2.48	2.50	2.38	2.50	2.36	2.39
WI	2.17	2.01	1.95	1.84	1.74	1.82	1.94	1.96
US	2.11	1.95	1.90	1.82	1.77	1.92	2.00	2.02
2004-2005								
CO	2.90	2.75	2.72	2.36	2.42	2.22	2.22	2.03
IL	2.49	2.35	2.20	2.22	2.08	2.17	2.23	2.02
IN	2.57	2.44	2.07	1.88	1.81	1.95	2.09	2.01
IA	2.48	2.23	2.14	2.16	2.00	1.99	2.04	1.88
KS	2.68	2.37	2.18	2.27	2.28	2.01	2.00	1.90
KY	2.71	2.40	2.33	2.16	2.11	2.12	2.37	2.13
MI	2.42	2.38	2.29	2.13	1.93	1.88	2.00	1.86
MN	2.47	2.27	2.17	2.13	2.03	1.93	1.94	1.86
MO	2.58	2.43	2.20	1.90	1.89	1.95	1.93	1.95
NE	2.57	2.35	2.15	2.15	2.13	2.01	2.04	1.89
NC	3.08	2.66	2.43	2.25	2.23	2.46	2.57	2.30
ND	2.52	2.53	2.37	2.22	2.10	1.85	1.91	1.64
OH	2.54	2.36	2.12	2.04	1.95	1.95	2.13	1.97
PA	2.98	2.90	2.40	2.06	2.26	2.10	2.32	2.35
SD	2.29	2.20	2.05	1.92	1.76	1.80	1.76	1.76
TN	2.73	2.28	2.10	2.24	2.42	2.33	2.16	2.05
TX	2.52	2.51	2.67	2.74	2.68	2.51	2.42	2.37
WI	2.59	2.34	2.29	2.26	2.24	2.12	2.14	2.07
US	2.51	2.34	2.20	2.14	2.05	2.04	2.12	1.95

See footnote(s) at end of table.

--continued

**Prices Received: Corn, by State and Month,
for Marketing Years, 2004-2005 and 2005-2006 (continued)**

State	Mar	Apr	May	Jun	Jul	Aug	Sep
	2005-2006						
	<i>Dollars per Bushel</i>	<i>Dollars per Bushel</i>	<i>Dollars per Bushel</i>	<i>Dollars per Bushel</i>	<i>Dollars per Bushel</i>	<i>Dollars per Bushel</i>	<i>Dollars per Bushel</i>
CO	2.19	2.26	2.34	2.44	2.44	2.48	2.43
IL	2.12	2.20	2.26	2.28	2.28	2.15	2.20
IN	2.15	2.20	2.26	2.21	2.31	2.08	2.32
IA	2.02	2.04	2.08	2.11	2.09	2.04	2.09
KS	2.07	2.17	2.17	2.17	2.35	2.23	2.43
KY	2.33	2.36	2.46	2.46	2.43	2.37	2.34
MI	1.95	2.04	2.16	2.11	2.18	2.05	2.05
MN	1.85	1.90	1.95	1.93	1.97	1.93	1.96
MO	2.16	2.22	2.25	2.24	2.29	2.21	2.23
NE	1.96	2.00	2.08	2.06	2.11	2.08	2.13
NC	2.53	2.56	2.59	2.72	2.82	2.52	2.50
ND	1.84	1.90	1.95	1.89	1.88	1.89	1.99
OH	2.09	2.17	2.26	2.23	2.25	2.12	2.18
PA	2.49	2.51	2.60	2.60	2.59	2.55	2.71
SD	1.84	1.89	1.92	1.95	1.94	2.00	2.05
TN	2.33	2.41	2.46	2.62	2.51	2.42	2.41
TX	2.54	2.59	2.62	2.68	2.39	2.42	2.63
WI	1.94	2.02	2.08	2.05	2.10	2.06	2.09
US	2.06	2.11	2.17	2.14	2.14	2.09	2.20
	2004-2005						
CO	2.21	2.11	2.16	2.17	2.28	2.22	2.21
IL	2.09	2.09	2.05	2.12	2.23	2.03	1.92
IN	2.01	1.96	2.02	2.07	2.20	1.97	1.80
IA	1.98	1.95	1.92	1.95	2.00	1.84	1.81
KS	2.00	1.90	2.00	2.08	2.17	2.11	2.10
KY	2.20	2.19	2.21	2.26	2.35	2.21	2.05
MI	1.94	1.88	1.93	2.00	2.17	2.03	1.83
MN	1.92	1.90	1.90	1.95	1.97	1.82	1.71
MO	2.02	2.03	2.04	2.08	2.15	2.11	1.81
NE	1.98	1.92	1.93	1.97	2.04	1.86	1.72
NC	2.45	2.34	2.49	2.52	2.58	2.47	2.22
ND	1.79	1.85	1.86	1.87	1.87	1.82	1.77
OH	2.01	1.99	2.01	2.11	2.21	2.01	1.78
PA	2.40	2.37	2.54	2.48	2.56	2.43	2.29
SD	1.83	1.82	1.84	1.87	1.91	1.80	1.71
TN	2.09	2.34	2.45	2.38	2.45	2.18	1.83
TX	2.37	2.30	2.31	2.58	(²)	2.35	2.48
WI	2.14	2.20	2.11	2.12	2.17	2.01	1.95
US	2.02	2.00	1.98	2.03	2.11	1.95	1.90

¹ Second year.

² Price not published to avoid disclosure of individual firms.

**Prices Received: Flaxseed, by State and Month,
for Marketing Years, 2004-2005 and 2005-2006**

State	Jul	Aug	Sep	Oct	Nov	Dec
	2005-2006					
	<i>Dollars per Bushel</i>	<i>Dollars per Bushel</i>	<i>Dollars per Bushel</i>	<i>Dollars per Bushel</i>	<i>Dollars per Bushel</i>	<i>Dollars per Bushel</i>
ND	10.00	6.27	6.11	6.05	5.95	5.81
SD	⁽³⁾	6.02	5.64	5.34	5.49	⁽³⁾
US	10.00	6.26	6.11	6.05	5.94	5.81
	2004-2005					
ND	7.32	7.03	7.19	7.36	8.62	8.42
SD	⁽³⁾	6.21	7.25	7.92	⁽³⁾	⁽³⁾
US	7.32	6.94	7.19	7.36	8.62	8.42
	Jan ¹	Feb	Mar	Apr	May	Jun
	2005-2006					
ND	5.64	5.61	5.31	5.56	5.59	5.40
SD	⁽³⁾	5.00	⁽³⁾	⁽³⁾	⁽³⁾	⁽³⁾
US	5.64	5.59	5.31	5.56	5.59	5.40
	2004-2005					
ND	8.89	10.90	11.30	12.30	11.60	11.20
SD	⁽³⁾	⁽³⁾	11.90	12.20	⁽³⁾	⁽³⁾
US	8.89	10.90	11.40	12.30	11.60	11.20

¹ Second year.

² Price not published to avoid disclosure of individual firms.

³ Insufficient sales to establish a price.

**Prices Received: All Sunflower, by State and Month,
for Marketing Years, 2004-2005 and 2005-2006**

State	Sep	Oct	Nov	Dec	Jan ¹	Feb
2005-2006						
	<i>Dollars per Cwt</i>	<i>Dollars per Cwt</i>	<i>Dollars per Cwt</i>	<i>Dollars per Cwt</i>	<i>Dollars per Cwt</i>	<i>Dollars per Cwt</i>
KS	14.80	14.80	11.10	8.51	8.30	9.23
MN	16.90	17.80	16.90	18.20	13.50	15.30
ND	10.20	12.40	12.70	12.30	11.70	11.50
SD	12.80	11.10	11.10	12.50	11.50	10.40
US	13.20	12.90	12.20	12.20	11.40	11.20
2004-2005						
KS	10.10	12.70	11.50	12.70	12.60	13.40
MN	13.80	15.90	15.80	16.80	16.30	16.70
ND	15.00	13.20	13.40	13.70	14.00	15.80
SD	12.50	11.60	11.80	12.70	13.30	14.50
US	12.80	12.60	12.80	13.40	13.70	15.00
	Mar	Apr	May	Jun	Jul	Aug
2005-2006						
KS	10.20	12.00	9.68	10.80	12.30	11.10
MN	16.40	17.80	18.60	16.60	16.80	14.70
ND	11.60	11.70	12.60	12.20	11.60	12.40
SD	10.70	11.00	10.40	10.90	12.80	12.30
US	11.50	11.90	11.80	12.30	12.00	12.40
2004-2005						
KS	15.70	14.00	15.50	9.87	10.70	13.20
MN	17.70	19.10	17.00	(²)	(²)	(²)
ND	14.80	16.10	14.50	15.60	15.10	14.40
SD	14.50	14.30	15.90	14.90	14.80	14.10
US	15.00	15.10	15.40	15.20	15.20	14.40

¹ Second year.

² Price not published to avoid disclosure of individual firms.

³ Insufficient sales to establish a price.

**Prices Received: Oil Sunflower, by State and Month,
for Marketing Years, 2004-2005 and 2005-2006**

State	Sep	Oct	Nov	Dec	Jan ¹	Feb
2005-2006						
	<i>Dollars per Cwt</i>	<i>Dollars per Cwt</i>	<i>Dollars per Cwt</i>	<i>Dollars per Cwt</i>	<i>Dollars per Cwt</i>	<i>Dollars per Cwt</i>
KS	10.70	10.10	8.75	7.70	7.59	7.74
MN	⁽²⁾	13.60	12.60	13.80	11.90	11.50
ND	9.74	11.50	11.30	11.10	10.90	10.40
SD	12.80	11.30	10.70	11.30	10.70	9.17
US	11.50	11.20	10.70	10.50	10.50	9.72
2004-2005						
KS	10.00	10.80	11.50	12.00	12.00	12.50
MN	13.80	13.80	13.20	⁽²⁾	14.60	⁽²⁾
ND	12.80	12.30	12.50	12.90	13.10	14.00
SD	12.40	11.60	11.70	12.20	12.90	13.90
US	12.00	11.60	12.20	12.60	12.90	13.80
	Mar	Apr	May	Jun	Jul	Aug
2005-2006						
KS	7.96	8.42	8.33	8.56	⁽²⁾	10.00
MN	13.30	⁽²⁾	⁽²⁾	14.70	14.70	11.80
ND	10.40	9.59	10.70	10.40	10.60	10.80
SD	10.10	9.66	8.89	9.53	12.40	11.80
US	9.91	9.51	9.60	10.40	10.90	11.20
2004-2005						
KS	11.70	12.30	12.30	9.87	10.70	10.50
MN	⁽²⁾	⁽²⁾	12.40	⁽³⁾	⁽³⁾	⁽²⁾
ND	13.50	14.20	13.50	14.30	14.30	14.10
SD	14.00	14.10	14.00	14.50	14.40	14.10
US	13.60	13.90	13.60	14.30	14.30	14.00

¹ Second year.

² Price not published to avoid disclosure of individual firms.

³ Insufficient sales to establish a price.

**Prices Received: Non-Oil Sunflower, by State and Month,
for Marketing Years, 2004-2005 and 2005-2006**

State	Sep	Oct	Nov	Dec	Jan ¹	Feb
2005-2006						
	<i>Dollars per Cwt</i>	<i>Dollars per Cwt</i>	<i>Dollars per Cwt</i>	<i>Dollars per Cwt</i>	<i>Dollars per Cwt</i>	<i>Dollars per Cwt</i>
KS	⁽²⁾	19.10	16.70	⁽²⁾	⁽²⁾	⁽²⁾
MN	⁽²⁾	19.30	18.90	18.80	⁽²⁾	18.10
ND	⁽³⁾	18.20	17.50	17.10	16.30	16.90
SD	⁽³⁾	10.40	⁽²⁾	⁽²⁾	⁽²⁾	⁽²⁾
US	19.70	16.90	17.40	17.70	16.60	17.60
2004-2005						
KS	⁽²⁾	⁽²⁾	⁽³⁾	⁽²⁾	⁽²⁾	⁽²⁾
MN	⁽³⁾	⁽²⁾	17.40	⁽²⁾	18.10	18.80
ND	20.20	17.80	18.20	17.20	17.80	19.40
SD	13.80	12.30	12.10	14.10	16.50	16.70
US	18.20	16.80	15.70	16.40	17.50	18.30
	Mar	Apr	May	Jun	Jul	Aug
2005-2006						
KS	⁽²⁾	⁽²⁾	⁽²⁾	⁽²⁾	⁽²⁾	⁽²⁾
MN	17.20	18.80	18.60	17.20	17.40	16.30
ND	18.10	17.50	18.00	17.10	16.90	15.40
SD	⁽²⁾	⁽²⁾	⁽²⁾	⁽²⁾	⁽²⁾	⁽²⁾
US	18.20	17.80	18.40	16.70	17.10	15.90
2004-2005						
KS	17.70	⁽²⁾	⁽²⁾	⁽³⁾	⁽³⁾	⁽²⁾
MN	⁽²⁾	19.50	18.50	⁽²⁾	⁽²⁾	⁽²⁾
ND	19.80	21.10	22.40	20.70	19.30	⁽²⁾
SD	16.70	⁽²⁾	17.50	⁽²⁾	⁽²⁾	⁽²⁾
US	18.40	20.30	18.20	20.50	19.80	15.60

¹ Second year.

² Price not published to avoid disclosure of individual firms.

³ Insufficient sales to establish a price.

**Prices Received: Dry Edible Beans, by State and Month,
for Marketing Years, 2004-2005 and 2005-2006**

State	Sep	Oct	Nov	Dec	Jan ¹	Feb
2005-2006						
	<i>Dollars per Cwt</i>	<i>Dollars per Cwt</i>	<i>Dollars per Cwt</i>	<i>Dollars per Cwt</i>	<i>Dollars per Cwt</i>	<i>Dollars per Cwt</i>
CA	30.40	37.80	46.40	44.80	40.00	42.80
CO	19.70	18.50	18.10	17.70	19.30	17.60
ID	21.90	20.80	22.60	20.60	21.60	19.30
MI	19.30	19.10	18.60	20.30	19.70	20.00
MN	18.80	21.70	20.80	19.00	(²)	(²)
NE	18.10	16.90	16.60	16.30	16.40	16.60
ND	15.80	17.00	15.30	14.70	16.00	14.20
US	18.00	18.80	18.00	18.10	19.20	17.40
2004-2005						
CA	35.80	38.70	36.80	38.40	40.70	37.00
CO	26.10	25.90	28.70	30.20	29.00	29.80
ID	22.50	24.10	22.30	24.60	26.50	26.40
MI	22.00	23.60	23.70	23.60	27.10	22.30
MN	23.40	26.40	24.40	28.20	27.80	28.20
NE	21.80	22.10	23.60	23.90	23.80	24.30
ND	22.20	23.80	26.50	26.60	26.20	29.00
US	22.80	24.50	25.90	27.00	27.20	27.80
	Mar	Apr	May	Jun	Jul	Aug
2005-2006						
CA	44.50	42.60	42.30	41.40	38.20	41.30
CO	18.10	18.40	18.40	17.30	20.00	19.90
ID	18.40	18.70	18.00	18.40	17.50	18.10
MI	22.10	21.90	20.80	19.60	21.70	20.00
MN	16.90	14.90	13.60	21.50	(²)	21.30
NE	16.80	17.10	17.10	17.40	18.10	19.40
ND	14.60	14.50	14.70	14.60	15.60	17.10
US	17.10	18.90	19.30	19.00	21.70	19.50
2004-2005						
CA	37.20	37.90	35.50	39.80	35.10	(²)
CO	29.20	27.80	28.70	30.70	30.10	25.00
ID	27.40	25.90	24.60	28.50	27.20	27.40
MI	23.50	23.50	25.20	23.50	20.40	20.60
MN	26.60	(²)	26.10	(²)	(²)	(²)
NE	24.00	23.80	23.10	23.40	22.40	19.80
ND	26.30	24.80	23.30	23.20	21.40	20.80
US	26.60	28.70	31.10	27.70	25.40	21.40

¹ Second year.

² Price not published to avoid disclosure of individual firms.

**Corn: Farm Marketings, Percent of Sales, by Month
and State, 2004-2005 and 2005-2006¹**

Year	Jul	Aug	Sep	Oct	Nov	Dec	Jan	Feb	Mar	Apr	May	Jun	Jul	Aug	Sep
	<i>Pct</i>	<i>Pct</i>	<i>Pct</i>	<i>Pct</i>	<i>Pct</i>	<i>Pct</i>	<i>Pct</i>	<i>Pct</i>	<i>Pct</i>	<i>Pct</i>	<i>Pct</i>	<i>Pct</i>	<i>Pct</i>	<i>Pct</i>	<i>Pct</i>
CO 2004-2005				5	17	22	13	14	8	4	4	3	4	3	3
2005-2006				13	18	21	12	7	5	5	3	3	4	4	5
IL 2004-2005			8	11	4	8	18	9	9	6	7	8	7	5	
2005-2006			8	9	5	8	22	9	7	6	7	7	6	6	
IN 2004-2005			8	21	9	5	11	8	7	4	5	8	7	7	
2005-2006			8	16	10	5	19	10	8	6	5	4	5	4	
IA 2004-2005			6	9	15	7	9	8	9	6	7	9	8	7	
2005-2006			6	10	10	7	12	8	7	7	7	8	10	8	
KS 2004-2005			11	19	16	14	10	10	5	2	3	3	4	3	
2005-2006			11	21	10	14	13	7	5	9	4	1	2	3	
KY 2004-2005			14	11	5	4	20	12	10	7	4	6	4	3	
2005-2006			10	11	4	4	26	13	9	7	5	4	3	4	
MI 2004-2005				11	21	12	11	7	5	4	5	7	6	6	5
2005-2006				17	13	9	11	8	6	8	6	5	5	6	6
MN 2004-2005				10	16	10	10	8	8	5	7	7	8	6	5
2005-2006				8	10	7	7	5	4	5	5	13	14	12	10
MO 2004-2005			20	15	6	8	11	8	8	4	4	5	6	5	
2005-2006			18	10	7	10	13	8	6	5	5	4	5	9	
NE 2004-2005			5	9	15	12	11	10	8	5	6	7	6	6	
2005-2006			5	14	11	9	12	9	8	7	6	5	7	7	
NC 2004-2005		17	37	11	6	4	5	6	5	2	3	2	2		
2005-2006		5	39	12	7	3	5	6	6	4	9	2	2		
ND 2004-2005				3	14	17	13	9	8	6	3	8	9	5	5
2005-2006				7	13	10	18	9	7	6	4	7	7	8	4
OH 2004-2005			4	22	13	7	10	8	9	6	5	6	6	4	
2005-2006			3	16	13	7	15	9	7	8	7	5	5	5	
PA 2004-2005			7	33	20	5	3	4	6	6	4	3	3	6	
2005-2006			13	21	16	5	7	3	13	4	5	4	6	3	
SD 2004-2005			3	5	22	13	9	9	7	4	6	6	9	7	
2005-2006			5	11	12	9	11	7	8	6	6	9	8	8	
TN 2004-2005		12	50	7	1	2	10	4	4	3	2	3	2		
2005-2006		3	32	16	5	8	11	9	3	4	5	2	2		
TX 2004-2005	3	9	12	26	21	10	8	4	2	2	2	1			
2005-2006	6	11	15	11	7	7	13	9	6	6	8	1			
WI 2004-2005				6	23	10	9	5	6	6	6	9	9	4	7
2005-2006				12	13	8	13	7	7	11	7	5	7	6	4
US 2004-2005			7.8	11.7	11.7	8.6	12.4	8.4	8.2	5.2	5.9	7.2	7.0	5.9	
2005-2006			7.4	11.3	8.9	7.9	15.4	8.2	6.8	6.4	6.4	6.9	7.5	6.9	

¹ Monthly farm marketings, based on a sample survey, as a percent of total used for calculating marketing year average prices.

**All Sunflower: Farm Marketings, Percent of Sales, by Month
and State, 2004-2005 and 2005-2006 ¹**

Year	Sep	Oct	Nov	Dec	Jan	Feb	Mar	Apr	May	Jun	Jul	Aug
	<i>Percent</i>	<i>Percent</i>	<i>Percent</i>	<i>Percent</i>	<i>Percent</i>	<i>Percent</i>	<i>Percent</i>	<i>Percent</i>	<i>Percent</i>	<i>Percent</i>	<i>Percent</i>	<i>Percent</i>
KS 2004-2005	4	28	14	24	12	8	5	3	1			1
2005-2006	5	30	20	10	7	8	8	4	4	1	1	2
MN 2004-2005	3	6	24	16	14	16	9	5	2	1	3	1
2005-2006	3	12	13	16	9	11	8	5	6	7	7	3
ND 2004-2005	2	8	30	21	11	7	6	3	1	3	6	2
2005-2006	1	14	16	11	13	7	7	5	3	8	11	4
SD 2004-2005	3	9	27	13	13	10	7	6	3	4	3	2
2005-2006	3	24	16	7	14	6	4	5	7	3	4	7
US 2004-2005	2.5	11.2	26.2	18.9	12.2	8.6	6.3	4.1	1.9	2.5	3.7	1.9
2005-2006	2.0	18.4	16.7	10.0	12.1	7.3	6.2	5.0	4.5	5.6	7.9	4.3

¹ Monthly farm marketings, based on a sample survey, as a percent of total used for calculating marketing year average prices.

**Flaxseed: Farm Marketings, Percent of Sales, by Month
and State, 2004-2005 and 2005-2006 ¹**

Year	Jul	Aug	Sep	Oct	Nov	Dec	Jan	Feb	Mar	Apr	May	Jun
	<i>Percent</i>	<i>Percent</i>	<i>Percent</i>	<i>Percent</i>	<i>Percent</i>	<i>Percent</i>	<i>Percent</i>	<i>Percent</i>	<i>Percent</i>	<i>Percent</i>	<i>Percent</i>	<i>Percent</i>
ND 2004-2005	2	3	22	34	13	9	8	2	2	2	2	1
2005-2006	1	10	41	9	6	6	7	3	5	3	2	7
SD 2004-2005		35	1	4					30	30		
2005-2006		39	30	4	14			13				
US 2004-2005	2.4	3.5	22.0	33.9	13.0	8.5	7.2	1.7	2.4	2.7	1.4	1.3
2005-2006	0.5	10.4	40.5	9.1	5.9	6.4	6.8	3.4	4.8	3.1	2.3	6.8

¹ Monthly farm marketings, based on a sample survey, as a percent of total used for calculating marketing year average prices.

**Dry Edible Beans: Farm Marketings, Percent of Sales, by Month
and State, 2004-2005 and 2005-2006¹**

Year	Sep	Oct	Nov	Dec	Jan	Feb	Mar	Apr	May	Jun	Jul	Aug
	<i>Percent</i>	<i>Percent</i>	<i>Percent</i>	<i>Percent</i>	<i>Percent</i>	<i>Percent</i>	<i>Percent</i>	<i>Percent</i>	<i>Percent</i>	<i>Percent</i>	<i>Percent</i>	<i>Percent</i>
CA 2004-2005	4	11	5	6	4	5	4	9	38	4	9	1
2005-2006	6	13	9	9	17	8	5	12	7	5	8	1
CO 2004-2005	19	15	8	10	15	8	5	9	4	2	3	2
2005-2006	20	11	6	9	8	7	8	8	5	5	5	8
ID 2004-2005	2	13	18	15	8	7	10	5	10	8	1	3
2005-2006	3	4	32	21	7	3	12	3	2	8	2	3
MI 2004-2005	31	20	4	5	3	5	5	3	1	2	2	19
2005-2006	23	29	6	6	5	3	3	1	2	7	1	14
MN 2004-2005	7	28	14	21	10	4	10	2	1	1	1	1
2005-2006	33	34	6	4	8	1	2	4	1	2	3	2
NE 2004-2005	16	28	12	9	8	7	7	3	1	3	3	3
2005-2006	31	16	5	8	13	5	4	3	4	4	2	5
ND 2004-2005	6	37	12	12	10	5	4	2	3	2	4	3
2005-2006	16	18	16	9	9	7	10	6	3	2	1	3
US 2004-2005	12.4	26.4	10.2	10.4	7.7	5.4	5.4	3.3	6.6	2.4	3.6	6.2
2005-2006	19.9	19.8	11.4	8.5	8.6	5.5	6.6	4.3	2.9	4.1	1.9	6.5

¹ Monthly farm marketings, based on a sample survey, as a percent of total used for calculating marketing year average prices.

Chickpeas, All (Garbanzo): Monthly Prices Received, Monthly Farm Marketing Percentages, and Marketing Year Average Prices, United States, 2003-2004 through 2005-2006¹

Month	Prices Received			Farm Marketing Percentages ²		
	2003-2004	2004-2005	2005-2006	2003-2004	2004-2005	2005-2006
	<i>Dollars per Cwt</i>	<i>Dollars per Cwt</i>	<i>Dollars per Cwt</i>	<i>Percent</i>	<i>Percent</i>	<i>Percent</i>
Sep	19.80	26.80	26.50	13.7	10.8	16.4
Oct	16.90	24.40	25.10	11.9	30.1	16.8
Nov	23.90	23.50	25.20	11.3	6.5	27.0
Dec	16.20	24.10	24.60	7.8	8.6	6.3
Jan ³	14.70	23.60	27.40	5.3	4.4	9.6
Feb	18.90	29.20	26.20	5.8	4.4	1.8
Mar	26.10	29.00	22.20	4.3	3.8	5.2
Apr	22.80	25.00	26.80	6.8	4.1	2.2
May	23.00	17.20	15.90	6.9	7.0	1.8
Jun	20.80	36.20	28.20	2.3	1.0	5.0
Jul	27.10	27.90	22.80	4.5	16.7	1.6
Aug	26.60	20.60	24.60	19.4	2.6	6.3
MYA	21.70	25.00	25.40	100.0	100.0	100.0

¹ Marketing year average (MYA) prices are weighted average prices for the U.S. marketing year of September - August.

² Monthly farm marketings, based on a sample survey, as percent of total used for calculating MYA prices.

³ Second year.

Chickpeas, Large (Garbanzo, larger than 20/64 in.): Monthly Prices Received, Monthly Farm Marketing Percentages, and Marketing Year Average Prices, United States, 2003-2004 through 2005-2006¹

Month	Prices Received			Farm Marketing Percentages ²		
	2003-2004	2004-2005	2005-2006	2003-2004	2004-2005	2005-2006
	<i>Dollars per Cwt</i>	<i>Dollars per Cwt</i>	<i>Dollars per Cwt</i>	<i>Percent</i>	<i>Percent</i>	<i>Percent</i>
Sep	21.00	26.80	26.80	9.2	11.3	17.5
Oct	18.70	24.40	25.20	10.5	30.3	18.1
Nov	23.90	23.50	25.40	12.8	6.9	28.7
Dec	16.20	24.30	24.80	7.8	8.9	6.7
Jan ³	14.70	23.70	27.80	6.0	4.6	10.2
Feb	19.10	30.10	30.20	6.4	4.5	1.3
Mar	26.40	29.30	25.20	4.8	4.0	4.2
Apr	23.30	25.00	30.90	7.5	4.3	1.7
May	23.30	19.10	(⁴)	7.5	5.4	(⁴)
Jun	22.00	36.60	30.70	2.3	1.0	4.8
Jul	27.20	28.20	(⁴)	5.1	17.1	(⁴)
Aug	27.20	25.70	26.30	20.1	1.7	5.9
MYA	22.40	25.60	26.30	100.0	100.0	100.0

¹ Marketing year average (MYA) prices are weighted average prices for the U.S. marketing year of September - August.

² Monthly farm marketings, based on a sample survey, as percent of total used for calculating MYA prices.

³ Second year.

⁴ Price not published to avoid disclosure of individual firms.

**Chickpeas, Small (Garbanzo, smaller than 20/64 in.): Monthly Prices Received,
Monthly Farm Marketing Percentages, and Marketing Year Average Prices,
United States, 2003-2004 through 2005-2006 ¹**

Month	Prices Received			Farm Marketing Percentages ²		
	2003-2004	2004-2005	2005-2006	2003-2004	2004-2005	2005-2006
	<i>Dollars per Cwt</i>	<i>Dollars per Cwt</i>	<i>Dollars per Cwt</i>	<i>Percent</i>	<i>Percent</i>	<i>Percent</i>
Sep	18.00	(⁵)	(⁴)	46.6	(⁵)	(⁴)
Oct	10.60	22.60	(⁴)	22.7	25.7	(⁴)
Nov	(⁴)	(⁵)	(⁴)	(⁴)	(⁵)	(⁴)
Dec	(⁴)	(⁴)	(⁴)	(⁴)	(⁴)	(⁴)
Jan ³	(⁴)	(⁴)	(⁴)	(⁴)	(⁴)	(⁴)
Feb	(⁴)	(⁴)	18.60	(⁴)	(⁴)	8.0
Mar	(⁴)	(⁴)	(⁴)	(⁴)	(⁴)	(⁴)
Apr	(⁴)	(⁴)	15.40	(⁴)	(⁴)	7.4
May	(⁴)	(⁴)	14.50	(⁴)	(⁴)	20.4
Jun	(⁴)	(⁴)	11.30	(⁴)	(⁴)	8.3
Jul	(⁴)	(⁴)	(⁴)	(⁴)	(⁴)	(⁴)
Aug	(⁴)	(⁴)	(⁴)	(⁴)	(⁴)	(⁴)
MYA	16.00	14.20	14.20	100.0	100.0	100.0

¹ Marketing year average (MYA) prices are weighted average prices for the U.S. marketing year of September - August.

² Monthly farm marketings, based on a sample survey, as percent of total used for calculating MYA prices.

³ Second year.

⁴ Price not published to avoid disclosure of individual firms.

⁵ Insufficient sales to establish a price.

Reliability of Prices Received Estimates

Definition: Prices received represent sales from producers to first buyers. They include all grades and qualities. The average commodity price from the survey multiplied by the total quantity marketed theoretically should give the total cash receipts for the commodity.

Survey Procedures: Primary sales data used to determine grain prices were obtained from probability samples of about 2000 mills and elevators. These procedures ensure that virtually all grain moving into commercial channels has a chance of being included in the survey. Generally, States surveyed account for 90 percent or more of total U.S. production. Livestock prices are obtained from packers, stockyards, auctions, dealers, and market check data from AMS-USDA, private marketing organizations, and state commodity groups and agencies. Inter-farm sales of grain and livestock are not included since they represent very small percentages of the total marketings. Grain marketed for seed is also excluded. Fruit and vegetable prices are obtained from sample surveys and market check data from AMS-USDA, private marketing organizations, state agencies, and universities.

Summary and Estimation Procedures: Survey quantities sold are expanded by strata to state levels and used to weight average strata prices to a state average. State prices are then weighted to a U.S. price based on expanded marketings. Recommendations are prepared by the State Field Offices and reviewed by the Agricultural Statistics Board in Washington, D.C. State recommendations are reviewed for reasonableness with survey data, other States, and recent historic estimates.

Revisions: For most items, the current month's preliminary price represents a 3-5 day period around the 15th of the month. Previous month's prices represent actual dollars received for quantities sold during the entire month. Revisions are published in monthly issues of *Agricultural Prices*.

Reliability: U.S. price estimates based on probability surveys generally have a sampling error of less than one percent for the major commodities such as corn, wheat, soybeans, cotton, and rice. Current methods of summarization for non-probability commodities are not designed directly to calculate sampling errors. However, analytical measures approximate the U.S. relative sampling errors at around five percent. Any nonsampling errors are attributed to such things as the inability to obtain correct information, differences in interpreting questions or definitions, mistakes in coding or processing the data, etc. Efforts are made at each step in the survey process to minimize these nonsampling errors.

Prices Paid by Farmers

The November Index of Prices Paid for Commodities and Services, Interest, Taxes, and Farm Wage Rates (PPITW) at 146 (1990-92=100), is unchanged from October 2006 but up 2.8 percent from November 2005.

PRODUCTION INDEX: The November index, at 144, is unchanged from last month but increased 2.1 percent from last year. Higher prices for feed grains, feed supplements, feed concentrates, and complete feeds offset lower prices in November for feeder cattle, mixed fertilizers, LP gas, and herbicides.

Feed: The November index, at 135, increased 5.5 percent from October and increased 17 percent from last November. Since October, prices are higher for feed grains, feed supplements, feed concentrates, complete feeds, and hay & forages.

Livestock & Poultry: The November index, at 124, decreased 6.1 percent from last month and decreased 13 percent from last year. Since October, lower prices for feeder cattle more than offset higher prices for feeder pigs. The November feeder cattle price, at \$102.90 per cwt, is down \$9.20 per cwt from the October price. November feeder pigs averaged \$122.00 per cwt, up \$7.00 per cwt from October.

Fertilizer: The November index, at 164, is down 1.2 percent from October and 8.9 percent below November a year ago. Since October, prices are lower for mixed fertilizers, nitrogen fertilizers, and potash & phosphate materials.

Agricultural Chemicals: The November index, at 127, decreased 1.6 percent from October but remained unchanged from a year ago. Prices are lower in November for herbicides, insecticides, and other chemicals.

Fuels: The November index, at 204, is down 0.5 percent from a month earlier and 8.5 percent below November 2005. Compared with last month, prices are lower for LP gas and gasoline but higher for diesel fuel.

Farm Machinery: The November index, at 181, is unchanged from October but 3.4 percent above last November. Since October, lower prices for other machinery offset higher prices for tractors.

CONSUMER PRICE INDEX: The October 2006 Consumer Price Index, as issued by the Bureau of Labor Statistics, for all urban consumers (CPI-U) decreased 0.5 percent before seasonal adjustment to a level of 201.8 (1982-84=100). This compares with the September index of 202.9. For the 12-month period ending in October, the overall index has increased 1.3 percent.

**Indexes of Prices Paid by Farmers and Related Parity Ratios
United States, November 2006 With Comparisons**

Indexes and Ratios	1910-14 = 100			1990-92 = 100		
	2005	2006		2005	2006	
	Nov	Oct	Nov	Nov	Oct	Nov
Prices Paid by Farmers for Commodities & Services, Interest, Taxes, & Wage Rates (PPITW)	1,892	*1,940	1,939	142	146	146
Production	1,367	*1,395	1,395	141	144	144
Feed	562	*625	660	115	*128	135
Livestock & Poultry	1,824	*1,683	1,583	143	*132	124
Seeds	1,694	1,838	1,838	171	186	186
Fertilizer	670	*620	611	180	*166	164
Agricultural Chemicals	747	*758	746	127	*129	127
Fuels	1,721	*1,585	1,575	223	*205	204
Farm Supplies & Repairs	1,011	*1,035	1,035	142	*146	146
Autos & Trucks	3,016	*2,963	2,974	113	111	112
Farm Machinery	4,544	*4,698	4,701	175	181	181
Building Materials	1,976	*2,086	2,079	145	154	153
Farm Services & Rent	1,502	*1,557	1,557			
Rent				127	*130	130
Interest ¹	2,731	2,981	2,981	109	119	119
Taxes ²	3,383	3,426	3,426	126	128	128
Wage Rates	6,209	*6,429	6,429	166	*172	172
Production, Interest, Taxes, & Wage Rates (PITW)	1,896	*1,945	1,944	141	145	145
Family Living-CPI ³	1,877	*1,917	1,917	147	*150	150
Ratio (Received/Paid) Parity Ratio ⁴	38	38	40	79	*79	83
Parity Ratio Adjusted ⁵	41	41	43			
PPITW Adjusted for Productivity ⁶	1,253	*1,285	1,285			
Crop Sector (PPITW)				146	150	149
Livestock Sector (PPITW)				138	141	142
Farm Sector (Production)				134	*139	139
Non-Farm Sector (Production)				145	147	146

* Revised.

¹ Interest per acre on farm real estate debt and interest rate on farm non-real estate debt.

² Farm real estate taxes payable per acre.

³ Bureau of Labor Statistics, Consumer Price Index for all urban consumers (CPI-U), for the previous month converted by the USDA.

⁴ Ratio of index of prices received to PPITW (1910-14=100).

⁵ Based on estimated cash receipts, from marketings and government payments, the preliminary adjustment factor is 1.079 for 2006 and the revised factor is 1.096 for 2005.

⁶ PPITW is adjusted based on productivity trend for the prior 15 years.

Prices Paid Indexes and Annual Weights for Input Components and Sub-Components United States, November 2006 With Comparisons

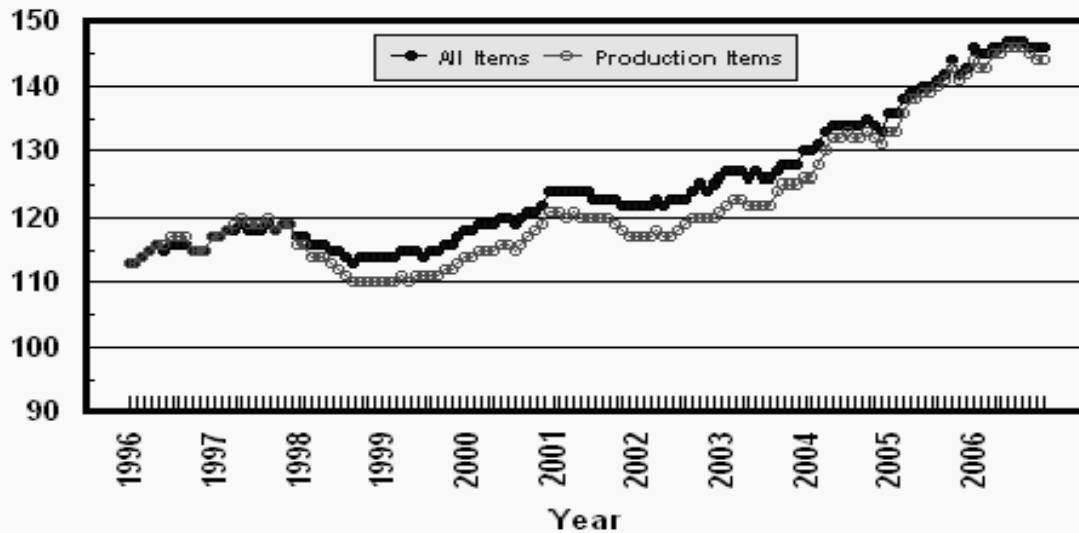
Index	Relative Weights 5-Year Moving Average ¹		Input Indexes		
	2005	2006	2005	2006	
	<i>Percent</i>	<i>Percent</i>	Nov <i>(1990-92=100)</i>	Oct <i>(1990-92=100)</i>	Nov <i>(1990-92=100)</i>
Production Items	66.4	66.8	141	144	144
Feed	10.7	10.9	115	*128	135
Feed Grains	1.5	1.6	78	*113	136
Complete Feeds	5.2	5.3	115	*123	125
Hay/Forages	1.3	1.4	122	141	141
Concentrates	1.7	1.7	126	*129	137
Supplements	0.9	0.9	145	*164	179
Livestock & Poultry	7.7	7.6	143	*132	124
Feeder Cattle	6.0	6.0	142	*132	122
Feeder Pigs	0.6	0.6	148	125	133
Milk Cow Replacements	0.6	0.6	166	146	146
Poultry	0.5	0.5	109	109	109
Seeds	3.5	3.6	171	186	186
Field Crops	3.2	3.3	177	191	191
Grasses/Legumes	0.3	0.3	118	133	133
Fertilizer	4.3	4.3	180	*166	164
Mixed Fertilizer	1.9	1.9	147	*147	143
Nitrogen	1.8	1.8	220	*189	188
Potash & Phosphate	0.6	0.6	161	*161	160
Agricultural Chemicals	3.6	3.5	127	*129	127
Herbicides	2.3	2.2	121	*125	123
Insecticides	0.8	0.8	145	*143	141
Fungicides/Other	0.5	0.5	125	*126	124
Fuels	2.7	2.9	223	*205	204
Diesel	1.6	1.7	245	*222	224
Gasoline	0.8	0.8	180	*174	172
LP Gas	0.4	0.4	220	*200	188
Farm Supplies & Repairs	5.2	5.0	142	*146	146
Supplies	1.7	1.7	133	*139	139
Repairs	3.5	3.3	147	*150	150
Autos & Trucks	1.8	1.8	113	111	112
Autos	0.2	0.2	109	109	110
Trucks	1.5	1.6	114	*112	112
Farm Machinery	4.0	4.4	175	181	181
Tractors	0.9	1.0	157	*162	163
Self-Propelled	1.6	1.7	182	188	188
Other Machinery	1.5	1.7	179	186	186
Building Materials	3.6	4.0	145	154	153
Farm Services	12.4	12.2	127	*130	130
Custom Rates	1.3	1.3	121	123	123
Other Services	11.1	10.9	127	*131	131
Rent	6.9	6.7	125	131	131
Cash	3.7	3.6	151	159	159
Share	3.2	3.1	94	98	98
Interest	4.5	4.2	109	119	119
Taxes	2.9	2.9	126	128	128
Wage Rates	7.6	7.8	166	*172	172
Family Living-CPI	18.6	18.4	147	*150	150

* Revised.

¹ Weights may not add due to rounding.

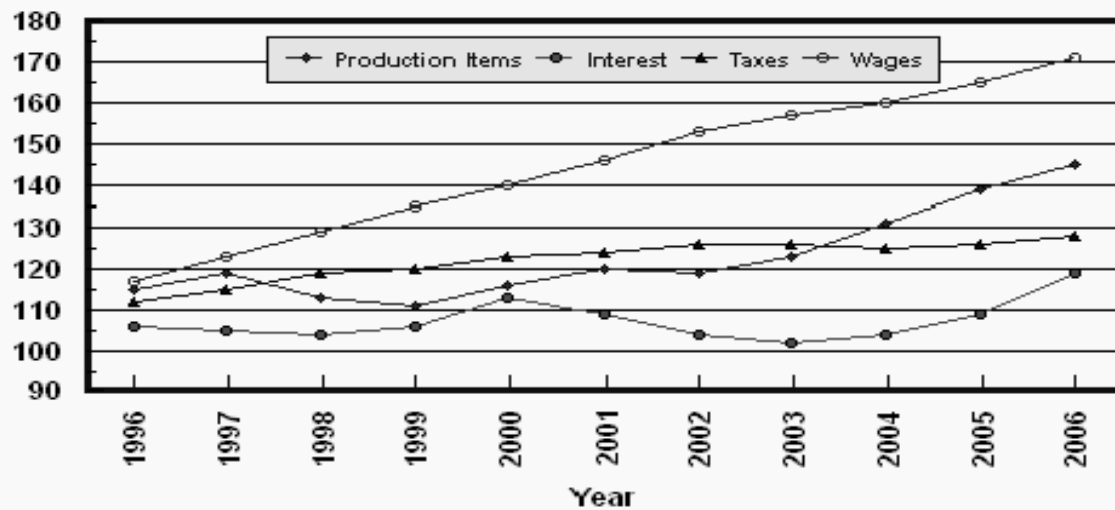
Prices Paid by Farmers, Major Indexes US, by Month

Percent (1990-92=100)



Prices Paid by Farmers, Major Indexes US, Annual Averages 1/

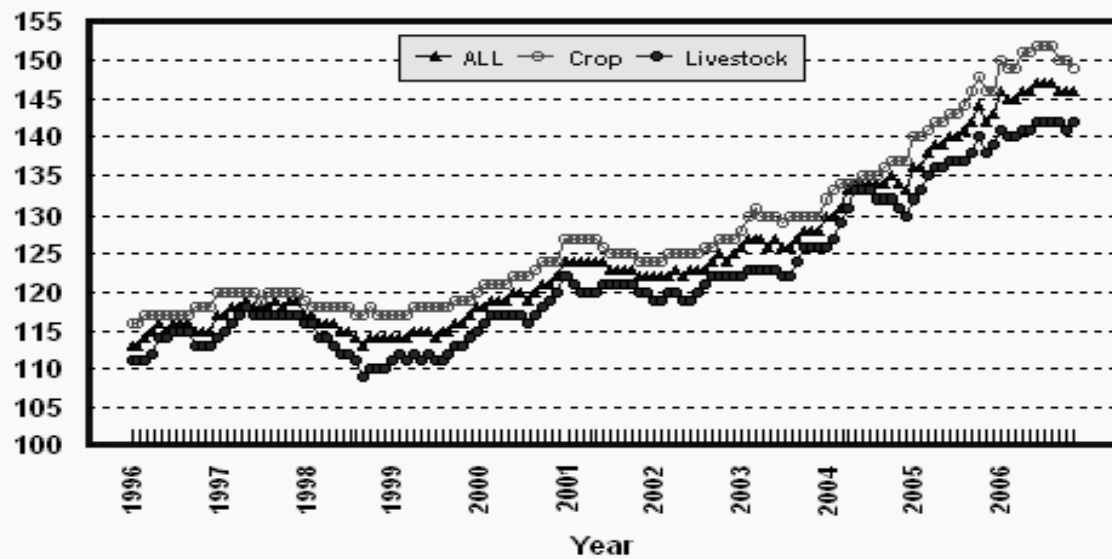
Percent (1990-92=100)



1/ Index values for 2006 are year-to-date averages.

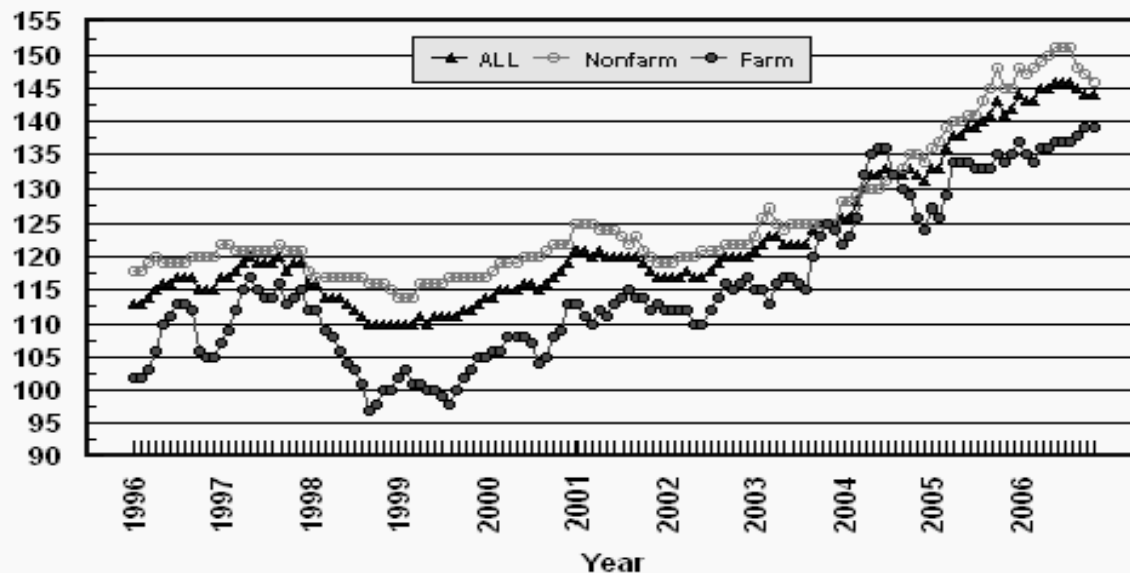
Prices Paid by Farmers, Indexes, All Items US, By Farm Type

Percent (1990-92=100)



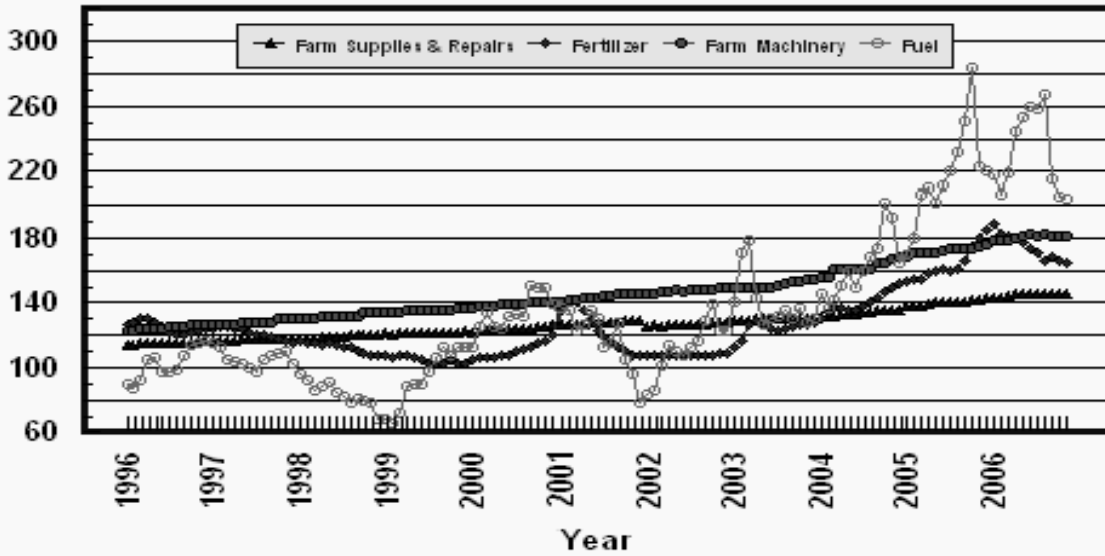
Prices Paid by Farmers, Indexes, All Production Items US, By Sector Origin

Percent (1990-92=100)



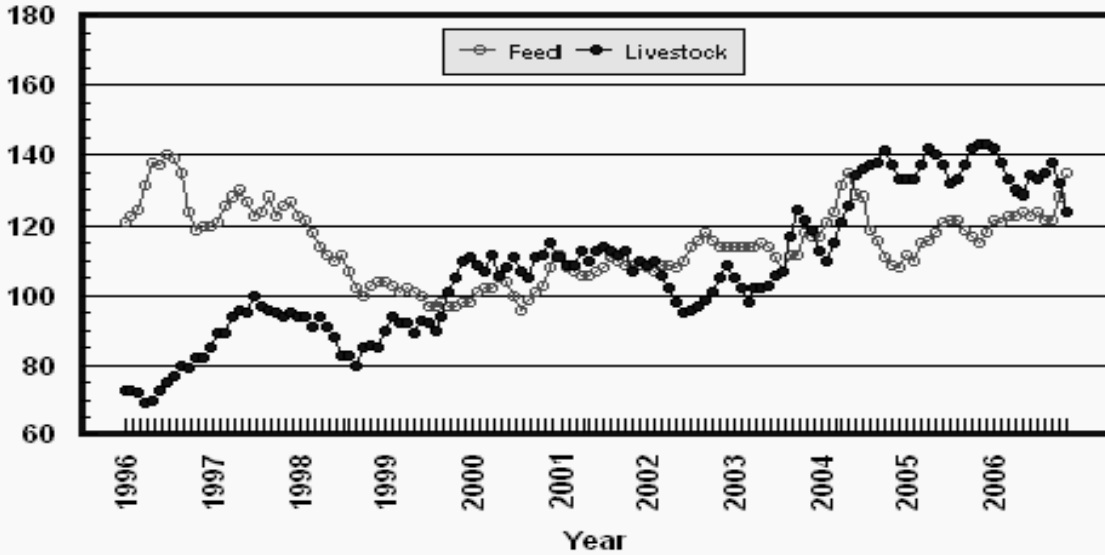
Prices Paid by Farmers, Selected Production Indexes US, By Non-Farm Sector

Percent (1990-92=100)



Prices Paid by Farmers, Selected Production Indexes US, By Farm Sector

Percent (1990-92=100)



Feed Price Ratios: United States, November 2006 with Comparisons

Feed Price Ratio ¹	2005	2006	
	Nov	Oct	Nov
Broiler-Feed: Pounds of Broiler Grower Feed equal in value to 1 pound of broiler, live weight	7.3	*6.2	5.3
Market Egg Feed: Pounds of Laying Feed equal in Value to 1 dozen eggs	10.3	*6.7	10.0
Hog-Corn: Bushels of Corn equal in value to 100 pounds of hog, live weight	24.6	*18.3	14.3
Milk-Feed: Pounds of 16% Mixed Dairy Feed equal in value to 1 pound of Whole Milk	3.45	*2.53	2.34
Steer & Heifer-Corn: Bushels of Corn equal in value to 100 pounds of Steer & Heifers, live weight	54.9	*37.0	28.8
Turkey-Feed: Pounds of Turkey Grower equal in value to 1 pound of Turkey, live weight	10.0	*9.8	9.2

* Revised.

¹ Effective January 1995, prices of commercial prepared feeds are based on current U.S. prices received for corn, soybeans, alfalfa hay, and all wheat.

**Prices Used to Calculate Feed Price Ratios:
United States, November 2006 with Comparisons**

Commodity	Unit	Entire Month		Preliminary
		Nov 2005	Oct 2006	Nov 2006
Broilers, Live	Lb	0.420	0.400	0.400
Eggs, Market	Doz	0.484	0.382	0.675
Hogs, All	Cwt	43.50	46.50	44.50
Milk, All	Cwt	15.10	13.50	13.80
Steers and Heifers	Cwt	97.10	94.00	90.00
Turkeys, Live	Lb	0.545	0.634	0.671
Corn	Bu	1.77	2.54	3.12
Hay, Alfalfa, Baled	Ton	98.30	112.00	109.00
Soybeans	Bu	5.62	5.52	6.15
Wheat, All	Bu	3.45	4.59	4.62

**Feeder Livestock: Prices Paid, United States
November 2006 with Comparisons**

Commodity	Unit	2005	2006	
		Nov	Oct	Nov
		<i>Dollars</i>	<i>Dollars</i>	<i>Dollars</i>
Feeders and Stockers				
Cattle and Calves	Cwt	120.40	*112.10	102.90
Feeder Pigs	Cwt	136.00	115.00	122.00

* Revised.

Prices Paid by Farmers

Definition: Prices paid by farmers represent the average costs of inputs purchased by farmers and ranchers to produce agricultural commodities. Conceptually, the average price when multiplied by quantity purchased should equal total producer expenditures for the item.

Survey Procedures: The prices paid data are obtained from establishments that sell goods and services to farmers and ranchers. Annually, about 8,500 firms are randomly selected from lists by type of item sold with an average response rate in the range of 75-80 percent. Firms are asked to report the price for the specified item "most commonly bought by farmers" or that was the "volume seller". Approximately 135 items are surveyed each April to represent all production input items purchased. The survey reference period for most items is the 5 business days centered around the 15th of the month. Separate prices paid surveys are conducted for agricultural chemicals, fuels, feed, fertilizer, machinery, and seed.

Summary and Estimation Procedures: The annual April Prices Paid Survey is summarized as a nonprobability survey. Average prices reported are aggregated to the region and U.S. level using weights available from expenditure data and other administrative sources. Price recommendations are prepared by the State Field Offices and Headquarters for review by the Agricultural Statistics Board in Washington, D.C. Also, the change in price level for individual items surveyed are combined to the regional and U.S. levels, and are published as prices paid indexes referenced to a specific base period. Prices paid indexes for new autos and trucks, building materials, farm supplies, motor supplies, and marketing containers are updated based on price changes measured in selected Bureau of Labor Statistics (BLS) indexes.

Revisions: Any revisions are published in the monthly and in annual issues of *Agricultural Prices*. The basis for revision must be supported by additional data that directly affect the level of the estimate. More revisions are likely in April when separate prices paid surveys are conducted, in lieu of BLS indexes, by the USDA to measure price change.

Reliability: Current methods of summarization in April are not designed directly to calculate sampling errors. However, analytical measures approximate the U.S. relative sampling errors for major items around 10 percent. Any nonsampling errors are attributed to such things as the inability to obtain correct information, differences in interpreting questions or definitions, mistakes in coding or processing the data, etc. Efforts are made at each step in the survey process to minimize these nonsampling errors.

Program Change: Effective January 1, 1995, the National Agricultural Statistics Service updated the weights and changed the construction of its prices paid and received by farmers indexes. A Federal Register Notice dated October 28, 1994 discussed these program modifications.

A 1990-92 reference and base period replaced the 1977 reference and 1971-73 base weight period. Five-year moving average weights replaced the current fixed 1971-73 base period weights. The 1910-14=100 price indexes, required by statute for computing parity prices, were linked forward based on the changes in the new 1990-92=100 indexes. The new indexes were constructed by multiplying the ratios of the current prices to the base period prices by the moving average weights (adjusted for seasonal marketing patterns for the prices received indexes).

Information Contacts

General questions should be directed to Chief, Environmental, Economics and Demographics Branch at (202) 720-6146. Below are the commodity specialists to contact for additional information.

Crop Prices Received

Jeff Geuder Chief, Crops Branch	(202) 720-2127
Greg Thessen, Field Crops Section	(202) 720-2127
Scott Cox - Wheat, Rye	(202) 720-8068
Ty Kalaus - Corn, Proso Millet, Flaxseed	(202) 720-9526
Shiela Corley - Cotton, Cottonseed	(202) 720-5944
Travis Thorson - Soybeans, Sunflower, Other Oilseeds	(202) 720-7369
King Whetstone - Hay, Oats, Sorghum	(202) 690-3234
Dennis Koong - Peanuts, Rice	(202) 720-7688
Brian Young - Sugarcane, Sugarbeets, Barley	(202) 720-7621
Jim Smith, Fruit and Vegetable Section	(202) 720-2127
Dan Norris - Peaches, Pears, Hops, Pulses, Mint	(202) 720-3250
Rich Holcomb - Citrus	(202) 720-5412
Jim Smith - Apples, Apricots, Cherries, Cranberries, Plums, Prunes	(202) 720-2127
Leslie Colburn - Grapes, Tobacco	(202) 720-7235
Cathy Scherrer - Potatoes, Dry Edible Beans, Sweet Potatoes	(202) 720-4285
Debbie Flippin - Vegetables, Onions, Strawberries	(202) 720-2157

Livestock Prices Received

Dan Kerestes, Chief, Livestock Branch	(202) 720-3570
Bill Weaver, Livestock Section	(202) 720-3570
Scott Hollis - Sheep, Lambs, Wool, Mohair	(202) 720-4751
Jason Hardegree- Milk, Milk Cows	(202) 720-3278
Bruce Boess - Hogs	(202) 720-3106
Mike Miller - Cattle	(202) 720-3040
Darin Jantzi, Poultry and Specialty Commodities Section	(202) 720-3570
Fleming Gibson - Turkeys	(202) 690-3237
Sharyn Lavender - Eggs, Broilers	(202) 720-3244

Indexes, Prices Paid, and Parity Prices

Vacant, Chief, Environmental, Economics and Demographics Branch	(202) 720-6146
Kevin Hintzman, Economics Section	(202) 720-6146
Jen Brown - Prices Paid Indexes, Prices Paid for Feed, Fertilizer, Agricultural Chemicals, Seeds, Farm Supplies and Repairs, Farm Machinery, Fuels, Feeder Livestock, Poultry Chicks, Feed Price Ratios, Autos & Trucks	(202) 720-5446
Daryl Brinkman - Prices Received Indexes, Parity Prices	(202) 720-8844
Jennifer Sissom - Grazing Fees	(202) 690-3229

ACCESS TO REPORTS!!

For your convenience, there are several ways to obtain NASS reports, data products, and services:

INTERNET ACCESS

All NASS reports are available free of charge on the worldwide Internet. For access, connect to the Internet and go to the NASS Home Page at: www.nass.usda.gov.

E-MAIL SUBSCRIPTION

All NASS reports are available by subscription free of charge direct to your e-mail address. Starting with the NASS Home Page at www.nass.usda.gov, under the right navigation, *Receive reports by Email*, click on **National** or **State**. Follow the instructions on the screen.

PRINTED REPORTS OR DATA PRODUCTS

CALL OUR TOLL-FREE ORDER DESK: 800-999-6779 (U.S. and Canada)
Other areas, please call 703-605-6220 FAX: 703-605-6900
(Visa, MasterCard, check, or money order acceptable for payment.)

ASSISTANCE

For **assistance** with general agricultural statistics or further information about NASS or its products or services, contact the **Agricultural Statistics Hotline** at **800-727-9540**, 7:30 a.m. to 4:00 p.m. ET, or e-mail: nass@nass.usda.gov.

The U.S. Department of Agriculture (USDA) prohibits discrimination in all its programs and activities on the basis of race, color, national origin, age, disability, and where applicable, sex, marital status, familial status, parental status, religion, sexual orientation, genetic information, political beliefs, reprisal, or because all or a part of an individual's income is derived from any public assistance program. (Not all prohibited bases apply to all programs.) Persons with disabilities who require alternative means for communication of program information (Braille, large print, audiotape, etc.) should contact USDA's TARGET Center at (202) 720-2600 (voice and TDD).

To file a complaint of discrimination, write to USDA, Director, Office of Civil Rights, 1400 Independence Avenue, S.W., Washington, D.C. 20250-9410, or call (800) 795-3272 (voice) or (202) 720-6382 (TDD). USDA is an equal opportunity provider and employer.