



# NASS

FACT FINDERS FOR AGRICULTURE  
UNITED STATES DEPARTMENT OF AGRICULTURE

Washington, D.C.

# Agricultural Prices

Released December 28, 2006, by the National Agricultural Statistics Service (NASS), Agricultural Statistics Board, U.S. Department of Agriculture. For information on *Agricultural Prices* see page 41, office hours 7:30 a.m. to 4:00 p.m. ET.

## December Farm Prices Received Index Increased 1 Point From Last Month

The preliminary All Farm Products Index of Prices Received by Farmers in December, at 121 percent, based on 1990-92=100, increased 1 point (0.8 percent) from November. The Crop Index is up 6 points (4.9 percent) but the Livestock Index decreased 3 points (2.6 percent). Producers received higher commodity prices for lettuce, corn, grapes, and broccoli. Lower prices were received for turkeys, cattle, hogs, and tomatoes. The overall index is also affected by the seasonal change based on a 3-year average mix of commodities producers sell. Increased average marketings of oranges, wheat, milk, and broilers offset decreased marketings of cattle, soybeans, grapes, and corn.

The preliminary All Farm Products Index is up 6 points (5.2 percent) from December 2005. The Food Commodities Index, at 123, increased 2 points (1.7 percent) from last month and 1 point (0.8 percent) from December 2005.

## Prices Paid Index Increased 2 Points

The December Index of Prices Paid for Commodities and Services, Interest, Taxes, and Farm Wage Rates (PPITW) is 148 percent of the 1990-92 average. The index is up 2 points (1.4 percent) from November and 5 points (3.5 percent) above December 2005. Higher prices in December for complete feeds, feed concentrates, feed supplements, and diesel fuel offset lower prices for nitrogen fertilizers, building materials, feeder cattle, and LP gas.

Index Summary Table

Index 1990-92=100	2005		2006	
	Nov	Dec	Nov	Dec
Prices Received	112	115	120	121
Prices Paid	142	143	146	148
Ratio <sup>1</sup>	79	80	82	82

<sup>1</sup> Ratio of index of prices received by farmers to index of prices paid by farmers.

## Prices Received by Farmers

The December All Farm Products Index is 121 percent of its 1990-92 base, up 0.8 percent from the November index and 5.2 percent above the December 2005 index.

**ALL CROPS:** The December index is 129, up 4.9 percent from November and 16 percent above December 2005. From November, index increases for commercial vegetables, feed grains & hay, potatoes & dry beans, and oil-bearing crops more than offset the index decrease for fruits & nuts.

**Food Grains:** The December index, at 153, is 0.7 percent above the previous month and 31 percent above a year ago. The December all wheat price, at \$4.59 per bushel, is unchanged from November but \$1.06 above December 2005.

**Feed Grains & Hay:** The December index is 135, up 5.5 percent from last month and 50 percent above a year ago. The corn price, at \$3.01 per bushel, is up 14 cents from last month and \$1.09 above December 2005. The all hay price, at \$108 per ton, is \$2.00 above November and up \$16.00 from last December. Sorghum grain, at \$6.05 per cwt, is 22 cents above November and \$3.14 above December last year.

**Oil-Bearing Crops:** The December index, at 110, is up 2.8 percent from November and 7.8 percent higher than December 2005. The soybean price, at \$6.14 per bushel, increased 7 cents from November and is 36 cents above December 2005.

**Cotton:** The December index, at 79, is unchanged from both November and the same month last year. The December price, at 47.9 cents per pound, is up 0.3 cent from the previous month but 0.1 cent below last December.

**Potatoes & Dry Beans:** The December index, at 122, is up 7.0 percent from both last month and December 2005. The all potato price, at \$7.22 per cwt, is up 55 cents from November and up 39 cents from last December. The all dry bean price, at \$21.60 per cwt, is unchanged from the previous month but \$3.50 above December 2005.

**Fruits & Nuts:** The December index, at 162, is down 1.8 percent from November but 32 percent higher than a year ago. Price decreases for lemons, oranges, and apples more than offset price increases for grapes and strawberries.

**Commercial Vegetables:** The December index, at 159, is up 34 percent from last month but 5.9 percent below December 2005. Price increases during December for lettuce, broccoli, and onions more than offset price declines for tomatoes, celery, and sweet corn.

**LIVESTOCK & PRODUCTS:** The December index, at 113, is 2.6 percent below last month and down 5.8 percent from December 2005. Compared with a year ago, prices are lower for cattle, milk, turkeys, calves, and hogs but higher for broilers and eggs.

**Meat Animals:** The December index, at 109, is down 3.5 percent from last month and 9.9 percent lower than last year. The December hog price, at \$43.20 per cwt, is down \$1.60 from November and \$1.10 lower than a year ago. The December beef cattle price of \$83.70 per cwt is down \$1.00 from last month and \$9.60 lower than December 2005.

**Dairy Products:** The December index, at 109, is up 2.8 percent from a month ago but 3.5 percent lower than December last year. The December all milk price of \$14.20 per cwt is up 30 cents from last month but down 60 cents from December 2005. The fluid grade milk price is up 30 cents and the manufacturing grade milk price is up 20 cents from the previous month.

**Poultry & Eggs:** The December index, at 125, is down 6.0 percent from November but 1.6 percent above a year ago. December market egg price, at 66.5 cents per dozen, decreased 1.0 cent from November but is 10.1 cents higher than December 2005. The December broiler price, at 40.0 cents per pound, is unchanged from November but 1.0 cent above a year ago. The December turkey price, at 43.4 cents per pound, is down 23.7 cents from the previous month and down 10.5 cents from a year earlier.

## Table of Contents

<b>U.S. Prices Received and Indexes</b>	<b>Page</b>	<b>Monthly State Prices, continued</b>	<b>Page</b>
Narrative .....	2	Cotton .....	17
Price Indexes .....	5	Cottonseed .....	17
Price Index Charts .....	6	Eggs .....	22
U.S. Prices Received Summary .....	8	Flaxseed .....	16
Charts .....	10	Grain Sorghum .....	15
Selected Commodities .....	14	Hay .....	17
Upland Cotton & Rice Marketings .....	17	Hogs, All .....	21
Parity Prices .....	24	Barrows and Gilts .....	21
Reliability Statement .....	26	Sows .....	21
 		Milk .....	23
<b>Monthly State Prices Received</b>		Milk Cows .....	23
Apples .....	17	Oats .....	15
Barley .....	15	Peanuts .....	16
Beans, Dry Edible .....	16	Potatoes .....	19
Beef Cattle, All .....	20	Rice .....	17
Calves .....	20	Sheep .....	22
Cows, Beef .....	20	Lambs .....	22
Steers and Heifers .....	20	Soybeans .....	15
Citrus Fruit .....	18	Sunflower .....	16
Corn .....	15	Wheat, All Classes .....	14
<b>Prices Received Special Features</b>			<b>Page</b>
<b>Marketing Year Average Prices by State and U.S.</b>			
Hops .....			26
<b>Calendar of Prices Received Features in the 2006 Agricultural Price Reports</b>			37

## Table of Contents (continued)

<b>U.S. Prices Paid, Prices Paid Indexes and Ratios</b>	<b>Page</b>
Narrative .....	27
Indexes and Parity Ratios .....	28
Charts .....	30
Feed Price Ratios .....	33
Reliability Statement .....	36
 <b>U.S. Average Prices</b>	
Prices Used to Calculate Feed Price Ratios .....	33
Feeder Livestock .....	33
 <b>Special Features</b>	
Feed: April Prices Paid, U.S. 2001-2006 .....	34
Feeder Livestock: Annual Average Prices Paid, U.S., 2001-2006 .....	34
Prices Paid Index for Beef Cattle Production .....	35
Beef Cattle Prices Received, Selected Regions .....	35
 <b>Calendar of Prices Paid Features in the 2006 Agricultural Price Reports</b> .....	40
 <b>Information Contacts</b> .....	41

**Index Numbers of Prices Received, United States,  
December 2006, with Comparisons**

Index	1910-14=100				1990-92=100		
	Average 1990-92	2005	2006		2005	2006	
		Dec	Nov	Dec	Dec	Nov	Dec
All Farm Products	639	730	*759	771	115	*120	121
All Crops	500	546	*604	636	111	*123	129
Food Grains	325	372	*483	485	117	152	153
Feed Grains & Hay	363	323	*458	481	90	*128	135
Cotton	517	405	*402	405	79	*79	79
Tobacco <sup>1</sup>	1,263	1,363	1,363	1,363	90	90	90
Oil-Bearing Crops	554	559	*584	599	102	*107	110
Fruits & Nuts	716	859	*1,153	1,128	123	165	162
Commercial Vegetables	698	1,132	*795	1,060	169	*119	159
Potatoes & Dry Beans	540	576	*579	619	114	*114	122
Other Crops	493	578	586	586	117	119	119
Livestock & Products	768	918	*892	868	120	116	113
Meat Animals	1,021	1,230	*1,146	1,113	121	*113	109
Dairy Products	799	910	*854	873	113	106	109
Poultry & Eggs	282	329	*375	350	123	133	125
Food Commodities					122	121	123

\* Revised.

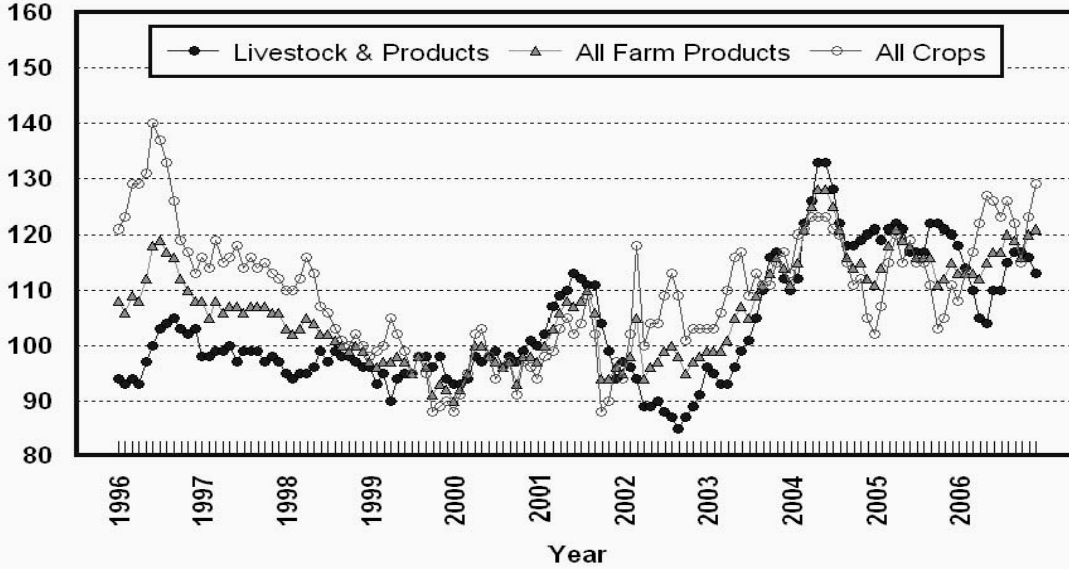
<sup>1</sup> Monthly prices discontinued July 2005.

**Selected Index Numbers for Prices Received and Paid,  
1990-92=100, by Month, United States, 2005 and 2006**

Month	Index of Prices Received						Index of Prices Paid			
	All Farm Products		All Crops		Livestock and Products		All Items		Production Items	
	2005	2006	2005	2006	2005	2006	2005	2006	2005	2006
Jan	111	113	102	108	121	118	136	146	133	144
Feb	114	113	107	113	119	114	136	145	133	143
Mar	118	113	115	117	121	110	138	145	136	143
Apr	121	112	120	122	122	105	139	146	138	145
May	119	115	115	127	121	104	139	146	138	145
Jun	118	117	119	126	117	110	140	147	139	146
Jul	116	117	115	123	117	110	140	147	139	146
Aug	116	120	115	126	117	115	141	147	140	146
Sep	116	119	111	122	122	117	142	146	141	145
Oct	111	116	103	115	122	117	144	146	143	144
Nov	112	120	105	123	121	116	142	146	141	145
Dec	115	121	111	129	120	113	143	148	142	147

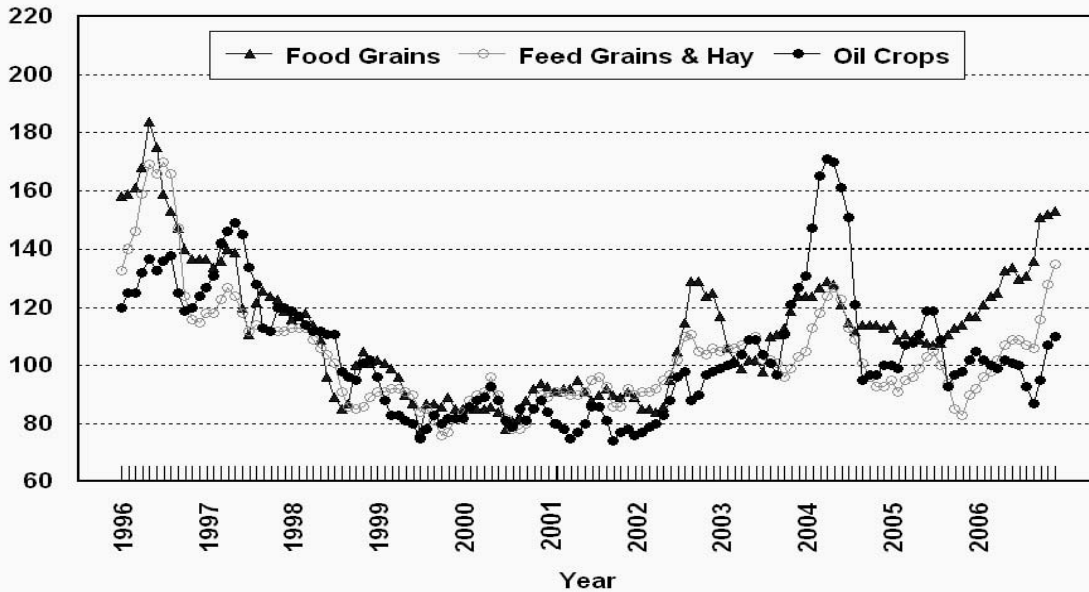
## Prices Received, Major Indexes, US

Percent (1990-92=100)



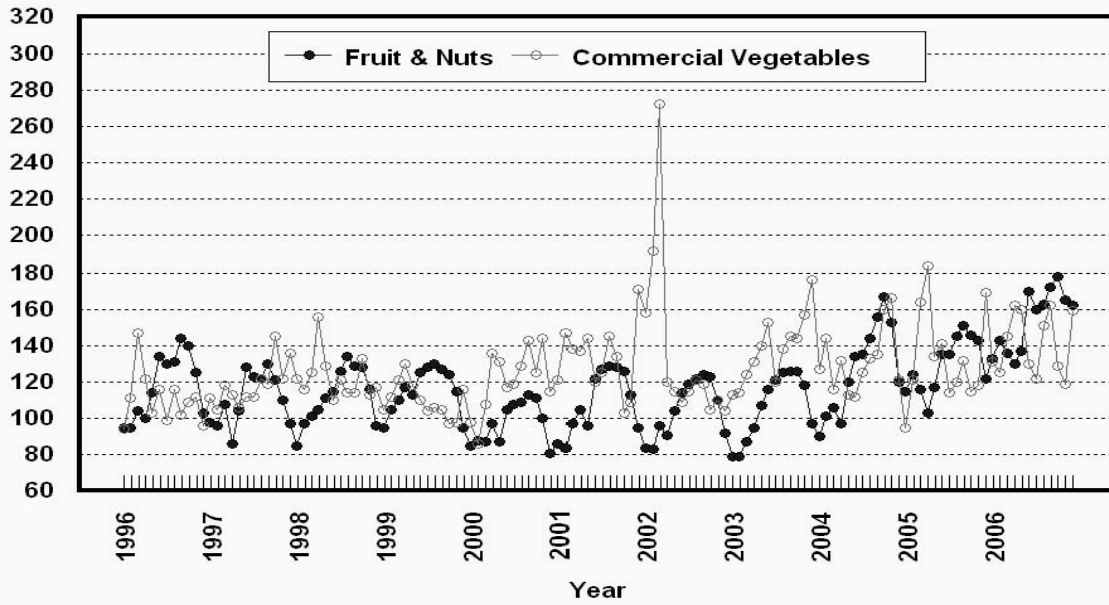
## Prices Received, Food, Feed, & Oil Indexes, US

Percent (1990-92=100)



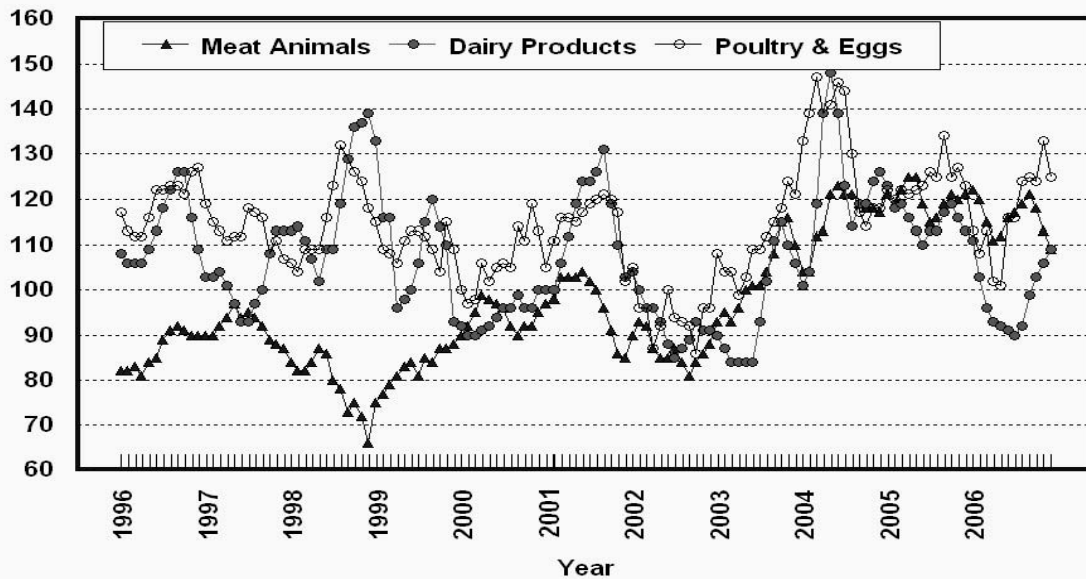
## Prices Received, Fruit/Vegetable Indexes, US

Percent (1990-92=100)



## Prices Received, Livestock Product Indexes, US

Percent (1990-92=100)



**Prices Received, United States,  
December 2006, with Comparisons**

Commodity	Unit	Average 1990-92	Entire Month		Preliminary
			Dec 2005	Nov 2006	Dec 2006
		<i>Dollars</i>	<i>Dollars</i>	<i>Dollars</i>	<i>Dollars</i>
<b>Field Crops</b>					
Barley, All	Bu	2.12	2.48	2.92	3.25
Feed	Bu	1.90	1.76	2.85	3.14
Malting	Bu	2.43	2.67	2.97	3.30
Beans, Dry Edible	Cwt	19.10	18.10	21.60	21.60
Chickpeas, All	Cwt		24.60	25.10	27.50
Large	Cwt		24.80	25.20	27.90
Small	Cwt		( <sup>4</sup> )	( <sup>4</sup> )	( <sup>4</sup> )
Corn	Bu	2.30	1.92	2.87	3.01
Cotton, Upland	Lb	0.606	0.480	0.476	0.479
Cottonseed <sup>3</sup>	Ton	96.00	97.40	108.00	109.00
Flaxseed	Bu	4.27	5.81	5.40	5.65
Hay, All, Baled <sup>1</sup>	Ton	76.30	92.00	106.00	108.00
Alfalfa <sup>1</sup>	Ton	77.20	96.90	109.00	112.00
Other <sup>1</sup>	Ton	60.00	82.10	98.10	99.30
Lentils	Cwt		12.20	13.20	15.00
Oats	Bu	1.22	1.73	2.02	2.06
Peanuts, In-Shell	Lb	0.304	0.174	0.172	0.178
Peas, Dry Edible	Cwt		4.99	6.46	6.50
Austrian Winter	Cwt		6.99	6.37	6.55
Potatoes	Cwt	5.82	6.83	6.67	7.22
Rice, Rough	Cwt	7.07	7.49	10.00	9.85
Sorghum Grain	Cwt	3.75	2.91	5.83	6.05
Soybeans	Bu	5.61	5.78	6.07	6.14
Sunflower, All	Cwt	9.50	12.20	12.50	13.20
Wheat, All	Bu	2.96	3.53	4.59	4.59
Winter	Bu	2.93	3.45	4.68	4.58
Durum	Bu	2.86	3.37	4.63	4.77
Other Spring	Bu	3.11	3.68	4.48	4.57
Hard Red Winter	Bu		3.56	4.82	
Soft Red Winter	Bu		3.02	4.26	
Hard Red Spring	Bu		3.72	4.49	
White	Bu	3.24	3.06	4.39	
<b>Fruit</b>					
Citrus, Equiv on-tree					
Grapefruit	Box	5.77	10.02	9.60	8.17
Lemons	Box	10.10	5.58	21.31	13.36
Oranges	Box	5.79	4.46	7.94	7.47
Tangelos	Box	5.82	7.66	( <sup>5</sup> )	6.20
Tangerines	Box	15.11	12.69	14.49	13.63
Noncitrus, Fresh					
Apples <sup>2</sup>	Lb	0.212	0.258	0.341	0.331
Grapes <sup>2</sup>	Ton	506.00	390.00	840.00	1,290.00
Peaches <sup>5</sup>	Ton	432.00			
Pears <sup>2</sup>	Ton	370.00	443.00	596.00	568.00
Strawberries	Cwt	56.00	85.00	96.10	215.00

<sup>1</sup> Mid-month price.

<sup>2</sup> Equivalent packinghouse-door returns for CA, MI, and NY (apples only), and WA (apples, peaches, and pears). Prices as sold for other states.

<sup>3</sup> Marketing year August - February.

<sup>4</sup> Price not published to avoid disclosure of individual firms.

<sup>5</sup> Insufficient sales to establish a price.



**Prices Received, United States,  
December 2006, with Comparisons**

Commodity	Unit	Average 1990-92	Entire Month		Preliminary
			Dec 2005	Nov 2006	Dec 2006
		<i>Dollars</i>	<i>Dollars</i>	<i>Dollars</i>	<i>Dollars</i>
<b>Vegetables, Fresh <sup>1</sup></b>					
Asparagus	Cwt	79.80			
Broccoli	Cwt	22.50	34.10	27.60	50.70
Cantaloupes <sup>2</sup>	Cwt		11.00	28.20	
Carrots	Cwt	13.20	22.00	20.20	19.20
Cauliflower	Cwt	26.80	43.90	34.40	48.90
Celery	Cwt	11.60	10.70	22.00	18.80
Corn, Sweet	Cwt	15.70	21.20	19.80	15.40
Cucumbers <sup>2</sup>	Cwt		64.80	29.80	28.30
Lettuce	Cwt	11.90	16.60	12.70	26.90
Onions	Cwt	12.80	12.30	12.40	15.50
Snap Beans <sup>2</sup>	Cwt		72.10	49.00	62.90
Tomatoes	Cwt	32.30	96.80	28.40	23.80
<b>Livestock</b>					
Calves	Cwt	94.30	137.00	118.00	115.00
Cattle, All Beef	Cwt	72.90	93.30	84.70	83.70
Cows <sup>3</sup>	Cwt	49.60	47.10	43.40	42.90
Steers & Heifers	Cwt	77.10	99.60	90.20	89.20
Milk Cows <sup>4</sup>	Head	1,130.00			
Hogs, All	Cwt	47.70	44.30	44.80	43.20
Barrows & Gilts	Cwt	48.40	44.50	45.20	43.60
Sows	Cwt	39.50	38.10	35.40	32.80
Lambs	Cwt	56.20	100.00	95.00	
Sheep	Cwt	23.40	49.30	30.90	
<b>Dairy and Poultry</b>					
Milk, All <sup>5 6</sup>	Cwt	13.06	14.80	13.90	14.20
Fluid Grade <sup>6</sup>	Cwt	13.10	14.80	13.90	14.20
Mfg Grade <sup>6</sup>	Cwt	11.80	14.40	13.60	13.80
Broilers, Live <sup>7</sup>	Lb	0.317	0.390	0.400	0.400
Eggs, All <sup>8</sup>	Doz	0.643	0.719	0.817	0.806
Market <sup>8</sup>	Doz	0.546	0.564	0.675	0.665
Turkeys, live <sup>7 8</sup>	Lb	0.380	0.539	0.671	0.434
<b>Adjusted for Seasonal Variation <sup>9</sup></b>					
Eggs, All	Doz	0.545	0.595	0.696	0.662
Milk, All <sup>5</sup>	Cwt	9.71	14.50	13.50	13.80

<sup>1</sup> Beginning January 2006, point of first sale. F.O.B. shipping point for prior years.

<sup>2</sup> Monthly estimates began January 1995.

<sup>3</sup> Beef cows and cull dairy cows sold for slaughter.

<sup>4</sup> Animals sold for dairy herd replacement only. Prices available for Jan, Apr, Jul, and Oct.

<sup>5</sup> Before deductions for hauling. Includes quality, quantity, and other premiums. Excludes hauling subsidies.

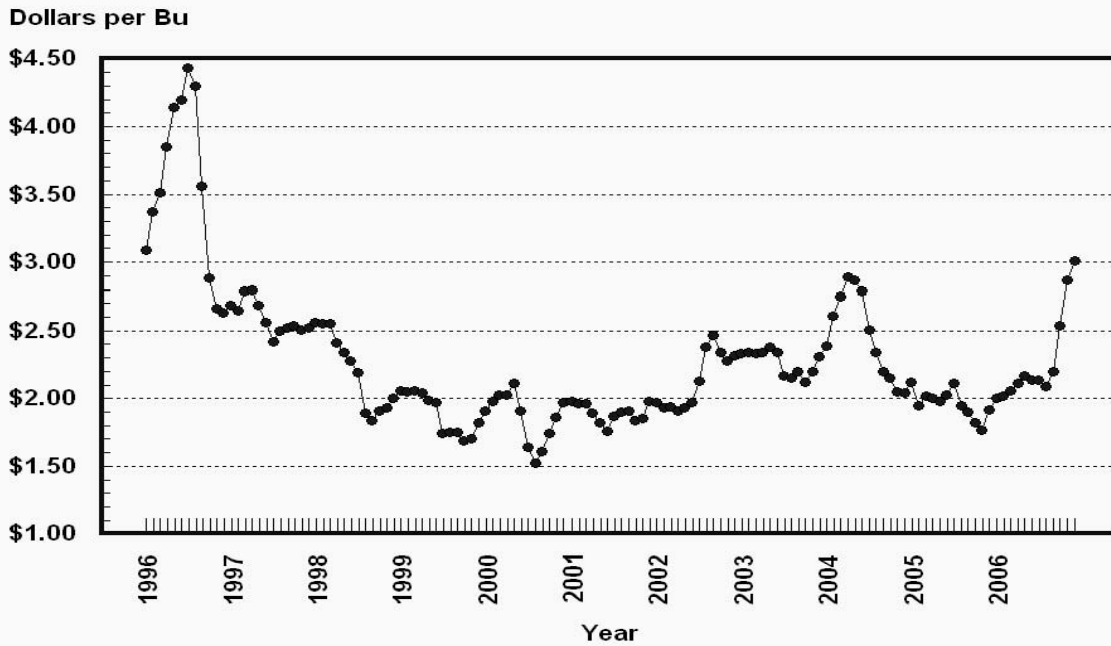
<sup>6</sup> December 2006 Fat test percent: all milk, 3.81; fluid milk, 3.81; mfg grade, 4.09.

<sup>7</sup> Equivalent liveweight returns to producers for most States. Includes growers and contractors.

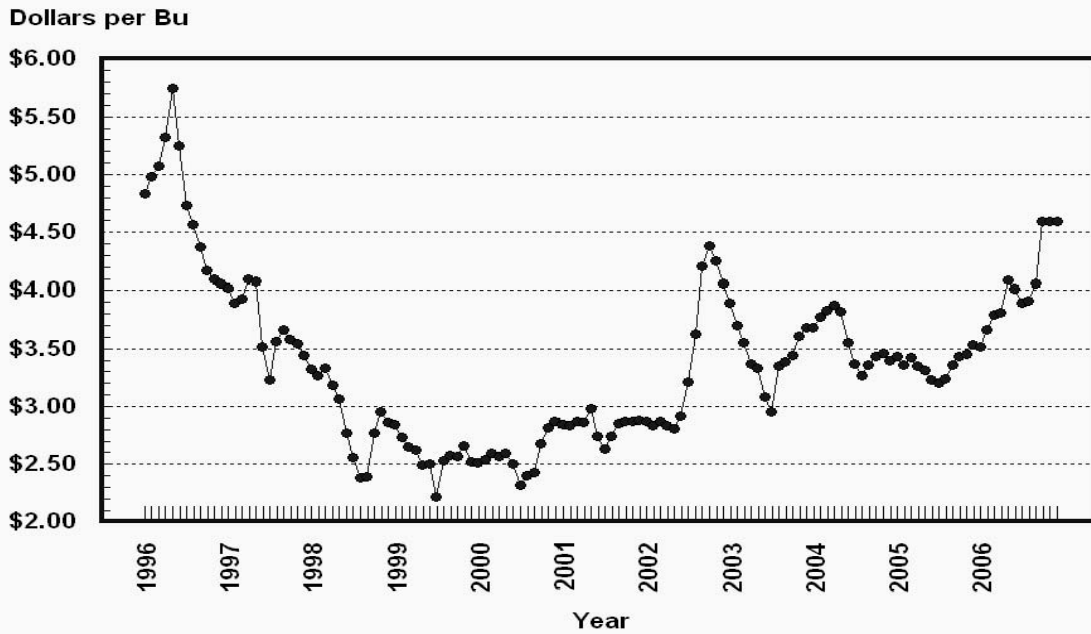
<sup>8</sup> Mid-month price.

<sup>9</sup> Seasonal adjustment factors are: All Eggs December 2005, 121; November 2006, 117; and December 2006, 122. All Milk December 2005, 102; November 2006, 103; and December 2006, 103.

### Prices Received, Corn, US

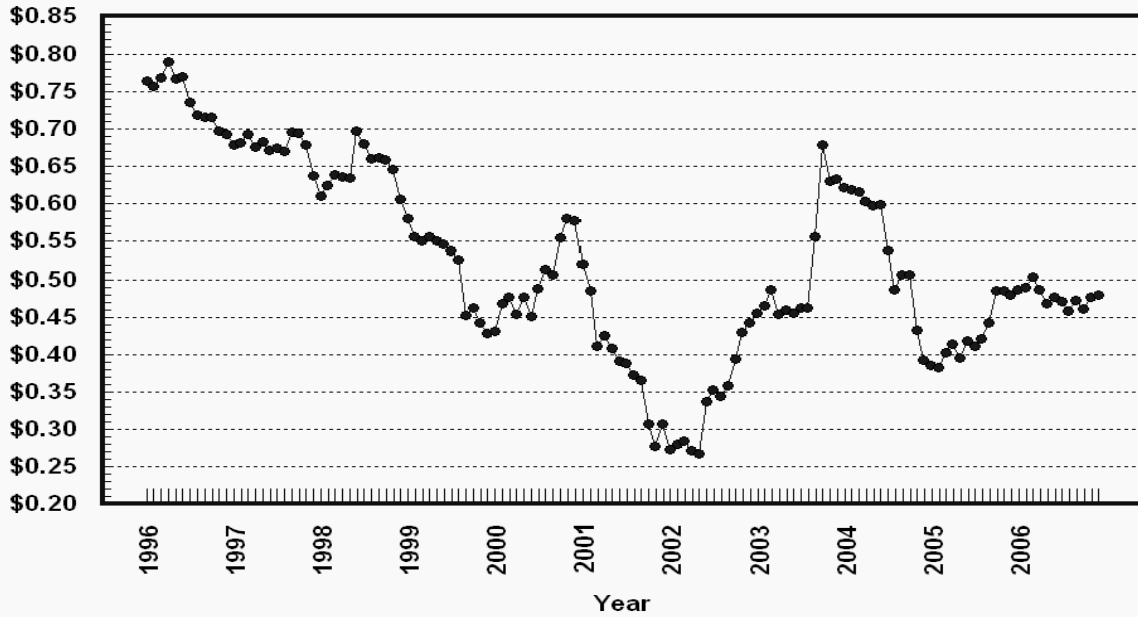


### Prices Received, Wheat, US



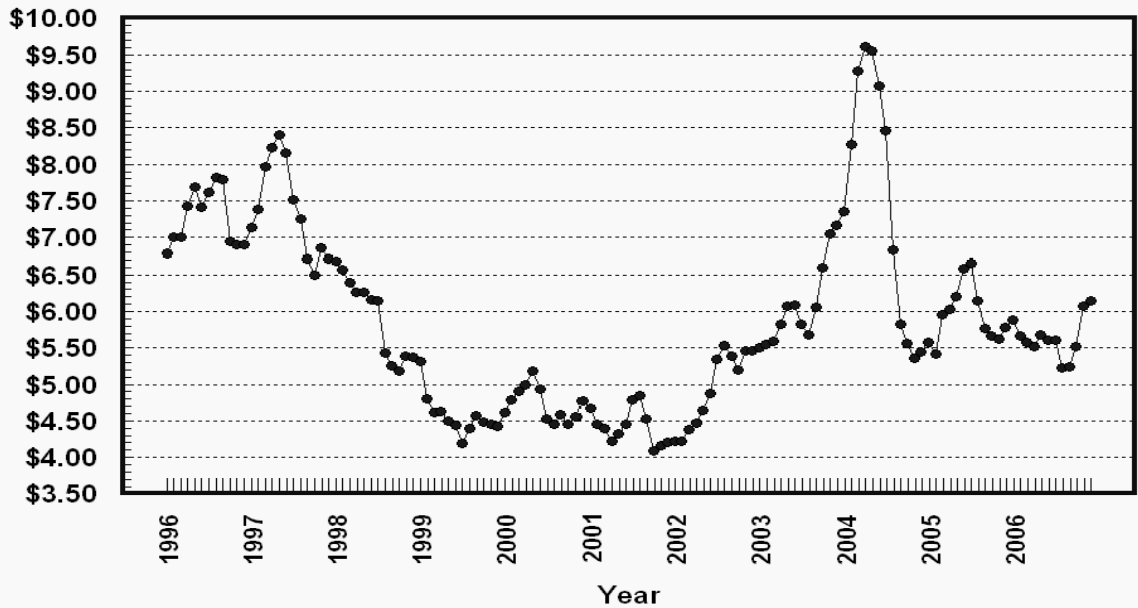
## Prices Received, Cotton, US

Dollars per Lb



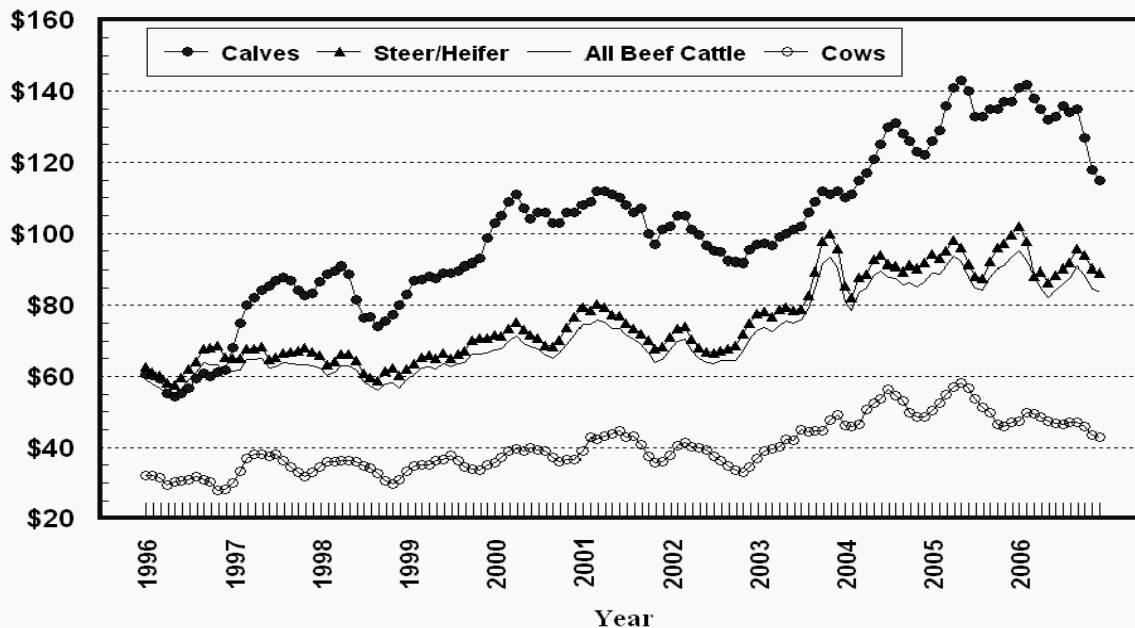
## Prices Received, Soybeans, US

Dollars per Bu



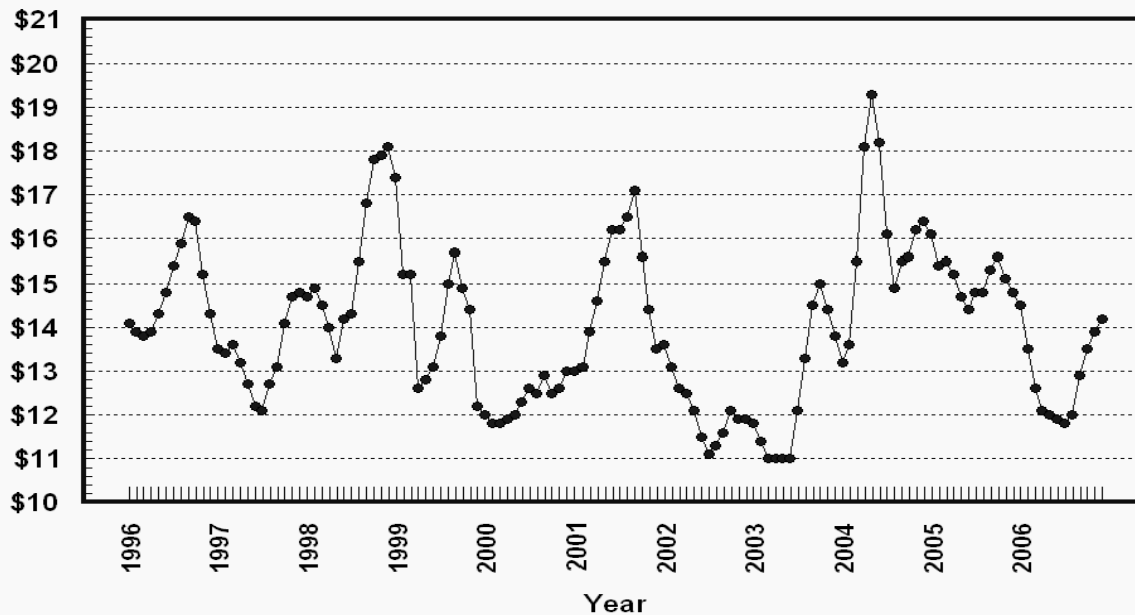
### Prices Received, Cattle, US

Dollars per Cwt



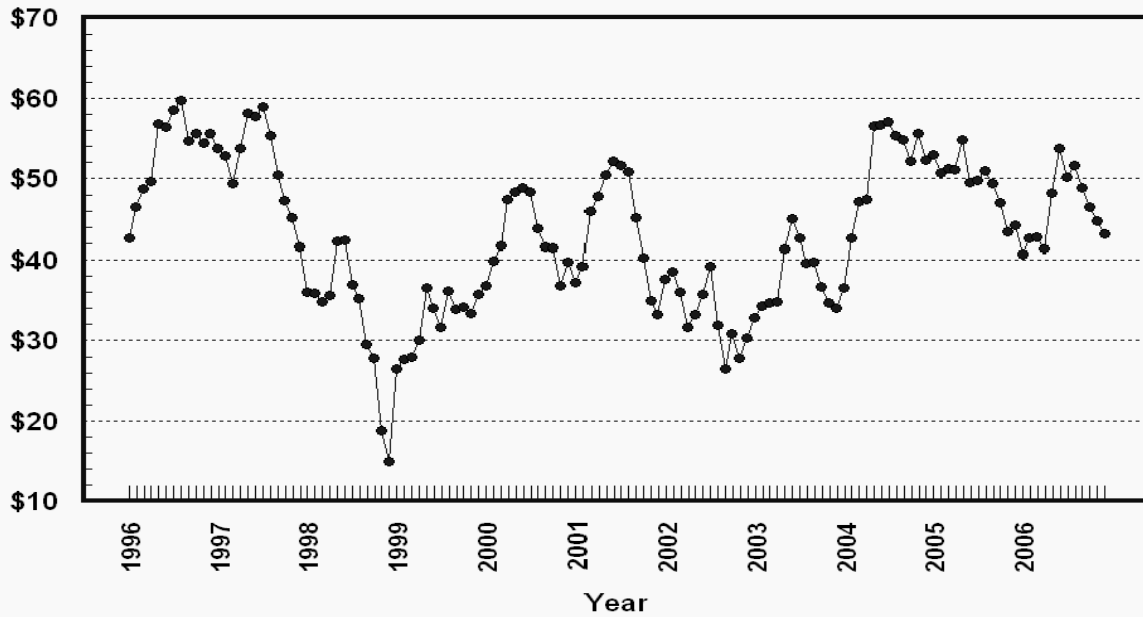
### Prices Received, Milk, US

Dollars per Cwt



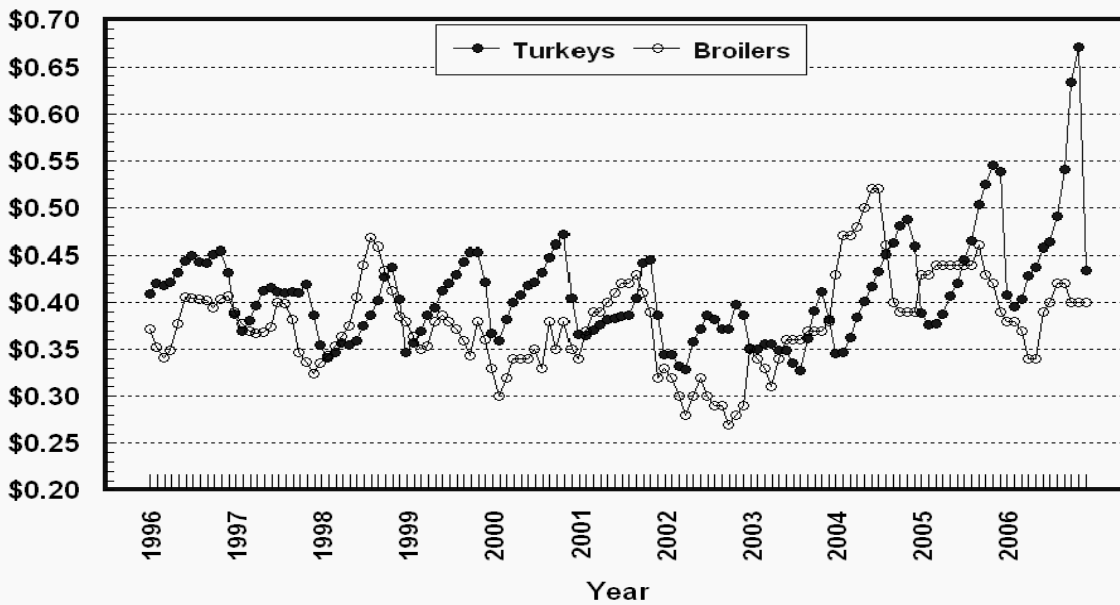
## Prices Received, Hogs, US

Dollars per Cwt



## Prices Received, Turkeys & Broilers, US

Dollars per Lb



**Wheat: Prices Received, by State, November and December 2006**

State	All Wheat		Winter Wheat		Durum Wheat		Oth Spring Wheat	
	Nov <sup>1</sup>	Dec <sup>2</sup>	Nov <sup>1</sup>	Dec <sup>2</sup>	Nov <sup>1</sup>	Dec <sup>2</sup>	Nov <sup>1</sup>	Dec <sup>2</sup>
	<i>Dollars per Bushel</i>	<i>Dollars per Bushel</i>	<i>Dollars per Bushel</i>	<i>Dollars per Bushel</i>	<i>Dollars per Bushel</i>	<i>Dollars per Bushel</i>	<i>Dollars per Bushel</i>	<i>Dollars per Bushel</i>
AR	4.59	4.60	4.59	4.60				
CA	4.29	( <sup>3</sup> )	3.92	( <sup>4</sup> )	( <sup>3</sup> )	( <sup>3</sup> )		
CO	4.74	4.62	4.74	4.62			( <sup>4</sup> )	( <sup>4</sup> )
ID	4.27	4.33	4.16	4.25	( <sup>3</sup> )	( <sup>3</sup> )	4.42	4.45
IL	4.44	4.40	4.44	4.40				
IN	4.35	4.20	4.35	4.20				
KS	5.05	4.62	5.05	4.62				
MI	4.06	4.10	4.06	4.10				
MN	4.51	4.59	4.47	4.47			4.51	4.59
MO	4.26	4.20	4.26	4.20				
MT	4.55	4.63	4.53	4.55	4.62	4.95	4.55	4.67
NE	4.85	4.80	4.85	4.80				
ND	4.42	4.53	4.29	4.35	4.63	4.70	4.38	4.50
OH	4.14	4.14	4.14	4.14				
OK	5.03	4.73	5.03	4.73				
OR	4.54	4.66	4.47	4.60			4.93	5.00
SD	4.60	4.52	4.50	4.44			4.75	4.63
TX	4.43	4.62	4.43	4.62				
WA	4.68	4.76	4.63	4.74			4.87	4.85
US	4.59	4.59	4.68	4.58	4.63	4.77	4.48	4.57

<sup>1</sup> Entire month.

<sup>2</sup> Mid-month.

<sup>3</sup> Price not published to avoid disclosure of individual firms.

<sup>4</sup> Insufficient sales to establish a price.

**Prices Received for Selected Agricultural Commodities, by Month,  
United States, 2005 and 2006 <sup>1</sup>**

Month	All Wheat		Corn		Soybeans		Beef Cattle <sup>2</sup>		All Hogs	
	2005	2006	2005	2006	2005	2006	2005	2006	2005	2006
	<i>Dollars per Bushel</i>	<i>Dollars per Bushel</i>	<i>Dollars per Bushel</i>	<i>Dollars per Bushel</i>	<i>Dollars per Bushel</i>	<i>Dollars per Bushel</i>	<i>Dollars per Cwt</i>	<i>Dollars per Cwt</i>	<i>Dollars per Cwt</i>	<i>Dollars per Cwt</i>
Jan	3.43	3.52	2.12	2.00	5.57	5.87	89.10	95.10	53.00	40.70
Feb	3.36	3.66	1.95	2.02	5.42	5.67	88.80	92.40	50.70	42.60
Mar	3.42	3.79	2.02	2.06	5.95	5.57	91.00	88.10	51.20	42.80
Apr	3.35	3.81	2.00	2.11	6.03	5.52	93.70	84.80	51.10	41.30
May	3.31	4.09	1.98	2.17	6.21	5.68	92.10	82.20	54.90	48.20
Jun	3.23	4.01	2.03	2.14	6.58	5.62	88.00	84.20	49.50	53.80
Jul	3.20	3.89	2.11	2.14	6.65	5.61	85.00	86.10	49.80	50.20
Aug	3.24	3.91	1.95	2.09	6.15	5.23	84.40	87.70	51.00	51.60
Sep	3.36	4.06	1.90	2.20	5.77	5.24	88.00	90.80	49.40	48.90
Oct	3.43	4.59	1.82	2.54	5.67	5.52	90.40	88.50	47.00	46.50
Nov	3.45	4.59	1.77	2.87	5.62	6.07	90.80	84.70	43.50	44.80
Dec	3.53	4.59	1.92	3.01	5.78	6.14	93.30	83.70	44.30	43.20

<sup>1</sup> Current month prices are mid-month; prices for previous months are for the entire month.

<sup>2</sup> Cows, steers and heifers.

**Grains: Prices Received, by State, November and December 2006**

Month	All Barley <sup>1</sup>		Corn		Oats		Soybeans		Sorghum Grain	
	Nov <sup>2</sup>	Dec <sup>3</sup>	Nov <sup>2</sup>	Dec <sup>3</sup>	Nov <sup>2</sup>	Dec <sup>3</sup>	Nov <sup>2</sup>	Dec <sup>3</sup>	Nov <sup>2</sup>	Dec <sup>3</sup>
	<i>Dollars per Bushel</i>	<i>Dollars per Bushel</i>	<i>Dollars per Bushel</i>	<i>Dollars per Bushel</i>	<i>Dollars per Bushel</i>	<i>Dollars per Bushel</i>	<i>Dollars per Bushel</i>	<i>Dollars per Bushel</i>	<i>Dollars per Cwt</i>	<i>Dollars per Cwt</i>
AL							6.48	6.65	( <sup>4</sup> )	( <sup>4</sup> )
AR										
CA	( <sup>5</sup> )	( <sup>5</sup> )			( <sup>5</sup> )	( <sup>5</sup> )				
CO	( <sup>4</sup> )	( <sup>4</sup> )	2.80	3.10						
ID	3.21	3.29								
IL			3.01	3.05	( <sup>4</sup> )	( <sup>5</sup> )	6.11	6.15	5.73	5.95
IN			3.01	3.10			6.10	6.30		
IA			2.84	3.00	2.17	1.90	6.09	6.15		
KS			3.16	3.30	( <sup>4</sup> )	2.12	6.05	6.09	5.86	6.06
KY			3.15	3.30			6.42	6.55		
LA							6.21	6.41		
MI			2.76	3.00	2.26	( <sup>4</sup> )	5.97	6.10		
MN	2.66	2.80	2.66	2.70	2.14	2.14	5.89	5.97		
MS							6.26	6.39		
MO			3.02	3.05			6.15	6.20	5.86	6.10
MT	2.90	3.31			1.96	( <sup>5</sup> )				
NE			2.76	3.00	2.49	2.30	5.89	5.95	5.62	5.90
NY					1.71	1.55				
NC			3.24	3.50			6.08	6.17		
ND	2.71	3.06	2.42	2.70	1.94	2.05	5.61	5.70		
OH			2.92	2.96	( <sup>5</sup> )	( <sup>5</sup> )	6.22	6.25		
OK									5.83	5.87
OR	3.37	3.50			( <sup>4</sup> )	( <sup>5</sup> )				
PA			3.35	3.60	2.06	2.06				
SD	( <sup>4</sup> )	( <sup>4</sup> )	2.58	2.80	2.11	2.30	5.79	5.92		
TN			3.29	3.35			6.48	6.65		
TX			3.29	3.59	( <sup>5</sup> )	( <sup>5</sup> )			5.81	6.10
UT	2.72	3.43								
WA	3.35	3.90								
WI			2.80	2.95	1.88	1.80	5.76	5.90		
WY	3.16	3.23								
US	2.92	3.25	2.87	3.01	2.02	2.06	6.07	6.14	5.83	6.05

<sup>1</sup> The Three-State (MN, ND and SD) Feed Barley price is discontinued.

<sup>2</sup> Entire month.

<sup>3</sup> Mid-month.

<sup>4</sup> Price not published to avoid disclosure of individual firms.

<sup>5</sup> Insufficient sales to establish a price.

**Malting and Feed Barley: Prices Received Selected State, November and December 2006**

State	Malting Barley		Feed Barley	
	Nov <sup>1</sup>	Dec <sup>2</sup>	Nov <sup>1</sup>	Dec <sup>2</sup>
	<i>Dollars per Bushel</i>	<i>Dollars per Bushel</i>	<i>Dollars per Bushel</i>	<i>Dollars per Bushel</i>
ID	3.24	3.30	3.09	3.20
MN	2.62	2.80	2.75	2.80
MT	3.11	3.46	2.34	2.92
ND	2.79	3.20	2.59	2.80
SD	( <sup>3</sup> )	( <sup>3</sup> )	( <sup>4</sup> )	( <sup>4</sup> )
WY	( <sup>3</sup> )	( <sup>3</sup> )	( <sup>3</sup> )	( <sup>3</sup> )

<sup>1</sup> Entire month.

<sup>2</sup> Mid-month.

<sup>3</sup> Price not published to avoid disclosure of individual firms.

<sup>4</sup> Insufficient sales to establish a price.

**Field Crops: Prices Received, by State, November and December 2006**

State	Dry Edible Beans		All Sunflower		Flaxseed		Peanuts <sup>4</sup>	
	Nov <sup>1</sup>	Dec <sup>2</sup>	Nov <sup>1</sup>	Dec <sup>2</sup>	Nov <sup>1</sup>	Dec <sup>2</sup>	Nov <sup>1</sup>	Dec <sup>3</sup>
	<i>Dollars per Cwt</i>	<i>Dollars per Cwt</i>	<i>Dollars per Cwt</i>	<i>Dollars per Cwt</i>	<i>Dollars per Bushel</i>	<i>Dollars per Bushel</i>	<i>Dollars per Pound</i>	<i>Dollars per Pound</i>
AL							0.165	0.163
CA	48.10	47.90						
CO	21.00	20.70						
FL							0.170	( <sup>5</sup> )
GA							0.168	0.173
ID	21.20	21.20						
KS			11.90	12.60				
MI	19.70	20.00						
MN	23.00	23.20	14.50	15.20				
NE	19.90	20.80						
NC							0.188	0.198
ND	19.30	19.50	12.40	13.00	5.40	5.65		
SD			12.50	13.40	( <sup>6</sup> )	( <sup>6</sup> )		
TX							0.180	0.188
VA							0.170	( <sup>5</sup> )
US	21.60	21.60	12.50	13.20	5.40	5.65	0.172	0.178

<sup>1</sup> Entire month.

<sup>2</sup> Mid-month.

<sup>3</sup> Based on sales through first half of month.

<sup>4</sup> In-Shell.

<sup>5</sup> Price not published to avoid disclosure of individual firms.

<sup>6</sup> Insufficient sales to establish a price.



**Field Crops and Apples: Prices Received, by State, November and December 2006**

State	Cotton, Upland		December				Apples Fresh Use <sup>1 4</sup>
	Nov <sup>1</sup>	Dec <sup>2</sup>	Cotton- seed <sup>5</sup>	Hay, Baled <sup>3</sup>			
				All	Alfalfa	Other	
	<i>Dollars per Pound</i>	<i>Dollars per Pound</i>	<i>Dollars per Ton</i>	<i>Dollars per Ton</i>	<i>Dollars per Ton</i>	<i>Dollars per Ton</i>	<i>Dol/Lb</i>
AL	0.446	0.494	92.00				
AZ	( <sup>6</sup> )	( <sup>6</sup> )	170.00	125.00	125.00	130.00	
AR	0.503	0.502	101.00				
CA	0.528	( <sup>6</sup> )	190.00	110.00	116.00	80.00	0.302
CO				139.00	140.00	125.00	
GA	0.519	0.512	94.00				
ID				112.00	116.00	86.00	
IL				99.00	106.00	82.00	
IA				89.00	91.00	67.00	
KS				106.00	118.00	75.00	
KY				82.00	120.00	70.00	
LA	0.474	0.485	( <sup>6</sup> )				
MI				101.00	105.00	85.00	0.255
MN				79.00	81.00	61.00	
MS	0.484	0.493	( <sup>6</sup> )				
MO				80.00	119.00	63.00	
MT				77.00	76.00	80.00	
NE				91.00	93.00	81.00	
NV				116.00	117.00	105.00	
NM				170.00	172.00	145.00	
NY				126.00	142.00	105.00	0.287
NC	0.428	0.420	96.00				
ND				66.00	69.00	49.00	
OH				107.00	133.00	85.00	0.375
OK				135.00	156.00	106.00	
OR				130.00	131.00	128.00	
PA				138.00	162.00	132.00	0.156
SD				81.00	84.00	67.00	
TN	0.488	0.494	102.00				
TX	0.460	0.468	122.00	135.00	166.00	131.00	
UT				103.00	105.00	79.00	
VA							0.180
WA				128.00	125.00	135.00	0.352
WI				58.00	61.00	46.00	
WY				96.00	97.00	94.00	
US	0.476	0.479	109.00	108.00	112.00	99.30	0.331

<sup>1</sup> Entire month.

<sup>2</sup> Based on sales during the first half of the month.

<sup>3</sup> Mid-month.

<sup>4</sup> Equivalent packinghouse-door returns for CA, MI, NY, and WA. Price at point of first sale for other States.

<sup>5</sup> Marketing year August - February.

<sup>6</sup> Price not published to avoid disclosure of individual firms.

<sup>7</sup> Insufficient sales to establish a price.

**Upland Cotton and Rice: Prices Received and Marketings,  
United States, December 2006, with Comparisons**

Item	Unit	Oct 2006 <sup>1</sup>	Nov 2006 <sup>1</sup>	Dec 2006 <sup>2</sup>
Cotton, Upland				
Average Price	Dollars per Pound	0.461	0.476	0.479
Marketings <sup>3</sup>	1,000 Bales	994	1,117	NA
Rice				
Average Price	Dollars per Cwt	9.46	10.00	9.85
Marketings <sup>4</sup>	1,000 Cwt	13,364	11,464	NA

<sup>1</sup> Entire month.

<sup>2</sup> Based on purchases for the first half of the month.

<sup>3</sup> Marketings based on a survey of cotton buyers in the major producing States - AL, AZ, AR, CA, GA, LA, MS, NC, TN, and TX.

<sup>4</sup> Purchases by private firms and rice (rough equivalent) shipped by cooperatives.

**Citrus Fruit: Prices and Equivalent Returns, by Utilization,  
by State and United States, December 2006**

Commodity, State and Type	F.O.B. Packed Fresh	Equivalent Returns <sup>1</sup>					
		Packinghouse-door			On-tree		
		All	Fresh	Process	All	Fresh	Process
	<i>Dollars per Box</i>	<i>Dollars per Box</i>	<i>Dollars per Box</i>	<i>Dollars per Box</i>	<i>Dollars per Box</i>	<i>Dollars per Box</i>	<i>Dollars per Box</i>
Grapefruit							
AZ	25.00	15.76	15.76		12.84	12.84	
CA	25.50	14.89	16.26	-0.30	11.97	13.34	-3.22
FL	21.50	9.98	13.03	4.03	7.43	10.68	1.09
White	20.60	7.78	11.90	4.10	5.20	9.55	1.30
Colored	21.60	10.47	13.20	4.00	7.93	10.85	1.00
TX	24.10	10.08	13.50	2.77	8.87	12.27	1.59
US	22.60	10.41	13.50	3.61	8.17	11.37	1.12
Lemons							
AZ	32.40	17.08	22.33	-0.42	11.66	16.91	-5.84
CA	34.40	19.77	24.33	-0.42	14.35	18.91	-5.84
US	33.70	18.78	23.62	-0.42	13.36	18.20	-5.84
Oranges							
AZ							
Navel and Misc	17.30	8.40	9.39	1.48	5.90	6.89	-1.02
CA							
Navel and Misc	22.80	13.54	14.89	1.48	11.04	12.39	-1.02
FL							
Early and Mids	21.70	9.35	12.80	9.10	6.60	10.10	6.35
TX							
Early and Mids	20.20	8.09	9.49	2.94	6.67	8.06	1.55
US	22.40	10.15	14.15	8.88	7.47	11.65	6.14
Tangelos							
FL	19.00	8.95	9.70	8.00	6.20	7.00	5.20
Tangerines							
AZ	26.90	17.66	17.66		14.42	14.42	
CA	38.40	24.61	29.16	0.26	21.37	25.92	-2.98
FL	29.80	15.34	18.80	8.30	11.67	15.30	4.30
US	31.60	17.20	21.06	7.45	13.63	17.63	3.53

<sup>1</sup> Net lbs. per box: Grapefruit - AZ & CA-67, FL-85, TX-80; Lemons - 76; Oranges - AZ & CA-75, FL-90, TX-85; Tangelos - 90; Tangerines - AZ & CA-75, FL-95.

**Potatoes: Prices Received, by State, November and December 2006 <sup>1</sup>**

State	Nov	Dec	State	Nov	Dec
	<i>Dollars per Cwt</i>	<i>Dollars per Cwt</i>		<i>Dollars per Cwt</i>	<i>Dollars per Cwt</i>
AL			NC		
AZ			ND - All <sup>2</sup>	7.00	6.65
CA - All <sup>2</sup>	8.10	9.20	- Fresh <sup>3</sup>	8.30	NA
- Winter	13.80	17.50	- Processing	6.25	NA
- Spring			OR	7.05	6.90
- Summer			TX		
- Fall	7.90	8.10	VA		
CO - All <sup>2</sup>	7.95	7.95	WA - All <sup>2</sup>	6.25	6.50
- Fresh <sup>3</sup>	8.50	NA	- Processing	5.60	NA
FL			WI - All <sup>2</sup>	7.55	7.40
ID - All <sup>2</sup>	5.60	5.45	- Fresh <sup>3</sup>	8.55	NA
- Fresh <sup>3</sup>	6.10	NA	- Processing	5.80	NA
- Processing	5.10	NA	US - All <sup>2</sup>	6.67	7.22
ME	8.15	8.35	- Fresh <sup>3</sup>	8.29	NA
MI	8.05	8.50	- Processing	5.68	NA
MN	6.10	6.05			
NY	12.50	11.90			

<sup>1</sup> Missing data indicates no potatoes being marketed.

<sup>2</sup> Average price of potatoes sold for all uses, including table stocks, processing, seed, and livestock feed.

<sup>3</sup> Fresh market prices only, includes table stock prices.

**Cattle: Prices Received, by State, November and December 2006**

State	Cows <sup>1</sup>		Steers & Heifers		Beef Cattle <sup>4</sup>		Calves	
	Nov <sup>2</sup>	Dec <sup>3</sup>	Nov <sup>2</sup>	Dec <sup>3</sup>	Nov <sup>2</sup>	Dec <sup>3</sup>	Nov <sup>2</sup>	Dec <sup>3</sup>
	<i>Dollars per Cwt</i>	<i>Dollars per Cwt</i>	<i>Dollars per Cwt</i>	<i>Dollars per Cwt</i>	<i>Dollars per Cwt</i>	<i>Dollars per Cwt</i>	<i>Dollars per Cwt</i>	<i>Dollars per Cwt</i>
AZ	43.70	42.70	93.00	90.00	84.60	76.80	110.00	107.00
AR	40.00	40.00	92.00	92.70	76.40	76.90	110.00	110.00
CA	40.40	38.00	88.40	86.70	65.40	63.30	105.00	104.00
CO	43.60	43.70	101.00	99.00	100.00	98.40	112.00	111.00
FL	44.20	44.00	86.70	85.30	70.80	68.90	106.00	103.00
GA	45.80	46.00	83.90	84.70	58.40	59.20	109.00	108.00
ID	40.60	39.70	87.60	86.50	72.10	73.40	108.00	105.00
IL	46.00	46.00	86.00	86.00	85.20	85.20	108.00	104.00
IA	46.40	43.90	85.70	85.10	84.90	84.30	104.00	107.00
KS	44.00	43.80	89.30	88.30	87.90	87.00	124.00	121.00
KY	43.00	43.00	88.00	88.00	77.20	77.20	104.00	103.00
LA	41.00	41.00	84.90	87.00	56.80	55.70	105.00	107.00
MI	46.50	44.50	80.50	78.50	70.30	68.30	126.00	120.00
MN	46.60	46.50	82.90	82.50	74.80	74.50	114.00	116.00
MO	41.90	41.90	95.90	98.10	85.10	86.30	111.00	113.00
MT	41.80	44.30	109.00	102.00	92.90	93.30	125.00	118.00
NE	46.00	46.50	89.90	90.30	88.60	89.00	120.00	123.00
NM	40.80	40.60	97.00	96.00	72.80	74.90	114.00	108.00
ND	43.00	43.00	103.00	100.00	88.60	88.60	112.00	112.00
OH	42.20	43.00	84.90	83.00	80.60	79.00	96.00	100.00
OK	43.10	43.00	100.00	101.00	86.90	87.70	114.00	118.00
OR	40.50	39.10	89.50	86.60	74.80	72.40	104.00	101.00
PA	42.80	43.10	82.50	82.00	72.20	71.90	114.00	108.00
SD	41.80	43.20	98.80	96.10	88.50	82.30	119.00	116.00
TN	41.00	41.00	86.00	88.00	68.00	69.20	98.00	101.00
TX	40.80	41.40	90.90	88.80	85.90	84.50	121.00	116.00
VA	39.90	39.70	83.00	81.10	71.80	63.30	96.50	97.30
WI	44.50	43.10	81.00	79.30	59.80	58.30	148.00	144.00
WY	41.10	40.00	105.00	104.00	78.20	81.60	122.00	120.00
US	43.40	42.90	90.20	89.20	84.70	83.70	118.00	115.00

<sup>1</sup> Beef cows and cull dairy cows sold for slaughter.

<sup>2</sup> Entire month.

<sup>3</sup> Mid-month.

<sup>4</sup> "Cows" and "steers and heifers" combined.

**Hogs: Prices Received, by State, November and December 2006**

State	Sows		Barrows and Gilts		All Hogs	
	Nov <sup>1</sup>	Dec <sup>2</sup>	Nov <sup>1</sup>	Dec <sup>2</sup>	Nov <sup>1</sup>	Dec <sup>2</sup>
	<i>Dollars per Cwt</i>	<i>Dollars per Cwt</i>	<i>Dollars per Cwt</i>	<i>Dollars per Cwt</i>	<i>Dollars per Cwt</i>	<i>Dollars per Cwt</i>
AR	35.00	33.00	43.00	41.50	42.20	40.70
IL	34.00	32.20	46.20	44.00	45.20	43.10
IN	38.80	35.50	44.30	43.10	43.70	42.30
IA	36.30	33.30	46.60	44.80	46.50	44.70
KS	35.90	33.50	41.90	40.60	41.10	39.70
MN	35.00	32.50	46.90	46.00	46.80	45.90
MO	35.10	32.40	36.90	35.30	36.80	35.10
NE	36.60	33.60	46.90	45.60	46.70	45.40
NC	35.20	33.30	45.50	43.10	45.40	43.00
OH	35.30	33.50	44.00	43.00	43.50	42.40
OK	33.80	31.30	38.40	36.70	37.70	35.90
PA	33.80	31.90	42.10	41.10	40.90	39.70
SD	34.00	31.80	46.80	45.30	45.10	43.80
US	35.40	32.80	45.20	43.60	44.80	43.20

<sup>1</sup> Entire month.

<sup>2</sup> Mid-month.

**Sheep and Poultry: Prices Received, by State, November and December 2006**

State	November		December
	Sheep <sup>1</sup>	Lambs <sup>1</sup>	Eggs <sup>2 3</sup>
	<i>Dollars per Cwt</i>	<i>Dollars per Cwt</i>	<i>Dollars per Dozen</i>
AL			0.620
AR			0.700
CA	38.00	91.50	0.740
CO	30.00	94.00	
CT			0.820
FL			0.660
GA			0.679
ID	27.00	80.00	
IN			0.670
IA	35.90	89.90	0.600
KY	36.00	91.00	
ME			0.900
MI			0.600
MN	30.50	94.00	0.740
MS			0.730
MO	33.80	89.80	0.600
MT	26.10	101.00	
NE	29.00	81.50	
NY			0.720
NC			0.623
ND	31.00	105.00	
OH	35.40	85.10	0.710
OR	36.00	96.00	
PA	46.80	106.00	0.600
SC			0.650
SD	26.60	108.00	
TX	35.70	94.30	0.680
VA	38.00	98.00	
WA			0.770
WV	31.00	99.00	
WY	27.70	112.00	
US	30.90	95.00	0.665

<sup>1</sup> Entire month.

<sup>2</sup> Mid-month.

<sup>3</sup> Market (table) eggs.

**Milk and Milk Cows: Prices Received, by State, November and December 2006**

State	November <sup>1</sup>						December		Milk Cows <sup>5</sup>
	Fluid Grade Milk <sup>2</sup>		Manufacturing Grade Milk		All Milk <sup>3</sup>		All Milk <sup>3 4</sup>		
	Price	Fat Test	Price	Fat Test	Price	Fat Test	Price	Fat Test	
	<i>Dol/Cwt</i>	<i>Percent</i>	<i>Dol/Cwt</i>	<i>Percent</i>	<i>Dol/Cwt</i>	<i>Percent</i>	<i>Dol/Cwt</i>	<i>Percent</i>	<i>Dol/Head</i>
AZ	13.80	3.68			13.80	3.68	14.20	3.72	
CA	12.40	3.76	13.50	4.27	12.43	3.78	12.50	3.81	
CO	14.20	3.64			14.20	3.64	14.30	3.65	
FL	16.60	3.74			16.60	3.74	16.60	3.75	
ID	13.20	3.77	13.20	3.91	13.20	3.77	13.70	3.82	
IL	14.90	3.90	14.50	3.73	14.90	3.90	14.90	3.90	
IN	14.00	3.81	12.80	3.91	14.00	3.81	14.50	3.84	
IA	14.10	3.79	13.20	4.12	14.10	3.80	14.20	3.82	
KS	13.60	3.76			13.60	3.76	13.90	3.79	
KY	14.70	3.80			14.70	3.80	14.70	3.82	
MI	14.30	3.74	12.00	3.80	14.30	3.74	14.80	3.77	
MN	14.40	3.87	13.00	3.99	14.40	3.87	14.80	3.86	
MO	14.20	3.80	13.20	3.99	14.20	3.81	14.40	3.82	
NM	13.50	3.70			13.50	3.70	13.80	3.71	
NY	14.40	3.79			14.40	3.79	14.60	3.82	
OH	14.90	3.81	13.80	3.99	14.90	3.82	15.20	3.84	
OR	15.50	3.82			15.50	3.82	15.70	3.85	
PA	15.40	3.80	13.20	3.95	15.40	3.80	15.70	3.85	
TX	14.50	3.83			14.50	3.83	14.60	3.85	
VT	14.90	3.84			14.90	3.84	15.20	3.85	
VA	16.20	3.75			16.20	3.75	16.20	3.75	
WA	13.50	3.82			13.50	3.82	13.80	3.85	
WI	14.50	3.82	14.20	3.99	14.50	3.83	15.00	3.82	
US	13.90	3.78	13.60	4.09	13.90	3.79	14.20	3.81	

<sup>1</sup> Entire month.

<sup>2</sup> Including milk diverted to manufacturing.

<sup>3</sup> Before deductions for hauling. Includes quality, quantity, and other premiums. Excludes hauling subsidies.

<sup>4</sup> Preliminary.

<sup>5</sup> Animals sold for dairy herd replacement only. Prices published January, April, July and October.

**Parity Price Equivalent for Manufacturing Grade Milk <sup>1</sup>: United States,  
November and December 2006, with Comparisons**

Item	Unit	Dec 2005	Nov 2006	Dec 2006
Parity Equivalent	Dollars per Cwt	34.30	35.00	35.40
Average Price F.O.B <sup>2</sup>	Dollars per Cwt	14.40	13.60	13.80
Average Fat Test of Milk <sup>2</sup>	Percent	4.07	4.09	4.09

<sup>1</sup> The parity price equivalent during 2006 is 91.5 percent of the parity price of all milk sold to plants, compared with 91.4 percent in 2005. For additional details, see January 2006 issue of "Agricultural Prices".

<sup>2</sup> Preliminary for December 2006.

**Parity Prices for Farm Products and Average Prices Received as  
Percent of Parity Prices, United States, with Comparisons <sup>1</sup>**

Commodity and Unit	Adjusted Base Price	Parity Price			Price as Percent of Parity		
		Dec 2005	Nov 2006	Dec 2006	Dec 2005	Nov 2006	Dec 2006
	<i>Dollars</i>	<i>Dollars</i>	<i>Dollars</i>	<i>Dollars</i>	<i>Percent</i>	<i>Percent</i>	<i>Percent</i>
<b>Basic Commodities</b>							
All Wheat, Bu	0.535	10.60	10.40	10.50	33	44	44
Rice, Cwt	1.45	26.20	28.10	28.50	29	34	35
Corn, Bu	0.398	7.08	7.72	7.82	27	40	38
Cotton, Lb							
American Upland	0.117	1.81	2.27	2.30	26	21	21
Extra Long Staple	0.138	2.70	2.68	2.71			
Peanuts, Lb	0.035	0.666	0.679	0.688	27	25	26
<b>Designated Nonbasic</b>							
All Milk, Sold to Plants, Per Cwt <sup>2</sup>	1.97	37.50	38.20	38.70	40	32	31
Honey, Extracted, Lb <sup>3</sup>	0.121	2.28	2.28	2.28			
<b>Wool and Mohair</b>							
Wool, Lb	0.083	1.73	1.61	1.63			
Mohair, Lb	0.339	6.33	6.57	6.66			
<b>Other Nonbasic</b>							
Barley, Bu	0.372	7.17	7.21	7.31	35	44	44
Canola, Cwt	1.38	29.60	26.80	27.10			
Cottonseed, Ton	15.40	295.00	299.00	303.00	32	36	36
Dry Edible Beans, Cwt	2.81	53.60	54.50	55.20	35	39	39
Flaxseed, Bu	0.795	14.30	15.40	15.60	41	35	36
Mustard Seed, Cwt	1.96	40.30	38.00	38.50			
Oats, Bu	0.221	4.20	4.29	4.34	41	46	47
Potatoes, Cwt	0.823	15.90	16.00	16.20	44	40	45
Rapeseed, Cwt	1.61	33.10	31.20	31.70			
Rye, Bu	0.355	6.75	6.88	6.98			
Safflower, Cwt	1.86	39.40	36.10	36.60			
Sorghum Grain, Cwt	0.617	11.50	12.00	12.10	25	49	50
Soybeans, Bu	0.880	17.10	17.10	17.30	34	36	35
All Sunflower, Cwt	1.68	31.60	32.50	33.00	37	37	36
Sweetpotatoes, Cwt	2.33	43.90	45.20	45.80			
Apples, Fresh, Lb <sup>4</sup>	0.027	0.555	0.524	0.531	40	41	41
Citrus (equiv on-tree), Box							
Grapefruit	0.541	7.49	10.50	10.60	135	91	77
Lemons	1.16	21.30	22.50	22.80	32	95	59
Oranges	0.591	10.90	11.50	11.60	41	69	64
Tangerines	1.390	25.70	27.00	27.30	46	54	53
Temples (FL)	0.394	7.21	7.64	7.75			
Beef Cattle, Cwt	9.87	184.00	191.00	194.00	51	44	43
Calves, Cwt	13.70	249.00	266.00	269.00	54	45	43
Hogs, Cwt	5.99	114.00	116.00	118.00	39	38	37
Lambs, Cwt	11.90	223.00	231.00	234.00	46		
Sheep, Cwt	4.89	89.80	94.80	96.10	52		
Eggs, Doz <sup>2</sup>	0.091	1.79	1.76	1.79	36	40	37
Turkeys, Live, Lb	0.056	1.070	1.090	1.100	51	62	39

<sup>1</sup> Parity prices are computed under the provisions of Title III, Subtitle a, Section 301 (a) of the Agricultural Adjustment Act of 1938 as amended by the Agricultural Acts of 1948, 1949, and 1956. See January "Agricultural Prices" for details on adjusted base price and parity price computations.

<sup>2</sup> Seasonally adjusted price as percentage of parity price.

<sup>3</sup> Wholesale extracted. Adjusted base price derived from state annual averages prices weighted by production. For 1982 through 1985 the national averages are the support prices.

<sup>4</sup> Equivalent packinghouse-door returns for CA, NY (apples only), OR (except peaches), and WA. Price at point of first sale for other states.



**Parity Prices for Farm Products, December 2006, United States <sup>1</sup>**

Other Nonbasic Commodities	Adjusted Base Price	Parity Price	Other Nonbasic Commodities	Adjusted Base Price	Parity Price
	<i>Dollars</i>	<i>Dollars</i>		<i>Dollars</i>	<i>Dollars</i>
Field Crops and Misc Commodities			Noncitrus Fruit, Continued		
Hops, Lb	0.247	4.86	Olives, CA canning, Ton <sup>3</sup>	92.30	1,810.00
Spearmint Oil, Lb	1.44	28.30	Papayas (HI)	0.051	1.000
Tobacco, Lb			Peaches		
Flue-Cured, 11-14	0.247	4.86	Fresh, Ton <sup>2</sup>	83.09	1,630.00
VA Fire-Cured, 21	0.258	5.07	Dried, CA, Ton	77.00	1,510.00
KY-TN Fire-Cured, 22-23	0.323	6.35	Processing <sup>3</sup>		
Burley, 31	0.266	5.23	Excl Dried		
Maryland, 32	0.202	3.97	Clingstone, CA, Ton	33.40	657.00
Dark Air-Cured, 35-36	0.285	5.60	Pears, Ton		
Sun-Cured, 37	0.237	4.66	Fresh <sup>2</sup>	54.50	1,070.00
PA Seedleaf, 41	0.201	3.95	Dried, CA <sup>4</sup>	171.00	3,360.00
Cigar Filler & Binder, 42-44, 54-55	0.222	4.36	Plums, CA, Ton		
Puerto Rican Filler, 46	0.159	3.13	Fresh, Equiv on-Tree	60.10	1,180.00
Cigar Binder, 51-52	0.760	14.90	Prunes, Dried, CA, Ton <sup>4</sup>	132.00	2,600.00
Type 61	3.21	63.10	Prunes and Plums, Excl CA, Ton		
Noncitrus Fruit			Fresh <sup>7</sup>	62.40	1,230.00
Apples, Ton <sup>4</sup>			Processing <sup>4</sup>		
Processing	17.60	346.00	Excl Dried	28.80	566.00
Apricots, Ton			Tree Nuts <sup>8</sup>		
Fresh <sup>5</sup>	101.00	1,990.00	Almonds, Lb	0.221	4.34
Dried, CA	270.00	5,310.00	Hazelnuts, Ton	150.00	2,950.00
Avocados, Ton <sup>5</sup>	233.00	4,580.00	Pistachio, Lb	0.168	3.30
Cherries			Walnuts, Ton	173.00	3,400.00
Sweet, Ton	195.00	3,830.00	Vegetables, Cwt <sup>9</sup>		
Tart, Lb	0.034	0.668	Fresh		
Cranberry, Bbl <sup>3</sup>	5.35	105.00	Carrots <sup>6</sup>	2.30	45.20
Dates, CA, Ton <sup>5</sup>	214.00	4,210.00	Cauliflower <sup>6</sup>	4.44	87.30
Grapes, Ton			Celery <sup>6</sup>	1.91	37.60
Raisin Variety	121.00	2,380.00	Honeydew Melons	2.64	51.90
Other Dried	70.80	1,390.00	Lettuce	2.36	46.40
Kiwifruit, Ton	89.20	1,750.00	Onions <sup>6</sup>	1.65	32.40
Nectarines			Tomatoes	4.61	90.60
Fresh, CA, Ton <sup>5</sup>	61.20	1,200.00			

<sup>1</sup> Parity prices are computed under the provisions of Title III, Subtitle a, Section 301 (a) of the Agricultural Adjustment Act of 1938 as amended by the Agricultural Acts of 1948, 1949, and 1956. See January "Agricultural Prices" for details on adjusted base price and parity price computations.

<sup>2</sup> Equivalent packinghouse-door returns for CA, NY (apples only), OR (except peaches), and WA. Price at point of first sale for other states.

<sup>3</sup> Equivalent returns for bulk fruit at first delivery point.

<sup>4</sup> Equivalent returns at processing plant door.

<sup>5</sup> Equivalent returns at packinghouse door.

<sup>6</sup> Includes some processing.

<sup>7</sup> Based on "as sold" prices for fresh fruit in all states.

<sup>8</sup> Prices in-shell basis except almonds which are shelled basis.

<sup>9</sup> F.O.B. shipping point prices.

**Hops: Marketing Year Average Prices Received,  
by State and United States, 2005-2006**

State	2005	2006
	<i>Dollars per Pound</i>	<i>Dollars per Pound</i>
ID	1.63	1.61
OR	2.56	2.60
WA	1.86	2.00
US	1.94	2.06

**Reliability of Prices Received Estimates**

**Definition:** Prices received represent sales from producers to first buyers. They include all grades and qualities. The average commodity price from the survey multiplied by the total quantity marketed theoretically should give the total cash receipts for the commodity.

**Survey Procedures:** Primary sales data used to determine grain prices were obtained from probability samples of about 2000 mills and elevators. These procedures ensure that virtually all grain moving into commercial channels has a chance of being included in the survey. Generally, States surveyed account for 90 percent or more of total U.S. production. Livestock prices are obtained from packers, stockyards, auctions, dealers, and market check data from AMS-USDA, private marketing organizations, and state commodity groups and agencies. Inter-farm sales of grain and livestock are not included since they represent very small percentages of the total marketings. Grain marketed for seed is also excluded. Fruit and vegetable prices are obtained from sample surveys and market check data from AMS-USDA, private marketing organizations, state agencies, and universities.

**Summary and Estimation Procedures:** Survey quantities sold are expanded by strata to state levels and used to weight average strata prices to a state average. State prices are then weighted to a U.S. price based on expanded marketings. Recommendations are prepared by the State Field Offices and reviewed by the Agricultural Statistics Board in Washington, D.C. State recommendations are reviewed for reasonableness with survey data, other States, and recent historic estimates.

**Revisions:** For most items, the current month's preliminary price represents a 3-5 day period around the 15<sup>th</sup> of the month. Previous month's prices represent actual dollars received for quantities sold during the entire month. Revisions are published in monthly issues of *Agricultural Prices*.

**Reliability:** U.S. price estimates based on probability surveys generally have a sampling error of less than one percent for the major commodities such as corn, wheat, soybeans, cotton, and rice. Current methods of summarization for non-probability commodities are not designed directly to calculate sampling errors. However, analytical measures approximate the U.S. relative sampling errors at around five percent. Any nonsampling errors are attributed to such things as the inability to obtain correct information, differences in interpreting questions or definitions, mistakes in coding or processing the data, etc. Efforts are made at each step in the survey process to minimize these nonsampling errors.

## Prices Paid by Farmers

The December Index of Prices Paid for Commodities and Services, Interest, Taxes, and Farm Wage Rates (PPITW) at 148 (1990-92=100), increased 1.4 percent from November 2006 and increased 3.5 percent from December 2005.

**PRODUCTION INDEX:** The December index, at 147, increased 1.4 percent from last month and increased 3.5 percent from last year. Higher prices in December for complete feeds, feed concentrates, feed supplements, and diesel fuel offset lower prices for nitrogen fertilizers, building materials, feeder cattle, and LP gas.

**Feed:** The December index, at 151, increased 7.9 percent from November and increased 28 percent from last December. Since November, prices are higher for complete feeds, feed concentrates, feed supplements, feed grains, and hay & forages.

**Livestock & Poultry:** The December index, at 123, was unchanged from last month but decreased 14 percent from last year. Since November, higher prices for feeder pigs offset lower prices for feeder cattle. The December feeder cattle price, at \$101.60 per cwt, is down 40 cents per cwt from the November price. December feeder pigs averaged \$131.00 per cwt, up \$9.00 per cwt from November.

**Fertilizer:** The December index, at 165, is down 0.6 percent from November and 11 percent below December a year ago. Since November, lower prices for nitrogen fertilizers more than offset higher prices for mixed fertilizers.

**Agricultural Chemicals:** The December index, at 130, is unchanged from November but increased 3.2 percent from last December.

**Fuels:** The December index, at 209, is up 2.0 percent from a month earlier but 5.4 percent below December 2005. Compared with last month, prices are higher for diesel fuel and gasoline but lower for LP gas.

**Farm Machinery:** The December index, at 184, increased 0.5 percent from November and increased 4.5 percent above last December. Since November, prices are higher for other machinery, tractors, and self-propelled machinery.

**CONSUMER PRICE INDEX:** The November 2006 Consumer Price Index, as issued by the Bureau of Labor Statistics, for all urban consumers (CPI-U) decreased 0.1 percent before seasonal adjustment to a level of 201.5 (1982-84=100). This compares with the October index of 201.8. For the 12-month period ending in November, the overall index has increased 2.0 percent.

**Indexes of Prices Paid by Farmers and Related Parity Ratios  
United States, December 2006 With Comparisons**

Indexes and Ratios	1910-14 = 100			1990-92 = 100		
	2005	2006		2005	2006	
	Dec	Nov	Dec	Dec	Nov	Dec
Prices Paid by Farmers for Commodities & Services, Interest, Taxes, & Wage Rates (PPITW)	1,898	*1,946	1,966	143	146	148
Production	1,375	*1,403	1,424	142	*145	147
Feed	576	*681	738	118	*140	151
Livestock & Poultry	1,830	*1,572	1,577	143	*123	123
Seeds	1,694	1,838	1,838	171	186	186
Fertilizer	690	*617	614	185	*166	165
Agricultural Chemicals	737	*761	764	126	*130	130
Fuels	1,705	*1,581	1,614	221	*205	209
Farm Supplies & Repairs	1,012	*1,036	1,036	143	146	146
Autos & Trucks	3,019	*2,958	2,954	114	*111	111
Farm Machinery	4,560	*4,731	4,764	176	*183	184
Building Materials	1,986	*2,075	2,064	146	153	152
Farm Services & Rent	1,501	*1,554	1,554			
Rent				127	130	130
Interest <sup>1</sup>	2,731	2,981	2,981	109	119	119
Taxes <sup>2</sup>	3,383	3,426	3,426	126	128	128
Wage Rates	6,209	6,429	6,429	166	172	172
Production, Interest, Taxes, & Wage Rates (PITW)	1,904	*1,954	1,977	142	145	147
Family Living-CPI <sup>3</sup>	1,869	*1,914	1,914	146	*149	149
Ratio (Received/Paid) Parity Ratio <sup>4</sup>	38	*39	39	80	*82	82
Parity Ratio Adjusted <sup>5</sup>	42	*42	42			
PPITW Adjusted for Productivity <sup>6</sup>	1,252	*1,286	1,289			
Crop Sector (PPITW)				146	*150	150
Livestock Sector (PPITW)				139	*143	145
Farm Sector (Production)				135	*141	147
Non-Farm Sector (Production)				145	146	147

\* Revised.

<sup>1</sup> Interest per acre on farm real estate debt and interest rate on farm non-real estate debt.

<sup>2</sup> Farm real estate taxes payable per acre.

<sup>3</sup> Bureau of Labor Statistics, Consumer Price Index for all urban consumers (CPI-U), for the previous month converted by the USDA.

<sup>4</sup> Ratio of index of prices received to PPITW (1910-14=100).

<sup>5</sup> Based on estimated cash receipts, from marketings and government payments, the preliminary adjustment factor is 1.079 for 2006 and the revised factor is 1.096 for 2005.

<sup>6</sup> PPITW is adjusted based on productivity trend for the prior 15 years.

**Prices Paid Indexes and Annual Weights for Input Components and Sub-Components United States, December 2006 With Comparisons**

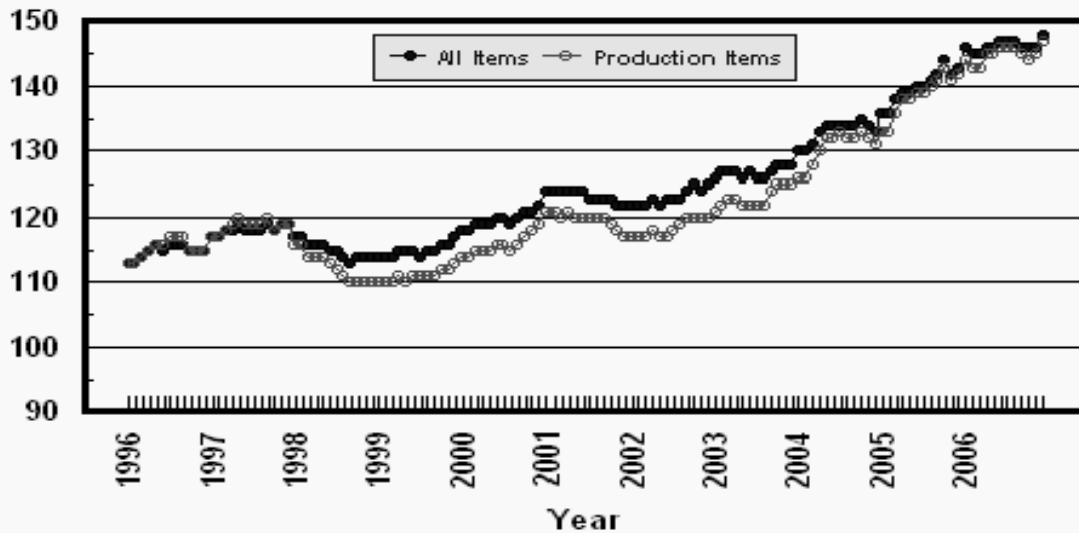
Index	Relative Weights 5-Year Moving Average <sup>1</sup>		Input Indexes		
	2005	2006	2005	2006	
	<i>Percent</i>	<i>Percent</i>	<i>(1990-92=100)</i> Dec	<i>(1990-92=100)</i> Nov	<i>(1990-92=100)</i> Dec
Production Items	66.4	66.8	142	*145	147
Feed	10.7	10.9	118	*140	151
Feed Grains	1.5	1.6	83	*127	133
Complete Feeds	5.2	5.3	117	*133	145
Hay/Forages	1.3	1.4	122	141	144
Concentrates	1.7	1.7	133	*147	167
Supplements	0.9	0.9	151	*181	201
Livestock & Poultry	7.7	7.6	143	*123	123
Feeder Cattle	6.0	6.0	141	*120	120
Feeder Pigs	0.6	0.6	170	133	143
Milk Cow Replacements	0.6	0.6	166	146	146
Poultry	0.5	0.5	109	109	109
Seeds	3.5	3.6	171	186	186
Field Crops	3.2	3.3	177	191	191
Grasses/Legumes	0.3	0.3	118	133	133
Fertilizer	4.3	4.3	185	*166	165
Mixed Fertilizer	1.9	1.9	148	*148	149
Nitrogen	1.8	1.8	232	*186	183
Potash & Phosphate	0.6	0.6	163	*161	161
Agricultural Chemicals	3.6	3.5	126	*130	130
Herbicides	2.3	2.2	120	*125	126
Insecticides	0.8	0.8	142	*143	144
Fungicides/Other	0.5	0.5	123	*127	127
Fuels	2.7	2.9	221	*205	209
Diesel	1.6	1.7	234	*222	228
Gasoline	0.8	0.8	183	*175	181
LP Gas	0.4	0.4	246	*194	189
Farm Supplies & Repairs	5.2	5.0	143	146	146
Supplies	1.7	1.7	134	139	139
Repairs	3.5	3.3	147	150	150
Autos & Trucks	1.8	1.8	114	*111	111
Autos	0.2	0.2	109	*109	110
Trucks	1.5	1.6	114	112	111
Farm Machinery	4.0	4.4	176	*183	184
Tractors	0.9	1.0	158	163	165
Self-Propelled	1.6	1.7	182	*189	189
Other Machinery	1.5	1.7	180	*187	189
Building Materials	3.6	4.0	146	153	152
Farm Services	12.4	12.2	127	130	130
Custom Rates	1.3	1.3	121	123	123
Other Services	11.1	10.9	127	131	131
Rent	6.9	6.7	125	131	131
Cash	3.7	3.6	151	159	159
Share	3.2	3.1	94	98	98
Interest	4.5	4.2	109	119	119
Taxes	2.9	2.9	126	128	128
Wage Rates	7.6	7.8	166	172	172
Family Living-CPI	18.6	18.4	146	*149	149

\* Revised.

<sup>1</sup> Weights may not add due to rounding.

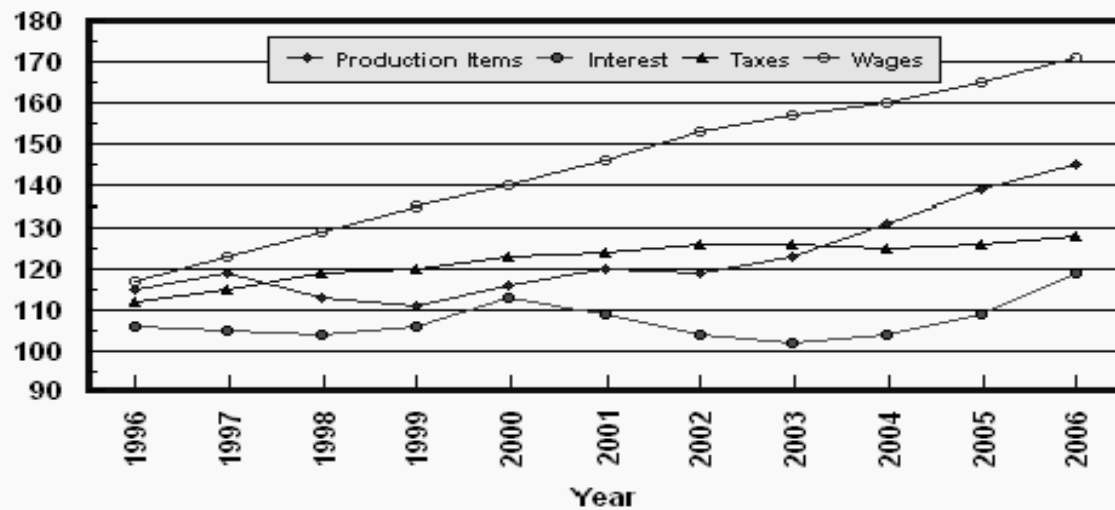
## Prices Paid by Farmers, Major Indexes US, by Month

Percent (1990-92=100)



## Prices Paid by Farmers, Major Indexes US, Annual Averages 1/

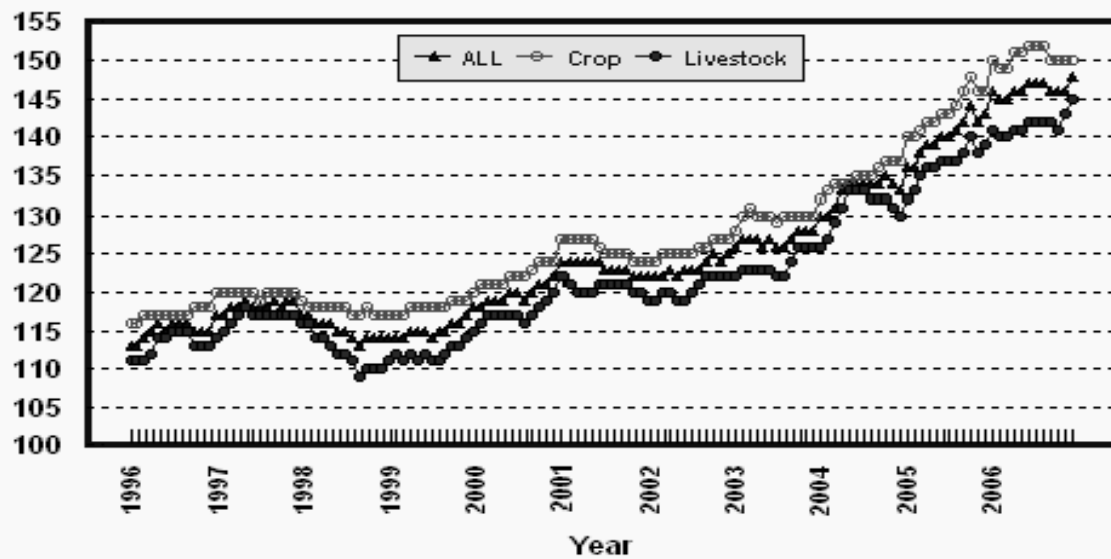
Percent (1990-92=100)



1/ Index values for 2006 are year-to-date averages.

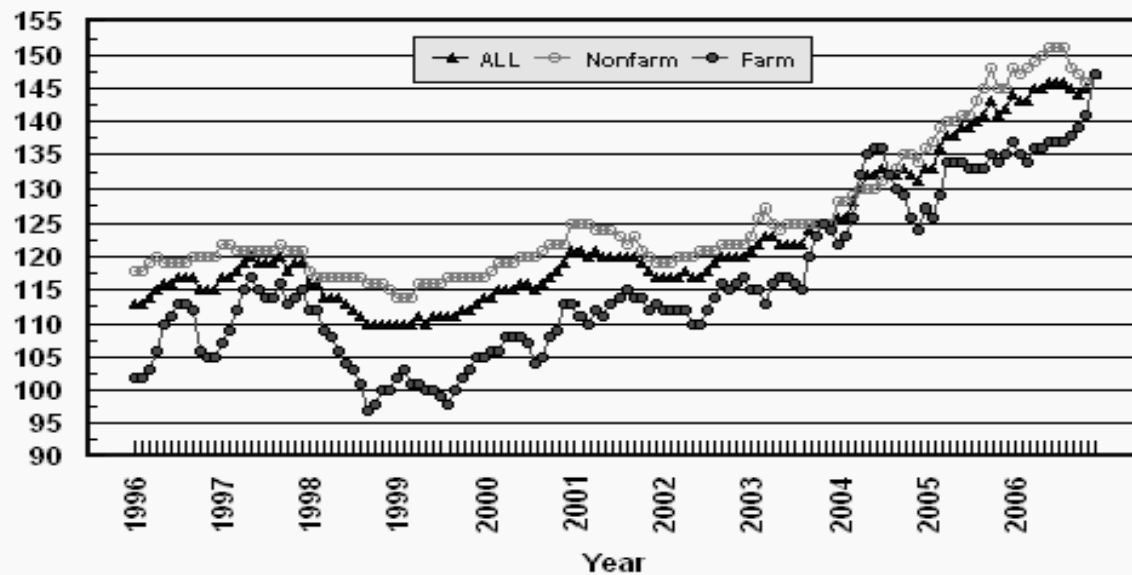
### Prices Paid by Farmers, Indexes, All Items US, By Farm Type

Percent (1990-92=100)



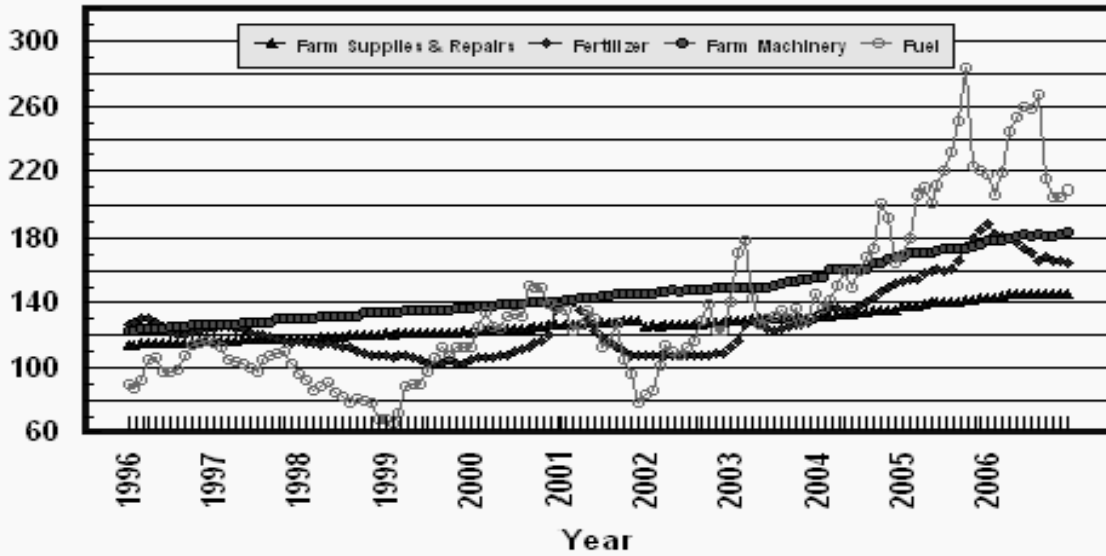
### Prices Paid by Farmers, Indexes, All Production Items US, By Sector Origin

Percent (1990-92=100)



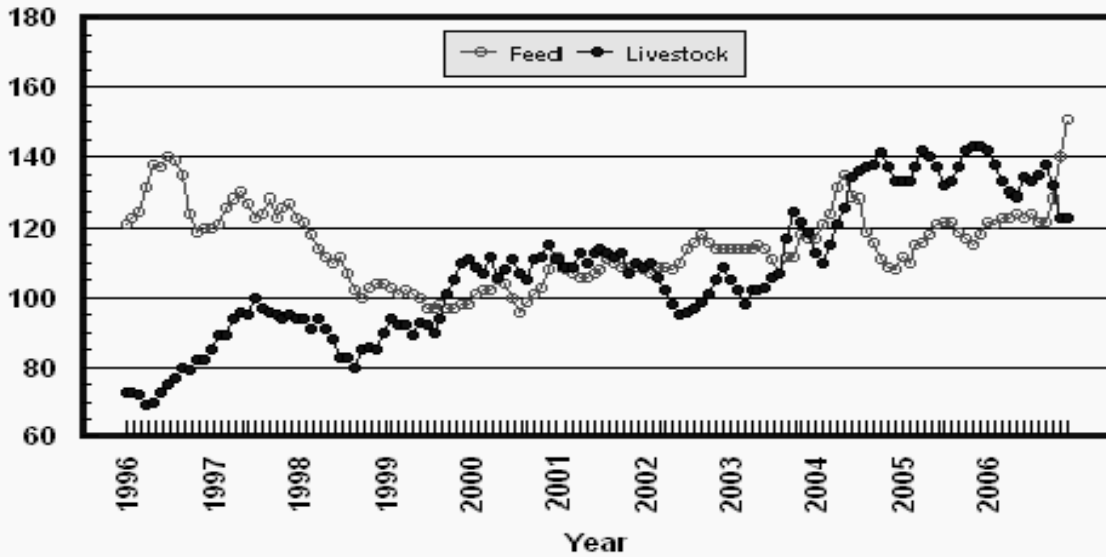
## Prices Paid by Farmers, Selected Production Indexes US, By Non-Farm Sector

Percent (1990-92=100)



## Prices Paid by Farmers, Selected Production Indexes US, By Farm Sector

Percent (1990-92=100)





**Feed Price Ratios: United States, December 2006 with Comparisons**

Feed Price Ratio <sup>1</sup>	2005	2006	
	Dec	Nov	Dec
Broiler-Feed: Pounds of Broiler Grower Feed equal in value to 1 pound of broiler, live weight	6.5	*5.5	5.4
Market Egg Feed: Pounds of Laying Feed equal in Value to 1 dozen eggs	11.3	*10.6	10.1
Hog-Corn: Bushels of Corn equal in value to 100 pounds of hog, live weight	23.1	*15.6	14.4
Milk-Feed: Pounds of 16% Mixed Dairy Feed equal in value to 1 pound of Whole Milk	3.28	*2.46	2.42
Steer & Heifer-Corn: Bushels of Corn equal in value to 100 pounds of Steer & Heifers, live weight	51.9	*31.4	29.6
Turkey-Feed: Pounds of Turkey Grower equal in value to 1 pound of Turkey, live weight	9.5	*9.5	6.0

\* Revised.

<sup>1</sup> Effective January 1995, prices of commercial prepared feeds are based on current U.S. prices received for corn, soybeans, alfalfa hay, and all wheat.

**Prices Used to Calculate Feed Price Ratios:  
United States, December 2006 with Comparisons**

Commodity	Unit	Entire Month		Preliminary
		Dec 2005	Nov 2006	Dec 2006
Broilers, Live	Lb	0.390	0.400	0.400
Eggs, Market	Doz	0.564	0.675	0.665
Hogs, All	Cwt	44.30	44.80	43.20
Milk, All	Cwt	14.80	13.90	14.20
Steers and Heifers	Cwt	99.60	90.20	89.20
Turkeys, Live	Lb	0.539	0.671	0.434
Corn	Bu	1.92	2.87	3.01
Hay, Alfalfa, Baled	Ton	96.90	109.00	112.00
Soybeans	Bu	5.78	6.07	6.14
Wheat, All	Bu	3.53	4.59	4.59

**Feeder Livestock: Prices Paid, United States  
December 2006 with Comparisons**

Commodity	Unit	2005	2006	
		Dec	Nov	Dec
		<i>Dollars</i>	<i>Dollars</i>	<i>Dollars</i>
Feeders and Stockers				
Cattle and Calves	Cwt	119.00	*102.00	101.60
Feeder Pigs	Cwt	156.00	122.00	131.00

\* Revised.

**Feed: April Prices Paid, United States, 2001-2006 <sup>1</sup>**

Item	Unit	2001	2002	2003	2004	2005	2006
		<i>Dollars</i>	<i>Dollars</i>	<i>Dollars</i>	<i>Dollars</i>	<i>Dollars</i>	<i>Dollars</i>
Alfalfa Meal	Cwt	13.40	14.40	15.00	14.90	15.40	16.40
Alfalfa Pellets	"	13.40	14.40	15.30	15.20	15.20	16.40
Bran	"	13.40	13.60	13.70	14.80	15.00	16.10
Beef Cattle Conc., 32-36% Protein	Ton	279	277	290	342	316	336
Corn Meal	Cwt	7.59	8.06	9.90	9.84	9.57	10.10
Cottonseed Meal, 41%	"	15.70	15.80	16.60	18.40	17.20	18.20
Dairy Feed							
14% Protein <sup>2</sup>	Ton	176	175	183	200	220	189
16% Protein <sup>2</sup>	"	184	190	200	218	197	210
18% Protein <sup>2</sup>	"	185	194	207	229	206	221
20% Protein <sup>2</sup>	"	184	191	201	233	206	226
32% Protein Conc.	"	291	298	311	381	331	341
Hog Feed							
14-18% Protein <sup>2,3</sup>	"	215	216	223	256	219	228
38-42% Protein Conc.	"	302	307	322	415	398	361
Molasses, Liquid	Cwt	12.40	12.90	13.30	14.20	14.80	17.90
Poultry Feed							
Broiler Grower <sup>2</sup>	Ton	232	259	234	278	237	255
Chick Starter <sup>2</sup>	"	239	240	241	299	268	273
Laying Feed <sup>2</sup>	"	212	225	232	249	226	240
Turkey Grower <sup>2</sup>	"	259	264	279	315	315	302
Soybean Meal, 44%	Cwt	13.40	13.50	14.50	19.60	16.10	16.90
Stock Salt	50 Lb	4.05	4.12	4.30	4.53	4.78	4.67
Trace Mineral Blocks	50 Lb	5.14	5.24	5.40	5.53	5.52	5.68
		Index (1990-92=100)					
Feed Prices Paid Index <sup>4</sup>	Pct	108	112	114	121	117	123

<sup>1</sup> April survey only, quarterly surveys discontinued January 1995.

<sup>2</sup> Complete ration feed, fed without mixing or supplementation.

<sup>3</sup> Excluding pig starter.

<sup>4</sup> Annual average for all years.

**Feeder Livestock: Annual Average Prices Paid, United States, 2001-2006**

Item	Unit	2001	2002	2003	2004	2005	2006
		<i>Dollars</i>	<i>Dollars</i>	<i>Dollars</i>	<i>Dollars</i>	<i>Dollars</i>	<i>Dollars</i>
Broiler Chicks	100	20.60	21.10	21.10	21.10	20.40	( <sup>1</sup> )
Egg-Type Chicks	100	53.90	52.00	50.50	53.60	53.50	( <sup>1</sup> )
Feeders and Stockers							
Cattle and Calves	Cwt	91.30	83.20	92.00	109.20	115.00	111.10
Feeder Pigs	Cwt	*109.60	85.80	93.80	*115.00	*143.00	128.90
Turkey Poults	Each	1.15	1.15	1.15	1.09	1.12	( <sup>1</sup> )
		Index (1990-92=100)					
Livestock and Poultry Prices Paid Index <sup>2</sup>	Pct	111	102	109	128	138	135

\* Revised.

<sup>1</sup> Annual average data are published in April 2007.

<sup>2</sup> Annual average.

The data presented in the following tables are calculated and published for use by the Forest Service, USDA and the Bureau of Land Management, USDI in computing Public Land Grazing Fees.

**2006 Prices Paid Index for Beef Cattle Production (1964-68=100) <sup>1</sup>: 724**

<sup>1</sup> The Index of Prices Paid by Farmers and Ranchers for Beef Cattle Production input items is for the period of November 2005 through October 2006. The components of this index include the production indexes of Fuels & Energy, Farm & Motor Supplies, Autos & Trucks, Tractors & Self Propelled Machinery, Other Machinery, Building & Fencing Materials, Interest, Farm Wage Rates, and Farm Services. These components are weighted to the overall index value by their importance in the cost of producing beef cattle, the weights are unchanged from a year earlier.

**Beef Cattle: Prices Received, Selected Regions, 2006 <sup>1</sup>**

State	Beef Cattle
	<i>Dollars Per Cwt</i>
17 Western States <sup>2</sup>	92.46
16 Western States <sup>3</sup>	93.76
11 Western States <sup>4</sup>	92.17
9 Great Plains States <sup>5</sup>	93.56

<sup>1</sup> Average for November 2005 through October 2006, except NV, UT, and WA which are marketing year averages.

<sup>2</sup> 17 Western States: AZ, CA, CO, ID, KS, MT, NE, NV, NM, ND, OK, OR, SD, TX, UT, WA, and WY.

<sup>3</sup> 16 Western States: All States except Texas.

<sup>4</sup> 11 Western States: AZ, CA, CO, ID, MT, NV, NM, OR, UT, WA, and WY.

<sup>5</sup> 9 Great Plain States: CO, KS, NE, NM, ND, OK, SD, TX, and WY.

## Prices Paid by Farmers

**Definition:** Prices paid by farmers represent the average costs of inputs purchased by farmers and ranchers to produce agricultural commodities. Conceptually, the average price when multiplied by quantity purchased should equal total producer expenditures for the item.

**Survey Procedures:** The prices paid data are obtained from establishments that sell goods and services to farmers and ranchers. Annually, about 8,500 firms are randomly selected from lists by type of item sold with an average response rate in the range of 75-80 percent. Firms are asked to report the price for the specified item "most commonly bought by farmers" or that was the "volume seller". Approximately 135 items are surveyed each April to represent all production input items purchased. The survey reference period for most items is the 5 business days centered around the 15th of the month. Separate prices paid surveys are conducted for agricultural chemicals, fuels, feed, fertilizer, machinery, and seed.

**Summary and Estimation Procedures:** The annual April Prices Paid Survey is summarized as a nonprobability survey. Average prices reported are aggregated to the region and U.S. level using weights available from expenditure data and other administrative sources. Price recommendations are prepared by the State Field Offices and Headquarters for review by the Agricultural Statistics Board in Washington, D.C. Also, the change in price level for individual items surveyed are combined to the regional and U.S. levels, and are published as prices paid indexes referenced to a specific base period. Prices paid indexes for new autos and trucks, building materials, farm supplies, motor supplies, and marketing containers are updated based on price changes measured in selected Bureau of Labor Statistics (BLS) indexes.

**Revisions:** Any revisions are published in the monthly and in annual issues of *Agricultural Prices*. The basis for revision must be supported by additional data that directly affect the level of the estimate. More revisions are likely in April when separate prices paid surveys are conducted, in lieu of BLS indexes, by the USDA to measure price change.

**Reliability:** Current methods of summarization in April are not designed directly to calculate sampling errors. However, analytical measures approximate the U.S. relative sampling errors for major items around 10 percent. Any nonsampling errors are attributed to such things as the inability to obtain correct information, differences in interpreting questions or definitions, mistakes in coding or processing the data, etc. Efforts are made at each step in the survey process to minimize these nonsampling errors.

**Program Change:** Effective January 1, 1995, the National Agricultural Statistics Service updated the weights and changed the construction of its prices paid and received by farmers indexes. A Federal Register Notice dated October 28, 1994 discussed these program modifications.

A 1990-92 reference and base period replaced the 1977 reference and 1971-73 base weight period. Five-year moving average weights replaced the current fixed 1971-73 base period weights. The 1910-14=100 price indexes, required by statute for computing parity prices, were linked forward based on the changes in the new 1990-92=100 indexes. The new indexes were constructed by multiplying the ratios of the current prices to the base period prices by the moving average weights (adjusted for seasonal marketing patterns for the prices received indexes).

## Calendar of Prices Received Features in the 2006 Agricultural Price Reports

<b>Annual or Marketing Year Average Prices:</b>	<b>Month Published</b>
Austrian Winter Peas, U.S. ....	Sep
Barley, U.S. ....	Jun
by State and U.S. ....	Aug
Broilers, by State and U.S. ....	Apr
Canola, by State and U.S. ....	Nov
Cattle, by State and U.S. ....	Feb
Chickens, Other by State and U.S. ....	Apr
Chickpeas, by State and U.S. ....	Nov
Corn, U.S. ....	Sep
by State and U.S. ....	Nov
Cotton, by Type, State and U.S. ....	Oct
Cottonseed, by State and U.S. ....	Oct
Dry Beans, by State and U.S. ....	Nov
Dry Edible Peas, U.S. ....	Sep
Eggs, by State and U.S. ....	Apr
Flaxseed, by State and U.S. ....	Nov
Goats, by State and U.S. ....	Feb
Hay, by State and U.S. ....	Aug
Other Hay, 3-year Average by Region ....	Feb
Hogs, by State and U.S. ....	Feb
Hops, by State and U.S. ....	Dec
Lentils, U.S. ....	Sep
Milk, Sold to Plants, by Grade, Price and Fat Test, by State and U.S. ....	Apr
Mohair, by State and U.S. ....	Feb
Mustard Seed, U.S. ....	Nov
Oats, U.S. ....	Jun
by State and U.S. ....	Aug
Peanuts, by State and U.S. ....	Aug
Potatoes, by State and U.S., Preliminary ....	Feb
Proso Millet, by State and U.S. ....	Nov
Rapeseed, U.S. ....	Nov
Rice, U.S. (year-to-date) ....	Aug
by State and U.S., by Length of Grain ....	Jan
Safflower, U.S. ....	Nov
Sheep and Lambs, by State and U.S. ....	Feb
Sorghum, by State and U.S. ....	Sep
Soybeans, by State and U.S. ....	Sep
Sweetpotatoes, by State and U.S., Preliminary ....	Jan
Final and Revised ....	Jun
Sugarbeets, U.S. ....	Jul
Sugarcane, U.S. ....	Jul
Sunflower, by State and U.S. ....	Nov
Turkeys, by State and U.S. ....	Apr
Wheat, by Class, U.S. ....	Jun
by State and U.S. ....	Aug
Wool, by State and U.S. ....	Feb

**Monthly Prices Received - Revised:****Month Published**

Austrian Winter Peas, U.S. ....	Sep
Barley, by State and U.S. ....	Aug
Broilers, U.S. ....	Apr
Cattle, by State and U.S. ....	Feb
Chickens, by State and U.S. ....	Apr
Chickpeas, by State and U.S. ....	Nov
Corn, by State and U.S. ....	Nov
Cotton, by Type, State and U.S. ....	Oct
Cottonseed, by State and U.S. ....	Oct
Dry Beans, by State and U.S. ....	Nov
Dry Edible Peas, U.S. ....	Sep
Eggs, by State and U.S. ....	Apr
Flaxseed, by State and U.S. ....	Nov
Hay, by State and U.S. ....	Aug
Hogs, by State and U.S. ....	Feb
Hops, by State and U.S. ....	Dec
Lentils, U.S. ....	Sep
Milk, Sold to Plants, by Grade, Price and Fat Test by State and U.S. ....	Apr
Milk Cows, by Quarter, by State and U.S. ....	Feb
Oats, by State and U.S. ....	Aug
Peanuts, by State and U.S. ....	Aug
Potatoes, by State and U.S., Preliminary ....	Feb
Rice, U.S. (year-to-date) ....	Aug
by State and U.S., by Length of Grain ....	Jan
Sheep and Lambs, by State and U.S. ....	Feb
Sorghum, by State and U.S. ....	Sep
Soybeans, by State and U.S. ....	Sep
Sunflower, by State and U.S. ....	Nov
Wheat, by State and U.S. ....	Aug

<b>Monthly Marketing Percents:</b>	<b>Month Published</b>
Austrian Winter Peas, U.S. ....	Sep
Barley, U.S. ....	Jun
by State and U.S. ....	Aug
Chickpeas, by State and U.S. ....	Nov
Corn, U.S. ....	Sep
by State and U.S. ....	Nov
Cotton, Upland, by State and U.S. ....	Oct
Dry Beans, by State and U.S. ....	Nov
Dry Edible Peas, U.S. ....	Sep
Flaxseed, by State and U.S. ....	Nov
Hay, by State and U.S. ....	Aug
Lentils, U.S. ....	Sep
Oats, U.S. ....	Jun
by State and U.S. ....	Aug
Peanuts, by State and U.S. ....	Aug
Rice, U.S. (year-to-date) ....	Aug
Final ....	Jan
Sorghum, by State and U.S. ....	Sep
Soybeans, by State and U.S. ....	Sep
Sunflower, by State and U.S. ....	Nov
Wheat, U.S. ....	Jun
by State and U.S. ....	Aug

**Prices Received Index Numbers - Revised:**

Index of Prices Received by Farmers, U.S., by Month and Year ..... Jan, Apr, Jul, Oct

**Milk and Egg Prices Received, Adjusted for Seasonal Variation:**

Seasonally Adjusted Prices, Revised, U.S. .... Apr  
Seasonal Adjustment Factors, U.S., program change ..... Jul

**Parity Prices:**

Method of Computing ..... Jan  
Average Prices Used for Parity Computations ..... Jan  
Manufacturing Milk: Method of Computing Parity Price Equivalent ..... Jan  
Average Price Received, U.S. .... Jan

## Calendar of Prices Paid Features in the 2006 Agricultural Price Reports

**Indexes (1910-1914=100):** **Month Published**  
 PPITW, PITW, Production Items, Component Items, Interest, Taxes and Wage Rates, Family Living, Farm and Non-Farm Origin, Crop and Livestock Sectors, Adjusted for Productivity, Ratio, Parity Ratio and Adjusted Parity Ratio

Annual Average (2002-2006) ..... Jan, Apr, Jul, Oct  
 By Month (2002-2006) ..... Jan, Apr, Jul, Oct  
 U.S. Current Month, Previous Month, Previous Year ..... Monthly

**Indexes (1990-1992=100):** **Month Published**  
 PPITW, PITW, Production Items, Component and Subcomponent Items, Interest, Taxes and Wage Rates, Family Living Farm and Non-Farm Origin, Crop and Livestock Sectors, Adjusted for Productivity, Ratio, Parity Ratio and Adjusted Parity Ratio

Annual Average (2002-2006) ..... Jan, Apr, Jul, Oct  
 By Month (2002-2006) ..... Jan, Apr, Jul, Oct  
 U.S. Current Month, Previous Month, Previous Year ..... Monthly  
 Feed and Feeder Livestock & Poultry Annual Average, U.S. (2001-2006) ..... Dec

**Prices Paid:** **Month Published**

Farm Machinery, U.S. .... Apr  
 Feed, by Region and U.S. .... Apr  
 Feed, U.S. (2001-2006) ..... Dec  
 Feeder Livestock, U.S. .... Monthly  
 Poultry, Chicks and Poults, Annual Average ..... Apr  
 Fertilizer Materials, Mixed Fertilizer and Agricultural Limestone, by Region and U.S. .... Apr  
 Field Seeds, Retail U.S. .... Apr  
 Fuels, by Region and U.S. .... Apr  
 Agricultural Chemicals, U.S. .... Apr

**Feed-Price Ratios:** **Month Published**

U.S. by Months and Annual Average, (Jan 2003- May 2006) ..... May  
 U.S. Current Month, Previous Month, Previous Year ..... Monthly

**Prices Paid Program Overview:** **Month Published**

Prices Paid Survey Months, Month Published and Geographic Levels of Estimates ..... Jan  
 Prices Paid Regions, and States Included ..... Apr

**Private Grazing Fee Rates and Components of Federal Fees:** **Month Published**

Private Non-Irrigated Grazing Fee Rates, by State and Region  
 (Data for 2004-2005) ..... Jan  
 Prices Paid Index for Beef Cattle Production (1964-68=100) ..... Dec  
 Beef Cattle Prices Received, Selected Regions (November-October) ..... Dec  
 Other Hay Prices Received, Selected Eastern Regions ..... Feb



## Information Contacts

General questions should be directed to Chief, Environmental, Economics and Demographics Branch at (202) 720-6146. Below are the commodity specialists to contact for additional information.

### Crop Prices Received

Jeff Geuder Chief, Crops Branch .....	(202) 720-2127
Greg Thessen, Field Crops Section .....	(202) 720-2127
Scott Cox - Wheat, Rye .....	(202) 720-8068
Ty Kalas - Corn, Proso Millet, Flaxseed .....	(202) 720-9526
Shiela Corley - Cotton, Cottonseed .....	(202) 720-5944
Travis Thorson - Soybeans, Sunflower, Other Oilseeds .....	(202) 720-7369
King Whetstone - Hay, Oats, Sorghum .....	(202) 690-3234
Dennis Koong - Peanuts, Rice .....	(202) 720-7688
Brian Young - Sugarcane, Sugarbeets, Barley .....	(202) 720-7621
Jim Smith, Fruit and Vegetable Section .....	(202) 720-2127
Dan Norris - Peaches, Pears, Hops, Pulses, Mint .....	(202) 720-3250
Rich Holcomb - Citrus .....	(202) 720-5412
Jim Smith - Apples, Apricots, Cherries, Cranberries, Plums, Prunes .....	(202) 720-2127
Leslie Colburn - Grapes, Tobacco .....	(202) 720-7235
Cathy Scherrer - Potatoes, Dry Edible Beans, Sweet Potatoes .....	(202) 720-4285
Debbie Flippin - Vegetables, Onions, Strawberries .....	(202) 720-2157

### Livestock Prices Received

Dan Kerestes, Chief, Livestock Branch .....	(202) 720-3570
Bill Weaver, Livestock Section .....	(202) 720-3570
Scott Hollis - Sheep, Lambs, Wool, Mohair .....	(202) 720-4751
Jason Hardegree- Milk, Milk Cows .....	(202) 720-3278
Bruce Boess - Hogs .....	(202) 720-3106
Mike Miller - Cattle .....	(202) 720-3040
Darin Jantzi, Poultry and Specialty Commodities Section .....	(202) 720-3570
Fleming Gibson - Turkeys .....	(202) 690-3237
Sharyn Lavender - Eggs, Broilers .....	(202) 720-3244

### Indexes, Prices Paid, and Parity Prices

Vacant, Chief, Environmental, Economics and Demographics Branch .....	(202) 720-6146
Kevin Hintzman, Economics Section .....	(202) 720-6146
Jen Brown - Prices Paid Indexes, Prices Paid for Feed, Fertilizer, Agricultural Chemicals, Seeds, Farm Supplies and Repairs, Farm Machinery, Fuels, Feeder Livestock, Poultry Chicks, Feed Price Ratios, Autos & Trucks .....	(202) 720-5446
Daryl Brinkman - Prices Received Indexes, Parity Prices .....	(202) 720-8844
Jennifer Sissom - Grazing Fees .....	(202) 690-3229

## ACCESS TO REPORTS!!

---

For your convenience, there are several ways to obtain NASS reports, data products, and services:

### INTERNET ACCESS

All NASS reports are available free of charge on the worldwide Internet. For access, connect to the Internet and go to the NASS Home Page at: [www.nass.usda.gov](http://www.nass.usda.gov).

### E-MAIL SUBSCRIPTION

All NASS reports are available by subscription free of charge direct to your e-mail address. Starting with the NASS Home Page at [www.nass.usda.gov](http://www.nass.usda.gov), under the right navigation, *Receive reports by Email*, click on **National** or **State**. Follow the instructions on the screen.

-----

### PRINTED REPORTS OR DATA PRODUCTS

**CALL OUR TOLL-FREE ORDER DESK: 800-999-6779 (U.S. and Canada)**  
**Other areas, please call 703-605-6220      FAX: 703-605-6900**  
**(Visa, MasterCard, check, or money order acceptable for payment.)**

-----

### ASSISTANCE

For **assistance** with general agricultural statistics or further information about NASS or its products or services, contact the **Agricultural Statistics Hotline** at **800-727-9540**, 7:30 a.m. to 4:00 p.m. ET, or e-mail: [nass@nass.usda.gov](mailto:nass@nass.usda.gov).

The U.S. Department of Agriculture (USDA) prohibits discrimination in all its programs and activities on the basis of race, color, national origin, age, disability, and where applicable, sex, marital status, familial status, parental status, religion, sexual orientation, genetic information, political beliefs, reprisal, or because all or a part of an individual's income is derived from any public assistance program. (Not all prohibited bases apply to all programs.) Persons with disabilities who require alternative means for communication of program information (Braille, large print, audiotape, etc.) should contact USDA's TARGET Center at (202) 720-2600 (voice and TDD).

To file a complaint of discrimination, write to USDA, Director, Office of Civil Rights, 1400 Independence Avenue, S.W., Washington, D.C. 20250-9410, or call (800) 795-3272 (voice) or (202) 720-6382 (TDD). USDA is an equal opportunity provider and employer.