



# NASS

FACT FINDERS FOR AGRICULTURE  
UNITED STATES DEPARTMENT OF AGRICULTURE

Washington, D.C.

# Agricultural Prices

Released January 31, 2007, by the National Agricultural Statistics Service (NASS), Agricultural Statistics Board, U.S. Department of Agriculture. For information on *Agricultural Prices* see page 87, office hours 7:30 a.m. to 4:00 p.m. ET.

## January Farm Prices Received Index Increased 3 Points From Last Month

The preliminary All Farm Products Index of Prices Received by Farmers in January, at 124 percent, based on 1990-92=100, increased 3 points (2.5 percent) from December. The Crop Index is up 4 points (3.1 percent) and the Livestock Index increased 3 points (2.7 percent). Producers received higher commodity prices for corn, oranges, broilers, and eggs. Lower prices were received for cattle, tomatoes, calves, and grapefruit. The overall index is also affected by the seasonal change based on a 3-year average mix of commodities producers sell. Increased average marketings of broilers, cotton, soybeans, and rice offset decreased marketings of oranges, tobacco, eggs, and cattle.

The preliminary All Farm Products Index is up 11 points (9.7 percent) from January 2006. The Food Commodities Index, at 123, increased 1 point (0.8 percent) from last month and 5 points (4.2 percent) from January 2006.

## Prices Paid Index Increased 2 Points

The January Index of Prices Paid for Commodities and Services, Interest, Taxes, and Farm Wage Rates (PPITW) is 152 percent of the 1990-92 average. The index is up 2 points (1.3 percent) from December and 4 points (2.7 percent) above January 2006. Higher prices in January for complete feeds, other services, feed supplements, and feed grains more than offset lower prices for diesel fuel, feeder cattle, cash rent, and LP gas.

Index Summary Table

Index 1990-92=100	2005	2006		2007
	Dec	Jan	Dec	Jan
Prices Received	117	113	121	124
Prices Paid	144	148	150	152
Ratio <sup>1</sup>	81	76	81	82

<sup>1</sup> Ratio of index of prices received by farmers to index of prices paid by farmers.

## Prices Received by Farmers

The January All Farm Products Index is 124 percent of its 1990-92 base, up 2.5 percent from the December index and 9.7 percent above the January 2006 index.

**ALL CROPS:** The January index is 132, up 3.1 percent from December and 22 percent above January 2006. From December, index increases for feed grains & hay, commercial vegetables, and oil-bearing crops more than offset the index decreases for fruits & nuts and food grains.

**Food Grains:** The January index, at 149, is 0.7 percent below the previous month but 27 percent above a year ago. The January all wheat price, at \$4.50 per bushel, is down a cent from December but 98 cents above January 2006.

**Feed Grains & Hay:** The January index is 142, up 6.0 percent from last month and 54 percent above a year ago. The corn price, at \$3.23 per bushel, is up 22 cents from last month and \$1.23 above January 2006. The all hay price, at \$112 per ton, is \$4.00 above December and \$18.90 above last January. Sorghum grain, at \$6.43 per cwt, is 34 cents above December and \$3.27 above January last year.

**Oil-Bearing Crops:** The January index, at 115, is up 4.5 percent from December and 9.5 percent higher than January 2006. The soybean price, at \$6.42 per bushel, increased 24 cents from December and is 55 cents above January 2006.

**Cotton:** The January index, at 82, is up 1.2 percent from December and 2.5 percent above last year. The January price, at 49.5 cents per pound, is up 0.2 cent from the previous month and 0.9 cent above last January.

**Potatoes & Dry Beans:** The January index, at 120, is up 1.7 percent from last month and January 2006. The all potato price, at \$6.98 per cwt, is up 8 cents from December but down 9 cents from last January. The all dry bean price, at \$22.70 per cwt, is up \$1.10 from the previous month and \$3.50 above January 2006.

**Fruits & Nuts:** The January index, at 157, is down 2.5 percent from December but 18 percent higher than a year ago. A price decrease for strawberries more than offset a price increase for oranges.

**Commercial Vegetables:** The January index, at 159, is up 6.0 percent from last month and 20 percent above January 2006. Price increases during January for onions, celery, and broccoli more than offset price declines for lettuce and cauliflower.

**LIVESTOCK & PRODUCTS:** The January index, at 116, is 2.7 percent above last month but down 1.7 percent from January 2006. Compared with a year ago, prices are higher for broilers, eggs, and hogs but lower for cattle, calves, and milk. Turkeys are unchanged.

**Meat Animals:** The January index, at 110, is up 0.9 percent from last month but 9.8 percent lower than last year. The January hog price, at \$41.40 per cwt, is down \$2.10 from December but 70 cents higher than a year ago. The January beef cattle price of \$85.00 per cwt is up \$1.40 from last month but \$10.10 lower than January 2006.

**Dairy Products:** The January index, at 110, is up 1.9 percent from a month ago but 0.9 percent lower than January last year. The January all milk price of \$14.40 per cwt is up 30 cents from last month but down 10 cents from January 2006. The fluid grade milk price increased 30 cents and the manufacturing grade milk price is up 10 cents from the previous month.

**Poultry & Eggs:** The January index, at 134, is up 7.2 percent from December and 18 percent above a year ago. January market egg prices, at 78.8 cents per dozen, increased 12.3 cents from December and 35 cents from January 2006. The January broiler price, at 43.0 cents per pound, is up 3.0 cents from December and 5.0 cents above a year ago. The January turkey price, at 40.8 cents per pound, decreased 2.6 cents from the previous month but is unchanged from a year earlier.

## Table of Contents

<b>U.S. Prices Received and Indexes</b>	<b>Page</b>	<b>Monthly State Prices, continued</b>	<b>Page</b>
Narrative .....	2	Cotton .....	19
Price Indexes .....	5	Cottonseed .....	19
Price Index Charts .....	6	Eggs .....	24
U.S. Prices Received Summary .....	10	Flaxseed .....	18
Charts .....	12	Grain Sorghum .....	17
Selected Commodities .....	16	Hay .....	19
Upland Cotton & Rice Marketings .....	19	Hogs, All .....	23
Parity Prices .....	26	Barrows and Gilts .....	23
Reliability Statement .....	57	Sows .....	23
<b>Monthly State Prices Received</b>		Milk .....	25
Apples .....	19	Milk Cows .....	25
Barley .....	17	Oats .....	17
Beans, Dry Edible .....	18	Peanuts .....	18
Beef Cattle, All .....	22	Potatoes .....	21
Calves .....	22	Sheep .....	24
Cows, Beef .....	22	Lambs .....	24
Steers and Heifers .....	22	Soybeans .....	17
Citrus Fruit .....	20	Sunflower, All .....	18
Corn .....	17	Wheat, All Classes .....	16
<b>Prices Received Special Features</b>			<b>Page</b>
<b>Marketing Year for Specified Commodities</b> .....			28
<b>Monthly Price Revisions</b>			
Apples .....		see January 2007 Noncitrus Fruits and Nuts - Preliminary <a href="http://usda.mannlib.cornell.edu/MannUsda/viewDocumentInfo.do?documentID=1113">http://usda.mannlib.cornell.edu/MannUsda/viewDocumentInfo.do?documentID=1113</a>	
Grapes .....		see January 2007 Noncitrus Fruits and Nuts - Preliminary <a href="http://usda.mannlib.cornell.edu/MannUsda/viewDocumentInfo.do?documentID=1113">http://usda.mannlib.cornell.edu/MannUsda/viewDocumentInfo.do?documentID=1113</a>	
Peaches .....		see January 2007 Noncitrus Fruits and Nuts - Preliminary <a href="http://usda.mannlib.cornell.edu/MannUsda/viewDocumentInfo.do?documentID=1113">http://usda.mannlib.cornell.edu/MannUsda/viewDocumentInfo.do?documentID=1113</a>	
Pears .....		see January 2007 Noncitrus Fruits and Nuts - Preliminary <a href="http://usda.mannlib.cornell.edu/MannUsda/viewDocumentInfo.do?documentID=1113">http://usda.mannlib.cornell.edu/MannUsda/viewDocumentInfo.do?documentID=1113</a>	
Rice .....			29
Strawberries .....		see January 2007 Vegetables Annual <a href="http://usda.mannlib.cornell.edu/MannUsda/viewDocumentInfo.do?documentID=1183">http://usda.mannlib.cornell.edu/MannUsda/viewDocumentInfo.do?documentID=1183</a>	
Vegetables .....		see January 2007 Vegetables Annual <a href="http://usda.mannlib.cornell.edu/MannUsda/viewDocumentInfo.do?documentID=1183">http://usda.mannlib.cornell.edu/MannUsda/viewDocumentInfo.do?documentID=1183</a>	
<b>Monthly Marketings</b>			
Rice .....			29
<b>Marketing Year Average Prices</b>			
Rice .....			29
Sweet Potatoes .....			28
<b>Index of Prices Received: U.S., All Groups, Monthly and Annual, 2003-2007</b> .....			48
<b>Annual Parity Price Calculations</b>			
Authority for Parity Prices, Method of Computation and Prices .....			30
Adjusted Base Prices & January 2007 Parity Prices .....			32
Average Base Period Prices, U.S., 1910-14 .....			37
Annual Average Prices Received for Parity Computations, U.S., by Years, 1997-2006 .....			38
Parity Price Equivalent for Manufacturing Grade Milk .....			56

## Table of Contents (continued)

<b>U.S. Prices Paid, Prices Paid Indexes and Ratios</b>	<b>Page</b>
Narrative .....	58
Indexes and Parity Ratios .....	59
Charts .....	61
Feed Price Ratios .....	64
Reliability Statement .....	86
<b>U.S. Average Prices</b>	
Prices Used to Calculate Feed Price Ratios .....	64
Feeder Livestock .....	64
<b>Special Features</b>	
Private Non-Irrigated Grazing Fee Rates for Cattle by Selected States and Regions .....	65
Prices Paid Survey Estimates, Month Published and Level .....	85
Index of Prices Paid: 1910-14=100 and 1990-92=100 Monthly and Annual Average, United States, 2003-2007 .....	66-84
PPITW, PITW, Production Items .....	66-67
Index Component Items, Interest, Taxes, Wage Rates, Farm and Non Farm Origin .....	67-74
Ratios .....	75
Crop Sector, Livestock Sector, and PPITW adjusted for Productivity .....	76
Index Sub-Components (1990-92=100): Monthly and Annual Averages .....	77-84
<b>Information Contacts</b> .....	87

**Index Numbers of Prices Received, United States,  
January 2007, with Comparisons**

Index	1910-14=100			1990-92=100			
	Average 1990-92	2006		2007	2006		2007
		Jan	Dec	Jan	Jan	Dec	Jan
All Farm Products	639	717	*768	788	113	121	124
All Crops	500	535	*632	650	108	*128	132
Food Grains	325	372	*478	473	117	*150	149
Feed Grains & Hay	363	329	*480	509	92	*134	142
Cotton	517	411	*417	418	80	*81	82
Tobacco	1,263	1,363	*1,392	1,392	90	*92	92
Oil-Bearing Crops	554	573	*603	628	105	110	115
Fruits & Nuts	716	929	*1,125	1,093	133	*161	157
Commercial Vegetables	698	882	*1,002	1,062	132	*150	159
Potatoes & Dry Beans	540	596	*596	606	118	*118	120
Other Crops	493	586	586	586	119	119	119
Livestock & Products	768	902	*867	887	118	113	116
Meat Animals	1,021	1,237	1,113	1,122	122	109	110
Dairy Products	799	891	*866	885	111	*108	110
Poultry & Eggs	282	319	*351	377	114	125	134
Food Commodities					118	*122	123

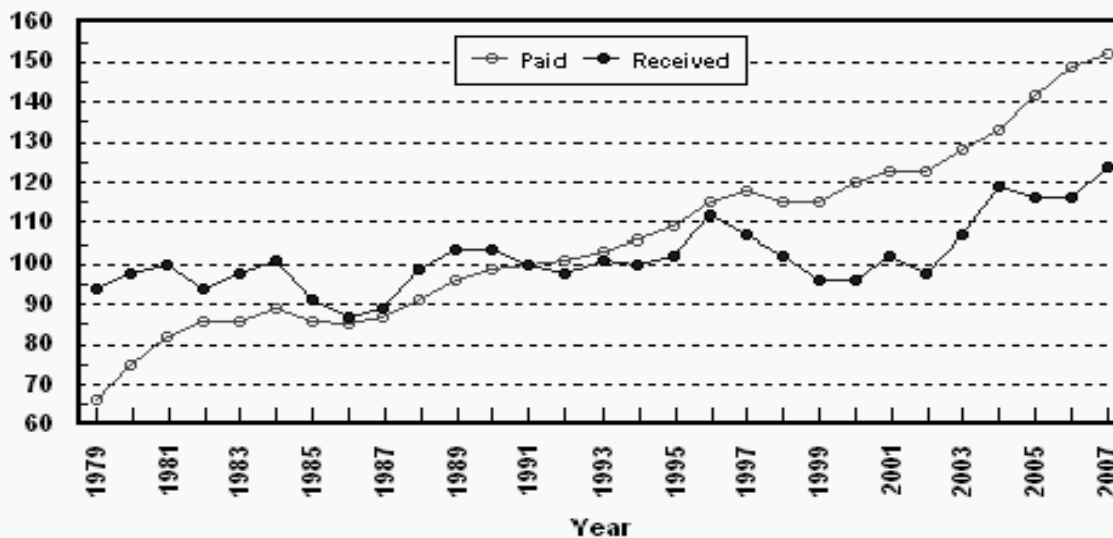
\* Revised.

**Selected Index Numbers for Prices Received and Paid,  
1990-92=100, by Month, United States, 2006 and 2007**

Month	Index of Prices Received						Index of Prices Paid			
	All Farm Products		All Crops		Livestock and Products		All Items		Production Items	
	2006	2007	2006	2007	2006	2007	2006	2007	2006	2007
Jan	113	124	108	132	118	116	148	152	145	149
Feb	113		113		114		147		144	
Mar	113		118		110		147		144	
Apr	111		120		105		148		145	
May	111		120		104		149		146	
Jun	118		126		110		149		147	
Jul	118		127		111		149		147	
Aug	120		125		115		149		147	
Sep	120		122		117		149		146	
Oct	116		115		117		148		145	
Nov	120		123		116		149		146	
Dec	121		128		113		150		147	

## Prices Received vs Prices Paid Annual Average Indexes\*

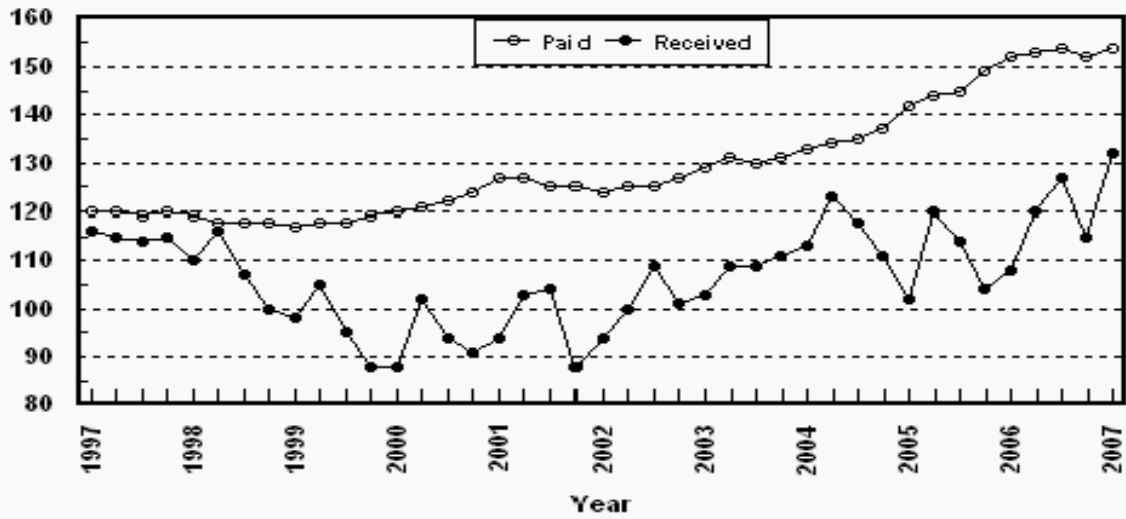
Percent (1990-92=100)



\* Index values for 2007 are year-to-date averages.

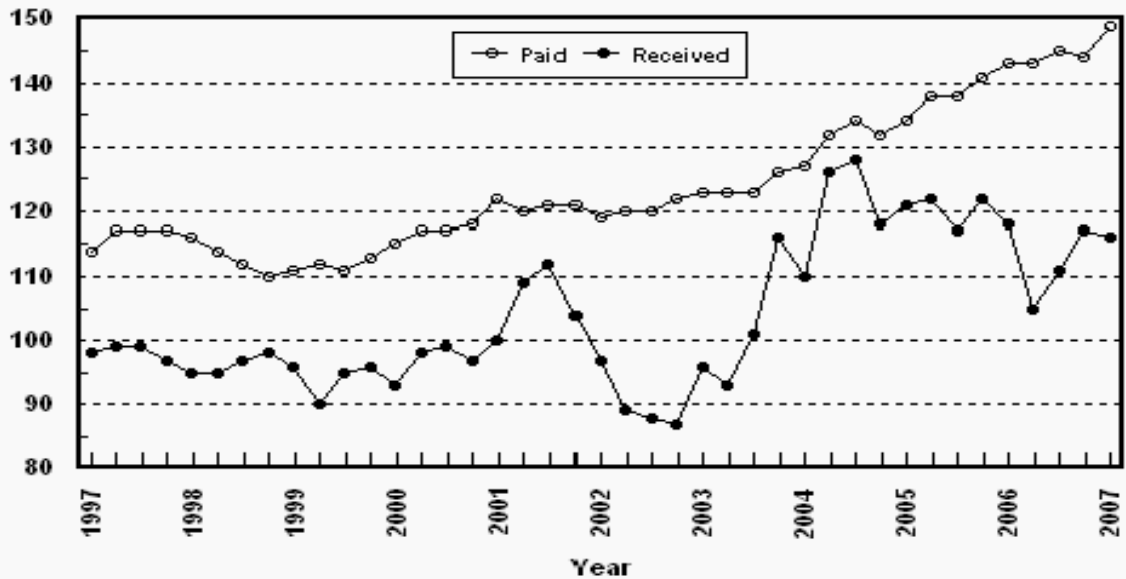
### Crop Farm Index: Prices Received and Prices Paid All Items, U.S., 1997-2007, By Quarter

Percent (1990-92=100)



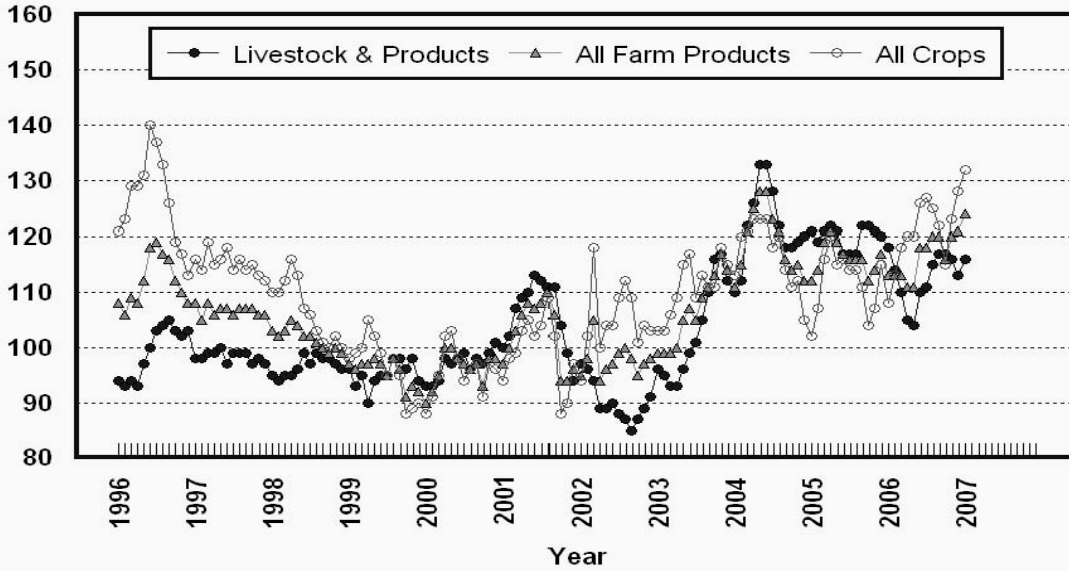
### Livestock Farm Index: Prices Received and Prices Paid All Items, U.S., 1997-2007, By Quarter

Percent (1990-92=100)



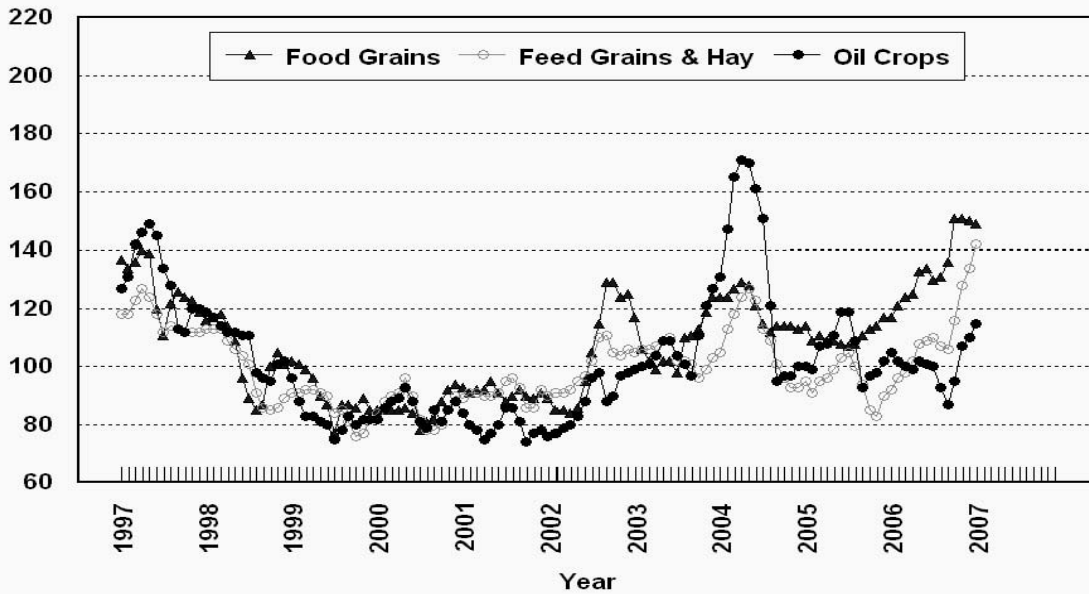
## Prices Received, Major Indexes, US

Percent (1990-92=100)



## Prices Received, Food, Feed, & Oil Indexes, US

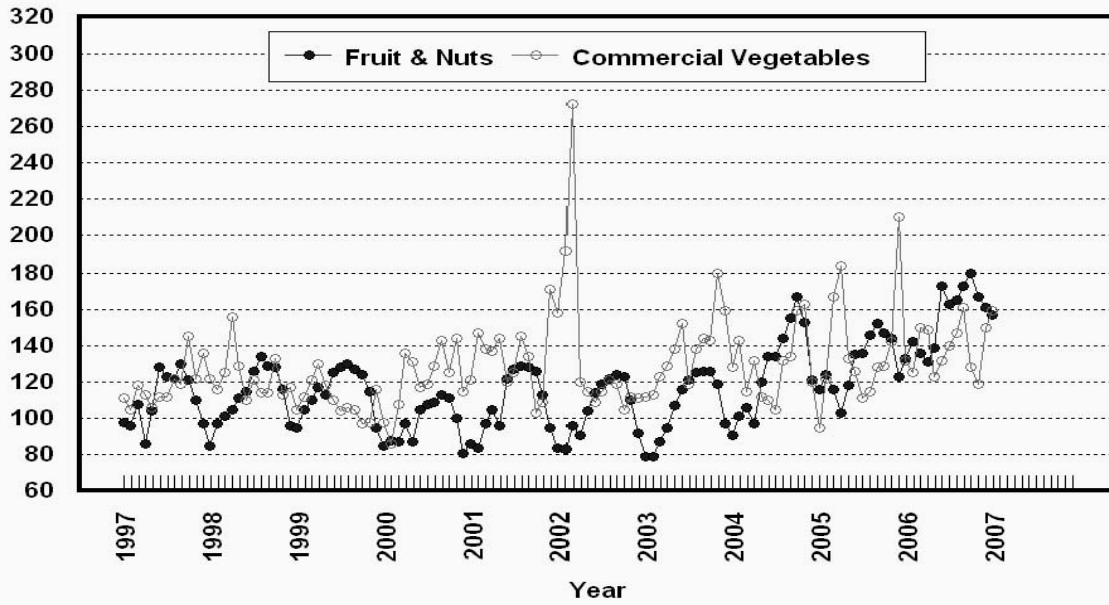
Percent (1990-92=100)





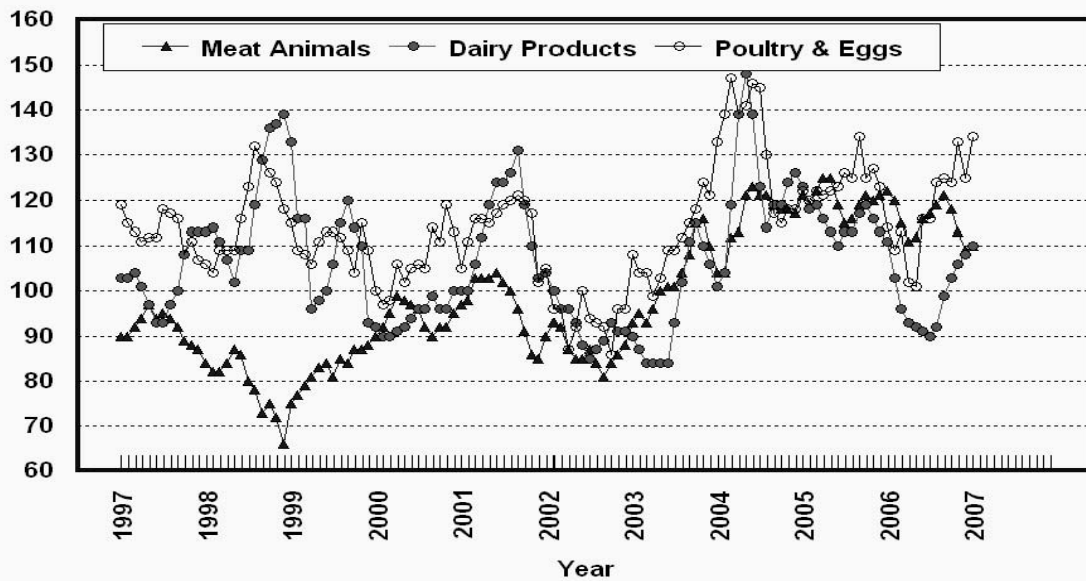
## Prices Received, Fruit/Vegetable Indexes, US

Percent (1990-92=100)



## Prices Received, Livestock Product Indexes, US

Percent (1990-92=100)



**Prices Received, United States,  
January 2007, with Comparisons**

Commodity	Unit	Average 1990-92	Entire Month		Preliminary
			Jan 2006	Dec 2006	Jan 2007
		<i>Dollars</i>	<i>Dollars</i>	<i>Dollars</i>	<i>Dollars</i>
<b>Field Crops</b>					
Barley, All	Bu	2.12	2.42	2.95	3.13
Feed	Bu	1.90	1.94	2.79	2.93
Malting	Bu	2.43	2.56	3.02	3.21
Beans, Dry Edible	Cwt	19.10	19.20	21.60	22.70
Chickpeas, All	Cwt		27.40	25.00	26.90
Large	Cwt		27.80	25.10	27.30
Small	Cwt		( <sup>4</sup> )	( <sup>4</sup> )	( <sup>4</sup> )
Corn	Bu	2.30	2.00	3.01	3.23
Cotton, Upland	Lb	0.606	0.486	0.493	0.495
Cottonseed <sup>3</sup>	Ton	96.00	102.00	109.00	117.00
Flaxseed	Bu	4.27	5.64	5.73	6.00
Hay, All, Baled <sup>1</sup>	Ton	76.30	93.10	108.00	112.00
Alfalfa <sup>1</sup>	Ton	77.20	96.40	112.00	115.00
Other <sup>1</sup>	Ton	60.00	84.30	99.30	102.00
Lentils	Cwt		11.10	11.50	12.00
Oats	Bu	1.22	1.73	1.97	2.12
Peanuts, In-Shell	Lb	0.304	0.173	0.176	0.178
Peas, Dry Edible	Cwt		4.74	7.03	7.17
Austrian Winter	Cwt		6.93	6.69	7.00
Potatoes	Cwt	5.82	7.07	6.90	6.98
Rice, Rough	Cwt	7.07	7.80	9.87	9.69
Sorghum Grain	Cwt	3.75	3.16	6.09	6.43
Soybeans	Bu	5.61	5.87	6.18	6.42
Sunflower, All	Cwt	9.50	11.40	13.60	14.30
Wheat, All	Bu	2.96	3.52	4.51	4.50
Winter	Bu	2.93	3.45	4.51	4.47
Durum	Bu	2.86	3.29	4.74	4.69
Other Spring	Bu	3.11	3.70	4.48	4.52
Hard Red Winter	Bu		3.55	4.65	
Soft Red Winter	Bu		3.24	4.28	
Hard Red Spring	Bu		3.74	4.49	
White	Bu	3.24	3.07	4.31	
<b>Fruit</b>					
Citrus, Equiv on-tree					
Grapefruit	Box	5.77	11.06	8.17	6.18
Lemons	Box	10.10	3.78	13.36	11.42
Oranges <sup>7</sup>	Box	5.79	5.16	7.47	8.14
Tangelos	Box	5.82	4.81	6.20	7.32
Tangerines	Box	15.11	10.39	13.63	16.23
Noncitrus, Fresh					
Apples <sup>2</sup>	Lb	0.212	0.217	0.261	0.287
Grapes <sup>2</sup>	Ton	506.00	( <sup>5</sup> )	1,290.00	( <sup>5</sup> )
Peaches <sup>2</sup>	Ton	432.00			
Pears <sup>2</sup>	Ton	370.00	404.00	578.00	561.00
Strawberries	Cwt	56.00	142.00	189.00	109.00

<sup>1</sup> Mid-month price.

<sup>2</sup> Equivalent packinghouse-door returns for CA, MI, and NY (apples only), and WA (apples, peaches, and pears). Prices as sold for other states.

<sup>3</sup> Marketing year August - February.

<sup>4</sup> Price not published to avoid disclosure of individual firms.

<sup>5</sup> Insufficient sales to establish a price.

<sup>6</sup> Monthly price estimates discontinued beginning in July 2005.

<sup>7</sup> Includes Temples beginning with the 2006-07 season.

**Prices Received, United States,  
January 2007, with Comparisons**

Commodity	Unit	Average 1990-92	Entire Month		Preliminary
			Jan 2006	Dec 2006	Jan 2007
		<i>Dollars</i>	<i>Dollars</i>	<i>Dollars</i>	<i>Dollars</i>
<b>Vegetables, Fresh <sup>1</sup></b>					
Asparagus	Cwt	79.80			
Broccoli	Cwt	22.50	32.50	53.10	59.30
Cantaloupes <sup>2</sup>	Cwt				
Carrots	Cwt	13.20	21.40	19.10	18.80
Cauliflower	Cwt	26.80	33.10	41.60	32.20
Celery	Cwt	11.60	9.64	20.20	27.40
Corn, Sweet	Cwt	15.70	36.50	14.40	29.40
Cucumbers <sup>2</sup>	Cwt		20.90	26.20	22.80
Lettuce	Cwt	11.90	10.50	22.40	18.40
Onions	Cwt	12.80	11.70	16.50	26.00
Snap Beans <sup>2</sup>	Cwt		44.40	67.70	66.40
Tomatoes	Cwt	32.30	79.20	24.80	26.70
<b>Livestock</b>					
Calves	Cwt	94.30	141.00	115.00	115.00
Cattle, All Beef	Cwt	72.90	95.10	83.60	85.00
Cows <sup>3</sup>	Cwt	49.60	47.30	42.20	43.80
Steers & Heifers	Cwt	77.10	102.00	89.30	90.30
Milk Cows <sup>4</sup>	Head	1,130.00			1,660.00
Hogs, All	Cwt	47.70	40.70	43.50	41.40
Barrows & Gilts	Cwt	48.40	41.10	44.00	42.00
Sows	Cwt	39.50	33.20	32.20	30.70
Lambs	Cwt	56.20	96.10	93.20	
Sheep	Cwt	23.40	47.70	35.30	
<b>Dairy and Poultry</b>					
Milk, All <sup>5 6</sup>	Cwt	13.06	14.50	14.10	14.40
Fluid Grade <sup>6</sup>	Cwt	13.10	14.50	14.10	14.40
Mfg Grade <sup>6</sup>	Cwt	11.80	14.00	13.80	13.90
Broilers, Live <sup>7</sup>	Lb	0.317	0.380	0.400	0.430
Eggs, All <sup>8</sup>	Doz	0.643	0.610	0.807	0.915
Market <sup>8</sup>	Doz	0.546	0.438	0.665	0.788
Turkeys, live <sup>7 8</sup>	Lb	0.380	0.408	0.434	0.408
<b>Adjusted for Seasonal Variation</b>					
Eggs, All	Doz	0.545	0.547	0.674	0.815
Milk, All <sup>5</sup>	Cwt	9.71	14.10	13.70	14.00

<sup>1</sup> Beginning January 2006, point of first sale. F.O.B. shipping point for prior years.

<sup>2</sup> Monthly estimates began January 1995.

<sup>3</sup> Beef cows and cull dairy cows sold for slaughter.

<sup>4</sup> Animals sold for dairy herd replacement only. Prices available for Jan, Apr, Jul, and Oct.

<sup>5</sup> Before deductions for hauling. Includes quality, quantity, and other premiums. Excludes hauling subsidies.

<sup>6</sup> January 2007 Fat test percent: all milk 3.76, fluid milk 3.76, mfg grade 4.06.

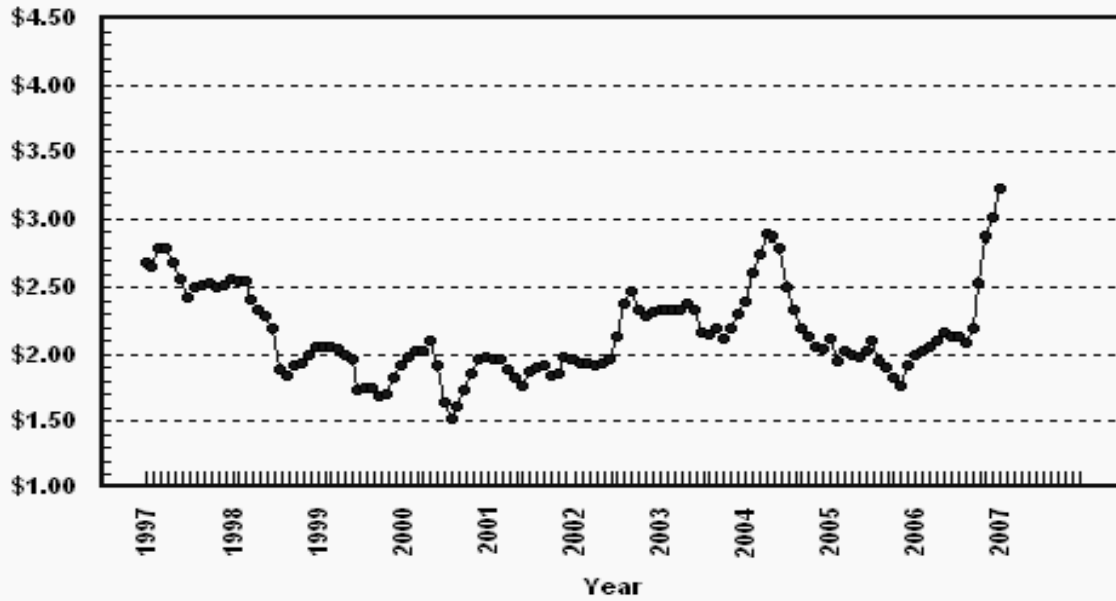
<sup>7</sup> Equivalent liveweight returns to producers for most States. Includes growers and contractors.

<sup>8</sup> Mid-month price.

<sup>9</sup> Seasonal adjustment factors are: All Eggs January 2006, 112; December 2006, 120; and January 2007, 112. All Milk January 2006, 102; December 2006, 103; and January 2007, 103.

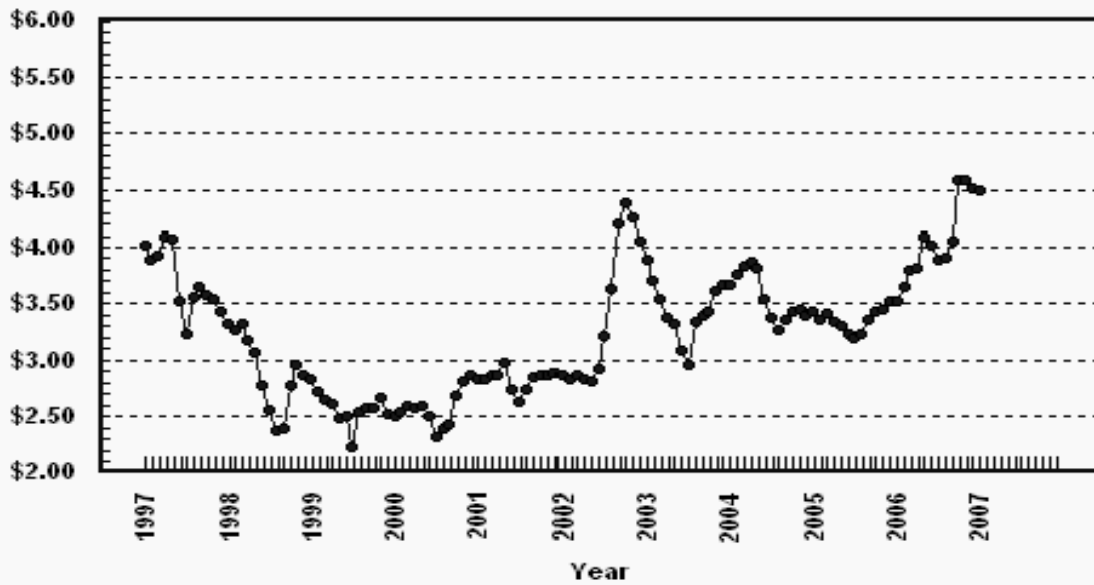
### Prices Received, Corn, US

Dollars per Bu



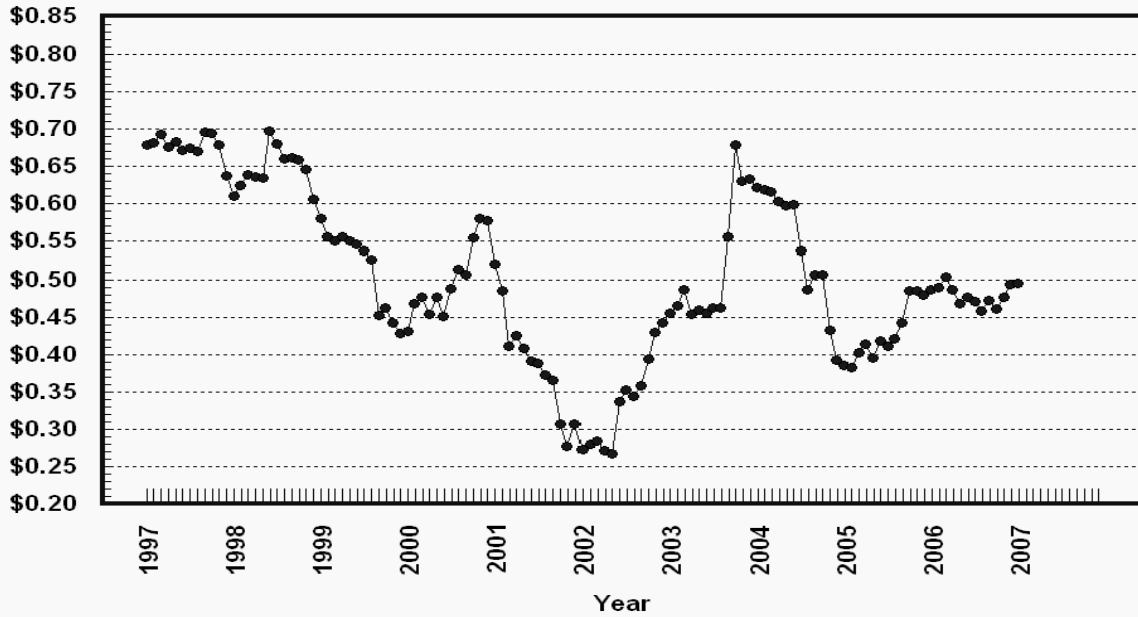
### Prices Received, Wheat, US

Dollars per Bu



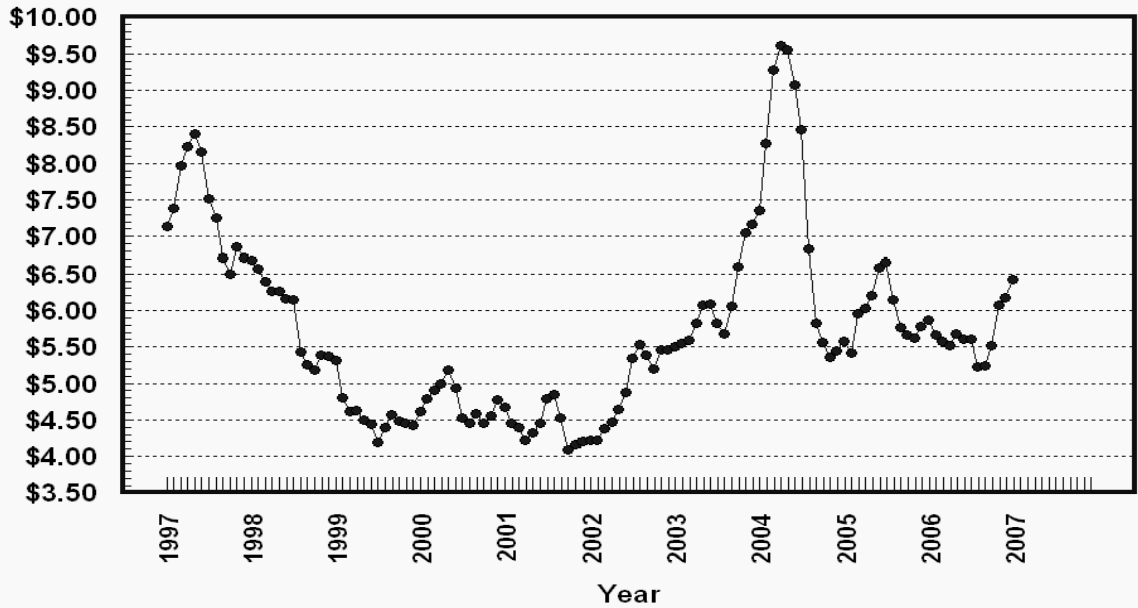
### Prices Received, Cotton, US

Dollars per Lb



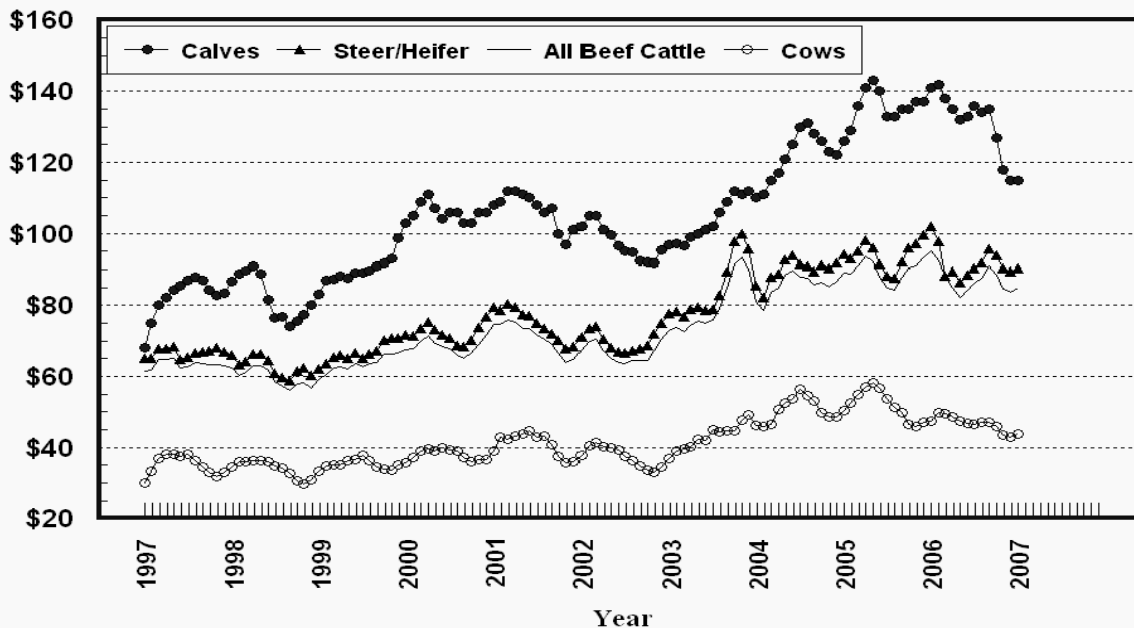
### Prices Received, Soybeans, US

Dollars per Bu



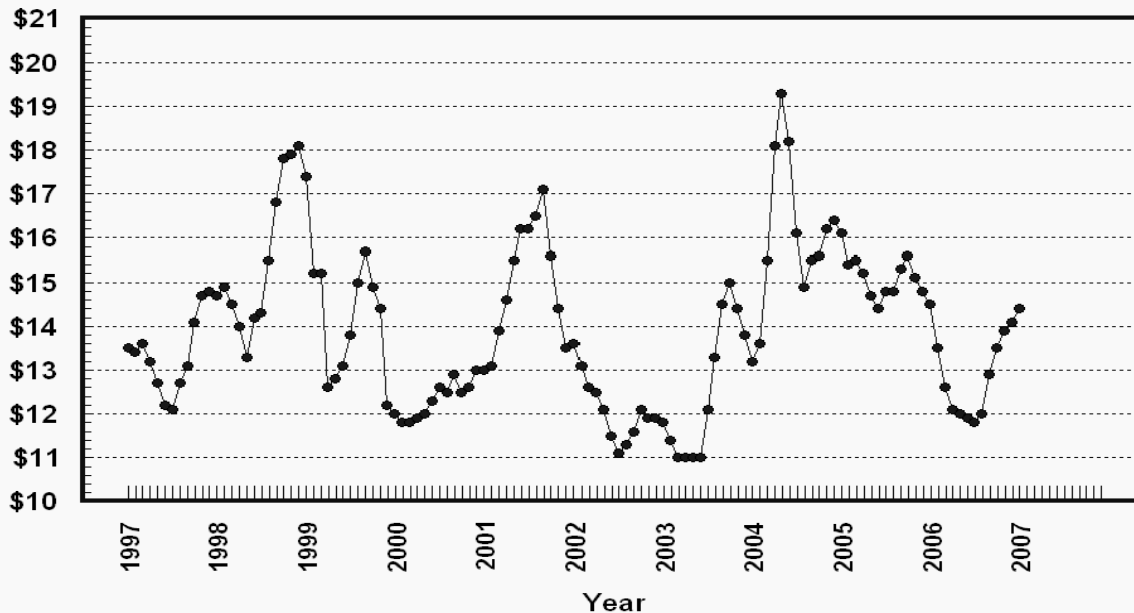
### Prices Received, Cattle, US

Dollars per Cwt



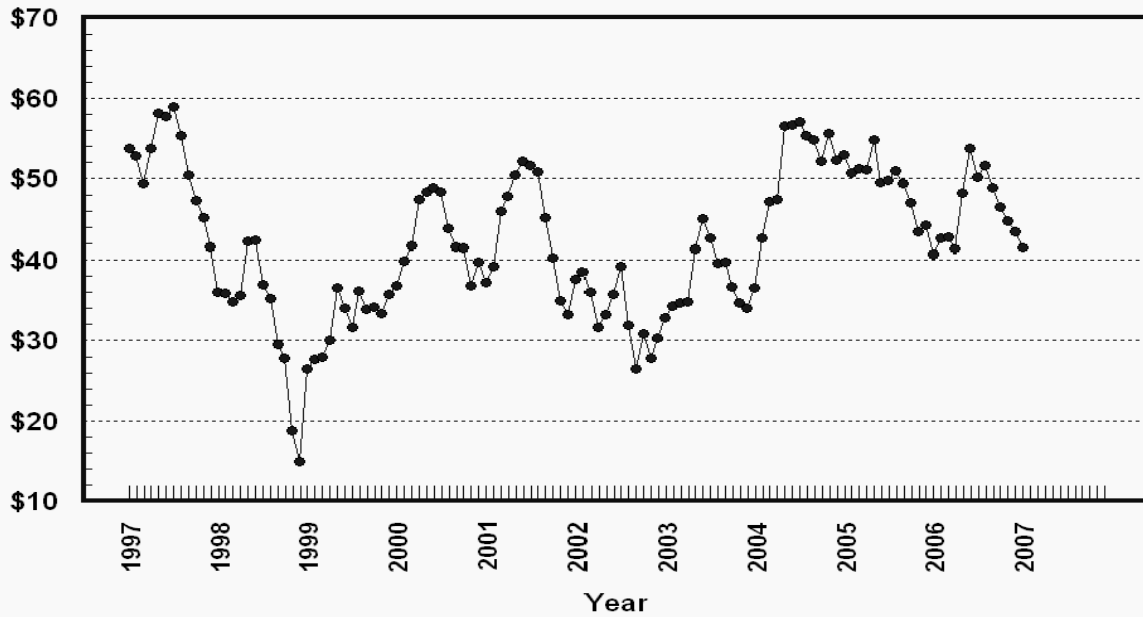
### Prices Received, Milk, US

Dollars per Cwt



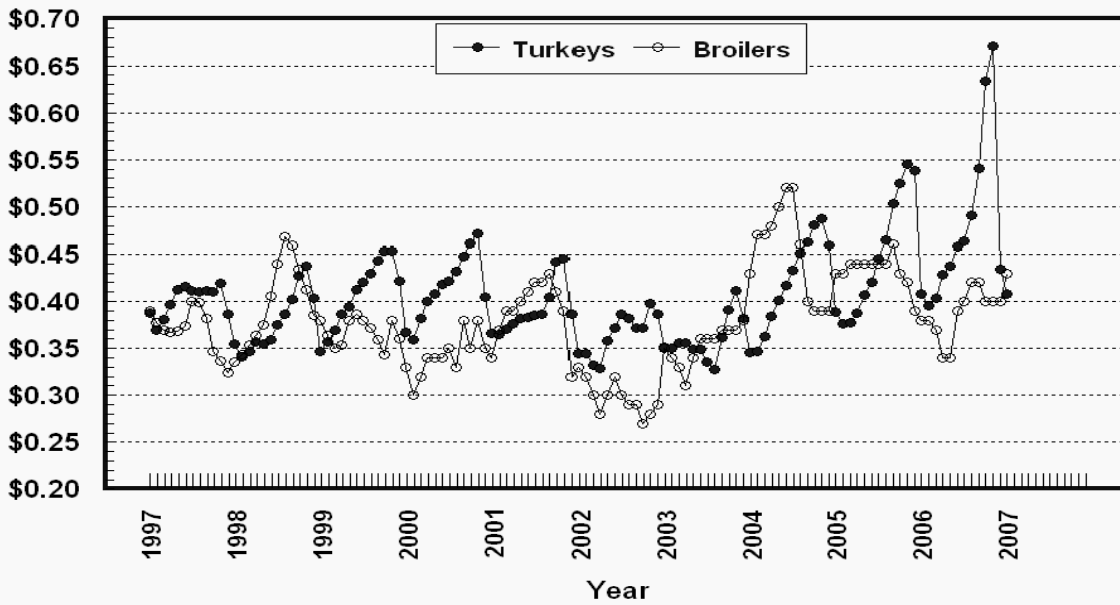
## Prices Received, Hogs, US

Dollars per Cwt



## Prices Received, Turkeys & Broilers, US

Dollars per Lb



**Wheat: Prices Received, by State, December 2006 and January 2007**

State	All Wheat		Winter Wheat		Durum Wheat		Oth Spring Wheat	
	Dec <sup>1</sup>	Jan <sup>2</sup>	Dec <sup>1</sup>	Jan <sup>2</sup>	Dec <sup>1</sup>	Jan <sup>2</sup>	Dec <sup>1</sup>	Jan <sup>2</sup>
	<i>Dollars per Bushel</i>	<i>Dollars per Bushel</i>	<i>Dollars per Bushel</i>	<i>Dollars per Bushel</i>	<i>Dollars per Bushel</i>	<i>Dollars per Bushel</i>	<i>Dollars per Bushel</i>	<i>Dollars per Bushel</i>
AR	4.60	4.45	4.60	4.45				
CA	4.59	4.18	4.18	( <sup>3</sup> )	( <sup>3</sup> )	( <sup>3</sup> )		
CO	4.51	4.50	4.51	4.50			( <sup>3</sup> )	( <sup>3</sup> )
ID	4.11	4.60	4.08	4.65	4.07	( <sup>3</sup> )	4.21	4.50
IL	4.26	4.00	4.26	4.00				
IN	4.48	4.05	4.48	4.05				
KS	4.91	4.55	4.91	4.55				
MI	4.22	4.00	4.22	4.00				
MN	4.44	4.40	4.35	4.35			4.44	4.40
MO	4.31	4.00	4.31	4.00				
MT	4.54	4.41	4.48	4.33	4.87	4.96	4.56	4.42
NE	4.73	4.60	4.73	4.60				
ND	4.49	4.57	4.36	4.35	4.74	4.65	4.44	4.55
OH	4.13	3.78	4.13	3.78				
OK	4.90	4.60	4.90	4.60				
OR	4.34	4.63	4.32	4.60			4.45	4.80
SD	4.48	4.44	4.40	4.40			4.62	4.50
TX	4.68	4.65	4.68	4.65				
WA	4.55	4.69	4.48	4.65			4.80	4.83
US	4.51	4.50	4.51	4.47	4.74	4.69	4.48	4.52

<sup>1</sup> Entire month.

<sup>2</sup> Mid-month.

<sup>3</sup> Price not published to avoid disclosure of individual firms.

<sup>4</sup> Insufficient sales to establish a price.

**Prices Received for Selected Agricultural Commodities, by Month, United States, 2006 and 2007 <sup>1</sup>**

Month	All Wheat		Corn		Soybeans		Beef Cattle <sup>2</sup>		All Hogs	
	2006	2007	2006	2007	2006	2007	2006	2007	2006	2007
	<i>Dollars per Bushel</i>	<i>Dollars per Bushel</i>	<i>Dollars per Bushel</i>	<i>Dollars per Bushel</i>	<i>Dollars per Bushel</i>	<i>Dollars per Bushel</i>	<i>Dollars per Cwt</i>	<i>Dollars per Cwt</i>	<i>Dollars per Cwt</i>	<i>Dollars per Cwt</i>
Jan	3.52	4.50	2.00	3.23	5.87	6.42	95.10	85.00	40.70	41.40
Feb	3.66		2.02		5.67		92.40		42.60	
Mar	3.79		2.06		5.57		88.10		42.80	
Apr	3.81		2.11		5.52		84.80		41.30	
May	4.09		2.17		5.68		82.20		48.20	
Jun	4.01		2.14		5.62		84.20		53.80	
Jul	3.89		2.14		5.61		86.10		50.20	
Aug	3.91		2.09		5.23		87.70		51.60	
Sep	4.06		2.20		5.24		90.80		48.90	
Oct	4.59		2.54		5.52		88.50		46.50	
Nov	4.59		2.87		6.07		84.70		44.80	
Dec	4.51		3.01		6.18		83.60		43.50	

<sup>1</sup> Current month prices are mid-month; prices for previous months are for the entire month.

<sup>2</sup> Cows, steers and heifers.



**Grains: Prices Received, by State, December 2006 and January 2007**

Month	All Barley <sup>1</sup>		Corn		Oats		Soybeans		Sorghum Grain	
	Dec <sup>2</sup>	Jan <sup>3</sup>	Dec <sup>2</sup>	Jan <sup>3</sup>	Dec <sup>2</sup>	Jan <sup>3</sup>	Dec <sup>2</sup>	Jan <sup>3</sup>	Dec <sup>2</sup>	Jan <sup>3</sup>
	<i>Dollars per Bushel</i>	<i>Dollars per Bushel</i>	<i>Dollars per Bushel</i>	<i>Dollars per Bushel</i>	<i>Dollars per Bushel</i>	<i>Dollars per Bushel</i>	<i>Dollars per Bushel</i>	<i>Dollars per Bushel</i>	<i>Dollars per Cwt</i>	<i>Dollars per Cwt</i>
AL										
AR										
CA										
CO	( <sup>4</sup> )	( <sup>5</sup> )			( <sup>5</sup> )	( <sup>5</sup> )	6.44	6.65	( <sup>4</sup> )	( <sup>4</sup> )
ID	( <sup>4</sup> )	( <sup>4</sup> )	2.88	3.25						
IL	3.20	3.21								
IN			3.00	3.20	( <sup>5</sup> )	( <sup>5</sup> )	6.21	6.35	6.07	6.15
IA			3.26	3.50			6.40	6.77		
KS			3.03	3.15	2.02	1.95	6.26	6.35		
KY			3.37	3.62	( <sup>4</sup> )	2.08	6.10	6.40	6.13	6.49
LA			3.26	3.55			6.49	6.80		
MI							6.34	6.77		
MN	2.64	2.68	3.00	3.30	1.99	1.90	6.09	6.50		
MS			2.81	3.10	2.14	2.10	5.95	6.20		
MO							6.40	6.83		
MT	3.04	3.31	3.08	3.30			6.18	6.35	5.86	6.00
NE					1.93	( <sup>5</sup> )				
NY			2.95	3.10	1.90	2.00	5.98	6.25	5.86	6.15
NC					1.73	1.84				
ND	2.75	3.05	3.60	3.95			6.12	6.44		
OH			2.63	2.90	2.05	2.15	5.74	6.00		
OK			3.07	3.27	( <sup>4</sup> )	( <sup>5</sup> )	6.19	6.45		
OR									6.04	6.24
PA	3.65	3.60			( <sup>5</sup> )	( <sup>5</sup> )				
SD	( <sup>4</sup> )	( <sup>4</sup> )	3.58	4.00	2.00	2.13				
TN			2.81	3.10	2.36	2.50	5.98	6.23		
TX			3.43	3.60			6.62	6.80		
UT			3.33	3.76	( <sup>4</sup> )	( <sup>5</sup> )			6.10	6.47
WA	3.40	3.51								
WI	3.52	3.62	2.86	3.15	1.73	1.80	5.87	6.20		
WY	3.15	3.23								
US	2.95	3.13	3.01	3.23	1.97	2.12	6.18	6.42	6.09	6.43

<sup>1</sup> The Three-State (MN, ND and SD) Feed Barley price in discontinued.

<sup>2</sup> Entire month.

<sup>3</sup> Mid-month.

<sup>4</sup> Price not published to avoid disclosure of individual firms.

<sup>5</sup> Insufficient sales to establish a price.

**Malting and Feed Barley: Prices Received Selected State, December 2006 and January 2007**

State	Malting Barley		Feed Barley	
	Dec <sup>1</sup>	Jan <sup>2</sup>	Dec <sup>1</sup>	Jan <sup>2</sup>
	<i>Dollars per Bushel</i>	<i>Dollars per Bushel</i>	<i>Dollars per Bushel</i>	<i>Dollars per Bushel</i>
ID	3.19	3.20	3.30	3.35
MN	2.62	2.65	2.86	2.90
MT	3.10	3.40	2.83	2.95
ND	2.85	3.20	2.62	2.70
SD	( <sup>4</sup> )	( <sup>4</sup> )	( <sup>3</sup> )	( <sup>3</sup> )
WY	( <sup>3</sup> )	( <sup>3</sup> )	( <sup>3</sup> )	( <sup>3</sup> )

<sup>1</sup> Entire month.

<sup>2</sup> Mid-month.

<sup>3</sup> Price not published to avoid disclosure of individual firms.

<sup>4</sup> Insufficient sales to establish a price.

**Field Crops: Prices Received, by State, December and January 2007**

State	Dry Edible Beans		All Sunflower		Flaxseed		Peanuts <sup>4</sup>	
	Dec <sup>1</sup>	Jan <sup>2</sup>	Dec <sup>1</sup>	Jan <sup>2</sup>	Dec <sup>1</sup>	Jan <sup>2</sup>	Dec <sup>1</sup>	Jan <sup>3</sup>
	<i>Dollars per Cwt</i>	<i>Dollars per Cwt</i>	<i>Dollars per Cwt</i>	<i>Dollars per Cwt</i>	<i>Dollars per Bushel</i>	<i>Dollars per Bushel</i>	<i>Dollars per Pound</i>	<i>Dollars per Pound</i>
AL							0.158	0.162
CA	54.00	51.70						
CO	20.70	22.00						
FL							( <sup>5</sup> )	( <sup>5</sup> )
GA							0.173	0.177
ID	20.20	21.00						
KS			12.90	14.10				
MI	20.10	21.00						
MN	24.00	( <sup>5</sup> )	15.10	16.00				
NE	20.00	22.40						
NC							0.189	0.183
ND	19.50	20.30	13.50	14.10	5.73	6.00		
SD			13.60	14.20	( <sup>6</sup> )	( <sup>6</sup> )		
TX							0.186	0.188
VA							0.163	0.177
US	21.60	22.70	13.60	14.30	5.73	6.00	0.176	0.178

<sup>1</sup> Entire month.

<sup>2</sup> Mid-month.

<sup>3</sup> Based on sales through first half of month.

<sup>4</sup> In-Shell.

<sup>5</sup> Price not published to avoid disclosure of individual firms.

<sup>6</sup> Insufficient sales to establish a price.

**Field Crops and Apples: Prices Received, by State,  
December 2006 and January 2007**

State	Upland Cotton		January				Apples Fresh Use <sup>1 4</sup>
	Dec <sup>1</sup>	Jan <sup>2</sup>	Cotton- seed <sup>5</sup>	Hay, Baled <sup>3</sup>			
				All	Alfalfa	Other	
<i>Dollars per Pound</i>	<i>Dollars per Pound</i>	<i>Dollars per Ton</i>	<i>Dollars per Ton</i>	<i>Dollars per Ton</i>	<i>Dollars per Ton</i>	<i>Dol/Lb</i>	
AL	0.473	0.492	78.00				
AZ	0.537	( <sup>6</sup> )	162.00	127.00	127.00	133.00	
AR	0.514	0.516	( <sup>7</sup> )				
CA	0.672	0.633	153.00	112.00	120.00	82.00	0.304
CO				139.00	140.00	126.00	
GA							
ID	0.510	0.502	91.00	114.00	116.00	93.00	
IL				99.00	104.00	79.00	
IA				88.00	92.00	65.00	
KS				113.00	122.00	80.00	
KY				85.00	125.00	70.00	
LA							
MI	0.495	0.496	( <sup>7</sup> )	104.00	110.00	85.00	0.250
MN				83.00	86.00	60.00	
MS	0.495	0.497	( <sup>7</sup> )				
MO				81.00	123.00	65.00	
MT				79.00	79.00	74.00	
NE				92.00	93.00	82.00	
NV				119.00	120.00	112.00	
NM				170.00	172.00	145.00	
NY				124.00	135.00	101.00	0.297
NC	0.486	( <sup>6</sup> )	83.00				
ND				64.00	69.00	49.00	
OH				108.00	130.00	75.00	0.395
OK				135.00	156.00	108.00	
OR				131.00	131.00	130.00	
PA				138.00	156.00	130.00	0.152
SD				81.00	84.00	69.00	
TN	0.504	0.508	102.00				
TX	0.477	0.479	122.00	135.00	166.00	131.00	
UT				103.00	105.00	79.00	
VA							0.260
WA				127.00	125.00	135.00	0.288
WI				52.00	55.00	40.00	
WY				100.00	101.00	98.00	
US	0.493	0.495	117.00	112.00	115.00	102.00	0.287

<sup>1</sup> Entire month.

<sup>2</sup> Based on sales during the first half of the month.

<sup>3</sup> Mid-month.

<sup>4</sup> Equivalent packinghouse-door returns for CA, MI, NY, and WA. Price at point of first sale for other States.

<sup>5</sup> Marketing year August - February.

<sup>6</sup> Price not published to avoid disclosure of individual firms.

<sup>7</sup> Insufficient sales to establish a price.

**Upland Cotton and Rice: Prices Received and Marketings,  
United States, January 2007, with Comparisons**

Item	Unit	Nov 2006 <sup>1</sup>	Dec 2006 <sup>1</sup>	Jan 2007 <sup>2</sup>
Upland Cotton				
Average Price	Dollars per Pound	0.476	0.493	0.495
Marketings <sup>3</sup>	1,000 Bales	1,117	2,062	NA
Rice				
Average Price	Dollars per Cwt	9.70	9.87	9.69
Marketings <sup>4</sup>	1,000 Cwt	11,749	12,851	NA

<sup>1</sup> Entire month.

<sup>2</sup> Based on purchases for the first half of the month.

<sup>3</sup> Marketings based on a survey of cotton buyers in the major producing States - AL, AZ, AR, CA, GA, LA, MS, NC, TN, and TX.

<sup>4</sup> Purchases by private firms and rice (rough equivalent) shipped by cooperatives.

**Citrus Fruit: Prices and Equivalent Returns, by Utilization,  
by State and United States, January 2007**

Commodity, State and Type	F.O.B. Packed Fresh	Equivalent Returns <sup>1</sup>					
		Packinghouse-door			On-tree		
		All	Fresh	Process	All	Fresh	Process
	<i>Dollars per Box</i>	<i>Dollars per Box</i>	<i>Dollars per Box</i>	<i>Dollars per Box</i>	<i>Dollars per Box</i>	<i>Dollars per Box</i>	<i>Dollars per Box</i>
Grapefruit							
AZ	19.80	10.56	10.56		7.64	7.64	
CA	24.70	13.97	15.46	-0.30	11.05	12.54	-3.22
FL	20.40	8.34	11.94	4.16	5.72	9.59	1.23
White	20.00	7.17	11.30	4.30	4.56	8.95	1.50
Colored	20.50	8.74	12.10	4.10	6.11	9.75	1.10
TX	22.00	7.30	11.40	2.77	6.10	10.17	1.59
US	21.20	8.55	12.26	3.80	6.18	10.04	1.23
Lemons							
AZ	31.50	14.65	21.43	-0.42	9.23	16.01	-5.84
CA	31.80	18.10	21.73	-0.42	12.68	16.31	-5.84
US	31.70	16.84	21.63	-0.42	11.42	16.21	-5.84
Oranges							
AZ							
Navel and Misc	21.10	11.52	13.19	1.48	9.02	10.69	-1.02
CA							
Navel and Misc	22.80	13.68	14.89	1.48	11.18	12.39	-1.02
FL							
Early and Mids	23.00	10.00	14.10	9.85	7.25	11.40	7.10
TX							
Early and Mids	30.90	14.79	20.19	2.94	13.37	18.76	1.55
US	23.10	10.82	14.96	9.62	8.14	12.47	6.88
Tangelos							
FL	20.00	10.10	10.70	9.95	7.32	8.00	7.15
Tangerines							
AZ	32.50	23.26	23.26		20.02	20.02	
CA	33.00	17.78	23.76	0.26	14.54	20.52	-2.98
FL	35.00	20.15	24.00	9.90	16.52	20.50	5.90
US	33.90	19.69	23.81	6.27	16.23	20.43	2.55

<sup>1</sup> Net lbs. per box: Grapefruit - AZ & CA-67, FL-85, TX-80; Lemons - 76; Oranges - AZ & CA-75, FL-90, TX-85; Tangelos - 90; Tangerines - AZ & CA-75, FL-95.

**Potatoes: Prices Received, by State, December 2006 and January 2007 <sup>1</sup>**

State	Dec	Jan	State	Dec	Jan
	<i>Dollars per Cwt</i>	<i>Dollars per Cwt</i>		<i>Dollars per Cwt</i>	<i>Dollars per Cwt</i>
AL			NC		
AZ			ND - All <sup>2</sup>	6.50	6.25
CA - All	8.90	9.70	ND - Fresh <sup>3</sup>	7.65	NA
CA - Winter	17.10	17.00	ND - Processing	6.05	NA
CA - Spring			OR	6.65	6.75
CA - Summer			TX		
CA - Fall	8.10	8.10	VA		
CO - All <sup>2</sup>	8.05	8.10	WA - All	6.80	7.10
CO - Fresh <sup>3</sup>	8.55	NA	WA - Processing	6.00	NA
FL			WI - All <sup>2</sup>	7.60	7.85
ID - All <sup>2</sup>	5.45	5.45	WI - Fresh <sup>3</sup>	9.05	NA
ID - Fresh <sup>3</sup>	5.90	NA	WI - Processing	6.05	NA
ID - Processing	5.20	NA			
ME	8.05	8.10	US - All <sup>2</sup>	6.90	6.98
MI	8.45	8.70	US - Fresh <sup>3</sup>	8.47	NA
MN	6.45	6.35	US - Processing	5.97	NA
NY	11.90	10.80			

<sup>1</sup> Missing data indicates no potatoes being marketed.

<sup>2</sup> Average price of potatoes sold for all uses, including table stocks, processing, seed and livestock feed.

<sup>3</sup> Fresh market prices only, includes table stock prices.

**Cattle: Prices Received, by State, December 2006 and January 2007**

State	Cows <sup>1</sup>		Steers & Heifers		Beef Cattle <sup>4</sup>		Calves	
	Dec <sup>2</sup>	Jan <sup>3</sup>	Dec <sup>2</sup>	Jan <sup>3</sup>	Dec <sup>2</sup>	Jan <sup>3</sup>	Dec <sup>2</sup>	Jan <sup>3</sup>
	<i>Dollars per Cwt</i>	<i>Dollars per Cwt</i>	<i>Dollars per Cwt</i>	<i>Dollars per Cwt</i>	<i>Dollars per Cwt</i>	<i>Dollars per Cwt</i>	<i>Dollars per Cwt</i>	<i>Dollars per Cwt</i>
AZ	42.40	43.40	92.00	94.00	84.60	86.90	106.00	106.00
AR	40.00	40.00	92.70	95.20	76.90	78.60	110.00	109.00
CA	36.40	40.90	86.80	90.10	61.60	65.50	108.00	109.00
CO	43.40	43.50	98.90	96.00	98.30	95.50	112.00	112.00
FL	45.90	47.70	83.40	80.10	64.90	59.30	104.00	106.00
GA	46.80	47.90	83.30	81.40	59.20	59.00	109.00	107.00
ID	39.20	38.70	86.30	89.10	73.10	75.50	105.00	108.00
IL	46.00	46.00	86.00	88.00	85.20	87.20	104.00	103.00
IA	44.20	44.90	88.70	91.50	87.80	90.60	107.00	105.00
KS	43.00	44.40	88.30	89.50	86.50	88.10	120.00	119.00
KY	42.00	43.00	87.00	87.00	76.20	76.40	102.00	102.00
LA	42.00	45.00	86.70	92.00	56.30	59.10	106.00	109.00
MI	44.50	44.50	78.50	80.00	68.30	69.40	120.00	114.00
MN	46.50	47.00	82.60	84.50	74.00	75.50	116.00	115.00
MO	41.30	42.40	96.80	97.90	85.10	81.30	112.00	113.00
MT	39.80	43.60	102.20	96.80	88.50	88.30	118.00	118.00
NE	43.20	42.20	90.30	91.60	88.90	90.10	122.00	120.00
NM	44.20	46.40	92.00	93.00	70.50	73.00	108.00	106.00
ND	42.00	41.00	99.00	96.00	86.50	90.50	114.00	114.00
OH	42.20	44.00	84.20	86.00	80.00	81.80	95.30	97.00
OK	42.80	44.10	100.00	98.20	90.80	89.50	118.00	116.00
OR	38.50	37.80	85.00	86.00	71.10	71.50	99.00	98.50
PA	42.80	44.10	82.30	84.90	72.00	74.30	108.00	107.00
SD	43.10	41.30	95.90	91.80	82.20	83.20	117.00	114.00
TN	41.00	42.00	88.00	86.00	69.20	68.40	102.00	100.00
TX	41.40	42.00	88.70	89.00	84.40	84.80	116.00	119.00
VA	37.90	39.00	80.60	84.10	62.20	64.70	99.40	102.00
WI	42.80	45.50	79.10	81.60	58.00	60.70	145.00	141.00
WY	41.60	41.50	102.00	99.00	75.40	87.50	121.00	120.00
US	42.20	43.80	89.30	90.30	83.60	85.00	115.00	115.00

<sup>1</sup> Beef cows and cull dairy cows sold for slaughter.

<sup>2</sup> Entire month.

<sup>3</sup> Mid-month.

<sup>4</sup> "Cows" and "steers and heifers" combined.

**Hogs: Prices Received, by State, December 2006 and January 2007**

State	Sows		Barrows and Gilts		All Hogs	
	Dec <sup>1</sup>	Jan <sup>2</sup>	Dec <sup>1</sup>	Jan <sup>2</sup>	Dec <sup>1</sup>	Jan <sup>2</sup>
	<i>Dollars per Cwt</i>	<i>Dollars per Cwt</i>	<i>Dollars per Cwt</i>	<i>Dollars per Cwt</i>	<i>Dollars per Cwt</i>	<i>Dollars per Cwt</i>
AR	32.50	31.10	40.80	38.30	40.00	37.60
IL	31.50	30.00	43.70	41.20	42.70	40.30
IN	35.80	34.50	43.50	41.20	42.70	40.50
IA	32.80	31.30	45.50	44.00	45.40	43.70
KS	33.10	31.50	40.20	38.40	39.30	37.50
MN	32.20	30.50	45.90	44.50	45.60	44.20
MO	31.10	29.50	34.60	32.70	34.40	32.50
NE	33.50	32.00	45.90	44.40	45.70	44.20
NC	31.70	30.10	44.40	42.30	44.30	42.20
OH	31.90	31.00	43.40	41.00	42.60	40.30
OK	30.60	29.10	36.60	34.50	35.70	33.70
PA	31.50	30.10	40.60	38.00	39.20	36.80
SD	30.60	28.90	45.70	43.80	44.00	41.90
US	32.20	30.70	44.00	42.00	43.50	41.40

<sup>1</sup> Entire month.

<sup>2</sup> Mid-month.

**Sheep and Poultry: Prices Received, by State, December 2006 and January 2007**

State	December		January
	Sheep <sup>1</sup>	Lambs <sup>1</sup>	Eggs <sup>2 3</sup>
	<i>Dollars per Cwt</i>	<i>Dollars per Cwt</i>	<i>Dollars per Dozen</i>
AL			0.700
AR			0.778
CA	43.00	89.50	0.820
CO	32.00	95.00	
CT			0.900
FL			0.750
GA			0.760
ID	30.00	84.00	
IN			0.860
IA	36.90	89.00	0.760
KY	43.00	97.00	
ME			1.010
MI			0.770
MN	32.00	89.60	0.820
MS			0.800
MO	33.80	91.10	0.730
MT	31.00	106.00	
NE	34.00	83.70	
NY			0.810
NC			0.742
ND	33.00	108.00	
OH	35.50	94.10	0.867
OR	36.00	92.00	
PA	46.40	111.00	0.690
SC			0.720
SD	32.90	108.00	
TX	38.20	96.90	0.740
VA	43.00	106.00	
WA			0.840
WV	35.00	102.00	
WY	34.00	103.00	
US	35.30	93.20	0.788

<sup>1</sup> Entire month.

<sup>2</sup> Mid-month.

<sup>3</sup> Market (table) eggs.



**Milk and Milk Cows: Prices Received, by State, December 2006 and January 2007**

State	December <sup>1</sup>						January		
	Fluid Grade Milk <sup>2</sup>		Manufacturing Grade Milk		All Milk <sup>3</sup>		All Milk <sup>3 4</sup>		Milk Cows <sup>5</sup>
	Price	Fat Test	Price	Fat Test	Price	Fat Test	Price	Fat Test	
	<i>Dol/Cwt</i>	<i>Percent</i>	<i>Dol/Cwt</i>	<i>Percent</i>	<i>Dol/Cwt</i>	<i>Percent</i>	<i>Dol/Cwt</i>	<i>Percent</i>	<i>Dol/Head</i>
AZ	14.10	3.74			14.10	3.74	14.40	3.70	1,800
CA	12.60	3.80	14.00	4.32	12.64	3.82	12.70	3.80	1,600
CO	14.30	3.63			14.30	3.63	14.40	3.62	1,900
FL	16.50	3.69			16.50	3.69	17.60	3.67	1,770
ID	13.30	3.78	13.10	3.98	13.30	3.78	13.30	3.74	1,600
IL	15.00	3.90	15.20	3.80	15.00	3.90	15.00	3.85	1,630
IN	14.20	3.78	13.40	3.98	14.20	3.78	14.50	3.75	1,650
IA	14.40	3.79	13.50	4.11	14.40	3.80	14.40	3.75	1,660
KS	14.00	3.78			14.00	3.78	14.30	3.75	1,630
KY	14.70	3.78			14.70	3.78	15.40	3.75	1,590
MI	14.50	3.70	12.10	3.76	14.50	3.70	14.90	3.66	1,800
MN	14.90	3.84	13.20	3.93	14.80	3.84	15.00	3.81	1,580
MO	14.50	3.80	13.60	4.00	14.50	3.81	15.00	3.75	1,460
NM	13.60	3.76			13.60	3.76	14.10	3.72	1,720
NY	14.50	3.77			14.50	3.77	14.80	3.76	1,540
OH	15.10	3.78	14.10	4.03	15.10	3.79	15.50	3.76	1,670
OR	16.00	3.79			16.00	3.79	16.60	3.75	1,750
PA	15.50	3.80	13.40	4.00	15.50	3.80	15.70	3.75	1,700
TX	14.50	3.85			14.50	3.85	14.50	3.82	1,690
VT	14.90	3.81			14.90	3.81	15.30	3.80	1,700
VA	16.00	3.73			16.00	3.73	16.10	3.70	1,660
WA	13.80	3.79			13.80	3.79	14.30	3.75	1,600
WI	14.90	3.78	14.10	3.99	14.90	3.79	15.10	3.78	1,730
US	14.10	3.78	13.80	4.12	14.10	3.79	14.40	3.76	1,660

<sup>1</sup> Entire month.

<sup>2</sup> Including milk diverted to manufacturing.

<sup>3</sup> Before deductions for hauling. Includes quality, quantity, and other premiums. Excludes hauling subsidies.

<sup>4</sup> Preliminary.

<sup>5</sup> Animals sold for dairy herd replacement only. Prices published January, April, July and October.

**Parity Price Equivalent for Manufacturing Milk <sup>1</sup>: United States,  
December 2006 and January 2007, with Comparisons**

Item	Unit	Jan 2006	Dec 2006	Jan 2007
Parity Equivalent	Dollars per Cwt	34.70	35.40	35.70
Average Price F.O.B <sup>2</sup>	Dollars per Cwt	14.00	13.80	13.90
Average Fat Test of Milk <sup>2</sup>	Percent	4.00	4.12	4.06

<sup>1</sup> The parity price equivalent during 2007 is 92.1 percent of the parity price of all milk sold to plants, compared with 91.5 percent in 2006. For additional details, see January 2007 issue of "Agricultural Prices".

<sup>2</sup> Preliminary for January 2007.

**Parity Prices for Farm Products and Average Prices Received as  
Percent of Parity Prices, United States, with Comparisons <sup>1</sup>**

Commodity and Unit	Adjusted Base Price	Parity Price			Price as Percent of Parity		
		Jan 2006	Dec 2006	Jan 2007	Jan 2006	Dec 2006	Jan 2007
	<i>Dollars</i>	<i>Dollars</i>	<i>Dollars</i>	<i>Dollars</i>	<i>Percent</i>	<i>Percent</i>	<i>Percent</i>
<b>Basic Commodities</b>							
All Wheat, Bu	0.519	10.30	10.50	10.50	34	43	43
Rice, Cwt	1.40	27.90	28.50	28.30	27	35	34
Corn, Bu	0.384	7.66	7.82	7.76	26	38	42
Cotton, Lb							
American Upland	0.098	2.25	2.30	1.98	22	21	25
Extra Long Staple	0.142	2.66	2.71	2.87			
Peanuts, Lb	0.031	0.674	0.688	0.627	26	26	28
<b>Designated Nonbasic</b>							
All Milk, Sold to							
Plants, Per Cwt <sup>2</sup>	1.92	37.90	38.70	38.80	39	31	31
Honey, Extracted, Lb <sup>3</sup>	0.123	2.28	2.28	2.49			
<b>Wool and Mohair</b>							
Wool, Lb	0.082	1.60	1.63	1.66			
Mohair, Lb	0.359	6.53	6.66	7.26			
<b>Other Nonbasic</b>							
Barley, Bu	0.362	7.16	7.31	7.32	34	40	43
Canola, Cwt	1.37	26.60	27.70	27.70			
Cottonseed, Ton	14.80	296.00	303.00	299.00	34	36	39
Dry Edible Beans, Cwt	2.72	54.10	55.20	55.00	35	39	41
Flaxseed, Bu	0.841	15.30	15.60	17.00	37	37	35
Mustard Seed, Cwt	1.92	37.70	38.50	38.80			
Oats, Bu	0.215	4.25	4.29	4.35	41	46	49
Potatoes, Cwt	0.818	15.80	16.20	16.50	45	43	42
Rapeseed, Cwt	1.59	31.00	31.70	32.10			
Rye, Bu	0.414	6.83	6.98	8.37			
Safflower, Cwt	1.84	35.80	36.60	37.30			
Sorghum Grain, Cwt	0.656	11.90	12.10	13.30	27	50	48
Soybeans, Bu	0.850	16.90	17.30	17.20	35	36	37
All Sunflower, Cwt	1.66	32.30	33.00	33.50	37	38	36
Sweetpotatoes, Cwt	2.31	44.90	45.80	46.70			
Apples, Fresh, Lb <sup>4</sup>	0.301	0.520	0.531	0.609	35	42	35
Citrus (equiv on-tree), Box							
Grapefruit	0.622	10.40	10.60	12.60	106	77	49
Lemons	1.14	22.30	22.80	23.10	17	59	49
Oranges	0.598	11.40	11.60	12.10	45	64	67
Tangerines	1.35	26.80	27.30	27.30	39	50	59
Temples (FL)	0.372	7.58	7.75	7.52			
Beef Cattle, Cwt	10.15	190.00	194.00	205.00	50	43	41
Calves, Cwt	14.60	264.00	269.00	295.00	53	43	39
Hogs, Cwt	5.83	115.00	118.00	118.00	35	37	35
Lambs, Cwt	11.90	229.00	234.00	241.00	42	40	
Sheep, Cwt	4.90	94.10	96.10	99.10	51	37	
Eggs, Doz <sup>2</sup>	0.088	1.75	1.79	1.78	31	38	46
Turkeys, Live, Lb	0.056	1.080	1.100	1.140	38	39	36

<sup>1</sup> Parity prices are computed under the provisions of Title III, Subtitle a, Section 301 (a) of the Agricultural Adjustment Act of 1938 as amended by the Agricultural Acts of 1948, 1949, and 1956. See January "Agricultural Prices" for details on adjusted base price and parity price computations.

<sup>2</sup> Seasonally adjusted price as percentage of parity price.

<sup>3</sup> Wholesale extracted. Adjusted base price derived from state annual averages prices weighted by production. For 1982 through 1985 the national averages are the support prices.

<sup>4</sup> Equivalent packinghouse-door returns for CA, NY (apples only), OR (except peaches), and WA. Price at point of first sale for other states.

**Parity Prices for Farm Products, January 2007, United States <sup>1</sup>**

Other Nonbasic Commodities	Adjusted Base Price	Parity Price	Other Nonbasic Commodities	Adjusted Base Price	Parity Price
	<i>Dollars</i>	<i>Dollars</i>		<i>Dollars</i>	<i>Dollars</i>
Field Crops and Misc Commodities			Fresh, CA, Ton <sup>5</sup>	60.80	1,230.00
Hops, Lb	0.250	5.06	Noncitrus Fruit, Continued		
Spearmint Oil, Lb	1.40	28.30	Olives, CA		
Tobacco, Lb			canning, Ton <sup>3</sup>	94.20	1,900.00
Flue-Cured, 11-14	0.240	4.85	Papayas (HI)	0.050	1.010
VA Fire-Cured, 21	0.254	5.14	Peaches		
KY-TN Fire-Cured, 22-23	0.319	6.45	Fresh, Ton <sup>2</sup>	83.80	1,690.00
Fire-Cured, 21-23	0.319	6.45	Dried, CA, Ton	77.00	1,560.00
Burley, 31	0.259	5.24	Processing <sup>3</sup>		
Maryland, 32	0.196	3.96	Excl Dried		
Dark Air-Cured, 35-36	0.282	5.70	Clingstone, CA, Ton	34.10	690.00
Sun-Cured, 37	0.235	4.75	Pears, Ton		
Dark Air-Cured, 35-37	0.284	5.74	Fresh <sup>2</sup>	53.50	1,080.00
PA Seedleaf, 41	0.200	4.04	Dried, CA <sup>4</sup>	178.00	3,600.00
Cigar Filler & Binder, 42-44, 54-55	0.222	4.49	Plums, CA, Ton		
Puerto Rican Filler, 46	0.155	3.13	Fresh, Equiv on-Tree	63.40	1,280.00
Cigar Binder, 51-52	0.749	15.10	Prunes, Dried, CA, Ton <sup>4</sup>	139.00	2,810.00
Type 61	3.30	66.70	Prunes and Plums, Excl CA, Ton		
Noncitrus Fruit			Fresh <sup>7</sup>	62.80	1,270.00
Apples, Ton <sup>4</sup>			Processing <sup>4</sup>		
Processing	16.70	338.00	Excl Dried	28.30	572.00
Apricots, Ton			Tree Nuts <sup>8</sup>		
Fresh <sup>5</sup>	104.00	2,100.00	Almonds, Lb	0.214	4.33
Dried, CA	264.00	5,340.00	Hazelnuts, Ton	154.00	3,110.00
Avocados, Ton <sup>5</sup>	231.00	4,670.00	Pistachio, Lb	0.180	3.64
Cherries			Walnuts, Ton	174.00	3,520.00
Sweet, Ton	197.00	3,980.00	Vegetables, Cwt <sup>9</sup>		
Tart, Lb	0.034	0.694	Fresh		
Cranberry, Bbl <sup>3</sup>	5.02	101.00	Carrots <sup>6</sup>	2.38	48.10
Dates, CA, Ton <sup>5</sup>	188.00	3,800.00	Cauliflower <sup>6</sup>	4.45	90.00
Grapes, Ton			Celery <sup>6</sup>	2.00	40.40
Raisin Variety	121.00	2,450.00	Honeydew Melons	2.67	54.00
Other Dried	71.50	1,450.00	Lettuce	2.35	47.50
Kiwifruit, Ton	90.50	1,830.00	Onions <sup>6</sup>	1.63	33.00
Nectarines			Tomatoes	4.77	96.50

<sup>1</sup> Parity prices are computed under the provisions of Title III, Subtitle a, Section 301 (a) of the Agricultural Adjustment Act of 1938 as amended by the Agricultural Acts of 1948, 1949, and 1956. See January "Agricultural Prices" for details on adjusted base price and parity price computations.

<sup>2</sup> Equivalent packinghouse-door returns for CA, NY (apples only), OR (except peaches), and WA. Price at point of first sale for other states.

<sup>3</sup> Equivalent returns for bulk fruit at first delivery point.

<sup>4</sup> Equivalent returns at processing plant door.

<sup>5</sup> Equivalent returns at packinghouse door.

<sup>6</sup> Includes some processing.

<sup>7</sup> Based on "as sold" prices for fresh fruit in all states.

<sup>8</sup> Prices in-shell basis except almonds which are shelled basis.

<sup>9</sup> F.O.B. shipping point prices.

## Marketing Year for Specified Commodities

**Rice:** August 1 to July 31 for U.S.; July 1 to June 30 for Louisiana and Texas; August 1 to July 31 for Arkansas and Mississippi; October 1 to September 30 for California; September 1 to August 31 for Missouri.

**Sweet Potatoes:** July - June for U.S.; July 1 to June 30 for Alabama and California; July 1 to May 31 for Georgia, Louisiana, North Carolina and Texas; August 1 to May 31 for South Carolina, and Virginia; and August 1 to July 31 for New Jersey.

**Sweet Potatoes: Marketing Year Average Prices Received,  
by State and United States, 2004-2006**

State	2004	2005	2006 <sup>1</sup>
	<i>Dollars per Cwt</i>	<i>Dollars per Cwt</i>	<i>Dollars per Cwt</i>
AL	20.80	21.40	25.50
CA	25.00	25.30	20.10
LA	17.70	16.20	17.80
MS	17.70	18.30	19.80
NJ	26.30	26.80	26.80
NC	13.50	14.20	16.30
SC	15.00	17.30	18.30
TX	16.80	11.30	10.50
VA	12.80	11.40	11.60
US	17.50	18.00	18.10

<sup>1</sup> Preliminary.

**Rice: Marketing Year Average Prices Received,  
by State and United States, 2004 and 2005**

State	2004	2005
	All	
	<i>Dollars per Cwt</i>	<i>Dollars per Cwt</i>
AR	7.13	7.27
CA	7.34	10.10
LA	7.77	7.47
MS	7.48	7.36
MO	6.98	6.87
TX	7.96	7.77
US <sup>1</sup>	7.33	7.65
	Length of Grain	
US: Long	7.34	7.30
Medium & Short	7.29	9.49

<sup>1</sup> Based on state prices weighted by marketings for August through July.

**All Rice: Monthly Prices Received, Marketing Year Average Prices and  
Monthly Farm Marketings, United States, 2004-2005 through 2006-2007 <sup>1</sup>**

Month	Prices Received			Farm Marketings <sup>2</sup>		
	2004-2005	2005-2006	2006-2007 <sup>4</sup>	2004-2005	2005-2006	2006-2007 <sup>4</sup>
	<i>Dollars per Cwt</i>	<i>Dollars per Cwt</i>	<i>Dollars per Cwt</i>	<i>1,000 Cwt</i>	<i>1,000 Cwt</i>	<i>1,000 Cwt</i>
Aug	8.93	6.59	8.67	9,104	14,130	12,801
Sep	8.46	6.77	9.01	12,719	14,753	10,176
Oct	7.59	7.02	9.57	13,590	15,023	13,122
Nov	7.38	7.56	9.70	11,343	14,596	11,749
Dec	7.37	7.54	9.87	13,310	16,242	12,851
Jan <sup>3</sup>	7.39	7.80		21,859	21,076	
Feb	6.90	8.02		15,622	17,666	
Mar	6.97	8.05		15,959	18,304	
Apr	6.98	8.16		14,859	13,414	
May	6.98	8.03		14,193	12,975	
Jun	6.96	8.11		13,841	13,224	
Jul	6.82	8.18		13,536	11,834	
MYA	7.33	7.65		169,935	183,237	

<sup>1</sup> Marketing year average (MYA) prices are weighted average prices for the U.S. marketing year of August - July.

<sup>2</sup> Purchases from producers as reported by private firms and rice (rough equivalent) shipped from producers as reported by cooperative mills.

<sup>3</sup> Second year.

<sup>4</sup> Prices and marketings include late reports and revised data for August 2006 - November 2006.

## Parity Prices

Parity prices based on data for January 2007 and adjusted base price data from which parity prices are computed, are presented in the table on pages 32 through 35. Annual average prices for 1996 through 2005 for use in parity computations, and ten-year averages for 1996-2005 and 1997-2006 are shown on pages 38 through 47.

Parity Prices shown on the following pages are computed under the provisions of Title III, Subtitle A, Section 301(a) of the Agricultural Adjustment Act of 1938 as amended by the Agricultural Acts of 1948, 1949, 1954, and 1956.

The major provisions of the amended Act relating to the calculation of parity prices are as follows:

"(1) (A) The 'parity price' for any agricultural commodity, as of any date, shall be determined by multiplying the adjusted base price of such commodity as of such date by the parity index as of such date.

"(B) The 'adjusted base price' of any agricultural commodity, as of any date, shall be (i) the average of the prices received by farmers for such commodity, at such time as the Secretary may select during each year of the ten-year period ending on the 31st of December last before such date, or during each marketing season beginning in such period if the Secretary determines use of a calendar year basis to be impracticable, divided by (ii) the ratio of the general level of prices received by farmers for agricultural commodities during the period January 1910 to December 1914, inclusive.

"(C) The 'parity index', as of any date, shall be the ratio of (i) the general level of prices for articles and services that farmers buy, wages paid hired farm labor, interest on farm indebtedness secured by farm real estate, and taxes on farm real estate, for the calendar month ending last before such date to (ii) the general level of such prices, wages, rates, and taxes during the period January 1910 to December 1914, inclusive.

"(D) The prices and indexes provided for herein, and the data used in computing them, shall be determined by the Secretary, whose determination shall be final."

Section 301(a) (1) (F) outlines authority for the Secretary of Agriculture to make special adjustments in the method of computing parity prices for particular commodities if the method outlined in the Act results in parity prices seriously out of line with those of other commodities.

The parity prices shown in this report are based on the provisions of the amended Act. Briefly, the actual method of computation is as follows:

- a. The average of prices received by farmers for individual commodities for the 10 preceding years is calculated (for 2007 this is the 1997-2006 average). An allowance for unredeemed loans and other supplemental payments resulting from price support programs, such as the deficiency payments for grains and cotton, is included for those commodities for which applicable.
- b. This 10-year average is divided by the average of the Index of Prices Received by Farmers for the same 10 preceding calendar years, adjusted to include an allowance for unredeemed loans and other supplemental price support operations, to give an "adjusted base price".
- c. Parity prices are computed by multiplying the "adjusted base prices" by the current Parity Index (the Index of Prices Paid by Farmers, including Interest, Taxes, and Wage Rates, 1910-14=100).

Parity prices are calculated in terms of prices received by farmers in the local markets in which they ordinarily sell. This means that the parity prices apply to the average of all classes and grades of the commodity as sold by all farmers in the United States, except as otherwise specified. Fruits and vegetables for fresh use and for processing are usually considered separate commodities and separate parity prices are calculated. The Agricultural Marketing Agreement Act of 1937 provided for parity prices for certain commodities covered by a marketing agreement or order program. Under present legislation, U.S. parity prices, with appropriate adjustments where needed, may be used for the purpose of this Act.

The indexes used in the computation of parity prices are published currently in "*Agricultural Prices*".

For the purpose of illustrating the computation of parity prices, the calculation of the parity price for corn based on data for January 2007 is given below.

The 120-month, January 1997-December 2006 average of prices received by farmers for corn was \$2.78 per bushel, adjusted to allow for unredeemed loans and other supplemental payments resulting from price support operations. The 120-month average of the Index of Prices Received by Farmers, adjusted to include an allowance for unredeemed loans, etc., was 724 (1910-14=100). Dividing \$2.78 by 7.24 gives \$0.384 per bushel, the adjusted base price which is multiplied by 2022 percent, the Parity Index (1910-14=100), based on data for January 2007. This gives \$7.76 per bushel, the parity price of corn during January 2007.

**Average Base Period Prices Received by Farmers, US, 1910-14**

Commodity	Price Per Unit	Average Jan 1910- Dec 1914	Commodity	Price Per Unit	Average Jan 1910- Dec 1914
All Wheat	Dol/Bu	0.880	Sweet Potatoes	Dol/Cwt	1.61
Rice Rough	Dol/Cwt	1.81	Dry Edible Beans	Dol/Cwt	3.39
Corn	Dol/Bu	0.649	All Beef Cattle	Dol/Cwt	5.52
Oats	Dol/Bu	0.399	Calves	Dol/Cwt	6.84
All Barley	Dol/Bu	0.617	All Hogs	Dol/Cwt	7.29
All Hay, Baled	Dol/Ton	11.90	Lambs	Dol/Cwt	5.96
Cotton	Ct/Lb	11.92	Sheep	Dol/Cwt	4.59
Peanuts	Ct/Lb	4.83	All Milk	Dol/Cwt	1.61
Cottonseed	Dol/Ton	21.80	All Eggs	Ct/Doz	21.6
Flaxseed	Dol/Bu	1.68	Turkeys, Live	Ct/Lb	14.3
Potatoes	Dol/Cwt	1.13	Wool	Ct/Lb	17.8

### The Parity Ratio

The parity ratio (the Index of Prices Received by Farmers for the products they sell divided by the Parity Index (1910-14=100)) provides an indication of the per unit purchasing power of farm commodities generally in terms of the goods and services currently bought by farmers, in relation to purchasing power of farm products in the 1910-14 base period. Thus, a Parity Ratio less than 100 indicates that the average per unit purchasing power of all farm products is lower than during the 1910-14 period.

The parity ratio is a measure of price relationships; not a measure of farm income, farmers' total purchasing power, or farmers' welfare. The latter depends upon a number of factors other than price relationships, such as changes in production efficiency and technology, quantities of farm products sold, and supplementary income, including that from off-farm jobs and federal programs.

An adjusted parity ratio is computed and published which incorporates supplementary income for federal farm programs. A "preliminary adjusted parity ratio reflecting government payments" based on the forecast of direct government payments for the year is published each quarter in "*Agricultural Prices*".

**Adjusted Base Prices and United States Parity Prices  
Based on Data for January, 2007**

Commodity and Unit	Adjusted Base Price <sup>1</sup>	Parity Price Based on data for Jan 2007 <sup>2</sup>
	<i>Dollars</i>	<i>Dollars</i>
<b>Basic Commodities</b>		
All Wheat, Bu <sup>3</sup>	0.519	10.50
Rice, Cwt <sup>3</sup>	1.40	28.30
Corn, Bu <sup>3</sup>	0.384	7.76
Cotton, Lb		
American Upland <sup>3</sup>	0.098	1.98
Extra Long Staple	0.142	2.87
Peanuts, Lb	0.031	0.627
Tobacco, Lb		
Flue-Cured, Types 11-14	0.240	4.85
VA Fire-Cured, Type 21	0.254	5.14
KY-TN Fire-Cured, Types 22-23	0.319	6.45
Fire-Cured, Types 21-23	0.319	6.45
Burley, Type 31	0.259	5.24
Maryland, Type 32	0.196	3.96
Dark Air-Cured, Types 35-36	0.282	5.70
Sun-Cured, Type 37	0.235	4.75
Dark Air-Cured, Types 35-37	0.284	5.74
PA SeedLeaf, Type 41	0.200	4.04
Puerto Rican Filler, Type 46	0.155	3.13
Cigar Binder, Types 51-52	0.749	15.10
<b>Designated Nonbasic Commodities</b>		
Soybeans, Bu <sup>3</sup>	0.850	17.20
All Milk Sold to Plants, Cwt	1.92	38.80
Honey, Wholesale, Lb Extracted	0.123	2.49
<b>Wool and Mohair</b>		
Wool, Lb <sup>3</sup>	0.082	1.66
Mohair, Lb	0.359	7.26
<b>Other Nonbasic Commodities</b>		
<b>Field Crops and Misc</b>		
All Barley, Bu <sup>3</sup>	0.362	7.32
Canola, Cwt	1.37	27.70
Cottonseed, Ton	14.80	299.00
All Dry Edible Beans, Cwt	2.72	55.00
Flaxseed, Bu	0.841	17.00
All Hay, Baled, Ton	12.70	257.00
Hops, Lb	0.250	5.06
Mustard Seed, Cwt	1.92	38.80
Oats, Bu <sup>3</sup>	0.215	4.35
Peppermint Oil, Lb <sup>3</sup>	1.63	32.96
All Potatoes, Cwt	0.818	16.50
Rapeseed, Cwt	1.59	32.10
Rye, Bu	0.414	8.37
Safflower, Cwt	1.84	37.30
Sorghum Grain, Cwt <sup>3</sup>	0.656	13.30
Spearmint Oil, Lb	1.40	28.30
All Sunflower, Cwt	1.66	33.50
Sweet Potatoes, Cwt	2.31	46.70
Tobacco, Cigar Wrapper Type 61, Lb	3.30	66.70



**Adjusted Base Prices and United States Parity Prices  
Based on Data for January, 2007**

Commodity and Unit	Adjusted Base Price <sup>1</sup>	Parity Price Based on data for Jan 2007 <sup>2</sup>
	<i>Dollars</i>	<i>Dollars</i>
Fruit, Citrus (Equiv On-Tree) Box		
Grapefruit <sup>13</sup>	0.622	12.60
Lemons <sup>13</sup>	1.144	23.10
Oranges <sup>13</sup>	0.598	12.10
Tangerines <sup>13</sup>	1.350	27.30
Temples <sup>13</sup>	0.372	7.52
Fruit, Deciduous and Other		
Apples		
Fresh, Lb <sup>4</sup>	0.301	0.609
Processing, Ton <sup>13</sup>	16.70	338.00
Apricots, Ton		
Fresh	104.00	2,100.00
Processing		
Dried (CA)	264.00	5,340.00
Excl Dried	38.10	770.00
Avocados, Ton <sup>13</sup>	231.00	4,670.00
Cherries		
Sweet, Ton	197.00	3,980.00
Tart, Lb <sup>13</sup>	0.034	0.694
Cranberries, Bbl <sup>13</sup>	5.02	101.00
Dates (CA), Ton <sup>5</sup>	188.00	3,800.00
Grapes, Ton		
Raisin Varieties Dried (CA)	121.00	2,450.00
Excl Raisin Varieties Dried	71.50	1,450.00
Kiwifruit, Ton <sup>13</sup>	90.50	1,830.00
Nectarines (CA), Ton		
Fresh <sup>5</sup>	60.80	1,230.00
Processing <sup>6</sup>	3.96	80.10
Olives (CA), Ton <sup>7</sup>		
Processing		
Crushed for oil	35.80	724.00
Excl crushed	81.90	1,656.00
Canning	94.20	1,900.00
Papayas (HI), Fresh, Lb	0.050	1.010
Peaches		
Fresh, Ton <sup>4 7</sup>	83.80	1,690.00
Processing		
Dried (CA), Ton <sup>6</sup>	77.00	1,560.00
Excluding Dried, Ton		
Clingstone (CA), Ton <sup>7</sup>	34.10	690.00
Freestone, Ton <sup>6</sup>	27.90	564.00
Pears		
Fresh, Ton <sup>4</sup>	53.50	1,080.00
Processing, Ton <sup>6</sup>		
Dried (CA)	178.00	3,600.00
Excluding Dried	26.90	544.00

See footnote(s) at end of table.

--continued

**Adjusted Base Prices and United States Parity Prices  
Based on Data for January, 2007**

Commodity and Unit	Adjusted Base Price <sup>1</sup>	Parity Price Based on data for Jan 2007 <sup>2</sup>
	<i>Dollars</i>	<i>Dollars</i>
Fruit, Deciduous and Other, Cont		
Plums (CA) Equiv On-Tree		
Fresh, Ton <sup>8</sup>	63.40	1,280.00
Processing, Ton	8.27	167.00
Prunes, Dried (CA), Ton <sup>13</sup>	139.00	2,810.00
Prunes & Plums (EX CA), Ton		
Fresh <sup>8</sup>	62.80	1,270.00
Processing <sup>6</sup>	28.30	572.00
Strawberries, Lb		
Fresh <sup>6</sup>	0.098	1.98
Processing	0.040	0.810
Sugar Crops, Ton		
Sugarbeets <sup>10 13</sup>	5.43	110.00
Sugarcane <sup>10 13</sup>	3.85	77.90
Tree Nuts <sup>11</sup>		
Almonds, Lb	0.214	4.33
Hazelnuts, Ton	154.00	3,110.00
Pecans, All, Ton	312.00	6,309.00
Pistachio, All, Lb	0.180	3.64
Walnuts, Ton <sup>13</sup>	174.00	3,520.00
Vegetables, Fresh, Cwt <sup>9</sup>		
Asparagus	15.10	305.00
Broccoli <sup>12</sup>	4.17	84.30
Carrots <sup>12</sup>	2.38	48.10
Cauliflower <sup>12</sup>	4.45	90.00
Celery <sup>12</sup>	2.00	40.40
Honeydew Melons	2.67	54.00
Lettuce	2.35	47.50
Onions <sup>12</sup>	1.63	33.00
Sweet Corn	2.67	54.00
Tomatoes	4.77	96.50
Vegetables, Processing, Ton <sup>6</sup>		
Asparagus	158.00	3,203.00
Green Peas	36.20	732.00
Snap Beans	22.40	453.00
Sweet Corn	9.82	199.00
Tomatoes	8.50	172.00
Livestock and Products		
Beef Cattle, Cwt	10.15	205.00
Calves, Cwt	14.60	295.00
Eggs, Doz	0.088	1.78
Hogs, Cwt	5.83	118.00
Lambs, Cwt	11.90	241.00
Sheep, Cwt	4.90	99.10
Turkeys, Lb	0.056	1.14

See footnote(s) at end of table.

--continued

**Adjusted Base Prices and United States Parity Prices  
Based on Data for January, 2007**

Commodity and Unit	Adjusted Base Price <sup>1</sup>	Parity Price Based on data for Jan 2007 <sup>2</sup>
	<i>Dollars</i>	<i>Dollars</i>
Discontinued Nonbasic Commodities <sup>14</sup>		
Field Crops and Misc		
Crude Pine Gum, Bbl	13.90	281.00
Dry Field Peas, Cwt	1.89	38.22
Popcorn, Cwt	1.81	36.60
Tobacco, Type 62, Lb <sup>15</sup>	0.858	17.40
Cigar Filler & Binder		
Types 42-44, 54-55	0.222	4.49
Puerto Rican Filler, Type 46, Lb	0.155	3.13
Fruit, Deciduous and Other		
Berries, Processing, Lb		
Blackberries	0.620	12.50
Black Raspberries	0.106	2.14
Boysenberries/Youngberries	0.088	1.78
Gooseberries	0.037	0.750
Loganberries	0.060	1.22
Red Raspberries	0.084	1.71
Seed Crops, Cwt		
Alfalfa	19.30	390.00
Bentgrass	18.90	382.00
Chewings Fescue	10.00	202.00
Crimson Clover	8.40	170.00
Hairy Vetch	5.81	117.00
Ladino Clover	24.70	499.00
Lespedeza	8.31	168.00
Merion KY Bluegrass	22.00	445.00
Orchardgrass	7.16	145.00
Red Clover	12.00	243.00
Red Fescue	10.10	204.00
Tall Fescue	3.67	74.20
Timothy	6.40	129.00
Vegetables, Fresh, Cwt		
Artichokes	4.55	92.00
Cabbage	1.38	27.90
Cantaloupes	2.13	43.10
Cucumbers	2.28	46.10
Eggplant	2.41	48.70
Escarole	3.10	62.70
Garlic	2.93	59.20
Green Peppers	3.60	72.80
Snap Beans	4.51	91.20
Spinach	3.95	79.90
Watermelon	0.846	17.10
Vegetables, Processing, Ton		
Beets	7.79	158.00
Cabbage	6.01	122.00
Lima Beans	67.00	1,355.00
Spinach	14.50	293.00
Livestock and Products		
Beeswax, Lb	0.291	5.90

See footnote(s) at end of table.

--continued

**Adjusted Base Price and United States Parity Prices  
Based on data for January 2007 (continued)**

- 1 Adjusted base price 1910-14 derived by dividing the average of 10 season average prices 1997-2006, including an allowance where appropriate for unredeemed loans and other supplemental payments resulting from price support operations, by 724 percent (120-month, Jan 1997-Dec 2006 average of the index of prices received by farmers adjusted to include an allowance for unredeemed loans and other supplemental payments) unless otherwise noted.
- 2 These parity prices are the legally applicable parity prices for the following calendar month.
- 3 Adjusted base price 1910-14 derived from 120-month, Jan 1997-Dec 2006 average including an allowance where appropriate for unredeemed loans and other supplemental payments resulting from price support operations.
- 4 Equivalent packinghouse-door returns for CA, MI, NY (apples only), and WA (apples, peaches, and pears). Prices "as sold" for other states.
- 5 Equivalent returns at packinghouse-door.
- 6 Equivalent returns at processing plant door.
- 7 Equivalent returns for bulk fruit at first delivery point.
- 8 Based on 'as sold' prices for fresh fruit in all states.
- 9 Average F.O.B. shipping point prices.
- 10 Relates to prices including average conditional payments per ton made under the sugar acts of 1937 and 1948. Crop deficiency and abandonment payments not included.
- 11 Prices on in-shell basis except almonds which are on shelled basis.
- 12 Includes some processing.
- 13 The 2006 marketing year average prices are not yet available for these commodities. Therefore, the adjusted base prices are brought forward from 2005, except citrus items (excluding limes) and cranberries.
- 14 Monthly and/or season average prices are no longer estimated for these items. Therefore, the adjusted base price is brought forward from July 1986.
- 15 Monthly and/or season average prices are no longer estimated for this item. The adjusted base price is brought forward from 1988.

**This page intentionally left blank**

**Prices Received by Farmers used to Calculate Parity Prices  
for Agricultural Commodities, United States, 1997 - 2006 <sup>1</sup>**

Commodity and Unit	1997	1998	1999	2000	2001	2002	2003
	(1910-14=100)						
Index of Prices Received by Farmers	678	645	607	611	650	620	677
	Calendar Year Average Prices <sup>3</sup>						
	<i>Dollars</i>	<i>Dollars</i>	<i>Dollars</i>	<i>Dollars</i>	<i>Dollars</i>	<i>Dollars</i>	<i>Dollars</i>
Basic Commodities							
Corn, Bu	2.60	2.20	1.89	1.86	1.89	2.13	2.27
Cotton, Upland, Lb	0.678	0.646	0.516	0.498	0.389	0.336	0.517
All Wheat, Bu	3.71	2.90	2.58	2.57	2.83	3.41	3.45
Rice, Cwt	10.01	9.40	7.60	5.69	5.12	4.07	5.78
Designated Nonbasic Comm							
All Milk, Cwt	13.30	15.50	14.40	12.30	15.00	12.10	12.50
Other Nonbasic Comm							
Field Crops and Misc							
All Barley, Bu	2.39	2.13	1.99	2.14	2.14	2.39	2.86
All Dry Beans, Cwt	20.90	20.40	17.90	15.10	17.50	22.60	17.70
Flaxseed, Bu	6.11	5.72	4.38	3.45	4.00	5.23	6.00
All Hay, Baled, Ton	102.80	89.70	78.70	80.40	95.20	93.70	88.80
Oats, Bu	1.72	1.34	1.15	1.17	1.42	1.88	1.71
Sorghum, Cwt	4.10	3.54	2.86	3.10	3.38	3.80	3.96
Soybeans, Bu	7.40	5.93	4.57	4.73	4.43	4.93	6.08
All Sunflower, Cwt	11.50	12.50	9.23	7.58	8.30	11.60	11.80
Fruit							
Apples, Fresh, Lb <sup>4</sup>	0.194	0.184	0.176	0.195	0.180	0.241	0.257
Livestock and Products							
Beef Cattle, Cwt	63.30	59.70	63.30	68.40	71.20	66.60	80.00
Calves, Cwt	82.30	82.30	89.60	105.80	106.70	97.60	103.60
Eggs, Doz	0.696	0.665	0.608	0.635	0.611	0.607	0.746
All Hogs, Cwt	52.00	32.50	32.30	42.90	44.10	33.30	37.50
Lambs, Cwt	90.50	72.50	74.50	80.30	67.60	73.30	94.80
Sheep, Cwt	38.10	31.90	30.70	33.80	35.80	28.90	35.90
Turkeys, Lb	0.401	0.379	0.407	0.414	0.391	0.365	0.360

See footnote(s) at end of table.

--continued

**Prices Received by Farmers used to Calculate Parity Prices  
for Agricultural Commodities, United States, 1997 - 2006 <sup>1</sup> (continued)**

Commodity and Unit	2004	2005	2006	1996-05 Average	1997-06 Average	
					As Computed	For Parity Purposes <sup>2</sup>
	(1910-14=100)					
Index of Prices Received by Farmers	757	736	738	669	672	724
	Calendar Year Average Prices <sup>3</sup>					
	<i>Dollars</i>	<i>Dollars</i>	<i>Dollars</i>	<i>Dollars</i>	<i>Dollars</i>	<i>Dollars</i>
Basic Commodities						
Corn, Bu	2.47	1.96	2.28	2.28	2.15	2.78
Cotton, Upland, Lb	0.543	0.427	0.477	0.529	0.503	0.707
All Wheat, Bu	3.57	3.36	4.04	3.31	3.24	3.76
Rice, Cwt	8.43	7.04	8.60	7.27	7.17	10.10
Designated Nonbasic Comm						
All Milk, Cwt	16.10	15.10	12.90	14.10	13.90	
Other Nonbasic Comm						
Field Crops and Misc						
All Barley, Bu	2.61	2.43	2.70	2.41	2.38	2.62
All Dry Beans, Cwt	21.20	24.10	19.50	20.10	19.70	
Flaxseed, Bu	7.18	8.87	5.51	5.69	5.64	6.09
All Hay, Baled, Ton	89.50	96.30	104.50	90.40	92.00	
Oats, Bu	1.52	1.64	1.82	1.56	1.54	1.56
Sorghum, Cwt	4.13	3.21	4.34	3.80	3.64	4.75
Soybeans, Bu	7.56	5.95	5.65	5.89	5.72	6.16
All Sunflower, Cwt	13.10	14.10	12.00	11.20	11.20	12.00
Fruit						
Apples, Fresh, Lb <sup>4</sup>	0.273	0.214	0.264	0.216	0.218	
Livestock and Products						
Beef Cattle, Cwt	85.50	89.60	87.35	70.70	73.50	
Calves, Cwt	121.60	135.40	132.20	98.20	105.70	
Eggs, Doz	0.698	0.545	0.589	0.657	0.640	
All Hogs, Cwt	51.20	49.60	46.20	42.90	42.20	
Lambs, Cwt	101.50	111.30	93.70	85.40	85.90	86.00
Sheep, Cwt	38.80	46.00	34.60	35.00	35.50	
Turkeys, Lb	0.419	0.448	0.481	0.402	0.407	

See footnote(s) at end of table.

--continued

**Prices Received by Farmers used to Calculate Parity Prices  
for Agricultural Commodities, United States, 1997-2006 <sup>1</sup>**

Commodity and Unit	1997	1998	1999	2000	2001	2002
	Marketing Year Average Prices <sup>5</sup>					
	Dollars	Dollars	Dollars	Dollars	Dollars	Dollars
<b>Basic Commodities</b>						
Cotton, Long Staple, Lb	1.014	0.924	0.852	1.003	0.856	0.860
Peanuts, Lb <sup>17</sup>	0.283	0.284	0.254	0.274	0.234	0.182
Tobacco, Lb						
Types 11-14	1.720	1.756	1.737	1.793	1.857	1.820
Type 21 <sup>21</sup>	2.125	1.936	1.819	1.637	1.759	1.884
Ky-Tn Fire-Cured,						
Types 22-23 <sup>21</sup>	2.256	2.225	2.298	2.163	2.149	2.378
Types 21-23	2.250	2.208	2.264	2.137	2.130	2.357
Burley, Type 31	1.885	1.903	1.899	1.963	1.973	1.974
Type 32	1.576	1.291	1.345	1.387	1.554	1.348
Types 35-36 <sup>2</sup>	2.017	2.017	2.039	1.965	1.829	2.101
Sun-Cured, Type 37 <sup>20 21</sup>	1.908	1.709	1.590	1.800	1.686	1.778
Types 35-37	2.016	1.951	2.033	1.964	1.827	2.098
PA Seedleaf, Type 41	1.600	1.300	1.300	( <sup>19</sup> )	1.650	1.450
Types 51-52	7.273	5.499	4.737	4.916	5.589	5.372
<b>Designated Nonbasic Comm</b>						
Honey, Lb	0.752	0.660	0.600	0.600	0.710	1.327
Wool and Mohair <sup>8</sup>						
Wool, Lb	0.840	0.600	0.380	0.330	0.350	0.530
Mohair, Lb	2.25	2.49	3.46	4.04	2.13	1.58
<b>Other Nonbasic Comm</b>						
Field Crops and Misc						
Canola, Cwt	11.30	10.30	7.82	6.71	8.77	10.60
Cottonseed, Ton	121.00	129.00	89.00	105.00	90.50	101.00
Hops, Lb	1.60	1.69	1.69	1.87	1.85	1.91
Mustard Seed, Cwt	15.90	13.60	11.40	10.10	12.10	15.40
Peppermint Oil, Lb	12.90	11.90	10.70	10.80	10.90	11.90
Potatoes, Cwt	5.64	5.56	5.76	5.08	6.99	6.67
Rapeseed, Cwt	13.20	10.30	8.68	9.74	10.80	9.73
Rye, Bu	3.75	2.49	2.27	2.60	2.86	3.32
Safflower, Cwt	15.40	14.20	13.70	10.60	10.90	12.20
Spearmint Oil, Lb	11.90	11.00	9.75	9.06	9.09	9.11
Sweet Potatoes, Cwt	15.80	15.30	17.60	15.30	15.30	16.80

See footnote(s) at end of table.

--continued



**Prices Received by Farmers used to Calculate Parity Prices  
for Agricultural Commodities, United States, 1997-2006<sup>1</sup> (continued)**

Commodity and Unit	2003	2004	2005	2006	1996-05 Average	1997-06 Average
	Marketing Year Average Prices <sup>5</sup>					
	<i>Dollars</i>	<i>Dollars</i>	<i>Dollars</i>	<i>Dollars</i>	<i>Dollars</i>	<i>Dollars</i>
<b>Basic Commodities</b>						
Cotton, Long Staple, Lb	1.210	0.993	1.244	1.030	0.985	1.026
Peanuts, Lb <sup>7</sup>	0.193	0.189	0.173	0.172	0.247	0.224
Tobacco, Lb						
Types 11-14	1.851	1.845	1.474	1.497	1.769	1.735
Type 21 <sup>21</sup>	1.641	1.798	1.974	( <sup>6</sup> )	1.803	( <sup>6</sup> )
Ky-Tn Fire-Cured, Types 22-23 <sup>21</sup>	2.475	2.540	2.377	( <sup>6</sup> )	2.290	( <sup>6</sup> )
Types 21-23	2.455	2.513	2.369	2.392	2.068	2.308
Burley, Type 31	1.977	1.994	1.564	1.638	1.905	1.877
Type 32	1.463	1.308	1.350	1.550	1.448	1.417
Types 35-36 <sup>21</sup>	2.157	2.194	2.137	( <sup>6</sup> )	2.003	( <sup>6</sup> )
Sun-Cured, Type 37 <sup>20 21</sup>	1.707	1.476	( <sup>6</sup> )	( <sup>6</sup> )	( <sup>6</sup> )	( <sup>6</sup> )
Types 35-37	2.154	2.187	2.137	2.200	1.837	2.057
PA Seedleaf, Type 41	1.400	1.450	1.450	1.550	1.451	1.451
Types 51-52	3.584	5.309	5.645	6.750	5.245	5.420
<b>Designated Nonbasic Comm</b>						
Honey, Lb	1.387	1.069	0.904	( <sup>6</sup> )	0.890	( <sup>6</sup> )
<b>Wool and Mohair<sup>8</sup></b>						
Wool, Lb	0.730	0.800	0.710	0.680	0.597	0.595
Mohair, Lb	1.66	1.96	2.78	3.67	2.43	2.60
<b>Other Nonbasic Comm</b>						
<b>Field Crops and Misc</b>						
Canola, Cwt	10.60	10.70	9.62	11.10	9.93	9.75
Cottonseed, Ton	117.00	107.00	96.00	110.00	108.00	107.00
Hops, Lb	1.86	1.88	1.94	2.06	1.79	1.81
Mustard Seed, Cwt	16.00	15.20	13.50	13.00	14.00	13.60
Peppermint Oil, Lb	12.00	11.90	12.20	12.80	11.90	11.80
Potatoes, Cwt	5.89	5.66	7.06	( <sup>6</sup> )	5.92	( <sup>6</sup> )
Rapeseed, Cwt	11.00	14.10	14.30	11.90	11.50	11.40
Rye, Bu	2.93	3.22	3.30	3.25	3.05	3.01
Safflower, Cwt	13.70	12.10	12.60	13.50	13.40	12.90
Spearmint Oil, Lb	9.29	9.62	10.70	11.30	10.20	10.10
Sweet Potatoes, Cwt	19.20	17.50	18.00	18.10	16.30	16.70

<sup>1</sup> Average used to compute "adjusted base prices". 2006 and 1997-2006 averages are preliminary. <sup>2</sup> Includes an allowance for price support operations as authorized by the Secretary of Agriculture, January 30, 1956. This entry is omitted for commodities not affected by the adjustment. <sup>3</sup> Simple average of monthly prices. Due to rounding differences, the 10-year average of these data might differ slightly from the 120-month averages shown in the 1996-2005 and 1997-2006 columns. <sup>4</sup> Equivalent packinghouse-door returns for CA, NY (applies only starting in 1985), OR (except peaches), and WA. Prices "as sold" for other states. <sup>5</sup> Unless otherwise noted these prices are the averages for the marketing season computed by weighting state prices by quantities sold. <sup>6</sup> Not available. <sup>7</sup> Price for year harvested, from Tobacco Division, AMS. <sup>8</sup> Average local market price; does not include incentive payment per pound, the 1996-2005 and 1997-2006 averages for parity purposes include this allowance. <sup>9</sup> Consistent with legislation quoted in this report, citrus prices shown for 2005 relate to the citrus crop designated as 2005-2006 in the production reports. <sup>10</sup> Equivalent returns at processing plant door. <sup>11</sup> Equivalent returns at packinghouse-door. <sup>12</sup> Equivalent returns for bulk fruit at first delivery point. <sup>13</sup> Based on "as sold" prices for fresh fruit in all states. <sup>14</sup> Average F.O.B. shipping point prices. <sup>15</sup> Includes strawberries for processing in states where the processing crop is not estimated separately. <sup>16</sup> Prices include average conditional payments per ton made under the sugar acts of 1937 and 1948. Crop deficiency and abandonment payments not included. <sup>17</sup> Prices on in-shell basis except almonds which are on shelled basis. <sup>18</sup> Includes some processing. <sup>19</sup> Marketing year average prices not published to avoid disclosure of individual firms. <sup>20</sup> None grown in 2005 or 2006. <sup>21</sup> Estimates discontinued in 2006.

**Prices Received by Farmers used to Calculate Parity Prices  
for Agricultural Commodities, United States, 1997-2006 <sup>1</sup>**

Commodity and Unit	1997	1998	1999	2000	2001	2002
	Marketing Year Average Prices <sup>5</sup>					
	Dollars	Dollars	Dollars	Dollars	Dollars	Dollars
Nonbasic Commodities						
Tobacco, Cigar Wrapper Type 61, Lb	( <sup>6</sup> )	( <sup>6</sup> )	( <sup>6</sup> )	25.30	23.00	22.50
Fruit, Citrus (Equip On-Tree) Box <sup>10</sup>						
Grapefruit	2.00	3.17	3.87	2.50	2.64	3.03
Lemons	6.57	8.85	9.49	4.96	11.40	6.53
Oranges	4.29	5.47	3.58	3.85	4.25	3.56
Tangerines	8.84	12.60	7.15	7.92	9.59	10.06
Temples	3.07	5.12	2.55	2.05	2.19	2.01
Fruit, Deciduous and Other						
Apples, Ton <sup>11</sup>						
Processing	130.00	95.10	128.00	101.00	108.00	130.00
Apricots, Ton						
Fresh <sup>14</sup>	558.00	579.00	638.00	573.00	650.00	678.00
Processing <sup>11</sup>						
Dried (CA)	1,810.00	1,860.00	( <sup>20</sup> )	1,860.00	1,960.00	1,590.00
Excl Dried	274.00	259.00	295.00	283.00	257.00	268.00
Avocados, Ton	1,560.00	2,160.00	1,950.00	1,400.00	1,670.00	1,920.00
Cherries						
Sweet, Ton	1,250.00	1,100.00	1,100.00	1,340.00	1,230.00	1,550.00
Tart, Lb	0.159	0.145	0.218	0.187	0.186	0.448
Cranberries, Bbl	63.70	36.60	17.20	18.10	23.80	32.20
Dates, (CA) Ton	1,100.00	1,220.00	1,240.00	1,230.00	1,360.00	1,550.00
Grapes, Ton						
Raisin Varieties						
Dried (CA)	908.00	1,250.00	1,220.00	569.00	570.00	393.00
Excl Raisin Var Dr	497.00	508.00	522.00	510.00	558.00	490.00
Kiwifruit, Ton <sup>12</sup>	518.00	744.00	634.00	455.00	667.00	783.00
Nectarines, Ton						
Fresh <sup>12</sup>	( <sup>20</sup> )	( <sup>20</sup> )	437.00	407.00	480.00	382.00
Processing <sup>11</sup>	( <sup>20</sup> )	( <sup>20</sup> )	27.90	24.00	26.00	( <sup>20</sup> )
Olives (CA), Ton						
Processing <sup>13</sup>						
Crushed for Oil	11.00	11.00	200.00	300.00	300.00	240.00
Excl Crushed	665.00	481.00	394.00	677.00	681.00	594.00
Canning <sup>13</sup>	760.00	590.00	513.00	769.00	770.00	662.00

See footnote(s) at end of table.

--continued

**Prices Received by Farmers used to Calculate Parity Prices  
for Agricultural Commodities, United States, 1997-2006<sup>1</sup> (continued)**

Commodity and Unit	2003	2004	2005	2006	1996-05 Average	1997-06 Average
	Marketing Year Average Prices <sup>5</sup>					
	<i>Dollars</i>	<i>Dollars</i>	<i>Dollars</i>	<i>Dollars</i>	<i>Dollars</i>	<i>Dollars</i>
<b>Nonbasic Commodities</b>						
Tobacco, Cigar Wrapper Type 61, Lb	26.00	25.30	21.00	( <sup>20</sup> )	23.60	( <sup>6</sup> )
<b>Fruit, Citrus (Equip On-Tree) Box<sup>10</sup></b>						
Grapefruit	3.66	12.65	9.53	( <sup>6</sup> )	4.50	( <sup>6</sup> )
Lemons	8.01	8.17	10.49	( <sup>6</sup> )	8.28	( <sup>6</sup> )
Oranges	3.74	4.41	5.96	( <sup>6</sup> )	4.33	( <sup>6</sup> )
Tangerines	8.36	13.01	10.64	( <sup>6</sup> )	9.77	( <sup>6</sup> )
Temples	1.07	2.48	3.16	( <sup>6</sup> )	2.69	( <sup>6</sup> )
<b>Fruit, Deciduous and Other</b>						
Apples, Ton <sup>11</sup> Processing	131.00	107.00	106.00	( <sup>6</sup> )	126.00	( <sup>6</sup> )
Apricots, Ton Fresh <sup>14</sup>	618.00	672.00	1,100.00	1,450.00	720.00	750.00
Processing <sup>11</sup> Dried (CA)	1,760.00	1,950.00	2,060.00	2,600.00	1,870.00	1,910.00
Excl Dried	262.00	279.00	266.00	313.00	273.00	276.00
Avocados, Ton	1,690.00	1,620.00	1,120.00	( <sup>6</sup> )	1,670.00	( <sup>6</sup> )
Cherries Sweet, Ton	1,400.00	1,570.00	1,990.00	1,700.00	1,400.00	1,423.00
Tart, Lb	0.354	0.328	0.238	0.213	0.242	0.248
Cranberries, Bbl	33.90	32.90	34.50	37.20	35.90	33.00
Dates, (CA) Ton	1,380.00	1,310.00	1,560.00	1,640.00	1,304.00	1,359.00
Grapes, Ton Raisin Varieties						
Dried (CA)	563.00	1,210.00	1,000.00	1,110.00	875.00	879.00
Excl Raisin Var Dr	491.00	522.00	506.00	574.00	509.00	518.00
Kiwifruit, Ton <sup>12</sup>	853.00	809.00	620.00	( <sup>6</sup> )	584.00	( <sup>6</sup> )
Nectarines, Ton Fresh <sup>12</sup>	436.00	342.00	507.00	521.00	437.00	440.00
Processing <sup>11</sup>	( <sup>20</sup> )	( <sup>20</sup> )	( <sup>20</sup> )	( <sup>20</sup> )	( <sup>20</sup> )	( <sup>20</sup> )
Olives (CA), Ton Processing <sup>13</sup>						
Crushed for Oil	238.00	361.00	526.00	405.00	220.00	259.00
Excl Crushed	420.00	589.00	568.00	858.00	569.00	593.00
Canning <sup>13</sup>	458.00	701.00	667.00	929.00	664.00	682.00

See footnote(s) at end of table.

--continued

**Prices Received by Farmers used to Calculate Parity Prices  
for Agricultural Commodities, United States, 1997-2006 <sup>1</sup>**

Commodity and Unit	1997	1998	1999	2000	2001	2002
	Marketing Year Average Prices <sup>5</sup>					
	<i>Dollars</i>	<i>Dollars</i>	<i>Dollars</i>	<i>Dollars</i>	<i>Dollars</i>	<i>Dollars</i>
Papayas (HI), Fresh, Lb	0.529	0.350	0.402	0.316	0.279	0.277
Peaches						
Fresh, Ton <sup>14</sup>	488.00	602.00	572.00	552.00	614.00	612.00
Processing <sup>11</sup>						
Dried (CA), Ton	612.00	544.50	620.00	728.00	514.00	456.00
Excluding Dried, Ton						
Clingstone CA, Ton	260.00	219.00	225.00	250.00	244.00	247.00
Freestone, Ton	206.00	196.00	196.00	206.00	207.00	199.00
Pears						
Fresh, Ton <sup>4</sup>	329.00	375.00	388.00	321.00	334.00	361.00
Processing, Ton <sup>11</sup>						
Dried (CA)	1,020.00	1,500.00	1,040.00	909.00	1,210.00	1,315.00
Excluding Dried	213.00	199.00	184.00	190.00	175.00	202.00
Plums (CA), Ton						
Fresh <sup>20</sup>	( <sup>20</sup> )	( <sup>20</sup> )	( <sup>20</sup> )	( <sup>20</sup> )	( <sup>20</sup> )	( <sup>20</sup> )
Processing <sup>20</sup>	( <sup>20</sup> )	( <sup>20</sup> )	( <sup>20</sup> )	( <sup>20</sup> )	( <sup>20</sup> )	( <sup>20</sup> )
Prunes, Dried, CA, Ton <sup>11</sup>	883.00	764.00	861.00	770.00	726.00	810.00
Prunes & Plums, Ex CA, Ton						
Fresh <sup>14</sup>	448.00	476.00	232.00	321.00	345.00	396.00
Processing <sup>11</sup>	134.00	162.00	182.00	178.00	185.00	204.00
Strawberries, Lb						
Fresh <sup>15 16</sup>	0.656	0.741	0.744	0.649	0.758	0.713
Processing	0.271	0.319	0.330	0.245	0.292	0.331
Sugar Crops, Ton <sup>17</sup>						
Sugarbeets	38.80	36.40	37.20	34.20	39.80	39.60
Sugarcane	28.10	27.30	25.60	26.10	29.00	28.40

See footnote(s) at end of table.

--continued

**Prices Received by Farmers used to Calculate Parity Prices  
for Agricultural Commodities, United States, 1997-2006<sup>1</sup> (continued)**

Commodity and Unit	2003	2004	2005	2006	1996-05 Average	1997-06 Average
	Marketing Year Average Prices <sup>5</sup>					
	<i>Dollars</i>	<i>Dollars</i>	<i>Dollars</i>	<i>Dollars</i>	<i>Dollars</i>	<i>Dollars</i>
Papayas (HI), Fresh, Lb	0.319	0.361	0.364	0.423	0.365	0.362
Peaches						
Fresh, Ton <sup>14</sup>	581.00	548.00	718.00	780.00	595.00	607.00
Processing <sup>11</sup>						
Dried (CA), Ton	446.00	382.00	504.00	802.00	553.00	561.00
Excluding Dried, Ton						
Clingstone CA, Ton	215.00	263.00	254.00	292.00	240.00	247.00
Freestone, Ton	204.00	182.00	187.00	241.00	197.00	202.00
Pears						
Fresh, Ton <sup>4</sup>	358.00	430.00	461.00	511.00	385.00	387.00
Processing, Ton <sup>11</sup>						
Dried (CA)	1,350.00	1,030.00	1,620.00	1,406.00	1,276.00	1,288.00
Excluding Dried	197.00	201.00	193.00	200.00	198.00	195.00
Plums (CA), Ton						
Fresh <sup>20</sup>	( <sup>20</sup> )	( <sup>20</sup> )	( <sup>20</sup> )	( <sup>20</sup> )	( <sup>20</sup> )	( <sup>20</sup> )
Processing <sup>20</sup>	( <sup>20</sup> )	( <sup>20</sup> )	( <sup>20</sup> )	( <sup>20</sup> )	( <sup>20</sup> )	( <sup>20</sup> )
Prunes, Dried, CA, Ton <sup>11</sup>	772.00	1,500.00	1,470.00	1,490.00	940.00	1,005.00
Prunes & Plums, Ex CA, Ton						
Fresh <sup>14</sup>	446.00	468.00	759.00	654.00	447.00	455.00
Processing <sup>11</sup>	254.00	228.00	257.00	267.00	205.00	205.00
Strawberries, Lb						
Fresh <sup>15 16</sup>	0.749	0.684	0.689	0.720	0.695	0.710
Processing	0.281	0.263	0.289	0.284	0.283	0.291
Sugar Crops, Ton <sup>17</sup>						
Sugarbeets	41.40	36.90	43.50	( <sup>6</sup> )	38.80	( <sup>6</sup> )
Sugarcane	29.50	( <sup>6</sup> )	( <sup>6</sup> )	( <sup>6</sup> )	( <sup>6</sup> )	( <sup>6</sup> )

See footnote(s) at end of table.

--continued

**Prices Received by Farmers used to Calculate Parity Prices  
for Agricultural Commodities, United States, 1997-2006 <sup>1</sup>**

Commodity and Unit	1997	1998	1999	2000	2001	2002
	Marketing Year Average Prices <sup>5</sup>					
	<i>Dollars</i>	<i>Dollars</i>	<i>Dollars</i>	<i>Dollars</i>	<i>Dollars</i>	<i>Dollars</i>
Tree Nuts <sup>18</sup>						
Almonds, Lb	1.56	1.41	0.86	0.97	0.91	1.11
Hazelnuts, Ton	899.00	964.00	890.00	891.00	701.00	1,000.00
Pecans, All, Lb	0.774	1.210	0.814	1.140	0.594	0.955
Pistachio, All, Lb	1.13	1.03	1.33	1.01	1.01	1.10
Walnuts, Ton	1,430.00	1,050.00	886.00	1,240.00	1,120.00	1,170.00
Vegetables, Fresh, Cwt <sup>15</sup>						
Asparagus	108.00	124.00	131.00	117.00	140.00	110.00
Broccoli	29.10	30.20	24.10	31.20	26.50	31.40
Carrots	12.90	12.20	16.80	13.10	17.10	19.10
Cauliflower	31.60	34.50	29.70	32.10	29.20	32.20
Celery <sup>19</sup>	14.70	11.70	12.00	18.50	14.40	12.80
Honeydew Melons	18.90	21.60	21.10	19.20	21.10	18.10
Lettuce	17.50	16.20	13.30	17.30	17.90	21.10
Onions <sup>19</sup>	12.60	13.00	9.74	11.20	10.70	12.10
Sweet Corn	17.70	17.20	16.90	18.50	19.50	19.20
Tomatoes	31.70	35.20	25.80	30.70	30.00	31.60
Vegetables, Proc., Ton <sup>11</sup>						
Asparagus	1,220.00	1,200.00	1,180.00	1,180.00	1,040.00	1,110.00
Green Peas	288.00	282.00	275.00	248.00	264.00	253.00
Snap Beans	176.00	172.00	173.00	171.00	161.00	151.00
Sweet Corn	74.90	73.30	71.10	73.40	73.00	68.00
Tomatoes	60.70	65.30	71.10	59.80	59.20	58.20

See footnote(s) at end of table.

--continued

**Prices Received by Farmers used to Calculate Parity Prices  
for Agricultural Commodities, United States, 1997-2006<sup>1</sup> (continued)**

Commodity and Unit	2003	2004	2005	2006	1996-05 Average	1997-06 Average
	Marketing Year Average Prices <sup>5</sup>					
	<i>Dollars</i>	<i>Dollars</i>	<i>Dollars</i>	<i>Dollars</i>	<i>Dollars</i>	<i>Dollars</i>
Tree Nuts <sup>18</sup>						
Almonds, Lb	1.57	2.21	2.81	2.05	1.55	1.55
Hazelnuts, Ton	1,030.00	1,440.00	2,240.00	1,100.00	1,092.00	1,116.00
Pecans, All, Lb	0.984	1.760	1.450	1.590	1.036	1.131
Pistachio, All, Lb	1.22	1.34	2.05	1.92	1.20	1.30
Walnuts, Ton	1,160.00	1,390.00	1,570.00	( <sup>6</sup> )	1,240.00	( <sup>6</sup> )
Vegetables, Fresh, Cwt <sup>15</sup>						
Asparagus	105.00	81.30	87.40	91.30	109.70	109.50
Broccoli <sup>19</sup>	32.70	33.20	( <sup>20</sup> )	33.70	( <sup>6</sup> )	30.10
Carrots	19.00	20.20	20.90	20.60	16.50	17.20
Cauliflower	35.10	30.80	( <sup>20</sup> )	35.00	( <sup>6</sup> )	32.10
Celery <sup>19</sup>	13.40	14.80	13.90	18.50	13.70	14.50
Honeydew Melons	18.80	17.60	18.80	18.00	19.20	19.30
Lettuce	18.10	16.90	15.50	16.60	16.90	17.00
Onions <sup>19</sup>	13.70	9.06	12.40	13.10	11.50	11.80
Sweet Corn	19.30	19.30	22.10	23.20	18.70	19.30
Tomatoes	37.40	37.60	41.80	43.30	33.00	34.50
Vegetables, Proc., Ton <sup>11</sup>						
Asparagus	1,170.00	1,170.00	1,050.00	1,150.00	1,153.00	1,147.00
Green Peas	250.00	250.00	266.00	243.00	266.00	262.00
Snap Beans	157.00	158.00	140.00	157.00	164.00	162.00
Sweet Corn	70.40	72.10	68.40	66.80	72.30	71.10
Tomatoes	58.70	58.60	60.90	63.80	61.50	61.60

<sup>1</sup> Average used to compute "adjusted base prices". 2006 and 1997-2006 averages are preliminary. <sup>2</sup> Includes an allowance for price support operations as authorized by the Secretary of Agriculture, January 30, 1956. This entry is omitted for commodities not affected by the adjustment. <sup>3</sup> Simple average of monthly prices. Due to rounding differences, the 10-year average of these data might differ slightly from the 120-month averages shown in the 1996-2005 and 1997-2006 columns. <sup>4</sup> Equivalent packinghouse-door returns for CA, NY (applies only starting in 1985), OR (except peaches), and WA. Prices "as sold" for other states. <sup>5</sup> Unless otherwise noted these prices are the averages for the marketing season computed by weighting state prices by quantities sold. <sup>6</sup> Not available. <sup>7</sup> Price for year harvested, from Tobacco Division, AMS. <sup>8</sup> For 1984 through 1986 the national averages are the support prices. <sup>9</sup> Average local market price; does not include incentive payment per pound, the 1996-2005 and 1997-2006 averages for parity purposes include this allowance. <sup>10</sup> Consistent with legislation quoted in this report, citrus prices shown for 2005 relate to the citrus crop designated as 2005-2006 in the production reports. <sup>11</sup> Equivalent returns at processing plant door. <sup>12</sup> Equivalent returns at packinghouse-door. <sup>13</sup> Equivalent returns for bulk fruit at first delivery point. <sup>14</sup> Based on "as sold" prices for fresh fruit in all states. <sup>15</sup> Average F.O.B. shipping point prices. <sup>16</sup> Includes strawberries for processing in states where the processing crop is not estimated separately. <sup>17</sup> Prices include average conditional payments per ton made under the sugar acts of 1937 and 1948. Crop deficiency and abandonment payments not included. <sup>18</sup> Prices on in-shell basis except almonds which are on shelled basis. <sup>19</sup> Includes some processing. <sup>20</sup> Marketing year average prices not published to avoid disclosure of individual firms.

**Indexes of Prices Received by Farmers, by Month and Annual Average,  
United States, 2003-2007**

Year	Jan	Feb	Mar	Apr	May	Jun	Jul	Aug	Sep	Oct	Nov	Dec	Avg <sup>1</sup>
All Farm Products 1910-14 = 100													
2003	631	627	629	638	667	680	666	693	704	718	745	722	677
2004	708	733	771	791	816	815	783	766	739	724	732	709	757
2005	708	722	754	769	754	743	736	736	737	709	722	745	736
2006	717	721	721	708	706	747	751	761	759	736	761	768	738
2007	788												788
1990-92 = 100													
2003	99	99	99	100	105	107	105	109	111	113	117	114	107
2004	111	115	121	125	128	128	123	121	116	114	115	112	119
2005	112	114	119	121	119	117	116	116	116	112	114	117	116
2006	113	113	113	111	111	118	118	120	120	116	120	121	116
2007	124												124
All Crops 1910-14 = 100													
2003	506	509	523	540	569	576	537	558	549	549	580	567	547
2004	557	590	597	605	606	607	584	589	565	549	551	516	576
2005	505	527	570	591	569	573	564	563	545	514	528	568	551
2006	535	559	581	593	590	623	625	619	601	570	606	632	595
2007	650												650
1990-92 = 100													
2003	103	103	106	109	115	117	109	113	111	111	118	115	111
2004	113	120	121	123	123	123	118	120	114	111	112	105	117
2005	102	107	116	120	115	116	114	114	111	104	107	115	112
2006	108	113	118	120	120	126	127	125	122	115	123	128	120
2007	132												132

<sup>1</sup> Simple average required for parity regulations. Weighted 1990-92 average equals 100. Average is year-to-date for current year.



**Indexes of Prices Received by Farmers, by Month and Annual Average,  
United States, 2003-2007**

Year	Jan	Feb	Mar	Apr	May	Jun	Jul	Aug	Sep	Oct	Nov	Dec	Avg <sup>1</sup>
Food Grains 1910-14 = 100													
2003	372	336	326	316	326	323	311	349	353	359	379	393	345
2004	393	395	402	408	407	384	366	357	364	363	362	359	380
2005	361	347	352	347	347	344	341	342	352	357	361	372	352
2006	372	384	395	397	423	426	414	416	431	481	480	478	425
2007	473												473
1990-92 = 100													
2003	117	106	102	99	102	102	98	110	111	113	119	124	109
2004	124	124	127	129	128	121	115	112	114	114	114	113	120
2005	114	109	111	109	109	108	107	108	111	112	114	117	111
2006	117	121	124	125	133	134	130	131	136	151	151	150	134
2007	149												149
Feed Grains and Hay 1910-14 = 100													
2003	375	380	380	382	391	392	365	364	360	342	353	368	371
2004	376	404	421	445	454	438	405	389	362	344	331	333	392
2005	340	326	339	342	353	366	376	357	335	306	297	323	338
2006	329	343	350	363	384	390	394	383	380	414	458	480	389
2007	509												509
1990-92 = 100													
2003	105	106	106	107	109	110	102	102	101	96	99	103	104
2004	105	113	118	124	127	123	113	109	101	96	93	93	110
2005	95	91	95	96	99	102	105	100	94	85	83	90	95
2006	92	96	98	101	107	109	110	107	106	116	128	134	109
2007	142												142

<sup>1</sup> Simple average required for parity regulations. Weighted 1990-92 average equals 100. Average is year-to-date for current year.

**Indexes of Prices Received by Farmers, by Month and Annual Average,  
United States, 2003-2007**

Year	Jan	Feb	Mar	Apr	May	Jun	Jul	Aug	Sep	Oct	Nov	Dec	Avg <sup>1</sup>
Cotton 1910-14 = 100													
2003	385	393	411	384	388	385	391	391	471	573	533	535	437
2004	526	523	521	510	505	506	455	411	428	428	365	332	459
2005	325	324	341	350	335	354	347	356	374	410	410	406	361
2006	411	414	426	411	396	403	398	387	400	390	402	417	405
2007	418												418
1990-92 = 100													
2003	75	77	80	75	76	75	76	76	92	112	104	104	85
2004	103	102	102	100	99	99	89	80	83	83	71	65	90
2005	64	63	67	68	65	69	68	69	73	80	80	79	70
2006	80	81	83	80	77	79	78	76	78	76	79	81	79
2007	82												82
Tobacco <sup>2</sup> 1910-14 = 100													
2003	1817	1800	1570	1065			1557	1570	1635	1643	1726	1735	1612
2004	1822	1891	1830	574					1648	1661	1726	1743	1421
2005	1857	1917	1265	1265	1265	1265	1363	1363	1363	1363	1363	1363	1418
2006	1363	1363	1363	1363	1363	1363	1392	1392	1392	1392	1392	1392	1378
2007	1392												1392
1990-92 = 100													
2003	120	119	104	70			103	104	108	109	114	115	107
2004	120	125	121	38					109	110	114	115	94
2005	123	127	84	84	84	84	90	90	90	90	90	90	94
2006	90	90	90	90	90	90	92	92	92	92	92	92	91
2007	92												92

<sup>1</sup> Simple average required for parity regulations. Weighted 1990-92 average equals 100. Average is year-to-date for current year.

<sup>2</sup> Monthly prices discontinued July 2005.

**Indexes of Prices Received by Farmers, by Month and Annual Average,  
United States, 2003-2007**

Year	Jan	Feb	Mar	Apr	May	Jun	Jul	Aug	Sep	Oct	Nov	Dec	Avg <sup>1</sup>
Oil-Bearing Crops 1910-14 = 100													
2003	540	548	550	571	594	597	570	552	529	607	664	692	585
2004	714	805	901	935	930	882	824	661	518	529	528	544	731
2005	548	539	587	594	610	648	653	599	509	531	539	561	577
2006	573	555	546	541	556	552	550	511	475	521	584	603	547
2007	628												628
1990-92 = 100													
2003	99	100	101	104	109	109	104	101	97	111	121	127	107
2004	131	147	165	171	170	161	151	121	95	97	97	100	134
2005	100	99	107	108	111	119	119	109	93	97	98	102	105
2006	105	102	100	99	102	101	100	93	87	95	107	110	100
2007	115												115
Fruit and Nuts 1910-14 = 100													
2003	548	551	605	664	744	809	843	871	880	880	832	680	742
2004	633	705	739	677	841	935	939	1008	1085	1166	1067	842	886
2005	807	868	810	718	822	944	949	1019	1059	1027	1002	862	907
2006	929	995	950	912	970	1205	1137	1149	1205	1254	1164	1125	1083
2007	1093												1093
1990-92 = 100													
2003	79	79	87	95	107	116	121	125	126	126	119	97	106
2004	91	101	106	97	120	134	134	144	155	167	153	121	127
2005	116	124	116	103	118	135	136	146	152	147	144	123	130
2006	133	142	136	131	139	173	163	165	173	180	167	161	155
2007	157												157

<sup>1</sup> Simple average required for parity regulations. Weighted 1990-92 average equals 100. Average is year-to-date for current year.

**Indexes of Prices Received by Farmers, by Month and Annual Average,  
United States, 2003-2007**

Year	Jan	Feb	Mar	Apr	May	Jun	Jul	Aug	Sep	Oct	Nov	Dec	Avg <sup>1</sup>
Commercial Vegetables 1910-14 = 100													
2003	752	755	824	865	924	1015	797	920	964	959	1201	1059	920
2004	853	958	771	880	746	738	703	882	898	1065	1087	799	865
2005	633	813	1119	1231	892	840	742	768	856	862	947	1406	926
2006	882	832	1000	996	825	880	933	981	1074	859	796	1002	922
2007	1062												1062
1990-92 = 100													
2003	112	113	123	129	138	152	119	138	144	143	180	159	138
2004	128	143	115	132	112	110	105	132	134	159	163	120	129
2005	95	122	167	184	133	126	111	115	128	129	142	210	139
2006	132	125	150	149	123	132	140	147	161	128	119	150	138
2007	159												159
Potatoes and Dry Beans 1910-14 = 100													
2003	533	554	567	592	590	559	570	483	458	443	479	493	527
2004	488	504	530	569	558	558	552	495	485	444	477	506	514
2005	534	535	578	566	576	572	622	574	491	472	532	574	552
2006	596	623	684	671	679	717	902	672	542	520	579	596	648
2007	606												606
1990-92 = 100													
2003	105	110	112	117	117	110	113	96	90	87	95	97	104
2004	96	100	105	112	110	110	109	98	96	88	94	100	102
2005	106	106	114	112	114	113	123	113	97	93	105	113	109
2006	118	123	135	133	134	142	178	133	107	103	114	118	128
2007	120												120

<sup>1</sup> Simple average required for parity regulations. Weighted 1990-92 average equals 100. Average is year-to-date for current year.

**Indexes of Prices Received by Farmers, by Month and Annual Average,  
United States, 2003-2007**

Year	Jan	Feb	Mar	Apr	May	Jun	Jul	Aug	Sep	Oct	Nov	Dec	Avg <sup>1</sup>
Other Crops 1910-14 = 100													
2003	564	564	564	564	564	564	564	564	564	564	564	564	564
2004	569	569	569	569	569	569	569	569	569	569	569	569	569
2005	578	578	578	578	578	578	578	578	578	578	578	578	578
2006	586	586	586	586	586	586	586	586	586	586	586	586	586
2007	586												586
1990-92 = 100													
2003	114	114	114	114	114	114	114	114	114	114	114	114	114
2004	115	115	115	115	115	115	115	115	115	115	115	115	115
2005	117	117	117	117	117	117	117	117	117	117	117	117	117
2006	119	119	119	119	119	119	119	119	119	119	119	119	119
2007	119												119
Food Commodities 1990-92 = 100													
2003	97	96	96	98	104	106	104	110	112	116	122	116	106
2004	112	116	123	126	131	131	126	124	119	118	122	117	122
2005	116	118	123	125	122	119	118	119	120	117	121	125	120
2006	118	116	115	112	111	119	120	123	123	117	121	122	118
2007	123												123

<sup>1</sup> Simple average required for parity regulations. Weighted 1990-92 average equals 100. Average is year-to-date for current year.

**Indexes of Prices Received by Farmers, by Month and Annual Average,  
United States, 2003-2007**

Year	Jan	Feb	Mar	Apr	May	Jun	Jul	Aug	Sep	Oct	Nov	Dec	Avg <sup>1</sup>
Livestock and Products 1910-14 = 100													
2003	735	728	715	717	740	758	775	809	847	887	895	859	789
2004	842	859	934	967	1021	1020	981	933	908	902	916	918	933
2005	932	915	930	937	931	901	901	901	936	933	927	918	922
2006	902	871	844	803	799	845	848	881	897	894	892	867	862
2007	887												887
1990-92 = 100													
2003	96	95	93	93	96	99	101	105	110	116	117	112	103
2004	110	112	122	126	133	133	128	122	118	118	119	120	122
2005	121	119	121	122	121	117	117	117	122	122	121	120	120
2006	118	114	110	105	104	110	111	115	117	117	116	113	113
2007	116												116
Meat Animals 1910-14 = 100													
2003	946	963	946	972	1014	1027	1025	1054	1100	1169	1179	1123	1043
2004	1058	1060	1134	1151	1232	1248	1234	1226	1205	1202	1201	1193	1179
2005	1226	1214	1241	1273	1273	1205	1172	1177	1206	1230	1222	1230	1222
2006	1237	1219	1170	1132	1134	1181	1185	1214	1229	1199	1145	1113	1180
2007	1122												1122
1990-92 = 100													
2003	93	95	93	96	100	101	101	104	108	115	116	110	103
2004	104	104	112	113	121	123	121	121	119	118	118	117	116
2005	121	119	122	125	125	119	115	116	119	121	120	121	120
2006	122	120	115	111	112	116	117	119	121	118	113	109	116
2007	110												110

<sup>1</sup> Simple average required for parity regulations. Weighted 1990-92 average equals 100. Average is year-to-date for current year.

**Indexes of Prices Received by Farmers, by Month and Annual Average,  
United States, 2003-2007**

Year	Jan	Feb	Mar	Apr	May	Jun	Jul	Aug	Sep	Oct	Nov	Dec	Avg <sup>1</sup>
Dairy Products 1910-14 = 100													
2003	725	701	676	676	676	676	744	817	891	922	885	848	770
2004	811	836	953	1112	1186	1118	989	916	953	959	996	1008	986
2005	989	946	953	934	903	885	910	910	940	959	928	910	931
2006	891	830	774	744	737	731	725	737	793	830	854	866	793
2007	885												885
1990-92 = 100													
2003	90	87	84	84	84	84	93	102	111	115	110	106	96
2004	101	104	119	139	148	139	123	114	119	119	124	126	123
2005	123	118	119	116	113	110	113	113	117	119	116	113	116
2006	111	103	96	93	92	91	90	92	99	103	106	108	99
2007	110												110
Poultry and Eggs 1910-14 = 100													
2003	303	291	291	279	289	307	307	316	322	330	350	339	310
2004	373	390	414	392	397	411	406	367	330	322	331	332	372
2005	343	338	342	341	344	345	353	350	377	351	358	345	349
2006	319	305	317	287	284	327	325	349	351	349	375	351	328
2007	377												377
1990-92 = 100													
2003	108	104	104	99	103	109	109	112	115	118	124	121	111
2004	133	139	147	139	141	146	145	130	117	115	118	118	132
2005	122	120	122	121	122	123	126	125	134	125	127	123	124
2006	114	109	113	102	101	116	116	124	125	124	133	125	117
2007	134												134

<sup>1</sup> Simple average required for parity regulations. Weighted 1990-92 average equals 100. Average is year-to-date for current year.

## Parity Price Equivalent for Manufacturing Grade Milk

By direction of the Secretary of Agriculture, the parity price equivalent for manufacturing grade milk is determined as follows: (1) Based on data for the 10 calendar years immediately preceding, compute the ratio of (a) the average price received by farmers, f.o.b. plant, for all manufacturing grade milk to (b) the average price by farmers, f.o.b. plant, for all milk sold to plants and dealers. (2) The parity price for all milk sold to plants is multiplied by the resulting ratio of (a) to (b) to determine the parity price equivalent for manufacturing milk. The parity price equivalent for manufacturing milk is not in itself a parity price but rather is an administrative determination based on the above price relationship.

The ratio is computed in January of each year and is used throughout the calendar year. The ratio to be used during 2007 is 92.1, up 0.6 points from 2006. The parity price for all milk sold to plants is \$38.80 per cwt. This price multiplied by 92.1 percent, results in \$35.70 per cwt as the parity price equivalent for manufacturing milk of average milkfat content. In 2006, the simple average of monthly fat tests for manufacturing grade milk was 3.93 percent. The fat test ranged from a low of 3.71 in July to a high of 4.12 percent in December.

### Average price January 1997 - December 2006

a. Manufacturing grade milk .....	12.80
b. All milk sold at wholesale to plants and dealers .....	13.90
c. Ratio a/b .....	92.1

### Parity price equivalent for manufacturing grade milk - United States

a. January 2006 .....	34.70
b. December 2006 .....	35.40
c. January 2007 .....	35.70

**Manufacturing Grade Milk: Average Price Per Cwt Received <sup>1</sup>,  
by Month, United States, January 1997-December 2006**

Year	Jan	Feb	Mar	Apr	May	Jun	Jul	Aug	Sep	Oct	Nov	Dec
	<i>Dollars</i>	<i>Dollars</i>	<i>Dollars</i>	<i>Dollars</i>	<i>Dollars</i>	<i>Dollars</i>	<i>Dollars</i>	<i>Dollars</i>	<i>Dollars</i>	<i>Dollars</i>	<i>Dollars</i>	<i>Dollars</i>
1997	12.10	12.50	12.40	11.60	10.90	10.80	10.80	11.90	12.70	13.20	13.60	13.60
1998	13.50	13.50	12.90	12.10	11.40	13.10	14.10	14.70	15.40	16.80	17.40	17.40
1999	15.40	12.40	12.50	12.00	11.60	12.00	13.40	15.40	15.10	12.70	11.10	10.80
2000	10.70	10.30	10.10	10.20	10.10	10.40	10.80	10.70	11.40	10.60	10.40	10.80
2001	10.70	11.10	12.20	12.80	14.20	14.90	14.90	15.20	16.00	14.30	12.40	12.50
2002	12.50	11.90	11.40	11.30	11.10	10.30	9.60	9.90	10.40	11.30	10.70	10.70
2003	10.70	10.40	9.90	10.00	10.20	10.20	11.80	13.20	14.10	14.60	13.70	12.70
2004	12.40	12.80	15.50	19.00	18.80	16.80	14.20	14.20	14.70	14.90	15.90	16.10
2005	15.30	14.90	14.70	14.70	14.00	14.00	14.10	13.80	14.70	14.80	14.30	14.40
2006	14.00	12.60	11.50	11.30	11.30	11.30	10.80	11.10	12.30	12.70	13.60	13.80

<sup>1</sup> Before hauling costs are deducted and including premiums paid to farmers.



## Reliability of Prices Received Estimates

**Definition:** Prices received represent sales from producers to first buyers. They include all grades and qualities. The average commodity price from the survey multiplied by the total quantity marketed theoretically should give the total cash receipts for the commodity.

**Survey Procedures:** Primary sales data used to determine grain prices were obtained from probability samples of about 2000 mills and elevators. These procedures ensure that virtually all grain moving into commercial channels has a chance of being included in the survey. Generally, States surveyed account for 90 percent or more of total U.S. production. Livestock prices are obtained from packers, stockyards, auctions, dealers, and market check data from AMS-USDA, private marketing organizations, and state commodity groups and agencies. Inter-farm sales of grain and livestock are not included since they represent very small percentages of the total marketings. Grain marketed for seed is also excluded. Fruit and vegetable prices are obtained from sample surveys and market check data from AMS-USDA, private marketing organizations, state agencies, and universities.

**Summary and Estimation Procedures:** Survey quantities sold are expanded by strata to state levels and used to weight average strata prices to a state average. State prices are then weighted to a U.S. price based on expanded marketings. Recommendations are prepared by the State Field Offices and reviewed by the Agricultural Statistics Board in Washington, D.C. State recommendations are reviewed for reasonableness with survey data, other States, and recent historic estimates.

**Revisions:** For most items, the current month's preliminary price represents a 3-5 day period around the 15<sup>th</sup> of the month. Previous month's prices represent actual dollars received for quantities sold during the entire month. Revisions are published in monthly issues of *Agricultural Prices*.

**Reliability:** U.S. price estimates based on probability surveys generally have a sampling error of less than one percent for the major commodities such as corn, wheat, soybeans, cotton, and rice. Current methods of summarization for non-probability commodities are not designed directly to calculate sampling errors. However, analytical measures approximate the U.S. relative sampling errors at around five percent. Any nonsampling errors are attributed to such things as the inability to obtain correct information, differences in interpreting questions or definitions, mistakes in coding or processing the data, etc. Efforts are made at each step in the survey process to minimize these nonsampling errors.

## Prices Paid by Farmers

The January Index of Prices Paid for Commodities and Services, Interest, Taxes, and Farm Wage Rates (PPITW) at 152 (1990-92=100), increased 1.3 percent from December 2006 and 2.7 percent from January 2006.

**PRODUCTION INDEX:** The January index, at 149, increased 1.4 percent from last month and increased 2.8 percent from last year. Higher prices in January for complete feeds, other services, feed supplements, and feed grains more than offset lower prices for diesel fuel, feeder cattle, cash rent, and LP gas.

**Feed:** The January index, at 154, increased 5.5 percent from December and 26 percent from last January. Since December, higher prices for complete feeds, feed supplements, feed grains, and hay & forages more than offset lower prices for feed concentrates.

**Livestock & Poultry:** The January index, at 122, decreased 0.8 percent from last month and 14 percent from last year. Since December, lower prices for feeder cattle more than offset higher prices for feeder pigs. The January feeder cattle price, at \$99.30 per cwt, is down \$2.20 per cwt from the December price. January feeder pigs averaged \$144.00 per cwt, up \$12.00 per cwt from December.

**Fertilizer:** The January index, at 173, is up 2.4 percent from December but 8.5 percent below January a year ago. Since December, prices are higher for nitrogen fertilizers, mixed fertilizers, and potash & phosphate materials.

**Agricultural Chemicals:** The January index, at 128, decreased 0.8 percent from December but increased 0.8 percent from last January. Since December, prices are lower for herbicides, insecticides, and fungicides.

**Fuels:** The January index, at 218, is down 3.5 percent from a month earlier and 1.4 percent below January 2006. Compared with last month, prices are lower for diesel fuel, LP gas, and gasoline.

**Farm Machinery:** The January index, at 183, is unchanged from December but 2.8 percent above last January.

**CONSUMER PRICE INDEX:** The December 2006 Consumer Price Index for all urban consumers (CPI-U) increased 0.1 percent before seasonal adjustment to a level of 201.8 (1982-84=100). This compares with the November index of 201.5. For the 12-month period ending in December, the overall index has increased 2.5 percent.

**Indexes of Prices Paid by Farmers and Related Parity Ratios  
United States, January 2007 With Comparisons**

Indexes and Ratios	1910-14 = 100			1990-92 = 100		
	2006		2007	2006		2007
	Jan	Dec	Jan	Jan	Dec	Jan
Prices Paid by Farmers for Commodities & Services, Interest, Taxes, & Wage Rates (PPITW)	1,967	1,995	2,022	148	150	152
Production	1,404	1,431	1,448	145	147	149
Feed	594	715	754	122	146	154
Livestock and Poultry	1,815	1,576	1,564	142	123	122
Seeds	1,694	1,838	1,838	171	186	186
Fertilizer	691	621	635	189	169	173
Agricultural Chemicals	783	798	793	127	129	128
Fuels	1,704	1,742	1,685	221	226	218
Farm Supplies & Repairs	1,014	1,037	1,037	143	146	146
Autos & Trucks	3,036	2,967	2,975	114	112	112
Farm Machinery	4,458	4,580	4,579	178	183	183
Building Material	2,013	2,072	2,070	148	153	152
Farm Services & Rent	1,560	1,569	1,580			
Farm Services				136	138	140
Rent				121	121	119
Interest <sup>1</sup>	3,452	3,452	3,778	138	138	151
Taxes <sup>2</sup>	4,343	4,343	4,570	162	162	171
Wage Rates	6,526	6,429	6,429	174	172	172
Production, Interest, Taxes, & Wage Rates (PITW)	1,986	2,013	2,045	148	150	152
Family Living-CPI <sup>3</sup>	1,883	1,917	1,917	147	150	150
Ratio (Received\Paid) Parity Ratio <sup>4</sup>	36	38	39	76	81	82
Parity Ratio Adjusted <sup>5</sup>	39	41	41			
PPITW Adjusted for Productivity <sup>6</sup>	1334	1337	1334			
Crop Sector (PPITW)				152	153	154
Livestock Sector (PPITW)				143	147	149
Farm Sector (Production)				137	145	149
Non-Farm Sector (Production)				149	149	150

<sup>1</sup> Interest per acre on farm real estate debt and interest rate on farm non-real estate debt.

<sup>2</sup> Farm real estate taxes payable per acre.

<sup>3</sup> Bureau of Labor Statistics, Consumer Price Index for all urban consumers (CPI-U), for the previous month converted by the USDA.

<sup>4</sup> Ratio of index of prices received to PPITW (1910-14=100).

<sup>5</sup> Based on estimated cash receipts, from marketings and government payments, the preliminary adjustment factor is 1.079 for 2007 and the revised factor is 1.096 for 2006.

<sup>6</sup> PPITW is adjusted based on productivity trend for the prior 15 years.

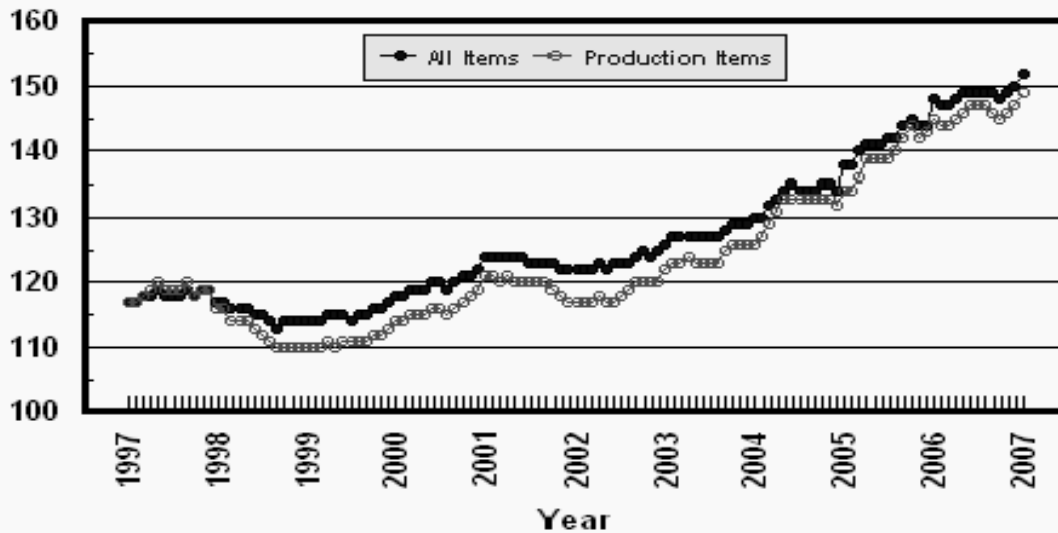
**Prices Paid Indexes and Annual Weights for Input Components and Sub-Components United States, January 2007 With Comparisons**

Index	Relative Weights 5-Year Moving Average <sup>1</sup>		Input Indexes		
	2006	2007	2006		2007
			Jan	Dec	Jan
	<i>Percent</i>	<i>Percent</i>	<i>(1990-92=100)</i>	<i>(1990-92=100)</i>	<i>(1990-92=100)</i>
Production Items	66.8	67.4	145	147	149
Feed	10.9	10.9	122	146	154
Feed Grains	1.6	1.6	87	133	142
Complete Feeds	5.3	5.3	122	142	152
Hay/Forages	1.4	1.4	123	144	148
Concentrates	1.7	1.7	132	146	145
Supplements	0.9	0.9	154	199	219
Livestock & Poultry	7.6	7.7	142	123	122
Feeder Cattle	6.0	6.0	139	120	117
Feeder Pigs	0.6	0.6	174	144	157
Milk Cow Replacements	0.6	0.6	163	146	147
Poultry	0.5	0.5	109	109	109
Seeds	3.6	3.7	171	186	186
Field Crops	3.3	3.4	177	191	191
Grasses/Legumes	0.3	0.4	118	133	133
Fertilizer	4.3	4.4	189	169	173
Mixed Fertilizer	1.9	1.9	149	149	151
Nitrogen	1.8	1.8	236	192	198
Potash & Phosphate	0.6	0.6	168	164	167
Agricultural Chemicals	3.5	3.4	127	129	128
Herbicides	2.2	2.2	121	125	124
Insecticides	0.8	0.8	142	143	142
Fungicides/Other	0.5	0.5	124	126	125
Fuels	2.9	3.1	221	226	218
Diesel	1.7	1.9	236	248	238
Gasoline	0.8	0.7	192	189	185
LP Gas	0.4	0.4	217	207	187
Farm Supplies & Repairs	5.0	4.8	143	146	146
Supplies	1.7	1.6	134	139	139
Repairs	3.3	3.2	147	150	150
Autos & Trucks	1.8	1.8	114	112	112
Autos	0.2	0.2	110	110	110
Trucks	1.6	1.6	115	112	112
Farm Machinery	4.4	4.5	178	183	183
Tractors	1.0	1.0	158	163	163
Self-Propelled	1.7	1.8	185	189	189
Other Machinery	1.7	1.7	182	187	187
Building Materials	4.0	4.3	148	153	152
Farm Services	12.2	12.2	136	138	140
Custom Rates	1.3	1.3	123	123	123
Other Services	10.9	10.9	138	139	142
Rent	6.7	6.7	121	121	119
Cash	3.6	3.6	144	144	140
Share	3.1	3.1	95	95	95
Interest	4.2	4.0	138	138	151
Taxes	2.9	2.9	162	162	171
Wage Rates	7.8	7.8	174	172	172
Family Living-CPI	18.4	18.0	147	150	150

<sup>1</sup> Weights may not add due to rounding.

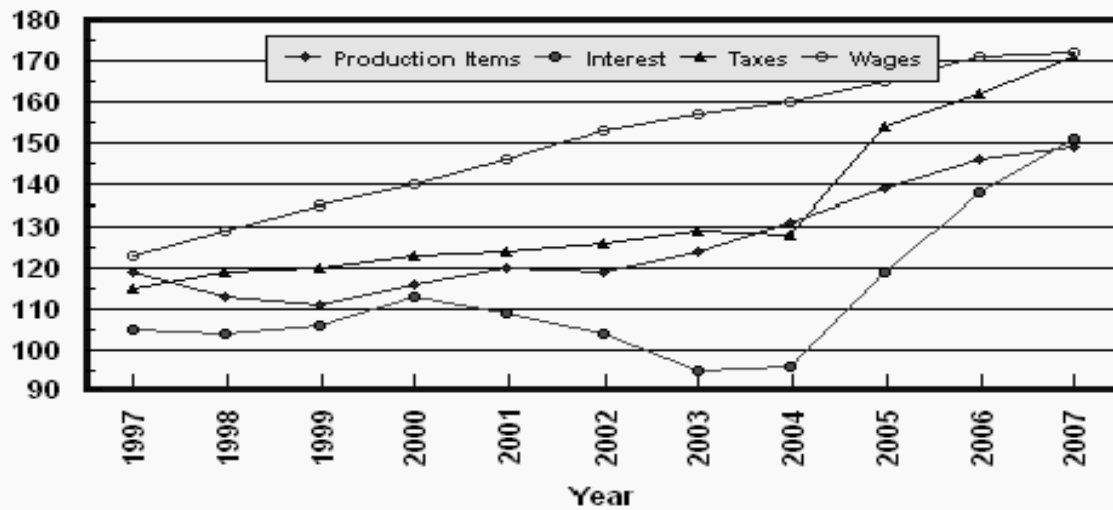
## Prices Paid by Farmers, Major Indexes US, by Month

Percent (1990-92=100)



## Prices Paid by Farmers, Major Indexes US, Annual Averages 1/

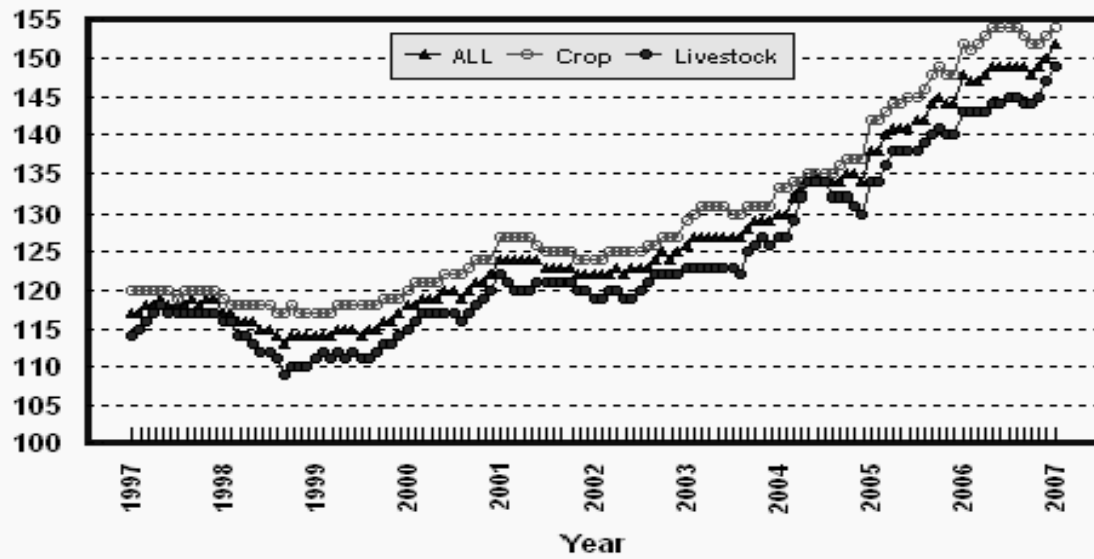
Percent (1990-92=100)



1/ Index values for 2007 are year-to-date averages.

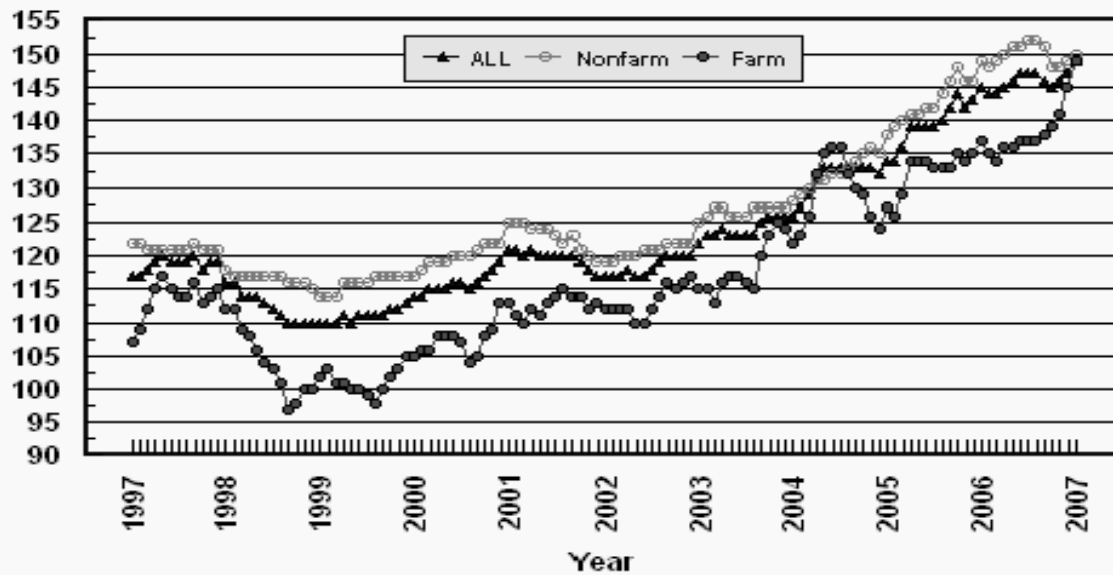
## Prices Paid by Farmers, Indexes, All Items US, By Farm Type

Percent (1990-92=100)



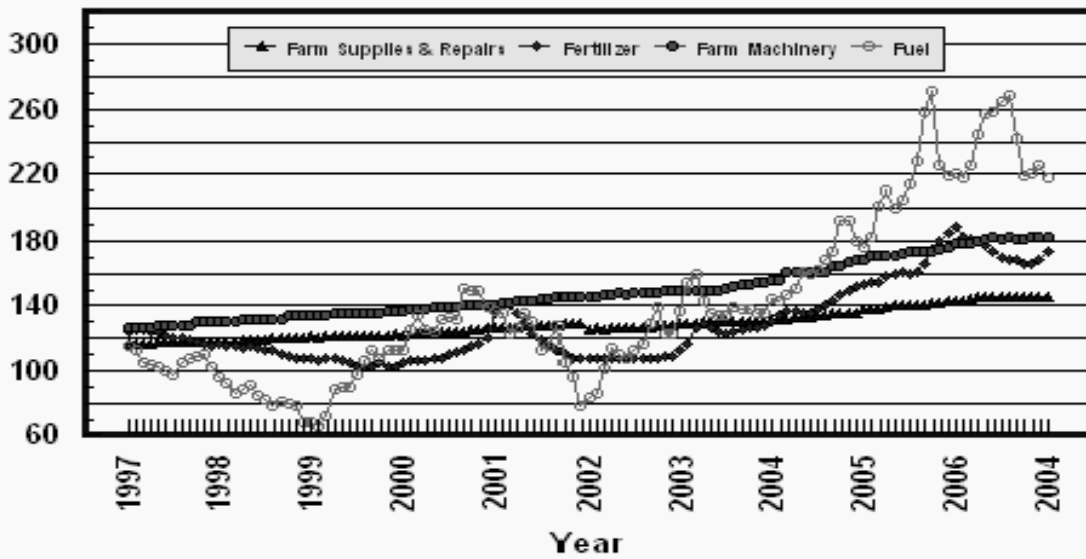
## Prices Paid by Farmers, Indexes, All Production Items US, By Sector Origin

Percent (1990-92=100)



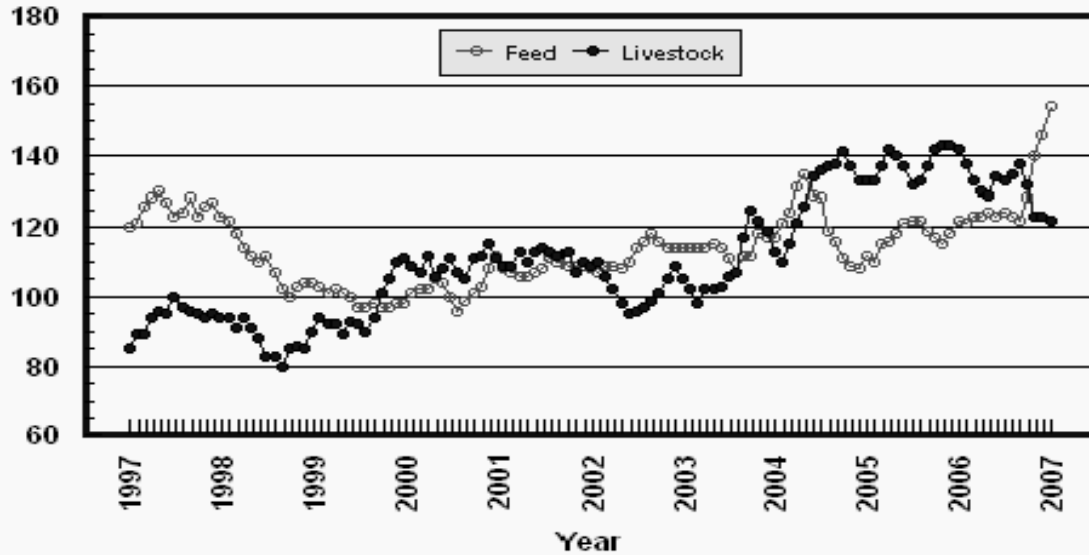
## Prices Paid by Farmers, Selected Production Indexes US, By Non-Farm Sector

Percent (1990-92=100)



## Prices Paid by Farmers, Selected Production Indexes US, By Farm Sector

Percent (1990-92=100)



**Feed Price Ratios: United States, January 2007 with Comparisons**

Feed Price Ratio <sup>1</sup>	2006		2007
	Jan	Dec	Jan
Broiler-Feed: Pounds of Broiler Grower Feed equal in value to 1 pound of broiler, live weight	6.1	5.4	5.5
Market Egg Feed: Pounds of Laying Feed equal in Value to 1 dozen eggs	8.5	10.1	11.3
Hog-Corn: Bushels of Corn equal in value to 100 pounds of hog, live weight	20.4	*14.5	12.8
Milk-Feed: Pounds of 16% Mixed Dairy Feed equal in value to 1 pound of Whole Milk	3.17	*2.41	2.34
Steer & Heifer-Corn: Bushels of Corn equal in value to 100 pounds of Steer & Heifers, live weight	51.0	*29.7	28.0
Turkey-Feed: Pounds of Turkey Grower equal in value to 1 pound of Turkey, live weight	7.0	6.0	5.4

\* Revised.

<sup>1</sup> Effective January 1995, prices of commercial prepared feeds are based on current U.S. prices received for corn, soybeans, alfalfa hay, and all wheat.

**Prices Used to Calculate Feed Price Ratios:  
United States, January 2007 with Comparisons**

Commodity	Unit	2006		2007
		Jan	Dec	Jan
Broilers, Live	Lb	0.380	0.400	0.430
Eggs, Market	Doz	0.438	0.665	0.788
Hogs, All	Cwt	40.70	43.50	41.40
Milk, All	Cwt	14.50	14.10	14.40
Steers and Heifers	Cwt	102.00	89.30	90.30
Turkeys, Live	Lb	0.408	0.434	0.408
Corn	Bu	2.00	3.01	3.23
Hay, Alfalfa, Baled	Ton	96.40	112.00	115.00
Soybeans	Bu	5.87	6.18	6.42
Wheat, All	Bu	3.52	4.51	4.50

**Feeder Livestock: Prices Paid, United States  
January 2007 with Comparisons**

Commodity	Unit	2006		2007
		Jan	Dec	Jan
		<i>Dollars</i>	<i>Dollars</i>	<i>Dollars</i>
Feeders and Stockers				
Cattle and Calves	Cwt	117.70	*101.50	99.30
Feeder Pigs	Cwt	160.00	*132.00	144.00

\* Revised.



**Grazing Fee Rates for Cattle by Selected States and Regions**

State	Survey Average Rates <sup>1</sup>					
	Animal Unit <sup>2</sup>		Cow-Calf		Per Head	
	2005	2006	2005	2006	2005	2006
	<i>Dollars per Month</i>	<i>Dollars per Month</i>	<i>Dollars per Month</i>	<i>Dollars per Month</i>	<i>Dollars per Month</i>	<i>Dollars per Month</i>
AZ	8.00	8.00	( <sup>7</sup> )	( <sup>7</sup> )	9.50	10.00
CA	15.40	16.50	20.50	21.00	17.00	17.00
CO	14.50	14.50	16.00	16.00	14.30	15.00
ID	12.50	12.80	14.60	15.00	13.00	13.50
KS	13.50	13.50	16.50	16.50	14.00	14.00
MT	16.20	16.20	18.70	18.70	17.30	18.30
NE	22.50	24.00	27.50	28.50	25.00	26.00
NV	12.20	13.00	12.50	13.50	12.50	13.00
NM	9.50	10.00	11.50	12.00	10.80	11.50
ND	13.70	14.50	16.00	16.00	14.50	15.00
OK	8.00	8.30	10.00	10.50	8.00	8.50
OR	13.00	12.50	15.70	15.00	12.80	12.80
SD	18.40	20.30	21.90	24.00	19.50	21.00
TX	9.40	10.00	9.00	10.00	9.90	9.90
UT	11.60	11.70	13.60	14.60	13.00	13.50
WA	9.70	9.60	12.50	12.00	12.20	12.20
WY	14.80	15.10	17.00	17.30	15.50	15.80
17-State <sup>3</sup>	13.20	13.80	15.20	15.80	14.00	14.40
16-State <sup>4</sup>	14.60	15.20	17.60	18.00	15.60	16.20
11-State <sup>5</sup>	13.70	13.90	16.20	16.40	14.60	15.10
9-State <sup>6</sup>	13.00	13.70	14.80	15.60	13.80	14.20

<sup>1</sup> The average rates are estimates based on survey indications of monthly lease rates for private, non-irrigated grazing land from the January Cattle Survey.

<sup>2</sup> Includes animal unit plus cow-calf rates. Cow-calf rate converted to animal unit (AUM) using (1 aum=cow-calf \*0.833).

<sup>3</sup> 17 Western States: All States listed.

<sup>4</sup> 16 Western States: All States except Texas.

<sup>5</sup> 11 Western States: AZ, CA, CO, ID, MT, NV, NM, OR, UT, WA, and WY.

<sup>6</sup> 9 Great Plains States: CO, KS, NE, NM, ND, OK, SD, TX, and WY.

<sup>7</sup> Insufficient data.

**Prices Paid Indexes: Monthly and Annual Average  
United States, 2003-2007**

Year	Jan	Feb	Mar	Apr	May	Jun	Jul	Aug	Sep	Oct	Nov	Dec	Avg <sup>1</sup>
Commodities and Services, Interest, Taxes, and Wage Rates (PPITW) 1910-14 = 100													
2003	1678	1687	1692	1694	1691	1692	1686	1686	1704	1714	1719	1715	1697
2004	1728	1735	1753	1770	1787	1791	1790	1784	1785	1796	1793	1784	1775
2005	1839	1843	1863	1879	1877	1884	1887	1896	1917	1935	1918	1922	1888
2006	1967	1960	1963	1972	1980	1987	1989	1990	1983	1973	1980	1995	1978
2007	2022												2022
1990-92 = 100													
2003	126	127	127	127	127	127	127	127	128	129	129	129	128
2004	130	130	132	133	134	135	134	134	134	135	135	134	133
2005	138	138	140	141	141	141	142	142	144	145	144	144	142
2006	148	147	147	148	149	149	149	149	149	148	149	150	149
2007	152												152
Items Used for Production, Interest, Taxes, and Wage Rates (PITW) 1910-14 = 100													
2003	1668	1675	1679	1683	1680	1681	1673	1671	1692	1704	1711	1708	1685
2004	1720	1728	1747	1767	1785	1789	1788	1780	1781	1792	1788	1779	1770
2005	1845	1847	1869	1886	1884	1892	1894	1903	1923	1945	1927	1934	1896
2006	1986	1976	1977	1985	1993	2000	2002	2002	1995	1985	1995	2013	1992
2007	2045												2045
1990-92 = 100													
2003	124	125	125	125	125	125	124	124	126	127	127	127	125
2004	128	129	130	132	133	133	133	133	133	133	133	132	132
2005	137	138	139	140	140	141	141	142	143	145	143	144	141
2006	148	147	147	148	148	149	149	149	149	148	149	150	148
2007	152												152

<sup>1</sup> Simple average and is year-to-date for current year.

**Prices Paid Indexes: Monthly and Annual Average  
United States, 2003-2007**

Year	Jan	Feb	Mar	Apr	May	Jun	Jul	Aug	Sep	Oct	Nov	Dec	Avg <sup>1</sup>
Items Used for Production 1910-14 = 100													
2003	1183	1190	1193	1200	1197	1197	1196	1194	1213	1220	1227	1223	1203
2004	1226	1232	1250	1271	1287	1290	1293	1286	1287	1291	1287	1279	1273
2005	1302	1304	1323	1346	1345	1352	1353	1361	1379	1394	1378	1384	1352
2006	1404	1396	1397	1410	1417	1423	1426	1426	1420	1407	1415	1431	1414
2007	1448												1448
1990-92 = 100													
2003	122	123	123	124	123	123	123	123	125	126	126	126	124
2004	126	127	129	131	133	133	133	133	133	133	133	132	131
2005	134	134	136	139	139	139	139	140	142	144	142	143	139
2006	145	144	144	145	146	147	147	147	146	145	146	147	146
2007	149												149
Feed 1910-14 = 100													
2003	556	559	556	555	560	556	541	523	546	545	576	574	554
2004	573	592	606	639	658	632	626	583	567	543	533	525	590
2005	545	538	559	569	577	589	596	593	579	572	562	576	571
2006	594	591	599	602	604	601	606	599	597	625	681	715	618
2007	754												754
1990-92 = 100													
2003	114	114	114	114	115	114	111	107	112	112	118	117	114
2004	117	121	124	131	135	129	128	119	116	111	109	108	121
2005	112	110	115	116	118	121	122	122	119	117	115	118	117
2006	122	121	123	123	124	123	124	123	122	128	140	146	127
2007	154												154

<sup>1</sup> Simple average and is year-to-date for current year.

**Prices Paid Indexes: Monthly and Annual Average  
United States, 2003-2007**

Year	Jan	Feb	Mar	Apr	May	Jun	Jul	Aug	Sep	Oct	Nov	Dec	Avg <sup>1</sup>
Livestock and Poultry 1910-14 = 100													
2003	1340	1298	1254	1308	1303	1322	1353	1371	1492	1604	1564	1521	1394
2004	1441	1405	1472	1548	1615	1715	1740	1756	1766	1798	1752	1706	1643
2005	1698	1695	1752	1819	1783	1752	1682	1697	1752	1818	1823	1828	1758
2006	1815	1764	1704	1665	1651	1708	1706	1720	1760	1681	1571	1576	1693
2007	1564												1564
1990-92 = 100													
2003	105	102	98	102	102	103	106	107	117	125	122	119	109
2004	113	110	115	121	126	134	136	137	138	141	137	133	128
2005	133	133	137	142	140	137	132	133	137	142	143	143	138
2006	142	138	133	130	129	134	133	135	138	132	123	123	133
2007	122												122
Seeds 1910-14 = 100													
2003	1426	1426	1426	1553	1553	1553	1553	1553	1553	1553	1553	1553	1521
2004	1553	1553	1553	1564	1564	1564	1564	1564	1564	1564	1564	1564	1561
2005	1564	1564	1564	1694	1694	1694	1694	1694	1694	1694	1694	1694	1662
2006	1694	1694	1694	1838	1838	1838	1838	1838	1838	1838	1838	1838	1802
2007	1838												1838
1990-92 = 100													
2003	144	144	144	157	157	157	157	157	157	157	157	157	154
2004	157	157	157	158	158	158	158	158	158	158	158	158	158
2005	158	158	158	171	171	171	171	171	171	171	171	171	168
2006	171	171	171	186	186	186	186	186	186	186	186	186	182
2007	186												186

<sup>1</sup> Simple average and is year-to-date for current year.

**Prices Paid Indexes: Monthly and Annual Average  
United States, 2003-2007**

Year	Jan	Feb	Mar	Apr	May	Jun	Jul	Aug	Sep	Oct	Nov	Dec	Avg <sup>1</sup>
Fertilizer 1910-14 = 100													
2003	412	427	463	471	466	454	449	453	457	461	463	469	454
2004	481	493	504	502	496	500	504	516	523	539	550	556	514
2005	562	564	565	579	586	591	588	590	609	641	659	679	601
2006	691	673	664	659	648	635	622	616	619	610	607	621	639
2007	635												635
1990-92 = 100													
2003	112	117	126	129	127	124	123	124	125	126	126	128	124
2004	131	134	137	137	135	136	138	141	143	147	150	152	140
2005	153	154	154	158	160	161	160	161	166	175	180	185	164
2006	189	183	181	180	177	173	170	168	169	166	166	169	174
2007	173												173
Agricultural Chemicals 1910-14 = 100													
2003	752	752	744	746	746	747	746	746	745	748	753	744	747
2004	746	749	749	745	746	748	753	744	745	741	741	743	746
2005	753	745	746	747	750	754	759	770	777	783	788	777	762
2006	783	783	781	777	797	795	797	799	812	799	802	798	794
2007	793												793
1990-92 = 100													
2003	122	122	120	121	121	121	121	121	121	121	122	120	121
2004	121	121	121	121	121	121	122	120	120	120	120	120	121
2005	122	120	121	121	121	122	123	124	126	127	127	126	123
2006	127	127	126	126	129	129	129	129	131	129	130	129	128
2007	128												128

<sup>1</sup> Simple average and is year-to-date for current year.

**Prices Paid Indexes: Monthly and Annual Average  
United States, 2003-2007**

Year	Jan	Feb	Mar	Apr	May	Jun	Jul	Aug	Sep	Oct	Nov	Dec	Avg <sup>1</sup>
Fuels 1910-14 = 100													
2003	1061	1192	1226	1105	1041	1037	1035	1074	1067	1061	1043	1049	1083
2004	1113	1103	1134	1168	1242	1231	1249	1307	1336	1484	1493	1387	1271
2005	1361	1416	1555	1624	1547	1581	1652	1758	2002	2091	1741	1694	1669
2006	1704	1679	1743	1882	1987	1995	2043	2079	1867	1687	1698	1742	1842
2007	1685												1685
1990-92 = 100													
2003	137	154	159	143	135	134	134	139	138	138	135	136	140
2004	144	143	147	151	161	159	162	169	173	192	193	180	165
2005	176	183	201	210	200	205	214	228	259	271	226	219	216
2006	221	218	226	244	257	259	265	269	242	219	220	226	239
2007	218												218
Farm Supplies and Repairs 1910-14 = 100													
2003	914	915	915	920	920	920	924	924	924	928	926	927	921
2004	937	938	936	944	945	946	949	949	955	959	960	964	948
2005	980	981	981	989	991	991	993	1002	1003	1006	1011	1012	995
2006	1014	1018	1020	1027	1028	1028	1033	1034	1034	1035	1036	1037	1029
2007	1037												1037
1990-92 = 100													
2003	129	129	129	130	130	130	130	130	130	131	131	131	130
2004	132	132	132	133	133	133	134	134	135	135	135	136	134
2005	138	138	138	139	140	140	140	141	141	142	142	143	140
2006	143	143	144	145	145	145	146	146	146	146	146	146	145
2007	146												146

<sup>1</sup> Simple average and is year-to-date for current year.

**Prices Paid Indexes: Monthly and Annual Average  
United States, 2003-2007**

Year	Jan	Feb	Mar	Apr	May	Jun	Jul	Aug	Sep	Oct	Nov	Dec	Avg <sup>1</sup>
Autos and Trucks 1910-14 = 100													
2003	3003	2991	2993	2979	2966	2949	2936	2938	2931	2934	2956	2966	2962
2004	3052	3060	3046	3042	3029	3021	2994	2969	2969	2985	3034	3067	3022
2005	3091	3093	3071	3062	3060	3042	2991	2959	2974	3000	3016	3019	3032
2006	3036	3040	3031	3019	2999	2985	2976	2961	2952	2963	2958	2967	2991
2007	2975												2975
1990-92 = 100													
2003	113	112	113	112	112	111	110	110	110	110	111	112	111
2004	115	115	115	114	114	114	113	112	112	112	114	115	114
2005	116	116	115	115	115	114	112	111	112	113	113	114	114
2006	114	114	114	114	113	112	112	111	111	111	111	112	112
2007	112												112
Farm Machinery 1910-14 = 100													
2003	3731	3732	3733	3737	3751	3766	3784	3815	3831	3846	3861	3875	3789
2004	3901	3919	4049	4040	4048	4042	4049	4049	4108	4134	4188	4215	4062
2005	4247	4290	4286	4282	4301	4314	4331	4350	4363	4376	4399	4415	4330
2006	4458	4477	4496	4511	4531	4531	4540	4547	4546	4548	4580	4580	4529
2007	4579												4579
1990-92 = 100													
2003	149	149	149	149	150	150	151	152	153	153	154	154	151
2004	156	156	161	161	161	161	161	161	164	165	167	168	162
2005	169	171	171	171	171	172	173	173	174	174	175	176	173
2006	178	178	179	180	181	181	181	181	181	181	183	183	181
2007	183												183

<sup>1</sup> Simple average and is year-to-date for current year.

**Prices Paid Indexes: Monthly and Annual Average  
United States, 2003-2007**

Year	Jan	Feb	Mar	Apr	May	Jun	Jul	Aug	Sep	Oct	Nov	Dec	Avg <sup>1</sup>
<b>Building Materials 1910-14 = 100</b>													
2003	1655	1663	1665	1671	1671	1672	1679	1680	1694	1696	1701	1701	1679
2004	1704	1738	1757	1800	1824	1824	1831	1856	1868	1867	1866	1872	1817
2005	1892	1910	1914	1917	1913	1918	1921	1917	1935	1959	1976	1986	1930
2006	2013	2022	2028	2041	2057	2068	2079	2084	2092	2086	2075	2072	2060
2007	2070												2070
<b>1990-92 = 100</b>													
2003	122	122	123	123	123	123	124	124	125	125	125	125	124
2004	125	128	129	133	134	134	135	137	137	137	137	138	134
2005	139	141	141	141	141	141	141	141	142	144	145	146	142
2006	148	149	149	150	151	152	153	153	154	154	153	153	152
2007	152												152
<b>Farm Services and Rent <sup>2</sup> 1910-14 = 100</b>													
2003	1469	1469	1470	1473	1474	1483	1485	1485	1485	1475	1470	1470	1476
2004	1458	1458	1459	1460	1464	1475	1475	1479	1478	1470	1466	1470	1468
2005	1517	1518	1518	1521	1525	1538	1540	1540	1542	1536	1536	1534	1530
2006	1560	1561	1564	1565	1568	1584	1584	1585	1586	1573	1570	1569	1572
2007	1580												1580
<b>Farm Services 1990-92 = 100</b>													
2003	123	124	124	124	124	125	126	126	126	124	124	124	125
2004	127	127	127	127	127	129	129	129	129	128	128	128	128
2005	130	130	130	131	131	133	133	133	133	133	133	132	132
2006	136	137	137	137	138	140	140	140	140	138	138	138	138
2007	140												140
<b>Rent 1990-92 = 100</b>													
2003	123	123	123	123	123	123	123	123	123	123	123	123	123
2004	115	115	115	115	115	115	115	115	115	115	115	115	115
2005	123	123	123	123	123	123	123	123	123	123	123	123	123
2006	121	121	121	121	121	121	121	121	121	121	121	121	121
2007	119												119

<sup>1</sup> Simple average and is year-to-date for current year.

<sup>2</sup> For the 1990-92=100 base period, the Farm Services and Rent Index is separated.



**Prices Paid Indexes: Monthly and Annual Average  
United States, 2003-2007**

Year	Jan	Feb	Mar	Apr	May	Jun	Jul	Aug	Sep	Oct	Nov	Dec	Avg <sup>1</sup>
Interest 1910-14 = 100													
2003	2377	2377	2377	2377	2377	2377	2377	2377	2377	2377	2377	2377	2377
2004	2411	2411	2411	2411	2411	2411	2411	2411	2411	2411	2411	2411	2411
2005	2979	2979	2979	2979	2979	2979	2979	2979	2979	2979	2979	2979	2979
2006	3452	3452	3452	3452	3452	3452	3452	3452	3452	3452	3452	3452	3452
2007	3778												3778
1990-92 = 100													
2003	95	95	95	95	95	95	95	95	95	95	95	95	95
2004	96	96	96	96	96	96	96	96	96	96	96	96	96
2005	119	119	119	119	119	119	119	119	119	119	119	119	119
2006	138	138	138	138	138	138	138	138	138	138	138	138	138
2007	151												151
Taxes 1910-14 = 100													
2003	3450	3450	3450	3450	3450	3450	3450	3450	3450	3450	3450	3450	3450
2004	3426	3426	3426	3426	3426	3426	3426	3426	3426	3426	3426	3426	3426
2005	4131	4131	4131	4131	4131	4131	4131	4131	4131	4131	4131	4131	4131
2006	4343	4343	4343	4343	4343	4343	4343	4343	4343	4343	4343	4343	4343
2007	4570												4570
1990-92 = 100													
2003	129	129	129	129	129	129	129	129	129	129	129	129	129
2004	128	128	128	128	128	128	128	128	128	128	128	128	128
2005	154	154	154	154	154	154	154	154	154	154	154	154	154
2006	162	162	162	162	162	162	162	162	162	162	162	162	162
2007	171												171
Wage Rates 1910-14 = 100													
2003	6035	6035	6035	5919	5919	5919	5738	5738	5738	5848	5848	5848	5885
2004	6080	6080	6080	5964	5964	5964	5841	5841	5841	6022	6022	6022	5977
2005	6319	6319	6319	6041	6041	6041	6061	6061	6061	6209	6209	6209	6158
2006	6526	6526	6526	6319	6326	6326	6281	6281	6281	6429	6429	6429	6390
2007	6429												6429
1990-92 = 100													
2003	161	161	161	158	158	158	153	153	153	156	156	156	157
2004	163	163	163	159	159	159	156	156	156	161	161	161	160
2005	169	169	169	161	161	161	162	162	162	166	166	166	165
2006	174	174	174	169	169	169	168	168	168	172	172	172	171
2007	172												172

<sup>1</sup> Simple average and is year-to-date for current year.

**Prices Paid Indexes: Monthly and Annual Average  
United States, 2003-2007**

Year	Jan	Feb	Mar	Apr	May	Jun	Jul	Aug	Sep	Oct	Nov	Dec	Avg <sup>1</sup>
Family Living 1910-14 = 100													
2003	1726	1739	1749	1746	1743	1745	1747	1753	1759	1757	1752	1750	1747
2004	1759	1768	1780	1786	1796	1802	1799	1800	1804	1813	1814	1807	1794
2005	1811	1822	1836	1848	1846	1847	1856	1865	1888	1892	1877	1869	1855
2006	1883	1887	1898	1914	1923	1927	1933	1937	1927	1917	1914	1917	1915
2007	1917												1917
1990-92 = 100													
2003	135	136	137	136	136	136	136	137	137	137	137	137	136
2004	137	138	139	139	140	141	141	141	141	142	142	141	140
2005	141	142	143	144	144	144	145	146	147	148	147	146	145
2006	147	147	148	149	150	151	151	151	151	150	149	150	150
2007	150												150
Production Items With Farm Origin <sup>2</sup> 1990-92 = 100													
2003	115	115	113	116	117	117	116	115	120	123	125	124	118
2004	122	123	126	132	135	136	136	132	130	129	126	124	129
2005	127	126	129	134	134	134	133	133	133	135	134	135	132
2006	137	135	134	136	136	137	137	137	138	139	141	145	138
2007	149												149
Production Items With Non-Farm Origin <sup>3</sup> 1990-92 = 100													
2003	125	126	127	127	126	126	126	127	127	127	127	127	127
2004	128	129	130	131	131	132	132	133	134	135	136	135	132
2005	138	139	140	141	141	142	142	144	146	148	146	146	143
2006	149	148	149	150	151	151	152	152	151	148	148	149	150
2007	150												150

<sup>1</sup> Simple average and is year-to-date for current year.

<sup>2</sup> Feed, livestock and poultry purchases, and seed.

<sup>3</sup> Fertilizer, agricultural chemicals, fuels, farm supplies and repairs, autos and trucks, farm machinery, building materials, and farm services and rent.

**Prices Paid Indexes: Monthly and Annual Average  
United States, 2003-2007**

Year	Jan	Feb	Mar	Apr	May	Jun	Jul	Aug	Sep	Oct	Nov	Dec	Avg <sup>1</sup>
Parity Ratio <sup>2</sup> 1910-14 = 100													
2003	38	37	37	38	39	40	40	41	41	42	43	42	40
2004	41	42	44	45	46	46	44	43	41	40	41	40	43
2005	38	39	40	41	40	39	39	39	38	37	38	39	39
2006	36	37	37	36	36	38	38	38	38	37	38	38	37
2007	39												39
Adjusted Parity Ratio <sup>3</sup> 1910-14 = 100													
2003	40	40	40	41	42	43	43	44	44	45	47	45	43
2004	43	45	46	47	48	48	46	45	44	43	43	42	45
2005	42	43	45	45	44	43	43	43	42	40	41	43	43
2006	39	39	39	38	38	40	40	41	41	40	41	41	40
2007	41												41
Ratio 1990-92 = 100													
2003	79	78	78	79	83	84	83	86	87	88	91	88	84
2004	85	88	92	94	96	95	92	90	87	84	85	84	89
2005	81	83	85	86	84	83	82	82	81	77	79	81	82
2006	76	77	77	75	74	79	79	81	81	78	81	81	78
2007	82												82

<sup>1</sup> Simple average and is year-to-date for current year.

<sup>2</sup> Ratio of index of prices received by farmers to index of prices paid for commodities and services, interest, taxes, and wage rates.

<sup>3</sup> Ratio of the index of prices received by farmers after adjustment for government payments to the index of prices paid for commodities and services, interest, taxes, and wage rates.

**Prices Paid Indexes: Monthly and Annual Average  
United States, 2003-2007**

Year	Jan	Feb	Mar	Apr	May	Jun	Jul	Aug	Sep	Oct	Nov	Dec	Avg <sup>1</sup>
Crop Sector (PPITW) 1990-92 = 100													
2003	129	130	131	131	131	131	130	130	131	131	131	131	131
2004	133	133	134	134	135	135	135	135	136	137	137	137	135
2005	142	142	143	144	144	145	145	146	148	149	148	148	145
2006	152	151	152	153	154	154	154	154	153	152	152	153	153
2007	154												154
Livestock Sector (PPITW) 1990-92 = 100													
2003	123	123	123	123	123	123	123	122	125	126	127	126	124
2004	127	127	129	132	134	134	134	132	132	132	131	130	131
2005	134	134	136	138	138	138	138	139	140	141	140	140	138
2006	143	143	143	143	144	144	145	145	144	144	145	147	144
2007	149												149
Commodities and Services, Interest, Taxes, and Wage Rates Adjusted for Productivity 1910-14 = 100													
2003	1153	1156	1159	1151	1150	1150	1137	1138	1142	1151	1151	1150	1149
2004	1196	1199	1204	1199	1204	1205	1196	1195	1196	1212	1211	1209	1202
2005	1272	1274	1279	1264	1263	1265	1268	1271	1278	1292	1287	1287	1275
2006	1334	1334	1336	1324	1328	1329	1327	1328	1325	1333	1334	1337	1331
2007	1334												1334

<sup>1</sup> Simple average and is year-to-date for current year.

**Prices Paid Index Sub-Components: Monthly and Annual Average  
United States, 2003-2007**

Year	Jan	Feb	Mar	Apr	May	Jun	Jul	Aug	Sep	Oct	Nov	Dec	Avg <sup>1</sup>
<b>Feed Sub-Components</b>													
<b>Feed Grains</b>													
1990-92 = 100													
2003	102	103	102	102	104	101	94	95	96	94	97	101	99
2004	104	113	119	124	123	119	108	101	94	91	88	87	106
2005	90	84	87	86	85	90	93	86	84	79	78	83	85
2006	87	88	90	93	96	95	97	94	97	113	127	133	101
2007	142												142
<b>Complete Feeds</b>													
1990-92 = 100													
2003	115	114	114	112	112	112	111	107	111	111	118	119	113
2004	119	123	122	130	132	130	131	123	120	113	111	108	122
2005	111	112	114	116	118	119	121	123	120	119	115	117	117
2006	122	121	122	121	120	120	121	121	120	123	133	142	124
2007	152												152
<b>Hay and Forages</b>													
1990-92 = 100													
2003	121	122	120	125	123	122	113	109	108	109	106	105	115
2004	106	107	108	116	129	122	119	118	118	119	116	113	116
2005	115	115	121	128	136	125	126	127	127	126	122	122	124
2006	123	127	130	138	146	141	139	138	140	141	141	144	137
2007	148												148
<b>Concentrates</b>													
1990-92 = 100													
2003	104	110	110	112	118	115	114	106	123	123	137	127	117
2004	125	126	143	149	159	140	142	118	114	107	105	104	128
2005	114	113	122	124	128	140	138	136	129	128	126	133	128
2006	132	131	131	130	129	129	128	126	121	129	147	146	132
2007	145												145

<sup>1</sup> Simple average and is year-to-date for current year.

**Prices Paid Index Sub-Components: Monthly and Annual Average  
United States, 2003-2007**

Year	Jan	Feb	Mar	Apr	May	Jun	Jul	Aug	Sep	Oct	Nov	Dec	Avg <sup>1</sup>
Supplements 1990-92 = 100													
2003	135	134	134	131	129	132	130	126	127	130	135	135	132
2004	135	134	135	138	136	136	134	131	135	133	135	138	135
2005	146	135	142	140	133	137	141	137	136	138	145	151	140
2006	154	151	157	153	150	150	158	151	149	164	181	199	160
2007	219												219
Livestock and Poultry Sub-Components Feeder Cattle 1990-92 = 100													
2003	99	96	92	99	99	102	107	111	122	130	126	122	109
2004	113	107	113	119	126	137	139	141	141	143	137	130	129
2005	128	128	133	138	137	137	132	134	138	143	142	141	136
2006	139	135	129	127	127	133	135	137	140	132	120	120	131
2007	117												117
Feeder Pigs 1990-92 = 100													
2003	138	127	123	119	109	104	82	64	73	97	94	96	102
2004	104	120	125	126	122	116	109	108	116	129	150	175	125
2005	185	186	195	194	164	139	115	110	122	139	148	170	156
2006	174	163	163	150	137	134	122	114	125	125	133	144	140
2007	157												157
Milk Cow Replacements 1990-92 = 100													
2003	122	122	122	115	115	115	116	116	116	122	122	122	119
2004	123	123	123	140	140	140	152	152	152	145	145	145	140
2005	144	144	144	157	157	157	162	162	162	166	166	166	157
2006	163	163	163	157	157	157	149	149	149	146	146	146	154
2007	147												147

<sup>1</sup> Simple average and is year-to-date for current year.

**Prices Paid Index Sub-Components: Monthly and Annual Average  
United States, 2003-2007**

Year	Jan	Feb	Mar	Apr	May	Jun	Jul	Aug	Sep	Oct	Nov	Dec	Avg <sup>1</sup>
Poultry 1990-92 = 100													
2003	110	110	110	110	110	110	110	110	110	110	110	110	110
2004	112	112	112	112	112	112	112	112	112	112	112	112	112
2005	109	109	109	109	109	109	109	109	109	109	109	109	109
2006	109	109	109	109	109	109	109	109	109	109	109	109	109
2007	109												109
Seeds Sub-Components Field Crops 1990-92 = 100													
2003	147	147	147	162	162	162	162	162	162	162	162	162	158
2004	162	162	162	163	163	163	163	163	163	163	163	163	163
2005	163	163	163	177	177	177	177	177	177	177	177	177	174
2006	177	177	177	191	191	191	191	191	191	191	191	191	188
2007	191												191
Grasses and Legumes 1990-92 = 100													
2003	118	118	118	109	109	109	109	109	109	109	109	109	111
2004	109	109	109	111	111	111	111	111	111	111	111	111	111
2005	111	111	111	118	118	118	118	118	118	118	118	118	116
2006	118	118	118	133	133	133	133	133	133	133	133	133	129
2007	133												133
Fertilizer Sub-Components Mixed Fertilizer 1990-92 = 100													
2003	107	107	112	113	113	113	113	113	114	114	115	115	112
2004	117	119	122	122	122	122	122	124	125	128	130	130	124
2005	133	133	134	135	136	135	137	138	143	146	147	148	139
2006	149	149	149	151	150	150	150	150	150	147	148	149	149
2007	151												151

<sup>1</sup> Simple average and is year-to-date for current year.

**Prices Paid Index Sub-Components: Monthly and Annual Average  
United States, 2003-2007**

Year	Jan	Feb	Mar	Apr	May	Jun	Jul	Aug	Sep	Oct	Nov	Dec	Avg <sup>1</sup>
Nitrogen 1990-92 = 100													
2003	122	131	147	150	146	141	138	139	141	142	144	147	141
2004	152	156	158	157	153	156	158	163	164	170	174	176	161
2005	176	176	176	183	187	189	185	185	192	210	220	232	193
2006	236	226	220	213	209	201	192	188	191	189	186	192	204
2007	198												198
Potash and Phosphate 1990-92 = 100													
2003	102	103	112	113	113	108	107	110	110	111	110	111	109
2004	114	119	124	123	124	124	124	128	133	137	143	146	128
2005	150	152	152	155	155	160	160	162	160	160	161	163	158
2006	168	162	167	171	165	165	166	164	161	161	161	164	165
2007	167												167
Agricultural Chemicals Sub-Components Herbicides 1990-92 = 100													
2003	112	112	112	112	112	112	112	112	112	113	114	112	112
2004	113	113	114	113	113	113	114	113	113	112	112	112	113
2005	114	113	113	113	114	114	116	118	119	120	121	120	116
2006	121	122	122	121	125	124	125	125	127	125	125	125	124
2007	124												124
Insecticides 1990-92 = 100													
2003	145	146	146	147	147	147	147	146	146	146	147	145	146
2004	145	145	144	143	143	144	145	143	143	142	142	143	144
2005	145	143	143	143	143	143	143	144	145	145	145	142	144
2006	142	142	140	139	143	142	143	143	145	143	143	143	142
2007	142												142

<sup>1</sup> Simple average and is year-to-date for current year.



**Prices Paid Index Sub-Components: Monthly and Annual Average  
United States, 2003-2007**

Year	Jan	Feb	Mar	Apr	May	Jun	Jul	Aug	Sep	Oct	Nov	Dec	Avg <sup>1</sup>
Fungicides and Other 1990-92 = 100													
2003	125	126	114	115	115	115	115	115	115	116	117	116	117
2004	116	117	117	116	117	117	118	117	118	117	117	118	117
2005	120	119	119	120	120	120	121	123	124	125	125	123	122
2006	124	124	124	123	126	126	126	126	129	126	127	126	126
2007	125												125
Fuels Sub-Components Diesel 1990-92 = 100													
2003	134	150	156	141	133	130	131	135	133	134	133	133	137
2004	138	141	144	149	156	154	158	168	177	199	202	190	165
2005	187	195	215	224	215	223	231	242	273	299	248	235	232
2006	236	237	244	259	275	276	279	290	265	240	242	248	258
2007	238												238
Gasoline 1990-92 = 100													
2003	127	141	148	140	132	131	132	141	145	135	131	127	136
2004	135	141	148	152	168	167	162	160	159	170	169	158	157
2005	157	164	178	192	184	183	194	209	243	227	188	182	192
2006	192	188	199	224	237	235	243	241	209	184	183	189	210
2007	185												185
LP Gas 1990-92 = 100													
2003	173	201	192	158	149	159	152	153	146	159	152	163	163
2004	188	157	157	158	170	167	178	197	186	212	211	182	180
2005	173	176	195	191	174	174	187	205	238	247	211	235	201
2006	217	200	207	220	224	236	250	245	216	203	206	207	219
2007	187												187

<sup>1</sup> Simple average and is year-to-date for current year.

**Prices Paid Index Sub-Components: Monthly and Annual Average  
United States, 2003-2007**

Year	Jan	Feb	Mar	Apr	May	Jun	Jul	Aug	Sep	Oct	Nov	Dec	Avg <sup>1</sup>
<b>Farm Supplies &amp; Repairs Sub-Components</b>													
Supplies 1990-92 = 100													
2003	118	118	118	118	118	118	119	119	119	119	119	119	119
2004	120	120	120	120	121	121	121	122	122	123	123	123	121
2005	124	124	125	126	127	127	127	131	131	132	133	134	128
2006	134	134	135	136	136	137	137	138	138	139	139	139	137
2007	139												139
Repairs 1990-92 = 100													
2003	134	134	135	135	136	136	136	136	136	137	136	136	136
2004	138	138	138	139	139	139	140	140	141	141	141	142	140
2005	145	145	145	146	146	146	146	146	146	147	147	147	146
2006	147	148	148	149	149	149	150	150	150	150	150	150	149
2007	150												150
<b>Autos and Trucks Sub-Components</b>													
Autos 1990-92 = 100													
2003	109	109	109	108	108	107	107	107	107	107	108	108	108
2004	108	108	108	108	108	107	106	106	106	106	108	108	107
2005	109	109	109	109	108	108	107	106	107	108	109	109	108
2006	110	110	110	109	109	109	109	108	109	109	109	110	109
2007	110												110
Trucks 1990-92 = 100													
2003	117	117	117	116	116	115	114	115	114	114	115	116	116
2004	116	116	116	115	115	115	114	113	113	113	115	116	115
2005	117	117	117	116	116	115	113	112	113	114	114	114	115
2006	115	115	115	114	113	113	112	112	111	112	112	112	113
2007	112												112

<sup>1</sup> Simple average and is year-to-date for current year.

**Prices Paid Index Sub-Components: Monthly and Annual Average  
United States, 2003-2007**

Year	Jan	Feb	Mar	Apr	May	Jun	Jul	Aug	Sep	Oct	Nov	Dec	Avg <sup>1</sup>
Farm Machinery Sub-Components													
Tractors 1990-92 = 100													
2003	140	140	141	141	141	141	142	143	144	144	145	145	142
2004	145	145	146	146	147	147	148	148	148	149	149	149	147
2005	152	153	153	153	154	154	155	155	155	155	157	158	155
2006	158	159	159	159	161	161	163	162	160	161	163	163	161
2007	163												163
Self Propelled 1990-92 = 100													
2003	148	148	148	148	149	150	152	154	156	157	158	160	152
2004	162	164	165	167	167	166	167	167	171	174	173	176	168
2005	176	176	176	176	177	178	178	180	180	181	182	182	179
2006	185	185	186	187	188	188	188	188	188	188	189	189	187
2007	189												189
Other Machinery 1990-92 = 100													
2003	155	155	155	155	155	155	155	155	155	155	155	155	155
2004	155	155	167	164	164	164	164	163	165	165	171	170	164
2005	172	176	176	175	176	176	177	178	178	179	179	180	177
2006	182	183	184	185	185	185	185	186	186	186	187	187	185
2007	187												187
Farm Services Sub-Components													
Custom Rates 1990-92 = 100													
2003	125	125	125	125	125	125	125	125	125	125	125	125	125
2004	120	120	120	120	120	120	120	120	120	120	120	120	120
2005	121	121	121	121	121	121	121	121	121	121	121	121	121
2006	123	123	123	123	123	123	123	123	123	123	123	123	123
2007	123												123

<sup>1</sup> Simple average and is year-to-date for current year.

**Prices Paid Index Sub-Components: Monthly and Annual Average  
United States, 2003-2007**

Year	Jan	Feb	Mar	Apr	May	Jun	Jul	Aug	Sep	Oct	Nov	Dec	Avg <sup>1</sup>
Other Services 1990-92 = 100													
2003	123	123	123	124	124	125	126	126	126	124	124	124	124
2004	128	128	128	128	128	130	130	131	130	129	129	129	129
2005	131	131	131	132	132	134	135	135	135	134	134	134	133
2006	138	138	139	139	139	142	141	142	142	140	140	139	140
2007	142												142
Rent Sub-Components Cash 1990-92 = 100													
2003	147	147	147	147	147	147	147	147	147	147	147	147	147
2004	132	132	132	132	132	132	132	132	132	132	132	132	132
2005	147	147	147	147	147	147	147	147	147	147	147	147	147
2006	144	144	144	144	144	144	144	144	144	144	144	144	144
2007	140												140
Share 1990-92 = 100													
2003	95	95	95	95	95	95	95	95	95	95	95	95	95
2004	95	95	95	95	95	95	95	95	95	95	95	95	95
2005	94	94	94	94	94	94	94	94	94	94	94	94	94
2006	95	95	95	95	95	95	95	95	95	95	95	95	95
2007	95												95

<sup>1</sup> Simple average and is year-to-date for current year.

**Prices Paid Survey Estimates, Month Published and Level**

Survey	2006 Program Schedule <sup>1</sup>	
	Survey and Publication Month	Level of Estimates
Feed	Apr	Farm Production Regions and US
Feeder Livestock	Monthly	US
Seed	Apr	US
Fertilizer	Apr	Fertilizer Regions and US
Agricultural Chemicals	Apr	US
Fuels	Apr	Farm Production Regions and US
Farm Machinery	Apr	US
Grazing Fees	Jan <sup>2</sup>	States and Regions

<sup>1</sup> Data collection and publication schedule for average prices paid by producers.

<sup>2</sup> Survey estimates for previous year.

## Prices Paid by Farmers

**Definition:** Prices paid by farmers represent the average costs of inputs purchased by farmers and ranchers to produce agricultural commodities. Conceptually, the average price when multiplied by quantity purchased should equal total producer expenditures for the item.

**Survey Procedures:** The prices paid data are obtained from establishments that sell goods and services to farmers and ranchers. Annually, about 8,500 firms are randomly selected from lists by type of item sold with an average response rate in the range of 75-80 percent. Firms are asked to report the price for the specified item "most commonly bought by farmers" or that was the "volume seller". Approximately 135 items are surveyed each April to represent all production input items purchased. The survey reference period for most items is the 5 business days centered around the 15th of the month. Separate prices paid surveys are conducted for agricultural chemicals, fuels, feed, fertilizer, machinery, and seed.

**Summary and Estimation Procedures:** The annual April Prices Paid Survey is summarized as a nonprobability survey. Average prices reported are aggregated to the region and U.S. level using weights available from expenditure data and other administrative sources. Price recommendations are prepared by the State Field Offices and Headquarters for review by the Agricultural Statistics Board in Washington, D.C. Also, the change in price level for individual items surveyed are combined to the regional and U.S. levels, and are published as prices paid indexes referenced to a specific base period. Prices paid indexes for new autos and trucks, building materials, farm supplies, motor supplies, and marketing containers are updated based on price changes measured in selected Bureau of Labor Statistics (BLS) indexes.

**Revisions:** Any revisions are published in the monthly and in annual issues of *Agricultural Prices*. The basis for revision must be supported by additional data that directly affect the level of the estimate. More revisions are likely in April when separate prices paid surveys are conducted, in lieu of BLS indexes, by the USDA to measure price change.

**Reliability:** Current methods of summarization in April are not designed directly to calculate sampling errors. However, analytical measures approximate the U.S. relative sampling errors for major items around 10 percent. Any nonsampling errors are attributed to such things as the inability to obtain correct information, differences in interpreting questions or definitions, mistakes in coding or processing the data, etc. Efforts are made at each step in the survey process to minimize these nonsampling errors.

**Program Change:** Effective January 1, 1995, the National Agricultural Statistics Service updated the weights and changed the construction of its prices paid and received by farmers indexes. A Federal Register Notice dated October 28, 1994 discussed these program modifications.

A 1990-92 reference and base period replaced the 1977 reference and 1971-73 base weight period. Five-year moving average weights replaced the current fixed 1971-73 base period weights. The 1910-14=100 price indexes, required by statute for computing parity prices, were linked forward based on the changes in the new 1990-92=100 indexes. The new indexes were constructed by multiplying the ratios of the current prices to the base period prices by the moving average weights (adjusted for seasonal marketing patterns for the prices received indexes).

## Information Contacts

General questions should be directed to Kevin Barnes, Chief, Environmental, Economics and Demographics Branch at (202) 720-6146. Below are the commodity specialists to contact for additional information.

### Crop Prices Received

Jeff Geuder, Chief, Crops Branch .....	(202) 720-2127
Greg Thessen, Field Crops Section .....	(202) 720-2127
Todd Ballard - Wheat, Rye .....	(202) 690-8533
Ty Kalaus - Corn, Proso Millet, Flaxseed .....	(202) 720-9526
Shiela Corley - Cotton, Cottonseed .....	(202) 720-5944
Travis Thorson - Soybeans, Sunflower, Other Oilseeds .....	(202) 720-7369
King Whetstone - Hay, Oats, Sorghum .....	(202) 690-3234
Dennis Koong - Peanuts, Rice .....	(202) 720-7688
Brian Young - Sugarcane, Sugarbeets, Barley .....	(202) 720-7621
Lance Honig, Fruit and Vegetable Section .....	(202) 720-2127
Dan Norris - Peaches, Pears, Hops, Pulses, Mint .....	(202) 720-3250
Rich Holcomb - Citrus .....	(202) 720-5412
Faye Propsom - Apples, Apricots, Cherries, Cranberries, Plums, Prunes .....	(202) 720-4288
Leslie Colburn - Grapes, Tobacco .....	(202) 720-7235
Cathy Scherrer - Potatoes, Dry Edible Beans, Sweet Potatoes .....	(202) 720-4285
Debbie Flippin - Vegetables, Onions, Strawberries .....	(202) 720-2157

### Livestock Prices Received

Dan Kerestes, Chief, Livestock Branch .....	(202) 720-3570
Bill Weaver, Livestock Section .....	(202) 720-3570
Scott Hollis - Sheep, Lambs, Wool, Mohair .....	(202) 720-4751
Jason Hardegree- Milk, Milk Cows .....	(202) 720-3278
Bruce Boess - Hogs .....	(202) 720-3106
Mike Miller - Cattle .....	(202) 720-3040
Darin Jantzi, Poultry and Specialty Commodities Section .....	(202) 720-3570
Fleming Gibson - Turkeys .....	(202) 720-0585
Sharyn Lavender - Broilers .....	(202) 720-3244
Mark Aitken - Eggs .....	(202) 690-8632

### Indexes, Prices Paid, and Parity Prices

Kevin Barnes, Chief, Environmental, Economics and Demographics Branch .....	(202) 720-6146
Kevin Hintzman, Economics Section .....	(202) 720-6146
Jen Brown - Prices Paid Indexes, Prices Paid for Feed, Fertilizer, Agricultural Chemicals, Seeds, Farm Supplies and Repairs, Farm Machinery, Fuels, Feeder Livestock, Poultry Chicks, Feed Price Ratios, Autos & Trucks .....	(202) 720-5446
Daryl Brinkman - Prices Received Indexes, Parity Prices .....	(202) 720-8844
Jennifer Sissom - Grazing Fees .....	(202) 690-3229

## ACCESS TO REPORTS!!

---

For your convenience, there are several ways to obtain NASS reports, data products, and services:

### INTERNET ACCESS

All NASS reports are available free of charge on the worldwide Internet. For access, connect to the Internet and go to the NASS Home Page at: [www.nass.usda.gov](http://www.nass.usda.gov).

### E-MAIL SUBSCRIPTION

All NASS reports are available by subscription free of charge direct to your e-mail address. Starting with the NASS Home Page at [www.nass.usda.gov](http://www.nass.usda.gov), under the right navigation, *Receive reports by Email*, click on **National** or **State**. Follow the instructions on the screen.

-----

### PRINTED REPORTS OR DATA PRODUCTS

**CALL OUR TOLL-FREE ORDER DESK: 800-999-6779 (U.S. and Canada)**  
**Other areas, please call 703-605-6220      FAX: 703-605-6900**  
**(Visa, MasterCard, check, or money order acceptable for payment.)**

-----

### ASSISTANCE

For **assistance** with general agricultural statistics or further information about NASS or its products or services, contact the **Agricultural Statistics Hotline** at **800-727-9540**, 7:30 a.m. to 4:00 p.m. ET, or e-mail: [nass@nass.usda.gov](mailto:nass@nass.usda.gov).

The U.S. Department of Agriculture (USDA) prohibits discrimination in all its programs and activities on the basis of race, color, national origin, age, disability, and where applicable, sex, marital status, familial status, parental status, religion, sexual orientation, genetic information, political beliefs, reprisal, or because all or a part of an individual's income is derived from any public assistance program. (Not all prohibited bases apply to all programs.) Persons with disabilities who require alternative means for communication of program information (Braille, large print, audiotape, etc.) should contact USDA's TARGET Center at (202) 720-2600 (voice and TDD).

To file a complaint of discrimination, write to USDA, Director, Office of Civil Rights, 1400 Independence Avenue, S.W., Washington, D.C. 20250-9410, or call (800) 795-3272 (voice) or (202) 720-6382 (TDD). USDA is an equal opportunity provider and employer.