



NASS

FACT FINDERS FOR AGRICULTURE
UNITED STATES DEPARTMENT OF AGRICULTURE

Washington, D.C.

Agricultural Prices

Released February 28, 2007, by the National Agricultural Statistics Service (NASS), Agricultural Statistics Board, U.S. Department of Agriculture. For information on *Agricultural Prices* see page 60, office hours 7:30 a.m. to 4:00 p.m. ET.

February Farm Prices Received Index Increased 3 Points From Last Month

The preliminary All Farm Products Index of Prices Received by Farmers in February, at 127 percent, based on 1990-92=100, increased 3 points (2.4 percent) from January. The Crop Index is up 6 points (4.6 percent) and the Livestock Index increased 3 points (2.6 percent). Producers received higher commodity prices for corn, broilers, soybeans, and hogs. Lower prices were received for broccoli, lettuce, eggs, and oranges. The overall index is also affected by the seasonal change based on a 3-year average mix of commodities producers sell. Increased average marketings of dairy, cattle, broilers, and strawberries offset decreased marketings of corn, soybeans, wheat, and cotton.

The preliminary All Farm Products Index is up 14 points (12 percent) from February 2006. The Food Commodities Index, at 127, increased 3 points (2.4 percent) from last month and increased 11 points (9.5 percent) from February 2006.

Prices Paid Index Increased 1 Point

The February Index of Prices Paid for Commodities and Services, Interest, Taxes, and Farm Wage Rates (PPITW) is 153 percent of the 1990-92 average. The index is up 1 point (0.7 percent) from January and 6 points (4.1 percent) above February 2006. Higher prices in February for complete feeds, feed grains, mixed fertilizers, and LP gas more than offset lower prices for feed concentrates, diesel fuel, herbicides, and tractors.

Index Summary Table

Index 1990-92=100	2006		2007	
	Jan	Feb	Jan	Feb
Prices Received	113	113	124	127
Prices Paid	148	147	152	153
Ratio ¹	76	77	82	83

¹ Ratio of index of prices received by farmers to index of prices paid by farmers.

Prices Received by Farmers

The February All Farm Products Index is 127 percent of its 1990-92 base, up 2.4 percent from the January index and 12 percent above the February 2006 index.

ALL CROPS: The February index is 137, up 4.6 percent from January and 21 percent above February 2006. From January, index increases for oil-bearing crops, feed grains & hay, and fruits & nuts more than offset the index decreases for vegetables and cotton.

Food Grains: The February index, at 153, is 1.3 percent above the previous month and 26 percent above a year ago. The February all wheat price, at \$4.66 per bushel, is up 12 cents from January and \$1.00 above February 2006.

Feed Grains & Hay: The February index is 146, up 7.4 percent from last month and 52 percent above a year ago. The corn price, at \$3.32 per bushel, is up 27 cents from last month and \$1.30 from February 2006. The all hay price, at \$114 per ton, increased \$2.00 from January and \$18.20 from last February. Sorghum grain, at \$6.67 per cwt, is 36 cents above January and \$3.27 above February last year.

Oil-Bearing Crops: The February index, at 123, is up 7.9 percent from January and 21 percent higher than February 2006. The soybean price, at \$6.83 per bushel, increased 45 cents from January and \$1.16 from February 2006.

Cotton: The February index, at 81, is down 1.2 percent from January but unchanged from last year. The February price, at 48.9 cents per pound, is down 0.8 cent from the previous month but unchanged from last February.

Potatoes & Dry Beans: The February index, at 125, is up 3.3 percent from last month and 1.6 percent above February 2006. The all potato price, at \$7.28 per cwt, is up 22 cents from January and 52 cents from last February. The all dry bean price, at \$23.80 per cwt, is up \$1.10 from the previous month and \$6.40 above February 2006.

Fruits & Nuts: The February index, at 160, is up 6.7 percent from January and 13 percent higher than a year ago. Price increases for lemons and strawberries more than offset price decreases for oranges and grapefruit.

Commercial Vegetables: The February index, at 165, is down 5.7 percent from last month but 32 percent above February 2006. Price decreases during February for broccoli and lettuce more than offset price increases for celery, tomatoes, and carrots.

LIVESTOCK & PRODUCTS: The February index, at 119, is 2.6 percent above last month and up 4.4 percent from February 2006. Compared with a year ago, prices are higher for broilers, milk, eggs, hogs, and turkeys. Prices for cattle and calves are down from last year.

Meat Animals: The February index, at 114, is up 3.6 percent from last month but 5.0 percent lower than last year. The February hog price, at \$46.60 per cwt, is up \$3.90 from January and \$4.00 higher than a year ago. The February beef cattle price of \$85.80 per cwt is up \$1.50 from last month but \$6.60 lower than February 2006.

Dairy Products: The February index, at 113, is up 1.8 percent from a month ago and 9.7 percent higher than February last year. The February all milk price of \$14.70 per cwt is up 20 cents from last month and \$1.20 from February 2006. The fluid grade milk price is up 20 cents and the manufacturing grade milk price is up 50 cents from the previous month.

Poultry & Eggs: The February index, at 139, is up 3.7 percent from January and 28 percent above a year ago. The February market egg price, at 62.7 cents per dozen, decreased 16.1 cents from January but is up 32.6 cents from February 2006. The February broiler price, at 47.0 cents per pound, is up 4.0 cents from January and 9.0 cents above a year ago. The February turkey price, at 43.2 cents per pound, is up 2.4 cents from the previous month and 3.6 cents from a year earlier.

Table of Contents

U.S. Prices Received and Indexes	Page	Monthly State Prices, continued	Page
Narrative	2	Cotton	17
Price Indexes	5	Cottonseed	17
Price Index Charts	6	Eggs	22
U.S. Prices Received Summary	8	Flaxseed	16
Charts	10	Grain Sorghum	15
Selected Commodities	14	Hay	17
Upland Cotton & Rice Marketings	17	Hogs, All	21
Parity Prices	24	Barrows and Gilts	21
Reliability Statement	51	Sows	21
 Monthly State Prices Received		Milk	23
Apples	17	Milk Cows	23
Barley	15	Oats	15
Beans, Dry Edible	16	Peanuts	16
Beef Cattle, All	20	Potatoes	19
Calves	20	Sheep	22
Cows, Beef	20	Lambs	22
Steers and Heifers	20	Soybeans	15
Citrus Fruit	18	Sunflower, All	16
Corn	15	Wheat, All Classes	14
 Prices Received Special Features			Page
Marketing Year for Specified Commodities			27
 Monthly Price Revisions			
Apples		see January 2007 Noncitrus Fruits and Nuts - Preliminary	
		http://usda.mannlib.cornell.edu/MannUsda/viewDocumentInfo.do?documentID=1113	
Cattle			34
Hogs			43
Lambs			46
Potatoes			28
Sheep			47
 Marketing Year Average Prices			
Apricots		see January 2007 Noncitrus Fruits and Nuts - Preliminary	
		http://usda.mannlib.cornell.edu/MannUsda/viewDocumentInfo.do?documentID=1113	
Cattle			30
Dried Figs		see January 2007 Noncitrus Fruits and Nuts - Preliminary	
		http://usda.mannlib.cornell.edu/MannUsda/viewDocumentInfo.do?documentID=1113	
Hogs			32
Grapes, California Raisin		see January 2007 Noncitrus Fruits and Nuts - Preliminary	
		http://usda.mannlib.cornell.edu/MannUsda/viewDocumentInfo.do?documentID=1113	
Grapes, Concord		see January 2007 Noncitrus Fruits and Nuts - Preliminary	
		http://usda.mannlib.cornell.edu/MannUsda/viewDocumentInfo.do?documentID=1113	
Mohair		see February 2007 Sheep and Goats	
		http://usda.mannlib.cornell.edu/MannUsda/viewDocumentInfo.do?documentID=1145	
Peaches		see January 2007 Noncitrus Fruits and Nuts - Preliminary	
		http://usda.mannlib.cornell.edu/MannUsda/viewDocumentInfo.do?documentID=1113	
Pears		see January 2007 Noncitrus Fruits and Nuts - Preliminary	
		http://usda.mannlib.cornell.edu/MannUsda/viewDocumentInfo.do?documentID=1113	
Plums		see January 2007 Noncitrus Fruits and Nuts - Preliminary	
		http://usda.mannlib.cornell.edu/MannUsda/viewDocumentInfo.do?documentID=1113	
Potatoes			27
Sheep			33
Wool		see February 2007 Sheep and Goats	
		http://usda.mannlib.cornell.edu/MannUsda/viewDocumentInfo.do?documentID=1145	
 Livestock Inventory Values			48
 Other Hay, Baled			
Used to Compute Grazing Fees for Eastern National Forests			26

Table of Contents (continued)

U.S. Prices Paid, Prices Paid Indexes and Ratios	Page
Narrative	52
Indexes and Parity Ratios	53
Charts	55
Feed Price Ratios	58
Reliability Statement	59
U.S. Average Prices	
Prices Used to Calculate Feed Price Ratios	58
Feeder Livestock	58
Information Contacts	60

**Index Numbers of Prices Received, United States,
February 2007, with Comparisons**

Index	1910-14=100				1990-92=100		
	Average 1990-92	2006	2007		2006	2007	
		Feb	Jan	Feb	Feb	Jan	Feb
All Farm Products	639	721	*785	808	113	124	127
All Crops	500	559	*646	678	113	*131	137
Food Grains	325	384	*481	486	121	*151	153
Feed Grains & Hay	363	343	*486	523	96	*136	146
Cotton	517	414	*420	413	81	82	81
Tobacco ¹	1,263	1,363	1,392	1,392	90	92	92
Oil-Bearing Crops	554	555	*624	671	102	*114	123
Fruits & Nuts	716	995	*1,046	1,115	142	*150	160
Commercial Vegetables	698	832	*1,172	1,105	125	*175	165
Potatoes & Dry Beans	540	623	*612	633	123	*121	125
Other Crops	493	586	*598	598	119	*121	121
Livestock & Products	768	871	*888	913	114	116	119
Meat Animals	1,021	1,219	*1,121	1,154	120	110	114
Dairy Products	799	830	*891	903	103	*111	113
Poultry & Eggs	282	305	377	390	109	134	139
Food Commodities					116	*124	127

* Revised.

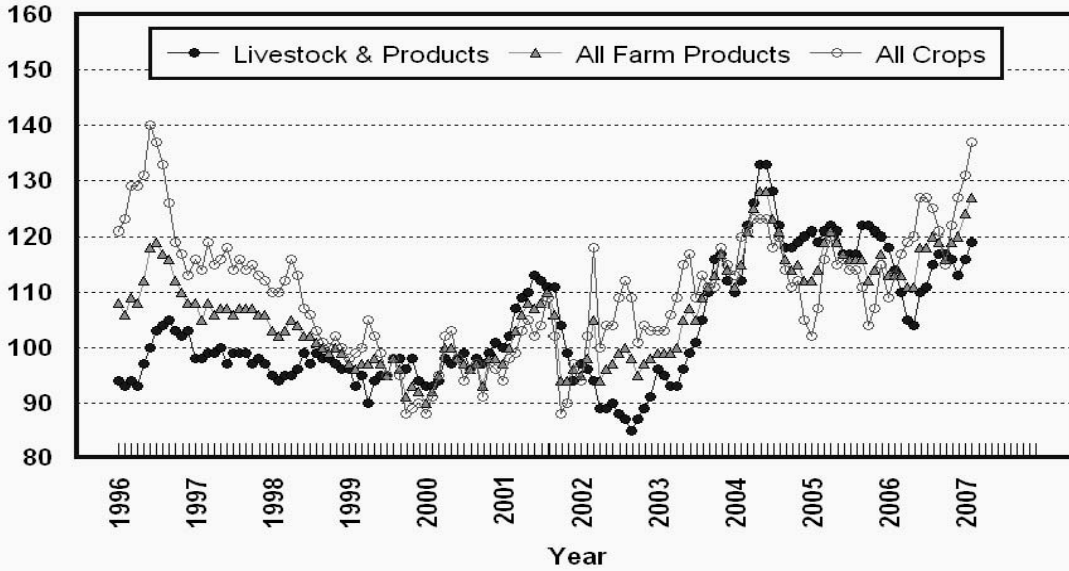
¹ Monthly prices discontinued July 2005.

**Selected Index Numbers for Prices Received and Paid,
1990-92=100, by Month, United States, 2006 and 2007**

Month	Index of Prices Received						Index of Prices Paid			
	All Farm Products		All Crops		Livestock and Products		All Items		Production Items	
	2006	2007	2006	2007	2006	2007	2006	2007	2006	2007
Jan	113	124	108	131	118	116	148	152	145	149
Feb	113	127	113	137	114	119	147	153	144	150
Mar	113		118		110		147		144	
Apr	111		120		105		148		145	
May	111		120		104		149		146	
Jun	118		126		110		149		147	
Jul	118		127		111		149		147	
Aug	120		125		115		149		147	
Sep	120		122		117		149		146	
Oct	116		115		117		148		145	
Nov	120		123		116		149		146	
Dec	121		128		113		150		147	

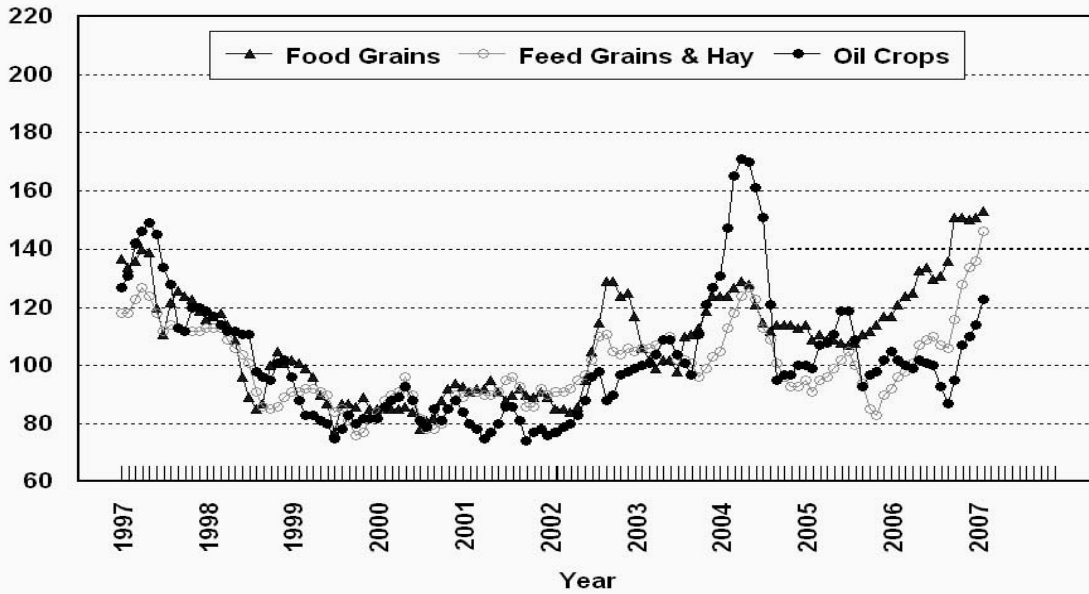
Prices Received, Major Indexes, US

Percent (1990-92=100)



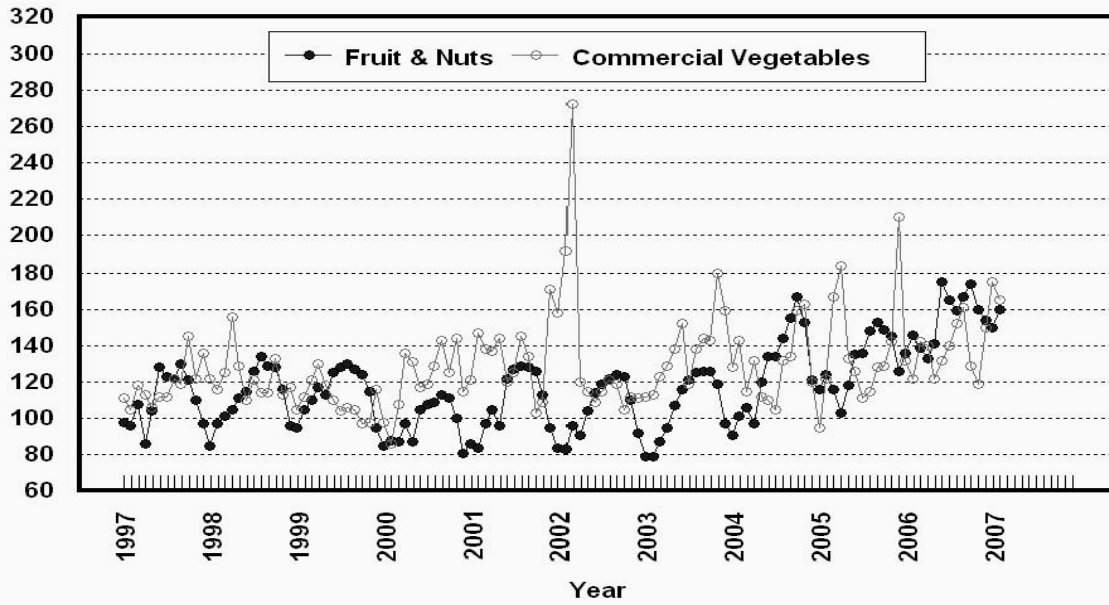
Prices Received, Food, Feed, & Oil Indexes, US

Percent (1990-92=100)



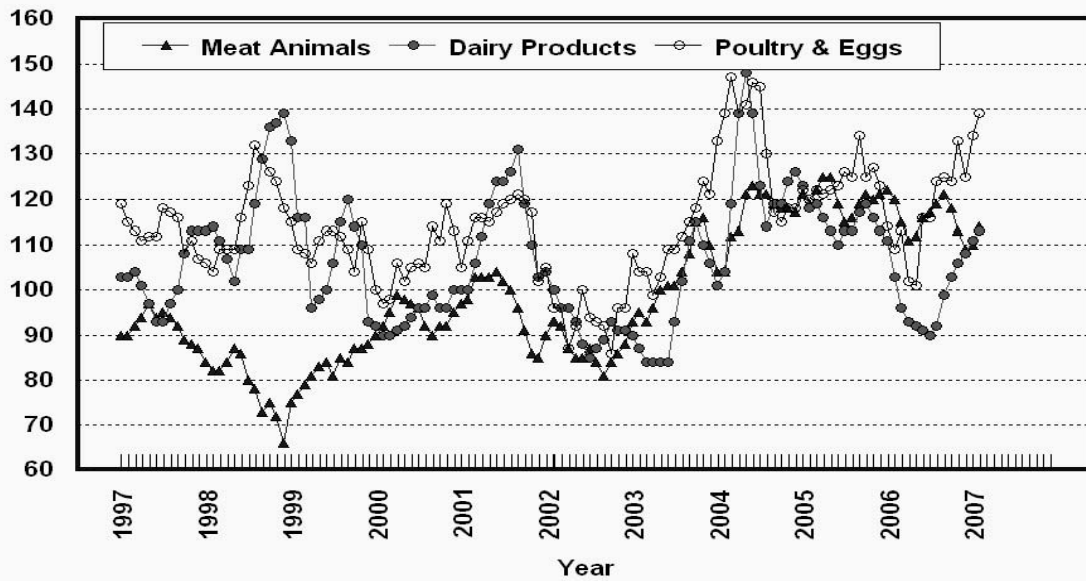
Prices Received, Fruit/Vegetable Indexes, US

Percent (1990-92=100)



Prices Received, Livestock Product Indexes, US

Percent (1990-92=100)



**Prices Received, United States,
February 2007, with Comparisons**

Commodity	Unit	Average 1990-92	Entire Month		Preliminary
			Feb 2006	Jan 2007	Feb 2007
		<i>Dollars</i>	<i>Dollars</i>	<i>Dollars</i>	<i>Dollars</i>
Field Crops					
Barley, All	Bu	2.12	2.55	3.03	3.10
Feed	Bu	1.90	1.83	3.12	3.13
Malting	Bu	2.43	2.74	2.99	3.09
Beans, Dry Edible	Cwt	19.10	17.40	22.70	23.80
Chickpeas, All	Cwt		26.20	28.20	28.80
Large	Cwt		30.20	28.50	29.20
Small	Cwt		18.60	(⁴)	(⁴)
Corn	Bu	2.30	2.02	3.05	3.32
Cotton, Upland	Lb	0.606	0.489	0.497	0.489
Cottonseed ³	Ton	96.00	99.00	120.00	125.00
Flaxseed	Bu	4.27	5.59	6.07	6.25
Hay, All, Baled ¹	Ton	76.30	95.80	112.00	114.00
Alfalfa ¹	Ton	77.20	98.40	115.00	117.00
Other ¹	Ton	60.00	88.60	102.00	105.00
Lentils	Cwt		11.00	14.00	14.70
Oats	Bu	1.22	1.82	2.19	2.19
Peanuts, In-Shell	Lb	0.304	0.186	0.178	0.179
Peas, Dry Edible	Cwt		5.02	7.21	7.95
Austrian Winter	Cwt		7.76	6.64	6.90
Potatoes	Cwt	5.82	6.76	7.06	7.28
Rice, Rough	Cwt	7.07	8.02	10.20	10.00
Sorghum Grain	Cwt	3.75	3.40	6.31	6.67
Soybeans	Bu	5.61	5.67	6.38	6.83
Sunflower, All	Cwt	9.50	11.20	13.80	14.60
Wheat, All	Bu	2.96	3.66	4.54	4.66
Winter	Bu	2.93	3.59	4.53	4.62
Durum	Bu	2.86	3.34	4.70	4.97
Other Spring	Bu	3.11	3.83	4.52	4.67
Hard Red Winter	Bu		3.77	4.73	
Soft Red Winter	Bu		3.32	4.04	
Hard Red Spring	Bu		3.89	4.54	
White	Bu	3.24	3.12	4.34	
Fruit					
Citrus, Equiv on-tree					
Grapefruit	Box	5.77	9.92	6.18	4.10
Lemons	Box	10.10	9.42	11.42	32.27
Oranges	Box	5.79	5.27	8.14	7.42
Tangelos	Box	5.82	2.70	7.32	10.67
Tangerines	Box	15.11	10.21	16.23	14.36
Noncitrus, Fresh					
Apples ²	Lb	0.212	0.206	0.287	0.285
Grapes ^{2,5}	Ton	506.00			
Peaches ^{2,5}	Ton	432.00			
Pears ²	Ton	370.00	392.00	561.00	534.00
Strawberries	Cwt	56.00	99.90	132.00	172.00

¹ Mid-month price.

² Equivalent packinghouse-door returns for CA, MI, and NY (apples only), and WA (apples, peaches, and pears). Prices as sold for other states.

³ Marketing year August - February.

⁴ Price not published to avoid disclosure of individual firms.

⁵ Insufficient sales to establish a price.

**Prices Received, United States,
February 2007, with Comparisons**

Commodity	Unit	Average 1990-92	Entire Month		Preliminary
			Feb 2006	Jan 2007	Feb 2007
		<i>Dollars</i>	<i>Dollars</i>	<i>Dollars</i>	<i>Dollars</i>
Vegetables, Fresh ¹					
Asparagus	Cwt	79.80	122.00		
Broccoli	Cwt	22.50	23.80	70.00	28.90
Cantaloupes ²	Cwt				
Carrots	Cwt	13.20	21.50	21.00	28.10
Cauliflower	Cwt	26.80	26.40	46.20	24.40
Celery	Cwt	11.60	10.80	33.90	58.70
Corn, Sweet	Cwt	15.70	35.00	27.90	21.70
Cucumbers ²	Cwt		27.70	28.90	
Lettuce	Cwt	11.90	12.00	21.00	16.60
Onions	Cwt	12.80	8.04	26.50	25.60
Snap Beans ²	Cwt		56.00	66.60	75.90
Tomatoes	Cwt	32.30	46.50	26.70	37.50
Livestock					
Calves	Cwt	94.30	143.00	115.00	115.00
Cattle, All Beef	Cwt	72.90	92.40	84.30	85.80
Cows ³	Cwt	49.60	49.50	44.40	46.50
Steers & Heifers	Cwt	77.10	97.60	89.80	90.70
Milk Cows ⁴	Head	1,130.00		1,660.00	
Hogs, All	Cwt	47.70	42.60	42.70	46.60
Barrows & Gilts	Cwt	48.40	43.20	43.40	47.40
Sows	Cwt	39.50	31.20	29.80	31.80
Lambs	Cwt	56.20	97.80	96.50	
Sheep	Cwt	23.40	45.90	37.10	
Dairy and Poultry					
Milk, All ^{5 6}	Cwt	13.06	13.50	14.50	14.70
Fluid Grade ⁶	Cwt	13.10	13.50	14.50	14.70
Mfg Grade ⁶	Cwt	11.80	12.60	13.90	14.40
Broilers, Live ⁷	Lb	0.317	0.380	0.430	0.470
Eggs, All ⁸	Doz	0.643	0.495	0.915	0.781
Market ⁸	Doz	0.546	0.301	0.788	0.627
Turkeys, live ^{7 8}	Lb	0.380	0.396	0.408	0.432
Adjusted for Seasonal Variation ⁹					
Eggs, All	Doz	0.545	0.489	0.818	0.770
Milk, All ⁵	Cwt	9.71	13.60	14.20	14.80

¹ Beginning January 2006, point of first sale. F.O.B. shipping point for prior years.

² Monthly estimates began January 1995.

³ Beef cows and cull dairy cows sold for slaughter.

⁴ Animals sold for dairy herd replacement only. Prices available for Jan, Apr, Jul, and Oct.

⁵ Before deductions for hauling. Includes quality, quantity, and other premiums. Excludes hauling subsidies.

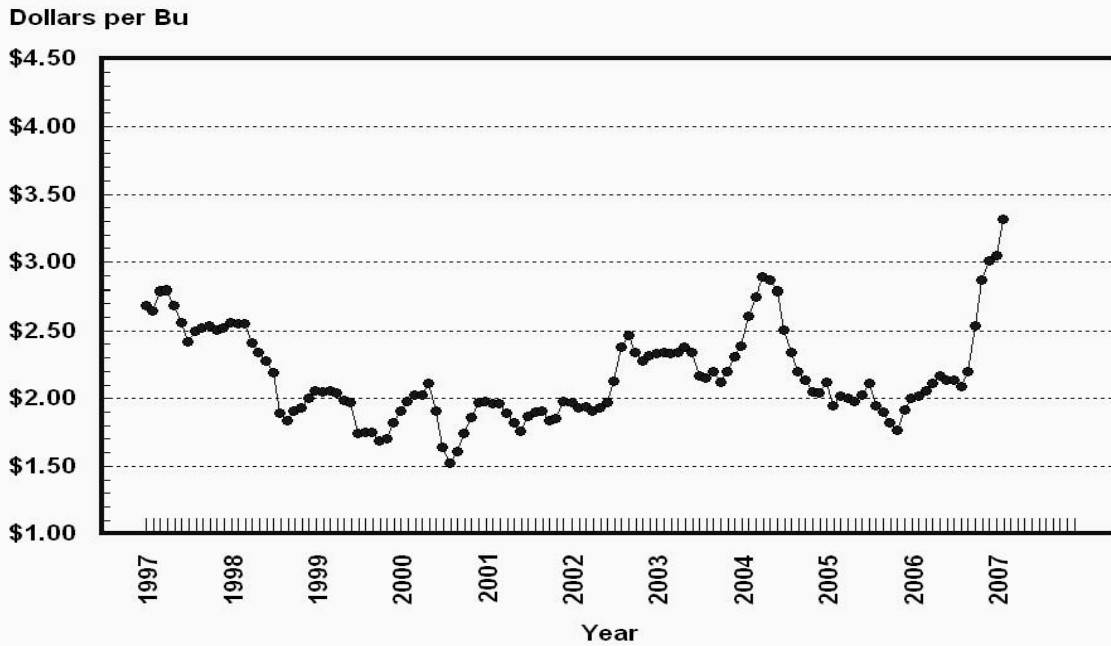
⁶ February 2007 Fat test percent: all milk, 3.74; fluid milk, 3.74; mfg grade, 4.01.

⁷ Equivalent liveweight returns to producers for most States. Includes growers and contractors.

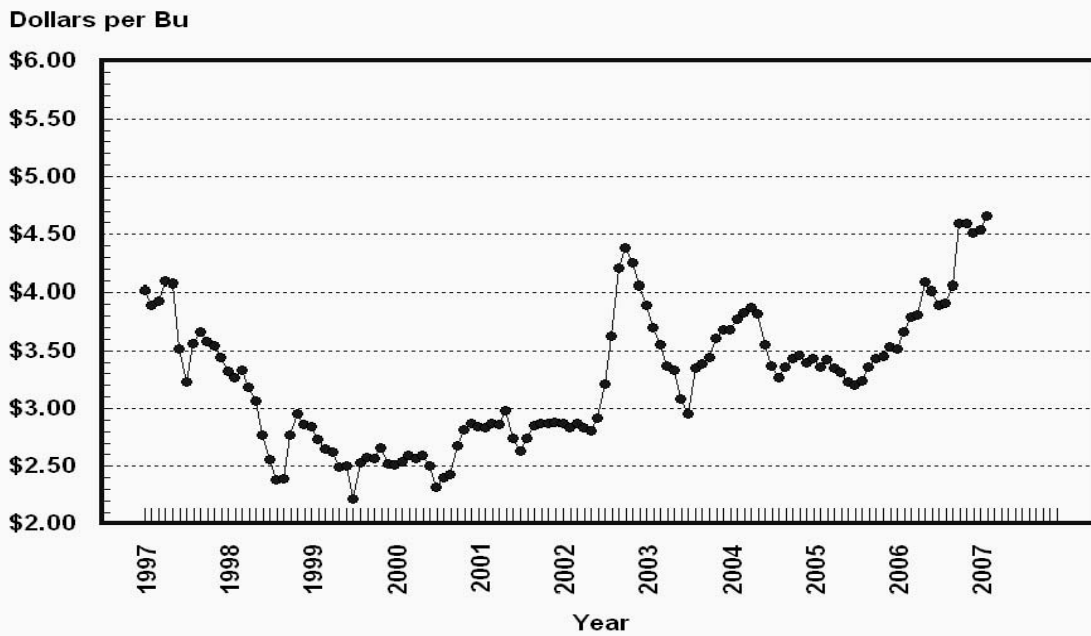
⁸ Mid-month price.

⁹ Seasonal adjustment factors are: All Eggs February 2006, 101; January 2007, 112; and February 2007, 101. All Milk February 2006, 99; January 2007, 102; and February 2007, 99.

Prices Received, Corn, US

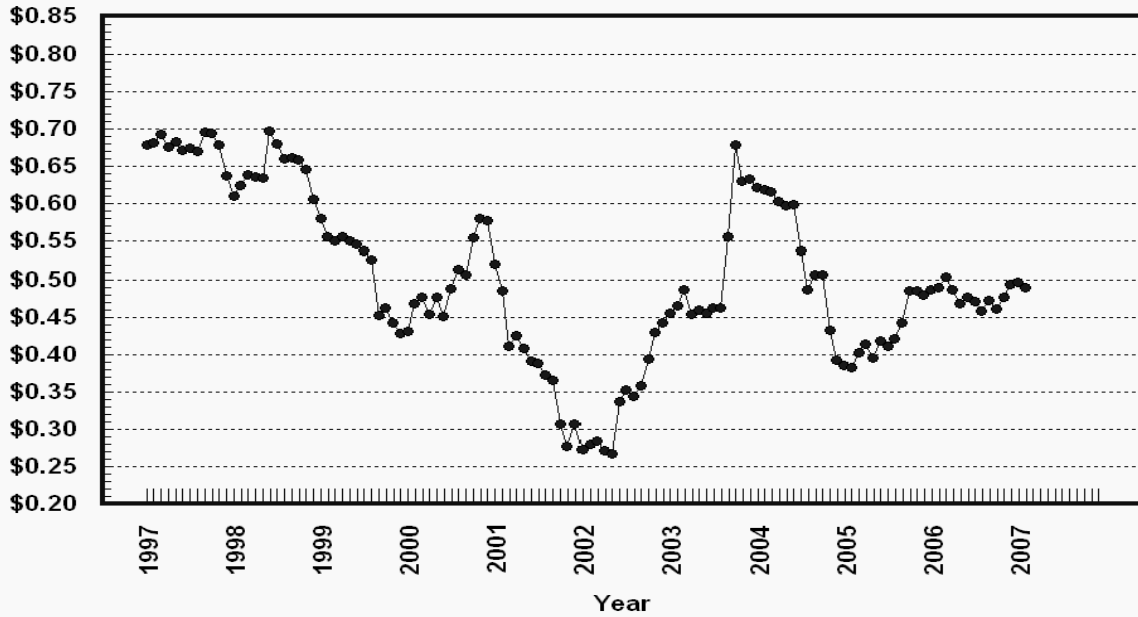


Prices Received, Wheat, US



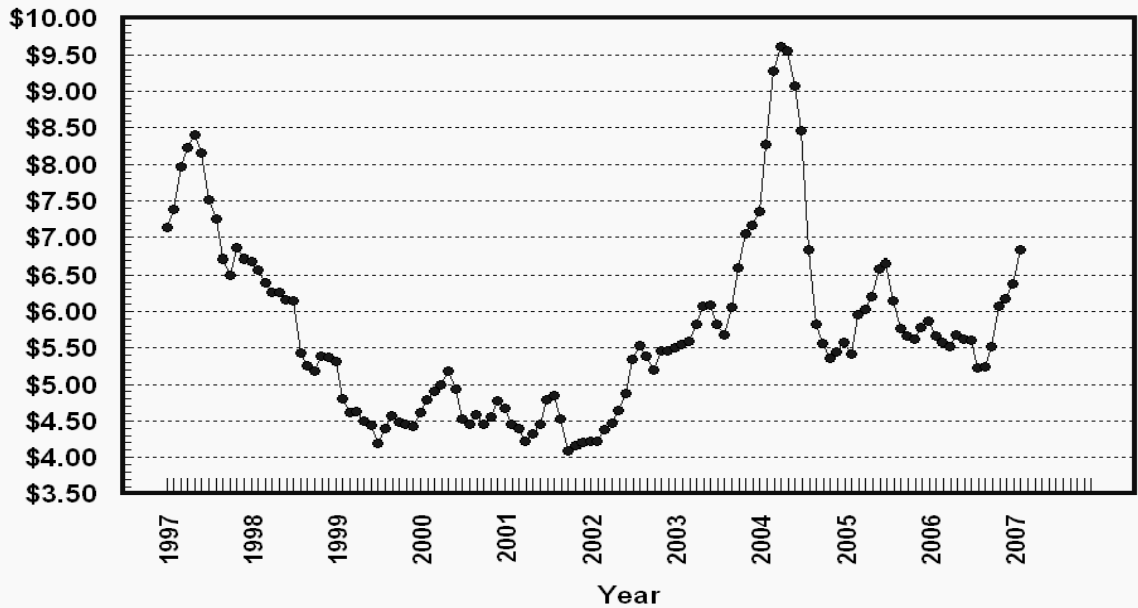
Prices Received, Cotton, US

Dollars per Lb



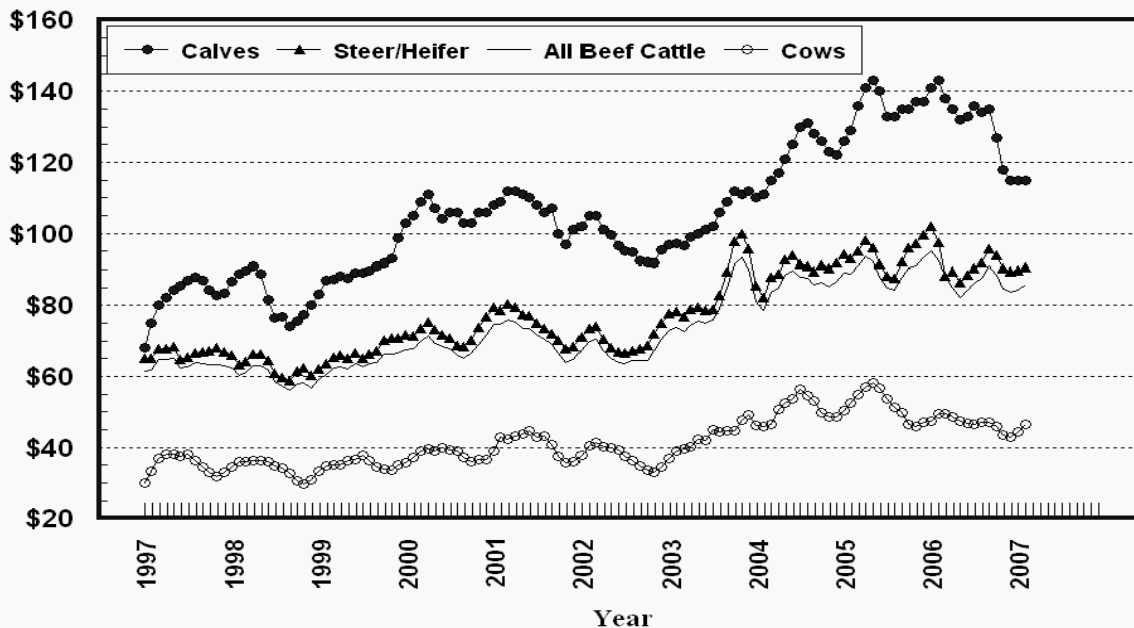
Prices Received, Soybeans, US

Dollars per Bu



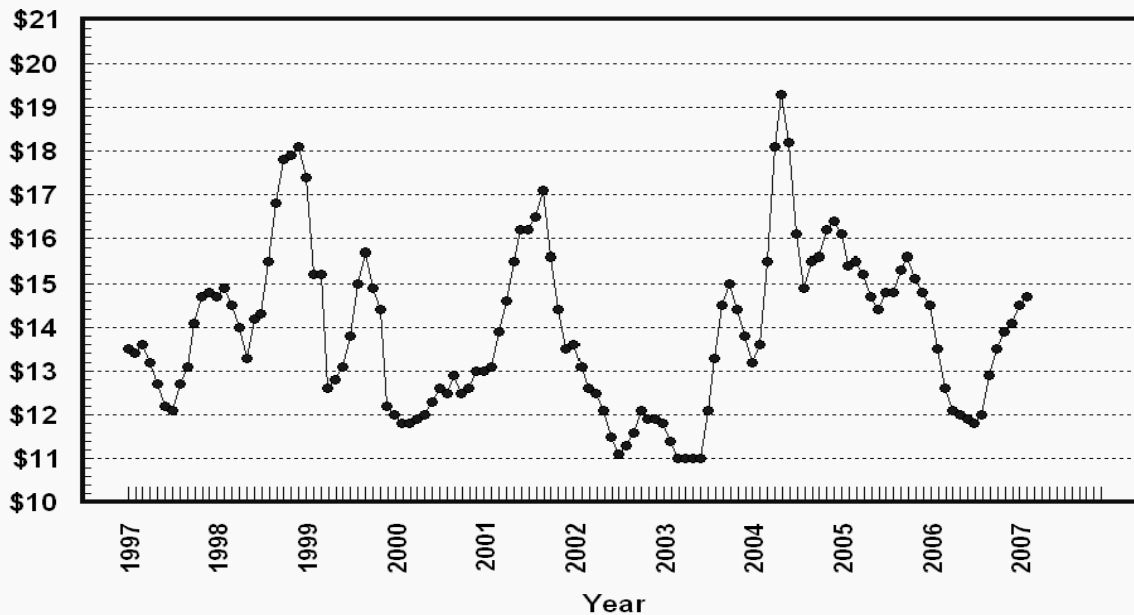
Prices Received, Cattle, US

Dollars per Cwt



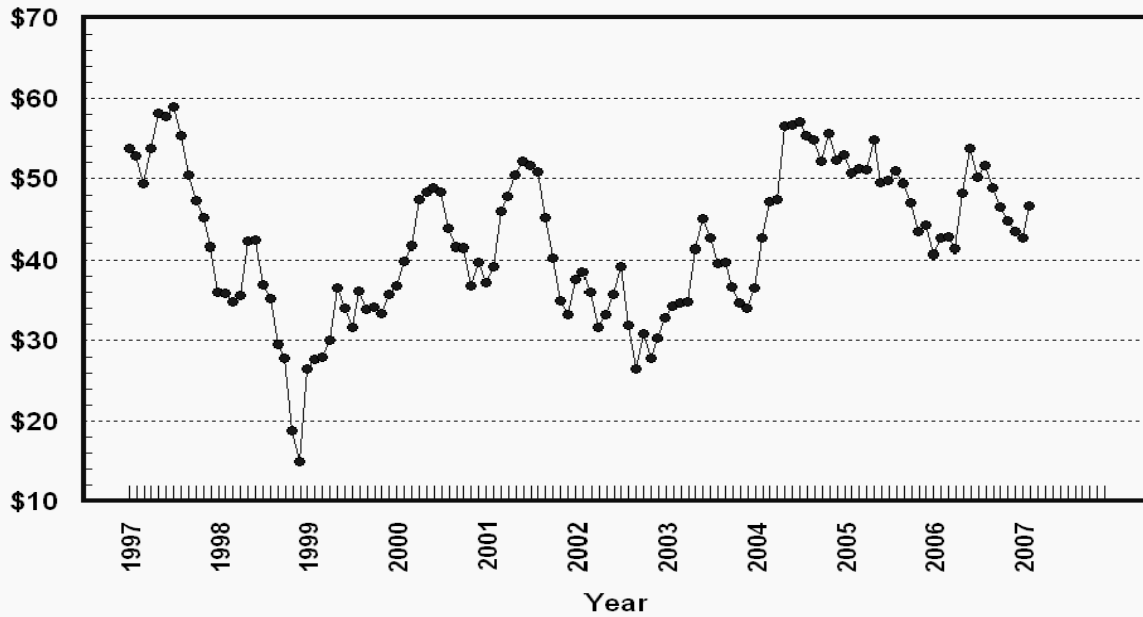
Prices Received, Milk, US

Dollars per Cwt



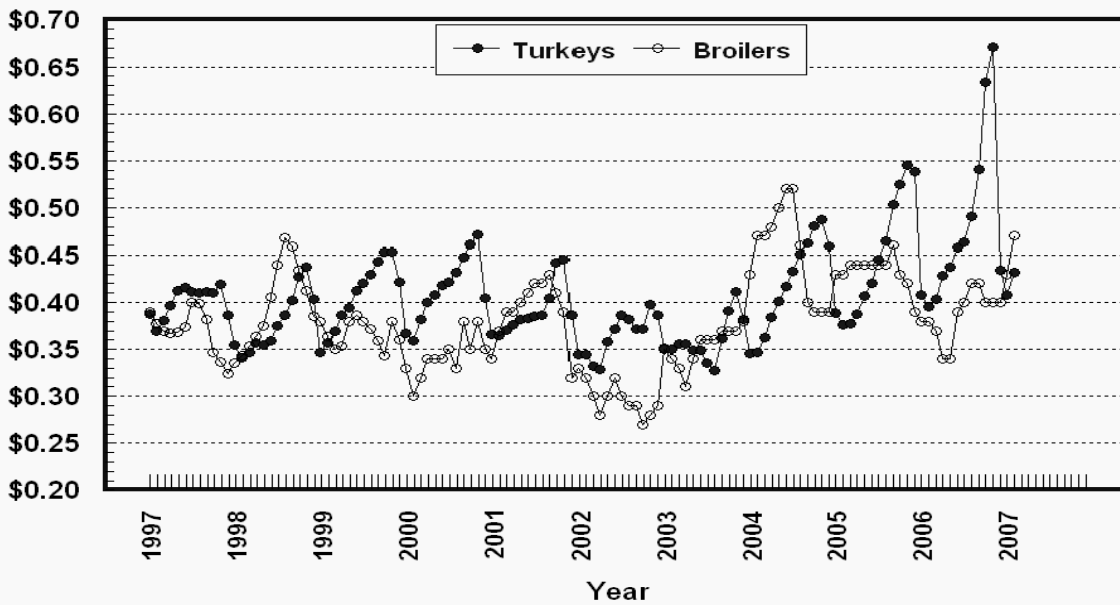
Prices Received, Hogs, US

Dollars per Cwt



Prices Received, Turkeys & Broilers, US

Dollars per Lb



Wheat: Prices Received, by State, January and February 2007

State	All Wheat		Winter Wheat		Durum Wheat		Oth Spring Wheat	
	Jan ¹	Feb ²	Jan ¹	Feb ²	Jan ¹	Feb ²	Jan ¹	Feb ²
	<i>Dollars per Bushel</i>	<i>Dollars per Bushel</i>	<i>Dollars per Bushel</i>	<i>Dollars per Bushel</i>	<i>Dollars per Bushel</i>	<i>Dollars per Bushel</i>	<i>Dollars per Bushel</i>	<i>Dollars per Bushel</i>
AR	4.14	4.25	(³)	4.25				
CA	4.12	(³)	4.12	(³)	(³)	(⁴)		
CO	4.55	4.46	4.55	(³)			(³)	(³)
ID	4.36	4.45	4.23	4.40	(³)	(³)	4.53	4.50
IL	3.97	3.95	3.97	3.95				
IN	4.08	4.14	4.08	4.14				
KS	4.90	4.84	4.90	4.84				
MI	3.81	3.90	3.81	3.90				
MN	4.57	4.62	(⁴)	(³)			4.57	4.62
MO	4.37	4.10	4.37	4.10				
MT	4.58	4.76	4.52	4.63	4.73	5.12	4.61	4.81
NE	4.54	4.50	4.54	4.50				
ND	4.46	4.68	4.17	4.35	4.72	4.95	4.38	4.60
OH	3.90	3.84	3.90	3.84				
OK	4.65	4.66	4.65	4.66				
OR	4.45	4.96	4.34	4.90			4.96	5.30
SD	4.59	4.55	4.53	4.49			4.70	4.68
TX	4.78	4.37	4.78	4.37				
WA	4.62	5.09	4.57	5.06			4.84	5.19
US	4.54	4.66	4.53	4.62	4.70	4.97	4.52	4.67

¹ Entire month.

² Mid-month.

³ Price not published to avoid disclosure of individual firms.

⁴ Insufficient sales to establish a price.

**Prices Received for Selected Agricultural Commodities, by Month,
United States, 2006 and 2007 ¹**

Month	All Wheat		Corn		Soybeans		Beef Cattle ²		All Hogs	
	2006	2007	2006	2007	2006	2007	2006	2007	2006	2007
	<i>Dollars per Bushel</i>	<i>Dollars per Bushel</i>	<i>Dollars per Bushel</i>	<i>Dollars per Bushel</i>	<i>Dollars per Bushel</i>	<i>Dollars per Bushel</i>	<i>Dollars per Cwt</i>	<i>Dollars per Cwt</i>	<i>Dollars per Cwt</i>	<i>Dollars per Cwt</i>
Jan	3.52	4.54	2.00	3.05	5.87	6.38	95.00	84.30	40.70	42.70
Feb	3.66	4.66	2.02	3.32	5.67	6.83	92.40	85.80	42.60	46.60
Mar	3.79		2.06		5.57		87.90		42.80	
Apr	3.81		2.11		5.52		84.80		41.30	
May	4.09		2.17		5.68		82.20		48.20	
Jun	4.01		2.14		5.62		84.00		53.80	
Jul	3.89		2.14		5.61		85.80		50.20	
Aug	3.91		2.09		5.23		87.20		51.60	
Sep	4.06		2.20		5.24		90.00		48.90	
Oct	4.59		2.54		5.52		88.20		46.50	
Nov	4.59		2.87		6.07		84.40		44.90	
Dec	4.51		3.01		6.18		83.10		43.50	

¹ Current month prices are mid-month; prices for previous months are for the entire month.

² Cows, steers and heifers.

Grains: Prices Received, by State, January and February 2007

Month	All Barley ¹		Corn		Oats		Soybeans		Sorghum Grain	
	Jan ²	Feb ³	Jan ²	Feb ³	Jan ²	Feb ³	Jan ²	Feb ³	Jan ²	Feb ³
	<i>Dollars per Bushel</i>	<i>Dollars per Bushel</i>	<i>Dollars per Bushel</i>	<i>Dollars per Bushel</i>	<i>Dollars per Bushel</i>	<i>Dollars per Bushel</i>	<i>Dollars per Bushel</i>	<i>Dollars per Bushel</i>	<i>Dollars per Cwt</i>	<i>Dollars per Cwt</i>
AL							6.54	7.15	(⁴)	(⁴)
AR										
CA	(⁵)	(⁵)			(⁵)	(⁵)				
CO	(⁴)	(⁴)	3.13	3.50						
ID	3.18	3.23								
IL			3.01	3.30	(⁴)	(⁵)	6.56	7.10	6.14	6.40
IN			3.14	3.45			6.43	7.20		
IA			3.03	3.25	2.49	2.35	6.22	6.50		
KS			3.41	3.65	2.03	1.97	6.28	6.87	6.39	6.76
KY			3.16	3.55			6.53	7.20		
LA							6.29	6.55		
MI			3.27	3.50	1.94	2.00	6.29	6.70		
MN	2.66	2.90	2.94	3.20	2.12	2.12	6.11	6.50		
MS							6.36	7.05		
MO			3.15	3.45			6.40	6.70	6.12	6.30
MT	3.15	3.32			2.84	(⁵)				
NE			3.04	3.25	(⁴)	(⁴)	6.21	6.60	5.98	6.25
NY					1.84	1.80				
NC			3.63	3.95			6.45	7.18		
ND	2.83	2.89	2.92	3.20	1.97	2.00	5.89	6.30		
OH			3.11	3.34	(⁵)	(⁵)	6.39	7.01		
OK									6.17	6.63
OR	3.71	3.80			(⁵)	(⁵)				
PA			4.04	4.12	2.60	2.45				
SD	(⁴)	(⁴)	2.90	3.20	2.36	2.40	6.12	6.60		
TN			3.21	3.50			6.55	7.20		
TX			3.39	3.75	2.61	(⁵)			6.10	6.60
UT	3.65	3.70								
WA	3.60	3.62								
WI			3.10	3.30	1.92	1.90	6.10	6.75		
WY	3.28	3.28								
US	3.03	3.10	3.05	3.32	2.19	2.19	6.38	6.83	6.31	6.67

¹ The Three-State (MN, ND and SD) Feed Barley price is discontinued.

² Entire month.

³ Mid-month.

⁴ Price not published to avoid disclosure of individual firms.

⁵ Insufficient sales to establish a price.

Malting and Feed Barley: Prices Received Selected State, January and February 2007

State	Malting Barley		Feed Barley	
	Jan ¹	Feb ²	Jan ¹	Feb ²
	<i>Dollars per Bushel</i>	<i>Dollars per Bushel</i>	<i>Dollars per Bushel</i>	<i>Dollars per Bushel</i>
ID	3.12	3.20	3.35	3.40
MN	2.66	2.90	2.78	2.90
MT	3.19	3.35	2.94	3.15
ND	2.82	2.90	2.85	2.85
SD	(⁴)	(⁴)	(³)	(³)
WY	(³)	(³)	(³)	(³)

¹ Entire month.

² Mid-month.

³ Price not published to avoid disclosure of individual firms.

⁴ Insufficient sales to establish a price.

Field Crops: Prices Received, by State, January and February 2007

State	Dry Edible Beans		All Sunflower		Flaxseed		Peanuts ⁴	
	Jan ¹	Feb ²	Jan ¹	Feb ²	Jan ¹	Feb ²	Jan ¹	Feb ³
	<i>Dollars per Cwt</i>	<i>Dollars per Cwt</i>	<i>Dollars per Cwt</i>	<i>Dollars per Cwt</i>	<i>Dollars per Bushel</i>	<i>Dollars per Bushel</i>	<i>Dollars per Pound</i>	<i>Dollars per Pound</i>
AL							0.168	0.167
CA	43.70	45.10						
CO	21.20	22.00						
FL							0.174	(⁵)
GA							0.177	0.167
ID	21.50	23.00						
KS			14.20	14.30				
MI	20.80	22.00						
MN	24.70	25.80	15.20	15.60				
NE	22.20	23.10						
NC							0.171	0.168
ND	20.50	22.30	13.70	14.60	6.07	6.25		
SD			13.60	14.20	(⁶)	(⁶)		
TX							0.187	0.197
VA							0.169	(⁵)
US	22.70	23.80	13.80	14.60	6.07	6.25	0.178	0.179

¹ Entire month.

² Mid-month.

³ Based on sales through first half of month.

⁴ In-Shell.

⁵ Price not published to avoid disclosure of individual firms.

⁶ Insufficient sales to establish a price.

Field Crops and Apples: Prices Received, by State, January and February 2007

State	Cotton, Upland		February				Apples Fresh Use ^{1 4}
	Jan ¹	Feb ²	Cotton- seed ⁵	Hay, Baled ³			
				All	Alfalfa	Other	
<i>Dollars per Pound</i>	<i>Dollars per Pound</i>	<i>Dollars per Ton</i>	<i>Dollars per Ton</i>	<i>Dollars per Ton</i>	<i>Dollars per Ton</i>	<i>Dol/Lb</i>	
AL	0.514	0.500	81.00				
AZ	0.525	(⁶)	173.00	135.00	135.00	133.00	
AR	0.504	0.493	(⁷)				
CA	0.569	(⁶)	158.00	118.00	127.00	85.00	0.328
CO				139.00	140.00	127.00	
GA	0.514	0.492	93.00				
ID				116.00	118.00	90.00	
IL				101.00	108.00	84.00	
IA				89.00	91.00	66.00	
KS				114.00	124.00	81.00	
KY				95.00	135.00	75.00	
LA	0.498	0.486	(⁷)				
MI				106.00	110.00	85.00	0.255
MN				89.00	90.00	67.00	
MS	0.492	0.492	(⁷)				
MO				83.00	130.00	67.00	
MT				79.00	80.00	75.00	
NE				95.00	96.00	83.00	
NV				118.00	118.00	118.00	
NM				170.00	172.00	145.00	
NY				121.00	135.00	105.00	0.292
NC	0.492	0.452	88.00				
ND				67.00	70.00	49.00	
OH				113.00	131.00	85.00	0.385
OK				133.00	156.00	108.00	
OR				130.00	132.00	127.00	
PA				141.00	159.00	136.00	0.173
SD				82.00	85.00	71.00	
TN	0.500	0.483	(⁷)				
TX	0.473	0.469	125.00	140.00	166.00	135.00	
UT				105.00	107.00	81.00	
VA							0.320
WA				131.00	130.00	135.00	0.285
WI				56.00	60.00	40.00	
WY				105.00	105.00	102.00	
US	0.497	0.489	125.00	114.00	117.00	105.00	0.285

¹ Entire month.

² Based on sales during the first half of the month.

³ Mid-month.

⁴ Equivalent packinghouse-door returns for CA, MI, NY, and WA. Price at point of first sale for other States.

⁵ Marketing year August - February.

⁶ Price not published to avoid disclosure of individual firms.

⁷ Insufficient sales to establish a price.

**Upland Cotton and Rice: Prices Received and Marketings,
United States, February 2007, with Comparisons**

Item	Unit	Dec 2006 ¹	Jan 2007 ¹	Feb 2007 ²
Cotton, Upland				
Average Price	Dollars per Pound	0.493	0.497	0.489
Marketings ³	1,000 Bales	2,062	1,557	NA
Rice				
Average Price	Dollars per Cwt	9.87	10.20	10.00
Marketings ⁴	1,000 Cwt	12,851	17,977	NA

¹ Entire month.

² Based on purchases for the first half of the month.

³ Marketings based on a survey of cotton buyers in the major producing States - AL, AZ, AR, CA, GA, LA, MS, NC, TN, and TX.

⁴ Purchases by private firms and rice (rough equivalent) shipped by cooperatives.

**Citrus Fruit: Prices and Equivalent Returns, by Utilization,
by State and United States, February 2007**

Commodity, State and Type	F.O.B. Packed Fresh	Equivalent Returns ¹					
		Packinghouse-door			On-tree		
		All	Fresh	Process	All	Fresh	Process
	<i>Dollars per Box</i>	<i>Dollars per Box</i>	<i>Dollars per Box</i>	<i>Dollars per Box</i>	<i>Dollars per Box</i>	<i>Dollars per Box</i>	<i>Dollars per Box</i>
Grapefruit							
AZ	17.80	8.56	8.56		5.64	5.64	
CA	24.60	14.64	15.36	-0.30	11.72	12.44	-3.22
FL	17.70	6.19	9.26	4.15	3.51	6.91	1.26
White	17.00	5.21	8.30	4.20	2.52	5.95	1.40
Colored	18.00	6.92	9.60	4.10	4.25	7.25	1.10
TX	21.60	6.83	11.00	2.17	5.62	9.77	0.99
US	18.90	6.53	9.98	3.85	4.10	7.83	1.21
Lemons							
AZ	48.10	25.21	38.03	-0.42	19.79	32.61	-5.84
CA	53.60	40.76	43.53	-0.42	35.34	38.11	-5.84
US	52.80	37.69	42.71	-0.42	32.27	37.29	-5.84
Oranges							
AZ							
Navel and Misc	32.50	19.97	24.59	1.48	17.47	22.09	-1.02
CA							
Navel and Misc	35.10	8.05	27.19	1.48	5.55	24.69	-1.02
FL							
Early and Mids	27.40	11.14	18.50	10.90	8.39	15.80	8.15
TX							
Early and Mids	27.70	13.66	16.99	2.94	12.24	15.56	1.55
US	33.30	10.06	25.00	7.99	7.42	22.55	5.32
Tangelos							
FL	40.00	13.45	30.70	10.00	10.67	28.00	7.20
Tangerines							
AZ	32.90	23.66	23.66		20.42	20.42	
CA	34.00	18.19	24.76	0.26	14.95	21.52	-2.98
FL	31.50	17.15	20.50	11.30	13.47	17.00	7.30
US	32.60	17.85	22.45	7.62	14.36	19.07	3.87

¹ Net lbs. per box: Grapefruit - AZ & CA-67, FL-85, TX-80; Lemons - 76; Oranges - AZ & CA-75, FL-90, TX-85; Tangelos - 90; Tangerines - AZ & CA-75, FL-95.

Potatoes: Prices Received, by State, January and February 2007 ¹

State	Jan	Feb	State	Jan	Feb
	<i>Dollars per Cwt</i>	<i>Dollars per Cwt</i>		<i>Dollars per Cwt</i>	<i>Dollars per Cwt</i>
AL			NC		
AZ			ND - All ²	6.05	6.05
CA - All ²	9.70	11.00	- Fresh ³	6.85	NA
- Winter	17.80	18.90	- Processing	5.75	NA
- Spring			OR	6.55	6.75
- Summer			TX		
- Fall	7.40	7.40	VA		
CO - All ²	8.00	8.15	WA - All ²	7.20	6.90
- Fresh ³	8.70	NA	- Processing	6.30	NA
FL		38.40	WI - All ²	7.60	7.80
ID - All ²	5.90	5.90	- Fresh ³	7.90	NA
- Fresh ³	6.50	NA	- Processing	7.20	NA
- Processing	5.60	NA	US - All ²	7.06	7.28
ME	8.30	8.50	- Fresh ³	8.53	NA
MI	8.75	9.05	- Processing	6.13	NA
MN	5.70	5.65			
NY	10.80	11.00			

¹ Missing data indicates no potatoes being marketed.

² Average price of potatoes sold for all uses, including table stocks, processing, seed, and livestock feed.

³ Fresh market prices only, includes table stock prices.

Cattle: Prices Received, by State, January and February 2007

State	Cows ¹		Steers & Heifers		Beef Cattle ⁴		Calves	
	Jan ²	Feb ³	Jan ²	Feb ³	Jan ²	Feb ³	Jan ²	Feb ³
	<i>Dollars per Cwt</i>	<i>Dollars per Cwt</i>	<i>Dollars per Cwt</i>	<i>Dollars per Cwt</i>	<i>Dollars per Cwt</i>	<i>Dollars per Cwt</i>	<i>Dollars per Cwt</i>	<i>Dollars per Cwt</i>
AZ	43.00	44.30	93.50	93.00	76.80	76.90	107.00	110.00
AR	42.50	44.50	92.90	95.70	77.80	80.30	107.00	112.00
CA	40.60	40.00	88.90	88.70	64.80	64.40	106.00	100.00
CO	45.90	47.60	95.10	96.70	94.10	95.70	110.00	105.00
FL	48.30	50.50	84.50	84.40	66.00	66.40	110.00	105.00
GA	49.20	50.80	81.30	83.70	59.80	62.60	107.00	110.00
ID	40.90	41.70	89.40	90.20	76.30	79.50	106.00	107.00
IL	46.00	47.00	88.00	89.00	87.20	88.20	103.00	102.00
IA	46.30	49.00	87.60	91.70	86.80	90.80	106.00	112.00
KS	45.70	45.70	88.80	90.80	87.10	89.40	118.00	120.00
KY	42.00	44.00	84.00	86.00	73.90	75.90	99.00	102.00
LA	45.80	48.00	92.90	93.00	59.90	60.60	108.00	110.00
MI	44.50	48.00	80.00	82.00	69.40	71.80	114.00	114.00
MN	47.80	49.00	84.00	86.00	73.10	74.90	113.00	115.00
MO	43.90	47.40	96.10	96.70	80.40	79.90	110.00	113.00
MT	44.80	46.30	93.80	94.30	85.50	84.20	113.00	113.00
NE	44.70	47.60	90.70	90.70	89.30	89.40	115.00	113.00
NM	46.70	45.80	93.00	93.00	73.10	74.10	106.00	115.00
ND	43.40	45.00	94.90	94.50	88.70	88.60	111.00	113.00
OH	43.70	46.00	83.50	84.00	79.50	80.20	99.30	97.00
OK	45.60	48.00	96.40	96.30	92.30	92.40	113.00	114.00
OR	40.00	40.40	86.60	88.60	72.60	74.10	98.90	101.00
PA	45.20	48.20	84.00	85.00	73.90	75.40	110.00	108.00
SD	45.40	47.90	92.10	96.50	84.20	91.20	112.00	116.00
TN	44.00	44.00	86.00	89.00	69.20	71.00	99.00	108.00
TX	43.60	45.80	90.10	90.20	85.90	87.10	116.00	118.00
VA	40.50	43.10	79.50	80.60	62.70	66.70	98.00	101.00
WI	44.40	48.90	80.90	82.90	59.70	63.20	145.00	140.00
WY	43.90	44.00	98.00	98.00	85.00	89.90	112.00	114.00
US	44.40	46.50	89.80	90.70	84.30	85.80	115.00	115.00

¹ Beef cows and cull dairy cows sold for slaughter.

² Entire month.

³ Mid-month.

⁴ "Cows" and "steers and heifers" combined.

Hogs: Prices Received, by State, January and February 2007

State	Sows		Barrows and Gilts		All Hogs	
	Jan ¹	Feb ²	Jan ¹	Feb ²	Jan ¹	Feb ²
	<i>Dollars per Cwt</i>	<i>Dollars per Cwt</i>	<i>Dollars per Cwt</i>	<i>Dollars per Cwt</i>	<i>Dollars per Cwt</i>	<i>Dollars per Cwt</i>
AR	30.30	31.60	40.10	45.10	39.10	43.80
IL	28.50	30.20	43.20	46.00	42.00	44.70
IN	33.70	34.80	42.00	46.50	41.30	45.40
IA	29.50	31.50	44.80	48.00	44.50	47.30
KS	30.60	33.10	39.90	44.90	38.70	43.40
MN	29.90	31.50	45.20	49.00	44.90	48.60
MO	28.50	30.40	34.50	39.70	34.10	39.00
NE	31.50	33.80	44.90	49.90	44.60	49.60
NC	28.70	31.20	44.10	49.60	43.90	49.40
OH	30.30	33.00	42.00	46.00	41.20	45.10
OK	28.40	29.90	36.20	41.00	35.00	39.30
PA	30.00	32.50	40.10	43.60	38.60	41.90
SD	28.60	30.60	44.50	49.60	42.40	47.70
US	29.80	31.80	43.40	47.40	42.70	46.60

¹ Entire month.

² Mid-month.

Sheep and Poultry: Prices Received, by State, January and February 2007

State	January		February
	Sheep ¹	Lambs ¹	Eggs ^{2 3}
	<i>Dollars per Cwt</i>	<i>Dollars per Cwt</i>	<i>Dollars per Dozen</i>
AL			0.650
AR			0.619
CA	43.00	87.50	0.660
CO	32.00	94.00	
CT			0.640
FL			0.630
GA			0.600
ID	30.00	82.00	
IN			0.620
IA	38.00	88.00	0.570
KY	52.00	102.00	
ME			0.840
MI			0.630
MN	41.50	92.60	0.700
MS			0.630
MO	32.50	100.00	0.580
MT	35.50	97.60	
NE	32.00	84.50	
NY			0.635
NC			0.631
ND	32.00	100.00	
OH	44.50	103.00	0.700
OR	34.50	92.00	
PA	52.00	120.00	0.600
SC			0.630
SD	37.60	107.00	
TX	40.50	103.00	0.580
VA	44.00	106.00	
WA			0.720
WV	41.00	107.00	
WY	30.00	100.00	
US	37.10	96.50	0.627

¹ Entire month.

² Mid-month.

³ Market (table) eggs.

Milk and Milk Cows: Prices Received, by State, January and February 2007

State	January ¹						February		Milk Cows ⁵
	Fluid Grade Milk ²		Manufacturing Grade Milk		All Milk ³		All Milk ^{3 4}		
	Price	Fat Test	Price	Fat Test	Price	Fat Test	Price	Fat Test	
	<i>Dol/Cwt</i>	<i>Percent</i>	<i>Dol/Cwt</i>	<i>Percent</i>	<i>Dol/Cwt</i>	<i>Percent</i>	<i>Dol/Cwt</i>	<i>Percent</i>	<i>Dol/Head</i>
AZ	14.50	3.75			14.50	3.75	14.30	3.68	
CA	12.90	3.79	14.20	4.30	12.94	3.81	13.50	3.75	
CO	14.90	3.66			14.90	3.66	14.70	3.62	
FL	17.60	3.66			17.60	3.66	17.40	3.65	
ID	13.50	3.76	13.10	3.97	13.50	3.76	13.60	3.70	
IL	15.30	3.86	14.90	3.70	15.30	3.86	15.10	3.80	
IN	14.50	3.73	13.60	3.91	14.50	3.73	14.60	3.70	
IA	14.90	3.74	13.50	4.05	14.90	3.74	14.50	3.72	
KS	14.60	3.78			14.60	3.78	14.50	3.75	
KY	15.50	3.76			15.50	3.76	15.30	3.72	
MI	15.00	3.67	12.50	3.77	15.00	3.67	15.20	3.66	
MN	15.00	3.81	13.10	3.83	14.90	3.81	15.40	3.80	
MO	15.10	3.79	14.00	3.93	15.10	3.80	14.90	3.75	
NM	14.40	3.79			14.40	3.79	14.40	3.75	
NY	14.80	3.76			14.80	3.76	15.10	3.75	
OH	15.60	3.73	14.20	3.97	15.50	3.74	15.50	3.72	
OR	15.70	3.79			15.70	3.79	15.80	3.75	
PA	16.20	3.75	13.30	4.05	16.20	3.75	16.30	3.75	
TX	15.30	3.89			15.30	3.89	15.00	3.87	
VT	15.60	3.80			15.60	3.80	15.50	3.80	
VA	16.20	3.72			16.20	3.72	15.70	3.70	
WA	14.30	3.79			14.30	3.79	14.50	3.75	
WI	15.10	3.77	14.00	3.93	15.10	3.77	15.40	3.75	
US	14.50	3.77	13.90	4.08	14.50	3.78	14.70	3.74	

¹ Entire month.

² Including milk diverted to manufacturing.

³ Before deductions for hauling. Includes quality, quantity, and other premiums. Excludes hauling subsidies.

⁴ Preliminary.

⁵ Animals sold for dairy herd replacement only. Prices published January, April, July and October.

**Parity Price Equivalent for Manufacturing Grade Milk ¹: United States,
January and February 2007, with Comparisons**

Item	Unit	Feb 2006	Jan 2007	Feb 2007
Parity Equivalent	Dollars per Cwt	35.00	35.70	36.00
Average Price F.O.B ²	Dollars per Cwt	12.60	13.90	14.40
Average Fat Test of Milk ²	Percent	4.00	4.08	4.01

¹ The parity price equivalent during 2007 is 92.1 percent of the parity price of all milk sold to plants, compared with 91.5 percent in 2006. For additional details, see January 2007 issue of "Agricultural Prices".

² Preliminary for February 2007.

**Parity Prices for Farm Products and Average Prices Received as
Percent of Parity Prices, United States, with Comparisons ¹**

Commodity and Unit	Adjusted Base Price	Parity Price			Price as Percent of Parity		
		Feb 2006	Jan 2006	Feb 2007	Feb 2006	Jan 2006	Feb 2007
	<i>Dollars</i>	<i>Dollars</i>	<i>Dollars</i>	<i>Dollars</i>	<i>Percent</i>	<i>Percent</i>	<i>Percent</i>
Basic Commodities							
All Wheat, Bu	0.519	10.40	10.50	10.60	35	43	44
Rice, Cwt	1.40	28.10	28.30	28.50	29	36	35
Corn, Bu	0.384	7.72	7.76	7.81	26	39	43
Cotton, Lb							
American Upland	0.098	2.27	1.98	1.99	22	25	25
Extra Long Staple	0.142	2.68	2.87	2.89			
Peanuts, Lb	0.031	0.679	0.627	0.631	27	28	28
Designated Nonbasic							
All Milk, Sold to Plants, Per Cwt ²	1.92	38.20	38.80	39.10	38	31	31
Honey, Extracted, Lb ³	0.123	2.28	2.49	2.50			
Wool and Mohair							
Wool, Lb	0.082	1.61	1.66	1.67	44		41
Mohair, Lb	0.359	6.58	7.26	7.31	42		50
Other Nonbasic							
Barley, Bu	0.362	7.22	7.32	7.37	35	41	42
Canola, Cwt	1.37	26.80	27.70	27.90			
Cottonseed, Ton	14.80	299.00	299.00	301.00	33	40	42
Dry Edible Beans, Cwt	2.72	54.50	55.00	55.40	32	41	43
Flaxseed, Bu	0.841	15.40	17.00	17.10	36	36	37
Mustard Seed, Cwt	1.92	38.00	38.80	39.10			
Oats, Bu	0.215	4.29	4.35	4.38	42	50	50
Potatoes, Cwt	0.818	16.00	16.50	16.60	42	43	44
Rapeseed, Cwt	1.59	31.20	32.10	32.40			
Rye, Bu	0.414	6.89	8.37	8.42			
Safflower, Cwt	1.84	36.10	37.30	37.40			
Sorghum Grain, Cwt	0.656	12.00	13.30	13.30	28	47	50
Soybeans, Bu	0.850	17.10	17.20	17.30	33	37	39
All Sunflower, Cwt	1.66	32.50	33.50	33.80	41	37	36
Sweetpotatoes, Cwt	2.31	45.20	46.70	47.00			
Apples, Fresh, Lb ⁴	0.301	0.524	0.609	0.613	35	37	35
Citrus (equiv on-tree), Box							
Grapefruit	0.622	10.50	12.60	12.70	94	49	32
Lemons	1.14	22.50	23.10	23.20	42	49	139
Oranges	0.598	11.50	12.10	12.20	46	67	61
Tangerines	1.35	27.00	27.30	27.50	38	59	52
Temples (FL)	0.372	7.64	7.52	7.57			
Beef Cattle, Cwt	10.15	191.00	205.00	207.00	48	41	41
Calves, Cwt	14.60	266.00	295.00	297.00	54	39	39
Hogs, Cwt	5.83	116.00	118.00	119.00	37	36	39
Lambs, Cwt	11.90	231.00	241.00	242.00	42	40	
Sheep, Cwt	4.90	94.90	99.10	99.70	48	37	
Eggs, Doz ²	0.088	1.77	1.78	1.79	28	46	43
Turkeys, Live, Lb	0.056	1.090	1.140	1.140	36	36	38

¹ Parity prices are computed under the provisions of Title III, Subtitle a, Section 301 (a) of the Agricultural Adjustment Act of 1938 as amended by the Agricultural Acts of 1948, 1949, and 1956. See January "Agricultural Prices" for details on adjusted base price and parity price computations.

² Seasonally adjusted price as percentage of parity price.

³ Wholesale extracted. Adjusted base price derived from state annual averages prices weighted by production. For 1982 through 1985 the national averages are the support prices.

⁴ Equivalent packinghouse-door returns for CA, NY (apples only), OR (except peaches), and WA. Price at point of first sale for other states.

Parity Prices for Farm Products, February 2007, United States ¹

Other Nonbasic Commodities	Adjusted Base Price	Parity Price	Other Nonbasic Commodities	Adjusted Base Price	Parity Price
	<i>Dollars</i>	<i>Dollars</i>		<i>Dollars</i>	<i>Dollars</i>
Field Crops and Misc Commodities			Fresh, CA, Ton ⁵	60.80	1,240.00
Hops, Lb	0.250	5.09	Noncitrus Fruit, Continued		
Spearmint Oil, Lb	1.40	28.50	Olives, CA		
Tobacco, Lb			canning, Ton ³	94.20	1,920.00
Flue-Cured, 11-14	0.240	4.88	Papayas (HI)	0.050	1.020
VA Fire-Cured, 21	0.254	5.25	Peaches		
KY-TN Fire-Cured, 22-23	0.319	6.49	Fresh, Ton ²	83.80	1,710.00
Fire-Cured, 21-23	0.319	6.49	Dried, CA, Ton	77.00	1,570.00
Burley, 31	0.259	5.27	Processing ³		
Maryland, 32	0.196	3.99	Excl Dried		
Dark Air-Cured, 35-36	0.282	5.74	Clingstone, CA, Ton	34.10	694.00
Sun-Cured, 37	0.235	4.78	Pears, Ton		
Dark Air-Cured, 35-37	0.284	5.78	Fresh ²	53.50	1,090.00
PA Seedleaf, 41	0.200	4.07	Dried, CA ⁴	178.00	3,620.00
Cigar Filler & Binder, 42-44, 54-55	0.222	4.52	Plums, CA, Ton		
Puerto Rican Filler, 46	0.155	3.15	Fresh, Equiv on-Tree	63.40	1,290.00
Cigar Binder, 51-52	0.749	15.20	Prunes, Dried, CA, Ton ⁴	139.00	2,830.00
Type 61	3.30	67.20	Prunes and Plums, Excl CA, Ton		
Noncitrus Fruit			Fresh ⁷	62.80	1,280.00
Apples, Ton ⁴			Processing ⁴		
Processing	16.70	340.00	Excl Dried	28.30	576.00
Apricots, Ton			Tree Nuts ⁸		
Fresh ⁵	104.00	2,120.00	Almonds, Lb	0.214	4.35
Dried, CA	264.00	5,370.00	Hazelnuts, Ton	154.00	3,130.00
Avocados, Ton ⁵	231.00	4,700.00	Pistachio, Lb	0.180	3.66
Cherries			Walnuts, Ton	174.00	3,540.00
Sweet, Ton	197.00	4,010.00	Vegetables, Cwt ⁹		
Tart, Lb	0.034	0.698	Fresh		
Cranberry, Bbl ³	5.02	102.00	Carrots ⁶	2.38	48.40
Dates, CA, Ton ⁵	188.00	3,830.00	Cauliflower ⁶	4.45	90.60
Grapes, Ton			Celery ⁶	2.00	40.70
Raisin Variety	121.00	2,460.00	Honeydew Melons	2.67	54.30
Other Dried	71.50	1,460.00	Lettuce	2.35	47.80
Kiwifruit, Ton	90.50	1,840.00	Onions ⁶	1.63	33.20
Nectarines			Tomatoes	4.77	97.10

¹ Parity prices are computed under the provisions of Title III, Subtitle a, Section 301 (a) of the Agricultural Adjustment Act of 1938 as amended by the Agricultural Acts of 1948, 1949, and 1956. See January "Agricultural Prices" for details on adjusted base price and parity price computations.

² Equivalent packinghouse-door returns for CA, NY (apples only), OR (except peaches), and WA. Price at point of first sale for other states.

³ Equivalent returns for bulk fruit at first delivery point.

⁴ Equivalent returns at processing plant door.

⁵ Equivalent returns at packinghouse door.

⁶ Includes some processing.

⁷ Based on "as sold" prices for fresh fruit in all states.

⁸ Prices in-shell basis except almonds which are shelled basis.

⁹ F.O.B. shipping point prices.

**Other Hay, Baled: Prices Received, Selected Regions,
Marketing Year Average, 2004-2006 ¹**

Region	3-Year Avg
	<i>Dollars Per Ton</i>
Appalachia ²	65.50
Corn Belt ³	57.00
Florida	97.40
Lake States ⁴	58.20
Northeast ⁵	114.70
Southeast/Delta ⁶	58.90

¹ Prices provided to the Forest Service, USDA to compute Eastern National Forest grazing fees.

² KY, NC, TN, VA, and WV.

³ IL, IN, MO, and OH.

⁴ MI, MN, and WI.

⁵ ME, NH, NY, PA, and VT.

⁶ AL, AR, GA, LA, MS, and SC.

Marketing Year for Specified Commodities

Potatoes: The marketing year extends over a 21 month period beginning in November preceding the specified crop year and extending into July the following year. November (previous year)-May for winter crop potatoes; April-August for spring crop potatoes; June-December for summer crop potatoes; July-July (following year) for fall potatoes.

Cattle, Lambs, Mohair, Sheep, Turkeys, and Wool: January 1 - December 31 for U.S. and all States.

**Potatoes: Marketing Year Average Prices Received,
by States and United States, 2005 and 2006 ¹**

State	2005	2006	State	2005	2006
	<i>Dollars per Cwt</i>	<i>Dollars per Cwt</i>		<i>Dollars per Cwt</i>	<i>Dollars per Cwt</i>
AL	8.55	15.00	NE	8.45	7.35
AK	20.50	20.10	NV	5.50	6.15
AZ	11.50	13.40	NJ	8.05	8.50
CA - All	13.50	13.00	NM	6.80	6.50
Winter	19.10	18.00	NY	12.20	12.40
Spring	13.00	12.00	NC	7.70	10.00
Summer	14.40	18.50	ND - All	6.80	6.60
Fall	7.35	7.40	Fresh	10.30	8.70
CO - All	8.65	8.35	Processing	5.80	5.95
Fresh	9.45	8.85	OH	8.65	9.10
DE	8.65	9.25	OR	5.85	6.90
FL	14.40	18.80	PA	11.40	9.75
ID - All	5.70	5.85	RI	8.50	11.00
Fresh	6.90	6.55	TX	12.10	16.40
Processing	4.90	5.25	VA	10.50	14.70
IL	6.10	6.50	WA - All	5.60	6.00
KS	7.70	10.60	Processing	4.90	5.30
ME	8.25	8.05	WI - All	7.85	7.90
MD	8.30	10.10	Fresh	8.85	9.45
MA	8.80	9.50	Processing	6.55	6.40
MI	7.90	8.45	US - All	7.06	7.42
MN	6.45	6.30	Fresh	10.36	10.49
MO	5.75	6.15	Processing	5.39	5.74
MT	9.15	9.45			

¹ State Marketing Year Average Prices are computed by weighting state monthly prices by estimated sales for the month during the crop year. U.S. Marketing Year Average Price is computed by weighting state Marketing Year Average Prices by estimated sales for the crop year.

Potatoes: Prices Received, Monthly by State and U.S., 2006 ¹

State	Jan	Feb	Mar	Apr	May	Jun
	<i>Dollars per Cwt</i>	<i>Dollars per Cwt</i>	<i>Dollars per Cwt</i>	<i>Dollars per Cwt</i>	<i>Dollars per Cwt</i>	<i>Dollars per Cwt</i>
AL						16.20
AZ				21.40	14.00	9.30
CA - All	13.40	11.10	13.00	17.90	11.80	11.30
Winter	14.80	18.20	21.30	24.80		
Spring					12.70	11.50
Summer						
Fall	7.20	7.15	7.50	7.55	7.55	7.55
CO - All	8.55	8.75	8.85	8.75	8.30	8.20
Fresh	9.50	9.85	9.70	9.35	9.15	9.10
FL			40.00	18.70	11.90	12.20
ID - All	5.15	5.30	6.15	6.55	6.40	6.10
Fresh	5.80	6.10	6.70	6.70	7.00	7.20
Processing	4.90	4.90	5.10	5.20	5.40	5.40
ME	8.20	8.40	8.75	9.45	9.30	8.55
MI	8.50	8.80	9.00	10.50	11.10	
MN	5.95	6.45	6.00	6.00	5.80	5.20
NY	12.70	12.70	13.10	13.10	15.50	
NC						10.40
ND - All	7.30	7.40	7.75	7.60	7.75	6.45
Fresh	11.00	12.10	13.90	12.00	13.30	13.00
Processing	6.25	6.30	6.25	5.90	6.55	6.30
OR	5.65	5.35	6.20	6.40	6.90	9.35
TX					10.40	10.80
VA						13.10
WA - All	6.75	5.95	6.45	6.35	6.40	6.55
Processing	5.75	5.30	5.55	5.50	5.80	5.85
WI - All	7.75	8.30	8.95	9.35	8.45	7.60
Fresh	8.55	9.15	9.00	8.30	8.10	7.65
Processing	7.25	7.60	8.65	9.40	8.70	7.50
US - All	7.08	6.76	8.50	8.35	7.83	8.41
Fresh	9.58	9.13	13.78	12.32	10.51	11.90
Processing	5.65	5.59	5.74	6.04	6.30	6.46

See footnote(s) at end of table.

--continued

Potatoes: Prices Received, Monthly by State and U.S., 2006 ¹ (continued)

State	Jul	Aug	Sep	Oct	Nov	Dec
	<i>Dollars per Cwt</i>	<i>Dollars per Cwt</i>	<i>Dollars per Cwt</i>	<i>Dollars per Cwt</i>	<i>Dollars per Cwt</i>	<i>Dollars per Cwt</i>
AL	14.00	15.10				
AZ	11.50					
CA - All	15.00	19.30	17.30	13.40	8.10	8.10
Winter					13.80	17.10
Spring	12.80					
Summer	18.70	19.30	17.30	17.20		
Fall				7.35	7.40	7.40
CO - All	9.15	8.60	8.15	8.35	7.95	8.05
Fresh	10.20	10.40	9.10	9.30	8.50	8.55
FL						
ID - All	7.35	6.70	5.15	5.45	5.60	5.45
Fresh	8.70	9.00	7.00	6.50	6.10	5.90
Processing	5.90	5.50	4.70	5.10	5.10	5.20
ME	8.10		5.85	6.50	8.15	8.05
MI	10.10	7.10	7.05	6.85	8.05	8.45
MN	6.15	8.60	7.05	6.25	6.00	6.45
NY		15.10	14.90	14.30	12.50	11.90
NC	9.15					
ND - All	6.60	6.05	5.85	7.20	7.00	6.50
Fresh		8.15	7.00	14.20	8.30	7.65
Processing	6.60	5.50	5.65	5.35	6.25	6.05
OR	9.40	6.10	5.90	5.85	7.05	6.65
TX	20.50	20.30	18.40			
VA	15.10	14.30				
WA - All	7.90	6.50	5.55	5.10	6.25	6.80
Processing	6.30	5.05	5.00	4.90	5.60	6.00
WI - All		9.50	6.80	7.80	7.55	7.60
Fresh		12.70	9.75	9.70	8.55	9.05
Processing		5.90	5.55	5.55	5.80	6.05
US - All	10.46	8.23	6.24	5.96	6.74	6.84
Fresh	13.99	14.54	10.10	9.30	8.42	8.37
Processing	6.20	5.26	5.14	5.13	5.74	5.95

¹ Monthly prices refer to all potatoes sold in a given month regardless of the year harvested.

**Cattle: Marketing Year Average Prices Received
by States and United States, 2005-2006**

State	Cows ¹		Steer & Heifers		All Beef ²	
	2005	2006	2005	2006	2005	2006
	<i>Dollars per Cwt</i>	<i>Dollars per Cwt</i>	<i>Dollars per Cwt</i>	<i>Dollars per Cwt</i>	<i>Dollars per Cwt</i>	<i>Dollars per Cwt</i>
AL	48.00	44.20	101.00	98.40	84.00	81.50
AK	85.00	90.00	110.00	120.00	95.00	100.00
AZ	52.50	45.40	105.00	104.00	93.40	88.30
AR	47.70	43.60	107.00	105.00	89.10	86.80
CA	48.50	44.20	90.80	89.30	70.40	67.30
CO	53.50	48.40	111.00	108.00	110.00	107.00
CT	52.00	47.00	75.00	74.00	70.00	69.00
DE	54.50	46.50	89.30	88.30	85.80	85.10
FL	50.40	46.50	100.00	101.00	80.00	78.20
GA	52.30	47.70	99.90	95.80	68.60	63.90
HI	27.80	29.20	55.10	60.30	49.00	52.40
ID	51.70	44.80	91.40	88.70	81.30	78.20
IL	51.50	47.50	87.60	86.40	86.90	85.60
IN	50.00	48.30	102.00	100.00	85.20	86.10
IA	52.40	49.60	89.60	88.00	89.00	87.30
KS	52.50	47.20	91.20	89.70	90.10	88.60
KY	49.90	46.00	104.00	101.00	90.90	87.60
LA	49.90	45.40	105.00	102.00	67.20	63.40
ME	55.00	49.00	85.00	84.00	79.00	77.00
MD	54.50	46.50	89.30	88.30	85.80	85.10
MA	48.00	46.00	78.00	77.00	72.00	71.00
MI	52.10	49.10	82.20	81.60	73.20	71.90
MN	54.50	50.40	84.60	83.00	79.10	77.20
MS	49.00	45.00	101.00	97.70	76.80	68.20
MO	51.60	47.00	113.00	110.00	98.00	94.20
MT	55.10	47.70	114.00	112.00	104.00	93.80
NE	54.80	47.80	93.40	91.20	92.30	89.90
NV	51.00	45.30	108.00	106.00	93.80	90.20
NH	52.00	47.00	83.00	82.00	77.00	75.00
NJ	50.00	48.00	72.00	70.00	55.00	53.00
NM	53.30	44.50	109.00	106.00	87.00	81.10
NY	48.00	42.40	72.90	70.60	49.90	44.40
NC	49.90	45.60	99.90	95.00	77.90	68.00
ND	54.30	47.80	111.00	107.00	99.20	94.60
OH	47.90	45.30	87.00	88.00	83.30	83.60
OK	52.40	46.30	108.00	105.00	104.00	96.80
OR	48.30	43.10	102.00	98.80	85.90	82.30
PA	51.00	47.10	84.20	83.20	75.70	73.90
RI	48.00	46.00	73.00	72.00	70.00	68.00
SC	52.50	48.70	98.00	91.30	87.10	80.60
SD	54.00	47.80	104.00	100.00	95.90	91.90
TN	49.00	44.90	106.00	101.00	83.10	78.50
TX	49.80	42.90	93.70	92.40	89.90	88.10
UT	48.00	42.10	97.00	96.00	94.00	92.50
VT	52.00	47.00	78.00	77.00	75.00	71.00
VA	48.40	42.40	101.00	93.30	84.80	77.20
WA	51.90	47.30	108.00	102.00	103.00	96.40
WV	45.80	41.60	97.30	87.20	72.00	68.40
WI	52.70	47.90	86.10	84.30	66.70	63.30
WY	54.20	47.20	109.00	111.00	102.00	98.90
US	51.70	46.60	94.30	92.30	89.70	87.20

See footnote(s) at end of table.

--continued

**Cattle: Marketing Year Average Prices Received
by States and United States, 2005-2006 (continued)**

State	Calves		Milk Cows ³	
	2005	2006	2005	2006
	<i>Dollars per Cwt</i>	<i>Dollars per Cwt</i>	<i>Dollars per Head</i>	<i>Dollars per Head</i>
AL	127.00	122.00	1,750	1,600
AK	110.00	115.00	1,400	1,300
AZ	126.00	125.00	1,830	1,850
AR	129.00	123.00	1,680	1,670
CA	121.00	118.00	1,780	1,630
CO	136.00	130.00	2,030	2,020
CT	100.00	110.00	1,690	1,700
DE	110.00	135.00	1,690	1,710
FL	130.00	120.00	1,900	1,900
GA	125.00	122.00	1,750	1,800
HI	96.00	101.00	1,500	1,500
ID	126.00	121.00	1,880	1,900
IL	121.00	119.00	1,770	1,720
IN	117.00	119.00	1,700	1,750
IA	131.00	124.00	1,780	1,710
KS	140.00	135.00	1,690	1,660
KY	123.00	121.00	1,700	1,740
LA	123.00	120.00	1,520	1,550
ME	105.00	110.00	1,660	1,600
MD	110.00	135.00	1,730	1,830
MA	100.00	115.00	1,650	1,650
MI	132.00	134.00	1,840	1,930
MN	133.00	129.00	1,700	1,700
MS	123.00	122.00	1,580	1,560
MO	133.00	129.00	1,640	1,630
MT	138.00	131.00	1,700	1,730
NE	142.00	135.00	1,720	1,760
NV	137.00	121.00	1,740	1,700
NH	105.00	115.00	1,740	1,700
NJ	130.00	140.00	1,670	1,810
NM	131.00	128.00	1,810	1,790
NY	140.00	145.00	1,620	1,620
NC	119.00	115.00	1,810	1,800
ND	135.00	126.00	1,480	1,530
OH	118.00	118.00	1,730	1,780
OK	132.00	127.00	1,650	1,700
OR	119.00	117.00	1,910	1,870
PA	132.00	133.00	1,730	1,750
RI	100.00	110.00	1,660	1,600
SC	123.00	115.00	1,840	1,850
SD	137.00	132.00	1,600	1,600
TN	122.00	117.00	1,650	1,650
TX	136.00	132.00	1,840	1,790
UT	134.00	131.00	1,620	1,620
VT	105.00	110.00	1,790	1,800
VA	122.00	114.00	1,760	1,800
WA	125.00	116.00	1,850	1,770
WV	112.00	107.00	1,650	1,700
WI	163.00	163.00	1,810	1,760
WY	140.00	131.00	1,650	1,600
US	135.00	133.00	1,770	1,730

¹ Beef cows and cull dairy cows sold for slaughter.

² "Cows" and "Steer and Heifers" combined.

³ Calendar year average.

**Hogs: Marketing Year Average Prices Received by Farmers,
by States and United States, 2005-2006**

State	Barrows & Gilts		Sows		All	
	2005	2006	2005	2006	2005	2006
	<i>Dollars per Cwt</i>	<i>Dollars per Cwt</i>	<i>Dollars per Cwt</i>	<i>Dollars per Cwt</i>	<i>Dollars per Cwt</i>	<i>Dollars per Cwt</i>
AL	45.00	41.20	41.50	34.00	44.00	40.40
AK	85.00	90.00	70.00	75.00	82.00	85.00
AZ	59.00	53.00	43.90	39.20	59.20	52.90
AR	48.50	43.30	43.20	33.90	47.90	42.40
CA	52.30	47.90	36.50	33.10	50.70	47.90
CO	53.70	49.00	45.40	37.20	53.60	48.90
CT	47.50	41.50	36.00	28.00	45.00	39.00
DE	42.80	39.40	38.60	32.30	42.50	38.60
FL	46.50	42.50	39.40	32.40	44.50	39.40
GA	53.00	48.30	42.30	33.90	52.00	46.10
HI	93.10	96.30	48.30	51.00	89.80	92.70
ID	49.50	47.00	39.70	34.50	48.90	46.50
IL	52.50	47.90	40.60	31.90	51.40	46.70
IN	49.30	45.60	45.60	37.80	49.00	45.00
IA	52.20	48.20	43.60	34.20	52.00	47.90
KS	47.70	44.10	41.90	34.30	46.90	42.90
KY	49.30	45.60	41.70	33.30	49.10	45.30
LA	46.50	42.20	35.30	28.00	43.60	38.40
ME	47.50	41.50	36.00	28.00	45.00	39.00
MD	42.80	39.40	38.60	32.30	42.50	38.60
MA	47.50	41.50	36.00	28.00	45.00	39.00
MI	47.20	42.90	40.40	31.80	46.70	42.00
MN	50.80	47.40	42.70	34.20	50.70	47.20
MS	46.80	42.70	40.50	32.50	46.60	42.60
MO	45.80	40.90	40.90	32.90	45.50	40.40
MT	54.50	49.70	40.50	31.70	53.10	47.90
NE	52.10	48.20	41.10	34.70	51.80	47.90
NV	48.80	43.00	37.50	33.00	46.60	42.30
NH	47.50	41.50	36.00	28.00	45.00	39.00
NJ	44.00	39.30	34.00	28.00	40.00	33.70
NM	47.90	42.40	38.90	33.00	47.50	42.00
NY	44.90	39.90	34.50	27.10	43.30	38.00
NC	50.80	46.80	42.70	34.30	50.70	46.60
ND	51.50	47.60	38.70	32.80	51.30	47.40
OH	49.90	45.40	41.70	33.80	49.40	44.70
OK	44.60	40.60	40.60	32.00	43.90	39.30
OR	53.50	50.50	30.00	25.70	53.20	50.00
PA	48.60	43.60	39.90	32.10	47.30	41.90
RI	47.50	41.50	36.00	28.00	45.00	39.00
SC	51.00	46.50	42.00	33.70	50.50	45.70
SD	52.30	48.10	40.60	32.80	50.90	46.20
TN	48.00	44.00	42.00	33.00	47.40	42.90
TX	47.30	43.30	37.00	29.60	45.40	40.80
UT	55.90	49.40	42.80	38.70	55.90	49.40
VT	47.50	41.50	36.00	28.00	45.00	39.00
VA	47.10	43.70	38.20	30.90	46.60	42.60
WA	49.60	47.20	41.20	36.20	48.90	46.20
WV	51.00	45.50	37.80	29.40	46.60	42.40
WI	48.10	43.70	39.60	31.40	47.10	42.50
WY	47.70	43.10	42.80	34.30	46.60	41.10
US	50.70	46.60	41.30	33.20	50.20	46.00

**Sheep and Lambs: Marketing Year Average Prices Received
by States and United States, 2005-2006**

State	Sheep		Lambs	
	2005	2006	2005	2006
	<i>Dollars per Cwt</i>	<i>Dollars per Cwt</i>	<i>Dollars per Cwt</i>	<i>Dollars per Cwt</i>
AZ	45.00	38.00	105.00	90.00
CA	41.00	31.40	98.90	84.00
CO	41.00	34.50	112.00	97.00
ID	42.00	27.60	105.00	85.80
IL	47.10	35.00	110.00	87.60
IN	43.40	32.30	108.00	94.00
IA	45.30	40.70	104.00	88.40
KS	37.00	26.30	102.00	81.80
KY	47.60	41.60	109.00	94.80
MD	45.00	40.00	110.00	100.00
MI	45.00	36.00	105.00	87.00
MN	40.60	31.40	106.00	89.60
MO	47.10	36.60	107.00	98.20
MT	43.30	25.70	124.00	102.00
NE	43.70	35.00	104.00	89.00
NV	40.00	29.00	115.00	96.00
N ENG ¹	50.00	45.00	125.00	115.00
NM	51.00	38.00	108.00	92.00
NY	51.10	46.10	120.00	106.00
NC	43.00	41.00	107.00	99.00
ND	43.70	33.30	116.00	102.00
OH	44.00	34.80	109.00	91.80
OK	38.00	34.00	102.00	92.00
OR	41.20	36.70	101.00	89.60
PA	51.40	45.20	116.00	109.00
SD	45.90	29.40	130.00	109.00
TN	44.00	39.00	109.00	100.00
TX	52.10	37.10	113.00	92.40
UT	44.00	33.20	117.00	98.50
VA	42.90	38.00	108.00	101.00
WA	40.00	33.00	108.00	92.00
WV	41.80	34.40	110.00	99.90
WI	43.20	34.70	103.00	84.70
WY	45.90	30.80	121.00	107.00
Oth St ²	42.00	36.00	102.00	92.00
US	45.10	35.20	110.00	95.50

¹ Includes CT, ME, MA, NH, RI, and VT.

² Other States include AL, AK, AR, DE, FL, GA, HI, LA, MS, NJ, and SC.

**Cows ¹: Monthly Prices Received by State 2006
and United States, 2005-2006**

State	Jan	Feb	Mar	Apr	May	Jun
	<i>Dollars per Cwt</i>	<i>Dollars per Cwt</i>	<i>Dollars per Cwt</i>	<i>Dollars per Cwt</i>	<i>Dollars per Cwt</i>	<i>Dollars per Cwt</i>
AZ	46.30	47.30	48.10	46.40	44.50	43.60
AR	43.00	47.10	46.30	45.00	45.40	43.10
CA	46.40	46.80	47.80	47.00	44.70	44.40
CO	48.70	52.40	51.00	49.70	48.20	48.40
FL	46.20	49.90	52.20	49.20	47.60	47.60
GA	47.60	51.50	51.80	50.80	50.10	48.00
ID	46.00	47.60	47.50	46.20	45.60	45.10
IL	50.00	50.00	47.00	46.00	45.00	46.00
IA	49.40	53.40	50.90	49.50	49.00	50.70
KS	47.40	50.50	50.50	48.60	48.30	47.30
KY	44.00	47.00	48.00	48.00	48.00	47.00
LA	45.50	51.30	49.50	47.30	45.10	43.50
MI	50.00	50.00	51.00	51.00	50.00	50.00
MN	49.80	53.40	53.00	52.00	51.00	51.20
MO	47.30	51.30	50.50	49.10	48.90	47.90
MT	50.90	52.60	52.40	49.50	49.80	49.30
NE	47.00	49.90	49.20	48.20	47.40	47.00
NM	46.70	48.50	49.20	48.90	43.80	42.80
ND	50.70	54.30	52.00	51.20	51.10	49.00
OH	44.40	46.20	47.20	47.30	47.50	47.80
OK	47.10	50.80	50.90	48.80	47.10	45.60
OR	44.00	46.00	45.00	44.00	44.00	43.00
PA	47.00	49.10	49.80	50.10	50.00	49.20
SD	48.60	52.10	52.20	50.10	48.60	47.90
TN	46.00	47.00	47.00	48.00	48.00	48.00
TX	43.60	46.80	46.40	44.60	43.80	41.90
VA	41.50	43.50	44.40	44.40	44.40	43.70
WI	48.40	50.70	50.70	49.60	49.50	48.80
WY	49.50	53.10	52.00	48.90	47.60	48.50
US						
2006	47.20	49.50	49.50	48.40	47.40	46.80
2005	50.50	52.50	55.00	57.00	58.30	56.80

See footnote(s) at end of table.

--continued

**Cows ¹: Monthly Prices Received by State 2006
and United States, 2005-2006 (continued)**

State	Jul	Aug	Sep	Oct	Nov	Dec
	<i>Dollars per Cwt</i>	<i>Dollars per Cwt</i>	<i>Dollars per Cwt</i>	<i>Dollars per Cwt</i>	<i>Dollars per Cwt</i>	<i>Dollars per Cwt</i>
AZ	45.00	45.90	46.30	45.70	43.70	42.40
AR	42.50	42.50	42.20	42.00	40.00	40.00
CA	44.70	45.70	44.90	42.80	40.40	36.40
CO	46.70	47.80	49.80	47.70	43.60	43.40
FL	44.90	45.40	44.20	43.40	44.20	45.90
GA	45.40	46.90	45.80	45.80	45.80	46.80
ID	44.90	45.00	45.70	44.00	40.60	39.20
IL	46.00	47.00	48.00	47.00	46.00	46.00
IA	50.80	52.10	52.40	48.50	46.40	44.20
KS	45.70	47.00	48.20	47.00	44.00	43.00
KY	46.00	46.00	46.00	45.00	43.00	42.00
LA	43.20	43.80	42.90	41.90	41.00	42.00
MI	49.50	49.50	49.50	49.00	46.50	44.50
MN	50.90	51.00	51.40	49.70	46.60	46.50
MO	46.60	47.00	48.40	45.10	41.90	41.30
MT	46.80	50.30	49.10	47.10	41.80	39.80
NE	47.00	50.00	50.90	49.20	46.00	43.20
NM	42.50	41.70	43.30	43.70	40.80	44.20
ND	47.00	47.40	50.00	47.00	43.00	42.00
OH	46.30	45.60	45.10	45.00	42.20	42.20
OK	44.60	45.40	46.10	45.80	43.10	42.80
OR	42.90	44.50	43.30	42.70	40.50	38.50
PA	47.90	46.30	46.40	45.20	42.80	42.80
SD	48.10	48.40	48.90	47.80	41.80	43.10
TN	44.00	45.00	44.00	43.00	41.00	41.00
TX	42.30	41.20	42.20	42.00	40.80	41.40
VA	42.80	42.10	41.00	40.70	39.90	37.90
WI	48.00	48.30	48.70	47.50	44.50	42.80
WY	48.30	49.50	51.00	47.10	41.10	41.60
US						
2006	46.40	46.80	47.10	46.00	43.60	42.20
2005	53.80	51.40	49.80	46.60	45.90	47.10

¹ Beef cows and cull dairy cows sold for slaughter.

**Steers & Heifers: Monthly Prices Received by State 2006
and United States, 2005-2006**

State	Jan	Feb	Mar	Apr	May	Jun
	<i>Dollars per Cwt</i>	<i>Dollars per Cwt</i>	<i>Dollars per Cwt</i>	<i>Dollars per Cwt</i>	<i>Dollars per Cwt</i>	<i>Dollars per Cwt</i>
AZ	108.00	107.00	103.00	103.00	106.00	105.00
AR	110.00	111.00	109.00	105.00	106.00	108.00
CA	99.40	94.80	89.30	85.20	84.00	86.70
CO	119.00	115.00	106.00	102.00	101.00	104.00
FL	102.00	108.00	107.00	100.00	98.20	101.00
GA	102.00	103.00	98.10	94.20	96.00	97.80
ID	100.00	95.20	91.40	87.50	83.50	83.10
IL	96.00	91.00	87.00	83.00	81.00	83.00
IA	98.00	96.70	89.10	86.80	82.50	82.80
KS	98.10	94.10	90.00	85.50	83.40	85.90
KY	104.00	104.00	102.00	100.00	101.00	105.00
LA	107.00	111.00	107.00	101.00	102.00	103.00
MI	87.00	85.00	83.00	80.00	79.00	80.00
MN	88.80	87.30	84.70	81.70	78.90	80.00
MO	114.00	114.00	112.00	108.00	109.00	113.00
MT	119.00	118.00	113.00	111.00	98.80	99.60
NE	104.00	98.00	93.40	90.40	84.70	85.60
NM	114.00	109.00	102.00	100.00	104.00	109.00
ND	116.00	111.00	106.00	99.20	99.30	96.00
OH	95.40	92.80	88.00	87.00	84.70	86.60
OK	111.00	105.00	101.00	97.40	98.00	107.00
OR	107.00	106.00	104.00	102.00	103.00	101.00
PA	90.40	87.80	84.70	81.20	80.10	81.60
SD	114.00	107.00	101.00	94.40	89.60	92.00
TN	105.00	106.00	104.00	100.00	104.00	107.00
TX	99.40	97.80	93.90	90.90	88.10	90.10
VA	100.00	96.60	87.40	87.40	92.80	98.60
WI	91.40	88.60	87.20	82.00	82.00	84.00
WY	119.00	118.00	108.00	103.00	105.00	109.00
US						
2006	101.00	97.60	92.80	89.20	86.30	88.20
2005	94.20	93.10	95.20	98.10	96.10	91.50

--continued

**Steers & Heifers: Monthly Prices Received by State 2006
and United States, 2005-2006 (continued)**

State	Jul	Aug	Sep	Oct	Nov	Dec
	<i>Dollars per Cwt</i>	<i>Dollars per Cwt</i>	<i>Dollars per Cwt</i>	<i>Dollars per Cwt</i>	<i>Dollars per Cwt</i>	<i>Dollars per Cwt</i>
AZ	106.00	110.00	111.00	101.00	93.00	92.00
AR	109.00	109.00	107.00	105.00	92.00	92.70
CA	86.50	89.20	92.50	91.00	88.40	86.80
CO	112.00	112.00	116.00	109.00	101.00	98.90
FL	105.00	106.00	102.00	92.30	86.70	83.40
GA	97.10	98.40	98.60	91.20	83.90	83.30
ID	84.30	87.60	92.80	91.20	87.60	86.30
IL	83.00	85.00	89.00	88.00	86.00	86.00
IA	82.80	86.90	91.80	87.60	85.70	88.70
KS	86.50	90.90	94.30	92.70	89.30	88.30
KY	106.00	107.00	107.00	98.00	88.00	87.00
LA	102.00	102.00	103.00	95.60	84.90	86.70
MI	81.00	81.50	83.50	82.50	80.50	78.50
MN	80.70	81.80	86.20	84.30	82.90	82.60
MO	113.00	116.00	116.00	107.00	95.90	96.80
MT	105.00	108.00	112.00	114.00	109.00	102.00
NE	87.40	88.00	93.70	93.20	89.90	90.30
NM	113.00	112.00	113.00	105.00	97.00	92.00
ND	104.00	109.00	112.00	110.00	103.00	99.00
OH	86.90	87.60	91.00	87.60	84.90	84.20
OK	110.00	113.00	115.00	107.00	100.00	100.00
OR	102.00	99.00	101.00	97.10	89.50	85.00
PA	82.00	82.00	84.00	82.10	82.50	82.30
SD	92.60	98.40	106.00	110.00	98.80	95.90
TN	105.00	106.00	106.00	97.00	86.00	88.00
TX	91.30	90.90	94.10	94.50	90.90	88.70
VA	102.00	100.00	99.00	93.50	83.00	80.60
WI	84.10	85.10	87.40	83.30	81.00	79.10
WY	112.00	111.00	114.00	112.00	105.00	102.00
US						
2006	90.00	91.50	95.20	93.70	90.00	89.00
2005	88.20	87.70	92.10	96.10	97.10	99.60

**Beef Cattle ¹: Monthly Prices Received by State 2006
and United States, 2005-2006**

State	Jan	Feb	Mar	Apr	May	Jun
	<i>Dollars per Cwt</i>	<i>Dollars per Cwt</i>	<i>Dollars per Cwt</i>	<i>Dollars per Cwt</i>	<i>Dollars per Cwt</i>	<i>Dollars per Cwt</i>
AZ	89.50	92.70	88.20	90.00	92.50	92.70
AR	89.90	91.80	90.20	87.00	87.80	88.50
CA	72.40	70.80	69.00	66.50	65.50	67.20
CO	118.00	114.00	105.00	101.00	100.00	103.00
FL	78.00	85.30	83.70	74.10	74.00	80.20
GA	65.60	70.00	70.30	66.40	65.70	64.90
ID	85.40	84.70	80.90	77.60	74.40	74.00
IL	95.10	90.20	86.20	82.30	80.30	82.30
IA	97.00	95.80	88.30	86.40	81.80	82.20
KS	96.10	92.80	88.80	84.00	82.00	85.50
KY	89.60	90.30	89.00	87.50	88.30	91.10
LA	64.00	68.00	65.60	62.90	62.70	61.90
MI	75.90	74.50	73.40	71.30	70.30	71.00
MN	80.60	81.50	79.00	75.80	73.90	75.10
MO	94.00	92.70	98.50	93.90	94.00	94.80
MT	101.00	102.00	93.60	86.40	66.50	64.40
NE	102.00	96.60	92.10	89.10	83.60	84.40
NM	85.10	84.80	83.00	82.60	83.50	85.80
ND	109.00	105.00	98.40	90.10	83.90	66.40
OH	90.30	88.10	83.90	83.00	81.00	82.70
OK	106.00	102.00	97.50	93.50	92.40	99.60
OR	88.10	88.00	86.30	84.60	85.30	83.60
PA	79.10	77.70	75.60	73.10	72.30	73.20
SD	103.00	101.00	96.10	88.60	82.20	81.90
TN	81.40	82.40	81.20	79.20	81.60	83.40
TX	94.40	93.70	89.20	87.20	84.10	85.80
VA	74.80	77.00	75.80	77.50	74.40	77.70
WI	66.50	66.60	66.00	63.20	63.20	63.60
WY	110.00	106.00	99.60	94.30	88.90	97.50
US						
2006	95.00	92.40	87.90	84.80	82.20	84.00
2005	89.10	88.80	91.00	93.70	92.10	88.00

See footnote(s) at end of table.

--continued

**Beef Cattle ¹: Monthly Prices Received by State 2006
and United States, 2005-2006 (continued)**

State	Jul	Aug	Sep	Oct	Nov	Dec
	<i>Dollars per Cwt</i>	<i>Dollars per Cwt</i>	<i>Dollars per Cwt</i>	<i>Dollars per Cwt</i>	<i>Dollars per Cwt</i>	<i>Dollars per Cwt</i>
AZ	94.40	92.70	92.20	82.80	75.30	77.60
AR	89.10	89.10	87.60	86.10	76.40	76.90
CA	67.30	67.00	68.70	67.90	64.40	62.10
CO	111.00	111.00	115.00	108.00	100.00	98.30
FL	86.50	87.40	83.30	73.50	70.80	64.90
GA	63.00	64.40	63.80	61.20	58.40	59.20
ID	75.20	79.90	82.40	78.00	72.10	73.10
IL	82.30	84.20	88.20	87.20	85.20	85.20
IA	82.20	86.20	91.00	86.80	84.90	87.80
KS	86.10	90.50	93.40	91.30	87.90	86.50
KY	91.60	92.40	92.40	85.30	77.20	76.20
LA	63.20	65.30	65.10	61.80	56.80	56.30
MI	71.60	71.90	73.30	72.50	70.30	68.30
MN	76.20	77.50	80.60	78.40	74.80	74.00
MO	96.40	101.00	101.00	93.40	85.10	85.10
MT	66.00	91.80	95.60	103.00	92.90	88.30
NE	86.20	86.90	92.40	91.90	88.60	88.90
NM	85.50	84.20	85.80	81.70	72.80	70.50
ND	70.90	88.10	93.40	94.90	88.60	86.50
OH	82.80	83.40	86.40	83.30	80.60	80.00
OK	96.90	98.10	106.00	93.50	86.90	90.80
OR	84.30	82.70	83.70	80.80	74.80	71.10
PA	73.10	72.70	74.20	72.50	72.20	72.00
SD	81.50	90.40	99.10	103.00	88.50	82.20
TN	80.60	81.60	81.20	75.40	68.00	69.20
TX	87.40	87.40	89.40	90.30	85.90	84.40
VA	81.30	82.10	86.80	82.40	71.80	62.20
WI	63.20	63.80	65.00	62.50	59.80	58.00
WY	104.00	107.00	106.00	88.60	78.20	75.40
US						
2006	85.80	87.20	90.00	88.20	84.40	83.10
2005	85.00	84.40	88.00	90.40	90.80	93.30

¹ "Cows" and "Steers and Heifers" combined.

**Calves: Monthly Prices Received by State 2006
and United States, 2005-2006**

State	Jan	Feb	Mar	Apr	May	Jun
	<i>Dollars per Cwt</i>	<i>Dollars per Cwt</i>	<i>Dollars per Cwt</i>	<i>Dollars per Cwt</i>	<i>Dollars per Cwt</i>	<i>Dollars per Cwt</i>
AZ	128.00	129.00	127.00	126.00	126.00	129.00
AR	131.00	133.00	128.00	125.00	125.00	128.00
CA	136.00	131.00	124.00	125.00	118.00	117.00
CO	144.00	141.00	132.00	130.00	120.00	131.00
FL	129.00	136.00	135.00	123.00	123.00	120.00
GA	130.00	134.00	130.00	123.00	124.00	122.00
ID	132.00	133.00	130.00	127.00	123.00	120.00
IL	123.00	123.00	123.00	123.00	123.00	122.00
IA	132.00	141.00	133.00	130.00	125.00	129.00
KS	145.00	147.00	138.00	135.00	133.00	137.00
KY	126.00	131.00	128.00	126.00	124.00	126.00
LA	128.00	134.00	129.00	121.00	118.00	118.00
MI	138.00	140.00	140.00	140.00	138.00	134.00
MN	138.00	134.00	135.00	135.00	136.00	132.00
MO	138.00	142.00	137.00	132.00	130.00	130.00
MT	148.00	150.00	141.00	131.00	126.00	127.00
NE	149.00	145.00	140.00	134.00	128.00	135.00
NM	132.00	135.00	131.00	130.00	125.00	132.00
ND	143.00	141.00	132.00	125.00	123.00	128.00
OH	122.00	129.00	125.00	124.00	124.00	130.00
OK	135.00	137.00	133.00	129.00	128.00	129.00
OR	127.00	128.00	128.00	125.00	120.00	116.00
PA	138.00	138.00	138.00	138.00	139.00	140.00
SD	146.00	141.00	134.00	127.00	124.00	130.00
TN	127.00	130.00	130.00	123.00	120.00	121.00
TX	137.00	143.00	140.00	139.00	135.00	133.00
VA	123.00	128.00	123.00	119.00	117.00	116.00
WI	174.00	174.00	172.00	167.00	165.00	165.00
WY	153.00	151.00	143.00	134.00	133.00	133.00
US						
2006	141.00	143.00	139.00	137.00	134.00	135.00
2005	126.00	129.00	136.00	141.00	143.00	140.00

--continued

**Calves: Monthly Prices Received by State 2006
and United States, 2005-2006 (continued)**

State	Jul	Aug	Sep	Oct	Nov	Dec
	<i>Dollars per Cwt</i>	<i>Dollars per Cwt</i>	<i>Dollars per Cwt</i>	<i>Dollars per Cwt</i>	<i>Dollars per Cwt</i>	<i>Dollars per Cwt</i>
AZ	135.00	133.00	133.00	123.00	110.00	106.00
AR	124.00	121.00	123.00	121.00	110.00	110.00
CA	114.00	115.00	113.00	113.00	105.00	108.00
CO	144.00	141.00	132.00	124.00	112.00	112.00
FL	118.00	118.00	118.00	111.00	106.00	104.00
GA	119.00	121.00	124.00	113.00	109.00	109.00
ID	123.00	124.00	122.00	114.00	108.00	105.00
IL	122.00	122.00	123.00	115.00	108.00	104.00
IA	121.00	123.00	133.00	115.00	104.00	107.00
KS	140.00	140.00	137.00	132.00	124.00	120.00
KY	124.00	124.00	125.00	114.00	104.00	102.00
LA	116.00	118.00	121.00	115.00	105.00	106.00
MI	134.00	134.00	134.00	132.00	126.00	120.00
MN	124.00	124.00	133.00	125.00	114.00	116.00
MO	132.00	132.00	135.00	121.00	111.00	112.00
MT	141.00	141.00	143.00	131.00	125.00	118.00
NE	143.00	144.00	138.00	131.00	120.00	122.00
NM	139.00	138.00	131.00	124.00	114.00	108.00
ND	131.00	136.00	130.00	124.00	112.00	114.00
OH	126.00	121.00	122.00	111.00	96.00	95.30
OK	127.00	128.00	128.00	122.00	114.00	118.00
OR	116.00	113.00	115.00	114.00	104.00	99.00
PA	139.00	138.00	139.00	125.00	114.00	108.00
SD	133.00	145.00	139.00	133.00	119.00	117.00
TN	117.00	119.00	120.00	110.00	98.00	102.00
TX	136.00	131.00	134.00	126.00	121.00	116.00
VA	115.00	120.00	119.00	109.00	96.50	99.40
WI	163.00	164.00	165.00	157.00	148.00	145.00
WY	139.00	139.00	142.00	132.00	122.00	121.00
US						
2006	137.00	136.00	136.00	128.00	119.00	116.00
2005	133.00	133.00	135.00	135.00	137.00	137.00

**Milk Cows ¹: Monthly Prices Received by State 2006
and United States, 2005-2006**

State	Jan	Apr	Jul	Oct
	<i>Dollars per Head</i>	<i>Dollars per Head</i>	<i>Dollars per Head</i>	<i>Dollars per Head</i>
AZ	1,950	1,850	1,850	1,800
CA	1,800	1,600	1,500	1,600
CO	2,100	2,050	2,000	1,950
FL	1,980	1,910	1,880	1,850
ID	1,900	1,900	1,900	1,800
IL	1,780	1,760	1,710	1,650
IN	1,800	1,800	1,700	1,650
IA	1,750	1,780	1,670	1,640
KS	1,730	1,730	1,630	1,550
KY	1,810	1,830	1,700	1,600
MI	2,000	2,000	1,900	1,800
MN	1,790	1,780	1,660	1,580
MO	1,660	1,700	1,600	1,530
NM	1,860	1,780	1,780	1,740
NY	1,710	1,630	1,580	1,550
OH	1,840	1,830	1,760	1,680
OR	1,880	1,880	1,880	1,830
PA	1,900	1,800	1,700	1,650
TX	1,900	1,880	1,740	1,650
VT	1,850	1,850	1,800	1,700
VA	1,850	1,860	1,750	1,700
WA	1,850	1,800	1,750	1,700
WI	1,880	1,850	1,700	1,600
US				
2006	1,840	1,770	1,680	1,650
2005	1,620	1,770	1,830	1,870

¹ Cows sold for dairy herd replacement.

**All Hogs ¹: Monthly Prices Received by States 2006,
and United States, 2005-2006**

State	Dec ²	Jan	Feb	Mar	Apr	May
	<i>Dollars per Cwt</i>	<i>Dollars per Cwt</i>	<i>Dollars per Cwt</i>	<i>Dollars per Cwt</i>	<i>Dollars per Cwt</i>	<i>Dollars per Cwt</i>
AR	40.80	37.50	38.30	38.60	37.80	43.50
IL	45.20	41.70	43.80	44.00	41.70	49.20
IN	43.70	39.60	41.80	42.10	40.40	46.60
IA	45.20	41.80	43.90	44.30	43.10	50.30
KS	41.40	38.50	39.50	39.50	38.30	45.20
MN	44.60	41.50	42.90	43.00	41.30	49.20
MO	40.90	37.10	38.50	38.50	37.50	43.10
NE	45.90	42.90	44.30	44.40	42.80	49.50
NC	44.50	40.60	42.70	42.30	41.80	49.00
OH	43.90	39.80	42.10	42.30	40.20	43.90
OK	38.50	35.80	36.80	36.90	35.50	40.70
PA	42.10	37.90	39.50	40.00	38.10	42.20
SD	44.30	40.80	43.00	42.90	41.00	48.20
US						
2006	44.20	40.70	42.60	42.80	41.30	48.20
2005	52.30	53.00	50.70	51.20	51.10	54.90
	Jun	Jul	Aug	Sep	Oct	Nov
	<i>Dollars per Cwt</i>	<i>Dollars per Cwt</i>	<i>Dollars per Cwt</i>	<i>Dollars per Cwt</i>	<i>Dollars per Cwt</i>	<i>Dollars per Cwt</i>
AR	48.80	46.10	48.00	45.30	43.30	42.20
IL	53.10	50.30	51.30	48.70	46.90	45.20
IN	52.40	49.20	49.80	47.50	45.80	43.70
IA	55.60	52.60	54.00	50.90	48.30	46.50
KS	51.00	46.00	47.70	44.80	43.20	41.10
MN	55.40	51.80	53.00	51.30	48.10	46.80
MO	47.50	42.40	43.50	40.70	38.60	36.80
NE	55.00	52.30	53.60	51.10	48.10	46.70
NC	55.50	51.20	53.20	49.10	47.30	45.40
OH	50.60	49.20	49.40	46.70	45.70	43.50
OK	46.00	41.70	43.60	41.30	39.50	37.70
PA	46.30	44.50	45.30	44.20	42.10	40.90
SD	52.70	49.20	51.10	49.40	47.30	45.10
US						
2006	53.80	50.20	51.60	48.90	46.50	44.90
2005	49.50	49.80	51.00	49.40	47.00	43.50

¹ "Sows" and "Barrows & Gilts" combined.

² Preceding year.

**Barrows and Gilts: Monthly Prices Received by States 2006
and United States, 2005-2006**

State	Dec ¹	Jan	Feb	Mar	Apr	May
	<i>Dollars per Cwt</i>	<i>Dollars per Cwt</i>	<i>Dollars per Cwt</i>	<i>Dollars per Cwt</i>	<i>Dollars per Cwt</i>	<i>Dollars per Cwt</i>
AR	41.00	37.90	39.10	39.00	38.70	45.00
IL	46.00	42.50	45.00	45.00	43.00	51.00
IN	43.80	39.80	42.40	42.40	40.90	47.70
IA	45.30	42.00	44.50	44.50	43.20	50.50
KS	41.90	39.20	40.70	40.20	39.60	47.40
MN	44.70	41.70	43.10	43.10	41.40	49.40
MO	41.10	37.40	39.20	39.00	38.30	44.00
NE	46.00	43.10	44.60	44.60	43.00	49.90
NC	44.60	40.70	42.80	42.40	41.90	49.20
OH	44.30	40.20	42.90	42.90	41.10	44.60
OK	38.90	36.40	37.90	37.50	37.00	42.90
PA	43.10	38.90	41.10	41.10	39.80	44.50
SD	45.40	42.20	44.50	44.10	42.50	50.40
US						
2006	44.50	41.10	43.20	43.20	41.80	48.90
2005	52.70	53.40	51.00	51.50	51.50	55.50
	Jun	Jul	Aug	Sep	Oct	Nov
	<i>Dollars per Cwt</i>	<i>Dollars per Cwt</i>	<i>Dollars per Cwt</i>	<i>Dollars per Cwt</i>	<i>Dollars per Cwt</i>	<i>Dollars per Cwt</i>
AR	50.70	47.70	49.40	46.30	43.90	43.00
IL	55.00	52.00	53.00	50.00	48.00	46.20
IN	53.90	50.30	51.00	48.30	46.20	44.30
IA	56.00	53.00	54.40	51.10	48.50	46.60
KS	53.60	48.00	49.40	46.00	43.90	41.90
MN	55.60	51.90	53.20	51.50	48.20	46.90
MO	48.60	43.60	44.60	41.20	38.70	36.90
NE	55.40	52.70	54.00	51.40	48.30	46.90
NC	55.70	51.40	53.40	49.20	47.40	45.50
OH	51.80	50.00	50.50	47.70	46.20	44.00
OK	48.60	43.70	45.40	42.60	40.20	38.40
PA	49.00	47.00	47.60	46.20	43.40	42.10
SD	55.90	52.30	53.80	51.20	48.70	46.80
US						
2006	54.80	51.10	52.50	49.50	46.90	45.30
2005	49.90	50.40	51.60	49.90	47.30	43.80

¹ Preceding year.

**Sows: Monthly Prices Received by States 2006
and United States, 2005-2006**

State	Dec ¹	Jan	Feb	Mar	Apr	May
	<i>Dollars per Cwt</i>	<i>Dollars per Cwt</i>	<i>Dollars per Cwt</i>	<i>Dollars per Cwt</i>	<i>Dollars per Cwt</i>	<i>Dollars per Cwt</i>
AR	39.20	34.30	30.70	34.60	29.60	30.40
IL	36.50	32.00	29.90	32.30	27.00	28.20
IN	42.80	37.40	35.50	38.40	33.30	34.50
IA	38.50	33.60	30.60	34.90	29.50	32.00
KS	38.00	33.80	31.10	34.70	29.50	30.40
MN	37.60	33.00	31.40	34.00	28.60	30.50
MO	37.50	32.80	30.60	33.00	27.10	28.50
NE	38.50	33.50	31.50	35.30	30.50	32.00
NC	38.50	33.80	30.80	34.20	29.60	30.40
OH	37.90	33.10	31.30	34.90	30.40	32.20
OK	36.10	32.20	30.40	33.30	27.30	28.30
PA	36.10	32.50	30.50	33.50	28.30	29.00
SD	35.80	31.30	29.90	32.50	27.70	30.20
US						
2006	38.00	33.30	31.20	34.20	28.80	30.10
2005	44.50	45.40	45.10	43.40	41.50	42.60
	Jun	Jul	Aug	Sep	Oct	Nov
	<i>Dollars per Cwt</i>	<i>Dollars per Cwt</i>	<i>Dollars per Cwt</i>	<i>Dollars per Cwt</i>	<i>Dollars per Cwt</i>	<i>Dollars per Cwt</i>
AR	32.10	31.60	35.80	36.40	38.00	35.00
IL	30.70	30.40	32.20	34.10	34.80	34.00
IN	36.70	36.20	38.00	38.90	40.40	38.80
IA	34.80	33.10	35.50	35.70	38.00	36.30
KS	33.90	32.80	36.50	37.00	38.40	35.90
MN	34.10	32.50	36.50	36.70	37.50	35.00
MO	32.20	31.90	34.80	35.30	36.80	35.10
NE	35.30	33.30	36.40	36.80	39.00	36.60
NC	33.10	33.00	35.50	36.30	37.80	35.20
OH	34.00	33.80	34.70	34.80	36.10	35.30
OK	31.00	30.20	33.50	33.90	35.60	33.80
PA	30.70	30.00	32.00	33.00	34.40	33.80
SD	33.00	31.70	34.70	35.90	36.90	34.00
US						
2006	33.10	32.10	34.90	35.50	36.90	35.40
2005	43.40	37.60	38.60	39.10	41.60	37.30

¹ Preceding year.

**Lambs: Monthly Prices Received by State 2006
and United States, 2005-2006**

State	Jan	Feb	Mar	Apr	May	Jun
	<i>Dollars per Cwt</i>	<i>Dollars per Cwt</i>	<i>Dollars per Cwt</i>	<i>Dollars per Cwt</i>	<i>Dollars per Cwt</i>	<i>Dollars per Cwt</i>
CA	80.50	86.50	78.50	73.50	72.00	83.50
CO	103.00	105.00	98.00	97.00	95.00	97.00
ID	82.00	83.00	76.00	75.00	82.00	90.00
IA	82.00	80.00	80.00	79.00	85.00	91.40
KY	101.00	96.00	100.00	93.00	94.00	95.00
MN	84.80	82.50	78.60	77.20	90.80	98.70
MO	101.00	103.00	105.00	95.00	102.00	95.00
MT	105.00	104.00	95.80	84.70	85.20	99.90
NE	95.00	92.00	95.40	91.40	96.60	90.60
ND	105.00	103.00	99.00	90.00	92.00	95.00
OH	98.90	96.50	98.70	95.00	98.20	90.00
OR	95.00	91.00	88.00	85.00	86.00	86.00
PA	120.00	115.00	119.00	115.00	104.00	102.00
SD	103.00	101.00	90.80	90.00	99.00	105.00
TX	95.20	106.00	96.50	87.60	91.10	84.80
VA	117.00	110.00	116.00	115.00	107.00	99.00
WV	117.00	111.00	120.00	116.00	108.00	99.00
WY	106.00	112.00	96.60	78.50	86.00	101.00
US						
2006	94.60	97.80	92.10	87.20	88.90	92.10
2005	115.00	114.00	114.00	114.00	114.00	114.00
	Jul	Aug	Sep	Oct	Nov	Dec
	<i>Dollars per Cwt</i>	<i>Dollars per Cwt</i>	<i>Dollars per Cwt</i>	<i>Dollars per Cwt</i>	<i>Dollars per Cwt</i>	<i>Dollars per Cwt</i>
CA	87.00	88.50	90.00	91.50	91.50	89.50
CO	97.00	96.00	98.00	95.00	94.00	95.00
ID	86.00	87.00	88.00	88.00	80.00	84.00
IA	95.60	94.90	95.00	91.50	89.90	89.00
KY	95.00	83.00	94.00	98.00	91.00	97.00
MN	95.30	91.20	99.00	97.00	94.00	89.60
MO	92.10	102.00	103.00	95.00	89.80	91.10
MT	103.00	101.00	104.00	104.00	101.00	106.00
NE	90.20	85.80	87.80	84.20	81.50	83.70
ND	98.00	100.00	108.00	102.00	105.00	108.00
OH	89.00	84.30	85.10	91.00	85.10	94.10
OR	90.00	88.00	89.00	96.00	96.00	92.00
PA	97.80	103.00	103.00	110.00	106.00	111.00
SD	105.00	108.00	116.00	115.00	108.00	108.00
TX	78.60	83.90	92.70	99.80	94.30	96.90
VA	100.00	89.00	97.00	101.00	98.00	106.00
WV	95.00	90.00	96.00	99.00	99.00	102.00
WY	103.00	103.00	115.00	115.00	112.00	103.00
US						
2006	93.40	95.40	98.30	98.50	95.60	94.00
2005	110.00	109.00	110.00	108.00	107.00	100.00

**Sheep: Monthly Prices Received by State 2006
and United States, 2005-2006**

State	Jan	Feb	Mar	Apr	May	Jun
	<i>Dollars per Cwt</i>	<i>Dollars per Cwt</i>	<i>Dollars per Cwt</i>	<i>Dollars per Cwt</i>	<i>Dollars per Cwt</i>	<i>Dollars per Cwt</i>
CA	48.00	48.50	40.00	37.50	30.50	28.00
CO	46.00	43.00	38.00	38.00	34.00	31.00
ID	39.00	42.00	38.00	38.00	31.00	25.00
IA	50.50	50.00	45.00	36.50	36.50	39.00
KY	56.00	53.00	49.00	36.00	37.00	35.00
MN	41.50	37.50	34.00	29.00	30.00	30.00
MO	48.50	42.30	33.30	33.10	33.30	35.10
MT	43.20	38.10	38.10	26.00	28.20	24.00
NE	45.20	44.20	38.20	34.00	32.00	28.70
ND	46.00	43.00	36.00	33.00	32.00	30.00
OH	53.20	47.80	36.90	35.40	32.90	31.60
OR	51.00	48.00	44.00	40.00	35.00	32.00
PA	52.00	51.50	50.70	42.00	44.40	42.90
SD	48.40	43.00	33.40	27.10	29.90	24.70
TX	48.90	50.10	46.00	38.90	35.00	27.30
VA	48.00	49.00	38.00	38.00	40.00	33.00
WV	49.00	49.00	41.00	38.00	34.00	32.00
WY	50.80	43.30	34.50	29.80	29.90	23.10
US						
2006	47.50	45.90	40.10	35.20	32.50	28.20
2005	54.20	52.40	49.00	45.10	43.70	41.20
	Jul	Aug	Sep	Oct	Nov	Dec
	<i>Dollars per Cwt</i>	<i>Dollars per Cwt</i>	<i>Dollars per Cwt</i>	<i>Dollars per Cwt</i>	<i>Dollars per Cwt</i>	<i>Dollars per Cwt</i>
CA	22.50	26.50	36.00	36.00	38.00	43.00
CO	32.00	33.00	35.00	32.00	30.00	32.00
ID	26.00	20.00	23.00	23.00	27.00	30.00
IA	36.30	40.70	42.80	40.90	35.90	36.90
KY	37.00	35.00	46.00	42.00	36.00	43.00
MN	26.00	23.70	30.00	29.00	30.50	32.00
MO	39.60	36.10	36.10	36.30	33.80	33.80
MT	16.80	18.50	22.20	25.60	26.10	31.00
NE	32.70	31.60	36.60	33.00	29.00	34.00
ND	25.00	30.00	33.00	32.00	31.00	33.00
OH	30.40	29.20	34.70	34.80	35.40	35.50
OR	35.00	35.00	34.50	36.00	36.00	36.00
PA	36.30	42.40	48.40	43.00	46.80	46.40
SD	18.70	23.20	30.10	27.10	26.60	32.90
TX	26.60	28.50	36.70	37.00	35.70	38.20
VA	34.00	39.00	37.00	36.00	38.00	44.00
WV	32.00	31.00	29.00	30.00	31.00	35.00
WY	24.20	26.90	36.00	30.50	27.70	34.00
US						
2006	27.60	27.90	32.20	31.40	30.30	34.80
2005	41.00	43.00	43.70	43.60	46.20	49.30

**All Cattle and Calves: Value per Head and Total Value,
by States and United States, January 1, 2006-2007 ¹**

State	Value per Head		Total Value	
	2006	2007	2006	2007
	<i>Dollars</i>	<i>Dollars</i>	<i>1,000 Dollars</i>	<i>1,000 Dollars</i>
AL	820	760	1,049,600	1,003,200
AK	1,030	1,010	15,965	16,160
AZ	1,090	1,010	1,024,600	949,400
AR	850	770	1,453,500	1,347,500
CA	1,280	1,140	6,976,000	6,270,000
CO	1,110	970	2,941,500	2,619,000
CT	1,210	1,170	62,920	62,010
DE	1,050	1,020	24,150	23,460
FL	900	850	1,512,000	1,470,500
GA	820	790	967,600	924,300
HI	620	640	99,820	101,120
ID	1,250	1,090	2,637,500	2,376,200
IL	990	900	1,316,700	1,206,000
IN	1,060	1,000	954,000	900,000
IA	980	910	3,724,000	3,594,500
KS	920	840	6,118,000	5,376,000
KY	860	810	2,046,800	1,992,600
LA	850	810	697,000	696,600
ME	1,170	1,140	107,640	98,040
MD	1,120	1,100	257,600	242,000
MA	1,190	1,190	55,930	52,360
MI	1,230	1,130	1,266,900	1,197,800
MN	1,030	960	2,420,500	2,323,200
MS	840	770	831,600	754,600
MO	950	870	4,275,000	3,871,500
MT	1,220	1,050	2,928,000	2,520,000
NE	980	890	6,370,000	5,918,500
NV	1,050	980	525,000	490,000
NH	1,280	1,290	49,920	45,150
NJ	1,210	1,200	50,820	45,600
NM	1,160	1,060	1,798,000	1,674,800
NY	1,290	1,170	1,806,000	1,661,400
NC	820	780	705,200	663,000
ND	1,240	1,070	2,132,800	1,979,500
OH	1,030	990	1,318,400	1,247,400
OK	870	800	4,741,500	4,200,000
OR	1,050	930	1,491,000	1,246,200
PA	1,240	1,110	1,971,600	1,776,000
RI	1,090	1,080	5,450	5,292
SC	860	810	352,600	324,000
SD	1,160	1,000	4,350,000	3,700,000
TN	830	770	1,859,200	1,778,700
TX	840	790	11,844,000	11,060,000
UT	1,020	970	816,000	805,100
VT	1,400	1,360	385,000	360,400
VA	840	770	1,394,400	1,247,400
WA	1,220	1,120	1,342,000	1,276,800
WV	860	790	352,600	331,800
WI	1,330	1,230	4,522,000	4,182,000
WY	1,140	1,010	1,630,200	1,444,300
US	1,009	922	97,578,515	89,451,392

¹ 2006 revised.

**Hogs: Value per Head and Total Value by States
and United States, December 1, 2005-2006 ¹**

State	Value per Head		Total Value	
	2005	2006	2005	2006
	<i>Dollars</i>	<i>Dollars</i>	<i>1,000 Dollars</i>	<i>1,000 Dollars</i>
AL	93	87	14,880	14,355
AK	180	180	288	162
AZ	100	94	14,200	13,912
AR	89	87	24,030	22,620
CA	130	120	18,850	18,000
CO	85	82	72,250	68,060
CT	130	120	455	432
DE	93	87	1,535	914
FL	100	94	2,000	1,880
GA	83	77	22,410	18,865
HI	150	150	2,850	2,400
ID	100	94	2,100	2,350
IL	93	88	372,000	369,600
IN	96	92	312,000	303,600
IA	100	95	1,660,000	1,634,000
KS	82	79	146,780	145,360
KY	71	70	26,270	21,700
LA	100	94	1,400	1,316
ME	100	94	500	451
MD	93	87	3,255	2,958
MA	100	94	1,300	1,222
MI	110	100	105,600	100,000
MN	120	110	792,000	748,000
MS	100	94	37,500	31,490
MO	81	76	218,700	209,000
MT	100	94	17,500	16,920
NE	100	96	285,000	288,000
NV	130	120	520	420
NH	110	100	352	280
NJ	110	100	990	700
NM	100	94	200	188
NY	93	87	7,719	8,526
NC	77	74	754,600	703,000
ND	100	94	15,700	15,886
OH	100	93	156,000	156,240
OK	81	77	191,970	179,410
OR	100	94	2,300	2,350
PA	89	85	97,900	90,950
RI	100	94	180	179
SC	83	78	26,145	23,010
SD	110	97	163,900	129,010
TN	83	78	15,770	17,160
TX	79	75	73,470	69,750
UT	100	94	69,000	63,920
VT	130	120	299	300
VA	80	74	39,200	26,640
WA	110	100	3,300	3,600
WV	100	94	800	1,034
WI	87	83	37,410	36,520
WY	110	100	11,550	10,000
US	95	90	5,824,928	5,576,639

¹ 2005 revised.

**Sheep and Lambs, Angora Goats: Value per Head and Total Value,
by States and United States, January 1, 2006-2007 ¹**

State	Sheep and Lambs				Angora Goats			
	Value per Head		Total Value		Value per Head		Total Value	
	2006	2007	2006	2007	2006	2007	2006	2007
	<i>Dollars</i>	<i>Dollars</i>	<i>1,000 Dollars</i>	<i>1,000 Dollars</i>	<i>Dollars</i>	<i>Dollars</i>	<i>1,000 Dollars</i>	<i>1,000 Dollars</i>
AZ	142	142	14,910	15,620	75.00	75.00	1,575	1,350
CA	129	127	83,850	77,470	63.00	63.00	189	189
CO	136	124	53,040	49,600				
ID	152	137	39,520	35,620				
IL	187	190	12,903	13,300				
IN	190	195	9,500	10,335				
IA	152	143	35,720	33,605				
KS	134	135	13,400	14,445				
KY	154	164	5,390	6,068				
MD	151	156	3,322	3,588				
MI	148	145	12,284	11,745				
MN	147	139	22,785	20,850				
MO	149	156	11,175	12,168				
MT	147	132	43,365	38,280				
NE	151	136	16,006	12,920				
NV	148	135	10,952	10,125				
N ENG ²	203	202	9,541	8,888				
NM	133	125	20,615	16,250	80.00	80.00	640	560
NY	149	146	10,430	10,804				
NC	163	163	2,934	3,423				
ND	147	144	15,288	14,400				
OH	167	167	23,547	23,547				
OK	157	158	12,560	12,640				
OR	128	121	28,160	26,015				
PA	155	153	17,050	16,524				
SD	146	134	56,210	50,920				
TN	158	156	4,266	3,900				
TX	114	106	124,260	113,420	76.00	79.00	15,200	14,220
UT	158	147	44,240	43,365				
VA	149	148	9,983	10,656				
WA	137	137	6,850	6,987				
WV	129	125	4,128	4,250				
WI	172	166	15,308	15,272				
WY	148	137	66,600	63,020				
Oth ³	138	134	15,318	15,946				
US ⁴	141	134	875,410	825,966	75.90	78.50	17,604	16,319

¹ 2006 Revised.

² N ENG includes CT, ME, MA, NH, RI, and VT.

³ Other States include AL, AK, AR, DE, FL, GA, HI, LA, MS, NJ, and SC.

⁴ 4 States for Angora Goats.

Reliability of Prices Received Estimates

Definition: Prices received represent sales from producers to first buyers. They include all grades and qualities. The average commodity price from the survey multiplied by the total quantity marketed theoretically should give the total cash receipts for the commodity.

Survey Procedures: Primary sales data used to determine grain prices were obtained from probability samples of about 2000 mills and elevators. These procedures ensure that virtually all grain moving into commercial channels has a chance of being included in the survey. Generally, States surveyed account for 90 percent or more of total U.S. production. Livestock prices are obtained from packers, stockyards, auctions, dealers, and market check data from AMS-USDA, private marketing organizations, and state commodity groups and agencies. Inter-farm sales of grain and livestock are not included since they represent very small percentages of the total marketings. Grain marketed for seed is also excluded. Fruit and vegetable prices are obtained from sample surveys and market check data from AMS-USDA, private marketing organizations, state agencies, and universities.

Summary and Estimation Procedures: Survey quantities sold are expanded by strata to state levels and used to weight average strata prices to a state average. State prices are then weighted to a U.S. price based on expanded marketings. Recommendations are prepared by the State Field Offices and reviewed by the Agricultural Statistics Board in Washington, D.C. State recommendations are reviewed for reasonableness with survey data, other States, and recent historic estimates.

Revisions: For most items, the current month's preliminary price represents a 3-5 day period around the 15th of the month. Previous month's prices represent actual dollars received for quantities sold during the entire month. Revisions are published in monthly issues of *Agricultural Prices*.

Reliability: U.S. price estimates based on probability surveys generally have a sampling error of less than one percent for the major commodities such as corn, wheat, soybeans, cotton, and rice. Current methods of summarization for non-probability commodities are not designed directly to calculate sampling errors. However, analytical measures approximate the U.S. relative sampling errors at around five percent. Any nonsampling errors are attributed to such things as the inability to obtain correct information, differences in interpreting questions or definitions, mistakes in coding or processing the data, etc. Efforts are made at each step in the survey process to minimize these nonsampling errors.

Prices Paid by Farmers

The February Index of Prices Paid for Commodities and Services, Interest, Taxes, and Farm Wage Rates (PPITW) at 153 (1990-92=100), increased 0.7 percent from January 2007 and 4.1 percent from February 2006.

PRODUCTION INDEX: The February index, at 150, increased 0.7 percent from last month and increased 4.2 percent from last year. Higher prices in February for complete feeds, feed grains, mixed fertilizers, and LP gas more than offset lower prices for feed concentrates, diesel fuel, herbicides, and tractors.

Feed: The February index, at 152, increased 2.0 percent from January and increased 26 percent from last February. Since January, higher prices for complete feeds, feed grains, and hay & forages more than offset lower prices for feed concentrates and feed supplements.

Livestock & Poultry: The February index, at 122, increased 0.8 percent from last month but decreased 12 percent from last year. Since January, prices are higher for feeder pigs and feeder cattle. The February feeder cattle price, at \$98.20 per cwt, is up 80 cents per cwt from the January price. February feeder pigs averaged \$155.00 per cwt, up \$10.00 per cwt from January.

Fertilizer: The February index, at 179, is up 2.9 percent from January but 2.2 percent below February a year ago. Since January, prices are higher for mixed fertilizers, nitrogen fertilizers, and potash & phosphate.

Agricultural Chemicals: The February index, at 128, is unchanged from January but increased 0.8 percent from last February.

Fuels: The February index, at 222, is up 0.5 percent from a month earlier and 1.8 percent above February 2006. Since January, higher prices for LP gas more than offset lower prices for diesel fuel and gasoline.

Farm Machinery: The February index, at 182, is unchanged from January but 2.2 percent above last February.

CONSUMER PRICE INDEX: The January 2007 Consumer Price Index, as issued by the Bureau of Labor Statistics, for all urban consumers (CPI-U) increased 0.3 percent before seasonal adjustment to a level of 202.416 (1982-84=100). This compares with the December index of 201.8. For the 12-month period ending in January, the overall index has increased 2.1 percent.

**Indexes of Prices Paid by Farmers and Related Parity Ratios
United States, February 2007 With Comparisons**

Indexes and Ratios	1910-14 = 100			1990-92 = 100		
	2006	2007		2006	2007	
	Feb	Jan	Feb	Feb	Jan	Feb
Prices Paid by Farmers for Commodities & Services, Interest, Taxes, & Wage Rates (PPITW)	1,960	2,025	2,035	147	152	153
Production	1,396	1,442	1,453	144	149	150
Feed	591	727	744	121	149	152
Livestock & Poultry	1,764	1,543	1,563	138	121	122
Seeds	1,694	1,838	1,838	171	186	186
Fertilizer	673	638	656	183	174	179
Agricultural Chemicals	783	794	790	127	128	128
Fuels	1,679	1,703	1,716	218	221	222
Farm Supplies & Repairs	1,018	1,051	1,051	143	148	148
Autos & Trucks	3,040	2,980	2,994	114	112	113
Farm Machinery	4,477	4,573	4,567	178	182	182
Building Materials	2,022	2,079	2,086	149	153	154
Farm Services & Rent	1,561	1,587	1,587			
Farm Services				137	141	141
Rent				121	119	119
Interest ¹	3,452	3,778	3,778	138	151	151
Taxes ²	4,343	4,570	4,570	162	171	171
Wage Rates	6,526	6,688	6,688	174	179	179
Production, Interest, Taxes, & Wage Rates (PITW)	1,976	2,047	2,060	147	152	153
Family Living-CPI ³	1,887	1,922	1,922	147	150	150
Ratio (Received\Paid) Parity Ratio ⁴	37	39	40	77	82	83
Parity Ratio Adjusted ⁵	39	41	42			
PPITW Adjusted for Productivity ⁶	1,334	1,355	1,356			
Crop Sector (PPITW)				151	155	156
Livestock Sector (PPITW)				143	149	150
Farm Sector (Production)				135	145	148
Non-Farm Sector (Production)				148	150	151

¹ Interest per acre on farm real estate debt and interest rate on farm non-real estate debt.

² Farm real estate taxes payable per acre.

³ Bureau of Labor Statistics, Consumer Price Index for all urban consumers (CPI-U), for the previous month converted by the USDA.

⁴ Ratio of index of prices received to PPITW (1910-14=100).

⁵ Based on estimated cash receipts, from marketings and government payments, the preliminary adjustment factor is 1.079 for 2007 and the revised factor is 1.096 for 2006.

⁶ PPITW is adjusted based on productivity trend for the prior 15 years.

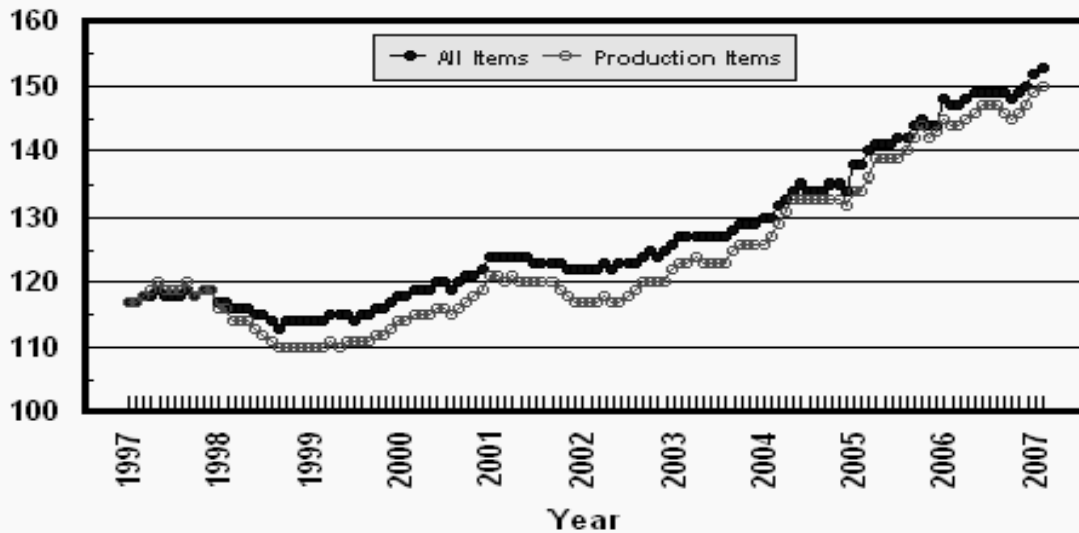
**Prices Paid Indexes and Annual Weights for Input Components and
Sub-Components United States, February 2007 With Comparisons**

Index	Relative Weights 5-Year Moving Average ¹		Input Indexes		
	2006	2007	2006	2007	
			Feb	Jan	Feb
	<i>Percent</i>	<i>Percent</i>	<i>(1990-92=100)</i>	<i>(1990-92=100)</i>	<i>(1990-92=100)</i>
Production Items	66.8	67.4	144	149	150
Feed	10.9	10.9	121	149	152
Feed Grains	1.6	1.6	88	135	146
Complete Feeds	5.3	5.3	121	146	150
Hay/Forages	1.4	1.4	127	148	151
Concentrates	1.7	1.7	131	143	140
Supplements	0.9	0.9	151	199	199
Livestock & Poultry	7.6	7.7	138	121	122
Feeder Cattle	6.0	6.0	135	115	116
Feeder Pigs	0.6	0.6	163	158	169
Milk Cow Replacements	0.6	0.6	163	147	147
Poultry	0.5	0.5	109	109	109
Seeds	3.6	3.7	171	186	186
Field Crops	3.3	3.4	177	191	191
Grasses/Legumes	0.3	0.4	118	133	133
Fertilizer	4.3	4.4	183	174	179
Mixed Fertilizer	1.9	1.9	149	154	159
Nitrogen	1.8	1.8	226	196	200
Potash & Phosphate	0.6	0.6	162	170	176
Agricultural Chemicals	3.5	3.4	127	128	128
Herbicides	2.2	2.2	122	124	123
Insecticides	0.8	0.8	142	142	141
Fungicides/Other	0.5	0.5	124	126	125
Fuels	2.9	3.1	218	221	222
Diesel	1.7	1.9	237	237	235
Gasoline	0.8	0.7	188	189	188
LP Gas	0.4	0.4	200	203	223
Farm Supplies & Repairs	5.0	4.8	143	148	148
Supplies	1.7	1.6	134	140	140
Repairs	3.3	3.2	148	152	152
Autos & Trucks	1.8	1.8	114	112	113
Autos	0.2	0.2	110	110	110
Trucks	1.6	1.6	115	112	113
Farm Machinery	4.4	4.5	178	182	182
Tractors	1.0	1.0	159	163	162
Self-Propelled	1.7	1.8	185	189	189
Other Machinery	1.7	1.7	183	187	187
Building Materials	4.0	4.3	149	153	154
Farm Services	12.2	12.2	137	141	141
Custom Rates	1.3	1.3	123	123	123
Other Services	10.9	10.9	138	143	143
Rent	6.7	6.7	121	119	119
Cash	3.6	3.6	144	140	140
Share	3.1	3.1	95	95	95
Interest	4.2	4.0	138	151	151
Taxes	2.9	2.9	162	171	171
Wage Rates	7.8	7.8	174	179	179
Family Living-CPI	18.4	18.0	147	150	150

¹ Weights may not add due to rounding.

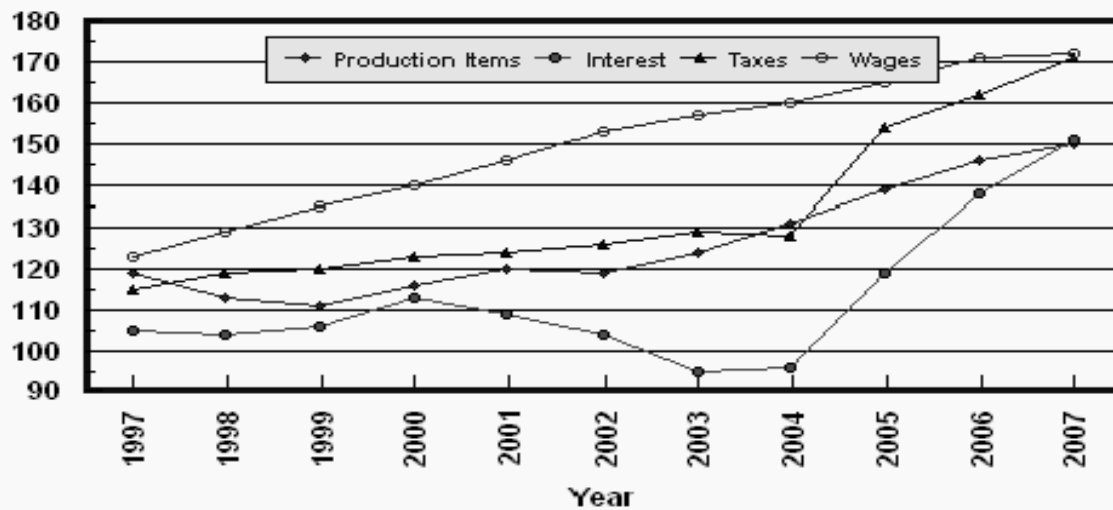
Prices Paid by Farmers, Major Indexes US, by Month

Percent (1990-92=100)



Prices Paid by Farmers, Major Indexes US, Annual Averages 1/

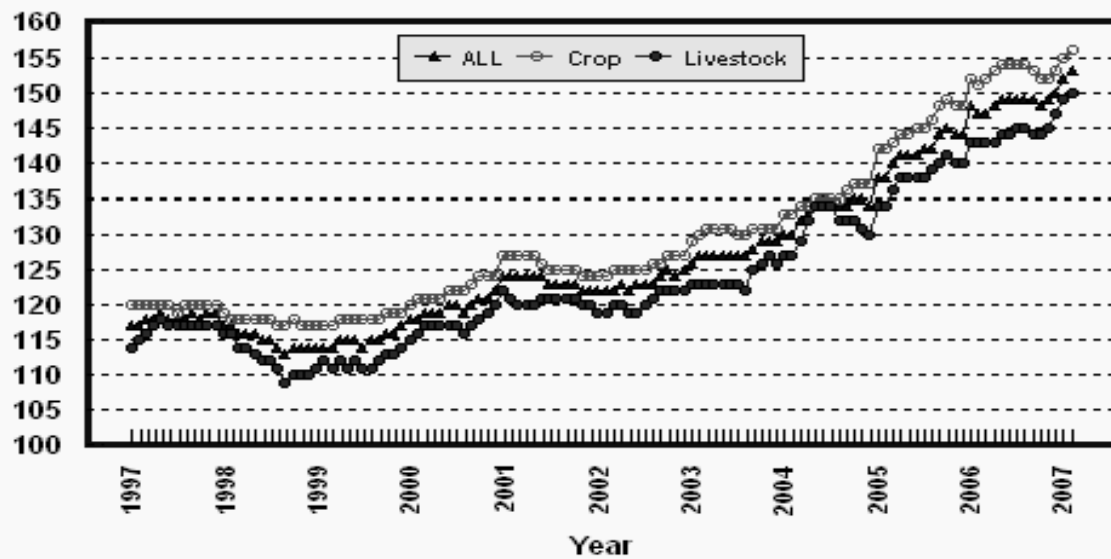
Percent (1990-92=100)



1/ Index values for 2007 are year-to-date averages.

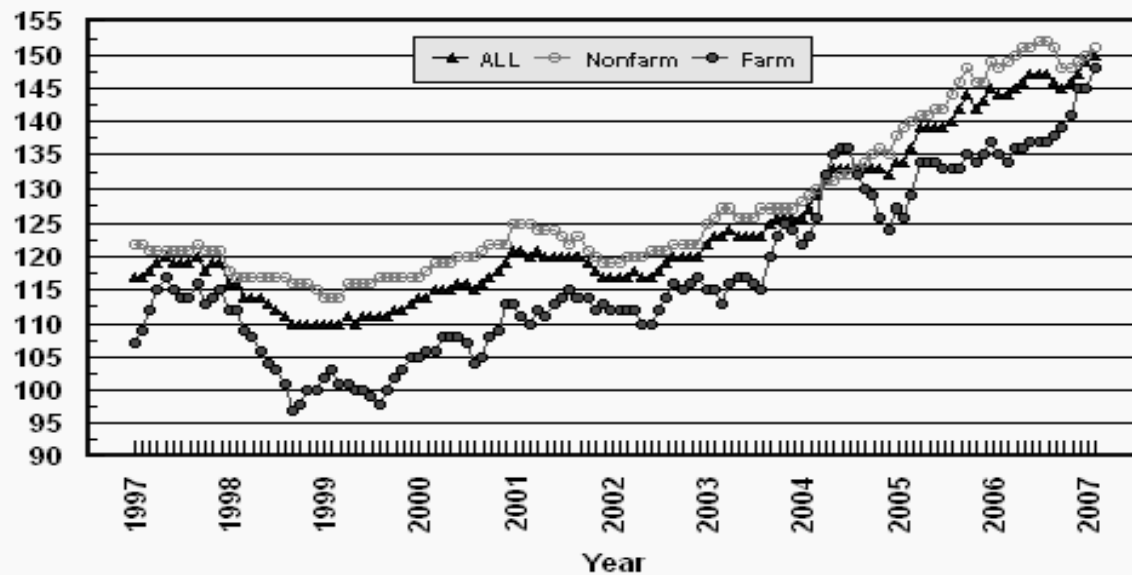
Prices Paid by Farmers, Indexes, All Items US, By Farm Type

Percent (1990-92=100)



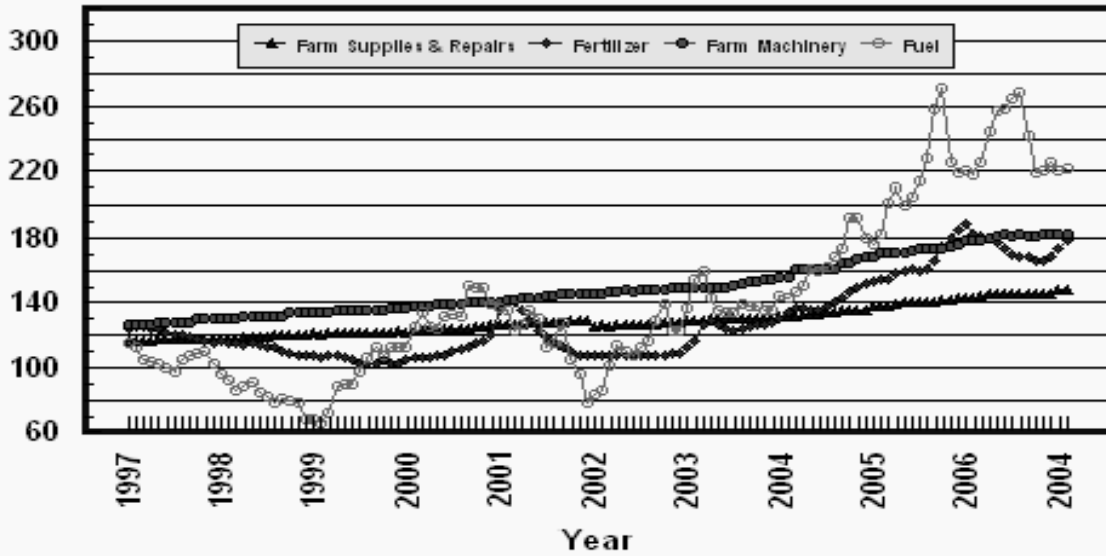
Prices Paid by Farmers, Indexes, All Production Items US, By Sector Origin

Percent (1990-92=100)



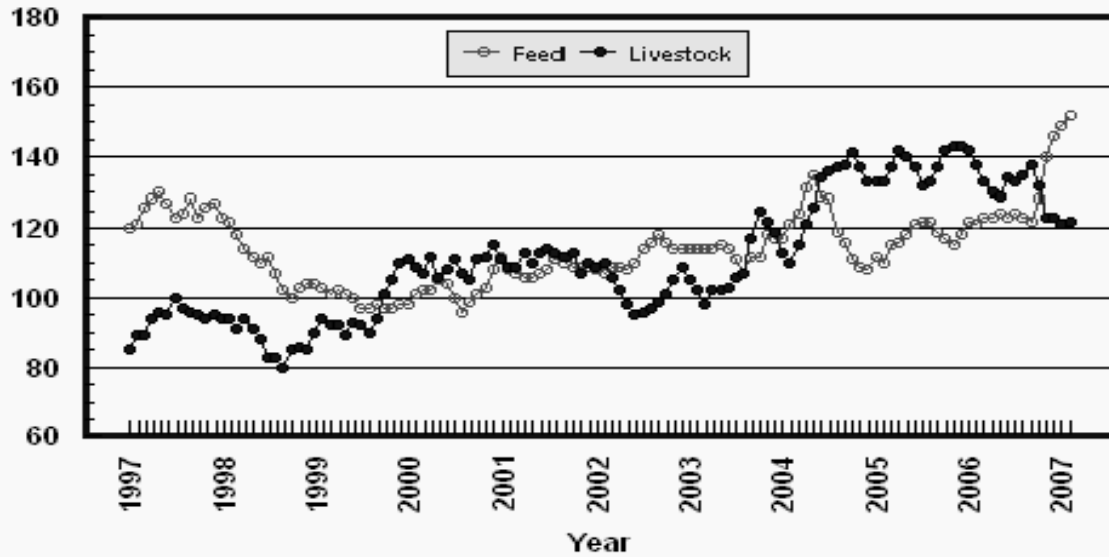
Prices Paid by Farmers, Selected Production Indexes US, By Non-Farm Sector

Percent (1990-92=100)



Prices Paid by Farmers, Selected Production Indexes US, By Farm Sector

Percent (1990-92=100)



Feed Price Ratios: United States, February 2007 with Comparisons

Feed Price Ratio ¹	2006	2007	
	Feb	Jan	Feb
Broiler-Feed: Pounds of Broiler Grower Feed equal in value to 1 pound of broiler, live weight	6.3	*5.6	5.7
Market Egg Feed: Pounds of Laying Feed equal in Value to 1 dozen eggs	5.9	*11.7	8.6
Hog-Corn: Bushels of Corn equal in value to 100 pounds of hog, live weight	21.1	*14.0	14.0
Milk-Feed: Pounds of 16% Mixed Dairy Feed equal in value to 1 pound of Whole Milk	2.93	*2.42	2.32
Steer & Heifer-Corn: Bushels of Corn equal in value to 100 pounds of Steer & Heifers, live weight	48.3	*29.4	27.3
Turkey-Feed: Pounds of Turkey Grower equal in value to 1 pound of Turkey, live weight	6.9	*5.6	5.5

* Revised.

¹ Effective January 1995, prices of commercial prepared feeds are based on current U.S. prices received for corn, soybeans, alfalfa hay, and all wheat.

**Prices Used to Calculate Feed Price Ratios:
United States, February 2007 with Comparisons**

Commodity	Unit	Entire Month		Preliminary
		Feb 2006	Jan 2007	Feb 2007
Broilers, Live	Lb	0.380	0.430	0.470
Eggs, Market	Doz	0.301	0.788	0.627
Hogs, All	Cwt	42.60	42.70	46.60
Milk, All	Cwt	13.50	14.50	14.70
Steers and Heifers	Cwt	97.60	89.80	90.70
Turkeys, Live	Lb	0.396	0.408	0.432
Corn	Bu	2.02	3.05	3.32
Soybeans	Bu	5.67	6.38	6.83
Wheat, All	Bu	3.66	4.54	4.66

**Feeder Livestock: Prices Paid, United States
February 2007 with Comparisons**

Commodity	Unit	2006	2007	
		Feb	Jan	Feb
		<i>Dollars</i>	<i>Dollars</i>	<i>Dollars</i>
Feeders and Stockers Cattle and Calves	Cwt	114.30	*97.40	98.20
Feeder Pigs	Cwt	150.00	*145.00	155.00

* Revised.

Prices Paid by Farmers

Definition: Prices paid by farmers represent the average costs of inputs purchased by farmers and ranchers to produce agricultural commodities. Conceptually, the average price when multiplied by quantity purchased should equal total producer expenditures for the item.

Survey Procedures: The prices paid data are obtained from establishments that sell goods and services to farmers and ranchers. Annually, about 8,500 firms are randomly selected from lists by type of item sold with an average response rate in the range of 75-80 percent. Firms are asked to report the price for the specified item "most commonly bought by farmers" or that was the "volume seller". Approximately 135 items are surveyed each April to represent all production input items purchased. The survey reference period for most items is the 5 business days centered around the 15th of the month. Separate prices paid surveys are conducted for agricultural chemicals, fuels, feed, fertilizer, machinery, and seed.

Summary and Estimation Procedures: The annual April Prices Paid Survey is summarized as a nonprobability survey. Average prices reported are aggregated to the region and U.S. level using weights available from expenditure data and other administrative sources. Price recommendations are prepared by the State Field Offices and Headquarters for review by the Agricultural Statistics Board in Washington, D.C. Also, the change in price level for individual items surveyed are combined to the regional and U.S. levels, and are published as prices paid indexes referenced to a specific base period. Prices paid indexes for new autos and trucks, building materials, farm supplies, motor supplies, and marketing containers are updated based on price changes measured in selected Bureau of Labor Statistics (BLS) indexes.

Revisions: Any revisions are published in the monthly and in annual issues of *Agricultural Prices*. The basis for revision must be supported by additional data that directly affect the level of the estimate. More revisions are likely in April when separate prices paid surveys are conducted, in lieu of BLS indexes, by the USDA to measure price change.

Reliability: Current methods of summarization in April are not designed directly to calculate sampling errors. However, analytical measures approximate the U.S. relative sampling errors for major items around 10 percent. Any nonsampling errors are attributed to such things as the inability to obtain correct information, differences in interpreting questions or definitions, mistakes in coding or processing the data, etc. Efforts are made at each step in the survey process to minimize these nonsampling errors.

Program Change: Effective January 1, 1995, the National Agricultural Statistics Service updated the weights and changed the construction of its prices paid and received by farmers indexes. A Federal Register Notice dated October 28, 1994 discussed these program modifications.

A 1990-92 reference and base period replaced the 1977 reference and 1971-73 base weight period. Five-year moving average weights replaced the current fixed 1971-73 base period weights. The 1910-14=100 price indexes, required by statute for computing parity prices, were linked forward based on the changes in the new 1990-92=100 indexes. The new indexes were constructed by multiplying the ratios of the current prices to the base period prices by the moving average weights (adjusted for seasonal marketing patterns for the prices received indexes).

Information Contacts

General questions should be directed to Kevin Barnes, Chief, Environmental, Economics and Demographics Branch at (202) 720-6146. Below are the commodity specialists to contact for additional information.

Crop Prices Received

Jeff Geuder, Chief, Crops Branch	(202) 720-2127
Greg Thessen, Field Crops Section	(202) 720-2127
Todd Ballard - Wheat, Rye	(202) 690-8533
Ty Kalas - Corn, Proso Millet, Flaxseed	(202) 720-9526
Shiela Corley - Cotton, Cottonseed	(202) 720-5944
Travis Thorson - Soybeans, Sunflower, Other Oilseeds	(202) 720-7369
King Whetstone - Hay, Oats, Sorghum	(202) 690-3234
Dennis Koong - Peanuts, Rice	(202) 720-7688
Brian Young - Sugarcane, Sugarbeets, Barley	(202) 720-7621
Lance Honig, Fruit and Vegetable Section	(202) 720-2127
Dan Norris - Peaches, Pears, Hops, Pulses, Mint	(202) 720-3250
Rich Holcomb - Citrus	(202) 720-5412
Faye Propsom - Apples, Apricots, Cherries, Cranberries, Plums, Prunes	(202) 720-4288
Leslie Colburn - Grapes, Tobacco	(202) 720-7235
Cathy Scherrer - Potatoes, Dry Edible Beans, Sweet Potatoes	(202) 720-4285
Debbie Flippin - Vegetables, Onions, Strawberries	(202) 720-2157

Livestock Prices Received

Dan Kerestes, Chief, Livestock Branch	(202) 720-3570
Bill Weaver, Livestock Section	(202) 720-3570
Scott Hollis - Sheep, Lambs, Wool, Mohair	(202) 720-4751
Jason Hardegree- Milk, Milk Cows	(202) 720-3278
Bruce Boess - Hogs	(202) 720-3106
Mike Miller - Cattle	(202) 720-3040
Darin Jantzi, Poultry and Specialty Commodities Section	(202) 720-3570
Fleming Gibson - Turkeys	(202) 720-0585
Sharyn Lavender - Broilers	(202) 720-3244
Mark Aitken - Eggs	(202) 690-8632

Indexes, Prices Paid, and Parity Prices

Kevin Barnes, Chief, Environmental, Economics and Demographics Branch	(202) 720-6146
Kevin Hintzman, Economics Section	(202) 720-6146
Jen Brown - Prices Paid Indexes, Prices Paid for Feed, Fertilizer, Agricultural Chemicals, Seeds, Farm Supplies and Repairs, Farm Machinery, Fuels, Feeder Livestock, Poultry Chicks, Feed Price Ratios, Autos & Trucks	(202) 720-5446
Daryl Brinkman - Prices Received Indexes, Parity Prices	(202) 720-8844
Jennifer Sissom - Grazing Fees	(202) 690-3229

ACCESS TO REPORTS!!

For your convenience, there are several ways to obtain NASS reports, data products, and services:

INTERNET ACCESS

All NASS reports are available free of charge on the worldwide Internet. For access, connect to the Internet and go to the NASS Home Page at: www.nass.usda.gov.

E-MAIL SUBSCRIPTION

All NASS reports are available by subscription free of charge direct to your e-mail address. Starting with the NASS Home Page at www.nass.usda.gov, under the right navigation, *Receive reports by Email*, click on **National** or **State**. Follow the instructions on the screen.

PRINTED REPORTS OR DATA PRODUCTS

CALL OUR TOLL-FREE ORDER DESK: 800-999-6779 (U.S. and Canada)
Other areas, please call 703-605-6220 FAX: 703-605-6900
(Visa, MasterCard, check, or money order acceptable for payment.)

ASSISTANCE

For **assistance** with general agricultural statistics or further information about NASS or its products or services, contact the **Agricultural Statistics Hotline** at **800-727-9540**, 7:30 a.m. to 4:00 p.m. ET, or e-mail: nass@nass.usda.gov.

The U.S. Department of Agriculture (USDA) prohibits discrimination in all its programs and activities on the basis of race, color, national origin, age, disability, and where applicable, sex, marital status, familial status, parental status, religion, sexual orientation, genetic information, political beliefs, reprisal, or because all or a part of an individual's income is derived from any public assistance program. (Not all prohibited bases apply to all programs.) Persons with disabilities who require alternative means for communication of program information (Braille, large print, audiotape, etc.) should contact USDA's TARGET Center at (202) 720-2600 (voice and TDD).

To file a complaint of discrimination, write to USDA, Director, Office of Civil Rights, 1400 Independence Avenue, S.W., Washington, D.C. 20250-9410, or call (800) 795-3272 (voice) or (202) 720-6382 (TDD). USDA is an equal opportunity provider and employer.