



NASS

FACT FINDERS FOR AGRICULTURE
UNITED STATES DEPARTMENT OF AGRICULTURE

Washington, D.C.

Agricultural Prices

Released March 29, 2007, by the National Agricultural Statistics Service (NASS), Agricultural Statistics Board, U.S. Department of Agriculture. For information on *Agricultural Prices* see page 35, office hours 7:30 a.m. to 4:00 p.m. ET.

March Farm Prices Received Index Increased 5 Points From Last Month

The preliminary All Farm Products Index of Prices Received by Farmers in March, at 133 percent, based on 1990-92=100, increased 5 points (3.9 percent) from February. The Crop Index is up 6 points (4.3 percent) and the Livestock Index increased 5 points (4.2 percent). Producers received higher commodity prices for cattle, lettuce, oranges, and broilers. Lower prices were received for strawberries, celery, corn, and hogs. The overall index is also affected by the seasonal change based on a 3-year average mix of commodities producers sell. Increased average marketings of strawberries, broilers, and milk offset decreased marketings of cattle, oranges, and corn.

The preliminary All Farm Products Index is up 20 points (18 percent) from March 2006. The Food Commodities Index, at 134, increased 6 points (4.7 percent) from last month and increased 19 points (17 percent) from March 2006.

Prices Paid Index Up 2 Points

The March Index of Prices Paid for Commodities and Services, Interest, Taxes, and Farm Wage Rates (PPITW) is 155 percent of the 1990-92 average. The index is up 2 points (1.3 percent) from February and 8 points (5.4 percent) above March 2006. Higher prices in March for feed concentrates, feeder cattle, diesel fuel, and complete feeds more than offset lower prices for feed grains, trucks, tractors, and autos.

Index Summary Table

Index 1990-92=100	2006		2007	
	Feb	Mar	Feb	Mar
Prices Received	113	113	128	133
Prices Paid	147	147	153	155
Ratio ¹	77	77	84	86

¹ Ratio of index of prices received by farmers to index of prices paid by farmers.

Prices Received by Farmers

The March All Farm Products Index is 133 percent of its 1990-92 base, up 3.9 percent from the February index and 18 percent above the March 2006 index.

ALL CROPS: The March index is 144, up 4.3 percent from February and 22 percent above March 2006. Index increases for potatoes & dry beans, commercial vegetables, and fruits & nuts more than offset the index decreases for cotton and feed grains & hay.

Food Grains: The March index, at 154, is unchanged from the previous month but 24 percent above a year ago. The March all wheat price, at \$4.75 per bushel, is up 4 cents from February and 96 cents above from March 2006.

Feed Grains & Hay: The March index is 149, down 0.7 percent from last month but 52 percent above a year ago. The corn price, at \$3.36 per bushel, is down 8 cents from last month but \$1.30 above March 2006. The all hay price, at \$117 per ton, is \$3.00 higher than February and \$19.50 above last March. Sorghum grain, at \$6.74 per cwt, is 24 cents below February but \$3.20 above March last year.

Oil-Bearing Crops: The March index, at 123, is unchanged from February but 23 percent higher than March 2006. The soybean price, at \$6.85 per bushel, decreased 2 cents from February but is \$1.28 above March 2006.

Cotton: The March index, at 78, is down 1.3 percent from February and 6.0 percent below last year. The March price, at 47.2 cents per pound, is down 0.8 cent from the previous month and 2.8 cents below last March.

Potatoes & Dry Beans: The March index, at 145, is up 16 percent from last month and 7.4 percent above March 2006. The all potato price, at \$8.52 per cwt, is up \$1.29 from February and up 2 cents from last March. The all dry bean price, at \$25.70 per cwt, is up 40 cents from the previous month and \$8.60 above March 2006.

Fruits & Nuts: The March index, at 162, is up 3.8 percent from February and 19 percent higher than a year ago. Price increases for oranges more than offset price decreases for strawberries, grapefruit, and lemons.

Commercial Vegetables: The March index, at 193, is up 15 percent from last month and 29 percent above March 2006. Price increases during March for lettuce, onions, and snap beans more than offset price declines for celery and tomatoes.

LIVESTOCK & PRODUCTS: The March index, at 125, is 4.2 percent above last month and up 14 percent from March 2006. Compared with a year ago, prices are higher for broilers, milk, cattle, hogs, eggs, and turkeys. The price for calves is down from last year.

Meat Animals: The March index, at 118, is up 2.6 percent from last month and last year. The March hog price, at \$45.40 per cwt, is down \$1.90 from February but \$2.60 higher than a year ago. The March beef cattle price of \$91.40 per cwt is up \$4.80 from last month and \$3.50 higher than March 2006.

Dairy Products: The March index, at 119, is up 4.4 percent from a month ago and 24 percent higher than March last year. The March all milk price of \$15.50 per cwt is up 60 cents from last month and \$2.90 higher than March 2006. The fluid grade milk and manufacturing grade milk prices are up 60 cents from the previous month.

Poultry & Eggs: The March index, at 146, is up 5.0 percent from February and 29 percent above a year ago. The March market egg price, at 68.1 cents per dozen, increased 5.4 cents from February and 18.2 cents from March 2006. The March broiler price, at 50.0 cents per pound, is up 3.0 cents from February and 13.0 cents above a year ago. The March turkey price, at 44.0 cents per pound, is up 1.6 cents from the previous month and 3.7 cents from a year earlier.

Table of Contents

U.S. Prices Received and Indexes	Page	Monthly State Prices, continued	Page
Narrative	2	Cotton	17
Price Indexes	5	Cottonseed	17
Price Index Charts	6	Eggs	22
U.S. Prices Received Summary	8	Flaxseed	16
Charts	10	Grain Sorghum	15
Selected Commodities	14	Hay	17
Upland Cotton & Rice Marketings	17	Hogs, All	21
Parity Prices	24	Barrows and Gilts	21
Reliability Statement	26	Sows	21
 Monthly State Prices Received		Milk	23
Apples	17	Milk Cows	23
Barley	15	Oats	15
Beans, Dry Edible	16	Peanuts	16
Beef Cattle, All	20	Potatoes	19
Calves	20	Sheep	22
Cows, Beef	20	Lambs	22
Steers and Heifers	20	Soybeans	15
Citrus Fruit	18	Sunflower, All	16
Corn	15	Wheat, All Classes	14

Table of Contents (continued)

U.S. Prices Paid, Prices Paid Indexes and Ratios	Page
Narrative	27
Indexes and Parity Ratios	28
Charts	30
Feed Price Ratios	33
Reliability Statement	34
 U.S. Average Prices	
Prices Used to Calculate Feed Price Ratios	33
Feeder Livestock	33
 Information Contacts	35

**Index Numbers of Prices Received, United States,
March 2007, with Comparisons**

Index	1910-14=100				1990-92=100		
	Average 1990-92	2006	2007		2006	2007	
		Mar	Feb	Mar	Mar	Feb	Mar
All Farm Products	639	721	*814	847	113	*128	133
All Crops	500	581	*683	710	118	*138	144
Food Grains	325	395	*491	491	124	*154	154
Feed Grains & Hay	363	350	*538	531	98	*150	149
Cotton	517	426	*406	399	83	*79	78
Tobacco ¹	1,263	1,363	1,392	1,392	90	92	92
Oil-Bearing Crops	554	546	*675	673	100	123	123
Fruits & Nuts	716	950	*1,087	1,132	136	*156	162
Commercial Vegetables	698	1,000	*1,125	1,292	150	*168	193
Potatoes & Dry Beans	540	684	*634	734	135	125	145
Other Crops	493	586	598	598	119	121	121
Livestock & Products	768	844	*920	958	110	*120	125
Meat Animals	1,021	1,170	*1,167	1,204	115	*115	118
Dairy Products	799	774	*916	953	96	*114	119
Poultry & Eggs	282	317	390	410	113	139	146
Food Commodities					115	*128	134

* Revised.

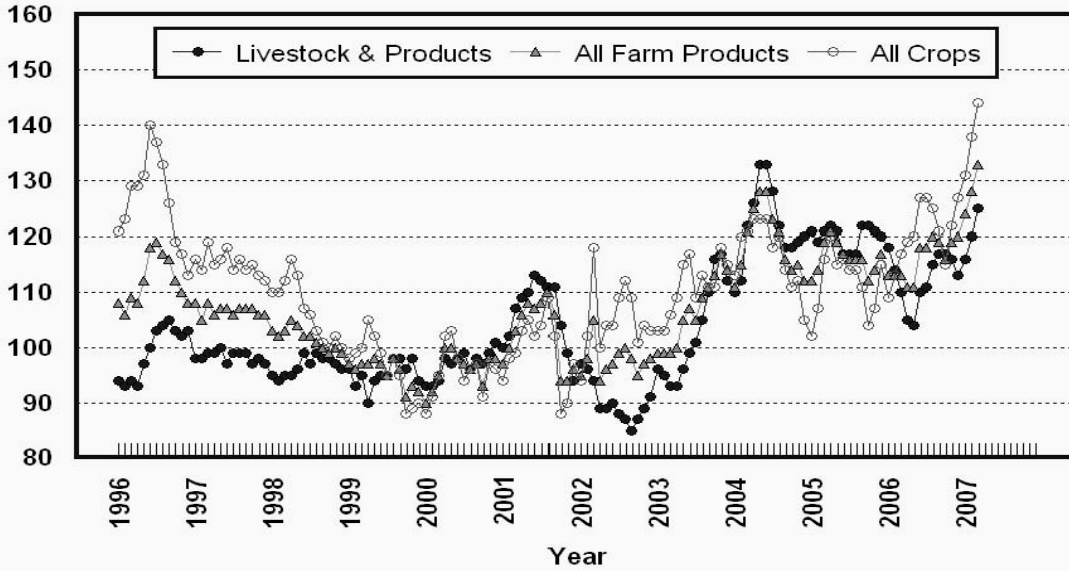
¹ Monthly prices discontinued July 2005.

**Selected Index Numbers for Prices Received and Paid,
1990-92=100, by Month, United States, 2006 and 2007**

Month	Index of Prices Received						Index of Prices Paid			
	All Farm Products		All Crops		Livestock and Products		All Items		Production Items	
	2006	2007	2006	2007	2006	2007	2006	2007	2006	2007
Jan	113	124	108	131	118	116	148	152	145	149
Feb	113	128	113	138	114	120	147	153	144	151
Mar	113	133	118	144	110	125	147	155	144	154
Apr	111		120		105		148		145	
May	111		120		104		149		146	
Jun	118		126		110		149		147	
Jul	118		127		111		149		147	
Aug	120		125		115		149		147	
Sep	120		122		117		149		146	
Oct	116		115		117		148		145	
Nov	120		123		116		149		146	
Dec	121		128		113		150		147	

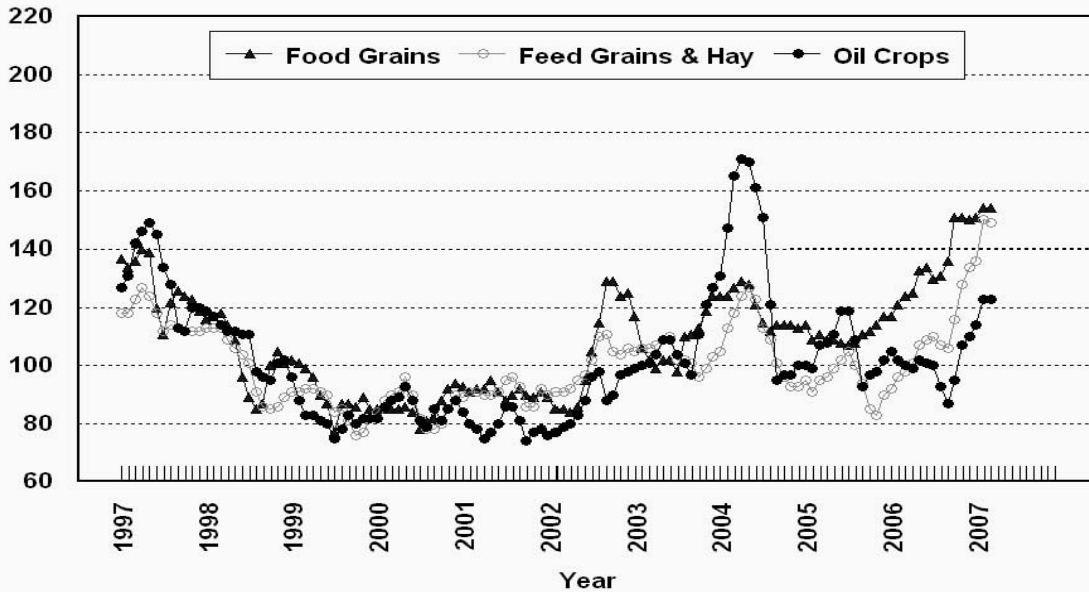
Prices Received, Major Indexes, US

Percent (1990-92=100)



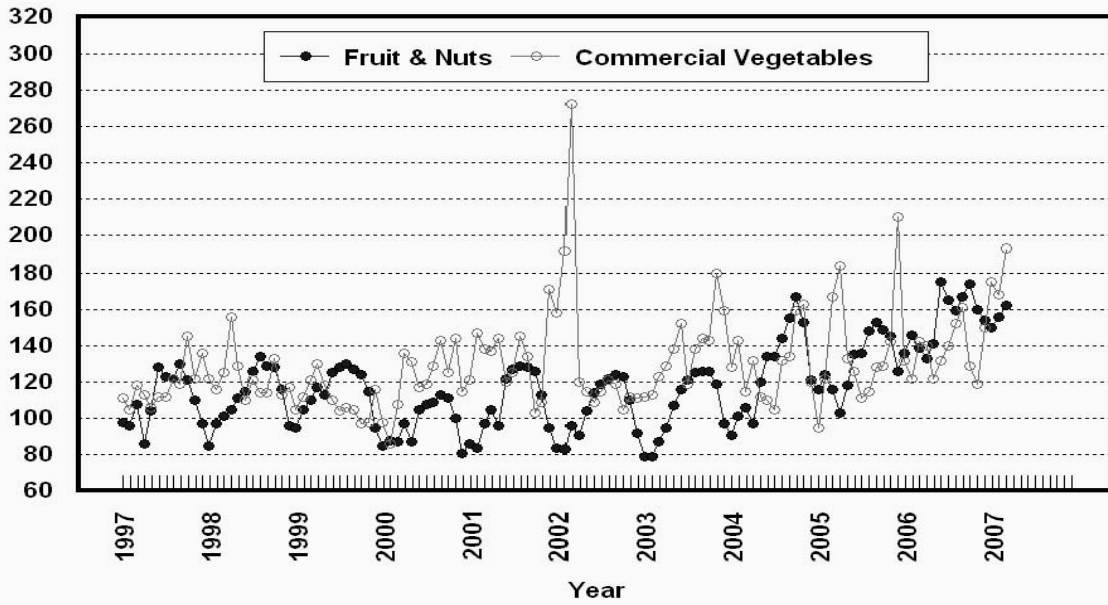
Prices Received, Food, Feed, & Oil Indexes, US

Percent (1990-92=100)



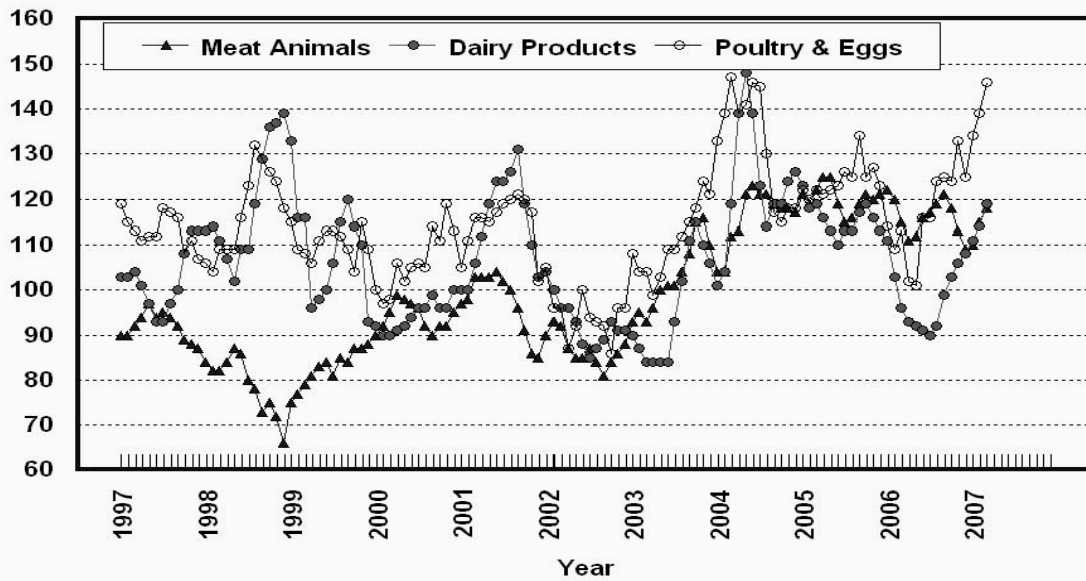
Prices Received, Fruit/Vegetable Indexes, US

Percent (1990-92=100)



Prices Received, Livestock Product Indexes, US

Percent (1990-92=100)



**Prices Received, United States,
March 2007, with Comparisons**

Commodity	Unit	Average 1990-92	Entire Month		Preliminary
			Mar 2006	Feb 2007	Mar 2007
		<i>Dollars</i>	<i>Dollars</i>	<i>Dollars</i>	<i>Dollars</i>
Field Crops					
Barley, All	Bu	2.12	2.70	3.10	3.27
Feed	Bu	1.90	1.80	3.17	3.21
Malting	Bu	2.43	2.92	3.08	3.29
Beans, Dry Edible	Cwt	19.10	17.10	25.30	25.70
Chickpeas, All	Cwt		22.20	28.50	28.80
Large	Cwt		25.20	29.40	28.80
Small	Cwt		(⁴)	(⁴)	(⁴)
Corn	Bu	2.30	2.06	3.44	3.36
Cotton, Upland	Lb	0.606	0.500	0.480	0.472
Cottonseed ³	Ton	96.00		125.00	
Flaxseed	Bu	4.27	5.31	6.40	6.45
Hay, All, Baled ¹	Ton	76.30	97.50	114.00	117.00
Alfalfa ¹	Ton	77.20	100.00	117.00	120.00
Other ¹	Ton	60.00	90.10	105.00	108.00
Lentils	Cwt		10.50	13.60	13.60
Oats	Bu	1.22	1.82	2.34	2.24
Peanuts, In-Shell	Lb	0.304	0.169	0.178	0.175
Peas, Dry Edible	Cwt		5.05	7.73	8.43
Austrian Winter	Cwt		6.54	7.72	(⁵)
Potatoes	Cwt	5.82	8.50	7.23	8.52
Rice, Rough	Cwt	7.07	8.05	10.10	9.86
Sorghum Grain	Cwt	3.75	3.54	6.98	6.74
Soybeans	Bu	5.61	5.57	6.87	6.85
Sunflower, All	Cwt	9.50	11.50	14.90	15.40
Wheat, All	Bu	2.96	3.79	4.71	4.75
Winter	Bu	2.93	3.82	4.67	4.66
Durum	Bu	2.86	3.39	5.16	5.33
Other Spring	Bu	3.11	3.85	4.73	4.78
Hard Red Winter	Bu		4.04	4.72	
Soft Red Winter	Bu		3.41	4.09	
Hard Red Spring	Bu		3.90	4.73	
White	Bu	3.24	3.18	4.75	
Fruit					
Citrus, Equiv on-tree					
Grapefruit	Box	5.77	8.18	4.10	3.01
Lemons	Box	10.10	9.44	32.27	28.06
Oranges	Box	5.79	5.78	7.42	11.86
Tangelos	Box	5.82	1.00	10.67	(⁵)
Tangerines	Box	15.11	7.96	14.36	12.43
Noncitrus, Fresh					
Apples ²	Lb	0.212	0.198	0.285	0.284
Grapes ^{2,5}	Ton	506.00			
Peaches ^{2,5}	Ton	432.00			
Pears ²	Ton	370.00	339.00	534.00	554.00
Strawberries	Cwt	56.00	68.80	150.00	95.40

¹ Mid-month price.

² Equivalent packinghouse-door returns for CA, MI, and NY (apples only), and WA (apples, peaches, and pears). Prices as sold for other states.

³ Marketing year August - February.

⁴ Price not published to avoid disclosure of individual firms.

⁵ Insufficient sales to establish a price.

**Prices Received, United States,
March 2007, with Comparisons**

Commodity	Unit	Average 1990-92	Entire Month		Preliminary
			Mar 2006	Feb 2007	Mar 2007
		<i>Dollars</i>	<i>Dollars</i>	<i>Dollars</i>	<i>Dollars</i>
Vegetables, Fresh ¹					
Asparagus	Cwt	79.80	133.00		
Broccoli	Cwt	22.50	27.60	25.60	30.30
Cantaloupes ²	Cwt				
Carrots	Cwt	13.20	21.50	28.10	28.40
Cauliflower	Cwt	26.80	31.40	29.40	49.50
Celery	Cwt	11.60	14.90	58.90	39.90
Corn, Sweet	Cwt	15.70	34.00	23.70	28.80
Cucumbers ²	Cwt		40.70		59.50
Lettuce	Cwt	11.90	19.10	15.50	26.00
Onions	Cwt	12.80	7.45	31.10	40.70
Snap Beans ²	Cwt		44.90	89.10	116.00
Tomatoes	Cwt	32.30	24.80	34.60	28.80
Livestock					
Calves	Cwt	94.30	139.00	117.00	123.00
Cattle, All Beef	Cwt	72.90	87.90	86.60	91.40
Cows ³	Cwt	49.60	49.50	47.00	46.90
Steers & Heifers	Cwt	77.10	92.80	91.50	97.20
Milk Cows ⁴	Head	1,130.00			
Hogs, All	Cwt	47.70	42.80	47.30	45.40
Barrows & Gilts	Cwt	48.40	43.20	48.10	45.90
Sows	Cwt	39.50	34.20	32.20	34.40
Lambs	Cwt	56.20	92.10	95.40	
Sheep	Cwt	23.40	40.10	36.50	
Dairy and Poultry					
Milk, All ^{5 6}	Cwt	13.06	12.60	14.90	15.50
Fluid Grade ⁶	Cwt	13.10	12.60	14.90	15.50
Mfg Grade ⁶	Cwt	11.80	11.50	14.40	15.00
Broilers, Live ⁷	Lb	0.317	0.370	0.470	0.500
Eggs, All ⁸	Doz	0.643	0.670	0.781	0.770
Market ⁸	Doz	0.546	0.499	0.627	0.681
Turkeys, live ^{7 8}	Lb	0.380	0.403	0.424	0.440
Adjusted for Seasonal Variation ⁹					
Eggs, All	Doz	0.545	0.620	0.751	0.714
Milk, All ⁵	Cwt	9.71	12.80	14.90	15.70

¹ Beginning January 2006, point of first sale. F.O.B. shipping point for prior years.

² Monthly estimates began January 1995.

³ Beef cows and cull dairy cows sold for slaughter.

⁴ Animals sold for dairy herd replacement only. Prices available for Jan, Apr, Jul, and Oct.

⁵ Before deductions for hauling. Includes quality, quantity, and other premiums. Excludes hauling subsidies.

⁶ March 2007 Fat test percent: all milk, 3.74; fluid milk, 3.74; mfg grade, 3.98.

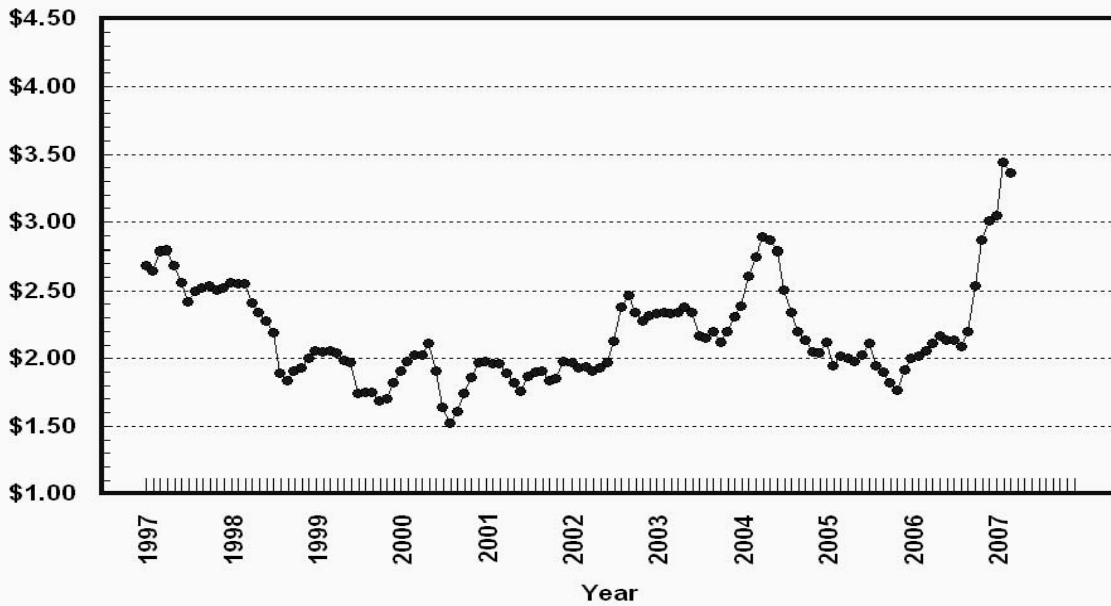
⁷ Equivalent liveweight returns to producers for most States. Includes growers and contractors.

⁸ Mid-month price.

⁹ Seasonal adjustment factors are: All Eggs March 2006, 108; February 2007, 104; and March 2007, 108. All Milk March 2006, 99; February 2007, 100; and March 2007, 99.

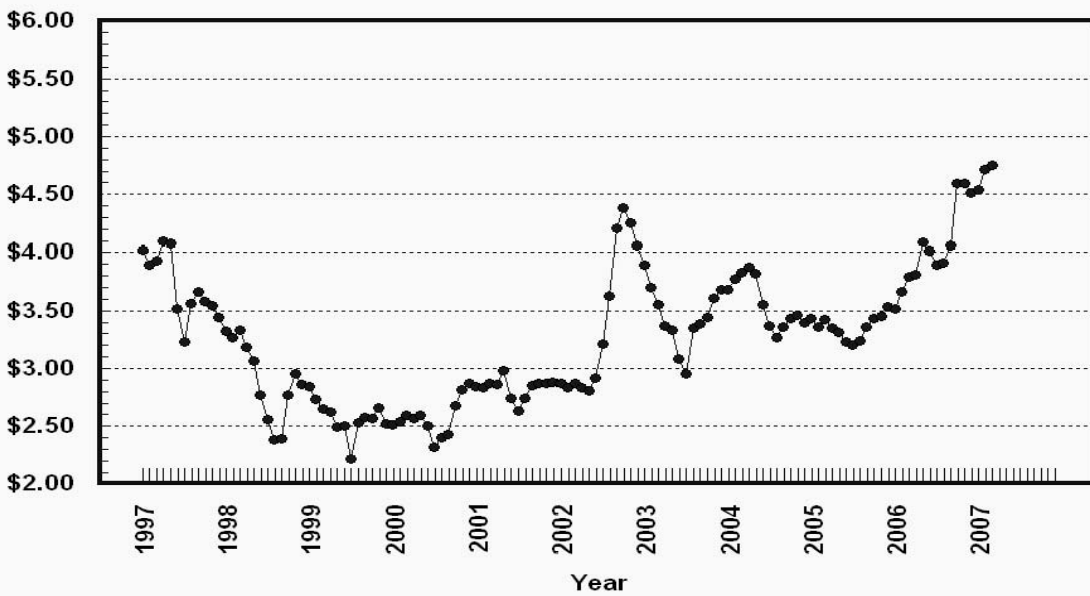
Prices Received, Corn, US

Dollars per Bu



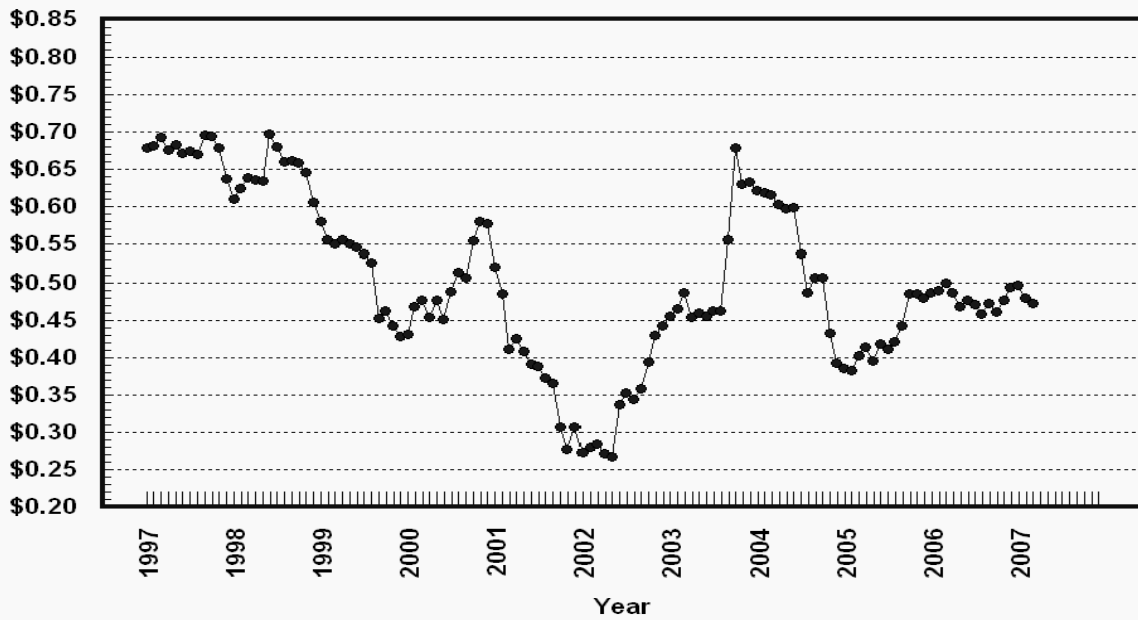
Prices Received, Wheat, US

Dollars per Bu



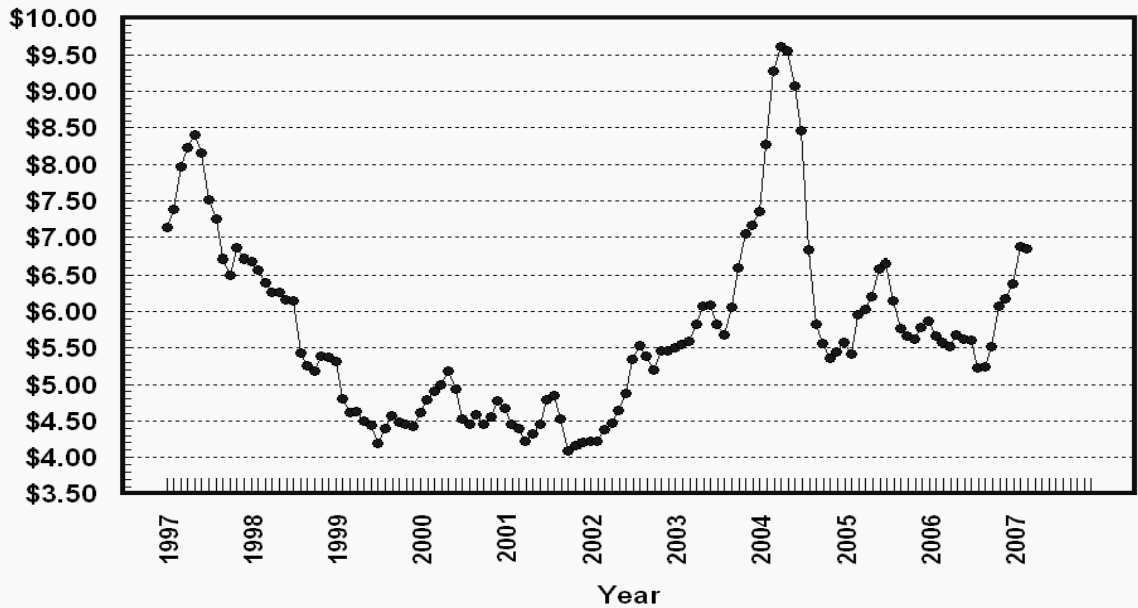
Prices Received, Cotton, US

Dollars per Lb



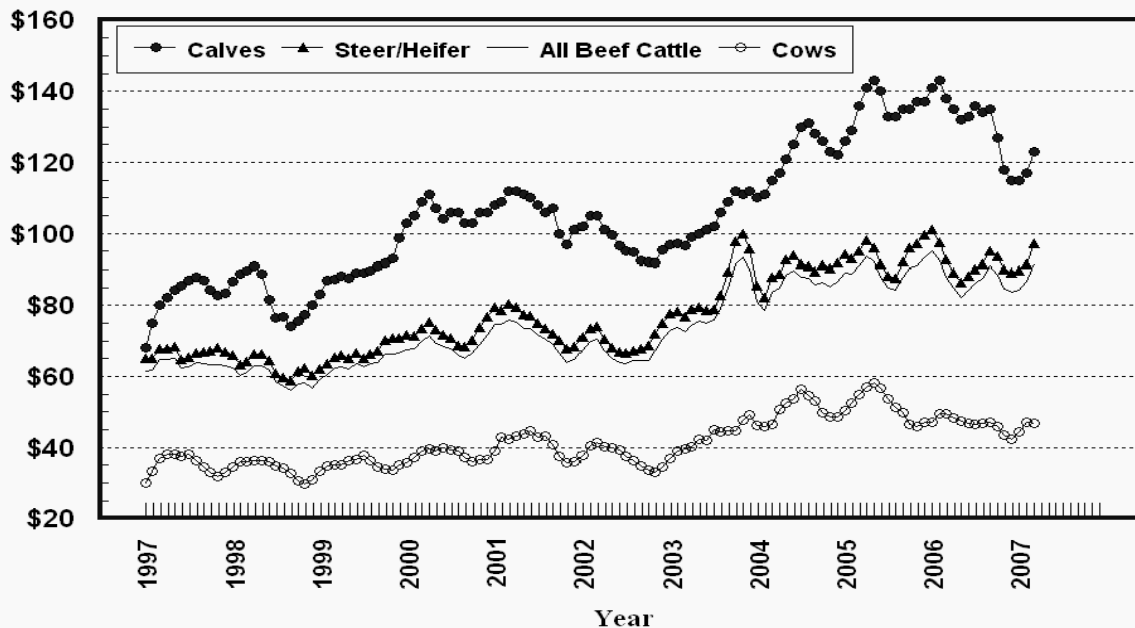
Prices Received, Soybeans, US

Dollars per Bu



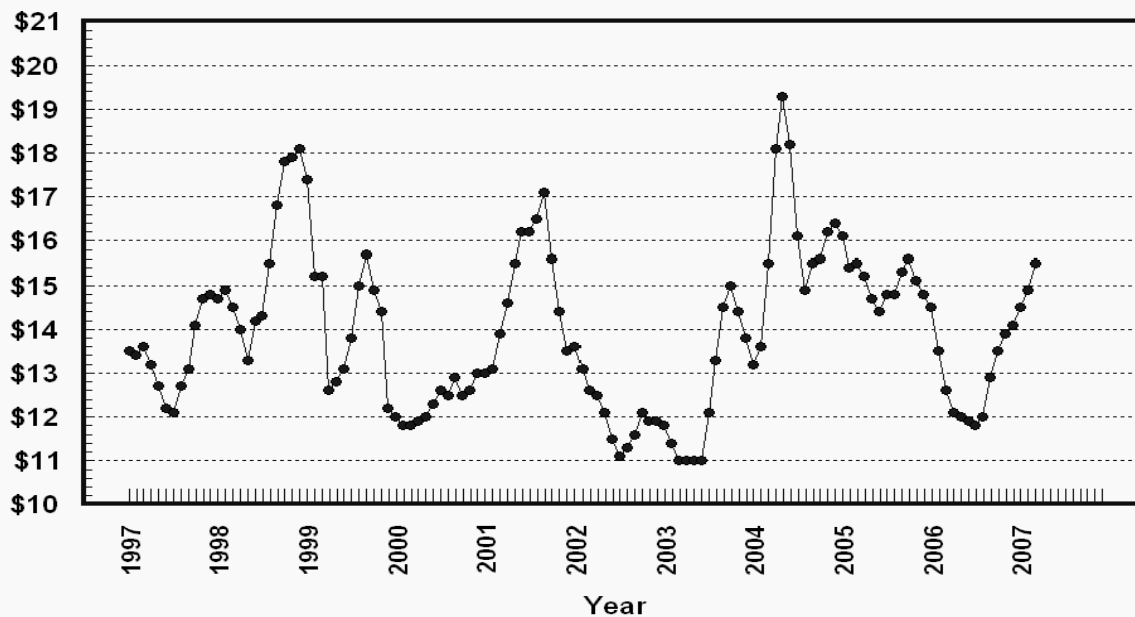
Prices Received, Cattle, US

Dollars per Cwt



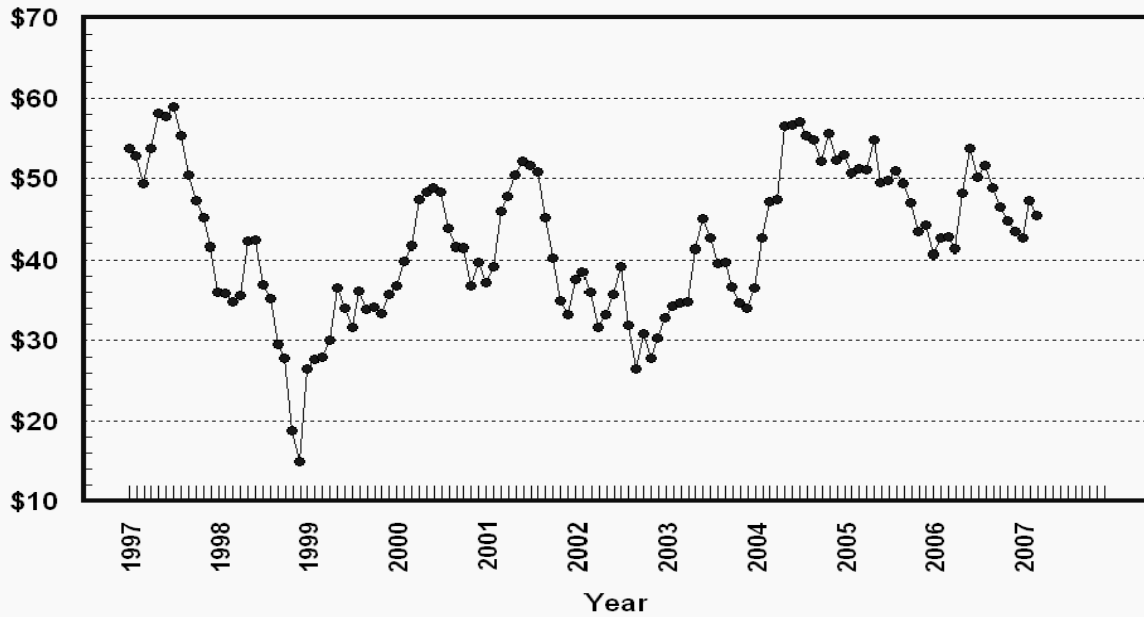
Prices Received, Milk, US

Dollars per Cwt



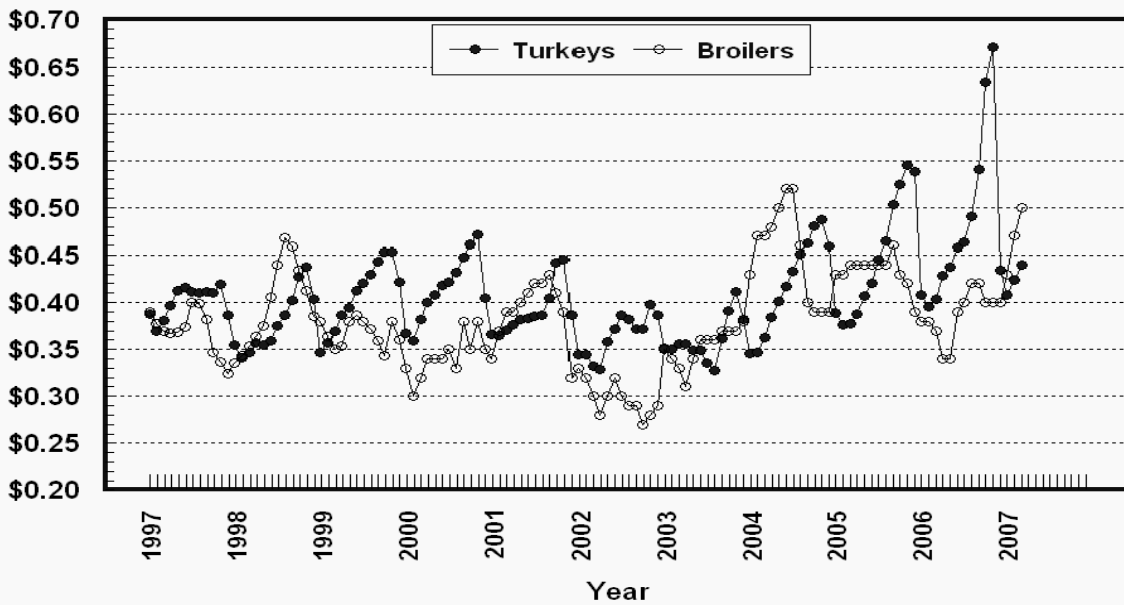
Prices Received, Hogs, US

Dollars per Cwt



Prices Received, Turkeys & Broilers, US

Dollars per Lb



Wheat: Prices Received, by State, February and March 2007

State	All Wheat		Winter Wheat		Durum Wheat		Oth Spring Wheat	
	Feb ¹	Mar ²	Feb ¹	Mar ²	Feb ¹	Mar ²	Feb ¹	Mar ²
	<i>Dollars per Bushel</i>	<i>Dollars per Bushel</i>	<i>Dollars per Bushel</i>	<i>Dollars per Bushel</i>	<i>Dollars per Bushel</i>	<i>Dollars per Bushel</i>	<i>Dollars per Bushel</i>	<i>Dollars per Bushel</i>
AR	4.27	4.10	(³)	(³)				
CA	4.70	(³)	4.43	(⁴)	4.87	(³)		
CO	4.46	4.55	4.46	4.55			(³)	(³)
ID	4.57	4.89	4.42	4.90	(³)	(³)	4.77	4.90
IL	4.24	4.00	4.24	4.00				
IN	4.15	3.86	4.15	3.86				
KS	4.74	4.55	4.74	4.55				
MI	3.78	3.90	3.78	3.90				
MN	4.75	4.75	(³)	4.43			4.75	4.75
MO	4.14	4.00	4.14	4.00				
MT	4.74	4.83	4.65	4.65	5.12	5.56	4.78	4.92
NE	4.69	4.70	4.69	4.70				
ND	4.71	4.77	4.39	4.40	5.22	5.30	4.64	4.65
OH	3.96	3.78	3.96	3.78				
OK	4.84	4.67	4.84	4.67				
OR	4.89	5.31	4.88	5.30			5.00	5.40
SD	4.67	4.70	4.56	4.60			4.81	4.81
TX	4.71	4.54	4.71	4.54				
WA	5.00	5.32	4.93	5.32			5.25	5.34
US	4.71	4.75	4.67	4.66	5.16	5.33	4.73	4.78

¹ Entire month.

² Mid-month.

³ Price not published to avoid disclosure of individual firms.

⁴ Insufficient sales to establish a price.

Prices Received for Selected Agricultural Commodities, by Month, United States, 2006 and 2007 ¹

Month	All Wheat		Corn		Soybeans		Beef Cattle ²		All Hogs	
	2006	2007	2006	2007	2006	2007	2006	2007	2006	2007
	<i>Dollars per Bushel</i>	<i>Dollars per Bushel</i>	<i>Dollars per Bushel</i>	<i>Dollars per Bushel</i>	<i>Dollars per Bushel</i>	<i>Dollars per Bushel</i>	<i>Dollars per Cwt</i>	<i>Dollars per Cwt</i>	<i>Dollars per Cwt</i>	<i>Dollars per Cwt</i>
Jan	3.52	4.54	2.00	3.05	5.87	6.38	95.00	84.30	40.70	42.70
Feb	3.66	4.71	2.02	3.44	5.67	6.87	92.40	86.60	42.60	47.30
Mar	3.79	4.75	2.06	3.36	5.57	6.85	87.90	91.40	42.80	45.40
Apr	3.81		2.11		5.52		84.80		41.30	
May	4.09		2.17		5.68		82.20		48.20	
Jun	4.01		2.14		5.62		84.00		53.80	
Jul	3.89		2.14		5.61		85.80		50.20	
Aug	3.91		2.09		5.23		87.20		51.60	
Sep	4.06		2.20		5.24		90.00		48.90	
Oct	4.59		2.54		5.52		88.20		46.50	
Nov	4.59		2.87		6.07		84.40		44.90	
Dec	4.51		3.01		6.18		83.10		43.50	

¹ Current month prices are mid-month; prices for previous months are for the entire month.

² Cows, steers and heifers.

Grains: Prices Received, by State, February and March 2007

Month	All Barley ¹		Corn		Oats		Soybeans		Sorghum Grain	
	Feb ²	Mar ³	Feb ²	Mar ³	Feb ²	Mar ³	Feb ²	Mar ³	Feb ²	Mar ³
	<i>Dollars per Bushel</i>	<i>Dollars per Bushel</i>	<i>Dollars per Bushel</i>	<i>Dollars per Bushel</i>	<i>Dollars per Bushel</i>	<i>Dollars per Bushel</i>	<i>Dollars per Bushel</i>	<i>Dollars per Bushel</i>	<i>Dollars per Cwt</i>	<i>Dollars per Cwt</i>
AL							7.22	7.10	(⁵)	(⁵)
AR										
CA	(⁵)	(⁵)			(⁵)	(⁵)				
CO	(⁴)	(⁴)	3.27	3.25						
ID	3.22	3.24								
IL			3.44	3.30	(⁵)	(⁵)	7.05	6.95	7.14	6.80
IN			3.53	3.45			6.95	7.05		
IA			3.47	3.40	2.72	2.55	6.81	6.80		
KS			3.92	3.87	2.62	2.57	6.84	6.79	7.25	6.87
KY			3.80	3.80			7.07	7.15		
LA							6.92	6.80		
MI			3.42	3.35	2.43	(⁴)	6.81	6.90		
MN	2.95	2.90	3.25	3.15	2.20	2.26	6.69	6.75		
MS							7.20	7.12		
MO			3.53	3.45			6.89	6.80	6.39	6.00
MT	3.18	3.47			(⁴)	(⁵)				
NE			3.26	3.25	3.21	3.00	6.66	6.60	6.53	6.30
NY					2.28	2.22				
NC			4.00	4.05			7.05	7.20		
ND	2.89	3.15	3.07	3.15	2.17	2.00	6.40	6.50		
OH			3.67	3.52	(⁵)	(⁵)	6.99	6.90		
OK									6.51	6.22
OR	(⁴)	3.80			(⁴)	(⁴)				
PA			4.03	4.11	2.35	2.33				
SD	(⁴)	(⁴)	3.19	3.14	2.48	2.45	6.57	6.60		
TN			3.75	3.75			7.10	7.10		
TX			3.32	3.45	2.56	(⁵)			6.79	6.60
UT	3.91	3.94								
WA	3.42	3.75								
WI			3.35	3.30	1.98	2.00	6.74	6.65		
WY	3.20	3.22								
US	3.10	3.27	3.44	3.36	2.34	2.24	6.87	6.85	6.98	6.74

¹ The Three-State (MN, ND and SD) Feed Barley price is discontinued.

² Entire month.

³ Mid-month.

⁴ Price not published to avoid disclosure of individual firms.

⁵ Insufficient sales to establish a price.

Malting and Feed Barley: Prices Received Selected State, February and March 2007

State	Malting Barley		Feed Barley	
	Feb ¹	Mar ²	Feb ¹	Mar ²
	<i>Dollars per Bushel</i>	<i>Dollars per Bushel</i>	<i>Dollars per Bushel</i>	<i>Dollars per Bushel</i>
ID	3.23	3.25	3.19	3.20
MN	2.96	2.90	(³)	2.66
MT	3.20	3.50	3.07	3.33
ND	2.90	3.20	2.85	3.00
SD	(³)	(³)	(⁴)	(⁴)
WY	(³)	(³)	(³)	(³)

¹ Entire month.

² Mid-month.

³ Price not published to avoid disclosure of individual firms.

⁴ Insufficient sales to establish a price.

Field Crops: Prices Received, by State, February and March 2007

State	Dry Edible Beans		All Sunflower		Flaxseed		Peanuts ⁴	
	Feb ¹	Mar ²	Feb ¹	Mar ²	Feb ¹	Mar ²	Feb ¹	Mar ³
	<i>Dollars per Cwt</i>	<i>Dollars per Cwt</i>	<i>Dollars per Cwt</i>	<i>Dollars per Cwt</i>	<i>Dollars per Bushel</i>	<i>Dollars per Bushel</i>	<i>Dollars per Pound</i>	<i>Dollars per Pound</i>
AL							0.163	0.159
CA	47.80	44.10						
CO	24.20	(⁵)						
FL							0.171	0.166
GA							0.170	0.175
ID	24.20	24.60						
KS			16.20	15.40				
MI	24.90	(⁵)						
MN	24.90	26.00	16.00	16.20				
NE	23.20	24.80						
NC							0.167	0.174
ND	22.60	23.70	14.70	15.30	6.40	6.45		
SD			15.00	15.40	(⁶)	(⁶)		
TX							0.201	0.187
VA							0.162	(⁵)
US	25.30	25.70	14.90	15.40	6.40	6.45	0.178	0.175

¹ Entire month.

² Mid-month.

³ Based on sales through first half of month.

⁴ In-Shell.

⁵ Price not published to avoid disclosure of individual firms.

⁶ Insufficient sales to establish a price.

Field Crops and Apples: Prices Received, by State, February and March 2007

State	Cotton, Upland		March				Apples Fresh Use ^{1 4}
	Feb ¹	Mar ²	Cotton- seed ⁵	Hay, Baled ³			
				All	Alfalfa	Other	
<i>Dollars per Pound</i>	<i>Dollars per Pound</i>	<i>Dollars per Ton</i>	<i>Dollars per Ton</i>	<i>Dollars per Ton</i>	<i>Dollars per Ton</i>	<i>Dol/Lb</i>	
AL	0.475	0.477					
AZ	0.503	(⁶)		140.00	140.00	138.00	
AR	0.484	0.488					
CA	0.635	(⁶)		127.00	135.00	97.00	(⁷)
CO				139.00	140.00	130.00	
GA	0.486	0.489					
ID				118.00	121.00	95.00	
IL				102.00	110.00	86.00	
IA				102.00	104.00	74.00	
KS				113.00	125.00	84.00	
KY				105.00	135.00	75.00	
LA	0.465	0.477					
MI				106.00	110.00	85.00	0.250
MN				90.00	91.00	75.00	
MS	0.476	0.477					
MO				91.00	140.00	75.00	
MT				90.00	90.00	87.00	
NE				98.00	99.00	90.00	
NV				119.00	119.00	127.00	
NM				170.00	172.00	145.00	
NY				117.00	140.00	110.00	0.286
NC	0.451	0.489					
ND				66.00	70.00	52.00	
OH				115.00	139.00	85.00	0.410
OK				136.00	165.00	98.00	
OR				134.00	135.00	133.00	
PA				140.00	159.00	137.00	0.214
SD				90.00	93.00	72.00	
TN	0.475	0.479					
TX	0.449	0.438		140.00	166.00	135.00	
UT				110.00	113.00	87.00	
VA							0.310
WA				131.00	130.00	135.00	0.285
WI				66.00	70.00	45.00	
WY				107.00	108.00	105.00	
US	0.480	0.472		117.00	120.00	108.00	0.284

¹ Entire month.

² Based on sales during the first half of the month.

³ Mid-month.

⁴ Equivalent packinghouse-door returns for CA, MI, NY, and WA. Price at point of first sale for other States.

⁵ Marketing year August - February.

⁶ Price not published to avoid disclosure of individual firms.

⁷ Insufficient sales to establish a price.

**Upland Cotton and Rice: Prices Received and Marketings,
United States, March 2007, with Comparisons**

Item	Unit	Jan 2007 ¹	Feb 2007 ¹	Mar 2007 ²
Cotton, Upland				
Average Price	Dollars per Pound	0.497	0.480	0.472
Marketings ³	1,000 Bales	1,557	1,253	NA
Rice				
Average Price	Dollars per Cwt	10.20	10.10	9.86
Marketings ⁴	1,000 Cwt	17,977	12,918	NA

¹ Entire month.

² Based on purchases for the first half of the month.

³ Marketings based on a survey of cotton buyers in the major producing States - AL, AZ, AR, CA, GA, LA, MS, NC, TN, and TX.

⁴ Purchases by private firms and rice (rough equivalent) shipped by cooperatives.

**Citrus Fruit: Prices and Equivalent Returns, by Utilization,
by State and United States, March 2007**

Commodity, State and Type	F.O.B. Packed Fresh	Equivalent Returns ¹					
		Packinghouse-door			On-tree		
		All	Fresh	Process	All	Fresh	Process
	<i>Dollars per Box</i>	<i>Dollars per Box</i>	<i>Dollars per Box</i>	<i>Dollars per Box</i>	<i>Dollars per Box</i>	<i>Dollars per Box</i>	<i>Dollars per Box</i>
Grapefruit							
CA	17.00	7.31	7.76	-0.30	4.39	4.84	-3.22
FL	18.60	5.43	10.12	3.27	2.71	7.77	0.37
White	17.90	4.46	9.20	3.50	1.73	6.85	0.70
Colored	18.80	6.19	10.40	3.00	3.47	8.05	0.00
TX	21.10	5.92	10.50	2.17	4.71	9.27	0.99
US	19.00	5.53	10.08	3.14	3.01	7.91	0.44
Lemons							
CA	53.20	33.48	43.13	-0.42	28.06	37.71	-5.84
Oranges							
CA							
Navel and Misc	33.20	14.26	25.29	1.48	11.76	22.79	-1.02
FL	27.30	14.78	18.35	14.64	11.94	15.58	11.79
Early and Mids	25.40	12.81	16.50	12.10	10.06	13.80	9.35
Valencia	28.00	14.93	19.10	14.80	12.08	16.30	11.95
TX							
Valencia	27.80	7.77	17.09	2.94	6.37	15.66	1.55
US	32.60	14.56	24.59	11.43	11.86	22.07	8.67
Tangerines							
CA	39.00	16.85	29.76	0.26	13.61	26.52	-2.98
FL	29.00	15.75	18.00	11.90	12.07	14.50	7.90
US	31.20	16.01	20.53	8.78	12.43	17.09	4.98

¹ Net lbs. per box: Grapefruit - AZ & CA-67, FL-85, TX-80; Lemons - 76; Oranges - AZ & CA-75, FL-90, TX-85; Tangelos - 90; Tangerines - AZ & CA-75, FL-95.

Potatoes: Prices Received, by State, February and March 2007 ¹

State	Feb	Mar	State	Feb	Mar
	<i>Dollars per Cwt</i>	<i>Dollars per Cwt</i>		<i>Dollars per Cwt</i>	<i>Dollars per Cwt</i>
AL			NC		
AZ			ND - All ²	6.15	6.15
CA - All ²	12.40	10.20	- Fresh ³	6.80	NA
- Winter	18.80	25.50	- Processing	5.75	NA
- Spring			OR	6.80	7.20
- Summer			TX		
- Fall	7.40	7.05	VA		
CO - All ²	8.15	8.35	WA - All ²	7.00	6.95
- Fresh ³	8.75	NA	- Processing	6.25	NA
FL	40.50	48.90	WI - All ²	7.60	8.25
ID - All ²	5.90	6.55	- Fresh ³	8.10	NA
- Fresh ³	6.40	NA	- Processing	7.25	NA
- Processing	5.60	NA	US - All ²	7.23	8.52
ME	7.70	7.90	- Fresh ³	9.20	NA
MI	8.95	9.45	- Processing	6.16	NA
MN	5.65	5.75			
NY	11.00	11.20			

¹ Missing data indicates no potatoes being marketed.

² Average price of potatoes sold for all uses, including table stocks, processing, seed, and livestock feed.

³ Fresh market prices only, includes table stock prices.

Cattle: Prices Received, by State, February and March 2007

State	Cows ¹		Steers & Heifers		Beef Cattle ⁴		Calves	
	Feb ²	Mar ³	Feb ²	Mar ³	Feb ²	Mar ³	Feb ²	Mar ³
	<i>Dollars per Cwt</i>	<i>Dollars per Cwt</i>	<i>Dollars per Cwt</i>	<i>Dollars per Cwt</i>	<i>Dollars per Cwt</i>	<i>Dollars per Cwt</i>	<i>Dollars per Cwt</i>	<i>Dollars per Cwt</i>
AZ	45.00	46.50	94.00	97.00	75.90	78.30	114.00	119.00
AR	44.50	43.90	96.70	101.00	81.00	83.90	117.00	117.00
CA	42.00	43.40	90.50	95.50	66.30	69.50	104.00	110.00
CO	48.50	47.90	96.90	103.00	95.90	102.00	110.00	126.00
FL	50.50	49.00	85.00	89.00	67.00	69.00	113.00	115.00
GA	51.10	48.50	85.10	89.50	63.30	64.90	112.00	116.00
ID	44.60	48.40	90.20	95.30	80.20	84.00	110.00	117.00
IL	47.00	48.00	90.00	96.00	89.10	95.00	106.00	109.00
IA	49.20	48.00	89.70	95.00	88.90	94.10	109.00	115.00
KS	47.50	48.30	91.70	97.60	90.40	96.10	122.00	130.00
KY	45.00	44.00	87.00	94.00	76.90	82.00	105.00	112.00
LA	47.80	46.00	95.10	101.00	61.00	61.40	112.00	119.00
MI	48.00	50.00	82.00	86.50	71.80	75.60	114.00	114.00
MN	50.10	50.50	86.00	92.50	78.60	83.90	114.00	121.00
MO	48.20	45.70	98.00	104.00	81.10	91.20	117.00	123.00
MT	47.70	48.90	94.70	100.00	83.90	91.80	113.00	121.00
NE	48.00	48.00	90.70	96.90	89.40	95.40	114.00	123.00
NM	46.50	48.00	94.00	100.00	75.00	81.30	118.00	121.00
ND	48.50	50.00	95.40	100.00	88.40	92.00	107.00	115.00
OH	44.00	46.00	87.00	89.00	82.70	84.70	101.00	105.00
OK	48.80	47.20	96.60	101.00	93.30	97.20	114.00	123.00
OR	42.60	43.40	89.60	93.80	75.50	78.70	104.00	111.00
PA	48.60	48.30	86.40	89.90	76.60	79.10	111.00	111.00
SD	49.30	43.00	94.90	99.30	89.90	93.70	116.00	117.00
TN	45.00	43.50	91.00	95.00	72.60	74.40	111.00	112.00
TX	45.60	45.50	92.50	97.70	89.20	93.00	121.00	128.00
VA	43.40	42.30	83.10	90.10	68.40	77.20	104.00	107.00
WI	48.30	47.30	83.30	88.90	63.00	64.80	142.00	141.00
WY	45.20	47.00	97.00	98.00	84.60	87.80	114.00	116.00
US	47.00	46.90	91.50	97.20	86.60	91.40	117.00	123.00

¹ Beef cows and cull dairy cows sold for slaughter.

² Entire month.

³ Mid-month.

⁴ "Cows" and "steers and heifers" combined.

Hogs: Prices Received, by State, February and March 2007

State	Sows		Barrows and Gilts		All Hogs	
	Feb ¹	Mar ²	Feb ¹	Mar ²	Feb ¹	Mar ²
	<i>Dollars per Cwt</i>	<i>Dollars per Cwt</i>	<i>Dollars per Cwt</i>	<i>Dollars per Cwt</i>	<i>Dollars per Cwt</i>	<i>Dollars per Cwt</i>
AR	32.60	34.70	45.20	42.70	43.90	41.90
IL	31.00	33.00	47.50	45.50	46.20	44.50
IN	36.10	38.50	46.90	44.30	45.90	43.80
IA	31.40	34.00	49.90	47.50	49.20	47.20
KS	33.00	35.00	45.50	42.50	43.90	41.50
MN	32.00	34.50	49.30	47.00	49.10	46.90
MO	31.10	33.70	41.20	39.20	40.40	38.80
NE	33.20	35.80	49.10	46.60	48.80	46.40
NC	31.60	34.00	48.60	46.30	48.40	46.20
OH	32.80	35.00	47.10	45.00	46.40	44.50
OK	31.00	33.30	41.90	40.00	40.30	39.00
PA	32.80	35.10	44.70	42.70	42.90	41.60
SD	30.60	32.60	49.30	46.50	47.40	45.10
US	32.20	34.40	48.10	45.90	47.30	45.40

¹ Entire month.

² Mid-month.

Sheep and Poultry: Prices Received, by State, February and March 2007

State	February		March
	Sheep ¹	Lambs ¹	Eggs ^{2 3}
	<i>Dollars per Cwt</i>	<i>Dollars per Cwt</i>	<i>Dollars per Dozen</i>
AL			0.700
AR			0.705
CA	41.00	88.50	0.710
CO	34.00	96.00	
CT			0.650
FL			0.700
GA			0.679
ID	31.00	83.00	
IN			0.650
IA	32.00	88.00	0.650
KY	48.00	104.00	
ME			0.890
MI			0.640
MN	37.50	96.20	0.720
MS			0.710
MO	38.00	111.00	0.650
MT	30.30	99.60	
NE	30.00	85.10	
NY			0.700
NC			0.683
ND	35.00	96.00	
OH	41.80	105.00	0.760
OR	35.00	91.20	
PA	52.00	110.00	0.630
SC			0.651
SD	37.80	98.80	
TX	42.40	102.00	0.650
VA	44.00	109.00	
WA			0.780
WV	46.00	116.00	
WY	33.60	92.10	
US	36.50	95.40	0.681

¹ Entire month.

² Mid-month.

³ Market (table) eggs.

Milk and Milk Cows: Prices Received, by State, February and March 2007

State	February ¹						March		Milk Cows ⁵
	Fluid Grade Milk ²		Manufacturing Grade Milk		All Milk ³		All Milk ^{3 4}		
	Price	Fat Test	Price	Fat Test	Price	Fat Test	Price	Fat Test	
	<i>Dol/Cwt</i>	<i>Percent</i>	<i>Dol/Cwt</i>	<i>Percent</i>	<i>Dol/Cwt</i>	<i>Percent</i>	<i>Dol/Cwt</i>	<i>Percent</i>	<i>Dol/Head</i>
AZ	14.40	3.66			14.40	3.66	14.70	3.58	
CA	13.70	3.75	14.60	4.23	13.73	3.76	14.40	3.70	
CO	14.80	3.63			14.80	3.63	15.10	3.60	
FL	17.40	3.65			17.40	3.65	18.20	3.61	
ID	13.80	3.71	13.10	3.89	13.80	3.71	13.90	3.66	
IL	15.80	3.90	15.50	3.60	15.80	3.89	16.00	3.80	
IN	14.70	3.78	14.40	4.03	14.70	3.79	15.40	3.76	
IA	15.10	3.80	14.10	4.10	15.10	3.80	15.30	3.80	
KS	14.80	3.79			14.80	3.79	15.20	3.76	
KY	15.60	3.78			15.60	3.78	16.40	3.75	
MI	15.30	3.70	12.70	3.77	15.30	3.70	15.90	3.68	
MN	15.60	3.84	14.00	3.87	15.60	3.84	16.00	3.83	
MO	15.10	3.78	14.10	3.93	15.10	3.79	15.40	3.73	
NM	14.20	3.75			14.20	3.75	14.90	3.72	
NY	15.30	3.79			15.30	3.79	15.60	3.78	
OH	15.90	3.78	14.50	3.98	15.80	3.79	16.30	3.76	
OR	16.10	3.76			16.10	3.76	16.70	3.72	
PA	16.50	3.80	13.60	3.90	16.50	3.80	17.10	3.80	
TX	15.60	3.87			15.60	3.87	15.90	3.81	
VT	15.80	3.83			15.80	3.83	16.10	3.82	
VA	16.00	3.70			16.00	3.70	16.40	3.70	
WA	14.40	3.76			14.40	3.76	15.00	3.72	
WI	15.60	3.80	14.80	3.94	15.60	3.80	16.40	3.78	
US	14.90	3.77	14.40	4.05	14.90	3.77	15.50	3.74	

¹ Entire month.

² Including milk diverted to manufacturing.

³ Before deductions for hauling. Includes quality, quantity, and other premiums. Excludes hauling subsidies.

⁴ Preliminary.

⁵ Animals sold for dairy herd replacement only. Prices published January, April, July and October.

**Parity Price Equivalent for Manufacturing Grade Milk ¹: United States,
February and March 2007, with Comparisons**

Item	Unit	Mar 2006	Feb 2007	Mar 2007
Parity Equivalent	Dollars per Cwt	34.70	36.00	36.60
Average Price F.O.B ²	Dollars per Cwt	11.50	14.40	15.00
Average Fat Test of Milk ²	Percent	4.03	4.05	3.98

¹ The parity price equivalent during 2007 is 92.1 percent of the parity price of all milk sold to plants, compared with 91.5 percent in 2006. For additional details, see January 2007 issue of "Agricultural Prices".

² Preliminary for March 2007.

**Parity Prices for Farm Products and Average Prices Received as
Percent of Parity Prices, United States, with Comparisons ¹**

Commodity and Unit	Adjusted Base Price	Parity Price			Price as Percent of Parity		
		Mar 2006	Feb 2007	Mar 2007	Mar 2006	Feb 2007	Mar 2007
	<i>Dollars</i>	<i>Dollars</i>	<i>Dollars</i>	<i>Dollars</i>	<i>Percent</i>	<i>Percent</i>	<i>Percent</i>
Basic Commodities							
All Wheat, Bu	0.519	10.30	10.60	10.70	37	44	44
Rice, Cwt	1.40	27.90	28.50	28.90	29	35	34
Corn, Bu	0.384	7.65	7.81	7.94	27	44	42
Cotton, Lb							
American Upland	0.098	2.25	1.99	2.03	22	24	23
Extra Long Staple	0.142	2.65		2.94			
Peanuts, Lb	0.031	0.673	0.631	0.641	25	28	27
Designated Nonbasic							
All Milk, Sold to Plants, Per Cwt ²	1.92	37.90	39.10	39.70	38	31	30
Honey, Extracted, Lb ³	0.123	2.28		2.54			
Wool and Mohair							
Wool, Lb	0.082	1.60	1.67	1.69		41	
Mohair, Lb	0.359	6.52	7.31	7.42		50	
Other Nonbasic							
Barley, Bu	0.362	7.15	7.37	7.48	38	42	44
Canola, Cwt	1.37	26.50	27.90	28.30			
Cottonseed, Ton	14.80	296.00	301.00	306.00	33	42	41
Dry Edible Beans, Cwt	2.72	54.00	55.40	56.20	32	46	46
Flaxseed, Bu	0.841	15.30	17.10	17.40	35	37	37
Mustard Seed, Cwt	1.92	37.70	39.10	39.70			
Oats, Bu	0.215	4.25	4.38	4.44	43	53	50
Potatoes, Cwt	0.818	15.80	16.60	16.90	54	44	50
Rapeseed, Cwt	1.59	31.00	32.40	32.90			
Rye, Bu	0.414	6.83		8.56			
Safflower, Cwt	1.84	35.80	37.40	38.00			
Sorghum Grain, Cwt	0.656	11.90	13.30	13.60	30	52	50
Soybeans, Bu	0.850	16.90	17.30	17.60	33	40	39
All Sunflower, Cwt	1.66	32.20	33.80	34.30	35	44	45
Sweetpotatoes, Cwt	2.31	44.80		47.70			
Apples, Fresh, Lb ⁴	0.301	0.519	0.613	0.622	34	36	35
Citrus (equiv on-tree), Box							
Grapefruit	0.622	10.40	12.70	12.90	79	32	23
Lemons	1.14	22.30	23.20	23.60	42	139	119
Oranges	0.598	11.40	12.20	12.40	51	61	96
Tangerines	1.35	26.70	27.50	27.90	30	52	45
Temples (FL)	0.372	7.58		7.69			
Beef Cattle, Cwt	10.15	190.00	207.00	210.00	46	42	44
Calves, Cwt	14.60	263.00	297.00	302.00	52	39	41
Hogs, Cwt	5.83	115.00	119.00	121.00	37	40	38
Lambs, Cwt	11.90	229.00	242.00	246.00	40	39	
Sheep, Cwt	4.90	94.00	99.70	101.00	43	37	
Eggs, Doz ²	0.088	1.75	1.79	1.82	28	46	42
Turkeys, Live, Lb	0.056	1.080	1.140	1.160	37	37	38

¹ Parity prices are computed under the provisions of Title III, Subtitle a, Section 301 (a) of the Agricultural Adjustment Act of 1938 as amended by the Agricultural Acts of 1948, 1949, and 1956. See January "Agricultural Prices" for details on adjusted base price and parity price computations.

² Seasonally adjusted price as percentage of parity price.

³ Wholesale extracted. Adjusted base price derived from state annual averages prices weighted by production. For 1982 through 1985 the national averages are the support prices.

⁴ Equivalent packinghouse-door returns for CA, NY (apples only), OR (except peaches), and WA. Price at point of first sale for other states.

Parity Prices for Farm Products, March 2007, United States ¹

Other Nonbasic Commodities	Adjusted Base Price	Parity Price	Other Nonbasic Commodities	Adjusted Base Price	Parity Price
	<i>Dollars</i>	<i>Dollars</i>		<i>Dollars</i>	<i>Dollars</i>
Field Crops and Misc Commodities			Fresh, CA, Ton ⁵	60.80	1,260.00
Hops, Lb	0.250	5.17	Noncitrus Fruit, Continued		
Spearmint Oil, Lb	1.40	28.90	Olives, CA		
Tobacco, Lb			canning, Ton ³	94.20	1,950.00
Flue-Cured, 11-14	0.240	4.96	Papayas (HI)	0.050	1.030
VA Fire-Cured, 21	0.254	5.33	Peaches		
KY-TN Fire-Cured, 22-23	0.319	6.59	Fresh, Ton ²	83.80	1,730.00
Fire-Cured, 21-23	0.319	6.59	Dried, CA, Ton	77.00	1,590.00
Burley, 31	0.259	5.35	Processing ³		
Maryland, 32	0.196	4.05	Excl Dried		
Dark Air-Cured, 35-36	0.282	5.83	Clingstone, CA, Ton	34.10	705.00
Sun-Cured, 37	0.235	4.86	Pears, Ton		
Dark Air-Cured, 35-37	0.284	5.87	Fresh ²	53.50	1,110.00
PA Seedleaf, 41	0.200	4.13	Dried, CA ⁴	178.00	3,680.00
Cigar Filler & Binder, 42-44, 54-55	0.222	4.59	Plums, CA, Ton		
Puerto Rican Filler, 46	0.155	3.20	Fresh, Equiv on-Tree	63.40	1,310.00
Cigar Binder, 51-52	0.749	15.50	Prunes, Dried, CA, Ton ⁴	139.00	2,870.00
Type 61	3.30	68.20	Prunes and Plums, Excl CA, Ton		
Noncitrus Fruit			Fresh ⁷	62.80	1,300.00
Apples, Ton ⁴			Processing ⁴		
Processing	16.70	345.00	Excl Dried	28.30	585.00
Apricots, Ton			Tree Nuts ⁸		
Fresh ⁵	104.00	2,150.00	Almonds, Lb	0.214	4.42
Dried, CA	264.00	5,460.00	Hazelnuts, Ton	154.00	3,180.00
Avocados, Ton ⁵	231.00	4,770.00	Pistachio, Lb	0.180	3.72
Cherries			Walnuts, Ton	174.00	3,600.00
Sweet, Ton	197.00	4,070.00	Vegetables, Cwt ⁹		
Tart, Lb	0.034	0.709	Fresh		
Cranberry, Bbl ³	5.02	104.00	Carrots ⁶	2.38	49.20
Dates, CA, Ton ⁵	188.00	3,890.00	Cauliflower ⁶	4.45	92.00
Grapes, Ton			Celery ⁶	2.00	41.30
Raisin Variety	121.00	2,500.00	Honeydew Melons	2.67	55.20
Other Dried	71.50	1,480.00	Lettuce	2.35	48.60
Kiwifruit, Ton	90.50	1,870.00	Onions ⁶	1.63	33.70
Nectarines			Tomatoes	4.77	98.60

¹ Parity prices are computed under the provisions of Title III, Subtitle a, Section 301 (a) of the Agricultural Adjustment Act of 1938 as amended by the Agricultural Acts of 1948, 1949, and 1956. See January "Agricultural Prices" for details on adjusted base price and parity price computations.

² Equivalent packinghouse-door returns for CA, NY (apples only), OR (except peaches), and WA. Price at point of first sale for other states.

³ Equivalent returns for bulk fruit at first delivery point.

⁴ Equivalent returns at processing plant door.

⁵ Equivalent returns at packinghouse door.

⁶ Includes some processing.

⁷ Based on "as sold" prices for fresh fruit in all states.

⁸ Prices in-shell basis except almonds which are shelled basis.

⁹ F.O.B. shipping point prices.

Reliability of Prices Received Estimates

Definition: Prices received represent sales from producers to first buyers. They include all grades and qualities. The average commodity price from the survey multiplied by the total quantity marketed theoretically should give the total cash receipts for the commodity.

Survey Procedures: Primary sales data used to determine grain prices were obtained from probability samples of about 2000 mills and elevators. These procedures ensure that virtually all grain moving into commercial channels has a chance of being included in the survey. Generally, States surveyed account for 90 percent or more of total U.S. production. Livestock prices are obtained from packers, stockyards, auctions, dealers, and market check data from AMS-USDA, private marketing organizations, and state commodity groups and agencies. Inter-farm sales of grain and livestock are not included since they represent very small percentages of the total marketings. Grain marketed for seed is also excluded. Fruit and vegetable prices are obtained from sample surveys and market check data from AMS-USDA, private marketing organizations, state agencies, and universities.

Summary and Estimation Procedures: Survey quantities sold are expanded by strata to state levels and used to weight average strata prices to a state average. State prices are then weighted to a U.S. price based on expanded marketings. Recommendations are prepared by the State Field Offices and reviewed by the Agricultural Statistics Board in Washington, D.C. State recommendations are reviewed for reasonableness with survey data, other States, and recent historic estimates.

Revisions: For most items, the current month's preliminary price represents a 3-5 day period around the 15th of the month. Previous month's prices represent actual dollars received for quantities sold during the entire month. Revisions are published in monthly issues of *Agricultural Prices*.

Reliability: U.S. price estimates based on probability surveys generally have a sampling error of less than one percent for the major commodities such as corn, wheat, soybeans, cotton, and rice. Current methods of summarization for non-probability commodities are not designed directly to calculate sampling errors. However, analytical measures approximate the U.S. relative sampling errors at around five percent. Any nonsampling errors are attributed to such things as the inability to obtain correct information, differences in interpreting questions or definitions, mistakes in coding or processing the data, etc. Efforts are made at each step in the survey process to minimize these nonsampling errors.

Prices Paid by Farmers

The March Index of Prices Paid for Commodities and Services, Interest, Taxes, and Farm Wage Rates (PPITW) at 155 (1990-92=100), increased 1.3 percent from February 2007 and 5.4 percent from March 2006.

PRODUCTION INDEX: The March index, at 154, increased 2.0 percent from last month and increased 6.9 percent from last year. Higher prices in March for feed concentrates, feeder cattle, diesel fuel, and complete feeds more than offset lower prices for feed grains, trucks, tractors, and autos.

Feed: The March index, at 162, increased 3.2 percent from February and increased 32 percent from last March. Since February, higher prices for feed concentrates, complete feeds, hay & forages, and feed supplements more than offset lower prices for feed grains.

Livestock & Poultry: The March index, at 128, increased 4.1 percent from last month but decreased 3.8 percent from last year. Since February, prices are higher for feeder cattle and feeder pigs. The March feeder cattle price, at \$104.10 per cwt, is up \$4.90 per cwt from the February price. March feeder pigs averaged \$158.00 per cwt, up \$3.00 per cwt from February.

Fertilizer: The March index, at 191, is up 4.9 percent from February and 5.5 percent above March a year ago. Since February, prices are higher for nitrogen fertilizers, potash & phosphate materials, and mixed fertilizers.

Agricultural Chemicals: The March index, at 132, increased 1.5 percent from February and 4.8 percent from last March. Since February, prices are higher for herbicides, insecticides, and fungicides.

Fuels: The March index, at 241, is up 7.6 percent from a month earlier and 6.6 percent above March 2006. Compared with last month, prices are higher for diesel fuel, gasoline, and LP gas.

Farm Machinery: The March index, at 184, increased 0.5 percent from February and 2.8 percent from last March. Since February, higher prices for self-propelled and other machinery more than offset lower prices for tractors.

CONSUMER PRICE INDEX: The February 2007 Consumer Price Index, as issued by the Bureau of Labor Statistics, for all urban consumers (CPI-U) increased 0.5 percent before seasonal adjustment to a level of 203.499 (1982-84=100). This compares with the January index of 202.416. For the 12-month period ending in February, the overall index has increased 2.4 percent.

**Indexes of Prices Paid by Farmers and Related Parity Ratios
United States, March 2007 With Comparisons**

Indexes and Ratios	1910-14 = 100			1990-92 = 100		
	2006	2007		2006	2007	
	Mar	Feb	Mar	Mar	Feb	Mar
Prices Paid by Farmers for Commodities & Services, Interest, Taxes, & Wage Rates (PPITW)	1,963	2,041	2,067	147	153	155
Production	1,397	1,465	1,494	144	151	154
Feed	599	764	791	123	157	162
Livestock & Poultry	1,704	1,575	1,636	133	123	128
Seeds	1,694	1,838	1,838	171	186	186
Fertilizer	664	667	699	181	182	191
Agricultural Chemicals	781	804	814	126	130	132
Fuels	1,743	1,731	1,862	226	224	241
Farm Supplies & Repairs	1,020	1,051	1,051	144	148	148
Autos & Trucks	3,031	2,976	2,971	114	112	112
Farm Machinery	4,496	4,601	4,628	179	183	184
Building Materials	2,028	2,081	2,083	149	153	153
Farm Services & Rent	1,564	1,588	1,588			
Farm Services				137	141	141
Rent				121	119	119
Interest ¹	3,452	3,778	3,778	138	151	151
Taxes ²	4,343	4,570	4,570	162	171	171
Wage Rates	6,526	6,429	6,429	174	172	172
Production, Interest, Taxes, & Wage Rates (PITW)	1,977	2,065	2,097	147	154	156
Family Living-CPI ³	1,898	1,933	1,933	148	151	151
Ratio (Received/Paid) Parity Ratio ⁴	37	40	41	77	84	86
Parity Ratio Adjusted ⁵	39	42	43			
PPITW Adjusted for Productivity ⁶	1,336	1,340	1,344			
Crop Sector (PPITW)				152	156	157
Livestock Sector (PPITW)				143	151	153
Farm Sector (Production)				134	150	154
Non-Farm Sector (Production)				149	152	154

¹ Interest per acre on farm real estate debt and interest rate on farm non-real estate debt.

² Farm real estate taxes payable per acre.

³ Bureau of Labor Statistics, Consumer Price Index for all urban consumers (CPI-U), for the previous month converted by the USDA.

⁴ Ratio of index of prices received to PPITW (1910-14=100).

⁵ Based on estimated cash receipts, from marketings and government payments, the preliminary adjustment factor is 1.079 for 2007 and the revised factor is 1.096 for 2006.

⁶ PPITW is adjusted based on productivity trend for the prior 15 years.

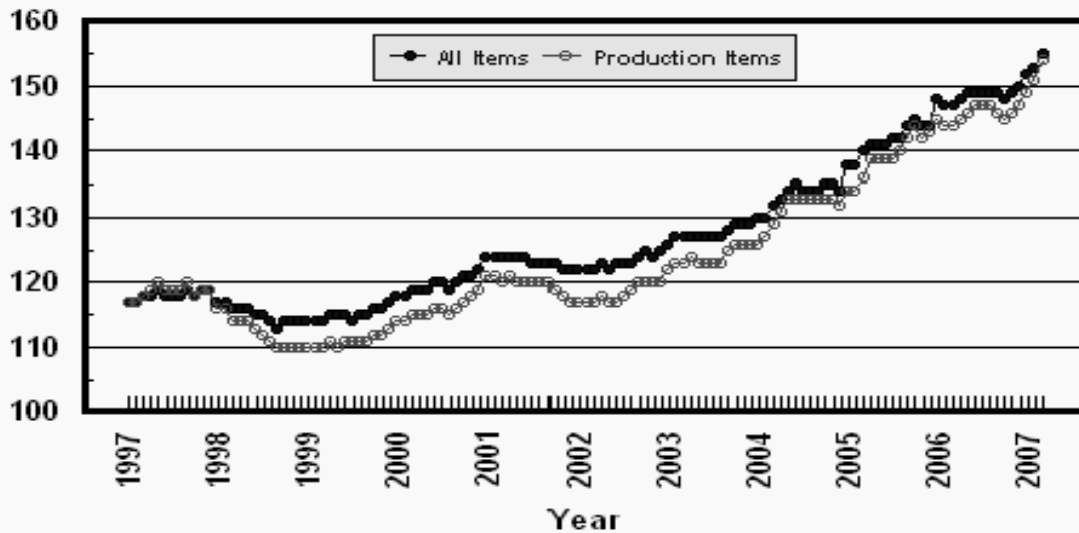
**Prices Paid Indexes and Annual Weights for Input Components and
Sub-Components United States, March 2007 With Comparisons**

Index	Relative Weights 5-Year Moving Average ¹		Input Indexes		
	2006	2007	2006	2007	
	<i>Percent</i>	<i>Percent</i>	Mar <i>(1990-92=100)</i>	Feb <i>(1990-92=100)</i>	Mar <i>(1990-92=100)</i>
Production Items	66.8	67.4	144	151	154
Feed	10.9	10.9	123	157	162
Feed Grains	1.6	1.6	90	152	148
Complete Feeds	5.3	5.3	122	150	154
Hay/Forages	1.4	1.4	130	151	155
Concentrates	1.7	1.7	131	161	182
Supplements	0.9	0.9	157	201	202
Livestock & Poultry	7.6	7.7	133	123	128
Feeder Cattle	6.0	6.0	129	117	123
Feeder Pigs	0.6	0.6	163	169	172
Milk Cow Replacements	0.6	0.6	163	147	147
Poultry	0.5	0.5	109	109	109
Seeds	3.6	3.7	171	186	186
Field Crops	3.3	3.4	177	191	191
Grasses/Legumes	0.3	0.4	118	133	133
Fertilizer	4.3	4.4	181	182	191
Mixed Fertilizer	1.9	1.9	149	157	159
Nitrogen	1.8	1.8	220	205	215
Potash & Phosphate	0.6	0.6	167	192	217
Agricultural Chemicals	3.5	3.4	126	130	132
Herbicides	2.2	2.2	122	126	127
Insecticides	0.8	0.8	140	144	146
Fungicides/Other	0.5	0.5	124	127	129
Fuels	2.9	3.1	226	224	241
Diesel	1.7	1.9	244	237	254
Gasoline	0.8	0.7	199	191	214
LP Gas	0.4	0.4	207	224	232
Farm Supplies & Repairs	5.0	4.8	144	148	148
Supplies	1.7	1.6	135	140	140
Repairs	3.3	3.2	148	152	152
Autos & Trucks	1.8	1.8	114	112	112
Autos	0.2	0.2	110	110	109
Trucks	1.6	1.6	115	112	112
Farm Machinery	4.4	4.5	179	183	184
Tractors	1.0	1.0	159	163	162
Self-Propelled	1.7	1.8	186	191	194
Other Machinery	1.7	1.7	184	187	187
Building Materials	4.0	4.3	149	153	153
Farm Services	12.2	12.2	137	141	141
Custom Rates	1.3	1.3	123	123	123
Other Services	10.9	10.9	139	143	143
Rent	6.7	6.7	121	119	119
Cash	3.6	3.6	144	140	140
Share	3.1	3.1	95	95	95
Interest	4.2	4.0	138	151	151
Taxes	2.9	2.9	162	171	171
Wage Rates	7.8	7.8	174	172	172
Family Living-CPI	18.4	18.0	148	151	151

¹ Weights may not add due to rounding.

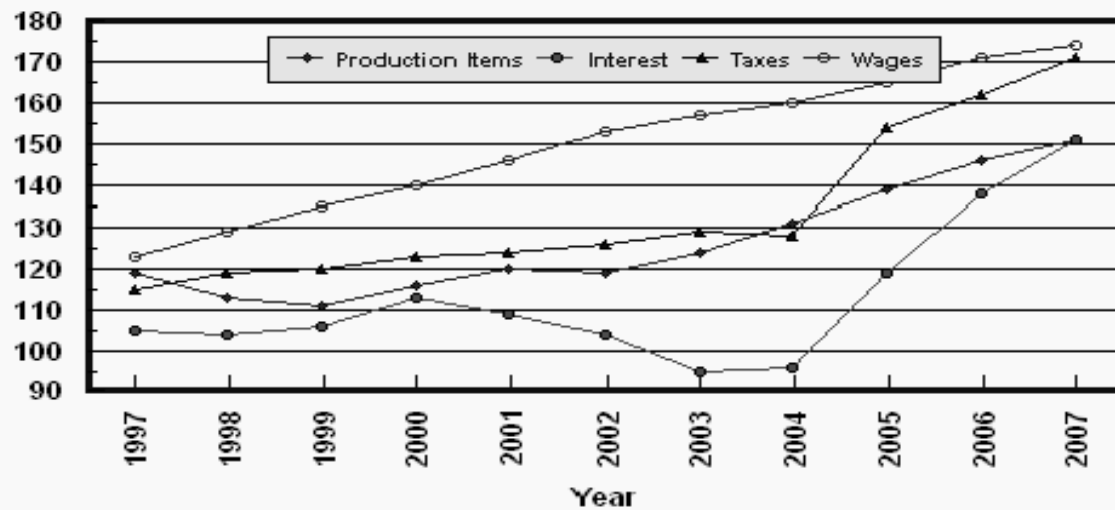
Prices Paid by Farmers, Major Indexes US, by Month

Percent (1990-92=100)



Prices Paid by Farmers, Major Indexes US, Annual Averages 1/

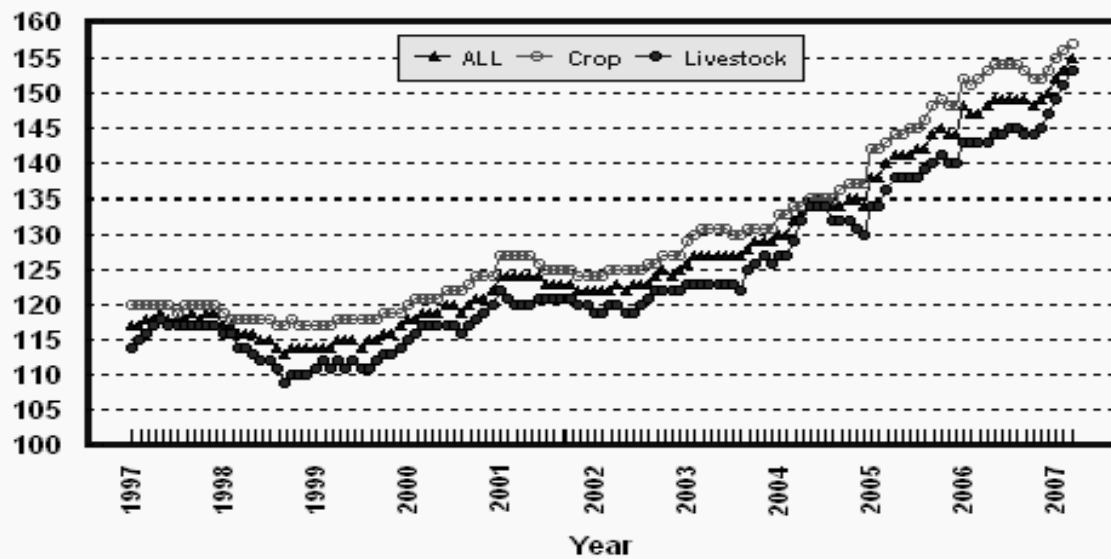
Percent (1990-92=100)



1/ Index values for 2007 are year-to-date averages.

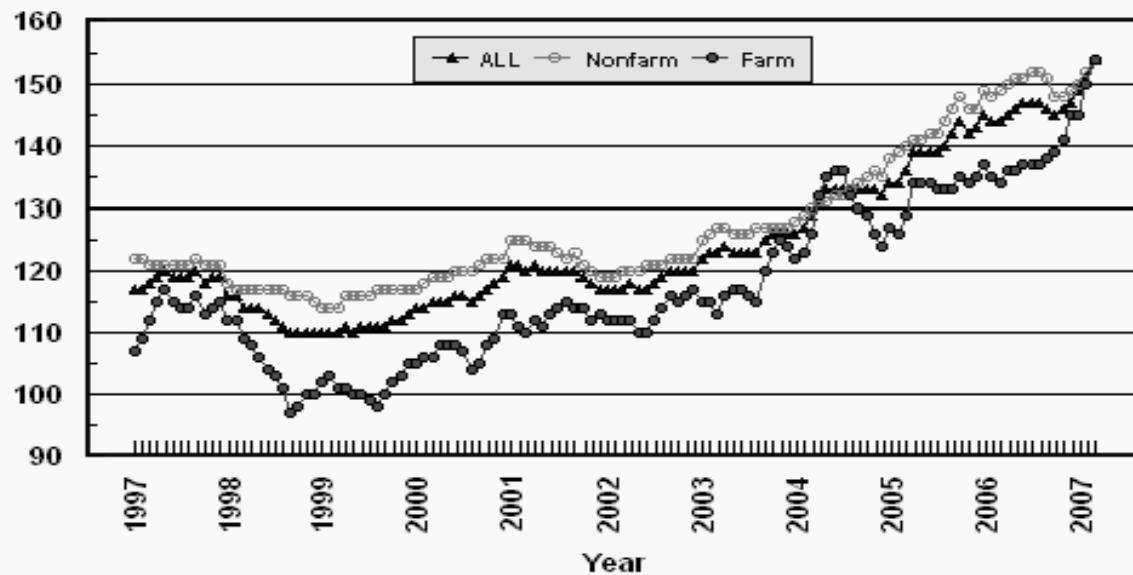
Prices Paid by Farmers, Indexes, All Items US, By Farm Type

Percent (1990-92=100)



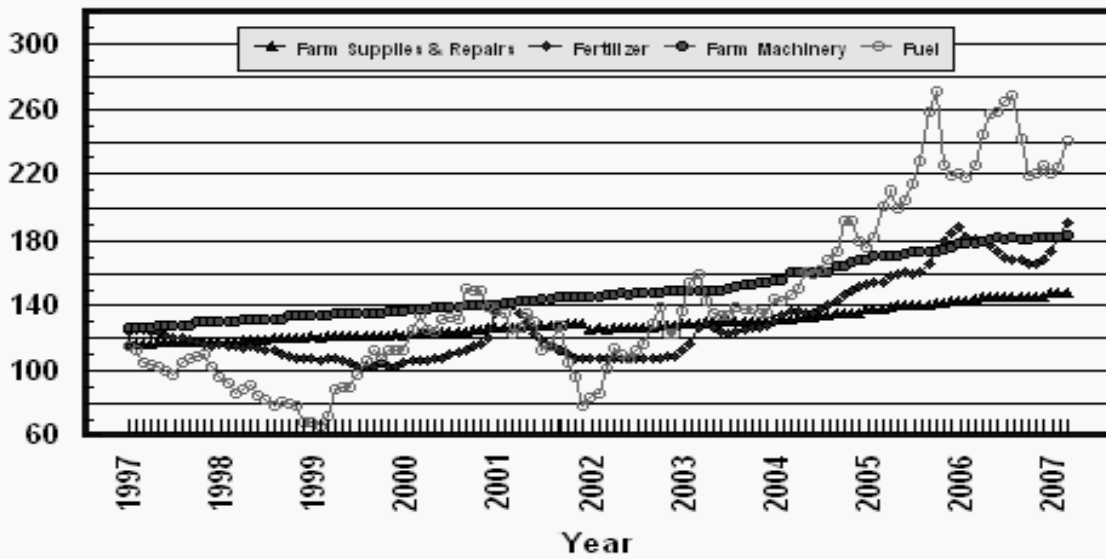
Prices Paid by Farmers, Indexes, All Production Items US, By Sector Origin

Percent (1990-92=100)



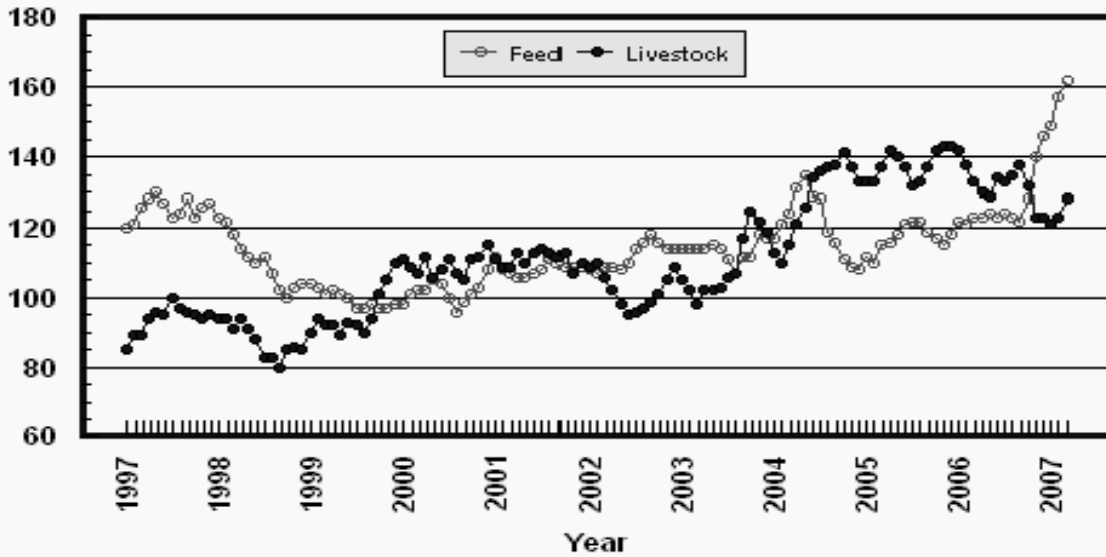
Prices Paid by Farmers, Selected Production Indexes US, By Non-Farm Sector

Percent (1990-92=100)



Prices Paid by Farmers, Selected Production Indexes US, By Farm Sector

Percent (1990-92=100)



Feed Price Ratios: United States, March 2007 with Comparisons

Feed Price Ratio ¹	2006	2007	
	Mar	Feb	Mar
Broiler-Feed: Pounds of Broiler Grower Feed equal in value to 1 pound of broiler, live weight	6.1	*5.6	6.0
Market Egg Feed: Pounds of Laying Feed equal in Value to 1 dozen eggs	9.8	*8.4	9.3
Hog-Corn: Bushels of Corn equal in value to 100 pounds of hog, live weight	20.8	*13.8	13.5
Milk-Feed: Pounds of 16% Mixed Dairy Feed equal in value to 1 pound of Whole Milk	2.70	*2.31	2.41
Steer & Heifer-Corn: Bushels of Corn equal in value to 100 pounds of Steer & Heifers, live weight	45.0	*26.6	28.9
Turkey-Feed: Pounds of Turkey Grower equal in value to 1 pound of Turkey, live weight	6.9	*5.3	5.6

* Revised.

¹ Effective January 1995, prices of commercial prepared feeds are based on current U.S. prices received for corn, soybeans, alfalfa hay, and all wheat.

**Prices Used to Calculate Feed Price Ratios:
United States, March 2007 with Comparisons**

Commodity	Unit	Entire Month		Preliminary
		Mar 2006	Feb 2007	Mar 2007
Broilers, Live	Lb	0.370	0.470	0.500
Eggs, Market	Doz	0.499	0.627	0.681
Hogs, All	Cwt	42.80	47.30	45.40
Milk, All	Cwt	12.60	14.90	15.50
Steers and Heifers	Cwt	92.80	91.50	97.20
Turkeys, Live	Lb	0.403	*0.424	0.440
Corn	Bu	2.06	3.44	3.36
Hay, Alfalfa, Baled	Ton	100.00	117.00	120.00
Soybeans	Bu	5.57	6.87	6.85
Wheat, All	Bu	3.79	4.71	4.75

* Revised.

**Feeder Livestock: Prices Paid, United States
March 2007 with Comparisons**

Commodity	Unit	2006	2007	
		Mar	Feb	Mar
		<i>Dollars</i>	<i>Dollars</i>	<i>Dollars</i>
Feeders and Stockers Cattle and Calves	Cwt	109.20	*99.20	104.10
Feeder Pigs	Cwt	150.00	155.00	158.00

* Revised.

Prices Paid by Farmers

Definition: Prices paid by farmers represent the average costs of inputs purchased by farmers and ranchers to produce agricultural commodities. Conceptually, the average price when multiplied by quantity purchased should equal total producer expenditures for the item.

Survey Procedures: The prices paid data are obtained from establishments that sell goods and services to farmers and ranchers. Annually, about 8,500 firms are randomly selected from lists by type of item sold with an average response rate in the range of 75-80 percent. Firms are asked to report the price for the specified item "most commonly bought by farmers" or that was the "volume seller". Approximately 135 items are surveyed each April to represent all production input items purchased. The survey reference period for most items is the 5 business days centered around the 15th of the month. Separate prices paid surveys are conducted for agricultural chemicals, fuels, feed, fertilizer, machinery, and seed.

Summary and Estimation Procedures: The annual April Prices Paid Survey is summarized as a nonprobability survey. Average prices reported are aggregated to the region and U.S. level using weights available from expenditure data and other administrative sources. Price recommendations are prepared by the State Field Offices and Headquarters for review by the Agricultural Statistics Board in Washington, D.C. Also, the change in price level for individual items surveyed are combined to the regional and U.S. levels, and are published as prices paid indexes referenced to a specific base period. Prices paid indexes for new autos and trucks, building materials, farm supplies, motor supplies, and marketing containers are updated based on price changes measured in selected Bureau of Labor Statistics (BLS) indexes.

Revisions: Any revisions are published in the monthly and in annual issues of *Agricultural Prices*. The basis for revision must be supported by additional data that directly affect the level of the estimate. More revisions are likely in April when separate prices paid surveys are conducted, in lieu of BLS indexes, by the USDA to measure price change.

Reliability: Current methods of summarization in April are not designed directly to calculate sampling errors. However, analytical measures approximate the U.S. relative sampling errors for major items around 10 percent. Any nonsampling errors are attributed to such things as the inability to obtain correct information, differences in interpreting questions or definitions, mistakes in coding or processing the data, etc. Efforts are made at each step in the survey process to minimize these nonsampling errors.

Program Change: Effective January 1, 1995, the National Agricultural Statistics Service updated the weights and changed the construction of its prices paid and received by farmers indexes. A Federal Register Notice dated October 28, 1994 discussed these program modifications.

A 1990-92 reference and base period replaced the 1977 reference and 1971-73 base weight period. Five-year moving average weights replaced the current fixed 1971-73 base period weights. The 1910-14=100 price indexes, required by statute for computing parity prices, were linked forward based on the changes in the new 1990-92=100 indexes. The new indexes were constructed by multiplying the ratios of the current prices to the base period prices by the moving average weights (adjusted for seasonal marketing patterns for the prices received indexes).

Information Contacts

General questions should be directed to Kevin Barnes, Chief, Environmental, Economics and Demographics Branch at (202) 720-6146. Below are the commodity specialists to contact for additional information.

Crop Prices Received

Jeff Geuder, Chief, Crops Branch	(202) 720-2127
Greg Thessen, Field Crops Section	(202) 720-2127
Todd Ballard - Wheat, Rye	(202) 690-8533
Ty Kalas - Corn, Proso Millet, Flaxseed	(202) 720-9526
Shiela Corley - Cotton, Cottonseed	(202) 720-5944
Travis Thorson - Soybeans, Sunflower, Other Oilseeds	(202) 720-7369
King Whetstone - Hay, Oats, Sorghum	(202) 690-3234
Dennis Koong - Peanuts, Rice	(202) 720-7688
Greg Thessen - Sugarcane, Sugarbeets, Barley	(202) 720-2127
Lance Honig, Fruits, Vegetables & Special Crops Section	(202) 720-2127
Dan Norris - Peaches, Pears, Hops, Pulses, Mint	(202) 720-3250
Rich Holcomb - Citrus	(202) 720-5412
Faye Propsom - Apples, Apricots, Cherries, Cranberries, Plums, Prunes	(202) 720-4288
Leslie Colburn - Grapes, Tobacco	(202) 720-7235
Cathy Scherrer - Potatoes, Dry Edible Beans, Sweet Potatoes	(202) 720-4285
Debbie Flippin - Vegetables, Onions, Strawberries	(202) 720-2157
Doug Marousek - Tree Nuts	(202) 720-4215

Livestock Prices Received

Dan Kerestes, Chief, Livestock Branch	(202) 720-3570
Bill Weaver, Livestock Section	(202) 720-3570
Scott Hollis - Sheep, Lambs, Wool, Mohair	(202) 720-4751
Jason Hardegree- Milk, Milk Cows	(202) 720-3278
Bruce Boess - Hogs	(202) 720-3106
Mike Miller - Cattle	(202) 720-3040
Darin Jantzi, Poultry and Specialty Commodities Section	(202) 720-3570
Toby Paterson - Turkeys	(202) 720-0585
Sharyn Lavender - Broilers	(202) 720-3244
Mark Aitken - Eggs	(202) 690-8632

Indexes, Prices Paid, and Parity Prices

Kevin Barnes, Chief, Environmental, Economics and Demographics Branch	(202) 720-6146
Kevin Hintzman, Economics Section	(202) 720-6146
Jen Brown - Prices Paid Indexes, Prices Paid for Feed, Fertilizer, Agricultural Chemicals, Seeds, Farm Supplies and Repairs, Farm Machinery, Fuels, Feeder Livestock, Poultry Chicks, Feed Price Ratios, Autos & Trucks	(202) 720-5446
Daryl Brinkman - Prices Received Indexes, Parity Prices	(202) 720-8844
Jennifer Sissom - Grazing Fees	(202) 690-3229

ACCESS TO REPORTS!!

For your convenience, there are several ways to obtain NASS reports, data products, and services:

INTERNET ACCESS

All NASS reports are available free of charge on the worldwide Internet. For access, connect to the Internet and go to the NASS Home Page at: www.nass.usda.gov.

E-MAIL SUBSCRIPTION

All NASS reports are available by subscription free of charge direct to your e-mail address. Starting with the NASS Home Page at www.nass.usda.gov, under the right navigation, *Receive reports by Email*, click on **National** or **State**. Follow the instructions on the screen.

PRINTED REPORTS OR DATA PRODUCTS

CALL OUR TOLL-FREE ORDER DESK: 800-999-6779 (U.S. and Canada)
Other areas, please call 703-605-6220 FAX: 703-605-6900
(Visa, MasterCard, check, or money order acceptable for payment.)

ASSISTANCE

For **assistance** with general agricultural statistics or further information about NASS or its products or services, contact the **Agricultural Statistics Hotline** at **800-727-9540**, 7:30 a.m. to 4:00 p.m. ET, or e-mail: nass@nass.usda.gov.

The U.S. Department of Agriculture (USDA) prohibits discrimination in all its programs and activities on the basis of race, color, national origin, age, disability, and where applicable, sex, marital status, familial status, parental status, religion, sexual orientation, genetic information, political beliefs, reprisal, or because all or a part of an individual's income is derived from any public assistance program. (Not all prohibited bases apply to all programs.) Persons with disabilities who require alternative means for communication of program information (Braille, large print, audiotape, etc.) should contact USDA's TARGET Center at (202) 720-2600 (voice and TDD).

To file a complaint of discrimination, write to USDA, Director, Office of Civil Rights, 1400 Independence Avenue, S.W., Washington, D.C. 20250-9410, or call (800) 795-3272 (voice) or (202) 720-6382 (TDD). USDA is an equal opportunity provider and employer.