



# NASS

FACT FINDERS FOR AGRICULTURE  
UNITED STATES DEPARTMENT OF AGRICULTURE

Washington, D.C.

# Agricultural Prices

Released May 31, 2007, by the National Agricultural Statistics Service (NASS), Agricultural Statistics Board, U.S. Department of Agriculture. For information on *Agricultural Prices* see page 36, office hours 7:30 a.m. to 4:00 p.m. ET.

## May Farm Prices Received Index Up 4 Points From Last Month

The preliminary All Farm Products Index of Prices Received by Farmers in May, at 138 percent, based on 1990-92=100, increased 4 points (3.0 percent) from April. The Crop Index is up 3 points (2.1 percent) and the Livestock Index increased 5 points (3.9 percent). Producers received higher commodity prices for milk, hogs, hay, and broilers. Lower prices were received for lettuce, cattle, broccoli, and cauliflower. The overall index is also affected by the seasonal change based on a 3-year average mix of commodities producers sell. Increased average marketings of sweet corn, broilers, peaches, and wheat offset decreased marketings of cattle, milk, oranges, and apples.

The preliminary All Farm Products Index is up 27 points (24 percent) from May 2006. The Food Commodities Index, at 139, increased 4 points (3.0 percent) from last month and increased 28 points (25 percent) from May 2006.

## Prices Paid Index up 1 Point

The May Index of Prices Paid for Commodities and Services, Interest, Taxes, and Farm Wage Rates (PPITW) is 158 percent of the 1990-92 average. The index is up 1 point (0.6 percent) from April and 9 points (6.0 percent) above May 2006. Higher prices in May for hay & forages, gasoline, mixed fertilizers, and nitrogen fertilizers more than offset lower prices for feed supplements, complete feeds, diesel fuel, and feeder cattle.

Index Summary Table

| Index<br>1990-92=100 | 2006 |     | 2007 |     |
|----------------------|------|-----|------|-----|
|                      | Apr  | May | Apr  | May |
| Prices Received      | 111  | 111 | 134  | 138 |
| Prices Paid          | 148  | 149 | 157  | 158 |
| Ratio <sup>1</sup>   | 75   | 74  | 85   | 87  |

<sup>1</sup> Ratio of index of prices received by farmers to index of prices paid by farmers.

## Prices Received by Farmers

The May All Farm Products Index is 138 percent of its 1990-92 base, up 3.0 percent from the April index and 24 percent above the May 2006 index.

**ALL CROPS:** The May index is 144, up 2.1 percent from April and 20 percent above May 2006. Index increases for fruits & nuts, feed grains & hay, oil-bearing crops, and potatoes & dry beans more than offset the index decreases for commercial vegetables, cotton, and food grains.

**Food Grains:** The May index, at 155, is 1.9 percent below the previous month but 17 percent above a year ago. The May all wheat price, at \$4.70 per bushel, is down 19 cents from April but 61 cents above May 2006.

**Feed Grains & Hay:** The May index is 158, up 4.6 percent from last month and 48 percent above a year ago. The corn price, at \$3.48 per bushel, is up 9 cents from last month and \$1.31 above May 2006. The all hay price, at \$138 per ton, is up \$14.00 from April and \$25.00 from last May. Sorghum grain, at \$5.78 per cwt, is 18 cents below April but \$1.77 above May last year.

**Oil-Bearing Crops:** The May index, at 128, is up 4.1 percent from April and 25 percent higher than May 2006. The soybean price, at \$7.15 per bushel, increased 27 cents from April and is \$1.47 above May 2006.

**Cotton:** The May index, at 75, is down 3.8 percent from April and 2.6 percent below last year. The May price, at 45.2 cents per pound, is down 2.1 cents from the previous month and 1.2 cents below last May.

**Potatoes & Dry Beans:** The May index, at 148, is up 2.8 percent from last month and 13 percent above May 2006. The all potato price, at \$8.69 per cwt, is up 16 cents from April and 86 cents higher than last May. The all dry bean price, at \$25.90 per cwt, is up \$1.30 from the previous month and \$6.60 above May 2006.

**Fruits & Nuts:** The May index, at 155, is up 4.7 percent from April and 9.9 percent higher than a year ago. Price increases for grapefruit and oranges more than offset price decreases for strawberries and lemons.

**Commercial Vegetables:** The May index, at 157, is down 5.4 percent from last month but 29 percent above May 2006. Price decreases during May for lettuce, broccoli, cauliflower, and tomatoes more than offset higher prices for cucumbers and carrots.

**LIVESTOCK & PRODUCTS:** The May index, at 134, is 3.9 percent above last month and up 29 percent from May 2006. Compared with a year ago, prices are higher for milk, broilers, cattle, eggs, hogs, and turkeys. The price for calves is down from last year.

**Meat Animals:** The May index, at 124, is up 0.8 percent from last month and 11 percent higher than last year. The May hog price, at \$52.00 per cwt, is up \$4.70 from April and \$3.80 higher than a year ago. The May beef cattle price of \$93.50 per cwt is down 80 cents from last month but \$11.30 higher than May 2006.

**Dairy Products:** The May index, at 136, is up 7.1 percent from a month ago and 49 percent higher than May last year. The May all milk price of \$17.80 per cwt is up \$1.20 from last month and \$5.90 from May 2006. The fluid grade milk price is up \$1.20 and the manufacturing grade milk price is up \$1.30 from the previous month.

**Poultry & Eggs:** The May index, at 150, is up 2.7 percent from April and 46 percent above a year ago. The May market egg price, at 61.5 cents per dozen, increased 5.7 cents from April and is 39.3 cents higher than May 2006. The May broiler price, at 51.0 cents per pound, is up 1.0 cent from April and 16.0 cents above a year ago. The May turkey price, at 48.3 cents per pound, is up 1.5 cents from the previous month and 5.0 cents from a year earlier.

## Table of Contents

| <b>U.S. Prices Received and Indexes</b>  | <b>Page</b> | <b>Monthly State Prices, continued</b> | <b>Page</b> |
|--|-------------|--|-------------|
| Narrative .....                          | 2           | Cotton, Upland .....                   | 17          |
| Price Indexes .....                      | 5           | Cottonseed .....                       | 17          |
| Price Index Charts .....                 | 6           | Eggs .....                             | 22          |
| U.S. Prices Received Summary .....       | 8           | Flaxseed .....                         | 16          |
| Charts .....                             | 10          | Grain Sorghum .....                    | 15          |
| Selected Commodities .....               | 14          | Hay .....                              | 17          |
| Upland Cotton & Rice Marketings .....    | 17          | Hogs, All .....                        | 21          |
| Parity Prices .....                      | 24          | Barrows and Gilts .....                | 21          |
| Reliability Statement .....              | 26          | Sows .....                             | 21          |
| <br><b>Monthly State Prices Received</b> |             | Milk .....                             | 23          |
| Apples .....                             | 17          | Milk Cows .....                        | 23          |
| Barley .....                             | 15          | Oats .....                             | 15          |
| Beans, Dry Edible .....                  | 16          | Peanuts .....                          | 16          |
| Beef Cattle, All .....                   | 20          | Potatoes .....                         | 19          |
| Calves .....                             | 20          | Sheep .....                            | 22          |
| Cows, Beef .....                         | 20          | Lambs .....                            | 22          |
| Steers and Heifers .....                 | 20          | Soybeans .....                         | 15          |
| Citrus Fruit .....                       | 18          | Sunflower, All .....                   | 16          |
| Corn .....                               | 15          | Wheat, All Classes .....               | 14          |

**Table of Contents (continued)**

| <b>U.S. Prices Paid, Prices Paid Indexes and Ratios</b> | <b>Page</b> |
|---|-------------|
| Narrative .....   | 27          |
| Indexes and Parity Ratios .....                         | 28          |
| Charts .....  | 30          |
| Feed Price Ratios .....                                 | 33          |
| Reliability Statement .....                             | 35          |
| <br><b>U.S. Average Prices</b>                          |             |
| Prices Used to Calculate Feed Price Ratios .....        | 33          |
| Feeder Livestock .....                                  | 33          |
| <br><b>Special Features</b>                             |             |
| Feed Price Ratios, January 2003 - May 2007 .....        | 34          |
| <br><b>Information Contacts</b> .....                   | 36          |

**Index Numbers of Prices Received, United States,  
May 2007, with Comparisons <sup>1</sup>**

| Index                 | 1910-14=100        |       |        |       | 1990-92=100 |      |     |
|-----------------------|--------------------|-------|--------|-------|-------------|------|-----|
|                       | Average<br>1990-92 | 2006  | 2007   |       | 2006        | 2007 |     |
|                       |                    | May   | Apr    | May   | May         | Apr  | May |
| All Farm Products     | 639                | 707   | *853   | 878   | 111         | *134 | 138 |
| All Crops             | 500                | 589   | *694   | 708   | 120         | *141 | 144 |
| Food Grains           | 325                | 423   | *502   | 492   | 133         | *158 | 155 |
| Feed Grains & Hay     | 363                | 384   | *539   | 565   | 107         | *151 | 158 |
| Cotton                | 517                | 396   | *400   | 382   | 77          | *78  | 75  |
| Tobacco <sup>2</sup>  | 1,263              | 1,363 | 1,392  | 1,392 | 90          | 92   | 92  |
| Oil-Bearing Crops     | 554                | 556   | *675   | 701   | 102         | *123 | 128 |
| Fruits & Nuts         | 716                | 986   | *1,034 | 1,080 | 141         | 148  | 155 |
| Commercial Vegetables | 698                | 813   | *1,110 | 1,048 | 122         | *166 | 157 |
| Potatoes & Dry Beans  | 540                | 662   | *731   | 748   | 131         | *144 | 148 |
| Other Crops           | 493                | 586   | 598    | 598   | 119         | 121  | 121 |
| Livestock & Products  | 768                | 801   | *992   | 1,026 | 104         | 129  | 134 |
| Meat Animals          | 1,021              | 1,135 | *1,250 | 1,263 | 112         | 123  | 124 |
| Dairy Products        | 799                | 731   | *1,020 | 1,094 | 91          | *127 | 136 |
| Poultry & Eggs        | 282                | 289   | 410    | 423   | 103         | 146  | 150 |
| Food Commodities      |                    |       |        |       | 111         | *135 | 139 |

\* Revised.

<sup>1</sup> Revised historic price indexes for months not shown are available at [www.nass.usda.gov](http://www.nass.usda.gov).

<sup>2</sup> Monthly prices discontinued July 2005.

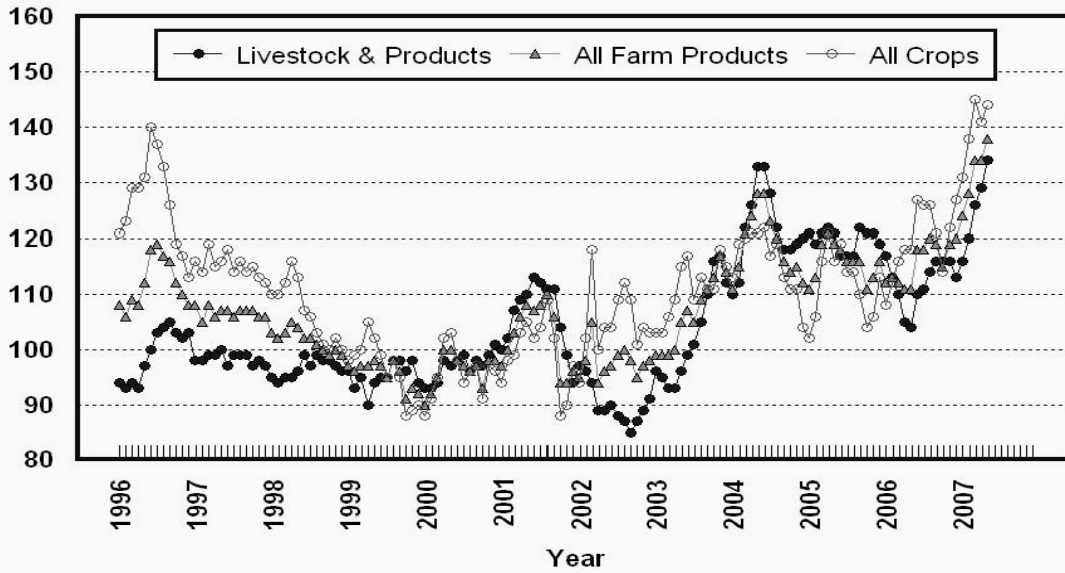
**Selected Index Numbers for Prices Received and Paid,  
1990-92=100, by Month, United States, 2006 and 2007 <sup>1</sup>**

| Month | Index of Prices Received |      |           |      |                        |      | Index of Prices Paid |      |                  |      |
|-------|--------------------------|------|-----------|------|------------------------|------|----------------------|------|------------------|------|
|       | All Farm Products        |      | All Crops |      | Livestock and Products |      | All Items            |      | Production Items |      |
|       | 2006                     | 2007 | 2006      | 2007 | 2006                   | 2007 | 2006                 | 2007 | 2006             | 2007 |
| Jan   | 113                      | 124  | 109       | 131  | 117                    | 116  | 148                  | 151  | 145              | 148  |
| Feb   | 113                      | 128  | 113       | 138  | 113                    | 120  | 147                  | 153  | 144              | 150  |
| Mar   | 113                      | 134  | 117       | 145  | 110                    | 126  | 147                  | 156  | 144              | 153  |
| Apr   | 111                      | 134  | 119       | 141  | 105                    | 129  | 148                  | 157  | 145              | 156  |
| May   | 111                      | 138  | 120       | 144  | 104                    | 134  | 149                  | 158  | 146              | 156  |
| Jun   | 118                      |      | 127       |      | 110                    |      | 149                  |      | 147              |      |
| Jul   | 118                      |      | 127       |      | 111                    |      | 149                  |      | 147              |      |
| Aug   | 120                      |      | 125       |      | 114                    |      | 149                  |      | 147              |      |
| Sep   | 119                      |      | 121       |      | 116                    |      | 149                  |      | 146              |      |
| Oct   | 116                      |      | 115       |      | 116                    |      | 148                  |      | 145              |      |
| Nov   | 119                      |      | 122       |      | 116                    |      | 148                  |      | 145              |      |
| Dec   | 120                      |      | 127       |      | 113                    |      | 149                  |      | 147              |      |

<sup>1</sup> Revised historic price indexes for months not shown are available at [www.nass.usda.gov](http://www.nass.usda.gov).

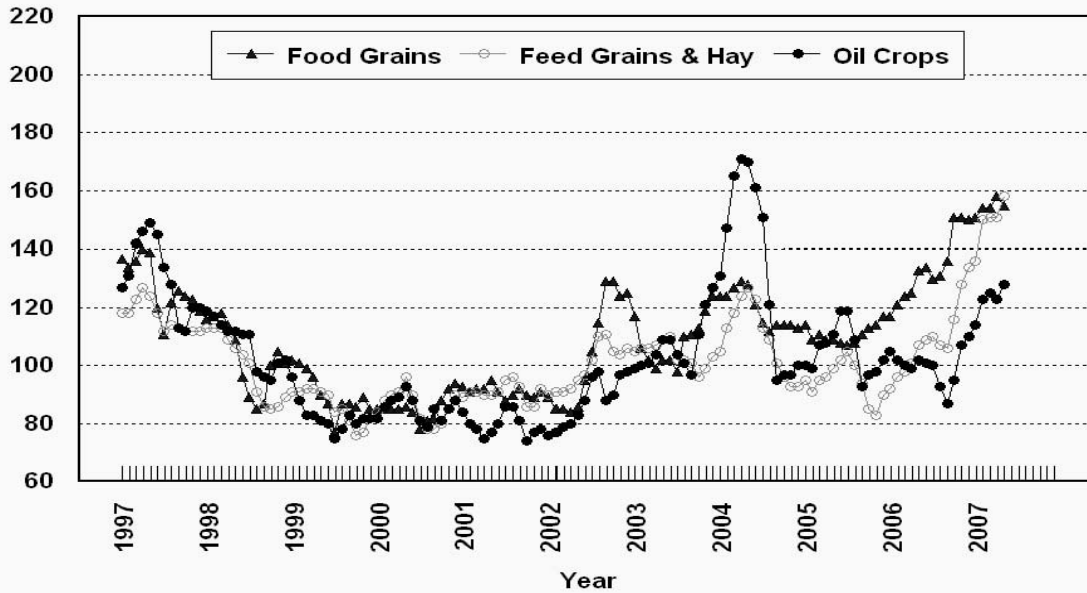
## Prices Received, Major Indexes, US

Percent (1990-92=100)



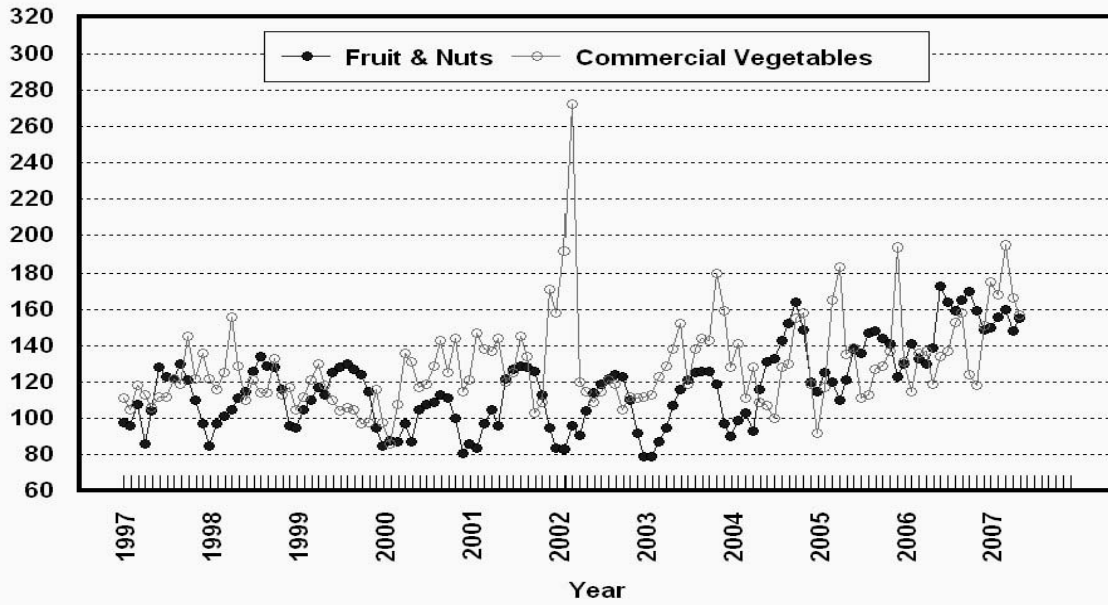
## Prices Received, Food, Feed, & Oil Indexes, US

Percent (1990-92=100)



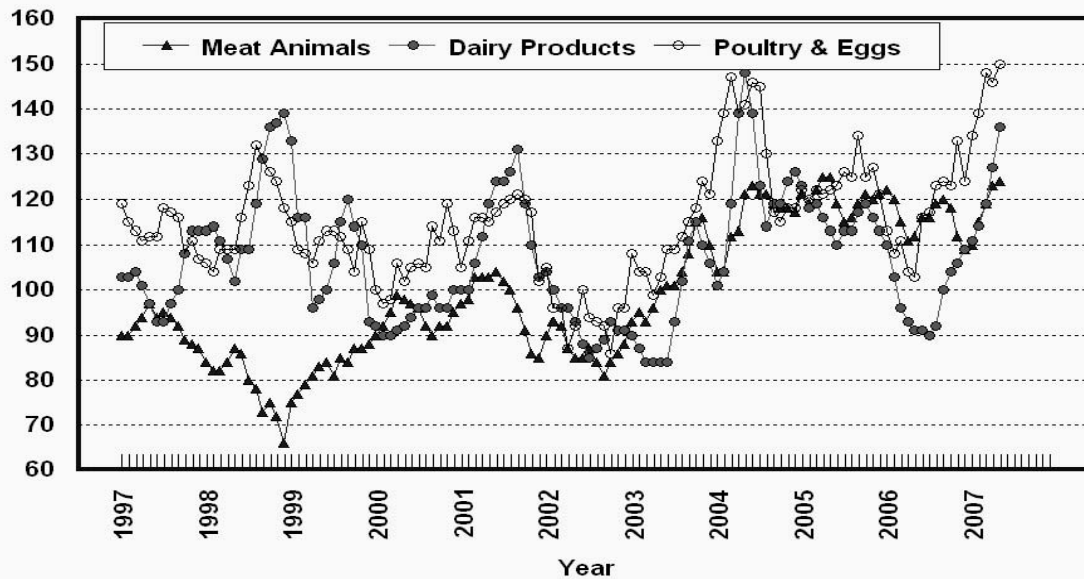
## Prices Received, Fruit/Vegetable Indexes, US

Percent (1990-92=100)



## Prices Received, Livestock Product Indexes, US

Percent (1990-92=100)



**Prices Received, United States,  
May 2007, with Comparisons**

| Commodity                    | Unit | Average<br>1990-92 | Entire Month     |                  | Preliminary      |
|------------------------------|------|--------------------|------------------|------------------|------------------|
|                              |      |                    | May<br>2006      | Apr<br>2007      | May<br>2007      |
|                              |      | <i>Dollars</i>     | <i>Dollars</i>   | <i>Dollars</i>   | <i>Dollars</i>   |
| <b>Field Crops</b>           |      |                    |                  |                  |                  |
| Barley, All                  | Bu   | 2.12               | 2.97             | 3.07             | 3.33             |
| Feed                         | Bu   | 1.90               | 2.45             | 3.20             | 3.47             |
| Malting                      | Bu   | 2.43               | 3.11             | 3.02             | 3.29             |
| Beans, Dry Edible            | Cwt  | 19.10              | 19.30            | 24.60            | 25.90            |
| Chickpeas, All               | Cwt  |                    | 15.90            | 30.00            | 27.00            |
| Large                        | Cwt  |                    | ( <sup>4</sup> ) | 30.10            | 29.00            |
| Small                        | Cwt  |                    | 14.50            | ( <sup>4</sup> ) | ( <sup>4</sup> ) |
| Corn                         | Bu   | 2.30               | 2.17             | 3.39             | 3.48             |
| Cotton, Upland               | Lb   | 0.606              | 0.464            | 0.473            | 0.452            |
| Cottonseed <sup>3</sup>      | Ton  | 96.00              |                  |                  |                  |
| Flaxseed                     | Bu   | 4.27               | 5.59             | 6.73             | 6.85             |
| Hay, All, Baled <sup>1</sup> | Ton  | 76.30              | 113.00           | 124.00           | 138.00           |
| Alfalfa <sup>1</sup>         | Ton  | 77.20              | 117.00           | 128.00           | 144.00           |
| Other <sup>1</sup>           | Ton  | 60.00              | 95.80            | 113.00           | 116.00           |
| Lentils                      | Cwt  |                    | 9.68             | 13.30            | 14.60            |
| Oats                         | Bu   | 1.22               | 1.85             | 2.46             | 2.36             |
| Peanuts, In-Shell            | Lb   | 0.304              | 0.173            | 0.183            | 0.179            |
| Peas, Dry Edible             | Cwt  |                    | 5.25             | 9.64             | 10.60            |
| Austrian Winter              | Cwt  |                    | ( <sup>5</sup> ) | ( <sup>4</sup> ) | ( <sup>4</sup> ) |
| Potatoes                     | Cwt  | 5.82               | 7.83             | 8.53             | 8.69             |
| Rice, Rough                  | Cwt  | 7.07               | 8.03             | 9.94             | 10.00            |
| Sorghum Grain                | Cwt  | 3.75               | 4.01             | 5.96             | 5.78             |
| Soybeans                     | Bu   | 5.61               | 5.68             | 6.88             | 7.15             |
| Sunflower, All               | Cwt  | 9.50               | 11.80            | 15.90            | 16.40            |
| Wheat, All                   | Bu   | 2.96               | 4.09             | 4.89             | 4.70             |
| Winter                       | Bu   | 2.93               | 4.06             | 4.87             | 4.58             |
| Durum                        | Bu   | 2.86               | 3.94             | 5.45             | 5.28             |
| Other Spring                 | Bu   | 3.11               | 4.18             | 4.86             | 4.91             |
| Hard Red Winter              | Bu   |                    | 4.40             | 4.83             |                  |
| Soft Red Winter              | Bu   |                    | 3.56             | 4.02             |                  |
| Hard Red Spring              | Bu   |                    | 4.28             | 4.84             |                  |
| White                        | Bu   | 3.24               | 3.23             | 5.31             |                  |
| <b>Fruit</b>                 |      |                    |                  |                  |                  |
| Citrus, Equiv on-tree        |      |                    |                  |                  |                  |
| Grapefruit                   | Box  | 5.77               | 11.41            | 2.87             | 4.85             |
| Lemons                       | Box  | 10.10              | 15.09            | 27.07            | 25.94            |
| Oranges                      | Box  | 5.79               | 7.13             | 10.21            | 10.58            |
| Tangelos <sup>5</sup>        | Box  | 5.82               |                  |                  |                  |
| Tangerines                   | Box  | 15.11              | 5.88             | 13.27            | 16.50            |
| Noncitrus, Fresh             |      |                    |                  |                  |                  |
| Apples <sup>2</sup>          | Lb   | 0.212              | 0.189            | 0.284            | 0.295            |
| Grapes <sup>2,5</sup>        | Ton  | 506.00             |                  |                  |                  |
| Peaches <sup>2</sup>         | Ton  | 432.00             | ( <sup>5</sup> ) | ( <sup>5</sup> ) | 820.00           |
| Pears <sup>2</sup>           | Ton  | 370.00             | 419.00           | 615.00           | 677.00           |
| Strawberries                 | Cwt  | 56.00              | 61.80            | 64.60            | 61.20            |

<sup>1</sup> Mid-month price.

<sup>2</sup> Equivalent packinghouse-door returns for CA, MI, and NY (apples only), and WA (apples, peaches, and pears). Prices as sold for other states.

<sup>3</sup> Marketing year August - February.

<sup>4</sup> Price not published to avoid disclosure of individual firms.

<sup>5</sup> Insufficient sales to establish a price.



**Prices Received, United States,  
May 2007, with Comparisons**

| Commodity   | Unit | Average<br>1990-92 | Entire Month   |                | Preliminary    |
|---|------|--------------------|----------------|----------------|----------------|
|   |      |                    | May<br>2006    | Apr<br>2007    | May<br>2007    |
|   |      | <i>Dollars</i>     | <i>Dollars</i> | <i>Dollars</i> | <i>Dollars</i> |
| <b>Vegetables, Fresh <sup>1</sup></b>                   |      |                    |                |                |                |
| Asparagus   | Cwt  | 79.80              | 74.70          | 114.00         | 121.00         |
| Broccoli  | Cwt  | 22.50              | 29.00          | 36.80          | 28.50          |
| Cantaloupes <sup>2</sup>                                | Cwt  |                    | 29.10          |                |                |
| Carrots   | Cwt  | 13.20              | 20.80          | 29.60          | 33.00          |
| Cauliflower   | Cwt  | 26.80              | 29.00          | 51.20          | 24.40          |
| Celery  | Cwt  | 11.60              | 12.70          | 18.80          | 21.80          |
| Corn, Sweet   | Cwt  | 15.70              | 15.40          | 24.80          | 22.20          |
| Cucumbers <sup>2</sup>                                  | Cwt  |                    | 21.30          | 17.60          | 26.40          |
| Lettuce   | Cwt  | 11.90              | 33.70          | 17.80          | 13.90          |
| Onions  | Cwt  | 12.80              | 15.60          | 57.20          | 22.60          |
| Snap Beans <sup>2</sup>                                 | Cwt  |                    | 34.80          | 58.10          | 41.80          |
| Tomatoes  | Cwt  | 32.30              | 23.30          | 54.90          | 49.80          |
| <b>Livestock</b>  |      |                    |                |                |                |
| Calves  | Cwt  | 94.30              | 134.00         | 127.00         | 126.00         |
| Cattle, All Beef  | Cwt  | 72.90              | 82.20          | 94.30          | 93.50          |
| Cows <sup>3</sup>                                       | Cwt  | 49.60              | 47.40          | 49.20          | 51.60          |
| Steers & Heifers  | Cwt  | 77.10              | 86.30          | 99.90          | 98.60          |
| Milk Cows <sup>4</sup>                                  | Head | 1,130.00           |                |                |                |
| Hogs, All   | Cwt  | 47.70              | 48.20          | 47.30          | 52.00          |
| Barrows & Gilts   | Cwt  | 48.40              | 48.90          | 48.10          | 52.80          |
| Sows  | Cwt  | 39.50              | 30.10          | 27.90          | 32.60          |
| Lambs   | Cwt  | 56.20              | 88.90          | 97.20          |                |
| Sheep   | Cwt  | 23.40              | 32.50          | 33.80          |                |
| <b>Dairy and Poultry</b>                                |      |                    |                |                |                |
| Milk, All <sup>5 6</sup>                                | Cwt  | 13.06              | 11.90          | 16.60          | 17.80          |
| Fluid Grade <sup>6</sup>                                | Cwt  | 13.10              | 11.90          | 16.60          | 17.80          |
| Mfg Grade <sup>6</sup>                                  | Cwt  | 11.80              | 11.30          | 15.90          | 17.20          |
| Broilers, Live <sup>7</sup>                             | Lb   | 0.317              | 0.350          | 0.500          | 0.510          |
| Eggs, All <sup>8</sup>                                  | Doz  | 0.643              | 0.427          | 0.723          | 0.773          |
| Market <sup>8</sup>                                     | Doz  | 0.546              | 0.222          | 0.558          | 0.615          |
| Turkeys, live <sup>7 8</sup>                            | Lb   | 0.380              | 0.433          | 0.468          | 0.483          |
| <b>Adjusted for Seasonal<br/>Variation <sup>9</sup></b> |      |                    |                |                |                |
| Eggs, All   | Doz  | 0.545              | 0.499          | 0.768          | 0.903          |
| Milk, All <sup>5</sup>                                  | Cwt  | 9.71               | 12.10          | 16.90          | 18.10          |

<sup>1</sup> Beginning January 2006, point of first sale. F.O.B. shipping point for prior years.

<sup>2</sup> Monthly estimates began January 1995.

<sup>3</sup> Beef cows and cull dairy cows sold for slaughter.

<sup>4</sup> Animals sold for dairy herd replacement only. Prices available for Jan, Apr, Jul, and Oct.

<sup>5</sup> Before deductions for hauling. Includes quality, quantity, and other premiums. Excludes hauling subsidies.

<sup>6</sup> May 2007 Fat test percent: all milk, 3.62; fluid milk, 3.62; mfg grade, 3.89.

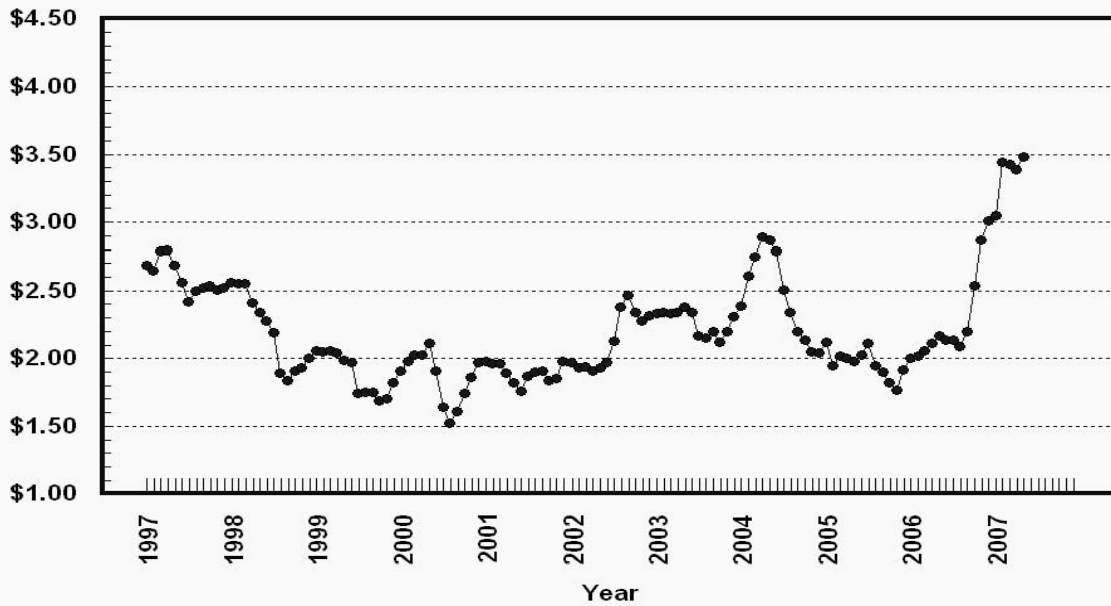
<sup>7</sup> Equivalent live weight returns to producers.

<sup>8</sup> Mid-month price.

<sup>9</sup> Seasonal adjustment factors are: All Eggs May 2006, 86; April 2007, 94; and May 2007, 86. All Milk May 2006, 98; April 2007, 98; and May 2007, 98.

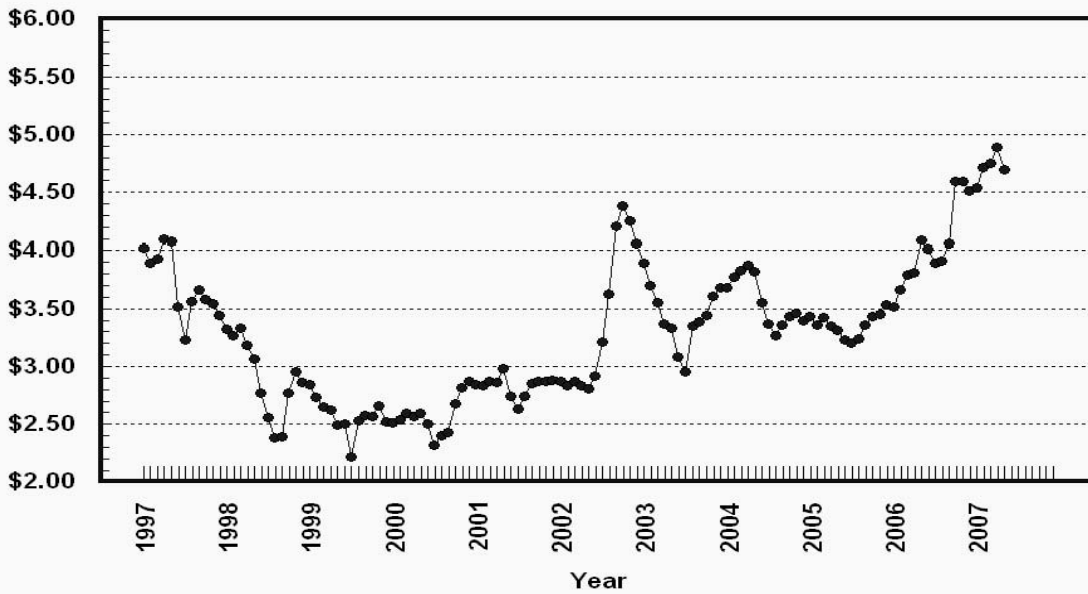
### Prices Received, Corn, US

Dollars per Bu



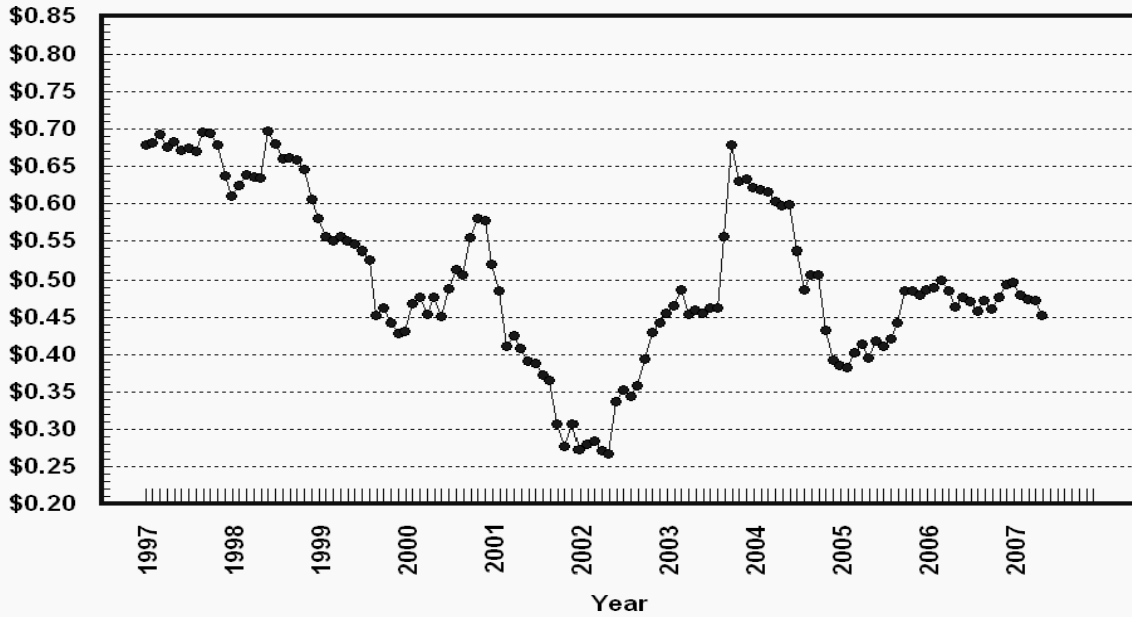
### Prices Received, Wheat, US

Dollars per Bu



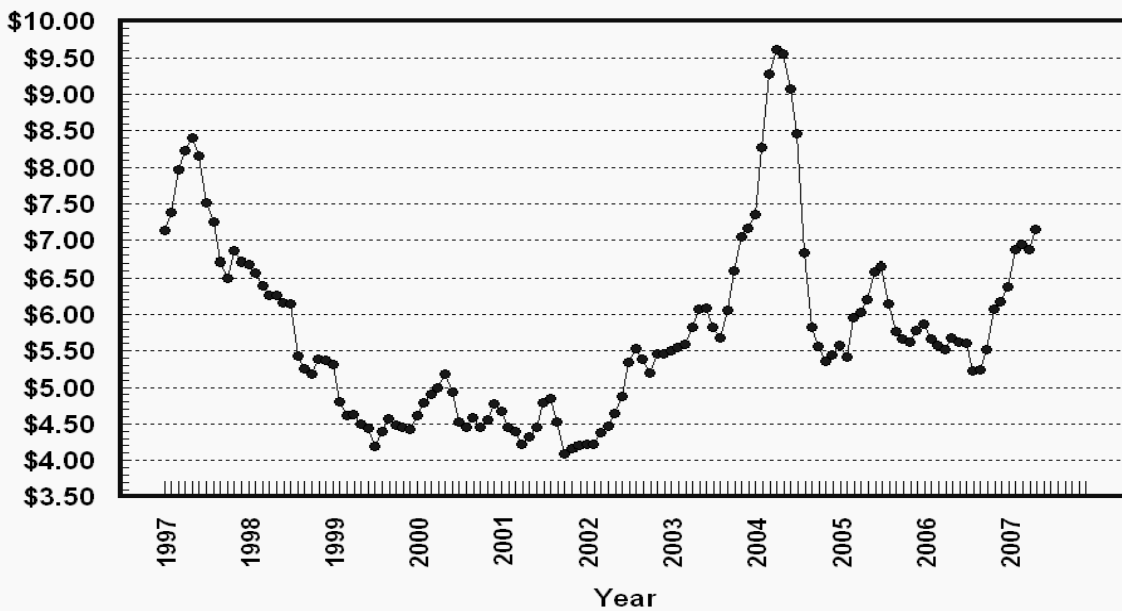
## Prices Received, Cotton, US

Dollars per Lb



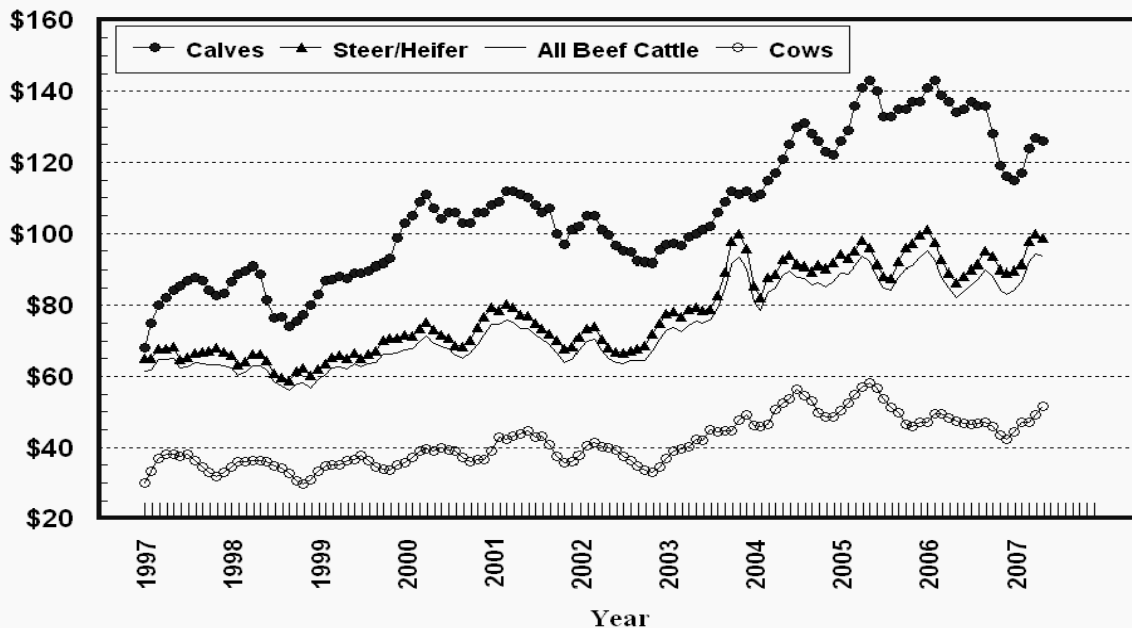
## Prices Received, Soybeans, US

Dollars per Bu



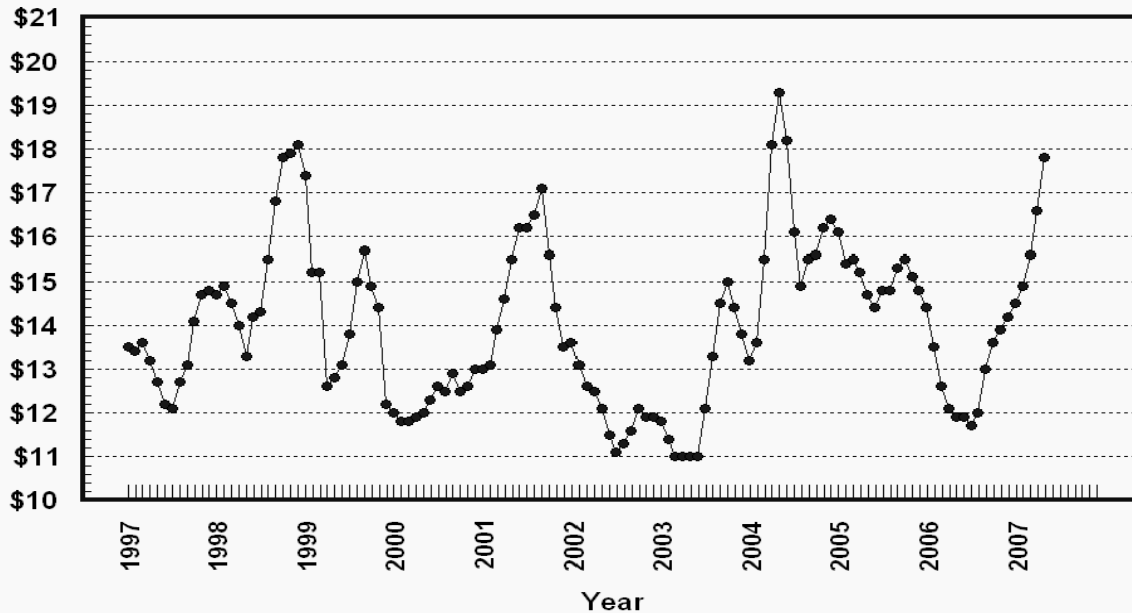
### Prices Received, Cattle, US

Dollars per Cwt



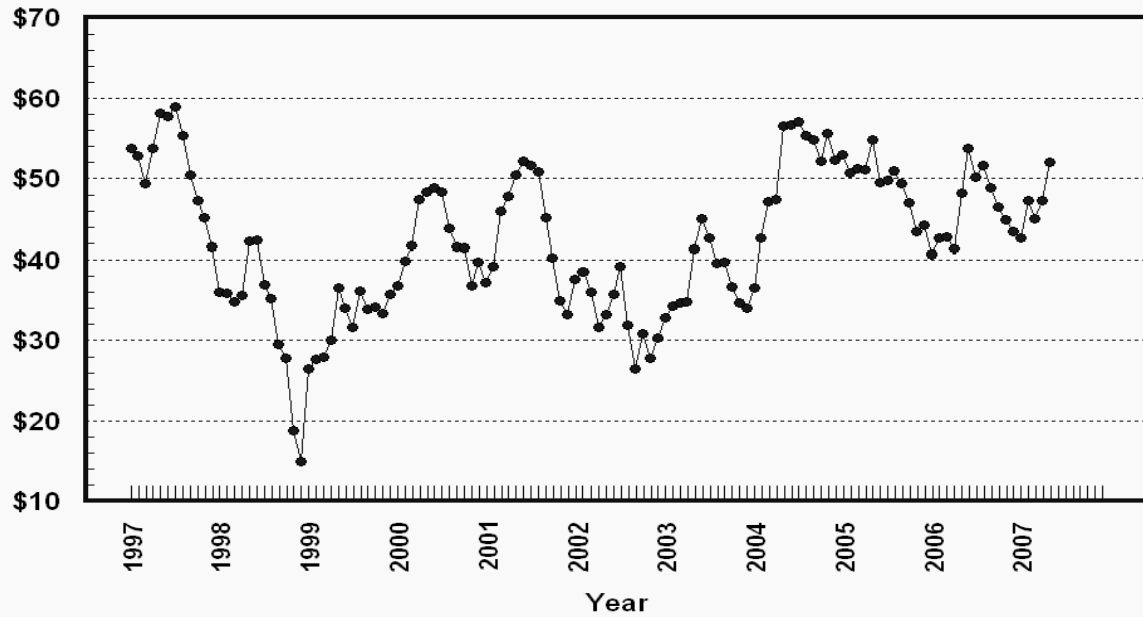
### Prices Received, Milk, US

Dollars per Cwt



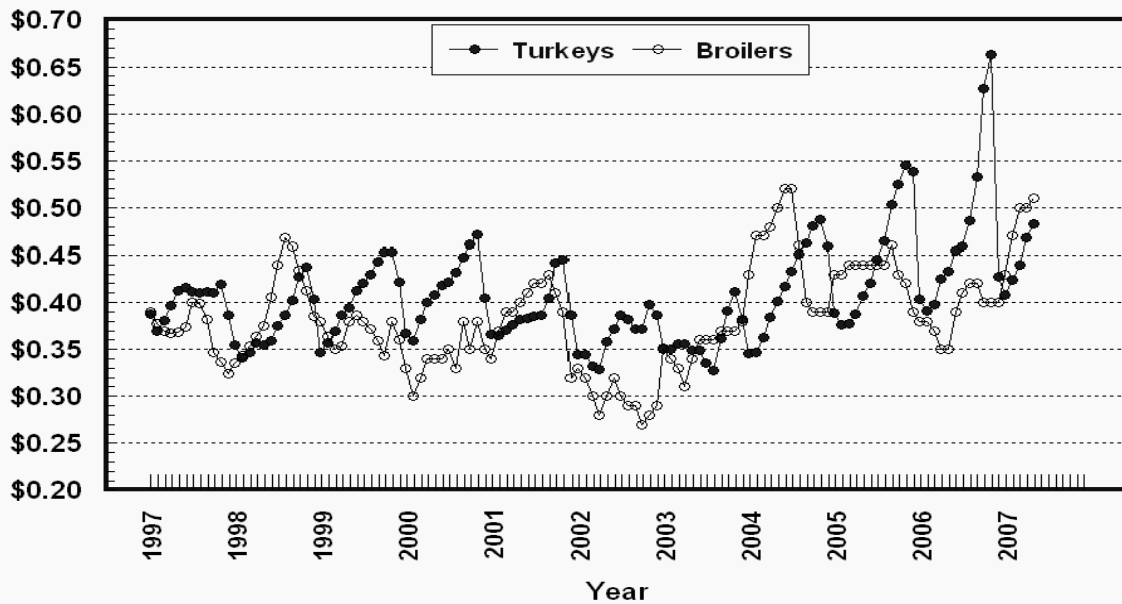
## Prices Received, Hogs, US

Dollars per Cwt



## Prices Received, Turkeys & Broilers, US

Dollars per Lb



**Wheat: Prices Received, by State, April and May 2007**

| State | All Wheat                 |                           | Winter Wheat              |                           | Durum Wheat               |                           | Oth Spring Wheat          |                           |
|-------|---------------------------|---------------------------|---------------------------|---------------------------|---------------------------|---------------------------|---------------------------|---------------------------|
|       | Apr <sup>1</sup>          | May <sup>2</sup>          | Apr <sup>1</sup>          | May <sup>2</sup>          | Apr <sup>1</sup>          | May <sup>2</sup>          | Apr <sup>1</sup>          | May <sup>2</sup>          |
|       | <i>Dollars per Bushel</i> | <i>Dollars per Bushel</i> | <i>Dollars per Bushel</i> | <i>Dollars per Bushel</i> | <i>Dollars per Bushel</i> | <i>Dollars per Bushel</i> | <i>Dollars per Bushel</i> | <i>Dollars per Bushel</i> |
| AR    | ( <sup>3</sup> )          | ( <sup>3</sup> )          | ( <sup>3</sup> )          | ( <sup>3</sup> )          |                           |                           |                           |                           |
| CA    | 4.32                      | ( <sup>3</sup> )          | 4.30                      | ( <sup>3</sup> )          | ( <sup>3</sup> )          | ( <sup>4</sup> )          |                           |                           |
| CO    | 4.63                      | 4.55                      | 4.63                      | 4.55                      |                           |                           | ( <sup>4</sup> )          | ( <sup>4</sup> )          |
| ID    | 5.06                      | 4.94                      | 5.06                      | 5.00                      | ( <sup>4</sup> )          | ( <sup>4</sup> )          | 5.05                      | 4.88                      |
| IL    | 4.16                      | 4.30                      | 4.16                      | 4.30                      |                           |                           |                           |                           |
| IN    | 4.07                      | 4.53                      | 4.07                      | 4.53                      |                           |                           |                           |                           |
| KS    | 4.93                      | 4.65                      | 4.93                      | 4.65                      |                           |                           |                           |                           |
| MI    | 3.94                      | 4.10                      | 3.94                      | 4.10                      |                           |                           |                           |                           |
| MN    | 4.89                      | 4.85                      | ( <sup>3</sup> )          | 4.55                      |                           |                           | 4.89                      | 4.85                      |
| MO    | 4.06                      | 4.20                      | 4.06                      | 4.20                      |                           |                           |                           |                           |
| MT    | 4.87                      | 4.86                      | 4.79                      | 4.67                      | 5.57                      | 5.25                      | 4.82                      | 4.97                      |
| NE    | 4.75                      | 4.70                      | 4.75                      | 4.70                      |                           |                           |                           |                           |
| ND    | 4.85                      | 4.89                      | 4.40                      | 4.55                      | 5.40                      | 5.30                      | 4.79                      | 4.80                      |
| OH    | 4.10                      | 4.39                      | 4.10                      | 4.39                      |                           |                           |                           |                           |
| OK    | 4.77                      | 4.49                      | 4.77                      | 4.49                      |                           |                           |                           |                           |
| OR    | 5.41                      | 5.34                      | 5.37                      | 5.30                      |                           |                           | 5.56                      | 5.60                      |
| SD    | 4.74                      | 4.69                      | 4.71                      | 4.51                      |                           |                           | 4.77                      | 4.86                      |
| TX    | 4.74                      | 4.36                      | 4.74                      | 4.36                      |                           |                           |                           |                           |
| WA    | 5.46                      | 5.26                      | 5.43                      | 5.22                      |                           |                           | 5.54                      | 5.37                      |
| US    | 4.89                      | 4.70                      | 4.87                      | 4.58                      | 5.45                      | 5.28                      | 4.86                      | 4.91                      |

<sup>1</sup> Entire month.

<sup>2</sup> Mid-month.

<sup>3</sup> Price not published to avoid disclosure of individual firms.

<sup>4</sup> Insufficient sales to establish a price.

**Prices Received for Selected Agricultural Commodities, by Month,  
United States, 2006 and 2007 <sup>1</sup>**

| Month | All Wheat                 |                           | Corn                      |                           | Soybeans                  |                           | Beef Cattle <sup>2</sup> |                        | All Hogs               |                        |
|-------|---------------------------|---------------------------|---------------------------|---------------------------|---------------------------|---------------------------|--------------------------|------------------------|------------------------|------------------------|
|       | 2006                      | 2007                      | 2006                      | 2007                      | 2006                      | 2007                      | 2006                     | 2007                   | 2006                   | 2007                   |
|       | <i>Dollars per Bushel</i> | <i>Dollars per Bushel</i> | <i>Dollars per Bushel</i> | <i>Dollars per Bushel</i> | <i>Dollars per Bushel</i> | <i>Dollars per Bushel</i> | <i>Dollars per Cwt</i>   | <i>Dollars per Cwt</i> | <i>Dollars per Cwt</i> | <i>Dollars per Cwt</i> |
| Jan   | 3.52                      | 4.54                      | 2.00                      | 3.05                      | 5.87                      | 6.38                      | 95.00                    | 84.30                  | 40.70                  | 42.70                  |
| Feb   | 3.66                      | 4.71                      | 2.02                      | 3.44                      | 5.67                      | 6.87                      | 92.40                    | 86.60                  | 42.60                  | 47.30                  |
| Mar   | 3.79                      | 4.75                      | 2.06                      | 3.43                      | 5.57                      | 6.95                      | 87.90                    | 92.00                  | 42.80                  | 45.00                  |
| Apr   | 3.81                      | 4.89                      | 2.11                      | 3.39                      | 5.52                      | 6.88                      | 84.80                    | 94.30                  | 41.30                  | 47.30                  |
| May   | 4.09                      | 4.70                      | 2.17                      | 3.48                      | 5.68                      | 7.15                      | 82.20                    | 93.50                  | 48.20                  | 52.00                  |
| Jun   | 4.01                      |                           | 2.14                      |                           | 5.62                      |                           | 84.00                    |                        | 53.80                  |                        |
| Jul   | 3.89                      |                           | 2.14                      |                           | 5.61                      |                           | 85.80                    |                        | 50.20                  |                        |
| Aug   | 3.91                      |                           | 2.09                      |                           | 5.23                      |                           | 87.20                    |                        | 51.60                  |                        |
| Sep   | 4.06                      |                           | 2.20                      |                           | 5.24                      |                           | 90.00                    |                        | 48.90                  |                        |
| Oct   | 4.59                      |                           | 2.54                      |                           | 5.52                      |                           | 88.20                    |                        | 46.50                  |                        |
| Nov   | 4.59                      |                           | 2.87                      |                           | 6.07                      |                           | 84.40                    |                        | 44.90                  |                        |
| Dec   | 4.51                      |                           | 3.01                      |                           | 6.18                      |                           | 83.10                    |                        | 43.50                  |                        |

<sup>1</sup> Current month prices are mid-month; prices for previous months are for the entire month.

<sup>2</sup> Cows, steers and heifers.

**Grains: Prices Received, by State, April and May 2007**

| State | All Barley <sup>1</sup>   |                           | Corn                      |                           | Oats                      |                           | Soybeans                  |                           | Sorghum Grain          |                        |
|-------|---------------------------|---------------------------|---------------------------|---------------------------|---------------------------|---------------------------|---------------------------|---------------------------|------------------------|------------------------|
|       | Apr <sup>2</sup>          | May <sup>3</sup>          | Apr <sup>2</sup>          | May <sup>3</sup>          | Apr <sup>2</sup>          | May <sup>3</sup>          | Apr <sup>2</sup>          | May <sup>3</sup>          | Apr <sup>2</sup>       | May <sup>3</sup>       |
|       | <i>Dollars per Bushel</i> | <i>Dollars per Bushel</i> | <i>Dollars per Bushel</i> | <i>Dollars per Bushel</i> | <i>Dollars per Bushel</i> | <i>Dollars per Bushel</i> | <i>Dollars per Bushel</i> | <i>Dollars per Bushel</i> | <i>Dollars per Cwt</i> | <i>Dollars per Cwt</i> |
| AL    |                           |                           |                           |                           |                           |                           | 7.08                      | 7.25                      | ( <sup>5</sup> )       | ( <sup>5</sup> )       |
| AR    |                           |                           |                           |                           |                           |                           |                           |                           |                        |                        |
| CA    | ( <sup>5</sup> )          | ( <sup>5</sup> )          |                           |                           | ( <sup>5</sup> )          | ( <sup>5</sup> )          |                           |                           |                        |                        |
| CO    | ( <sup>4</sup> )          | ( <sup>4</sup> )          | 3.15                      | 3.30                      |                           |                           |                           |                           |                        |                        |
| ID    | 3.25                      | 3.32                      |                           |                           |                           |                           |                           |                           |                        |                        |
| IL    |                           |                           | 3.48                      | 3.60                      | ( <sup>4</sup> )          | ( <sup>4</sup> )          | 7.00                      | 7.30                      | ( <sup>4</sup> )       | ( <sup>4</sup> )       |
| IN    |                           |                           | 3.57                      | 3.55                      |                           |                           | 7.13                      | 7.44                      |                        |                        |
| IA    |                           |                           | 3.40                      | 3.45                      | 2.88                      | 2.75                      | 6.85                      | 7.00                      |                        |                        |
| KS    |                           |                           | 3.58                      | 3.55                      | 2.94                      | 2.60                      | 6.86                      | 6.99                      | 5.95                   | 5.68                   |
| KY    |                           |                           | 3.58                      | 3.70                      |                           |                           | 7.11                      | 7.50                      |                        |                        |
| LA    |                           |                           |                           |                           |                           |                           | 7.12                      | 7.39                      |                        |                        |
| MI    |                           |                           | 3.35                      | 3.40                      | 2.49                      | 2.25                      | 6.77                      | 7.00                      |                        |                        |
| MN    | 2.85                      | 2.96                      | 3.14                      | 3.14                      | 2.56                      | 2.40                      | 6.76                      | 7.05                      |                        |                        |
| MS    |                           |                           |                           |                           |                           |                           | 7.08                      | 7.27                      |                        |                        |
| MO    |                           |                           | 3.56                      | 3.60                      |                           |                           | 6.94                      | 7.20                      | 5.85                   | 5.80                   |
| MT    | 3.28                      | 3.51                      |                           |                           | 2.32                      | ( <sup>5</sup> )          |                           |                           |                        |                        |
| NE    |                           |                           | 3.32                      | 3.40                      | 2.66                      | 2.60                      | 6.63                      | 6.80                      | 5.98                   | 5.90                   |
| NY    |                           |                           |                           |                           | 2.28                      | 2.01                      |                           |                           |                        |                        |
| NC    |                           |                           | 3.96                      | 4.07                      |                           |                           | 7.21                      | 7.42                      |                        |                        |
| ND    | 2.91                      | 3.10                      | 2.92                      | 3.10                      | 2.42                      | 2.05                      | 6.58                      | 6.65                      |                        |                        |
| OH    |                           |                           | 3.48                      | 3.66                      | ( <sup>4</sup> )          | ( <sup>5</sup> )          | 7.06                      | 7.44                      |                        |                        |
| OK    |                           |                           |                           |                           |                           |                           |                           |                           | 6.04                   | 5.98                   |
| OR    | 3.71                      | 3.80                      |                           |                           | ( <sup>4</sup> )          | ( <sup>5</sup> )          |                           |                           |                        |                        |
| PA    |                           |                           | 3.97                      | 4.11                      | 2.56                      | 2.20                      |                           |                           |                        |                        |
| SD    | ( <sup>4</sup> )          | ( <sup>4</sup> )          | 3.21                      | 3.25                      | 2.57                      | 2.55                      | 6.69                      | 6.95                      |                        |                        |
| TN    |                           |                           | 3.25                      | 3.65                      |                           |                           | 7.10                      | 7.40                      |                        |                        |
| TX    |                           |                           | 3.82                      | 3.85                      | ( <sup>5</sup> )          | ( <sup>5</sup> )          |                           |                           | 6.29                   | 6.11                   |
| UT    | 3.18                      | 3.72                      |                           |                           |                           |                           |                           |                           |                        |                        |
| WA    | 3.91                      | 3.90                      |                           |                           |                           |                           |                           |                           |                        |                        |
| WI    |                           |                           | 3.11                      | 3.30                      | 2.26                      | 2.30                      | 6.64                      | 6.85                      |                        |                        |
| WY    | ( <sup>4</sup> )          | ( <sup>4</sup> )          |                           |                           |                           |                           |                           |                           |                        |                        |
| US    | 3.07                      | 3.33                      | 3.39                      | 3.48                      | 2.46                      | 2.36                      | 6.88                      | 7.15                      | 5.96                   | 5.78                   |

<sup>1</sup> The Three-State (MN, ND and SD) Feed Barley price is discontinued.

<sup>2</sup> Entire month.

<sup>3</sup> Mid-month.

<sup>4</sup> Price not published to avoid disclosure of individual firms.

<sup>5</sup> Insufficient sales to establish a price.

**Malting and Feed Barley: Prices Received Selected State, April and May 2007**

| State | Malting Barley            |                           | Feed Barley               |                           |
|-------|---------------------------|---------------------------|---------------------------|---------------------------|
|       | Apr <sup>1</sup>          | May <sup>2</sup>          | Apr <sup>1</sup>          | May <sup>2</sup>          |
|       | <i>Dollars per Bushel</i> | <i>Dollars per Bushel</i> | <i>Dollars per Bushel</i> | <i>Dollars per Bushel</i> |
| ID    | 3.18                      | 3.25                      | 3.43                      | 3.65                      |
| MN    | 2.66                      | 2.85                      | 3.16                      | 3.15                      |
| MT    | 3.35                      | 3.59                      | 2.91                      | 3.07                      |
| ND    | 2.89                      | 3.10                      | 3.00                      | 3.10                      |
| SD    | ( <sup>3</sup> )          | ( <sup>3</sup> )          | ( <sup>4</sup> )          | ( <sup>4</sup> )          |
| WY    | ( <sup>4</sup> )          | ( <sup>4</sup> )          | ( <sup>3</sup> )          | ( <sup>3</sup> )          |

<sup>1</sup> Entire month.

<sup>2</sup> Mid-month.

<sup>3</sup> Price not published to avoid disclosure of individual firms.

<sup>4</sup> Insufficient sales to establish a price.

**Field Crops: Prices Received, by State, April and May 2007**

| State | Dry Edible Beans       |                        | All Sunflower          |                        | Flaxseed                  |                           | Peanuts <sup>4</sup>     |                          |
|-------|------------------------|------------------------|------------------------|------------------------|---------------------------|---------------------------|--------------------------|--------------------------|
|       | Apr <sup>1</sup>       | May <sup>2</sup>       | Apr <sup>1</sup>       | May <sup>2</sup>       | Apr <sup>1</sup>          | May <sup>2</sup>          | Apr <sup>1</sup>         | May <sup>3</sup>         |
|       | <i>Dollars per Cwt</i> | <i>Dollars per Cwt</i> | <i>Dollars per Cwt</i> | <i>Dollars per Cwt</i> | <i>Dollars per Bushel</i> | <i>Dollars per Bushel</i> | <i>Dollars per Pound</i> | <i>Dollars per Pound</i> |
| AL    |                        |                        |                        |                        |                           |                           | ( <sup>5</sup> )         | 0.175                    |
| CA    | 42.50                  | ( <sup>5</sup> )       |                        |                        |                           |                           |                          |                          |
| CO    | 24.60                  | 25.40                  |                        |                        |                           |                           |                          |                          |
| FL    |                        |                        |                        |                        |                           |                           | 0.174                    | 0.175                    |
| GA    |                        |                        |                        |                        |                           |                           | 0.180                    | 0.175                    |
| ID    | 25.00                  | 25.00                  |                        |                        |                           |                           |                          |                          |
| KS    |                        |                        | 16.10                  | ( <sup>5</sup> )       |                           |                           |                          |                          |
| MI    | 24.60                  | 25.00                  |                        |                        |                           |                           |                          |                          |
| MN    | 25.80                  | 28.30                  | 17.30                  | 17.60                  |                           |                           |                          |                          |
| NE    | 25.50                  | 26.00                  |                        |                        |                           |                           |                          |                          |
| NC    |                        |                        |                        |                        |                           |                           | 0.205                    | 0.191                    |
| ND    | 23.00                  | 21.80                  | 15.70                  | 15.90                  | 6.73                      | 6.85                      |                          |                          |
| SD    |                        |                        | 16.40                  | 16.70                  | ( <sup>6</sup> )          | ( <sup>6</sup> )          |                          |                          |
| TX    |                        |                        |                        |                        |                           |                           | 0.186                    | ( <sup>5</sup> )         |
| VA    |                        |                        |                        |                        |                           |                           | ( <sup>5</sup> )         | ( <sup>5</sup> )         |
| US    | 24.60                  | 25.90                  | 15.90                  | 16.40                  | 6.73                      | 6.85                      | 0.183                    | 0.179                    |

<sup>1</sup> Entire month.

<sup>2</sup> Mid-month.

<sup>3</sup> Based on sales through first half of month.

<sup>4</sup> In-Shell.

<sup>5</sup> Price not published to avoid disclosure of individual firms.

<sup>6</sup> Insufficient sales to establish a price.



**Field Crops and Apples: Prices Received, by State, April and May 2007**

| State | Cotton, Upland           |                          | May                          |                         |                        |                        | Apples<br>Fresh<br>Use <sup>1 4</sup> |
|-------|--------------------------|--------------------------|------------------------------|-------------------------|------------------------|------------------------|---------------------------------------|
|       | Apr <sup>1</sup>         | May <sup>2</sup>         | Cotton-<br>seed <sup>5</sup> | Hay, Baled <sup>3</sup> |                        |                        |                                       |
|       |                          |                          |                              | All                     | Alfalfa                | Other                  |                                       |
|       | <i>Dollars per Pound</i> | <i>Dollars per Pound</i> | <i>Dollars per Ton</i>       | <i>Dollars per Ton</i>  | <i>Dollars per Ton</i> | <i>Dollars per Ton</i> | <i>Dol/Lb</i>                         |
| AL    | 0.470                    | 0.470                    |                              |                         |                        |                        |                                       |
| AZ    | 0.502                    | ( <sup>7</sup> )         |                              | 149.00                  | 149.00                 | 142.00                 |                                       |
| AR    | 0.470                    | 0.468                    |                              |                         |                        |                        |                                       |
| CA    | ( <sup>6</sup> )         | ( <sup>7</sup> )         |                              | 155.00                  | 164.00                 | 115.00                 |                                       |
| CO    |                          |                          |                              | 140.00                  | 140.00                 | 145.00                 |                                       |
| GA    | 0.470                    | 0.469                    |                              |                         |                        |                        |                                       |
| ID    |                          |                          |                              | 117.00                  | 120.00                 | 100.00                 |                                       |
| IL    |                          |                          |                              | 106.00                  | 110.00                 | 84.00                  |                                       |
| IA    |                          |                          |                              | 105.00                  | 106.00                 | 73.00                  |                                       |
| KS    |                          |                          |                              | 116.00                  | 119.00                 | 84.00                  |                                       |
| KY    |                          |                          |                              | 98.00                   | 135.00                 | 75.00                  |                                       |
| LA    | 0.463                    | 0.445                    |                              |                         |                        |                        |                                       |
| MI    |                          |                          |                              | 101.00                  | 105.00                 | 80.00                  | 0.235                                 |
| MN    |                          |                          |                              | 103.00                  | 104.00                 | 86.00                  |                                       |
| MS    | 0.468                    | 0.461                    |                              |                         |                        |                        |                                       |
| MO    |                          |                          |                              | 108.00                  | 150.00                 | 85.00                  |                                       |
| MT    |                          |                          |                              | 89.00                   | 89.00                  | 84.00                  |                                       |
| NE    |                          |                          |                              | 98.00                   | 99.00                  | 92.00                  |                                       |
| NV    |                          |                          |                              | 126.00                  | 127.00                 | 114.00                 |                                       |
| NM    |                          |                          |                              | 172.00                  | 175.00                 | 145.00                 |                                       |
| NY    |                          |                          |                              | 125.00                  | 150.00                 | 110.00                 | 0.277                                 |
| NC    | 0.478                    | 0.470                    |                              |                         |                        |                        |                                       |
| ND    |                          |                          |                              | 63.00                   | 65.00                  | 45.00                  |                                       |
| OH    |                          |                          |                              | 136.00                  | 155.00                 | 95.00                  | 0.385                                 |
| OK    |                          |                          |                              | 129.00                  | 150.00                 | 94.00                  |                                       |
| OR    |                          |                          |                              | 142.00                  | 144.00                 | 138.00                 |                                       |
| PA    |                          |                          |                              | 147.00                  | 161.00                 | 139.00                 | ( <sup>7</sup> )                      |
| SD    |                          |                          |                              | 95.00                   | 97.00                  | 79.00                  |                                       |
| TN    | 0.468                    | 0.445                    |                              |                         |                        |                        |                                       |
| TX    | 0.436                    | 0.438                    |                              | 146.00                  | 166.00                 | 135.00                 |                                       |
| UT    |                          |                          |                              | 119.00                  | 120.00                 | 90.00                  |                                       |
| VA    |                          |                          |                              |                         |                        |                        |                                       |
| WA    |                          |                          |                              | 131.00                  | 130.00                 | 135.00                 | 0.300                                 |
| WI    |                          |                          |                              | 64.00                   | 70.00                  | 45.00                  |                                       |
| WY    |                          |                          |                              | 113.00                  | 114.00                 | 111.00                 |                                       |
| US    | 0.473                    | 0.452                    |                              | 138.00                  | 144.00                 | 116.00                 | 0.295                                 |

<sup>1</sup> Entire month.

<sup>2</sup> Based on sales during the first half of the month.

<sup>3</sup> Mid-month.

<sup>4</sup> Equivalent packinghouse-door returns for CA, MI, NY, and WA. Price at point of first sale for other States.

<sup>5</sup> Marketing year August - February.

<sup>6</sup> Price not published to avoid disclosure of individual firms.

<sup>7</sup> Insufficient sales to establish a price.

**Upland Cotton and Rice: Prices Received and Marketings,  
United States, May 2007, with Comparisons**

| Item                    | Unit              | Mar 2007 <sup>1</sup> | Apr 2007 <sup>1</sup> | May 2007 <sup>2</sup> |
|-------------------------|-------------------|-----------------------|-----------------------|-----------------------|
| Cotton, Upland          |                   |                       |                       |                       |
| Average Price           | Dollars per Pound | 0.474                 | 0.473                 | 0.452                 |
| Marketings <sup>3</sup> | 1,000 Bales       | 1,566                 | 1,155                 | NA                    |
| Rice                    |                   |                       |                       |                       |
| Average Price           | Dollars per Cwt   | 9.73                  | 9.94                  | 10.00                 |
| Marketings <sup>4</sup> | 1,000 Cwt         | 13,337                | 11,462                | NA                    |

<sup>1</sup> Entire month.

<sup>2</sup> Based on purchases for the first half of the month.

<sup>3</sup> Marketings based on a survey of cotton buyers in the major producing States - AL, AZ, AR, CA, GA, LA, MS, NC, TN, and TX.

<sup>4</sup> Purchases by private firms and rice (rough equivalent) shipped by cooperatives.

**Citrus Fruit: Prices and Equivalent Returns, by Utilization,  
by State and United States, May 2007**

| Commodity,<br>State<br>and Type | F.O.B.<br>Packed<br>Fresh | Equivalent Returns <sup>1</sup> |                        |                        |                        |                        |                        |
|---------------------------------|---------------------------|---------------------------------|------------------------|------------------------|------------------------|------------------------|------------------------|
|                                 |                           | Packinghouse-door               |                        |                        | On-tree                |                        |                        |
|                                 |                           | All                             | Fresh                  | Process                | All                    | Fresh                  | Process                |
|                                 | <i>Dollars per Box</i>    | <i>Dollars per Box</i>          | <i>Dollars per Box</i> | <i>Dollars per Box</i> | <i>Dollars per Box</i> | <i>Dollars per Box</i> | <i>Dollars per Box</i> |
| Grapefruit                      |                           |                                 |                        |                        |                        |                        |                        |
| CA                              | 24.10                     | 12.93                           | 14.86                  | -0.30                  | 10.01                  | 11.94                  | -3.22                  |
| FL                              | 19.50                     | 5.09                            | 11.08                  | 2.35                   | 2.34                   | 8.73                   | -0.58                  |
| White                           | 15.40                     | 2.79                            | 6.70                   | 2.55                   | 0.02                   | 4.35                   | -0.25                  |
| Colored                         | 19.70                     | 5.87                            | 11.30                  | 2.25                   | 3.13                   | 8.95                   | -0.75                  |
| TX                              | 21.70                     | 4.71                            | 11.10                  | 1.00                   | 3.51                   | 9.87                   | -0.18                  |
| US                              | 22.30                     | 7.21                            | 13.01                  | 1.71                   | 4.85                   | 10.60                  | -0.63                  |
| Lemons                          |                           |                                 |                        |                        |                        |                        |                        |
| CA                              | 51.60                     | 31.36                           | 41.53                  | -0.42                  | 25.94                  | 36.11                  | -5.84                  |
| Oranges                         |                           |                                 |                        |                        |                        |                        |                        |
| CA                              | 32.90                     | 9.59                            | 24.93                  | 1.51                   | 7.08                   | 22.41                  | -0.99                  |
| Navel and Misc                  | 35.80                     | 8.08                            | 27.89                  | 1.48                   | 5.58                   | 25.39                  | -1.02                  |
| Valencia                        | 30.00                     | 12.93                           | 21.97                  | 1.64                   | 10.39                  | 19.43                  | -0.90                  |
| FL                              |                           |                                 |                        |                        |                        |                        |                        |
| Valencia                        | 26.20                     | 14.17                           | 17.30                  | 14.10                  | 11.32                  | 14.50                  | 11.25                  |
| TX                              |                           |                                 |                        |                        |                        |                        |                        |
| Valencia                        | 27.80                     | 15.50                           | 17.09                  | 2.94                   | 14.08                  | 15.66                  | 1.55                   |
| US                              | 31.20                     | 13.36                           | 22.93                  | 12.49                  | 10.58                  | 20.40                  | 9.69                   |
| Tangerines                      |                           |                                 |                        |                        |                        |                        |                        |
| CA                              | 40.30                     | 22.26                           | 31.06                  | 0.26                   | 19.02                  | 27.82                  | -2.98                  |
| FL                              | 35.00                     | 19.84                           | 24.00                  | 12.90                  | 16.15                  | 20.50                  | 8.90                   |
| US                              | 35.70                     | 20.13                           | 24.96                  | 11.70                  | 16.50                  | 21.50                  | 7.77                   |

<sup>1</sup> Net lbs. per box: Grapefruit - AZ & CA-67, FL-85, TX-80; Lemons - 76; Oranges - AZ & CA-75, FL-90, TX-85; Tangelos - 90; Tangerines - AZ & CA-75, FL-95.

**Potatoes: Prices Received, by State, April and May 2007 <sup>1</sup>**

| State                 | Apr                    | May                    | State                 | Apr                    | May                    |
|-----------------------|------------------------|------------------------|-----------------------|------------------------|------------------------|
|                       | <i>Dollars per Cwt</i> | <i>Dollars per Cwt</i> |                       | <i>Dollars per Cwt</i> | <i>Dollars per Cwt</i> |
| AL                    |                        |                        | NC                    |                        |                        |
| AZ                    |                        | ( <sup>4</sup> )       | ND                    |                        |                        |
| CA - All <sup>2</sup> | 7.40                   | 14.10                  | ND - All <sup>2</sup> | 7.85                   | 7.10                   |
| - Winter              |                        |                        | - Fresh <sup>3</sup>  | 7.15                   | NA                     |
| - Spring              |                        | 18.70                  | - Processing          | 7.70                   | NA                     |
| - Summer              |                        |                        | OR                    | 7.80                   | 8.10                   |
| - Fall                | 7.40                   | 7.65                   | TX                    | 24.10                  | 10.40                  |
| CO - All <sup>2</sup> | 7.80                   | 7.80                   | VA                    |                        |                        |
| - Fresh <sup>3</sup>  | 8.65                   | NA                     | WA - All <sup>2</sup> | 7.20                   | 7.00                   |
| FL                    | 27.40                  | 19.20                  | - Processing          | 6.40                   | NA                     |
| ID - All <sup>2</sup> | 7.05                   | 6.65                   | WI - All <sup>2</sup> | 8.25                   | 7.65                   |
| - Fresh <sup>3</sup>  | 6.90                   | NA                     | - Fresh <sup>3</sup>  | 7.20                   | NA                     |
| - Processing          | 5.80                   | NA                     | - Processing          | 8.85                   | NA                     |
| ME                    | 8.05                   | 8.15                   | US - All <sup>2</sup> | 8.53                   | 8.69                   |
| MI                    | 10.00                  | 10.20                  | - Fresh <sup>3</sup>  | 11.68                  | NA                     |
| MN                    | 5.85                   | 5.55                   | - Processing          | 6.78                   | NA                     |
| NY                    | 11.50                  | 11.60                  |                       |                        |                        |

<sup>1</sup> Missing data indicates no potatoes being marketed.

<sup>2</sup> Average price of potatoes sold for all uses, including table stocks, processing, seed, and livestock feed.

<sup>3</sup> Fresh market prices only, includes table stock prices.

<sup>4</sup> Price not published to avoid disclosure of individual firms.

**Cattle: Prices Received, by State, April and May 2007**

| State | Cows <sup>1</sup>      |                        | Steers & Heifers       |                        | Beef Cattle <sup>4</sup> |                        | Calves                 |                        |
|-------|------------------------|------------------------|------------------------|------------------------|--------------------------|------------------------|------------------------|------------------------|
|       | Apr <sup>2</sup>       | May <sup>3</sup>       | Apr <sup>2</sup>       | May <sup>3</sup>       | Apr <sup>2</sup>         | May <sup>3</sup>       | Apr <sup>2</sup>       | May <sup>3</sup>       |
|       | <i>Dollars per Cwt</i> | <i>Dollars per Cwt</i> | <i>Dollars per Cwt</i> | <i>Dollars per Cwt</i> | <i>Dollars per Cwt</i>   | <i>Dollars per Cwt</i> | <i>Dollars per Cwt</i> | <i>Dollars per Cwt</i> |
| AZ    | 49.00                  | 51.00                  | 100.00                 | 99.00                  | 83.20                    | 83.20                  | 119.00                 | 115.00                 |
| AR    | 47.00                  | 49.00                  | 107.00                 | 105.00                 | 89.00                    | 88.20                  | 119.00                 | 117.00                 |
| CA    | 47.40                  | 47.80                  | 98.20                  | 96.90                  | 74.80                    | 73.80                  | 116.00                 | 115.00                 |
| CO    | 51.00                  | 53.70                  | 107.00                 | 105.00                 | 106.00                   | 104.00                 | 124.00                 | 121.00                 |
| FL    | 49.40                  | 51.40                  | 97.50                  | 97.00                  | 82.90                    | 77.10                  | 117.00                 | 114.00                 |
| GA    | 49.70                  | 50.70                  | 95.80                  | 95.50                  | 66.30                    | 65.90                  | 118.00                 | 117.00                 |
| ID    | 48.60                  | 53.00                  | 97.20                  | 96.30                  | 85.50                    | 85.90                  | 111.00                 | 110.00                 |
| IL    | 50.00                  | 52.00                  | 99.00                  | 99.00                  | 98.00                    | 98.10                  | 119.00                 | 121.00                 |
| IA    | 51.00                  | 53.70                  | 96.70                  | 96.50                  | 96.20                    | 95.60                  | 118.00                 | 120.00                 |
| KS    | 49.00                  | 53.40                  | 98.90                  | 98.20                  | 96.90                    | 96.40                  | 128.00                 | 128.00                 |
| KY    | 47.00                  | 51.00                  | 99.00                  | 101.00                 | 86.50                    | 89.00                  | 115.00                 | 114.00                 |
| LA    | 48.50                  | 51.00                  | 103.00                 | 101.00                 | 64.30                    | 66.50                  | 121.00                 | 121.00                 |
| MI    | 50.00                  | 51.00                  | 91.00                  | 93.00                  | 78.70                    | 80.40                  | 120.00                 | 126.00                 |
| MN    | 51.30                  | 54.00                  | 95.20                  | 95.50                  | 85.30                    | 86.20                  | 125.00                 | 126.00                 |
| MO    | 48.80                  | 51.30                  | 109.00                 | 110.00                 | 94.60                    | 95.30                  | 124.00                 | 124.00                 |
| MT    | 49.90                  | 53.50                  | 102.00                 | 99.70                  | 87.40                    | 85.80                  | 121.00                 | 114.00                 |
| NE    | 50.60                  | 53.50                  | 100.00                 | 98.00                  | 98.50                    | 96.70                  | 127.00                 | 124.00                 |
| NM    | 49.00                  | 50.00                  | 103.00                 | 103.00                 | 84.60                    | 85.00                  | 130.00                 | 127.00                 |
| ND    | 49.50                  | 51.00                  | 102.00                 | 100.00                 | 88.90                    | 80.90                  | 120.00                 | 123.00                 |
| OH    | 47.00                  | 51.00                  | 95.00                  | 94.00                  | 90.20                    | 89.70                  | 111.00                 | 110.00                 |
| OK    | 50.70                  | 53.80                  | 103.00                 | 103.00                 | 98.30                    | 98.60                  | 121.00                 | 122.00                 |
| OR    | 47.00                  | 48.70                  | 96.50                  | 93.60                  | 81.70                    | 80.10                  | 114.00                 | 110.00                 |
| PA    | 48.20                  | 52.40                  | 92.80                  | 94.50                  | 81.20                    | 83.60                  | 115.00                 | 116.00                 |
| SD    | 49.00                  | 52.60                  | 100.00                 | 98.50                  | 93.40                    | 90.20                  | 122.00                 | 121.00                 |
| TN    | 47.00                  | 49.00                  | 101.00                 | 100.00                 | 79.40                    | 79.60                  | 115.00                 | 113.00                 |
| TX    | 49.10                  | 51.10                  | 101.00                 | 99.10                  | 96.80                    | 94.80                  | 134.00                 | 130.00                 |
| VA    | 45.00                  | 49.00                  | 96.50                  | 95.80                  | 84.70                    | 78.00                  | 111.00                 | 110.00                 |
| WI    | 49.00                  | 52.50                  | 93.80                  | 94.00                  | 67.80                    | 69.90                  | 154.00                 | 151.00                 |
| WY    | 49.50                  | 54.00                  | 106.00                 | 106.00                 | 89.60                    | 95.60                  | 130.00                 | 125.00                 |
| US    | 49.20                  | 51.60                  | 99.90                  | 98.60                  | 94.30                    | 93.50                  | 127.00                 | 126.00                 |

<sup>1</sup> Beef cows and cull dairy cows sold for slaughter.

<sup>2</sup> Entire month.

<sup>3</sup> Mid-month.

<sup>4</sup> "Cows" and "steers and heifers" combined.

**Hogs: Prices Received, by State, April and May 2007**

| State | Sows                   |                        | Barrows and Gilts      |                        | All Hogs               |                        |
|-------|------------------------|------------------------|------------------------|------------------------|------------------------|------------------------|
|       | Apr <sup>1</sup>       | May <sup>2</sup>       | Apr <sup>1</sup>       | May <sup>2</sup>       | Apr <sup>1</sup>       | May <sup>2</sup>       |
|       | <i>Dollars per Cwt</i> | <i>Dollars per Cwt</i> | <i>Dollars per Cwt</i> | <i>Dollars per Cwt</i> | <i>Dollars per Cwt</i> | <i>Dollars per Cwt</i> |
| AR    | 28.40                  | 32.20                  | 46.10                  | 50.50                  | 44.30                  | 48.70                  |
| IL    | 27.00                  | 31.60                  | 47.00                  | 51.00                  | 45.40                  | 49.40                  |
| IN    | 32.00                  | 36.50                  | 47.40                  | 51.60                  | 46.20                  | 50.40                  |
| IA    | 28.50                  | 32.00                  | 49.70                  | 54.00                  | 49.50                  | 53.80                  |
| KS    | 27.40                  | 32.70                  | 43.50                  | 49.20                  | 41.40                  | 47.10                  |
| MN    | 29.60                  | 34.50                  | 48.90                  | 55.00                  | 48.80                  | 54.90                  |
| MO    | 27.50                  | 32.70                  | 43.40                  | 48.60                  | 42.30                  | 47.60                  |
| NE    | 29.50                  | 33.50                  | 49.40                  | 54.40                  | 49.00                  | 54.00                  |
| NC    | 26.40                  | 32.30                  | 49.20                  | 54.00                  | 49.00                  | 53.80                  |
| OH    | 27.70                  | 32.20                  | 47.20                  | 50.00                  | 46.20                  | 49.10                  |
| OK    | 26.80                  | 31.80                  | 42.10                  | 46.50                  | 39.80                  | 44.30                  |
| PA    | 27.40                  | 31.30                  | 43.30                  | 47.90                  | 40.90                  | 45.40                  |
| SD    | 27.80                  | 31.90                  | 49.50                  | 54.90                  | 47.30                  | 52.40                  |
| US    | 27.90                  | 32.60                  | 48.10                  | 52.80                  | 47.30                  | 52.00                  |

<sup>1</sup> Entire month.

<sup>2</sup> Mid-month.

**Sheep and Poultry: Prices Received, by State, April and May 2007**

| State | April                  |                        | May                      |
|-------|------------------------|------------------------|--------------------------|
|       | Sheep <sup>1</sup>     | Lambs <sup>1</sup>     | Eggs <sup>2 3</sup>      |
|       | <i>Dollars per Cwt</i> | <i>Dollars per Cwt</i> | <i>Dollars per Dozen</i> |
| AL    |                        |                        | 0.660                    |
| AR    |                        |                        | 0.609                    |
| CA    | 42.00                  | 87.00                  | 0.600                    |
| CO    | 34.00                  | 97.00                  |                          |
| CT    |                        |                        | 0.580                    |
| FL    |                        |                        | 0.650                    |
| GA    |                        |                        | 0.630                    |
| ID    | 28.00                  | 87.00                  |                          |
| IN    |                        |                        | 0.610                    |
| IA    | 32.80                  | 90.00                  | 0.568                    |
| KY    | 33.00                  | 106.00                 |                          |
| ME    |                        |                        | 0.840                    |
| MI    |                        |                        | 0.590                    |
| MN    | 30.00                  | 96.00                  | 0.680                    |
| MS    |                        |                        | 0.620                    |
| MO    | 33.20                  | 106.00                 | 0.580                    |
| MT    | 28.20                  | 96.00                  |                          |
| NE    | 32.50                  | 100.00                 |                          |
| NY    |                        |                        | 0.620                    |
| NC    |                        |                        | 0.614                    |
| ND    | 33.00                  | 100.00                 |                          |
| OH    | 33.60                  | 113.00                 | 0.700                    |
| OR    | 35.00                  | 92.00                  |                          |
| PA    | 39.40                  | 126.00                 | 0.560                    |
| SC    |                        |                        | 0.640                    |
| SD    | 25.20                  | 94.70                  |                          |
| TX    | 41.30                  | 105.00                 | 0.590                    |
| VA    | 42.00                  | 113.00                 |                          |
| WA    |                        |                        | 0.710                    |
| WV    | 33.00                  | 112.00                 |                          |
| WY    | 32.40                  | 94.10                  |                          |
| US    | 33.80                  | 97.20                  | 0.615                    |

<sup>1</sup> Entire month.

<sup>2</sup> Mid-month.

<sup>3</sup> Market (table) eggs.

**Milk and Milk Cows: Prices Received, by State, April and May 2007**

| State | April <sup>1</sup>            |                |                                       |                |                       |                | May                     |                |                        |
|-------|-------------------------------|----------------|---------------------------------------|----------------|-----------------------|----------------|-------------------------|----------------|------------------------|
|       | Fluid Grade Milk <sup>2</sup> |                | Manufacturing Grade Milk <sup>3</sup> |                | All Milk <sup>4</sup> |                | All Milk <sup>4 5</sup> |                | Milk Cows <sup>6</sup> |
|       | Price                         | Fat Test       | Price                                 | Fat Test       | Price                 | Fat Test       | Price                   | Fat Test       |                        |
|       | <i>Dol/Cwt</i>                | <i>Percent</i> | <i>Dol/Cwt</i>                        | <i>Percent</i> | <i>Dol/Cwt</i>        | <i>Percent</i> | <i>Dol/Cwt</i>          | <i>Percent</i> | <i>Dol/Head</i>        |
| AZ    | 16.50                         | 3.53           |                                       |                | 16.50                 | 3.53           | 17.80                   | 3.52           |                        |
| CA    | 15.40                         | 3.65           | 16.00                                 | 4.08           | 15.42                 | 3.66           | 17.00                   | 3.61           |                        |
| CO    | 16.70                         | 3.54           |                                       |                | 16.70                 | 3.54           | 17.70                   | 3.50           |                        |
| FL    | 18.90                         | 3.57           |                                       |                | 18.90                 | 3.57           | 19.70                   | 3.56           |                        |
| ID    | 15.50                         | 3.65           |                                       |                | 15.50                 | 3.65           | 16.60                   | 3.60           |                        |
| IL    | 17.30                         | 3.70           | 16.90                                 | 3.60           | 17.30                 | 3.70           | 18.00                   | 3.70           |                        |
| IN    | 16.40                         | 3.65           | 16.00                                 | 3.78           | 16.40                 | 3.65           | 17.50                   | 3.63           |                        |
| IA    | 16.70                         | 3.69           | 16.10                                 | 3.87           | 16.70                 | 3.69           | 17.60                   | 3.65           |                        |
| KS    | 16.10                         | 3.65           |                                       |                | 16.10                 | 3.65           | 17.60                   | 3.58           |                        |
| KY    | 17.40                         | 3.63           |                                       |                | 17.40                 | 3.63           | 18.50                   | 3.59           |                        |
| MI    | 16.90                         | 3.60           |                                       |                | 16.90                 | 3.60           | 17.90                   | 3.55           |                        |
| MN    | 17.40                         | 3.75           | 15.80                                 | 3.82           | 17.40                 | 3.75           | 18.50                   | 3.71           |                        |
| MO    | 16.70                         | 3.63           | 15.60                                 | 3.74           | 16.70                 | 3.63           | 17.90                   | 3.59           |                        |
| NM    | 16.00                         | 3.58           |                                       |                | 16.00                 | 3.58           | 17.10                   | 3.55           |                        |
| NY    | 17.00                         | 3.72           |                                       |                | 17.00                 | 3.72           | 18.00                   | 3.69           |                        |
| OH    | 17.20                         | 3.70           | 15.80                                 | 3.87           | 17.10                 | 3.71           | 18.00                   | 3.63           |                        |
| OR    | 16.70                         | 3.66           |                                       |                | 16.70                 | 3.66           | 18.10                   | 3.61           |                        |
| PA    | 18.00                         | 3.70           |                                       |                | 18.00                 | 3.70           | 19.40                   | 3.60           |                        |
| TX    | 17.00                         | 3.70           |                                       |                | 17.00                 | 3.70           | 17.80                   | 3.66           |                        |
| VT    | 17.60                         | 3.75           |                                       |                | 17.60                 | 3.75           | 18.90                   | 3.70           |                        |
| VA    | 17.70                         | 3.65           |                                       |                | 17.70                 | 3.65           | 18.60                   | 3.60           |                        |
| WA    | 16.40                         | 3.66           |                                       |                | 16.40                 | 3.66           | 18.10                   | 3.61           |                        |
| WI    | 17.20                         | 3.71           | 15.90                                 | 3.88           | 17.10                 | 3.72           | 18.20                   | 3.66           |                        |
| US    | 16.60                         | 3.67           | 15.90                                 | 3.94           | 16.60                 | 3.67           | 17.80                   | 3.62           |                        |

<sup>1</sup> Entire month.

<sup>2</sup> Including milk diverted to manufacturing.

<sup>3</sup> ID, MI, and PA are no longer published due to insufficient manufacturing grade milk volume.

<sup>4</sup> Before deductions for hauling. Includes quality, quantity, and other premiums. Excludes hauling subsidies.

<sup>5</sup> Preliminary.

<sup>6</sup> Animals sold for dairy herd replacement only. Prices published January, April, July and October.

**Parity Price Equivalent for Manufacturing Grade Milk <sup>1</sup>: United States,  
April and May 2007, with Comparisons**

| Item                                  | Unit            | May 2006 | Apr 2007 | May 2007 |
|---------------------------------------|-----------------|----------|----------|----------|
| Parity Equivalent                     | Dollars per Cwt | 35.10    | 37.00    | 37.10    |
| Average Price F.O.B <sup>2</sup>      | Dollars per Cwt | 11.30    | 15.90    | 17.20    |
| Average Fat Test of Milk <sup>2</sup> | Percent         | 3.86     | 3.94     | 3.89     |

<sup>1</sup> The parity price equivalent during 2007 is 92.1 percent of the parity price of all milk sold to plants, compared with 91.5 percent in 2006. For additional details, see January 2007 issue of "Agricultural Prices".

<sup>2</sup> Preliminary for May 2007.

**Parity Prices for Farm Products and Average Prices Received as  
Percent of Parity Prices, United States, with Comparisons <sup>1</sup>**

| Commodity and Unit                                | Adjusted<br>Base<br>Price | Parity Price   |                |                | Price as Percent<br>of Parity |                |                |
|---|---------------------------|----------------|----------------|----------------|-------------------------------|----------------|----------------|
|   |                           | May<br>2006    | Apr<br>2007    | May<br>2007    | May<br>2006                   | Apr<br>2007    | May<br>2007    |
|   | <i>Dollars</i>            | <i>Dollars</i> | <i>Dollars</i> | <i>Dollars</i> | <i>Percent</i>                | <i>Percent</i> | <i>Percent</i> |
| <b>Basic Commodities</b>                          |                           |                |                |                |                               |                |                |
| All Wheat, Bu                                     | 0.519                     | 10.40          | 10.90          | 10.90          | 39                            | 45             | 43             |
| Rice, Cwt   | 1.40                      | 28.30          | 29.30          | 29.40          | 28                            | 34             | 34             |
| Corn, Bu  | 0.384                     | 7.76           | 8.04           | 8.06           | 28                            | 42             | 43             |
| Cotton, Lb  |                           |                |                |                |                               |                |                |
| American Upland                                   | 0.098                     | 2.28           | 2.05           | 2.06           | 20                            | 23             | 22             |
| Extra Long Staple                                 | 0.142                     | 2.69           | 2.97           | 2.98           |                               |                |                |
| Peanuts, Lb                                       | 0.031                     | 0.683          | 0.649          | 0.650          | 25                            | 28             | 28             |
| <b>Designated Nonbasic</b>                        |                           |                |                |                |                               |                |                |
| All Milk, Sold to<br>Plants, Per Cwt <sup>2</sup> | 1.92                      | 38.40          | 40.20          | 40.30          | 32                            | 42             | 45             |
| Honey, Extracted, Lb <sup>3</sup>                 | 0.123                     | 2.28           | 2.58           | 2.58           |                               |                |                |
| <b>Wool and Mohair</b>                            |                           |                |                |                |                               |                |                |
| Wool, Lb  | 0.082                     | 1.62           | 1.72           | 1.72           |                               |                |                |
| Mohair, Lb  | 0.359                     | 6.61           | 7.52           | 7.53           |                               |                |                |
| <b>Other Nonbasic</b>                             |                           |                |                |                |                               |                |                |
| Barley, Bu  | 0.362                     | 7.25           | 7.58           | 7.59           | 41                            | 41             | 44             |
| Canola, Cwt                                       | 1.37                      | 26.90          | 28.70          | 28.70          |                               |                |                |
| Cottonseed, Ton                                   | 14.80                     | 300.00         | 310.00         | 311.00         | 33                            | 40             | 40             |
| Dry Edible Beans, Cwt                             | 2.72                      | 54.80          | 57.00          | 57.10          | 35                            | 43             | 45             |
| Flaxseed, Bu                                      | 0.841                     | 15.50          | 17.60          | 17.60          | 36                            | 38             | 39             |
| Mustard Seed, Cwt                                 | 1.92                      | 38.20          | 40.20          | 40.30          |                               |                |                |
| Oats, Bu  | 0.215                     | 4.31           | 4.50           | 4.51           | 43                            | 55             | 52             |
| Potatoes, Cwt                                     | 0.818                     | 16.00          | 17.10          | 17.20          | 49                            | 50             | 51             |
| Rapeseed, Cwt                                     | 1.59                      | 31.40          | 33.30          | 33.40          |                               |                |                |
| Rye, Bu   | 0.414                     | 6.92           | 8.67           | 8.69           |                               |                |                |
| Safflower, Cwt                                    | 1.84                      | 36.30          | 38.50          | 38.60          |                               |                |                |
| Sorghum Grain, Cwt                                | 0.656                     | 12.00          | 13.70          | 13.80          | 33                            | 44             | 42             |
| Soybeans, Bu                                      | 0.850                     | 17.20          | 17.80          | 17.80          | 33                            | 39             | 40             |
| All Sunflower, Cwt                                | 1.66                      | 36.30          | 34.80          | 34.80          | 33                            | 46             | 47             |
| Sweetpotatoes, Cwt                                | 2.31                      | 45.40          | 48.40          | 48.50          |                               |                |                |
| Apples, Fresh, Lb <sup>4</sup>                    | 0.030                     | 0.527          | 0.630          | 0.631          | 26                            | 35             | 34             |
| Citrus (equiv on-tree), Box                       |                           |                |                |                |                               |                |                |
| Grapefruit  | 0.622                     | 10.50          | 13.00          | 13.00          | 109                           | 22             | 37             |
| Lemons  | 1.14                      | 22.60          | 23.90          | 23.90          | 67                            | 113            | 109            |
| Oranges   | 0.598                     | 11.50          | 12.50          | 12.50          | 62                            | 82             | 85             |
| Tangerines  | 1.35                      | 27.10          | 28.30          | 28.30          | 22                            | 47             | 58             |
| Temples (FL)                                      | 0.372                     | 7.68           | 7.79           | 7.80           |                               |                |                |
| Beef Cattle, Cwt                                  | 10.15                     | 192.00         | 213.00         | 213.00         | 43                            | 44             | 44             |
| Calves, Cwt                                       | 14.60                     | 267.00         | 306.00         | 306.00         | 50                            | 42             | 41             |
| Hogs, Cwt   | 5.83                      | 117.00         | 122.00         | 122.00         | 41                            | 39             | 43             |
| Lambs, Cwt  | 11.90                     | 232.00         | 249.00         | 250.00         | 38                            | 39             |                |
| Sheep, Cwt  | 4.90                      | 95.40          | 103.00         | 103.00         | 34                            | 33             |                |
| Eggs, Doz <sup>2</sup>                            | 0.088                     | 1.77           | 1.84           | 1.85           | 28                            | 42             | 49             |
| Turkeys, Live, Lb                                 | 0.056                     | 1.090          | 1.170          | 1.170          | 40                            | 40             | 41             |

<sup>1</sup> Parity prices are computed under the provisions of Title III, Subtitle a, Section 301 (a) of the Agricultural Adjustment Act of 1938 as amended by the Agricultural Acts of 1948, 1949, and 1956. See January "Agricultural Prices" for details on adjusted base price and parity price computations.

<sup>2</sup> Seasonally adjusted price as percentage of parity price.

<sup>3</sup> Wholesale extracted. Adjusted base price derived from state annual averages prices weighted by production. For 1982 through 1985 the national averages are the support prices.

<sup>4</sup> Equivalent packinghouse-door returns for CA, NY (apples only), OR (except peaches), and WA. Price at point of first sale for other states.



**Parity Prices for Farm Products, May 2007, United States <sup>1</sup>**

| Other Nonbasic Commodities          | Adjusted Base Price | Parity Price   | Other Nonbasic Commodities          | Adjusted Base Price | Parity Price   |
|-------------------------------------|---------------------|----------------|-------------------------------------|---------------------|----------------|
|                                     | <i>Dollars</i>      | <i>Dollars</i> |                                     | <i>Dollars</i>      | <i>Dollars</i> |
| Field Crops and Misc Commodities    |                     |                | Fresh, CA, Ton <sup>5</sup>         | 60.80               | 1,280.00       |
| Hops, Lb                            | 0.250               | 5.25           | Noncitrus Fruit, Continued          |                     |                |
| Spearmint Oil, Lb                   | 1.40                | 29.40          | Olives, CA                          |                     |                |
| Tobacco, Lb                         |                     |                | canning, Ton <sup>3</sup>           | 94.20               | 1,980.00       |
| Flue-Cured, 11-14                   | 0.240               | 5.04           | Papayas (HI)                        | 0.050               | 1.050          |
| VA Fire-Cured, 21                   | 0.254               | 5.41           | Peaches                             |                     |                |
| KY-TN Fire-Cured, 22-23             | 0.319               | 6.69           | Fresh, Ton <sup>2</sup>             | 83.80               | 1,760.00       |
| Fire-Cured, 21-23                   | 0.319               | 6.69           | Dried, CA, Ton                      | 77.00               | 1,620.00       |
| Burley, 31                          | 0.259               | 5.43           | Processing <sup>3</sup>             |                     |                |
| Maryland, 32                        | 0.196               | 4.11           | Excl Dried                          |                     |                |
| Dark Air-Cured, 35-36               | 0.282               | 5.92           | Clingstone, CA, Ton                 | 34.10               | 715.00         |
| Sun-Cured, 37                       | 0.235               | 4.93           | Pears, Ton                          |                     |                |
| Dark Air-Cured, 35-37               | 0.284               | 5.96           | Fresh <sup>2</sup>                  | 53.50               | 1,120.00       |
| PA Seedleaf, 41                     | 0.200               | 4.20           | Dried, CA <sup>4</sup>              | 178.00              | 3,730.00       |
| Cigar Filler & Binder, 42-44, 54-55 | 0.222               | 4.66           | Plums, CA, Ton                      |                     |                |
| Puerto Rican Filler, 46             | 0.155               | 3.25           | Fresh, Equiv on-Tree                | 63.40               | 1,330.00       |
| Cigar Binder, 51-52                 | 0.749               | 15.70          | Prunes, Dried, CA, Ton <sup>4</sup> | 139.00              | 2,920.00       |
| Type 61                             | 3.30                | 69.20          | Prunes and Plums, Excl CA, Ton      |                     |                |
| Noncitrus Fruit                     |                     |                | Fresh <sup>7</sup>                  | 62.80               | 1,320.00       |
| Apples, Ton <sup>4</sup>            |                     |                | Processing <sup>4</sup>             |                     |                |
| Processing                          | 16.70               | 350.00         | Excl Dried                          | 28.30               | 594.00         |
| Apricots, Ton                       |                     |                | Tree Nuts <sup>8</sup>              |                     |                |
| Fresh <sup>5</sup>                  | 104.00              | 2,180.00       | Almonds, Lb                         | 0.214               | 4.49           |
| Dried, CA                           | 264.00              | 5,540.00       | Hazelnuts, Ton                      | 154.00              | 3,230.00       |
| Avocados, Ton <sup>5</sup>          | 231.00              | 4,850.00       | Pistachio, Lb                       | 0.180               | 3.78           |
| Cherries                            |                     |                | Walnuts, Ton                        | 174.00              | 3,650.00       |
| Sweet, Ton                          | 197.00              | 4,130.00       | Vegetables, Cwt <sup>9</sup>        |                     |                |
| Tart, Lb                            | 0.034               | 0.720          | Fresh                               |                     |                |
| Cranberry, Bbl <sup>3</sup>         | 5.02                | 105.00         | Carrots <sup>6</sup>                | 2.38                | 49.90          |
| Dates, CA, Ton <sup>5</sup>         | 188.00              | 3,940.00       | Cauliflower <sup>6</sup>            | 4.45                | 93.40          |
| Grapes, Ton                         |                     |                | Celery <sup>6</sup>                 | 2.00                | 42.00          |
| Raisin Variety                      | 121.00              | 2,540.00       | Honeydew Melons                     | 2.67                | 56.00          |
| Other Dried                         | 71.50               | 1,500.00       | Lettuce                             | 2.35                | 49.30          |
| Kiwifruit, Ton                      | 90.50               | 1,900.00       | Onions <sup>6</sup>                 | 1.63                | 34.20          |
| Nectarines                          |                     |                | Tomatoes                            | 4.77                | 100.00         |

<sup>1</sup> Parity prices are computed under the provisions of Title III, Subtitle a, Section 301 (a) of the Agricultural Adjustment Act of 1938 as amended by the Agricultural Acts of 1948, 1949, and 1956. See January "Agricultural Prices" for details on adjusted base price and parity price computations.

<sup>2</sup> Equivalent packinghouse-door returns for CA, NY (apples only), OR (except peaches), and WA. Price at point of first sale for other states.

<sup>3</sup> Equivalent returns for bulk fruit at first delivery point.

<sup>4</sup> Equivalent returns at processing plant door.

<sup>5</sup> Equivalent returns at packinghouse door.

<sup>6</sup> Includes some processing.

<sup>7</sup> Based on "as sold" prices for fresh fruit in all states.

<sup>8</sup> Prices in-shell basis except almonds which are shelled basis.

<sup>9</sup> F.O.B. shipping point prices.

## Reliability of Prices Received Estimates

**Definition:** Prices received represent sales from producers to first buyers. They include all grades and qualities. The average commodity price from the survey multiplied by the total quantity marketed theoretically should give the total cash receipts for the commodity.

**Survey Procedures:** Primary sales data used to determine grain prices were obtained from probability samples of about 2000 mills and elevators. These procedures ensure that virtually all grain moving into commercial channels has a chance of being included in the survey. Generally, States surveyed account for 90 percent or more of total U.S. production. Livestock prices are obtained from packers, stockyards, auctions, dealers, and market check data from AMS-USDA, private marketing organizations, and state commodity groups and agencies. Inter-farm sales of grain and livestock are not included since they represent very small percentages of the total marketings. Grain marketed for seed is also excluded. Fruit and vegetable prices are obtained from sample surveys and market check data from AMS-USDA, private marketing organizations, state agencies, and universities.

**Summary and Estimation Procedures:** Survey quantities sold are expanded by strata to state levels and used to weight average strata prices to a state average. State prices are then weighted to a U.S. price based on expanded marketings. Recommendations are prepared by the State Field Offices and reviewed by the Agricultural Statistics Board in Washington, D.C. State recommendations are reviewed for reasonableness with survey data, other States, and recent historic estimates.

**Revisions:** For most items, the current month's preliminary price represents a 3-5 day period around the 15<sup>th</sup> of the month. Previous month's prices represent actual dollars received for quantities sold during the entire month. Revisions are published in monthly issues of *Agricultural Prices*.

**Reliability:** U.S. price estimates based on probability surveys generally have a sampling error of less than one percent for the major commodities such as corn, wheat, soybeans, cotton, and rice. Current methods of summarization for non-probability commodities are not designed directly to calculate sampling errors. However, analytical measures approximate the U.S. relative sampling errors at around five percent. Any nonsampling errors are attributed to such things as the inability to obtain correct information, differences in interpreting questions or definitions, mistakes in coding or processing the data, etc. Efforts are made at each step in the survey process to minimize these nonsampling errors.

## Prices Paid by Farmers

The May Index of Prices Paid for Commodities and Services, Interest, Taxes, and Farm Wage Rates (PPITW) at 158 (1990-92=100), is up 0.6 percent from April 2007 and up 6.0 percent from May 2006.

**PRODUCTION INDEX:** The May index, at 156, is unchanged from last month but increased 6.8 percent from last year. Higher prices in May for hay & forages, gasoline, mixed fertilizers, and nitrogen fertilizers more than offset lower prices for feed supplements, complete feeds, diesel fuel, and feeder cattle.

**Feed:** The May index, at 146, decreased 0.7 percent from April but increased 19 percent from last May. Since April, lower prices for feed supplements, complete feeds, and feed concentrates more than offset higher prices for hay & forages and feed grains.

**Livestock & Poultry:** The May index, at 132, decreased 0.8 percent from last month but increased 1.5 percent from last year. Since April, prices are lower for feeder cattle and feeder pigs. The May feeder cattle price, at \$108.60 per cwt, is down 50 cents per cwt from the April price. May feeder pigs averaged \$144.00 per cwt, down \$3.00 per cwt from April.

**Fertilizer:** The May index, at 217, is up 3.8 percent from April and 23 percent above May a year ago. Since April, prices are higher for mixed fertilizers, nitrogen fertilizers, and potash & phosphate materials.

**Agricultural Chemicals:** The May index, at 130, is unchanged from April but increased 0.8 percent from last May.

**Fuels:** The May index, at 262, is up 1.6 percent from a month earlier and 1.6 percent above May 2006. Compared with last month, prices are higher for gasoline and LP gas but lower for diesel fuel.

**Farm Machinery:** The May index, at 190, increased 0.5 percent from April and 5.0 percent above last May. Since April, prices are higher for other machinery and self-propelled machinery.

**CONSUMER PRICE INDEX:** The April 2007 Consumer Price Index, as issued by the Bureau of Labor Statistics, for all urban consumers (CPI-U) increased 0.6 percent before seasonal adjustment to a level of 206.686 (1982-84=100). This compares with the March index of 205.352. For the 12-month period ending in April, the overall index increased 2.6 percent.

**Indexes of Prices Paid by Farmers and Related Parity Ratios  
United States, May 2007 With Comparisons <sup>1</sup>**

| Indexes and Ratios   | 1910-14 = 100 |       |       | 1990-92 = 100 |      |     |
|--|---------------|-------|-------|---------------|------|-----|
|  | 2006          | 2007  |       | 2006          | 2007 |     |
|  | May           | Apr   | May   | May           | Apr  | May |
| Prices Paid by Farmers for Commodities & Services, Interest, Taxes, & Wage Rates (PPITW) | 1,980         | 2,094 | 2,098 | 149           | 157  | 158 |
| Production   | 1,417         | 1,512 | 1,517 | 146           | 156  | 156 |
| Feed   | 601           | 720   | 713   | 123           | 147  | 146 |
| Livestock & Poultry  | 1,663         | 1,701 | 1,691 | 130           | 133  | 132 |
| Seeds  | 1,838         | 2,086 | 2,086 | 186           | 211  | 211 |
| Fertilizer   | 649           | 766   | 796   | 177           | 209  | 217 |
| Agricultural Chemicals   | 796           | 805   | 801   | 129           | 130  | 130 |
| Fuels  | 1,988         | 1,992 | 2,020 | 258           | 258  | 262 |
| Farm Supplies & Repairs  | 1,028         | 1,053 | 1,053 | 145           | 148  | 148 |
| Autos & Trucks   | 2,999         | 2,967 | 2,960 | 113           | 112  | 111 |
| Farm Machinery   | 4,539         | 4,740 | 4,766 | 181           | 189  | 190 |
| Building Materials   | 2,057         | 2,102 | 2,115 | 151           | 155  | 156 |
| Farm Services & Rent   | 1,568         | 1,589 | 1,589 |               |      |     |
| Rent   |               |       |       | 138           | 141  | 141 |
| Interest <sup>2</sup>  | 3,452         | 3,778 | 3,778 | 138           | 151  | 151 |
| Taxes <sup>3</sup>   | 4,343         | 4,570 | 4,570 | 162           | 171  | 171 |
| Wage Rates   | 6,326         | 6,571 | 6,571 | 169           | 176  | 176 |
| Production, Interest, Taxes, & Wage Rates (PITW)   | 1,993         | 2,122 | 2,128 | 148           | 158  | 158 |
| Family Living-CPI <sup>4</sup>   | 1,923         | 1,963 | 1,963 | 150           | 153  | 153 |
| Ratio (Received\Paid) Parity Ratio <sup>5</sup>  | 36            | 41    | 42    | 74            | 85   | 87  |
| Parity Ratio Adjusted <sup>6</sup>   | 38            | 43    | 44    |               |      |     |
| PPITW Adjusted for Productivity <sup>7</sup>   | 1,328         | 1,363 | 1,364 |               |      |     |
| Crop Sector (PPITW)  |               |       |       | 154           | 162  | 162 |
| Livestock Sector (PPITW)   |               |       |       | 144           | 153  | 153 |
| Farm Sector (Production)   |               |       |       | 136           | 153  | 152 |
| Non-Farm Sector (Production)   |               |       |       | 151           | 157  | 158 |

<sup>1</sup> Revised historic price indexes for months not shown are available at [www.nass.usda.gov](http://www.nass.usda.gov).

<sup>2</sup> Interest per acre on farm real estate debt and interest rate on farm non-real estate debt.

<sup>3</sup> Farm real estate taxes payable per acre.

<sup>4</sup> Bureau of Labor Statistics, Consumer Price Index for all urban consumers (CPI-U), for the previous month converted by the USDA.

<sup>5</sup> Ratio of index of prices received to PPITW (1910-14=100).

<sup>6</sup> Based on estimated cash receipts, from marketings and government payments, the preliminary adjustment factor is 1.079 for 2007 and the revised factor is 1.096 for 2006.

<sup>7</sup> PPITW is adjusted based on productivity trend for the prior 15 years.

**Prices Paid Indexes and Annual Weights for Input Components and  
Sub-Components United States, May 2007 With Comparisons <sup>1</sup>**

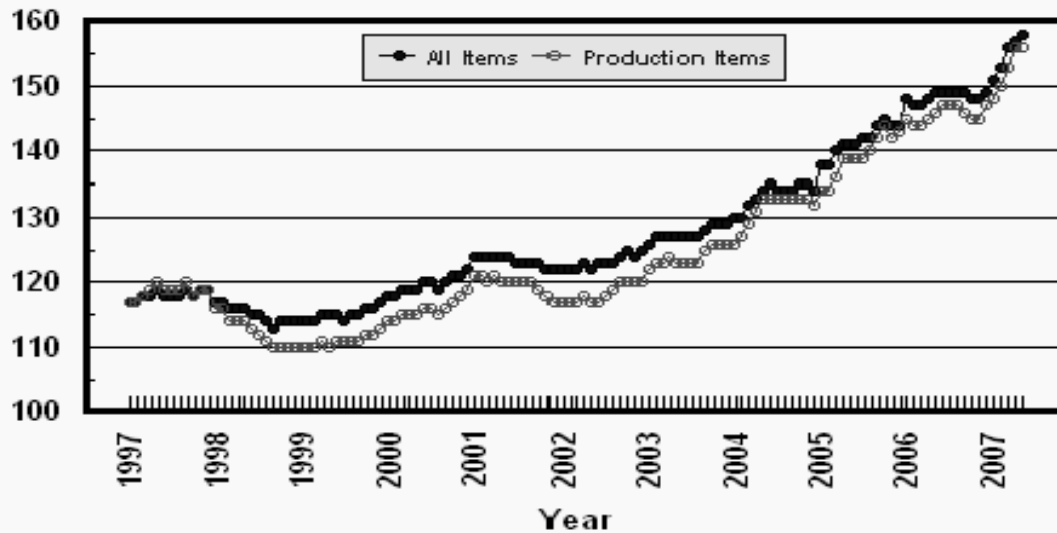
| Index                   | Relative Weights<br>5-Year Moving Average <sup>2</sup> |                | Input Indexes        |                      |                      |
|-------------------------|--|----------------|----------------------|----------------------|----------------------|
|                         | 2006   | 2007           | 2006                 | 2007                 |                      |
|                         | <i>Percent</i>   | <i>Percent</i> | <i>(1990-92=100)</i> | <i>(1990-92=100)</i> | <i>(1990-92=100)</i> |
| Production Items        | 66.8   | 67.4           | 146                  | 156                  | 156                  |
| Feed                    | 10.9   | 10.9           | 123                  | 147                  | 146                  |
| Feed Grains             | 1.6  | 1.6            | 96                   | 147                  | 149                  |
| Complete Feeds          | 5.3  | 5.3            | 119                  | 142                  | 140                  |
| Hay/Forages             | 1.4  | 1.4            | 146                  | 164                  | 178                  |
| Concentrates            | 1.7  | 1.7            | 128                  | 140                  | 138                  |
| Supplements             | 0.9  | 0.9            | 148                  | 170                  | 144                  |
| Livestock & Poultry     | 7.6  | 7.7            | 130                  | 133                  | 132                  |
| Feeder Cattle           | 6.0  | 6.0            | 127                  | 129                  | 128                  |
| Feeder Pigs             | 0.6  | 0.6            | 137                  | 160                  | 157                  |
| Milk Cow Replacements   | 0.6  | 0.6            | 157                  | 153                  | 153                  |
| Poultry                 | 0.5  | 0.5            | 125                  | 125                  | 124                  |
| Seeds                   | 3.6  | 3.7            | 186                  | 211                  | 211                  |
| Field Crops             | 3.3  | 3.4            | 191                  | 218                  | 218                  |
| Grasses/Legumes         | 0.3  | 0.4            | 133                  | 142                  | 142                  |
| Fertilizer              | 4.3  | 4.4            | 177                  | 209                  | 217                  |
| Mixed Fertilizer        | 1.9  | 1.9            | 151                  | 189                  | 197                  |
| Nitrogen                | 1.8  | 1.8            | 209                  | 236                  | 243                  |
| Potash & Phosphate      | 0.6  | 0.6            | 163                  | 192                  | 202                  |
| Agricultural Chemicals  | 3.5  | 3.4            | 129                  | 130                  | 130                  |
| Herbicides              | 2.2  | 2.2            | 124                  | 123                  | 122                  |
| Insecticides            | 0.8  | 0.8            | 143                  | 148                  | 148                  |
| Fungicides/Other        | 0.5  | 0.5            | 126                  | 133                  | 132                  |
| Fuels                   | 2.9  | 3.1            | 258                  | 258                  | 262                  |
| Diesel                  | 1.7  | 1.9            | 276                  | 277                  | 273                  |
| Gasoline                | 0.8  | 0.7            | 237                  | 228                  | 250                  |
| LP Gas                  | 0.4  | 0.4            | 224                  | 225                  | 233                  |
| Farm Supplies & Repairs | 5.0  | 4.8            | 145                  | 148                  | 148                  |
| Supplies                | 1.7  | 1.6            | 136                  | 140                  | 140                  |
| Repairs                 | 3.3  | 3.2            | 149                  | 153                  | 153                  |
| Autos & Trucks          | 1.8  | 1.8            | 113                  | 112                  | 111                  |
| Autos                   | 0.2  | 0.2            | 109                  | 109                  | 109                  |
| Trucks                  | 1.6  | 1.6            | 113                  | 112                  | 112                  |
| Farm Machinery          | 4.4  | 4.5            | 181                  | 189                  | 190                  |
| Tractors                | 1.0  | 1.0            | 161                  | 166                  | 166                  |
| Self-Propelled          | 1.7  | 1.8            | 188                  | 196                  | 197                  |
| Other Machinery         | 1.7  | 1.7            | 185                  | 195                  | 197                  |
| Building Materials      | 4.0  | 4.3            | 151                  | 155                  | 156                  |
| Farm Services           | 12.2   | 12.2           | 138                  | 141                  | 141                  |
| Custom Rates            | 1.3  | 1.3            | 123                  | 123                  | 123                  |
| Other Services          | 10.9   | 10.9           | 139                  | 144                  | 144                  |
| Rent                    | 6.7  | 6.7            | 121                  | 119                  | 119                  |
| Cash                    | 3.6  | 3.6            | 144                  | 140                  | 140                  |
| Share                   | 3.1  | 3.1            | 95                   | 95                   | 95                   |
| Interest                | 4.2  | 4.0            | 138                  | 151                  | 151                  |
| Taxes                   | 2.9  | 2.9            | 162                  | 171                  | 171                  |
| Wage Rates              | 7.8  | 7.8            | 169                  | 176                  | 176                  |
| Family Living-CPI       | 18.4   | 18.0           | 150                  | 153                  | 153                  |

<sup>1</sup> Revised historic price indexes for months not shown are available at [www.nass.usda.gov](http://www.nass.usda.gov).

<sup>2</sup> Weights may not add due to rounding.

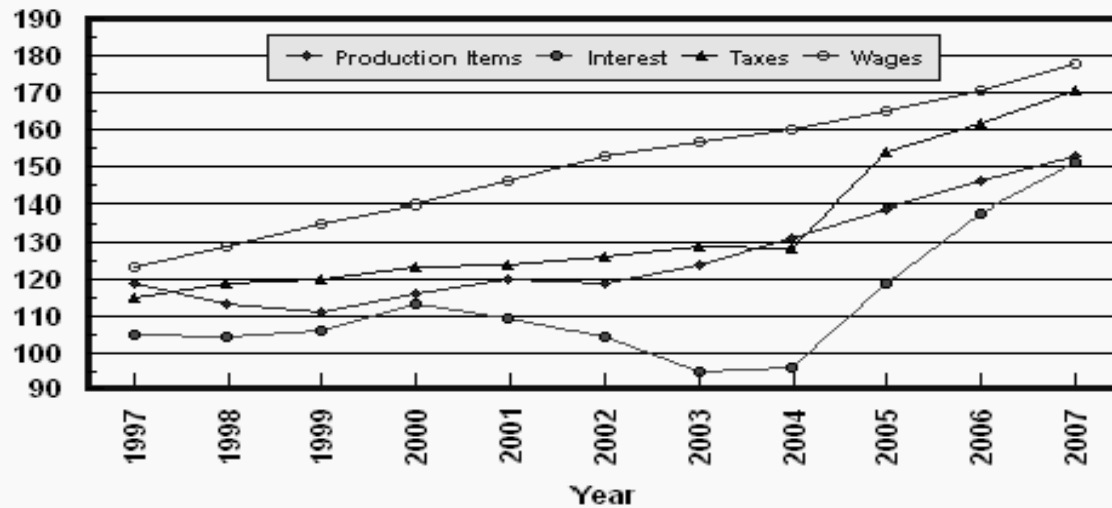
## Prices Paid by Farmers, Major Indexes US, by Month

Percent (1990-92=100)



## Prices Paid by Farmers, Major Indexes US, Annual Averages 1/

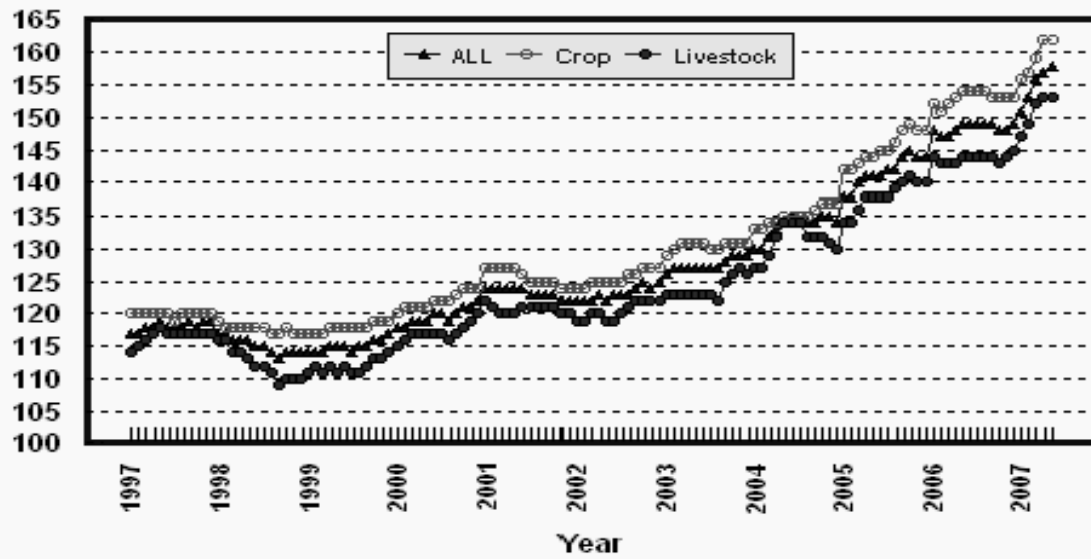
Percent (1990-92=100)



1/ Index values for 2007 are year-to-date averages.

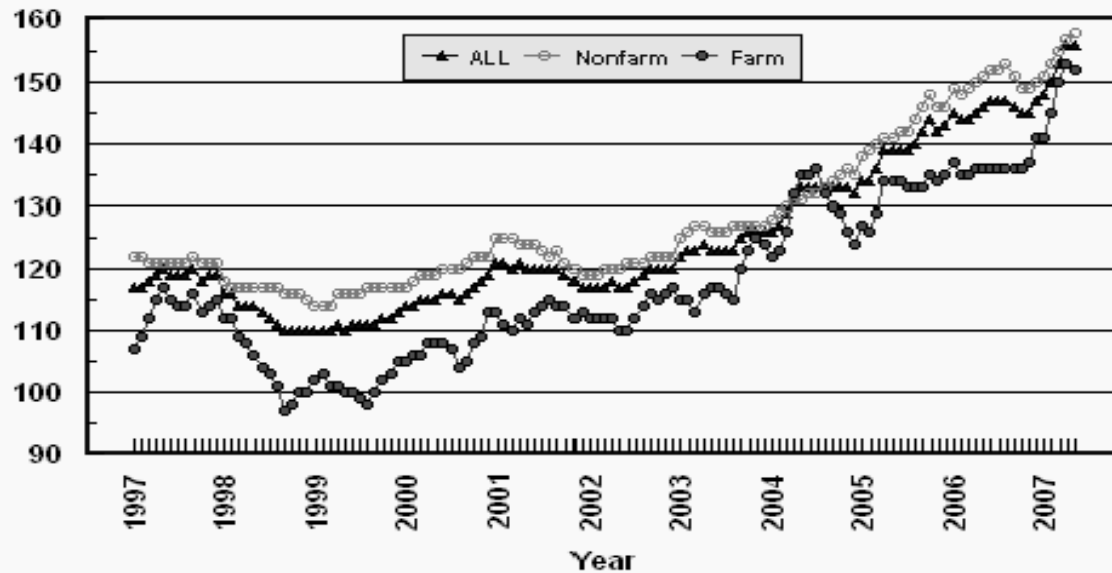
## Prices Paid by Farmers, Indexes, All Items US, By Farm Type

Percent (1990-92=100)



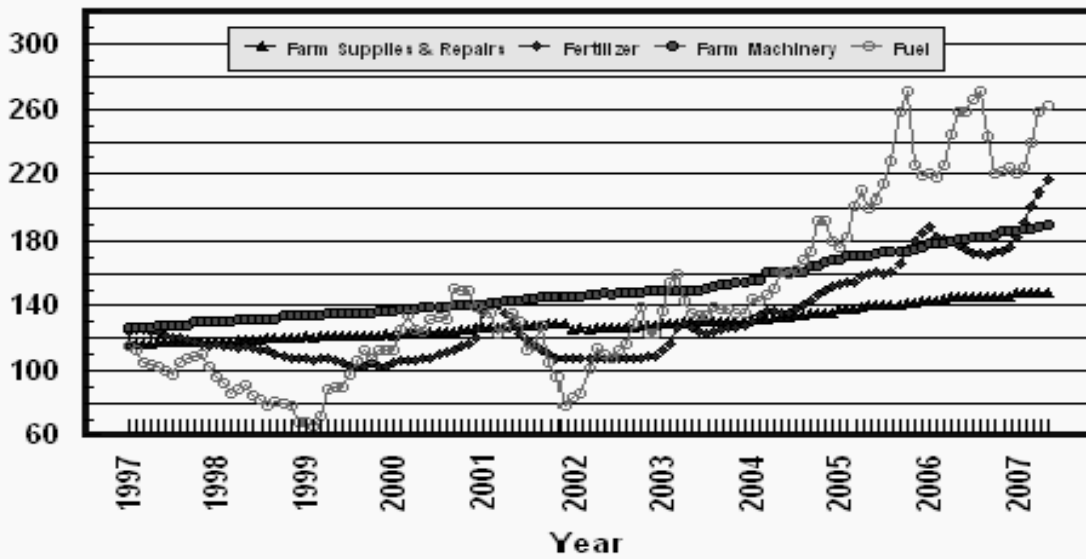
## Prices Paid by Farmers, Indexes, All Production Items US, By Sector Origin

Percent (1990-92=100)



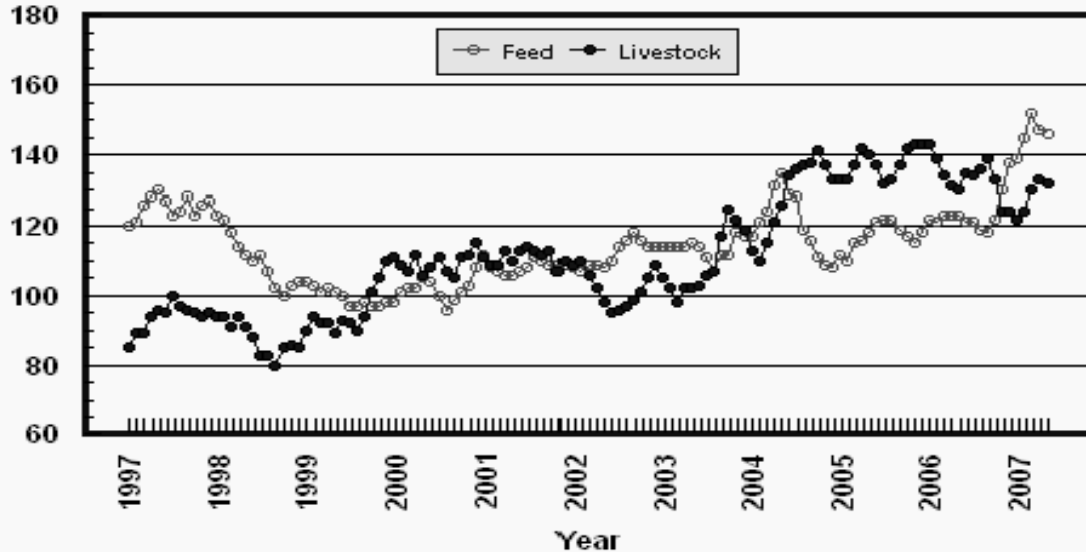
## Prices Paid by Farmers, Selected Production Indexes US, By Non-Farm Sector

Percent (1990-92=100)



## Prices Paid by Farmers, Selected Production Indexes US, By Farm Sector

Percent (1990-92=100)





**Feed Price Ratios: United States, May 2007 with Comparisons**

| Feed Price Ratio <sup>1</sup>   | 2006 | 2007  |      |
|---|------|-------|------|
|   | May  | Apr   | May  |
| Broiler-Feed: Pounds of Broiler Grower Feed equal in value to 1 pound of broiler, live weight     | 5.6  | *6.0  | 5.9  |
| Market Egg Feed: Pounds of Laying Feed equal in Value to 1 dozen eggs                             | 4.2  | *7.5  | 8.0  |
| Hog-Corn: Bushels of Corn equal in value to 100 pounds of hog, live weight                        | 22.2 | *14.0 | 14.9 |
| Milk-Feed: Pounds of 16% Mixed Dairy Feed equal in value to 1 pound of Whole Milk                 | 2.32 | *2.50 | 2.52 |
| Steer & Heifer-Corn: Bushels of Corn equal in value to 100 pounds of Steer & Heifers, live weight | 39.8 | *29.5 | 28.3 |
| Turkey-Feed: Pounds of Turkey Grower equal in value to 1 pound of Turkey, live weight             | 7.1  | *5.8  | 5.9  |

\* Revised.

<sup>1</sup> Effective January 1995, prices of commercial prepared feeds are based on current U.S. prices received for corn, soybeans, alfalfa hay, and all wheat.

**Prices Used to Calculate Feed Price Ratios:  
United States, May 2007 with Comparisons**

| Commodity           | Unit | Entire Month |          | Preliminary |
|---------------------|------|--------------|----------|-------------|
|                     |      | May 2006     | Apr 2007 | May 2007    |
| Broilers, Live      | Lb   | 0.350        | 0.500    | 0.510       |
| Eggs, Market        | Doz  | 0.222        | 0.558    | 0.615       |
| Hogs, All           | Cwt  | 48.20        | 47.30    | 52.00       |
| Milk, All           | Cwt  | 11.90        | 16.60    | 17.80       |
| Steers and Heifers  | Cwt  | 86.30        | 99.90    | 98.60       |
| Turkeys, Live       | Lb   | 0.433        | 0.468    | 0.483       |
| Corn                | Bu   | 2.17         | 3.39     | 3.48        |
| Hay, Alfalfa, Baled | Ton  | 117.00       | 128.00   | 144.00      |
| Soybeans            | Bu   | 5.68         | 6.88     | 7.15        |
| Wheat, All          | Bu   | 4.09         | 4.89     | 4.70        |

**Feeder Livestock: Prices Paid, United States  
May 2007 with Comparisons**

| Commodity            | Unit | 2006           | 2007           |                |
|----------------------|------|----------------|----------------|----------------|
|                      |      | May            | Apr            | May            |
|                      |      | <i>Dollars</i> | <i>Dollars</i> | <i>Dollars</i> |
| Feeders and Stockers |      |                |                |                |
| Cattle and Calves    | Cwt  | 107.50         | *109.10        | 108.60         |
| Feeder Pigs          | Cwt  | 126.00         | *147.00        | 144.00         |

\* Revised.

**Feed Price Ratios, Monthly, United States,  
January 2003 - May 2007 <sup>1</sup>**

| Year   | Jan  | Feb  | Mar  | Apr  | May  | Jun  | Jul  | Aug  | Sep  | Oct  | Nov  | Dec  | Avg <sup>2</sup> |
|--|------|------|------|------|------|------|------|------|------|------|------|------|------------------|
| <b>Broiler-Feed Ratio <sup>3</sup></b>                 |      |      |      |      |      |      |      |      |      |      |      |      |                  |
| 2003   | 5.6  | 5.4  | 5.2  | 4.8  | 5.1  | 5.4  | 5.7  | 5.8  | 5.7  | 5.4  | 5.1  | 5.1  | 5.4              |
| 2004   | 5.6  | 5.5  | 5.0  | 4.9  | 5.2  | 5.6  | 6.1  | 6.4  | 6.3  | 6.4  | 6.6  | 6.6  | 5.9              |
| 2005   | 7.1  | 7.4  | 7.0  | 7.0  | 6.9  | 6.6  | 6.4  | 7.0  | 7.7  | 7.3  | 7.3  | 6.5  | 7.0              |
| 2006   | 6.1  | 6.3  | 6.1  | 5.8  | 5.6  | 6.3  | 6.7  | 7.2  | 7.1  | 6.2  | 5.5  | 5.4  | 6.2              |
| 2007   | 5.6  | 5.6  | 5.9  | 6.0  | 5.9  |      |      |      |      |      |      |      | 5.8              |
| <b>Market Egg-Feed Ratios <sup>4</sup></b>             |      |      |      |      |      |      |      |      |      |      |      |      |                  |
| 2003   | 9.7  | 8.5  | 9.5  | 9.3  | 6.9  | 8.8  | 9.8  | 12.7 | 11.6 | 12.6 | 15.7 | 12.1 | 10.6             |
| 2004   | 12.9 | 10.8 | 13.2 | 7.9  | 6.0  | 6.6  | 5.9  | 5.7  | 6.6  | 5.9  | 8.8  | 9.7  | 8.3              |
| 2005   | 7.3  | 7.4  | 6.4  | 5.2  | 4.6  | 4.4  | 5.9  | 5.1  | 9.3  | 6.6  | 10.3 | 10.6 | 6.9              |
| 2006   | 8.5  | 5.5  | 9.2  | 6.3  | 4.2  | 7.1  | 4.6  | 7.5  | 6.9  | 6.4  | 10.6 | 10.1 | 7.2              |
| 2007   | 11.7 | 8.4  | 9.1  | 7.5  | 8.0  |      |      |      |      |      |      |      | 9.0              |
| <b>Turkey-Feed Ratio <sup>5</sup></b>                  |      |      |      |      |      |      |      |      |      |      |      |      |                  |
| 2003   | 5.8  | 5.8  | 6.0  | 5.9  | 5.7  | 5.8  | 5.9  | 5.7  | 6.0  | 6.3  | 6.3  | 5.7  | 5.9              |
| 2004   | 5.0  | 4.6  | 4.4  | 4.5  | 4.8  | 5.2  | 5.8  | 7.0  | 7.8  | 8.4  | 8.7  | 8.2  | 6.2              |
| 2005   | 6.8  | 6.9  | 6.5  | 6.7  | 6.9  | 7.0  | 7.3  | 8.0  | 9.0  | 9.5  | 10.0 | 9.5  | 7.8              |
| 2006   | 7.0  | 6.8  | 6.9  | 7.3  | 7.1  | 7.6  | 7.7  | 8.5  | 9.1  | 9.7  | 9.4  | 5.9  | 7.8              |
| 2007   | 5.6  | 5.3  | 5.5  | 5.8  | 5.9  |      |      |      |      |      |      |      | 5.6              |
| <b>Milk-Feed Ratio <sup>6</sup></b>                    |      |      |      |      |      |      |      |      |      |      |      |      |                  |
| 2003   | 2.42 | 2.33 | 2.27 | 2.25 | 2.18 | 2.19 | 2.59 | 2.89 | 3.11 | 3.23 | 3.05 | 2.85 | 2.61             |
| 2004   | 2.70 | 2.60 | 2.81 | 3.11 | 3.16 | 3.12 | 2.96 | 2.93 | 3.24 | 3.29 | 3.57 | 3.67 | 3.10             |
| 2005   | 3.49 | 3.48 | 3.33 | 3.18 | 2.96 | 2.94 | 2.98 | 3.08 | 3.27 | 3.39 | 3.45 | 3.28 | 3.24             |
| 2006   | 3.14 | 2.93 | 2.70 | 2.48 | 2.32 | 2.35 | 2.33 | 2.47 | 2.60 | 2.54 | 2.46 | 2.42 | 2.56             |
| 2007   | 2.42 | 2.31 | 2.40 | 2.50 | 2.52 |      |      |      |      |      |      |      | 2.43             |
| <b>Hog-Corn Ratio <sup>7</sup></b>                     |      |      |      |      |      |      |      |      |      |      |      |      |                  |
| 2003   | 14.1 | 14.7 | 14.9 | 14.9 | 17.4 | 19.2 | 19.7 | 18.4 | 18.0 | 17.3 | 15.8 | 14.8 | 16.6             |
| 2004   | 15.3 | 16.3 | 17.2 | 16.4 | 19.7 | 20.3 | 22.7 | 23.6 | 24.9 | 24.4 | 27.1 | 25.6 | 21.1             |
| 2005   | 25.0 | 26.0 | 25.3 | 25.6 | 27.7 | 24.4 | 23.6 | 26.2 | 26.0 | 25.8 | 24.6 | 23.0 | 25.3             |
| 2006   | 20.4 | 21.1 | 20.8 | 19.6 | 22.2 | 25.1 | 23.5 | 24.7 | 22.2 | 18.3 | 15.6 | 14.5 | 20.7             |
| 2007   | 14.0 | 13.8 | 13.1 | 14.0 | 14.9 |      |      |      |      |      |      |      | 14.0             |
| <b>Steer &amp; Heifer-Corn Feed Ratio <sup>8</sup></b> |      |      |      |      |      |      |      |      |      |      |      |      |                  |
| 2003   | 33.3 | 33.4 | 32.9 | 33.7 | 33.4 | 33.6 | 36.4 | 38.6 | 40.6 | 46.1 | 45.4 | 41.4 | 37.4             |
| 2004   | 35.8 | 31.5 | 32.0 | 30.8 | 32.3 | 33.6 | 36.4 | 38.9 | 40.7 | 42.6 | 44.0 | 45.0 | 37.0             |
| 2005   | 44.4 | 47.7 | 47.1 | 49.1 | 48.5 | 45.1 | 41.8 | 45.0 | 48.5 | 52.8 | 54.9 | 51.9 | 48.1             |
| 2006   | 50.5 | 48.3 | 45.0 | 42.3 | 39.8 | 41.2 | 42.1 | 43.8 | 43.3 | 36.9 | 31.4 | 29.6 | 41.2             |
| 2007   | 29.4 | 26.6 | 28.5 | 29.5 | 28.3 |      |      |      |      |      |      |      | 28.5             |

<sup>1</sup> Quarterly commercial feed surveys discontinued in January 1995. Comparable complete feeds are based on US prices for Corn, Alfalfa Hay, Soybeans, and All Wheat.

<sup>2</sup> Simple average of monthly ratios, January through December.

<sup>3</sup> Number of pounds of Broiler Grower Feed (corn-58 pounds, soybeans-42 pounds) equal in value to one pound of Broilers, live weight.

<sup>4</sup> Number of pounds of Laying Feed (corn-75 pounds, soybeans-25 pounds) equal in value to one dozen Market Eggs.

<sup>5</sup> Number of pounds of Turkey Grower Feed (corn-51 pounds, soybeans-28 pounds, all wheat-21 pounds) equal in value to one pound of Turkeys, live weight.

<sup>6</sup> Number of pounds of 16% protein Mixed Dairy Feed (corn-51 pounds, soybeans-8 pounds, alfalfa hay-41 pounds) equal in value to one pound of All Milk.

<sup>7</sup> Number of bushels of corn equal in value to 100 pounds of All Hogs, live weight.

<sup>8</sup> Number of bushels of corn equal in value to 100 pounds of Steers & Heifers, live weight.

## Prices Paid by Farmers

**Definition:** Prices paid by farmers represent the average costs of inputs purchased by farmers and ranchers to produce agricultural commodities. Conceptually, the average price when multiplied by quantity purchased should equal total producer expenditures for the item.

**Survey Procedures:** The prices paid data are obtained from establishments that sell goods and services to farmers and ranchers. Annually, about 8,500 firms are randomly selected from lists by type of item sold with an average response rate in the range of 75-80 percent. Firms are asked to report the price for the specified item "most commonly bought by farmers" or that was the "volume seller". Approximately 135 items are surveyed each April to represent all production input items purchased. The survey reference period for most items is the 5 business days centered around the 15th of the month. Separate prices paid surveys are conducted for agricultural chemicals, fuels, feed, fertilizer, machinery, and seed.

**Summary and Estimation Procedures:** The annual April Prices Paid Survey is summarized as a nonprobability survey. Average prices reported are aggregated to the region and U.S. level using weights available from expenditure data and other administrative sources. Price recommendations are prepared by the State Field Offices and Headquarters for review by the Agricultural Statistics Board in Washington, D.C. Also, the change in price level for individual items surveyed are combined to the regional and U.S. levels, and are published as prices paid indexes referenced to a specific base period. Prices paid indexes for new autos and trucks, building materials, farm supplies, motor supplies, and marketing containers are updated based on price changes measured in selected Bureau of Labor Statistics (BLS) indexes.

**Revisions:** Any revisions are published in the monthly and in annual issues of *Agricultural Prices*. The basis for revision must be supported by additional data that directly affect the level of the estimate. More revisions are likely in April when separate prices paid surveys are conducted, in lieu of BLS indexes, by the USDA to measure price change.

**Reliability:** Current methods of summarization in April are not designed directly to calculate sampling errors. However, analytical measures approximate the U.S. relative sampling errors for major items around 10 percent. Any nonsampling errors are attributed to such things as the inability to obtain correct information, differences in interpreting questions or definitions, mistakes in coding or processing the data, etc. Efforts are made at each step in the survey process to minimize these nonsampling errors.

**Program Change:** Effective January 1, 1995, the National Agricultural Statistics Service updated the weights and changed the construction of its prices paid and received by farmers indexes. A Federal Register Notice dated October 28, 1994 discussed these program modifications.

A 1990-92 reference and base period replaced the 1977 reference and 1971-73 base weight period. Five-year moving average weights replaced the current fixed 1971-73 base period weights. The 1910-14=100 price indexes, required by statute for computing parity prices, were linked forward based on the changes in the new 1990-92=100 indexes. The new indexes were constructed by multiplying the ratios of the current prices to the base period prices by the moving average weights (adjusted for seasonal marketing patterns for the prices received indexes).

## Information Contacts

General questions should be directed to Kevin Barnes, Chief, Environmental, Economics and Demographics Branch at (202) 720-6146. Below are the commodity specialists to contact for additional information.

### Crop Prices Received

|  |                |
|--|----------------|
| Jeff Geuder, Chief, Crops Branch .....   | (202) 720-2127 |
| Greg Thessen, Field Crops Section .....  | (202) 720-2127 |
| Todd Ballard - Wheat, Rye .....  | (202) 690-8533 |
| Ty Kalas - Corn, Proso Millet, Flaxseed .....                                  | (202) 720-9526 |
| Shiela Corley - Cotton, Cottonseed .....                                       | (202) 720-5944 |
| Travis Thorson - Soybeans, Sunflower, Other Oilseeds .....                     | (202) 720-7369 |
| King Whetstone - Hay, Oats, Sorghum .....                                      | (202) 690-3234 |
| Dennis Koong - Peanuts, Rice .....   | (202) 720-7688 |
| Greg Thessen - Sugarcane, Sugarbeets, Barley .....                             | (202) 720-2127 |
| Lance Honig, Fruits, Vegetables & Special Crops Section .....                  | (202) 720-2127 |
| Dan Norris - Peaches, Pears, Hops, Pulses, Mint .....                          | (202) 720-3250 |
| Rich Holcomb - Citrus .....  | (202) 720-5412 |
| Faye Propsom - Apples, Apricots, Cherries,<br>Cranberries, Plums, Prunes ..... | (202) 720-4288 |
| Leslie Colburn - Grapes, Tobacco .....   | (202) 720-7235 |
| Cathy Scherrer - Potatoes, Dry Edible Beans, Sweet Potatoes .....              | (202) 720-4285 |
| Debbie Flippin - Vegetables, Onions, Strawberries .....                        | (202) 720-2157 |
| Doug Marousek - Tree Nuts .....  | (202) 720-4215 |

### Livestock Prices Received

|   |                |
|---|----------------|
| Dan Kerestes, Chief, Livestock Branch .....                   | (202) 720-3570 |
| Bill Weaver, Livestock Section .....                          | (202) 720-3570 |
| Scott Hollis - Sheep, Lambs, Wool, Mohair .....               | (202) 720-4751 |
| Jason Hardegree- Milk, Milk Cows .....                        | (202) 720-3278 |
| Bruce Boess - Hogs .....                                      | (202) 720-3106 |
| Mike Miller - Cattle .....                                    | (202) 720-3040 |
| Darin Jantzi, Poultry and Specialty Commodities Section ..... | (202) 720-3570 |
| Toby Paterson - Turkeys .....                                 | (202) 720-0585 |
| Sharyn Lavender - Broilers, Eggs .....                        | (202) 720-3244 |

### Indexes, Prices Paid, and Parity Prices

|  |                |
|--|----------------|
| Kevin Barnes, Chief, Environmental, Economics and<br>Demographics Branch .....   | (202) 720-6146 |
| Kevin Hintzman, Economics Section .....  | (202) 720-6146 |
| Jen Brown - Prices Paid Indexes, Prices Paid for Feed, Fertilizer,<br>Agricultural Chemicals, Seeds, Farm Supplies and Repairs,<br>Farm Machinery, Fuels, Feeder Livestock, Poultry Chicks,<br>Feed Price Ratios, Autos & Trucks ..... | (202) 720-5446 |
| Daryl Brinkman - Prices Received Indexes,<br>Parity Prices .....   | (202) 720-8844 |
| Jennifer Sissom - Grazing Fees .....   | (202) 690-3229 |

## ACCESS TO REPORTS!!

---

For your convenience, there are several ways to obtain NASS reports, data products, and services:

### INTERNET ACCESS

All NASS reports are available free of charge on the worldwide Internet. For access, connect to the Internet and go to the NASS Home Page at: [www.nass.usda.gov](http://www.nass.usda.gov).

### E-MAIL SUBSCRIPTION

All NASS reports are available by subscription free of charge direct to your e-mail address. Starting with the NASS Home Page at [www.nass.usda.gov](http://www.nass.usda.gov), under the right navigation, *Receive reports by Email*, click on **National** or **State**. Follow the instructions on the screen.

-----

### PRINTED REPORTS OR DATA PRODUCTS

**CALL OUR TOLL-FREE ORDER DESK: 800-999-6779 (U.S. and Canada)**  
**Other areas, please call 703-605-6220      FAX: 703-605-6900**  
**(Visa, MasterCard, check, or money order acceptable for payment.)**

-----

### ASSISTANCE

For **assistance** with general agricultural statistics or further information about NASS or its products or services, contact the **Agricultural Statistics Hotline** at **800-727-9540**, 7:30 a.m. to 4:00 p.m. ET, or e-mail: [nass@nass.usda.gov](mailto:nass@nass.usda.gov).

The U.S. Department of Agriculture (USDA) prohibits discrimination in all its programs and activities on the basis of race, color, national origin, age, disability, and where applicable, sex, marital status, familial status, parental status, religion, sexual orientation, genetic information, political beliefs, reprisal, or because all or a part of an individual's income is derived from any public assistance program. (Not all prohibited bases apply to all programs.) Persons with disabilities who require alternative means for communication of program information (Braille, large print, audiotape, etc.) should contact USDA's TARGET Center at (202) 720-2600 (voice and TDD).

To file a complaint of discrimination, write to USDA, Director, Office of Civil Rights, 1400 Independence Avenue, S.W., Washington, D.C. 20250-9410, or call (800) 795-3272 (voice) or (202) 720-6382 (TDD). USDA is an equal opportunity provider and employer.