



NASS

FACT FINDERS FOR AGRICULTURE
UNITED STATES DEPARTMENT OF AGRICULTURE

Washington, D.C.

Agricultural Prices

Released June 28, 2007, by the National Agricultural Statistics Service (NASS), Agricultural Statistics Board, U.S. Department of Agriculture. For information on *Agricultural Prices* see page 40, office hours 7:30 a.m. to 4:00 p.m. ET.

June Farm Prices Received Index Increased 3 Points From Last Month

The preliminary All Farm Products Index of Prices Received by Farmers in June, at 141 percent, based on 1990-92=100, increased 3 points (2.2 percent) from May. The Crop Index is up 3 points (2.1 percent) and the Livestock Index increased 2 points (1.5 percent). Producers received higher commodity prices for milk, corn, lettuce, and soybeans. Lower prices were received for cantaloups, cattle, tomatoes, and eggs. The overall index is also affected by the seasonal change based on a 3-year average mix of commodities producers sell. Increased average marketings of wheat, grapes, hay, and cantaloups offset decreased marketings of oranges, strawberries, tomatoes, and sweet corn.

The preliminary All Farm Products Index is up 23 points (19 percent) from June 2006. The Food Commodities Index, at 141, increased 2 points (1.4 percent) from last month and increased 22 points (18 percent) from June 2006.

Prices Paid Index Down 1 Point

The June Index of Prices Paid for Commodities and Services, Interest, Taxes, and Farm Wage Rates (PPITW) is 156 percent of the 1990-92 average. The index is down 1 point (0.6 percent) from May but 7 points (4.7 percent) above June 2006. Lower prices in June for complete feeds, feed concentrates, and feeder pigs offset higher prices for feed grains and diesel fuel.

Index Summary Table

Index 1990-92=100	2006		2007	
	May	Jun	May	Jun
Prices Received	111	118	138	141
Prices Paid	149	149	157	156
Ratio ¹	74	79	88	90

¹ Ratio of index of prices received by farmers to index of prices paid by farmers.

Prices Received by Farmers

The June All Farm Products Index is 141 percent of its 1990-92 base, up 2.2 percent from the May index and 19 percent above the June 2006 index.

ALL CROPS: The June index is 146, up 2.1 percent from May and 15 percent above June 2006. Index increases for food grains, oil-bearing crops, feed grains & hay, and food grains more than offset the index decreases for commercial vegetables and fruits & nuts.

Food Grains: The June index, at 175, is 10 percent above the previous month and 31 percent above a year ago. The June all wheat price, at \$5.28 per bushel, is 40 cents higher than May and \$1.30 above June 2006.

Feed Grains & Hay: The June index is 167, up 5.7 percent from last month and 53 percent above a year ago. The corn price, at \$3.77 per bushel, is up 28 cents from last month and \$1.63 above June 2006. The all hay price, at \$131 per ton, is down \$7.00 from May but \$22.00 higher than last June. Sorghum grain, at \$6.60 per cwt, increased 12 cents from May and \$2.65 from June last year.

Oil-Bearing Crops: The June index, at 136, is up 6.3 percent from May and 35 percent higher than June 2006. The soybean price, at \$7.57 per bushel, increased 44 cents from May and is \$1.95 above June 2006.

Cotton: The June index, at 74, is unchanged from May but 6.3 percent below last year. The June price, at 45.1 cents per pound, is up 0.3 cent from the previous month but 2.3 cents below last June.

Potatoes & Dry Beans: The June index, at 141, is up 0.7 percent from last month and 1.4 percent above June 2006. The all potato price, at \$8.33 per cwt, is up 6 cents from May but down 8 cents from last June. The all dry bean price, at \$24.80 per cwt, is up 40 cents from the previous month and \$5.80 above June 2006.

Fruits & Nuts: The June index, at 155, is down 1.9 percent from May and 11 percent lower than a year ago. Price decreases for peaches and strawberries more than offset price increases for oranges, grapefruit, and lemons.

Commercial Vegetables: The June index, at 137, is down 9.9 percent from last month but 3.8 percent above June 2006. Price decreases during June for cantaloups, tomatoes, and onions more than offset price increases for lettuce, cauliflower, and asparagus.

LIVESTOCK & PRODUCTS: The June index, at 136, is 1.5 percent above last month and up 24 percent from June 2006. Compared with a year ago, prices are higher for milk, broilers, cattle, eggs, and turkeys. The prices for hogs and calves are down from last year.

Meat Animals: The June index, at 121, is down 2.4 percent from last month but 4.3 percent higher than last year. The June hog price, at \$52.50 per cwt, is down 50 cents from May and \$1.30 lower than a year ago. The June beef cattle price of \$89.70 per cwt is down \$3.50 from last month but \$5.70 higher than June 2006.

Dairy Products: The June index, at 153, is up 11 percent from a month ago and 68 percent higher than June last year. The June all milk price of \$20.00 per cwt is up \$2.00 from last month and up \$8.10 from June 2006. The fluid grade milk price is up \$2.00 and the manufacturing grade milk price is up \$2.10 from the previous month.

Poultry & Eggs: The June index, at 151, is up 0.7 percent from May and 30 percent above a year ago. The June market egg price, at 49.7 cents per dozen, decreased 11.8 cents from May but is 12.9 cents above June 2006. The June broiler price, at 52.0 cents per pound, is up 1.0 cent from May and 13.0 cents above a year ago. The June turkey price, at 52.0 cents per pound, is up 3.7 cents from the previous month and up 6.6 cents from a year earlier.

Table of Contents

U.S. Prices Received and Indexes	Page	Monthly State Prices, continued	Page
Narrative	2	Cotton, Upland	17
Price Indexes	5	Cottonseed	17
Price Index Charts	6	Eggs	22
U.S. Prices Received Summary	8	Flaxseed	16
Charts	10	Grain Sorghum	15
Selected Commodities	14	Hay	17
Upland Cotton & Rice Marketings	17	Hogs, All	21
Parity Prices	24	Barrows and Gilts	21
Reliability Statement	31	Sows	21
 		Milk	23
Monthly State Prices Received		Milk Cows	23
Apples	17	Oats	15
Barley	15	Peanuts	16
Beans, Dry Edible	16	Potatoes	19
Beef Cattle, All	20	Sheep	22
Calves	20	Lambs	22
Cows, Beef	20	Soybeans	15
Steers and Heifers	20	Sunflower, All	16
Citrus Fruit	18	Wheat, All Classes	14
Corn	15		
Prices Received Special Features			Page
Marketing Year for Specified Commodities			26
Marketing Year Average Prices, State and U.S.			
Sweet Potatoes			26
Monthly Prices Received, Monthly Farm Marketing Percentages, and Marketing Year Average Prices, U.S.			
Oats			26
All Barley			27
Malting Barley			27
Feed Barley			28
All Wheat			28
Winter Wheat			29
Durum Wheat			29
Other Spring Wheat			29
Hard Red Spring Wheat			30
Hard Red Winter Wheat			30
Soft Red Winter Wheat			30
White Wheat			30

Note: NASS adjusted its Marketing Year Average (MYA) Price publication schedule to accommodate the 2002 Farm Security and Rural Investment Act. Final U.S. MYA prices for all commodities will be published as soon as possible after the end of the U.S. marketing year for each crop. Final State MYA prices for each crop will be published after the marketing year for all States is complete. For barley, oats, and wheat, final State MYA prices will be published in the August 31st *Agricultural Prices* report.

Table of Contents (continued)

U.S. Prices Paid, Prices Paid Indexes and Ratios	Page
Narrative	32
Indexes and Parity Ratios	33
Charts	35
Feed Price Ratios	38
Reliability Statement	39
 U.S. Average Prices	
Prices Used to Calculate Feed Price Ratios	38
Feeder Livestock	38
 Information Contacts	40

**Index Numbers of Prices Received, United States,
June 2007, with Comparisons ¹**

Index	1910-14=100				1990-92=100		
	Average 1990-92	2006	2007		2006	2007	
		Jun	May	Jun	Jun	May	Jun
All Farm Products	639	747	878	895	118	138	141
All Crops	500	625	*707	722	127	*143	146
Food Grains	325	426	*505	557	134	*159	175
Feed Grains & Hay	363	390	*567	596	109	158	167
Cotton	517	403	*379	381	79	*74	74
Tobacco ²	1,263	1,363	1,392	1,392	90	92	92
Oil-Bearing Crops	554	552	*699	744	101	128	136
Fruits & Nuts	716	1,222	*1,105	1,086	175	*158	155
Commercial Vegetables	698	880	*1,017	914	132	*152	137
Potatoes & Dry Beans	540	703	*711	716	139	*140	141
Other Crops	493	586	598	598	119	121	121
Livestock & Products	768	843	*1,029	1,045	110	134	136
Meat Animals	1,021	1,180	*1,265	1,226	116	124	121
Dairy Products	799	731	*1,106	1,229	91	*138	153
Poultry & Eggs	282	325	423	424	116	150	151
Food Commodities					119	139	141

* Revised.

¹ Revised historic price indexes for months not shown are available at www.nass.usda.gov.

² Monthly prices discontinued July 2005.

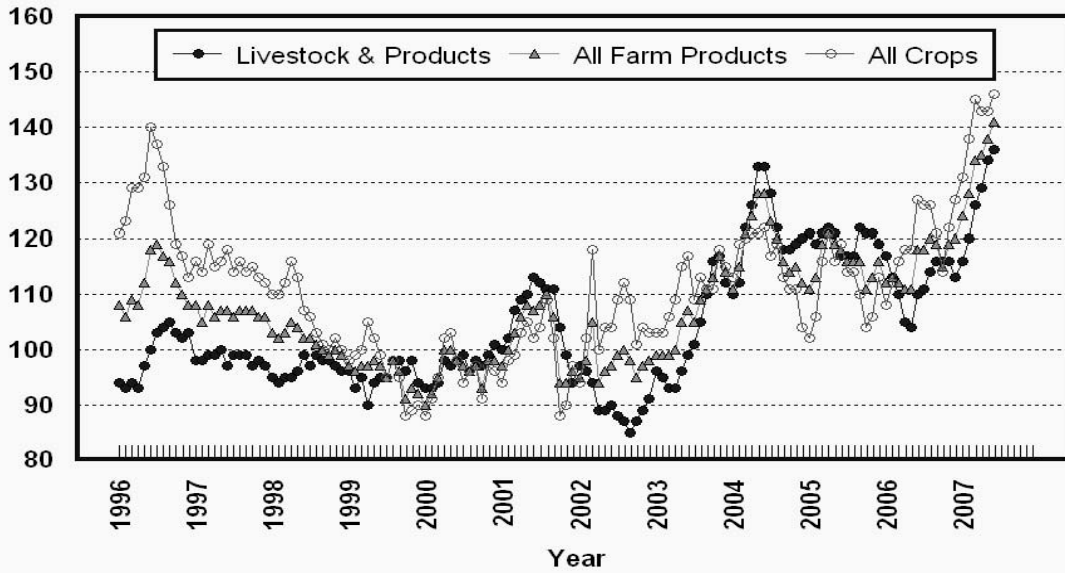
**Selected Index Numbers for Prices Received and Paid,
1990-92=100, by Month, United States, 2006 and 2007 ¹**

Month	Index of Prices Received						Index of Prices Paid			
	All Farm Products		All Crops		Livestock and Products		All Items		Production Items	
	2006	2007	2006	2007	2006	2007	2006	2007	2006	2007
Jan	113	124	109	131	117	116	148	151	145	148
Feb	113	128	113	138	113	120	147	153	144	150
Mar	113	134	117	145	110	126	147	156	144	153
Apr	111	134	119	141	105	129	148	157	145	156
May	111	138	120	143	104	134	149	157	146	156
Jun	118	141	127	146	110	136	149	156	147	154
Jul	118		127		111		149		147	
Aug	120		125		114		149		147	
Sep	119		121		116		149		146	
Oct	116		115		116		148		145	
Nov	119		122		116		148		145	
Dec	120		127		113		149		147	

¹ Revised historic price indexes for months not shown are available at www.nass.usda.gov.

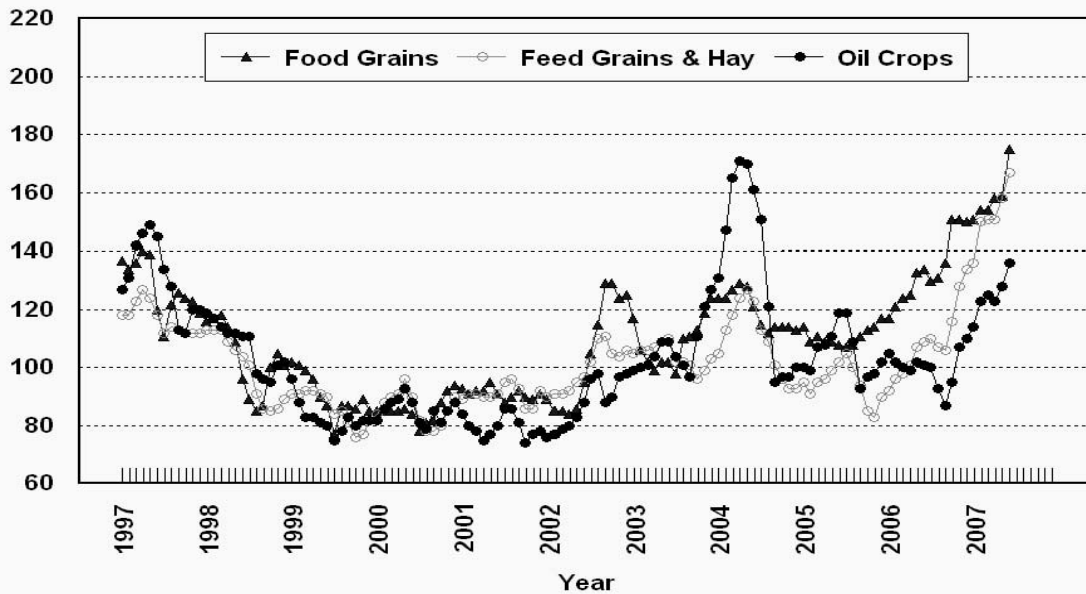
Prices Received, Major Indexes, US

Percent (1990-92=100)



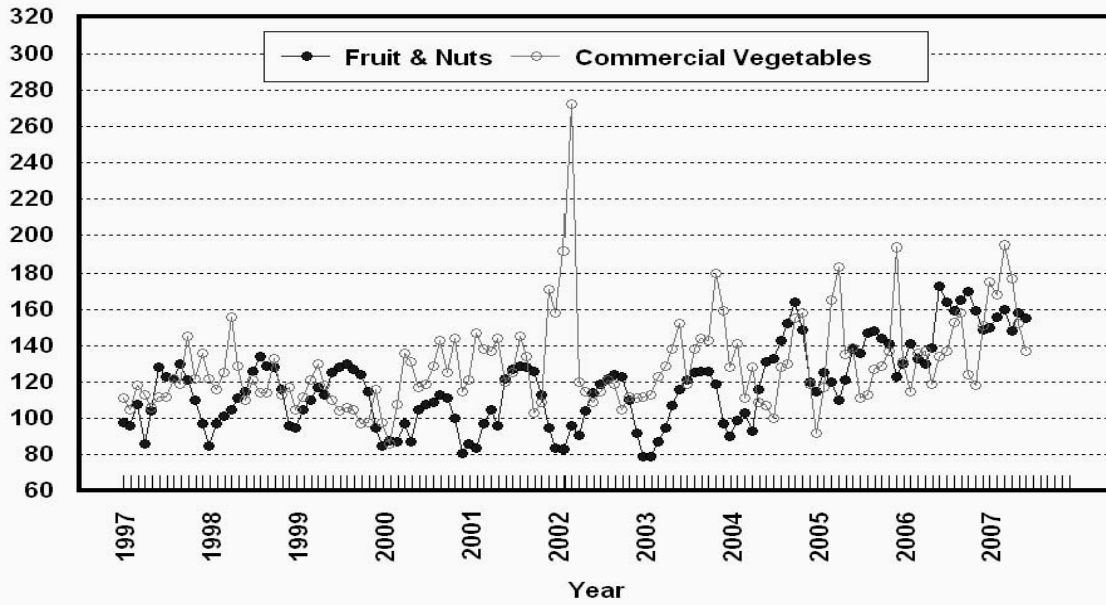
Prices Received, Food, Feed, & Oil Indexes, US

Percent (1990-92=100)



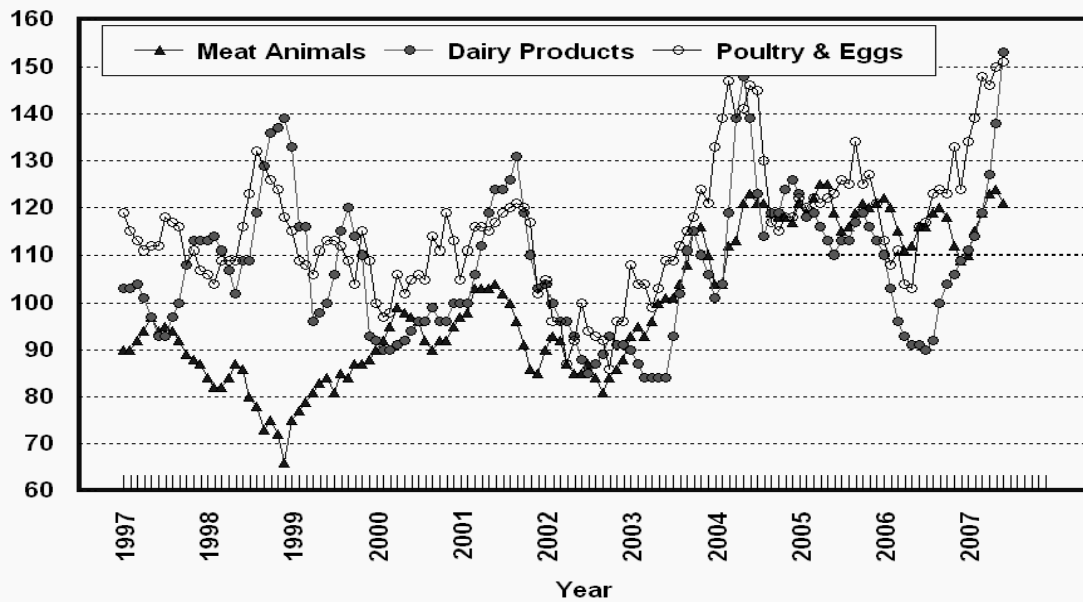
Prices Received, Fruit/Vegetable Indexes, US

Percent (1990-92=100)



Prices Received, Livestock Product Indexes, US

Percent (1990-92=100)



**Prices Received, United States,
June 2007, with Comparisons**

Commodity	Unit	Average 1990-92	Entire Month		Preliminary
			Jun 2006	May 2007	Jun 2007
		<i>Dollars</i>	<i>Dollars</i>	<i>Dollars</i>	<i>Dollars</i>
Field Crops					
Barley, All	Bu	2.12	2.77	3.12	3.43
Feed	Bu	1.90	2.08	3.20	3.34
Malting	Bu	2.43	3.05	3.08	3.50
Beans, Dry Edible	Cwt	19.10	19.00	24.40	24.80
Chickpeas, All	Cwt		28.20	29.50	28.00
Large	Cwt		30.70	30.00	29.20
Small	Cwt		11.30	19.40	14.50
Corn	Bu	2.30	2.14	3.49	3.77
Cotton, Upland	Lb	0.606	0.474	0.448	0.451
Cottonseed ³	Ton	96.00			
Flaxseed	Bu	4.27	5.40	7.09	7.40
Hay, All, Baled ¹	Ton	76.30	109.00	138.00	131.00
Alfalfa ¹	Ton	77.20	115.00	144.00	137.00
Other ¹	Ton	60.00	90.10	116.00	111.00
Lentils	Cwt		7.81	13.00	14.60
Oats	Bu	1.22	1.90	2.49	2.55
Peanuts, In-Shell	Lb	0.304	0.170	0.179	0.181
Peas, Dry Edible	Cwt		5.30	10.10	10.10
Austrian Winter	Cwt		6.23	10.20	(⁴)
Potatoes	Cwt	5.82	8.41	8.27	8.33
Rice, Rough	Cwt	7.07	8.11	9.72	9.80
Sorghum Grain	Cwt	3.75	3.95	6.48	6.60
Soybeans	Bu	5.61	5.62	7.13	7.57
Sunflower, All	Cwt	9.50	12.30	16.60	17.00
Wheat, All	Bu	2.96	3.98	4.88	5.28
Winter	Bu	2.93	3.95	4.77	5.28
Durum	Bu	2.86	3.81	5.39	5.52
Other Spring	Bu	3.11	4.18	4.98	5.25
Hard Red Winter	Bu		4.27	4.69	
Soft Red Winter	Bu		3.32	4.31	
Hard Red Spring	Bu		4.23	4.97	
White	Bu	3.24	3.40	5.20	
Fruit					
Citrus, Equiv on-tree					
Grapefruit	Box	5.77	10.98	4.85	9.76
Lemons	Box	10.10	16.98	25.94	29.32
Oranges	Box	5.79	7.05	10.58	11.30
Tangelos ⁵	Box	5.82			
Tangerines	Box	15.11	(⁵)	16.50	(⁵)
Noncitrus, Fresh					
Apples ²	Lb	0.212	0.229	0.295	0.296
Grapes ²	Ton	506.00	2,400.00	(⁵)	850.00
Peaches ²	Ton	432.00	809.00	820.00	522.00
Pears ²	Ton	370.00	596.00	677.00	714.00
Strawberries	Cwt	56.00	51.40	68.60	64.80

¹ Mid-month price.

² Equivalent packinghouse-door returns for CA, MI, and NY (apples only), and WA (apples, peaches, and pears). Prices as sold for other states.

³ Marketing year August - February.

⁴ Price not published to avoid disclosure of individual firms.

⁵ Insufficient sales to establish a price.

**Prices Received, United States,
June 2007, with Comparisons**

Commodity	Unit	Average 1990-92	Entire Month		Preliminary
			Jun 2006	May 2007	Jun 2007
		<i>Dollars</i>	<i>Dollars</i>	<i>Dollars</i>	<i>Dollars</i>
Vegetables, Fresh ¹					
Asparagus	Cwt	79.80	96.40	115.00	122.00
Broccoli	Cwt	22.50	51.10	26.70	24.60
Cantaloups ²	Cwt		18.50	32.70	15.80
Carrots	Cwt	13.20	21.40	32.00	28.00
Cauliflower	Cwt	26.80	51.10	24.90	28.90
Celery	Cwt	11.60	17.80	18.30	12.20
Corn, Sweet	Cwt	15.70	21.60	21.20	19.40
Cucumbers ²	Cwt		24.30	27.80	22.30
Lettuce	Cwt	11.90	11.80	13.60	18.60
Onions	Cwt	12.80	17.00	28.40	23.40
Snap Beans ²	Cwt		34.20	37.60	33.50
Tomatoes	Cwt	32.30	30.90	49.80	32.10
Livestock					
Calves	Cwt	94.30	135.00	126.00	125.00
Cattle, All Beef	Cwt	72.90	84.00	93.20	89.70
Cows ³	Cwt	49.60	46.80	51.60	50.00
Steers & Heifers	Cwt	77.10	88.20	98.10	94.00
Milk Cows ⁴	Head	1,130.00			
Hogs, All	Cwt	47.70	53.80	53.00	52.50
Barrows & Gilts	Cwt	48.40	54.80	53.90	53.20
Sows	Cwt	39.50	33.10	33.90	36.60
Lambs	Cwt	56.20	92.10	96.60	
Sheep	Cwt	23.40	28.20	30.30	
Dairy and Poultry					
Milk, All ^{5 6}	Cwt	13.06	11.90	18.00	20.00
Fluid Grade ⁶	Cwt	13.10	11.90	18.00	20.00
Mfg Grade ⁶	Cwt	11.80	11.30	17.70	19.80
Broilers, Live ⁷	Lb	0.317	0.390	0.510	0.520
Eggs, All ⁸	Doz	0.643	0.547	0.773	0.676
Market ⁸	Doz	0.546	0.368	0.615	0.497
Turkeys, live ^{7 8}	Lb	0.380	0.454	0.483	0.520
Adjusted for Seasonal Variation ⁹					
Eggs, All	Doz	0.545	0.615	0.889	0.768
Milk, All ⁵	Cwt	9.71	12.10	18.40	20.40

¹ Beginning January 2006, point of first sale. F.O.B. shipping point for prior years.

² Monthly estimates began January 1995.

³ Beef cows and cull dairy cows sold for slaughter.

⁴ Animals sold for dairy herd replacement only. Prices available for Jan, Apr, Jul, and Oct.

⁵ Before deductions for hauling. Includes quality, quantity, and other premiums. Excludes hauling subsidies.

⁶ June 2007 Fat test percent: all milk, 3.57; fluid milk, 3.56; mfg grade, 3.76.

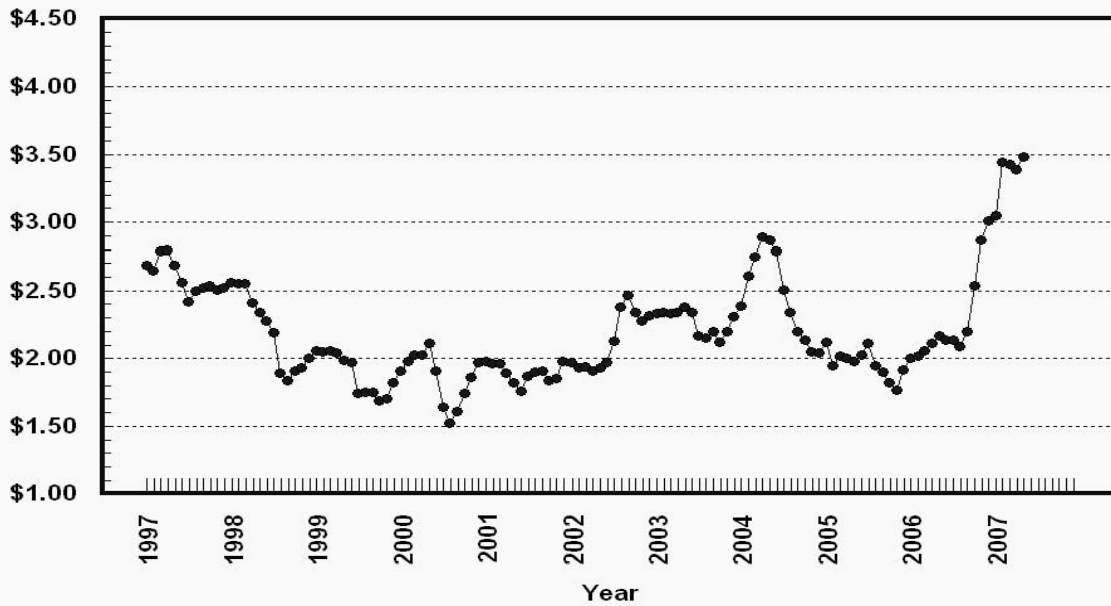
⁷ Equivalent live weight returns to producers.

⁸ Mid-month price.

⁹ Seasonal adjustment factors are: All Eggs June 2006, 89; May 2007, 87; and June 2007, 88. All Milk June 2006, 98; May 2007, 98; and June 2007, 98.

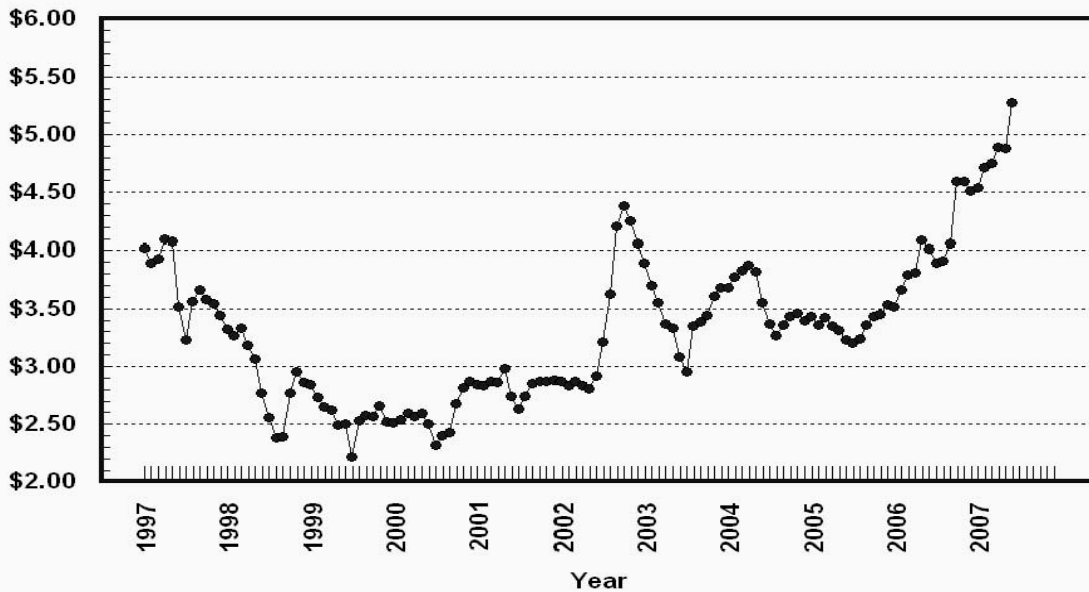
Prices Received, Corn, US

Dollars per Bu



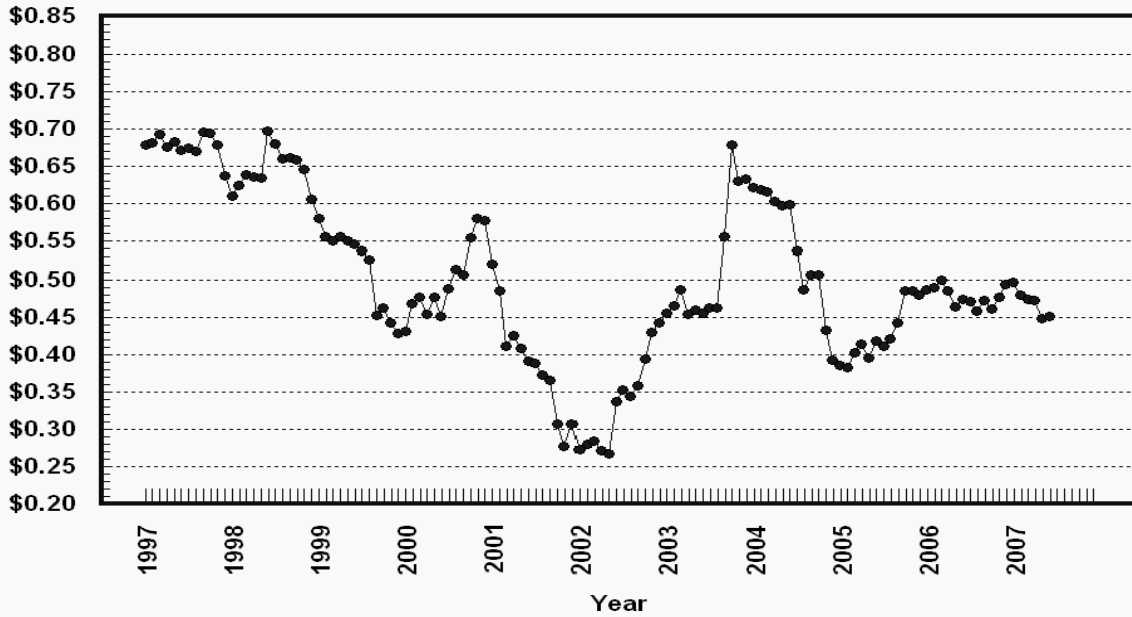
Prices Received, Wheat, US

Dollars per Bu



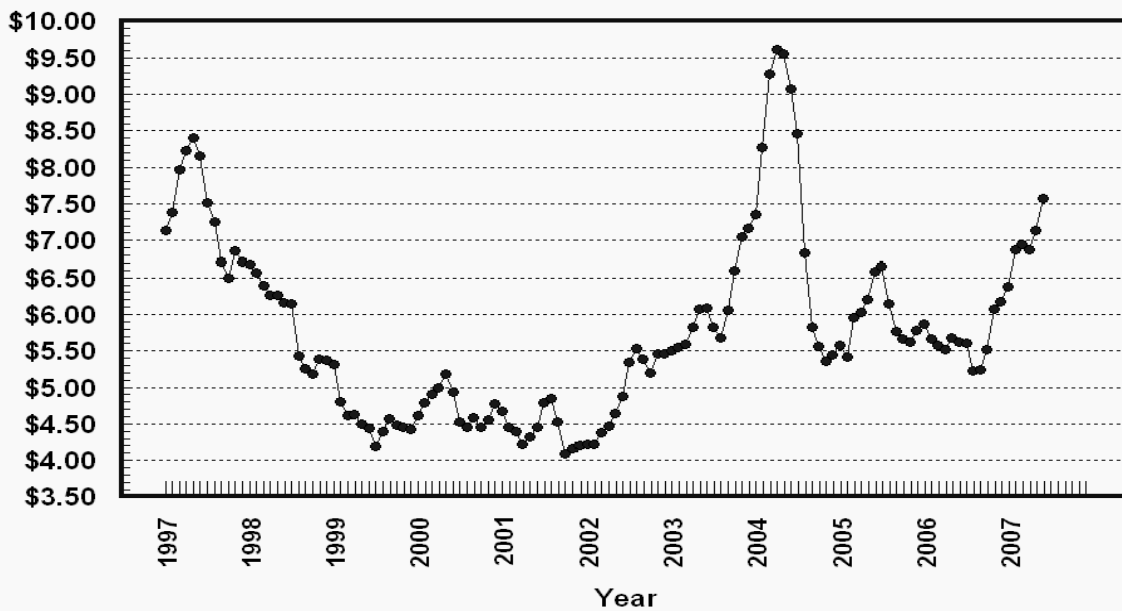
Prices Received, Cotton, US

Dollars per Lb



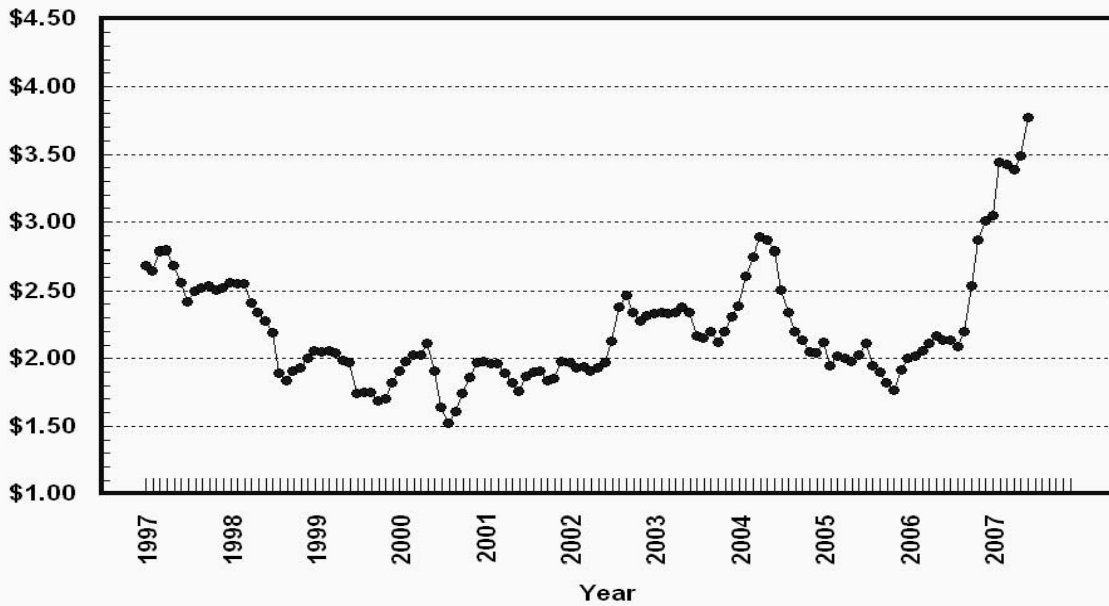
Prices Received, Soybeans, US

Dollars per Bu



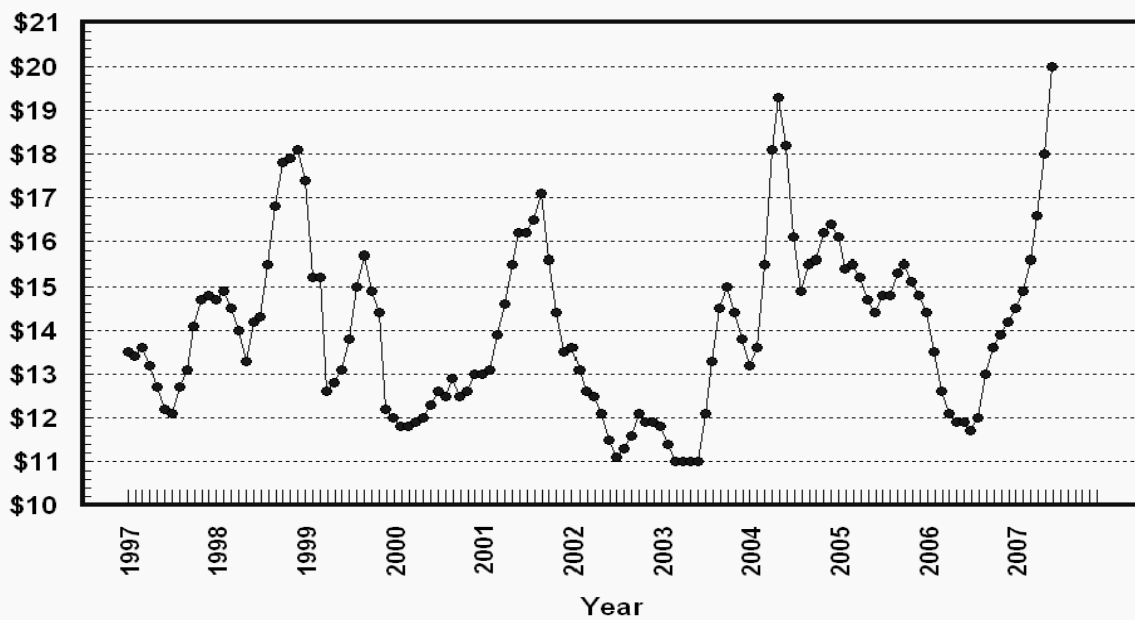
Prices Received, Corn, US

Dollars per Bu



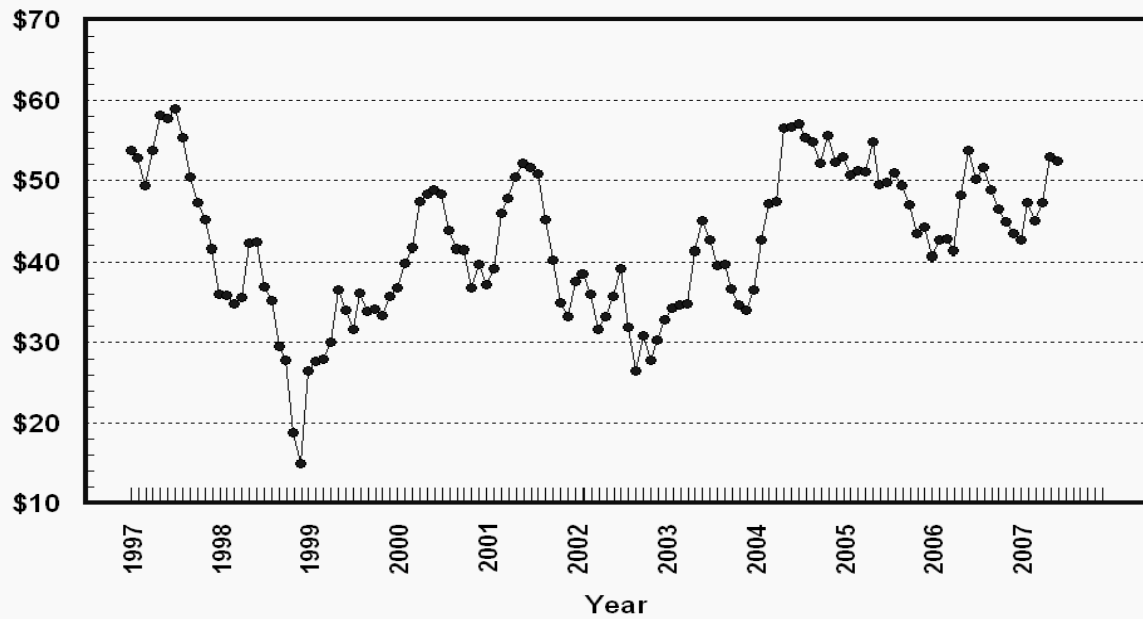
Prices Received, Milk, US

Dollars per Cwt



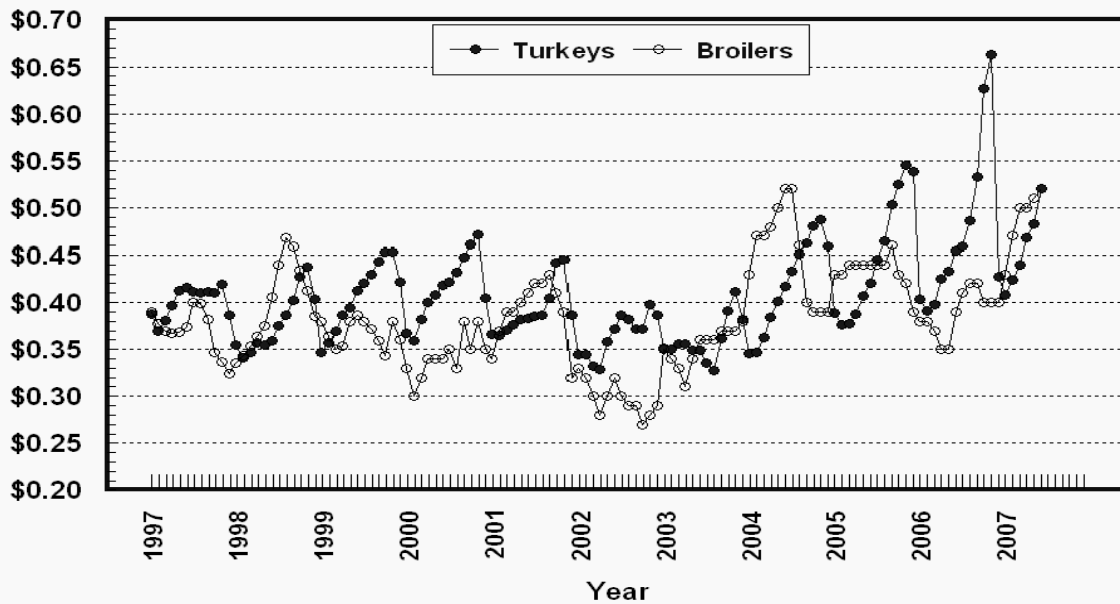
Prices Received, Hogs, US

Dollars per Cwt



Prices Received, Turkeys & Broilers, US

Dollars per Lb



Wheat: Prices Received, by State, May and June 2007

State	All Wheat		Winter Wheat		Durum Wheat		Oth Spring Wheat	
	May ¹	Jun ²	May ¹	Jun ²	May ¹	Jun ²	May ¹	Jun ²
	<i>Dollars per Bushel</i>	<i>Dollars per Bushel</i>	<i>Dollars per Bushel</i>	<i>Dollars per Bushel</i>	<i>Dollars per Bushel</i>	<i>Dollars per Bushel</i>	<i>Dollars per Bushel</i>	<i>Dollars per Bushel</i>
AR	4.39	4.80	4.39	4.80				
CA	4.17	5.01	4.16	5.02	(³)	(³)		
CO	4.63	5.42	4.63	5.42			(⁴)	(⁴)
ID	5.02	5.43	5.01	5.65	4.65	4.70	5.03	5.15
IL	4.34	5.00	4.34	5.00				
IN	4.54	5.24	4.54	5.24				
KS	4.76	5.53	4.76	5.53				
MI	4.02	5.00	4.02	5.00				
MN	4.97	5.30	(⁴)	5.00			4.97	5.30
MO	4.37	5.20	4.37	5.20				
MT	4.95	5.17	4.81	4.96	5.75	5.75	4.97	5.30
NE	4.66	5.15	4.66	5.15				
ND	4.94	5.20	4.54	4.85	5.22	5.55	4.92	5.15
OH	4.17	5.22	4.17	5.22				
OK	4.49	5.30	4.49	5.30				
OR	5.42	5.71	5.39	5.70			5.58	5.80
SD	4.76	5.22	4.49	5.13			4.92	5.27
TX	4.52	5.17	4.52	5.17				
WA	5.31	5.51	5.22	5.39			5.52	5.79
US	4.88	5.28	4.77	5.28	5.39	5.52	4.98	5.25

¹ Entire month.

² Mid-month.

³ Price not published to avoid disclosure of individual firms.

⁴ Insufficient sales to establish a price.

**Prices Received for Selected Agricultural Commodities, by Month,
United States, 2006 and 2007 ¹**

Month	All Wheat		Corn		Soybeans		Beef Cattle ²		All Hogs	
	2006	2007	2006	2007	2006	2007	2006	2007	2006	2007
	<i>Dollars per Bushel</i>	<i>Dollars per Bushel</i>	<i>Dollars per Bushel</i>	<i>Dollars per Bushel</i>	<i>Dollars per Bushel</i>	<i>Dollars per Bushel</i>	<i>Dollars per Cwt</i>	<i>Dollars per Cwt</i>	<i>Dollars per Cwt</i>	<i>Dollars per Cwt</i>
Jan	3.52	4.53	2.00	3.05	5.87	6.38	95.00	84.30	40.70	42.70
Feb	3.66	4.71	2.02	3.44	5.67	6.87	92.40	86.60	42.60	47.30
Mar	3.79	4.75	2.06	3.43	5.57	6.95	87.90	92.00	42.80	45.00
Apr	3.81	4.89	2.11	3.39	5.52	6.88	84.80	94.30	41.30	47.30
May	4.09	4.88	2.17	3.49	5.68	7.13	82.20	93.20	48.20	53.00
Jun	3.98	5.28	2.14	3.77	5.62	7.57	84.00	89.70	53.80	52.50
Jul	3.88		2.14		5.61		85.80		50.20	
Aug	3.91		2.09		5.23		87.20		51.60	
Sep	4.06		2.20		5.24		90.00		48.90	
Oct	4.59		2.54		5.52		88.20		46.50	
Nov	4.59		2.87		6.07		84.40		44.90	
Dec	4.52		3.01		6.18		83.10		43.50	

¹ Current month prices are mid-month; prices for previous months are for the entire month.

² Cows, steers and heifers.

Grains: Prices Received, by State, May and June 2007

State	All Barley		Corn		Oats		Soybeans		Sorghum Grain	
	May ¹	Jun ²	May ¹	Jun ²	May ¹	Jun ²	May ¹	Jun ²	May ¹	Jun ²
	<i>Dollars per Bushel</i>	<i>Dollars per Bushel</i>	<i>Dollars per Bushel</i>	<i>Dollars per Bushel</i>	<i>Dollars per Bushel</i>	<i>Dollars per Bushel</i>	<i>Dollars per Bushel</i>	<i>Dollars per Bushel</i>	<i>Dollars per Cwt</i>	<i>Dollars per Cwt</i>
AL							7.49	7.80	(⁴)	(⁴)
AR										
CA	(³)	(⁴)			(⁴)	(⁴)				
CO	(³)	(³)	3.43	4.00						
ID	3.34	3.55								
IL			3.52	3.90	(⁴)	(⁴)	7.27	7.70	6.50	6.90
IN			3.66	4.10			7.37	7.88		
IA			3.52	3.75	2.79	2.80	7.11	7.50		
KS			3.57	4.07	2.86	2.76	7.05	7.53	6.55	6.61
KY			3.70	4.00			7.36	7.75		
LA							6.82	(³)		
MI			3.48	3.80	2.61	2.30	7.13	7.50		
MN	3.22	3.37	3.22	3.37	2.58	2.70	6.97	7.35		
MS							7.06	7.80		
MO			3.62	4.05			7.16	7.75	5.86	6.00
MT	3.18	3.70			2.49	(⁴)				
NE			3.49	3.65	3.14	3.00	6.94	7.35	6.06	6.55
NY					2.18	2.29				
NC			4.04	4.25			7.54	7.98		
ND	3.02	3.14	3.04	3.30	2.24	2.30	6.73	7.00		
OH			3.57	4.01	(³)	(⁴)	7.34	7.89		
OK									6.05	6.47
OR	3.67	3.70			(⁴)	(⁴)				
PA			4.20	4.58	2.28	2.24				
SD	3.08	(⁴)	3.31	3.77	2.60	2.66	6.81	7.22		
TN			3.94	4.35			7.20	7.90		
TX			3.89	4.26	(³)	(⁴)			6.20	6.60
UT	3.72	3.99								
WA	3.75	3.79								
WI			3.50	3.70	2.23	2.25	7.07	7.40		
WY	(³)	(³)								
US	3.12	3.43	3.49	3.77	2.49	2.55	7.13	7.57	6.48	6.60

¹ Entire month.

² Mid-month.

³ Price not published to avoid disclosure of individual firms.

⁴ Insufficient sales to establish a price.

**Malting and Feed Barley: Prices Received Selected State,
May and June 2007**

State	Malting Barley		Feed Barley	
	May ¹	Jun ²	May ¹	Jun ²
	<i>Dollars per Bushel</i>	<i>Dollars per Bushel</i>	<i>Dollars per Bushel</i>	<i>Dollars per Bushel</i>
ID	3.00	3.70	3.49	3.45
MN	3.30	3.28	3.19	3.40
MT	3.31	(³)	2.82	2.97
ND	3.01	3.15	3.04	3.10
SD	(³)	(⁴)	(⁴)	(⁴)
WY	(⁴)	(⁴)	(³)	(³)

¹ Entire month.

² Mid-month.

³ Price not published to avoid disclosure of individual firms.

⁴ Insufficient sales to establish a price.

Field Crops: Prices Received, by State, May and June 2007

State	Dry Edible Beans		All Sunflower		Flaxseed		Peanuts ⁴	
	May ¹	Jun ²	May ¹	Jun ²	May ¹	Jun ²	May ¹	Jun ³
	<i>Dollars per Cwt</i>	<i>Dollars per Cwt</i>	<i>Dollars per Cwt</i>	<i>Dollars per Cwt</i>	<i>Dollars per Bushel</i>	<i>Dollars per Bushel</i>	<i>Dollars per Pound</i>	<i>Dollars per Pound</i>
AL							(⁵)	0.176
CA	36.90	35.90						
CO	25.10	24.40						
FL							(⁵)	(⁵)
GA							0.175	0.177
ID	24.90	25.00						
KS			15.80	15.80				
MI	24.30	25.00						
MN	26.80	26.90	16.90	17.90				
NE	25.10	25.30						
NC							0.184	0.180
ND	21.90	21.80	16.30	16.80	7.09	7.40		
SD			17.00	17.40	(⁶)	(⁶)		
TX							0.191	(⁵)
VA							0.174	(⁵)
US	24.40	24.80	16.60	17.00	7.09	7.40	0.179	0.181

¹ Entire month.

² Mid-month.

³ Based on sales through first half of month.

⁴ In-Shell.

⁵ Price not published to avoid disclosure of individual firms.

⁶ Insufficient sales to establish a price.

Field Crops and Apples: Prices Received, by State, May and June 2007

State	Cotton, Upland		June				Apples Fresh Use ^{1 4}
	May ¹	Jun ²	Cotton-seed ⁵	Hay, Baled ³			
				All	Alfalfa	Other	
	<i>Dollars per Pound</i>	<i>Dollars per Pound</i>	<i>Dollars per Ton</i>	<i>Dollars per Ton</i>	<i>Dollars per Ton</i>	<i>Dollars per Ton</i>	<i>Dol/Lb</i>
AL	0.443	0.443					
AZ	(⁶)	(⁶)		150.00	151.00	138.00	
AR	0.454	0.454					
CA	0.545	(⁶)		154.00	166.00	117.00	
CO				135.00	135.00	135.00	
GA	0.452	0.452					
ID				140.00	140.00	110.00	
IL				103.00	113.00	87.00	
IA				104.00	108.00	78.00	
KS				109.00	113.00	78.00	
KY				86.00	135.00	75.00	
LA	0.438	0.443					
MI				99.00	100.00	80.00	0.250
MN				105.00	107.00	94.00	
MS	0.443	0.443					
MO				107.00	150.00	87.00	
MT				90.00	87.00	104.00	
NE				96.00	96.00	92.00	
NV				126.00	127.00	118.00	
NM				174.00	177.00	145.00	
NY				123.00	150.00	105.00	0.274
NC	0.443	0.443					
ND				60.00	63.00	45.00	
OH				123.00	146.00	94.00	(⁷)
OK				112.00	140.00	81.00	
OR				150.00	148.00	157.00	
PA				140.00	156.00	132.00	(⁷)
SD				89.00	91.00	74.00	
TN	0.445	0.459					
TX	0.441	0.444		143.00	165.00	135.00	
UT				120.00	121.00	92.00	
VA							
WA				140.00	140.00	140.00	0.300
WI				63.00	65.00	45.00	
WY				114.00	114.00	111.00	
US	0.448	0.451		131.00	137.00	111.00	0.296

¹ Entire month.

² Based on sales during the first half of the month.

³ Mid-month.

⁴ Equivalent packinghouse-door returns for CA, MI, NY, and WA. Price at point of first sale for other States.

⁵ Marketing year August - February.

⁶ Price not published to avoid disclosure of individual firms.

⁷ Insufficient sales to establish a price.

Upland Cotton and Rice: Prices Received and Marketings, United States, June 2007, with Comparisons

Item	Unit	Apr 2007 ¹	May 2007 ¹	Jun 2007 ²
Cotton, Upland				
Average Price	Dollars per Pound	0.473	0.448	0.451
Marketings ³	1,000 Bales	1,155	1,550	NA
Rice				
Average Price	Dollars per Cwt	9.94	9.72	9.80
Marketings ⁴	1,000 Cwt	11,462	12,344	NA

¹ Entire month.

² Based on purchases for the first half of the month.

³ Marketings based on a survey of cotton buyers in the major producing States - AL, AZ, AR, CA, GA, LA, MS, NC, TN, and TX.

⁴ Purchases by private firms and rice (rough equivalent) shipped by cooperatives.

**Citrus Fruit: Prices and Equivalent Returns, by Utilization,
by State and United States, June 2007**

Commodity, State and Type	F.O.B. Packed Fresh	Equivalent Returns ¹					
		Packinghouse-door			On-tree		
		All	Fresh	Process	All	Fresh	Process
	<i>Dollars per Box</i>	<i>Dollars per Box</i>	<i>Dollars per Box</i>	<i>Dollars per Box</i>	<i>Dollars per Box</i>	<i>Dollars per Box</i>	<i>Dollars per Box</i>
Grapefruit CA	24.20	12.68	14.96	-0.30	9.76	12.04	-3.22
Lemons CA	53.70	34.74	43.63	-0.42	29.32	38.21	-5.84
Oranges CA Valencia	28.60	13.00	20.57	1.64	10.46	18.03	-0.90
FL Valencia	27.00	14.46	18.10	14.00	11.61	15.30	11.15
US	28.10	14.06	19.75	12.23	11.30	17.12	9.43

¹ Net lbs. per box: Grapefruit - AZ & CA-67, FL-85, TX-80; Lemons - 76; Oranges - AZ & CA-75, FL-90, TX-85; Tangelos - 90; Tangerines - AZ & CA-75, FL-95.

Potatoes: Prices Received, by State, May and June 2007 ¹

State	May	Jun	State	May	Jun
	<i>Dollars per Cwt</i>	<i>Dollars per Cwt</i>		<i>Dollars per Cwt</i>	<i>Dollars per Cwt</i>
AL			NC		
AZ	(⁴)	(⁴)	ND		
CA - All ²	17.20	13.60	ND - All ²	7.25	6.20
- Winter			- Fresh ³	5.80	NA
- Spring	19.70	14.30	- Processing	7.00	NA
- Summer			OR	8.15	8.45
- Fall	7.85	8.30	TX	10.50	10.50
CO - All ²	7.90	7.90	VA		
- Fresh ³	9.10	NA	WA - All ²	7.75	7.85
FL	12.70	12.90	- Processing	7.00	NA
ID - All ²	6.45	6.10	WI - All ²	7.70	7.55
- Fresh ³	7.00	NA	- Fresh ³	6.80	NA
- Processing	5.80	NA	- Processing	8.65	NA
ME	8.25	7.60	US - All ²	8.27	8.33
MI	10.20		- Fresh ³	11.08	NA
MN	5.60	5.10	- Processing	6.87	NA
NY	11.60				

¹ Missing data indicates no potatoes being marketed.

² Average price of potatoes sold for all uses, including table stocks, processing, seed, and livestock feed.

³ Fresh market prices only, includes table stock prices.

⁴ Price not published to avoid disclosure of individual firms.

Cattle: Prices Received, by State, May and June 2007

State	Cows ¹		Steers & Heifers		Beef Cattle ⁴		Calves	
	May ²	Jun ³	May ²	Jun ³	May ²	Jun ³	May ²	Jun ³
	<i>Dollars per Cwt</i>	<i>Dollars per Cwt</i>	<i>Dollars per Cwt</i>	<i>Dollars per Cwt</i>	<i>Dollars per Cwt</i>	<i>Dollars per Cwt</i>	<i>Dollars per Cwt</i>	<i>Dollars per Cwt</i>
AZ	51.00	52.00	99.00	96.00	84.60	82.80	114.00	110.00
AR	49.00	47.50	105.00	104.00	88.20	87.10	118.00	116.00
CA	48.30	48.00	96.50	92.50	75.80	73.40	112.00	109.00
CO	53.20	51.60	105.00	101.00	104.00	100.00	121.00	124.00
FL	50.60	48.50	101.00	98.20	81.60	82.50	112.00	108.00
GA	50.30	49.00	95.50	94.00	65.70	64.30	116.00	114.00
ID	51.00	50.80	95.90	91.90	85.10	82.00	111.00	111.00
IL	54.00	52.00	98.00	93.00	97.10	92.20	117.00	113.00
IA	54.50	51.00	94.60	90.00	93.80	89.20	119.00	117.00
KS	53.70	52.20	97.60	93.50	95.80	93.10	127.00	129.00
KY	50.00	47.00	100.00	97.00	88.00	85.00	114.00	109.00
LA	50.00	48.00	100.00	96.00	65.50	62.90	117.00	112.00
MI	52.00	51.00	93.00	90.00	80.70	78.30	125.00	125.00
MN	53.80	52.00	94.90	90.00	88.10	83.70	126.00	128.00
MO	51.60	49.00	109.00	107.00	94.70	90.80	123.00	121.00
MT	53.90	51.50	98.80	94.10	84.90	72.80	114.00	119.00
NE	52.70	50.00	98.10	93.30	96.70	92.00	127.00	130.00
NM	52.00	52.00	102.00	100.00	85.00	83.20	125.00	126.00
ND	52.50	50.00	98.00	94.00	79.80	66.30	122.00	120.00
OH	50.70	49.00	94.90	90.00	90.50	85.90	111.00	105.00
OK	52.90	50.50	103.00	102.00	99.00	97.90	124.00	120.00
OR	51.00	48.50	96.00	95.00	82.50	81.10	109.00	103.00
PA	52.70	51.10	94.50	91.00	83.60	80.60	116.00	118.00
SD	52.60	50.40	97.90	96.00	89.70	85.50	118.00	115.00
TN	49.00	46.00	101.00	100.00	80.20	78.40	113.00	108.00
TX	50.70	49.80	97.90	94.60	93.70	90.60	129.00	126.00
VA	48.20	46.00	96.00	94.10	77.80	75.80	110.00	116.00
WI	53.00	50.00	93.40	90.00	70.00	66.80	156.00	150.00
WY	52.00	48.50	104.00	100.00	93.10	89.70	125.00	123.00
US	51.60	50.00	98.10	94.00	93.20	89.70	126.00	125.00

¹ Beef cows and cull dairy cows sold for slaughter.

² Entire month.

³ Mid-month.

⁴ "Cows" and "steers and heifers" combined.

Hogs: Prices Received, by State, May and June 2007

State	Sows		Barrows and Gilts		All Hogs	
	May ¹	Jun ²	May ¹	Jun ²	May ¹	Jun ²
	<i>Dollars per Cwt</i>	<i>Dollars per Cwt</i>	<i>Dollars per Cwt</i>	<i>Dollars per Cwt</i>	<i>Dollars per Cwt</i>	<i>Dollars per Cwt</i>
AR	34.10	36.90	51.10	50.60	49.40	49.20
IL	32.50	35.30	52.00	51.00	50.40	49.70
IN	38.20	40.70	53.40	52.90	52.20	51.90
IA	34.00	36.50	55.00	54.00	54.80	53.70
KS	33.70	36.60	49.60	49.10	47.50	47.50
MN	36.00	39.00	55.80	55.00	55.60	54.90
MO	34.00	35.70	49.20	48.90	48.30	48.00
NE	35.50	38.50	55.90	55.40	55.50	55.10
NC	32.90	36.20	55.00	54.50	54.80	54.30
OH	34.10	37.00	52.40	51.00	51.30	50.20
OK	33.00	35.00	47.40	47.00	45.20	45.20
PA	33.20	35.50	48.30	47.30	46.00	45.50
SD	33.30	35.70	56.30	54.80	53.80	52.10
US	33.90	36.60	53.90	53.20	53.00	52.50

¹ Entire month.

² Mid-month.

Sheep and Poultry: Prices Received, by State, May and June 2007

State	May		June
	Sheep ¹ <i>Dollars per Cwt</i>	Lambs ¹ <i>Dollars per Cwt</i>	Market Eggs ^{2 3} <i>Dollars per Dozen</i>
AL			0.540
AR			0.488
CA	30.00	89.00	0.500
CO	32.00	100.00	
CT			0.460
FL			0.490
GA			0.499
ID	24.00	88.00	
IN			0.500
IA	31.80	92.00	0.458
KY	32.00	102.00	
ME			0.700
MI			0.480
MN	30.00	96.70	0.550
MS			0.490
MO	31.50	104.00	0.450
MT	27.80	98.30	
NE	29.80	96.60	
NY			0.505
NC			0.505
ND	30.00	103.00	
OH	28.50	105.00	0.570
OR	34.50	95.00	
PA	39.00	118.00	
SC			0.460
SD	24.20	104.00	0.510
TX	34.30	97.20	0.470
VA	39.00	108.00	
WA			0.570
WV	29.00	110.00	
WY	28.30	92.00	
US	30.30	96.60	0.497

¹ Entire month.

² Mid-month.

³ Also referred to as Table eggs.

Milk and Milk Cows: Prices Received, by State, May and June 2007

State	May ¹						June		Milk Cows ⁶
	Fluid Grade Milk ²		Manufacturing Grade Milk ³		All Milk ⁴		All Milk ^{4 5}		
	Price	Fat Test	Price	Fat Test	Price	Fat Test	Price	Fat Test	
	<i>Dol/Cwt</i>	<i>Percent</i>	<i>Dol/Cwt</i>	<i>Percent</i>	<i>Dol/Cwt</i>	<i>Percent</i>	<i>Dol/Cwt</i>	<i>Percent</i>	<i>Dol/Head</i>
AZ	18.10	3.52			18.10	3.52	20.10	3.52	
CA	17.20	3.59	18.00	4.01	17.22	3.60	19.60	3.57	
CO	18.00	3.47			18.00	3.47	19.80	3.45	
FL	20.10	3.56			20.10	3.56	21.70	3.55	
ID	17.00	3.57			17.00	3.57	18.50	3.51	
IL	18.70	3.65	18.20	3.55	18.70	3.65	20.20	3.60	
IN	17.90	3.57	16.90	3.71	17.90	3.57	19.50	3.54	
IA	18.00	3.62	17.40	3.71	18.00	3.62	20.10	3.56	
KS	17.40	3.58			17.40	3.58	19.70	3.50	
KY	18.80	3.58			18.80	3.58	20.80	3.56	
MI	18.20	3.52			18.20	3.52	20.10	3.48	
MN	18.50	3.70	17.50	3.76	18.50	3.70	20.30	3.64	
MO	18.00	3.57	17.00	3.59	18.00	3.57	19.90	3.53	
NM	17.40	3.53			17.40	3.53	19.00	3.50	
NY	18.50	3.63			18.50	3.63	20.10	3.60	
OH	18.60	3.62	17.00	3.74	18.50	3.62	19.90	3.55	
OR	17.50	3.63			17.50	3.63	18.50	3.60	
PA	19.30	3.60			19.30	3.60	21.40	3.60	
TX	18.40	3.66			18.40	3.66	20.00	3.64	
VT	19.00	3.70			19.00	3.70	20.70	3.67	
VA	19.30	3.60			19.30	3.60	20.70	3.60	
WA	18.10	3.63			18.10	3.63	20.30	3.59	
WI	18.50	3.63	17.70	3.74	18.50	3.63	20.80	3.57	
US	18.00	3.60	17.70	3.85	18.00	3.60	20.00	3.57	

¹ Entire month.

² Including milk diverted to manufacturing.

³ ID, MI, and PA are no longer published due to insufficient manufacturing grade milk volume.

⁴ Before deductions for hauling. Includes quality, quantity, and other premiums. Excludes hauling subsidies.

⁵ Preliminary.

⁶ Animals sold for dairy herd replacement only. Prices published January, April, July and October.

**Parity Price Equivalent for Manufacturing Grade Milk ¹: United States,
May and June 2007, with Comparisons**

Item	Unit	Jun 2006	May 2007	Jun 2007
Parity Equivalent	Dollars per Cwt	35.30	37.10	36.80
Average Price F.O.B ²	Dollars per Cwt	11.30	17.70	19.80
Average Fat Test of Milk ²	Percent	3.80	3.85	3.76

¹ The parity price equivalent during 2007 is 92.1 percent of the parity price of all milk sold to plants, compared with 91.5 percent in 2006. For additional details, see January 2007 issue of "Agricultural Prices".

² Preliminary for June 2007.

**Parity Prices for Farm Products and Average Prices Received as
Percent of Parity Prices, United States, with Comparisons ¹**

Commodity and Unit	Adjusted Base Price	Parity Price			Price as Percent of Parity		
		Jun 2006	May 2007	Jun 2007	Jun 2006	May 2007	Jun 2007
	<i>Dollars</i>	<i>Dollars</i>	<i>Dollars</i>	<i>Dollars</i>	<i>Percent</i>	<i>Percent</i>	<i>Percent</i>
Basic Commodities							
All Wheat, Bu	0.519	10.50	10.90	10.80	38	45	49
Rice, Cwt	1.40	28.40	29.40	29.10	29	33	34
Corn, Bu	0.384	7.80	8.06	7.99	27	43	47
Cotton, Lb							
American Upland	0.098	2.29	2.06	2.04	21	22	22
Extra Long Staple	0.142	2.70	2.98	2.96			
Peanuts, Lb	0.031	0.686	0.650	0.645	25	28	28
Designated Nonbasic							
All Milk, Sold to							
Plants, Per Cwt ²	1.92	38.60	40.30	40.00	31	46	51
Honey, Extracted, Lb ³	0.123	2.28	2.58	2.56			
Wool and Mohair							
Wool, Lb	0.082	1.63	1.72	1.71			
Mohair, Lb	0.359	6.64	7.53	7.47			
Other Nonbasic							
Barley, Bu	0.362	7.29	7.59	7.54	38	41	45
Canola, Cwt	1.37	27.00	28.70	28.50			
Cottonseed, Ton	14.80	302.00	311.00	308.00	33	40	41
Dry Edible Beans, Cwt	2.72	55.00	57.10	56.60	35	43	44
Flaxseed, Bu	0.841	15.60	17.60	17.50	35	40	42
Mustard Seed, Cwt	1.92	38.40	40.30	40.00			
Oats, Bu	0.215	4.33	4.51	4.48	45	55	57
Potatoes, Cwt	0.818	16.10	17.20	17.00	52	48	49
Rapeseed, Cwt	1.59	31.50	33.40	33.10			
Rye, Bu	0.414	6.95	8.69	8.62			
Safflower, Cwt	1.84	36.40	38.60	38.30			
Sorghum Grain, Cwt	0.656	12.10	13.80	13.70	33	47	48
Soybeans, Bu	0.850	17.20	17.80	17.70	33	40	43
All Sunflower, Cwt	1.66	32.80	34.80	34.60	38	48	49
Sweetpotatoes, Cwt	2.31	45.60	48.50	48.10			
Apples, Fresh, Lb ⁴	0.030	0.529	0.631	0.627	31	35	34
Citrus (equiv on-tree), Box							
Grapefruit	0.622	10.60	13.00	13.00	104	37	75
Lemons	1.14	22.70	23.90	23.70	75	109	124
Oranges	0.598	11.60	12.50	12.50	61	85	90
Tangerines	1.35	27.20	28.30	28.10		58	59
Temples (FL)	0.372	7.72	7.80	7.75			
Beef Cattle, Cwt	10.15	193.00	213.00	211.00	44	44	43
Calves, Cwt	14.60	268.00	306.00	304.00	50	41	41
Hogs, Cwt	5.83	117.00	122.00	121.00	46	43	43
Lambs, Cwt	11.90	233.00	250.00	248.00	40	39	
Sheep, Cwt	4.90	95.80	103.00	102.00	29	29	
Eggs, Doz ²	0.088	1.78	1.85	1.83	35	48	42
Turkeys, Live, Lb	0.056	1.100	1.170	1.170	41	41	44

¹ Parity prices are computed under the provisions of Title III, Subtitle a, Section 301 (a) of the Agricultural Adjustment Act of 1938 as amended by the Agricultural Acts of 1948, 1949, and 1956. See January "Agricultural Prices" for details on adjusted base price and parity price computations.

² Seasonally adjusted price as percentage of parity price.

³ Wholesale extracted. Adjusted base price derived from state annual averages prices weighted by production. For 1982 through 1985 the national averages are the support prices.

⁴ Equivalent packinghouse-door returns for CA, NY (apples only), OR (except peaches), and WA. Price at point of first sale for other states.

Parity Prices for Farm Products, June 2007, United States ¹

Other Nonbasic Commodities	Adjusted Base Price	Parity Price	Other Nonbasic Commodities	Adjusted Base Price	Parity Price
	<i>Dollars</i>	<i>Dollars</i>		<i>Dollars</i>	<i>Dollars</i>
Field Crops and Misc Commodities			Nectarines		
Hops, Lb	0.250	5.21	Fresh, CA, Ton ⁵	60.80	1,270.00
Spearmint Oil, Lb	1.40	29.10	Noncitrus Fruit, Continued		
Tobacco, Lb			Olives, CA		
Flue-Cured, 11-14	0.240	5.00	canning, Ton ³	94.20	1,960.00
VA Fire-Cured, 21	0.254	5.37	Papayas (HI)	0.050	1.040
KY-TN Fire-Cured, 22-23	0.319	6.64	Peaches		
Fire-Cured, 21-23	0.319	6.64	Fresh, Ton ²	83.80	1,740.00
Burley, 31	0.259	5.39	Dried, CA, Ton		
Maryland, 32	0.196	4.08	Processing ³	77.00	1,600.00
Dark Air-Cured, 35-36	0.282	5.87	Excl Dried		
Sun-Cured, 37	0.235	4.89	Clingstone, CA, Ton	34.10	710.00
Dark Air-Cured, 35-37	0.284	5.91	Pears, Ton		
PA Seedleaf, 41	0.200	4.16	Fresh ²	53.50	1,110.00
Cigar Filler & Binder, 42-44, 54-55	0.222	4.62	Dried, CA ⁴	178.00	3,710.00
Puerto Rican Filler, 46	0.155	3.23	Plums, CA, Ton		
Cigar Binder, 51-52	0.749	15.60	Fresh, Equiv on-Tree	63.40	1,320.00
Type 61	3.30	68.70	Prunes, Dried, CA, Ton ⁴	139.00	2,890.00
			Prunes and Plums, Excl CA, Ton		
			Fresh ⁷	62.80	1,310.00
			Processing ⁴		
			Excl Dried	28.30	589.00
Noncitrus Fruit			Tree Nuts ⁸		
Apples, Ton ⁴			Almonds, Lb	0.214	4.46
Processing	16.70	348.00	Hazelnuts, Ton	154.00	3,210.00
Apricots, Ton			Pistachio, Lb	0.180	3.75
Fresh ⁵	104.00	2,170.00	Walnuts, Ton	174.00	3,620.00
Dried, CA	264.00	5,500.00			
Avocados, Ton ⁵	231.00	4,810.00	Vegetables, Cwt ⁹		
Cherries			Fresh		
Sweet, Ton	197.00	4,100.00	Carrots ⁶	2.38	49.60
Tart, Lb	0.034	0.714	Cauliflower ⁶	4.45	92.60
Cranberry, Bbl ³	5.02	105.00	Celery ⁶	2.00	41.60
Dates, CA, Ton ⁵	188.00	3,910.00	Honeydew Melons	2.67	55.60
Grapes, Ton			Lettuce	2.35	48.90
Raisin Variety	121.00	2,520.00	Onions ⁶	1.63	33.90
Other Dried	71.50	1,490.00	Tomatoes	4.77	99.30
Kiwifruit, Ton	90.50	1,880.00			

¹ Parity prices are computed under the provisions of Title III, Subtitle a, Section 301 (a) of the Agricultural Adjustment Act of 1938 as amended by the Agricultural Acts of 1948, 1949, and 1956. See January "Agricultural Prices" for details on adjusted base price and parity price computations.

² Equivalent packinghouse-door returns for CA, NY (apples only), OR (except peaches), and WA. Price at point of first sale for other states.

³ Equivalent returns for bulk fruit at first delivery point.

⁴ Equivalent returns at processing plant door.

⁵ Equivalent returns at packinghouse door.

⁶ Includes some processing.

⁷ Based on "as sold" prices for fresh fruit in all states.

⁸ Prices in-shell basis except almonds which are shelled basis.

⁹ F.O.B. shipping point prices.

Marketing Year for Specified Commodities

Barley: June 1 to May 31 for U.S.; June 1 to May 31 for Arizona, California, Delaware, Kentucky, Maryland, New Jersey, North Carolina, Pennsylvania, Virginia; August 1 to July 31 for Alaska, Maine; July 1 to June 30 for all other states.

Oats: June 1 to May 31 for U.S.; May 1 to April 30 for Georgia and Texas; June 1 to May 31 for North Carolina, Oklahoma, and South Carolina; August 1 to July 31 for Maine and New York; September 1 to August 31 for Alaska; July 1 to June 30 for all other States.

Sweet Potatoes: September 1 to August 31 for U.S. and all States.

Wheat: June 1 to May 31 for U.S.; May 1 to April 30 for Alabama, Florida, Georgia, Louisiana, Mississippi, and Texas; June 1 to May 31 for Arizona, Arkansas, California, Delaware, Illinois, Indiana, Kansas, Kentucky, Maryland, Missouri, New Mexico, North Carolina, Oklahoma, South Carolina, Tennessee, and Virginia; July 1 to June 30 for all other States.

**Sweet Potatoes: Marketing Year Average Prices Received,
by State and United States, 2004-2006**

State	2004	2005 ¹	2006
	Dollars per Cwt		
AL	20.80	21.40	25.70
CA	25.00	25.30	20.10
LA	17.70	16.20	17.30
MS	17.70	18.30	19.80
NJ	26.30	26.80	27.70
NC	13.50	14.20	16.20
SC	15.00	17.30	18.30
TX	16.80	20.50	22.70
VA	12.80	11.40	11.60
US	17.50	18.10	18.00

¹ Revised.

**Oats: Monthly Prices Received, Monthly Farm Marketing Percentages, and
Marketing Year Average Prices, United States, 2004-2005 through 2006-2007 ¹**

Month	Prices Received			Farm Marketing Percentages ²		
	2004-2005	2005-2006	2006-2007	2004-2005	2005-2006	2006-2007
	<i>Dollars per Bushel</i>	<i>Dollars per Bushel</i>	<i>Dollars per Bushel</i>	<i>Percent</i>	<i>Percent</i>	<i>Percent</i>
Jun	1.61	1.75	1.90	6.9	5.4	3.9
Jul	1.36	1.59	1.78	15.6	21.9	27.7
Aug	1.32	1.49	1.67	26.2	28.1	31.4
Sep	1.42	1.54	1.70	11.4	5.9	6.0
Oct	1.45	1.59	1.77	6.0	4.5	4.8
Nov	1.51	1.64	2.05	3.1	3.8	3.9
Dec	1.60	1.73	2.01	3.9	4.4	4.1
Jan ³	1.64	1.73	2.20	5.9	6.2	4.8
Feb	1.67	1.82	2.35	6.2	5.8	2.7
Mar	1.73	1.82	2.40	6.4	5.6	4.4
Apr	1.65	1.75	2.46	5.1	4.9	3.2
May	1.64	1.85	2.49	3.3	3.5	3.1
MYA ¹	1.48	1.63	1.87	100.0	100.0	100.0

¹ Marketing year average (MYA) prices are weighted average prices for the U.S. marketing year of June - May.

² Monthly farm marketings, based on a sample survey, as percent of total used for calculating MYA prices.

³ Second year.

All Barley: Monthly Prices Received, Monthly Farm Marketing Percentages, and Marketing Year Average Prices, United States, 2004-2005 through 2006-2007 ¹

Month	Prices Received			Farm Marketing Percentages ²		
	2004-2005	2005-2006	2006-2007	2004-2005	2005-2006	2006-2007
	<i>Dollars per Bushel</i>	<i>Dollars per Bushel</i>	<i>Dollars per Bushel</i>	<i>Percent</i>	<i>Percent</i>	<i>Percent</i>
Jun	2.63	2.54	2.77	5.7	7.8	9.5
Jul	2.54	2.37	2.71	6.7	9.3	7.9
Aug	2.77	2.50	2.70	14.9	17.2	16.3
Sep	2.43	2.36	2.53	12.1	9.3	8.5
Oct	2.29	2.41	2.76	7.8	5.8	8.4
Nov	2.45	2.58	2.92	7.6	8.0	8.8
Dec	2.49	2.48	2.93	9.6	7.5	11.3
Jan ³	2.41	2.42	3.03	9.7	7.4	10.5
Feb	2.31	2.55	3.09	8.1	7.2	6.6
Mar	2.49	2.70	3.11	8.0	9.6	7.0
Apr	2.26	2.65	3.07	5.9	4.8	3.5
May	2.46	2.97	3.12	3.9	6.1	1.7
MYA ¹	2.48	2.53	2.85	100.0	100.0	100.0

¹ Marketing year average (MYA) prices are weighted average prices for the U.S. marketing year of June - May.

² Monthly farm marketings, based on a sample survey, as percent of total used for calculating MYA prices.

³ Second year.

Malting Barley: Monthly Prices Received, Monthly Farm Marketing Percentages, and Marketing Year Average Prices, United States, 2004-2005 through 2006-2007 ¹

Month	Prices Received			Farm Marketing Percentages ²		
	2004-2005	2005-2006	2006-2007	2004-2005	2005-2006	2006-2007
	<i>Dollars per Bushel</i>	<i>Dollars per Bushel</i>	<i>Dollars per Bushel</i>	<i>Percent</i>	<i>Percent</i>	<i>Percent</i>
Jun	2.79	2.88	3.05	5.9	7.2	10.1
Jul	2.68	2.66	2.95	6.8	8.3	8.6
Aug	3.06	2.85	2.97	16.3	16.3	17.0
Sep	2.91	2.74	2.73	10.7	7.6	6.6
Oct	2.73	2.73	2.84	6.9	5.3	5.8
Nov	2.83	2.89	2.98	7.0	7.8	7.7
Dec	2.74	2.67	3.00	10.7	8.4	11.5
Jan ³	2.73	2.56	3.00	9.9	8.0	10.6
Feb	2.58	2.74	3.08	8.4	8.1	8.1
Mar	2.74	2.92	3.09	8.9	11.0	8.5
Apr	2.76	2.88	3.02	5.0	5.3	3.9
May	2.90	3.11	3.08	3.5	6.7	1.6
MYA ¹	2.81	2.80	2.98	100.0	100.0	100.0

¹ Marketing year average (MYA) prices are weighted average prices for the U.S. marketing year of June - May.

² Monthly farm marketings, based on a sample survey, as percent of total used for calculating MYA prices.

³ Second year.

Feed Barley: Monthly Prices Received, Monthly Farm Marketing Percentages, and Marketing Year Average Prices, United States, 2004-2005 through 2006-2007 ¹

Month	Prices Received			Farm Marketing Percentages ²		
	2004-2005	2005-2006	2006-2007	2004-2005	2005-2006	2006-2007
	<i>Dollars per Bushel</i>	<i>Dollars per Bushel</i>	<i>Dollars per Bushel</i>	<i>Percent</i>	<i>Percent</i>	<i>Percent</i>
Jun	2.20	1.91	2.08	5.1	9.2	8.2
Jul	2.21	1.88	2.04	6.5	11.7	6.4
Aug	1.83	1.77	2.06	11.5	19.1	14.9
Sep	1.64	1.84	2.31	15.2	13.4	12.4
Oct	1.58	1.81	2.68	9.9	7.0	13.7
Nov	1.78	1.91	2.84	9.0	8.6	11.1
Dec	1.66	1.76	2.79	7.3	5.3	11.1
Jan ³	1.65	1.94	3.11	9.3	6.1	10.2
Feb	1.60	1.83	3.15	7.3	5.1	3.4
Mar	1.67	1.80	3.19	6.1	6.3	4.0
Apr	1.56	1.81	3.20	8.1	3.6	2.7
May	1.71	2.45	3.20	4.7	4.6	1.9
MYA ¹	1.73	1.87	2.59	100.0	100.0	100.0

¹ Marketing year average (MYA) prices are weighted average prices for the U.S. marketing year of June - May.

² Monthly farm marketings, based on a sample survey, as percent of total used for calculating MYA prices.

³ Second year.

All Wheat: Monthly Prices Received, Monthly Farm Marketing Percentages, and Marketing Year Average Prices, United States, 2004-2005 through 2006-2007 ¹

Month	Prices Received			Farm Marketing Percentages ²		
	2004-2005	2005-2006	2006-2007	2004-2005	2005-2006	2006-2007
	<i>Dollars per Bushel</i>	<i>Dollars per Bushel</i>	<i>Dollars per Bushel</i>	<i>Percent</i>	<i>Percent</i>	<i>Percent</i>
Jun	3.55	3.23	3.98	10.9	11.9	16.0
Jul	3.37	3.20	3.88	12.4	16.8	18.5
Aug	3.27	3.24	3.91	9.0	13.4	12.6
Sep	3.36	3.36	4.06	11.0	11.7	6.9
Oct	3.43	3.43	4.59	7.0	6.3	9.1
Nov	3.46	3.45	4.59	7.8	4.7	4.8
Dec	3.40	3.53	4.52	8.6	8.1	6.8
Jan ³	3.43	3.52	4.53	9.7	8.4	8.2
Feb	3.36	3.66	4.71	9.5	6.2	5.1
Mar	3.42	3.79	4.75	7.1	5.1	4.9
Apr	3.35	3.81	4.89	3.4	3.4	4.2
May	3.31	4.09	4.88	3.6	4.0	2.9
MYA ¹	3.40	3.42	4.26	100.0	100.0	100.0

¹ Marketing year average (MYA) prices are weighted average prices for the U.S. marketing year of June - May.

² Monthly farm marketings, based on a sample survey, as percent of total used for calculating MYA prices.

³ Second year.

**Monthly Prices Received and Marketing Year Average Prices,
United States, 2004-2005 through 2006-2007¹**

Month	Winter Wheat		
	2004-2005	2005-2006	2006-2007
	<i>Dollars per Bushel</i>	<i>Dollars per Bushel</i>	<i>Dollars per Bushel</i>
Jun	3.46	3.15	3.95
Jul	3.31	3.15	3.82
Aug	3.19	3.16	3.77
Sep	3.26	3.28	4.03
Oct	3.34	3.34	4.63
Nov	3.39	3.27	4.67
Dec	3.34	3.45	4.53
Jan ²	3.28	3.45	4.53
Feb	3.27	3.59	4.67
Mar	3.32	3.82	4.67
Apr	3.27	3.74	4.87
May	3.23	4.06	4.77
MYA ¹	3.32	3.32	4.17

¹ Marketing year average (MYA) prices are weighted average prices for the U.S. marketing year of June - May.

² Second year.

**Monthly Prices Received and Marketing Year Average Prices,
United States, 2004-2005 through 2006-2007¹**

Month	Durum Wheat			Other Spring Wheat		
	2004-2005	2005-2006	2006-2007	2004-2005	2005-2006	2006-2007
	<i>Dollars per Bushel</i>	<i>Dollars per Bushel</i>	<i>Dollars per Bushel</i>	<i>Dollars per Bushel</i>	<i>Dollars per Bushel</i>	<i>Dollars per Bushel</i>
Jun	4.35	3.67	3.81	3.83	3.51	4.18
Jul	4.09	3.72	3.83	3.55	3.45	4.41
Aug	3.86	3.35	4.09	3.38	3.43	4.11
Sep	3.89	3.38	4.07	3.48	3.51	4.11
Oct	3.87	3.39	4.55	3.50	3.61	4.48
Nov	3.79	3.28	4.62	3.57	3.71	4.48
Dec	3.67	3.37	4.74	3.48	3.68	4.48
Jan ²	3.64	3.29	4.71	3.61	3.70	4.51
Feb	3.72	3.34	5.16	3.49	3.83	4.73
Mar	3.70	3.39	5.32	3.51	3.85	4.73
Apr	3.63	3.41	5.46	3.39	3.95	4.87
May	3.67	3.94	5.39	3.37	4.18	4.98
MYA ¹	3.85	3.46	4.43	3.51	3.66	4.46

¹ Marketing year average (MYA) prices are weighted average prices for the U.S. marketing year of June - May.

² Second year.

**Monthly Prices Received and Marketing Year Average Prices,
United States, 2004-2005 through 2006-2007¹**

Month	Hard Red Spring Wheat			Hard Red Winter Wheat		
	2004-2005	2005-2006	2006-2007	2004-2005	2005-2006	2006-2007
	<i>Dollars per Bushel</i>	<i>Dollars per Bushel</i>	<i>Dollars per Bushel</i>	<i>Dollars per Bushel</i>	<i>Dollars per Bushel</i>	<i>Dollars per Bushel</i>
Jun	3.83	3.51	4.23	3.46	3.12	4.27
Jul	3.54	3.45	4.47	3.34	3.13	4.43
Aug	3.36	3.46	4.17	3.11	3.18	4.28
Sep	3.48	3.55	4.16	3.21	3.36	4.43
Oct	3.50	3.67	4.52	3.25	3.46	4.86
Nov	3.57	3.77	4.49	3.37	3.41	4.83
Dec	3.48	3.72	4.49	3.32	3.56	4.67
Jan ²	3.62	3.74	4.54	3.24	3.55	4.73
Feb	3.49	3.89	4.73	3.25	3.77	4.71
Mar	3.52	3.90	4.74	3.29	4.04	4.66
Apr	3.38	3.99	4.85	3.18	3.97	4.82
May	3.37	4.28	4.97	3.17	4.40	4.69
MYA ¹	3.51	3.70	4.48	3.29	3.38	4.53

¹ Marketing year average (MYA) prices are weighted average prices for the U.S. marketing year of June - May.

² Second year.

**Monthly Prices Received and Marketing Year Average Prices,
United States, 2004-2005 through 2006-2007¹**

Month	Soft Red Winter Wheat			White Wheat		
	2004-2005	2005-2006	2006-2007	2004-2005	2005-2006	2006-2007
	<i>Dollars per Bushel</i>	<i>Dollars per Bushel</i>	<i>Dollars per Bushel</i>	<i>Dollars per Bushel</i>	<i>Dollars per Bushel</i>	<i>Dollars per Bushel</i>
Jun	3.41	3.27	3.32	3.81	3.45	3.40
Jul	3.24	3.19	3.25	3.46	3.36	3.55
Aug	3.04	3.10	3.10	3.52	3.11	3.54
Sep	2.96	2.95	3.22	3.51	3.07	3.78
Oct	2.96	2.99	3.85	3.52	3.14	4.30
Nov	2.93	2.81	4.26	3.54	3.10	4.37
Dec	2.94	3.02	4.26	3.51	3.06	4.33
Jan ²	3.12	3.24	4.05	3.49	3.07	4.34
Feb	3.13	3.32	4.09	3.47	3.12	4.75
Mar	3.32	3.41	3.94	3.50	3.18	5.04
Apr	3.16	3.29	4.04	3.51	3.16	5.27
May	3.09	3.56	4.31	3.50	3.23	5.20
MYA ¹	3.21	3.19	3.38	3.52	3.13	4.14

¹ Marketing year average (MYA) prices are weighted average prices for the U.S. marketing year of June - May.

² Second year.

Reliability of Prices Received Estimates

Definition: Prices received represent sales from producers to first buyers. They include all grades and qualities. The average commodity price from the survey multiplied by the total quantity marketed theoretically should give the total cash receipts for the commodity.

Survey Procedures: Primary sales data used to determine grain prices were obtained from probability samples of about 2000 mills and elevators. These procedures ensure that virtually all grain moving into commercial channels has a chance of being included in the survey. Generally, States surveyed account for 90 percent or more of total U.S. production. Livestock prices are obtained from packers, stockyards, auctions, dealers, and market check data from AMS-USDA, private marketing organizations, and state commodity groups and agencies. Inter-farm sales of grain and livestock are not included since they represent very small percentages of the total marketings. Grain marketed for seed is also excluded. Fruit and vegetable prices are obtained from sample surveys and market check data from AMS-USDA, private marketing organizations, state agencies, and universities.

Summary and Estimation Procedures: Survey quantities sold are expanded by strata to state levels and used to weight average strata prices to a state average. State prices are then weighted to a U.S. price based on expanded marketings. Recommendations are prepared by the State Field Offices and reviewed by the Agricultural Statistics Board in Washington, D.C. State recommendations are reviewed for reasonableness with survey data, other States, and recent historic estimates.

Revisions: For most items, the current month's preliminary price represents a 3-5 day period around the 15th of the month. Previous month's prices represent actual dollars received for quantities sold during the entire month. Revisions are published in monthly issues of *Agricultural Prices*.

Reliability: U.S. price estimates based on probability surveys generally have a sampling error of less than one percent for the major commodities such as corn, wheat, soybeans, cotton, and rice. Current methods of summarization for non-probability commodities are not designed directly to calculate sampling errors. However, analytical measures approximate the U.S. relative sampling errors at around five percent. Any nonsampling errors are attributed to such things as the inability to obtain correct information, differences in interpreting questions or definitions, mistakes in coding or processing the data, etc. Efforts are made at each step in the survey process to minimize these nonsampling errors.

Prices Paid by Farmers

The June Index of Prices Paid for Commodities and Services, Interest, Taxes, and Farm Wage Rates (PPITW) at 156 (1990-92=100), is down 0.6 percent from May 2007 but up 4.7 percent from June 2006.

PRODUCTION INDEX: The June index, at 154, decreased 1.3 percent from last month but increased 4.8 percent from last year. Lower prices in June for complete feeds, feed concentrates, and feeder pigs offset higher prices for feed grains and diesel fuel.

Feed: The June index, at 142, decreased 2.7 percent from May but increased 16 percent from last June. Since May, lower prices for complete feeds, feed concentrates, hay & forages, and feed supplements more than offset higher prices for feed grains.

Livestock & Poultry: The June index, at 129, decreased 1.5 percent from last month and 4.4 percent from last year. Since May, prices are lower for feeder pigs and feeder cattle. The June feeder cattle price, at \$106.90 per cwt, is down \$1.10 per cwt from the May price. June feeder pigs averaged \$119.00 per cwt, down \$21.00 per cwt from May.

Fertilizer: The June index, at 202, is down 1.5 percent from May but 16 percent above June a year ago. Since May, prices are lower for nitrogen fertilizers, mixed fertilizers, and potash & phosphate materials.

Chemicals: The June index, at 129, decreased 0.8 percent from May but increased 0.8 percent from last June.

Fuels: The June index, at 261, is down 0.8 percent from a month earlier but 0.8 percent above June 2006. Compared with last month, prices are lower for gasoline and LP gas but higher for diesel fuel.

Machinery: The June index, at 189, is unchanged from May but 4.4 percent above last June.

CONSUMER PRICE INDEX: The May 2007 Consumer Price Index, as issued by the Bureau of Labor Statistics, for all urban consumers (CPI-U) increased 0.6 percent before seasonal adjustment to a level of 207.949 (1982-84=100). This compares with the April index of 206.686. For the 12-month period ending in May, the overall index has increased 2.7 percent.

**Indexes of Prices Paid by Farmers and Related Parity Ratios
United States, June 2007 With Comparisons ¹**

Indexes and Ratios	1910-14 = 100			1990-92 = 100		
	2006	2007		2006	2007	
	Jun	May	Jun	Jun	May	Jun
Prices Paid by Farmers for Commodities & Services, Interest, Taxes, & Wage Rates (PPITW)	1,986	2,093	2,082	149	157	156
Production	1,423	1,509	1,497	147	156	154
Feed	594	711	694	122	146	142
Livestock & Poultry	1,721	1,680	1,644	135	131	129
Seeds	1,838	2,086	2,086	186	211	211
Fertilizer	638	753	741	174	205	202
Chemicals	794	802	800	128	130	129
Fuels	1,997	2,028	2,018	259	263	261
Supplies & Repairs	1,028	1,053	1,053	145	148	148
Autos & Trucks	2,985	2,954	2,940	112	111	111
Machinery	4,547	4,740	4,740	181	189	189
Building Materials	2,068	2,109	2,115	152	155	156
Services & Rent	1,584	1,593	1,593			
Services				140	142	142
Rent				121	119	119
Interest ²	3,452	3,778	3,778	138	151	151
Taxes ³	4,343	4,570	4,570	162	171	171
Wage Rates	6,326	6,571	6,571	169	176	176
Production, Interest, Taxes, & Wage Rates (PITW)	1,999	2,118	2,105	149	158	157
Family Living-CPI ⁴	1,927	1,975	1,975	151	154	154
Ratio (Received\Paid) Parity Ratio ⁵	38	42	43	79	88	90
Parity Ratio Adjusted ⁶	40	44	45			
PPITW Adjusted for Productivity ⁷	1,329	1,365	1,363			
Crop Sector (PPITW)				154	162	161
Livestock Sector (PPITW)				144	153	151
Farm Sector (Production)				137	152	149
Non-Farm Sector (Production)				152	157	157

¹ Revised historic price indexes for months not shown are available at www.nass.usda.gov.

² Interest per acre on farm real estate debt and interest rate on farm non-real estate debt.

³ Farm real estate taxes payable per acre.

⁴ Bureau of Labor Statistics, Consumer Price Index for all urban consumers (CPI-U), for the previous month converted by the USDA.

⁵ Ratio of index of prices received to PPITW (1910-14=100).

⁶ Based on estimated cash receipts, from marketings and government payments, the preliminary adjustment factor is 1.079 for 2007 and the revised factor is 1.096 for 2006.

⁷ PPITW is adjusted based on productivity trend for the prior 15 years.

**Prices Paid Indexes and Annual Weights for Input Components and
Sub-Components United States, June 2007 With Comparisons ¹**

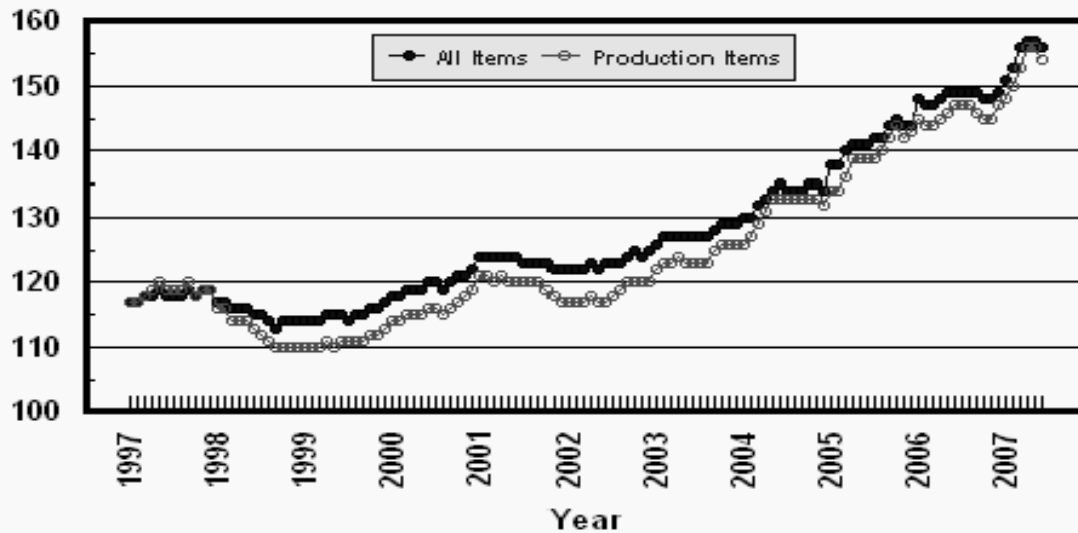
Index	Relative Weights 5-Year Moving Average ²		Input Indexes		
	2006	2007	2006	2007	
	<i>Percent</i>	<i>Percent</i>	<i>(1990-92=100)</i>	<i>(1990-92=100)</i>	<i>(1990-92=100)</i>
Production Items	66.8	67.4	147	156	154
Feed	10.9	10.9	122	146	142
Feed Grains	1.6	1.6	95	152	163
Complete Feeds	5.3	5.3	119	137	132
Hay/Forages	1.4	1.4	141	178	170
Concentrates	1.7	1.7	127	131	122
Supplements	0.9	0.9	147	168	167
Livestock & Poultry	7.6	7.7	135	131	129
Feeder Cattle	6.0	6.0	133	128	126
Feeder Pigs	0.6	0.6	134	152	129
Milk Cow Replacements	0.6	0.6	157	153	153
Poultry	0.5	0.5	125	125	125
Seeds	3.6	3.7	186	211	211
Field Crops	3.3	3.4	191	218	218
Grasses/Legumes	0.3	0.4	133	142	142
Fertilizer	4.3	4.4	174	205	202
Mixed Fertilizer	1.9	1.9	152	186	183
Nitrogen	1.8	1.8	202	231	226
Potash & Phosphate	0.6	0.6	160	191	190
Chemicals	3.5	3.4	128	130	129
Herbicides	2.2	2.2	124	122	122
Insecticides	0.8	0.8	143	148	148
Fungicides/Other	0.5	0.5	126	133	132
Fuels	2.9	3.1	259	263	261
Diesel	1.7	1.9	277	273	274
Gasoline	0.8	0.7	235	252	247
LP Gas	0.4	0.4	234	234	232
Supplies & Repairs	5.0	4.8	145	148	148
Supplies	1.7	1.6	137	140	140
Repairs	3.3	3.2	149	153	153
Autos & Trucks	1.8	1.8	112	111	111
Autos	0.2	0.2	109	109	108
Trucks	1.6	1.6	113	111	111
Machinery	4.4	4.5	181	189	189
Tractors	1.0	1.0	161	166	166
Self-Propelled	1.7	1.8	189	196	196
Other Machinery	1.7	1.7	185	195	195
Building Materials	4.0	4.3	152	155	156
Services	12.2	12.2	140	142	142
Custom Rates	1.3	1.3	123	123	123
Other Services	10.9	10.9	142	144	144
Rent	6.7	6.7	121	119	119
Cash	3.6	3.6	144	140	140
Share	3.1	3.1	95	95	95
Interest	4.2	4.0	138	151	151
Taxes	2.9	2.9	162	171	171
Wage Rates	7.8	7.8	169	176	176
Family Living-CPI	18.4	18.0	151	154	154

¹ Revised historic price indexes for months not shown are available at www.nass.usda.gov.

² Weights may not add due to rounding.

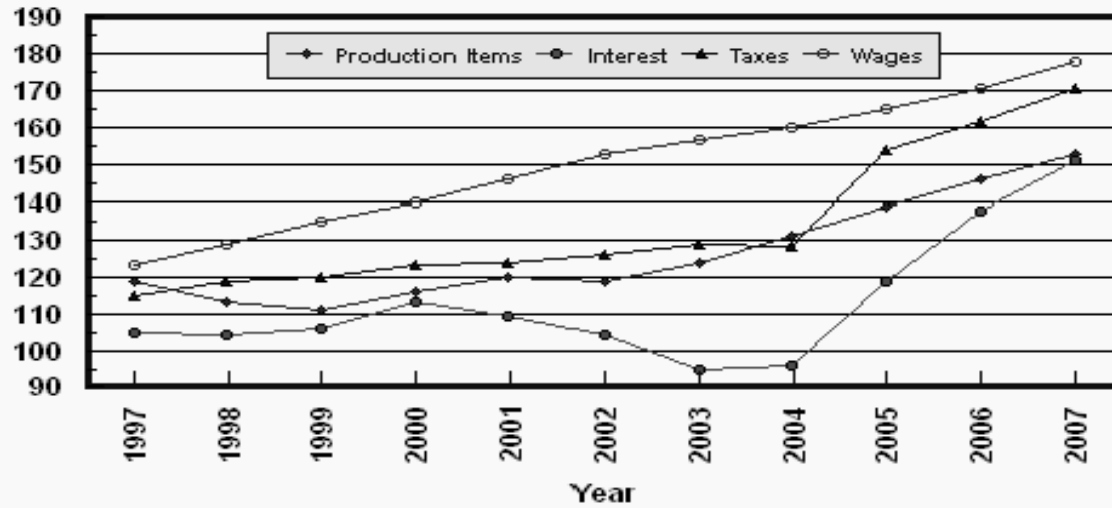
Prices Paid by Farmers, Major Indexes US, by Month

Percent (1990-92=100)



Prices Paid by Farmers, Major Indexes US, Annual Averages 1/

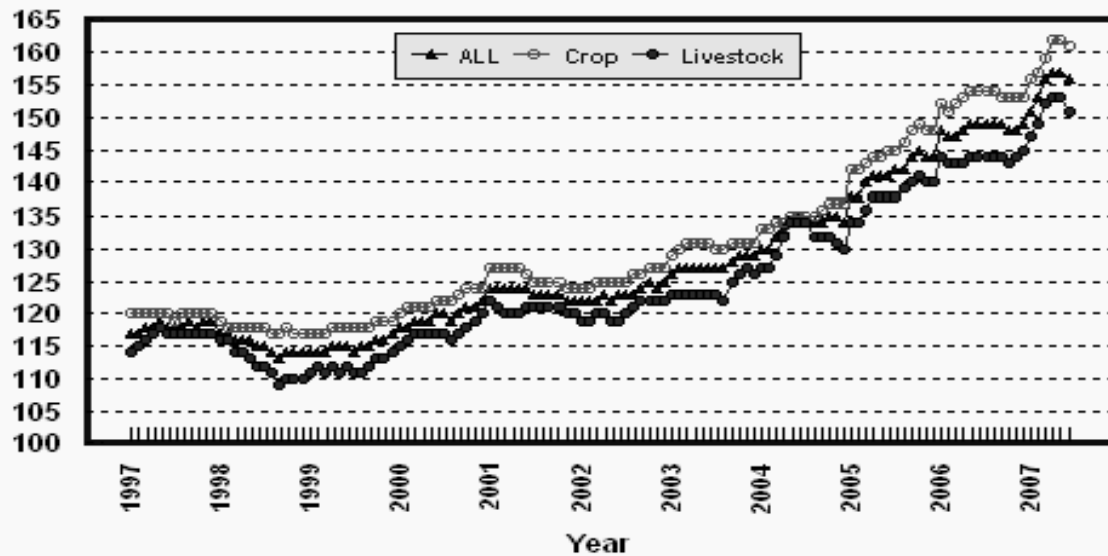
Percent (1990-92=100)



1/ Index values for 2007 are year-to-date averages.

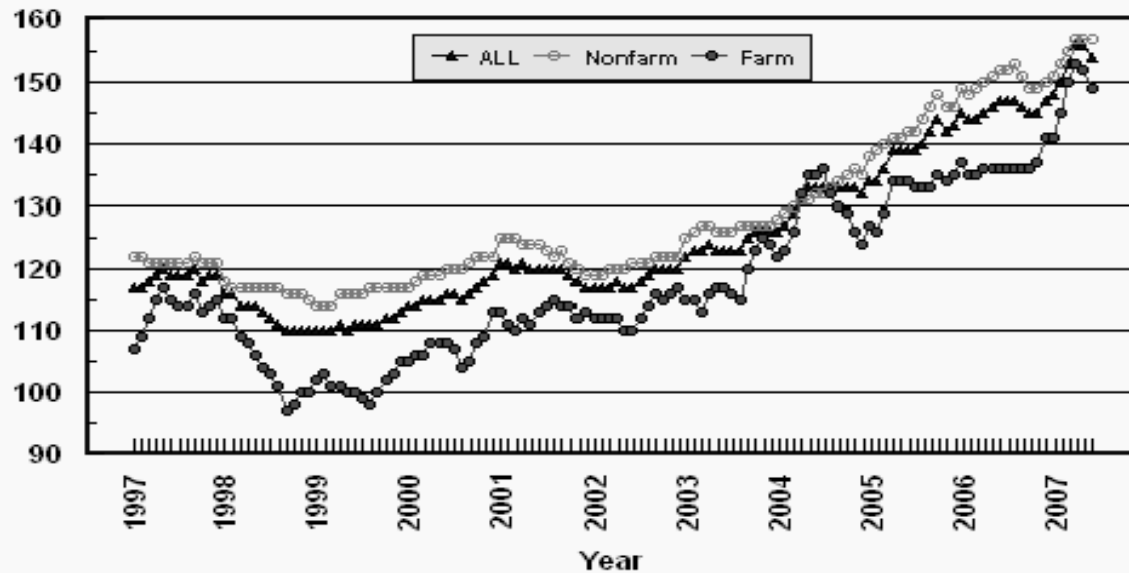
Prices Paid by Farmers, Indexes, All Items US, By Farm Type

Percent (1990-92=100)



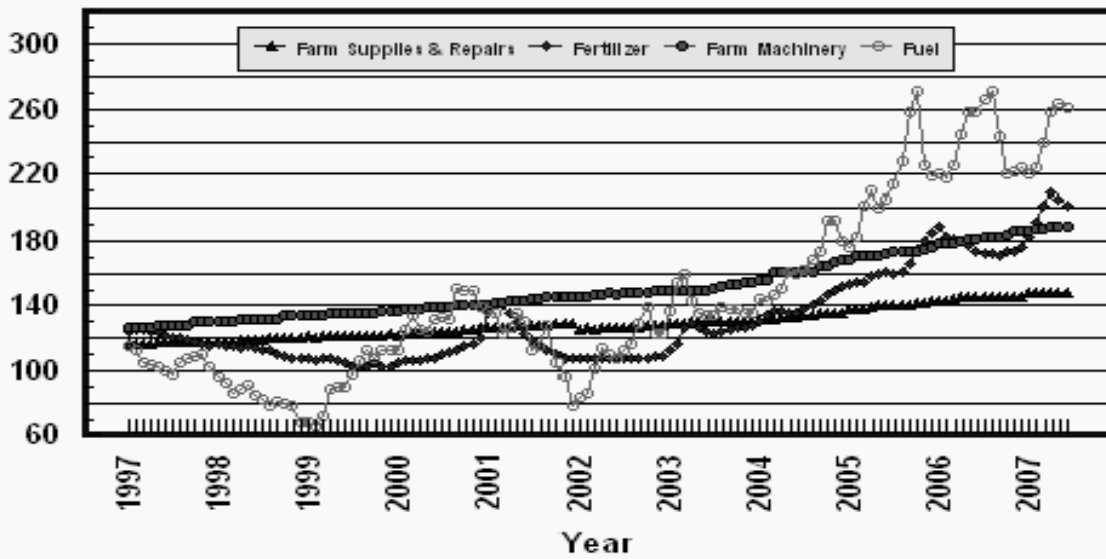
Prices Paid by Farmers, Indexes, All Production Items US, By Sector Origin

Percent (1990-92=100)



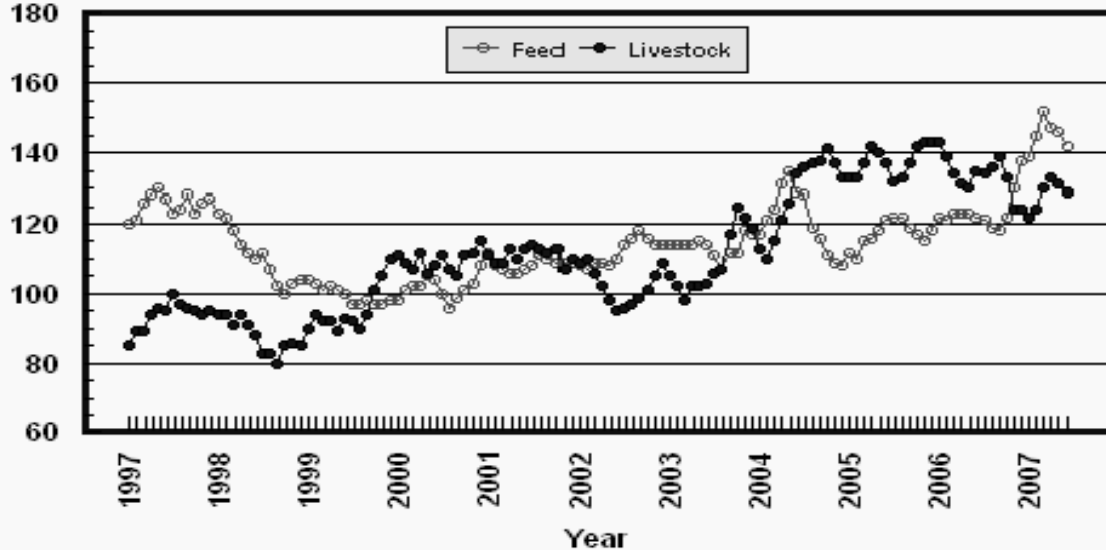
Prices Paid by Farmers, Selected Production Indexes US, By Non-Farm Sector

Percent (1990-92=100)



Prices Paid by Farmers, Selected Production Indexes US, By Farm Sector

Percent (1990-92=100)



Feed Price Ratios: United States, June 2007 with Comparisons

Feed Price Ratio ¹	2006	2007	
	Jun	May	Jun
Broiler-Feed: Pounds of Broiler Grower Feed equal in value to 1 pound of broiler, live weight	6.3	5.9	5.6
Market Egg Feed: Pounds of Laying Feed equal in Value to 1 dozen eggs	7.1	8.0	6.1
Hog-Corn: Bushels of Corn equal in value to 100 pounds of hog, live weight	25.1	*15.2	13.9
Milk-Feed: Pounds of 16% Mixed Dairy Feed equal in value to 1 pound of Whole Milk	2.35	*2.54	2.76
Steer & Heifer-Corn: Bushels of Corn equal in value to 100 pounds of Steer & Heifers, live weight	41.2	*28.1	24.9
Turkey-Feed: Pounds of Turkey Grower equal in value to 1 pound of Turkey, live weight	7.6	5.9	5.9

* Revised.

¹ Effective January 1995, prices of commercial prepared feeds are based on current U.S. prices received for corn, soybeans, alfalfa hay, and all wheat.

**Prices Used to Calculate Feed Price Ratios:
United States, June 2007 with Comparisons**

Commodity	Unit	Entire Month		Preliminary
		Jun 2006	May 2007	Jun 2007
Broilers, Live	Lb	0.390	0.510	0.520
Eggs, Market	Doz	0.368	0.615	0.497
Hogs, All	Cwt	53.80	53.00	52.50
Milk, All	Cwt	11.90	18.00	20.00
Steers and Heifers	Cwt	88.20	98.10	94.00
Turkeys, Live	Lb	0.454	0.483	0.520
Corn	Bu	2.14	3.49	3.77
Hay, Alfalfa, Baled	Ton	115.00	144.00	137.00
Soybeans	Bu	5.62	7.13	7.57
Wheat, All	Bu	3.98	4.88	5.28

**Feeder Livestock: Prices Paid, United States
June 2007 with Comparisons**

Commodity	Unit	2006	2007	
		Jun	May	Jun
		<i>Dollars</i>	<i>Dollars</i>	<i>Dollars</i>
Feeders and Stockers				
Cattle and Calves	Cwt	112.70	*108.00	106.90
Feeder Pigs	Cwt	123.00	*140.00	119.00

* Revised.

Prices Paid by Farmers

Definition: Prices paid by farmers represent the average costs of inputs purchased by farmers and ranchers to produce agricultural commodities. Conceptually, the average price when multiplied by quantity purchased should equal total producer expenditures for the item.

Survey Procedures: The prices paid data are obtained from establishments that sell goods and services to farmers and ranchers. Annually, about 8,500 firms are randomly selected from lists by type of item sold with an average response rate in the range of 75-80 percent. Firms are asked to report the price for the specified item "most commonly bought by farmers" or that was the "volume seller". Approximately 135 items are surveyed each April to represent all production input items purchased. The survey reference period for most items is the 5 business days centered around the 15th of the month. Separate prices paid surveys are conducted for agricultural chemicals, fuels, feed, fertilizer, machinery, and seed.

Summary and Estimation Procedures: The annual April Prices Paid Survey is summarized as a nonprobability survey. Average prices reported are aggregated to the region and U.S. level using weights available from expenditure data and other administrative sources. Price recommendations are prepared by the State Field Offices and Headquarters for review by the Agricultural Statistics Board in Washington, D.C. Also, the change in price level for individual items surveyed are combined to the regional and U.S. levels, and are published as prices paid indexes referenced to a specific base period. Prices paid indexes for new autos and trucks, building materials, farm supplies, motor supplies, and marketing containers are updated based on price changes measured in selected Bureau of Labor Statistics (BLS) indexes.

Revisions: Any revisions are published in the monthly and in annual issues of *Agricultural Prices*. The basis for revision must be supported by additional data that directly affect the level of the estimate. More revisions are likely in April when separate prices paid surveys are conducted, in lieu of BLS indexes, by the USDA to measure price change.

Reliability: Current methods of summarization in April are not designed directly to calculate sampling errors. However, analytical measures approximate the U.S. relative sampling errors for major items around 10 percent. Any nonsampling errors are attributed to such things as the inability to obtain correct information, differences in interpreting questions or definitions, mistakes in coding or processing the data, etc. Efforts are made at each step in the survey process to minimize these nonsampling errors.

Program Change: Effective January 1, 1995, the National Agricultural Statistics Service updated the weights and changed the construction of its prices paid and received by farmers indexes. A Federal Register Notice dated October 28, 1994 discussed these program modifications.

A 1990-92 reference and base period replaced the 1977 reference and 1971-73 base weight period. Five-year moving average weights replaced the current fixed 1971-73 base period weights. The 1910-14=100 price indexes, required by statute for computing parity prices, were linked forward based on the changes in the new 1990-92=100 indexes. The new indexes were constructed by multiplying the ratios of the current prices to the base period prices by the moving average weights (adjusted for seasonal marketing patterns for the prices received indexes).

Information Contacts

General questions should be directed to Kevin Barnes, Chief, Environmental, Economics and Demographics Branch at (202) 720-6146. Below are the commodity specialists to contact for additional information.

Crop Prices Received

Jeff Geuder, Chief, Crops Branch	(202) 720-2127
Greg Thessen, Field Crops Section	(202) 720-2127
Todd Ballard - Wheat, Rye	(202) 690-8533
Ty Kalas - Corn, Proso Millet, Flaxseed	(202) 720-9526
Shiela Corley - Cotton, Cottonseed	(202) 720-5944
Travis Thorson - Soybeans, Sunflower, Other Oilseeds	(202) 720-7369
King Whetstone - Hay, Oats, Sorghum	(202) 690-3234
Dennis Koong - Peanuts, Rice	(202) 720-7688
Greg Thessen - Sugarcane, Sugarbeets, Barley	(202) 720-2127
Lance Honig, Fruits, Vegetables & Special Crops Section	(202) 720-2127
Dan Norris - Peaches, Pears, Hops, Pulses, Mint	(202) 720-3250
Rich Holcomb - Citrus	(202) 720-5412
Faye Propsom - Apples, Apricots, Cherries, Cranberries, Plums, Prunes	(202) 720-4288
Leslie Colburn - Grapes, Tobacco	(202) 720-7235
Cathy Scherrer - Potatoes, Dry Edible Beans, Sweet Potatoes	(202) 720-4285
Debbie Flippin - Vegetables, Onions, Strawberries	(202) 720-2157
Doug Marousek - Tree Nuts	(202) 720-4215

Livestock Prices Received

Dan Kerestes, Chief, Livestock Branch	(202) 720-3570
Bill Weaver, Livestock Section	(202) 720-3570
Scott Hollis - Sheep, Lambs, Wool, Mohair	(202) 720-4751
Jason Hardegree- Milk, Milk Cows	(202) 720-3278
Bruce Boess - Hogs	(202) 720-3106
Mike Miller - Cattle	(202) 720-3040
Darin Jantzi, Poultry and Specialty Commodities Section	(202) 720-3570
Toby Paterson - Turkeys	(202) 720-0585
Sharyn Lavender - Broilers, Eggs	(202) 720-3244

Indexes, Prices Paid, and Parity Prices

Kevin Barnes, Chief, Environmental, Economics and Demographics Branch	(202) 720-6146
Kevin Hintzman, Economics Section	(202) 720-6146
Jennifer Sissom - Prices Paid Indexes, Prices Paid for Feed, Fertilizer, Agricultural Chemicals, Seeds, Farm Supplies and Repairs, Farm Machinery, Fuels, Feeder Livestock, Poultry Chicks, Feed Price Ratios, Autos & Trucks, Grazing Fees	(202) 690-3229
Daryl Brinkman - Prices Received Indexes, Parity Prices	(202) 720-8844

ACCESS TO REPORTS!!

For your convenience, there are several ways to obtain NASS reports, data products, and services:

INTERNET ACCESS

All NASS reports are available free of charge on the worldwide Internet. For access, connect to the Internet and go to the NASS Home Page at: www.nass.usda.gov.

E-MAIL SUBSCRIPTION

All NASS reports are available by subscription free of charge direct to your e-mail address. Starting with the NASS Home Page at www.nass.usda.gov, under the right navigation, *Receive reports by Email*, click on **National** or **State**. Follow the instructions on the screen.

PRINTED REPORTS OR DATA PRODUCTS

CALL OUR TOLL-FREE ORDER DESK: 800-999-6779 (U.S. and Canada)
Other areas, please call 703-605-6220 FAX: 703-605-6900
(Visa, MasterCard, check, or money order acceptable for payment.)

ASSISTANCE

For **assistance** with general agricultural statistics or further information about NASS or its products or services, contact the **Agricultural Statistics Hotline** at **800-727-9540**, 7:30 a.m. to 4:00 p.m. ET, or e-mail: nass@nass.usda.gov.

The U.S. Department of Agriculture (USDA) prohibits discrimination in all its programs and activities on the basis of race, color, national origin, age, disability, and where applicable, sex, marital status, familial status, parental status, religion, sexual orientation, genetic information, political beliefs, reprisal, or because all or a part of an individual's income is derived from any public assistance program. (Not all prohibited bases apply to all programs.) Persons with disabilities who require alternative means for communication of program information (Braille, large print, audiotape, etc.) should contact USDA's TARGET Center at (202) 720-2600 (voice and TDD).

To file a complaint of discrimination, write to USDA, Director, Office of Civil Rights, 1400 Independence Avenue, S.W., Washington, D.C. 20250-9410, or call (800) 795-3272 (voice) or (202) 720-6382 (TDD). USDA is an equal opportunity provider and employer.