



NASS

FACT FINDERS FOR AGRICULTURE
UNITED STATES DEPARTMENT OF AGRICULTURE

Washington, D.C.

Agricultural Prices

Released July 31, 2007, by the National Agricultural Statistics Service (NASS), Agricultural Statistics Board, U.S. Department of Agriculture. For information on *Agricultural Prices* see page 66, office hours 7:30 a.m. to 4:00 p.m. ET.

July Farm Prices Received Index Advanced 3 Points From Last Month

The preliminary All Farm Products Index of Prices Received by Farmers in July, at 142 percent, based on 1990-92=100, increased 3 points (2.2 percent) from June. The Crop Index is up 2 points (1.4 percent) and the Livestock Index increased 3 points (2.2 percent). Producers received higher commodity prices for milk, eggs, wheat, and snap beans. Lower prices were received for corn, broilers, hogs, and cantaloups. The overall index is also affected by the seasonal change based on a 3-year average mix of commodities producers sell. Increased average marketings of grapes, wheat, hay, and tomatoes offset decreased marketings of milk, cantaloups, and potatoes.

The preliminary All Farm Products Index is up 25 points (21 percent) from July 2006. The Food Commodities Index, at 144, increased 4 points (2.9 percent) from last month and increased 25 points (21 percent) from July 2006.

Prices Paid Index Unchanged

The July Index of Prices Paid for Commodities and Services, Interest, Taxes, and Farm Wage Rates (PPITW) is 158 percent of the 1990-92 average. The index is unchanged from June but 9 points (6.0 percent) above July 2006. Lower prices in July for feed grains, feeder pigs, LP gas, and gasoline offset higher prices for feeder cattle, complete feeds, milk cows, and nitrogen fertilizers.

Index Summary Table

| Index 1990-92=100 | 2006 | | 2007 | |
|----------------------|------|-----|------|-----|
| | Jun | Jul | Jun | Jul |
| Prices Received | 118 | 117 | 139 | 142 |
| Prices Paid | 149 | 149 | 158 | 158 |
| Ratio ¹ | 79 | 79 | 88 | 90 |

¹ Ratio of index of prices received by farmers to index of prices paid by farmers.

Prices Received by Farmers

The July All Farm Products Index is 142 percent of its 1990-92 base, up 2.2 percent from the June index and 21 percent above the July 2006 index.

ALL CROPS: The July index is 143, up 1.4 percent from June and 16 percent above July 2006. Index increases for food grains, oil-bearing crops, and commercial vegetables more than offset the index decreases for feed grains & hay, potatoes & dry beans, and fruits & nuts.

Food Grains: The July index, at 179, is 7.2 percent above the previous month and 38 percent above a year ago. The July all wheat price, at \$5.37 per bushel, is up 34 cents from June and \$1.49 above July 2006.

Feed Grains & Hay: The July index is 151, down 5.0 percent from last month but 37 percent above a year ago. The corn price, at \$3.23 per bushel, is down 28 cents from last month but \$1.09 above July 2006. The all hay price, at \$131 per ton, is unchanged from June but up \$24.00 from last July. Sorghum grain, at \$5.55 per cwt, is 57 cents below June but 94 cents above July last year.

Oil-Bearing Crops: The July index, at 142, is up 5.2 percent from June and 42 percent higher than July 2006. The soybean price, at \$7.92 per bushel, increased 41 cents from June and is \$2.31 above July 2006.

Cotton: The July index, at 77, is unchanged from June and last year. The July price, at 46.8 cents per pound, is up 0.4 cent from the previous month but unchanged from last July.

Potatoes & Dry Beans: The July index, at 138, is down 1.4 percent from last month and 19 percent below July 2006. The all potato price, at \$8.10 per cwt, is down 17 cents from June and \$2.36 below last July. The all dry bean price, at \$25.10 per cwt, is up 70 cents from the previous month and \$3.40 higher than July 2006.

Fruits & Nuts: The July index, at 151, is down 1.3 percent from June and 12 percent lower than a year ago. Price decreases for oranges, strawberries, pears, and grapefruit more than offset a price increase for lemons.

Commercial Vegetables: The July index, at 134, is up 1.5 percent from last month and 14 percent above July 2006. Price increases during July for snap beans, sweet corn, broccoli, and asparagus more than offset price declines for lettuce, carrots, cantaloups, and tomatoes.

LIVESTOCK & PRODUCTS: The July index, at 140, is 2.2 percent above last month and up 26 percent from July 2006. Compared with a year ago, prices are higher for milk, broilers, eggs, cattle, turkeys, and hogs. The price for calves is down from last year.

Meat Animals: The July index, at 121, is unchanged from last month but 4.3 percent higher than last year. The July hog price, at \$52.60 per cwt, is down \$1.70 from June but \$2.40 higher than a year ago. The July beef cattle price, at \$90.30 per cwt, is up \$1.20 from last month and \$4.50 above July 2006.

Dairy Products: The July index, at 166, is up 7.1 percent from a month ago and 84 percent higher than July last year. The June all milk price of \$20.20 is a record high milk price, up \$.90 from the previous record high of \$19.30 set in May of 2004. The July preliminary all milk price of \$21.70 per cwt, if realized, will be a new record high, up an additional \$1.50 from last month and \$10.00 from July 2006. The July fluid grade milk price is up \$1.60 and the manufacturing grade milk price is up 70 cents from the previous month.

Poultry & Eggs: The July index, at 157, is up 4.0 percent from June and 34 percent above a year ago. The July market egg price, at 81.2 cents per dozen, increased 31.5 cents from June and is 57.5 cents above July 2006. The July broiler price, at 51.0 cents per pound, is down 1.0 cent from June but 10.0 cents above a year ago. The July turkey price, at 55.5 cents per pound, is up 3.5 cents from the previous month and 9.6 cents from a year earlier.

Table of Contents

| U.S. Prices Received and Indexes | Page | Monthly State Prices, continued | Page |
|--|-------------|---|-------------|
| Narrative | 2 | Cotton | 19 |
| Price Indexes | 5 | Cottonseed | 19 |
| Price Index Charts | 6 | Eggs | 24 |
| U.S. Prices Received Summary | 10 | Flaxseed | 18 |
| Charts | 12 | Grain Sorghum | 17 |
| Selected Commodities | 16 | Hay | 19 |
| Upland Cotton & Rice Marketings | 19 | Hogs, All | 23 |
| Parity Prices | 26 | Barrows and Gilts | 23 |
| Reliability Statement | 38 | Sows | 23 |
| | | Milk | 25 |
| Monthly State Prices Received | | Milk Cows | 25 |
| Apples | 19 | Oats | 17 |
| Barley | 17 | Peanuts | 18 |
| Beans, Dry Edible | 18 | Potatoes | 21 |
| Beef Cattle, All | 22 | Sheep | 24 |
| Calves | 22 | Lambs | 24 |
| Cows, Beef | 22 | Soybeans | 17 |
| Steers and Heifers | 22 | Sunflower, All | 18 |
| Fruit, Citrus | 20 | Wheat, All Classes | 16 |
| Corn | 17 | | |
| | | | |
| Prices Received Special Features | | | Page |
| Marketing Year for Specified Commodities | | | 28 |
| | | | |
| Marketing Year Average Prices | | | |
| Cranberries | | see July 2007 Noncitrus Fruits and Nuts 2006 Summary | |
| | | http://usda.mannlib.cornell.edu/MannUsda/viewDocumentInfo.do?documentID=1113 | |
| Sugarbeets | | | 28 |
| Sugarcane | | | 28 |
| | | | |
| Monthly Price Revisions | | | |
| Apples | | see July 2007 Noncitrus Fruits and Nuts 2006 Summary | |
| | | http://usda.mannlib.cornell.edu/MannUsda/viewDocumentInfo.do?documentID=1113 | |
| Grapes | | see July 2007 Noncitrus Fruits and Nuts 2006 Summary | |
| | | http://usda.mannlib.cornell.edu/MannUsda/viewDocumentInfo.do?documentID=1113 | |
| Onions | | see July 2007 Vegetables | |
| | | http://usda.mannlib.cornell.edu/MannUsda/viewDocumentInfo.do?documentID=1177 | |
| Peaches | | see July 2007 Noncitrus Fruits and Nuts 2006 Summary | |
| | | http://usda.mannlib.cornell.edu/MannUsda/viewDocumentInfo.do?documentID=1113 | |
| Pears | | see July 2007 Noncitrus Fruits and Nuts 2006 Summary | |
| | | http://usda.mannlib.cornell.edu/MannUsda/viewDocumentInfo.do?documentID=1113 | |
| | | | |
| Seasonal Adjustment Factors | | | 29 |
| | | | |
| Indexes of Prices Received: U.S., All Groups, Monthly and Annual, 2003-2007 | | | 30 |

Table of Contents (continued)

| U.S. Prices Paid, Prices Paid Indexes and Ratios | Page |
|---|-------------|
| Narrative | 39 |
| Indexes and Parity Ratios | 40 |
| Charts | 42 |
| Feed Price Ratios | 45 |
| Reliability Statement | 65 |
| | |
| U.S. Average Prices | |
| Prices Used to Calculate Feed Price Ratios | 45 |
| Feeder Livestock | 45 |
| | |
| Special Features | |
| Index of Prices Paid: 1910-14=100 and 1990-92=100 Monthly and Annual Average, United States, 2003-2007 | 46-64 |
| PPITW, PITW, Production Items | 46-47 |
| Index Component Items, Interest, Taxes, Wage Rates, Farm and Non Farm Origin Ratios | 47-54 55 |
| Crop Sector, Livestock Sector, and PPITW adjusted for Productivity | 56 |
| Index Sub-Components (1990-92=100): Monthly and Annual Averages | 57-64 |
| | |
| Information Contacts | 66 |

**Index Numbers of Prices Received, United States,
July 2007, with Comparisons ¹**

| Index | 1910-14=100 | | | | 1990-92=100 | | |
|-----------------------|--------------------|-------|--------|-------|-------------|------|-----|
| | Average 1990-92 | 2006 | 2007 | | 2006 | 2007 | |
| | | Jul | Jun | Jul | Jul | Jun | Jul |
| All Farm Products | 639 | 741 | *880 | 899 | 117 | *139 | 142 |
| All Crops | 500 | 609 | *695 | 705 | 123 | *141 | 143 |
| Food Grains | 325 | 413 | *532 | 567 | 130 | *167 | 179 |
| Feed Grains & Hay | 363 | 393 | *568 | 541 | 110 | *159 | 151 |
| Cotton | 517 | 396 | *392 | 396 | 77 | *77 | 77 |
| Tobacco ² | 1,263 | 1,392 | 1,392 | 1,392 | 92 | 92 | 92 |
| Oil-Bearing Crops | 554 | 550 | *740 | 777 | 100 | *135 | 142 |
| Fruits & Nuts | 716 | 1,199 | *1,071 | 1,057 | 172 | *153 | 151 |
| Commercial Vegetables | 698 | 791 | *881 | 895 | 118 | *132 | 134 |
| Potatoes & Dry Beans | 540 | 859 | *710 | 699 | 170 | *140 | 138 |
| Other Crops | 493 | 563 | *563 | 563 | 114 | *114 | 114 |
| Livestock & Products | 768 | 848 | *1,049 | 1,078 | 111 | *137 | 140 |
| Meat Animals | 1,021 | 1,183 | *1,229 | 1,233 | 116 | 121 | 121 |
| Dairy Products | 799 | 719 | *1,241 | 1,334 | 90 | *155 | 166 |
| Poultry & Eggs | 282 | 329 | 424 | 441 | 117 | 151 | 157 |
| Food Commodities | | | | | 119 | *140 | 144 |

* Revised.

¹ Revised historical price indexes for months not shown are available at www.nass.usda.gov.

² Monthly prices discontinued July 2005.

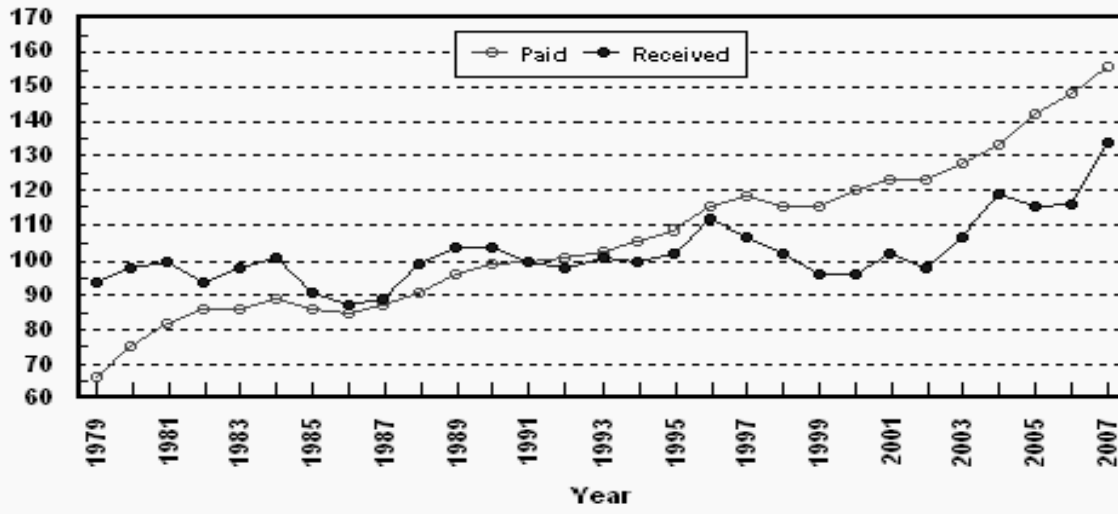
**Selected Index Numbers for Prices Received and Paid,
1990-92=100, by Month, United States, 2006 and 2007 ¹**

| Month | Index of Prices Received | | | | | | Index of Prices Paid | | | |
|-------|--------------------------|------|--------------|------|------------------------------|------|----------------------|------|---------------------|------|
| | All Farm Products | | All Crops | | Livestock and Products | | All Items | | Production Items | |
| | 2006 | 2007 | 2006 | 2007 | 2006 | 2007 | 2006 | 2007 | 2006 | 2007 |
| Jan | 113 | 124 | 109 | 131 | 117 | 116 | 148 | 151 | 145 | 148 |
| Feb | 113 | 128 | 113 | 138 | 113 | 120 | 147 | 153 | 144 | 150 |
| Mar | 113 | 134 | 117 | 145 | 110 | 126 | 147 | 156 | 144 | 153 |
| Apr | 111 | 134 | 119 | 141 | 105 | 129 | 148 | 157 | 145 | 156 |
| May | 111 | 138 | 120 | 143 | 104 | 134 | 149 | 157 | 146 | 156 |
| Jun | 118 | 139 | 127 | 141 | 110 | 137 | 149 | 158 | 147 | 156 |
| Jul | 117 | 142 | 123 | 143 | 111 | 140 | 149 | 158 | 147 | 157 |
| Aug | 120 | | 125 | | 114 | | 149 | | 147 | |
| Sep | 119 | | 121 | | 116 | | 149 | | 146 | |
| Oct | 116 | | 115 | | 116 | | 148 | | 145 | |
| Nov | 119 | | 122 | | 116 | | 148 | | 145 | |
| Dec | 120 | | 127 | | 113 | | 149 | | 147 | |

¹ Revised historical price indexes for months not shown are available at www.nass.usda.gov.

Prices Received vs Prices Paid Annual Average Indexes^{*}

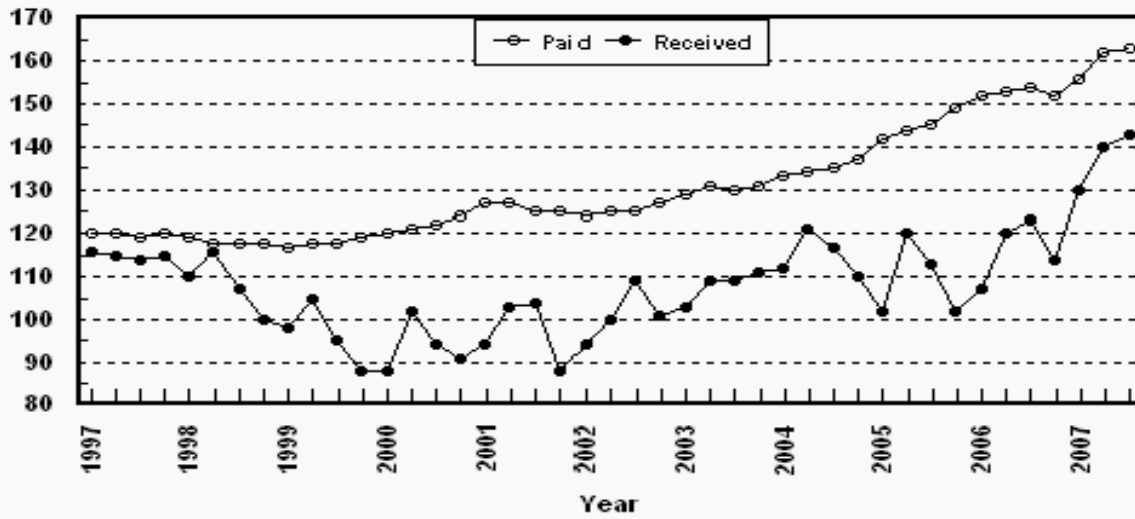
Percent (1990-92=100)



* Index values for 2007 are year-to-date averages.

Crop Farm Index: Prices Received and Prices Paid All Items, U.S., 1997-2007, By Quarter

Percent (1990-92=100)



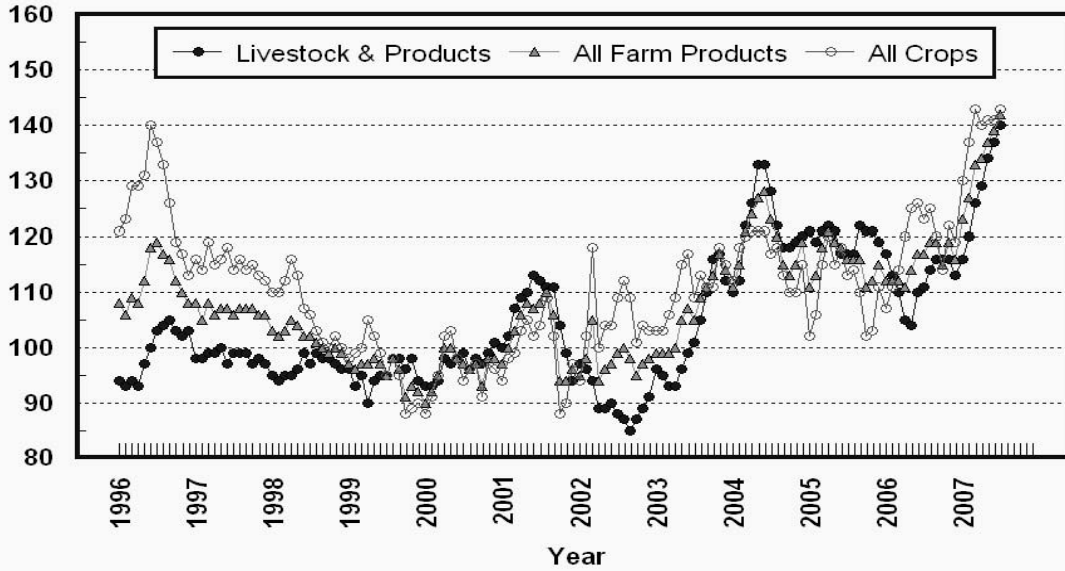
Livestock Farm Index: Prices Received and Prices Paid All Items, U.S., 1997-2007, By Quarter

Percent (1990-92=100)



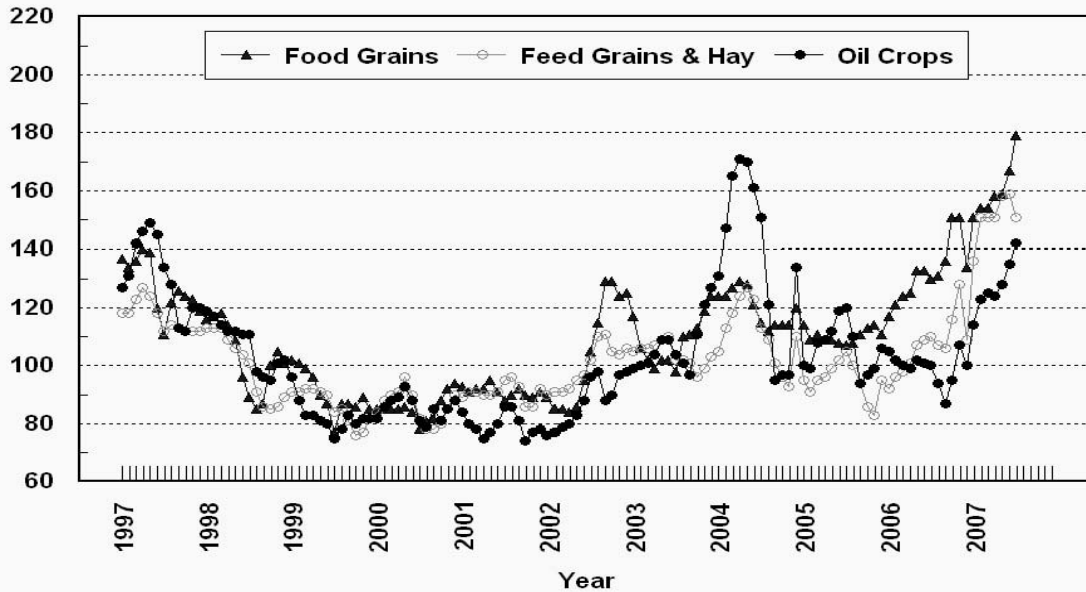
Prices Received, Major Indexes, US

Percent (1990-92=100)



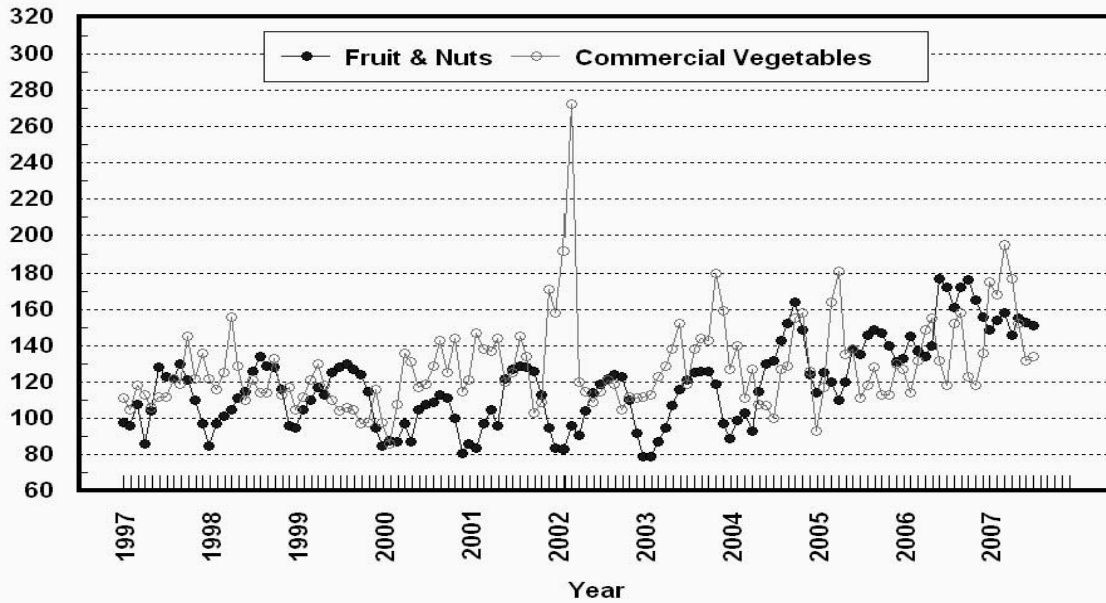
Prices Received, Food, Feed, & Oil Indexes, US

Percent (1990-92=100)



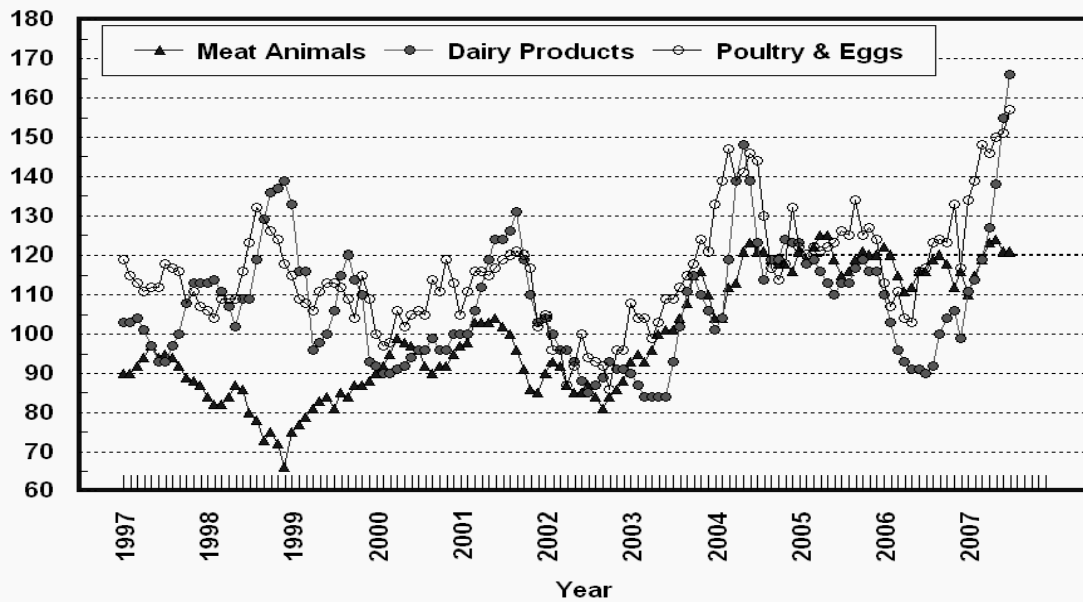
Prices Received, Fruit/Vegetable Indexes, US

Percent (1990-92=100)



Prices Received, Livestock Product Indexes, US

Percent (1990-92=100)



**Prices Received, United States,
July 2007, with Comparisons**

| Commodity | Unit | Average 1990-92 | Entire Month | | Preliminary |
|------------------------------|------|--------------------|------------------|------------------|------------------|
| | | | Jul 2006 | Jun 2007 | Jul 2007 |
| | | <i>Dollars</i> | <i>Dollars</i> | <i>Dollars</i> | <i>Dollars</i> |
| Field Crops | | | | | |
| Barley, All | Bu | 2.12 | 2.71 | 3.30 | 3.37 |
| Feed | Bu | 1.90 | 2.04 | 3.52 | 3.31 |
| Malting | Bu | 2.43 | 2.95 | 3.26 | 3.40 |
| Beans, Dry Edible | Cwt | 19.10 | 21.70 | 24.40 | 25.10 |
| Chickpeas, All | Cwt | | 22.80 | 28.40 | 30.60 |
| Large | Cwt | | (⁴) | 30.30 | 31.30 |
| Small | Cwt | | (⁴) | (⁴) | (⁵) |
| Corn | Bu | 2.30 | 2.14 | 3.51 | 3.23 |
| Cotton, Upland | Lb | 0.606 | 0.468 | 0.464 | 0.468 |
| Cottonseed ³ | Ton | 96.00 | | | |
| Flaxseed | Bu | 4.27 | 5.47 | 7.79 | 8.00 |
| Hay, All, Baled ¹ | Ton | 76.30 | 107.00 | 131.00 | 131.00 |
| Alfalfa ¹ | Ton | 77.20 | 113.00 | 137.00 | 137.00 |
| Other ¹ | Ton | 60.00 | 89.30 | 111.00 | 113.00 |
| Lentils | Cwt | | 7.80 | 13.20 | 14.40 |
| Oats | Bu | 1.22 | 1.78 | 2.54 | 2.50 |
| Peanuts, In-Shell | Lb | 0.304 | 0.170 | 0.181 | 0.183 |
| Peas, Dry Edible | Cwt | | 5.03 | 10.10 | 9.26 |
| Austrian Winter | Cwt | | (⁵) | 9.62 | (⁵) |
| Potatoes | Cwt | 5.82 | 10.46 | 8.27 | 8.10 |
| Rice, Rough | Cwt | 7.07 | 8.18 | 9.77 | 9.84 |
| Sorghum Grain | Cwt | 3.75 | 4.61 | 6.12 | 5.55 |
| Soybeans | Bu | 5.61 | 5.61 | 7.51 | 7.92 |
| Sunflower, All | Cwt | 9.50 | 12.00 | 17.00 | 17.40 |
| Wheat, All | Bu | 2.96 | 3.88 | 5.03 | 5.37 |
| Winter | Bu | 2.93 | 3.82 | 5.00 | 5.30 |
| Durum | Bu | 2.86 | 3.83 | 5.50 | 6.25 |
| Other Spring | Bu | 3.11 | 4.41 | 5.18 | 5.62 |
| Hard Red Winter | Bu | | 4.43 | 5.10 | |
| Soft Red Winter | Bu | | 3.25 | 4.77 | |
| Hard Red Spring | Bu | | 4.47 | 5.18 | |
| White | Bu | 3.24 | 3.55 | 5.42 | |
| Fruit | | | | | |
| Citrus, Equiv on-tree | | | | | |
| Grapefruit | Box | 5.77 | 11.16 | 9.76 | 8.79 |
| Lemons | Box | 10.10 | 18.88 | 29.32 | 31.49 |
| Oranges | Box | 5.79 | 6.56 | 11.30 | 8.95 |
| Tangelos ⁵ | Box | 5.82 | | | |
| Tangerines ⁵ | Box | 15.11 | | | |
| Noncitrus, Fresh | | | | | |
| Apples ² | Lb | 0.212 | 0.423 | 0.296 | 0.293 |
| Grapes ^{2,5} | Ton | 506.00 | 1,030.00 | 850.00 | 730.00 |
| Peaches ^{2,5} | Ton | 432.00 | 721.00 | 522.00 | 530.00 |
| Pears ² | Ton | 370.00 | 759.00 | 714.00 | 576.00 |
| Strawberries | Cwt | 56.00 | 64.00 | 66.10 | 57.40 |

¹ Mid-month price.

² Equivalent packinghouse-door returns for CA, MI, and NY (apples only), and WA (apples, peaches, and pears). Prices as sold for other states.

³ Marketing year August - February.

⁴ Price not published to avoid disclosure of individual firms.

⁵ Insufficient sales to establish a price.

**Prices Received, United States,
July 2007, with Comparisons**

| Commodity | Unit | Average 1990-92 | Entire Month | | Preliminary |
|---|------|--------------------|----------------|----------------|----------------|
| | | | Jul 2006 | Jun 2007 | Jul 2007 |
| | | <i>Dollars</i> | <i>Dollars</i> | <i>Dollars</i> | <i>Dollars</i> |
| Vegetables, Fresh ¹ | | | | | |
| Asparagus | Cwt | 79.80 | 105.00 | 108.00 | 162.00 |
| Broccoli | Cwt | 22.50 | 26.20 | 24.80 | 26.70 |
| Cantaloups ² | Cwt | | 16.00 | 12.80 | 10.40 |
| Carrots | Cwt | 13.20 | 21.50 | 25.90 | 21.50 |
| Cauliflower | Cwt | 26.80 | 26.20 | 30.00 | 22.70 |
| Celery | Cwt | 11.60 | 21.00 | 11.60 | 12.60 |
| Corn, Sweet | Cwt | 15.70 | 21.10 | 17.80 | 22.60 |
| Cucumbers ² | Cwt | | 27.00 | 22.80 | 23.40 |
| Lettuce | Cwt | 11.90 | 12.20 | 17.80 | 16.70 |
| Onions | Cwt | 12.80 | 16.80 | 27.40 | 27.00 |
| Snap Beans ² | Cwt | | 61.20 | 29.10 | 92.20 |
| Tomatoes | Cwt | 32.30 | 25.10 | 31.50 | 29.30 |
| Livestock | | | | | |
| Calves | Cwt | 94.30 | 137.00 | 125.00 | 125.00 |
| Cattle, All Beef | Cwt | 72.90 | 85.80 | 89.10 | 90.30 |
| Cows ³ | Cwt | 49.60 | 46.40 | 50.10 | 51.40 |
| Steers & Heifers | Cwt | 77.10 | 90.00 | 93.30 | 94.30 |
| Milk Cows ⁴ | Head | 1,130.00 | 1,680.00 | | 1,950.00 |
| Hogs, All | Cwt | 47.70 | 50.20 | 54.30 | 52.60 |
| Barrows & Gilts | Cwt | 48.40 | 51.10 | 55.10 | 53.40 |
| Sows | Cwt | 39.50 | 32.10 | 37.50 | 36.50 |
| Lambs | Cwt | 56.20 | 93.40 | 96.30 | |
| Sheep | Cwt | 23.40 | 27.60 | 27.50 | |
| Dairy and Poultry | | | | | |
| Milk, All ^{5 6} | Cwt | 13.06 | 11.70 | 20.20 | 21.70 |
| Fluid Grade ⁶ | Cwt | 13.10 | 11.70 | 20.20 | 21.80 |
| Mfg Grade ⁶ | Cwt | 11.80 | 10.80 | 20.00 | 20.70 |
| Broilers, Live ⁷ | Lb | 0.317 | 0.410 | 0.520 | 0.510 |
| Eggs, All ⁸ | Doz | 0.643 | 0.435 | 0.677 | 0.946 |
| Market ⁸ | Doz | 0.546 | 0.237 | 0.497 | 0.812 |
| Turkeys, live ^{7 8} | Lb | 0.380 | 0.459 | 0.520 | 0.555 |
| Adjusted for Seasonal Variation ⁹ | | | | | |
| Eggs, All | Doz | 0.545 | 0.480 | 0.756 | 1.020 |
| Milk, All ⁵ | Cwt | 9.71 | 12.10 | 20.60 | 22.40 |

¹ Beginning January 2006, point of first sale. F.O.B. shipping point for prior years.

² Monthly estimates began January 1995.

³ Beef cows and cull dairy cows sold for slaughter.

⁴ Animals sold for dairy herd replacement only. Prices available for Jan, Apr, Jul, and Oct.

⁵ Before deductions for hauling. Includes quality, quantity, and other premiums. Excludes hauling subsidies.

⁶ July 2007 Fat test percent: all milk, 3.55; fluid milk, 3.55; mfg grade, 3.75.

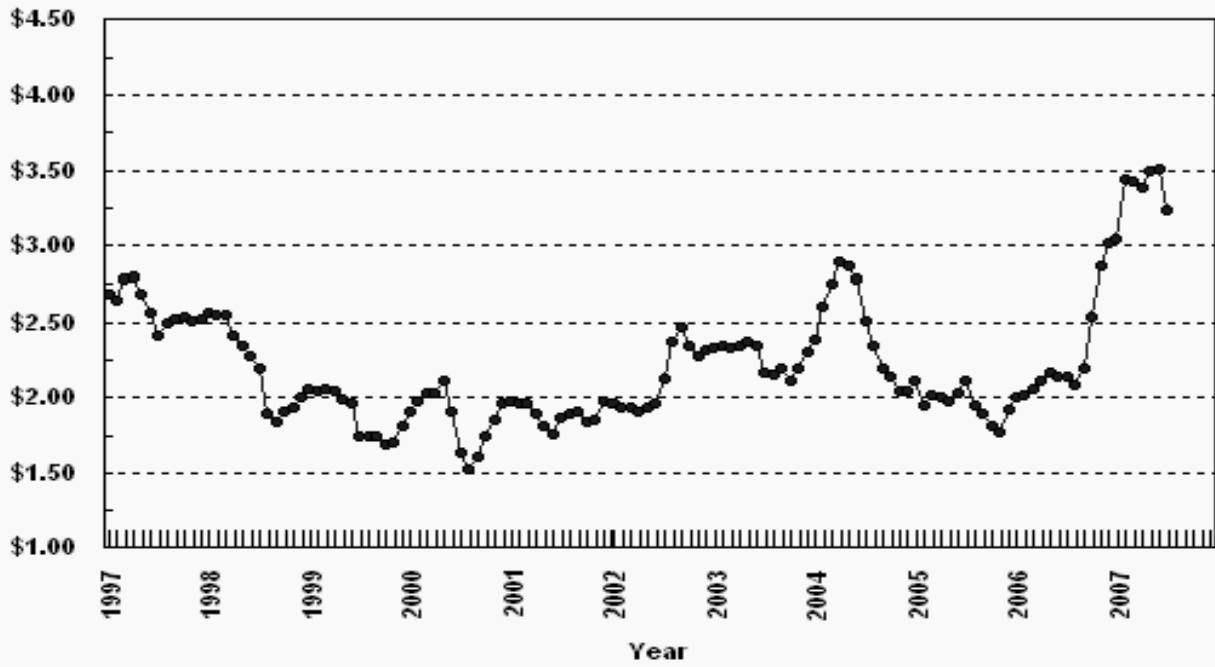
⁷ Equivalent live weight returns to producers.

⁸ Mid-month price.

⁹ Seasonal adjustment factors are: All Eggs July 2006, 92; June 2007, 90; and July 2007, 93. All Milk July 2006, 97; June 2007, 98; and July 2007, 97.

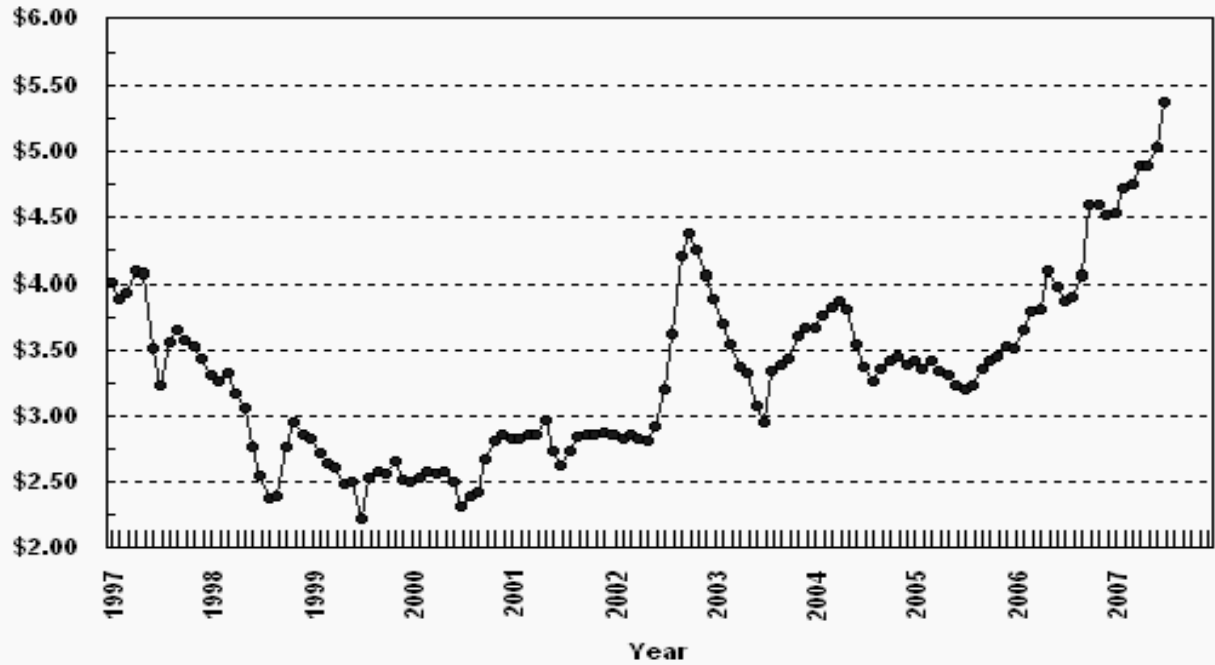
Prices Received, Corn, US

Dollars per Bu



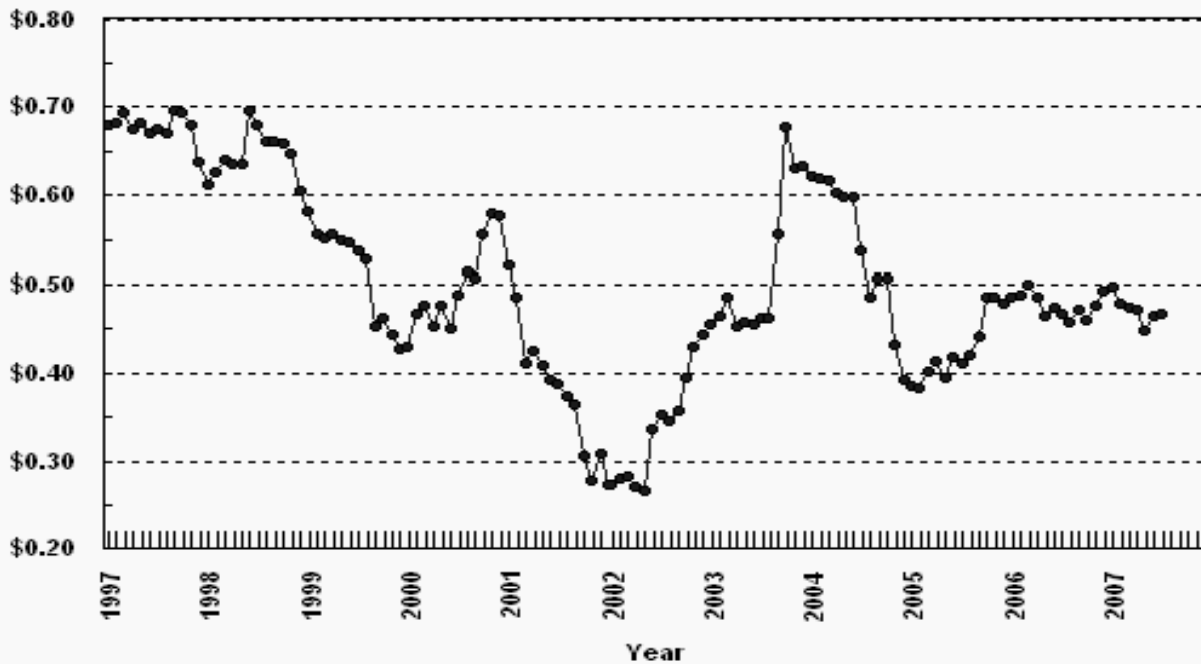
Prices Received, Wheat, US

Dollars per Bu



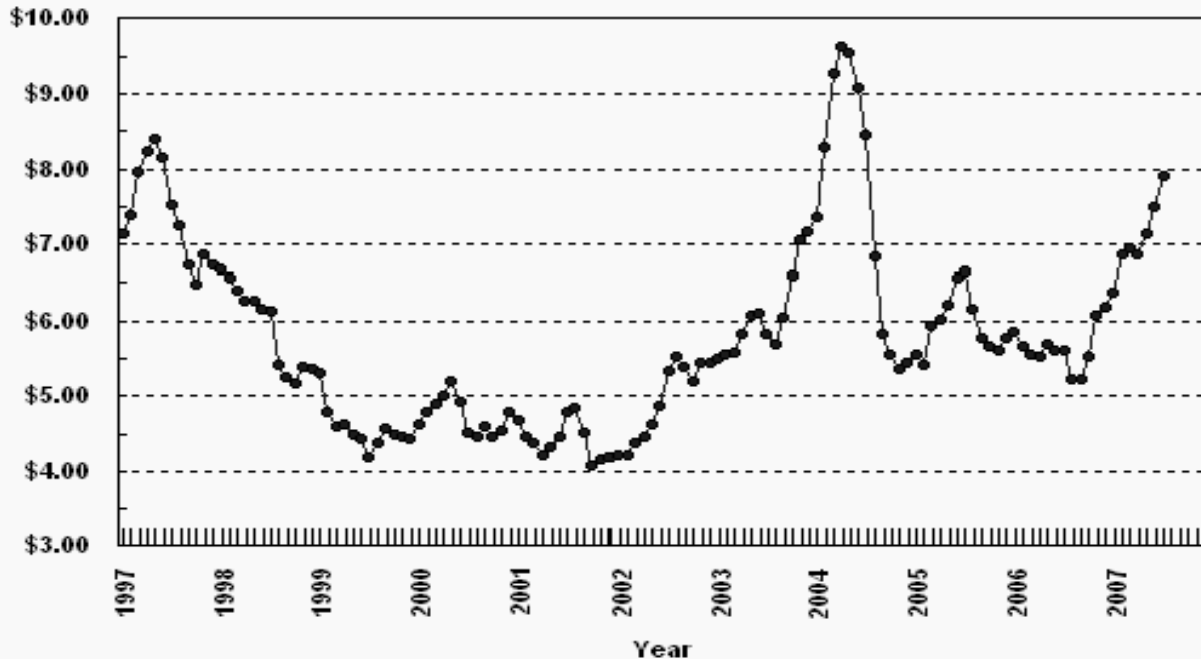
Prices Received, Cotton, US

Dollars per Lb



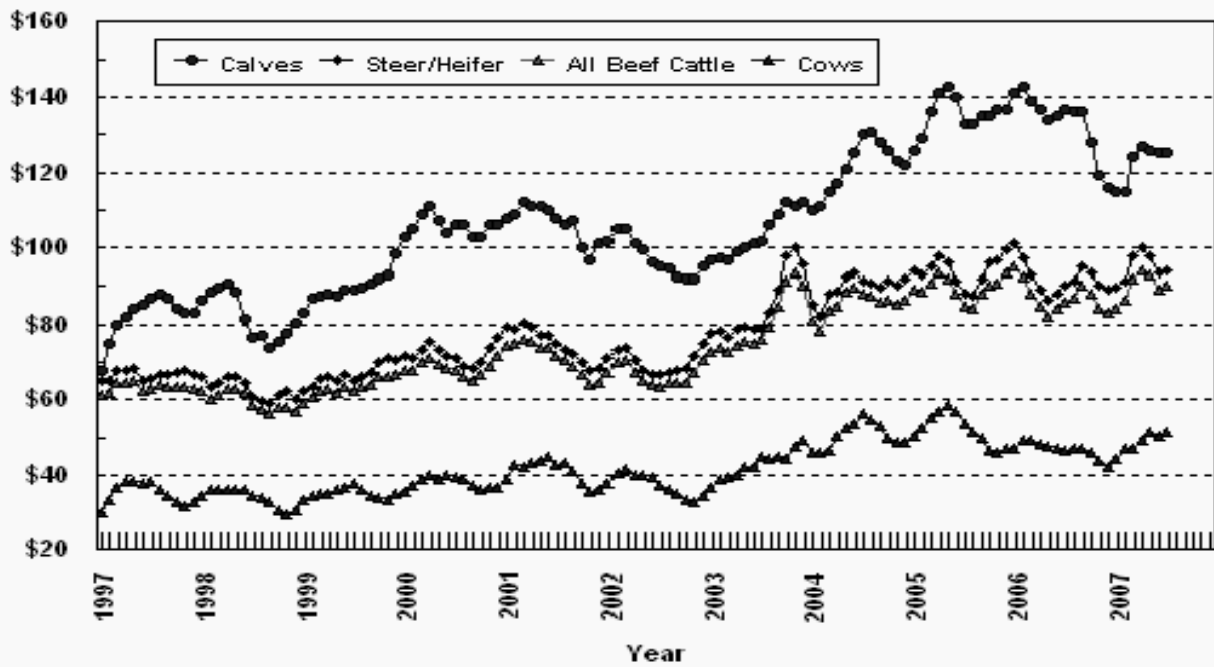
Prices Received, Soybeans, US

Dollars per Bu



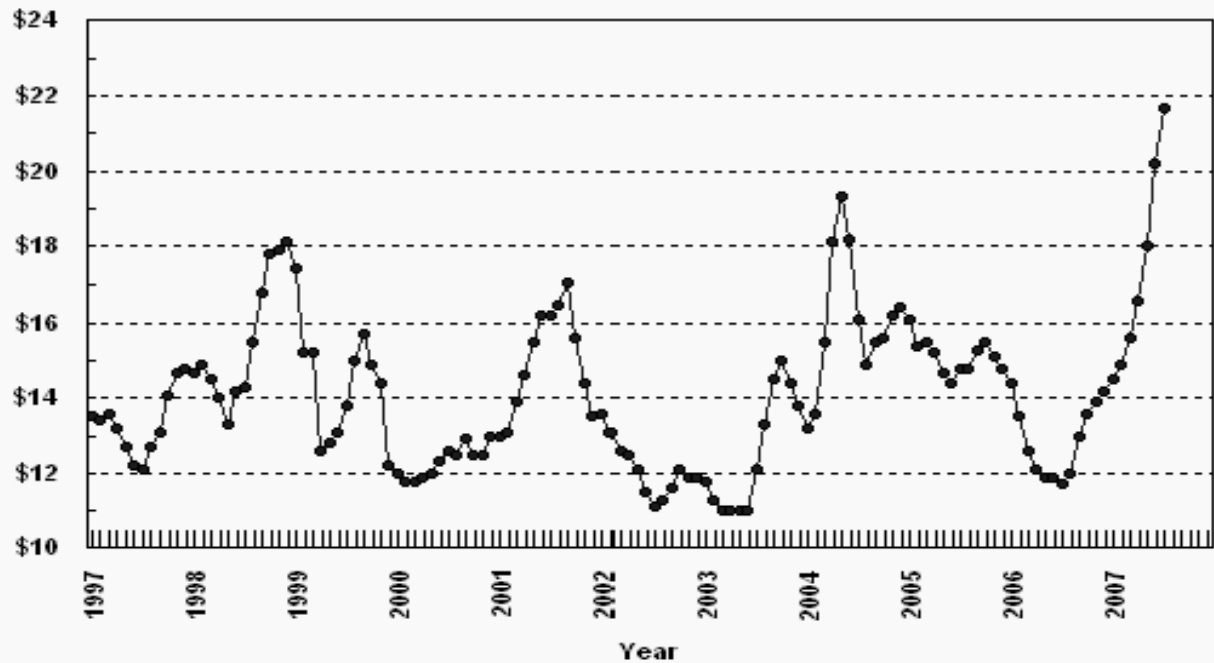
Prices Received, Cattle, US

Dollars per Cwt



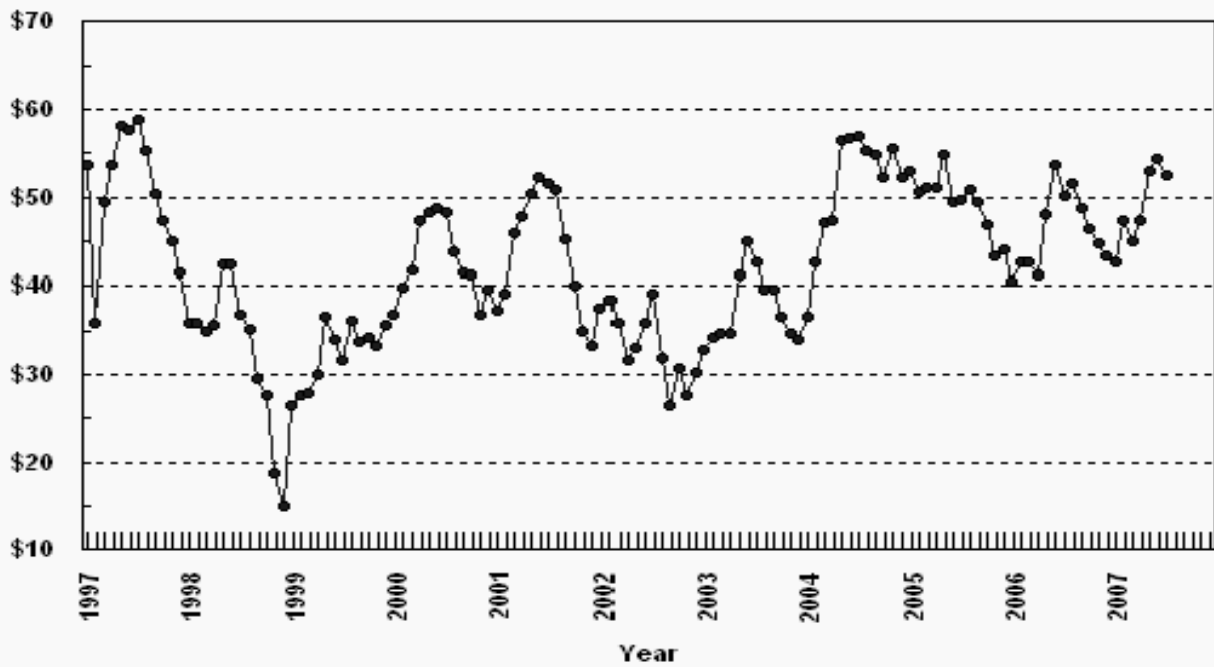
Prices Received, Milk, US

Dollars per Cwt



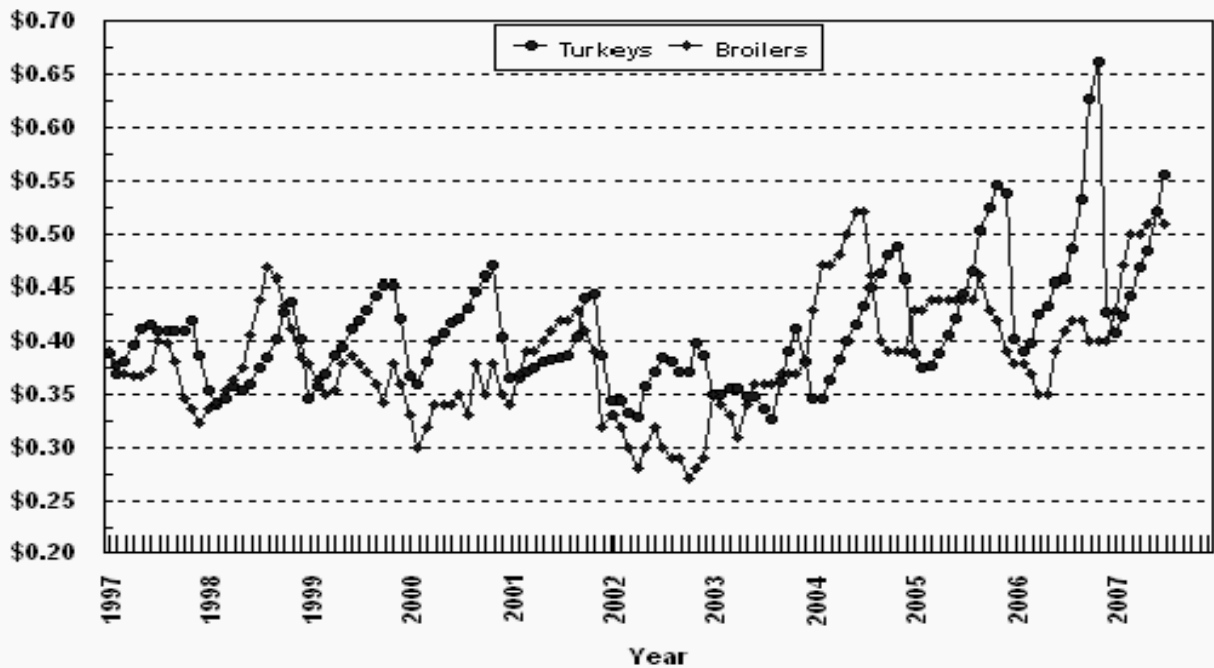
Prices Received, Hogs, US

Dollars per Cwt



Prices Received, Turkeys & Broilers, US

Dollars per Lb



Wheat: Prices Received, by State, June and July 2007

| State | All Wheat | | Winter Wheat | | Durum Wheat | | Oth Spring Wheat | |
|-------|---------------------------|---------------------------|---------------------------|---------------------------|---------------------------|---------------------------|---------------------------|---------------------------|
| | Jun ¹ | Jul ² | Jun ¹ | Jul ² | Jun ¹ | Jul ² | Jun ¹ | Jul ² |
| | <i>Dollars per Bushel</i> | <i>Dollars per Bushel</i> | <i>Dollars per Bushel</i> | <i>Dollars per Bushel</i> | <i>Dollars per Bushel</i> | <i>Dollars per Bushel</i> | <i>Dollars per Bushel</i> | <i>Dollars per Bushel</i> |
| AR | 4.60 | 5.45 | 4.60 | 5.45 | | | | |
| CA | 5.17 | 5.32 | 5.02 | 5.25 | 5.35 | (³) | | |
| CO | 5.13 | 5.33 | 5.13 | 5.33 | | | | |
| ID | 5.23 | 5.50 | 5.24 | 5.50 | (⁴) | (⁴) | 5.22 | 5.50 |
| IL | 4.92 | 5.10 | 4.92 | 5.10 | | | | |
| IN | 4.90 | 5.30 | 4.90 | 5.30 | | | | |
| KS | 5.06 | 5.52 | 5.06 | 5.52 | | | | |
| MI | 4.41 | 4.75 | 4.41 | 4.75 | | | | |
| MN | 5.18 | 5.44 | 4.26 | 4.30 | | | 5.19 | 5.45 |
| MO | 4.65 | 4.80 | 4.65 | 4.80 | | | | |
| MT | 5.07 | 5.47 | 5.04 | 5.23 | 5.40 | 6.47 | 5.08 | 5.60 |
| NE | 4.94 | 5.20 | 4.94 | 5.20 | | | | |
| ND | 5.22 | 5.81 | (³) | 4.85 | 5.69 | 6.95 | 5.18 | 5.55 |
| OH | 4.63 | 5.17 | 4.63 | 5.17 | | | | |
| OK | 5.00 | 5.50 | 5.00 | 5.50 | | | | |
| OR | 5.59 | 6.04 | 5.57 | 6.00 | | | 5.74 | 6.30 |
| SD | 5.06 | 5.56 | 4.75 | 5.23 | | | 5.17 | 5.67 |
| TX | 5.23 | 5.43 | 5.23 | 5.43 | | | | |
| WA | 5.54 | 6.13 | 5.48 | 6.05 | | | 5.65 | 6.30 |
| US | 5.03 | 5.37 | 5.00 | 5.30 | 5.50 | 6.25 | 5.18 | 5.62 |

¹ Entire month.

² Mid-month.

³ Price not published to avoid disclosure of individual firms.

⁴ Insufficient sales to establish a price.

**Prices Received for Selected Agricultural Commodities, by Month,
United States, 2006 and 2007 ¹**

| Month | All Wheat | | Corn | | Soybeans | | Beef Cattle ² | | All Hogs | |
|-------|---------------------------|---------------------------|---------------------------|---------------------------|---------------------------|---------------------------|--------------------------|------------------------|------------------------|------------------------|
| | 2006 | 2007 | 2006 | 2007 | 2006 | 2007 | 2006 | 2007 | 2006 | 2007 |
| | <i>Dollars per Bushel</i> | <i>Dollars per Bushel</i> | <i>Dollars per Bushel</i> | <i>Dollars per Bushel</i> | <i>Dollars per Bushel</i> | <i>Dollars per Bushel</i> | <i>Dollars per Cwt</i> | <i>Dollars per Cwt</i> | <i>Dollars per Cwt</i> | <i>Dollars per Cwt</i> |
| Jan | 3.52 | 4.53 | 2.00 | 3.05 | 5.87 | 6.38 | 95.00 | 84.30 | 40.70 | 42.70 |
| Feb | 3.66 | 4.71 | 2.02 | 3.44 | 5.67 | 6.87 | 92.40 | 86.60 | 42.60 | 47.30 |
| Mar | 3.79 | 4.75 | 2.06 | 3.43 | 5.57 | 6.95 | 87.90 | 92.00 | 42.80 | 45.00 |
| Apr | 3.81 | 4.89 | 2.11 | 3.39 | 5.52 | 6.88 | 84.80 | 94.30 | 41.30 | 47.30 |
| May | 4.09 | 4.88 | 2.17 | 3.49 | 5.68 | 7.13 | 82.20 | 93.20 | 48.20 | 53.00 |
| Jun | 3.98 | 5.03 | 2.14 | 3.51 | 5.62 | 7.51 | 84.00 | 89.10 | 53.80 | 54.30 |
| Jul | 3.88 | 5.37 | 2.14 | 3.23 | 5.61 | 7.92 | 85.80 | 90.30 | 50.20 | 52.60 |
| Aug | 3.91 | | 2.09 | | 5.23 | | 87.20 | | 51.60 | |
| Sep | 4.06 | | 2.20 | | 5.24 | | 90.00 | | 48.90 | |
| Oct | 4.59 | | 2.54 | | 5.52 | | 88.20 | | 46.50 | |
| Nov | 4.59 | | 2.87 | | 6.07 | | 84.40 | | 44.90 | |
| Dec | 4.52 | | 3.01 | | 6.18 | | 83.10 | | 43.50 | |

¹ Current month prices are mid-month; prices for previous months are for the entire month.

² Cows, steers and heifers.

Grains: Prices Received, by State, June and July 2007

| Month | All Barley ¹ | | Corn | | Oats | | Soybeans | | Sorghum Grain | |
|-------|---------------------------|---------------------------|---------------------------|---------------------------|---------------------------|---------------------------|---------------------------|---------------------------|------------------------|------------------------|
| | Jun ² | Jul ³ | Jun ² | Jul ³ | Jun ² | Jul ³ | Jun ² | Jul ³ | Jun ² | Jul ³ |
| | <i>Dollars per Bushel</i> | <i>Dollars per Bushel</i> | <i>Dollars per Bushel</i> | <i>Dollars per Bushel</i> | <i>Dollars per Bushel</i> | <i>Dollars per Bushel</i> | <i>Dollars per Bushel</i> | <i>Dollars per Bushel</i> | <i>Dollars per Cwt</i> | <i>Dollars per Cwt</i> |
| AL | | | | | | | 7.82 | 8.25 | (⁵) | (⁵) |
| AR | | | | | | | | | | |
| CA | 3.73 | (⁴) | | | (⁵) | (⁵) | | | | |
| CO | (⁵) | (⁵) | 3.56 | 3.45 | | | | | | |
| ID | 3.24 | 3.20 | | | | | | | | |
| IL | | | 3.64 | 3.30 | (⁵) | (⁵) | 7.64 | 8.10 | 6.82 | 6.10 |
| IN | | | 3.73 | 3.42 | | | 7.83 | 8.33 | | |
| IA | | | 3.38 | 3.05 | 2.71 | 2.60 | 7.54 | 7.95 | | |
| KS | | | 3.84 | 3.46 | 2.82 | 2.69 | 7.57 | 8.10 | 6.33 | 5.51 |
| KY | | | 3.87 | 3.40 | | | 7.71 | 8.00 | | |
| LA | | | | | | | 7.37 | 8.30 | | |
| MI | | | 3.75 | 3.40 | 2.67 | 2.50 | 7.45 | 8.00 | | |
| MN | 3.44 | 3.36 | 3.19 | 3.08 | 2.38 | 2.33 | 7.19 | 7.44 | | |
| MS | | | | | | | 7.61 | 8.40 | | |
| MO | | | 3.84 | 3.50 | | | 7.55 | 8.00 | 6.78 | 5.80 |
| MT | 3.22 | 3.39 | | | 2.41 | 2.50 | | | | |
| NE | | | 3.64 | 3.40 | 3.06 | 2.90 | 7.18 | 7.40 | 6.37 | 5.85 |
| NY | | | | | 2.05 | 1.96 | | | | |
| NC | | | 3.86 | 4.00 | | | 8.22 | 8.60 | | |
| ND | 3.28 | 3.32 | 3.33 | 3.25 | 2.26 | 2.20 | 7.08 | 7.20 | | |
| OH | | | 3.68 | 3.40 | (⁴) | (⁵) | 7.72 | 8.28 | | |
| OK | | | | | | | | | 6.14 | 5.50 |
| OR | 3.81 | 3.80 | | | (⁵) | (⁵) | | | | |
| PA | | | 4.32 | 4.03 | 2.17 | 2.04 | | | | |
| SD | (⁴) | (⁴) | 3.42 | 3.20 | 2.88 | 2.70 | 7.09 | 7.38 | | |
| TN | | | 4.15 | 3.65 | | | 7.67 | 8.35 | | |
| TX | | | 4.25 | 3.67 | (⁴) | 2.82 | | | 6.03 | 5.54 |
| UT | (⁴) | (⁴) | | | | | | | | |
| WA | 3.70 | 3.63 | | | | | | | | |
| WI | | | 3.31 | 3.20 | 2.25 | 2.25 | 7.37 | 7.70 | | |
| WY | 2.88 | 2.88 | | | | | | | | |
| US | 3.30 | 3.37 | 3.51 | 3.23 | 2.54 | 2.50 | 7.51 | 7.92 | 6.12 | 5.55 |

¹ The Three-State (MN, ND and SD) Feed Barley price is discontinued.

² Entire month.

³ Mid-month.

⁴ Price not published to avoid disclosure of individual firms.

⁵ Insufficient sales to establish a price.

**Malting and Feed Barley: Prices Received Selected State,
June and July 2007**

| State | Malting Barley | | Feed Barley | |
|-------|---------------------------|---------------------------|---------------------------|---------------------------|
| | Jun ¹ | Jul ² | Jun ¹ | Jul ² |
| | <i>Dollars per Bushel</i> | <i>Dollars per Bushel</i> | <i>Dollars per Bushel</i> | <i>Dollars per Bushel</i> |
| ID | 3.23 | 3.20 | 3.38 | 3.40 |
| MN | (³) | 3.60 | 3.34 | 3.24 |
| MT | 3.23 | (³) | 3.11 | 2.97 |
| ND | 3.29 | 3.45 | 3.12 | 3.00 |
| SD | (³) | (³) | (⁴) | (⁴) |
| WY | (⁴) | (⁴) | 2.88 | 2.88 |

¹ Entire month.

² Mid-month.

³ Price not published to avoid disclosure of individual firms.

⁴ Insufficient sales to establish a price.

Field Crops: Prices Received, by State, June and July 2007

| State | Dry Edible Beans | | All Sunflower | | Flaxseed | | Peanuts ⁴ | |
|-------|------------------------|------------------------|------------------------|------------------------|---------------------------|---------------------------|--------------------------|--------------------------|
| | Jun ¹ | Jul ² | Jun ¹ | Jul ² | Jun ¹ | Jul ² | Jun ¹ | Jul ³ |
| | <i>Dollars per Cwt</i> | <i>Dollars per Cwt</i> | <i>Dollars per Cwt</i> | <i>Dollars per Cwt</i> | <i>Dollars per Bushel</i> | <i>Dollars per Bushel</i> | <i>Dollars per Pound</i> | <i>Dollars per Pound</i> |
| AL | | | | | | | 0.174 | 0.177 |
| CA | 42.70 | (⁵) | | | | | | |
| CO | 26.20 | 26.00 | | | | | | |
| FL | | | | | | | 0.174 | (⁵) |
| GA | | | | | | | 0.178 | 0.183 |
| ID | 25.60 | 23.40 | | | | | | |
| KS | | | 15.40 | (⁵) | | | | |
| MI | 24.00 | 26.00 | | | | | | |
| MN | 25.80 | (⁵) | 17.40 | 18.10 | | | | |
| NE | 26.20 | 26.90 | | | | | | |
| NC | | | | | | | 0.189 | 0.190 |
| ND | 22.80 | 22.30 | 16.30 | 17.10 | 7.80 | 8.00 | | |
| SD | | | 17.70 | 18.60 | (⁵) | (⁶) | | |
| TX | | | | | | | (⁵) | 0.193 |
| VA | | | | | | | 0.168 | (⁵) |
| US | 24.40 | 25.10 | 17.00 | 17.40 | 7.79 | 8.00 | 0.181 | 0.183 |

¹ Entire month.

² Mid-month.

³ Based on sales through first half of month.

⁴ In-Shell.

⁵ Price not published to avoid disclosure of individual firms.

⁶ Insufficient sales to establish a price.

Field Crops and Apples: Prices Received, by State, June and July 2007

| State | Cotton, Upland | | July | | | | Apples Fresh Use ^{1 4} |
|--------------------------|--------------------------|------------------------|------------------------------|-------------------------|------------------------|---------------|---------------------------------------|
| | Jun ¹ | Jul ² | Cotton- seed ⁵ | Hay, Baled ³ | | | |
| | | | | All | Alfalfa | Other | |
| <i>Dollars per Pound</i> | <i>Dollars per Pound</i> | <i>Dollars per Ton</i> | <i>Dollars per Ton</i> | <i>Dollars per Ton</i> | <i>Dollars per Ton</i> | <i>Dol/Lb</i> | |
| AL | 0.444 | 0.444 | | | | | |
| AZ | (⁶) | (⁶) | | 150.00 | 151.00 | 138.00 | |
| AR | 0.445 | 0.470 | | | | | |
| CA | (⁶) | (⁷) | | 153.00 | 162.00 | 124.00 | |
| CO | | | | 135.00 | 135.00 | 135.00 | |
| GA | 0.459 | 0.455 | | | | | |
| ID | | | | 139.00 | 140.00 | 115.00 | |
| IL | | | | 119.00 | 123.00 | 94.00 | |
| IA | | | | 106.00 | 109.00 | 79.00 | |
| KS | | | | 99.00 | 102.00 | 88.00 | |
| KY | | | | 90.00 | 140.00 | 80.00 | |
| LA | 0.452 | 0.448 | | | | | |
| MI | | | | 102.00 | 105.00 | 80.00 | |
| MN | | | | 95.00 | 97.00 | 84.00 | |
| MS | 0.445 | 0.457 | | | | | |
| MO | | | | 101.00 | 148.00 | 85.00 | |
| MT | | | | 81.00 | 77.00 | 105.00 | |
| NE | | | | 95.00 | 96.00 | 89.00 | |
| NV | | | | 137.00 | 138.00 | 129.00 | |
| NM | | | | 164.00 | 167.00 | 136.00 | |
| NY | | | | 123.00 | 150.00 | 105.00 | |
| NC | 0.447 | 0.444 | | | | | |
| ND | | | | 56.00 | 58.00 | 40.00 | |
| OH | | | | 138.00 | 160.00 | 103.00 | 0.425 |
| OK | | | | 105.00 | 145.00 | 77.00 | |
| OR | | | | 155.00 | 151.00 | 166.00 | |
| PA | | | | 147.00 | 161.00 | 137.00 | |
| SD | | | | 89.00 | 92.00 | 76.00 | |
| TN | 0.472 | 0.494 | | | | | |
| TX | 0.490 | 0.497 | | 144.00 | 165.00 | 135.00 | |
| UT | | | | 121.00 | 123.00 | 105.00 | |
| VA | | | | | | | |
| WA | | | | 140.00 | 140.00 | 140.00 | 0.293 |
| WI | | | | 56.00 | 60.00 | 40.00 | |
| WY | | | | 114.00 | 114.00 | 111.00 | |
| US | 0.464 | 0.468 | | 131.00 | 137.00 | 113.00 | 0.293 |

¹ Entire month.

² Based on sales during the first half of the month.

³ Mid-month.

⁴ Equivalent packinghouse-door returns for CA, MI, NY, and WA. Price at point of first sale for other States.

⁵ Marketing year August - February.

⁶ Price not published to avoid disclosure of individual firms.

⁷ Insufficient sales to establish a price.

**Upland Cotton and Rice: Prices Received and Marketings,
United States, July 2007, with Comparisons**

| Item | Unit | May 2007 ¹ | Jun 2007 ¹ | Jul 2007 ² |
|-------------------------|-------------------|-----------------------|-----------------------|-----------------------|
| Cotton, Upland | | | | |
| Average Price | Dollars per Pound | 0.448 | 0.464 | 0.468 |
| Marketings ³ | 1,000 Bales | 1,550 | 1,067 | NA |
| Rice | | | | |
| Average Price | Dollars per Cwt | 9.72 | 9.77 | 9.84 |
| Marketings ⁴ | 1,000 Cwt | 12,344 | 9,979 | NA |

¹ Entire month.

² Based on purchases for the first half of the month.

³ Marketings based on a survey of cotton buyers in the major producing States - AL, AZ, AR, CA, GA, LA, MS, NC, TN, and TX.

⁴ Purchases by private firms and rice (rough equivalent) shipped by cooperatives.

**Citrus Fruit: Prices and Equivalent Returns, by Utilization,
by State and United States, July 2007**

| Commodity, State and Type | F.O.B. Packed Fresh | Equivalent Returns ¹ | | | | | |
|---------------------------------|---------------------------|---------------------------------|------------------------|------------------------|------------------------|------------------------|------------------------|
| | | Packinghouse-door | | | On-tree | | |
| | | All | Fresh | Process | All | Fresh | Process |
| | <i>Dollars per Box</i> | <i>Dollars per Box</i> | <i>Dollars per Box</i> | <i>Dollars per Box</i> | <i>Dollars per Box</i> | <i>Dollars per Box</i> | <i>Dollars per Box</i> |
| Grapefruit CA | 23.30 | 11.71 | 14.06 | -0.30 | 8.79 | 11.14 | -3.22 |
| Lemons CA | 56.40 | 36.91 | 46.33 | -0.42 | 31.49 | 40.91 | -5.84 |
| Oranges CA Valencia | 27.40 | 11.49 | 19.37 | 1.64 | 8.95 | 16.83 | -0.90 |

¹ Net lbs. per box: Grapefruit - AZ & CA-67, FL-85, TX-80; Lemons - 76; Oranges - AZ & CA-75, FL-90, TX-85; Tangelos - 90; Tangerines - AZ & CA-75, FL-95.

Potatoes: Prices Received, by State, June and July 2007 ¹

| State | Jun | Jul | State | Jun | Jul |
|-----------------------|------------------------|------------------------|-----------------------|------------------------|------------------------|
| | <i>Dollars per Cwt</i> | <i>Dollars per Cwt</i> | | <i>Dollars per Cwt</i> | <i>Dollars per Cwt</i> |
| AL | 18.20 | 14.80 | | | |
| AZ | (⁴) | (⁴) | NC | 8.00 | 7.65 |
| CA - All ² | 13.00 | 12.30 | ND - All ² | 6.45 | 5.65 |
| - Winter | | | - Fresh ³ | 5.00 | NA |
| - Spring | 13.70 | 12.60 | - Processing | 6.55 | NA |
| - Summer | 12.90 | 12.20 | OR | 7.90 | 7.30 |
| - Fall | 8.20 | 7.90 | TX | 10.40 | (⁴) |
| CO - All ² | 7.60 | 7.60 | VA | | 14.10 |
| - Fresh ³ | 8.75 | NA | WA - All ² | 7.20 | 7.15 |
| FL | 13.50 | | - Processing | 6.50 | NA |
| ID - All ² | 6.10 | 5.95 | WI - All ² | 7.55 | |
| - Fresh ³ | 6.40 | NA | - Fresh ³ | (⁴) | NA |
| - Processing | 5.90 | NA | - Processing | (⁴) | NA |
| ME | 8.00 | 7.95 | | | |
| MI | | | US - All ² | 8.27 | 8.10 |
| MN | 5.35 | 4.85 | - Fresh ³ | 11.78 | NA |
| NY | | | - Processing | 6.75 | NA |

¹ Missing data indicates no potatoes being marketed.

² Average price of potatoes sold for all uses, including table stocks, processing, seed, and livestock feed.

³ Fresh market prices only, includes table stock prices.

⁴ Price not published to avoid disclosure of individual firms.

Cattle: Prices Received, by State, June and July 2007

| State | Cows ¹ | | Steers & Heifers | | Beef Cattle ⁴ | | Calves | |
|-------|------------------------|------------------------|------------------------|------------------------|--------------------------|------------------------|------------------------|------------------------|
| | Jun ² | Jul ³ | Jun ² | Jul ³ | Jun ² | Jul ³ | Jun ² | Jul ³ |
| | <i>Dollars per Cwt</i> | <i>Dollars per Cwt</i> | <i>Dollars per Cwt</i> | <i>Dollars per Cwt</i> | <i>Dollars per Cwt</i> | <i>Dollars per Cwt</i> | <i>Dollars per Cwt</i> | <i>Dollars per Cwt</i> |
| AZ | 51.00 | 52.00 | 95.00 | 91.00 | 84.40 | 81.60 | 109.00 | 120.00 |
| AR | 47.50 | 49.50 | 103.00 | 103.00 | 86.40 | 87.00 | 114.00 | 118.00 |
| CA | 47.80 | 48.70 | 90.40 | 92.40 | 73.40 | 74.90 | 112.00 | 111.00 |
| CO | 51.70 | 52.50 | 101.00 | 101.00 | 100.00 | 100.00 | 121.00 | 121.00 |
| FL | 49.00 | 50.00 | 96.30 | 98.60 | 81.40 | 77.90 | 112.00 | 116.00 |
| GA | 49.20 | 50.50 | 94.40 | 97.20 | 64.60 | 66.40 | 114.00 | 118.00 |
| ID | 49.60 | 51.40 | 90.50 | 89.10 | 80.70 | 80.40 | 111.00 | 113.00 |
| IL | 52.00 | 52.00 | 91.00 | 90.00 | 90.20 | 89.20 | 111.00 | 112.00 |
| IA | 54.40 | 56.00 | 87.50 | 88.50 | 86.80 | 87.90 | 116.00 | 116.00 |
| KS | 53.10 | 54.50 | 91.60 | 92.90 | 91.20 | 92.50 | 128.00 | 129.00 |
| KY | 46.00 | 47.00 | 96.00 | 103.00 | 84.00 | 89.60 | 109.00 | 114.00 |
| LA | 47.80 | 51.00 | 95.30 | 99.00 | 62.50 | 67.30 | 111.00 | 114.00 |
| MI | 51.00 | 51.00 | 90.00 | 85.00 | 78.30 | 74.80 | 125.00 | 120.00 |
| MN | 51.60 | 53.50 | 88.10 | 85.00 | 83.10 | 80.70 | 128.00 | 121.00 |
| MO | 49.50 | 52.10 | 107.00 | 110.00 | 90.90 | 95.50 | 118.00 | 120.00 |
| MT | 52.00 | 54.60 | 90.40 | 90.90 | 73.10 | 82.90 | 112.00 | 116.00 |
| NE | 52.20 | 54.00 | 93.60 | 96.10 | 92.40 | 94.80 | 129.00 | 131.00 |
| NM | 52.00 | 54.00 | 98.00 | 97.00 | 81.90 | 80.20 | 128.00 | 124.00 |
| ND | 52.50 | 54.00 | 93.00 | 90.00 | 64.70 | 66.60 | 121.00 | 120.00 |
| OH | 48.40 | 50.00 | 87.40 | 86.00 | 83.50 | 82.40 | 102.00 | 103.00 |
| OK | 52.00 | 53.10 | 102.00 | 105.00 | 98.00 | 101.00 | 121.00 | 129.00 |
| OR | 50.00 | 50.50 | 93.00 | 92.00 | 80.10 | 79.60 | 100.00 | 95.00 |
| PA | 50.70 | 50.70 | 89.00 | 86.90 | 79.00 | 77.50 | 117.00 | 119.00 |
| SD | 50.00 | 52.00 | 94.90 | 97.00 | 84.60 | 85.80 | 107.00 | 111.00 |
| TN | 46.00 | 49.00 | 97.00 | 102.00 | 76.60 | 80.80 | 106.00 | 111.00 |
| TX | 49.20 | 51.00 | 94.80 | 95.10 | 90.70 | 92.00 | 126.00 | 126.00 |
| VA | 44.40 | 45.60 | 93.70 | 97.90 | 75.00 | 79.60 | 113.00 | 108.00 |
| WI | 49.60 | 51.10 | 87.40 | 86.00 | 65.50 | 65.80 | 158.00 | 156.00 |
| WY | 52.00 | 52.60 | 100.00 | 103.00 | 80.80 | 95.40 | 124.00 | 128.00 |
| US | 50.10 | 51.40 | 93.30 | 94.30 | 89.10 | 90.30 | 125.00 | 125.00 |

¹ Beef cows and cull dairy cows sold for slaughter.

² Entire month.

³ Mid-month.

⁴ "Cows" and "steers and heifers" combined.

Hogs: Prices Received, by State, June and July 2007

| State | Sows | | Barrows and Gilts | | All Hogs | |
|-------|------------------------|------------------------|------------------------|------------------------|------------------------|------------------------|
| | Jun ¹ | Jul ² | Jun ¹ | Jul ² | Jun ¹ | Jul ² |
| | <i>Dollars per Cwt</i> | <i>Dollars per Cwt</i> | <i>Dollars per Cwt</i> | <i>Dollars per Cwt</i> | <i>Dollars per Cwt</i> | <i>Dollars per Cwt</i> |
| AR | 37.70 | 37.20 | 52.40 | 50.40 | 50.90 | 49.10 |
| IL | 36.00 | 35.20 | 53.80 | 51.30 | 52.40 | 50.00 |
| IN | 41.50 | 40.50 | 55.00 | 52.50 | 53.90 | 51.50 |
| IA | 38.00 | 37.50 | 56.00 | 55.00 | 55.60 | 54.70 |
| KS | 37.70 | 36.60 | 50.30 | 48.10 | 48.70 | 46.60 |
| MN | 40.00 | 39.00 | 56.10 | 54.50 | 56.00 | 54.40 |
| MO | 36.90 | 35.70 | 50.40 | 49.00 | 49.50 | 47.70 |
| NE | 38.50 | 37.50 | 56.30 | 53.50 | 55.90 | 53.20 |
| NC | 36.90 | 36.50 | 56.90 | 55.90 | 56.70 | 55.70 |
| OH | 37.00 | 36.00 | 53.40 | 51.40 | 51.90 | 50.00 |
| OK | 35.90 | 35.30 | 48.40 | 47.00 | 46.50 | 45.20 |
| PA | 36.20 | 36.00 | 49.80 | 48.50 | 47.80 | 46.60 |
| SD | 36.60 | 35.80 | 56.70 | 54.00 | 53.90 | 51.30 |
| US | 37.50 | 36.50 | 55.10 | 53.40 | 54.30 | 52.60 |

¹ Entire month.

² Mid-month.

Sheep and Poultry: Prices Received, by State, June and July 2007

| State | June | | July |
|-------|------------------------|------------------------|----------------------------|
| | Sheep ¹ | Lambs ¹ | Market Eggs ^{2 3} |
| | <i>Dollars per Cwt</i> | <i>Dollars per Cwt</i> | <i>Dollars per Dozen</i> |
| AL | | | 0.830 |
| AR | | | 0.811 |
| CA | 23.50 | 91.00 | 0.840 |
| CO | 30.00 | 98.00 | |
| CT | | | 0.810 |
| FL | | | 0.790 |
| GA | | | 0.790 |
| ID | 24.00 | 94.00 | |
| IN | | | 0.800 |
| IA | 31.00 | 100.00 | 0.769 |
| KY | 28.00 | 96.00 | |
| ME | | | 1.010 |
| MI | | | 0.800 |
| MN | 25.00 | 104.00 | 0.860 |
| MS | | | 0.790 |
| MO | 33.60 | 93.50 | 0.760 |
| MT | 28.90 | 102.00 | |
| NE | 28.60 | 93.10 | |
| NY | | | 0.890 |
| NC | | | 0.800 |
| ND | 25.00 | 101.00 | |
| OH | 24.50 | 97.00 | 0.890 |
| OR | 31.00 | 94.00 | |
| PA | 38.00 | 110.00 | 0.760 |
| SC | | | 0.800 |
| SD | 24.90 | 109.00 | |
| TX | 31.30 | 87.60 | 0.820 |
| VA | 33.00 | 104.00 | |
| WA | | | 0.894 |
| WV | 27.00 | 99.00 | |
| WY | 26.70 | 100.00 | |
| US | 27.50 | 96.30 | 0.812 |

¹ Entire month.

² Mid-month.

³ Also referred to as Table eggs.

Milk and Milk Cows: Prices Received, by State, June and July 2007

| State | June ¹ | | | | | | July | | |
|-------|-------------------------------|----------------|---------------------------------------|----------------|-----------------------|----------------|-------------------------|----------------|------------------------|
| | Fluid Grade Milk ² | | Manufacturing Grade Milk ³ | | All Milk ⁴ | | All Milk ^{4 5} | | Milk Cows ⁶ |
| | Price | Fat Test | Price | Fat Test | Price | Fat Test | Price | Fat Test | |
| | <i>Dol/Cwt</i> | <i>Percent</i> | <i>Dol/Cwt</i> | <i>Percent</i> | <i>Dol/Cwt</i> | <i>Percent</i> | <i>Dol/Cwt</i> | <i>Percent</i> | <i>Dol/Head</i> |
| AZ | 20.40 | 3.54 | | | 20.40 | 3.54 | 22.30 | 3.54 | 1,850 |
| CA | 19.60 | 3.56 | 20.90 | 3.99 | 19.64 | 3.57 | 20.60 | 3.56 | 1,850 |
| CO | 20.20 | 3.45 | | | 20.20 | 3.45 | 21.90 | 3.45 | 2,200 |
| FL | 21.80 | 3.58 | | | 21.80 | 3.58 | 24.20 | 3.60 | 2,050 |
| ID | 19.50 | 3.52 | | | 19.50 | 3.52 | 20.50 | 3.48 | 2,250 |
| IL | 20.90 | 3.63 | 20.50 | 3.55 | 20.90 | 3.63 | 22.00 | 3.61 | 1,870 |
| IN | 19.70 | 3.51 | 17.90 | 3.54 | 19.70 | 3.51 | 22.20 | 3.50 | 1,950 |
| IA | 19.90 | 3.58 | 19.60 | 3.61 | 19.90 | 3.58 | 21.80 | 3.54 | 2,020 |
| KS | 19.50 | 3.54 | | | 19.50 | 3.54 | 21.80 | 3.54 | 1,850 |
| KY | 20.70 | 3.56 | | | 20.70 | 3.56 | 23.10 | 3.55 | 1,820 |
| MI | 20.40 | 3.49 | | | 20.40 | 3.49 | 22.50 | 3.45 | 1,950 |
| MN | 20.50 | 3.66 | 19.60 | 3.66 | 20.50 | 3.66 | 21.50 | 3.57 | 1,900 |
| MO | 20.10 | 3.55 | 19.10 | 3.61 | 20.10 | 3.55 | 22.50 | 3.54 | 1,780 |
| NM | 19.80 | 3.51 | | | 19.80 | 3.51 | 22.00 | 3.51 | 2,000 |
| NY | 20.30 | 3.58 | | | 20.30 | 3.58 | 22.10 | 3.58 | 1,820 |
| OH | 20.60 | 3.56 | 17.00 | 3.67 | 20.50 | 3.56 | 22.30 | 3.53 | 1,910 |
| OR | 18.50 | 3.60 | | | 18.50 | 3.60 | 20.10 | 3.59 | 2,100 |
| PA | 21.30 | 3.60 | | | 21.30 | 3.60 | 23.50 | 3.60 | 2,000 |
| TX | 20.80 | 3.64 | | | 20.80 | 3.64 | 22.20 | 3.65 | 2,100 |
| VT | 21.00 | 3.63 | | | 21.00 | 3.63 | 22.80 | 3.57 | 2,100 |
| VA | 21.60 | 3.55 | | | 21.60 | 3.55 | 23.40 | 3.50 | 1,850 |
| WA | 20.30 | 3.60 | | | 20.30 | 3.60 | 22.20 | 3.59 | 2,100 |
| WI | 20.50 | 3.58 | 19.60 | 3.63 | 20.50 | 3.58 | 22.00 | 3.54 | 1,960 |
| US | 20.20 | 3.57 | 20.00 | 3.80 | 20.20 | 3.57 | 21.70 | 3.55 | 1,950 |

¹ Entire month.

² Including milk diverted to manufacturing.

³ ID, MI, and PA are no longer published due to insufficient manufacturing grade milk volume.

⁴ Before deductions for hauling. Includes quality, quantity, and other premiums. Excludes hauling subsidies.

⁵ Preliminary.

⁶ Animals sold for dairy herd replacement only. Prices published January, April, July and October.

**Parity Price Equivalent for Manufacturing Grade Milk ¹: United States,
June and July 2007, with Comparisons**

| Item | Unit | Jul 2006 | Jun 2007 | Jul 2007 |
|---------------------------------------|-----------------|----------|----------|----------|
| Parity Equivalent | Dollars per Cwt | 35.50 | 36.80 | 37.30 |
| Average Price F.O.B ² | Dollars per Cwt | 10.80 | 20.00 | 20.70 |
| Average Fat Test of Milk ² | Percent | 3.73 | 3.80 | 3.75 |

¹ The parity price equivalent during 2007 is 92.1 percent of the parity price of all milk sold to plants, compared with 91.5 percent in 2006. For additional details, see January 2007 issue of "Agricultural Prices".

² Preliminary for July 2007.

**Parity Prices for Farm Products and Average Prices Received as
Percent of Parity Prices, United States, with Comparisons ¹**

| Commodity and Unit | Adjusted Base Price | Parity Price | | | Price as Percent of Parity | | |
|---|---------------------------|----------------|----------------|----------------|-------------------------------|----------------|----------------|
| | | Jul 2006 | Jun 2007 | Jul 2007 | Jul 2006 | Jun 2007 | Jul 2007 |
| | <i>Dollars</i> | <i>Dollars</i> | <i>Dollars</i> | <i>Dollars</i> | <i>Percent</i> | <i>Percent</i> | <i>Percent</i> |
| Basic Commodities | | | | | | | |
| All Wheat, Bu | 0.519 | 10.50 | 10.80 | 10.90 | 37 | 47 | 49 |
| Rice, Cwt | 1.40 | 28.50 | 29.10 | 29.50 | 29 | 34 | 33 |
| Corn, Bu | 0.384 | 7.83 | 7.99 | 8.09 | 27 | 44 | 40 |
| Cotton, Lb | | | | | | | |
| American Upland | 0.098 | 2.30 | 2.04 | 2.06 | 20 | 23 | 23 |
| Extra Long Staple | 0.142 | 2.72 | 2.96 | 2.99 | | | |
| Peanuts, Lb | 0.031 | 0.689 | 0.645 | 0.653 | 25 | 28 | 28 |
| Designated Nonbasic | | | | | | | |
| All Milk, Sold to Plants, Per Cwt ² | 1.92 | 38.80 | 40.00 | 40.50 | 31 | 52 | 55 |
| Honey, Extracted, Lb ³ | 0.123 | 2.28 | 2.56 | 2.59 | | | |
| Wool and Mohair | | | | | | | |
| Wool, Lb | 0.082 | 1.63 | 1.71 | 1.73 | | | |
| Mohair, Lb | 0.359 | 6.67 | 7.47 | 7.56 | | | |
| Other Nonbasic | | | | | | | |
| Barley, Bu | 0.362 | 7.32 | 7.54 | 7.63 | 37 | 44 | 44 |
| Canola, Cwt | 1.37 | 27.20 | 28.50 | 28.90 | | | |
| Cottonseed, Ton | 14.80 | 303.00 | 308.00 | 312.00 | 32 | 41 | 40 |
| Dry Edible Beans, Cwt | 2.72 | 55.30 | 56.60 | 57.30 | 39 | 43 | 44 |
| Flaxseed, Bu | 0.841 | 15.60 | 17.50 | 17.70 | 35 | 45 | 45 |
| Mustard Seed, Cwt | 1.92 | 38.60 | 40.00 | 40.50 | | | |
| Oats, Bu | 0.215 | 4.35 | 4.48 | 4.53 | 41 | 57 | 55 |
| Potatoes, Cwt | 0.818 | 16.20 | 17.00 | 17.20 | 65 | 49 | 47 |
| Rapeseed, Cwt | 1.59 | 31.70 | 33.10 | 33.50 | | | |
| Rye, Bu | 0.414 | 6.99 | 8.62 | 8.72 | | | |
| Safflower, Cwt | 1.84 | 36.60 | 38.30 | 38.80 | | | |
| Sorghum Grain, Cwt | 0.656 | 12.10 | 13.70 | 13.80 | 38 | 45 | 40 |
| Soybeans, Bu | 0.850 | 17.30 | 17.70 | 17.90 | 32 | 42 | 44 |
| All Sunflower, Cwt | 1.66 | 33.00 | 34.60 | 35.00 | 36 | 49 | 50 |
| Sweetpotatoes, Cwt | 2.31 | 45.90 | 48.10 | 48.70 | | | |
| Apples, Fresh, Lb ⁴ | 0.030 | 0.531 | 0.627 | 0.634 | 80 | 47 | 46 |
| Citrus (equiv on-tree), Box | | | | | | | |
| Grapefruit | 0.622 | 10.60 | 13.00 | 13.10 | 105 | 75 | 67 |
| Lemons | 1.14 | 22.80 | 23.70 | 24.00 | 83 | 124 | 131 |
| Oranges | 0.598 | 11.60 | 12.50 | 12.60 | 57 | 90 | 71 |
| Tangerines | 1.35 | 27.40 | 28.10 | 28.40 | | | |
| Temples (FL) | 0.372 | 7.75 | 7.75 | 7.84 | | | |
| Beef Cattle, Cwt | 10.15 | 194.00 | 211.00 | 214.00 | 44 | 42 | 42 |
| Calves, Cwt | 14.60 | 270.00 | 304.00 | 308.00 | 51 | 41 | 41 |
| Hogs, Cwt | | | | | | | |
| Lambs, Cwt | 11.90 | 234.00 | 248.00 | 251.00 | 40 | 39 | |
| Sheep, Cwt | 4.90 | 96.20 | 102.00 | 103.00 | 29 | 27 | |
| Eggs, Doz ² | 0.088 | 1.79 | 1.83 | 1.85 | 26 | 42 | 55 |
| Turkeys, Live, Lb | 0.056 | 1.100 | 1.170 | 1.180 | 42 | 44 | 47 |

¹ Parity prices are computed under the provisions of Title III, Subtitle a, Section 301 (a) of the Agricultural Adjustment Act of 1938 as amended by the Agricultural Acts of 1948, 1949, and 1956. See January "Agricultural Prices" for details on adjusted base price and parity price computations.

² Seasonally adjusted price as percentage of parity price.

³ Wholesale extracted. Adjusted base price derived from state annual averages prices weighted by production. For 1982 through 1985 the national averages are the support prices.

⁴ Equivalent packinghouse-door returns for CA, NY (apples only), OR (except peaches), and WA. Price at point of first sale for other states.

Parity Prices for Farm Products, July 2007, United States ¹

| Other Nonbasic Commodities | Adjusted Base Price | Parity Price | Other Nonbasic Commodities | Adjusted Base Price | Parity Price |
|-------------------------------------|---------------------|----------------|-------------------------------------|---------------------|----------------|
| | <i>Dollars</i> | <i>Dollars</i> | | <i>Dollars</i> | <i>Dollars</i> |
| Field Crops and Misc Commodities | | | Fresh, CA, Ton ⁵ | 60.80 | 1,280.00 |
| Hops, Lb | 0.250 | 5.27 | Noncitrus Fruit, Continued | | |
| Spearmint Oil, Lb | 1.40 | 29.50 | Olives, CA | | |
| Tobacco, Lb | | | canning, Ton ³ | 94.20 | 1,980.00 |
| Flue-Cured, 11-14 | 0.240 | 5.06 | Papayas (HI) | 0.050 | 1.050 |
| VA Fire-Cured, 21 | 0.254 | 5.35 | Peaches | | |
| KY-TN Fire-Cured, 22-23 | 0.319 | 6.72 | Fresh, Ton ² | 83.80 | 1,770.00 |
| Fire-Cured, 21-23 | 0.319 | 6.72 | Dried, CA, Ton | 77.00 | 1,620.00 |
| Burley, 31 | 0.259 | 5.46 | Processing ³ | | |
| Maryland, 32 | 0.196 | 4.13 | Excl Dried | | |
| Dark Air-Cured, 35-36 | 0.282 | 5.94 | Clingstone, CA, Ton | 34.10 | 718.00 |
| Sun-Cured, 37 | 0.235 | 4.95 | Pears, Ton | | |
| Dark Air-Cured, 35-37 | 0.284 | 5.98 | Fresh ² | 53.50 | 1,130.00 |
| PA Seedleaf, 41 | 0.200 | 4.21 | Dried, CA ⁴ | 178.00 | 3,750.00 |
| Cigar Filler & Binder, 42-44, 54-55 | 0.222 | 4.68 | Plums, CA, Ton | | |
| Puerto Rican Filler, 46 | 0.155 | 3.27 | Fresh, Equiv on-Tree | 63.40 | 1,340.00 |
| Cigar Binder, 51-52 | 0.749 | 15.80 | Prunes, Dried, CA, Ton ⁴ | 139.00 | 2,930.00 |
| Type 61 | 3.30 | 69.50 | Prunes and Plums, Excl CA, Ton | | |
| Noncitrus Fruit | | | Fresh ⁷ | 62.80 | 1,320.00 |
| Apples, Ton ⁴ | | | Processing ⁴ | | |
| Processing | 16.70 | 352.00 | Excl Dried | 28.30 | 596.00 |
| Apricots, Ton | | | Tree Nuts ⁸ | | |
| Fresh ⁵ | 104.00 | 2,190.00 | Almonds, Lb | 0.214 | 4.51 |
| Dried, CA | 264.00 | 5,560.00 | Hazelnuts, Ton | 154.00 | 3,240.00 |
| Avocados, Ton ⁵ | 231.00 | 4,870.00 | Pistachio, Lb | 0.180 | 3.79 |
| Cherries | | | Walnuts, Ton | 174.00 | 3,670.00 |
| Sweet, Ton | 197.00 | 4,150.00 | Vegetables, Cwt ⁹ | | |
| Tart, Lb | 0.034 | 0.716 | Fresh | | |
| Cranberry, Bbl ³ | 5.02 | 106.00 | Carrots ⁶ | 2.38 | 50.10 |
| Dates, CA, Ton ⁵ | 188.00 | 3,960.00 | Cauliflower ⁶ | 4.45 | 93.80 |
| Grapes, Ton | | | Celery ⁶ | 2.00 | 42.10 |
| Raisin Variety | 121.00 | 2,550.00 | Honeydew Melons | 2.67 | 56.30 |
| Other Dried | 71.50 | 1,510.00 | Lettuce | 2.35 | 49.50 |
| Kiwifruit, Ton | 90.50 | 1,910.00 | Onions ⁶ | 1.63 | 34.30 |
| Nectarines | | | Tomatoes | 4.77 | 101.00 |

¹ Parity prices are computed under the provisions of Title III, Subtitle a, Section 301 (a) of the Agricultural Adjustment Act of 1938 as amended by the Agricultural Acts of 1948, 1949, and 1956. See January "Agricultural Prices" for details on adjusted base price and parity price computations.

² Equivalent packinghouse-door returns for CA, NY (apples only), OR (except peaches), and WA. Price at point of first sale for other states.

³ Equivalent returns for bulk fruit at first delivery point.

⁴ Equivalent returns at processing plant door.

⁵ Equivalent returns at packinghouse door.

⁶ Includes some processing.

⁷ Based on "as sold" prices for fresh fruit in all states.

⁸ Prices in-shell basis except almonds which are shelled basis.

⁹ F.O.B. shipping point prices.

Marketing Year for Specified Commodities

Sugarbeets: September 1 to August 31 for US and all estimating States. Estimating States are California, Colorado, Idaho, Michigan, Minnesota, Montana, Nebraska, North Dakota, Ohio, Oregon, Washington, and Wyoming.

Sugarcane: October 1 to September 30 for US and all estimating States. Estimating States are Florida, Hawaii, Louisiana, and Texas.

Sugar Crops: Marketing Year Average Price Received and Value of Production, United States, 2006 Crop ¹

| | Sugarbeets ² | | Sugarcane ³ | | |
|----|-------------------------|---------------------------|------------------------|------------------------|------------------------|
| | Price | Value of Production | For Sugar | | Sugar and Seed |
| | | | Price | Value of Production | Value of Production |
| | <i>Dollars per Ton</i> | <i>1,000 Dollars</i> | <i>Dollars per Ton</i> | <i>1,000 Dollars</i> | <i>1,000 Dollars</i> |
| US | 42.20 | 1,436,653 | 28.50 | 795,847 | 840,914 |

¹ Preliminary. Final prices and value of production by States will be published in "Crop Values" February 2008.

² Includes CA, CO, ID, MI, MN, MT, NE, ND, OH, OR, WA, and WY

³ Includes FL, HI, LA, and TX.

Seasonal Adjustment Factors - All Eggs and All Milk

Base prices used in calculating parity prices are averages of prices received by farmers for several years; therefore, any seasonal variation is largely averaged out. To facilitate comparisons with parity prices, monthly prices for all eggs and all milk are adjusted for seasonal variation.

The seasonally adjusted price is calculated by dividing the monthly price by the adjustment factor. The factors are based on prices for the years 1997-2007. Seasonal adjustment factors will no longer be published for the upcoming 12 months. Instead, adjustment factors will be published monthly as a footnote in the US table containing the seasonal adjusted prices on page 11 of this publication.

**Indexes of Prices Received by Farmers, by Month and Annual Average,
United States, 2003-2007**

| Year | Jan | Feb | Mar | Apr | May | Jun | Jul | Aug | Sep | Oct | Nov | Dec | Avg ¹ |
|------------------------------------|-----|-----|-----|-----|-----|-----|-----|-----|-----|-----|-----|-----|------------------|
| All Farm Products 1910-14 = 100 | | | | | | | | | | | | | |
| 2003 | 631 | 627 | 629 | 638 | 667 | 680 | 666 | 693 | 704 | 718 | 745 | 722 | 677 |
| 2004 | 706 | 730 | 767 | 785 | 810 | 810 | 779 | 762 | 734 | 720 | 727 | 706 | 753 |
| 2005 | 706 | 719 | 752 | 768 | 753 | 748 | 734 | 735 | 735 | 702 | 710 | 723 | 732 |
| 2006 | 711 | 713 | 709 | 708 | 723 | 744 | 741 | 757 | 753 | 730 | 756 | 762 | 734 |
| 2007 | 781 | 809 | 846 | 852 | 872 | 880 | 899 | | | | | | 848 |
| 1990-92 = 100 | | | | | | | | | | | | | |
| 2003 | 99 | 99 | 99 | 100 | 105 | 107 | 105 | 109 | 111 | 113 | 117 | 114 | 107 |
| 2004 | 111 | 115 | 121 | 124 | 127 | 128 | 123 | 120 | 115 | 113 | 115 | 111 | 119 |
| 2005 | 111 | 113 | 118 | 121 | 119 | 118 | 116 | 116 | 116 | 111 | 112 | 114 | 115 |
| 2006 | 112 | 112 | 112 | 111 | 114 | 117 | 117 | 119 | 119 | 115 | 119 | 120 | 116 |
| 2007 | 123 | 127 | 133 | 134 | 137 | 139 | 142 | | | | | | 134 |
| All Crops 1910-14 = 100 | | | | | | | | | | | | | |
| 2003 | 506 | 509 | 523 | 540 | 569 | 576 | 537 | 558 | 549 | 549 | 580 | 567 | 547 |
| 2004 | 554 | 584 | 590 | 595 | 595 | 598 | 577 | 583 | 557 | 544 | 544 | 511 | 569 |
| 2005 | 501 | 521 | 567 | 589 | 568 | 582 | 559 | 562 | 542 | 505 | 510 | 538 | 545 |
| 2006 | 528 | 547 | 564 | 590 | 617 | 619 | 609 | 615 | 594 | 561 | 600 | 622 | 589 |
| 2007 | 640 | 674 | 703 | 693 | 696 | 695 | 705 | | | | | | 686 |
| 1990-92 = 100 | | | | | | | | | | | | | |
| 2003 | 103 | 103 | 106 | 109 | 115 | 117 | 109 | 113 | 111 | 111 | 118 | 115 | 111 |
| 2004 | 112 | 118 | 120 | 121 | 121 | 121 | 117 | 118 | 113 | 110 | 110 | 104 | 115 |
| 2005 | 102 | 106 | 115 | 120 | 115 | 118 | 113 | 114 | 110 | 102 | 103 | 109 | 111 |
| 2006 | 107 | 111 | 114 | 120 | 125 | 126 | 123 | 125 | 120 | 114 | 122 | 126 | 119 |
| 2007 | 130 | 137 | 143 | 140 | 141 | 141 | 143 | | | | | | 139 |

¹ Simple average required for parity regulations. Weighted 1990-92 average equals 100. Average is year-to-date for current year.

**Indexes of Prices Received by Farmers, by Month and Annual Average,
United States, 2003-2007**

| Year | Jan | Feb | Mar | Apr | May | Jun | Jul | Aug | Sep | Oct | Nov | Dec | Avg ¹ |
|--------------------------------------|-----|-----|-----|-----|-----|-----|-----|-----|-----|-----|-----|-----|------------------|
| Food Grains 1910-14 = 100 | | | | | | | | | | | | | |
| 2003 | 372 | 336 | 326 | 316 | 326 | 323 | 311 | 349 | 353 | 359 | 379 | 393 | 345 |
| 2004 | 393 | 395 | 402 | 408 | 407 | 384 | 366 | 357 | 364 | 363 | 362 | 359 | 380 |
| 2005 | 361 | 347 | 352 | 347 | 347 | 344 | 341 | 342 | 353 | 358 | 364 | 373 | 352 |
| 2006 | 372 | 384 | 395 | 398 | 423 | 423 | 413 | 417 | 431 | 481 | 480 | 479 | 425 |
| 2007 | 480 | 491 | 489 | 502 | 505 | 532 | 567 | | | | | | 509 |
| 1990-92 = 100 | | | | | | | | | | | | | |
| 2003 | 117 | 106 | 102 | 99 | 102 | 102 | 98 | 110 | 111 | 113 | 119 | 124 | 109 |
| 2004 | 124 | 124 | 127 | 129 | 128 | 121 | 115 | 112 | 114 | 114 | 114 | 113 | 120 |
| 2005 | 114 | 109 | 111 | 109 | 109 | 108 | 107 | 108 | 111 | 113 | 114 | 117 | 111 |
| 2006 | 117 | 121 | 124 | 125 | 133 | 133 | 130 | 131 | 136 | 151 | 151 | 151 | 134 |
| 2007 | 151 | 154 | 154 | 158 | 159 | 167 | 179 | | | | | | 160 |
| Feed Grains and Hay 1910-14 = 100 | | | | | | | | | | | | | |
| 2003 | 375 | 380 | 380 | 382 | 391 | 392 | 365 | 364 | 360 | 342 | 353 | 368 | 371 |
| 2004 | 376 | 404 | 421 | 445 | 454 | 438 | 405 | 389 | 362 | 344 | 331 | 333 | 392 |
| 2005 | 340 | 326 | 340 | 343 | 354 | 366 | 377 | 357 | 336 | 306 | 297 | 324 | 339 |
| 2006 | 328 | 342 | 350 | 362 | 383 | 389 | 393 | 382 | 379 | 414 | 458 | 480 | 388 |
| 2007 | 485 | 538 | 539 | 539 | 567 | 568 | 541 | | | | | | 539 |
| 1990-92 = 100 | | | | | | | | | | | | | |
| 2003 | 105 | 106 | 106 | 107 | 109 | 110 | 102 | 102 | 101 | 96 | 99 | 103 | 104 |
| 2004 | 105 | 113 | 118 | 124 | 127 | 123 | 113 | 109 | 101 | 96 | 93 | 93 | 110 |
| 2005 | 95 | 91 | 95 | 96 | 99 | 102 | 105 | 100 | 94 | 86 | 83 | 91 | 95 |
| 2006 | 92 | 96 | 98 | 101 | 107 | 109 | 110 | 107 | 106 | 116 | 128 | 134 | 109 |
| 2007 | 136 | 151 | 151 | 151 | 158 | 159 | 151 | | | | | | 151 |

¹ Simple average required for parity regulations. Weighted 1990-92 average equals 100. Average is year-to-date for current year.

**Indexes of Prices Received by Farmers, by Month and Annual Average,
United States, 2003-2007**

| Year | Jan | Feb | Mar | Apr | May | Jun | Jul | Aug | Sep | Oct | Nov | Dec | Avg ¹ |
|----------------------|------|------|------|------|-----|-----|------|------|------|------|------|------|------------------|
| Cotton | | | | | | | | | | | | | |
| 1910-14 = 100 | | | | | | | | | | | | | |
| 2003 | 385 | 393 | 411 | 384 | 388 | 385 | 391 | 391 | 471 | 573 | 533 | 535 | 437 |
| 2004 | 526 | 523 | 521 | 510 | 505 | 506 | 455 | 411 | 428 | 428 | 365 | 332 | 459 |
| 2005 | 325 | 324 | 341 | 350 | 335 | 354 | 347 | 356 | 373 | 410 | 410 | 406 | 361 |
| 2006 | 411 | 413 | 423 | 410 | 392 | 401 | 396 | 387 | 400 | 390 | 402 | 417 | 403 |
| 2007 | 420 | 406 | 401 | 400 | 379 | 392 | 396 | | | | | | 399 |
| 1990-92 = 100 | | | | | | | | | | | | | |
| 2003 | 75 | 77 | 80 | 75 | 76 | 75 | 76 | 76 | 92 | 112 | 104 | 104 | 85 |
| 2004 | 103 | 102 | 102 | 100 | 99 | 99 | 89 | 80 | 83 | 83 | 71 | 65 | 90 |
| 2005 | 64 | 63 | 67 | 68 | 65 | 69 | 68 | 69 | 73 | 80 | 80 | 79 | 70 |
| 2006 | 80 | 81 | 83 | 80 | 77 | 78 | 77 | 76 | 78 | 76 | 79 | 81 | 79 |
| 2007 | 82 | 79 | 78 | 78 | 74 | 77 | 77 | | | | | | 78 |
| Tobacco ² | | | | | | | | | | | | | |
| 1910-14 = 100 | | | | | | | | | | | | | |
| 2003 | 1817 | 1800 | 1570 | 1065 | | | 1557 | 1570 | 1635 | 1643 | 1726 | 1735 | 1612 |
| 2004 | 1822 | 1891 | 1830 | 574 | | | | | 1648 | 1661 | 1726 | 1743 | 1421 |
| 2005 | 1857 | 1917 | 1265 | 1265 | | | | | | | | | 1418 |
| 2006 | | | | | | | | | | | | | 1377 |
| 2007 | | | | | | | | | | | | | 1392 |
| 1990-92 = 100 | | | | | | | | | | | | | |
| 2003 | 120 | 119 | 104 | 70 | | | 103 | 104 | 108 | 109 | 114 | 115 | 107 |
| 2004 | 120 | 125 | 121 | 38 | | | | | 109 | 110 | 114 | 115 | 94 |
| 2005 | 123 | 127 | 84 | 84 | | | | | | | | | 94 |
| 2006 | | | | | | | | | | | | | 91 |
| 2007 | | | | | | | | | | | | | 92 |

¹ Simple average required for parity regulations. Weighted 1990-92 average equals 100. Average is year-to-date for current year.

² Monthly prices discontinued July 2005.

**Indexes of Prices Received by Farmers, by Month and Annual Average,
United States, 2003-2007**

| Year | Jan | Feb | Mar | Apr | May | Jun | Jul | Aug | Sep | Oct | Nov | Dec | Avg ¹ |
|------------------------------------|------|------|------|------|------|------|------|------|------|------|------|------|------------------|
| Oil-Bearing Crops 1910-14 = 100 | | | | | | | | | | | | | |
| 2003 | 540 | 548 | 550 | 571 | 594 | 597 | 570 | 552 | 529 | 607 | 664 | 692 | 585 |
| 2004 | 715 | 805 | 901 | 935 | 930 | 882 | 824 | 662 | 521 | 530 | 529 | 545 | 732 |
| 2005 | 549 | 541 | 590 | 596 | 612 | 651 | 654 | 600 | 512 | 531 | 539 | 561 | 578 |
| 2006 | 573 | 556 | 546 | 541 | 556 | 552 | 550 | 512 | 478 | 522 | 584 | 603 | 548 |
| 2007 | 625 | 676 | 683 | 676 | 699 | 740 | 777 | | | | | | 697 |
| 1990-92 = 100 | | | | | | | | | | | | | |
| 2003 | 99 | 100 | 101 | 104 | 109 | 109 | 104 | 101 | 97 | 111 | 121 | 127 | 107 |
| 2004 | 131 | 147 | 165 | 171 | 170 | 161 | 151 | 121 | 95 | 97 | 97 | 100 | 134 |
| 2005 | 100 | 99 | 108 | 109 | 112 | 119 | 120 | 110 | 94 | 97 | 99 | 103 | 106 |
| 2006 | 105 | 102 | 100 | 99 | 102 | 101 | 100 | 94 | 87 | 95 | 107 | 110 | 100 |
| 2007 | 114 | 123 | 125 | 124 | 128 | 135 | 142 | | | | | | 127 |
| Fruit and Nuts 1910-14 = 100 | | | | | | | | | | | | | |
| 2003 | 548 | 551 | 605 | 664 | 744 | 809 | 843 | 871 | 880 | 880 | 832 | 680 | 742 |
| 2004 | 624 | 693 | 722 | 650 | 805 | 909 | 924 | 996 | 1060 | 1149 | 1041 | 836 | 867 |
| 2005 | 798 | 870 | 836 | 769 | 838 | 964 | 946 | 1020 | 1040 | 1024 | 977 | 877 | 913 |
| 2006 | 931 | 1010 | 958 | 934 | 974 | 1238 | 1199 | 1125 | 1200 | 1229 | 1154 | 1075 | 1086 |
| 2007 | 1039 | 1077 | 1106 | 1019 | 1082 | 1071 | 1057 | | | | | | 1064 |
| 1990-92 = 100 | | | | | | | | | | | | | |
| 2003 | 79 | 79 | 87 | 95 | 107 | 116 | 121 | 125 | 126 | 126 | 119 | 97 | 106 |
| 2004 | 89 | 99 | 103 | 93 | 115 | 130 | 132 | 143 | 152 | 164 | 149 | 120 | 124 |
| 2005 | 114 | 125 | 120 | 110 | 120 | 138 | 135 | 146 | 149 | 147 | 140 | 126 | 131 |
| 2006 | 133 | 145 | 137 | 134 | 140 | 177 | 172 | 161 | 172 | 176 | 165 | 154 | 156 |
| 2007 | 149 | 154 | 158 | 146 | 155 | 153 | 151 | | | | | | 152 |

¹ Simple average required for parity regulations. Weighted 1990-92 average equals 100. Average is year-to-date for current year.

**Indexes of Prices Received by Farmers, by Month and Annual Average,
United States, 2003-2007**

| Year | Jan | Feb | Mar | Apr | May | Jun | Jul | Aug | Sep | Oct | Nov | Dec | Avg ¹ |
|---|------|------|------|------|------|------|-----|------|------|------|------|------|------------------|
| Commercial Vegetables 1910-14 = 100 | | | | | | | | | | | | | |
| 2003 | 752 | 755 | 824 | 865 | 924 | 1015 | 797 | 920 | 964 | 959 | 1201 | 1059 | 920 |
| 2004 | 852 | 936 | 741 | 848 | 722 | 712 | 666 | 852 | 864 | 1037 | 1055 | 786 | 839 |
| 2005 | 618 | 783 | 1099 | 1212 | 900 | 923 | 741 | 790 | 857 | 758 | 755 | 1014 | 871 |
| 2006 | 847 | 763 | 883 | 997 | 1035 | 881 | 791 | 1016 | 1055 | 822 | 789 | 1006 | 907 |
| 2007 | 1173 | 1125 | 1303 | 1184 | 1017 | 881 | 895 | | | | | | 1082 |
| 1990-92 = 100 | | | | | | | | | | | | | |
| 2003 | 112 | 113 | 123 | 129 | 138 | 152 | 119 | 138 | 144 | 143 | 180 | 159 | 138 |
| 2004 | 127 | 140 | 111 | 127 | 108 | 107 | 100 | 127 | 129 | 155 | 158 | 118 | 126 |
| 2005 | 93 | 117 | 164 | 181 | 135 | 138 | 111 | 118 | 128 | 113 | 113 | 152 | 130 |
| 2006 | 127 | 114 | 132 | 149 | 155 | 132 | 118 | 152 | 158 | 123 | 118 | 151 | 136 |
| 2007 | 175 | 168 | 195 | 177 | 152 | 132 | 134 | | | | | | 162 |
| Potatoes and Dry Beans 1910-14 = 100 | | | | | | | | | | | | | |
| 2003 | 533 | 554 | 567 | 592 | 590 | 559 | 570 | 483 | 458 | 443 | 479 | 493 | 527 |
| 2004 | 488 | 504 | 530 | 568 | 558 | 558 | 552 | 495 | 485 | 444 | 477 | 506 | 514 |
| 2005 | 534 | 535 | 578 | 566 | 576 | 573 | 622 | 574 | 491 | 472 | 539 | 578 | 553 |
| 2006 | 596 | 571 | 706 | 700 | 661 | 702 | 859 | 693 | 534 | 519 | 584 | 591 | 643 |
| 2007 | 612 | 634 | 720 | 731 | 711 | 710 | 699 | | | | | | 688 |
| 1990-92 = 100 | | | | | | | | | | | | | |
| 2003 | 105 | 110 | 112 | 117 | 117 | 110 | 113 | 96 | 90 | 87 | 95 | 97 | 104 |
| 2004 | 96 | 100 | 105 | 112 | 110 | 110 | 109 | 98 | 96 | 88 | 94 | 100 | 102 |
| 2005 | 106 | 106 | 114 | 112 | 114 | 113 | 123 | 113 | 97 | 93 | 106 | 114 | 109 |
| 2006 | 118 | 113 | 139 | 138 | 131 | 139 | 170 | 137 | 106 | 103 | 115 | 117 | 127 |
| 2007 | 121 | 125 | 142 | 144 | 140 | 140 | 138 | | | | | | 136 |

¹ Simple average required for parity regulations. Weighted 1990-92 average equals 100. Average is year-to-date for current year.

**Indexes of Prices Received by Farmers, by Month and Annual Average,
United States, 2003-2007**

| Year | Jan | Feb | Mar | Apr | May | Jun | Jul | Aug | Sep | Oct | Nov | Dec | Avg ¹ |
|-----------------------------------|-----|-----|-----|-----|-----|-----|-----|-----|-----|-----|-----|-----|------------------|
| Other Crops 1910-14 = 100 | | | | | | | | | | | | | |
| 2003 | 564 | 564 | 564 | 564 | 564 | 564 | 564 | 564 | 564 | 564 | 564 | 564 | 564 |
| 2004 | 558 | 558 | 558 | 558 | 558 | 558 | 559 | 559 | 555 | 554 | 554 | 554 | 557 |
| 2005 | 559 | 559 | 559 | 559 | 559 | 559 | 558 | 558 | 563 | 563 | 563 | 563 | 560 |
| 2006 | 563 | 563 | 563 | 563 | 563 | 563 | 563 | 563 | 562 | 562 | 562 | 562 | 563 |
| 2007 | 563 | 563 | 563 | 563 | 563 | 563 | 563 | | | | | | 563 |
| 1990-92 = 100 | | | | | | | | | | | | | |
| 2003 | 114 | 114 | 114 | 114 | 114 | 114 | 114 | 114 | 114 | 114 | 114 | 114 | 114 |
| 2004 | 113 | 113 | 113 | 113 | 113 | 113 | 113 | 113 | 113 | 112 | 112 | 112 | 113 |
| 2005 | 113 | 113 | 113 | 113 | 113 | 113 | 113 | 113 | 114 | 114 | 114 | 114 | 114 |
| 2006 | 114 | 114 | 114 | 114 | 114 | 114 | 114 | 114 | 114 | 114 | 114 | 114 | 114 |
| 2007 | 114 | 114 | 114 | 114 | 114 | 114 | 114 | | | | | | 114 |
| Food Commodities 1990-92 = 100 | | | | | | | | | | | | | |
| 2003 | 97 | 96 | 96 | 98 | 104 | 106 | 104 | 110 | 112 | 116 | 122 | 116 | 106 |
| 2004 | 112 | 116 | 123 | 126 | 130 | 130 | 125 | 123 | 119 | 117 | 121 | 117 | 122 |
| 2005 | 116 | 117 | 123 | 126 | 122 | 121 | 118 | 119 | 120 | 115 | 118 | 120 | 120 |
| 2006 | 118 | 115 | 114 | 113 | 115 | 119 | 119 | 123 | 122 | 116 | 120 | 121 | 118 |
| 2007 | 124 | 128 | 135 | 136 | 139 | 140 | 144 | | | | | | 135 |

¹ Simple average required for parity regulations. Weighted 1990-92 average equals 100. Average is year-to-date for current year.

**Indexes of Prices Received by Farmers, by Month and Annual Average,
United States, 2003-2007**

| Year | Jan | Feb | Mar | Apr | May | Jun | Jul | Aug | Sep | Oct | Nov | Dec | Avg ¹ |
|-------------------------------|------|------|------|------|------|------|------|------|------|------|------|------|------------------|
| Livestock and Products | | | | | | | | | | | | | |
| 1910-14 = 100 | | | | | | | | | | | | | |
| 2003 | 735 | 728 | 715 | 717 | 740 | 758 | 775 | 809 | 847 | 887 | 895 | 859 | 789 |
| 2004 | 842 | 859 | 934 | 967 | 1021 | 1020 | 981 | 932 | 907 | 902 | 915 | 918 | 933 |
| 2005 | 932 | 914 | 929 | 937 | 931 | 901 | 901 | 900 | 936 | 931 | 927 | 915 | 921 |
| 2006 | 900 | 870 | 841 | 807 | 801 | 843 | 848 | 877 | 894 | 892 | 890 | 867 | 861 |
| 2007 | 888 | 920 | 964 | 992 | 1029 | 1049 | 1078 | | | | | | 989 |
| 1990-92 = 100 | | | | | | | | | | | | | |
| 2003 | 96 | 95 | 93 | 93 | 96 | 99 | 101 | 105 | 110 | 116 | 117 | 112 | 103 |
| 2004 | 110 | 112 | 122 | 126 | 133 | 133 | 128 | 122 | 118 | 118 | 119 | 120 | 122 |
| 2005 | 121 | 119 | 121 | 122 | 121 | 117 | 117 | 117 | 122 | 121 | 121 | 119 | 120 |
| 2006 | 117 | 113 | 110 | 105 | 104 | 110 | 111 | 114 | 116 | 116 | 116 | 113 | 112 |
| 2007 | 116 | 120 | 126 | 129 | 134 | 137 | 140 | | | | | | 129 |
| Meat Animals | | | | | | | | | | | | | |
| 1910-14 = 100 | | | | | | | | | | | | | |
| 2003 | 946 | 963 | 946 | 972 | 1014 | 1027 | 1025 | 1054 | 1100 | 1169 | 1179 | 1123 | 1043 |
| 2004 | 1058 | 1060 | 1134 | 1151 | 1232 | 1248 | 1234 | 1226 | 1205 | 1202 | 1201 | 1193 | 1179 |
| 2005 | 1226 | 1214 | 1241 | 1273 | 1273 | 1205 | 1172 | 1177 | 1206 | 1230 | 1222 | 1229 | 1222 |
| 2006 | 1236 | 1220 | 1169 | 1133 | 1135 | 1180 | 1183 | 1210 | 1222 | 1197 | 1144 | 1109 | 1178 |
| 2007 | 1121 | 1167 | 1209 | 1250 | 1265 | 1229 | 1233 | | | | | | 1210 |
| 1990-92 = 100 | | | | | | | | | | | | | |
| 2003 | 93 | 95 | 93 | 96 | 100 | 101 | 101 | 104 | 108 | 115 | 116 | 110 | 103 |
| 2004 | 104 | 104 | 112 | 113 | 121 | 123 | 121 | 121 | 119 | 118 | 118 | 117 | 116 |
| 2005 | 121 | 119 | 122 | 125 | 125 | 119 | 115 | 116 | 119 | 121 | 120 | 121 | 120 |
| 2006 | 122 | 120 | 115 | 111 | 112 | 116 | 116 | 119 | 120 | 118 | 112 | 109 | 116 |
| 2007 | 110 | 115 | 119 | 123 | 124 | 121 | 121 | | | | | | 119 |

¹ Simple average required for parity regulations. Weighted 1990-92 average equals 100. Average is year-to-date for current year.

**Indexes of Prices Received by Farmers, by Month and Annual Average,
United States, 2003-2007**

| Year | Jan | Feb | Mar | Apr | May | Jun | Jul | Aug | Sep | Oct | Nov | Dec | Avg ¹ |
|-------------------------|-----|-----|-----|------|------|------|------|-----|-----|-----|-----|------|------------------|
| Dairy Products | | | | | | | | | | | | | |
| 1910-14 = 100 | | | | | | | | | | | | | |
| 2003 | 725 | 701 | 676 | 676 | 676 | 676 | 744 | 817 | 891 | 922 | 885 | 848 | 770 |
| 2004 | 811 | 836 | 953 | 1112 | 1186 | 1118 | 989 | 916 | 953 | 959 | 996 | 1008 | 986 |
| 2005 | 989 | 946 | 953 | 934 | 903 | 885 | 910 | 910 | 940 | 953 | 928 | 910 | 930 |
| 2006 | 885 | 830 | 774 | 744 | 731 | 731 | 719 | 737 | 799 | 836 | 854 | 873 | 793 |
| 2007 | 891 | 916 | 959 | 1020 | 1106 | 1241 | 1334 | | | | | | 1067 |
| 1990-92 = 100 | | | | | | | | | | | | | |
| 2003 | 90 | 87 | 84 | 84 | 84 | 84 | 93 | 102 | 111 | 115 | 110 | 106 | 96 |
| 2004 | 101 | 104 | 119 | 139 | 148 | 139 | 123 | 114 | 119 | 119 | 124 | 126 | 123 |
| 2005 | 123 | 118 | 119 | 116 | 113 | 110 | 113 | 113 | 117 | 119 | 116 | 113 | 116 |
| 2006 | 110 | 103 | 96 | 93 | 91 | 91 | 90 | 92 | 100 | 104 | 106 | 109 | 99 |
| 2007 | 111 | 114 | 119 | 127 | 138 | 155 | 166 | | | | | | 133 |
| Poultry and Eggs | | | | | | | | | | | | | |
| 1910-14 = 100 | | | | | | | | | | | | | |
| 2003 | 303 | 291 | 291 | 279 | 289 | 307 | 307 | 316 | 322 | 330 | 350 | 339 | 310 |
| 2004 | 373 | 390 | 414 | 392 | 397 | 411 | 406 | 367 | 330 | 322 | 331 | 332 | 372 |
| 2005 | 343 | 337 | 342 | 341 | 344 | 345 | 353 | 350 | 377 | 351 | 358 | 341 | 349 |
| 2006 | 319 | 302 | 313 | 293 | 289 | 325 | 329 | 347 | 348 | 345 | 374 | 350 | 328 |
| 2007 | 377 | 390 | 415 | 410 | 423 | 424 | 441 | | | | | | 411 |
| 1990-92 = 100 | | | | | | | | | | | | | |
| 2003 | 108 | 104 | 104 | 99 | 103 | 109 | 109 | 112 | 115 | 118 | 124 | 121 | 111 |
| 2004 | 133 | 139 | 147 | 139 | 141 | 146 | 144 | 130 | 117 | 114 | 118 | 118 | 132 |
| 2005 | 122 | 120 | 122 | 121 | 122 | 123 | 126 | 125 | 134 | 125 | 127 | 121 | 124 |
| 2006 | 113 | 107 | 111 | 104 | 103 | 116 | 117 | 123 | 124 | 123 | 133 | 124 | 117 |
| 2007 | 134 | 139 | 148 | 146 | 150 | 151 | 157 | | | | | | 146 |

¹ Simple average required for parity regulations. Weighted 1990-92 average equals 100. Average is year-to-date for current year.

Reliability of Prices Received Estimates

Definition: Prices received represent sales from producers to first buyers. They include all grades and qualities. The average commodity price from the survey multiplied by the total quantity marketed theoretically should give the total cash receipts for the commodity.

Survey Procedures: Primary sales data used to determine grain prices were obtained from probability samples of about 2000 mills and elevators. These procedures ensure that virtually all grain moving into commercial channels has a chance of being included in the survey. Generally, States surveyed account for 90 percent or more of total U.S. production. Livestock prices are obtained from packers, stockyards, auctions, dealers, and market check data from AMS-USDA, private marketing organizations, and state commodity groups and agencies. Inter-farm sales of grain and livestock are not included since they represent very small percentages of the total marketings. Grain marketed for seed is also excluded. Fruit and vegetable prices are obtained from sample surveys and market check data from AMS-USDA, private marketing organizations, state agencies, and universities.

Summary and Estimation Procedures: Survey quantities sold are expanded by strata to state levels and used to weight average strata prices to a state average. State prices are then weighted to a U.S. price based on expanded marketings. Recommendations are prepared by the State Field Offices and reviewed by the Agricultural Statistics Board in Washington, D.C. State recommendations are reviewed for reasonableness with survey data, other States, and recent historic estimates.

Revisions: For most items, the current month's preliminary price represents a 3-5 day period around the 15th of the month. Previous month's prices represent actual dollars received for quantities sold during the entire month. Revisions are published in monthly issues of *Agricultural Prices*.

Reliability: U.S. price estimates based on probability surveys generally have a sampling error of less than one percent for the major commodities such as corn, wheat, soybeans, cotton, and rice. Current methods of summarization for non-probability commodities are not designed directly to calculate sampling errors. However, analytical measures approximate the U.S. relative sampling errors at around five percent. Any nonsampling errors are attributed to such things as the inability to obtain correct information, differences in interpreting questions or definitions, mistakes in coding or processing the data, etc. Efforts are made at each step in the survey process to minimize these nonsampling errors.

Prices Paid by Farmers

The July Index of Prices Paid for Commodities and Services, Interest, Taxes, and Farm Wage Rates (PPITW) at 158 (1990-92=100), is unchanged from June 2007 but up 6.0 percent from July 2006.

PRODUCTION INDEX: The July index, at 157, increased 0.6 percent from last month and 6.8 percent from last year. Lower prices in July for feed grains, feeder pigs, LP gas, and gasoline offset higher prices for feeder cattle, complete feeds, milk cows, and nitrogen fertilizers.

Feed: The July index, at 149, increased 0.7 percent from June and 22 percent from last July. Since June, higher prices for complete feeds, feed concentrates, feed supplements, and hay & forages offset lower prices for feed grains.

Livestock & Poultry: The July index, at 133, increased 3.9 percent from last month but decreased 0.7 percent from last year. Since June, higher prices for feeder cattle and milk cows more than offset lower prices for feeder pigs. The July feeder cattle price, at \$110.90 per cwt, is up \$4.40 per cwt from the June price. July feeder pigs averaged \$103.00 per cwt, down \$14.00 per cwt from June.

Fertilizer: The July index, at 213, is up 1.9 percent from June and 25 percent above July a year ago. Since June, higher prices for nitrogen fertilizers and potash & phosphate more than offset lower prices for mixed fertilizers.

Chemicals: The July index, at 130, is unchanged from June but increased 0.8 percent from last July.

Fuels: The July index, at 261, is down 0.4 percent from a month earlier and 1.5 percent below July 2006. Compared with last month, prices are lower for LP gas and gasoline but higher for diesel fuel.

Machinery: The July index, at 190, increased 0.5 percent from June and 4.4 percent above last July. Since June, prices are higher for other machinery and tractors.

CONSUMER PRICE INDEX: The June 2007 Consumer Price Index, as issued by the Bureau of Labor Statistics, for all urban consumers (CPI-U) increased 0.2 percent before seasonal adjustment to a level of 208.352 (1982-84=100). This compares with the May index of 207.949. For the 12-month period ending in June, the overall index increased 2.7 percent.

**Indexes of Prices Paid by Farmers and Related Parity Ratios
United States, July 2007 With Comparisons ¹**

| Indexes and Ratios | 1910-14 = 100 | | | 1990-92 = 100 | | |
|--|---------------|--------|-------|---------------|------|-----|
| | 2006 | 2007 | | 2006 | 2007 | |
| | Jul | Jun | Jul | Jul | Jun | Jul |
| Prices Paid by Farmers for Commodities & Services, Interest, Taxes, & Wage Rates (PPITW) | 1,988 | *2,099 | 2,108 | 149 | *158 | 158 |
| Production | 1,425 | *1,514 | 1,524 | 147 | *156 | 157 |
| Feed | 596 | *720 | 727 | 122 | *148 | 149 |
| Livestock & Poultry | 1,718 | *1,637 | 1,694 | 134 | *128 | 133 |
| Seeds | 1,838 | 2,086 | 2,086 | 186 | 211 | 211 |
| Fertilizer | 626 | *766 | 779 | 171 | *209 | 213 |
| Chemicals | 795 | *802 | 801 | 129 | *130 | 130 |
| Fuels | 2,046 | *2,020 | 2,015 | 265 | *262 | 261 |
| Supplies & Repairs | 1,033 | *1,065 | 1,065 | 146 | *150 | 150 |
| Autos & Trucks | 2,976 | *2,938 | 2,923 | 112 | *110 | 110 |
| Machinery | 4,563 | *4,751 | 4,763 | 182 | 189 | 190 |
| Building Materials | 2,079 | 2,115 | 2,122 | 153 | 156 | 156 |
| Services & Rent | 1,584 | *1,608 | 1,608 | | | |
| Rent | | | | 140 | *144 | 144 |
| Interest ² | 3,452 | 3,778 | 3,778 | 138 | 151 | 151 |
| Taxes ³ | 4,343 | 4,570 | 4,570 | 162 | 171 | 171 |
| Wage Rates | 6,281 | 6,571 | 6,571 | 168 | 176 | 176 |
| Production, Interest, Taxes, & Wage Rates (PITW) | 2,001 | *2,125 | 2,136 | 149 | *158 | 159 |
| Family Living-CPI ⁴ | 1,933 | *1,979 | 1,979 | 151 | *155 | 155 |
| Ratio (Received/Paid) Parity Ratio ⁵ | 37 | *42 | 43 | 79 | *88 | 90 |
| Parity Ratio Adjusted ⁶ | 40 | *44 | 45 | | | |
| PPITW Adjusted for Productivity ⁷ | 1,327 | *1,366 | 1,368 | | | |
| Crop Sector (PPITW) | | | | 154 | *162 | 163 |
| Livestock Sector (PPITW) | | | | 144 | *153 | 154 |
| Farm Sector (Production) | | | | 137 | *151 | 154 |
| Non-Farm Sector (Production) | | | | 152 | *158 | 159 |

* Revised.

¹ Revised historic price indexes for months not shown are available at www.nass.usda.gov.

² Interest per acre on farm real estate debt and interest rate on farm non-real estate debt.

³ Farm real estate taxes payable per acre.

⁴ Bureau of Labor Statistics, Consumer Price Index for all urban consumers (CPI-U), for the previous month converted by the USDA.

⁵ Ratio of index of prices received to PPITW (1910-14=100).

⁶ Based on estimated cash receipts, from marketings and government payments, the preliminary adjustment factor is 1.079 for 2007 and the revised factor is 1.096 for 2006.

⁷ PPITW is adjusted based on productivity trend for the prior 15 years.

Prices Paid Indexes and Annual Weights for Input Components and Sub-Components United States, July 2007 With Comparisons ¹

| Index | Relative Weights 5-Year Moving Average ² | | Input Indexes | | |
|-----------------------|--|----------------|----------------------|----------------------|----------------------|
| | 2006 | 2007 | 2006 | 2007 | |
| | <i>Percent</i> | <i>Percent</i> | <i>(1990-92=100)</i> | <i>(1990-92=100)</i> | <i>(1990-92=100)</i> |
| Production Items | 66.8 | 67.4 | 147 | *156 | 157 |
| Feed | 10.9 | 10.9 | 122 | *148 | 149 |
| Feed Grains | 1.6 | 1.6 | 97 | *152 | 140 |
| Complete Feeds | 5.3 | 5.3 | 119 | *140 | 143 |
| Hay/Forages | 1.4 | 1.4 | 139 | 170 | 171 |
| Concentrates | 1.7 | 1.7 | 125 | *136 | 143 |
| Supplements | 0.9 | 0.9 | 153 | *172 | 176 |
| Livestock & Poultry | 7.6 | 7.7 | 134 | *128 | 133 |
| Feeder Cattle | 6.0 | 6.0 | 135 | 126 | 131 |
| Feeder Pigs | 0.6 | 0.6 | 122 | *127 | 112 |
| Milk Cow Replacements | 0.6 | 0.6 | 149 | 153 | 173 |
| Poultry | 0.5 | 0.5 | 125 | 125 | 125 |
| Seeds | 3.6 | 3.7 | 186 | 211 | 211 |
| Field Crops | 3.3 | 3.4 | 191 | 218 | 218 |
| Grasses/Legumes | 0.3 | 0.4 | 133 | 142 | 142 |
| Fertilizer | 4.3 | 4.4 | 171 | *209 | 213 |
| Mixed Fertilizer | 1.9 | 1.9 | 154 | *185 | 185 |
| Nitrogen | 1.8 | 1.8 | 192 | *237 | 243 |
| Potash & Phosphate | 0.6 | 0.6 | 159 | *199 | 208 |
| Chemicals | 3.5 | 3.4 | 129 | *130 | 130 |
| Herbicides | 2.2 | 2.2 | 123 | 122 | 122 |
| Insecticides | 0.8 | 0.8 | 143 | 148 | 148 |
| Fungicides/Other | 0.5 | 0.5 | 127 | 132 | 132 |
| Fuels | 2.9 | 3.1 | 265 | *262 | 261 |
| Diesel | 1.7 | 1.9 | 281 | *275 | 279 |
| Gasoline | 0.8 | 0.7 | 242 | *245 | 240 |
| LP Gas | 0.4 | 0.4 | 247 | *234 | 216 |
| Supplies & Repairs | 5.0 | 4.8 | 146 | *150 | 150 |
| Supplies | 1.7 | 1.6 | 137 | 140 | 140 |
| Repairs | 3.3 | 3.2 | 150 | *155 | 155 |
| Autos & Trucks | 1.8 | 1.8 | 112 | *110 | 110 |
| Autos | 0.2 | 0.2 | 109 | 108 | 108 |
| Trucks | 1.6 | 1.6 | 112 | 111 | 110 |
| Machinery | 4.4 | 4.5 | 182 | 189 | 190 |
| Tractors | 1.0 | 1.0 | 164 | 166 | 167 |
| Self-Propelled | 1.7 | 1.8 | 189 | 196 | 196 |
| Other Machinery | 1.7 | 1.7 | 185 | *196 | 197 |
| Building Materials | 4.0 | 4.3 | 153 | 156 | 156 |
| Services | 12.2 | 12.2 | 140 | *144 | 144 |
| Custom Rates | 1.3 | 1.3 | 123 | *125 | 125 |
| Other Services | 10.9 | 10.9 | 141 | *146 | 146 |
| Rent | 6.7 | 6.7 | 121 | 119 | 119 |
| Cash | 3.6 | 3.6 | 144 | 140 | 140 |
| Share | 3.1 | 3.1 | 95 | 95 | 95 |
| Interest | 4.2 | 4.0 | 138 | 151 | 151 |
| Taxes | 2.9 | 2.9 | 162 | 171 | 171 |
| Wage Rates | 7.8 | 7.8 | 168 | 176 | 176 |
| Family Living-CPI | 18.4 | 18.0 | 151 | *155 | 155 |

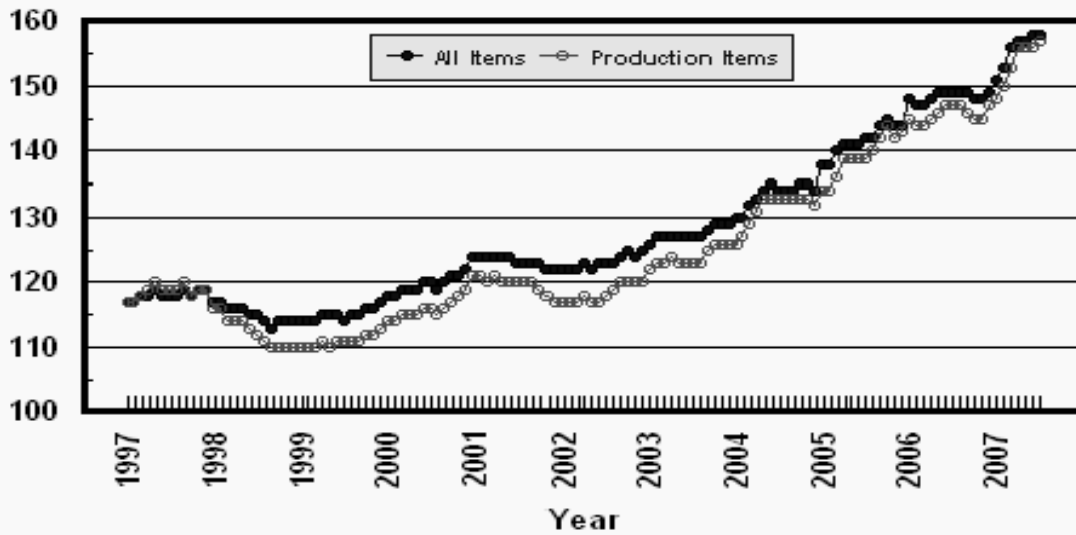
* Revised.

¹ Revised historical price indexes for months not shown are available at www.nass.usda.gov.

² Weights may not add due to rounding.

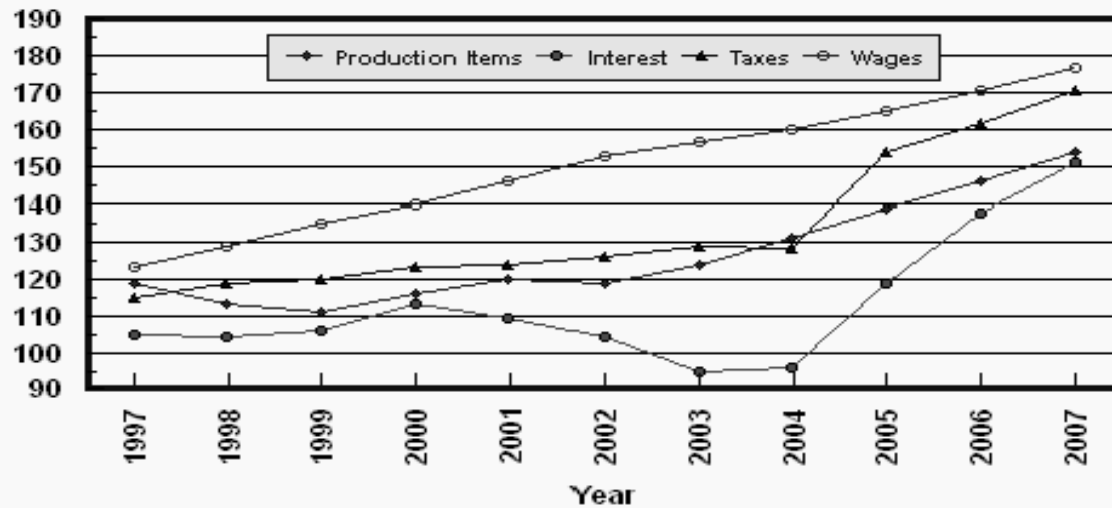
Prices Paid by Farmers, Major Indexes US, by Month

Percent (1990-92=100)



Prices Paid by Farmers, Major Indexes US, Annual Averages 1/

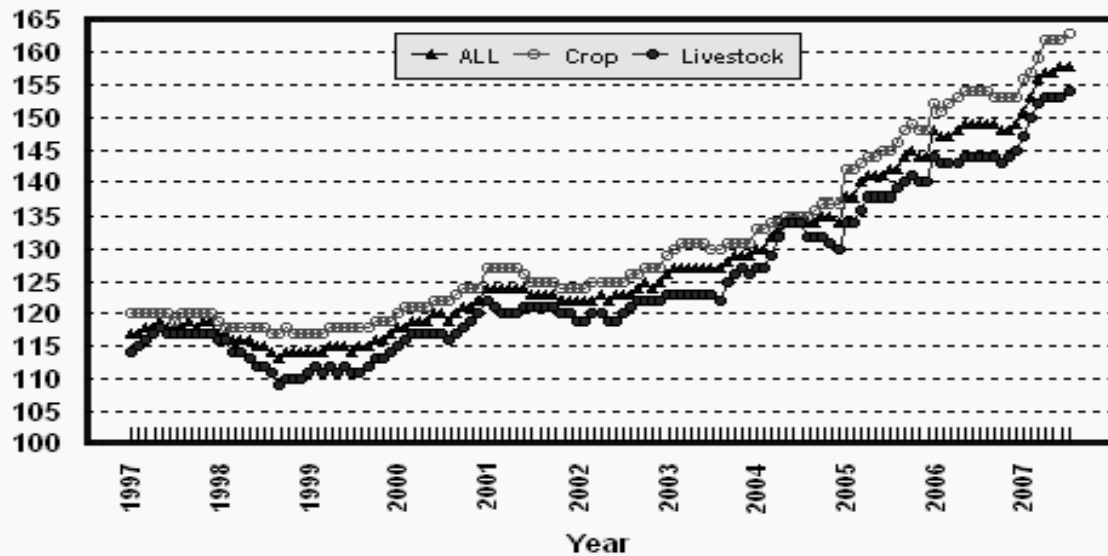
Percent (1990-92=100)



1/ Index values for 2007 are year-to-date averages.

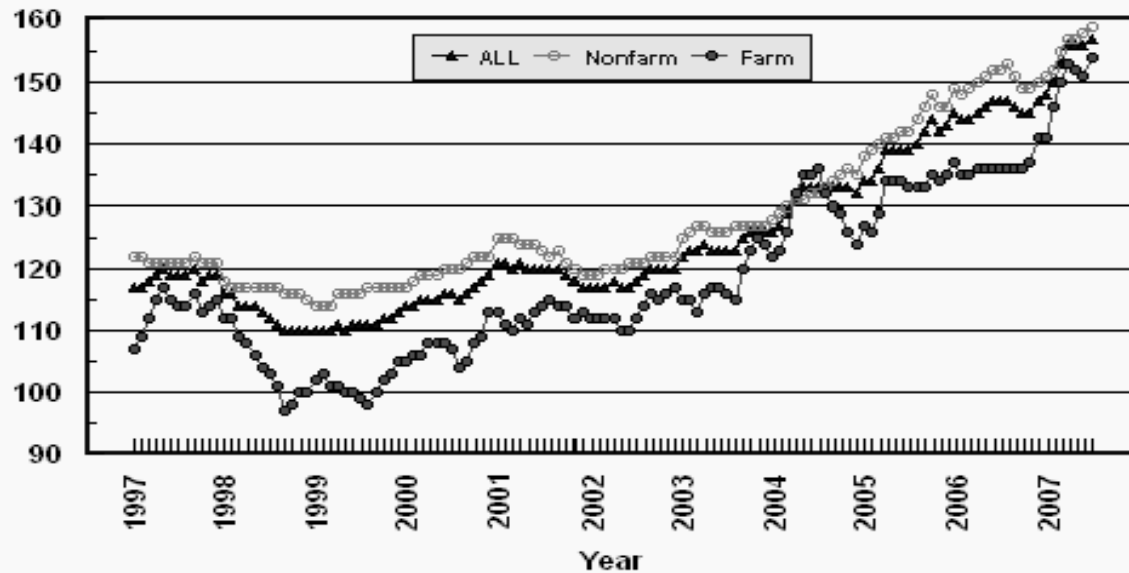
Prices Paid by Farmers, Indexes, All Items US, By Farm Type

Percent (1990-92=100)



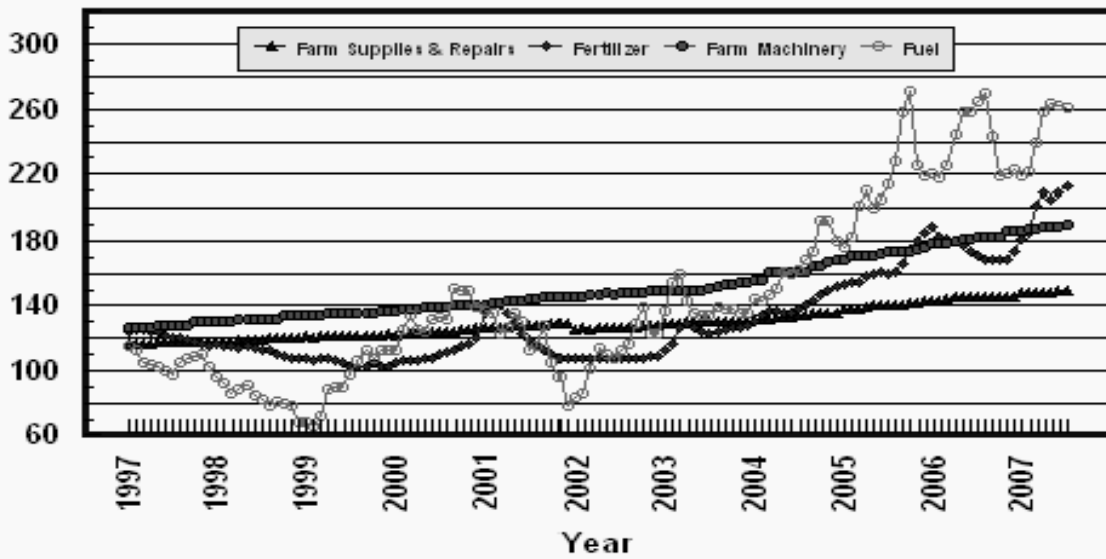
Prices Paid by Farmers, Indexes, All Production Items US, By Sector Origin

Percent (1990-92=100)



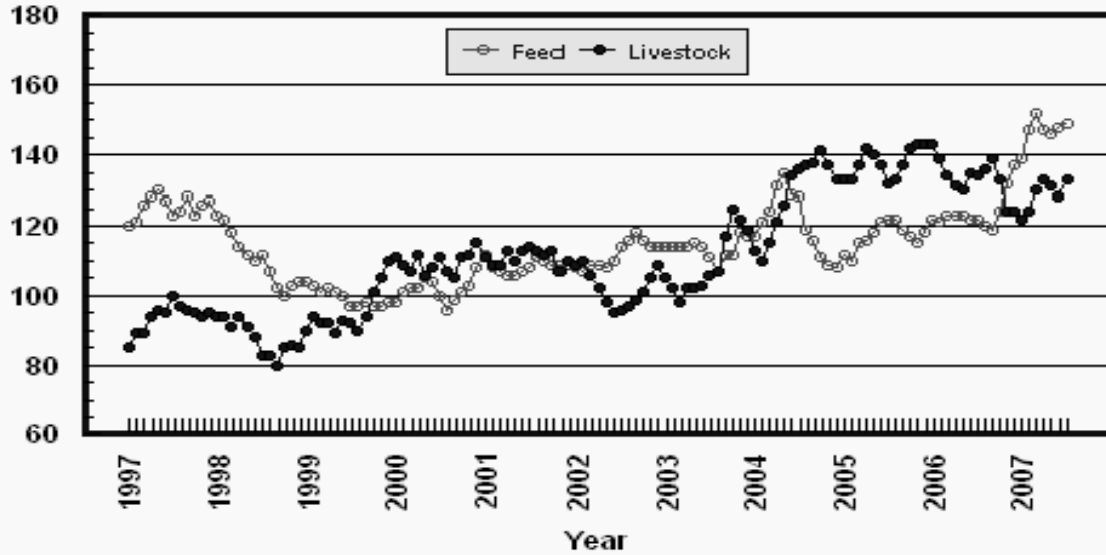
Prices Paid by Farmers, Selected Production Indexes US, By Non-Farm Sector

Percent (1990-92=100)



Prices Paid by Farmers, Selected Production Indexes US, By Farm Sector

Percent (1990-92=100)



Feed Price Ratios: United States, July 2007 with Comparisons

| Feed Price Ratio ¹ | 2006 | 2007 | |
|---|------|-------|------|
| | Jul | Jun | Jul |
| Broiler-Feed: Pounds of Broiler Grower Feed equal in value to 1 pound of broiler, live weight | 6.7 | *5.8 | 5.7 |
| Market Egg Feed: Pounds of Laying Feed equal in Value to 1 dozen eggs | 4.6 | *6.3 | 10.6 |
| Hog-Corn: Bushels of Corn equal in value to 100 pounds of hog, live weight | 23.5 | *15.5 | 16.3 |
| Milk-Feed: Pounds of 16% Mixed Dairy Feed equal in value to 1 pound of Whole Milk | 2.33 | *2.88 | 3.19 |
| Steer & Heifer-Corn: Bushels of Corn equal in value to 100 pounds of Steer & Heifers, live weight | 42.1 | *26.6 | 29.2 |
| Turkey-Feed: Pounds of Turkey Grower equal in value to 1 pound of Turkey, live weight | 7.7 | *6.1 | 6.5 |

* Revised.

¹ Effective January 1995, prices of commercial prepared feeds are based on current U.S. prices received for corn, soybeans, alfalfa hay, and all wheat.

**Prices Used to Calculate Feed Price Ratios:
United States, July 2007 with Comparisons**

| Commodity | Unit | Entire Month | | Preliminary |
|---------------------|------|--------------|----------|-------------|
| | | Jul 2006 | Jun 2007 | Jul 2007 |
| Broilers, Live | Lb | 0.410 | 0.520 | 0.510 |
| Eggs, Market | Doz | 0.237 | 0.497 | 0.812 |
| Hogs, All | Cwt | 50.20 | 54.30 | 52.60 |
| Milk, All | Cwt | 11.70 | 20.20 | 21.70 |
| Steers and Heifers | Cwt | 90.00 | 93.30 | 94.30 |
| Turkeys, Live | Lb | 0.459 | 0.520 | 0.555 |
| Corn | Bu | 2.14 | 3.51 | 3.23 |
| Hay, Alfalfa, Baled | Ton | 113.00 | 137.00 | 137.00 |
| Soybeans | Bu | 5.61 | 7.51 | 7.92 |
| Wheat, All | Bu | 3.88 | 5.03 | 5.37 |

**Feeder Livestock: Prices Paid, United States
July 2007 with Comparisons**

| Commodity | Unit | 2006 | 2007 | |
|----------------------|------|----------------|----------------|----------------|
| | | Jul | Jun | Jul |
| | | <i>Dollars</i> | <i>Dollars</i> | <i>Dollars</i> |
| Feeders and Stockers | | | | |
| Cattle and Calves | Cwt | 114.20 | *106.50 | 110.90 |
| Feeder Pigs | Cwt | 112.00 | *117.00 | 103.00 |

* Revised.

**Prices Paid Indexes: Monthly and Annual Average
United States, 2003-2007**

| Year | Jan | Feb | Mar | Apr | May | Jun | Jul | Aug | Sep | Oct | Nov | Dec | Avg ¹ |
|---|------|------|------|------|------|------|------|------|------|------|------|------|------------------|
| Commodities and Services, Interest, Taxes, and Wage Rates (PPITW) 1910-14 = 100 | | | | | | | | | | | | | |
| 2003 | 1678 | 1687 | 1692 | 1694 | 1691 | 1692 | 1686 | 1686 | 1704 | 1714 | 1719 | 1715 | 1697 |
| 2004 | 1727 | 1735 | 1753 | 1770 | 1787 | 1791 | 1790 | 1784 | 1785 | 1796 | 1793 | 1784 | 1775 |
| 2005 | 1839 | 1843 | 1863 | 1879 | 1877 | 1884 | 1887 | 1896 | 1917 | 1935 | 1918 | 1922 | 1888 |
| 2006 | 1968 | 1961 | 1964 | 1973 | 1980 | 1986 | 1988 | 1989 | 1978 | 1970 | 1975 | 1987 | 1977 |
| 2007 | 2018 | 2038 | 2072 | 2095 | 2093 | 2099 | 2108 | | | | | | 2075 |
| 1990-92 = 100 | | | | | | | | | | | | | |
| 2003 | 126 | 127 | 127 | 127 | 127 | 127 | 127 | 127 | 128 | 129 | 129 | 129 | 128 |
| 2004 | 130 | 130 | 132 | 133 | 134 | 135 | 134 | 134 | 134 | 135 | 135 | 134 | 133 |
| 2005 | 138 | 138 | 140 | 141 | 141 | 141 | 142 | 142 | 144 | 145 | 144 | 144 | 142 |
| 2006 | 148 | 147 | 147 | 148 | 149 | 149 | 149 | 149 | 149 | 148 | 148 | 149 | 148 |
| 2007 | 151 | 153 | 156 | 157 | 157 | 158 | 158 | | | | | | 156 |
| Items Used for Production, Interest, Taxes, and Wage Rates (PITW) 1910-14 = 100 | | | | | | | | | | | | | |
| 2003 | 1668 | 1675 | 1679 | 1683 | 1680 | 1681 | 1673 | 1671 | 1692 | 1704 | 1711 | 1708 | 1685 |
| 2004 | 1720 | 1728 | 1747 | 1767 | 1785 | 1789 | 1788 | 1780 | 1781 | 1792 | 1788 | 1778 | 1770 |
| 2005 | 1845 | 1847 | 1869 | 1886 | 1884 | 1892 | 1894 | 1903 | 1924 | 1945 | 1927 | 1934 | 1896 |
| 2006 | 1987 | 1978 | 1978 | 1986 | 1993 | 1999 | 2001 | 2000 | 1990 | 1983 | 1989 | 2002 | 1991 |
| 2007 | 2039 | 2062 | 2099 | 2123 | 2119 | 2125 | 2136 | | | | | | 2100 |
| 1990-92 = 100 | | | | | | | | | | | | | |
| 2003 | 124 | 125 | 125 | 125 | 125 | 125 | 124 | 124 | 126 | 127 | 127 | 127 | 125 |
| 2004 | 128 | 129 | 130 | 132 | 133 | 133 | 133 | 133 | 133 | 133 | 133 | 132 | 132 |
| 2005 | 137 | 138 | 139 | 140 | 140 | 141 | 141 | 142 | 143 | 145 | 143 | 144 | 141 |
| 2006 | 148 | 147 | 147 | 148 | 148 | 149 | 149 | 149 | 148 | 148 | 148 | 149 | 148 |
| 2007 | 152 | 153 | 156 | 158 | 158 | 158 | 159 | | | | | | 156 |

¹ Simple average and is year-to-date for current year.

**Prices Paid Indexes: Monthly and Annual Average
United States, 2003-2007**

| Year | Jan | Feb | Mar | Apr | May | Jun | Jul | Aug | Sep | Oct | Nov | Dec | Avg ¹ |
|--|------|------|------|------|------|------|------|------|------|------|------|------|------------------|
| Items Used for Production 1910-14 = 100 | | | | | | | | | | | | | |
| 2003 | 1183 | 1190 | 1193 | 1200 | 1197 | 1197 | 1196 | 1194 | 1213 | 1220 | 1227 | 1223 | 1203 |
| 2004 | 1226 | 1232 | 1250 | 1271 | 1287 | 1290 | 1293 | 1286 | 1287 | 1291 | 1287 | 1279 | 1273 |
| 2005 | 1302 | 1304 | 1323 | 1346 | 1345 | 1352 | 1353 | 1361 | 1379 | 1394 | 1378 | 1384 | 1352 |
| 2006 | 1405 | 1397 | 1398 | 1411 | 1417 | 1423 | 1425 | 1425 | 1416 | 1404 | 1410 | 1422 | 1413 |
| 2007 | 1435 | 1455 | 1488 | 1513 | 1509 | 1514 | 1524 | | | | | | 1491 |
| 1990-92 = 100 | | | | | | | | | | | | | |
| 2003 | 122 | 123 | 123 | 124 | 123 | 123 | 123 | 123 | 125 | 126 | 126 | 126 | 124 |
| 2004 | 126 | 127 | 129 | 131 | 133 | 133 | 133 | 133 | 133 | 133 | 133 | 132 | 131 |
| 2005 | 134 | 134 | 136 | 139 | 139 | 139 | 139 | 140 | 142 | 144 | 142 | 143 | 139 |
| 2006 | 145 | 144 | 144 | 145 | 146 | 147 | 147 | 147 | 146 | 145 | 145 | 147 | 146 |
| 2007 | 148 | 150 | 153 | 156 | 156 | 156 | 157 | | | | | | 154 |
| Feed 1910-14 = 100 | | | | | | | | | | | | | |
| 2003 | 556 | 559 | 556 | 555 | 560 | 556 | 541 | 523 | 546 | 545 | 576 | 574 | 554 |
| 2004 | 573 | 592 | 606 | 639 | 658 | 632 | 626 | 583 | 567 | 543 | 533 | 525 | 590 |
| 2005 | 545 | 538 | 559 | 569 | 577 | 589 | 596 | 593 | 579 | 572 | 562 | 576 | 571 |
| 2006 | 594 | 591 | 599 | 602 | 601 | 594 | 596 | 585 | 583 | 604 | 644 | 671 | 605 |
| 2007 | 679 | 718 | 740 | 720 | 711 | 720 | 727 | | | | | | 716 |
| 1990-92 = 100 | | | | | | | | | | | | | |
| 2003 | 114 | 114 | 114 | 114 | 115 | 114 | 111 | 107 | 112 | 112 | 118 | 117 | 114 |
| 2004 | 117 | 121 | 124 | 131 | 135 | 129 | 128 | 119 | 116 | 111 | 109 | 108 | 121 |
| 2005 | 112 | 110 | 115 | 116 | 118 | 121 | 122 | 122 | 119 | 117 | 115 | 118 | 117 |
| 2006 | 122 | 121 | 123 | 123 | 123 | 122 | 122 | 120 | 119 | 124 | 132 | 137 | 124 |
| 2007 | 139 | 147 | 152 | 147 | 146 | 148 | 149 | | | | | | 147 |

¹ Simple average and is year-to-date for current year.

**Prices Paid Indexes: Monthly and Annual Average
United States, 2003-2007**

| Year | Jan | Feb | Mar | Apr | May | Jun | Jul | Aug | Sep | Oct | Nov | Dec | Avg ¹ |
|--|------|------|------|------|------|------|------|------|------|------|------|------|------------------|
| Livestock and Poultry 1910-14 = 100 | | | | | | | | | | | | | |
| 2003 | 1340 | 1298 | 1254 | 1308 | 1303 | 1322 | 1353 | 1371 | 1492 | 1604 | 1564 | 1521 | 1394 |
| 2004 | 1439 | 1404 | 1470 | 1546 | 1614 | 1714 | 1739 | 1754 | 1764 | 1796 | 1750 | 1704 | 1641 |
| 2005 | 1698 | 1696 | 1753 | 1820 | 1784 | 1752 | 1683 | 1697 | 1753 | 1819 | 1823 | 1829 | 1759 |
| 2006 | 1827 | 1776 | 1716 | 1677 | 1663 | 1721 | 1718 | 1732 | 1772 | 1694 | 1583 | 1588 | 1706 |
| 2007 | 1555 | 1587 | 1662 | 1701 | 1680 | 1637 | 1694 | | | | | | 1645 |
| 1990-92 = 100 | | | | | | | | | | | | | |
| 2003 | 105 | 102 | 98 | 102 | 102 | 103 | 106 | 107 | 117 | 125 | 122 | 119 | 109 |
| 2004 | 113 | 110 | 115 | 121 | 126 | 134 | 136 | 137 | 138 | 141 | 137 | 133 | 128 |
| 2005 | 133 | 133 | 137 | 142 | 140 | 137 | 132 | 133 | 137 | 142 | 143 | 143 | 138 |
| 2006 | 143 | 139 | 134 | 131 | 130 | 135 | 134 | 136 | 139 | 133 | 124 | 124 | 134 |
| 2007 | 122 | 124 | 130 | 133 | 131 | 128 | 133 | | | | | | 129 |
| Seeds 1910-14 = 100 | | | | | | | | | | | | | |
| 2003 | 1426 | 1426 | 1426 | 1553 | 1553 | 1553 | 1553 | 1553 | 1553 | 1553 | 1553 | 1553 | 1521 |
| 2004 | 1553 | 1553 | 1553 | 1564 | 1564 | 1564 | 1564 | 1564 | 1564 | 1564 | 1564 | 1564 | 1561 |
| 2005 | 1564 | 1564 | 1564 | 1694 | 1694 | 1694 | 1694 | 1694 | 1694 | 1694 | 1694 | 1694 | 1662 |
| 2006 | 1694 | 1694 | 1694 | 1838 | 1838 | 1838 | 1838 | 1838 | 1838 | 1838 | 1838 | 1838 | 1802 |
| 2007 | 1838 | 1838 | 1838 | 2086 | 2086 | 2086 | 2086 | | | | | | 1980 |
| 1990-92 = 100 | | | | | | | | | | | | | |
| 2003 | 144 | 144 | 144 | 157 | 157 | 157 | 157 | 157 | 157 | 157 | 157 | 157 | 154 |
| 2004 | 157 | 157 | 157 | 158 | 158 | 158 | 158 | 158 | 158 | 158 | 158 | 158 | 158 |
| 2005 | 158 | 158 | 158 | 171 | 171 | 171 | 171 | 171 | 171 | 171 | 171 | 171 | 168 |
| 2006 | 171 | 171 | 171 | 186 | 186 | 186 | 186 | 186 | 186 | 186 | 186 | 186 | 182 |
| 2007 | 186 | 186 | 186 | 211 | 211 | 211 | 211 | | | | | | 200 |

¹ Simple average and is year-to-date for current year.

**Prices Paid Indexes: Monthly and Annual Average
United States, 2003-2007**

| Year | Jan | Feb | Mar | Apr | May | Jun | Jul | Aug | Sep | Oct | Nov | Dec | Avg ¹ |
|-----------------------------|-----|-----|-----|-----|-----|-----|-----|-----|-----|-----|-----|-----|------------------|
| Fertilizer 1910-14 = 100 | | | | | | | | | | | | | |
| 2003 | 412 | 427 | 463 | 471 | 466 | 454 | 449 | 453 | 457 | 461 | 463 | 469 | 454 |
| 2004 | 481 | 493 | 504 | 502 | 496 | 500 | 504 | 516 | 523 | 539 | 550 | 556 | 514 |
| 2005 | 562 | 564 | 565 | 579 | 586 | 591 | 588 | 590 | 609 | 641 | 659 | 679 | 601 |
| 2006 | 691 | 673 | 664 | 659 | 649 | 638 | 626 | 621 | 616 | 620 | 620 | 635 | 643 |
| 2007 | 662 | 678 | 736 | 766 | 753 | 766 | 779 | | | | | | 734 |
| 1990-92 = 100 | | | | | | | | | | | | | |
| 2003 | 112 | 117 | 126 | 129 | 127 | 124 | 123 | 124 | 125 | 126 | 126 | 128 | 124 |
| 2004 | 131 | 134 | 137 | 137 | 135 | 136 | 138 | 141 | 143 | 147 | 150 | 152 | 140 |
| 2005 | 153 | 154 | 154 | 158 | 160 | 161 | 160 | 161 | 166 | 175 | 180 | 185 | 164 |
| 2006 | 189 | 183 | 181 | 180 | 177 | 174 | 171 | 169 | 168 | 169 | 169 | 173 | 175 |
| 2007 | 181 | 185 | 201 | 209 | 205 | 209 | 213 | | | | | | 200 |
| Chemicals 1910-14 = 100 | | | | | | | | | | | | | |
| 2003 | 752 | 752 | 744 | 746 | 746 | 747 | 746 | 746 | 745 | 748 | 753 | 744 | 747 |
| 2004 | 746 | 749 | 749 | 745 | 746 | 748 | 753 | 744 | 745 | 741 | 741 | 743 | 746 |
| 2005 | 753 | 745 | 746 | 747 | 750 | 754 | 759 | 770 | 777 | 783 | 788 | 777 | 762 |
| 2006 | 783 | 783 | 781 | 777 | 796 | 794 | 795 | 795 | 799 | 797 | 807 | 796 | 792 |
| 2007 | 797 | 797 | 809 | 805 | 802 | 802 | 801 | | | | | | 802 |
| 1990-92 = 100 | | | | | | | | | | | | | |
| 2003 | 122 | 122 | 120 | 121 | 121 | 121 | 121 | 121 | 121 | 121 | 122 | 120 | 121 |
| 2004 | 121 | 121 | 121 | 121 | 121 | 121 | 122 | 120 | 120 | 120 | 120 | 120 | 121 |
| 2005 | 122 | 120 | 121 | 121 | 121 | 122 | 123 | 124 | 126 | 127 | 127 | 126 | 123 |
| 2006 | 127 | 127 | 126 | 126 | 129 | 128 | 129 | 129 | 129 | 129 | 131 | 129 | 128 |
| 2007 | 129 | 129 | 131 | 130 | 130 | 130 | 130 | | | | | | 130 |

¹ Simple average and is year-to-date for current year.

**Prices Paid Indexes: Monthly and Annual Average
United States, 2003-2007**

| Year | Jan | Feb | Mar | Apr | May | Jun | Jul | Aug | Sep | Oct | Nov | Dec | Avg ¹ |
|---------------------------------------|------|------|------|------|------|------|------|------|------|------|------|------|------------------|
| Fuels 1910-14 = 100 | | | | | | | | | | | | | |
| 2003 | 1061 | 1192 | 1226 | 1105 | 1041 | 1037 | 1035 | 1074 | 1067 | 1061 | 1043 | 1049 | 1083 |
| 2004 | 1113 | 1103 | 1134 | 1168 | 1242 | 1231 | 1249 | 1307 | 1336 | 1484 | 1493 | 1387 | 1271 |
| 2005 | 1361 | 1416 | 1555 | 1624 | 1547 | 1581 | 1652 | 1758 | 2002 | 2091 | 1741 | 1694 | 1669 |
| 2006 | 1704 | 1679 | 1743 | 1882 | 1988 | 1997 | 2046 | 2084 | 1873 | 1693 | 1705 | 1723 | 1843 |
| 2007 | 1690 | 1717 | 1854 | 1992 | 2028 | 2020 | 2015 | | | | | | 1902 |
| 1990-92 = 100 | | | | | | | | | | | | | |
| 2003 | 137 | 154 | 159 | 143 | 135 | 134 | 134 | 139 | 138 | 138 | 135 | 136 | 140 |
| 2004 | 144 | 143 | 147 | 151 | 161 | 159 | 162 | 169 | 173 | 192 | 193 | 180 | 165 |
| 2005 | 176 | 183 | 201 | 210 | 200 | 205 | 214 | 228 | 259 | 271 | 226 | 219 | 216 |
| 2006 | 221 | 218 | 226 | 244 | 258 | 259 | 265 | 270 | 243 | 219 | 221 | 223 | 239 |
| 2007 | 219 | 222 | 240 | 258 | 263 | 262 | 261 | | | | | | 246 |
| Supplies and Repairs 1910-14 = 100 | | | | | | | | | | | | | |
| 2003 | 914 | 915 | 915 | 920 | 920 | 920 | 924 | 924 | 924 | 928 | 926 | 927 | 921 |
| 2004 | 937 | 938 | 936 | 944 | 945 | 946 | 949 | 949 | 955 | 959 | 960 | 964 | 949 |
| 2005 | 980 | 981 | 981 | 989 | 991 | 991 | 993 | 1002 | 1003 | 1006 | 1011 | 1012 | 995 |
| 2006 | 1014 | 1018 | 1020 | 1027 | 1028 | 1028 | 1033 | 1034 | 1034 | 1037 | 1037 | 1038 | 1029 |
| 2007 | 1052 | 1053 | 1052 | 1053 | 1053 | 1065 | 1065 | | | | | | 1056 |
| 1990-92 = 100 | | | | | | | | | | | | | |
| 2003 | 129 | 129 | 129 | 130 | 130 | 130 | 130 | 130 | 130 | 131 | 131 | 131 | 130 |
| 2004 | 132 | 132 | 132 | 133 | 133 | 133 | 134 | 134 | 135 | 135 | 135 | 136 | 134 |
| 2005 | 138 | 138 | 138 | 139 | 140 | 140 | 140 | 141 | 141 | 142 | 142 | 143 | 140 |
| 2006 | 143 | 143 | 144 | 145 | 145 | 145 | 146 | 146 | 146 | 146 | 146 | 146 | 145 |
| 2007 | 148 | 148 | 148 | 148 | 148 | 150 | 150 | | | | | | 149 |

¹ Simple average and is year-to-date for current year.

**Prices Paid Indexes: Monthly and Annual Average
United States, 2003-2007**

| Year | Jan | Feb | Mar | Apr | May | Jun | Jul | Aug | Sep | Oct | Nov | Dec | Avg ¹ |
|-----------------------------------|------|------|------|------|------|------|------|------|------|------|------|------|------------------|
| Autos and Trucks 1910-14 = 100 | | | | | | | | | | | | | |
| 2003 | 3003 | 2991 | 2993 | 2979 | 2966 | 2949 | 2936 | 2938 | 2931 | 2934 | 2956 | 2966 | 2962 |
| 2004 | 3052 | 3060 | 3046 | 3042 | 3029 | 3021 | 2994 | 2969 | 2969 | 2985 | 3034 | 3067 | 3022 |
| 2005 | 3091 | 3093 | 3071 | 3062 | 3060 | 3042 | 2991 | 2959 | 2974 | 3000 | 3016 | 3019 | 3032 |
| 2006 | 3036 | 3040 | 3031 | 3019 | 2999 | 2985 | 2976 | 2961 | 2952 | 2963 | 2958 | 2967 | 2991 |
| 2007 | 2980 | 2976 | 2975 | 2967 | 2954 | 2938 | 2923 | | | | | | 2959 |
| 1990-92 = 100 | | | | | | | | | | | | | |
| 2003 | 113 | 112 | 113 | 112 | 112 | 111 | 110 | 110 | 110 | 110 | 111 | 112 | 111 |
| 2004 | 115 | 115 | 115 | 114 | 114 | 114 | 113 | 112 | 112 | 112 | 114 | 115 | 114 |
| 2005 | 116 | 116 | 115 | 115 | 115 | 114 | 112 | 111 | 112 | 113 | 113 | 114 | 114 |
| 2006 | 114 | 114 | 114 | 114 | 113 | 112 | 112 | 111 | 111 | 111 | 111 | 112 | 112 |
| 2007 | 112 | 112 | 112 | 112 | 111 | 110 | 110 | | | | | | 111 |
| Machinery 1910-14 = 100 | | | | | | | | | | | | | |
| 2003 | 3731 | 3732 | 3733 | 3737 | 3751 | 3766 | 3784 | 3815 | 3831 | 3846 | 3861 | 3875 | 3789 |
| 2004 | 3901 | 3919 | 4049 | 4040 | 4048 | 4042 | 4049 | 4049 | 4108 | 4134 | 4188 | 4215 | 4062 |
| 2005 | 4247 | 4290 | 4286 | 4282 | 4301 | 4314 | 4331 | 4350 | 4363 | 4376 | 4399 | 4415 | 4330 |
| 2006 | 4458 | 4477 | 4496 | 4511 | 4539 | 4547 | 4563 | 4578 | 4586 | 4595 | 4654 | 4662 | 4556 |
| 2007 | 4670 | 4681 | 4706 | 4740 | 4740 | 4751 | 4763 | | | | | | 4722 |
| 1990-92 = 100 | | | | | | | | | | | | | |
| 2003 | 149 | 149 | 149 | 149 | 150 | 150 | 151 | 152 | 153 | 153 | 154 | 154 | 151 |
| 2004 | 156 | 156 | 161 | 161 | 161 | 161 | 161 | 161 | 164 | 165 | 167 | 168 | 162 |
| 2005 | 169 | 171 | 171 | 171 | 171 | 172 | 173 | 173 | 174 | 174 | 175 | 176 | 173 |
| 2006 | 178 | 178 | 179 | 180 | 181 | 181 | 182 | 182 | 183 | 183 | 186 | 186 | 182 |
| 2007 | 186 | 187 | 188 | 189 | 189 | 189 | 190 | | | | | | 188 |

¹ Simple average and is year-to-date for current year.

**Prices Paid Indexes: Monthly and Annual Average
United States, 2003-2007**

| Year | Jan | Feb | Mar | Apr | May | Jun | Jul | Aug | Sep | Oct | Nov | Dec | Avg ¹ |
|--|------|------|------|------|------|------|------|------|------|------|------|------|------------------|
| Building Materials 1910-14 = 100 | | | | | | | | | | | | | |
| 2003 | 1655 | 1663 | 1665 | 1671 | 1671 | 1672 | 1679 | 1680 | 1694 | 1696 | 1701 | 1701 | 1679 |
| 2004 | 1704 | 1738 | 1757 | 1800 | 1824 | 1824 | 1831 | 1856 | 1868 | 1867 | 1866 | 1872 | 1817 |
| 2005 | 1892 | 1910 | 1914 | 1917 | 1913 | 1918 | 1921 | 1917 | 1935 | 1959 | 1976 | 1986 | 1930 |
| 2006 | 2013 | 2022 | 2028 | 2041 | 2057 | 2068 | 2079 | 2084 | 2088 | 2081 | 2072 | 2072 | 2059 |
| 2007 | 2080 | 2083 | 2089 | 2102 | 2109 | 2115 | 2122 | | | | | | 2100 |
| 1990-92 = 100 | | | | | | | | | | | | | |
| 2003 | 122 | 122 | 123 | 123 | 123 | 123 | 124 | 124 | 125 | 125 | 125 | 125 | 124 |
| 2004 | 125 | 128 | 129 | 133 | 134 | 134 | 135 | 137 | 137 | 137 | 137 | 138 | 134 |
| 2005 | 139 | 141 | 141 | 141 | 141 | 141 | 141 | 141 | 142 | 144 | 145 | 146 | 142 |
| 2006 | 148 | 149 | 149 | 150 | 151 | 152 | 153 | 153 | 154 | 153 | 153 | 153 | 152 |
| 2007 | 153 | 153 | 154 | 155 | 155 | 156 | 156 | | | | | | 155 |
| Services and Rent ² 1910-14 = 100 | | | | | | | | | | | | | |
| 2003 | 1469 | 1469 | 1470 | 1473 | 1474 | 1483 | 1485 | 1485 | 1485 | 1475 | 1470 | 1470 | 1476 |
| 2004 | 1458 | 1458 | 1459 | 1460 | 1464 | 1475 | 1475 | 1479 | 1478 | 1470 | 1466 | 1470 | 1468 |
| 2005 | 1517 | 1518 | 1518 | 1521 | 1525 | 1538 | 1540 | 1540 | 1542 | 1536 | 1536 | 1534 | 1530 |
| 2006 | 1560 | 1561 | 1564 | 1565 | 1568 | 1584 | 1584 | 1585 | 1585 | 1574 | 1572 | 1571 | 1573 |
| 2007 | 1591 | 1590 | 1589 | 1592 | 1596 | 1608 | 1608 | | | | | | 1596 |
| Services 1990-92 = 100 | | | | | | | | | | | | | |
| 2003 | 123 | 124 | 124 | 124 | 124 | 125 | 126 | 126 | 126 | 124 | 124 | 124 | 125 |
| 2004 | 127 | 127 | 127 | 127 | 127 | 129 | 129 | 129 | 129 | 128 | 128 | 128 | 128 |
| 2005 | 130 | 130 | 130 | 131 | 131 | 133 | 133 | 133 | 133 | 133 | 133 | 132 | 132 |
| 2006 | 136 | 137 | 137 | 137 | 138 | 140 | 140 | 140 | 140 | 138 | 138 | 138 | 138 |
| 2007 | 142 | 142 | 141 | 142 | 142 | 144 | 144 | | | | | | 142 |
| Rent 1990-92 = 100 | | | | | | | | | | | | | |
| 2003 | 123 | 123 | 123 | 123 | 123 | 123 | 123 | 123 | 123 | 123 | 123 | 123 | 123 |
| 2004 | 115 | 115 | 115 | 115 | 115 | 115 | 115 | 115 | 115 | 115 | 115 | 115 | 115 |
| 2005 | 123 | 123 | 123 | 123 | 123 | 123 | 123 | 123 | 123 | 123 | 123 | 123 | 123 |
| 2006 | 121 | 121 | 121 | 121 | 121 | 121 | 121 | 121 | 121 | 121 | 121 | 121 | 121 |
| 2007 | 119 | 119 | 119 | 119 | 119 | 119 | 119 | | | | | | 119 |

¹ Simple average and is year-to-date for current year.

² For the 1990-92=100 base period, the Farm Services and Rent Index is separated.

**Prices Paid Indexes: Monthly and Annual Average
United States, 2003-2007**

| Year | Jan | Feb | Mar | Apr | May | Jun | Jul | Aug | Sep | Oct | Nov | Dec | Avg ¹ |
|---------------|------|------|------|------|------|------|------|------|------|------|------|------|------------------|
| Interest | | | | | | | | | | | | | |
| 1910-14 = 100 | | | | | | | | | | | | | |
| 2003 | 2377 | 2377 | 2377 | 2377 | 2377 | 2377 | 2377 | 2377 | 2377 | 2377 | 2377 | 2377 | 2377 |
| 2004 | 2411 | 2411 | 2411 | 2411 | 2411 | 2411 | 2411 | 2411 | 2411 | 2411 | 2411 | 2411 | 2411 |
| 2005 | 2979 | 2979 | 2979 | 2979 | 2979 | 2979 | 2979 | 2979 | 2979 | 2979 | 2979 | 2979 | 2979 |
| 2006 | 3452 | 3452 | 3452 | 3452 | 3452 | 3452 | 3452 | 3452 | 3452 | 3452 | 3452 | 3452 | 3452 |
| 2007 | 3778 | 3778 | 3778 | 3778 | 3778 | 3778 | 3778 | 3778 | 3452 | 3452 | 3452 | 3452 | 3778 |
| 1990-92 = 100 | | | | | | | | | | | | | |
| 2003 | 95 | 95 | 95 | 95 | 95 | 95 | 95 | 95 | 95 | 95 | 95 | 95 | 95 |
| 2004 | 96 | 96 | 96 | 96 | 96 | 96 | 96 | 96 | 96 | 96 | 96 | 96 | 96 |
| 2005 | 119 | 119 | 119 | 119 | 119 | 119 | 119 | 119 | 119 | 119 | 119 | 119 | 119 |
| 2006 | 138 | 138 | 138 | 138 | 138 | 138 | 138 | 138 | 138 | 138 | 138 | 138 | 138 |
| 2007 | 151 | 151 | 151 | 151 | 151 | 151 | 151 | 151 | 138 | 138 | 138 | 138 | 151 |
| Taxes | | | | | | | | | | | | | |
| 1910-14 = 100 | | | | | | | | | | | | | |
| 2003 | 3450 | 3450 | 3450 | 3450 | 3450 | 3450 | 3450 | 3450 | 3450 | 3450 | 3450 | 3450 | 3450 |
| 2004 | 3426 | 3426 | 3426 | 3426 | 3426 | 3426 | 3426 | 3426 | 3426 | 3426 | 3426 | 3426 | 3426 |
| 2005 | 4131 | 4131 | 4131 | 4131 | 4131 | 4131 | 4131 | 4131 | 4131 | 4131 | 4131 | 4131 | 4131 |
| 2006 | 4343 | 4343 | 4343 | 4343 | 4343 | 4343 | 4343 | 4343 | 4343 | 4343 | 4343 | 4343 | 4343 |
| 2007 | 4570 | 4570 | 4570 | 4570 | 4570 | 4570 | 4570 | 4570 | 4343 | 4343 | 4343 | 4343 | 4570 |
| 1990-92 = 100 | | | | | | | | | | | | | |
| 2003 | 129 | 129 | 129 | 129 | 129 | 129 | 129 | 129 | 129 | 129 | 129 | 129 | 129 |
| 2004 | 128 | 128 | 128 | 128 | 128 | 128 | 128 | 128 | 128 | 128 | 128 | 128 | 128 |
| 2005 | 154 | 154 | 154 | 154 | 154 | 154 | 154 | 154 | 154 | 154 | 154 | 154 | 154 |
| 2006 | 162 | 162 | 162 | 162 | 162 | 162 | 162 | 162 | 162 | 162 | 162 | 162 | 162 |
| 2007 | 171 | 171 | 171 | 171 | 171 | 171 | 171 | 171 | 162 | 162 | 162 | 162 | 171 |
| Wage Rates | | | | | | | | | | | | | |
| 1910-14 = 100 | | | | | | | | | | | | | |
| 2003 | 6035 | 6035 | 6035 | 5919 | 5919 | 5919 | 5738 | 5738 | 5738 | 5848 | 5848 | 5848 | 5885 |
| 2004 | 6080 | 6080 | 6080 | 5964 | 5964 | 5964 | 5841 | 5841 | 5841 | 6022 | 6022 | 6022 | 5977 |
| 2005 | 6319 | 6319 | 6319 | 6041 | 6041 | 6041 | 6061 | 6061 | 6061 | 6209 | 6209 | 6209 | 6158 |
| 2006 | 6526 | 6526 | 6526 | 6319 | 6319 | 6319 | 6281 | 6281 | 6281 | 6429 | 6429 | 6429 | 6390 |
| 2007 | 6688 | 6688 | 6688 | 6571 | 6571 | 6571 | 6571 | 6571 | 6281 | 6429 | 6429 | 6429 | 6621 |
| 1990-92 = 100 | | | | | | | | | | | | | |
| 2003 | 161 | 161 | 161 | 158 | 158 | 158 | 153 | 153 | 153 | 156 | 156 | 156 | 157 |
| 2004 | 163 | 163 | 163 | 159 | 159 | 159 | 156 | 156 | 156 | 161 | 161 | 161 | 160 |
| 2005 | 169 | 169 | 169 | 161 | 161 | 161 | 162 | 162 | 162 | 166 | 166 | 166 | 165 |
| 2006 | 174 | 174 | 174 | 169 | 169 | 169 | 168 | 168 | 168 | 172 | 172 | 172 | 171 |
| 2007 | 179 | 179 | 179 | 176 | 176 | 176 | 176 | 176 | 168 | 172 | 172 | 172 | 177 |

¹ Simple average and is year-to-date for current year.

**Prices Paid Indexes: Monthly and Annual Average
United States, 2003-2007**

| Year | Jan | Feb | Mar | Apr | May | Jun | Jul | Aug | Sep | Oct | Nov | Dec | Avg ¹ |
|---|------|------|------|------|------|------|------|------|------|------|------|------|------------------|
| Family Living 1910-14 = 100 | | | | | | | | | | | | | |
| 2003 | 1726 | 1739 | 1749 | 1746 | 1743 | 1745 | 1747 | 1753 | 1759 | 1757 | 1752 | 1750 | 1747 |
| 2004 | 1759 | 1768 | 1780 | 1786 | 1796 | 1802 | 1799 | 1800 | 1804 | 1813 | 1814 | 1807 | 1794 |
| 2005 | 1811 | 1822 | 1836 | 1848 | 1846 | 1847 | 1856 | 1865 | 1888 | 1892 | 1877 | 1869 | 1855 |
| 2006 | 1883 | 1887 | 1898 | 1914 | 1923 | 1927 | 1933 | 1937 | 1927 | 1917 | 1914 | 1917 | 1915 |
| 2007 | 1922 | 1933 | 1950 | 1963 | 1975 | 1979 | 1979 | | | | | | 1957 |
| 1990-92 = 100 | | | | | | | | | | | | | |
| 2003 | 135 | 136 | 137 | 136 | 136 | 136 | 136 | 137 | 137 | 137 | 137 | 137 | 136 |
| 2004 | 137 | 138 | 139 | 139 | 140 | 141 | 141 | 141 | 141 | 142 | 142 | 141 | 140 |
| 2005 | 141 | 142 | 143 | 144 | 144 | 144 | 145 | 146 | 147 | 148 | 147 | 146 | 145 |
| 2006 | 147 | 147 | 148 | 149 | 150 | 151 | 151 | 151 | 151 | 150 | 149 | 150 | 150 |
| 2007 | 150 | 151 | 152 | 153 | 154 | 155 | 155 | | | | | | 153 |
| Production Items With Farm Origin ² 1990-92 = 100 | | | | | | | | | | | | | |
| 2003 | 115 | 115 | 113 | 116 | 117 | 117 | 116 | 115 | 120 | 123 | 125 | 124 | 118 |
| 2004 | 122 | 123 | 126 | 132 | 135 | 135 | 136 | 132 | 130 | 129 | 126 | 124 | 129 |
| 2005 | 127 | 126 | 129 | 134 | 134 | 134 | 133 | 133 | 133 | 135 | 134 | 135 | 132 |
| 2006 | 137 | 135 | 135 | 136 | 136 | 137 | 137 | 136 | 137 | 137 | 138 | 141 | 137 |
| 2007 | 141 | 146 | 150 | 153 | 152 | 151 | 154 | | | | | | 149 |
| Production Items With Non-Farm Origin ³ 1990-92 = 100 | | | | | | | | | | | | | |
| 2003 | 125 | 126 | 127 | 127 | 126 | 126 | 126 | 127 | 127 | 127 | 127 | 127 | 127 |
| 2004 | 128 | 129 | 130 | 131 | 131 | 132 | 132 | 133 | 134 | 135 | 136 | 135 | 132 |
| 2005 | 138 | 139 | 140 | 141 | 141 | 142 | 142 | 144 | 146 | 148 | 146 | 146 | 143 |
| 2006 | 149 | 148 | 149 | 150 | 151 | 152 | 152 | 152 | 150 | 149 | 149 | 149 | 150 |
| 2007 | 151 | 152 | 155 | 157 | 157 | 158 | 159 | | | | | | 156 |

¹ Simple average and is year-to-date for current year.

² Feed, livestock and poultry purchases, and seed.

³ Fertilizer, agricultural chemicals, fuels, farm supplies and repairs, autos and trucks, farm machinery, building materials, and farm services and rent.

**Prices Paid Indexes: Monthly and Annual Average
United States, 2003-2007**

| Year | Jan | Feb | Mar | Apr | May | Jun | Jul | Aug | Sep | Oct | Nov | Dec | Avg ¹ |
|---|-----|-----|-----|-----|-----|-----|-----|-----|-----|-----|-----|-----|------------------|
| Parity Ratio ² 1910-14 = 100 | | | | | | | | | | | | | |
| 2003 | 38 | 37 | 37 | 38 | 39 | 40 | 40 | 41 | 41 | 42 | 43 | 42 | 40 |
| 2004 | 41 | 42 | 44 | 45 | 46 | 46 | 44 | 43 | 41 | 40 | 41 | 40 | 43 |
| 2005 | 38 | 39 | 40 | 41 | 40 | 39 | 39 | 39 | 38 | 37 | 38 | 39 | 39 |
| 2006 | 36 | 37 | 37 | 36 | 36 | 38 | 37 | 38 | 38 | 37 | 38 | 39 | 37 |
| 2007 | 39 | 40 | 41 | 41 | 42 | 42 | 43 | | | | | | 41 |
| Adjusted Parity Ratio ³ 1910-14 = 100 | | | | | | | | | | | | | |
| 2003 | 40 | 40 | 40 | 41 | 42 | 43 | 43 | 44 | 44 | 45 | 47 | 45 | 43 |
| 2004 | 43 | 45 | 46 | 47 | 48 | 48 | 46 | 45 | 44 | 43 | 43 | 42 | 45 |
| 2005 | 42 | 43 | 45 | 45 | 44 | 43 | 43 | 43 | 42 | 40 | 42 | 43 | 43 |
| 2006 | 39 | 39 | 39 | 38 | 38 | 40 | 40 | 41 | 41 | 40 | 41 | 41 | 40 |
| 2007 | 41 | 42 | 43 | 43 | 44 | 44 | 45 | | | | | | 43 |
| Ratio 1990-92 = 100 | | | | | | | | | | | | | |
| 2003 | 79 | 78 | 78 | 79 | 83 | 84 | 83 | 86 | 87 | 88 | 91 | 88 | 84 |
| 2004 | 85 | 88 | 92 | 94 | 96 | 95 | 92 | 90 | 87 | 84 | 85 | 84 | 89 |
| 2005 | 81 | 83 | 85 | 86 | 84 | 83 | 82 | 82 | 81 | 77 | 79 | 81 | 82 |
| 2006 | 76 | 77 | 77 | 75 | 74 | 79 | 79 | 81 | 80 | 78 | 80 | 81 | 78 |
| 2007 | 82 | 84 | 86 | 85 | 88 | 88 | 90 | | | | | | 86 |

¹ Simple average and is year-to-date for current year.

² Ratio of index of prices received by farmers to index of prices paid for commodities and services, interest, taxes, and wage rates.

³ Ratio of the index of prices received by farmers after adjustment for government payments to the index of prices paid for commodities and services, interest, taxes, and wage rates.

**Prices Paid Indexes: Monthly and Annual Average
United States, 2003-2007**

| Year | Jan | Feb | Mar | Apr | May | Jun | Jul | Aug | Sep | Oct | Nov | Dec | Avg ¹ |
|---|------|------|------|------|------|------|------|------|------|------|------|------|------------------|
| Crop Sector (PPITW) 1990-92 = 100 | | | | | | | | | | | | | |
| 2003 | 129 | 130 | 131 | 131 | 131 | 131 | 130 | 130 | 131 | 131 | 131 | 131 | 131 |
| 2004 | 133 | 133 | 134 | 134 | 135 | 135 | 135 | 135 | 136 | 137 | 137 | 137 | 135 |
| 2005 | 142 | 142 | 143 | 144 | 144 | 145 | 145 | 146 | 148 | 149 | 148 | 148 | 145 |
| 2006 | 152 | 151 | 152 | 153 | 154 | 154 | 154 | 154 | 153 | 152 | 152 | 153 | 153 |
| 2007 | 156 | 157 | 159 | 162 | 162 | 162 | 163 | | | | | | 160 |
| Livestock Sector (PPITW) 1990-92 = 100 | | | | | | | | | | | | | |
| 2003 | 123 | 123 | 123 | 123 | 123 | 123 | 123 | 122 | 125 | 126 | 127 | 126 | 124 |
| 2004 | 127 | 127 | 129 | 132 | 134 | 134 | 134 | 132 | 132 | 132 | 131 | 130 | 131 |
| 2005 | 134 | 134 | 136 | 138 | 138 | 138 | 138 | 139 | 140 | 141 | 140 | 140 | 138 |
| 2006 | 144 | 143 | 143 | 143 | 144 | 144 | 144 | 144 | 144 | 143 | 144 | 145 | 144 |
| 2007 | 147 | 150 | 152 | 153 | 153 | 153 | 154 | | | | | | 152 |
| Commodities and Services, Interest, Taxes, and Wage Rates Adjusted for Productivity 1910-14 = 100 | | | | | | | | | | | | | |
| 2003 | 1153 | 1156 | 1159 | 1151 | 1150 | 1150 | 1137 | 1138 | 1142 | 1151 | 1151 | 1150 | 1149 |
| 2004 | 1196 | 1199 | 1204 | 1199 | 1204 | 1205 | 1196 | 1195 | 1196 | 1212 | 1211 | 1209 | 1202 |
| 2005 | 1272 | 1274 | 1279 | 1264 | 1263 | 1265 | 1268 | 1271 | 1278 | 1292 | 1287 | 1287 | 1275 |
| 2006 | 1334 | 1334 | 1336 | 1325 | 1327 | 1329 | 1327 | 1328 | 1325 | 1333 | 1333 | 1335 | 1331 |
| 2007 | 1354 | 1359 | 1366 | 1363 | 1365 | 1366 | 1368 | | | | | | 1363 |

¹ Simple average and is year-to-date for current year.

**Prices Paid Index Sub-Components: Monthly and Annual Average
United States, 2003-2007**

| Year | Jan | Feb | Mar | Apr | May | Jun | Jul | Aug | Sep | Oct | Nov | Dec | Avg ¹ |
|---------------------|-----|-----|-----|-----|-----|-----|-----|-----|-----|-----|-----|-----|------------------|
| Feed Sub-Components | | | | | | | | | | | | | |
| Feed Grains | | | | | | | | | | | | | |
| 1990-92 = 100 | | | | | | | | | | | | | |
| 2003 | 102 | 103 | 102 | 102 | 104 | 101 | 94 | 95 | 96 | 94 | 97 | 101 | 99 |
| 2004 | 104 | 113 | 119 | 124 | 123 | 119 | 108 | 101 | 94 | 91 | 88 | 87 | 106 |
| 2005 | 90 | 84 | 87 | 86 | 85 | 90 | 93 | 86 | 84 | 79 | 78 | 83 | 85 |
| 2006 | 87 | 88 | 90 | 93 | 96 | 95 | 97 | 94 | 97 | 113 | 127 | 133 | 101 |
| 2007 | 135 | 152 | 150 | 147 | 152 | 152 | 140 | | | | | | 147 |
| Complete Feeds | | | | | | | | | | | | | |
| 1990-92 = 100 | | | | | | | | | | | | | |
| 2003 | 115 | 114 | 114 | 112 | 112 | 112 | 111 | 107 | 111 | 111 | 118 | 119 | 113 |
| 2004 | 119 | 123 | 122 | 130 | 132 | 130 | 131 | 123 | 120 | 113 | 111 | 108 | 122 |
| 2005 | 111 | 112 | 114 | 116 | 118 | 119 | 121 | 123 | 120 | 119 | 115 | 117 | 117 |
| 2006 | 122 | 121 | 122 | 121 | 119 | 119 | 119 | 118 | 117 | 118 | 128 | 135 | 122 |
| 2007 | 138 | 141 | 145 | 142 | 137 | 140 | 143 | | | | | | 141 |
| Hay and Forages | | | | | | | | | | | | | |
| 1990-92 = 100 | | | | | | | | | | | | | |
| 2003 | 121 | 122 | 120 | 125 | 123 | 122 | 113 | 109 | 108 | 109 | 106 | 105 | 115 |
| 2004 | 106 | 107 | 108 | 116 | 129 | 122 | 119 | 118 | 118 | 119 | 116 | 113 | 116 |
| 2005 | 115 | 115 | 121 | 128 | 136 | 125 | 126 | 127 | 127 | 126 | 122 | 122 | 124 |
| 2006 | 123 | 127 | 130 | 138 | 146 | 141 | 139 | 138 | 140 | 141 | 141 | 144 | 137 |
| 2007 | 148 | 151 | 155 | 164 | 178 | 170 | 171 | | | | | | 162 |
| Concentrates | | | | | | | | | | | | | |
| 1990-92 = 100 | | | | | | | | | | | | | |
| 2003 | 104 | 110 | 110 | 112 | 118 | 115 | 114 | 106 | 123 | 123 | 137 | 127 | 117 |
| 2004 | 125 | 126 | 143 | 149 | 159 | 140 | 142 | 118 | 114 | 107 | 105 | 104 | 128 |
| 2005 | 114 | 113 | 122 | 124 | 128 | 140 | 138 | 136 | 129 | 128 | 126 | 133 | 128 |
| 2006 | 132 | 131 | 131 | 130 | 128 | 127 | 125 | 121 | 119 | 122 | 125 | 123 | 126 |
| 2007 | 120 | 140 | 143 | 140 | 131 | 136 | 143 | | | | | | 136 |

¹ Simple average and is year-to-date for current year.

**Prices Paid Index Sub-Components: Monthly and Annual Average
United States, 2003-2007**

| Year | Jan | Feb | Mar | Apr | May | Jun | Jul | Aug | Sep | Oct | Nov | Dec | Avg ¹ |
|--|-----|-----|-----|-----|-----|-----|-----|-----|-----|-----|-----|-----|------------------|
| Supplements 1990-92 = 100 | | | | | | | | | | | | | |
| 2003 | 135 | 134 | 134 | 131 | 129 | 132 | 130 | 126 | 127 | 130 | 135 | 135 | 132 |
| 2004 | 135 | 134 | 135 | 138 | 136 | 136 | 134 | 131 | 135 | 133 | 135 | 138 | 135 |
| 2005 | 146 | 135 | 142 | 140 | 133 | 137 | 141 | 137 | 136 | 138 | 145 | 151 | 140 |
| 2006 | 154 | 151 | 157 | 153 | 148 | 147 | 153 | 144 | 141 | 153 | 166 | 177 | 154 |
| 2007 | 177 | 182 | 202 | 170 | 168 | 172 | 176 | | | | | | 178 |
| Livestock and Poultry Sub-Components Feeder Cattle 1990-92 = 100 | | | | | | | | | | | | | |
| 2003 | 99 | 96 | 92 | 99 | 99 | 102 | 107 | 111 | 122 | 130 | 126 | 122 | 109 |
| 2004 | 113 | 107 | 113 | 119 | 126 | 137 | 139 | 141 | 141 | 143 | 137 | 130 | 129 |
| 2005 | 128 | 128 | 133 | 138 | 137 | 137 | 132 | 134 | 138 | 143 | 142 | 141 | 136 |
| 2006 | 139 | 135 | 129 | 127 | 127 | 133 | 135 | 137 | 140 | 132 | 120 | 120 | 131 |
| 2007 | 115 | 117 | 124 | 129 | 128 | 126 | 131 | | | | | | 124 |
| Feeder Pigs 1990-92 = 100 | | | | | | | | | | | | | |
| 2003 | 138 | 127 | 123 | 119 | 109 | 104 | 82 | 64 | 73 | 97 | 94 | 96 | 102 |
| 2004 | 104 | 120 | 125 | 126 | 122 | 116 | 109 | 108 | 116 | 129 | 150 | 175 | 125 |
| 2005 | 185 | 186 | 195 | 194 | 164 | 139 | 115 | 110 | 122 | 139 | 148 | 170 | 156 |
| 2006 | 174 | 163 | 163 | 150 | 137 | 134 | 122 | 114 | 125 | 125 | 133 | 144 | 140 |
| 2007 | 158 | 169 | 171 | 160 | 152 | 127 | 112 | | | | | | 150 |
| Milk Cow Replacements 1990-92 = 100 | | | | | | | | | | | | | |
| 2003 | 122 | 122 | 122 | 115 | 115 | 115 | 116 | 116 | 116 | 122 | 122 | 122 | 119 |
| 2004 | 123 | 123 | 123 | 140 | 140 | 140 | 152 | 152 | 152 | 145 | 145 | 145 | 140 |
| 2005 | 144 | 144 | 144 | 157 | 157 | 157 | 162 | 162 | 162 | 166 | 166 | 166 | 157 |
| 2006 | 163 | 163 | 163 | 157 | 157 | 157 | 149 | 149 | 149 | 146 | 146 | 146 | 154 |
| 2007 | 147 | 147 | 147 | 153 | 153 | 153 | 173 | | | | | | 153 |

¹ Simple average and is year-to-date for current year.

**Prices Paid Index Sub-Components: Monthly and Annual Average
United States, 2003-2007**

| Year | Jan | Feb | Mar | Apr | May | Jun | Jul | Aug | Sep | Oct | Nov | Dec | Avg ¹ |
|--|-----|-----|-----|-----|-----|-----|-----|-----|-----|-----|-----|-----|------------------|
| Poultry 1990-92 = 100 | | | | | | | | | | | | | |
| 2003 | 110 | 110 | 110 | 110 | 110 | 110 | 110 | 110 | 110 | 110 | 110 | 110 | 110 |
| 2004 | 110 | 110 | 110 | 110 | 110 | 110 | 110 | 110 | 110 | 110 | 110 | 110 | 110 |
| 2005 | 110 | 110 | 110 | 110 | 110 | 110 | 110 | 110 | 110 | 110 | 110 | 110 | 110 |
| 2006 | 125 | 125 | 125 | 125 | 125 | 125 | 125 | 125 | 125 | 125 | 125 | 125 | 125 |
| 2007 | 125 | 125 | 125 | 125 | 125 | 125 | 125 | 125 | 125 | 125 | 125 | 125 | 125 |
| Seeds Sub-Components Field Crops 1990-92 = 100 | | | | | | | | | | | | | |
| 2003 | 147 | 147 | 147 | 162 | 162 | 162 | 162 | 162 | 162 | 162 | 162 | 162 | 158 |
| 2004 | 162 | 162 | 162 | 163 | 163 | 163 | 163 | 163 | 163 | 163 | 163 | 163 | 163 |
| 2005 | 163 | 163 | 163 | 177 | 177 | 177 | 177 | 177 | 177 | 177 | 177 | 177 | 174 |
| 2006 | 177 | 177 | 177 | 191 | 191 | 191 | 191 | 191 | 191 | 191 | 191 | 191 | 188 |
| 2007 | 191 | 191 | 191 | 218 | 218 | 218 | 218 | 218 | 218 | 218 | 218 | 218 | 206 |
| Grasses and Legumes 1990-92 = 100 | | | | | | | | | | | | | |
| 2003 | 118 | 118 | 118 | 109 | 109 | 109 | 109 | 109 | 109 | 109 | 109 | 109 | 111 |
| 2004 | 109 | 109 | 109 | 111 | 111 | 111 | 111 | 111 | 111 | 111 | 111 | 111 | 111 |
| 2005 | 111 | 111 | 111 | 118 | 118 | 118 | 118 | 118 | 118 | 118 | 118 | 118 | 116 |
| 2006 | 118 | 118 | 118 | 133 | 133 | 133 | 133 | 133 | 133 | 133 | 133 | 133 | 129 |
| 2007 | 133 | 133 | 133 | 142 | 142 | 142 | 142 | 142 | 142 | 142 | 142 | 142 | 138 |
| Fertilizer Sub-Components Mixed Fertilizer 1990-92 = 100 | | | | | | | | | | | | | |
| 2003 | 107 | 107 | 112 | 113 | 113 | 113 | 113 | 113 | 114 | 114 | 115 | 115 | 112 |
| 2004 | 117 | 119 | 122 | 122 | 122 | 122 | 122 | 124 | 125 | 128 | 130 | 130 | 124 |
| 2005 | 133 | 133 | 134 | 135 | 136 | 135 | 137 | 138 | 143 | 146 | 147 | 148 | 139 |
| 2006 | 149 | 149 | 149 | 151 | 151 | 152 | 154 | 155 | 156 | 155 | 157 | 162 | 153 |
| 2007 | 168 | 171 | 179 | 189 | 186 | 185 | 185 | 185 | 185 | 185 | 185 | 185 | 180 |

¹ Simple average and is year-to-date for current year.

**Prices Paid Index Sub-Components: Monthly and Annual Average
United States, 2003-2007**

| Year | Jan | Feb | Mar | Apr | May | Jun | Jul | Aug | Sep | Oct | Nov | Dec | Avg ¹ |
|---|-----|-----|-----|-----|-----|-----|-----|-----|-----|-----|-----|-----|------------------|
| Nitrogen 1990-92 = 100 | | | | | | | | | | | | | |
| 2003 | 122 | 131 | 147 | 150 | 146 | 141 | 138 | 139 | 141 | 142 | 144 | 147 | 141 |
| 2004 | 152 | 156 | 158 | 157 | 153 | 156 | 158 | 163 | 164 | 170 | 174 | 176 | 161 |
| 2005 | 176 | 176 | 176 | 183 | 187 | 189 | 185 | 185 | 192 | 210 | 220 | 232 | 193 |
| 2006 | 236 | 226 | 220 | 213 | 209 | 202 | 192 | 189 | 187 | 190 | 190 | 195 | 204 |
| 2007 | 205 | 207 | 228 | 236 | 231 | 237 | 243 | | | | | | 227 |
| Potash and Phosphate 1990-92 = 100 | | | | | | | | | | | | | |
| 2003 | 102 | 103 | 112 | 113 | 113 | 108 | 107 | 110 | 110 | 111 | 110 | 111 | 109 |
| 2004 | 114 | 119 | 124 | 123 | 124 | 124 | 124 | 128 | 133 | 137 | 143 | 146 | 128 |
| 2005 | 150 | 152 | 152 | 155 | 155 | 160 | 160 | 162 | 160 | 160 | 161 | 163 | 158 |
| 2006 | 168 | 162 | 167 | 171 | 163 | 160 | 159 | 154 | 150 | 151 | 144 | 145 | 158 |
| 2007 | 149 | 164 | 186 | 192 | 191 | 199 | 208 | | | | | | 184 |
| Chemicals Sub-Components Herbicides 1990-92 = 100 | | | | | | | | | | | | | |
| 2003 | 112 | 112 | 112 | 112 | 112 | 112 | 112 | 112 | 112 | 113 | 114 | 112 | 112 |
| 2004 | 113 | 113 | 114 | 113 | 113 | 113 | 114 | 113 | 113 | 112 | 112 | 112 | 113 |
| 2005 | 114 | 113 | 113 | 113 | 114 | 114 | 116 | 118 | 119 | 120 | 121 | 120 | 116 |
| 2006 | 121 | 122 | 122 | 121 | 124 | 124 | 123 | 123 | 124 | 123 | 124 | 122 | 123 |
| 2007 | 122 | 122 | 124 | 123 | 122 | 122 | 122 | | | | | | 123 |
| Insecticides 1990-92 = 100 | | | | | | | | | | | | | |
| 2003 | 145 | 146 | 146 | 147 | 147 | 147 | 147 | 146 | 146 | 146 | 147 | 145 | 146 |
| 2004 | 145 | 145 | 144 | 143 | 143 | 144 | 145 | 143 | 143 | 142 | 142 | 143 | 144 |
| 2005 | 145 | 143 | 143 | 143 | 143 | 143 | 143 | 144 | 145 | 145 | 145 | 142 | 144 |
| 2006 | 142 | 142 | 140 | 139 | 143 | 143 | 143 | 144 | 145 | 145 | 147 | 145 | 143 |
| 2007 | 146 | 146 | 149 | 148 | 148 | 148 | 148 | | | | | | 148 |

¹ Simple average and is year-to-date for current year.

**Prices Paid Index Sub-Components: Monthly and Annual Average
United States, 2003-2007**

| Year | Jan | Feb | Mar | Apr | May | Jun | Jul | Aug | Sep | Oct | Nov | Dec | Avg ¹ |
|---|-----|-----|-----|-----|-----|-----|-----|-----|-----|-----|-----|-----|------------------|
| Fungicides and Other 1990-92 = 100 | | | | | | | | | | | | | |
| 2003 | 125 | 126 | 114 | 115 | 115 | 115 | 115 | 115 | 115 | 116 | 117 | 116 | 117 |
| 2004 | 116 | 117 | 117 | 116 | 117 | 117 | 118 | 117 | 118 | 117 | 117 | 118 | 117 |
| 2005 | 120 | 119 | 119 | 120 | 120 | 120 | 121 | 123 | 124 | 125 | 125 | 123 | 122 |
| 2006 | 124 | 124 | 124 | 123 | 126 | 126 | 127 | 128 | 129 | 129 | 131 | 130 | 127 |
| 2007 | 130 | 131 | 133 | 133 | 133 | 132 | 132 | | | | | | 132 |
| Fuels Sub-Components Diesel 1990-92 = 100 | | | | | | | | | | | | | |
| 2003 | 134 | 150 | 156 | 141 | 133 | 130 | 131 | 135 | 133 | 134 | 133 | 133 | 137 |
| 2004 | 138 | 141 | 144 | 149 | 156 | 154 | 158 | 168 | 177 | 199 | 202 | 190 | 165 |
| 2005 | 187 | 195 | 215 | 224 | 215 | 223 | 231 | 242 | 273 | 299 | 248 | 235 | 232 |
| 2006 | 236 | 237 | 244 | 259 | 276 | 277 | 281 | 292 | 268 | 243 | 246 | 252 | 259 |
| 2007 | 241 | 242 | 260 | 277 | 273 | 275 | 279 | | | | | | 264 |
| Gasoline 1990-92 = 100 | | | | | | | | | | | | | |
| 2003 | 127 | 141 | 148 | 140 | 132 | 131 | 132 | 141 | 145 | 135 | 131 | 127 | 136 |
| 2004 | 135 | 141 | 148 | 152 | 168 | 167 | 162 | 160 | 159 | 170 | 169 | 158 | 157 |
| 2005 | 157 | 164 | 178 | 192 | 184 | 183 | 194 | 209 | 243 | 227 | 188 | 182 | 192 |
| 2006 | 192 | 188 | 199 | 224 | 237 | 235 | 242 | 239 | 208 | 183 | 181 | 183 | 209 |
| 2007 | 182 | 184 | 206 | 228 | 252 | 245 | 240 | | | | | | 220 |
| LP Gas 1990-92 = 100 | | | | | | | | | | | | | |
| 2003 | 173 | 201 | 192 | 158 | 149 | 159 | 152 | 153 | 146 | 159 | 152 | 163 | 163 |
| 2004 | 188 | 157 | 157 | 158 | 170 | 167 | 178 | 197 | 186 | 212 | 211 | 182 | 180 |
| 2005 | 173 | 176 | 195 | 191 | 174 | 174 | 187 | 205 | 238 | 247 | 211 | 235 | 201 |
| 2006 | 217 | 200 | 207 | 220 | 224 | 234 | 247 | 241 | 211 | 198 | 199 | 189 | 216 |
| 2007 | 184 | 202 | 210 | 225 | 234 | 234 | 216 | | | | | | 215 |

¹ Simple average and is year-to-date for current year.

**Prices Paid Index Sub-Components: Monthly and Annual Average
United States, 2003-2007**

| Year | Jan | Feb | Mar | Apr | May | Jun | Jul | Aug | Sep | Oct | Nov | Dec | Avg ¹ |
|-----------------------------------|-----|-----|-----|-----|-----|-----|-----|-----|-----|-----|-----|-----|------------------|
| Supplies & Repairs Sub-Components | | | | | | | | | | | | | |
| Supplies | | | | | | | | | | | | | |
| 1990-92 = 100 | | | | | | | | | | | | | |
| 2003 | 118 | 118 | 118 | 118 | 118 | 118 | 119 | 119 | 119 | 119 | 119 | 119 | 119 |
| 2004 | 120 | 120 | 120 | 120 | 121 | 121 | 121 | 122 | 122 | 123 | 123 | 123 | 121 |
| 2005 | 124 | 124 | 125 | 126 | 127 | 127 | 127 | 131 | 131 | 132 | 133 | 134 | 128 |
| 2006 | 134 | 134 | 135 | 136 | 136 | 137 | 137 | 138 | 138 | 138 | 139 | 139 | 137 |
| 2007 | 140 | 140 | 140 | 140 | 140 | 140 | 140 | | | | | | 140 |
| Repairs | | | | | | | | | | | | | |
| 1990-92 = 100 | | | | | | | | | | | | | |
| 2003 | 134 | 134 | 135 | 135 | 136 | 136 | 136 | 136 | 136 | 137 | 136 | 136 | 136 |
| 2004 | 138 | 138 | 138 | 139 | 139 | 139 | 140 | 140 | 141 | 141 | 141 | 142 | 140 |
| 2005 | 145 | 145 | 145 | 146 | 146 | 146 | 146 | 146 | 146 | 147 | 147 | 147 | 146 |
| 2006 | 147 | 148 | 148 | 149 | 149 | 149 | 150 | 150 | 150 | 150 | 150 | 150 | 149 |
| 2007 | 153 | 153 | 153 | 153 | 153 | 155 | 155 | | | | | | 154 |
| Autos and Trucks Sub-Components | | | | | | | | | | | | | |
| Autos | | | | | | | | | | | | | |
| 1990-92 = 100 | | | | | | | | | | | | | |
| 2003 | 109 | 109 | 109 | 108 | 108 | 107 | 107 | 107 | 107 | 107 | 108 | 108 | 108 |
| 2004 | 108 | 108 | 108 | 108 | 108 | 107 | 106 | 106 | 106 | 106 | 108 | 108 | 107 |
| 2005 | 109 | 109 | 109 | 109 | 108 | 108 | 107 | 106 | 107 | 108 | 109 | 109 | 108 |
| 2006 | 110 | 110 | 110 | 109 | 109 | 109 | 109 | 108 | 109 | 109 | 109 | 110 | 109 |
| 2007 | 110 | 110 | 109 | 109 | 109 | 108 | 108 | | | | | | 109 |
| Trucks | | | | | | | | | | | | | |
| 1990-92 = 100 | | | | | | | | | | | | | |
| 2003 | 117 | 117 | 117 | 116 | 116 | 115 | 114 | 115 | 114 | 114 | 115 | 116 | 116 |
| 2004 | 116 | 116 | 116 | 115 | 115 | 115 | 114 | 113 | 113 | 113 | 115 | 116 | 115 |
| 2005 | 117 | 117 | 117 | 116 | 116 | 115 | 113 | 112 | 113 | 114 | 114 | 114 | 115 |
| 2006 | 115 | 115 | 115 | 114 | 113 | 113 | 112 | 112 | 111 | 112 | 112 | 112 | 113 |
| 2007 | 112 | 112 | 112 | 112 | 111 | 111 | 110 | | | | | | 111 |

¹ Simple average and is year-to-date for current year.

**Prices Paid Index Sub-Components: Monthly and Annual Average
United States, 2003-2007**

| Year | Jan | Feb | Mar | Apr | May | Jun | Jul | Aug | Sep | Oct | Nov | Dec | Avg ¹ |
|--------------------------|-----|-----|-----|-----|-----|-----|-----|-----|-----|-----|-----|-----|------------------|
| Machinery Sub-Components | | | | | | | | | | | | | |
| Tractors | | | | | | | | | | | | | |
| 1990-92 = 100 | | | | | | | | | | | | | |
| 2003 | 140 | 140 | 141 | 141 | 141 | 141 | 142 | 143 | 144 | 144 | 145 | 145 | 142 |
| 2004 | 145 | 145 | 146 | 146 | 147 | 147 | 148 | 148 | 148 | 149 | 149 | 149 | 147 |
| 2005 | 152 | 153 | 153 | 153 | 154 | 154 | 155 | 155 | 155 | 155 | 157 | 158 | 155 |
| 2006 | 158 | 159 | 159 | 159 | 161 | 161 | 164 | 163 | 163 | 164 | 164 | 165 | 162 |
| 2007 | 165 | 165 | 166 | 166 | 166 | 166 | 167 | | | | | | 166 |
| Self Propelled | | | | | | | | | | | | | |
| 1990-92 = 100 | | | | | | | | | | | | | |
| 2003 | 148 | 148 | 148 | 148 | 149 | 150 | 152 | 154 | 156 | 157 | 158 | 160 | 152 |
| 2004 | 162 | 164 | 165 | 167 | 167 | 166 | 167 | 167 | 171 | 174 | 173 | 176 | 168 |
| 2005 | 176 | 176 | 176 | 176 | 177 | 178 | 178 | 180 | 180 | 181 | 182 | 182 | 179 |
| 2006 | 185 | 185 | 186 | 187 | 188 | 189 | 189 | 189 | 189 | 190 | 194 | 194 | 189 |
| 2007 | 195 | 195 | 196 | 196 | 196 | 196 | 196 | | | | | | 196 |
| Other Machinery | | | | | | | | | | | | | |
| 1990-92 = 100 | | | | | | | | | | | | | |
| 2003 | 155 | 155 | 155 | 155 | 155 | 155 | 155 | 155 | 155 | 155 | 155 | 155 | 155 |
| 2004 | 155 | 155 | 167 | 164 | 164 | 164 | 164 | 163 | 165 | 165 | 171 | 170 | 164 |
| 2005 | 172 | 176 | 176 | 175 | 176 | 176 | 177 | 178 | 178 | 179 | 179 | 180 | 177 |
| 2006 | 182 | 183 | 184 | 185 | 185 | 185 | 185 | 187 | 187 | 188 | 189 | 189 | 186 |
| 2007 | 189 | 190 | 192 | 195 | 195 | 196 | 197 | | | | | | 193 |
| Services Sub-Components | | | | | | | | | | | | | |
| Custom Rates | | | | | | | | | | | | | |
| 1990-92 = 100 | | | | | | | | | | | | | |
| 2003 | 125 | 125 | 125 | 125 | 125 | 125 | 125 | 125 | 125 | 125 | 125 | 125 | 125 |
| 2004 | 120 | 120 | 120 | 120 | 120 | 120 | 120 | 120 | 120 | 120 | 120 | 120 | 120 |
| 2005 | 121 | 121 | 121 | 121 | 121 | 121 | 121 | 121 | 121 | 121 | 121 | 121 | 121 |
| 2006 | 123 | 123 | 123 | 123 | 123 | 123 | 123 | 123 | 123 | 123 | 123 | 123 | 123 |
| 2007 | 125 | 125 | 125 | 125 | 125 | 125 | 125 | | | | | | 125 |

¹ Simple average and is year-to-date for current year.

**Prices Paid Index Sub-Components: Monthly and Annual Average
United States, 2003-2007**

| Year | Jan | Feb | Mar | Apr | May | Jun | Jul | Aug | Sep | Oct | Nov | Dec | Avg ¹ |
|--|-----|-----|-----|-----|-----|-----|-----|-----|-----|-----|-----|-----|------------------|
| Other Services 1990-92 = 100 | | | | | | | | | | | | | |
| 2003 | 123 | 123 | 123 | 124 | 124 | 125 | 126 | 126 | 126 | 124 | 124 | 124 | 124 |
| 2004 | 128 | 128 | 128 | 128 | 128 | 130 | 130 | 131 | 130 | 129 | 129 | 129 | 129 |
| 2005 | 131 | 131 | 131 | 132 | 132 | 134 | 135 | 135 | 135 | 134 | 134 | 134 | 133 |
| 2006 | 138 | 138 | 139 | 139 | 139 | 142 | 141 | 142 | 142 | 140 | 140 | 140 | 140 |
| 2007 | 143 | 143 | 143 | 144 | 144 | 146 | 146 | | | | | | 144 |
| Rent Sub-Components Cash 1990-92 = 100 | | | | | | | | | | | | | |
| 2003 | 147 | 147 | 147 | 147 | 147 | 147 | 147 | 147 | 147 | 147 | 147 | 147 | 147 |
| 2004 | 132 | 132 | 132 | 132 | 132 | 132 | 132 | 132 | 132 | 132 | 132 | 132 | 132 |
| 2005 | 147 | 147 | 147 | 147 | 147 | 147 | 147 | 147 | 147 | 147 | 147 | 147 | 147 |
| 2006 | 144 | 144 | 144 | 144 | 144 | 144 | 144 | 144 | 144 | 144 | 144 | 144 | 144 |
| 2007 | 140 | 140 | 140 | 140 | 140 | 140 | 140 | | | | | | 140 |
| Share 1990-92 = 100 | | | | | | | | | | | | | |
| 2003 | 95 | 95 | 95 | 95 | 95 | 95 | 95 | 95 | 95 | 95 | 95 | 95 | 95 |
| 2004 | 95 | 95 | 95 | 95 | 95 | 95 | 95 | 95 | 95 | 95 | 95 | 95 | 95 |
| 2005 | 94 | 94 | 94 | 94 | 94 | 94 | 94 | 94 | 94 | 94 | 94 | 94 | 94 |
| 2006 | 95 | 95 | 95 | 95 | 95 | 95 | 95 | 95 | 95 | 95 | 95 | 95 | 95 |
| 2007 | 95 | 95 | 95 | 95 | 95 | 95 | 95 | | | | | | 95 |

¹ Simple average and is year-to-date for current year.

Prices Paid by Farmers

Definition: Prices paid by farmers represent the average costs of inputs purchased by farmers and ranchers to produce agricultural commodities. Conceptually, the average price when multiplied by quantity purchased should equal total producer expenditures for the item.

Survey Procedures: The prices paid data are obtained from establishments that sell goods and services to farmers and ranchers. Annually, about 8,500 firms are randomly selected from lists by type of item sold with an average response rate in the range of 75-80 percent. Firms are asked to report the price for the specified item "most commonly bought by farmers" or that was the "volume seller". Approximately 135 items are surveyed each April to represent all production input items purchased. The survey reference period for most items is the 5 business days centered around the 15th of the month. Separate prices paid surveys are conducted for agricultural chemicals, fuels, feed, fertilizer, machinery, and seed.

Summary and Estimation Procedures: The annual April Prices Paid Survey is summarized as a nonprobability survey. Average prices reported are aggregated to the region and U.S. level using weights available from expenditure data and other administrative sources. Price recommendations are prepared by the State Field Offices and Headquarters for review by the Agricultural Statistics Board in Washington, D.C. Also, the change in price level for individual items surveyed are combined to the regional and U.S. levels, and are published as prices paid indexes referenced to a specific base period. Prices paid indexes for new autos and trucks, building materials, farm supplies, motor supplies, and marketing containers are updated based on price changes measured in selected Bureau of Labor Statistics (BLS) indexes.

Revisions: Any revisions are published in the monthly and in annual issues of *Agricultural Prices*. The basis for revision must be supported by additional data that directly affect the level of the estimate. More revisions are likely in April when separate prices paid surveys are conducted, in lieu of BLS indexes, by the USDA to measure price change.

Reliability: Current methods of summarization in April are not designed directly to calculate sampling errors. However, analytical measures approximate the U.S. relative sampling errors for major items around 10 percent. Any nonsampling errors are attributed to such things as the inability to obtain correct information, differences in interpreting questions or definitions, mistakes in coding or processing the data, etc. Efforts are made at each step in the survey process to minimize these nonsampling errors.

Program Change: Effective January 1, 1995, the National Agricultural Statistics Service updated the weights and changed the construction of its prices paid and received by farmers indexes. A Federal Register Notice dated October 28, 1994 discussed these program modifications.

A 1990-92 reference and base period replaced the 1977 reference and 1971-73 base weight period. Five-year moving average weights replaced the current fixed 1971-73 base period weights. The 1910-14=100 price indexes, required by statute for computing parity prices, were linked forward based on the changes in the new 1990-92=100 indexes. The new indexes were constructed by multiplying the ratios of the current prices to the base period prices by the moving average weights (adjusted for seasonal marketing patterns for the prices received indexes).

Information Contacts

General questions should be directed to Kevin Barnes, Chief, Environmental, Economics and Demographics Branch at (202) 720-6146. Below are the commodity specialists to contact for additional information.

Crop Prices Received

| | |
|--|----------------|
| Jeff Geuder, Chief, Crops Branch | (202) 720-2127 |
| Greg Thessen, Field Crops Section | (202) 720-2127 |
| Todd Ballard - Wheat, Rye | (202) 690-8533 |
| Ty Kalas - Corn, Proso Millet, Flaxseed | (202) 720-9526 |
| Shiela Corley - Cotton, Cottonseed | (202) 720-5944 |
| Travis Thorson - Soybeans, Sunflower, Other Oilseeds | (202) 720-7369 |
| King Whetstone - Hay, Oats, Sorghum | (202) 690-3234 |
| Dennis Koong - Peanuts, Rice | (202) 720-7688 |
| Greg Thessen - Sugarcane, Sugarbeets, Barley | (202) 720-2127 |
| Lance Honig, Fruits, Vegetables & Special Crops Section | (202) 720-2127 |
| Dan Norris - Peaches, Pears, Hops, Pulses, Mint | (202) 720-3250 |
| Rich Holcomb - Citrus, Tropical Fruits | (202) 720-5412 |
| Faye Propsom - Apples, Apricots, Cherries, Cranberries, Plums, Prunes | (202) 720-4288 |
| Leslie Colburn - Grapes, Tobacco | (202) 720-7235 |
| Cathy Scherrer - Potatoes, Dry Edible Beans, Sweet Potatoes | (202) 720-4285 |
| Debbie Flippin - Vegetables, Onions, Strawberries | (202) 720-2157 |
| Doug Marousek - Tree Nuts | (202) 720-4215 |

Livestock Prices Received

| | |
|---|----------------|
| Dan Kerestes, Chief, Livestock Branch | (202) 720-3570 |
| Shawn Clark, Livestock Section | (202) 720-3570 |
| Scott Hollis - Sheep, Lambs, Goats, Wool, Mohair | (202) 720-4751 |
| Jason Hardegree- Milk, Milk Cows | (202) 720-3278 |
| Bruce Boess - Hogs | (202) 720-3106 |
| Mike Miller - Cattle | (202) 720-3040 |
| Darin Jantzi, Poultry and Specialty Commodities Section | (202) 720-3570 |
| Toby Paterson - Turkeys | (202) 720-0585 |
| Sharyn Lavender - Broilers, Eggs, Honey | (202) 720-3244 |

Indexes, Prices Paid, and Parity Prices

| | |
|--|----------------|
| Kevin Barnes, Chief, Environmental, Economics and Demographics Branch | (202) 720-6146 |
| Kevin Hintzman, Economics Section | (202) 720-6146 |
| Jennifer Sissom - Prices Paid Indexes, Prices Paid for Feed, Fertilizer, Agricultural Chemicals, Seeds, Farm Supplies and Repairs, Farm Machinery, Fuels, Feeder Livestock, Poultry Chicks, Feed Price Ratios, Autos & Trucks, Grazing Fees | (202) 690-3229 |
| Daryl Brinkman - Prices Received Indexes, Parity Prices | (202) 720-8844 |

ACCESS TO REPORTS!!

For your convenience, there are several ways to obtain NASS reports, data products, and services:

INTERNET ACCESS

All NASS reports are available free of charge on the worldwide Internet. For access, connect to the Internet and go to the NASS Home Page at: www.nass.usda.gov.

E-MAIL SUBSCRIPTION

All NASS reports are available by subscription free of charge direct to your e-mail address. Starting with the NASS Home Page at www.nass.usda.gov, under the right navigation, *Receive reports by Email*, click on **National** or **State**. Follow the instructions on the screen.

PRINTED REPORTS OR DATA PRODUCTS

CALL OUR TOLL-FREE ORDER DESK: 800-999-6779 (U.S. and Canada)
Other areas, please call 703-605-6220 FAX: 703-605-6900
(Visa, MasterCard, check, or money order acceptable for payment.)

ASSISTANCE

For **assistance** with general agricultural statistics or further information about NASS or its products or services, contact the **Agricultural Statistics Hotline** at **800-727-9540**, 7:30 a.m. to 4:00 p.m. ET, or e-mail: nass@nass.usda.gov.

The U.S. Department of Agriculture (USDA) prohibits discrimination in all its programs and activities on the basis of race, color, national origin, age, disability, and where applicable, sex, marital status, familial status, parental status, religion, sexual orientation, genetic information, political beliefs, reprisal, or because all or a part of an individual's income is derived from any public assistance program. (Not all prohibited bases apply to all programs.) Persons with disabilities who require alternative means for communication of program information (Braille, large print, audiotape, etc.) should contact USDA's TARGET Center at (202) 720-2600 (voice and TDD).

To file a complaint of discrimination, write to USDA, Director, Office of Civil Rights, 1400 Independence Avenue, S.W., Washington, D.C. 20250-9410, or call (800) 795-3272 (voice) or (202) 720-6382 (TDD). USDA is an equal opportunity provider and employer.