



NASS

FACT FINDERS FOR AGRICULTURE
UNITED STATES DEPARTMENT OF AGRICULTURE

Washington, D.C.

Agricultural Prices

Released September 27, 2007, by the National Agricultural Statistics Service (NASS), Agricultural Statistics Board, U.S. Department of Agriculture. For information on *Agricultural Prices* see page 44, office hours 7:30 a.m. to 4:00 p.m. ET.

September Farm Prices Received Index Advances 2 Points From Last Month

The preliminary All Farm Products Index of Prices Received by Farmers in September, at 142 percent, based on 1990-92=100, increased 2 points (1.4 percent) from August. The Crop Index advanced 3 points (2.1 percent) and the Livestock Index increased 2 points (1.4 percent). Producers received higher commodity prices for wheat, lettuce, eggs, and cattle. Lower prices were received for hogs, corn, strawberries, and onions. The overall index is also affected by the seasonal change based on a 3-year average mix of commodities producers sell. Increased average marketings of soybeans, corn, apples, and peanuts offset decreased marketings of cattle, wheat, broilers, and grapes.

The preliminary All Farm Products Index is up 23 points (19 percent) from September 2006. The Food Commodities Index, at 146, increased 3 points (2.1 percent) from last month and 24 points (20 percent) from September 2006.

Prices Paid Index up 1 Point

The September Index of Prices Paid for Commodities and Services, Interest, Taxes, and Farm Wage Rates (PPITW) is 159 percent of the 1990-92 average. The index is up 1 point (0.6 percent) from August and 10 points (6.7 percent) above September 2006. Higher prices in September for nitrogen fertilizers, diesel fuel, and feeder cattle offset lower prices for complete feeds, feeder pigs, and feed grains.

Index Summary Table

Index 1990-92=100	2006		2007	
	Aug	Sep	Aug	Sep
Prices Received	119	119	140	142
Prices Paid	149	149	158	159
Ratio ¹	80	80	89	89

¹ Ratio of index of prices received by farmers to index of prices paid by farmers.

Prices Received by Farmers

The September All Farm Products Index is 142 percent of its 1990-92 base, up 1.4 percent from the August index and 19 percent above the September 2006 index.

ALL CROPS: The September index is 144, up 2.1 percent from August and 19 percent above September 2006. Index increases for food grains, cotton, commercial vegetables, and fruits & nuts more than offset the index decreases for potatoes & dry beans, oil-bearing crops, and feed grains & hay.

Food Grains: The September index, at 227, is 23 percent above the previous month and 67 percent above a year ago. The September all wheat price, at \$7.16 per bushel, is up \$1.52 from August and \$3.10 above September 2006. If realized this would be a record high price.

Feed Grains & Hay: The September index is 148, down 2.6 percent from last month but 40 percent above a year ago. The corn price, at \$3.19 per bushel, is down 7 cents from last month but 99 cents above September 2006. The all hay price, at \$132 per ton, is unchanged from August but up \$24.00 from last September. Sorghum grain, at \$6.02 per cwt, is 9 cents above August and \$1.73 above September last year.

Oil-Bearing Crops: The September index, at 134, is down 2.9 percent from August but 54 percent higher than September 2006. The soybean price, at \$8.34 per bushel, increased 62 cents from August and is \$3.11 above September 2006.

Cotton: The September index, at 86, is up 16 percent from August and 10 percent above last year. The September price, at 52.2 cents per pound, is up 7.3 cents from the previous month and 4.9 cents above last September.

Potatoes & Dry Beans: The September index, at 115, is down 4.2 percent from last month but 11 percent above September 2006. The all potato price, at \$6.47 per cwt, is down 40 cents from August but up 35 cents from last September. The all dry bean price, at \$24.90 per cwt, is down 90 cents from the previous month but \$6.10 above September 2006.

Fruits & Nuts: The September index, at 163, is up 5.8 percent from August but 6.3 percent lower than a year ago. Price increases for apples, grapes, peaches, and lemons more than offset price decreases for strawberries, oranges, and pears.

Commercial Vegetables: The September index, at 154, is up 10 percent from last month but 2.5 percent below September 2006. Price increases during September for lettuce, tomatoes, cucumbers, and celery more than offset price declines for onions, broccoli, snap beans, and carrots.

LIVESTOCK & PRODUCTS: The September index, at 141, is 1.4 percent above last month and up 22 percent from September 2006. Compared with a year ago, prices are higher for milk, broilers, eggs, cattle, and turkeys. The prices for hogs and calves are down from last year.

Meat Animals: The September index, at 122, is down 0.8 percent from last month but 1.7 percent higher than last year. The September hog price, at \$47.00 per cwt, is down \$4.60 from August and \$1.90 lower than a year ago. The September beef cattle price of \$93.30 per cwt is up \$1.60 from last month and \$3.30 higher than September 2006.

Dairy Products: The September index, at 167, is up 1.2 percent from a month ago and 67 percent higher than September last year. The September all milk price of \$21.80 per cwt is up 20 cents from last month and up \$8.80 from September 2006. The fluid grade milk and manufacturing grade prices are up 20 cents from the previous month. The September all milk price, if realized, would be 10 cents more than the record high achieved in July 2007.

Poultry & Eggs: The September index, at 159, is up 3.9 percent from August and 28 percent above a year ago. The September market egg price, at 96.0 cents per dozen, increased 24.4 cents from August and is 60.6 cents above September 2006. The September broiler price, at 50.0 cents per pound, is unchanged from August but 8.0 cents above a year ago. The September turkey price, at 60.4 cents per pound, is up 3.2 cents from the previous month and up 7.1 cents from a year earlier.

Table of Contents

U.S. Prices Received and Indexes	Page	Monthly State Prices, continued	Page
Narrative	2	Cotton	17
Price Indexes	5	Cottonseed	17
Price Index Charts	6	Market Eggs	20
U.S. Prices Received Summary	8	Flaxseed	16
Charts	10	Grain Sorghum	15
Selected Commodities	14	Hay	17
Upland Cotton & Rice Marketings	17	Hogs, All	19
Parity Prices	22	Barrows and Gilts	19
Reliability Statement	34	Sows	19
Monthly State Prices Received		Milk	21
Apples	17	Milk Cows	21
Barley	15	Manufacturing Grade & Parity Price Equiv..	21
Beans, Dry Edible	16	Oats	15
Beef Cattle, All	19	Peanuts	16
Calves	19	Potatoes	18
Cows, Beef	19	Sheep	20
Steers and Heifers	19	Lambs	20
Canola	16	Soybeans	15
Citrus Fruit	18	Sunflower, All	16
Corn	15	Wheat, All Classes	14
Prices Received Special Features			Page
Marketing Year for Specified Commodities			24
Marketing Year Average Prices			
Austrian Winter Peas			25
Citrus		see September 2007 Citrus Fruits	
		http://usda.mannlib.cornell.edu/MannUsda/viewDocumentInfo.do?documentID=1031/	
Dry Edible Peas			25
Grain Sorghum			28
Lentils			25
Potatoes		see Potatoes 2006 Summary - September 2006	
		http://usda.mannlib.cornell.edu/MannUsda/viewDocumentInfo.do?documentID=1123/	
Soybeans			30
Monthly Prices Received, Monthly Farm Marketings, and Marketing Year Average Prices			
Austrian Winter Peas			27
Corn			27
Dry Edible Peas			26
Lentils			26
Monthly Prices			
Citrus		see September 2007 Citrus Fruits	
		http://usda.mannlib.cornell.edu/MannUsda/viewDocumentInfo.do?documentID=1031/	
Grain Sorghum			29
Potatoes		see Potatoes 2006 Summary - September 2007	
		http://usda.mannlib.cornell.edu/MannUsda/viewDocumentInfo.do?documentID=1123/	
Soybeans			31
Monthly Farm Marketing Percentages			
Grain Sorghum			28
Soybeans			33

Table of Contents (continued)

U.S. Prices Paid, Prices Paid Indexes and Ratios	Page
Narrative	35
Indexes and Parity Ratios	36
Charts	38
Feed Price Ratios	41
Reliability Statement	42
 U.S. Average Prices	
Prices Used to Calculate Feed Price Ratios	41
Feeder Livestock	41
 Information Contacts	43

**Index Numbers of Prices Received, United States,
September 2007, with Comparisons ¹**

Index	1910-14=100				1990-92=100		
	Average 1990-92	2006	2007		2006	2007	
		Sep	Aug	Sep	Sep	Aug	Sep
All Farm Products	639	754	890	903	119	140	142
All Crops	500	595	696	708	121	141	144
Food Grains	325	432	588	722	136	185	227
Feed Grains & Hay	363	380	545	531	106	152	148
Cotton	517	400	380	441	78	74	86
Tobacco ²	1,263	1,392	1,392	1,392	92	92	92
Oil-Bearing Crops	554	477	755	734	87	138	134
Fruits & Nuts	716	1,214	1,078	1,141	174	154	163
Commercial Vegetables	698	1,055	932	1,029	158	140	154
Potatoes & Dry Beans	540	526	607	581	104	120	115
Other Crops	493	562	566	566	114	115	115
Livestock & Products	768	894	1,068	1,079	116	139	141
Meat Animals	1,021	1,222	1,251	1,237	120	123	122
Dairy Products	799	799	1,327	1,340	100	165	167
Poultry & Eggs	282	348	430	449	124	153	159
Food Commodities					122	143	146

¹ Revised historical price indexes for months not shown are available at www.nass.usda.gov.

² Monthly prices discontinued July 2005.

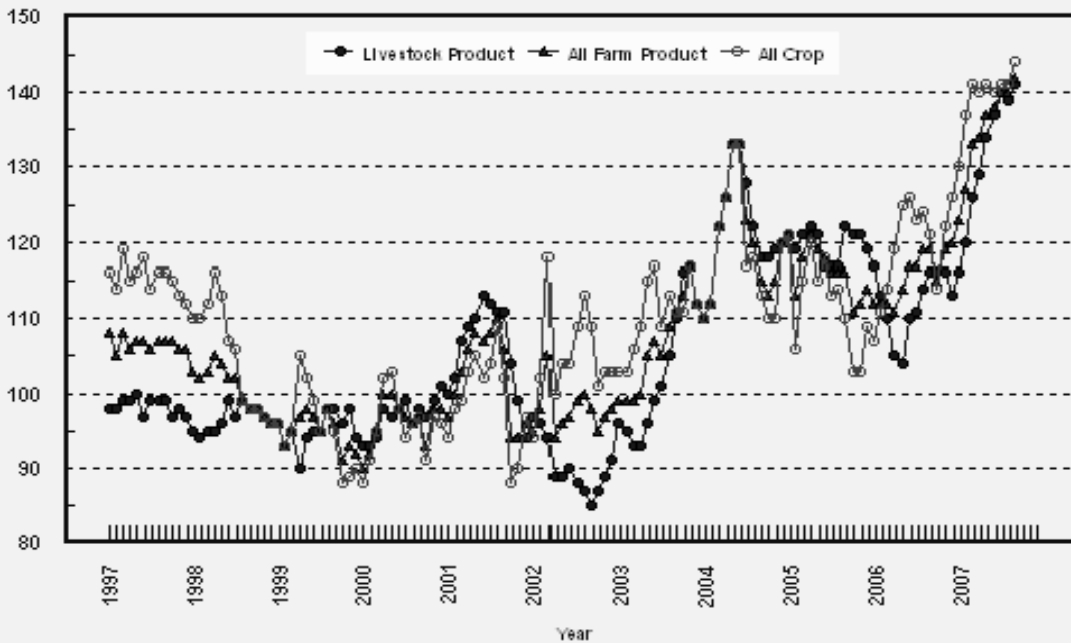
**Selected Index Numbers for Prices Received and Paid,
1990-92=100, by Month, United States, 2006 and 2007 ¹**

Month	Index of Prices Received						Index of Prices Paid			
	All Farm Products		All Crops		Livestock and Products		All Items		Production Items	
	2006	2007	2006	2007	2006	2007	2006	2007	2006	2007
Jan	112	123	107	130	117	116	148	152	145	148
Feb	112	127	111	137	113	120	147	153	144	150
Mar	112	133	114	141	110	126	147	155	144	153
Apr	111	134	119	140	105	129	148	157	145	156
May	114	137	125	141	104	134	149	157	146	156
Jun	117	138	126	140	110	137	149	158	147	156
Jul	117	140	123	141	111	140	149	158	147	157
Aug	119	140	124	141	114	139	149	158	147	158
Sep	119	142	121	144	116	141	149	159	146	158
Oct	115		114		116		148		145	
Nov	119		122		116		148		146	
Dec	120		126		113		149		147	

¹ Revised historical price indexes for months not shown are available at www.nass.usda.gov.

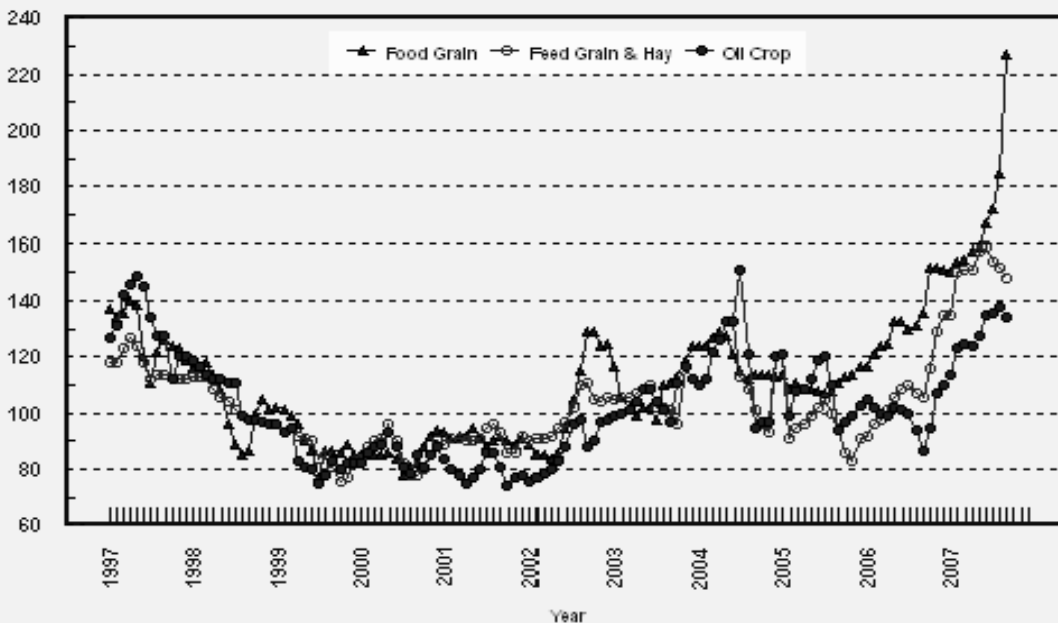
Prices Received, Major Indexes, US

Percent (1990-92=100)

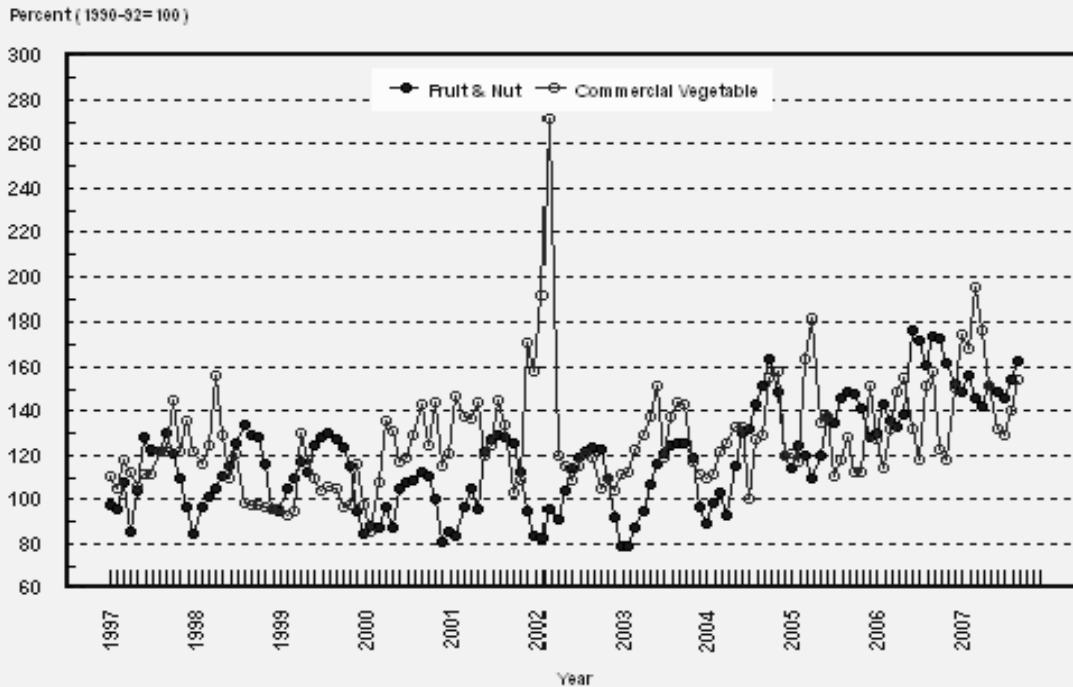


Prices Received, Food, Feed, & Oil Crop Indexes, US

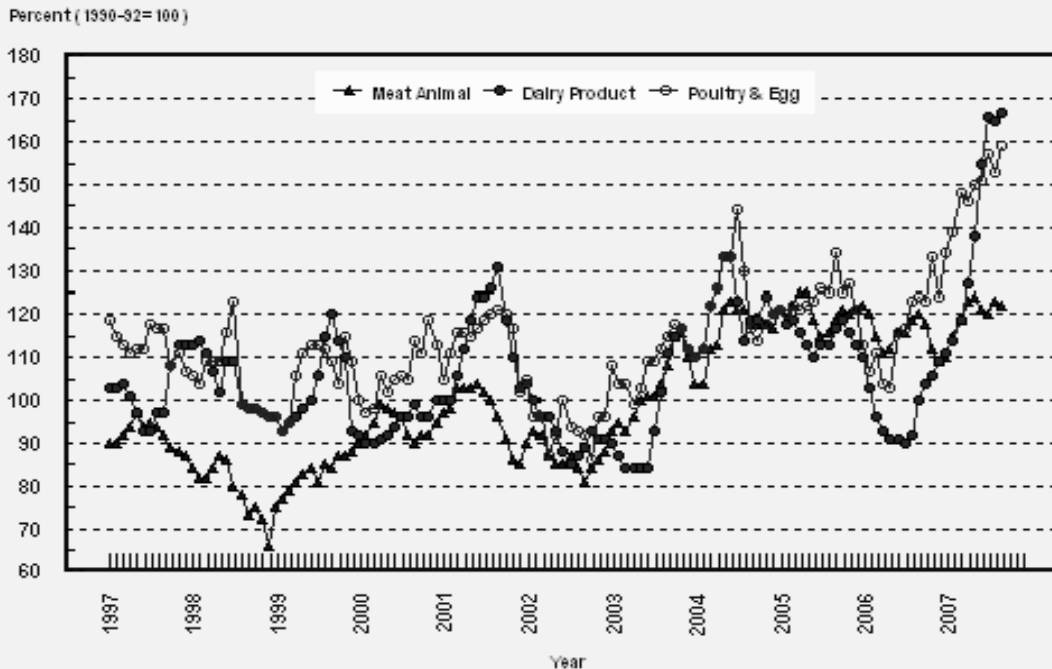
Percent (1990-92=100)



Prices Received, Fruit and Vegetable Indexes, US



Prices Received, Livestock Product Indexes, US



**Prices Received, United States,
September 2007, with Comparisons**

Commodity	Unit	Average 1990-92	Entire Month		Preliminary
			Sep 2006	Aug 2007	Sep 2007
		<i>Dollars</i>	<i>Dollars</i>	<i>Dollars</i>	<i>Dollars</i>
Field Crops					
Barley, All	Bu	2.12	2.53	3.54	4.27
Feed	Bu	1.90	2.31	3.59	4.99
Malting	Bu	2.43	2.73	3.52	3.82
Beans, Dry Edible	Cwt	19.10	18.80	25.80	24.90
Canola ¹	Cwt			14.60	15.90
Chickpeas, All	Cwt		25.40	29.40	31.30
Large	Cwt		25.50	29.60	(⁵)
Small	Cwt		(⁵)	(⁵)	(⁵)
Corn	Bu	2.30	2.20	3.26	3.19
Cotton, Upland	Lb	0.606	0.473	0.449	0.522
Cottonseed ²	Ton	96.00	99.10		137.00
Flaxseed	Bu	4.27	5.46	8.64	9.10
Hay, All, Baled ³	Ton	76.30	108.00	132.00	132.00
Alfalfa ³	Ton	77.20	111.00	137.00	135.00
Other ³	Ton	60.00	99.50	118.00	124.00
Lentils	Cwt		12.10	15.50	18.10
Oats	Bu	1.22	1.70	2.25	2.30
Peanuts, In-Shell	Lb	0.304	0.173	0.180	0.193
Peas, Dry Edible	Cwt		5.75	8.91	9.95
Austrian Winter	Cwt		6.84	9.85	11.30
Potatoes	Cwt	5.82	6.12	6.87	6.47
Rice, Rough	Cwt	7.07	9.03	10.00	10.30
Grain Sorghum	Cwt	3.75	4.29	5.93	6.02
Soybeans	Bu	5.61	5.23	7.72	8.34
Sunflower, All	Cwt	9.50	11.70	18.30	18.10
Wheat, All	Bu	2.96	4.06	5.64	7.16
Winter	Bu	2.93	4.03	5.66	7.39
Durum	Bu	2.86	4.07	6.88	7.94
Other Spring	Bu	3.11	4.11	5.53	6.62
Hard Red Winter	Bu		4.43	5.65	
Soft Red Winter	Bu		3.22	5.65	
Hard Red Spring	Bu		4.16	5.53	
White	Bu	3.24	3.78	5.70	
Fruit					
Citrus, Equiv on-tree					
Grapefruit	Box	5.77	11.38	7.53	8.49
Lemons	Box	10.10	27.80	31.67	32.37
Oranges	Box	5.79	17.96	8.81	7.93
Tangelos ⁶	Box	5.82			
Tangerines	Box	15.11	12.62	(⁶)	(⁶)
Noncitrus, Fresh					
Apples ⁴	Lb	0.212	0.420	0.326	0.379
Grapes ⁴	Ton	506.00	910.00	750.00	870.00
Peaches ⁴	Ton	432.00	589.00	371.00	502.00
Pears ⁴	Ton	370.00	283.00	357.00	340.00
Strawberries	Cwt	56.00	77.60	79.30	63.90

¹ Monthly prices began in July 2007.

² Marketing year August - February.

³ Mid-month price.

⁴ Equivalent packinghouse-door returns for CA, MI, and NY (apples only), and WA (apples, peaches, and pears). Prices as sold for other states.

⁵ Price not published to avoid disclosure of individual firms.

⁶ Insufficient sales to establish a price.

**Prices Received, United States,
September 2007, with Comparisons**

Commodity	Unit	Average 1990-92	Entire Month		Preliminary
			Sep 2006	Aug 2007	Sep 2007
		<i>Dollars</i>	<i>Dollars</i>	<i>Dollars</i>	<i>Dollars</i>
Vegetables, Fresh ¹					
Asparagus	Cwt	79.80	122.00		
Broccoli	Cwt	22.50	39.40	38.20	32.50
Cantaloups ²	Cwt		10.30	13.40	13.50
Carrots	Cwt	13.20	19.30	17.30	16.50
Cauliflower	Cwt	26.80	39.40	27.90	31.50
Celery	Cwt	11.60	27.70	9.78	13.60
Corn, Sweet	Cwt	15.70	25.90	20.40	20.90
Cucumbers ²	Cwt		22.50	24.30	29.70
Lettuce	Cwt	11.90	16.30	23.10	31.20
Onions	Cwt	12.80	12.30	9.16	6.66
Snap Beans ²	Cwt		76.10	92.70	84.20
Tomatoes	Cwt	32.30	79.80	28.90	32.80
Livestock					
Calves	Cwt	94.30	136.00	129.00	128.00
Cattle, All Beef	Cwt	72.90	90.00	91.70	93.30
Cows ³	Cwt	49.60	47.10	51.60	50.30
Steers & Heifers	Cwt	77.10	95.20	95.80	98.10
Milk Cows ⁴	Head	1,130.00			
Hogs, All	Cwt	47.70	48.90	51.60	47.00
Barrows & Gilts	Cwt	48.40	49.50	52.30	47.40
Sows	Cwt	39.50	35.50	36.20	37.10
Lambs	Cwt	56.20	98.30	98.60	
Sheep	Cwt	23.40	32.20	27.80	
Dairy and Poultry					
Milk, All ^{5 6}	Cwt	13.06	13.00	21.60	21.80
Fluid Grade ⁶	Cwt	13.10	13.00	21.60	21.80
Mfg Grade ⁶	Cwt	11.80	12.70	20.00	20.20
Broilers, Live ⁷	Lb	0.317	0.420	0.500	0.500
Eggs, All ⁸	Doz	0.643	0.534	0.863	1.070
Market ^{8 9}	Doz	0.546	0.354	0.716	0.960
Turkeys, live ^{7 8}	Lb	0.380	0.533	0.572	0.604
Adjusted for Seasonal Variation ¹⁰					
Eggs, All	Doz	0.545	0.568	0.965	1.130
Milk, All ⁵	Cwt	9.71	12.80	22.20	21.50

¹ Beginning January 2006, point of first sale. F.O.B. shipping point for prior years.

² Monthly estimates began January 1995.

³ Beef cows and cull dairy cows sold for slaughter.

⁴ Animals sold for dairy herd replacement only. Prices available for Jan, Apr, Jul, and Oct.

⁵ Before deductions for hauling. Includes quality, quantity, and other premiums. Excludes hauling subsidies.

⁶ September 2007 Fat test percent: all milk, 3.64; fluid milk, 3.64; mfg grade, 3.88.

⁷ Equivalent live weight returns to producers.

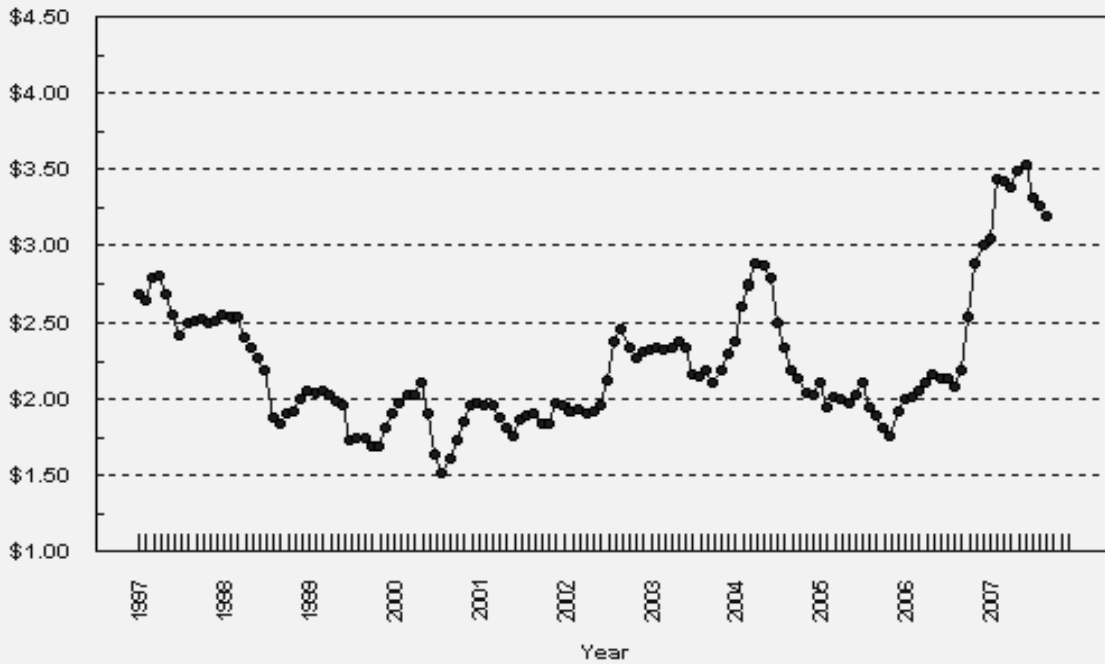
⁸ Mid-month price.

⁹ Also referred to as table eggs.

¹⁰ Seasonal adjustment factors are: All Eggs September 2006, 94; August 2007, 89; and September 2007, 94. All Milk September 2006, 101; August 2007, 97; and September 2007, 101.

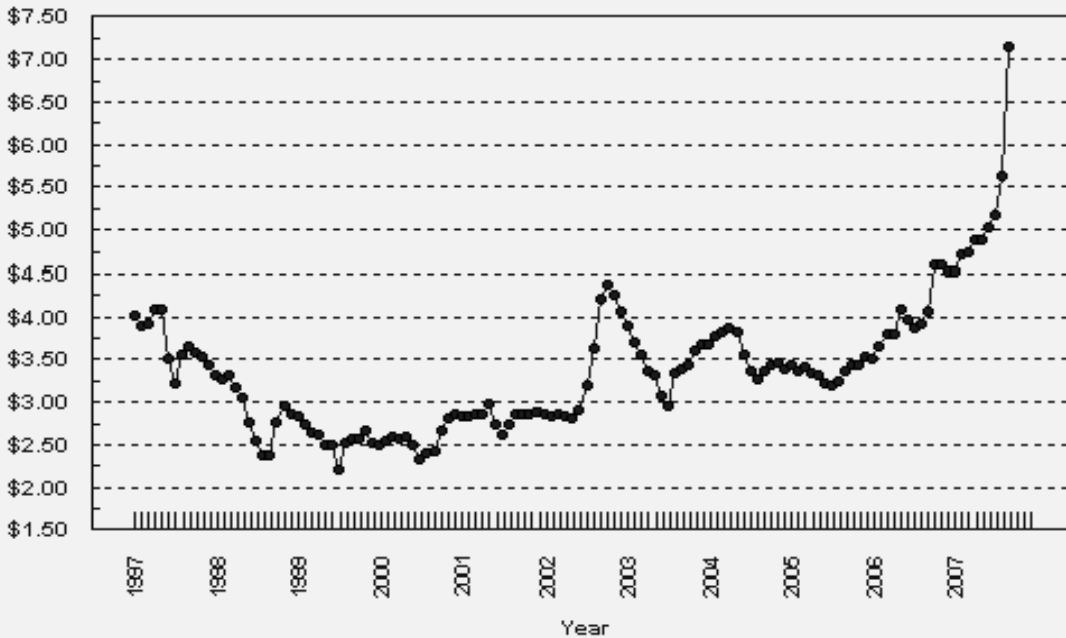
Prices Received, Corn, US

Dollars per Bu



Prices Received, Wheat, US

Dollars per Bu



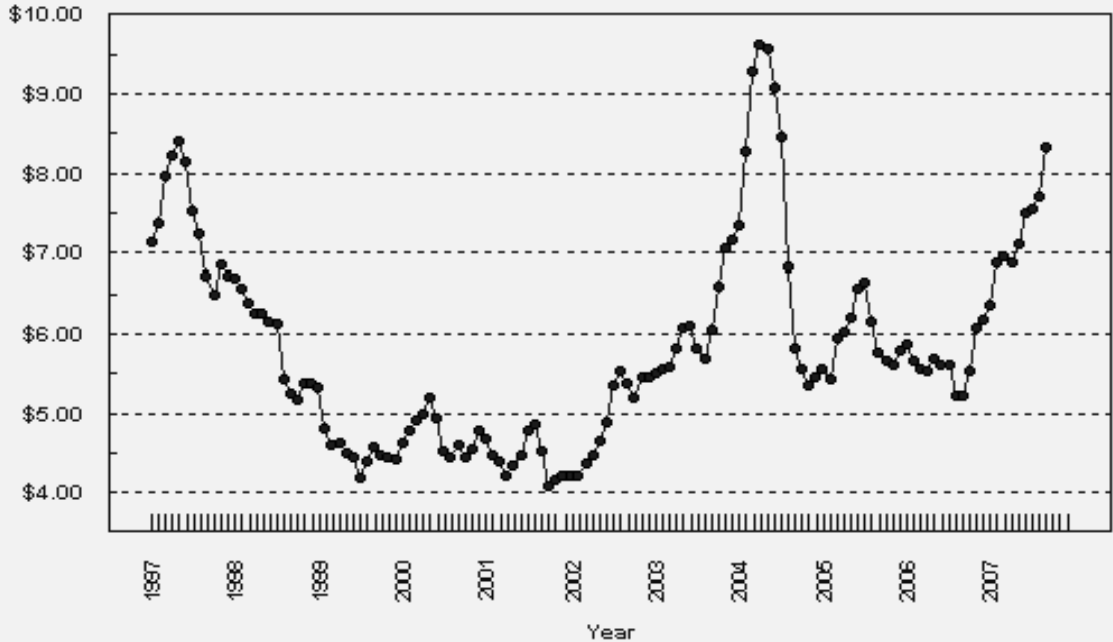
Prices Received, Cotton, US

Dollars per Lb



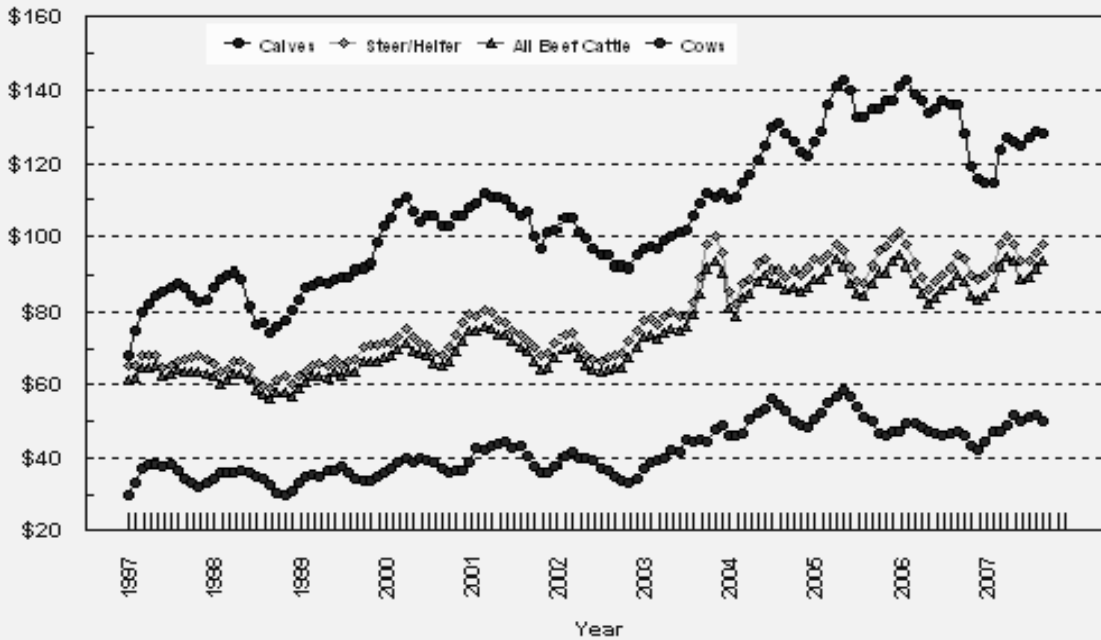
Prices Received, Soybeans, US

Dollars per Bu



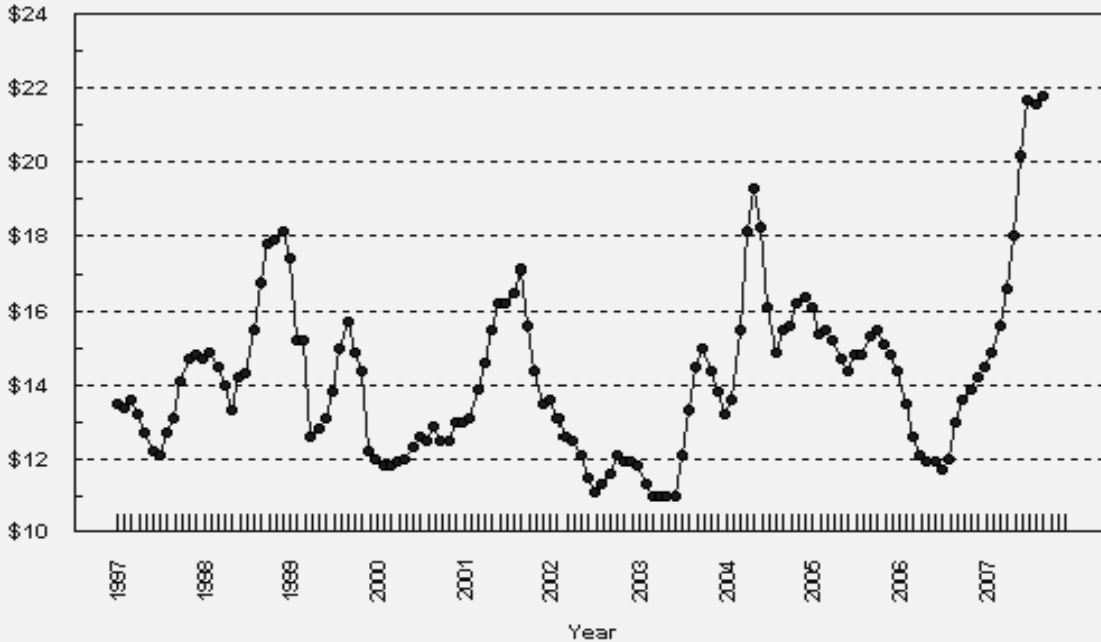
Prices Received, Cattle, US

Dollars per Cwt

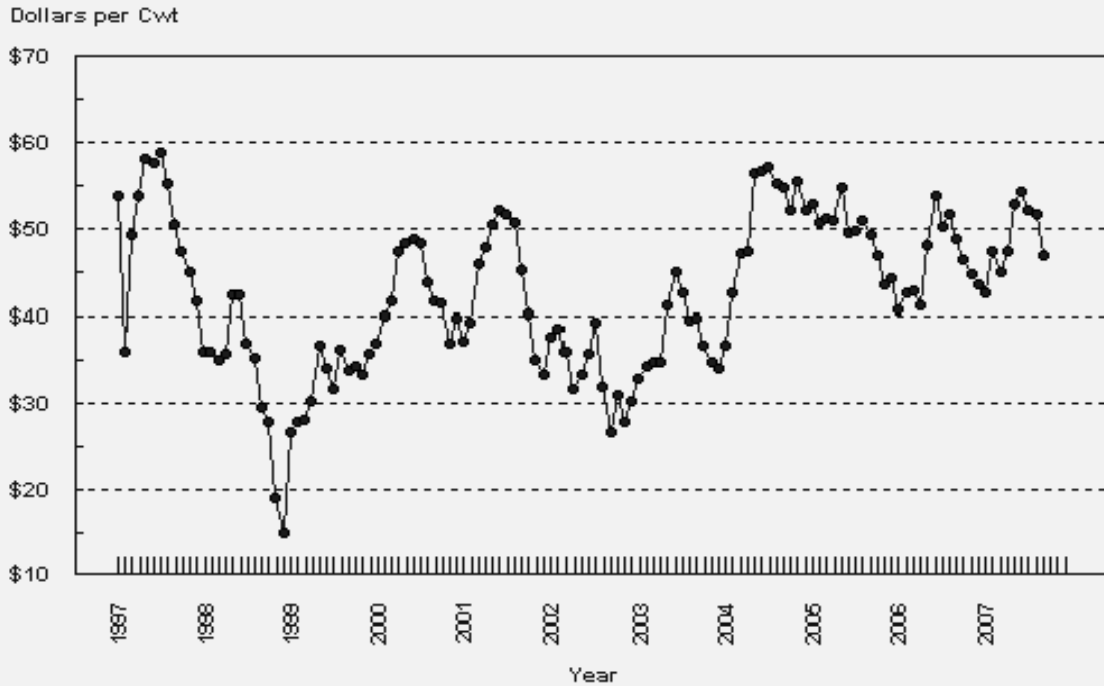


Prices Received, Milk, US

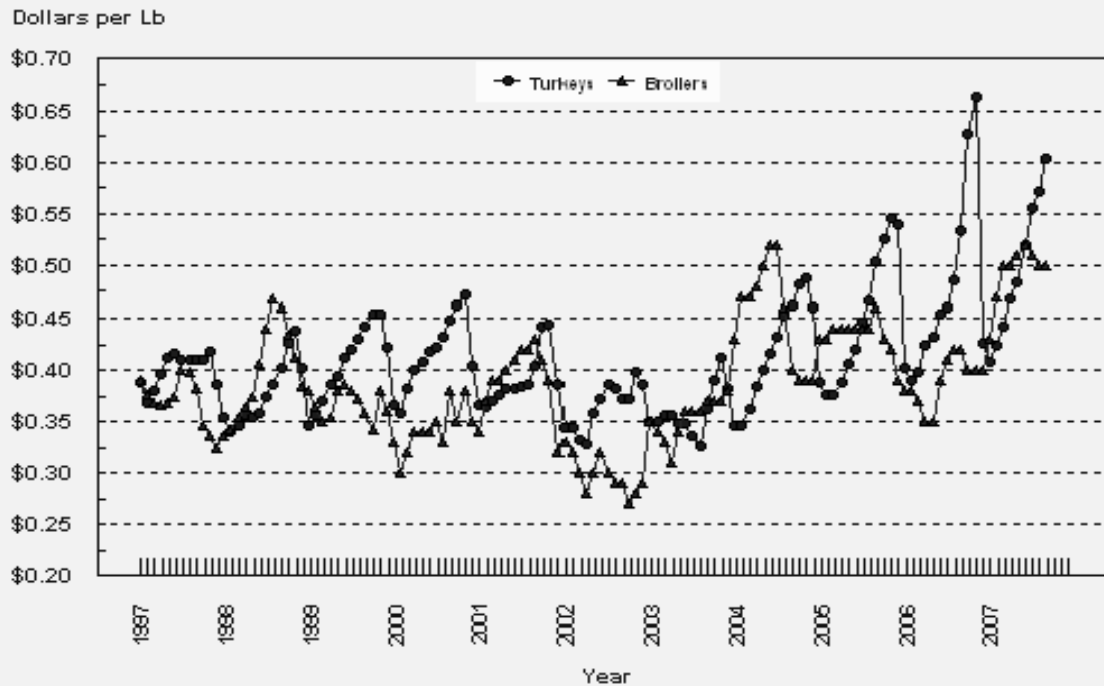
Dollars per Cwt



Prices Received, Hogs, US



Prices Received, Turkeys & Broilers, US



Wheat: Prices Received, by State, August and September 2007

State	All Wheat		Winter Wheat		Durum Wheat		Oth Spring Wheat	
	Aug ¹	Sep ²	Aug ¹	Sep ²	Aug ¹	Sep ²	Aug ¹	Sep ²
	<i>Dollars per Bushel</i>	<i>Dollars per Bushel</i>	<i>Dollars per Bushel</i>	<i>Dollars per Bushel</i>	<i>Dollars per Bushel</i>	<i>Dollars per Bushel</i>	<i>Dollars per Bushel</i>	<i>Dollars per Bushel</i>
AR	5.40	7.00	5.40	7.00				
CA	5.53	6.52	5.15	6.35	6.96	(³)		
CO	5.56	7.34	5.56	7.34			(³)	(⁴)
ID	5.30	7.31	5.27	7.65	(³)	(³)	5.37	6.15
IL	5.34	6.50	5.34	6.50				
IN	6.16	7.23	6.16	7.23				
KS	5.88	7.46	5.88	7.46				
MI	5.43	6.60	5.43	6.60				
MN	5.73	6.69	5.42	6.45			5.74	6.70
MO	5.67	7.30	5.67	7.30				
MT	5.59	6.59	5.52	6.61	6.64	8.29	5.61	6.33
NE	4.96	7.10	4.96	7.10				
ND	5.53	6.66	5.10	6.55	6.93	8.10	5.46	6.55
OH	5.95	7.29	5.95	7.29				
OK	6.01	7.60	6.01	7.60				
OR	6.58	8.26	6.54	8.25			6.75	8.30
SD	5.35	6.50	5.40	6.80			5.34	6.40
TX	5.84	7.51	5.84	7.51				
WA	5.68	8.12	5.66	8.14			5.76	8.06
US	5.64	7.16	5.66	7.39	6.88	7.94	5.53	6.62

¹ Entire month.

² Mid-month.

³ Price not published to avoid disclosure of individual firms.

⁴ Insufficient sales to establish a price.

Prices Received for Selected Agricultural Commodities, by Month, United States, 2006 and 2007 ¹

Month	All Wheat		Corn		Soybeans		Beef Cattle ²		All Hogs	
	2006	2007	2006	2007	2006	2007	2006	2007	2006	2007
	<i>Dollars per Bushel</i>	<i>Dollars per Bushel</i>	<i>Dollars per Bushel</i>	<i>Dollars per Bushel</i>	<i>Dollars per Bushel</i>	<i>Dollars per Bushel</i>	<i>Dollars per Cwt</i>	<i>Dollars per Cwt</i>	<i>Dollars per Cwt</i>	<i>Dollars per Cwt</i>
Jan	3.52	4.53	2.00	3.05	5.87	6.37	95.00	84.30	40.70	42.70
Feb	3.66	4.71	2.02	3.44	5.67	6.87	92.40	86.60	42.60	47.30
Mar	3.79	4.75	2.06	3.43	5.57	6.95	87.90	92.00	42.80	45.00
Apr	3.81	4.89	2.11	3.39	5.52	6.88	84.80	94.30	41.30	47.30
May	4.09	4.88	2.17	3.49	5.68	7.12	82.20	93.20	48.20	53.00
Jun	3.98	5.03	2.14	3.53	5.62	7.51	84.00	89.10	53.80	54.30
Jul	3.88	5.17	2.14	3.32	5.61	7.56	85.80	89.20	50.20	52.20
Aug	3.91	5.64	2.09	3.26	5.23	7.72	87.20	91.70	51.60	51.60
Sep	4.06	7.16	2.20	3.19	5.23	8.34	90.00	93.30	48.90	47.00
Oct	4.59		2.55		5.52		88.20		46.50	
Nov	4.59		2.88		6.08		84.40		44.90	
Dec	4.52		3.01		6.18		83.10		43.50	

¹ Current month prices are mid-month; prices for previous months are for the entire month.

² Cows, steers and heifers.

Grains: Prices Received, by State, August and September 2007

Month	All Barley ¹		Corn		Oats		Soybeans		Grain Sorghum	
	Aug ²	Sep ³	Aug ²	Sep ³	Aug ²	Sep ³	Aug ²	Sep ³	Aug ²	Sep ³
	<i>Dollars per Bushel</i>	<i>Dollars per Bushel</i>	<i>Dollars per Bushel</i>	<i>Dollars per Bushel</i>	<i>Dollars per Bushel</i>	<i>Dollars per Bushel</i>	<i>Dollars per Bushel</i>	<i>Dollars per Bushel</i>	<i>Dollars per Cwt</i>	<i>Dollars per Cwt</i>
AL							7.48	8.40	5.99	6.00
AR										
CA	(⁴)	(⁵)			(⁵)	(⁵)				
CO	3.39	(⁴)	3.54	3.42						
ID	3.73	4.05								
IL			3.16	3.15	(⁵)	(⁵)	7.96	8.50	5.84	5.95
IN			3.27	3.16			8.03	8.75		
IA			3.26	3.10	2.43	2.50	7.66	8.30		
KS			3.26	3.31	2.95	2.80	7.88	8.49	5.60	5.69
KY			3.35	3.25			8.01	8.60		
LA							7.41	8.00		
MI			3.30	3.30	2.48	2.60	7.57	8.00		
MN	3.28	3.85	3.09	3.09	2.17	2.25	7.53	8.00		
MS							7.34	7.90		
MO			3.29	3.30			7.88	8.50	5.94	6.10
MT	3.59	3.75			2.18	(⁵)				
NE			3.26	3.15	2.82	2.80	7.33	7.90	5.58	5.70
NY					2.00	2.00				
NC			3.58	3.57			8.54	8.90		
ND	3.31	3.97	3.16	3.00	2.23	2.10	7.07	7.90		
OH			3.33	3.30	1.88	(⁵)	7.84	8.75		
OK									5.63	5.88
OR	3.85	5.90			(⁵)	(⁵)				
PA			3.98	3.96	2.13	2.26				
SD	(⁴)	(⁴)	3.23	3.11	2.32	2.37	7.30	7.80		
TN			3.27	3.15			7.58	8.65		
TX			3.75	3.49	(⁵)	2.79			5.96	6.21
UT	3.39	3.63								
WA	4.11	5.82								
WI			3.24	3.20	2.22	2.25	7.47	8.20		
WY	(⁴)	(⁴)								
US	3.54	4.27	3.26	3.19	2.25	2.30	7.72	8.34	5.93	6.02

¹ The Three-State (MN, ND and SD) Feed Barley price is discontinued.

² Entire month.

³ Mid-month.

⁴ Price not published to avoid disclosure of individual firms.

⁵ Insufficient sales to establish a price.

Malting and Feed Barley: Prices Received Selected State, August and September 2007

State	Malting Barley		Feed Barley	
	Aug ¹	Sep ²	Aug ¹	Sep ²
	<i>Dollars per Bushel</i>	<i>Dollars per Bushel</i>	<i>Dollars per Bushel</i>	<i>Dollars per Bushel</i>
ID	3.70	3.75	3.82	5.35
MN	3.43	4.00	2.86	3.41
MT	3.65	3.70	3.22	4.02
ND	3.38	4.00	3.14	3.90
SD	(³)	(³)	(⁴)	(⁴)
WY	(³)	(³)	2.96	4.02

¹ Entire month.

² Mid-month.

³ Price not published to avoid disclosure of individual firms.

⁴ Insufficient sales to establish a price.

Field Crops: Prices Received, by State, August and September 2007

State	Dry Edible Beans		All Sunflower		Canola		Flaxseed		Peanuts ⁴	
	Aug ¹	Sep ²	Aug ¹	Sep ²	Aug ¹	Sep ²	Aug ¹	Sep ²	Aug ¹	Sep ³
	<i>Dollars per Cwt</i>	<i>Dollars per Cwt</i>	<i>Dollars per Cwt</i>	<i>Dollars per Cwt</i>	<i>Dollars per Cwt</i>	<i>Dollars per Cwt</i>	<i>Dollars per Bushel</i>	<i>Dollars per Bushel</i>	<i>Dollars per Pound</i>	<i>Dollars per Pound</i>
AL									0.176	(⁵)
CA	36.30	36.80								
CO	27.90	28.00								
FL									(⁵)	(⁵)
GA									0.178	0.180
ID	25.30	25.50								
KS			16.70	16.20						
MI	26.90	25.00								
MN	25.90	23.00	15.60	17.50	14.30	(⁶)				
NE	27.00	29.00								
NC									0.202	0.240
ND	22.60	23.20	18.10	18.90	14.60	15.90	8.64	9.10		
SD			19.50	(⁵)			(⁶)	(⁶)		
TX									0.193	(⁵)
VA									(⁵)	(⁵)
US	25.80	24.90	18.30	18.10	14.60	15.90	8.64	9.10	0.180	0.193

¹ Entire month.

² Mid-month.

³ Based on sales through first half of month.

⁴ In-Shell.

⁵ Price not published to avoid disclosure of individual firms.

⁶ Insufficient sales to establish a price.

Field Crops and Apples: Prices Received, by State, August and September 2007

State	Cotton, Upland		September				Apples Fresh Use ^{1 4}
	Aug ¹	Sep ²	Cotton- seed ⁵	Hay, Baled ³			
				All	Alfalfa	Other	
<i>Dollars per Pound</i>	<i>Dollars per Pound</i>	<i>Dollars per Ton</i>	<i>Dollars per Ton</i>	<i>Dollars per Ton</i>	<i>Dollars per Ton</i>	<i>Dol/Lb</i>	
AL	0.442	(⁷)	125.00				
AZ	(⁶)	(⁷)	(⁷)	142.00	143.00	130.00	
AR	0.445	0.532	(⁷)				
CA	(⁶)	(⁷)	(⁷)	150.00	156.00	128.00	0.422
CO				139.00	140.00	135.00	
GA	0.443	0.500	(⁷)				
ID				136.00	137.00	114.00	
IL				121.00	130.00	97.00	
IA				107.00	111.00	81.00	
KS				110.00	115.00	77.00	
KY				106.00	145.00	85.00	
LA	0.443	0.520	(⁷)				
MI				118.00	120.00	95.00	0.340
MN				108.00	113.00	82.00	
MS	0.442	(⁷)	95.00				
MO				108.00	150.00	90.00	
MT				75.00	76.00	71.00	
NE				89.00	91.00	77.00	
NV				144.00	144.00	144.00	
NM				157.00	160.00	131.00	
NY				116.00	130.00	95.00	0.362
NC	0.442	(⁷)	(⁷)				
ND				55.00	58.00	40.00	
OH				147.00	182.00	107.00	0.475
OK				110.00	149.00	80.00	
OR				150.00	145.00	166.00	
PA				170.00	191.00	167.00	0.403
SD				88.00	93.00	76.00	
TN	0.456	0.525	(⁷)				
TX	0.494	0.509	139.00	144.00	165.00	135.00	
UT				130.00	132.00	114.00	
VA							0.350
WA				141.00	140.00	145.00	0.377
WI				69.00	75.00	50.00	
WY				113.00	114.00	109.00	
US	0.449	0.522	137.00	132.00	135.00	124.00	0.379

¹ Entire month.

² Based on sales during the first half of the month.

³ Mid-month.

⁴ Equivalent packinghouse-door returns for CA, MI, NY, and WA. Price at point of first sale for other States.

⁵ Marketing year August - February.

⁶ Price not published to avoid disclosure of individual firms.

⁷ Insufficient sales to establish a price.

**Upland Cotton and Rice: Prices Received and Marketings,
United States, September 2007, with Comparisons**

Item	Unit	Jul 2007 ¹	Aug 2007 ¹	Sep 2007 ²
Cotton, Upland Average Price Marketings ³	Dollars per Pound	0.465	0.449	0.522
	1,000 Bales	1,277	1,762	NA
Rice Average Price Marketings ⁴	Dollars per Cwt	9.84	10.00	10.30
	1,000 Cwt	10,475	9,520	NA

¹ Entire month.

² Based on purchases for the first half of the month.

³ Marketings based on a survey of cotton buyers in the major producing States - AL, AZ, AR, CA, GA, LA, MS, NC, TN, and TX.

⁴ Purchases by private firms and rice (rough equivalent) shipped by cooperatives.

**Citrus Fruit: Prices and Equivalent Returns, by Utilization,
by State and United States, September 2007**

Commodity, State and Type	F.O.B. Packed Fresh	Equivalent Returns ¹					
		Packinghouse-door			On-tree		
		All	Fresh	Process	All	Fresh	Process
	<i>Dollars per Box</i>	<i>Dollars per Box</i>	<i>Dollars per Box</i>	<i>Dollars per Box</i>	<i>Dollars per Box</i>	<i>Dollars per Box</i>	<i>Dollars per Box</i>
Grapefruit CA	21.90	11.41	12.66	-0.30	8.49	9.74	-3.22
Lemons CA	61.90	37.90	51.63	-0.44	32.37	46.10	-5.97
Oranges CA Valencia	23.40	10.47	15.37	1.64	7.93	12.83	-0.90

¹ Net lbs. per box: Grapefruit - AZ & CA-67, FL-85, TX-80; Lemons - 76; Oranges - AZ & CA-75, FL-90, TX-85; Tangelos - 90; Tangerines - AZ & CA-75, FL-95.

Potatoes: Prices Received, by State, August and September 2007 ¹

State	Aug	Sep	State	Aug	Sep
	<i>Dollars per Cwt</i>	<i>Dollars per Cwt</i>		<i>Dollars per Cwt</i>	<i>Dollars per Cwt</i>
AL	(⁴)		NC		
AZ			ND - All ²		6.25
CA - All ²	12.10	12.00	- Fresh ³		NA
- Winter			- Processing		NA
- Spring			OR	6.10	5.90
- Summer	12.10	12.00	TX	13.90	11.00
- Fall			VA		
CO - All ²	6.40	8.30	WA - All ²	5.75	5.65
- Fresh ³	8.30	NA	- Processing	5.10	NA
FL			WI - All ²	7.65	6.90
ID - All ²	5.95	5.90	- Fresh ³	9.25	NA
- Fresh ³	6.20	NA	- Processing	5.70	NA
- Processing	5.80	NA	US - All ²	6.87	6.47
ME			- Fresh ³	10.47	NA
MI	6.70	6.60	- Processing	5.48	NA
MN	9.90	8.40			
NY	14.20	13.90			

¹ Missing data indicates no potatoes being marketed.

² Average price of potatoes sold for all uses, including table stocks, processing, seed, and livestock feed.

³ Fresh market prices only, includes table stock prices.

⁴ Price not published to avoid disclosure of individual firms.

Cattle: Prices Received, by State, August and September 2007

State	Cows ¹		Steers & Heifers		Beef Cattle ⁴		Calves	
	Aug ²	Sep ³	Aug ²	Sep ³	Aug ²	Sep ³	Aug ²	Sep ³
	<i>Dollars per Cwt</i>	<i>Dollars per Cwt</i>	<i>Dollars per Cwt</i>	<i>Dollars per Cwt</i>	<i>Dollars per Cwt</i>	<i>Dollars per Cwt</i>	<i>Dollars per Cwt</i>	<i>Dollars per Cwt</i>
AZ	53.00	52.00	95.00	98.00	85.30	87.40	124.00	123.00
AR	50.00	47.50	108.00	107.00	90.60	89.20	119.00	117.00
CA	47.00	47.10	94.20	96.40	75.30	75.70	110.00	111.00
CO	54.00	53.00	103.00	107.00	102.00	106.00	122.00	120.00
FL	50.90	48.40	101.00	99.80	83.10	77.60	117.00	117.00
GA	51.00	49.00	100.00	99.00	67.70	66.00	118.00	117.00
ID	48.50	49.50	94.30	97.40	86.10	86.90	115.00	117.00
IL	54.00	51.00	92.00	94.00	91.20	93.10	119.00	118.00
IA	55.00	53.00	93.20	93.50	92.40	92.70	131.00	135.00
KS	54.30	52.20	96.20	98.40	95.80	97.50	132.00	132.00
KY	48.00	47.00	105.00	103.00	91.30	89.60	115.00	112.00
LA	50.60	47.00	102.00	100.00	69.60	66.60	118.00	115.00
MI	52.00	52.00	88.00	89.00	77.20	77.90	120.00	120.00
MN	54.30	53.50	89.60	91.00	85.40	86.50	132.00	131.00
MO	49.80	49.10	114.00	114.00	99.90	99.70	122.00	122.00
MT	53.60	49.20	102.00	108.00	94.70	100.00	122.00	133.00
NE	53.70	51.90	94.40	96.60	93.20	95.30	137.00	126.00
NM	54.00	52.00	101.00	107.00	82.70	85.60	126.00	127.00
ND	51.00	53.00	104.00	110.00	85.50	94.00	126.00	123.00
OH	49.00	48.00	92.20	90.00	87.90	85.80	109.00	105.00
OK	52.50	51.30	110.00	112.00	105.00	107.00	128.00	127.00
OR	51.00	48.20	93.00	96.00	80.40	81.70	104.00	100.00
PA	51.70	50.40	87.90	88.90	78.50	78.90	119.00	121.00
SD	51.70	52.10	103.00	107.00	94.80	100.00	125.00	135.00
TN	48.00	47.00	104.00	103.00	81.60	80.60	111.00	112.00
TX	51.80	48.90	96.80	100.00	93.70	95.90	130.00	128.00
VA	46.50	45.50	100.00	101.00	83.40	88.80	107.00	113.00
WI	52.00	51.00	87.90	89.50	67.10	67.20	163.00	163.00
WY	53.60	52.50	107.00	112.00	101.00	105.00	133.00	128.00
US	51.60	50.30	95.80	98.10	91.70	93.30	129.00	128.00

¹ Beef cows and cull dairy cows sold for slaughter.

² Entire month.

³ Mid-month.

⁴ "Cows" and "steers and heifers" combined.

Hogs: Prices Received, by State, August and September 2007

State	Sows		Barrows and Gilts		All Hogs	
	Aug ¹	Sep ²	Aug ¹	Sep ²	Aug ¹	Sep ²
	<i>Dollars per Cwt</i>	<i>Dollars per Cwt</i>	<i>Dollars per Cwt</i>	<i>Dollars per Cwt</i>	<i>Dollars per Cwt</i>	<i>Dollars per Cwt</i>
AR	36.80	37.90	50.00	45.00	48.70	44.30
IL	34.50	35.00	51.00	47.00	49.70	46.00
IN	40.60	41.70	52.10	47.80	51.10	47.30
IA	36.50	37.50	53.60	48.90	53.30	48.80
KS	35.70	36.60	47.30	41.70	45.80	41.00
MN	37.90	39.00	53.80	48.50	53.70	48.40
MO	35.40	36.50	46.90	41.10	45.60	40.70
NE	37.30	38.10	53.70	47.90	53.40	47.70
NC	36.20	37.40	53.80	48.60	53.60	48.50
OH	36.30	37.30	50.30	46.60	49.30	45.90
OK	35.10	35.80	45.40	40.70	43.90	40.00
PA	35.80	36.90	46.10	42.20	44.60	41.40
SD	35.10	35.90	53.20	47.40	50.70	46.00
US	36.20	37.10	52.30	47.40	51.60	47.00

¹ Entire month.

² Mid-month.

Sheep and Poultry: Prices Received, by State, August and September 2007

State	August		September
	Sheep ¹	Lambs ¹	Market Eggs ^{2 3}
	<i>Dollars per Cwt</i>	<i>Dollars per Cwt</i>	<i>Dollars per Dozen</i>
AL			0.960
AR			0.970
CA	27.50	91.00	0.990
CO	32.00	96.00	
CT			0.940
FL			0.970
GA			0.950
ID	22.00	99.00	
IN			0.960
IA	30.50	102.00	0.918
KY	30.00	92.00	
ME			1.140
MI			0.960
MN	29.50	104.00	1.010
MS			0.960
MO	32.70	87.70	0.900
MT	20.00	101.00	
NE	31.70	97.30	
NY			1.000
NC			0.974
ND	30.00	102.00	
OH	28.90	88.20	1.000
OR	32.00	96.00	
PA	41.40	112.00	0.930
SC			0.950
SD	22.80	107.00	
TX	31.90	90.50	0.960
VA	38.00	103.00	
WA			1.030
WV	28.00	92.00	
WY	27.60	107.00	
US	27.80	98.60	0.960

¹ Entire month.

² Mid-month.

³ Also referred to as table eggs.

Milk and Milk Cows: Prices Received, by State, August and September 2007

State	August ¹						September		
	Fluid Grade Milk ²		Manufacturing Grade Milk ³		All Milk ⁴		All Milk ^{4 5}		Milk Cows ⁶
	Price	Fat Test	Price	Fat Test	Price	Fat Test	Price	Fat Test	
	<i>Dol/Cwt</i>	<i>Percent</i>	<i>Dol/Cwt</i>	<i>Percent</i>	<i>Dol/Cwt</i>	<i>Percent</i>	<i>Dol/Cwt</i>	<i>Percent</i>	<i>Dol/Head</i>
AZ	22.30	3.53			22.30	3.53	22.50	3.59	
CA	20.60	3.56	21.00	3.99	20.61	3.57	20.50	3.64	
CO	22.00	3.42			22.00	3.42	22.30	3.50	
FL	25.70	3.62			25.70	3.62	26.00	3.68	
ID	19.60	3.51			19.60	3.51	20.30	3.58	
IL	22.30	3.60	20.00	3.55	22.30	3.60	22.50	3.65	
IN	22.80	3.60	19.50	3.53	22.80	3.60	23.00	3.65	
IA	21.50	3.58	20.00	3.63	21.50	3.58	21.90	3.62	
KS	22.20	3.55			22.20	3.55	22.30	3.65	
KY	24.00	3.58			24.00	3.58	24.20	3.65	
MI	22.80	3.52			22.80	3.52	23.00	3.59	
MN	20.80	3.58	19.30	3.54	20.80	3.58	21.00	3.68	
MO	23.10	3.57	18.80	3.61	22.90	3.57	23.00	3.63	
NM	21.50	3.52			21.50	3.52	22.00	3.55	
NY	22.70	3.58			22.70	3.58	22.80	3.67	
OH	22.70	3.60	17.70	3.65	22.50	3.60	23.50	3.65	
OR	19.20	3.62			19.20	3.62	19.30	3.70	
PA	23.80	3.60			23.80	3.60	24.00	3.70	
TX	22.60	3.63			22.60	3.63	23.00	3.69	
VT	23.40	3.64			23.40	3.64	23.50	3.72	
VA	24.90	3.55			24.90	3.55	25.30	3.60	
WA	22.10	3.62			22.10	3.62	22.30	3.70	
WI	20.90	3.55	19.40	3.63	20.90	3.55	21.20	3.62	
US	21.60	3.56	20.00	3.79	21.60	3.57	21.80	3.64	

¹ Entire month.

² Including milk diverted to manufacturing.

³ ID, MI, and PA are no longer published due to insufficient manufacturing grade milk volume.

⁴ Before deductions for hauling. Includes quality, quantity, and other premiums. Excludes hauling subsidies.

⁵ Preliminary.

⁶ Animals sold for dairy herd replacement only. Prices published January, April, July and October.

**Parity Price Equivalent for Manufacturing Grade Milk ¹: United States,
August and September 2007, with Comparisons**

Item	Unit	Sep 2006	Aug 2007	Sep 2007
Parity Equivalent	Dollars per Cwt	35.30	37.30	37.40
Average Price F.O.B ²	Dollars per Cwt	12.70	20.00	20.20
Average Fat Test of Milk ²	Percent	3.91	3.79	3.88

¹ The parity price equivalent during 2007 is 92.1 percent of the parity price of all milk sold to plants, compared with 91.5 percent in 2006. For additional details, see January 2007 issue of "Agricultural Prices".

² Beginning in August 2007, Parity Price for Manufacturing Grade Milk is computed using the same methodology as Parity Prices for other commodities.

³ Preliminary for September 2007.

**Parity Prices for Farm Products and Average Prices Received as
Percent of Parity Prices, United States, with Comparisons ¹**

Commodity and Unit	Adjusted Base Price	Parity Price			Price as Percent of Parity		
		Sep 2006	Aug 2007	Sep 2007	Sep 2006	Aug 2007	Sep 2007
	<i>Dollars</i>	<i>Dollars</i>	<i>Dollars</i>	<i>Dollars</i>	<i>Percent</i>	<i>Percent</i>	<i>Percent</i>
Basic Commodities							
All Wheat, Bu	0.519	10.50	11.00	11.00	39	51	65
Rice, Cwt	1.40	28.40	29.50	29.60	32	34	35
Corn, Bu	0.384	7.80	8.10	8.13	28	40	39
Cotton, Lb							
American Upland	0.098	2.29	2.07	2.07	21	22	25
Extra Long Staple	0.142	2.70	3.00	3.00			
Peanuts, Lb	0.031	0.686	0.654	0.656	25	28	29
Designated Nonbasic							
All Milk, Sold to Plants, Per Cwt ²	1.92	38.60	40.50	40.60	33	55	53
Honey, Extracted, Lb ³	0.123	2.28	2.60	2.60			
Wool and Mohair							
Wool, Lb	0.082	1.63	1.73	1.74			
Mohair, Lb	0.359	6.64	7.57	7.60			
Other Nonbasic							
Barley, Bu	0.362	7.29	7.64	7.66	35	46	56
Canola, Cwt	1.370	26.90	28.90	29.00		51	55
Cottonseed, Ton	14.80	302.00	312.00	313.00	33	40	44
Dry Edible Beans, Cwt	2.72	55.10	57.40	57.60	34	45	43
Flaxseed, Bu	0.841	15.60	17.70	17.80	35	49	51
Mustard Seed, Cwt	1.92	38.40	40.50	40.60			
Oats, Bu	0.215	4.33	4.54	4.55	39	50	51
Potatoes, Cwt	0.818	16.10	17.30	17.30	38	40	37
Rapeseed, Cwt	1.59	31.60	33.50	33.60			
Rye, Bu	0.414	6.96	8.74	8.76			
Safflower, Cwt	1.84	36.50	38.80	38.90			
Sorghum Grain, Cwt	0.656	12.10	13.80	13.90	35	43	43
Soybeans, Bu	0.850	17.20	17.90	18.00	30	43	46
All Sunflower, Cwt	1.66	32.80	35.00	35.10	36	52	52
Sweetpotatoes, Cwt	2.31	45.70	48.70	48.90			
Apples, Fresh, Lb ⁴	0.030	0.529	0.635	0.637	79	51	59
Citrus (equiv on-tree), Box							
Grapefruit	0.622	10.60	13.10	13.20	107	57	64
Lemons	1.14	22.80	24.10	24.10	122	131	134
Oranges	0.598	11.60	12.60	12.70	155	70	62
Tangerines	1.35	27.20	28.50	28.60			
Temples (FL)	0.372	7.72	7.85	7.87			
Beef Cattle, Cwt	10.15	193.00	214.00	215.00	47	43	43
Calves, Cwt	14.60	269.00	308.00	309.00	51	42	41
Hogs, Cwt	5.83	117.00	123.00	123.00	42	42	38
Lambs, Cwt	11.90	233.00	251.00	252.00	42	39	
Sheep, Cwt	4.90	95.80	103.00	104.00	34	27	
Eggs, Doz ²	0.088	1.78	1.86	1.86	32	52	61
Turkeys, Live, Lb	0.056	1.100	1.180	1.180	48	48	51

¹ Parity prices are computed under the provisions of Title III, Subtitle a, Section 301 (a) of the Agricultural Adjustment Act of 1938 as amended by the Agricultural Acts of 1948, 1949, and 1956. See January "Agricultural Prices" for details on adjusted base price and parity price computations.

² Seasonally adjusted price as percentage of parity price.

³ Wholesale extracted. Adjusted base price derived from state annual averages prices weighted by production. For 1982 through 1985 the national averages are the support prices.

⁴ Equivalent packinghouse-door returns for CA, NY (apples only), OR (except peaches), and WA. Price at point of first sale for other states.

Parity Prices for Farm Products, September 2007, United States ¹

Other Nonbasic Commodities	Adjusted Base Price	Parity Price	Other Nonbasic Commodities	Adjusted Base Price	Parity Price
	<i>Dollars</i>	<i>Dollars</i>		<i>Dollars</i>	<i>Dollars</i>
Field Crops and Misc Commodities			Nectarines		
Hops, Lb	0.250	5.29	Fresh, CA, Ton ⁵	60.80	1,290.00
Spearmint Oil, Lb	1.40	29.60	Noncitrus Fruit, Continued		
Tobacco, Lb			Olives, CA		
Flue-Cured, 11-14	0.240	5.08	canning, Ton ³	94.20	1,990.00
VA Fire-Cured, 21	0.254	5.37	Papayas (HI)	0.050	1.060
KY-TN Fire-Cured, 22-23	0.319	6.75	Peaches		
Fire-Cured, 21-23	0.319	6.75	Fresh, Ton ²	83.80	1,770.00
Burley, 31	0.259	5.48	Dried, CA, Ton	77.00	1,630.00
Maryland, 32	0.196	4.15	Processing ³		
Dark Air-Cured, 35-36	0.282	5.97	Excl Dried		
Sun-Cured, 37	0.235	4.97	Clingstone, CA, Ton	34.10	722.00
Dark Air-Cured, 35-37	0.284	6.01	Pears, Ton		
PA Seedleaf, 41	0.200	4.23	Fresh ²	53.50	1,130.00
Cigar Filler & Binder, 42-44, 54-55	0.222	4.70	Dried, CA ⁴	178.00	3,770.00
Puerto Rican Filler, 46	0.155	3.28	Plums, CA, Ton		
Cigar Binder, 51-52	0.749	15.80	Fresh, Equiv on-Tree	63.40	1,340.00
Type 61	3.30	69.80	Prunes, Dried, CA, Ton ⁴	139.00	2,940.00
Noncitrus Fruit			Prunes and Plums, Excl CA, Ton		
Apples, Ton ⁴			Fresh ⁷	62.80	1,330.00
Processing	16.70	353.00	Processing ⁴		
Apricots, Ton			Excl Dried	28.30	599.00
Fresh ⁵	104.00	2,200.00	Tree Nuts ⁸		
Dried, CA	264.00	5,590.00	Almonds, Lb	0.214	4.53
Avocados, Ton ⁵	231.00	4,890.00	Hazelnuts, Ton	154.00	3,260.00
Cherries			Pistachio, Lb	0.180	3.81
Sweet, Ton	197.00	4,170.00	Walnuts, Ton	174.00	3,680.00
Tart, Lb	0.034	0.719	Vegetables, Cwt ⁹		
Cranberry, Bbl ³	5.02	106.00	Fresh		
Dates, CA, Ton ⁵	188.00	3,980.00	Carrots ⁶	2.38	50.40
Grapes, Ton			Cauliflower ⁶	4.45	94.20
Raisin Variety	121.00	2,560.00	Celery ⁶	2.00	42.30
Other Dried	71.50	1,510.00	Honeydew Melons	2.67	56.50
Kiwifruit, Ton	90.50	1,910.00	Lettuce	2.35	49.70
			Onions ⁶	1.63	34.50
			Tomatoes	4.77	101.00

¹ Parity prices are computed under the provisions of Title III, Subtitle a, Section 301 (a) of the Agricultural Adjustment Act of 1938 as amended by the Agricultural Acts of 1948, 1949, and 1956. See January "Agricultural Prices" for details on adjusted base price and parity price computations.

² Equivalent packinghouse-door returns for CA, NY (apples only), OR (except peaches), and WA. Price at point of first sale for other states.

³ Equivalent returns for bulk fruit at first delivery point.

⁴ Equivalent returns at processing plant door.

⁵ Equivalent returns at packinghouse door.

⁶ Includes some processing.

⁷ Based on "as sold" prices for fresh fruit in all states.

⁸ Prices in-shell basis except almonds which are shelled basis.

⁹ F.O.B. shipping point prices.

Marketing Year for Specified Commodities

Corn for Grain: September 1 to August 31 for U.S.; July 1 to June 30 for Texas; August 1 to July 31 for Alabama, Arkansas, Florida, Georgia, Louisiana, Mississippi, North Carolina, Oklahoma, South Carolina, and Tennessee; September 1 to August 31 for Arizona, California, Delaware, Illinois, Indiana, Iowa, Kansas, Kentucky, Maryland, Missouri, Nebraska, New Mexico, Ohio, Pennsylvania, South Dakota, Virginia, and West Virginia; October 1 to September 30 for all other States.

Potatoes: The marketing year extends over a 21 month period beginning in November preceding the specified crop year and extending into July the following year. November (previous year)-May for winter crop potatoes; April-August for spring crop potatoes; June-December for summer crop potatoes; July-July (following year) for fall potatoes.

Sorghum for Grain: September 1 to August 31 for U.S.; June 1 to May 31 for Texas; August 1 to July 31 for Alabama, Arkansas, Georgia, Louisiana, Mississippi, Oklahoma, South Carolina, and Tennessee; September 1 to August 31 for all other States.

Soybeans: September 1 to August 31 for U.S.; July 1 to June 30 for Texas; August 1 to July 31 for Louisiana and Mississippi; September 1 to August 31 for all other States.

Austrian Winter Peas: July 1 to June 30 for U.S.; Idaho, Montana, and Oregon.

Dry Edible Peas: July 1 to June 30 for U.S.; Idaho, Montana, North Dakota, Oregon, and Washington.

Lentils: July 1 to June 30 for U.S.; Idaho, Montana, North Dakota, and Washington.

Oranges:

Arizona Early, Mids, and Navels	November 1 to March 31	75 pounds
Arizona Valencias	February 1 to June 30	75 pounds
California Navels	November 1 to June 15	75 pounds
California Valencias	March 15 to December 20	75 pounds
Florida Early and Midseason	October 1 to April 1	90 pounds
Florida Valencias	January 1 to July 31	90 pounds
Texas Early, Mids, and Navels	September 25 to February 15	85 pounds
Texas Valencias	January 15 to May 15	85 pounds

Grapefruit:

Arizona	November 1 to June 30	67 pounds
California	November 1 to October 31	67 pounds
Florida	September 10 to July 1	85 pounds
Texas	October 1 to May 30	80 pounds

Lemons:

Arizona	September 1 to March 31	76 pounds
California	August 1 to July 31	76 pounds

Tangelos:

Florida	October 15 to March 1	90 pounds
---------	-----------------------	-----------

Tangerines:

Arizona	November 1 to April 30	75 pounds
California	November 1 to May 15	75 pounds
Florida	October 1 to May 1	95 pounds

**Dry Edible Peas: Marketing Year Average Price,
by State and United States, 2004-2006 ¹**

State	Marketing Year Average Price		
	2004	2005	2006
	<i>Dollars</i>	<i>Dollars</i>	<i>Dollars</i>
ID	6.50	5.74	7.77
MT	5.91	4.80	6.64
ND	5.39	4.52	6.33
OR	6.80	5.08	7.50
WA	6.80	5.54	7.42
US	5.94	4.78	6.56

¹ Excludes both wrinkled seed peas and Austrian winter peas.

**Austrian Winter Peas: Marketing Year Average Price,
by State and United States, 2004-2006**

State	Marketing Year Average Price		
	2004	2005	2006
	<i>Dollars</i>	<i>Dollars</i>	<i>Dollars</i>
ID	9.10	7.18	6.89
MT	10.10	8.67	7.93
OR	9.80	5.53	7.44
US	9.19	6.82	7.14

**Lentils: Marketing Year Average Price,
by State and United States, 2004-2006**

State	Marketing Year Average Price		
	2004	2005	2006
	<i>Dollars</i>	<i>Dollars</i>	<i>Dollars</i>
ID	13.80	12.10	15.50
MT	15.10	9.54	10.80
ND	14.30	10.20	9.72
WA	14.90	11.70	16.60
US	14.40	11.00	12.40

**Lentils: Monthly Prices Received, Monthly Farm
Marketing Percentages, and Marketing Year Average Prices,
United States, 2004-2005 through 2006-2007¹**

Month	Prices Received			Farm Marketing Percentages ²		
	2004-2005	2005-2006	2006-2007	2004-2005	2005-2006	2006-2007
	<i>Dollars per Cwt</i>	<i>Dollars per Cwt</i>	<i>Dollars per Cwt</i>	<i>Percent</i>	<i>Percent</i>	<i>Percent</i>
Jul	17.30	11.90	7.82	0.5	5.7	3.3
Aug	13.80	11.80	9.30	7.3	8.9	6.9
Sep	15.50	11.50	12.10	16.8	17.1	10.8
Oct	15.30	11.80	12.00	12.1	12.1	10.3
Nov	15.60	11.30	13.30	9.7	12.4	13.5
Dec	15.10	12.20	11.60	6.5	5.0	11.3
Jan ³	15.00	11.10	14.10	6.7	8.6	10.8
Feb	13.80	11.00	13.50	10.9	5.2	6.8
Mar	13.50	10.50	12.10	13.1	6.8	8.9
Apr	13.10	9.51	13.20	7.9	6.6	11.6
May	12.30	9.68	13.20	4.7	4.0	4.5
Jun	12.10	7.81	12.70	3.8	7.6	1.3
MYA	14.40	11.00	12.40	100.0	100.0	100.0

¹ Marketing year average (MYA) prices are weighted average prices for the U.S. marketing year of July - June.

² Monthly farm marketings, based on a sample survey, as percent of total used for calculating MYA prices.

³ Second year.

**Dry Edible Peas: Monthly Prices Received, Monthly Farm
Marketing Percentages, and Marketing Year Average Prices,
United States, 2004-2005 through 2006-2007¹**

Month	Prices Received			Farm Marketing Percentages ²		
	2004-2005	2005-2006	2006-2007	2004-2005	2005-2006	2006-2007
	<i>Dollars per Cwt</i>	<i>Dollars per Cwt</i>	<i>Dollars per Cwt</i>	<i>Percent</i>	<i>Percent</i>	<i>Percent</i>
Jul	8.19	5.16	5.03	2.5	7.6	6.2
Aug	6.11	4.25	4.52	17.1	21.1	23.4
Sep	5.90	4.66	5.75	13.3	10.4	9.0
Oct	6.20	4.51	6.02	11.8	5.9	9.3
Nov	6.05	4.80	6.55	8.7	6.0	7.4
Dec	5.68	4.99	7.02	7.3	6.1	8.6
Jan ³	5.93	4.74	7.23	9.3	9.0	11.1
Feb	6.03	5.02	7.62	8.8	8.7	6.0
Mar	5.64	5.05	8.33	4.8	7.3	7.2
Apr	5.59	4.88	9.52	5.9	7.0	5.3
May	5.18	5.25	10.10	5.3	3.9	2.7
Jun	5.39	5.30	10.10	5.2	7.0	3.8
MYA	5.94	4.78	6.56	100.0	100.0	100.0

¹ Marketing year average (MYA) prices are weighted average prices for the U.S. marketing year of July - June.

² Monthly farm marketings, based on a sample survey, as percent of total used for calculating MYA prices.

³ Second year.

Austrian Winter Peas: Monthly Prices Received, Monthly Farm Marketing Percentages, and Marketing Year Average Prices, United States, 2004-2005 through 2006-2007¹

Month	Prices Received			Farm Marketing Percentages ²		
	2004-2005	2005-2006	2006-2007	2004-2005	2005-2006	2006-2007
	<i>Dollars per Cwt</i>	<i>Dollars per Cwt</i>	<i>Dollars per Cwt</i>	<i>Percent</i>	<i>Percent</i>	<i>Percent</i>
Jul	10.90	7.57	(⁴)	1.8	3.6	(⁴)
Aug	9.08	6.75	6.91	6.7	15.8	28.0
Sep	9.44	6.22	6.84	41.9	21.3	19.0
Oct	8.97	6.83	6.41	27.4	22.9	7.8
Nov	9.81	7.33	6.89	4.2	13.9	10.6
Dec	8.29	6.99	7.04	5.3	5.0	8.7
Jan ³	8.44	6.93	6.95	6.6	5.8	2.9
Feb	9.49	7.76	7.95	3.4	2.0	4.7
Mar	7.63	6.54	8.22	0.5	2.8	7.4
Apr	8.70	6.44	6.91	0.5	6.4	6.2
May	9.83	(⁴)	9.75	1.1	(⁴)	1.3
Jun	9.40	6.23	9.42	0.6	0.5	3.4
MYA	9.19	6.82	7.14	100.0	100.0	100.0

¹ Marketing year average (MYA) prices are weighted average prices for the U.S. marketing year of July - June.

² Monthly farm marketings, based on a sample survey, as percent of total used for calculating MYA prices.

³ Second year.

⁴ Insufficient sales to establish a price.

Corn: Monthly Prices Received, Monthly Farm Marketing Percentages, and Marketing Year Average Prices, United States, 2004-2005 through 2006-2007¹

Month	Prices Received			Farm Marketing Percentages ²		
	2004-2005	2005-2006	2006-2007	2004-2005	2005-2006	2006-2007
	<i>Dollars per Bushel</i>	<i>Dollars per Bushel</i>	<i>Dollars per Bushel</i>	<i>Percent</i>	<i>Percent</i>	<i>Percent</i>
Sep	2.20	1.90	2.20	7.8	7.4	6.9
Oct	2.14	1.82	2.55	11.7	11.3	14.7
Nov	2.05	1.77	2.88	11.7	8.9	14.6
Dec	2.04	1.92	3.01	8.6	7.9	8.0
Jan ³	2.12	2.00	3.05	12.4	15.4	15.3
Feb	1.95	2.02	3.44	8.4	8.2	5.9
Mar	2.02	2.06	3.43	8.2	6.8	6.6
Apr	2.00	2.11	3.39	5.2	6.4	4.4
May	1.98	2.17	3.49	5.9	6.4	4.7
Jun	2.03	2.14	3.53	7.2	6.9	6.6
Jul	2.11	2.14	3.32	7.0	7.5	6.2
Aug	1.95	2.09	3.26	5.9	6.9	6.1
MYA	2.06	2.00	3.04	100.0	100.0	100.0

¹ Marketing year average (MYA) prices are weighted average prices for the U.S. marketing year of September - August.

² Monthly farm marketings, based on a sample survey, as percent of total used for calculating MYA prices.

³ Second year.

**Grain Sorghum: Marketing Year Average Prices Received, by States
and United States, 2005 and 2006**

State	2005	2006	State	2005	2006
	<i>Dollars per Cwt</i>	<i>Dollars per Cwt</i>		<i>Dollars per Cwt</i>	<i>Dollars per Cwt</i>
AL	3.50	5.00	NE	3.05	5.54
AZ	5.00	7.80	NM	3.75	5.65
AR	3.28	4.32	NC	4.00	6.72
CA	4.50	6.55	OK	3.32	5.87
CO	3.02	5.67	PA	4.75	5.86
GA	3.07	4.90	SC	3.40	5.20
IL	3.41	5.35	SD	3.36	5.88
KS	3.03	6.01	TN	3.48	5.20
KY	3.35	6.00	TX	3.89	5.24
LA	3.80	4.90			
MS	3.89	4.73	US	3.33	5.88
MO	3.42	5.68			

**Grain Sorghum: Farm Marketings, Percent of Sales, by Month
and State, 2005-2006 and 2006-2007¹**

State and Marketing Year	Jun	Jul	Aug	Sep	Oct	Nov	Dec	Jan	Feb	Mar	Apr	May	Jun	Jul	Aug
	<i>Pct</i>	<i>Pct</i>	<i>Pct</i>	<i>Pct</i>	<i>Pct</i>	<i>Pct</i>	<i>Pct</i>	<i>Pct</i>	<i>Pct</i>	<i>Pct</i>	<i>Pct</i>	<i>Pct</i>	<i>Pct</i>	<i>Pct</i>	<i>Pct</i>
AR 2006-2007 2005-2006			49 14	30 61	6 5	1 5	1 1	12 12	1		1			1	
IL 2006-2007 2005-2006				12 8	27 32	32 18	2 4	14 24	3 3	3 4	2 1	1 4	1	1 2	2
KS 2006-2007 2005-2006				3 4	12 9	36 23	13 21	18 16	7 8	2 5	2 6	3 4	2 2	1 1	1 1
MO 2006-2007 2005-2006				10 24	10 20	15 15	23 5	22 10	2 6	7 3	4 3	1 6	1 2	1 3	4 3
NE 2006-2007 2005-2006				4 3	23 19	35 16	10 14	10 14	5 11	3 4	1 6	2 5	2 3	1 3	4 2
OK 2006-2007 2005-2006			2 5	3 11	16 8	26 22	23 22	10 15	15 3	2 3	1 4	1 5		1 1	
TX 2006-2007 2005-2006	2 10	29 15	17 14	6 12	14 7	5 9	4 7	6 8	15 5	1 5		1 4			
US 2006-2007 2005-2006				4.1 7.1	12.2 9.4	23.3 19.1	9.6 15.9	12.2 13.8	7.7 7.0	1.5 5.1	1.0 5.2	1.6 4.3	5.1 1.7	7.8 6.7	13.9 4.7

¹ Monthly farm marketings, based on a sample survey, as a percent of total used for calculating marketing year average prices.

**Prices Received: Grain Sorghum, by State and Month,
for Marketing Years, 2005-2006 and 2006-2007**

State	Jun	Jul	Aug	Sep	Oct	Nov	Dec	Jan ¹
2006-2007								
	<i>Dollars per Cwt</i>	<i>Dollars per Cwt</i>	<i>Dollars per Cwt</i>	<i>Dollars per Cwt</i>	<i>Dollars per Cwt</i>	<i>Dollars per Cwt</i>	<i>Dollars per Cwt</i>	<i>Dollars per Cwt</i>
AR	(²)	(³)	(²)	(²)	(²)	(²)	(²)	(²)
IL	4.73	4.58	(³)	(²)	(²)	5.73	6.07	6.14
KS	3.70	3.97	3.88	3.93	5.44	5.86	6.13	6.39
MO	4.16	3.86	3.99	4.12	4.69	5.86	5.86	6.12
NE	3.74	3.95	3.75	3.94	4.91	5.62	5.86	5.98
OK	3.67	3.98	3.75	4.30	5.28	5.83	6.04	6.17
TX	4.73	4.74	4.53	4.87	4.90	5.81	6.10	6.10
US	3.95	4.61	4.35	4.29	5.16	5.83	6.09	6.31
2005-2006								
AR	(²)	(²)	(²)	(²)	2.86	(²)	(²)	(²)
IL	3.58	(²)	4.05	3.13	2.97	3.23	(²)	3.76
KS	3.34	3.44	3.12	2.97	2.90	2.73	2.84	3.02
MO	3.77	3.64	3.59	3.19	(²)	3.04	3.56	3.61
NE	3.26	3.60	3.17	2.85	2.76	2.68	2.86	2.97
OK	3.15	3.31	3.42	3.41	3.24	3.12	3.23	3.28
TX	4.39	4.22	3.85	3.83	3.38	3.27	3.26	3.64
US	3.77	3.94	3.69	3.41	2.99	2.82	2.91	3.16

See footnote(s) at end of table.

--continued

**Prices Received: Grain Sorghum, by State and Month,
for Marketing Years, 2005-2006 and 2006-2007 (continued)**

State	Feb	Mar	Apr	May	Jun	Jul	Aug
2006-2007							
	<i>Dollars per Cwt</i>	<i>Dollars per Cwt</i>	<i>Dollars per Cwt</i>	<i>Dollars per Cwt</i>	<i>Dollars per Cwt</i>	<i>Dollars per Cwt</i>	<i>Dollars per Cwt</i>
AR	(³)	(²)	(³)	(³)	(³)	(²)	5.99
IL	7.14	7.16	(²)	6.50	6.82	(²)	5.84
KS	7.22	6.41	5.95	6.57	6.33	6.07	5.60
MO	6.39	6.45	5.85	5.86	6.78	6.03	5.94
NE	6.53	6.40	5.98	6.06	6.37	5.84	5.58
OK	6.51	6.82	6.04	6.05	6.14	(²)	5.63
TX	6.79	7.09	6.29	6.20	6.03	5.47	5.96
US	6.95	6.48	5.97	6.49	6.11	5.52	5.93
2005-2006							
AR	(²)	(²)	(²)	(³)	(²)	(³)	(²)
IL	4.06	4.03	4.01	4.47	4.73	4.58	(³)
KS	3.23	3.29	3.48	3.76	3.70	3.97	3.88
MO	3.92	4.28	3.83	4.19	4.16	3.86	3.99
NE	3.20	3.29	3.59	3.84	3.74	3.95	3.75
OK	3.56	(²)	3.59	3.88	3.67	3.98	3.75
TX	4.06	4.14	4.46	4.54	4.73	4.74	4.53
US	3.40	3.54	3.70	4.01	3.95	4.61	4.35

¹ Second year.

² Price not published to avoid disclosure of individual firms.

³ Insufficient sales to establish a price.

**Soybeans: Marketing Year Average Prices Received, by States
and United States, 2005 and 2006**

State	2005	2006	State	2005	2006
	<i>Dollars per Bu</i>	<i>Dollars per Bu</i>		<i>Dollars per Bu</i>	<i>Dollars per Bu</i>
AL	5.95	6.85	NJ	5.65	6.25
AR	5.92	6.41	NY	5.20	6.19
DE	5.65	6.60	NC	5.64	6.35
FL	5.40	6.25	ND	5.37	5.98
GA	5.50	6.85	OH	5.74	6.46
IL	5.76	6.68	OK	5.45	6.35
IN	5.78	6.53	PA	5.60	6.25
IA	5.54	6.58	SC	5.55	6.80
KS	5.45	6.37	SD	5.39	6.03
KY	5.86	6.68	TN	5.73	6.30
LA	5.97	5.94	TX	5.45	5.40
MD	5.53	6.40	VA	5.53	6.54
MI	5.73	6.27	WV	5.49	6.40
MN	5.53	6.26	WI	5.64	6.04
MS	5.92	6.23			
MO	5.67	6.47	US	5.66	6.43
NE	5.55	6.05			

**Prices Received: Soybeans, by State and Month,
for Marketing Years, 2005-2006 and 2006-2007 ¹**

State	Aug	Sep	Oct	Nov	Dec	Jan ²	Feb
	2006-2007						
	<i>Dollars per Bushel</i>	<i>Dollars per Bushel</i>	<i>Dollars per Bushel</i>	<i>Dollars per Bushel</i>	<i>Dollars per Bushel</i>	<i>Dollars per Bushel</i>	<i>Dollars per Bushel</i>
AR	5.74	5.63	5.95	6.47	6.43	6.54	7.22
IL	5.37	5.24	5.65	6.11	6.21	6.56	7.05
IN	5.53	5.40	5.63	6.13	6.38	6.44	6.95
IA	4.84	5.11	5.48	6.07	6.27	6.21	6.81
KS	5.34	5.17	5.46	6.06	6.10	6.27	6.84
KY	5.50	5.37	5.85	6.41	6.49	6.50	7.07
LA	5.68	5.50	5.87	6.21	6.34	6.29	6.92
MI	5.40	5.32	5.47	5.98	6.09	6.28	6.81
MN	5.09	5.06	5.29	5.95	5.94	6.11	6.69
MS	5.68	5.74	6.05	6.26	6.40	6.36	7.22
MO	5.29	5.18	5.50	6.15	6.18	6.40	6.90
NE	5.05	5.14	5.38	5.90	5.98	6.21	6.66
NC	5.69	5.30	5.72	6.08	6.12	6.45	7.05
ND	5.01	5.27	5.34	5.61	5.74	5.90	6.40
OH	5.43	5.37	5.67	6.22	6.35	6.39	6.99
SD	5.04	4.95	5.13	5.79	5.98	6.12	6.57
TN	5.61	5.59	5.86	6.48	6.60	6.55	7.10
WI	5.38	4.98	5.44	5.79	5.83	6.10	6.76
US	5.23	5.23	5.52	6.08	6.18	6.37	6.87
	2005-2006						
AR	6.08	6.02	5.94	5.82	6.00	6.00	5.75
IL	6.20	5.76	5.68	5.78	5.89	5.94	5.80
IN	6.29	5.76	5.60	5.58	6.01	6.06	5.83
IA	6.07	5.80	5.70	5.59	5.67	5.72	5.53
KS	6.17	5.51	5.49	5.37	5.50	5.52	5.40
KY	6.32	5.60	5.70	5.74	5.98	6.11	5.96
LA	6.17	6.02	5.94	5.90	5.93	6.03	5.92
MI	6.27	5.81	5.78	5.62	5.67	5.93	5.81
MN	6.11	5.75	5.70	5.56	5.65	5.68	5.45
MS	6.08	5.92	5.74	5.84	6.01	6.08	5.85
MO	6.24	5.64	5.57	5.63	5.93	5.91	5.76
NE	6.04	5.63	5.72	5.57	5.55	5.61	5.42
NC	6.26	6.08	5.78	5.53	5.58	5.76	5.73
ND	5.82	5.51	5.58	5.38	5.39	5.47	5.39
OH	6.41	5.91	5.70	5.55	5.91	5.92	5.83
SD	5.87	5.51	5.45	5.40	5.51	5.50	5.36
TN	6.23	5.72	5.52	5.77	6.03	6.01	5.81
WI	6.25	5.80	5.70	5.46	5.78	5.83	5.41
US	6.15	5.77	5.67	5.62	5.78	5.87	5.67

See footnote(s) at end of table.

--continued

**Prices Received: Soybeans, by State and Month,
for Marketing Years, 2005-2006 and 2006-2007 (continued) ¹**

State	Mar	Apr	May	Jun	Jul	Aug
2006-2007						
	<i>Dollars per Bushel</i>	<i>Dollars per Bushel</i>	<i>Dollars per Bushel</i>	<i>Dollars per Bushel</i>	<i>Dollars per Bushel</i>	<i>Dollars per Bushel</i>
AR	7.28	7.09	7.49	7.82	7.89	7.48
IL	7.11	7.00	7.27	7.64	7.76	7.96
IN	7.17	7.13	7.36	7.83	7.97	8.03
IA	6.89	6.85	7.10	7.55	7.48	7.66
KS	6.93	6.86	7.06	7.58	7.90	7.88
KY	6.98	7.11	7.38	7.71	7.98	8.01
LA	⁽³⁾	7.12	6.82	7.37	7.25	7.41
MI	6.67	6.79	7.10	7.45	7.56	7.57
MN	6.75	6.76	6.97	7.20	7.21	7.53
MS	7.26	7.08	7.06	7.61	⁽³⁾	7.34
MO	7.00	6.94	7.16	7.55	7.80	7.88
NE	6.75	6.63	6.94	7.18	7.38	7.33
NC	7.24	7.21	7.54	8.22	8.20	8.54
ND	6.54	6.57	6.73	7.08	7.18	7.07
OH	6.99	7.06	7.34	7.72	7.88	7.84
SD	6.57	6.69	6.81	7.09	7.10	7.30
TN	7.11	7.10	7.20	7.67	8.01	7.58
WI	6.65	6.64	7.07	7.35	7.35	7.47
US	6.95	6.88	7.12	7.51	7.56	7.72
2005-2006						
AR	5.76	5.72	5.88	5.78	5.69	5.74
IL	5.68	5.64	5.83	5.78	5.74	5.37
IN	5.76	5.69	5.83	5.80	5.85	5.53
IA	5.48	5.47	5.60	5.54	5.52	4.84
KS	5.39	5.23	5.44	5.48	5.49	5.34
KY	5.79	5.65	5.88	5.83	5.79	5.50
LA	5.74	5.54	5.85	5.78	5.81	5.68
MI	5.62	5.64	5.72	5.70	5.65	5.40
MN	5.39	5.34	5.51	5.46	5.43	5.09
MS	5.67	5.71	5.82	5.57	5.76	5.68
MO	5.61	5.57	5.72	5.65	5.67	5.29
NE	5.36	5.34	5.45	5.42	5.38	5.05
NC	5.47	5.69	5.87	5.84	5.78	5.69
ND	5.21	5.08	5.22	5.19	5.19	5.01
OH	5.71	5.63	5.78	5.76	5.82	5.43
SD	5.29	5.26	5.43	5.38	5.38	5.04
TN	5.81	5.63	5.80	5.79	5.68	5.61
WI	5.36	5.42	5.56	5.75	5.45	5.38
US	5.57	5.52	5.68	5.62	5.61	5.23

¹ Marketing year: September 1 to August 31 for U.S.; August 1 to July 31 for Louisiana and Mississippi; September 1 to August 31 for all other monthly marketing estimating States.

² Second year.

³ Price not published to avoid disclosure of individual firms.

⁴ Insufficient sales to establish a price.

**Soybeans: Farm Marketings, Percent of Sales, by Month
and State, 2005-2006 and 2006-2007¹**

State and Marketing Year	Aug	Sep	Oct	Nov	Dec	Jan	Feb	Mar	Apr	May	Jun	Jul	Aug
	<i>Percent</i>	<i>Percent</i>	<i>Percent</i>	<i>Percent</i>	<i>Percent</i>	<i>Percent</i>	<i>Percent</i>	<i>Percent</i>	<i>Percent</i>	<i>Percent</i>	<i>Percent</i>	<i>Percent</i>	<i>Percent</i>
AR 2006-2007		6	28	17	15	20	5	1	1	2	1	1	3
2005-2006		10	19	10	21	16	7	5	3	2	2	2	3
IL 2006-2007		4	14	5	10	24	7	7	6	5	6	6	6
2005-2006		5	14	5	10	20	6	7	5	7	7	6	8
IN 2006-2007		6	22	13	6	16	7	8	4	4	5	4	5
2005-2006		8	22	4	6	16	7	6	6	6	3	8	8
IA 2006-2007		6	16	8	8	9	5	6	7	7	11	9	8
2005-2006		8	16	4	8	11	5	6	7	9	6	10	10
KS 2006-2007		4	22	16	8	12	8	6	4	6	5	4	5
2005-2006		4	22	12	16	11	6	8	4	6	4	3	4
KY 2006-2007		3	10	14	10	26	11	6	5	4	5	4	2
2005-2006		3	18	11	6	26	11	7	5	5	2	2	4
LA 2006-2007	27	17	19	8	6	18	2	1		1		1	
2005-2006	10	26	25	5	10	12	4	3	2	1	1	1	
MI 2006-2007		4	24	19	7	11	7	5	4	5	7	4	3
2005-2006		13	28	5	7	9	5	6	6	7	4	5	5
MN 2006-2007		8	19	9	8	12	6	5	5	8	8	6	6
2005-2006		7	18	6	12	8	5	6	6	7	8	10	7
MS 2006-2007	15	11	16	6	8	28	3	2	1	1	1	8	
2005-2006	9	17	10	5	9	26	7	3	3	2	2	7	
MO 2006-2007		5	14	14	12	16	9	7	5	6	3	4	5
2005-2006		4	24	11	9	13	5	6	5	6	4	6	7
NE 2006-2007		6	30	15	9	11	5	4	5	4	4	3	4
2005-2006		9	32	6	10	10	5	5	5	5	4	4	5
NC 2006-2007		1	18	23	26	10	7	4	4	3	2	1	1
2005-2006		2	6	34	19	12	5	6	4	5	3	3	1
ND 2006-2007		6	25	8	10	15	8	7	6	5	4	4	2
2005-2006		6	22	8	9	13	8	6	5	4	8	7	4
OH 2006-2007		7	25	12	9	11	9	7	4	4	5	4	3
2005-2006		8	29	8	6	10	5	7	5	5	6	5	6
SD 2006-2007		4	31	6	5	13	8	7	6	6	6	5	3
2005-2006		8	25	7	7	9	6	6	6	6	7	5	8
TN 2006-2007		12	33	18	6	17	5	2	1	1	1	1	3
2005-2006		13	32	12	5	15	5	3	2	4	2	3	4
WI 2006-2007		3	31	16	9	11	5	5	4	6	4	3	3
2005-2006		10	34	8	7	10	3	4	8	5	4	4	3
US 2006-2007		5.6	19.9	10.2	8.8	15.1	6.8	6.2	5.1	5.3	6.2	5.5	5.3
2005-2006		7.4	19.9	6.2	9.2	14.1	5.7	5.9	5.5	6.6	5.4	6.4	7.7

¹ Monthly farm marketings, based on a sample survey, as a percent of total used for calculating marketing year average prices.

Reliability of Prices Received Estimates

Definition: Prices received represent sales from producers to first buyers. They include all grades and qualities. The average commodity price from the survey multiplied by the total quantity marketed theoretically should give the total cash receipts for the commodity.

Survey Procedures: Primary sales data used to determine grain prices were obtained from probability samples of about 2000 mills and elevators. These procedures ensure that virtually all grain moving into commercial channels has a chance of being included in the survey. Generally, States surveyed account for 90 percent or more of total U.S. production. Livestock prices are obtained from packers, stockyards, auctions, dealers, and market check data from AMS-USDA, private marketing organizations, and state commodity groups and agencies. Inter-farm sales of grain and livestock are not included since they represent very small percentages of the total marketings. Grain marketed for seed is also excluded. Fruit and vegetable prices are obtained from sample surveys and market check data from AMS-USDA, private marketing organizations, state agencies, and universities.

Summary and Estimation Procedures: Survey quantities sold are expanded by strata to state levels and used to weight average strata prices to a state average. State prices are then weighted to a U.S. price based on expanded marketings. Recommendations are prepared by the State Field Offices and reviewed by the Agricultural Statistics Board in Washington, D.C. State recommendations are reviewed for reasonableness with survey data, other States, and recent historic estimates.

Revisions: For most items, the current month's preliminary price represents a 3-5 day period around the 15th of the month. Previous month's prices represent actual dollars received for quantities sold during the entire month. Revisions are published in monthly issues of *Agricultural Prices*.

Reliability: U.S. price estimates based on probability surveys generally have a sampling error of less than one percent for the major commodities such as corn, wheat, soybeans, cotton, and rice. Current methods of summarization for non-probability commodities are not designed directly to calculate sampling errors. However, analytical measures approximate the U.S. relative sampling errors at around five percent. Any nonsampling errors are attributed to such things as the inability to obtain correct information, differences in interpreting questions or definitions, mistakes in coding or processing the data, etc. Efforts are made at each step in the survey process to minimize these nonsampling errors.

Prices Paid by Farmers

The September Index of Prices Paid for Commodities and Services, Interest, Taxes, and Farm Wage Rates (PPITW) at 159 (1990-92=100), is up 0.6 percent from August 2007 and 6.7 percent from September 2006.

PRODUCTION INDEX: The September index, at 158, was unchanged from last month but increased 8.2 percent from last year. Higher prices in September for nitrogen fertilizers, diesel fuel, and feeder cattle offset lower prices for complete feeds, feeder pigs, and feed grains.

Feed: The September index, at 149, was unchanged from August but increased 24 percent from last September. Since August, lower prices for complete feeds and feed grains offset higher prices for hay & forages, feed concentrates, and feed supplements.

Livestock & Poultry: The September index, at 136, increased 0.7 percent from last month but decreased 2.2 percent from last year. Since August, higher prices for feeder cattle more than offset lower prices for feeder pigs. The September feeder cattle price, at \$114.70 per cwt, is up \$1.40 per cwt from the August price. September feeder pigs averaged \$104.00 per cwt, down \$6.00 per cwt from August.

Fertilizer: The September index, at 222, is up 2.8 percent from August and 31 percent above September a year ago. Since August, prices are higher for all fertilizer sub-components.

Chemicals: The September index, at 133, increased 1.5 percent from August and 3.1 percent from last September.

Fuels: The September index, at 268, is up 2.3 percent from a month earlier and 10.3 percent above September 2006. Compared with last month, prices are higher for diesel, LP gas, and gasoline.

Machinery: The September index, at 189, was unchanged from August but 3.3 percent above last September. Since August, prices are slightly lower for tractors.

CONSUMER PRICE INDEX: The August 2007 Consumer Price Index, as issued by the Bureau of Labor Statistics, for all urban consumers (CPI-U) decreased 0.2 percent before seasonal adjustment to a level of 207.917 (1982-84=100). This compares with the July index of 208.299. For the 12-month period ending in August, the overall index increased 2.0 percent.

**Indexes of Prices Paid by Farmers and Related Parity Ratios
United States, September 2007 With Comparisons ¹**

Indexes and Ratios	1910-14 = 100			1990-92 = 100		
	2006	2007		2006	2007	
	Sep	Aug	Sep	Sep	Aug	Sep
Prices Paid by Farmers for Commodities & Services, Interest, Taxes, & Wage Rates (PPITW)	1,980	2,110	2,116	149	158	159
Production	1,417	*1,530	1,536	146	158	158
Feed	586	*728	725	120	*149	149
Livestock & Poultry	1,772	*1,730	1,739	139	135	136
Seeds	1,838	2,086	2,086	186	211	211
Fertilizer	618	*793	812	169	*216	222
Chemicals	799	*812	820	129	*131	133
Fuels	1,873	*2,020	2,066	243	262	268
Supplies & Repairs	1,034	*1,066	1,066	146	150	150
Autos & Trucks	2,952	*2,924	2,920	111	110	110
Machinery	4,586	*4,749	4,748	183	189	189
Building Materials	2,088	*2,116	2,114	154	156	156
Services & Rent	1,585	*1,607	1,607			
Rent				140	144	144
Interest ²	3,452	3,778	3,778	138	151	151
Taxes ³	4,343	4,570	4,570	162	171	171
Wage Rates	6,281	6,487	6,487	168	173	173
Production, Interest, Taxes, & Wage Rates (PITW)	1,992	*2,140	2,147	148	159	160
Family Living-CPI ⁴	1,927	*1,975	1,975	151	*154	154
Ratio (Received/Paid) Parity Ratio ⁵	38	42	43	80	*89	89
Parity Ratio Adjusted ⁶	41	44	45			
PPITW Adjusted for Productivity ⁷	1,325	*1,361	1,362			
Crop Sector (PPITW)				153	*163	163
Livestock Sector (PPITW)				144	154	154
Farm Sector (Production)				137	155	155
Non-Farm Sector (Production)				150	159	160

* Revised.

¹ Revised historical price indexes for months not shown are available at www.nass.usda.gov.

² Interest per acre on farm real estate debt and interest rate on farm non-real estate debt.

³ Farm real estate taxes payable per acre.

⁴ Bureau of Labor Statistics, Consumer Price Index for all urban consumers (CPI-U), for the previous month converted by the USDA.

⁵ Ratio of index of prices received to PPITW (1910-14=100).

⁶ Based on estimated cash receipts, from marketings and government payments, the preliminary adjustment factor is 1.079 for 2007 and the revised factor is 1.096 for 2006.

⁷ PPITW is adjusted based on productivity trend for the prior 15 years.

Prices Paid Indexes and Annual Weights for Input Components and Sub-Components United States, September 2007 With Comparisons ¹

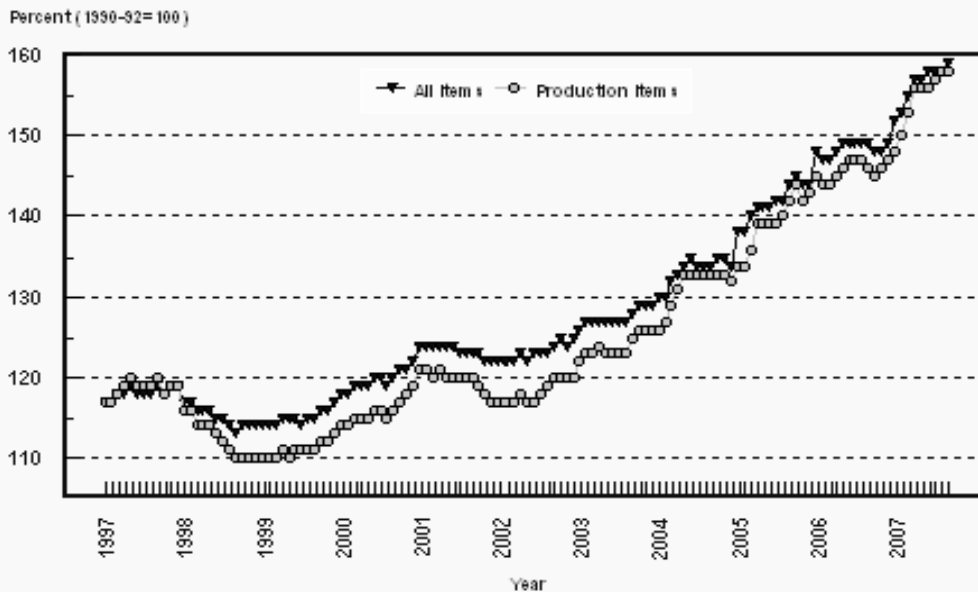
Index	Relative Weights 5-Year Moving Average ²		Input Indexes		
	2006	2007	2006	2007	
	<i>Percent</i>	<i>Percent</i>	Sep <i>(1990-92=100)</i>	Aug <i>(1990-92=100)</i>	Sep <i>(1990-92=100)</i>
Production Items	66.8	67.4	146	158	158
Feed	10.9	10.9	120	*149	149
Feed Grains	1.6	1.6	97	*142	141
Complete Feeds	5.3	5.3	117	*141	138
Hay/Forages	1.4	1.4	144	174	176
Concentrates	1.7	1.7	122	*151	152
Supplements	0.9	0.9	141	*169	172
Livestock & Poultry	7.6	7.7	139	135	136
Feeder Cattle	6.0	6.0	140	134	135
Feeder Pigs	0.6	0.6	125	120	113
Milk Cow Replacements	0.6	0.6	149	173	173
Poultry	0.5	0.5	125	125	125
Seeds	3.6	3.7	186	211	211
Field Crops	3.3	3.4	191	218	218
Grasses/Legumes	0.3	0.4	133	142	142
Fertilizer	4.3	4.4	169	*216	222
Mixed Fertilizer	1.9	1.9	159	*194	198
Nitrogen	1.8	1.8	186	*242	248
Potash & Phosphate	0.6	0.6	150	*210	217
Chemicals	3.5	3.4	129	*131	133
Herbicides	2.2	2.2	124	*124	125
Insecticides	0.8	0.8	145	*150	151
Fungicides/Other	0.5	0.5	129	*134	135
Fuels	2.9	3.1	243	262	268
Diesel	1.7	1.9	268	281	286
Gasoline	0.8	0.7	208	*224	225
LP Gas	0.4	0.4	211	*244	261
Supplies & Repairs	5.0	4.8	146	150	150
Supplies	1.7	1.6	138	140	140
Repairs	3.3	3.2	150	155	155
Autos & Trucks	1.8	1.8	111	110	110
Autos	0.2	0.2	109	108	108
Trucks	1.6	1.6	111	110	110
Machinery	4.4	4.5	183	189	189
Tractors	1.0	1.0	163	166	166
Self-Propelled	1.7	1.8	189	196	196
Other Machinery	1.7	1.7	187	196	196
Building Materials	4.0	4.3	154	156	156
Services	12.2	12.2	140	144	144
Custom Rates	1.3	1.3	123	125	125
Other Services	10.9	10.9	142	146	146
Rent	6.7	6.7	121	119	119
Cash	3.6	3.6	144	140	140
Share	3.1	3.1	95	95	95
Interest	4.2	4.0	138	151	151
Taxes	2.9	2.9	162	171	171
Wage Rates	7.8	7.8	168	173	173
Family Living-CPI	18.4	18.0	151	*154	154

* Revised.

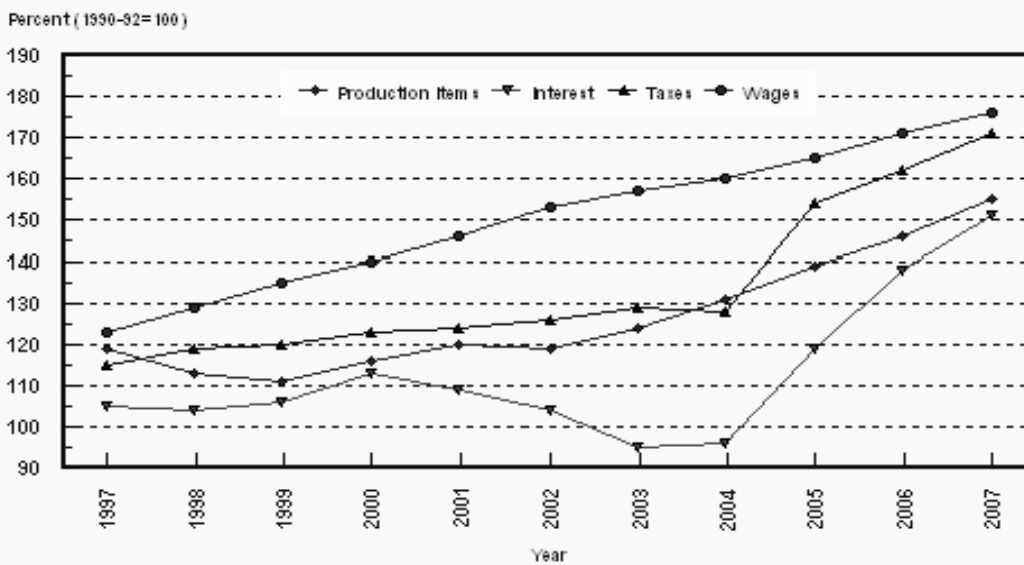
¹ Revised historical price indexes for months not shown are available at www.nass.usda.gov.

² Weights may not add due to rounding.

Prices Paid by Farmers, Major Indexes US, by Month

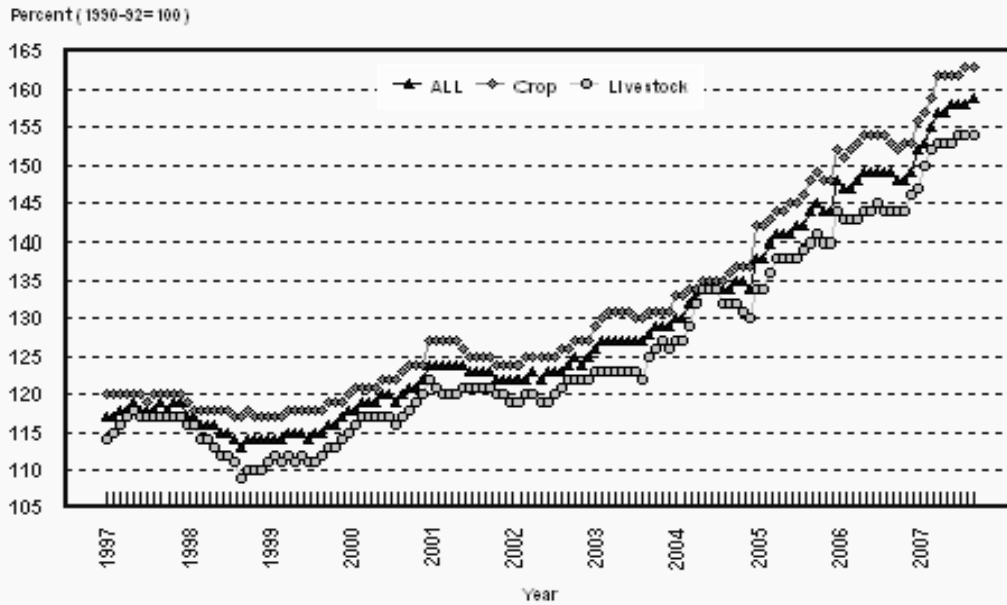


Prices Paid by Farmers, Major Indexes US, Annual Averages 1/

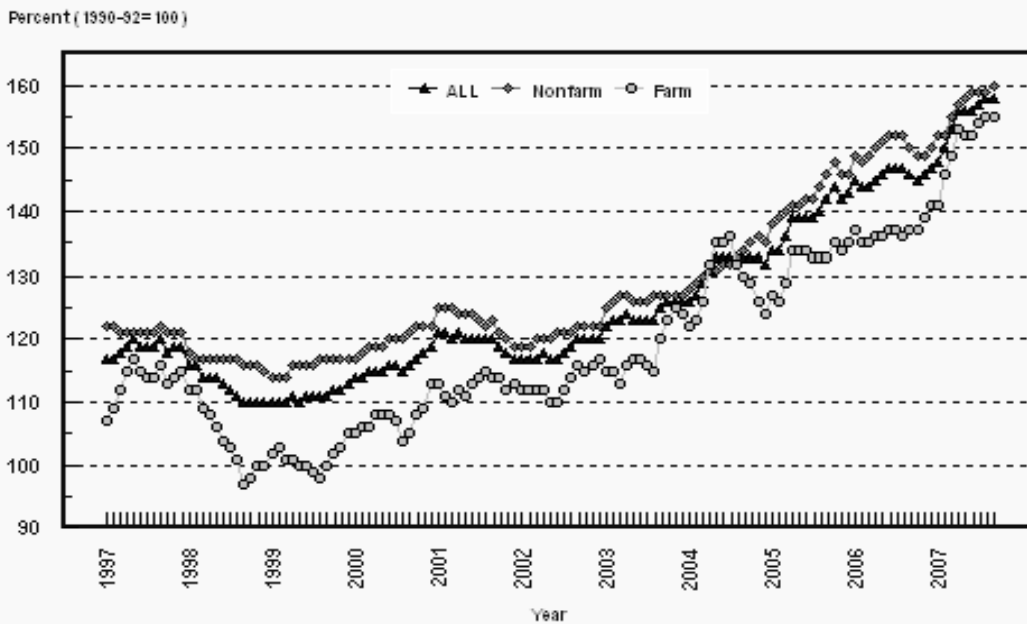


1/ Index values for 2007 are year-to-date averages.

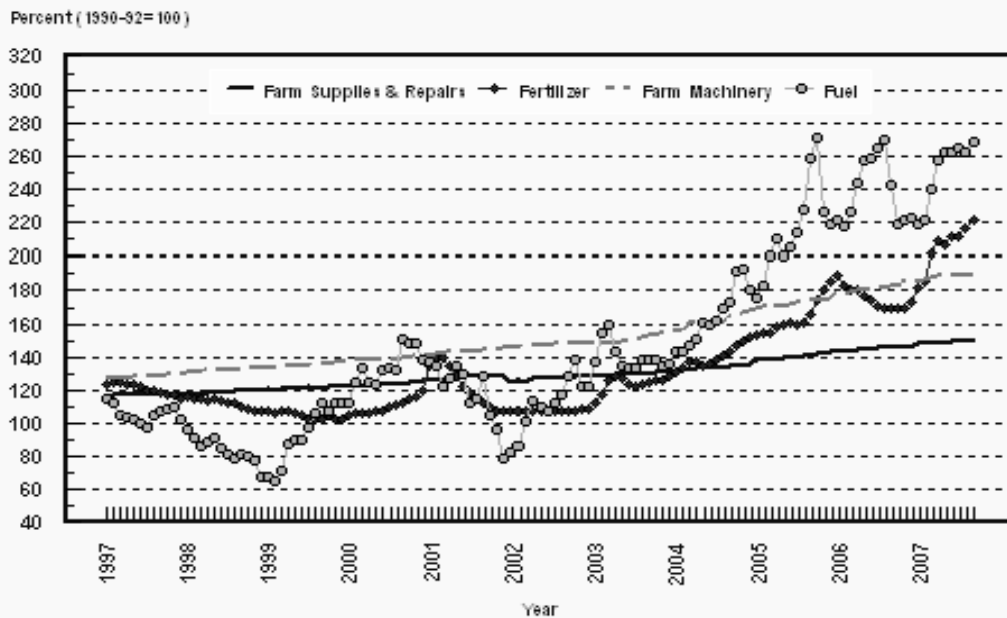
Prices Paid by Farmers, Indexes, All Items US, By Farm Type



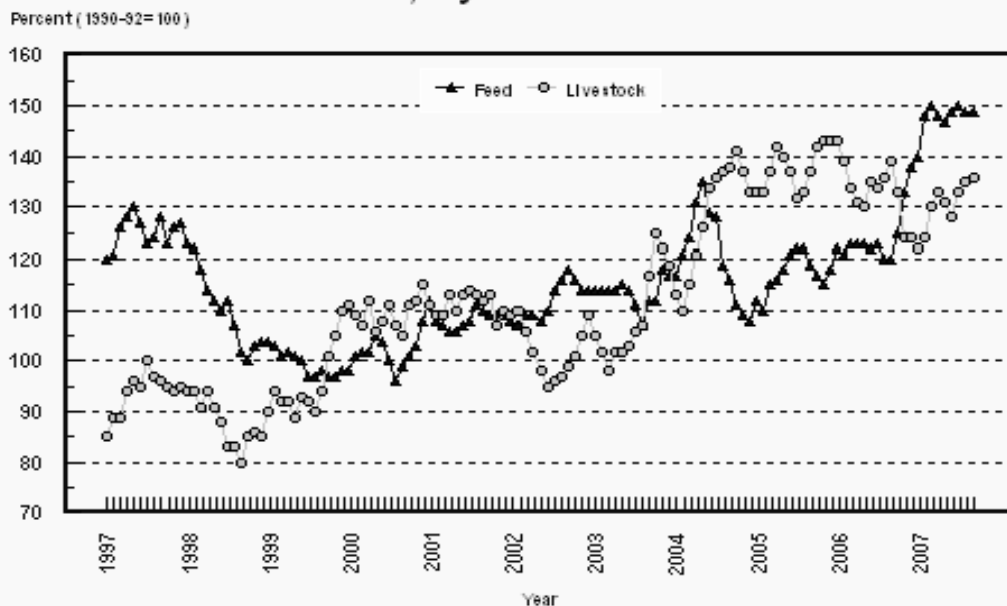
Prices Paid by Farmers, Indexes, All Production Items US, By Sector Origin



Prices Paid by Farmers, Selected Production Indexes US, By Non-Farm Sector



Prices Paid by Farmers, Selected Production Indexes US, By Farm Sector



Feed Price Ratios: United States, September 2007 with Comparisons

Feed Price Ratio ¹	2006	2007	
	Sep	Aug	Sep
Broiler-Feed: Pounds of Broiler Grower Feed equal in value to 1 pound of broiler, live weight	7.1	*5.7	5.5
Market Egg Feed: Pounds of Laying Feed equal in Value to 1 dozen eggs	6.9	*9.4	12.4
Hog-Corn: Bushels of Corn equal in value to 100 pounds of hog, live weight	22.2	*15.8	14.7
Milk-Feed: Pounds of 16% Mixed Dairy Feed equal in value to 1 pound of Whole Milk	2.61	3.17	3.21
Steer & Heifer-Corn: Bushels of Corn equal in value to 100 pounds of Steer & Heifers, live weight	43.3	*29.4	30.8
Turkey-Feed: Pounds of Turkey Grower equal in value to 1 pound of Turkey, live weight	9.1	*6.7	6.5

* Revised.

¹ Effective January 1995, prices of commercial prepared feeds are based on current U.S. prices received for corn, soybeans, alfalfa hay, and all wheat.

**Prices Used to Calculate Feed Price Ratios:
United States, September 2007 with Comparisons**

Commodity	Unit	Entire Month		Preliminary
		Sep 2006	Aug 2007	Sep 2007
Broilers, Live	Lb	0.420	0.500	0.500
Eggs, Market	Doz	0.354	0.716	0.960
Hogs, All	Cwt	48.90	51.60	47.00
Milk, All	Cwt	13.00	21.60	21.80
Steers and Heifers	Cwt	95.20	95.80	98.10
Turkeys, Live	Lb	0.533	0.572	0.604
Corn	Bu	2.20	3.26	3.19
Hay, Alfalfa, Baled	Ton	111.00	137.00	135.00
Soybeans	Bu	5.23	7.72	8.34
Wheat, All	Bu	4.06	5.64	7.16

**Feeder Livestock: Prices Paid, United States
September 2007 with Comparisons**

Commodity	Unit	2006	2007	
		Sep	Aug	Sep
		<i>Dollars</i>	<i>Dollars</i>	<i>Dollars</i>
Feeders and Stockers				
Cattle and Calves	Cwt	118.50	*113.30	114.70
Feeder Pigs	Cwt	115.00	110.00	104.00

* Revised.

Reliability of Prices Paid Estimates

Definition: Prices paid by farmers represent the average costs of inputs purchased by farmers and ranchers to produce agricultural commodities. Conceptually, the average price when multiplied by quantity purchased should equal total producer expenditures for the item.

Survey Procedures: The prices paid data are obtained from establishments that sell goods and services to farmers and ranchers. Annually, about 8,500 firms are randomly selected from lists by type of item sold with an average response rate in the range of 75-80 percent. Firms are asked to report the price for the specified item "most commonly bought by farmers" or that was the "volume seller". Approximately 135 items are surveyed each April to represent all production input items purchased. The survey reference period for most items is the 5 business days centered around the 15th of the month. Separate prices paid surveys are conducted for agricultural chemicals, fuels, feed, fertilizer, machinery, and seed.

Summary and Estimation Procedures: The annual April Prices Paid Survey is summarized as a nonprobability survey. Average prices reported are aggregated to the region and U.S. level using weights available from expenditure data and other administrative sources. Price recommendations are prepared by the State Field Offices and Headquarters for review by the Agricultural Statistics Board in Washington, D.C. Also, the change in price level for individual items surveyed are combined to the regional and U.S. levels, and are published as prices paid indexes referenced to a specific base period. Prices paid indexes for new autos and trucks, building materials, farm supplies, motor supplies, and marketing containers are updated based on price changes measured in selected Bureau of Labor Statistics (BLS) indexes.

Revisions: Any revisions are published in the monthly and in annual issues of *Agricultural Prices*. The basis for revision must be supported by additional data that directly affect the level of the estimate. More revisions are likely in April when separate prices paid surveys are conducted, in lieu of BLS indexes, by the USDA to measure price change.

Reliability: Current methods of summarization in April are not designed directly to calculate sampling errors. However, analytical measures approximate the U.S. relative sampling errors for major items around 10 percent. Any nonsampling errors are attributed to such things as the inability to obtain correct information, differences in interpreting questions or definitions, mistakes in coding or processing the data, etc. Efforts are made at each step in the survey process to minimize these nonsampling errors.

Program Change: Effective January 1, 1995, the National Agricultural Statistics Service updated the weights and changed the construction of its prices paid and received by farmers indexes. A Federal Register Notice dated October 28, 1994 discussed these program modifications.

A 1990-92 reference and base period replaced the 1977 reference and 1971-73 base weight period. Five-year moving average weights replaced the current fixed 1971-73 base period weights. The 1910-14=100 price indexes, required by statute for computing parity prices, were linked forward based on the changes in the new 1990-92=100 indexes. The new indexes were constructed by multiplying the ratios of the current prices to the base period prices by the moving average weights (adjusted for seasonal marketing patterns for the prices received indexes).

Information Contacts

General questions should be directed to Kevin Barnes, Chief, Environmental, Economics and Demographics Branch at (202) 720-6146. Below are the commodity specialists to contact for additional information.

Crop Prices Received

Jeff Geuder, Chief, Crops Branch	(202) 720-2127
Greg Thessen, Field Crops Section	(202) 720-2127
Todd Ballard - Wheat, Rye	(202) 690-8533
Ty Kalas - Corn, Proso Millet, Flaxseed	(202) 720-9526
Shiela Corley - Cotton, Cottonseed	(202) 720-5944
Travis Thorson - Soybeans, Sunflower, Canola, Other Oilseeds	(202) 720-7369
King Whetstone - Hay, Oats, Sorghum	(202) 690-3234
Greg Thessen - Peanuts, Rice	(202) 720-2127
Dawn Keen - Sugarcane, Sugarbeets, Barley	(202) 720-7621
Lance Honig, Fruits, Vegetables & Special Crops Section	(202) 720-2127
Dan Norris - Peaches, Pears, Hops, Pulses, Mint	(202) 720-3250
Rich Holcomb - Citrus, Tropical Fruits	(202) 720-5412
Faye Propsom - Apples, Apricots, Cherries, Cranberries, Plums, Prunes	(202) 720-4288
Leslie Colburn - Grapes, Tobacco	(202) 720-7235
Cathy Scherrer - Potatoes, Dry Edible Beans, Sweet Potatoes	(202) 720-4285
Debbie Flippin - Vegetables, Onions, Strawberries	(202) 720-2157
Doug Marousek - Tree Nuts	(202) 720-4215

Livestock Prices Received

Dan Kerestes, Chief, Livestock Branch	(202) 720-3570
Shawn Clark, Livestock Section	(202) 720-3570
Scott Hollis - Sheep, Lambs, Goats, Wool, Mohair	(202) 720-4751
Jason Hardegree- Milk, Milk Cows	(202) 720-3278
Bruce Boess - Hogs	(202) 720-3106
Mike Miller - Cattle	(202) 720-3040
Darin Jantzi, Poultry and Specialty Commodities Section	(202) 720-3570
Toby Paterson - Turkeys	(202) 720-0585
Sharyn Lavender - Broilers, Honey	(202) 720-3244
Kim Linonis - Eggs	(202) 690-8632

Indexes, Prices Paid, and Parity Prices

Kevin Barnes, Chief, Environmental, Economics and Demographics Branch	(202) 720-6146
Kevin Hintzman, Economics Section	(202) 720-6146
Jennifer Sissom - Prices Paid Indexes, Prices Paid for Feed, Fertilizer, Agricultural Chemicals, Seeds, Farm Supplies and Repairs, Farm Machinery, Fuels, Feeder Livestock, Poultry Chicks, Feed Price Ratios, Autos & Trucks, Grazing Fees	(202) 690-3229
Daryl Brinkman - Prices Received Indexes, Parity Prices	(202) 720-8844

ACCESS TO REPORTS!!

For your convenience, there are several ways to obtain NASS reports, data products, and services:

INTERNET ACCESS

All NASS reports are available free of charge on the worldwide Internet. For access, connect to the Internet and go to the NASS Home Page at: www.nass.usda.gov.

E-MAIL SUBSCRIPTION

All NASS reports are available by subscription free of charge direct to your e-mail address. Starting with the NASS Home Page at www.nass.usda.gov, under the right navigation, *Receive reports by Email*, click on **National** or **State**. Follow the instructions on the screen.

PRINTED REPORTS OR DATA PRODUCTS

CALL OUR TOLL-FREE ORDER DESK: 800-999-6779 (U.S. and Canada)
Other areas, please call 703-605-6220 FAX: 703-605-6900
(Visa, MasterCard, check, or money order acceptable for payment.)

ASSISTANCE

For **assistance** with general agricultural statistics or further information about NASS or its products or services, contact the **Agricultural Statistics Hotline** at **800-727-9540**, 7:30 a.m. to 4:00 p.m. ET, or e-mail: nass@nass.usda.gov.

The U.S. Department of Agriculture (USDA) prohibits discrimination in all its programs and activities on the basis of race, color, national origin, age, disability, and where applicable, sex, marital status, familial status, parental status, religion, sexual orientation, genetic information, political beliefs, reprisal, or because all or a part of an individual's income is derived from any public assistance program. (Not all prohibited bases apply to all programs.) Persons with disabilities who require alternative means for communication of program information (Braille, large print, audiotape, etc.) should contact USDA's TARGET Center at (202) 720-2600 (voice and TDD).

To file a complaint of discrimination write to USDA, Director, Office of Civil Rights, 1400 Independence Avenue, S.W., Washington, D.C. 20250-9410 or call (800) 795-3272 (voice) or (202) 720-6382 (TDD). USDA is an equal opportunity provider and employer.

USDA Data Users' Meeting

October 29, 2007

Crowne Plaza Chicago O'Hare

Rosemont, Illinois

(847) 671-6350

The USDA's National Agricultural Statistics Service will be organizing an open forum for data users. The purpose will be to provide updates on pending changes in the various statistical and information programs and seek comments and input from data users. Other USDA agencies to be represented will include the Agricultural Marketing Service, the Economic Research Service, the Foreign Agricultural Service, and World Agricultural Outlook Board. The Foreign Trade Division from the Census Bureau will also be included in the meeting.

For registration details or additional information for the Data Users' Meeting, see the NASS homepage at www.nass.usda.gov/forum/ or contact Marjorie Taylor (NASS) at (202) 690-8141 or at marjorie_taylor@nass.usda.gov.

This Data Users' Meeting precedes an Industry Outlook meeting that will be held at the same location on October 30, 2007. The Outlook meeting brings together analysts from various commodity sectors to discuss the outlook situation. For registration details or additional information for the Industry Outlook Meeting see the Livestock and Marketing Information Center (LMIC) homepage at www.lmic.info or contact Jim Robb at (720) 544-2941 or at robb@lmic.info.