



# NASS

FACT FINDERS FOR AGRICULTURE  
UNITED STATES DEPARTMENT OF AGRICULTURE

Washington, D.C.

# Agricultural Prices

Released February 29, 2008, by the National Agricultural Statistics Service (NASS), Agricultural Statistics Board, U.S. Department of Agriculture. For information on *Agricultural Prices* see page 60, office hours 7:30 a.m. to 4:00 p.m. ET.

## February Farm Prices Received Index Unchanged From Last Month

The preliminary All Farm Products Index of Prices Received by Farmers in February, at 145 percent, based on 1990-92=100, was unchanged from January. The Crop Index is up 1 point (0.6 percent) and the Livestock Index increased 1 point (0.8 percent). Producers received higher commodity prices for wheat, soybeans, corn, and hogs and lower prices were received for milk, lettuce, broccoli, and tomatoes. The overall index is also affected by the seasonal change based on a 3-year average mix of commodities producers sell. Increased monthly marketings of milk, cattle, broilers, and eggs offset decreased marketings of corn, soybeans, wheat, and cotton.

The preliminary All Farm Products Index is up 17 points (13 percent) from February 2007. The Food Commodities Index, at 145, decreased 1 point (0.7 percent) from last month but increased 17 points (13 percent) from February 2007.

## Prices Paid Index up 2 Points

The February Index of Prices Paid for Commodities and Services, Interest, Taxes, and Farm Wage Rates (PPITW) is 172 percent of the 1990-92 average. The index is up 2 points (1.2 percent) from January and 16 points (10 percent) above February 2007. Higher prices in February for complete feeds, feeder cattle, potash & phosphate materials, and feed concentrates offset lower prices for LP gas, self-propelled machinery, gasoline, and other machinery.

**Index Summary Table**

Index 1990-92=100	2007		2008	
	Jan	Feb	Jan	Feb
Prices Received	123	128	145	145
Prices Paid	155	156	170	172
Ratio <sup>1</sup>	79	82	85	84

<sup>1</sup> Ratio of index of prices received by farmers to index of prices paid by farmers.

## Prices Received by Farmers

The February All Farm Products Index is 145 percent of its 1990-92 base, unchanged from the January index but 13 percent above the February 2007 index.

**ALL CROPS:** The February index is 159, up 0.6 percent from January and 15 percent above February 2007. Index increases for food grains, oil-bearing crops, feed grains & hay, and fruits & nuts offset the index decreases for commercial vegetables and potatoes & dry beans.

**Food Grains:** The February index, at 298, is 21 percent above the previous month and 94 percent above a year ago. The February all wheat price, at \$10.40 per bushel, is up \$2.47 from January and \$5.69 above February 2007.

**Feed Grains & Hay:** The February index is 184, up 5.7 percent from last month and 23 percent above a year ago. The corn price, at \$4.25 per bushel, is up 28 cents from last month and 81 cents above February 2007. The all hay price, at \$133 per ton, is up \$4.00 from January and up \$20.00 from last February. Grain sorghum, at \$7.82 per cwt, is 42 cents above January and 87 cents above February last year.

**Oil-Bearing Crops:** The February index, at 197, is up 11 percent from January and 59 percent higher than February 2007. The soybean price, at \$11.00 per bushel, increased \$1.04 from January and is \$4.13 above February 2007.

**Cotton:** The February index, at 100, is unchanged from January but 28 percent above last year. The February price, at 60.7 cents per pound, is unchanged from the previous month but 13.3 cents above last February.

**Potatoes & Dry Beans:** The February index, at 127, is down 1.6 percent from last month and 0.8 percent below February 2007. The all potato price, at \$7.14 per cwt, is down 19 cents from January and down 28 cents from last February. The all dry bean price, at \$29.50 per cwt, is up \$2.20 from the previous month and \$4.10 above February 2007.

**Fruits & Nuts:** The February index, at 155, is up 2.0 percent from January but 2.5 percent lower than a year ago. A price increase for lemons more than offset price decreases for strawberries, grapefruit, apples, and pears.

**Commercial Vegetables:** The February index, at 112, is down 19 percent from last month and 32 percent below February 2007. Price decreases during February for lettuce, broccoli, tomatoes, and cauliflower more than offset a price increase for snap beans.

**LIVESTOCK & PRODUCTS:** The February index, at 132, is 0.8 percent above last month and up 10 percent from February 2007. Compared with a year ago, prices are higher for milk, eggs, broilers, cattle, turkeys, and calves. The price for hogs is down from last year.

**Meat Animals:** The February index, at 114, is up 2.7 percent from last month but unchanged from last year. The February hog price, at \$41.90 per cwt, is up \$4.70 from January but \$5.60 lower than a year ago. The February beef cattle price of \$87.80 per cwt is up 50 cents from last month and \$1.70 higher than February 2007.

**Dairy Products:** The February index, at 148, is down 5.7 percent from a month ago but 30 percent higher than February last year. The February all milk price of \$19.30 per cwt is down \$1.20 from last month but up \$4.40 from February 2007. The fluid grade milk price is down \$1.20 and the manufacturing grade milk price is down 90 cents from the previous month.

**Poultry & Eggs:** The February index, at 163, is up 3.8 percent from January and 17 percent above a year ago. The February market egg price, at \$1.22 per dozen, increased 2.0 cents from January and is 59.3 cents above February 2007. The February broiler price, at 50.0 cents per pound, is up 2.0 cents from January and 3.0 cents above a year ago. The February turkey price, at 47.5 cents per pound, is up 2.7 cents from the previous month and up 5.1 cents from a year earlier.

## Table of Contents

<b>U.S. Prices Received and Indexes</b>	<b>Page</b>	<b>Monthly State Prices, continued</b>	<b>Page</b>
Narrative .....	2	Cotton .....	17
Price Indexes .....	5	Cottonseed .....	17
Price Index Charts .....	6	Eggs .....	22
U.S. Prices Received Summary .....	8	Flaxseed .....	16
Charts .....	10	Grain Sorghum .....	15
Selected Commodities .....	14	Hay .....	17
Upland Cotton & Rice Marketings .....	17	Hogs, All .....	21
Parity Prices .....	24	Barrows and Gilts .....	21
Reliability Statement .....	51	Sows .....	21
 <b>Monthly State Prices Received</b>		Milk .....	23
Apples .....	17	Milk Cows .....	23
Barley .....	15	Oats .....	15
Beans, Dry Edible .....	16	Peanuts .....	16
Beef Cattle, All .....	20	Potatoes .....	19
Calves .....	20	Sheep .....	22
Cows, Beef .....	20	Lambs .....	22
Steers and Heifers .....	20	Soybeans .....	15
Canola .....	16	Sunflower, All .....	16
Citrus Fruit .....	18	Wheat, All Classes .....	14
Corn .....	15		
 <b>Prices Received Special Features</b>			<b>Page</b>
<b>Marketing Year for Specified Commodities</b> .....			27
 <b>Monthly Price Revisions</b>			
Apples .....		see January 2008 Noncitrus Fruits and Nuts - Preliminary <a href="http://usda.mannlib.cornell.edu/MannUsda/viewDocumentInfo.do?documentID=1113">http://usda.mannlib.cornell.edu/MannUsda/viewDocumentInfo.do?documentID=1113</a>	
Cattle .....			34
Hogs .....			43
Lambs .....			46
Potatoes .....			28
Sheep .....			47
 <b>Marketing Year Average Prices</b>			
Apricots .....		see January 2008 Noncitrus Fruits and Nuts - Preliminary <a href="http://usda.mannlib.cornell.edu/MannUsda/viewDocumentInfo.do?documentID=1113">http://usda.mannlib.cornell.edu/MannUsda/viewDocumentInfo.do?documentID=1113</a>	
Cattle .....			30
Dried Figs .....		see January 2008 Noncitrus Fruits and Nuts - Preliminary <a href="http://usda.mannlib.cornell.edu/MannUsda/viewDocumentInfo.do?documentID=1113">http://usda.mannlib.cornell.edu/MannUsda/viewDocumentInfo.do?documentID=1113</a>	
Hogs .....			32
Grapes, California Raisin .....		see January 2008 Noncitrus Fruits and Nuts - Preliminary <a href="http://usda.mannlib.cornell.edu/MannUsda/viewDocumentInfo.do?documentID=1113">http://usda.mannlib.cornell.edu/MannUsda/viewDocumentInfo.do?documentID=1113</a>	
Grapes, Concord .....		see January 2008 Noncitrus Fruits and Nuts - Preliminary <a href="http://usda.mannlib.cornell.edu/MannUsda/viewDocumentInfo.do?documentID=1113">http://usda.mannlib.cornell.edu/MannUsda/viewDocumentInfo.do?documentID=1113</a>	
Mohair .....		see February 2008 Sheep and Goats <a href="http://usda.mannlib.cornell.edu/MannUsda/viewDocumentInfo.do?documentID=1145">http://usda.mannlib.cornell.edu/MannUsda/viewDocumentInfo.do?documentID=1145</a>	
Peaches .....		see January 2008 Noncitrus Fruits and Nuts - Preliminary <a href="http://usda.mannlib.cornell.edu/MannUsda/viewDocumentInfo.do?documentID=1113">http://usda.mannlib.cornell.edu/MannUsda/viewDocumentInfo.do?documentID=1113</a>	
Pears .....		see January 2008 Noncitrus Fruits and Nuts - Preliminary <a href="http://usda.mannlib.cornell.edu/MannUsda/viewDocumentInfo.do?documentID=1113">http://usda.mannlib.cornell.edu/MannUsda/viewDocumentInfo.do?documentID=1113</a>	
Plums .....		see January 2008 Noncitrus Fruits and Nuts - Preliminary <a href="http://usda.mannlib.cornell.edu/MannUsda/viewDocumentInfo.do?documentID=1113">http://usda.mannlib.cornell.edu/MannUsda/viewDocumentInfo.do?documentID=1113</a>	
Potatoes .....			27
Sheep .....			33
Wool .....		see February 2008 Sheep and Goats <a href="http://usda.mannlib.cornell.edu/MannUsda/viewDocumentInfo.do?documentID=1145">http://usda.mannlib.cornell.edu/MannUsda/viewDocumentInfo.do?documentID=1145</a>	
 <b>Livestock Inventory Values</b> .....			48
 <b>Other Hay, Baled</b>			
Used to Compute Grazing Fees for Eastern National Forests .....			26

**Table of Contents (continued)**

<b>U.S. Prices Paid, Prices Paid Indexes and Ratios</b>	<b>Page</b>
Narrative .....	52
Indexes and Parity Ratios .....	53
Charts .....	55
Feed Price Ratios .....	58
Reliability Statement .....	59
<b>U.S. Average Prices</b>	
Prices Used to Calculate Feed Price Ratios .....	58
Feeder Livestock .....	58
<b>Information Contacts</b> .....	<b>60</b>

**Index Numbers of Prices Received, United States,  
February 2008, with Comparisons <sup>1</sup>**

Index	1910-14=100			1990-92=100			
	Average 1990-92	2007	2008		2007	2008	
		Feb	Jan	Feb	Feb	Jan	Feb
All Farm Products		811	*921	919	128	*145	145
All Crops		679	*779	786	138	*158	159
Food Grains		491	*780	947	154	*246	298
Feed Grains & Hay		537	*621	657	150	*174	184
Cotton		401	*513	513	78	*100	100
Tobacco <sup>2</sup>		1,392	1,397	1,397	92	92	92
Oil-Bearing Crops		676	*973	1,080	124	*178	197
Fruits & Nuts		1,113	*1,063	1,085	159	*152	155
Commercial Vegetables		1,103	*930	752	165	*139	112
Potatoes & Dry Beans		649	*654	642	128	*129	127
Other Crops		580	585	585	118	119	119
Livestock & Products		918	*1,002	1,016	120	*131	132
Meat Animals		1,161	*1,127	1,155	114	*111	114
Dairy Products		916	*1,260	1,186	114	*157	148
Poultry & Eggs		390	442	459	139	157	163
Food Commodities					128	*146	145

\* Revised.

<sup>1</sup> Revised historical price indexes for months not shown are available at [www.nass.usda.gov](http://www.nass.usda.gov).

<sup>2</sup> Monthly prices discontinued July 2005.

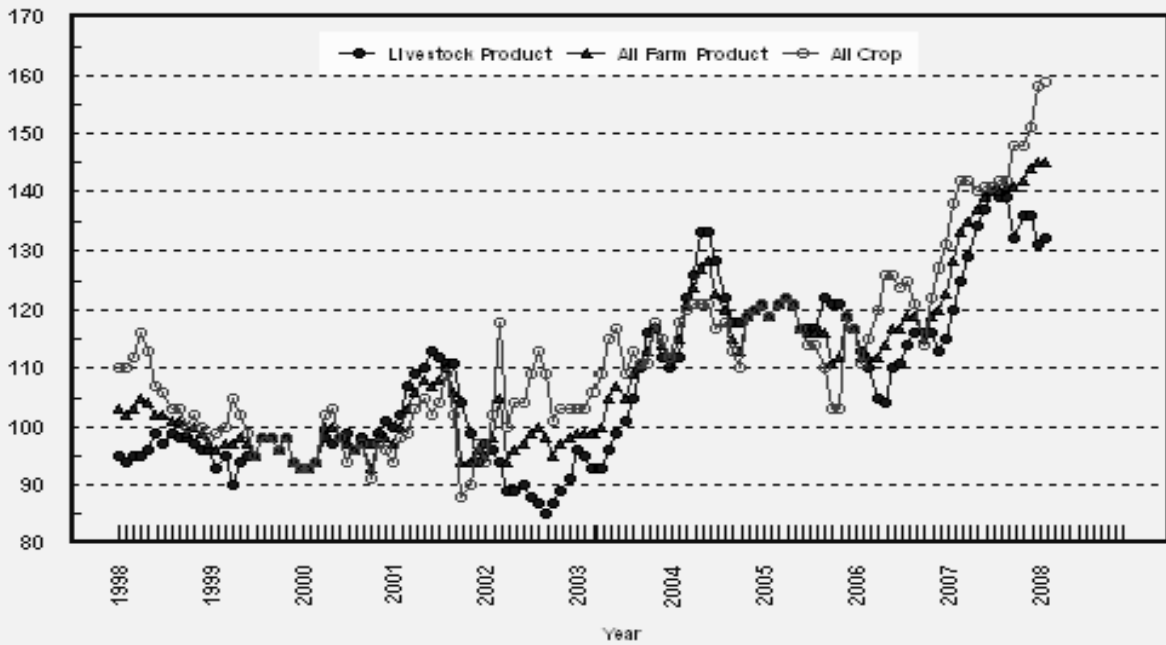
**Selected Index Numbers for Prices Received and Paid,  
1990-92=100, by Month, United States, 2007 and 2008 <sup>1</sup>**

Month	Index of Prices Received						Index of Prices Paid			
	All Farm Products		All Crops		Livestock and Products		All Items		Production Items	
	2007	2008	2007	2008	2007	2008	2007	2008	2007	2008
Jan	123	145	131	158	115	131	155	170	152	171
Feb	128	145	138	159	120	132	156	172	154	174
Mar	133		142		125		159		157	
Apr	135		142		129		160		160	
May	137		140		134		161		160	
Jun	139		141		137		161		160	
Jul	140		141		140		161		161	
Aug	140		142		139		161		161	
Sep	141		142		139		162		161	
Oct	141		148		132		163		163	
Nov	142		148		136		165		165	
Dec	144		151		136		165		166	

<sup>1</sup> Revised historical price indexes for months not shown are available at [www.nass.usda.gov](http://www.nass.usda.gov).

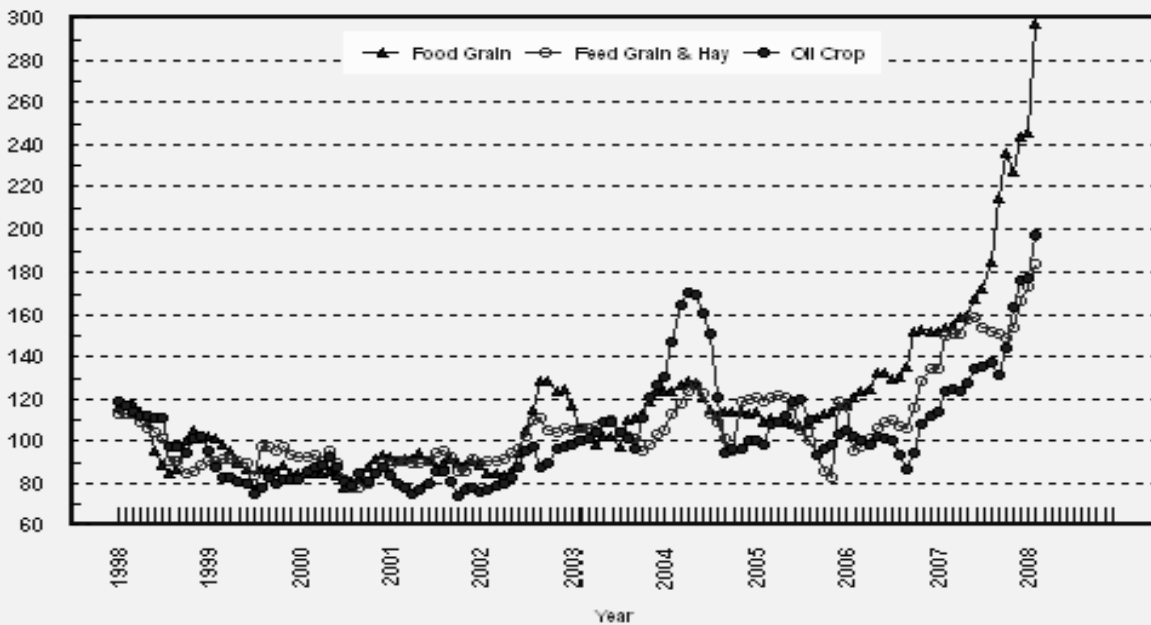
## Prices Received, Major Indexes, US

Percent (1990-92=100)



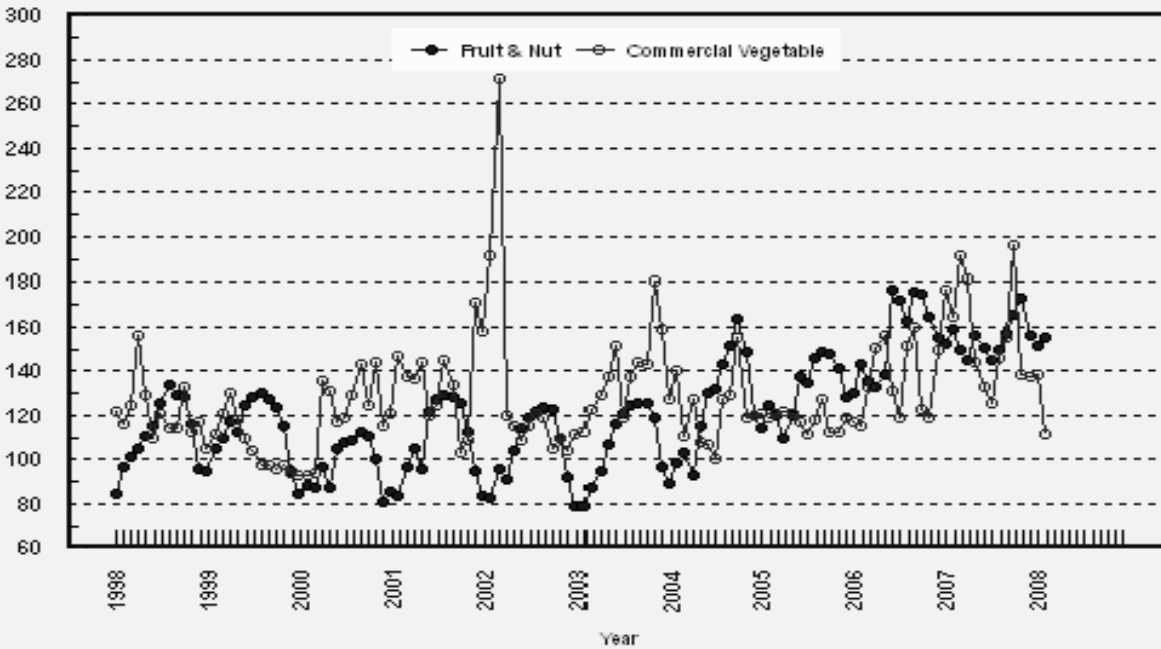
## Prices Received, Food, Feed, & Oil Crop Indexes, US

Percent (1990-92=100)



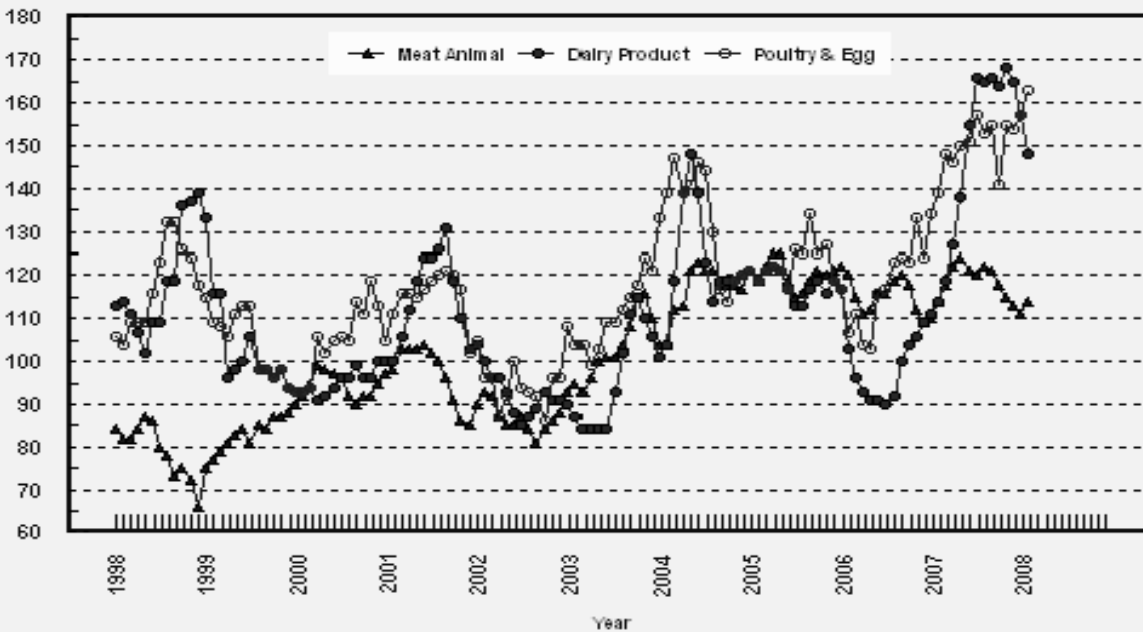
## Prices Received, Fruit and Vegetable Indexes, US

Percent (1990-92=100)



## Prices Received, Livestock Product Indexes, US

Percent (1990-92=100)



**Prices Received, United States,  
February 2008, with Comparisons**

Commodity	Unit	Average 1990-92	Entire Month		Preliminary
			Feb 2007	Jan 2008	Feb 2008
		<i>Dollars</i>	<i>Dollars</i>	<i>Dollars</i>	<i>Dollars</i>
<b>Field Crops</b>					
Barley, All	Bu	2.12	3.09	4.34	4.06
Feed	Bu	1.90	3.15	4.85	4.29
Malting	Bu	2.43	3.08	4.11	3.97
Beans, Dry Edible	Cwt	19.10	25.40	27.30	29.50
Canola <sup>1</sup>	Cwt			17.90	20.50
Chickpeas, All	Cwt		26.80	30.40	29.90
Large	Cwt		27.70	30.90	( <sup>5</sup> )
Small	Cwt		12.90	21.10	( <sup>5</sup> )
Corn	Bu	2.30	3.44	3.97	4.25
Cotton, Upland	Lb	0.606	0.474	0.607	0.607
Cottonseed <sup>2</sup>	Ton	96.00	130.00	171.00	162.00
Flaxseed	Bu	4.27	6.39	13.80	16.90
Hay, All, Baled <sup>3</sup>	Ton	76.30	113.00	129.00	133.00
Alfalfa <sup>3</sup>	Ton	77.20	115.00	135.00	138.00
Other <sup>3</sup>	Ton	60.00	108.00	118.00	122.00
Lentils	Cwt		13.50	25.40	29.80
Oats	Bu	1.22	2.35	2.96	2.97
Peanuts, In-Shell	Lb	0.304	0.178	0.218	0.207
Peas, Dry Edible	Cwt		7.62	14.00	14.90
Austrian Winter	Cwt		7.95	( <sup>5</sup> )	14.50
Potatoes	Cwt	5.82	7.42	7.33	7.14
Rice, Rough	Cwt	7.07	10.10	11.80	12.20
Grain Sorghum	Cwt	3.75	6.95	7.40	7.82
Soybeans	Bu	5.61	6.87	9.96	11.00
Sunflower, All	Cwt	9.50	14.90	19.00	22.80
Wheat, All	Bu	2.96	4.71	7.93	10.40
Winter	Bu	2.93	4.67	7.78	9.22
Durum	Bu	2.86	5.16	13.20	16.40
Other Spring	Bu	3.11	4.73	7.99	11.90
Hard Red Winter	Bu		4.71	7.60	
Soft Red Winter	Bu		4.09	6.93	
Hard Red Spring	Bu		4.73	7.98	
White	Bu	3.24	4.75	8.38	
<b>Fruit</b>					
Citrus, Equiv on-tree					
Grapefruit	Box	5.77	4.02	5.31	4.07
Lemons	Box	10.10	27.69	36.73	42.42
Oranges	Box	5.79	8.11	5.77	5.74
Tangelos	Box	5.82	9.01	0.96	1.55
Tangerines	Box	15.11	14.19	16.47	14.80
Noncitrus, Fresh					
Apples <sup>4</sup>	Lb	0.212	0.297	0.356	0.347
Grapes <sup>4 6</sup>	Ton	506.00			
Peaches <sup>4 6</sup>	Ton	432.00			
Pears <sup>4</sup>	Ton	370.00	517.00	553.00	534.00
Strawberries	Cwt	56.00	147.00	194.00	163.00

<sup>1</sup> Monthly prices began in July 2007.

<sup>2</sup> Marketing year August - February.

<sup>3</sup> Mid-month price.

<sup>4</sup> Equivalent packinghouse-door returns for CA, MI, and NY (apples only), and WA (apples, peaches, and pears). Prices as sold for other states.

<sup>5</sup> Price not published to avoid disclosure of individual firms.

<sup>6</sup> Insufficient sales to establish a price.



**Prices Received, United States,  
February 2008, with Comparisons**

Commodity	Unit	Average 1990-92	Entire Month		Preliminary
			Feb 2007	Jan 2008	Feb 2008
		<i>Dollars</i>	<i>Dollars</i>	<i>Dollars</i>	<i>Dollars</i>
<b>Vegetables, Fresh <sup>1</sup></b>					
Asparagus	Cwt	79.80			
Broccoli	Cwt	22.50	25.40	47.30	28.10
Cantaloups <sup>2</sup>	Cwt				
Carrots	Cwt	13.20	28.10	16.20	16.20
Cauliflower	Cwt	26.80	29.40	53.40	30.40
Celery	Cwt	11.60	58.90	16.20	13.00
Corn, Sweet	Cwt	15.70	23.60	30.80	23.00
Cucumbers <sup>2</sup>	Cwt		35.30	38.40	
Lettuce	Cwt	11.90	15.50	17.50	12.50
Onions	Cwt	12.80	26.20	4.54	3.37
Snap Beans <sup>2</sup>	Cwt		82.30	68.80	98.30
Tomatoes	Cwt	32.30	31.20	58.20	45.50
<b>Livestock</b>					
Calves	Cwt	94.30	114.00	117.00	118.00
Cattle, All Beef	Cwt	72.90	86.10	87.30	87.80
Cows <sup>3</sup>	Cwt	49.60	47.00	46.30	49.70
Steers & Heifers	Cwt	77.10	91.40	93.40	93.20
Milk Cows <sup>4</sup>	Head	1,130.00		1,960.00	
Hogs, All	Cwt	47.70	47.50	37.20	41.90
Barrows & Gilts	Cwt	48.40	48.30	38.10	42.90
Sows	Cwt	39.50	32.10	18.50	20.20
Lambs	Cwt	56.20	94.80	97.50	
Sheep	Cwt	23.40	37.30	31.90	
<b>Dairy and Poultry</b>					
Milk, All <sup>5 6</sup>	Cwt	13.06	14.90	20.50	19.30
Fluid Grade <sup>6</sup>	Cwt	13.10	14.90	20.50	19.30
Mfg Grade <sup>6</sup>	Cwt	11.80	14.40	19.60	18.70
Broilers, Live <sup>7</sup>	Lb	0.317	0.470	0.480	0.500
Eggs, All <sup>9</sup>	Doz	0.643	0.781	1.290	1.310
Market <sup>9 10</sup>	Doz	0.546	0.627	1.200	1.220
Turkeys, live <sup>8 9</sup>	Lb	0.380	0.424	0.448	0.475
<b>Adjusted for Seasonal Variation <sup>11</sup></b>					
Eggs, All	Doz	0.545	0.736	1.120	1.230
Milk, All <sup>5</sup>	Cwt	9.71	15.30	20.30	19.80

<sup>1</sup> Beginning January 2006, point of first sale. F.O.B. shipping point for prior years.

<sup>2</sup> Monthly estimates began January 1995.

<sup>3</sup> Beef cows and cull dairy cows sold for slaughter.

<sup>4</sup> Animals sold for dairy herd replacement only. Prices available for Jan, Apr, Jul, and Oct.

<sup>5</sup> Before deductions for hauling. Includes quality, quantity, and other premiums. Excludes hauling subsidies.

<sup>6</sup> February 2008 Fat test percent: all milk, 3.77; fluid milk, 3.76; mfg grade, 4.07.

<sup>7</sup> Equivalent live weight price.

<sup>8</sup> Live weight equivalent price is used when actual liveweight price is not available for the State.

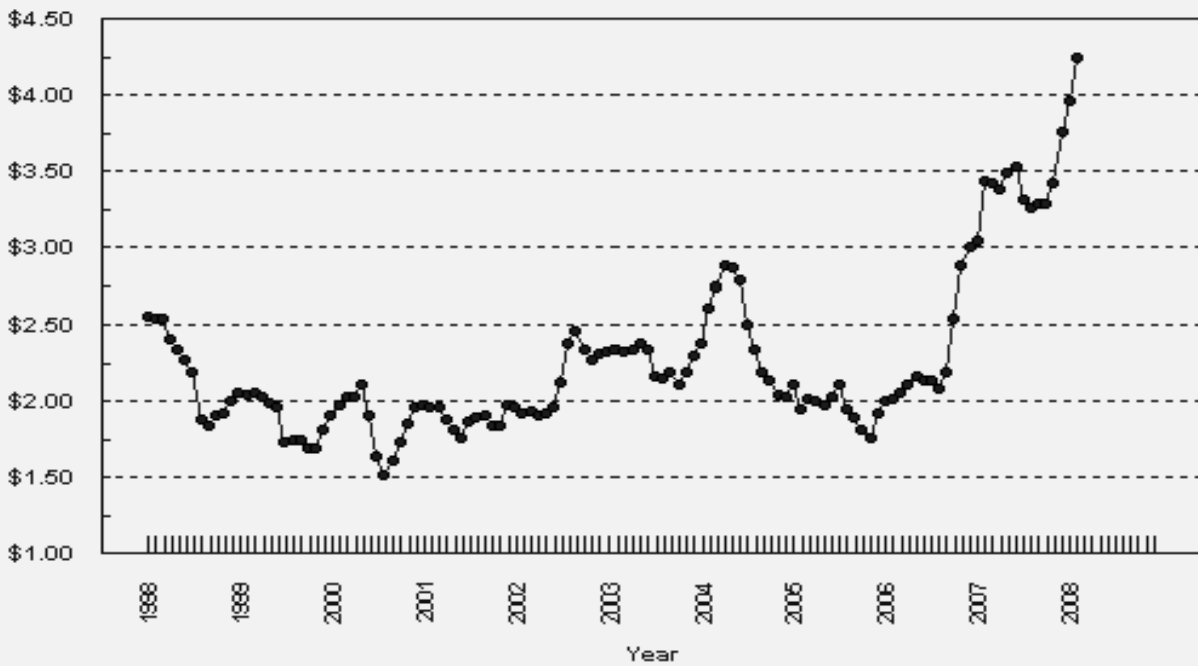
<sup>9</sup> Mid-month price.

<sup>10</sup> Also referred to as table eggs.

<sup>11</sup> Seasonal adjustment factors are: All Eggs February 2007, 106; January 2008, 115; and February 2008, 106. All Milk February 2007, 97; January 2008, 101; and February 2008, 98.

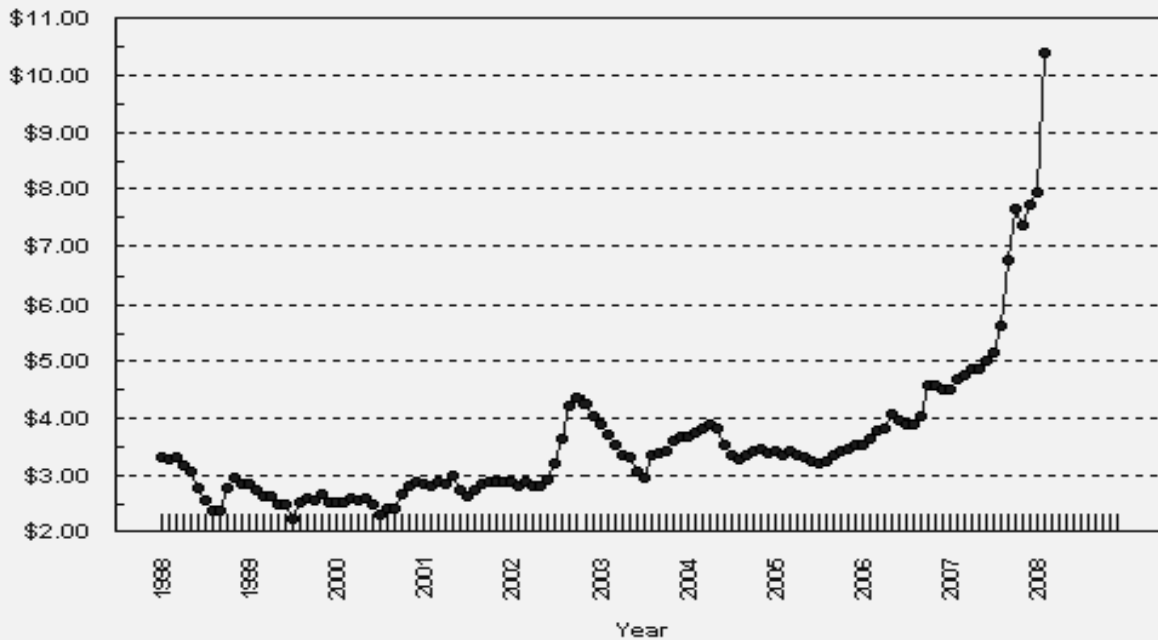
## Prices Received, Corn, US

Dollars per Bu



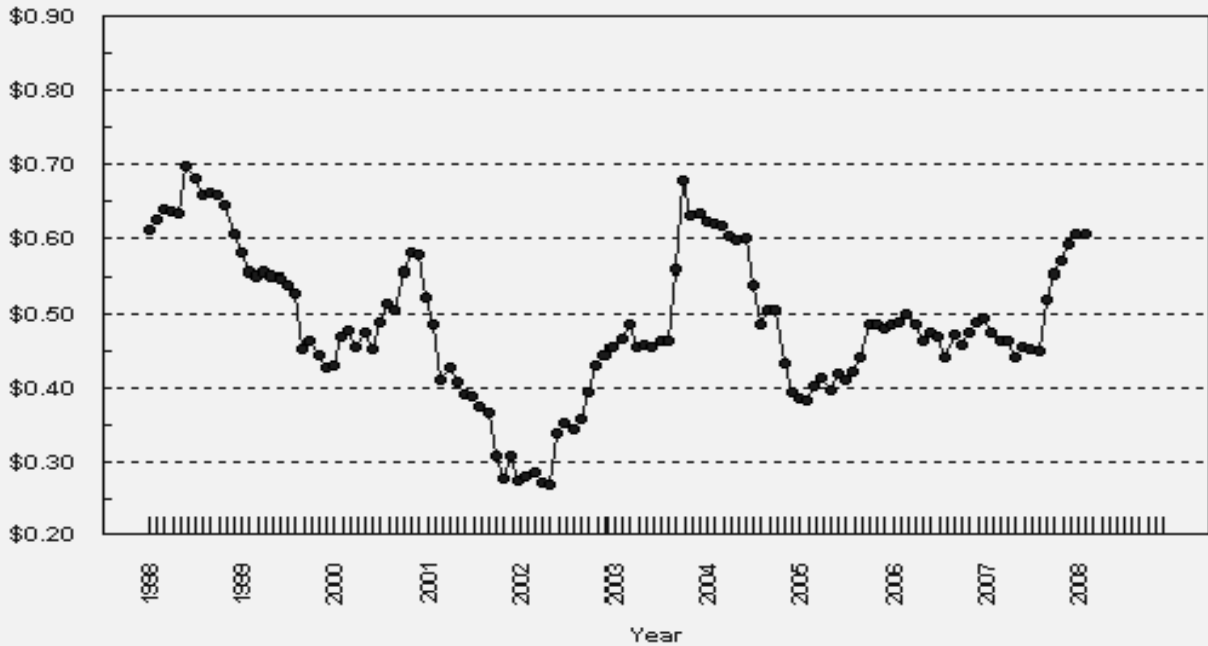
## Prices Received, Wheat, US

Dollars per Bu



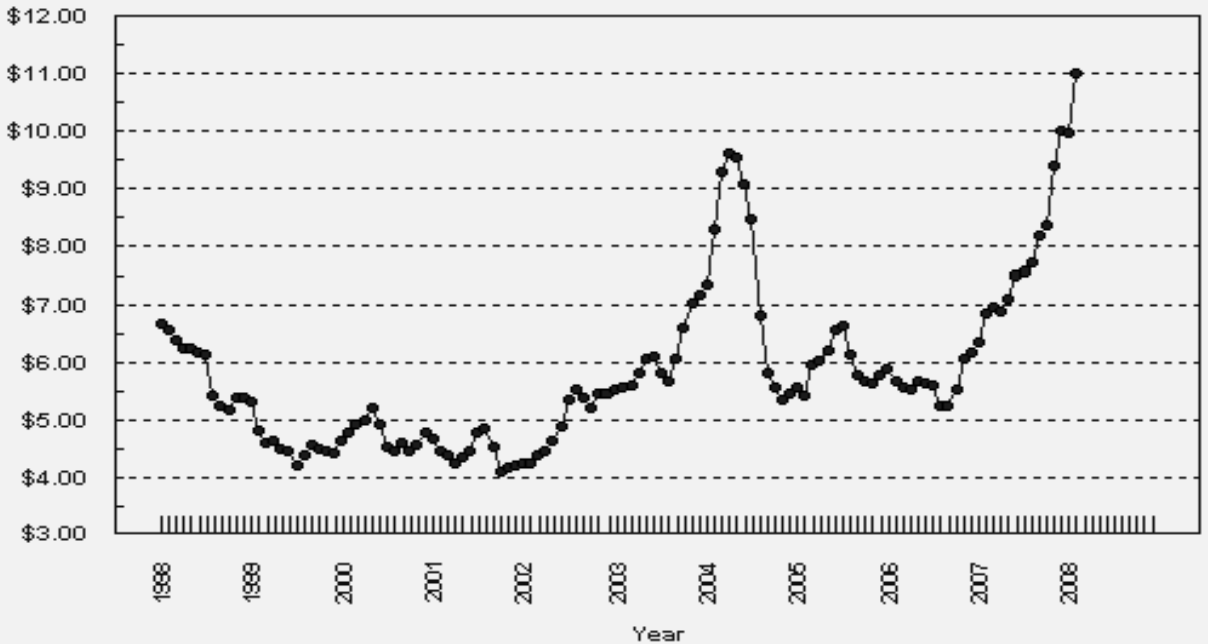
## Prices Received, Cotton, US

Dollars per Lb



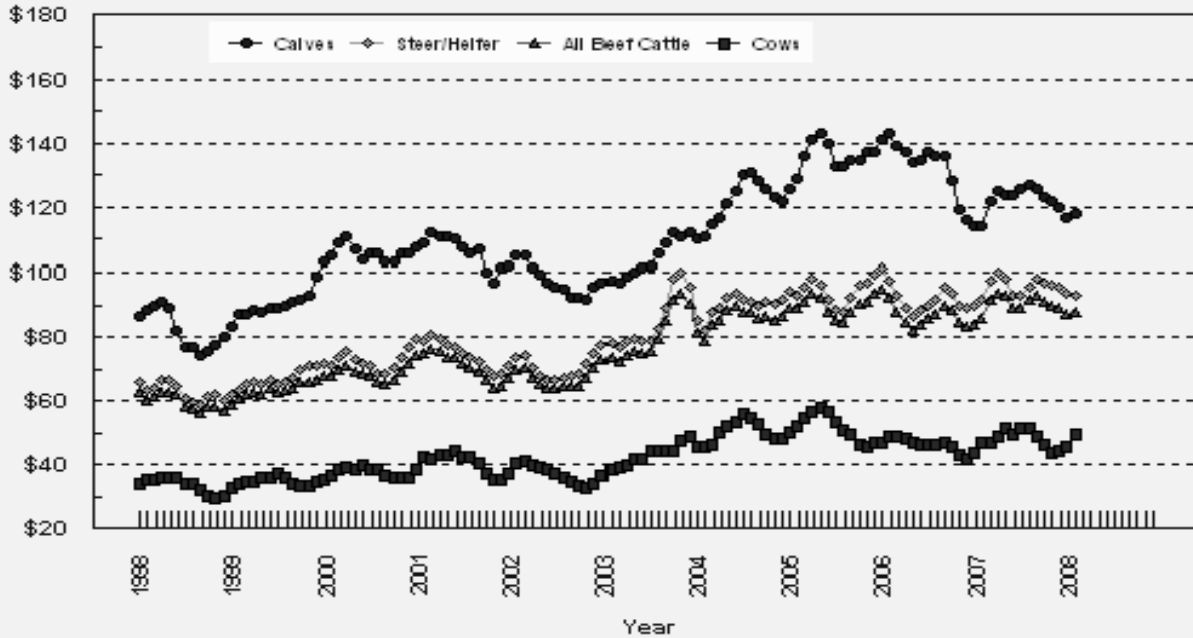
## Prices Received, Soybeans, US

Dollars per Bu



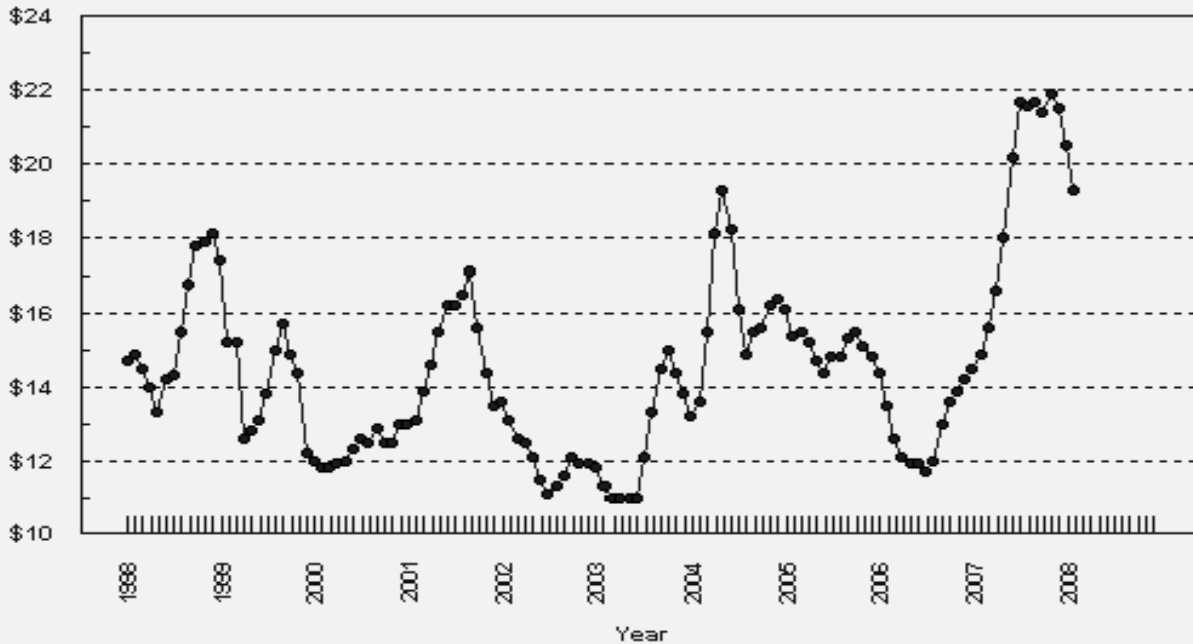
## Prices Received, Cattle, US

Dollars per Cwt



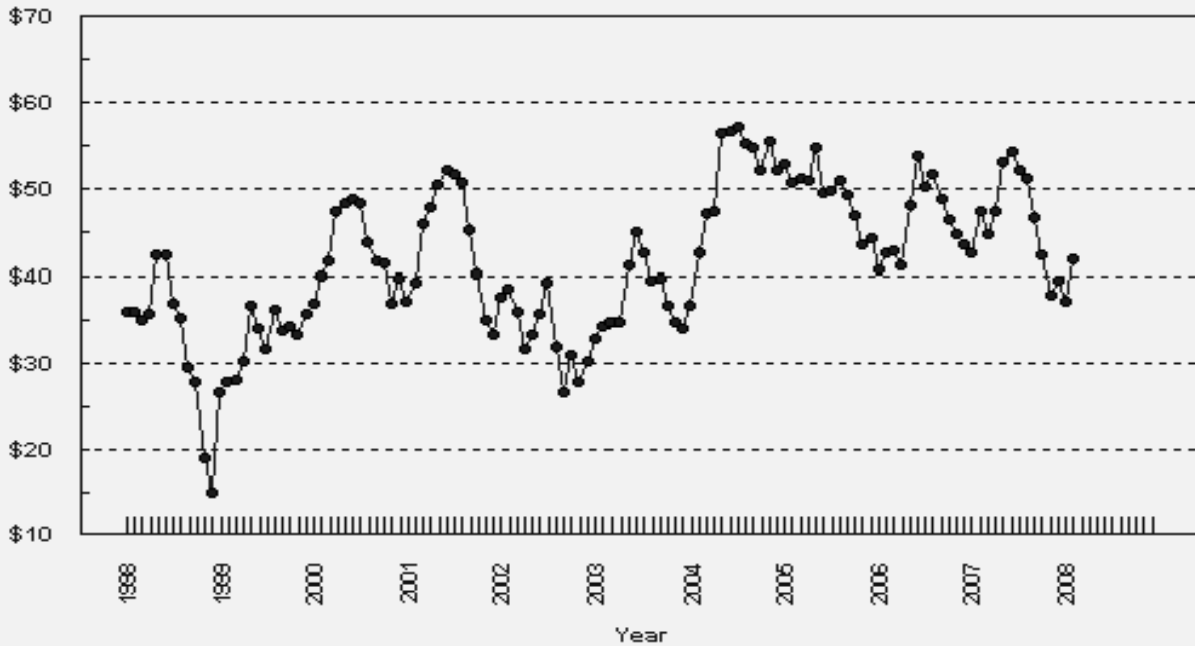
## Prices Received, Milk, US

Dollars per Cwt



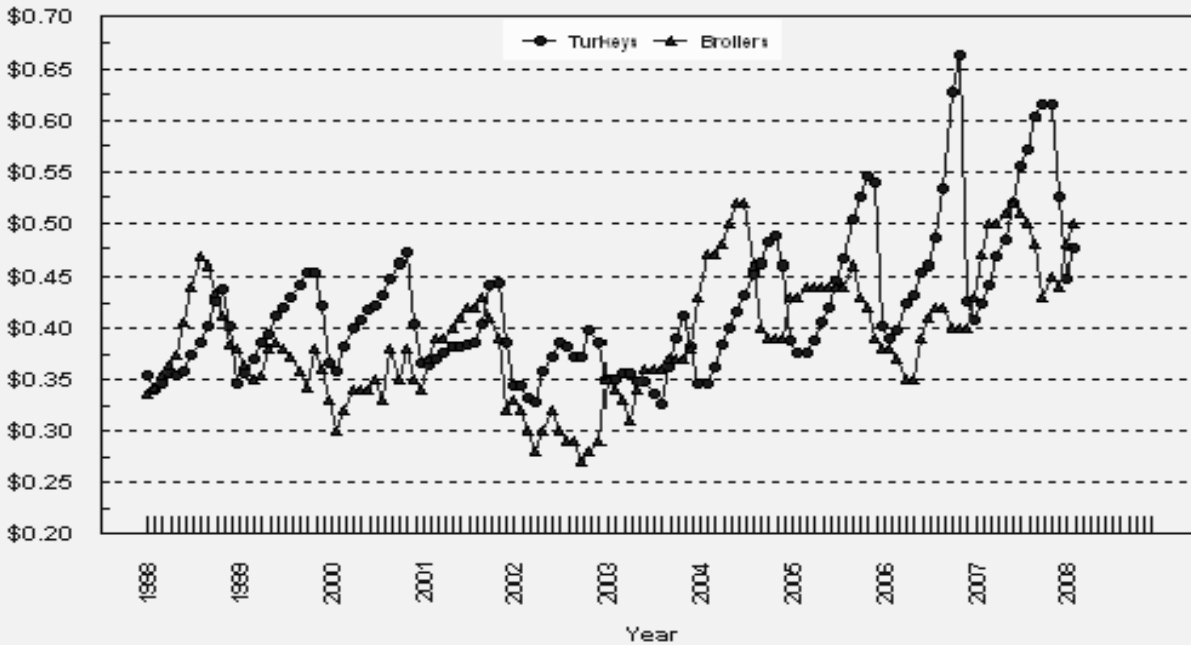
## Prices Received, Hogs, US

Dollars per Cwt



## Prices Received, Turkeys & Broilers, US

Dollars per Lb



**Wheat: Prices Received, by State, January and February 2008**

State	All Wheat		Winter Wheat		Durum Wheat		Oth Spring Wheat	
	Jan <sup>1</sup>	Feb <sup>2</sup>	Jan <sup>1</sup>	Feb <sup>2</sup>	Jan <sup>1</sup>	Feb <sup>2</sup>	Jan <sup>1</sup>	Feb <sup>2</sup>
	<i>Dollars per Bushel</i>	<i>Dollars per Bushel</i>	<i>Dollars per Bushel</i>	<i>Dollars per Bushel</i>	<i>Dollars per Bushel</i>	<i>Dollars per Bushel</i>	<i>Dollars per Bushel</i>	<i>Dollars per Bushel</i>
AR	( <sup>3</sup> )	( <sup>3</sup> )	( <sup>3</sup> )	( <sup>3</sup> )				
CA	5.38	( <sup>3</sup> )	4.99	( <sup>3</sup> )	( <sup>3</sup> )	( <sup>4</sup> )		
CO	7.39	9.40	7.29	9.40			( <sup>3</sup> )	( <sup>4</sup> )
ID	6.80	8.92	6.79	8.80	5.65	( <sup>3</sup> )	6.88	9.20
IL	7.12	8.00	7.12	8.00				
IN	7.70	9.30	7.70	9.30				
KS	8.03	9.40	8.03	9.40				
MI	5.74	6.50	5.74	6.50				
MN	7.85	9.91	6.30	7.00			7.90	10.00
MO	6.75	6.90	6.75	6.90				
MT	7.20	10.50	6.65	9.25	10.10	14.80	8.00	12.30
NE	7.00	9.40	7.00	9.40				
ND	8.31	12.70	7.70	9.00	15.00	17.00	8.04	12.50
OH	6.67	7.40	6.67	7.40				
OK	8.27	9.55	8.27	9.55				
OR	8.86	10.10	8.78	9.70			9.40	12.60
SD	7.69	11.60	7.25	9.40			7.85	12.00
TX	8.40	9.50	8.40	9.50				
WA	8.83	10.00	8.86	9.50			8.68	12.20
US	7.93	10.40	7.78	9.22	13.20	16.40	7.99	11.90

<sup>1</sup> Entire month.

<sup>2</sup> Mid-month.

<sup>3</sup> Price not published to avoid disclosure of individual firms.

<sup>4</sup> Insufficient sales to establish a price.

**Prices Received for Selected Agricultural Commodities, by Month, United States, 2007 and 2008 <sup>1</sup>**

Month	All Wheat		Corn		Soybeans		Beef Cattle <sup>2</sup>		All Hogs	
	2007	2008	2007	2008	2007	2008	2007	2008	2007	2008
	<i>Dollars per Bushel</i>	<i>Dollars per Bushel</i>	<i>Dollars per Bushel</i>	<i>Dollars per Bushel</i>	<i>Dollars per Bushel</i>	<i>Dollars per Bushel</i>	<i>Dollars per Cwt</i>	<i>Dollars per Cwt</i>	<i>Dollars per Cwt</i>	<i>Dollars per Cwt</i>
Jan	4.53	7.93	3.05	3.97	6.37	9.96	83.70	87.30	42.60	37.20
Feb	4.71	10.40	3.44	4.25	6.87	11.00	86.10	87.80	47.50	41.90
Mar	4.75		3.43		6.95		91.60		44.90	
Apr	4.89		3.39		6.88		93.70		47.30	
May	4.88		3.49		7.12		92.80		53.10	
Jun	5.03		3.53		7.51		88.80		54.30	
Jul	5.17		3.32		7.56		89.00		52.20	
Aug	5.64		3.26		7.72		91.40		51.30	
Sep	6.75		3.29		8.18		93.10		46.80	
Oct	7.65		3.29		8.36		90.90		42.40	
Nov	7.36		3.43		9.41		89.90		37.90	
Dec	7.74		3.76		10.00		89.20		39.60	

<sup>1</sup> Current month prices are mid-month; prices for previous months are for the entire month.

<sup>2</sup> Cows, steers and heifers.

**Grains: Prices Received, by State, January and February 2008**

Month	All Barley		Corn		Oats		Soybeans		Grain Sorghum	
	Jan <sup>1</sup>	Feb <sup>2</sup>	Jan <sup>1</sup>	Feb <sup>2</sup>	Jan <sup>1</sup>	Feb <sup>2</sup>	Jan <sup>1</sup>	Feb <sup>2</sup>	Jan <sup>1</sup>	Feb <sup>2</sup>
	<i>Dollars per Bushel</i>	<i>Dollars per Bushel</i>	<i>Dollars per Bushel</i>	<i>Dollars per Bushel</i>	<i>Dollars per Bushel</i>	<i>Dollars per Bushel</i>	<i>Dollars per Bushel</i>	<i>Dollars per Bushel</i>	<i>Dollars per Cwt</i>	<i>Dollars per Cwt</i>
AL							9.25	10.50	6.31	7.00
AR										
CA	( <sup>4</sup> )	( <sup>4</sup> )			( <sup>4</sup> )	( <sup>4</sup> )				
CO		( <sup>4</sup> )	3.91	4.15						
ID	4.35	3.99								
IL			3.88	4.20	( <sup>4</sup> )	( <sup>4</sup> )	10.10	10.60	8.33	8.30
IN			4.16	4.40			10.20	11.70		
IA			3.96	4.25	2.71	2.90	10.00	11.50		
KS			4.37	4.55	3.94	3.50	10.60	11.80	7.55	8.00
KY			4.01	4.40			9.93	12.00		
LA							8.89	10.40		
MI			4.08	4.30	3.52	( <sup>4</sup> )	10.10	10.50		
MN	3.76	3.73	3.81	4.05	2.59	2.80	9.77	10.50		
MS							8.60	10.60		
MO			4.05	4.30			9.95	10.30	7.54	7.60
MT	4.50	3.82			3.06	( <sup>4</sup> )				
NE			4.00	4.30	3.41	3.40	10.10	11.50	7.22	8.00
NY					3.22	3.20				
NC			4.54	4.70			10.50	12.00		
ND	4.07	4.12	3.66	3.90	2.46	2.50	9.83	10.50		
OH			4.04	4.21	3.70	( <sup>4</sup> )	10.10	11.00		
OK									7.59	7.60
OR	5.80	5.40			( <sup>4</sup> )	( <sup>4</sup> )				
PA			4.22	4.60	3.45	3.66				
SD	( <sup>3</sup> )	( <sup>3</sup> )	3.96	4.10	3.06	3.10	9.48	10.40		
TN			4.26	4.50			11.10	12.00		
TX			4.36	4.55	( <sup>3</sup> )	( <sup>4</sup> )			7.17	7.40
UT	6.03	4.94								
WA	6.06	5.00								
WI			3.78	4.10	2.92	2.90	9.58	11.00		
WY	( <sup>3</sup> )	( <sup>3</sup> )								
US	4.34	4.06	3.97	4.25	2.96	2.97	9.96	11.00	7.40	7.82

<sup>1</sup> Entire month.

<sup>2</sup> Mid-month.

<sup>3</sup> Price not published to avoid disclosure of individual firms.

<sup>4</sup> Insufficient sales to establish a price.

**Malting and Feed Barley: Prices Received Selected State, January and February 2008**

State	Malting Barley		Feed Barley	
	Jan <sup>1</sup>	Feb <sup>2</sup>	Jan <sup>1</sup>	Feb <sup>2</sup>
	<i>Dollars per Bushel</i>	<i>Dollars per Bushel</i>	<i>Dollars per Bushel</i>	<i>Dollars per Bushel</i>
ID	4.22	3.85	4.69	4.50
MN	3.69	3.70	4.10	3.90
MT	4.22	3.55	4.77	4.07
ND	4.09	4.10	4.00	4.20
SD	( <sup>4</sup> )	( <sup>4</sup> )	( <sup>3</sup> )	( <sup>3</sup> )
WY	( <sup>3</sup> )	( <sup>3</sup> )	( <sup>4</sup> )	( <sup>3</sup> )

<sup>1</sup> Entire month.

<sup>2</sup> Mid-month.

<sup>3</sup> Price not published to avoid disclosure of individual firms.

<sup>4</sup> Insufficient sales to establish a price.

**Field Crops: Prices Received, by State, January and February 2008**

State	Dry Edible Beans		All Sunflower		Canola		Flaxseed		Peanuts <sup>4</sup>	
	Jan <sup>1</sup>	Feb <sup>2</sup>	Jan <sup>1</sup>	Feb <sup>2</sup>	Jan <sup>1</sup>	Feb <sup>2</sup>	Jan <sup>1</sup>	Feb <sup>2</sup>	Jan <sup>1</sup>	Feb <sup>3</sup>
	<i>Dollars per Cwt</i>	<i>Dollars per Cwt</i>	<i>Dollars per Cwt</i>	<i>Dollars per Cwt</i>	<i>Dollars per Cwt</i>	<i>Dollars per Cwt</i>	<i>Dollars per Bushel</i>	<i>Dollars per Bushel</i>	<i>Dollars per Pound</i>	<i>Dollars per Pound</i>
AL									0.211	0.205
CA	45.10	48.20								
CO	30.80	32.20								
FL									0.203	0.181
GA									0.209	0.201
ID	29.40	31.50								
KS			20.90	24.30						
MI	30.80	32.00								
MN	34.20	36.00	18.90	20.40	( <sup>5</sup> )	( <sup>6</sup> )				
NE	26.80	31.80								
NC									0.246	0.229
ND	23.50	26.00	18.70	22.40	18.10	20.50	13.80	16.90		
SD			20.00	24.00			( <sup>6</sup> )	( <sup>6</sup> )		
TX									0.236	0.243
VA									0.243	0.246
US	27.30	29.50	19.00	22.80	17.90	20.50	13.80	16.90	0.218	0.207

<sup>1</sup> Entire month.

<sup>2</sup> Mid-month.

<sup>3</sup> Based on sales through first half of month.

<sup>4</sup> In-Shell.

<sup>5</sup> Price not published to avoid disclosure of individual firms.

<sup>6</sup> Insufficient sales to establish a price.



**Field Crops and Apples: Prices Received, by State, January and February 2008**

State	Cotton, Upland		February				Apples Fresh Use <sup>1 4</sup>
	Jan <sup>1</sup>	Feb <sup>2</sup>	Cotton- seed <sup>5</sup>	Hay, Baled <sup>3</sup>			
				All	Alfalfa	Other	
	<i>Dollars per Pound</i>	<i>Dollars per Pound</i>	<i>Dollars per Ton</i>	<i>Dollars per Ton</i>	<i>Dollars per Ton</i>	<i>Dollars per Ton</i>	<i>Dol/Lb</i>
AL	0.579	0.559	( <sup>6</sup> )				
AZ	( <sup>6</sup> )	( <sup>6</sup> )	( <sup>7</sup> )	164.00	165.00	150.00	
AR	0.555	0.556	( <sup>7</sup> )				
CA	( <sup>6</sup> )	( <sup>7</sup> )	( <sup>6</sup> )	170.00	183.00	123.00	
CO				139.00	140.00	125.00	
GA	0.615	0.583	156.00				
ID				152.00	153.00	140.00	
IL				141.00	152.00	115.00	
IA				115.00	121.00	88.00	
KS				94.00	103.00	74.00	
KY				122.00	170.00	100.00	
LA			( <sup>7</sup> )				
MI	0.574	0.556	( <sup>7</sup> )	143.00	145.00	135.00	0.300
MN				115.00	116.00	95.00	
MS	0.560	0.556	( <sup>7</sup> )				
MO				110.00	160.00	92.00	
MT				78.00	78.00	82.00	
NE				88.00	90.00	76.00	
NV				167.00	170.00	140.00	
NM				158.00	161.00	131.00	
NY				111.00	155.00	95.00	0.322
NC	0.592	0.556	( <sup>7</sup> )				
ND				62.00	64.00	45.00	
OH				148.00	173.00	125.00	0.470
OK				100.00	130.00	66.00	
OR				174.00	169.00	184.00	
PA				189.00	221.00	182.00	0.308
SD				101.00	105.00	86.00	
TN	0.557	0.555	( <sup>7</sup> )				
TX	0.616	0.615	161.00	132.00	160.00	120.00	
UT				149.00	150.00	130.00	
VA							0.320
WA				161.00	160.00	165.00	0.354
WI				103.00	105.00	75.00	
WY				109.00	110.00	103.00	
US	0.607	0.607	162.00	133.00	138.00	122.00	0.347

<sup>1</sup> Entire month.

<sup>2</sup> Based on sales during the first half of the month.

<sup>3</sup> Mid-month.

<sup>4</sup> Equivalent packinghouse-door returns for CA, MI, NY, and WA. Price at point of first sale for other States.

<sup>5</sup> Marketing year August - February.

<sup>6</sup> Price not published to avoid disclosure of individual firms.

<sup>7</sup> Insufficient sales to establish a price.

**Upland Cotton and Rice: Prices Received and Marketings,  
United States, February 2008, with Comparisons**

Item	Unit	Dec 2007 <sup>1</sup>	Jan 2008 <sup>1</sup>	Feb 2008 <sup>2</sup>
Cotton, Upland				
Average Price	Dollars per Pound	0.592	0.607	0.607
Marketings <sup>3</sup>	1,000 Bales	1,529	1,839	NA
Rice				
Average Price	Dollars per Cwt	11.30	11.80	12.20
Marketings <sup>4</sup>	1,000 Cwt	20,586	19,730	NA

<sup>1</sup> Entire month.

<sup>2</sup> Based on purchases for the first half of the month.

<sup>3</sup> Marketings based on a survey of cotton buyers in the major producing States - AL, AZ, AR, CA, GA, LA, MS, NC, TN, and TX.

<sup>4</sup> Purchases by private firms and rice (rough equivalent) shipped by cooperatives.

**Citrus Fruit: Prices and Equivalent Returns, by Utilization,  
by State and United States, February 2008**

Commodity, State and Type	F.O.B. Packed Fresh	Equivalent Returns <sup>1</sup>					
		Packinghouse-door			On-tree		
		All	Fresh	Process	All	Fresh	Process
	<i>Dollars per Box</i>	<i>Dollars per Box</i>	<i>Dollars per Box</i>	<i>Dollars per Box</i>	<i>Dollars per Box</i>	<i>Dollars per Box</i>	<i>Dollars per Box</i>
Grapefruit							
CA	18.80	8.73	9.38	-0.31	5.75	6.40	-3.29
FL	20.60	6.65	12.14	2.59	4.15	9.99	-0.18
White	19.00	4.76	10.25	2.65	2.44	8.15	0.25
Colored	21.00	7.48	12.60	2.55	4.90	10.45	-0.45
TX	18.00	4.66	7.19	0.65	3.43	5.94	-0.55
US	20.00	6.38	10.97	2.36	4.07	8.98	-0.23
Lemons							
CA	62.90	47.95	52.63	-0.44	42.42	47.10	-5.97
Oranges							
CA							
Navel and Misc	18.30	8.40	10.23	1.46	5.85	7.68	-1.09
FL							
Early and Mids	19.20	8.49	10.20	8.45	5.83	7.40	5.80
TX							
Early and Mids	8.20	-2.68	-2.72	2.40	-4.14	-4.18	0.98
US	17.90	8.36	9.62	8.06	5.74	7.10	5.42
Tangelos							
FL	14.00	4.91	4.70	4.95	1.55	1.55	1.55
Tangerines							
AZ	35.50	20.91	26.08	0.24	17.61	22.78	-3.06
CA	36.50	22.65	27.08	0.24	19.35	23.78	-3.06
FL	27.00	11.90	15.50	4.80	8.23	12.00	0.80
US	33.10	18.25	22.98	2.88	14.80	19.61	-0.83

<sup>1</sup> Net lbs. per box: Grapefruit - AZ & CA-67, FL-85, TX-80; Lemons - 76; Oranges - AZ & CA-75, FL-90, TX-85; Tangelos - 90; Tangerines - AZ & CA-75, FL-95.

**Potatoes: Prices Received, by State, January and February 2008 <sup>1</sup>**

State	Jan	Feb	State	Jan	Feb
	<i>Dollars per Cwt</i>	<i>Dollars per Cwt</i>		<i>Dollars per Cwt</i>	<i>Dollars per Cwt</i>
AL			NC		
AZ			ND - All <sup>2</sup>	7.20	7.00
CA - All <sup>2</sup>	10.30	10.50	- Fresh <sup>3</sup>	8.90	NA
- Winter	17.80	16.40	- Processing	6.35	NA
- Spring			OR	8.65	8.75
- Summer			TX		
- Fall	8.05	8.25	VA		
CO - All <sup>2</sup>	8.90	9.30	WA - All <sup>2</sup>	7.65	7.05
- Fresh <sup>3</sup>	9.85	NA	- Processing	6.35	NA
FL			WI - All <sup>2</sup>	8.30	8.55
ID - All <sup>2</sup>	5.70	5.65	- Fresh <sup>3</sup>	8.55	NA
- Fresh <sup>3</sup>	6.80	NA	- Processing	7.95	NA
- Processing	5.20	NA	US - All <sup>2</sup>	7.33	7.14
ME	7.45	7.55	- Fresh <sup>3</sup>	9.26	NA
MI	8.80	9.05	- Processing	6.17	NA
MN	6.10	6.00			
NY	12.10	12.10			

<sup>1</sup> Missing data indicates no potatoes being marketed.

<sup>2</sup> Average price of potatoes sold for all uses, including table stocks, processing, seed, and livestock feed.

<sup>3</sup> Fresh market prices only, includes table stock prices.

**Cattle: Prices Received, by State, January and February 2008**

State	Cows <sup>1</sup>		Steers & Heifers		Beef Cattle <sup>4</sup>		Calves	
	Jan <sup>2</sup>	Feb <sup>3</sup>	Jan <sup>2</sup>	Feb <sup>3</sup>	Jan <sup>2</sup>	Feb <sup>3</sup>	Jan <sup>2</sup>	Feb <sup>3</sup>
	<i>Dollars per Cwt</i>	<i>Dollars per Cwt</i>	<i>Dollars per Cwt</i>	<i>Dollars per Cwt</i>	<i>Dollars per Cwt</i>	<i>Dollars per Cwt</i>	<i>Dollars per Cwt</i>	<i>Dollars per Cwt</i>
AZ	48.00	50.00	96.00	95.00	76.80	77.00	110.00	112.00
AR	46.50	50.00	93.50	101.00	79.40	85.70	107.00	114.00
CA	40.60	41.60	92.90	92.80	70.40	70.30	110.00	110.00
CO	46.90	51.40	100.00	101.00	98.90	100.00	116.00	114.00
FL	48.40	53.00	87.50	92.00	68.30	70.80	104.00	107.00
GA	48.30	53.20	86.00	91.00	62.20	71.00	103.00	108.00
ID	42.70	45.30	91.30	90.60	78.20	80.60	102.00	105.00
IL	47.00	51.50	92.00	93.00	91.10	92.20	98.00	112.00
IA	48.00	53.00	89.60	89.40	88.80	88.70	104.00	111.00
KS	47.30	51.60	92.60	92.50	90.80	91.30	117.00	125.00
KY	44.00	50.00	85.00	94.00	75.20	83.40	98.00	110.00
LA	47.20	52.00	87.40	97.00	59.30	64.60	100.00	108.00
MI	49.00	53.00	87.00	87.00	75.60	76.80	103.00	100.00
MN	49.40	53.60	88.70	89.40	79.40	81.00	114.00	119.00
MO	45.90	49.40	95.30	102.00	80.50	84.10	107.00	118.00
MT	45.50	51.60	98.80	99.20	89.20	91.60	116.00	119.00
NE	49.20	53.20	94.80	94.50	93.40	93.30	120.00	123.00
NM	46.00	49.00	96.00	100.00	74.50	79.60	112.00	112.00
ND	44.30	49.00	96.30	98.00	89.00	90.70	113.00	114.00
OH	44.00	48.00	83.80	85.00	79.80	81.30	96.00	100.00
OK	46.40	52.50	97.10	101.00	92.00	96.20	110.00	120.00
OR	43.00	44.50	90.20	87.80	76.00	74.80	100.00	104.00
PA	47.00	49.00	84.40	85.40	74.70	75.90	117.00	116.00
SD	44.90	51.00	98.30	97.50	89.20	92.40	115.00	114.00
TN	45.00	51.00	87.00	93.00	70.20	76.20	99.00	109.00
TX	45.60	48.60	93.60	92.00	88.30	87.20	110.00	115.00
VA	44.20	47.10	82.10	88.30	65.80	73.10	97.00	106.00
WI	47.00	51.50	84.50	85.00	62.80	65.60	152.00	151.00
WY	44.50	49.00	100.00	95.00	85.60	83.50	121.00	120.00
US	46.30	49.70	93.40	93.20	87.30	87.80	117.00	118.00

<sup>1</sup> Beef cows and cull dairy cows sold for slaughter.

<sup>2</sup> Entire month.

<sup>3</sup> Mid-month.

<sup>4</sup> "Cows" and "steers and heifers" combined.

**Hogs: Prices Received, by State, January and February 2008**

State	Sows		Barrows and Gilts		All Hogs	
	Jan <sup>1</sup>	Feb <sup>2</sup>	Jan <sup>1</sup>	Feb <sup>2</sup>	Jan <sup>1</sup>	Feb <sup>2</sup>
	<i>Dollars per Cwt</i>	<i>Dollars per Cwt</i>	<i>Dollars per Cwt</i>	<i>Dollars per Cwt</i>	<i>Dollars per Cwt</i>	<i>Dollars per Cwt</i>
AR	17.90	18.50	35.50	40.00	33.70	37.90
IL	16.30	18.00	40.50	44.00	38.60	41.90
IN	23.10	23.20	40.90	45.30	39.50	43.50
IA	19.00	21.00	40.00	44.50	39.60	43.60
KS	19.20	21.20	31.90	38.60	30.20	36.30
MN	19.00	20.20	38.50	43.10	38.40	43.00
MO	15.40	17.50	31.40	36.80	30.30	35.30
NE	20.70	21.90	39.10	43.10	38.70	42.70
NC	18.00	18.20	37.60	43.50	37.40	43.20
OH	19.30	20.50	34.60	40.00	33.70	38.80
OK	16.40	18.20	30.40	36.80	28.30	34.00
PA	19.30	20.00	31.80	37.80	29.90	35.10
SD	19.70	20.60	38.10	43.50	35.70	41.20
US	18.50	20.20	38.10	42.90	37.20	41.90

<sup>1</sup> Entire month.

<sup>2</sup> Mid-month.

**Sheep and Poultry: Prices Received, by State, January and February 2008**

State	January		February
	Sheep <sup>1</sup>	Lambs <sup>1</sup>	Market Eggs <sup>2 3</sup>
	<i>Dollars per Cwt</i>	<i>Dollars per Cwt</i>	<i>Dollars per Dozen</i>
AL			1.320
AR			1.240
CA	43.00	89.00	1.250
CO	30.00	100.00	
CT			1.150
FL			1.300
GA			1.300
ID	28.00	93.00	
IN			1.240
IA	30.00	88.00	1.180
KY	36.00	93.00	
ME			1.520
MI			1.200
MN	31.30	94.80	1.270
MS			1.250
MO	29.70	101.00	1.180
MT	28.70	103.00	
NE	33.70	89.50	
NY			1.250
NC			1.210
ND	28.00	102.00	
OH	29.90	103.00	1.220
OR	43.00	97.50	
PA	40.60	116.00	1.120
SC			1.080
SD	31.40	102.00	
TX	32.90	102.00	1.230
VA	38.00	99.00	
WA			1.350
WV	29.00	103.00	
WY	28.00	102.00	
US	31.90	97.50	1.220

<sup>1</sup> Entire month.

<sup>2</sup> Mid-month.

<sup>3</sup> Also referred to as table eggs.

**Milk and Milk Cows: Prices Received, by State, January and February 2008**

State	January <sup>1</sup>						February		Milk Cows <sup>5</sup>
	Fluid Grade Milk <sup>2</sup>		Manufacturing Grade Milk		All Milk <sup>3</sup>		All Milk <sup>3 4</sup>		
	Price	Fat Test	Price	Fat Test	Price	Fat Test	Price	Fat Test	
	<i>Dol/Cwt</i>	<i>Percent</i>	<i>Dol/Cwt</i>	<i>Percent</i>	<i>Dol/Cwt</i>	<i>Percent</i>	<i>Dol/Cwt</i>	<i>Percent</i>	<i>Dol/Head</i>
AZ	20.10	3.70			20.10	3.70	18.60	3.62	
CA	18.50	3.79	19.50	4.37	18.53	3.81	17.80	3.76	
CO	20.30	3.64			20.30	3.64	19.50	3.60	
FL	24.50	3.65			24.50	3.65	23.60	3.65	
ID	18.80	3.72			18.80	3.72	17.30	3.69	
IL	21.80	3.90	21.00	3.90	21.80	3.90	20.00	3.85	
IN	21.70	3.79	20.00	4.01	21.70	3.79	20.00	3.82	
IA	20.80	3.82	19.70	4.01	20.80	3.82	19.20	3.80	
KS	21.20	3.84			21.20	3.84	19.50	3.84	
KY	22.50	3.79			22.50	3.79	21.40	3.75	
MI	21.30	3.71			21.30	3.71	19.60	3.70	
MN	21.20	3.84	19.70	3.89	21.20	3.84	20.50	3.83	
MO	21.50	3.78	18.50	4.00	21.40	3.79	19.80	3.76	
NM	20.60	3.74			20.60	3.74	20.00	3.70	
NY	21.30	3.79			21.30	3.79	19.70	3.79	
OH	22.00	3.87	18.90	4.03	21.90	3.88	20.40	3.81	
OR	19.60	3.81			19.60	3.81	18.10	3.76	
PA	22.60	3.80			22.60	3.80	20.50	3.85	
TX	21.20	3.87			21.20	3.87	20.70	3.85	
VT	22.20	3.82			22.20	3.82	21.10	3.83	
VA	23.90	3.75			23.90	3.75	23.50	3.75	
WA	21.00	3.81			21.00	3.81	19.00	3.76	
WI	21.10	3.80	19.80	3.95	21.10	3.80	19.30	3.78	
US	20.50	3.79	19.60	4.15	20.50	3.79	19.30	3.77	

<sup>1</sup> Entire month.

<sup>2</sup> Including milk diverted to manufacturing.

<sup>3</sup> Before deductions for hauling. Includes quality, quantity, and other premiums. Excludes hauling subsidies.

<sup>4</sup> Preliminary.

<sup>5</sup> Animals sold for dairy herd replacement only. Prices published January, April, July and October.

**Parity Price Equivalent for Manufacturing Grade Milk <sup>1</sup>: United States,  
January and February 2008, with Comparisons**

Item	Unit	Feb 2007	Jan 2008	Feb 2008
Parity Equivalent	Dollars per Cwt	36.00	40.40	41.40
Average Price F.O.B <sup>2</sup>	Dollars per Cwt	14.40	19.60	18.70
Average Fat Test of Milk <sup>2</sup>	Percent	4.05	4.15	4.07

<sup>1</sup> The parity price equivalent during 2008 is 92.1 percent of the parity price of all milk sold to plants, compared with 91.5 percent in 2007. For additional details, see January 2008 issue of "Agricultural Prices".

<sup>2</sup> Beginning in August 2007, Parity Price for Manufacturing Grade Milk is computed using the same methodology as Parity Prices for other commodities.

<sup>3</sup> Preliminary for February 2008.

**Parity Prices for Farm Products and Average Prices Received as  
Percent of Parity Prices, United States, with Comparisons <sup>1</sup>**

Commodity and Unit	Adjusted Base Price	Parity Price			Price as Percent of Parity		
		Feb 2007	Jan 2008	Feb 2008	Feb 2007	Jan 2008	Feb 2008
	<i>Dollars</i>	<i>Dollars</i>	<i>Dollars</i>	<i>Dollars</i>	<i>Percent</i>	<i>Percent</i>	<i>Percent</i>
<b>Basic Commodities</b>							
All Wheat, Bu	0.533	10.60	12.00	12.30	44	66	85
Rice, Cwt	1.29	28.50	28.90	29.70	35	41	41
Corn, Bu	0.337	7.81	7.56	7.75	44	53	55
Cotton, Lb							
American Upland	0.092	1.99	2.06	2.12	24	29	29
Extra Long Staple	0.137	2.89	3.07	3.15			
Peanuts, Lb	0.035	0.631	0.785	0.805	28	28	26
<b>Designated Nonbasic</b>							
All Milk, Sold to Plants, Per Cwt <sup>2</sup>	1.95	39.10	43.80	44.80	39	46	44
Honey, Extracted, Lb <sup>3</sup>	0.122	2.50	2.74	2.80			
<b>Wool and Mohair</b>							
Wool, Lb	0.080	1.67	1.80	1.84	41		48
Mohair, Lb	0.371	7.31	8.33	8.53	50		44
<b>Other Nonbasic</b>							
Barley, Bu	0.368	7.37	8.26	8.46	42	53	48
Canola, Cwt	1.530	27.90	34.30	35.20		52	58
Cottonseed, Ton	14.40	301.00	323.00	331.00	43	53	49
Dry Edible Beans, Cwt	2.71	55.40	60.80	62.30	46	45	47
Flaxseed, Bu	0.901	17.10	20.20	20.70	37	68	82
Mustard Seed, Cwt	2.00	39.10	44.90	46.00			
Oats, Bu	0.219	4.38	4.91	5.03	54	60	59
Potatoes, Cwt	0.827	16.60	18.60	19.00	45	39	38
Rapeseed, Cwt	1.73	32.40	38.80	39.80			
Rye, Bu	0.420	8.42	9.42	9.66			
Safflower, Cwt	1.88	37.40	42.20	43.20			
Sorghum Grain, Cwt	0.601	13.30	13.50	13.80	52	55	57
Soybeans, Bu	0.832	17.30	18.70	19.10	40	53	58
All Sunflower, Cwt	1.68	33.80	37.70	38.60	44	50	59
Sweetpotatoes, Cwt	2.34	47.00	52.50	53.80			
Apples, Fresh, Lb <sup>4</sup>	0.032	0.613	0.718	0.736	48	50	47
<b>Citrus (equiv on-tree), Box</b>							
Grapefruit	0.631	12.70	14.20	14.50	32	37	28
Lemons	1.22	23.20	27.40	28.00	119	134	152
Oranges	0.651	12.20	14.60	15.00	66	40	38
Tangerines	1.37	27.50	30.70	31.50	52	54	47
Beef Cattle, Cwt	10.20	207.00	229.00	234.00	42	38	38
Calves, Cwt	14.80	297.00	332.00	340.00	38	35	35
Hogs, Cwt	5.58	119.00	125.00	128.00	40	30	33
Lambs, Cwt	11.60	242.00	260.00	267.00	39	38	
Sheep, Cwt	4.67	99.70	105.00	107.00	37	30	
Eggs, Doz <sup>2</sup>	0.089	1.79	2.00	2.05	41	56	60
Turkeys, Live, Lb	0.056	1.140	1.260	1.290	37	36	37

<sup>1</sup> Parity prices are computed under the provisions of Title III, Subtitle a, Section 301 (a) of the Agricultural Adjustment Act of 1938 as amended by the Agricultural Acts of 1948, 1949, and 1956. See January "Agricultural Prices" for details on adjusted base price and parity price computations.

<sup>2</sup> Seasonally adjusted price as percentage of parity price.

<sup>3</sup> Wholesale extracted. Adjusted base price derived from state annual averages prices weighted by production. For 1982 through 1985 the national averages are the support prices.

<sup>4</sup> Equivalent packinghouse-door returns for CA, NY (apples only), OR (except peaches), and WA. Price at point of first sale for other states.



**Parity Prices for Farm Products, February 2008, United States <sup>1</sup>**

Other Nonbasic Commodities	Adjusted Base Price	Parity Price	Other Nonbasic Commodities	Adjusted Base Price	Parity Price
	<i>Dollars</i>	<i>Dollars</i>		<i>Dollars</i>	<i>Dollars</i>
Field Crops and Misc Commodities			Papayas (HI)	0.047	1.080
Hops, Lb	0.263	6.05	Peaches		
Spearmint Oil, Lb	1.37	31.50	Fresh, Ton <sup>2</sup>	84.60	1,940.00
Tobacco, Lb			Dried, CA, Ton	74.20	1,710.00
Flue-Cured, 11-14	0.231	5.31	Processing <sup>3</sup>		
Fire-Cured, 21-23	0.311	7.15	Excl Dried		
Burley, 31	0.248	5.70	Clingstone, CA, Ton	33.70	775.00
Maryland, 32	0.191	4.39	Pears, Ton		
Dark Air-Cured, 35-37	0.278	6.39	Fresh <sup>2</sup>	54.50	1,250.00
PA Seedleaf, 41	0.196	4.51	Dried, CA <sup>4</sup>	177.00	4,070.00
Cigar Binder, 51	0.718	16.50	Plums, CA, Ton		
Type 61	3.13	72.00	Fresh, Equiv on-Tree	66.20	1,520.00
Noncitrus Fruit			Prunes, Dried, CA, Ton <sup>4</sup>	141.00	3,240.00
Apples, Ton <sup>4</sup>			Prunes and Plums, Excl CA, Ton		
Processing	15.70	361.00	Fresh <sup>7</sup>	63.10	1,450.00
Apricots, Ton			Processing <sup>4</sup>		
Fresh <sup>5</sup>	105.00	2,410.00	Excl Dried	28.60	658.00
Dried, CA	252.00	5,790.00	Tree Nuts <sup>8</sup>		
Avocados, Ton <sup>5</sup>	227.00	5,220.00	Almonds, Lb	0.209	4.80
Cherries			Hazelnuts, Ton	162.00	3,720.00
Sweet, Ton	197.00	4,530.00	Pistachio, Lb	0.179	4.12
Tart, Lb	0.035	0.805	Walnuts, Ton	169.00	3,890.00
Cranberry, Bbl <sup>3</sup>	4.20	96.60	Vegetables, Cwt <sup>9</sup>		
Dates, CA, Ton <sup>5</sup>	185.00	4,250.00	Fresh		
Grapes, Ton			Carrots <sup>6</sup>	2.44	56.10
Raisin Variety	119.00	2,740.00	Cauliflower <sup>6</sup>	4.32	99.30
Other Dried	70.90	1,630.00	Celery <sup>6</sup>	2.04	46.90
Kiwifruit, Ton	93.80	2,160.00	Honeydew Melons	2.58	59.30
Nectarines			Lettuce	2.35	54.00
Fresh, CA, Ton <sup>5</sup>	58.50	1,340.00	Onions <sup>6</sup>	1.60	36.80
Noncitrus Fruit, Continued			Tomatoes	4.68	108.00
Olives, CA canning, Ton <sup>3</sup>	90.70	2,090.00			

<sup>1</sup> Parity prices are computed under the provisions of Title III, Subtitle a, Section 301 (a) of the Agricultural Adjustment Act of 1938 as amended by the Agricultural Acts of 1948, 1949, and 1956. See January "Agricultural Prices" for details on adjusted base price and parity price computations.

<sup>2</sup> Equivalent packinghouse-door returns for CA, NY (apples only), OR (except peaches), and WA. Price at point of first sale for other states.

<sup>3</sup> Equivalent returns for bulk fruit at first delivery point.

<sup>4</sup> Equivalent returns at processing plant door.

<sup>5</sup> Equivalent returns at packinghouse door.

<sup>6</sup> Includes some processing.

<sup>7</sup> Based on "as sold" prices for fresh fruit in all states.

<sup>8</sup> Prices in-shell basis except almonds which are shelled basis.

<sup>9</sup> F.O.B. shipping point prices.

**Other Hay, Baled: Prices Received, Selected Regions,  
Marketing Year Average, 2005-2007 <sup>1</sup>**

Region	3-Year Avg
	<i>Dollars Per Ton</i>
Appalachia <sup>2</sup>	74.20
Corn Belt <sup>3</sup>	72.50
Florida	105.70
Lake States <sup>4</sup>	67.00
Northeast <sup>5</sup>	126.00
Southeast/Delta <sup>6</sup>	69.80

<sup>1</sup> Prices provided to the Forest Service, USDA to compute Eastern National Forest grazing fees.

<sup>2</sup> KY, NC, TN, VA, and WV.

<sup>3</sup> IL, IN, MO, and OH.

<sup>4</sup> MI, MN, and WI.

<sup>5</sup> ME, NH, NY, PA, and VT.

<sup>6</sup> AL, AR, GA, LA, MS, and SC.

## Marketing Year for Specified Commodities

**Potatoes:** The marketing year extends over a 21 month period beginning in November preceding the specified crop year and extending into July the following year. November (previous year)-May for winter crop potatoes; April-August for spring crop potatoes; June-December for summer crop potatoes; July-July (following year) for fall potatoes.

**Cattle, Lambs, Mohair, Sheep, Turkeys, and Wool:** January 1 - December 31 for U.S. and all States.

**Potatoes: Marketing Year Average Prices Received,  
by States and United States, 2006 and 2007 <sup>1</sup>**

State	2006	2007	State	2006	2007
	<i>Dollars per Cwt</i>	<i>Dollars per Cwt</i>		<i>Dollars per Cwt</i>	<i>Dollars per Cwt</i>
AL	15.00	17.30	NE	7.40	7.30
AK	20.10	20.10	NV	6.10	5.75
AZ	13.40	9.55	NJ	8.70	8.05
CA - All	12.50	11.10	NM	6.50	7.00
Winter	18.00	18.60	NY	12.00	12.10
Spring	12.00	10.20	NC	10.00	8.30
Summer	15.30	11.80	ND - All	6.55	6.60
Fall	6.75	7.45	Fresh	8.15	8.20
CO - All	7.95	8.25	Processing	6.00	6.00
Fresh	8.80	8.85	OH	8.90	9.15
DE	9.25	10.10	OR	6.45	7.25
FL	18.80	20.90	PA	10.40	9.30
ID - All	5.90	5.80	RI	10.40	8.80
Fresh	6.55	6.30	TX	13.20	11.40
Processing	5.40	5.20	VA	14.70	11.60
IL	6.50	5.60	WA - All	6.25	6.00
KS	10.60	6.70	Processing	5.60	5.40
ME	7.80	7.50	WI - All	7.80	7.45
MD	10.10	10.60	Fresh	8.65	7.75
MA	10.10	8.80	Processing	6.75	6.85
MI	8.35	8.40			
MN	6.15	6.40	US - All	7.33	7.12
MO	6.15	6.40	Fresh	10.27	9.53
MT	9.00	10.40	Processing	5.90	5.86

<sup>1</sup> State Marketing Year Average Prices are computed by weighting state monthly prices by estimated sales for the month during the crop year. U.S. Marketing Year Average Price is computed by weighting state Marketing Year Average Prices by estimated sales for the crop year.

**Potatoes: Prices Received, Monthly, by State and U.S., 2007 <sup>1</sup>**

State	Jan	Feb	Mar	Apr	May	Jun
	<i>Dollars per Cwt</i>	<i>Dollars per Cwt</i>	<i>Dollars per Cwt</i>	<i>Dollars per Cwt</i>	<i>Dollars per Cwt</i>	<i>Dollars per Cwt</i>
AL						20.70
AZ						
CA - All	13.80	14.90	13.10	6.65	11.50	9.45
Winter	18.20	19.20	26.20			
Spring					12.80	9.20
Summer						12.90
Fall	6.65	6.65	6.45	6.65	6.95	7.15
CO - All	7.85	8.25	8.10	7.80	7.85	7.60
Fresh	8.70	8.75	8.50	8.65	9.10	8.75
FL		40.50	41.50	33.80	13.40	12.80
ID - All	5.85	5.90	6.45	7.05	6.40	6.05
Fresh	6.50	6.40	6.50	6.90	7.00	6.40
Processing	5.60	5.60	5.70	5.80	5.80	5.90
ME	8.40	7.90	7.60	8.15	8.20	8.05
MI	8.75	9.00	9.45	10.40	10.40	
MN	5.75	5.65	5.85	5.95	5.75	5.35
NY	10.60	11.00	11.00	11.50	11.60	
NC						8.00
ND - All	6.10	5.75	6.90	7.90	7.40	6.50
Fresh	6.80	6.80	7.30	7.15	5.80	4.80
Processing	5.75	5.15	6.55	7.70	7.00	6.55
OR	6.30	6.65	6.90	7.45	7.75	7.65
TX					10.30	10.20
VA						14.30
WA - All	7.20	7.05	7.10	7.10	7.55	7.05
Processing	6.30	6.25	6.45	6.40	7.00	6.50
WI - All	7.50	7.65	8.30	8.35	7.75	7.55
Fresh	7.90	8.10	8.45	7.20	6.80	
Processing	7.20	7.25	8.40	8.85	8.65	
US - All	7.16	7.42	7.93	8.71	7.95	7.75
Fresh	9.11	10.10	11.04	13.03	11.08	10.31
Processing	6.14	6.04	6.36	6.56	6.74	6.71

See footnote(s) at end of table.

--continued

**Potatoes: Prices Received, Monthly, by State and U.S., 2007 <sup>1</sup> (continued)**

State	Jul	Aug	Sep	Oct	Nov	Dec
	<i>Dollars per Cwt</i>	<i>Dollars per Cwt</i>	<i>Dollars per Cwt</i>	<i>Dollars per Cwt</i>	<i>Dollars per Cwt</i>	<i>Dollars per Cwt</i>
AL	14.50					
AZ						
CA - All	10.20	12.10	8.30	7.75	7.50	7.80
Winter						12.30
Spring	9.85					
Summer	11.70	12.10	11.30	10.60		
Fall	8.55		6.90	7.00	7.50	7.80
CO - All	7.25	6.95	7.65	7.45	7.70	8.35
Fresh	8.50	8.70	8.25	8.40	8.50	9.05
FL						
ID - All	5.80	6.00	5.25	5.25	5.50	5.50
Fresh	5.90	6.30	6.00	5.80	6.40	6.20
Processing	5.70	5.80	5.10	5.10	5.10	5.20
ME	7.65		6.20	6.30	7.20	7.35
MI	11.50	6.70	6.50	6.55	8.15	8.45
MN	13.90	7.95	5.95	6.35	6.30	6.50
NY		13.40	12.60	11.70	12.30	12.00
NC	8.60					
ND - All	5.95	6.50	6.35	6.45	6.75	7.05
Fresh		8.25	8.25	8.25	8.40	8.40
Processing	5.95	6.25	5.85	5.90	6.10	6.50
OR	6.65	6.10	5.65	5.80	7.45	8.20
TX	11.80	13.90	9.90			
VA	12.00	10.10				
WA - All	8.25	5.75	5.30	5.40	6.00	7.40
Processing	7.70	5.10	4.90	5.20	5.20	6.15
WI - All	9.40	7.65	6.50	6.85	7.45	7.90
Fresh		9.25	7.15	8.10	8.45	8.25
Processing		5.70	5.95	5.75	6.20	7.20
US - All	8.48	6.85	5.92	5.78	6.55	7.06
Fresh	11.33	10.42	7.92	7.87	8.32	8.65
Processing	6.53	5.51	5.34	5.32	5.64	6.07

<sup>1</sup> Monthly prices refer to all potatoes sold in a given month regardless of the year harvested.

**Cattle: Marketing Year Average Prices Received,  
by States and United State, 2006-2007**

State	Cows <sup>1</sup>		Steer & Heifers		All Beef <sup>2</sup>	
	2006	2007	2006	2007	2006	2007
	<i>Dollars per Cwt</i>	<i>Dollars per Cwt</i>	<i>Dollars per Cwt</i>	<i>Dollars per Cwt</i>	<i>Dollars per Cwt</i>	<i>Dollars per Cwt</i>
AL	44.20	44.90	98.40	91.20	81.50	77.00
AK	90.00	90.00	120.00	120.00	100.00	105.00
AZ	45.40	48.50	104.00	96.10	88.30	79.90
AR	43.60	46.30	105.00	102.00	86.80	85.50
CA	44.20	44.30	89.30	93.70	67.30	71.40
CO	48.40	49.60	108.00	104.00	107.00	103.00
CT	47.00	47.00	74.00	72.00	69.00	69.00
DE	46.50	48.60	88.30	90.50	85.10	86.50
FL	46.50	48.40	101.00	94.00	78.20	76.40
GA	47.70	48.80	95.80	92.30	64.20	64.70
HI	29.20	29.20	60.30	56.60	52.40	49.10
ID	44.80	46.50	88.70	93.40	78.20	82.00
IL	47.50	49.40	86.40	92.90	85.60	92.00
IN	48.30	49.40	100.00	93.50	86.10	81.80
IA	49.60	50.50	88.00	91.30	87.30	90.60
KS	47.20	49.60	89.70	95.10	88.60	93.90
KY	46.00	45.30	101.00	95.20	87.60	83.20
LA	45.40	47.00	102.00	98.10	63.40	63.50
ME	49.00	47.00	84.00	88.00	77.00	80.00
MD	46.50	48.60	88.30	90.50	85.10	86.50
MA	46.00	47.00	77.00	77.00	71.00	72.00
MI	49.10	49.30	81.60	87.00	71.90	75.80
MN	50.40	50.20	83.00	89.30	77.20	81.90
MS	45.00	48.40	97.70	91.20	68.20	70.60
MO	47.00	47.50	110.00	106.00	94.20	91.60
MT	47.70	47.70	112.00	103.00	93.80	89.80
NE	47.80	49.90	91.20	95.30	89.90	93.90
NV	45.30	42.30	106.00	102.00	90.20	87.10
NH	47.00	46.00	82.00	80.00	75.00	71.00
NJ	48.00	47.00	70.00	70.00	53.00	52.00
NM	44.50	49.40	106.00	101.00	81.10	80.40
NY	42.40	44.40	70.60	75.00	44.40	46.00
NC	45.60	47.90	95.00	93.60	68.00	63.80
ND	47.80	47.40	107.00	102.00	94.60	89.70
OH	45.30	46.10	88.00	89.90	83.60	85.40
OK	46.30	48.80	105.00	104.00	96.80	99.40
OR	43.10	46.50	98.80	92.30	82.30	78.60
PA	47.10	48.40	83.20	87.90	73.90	77.60
RI	46.00	46.00	72.00	72.00	68.00	68.00
SC	48.70	46.80	91.30	89.30	80.60	79.10
SD	47.80	48.20	100.00	101.00	91.90	92.10
TN	44.90	45.30	101.00	96.50	78.50	76.20
TX	42.90	46.60	92.40	95.90	88.10	91.60
UT	42.10	42.00	96.00	93.60	92.50	90.00
VT	47.00	47.00	77.00	77.00	71.00	71.00
VA	42.40	44.40	93.30	92.70	77.20	78.80
WA	47.30	47.90	102.00	98.20	96.40	92.90
WV	41.60	45.60	87.20	88.20	68.40	64.60
WI	47.90	48.60	84.30	87.50	63.30	65.00
WY	47.20	47.00	111.00	106.00	98.90	92.90
US	46.60	47.90	92.30	95.40	87.20	89.90

See footnote(s) at end of table.

--continued

**Cattle: Marketing Year Average Prices Received,  
by State and United States, 2006-2007 (continued)**

State	Calves		Milk Cows <sup>3</sup>	
	2006	2007	2006	2007
	<i>Dollars per Cwt</i>	<i>Dollars per Cwt</i>	<i>Dollars per Head</i>	<i>Dollars per Head</i>
AL	122.00	112.00	1,600	1,850
AK	115.00	120.00	1,300	1,200
AZ	125.00	116.00	1,850	1,880
AR	123.00	115.00	1,670	1,720
CA	118.00	109.00	1,630	1,760
CO	130.00	119.00	2,020	2,030
CT	110.00	100.00	1,700	1,800
DE	135.00	110.00	1,710	1,780
FL	120.00	112.00	1,900	1,980
GA	122.00	114.00	1,800	1,900
HI	101.00	90.00	1,500	1,400
ID	121.00	111.00	1,900	2,000
IL	119.00	112.00	1,720	1,800
IN	119.00	106.00	1,750	1,860
IA	124.00	117.00	1,710	1,850
KS	135.00	126.00	1,660	1,760
KY	121.00	109.00	1,740	1,750
LA	120.00	111.00	1,550	1,650
ME	110.00	105.00	1,600	1,700
MD	135.00	110.00	1,830	1,850
MA	115.00	105.00	1,650	1,850
MI	134.00	118.00	1,930	1,910
MN	129.00	123.00	1,700	1,780
MS	122.00	109.00	1,560	1,670
MO	129.00	119.00	1,630	1,660
MT	131.00	123.00	1,730	1,720
NE	135.00	125.00	1,760	1,800
NV	121.00	121.00	1,700	1,900
NH	115.00	110.00	1,700	1,850
NJ	140.00	94.00	1,810	1,910
NM	128.00	120.00	1,790	1,860
NY	145.00	104.00	1,620	1,720
NC	115.00	104.00	1,800	1,860
ND	126.00	117.00	1,530	1,530
OH	118.00	105.00	1,780	1,820
OK	127.00	121.00	1,700	1,750
OR	117.00	105.00	1,870	1,980
PA	133.00	116.00	1,750	1,900
RI	110.00	100.00	1,600	1,650
SC	115.00	106.00	1,850	1,920
SD	132.00	120.00	1,600	1,770
TN	117.00	108.00	1,650	1,680
TX	132.00	122.00	1,790	1,940
UT	131.00	118.00	1,620	1,620
VT	110.00	105.00	1,800	1,930
VA	114.00	106.00	1,800	1,820
WA	116.00	106.00	1,770	1,880
WV	107.00	98.30	1,700	1,790
WI	163.00	154.00	1,760	1,880
WY	131.00	124.00	1,600	1,700
US	133.00	119.00	1,730	1,830

<sup>1</sup> Beef cows and cull dairy cows sold for slaughter.

<sup>2</sup> "Cows" and "Steer and Heifers" combined.

<sup>3</sup> Calendar year average.

**Hogs: Marketing Year Average Prices Received by Farmers,  
by State and United States, 2006-2007**

State	Barrows & Gilts		Sows		All	
	2006	2007	2006	2007	2006	2007
	<i>Dollars per Cwt</i>	<i>Dollars per Cwt</i>	<i>Dollars per Cwt</i>	<i>Dollars per Cwt</i>	<i>Dollars per Cwt</i>	<i>Dollars per Cwt</i>
AL	41.20	43.20	34.00	32.20	40.40	42.00
AK	90.00	90.00	75.00	75.00	85.00	85.00
AZ	53.00	53.90	39.20	39.90	52.90	53.80
AR	43.30	46.10	33.90	33.70	42.40	44.90
CA	47.90	48.80	33.10	34.10	47.90	48.90
CO	49.00	48.70	37.20	35.50	48.90	48.60
CT	41.50	40.00	28.00	27.00	39.00	38.00
DE	39.40	40.80	32.30	33.00	38.60	40.20
FL	42.50	42.50	32.40	32.00	39.40	39.10
GA	48.30	49.70	33.90	32.10	46.10	46.90
HI	96.30	98.20	51.00	51.70	92.70	94.90
ID	47.00	47.50	34.50	32.80	46.50	46.80
IL	47.90	47.10	31.90	31.20	46.70	45.80
IN	45.60	47.00	37.80	36.50	45.00	46.10
IA	48.20	48.90	34.20	31.60	47.90	48.60
KS	44.10	43.00	34.30	32.30	42.90	41.60
KY	45.60	46.30	33.30	32.80	45.30	45.90
LA	42.20	43.10	28.00	27.00	38.40	39.10
ME	41.50	40.00	28.00	27.00	39.00	38.00
MD	39.40	40.80	32.30	33.00	38.60	40.20
MA	41.50	40.00	28.00	27.00	39.00	38.00
MI	42.90	42.30	31.80	30.40	42.00	41.10
MN	47.40	49.00	34.20	33.10	47.20	48.80
MS	42.70	44.10	32.50	31.40	42.60	44.00
MO	40.90	41.30	32.90	31.60	40.40	40.60
MT	49.70	49.90	31.70	30.20	47.90	47.90
NE	48.20	49.10	34.70	33.50	47.90	48.80
NV	43.00	44.50	33.00	34.00	42.30	44.30
NH	41.50	40.00	28.00	27.00	39.00	38.00
NJ	39.30	40.70	28.00	27.00	37.60	40.40
NM	42.40	41.20	33.00	32.00	42.00	40.80
NY	39.90	38.70	27.10	26.10	38.00	36.60
NC	46.80	48.20	34.30	31.90	46.60	48.00
ND	47.60	48.10	32.80	31.80	47.40	47.80
OH	45.40	45.90	33.80	32.90	44.70	45.00
OK	40.60	40.90	32.00	31.00	39.30	39.40
OR	50.50	50.60	25.70	26.50	50.00	50.10
PA	43.60	42.40	32.10	32.30	41.90	40.90
RI	41.50	40.00	28.00	27.00	39.00	38.00
SC	46.50	47.40	33.70	32.20	45.70	46.50
SD	48.10	48.70	32.80	31.60	46.20	46.70
TN	44.00	45.00	33.00	31.00	42.90	43.60
TX	43.30	42.50	29.60	27.20	40.80	39.70
UT	49.40	50.80	38.70	39.90	49.40	50.80
VT	41.50	40.00	28.00	27.00	39.00	38.00
VA	43.70	45.90	30.90	32.00	42.60	45.20
WA	47.20	48.60	36.20	33.30	46.20	47.80
WV	45.50	46.70	29.40	30.00	42.40	43.40
WI	43.70	45.40	31.40	30.80	42.50	43.90
WY	43.10	44.70	34.30	33.30	41.10	42.20
US	46.60	47.40	33.20	32.00	46.00	46.60



**Sheep and Lambs: Marketing Year Average Prices Received,  
by State and United States, 2006-2007**

State	Sheep		Lambs	
	2006	2007	2006	2007
	<i>Dollars per Cwt</i>	<i>Dollars per Cwt</i>	<i>Dollars per Cwt</i>	<i>Dollars per Cwt</i>
AZ	38.00	36.00	90.00	95.00
CA	31.40	29.60	84.00	90.50
CO	34.50	31.10	97.00	96.20
ID	27.60	24.30	85.80	98.20
IL	35.00	30.20	87.60	93.00
IN	32.30	28.00	94.00	95.60
IA	40.70	32.60	88.40	94.60
KS	26.30	22.50	81.80	95.30
KY	41.60	34.30	94.80	98.20
MD	45.00	43.00	100.00	110.00
MI	36.00	32.00	87.00	93.00
MN	31.40	29.40	89.60	99.30
MO	36.60	32.10	98.20	96.50
MT	25.70	23.90	102.00	101.00
NE	35.00	31.20	89.00	94.20
NV	29.00	29.00	96.00	101.00
N ENG <sup>1</sup>	50.00	46.00	125.00	120.00
NM	38.00	36.00	92.00	98.00
NY	46.10	44.80	106.00	103.00
NC	41.00	37.00	99.00	102.00
ND	30.50	27.30	101.00	101.00
OH	34.80	30.70	91.80	97.70
OK	34.00	33.00	92.00	95.00
OR	36.70	31.80	89.60	95.30
PA	45.20	43.00	109.00	116.00
SD	29.40	24.10	109.00	107.00
TN	39.00	35.00	100.00	101.00
TX	37.10	35.30	92.40	98.10
UT	33.20	27.90	98.50	98.50
VA	38.00	37.10	101.00	104.00
WA	33.00	30.00	92.00	100.00
WV	34.40	31.80	99.90	101.00
WI	34.70	31.10	84.70	94.30
WY	30.80	28.40	107.00	99.70
Oth St <sup>2</sup>	36.00	34.00	92.00	96.00
US	35.20	31.00	95.50	98.50

<sup>1</sup> Includes CT, ME, MA, NH, RI, and VT.

<sup>2</sup> Individual state estimates not available for states not shown, but are included in Other States.

**Cows <sup>1</sup>: Monthly Prices Received, by State, 2007  
and United States, 2006-2007**

State	Jan	Feb	Mar	Apr	May	Jun
	<i>Dollars per Cwt</i>	<i>Dollars per Cwt</i>	<i>Dollars per Cwt</i>	<i>Dollars per Cwt</i>	<i>Dollars per Cwt</i>	<i>Dollars per Cwt</i>
AZ	43.00	45.00	47.00	49.00	51.00	51.00
AR	42.50	44.50	43.60	47.00	49.00	47.50
CA	40.60	42.00	45.20	47.40	48.30	47.80
CO	45.90	48.50	47.80	51.00	53.20	51.70
FL	48.30	50.50	48.20	49.40	50.60	49.00
GA	49.20	51.10	48.60	49.70	50.30	49.20
ID	40.90	44.60	47.00	48.60	51.00	49.60
IL	46.00	47.00	48.00	50.00	54.00	52.00
IA	46.30	49.20	48.70	51.00	54.50	54.40
KS	45.70	47.50	48.30	49.00	53.70	53.10
KY	42.00	45.00	44.00	47.00	50.00	46.00
LA	45.80	47.80	46.00	48.50	50.00	47.80
MI	44.50	48.00	49.00	50.00	52.00	51.00
MN	47.80	50.10	49.50	51.30	53.80	51.60
MO	43.90	48.20	45.60	48.80	51.60	49.50
MT	44.80	47.70	47.60	49.90	53.90	52.00
NE	44.70	48.00	48.80	50.60	52.70	52.20
NM	46.70	46.50	47.60	49.00	52.00	52.00
ND	43.40	48.50	48.30	49.50	53.00	52.50
OH	43.70	44.00	44.00	47.00	50.70	48.40
OK	45.60	48.80	47.30	50.70	52.90	52.00
OR	40.00	42.60	45.90	47.00	51.00	50.00
PA	45.20	48.60	47.90	48.20	52.70	50.70
SD	45.40	49.30	48.00	49.00	52.60	50.00
TN	44.00	45.00	44.00	47.00	49.00	46.00
TX	43.60	45.60	45.40	49.10	50.70	49.20
VA	40.50	43.40	43.00	45.00	48.20	44.40
WI	44.40	48.30	47.10	49.00	53.00	49.60
WY	43.90	45.20	47.80	49.50	52.00	52.00
US						
2007	44.40	47.00	47.20	49.20	51.70	50.10
2006	47.20	49.50	49.50	48.40	47.40	46.80

See footnote(s) at end of table.

--continued

**Cows <sup>1</sup>: Monthly Prices Received, by State, 2007  
and United States, 2006-2007 (continued)**

State	Jul	Aug	Sep	Oct	Nov	Dec
	<i>Dollars per Cwt</i>	<i>Dollars per Cwt</i>	<i>Dollars per Cwt</i>	<i>Dollars per Cwt</i>	<i>Dollars per Cwt</i>	<i>Dollars per Cwt</i>
AZ	53.00	53.00	51.00	49.00	46.00	47.00
AR	50.00	50.00	47.00	44.00	42.00	43.50
CA	48.00	47.00	44.90	41.60	40.00	40.20
CO	54.20	54.00	52.70	48.90	43.30	45.20
FL	50.00	50.90	47.20	44.90	46.00	46.50
GA	51.00	51.00	48.50	46.00	44.00	45.00
ID	51.50	48.50	47.30	43.20	41.40	41.90
IL	53.00	54.00	50.50	48.50	44.00	45.50
IA	53.50	55.00	51.40	47.90	44.00	47.20
KS	53.40	54.30	51.00	48.00	44.70	46.00
KY	48.00	48.00	46.00	44.00	42.00	42.00
LA	50.30	50.60	45.90	43.40	42.70	44.30
MI	51.00	52.00	51.00	49.00	46.00	47.00
MN	53.80	54.30	52.70	48.60	45.10	47.10
MO	51.30	49.80	48.70	46.80	42.60	44.30
MT	53.70	53.60	48.70	45.70	42.00	42.70
NE	54.70	53.70	52.80	49.00	45.50	47.90
NM	53.00	54.00	52.00	49.00	44.00	44.00
ND	54.00	51.00	47.00	44.70	41.50	44.00
OH	49.00	49.00	46.50	44.30	42.00	43.00
OK	52.90	52.50	50.50	46.90	43.90	45.20
OR	51.00	51.00	48.00	45.00	43.00	44.00
PA	50.70	51.70	49.40	47.00	44.20	46.40
SD	54.30	51.70	50.20	46.90	42.60	43.60
TN	48.00	48.00	45.00	43.00	43.00	43.00
TX	50.80	51.80	47.00	44.50	42.10	42.80
VA	46.70	46.50	44.50	42.20	39.50	41.70
WI	51.30	52.00	49.90	48.90	46.00	46.00
WY	53.80	53.60	49.00	45.20	40.80	44.10
US						
2007	51.50	51.50	49.30	46.60	43.90	45.00
2006	46.40	46.80	47.10	46.00	43.60	42.20

<sup>1</sup> Beef cows and cull dairy cows sold for slaughter.

**Steers & Heifers: Monthly Prices Received, by State, 2007  
and United States, 2006-2007**

State	Jan	Feb	Mar	Apr	May	Jun
	<i>Dollars per Cwt</i>	<i>Dollars per Cwt</i>	<i>Dollars per Cwt</i>	<i>Dollars per Cwt</i>	<i>Dollars per Cwt</i>	<i>Dollars per Cwt</i>
AZ	93.50	94.00	98.00	100.00	99.00	95.00
AR	92.90	96.70	103.00	107.00	105.00	103.00
CA	88.90	90.50	95.70	98.20	96.50	90.40
CO	95.10	96.90	104.00	107.00	105.00	101.00
FL	84.50	85.00	93.00	99.50	101.00	96.30
GA	81.30	85.10	91.80	95.80	95.50	94.40
ID	89.40	90.20	97.00	97.20	95.90	90.50
IL	88.00	90.00	97.00	99.00	98.00	91.00
IA	87.60	89.70	94.30	96.70	94.60	87.50
KS	88.80	91.70	97.80	98.90	97.60	91.60
KY	84.00	87.00	93.00	99.00	100.00	96.00
LA	92.90	95.10	102.00	103.00	100.00	95.30
MI	80.00	82.00	87.50	91.00	93.00	90.00
MN	84.00	86.00	92.40	95.20	94.90	88.10
MO	96.10	98.00	105.00	109.00	109.00	107.00
MT	93.80	94.70	102.00	102.00	98.80	90.40
NE	90.70	90.70	97.10	100.00	98.10	93.60
NM	93.00	94.00	101.00	103.00	102.00	98.00
ND	94.90	95.40	101.00	102.00	100.00	93.00
OH	83.50	87.00	90.90	95.00	94.90	87.40
OK	96.40	96.60	101.00	103.00	103.00	102.00
OR	86.60	89.60	95.80	96.50	96.00	93.00
PA	84.00	86.40	90.40	92.80	94.50	89.00
SD	92.10	94.90	99.30	100.00	97.90	94.90
TN	86.00	91.00	96.00	101.00	101.00	97.00
TX	90.10	92.50	98.70	101.00	97.90	94.80
VA	79.50	83.10	90.70	96.50	96.00	93.70
WI	80.90	83.30	91.80	93.80	93.40	87.40
WY	98.00	97.00	102.00	106.00	104.00	100.00
US						
2007	89.50	91.40	97.70	99.80	98.10	93.20
2006	101.00	97.60	92.80	89.20	86.30	88.20

--continued

**Steers & Heifers: Monthly Prices Received, by State, 2007  
and United States, 2006-2007 (continued)**

State	Jul	Aug	Sep	Oct	Nov	Dec
	<i>Dollars per Cwt</i>	<i>Dollars per Cwt</i>	<i>Dollars per Cwt</i>	<i>Dollars per Cwt</i>	<i>Dollars per Cwt</i>	<i>Dollars per Cwt</i>
AZ	93.00	95.00	97.00	97.00	96.00	97.00
AR	107.00	108.00	105.00	101.00	99.20	97.80
CA	92.40	94.20	96.40	93.70	93.00	95.10
CO	100.00	103.00	109.00	108.00	106.00	106.00
FL	99.60	101.00	98.70	91.40	91.40	88.30
GA	99.00	100.00	98.00	93.00	88.00	88.00
ID	90.40	94.30	95.90	94.20	93.50	93.60
IL	90.00	92.00	94.00	92.00	92.50	92.00
IA	87.00	93.20	92.60	90.40	91.60	91.00
KS	93.20	96.20	98.60	96.20	96.80	94.20
KY	102.00	105.00	102.00	95.00	92.00	93.00
LA	101.00	102.00	99.50	92.50	87.80	92.70
MI	86.00	88.00	88.00	87.00	85.00	87.00
MN	85.90	89.60	90.70	89.20	88.70	88.70
MO	111.00	114.00	113.00	106.00	103.00	99.40
MT	90.10	102.00	107.00	114.00	112.00	108.00
NE	92.10	94.40	97.10	97.20	96.70	96.50
NM	98.00	101.00	104.00	102.00	100.00	101.00
ND	95.00	104.00	107.00	108.00	107.00	102.00
OH	90.10	92.20	93.20	88.10	87.60	87.30
OK	106.00	110.00	113.00	109.00	106.00	104.00
OR	91.00	93.00	94.00	91.50	89.00	92.00
PA	86.70	87.90	88.50	86.50	82.60	84.50
SD	98.00	103.00	108.00	113.00	109.00	102.00
TN	104.00	104.00	102.00	95.00	91.00	91.00
TX	94.40	96.80	98.60	95.70	94.30	95.20
VA	97.40	100.00	101.00	96.00	90.00	87.00
WI	85.20	87.90	89.90	86.40	85.50	85.00
WY	103.00	107.00	113.00	112.00	110.00	108.00
US						
2007	93.00	95.70	98.30	96.60	96.00	95.30
2006	90.00	91.50	95.20	93.70	90.00	89.00

**Beef Cattle <sup>1</sup>: Monthly Prices Received, by State, 2007  
and United States, 2006-2007**

State	Jan	Feb	Mar	Apr	May	Jun
	<i>Dollars per Cwt</i>	<i>Dollars per Cwt</i>	<i>Dollars per Cwt</i>	<i>Dollars per Cwt</i>	<i>Dollars per Cwt</i>	<i>Dollars per Cwt</i>
AZ	76.80	75.90	79.10	83.20	84.60	84.40
AR	77.80	81.00	85.20	89.00	88.20	86.40
CA	64.30	66.70	72.00	74.30	75.30	72.90
CO	94.10	95.90	103.00	106.00	104.00	100.00
FL	66.90	67.80	71.90	84.30	81.60	81.40
GA	61.10	67.10	66.30	66.30	65.20	62.80
ID	76.30	80.20	85.00	85.50	85.10	80.70
IL	87.20	89.10	96.00	98.00	97.10	90.20
IA	86.80	88.90	93.40	96.20	93.80	86.80
KS	87.10	90.40	96.30	96.90	95.80	91.20
KY	73.90	76.90	81.20	86.50	88.00	84.00
LA	59.90	61.00	61.70	64.30	65.50	62.50
MI	69.40	71.80	76.00	78.70	80.70	78.30
MN	73.10	78.60	82.90	85.30	88.10	83.10
MO	80.40	81.10	91.90	94.60	94.70	90.90
MT	85.50	83.90	91.10	87.40	84.90	73.10
NE	89.30	89.40	95.70	98.50	96.70	92.40
NM	73.10	75.00	81.80	84.60	85.00	81.90
ND	88.70	88.40	94.70	88.90	81.20	64.70
OH	79.50	82.70	86.20	90.20	90.50	83.50
OK	92.30	93.30	98.30	98.30	99.00	98.00
OR	72.60	75.50	80.80	81.70	82.50	80.10
PA	73.90	76.60	79.40	81.20	83.60	79.00
SD	84.20	89.90	94.20	93.40	89.70	84.60
TN	69.20	72.60	75.20	79.40	80.20	76.60
TX	85.90	89.20	93.90	96.80	93.70	90.70
VA	62.70	68.40	77.80	84.70	77.80	75.00
WI	59.70	63.00	65.90	67.80	70.00	65.50
WY	85.00	84.60	93.30	89.60	93.10	80.80
US						
2007	83.70	86.10	91.60	93.70	92.80	88.80
2006	95.00	92.40	87.90	84.80	82.20	84.00

See footnote(s) at end of table.

--continued

**Beef Cattle <sup>1</sup>: Monthly Prices Received, by State, 2007  
and United States, 2006-2007 (continued)**

State	Jul	Aug	Sep	Oct	Nov	Dec
	<i>Dollars per Cwt</i>	<i>Dollars per Cwt</i>	<i>Dollars per Cwt</i>	<i>Dollars per Cwt</i>	<i>Dollars per Cwt</i>	<i>Dollars per Cwt</i>
AZ	83.80	83.20	81.80	75.40	73.50	77.00
AR	89.90	90.60	87.60	83.90	82.00	81.50
CA	74.20	73.40	72.70	70.30	70.20	71.50
CO	99.10	102.00	108.00	107.00	105.00	105.00
FL	84.10	83.10	77.40	74.50	72.60	69.50
GA	66.80	69.10	66.80	62.90	62.50	59.60
ID	81.50	86.10	85.20	79.90	76.30	79.10
IL	89.30	91.20	93.10	91.10	91.50	91.10
IA	86.30	92.40	91.80	89.60	90.60	90.10
KS	92.80	95.80	97.60	94.80	95.20	92.80
KY	89.00	91.30	88.60	82.80	80.00	80.80
LA	67.50	69.60	65.70	61.60	58.90	59.80
MI	75.50	77.20	76.90	75.60	73.30	75.00
MN	81.30	85.40	84.10	83.10	81.50	79.50
MO	96.10	99.90	98.90	93.00	90.90	87.80
MT	81.70	94.70	97.10	99.00	91.00	88.40
NE	91.00	93.20	95.80	95.80	95.20	95.00
NM	80.50	82.70	83.70	81.90	75.90	76.50
ND	68.40	85.50	93.80	94.70	90.60	88.10
OH	86.00	87.90	88.50	83.70	83.00	82.90
OK	101.00	105.00	108.00	102.00	97.30	97.50
OR	79.00	80.40	80.20	77.60	75.20	77.60
PA	77.30	78.50	78.30	76.20	72.60	74.60
SD	87.10	94.80	101.00	106.00	97.00	86.80
TN	81.60	81.60	79.20	74.20	71.80	71.80
TX	90.90	93.70	94.50	90.60	89.10	90.00
VA	79.70	83.40	88.60	84.70	76.90	67.50
WI	65.50	67.10	66.70	64.70	62.60	62.40
WY	97.60	101.00	108.00	92.00	80.20	81.80
US						
2007	89.00	91.40	93.10	90.90	89.90	89.20
2006	85.80	87.20	90.00	88.30	84.40	83.10

<sup>1</sup> "Cows" and "Steers and Heifers" combined.

**Calves: Monthly Prices Received, by State, 2007  
and United States, 2006-2007**

State	Jan	Feb	Mar	Apr	May	Jun
	<i>Dollars per Cwt</i>	<i>Dollars per Cwt</i>	<i>Dollars per Cwt</i>	<i>Dollars per Cwt</i>	<i>Dollars per Cwt</i>	<i>Dollars per Cwt</i>
AZ	107.00	114.00	118.00	119.00	114.00	109.00
AR	107.00	117.00	118.00	119.00	118.00	114.00
CA	106.00	104.00	112.00	116.00	112.00	112.00
CO	110.00	110.00	127.00	124.00	121.00	121.00
FL	110.00	113.00	117.00	117.00	112.00	112.00
GA	107.00	112.00	116.00	118.00	116.00	114.00
ID	106.00	110.00	116.00	111.00	111.00	111.00
IL	103.00	106.00	112.00	119.00	117.00	111.00
IA	106.00	109.00	114.00	118.00	119.00	116.00
KS	118.00	122.00	131.00	128.00	127.00	128.00
KY	99.00	105.00	112.00	115.00	114.00	109.00
LA	108.00	112.00	120.00	121.00	117.00	111.00
MI	114.00	114.00	114.00	120.00	125.00	125.00
MN	113.00	114.00	120.00	125.00	126.00	128.00
MO	110.00	117.00	124.00	124.00	123.00	118.00
MT	113.00	113.00	125.00	121.00	114.00	112.00
NE	115.00	114.00	125.00	127.00	127.00	129.00
NM	106.00	118.00	122.00	130.00	125.00	128.00
ND	111.00	107.00	119.00	120.00	120.00	121.00
OH	99.30	101.00	106.00	111.00	111.00	102.00
OK	113.00	114.00	123.00	121.00	124.00	121.00
OR	98.90	104.00	115.00	114.00	109.00	100.00
PA	110.00	111.00	112.00	115.00	116.00	117.00
SD	112.00	116.00	118.00	122.00	118.00	107.00
TN	99.00	111.00	113.00	115.00	113.00	106.00
TX	116.00	121.00	128.00	134.00	129.00	126.00
VA	98.00	104.00	107.00	111.00	110.00	113.00
WI	145.00	142.00	146.00	154.00	156.00	158.00
WY	112.00	114.00	126.00	130.00	125.00	124.00
US						
2007	114.00	114.00	122.00	125.00	124.00	124.00
2006	141.00	143.00	139.00	137.00	134.00	135.00

--continued



**Calves: Monthly Prices Received, by State, 2007  
and United States, 2006-2007 (continued)**

State	Jul	Aug	Sep	Oct	Nov	Dec
	<i>Dollars per Cwt</i>	<i>Dollars per Cwt</i>	<i>Dollars per Cwt</i>	<i>Dollars per Cwt</i>	<i>Dollars per Cwt</i>	<i>Dollars per Cwt</i>
AZ	124.00	124.00	120.00	115.00	111.00	112.00
AR	119.00	119.00	117.00	110.00	107.00	111.00
CA	110.00	110.00	112.00	104.00	104.00	109.00
CO	122.00	122.00	120.00	118.00	116.00	117.00
FL	117.00	117.00	115.00	104.00	103.00	105.00
GA	119.00	118.00	116.00	110.00	107.00	106.00
ID	113.00	115.00	115.00	108.00	105.00	107.00
IL	114.00	119.00	119.00	107.00	110.00	104.00
IA	125.00	131.00	128.00	116.00	114.00	110.00
KS	129.00	132.00	130.00	127.00	125.00	119.00
KY	113.00	115.00	111.00	103.00	102.00	102.00
LA	116.00	118.00	114.00	106.00	102.00	106.00
MI	122.00	120.00	120.00	118.00	116.00	112.00
MN	130.00	132.00	128.00	122.00	121.00	118.00
MO	123.00	122.00	120.00	116.00	114.00	113.00
MT	114.00	122.00	130.00	125.00	123.00	121.00
NE	136.00	137.00	128.00	126.00	124.00	123.00
NM	122.00	126.00	122.00	117.00	113.00	115.00
ND	122.00	126.00	123.00	119.00	119.00	115.00
OH	111.00	109.00	108.00	101.00	100.00	98.00
OK	128.00	128.00	123.00	119.00	117.00	118.00
OR	98.00	104.00	104.00	104.00	101.00	101.00
PA	118.00	119.00	120.00	120.00	119.00	118.00
SD	127.00	125.00	132.00	125.00	125.00	118.00
TN	114.00	111.00	110.00	103.00	101.00	102.00
TX	127.00	130.00	127.00	119.00	110.00	114.00
VA	111.00	107.00	111.00	103.00	102.00	103.00
WI	159.00	163.00	164.00	159.00	160.00	157.00
WY	135.00	133.00	131.00	126.00	123.00	123.00
US						
2007	126.00	127.00	126.00	123.00	122.00	120.00
2006	137.00	136.00	136.00	128.00	119.00	116.00

**Milk Cows <sup>1</sup>: Monthly Prices Received, by State, 2007  
and United States, 2006-2007**

State	Jan	Apr	Jul	Oct
	<i>Dollars per Head</i>	<i>Dollars per Head</i>	<i>Dollars per Head</i>	<i>Dollars per Head</i>
AZ	1,800	1,800	1,850	2,050
CA	1,600	1,700	1,850	1,900
CO	1,900	1,930	2,200	2,100
FL	1,770	1,850	2,050	2,250
ID	1,600	1,800	2,250	2,250
IL	1,630	1,700	1,870	1,980
IN	1,650	1,730	1,950	2,100
IA	1,660	1,760	2,020	1,970
KS	1,630	1,630	1,850	1,940
KY	1,590	1,640	1,820	1,940
MI	1,800	1,800	1,950	2,100
MN	1,580	1,700	1,900	1,920
MO	1,460	1,550	1,780	1,830
NM	1,720	1,750	2,000	1,950
NY	1,540	1,600	1,820	1,930
OH	1,670	1,700	1,910	2,000
OR	1,750	1,880	2,100	2,200
PA	1,700	1,700	2,000	2,100
TX	1,690	1,780	2,100	2,200
VT	1,700	1,800	2,100	2,100
VA	1,660	1,770	1,850	2,000
WA	1,600	1,700	2,100	2,100
WI	1,730	1,770	1,960	2,050
US				
2007	1,660	1,730	1,950	2,020
2006	1,840	1,770	1,680	1,650

<sup>1</sup> Cows sold for dairy herd replacement.

**All Hogs <sup>1</sup>: Monthly Prices Received, by State, 2007  
and United States, 2006-2007**

State	Dec <sup>2</sup>	Jan	Feb	Mar	Apr	May
	<i>Dollars per Cwt</i>	<i>Dollars per Cwt</i>	<i>Dollars per Cwt</i>	<i>Dollars per Cwt</i>	<i>Dollars per Cwt</i>	<i>Dollars per Cwt</i>
AR	40.00	39.10	43.90	42.40	44.30	49.40
IL	42.70	42.00	46.20	44.70	45.40	50.40
IN	42.70	41.30	45.90	43.30	46.20	52.20
IA	45.40	44.50	49.20	46.30	49.50	54.80
KS	39.30	38.70	43.90	40.90	41.40	47.50
MN	45.60	44.90	49.10	47.20	48.80	55.60
MO	34.40	34.10	40.40	39.50	42.30	48.30
NE	45.70	44.60	48.80	46.60	49.00	55.50
NC	44.30	43.90	48.40	44.90	49.00	54.80
OH	42.60	41.20	46.40	44.20	46.20	51.30
OK	35.70	35.00	40.30	38.90	39.80	45.20
PA	39.20	38.60	42.90	40.00	40.90	46.00
SD	44.00	42.40	47.40	45.10	47.30	53.80
US						
2007	43.50	42.60	47.50	44.90	47.30	53.10
2006	44.20	40.70	42.60	42.80	41.30	48.20
	Jun	Jul	Aug	Sep	Oct	Nov
	<i>Dollars per Cwt</i>	<i>Dollars per Cwt</i>	<i>Dollars per Cwt</i>	<i>Dollars per Cwt</i>	<i>Dollars per Cwt</i>	<i>Dollars per Cwt</i>
AR	50.90	49.40	48.70	43.80	39.20	35.10
IL	52.40	50.60	49.70	45.10	41.50	38.70
IN	53.90	51.70	51.10	47.00	42.90	39.80
IA	55.60	53.70	53.30	48.40	43.90	40.30
KS	48.70	46.90	45.80	40.60	35.80	31.90
MN	56.00	54.20	53.70	48.70	44.10	39.00
MO	49.50	46.80	45.60	40.40	36.80	32.70
NE	55.90	53.60	53.40	48.90	44.10	39.20
NC	56.70	55.40	53.60	47.70	43.30	38.50
OH	51.90	50.30	49.30	44.30	39.60	35.90
OK	46.50	44.90	43.90	39.20	34.30	30.70
PA	47.80	45.90	44.60	40.50	35.40	32.10
SD	53.90	51.00	50.70	46.70	41.70	36.60
US						
2007	54.30	52.20	51.30	46.80	42.40	37.90
2006	53.80	50.20	51.60	48.90	46.50	44.90

<sup>1</sup> "Sows" and "Barrows & Gilts" combined.

<sup>2</sup> Preceding year.

**Barrows and Gilts: Monthly Prices Received, by State, 2007  
and United States, 2006-2007**

State	Dec <sup>1</sup>	Jan	Feb	Mar	Apr	May
	<i>Dollars per Cwt</i>	<i>Dollars per Cwt</i>	<i>Dollars per Cwt</i>	<i>Dollars per Cwt</i>	<i>Dollars per Cwt</i>	<i>Dollars per Cwt</i>
AR	40.80	40.10	45.20	43.30	46.10	51.10
IL	43.70	43.20	47.50	45.90	47.00	52.00
IN	43.50	42.00	46.90	43.70	47.40	53.40
IA	45.50	44.80	49.90	46.60	49.70	55.00
KS	40.20	39.90	45.50	42.00	43.50	49.60
MN	45.90	45.20	49.30	47.30	48.90	55.80
MO	34.60	34.50	41.20	40.20	43.40	49.20
NE	45.90	44.90	49.10	46.90	49.40	55.90
NC	44.40	44.10	48.60	45.00	49.20	55.00
OH	43.40	42.00	47.10	45.10	47.20	52.40
OK	36.60	36.20	41.90	40.10	42.10	47.40
PA	40.60	40.10	44.70	41.00	43.30	48.30
SD	45.70	44.50	49.30	46.70	49.50	56.30
US						
2007	44.10	43.20	48.30	45.50	48.10	53.90
2006	44.50	41.10	43.20	43.20	41.80	48.90
	Jun	Jul	Aug	Sep	Oct	Nov
	<i>Dollars per Cwt</i>	<i>Dollars per Cwt</i>	<i>Dollars per Cwt</i>	<i>Dollars per Cwt</i>	<i>Dollars per Cwt</i>	<i>Dollars per Cwt</i>
AR	52.40	50.80	50.00	44.50	40.40	36.20
IL	53.80	52.00	51.00	46.00	42.80	40.00
IN	55.00	52.60	52.10	47.50	43.80	40.80
IA	56.00	54.00	53.60	48.50	44.50	40.50
KS	50.30	48.40	47.30	41.20	37.00	32.90
MN	56.10	54.30	53.80	48.80	44.20	39.10
MO	50.40	48.00	46.90	40.80	37.60	33.30
NE	56.30	53.90	53.70	49.10	44.40	39.50
NC	56.90	55.60	53.80	47.80	43.50	38.60
OH	53.40	51.00	50.30	44.80	40.40	36.40
OK	48.40	46.50	45.40	39.90	35.60	31.80
PA	49.80	47.60	46.10	41.10	36.60	33.10
SD	56.70	53.60	53.20	48.20	43.60	38.30
US						
2007	55.10	53.00	52.10	47.20	43.10	38.50
2006	54.80	51.10	52.50	49.50	46.90	45.30

<sup>1</sup> Preceding year.

**Sows: Monthly Prices Received, by State, 2007  
and United States, 2006-2007**

State	Dec <sup>1</sup>	Jan	Feb	Mar	Apr	May
	<i>Dollars per Cwt</i>	<i>Dollars per Cwt</i>	<i>Dollars per Cwt</i>	<i>Dollars per Cwt</i>	<i>Dollars per Cwt</i>	<i>Dollars per Cwt</i>
AR	32.50	30.30	32.60	34.50	28.40	34.10
IL	31.50	28.50	31.00	31.50	27.00	32.50
IN	35.80	33.70	36.10	38.10	32.00	38.20
IA	32.80	29.50	31.40	31.50	28.50	34.00
KS	33.10	30.60	33.00	33.30	27.40	33.70
MN	32.20	29.90	32.00	32.10	29.60	36.00
MO	31.10	28.50	31.10	31.40	27.50	34.00
NE	33.50	31.50	33.20	33.90	29.50	35.50
NC	31.70	28.70	31.60	33.40	26.40	32.90
OH	31.90	30.30	32.80	33.80	27.70	34.10
OK	30.60	28.40	31.00	32.30	26.80	33.00
PA	31.50	30.00	32.80	34.60	27.40	33.20
SD	30.60	28.60	30.60	30.70	27.80	33.30
US						
2007	32.30	29.80	32.10	33.00	27.90	34.10
2006	38.00	33.30	31.20	34.20	28.80	30.10
	Jun	Jul	Aug	Sep	Oct	Nov
	<i>Dollars per Cwt</i>	<i>Dollars per Cwt</i>	<i>Dollars per Cwt</i>	<i>Dollars per Cwt</i>	<i>Dollars per Cwt</i>	<i>Dollars per Cwt</i>
AR	37.70	37.00	36.80	37.70	28.20	25.30
IL	36.00	35.00	34.50	35.00	26.00	24.00
IN	41.50	41.40	40.60	41.60	32.10	30.50
IA	38.00	38.00	36.50	37.00	26.00	24.90
KS	37.70	36.80	35.70	36.40	27.50	24.90
MN	40.00	39.30	37.90	38.30	29.30	27.00
MO	36.90	35.70	35.40	35.80	26.30	23.20
NE	38.50	38.50	37.30	37.80	27.60	26.60
NC	36.90	36.90	36.20	37.40	28.40	25.40
OH	37.00	36.70	36.30	37.00	27.50	26.50
OK	35.90	35.50	35.10	35.30	27.00	24.20
PA	36.20	36.20	35.80	36.80	28.30	26.30
SD	36.60	36.00	35.10	35.60	27.60	25.60
US						
2007	37.40	36.70	36.10	37.00	27.30	25.90
2006	33.10	32.10	34.90	35.50	36.90	35.40

<sup>1</sup> Preceding year.

**Lambs: Monthly Prices Received, by State, 2007  
and United States, 2006-2007**

State	Jan	Feb	Mar	Apr	May	Jun
	<i>Dollars per Cwt</i>	<i>Dollars per Cwt</i>	<i>Dollars per Cwt</i>	<i>Dollars per Cwt</i>	<i>Dollars per Cwt</i>	<i>Dollars per Cwt</i>
CA	87.50	88.50	90.50	87.00	89.00	91.00
CO	94.00	96.00	94.00	97.00	100.00	98.00
ID	82.00	83.00	87.00	87.00	88.00	94.00
IA	88.00	88.00	89.00	90.00	92.00	100.00
KY	102.00	104.00	106.00	106.00	102.00	96.00
MN	92.60	96.20	98.40	96.00	96.70	104.00
MO	100.00	111.00	99.90	106.00	104.00	93.50
MT	97.60	99.60	101.00	96.00	98.30	102.00
NE	84.50	85.10	92.50	100.00	96.60	93.10
ND	100.00	98.00	99.00	97.00	99.00	102.00
OH	103.00	105.00	106.00	113.00	105.00	97.00
OR	92.00	91.20	92.60	92.00	95.00	94.00
PA	120.00	110.00	125.00	126.00	118.00	110.00
SD	107.00	98.80	104.00	94.70	104.00	109.00
TX	103.00	102.00	101.00	105.00	97.20	87.60
VA	102.00	109.00	119.00	109.00	106.00	110.00
WV	107.00	116.00	116.00	112.00	110.00	99.00
WY	100.00	92.10	94.00	94.10	92.00	100.00
US						
2007	96.00	94.80	95.50	97.10	97.10	96.80
2006	94.60	97.80	92.10	87.20	88.90	92.10
	Jul	Aug	Sep	Oct	Nov	Dec
	<i>Dollars per Cwt</i>	<i>Dollars per Cwt</i>	<i>Dollars per Cwt</i>	<i>Dollars per Cwt</i>	<i>Dollars per Cwt</i>	<i>Dollars per Cwt</i>
CA	92.50	91.00	94.50	92.50	92.00	89.00
CO	98.00	96.00	95.00	95.00	95.00	100.00
ID	100.00	99.00	103.00	100.00	98.00	97.00
IA	102.00	102.00	101.00	96.00	95.00	93.00
KY	99.00	92.00	93.00	95.00	90.00	97.00
MN	105.00	104.00	105.00	100.00	96.30	97.30
MO	92.50	87.70	93.10	90.90	96.80	94.50
MT	103.00	101.00	102.00	98.80	102.00	104.00
NE	100.00	97.30	95.00	91.10	86.90	91.80
ND	104.00	104.00	105.00	100.00	102.00	103.00
OH	95.00	88.20	89.80	90.10	86.40	99.20
OR	97.00	96.00	97.00	95.00	96.00	99.00
PA	112.00	112.00	113.00	114.00	115.00	116.00
SD	110.00	107.00	109.00	105.00	106.00	110.00
TX	86.30	90.50	96.70	95.00	97.60	110.00
VA	95.00	94.00	94.00	106.00	105.00	103.00
WV	97.00	92.00	93.00	103.00	103.00	108.00
WY	106.00	107.00	101.00	101.00	101.00	100.00
US						
2007	98.70	97.90	99.00	97.00	97.10	98.40
2006	93.40	95.40	98.30	98.50	95.60	94.00

**Sheep: Monthly Prices Received, by State, 2007  
and United States, 2006-2007**

State	Jan	Feb	Mar	Apr	May	Jun
	<i>Dollars per Cwt</i>	<i>Dollars per Cwt</i>	<i>Dollars per Cwt</i>	<i>Dollars per Cwt</i>	<i>Dollars per Cwt</i>	<i>Dollars per Cwt</i>
CA	43.00	41.00	47.00	42.00	30.00	23.50
CO	32.00	34.00	34.00	34.00	32.00	30.00
ID	30.00	31.00	31.00	28.00	24.00	24.00
IA	38.00	32.00	32.00	32.80	31.80	31.00
KY	52.00	48.00	43.00	33.00	32.00	28.00
MN	41.50	37.50	30.90	30.00	30.00	25.00
MO	32.50	38.00	35.90	33.20	31.50	33.60
MT	35.50	30.30	31.80	28.20	27.80	28.90
NE	32.00	30.00	29.00	32.50	29.80	28.60
ND	37.00	35.00	30.00	28.00	27.00	25.00
OH	44.50	41.80	30.90	33.60	28.50	24.50
OR	34.50	35.00	37.00	35.00	34.50	31.00
PA	52.00	52.00	44.70	39.40	39.00	38.00
SD	37.60	37.80	30.30	25.20	24.20	24.90
TX	40.50	42.40	43.30	41.30	34.30	31.30
VA	44.00	44.00	45.00	44.00	39.00	33.00
WV	41.00	46.00	37.00	33.00	29.00	27.00
WY	30.00	33.60	40.40	32.40	28.30	26.70
US						
2007	37.10	37.30	36.60	34.20	30.80	28.20
2006	47.50	45.90	40.10	35.20	32.50	28.20
	Jul	Aug	Sep	Oct	Nov	Dec
	<i>Dollars per Cwt</i>	<i>Dollars per Cwt</i>	<i>Dollars per Cwt</i>	<i>Dollars per Cwt</i>	<i>Dollars per Cwt</i>	<i>Dollars per Cwt</i>
CA	24.00	27.50	30.50	28.00	40.00	35.00
CO	31.00	32.00	31.00	29.00	28.00	30.00
ID	22.00	22.00	23.00	22.00	23.00	23.00
IA	35.00	30.50	31.80	31.50	33.50	35.00
KY	25.00	30.00	33.00	33.00	33.00	37.00
MN	26.50	29.50	25.50	26.50	25.50	28.20
MO	27.40	32.70	31.10	28.50	33.90	34.80
MT	23.30	20.00	20.70	19.40	19.10	22.80
NE	29.00	31.70	35.50	31.70	29.70	33.70
ND	23.00	28.00	25.00	25.00	24.00	27.00
OH	27.80	28.90	30.50	27.90	30.00	32.00
OR	25.00	32.00	29.00	32.00	36.00	39.00
PA	39.80	41.40	46.90	45.00	40.40	42.50
SD	22.00	22.80	20.60	20.30	21.80	23.90
TX	33.80	31.90	29.60	27.20	30.50	33.00
VA	34.00	26.00	26.00	37.00	33.00	46.00
WV	32.00	28.00	33.00	31.00	29.00	32.00
WY	30.50	27.60	24.20	22.70	26.40	27.00
US						
2007	29.20	28.30	26.70	25.50	27.10	30.20
2006	27.60	27.90	32.20	31.40	30.30	34.80

**All Cattle and Calves: Value per Head and Total Value,  
by State and United States, January 1, 2007-2008 <sup>1</sup>**

State	Value per Head		Total Value	
	2007	2008	2007	2008
	<i>Dollars</i>	<i>Dollars</i>	<i>1,000 Dollars</i>	<i>1,000 Dollars</i>
AL	760	770	1,003,200	962,500
AK	1,010	960	16,160	14,880
AZ	1,010	1,120	949,400	1,086,400
AR	770	780	1,347,500	1,411,800
CA	1,140	1,280	6,270,000	6,976,000
CO	970	1,030	2,619,000	2,832,500
CT	1,170	1,240	62,010	62,000
DE	1,020	1,100	23,460	24,200
FL	850	880	1,470,500	1,504,800
GA	790	830	924,300	937,900
HI	640	640	101,120	97,280
ID	1,090	1,270	2,376,200	2,832,100
IL	900	980	1,206,000	1,215,200
IN	1,000	1,110	900,000	987,900
IA	910	950	3,594,500	3,800,000
KS	840	870	5,376,000	5,829,000
KY	810	800	1,992,600	1,920,000
LA	810	820	696,600	729,800
ME	1,140	1,210	98,040	107,690
MD	1,100	1,150	242,000	235,750
MA	1,180	1,240	51,920	57,040
MI	1,130	1,330	1,197,800	1,423,100
MN	960	1,100	2,323,200	2,640,000
MS	770	780	754,600	772,200
MO	870	860	3,871,500	3,698,000
MT	1,050	1,080	2,520,000	2,808,000
NE	890	940	5,918,500	6,157,000
NV	980	1,010	490,000	454,500
NH	1,280	1,290	44,800	46,440
NJ	1,200	1,250	45,600	47,500
NM	1,060	1,160	1,674,800	1,774,800
NY	1,170	1,300	1,661,400	1,885,000
NC	780	780	663,000	647,400
ND	1,070	1,080	1,979,500	1,954,800
OH	990	1,090	1,247,400	1,384,300
OK	800	860	4,200,000	4,644,000
OR	930	1,030	1,246,200	1,431,700
PA	1,110	1,300	1,776,000	2,093,000
RI	1,080	1,090	5,292	5,559
SC	800	820	320,000	328,000
SD	1,000	1,040	3,700,000	3,848,000
TN	770	760	1,778,700	1,618,800
TX	790	850	11,060,000	11,730,000
UT	970	990	805,100	841,500
VT	1,360	1,580	360,400	418,700
VA	770	810	1,247,400	1,271,700
WA	1,120	1,270	1,276,800	1,384,300
WV	790	790	331,800	327,850
WI	1,230	1,410	4,182,000	4,794,000
WY	1,010	1,020	1,444,300	1,346,400
US	922	987	89,446,602	95,401,289

<sup>1</sup> 2007 revised.



**Hogs: Value per Head and Total Value, by State  
and United States, December 1, 2006-2007 <sup>1</sup>**

State	Value per Head		Total Value	
	2006	2007	2006	2007
	<i>Dollars</i>	<i>Dollars</i>	<i>1,000 Dollars</i>	<i>1,000 Dollars</i>
AL	87	71	14,355	12,070
AK	180	180	162	162
AZ	93	76	13,764	13,300
AR	87	81	22,620	23,085
CA	120	98	17,400	15,190
CO	81	74	68,040	62,900
CT	120	98	432	392
DE	87	71	914	781
FL	93	76	1,860	1,520
GA	77	64	18,865	16,960
HI	150	140	2,400	2,100
ID	93	76	2,325	2,128
IL	88	72	369,600	298,800
IN	91	76	304,850	266,000
IA	94	75	1,626,200	1,365,000
KS	79	66	145,360	122,100
KY	70	58	21,700	20,300
LA	93	76	1,302	836
ME	93	76	446	357
MD	87	71	2,871	2,201
MA	93	76	1,209	912
MI	100	82	100,000	83,640
MN	110	83	759,000	597,600
MS	93	76	31,155	26,220
MO	76	63	212,800	192,150
MT	93	76	16,740	13,680
NE	96	79	292,800	248,850
NV	120	98	420	294
NH	100	82	280	238
NJ	100	82	900	738
NM	93	76	186	152
NY	87	71	8,526	6,106
NC	74	62	703,000	613,800
ND	93	76	15,717	13,832
OH	93	74	157,170	130,240
OK	77	70	179,410	163,100
OR	93	76	2,325	1,900
PA	85	67	91,800	75,710
RI	93	76	195	175
SC	78	64	23,010	18,880
SD	98	80	124,460	109,600
TN	78	64	17,160	8,960
TX	74	63	69,560	70,560
UT	93	76	63,240	60,040
VT	120	98	300	265
VA	74	62	27,010	22,940
WA	100	82	3,600	2,378
WV	93	76	1,023	684
WI	83	67	37,350	28,810
WY	100	82	10,000	7,298
US	89	73	5,585,812	4,725,933

<sup>1</sup> 2006 revised.

**Sheep and Lambs, Angora Goats: Value per Head and Total Value,  
by State and United States, January 1, 2007-2008 <sup>1</sup>**

State	Sheep and Lambs				Angora Goats			
	Value per Head		Total Value		Value per Head		Total Value	
	2007	2008	2007	2008	2007	2008	2007	2008
	<i>Dollars</i>	<i>Dollars</i>	<i>1,000 Dollars</i>	<i>1,000 Dollars</i>	<i>Dollars</i>	<i>Dollars</i>	<i>1,000 Dollars</i>	<i>1,000 Dollars</i>
AZ	142	145	15,620	17,400	75.00	75.00	1,350	1,350
CA	127	144	77,470	86,400	63.00	65.00	189	260
CO	124	141	49,600	59,220				
ID	137	137	35,620	32,880				
IL	190	198	13,300	13,464				
IN	195	194	10,335	10,088				
IA	143	158	33,605	41,080				
KS	135	145	14,445	14,210				
KY	164	173	6,068	6,401				
MD	156	170	3,588	4,080				
MI	145	155	11,745	12,710				
MN	139	145	20,850	21,025				
MO	156	172	12,168	14,104				
MT	132	129	38,280	37,410				
NE	136	134	12,920	11,390				
NV	135	140	10,125	9,800				
N ENG <sup>2</sup>	202	210	8,888	10,080				
NM	125	131	16,250	17,030	80.00	75.00	560	563
NY	146	154	10,804	10,318				
NC	163	168	3,423	3,696				
ND	144	143	14,400	13,585				
OH	167	169	23,547	23,491				
OK	158	170	12,640	13,600				
OR	121	124	26,015	27,280				
PA	153	172	16,524	16,856				
SD	134	134	50,920	47,570				
TN	156	155	3,900	4,340				
TX	106	102	111,300	102,000	79.00	75.00	14,220	11,250
UT	147	146	43,365	40,150				
VA	148	155	10,656	12,555				
WA	137	141	6,987	6,909				
WV	125	124	4,250	4,340				
WI	166	169	15,272	15,210				
WY	137	133	63,020	58,520				
Oth St <sup>3</sup>	134	130	15,946	16,900				
US <sup>4</sup>	134	138	823,846	836,092	78.50	74.80	16,319	13,423

<sup>1</sup> 2007 Revised.

<sup>2</sup> N ENG includes CT, ME, MA, NH, RI, and VT.

<sup>3</sup> Individual state estimates not available for states not shown, but are included in Other States.

<sup>4</sup> 4 States for Angora Goats.

## Reliability of Prices Received Estimates

**Definition:** Prices received represent sales from producers to first buyers. They include all grades and qualities. The average commodity price from the survey multiplied by the total quantity marketed theoretically should give the total cash receipts for the commodity.

**Survey Procedures:** Primary sales data used to determine grain prices were obtained from probability samples of about 2000 mills and elevators. These procedures ensure that virtually all grain moving into commercial channels has a chance of being included in the survey. Generally, States surveyed account for 90 percent or more of total U.S. production. Livestock prices are obtained from packers, stockyards, auctions, dealers, and market check data from AMS-USDA, private marketing organizations, and state commodity groups and agencies. Inter-farm sales of grain and livestock are not included since they represent very small percentages of the total marketings. Grain marketed for seed is also excluded. Fruit and vegetable prices are obtained from sample surveys and market check data from AMS-USDA, private marketing organizations, state agencies, and universities.

**Summary and Estimation Procedures:** Survey quantities sold are expanded by strata to state levels and used to weight average strata prices to a state average. State prices are then weighted to a U.S. price based on expanded marketings. Recommendations are prepared by the State Field Offices and reviewed by the Agricultural Statistics Board in Washington, D.C. State recommendations are reviewed for reasonableness with survey data, other States, and recent historic estimates.

**Revisions:** For most items, the current month's preliminary price represents a 3-5 day period around the 15<sup>th</sup> of the month. Previous month's prices represent actual dollars received for quantities sold during the entire month. Revisions are published in monthly issues of *Agricultural Prices*.

**Reliability:** U.S. price estimates based on probability surveys generally have a sampling error of less than one percent for the major commodities such as corn, wheat, soybeans, cotton, and rice. Current methods of summarization for non-probability commodities are not designed directly to calculate sampling errors. However, analytical measures approximate the U.S. relative sampling errors at around five percent. Any nonsampling errors are attributed to such things as the inability to obtain correct information, differences in interpreting questions or definitions, mistakes in coding or processing the data, etc. Efforts are made at each step in the survey process to minimize these nonsampling errors.

## Prices Paid by Farmers

The February Index of Prices Paid for Commodities and Services, Interest, Taxes, and Farm Wage Rates (PPITW) at 172 (1990-92=100), up 1.2 percent from January 2008 and 10 percent from February 2007.

**PRODUCTION INDEX:** The February index, at 174, increased 1.8 percent from last month and 13 percent from last year. Higher prices in February for complete feeds, feeder cattle, potash & phosphate materials, and feed concentrates offset lower prices for LP gas, self-propelled machinery, gasoline, and other machinery.

**Feed:** The February index, at 187, increased 6.9 percent from January and 26 percent from last February. While all sub-component prices are higher, concentrate prices are up 8.0 percent and complete feed prices are up 6.5 percent.

**Livestock & Poultry:** The February index, at 127, increased 4.1 percent from last month and 2.4 percent from last year. Since January, prices are higher for feeder cattle and feeder pigs. The February feeder cattle price, at \$103.50 per cwt, is up \$4.50 per cwt from the January price. February feeder pigs averaged \$113.00 per cwt, up \$8.00 per cwt from January.

**Fertilizer:** The February index, at 260, is up 6.6 percent from January and 40 percent above February a year ago. Potash & phosphorus prices are up 18 percent, mixed fertilizer prices increased 5.1 percent, and nitrogen fertilizer prices rose 3.4 percent since last month.

**Chemicals:** The February index, at 139, increased 2.2 percent from January and 7.8 percent from last February. Since January, prices for herbicides, insecticides, and fungicides increased over two percent.

**Fuels:** The February index, at 300, is down 1.0 percent from a month earlier but 35 percent above February 2007. Compared with last month, prices are lower for LP gas and gasoline but higher for diesel fuel.

**Machinery:** The February index, at 195, increased 1.0 percent from January and 4.3 percent from last February. Since January, higher prices for tractors more than offset lower prices for self-propelled machinery and other machinery.

**CONSUMER PRICE INDEX:** The January 2008 Consumer Price Index, as issued by the Bureau of Labor Statistics, for all urban consumers (CPI-U) increased 0.5 percent before seasonal adjustment to a level of 211.080 (1982-84=100). This compares with the December index of 210.036. For the 12-month period ending in January, the overall index increased 4.3 percent.

**Indexes of Prices Paid by Farmers and Related Parity Ratios  
United States, February 2008 With Comparisons <sup>1</sup>**

Indexes and Ratios	1910-14 = 100			1990-92 = 100		
	2007	2008		2007	2008	
	Feb	Jan	Feb	Feb	Jan	Feb
Prices Paid by Farmers for Commodities & Services, Interest, Taxes, & Wage Rates (PPITW)	2,084	*2,266	2,299	156	*170	172
Production	1,493	*1,655	1,690	154	*171	174
Feed	722	*856	911	148	*175	187
Livestock & Poultry	1,587	*1,557	1,619	124	*122	127
Seeds	1,838	2,086	2,086	186	211	211
Fertilizer	683	*895	952	186	*244	260
Chemicals	797	*841	859	129	*136	139
Fuels	1,717	*2,338	2,313	222	*303	300
Supplies & Repairs	1,053	*1,065	1,065	148	*150	150
Autos & Trucks	2,976	*2,965	2,970	112	*111	112
Machinery	4,681	*4,839	4,894	187	*193	195
Building Materials	2,083	*2,122	2,134	153	*156	157
Services & Rent	1,752	*1,841	1,841			
Rent				145	150	150
Interest <sup>2</sup>	3,865	4,100	4,100	154	164	164
Taxes <sup>3</sup>	5,043	5,443	5,443	188	203	203
Wage Rates	6,720	*6,959	6,959	180	*186	186
Production, Interest, Taxes, & Wage Rates (PITW)	2,117	*2,322	2,362	158	*173	176
Family Living-CPI <sup>4</sup>	1,933	*2,005	2,005	151	*157	157
Ratio (Received/Paid) Parity Ratio <sup>5</sup>	39	*41	40	82	*85	84
Parity Ratio Adjusted <sup>6</sup>	41	*42	42			
PPITW Adjusted for Productivity <sup>7</sup>	1,394	*1,455	1,461			
Crop Sector (PPITW)				161	*176	178
Livestock Sector (PPITW)				152	*164	167
Farm Sector (Production)				146	*163	170
Non-Farm Sector (Production)				158	*175	176

\* Revised.

<sup>1</sup> Revised historical price indexes for months not shown are available at [www.nass.usda.gov](http://www.nass.usda.gov).

<sup>2</sup> Interest per acre on farm real estate debt and interest rate on farm non-real estate debt.

<sup>3</sup> Farm real estate taxes payable per acre.

<sup>4</sup> Bureau of Labor Statistics, Consumer Price Index for all urban consumers (CPI-U), for the previous month converted by the USDA.

<sup>5</sup> Ratio of index of prices received to PPITW (1910-14=100).

<sup>6</sup> Based on estimated cash receipts, from marketings and government payments, the preliminary adjustment factor is 1.079 for 2008 and the revised factor is 1.096 for 2007.

<sup>7</sup> PPITW is adjusted based on productivity trend for the prior 15 years.

**Prices Paid Indexes and Annual Weights for Input Components and Sub-Components United States, February 2008 With Comparisons <sup>1</sup>**

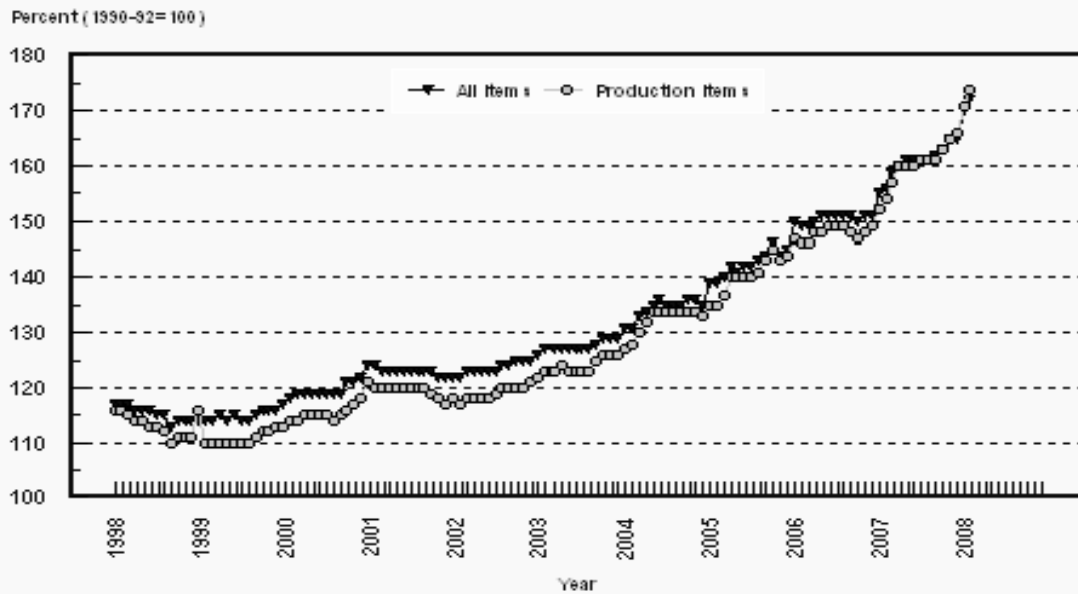
Index	Relative Weights 5-Year Moving Average <sup>2</sup>		Input Indexes		
	2007	2008	2007	2008	
	Percent	Percent	Feb <i>(1990-92=100)</i>	Jan <i>(1990-92=100)</i>	Feb <i>(1990-92=100)</i>
Production Items	67.4	67.9	154	*171	174
Feed	10.9	10.9	148	*175	187
Feed Grains	1.6	1.6	151	*174	185
Complete Feeds	5.3	5.4	141	*168	179
Hay/Forages	1.4	1.4	152	173	177
Concentrates	1.7	1.7	145	*174	188
Supplements	0.9	0.9	182	*228	245
Livestock & Poultry	7.7	8.0	124	*122	127
Feeder Cattle	6.0	6.2	117	*117	122
Feeder Pigs	0.6	0.6	169	*114	123
Milk Cow Replacements	0.6	0.6	147	174	174
Poultry	0.5	0.5	125	125	125
Seeds	3.7	3.8	186	211	211
Field Crops	3.4	3.5	191	218	218
Grasses/Legumes	0.4	0.4	133	142	142
Fertilizer	4.4	4.4	186	*244	260
Mixed Fertilizer	1.9	1.9	177	*216	227
Nitrogen	1.8	1.9	204	*261	270
Potash & Phosphate	0.6	0.6	164	*281	331
Chemicals	3.4	3.3	129	*136	139
Herbicides	2.2	2.1	122	*128	131
Insecticides	0.8	0.8	146	*155	159
Fungicides/Other	0.5	0.5	131	*139	142
Fuels	3.1	3.3	222	*303	300
Diesel	1.9	2.1	242	*323	325
Gasoline	0.7	0.8	184	*244	240
LP Gas	0.4	0.4	202	*306	282
Supplies & Repairs	4.8	4.7	148	*150	150
Supplies	1.6	1.6	140	*140	140
Repairs	3.2	3.1	153	155	155
Autos & Trucks	1.8	1.7	112	*111	112
Autos	0.2	0.2	110	109	109
Trucks	1.6	1.5	112	112	112
Machinery	4.5	4.5	187	*193	195
Tractors	1.0	1.0	165	*180	194
Self-Propelled	1.8	1.8	195	*197	195
Other Machinery	1.7	1.7	190	196	195
Building Materials	4.3	4.5	153	*156	157
Services	12.2	12.2	145	150	150
Custom Rates	1.3	1.3	125	125	125
Other Services	10.9	10.9	147	153	153
Rent	6.7	6.6	151	163	163
Cash	3.6	3.5	180	195	195
Share	3.1	3.0	117	126	126
Interest	4.0	3.8	154	164	164
Taxes	2.9	2.9	188	203	203
Wage Rates	7.8	7.8	180	*186	186
Family Living-CPI	18.0	17.6	151	*157	157

\* Revised.

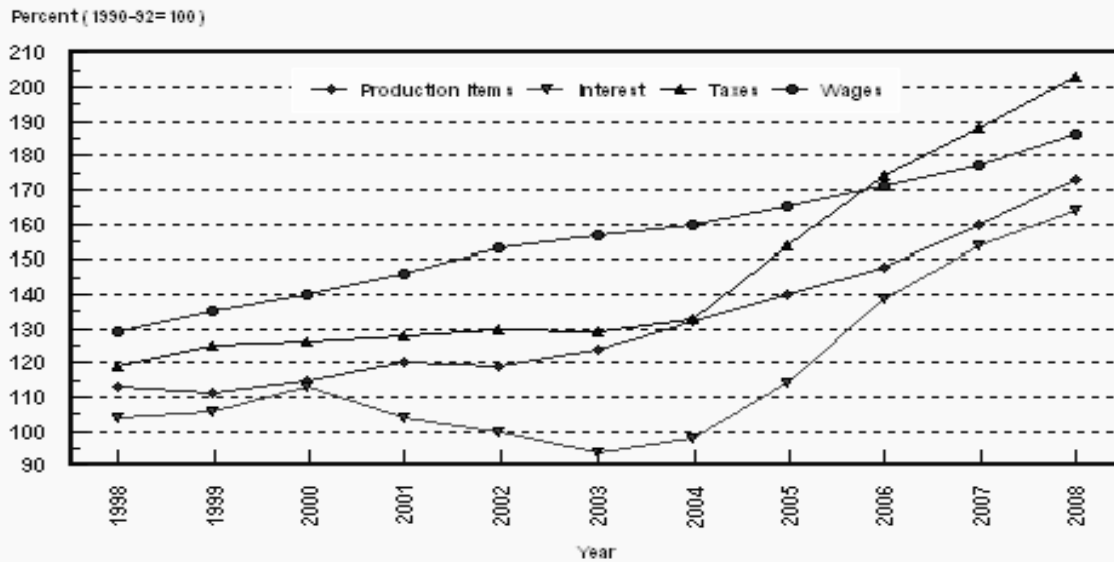
<sup>1</sup> Revised historical price indexes for months not shown are available at [www.nass.usda.gov](http://www.nass.usda.gov).

<sup>2</sup> Weights may not add due to rounding.

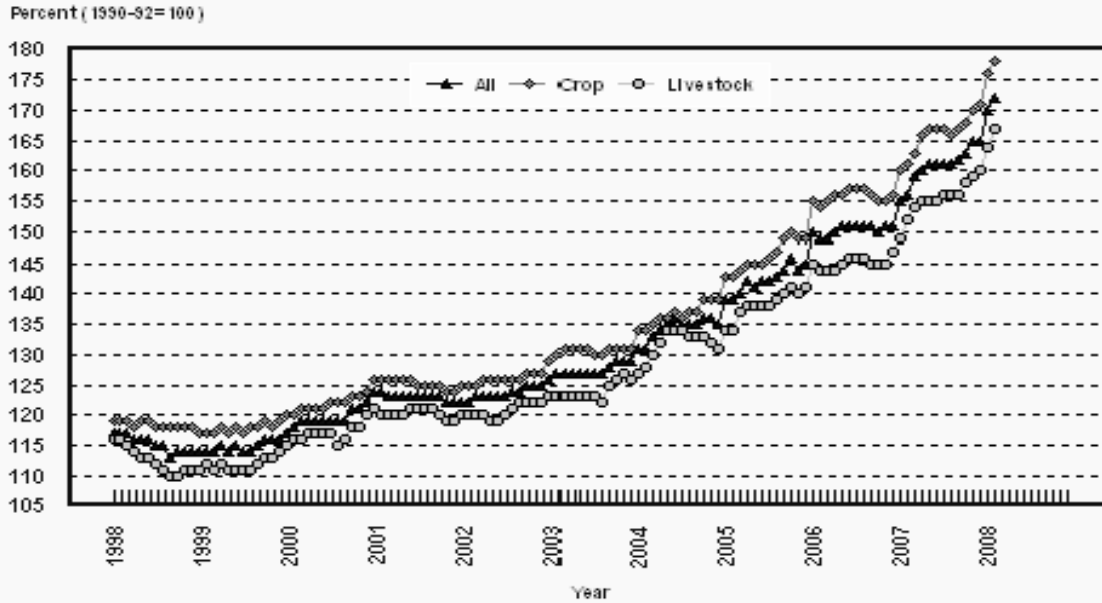
## Prices Paid by Farmers, Major Indexes US, by Month



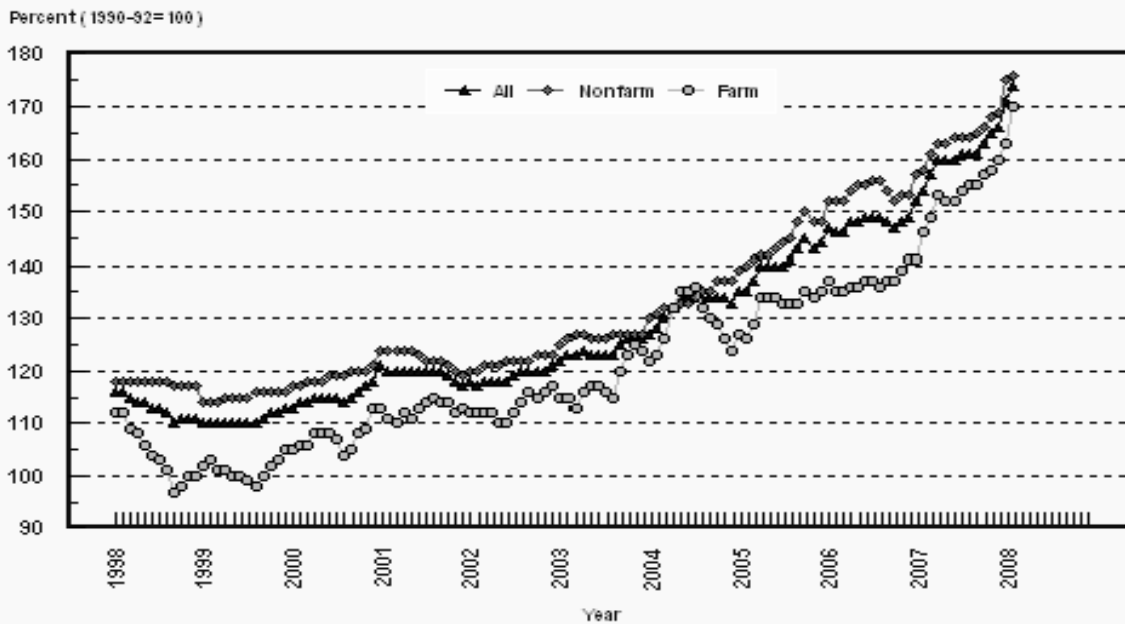
## Prices Paid by Farmers, Major Indexes US, Annual Averages 1/



## Prices Paid by Farmers, Indexes, All Items US, by Farm Type



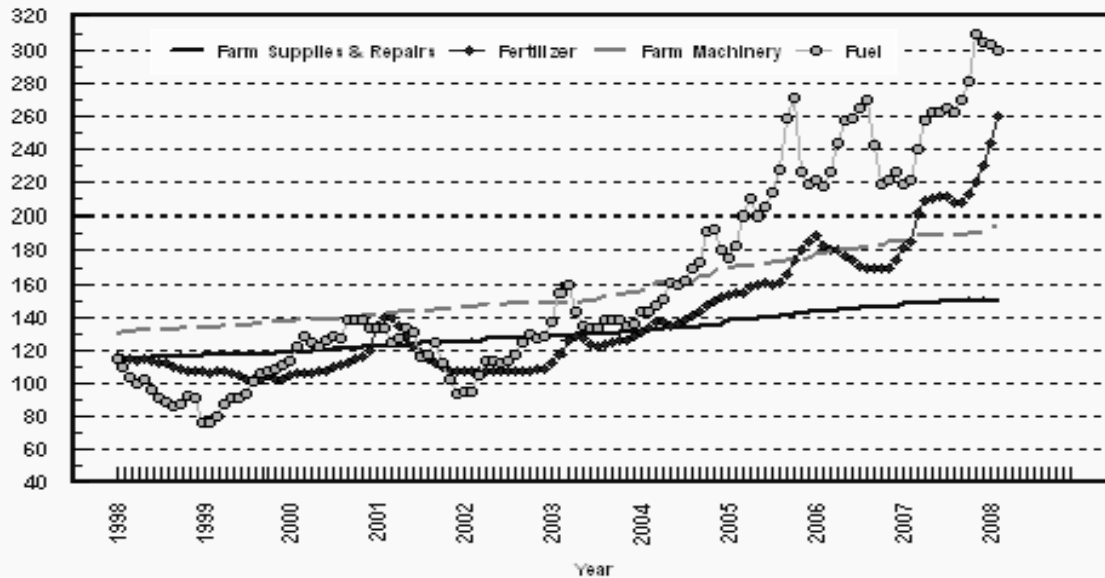
## Prices Paid by Farmers, Indexes, All Production Items US, by Sector Origin





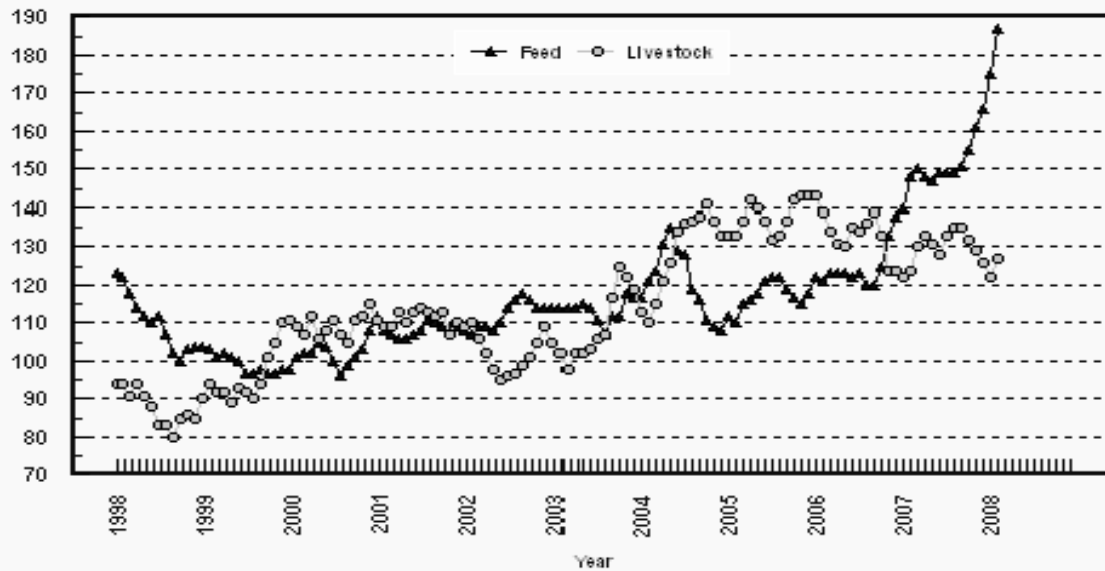
## Prices Paid by Farmers, Indexes, Selected Production Indexes US, by Non-Farm Sector

Percent (1990-92=100)



## Prices Paid by Farmers, Selected Production Indexes US, by Farm Sector

Percent (1990-92=100)



**Feed Price Ratios: United States, February 2008 with Comparisons**

Feed Price Ratio <sup>1</sup>	2007	2008	
	Feb	Jan	Feb
Broiler-Feed: Pounds of Broiler Grower Feed equal in value to 1 pound of broiler, live weight <sup>2</sup>	5.6	*4.3	4.1
Market Egg Feed: Pounds of Laying Feed equal in value to 1 dozen eggs <sup>3</sup>	8.4	*12.7	11.9
Hog-Corn: Bushels of Corn equal in value to 100 pounds of hog, live weight	13.8	*9.4	9.9
Milk-Feed: Pounds of 16% Mixed Dairy Feed equal in value to 1 pound of Whole Milk <sup>4</sup>	2.33	*2.66	2.36
Steer & Heifer-Corn: Bushels of Corn equal in value to 100 pounds of Steer & Heifers, live weight	26.6	*23.5	21.9
Turkey-Feed: Pounds of Turkey Grower equal in value to 1 pound of Turkey, live weight <sup>5</sup>	5.3	*4.1	3.8

\* Revised.

<sup>1</sup> Effective January 1995, prices of commercial prepared feeds are based on current U.S. prices received for corn, soybeans, alfalfa hay, and all wheat.

<sup>2</sup> The price of commercial prepared broiler feed is based on current U.S. prices received for corn and soybeans. The modeled feed uses 58 percent corn and 42 percent soybeans.

<sup>3</sup> The price of commercial prepared layer feed is based on current U.S. prices received for corn and soybeans. The modeled feed uses 75 percent corn and 25 percent soybeans.

<sup>4</sup> The price of commercial prepared dairy feed is based on current U.S. prices received for corn, soybeans, and alfalfa. The modeled feed uses 51 percent corn, 8 percent soybeans, and 41 percent alfalfa.

<sup>5</sup> The price of commercial prepared turkey feed is based on current U.S. prices received for corn, soybeans, and wheat. The modeled feed used 51 percent corn, 28 percent soybeans, and 21 percent wheat.

**Prices Used to Calculate Feed Price Ratios:  
United States, February 2008 with Comparisons**

Commodity	Unit	Entire Month		Preliminary
		Feb 2007	Jan 2008	Feb 2008
Broilers, Live	Lb	0.470	0.480	0.500
Eggs, Market	Doz	0.627	1.200	1.220
Hogs, All	Cwt	47.50	37.20	41.90
Milk, All	Cwt	14.90	20.50	19.30
Steers and Heifers	Cwt	91.40	93.40	93.20
Turkeys, Live	Lb	0.424	0.448	0.475
Corn	Bu	3.44	3.97	4.25
Hay, Alfalfa, Baled	Ton	115.00	135.00	138.00
Soybeans	Bu	6.87	9.96	11.00
Wheat, All	Bu	4.71	7.93	10.40

**Feeder Livestock: Prices Paid, United States  
February 2008 with Comparisons**

Commodity	Unit	2007	2008	
		Feb	Jan	Feb
		<i>Dollars</i>	<i>Dollars</i>	<i>Dollars</i>
Feeders and Stockers				
Cattle and Calves	Cwt	99.20	*99.00	103.50
Feeder Pigs	Cwt	155.00	*105.00	113.00

\* Revised.

## Reliability of Prices Paid Estimates

**Definition:** Prices paid by farmers represent the average costs of inputs purchased by farmers and ranchers to produce agricultural commodities. Conceptually, the average price when multiplied by quantity purchased should equal total producer expenditures for the item.

**Survey Procedures:** The prices paid data are obtained from establishments that sell goods and services to farmers and ranchers. Annually, about 8,500 firms are randomly selected from lists by type of item sold with an average response rate in the range of 75-80 percent. Firms are asked to report the price for the specified item "most commonly bought by farmers" or that was the "volume seller". Approximately 135 items are surveyed each April to represent all production input items purchased. The survey reference period for most items is the 5 business days centered around the 15th of the month. Separate prices paid surveys are conducted for agricultural chemicals, fuels, feed, fertilizer, machinery, and seed.

**Summary and Estimation Procedures:** The annual April Prices Paid Survey is summarized as a nonprobability survey. Average prices reported are aggregated to the region and U.S. level using weights available from expenditure data and other administrative sources. Price recommendations are prepared by the State Field Offices and Headquarters for review by the Agricultural Statistics Board in Washington, D.C. Also, the change in price level for individual items surveyed are combined to the regional and U.S. levels, and are published as prices paid indexes referenced to a specific base period. Prices paid indexes for new autos and trucks, building materials, farm supplies, motor supplies, and marketing containers are updated based on price changes measured in selected Bureau of Labor Statistics (BLS) indexes.

**Revisions:** Any revisions are published in the monthly and in annual issues of *Agricultural Prices*. The basis for revision must be supported by additional data that directly affect the level of the estimate. More revisions are likely in April when separate prices paid surveys are conducted, in lieu of BLS indexes, by the USDA to measure price change.

**Reliability:** Current methods of summarization in April are not designed directly to calculate sampling errors. However, analytical measures approximate the U.S. relative sampling errors for major items around 10 percent. Any nonsampling errors are attributed to such things as the inability to obtain correct information, differences in interpreting questions or definitions, mistakes in coding or processing the data, etc. Efforts are made at each step in the survey process to minimize these nonsampling errors.

**Program Change:** Effective January 1, 1995, the National Agricultural Statistics Service updated the weights and changed the construction of its prices paid and received by farmers indexes. A Federal Register Notice dated October 28, 1994 discussed these program modifications.

A 1990-92 reference and base period replaced the 1977 reference and 1971-73 base weight period. Five-year moving average weights replaced the current fixed 1971-73 base period weights. The 1910-14=100 price indexes, required by statute for computing parity prices, were linked forward based on the changes in the new 1990-92=100 indexes. The new indexes were constructed by multiplying the ratios of the current prices to the base period prices by the moving average weights (adjusted for seasonal marketing patterns for the prices received indexes).

## Information Contacts

General questions should be directed to Kevin Barnes, Chief, Environmental, Economics and Demographics Branch at (202) 720-6146. Below are the commodity specialists to contact for additional information.

### Crop Prices Received

Jeff Geuder, Chief, Crops Branch .....	(202) 720-2127
Greg Thessen, Field Crops Section .....	(202) 720-2127
Todd Ballard - Wheat, Rye .....	(202) 720-8068
Ty Kalasus - Corn, Proso Millet, Flaxseed .....	(202) 720-9526
Shiela Corley - Cotton, Cottonseed .....	(202) 720-5944
Travis Thorson - Soybeans, Sunflower, Canola, Other Oilseeds .....	(202) 720-7369
Don Gephart - Hay, Oats, Sorghum .....	(202) 690-3234
Anthony Prillaman - Peanuts, Rice .....	(202) 720-2127
Dawn Keen - Sugarcane, Sugarbeets, Barley .....	(202) 720-7621
Lance Honig, Fruits, Vegetables & Special Crops Section .....	(202) 720-2127
Dan Norris - Peaches, Pears, Hops, Pulses, Mint .....	(202) 720-3250
Faye Propsom - Citrus, Tropical Fruits .....	(202) 720-5412
Mike Jacobsen - Apples, Apricots, Cherries, Cranberries, Plums, Prunes .....	(202) 720-4288
Leslie Colburn - Grapes, Tobacco .....	(202) 720-7235
Lance Honig - Potatoes, Dry Edible Beans, Sweet Potatoes .....	(202) 720-2127
Debbie Flippin - Vegetables, Onions, Strawberries .....	(202) 720-2157
Doug Marousek - Tree Nuts .....	(202) 720-4215

### Livestock Prices Received

Dan Kerestes, Chief, Livestock Branch .....	(202) 720-3570
Shawn Clark, Livestock Section .....	(202) 720-3570
Scott Hollis - Sheep, Lambs, Goats, Wool, Mohair .....	(202) 720-4751
Jason Hardegree- Milk, Milk Cows .....	(202) 720-3278
Bruce Boess - Hogs .....	(202) 720-3106
Mike Miller - Cattle .....	(202) 720-3040
Darin Jantzi, Poultry and Specialty Commodities Section .....	(202) 720-3570
Toby Paterson - Turkeys .....	(202) 720-0585
Sharyn Lavender - Broilers, Honey .....	(202) 720-3244
Kim Linonis - Eggs .....	(202) 690-8632

### Indexes, Prices Paid, and Parity Prices

Kevin Barnes, Chief, Environmental, Economics and Demographics Branch .....	(202) 720-6146
Kevin Hintzman, Economics Section .....	(202) 720-6146
Jennifer Sissom - Prices Paid Indexes, Prices Paid for Feed, Fertilizer, Agricultural Chemicals, Seeds, Farm Supplies and Repairs, Farm Machinery, Fuels, Feeder Livestock, Poultry Chicks, Feed Price Ratios, Autos & Trucks .....	(202) 690-3229
Daryl Brinkman - Prices Received Indexes, Parity Prices .....	(202) 720-8844
Kathy King - Grazing Fees .....	(202) 720-2250

## ACCESS TO REPORTS!!

---

For your convenience, there are several ways to obtain NASS reports, data products, and services:

### INTERNET ACCESS

All NASS reports are available free of charge on the worldwide Internet. For access, connect to the Internet and go to the NASS Home Page at: [www.nass.usda.gov](http://www.nass.usda.gov).

### E-MAIL SUBSCRIPTION

All NASS reports are available by subscription free of charge direct to your e-mail address. Starting with the NASS Home Page at [www.nass.usda.gov](http://www.nass.usda.gov), under the right navigation, *Receive reports by Email*, click on **National** or **State**. Follow the instructions on the screen.

-----

### PRINTED REPORTS OR DATA PRODUCTS

**CALL OUR TOLL-FREE ORDER DESK: 800-999-6779 (U.S. and Canada)**  
**Other areas, please call 703-605-6220      FAX: 703-605-6900**  
**(Visa, MasterCard, check, or money order acceptable for payment.)**

-----

### ASSISTANCE

For **assistance** with general agricultural statistics or further information about NASS or its products or services, contact the **Agricultural Statistics Hotline** at **800-727-9540**, 7:30 a.m. to 4:00 p.m. ET, or e-mail: [nass@nass.usda.gov](mailto:nass@nass.usda.gov).

The U.S. Department of Agriculture (USDA) prohibits discrimination in all its programs and activities on the basis of race, color, national origin, age, disability, and where applicable, sex, marital status, familial status, parental status, religion, sexual orientation, genetic information, political beliefs, reprisal, or because all or a part of an individual's income is derived from any public assistance program. (Not all prohibited bases apply to all programs.) Persons with disabilities who require alternative means for communication of program information (Braille, large print, audiotape, etc.) should contact USDA's TARGET Center at (202) 720-2600 (voice and TDD).

To file a complaint of discrimination write to USDA, Director, Office of Civil Rights, 1400 Independence Avenue, S.W., Washington, D.C. 20250-9410 or call (800) 795-3272 (voice) or (202) 720-6382 (TDD). USDA is an equal opportunity provider and employer.