

Agricultural Prices

Released September 29, 2010, by the National Agricultural Statistics Service (NASS), Agricultural Statistics Board, U.S. Department of Agriculture. For information on *Agricultural Prices* see page 43, office hours 7:30 a.m. to 4:00 p.m. ET.

September Farm Prices Received Index Advanced 5 Points

The preliminary All Farm Products Index of Prices Received by Farmers in September, at 150 percent, based on 1990-1992=100, increased 5 points (3.4 percent) from August. The Crop Index is up 6 points (3.8 percent) and the Livestock Index increased 1 point (0.7 percent). Producers received higher prices for corn, wheat, broilers, and milk and lower prices for lettuce, eggs, soybeans, and strawberries. In addition to prices, the overall index is also affected by the seasonal change based on a 3-year average mix of commodities producers sell. Increased monthly marketings of soybeans, corn, apples, and potatoes offset decreased marketings of cattle, wheat, broilers, and grapes.

The preliminary All Farm Products Index is up 24 points (19 percent) from September 2009. The Food Commodities Index, at 147, increased 1 point (0.7 percent) from last month and increased 22 points (18 percent) from September 2009.

Prices Paid Index Up 1 Point

The September Index of Prices Paid for Commodities and Services, Interest, Taxes, and Farm Wage Rates (PPITW) is 183 percent of the 1990-1992 average. The index is up 1 point (0.5 percent) from August and 7 points (4.0 percent) above September 2009. Higher prices in September for feed grains, complete feeds, concentrates, and LP gas more than offset lower prices for feeder cattle, diesel, potash & phosphate, and gasoline.

Index Summary Table

Index 1990-92=100	2009		2010	
	Aug	Sep	Aug	Sep
Prices Received	126	126	145	150
Prices Paid	177	176	182	183
Ratio ¹	71	72	80	82

¹ Ratio of index of prices received by farmers to index of prices paid by farmers.

Prices Received by Farmers

The September All Farm Products Index is 150 percent of its 1990-1992 base, up 3.4 percent from the August index and 19 percent above the September 2009 index.

ALL CROPS: The September index is 162, up 3.8 percent from August and 14 percent above September 2009. Index increases for feed grains & hay, food grains, and fruits & nuts more than offset the index decreases for oilseeds, commercial vegetables, and potatoes & dry beans.

Food Grains: The September index, at 197, is 8.8 percent above the previous month and 23 percent above a year ago. The September all wheat price, at \$6.02 per bushel, is up 58 cents from August and \$1.54 above September 2009.

Feed Grains & Hay: The September index is 182, up 16 percent from last month and 27 percent above a year ago. The corn price, at \$4.34 per bushel, is up 69 cents from last month and \$1.09 above September 2009. The all hay price, at \$111 per ton, is unchanged from August but up \$6.00 from last September. Sorghum grain, at \$7.43 per cwt, is \$1.07 above August and \$1.80 above September last year.

Cotton: The September index, at 127, is unchanged from August but 40 percent above last year. The September price, at 76.8 cents per pound, is down 0.4 cent from the previous month but 21.8 cents above last September.

Oilseeds: The September index, at 163, is down 8.9 percent from August but 3.2 percent higher than September 2009. The soybean price, at \$9.94 per bushel, decreased 16 cents from August but is 19 cents above September 2009.

Fruits & Nuts: The September index, at 162, is up 1.9 percent from August and 8.0 percent higher than a year ago. Price increases for apples, lemons, and grapefruit more than offset price decreases for strawberries, peaches, and oranges.

Commercial Vegetables: The September index, at 156, is down 3.7 percent from last month but 16 percent above September 2009. Price declines during September for lettuce, onions, snap beans, and carrots more than offset price increases for sweet corn, broccoli, cucumbers, and cauliflower.

Potatoes & Dry Beans: The September index, at 129, is down 5.1 percent from last month and 11 percent below September 2009. The all potato price, at \$7.58 per cwt, is down 20 cents from August and down 69 cents from last September. The all dry bean price, at \$24.10 per cwt, is down \$5.30 from the previous month and \$6.30 below September 2009.

LIVESTOCK & PRODUCTS: The September index, at 135, is 0.7 percent above last month and up 25 percent from September 2009. Compared with a year ago, prices are higher for milk, cattle, hogs, broilers, turkeys, and calves. Prices for eggs are down from last year.

Meat Animals: The September index, at 129, is up 0.8 percent from last month and 25 percent higher than last year. The September hog price, at \$60.90 per cwt, is down 40 cents from August but \$23.20 higher than a year ago. The September beef cattle price of \$94.40 per cwt is up 90 cents from last month and \$13.90 higher than September 2009.

Dairy Products: The September index, at 132, is up 3.1 percent from a month ago and 32 percent higher than September last year. The September all milk price of \$17.20 per cwt is up 50 cents from last month and up \$4.20 from September 2009. The fluid grade milk price is up 50 cents and the manufacturing grade milk price is up \$1.10 from the previous month.

Poultry & Eggs: The September index, at 149, is unchanged from August but 16 percent above a year ago. The September market egg price, at 44.6 cents per dozen, decreased 17.8 cents from August and is 12.5 cents below September 2009. The September broiler price, at 50.0 cents per pound, is up 2.0 cents from August and 8.0 cents above a year ago. The September turkey price, at 68.7 cents per pound, is up 1.9 cents from the previous month and up 20.2 cents from a year earlier.

Contents

	Page
U.S. Prices Received and Indexes	
Narrative	2
Price Indexes	5
Index Charts	6
U.S. Prices Received Summary	8
Price Charts	10
Selected Commodities	14
Upland Cotton & Rice Marketings	17
Parity Prices	22
Reliability Statement	34
 Monthly State Prices	
Apples	17
Barley	15
Beans, Dry Edible	16
Beef Cattle, All	19
Calves	19
Cows, Beef	19
Steers and Heifers	19
Canola	16
Citrus Fruit	18
Corn	15
Cotton	17
Cottonseed	17
Flaxseed	16
Hay	17
Hogs, All	19
Barrows and Gilts	19
Sows	19
Milk	21
Milk Cows	21
Manufacturing Grade & Parity Price Equiv	21
Oats	15
Peanuts	16
Potatoes	18
Rice	17
Sheep	20
Lambs	20
Sorghum Grain	15
Soybeans	15
Sunflower, All	16
Wheat, All Classes	14
 Marketing Year for Specified Commodities	 24
 Marketing Year Average Prices	
Austrian Winter Peas	25
Dry Edible Peas	25
Sorghum Grain	28
Lentils	25
Soybeans	30
 Monthly Prices Received, Monthly Farm Marketings, and Marketing Year Average Prices	
Austrian Winter Peas	27
Corn	27
Dry Edible Peas	26
Lentils	26

Monthly Prices	
Sorghum Grain	29
Soybeans	31
Monthly Farm Marketing Percentages	
Sorghum Grain	28
Soybeans	33
U.S. Prices Paid, Prices Paid Indexes, and Ratios	Page
Narrative	35
Price Indexes	36
Index Charts	38
Feed Price Ratios.....	41
Reliability Statement	42
U.S. Average Prices	
Prices Used to Calculate Feed Price Ratios	41
Feeder Livestock	41
Information Contacts	43

**Index Numbers of Prices Received, United States,
September 2010 with Comparisons ¹**

Index	1910-14=100				1990-92=100		
	Average 1990-92	2009	2010		2009	2010	
		Sep	Aug	Sep	Sep	Aug	Sep
All Farm Products	639	798	* 921	952	126	145	150
All Crops	500	702	* 774	803	142	* 156	162
Food Grains	325	508	* 574	623	160	* 181	197
Feed Grains & Hay	363	511	* 560	649	143	157	182
Cotton	517	466	* 653	650	91	* 127	127
Tobacco ²	1263	1569	1563	1563	104	103	103
Oilseeds	554	867	* 981	894	158	179	163
Fruits & Nuts	716	1044	* 1107	1128	150	* 159	162
Commercial Vegetables	698	963	* 1159	1112	135	* 162	156
Potatoes & Dry Beans	540	737	* 691	656	145	* 136	129
Other Crops	493	606	610	610	123	124	124
Livestock & Products	768	831	* 1025	1032	108	* 134	135
Meat Animals	1021	1049	* 1307	1312	103	128	129
Dairy Products	799	800	* 1028	1058	100	* 128	132
Poultry & Eggs	282	362	419	419	129	149	149
Food Commodities					125	* 146	147

* Revised.

¹ Revised historical price indexes for months not shown are available at www.nass.usda.gov.

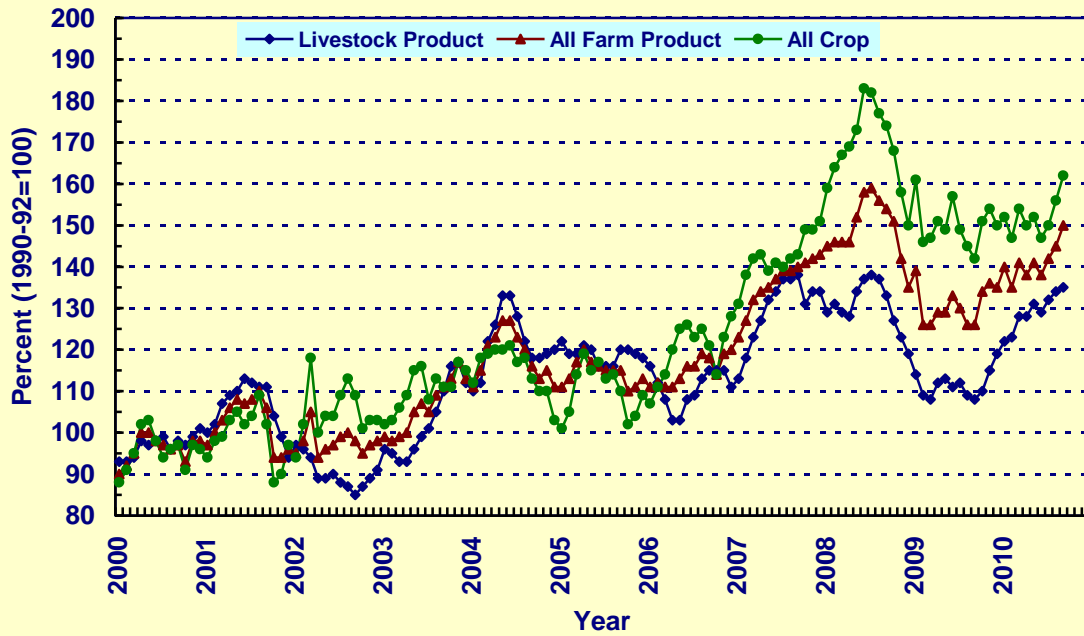
² Monthly prices discontinued July 2005.

**Selected Index Numbers for Prices Received and Paid,
1990-92=100, by Month, United States, 2009 and 2010 ¹**

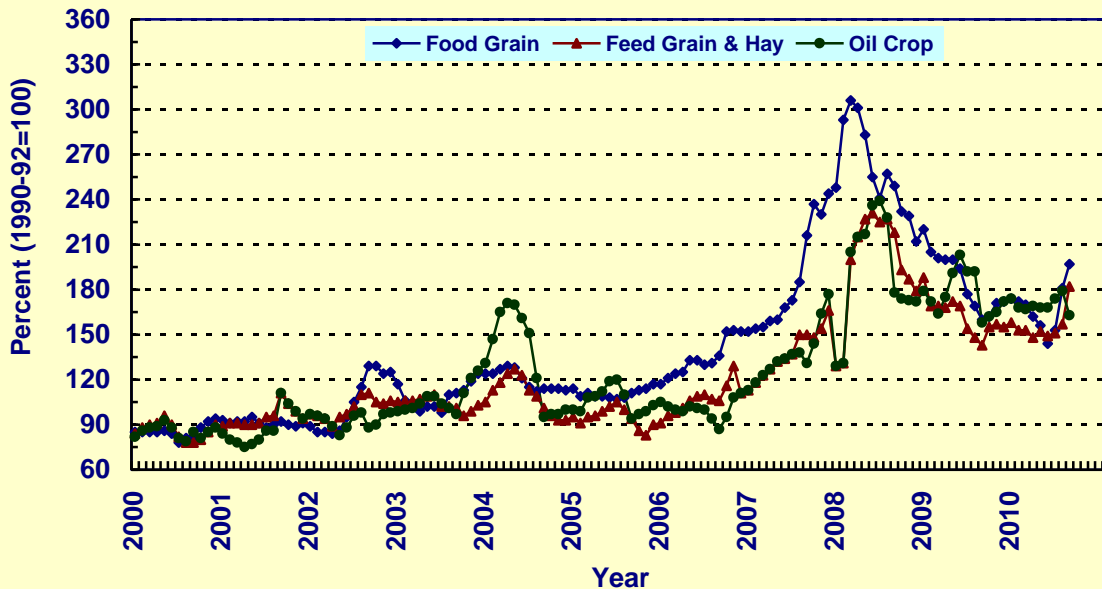
Month	Index of Prices Received						Index of Prices Paid			
	All Farm Products		All Crops		Livestock and Products		All Items		Production Items	
	2009	2010	2009	2010	2009	2010	2009	2010	2009	2010
Jan	139	140	161	152	114	122	180	183	184	186
Feb	126	135	146	147	109	123	179	182	183	185
Mar	126	141	147	154	108	128	180	182	184	184
Apr	129	138	151	150	112	128	180	183	185	186
May	129	141	149	152	113	131	180	183	184	186
Jun	133	138	157	147	111	129	180	182	184	185
Jul	130	142	149	150	112	132	178	182	182	185
Aug	126	145	145	156	109	134	177	182	180	186
Sep	126	150	142	162	108	135	176	183	179	186
Oct	134		151		110		177		179	
Nov	136		154		115		178		181	
Dec	135		150		119		178		181	

¹ Revised historical price indexes for months not shown are available at www.nass.usda.gov.

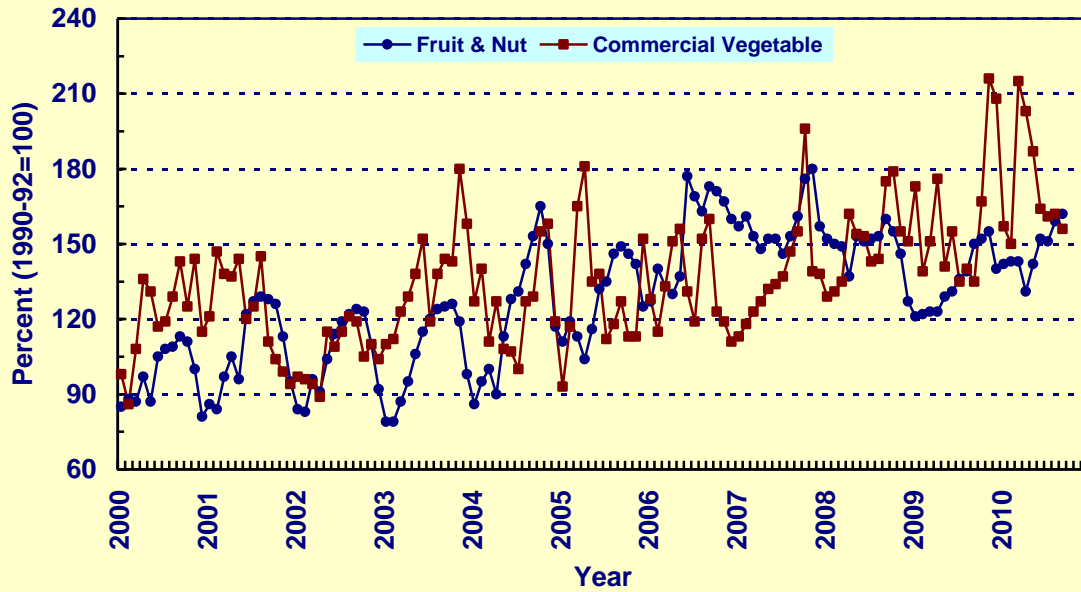
Prices Received, Major Indexes, US



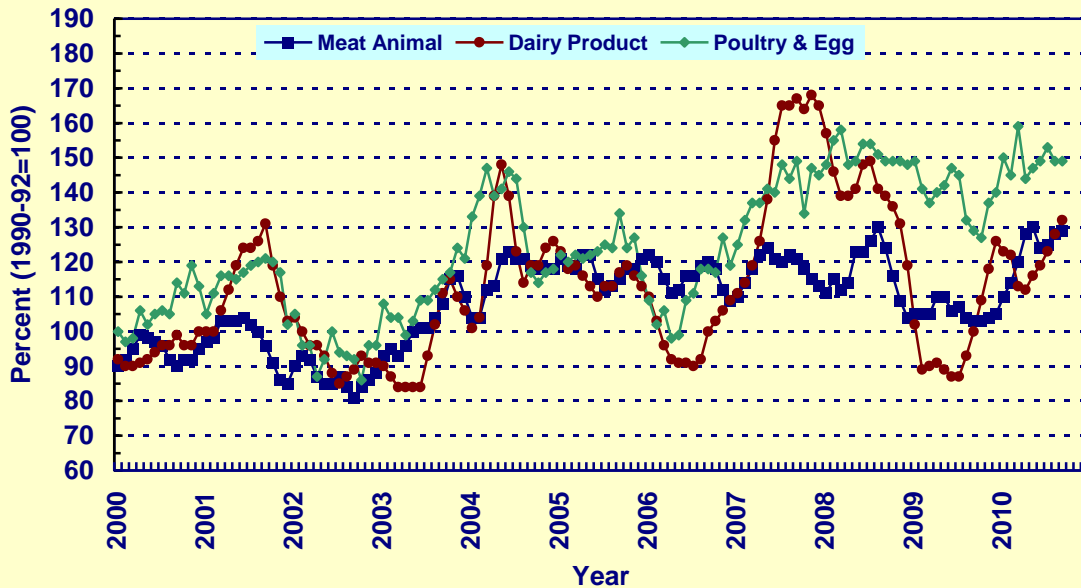
Prices Received, Food, Feed, & Oil Crop Indexes, US



Prices Received, Fruit and Vegetable Indexes, US



Prices Received, Livestock Product Indexes, US



**Prices Received, United States,
September 2010, with Comparisons**

Commodity	Unit	Average 1990-92	Entire Month		Preliminary
			Sep 2009	Aug 2010	Sep 2010
		<i>Dollars</i>	<i>Dollars</i>	<i>Dollars</i>	<i>Dollars</i>
Field Crops					
Barley, All	Bu	2.12	4.78	3.68	3.54
Feed	Bu	1.90	2.14	2.34	2.71
Malting	Bu	2.43	5.32	3.92	3.82
Beans, Dry Edible	Cwt	19.10	30.40	29.40	24.10
Canola	Cwt		15.70	17.20	17.60
Chickpeas, All	Cwt		31.30	(⁵)	(⁶)
Large	Cwt		(⁵)	(⁵)	(⁶)
Small	Cwt		(⁵)	(⁵)	(⁶)
Corn	Bu	2.30	3.25	3.65	4.34
Cotton, Upland	Lb	0.606	0.550	0.772	0.768
Cottonseed ¹	Ton	96.00	168.00		154.00
Flaxseed	Bu	4.27	6.79	11.10	11.20
Hay, All, Baled ²	Ton	76.30	105.00	111.00	111.00
Alfalfa ²	Ton	77.20	109.00	116.00	117.00
Other ²	Ton	60.00	97.10	96.10	95.20
Lentils	Cwt		25.60	21.50	24.60
Oats	Bu	1.22	1.82	2.09	2.16
Peanuts, In-Shell	Lb	0.304	0.233	0.207	0.204
Peas, Dry Edible	Cwt		8.57	8.71	7.97
Austrian Winter	Cwt		22.30	17.00	(⁶)
Potatoes	Cwt	5.82	8.27	7.78	7.58
Rice, All	Cwt	7.07	14.60	11.30	11.30
Long ³	Cwt		12.80	10.30	10.40
Medium & Short ³	Cwt		22.60	16.10	17.60
Sorghum Grain	Cwt	3.75	5.63	6.36	7.43
Soybeans	Bu	5.61	9.75	10.10	9.94
Sunflower, All	Cwt	9.50	13.90	14.30	16.60
Wheat, All	Bu	2.96	4.48	5.44	6.02
Winter	Bu	2.93	4.20	5.48	5.97
Durum	Bu	2.86	4.95	4.43	5.01
Other Spring	Bu	3.11	4.85	5.48	6.23
Hard Red Winter	Bu		4.32	5.43	
Soft Red Winter	Bu		3.63	5.77	
Hard Red Spring	Bu		4.87	5.49	
White	Bu	3.24	4.14	5.52	
Fruit					
Citrus, Equiv on-tree					
Grapefruit	Box	5.77	6.55	0.50	4.70
Lemons	Box	10.10	17.60	16.60	19.96
Oranges	Box	5.79	(⁵)	7.49	7.12
Tangelos	Box	5.82	(⁶)	(⁶)	(⁶)
Tangerines and Mandarins	Box	15.11	(⁶)	(⁶)	(⁶)
Noncitrus, Fresh					
Apples ⁴	Lb	0.212	0.357	0.317	0.349
Grapes ⁴	Ton	506.00	470.00	760.00	760.00
Peaches ⁴	Ton	432.00	655.00	520.00	493.00
Pears ⁴	Ton	370.00	383.00	441.00	444.00
Strawberries	Cwt	56.00	75.00	81.70	72.90

¹ Marketing year August - February.

² Mid-month price.

³ Published estimates began in August 2008.

⁴ Equivalent packinghouse-door returns for CA, MI, and NY (apples only), and WA (apples, peaches, and pears). Prices as sold for other states.

⁵ Price not published to avoid disclosure of individual firms.

⁶ Insufficient sales to establish a price.

**Prices Received, United States,
September 2010, with Comparisons**

Commodity	Unit	Average 1990-92	Entire Month		Preliminary
			Sep 2009	Aug 2010	Sep 2010
		<i>Dollars</i>	<i>Dollars</i>	<i>Dollars</i>	<i>Dollars</i>
Vegetables, Fresh ¹					
Asparagus	Cwt	79.80			
Broccoli	Cwt	22.50	31.60	25.70	33.60
Cantaloups ²	Cwt		12.90	9.70	11.60
Carrots	Cwt	13.20	25.20	27.10	26.90
Cauliflower	Cwt	26.80	26.90	26.30	30.60
Celery	Cwt	11.60	12.00	14.30	14.60
Corn, Sweet	Cwt	15.70	23.70	23.10	25.90
Cucumbers ²	Cwt		26.10	27.10	31.40
Lettuce	Cwt	11.90	16.60	23.30	18.20
Onions	Cwt	12.80	9.27	15.30	14.10
Snap Beans ²	Cwt		76.90	88.80	76.30
Tomatoes	Cwt	32.30	34.40	37.60	38.50
Livestock					
Calves	Cwt	94.30	105.00	121.00	120.00
Cattle, All Beef	Cwt	72.90	80.50	93.50	94.40
Cows ³	Cwt	49.60	44.30	58.40	56.60
Steers & Heifers	Cwt	77.10	85.50	98.00	99.30
Milk Cows ⁴	Head	1130.00			
Hogs, All	Cwt	47.70	37.70	61.30	60.90
Barrows & Gilts	Cwt	48.40	38.20	61.50	61.00
Sows	Cwt	39.50	24.10	58.40	58.70
Lambs	Cwt	56.20	98.10	127.00	
Sheep	Cwt	23.40	29.70	47.80	
Dairy and Poultry					
Milk, All ^{5,6}	Cwt	13.06	13.00	16.70	17.20
Fluid Grade ⁶	Cwt	13.10	13.00	16.70	17.20
Mfg Grade ⁶	Cwt	11.80	12.40	15.10	16.20
Broilers, Live ⁷	Lb	0.317	0.420	0.480	0.500
Eggs, All ⁸	Doz	0.643	0.744	0.792	0.636
Market ^{8,9}	Doz	0.546	0.571	0.624	0.446
Turkeys, live ^{8,10}	Lb	0.380	0.485	0.668	0.687
Adjusted for Seasonal Variation ¹¹					
Eggs, All	Doz	0.545	0.785	0.823	0.672
Milk, All ⁵	Cwt	9.71	12.50	16.50	16.60

¹ Beginning January 2006, point of first sale. F.O.B. shipping point for prior years.

² Monthly estimates began January 1995.

³ Beef cows and cull dairy cows sold for slaughter.

⁴ Animals sold for dairy herd replacement only. Prices available for Jan, Apr, Jul, and Oct.

⁵ Before deductions for hauling. Includes quality, quantity, and other premiums. Excludes hauling subsidies.

⁶ September 2010 Fat test percent: all milk, 3.59; fluid milk, 3.58; mfg grade, 3.95.

⁷ Equivalent live weight price.

⁸ Mid-month price.

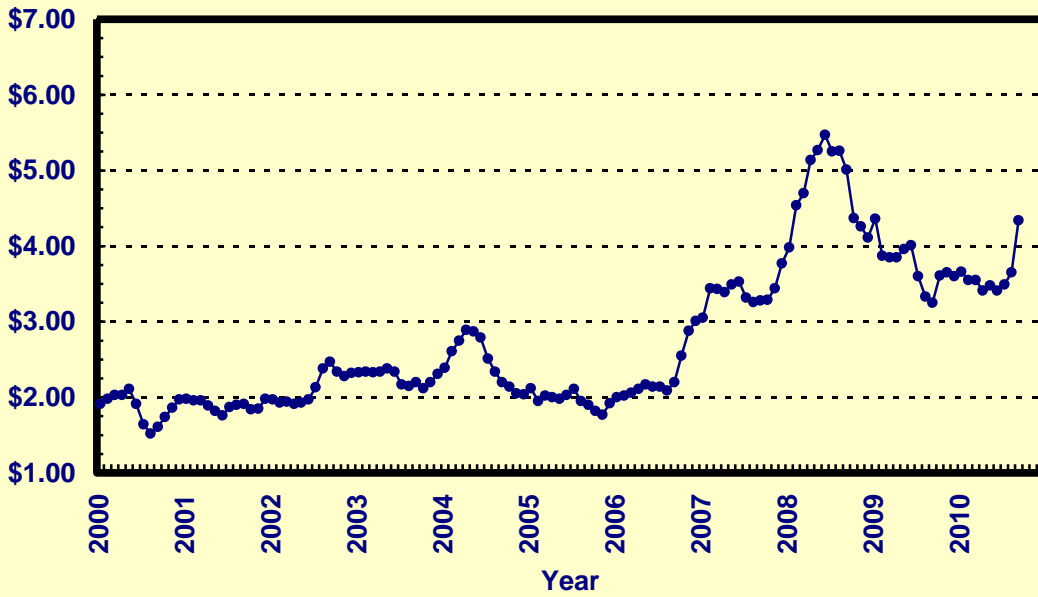
⁹ Also referred to as table eggs.

¹⁰ Live weight equivalent price is used when actual live weight price is not available.

¹¹ Seasonal adjustment factors are: All Eggs September 2009, 95; August 2010, 96; and September 2010, 95. All Milk September 2009, 104; August 2010, 101; and September 2010, 104.

Prices Received, Corn, US

Dollars per Bu



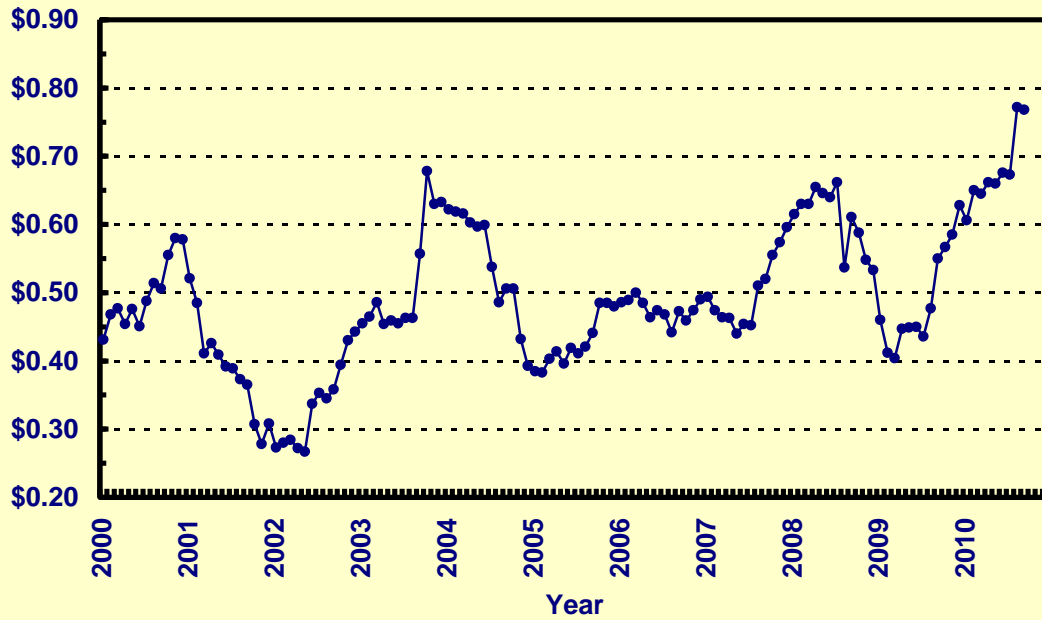
Prices Received, Wheat, US

Dollars per Bu



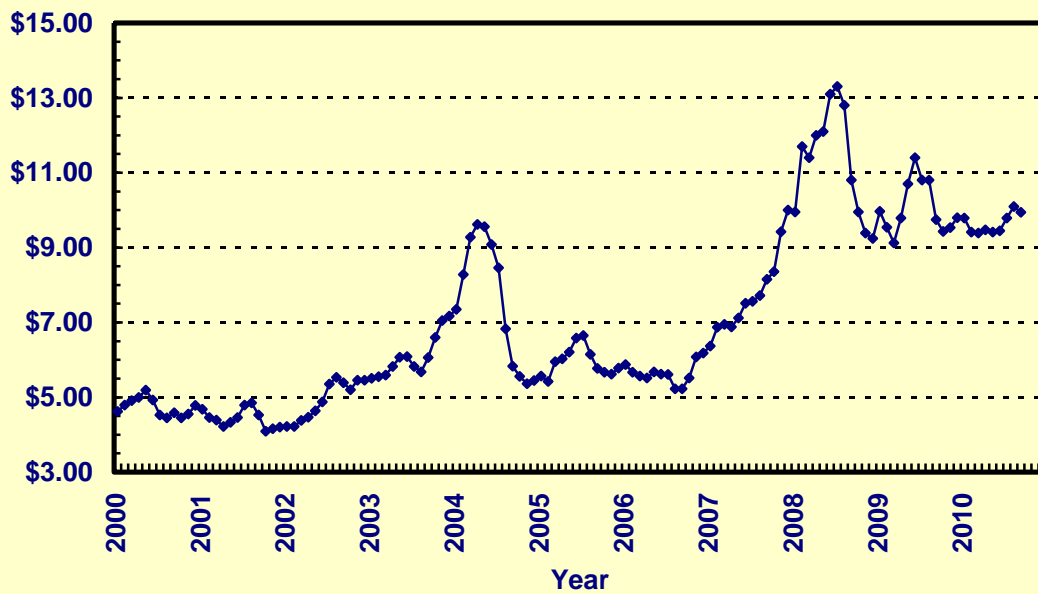
Prices Received, Cotton, US

Dollars per Lb



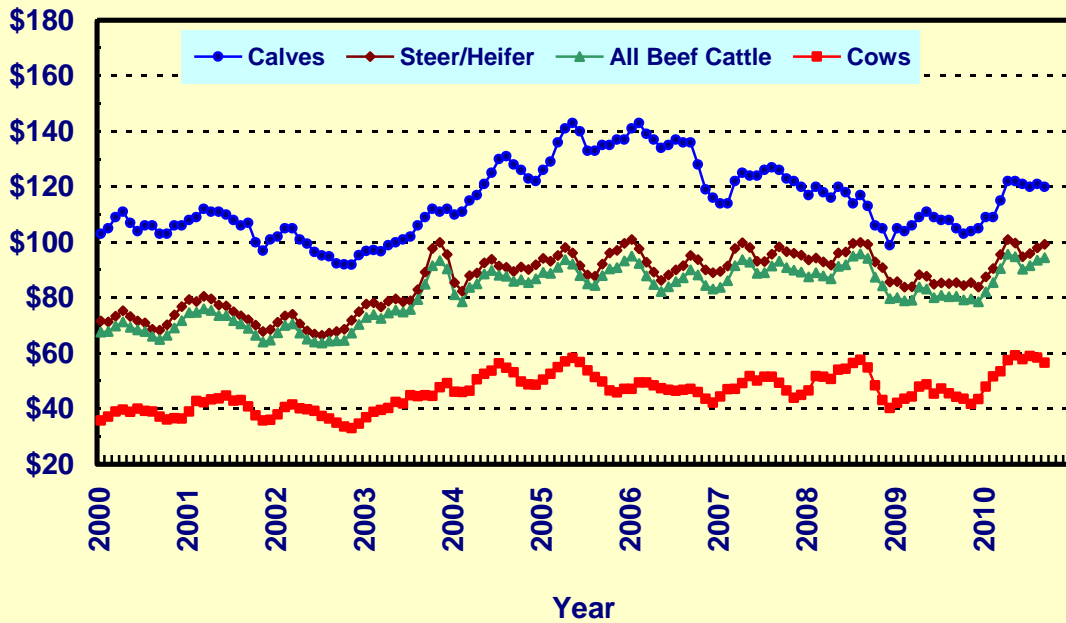
Prices Received, Soybeans, US

Dollars per Bu



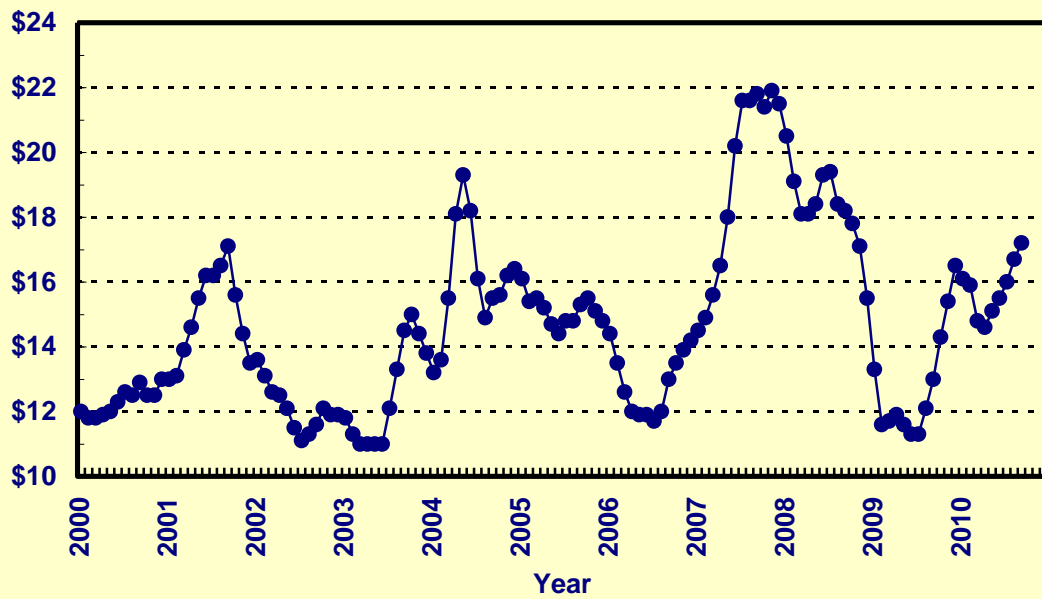
Prices Received, Cattle, US

Dollars per Cwt



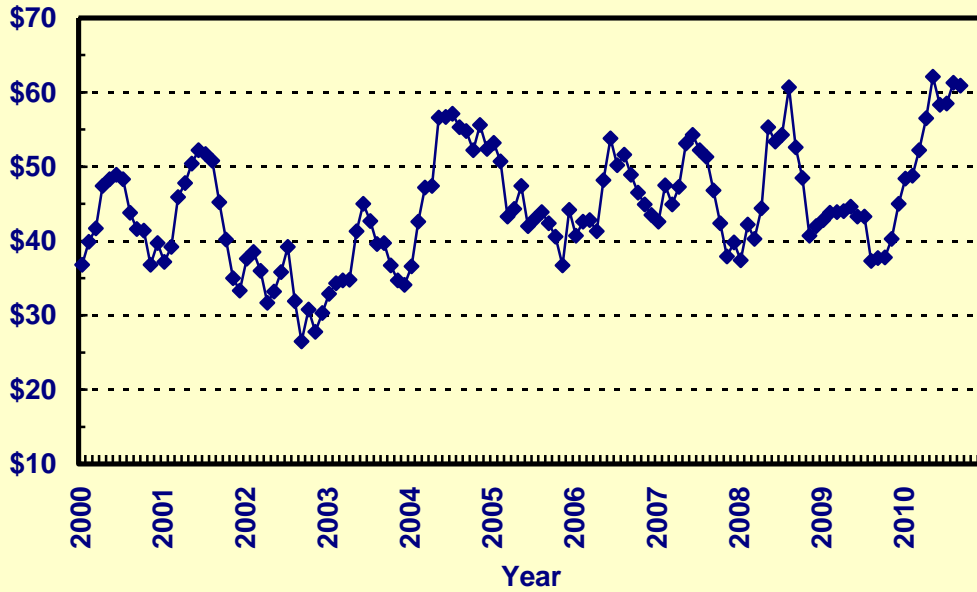
Prices Received, Milk, US

Dollars per Cwt



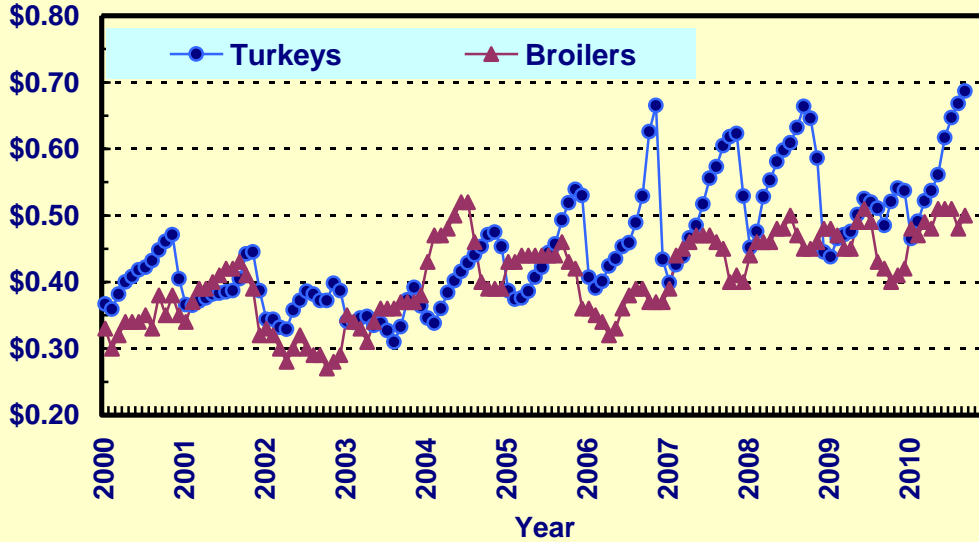
Prices Received, Hogs, US

Dollars per Cwt



Prices Received, Turkeys & Broilers, US

Dollars per Lb



Wheat: Prices Received, by State, August and September 2010

State	All Wheat		Winter Wheat		Durum Wheat		Oth Spring Wheat	
	Aug ¹	Sep ²	Aug ¹	Sep ²	Aug ¹	Sep ²	Aug ¹	Sep ²
	<i>Dollars per Bushel</i>	<i>Dollars per Bushel</i>	<i>Dollars per Bushel</i>	<i>Dollars per Bushel</i>	<i>Dollars per Bushel</i>	<i>Dollars per Bushel</i>	<i>Dollars per Bushel</i>	<i>Dollars per Bushel</i>
AZ	(³)	(³)			(³)	(³)		
AR	5.91	6.20	5.91	(³)				
CA	5.23	5.92	5.23	5.92	(⁴)	(⁴)		
CO	5.44	5.87	5.46	5.88			4.53	(³)
ID	4.83	5.67	4.78	5.70	(³)	(³)	4.90	5.55
IL	5.66	5.70	5.66	5.70				
IN	5.88	6.03	5.88	6.03				
KS	5.69	6.38	5.69	6.38				
MI	6.16	6.25	6.16	6.25				
MN	5.22	5.79	4.37	5.00			5.24	5.80
MO	5.25	5.70	5.25	5.70				
MT	5.06	6.00	4.92	5.76	4.20	4.56	5.41	6.63
NE	5.26	6.00	5.26	6.00				
NC	5.70	6.01	5.70	6.01				
ND	5.22	6.04	4.49	5.20	4.38	4.95	5.48	6.30
OH	5.92	6.10	5.92	6.10				
OK	5.83	6.52	5.83	6.52				
OR	6.25	6.17	6.16	6.00			6.64	7.20
SD	5.51	6.25	5.14	5.89			5.81	6.53
TX	5.57	6.11	5.57	6.11				
WA	5.65	5.54	5.57	5.38			6.03	6.33
US	5.44	6.02	5.48	5.97	4.43	5.01	5.48	6.23

¹ Entire month.

² Mid-month.

³ Price not published to avoid disclosure of individual firms.

⁴ Insufficient sales to establish a price.

**Prices Received for Selected Agricultural Commodities, by Month,
United States, 2009 and 2010 ¹**

Month	All Wheat		Corn		Soybeans		Beef Cattle ²		All Hogs	
	2009	2010	2009	2010	2009	2010	2009	2010	2009	2010
	<i>Dollars per Bushel</i>	<i>Dollars per Bushel</i>	<i>Dollars per Bushel</i>	<i>Dollars per Bushel</i>	<i>Dollars per Bushel</i>	<i>Dollars per Bushel</i>	<i>Dollars per Cwt</i>	<i>Dollars per Cwt</i>	<i>Dollars per Cwt</i>	<i>Dollars per Cwt</i>
Jan	6.20	4.90	4.36	3.66	9.97	9.79	80.10	82.10	42.80	48.40
Feb	5.79	4.73	3.87	3.55	9.54	9.41	78.90	85.50	43.80	48.80
Mar	5.71	4.70	3.85	3.55	9.12	9.39	79.10	90.50	43.90	52.20
Apr	5.75	4.41	3.85	3.41	9.79	9.47	83.80	95.70	44.00	56.50
May	5.85	4.33	3.96	3.48	10.70	9.41	83.20	94.80	44.60	62.10
Jun	5.72	4.16	4.01	3.41	11.40	9.45	80.10	90.30	43.30	58.30
Jul	5.17	4.50	3.60	3.49	10.80	9.79	80.90	91.60	43.30	58.50
Aug	4.85	5.44	3.33	3.65	10.80	10.10	80.40	93.50	37.30	61.30
Sep	4.48	6.02	3.25	4.34	9.75	9.94	80.50	94.40	37.70	60.90
Oct	4.47		3.61		9.43		79.20		37.80	
Nov	4.79		3.65		9.53		79.60		40.30	
Dec	4.87		3.60		9.80		78.50		45.00	

¹ Current month prices are mid-month; prices for previous months are for the entire month.

² Cows, steers and heifers.

Grains: Prices Received, by State, August and September 2010

State	All Barley		Corn		Oats		Soybeans		Sorghum Grain	
	Aug ¹	Sep ²	Aug ¹	Sep ²	Aug ¹	Sep ²	Aug ¹	Sep ²	Aug ¹	Sep ²
	<i>Dollars per Bushel</i>	<i>Dollars per Bushel</i>	<i>Dollars per Bushel</i>	<i>Dollars per Bushel</i>	<i>Dollars per Bushel</i>	<i>Dollars per Bushel</i>	<i>Dollars per Bushel</i>	<i>Dollars per Bushel</i>	<i>Dollars per Cwt</i>	<i>Dollars per Cwt</i>
AL							10.10	10.00	6.94	(⁴)
AR										
CA	(³)	(⁴)								
CO	2.78	(³)	3.68	4.39						
ID	4.03	3.84								
IL			3.73	4.30	2.82	(⁴)	10.30	10.10	6.66	(³)
IN			3.80	4.51			10.50	10.10		
IA			3.61	4.35	2.31	2.50	10.00	9.90		
KS			3.67	4.24			10.20	9.90	5.92	7.38
KY			3.84	4.45			10.00	10.10		
LA							9.75	9.75	6.74	(³)
MI			3.78	4.35	2.21	2.55	10.20	9.80		
MN	(³)	(³)	3.42	3.90	2.05	1.95	9.87	9.60		
MS							9.68	9.70		
MO			3.69	4.30			10.20	10.10	5.78	6.60
MT	4.29	4.31			2.06	(⁴)				
NE			3.68	4.40	2.46	2.50	9.93	10.00	5.96	7.25
NY					1.59	1.79				
NC			4.20	4.93			10.80	10.70		
ND	3.01	2.71	3.25	3.80	1.92	(³)	9.58	9.55		
OH			3.83	4.41			10.70	10.30		
OK									6.41	7.95
OR	3.08	3.60			(³)	(⁴)				
PA			4.15	4.84	2.36	2.33				
SD			3.28	3.89	2.23	2.19	9.59	9.65		
TN			3.99	4.65			10.20	10.20		
TX			3.80	4.63	(⁴)	(⁴)			6.35	7.44
UT	2.88	2.97								
WA	3.03	3.28								
WI			3.49	4.05	1.87	2.00	10.20	9.85		
WY	(³)	(³)								
US	3.68	3.54	3.65	4.34	2.09	2.16	10.10	9.94	6.36	7.43

¹ Entire month.

² Mid-month.

³ Price not published to avoid disclosure of individual firms.

⁴ Insufficient sales to establish a price.

**Malting and Feed Barley: Prices Received Selected State,
August and September 2010**

State	Malting Barley		Feed Barley	
	Aug ¹	Sep ²	Aug ¹	Sep ²
	<i>Dollars per Bushel</i>	<i>Dollars per Bushel</i>	<i>Dollars per Bushel</i>	<i>Dollars per Bushel</i>
ID	4.06	3.85	3.15	3.30
MN	(³)	(³)	2.00	(³)
MT	4.39	4.39	2.43	2.75
ND	3.30	2.90	2.00	2.25
WY	(³)	(³)	(³)	(³)

¹ Entire month.

² Mid-month.

³ Price not published to avoid disclosure of individual firms.

⁴ Insufficient sales to establish a price.

Field Crops: Prices Received, by State, August and September 2010

State	Dry Edible Beans		All Sunflower		Canola		Flaxseed		Peanuts ^{4 5}	
	Aug ¹	Sep ²	Aug ¹	Sep ²	Aug ¹	Sep ²	Aug ¹	Sep ²	Aug ¹	Sep ³
	<i>Dollars per Cwt</i>	<i>Dollars per Cwt</i>	<i>Dollars per Cwt</i>	<i>Dollars per Cwt</i>	<i>Dollars per Cwt</i>	<i>Dollars per Cwt</i>	<i>Dollars per Bushel</i>	<i>Dollars per Bushel</i>	<i>Dollars per Pound</i>	<i>Dollars per Pound</i>
AL									0.198	0.198
CA	52.00	45.80								
CO	22.80	23.30	(⁷)	(⁷)						
FL									0.198	0.189
GA									0.201	0.203
ID	29.10	30.00								
KS			13.40	(⁶)						
MI	35.10	26.00								
MN	31.50	27.50	16.60	(⁶)	(⁶)	(⁷)				
MS									0.195	0.190
NE	22.80	21.40								
NM									0.186	(⁷)
NC									0.248	0.236
ND	23.30	22.00	14.20	16.20	17.20	17.60	11.10	11.20		
OK									(⁷)	(⁷)
SC									0.226	0.247
SD			15.20	16.40						
TX									0.230	0.244
VA									0.231	0.184
US	29.40	24.10	14.30	16.60	17.20	17.60	11.10	11.20	0.207	0.204

¹ Entire month.

² Mid-month.

³ Based on sales through first half of month.

⁴ In-Shell.

⁵ Monthly published estimates for MS, NM, OK, and SC began in August 2009.

⁶ Price not published to avoid disclosure of individual firms.

⁷ Insufficient sales to establish a price.

Field Crops and Apples: Prices Received, by State, August and September 2010

State	Cotton, Upland		September				Apples Fresh Use ^{2 4}
	Aug ¹	Sep ²	Cotton- seed ⁵	Hay, Baled ³			
				All	Alfalfa	Other	
<i>Dollars per Pound</i>	<i>Dollars per Pound</i>	<i>Dollars per Ton</i>	<i>Dollars per Ton</i>	<i>Dollars per Ton</i>	<i>Dollars per Ton</i>	<i>Dol/Lb</i>	
AL	(⁷)	(⁷)	(⁷)				
AZ	(⁷)	(⁷)	(⁷)	120.00	120.00	125.00	
AR	(⁶)	(⁷)	(⁷)				
CA	(⁷)	(⁷)	(⁷)	117.00	123.00	92.00	0.368
CO				123.00	125.00	110.00	
GA	0.801	0.881	(⁷)				
ID				117.00	120.00	90.00	
IL				120.00	133.00	84.00	
IA				105.00	112.00	79.00	
KS				103.00	110.00	70.00	
KY				89.00	135.00	70.00	
LA	(⁷)	0.746	165.00				
MI				95.00	105.00	75.00	0.350
MN				97.00	110.00	60.00	
MS	(⁷)	(⁷)	159.00				
MO				71.00	135.00	60.00	
MT				78.00	77.00	87.00	
NE				74.00	77.00	66.00	
NV				120.00	120.00	125.00	
NM				164.00	167.00	136.00	
NY				101.00	120.00	90.00	0.282
NC	(⁷)	(⁷)	139.00				
ND				54.00	59.00	42.00	
OH				116.00	145.00	83.00	0.430
OK				96.00	132.00	75.00	
OR				141.00	135.00	164.00	
PA				114.00	150.00	108.00	0.416
SD				73.00	75.00	68.00	
TN	(⁷)	(⁷)	(⁷)				
TX	0.772	0.768	150.00	125.00	180.00	110.00	
UT				99.00	100.00	80.00	
VA							0.380
WA				148.00	135.00	180.00	0.357
WI				92.00	105.00	70.00	
WY				89.00	90.00	84.00	
US	0.772	0.768	154.00	111.00	117.00	95.20	0.349

¹ Entire month.

² Based on sales during the first half of the month.

³ Mid-month.

⁴ Equivalent packinghouse-door returns for CA, MI, NY, and WA. Price at point of first sale for other States.

⁵ Marketing year August - February.

⁶ Price not published to avoid disclosure of individual firms.

⁷ Insufficient sales to establish a price.

**Upland Cotton and Rice: Prices Received and Marketings,
United States, September 2010, with Comparisons**

Item	Unit	Sep 2009 ¹	Aug 2010 ¹	Sep 2010 ²
Cotton, Upland				
Average Price	Dollars per Pound	0.550	0.772	0.768
Marketings ³	1,000 Bales	225	387	NA
Rice, All				
Average Price	Dollars per Cwt	14.60	11.30	11.30
Marketings ⁴	1,000 Cwt	11,061	11,071	NA
Rice, Long				
Average Price	Dollars per Cwt	12.80	10.30	10.40
Marketings ⁴	1,000 Cwt	9,125	9,056	NA
Rice, Medium & Short				
Average Price	Dollars per Cwt	22.60	16.10	17.60
Marketings ⁴	1,000 Cwt	1,936	2,015	NA

¹ Entire month.

² Based on purchases for the first half of the month.

³ Marketings based on a survey of cotton buyers in the major producing States - AL, AZ, AR, CA, GA, LA, MS, NC, TN, and TX.

⁴ Purchases by private firms and rice (rough equivalent) shipped by cooperatives.

**Citrus Fruit: Prices and Equivalent Returns, by Utilization,
by State and United States, September 2010**

Commodity, State and Type	F.O.B. Packed Fresh	Equivalent Returns ¹					
		Packinghouse-door			On-tree		
		All	Fresh	Process	All	Fresh	Process
	<i>Dollars per Box</i>	<i>Dollars per Box</i>	<i>Dollars per Box</i>	<i>Dollars per Box</i>	<i>Dollars per Box</i>	<i>Dollars per Box</i>	<i>Dollars per Box</i>
Grapefruit CA	17.60	7.80	7.80	(²)	4.70	4.70	(²)
Lemons CA	43.00	25.30	34.27	(³)	19.96	28.60	(³)
Oranges CA Valencia	21.90	9.81	13.38	(³)	7.12	10.69	(³)

¹ Net lbs. per box: Grapefruit - AZ & CA-67, FL-85, TX-80; Lemons - 80; Oranges - AZ & CA-75, FL-90, TX-85; Tangelos - 90; Tangerines and Mandarins- AZ & CA-75, FL-95.

² Processed sales insignificant and included in fresh sales.

³ Price not published to avoid disclosure of individual firms.

Potatoes: Prices Received, by State, August and September 2010 ¹

State	Aug	Sep ²	State	Aug	Sep ²
	<i>Dollars per Cwt</i>	<i>Dollars per Cwt</i>		<i>Dollars per Cwt</i>	<i>Dollars per Cwt</i>
CA - All ³	14.30		NC		
- Winter			ND - All ³		(⁵)
- Spring	14.30		- Fresh ⁴		NA
- Summer			- Processing		NA
- Fall			OR	6.05	6.15
CO - All ³	11.20	9.55	TX		
- Fresh ⁴	11.70	NA	VA		
FL			WA - All ³	6.95	6.70
ID - All ³	7.20	7.00	- Processing	5.85	NA
- Fresh ⁴	9.00	NA	WI - All ³	10.40	8.20
- Processing	6.40	NA	- Fresh ⁴	12.40	NA
ME	(⁵)	(⁵)	- Processing	7.75	NA
MI	9.45	9.20			
MN	9.10	(⁵)	US - All ³	7.78	7.58
NY	15.90	14.20	- Fresh ⁴	12.79	NA
			- Processing	6.17	NA

¹ Missing data indicate no potatoes being marketed.

² Preliminary price reflecting prices received for the entire month.

³ Average price of potatoes sold for all uses, including table stocks, processing, seed, and livestock feed.

⁴ Fresh market prices only, includes table stock prices.

⁵ Price not published to avoid disclosure of individual firms.

Cattle: Prices Received, by State, August and September 2010

State	Cows ¹		Steers & Heifers		Beef Cattle ⁴		Calves	
	Aug ²	Sep ³	Aug ²	Sep ³	Aug ²	Sep ³	Aug ²	Sep ³
	<i>Dollars per Cwt</i>	<i>Dollars per Cwt</i>	<i>Dollars per Cwt</i>	<i>Dollars per Cwt</i>	<i>Dollars per Cwt</i>	<i>Dollars per Cwt</i>	<i>Dollars per Cwt</i>	<i>Dollars per Cwt</i>
AZ	61.00	61.00	95.00	99.00	82.10	84.60	123.00	121.00
AR	56.00	52.00	108.00	104.00	87.20	78.00	117.00	114.00
CA	57.30	55.40	97.80	98.50	81.20	80.80	112.00	115.00
CO	63.00	63.00	103.00	105.00	102.00	104.00	128.00	125.00
FL	54.50	50.10	102.00	97.80	83.30	80.20	117.00	113.00
GA	57.60	53.80	99.20	96.20	73.90	71.70	113.00	109.00
ID	59.50	58.80	95.70	99.20	89.20	90.30	120.00	119.00
IL	59.80	57.30	94.50	98.50	93.80	97.70	120.00	122.00
IA	61.50	59.00	97.00	98.00	96.30	97.20	125.00	124.00
KS	56.00	54.00	99.00	101.00	98.10	100.00	128.00	124.00
KY	60.00	59.00	106.00	104.00	95.00	93.20	115.00	110.00
LA	55.20	52.00	96.60	94.00	70.50	67.50	111.00	105.00
MI	57.00	56.00	88.00	89.00	78.70	79.10	98.00	99.00
MN	61.80	61.10	94.40	95.60	89.00	89.90	132.00	127.00
MO	57.70	54.70	110.00	108.00	98.50	96.30	122.00	119.00
MT	59.00	56.50	105.00	106.00	93.00	96.60	138.00	132.00
NE	63.70	61.40	97.00	98.40	96.00	97.30	134.00	130.00
NM	64.00	63.00	100.00	102.00	86.00	86.80	121.00	114.00
ND	61.00	60.00	103.00	103.00	91.20	96.60	123.00	121.00
OH	50.00	48.00	93.20	92.00	88.90	87.60	111.00	105.00
OK	63.90	61.00	102.00	102.00	98.80	97.70	121.00	117.00
OR	62.00	61.00	94.00	96.00	91.10	87.60	112.00	114.00
PA	54.70	54.50	90.00	89.80	80.80	80.60	102.00	101.00
SD	64.20	62.00	102.00	102.00	100.00	101.00	125.00	132.00
TN	55.00	53.00	104.00	101.00	84.40	81.80	113.00	110.00
TX	55.10	51.70	98.80	98.90	94.00	93.70	128.00	123.00
VA	50.70	50.00	105.00	101.00	88.20	89.80	115.00	115.00
WI	58.70	57.20	88.90	90.40	71.40	71.10	142.00	140.00
WY	56.40	55.20	108.00	108.00	103.00	102.00	129.00	119.00
US	58.40	56.60	98.00	99.30	93.50	94.40	121.00	120.00

¹ Beef cows and cull dairy cows sold for slaughter.

² Entire month.

³ Mid-month.

⁴ "Cows" and "steers and heifers" combined.

Hogs: Prices Received, by State, August and September 2010

State	Sows		Barrows and Gilts		All Hogs	
	Aug ¹	Sep ²	Aug ¹	Sep ²	Aug ¹	Sep ²
	<i>Dollars per Cwt</i>	<i>Dollars per Cwt</i>	<i>Dollars per Cwt</i>	<i>Dollars per Cwt</i>	<i>Dollars per Cwt</i>	<i>Dollars per Cwt</i>
IL	55.10	55.20	61.10	60.30	60.60	59.90
IN	63.20	63.70	60.30	59.20	60.50	59.60
IA	59.00	60.00	62.50	62.00	62.40	62.00
KS	59.00	59.50	57.20	56.70	57.40	57.10
MN	58.70	58.90	63.30	62.50	63.30	62.50
MO	57.10	57.60	55.10	54.10	55.30	54.40
NE	60.70	61.00	63.10	62.40	63.10	62.40
NC	63.00	63.20	63.10	61.30	63.10	61.30
OH	57.90	58.00	60.50	59.40	60.30	59.30
OK	55.50	55.70	55.00	54.50	55.10	54.70
PA	60.50	60.70	56.60	55.70	57.20	56.50
SD	53.20	53.40	63.20	62.30	61.80	61.20
US	58.40	58.70	61.50	61.00	61.30	60.90

¹ Entire month.

² Mid-month.

Sheep and Lambs: Prices Received, by State, August 2010

State	August	
	Sheep ¹	Lambs ¹
	<i>Dollars per Cwt</i>	<i>Dollars per Cwt</i>
CA	40.00	110.00
CO	47.00	124.00
ID	39.00	121.00
IA	55.00	126.00
MN	52.00	137.00
MO	53.20	130.00
MT	50.40	136.00
NE	53.70	126.00
ND	45.00	136.00
OH	54.50	129.00
OR	48.00	119.00
PA	61.00	127.00
SD	50.80	139.00
TX	43.00	130.00
VA	48.00	123.00
WV	52.00	126.00
WY	54.40	124.00
US	47.80	127.00

¹ Entire month.

Milk and Milk Cows: Prices Received, by State, August and September 2010

State	August ¹						September		
	Fluid Grade Milk ^{2 3}		Manufacturing Grade Milk ³		All Milk ³		All Milk ^{3 4}		Milk Cows ⁵
	Price	Fat Test	Price	Fat Test	Price	Fat Test	Price	Fat Test	
	<i>Dol/Cwt</i>	<i>Percent</i>	<i>Dol/Cwt</i>	<i>Percent</i>	<i>Dol/Cwt</i>	<i>Percent</i>	<i>Dol/Cwt</i>	<i>Percent</i>	<i>Dol/Head</i>
AZ	16.40	3.42			16.40	3.42	16.90	3.46	
CA	15.50	3.52	15.40	4.00	15.50	3.54	16.20	3.63	
CO	16.60	3.32			16.60	3.32	16.90	3.40	
FL	21.00	3.54			21.00	3.54	20.70	3.56	
ID	15.30	3.47			15.30	3.47	15.90	3.52	
IL	17.20	3.57	15.10	3.63	17.20	3.57	17.50	3.61	
IN	17.50	3.47			17.50	3.47	17.70	3.52	
IA	16.90	3.50	14.80	3.61	16.90	3.50	17.20	3.58	
KS	17.40	3.48			17.40	3.48	17.70	3.56	
MI	17.50	3.46			17.50	3.46	17.90	3.53	
MN	16.50	3.55	14.50	3.60	16.50	3.55	17.20	3.67	
MO	17.40	3.49	14.00	3.63	17.30	3.50	17.60	3.60	
NM	16.10	3.40			16.10	3.40	16.70	3.45	
NY	18.00	3.55			18.00	3.55	18.20	3.62	
OH	18.20	3.54	14.80	3.71	18.10	3.55	18.30	3.60	
OR	17.60	3.62			17.60	3.62	18.00	3.70	
PA	18.50	3.50			18.50	3.50	18.90	3.55	
TX	17.30	3.59			17.30	3.59	17.50	3.65	
UT	16.70	3.50			16.70	3.50	17.10	3.54	
VT	18.00	3.62			18.00	3.62	18.40	3.67	
VA	19.80	3.48			19.80	3.48	20.00	3.54	
WA	16.40	3.62			16.40	3.62	17.20	3.70	
WI	16.40	3.51	14.50	3.59	16.30	3.51	17.20	3.58	
US	16.70	3.51	15.10	3.84	16.70	3.52	17.20	3.59	

¹ Entire month.

² Including milk diverted to manufacturing.

³ Before deductions for hauling. Includes quality, quantity, and other premiums. Excludes hauling subsidies.

⁴ Preliminary.

⁵ Animals sold for dairy herd replacement only. Prices published January, April, July and October.

**Parity Price for Manufacturing Grade Milk ¹: United States,
August and September 2010, with Comparisons**

Item	Unit	Sep 2009	Aug 2010	Sep 2010
Parity Equivalent	Dollars per Cwt	41.60	41.80	41.90
Average Price F.O.B	Dollars per Cwt	12.40	15.10	16.20
Average Fat Test of Milk	Percent	3.93	3.84	3.95

¹ The parity price equivalent during 2010 is 93.2 percent of the parity price of all milk sold to plants, compared with 92.4 percent in 2009. For additional details, see January 2010 issue of *Agricultural Prices*.

**Parity Prices for Farm Products and Average Prices Received as
Percent of Parity Prices, United States, with Comparisons ¹**

Commodity and Unit	Adjusted Base Price	Parity Price			Price as Percent of Parity		
		Sep 2009	Aug 2010	Sep 2010	Sep 2009	Aug 2010	Sep 2010
	<i>Dollars</i>	<i>Dollars</i>	<i>Dollars</i>	<i>Dollars</i>	<i>Percent</i>	<i>Percent</i>	<i>Percent</i>
Basic Commodities							
All Wheat, Bu	0.597	13.50	14.50	14.60	33	38	41
Rice, Cwt	1.38	36.00	33.50	33.60	41	34	34
Corn, Bu	0.372	8.34	9.03	9.07	39	40	48
Cotton, Lb							
American Upland	0.084	1.82	2.04	2.05	30	38	37
Extra Long Staple	0.132	3.13	3.20	3.22	32	35	35
Peanuts, Lb	0.029	0.771	0.704	0.707	30	29	29
Small Chickpeas, Cwt ⁵							
Large Chickpeas, Cwt ⁵							
Lentils, Cwt ⁵							
Designated Nonbasic							
All Milk, Sold to Plants, Per Cwt ²	1.83	44.60	44.40	44.60	28	37	37
Honey, Extracted, Lb ³	0.127	2.83	3.08	3.10	50	47	47
Wool and Mohair							
Wool, Lb	0.085	1.92	2.06	2.07	51	38	38
Mohair, Lb	0.343	8.51	8.33	8.36	39	32	32
Other Nonbasic							
Barley, Bu	0.416	9.11	10.10	10.10	52	36	35
Canola, Cwt	1.630	36.70	39.60	39.70	43	43	44
Cottonseed, Ton	15.10	334.00	367.00	368.00	50	41	42
Dry Edible Beans, Cwt	2.88	65.20	69.90	70.20	47	42	34
Flaxseed, Bu	0.972	22.10	23.60	23.70	31	47	47
Mustard Seed, Cwt	2.59	56.30	62.90	63.10			
Oats, Bu	0.244	5.52	5.92	5.95	33	35	36
Potatoes, Cwt	0.833	19.10	20.20	20.30	43	39	37
Rapeseed, Cwt	2.04	43.50	49.50	49.70			
Rye, Bu	0.474	10.60	11.50	11.60			
Safflower, Cwt	1.95	45.60	47.30	47.50			
Sorghum Grain, Cwt	0.656	14.90	15.90	16.00	38	40	46
Soybeans, Bu	0.916	20.30	22.20	22.30	48	45	45
All Sunflower, Cwt	1.85	41.60	44.90	45.10	33	32	37
Sweetpotatoes, Cwt	2.27	53.80	55.10	55.30			
Apples, Fresh, Lb ⁴	0.033	0.771	0.801	0.805	46	40	43
Citrus (equiv on-tree), Box							
Grapefruit	0.648	15.10	15.70	15.80	43	3	30
Lemons	1.38	33.20	33.50	33.60	53	50	59
Oranges	0.660	15.40	16.00	16.10	85	47	44
Tangerines	1.39	33.00	33.70	33.90	142	139	138
Beef Cattle, Cwt	10.20	238.00	248.00	249.00	34	38	38
Calves, Cwt	14.40	341.00	350.00	351.00	31	35	34
Hogs, Cwt	5.54	130.00	135.00	135.00	29	45	45
Lambs, Cwt	11.50	269.00	279.00	280.00	36	46	
Sheep, Cwt	4.35	104.00	106.00	106.00	29	45	
Eggs, Doz ²	0.091	2.13	2.21	2.22	37	37	30
Turkeys, Live, Lb	0.056	1.310	1.360	1.370	37	49	50

¹ Parity prices are computed under the provisions of Title III, Subtitle a, Section 301 (a) of the Agricultural Adjustment Act of 1938 as amended by the Agricultural Acts of 1948, 1949, and 1956. See January "Agricultural Prices" for details on adjusted base price and parity price computations.

² Seasonally adjusted price as percentage of parity price.

³ Wholesale extracted. Adjusted base price derived from state annual averages prices weighted by production. For 1982 through 1985 the national averages are the support prices.

⁴ Equivalent packinghouse-door returns for CA, NY (apples only), OR (except peaches), and WA. Price at point of first sale for other states.

⁵ Not available.

Parity Prices for Farm Products, September 2010, United States ¹

Other Nonbasic Commodities	Adjusted Base Price	Parity Price	Other Nonbasic Commodities	Adjusted Base Price	Parity Price
	<i>Dollars</i>	<i>Dollars</i>		<i>Dollars</i>	<i>Dollars</i>
Field Crops and Misc Commodities			Noncitrus Fruit, Continued		
Hops, Lb	0.300	7.31	Papayas (HI)	0.046	1.120
Spearmint Oil, Lb	1.42	34.60	Peaches		
Tobacco, Lb			Fresh, Ton ²	83.00	2,020.00
Flue-Cured, 11-14	0.216	5.27	Dried, CA, Ton	64.90	1,580.00
Fire-Cured, 21-23	0.298	7.27	Processing ³		
Burley, 31	0.227	5.53	Excl Dried		
Maryland, 32	0.186	4.53	Clingstone, CA, Ton	33.70	822.00
Dark Air-Cured, 35-37	0.268	6.53	Pears, Ton		
PA Seedleaf, 41	0.194	4.73	Fresh ²	54.90	1,340.00
Cigar Binder, 51	0.651	15.90	Dried, CA ⁴	173.00	4,220.00
Noncitrus Fruit			Plums, CA, Ton		
Apples, Ton ⁴			Fresh, Equiv on-Tree	60.90	1,480.00
Processing	16.70	407.00	Prunes, Dried, CA, Ton ⁴	146.00	3,560.00
Apricots, Ton			Prunes and Plums, Excl CA, Ton		
Fresh ⁵	108.00	2,630.00	Fresh ⁷	63.20	1,540.00
Dried, CA	253.00	6,170.00	Processing ⁴		
Avocados, Ton ⁵	211.00	5,140.00	Excl Dried	26.50	646.00
Cherries			Tree Nuts ⁸		
Sweet, Ton	205.00	5,000.00	Almonds, Lb	0.202	4.92
Tart, Lb	0.035	0.853	Hazelnuts, Ton	171.00	4,170.00
Cranberry, Bbl ³	4.75	116.00	Pistachio, Lb	0.190	4.63
Dates, CA, Ton ⁵	197.00	4,800.00	Walnuts, Ton	172.00	4,190.00
Grapes, Ton			Vegetables, Cwt ⁹		
Raisin Variety	110.00	2,680.00	Fresh		
Other Dried	66.60	1,620.00	Carrots ⁶	2.54	61.90
Kiwifruit, Ton	95.10	2,320.00	Cauliflower ⁶	4.31	105.00
Nectarines			Celery ⁶	2.09	51.00
Fresh, CA, Ton ⁵	55.40	1,350.00	Honeydew Melons	2.31	56.30
Olives, CA			Lettuce	2.35	57.30
canning, Ton ³	94.70	2,310.00	Onions ⁶	1.52	37.10
			Tomatoes	4.69	114.00

¹ Parity prices are computed under the provisions of Title III, Subtitle a, Section 301 (a) of the Agricultural Adjustment Act of 1938 as amended by the Agricultural Acts of 1948, 1949, and 1956. See January "Agricultural Prices" for details on adjusted base price and parity price computations.

² Equivalent packinghouse-door returns for CA, NY (apples only), OR (except peaches), and WA. Price at point of first sale for other states.

³ Equivalent returns for bulk fruit at first delivery point.

⁴ Equivalent returns at processing plant door.

⁵ Equivalent returns at packinghouse door.

⁶ Includes some processing.

⁷ Based on "as sold" prices for fresh fruit in all states.

⁸ Prices in-shell basis except almonds which are shelled basis.

⁹ F.O.B. shipping point prices.

Marketing Year for Specified Commodities

Corn for Grain: September 1 to August 31 for U.S.; July 1 to June 30 for Texas; August 1 to July 31 for Alabama, Arkansas, Florida, Georgia, Louisiana, Mississippi, North Carolina, Oklahoma, South Carolina, and Tennessee; September 1 to August 31 for Arizona, California, Delaware, Illinois, Indiana, Iowa, Kansas, Kentucky, Maryland, Missouri, Nebraska, New Mexico, Ohio, Pennsylvania, South Dakota, Virginia, and West Virginia; October 1 to September 30 for all other States.

Sorghum for Grain: September 1 to August 31 for U.S.; June 1 to May 31 for Texas; August 1 to July 31 for Alabama, Arkansas, Georgia, Louisiana, Mississippi, Oklahoma, South Carolina, and Tennessee; September 1 to August 31 for all other States.

Soybeans: September 1 to August 31 for U.S.; July 1 to June 30 for Texas; August 1 to July 31 for Louisiana and Mississippi; September 1 to August 31 for all other States.

Austrian Winter Peas: July 1 to June 30 for U.S.; Idaho, Montana, and Oregon.

Dry Edible Peas: July 1 to June 30 for U.S.; Idaho, Montana, North Dakota, Oregon, and Washington.

Lentils: July 1 to June 30 for U.S.; Idaho, Montana, North Dakota, and Washington.

**Dry Edible Peas: Marketing Year Average Price,
by State and United States, 2007-2009 ¹**

State	Marketing Year Average Price		
	2007	2008	2009
	<i>Dollars</i>	<i>Dollars</i>	<i>Dollars</i>
ID	14.80	15.40	10.40
MT	12.40	14.50	8.46
ND	13.00	13.00	8.44
OR	14.90	18.30	17.50
WA	14.50	14.40	11.30
US	13.10	13.40	8.98

¹ Excludes both wrinkled seed peas and Austrian winter peas.

**Austrian Winter Peas: Marketing Year Average Price,
by State and United States, 2007-2009**

State	Marketing Year Average Price		
	2007	2008	2009
	<i>Dollars</i>	<i>Dollars</i>	<i>Dollars</i>
ID	13.40	22.40	23.40
MT	13.20	21.70	21.70
OR	13.00	21.80	21.80
US	13.20	22.40	22.70

**Lentils: Marketing Year Average Price,
by State and United States, 2007-2009**

State	Marketing Year Average Price		
	2007	2008	2009
	<i>Dollars</i>	<i>Dollars</i>	<i>Dollars</i>
ID	29.90	33.20	26.80
MT	21.80	34.90	27.20
ND	22.80	33.10	26.60
WA	31.30	34.10	26.80
US	26.00	33.80	26.80

**Lentils: Monthly Prices Received, Monthly Farm
Marketing Percentages, and Marketing Year Average Prices,
United States, 2007-2008 through 2009-2010¹**

Month	Prices Received			Farm Marketing Percentages ²		
	2007-2008	2008-2009	2009-2010	2007-2008	2008-2009	2009-2010
	<i>Dollars per Cwt</i>	<i>Dollars per Cwt</i>	<i>Dollars per Cwt</i>	<i>Percent</i>	<i>Percent</i>	<i>Percent</i>
Jul	13.80	32.70	33.50	4.7	2.3	0.8
Aug	15.50	31.10	27.00	6.4	11.1	5.5
Sep	19.10	36.30	25.60	8.5	17.8	14.4
Oct	24.50	37.40	25.40	10.9	10.5	18.7
Nov	26.20	38.10	25.90	10.9	10.9	13.4
Dec	28.30	34.40	27.10	8.5	11.8	16.6
Jan ³	26.00	30.50	27.60	8.3	10.0	11.1
Feb	29.00	30.00	29.60	11.3	4.7	5.9
Mar	29.90	30.80	28.60	17.1	8.0	6.6
Apr	33.70	31.30	28.70	6.4	7.4	4.0
May	30.20	30.80	29.40	1.9	1.9	1.4
Jun	30.00	31.50	26.30	5.1	3.6	1.6
MYA	26.00	33.80	26.80	100.0	100.0	100.0

¹ Marketing year average (MYA) prices are weighted average prices for the U.S. marketing year of July - June.

² Monthly farm marketings, based on a sample survey, as percent of total used for calculating MYA prices.

³ Second year.

**Dry Edible Peas: Monthly Prices Received, Monthly Farm
Marketing Percentages, and Marketing Year Average Prices,
United States, 2007-2008 through 2009-2010¹**

Month	Prices Received			Farm Marketing Percentages ²		
	2007-2008	2008-2009	2009-2010	2007-2008	2008-2009	2009-2010
	<i>Dollars per Cwt</i>	<i>Dollars per Cwt</i>	<i>Dollars per Cwt</i>	<i>Percent</i>	<i>Percent</i>	<i>Percent</i>
Jul	9.26	16.10	10.90	8.3	9.8	5.7
Aug	8.92	15.10	9.02	17.0	11.9	11.1
Sep	9.85	15.40	8.57	9.6	11.0	11.4
Oct	12.10	13.80	8.95	7.9	7.8	13.1
Nov	12.20	13.00	8.78	7.3	7.4	9.8
Dec	14.20	12.70	8.99	6.0	7.8	10.1
Jan ³	14.30	12.70	9.79	9.4	10.4	9.3
Feb	16.40	12.40	9.14	10.0	6.1	8.5
Mar	17.30	11.80	8.49	7.4	11.3	5.9
Apr	17.70	11.40	8.43	6.7	6.4	5.6
May	16.70	12.00	9.35	2.6	4.4	3.7
Jun	17.20	11.10	7.48	7.8	5.7	5.8
MYA	13.10	13.40	8.98	100.0	100.0	100.0

¹ Marketing year average (MYA) prices are weighted average prices for the U.S. marketing year of July - June.

² Monthly farm marketings, based on a sample survey, as percent of total used for calculating MYA prices.

³ Second year.

Austrian Winter Peas: Monthly Prices Received, Monthly Farm Marketing Percentages, and Marketing Year Average Prices, United States, 2007-2008 through 2009-2010¹

Month	Prices Received			Farm Marketing Percentages ²		
	2007-2008	2008-2009	2009-2010	2007-2008	2008-2009	2009-2010
	<i>Dollars per Cwt</i>	<i>Dollars per Cwt</i>	<i>Dollars per Cwt</i>	<i>Percent</i>	<i>Percent</i>	<i>Percent</i>
Jul	(⁴)	(⁴)	24.00	0.9	0.3	5.1
Aug	11.40	(⁴)	23.20	17.3	2.7	24.3
Sep	12.30	20.80	22.30	13.6	50.7	27.1
Oct	13.10	24.00	23.30	15.5	29.9	30.6
Nov	13.70	(⁴)	21.10	21.1	3.4	4.4
Dec	14.10	(⁴)	21.70	14.2	5.6	2.0
Jan ³	11.40	(⁴)	23.20	5.3	0.9	2.2
Feb	(⁴)	(⁴)	(⁴)	(⁴)	1.8	(⁴)
Mar	12.60	(⁴)	(⁴)	3.2	4.7	(⁴)
Apr	16.50	(⁴)	19.40	5.9	(⁴)	1.1
May	(⁴)	(⁴)	(⁴)	1.7	(⁴)	(⁴)
Jun	(⁴)	(⁴)	(⁴)	1.3	(⁴)	(⁴)
MYA	13.20	22.40	22.70	100.0	100.0	100.0

¹ Marketing year average (MYA) prices are weighted average prices for the U.S. marketing year of July - June.

² Monthly farm marketings, based on a sample survey, as percent of total used for calculating MYA prices.

³ Second year.

⁴ Insufficient sales to establish a price.

Corn: Monthly Prices Received, Monthly Farm Marketing Percentages, and Marketing Year Average Prices, United States, 2007-2008 through 2009-2010¹

Month	Prices Received			Farm Marketing Percentages ²		
	2007-2008	2008-2009	2009-2010	2007-2008	2008-2009	2009-2010
	<i>Dollars per Bushel</i>	<i>Dollars per Bushel</i>	<i>Dollars per Bushel</i>	<i>Percent</i>	<i>Percent</i>	<i>Percent</i>
Sep	3.28	5.01	3.25	7.9	4.5	5.4
Oct	3.29	4.37	3.61	13.7	9.4	6.9
Nov	3.44	4.26	3.65	11.1	11.9	14.3
Dec	3.77	4.11	3.60	8.7	8.9	11.3
Jan ³	3.98	4.36	3.66	16.5	12.8	11.3
Feb	4.54	3.87	3.55	7.3	6.4	6.7
Mar	4.70	3.85	3.55	7.5	9.6	7.2
Apr	5.14	3.85	3.41	6.2	6.7	7.1
May	5.27	3.96	3.48	4.6	9.1	6.4
Jun	5.47	4.01	3.41	6.1	7.4	6.8
Jul	5.25	3.60	3.49	6.4	6.9	8.9
Aug	5.26	3.33	3.65	4.0	6.4	7.7
MYA	4.20	4.06	3.55	100.0	100.0	100.0

¹ Marketing year average (MYA) prices are weighted average prices for the U.S. marketing year of September - August.

² Monthly farm marketings, based on a sample survey, as percent of total used for calculating MYA prices.

³ Second year.

**Sorghum Grain: Marketing Year Average Prices Received, by States
and United States, 2008 and 2009**

State	2008	2009	State	2008	2009
	<i>Dollars per Cwt</i>	<i>Dollars per Cwt</i>		<i>Dollars per Cwt</i>	<i>Dollars per Cwt</i>
AL ¹	6.10		NE	5.80	5.62
AZ	9.40	6.20	NM	6.25	6.12
AR	6.93	5.77	NC ¹	6.90	
CA ¹	6.30		OK	5.89	5.68
CO	5.90	5.28	PA ¹	5.35	
GA	6.10	5.70	SC ¹	6.80	
IL	5.29	6.86	SD	5.62	4.88
KS	5.61	5.47	TN ¹	6.00	
KY ¹	6.60		TX	6.91	6.00
LA	6.90	5.70	US	5.72	5.75
MS	6.00	4.72			
MO	6.38	5.86			

¹ Estimates discontinued beginning in 2009.

**Sorghum Grain: Farm Marketings, Percent of Sales, by Month
and State, 2008-2009 and 2009-2010 ¹**

State and Marketing Year	Jun	Jul	Aug	Sep	Oct	Nov	Dec	Jan	Feb	Mar	Apr	May	Jun	Jul	Aug
	<i>Pct</i>	<i>Pct</i>	<i>Pct</i>	<i>Pct</i>	<i>Pct</i>	<i>Pct</i>	<i>Pct</i>	<i>Pct</i>	<i>Pct</i>	<i>Pct</i>	<i>Pct</i>	<i>Pct</i>	<i>Pct</i>	<i>Pct</i>	<i>Pct</i>
AR															
2009-2010			21	25	37	11	1	1	3	1	1				
2008-2009			8	55	23	2	1	3	5	1	1	1			
IL															
2009-2010				3	4	21	7	8	9	23	4	6	4	6	5
2008-2009				4	4	21	14	5	4	22	8	3	3	8	4
KS															
2009-2010				3	4	25	20	12	7	5	8	6	3	4	3
2008-2009				2	2	13	17	15	7	15	8	12	3	3	3
LA															
2009-2010			41	21	16	2	2	3	1		1	1		12	
2008-2009 ²															41
MO															
2009-2010				2	5	32	11	17	13		1	4		11	4
2008-2009				12	7	12	6	8	6	8	3	11	12	6	9
NE															
2009-2010				3	3	29	17	10	5	8	5	4	5	6	5
2008-2009				2	1	18	11	19	8	15	8	9	5	2	2
OK															
2009-2010			1	2	4	23	31	16	8	4	3	4	2	2	
2008-2009			6	5	1	9	15	21	8	15	6	7	6	1	
TX															
2009-2010	3	14	12	24	8	14	10	7	2	2	2	2			
2008-2009	5	16	12	4	4	6	19	15	6	7	2	4			
US															
2009-2010				7.6	5.1	19.7	15.4	9.3	5.0	4.2	5.2	4.1	3.1	11.2	10.1
2008-2009				3.9	3.1	11.4	17.2	15.1	7.3	13.0	6.0	9.1	3.4	5.4	5.1

¹ Monthly farm marketings, based on a sample survey, as a percent of total used for calculating marketing year average prices.

² Monthly Price Estimates Began in August 2009.

**Prices Received: Sorghum Grain, by State and Month,
for Marketing Years, 2008-2009 and 2009-2010**

State	Jun	Jul	Aug	Sep	Oct	Nov	Dec	Jan ¹
2009-2010								
	<i>Dollars per Cwt</i>	<i>Dollars per Cwt</i>	<i>Dollars per Cwt</i>	<i>Dollars per Cwt</i>	<i>Dollars per Cwt</i>	<i>Dollars per Cwt</i>	<i>Dollars per Cwt</i>	<i>Dollars per Cwt</i>
AR	(³)	(⁴)	5.71	(³)	(³)	6.45	(³)	(³)
IL	(³)	(³)	(³)	(³)	(³)	6.36	6.81	6.92
KS	6.09	4.65	4.83	4.74	5.29	5.51	5.58	5.67
LA ²			5.48	5.49	5.50	(³)	(³)	5.76
MO	6.84	5.74	5.21	4.47	(³)	5.95	5.95	5.84
NE	6.18	4.95	5.04	4.86	5.53	5.72	5.68	5.74
OK	7.09	4.70	4.47	4.66	5.27	5.74	5.92	5.95
TX	6.64	5.44	5.64	5.95	5.87	6.30	6.29	6.54
US	6.29	5.19	5.36	5.63	5.54	5.67	5.71	5.84
2008-2009								
AR	(⁴)	(⁴)	8.74	(³)	5.72	4.39	4.88	5.99
IL	9.93	(³)	8.82	(³)	5.63	4.77	4.18	4.53
KS	10.40	10.20	8.36	7.89	6.15	6.56	5.12	5.39
MO	10.30	11.20	8.74	7.91	7.07	7.14	5.78	6.34
NE	10.40	9.86	8.70	7.97	7.43	6.24	5.05	6.20
OK	10.50	10.70	7.93	7.98	5.77	5.94	5.26	5.75
TX	9.63	8.94	8.40	8.46	8.05	6.45	5.16	6.13
US	10.10	9.06	8.40	7.99	6.89	6.48	5.13	5.68

See footnote(s) at end of table.

--continued

**Prices Received: Sorghum Grain, by State and Month,
for Marketing Years, 2008-2009 and 2009-2010 (continued)**

State	Feb	Mar	Apr	May	Jun	Jul	Aug
2009-2010							
	<i>Dollars per Cwt</i>	<i>Dollars per Cwt</i>	<i>Dollars per Cwt</i>	<i>Dollars per Cwt</i>	<i>Dollars per Cwt</i>	<i>Dollars per Cwt</i>	<i>Dollars per Cwt</i>
AR	(⁴)	4.36	(³)	(⁴)	(⁴)	(⁴)	6.94
IL	7.44	(³)	6.94	(³)	(³)	(³)	6.66
KS	5.30	5.53	5.28	5.55	5.02	5.42	5.92
LA ²	(³)	(⁴)	(³)	(³)	(³)	(³)	6.74
MO	6.29	(⁴)	5.50	5.40	(⁴)	5.45	5.78
NE	5.55	5.66	5.36	5.38	5.38	5.35	5.96
OK	5.48	5.40	5.05	5.26	5.03	5.39	6.41
TX	6.13	5.79	6.39	6.91	5.85	6.14	6.35
US	5.44	5.68	5.39	5.69	5.38	5.97	6.36
2008-2009							
AR	4.90	(³)	(³)	(³)	(³)	(⁴)	5.71
IL	5.71	6.08	5.38	5.88	(³)	(³)	(³)
KS	4.94	5.38	5.59	5.99	6.09	4.65	4.83
MO	5.45	5.70	5.64	5.84	6.84	5.74	5.21
NE	4.93	5.37	5.62	5.98	6.18	4.95	5.04
OK	4.98	5.32	5.69	5.93	7.09	4.70	4.47
TX	5.32	5.27	5.42	5.91	6.64	5.44	5.64
US	5.04	5.37	5.57	5.98	6.29	5.19	5.36

¹ Second year.

² Monthly price estimates began in August 2009.

³ Price not published to avoid disclosure of individual firms.

⁴ Insufficient sales to establish a price.

**Soybeans: Marketing Year Average Prices Received, by States
and United States, 2008 and 2009**

State	2008	2009	State	2008	2009
	<i>Dollars per Bushel</i>	<i>Dollars per Bushel</i>		<i>Dollars per Bushel</i>	<i>Dollars per Bushel</i>
AL	10.30	10.00	NJ	9.75	9.37
AR	9.64	9.66	NY	10.30	9.10
DE	9.40	9.60	NC	9.33	9.59
FL	8.50	9.50	ND	9.71	9.26
GA	9.50	9.80	OH	10.30	9.78
IL	10.20	9.80	OK	9.10	9.40
IN	10.20	9.80	PA	10.20	9.40
IA	10.20	9.52	SC	9.00	9.50
KS	9.39	9.38	SD	9.65	9.18
KY	10.00	9.90	TN	9.45	9.74
LA	9.52	9.66	TX	9.25	9.25
MD	9.20	9.50	VA	9.10	9.40
MI	9.82	9.54	WV	9.75	9.60
MN	10.10	9.39	WI	9.80	9.62
MS	9.29	9.24			
MO	9.74	9.61	US	9.97	9.59
NE	9.79	9.48			

**Prices Received: Soybeans, by State and Month,
for Marketing Years, 2008-2009 and 2009-2010 ¹**

State	Aug	Sep	Oct	Nov	Dec	Jan ²	Feb
2009-2010							
	<i>Dollars per Bushel</i>	<i>Dollars per Bushel</i>	<i>Dollars per Bushel</i>	<i>Dollars per Bushel</i>	<i>Dollars per Bushel</i>	<i>Dollars per Bushel</i>	<i>Dollars per Bushel</i>
AR	10.70	9.60	9.56	9.69	9.68	9.91	9.00
IL	11.10	10.10	9.73	9.79	10.10	9.95	9.44
IN	11.00	9.97	9.49	9.63	10.20	10.00	9.82
IA	11.00	9.89	9.35	9.53	9.81	9.66	9.30
KS	10.70	9.46	9.11	9.37	9.72	9.53	9.17
KY	11.40	9.80	9.51	9.63	10.30	10.10	10.00
LA	10.10	9.72	9.51	9.60	9.41	9.99	9.44
MI	11.00	10.10	9.40	9.50	9.91	9.67	9.50
MN	10.50	9.54	9.38	9.32	9.63	9.59	9.16
MS	9.93	9.53	9.20	8.87	9.32	9.52	8.96
MO	10.90	10.00	9.33	9.45	9.80	9.81	9.47
NE	10.80	9.47	9.32	9.59	9.82	9.73	9.21
NC	10.90	9.86	9.54	9.69	9.48	9.46	9.49
ND	10.10	9.24	9.30	9.27	9.40	9.28	9.23
OH	11.10	9.99	9.63	9.72	9.95	9.93	9.87
SD	10.30	9.16	9.02	9.22	9.46	9.15	9.22
TN	10.60	9.68	9.57	9.71	9.93	9.96	9.47
WI	11.50	9.88	9.39	9.55	10.00	9.86	9.59
US	10.80	9.75	9.43	9.53	9.80	9.79	9.41
2008-2009							
AR	11.60	10.80	9.53	8.73	8.89	9.74	9.62
IL	13.00	11.40	10.10	9.54	9.83	10.30	9.62
IN	13.50	11.00	9.78	9.47	9.70	10.30	9.88
IA	12.60	11.10	10.40	9.91	9.54	10.10	9.47
KS	13.10	11.40	9.69	8.83	8.33	9.38	9.26
KY	(³)	10.80	9.38	9.60	9.83	10.20	10.10
LA	9.85	9.89	9.22	9.59	9.12	9.54	9.44
MI	12.40	10.20	9.79	9.17	9.06	9.74	9.63
MN	12.70	11.00	10.30	9.49	9.50	9.95	9.33
MS	11.70	9.37	9.19	9.19	9.08	9.30	9.55
MO	13.00	11.90	9.57	9.24	9.07	9.82	9.50
NE	12.80	10.40	10.20	9.59	8.85	9.54	9.27
NC	13.50	10.80	9.51	9.07	8.66	9.52	9.48
ND	12.20	10.80	9.80	9.65	8.68	9.39	9.18
OH	13.30	10.60	9.98	9.61	9.83	10.40	9.96
SD	12.60	10.50	9.71	9.14	8.87	9.60	9.37
TN	12.20	10.00	8.94	9.13	9.20	9.85	9.63
WI	12.60	10.30	9.88	9.19	8.97	9.79	9.01
US	12.80	10.80	9.95	9.39	9.24	9.97	9.54

See footnote(s) at end of table.

--continued

**Prices Received: Soybeans, by State and Month,
for Marketing Years, 2008-2009 and 2009-2010 (continued) ¹**

State	Mar	Apr	May	Jun	Jul	Aug
	2009-2010					
	<i>Dollars per Bushel</i>	<i>Dollars per Bushel</i>	<i>Dollars per Bushel</i>	<i>Dollars per Bushel</i>	<i>Dollars per Bushel</i>	<i>Dollars per Bushel</i>
AR	9.25	9.18	9.25	8.98	9.71	10.10
IL	9.52	9.58	9.43	9.60	10.00	10.30
IN	9.70	9.79	9.77	9.79	10.10	10.50
IA	9.27	9.33	9.35	9.39	9.69	10.00
KS	9.24	9.39	9.35	9.28	9.83	10.20
KY	9.66	9.76	9.61	9.62	10.00	10.00
LA	³	9.32	9.06	7.68	9.90	9.75
MI	9.40	9.51	9.54	9.49	9.80	10.20
MN	9.08	9.23	9.15	9.10	9.41	9.87
MS	8.88	8.85	8.75	8.56	³	9.68
MO	9.44	9.59	9.48	9.56	9.87	10.20
NE	9.22	9.33	9.27	9.31	9.46	9.93
NC	9.55	9.64	9.66	9.59	10.40	10.80
ND	9.05	9.04	9.06	9.17	9.25	9.58
OH	9.73	9.68	9.50	9.82	10.20	10.70
SD	9.00	9.18	9.19	9.03	9.25	9.59
TN	9.43	9.52	9.55	9.63	9.96	10.20
WI	9.33	9.55	9.85	9.42	9.98	10.20
US	9.39	9.47	9.41	9.45	9.79	10.10
	2008-2009					
AR	9.45	9.96	10.10	11.80	10.90	10.70
IL	9.21	9.87	10.90	11.80	10.90	11.10
IN	9.49	10.10	11.10	11.90	11.10	11.00
IA	9.05	9.72	10.60	11.30	10.90	11.00
KS	8.93	9.63	10.60	11.50	10.80	10.70
KY	9.79	10.10	10.90	11.80	10.90	11.40
LA	9.12	9.38	10.80	11.30	³	10.10
MI	9.09	9.89	10.80	11.60	11.00	11.00
MN	8.97	9.69	10.50	11.30	10.70	10.50
MS	8.63	9.59	10.20	10.30	9.99	9.93
MO	8.97	9.85	10.80	11.70	10.80	10.90
NE	8.85	9.65	10.50	11.20	10.70	10.80
NC	9.24	10.00	11.00	11.60	³	10.90
ND	8.38	9.62	10.20	10.90	10.30	10.10
OH	9.53	10.10	11.40	12.00	11.20	11.10
SD	8.90	9.37	10.50	10.50	10.50	10.30
TN	9.19	10.20	10.90	12.00	³	10.60
WI	9.06	9.66	10.50	11.20	11.10	11.50
US	9.12	9.79	10.70	11.40	10.80	10.80

¹ Marketing year: September 1 to August 31 for U.S.; August 1 to July 31 for Louisiana and Mississippi; September 1 to August 31 for all other monthly marketing estimating States.

² Second year.

³ Price not published to avoid disclosure of individual firms.

⁴ Insufficient sales to establish a price.

**Soybeans: Farm Marketings, Percent of Sales, by Month
and State, 2008-2009 and 2009-2010¹**

State and Marketing Year	Aug	Sep	Oct	Nov	Dec	Jan	Feb	Mar	Apr	May	Jun	Jul	Aug
	Percent	Percent	Percent	Percent	Percent	Percent	Percent	Percent	Percent	Percent	Percent	Percent	Percent
AR 2009-2010		8	19	35	18	9	1	2	1	1	1	1	4
2008-2009		10	39	12	10	12	2	3	3	2	1	2	4
IL 2009-2010		3	14	15	7	19	8	7	5	4	7	7	4
2008-2009		2	15	6	5	21	7	10	14	8	4	4	4
IN 2009-2010		6	23	14	6	18	6	8	5	3	4	4	3
2008-2009		8	20	5	6	17	9	10	9	6	3	4	3
IA 2009-2010		5	17	19	7	12	7	8	6	3	5	7	4
2008-2009		4	19	4	4	12	6	10	13	10	8	7	3
KS 2009-2010		3	23	23	13	13	7	6	4	2	2	3	1
2008-2009		2	14	12	15	19	7	9	10	4	2	3	3
KY 2009-2010			15	18	12	35	7	4	3	1	1	2	1
2008-2009		2	14	15	10	22	9	10	9	3	2	2	2
LA 2009-2010	5	33	23	10	13	11	2	1			1	1	
2008-2009	3	26	25	8	9	17	3	4	3	1		1	
MI 2009-2010		1	33	24	7	11	5	4	4	2	4	3	2
2008-2009		6	34	9	7	11	5	7	10	4	4	2	1
MN 2009-2010		5	17	18	12	12	5	6	4	3	7	7	4
2008-2009		7	20	5	8	13	6	9	10	7	7	5	3
MS 2009-2010	3	13	17	21	23	13	3	2	2	1	1	1	
2008-2009		12	28	6	7	33	6	3	2	1	1	1	
MO 2009-2010		2	13	24	8	21	6	7	6	2	3	5	3
2008-2009		3	22	12	10	14	7	9	10	5	3	3	2
NE 2009-2010		5	33	18	12	10	5	5	3	1	3	3	2
2008-2009		4	24	7	9	15	7	9	9	7	4	3	2
NC 2009-2010		2	5	15	23	25	9	6	4	3	3	3	2
2008-2009		1	7	31	23	13	7	6	3	2	2	3	2
ND 2009-2010		1	11	27	15	17	8	9	3	2	3	3	1
2008-2009		2	23	7	7	13	6	7	9	4	10	8	4
OH 2009-2010		2	36	14	7	13	5	7	4	2	4	4	2
2008-2009		12	25	4	5	13	7	9	9	4	5	4	3
SD 2009-2010		3	21	33	8	8	5	5	4	2	3	5	3
2008-2009		3	29	5	6	12	7	10	10	6	6	5	1
TN 2009-2010		3	18	38	15	14	3	2	1	1	1	2	2
2008-2009		4	29	17	11	22	5	3	2	3	1	2	1
WI 2009-2010		1	18	35	5	16	3	5	5	2	4	4	2
2008-2009		2	32	7	7	12	5	9	11	6	4	3	2
US 2009-2010		4.1	20.3	19.6	9.7	14.8	6.0	6.2	4.4	2.6	4.2	4.7	3.4
2008-2009		5.1	21.0	6.9	7.1	15.4	6.7	8.9	10.2	6.3	4.8	4.6	3.0

¹ Monthly farm marketings, based on a sample survey, as a percent of total used for calculating marketing year average prices.

Reliability of Prices Received Estimates

Definition: Prices received represent sales from producers to first buyers. They include all grades and qualities. The average commodity price from the survey multiplied by the total quantity marketed theoretically should give the total cash receipts for the commodity.

Survey Procedures: Primary sales data used to determine grain prices were obtained from probability samples of about 2000 mills and elevators. These procedures ensure that virtually all grain moving into commercial channels has a chance of being included in the survey. Generally, States surveyed account for 90 percent or more of total U.S. production. Livestock prices are obtained from packers, stockyards, auctions, dealers, and market check data from AMS-USDA, private marketing organizations, and state commodity groups and agencies. Inter-farm sales of grain and livestock are not included since they represent very small percentages of the total marketings. Grain marketed for seed is also excluded. Fruit and vegetable prices are obtained from sample surveys and market check data from AMS-USDA, private marketing organizations, state agencies, and universities.

Summary and Estimation Procedures: Survey quantities sold are expanded by strata to state levels and used to weight average strata prices to a state average. State prices are then weighted to a U.S. price based on expanded marketings. Recommendations are prepared by the State Field Offices and reviewed by the Agricultural Statistics Board in Washington, D.C. State recommendations are reviewed for reasonableness with survey data, other States, and recent historic estimates.

Revisions: For most items, the current month's preliminary price represents a 3-5 day period around the 15th of the month. Previous month's prices represent actual dollars received for quantities sold during the entire month. Revisions are published in monthly issues of Agricultural Prices.

Reliability: U.S. price estimates based on probability surveys generally have a sampling error of less than one percent for the major commodities such as corn, wheat, soybeans, cotton, and rice. Current methods of summarization for non-probability commodities are not designed directly to calculate sampling errors. However, analytical measures approximate the U.S. relative sampling errors at around five percent. Any nonsampling errors are attributed to such things as the inability to obtain correct information, differences in interpreting questions or definitions, mistakes in coding or processing the data, etc. Efforts are made at each step in the survey process to minimize these nonsampling errors.

Prices Paid by Farmers

The September Index of Prices Paid for Commodities and Services, Interest, Taxes, and Farm Wage Rates (PPITW) at 183 (1990-1992=100), is up 0.5 percent from August 2010 and 4.0 percent from September 2009.

PRODUCTION INDEX: The September index, at 186, is unchanged from last month but increased 3.9 percent from last year. Higher prices in September for feed grains, complete feeds, concentrates, and LP offset lower prices for feeder cattle, diesel, potash & phosphate, and gasoline.

Feed: The September index, at 184, increased 3.4 percent from August and 2.2 percent from last September. Prices are higher for feed grains, complete feeds, concentrates, supplements, and hay & forages.

Livestock & Poultry: The September index, at 132, decreased 0.8 percent from last month but increased 21 percent from last year. Lower prices for feeder cattle more than offset higher prices for feeder pigs. The September feeder cattle price, at \$110.10 per cwt, is down \$1.60 from the August price. September feeder pigs averaged \$140.00 per cwt, up \$2.00 from August.

Fertilizer: The September index, at 238, is unchanged from August but is 1.7 percent above September a year ago. Higher prices for mixed fertilizer and nitrogen offset lower prices for potash & phosphate.

Chemicals: The September index, at 144, is unchanged from August but decreased 2.0 percent from last September. Compared with August, prices are lower for herbicides, insecticides, and fungicides/other.

Fuels: The September index, at 277, is unchanged from a month earlier but is 13 percent above September 2009. Compared with last month, prices are higher for LP gas but lower for diesel and gasoline.

Machinery: The September index, at 227, is unchanged from August but is 0.4 percent above last September. Lower prices for tractors offset higher prices for other machinery.

CONSUMER PRICE INDEX: The August 2010 Consumer Price Index, as issued by the Bureau of Labor Statistics, for all urban consumers (CPI-U) increased 0.1 percent before seasonal adjustment to a level of 218.312 (1982-1984=100). The July index is 218.011. For the 12-month period ending in August, the overall index increased 1.1 percent.

**Indexes of Prices Paid by Farmers and Related Parity Ratios
United States, September 2010 with Comparisons ¹**

Indexes and Ratios	1910-14 = 100			1990-92 = 100		
	2009	2010		2009	2010	
	Sep	Aug	Sep	Sep	Aug	Sep
Prices Paid by Farmers for Commodities & Services, Interest, Taxes, & Wage Rates (PPITW)	2346	2430	2438	176	182	183
Production	1733	1802	1809	179	186	186
Feed	881	870	900	180	178	184
Livestock & Poultry	1399	1702	1685	109	133	132
Seeds	3008	2815	2815	304	284	284
Fertilizer	859	872	874	234	238	238
Chemicals	908	890	888	147	144	144
Fuels	1895	2137	2134	246	277	277
Supplies & Repairs	1111	1141	1141	157	161	161
Autos & Trucks	2903	2975	2974	109	112	112
Machinery	5660	5694	5691	226	227	227
Building Materials	2208	2252	2248	163	166	165
Services & Rent	1971	2074	2074			
Services				159	165	165
Rent				178	191	191
Interest ²	3478	3211	3211	139	128	128
Taxes ³	6370	7190	7190	238	268	268
Wage Rates	6888	6991	6991	184	187	187
Production, Interest, Taxes, & Wage Rates (PITW)	2411	2503	2512	179	186	187
Family Living-CPI ⁴	2051	2073	2076	160	162	162
Ratio (Received/Paid) Parity Ratio ⁵	34	38	39	72	80	82
Parity Ratio Adjusted ⁶	36	40	41			
PPITW Adjusted for Productivity ⁷	1425	1431	1432			
Crop Sector (PPITW)				186	192	192
Livestock Sector (PPITW)				166	173	174
Farm Sector (Production)				176	179	182
Non-Farm Sector (Production)				180	189	189

¹ Revised historical price indexes for months not shown are available at www.nass.usda.gov.

² Interest per acre on farm real estate debt and interest rate on farm non-real estate debt.

³ Farm real estate taxes payable per acre.

⁴ Bureau of Labor Statistics, Consumer Price Index for all urban consumers (CPI-U), for the previous month converted by the USDA.

⁵ Ratio of index of prices received to PPITW (1910-14=100).

⁶ Based on estimated cash receipts, from marketings and government payments, the preliminary adjustment factor is 1.044 for 2010 and the revised factor is 1.041 for 2009.

⁷ PPITW is adjusted based on productivity trend for the prior 15 years.

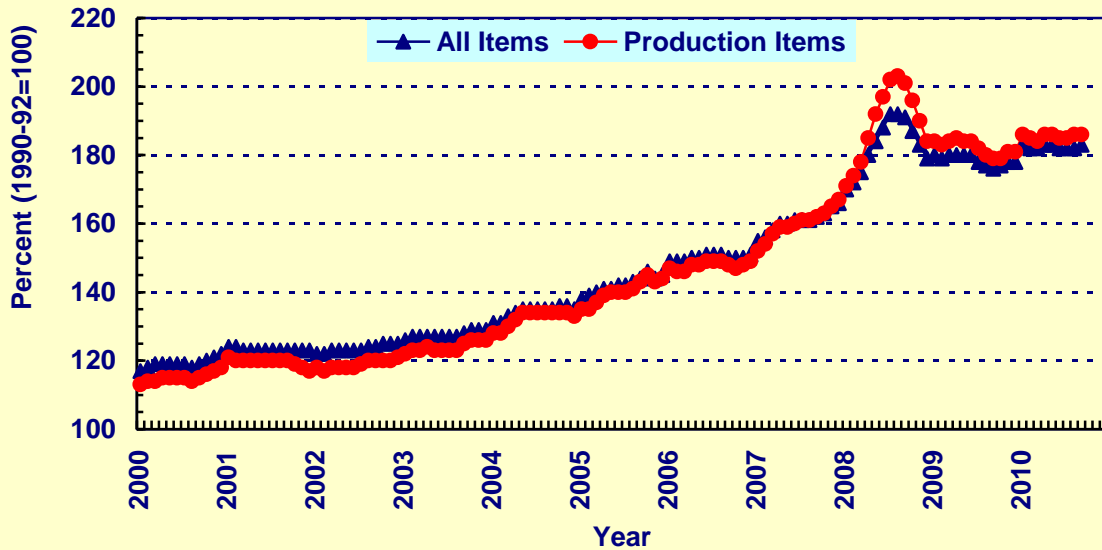
Prices Paid Indexes and Annual Weights for Input Components and Sub-Components United States, September 2010 with Comparisons ¹

Index	Relative Weights 5-Year Moving Average ²		Input Indexes		
	2009	2010	2009	2010	
	<i>Percent</i>	<i>Percent</i>	Sep <i>(1990-92=100)</i>	Aug <i>(1990-92=100)</i>	Sep <i>(1990-92=100)</i>
Production Items	68.9	70.2	179	186	186
Feed	11.4	11.9	180	178	184
Feed Grains	1.6	1.7	142	157	185
Complete Feeds	5.6	5.8	196	183	185
Hay/Forage	1.4	1.5	141	145	145
Concentrates	1.8	1.9	188	199	204
Supplements	1.0	1.0	200	199	202
Livestock & Poultry	8.2	8.6	109	133	132
Feeder Cattle	6.4	6.7	111	132	130
Feeder Pigs	0.7	0.7	65	150	152
Milk Cow Replacements	0.7	0.7	113	117	117
Poultry	0.5	0.5	148	148	148
Seeds	3.8	3.9	304	284	284
Field Crops	3.5	3.6	319	299	299
Grasses/Legumes	0.4	0.4	161	139	139
Fertilizer	4.7	5.2	234	238	238
Mixed Fertilizer	2.1	2.3	247	229	231
Nitrogen	2.0	2.2	210	226	226
Potash & Phosphate	0.7	0.7	265	302	299
Chemicals	3.3	3.2	147	144	144
Herbicides	2.1	2.0	138	133	132
Insecticides	0.8	0.7	160	162	162
Fungicides/Other	0.5	0.5	165	165	165
Fuels	3.6	3.9	246	277	277
Diesel	2.3	2.5	251	294	293
Gasoline	0.8	0.9	221	239	237
LP Gas	0.4	0.5	260	250	257
Supplies & Repairs	4.6	4.6	157	161	161
Supplies	1.5	1.5	152	156	157
Repairs	3.1	3.0	159	163	163
Autos & Trucks	1.6	1.5	109	112	112
Autos	0.2	0.2	108	110	110
Trucks	1.4	1.3	109	112	112
Machinery	4.4	4.5	226	227	227
Tractors	1.0	1.0	188	188	188
Self-Propelled	1.8	1.8	230	234	234
Other Machinery	1.7	1.7	243	242	242
Building Materials	4.6	4.5	163	166	165
Services	12.2	12.1	159	165	165
Custom Rates	1.3	1.2	145	145	145
Other Services	11.0	10.8	161	168	168
Rent	6.4	6.3	178	191	191
Cash	3.4	3.4	224	243	243
Share	3.0	2.9	124	130	130
Interest	3.7	3.6	139	128	128
Taxes	3.0	3.0	238	268	268
Wage Rates	7.6	7.5	184	187	187
Family Living-CPI	16.9	15.7	160	162	162

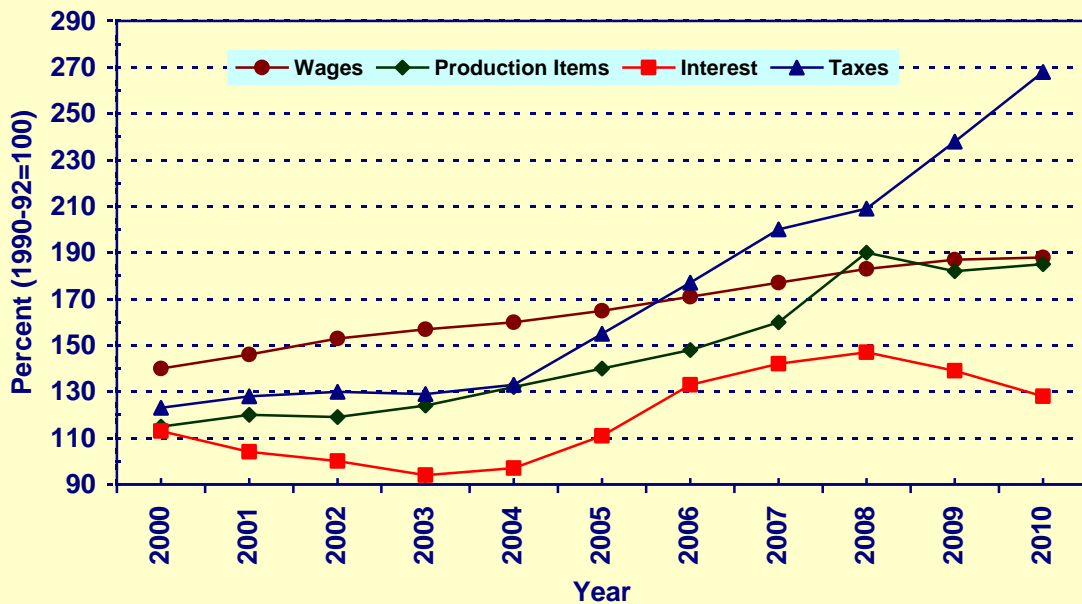
¹ Revised historical price indexes for months not shown are available at www.nass.usda.gov.

² Weights may not add due to rounding.

Prices Paid by Farmers, Major Indexes US, by Month

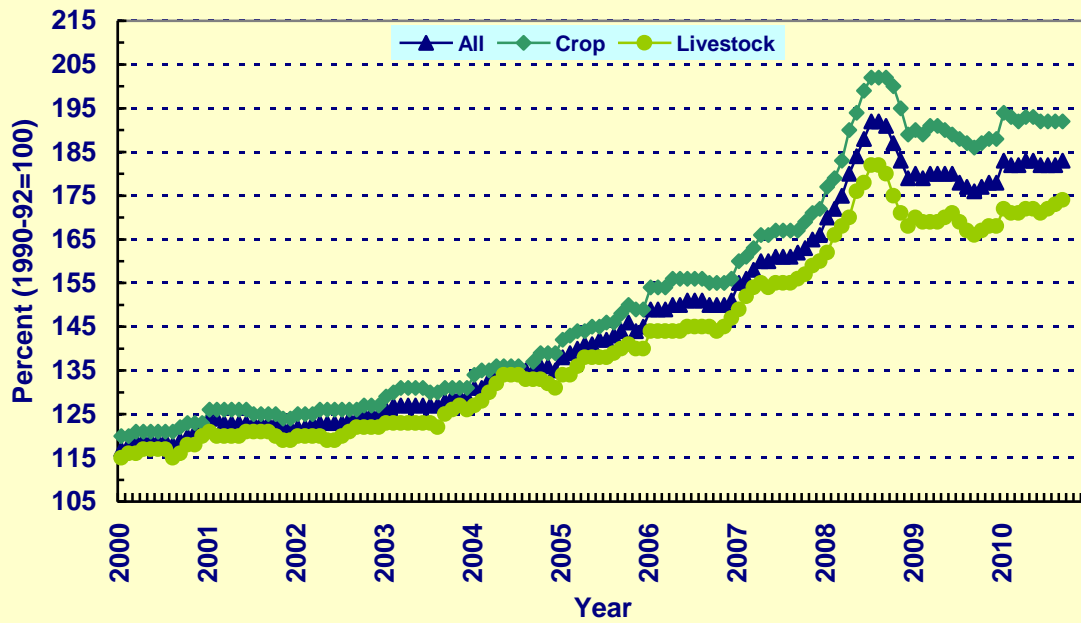


Prices Paid by Farmers, Major Indexes US, Annual Averages 1/

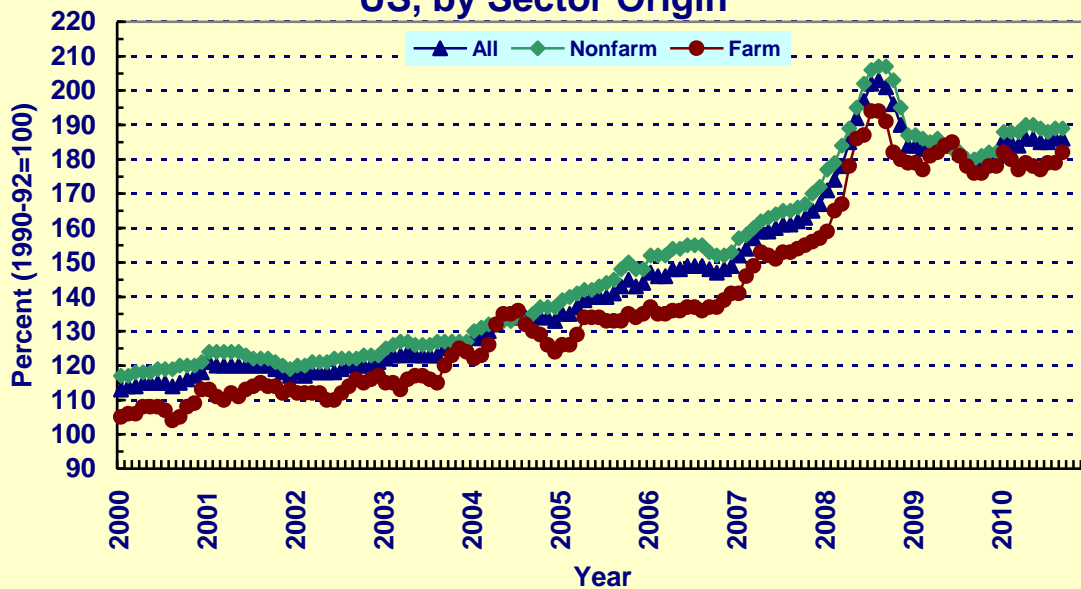


1/ Index values for 2010 are year-to-date averages.

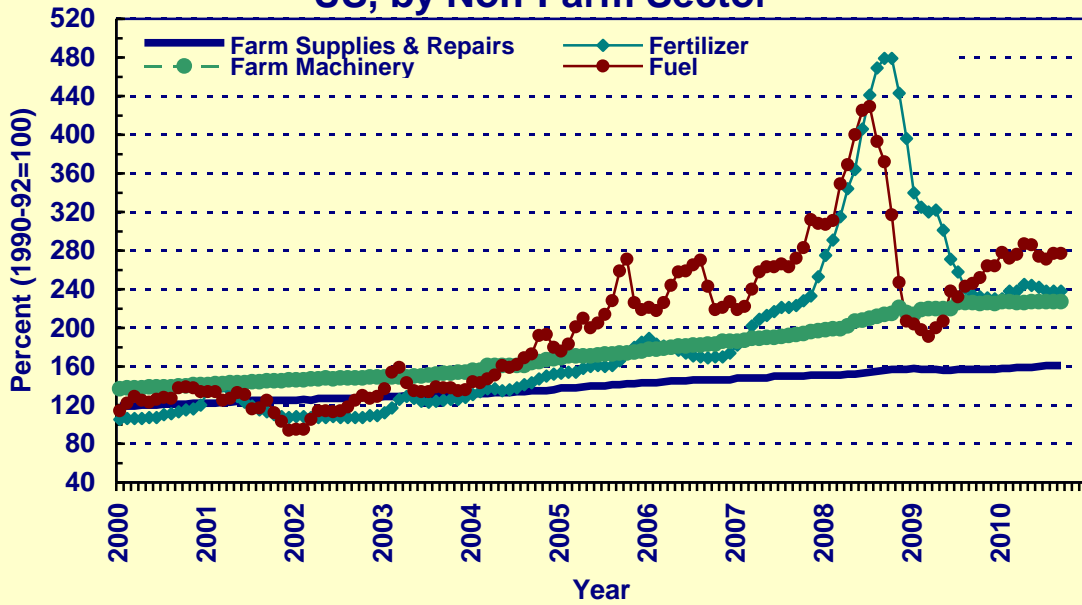
Prices Paid by Farmers, Indexes, All Items US, by Farm Type



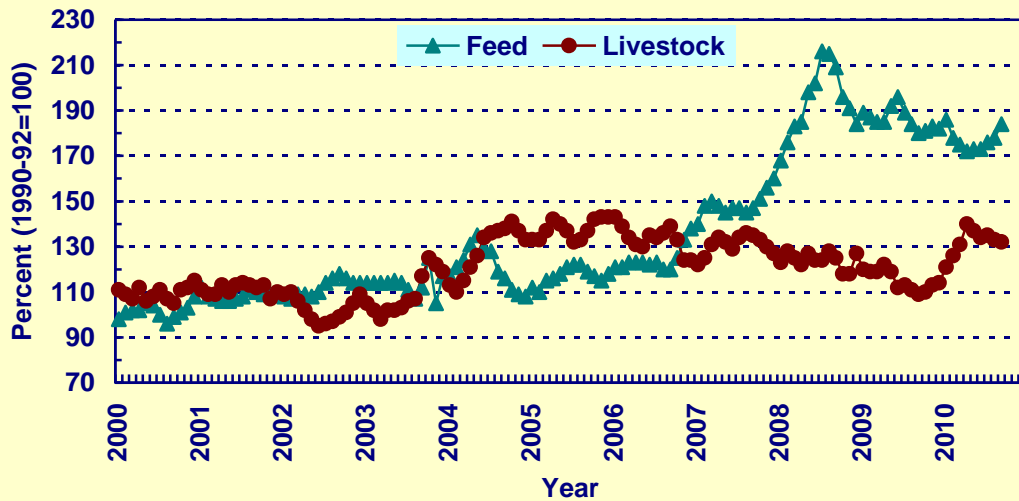
Prices Paid by Farmers, Indexes, All Production Items US, by Sector Origin



Prices Paid by Farmers, Selected Production Indexes US, by Non-Farm Sector



Prices Paid by Farmers, Selected Production Indexes US, by Farm Sector



Feed Price Ratios: United States, September 2010 with Comparisons

Feed Price Ratio ¹	2009	2010	
	Sep	Aug	Sep
Broiler-Feed: Pounds of Broiler Grower Feed equal in value to 1 pound of broiler, live weight ²	4.1	4.4	4.4
Market Egg Feed: Pounds of Laying Feed equal in value to 1 dozen eggs ³	6.8	6.9	4.5
Hog-Corn: Bushels of Corn equal in value to 100 pounds of hog, live weight	11.6	16.8	14.0
Milk-Feed: Pounds of 16% Mixed Dairy Feed equal in value to 1 pound of Whole Milk ⁴	2.00	* 2.37	2.24
Steer & Heifer-Corn: Bushels of Corn equal in value to 100 pounds of Steer & Heifers, live weight	26.3	26.8	22.9
Turkey-Feed: Pounds of Turkey Grower equal in value to 1 pound of Turkey, live weight ⁵	5.3	* 6.7	6.4

* Revised.

¹ Effective January 1995, prices of commercial prepared feeds are based on current U.S. prices received for corn, soybeans, alfalfa hay, and all wheat.

² The price of commercial prepared broiler feed is based on current U.S. prices received for corn and soybeans. The modeled feed uses 58 percent corn and 42 percent soybeans.

³ The price of commercial prepared layer feed is based on current U.S. prices received for corn and soybeans. The modeled feed uses 75 percent corn and 25 percent soybeans.

⁴ The price of commercial prepared dairy feed is based on current U.S. prices received for corn, soybeans, and alfalfa. The modeled feed uses 51 percent corn, 8 percent soybeans, and 41 percent alfalfa.

⁵ The price of commercial prepared turkey feed is based on current U.S. prices received for corn, soybeans, and wheat. The modeled feed used 51 percent corn, 28 percent soybeans, and 21 percent wheat.

**Prices Used to Calculate Feed Price Ratios:
United States, September 2010 with Comparisons**

Commodity	Unit	Entire Month		Preliminary
		Sep 2009	Aug 2010	Sep 2010
		<i>Dollars</i>	<i>Dollars</i>	<i>Dollars</i>
Broilers, Live	Lb	0.420	0.480	0.500
Eggs, Market	Doz	0.571	0.624	0.446
Hogs, All	Cwt	37.70	61.30	60.90
Milk, All	Cwt	13.00	16.70	17.20
Steers and Heifers	Cwt	85.50	98.00	99.30
Turkeys, Live	Lb	0.485	0.668	0.687
Corn	Bu	3.25	3.65	4.34
Hay, Alfalfa, Baled	Ton	109.00	116.00	117.00
Soybeans	Bu	9.75	10.10	9.94
Wheat, All	Bu	4.48	5.44	6.02

**Feeder Livestock: Prices Paid, United States
September 2010 with Comparisons**

Commodity	Unit	2009	2010	
		Sep	Aug	Sep
		<i>Dollars</i>	<i>Dollars</i>	<i>Dollars</i>
Feeders and Stockers				
Cattle and Calves	Cwt	93.60	* 111.70	110.10
Feeder Pigs	Cwt	60.00	138.00	140.00

* Revised.

Reliability of Prices Paid Estimates

Definition: Prices paid by farmers represent the average costs of inputs purchased by farmers and ranchers to produce agricultural commodities. Conceptually, the average price when multiplied by quantity purchased should equal total producer expenditures for the item.

Survey Procedures: The prices paid data are obtained from establishments that sell goods and services to farmers and ranchers. Annually, about 8,500 firms are randomly selected from lists by type of item sold with an average response rate in the range of 75-80 percent. Firms are asked to report the price for the specified item "most commonly bought by farmers" or that was the "volume seller". Approximately 135 items are surveyed each March to represent all production input items purchased. The survey reference period for most items is the 5 business days centered around the 15th of the month. Separate prices paid surveys are conducted for agricultural chemicals, fuels, feed, fertilizer, machinery, and seed.

Summary and Estimation Procedures: The annual March Prices Paid Survey is summarized as a nonprobability survey. Average prices reported are aggregated to the region and U.S. level using weights available from expenditure data and other administrative sources. Price recommendations are prepared by the State Field Offices and Headquarters for review by the Agricultural Statistics Board in Washington, D.C. Also, the change in price level for individual items surveyed are combined to the regional and U.S. levels, and are published as prices paid indexes referenced to a specific base period. Prices paid indexes for new autos and trucks, building materials, farm supplies, motor supplies, and marketing containers are updated based on price changes measured in selected Bureau of Labor Statistics (BLS) indexes.

Revisions: Any revisions are published in the monthly and in annual issues of Agricultural Prices. The basis for revision must be supported by additional data that directly affect the level of the estimate. More revisions are likely for March when separate prices paid surveys are conducted, in lieu of BLS indexes, by the USDA to measure price change.

Reliability: Current methods of summarization for the March data are not designed directly to calculate sampling errors. However, analytical measures approximate the U.S. relative sampling errors for major items around 10 percent. Any nonsampling errors are attributed to such things as the inability to obtain correct information, differences in interpreting questions or definitions, mistakes in coding or processing the data, etc. Efforts are made at each step in the survey process to minimize these nonsampling errors.

Program Change: Effective January 1, 1995, the National Agricultural Statistics Service updated the weights and changed the construction of its prices paid and received by farmers indexes. A Federal Register Notice dated October 28, 1994 discussed these program modifications.

A 1990-1992 reference and base period replaced the 1977 reference and 1971-1973 base weight period. Five-year moving average weights replaced the current fixed 1971-1973 base period weights. The 1910-1914=100 price indexes, required by statute for computing parity prices, were linked forward based on the changes in the new 1990-1992=100 indexes. The new indexes were constructed by multiplying the ratios of the current prices to the base period prices by the moving average weights (adjusted for seasonal marketing patterns for the prices received indexes).

Information Contacts

Direct general questions to Kevin Barnes, Chief, Environmental, Economics and Demographics Branch at (202) 720-6146.

Below are the commodity specialists to contact for additional information.

Crop Prices Received

Lance Honig, Chief, Crops Branch	(202) 720-2127
Jacqueline Moore, Field Crops Section.....	(202) 720-2127
Nick Schauer - Wheat, Rye	(202) 720-8068
Anthony Prillaman - Corn, Proso Millet, Flaxseed	(202) 720-9526
Shiela Corley - Cotton, Cottonseed	(202) 720-5944
Travis Thorson - Soybeans, Sunflower, Canola, Other Oilseeds.....	(202) 720-7369
Bryan Durham - Hay, Oats, Sorghum	(202) 690-3234
Suzanne Avilla - Peanuts, Rice	(202) 720-7688
Julie Schmidt - Sugarcane, Sugarbeets, Barley	(202) 720-7621
Jorge Garcia-Pratts, Fruits, Vegetables & Special Crops Section.....	(202) 720-2127
Dan Norris - Dry Edible Beans, Peaches, Pears, Hops, Pulses, Mint	(202) 720-3250
Steve Maliszewski - Citrus, Coffee, Grapes, Tropical Fruits	(202) 720-5412
Fred Granja - Apples, Apricots, Cherries, Plums, Prunes, Tobacco.....	(202) 720-4288
Debbie Flippin - Vegetables, Onions, Strawberries	(202) 720-2157
Dawn Keen - Tree Nuts.....	(202) 720-4215
Mike Jacobsen - Cranberries	(202) 720-9085
Tierra Mobley - Potatoes, Sweet Potatoes.....	(202) 720-4285

Livestock Prices Received

Dan Kerestes, Chief, Livestock Branch	(202) 720-3570
Scott Hollis, Livestock Section.....	(202) 720-3570
Everett Olbert - Sheep, Lambs, Goats, Wool, Mohair.....	(202) 720-4751
Mike Miller - Milk, Milk Cows.....	(202) 720-3278
Nicholas Streff - Hogs.....	(202) 720-3106
Jason Hardegreer - Cattle.....	(202) 720-3040
Bruce Boess, Poultry and Specialty Commodities Section	(202) 720-3570
Doug Bounds - Turkeys	(202) 690-3237
Troy Marshall - Broilers, Honey	(202) 720-3244
Kim Linonis - Eggs	(202) 690-8632

Indexes, Prices Paid, and Parity Prices

Kevin Barnes, Chief, Environmental, Economics and Demographics Branch	(202) 720-6146
Kevin Hintzman, Economics Section.....	(202) 720-6146
Jennifer Sissom - Prices Paid Indexes, Prices Paid for Feed, Fertilizer, Agricultural Chemicals, Seeds, Farm Supplies and Repairs, Farm Machinery, Fuels, Feeder Livestock, Poultry Chicks, Feed Price Ratios, Autos & Trucks	(202) 690-3229
Daryl Brinkman - Prices Received Indexes, Parity Prices.....	(202) 720-8844
Joe Samson - Grazing Fees	(202) 720-5446

ACCESS TO REPORTS!!

For your convenience, there are several ways to obtain NASS reports, data products, and services:

INTERNET ACCESS

All NASS reports are available free of charge. For free access, connect to the Internet and go to the NASS Home Page at www.nass.usda.gov.

E-MAIL SUBSCRIPTION

All NASS reports are available by subscription free of charge direct to your e-mail address. Starting with the NASS Home Page at www.nass.usda.gov, under the right navigation, *Receive reports by Email*, click on **National** or **State**. Follow the instructions on the screen.

PRINTED REPORTS OR DATA PRODUCTS

CALL OUR TOLL-FREE ORDER DESK: 800-999-6779 (U.S. and Canada)
Other areas, please call 703-605-6220 FAX: 703-605-6880
(Visa, MasterCard, check, or money order acceptable for payment.)

ASSISTANCE

For **assistance** with general agricultural statistics or further information about NASS or its products or services, contact the **Agricultural Statistics Hotline** at **800-727-9540**, 7:30 a.m. to 4:00 p.m. ET, or e-mail: nass@nass.usda.gov.

The U.S. Department of Agriculture (USDA) prohibits discrimination in all its programs and activities on the basis of race, color, national origin, age, disability, and where applicable, sex, marital status, familial status, parental status, religion, sexual orientation, genetic information, political beliefs, reprisal, or because all or a part of an individual's income is derived from any public assistance program. (Not all prohibited bases apply to all programs.) Persons with disabilities who require alternative means for communication of program information (Braille, large print, audiotape, etc.) should contact USDA's TARGET Center at (202) 720-2600 (voice and TDD).

To file a complaint of discrimination, write to USDA, Director, Office of Civil Rights, 1400 Independence Avenue, S.W., Washington, D.C. 20250-9410, or call (800) 795-3272 (voice) or (202) 720-6382 (TDD). USDA is an equal opportunity provider and employer.

USDA Data Users' Meeting
Monday October 25, 2010

Crowne Plaza Chicago-Metro
Chicago, Illinois 60661
312-829-5000

The USDA's National Agricultural Statistics Service will be organizing an open forum for data users. The purpose will be to provide updates on pending changes in the various statistical and information programs and seek comments and input from data users. Other USDA agencies to be represented will include the Agricultural Marketing Service, the Economic Research Service, the Foreign Agricultural Service, and the World Agricultural Outlook Board. The Foreign Trade Division from the Census Bureau will also be included in the meeting.

For registration details or additional information for the Data Users' Meeting, see the NASS homepage at <http://www.nass.usda.gov/meeting/> or contact Marie Jordan (NASS) at 202-690-8141 or at marie_jordan@nass.usda.gov.

This Data Users' Meeting precedes an Industry Outlook Meeting that will be held at the same location on Tuesday October 26, 2010. The Outlook meeting brings together analysts from various commodity sectors to discuss the outlook situation. For registration details or additional information for the Industry Outlook Meeting, see the Livestock and Marketing Information Center (LMIC) homepage at <http://www.lmic.info/> or contact Erica Rosa 303-236-0461 at rosa@lmic.info or Laura Lahr 303-236-0464 at lahr@lmic.info.