



# Agricultural Prices

ISSN: 1937-4216

Released November 30, 2010, by the National Agricultural Statistics Service (NASS), Agricultural Statistics Board, United States Department of Agriculture (USDA).

## November Farm Prices Received Index Advanced 4 Points

The preliminary All Farm Products Index of Prices Received by Farmers in November, at 159 percent, based on 1990-1992=100, increased 4 points (2.6 percent) from October. The Crop Index is up 9 points (5.4 percent) and the Livestock Index increased 1 point (0.7 percent). Producers received higher prices for soybeans, corn, lettuce, and eggs and lower prices for hogs, milk, apples, and cucumbers. In addition to prices, the overall index is also affected by the seasonal change based on a 3-year average mix of commodities producers sell. Increased monthly marketings of milk, cotton, cattle, and corn offset decreased marketings of soybeans, potatoes, peanuts, and lettuce.

The preliminary All Farm Products Index is up 23 points (17 percent) from November 2009. The Food Commodities Index, at 155, increased 3 points (2.0 percent) from last month and increased 19 points (14 percent) from November 2009.

## Prices Paid Index Up 2 Points

The November Index of Prices Paid for Commodities and Services, Interest, Taxes, and Farm Wage Rates (PPITW) is 188 percent of the 1990-1992 average. The index is up 2 points (1.1 percent) from October and 10 points (5.6 percent) above November 2009. Higher prices in November for complete feeds, nitrogen, and supplements more than offset lower prices for other services, feeder pigs, and hay & forages.

## Prices Received, Prices Paid, and Ratio of Prices Received to Prices Paid, Indexes 1990-1992=100 – United States: November 2010 with Comparisons

Index	November 2009	October 2010	November 2010
Prices received .....	136	155	159
Prices paid .....	178	186	188
Ratio prices received to prices paid .....	76	83	85

## Contents

Prices Received by Farmers .....	5
Prices Received Indexes – United States: November 2010 with Comparisons .....	6
Prices Received and Prices Paid Indexes by Month for Selected Groups – United States: 2009 and 2010, 1990-1992=100 .....	6
Received Indexes by Month, Livestock Products, All Products, and All Crops – United States: 1990-1992=100 Chart.....	7
Received Indexes by Month, Food Grains, Feed Grains & Hay, and Oilseeds – United States: 1990-1992=100 Chart.....	7
Received Indexes by Month, Fruit & Nut and Commercial Vegetables – United States: 1990-1992=100 Chart.....	8
Received Indexes by Month, Meat Animal, Dairy Products, and Poultry & Eggs – United States: 1990-1992=100 Chart.....	8
Prices Received for Field Crops and Fruits – United States: November 2010 with Comparisons .....	9
Prices Received for Vegetables and Livestock – United States: November 2010 with Comparisons .....	10
Prices Received for Corn by Month – United States Chart.....	11
Prices Received for Wheat by Month – United States Chart .....	11
Prices Received for Cotton by Month – United States Chart.....	12
Prices Received for Soybeans by Month – United States Chart .....	12
Prices Received for Cattle by Month – United States Chart .....	13
Prices Received for Milk by Month – United States Chart.....	13
Prices Received for Hogs by Month – United States Chart .....	14
Prices Received for Turkeys and Broilers by Month – United States Chart .....	14
Prices Received for All Wheat – States and United States: November 2010 with Comparisons .....	15
Prices Received for Winter Wheat – States and United States: November 2010 with Comparisons .....	15
Prices Received for Durum Wheat – States and United States: November 2010 with Comparisons .....	16
Prices Received for Spring Wheat – States and United States: November 2010 with Comparisons .....	16
Prices Received for All Wheat, Corn, and Soybeans by Month – United States: 2010 with Comparisons .....	17
Prices Received for Beef Cattle and All Hogs by Month – United States: 2010 with Comparisons .....	17
Prices Received for All Barley – States and United States: November 2010 with Comparisons .....	18
Prices Received for Malting Barley – States: November 2010 with Comparisons.....	18
Prices Received for Feed Barley – States: November 2010 with Comparisons.....	18
Prices Received for Corn – States and United States: November 2010 with Comparisons.....	19
Prices Received for Soybeans – States and United States: November 2010 with Comparisons.....	19
Prices Received for Oats – States and United States: November 2010 with Comparisons.....	20
Prices Received for Sorghum Grain – States and United States: November 2010 with Comparisons .....	20
Prices Received for Dry Beans – States and United States: November 2010 with Comparisons .....	21
Prices Received for Peanuts (In-Shell) – States and United States: November 2010 with Comparisons .....	21
Prices Received for Sunflowers – States and United States: November 2010 with Comparisons.....	22
Prices Received for Canola – States and United States: November 2010 with Comparisons.....	22
Prices Received for Flaxseed – States and United States: November 2010 with Comparisons.....	22
Prices Received for Upland Cotton and Cottonseed – States and United States: November 2010 with Comparisons .....	23
Prices Received and Marketings for Upland Cotton and Rice – United States: November 2010 with Comparisons .....	23
Prices Received for Hay by Type – States and United States: November 2010 with Comparisons .....	24
Prices Received for Apples – States and United States: November 2010 with Comparisons.....	24
Prices Received for Citrus Fruits, by Utilization – States and United States: November 2009.....	25
Prices Received for Citrus Fruits, by Utilization – States and United States: October 2010.....	26
Prices Received for Citrus Fruits, by Utilization – States and United States: November 2010.....	27
Prices Received for Potatoes – States and United States: November 2010 with Comparisons .....	28
Prices Received for Beef Cattle and Cows – States and United States: November 2010 with Comparisons .....	29

Prices Received for Calves and Steers & Heifers – States and United States: November 2010 with Comparisons .....	30
Prices Received for All Hogs – States and United States: November 2010 with Comparisons .....	31
Prices Received for Barrows & Gilts – States and United States: November 2010 with Comparisons .....	31
Prices Received for Sows – States and United States: November 2010 with Comparisons .....	32
Prices Received for Sheep – States and United States: October 2010 with Comparisons .....	32
Prices Received for Lambs – States and United States: October 2010 with Comparisons .....	33
Prices Received for All Milk – States and United States: November 2010 with Comparisons .....	33
Prices Received for Fluid Grade Milk – States and United States: November 2010 with Comparisons .....	34
Prices Received for Manufacturing Grade Milk – States and United States: November 2010 with Comparisons .....	35
Prices Received for Milk Cows – States and United States: October 2010 with Comparisons .....	35
Parity Price Equivalent for Manufacturing Grade Milk – United States: November 2010, with Comparisons .....	35
Commodity Parity Prices and Price as Percent of Parity Price – United States: November 2010 with Comparisons .....	36
Commodity Parity Prices – United States: November 2010 with Comparisons .....	37
Marketing Year for Specified Commodities .....	39
Marketing Year Average Prices Received for Flaxseed – States and United States: 2008 and 2009 .....	39
Marketing Year Average Prices Received for Sunflowers – States and United States: 2008 and 2009 .....	39
Marketing Year Average Prices Received for Canola - States and United States: 2008 and 2009 .....	40
Marketing Year Average Prices Received for Proso Millet - States and United States: 2008 and 2009 .....	40
Marketing Year Average Prices Received for Other Oilseeds - United States: 2008 and 2009 .....	40
Marketing Year Average Prices Received for Safflower - States and United States: 2008 and 2009 .....	40
Marketing Year Average Prices Received for Corn – States and United States: 2008 and 2009 .....	41
Marketing Year Average Prices Received for All Dry Beans – States and United States: 2008 and 2009 .....	42
Prices Received for Corn by Month – States and United States: Marketing Years 2008-2009 and 2009-2010 .....	43
Prices Received for Flaxseed by Month – States and United States: Marketing Years, 2008-2009 and 2009-2010 .....	45
Prices Received for Canola by Month – States and United States: Marketing Years, 2008-2009 and 2009-2010 .....	46
Prices Received for All Sunflowers by Month – States and United States: Marketing Years, 2008-2009 and 2009-2010 .....	47
Prices Received for Oil Sunflowers by Month – States and United States: Marketing Years, 2008-2009 and 2009-2010 .....	48
Prices Received for Non-Oil Sunflowers by Month – States and United States: Marketing Years, 2008-2009 and 2009-2010 .....	49
Prices Received for Dry Edible Beans by Month – States and United States: Marketing Years, 2008-2009 and 2009-2010 .....	50
Percent of Corn Farm Marketings by Month – States and United States: 2008-2009 and 2009-2010 .....	51
Percent of All Sunflowers Farm Marketings by Month – States and United States: 2008-2009 and 2009-2010 .....	52
Percent of Flaxseed Farm Marketings by Month – States and United States: 2008-2009 and 2009-2010 .....	52
Percent of Canola Farm Marketings by Month – States and United States: 2008-2009 2009-2010 .....	53
Percent of Dry Edible Beans Farm Marketings by Month – States and United States: 2008-2009 and 2009-2010 .....	53
Prices Received for Chickpeas, All (Garbanzo), Monthly Prices Received, Monthly Farm Marketing Percentages, and Marketing Year Average Prices – United States: 2007-2008 through 2009-2010 .....	54
Prices Received for Chickpeas, Large (Garbanzo, larger than 20/64 in), Monthly Prices Received, Monthly Farm Marketing Percentages, and Marketing Year Average Prices – United States, 2007-2008 through 2009-2010 .....	54
Prices Received for Chickpeas, Small (Garbanzo, smaller than 20/64 in), Monthly Prices Received, Monthly Farm Marketing Percentages, and Marketing Year Average Prices – United States, 2007-2008 through 2009-2010 .....	55
Reliability of Prices Received Estimates .....	56
Prices Paid by Farmers .....	57
Prices Paid Indexes and Related Parity Ratios – United States: November 2010 with Comparisons .....	58

Prices Paid Indexes and Annual Weights for Input Components and Sub-Components – United States: November 2010 with Comparisons .....	59
Paid Indexes by Month, All Items and Production Items – United States: 1990-1992=100 Chart.....	60
Paid Indexes, Annual Averages, Production Items, Interest, Taxes, and Wages – United States: 1990-1992=100 Chart.....	60
Paid Indexes by Farm Type, All Items – United States: 1990-1991=100 Chart.....	61
Paid Indexes by Origin, All Production Items – United States: 1990-1992=100 Chart.....	61
Paid Indexes by Non-Farm Sector, Supplies & Repairs, Fertilizer, Machinery, and Fuel – United States: 1990-1992=100 Chart.....	62
Paid Indexes by Month, Feed and Replacement Livestock – United States: 1990-1992=100 Chart.....	62
Feed Price Ratios – United States: November 2010 with Comparisons .....	63
Prices Received Used to Calculate Feed Price Ratios – United States: November 2010 with Comparisons .....	63
Prices Paid for Feeder Livestock – United States: November 2010 with Comparisons .....	63
Reliability of Prices Paid Estimates .....	64
Information Contacts.....	65

## Prices Received by Farmers

The November All Farm Products Index is 159 percent of its 1990-1992 base, up 2.6 percent from the October index and 17 percent above the November 2009 index.

**All crops:** The November index is 177, up 5.4 percent from October and 15 percent above November 2009. Indexes increased for oilseeds, feed grains & hay, commercial vegetables, food grains, fruits & nuts, potatoes & dry beans, and cotton.

**Food grains:** The November index, at 201, is 5.8 percent above the previous month and 18 percent above a year ago. The November all wheat price, at \$6.21 per bushel, is up 34 cents from October and \$1.42 above November 2009.

**Feed grains & hay:** The November index is 195, up 5.4 percent from last month and 24 percent above a year ago. The corn price, at \$4.59 per bushel, is up 27 cents from last month and 94 cents above November 2009. The all hay price, at \$111 per ton, is down \$2.00 from October but up \$6.00 from last November. Sorghum grain, at \$8.34 per cwt, is 54 cents above October and \$2.67 above November last year.

**Cotton:** The November index, at 132, is up 2.3 percent from October and 35 percent above last year. The November price, at 80.1 cents per pound, is up 2.0 cents from the previous month and 20.6 cents above last November.

**Oilseeds:** The November index, at 193, is up 9.7 percent from October and 17 percent higher than November 2009. The soybean price, at \$11.20 per bushel, increased \$1.00 from October and is \$1.67 above November 2009.

**Fruits & nuts:** The November index, at 170, is up 4.3 percent from October and 9.7 percent higher than a year ago. Price increases for oranges, grapefruit, strawberries, and grapes more than offset price decreases for apples, pears, and lemons.

**Commercial vegetables:** The November index, at 185, is up 23 percent from last month but 14 percent below November 2009. Price increases during November for lettuce, broccoli, onions, and cantaloups more than offset price declines for cucumbers, snap beans, sweet corn, and celery.

**Potatoes & dry beans:** The November index, at 131, is up 9.2 percent from last month and 0.8 percent above November 2009. The all potato price, at \$7.65 per cwt, is up 88 cents from October and up 43 cents from last November. The all dry bean price, at \$24.30 per cwt, is down \$1.40 from the previous month and \$5.80 below November 2009.

**Livestock and products:** The November index, at 135, is 0.7 percent above last month and up 17 percent from November 2009. Compared with a year ago, prices are higher for cattle, milk, broilers, turkeys, hogs, calves, and eggs.

**Meat animals:** The November index, at 123, is down 0.8 percent from last month but 18 percent higher than last year. The November hog price, at \$47.20 per cwt, is down \$6.10 from October but is \$6.90 higher than a year ago. The November beef cattle price of \$94.10 per cwt is up \$1.00 from last month and is \$14.50 higher than November 2009.

**Dairy products:** The November index, at 137, is down 3.5 percent from a month ago but 16 percent higher than November last year. The November all milk price of \$17.90 per cwt is down 60 cents from last month but is \$2.50 higher than November 2009. The fluid grade milk price is down 60 cents and the manufacturing grade milk price is \$1.80 lower than the previous month.

**Poultry & eggs:** The November index, at 161, is up 7.3 percent from October and 18 percent above a year ago. The November market egg price, at \$1.02 per dozen, increased 36.6 cents from October and is 13.6 cents above November 2009. The November broiler price, at 47.0 cents per pound, is unchanged from October but 6.0 cents above a year ago. The November turkey price, at 73.6 cents per pound, is up 0.2 cent from the previous month and up 19.5 cents from a year earlier.

## Prices Received Indexes – United States: November 2010 with Comparisons

[Revised historical price indexes for months not shown are available at [www.nass.usda.gov](http://www.nass.usda.gov)]

Index	1910-1914=100				1990-1992=100		
	1990-1992 Average	November 2009	October 2010	November 2010	November 2009	October 2010	November 2010
	(percent)	(percent)	(percent)	(percent)	(percent)	(percent)	(percent)
All products .....	639	861	985	1011	136	155	159
All crops .....	500	762	833	877	154	168	177
Food grains .....	325	541	601	636	171	190	201
Feed grains & hay .....	363	560	661	697	157	185	195
Cotton .....	517	504	661	678	98	129	132
Tobacco .....	1263	1569	1563	1563	104	103	103
Oilseeds .....	554	905	963	1057	165	176	193
Fruits & nuts .....	716	1084	1137	1187	155	163	170
Commercial vegetables .....	698	1544	1079	1318	216	151	185
Potatoes & dry beans .....	540	661	606	662	130	120	131
Other crops .....	493	610	618	618	124	126	126
Livestock and products .....	768	881	1029	1039	115	134	135
Meat animals .....	1021	1063	1266	1250	104	124	123
Dairy products .....	799	948	1138	1101	118	142	137
Poultry & eggs .....	282	384	422	453	137	150	161
Food commodities .....	(NA)	(NA)	(NA)	(NA)	136	152	155

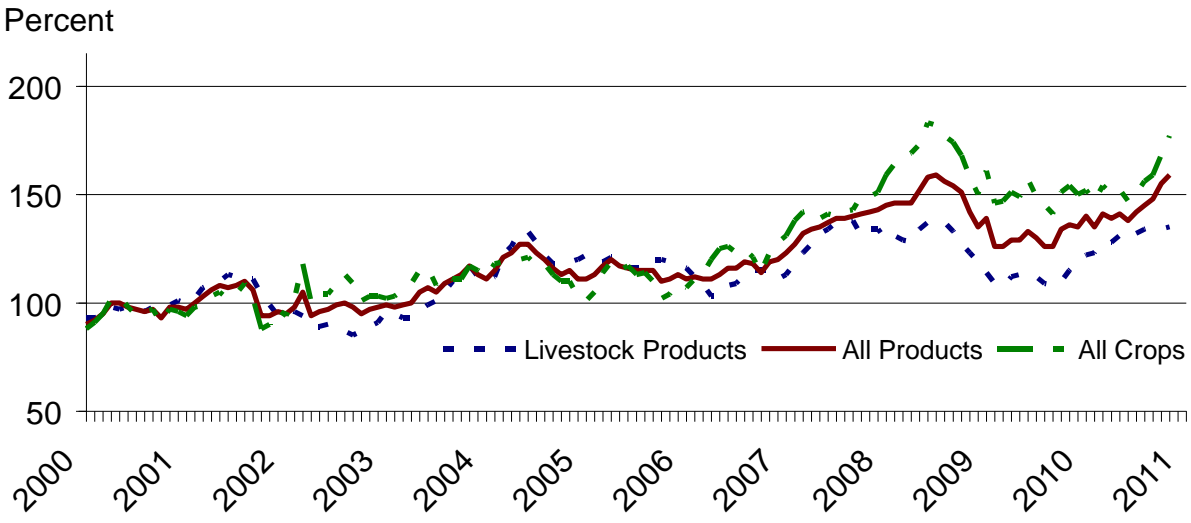
(NA) Not available.

## Prices Received and Prices Paid Indexes by Month for Selected Groups – United States: 2009 and 2010, 1990-1992=100

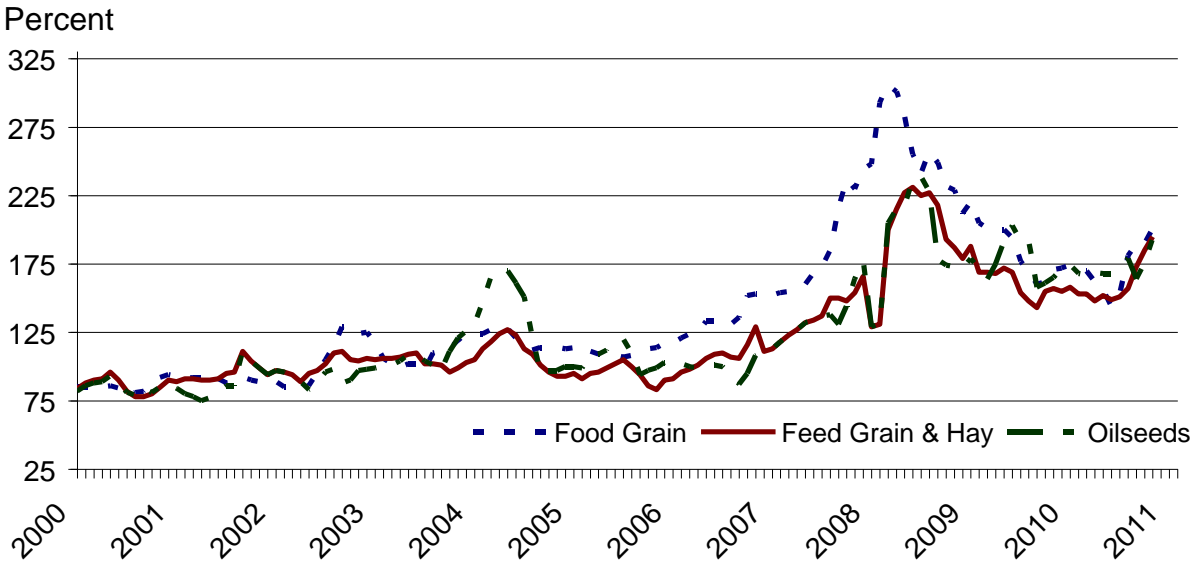
[Revised historical price indexes for months not shown are available at [www.nass.usda.gov](http://www.nass.usda.gov). Blank data cells indicate estimation period has not yet begun]

Month	Index of prices received						Index of prices paid			
	All farm products		All crops		Livestock and products		All items		Production items	
	2009	2010	2009	2010	2009	2010	2009	2010	2009	2010
	(percent)	(percent)	(percent)	(percent)	(percent)	(percent)	(percent)	(percent)	(percent)	(percent)
January .....	139	140	161	152	114	122	180	183	184	186
February .....	126	135	146	147	109	123	179	182	183	185
March .....	126	141	147	154	108	128	180	182	184	184
April .....	129	139	151	150	112	128	180	183	185	186
May .....	129	141	149	152	113	131	180	183	184	186
June .....	133	138	157	147	111	129	180	182	184	185
July .....	130	142	149	150	112	132	178	182	182	185
August .....	126	145	145	156	109	134	177	182	180	186
September .....	126	148	141	159	108	135	176	183	179	187
October .....	134	155	151	168	110	134	177	186	179	190
November .....	136	159	154	177	115	135	178	188	181	193
December .....	135		150		119		178		181	

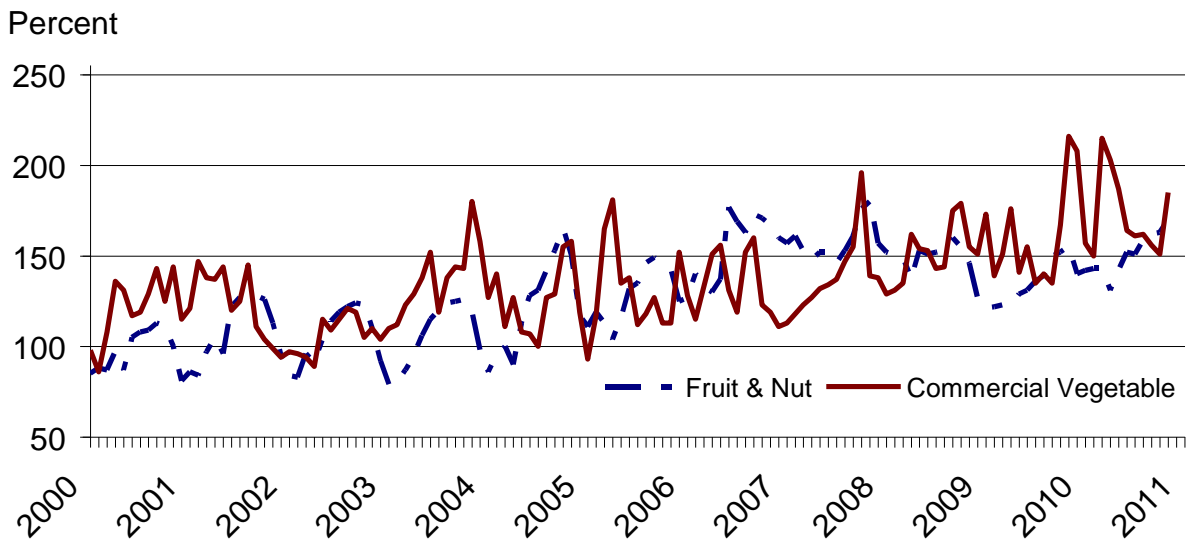
**Received Indexes by Month,  
Livestock Products, All Products, and All Crops –  
United States: 1990-1992=100**



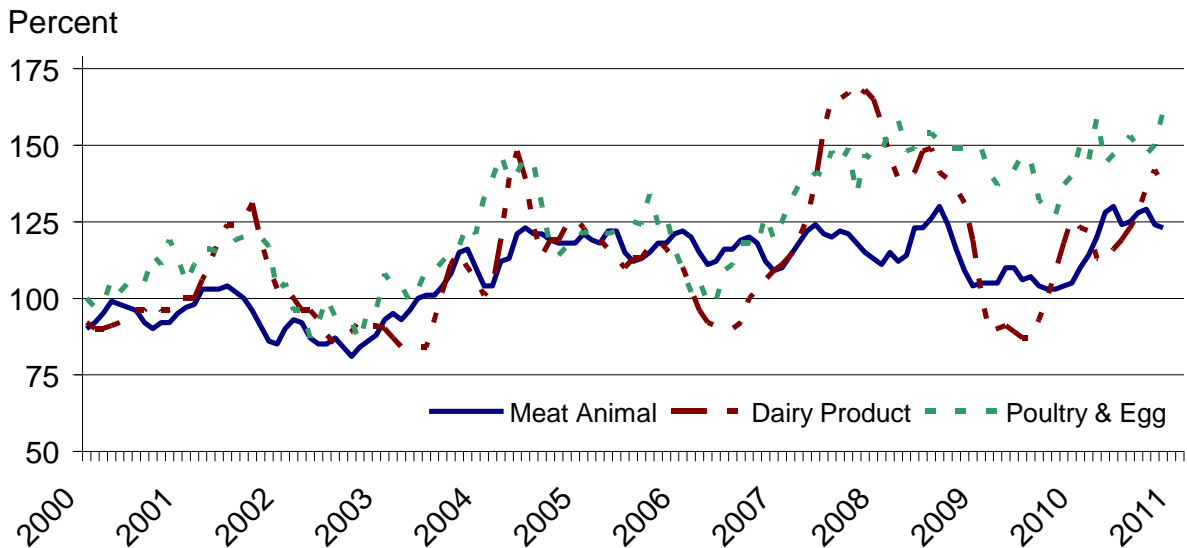
**Received Indexes by Month,  
Food Grains, Feed Grains & Hay, and Oilseeds –  
United States: 1990-1992=100**



## Received Indexes by Month, Fruit & Nut and Commercial Vegetables – United States: 1990-1992=100



## Received Indexes by Month, Meat Animal, Dairy Product, and Poultry & Egg – United States: 1990-1992=100





## Prices Received for Field Crops and Fruits – United States: November 2010 with Comparisons

Commodity	Average 1990-1992=100	November 2009	October 2010	Preliminary November 2010
<b>Field crops</b>				
Austrian winter peas .....dollars/cwt	(NA)	21.10	17.50	(D)
Barley, all .....dollars/bushel	2.12	4.46	3.75	3.76
Feed .....dollars/bushel	1.90	2.50	3.35	3.54
Malting .....dollars/bushel	2.43	4.88	3.89	3.84
Beans, dry edible .....dollars/cwt	19.10	30.10	25.70	24.30
Canola .....dollars/cwt	(NA)	16.00	18.20	20.70
Chickpeas, all .....dollars/cwt	(NA)	28.00	23.80	30.30
Large .....dollars/cwt	(NA)	28.40	26.60	30.40
Small .....dollars/cwt	(NA)	19.70	19.40	(D)
Corn .....dollars/bushel	2.30	3.65	4.32	4.59
Cotton, upland .....dollars/pound	0.606	0.595	0.781	0.801
Cottonseed <sup>1</sup> .....dollars/ton	96.00	159.00	158.00	163.00
Flaxseed .....dollars/bushel	4.27	8.12	11.90	12.90
Hay, all, baled .....dollars/ton	76.30	105.00	113.00	111.00
Alfalfa .....dollars/ton	77.20	109.00	118.00	117.00
Other .....dollars/ton	60.00	97.90	96.90	95.50
Lentils .....dollars/cwt	(NA)	25.90	24.80	30.10
Oats .....dollars/bushel	1.22	2.02	2.37	2.57
Peanuts, in-shell .....dollars/pound	0.304	0.217	0.214	0.225
Peas, dry edible .....dollars/cwt	(NA)	8.78	8.70	9.12
Potatoes .....dollars/cwt	5.82	7.22	6.77	7.65
Rice, all .....dollars/cwt	7.07	14.00	11.10	12.10
Long .....dollars/cwt	(NA)	13.00	10.10	10.40
Medium and short .....dollars/cwt	(NA)	17.30	16.60	17.10
Sorghum grain .....dollars/cwt	3.75	5.67	7.80	8.34
Soybeans .....dollars/bushel	5.61	9.53	10.20	11.20
Sunflowers, all .....dollars/cwt	9.50	14.20	20.80	20.30
Wheat, all .....dollars/bushel	2.96	4.79	5.87	6.21
Winter .....dollars/bushel	2.93	4.60	5.80	6.04
Durum .....dollars/bushel	2.86	4.59	4.97	6.14
Other spring .....dollars/bushel	3.11	5.19	6.15	6.50
Hard red winter <sup>2</sup> .....dollars/bushel	(NA)	4.68	5.86	(NA)
Soft red winter <sup>2</sup> .....dollars/bushel	(NA)	4.21	5.96	(NA)
Hard red spring <sup>2</sup> .....dollars/bushel	(NA)	5.24	6.20	(NA)
White <sup>2</sup> .....dollars/bushel	3.24	4.39	5.67	(NA)
<b>Fruits</b>				
<b>Citrus, equivalent on-tree</b>				
Grapefruit .....dollars/box	5.77	10.78	1.10	11.56
Lemons .....dollars/box	10.10	14.60	21.34	20.93
Oranges .....dollars/box	5.79	11.61	6.68	11.22
Tangelos .....dollars/box	5.82	6.68	(S)	(S)
Tangerines and mandarins .....dollars/box	15.11	18.61	13.43	26.48
<b>Noncitrus, fresh</b>				
Apples <sup>3</sup> .....dollars/pound	0.212	0.333	0.349	0.321
Grapes <sup>3</sup> .....dollars/ton	506.00	630.00	730.00	770.00
Peaches <sup>3</sup> .....dollars/ton	432.00	(S)	(S)	(S)
Pears <sup>3</sup> .....dollars/ton	370.00	449.00	604.00	519.00
Strawberries .....dollars/cwt	56.00	87.60	87.60	130.00

(D) Withheld to avoid disclosing data for individual operations.

(NA) Not available.

(S) Insufficient number of reports to establish an estimate.

<sup>1</sup> Marketing year August - February.

<sup>2</sup> Preliminary estimates not set for this item.

<sup>3</sup> Equivalent packinghouse-door returns for California, Michigan, New York (apples only), and Washington (apples, peaches, and pears). Prices as sold for other states.

# Prices Received for Vegetables and Livestock – United States: November 2010 with Comparisons

[Blank data cells indicate estimation period has not yet begun]

Commodity	Average 1990-1992=100	November 2009	October 2010	Preliminary November 2010
<b>Vegetables, fresh <sup>1</sup></b>				
Asparagus .....	dollars/cwt 79.80	(S)	(S)	(S)
Beans, snap <sup>2</sup> .....	dollars/cwt (NA)	59.30	54.60	34.00
Broccoli .....	dollars/cwt 22.50	57.10	30.40	44.80
Cantaloups <sup>2</sup> .....	dollars/cwt (NA)	15.40	14.60	34.50
Carrots .....	dollars/cwt 13.20	27.20	26.80	27.10
Cauliflower .....	dollars/cwt 26.80	54.40	31.50	35.80
Celery .....	dollars/cwt 11.60	21.10	14.70	14.60
Corn, sweet .....	dollars/cwt 15.70	19.80	28.00	19.70
Cucumbers <sup>2</sup> .....	dollars/cwt (NA)	16.80	27.60	14.90
Lettuce .....	dollars/cwt 11.90	49.60	20.20	35.80
Onions .....	dollars/cwt 12.80	7.93	16.60	18.70
Tomatoes .....	dollars/cwt 32.30	73.70	32.40	35.70
<b>Livestock</b>				
Calves .....	dollars/cwt 94.30	104.00	120.00	122.00
Cattle, all beef .....	dollars/cwt 72.90	79.60	93.10	94.10
Cows <sup>3</sup> .....	dollars/cwt 49.60	41.70	52.70	51.90
Steers & heifers .....	dollars/cwt 77.10	85.40	98.80	100.00
Milk cows <sup>4</sup> .....	dollars/head 1130.00	(NA)	1330.00	(NA)
Hogs, all .....	dollars/cwt 47.70	40.30	53.30	47.20
Barrows & gilts .....	dollars/cwt 48.40	40.50	53.50	47.40
Sows .....	dollars/cwt 39.50	36.10	49.10	42.70
Lambs .....	dollars/cwt 56.20	97.70	138.00	(NA)
Sheep .....	dollars/cwt 23.40	36.30	48.50	(NA)
<b>Dairy and poultry</b>				
Milk, all <sup>5</sup> .....	dollars/cwt 13.06	15.40	18.50	17.90
Fat test .....	percent 3.66	3.77	3.72	3.76
Fluid grade .....	dollars/cwt 13.10	15.40	18.50	17.90
Fat test .....	percent 3.66	3.76	3.71	3.75
Manufacturing grade .....	dollars/cwt 11.80	15.30	17.40	15.60
Fat test .....	percent 3.71	4.18	4.12	4.20
Broilers, live <sup>6</sup> .....	dollars/pound 0.317	0.410	0.470	0.470
Eggs, all <sup>7</sup> .....	dollars/dozen 0.643	1.010	0.813	1.130
Market <sup>7 8</sup> .....	dollars/dozen 0.546	0.884	0.654	1.020
Turkeys, live <sup>7 9</sup> .....	dollars/pound 0.380	0.541	0.734	0.736
<b>Adjusted for seasonal variation</b>				
Eggs, all .....	dollars/dozen 0.545	0.845	0.835	0.945
Seasonal factor .....	percent 100	120	97	120
Milk, all <sup>5</sup> .....	dollars/cwt 9.71	14.40	17.30	16.70
Seasonal factor .....	percent 100	107	107	107

(NA) Not available.

(S) Insufficient number of reports to establish an estimate.

<sup>1</sup> Beginning January 2006, point of first sale. FOB shipping point for prior years.

<sup>2</sup> Monthly estimates began January 1995.

<sup>3</sup> Beef cows and cull dairy cows sold for slaughter.

<sup>4</sup> Animals sold for dairy herd replacement only. Prices available for January, April, July, and October.

<sup>5</sup> Before deductions for hauling. Includes quality, quantity, and other premiums. Excludes hauling subsidies.

<sup>6</sup> Equivalent live weight price.

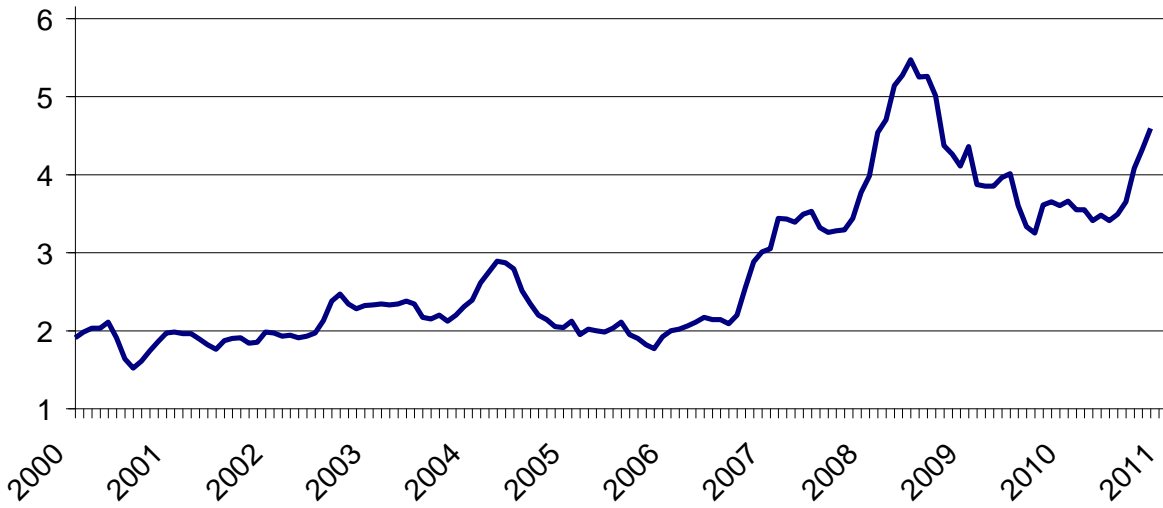
<sup>7</sup> Mid-month price.

<sup>8</sup> Also referred to as table eggs.

<sup>9</sup> Live weight equivalent price is used when actual live weight price is not available.

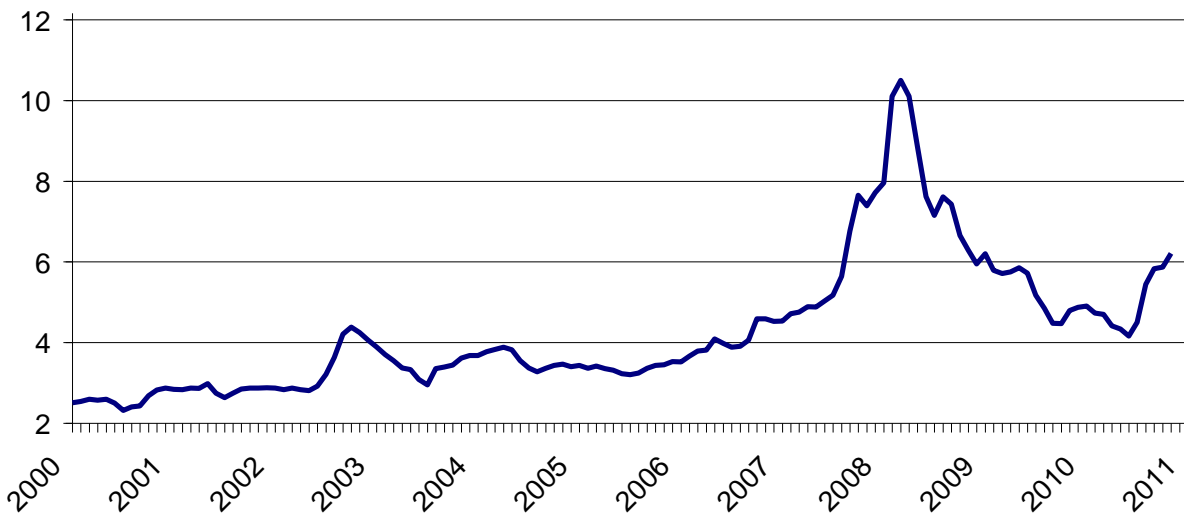
## Prices Received for Corn by Month – United States

Dollars per bushel



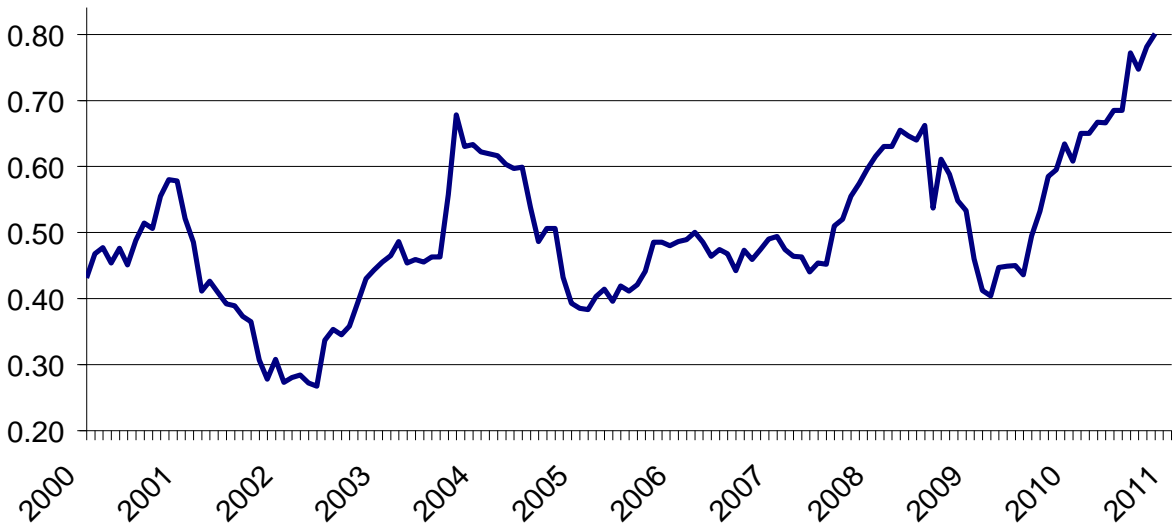
## Prices Received for Wheat by Month – United States

Dollars per bushel



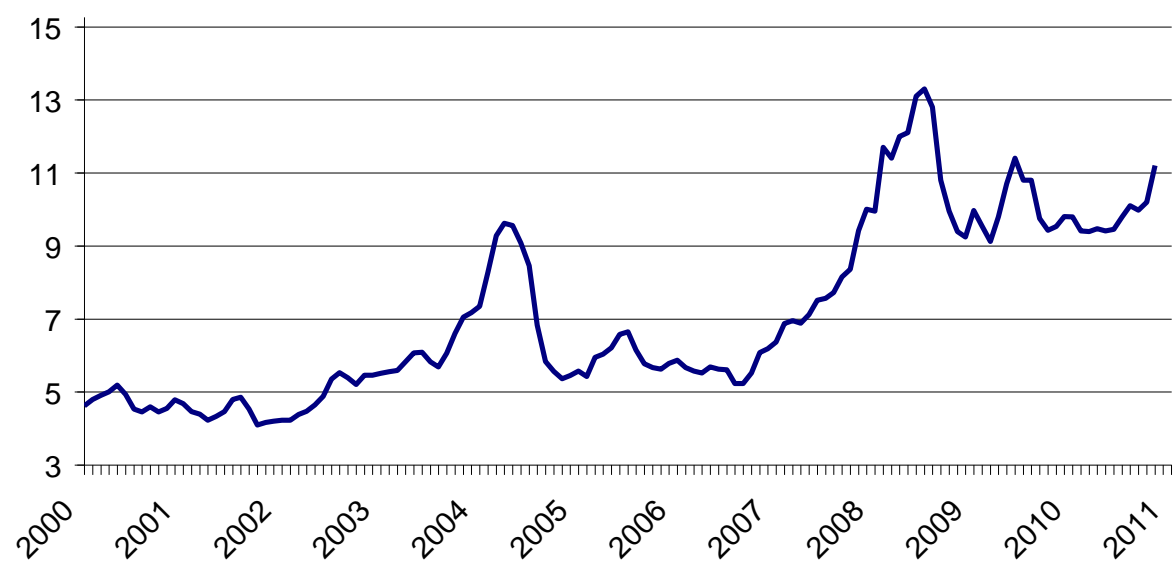
## Prices Received for Cotton by Month – United States

Dollars per pound



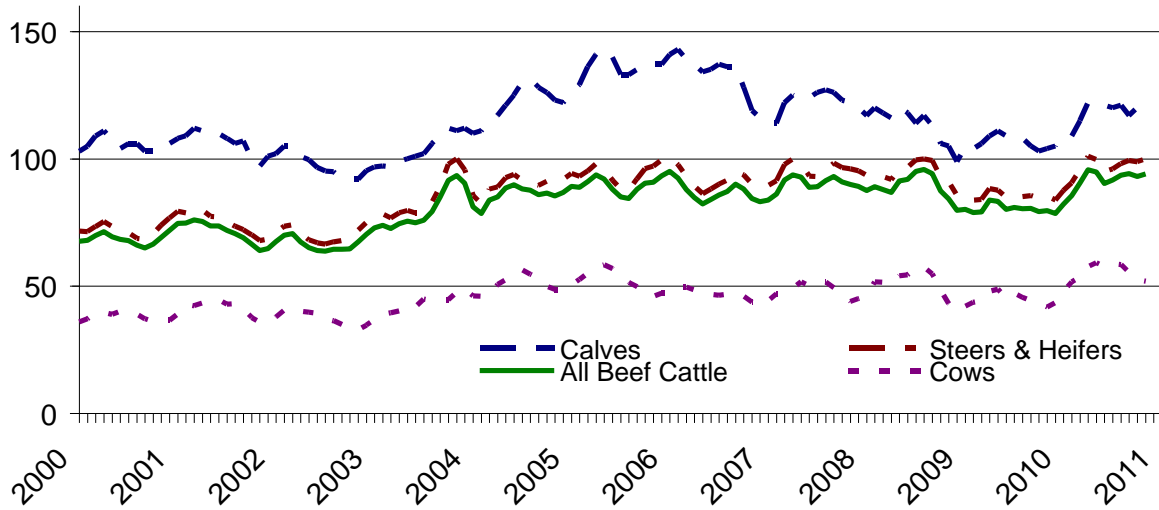
## Prices Received for Soybeans by Month – United States

Dollars per bushel



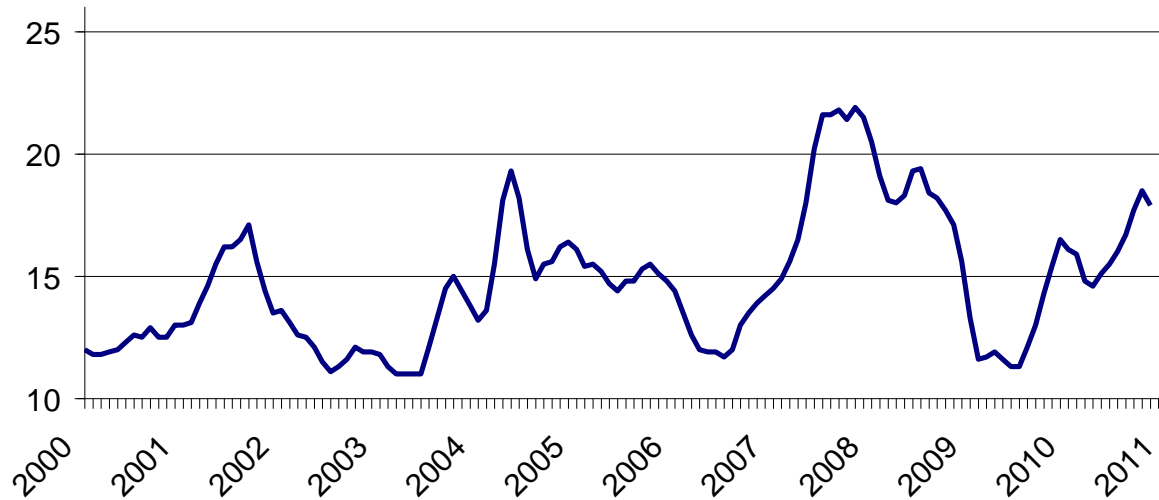
## Prices Received for Cattle by Month – United States

Dollars per cwt

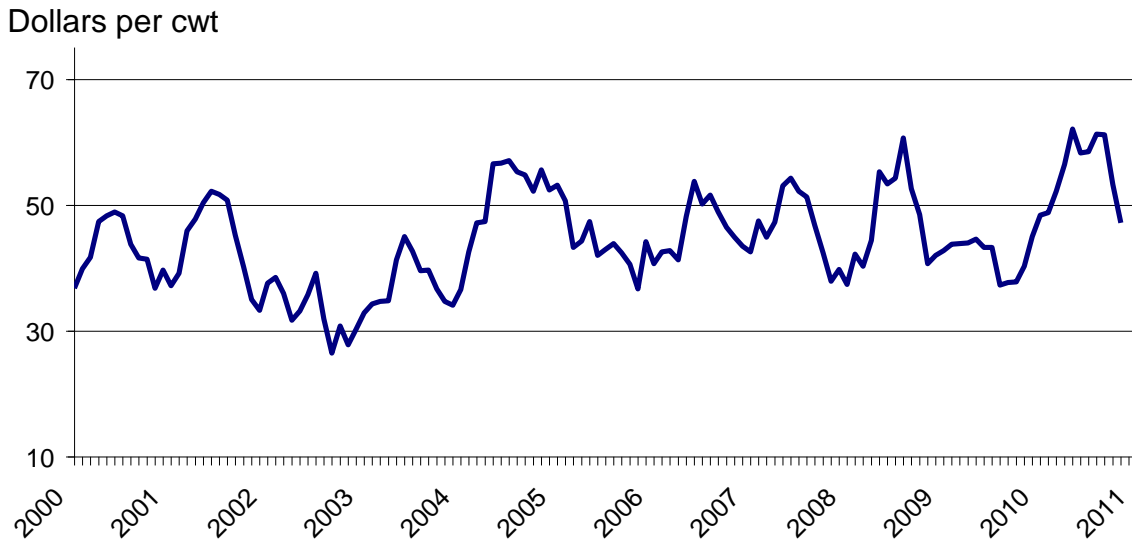


## Prices Received for Milk by Month – United States

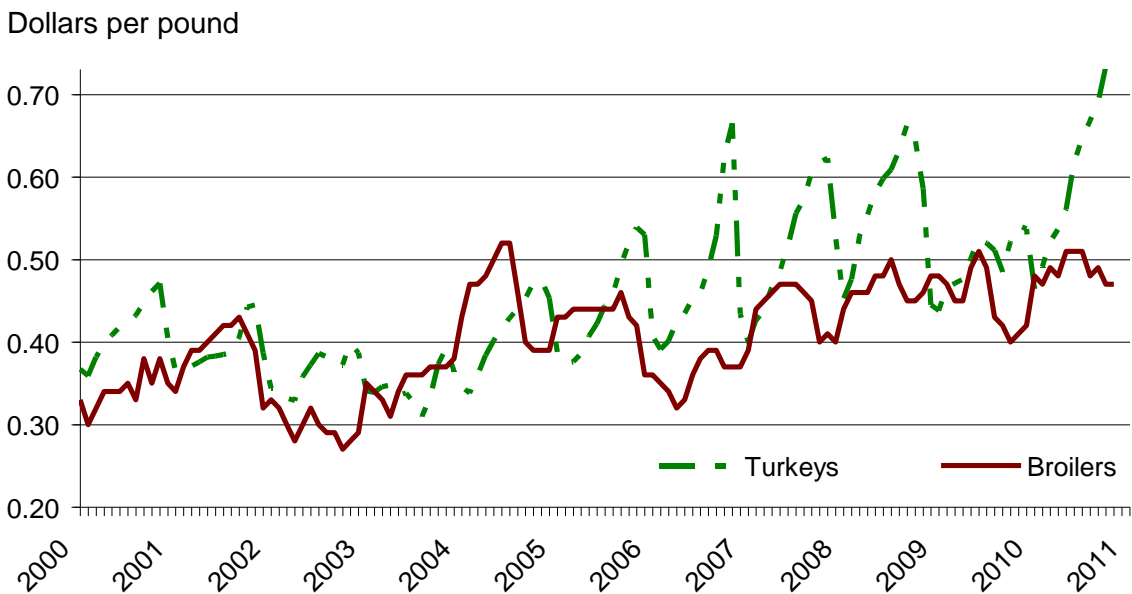
Dollars per cwt



## Prices Received for Hogs by Month – United States



## Prices Received for Turkeys and Broilers by Month – United States



**Prices Received for All Wheat – States and United States:  
November 2010 with Comparisons**

States	November 2009	October 2010	Preliminary November 2010
	(dollars per bushel)	(dollars per bushel)	(dollars per bushel)
Arizona .....	(S)	(D)	(D)
Arkansas .....	4.28	(S)	(D)
California .....	(D)	(D)	(D)
Colorado .....	4.59	5.83	5.76
Idaho .....	4.59	5.63	5.94
Illinois .....	3.87	6.29	6.70
Indiana .....	3.79	5.19	6.01
Kansas .....	4.60	6.19	6.15
Michigan .....	4.55	6.26	6.25
Minnesota .....	4.76	5.72	5.73
Missouri .....	3.98	6.22	6.00
Montana .....	5.16	5.82	6.59
Nebraska .....	4.50	5.74	5.90
North Carolina .....	4.46	6.00	6.02
North Dakota .....	4.92	5.80	6.34
Ohio .....	4.56	5.68	5.60
Oklahoma .....	4.60	6.17	6.16
Oregon .....	4.16	6.06	6.33
South Dakota .....	5.37	6.14	6.29
Texas .....	5.01	5.65	6.11
Washington .....	5.05	5.80	6.06
United States .....	4.79	5.87	6.21

(D) Withheld to avoid disclosing data for individual operations.

(S) Insufficient number of reports to establish an estimate.

**Prices Received for Winter Wheat – States and United States:  
November 2010 with Comparisons**

States	November 2009	October 2010	Preliminary November 2010
	(dollars per bushel)	(dollars per bushel)	(dollars per bushel)
Arkansas .....	4.28	(S)	(D)
California .....	(D)	(D)	(D)
Colorado .....	4.60	5.84	5.76
Idaho .....	4.36	5.52	5.95
Illinois .....	3.87	6.29	6.70
Indiana .....	3.79	5.19	6.01
Kansas .....	4.60	6.19	6.15
Michigan .....	4.55	6.26	6.25
Minnesota .....	3.80	5.07	5.00
Missouri .....	3.98	6.22	6.00
Montana .....	4.68	5.64	6.10
Nebraska .....	4.50	5.74	5.90
North Carolina .....	4.46	6.00	6.02
North Dakota .....	4.20	5.19	5.30
Ohio .....	4.56	5.68	5.60
Oklahoma .....	4.60	6.17	6.16
Oregon .....	4.14	5.92	6.20
South Dakota .....	5.22	5.06	5.90
Texas .....	5.01	5.65	6.11
Washington .....	4.72	5.71	5.93
United States .....	4.60	5.80	6.04

(D) Withheld to avoid disclosing data for individual operations.

(S) Insufficient number of reports to establish an estimate.

**Prices Received for Durum Wheat – States and United States:  
November 2010 with Comparisons**

States	November 2009	October 2010	Preliminary November 2010
	(dollars per bushel)	(dollars per bushel)	(dollars per bushel)
Arizona .....	(S)	(D)	(D)
California .....	(D)	(S)	(S)
Idaho .....	(D)	(D)	(D)
Montana .....	4.92	5.19	6.49
North Dakota .....	4.33	4.84	6.00
United States .....	4.59	4.97	6.14

(D) Withheld to avoid disclosing data for individual operations.

(S) Insufficient number of reports to establish an estimate.

**Prices Received for Spring Wheat – States and United States:  
November 2010 with Comparisons**

States	November 2009	October 2010	Preliminary November 2010
	(dollars per bushel)	(dollars per bushel)	(dollars per bushel)
Colorado .....	(D)	(D)	(D)
Idaho .....	4.94	5.90	5.95
Minnesota .....	4.77	5.74	5.75
Montana .....	5.68	6.03	6.97
North Dakota .....	5.04	6.18	6.50
Oregon .....	4.31	6.77	7.10
South Dakota .....	5.62	6.59	6.45
Washington .....	5.93	6.24	6.69
United States .....	5.19	6.15	6.50

(D) Withheld to avoid disclosing data for individual operations.



## Prices Received for All Wheat, Corn, and Soybeans by Month – United States: 2010 with Comparisons

[Current month prices are mid-month; prices for previous months and years are for the entire month. Blank data cells indicate estimation period has not yet begun]

Month	All wheat			Corn			Soybeans		
	2008	2009	Preliminary 2010	2008	2009	Preliminary 2010	2008	2009	Preliminary 2010
	(dollars per bushel)	(dollars per bushel)	(dollars per bushel)	(dollars per bushel)	(dollars per bushel)	(dollars per bushel)	(dollars per bushel)	(dollars per bushel)	(dollars per bushel)
January ....	7.96	6.20	4.90	3.98	4.36	3.66	9.95	9.97	9.79
February ...	10.10	5.79	4.73	4.54	3.87	3.55	11.70	9.54	9.41
March .....	10.50	5.71	4.70	4.70	3.85	3.55	11.40	9.12	9.39
April .....	10.10	5.75	4.41	5.14	3.85	3.41	12.00	9.79	9.47
May .....	8.87	5.85	4.33	5.27	3.96	3.48	12.10	10.70	9.41
June .....	7.62	5.72	4.16	5.47	4.01	3.41	13.10	11.40	9.45
July .....	7.15	5.17	4.50	5.25	3.60	3.49	13.30	10.80	9.79
August .....	7.61	4.85	5.44	5.26	3.33	3.65	12.80	10.80	10.10
September	7.43	4.48	5.83	5.01	3.25	4.08	10.80	9.75	9.98
October ....	6.65	4.47	5.87	4.37	3.61	4.32	9.95	9.43	10.20
November .	6.29	4.79	6.21	4.26	3.65	4.59	9.39	9.53	11.20
December .	5.95	4.87		4.11	3.60		9.24	9.80	

## Prices Received for Beef Cattle and All Hogs by Month – United States: 2010 with Comparisons

[Current month prices are mid-month; prices for previous months and years are for the entire month. Blank data cells indicate estimation period has not yet begun]

States	Beef cattle <sup>1</sup>			All hogs <sup>2</sup>		
	2008	2009	Preliminary 2010	2008	2009	Preliminary 2010
	(dollars per cwt)	(dollars per cwt)	(dollars per cwt)	(dollars per cwt)	(dollars per cwt)	(dollars per cwt)
January .....	87.50	80.10	82.10	37.40	42.80	48.40
February .....	89.00	78.90	85.50	42.20	43.80	48.80
March .....	87.90	79.10	90.50	40.30	43.90	52.20
April .....	86.80	83.80	95.70	44.40	44.00	56.50
May .....	91.30	83.20	94.80	55.30	44.60	62.10
June .....	91.90	80.10	90.30	53.40	43.30	58.30
July .....	95.00	80.90	91.60	54.30	43.30	58.50
August .....	95.80	80.40	93.50	60.70	37.30	61.30
September .....	94.20	80.50	94.20	52.60	37.70	61.20
October .....	87.40	79.20	93.10	48.50	37.80	53.30
November .....	84.30	79.60	94.10	40.70	40.30	47.20
December .....	79.70	78.50		42.00	45.00	

<sup>1</sup> Cows and steers & heifers.

<sup>2</sup> Barrows & gilts and sows.

**Prices Received for All Barley – States and United States:  
November 2010 with Comparisons**

States	November 2009	October 2010	Preliminary November 2010
	(dollars per bushel)	(dollars per bushel)	(dollars per bushel)
California .....	(S)	(D)	(S)
Colorado .....	5.22	4.12	(S)
Idaho .....	4.85	4.11	3.89
Minnesota .....	(D)	3.42	(D)
Montana .....	4.51	3.51	3.79
North Dakota .....	4.34	3.53	3.64
Oregon .....	2.27	3.58	4.30
Utah .....	2.49	3.11	3.56
Washington .....	2.73	3.76	3.91
Wyoming .....	(D)	(D)	(D)
United States .....	4.46	3.75	3.76

(D) Withheld to avoid disclosing data for individual operations.

(S) Insufficient number of reports to establish an estimate.

**Prices Received for Malting Barley – States: November 2010 with Comparisons**

States	November 2009	October 2010	Preliminary November 2010
	(dollars per bushel)	(dollars per bushel)	(dollars per bushel)
Idaho .....	5.09	4.17	3.90
Minnesota .....	(D)	3.49	(D)
Montana .....	4.63	3.70	3.88
North Dakota .....	4.84	3.69	3.70
Wyoming .....	(D)	(D)	(D)

(D) Withheld to avoid disclosing data for individual operations.

**Prices Received for Feed Barley – States: November 2010 with Comparisons**

States	November 2009	October 2010	Preliminary November 2010
	(dollars per bushel)	(dollars per bushel)	(dollars per bushel)
Idaho .....	2.75	3.68	3.80
Minnesota .....	(D)	2.40	(D)
Montana .....	2.01	3.00	3.55
North Dakota .....	2.16	2.88	3.30
Wyoming .....	(D)	(D)	(D)

(D) Withheld to avoid disclosing data for individual operations.

**Prices Received for Corn – States and United States:  
November 2010 with Comparisons**

States	November 2009	October 2010	Preliminary November 2010
	(dollars per bushel)	(dollars per bushel)	(dollars per bushel)
Colorado .....	3.79	4.23	4.57
Illinois .....	3.55	4.52	4.60
Indiana .....	3.66	4.51	4.81
Iowa .....	3.72	4.28	4.60
Kansas .....	3.61	4.47	4.85
Kentucky .....	3.62	4.62	4.90
Michigan .....	3.52	4.48	4.80
Minnesota .....	3.57	3.95	4.20
Missouri .....	3.59	4.38	4.60
Nebraska .....	3.71	4.22	4.50
North Carolina .....	4.18	5.28	5.48
North Dakota .....	3.46	3.87	4.25
Ohio .....	3.59	4.56	4.79
Pennsylvania .....	3.69	5.44	5.77
South Dakota .....	3.38	4.02	4.39
Tennessee .....	3.71	4.66	5.10
Texas .....	4.18	4.48	4.87
Wisconsin .....	3.63	4.30	4.55
United States .....	3.65	4.32	4.59

**Prices Received for Soybeans – States and United States:  
November 2010 with Comparisons**

States	November 2009	October 2010	Preliminary November 2010
	(dollars per bushel)	(dollars per bushel)	(dollars per bushel)
Arkansas .....	9.69	10.80	11.80
Illinois .....	9.79	10.80	11.50
Indiana .....	9.63	10.60	11.80
Iowa .....	9.53	9.99	10.80
Kansas .....	9.37	10.50	11.50
Kentucky .....	9.63	10.70	11.50
Louisiana .....	9.60	10.80	11.80
Michigan .....	9.50	10.30	11.50
Minnesota .....	9.32	9.69	10.50
Mississippi .....	8.87	10.30	11.50
Missouri .....	9.45	10.50	11.20
Nebraska .....	9.59	9.98	10.70
North Carolina .....	9.69	10.90	11.90
North Dakota .....	9.27	9.83	10.90
Ohio .....	9.72	10.60	11.40
South Dakota .....	9.22	9.88	11.00
Tennessee .....	9.71	10.80	11.80
Wisconsin .....	9.55	10.20	11.30
United States .....	9.53	10.20	11.20

**Prices Received for Oats – States and United States:  
November 2010 with Comparisons**

States	November 2009	October 2010	Preliminary November 2010
	(dollars per bushel)	(dollars per bushel)	(dollars per bushel)
Illinois .....	(D)	(D)	(D)
Iowa .....	1.85	2.27	2.40
Michigan .....	2.20	2.68	2.71
Minnesota .....	1.98	2.19	2.30
Montana .....	(D)	2.30	(S)
Nebraska .....	2.28	3.43	3.65
New York .....	(D)	(D)	(D)
North Dakota .....	1.98	2.30	(D)
Oregon .....	(S)	(D)	(S)
Pennsylvania .....	2.44	2.81	2.90
South Dakota .....	1.99	2.48	2.50
Texas .....	(D)	(S)	(S)
Wisconsin .....	1.79	2.49	1.99
United States .....	2.02	2.37	2.57

(D) Withheld to avoid disclosing data for individual operations.

(S) Insufficient number of reports to establish an estimate.

**Prices Received for Sorghum Grain – States and United States:  
November 2010 with Comparisons**

States	November 2009	October 2010	Preliminary November 2010
	(dollars per cwt)	(dollars per cwt)	(dollars per cwt)
Arkansas .....	6.45	(D)	(D)
Illinois .....	6.36	9.56	9.40
Kansas .....	5.51	8.00	8.25
Louisiana .....	(D)	(D)	(S)
Missouri .....	5.95	7.90	7.70
Nebraska .....	5.72	7.77	8.25
Oklahoma .....	5.74	8.34	8.40
Texas .....	6.30	7.41	8.61
United States .....	5.67	7.80	8.34

(D) Withheld to avoid disclosing data for individual operations.

(S) Insufficient number of reports to establish an estimate.

**Prices Received for Dry Beans – States and United States:  
November 2010 with Comparisons**

States	November 2009	October 2010	Preliminary November 2010
	(dollars per cwt)	(dollars per cwt)	(dollars per cwt)
California .....	54.70	42.70	(D)
Colorado .....	30.40	23.20	22.80
Idaho .....	32.40	22.60	27.80
Michigan .....	33.30	28.60	29.00
Minnesota .....	30.50	28.50	29.00
Nebraska .....	30.90	22.00	21.90
North Dakota .....	28.50	22.70	21.10
United States .....	30.10	25.70	24.30

(D) Withheld to avoid disclosing data for individual operations.

**Prices Received for Peanuts (In-Shell) – States and United States:  
November 2010 with Comparisons**

States	November 2009	October 2010	Preliminary November 2010
	(dollars per bushel)	(dollars per bushel)	(dollars per bushel)
Alabama .....	(D)	0.169	0.188
Florida .....	0.205	0.194	0.213
Georgia .....	0.189	0.197	0.200
Mississippi .....	0.189	0.183	0.164
New Mexico .....	0.338	0.373	0.532
North Carolina .....	0.223	0.220	0.235
Oklahoma .....	(D)	0.255	(D)
South Carolina .....	0.217	0.241	0.246
Texas .....	0.243	0.274	0.261
Virginia .....	0.247	0.214	0.230
United States .....	0.217	0.214	0.225

(D) Withheld to avoid disclosing data for individual operations.

**Prices Received for Sunflowers – States and United States: November 2010 with Comparisons**

States	November 2009	October 2010	Preliminary November 2010
	(dollars per cwt)	(dollars per cwt)	(dollars per cwt)
Colorado .....	21.50	(D)	(S)
Kansas .....	17.80	24.80	21.40
Minnesota .....	19.10	21.90	(D)
North Dakota .....	14.00	19.50	20.50
South Dakota .....	12.50	17.00	19.20
United States .....	14.20	20.80	20.30

(D) Withheld to avoid disclosing data for individual operations.

(S) Insufficient number of reports to establish an estimate.

**Prices Received for Canola – States and United States: November 2010 with Comparisons**

States	November 2009	October 2010	Preliminary November 2010
	(dollars per cwt)	(dollars per cwt)	(dollars per cwt)
Minnesota .....	(D)	(D)	(S)
North Dakota .....	16.00	18.20	20.70
United States .....	16.00	18.20	20.70

(D) Withheld to avoid disclosing data for individual operations.

(S) Insufficient number of reports to establish an estimate.

**Prices Received for Flaxseed – States and United States: November 2010 with Comparisons**

States	November 2009	October 2010	Preliminary November 2010
	(dollars per bushel)	(dollars per bushel)	(dollars per bushel)
North Dakota .....	8.12	11.90	12.90
United States .....	8.12	11.90	12.90

## Prices Received for Upland Cotton and Cottonseed – States and United States: November 2010 with Comparisons

[Cottonseed marketing year August - February]

States	Upland cotton			Cottonseed		
	November 2009	October 2010	Preliminary November 2010	November 2009	October 2010	Preliminary November 2010
	(dollars per pound)	(dollars per pound)	(dollars per pound)	(dollars per cwt)	(dollars per cwt)	(dollars per cwt)
Alabama .....	0.649	0.732	(D)	129.00	132.00	136.00
Arizona .....	(D)	(D)	(D)	177.00	(D)	212.00
Arkansas .....	0.624	(D)	0.759	173.00	175.00	177.00
California .....	(D)	(D)	(S)	253.00	(D)	274.00
Georgia .....	0.666	0.843	0.812	122.00	134.00	136.00
Louisiana .....	0.642	0.773	0.838	146.00	165.00	185.00
Mississippi .....	0.617	0.733	0.791	156.00	153.00	164.00
North Carolina .....	0.640	0.716	0.707	146.00	145.00	151.00
Tennessee .....	0.628	0.767	(D)	174.00	190.00	190.00
Texas .....	0.553	0.792	0.812	155.00	151.00	153.00
United States .....	0.595	0.781	0.801	159.00	158.00	163.00

(D) Withheld to avoid disclosing data for individual operations.

(S) Insufficient number of reports to establish an estimate.

## Prices Received and Marketings for Upland Cotton and Rice – United States: November 2010 with Comparisons

Item	November 2009	October 2010	Preliminary November 2010
Cotton, Upland			
Average price .....dollars/pound	0.595	0.781	0.801
Marketings <sup>1</sup> .....1,000 bales	1,679	2,203	(NA)
Rice, all			
Average price .....dollars/cwt	14.00	11.10	12.10
Marketings <sup>2</sup> .....1,000 cwt	13,279	17,755	(NA)
Rice, long			
Average price .....dollars/cwt	13.00	10.10	10.40
Marketings <sup>2</sup> .....1,000 cwt	10,266	14,781	(NA)
Rice, medium and short			
Average price .....dollars/cwt	17.30	16.60	17.10
Marketings <sup>2</sup> .....1,000 cwt	3,013	2,974	(NA)

(NA) Not available.

<sup>1</sup> Marketings based on a survey of cotton buyers in the major producing States - Alabama, Arizona, Arkansas, California, Georgia, Louisiana, Mississippi, North Carolina, Tennessee, and Texas.

<sup>2</sup> Purchases by private firms and rice (rough equivalent) shipped by cooperatives.

**Prices Received for Hay by Type – States and United States:  
November 2010 with Comparisons**

States	All hay			Alfalfa hay			Other hay		
	November 2009	October 2010	Preliminary November 2010	November 2009	October 2010	Preliminary November 2010	November 2009	October 2010	Preliminary November 2010
	(dollars per ton)	(dollars per ton)	(dollars per ton)	(dollars per ton)	(dollars per ton)	(dollars per ton)	(dollars per ton)	(dollars per ton)	(dollars per ton)
Arizona .....	106.00	125.00	125.00	105.00	125.00	125.00	120.00	125.00	120.00
California .....	97.00	127.00	124.00	102.00	133.00	130.00	79.00	97.00	99.00
Colorado .....	128.00	123.00	123.00	130.00	125.00	125.00	110.00	105.00	105.00
Idaho .....	117.00	122.00	125.00	120.00	124.00	127.00	84.00	98.00	95.00
Illinois .....	116.00	116.00	112.00	128.00	130.00	130.00	90.00	86.00	88.00
Iowa .....	104.00	104.00	111.00	108.00	112.00	120.00	74.00	80.00	77.00
Kansas .....	102.00	102.00	107.00	107.00	110.00	115.00	78.00	70.00	75.00
Kentucky .....	90.00	88.00	88.00	150.00	130.00	130.00	75.00	75.00	75.00
Michigan .....	121.00	94.00	97.00	130.00	105.00	110.00	110.00	80.00	80.00
Minnesota .....	88.00	103.00	102.00	110.00	110.00	110.00	70.00	65.00	70.00
Missouri .....	61.00	80.00	77.00	115.00	135.00	135.00	50.00	60.00	65.00
Montana .....	93.00	86.00	81.00	92.00	87.00	83.00	96.00	82.00	75.00
Nebraska .....	71.00	73.00	75.00	75.00	77.00	78.00	59.00	61.00	64.00
Nevada .....	105.00	122.00	132.00	105.00	122.00	132.00	103.00	110.00	120.00
New Mexico .....	145.00	162.00	161.00	148.00	165.00	165.00	121.00	130.00	125.00
New York .....	128.00	104.00	104.00	145.00	125.00	120.00	125.00	100.00	100.00
North Dakota .....	64.00	54.00	55.00	68.00	59.00	58.00	49.00	42.00	42.00
Ohio .....	109.00	114.00	99.00	152.00	138.00	135.00	84.00	88.00	81.00
Oklahoma .....	96.00	102.00	112.00	136.00	131.00	136.00	85.00	75.00	75.00
Oregon .....	140.00	141.00	147.00	128.00	135.00	143.00	155.00	164.00	160.00
Pennsylvania .....	131.00	116.00	109.00	152.00	142.00	135.00	125.00	112.00	105.00
South Dakota .....	80.00	77.00	78.00	82.00	78.00	80.00	70.00	70.00	69.00
Texas .....	121.00	123.00	122.00	185.00	180.00	180.00	110.00	110.00	112.00
Utah .....	105.00	108.00	111.00	105.00	110.00	112.00	(D)	90.00	98.00
Washington .....	130.00	144.00	143.00	120.00	130.00	130.00	170.00	180.00	175.00
Wisconsin .....	96.00	101.00	102.00	100.00	105.00	105.00	70.00	75.00	70.00
Wyoming .....	95.00	88.00	89.00	95.00	90.00	90.00	93.00	80.00	80.00
United States ..	105.00	113.00	111.00	109.00	118.00	117.00	97.90	96.90	95.50

(D) Withheld to avoid disclosing data for individual operations.

**Prices Received for Apples – States and United States:  
November 2010 with Comparisons**

[Equivalent packinghouse-door returns for California, Michigan, New York, and Washington. Prices at point of first sale for Other States]

States	Apples, fresh use		
	November 2009	October 2010	Preliminary November 2010
	(dollars per pound)	(dollars per pound)	(dollars per pound)
California .....	0.292	0.342	0.370
Michigan .....	0.190	0.340	0.300
New York .....	0.256	0.292	0.268
Ohio .....	0.400	0.410	0.400
Pennsylvania .....	0.312	0.366	0.388
Virginia .....	0.305	0.370	0.370
Washington .....	0.354	0.356	0.324
United States .....	0.333	0.349	0.321



## Prices Received for Citrus Fruits, by Utilization – States and United States: November 2009

[Net lbs. per box: Grapefruit - Arizona and California-67, Florida-85, Texas-80; Lemons - Arizona and California-76; Oranges - Arizona and California-75, Florida-90, Texas-85; Tangelos - Florida-90; Tangerines and mandarins - Arizona and California-75, Florida-95]

Commodity, State, and type	FOB packed fresh	Equivalent returns					
		Packinghouse-door			On-tree		
		All	Fresh	Process	All	Fresh	Process
	(dollars per box)	(dollars per box)	(dollars per box)	(dollars per box)	(dollars per box)	(dollars per box)	(dollars per box)
Grapefruit							
California .....	14.50	4.70	4.70	(S)	1.60	1.60	(S)
Florida .....	26.10	13.22	16.80	3.64	10.61	14.38	0.54
White .....	28.00	13.62	18.65	3.25	10.93	16.00	0.50
Colored .....	25.60	13.09	16.25	3.80	10.51	13.90	0.55
Texas .....	26.90	14.13	16.65	1.60	12.65	15.15	0.20
United States .....	25.70	13.12	16.15	3.27	10.78	13.95	0.48
Lemons							
Arizona .....	39.90	16.85	29.21	(D)	11.10	23.46	(D)
California .....	42.50	21.86	31.81	(D)	16.11	26.06	(D)
United States .....	41.80	20.35	31.12	(D)	14.60	25.37	(D)
Oranges							
California							
Navel and misc .....	28.80	18.82	20.41	(D)	16.17	17.76	(D)
Florida							
Early and mids .....	23.90	9.31	14.00	5.95	6.69	11.20	3.45
United States .....	27.30	14.23	18.42	5.42	11.61	15.75	2.90
Tangelos							
Florida .....	25.00	9.81	14.75	2.40	6.68	11.50	-0.55
Tangerines and mandarins							
California .....	(D)	(D)	(D)	(D)	(D)	(D)	(D)
Florida .....	34.50	16.65	22.50	1.80	12.55	18.50	-2.55
United States .....	40.70	22.29	30.10	2.04	18.61	26.45	-1.74

(D) Withheld to avoid disclosing data for individual operations.

(S) Insufficient number of reports to establish an estimate.

## Prices Received for Citrus Fruits, by Utilization – States and United States: October 2010

[Net lbs. per box: Grapefruit - Arizona and California-67, Florida-85, Texas-80; Lemons - Arizona and California-80; Oranges - Arizona and California-75, Florida-90, Texas-85; Tangelos - Florida-90; Tangerines and mandarins - Arizona and California-75, Florida-95]

Commodity, State, and type	FOB packed fresh	Equivalent returns					
		Packinghouse-door			On-tree		
		All	Fresh	Process	All	Fresh	Process
	(dollars per box)	(dollars per box)	(dollars per box)	(dollars per box)	(dollars per box)	(dollars per box)	(dollars per box)
Grapefruit California .....	14.00	4.20	4.20	(S)	1.10	1.10	(S)
Lemons							
Arizona .....	42.70	31.80	31.80	(D)	25.93	25.93	(D)
California .....	43.00	26.78	32.10	(D)	20.91	26.23	(D)
United States .....	43.00	27.21	32.07	(D)	21.34	26.20	(D)
Oranges							
California Valencia .....	21.20	9.37	12.68	(D)	6.68	9.99	(D)
Tangerines and mandarins							
Florida .....	31.60	16.93	19.35	4.85	13.43	15.85	1.35

(D) Withheld to avoid disclosing data for individual operations.

(S) Insufficient number of reports to establish an estimate.

## Prices Received for Citrus Fruits, by Utilization – States and United States: November 2010

[Net lbs. per box: Grapefruit - Arizona and California-80, Florida-85, Texas-80; Lemons - Arizona and California-80; Oranges - Arizona and California-80, Florida-90, Texas-85; Tangelos - Florida-90; Tangerines and mandarins - Arizona and California-80, Florida-95]

Commodity, State, and type	FOB packed fresh	Equivalent returns					
		Packinghouse-door			On-tree		
		All	Fresh	Process	All	Fresh	Process
	(dollars per box)	(dollars per box)	(dollars per box)	(dollars per box)	(dollars per box)	(dollars per box)	(dollars per box)
Grapefruit							
California .....	16.10	9.70	9.70	(S)	7.60	7.60	(S)
Florida .....	28.90	14.11	19.07	3.04	11.74	16.88	0.27
White .....	29.90	12.43	20.00	3.00	10.10	17.85	0.45
Colored .....	28.70	14.52	18.90	3.05	12.14	16.70	0.20
Texas .....	28.20	12.57	17.90	1.60	11.07	16.35	0.20
United States .....	28.20	13.84	18.55	2.91	11.56	16.41	0.26
Lemons							
Arizona .....	41.50	27.52	30.60	(D)	21.65	24.73	(D)
California .....	44.10	26.69	33.20	(D)	20.82	27.33	(D)
United States .....	43.70	26.80	32.80	(D)	20.93	26.93	(D)
Oranges							
California .....	26.30	15.76	17.63	(D)	13.31	15.20	(D)
Navel and misc .....	26.70	17.04	18.06	(D)	14.62	15.65	(D)
Valencia .....	20.20	6.38	11.68	(D)	3.69	8.99	(D)
Florida							
Early and mids .....	25.40	10.35	15.40	7.60	7.76	12.65	5.10
United States .....	26.10	13.72	17.20	6.03	11.22	14.71	3.50
Tangerines and mandarins							
California .....	(D)	(D)	(D)	(D)	(D)	(D)	(D)
Florida .....	35.10	18.51	22.85	5.60	15.01	19.35	2.10
United States .....	46.40	29.61	36.53	2.62	26.48	33.56	-1.15

(D) Withheld to avoid disclosing data for individual operations.

(S) Insufficient number of reports to establish an estimate.

**Prices Received for Potatoes – States and United States:  
November 2010 with Comparisons**

States	November 2009	October 2010	Preliminary November 2010
	(dollars per cwt)	(dollars per cwt)	(dollars per cwt)
California			
All <sup>1</sup> .....	6.75	8.20	8.50
Winter <sup>2</sup> .....	(S)	(NA)	(NA)
Spring .....	(S)	(S)	(S)
Summer .....	(S)	(S)	(S)
Fall .....	6.75	8.20	8.50
Colorado			
All <sup>1</sup> .....	6.25	11.30	11.10
Fresh <sup>3</sup> .....	6.65	12.20	(D)
Florida .....	(S)	(S)	(S)
Idaho			
All <sup>1</sup> .....	6.10	6.15	6.35
Fresh <sup>3</sup> .....	4.80	6.60	(D)
Processing .....	7.00	6.00	(D)
Maine .....	9.75	7.95	8.65
Michigan .....	10.20	8.85	10.30
Minnesota .....	7.45	6.70	(D)
New York .....	12.20	13.50	13.40
North Carolina .....	(S)	(S)	(S)
North Dakota			
All <sup>1</sup> .....	10.00	7.90	9.05
Fresh <sup>3</sup> .....	9.75	12.70	(D)
Processing .....	9.70	6.80	(D)
Oregon .....	6.80	6.85	8.25
Texas .....	(S)	(S)	(S)
Virginia .....	(S)	(S)	(S)
Washington			
All <sup>1</sup> .....	6.25	6.00	6.00
Processing .....	6.20	5.80	(D)
Wisconsin			
All <sup>1</sup> .....	7.95	8.10	8.55
Fresh <sup>3</sup> .....	6.95	9.65	(D)
Processing .....	8.80	7.25	(D)
United States			
All <sup>1</sup> .....	7.22	6.77	7.65
Fresh <sup>3</sup> .....	6.68	9.91	(D)
Processing .....	7.46	6.16	(D)

(D) Withheld to avoid disclosing data for individual operations.

(NA) Not available.

(S) Insufficient number of reports to establish an estimate.

<sup>1</sup> Average price of potatoes sold for all uses, including table stock, processing, seed, and livestock feed.

<sup>2</sup> Beginning in 2010, winter potatoes included in spring potatoes.

<sup>3</sup> Fresh market prices only. Includes table stock prices.

## Prices Received for Beef Cattle and Cows – States and United States: November 2010 with Comparisons

[Beef cattle includes cows and steers & heifers combined. Cows includes beef cows and cull dairy cows sold for slaughter]

States	Beef cattle			Cows		
	November 2009	October 2010	Preliminary November 2010	November 2009	October 2010	Preliminary November 2010
	(dollars per cwt)	(dollars per cwt)	(dollars per cwt)	(dollars per cwt)	(dollars per cwt)	(dollars per cwt)
Arizona .....	58.50	76.60	77.10	43.00	57.00	56.00
Arkansas .....	70.40	77.80	83.80	38.50	53.00	50.00
California .....	64.80	77.60	79.20	44.40	52.00	52.60
Colorado .....	89.10	105.00	109.00	43.50	57.10	56.50
Florida .....	63.30	73.10	72.90	37.50	47.80	46.90
Georgia .....	55.60	65.60	66.40	43.10	51.80	52.40
Idaho .....	71.20	85.80	83.90	42.30	53.40	52.30
Illinois .....	82.60	95.20	96.50	42.00	53.30	52.20
Iowa .....	82.70	97.10	98.10	42.50	55.00	54.00
Kansas .....	84.70	98.00	100.00	42.70	49.50	50.00
Kentucky .....	70.60	87.40	88.20	41.00	54.00	54.00
Louisiana .....	52.60	64.40	63.10	39.00	49.00	46.90
Michigan .....	66.80	77.60	78.00	43.00	51.00	50.00
Minnesota .....	71.70	88.30	88.90	44.60	57.00	55.10
Missouri .....	78.00	93.30	94.60	40.20	51.70	49.00
Montana .....	77.10	94.90	94.70	38.60	52.60	51.50
Nebraska .....	83.90	97.70	98.40	44.40	57.60	54.60
New Mexico .....	70.10	83.80	83.60	45.00	59.00	58.00
North Dakota .....	78.60	95.60	98.60	43.00	54.00	53.00
Ohio .....	73.70	88.70	89.60	38.70	46.80	50.00
Oklahoma .....	85.80	96.10	96.40	41.20	56.70	55.50
Oregon .....	76.20	92.40	90.50	45.00	55.00	54.00
Pennsylvania .....	69.30	80.90	82.10	40.30	50.80	51.80
South Dakota .....	89.30	104.00	107.00	44.90	56.80	55.70
Tennessee .....	62.60	77.20	77.80	38.00	49.00	49.00
Texas .....	80.60	92.20	92.30	36.80	47.80	47.10
Virginia .....	67.10	85.10	83.70	39.30	46.40	48.50
Wisconsin .....	56.10	69.00	69.00	41.00	53.00	51.90
Wyoming .....	75.70	94.80	90.10	39.30	51.60	49.30
United States .....	79.60	93.10	94.10	41.70	52.70	51.90

**Prices Received for Calves and Steers & Heifers – States and United States:  
November 2010 with Comparisons**

States	Calves			Steers & heifers		
	November 2009	October 2010	Preliminary November 2010	November 2009	October 2010	Preliminary November 2010
	(dollars per cwt)	(dollars per cwt)	(dollars per cwt)	(dollars per cwt)	(dollars per cwt)	(dollars per cwt)
Arizona .....	98.00	112.00	118.00	86.00	97.00	99.00
Arkansas .....	91.50	107.00	112.00	84.00	98.00	102.00
California .....	100.00	122.00	122.00	85.10	98.60	101.00
Colorado .....	101.00	120.00	125.00	90.00	106.00	110.00
Florida .....	90.50	105.00	107.00	76.10	89.90	90.90
Georgia .....	93.20	106.00	109.00	76.90	89.90	91.60
Idaho .....	100.00	118.00	122.00	85.50	98.40	99.50
Illinois .....	94.10	109.00	113.00	83.40	96.10	97.40
Iowa .....	99.50	115.00	116.00	83.50	98.00	99.00
Kansas .....	110.00	122.00	130.00	85.60	99.00	101.00
Kentucky .....	90.00	103.00	104.00	80.00	98.00	99.00
Louisiana .....	89.30	100.00	102.00	76.80	90.50	92.00
Michigan .....	79.00	97.00	95.00	77.00	89.00	90.00
Minnesota .....	105.00	123.00	124.00	82.60	96.50	97.80
Missouri .....	99.20	117.00	118.00	87.50	105.00	106.00
Montana .....	108.00	130.00	131.00	97.00	113.00	115.00
Nebraska .....	109.00	129.00	129.00	85.10	98.90	99.80
New Mexico .....	103.00	111.00	120.00	89.00	99.00	100.00
North Dakota .....	103.00	120.00	125.00	92.50	108.00	110.00
Ohio .....	93.80	108.00	105.00	77.60	93.40	94.00
Oklahoma .....	103.00	114.00	117.00	90.70	101.00	102.00
Oregon .....	98.00	119.00	122.00	84.00	97.00	98.00
Pennsylvania .....	100.00	101.00	99.80	79.50	91.50	92.70
South Dakota .....	107.00	130.00	130.00	90.20	105.00	108.00
Tennessee .....	87.00	101.00	103.00	79.00	96.00	97.00
Texas .....	104.00	113.00	119.00	86.60	98.20	99.70
Virginia .....	85.90	106.00	107.00	76.80	95.40	96.10
Wisconsin .....	127.00	141.00	143.00	76.90	91.00	92.50
Wyoming .....	109.00	129.00	133.00	97.00	110.00	112.00
United States .....	104.00	120.00	122.00	85.40	98.80	100.00

**Prices Received for All Hogs – States and United States:  
November 2010 with Comparisons**

[Includes barrows & gilts and sows]

States	November 2009	October 2010	Preliminary November 2010
	(dollars per cwt)	(dollars per cwt)	(dollars per cwt)
Illinois .....	41.70	52.70	46.90
Indiana .....	41.90	53.80	49.40
Iowa .....	40.50	54.90	48.00
Kansas .....	36.20	49.10	42.90
Minnesota .....	41.70	54.90	48.40
Missouri .....	35.80	47.60	42.00
Nebraska .....	41.80	55.00	48.00
North Carolina .....	40.80	53.30	47.30
Ohio .....	39.90	51.80	46.80
Oklahoma .....	34.10	46.70	41.80
Pennsylvania .....	37.50	50.00	44.90
South Dakota .....	40.50	52.70	47.30
United States .....	40.30	53.30	47.20

**Prices Received for Barrows & Gilts – States and United States:  
November 2010 with Comparisons**

States	November 2009	October 2010	Preliminary November 2010
	(dollars per cwt)	(dollars per cwt)	(dollars per cwt)
Illinois .....	42.40	53.20	47.40
Indiana .....	42.10	53.80	49.70
Iowa .....	40.50	55.00	48.00
Kansas .....	36.00	49.00	43.00
Minnesota .....	41.70	54.90	48.40
Missouri .....	35.90	47.70	42.10
Nebraska .....	41.90	55.10	48.10
North Carolina .....	40.80	53.30	47.30
Ohio .....	40.20	52.00	47.00
Oklahoma .....	34.00	46.70	42.00
Pennsylvania .....	37.40	49.60	44.60
South Dakota .....	41.40	53.90	48.60
United States .....	40.50	53.50	47.40

**Prices Received for Sows – States and United States: November 2010 with Comparisons**

States	November 2009	October 2010	Preliminary November 2010
	(dollars per cwt)	(dollars per cwt)	(dollars per cwt)
Illinois .....	33.80	46.70	41.10
Indiana .....	39.80	53.30	46.50
Iowa .....	37.00	50.50	45.00
Kansas .....	37.50	49.50	42.50
Minnesota .....	36.00	49.00	42.60
Missouri .....	35.00	46.70	41.10
Nebraska .....	38.40	51.10	44.80
North Carolina .....	40.30	53.30	46.90
Ohio .....	35.10	48.60	43.10
Oklahoma .....	34.40	46.50	41.00
Pennsylvania .....	38.10	52.30	46.80
South Dakota .....	34.80	44.00	38.40
United States .....	36.10	49.10	42.70

**Prices Received for Sheep – States and United States: October 2010 with Comparisons**

States	October 2009	September 2010	Preliminary October 2010
	(dollars per cwt)	(dollars per cwt)	(dollars per cwt)
California .....	32.50	48.00	56.00
Colorado .....	29.00	51.00	47.00
Idaho .....	23.00	44.00	41.00
Iowa .....	30.50	50.00	51.00
Minnesota .....	33.40	52.00	52.00
Missouri .....	37.80	51.30	53.00
Montana .....	29.90	50.10	49.30
Nebraska .....	36.20	57.60	51.40
North Dakota .....	29.00	40.00	41.00
Ohio .....	35.50	53.00	57.50
Oregon .....	38.00	45.00	49.00
Pennsylvania .....	43.00	63.00	64.00
South Dakota .....	26.00	47.90	45.80
Texas .....	30.90	44.00	51.00
Virginia .....	33.00	54.00	55.00
West Virginia .....	32.00	49.00	51.00
Wyoming .....	29.50	51.60	46.20
United States .....	29.80	48.10	48.50



**Prices Received for Lambs – States and United States:  
October 2010 with Comparisons**

States	October 2009 (dollars per cwt)	September 2010 (dollars per cwt)	October 2010 (dollars per cwt)
California .....	86.00	113.00	118.00
Colorado .....	96.00	130.00	133.00
Idaho .....	94.00	132.00	134.00
Iowa .....	92.50	139.00	140.00
Minnesota .....	96.20	144.00	146.00
Missouri .....	97.30	131.00	133.00
Montana .....	96.50	145.00	145.00
Nebraska .....	95.00	133.00	138.00
North Dakota .....	96.00	138.00	141.00
Ohio .....	100.00	125.00	129.00
Oregon .....	91.00	125.00	134.00
Pennsylvania .....	110.00	126.00	128.00
South Dakota .....	102.00	153.00	156.00
Texas .....	105.00	136.00	142.00
Virginia .....	104.00	120.00	130.00
West Virginia .....	106.00	125.00	129.00
Wyoming .....	98.00	129.00	138.00
United States .....	96.80	135.00	138.00

**Prices Received for All Milk – States and United States:  
November 2010 with Comparisons**

[Before deduction for hauling. Includes quality, quantity, and other premiums. Excludes hauling subsidies]

States	November 2009		October 2010		Preliminary November 2010	
	Price (dollars per cwt)	Fat test (percent)	Price (dollars per cwt)	Fat test (percent)	Price (dollars per cwt)	Fat test (percent)
Arizona .....	14.40	3.58	17.80	3.51	17.80	3.54
California .....	14.17	3.77	16.74	3.72	15.50	3.75
Colorado .....	14.90	3.58	18.50	3.51	18.40	3.55
Florida .....	18.20	3.63	22.00	3.67	22.60	3.67
Idaho .....	14.80	3.75	17.10	3.64	16.50	3.70
Illinois .....	15.60	3.82	19.40	3.76	19.00	3.79
Indiana .....	15.50	3.79	19.30	3.72	19.20	3.75
Iowa .....	15.80	3.76	19.10	3.71	18.90	3.76
Kansas .....	16.30	3.78	19.80	3.75	19.70	3.80
Michigan .....	15.60	3.70	19.30	3.68	19.50	3.73
Minnesota .....	16.20	3.83	18.90	3.76	17.70	3.81
Missouri .....	15.10	3.77	18.60	3.70	18.80	3.75
New Mexico .....	14.90	3.66	18.00	3.60	17.80	3.65
New York .....	16.00	3.79	19.50	3.77	19.30	3.80
Ohio .....	16.70	3.84	20.00	3.79	20.20	3.84
Oregon .....	16.70	3.84	19.80	3.78	19.50	3.84
Pennsylvania .....	16.80	3.80	20.30	3.75	20.10	3.80
Texas .....	16.00	3.81	19.30	3.80	19.50	3.86
Utah .....	14.70	3.76	18.40	3.70	18.20	3.73
Vermont .....	16.20	3.85	20.00	3.84	20.00	3.85
Virginia .....	17.50	3.74	21.40	3.75	21.50	3.80
Washington .....	14.60	3.84	18.30	3.78	18.00	3.84
Wisconsin .....	15.80	3.77	18.80	3.73	17.50	3.78
United States .....	15.40	3.77	18.50	3.72	17.90	3.76

**Prices Received for Fluid Grade Milk – States and United States:  
November 2010 with Comparisons**

[Including milk diverted to manufacturing. Before deduction for hauling. Includes quality, quantity, and other premiums. Excludes hauling subsidies]

States	November 2009		October 2010		Preliminary November 2010	
	Price	Fat test	Price	Fat test	Price	Fat test
	(dollars per cwt)	(percent)	(dollars per cwt)	(percent)	(dollars per cwt)	(percent)
Arizona .....	14.40	3.58	17.80	3.51	(NA)	(NA)
California .....	14.10	3.75	16.70	3.69	(NA)	(NA)
Colorado .....	14.90	3.58	18.50	3.51	(NA)	(NA)
Florida .....	18.20	3.63	22.00	3.67	(NA)	(NA)
Idaho .....	14.80	3.75	17.10	3.64	(NA)	(NA)
Illinois .....	15.60	3.81	19.40	3.76	(NA)	(NA)
Indiana .....	15.50	3.79	19.30	3.72	(NA)	(NA)
Iowa .....	15.80	3.76	19.10	3.71	(NA)	(NA)
Kansas .....	16.30	3.78	19.80	3.75	(NA)	(NA)
Michigan .....	15.60	3.70	19.30	3.68	(NA)	(NA)
Minnesota .....	16.20	3.83	18.90	3.76	(NA)	(NA)
Missouri .....	15.20	3.76	18.70	3.69	(NA)	(NA)
New Mexico .....	14.90	3.66	18.00	3.60	(NA)	(NA)
New York .....	16.00	3.79	19.50	3.77	(NA)	(NA)
Ohio .....	16.80	3.83	20.10	3.78	(NA)	(NA)
Oregon .....	16.70	3.84	19.80	3.78	(NA)	(NA)
Pennsylvania .....	16.80	3.80	20.30	3.75	(NA)	(NA)
Texas .....	16.00	3.81	19.30	3.80	(NA)	(NA)
Utah .....	14.70	3.76	18.40	3.70	(NA)	(NA)
Vermont .....	16.20	3.85	20.00	3.84	(NA)	(NA)
Virginia .....	17.50	3.74	21.40	3.75	(NA)	(NA)
Washington .....	14.60	3.84	18.30	3.78	(NA)	(NA)
Wisconsin .....	15.80	3.76	18.80	3.73	(NA)	(NA)
United States .....	15.40	3.76	18.50	3.71	17.90	3.75

(NA) Not available.

## Prices Received for Manufacturing Grade Milk – States and United States: November 2010 with Comparisons

[Before deduction for hauling. Includes quality, quantity, and other premiums. Excludes hauling subsidies]

States	November 2009		October 2010		Preliminary November 2010	
	Price	Fat test	Price	Fat test	Price	Fat test
	(dollars per cwt)	(percent)	(dollars per cwt)	(percent)	(dollars per cwt)	(percent)
California .....	15.50	4.30	17.40	4.26	(NA)	(NA)
Illinois .....	15.00	3.92	17.10	3.89	(NA)	(NA)
Iowa .....	14.70	4.07	18.00	3.98	(NA)	(NA)
Minnesota .....	14.70	3.92	17.60	3.93	(NA)	(NA)
Missouri .....	13.70	3.95	17.00	3.90	(NA)	(NA)
Ohio .....	13.80	4.03	16.80	4.04	(NA)	(NA)
Wisconsin .....	15.40	4.00	17.50	3.88	(NA)	(NA)
United States .....	15.30	4.18	17.40	4.12	15.60	4.20

(NA) Not available.

## Prices Received for Milk Cows – States and United States: October 2010 with Comparisons

[Animals sold for dairy herd replacement only. Prices estimated in January, April, July, and October]

States	October 2009	July 2010	October 2010
	(dollars per head)	(dollars per head)	(dollars per head)
Arizona .....	1,350	1,300	1,400
California .....	1,200	1,300	1,300
Colorado .....	1,300	1,350	1,350
Florida .....	1,350	1,360	1,400
Idaho .....	1,250	1,350	1,350
Illinois .....	1,350	1,350	1,320
Indiana .....	1,300	1,260	1,340
Iowa .....	1,200	1,250	1,250
Kansas .....	1,250	1,250	1,250
Michigan .....	1,350	1,400	1,400
Minnesota .....	1,310	1,270	1,280
Missouri .....	1,070	1,140	1,190
New Mexico .....	1,280	1,320	1,370
New York .....	1,200	1,300	1,300
Ohio .....	1,270	1,300	1,360
Oregon .....	1,300	1,320	1,300
Pennsylvania .....	1,300	1,400	1,400
Texas .....	1,200	1,230	1,260
Utah .....	1,100	1,250	1,150
Vermont .....	1,400	1,400	1,350
Virginia .....	1,260	1,320	1,340
Washington .....	1,200	1,300	1,300
Wisconsin .....	1,200	1,400	1,410
United States .....	1,240	1,320	1,330

## Parity Price Equivalent for Manufacturing Grade Milk – United States: November 2010, with Comparisons

[The parity price equivalent during 2010 is 93.2 percent of the parity price of all milk sold to plants, compared with 92.4 percent in 2009. For additional details, see January 2010 issue of *Agricultural Prices*]

Item	November 2009	October 2010	November 2010
Parity equivalent ..... dollars/cwt	41.70	42.30	43.00
Average price FOB ..... dollars/cwt	15.30	17.40	15.60
Average fat test of milk ..... percent	4.18	4.12	4.20

## Commodity Parity Prices and Price as Percent of Parity Price – United States: November 2010 with Comparisons

[Parity prices are computed under the provisions of Title III, Subtitle a, Section 301 (a) of the Agricultural Adjustment Act of 1938 as amended by the Agricultural Acts of 1948, 1949, and 1956. See January *Agricultural Prices* for details on adjusted base price and parity price computations. Parity data not available for blank cells]

Commodity and unit	Adjusted base price	Parity price			Price as percent of parity		
		November 2009	October 2010	November 2010	November 2009	October 2010	November 2010
	(dollars)	(dollars)	(dollars)	(dollars)	(percent)	(percent)	(percent)
<b>Basic commodities</b>							
All wheat .....bushel	0.597	13.50	14.70	14.90	35	40	42
Rice .....cwt	1.38	36.10	34.00	34.50	39	33	35
Corn .....bushel	0.372	8.36	9.16	9.30	44	47	49
Cotton							
Upland ..... pound	0.084	1.83	2.07	2.10	33	38	38
American Pima ..... pound	0.132	3.14	3.25	3.30	31	36	35
Peanuts ..... pound	0.029	0.773	0.714	0.725	28	30	31
<b>Designated nonbasic</b>							
All milk, sold to plants <sup>1</sup> .....cwt							
	1.83	44.70	45.10	45.80	32	38	36
Honey, extracted <sup>2</sup> ..... pound	0.127	2.83	3.13	3.18	50	46	45
<b>Wool and mohair</b>							
Wool ..... pound	0.085	1.92	2.09	2.13	51	38	37
Mohair ..... pound	0.343	8.52	8.44	8.58	39	32	31
<b>Other nonbasic</b>							
Barley .....bushel	0.416	9.13	10.20	10.40	49	37	36
Canola .....cwt	1.630	36.80	40.10	40.80	43	45	51
Cottonseed ..... ton	15.10	335.00	372.00	378.00	47	42	43
Dry edible beans .....cwt	2.88	65.30	70.90	72.00	46	36	34
Flaxseed .....bushel	0.972	22.20	23.90	24.30	37	50	53
Oats .....bushel	0.244	5.53	6.01	6.10	37	39	42
Potatoes .....cwt	0.833	19.20	20.50	20.80	38	33	37
Sorghum grain .....cwt	0.656	15.00	16.20	16.40	38	48	51
Soybeans .....bushel	0.916	20.30	22.60	22.90	47	45	49
All sunflower .....cwt	1.85	41.70	45.50	46.30	34	46	43
Apples, fresh <sup>3</sup> ..... pound	0.033	0.773	0.812	0.825	43	43	39
<b>Citrus (equivalent on-tree)</b>							
Grapefruit .....box	0.648	15.10	16.00	16.20	71	7	71
Lemons .....box	1.38	33.30	34.00	34.50	44	63	61
Oranges .....box	0.660	15.50	16.20	16.50	75	41	68
Tangerines .....box	1.39	33.00	34.20	34.80	56	39	76
<b>Livestock and poultry</b>							
Beef cattle .....cwt	10.20	239.00	251.00	255.00	33	37	37
Calves .....cwt	14.40	342.00	355.00	360.00	30	34	34
Hogs .....cwt	5.54	130.00	136.00	139.00	31	39	34
Lambs .....cwt	11.50	269.00	283.00	288.00	36	49	(NA)
Sheep .....cwt	4.35	104.00	107.00	109.00	35	45	(NA)
Eggs <sup>1</sup> .....dozen	0.091	2.13	2.24	2.28	40	37	41
Turkeys, live ..... pound	0.056	1.310	1.380	1.400	41	53	53

(NA) Not available.

<sup>1</sup> Seasonally adjusted price as percentage of parity price.

<sup>2</sup> Wholesale extracted. Adjusted base price derived from state annual averages prices weighted by production. For 1982 through 1985 the national averages are the support prices.

<sup>3</sup> Equivalent packinghouse-door returns for California, New York (apples only), Oregon (except peaches), and Washington. Price at point of first sale for other states.

## Commodity Parity Prices – United States: November 2010 with Comparisons

[Parity prices are computed under the provisions of Title III, Subtitle a, Section 301 (a) of the Agricultural Adjustment Act of 1938 as amended by the Agricultural Acts of 1948, 1949, and 1956. See January *Agricultural Prices* for details on adjusted base price and parity price computations]

Commodity and unit	Adjusted base price	Parity price		
		November 2009	October 2010	November 2010
	(dollars)	(dollars)	(dollars)	(dollars)
<b>Field crops and miscellaneous commodities</b>				
Hops .....	0.300	6.65	7.39	7.50
Mustard seed .....	2.59	56.40	63.80	64.80
Rapeseed .....	2.04	43.60	50.20	51.00
Rye .....	0.474	10.60	11.70	11.90
Safflower .....	1.95	45.70	48.00	48.80
Spearmint oil .....	1.42	31.60	35.00	35.50
Sweetpotatoes .....	2.27	53.90	55.90	56.80
<b>Tobacco</b>				
Flue-cured, 11-14 .....	0.216	5.20	5.32	5.40
Fire-cured, 21-23 .....	0.298	7.10	7.34	7.45
Burley, 31 .....	0.227	5.53	5.59	5.68
Maryland, 32 .....	0.186	4.40	4.58	4.65
Dark air-cured, 35-37 .....	0.268	6.35	6.60	6.70
Pennsylvania seedleaf, 41 .....	0.194	4.54	4.78	4.85
Cigar binder, 51 .....	0.651	16.40	16.00	16.30
<b>Noncitrus fruit</b>				
Apples, processing <sup>1</sup> .....	16.70	372.00	411.00	418.00
Apricots				
Fresh <sup>2</sup> .....	108.00	2,460.00	2,660.00	2,700.00
Dried (California) .....	253.00	5,830.00	6,230.00	6,330.00
Avocados <sup>2</sup> .....	211.00	5,180.00	5,190.00	5,280.00
Cherries				
Sweet .....	205.00	4,820.00	5,050.00	5,130.00
Tart .....	0.035	0.867	0.862	0.875
Cranberry <sup>3</sup> .....	4.75	103.00	117.00	119.00
Dates <sup>2</sup> (California) .....	197.00	4,660.00	4,850.00	4,930.00
Grapes				
Raisin variety .....	110.00	2,620.00	2,710.00	2,750.00
Other dried .....	66.60	1,590.00	1,640.00	1,670.00
Kiwifruit .....	95.10	2,250.00	2,340.00	2,380.00
Nectarines, fresh <sup>2</sup> (California) .....	55.40	1,280.00	1,360.00	1,390.00
Olives, canning <sup>3</sup> (California) .....	94.70	2,090.00	2,330.00	2,370.00

See footnote(s) at end of table.

--continued

**Commodity Parity Prices – United States:  
November 2010 with Comparisons (continued)**

[Parity prices are computed under the provisions of Title III, Subtitle a, Section 301 (a) of the Agricultural Adjustment Act of 1938 as amended by the Agricultural Acts of 1948, 1949, and 1956. See January *Agricultural Prices* for details on adjusted base price and parity price computations]

Commodity and unit	Adjusted base price	Parity price		
		November 2009	October 2010	November 2010
	(dollars)	(dollars)	(dollars)	(dollars)
<b>Noncitrus fruit, continued</b>				
Papayas (Hawaii) ..... pound	0.046	1.10	1.13	1.15
<b>Peaches,</b>				
Fresh <sup>4</sup> ..... ton	83.00	1,930.00	2,040.00	2,080.00
Dried (California) ..... ton	64.90	1,640.00	1,600.00	1,620.00
<b>Processing, excludes dried</b>				
Clingstone <sup>3</sup> (California) ..... ton	33.70	799.00	830.00	843.00
<b>Pears</b>				
Fresh <sup>4</sup> ..... ton	54.90	1,300.00	1,350.00	1,370.00
Dried <sup>1</sup> (California) ..... ton	173.00	3,960.00	4,260.00	4,330.00
<b>Plums (California)</b>				
Fresh, equivalent on-tree ..... ton	60.90	1,440.00	1,500.00	1,520.00
Prunes, dried <sup>1</sup> (California) ..... ton	146.00	3,420.00	3,590.00	3,650.00
<b>Prunes and plums</b>				
Fresh, exclude California <sup>5</sup> ..... ton	63.20	1,450.00	1,560.00	1,580.00
Processing, exclude dried <sup>1</sup> ..... ton	26.50	646.00	652.00	663.00
<b>Tree nuts <sup>6</sup></b>				
Almonds ..... pound	0.202	4.75	4.97	5.05
Hazelnuts ..... ton	171.00	3,890.00	4,210.00	4,280.00
Pistachios ..... pound	0.190	4.33	4.68	4.75
Walnuts ..... ton	172.00	4,080.00	4,230.00	4,300.00
<b>Vegetables, fresh <sup>7</sup></b>				
Carrots <sup>8</sup> ..... cwt	2.54	58.60	62.50	63.50
Cauliflower <sup>8</sup> ..... cwt	4.31	99.10	106.00	108.00
Celery <sup>8</sup> ..... cwt	2.09	47.80	51.50	52.30
Honeydew melons ..... cwt	2.31	57.10	56.90	57.80
Lettuce ..... cwt	2.35	54.10	57.90	58.80
Onions <sup>8</sup> ..... cwt	1.52	36.10	37.40	38.00
Tomatoes ..... cwt	4.69	108.00	115.00	117.00

<sup>1</sup> Equivalent returns at processing plant door.

<sup>2</sup> Equivalent returns at packinghouse door.

<sup>3</sup> Equivalent returns for bulk fruit at first delivery point.

<sup>4</sup> Equivalent packinghouse-door returns for California, New York (apples only), Oregon (except peaches), and Washington. Price at point of first sale for other states.

<sup>5</sup> Based on "as sold" prices for fresh fruit in all states.

<sup>6</sup> Prices In-Shell basis except almonds which are shelled basis.

<sup>7</sup> FOB shipping point prices.

<sup>8</sup> Includes some processing.

## Marketing Year for Specified Commodities

**Corn for Grain:** September 1 to August 31 for United States; July 1 to June 30 for Texas; August 1 to July 31 for Alabama, Arkansas, Florida, Georgia, Louisiana, Mississippi, North Carolina, Oklahoma, South Carolina, and Tennessee; September 1 to August 31 for Arizona, California, Delaware, Illinois, Indiana, Iowa, Kansas, Kentucky, Maryland, Missouri, Nebraska, New Mexico, Ohio, Pennsylvania, South Dakota, Virginia, and West Virginia; October 1 to September 30 for all other States.

**Dry Edible Beans:** September 1 to August 31 for United States and all States.

**Canola:** July 1 to June 30 for United States and all States.

**Chickpeas (Garbanzo):** September 1 to August 31 for United States.

**Flaxseed:** July 1 to June 30 for United States and all States.

**Sunflower:** September 1 to August 31 for United States; July 1 to June 30 for Texas; September 1 to August 31 for all other States.

### Marketing Year Average Prices Received for Flaxseed – States and United States: 2008 and 2009

States	2008	2009
	(dollars per bushel)	(dollars per bushel)
Minnesota .....	11.80	8.80
Montana .....	17.70	7.80
North Dakota .....	12.70	8.15
South Dakota .....	11.30	7.50
United States .....	12.70	8.15

### Marketing Year Average Prices Received for Sunflowers – States and United States: 2008 and 2009

States	All		Oil		Non-oil	
	2008	2009	2008	2009	2008	2009
	(dollars per cwt)	(dollars per cwt)	(dollars per cwt)	(dollars per cwt)	(dollars per cwt)	(dollars per cwt)
California <sup>1</sup> .....	(D)	18.60	(D)	17.80	(D)	21.80
Colorado .....	23.20	18.70	21.90	(D)	30.00	(D)
Kansas .....	20.90	16.10	17.90	14.80	29.70	24.70
Minnesota .....	27.60	18.10	24.00	16.40	34.30	21.70
Nebraska .....	21.60	19.90	17.00	15.40	31.00	24.30
North Dakota .....	22.00	15.70	19.90	14.10	33.00	21.60
Oklahoma <sup>1</sup> .....	(D)	17.50	(D)	16.70	(D)	20.50
South Dakota .....	19.70	13.10	17.50	12.70	26.50	21.10
Texas .....	19.80	19.50	18.00	(D)	23.00	(D)
Other States <sup>2</sup> .....	21.70	(NA)	21.30	(NA)	25.20	(NA)
United States .....	21.80	15.10	19.50	13.80	31.30	22.10

(D) Withheld to avoid disclosing data for individual operations.

(NA) Not available.

<sup>1</sup> Beginning in 2009, California and Oklahoma are published individually.

<sup>2</sup> For 2008, other States include California, Illinois, Michigan, Missouri, Montana Oklahoma, Wisconsin, and Wyoming. Beginning in 2009, Other States is discontinued.

**Marketing Year Average Prices Received for Canola - States and United States: 2008 and 2009**

States	2008	2009
	(dollars per cwt)	(dollars per cwt)
Idaho <sup>1</sup> .....	(D)	14.00
Minnesota .....	18.50	(D)
Montana .....	16.50	13.50
North Dakota .....	18.70	16.10
Oklahoma <sup>1</sup> .....	(D)	19.00
Oregon <sup>1</sup> .....	(D)	17.00
Other States <sup>2</sup> .....	20.00	18.10
United States .....	18.70	16.20

(D) Withheld to avoid disclosing data for individual operations.

<sup>1</sup> Beginning in 2009, Idaho, Oklahoma, and Oregon are published individually.

<sup>2</sup> For 2008, Other States include Colorado, Idaho, Kansas, Michigan, Oklahoma, Oregon, and Washington. For 2009, Other States include Colorado, Kansas, Minnesota, and Washington.

**Marketing Year Average Prices Received for Proso Millet - States and United States: 2008 and 2009**

States	2008	2009
	(dollars per bushel)	(dollars per bushel)
Colorado .....	3.25	2.90
Nebraska .....	3.10	3.20
South Dakota .....	3.35	2.60
United States .....	3.23	2.90

**Marketing Year Average Prices Received for Other Oilseeds - United States: 2008 and 2009**

Year	Rapeseed	Mustard Seed
	(dollars per cwt)	(dollars per cwt)
2009 .....	26.30	30.40
2008 .....	25.30	43.80

**Marketing Year Average Prices Received for Safflower - States and United States: 2008 and 2009**

States	2008	2009
	(dollars per cwt)	(dollars per cwt)
California .....	23.90	16.40
Montana .....	27.50	19.00
Other States <sup>1</sup> .....	28.70	17.80
United States .....	24.80	17.10

<sup>1</sup> For 2008, Other States include Arizona, Colorado, Idaho, North Dakota, South Dakota, and Utah. For 2009, Other States include Colorado, Idaho, North Dakota, South Dakota, and Utah.



**Marketing Year Average Prices Received for Corn –  
States and United States: 2008 and 2009**

States	2008 (dollars per bushel)	2009 (dollars per bushel)
Alabama .....	5.26	3.89
Arizona .....	5.80	4.14
Arkansas .....	4.42	3.79
California .....	4.77	4.28
Colorado .....	4.14	3.68
Delaware .....	4.57	3.80
Florida .....	4.50	4.00
Georgia .....	4.50	4.10
Idaho .....	4.32	4.23
Illinois .....	4.01	3.53
Indiana .....	4.10	3.66
Iowa .....	4.10	3.59
Kansas .....	4.12	3.49
Kentucky .....	4.36	3.74
Louisiana .....	4.45	3.55
Maryland .....	4.42	3.71
Michigan .....	3.84	3.53
Minnesota .....	3.92	3.47
Mississippi .....	4.63	3.72
Missouri .....	4.11	3.58
Montana .....	3.80	4.23
Nebraska .....	4.05	3.58
New Jersey .....	4.15	3.73
New Mexico .....	5.30	4.12
New York .....	4.32	4.02
North Carolina .....	4.91	3.90
North Dakota .....	3.74	3.18
Ohio .....	4.21	3.55
Oklahoma .....	4.46	3.71
Oregon .....	4.15	4.12
Pennsylvania .....	4.16	3.84
South Carolina .....	4.59	3.86
South Dakota .....	3.78	3.23
Tennessee .....	4.53	3.65
Texas .....	4.82	4.01
Utah .....	4.40	4.52
Virginia .....	4.51	3.66
Washington .....	4.56	4.59
West Virginia .....	4.34	3.57
Wisconsin .....	3.89	3.57
Wyoming .....	4.25	4.06
United States .....	4.06	3.55

**Marketing Year Average Prices Received for All Dry Beans –  
States and United States: 2008 and 2009**

States	2008	2009
	(dollars per cwt)	(dollars per cwt)
Arizona <sup>1</sup> .....	(NA)	42.00
California .....	61.40	50.80
Colorado .....	35.80	30.40
Idaho .....	37.00	29.20
Kansas .....	36.20	28.00
Michigan .....	36.30	33.50
Minnesota .....	41.80	31.00
Montana .....	33.50	28.60
Nebraska .....	35.70	30.10
New Mexico .....	50.00	45.00
New York .....	56.00	35.00
North Dakota .....	29.70	26.70
Oregon .....	34.90	31.50
South Dakota .....	29.60	26.50
Texas .....	35.00	34.00
Utah <sup>2</sup> .....	31.00	(NA)
Washington .....	36.90	28.60
Wisconsin .....	53.50	39.40
Wyoming .....	36.40	30.20
United States .....	34.60	30.00

(NA) Not available.

<sup>1</sup> Estimates began in 2009.

<sup>2</sup> Estimates discontinued in 2009.

**Prices Received for Corn by Month – States and United States:  
Marketing Years 2008-2009 and 2009-2010**

States	2009-2010							
	Jul	Aug	Sep	Oct	Nov	Dec	Jan <sup>1</sup>	Feb
	(dollars per bushel)	(dollars per bushel)	(dollars per bushel)	(dollars per bushel)	(dollars per bushel)	(dollars per bushel)	(dollars per bushel)	(dollars per bushel)
Colorado .....	3.74	3.62	3.51	3.82	3.79	3.69	3.73	3.56
Illinois .....	3.56	3.32	3.27	3.59	3.55	3.57	3.63	3.48
Indiana .....	3.64	3.45	3.31	3.70	3.66	3.62	3.79	3.69
Iowa .....	3.65	3.30	3.23	3.67	3.72	3.68	3.76	3.66
Kansas .....	3.30	3.13	3.18	3.51	3.61	3.53	3.59	3.39
Kentucky .....	3.79	3.46	3.42	3.58	3.62	3.81	3.86	3.88
Michigan .....	3.41	3.35	3.33	3.45	3.52	3.48	3.56	3.32
Minnesota .....	3.61	3.24	3.17	3.60	3.57	3.51	3.55	3.57
Missouri .....	3.61	3.39	3.28	3.49	3.59	3.64	3.66	3.68
Nebraska .....	3.60	3.29	3.18	3.55	3.71	3.64	3.71	3.57
North Carolina .....	4.26	3.99	3.51	3.80	4.18	4.35	4.24	4.26
North Dakota .....	3.18	2.96	2.94	3.06	3.46	3.25	2.98	3.14
Ohio .....	3.61	3.43	3.34	3.66	3.59	3.56	3.57	3.50
Pennsylvania .....	3.88	3.94	3.90	3.75	3.69	3.77	3.89	3.89
South Dakota .....	3.53	3.14	2.98	3.31	3.38	3.33	3.25	3.12
Tennessee .....	4.20	3.58	3.43	3.59	3.71	3.75	3.85	3.97
Texas .....	3.72	3.68	3.47	4.04	4.18	4.12	4.19	3.82
Wisconsin .....	3.75	3.48	3.53	3.73	3.63	3.46	3.57	3.48
United States .....	3.60	3.33	3.25	3.61	3.65	3.60	3.66	3.55
States	2008-2009							
	Jul	Aug	Sep	Oct	Nov	Dec	Jan <sup>1</sup>	Feb
	(dollars per bushel)	(dollars per bushel)	(dollars per bushel)	(dollars per bushel)	(dollars per bushel)	(dollars per bushel)	(dollars per bushel)	(dollars per bushel)
Colorado .....	4.71	4.59	4.50	4.10	4.50	4.21	4.37	3.97
Illinois .....	5.43	5.17	4.99	4.29	4.11	4.09	4.34	3.75
Indiana .....	5.92	5.67	4.73	4.15	4.04	4.14	4.46	4.06
Iowa .....	5.26	5.34	5.16	4.48	4.35	4.21	4.44	3.96
Kansas .....	5.97	5.37	5.02	4.93	4.53	3.72	4.15	3.54
Kentucky .....	6.13	5.58	4.78	4.50	4.38	4.31	4.74	4.37
Michigan .....	5.47	5.07	5.02	4.15	4.05	3.95	4.12	3.67
Minnesota .....	4.64	4.82	4.91	4.40	4.31	4.13	4.33	3.69
Missouri .....	5.75	5.48	4.89	4.38	4.10	4.14	4.37	3.99
Nebraska .....	5.12	5.23	5.27	4.34	4.43	4.04	4.28	3.96
North Carolina .....	6.63	5.29	5.13	5.11	4.51	4.44	4.68	4.33
North Dakota .....	5.32	4.87	5.18	4.55	4.34	4.23	4.11	3.55
Ohio .....	5.56	5.79	4.88	4.35	4.25	4.24	4.59	4.15
Pennsylvania .....	6.27	5.71	5.63	4.09	3.87	4.14	4.04	4.36
South Dakota .....	5.08	4.91	5.07	3.99	4.01	3.75	3.96	3.67
Tennessee .....	6.48	6.14	5.06	4.42	4.34	4.37	4.64	3.87
Texas .....	6.60	5.82	5.14	4.85	4.93	4.52	4.65	4.11
Wisconsin .....	5.16	5.36	4.57	3.98	3.94	4.07	4.05	3.73
United States .....	5.25	5.26	5.01	4.37	4.26	4.11	4.36	3.87

See footnote(s) at end of table.

--continued

**Prices Received for Corn by Month – States and United States:  
Marketing Years 2008-2009 and 2009-2010 (continued)**

States	2009-2010						
	Mar	Apr	May	Jun	Jul	Aug	Sep
	(dollars per bushel)	(dollars per bushel)	(dollars per bushel)	(dollars per bushel)	(dollars per bushel)	(dollars per bushel)	(dollars per bushel)
Colorado .....	3.62	3.31	3.45	3.50	3.48	3.68	3.97
Illinois .....	3.53	3.42	3.49	3.41	3.51	3.73	4.05
Indiana .....	3.62	3.51	3.65	3.55	3.69	3.80	4.24
Iowa .....	3.61	3.46	3.52	3.42	3.50	3.61	4.01
Kansas .....	3.52	3.26	3.40	3.24	3.41	3.67	4.09
Kentucky .....	3.87	3.67	3.77	3.75	3.75	3.84	4.11
Michigan .....	3.35	3.32	3.44	3.45	3.55	3.78	4.03
Minnesota .....	3.41	3.23	3.33	3.39	3.37	3.42	3.79
Missouri .....	3.64	3.55	3.57	3.54	3.56	3.69	4.13
Nebraska .....	3.60	3.44	3.51	3.44	3.54	3.68	3.99
North Carolina .....	4.19	4.16	4.04	4.06	4.06	4.20	4.61
North Dakota .....	3.15	3.12	2.98	3.26	3.12	3.25	3.67
Ohio .....	3.50	3.38	3.52	3.39	3.57	3.83	4.21
Pennsylvania .....	3.92	3.74	3.79	3.84	4.03	4.15	4.90
South Dakota .....	3.13	3.11	3.21	3.14	3.19	3.28	3.62
Tennessee .....	3.88	3.87	3.87	3.41	3.86	3.99	4.34
Texas .....	4.13	3.93	4.04	3.62	3.72	3.80	4.18
Wisconsin .....	3.56	3.37	3.38	3.38	3.41	3.49	3.98
United States .....	3.55	3.41	3.48	3.41	3.49	3.65	4.08
States	2008-2009						
	Mar	Apr	May	Jun	Jul	Aug	Sep
	(dollars per bushel)	(dollars per bushel)	(dollars per bushel)	(dollars per bushel)	(dollars per bushel)	(dollars per bushel)	(dollars per bushel)
Colorado .....	3.86	3.87	3.97	4.02	3.74	3.62	3.51
Illinois .....	3.74	3.81	3.95	4.01	3.56	3.32	3.27
Indiana .....	3.92	4.11	4.12	4.14	3.64	3.45	3.31
Iowa .....	3.98	3.93	4.06	4.04	3.65	3.30	3.23
Kansas .....	3.60	3.70	3.93	3.92	3.30	3.13	3.18
Kentucky .....	4.10	4.09	4.18	4.39	3.79	3.46	3.42
Michigan .....	3.67	3.76	3.87	4.01	3.41	3.35	3.33
Minnesota .....	3.80	3.68	3.77	4.02	3.61	3.24	3.17
Missouri .....	3.87	3.92	3.98	4.12	3.61	3.39	3.28
Nebraska .....	3.90	3.78	3.86	3.94	3.60	3.29	3.18
North Carolina .....	4.47	4.60	4.73	4.75	4.26	3.99	3.51
North Dakota .....	3.47	3.55	3.66	3.85	3.18	2.96	2.94
Ohio .....	4.05	3.91	4.13	4.30	3.61	3.43	3.34
Pennsylvania .....	4.32	4.11	4.61	4.38	3.88	3.94	3.90
South Dakota .....	3.56	3.58	3.76	3.67	3.53	3.14	2.98
Tennessee .....	3.82	3.93	4.12	4.32	4.20	3.58	3.43
Texas .....	4.00	4.31	4.04	4.61	3.72	3.68	3.47
Wisconsin .....	3.83	3.83	3.88	3.92	3.75	3.48	3.53
United States .....	3.85	3.85	3.96	4.01	3.60	3.33	3.25

<sup>1</sup> Second year.

**Prices Received for Flaxseed by Month – States and United States:  
Marketing Years, 2008-2009 and 2009-2010**

States	2009-2010					
	July	August	September	October	November	December
	(dollars per bushel)	(dollars per bushel)	(dollars per bushel)	(dollars per bushel)	(dollars per bushel)	(dollars per bushel)
North Dakota .....	8.33	8.19	6.90	6.81	8.12	8.40
South Dakota <sup>2</sup> .....	(NA)	(NA)	(NA)	(NA)	(NA)	(NA)
United States .....	8.33	8.19	6.90	6.81	8.12	8.40
States	2008-2009					
	July	August	September	October	November	December
	(dollars per bushel)	(dollars per bushel)	(dollars per bushel)	(dollars per bushel)	(dollars per bushel)	(dollars per bushel)
North Dakota .....	18.10	16.50	15.50	12.20	12.60	11.50
South Dakota .....	(D)	(D)	(D)	(D)	(S)	(S)
United States .....	18.10	16.50	15.50	12.20	12.60	11.50
States	2009-2010					
	January <sup>1</sup>	February	March	April	May	June
	(dollars per bushel)	(dollars per bushel)	(dollars per bushel)	(dollars per bushel)	(dollars per bushel)	(dollars per bushel)
North Dakota .....	8.53	8.57	8.82	8.53	8.34	9.26
South Dakota <sup>2</sup> .....	(NA)	(NA)	(NA)	(NA)	(NA)	(NA)
United States .....	8.53	8.57	8.82	8.53	8.34	9.26
States	2008-2009					
	January <sup>1</sup>	February	March	April	May	June
	(dollars per bushel)	(dollars per bushel)	(dollars per bushel)	(dollars per bushel)	(dollars per bushel)	(dollars per bushel)
North Dakota .....	11.00	9.98	8.91	8.14	8.96	9.59
South Dakota .....	(S)	(S)	(D)	(D)	(S)	(S)
United States .....	11.00	9.98	8.84	8.13	8.96	9.59

(D) Withheld to avoid disclosing data for individual operations.

(NA) Not available.

(S) Insufficient number of reports to establish an estimate.

<sup>1</sup> Second year.

<sup>2</sup> Monthly prices discontinued beginning in July 2009.

**Prices Received for Canola by Month – States and United States:  
Marketing Years, 2008-2009 and 2009-2010**

States	2009-2010					
	July	August	September	October	November	December
	(dollars per bushel)	(dollars per bushel)	(dollars per bushel)	(dollars per bushel)	(dollars per bushel)	(dollars per bushel)
Minnesota .....	(D)	(D)	(D)	(D)	(D)	(D)
North Dakota .....	17.00	16.60	15.50	15.30	16.00	15.80
United States .....	17.10	16.70	15.60	15.30	16.00	15.80
States	2008-2009					
	July	August	September	October	November	December
	(dollars per bushel)	(dollars per bushel)	(dollars per bushel)	(dollars per bushel)	(dollars per bushel)	(dollars per bushel)
Minnesota .....	24.70	(D)	18.40	(D)	(D)	(D)
North Dakota .....	26.80	22.40	20.60	19.20	16.80	18.00
United States .....	26.70	22.40	20.60	19.10	16.80	18.00
States	2009-2010					
	January <sup>1</sup>	February	March	April	May	June
	(dollars per bushel)	(dollars per bushel)	(dollars per bushel)	(dollars per bushel)	(dollars per bushel)	(dollars per bushel)
Minnesota .....	(D)	(D)	(D)	(D)	(D)	(D)
North Dakota .....	16.30	(D)	16.50	16.80	16.60	17.00
United States .....	16.30	(D)	16.50	16.80	16.70	17.00
States	2008-2009					
	January <sup>1</sup>	February	March	April	May	June
	(dollars per bushel)	(dollars per bushel)	(dollars per bushel)	(dollars per bushel)	(dollars per bushel)	(dollars per bushel)
Minnesota .....	(D)	(D)	19.70	(D)	(D)	(D)
North Dakota .....	18.20	15.60	15.00	15.50	17.20	(D)
United States .....	18.20	15.60	15.20	15.50	17.20	17.20

(D) Withheld to avoid disclosing data for individual operations.

<sup>1</sup> Second year.

**Prices Received for All Sunflowers by Month – States and United States:  
Marketing Years, 2008-2009 and 2009-2010**

States	2009-2010					
	September	October	November	December	January <sup>1</sup>	February
	(dollars per cwt)	(dollars per cwt)	(dollars per cwt)	(dollars per cwt)	(dollars per cwt)	(dollars per cwt)
Colorado <sup>2</sup> .....	(D)	(D)	21.50	(D)	(D)	(D)
Kansas .....	16.10	16.30	17.80	15.00	15.00	15.80
Minnesota .....	(D)	17.90	19.10	21.20	17.90	19.30
North Dakota .....	14.20	15.20	14.00	16.00	17.30	17.30
South Dakota .....	12.60	14.00	12.50	12.90	13.30	14.60
United States .....	13.90	15.90	14.20	14.80	15.50	16.70

States	2008-2009					
	September	October	November	December	January <sup>1</sup>	February
	(dollars per cwt)	(dollars per cwt)	(dollars per cwt)	(dollars per cwt)	(dollars per cwt)	(dollars per cwt)
Colorado <sup>2</sup> .....	(NA)	(NA)	(NA)	(NA)	(NA)	(NA)
Kansas .....	27.90	28.40	19.60	21.20	17.40	20.90
Minnesota .....	(D)	30.30	27.20	28.00	28.50	29.90
North Dakota .....	27.80	24.80	23.60	23.80	22.50	22.70
South Dakota .....	29.70	21.50	22.10	20.60	21.40	20.20
United States .....	28.10	25.20	23.10	22.80	22.10	22.60

States	2009-2010					
	March	April	May	June	July	August
	(dollars per cwt)	(dollars per cwt)	(dollars per cwt)	(dollars per cwt)	(dollars per cwt)	(dollars per cwt)
Colorado <sup>2</sup> .....	(D)	(D)	(D)	(D)	(D)	(S)
Kansas .....	15.90	16.20	(D)	13.90	17.20	13.40
Minnesota .....	16.40	16.40	19.30	17.40	15.60	16.60
North Dakota .....	16.50	17.00	16.40	15.30	15.60	14.40
South Dakota .....	13.90	13.90	13.10	13.70	14.20	14.70
United States .....	15.80	15.80	14.90	15.10	15.40	14.50

States	2008-2009					
	March	April	May	June	July	August
	(dollars per cwt)	(dollars per cwt)	(dollars per cwt)	(dollars per cwt)	(dollars per cwt)	(dollars per cwt)
Colorado <sup>2</sup> .....	(NA)	(NA)	(NA)	(NA)	(NA)	(NA)
Kansas .....	20.50	19.40	19.30	(D)	15.40	17.60
Minnesota .....	29.00	28.10	25.60	29.20	24.80	22.90
North Dakota .....	21.80	19.00	20.80	19.00	18.70	21.20
South Dakota .....	19.90	23.50	24.70	16.60	13.70	16.70
United States .....	22.10	20.20	21.50	18.40	17.70	20.60

(D) Withheld to avoid disclosing data for individual operations.

(NA) Not available.

(S) Insufficient number of reports to establish an estimate.

<sup>1</sup> Second year.

<sup>2</sup> Monthly price estimates began in 2009.

**Prices Received for Oil Sunflowers by Month – States and United States:  
Marketing Years, 2008-2009 and 2009-2010**

States	2009-2010					
	September	October	November	December	January <sup>1</sup>	February
	(dollars per cwt)	(dollars per cwt)	(dollars per cwt)	(dollars per cwt)	(dollars per cwt)	(dollars per cwt)
Colorado <sup>2</sup> .....	(D)	(D)	(D)	(D)	(D)	(D)
Kansas .....	15.00	14.70	16.00	14.40	14.30	(D)
Minnesota .....	(D)	(D)	(D)	20.10	(D)	17.20
North Dakota .....	13.00	13.40	13.00	13.40	15.50	16.00
South Dakota .....	12.40	13.30	12.20	12.50	13.00	13.40
United States .....	13.10	14.20	13.10	13.30	14.20	15.30

States	2008-2009					
	September	October	November	December	January <sup>1</sup>	February
	(dollars per cwt)	(dollars per cwt)	(dollars per cwt)	(dollars per cwt)	(dollars per cwt)	(dollars per cwt)
Colorado <sup>2</sup> .....	(NA)	(NA)	(NA)	(NA)	(NA)	(NA)
Kansas .....	24.10	25.30	15.90	22.90	17.40	14.20
Minnesota .....	(D)	28.10	25.20	22.30	27.20	(D)
North Dakota .....	27.20	23.10	21.90	21.80	21.80	20.70
South Dakota .....	30.80	20.80	19.20	17.30	20.10	19.80
United States .....	27.20	23.20	21.10	21.10	21.30	20.10

States	2009-2010					
	March	April	May	June	July	August
	(dollars per cwt)	(dollars per cwt)	(dollars per cwt)	(dollars per cwt)	(dollars per cwt)	(dollars per cwt)
Colorado <sup>2</sup> .....	(D)	(D)	(D)	(D)	(S)	(S)
Kansas .....	14.30	14.70	(D)	13.90	13.30	13.40
Minnesota .....	14.30	15.20	14.70	16.50	14.70	15.90
North Dakota .....	14.80	14.30	14.50	14.60	14.50	13.90
South Dakota .....	13.20	13.30	12.90	13.50	13.30	14.00
United States .....	14.30	14.00	13.60	14.50	14.30	14.00

States	2008-2009					
	March	April	May	June	July	August
	(dollars per cwt)	(dollars per cwt)	(dollars per cwt)	(dollars per cwt)	(dollars per cwt)	(dollars per cwt)
Colorado <sup>2</sup> .....	(NA)	(NA)	(NA)	(NA)	(NA)	(NA)
Kansas .....	13.00	13.90	(D)	(D)	14.80	(D)
Minnesota .....	23.70	24.00	(D)	20.10	23.60	18.40
North Dakota .....	19.10	16.90	17.00	16.90	15.60	15.30
South Dakota .....	15.40	19.00	22.30	15.60	13.60	13.10
United States .....	18.50	17.20	17.60	16.50	15.40	15.50

(D) Withheld to avoid disclosing data for individual operations.

(NA) Not available.

(S) Insufficient number of reports to establish an estimate.

<sup>1</sup> Second year.

<sup>2</sup> Monthly price estimates began in 2009.



**Prices Received for Non-Oil Sunflowers by Month – States and United States:  
Marketing Years, 2008-2009 and 2009-2010**

States	2009-2010					
	September	October	November	December	January <sup>1</sup>	February
	(dollars per cwt)	(dollars per cwt)	(dollars per cwt)	(dollars per cwt)	(dollars per cwt)	(dollars per cwt)
Colorado <sup>2</sup> .....	(D)	(D)	(D)	(D)	(D)	(D)
Kansas .....	(D)	(D)	(D)	25.30	(D)	(D)
Minnesota .....	(D)	(D)	22.20	22.40	(D)	22.60
North Dakota .....	29.50	22.60	19.80	21.70	21.90	21.40
South Dakota .....	(D)	(D)	(D)	19.10	(D)	(D)
United States .....	27.20	23.50	21.50	21.70	21.90	22.10

States	2008-2009					
	September	October	November	December	January <sup>1</sup>	February
	(dollars per cwt)	(dollars per cwt)	(dollars per cwt)	(dollars per cwt)	(dollars per cwt)	(dollars per cwt)
Colorado <sup>2</sup> .....	(NA)	(NA)	(NA)	(NA)	(NA)	(NA)
Kansas .....	(D)	(D)	(D)	(D)	(S)	(D)
Minnesota .....	(D)	36.40	(D)	36.00	36.20	(D)
North Dakota .....	31.10	34.50	35.00	34.50	32.70	33.80
South Dakota .....	(D)	24.70	24.70	26.90	26.80	(D)
United States .....	30.80	31.50	30.20	28.80	31.20	34.00

States	2009-2010					
	March	April	May	June	July	August
	(dollars per cwt)	(dollars per cwt)	(dollars per cwt)	(dollars per cwt)	(dollars per cwt)	(dollars per cwt)
Colorado <sup>2</sup> .....	(D)	(D)	(D)	(S)	(D)	(S)
Kansas .....	(D)	(D)	(D)	(S)	(D)	(S)
Minnesota .....	22.40	(D)	(D)	(D)	(D)	(D)
North Dakota .....	21.90	22.30	22.00	23.30	23.40	21.60
South Dakota .....	(D)	(D)	(D)	(D)	(D)	(D)
United States .....	22.40	22.60	22.40	22.70	22.70	20.90

States	2008-2009					
	March	April	May	June	July	August
	(dollars per cwt)	(dollars per cwt)	(dollars per cwt)	(dollars per cwt)	(dollars per cwt)	(dollars per cwt)
Colorado <sup>2</sup> .....	(NA)	(NA)	(NA)	(NA)	(NA)	(NA)
Kansas .....	(D)	(D)	(D)	(S)	(D)	(D)
Minnesota .....	36.00	35.90	(D)	33.50	26.90	(D)
North Dakota .....	32.80	32.80	34.10	30.90	28.50	34.30
South Dakota .....	29.60	(D)	(D)	(D)	(D)	(D)
United States .....	33.30	34.00	34.40	30.80	28.10	33.20

(D) Withheld to avoid disclosing data for individual operations.

(NA) Not available.

(S) Insufficient number of reports to establish an estimate.

<sup>1</sup> Second year.

<sup>2</sup> Monthly price estimates began in 2009.

**Prices Received for Dry Edible Beans by Month – States and United States:  
Marketing Years, 2008-2009 and 2009-2010**

States	2009-2010					
	September	October	November	December	January <sup>1</sup>	February
	(dollars per cwt)	(dollars per cwt)	(dollars per cwt)	(dollars per cwt)	(dollars per cwt)	(dollars per cwt)
California .....	46.30	44.40	54.70	56.80	58.50	60.00
Colorado .....	30.20	37.50	30.40	32.40	31.30	33.00
Idaho .....	29.90	25.60	32.40	28.30	32.20	29.60
Michigan .....	33.20	32.40	33.30	35.60	34.90	35.80
Minnesota .....	29.00	31.50	30.50	31.20	35.60	35.90
Nebraska .....	31.00	29.10	30.90	31.30	30.60	30.00
North Dakota .....	26.40	26.40	28.50	27.90	28.30	26.50
United States .....	30.30	29.70	30.10	31.20	31.10	30.40
States	2008-2009					
	September	October	November	December	January <sup>1</sup>	February
	(dollars per cwt)	(dollars per cwt)	(dollars per cwt)	(dollars per cwt)	(dollars per cwt)	(dollars per cwt)
California .....	53.00	66.80	64.10	66.70	67.10	58.50
Colorado .....	38.30	35.90	40.30	36.80	35.40	32.00
Idaho .....	38.50	39.20	38.90	39.30	37.40	39.80
Michigan .....	39.40	37.90	36.00	30.90	34.40	31.30
Minnesota .....	37.60	45.20	42.20	57.10	47.80	(D)
Nebraska .....	38.60	39.10	36.80	39.10	33.40	29.40
North Dakota .....	33.20	30.50	30.80	28.80	29.90	26.20
United States .....	36.80	36.30	34.60	34.20	35.00	30.10
States	2009-2010					
	March	April	May	June	July	August
	(dollars per cwt)	(dollars per cwt)	(dollars per cwt)	(dollars per cwt)	(dollars per cwt)	(dollars per cwt)
California .....	(D)	(D)	49.30	43.00	40.60	52.00
Colorado .....	31.50	31.30	31.60	29.90	30.30	22.80
Idaho .....	30.80	33.00	29.80	30.70	30.00	28.50
Michigan .....	35.60	36.60	33.80	28.50	32.90	35.10
Minnesota .....	32.10	30.70	32.10	29.60	25.50	31.50
Nebraska .....	30.80	29.80	28.70	31.20	28.40	22.80
North Dakota .....	26.30	26.40	23.80	22.00	22.40	23.20
United States .....	29.70	30.60	27.80	26.00	25.80	29.40
States	2008-2009					
	March	April	May	June	July	August
	(dollars per cwt)	(dollars per cwt)	(dollars per cwt)	(dollars per cwt)	(dollars per cwt)	(dollars per cwt)
California .....	66.80	61.00	(D)	(D)	(D)	(D)
Colorado .....	33.10	30.70	30.90	30.90	38.50	31.30
Idaho .....	33.60	32.40	31.40	37.30	25.70	34.20
Michigan .....	30.80	33.90	34.70	31.70	29.10	31.40
Minnesota .....	(D)	(D)	(D)	29.10	(D)	(D)
Nebraska .....	35.20	37.20	26.50	27.00	31.60	32.40
North Dakota .....	26.60	25.60	25.00	27.90	29.60	29.90
United States .....	32.50	31.50	27.60	29.80	32.50	32.00

(D) Withheld to avoid disclosing data for individual operations.  
<sup>1</sup> Second year.

**Percent of Corn Farm Marketings by Month – States and United States:  
2008-2009 and 2009-2010**

[Monthly farm marketings, based on a sample survey, as a percent of total used for calculating marketing year average prices. Blank cells indicate month is outside State's designated marketing year as defined on page 39]

Year	Jul	Aug	Sep	Oct	Nov	Dec	Jan <sup>1</sup>	Feb	Mar	Apr	May	Jun	Jul	Aug	Sep
	(pct)	(pct)	(pct)	(pct)	(pct)	(pct)	(pct)	(pct)	(pct)	(pct)	(pct)	(pct)	(pct)	(pct)	(pct)
Colorado															
2009-2010 .....				7	15	25	11	6	7	5	4	4	4	4	8
2008-2009 .....				3	16	26	13	5	11	5	7	6	3	2	3
Illinois															
2009-2010 .....			4	5	9	11	14	9	7	8	7	8	10	8	
2008-2009 .....			3	9	10	8	18	7	9	7	10	6	6	7	
Indiana															
2009-2010 .....			4	7	19	8	15	6	9	6	7	5	8	6	
2008-2009 .....			4	16	11	6	16	7	9	6	7	6	5	7	
Iowa															
2009-2010 .....			5	6	15	10	9	7	7	8	7	8	10	8	
2008-2009 .....			4	6	13	8	10	6	10	7	10	9	10	7	
Kansas															
2009-2010 .....			6	15	18	13	11	5	8	6	5	3	5	5	
2008-2009 .....			6	17	13	11	12	7	9	5	9	4	3	4	
Kentucky															
2009-2010 .....			8	15	10	6	20	8	8	6	4	3	4	8	
2008-2009 .....			12	10	4	6	18	8	12	9	7	5	4	5	
Michigan															
2009-2010 .....				5	16	13	11	6	6	6	6	8	9	6	8
2008-2009 .....				9	16	10	10	7	8	7	9	7	5	6	6
Minnesota															
2009-2010 .....				5	13	11	9	5	6	6	7	11	13	10	4
2008-2009 .....				11	13	8	10	5	9	6	9	9	8	6	6
Missouri															
2009-2010 .....			8	12	11	10	12	7	6	6	6	5	7	10	
2008-2009 .....			9	12	8	8	12	8	10	7	7	6	6	7	
Nebraska															
2009-2010 .....			6	6	14	14	10	7	8	7	6	6	9	7	
2008-2009 .....			3	7	13	12	12	7	11	7	9	7	6	6	
North Carolina															
2009-2010 .....		11	29	20	6	5	9	5	4	4	2	2	3		
2008-2009 .....		4	41	17	8	4	6	4	5	3	4	2	2		
North Dakota															
2009-2010 .....				7	8	12	14	7	8	9	6	9	9	7	4
2008-2009 .....				2	12	12	12	7	10	7	7	11	8	6	6
Ohio															
2009-2010 .....			4	6	24	9	11	5	10	6	7	6	7	5	
2008-2009 .....			5	16	8	7	14	7	10	6	10	7	5	5	
Pennsylvania															
2009-2010 .....			6	12	16	11	12	4	6	5	5	7	9	7	
2008-2009 .....			3	15	29	7	9	7	9	3	7	5	5	1	
South Dakota															
2009-2010 .....			7	4	14	17	9	5	6	7	6	8	9	8	
2008-2009 .....			4	5	15	11	9	7	9	7	9	11	9	4	
Tennessee															
2009-2010 .....		3	19	33	9	6	10	3	5	4	3	3	2		
2008-2009 .....		3	26	15	3	14	12	8	7	3	5	2	2		
Texas															
2009-2010 .....	5	4	8	24	24	11	12	3	3	3	2	1			
2008-2009 .....	5	8	7	17	14	13	12	6	5	4	5	4			
Wisconsin															
2009-2010 .....				3	19	10	13	4	8	7	6	6	7	5	12
2008-2009 .....				11	20	9	11	5	8	6	9	7	5	5	4
United States															
2009-2010 .....			5.4	6.9	14.3	11.3	11.3	6.7	7.2	7.1	6.4	6.8	8.9	7.7	
2008-2009 .....			4.5	9.4	11.9	8.9	12.8	6.4	9.6	6.7	9.1	7.4	6.9	6.4	

<sup>1</sup> Second year.

**Percent of All Sunflowers Farm Marketings by Month – States and United States:  
2008-2009 and 2009-2010**

[Monthly farm marketings, based on a sample survey, as a percent of total used for calculating marketing year average prices. Blank cells indicate month is outside State's designated marketing year as defined on page 39]

Year	Sep	Oct	Nov	Dec	Jan <sup>1</sup>	Feb	Mar	Apr	May	Jun	Jul	Aug
	(pct)	(pct)	(pct)	(pct)	(pct)	(pct)	(pct)	(pct)	(pct)	(pct)	(pct)	(pct)
Colorado <sup>2</sup>												
2009-2010 .....	3	15	33	13	13	10	5	3	1	4	-	-
2008-2009 .....	(NA)	(NA)	(NA)	(NA)	(NA)	(NA)	(NA)	(NA)	(NA)	(NA)	(NA)	(NA)
Kansas												
2009-2010 .....	2	14	26	19	16	10	6	4	1	1	1	-
2008-2009 .....	3	14	20	18	9	7	6	6	3	9	1	4
Minnesota												
2009-2010 .....	3	7	13	9	10	12	11	4	4	14	9	4
2008-2009 .....	2	10	16	11	5	9	10	9	5	4	10	9
North Dakota												
2009-2010 .....	3	3	25	13	11	11	9	4	2	6	7	6
2008-2009 .....	1	8	18	9	14	7	8	8	5	9	8	5
South Dakota												
2009-2010 .....	4	4	32	18	15	5	6	5	4	4	2	1
2008-2009 .....	1	9	17	17	7	7	4	3	4	14	14	3
United States												
2009-2010 .....	3.0	4.8	27.2	14.9	13.2	9.2	7.4	4.7	2.5	4.9	4.5	3.7
2008-2009 .....	1.4	8.9	18.4	11.6	11.6	7.1	7.1	6.7	4.8	9.4	8.4	4.6

- Represents zero.

(NA) Not available.

<sup>1</sup> Second year.

<sup>2</sup> Monthly price estimates began in 2009.

**Percent of Flaxseed Farm Marketings by Month – States and United States:  
2008-2009 and 2009-2010**

[Monthly farm marketings, based on a sample survey, as a percent of total used for calculating marketing year average prices]

Year	Jul	Aug	Sep	Oct	Nov	Dec	Jan <sup>1</sup>	Feb	Mar	Apr	May	Jun
	(pct)	(pct)	(pct)	(pct)	(pct)	(pct)	(pct)	(pct)	(pct)	(pct)	(pct)	(pct)
North Dakota												
2009-2010 .....	5	4	11	11	10	14	17	10	5	4	2	7
2008-2009 .....	13	4	20	13	6	4	7	8	6	7	3	9
South Dakota												
2009-2010 <sup>2</sup> .....	(NA)	(NA)	(NA)	(NA)	(NA)	(NA)	(NA)	(NA)	(NA)	(NA)	(NA)	(NA)
2008-2009 .....	(S)	(S)	(S)	(S)	(S)	(S)	(S)	(S)	(S)	(S)	(S)	(S)
United States												
2009-2010 .....	5.4	4.1	10.9	10.8	10.2	13.6	17.1	9.6	5.5	3.8	2.3	6.7
2008-2009 .....	13.0	3.5	20.5	12.6	6.1	3.6	6.6	7.9	6.6	7.2	3.1	9.3

(NA) Not available.

(S) Insufficient number of reports to establish an estimate.

<sup>1</sup> Second year.

<sup>2</sup> Monthly prices discontinued beginning in July 2009.

**Percent of Canola Farm Marketings by Month – States and United States:  
2008-2009 2009-2010**

[Monthly farm marketings, based on a sample survey, as a percent of total used for calculating marketing year average prices]

Year	Jul	Aug	Sep	Oct	Nov	Dec	Jan <sup>1</sup>	Feb	Mar	Apr	May	Jun
	(pct)	(pct)	(pct)	(pct)	(pct)	(pct)	(pct)	(pct)	(pct)	(pct)	(pct)	(pct)
Minnesota												
2009-2010 .....	(D)	(D)	(D)	(D)	(D)	(D)	(D)	(D)	(D)	(D)	(D)	(D)
2008-2009 .....	9	2	15	7	6	4	5	3	17	8	7	17
North Dakota												
2009-2010 .....	7	8	25	6	7	8	12	8	7	4	2	6
2008-2009 .....	5	8	23	6	4	5	12	6	8	12	6	5
United States												
2009-2010 .....	7.1	7.9	25.3	6.4	7.1	7.5	11.8	7.6	7.1	4.4	1.5	6.3
2008-2009 .....	5.5	8.3	22.4	6.2	3.8	4.8	12.0	5.6	8.6	11.4	5.8	5.6

(D) Withheld to avoid disclosing data for individual operations.  
<sup>1</sup> Second year.

**Percent of Dry Edible Beans Farm Marketings by Month – States and United States:  
2008-2009 and 2009-2010**

[Monthly farm marketings, based on a sample survey, as a percent of total used for calculating marketing year average prices]

Year	Sep	Oct	Nov	Dec	Jan <sup>1</sup>	Feb	Mar	Apr	May	Jun	Jul	Aug
	(pct)	(pct)	(pct)	(pct)	(pct)	(pct)	(pct)	(pct)	(pct)	(pct)	(pct)	(pct)
California												
2009-2010 .....	7	8	7	18	11	6	7	10	6	5	9	6
2008-2009 .....	3	9	12	11	12	12	9	14	3	4	7	4
Colorado												
2009-2010 .....	40	5	5	9	13	5	5	3	2	2	1	10
2008-2009 .....	42	9	4	6	8	9	3	4	7	5	2	1
Idaho												
2009-2010 .....	7	24	5	19	14	3	14	2	1	8	1	2
2008-2009 .....	9	14	6	18	10	4	24	3	1	8	1	2
Michigan												
2009-2010 .....	27	29	10	8	7	3	1	1	1	2	-	11
2008-2009 .....	25	38	6	3	4	4	2	1	1	2	1	13
Minnesota												
2009-2010 .....	31	10	5	2	10	1	7	7	3	1	3	20
2008-2009 .....	44	33	2	3	13	1	1	-	-	1	1	1
Nebraska												
2009-2010 .....	39	9	4	6	14	5	8	1	3	3	2	6
2008-2009 .....	42	15	3	1	7	6	5	4	7	4	1	5
North Dakota												
2009-2010 .....	10	12	18	12	16	6	6	3	4	5	3	5
2008-2009 .....	19	22	9	8	12	7	4	5	3	6	4	1
United States												
2009-2010 .....	19.9	15.6	11.6	10.1	12.9	4.3	5.9	3.0	2.7	3.7	2.3	8.0
2008-2009 .....	25.7	24.5	7.0	5.8	9.3	5.6	4.2	3.7	3.2	4.2	2.3	4.5

- Represents zero.  
<sup>1</sup> Second year.

**Prices Received for Chickpeas, All (Garbanzo), Monthly Prices Received, Monthly Farm Marketing Percentages, and Marketing Year Average Prices – United States: 2007-2008 through 2009-2010**

[Marketing year average (MYA) prices are weighted average prices for the United States marketing year of September - August. Monthly farm marketings, based on a sample survey, as percent of total used for calculating MYA prices]

Month	Prices received			Farm marketing percentages		
	2007-2008	2008-2009	2009-2010	2007-2008	2008-2009	2009-2010
	(dollars per cwt)	(dollars per cwt)	(dollars per cwt)	(percent)	(percent)	(percent)
September .....	30.90	38.30	(D)	4.3	6.2	(D)
October .....	25.20	39.10	25.50	24.4	11.2	32.4
November .....	27.10	35.40	28.00	13.4	4.0	9.2
December .....	29.10	35.70	25.90	10.2	8.2	13.7
January <sup>1</sup> .....	30.70	34.20	29.10	6.2	7.7	9.9
February .....	30.30	37.10	27.50	6.5	5.2	8.0
March .....	30.50	28.40	29.70	9.8	16.6	6.6
April .....	31.20	32.20	33.20	1.2	4.5	3.2
May .....	35.40	27.00	27.50	4.0	8.8	2.7
June .....	27.60	32.80	25.60	12.4	2.8	3.3
July .....	35.50	36.80	25.90	3.7	15.0	2.0
August .....	38.60	25.50	(D)	3.9	9.8	(D)
MYA .....	29.00	33.10	27.10	100.0	100.0	100.0

(D) Withheld to avoid disclosing data for individual operations.

<sup>1</sup> Second year.

**Prices Received for Chickpeas, Large (Garbanzo, larger than 20/64 in), Monthly Prices Received, Monthly Farm Marketing Percentages, and Marketing Year Average Prices – United States, 2007-2008 through 2009-2010**

[Marketing year average (MYA) prices are weighted average prices for the United States marketing year of September - August. Monthly farm marketings, based on a sample survey, as percent of total used for calculating MYA prices]

Month	Prices received			Farm marketing percentages		
	2007-2008	2008-2009	2009-2010	2007-2008	2008-2009	2009-2010
	(dollars per cwt)	(dollars per cwt)	(dollars per cwt)	(percent)	(percent)	(percent)
September .....	31.70	38.30	(D)	4.5	6.5	(D)
October .....	27.00	39.30	28.60	23.7	10.7	28.8
November .....	27.10	35.60	28.40	15.2	3.1	11.3
December .....	31.00	36.20	28.70	9.5	8.0	12.3
January <sup>1</sup> .....	31.10	35.50	30.30	6.8	7.3	10.5
February .....	32.10	37.20	28.70	5.8	5.5	9.0
March .....	30.60	28.40	30.80	10.8	17.3	7.3
April .....	33.60	32.30	33.50	1.2	4.6	3.9
May .....	37.50	27.30	28.10	3.8	8.7	2.5
June .....	28.10	33.60	27.60	12.4	2.8	3.3
July .....	40.70	37.00	37.00	2.5	15.5	0.6
August .....	40.60	25.90	(D)	3.8	10.0	(D)
MYA .....	30.00	33.40	29.10	100.0	100.0	100.0

(D) Withheld to avoid disclosing data for individual operations.

<sup>1</sup> Second year.

**Prices Received for Chickpeas, Small (Garbanzo, smaller than 20/64 in), Monthly Prices Received, Monthly Farm Marketing Percentages, and Marketing Year Average Prices – United States, 2007-2008 through 2009-2010**

[Marketing year average (MYA) prices are weighted average prices for the United States marketing year of September - August. Monthly farm marketings, based on a sample survey, as percent of total used for calculating MYA prices]

Month	Prices received			Farm marketing percentages		
	2007-2008	2008-2009	2009-2010	2007-2008	2008-2009	2009-2010
	(Dollars per Cwt)	(Dollars per Cwt)	(Dollars per Cwt)	(Percent)	(Percent)	(Percent)
September .....	(D)	32.00	(D)	(D)	1.6	(D)
October .....	14.50	37.70	18.60	30.5	20.7	44.4
November .....	(S)	35.00	19.70	(S)	20.8	2.0
December .....	20.80	29.50	19.90	15.5	12.5	18.5
January <sup>1</sup> .....	21.00	21.90	23.80	1.8	15.0	7.9
February .....	23.80	18.10	19.30	11.6	0.4	4.5
March .....	25.60	(D)	23.70	1.8	(D)	4.4
April .....	(D)	(D)	27.40	(D)	(D)	0.8
May .....	24.80	22.80	26.10	5.7	10.9	3.6
June .....	23.90	18.00	19.10	12.3	2.9	3.4
July .....	27.70	28.70	22.80	12.5	7.3	6.6
August .....	25.20	13.30	(D)	4.2	5.7	(D)
MYA .....	20.90	29.10	20.30	100.0	100.0	100.0

(D) Withheld to avoid disclosing data for individual operations.

(S) Insufficient number of reports to establish an estimate.

<sup>1</sup> Second year.

## Reliability of Prices Received Estimates

**Definition:** Prices received represent sales from producers to first buyers. They include all grades and qualities. The average commodity price from the survey multiplied by the total quantity marketed theoretically should give the total cash receipts for the commodity.

**Survey procedures:** Primary sales data used to determine grain prices were obtained from probability samples of about 2000 mills and elevators. These procedures ensure that virtually all grain moving into commercial channels has a chance of being included in the survey. Generally, States surveyed account for 90 percent or more of total United States production. Livestock prices are obtained from packers, stockyards, auctions, dealers, and market check data from AMS-USDA, private marketing organizations, and state commodity groups and agencies. Inter-farm sales of grain and livestock are not included since they represent very small percentages of the total marketings. Grain marketed for seed is also excluded. Fruit and vegetable prices are obtained from sample surveys and market check data from AMS-USDA, private marketing organizations, state agencies, and universities.

**Summary and estimation procedures:** Survey quantities sold are expanded by strata to state levels and used to weight average strata prices to a state average. State prices are then weighted to a United States price based on expanded marketings. Recommendations are prepared by the State Field Offices and reviewed by the Agricultural Statistics Board in Washington, D.C. State recommendations are reviewed for reasonableness with survey data, other States, and recent historic estimates.

**Revisions:** For most items, the current month's preliminary price represents a 3-5 day period around the 15th of the month. Previous month's prices represent actual dollars received for quantities sold during the entire month. Revisions are published in monthly issues of Agricultural Prices.

**Reliability:** United States price estimates based on probability surveys generally have a sampling error of less than one percent for the major commodities such as corn, wheat, soybeans, cotton, and rice. Current methods of summarization for non-probability commodities are not designed directly to calculate sampling errors. However, analytical measures approximate the United States relative sampling errors at around five percent. Any nonsampling errors are attributed to such things as the inability to obtain correct information, differences in interpreting questions or definitions, mistakes in coding or processing the data, etc. Efforts are made at each step in the survey process to minimize these nonsampling errors.



## Prices Paid by Farmers

The November Index of Prices Paid for Commodities and Services, Interest, Taxes, and Farm Wage Rates (PPITW) at 188 (1990-1992=100), is up 1.1 percent from October 2010 and 5.6 percent from November 2009.

**Production index:** The November index, at 193, increased 1.6 percent from last month and 6.6 percent from last year. Higher prices in November for complete feeds, nitrogen, and supplements more than offset lower prices for other services, feeder pigs, and hay & forages.

**Feed:** The November index, at 203, increased 4.6 percent from October and 11 percent from last November. Since October, higher prices for complete feeds, supplements, concentrates, and feed grains more than offset lower prices for hay & forages.

**Livestock and poultry:** The November index, at 133, increased 0.8 percent from last month and 18 percent from last year. Since October, higher prices for feeder cattle more than offset lower prices for feeder pigs. The November feeder cattle price, at \$112.20 per cwt, is up \$2.10 from the October price. November feeder pigs averaged \$128.00 per cwt, down \$8.00 from October.

**Fertilizer:** The November index, at 262, is up 4.4 percent from October and is 13 percent above November a year ago. Since October, prices are higher for nitrogen, potash & phosphate, and mixed fertilizer.

**Chemicals:** The November index, at 146, increased 0.7 percent from October but decreased 4.6 percent from last November. Compared with last month, prices are higher for herbicides, insecticides, and fungicides/other.

**Fuels:** The November index, at 297, is up 2.8 percent from a month earlier and is 13 percent above November 2009. Compared with last month, prices are higher for diesel, LP gas, and gasoline.

**Machinery:** The November index, at 229, is unchanged from October but is 1.3 percent above last November. Compared with last month, prices are higher for self-propelled machinery and other machinery.

**Consumer price index:** The October 2010 Consumer Price Index, as issued by the Bureau of Labor Statistics, for all urban consumers (CPI-U) increased 0.1 percent before seasonal adjustment to a level of 218.711 (1982-1984=100). The September index is 218.439. For the 12-month period ending in October, the overall index increased 1.2 percent.

## Prices Paid Indexes and Related Parity Ratios – United States: November 2010 with Comparisons

[Revised historical price indexes for months not shown are available at [www.nass.usda.gov](http://www.nass.usda.gov)]

Indexes and ratios	1910-1914 = 100			1990-1992 = 100		
	November 2009	October 2010	November 2010	November 2009	October 2010	November 2010
	(percent)	(percent)	(percent)	(percent)	(percent)	(percent)
Prices paid by farmers for commodities, services, interest, taxes, and wage rates (PPITW) .....	2369	2475	2501	178	186	188
Production .....	1752	1842	1870	181	190	193
Feed .....	894	947	993	183	194	203
Livestock & poultry .....	1444	1682	1698	113	132	133
Seeds .....	3008	2815	2815	304	284	284
Fertilizer .....	847	922	961	231	251	262
Chemicals .....	947	897	903	153	145	146
Fuels .....	2041	2234	2288	264	289	297
Supplies & repairs .....	1114	1141	1141	157	161	161
Autos & trucks .....	2987	2989	2997	112	112	113
Machinery .....	5658	5734	5753	226	229	229
Building materials .....	2205	2250	2251	162	166	166
Services & rent .....	1966	2067	2058	(NA)	(NA)	(NA)
Services .....	(NA)	(NA)	(NA)	158	164	163
Rent .....	(NA)	(NA)	(NA)	178	191	191
Interest <sup>1</sup> .....	3478	3211	3211	139	128	128
Taxes <sup>2</sup> .....	6370	7190	7190	238	268	268
Wage rates .....	7062	7192	7192	189	192	192
Production, interest, taxes, and wage rates (PITW) .....	2438	2556	2588	181	190	193
Family living-CPI <sup>3</sup> .....	2055	2077	2080	160	162	162
Ratio (received/paid) .....	(NA)	(NA)	(NA)	76	83	85
Parity ratio <sup>4</sup> .....	36	40	40	(NA)	(NA)	(NA)
Parity ratio adjusted <sup>5</sup> .....	38	42	42	(NA)	(NA)	(NA)
PPITW adjusted for productivity <sup>6</sup> .....	1441	1452	1456	(NA)	(NA)	(NA)
Crop sector (PPITW) .....	(NA)	(NA)	(NA)	188	195	196
Livestock sector (PPITW) .....	(NA)	(NA)	(NA)	168	177	180
Farm sector (production) .....	(NA)	(NA)	(NA)	178	187	192
Non-farm sector (production) .....	(NA)	(NA)	(NA)	182	192	193

(NA) Not available.

<sup>1</sup> Interest per acre on farm real estate debt and interest rate on farm non-real estate debt.

<sup>2</sup> Farm real estate taxes payable per acre.

<sup>3</sup> Bureau of Labor Statistics, Consumer Price Index for all urban consumers (CPI-U), for the previous month converted by the USDA.

<sup>4</sup> Ratio of index of prices received to PPITW (1910-1914=100).

<sup>5</sup> Based on estimated cash receipts, from marketings and government payments, the preliminary adjustment factor is 1.044 for 2010 and the revised factor is 1.041 for 2009.

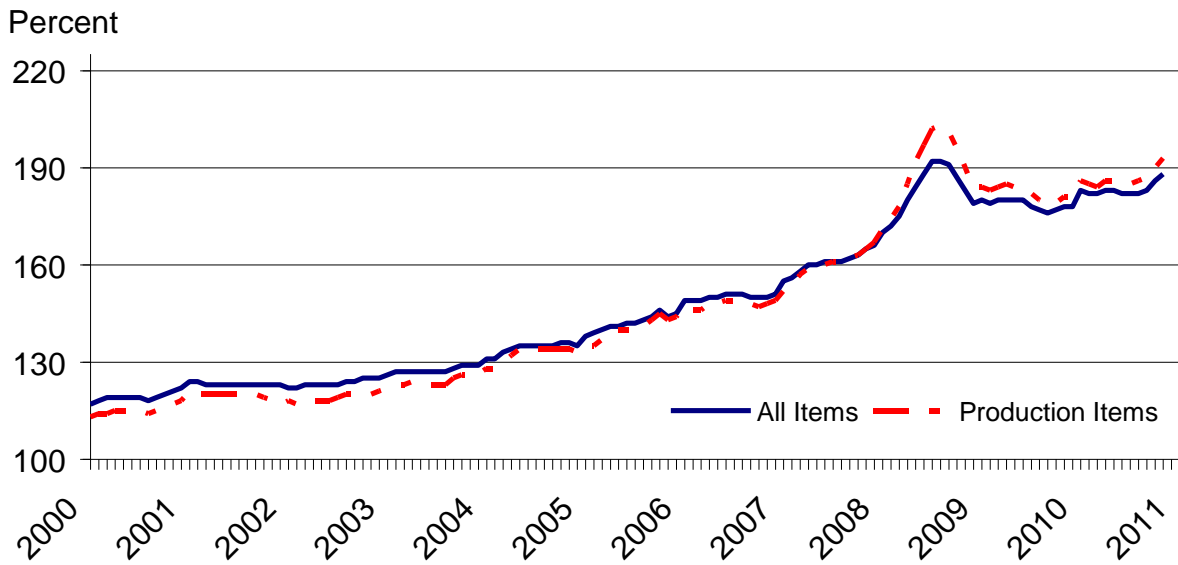
<sup>6</sup> PPITW is adjusted based on productivity trend for the prior 15 years.

## Prices Paid Indexes and Annual Weights for Input Components and Sub-Components – United States: November 2010 with Comparisons

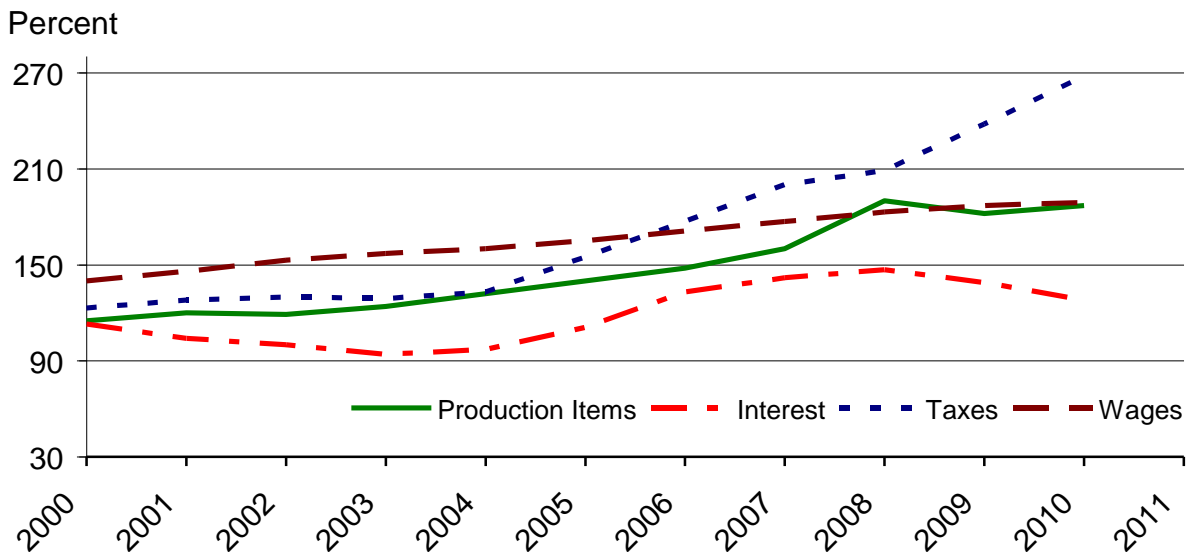
[Revised historical price indexes for months not shown are available at [www.nass.usda.gov](http://www.nass.usda.gov). Relative weights are a five year moving average]

	Relative weights		Indexes (1990-1992=100)		
	2009	2010	November 2009	October 2010	November 2010
	(percent)	(percent)	(percent)	(percent)	(percent)
Production items .....	68.9	70.2	181	190	193
Feed .....	11.4	11.9	183	194	203
Feed grains .....	1.6	1.7	156	186	198
Complete feeds .....	5.6	5.8	191	196	205
Hay & forages .....	1.4	1.5	141	147	145
Concentrates .....	1.8	1.9	193	205	216
Supplements .....	1.0	1.0	225	246	269
Livestock & poultry .....	8.2	8.6	113	132	133
Feeder cattle .....	6.4	6.7	111	130	133
Feeder pigs .....	0.7	0.7	107	148	139
Milk cow replacements .....	0.7	0.7	110	118	118
Poultry .....	0.5	0.5	148	148	148
Seeds .....	3.8	3.9	304	284	284
Field crops .....	3.5	3.6	319	299	299
Grasses & legumes .....	0.4	0.4	161	139	139
Fertilizer .....	4.7	5.2	231	251	262
Mixed fertilizer .....	2.1	2.3	240	233	235
Nitrogen .....	2.0	2.2	215	249	270
Potash & phosphate .....	0.7	0.7	252	317	326
Chemicals .....	3.3	3.2	153	145	146
Herbicides .....	2.1	2.0	143	134	135
Insecticides .....	0.8	0.7	169	163	164
Fungicides & other .....	0.5	0.5	174	167	168
Fuels .....	3.6	3.9	264	289	297
Diesel .....	2.3	2.5	271	303	310
Gasoline .....	0.8	0.9	231	245	249
LP gas .....	0.4	0.5	295	289	300
Supplies & repairs .....	4.6	4.6	157	161	161
Supplies .....	1.5	1.5	153	156	156
Repairs .....	3.1	3.0	159	163	163
Autos & trucks .....	1.6	1.5	112	112	113
Autos .....	0.2	0.2	112	110	111
Trucks .....	1.4	1.3	112	113	113
Machinery .....	4.4	4.5	226	229	229
Tractors .....	1.0	1.0	189	190	190
Self-propelled .....	1.8	1.8	231	236	237
Other machinery .....	1.7	1.7	241	244	244
Building materials .....	4.6	4.5	162	166	166
Services .....	12.2	12.1	158	164	163
Custom rates .....	1.3	1.2	145	145	145
Other services .....	11.0	10.8	160	167	165
Rent .....	6.4	6.3	178	191	191
Cash .....	3.4	3.4	224	243	243
Share .....	3.0	2.9	124	130	130
Interest .....	3.7	3.6	139	128	128
Taxes .....	3.0	3.0	238	268	268
Wage rates .....	7.6	7.5	189	192	192
Family living-CPI .....	16.9	15.7	160	162	162

## Paid Indexes by Month, All Items and Production Items – United States: 1990-1992=100

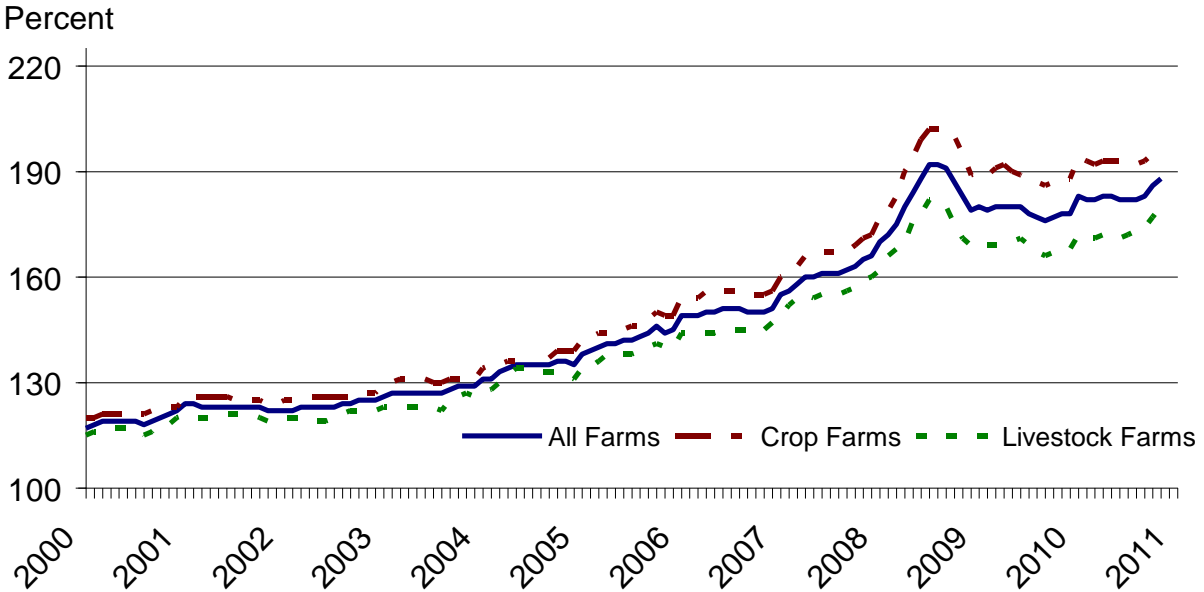


## Paid Indexes, Annual Averages, Production Items, Interest, Taxes, and Wages – United States: 1990-1992=100

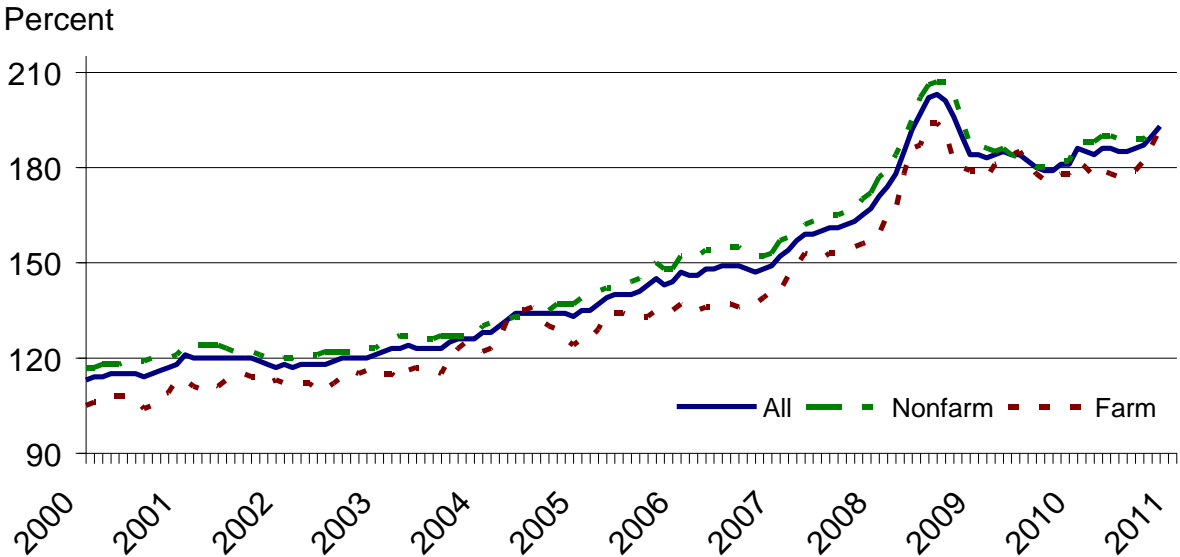


Index values are year-to-date for current year.

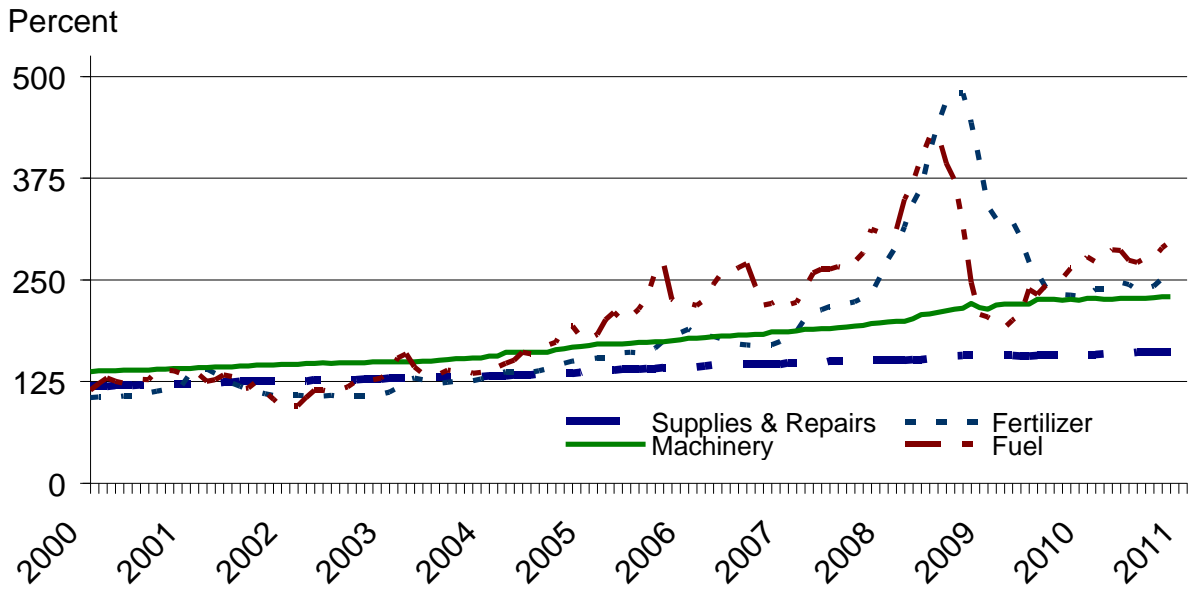
### Paid Indexes by Farm Type and Month, All Items – United States: 1990-1992=100



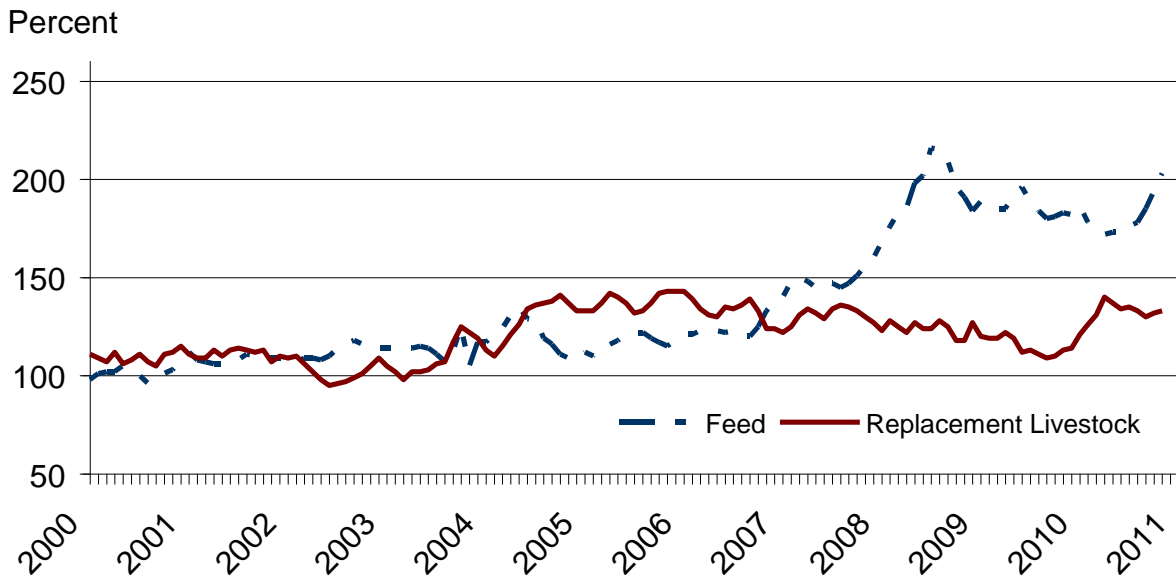
### Paid Indexes by Origin and Month, All Production Items – United States: 1990-1992=100



## Paid Indexes by Non-Farm Sector and Month, Supplies & Repairs, Fertilizer, Machinery, and Fuel – United States 1990-1992=100



## Paid Indexes by Month, Feed and Replacement Livestock – United States: 1990-1992=100



## Feed Price Ratios – United States: November 2010 with Comparisons

Feed price ratio <sup>1</sup>	November 2009	October 2010	Preliminary November 2010
Broiler-feed: pounds of broiler grower feed equal in value to 1 pound of broiler, live weight <sup>2</sup> .....	3.9	4.0	3.7
Market egg feed: pounds of laying feed equal in value to 1 dozen eggs <sup>3</sup> .....	10.0	6.5	9.4
Hog-corn: bushels of corn equal in value to 100 pounds of hog, live weight .....	11.0	12.3	10.3
Milk-feed: pounds of 16% mixed dairy feed equal in value to 1 pound of whole milk <sup>4</sup> .....	2.26	2.40	2.22
Steer & heifer-corn: bushels of corn equal in value to 100 pounds of steer & heifers, live weight .....	23.4	22.9	21.8
Turkey-feed: pounds of turkey grower equal in value to 1 pound of turkey, live weight <sup>5</sup> .....	5.7	6.8	6.4

<sup>1</sup> Effective January 1995, prices of commercial prepared feeds are based on current United States prices received for corn, soybeans, alfalfa hay, and all wheat.

<sup>2</sup> The price of commercial prepared broiler feed is based on current United States prices received for corn and soybeans. The modeled feed uses 58 percent corn and 42 percent soybeans.

<sup>3</sup> The price of commercial prepared layer feed is based on current United States prices received for corn and soybeans. The modeled feed uses 75 percent corn and 25 percent soybeans.

<sup>4</sup> The price of commercial prepared dairy feed is based on current United States prices received for corn, soybeans, and alfalfa hay. The modeled feed uses 51 percent corn, 41 percent alfalfa hay, and 8 percent soybeans.

<sup>5</sup> The price of commercial prepared turkey feed is based on current United States prices received for corn, soybeans, and wheat. The modeled feed uses 51 percent corn, 28 percent soybeans, and 21 percent wheat.

## Prices Received Used to Calculate Feed Price Ratios – United States: November 2010 with Comparisons

Item	November 2009	October 2010	Preliminary November 2010
	(dollars)	(dollars)	(dollars)
Broilers, live ..... pound	0.410	0.470	0.470
Eggs, market .....dozen	0.884	0.654	1.020
Hogs, all .....cwt	40.30	53.30	47.20
Milk, all .....cwt	15.40	18.50	17.90
Steers and heifers .....cwt	85.40	98.80	100.00
Turkeys, live ..... pound	0.541	0.734	0.736
Corn .....bushel	3.65	4.32	4.59
Hay, alfalfa ..... ton	109.00	118.00	117.00
Soybeans .....bushel	9.53	10.20	11.20
Wheat, all .....bushel	4.79	5.87	6.21

## Prices Paid for Feeder Livestock – United States: November 2010 with Comparisons

Item	November 2009	October 2010	Preliminary November 2010
	(dollars)	(dollars)	(dollars)
Feeder cattle & calves .....cwt	94.10	110.10	112.20
Feeder pigs .....cwt	98.00	136.00	128.00

## Reliability of Prices Paid Estimates

**Definition:** Prices paid by farmers represent the average costs of inputs purchased by farmers and ranchers to produce agricultural commodities. Conceptually, the average price when multiplied by quantity purchased should equal total producer expenditures for the item.

**Survey procedures:** The prices paid data are obtained from establishments that sell goods and services to farmers and ranchers. Annually, about 8,500 firms are randomly selected from lists by type of item sold with an average response rate in the range of 75-80 percent. Firms are asked to report the price for the specified item "most commonly bought by farmers" or that was the "volume seller". Approximately 135 items are surveyed each March to represent all production input items purchased. The survey reference period for most items is the five business days centered around the 15th of the month. Separate prices paid surveys are conducted for agricultural chemicals, fuels, feed, fertilizer, machinery, and seed.

**Summary and estimation procedures:** The annual March Prices Paid Survey is summarized as a nonprobability survey. Average prices reported are aggregated to the region and United States level using weights available from expenditure data and other administrative sources. Price recommendations are prepared by the State Field Offices and Headquarters for review by the Agricultural Statistics Board in Washington, D.C. Also, the change in price level for individual items surveyed are combined to the regional and United States levels, and are published as prices paid indexes referenced to a specific base period. Prices paid indexes for new autos and trucks, building materials, farm supplies, motor supplies, and marketing containers are updated based on price changes measured in selected Bureau of Labor Statistics (BLS) indexes.

**Revisions:** Any revisions are published in the monthly and in annual issues of Agricultural Prices. The basis for revision must be supported by additional data that directly affect the level of the estimate. More revisions are likely for March when separate prices paid surveys are conducted, in lieu of BLS indexes, by the USDA to measure price change.

**Reliability:** Current methods of summarization for the March data are not designed directly to calculate sampling errors. However, analytical measures approximate the United States relative sampling errors for major items around 10 percent. Any nonsampling errors are attributed to such things as the inability to obtain correct information, differences in interpreting questions or definitions, mistakes in coding or processing the data, etc. Efforts are made at each step in the survey process to minimize these nonsampling errors.

**Program change:** Effective January 1, 1995, the National Agricultural Statistics Service updated the weights and changed the construction of its prices paid and received by farmers indexes. A Federal Register Notice dated October 28, 1994 discussed these program modifications.

A 1990-1992 reference and base period replaced the 1977 reference and 1971-1973 base weight period. Five-year moving average weights replaced the current fixed 1971-1973 base period weights. The 1910-1914=100 price indexes, required by statute for computing parity prices, were linked forward based on the changes in the new 1990-1992=100 indexes. The new indexes were constructed by multiplying the ratios of the current prices to the base period prices by the moving average weights (adjusted for seasonal marketing patterns for the prices received indexes).



## Information Contacts

Direct general questions to Kevin Barnes, Chief, Environmental, Economics and Demographics Branch at (202) 720-6146. Below are the commodity specialists to contact for additional information.

### Crop Prices Received

Lance Honig, Chief, Crops Branch .....	(202) 720-2127
Jacqueline Moore, Head, Field Crops Section .....	(202) 720-2127
Suzanne Avilla – Peanuts, Rice .....	(202) 720-7688
Bryan Durham – Hay, Oats .....	(202) 690-3234
Steve Maliszewski – Cotton, Cotton Ginnings, Sorghum .....	(202) 720-5944
Anthony Prillaman – Corn, Proso Millet, Flaxseed .....	(202) 720-9526
Nick Schauer – Wheat, Rye .....	(202) 720-8068
Julie Schmidt – Crop Weather, Barley, Sugar Crops .....	(202) 720-7621
Travis Thorson – Soybeans, Sunflower, Other Oilseeds .....	(202) 720-7369
Jorge Garcia-Pratts, Head, Fruits, Vegetables and Special Crops Section .....	(202) 720-2127
Debbie Flippin – Fresh and Processing Vegetables, Onions, Strawberries .....	(202) 720-2157
Fred Granja – Apples, Apricots, Cherries, Plums, Prunes, Tobacco .....	(202) 720-4288
Dawn Keen – Floriculture, Maple Syrup, Nursery, Tree Nuts .....	(202) 720-4215
Steve Maliszewski – Citrus, Coffee, Grapes, Tropical Fruits .....	(202) 720-5944
Tierra Mobley – Berries, Cranberries, Potatoes, Sweet Potatoes .....	(202) 720-4285
Dan Norris – Austrian Winter Peas, Dry Edible Peas, Lentils, Mints, Mushrooms, Peaches, Pears, Wrinkled Seed Peas, Dry Beans .....	(202) 720-3250
Kim Ritchie – Hops .....	(360) 709-2400

### Livestock Prices Received

Dan Kerestes, Chief, Livestock Branch .....	(202) 720-3570
Scott Hollis, Livestock Section .....	(202) 720-3570
Jason Hardegree - Cattle .....	(202) 720-3040
Mike Miller - Milk, Milk Cows .....	(202) 720-3278
Everett Olbert - Sheep, Lambs, Goats, Wool, Mohair .....	(202) 720-4751
Nicholas Streff - Hogs .....	(202) 720-3106
Bruce Boess, Poultry and Specialty Commodities Section .....	(202) 720-3570
Doug Bounds - Turkeys .....	(202) 690-3237
Kim Linonis - Eggs .....	(202) 690-8632
Troy Marshall - Broilers, Honey .....	(202) 720-3244

### Indexes, Prices Paid, and Parity Prices

Kevin Barnes, Chief, Environmental, Economics and Demographics Branch .....	(202) 720-6146
Kevin Hintzman, Economics Section .....	(202) 720-6146
Daryl Brinkman - Prices Received Indexes, Parity Prices .....	(202) 720-8844
Joe Samson - Grazing Fees .....	(202) 720-5446
Jennifer Sissom - Prices Paid Indexes, Prices Paid for Feed, Fertilizer, Agricultural Chemicals, Seeds, Farm Supplies and Repairs, Farm Machinery, Fuels, Feeder Livestock, Poultry Chicks, Feed Price Ratios, Autos & Trucks .....	(202) 690-3229

## Access to NASS Reports

For your convenience, you may access NASS reports and products the following ways:

- All reports are available electronically, at no cost, on the NASS web site: <http://www.nass.usda.gov>
- Both national and state specific reports are available via a free e-mail subscription. To set-up this free subscription, visit <http://www.nass.usda.gov> and in the “Receive NASS Updates” box under “Receive reports by Email,” click on “National” or “State” to select the reports you would like to receive.
- Printed reports may be purchased from the National Technical Information Service (NTIS) by calling toll-free (800) 999-6779, or (703) 605-6220 if calling from outside the United States or Canada. Accepted methods of payment are Visa, MasterCard, check, or money order.

For more information on NASS surveys and reports, call the NASS Agricultural Statistics Hotline at (800) 727-9540, 7:30 a.m. to 4:00 p.m. ET, or e-mail: [nass@nass.usda.gov](mailto:nass@nass.usda.gov).

The United States Department of Agriculture (USDA) prohibits discrimination in all its programs and activities on the basis of race, color, national origin, age, disability, and where applicable, sex, marital status, familial status, parental status, religion, sexual orientation, political beliefs, genetic information, reprisal, or because all or a part of an individual's income is derived from any public assistance program. (Not all prohibited bases apply to all programs.) Persons with disabilities who require alternative means for communication of program information (Braille, large print, audiotape, etc.) should contact USDA's TARGET Center at (202) 720-2600 (voice and TDD).

To file a complaint of discrimination, write to USDA, Assistant Secretary for Civil Rights, Office of the Assistant Secretary for Civil Rights, 1400 Independence Avenue, S.W., Stop 9410, Washington, DC 20250-9410, or call toll-free at (866) 632-9992 (English) or (800) 877-8339 (TDD) or (866) 377-8642 (English Federal-relay) or (800) 845-6136 (Spanish Federal-relay). USDA is an equal opportunity provider and employer.