



Agricultural Prices

ISSN: 1937-4216

Released December 30, 2010, by the National Agricultural Statistics Service (NASS), Agricultural Statistics Board, United States Department of Agriculture (USDA).

Hog Program Alert

Beginning with December 2010, State level sow, barrow & gilt, and all hog prices will be discontinued. United States level sow, barrow & gilt, and all hog prices will be published based on data provided by United States Department of Agriculture's Agricultural Marketing Service.

December Farm Prices Received Index Up 1 Point

The preliminary All Farm Products Index of Prices Received by Farmers in December, at 160 percent, based on 1990-1992=100, increased 1 point (0.6 percent) from November. The Crop Index is up 2 points (1.1 percent) but the Livestock Index decreased 1 point (0.7 percent). Producers received higher prices for corn, soybeans, wheat, and cattle and lower prices for lettuce, milk, oranges, and onions. In addition to prices, the overall index is also affected by the seasonal change based on a 3-year average mix of commodities producers sell. Increased monthly marketings of wheat, milk, oranges, and broilers offset decreased marketings of soybeans, corn, cattle, and grapes.

The preliminary All Farm Products Index is up 25 points (19 percent) from December 2009. The Food Commodities Index, at 155, is unchanged from last month but increased 19 points (14 percent) from December 2009.

Prices Paid Index Up 3 Points

The December Index of Prices Paid for Commodities and Services, Interest, Taxes, and Farm Wage Rates (PPITW) is 191 percent of the 1990-1992 average. The index is up 3 points (1.6 percent) from November and 13 points (7.3 percent) above December 2009. Prices are higher for complete feeds, feeder cattle, feed grains, and nitrogen.

Prices Received, Prices Paid, and Ratio of Prices Received to Prices Paid, Indexes 1990-1992=100 – United States: December 2010 with Comparisons

Index	December 2009	November 2010	December 2010
Prices received	135	159	160
Prices paid	178	188	191
Ratio prices received to prices paid	76	85	84

Contents

Prices Received by Farmers	4
Prices Received Indexes – United States: December 2010 with Comparisons	5
Prices Received and Prices Paid Indexes by Month for Selected Groups – United States: 2009 and 2010, 1990-1992=100	5
Received Indexes by Month, Livestock Products, All Products, and All Crops – United States: 1990-1992=100 Chart.....	6
Received Indexes by Month, Food Grains, Feed Grains & Hay, and Oilseeds – United States: 1990-1992=100 Chart.....	6
Received Indexes by Month, Fruit & Nut and Commercial Vegetables – United States: 1990-1992=100 Chart.....	7
Received Indexes by Month, Meat Animal, Dairy Products, and Poultry & Eggs – United States: 1990-1992=100 Chart.....	7
Prices Received for Field Crops and Fruits – United States: December 2010 with Comparisons.....	8
Prices Received for Vegetables and Livestock – United States: December 2010 with Comparisons	9
Prices Received for Corn by Month – United States Chart.....	10
Prices Received for Wheat by Month – United States Chart	10
Prices Received for Cotton by Month – United States Chart.....	11
Prices Received for Soybeans by Month – United States Chart	11
Prices Received for Cattle by Month – United States Chart	12
Prices Received for Milk by Month – United States Chart.....	12
Prices Received for Hogs by Month – United States Chart	13
Prices Received for Turkeys and Broilers by Month – United States Chart	13
Prices Received for All Wheat – States and United States: December 2010 with Comparisons.....	14
Prices Received for Winter Wheat – States and United States: December 2010 with Comparisons.....	14
Prices Received for Durum Wheat – States and United States: December 2010 with Comparisons.....	15
Prices Received for Spring Wheat – States and United States: December 2010 with Comparisons	15
Prices Received for All Wheat, Corn, and Soybeans by Month – United States: 2010 with Comparisons.....	16
Prices Received for Beef Cattle and All Hogs by Month – United States: 2010 with Comparisons	16
Prices Received for All Barley – States and United States: December 2010 with Comparisons.....	17
Prices Received for Malting Barley – States: December 2010 with Comparisons	17
Prices Received for Feed Barley – States: December 2010 with Comparisons	17
Prices Received for Corn – States and United States: December 2010 with Comparisons	18
Prices Received for Soybeans – States and United States: December 2010 with Comparisons.....	18
Prices Received for Oats – States and United States: December 2010 with Comparisons	19
Prices Received for Sorghum Grain – States and United States: December 2010 with Comparisons.....	19
Prices Received for Dry Beans – States and United States: December 2010 with Comparisons	20
Prices Received for Peanuts (In-Shell) – States and United States: December 2010 with Comparisons	20
Prices Received for Sunflowers – States and United States: December 2010 with Comparisons	21
Prices Received for Canola – States and United States: December 2010 with Comparisons	21
Prices Received for Flaxseed – States and United States: December 2010 with Comparisons	21
Prices Received for Upland Cotton and Cottonseed – States and United States: December 2010 with Comparisons	22
Prices Received and Marketings for Upland Cotton and Rice – United States: December 2010 with Comparisons	22
Prices Received for Hay by Type – States and United States: December 2010 with Comparisons.....	23
Prices Received for Apples – States and United States: December 2010 with Comparisons	23
Prices Received for Citrus Fruits, by Utilization – States and United States: December 2009	24
Prices Received for Citrus Fruits, by Utilization – States and United States: November 2010.....	25
Prices Received for Citrus Fruits, by Utilization – States and United States: December 2010	26
Prices Received for Potatoes – States and United States: December 2010 with Comparisons.....	27
Prices Received for Beef Cattle and Cows – States and United States: December 2010 with Comparisons	28

Prices Received for Calves and Steers & Heifers – States and United States: December 2010 with Comparisons	29
Prices Received for All Hogs – States and United States: December 2010 with Comparisons.....	30
Prices Received for Barrows & Gilts – States and United States: December 2010 with Comparisons.....	30
Prices Received for Sows – States and United States: December 2010 with Comparisons	31
Prices Received for Sheep – States and United States: November 2010 with Comparisons.....	31
Prices Received for Lambs – States and United States: November 2010 with Comparisons.....	32
Prices Received for All Milk – States and United States: December 2010 with Comparisons	32
Prices Received for Fluid Grade Milk – States and United States: December 2010 with Comparisons	33
Prices Received for Manufacturing Grade Milk – States and United States: December 2010 with Comparisons.....	34
Prices Received for Milk Cows – States and United States: October 2010 with Comparisons.....	34
Parity Price Equivalent for Manufacturing Grade Milk – United States: December 2010, with Comparisons.....	34
Commodity Parity Prices and Price as Percent of Parity Price – United States: December 2010 with Comparisons	35
Commodity Parity Prices – United States: December 2010 with Comparisons	36
Prices Received for Hops – States and United States: 2009 and 2010	38
Reliability of Prices Received Estimates	38
Prices Paid by Farmers.....	39
Prices Paid Indexes and Related Parity Ratios – United States: December 2010 with Comparisons.....	40
Prices Paid Indexes and Annual Weights for Input Components and Sub-Components – United States: December 2010 with Comparisons.....	41
Paid Indexes by Month, All Items and Production Items – United States: 1990-1992=100 Chart	42
Paid Indexes, Annual Averages, Production Items, Interest, Taxes, and Wages – United States: 1990-1992=100 Chart	42
Paid Indexes by Farm Type, All Items – United States: 1990-1991=100 Chart.....	43
Paid Indexes by Origin, All Production Items – United States: 1990-1992=100 Chart	43
Paid Indexes by Non-Farm Sector, Supplies & Repairs, Fertilizer, Machinery, and Fuel – United States: 1990-1992=100 Chart	44
Paid Indexes by Month, Feed and Replacement Livestock – United States: 1990-1992=100 Chart.....	44
Feed Price Ratios – United States: December 2010 with Comparisons	45
Prices Received Used to Calculate Feed Price Ratios – United States: December 2010 with Comparisons.....	45
Prices Paid for Feeder Livestock – United States: December 2010 with Comparisons.....	45
Prices Paid for Feed – United States: 2005-2010.....	46
Annual Average Prices Paid for Feeder Livestock – United States: 2005-2010.....	46
Prices Paid by Farmers and Ranchers for Beef Cattle Production.....	47
Prices Received for Beef Cattle – Selected United States Regions: 2010	47
Reliability of Prices Paid Estimates	48
Calendar of Prices Received Features in the 2010 Agricultural Price Report	49
Calendar of Prices Paid Features in the 2010 Agricultural Price Report	52
Information Contacts	53

Prices Received by Farmers

The December All Farm Products Index is 160 percent of its 1990-1992 base, up 0.6 percent from the November index and 19 percent above the December 2009 index.

All crops: The December index is 179, up 1.1 percent from November and 19 percent above December 2009. Index increases for feed grains & hay, oilseeds, food grains, and cotton more than offset the index decreases for fruits & nuts and commercial vegetables.

Food grains: The December index, at 229, is 16 percent above the previous month and 33 percent above a year ago. The December all wheat price, at \$7.05 per bushel, is up 92 cents from November and \$2.18 above December 2009.

Feed grains & hay: The December index is 207, up 6.7 percent from last month and 34 percent above a year ago. The corn price, at \$4.94 per bushel, is up 39 cents from last month and \$1.34 above December 2009. The all hay price, at \$112 per ton, is up \$1.00 from November and up \$7.00 from last December. Sorghum grain, at \$9.17 per cwt, is 73 cents above November and \$3.46 above December last year.

Cotton: The December index, at 141, is up 5.2 percent from November and 34 percent above last year. The December price, at 85.3 cents per pound, is up 4.1 cents from the previous month and 21.9 cents above last December.

Oilseeds: The December index, at 204, is up 6.8 percent from November and 19 percent higher than December 2009. The soybean price, at \$11.70 per bushel, increased 60 cents from November and is \$1.90 above December 2009.

Fruits & nuts: The December index, at 144, is down 15 percent from November but 2.9 percent higher than a year ago. Price decreases for oranges, lemons, grapefruit, and apples more than offset price increases for strawberries and pears.

Commercial vegetables: The December index, at 180, is down 5.8 percent from last month and 13 percent below December 2009. Price declines for lettuce, onions, and tomatoes during December more than offset price increases for broccoli, cauliflower, snap beans, and carrots.

Potatoes & dry beans: The December index, at 143, is up 2.9 percent from last month and 5.9 percent above December 2009. The all potato price, at \$8.52 per cwt, is up 46 cents from November and \$1.05 from last December. The all dry bean price, at \$25.00 per cwt, is down \$1.90 from the previous month and \$6.20 below December 2009.

Livestock and products: The December index, at 135, is 0.7 percent below last month but up 13 percent from December 2009. Compared with a year ago, prices are higher for cattle, broilers, hogs, turkeys, calves, milk, and eggs.

Meat animals: The December index, at 127, is up 3.3 percent from last month and 21 percent higher than last year. The December hog price, at \$51.90 per cwt, is up \$4.10 from November and \$6.90 higher than a year ago. The December beef cattle price of \$97.60 per cwt is up \$3.60 from last month and \$19.10 higher than December 2009.

Dairy products: The December index, at 129, is down 5.8 percent from a month ago but 2.4 percent higher than December last year. The December all milk price of \$16.80 per cwt is \$1.10 lower than last month but 30 cents higher than December 2009. The fluid grade milk price is down \$1.10 and the manufacturing grade milk price down 90 cents from the previous month.

Poultry & eggs: The December index, at 154, is down 4.3 percent from November but 10 percent above a year ago. The December market egg price, at 91.9 cents per dozen, decreased 10.1 cents from November but is 0.1 cent above December 2009. The December broiler price, at 46.0 cents per pound, is down 1.0 cent from November but 4.0 cents above a year ago. The December turkey price, at 67.7 cents per pound, is down 5.9 cents from the previous month but up 14.0 cents from a year earlier.

Prices Received Indexes – United States: December 2010 with Comparisons

[Revised historical price indexes for months not shown are available at www.nass.usda.gov]

Index	1910-1914=100				1990-1992=100		
	1990-1992 Average	December 2009	November 2010	December 2010	December 2009	November 2010	December 2010
	(percent)	(percent)	(percent)	(percent)	(percent)	(percent)	(percent)
All products	639	860	1010	1018	135	159	160
All crops	500	743	876	889	150	177	179
Food grains	325	544	627	725	172	198	229
Feed grains & hay	363	552	692	738	155	194	207
Cotton	517	537	687	722	105	134	141
Tobacco	1263	1563	1563	1563	103	103	103
Oilseeds	554	942	1048	1117	172	191	204
Fruits & nuts	716	976	1189	1002	140	170	144
Commercial vegetables	698	1489	1364	1290	208	191	180
Potatoes & dry beans	540	682	704	727	135	139	143
Other crops	493	610	618	618	124	126	126
Livestock and products	768	912	1040	1036	119	136	135
Meat animals	1021	1066	1253	1298	105	123	127
Dairy products	799	1015	1101	1034	126	137	129
Poultry & eggs	282	393	453	434	140	161	154
Food commodities	(NA)	(NA)	(NA)	(NA)	136	155	155

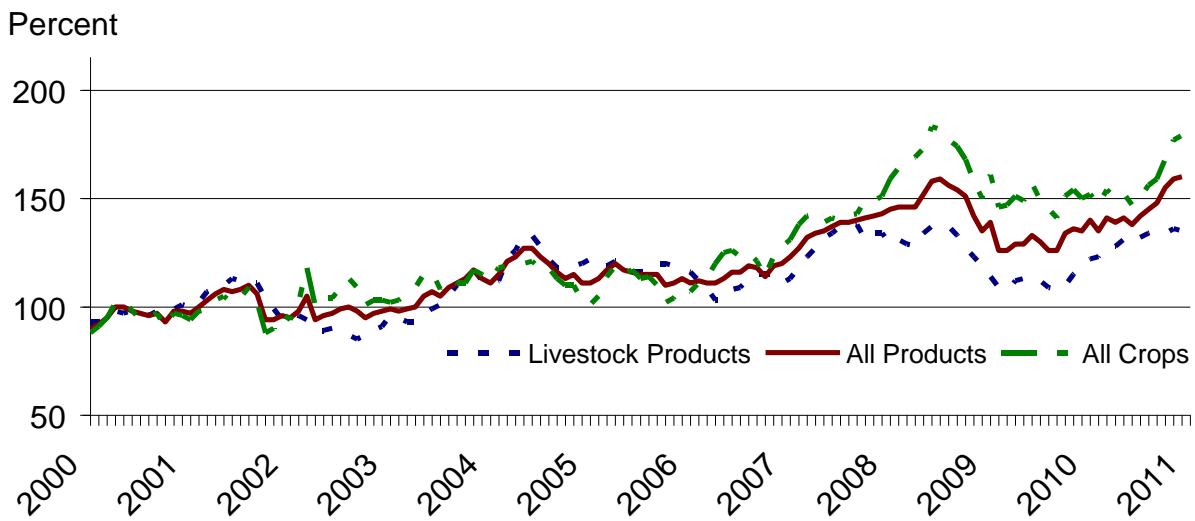
(NA) Not available.

Prices Received and Prices Paid Indexes by Month for Selected Groups – United States: 2009 and 2010, 1990-1992=100

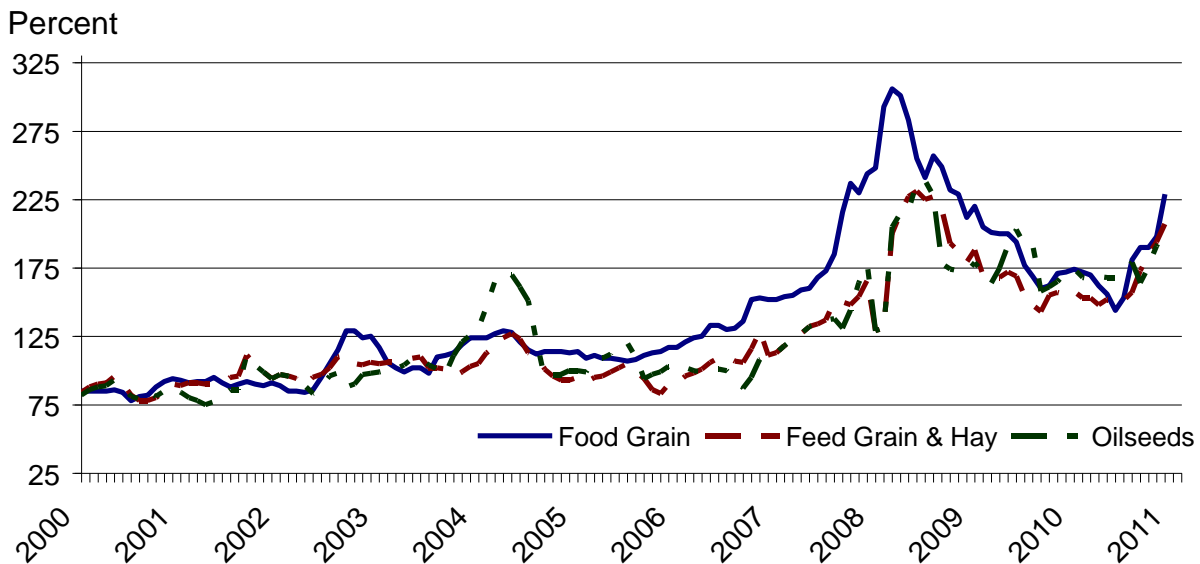
[Revised historical price indexes for months not shown are available at www.nass.usda.gov. Blank data cells indicate estimation period has not yet begun]

Month	Index of prices received						Index of prices paid			
	All farm products		All crops		Livestock and products		All items		Production items	
	2009	2010	2009	2010	2009	2010	2009	2010	2009	2010
	(percent)	(percent)	(percent)	(percent)	(percent)	(percent)	(percent)	(percent)	(percent)	(percent)
January	139	140	161	152	114	122	180	183	184	186
February	126	135	146	147	109	123	179	182	183	185
March	126	141	147	154	108	128	180	182	184	184
April	129	139	151	150	112	128	180	183	185	186
May	129	141	149	152	113	131	180	183	184	186
June	133	138	157	147	111	129	180	182	184	185
July	130	142	149	150	112	132	178	182	182	185
August	126	145	145	156	109	134	177	182	180	186
September	126	148	141	159	108	135	176	183	179	187
October	134	155	151	168	110	134	177	186	179	190
November	136	159	154	177	115	136	178	188	181	193
December	135	160	150	179	119	135	178	191	181	197

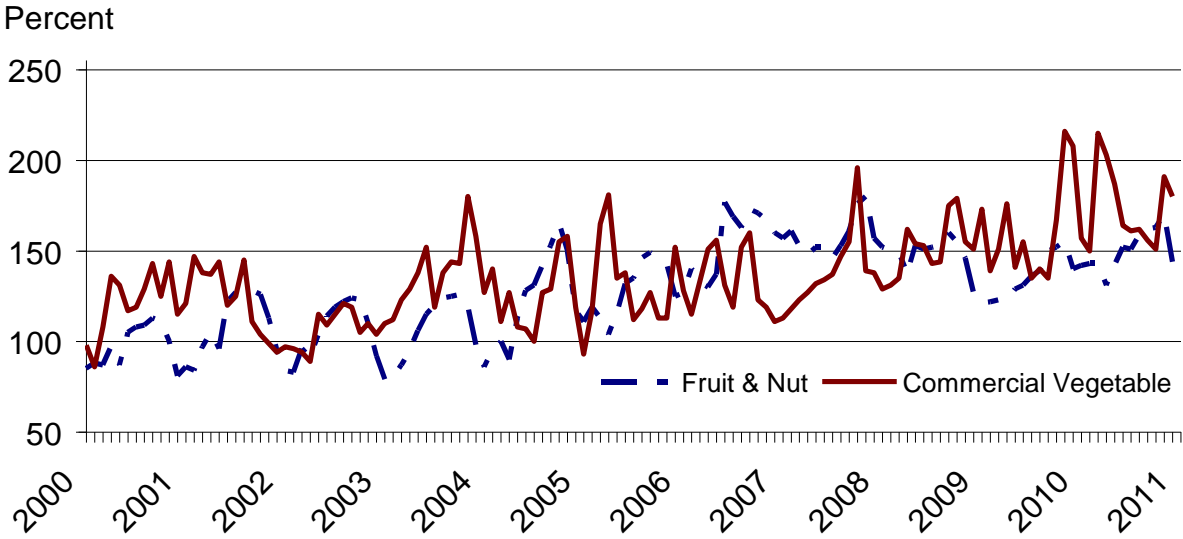
**Received Indexes by Month,
Livestock Products, All Products, and All Crops –
United States: 1990-1992=100**



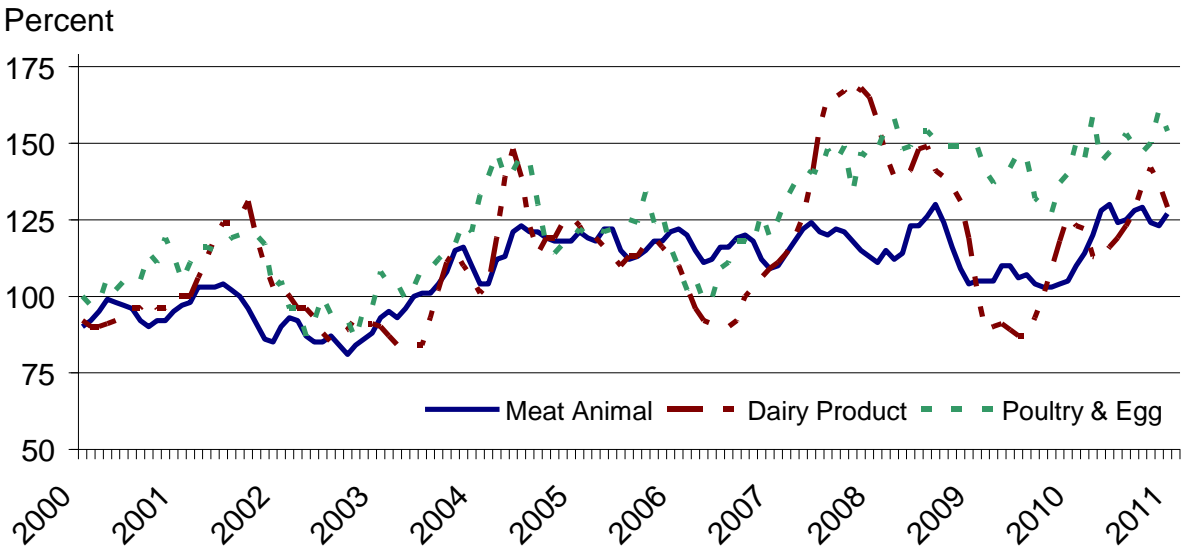
**Received Indexes by Month,
Food Grains, Feed Grains & Hay, and Oilseeds –
United States: 1990-1992=100**



**Received Indexes by Month,
Fruit & Nut and Commercial Vegetables –
United States: 1990-1992=100**



**Received Indexes by Month,
Meat Animal, Dairy Product, and Poultry & Egg –
United States: 1990-1992=100**



Prices Received for Field Crops and Fruits – United States: December 2010 with Comparisons

Commodity	Average 1990-1992=100	December 2009	November 2010	Preliminary December 2010
Field crops				
Austrian winter peas dollars/cwt	(NA)	21.70	(D)	(S)
Barley, all dollars/bushel	2.12	4.54	3.82	3.98
Feed dollars/bushel	1.90	2.63	3.31	3.69
Malting dollars/bushel	2.43	4.84	3.97	4.04
Beans, dry edible dollars/cwt	19.10	31.20	26.90	25.00
Canola dollars/cwt	(NA)	15.80	19.10	20.80
Chickpeas, all dollars/cwt	(NA)	25.90	28.40	30.60
Large dollars/cwt	(NA)	28.70	28.40	30.80
Small dollars/cwt	(NA)	19.90	26.30	(D)
Corn dollars/bushel	2.30	3.60	4.55	4.94
Cotton, upland dollars/pound	0.606	0.634	0.812	0.853
Cottonseed ¹ dollars/ton	96.00	160.00	163.00	163.00
Flaxseed dollars/bushel	4.27	8.40	12.30	12.90
Hay, all, baled dollars/ton	76.30	105.00	111.00	112.00
Alfalfa dollars/ton	77.20	109.00	117.00	121.00
Other dollars/ton	60.00	96.20	95.50	94.60
Lentils dollars/cwt	(NA)	27.10	26.90	30.50
Oats dollars/bushel	1.22	2.22	3.02	2.74
Peanuts, in-shell dollars/pound	0.304	0.217	0.223	0.226
Peas, dry edible dollars/cwt	(NA)	8.99	9.02	11.10
Potatoes dollars/cwt	5.82	7.47	8.06	8.52
Rice, all dollars/cwt	7.07	14.40	11.80	12.90
Long dollars/cwt	(NA)	13.30	10.50	11.10
Medium and short dollars/cwt	(NA)	17.00	16.10	17.30
Sorghum grain dollars/cwt	3.75	5.71	8.44	9.17
Soybeans dollars/bushel	5.61	9.80	11.10	11.70
Sunflowers, all dollars/cwt	9.50	14.80	19.10	21.20
Wheat, all dollars/bushel	2.96	4.87	6.13	7.05
Winter dollars/bushel	2.93	4.68	6.00	6.85
Durum dollars/bushel	2.86	4.91	6.04	6.83
Other spring dollars/bushel	3.11	5.18	6.36	7.38
Hard red winter ² dollars/bushel	(NA)	4.68	6.11	(NA)
Soft red winter ² dollars/bushel	(NA)	4.52	5.46	(NA)
Hard red spring ² dollars/bushel	(NA)	5.21	6.41	(NA)
White ² dollars/bushel	3.24	4.74	5.85	(NA)
Fruits				
Citrus, equivalent on-tree				
Grapefruit dollars/box	5.77	8.82	11.56	7.50
Lemons dollars/box	10.10	11.81	20.93	11.36
Oranges dollars/box	5.79	6.13	11.22	6.69
Tangelos dollars/box	5.82	4.49	(S)	4.74
Tangerines and mandarins dollars/box	15.11	19.56	26.48	22.90
Noncitrus, fresh				
Apples ³ dollars/pound	0.212	0.275	0.321	0.295
Grapes ³ dollars/ton	506.00	1,220.00	770.00	670.00
Peaches ³ dollars/ton	432.00	(S)	(S)	(S)
Pears ³ dollars/ton	370.00	398.00	519.00	681.00
Strawberries dollars/cwt	56.00	210.00	139.00	206.00

(D) Withheld to avoid disclosing data for individual operations.

(NA) Not available.

(S) Insufficient number of reports to establish an estimate.

¹ Marketing year August - February.

² Preliminary estimates not set for this item.

³ Equivalent packinghouse-door returns for California, Michigan, New York (apples only), and Washington (apples, peaches, and pears). Prices as sold for other states.

Prices Received for Vegetables and Livestock – United States: December 2010 with Comparisons

[Price data source for livestock and poultry commodities is United States Department of Agriculture's Agricultural Marketing Service. Blank data cells indicate estimation period has not yet begun]

Commodity	Average 1990-1992=100	December 2009	November 2010	Preliminary December 2010
Vegetables, fresh ¹				
Asparagusdollars/cwt	79.80	(S)	(S)	(S)
Beans, snap ²dollars/cwt	(NA)	63.50	43.30	78.50
Broccolidollars/cwt	22.50	53.50	55.40	85.00
Cantaloups ²dollars/cwt	(NA)	15.10	37.10	(S)
Carrotsdollars/cwt	13.20	27.80	27.60	29.70
Cauliflowerdollars/cwt	26.80	47.10	51.90	123.00
Celerydollars/cwt	11.60	38.80	14.30	14.40
Corn, sweetdollars/cwt	15.70	19.40	20.30	27.60
Cucumbers ²dollars/cwt	(NA)	20.40	14.40	19.70
Lettucedollars/cwt	11.90	38.70	35.50	20.00
Onionsdollars/cwt	12.80	7.83	18.70	13.00
Tomatoesdollars/cwt	32.30	65.00	35.00	31.80
Livestock				
Calvesdollars/cwt	94.30	105.00	124.00	128.00
Cattle, all beefdollars/cwt	72.90	78.50	94.00	97.60
Cows ³dollars/cwt	49.60	43.50	51.70	54.20
Steers & heifersdollars/cwt	77.10	83.80	101.00	104.00
Milk cows ⁴dollars/head	1130.00	(NA)	(NA)	(NA)
Hogs, alldollars/cwt	47.70	45.00	47.80	51.90
Barrows & giltsdollars/cwt	48.40	45.50	48.00	52.20
Sowsdollars/cwt	39.50	32.10	43.50	48.90
Lambsdollars/cwt	56.20	98.70	142.00	(NA)
Sheepdollars/cwt	23.40	44.40	54.20	(NA)
Dairy and poultry				
Milk, all ⁵dollars/cwt	13.06	16.50	17.90	16.80
Fat test percent	3.66	3.79	3.81	3.83
Fluid gradedollars/cwt	13.10	16.50	17.90	16.80
Fat test percent	3.66	3.79	3.80	3.82
Manufacturing gradedollars/cwt	11.80	16.30	15.60	14.70
Fat test percent	3.71	4.25	4.18	4.27
Broilers, live ⁶dollars/pound	0.317	0.420	0.470	0.460
Eggs, all ⁷dollars/dozen	0.643	1.050	1.130	1.080
Market ^{7 8}dollars/dozen	0.546	0.918	1.020	0.919
Turkeys, live ^{7 9}dollars/pound	0.380	0.537	0.736	0.677
Adjusted for seasonal variation				
Eggs, alldollars/dozen	0.545	0.878	0.945	0.903
Seasonal factor percent	100	120	120	120
Milk, all ⁵dollars/cwt	9.71	15.50	16.50	15.70
Seasonal factor percent	100	107	109	107

(NA) Not available.

(S) Insufficient number of reports to establish an estimate.

¹ Beginning January 2006, point of first sale. FOB shipping point for prior years.

² Monthly estimates began January 1995.

³ Beef cows and cull dairy cows sold for slaughter.

⁴ Animals sold for dairy herd replacement only. Prices available for January, April, July, and October.

⁵ Before deductions for hauling. Includes quality, quantity, and other premiums. Excludes hauling subsidies.

⁶ Equivalent live weight price.

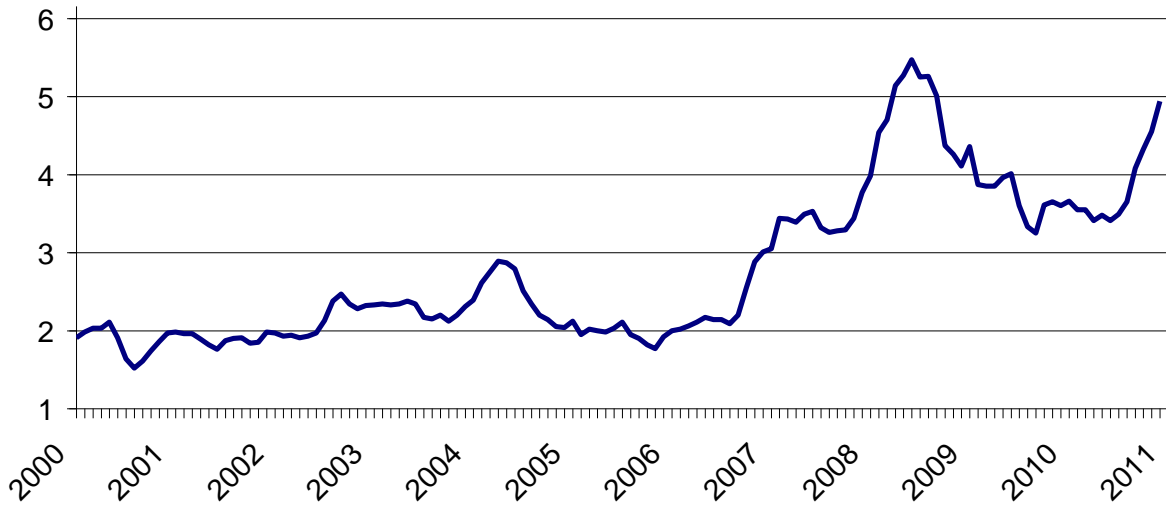
⁷ Mid-month price.

⁸ Also referred to as table eggs.

⁹ Live weight equivalent price is used when actual live weight price is not available.

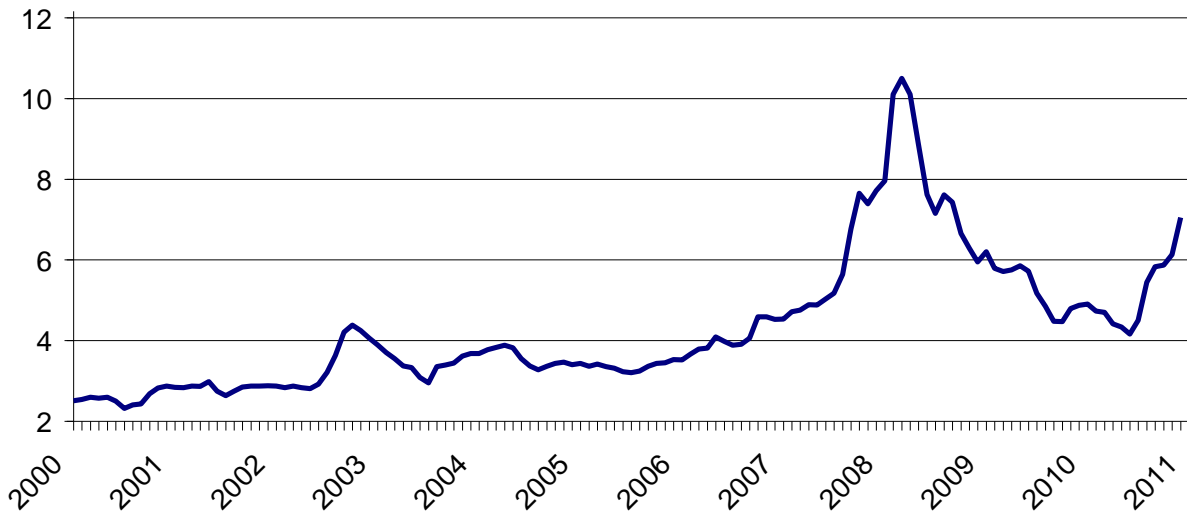
Prices Received for Corn by Month – United States

Dollars per bushel

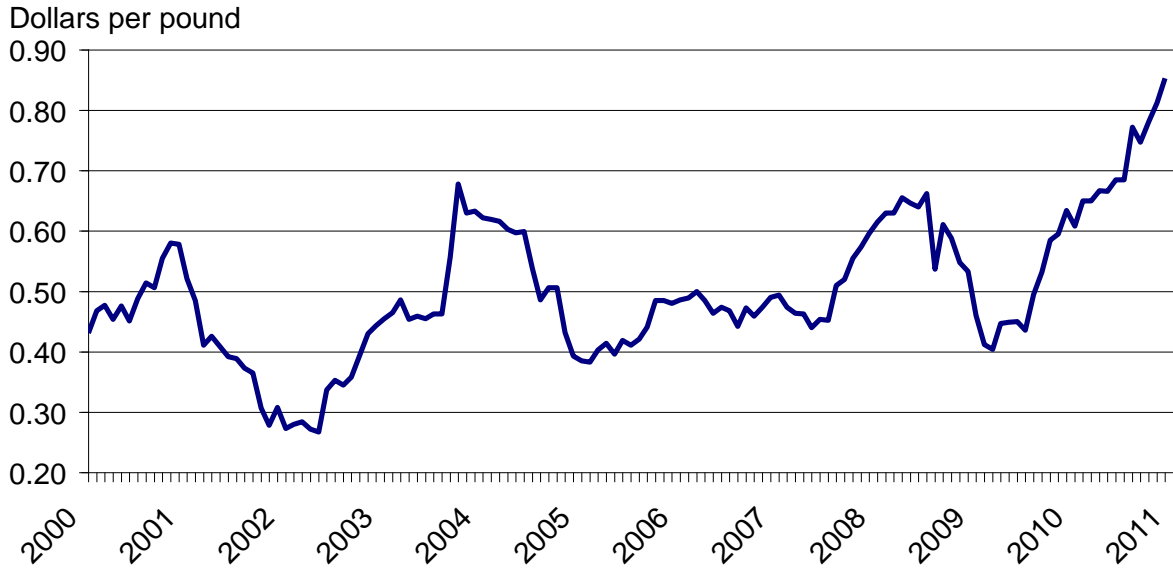


Prices Received for Wheat by Month – United States

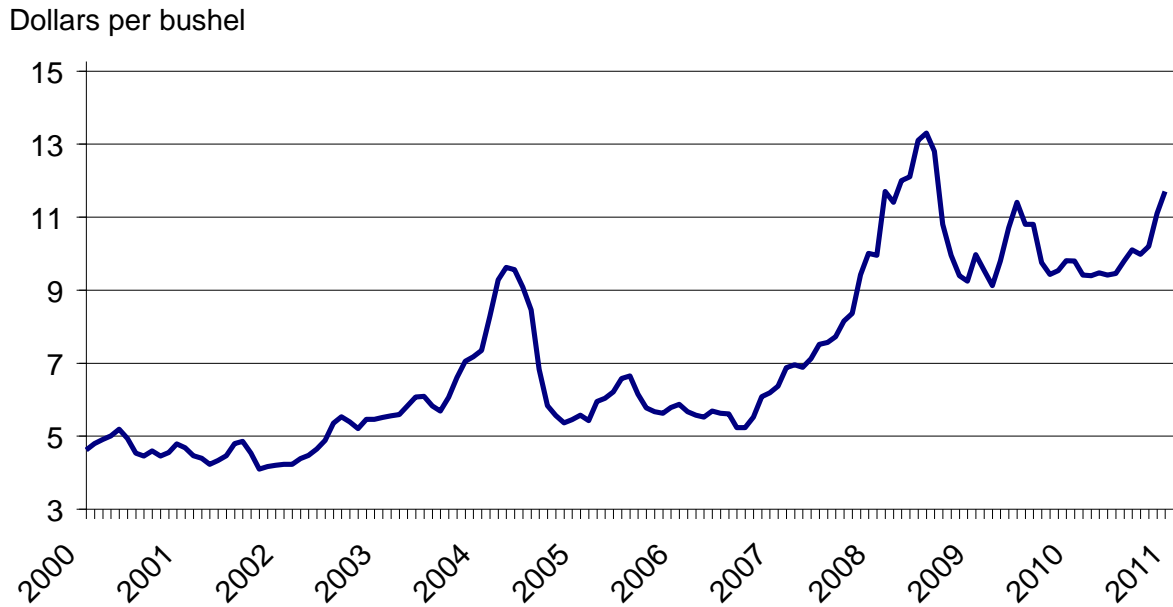
Dollars per bushel



Prices Received for Cotton by Month – United States

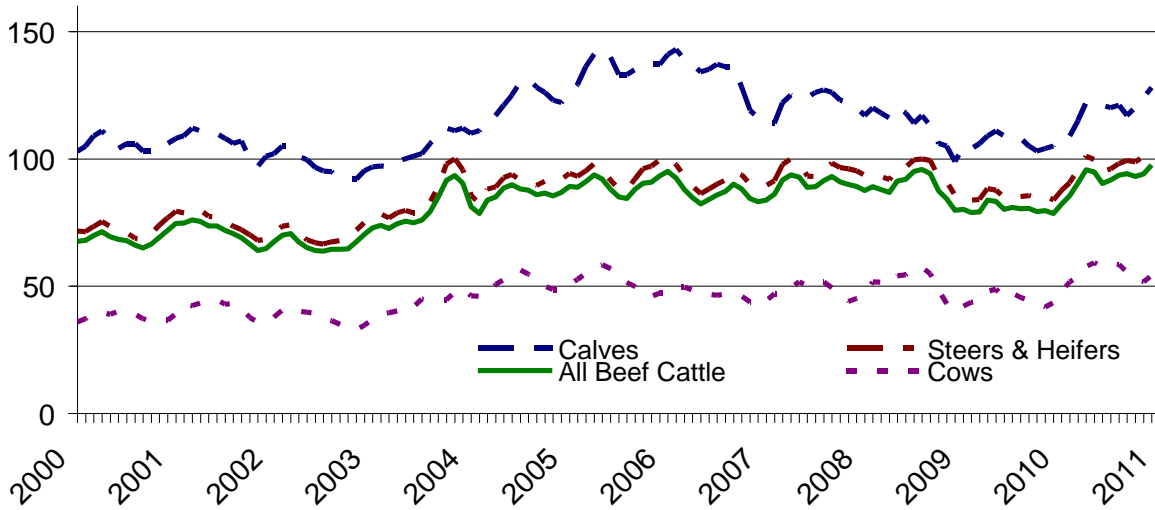


Prices Received for Soybeans by Month – United States



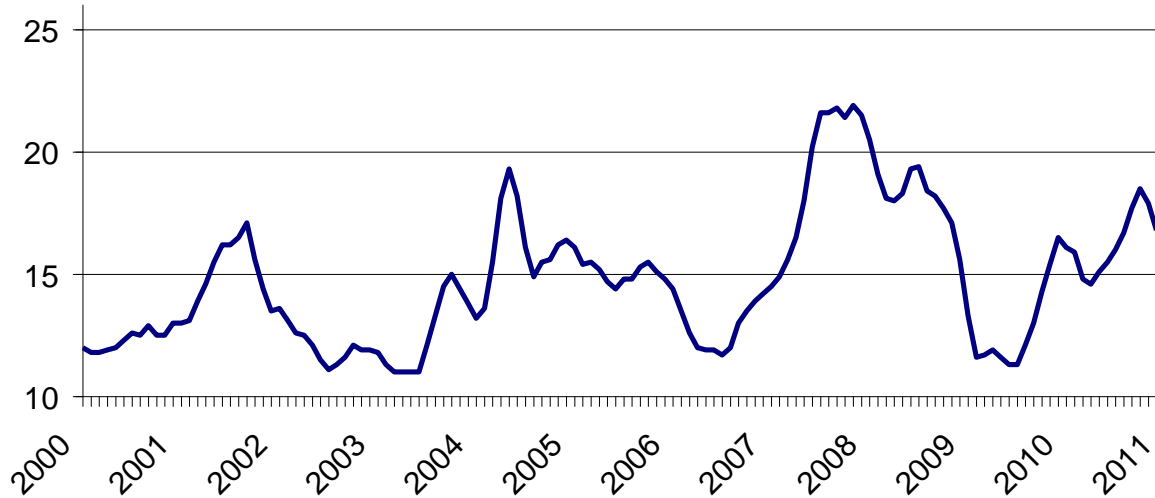
Prices Received for Cattle by Month – United States

Dollars per cwt



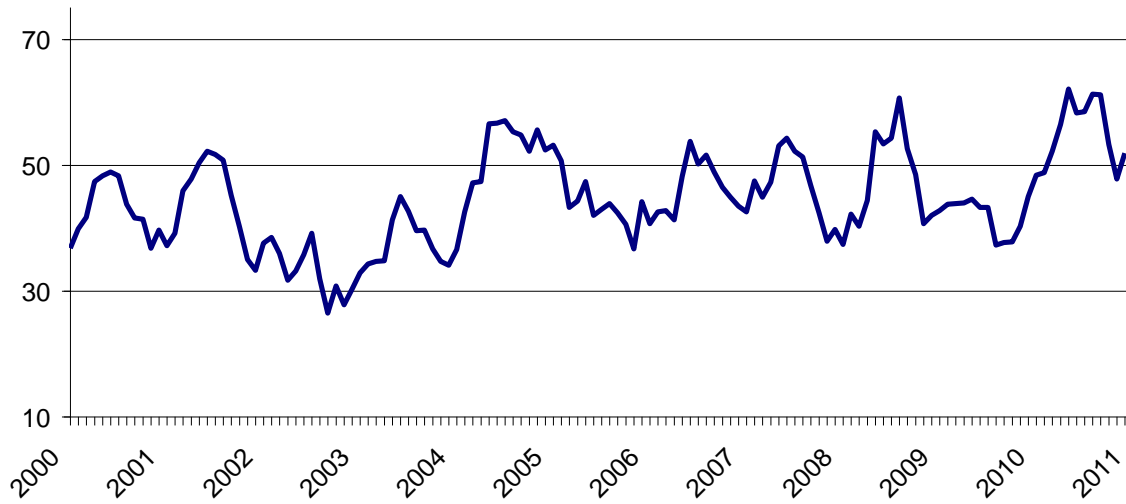
Prices Received for Milk by Month – United States

Dollars per cwt



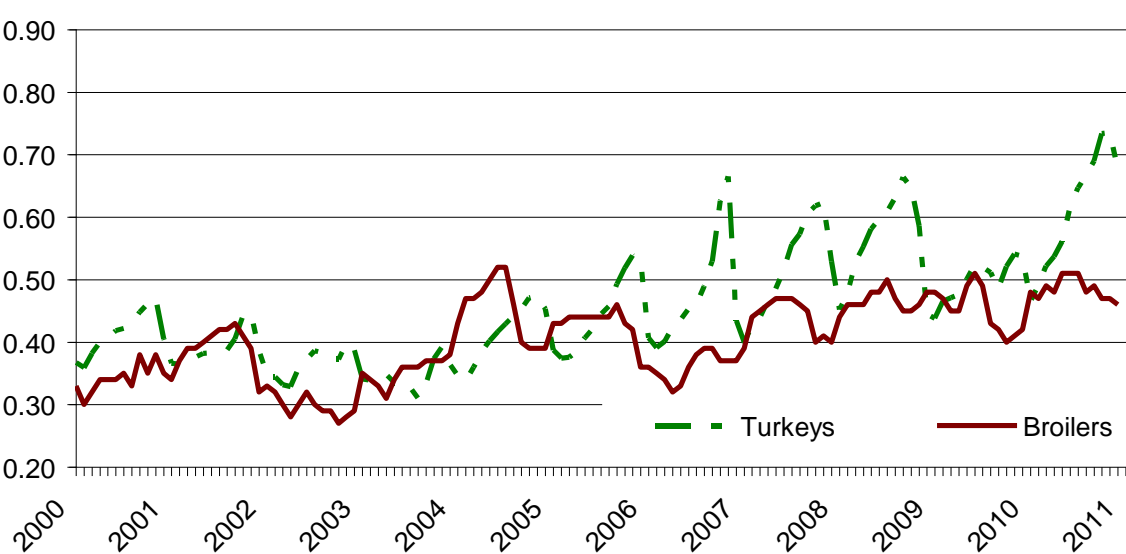
Prices Received for Hogs by Month – United States

Dollars per cwt



Prices Received for Turkeys and Broilers by Month – United States

Dollars per pound



**Prices Received for All Wheat – States and United States:
December 2010 with Comparisons**

States	December 2009	November 2010	Preliminary December 2010
	(dollars per bushel)	(dollars per bushel)	(dollars per bushel)
Arizona	(D)	6.24	(S)
Arkansas	4.72	(D)	(D)
California	5.33	6.30	(D)
Colorado	4.47	5.83	6.59
Idaho	4.88	5.71	6.71
Illinois	4.34	6.08	6.70
Indiana	4.24	5.81	6.72
Kansas	4.44	6.40	6.95
Michigan	4.64	5.90	6.84
Minnesota	4.74	5.37	6.97
Missouri	4.26	4.59	6.00
Montana	5.51	6.09	7.23
Nebraska	4.38	5.80	6.50
North Carolina	4.46	6.27	6.45
North Dakota	4.89	6.29	7.34
Ohio	4.77	5.43	6.19
Oklahoma	4.44	6.45	7.12
Oregon	5.26	6.65	7.08
South Dakota	5.10	6.46	7.22
Texas	5.54	6.65	7.04
Washington	4.87	5.97	6.89
United States	4.87	6.13	7.05

(D) Withheld to avoid disclosing data for individual operations.

(S) Insufficient number of reports to establish an estimate.

**Prices Received for Winter Wheat – States and United States:
December 2010 with Comparisons**

States	December 2009	November 2010	Preliminary December 2010
	(dollars per bushel)	(dollars per bushel)	(dollars per bushel)
Arkansas	4.72	(D)	(D)
California	5.15	6.30	(D)
Colorado	4.48	5.83	6.59
Idaho	4.74	5.50	6.43
Illinois	4.34	6.08	6.70
Indiana	4.24	5.81	6.72
Kansas	4.44	6.40	6.95
Michigan	4.64	5.90	6.84
Minnesota	3.91	5.06	6.00
Missouri	4.26	4.59	6.00
Montana	5.07	5.84	7.15
Nebraska	4.38	5.80	6.50
North Carolina	4.46	6.27	6.45
North Dakota	4.27	5.02	6.30
Ohio	4.77	5.43	6.19
Oklahoma	4.44	6.45	7.12
Oregon	5.25	6.49	6.90
South Dakota	4.64	5.77	6.66
Texas	5.54	6.65	7.04
Washington	4.66	5.83	6.71
United States	4.68	6.00	6.85

(D) Withheld to avoid disclosing data for individual operations.

**Prices Received for Durum Wheat – States and United States:
December 2010 with Comparisons**

States	December 2009	November 2010	Preliminary December 2010
	(dollars per bushel)	(dollars per bushel)	(dollars per bushel)
Arizona	(D)	6.24	(S)
California	(D)	(D)	(S)
Idaho	(S)	(D)	(D)
Montana	5.23	6.10	7.00
North Dakota	4.82	6.03	6.80
United States	4.91	6.04	6.83

(D) Withheld to avoid disclosing data for individual operations.

(S) Insufficient number of reports to establish an estimate.

**Prices Received for Spring Wheat – States and United States:
December 2010 with Comparisons**

States	December 2009	November 2010	Preliminary December 2010
	(dollars per bushel)	(dollars per bushel)	(dollars per bushel)
Colorado	(D)	(D)	(S)
Idaho	5.14	6.19	7.20
Minnesota	4.75	5.38	7.00
Montana	6.13	6.39	7.36
North Dakota	4.94	6.47	7.50
Oregon	5.34	7.44	8.20
South Dakota	5.76	6.62	7.35
Washington	5.65	6.65	7.75
United States	5.18	6.36	7.38

(D) Withheld to avoid disclosing data for individual operations.

(S) Insufficient number of reports to establish an estimate.

Prices Received for All Wheat, Corn, and Soybeans by Month – United States: 2010 with Comparisons

[Current month prices are mid-month; prices for previous months and years are for the entire month. Blank data cells indicate estimation period has not yet begun]

Month	All wheat			Corn			Soybeans		
	2008	2009	Preliminary 2010	2008	2009	Preliminary 2010	2008	2009	Preliminary 2010
	(dollars per bushel)	(dollars per bushel)	(dollars per bushel)	(dollars per bushel)	(dollars per bushel)	(dollars per bushel)	(dollars per bushel)	(dollars per bushel)	(dollars per bushel)
January	7.96	6.20	4.90	3.98	4.36	3.66	9.95	9.97	9.79
February ..	10.10	5.79	4.73	4.54	3.87	3.55	11.70	9.54	9.41
March	10.50	5.71	4.70	4.70	3.85	3.55	11.40	9.12	9.39
April	10.10	5.75	4.41	5.14	3.85	3.41	12.00	9.79	9.47
May	8.87	5.85	4.33	5.27	3.96	3.48	12.10	10.70	9.41
June	7.62	5.72	4.16	5.47	4.01	3.41	13.10	11.40	9.45
July	7.15	5.17	4.50	5.25	3.60	3.49	13.30	10.80	9.79
August	7.61	4.85	5.44	5.26	3.33	3.65	12.80	10.80	10.10
September	7.43	4.48	5.83	5.01	3.25	4.08	10.80	9.75	9.98
October	6.65	4.47	5.87	4.37	3.61	4.32	9.95	9.43	10.20
November	6.29	4.79	6.13	4.26	3.65	4.55	9.39	9.53	11.10
December	5.95	4.87	7.05	4.11	3.60	4.94	9.24	9.80	11.70

Prices Received for Beef Cattle and All Hogs by Month – United States: 2010 with Comparisons

[Current month prices are mid-month; prices for previous months and years are for the entire month. Blank data cells indicate estimation period has not yet begun]

States	Beef cattle ¹			All hogs ²		
	2008	2009	Preliminary 2010	2008	2009	Preliminary 2010
	(dollars per cwt)	(dollars per cwt)	(dollars per cwt)	(dollars per cwt)	(dollars per cwt)	(dollars per cwt)
January	87.50	80.10	82.10	37.40	42.80	48.40
February	89.00	78.90	85.50	42.20	43.80	48.80
March	87.90	79.10	90.50	40.30	43.90	52.20
April	86.80	83.80	95.70	44.40	44.00	56.50
May	91.30	83.20	94.80	55.30	44.60	62.10
June	91.90	80.10	90.30	53.40	43.30	58.30
July	95.00	80.90	91.60	54.30	43.30	58.50
August	95.80	80.40	93.50	60.70	37.30	61.30
September	94.20	80.50	94.20	52.60	37.70	61.20
October	87.40	79.20	93.10	48.50	37.80	53.30
November	84.30	79.60	94.00	40.70	40.30	47.80
December	79.70	78.50	97.60	42.00	45.00	51.90

¹ Cows and steers & heifers.

² Barrows & gilts and sows.

**Prices Received for All Barley – States and United States:
December 2010 with Comparisons**

States	December 2009	November 2010	Preliminary December 2010
	(dollars per bushel)	(dollars per bushel)	(dollars per bushel)
California	(S)	(S)	(S)
Colorado	5.15	4.13	(S)
Idaho	4.76	4.02	3.76
Minnesota	(D)	(D)	(D)
Montana	4.76	3.78	4.28
North Dakota	4.26	3.59	4.00
Oregon	2.98	3.89	4.10
Utah	2.72	3.73	3.48
Washington	2.73	3.68	3.76
Wyoming	(D)	(D)	(D)
United States	4.54	3.82	3.98

(D) Withheld to avoid disclosing data for individual operations.

(S) Insufficient number of reports to establish an estimate.

Prices Received for Malting Barley – States: December 2010 with Comparisons

States	December 2009	November 2010	Preliminary December 2010
	(dollars per bushel)	(dollars per bushel)	(dollars per bushel)
Idaho	4.94	4.04	3.75
Minnesota	(D)	(D)	(D)
Montana	5.03	3.92	4.44
North Dakota	4.47	3.82	4.10
Wyoming	(D)	(D)	(D)

(D) Withheld to avoid disclosing data for individual operations.

Prices Received for Feed Barley – States: December 2010 with Comparisons

States	December 2009	November 2010	Preliminary December 2010
	(dollars per bushel)	(dollars per bushel)	(dollars per bushel)
Idaho	2.91	3.82	3.90
Minnesota	(D)	3.29	(D)
Montana	2.47	3.22	3.64
North Dakota	2.29	3.18	3.60
Wyoming	(S)	(D)	(S)

(D) Withheld to avoid disclosing data for individual operations.

(S) Insufficient number of reports to establish an estimate.

**Prices Received for Corn – States and United States:
December 2010 with Comparisons**

States	December 2009	November 2010	Preliminary December 2010
	(dollars per bushel)	(dollars per bushel)	(dollars per bushel)
Colorado	3.69	4.33	5.09
Illinois	3.57	4.62	4.90
Indiana	3.62	4.81	5.30
Iowa	3.68	4.61	5.00
Kansas	3.53	4.72	5.20
Kentucky	3.81	5.00	5.40
Michigan	3.48	4.83	5.25
Minnesota	3.51	4.17	4.60
Missouri	3.64	4.81	5.00
Nebraska	3.64	4.46	4.75
North Carolina	4.35	5.47	5.76
North Dakota	3.25	4.17	4.85
Ohio	3.56	4.96	5.29
Pennsylvania	3.77	5.59	5.84
South Dakota	3.33	4.24	4.75
Tennessee	3.75	4.95	5.30
Texas	4.12	4.66	5.09
Wisconsin	3.46	4.37	5.02
United States	3.60	4.55	4.94

**Prices Received for Soybeans – States and United States:
December 2010 with Comparisons**

States	December 2009	November 2010	Preliminary December 2010
	(dollars per bushel)	(dollars per bushel)	(dollars per bushel)
Arkansas	9.68	11.40	12.00
Illinois	10.10	11.10	11.50
Indiana	10.20	11.50	12.10
Iowa	9.81	11.00	11.70
Kansas	9.72	11.50	12.20
Kentucky	10.30	11.40	12.10
Louisiana	9.41	12.10	11.00
Michigan	9.91	11.40	12.10
Minnesota	9.63	10.50	11.10
Mississippi	9.32	10.80	11.30
Missouri	9.80	11.30	12.00
Nebraska	9.82	10.90	11.70
North Carolina	9.48	11.20	12.00
North Dakota	9.40	10.70	11.50
Ohio	9.95	11.60	12.10
South Dakota	9.46	10.60	11.20
Tennessee	9.93	11.60	12.00
Wisconsin	10.00	10.80	11.50
United States	9.80	11.10	11.70

**Prices Received for Oats – States and United States:
December 2010 with Comparisons**

States	December 2009	November 2010	Preliminary December 2010
	(dollars per bushel)	(dollars per bushel)	(dollars per bushel)
Illinois	(S)	(S)	(S)
Iowa	1.86	2.97	2.80
Michigan	2.56	3.02	3.10
Minnesota	1.96	2.57	2.60
Montana	2.53	(D)	(S)
Nebraska	2.11	3.30	3.30
New York	(D)	(D)	(D)
North Dakota	(D)	2.67	(D)
Oregon	(D)	(S)	(S)
Pennsylvania	3.79	3.34	3.09
South Dakota	1.92	2.93	2.95
Texas	(S)	(D)	(D)
Wisconsin	2.01	2.75	2.18
United States	2.22	3.02	2.74

(D) Withheld to avoid disclosing data for individual operations.

(S) Insufficient number of reports to establish an estimate.

**Prices Received for Sorghum Grain – States and United States:
December 2010 with Comparisons**

States	December 2009	November 2010	Preliminary December 2010
	(dollars per cwt)	(dollars per cwt)	(dollars per cwt)
Arkansas	(D)	(D)	(D)
Illinois	6.81	9.26	9.50
Kansas	5.58	8.36	9.05
Louisiana	(D)	(D)	(S)
Missouri	5.95	8.18	8.50
Nebraska	5.68	8.21	8.70
Oklahoma	5.92	8.66	9.38
Texas	6.29	8.67	9.48
United States	5.71	8.44	9.17

(D) Withheld to avoid disclosing data for individual operations.

(S) Insufficient number of reports to establish an estimate.

**Prices Received for Dry Beans – States and United States:
December 2010 with Comparisons**

States	December 2009	November 2010	Preliminary December 2010
	(dollars per cwt)	(dollars per cwt)	(dollars per cwt)
California	56.80	53.50	57.00
Colorado	32.40	24.50	21.50
Idaho	28.30	28.10	27.70
Michigan	35.60	29.20	30.00
Minnesota	31.20	28.40	(D)
Nebraska	31.30	23.80	22.80
North Dakota	27.90	21.60	20.40
United States	31.20	26.90	25.00

(D) Withheld to avoid disclosing data for individual operations.

**Prices Received for Peanuts (In-Shell) – States and United States:
December 2010 with Comparisons**

States	December 2009	November 2010	Preliminary December 2010
	(dollars per bushel)	(dollars per bushel)	(dollars per bushel)
Alabama	(D)	0.188	0.208
Florida	0.180	0.213	0.228
Georgia	0.195	0.206	0.217
Mississippi	0.155	0.171	0.169
New Mexico	(S)	0.473	(S)
North Carolina	0.227	0.241	0.220
Oklahoma	0.191	(D)	(D)
South Carolina	0.217	0.246	0.246
Texas	0.247	0.264	0.250
Virginia	0.233	0.236	0.256
United States	0.217	0.223	0.226

(D) Withheld to avoid disclosing data for individual operations.

(S) Insufficient number of reports to establish an estimate.

Prices Received for Sunflowers – States and United States: December 2010 with Comparisons

States	December 2009	November 2010	Preliminary December 2010
	(dollars per cwt)	(dollars per cwt)	(dollars per cwt)
Colorado	(D)	(D)	(S)
Kansas	15.00	(D)	(D)
Minnesota	21.20	20.60	21.90
North Dakota	16.00	19.80	21.70
South Dakota	12.90	17.50	20.30
United States	14.80	19.10	21.20

(D) Withheld to avoid disclosing data for individual operations.

(S) Insufficient number of reports to establish an estimate.

Prices Received for Canola – States and United States: December 2010 with Comparisons

States	December 2009	November 2010	Preliminary December 2010
	(dollars per cwt)	(dollars per cwt)	(dollars per cwt)
Minnesota	(D)	20.60	(S)
North Dakota	15.80	19.10	20.80
United States	15.80	19.10	20.80

(D) Withheld to avoid disclosing data for individual operations.

(S) Insufficient number of reports to establish an estimate.

Prices Received for Flaxseed – States and United States: December 2010 with Comparisons

States	December 2009	November 2010	Preliminary December 2010
	(dollars per bushel)	(dollars per bushel)	(dollars per bushel)
North Dakota	8.40	12.30	12.90
United States	8.40	12.30	12.90

**Prices Received for Upland Cotton and Cottonseed – States and United States:
December 2010 with Comparisons**

[Cottonseed marketing year August - February]

States	Upland cotton			Cottonseed		
	December 2009	November 2010	Preliminary December 2010	December 2009	November 2010	Preliminary December 2010
	(dollars per pound)	(dollars per pound)	(dollars per pound)	(dollars per ton)	(dollars per ton)	(dollars per ton)
Alabama	0.658	0.869	(D)	133.00	136.00	121.00
Arizona	(D)	(D)	(D)	198.00	212.00	204.00
Arkansas	0.614	(D)	0.767	182.00	177.00	(S)
California	(D)	(D)	(D)	279.00	274.00	(D)
Georgia	0.669	0.852	0.793	127.00	136.00	137.00
Louisiana	0.601	0.911	0.963	(D)	185.00	(S)
Mississippi	0.635	0.782	0.750	161.00	164.00	(S)
North Carolina	0.649	0.711	0.710	160.00	151.00	143.00
Tennessee	0.644	0.830	0.921	174.00	190.00	190.00
Texas	0.629	0.823	0.865	156.00	153.00	157.00
United States	0.634	0.812	0.853	160.00	163.00	163.00

(D) Withheld to avoid disclosing data for individual operations.

(S) Insufficient number of reports to establish an estimate.

**Prices Received and Marketings for Upland Cotton and Rice – United States:
December 2010 with Comparisons**

Item	December 2009	November 2010	Preliminary December 2010
Cotton, Upland			
Average price dollars/pound	0.634	0.812	0.853
Marketings ¹ 1,000 bales	2,568	3,619	(NA)
Rice, all			
Average price dollars/cwt	14.40	11.80	12.90
Marketings ² 1,000 cwt	15,429	16,787	(NA)
Rice, long			
Average price dollars/cwt	13.30	10.50	11.10
Marketings ² 1,000 cwt	11,091	13,104	(NA)
Rice, medium and short			
Average price dollars/cwt	17.00	16.10	17.30
Marketings ² 1,000 cwt	4,338	3,683	(NA)

(NA) Not available.

¹ Marketings based on a survey of cotton buyers in the major producing States - Alabama, Arizona, Arkansas, California, Georgia, Louisiana, Mississippi, North Carolina, Tennessee, and Texas.

² Purchases by private firms and rice (rough equivalent) shipped by cooperatives.

**Prices Received for Hay by Type – States and United States:
December 2010 with Comparisons**

States	All hay			Alfalfa hay			Other hay		
	December 2009	November 2010	Preliminary December 2010	December 2009	November 2010	Preliminary December 2010	December 2009	November 2010	Preliminary December 2010
	(dollars per ton)	(dollars per ton)	(dollars per ton)	(dollars per ton)	(dollars per ton)	(dollars per ton)	(dollars per ton)	(dollars per ton)	(dollars per ton)
Arizona	105.00	125.00	130.00	105.00	125.00	130.00	110.00	120.00	125.00
California	99.00	124.00	134.00	104.00	130.00	140.00	76.00	99.00	109.00
Colorado	128.00	123.00	128.00	130.00	125.00	130.00	110.00	105.00	105.00
Idaho	108.00	125.00	139.00	110.00	127.00	140.00	79.00	95.00	105.00
Illinois	110.00	112.00	111.00	123.00	130.00	138.00	90.00	88.00	85.00
Iowa	108.00	111.00	110.00	111.00	120.00	115.00	77.00	77.00	78.00
Kansas	102.00	107.00	107.00	107.00	115.00	115.00	74.00	75.00	75.00
Kentucky	98.00	88.00	93.00	155.00	130.00	130.00	80.00	75.00	80.00
Michigan	126.00	97.00	100.00	135.00	110.00	110.00	110.00	80.00	80.00
Minnesota	106.00	102.00	93.00	120.00	110.00	100.00	80.00	70.00	75.00
Missouri	58.00	77.00	77.00	115.00	135.00	140.00	45.00	65.00	65.00
Montana	93.00	81.00	74.00	93.00	83.00	76.00	93.00	75.00	68.00
Nebraska	74.00	75.00	74.00	78.00	78.00	77.00	61.00	64.00	64.00
Nevada	102.00	132.00	138.00	102.00	132.00	139.00	99.00	120.00	110.00
New Mexico	142.00	161.00	162.00	146.00	165.00	165.00	119.00	125.00	132.00
New York	129.00	104.00	105.00	145.00	120.00	125.00	125.00	100.00	100.00
North Dakota	63.00	55.00	59.00	68.00	58.00	63.00	46.00	42.00	46.00
Ohio	110.00	99.00	98.00	162.00	135.00	144.00	94.00	81.00	80.00
Oklahoma	81.00	112.00	110.00	143.00	136.00	138.00	72.00	75.00	75.00
Oregon	147.00	147.00	152.00	128.00	143.00	148.00	170.00	160.00	167.00
Pennsylvania	134.00	109.00	111.00	156.00	135.00	145.00	129.00	105.00	105.00
South Dakota	82.00	78.00	80.00	85.00	80.00	83.00	70.00	69.00	69.00
Texas	116.00	122.00	120.00	183.00	180.00	180.00	106.00	112.00	112.00
Utah	100.00	111.00	112.00	100.00	112.00	113.00	90.00	98.00	99.00
Washington	132.00	143.00	139.00	120.00	130.00	125.00	170.00	175.00	170.00
Wisconsin	106.00	102.00	92.00	110.00	105.00	95.00	85.00	70.00	70.00
Wyoming	94.00	89.00	92.00	95.00	90.00	95.00	90.00	80.00	85.00
United States	105.00	111.00	112.00	109.00	117.00	121.00	96.20	95.50	94.60

**Prices Received for Apples – States and United States:
December 2010 with Comparisons**

[Equivalent packinghouse-door returns for California, Michigan, New York, and Washington. Prices at point of first sale for Other States]

States	Apples, fresh use		
	December 2009	November 2010	Preliminary December 2010
	(dollars per pound)	(dollars per pound)	(dollars per pound)
California	0.340	0.370	0.304
Michigan	0.185	0.300	0.290
New York	0.215	0.268	0.256
Ohio	0.417	0.400	0.400
Pennsylvania	0.278	0.388	0.269
Virginia	0.305	0.370	0.350
Washington	0.297	0.324	0.303
United States	0.275	0.321	0.295

Prices Received for Citrus Fruits, by Utilization – States and United States: December 2009

[Net lbs. per box: Grapefruit - Arizona and California-67, Florida-85, Texas-80; Lemons - Arizona and California-76; Oranges - Arizona and California-75, Florida-90, Texas-85; Tangelos - Florida-90; Tangerines and mandarins - Arizona and California-75, Florida-95]

Commodity, State, and type	FOB packed fresh	Equivalent returns					
		Packinghouse-door			On-tree		
		All	Fresh	Process	All	Fresh	Process
	(dollars per box)	(dollars per box)	(dollars per box)	(dollars per box)	(dollars per box)	(dollars per box)	(dollars per box)
Grapefruit							
California	17.30	7.50	7.50	(S)	4.40	4.40	(S)
Florida	24.40	11.79	15.06	5.22	9.15	12.67	2.10
White	27.10	11.26	17.75	4.40	8.56	15.10	1.65
Colored	24.00	11.90	14.65	5.50	9.28	12.30	2.25
Texas	26.10	10.44	15.85	1.60	8.98	14.35	0.20
United States	24.20	11.17	14.57	4.10	8.82	12.33	1.51
Lemons							
Arizona	38.40	14.10	27.71	(D)	8.35	21.96	(D)
California	39.00	19.14	28.31	(D)	13.39	22.56	(D)
United States	38.90	17.56	28.16	(D)	11.81	22.41	(D)
Oranges							
California							
Navel and misc	24.10	14.50	15.71	(D)	11.85	13.06	(D)
Florida							
Early and mids	23.00	7.63	13.10	7.30	5.11	10.30	4.80
United States	23.80	8.66	14.98	7.21	6.13	12.33	4.71
Tangelos							
Florida	22.50	7.59	12.25	2.95	4.49	9.00	0.00
Tangerines and mandarins							
California	(D)	(D)	(D)	(D)	(D)	(D)	(D)
Florida	31.40	13.56	19.40	2.75	9.44	15.40	-1.60
United States	39.10	23.23	28.64	2.39	19.56	25.05	-1.58

(D) Withheld to avoid disclosing data for individual operations.

(S) Insufficient number of reports to establish an estimate.

Prices Received for Citrus Fruits, by Utilization – States and United States: November 2010

[Net lbs. per box: Grapefruit - Arizona and California-80, Florida-85, Texas-80; Lemons - Arizona and California-80; Oranges - Arizona and California-80, Florida-90, Texas-85; Tangelos - Florida-90; Tangerines and mandarins - Arizona and California-80, Florida-95]

Commodity, State, and type	FOB packed fresh	Equivalent returns					
		Packinghouse-door			On-tree		
		All	Fresh	Process	All	Fresh	Process
	(dollars per box)	(dollars per box)	(dollars per box)	(dollars per box)	(dollars per box)	(dollars per box)	(dollars per box)
Grapefruit							
California	16.10	9.70	9.70	(S)	7.60	7.60	(S)
Florida	28.90	14.11	19.07	3.04	11.74	16.88	0.27
White	29.90	12.43	20.00	3.00	10.10	17.85	0.45
Colored	28.70	14.52	18.90	3.05	12.14	16.70	0.20
Texas	28.20	12.57	17.90	1.60	11.07	16.35	0.20
United States	28.20	13.84	18.55	2.91	11.56	16.41	0.26
Lemons							
Arizona	41.50	27.52	30.60	(D)	21.65	24.73	(D)
California	44.10	26.69	33.20	(D)	20.82	27.33	(D)
United States	43.70	26.80	32.80	(D)	20.93	26.93	(D)
Oranges							
California	26.30	15.76	17.63	(D)	13.31	15.20	(D)
Navel and misc	26.70	17.04	18.06	(D)	14.62	15.65	(D)
Valencia	20.20	6.38	11.68	(D)	3.69	8.99	(D)
Florida							
Early and mids	25.40	10.35	15.40	7.60	7.76	12.65	5.10
United States	26.10	13.72	17.20	6.03	11.22	14.71	3.50
Tangerines and mandarins							
California	(D)	(D)	(D)	(D)	(D)	(D)	(D)
Florida	35.10	18.51	22.85	5.60	15.01	19.35	2.10
United States	46.40	29.61	36.53	2.62	26.48	33.56	-1.15

(D) Withheld to avoid disclosing data for individual operations.

(S) Insufficient number of reports to establish an estimate.

Prices Received for Citrus Fruits, by Utilization – States and United States: December 2010

[Net lbs. per box: Grapefruit - Arizona and California-80, Florida-85, Texas-80; Lemons - Arizona and California-80; Oranges - Arizona and California-80, Florida-90, Texas-85; Tangelos - Florida-90; Tangerines and mandarins - Arizona and California-80, Florida-95]

Commodity, State, and type	FOB packed fresh	Equivalent returns					
		Packinghouse-door			On-tree		
		All	Fresh	Process	All	Fresh	Process
	(dollars per box)	(dollars per box)	(dollars per box)	(dollars per box)	(dollars per box)	(dollars per box)	(dollars per box)
Grapefruit							
California	18.10	11.70	11.70	(S)	9.60	9.60	(S)
Florida	23.60	9.81	13.75	4.57	7.37	11.56	1.80
White	26.80	9.25	16.90	4.50	6.85	14.75	1.95
Colored	23.10	9.94	13.30	4.60	7.49	11.10	1.75
Texas	22.40	8.83	12.10	1.60	7.32	10.55	0.20
United States	22.80	9.73	13.19	4.09	7.50	11.14	1.54
Lemons							
Arizona	(D)	(D)	(D)	(D)	(D)	(D)	(D)
California	36.10	17.12	25.20	(D)	11.25	19.33	(D)
United States	36.60	17.23	25.65	(D)	11.36	19.78	(D)
Oranges							
California							
Navel and misc	24.70	13.58	16.06	(D)	11.14	13.65	(D)
Florida							
Early and mids	23.00	8.07	13.00	7.70	5.55	10.25	5.20
United States	24.30	9.19	15.32	7.37	6.69	12.83	4.87
Tangelos							
Florida	20.60	7.91	10.20	6.00	4.74	7.05	2.80
Tangerines and mandarins							
Arizona	(D)	(D)	(D)	(D)	(D)	(D)	(D)
California	(D)	(D)	(D)	(D)	(D)	(D)	(D)
Florida	27.70	11.97	15.45	5.80	8.47	11.95	2.30
United States	44.30	26.04	34.81	2.46	22.90	31.91	-1.34

(D) Withheld to avoid disclosing data for individual operations.

(S) Insufficient number of reports to establish an estimate.

**Prices Received for Potatoes – States and United States:
December 2010 with Comparisons**

States	December 2009	November 2010	Preliminary December 2010
	(dollars per cwt)	(dollars per cwt)	(dollars per cwt)
California			
All ¹	6.70	8.45	8.55
Winter ²	(S)	(NA)	(NA)
Spring	(S)	(S)	(S)
Summer ²	(S)	(NA)	(NA)
Fall	6.70	8.45	8.55
Colorado			
All ¹	6.30	10.80	11.80
Fresh ³	6.50	11.90	(D)
Florida	(S)	(S)	(S)
Idaho			
All ¹	5.90	6.65	6.90
Fresh ³	4.00	7.70	(D)
Processing	7.10	5.90	(D)
Maine	9.75	8.95	9.00
Michigan	10.80	10.50	10.80
Minnesota	7.25	6.35	(D)
New York	12.10	12.40	13.30
North Carolina	(S)	(S)	(S)
North Dakota			
All ¹	9.95	8.75	9.25
Fresh ³	9.15	13.20	(D)
Processing	9.95	7.25	(D)
Oregon	7.00	8.70	8.70
Texas	(S)	(S)	(S)
Virginia	(S)	(S)	(S)
Washington			
All ¹	7.50	7.25	7.75
Processing	7.65	6.30	(D)
Wisconsin			
All ¹	8.80	9.15	9.45
Fresh ³	6.30	10.60	(D)
Processing	11.40	7.45	(D)
United States			
All ¹	7.47	8.06	8.52
Fresh ³	6.19	10.41	(D)
Processing	8.17	6.71	(D)

(D) Withheld to avoid disclosing data for individual operations.

(NA) Not available.

(S) Insufficient number of reports to establish an estimate.

¹ Average price of potatoes sold for all uses, including table stock, processing, seed, and livestock feed.

² Beginning in 2010, winter and summer potatoes included in spring potatoes.

³ Fresh market prices only. Includes table stock prices.

**Prices Received for Beef Cattle and Cows – States and United States:
December 2010 with Comparisons**

[Beef cattle includes cows and steers & heifers combined. Cows includes beef cows and cull dairy cows sold for slaughter]

States	Beef cattle			Cows		
	December 2009	November 2010	Preliminary December 2010	December 2009	November 2010	Preliminary December 2010
	(dollars per cwt)	(dollars per cwt)	(dollars per cwt)	(dollars per cwt)	(dollars per cwt)	(dollars per cwt)
Arizona	61.80	77.50	80.50	46.00	57.00	59.00
Arkansas	72.30	82.40	89.80	42.50	53.00	54.00
California	63.70	78.80	82.60	45.00	52.80	56.20
Colorado	86.20	110.00	114.00	45.60	56.40	58.70
Florida	64.50	72.60	78.30	41.30	46.90	51.30
Georgia	55.70	66.30	70.10	46.10	53.20	55.40
Idaho	72.60	84.90	89.40	45.20	52.10	54.30
Illinois	81.90	97.70	100.00	43.10	52.00	53.60
Iowa	83.20	99.10	103.00	44.00	53.00	55.00
Kansas	83.00	99.00	102.00	45.60	49.00	53.00
Kentucky	70.90	88.00	93.80	42.00	53.00	55.00
Louisiana	53.50	66.30	67.80	42.10	51.00	54.00
Michigan	67.80	77.70	79.40	44.00	49.00	50.00
Minnesota	73.20	85.40	88.00	46.40	54.90	55.80
Missouri	77.70	94.70	98.70	41.00	49.70	52.40
Montana	72.00	95.40	98.60	42.90	51.70	55.10
Nebraska	83.10	99.60	103.00	46.80	54.10	56.70
New Mexico	69.70	83.10	88.50	48.00	58.00	60.00
North Dakota	80.30	97.90	104.00	45.00	52.00	55.00
Ohio	74.50	90.10	91.50	40.40	47.30	51.00
Oklahoma	84.30	97.40	103.00	47.80	55.50	59.00
Oregon	77.40	93.20	97.10	45.00	54.00	57.00
Pennsylvania	68.60	81.80	83.60	40.90	50.80	53.00
South Dakota	87.60	107.00	110.00	46.00	56.20	59.40
Tennessee	64.00	79.00	82.60	40.00	49.00	52.00
Texas	78.90	91.50	96.80	39.60	46.90	51.20
Virginia	62.30	83.80	78.30	41.00	48.20	49.50
Wisconsin	56.10	68.80	70.80	42.00	51.50	53.00
Wyoming	75.60	91.10	93.50	42.40	50.60	53.80
United States	78.50	94.00	97.60	43.50	51.70	54.20

**Prices Received for Calves and Steers & Heifers – States and United States:
December 2010 with Comparisons**

States	Calves			Steers & heifers		
	December 2009	November 2010	Preliminary December 2010	December 2009	November 2010	Preliminary December 2010
	(dollars per cwt)	(dollars per cwt)	(dollars per cwt)	(dollars per cwt)	(dollars per cwt)	(dollars per cwt)
Arizona	101.00	119.00	127.00	82.00	98.00	102.00
Arkansas	96.00	112.00	121.00	85.00	102.00	109.00
California	104.00	122.00	129.00	83.20	101.00	105.00
Colorado	106.00	128.00	138.00	87.00	111.00	115.00
Florida	93.20	107.00	112.00	77.30	90.90	97.00
Georgia	92.80	112.00	118.00	77.20	92.40	99.00
Idaho	104.00	122.00	125.00	83.20	101.00	103.00
Illinois	91.40	115.00	116.00	82.70	98.60	101.00
Iowa	101.00	118.00	125.00	84.00	100.00	104.00
Kansas	111.00	129.00	137.00	83.80	100.00	103.00
Kentucky	89.00	104.00	112.00	80.00	99.00	106.00
Louisiana	94.30	103.00	107.00	77.80	93.40	97.00
Michigan	79.00	95.00	96.00	78.00	90.00	92.00
Minnesota	107.00	125.00	132.00	81.00	97.80	101.00
Missouri	101.00	121.00	129.00	87.40	106.00	111.00
Montana	109.00	131.00	135.00	95.80	115.00	119.00
Nebraska	113.00	131.00	139.00	84.20	101.00	104.00
New Mexico	100.00	122.00	124.00	86.00	102.00	106.00
North Dakota	106.00	126.00	131.00	91.50	114.00	116.00
Ohio	92.00	108.00	113.00	78.30	94.80	96.00
Oklahoma	103.00	119.00	128.00	88.30	103.00	108.00
Oregon	96.00	123.00	126.00	81.00	98.00	102.00
Pennsylvania	98.00	100.00	102.00	78.30	92.70	94.30
South Dakota	110.00	132.00	138.00	88.40	109.00	113.00
Tennessee	89.00	105.00	113.00	80.00	99.00	103.00
Texas	103.00	115.00	123.00	84.30	98.80	103.00
Virginia	87.90	107.00	113.00	78.40	96.30	100.00
Wisconsin	127.00	144.00	149.00	75.50	92.80	95.40
Wyoming	114.00	134.00	140.00	96.00	116.00	120.00
United States	105.00	124.00	128.00	83.80	101.00	104.00

**Prices Received for All Hogs – States and United States:
December 2010 with Comparisons**

[Includes barrows & gilts and sows. Price data source is United States Department of Agriculture's Agricultural Marketing Service. State prices discontinued beginning December 2010]

States	December 2009	November 2010	Preliminary December 2010
	(dollars per cwt)	(dollars per cwt)	(dollars per cwt)
Illinois	44.30	47.10	(NA)
Indiana	44.90	49.80	(NA)
Iowa	45.40	49.00	(NA)
Kansas	40.70	43.10	(NA)
Minnesota	47.40	49.00	(NA)
Missouri	40.30	42.40	(NA)
Nebraska	47.40	49.10	(NA)
North Carolina	46.30	48.00	(NA)
Ohio	44.80	46.80	(NA)
Oklahoma	37.70	41.40	(NA)
Pennsylvania	41.80	45.90	(NA)
South Dakota	45.30	46.90	(NA)
United States	45.00	47.80	51.90

(NA) Not available.

**Prices Received for Barrows & Gilts – States and United States:
December 2010 with Comparisons**

[Price data source is United States Department of Agriculture's Agricultural Marketing Service. State prices discontinued beginning December 2010]

States	December 2009	November 2010	Preliminary December 2010
	(dollars per cwt)	(dollars per cwt)	(dollars per cwt)
Illinois	45.60	47.60	(NA)
Indiana	46.00	50.00	(NA)
Iowa	45.50	49.00	(NA)
Kansas	41.90	43.00	(NA)
Minnesota	47.50	49.00	(NA)
Missouri	41.00	42.40	(NA)
Nebraska	47.70	49.20	(NA)
North Carolina	46.40	48.00	(NA)
Ohio	45.70	47.00	(NA)
Oklahoma	39.20	41.50	(NA)
Pennsylvania	43.10	45.60	(NA)
South Dakota	47.10	48.00	(NA)
United States	45.50	48.00	52.20

(NA) Not available.

Prices Received for Sows – States and United States: December 2010 with Comparisons

[Price data source is United States Department of Agriculture's Agricultural Marketing Service. State prices discontinued beginning December 2010]

States	December 2009	November 2010	Preliminary December 2010
	(dollars per cwt)	(dollars per cwt)	(dollars per cwt)
Illinois	29.40	41.50	(NA)
Indiana	34.80	47.70	(NA)
Iowa	33.00	45.00	(NA)
Kansas	32.50	44.00	(NA)
Minnesota	31.50	43.20	(NA)
Missouri	29.90	42.10	(NA)
Nebraska	33.70	45.40	(NA)
North Carolina	35.80	47.50	(NA)
Ohio	31.10	44.40	(NA)
Oklahoma	30.20	41.20	(NA)
Pennsylvania	34.30	47.60	(NA)
South Dakota	30.80	39.90	(NA)
United States	32.10	43.50	48.90

(NA) Not available.

Prices Received for Sheep – States and United States: November 2010 with Comparisons

States	November 2009	October 2010	November 2010
	(dollars per cwt)	(dollars per cwt)	(dollars per cwt)
California	43.50	56.00	60.00
Colorado	34.00	47.00	46.00
Idaho	29.00	41.00	44.00
Iowa	32.00	51.00	61.00
Minnesota	37.30	52.00	56.30
Missouri	44.20	53.00	61.00
Montana	39.00	49.30	46.90
Nebraska	39.90	51.40	55.10
North Dakota	31.00	41.00	45.00
Ohio	40.10	57.50	58.00
Oregon	50.00	49.00	60.00
Pennsylvania	50.00	64.00	66.00
South Dakota	32.00	45.80	53.70
Texas	39.30	51.00	57.00
Virginia	40.00	55.00	63.00
West Virginia	36.00	51.00	51.00
Wyoming	36.10	46.20	55.50
United States	36.30	48.50	54.20

**Prices Received for Lambs – States and United States:
November 2010 with Comparisons**

States	November 2009	October 2010	November 2010
	(dollars per cwt)	(dollars per cwt)	(dollars per cwt)
California	83.00	118.00	120.00
Colorado	95.00	133.00	136.00
Idaho	89.00	134.00	131.00
Iowa	92.50	140.00	150.00
Minnesota	97.70	146.00	147.00
Missouri	104.00	133.00	144.00
Montana	106.00	145.00	144.00
Nebraska	101.00	138.00	139.00
North Dakota	99.00	141.00	155.00
Ohio	102.00	129.00	145.00
Oregon	90.00	134.00	133.00
Pennsylvania	114.00	128.00	135.00
South Dakota	109.00	156.00	165.00
Texas	112.00	142.00	157.00
Virginia	108.00	130.00	138.00
West Virginia	110.00	129.00	143.00
Wyoming	95.00	138.00	144.00
United States	97.70	138.00	142.00

**Prices Received for All Milk – States and United States:
December 2010 with Comparisons**

[Before deduction for hauling. Includes quality, quantity, and other premiums. Excludes hauling subsidies]

States	December 2009		November 2010		Preliminary December 2010	
	Price	Fat test	Price	Fat test	Price	Fat test
	(dollars per cwt)	(percent)	(dollars per cwt)	(percent)	(dollars per cwt)	(percent)
Arizona	15.70	3.63	17.80	3.65	16.80	3.70
California	15.64	3.83	15.49	3.77	14.60	3.83
Colorado	16.40	3.65	18.20	3.67	17.20	3.67
Florida	19.40	3.63	22.80	3.73	22.40	3.71
Idaho	15.40	3.77	16.10	3.78	14.60	3.81
Illinois	16.50	3.89	18.70	3.84	17.40	3.87
Indiana	16.60	3.83	19.10	3.82	18.00	3.85
Iowa	16.80	3.77	18.30	3.79	17.00	3.81
Kansas	17.30	3.84	19.50	3.85	18.30	3.90
Michigan	16.60	3.70	19.20	3.76	18.20	3.78
Minnesota	16.90	3.84	17.60	3.84	17.00	3.85
Missouri	16.30	3.79	18.40	3.80	17.40	3.82
New Mexico	15.60	3.71	17.90	3.74	16.60	3.75
New York	17.10	3.80	19.40	3.84	18.40	3.86
Ohio	17.60	3.86	19.80	3.89	18.80	3.91
Oregon	17.80	3.85	19.00	3.91	17.70	3.91
Pennsylvania	17.90	3.80	20.20	3.85	19.30	3.85
Texas	16.90	3.86	19.20	3.92	18.20	3.96
Utah	16.00	3.83	18.10	3.85	17.10	3.85
Vermont	17.50	3.85	19.60	3.90	18.60	3.90
Virginia	18.60	3.77	21.60	3.82	20.80	3.84
Washington	15.90	3.85	18.10	3.91	17.20	3.91
Wisconsin	17.00	3.76	18.00	3.80	16.60	3.80
United States	16.50	3.79	17.90	3.81	16.80	3.83

**Prices Received for Fluid Grade Milk – States and United States:
December 2010 with Comparisons**

[Including milk diverted to manufacturing. Before deduction for hauling. Includes quality, quantity, and other premiums. Excludes hauling subsidies]

States	December 2009		November 2010		Preliminary December 2010	
	Price (dollars per cwt)	Fat test (percent)	Price (dollars per cwt)	Fat test (percent)	Price (dollars per cwt)	Fat test (percent)
Arizona	15.70	3.63	17.80	3.65	(NA)	(NA)
California	15.60	3.80	15.50	3.74	(NA)	(NA)
Colorado	16.40	3.65	18.20	3.67	(NA)	(NA)
Florida	19.40	3.63	22.80	3.73	(NA)	(NA)
Idaho	15.40	3.77	16.10	3.78	(NA)	(NA)
Illinois	16.50	3.88	18.80	3.84	(NA)	(NA)
Indiana	16.60	3.83	19.10	3.82	(NA)	(NA)
Iowa	16.80	3.77	18.30	3.79	(NA)	(NA)
Kansas	17.30	3.84	19.50	3.85	(NA)	(NA)
Michigan	16.60	3.70	19.20	3.76	(NA)	(NA)
Minnesota	16.90	3.84	17.60	3.84	(NA)	(NA)
Missouri	16.40	3.78	18.50	3.79	(NA)	(NA)
New Mexico	15.60	3.71	17.90	3.74	(NA)	(NA)
New York	17.10	3.80	19.40	3.84	(NA)	(NA)
Ohio	17.70	3.85	20.00	3.88	(NA)	(NA)
Oregon	17.80	3.85	19.00	3.91	(NA)	(NA)
Pennsylvania	17.90	3.80	20.20	3.85	(NA)	(NA)
Texas	16.90	3.86	19.20	3.92	(NA)	(NA)
Utah	16.00	3.83	18.10	3.85	(NA)	(NA)
Vermont	17.50	3.85	19.60	3.90	(NA)	(NA)
Virginia	18.60	3.77	21.60	3.82	(NA)	(NA)
Washington	15.90	3.85	18.10	3.91	(NA)	(NA)
Wisconsin	17.00	3.76	18.00	3.80	(NA)	(NA)
United States	16.50	3.79	17.90	3.80	16.80	3.82

(NA) Not available.

**Prices Received for Manufacturing Grade Milk – States and United States:
December 2010 with Comparisons**

[Before deduction for hauling. Includes quality, quantity, and other premiums. Excludes hauling subsidies]

States	December 2009		November 2010		Preliminary December 2010	
	Price	Fat test	Price	Fat test	Price	Fat test
	(dollars per cwt)	(percent)	(dollars per cwt)	(percent)	(dollars per cwt)	(percent)
California	16.70	4.40	15.30	4.27	(NA)	(NA)
Illinois	15.90	3.93	16.10	3.95	(NA)	(NA)
Iowa	15.60	4.08	16.90	4.10	(NA)	(NA)
Minnesota	15.40	3.93	16.20	4.01	(NA)	(NA)
Missouri	14.60	4.00	15.60	3.98	(NA)	(NA)
Ohio	14.70	4.11	15.80	4.09	(NA)	(NA)
Wisconsin	16.00	3.97	16.40	4.00	(NA)	(NA)
United States	16.30	4.25	15.60	4.18	14.70	4.27

(NA) Not available.

**Prices Received for Milk Cows – States and United States:
October 2010 with Comparisons**

[Animals sold for dairy herd replacement only. Prices estimated in January, April, July, and October]

States	October 2009	July 2010	October 2010
	(dollars per head)	(dollars per head)	(dollars per head)
Arizona	1,350	1,300	1,400
California	1,200	1,300	1,300
Colorado	1,300	1,350	1,350
Florida	1,350	1,360	1,400
Idaho	1,250	1,350	1,350
Illinois	1,350	1,350	1,320
Indiana	1,300	1,260	1,340
Iowa	1,200	1,250	1,250
Kansas	1,250	1,250	1,250
Michigan	1,350	1,400	1,400
Minnesota	1,310	1,270	1,280
Missouri	1,070	1,140	1,190
New Mexico	1,280	1,320	1,370
New York	1,200	1,300	1,300
Ohio	1,270	1,300	1,360
Oregon	1,300	1,320	1,300
Pennsylvania	1,300	1,400	1,400
Texas	1,200	1,230	1,260
Utah	1,100	1,250	1,150
Vermont	1,400	1,400	1,350
Virginia	1,260	1,320	1,340
Washington	1,200	1,300	1,300
Wisconsin	1,200	1,400	1,410
United States	1,240	1,320	1,330

**Parity Price Equivalent for Manufacturing Grade Milk – United States:
December 2010, with Comparisons**

[The parity price equivalent during 2010 is 93.2 percent of the parity price of all milk sold to plants, compared with 92.4 percent in 2009. For additional details, see January 2010 issue of *Agricultural Prices*]

Item	December 2009	November 2010	December 2010
Parity equivalent dollars/cwt	42.00	43.00	43.80
Average price FOB dollars/cwt	16.30	15.60	14.70
Average fat test of milk percent	4.25	4.18	4.27

Commodity Parity Prices and Price as Percent of Parity Price – United States: December 2010 with Comparisons

[Parity prices are computed under the provisions of Title III, Subtitle a, Section 301 (a) of the Agricultural Adjustment Act of 1938 as amended by the Agricultural Acts of 1948, 1949, and 1956. See January *Agricultural Prices* for details on adjusted base price and parity price computations. Parity data not available for blank cells. Primary source of data for livestock and milk prices is USDA-Agricultural Marketing Service]

Commodity and unit	Adjusted base price	Parity price			Price as percent of parity		
		December 2009	November 2010	December 2010	December 2009	November 2010	December 2010
	(dollars)	(dollars)	(dollars)	(dollars)	(percent)	(percent)	(percent)
Basic commodities							
All wheat bushel	0.597	13.60	14.90	15.20	36	41	46
Rice cwt	1.38	36.30	34.50	35.10	40	34	37
Corn bushel	0.372	8.43	9.30	9.46	43	49	52
Cotton							
Upland pound	0.084	1.84	2.10	2.14	34	39	40
American Pima pound	0.132	3.16	3.30	3.36	31	35	35
Peanuts pound	0.029	0.779	0.725	0.738	28	31	31
Designated nonbasic							
All milk, sold to plants¹							
..... cwt	1.83	45.10	45.80	46.60	34	36	34
Honey, extracted²							
..... pound	0.127	2.86	3.18	3.23	51	45	45
Wool and mohair							
Wool pound	0.085	1.94	2.13	2.16	51	37	37
Mohair pound	0.343	8.59	8.58	8.73	39	31	30
Other nonbasic							
Barley bushel	0.416	9.20	10.40	10.60	49	37	38
Canola cwt	1.630	37.10	40.80	41.50	43	47	50
Cottonseed ton	15.10	337.00	378.00	384.00	47	43	42
Dry edible beans cwt	2.88	65.80	72.00	73.30	47	37	34
Flaxseed bushel	0.972	22.30	24.30	24.70	38	51	52
Oats bushel	0.244	5.57	6.10	6.21	40	50	44
Potatoes cwt	0.833	19.30	20.80	21.20	39	39	40
Sorghum grain cwt	0.656	15.10	16.40	16.70	38	51	55
Soybeans bushel	0.916	20.50	22.90	23.30	48	48	50
All sunflower cwt	1.85	42.00	46.30	47.10	35	41	45
Apples, fresh ³ pound	0.033	0.779	0.825	0.840	35	39	35
Citrus (equivalent on-tree)							
Grapefruit box	0.648	15.20	16.20	16.50	58	71	45
Lemons box	1.38	33.50	34.50	35.10	35	61	32
Oranges box	0.660	15.60	16.50	16.80	39	68	40
Tangerines box	1.39	33.30	34.80	35.40	59	76	65
Livestock and poultry							
Beef cattle cwt	10.20	241.00	255.00	259.00	33	37	38
Calves cwt	14.40	345.00	360.00	366.00	30	34	35
Hogs cwt	5.54	131.00	139.00	141.00	34	34	37
Lambs cwt	11.50	271.00	288.00	293.00	36	49	(NA)
Sheep cwt	4.35	105.00	109.00	111.00	42	50	(NA)
Eggs ¹ dozen	0.091	2.15	2.28	2.32	41	41	39
Turkeys, live pound	0.056	1.320	1.400	1.420	41	53	48

(NA) Not available.

¹ Seasonally adjusted price as percentage of parity price.

² Wholesale extracted. Adjusted base price derived from state annual averages prices weighted by production. For 1982 through 1985 the national averages are the support prices.

³ Equivalent packinghouse-door returns for California, New York (apples only), Oregon (except peaches), and Washington. Price at point of first sale for other states.

**Commodity Parity Prices – United States:
December 2010 with Comparisons**

[Parity prices are computed under the provisions of Title III, Subtitle a, Section 301 (a) of the Agricultural Adjustment Act of 1938 as amended by the Agricultural Acts of 1948, 1949, and 1956. See January *Agricultural Prices* for details on adjusted base price and parity price computations]

Commodity and unit	Adjusted base price	Parity price		
		December 2009	November 2010	December 2010
	(dollars)	(dollars)	(dollars)	(dollars)
Field crops and miscellaneous commodities				
Hopspound	0.300	6.70	7.50	7.63
Mustard seed cwt	2.59	56.90	64.80	65.90
Rapeseed cwt	2.04	43.90	51.00	51.90
Rye bushel	0.474	10.70	11.90	12.10
Safflower cwt	1.95	46.00	48.80	49.60
Spearmint oilpound	1.42	31.90	35.50	36.10
Sweetpotatoes cwt	2.27	54.30	56.80	57.70
Tobacco				
Flue-cured, 11-14pound	0.216	5.24	5.40	5.50
Fire-cured, 21-23pound	0.298	7.15	7.45	7.58
Burley, 31pound	0.227	5.57	5.68	5.77
Maryland, 32pound	0.186	4.44	4.65	4.73
Dark air-cured, 35-37pound	0.268	6.40	6.70	6.82
Pennsylvania seedleaf, 41pound	0.194	4.58	4.85	4.94
Cigar binder, 51pound	0.651	16.50	16.30	16.60
Noncitrus fruit				
Apples, processing ¹ton	16.70	375.00	418.00	425.00
Apricots				
Fresh ²ton	108.00	2,480.00	2,700.00	2,750.00
Dried (California)ton	253.00	5,880.00	6,330.00	6,440.00
Avocados ²ton	211.00	5,220.00	5,280.00	5,370.00
Cherries				
Sweetton	205.00	4,860.00	5,130.00	5,220.00
Tartpound	0.035	0.873	0.875	0.890
Cranberry ³ barrel	4.75	104.00	119.00	121.00
Dates ² (California)ton	197.00	4,700.00	4,930.00	5,010.00
Grapes				
Raisin varietyton	110.00	2,640.00	2,750.00	2,800.00
Other driedton	66.60	1,610.00	1,670.00	1,690.00
Kiwifruitton	95.10	2,260.00	2,380.00	2,420.00
Nectarines, fresh ² (California)ton	55.40	1,290.00	1,390.00	1,410.00
Olives, canning ³ (California)ton	94.70	2,110.00	2,370.00	2,410.00

See footnote(s) at end of table.

--continued

**Commodity Parity Prices – United States:
December 2010 with Comparisons (continued)**

[Parity prices are computed under the provisions of Title III, Subtitle a, Section 301 (a) of the Agricultural Adjustment Act of 1938 as amended by the Agricultural Acts of 1948, 1949, and 1956. See January *Agricultural Prices* for details on adjusted base price and parity price computations]

Commodity and unit	Adjusted base price	Parity price		
		December 2009	November 2010	December 2010
	(dollars)	(dollars)	(dollars)	(dollars)
Noncitrus fruit, continued				
Papayas (Hawaii)pound	0.046	1.11	1.15	1.17
Peaches,				
Fresh ⁴ ton	83.00	1,940.00	2,080.00	2,110.00
Dried (California) ton	64.90	1,650.00	1,620.00	1,650.00
Processing, excludes dried				
Clingstone ³ (California) ton	33.70	805.00	843.00	857.00
Pears				
Fresh ⁴ ton	54.90	1,310.00	1,370.00	1,400.00
Dried ¹ (California) ton	173.00	3,990.00	4,330.00	4,400.00
Plums (California)				
Fresh, equivalent on-tree ton	60.90	1,450.00	1,520.00	1,550.00
Prunes, dried ¹ (California) ton	146.00	3,450.00	3,650.00	3,710.00
Prunes and plums				
Fresh, exclude California ⁵ ton	63.20	1,460.00	1,580.00	1,610.00
Processing, exclude dried ¹ ton	26.50	651.00	663.00	674.00
Tree nuts ⁶				
Almondspound	0.202	4.79	5.05	5.14
Hazelnuts ton	171.00	3,920.00	4,280.00	4,350.00
Pistachiospound	0.190	4.37	4.75	4.83
Walnuts ton	172.00	4,110.00	4,300.00	4,380.00
Vegetables, fresh ⁷				
Carrots ⁸cwt	2.54	59.00	63.50	64.60
Cauliflower ⁸cwt	4.31	99.80	108.00	110.00
Celery ⁸cwt	2.09	48.10	52.30	53.20
Honeydew melonscwt	2.31	57.60	57.80	58.80
Lettucecwt	2.35	54.50	58.80	59.80
Onions ⁸cwt	1.52	36.30	38.00	38.70
Tomatoescwt	4.69	109.00	117.00	119.00

¹ Equivalent returns at processing plant door.

² Equivalent returns at packinghouse door.

³ Equivalent returns for bulk fruit at first delivery point.

⁴ Equivalent packinghouse-door returns for California, New York (apples only), Oregon (except peaches), and Washington. Price at point of first sale for other states.

⁵ Based on "as sold" prices for fresh fruit in all states.

⁶ Prices In-Shell basis except almonds which are shelled basis.

⁷ FOB shipping point prices.

⁸ Includes some processing.

Prices Received for Hops – States and United States: 2009 and 2010

State	2009	2010
	(Dollars per Pound)	(Dollars per Pound)
Idaho	3.75	3.30
Oregon	3.63	3.78
Washington	3.54	3.08
United States	3.57	3.19

Reliability of Prices Received Estimates

Definition: Prices received represent sales from producers to first buyers. They include all grades and qualities. The average commodity price from the survey multiplied by the total quantity marketed theoretically should give the total cash receipts for the commodity.

Survey procedures: Primary sales data used to determine grain prices were obtained from probability samples of about 2000 mills and elevators. These procedures ensure that virtually all grain moving into commercial channels has a chance of being included in the survey. Generally, States surveyed account for 90 percent or more of total United States production. Livestock prices are obtained from packers, stockyards, auctions, dealers, and market check data from AMS-USDA, private marketing organizations, and state commodity groups and agencies. Inter-farm sales of grain and livestock are not included since they represent very small percentages of the total marketings. Grain marketed for seed is also excluded. Fruit and vegetable prices are obtained from sample surveys and market check data from AMS-USDA, private marketing organizations, state agencies, and universities.

Summary and estimation procedures: Survey quantities sold are expanded by strata to state levels and used to weight average strata prices to a state average. State prices are then weighted to a United States price based on expanded marketings. Recommendations are prepared by the State Field Offices and reviewed by the Agricultural Statistics Board in Washington, D.C. State recommendations are reviewed for reasonableness with survey data, other States, and recent historic estimates.

Revisions: For most items, the current month's preliminary price represents a 3-5 day period around the 15th of the month. Previous month's prices represent actual dollars received for quantities sold during the entire month. Revisions are published in monthly issues of Agricultural Prices.

Reliability: United States price estimates based on probability surveys generally have a sampling error of less than one percent for the major commodities such as corn, wheat, soybeans, cotton, and rice. Current methods of summarization for non-probability commodities are not designed directly to calculate sampling errors. However, analytical measures approximate the United States relative sampling errors at around five percent. Any nonsampling errors are attributed to such things as the inability to obtain correct information, differences in interpreting questions or definitions, mistakes in coding or processing the data, etc. Efforts are made at each step in the survey process to minimize these nonsampling errors.

Prices Paid by Farmers

The December Index of Prices Paid for Commodities and Services, Interest, Taxes, and Farm Wage Rates (PPITW) at 191 (1990-1992=100), is up 1.6 percent from November 2010 and 7.3 percent from December 2009.

Production index: The December index, at 197, increased 2.1 percent from last month and 8.8 percent from last year. Prices are higher in December for complete feeds, feeder cattle, feed grains, and nitrogen.

Feed: The December index, at 214, increased 5.4 percent from November and 18 percent from last December. Since November, prices are higher for complete feeds, feed grains, supplements, concentrates, and hay & forages.

Livestock and poultry: The December index, at 140, increased 4.5 percent from last month and 23 percent from last year. Since November, prices are higher for feeder cattle and feeder pigs. The December feeder cattle price, at \$118.20 per cwt, is up \$4.60 from the November price. December feeder pigs averaged \$149.00 per cwt, up \$20.00 from November.

Fertilizer: The December index, at 273, is up 4.2 percent from November and is 19 percent above December a year ago. Since November, prices are higher for nitrogen, potash & phosphate, and mixed fertilizer.

Chemicals: The December index, at 147, increased 0.7 percent from November but decreased 7.5 percent from last December. Compared with last month, prices for herbicides, insecticides, and fungicides/other are all higher.

Fuels: The December index, at 305, is up 2.7 percent from a month earlier and is 16 percent above December 2009. Compared with last month, prices are higher for diesel, gasoline, and LP gas.

Machinery: The December index, at 233, increased 0.9 percent from November and is 3.6 percent above last December. Compared with last month, self-propelled machinery, tractors, and other machinery are all higher.

Consumer price index: The November 2010 Consumer Price Index, as issued by the Bureau of Labor Statistics, for all urban consumers (CPIU) increased slightly before seasonal adjustment to a level of 218.803 (1982-1984=100). The October index is 218.711. For the 12-month period ending in November, the overall index increased 1.1 percent.

Prices Paid Indexes and Related Parity Ratios – United States: December 2010 with Comparisons

[Revised historical price indexes for months not shown are available at www.nass.usda.gov]

Indexes and ratios	1910-1914 = 100			1990-1992 = 100		
	December 2009	November 2010	December 2010	December 2009	November 2010	December 2010
	(percent)	(percent)	(percent)	(percent)	(percent)	(percent)
Prices paid by farmers for commodities, services, interest, taxes, and wage rates (PPITW)	2370	2506	2544	178	188	191
Production	1754	1874	1913	181	193	197
Feed	890	993	1047	182	203	214
Livestock & poultry	1462	1715	1792	114	134	140
Seeds	3008	2815	2815	304	284	284
Fertilizer	841	961	1001	230	262	273
Chemicals	980	903	909	159	146	147
Fuels	2041	2293	2357	264	297	305
Supplies & repairs	1114	1140	1139	157	161	161
Autos & trucks	2993	3003	3018	113	113	114
Machinery	5657	5790	5847	225	231	233
Building materials	2208	2253	2256	163	166	166
Services & rent	1966	2065	2064	(NA)	(NA)	(NA)
Services	(NA)	(NA)	(NA)	158	164	164
Rent	(NA)	(NA)	(NA)	178	191	191
Interest ¹	3478	3211	3211	139	128	128
Taxes ²	6370	7190	7190	238	268	268
Wage rates	7062	7192	7192	189	192	192
Production, interest, taxes, and wage rates (PITW)	2440	2593	2638	182	193	196
Family living-CPI ³	2051	2078	2079	160	162	162
Ratio (received/paid)	(NA)	(NA)	(NA)	76	85	84
Parity ratio ⁴	36	40	40	(NA)	(NA)	(NA)
Parity ratio adjusted ⁵	38	42	42	(NA)	(NA)	(NA)
PPITW adjusted for productivity ⁶	1441	1457	1462	(NA)	(NA)	(NA)
Crop sector (PPITW)	(NA)	(NA)	(NA)	188	197	198
Livestock sector (PPITW)	(NA)	(NA)	(NA)	168	180	184
Farm sector (production)	(NA)	(NA)	(NA)	178	192	200
Non-farm sector (production)	(NA)	(NA)	(NA)	182	194	196

(NA) Not available.

¹ Interest per acre on farm real estate debt and interest rate on farm non-real estate debt.

² Farm real estate taxes payable per acre.

³ Bureau of Labor Statistics, Consumer Price Index for all urban consumers (CPI-U), for the previous month converted by the USDA.

⁴ Ratio of index of prices received to PPITW (1910-1914=100).

⁵ Based on estimated cash receipts, from marketings and government payments, the preliminary adjustment factor is 1.044 for 2010 and the revised factor is 1.041 for 2009.

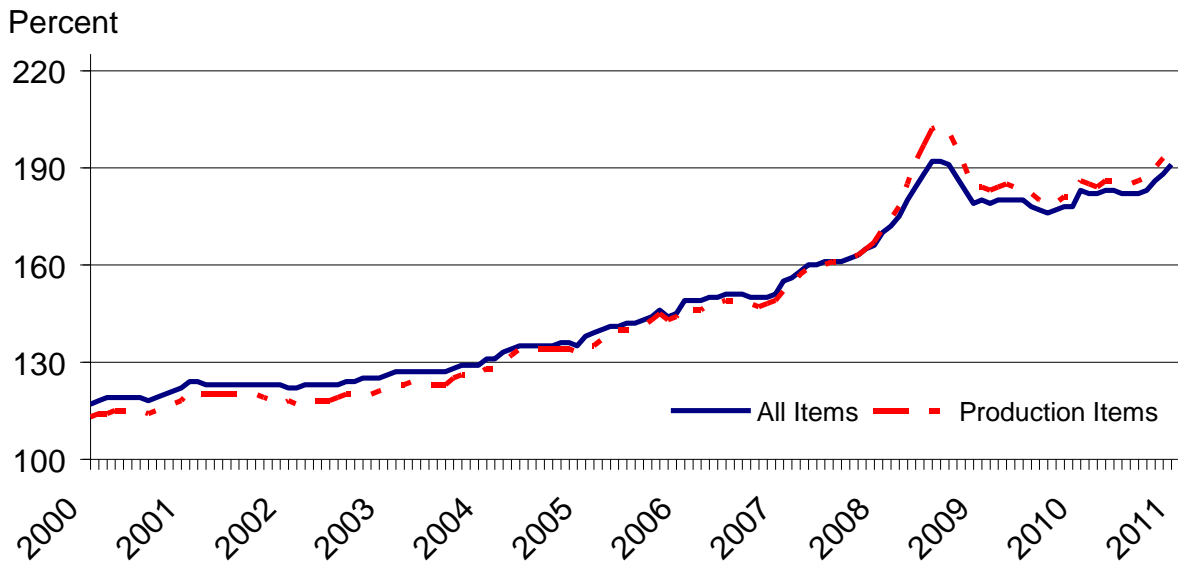
⁶ PPITW is adjusted based on productivity trend for the prior 15 years.

Prices Paid Indexes and Annual Weights for Input Components and Sub-Components – United States: December 2010 with Comparisons

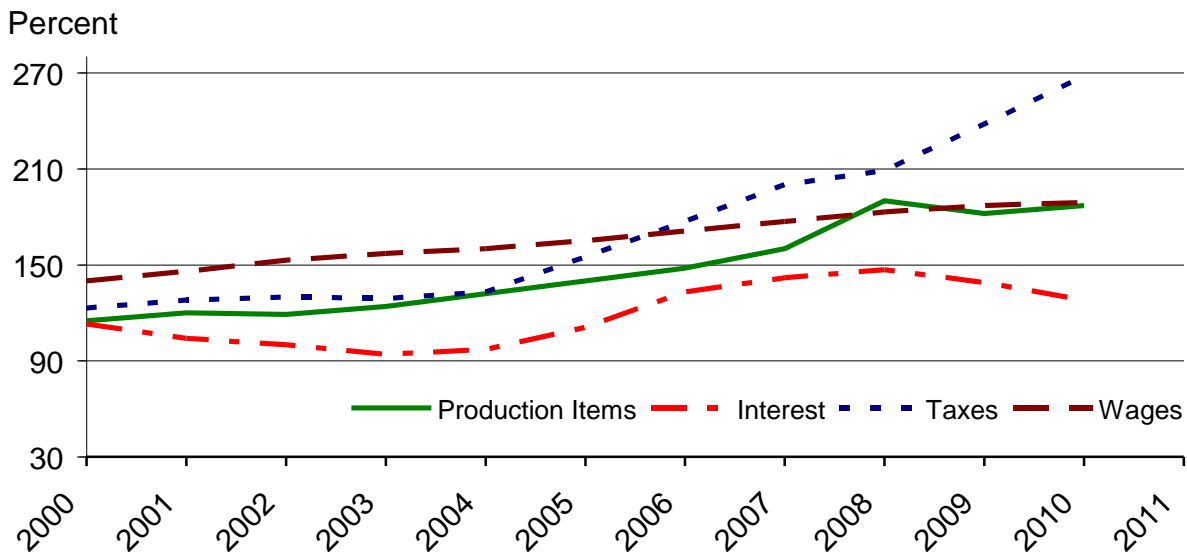
[Revised historical price indexes for months not shown are available at www.nass.usda.gov. Relative weights are a five year moving average]

	Relative weights		Indexes (1990-1992=100)		
	2009	2010	December 2009	November 2010	December 2010
	(percent)	(percent)	(percent)	(percent)	(percent)
Production items	68.9	70.2	181	193	197
Feed	11.4	11.9	182	203	214
Feed grains	1.6	1.7	155	197	213
Complete feeds	5.6	5.8	191	206	217
Hay & forages	1.4	1.5	140	145	148
Concentrates	1.8	1.9	193	214	224
Supplements	1.0	1.0	223	265	284
Livestock & poultry	8.2	8.6	114	134	140
Feeder cattle	6.4	6.7	111	134	140
Feeder pigs	0.7	0.7	127	140	162
Milk cow replacements	0.7	0.7	110	118	118
Poultry	0.5	0.5	148	148	148
Seeds	3.8	3.9	304	284	284
Field crops	3.5	3.6	319	299	299
Grasses & legumes	0.4	0.4	161	139	139
Fertilizer	4.7	5.2	230	262	273
Mixed fertilizer	2.1	2.3	237	240	248
Nitrogen	2.0	2.2	213	259	269
Potash & phosphate	0.7	0.7	253	341	366
Chemicals	3.3	3.2	159	146	147
Herbicides	2.1	2.0	147	135	136
Insecticides	0.8	0.7	176	164	165
Fungicides & other	0.5	0.5	180	168	169
Fuels	3.6	3.9	264	297	305
Diesel	2.3	2.5	268	312	320
Gasoline	0.8	0.9	227	250	260
LP gas	0.4	0.5	315	295	300
Supplies & repairs	4.6	4.6	157	161	161
Supplies	1.5	1.5	153	156	155
Repairs	3.1	3.0	159	163	163
Autos & trucks	1.6	1.5	113	113	114
Autos	0.2	0.2	112	111	111
Trucks	1.4	1.3	113	113	114
Machinery	4.4	4.5	225	231	233
Tractors	1.0	1.0	189	191	192
Self-propelled	1.8	1.8	231	240	245
Other machinery	1.7	1.7	241	244	244
Building materials	4.6	4.5	163	166	166
Services	12.2	12.1	158	164	164
Custom rates	1.3	1.2	145	145	145
Other services	11.0	10.8	160	166	166
Rent	6.4	6.3	178	191	191
Cash	3.4	3.4	224	243	243
Share	3.0	2.9	124	130	130
Interest	3.7	3.6	139	128	128
Taxes	3.0	3.0	238	268	268
Wage rates	7.6	7.5	189	192	192
Family living-CPI	16.9	15.7	160	162	162

Paid Indexes by Month, All Items and Production Items – United States: 1990-1992=100

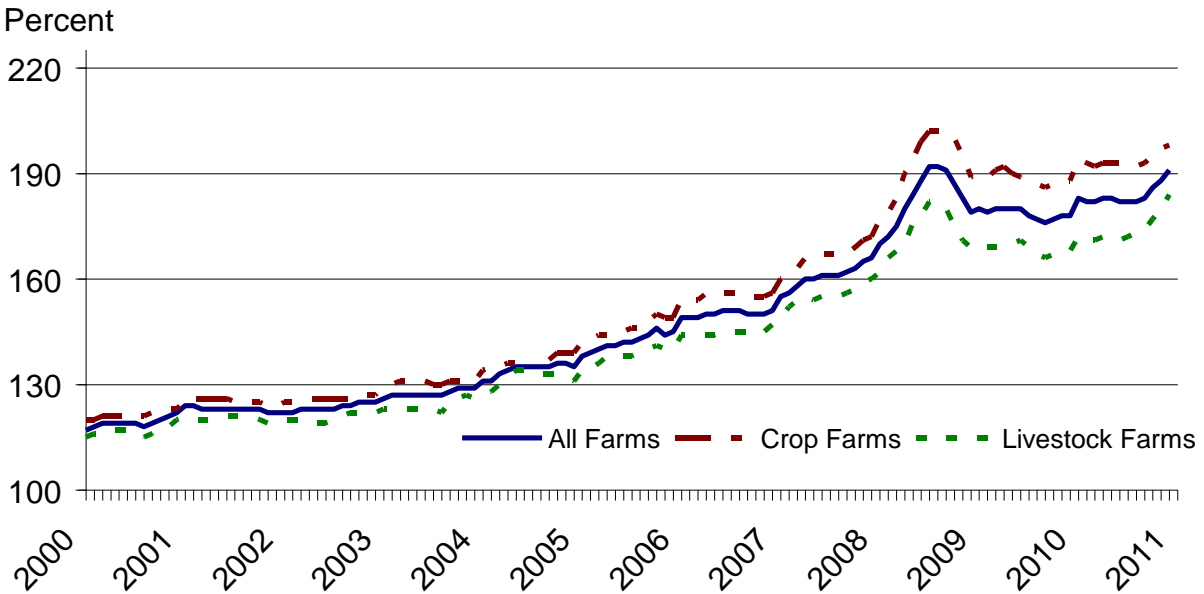


Paid Indexes, Annual Averages, Production Items, Interest, Taxes, and Wages – United States: 1990-1992=100

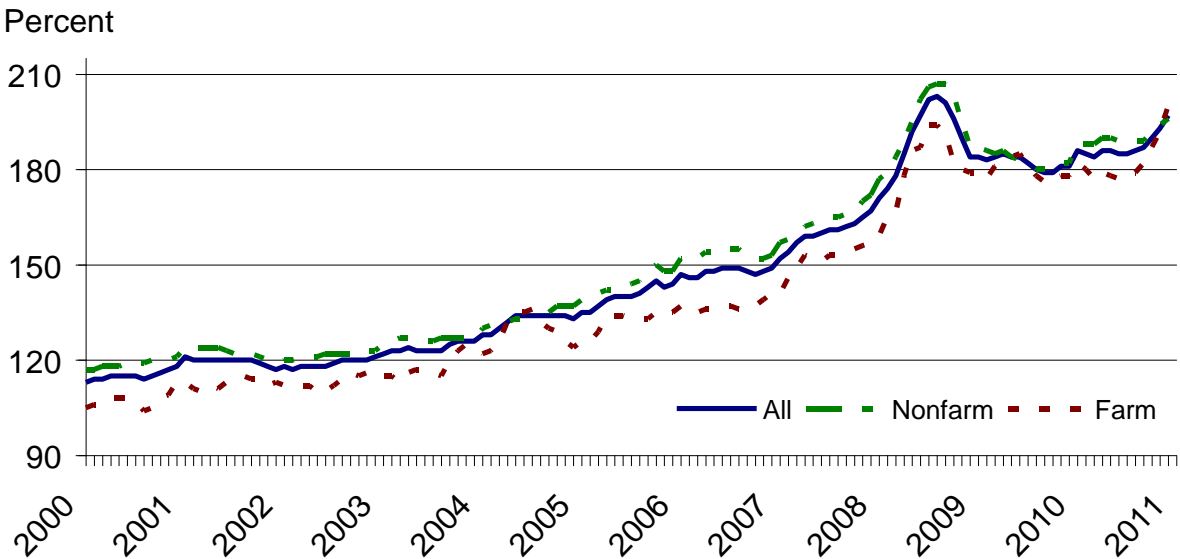


Index values are year-to-date for current year.

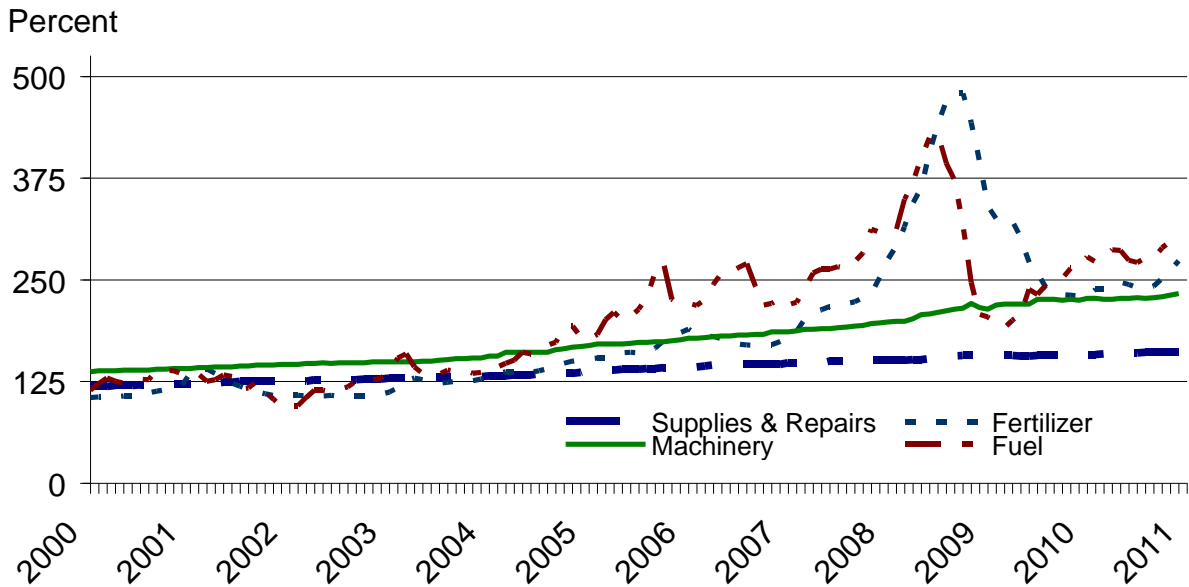
Paid Indexes by Farm Type and Month, All Items – United States: 1990-1992=100



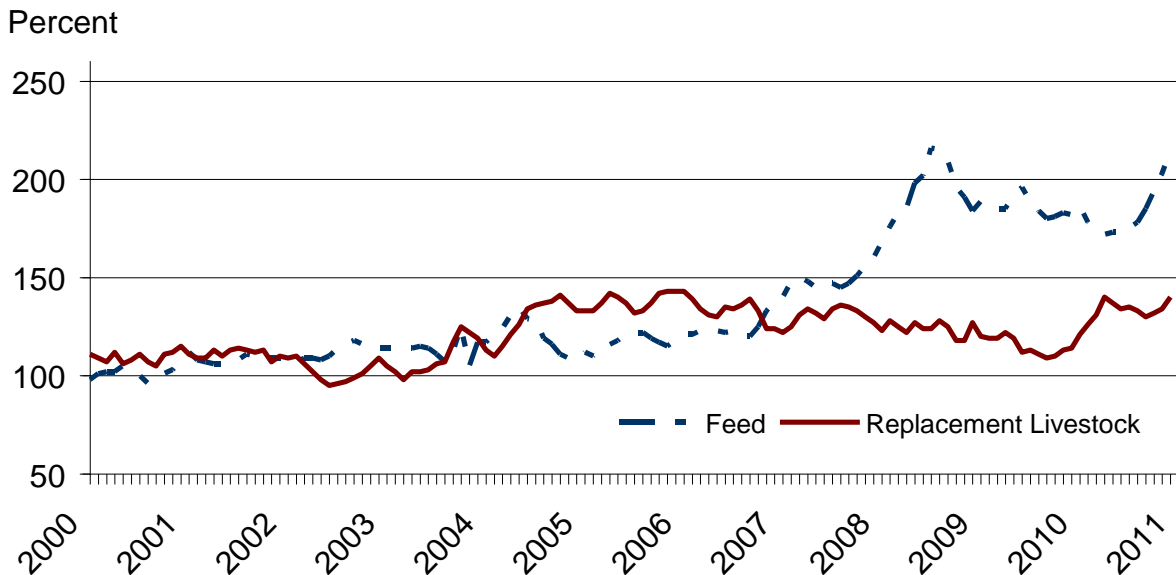
Paid Indexes by Origin and Month, All Production Items – United States: 1990-1992=100



Paid Indexes by Non-Farm Sector and Month, Supplies & Repairs, Fertilizer, Machinery, and Fuel – United States 1990-1992=100



Paid Indexes by Month, Feed and Replacement Livestock – United States: 1990-1992=100



Feed Price Ratios – United States: December 2010 with Comparisons

Feed price ratio ¹	December 2009	November 2010	Preliminary December 2010
Broiler-feed: pounds of broiler grower feed equal in value to 1 pound of broiler, live weight ²	4.0	3.8	3.5
Market egg feed: pounds of laying feed equal in value to 1 dozen eggs ³	10.3	9.5	8.0
Hog-corn: bushels of corn equal in value to 100 pounds of hog, live weight	12.5	10.5	10.5
Milk-feed: pounds of 16% mixed dairy feed equal in value to 1 pound of whole milk ⁴	2.42	2.23	1.97
Steer & heifer-corn: bushels of corn equal in value to 100 pounds of steer & heifers, live weight	23.3	22.2	21.1
Turkey-feed: pounds of turkey grower equal in value to 1 pound of turkey, live weight ⁵	5.6	6.4	5.4

¹ Effective January 1995, prices of commercial prepared feeds are based on current United States prices received for corn, soybeans, alfalfa hay, and all wheat.

² The price of commercial prepared broiler feed is based on current United States prices received for corn and soybeans. The modeled feed uses 58 percent corn and 42 percent soybeans.

³ The price of commercial prepared layer feed is based on current United States prices received for corn and soybeans. The modeled feed uses 75 percent corn and 25 percent soybeans.

⁴ The price of commercial prepared dairy feed is based on current United States prices received for corn, soybeans, and alfalfa hay. The modeled feed uses 51 percent corn, 41 percent alfalfa hay, and 8 percent soybeans.

⁵ The price of commercial prepared turkey feed is based on current United States prices received for corn, soybeans, and wheat. The modeled feed uses 51 percent corn, 28 percent soybeans, and 21 percent wheat.

Prices Received Used to Calculate Feed Price Ratios – United States: December 2010 with Comparisons

[Price data source for livestock and poultry commodities is United States Department of Agriculture's Agricultural Marketing Service]

Item	December 2009	November 2010	Preliminary December 2010
	(dollars)	(dollars)	(dollars)
Broilers, live pound	0.420	0.470	0.460
Eggs, marketdozen	0.918	1.020	0.919
Hogs, allcwt	45.00	47.80	51.90
Milk, allcwt	16.50	17.90	16.80
Steers and heiferscwt	83.80	101.00	104.00
Turkeys, live pound	0.537	0.736	0.677
Cornbushel	3.60	4.55	4.94
Hay, alfalfa ton	109.00	117.00	121.00
Soybeansbushel	9.80	11.10	11.70
Wheat, allbushel	4.87	6.13	7.05

Prices Paid for Feeder Livestock – United States: December 2010 with Comparisons

[Price data source is United States Department of Agriculture's Agricultural Marketing Service]

Item	December 2009	November 2010	Preliminary December 2010
	(dollars)	(dollars)	(dollars)
Feeder cattle & calvescwt	93.90	113.60	118.20
Feeder pigscwt	117.00	129.00	149.00

Prices Paid for Feed – United States: 2005-2010

[April survey for years 2005-2008. March survey began 2009]

Item	2005	2006	2007	2008	2009	2010
	(Dollars)	(Dollars)	(Dollars)	(Dollars)	(Dollars)	(Dollars)
Alfalfa Mealcwt	15.40	16.40	18.20	21.10	23.90	23.80
Alfalfa Pelletscwt	15.20	16.40	18.70	21.30	24.10	23.20
Brancwt	15.00	16.10	17.40	19.10	23.20	22.70
Beef Cattle Conc., 32-36% Protein ton	316	336	370	433	488	413
Corn Mealcwt	9.57	10.10	12.30	13.70	13.40	12.80
Cottonseed Meal, 41%cwt	17.20	18.20	20.00	23.00	25.60	25.40
Dairy Feed						
14% Protein ¹ ton	220	189	239	301	285	264
16% Protein ¹ ton	197	210	249	313	293	274
18% Protein ¹ ton	206	221	267	324	297	284
20% Protein ¹ ton	206	226	258	320	295	274
32-38% Protein Conc. ton	331	341	378	469	458	419
Hog Feed						
14-18% Protein ^{1 2} ton	219	228	305	345	328	303
38-42% Protein Conc. ton	398	361	398	490	493	446
Molasses, Liquidcwt	14.80	17.90	19.20	17.50	22.20	21.30
Poultry Feed						
Broiler Grower ¹ ton	237	255	306	387	464	456
Chick Starter ¹ ton	268	273	327	416	501	485
Laying Feed ¹ ton	226	240	278	371	391	374
Turkey Grower ¹ ton	315	302	337	434	466	434
Soybean Meal, 44%cwt	16.10	16.90	18.20	23.40	23.20	23.80
Soybean Meal, over 44%cwt	14.90	15.30	16.90	22.40	22.00	21.20
Stock Salt 50 Lb	4.78	4.67	5.02	5.45	5.93	5.92
Trace Mineral Blocks 50 Lb	5.52	5.68	6.15	6.60	7.09	8.02
	Index (1990-92=100)					
Feed Prices Paid Index ³ percent	117	124	149	194	186	184

¹ Complete ration feed, fed without mixing or supplementation.

² Excluding pig starter.

³ Annual average for all years.

Annual Average Prices Paid for Feeder Livestock – United States: 2005-2010

Item	2005	2006	2007	2008	2009	2010
	(Dollars)	(Dollars)	(Dollars)	(Dollars)	(Dollars)	(Dollars)
Broiler Chicks 100	20.60	22.90	25.60	26.30	26.50	(¹)
Egg-Type Chicks 100	53.50	66.50	69.40	75.60	81.10	(¹)
Feeders and Stockers						
Cattle and Calvescwt	115.00	111.10	107.40	101.46	95.20	109.30
Feeder Pigscwt	143.00	129.00	120.00	93.00	100.40	155.90
Turkey Poults each	1.13	1.20	1.32	1.44	1.32	(¹)
	Index (1990-92=100)					
Livestock and Poultry Prices Paid Index ² percent	138	134	131	124	115	133

¹ Annual average data are published in April 2011.

² Annual average.

The data presented in the following tables are calculated and published for use by the Forest Service, USDA and the Bureau of Land Management, U.S. Department of the Interior in computing Public Land Grazing Fees.

2010 Prices Paid Index for Beef Cattle Production (1964-68=100): 866

The Index of Prices Paid by Farmers and Ranchers for Beef Cattle Production input items is for the period of November 2009 through October 2010. The components of this index include the production indexes of Fuels, Supplies & Repairs, Autos & Trucks, Tractors & Self Propelled Machinery, Other Machinery, Building Materials, Interest, Wage Rates, and Farm Services & Rent. These components are weighted to the overall index value by their importance in the cost of producing beef cattle, the weights are unchanged from a year earlier.

Prices Received for Beef Cattle – Selected United States Regions: 2010

[Average for November 2009 through October 2010, except Nevada, Utah, and Washington which are marketing year averages]

State	Beef Cattle (Dollars Per Cwt)
17 Western States ¹	90.84
16 Western States ²	91.18
11 Western States ³	87.69
9 Great Plains States ⁴	92.41

¹ 17 Western States: Arizona, California, Colorado, Idaho, Kansas, Montana, Nebraska, Nevada, New Mexico, North Dakota, Oklahoma, Oregon, South Dakota, Texas, Utah, Washington, and Wyoming.

² 16 Western States: Arizona, California, Colorado, Idaho, Kansas, Montana, Nebraska, Nevada, New Mexico, North Dakota, Oklahoma, Oregon, South Dakota, Utah, Washington, and Wyoming.

³ 11 Western States: Arizona, California, Colorado, Idaho, Montana, Nevada, New Mexico, Oregon, Utah, Washington, and Wyoming.

⁴ 9 Great Plain States: Colorado, Kansas, Nebraska, New Mexico, North Dakota, Oklahoma, South Dakota, Texas, and Wyoming.

Reliability of Prices Paid Estimates

Definition: Prices paid by farmers represent the average costs of inputs purchased by farmers and ranchers to produce agricultural commodities. Conceptually, the average price when multiplied by quantity purchased should equal total producer expenditures for the item.

Survey procedures: The prices paid data are obtained from establishments that sell goods and services to farmers and ranchers. Annually, about 8,500 firms are randomly selected from lists by type of item sold with an average response rate in the range of 75-80 percent. Firms are asked to report the price for the specified item "most commonly bought by farmers" or that was the "volume seller". Approximately 135 items are surveyed each March to represent all production input items purchased. The survey reference period for most items is the five business days centered around the 15th of the month. Separate prices paid surveys are conducted for agricultural chemicals, fuels, feed, fertilizer, machinery, and seed.

Summary and estimation procedures: The annual March Prices Paid Survey is summarized as a nonprobability survey. Average prices reported are aggregated to the region and United States level using weights available from expenditure data and other administrative sources. Price recommendations are prepared by the State Field Offices and Headquarters for review by the Agricultural Statistics Board in Washington, D.C. Also, the change in price level for individual items surveyed are combined to the regional and United States levels, and are published as prices paid indexes referenced to a specific base period. Prices paid indexes for new autos and trucks, building materials, farm supplies, motor supplies, and marketing containers are updated based on price changes measured in selected Bureau of Labor Statistics (BLS) indexes.

Revisions: Any revisions are published in the monthly and in annual issues of Agricultural Prices. The basis for revision must be supported by additional data that directly affect the level of the estimate. More revisions are likely for March when separate prices paid surveys are conducted, in lieu of BLS indexes, by the USDA to measure price change.

Reliability: Current methods of summarization for the March data are not designed directly to calculate sampling errors. However, analytical measures approximate the United States relative sampling errors for major items around 10 percent. Any nonsampling errors are attributed to such things as the inability to obtain correct information, differences in interpreting questions or definitions, mistakes in coding or processing the data, etc. Efforts are made at each step in the survey process to minimize these nonsampling errors.

Program change: Effective January 1, 1995, the National Agricultural Statistics Service updated the weights and changed the construction of its prices paid and received by farmers indexes. A Federal Register Notice dated October 28, 1994 discussed these program modifications.

A 1990-1992 reference and base period replaced the 1977 reference and 1971-1973 base weight period. Five-year moving average weights replaced the current fixed 1971-1973 base period weights. The 1910-1914=100 price indexes, required by statute for computing parity prices, were linked forward based on the changes in the new 1990-1992=100 indexes. The new indexes were constructed by multiplying the ratios of the current prices to the base period prices by the moving average weights (adjusted for seasonal marketing patterns for the prices received indexes).

Calendar of Prices Received Features in the 2010 Agricultural Price Reports

Annual or Marketing Year Average Prices	Month Published
Austrian Winter Peas, United States	Sep
Barley, United States	Jun
by State and United States	Aug
Broilers, by State and United States.....	Apr
Canola, by State and United States	Nov
Cattle, by State and United States	Feb
Chickens, Other by State and United States.....	Apr
Chickpeas, by State and United States.....	Nov
Corn, United States	Sep
by State and United States	Nov
Cotton, by Type, State and United States	Oct
Cottonseed, by State and United States	Oct
Dry Beans, by State and United States.....	Nov
Dry Edible Peas, United States	Sep
Eggs, by State and United States	Apr
Flaxseed, by State and United States	Nov
Goats, by State and United States	Feb
Hay, by State and United States.....	Aug
Other Hay, 3-year Average by Region	Feb
Hogs, by State and United States	Feb
Hops, by State and United States	Dec
Lentils, United States	Sep
Milk, Sold to Plants, by Grade, Price and Fat Test, by State and United States.....	Apr
Mohair, by State and United States.....	Feb
Mustard Seed, United States	Nov
Oats, United States	Jun
by State and United States	Aug
Peanuts, by State and United States	Aug
Potatoes, by State and U.S., Preliminary	Feb
Proso Millet, by State and United States.....	Nov
Rapeseed, United States	Nov
Rice, United States (year-to-date)	Aug
by State and United States, by Length of Grain	Jan
Safflower, United States	Nov
Sheep and Lambs, by State and United States	Feb
Sorghum, by State and United States	Sep
Soybeans, by State and United States	Sep
Sweetpotatoes, by State and United States, Preliminary	Jan
Final and Revised	Jun
Sugarbeets, United States.....	Jul
Sugarcane, United States.....	Jul
Sunflower, by State and United States.....	Nov
Turkeys, by State and United States	Apr
Wheat, by Class, United States	Jun
by State and United States	Aug
Wool, by State and United States.....	Feb

Calendar of Prices Received Features in the 2010 Agricultural Price Reports (continued)

Monthly Prices Received – Revised	Month Published
Austrian Winter Peas, United States	Sep
Barley, by State and United States	Aug
Broilers, United States.....	Apr
Cattle, by State and United States	Feb
Chickens, by State and United States	Apr
Chickpeas, by State and United States	Nov
Corn, by State and United States.....	Nov
Cotton, by Type, State and United States.....	Oct
Cottonseed, by State and United States.....	Oct
Dry Beans, by State and United States.....	Nov
Dry Edible Peas, United States	Sep
Eggs, by State and United States.....	Apr
Flaxseed, by State and United States.....	Nov
Hay, by State and United States	Aug
Hogs, by State and United States	Feb
Hops, by State and United States	Dec
Lentils, United States	Sep
Milk, Sold to Plants, by Grade, Price and Fat Test by State and United States	Apr
Milk Cows, by Quarter, by State and United States.....	Feb
Oats, by State and United States	Aug
Peanuts, by State and United States	Aug
Potatoes, by State and United States, Preliminary	Feb
Rice, United States (year-to-date)	Aug
by State and United States, by Length of Grain	Jan
Sheep and Lambs, by State and United States	Feb
Sorghum, by State and United States	Sep
Soybeans, by State and United States	Sep
Sunflower, by State and United States	Nov
Wheat, by State and United States	Aug

Calendar of Prices Received Features in the 2010 Agricultural Price Reports (continued)

Monthly Marketing Percents	Month Published
Austrian Winter Peas, United States	Sep
Barley, United States	Jun
by State and United States	Aug
Chickpeas, by State and United States	Nov
Corn, United States	Sep
by State and United States	Nov
Cotton, Upland, by State and United States	Oct
Dry Beans, by State and United States	Nov
Dry Edible Peas, United States	Sep
Flaxseed, by State and United States	Nov
Hay, by State and United States	Aug
Lentils, United States	Sep
Oats, United States	Jun
by State and United States	Aug
Peanuts, by State and United States	Aug
Rice, United States (year-to-date)	Aug
Final	Jan
Sorghum, by State and United States	Sep
Soybeans, by State and United States	Sep
Sunflower, by State and United States	Nov
Wheat, United States	Jun
by State and United States	Aug

Prices Received Index Numbers - Revised

Index of Prices Received by Farmers, United States, by Month and Year	Jan, Apr, Jul, Oct
---	--------------------

Milk and Egg Prices Received, Adjusted for Seasonal Variation

Seasonally Adjusted Prices, Revised, United States	Apr
Seasonal Adjustment Factors, United States, program change	Jul

Parity Prices

Method of Computing	Jan
Average Prices Used for Parity Computations	Jan
Manufacturing Milk: Method of Computing Parity Price Equivalent	Jan
Average Price Received, United States	Jan

Calendar of Prices Paid Features in the 2010 Agricultural Price Reports

Indexes (1910-1914=100)

Month Published

PPITW, PITW, Production Items, Component Items, Interest, Taxes and Wage Rates, Family Living, Farm and Non-Farm Origin, Crop and Livestock Sectors, Adjusted for Productivity, Ratio, Parity Ratio and Adjusted Parity Ratio	
Annual Average (2006-2010)	Jan, Apr, Jul, Oct
By Month (2006-2010)	Jan, Apr, Jul, Oct
United States Current Month, Previous Month, Previous Year	Monthly

Indexes (1990-1992=100)

Month Published

PPITW, PITW, Production Items, Component and Subcomponent Items, Interest, Taxes and Wage Rates, Family Living Farm and Non-Farm Origin, Crop and Livestock Sectors, Adjusted for Productivity, Ratio, Parity Ratio and Adjusted Parity Ratio	
Annual Average (2006-2010)	Jan, Apr, Jul, Oct
By Month (2006-2010)	Jan, Apr, Jul, Oct
United States Current Month, Previous Month, Previous Year	Monthly
Feed and Feeder Livestock & Poultry Annual Average, United States (2005-2010)	Dec

Prices Paid

Month Published

Farm Machinery, United States	Apr
Feed, by Region and United States	Apr
Feed, United States (2005-2010)	Dec
Feeder Livestock, United States	Monthly
Poultry, Chicks and Poults, Annual Average	Apr
Fertilizer Materials, Mixed Fertilizer and Agricultural Limestone, by Region and United States	Apr
Field Seeds, Retail United States	Apr
Fuels, by Region and United States	Apr
Agricultural Chemicals, United States	Apr

Feed-Price Ratios

Month Published

United States by Months and Annual Average, (Jan 2007- May 2010)	May
United States Current Month, Previous Month, Previous Year	Monthly

Prices Paid Program Overview

Month Published

Prices Paid Survey Months, Month Published and Geographic Levels of Estimates	Jan
Prices Paid Regions, and States Included	Apr

Private Grazing Fee Rates and Components of Federal Fees

Month Published

Private Non-Irrigated Grazing Fee Rates, by State and Region (Data for 2008-2010)	Jan
Prices Paid Index for Beef Cattle Production (1964-68=100)	Dec
Beef Cattle Prices Received, Selected Regions (November-October)	Dec
Other Hay Prices Received, Selected Eastern Regions	Feb

Information Contacts

Direct general questions to Kevin Barnes, Chief, Environmental, Economics and Demographics Branch at (202) 720-6146. Below are the commodity specialists to contact for additional information.

Crop Prices Received

Lance Honig, Chief, Crops Branch	(202) 720-2127
Jacqueline Moore, Head, Field Crops Section	(202) 720-2127
Suzanne Avilla – Peanuts, Rice	(202) 720-7688
Bryan Durham – Hay, Oats	(202) 690-3234
Steve Maliszewski – Cotton, Cotton Ginnings, Sorghum	(202) 720-5944
Anthony Prillaman – Corn, Proso Millet, Flaxseed	(202) 720-9526
Nick Schauer – Wheat, Rye	(202) 720-8068
Julie Schmidt – Crop Weather, Barley, Sugar Crops	(202) 720-7621
Travis Thorson – Soybeans, Sunflower, Other Oilseeds	(202) 720-7369
Jorge Garcia-Pratts, Head, Fruits, Vegetables and Special Crops Section	(202) 720-2127
Debbie Flippin – Fresh and Processing Vegetables, Onions, Strawberries	(202) 720-2157
Fred Granja – Apples, Apricots, Cherries, Plums, Prunes, Tobacco	(202) 720-4288
Dawn Keen – Floriculture, Maple Syrup, Nursery, Tree Nuts	(202) 720-4215
Steve Maliszewski – Citrus, Coffee, Grapes, Tropical Fruits	(202) 720-5944
Tierra Mobley – Berries, Cranberries, Potatoes, Sweet Potatoes	(202) 720-4285
Dan Norris – Austrian Winter Peas, Dry Edible Peas, Lentils, Mints, Mushrooms, Peaches, Pears, Wrinkled Seed Peas, Dry Beans	(202) 720-3250
Kim Ritchie – Hops	(360) 709-2400

Livestock Prices Received

Dan Kerestes, Chief, Livestock Branch	(202) 720-3570
Scott Hollis, Livestock Section	(202) 720-3570
Jason Hardegree - Cattle	(202) 720-3040
Mike Miller - Milk, Milk Cows	(202) 720-3278
Everett Olbert - Sheep, Lambs, Goats, Wool, Mohair	(202) 720-4751
Nicholas Streff - Hogs	(202) 720-3106
Bruce Boess, Poultry and Specialty Commodities Section	(202) 720-3570
Doug Bounds - Turkeys	(202) 690-3237
Kim Linonis - Eggs	(202) 690-8632
Troy Marshall - Broilers, Honey	(202) 720-3244

Indexes, Prices Paid, and Parity Prices

Kevin Barnes, Chief, Environmental, Economics and Demographics Branch	(202) 720-6146
Kevin Hintzman, Economics Section	(202) 720-6146
Daryl Brinkman - Prices Received Indexes, Parity Prices	(202) 720-8844
Joe Samson - Grazing Fees	(202) 720-5446
Jennifer Sissom - Prices Paid Indexes, Prices Paid for Feed, Fertilizer, Agricultural Chemicals, Seeds, Farm Supplies and Repairs, Farm Machinery, Fuels, Feeder Livestock, Poultry Chicks, Feed Price Ratios, Autos & Trucks	(202) 690-3229

Access to NASS Reports

For your convenience, you may access NASS reports and products the following ways:

- All reports are available electronically, at no cost, on the NASS web site: <http://www.nass.usda.gov>
- Both national and state specific reports are available via a free e-mail subscription. To set-up this free subscription, visit <http://www.nass.usda.gov> and in the “Receive NASS Updates” box under “Receive reports by Email,” click on “National” or “State” to select the reports you would like to receive.
- Printed reports may be purchased from the National Technical Information Service (NTIS) by calling toll-free (800) 999-6779, or (703) 605-6220 if calling from outside the United States or Canada. Accepted methods of payment are Visa, MasterCard, check, or money order.

For more information on NASS surveys and reports, call the NASS Agricultural Statistics Hotline at (800) 727-9540, 7:30 a.m. to 4:00 p.m. ET, or e-mail: nass@nass.usda.gov.

The United States Department of Agriculture (USDA) prohibits discrimination in all its programs and activities on the basis of race, color, national origin, age, disability, and where applicable, sex, marital status, familial status, parental status, religion, sexual orientation, political beliefs, genetic information, reprisal, or because all or a part of an individual's income is derived from any public assistance program. (Not all prohibited bases apply to all programs.) Persons with disabilities who require alternative means for communication of program information (Braille, large print, audiotape, etc.) should contact USDA's TARGET Center at (202) 720-2600 (voice and TDD).

To file a complaint of discrimination, write to USDA, Assistant Secretary for Civil Rights, Office of the Assistant Secretary for Civil Rights, 1400 Independence Avenue, S.W., Stop 9410, Washington, DC 20250-9410, or call toll-free at (866) 632-9992 (English) or (800) 877-8339 (TDD) or (866) 377-8642 (English Federal-relay) or (800) 845-6136 (Spanish Federal-relay). USDA is an equal opportunity provider and employer.