



# Agricultural Prices

ISSN: 1937-4216

Released February 28, 2011, by the National Agricultural Statistics Service (NASS), Agricultural Statistics Board, United States Department of Agriculture (USDA).

## Special Note

Beginning with January 2011, State level sheep and lamb prices will be discontinued. Sheep and Lamb prices for the United States will be published based on data provided by the United States Department of Agriculture's Agricultural Marketing Service.

## February Farm Prices Received Index Increased 4 Points

The preliminary All Farm Products Index of Prices Received by Farmers in February, at 168 percent, based on 1990-1992=100, increased 4 points (2.4 percent) from January. The Crop Index is up 12 points (6.5 percent) and the Livestock Index increased 4 points (2.9 percent). Producers received higher prices for corn, wheat, lettuce, and milk and lower prices for strawberries, cattle, broilers, and broccoli. In addition to prices, the overall index is also affected by the seasonal change based on a 3-year average mix of commodities producers sell. Increased monthly marketings of milk, cattle, broilers, and hogs offset decreased marketings of corn, soybeans, wheat, and cotton.

The preliminary All Farm Products Index is up 33 points (24 percent) from February 2010. The Food Commodities Index, at 163, increased 5 points (3.2 percent) from last month and increased 29 points (22 percent) from February 2010.

## Prices Paid Index Up 3 Points

The February Index of Prices Paid for Commodities and Services, Interest, Taxes, and Farm Wage Rates (PPITW) is 197 percent of the 1990-1992 average. The index is up 3 points (1.5 percent) from January and is 17 points (9.4 percent) above February 2010. Higher prices in February for feed grains, complete feeds, nitrogen, and diesel more than offset lower prices for LP gas and other services.

## Prices Received, Prices Paid, and Ratio of Prices Received to Prices Paid Index on 1990-1992=100 Basis – United States: February 2011 with Comparisons

Index	February 2010	January 2011	February 2011
Prices received by farmers .....	135	164	168
Prices paid by farmers .....	180	194	197
Ratio prices received to prices paid .....	75	85	85

## Contents

Prices Received by Farmers .....	4
Prices Received Indexes – United States: February 2011 with Comparisons .....	5
Prices Received and Prices Paid Indexes by Month for Selected Groups – United States: 2010 and 2011, 1990-1992=100 .....	5
Received Indexes by Month, Livestock Products, All Products, and All Crops – United States: 1990-1992=100 Chart.....	6
Received Indexes by Month, Food Grains, Feed Grains & Hay, and Oilseeds – United States: 1990-1992=100 Chart.....	6
Received Indexes by Month, Fruit & Nut and Commercial Vegetables – United States: 1990-1992=100 Chart.....	7
Received Indexes by Month, Meat Animal, Dairy Products, and Poultry & Eggs – United States: 1990-1992=100 Chart.....	7
Prices Received for Field Crops and Fruits – United States: February 2011 with Comparisons.....	8
Prices Received for Vegetables and Livestock – United States: February 2011 with Comparisons .....	9
Prices Received for Corn by Month – United States Chart.....	10
Prices Received for Wheat by Month – United States Chart .....	10
Prices Received for Cotton by Month – United States Chart.....	11
Prices Received for Soybeans by Month – United States Chart .....	11
Prices Received for Cattle by Month – United States Chart .....	12
Prices Received for Milk by Month – United States Chart.....	12
Prices Received for Hogs by Month – United States Chart .....	13
Prices Received for Turkeys and Broilers by Month – United States Chart .....	13
Prices Received for All Wheat, Corn, and Soybeans by Month – United States: 2011 with Comparisons.....	14
Prices Received for Beef Cattle and All Hogs by Month – United States: 2011 with Comparisons .....	14
Prices Received for All Wheat – States and United States: February 2011 with Comparisons.....	15
Prices Received for Winter Wheat – States and United States: February 2011 with Comparisons.....	15
Prices Received for Durum Wheat – States and United States: February 2011 with Comparisons.....	16
Prices Received for Spring Wheat – States and United States: February 2011 with Comparisons .....	16
Prices Received for All Barley – States and United States: February 2011 with Comparisons.....	17
Prices Received for Malting Barley – States: February 2011 with Comparisons .....	17
Prices Received for Feed Barley – States: February 2011 with Comparisons .....	17
Prices Received for Corn – States and United States: February 2011 with Comparisons .....	18
Prices Received for Soybeans – States and United States: February 2011 with Comparisons .....	18
Prices Received for Oats – States and United States: February 2011 with Comparisons .....	19
Prices Received for Sorghum Grain – States and United States: February 2011 with Comparisons.....	19
Prices Received for Dry Beans – States and United States: February 2011 with Comparisons .....	20
Prices Received for Peanuts (In-Shell) – States and United States: February 2011 with Comparisons .....	20
Prices Received for Sunflowers – States and United States: February 2011 with Comparisons .....	21
Prices Received for Canola – States and United States: February 2011 with Comparisons .....	21
Prices Received for Flaxseed – States and United States: February 2011 with Comparisons .....	21
Prices Received for Cotton (Upland) and Cottonseed – States and United States: February 2011 with Comparisons .....	22
Prices Received and Marketings for Cotton (Upland) and Rice – United States: February 2011 with Comparisons .....	22
Prices Received for Hay by Type – States and United States: February 2011 with Comparisons.....	23
Prices Received for Apples – States and United States: February 2011 with Comparisons .....	23
Prices Received for Citrus Fruits by Utilization – States and United States: February 2010 .....	24
Prices Received for Citrus Fruits by Utilization – States and United States: January 2011 .....	25
Prices Received for Citrus Fruits by Utilization – States and United States: February 2011 .....	26
Prices Received for Potatoes – States and United States: February 2011 with Comparisons.....	27
Prices Received for Sheep – States and United States: January 2011 with Comparisons.....	28
Prices Received for Lambs – States and United States: January 2011 with Comparisons .....	28

Prices Received for All Milk – States and United States: February 2011 with Comparisons .....	29
Prices Received for Milk Cows – States and United States: January 2011 with Comparisons .....	30
Parity Price Equivalent for Manufacturing Grade Milk – United States: February 2011 with Comparisons.....	30
Commodity Parity Prices and Price as Percent of Parity Price – United States: February 2011 with Comparisons .....	31
Commodity Parity Prices – United States: February 2011 with Comparisons .....	32
Marketing Year for Specified Commodities .....	34
Market Year Average Prices Received for Cattle – States and United States: 2009 and 2010.....	34
Market Year Average Prices Received for Hogs – State and United States: 2009 and 2010 .....	36
Market Year Average Prices Received for Sheep and Lambs – States and United States: 2009 and 2010.....	37
Prices Received for Cows by Month – States and United States: 2009 and 2010 .....	38
Prices Received for Steers and Heifers by Month – States and United States: 2009 and 2010.....	40
Prices Received for Beef Cattle by Month – States and United States: 2009 and 2010 .....	42
Prices Received for Calves by Month – States and United States: 2009 and 2010 .....	44
Prices Received for Milk Cows by Month – States and United States: 2009 and 2010 .....	46
Prices Received for All Hogs by Month – States and United States: 2009 and 2010.....	47
Prices Received for Barrows and Gilts by Month – States and United States: 2009 and 2010 .....	48
Prices Received for Sows by Month – States and United States: 2009 and 2010.....	49
Prices Received for Sheep by Month – States and United States: 2009 and 2010 .....	50
Prices Received for Lambs by Month – States and United States: 2009 and 2010 .....	51
Prices Received Value per Head for All Cattle and Calves – States and United States: January 1, 2010 and 2011 .....	52
Prices Received Value per Head and Total Value for Hogs – States and United States: December 1, 2009 and 2010 .....	53
Prices Received Value per Head and Total Value for Sheep and Lambs – States and United States: January 1, 2010 and 2011 .....	54
Prices Received Value per Head and Total Value for Angora Goats – States and United States: January 1, 2010 and 2011 .....	55
Market Year Average Prices Received for Other Hay, Baled – Selected Regions: 2006-2008, 2007-2009, and 2008-2010 Averages.....	55
Reliability of Prices Received Estimates .....	56
Prices Paid by Farmers.....	57
Prices Paid Indexes and Related Parity Ratios – United States: February 2011 with Comparisons.....	58
Prices Paid Indexes and Annual Weights for Input Components and Sub-Components – United States: February 2011 with Comparisons.....	59
Paid Indexes by Month, All Items and Production Items – United States: 1990-1992=100 Chart .....	60
Paid Indexes, Annual Averages, Production Items, Interest, Taxes, and Wages – United States: 1990-1992=100 Chart .....	60
Paid Indexes by Farm Type, All Items – United States: 1990-1991=100 Chart.....	61
Paid Indexes by Origin, All Production Items – United States: 1990-1992=100 Chart .....	61
Paid Indexes by Non-Farm Sector, Supplies & Repairs, Fertilizer, Machinery, and Fuel – United States: 1990-1992=100 Chart .....	62
Paid Indexes by Month, Feed and Replacement Livestock – United States: 1990-1992=100 Chart.....	62
Feed Price Ratios – United States: February 2011 with Comparisons .....	63
Prices Received Used to Calculate Feed Price Ratios – United States: February 2011 with Comparisons.....	63
Prices Paid for Feeder Livestock – United States: February 2011 with Comparisons.....	63
Reliability of Prices Paid Estimates .....	64
Information Contacts .....	65

## Prices Received by Farmers

The February All Farm Products Index is 168 percent of its 1990-1992 base, up 2.4 percent from the January index and 24 percent above the February 2010 index.

**All crops:** The February index is 198, up 6.5 percent from January and 34 percent above February 2010. Index increases for feed grains & hay, commercial vegetables, food grains, and oilseeds more than offset the decrease for the fruits & nuts index.

**Food grains:** The February index, at 261, is 20 percent above the previous month and 50 percent above a year ago. The February all wheat price, at \$8.56 per bushel, is up \$1.85 from January and \$3.83 above February 2010.

**Feed grains & hay:** The February index is 233, up 11 percent from last month and 52 percent above a year ago. The corn price, at \$5.66 per bushel, is up 72 cents from last month and \$2.11 above February 2010. The all hay price, at \$116.00 per ton, increased \$4.00 from January and \$12.00 from last February. Sorghum grain, at \$10.40 per cwt, is 95 cents above January and \$4.96 above February last year.

**Upland cotton:** The February index, at 146, is up 7.4 percent from January and 36 percent above last year. The February price, at 88.3 cents per pound, is up 6.1 cents from the previous month and 23.3 cents above last February.

**Oilseeds:** The February index, at 217, is up 4.8 percent from January and 29 percent higher than February 2010. The soybean price, at \$12.10 per bushel, increased 50 cents from January and is \$2.69 above February 2010.

**Fruits & nuts:** The February index, at 142, is down 2.1 percent from January and 5.3 percent lower than a year ago. Price decreases for strawberries, lemons, apples, and grapefruit more than offset the price increase for pears.

**Commercial vegetables:** The February index, at 252, is up 31 percent from last month and 67 percent above February 2010. Price increases during February for lettuce, celery, tomatoes, and cauliflower more than offset price declines for broccoli, snap beans, onions, and sweet corn.

**Potatoes & dry beans:** The February index, at 158, is up 4.6 percent from last month and 21 percent above February 2010. The all potato price, at \$9.33 per cwt, is up 25 cents from January and up \$1.99 from last February. The all dry bean price, at \$28.20 per cwt, is up \$2.50 from the previous month but \$2.20 below February 2010.

**Livestock and products:** The February index, at 141, is 2.9 percent above last month and up 15 percent from February 2010. Compared with a year ago, prices are higher for cattle, milk, hogs, calves, turkeys, and eggs. Prices for broilers are lower than last year.

**Meat animals:** The February index, at 141, is up 0.7 percent from last month and 24 percent higher than last year. The February hog price, at \$61.50 per cwt, is up \$5.70 from January and \$12.60 higher than a year ago. The February beef cattle price of \$106 per cwt is down \$1.00 from last month but \$20.30 higher than February 2010.

**Dairy products:** The February index, at 141, is up 10 percent from a month ago and 16 percent higher than February last year. The February all milk price of \$18.40 cents per cwt increased \$1.70 from last month and \$2.50 from February 2010.

**Poultry & eggs:** The February index, at 142, is up 0.7 percent from January but 2.1 percent below a year ago. The February market egg price, at 77.6 cents per dozen, increased 11.6 cents from January and is 0.1 cent above February 2010. The February broiler price, at 44.0 cents per pound, is down 1.0 cent from January and 3.0 cents below a year ago. The February turkey price, at 57.2 cents per pound, is up 0.8 cent from the previous month and up 8.1 cents from a year earlier.

## Prices Received Indexes – United States: February 2011 with Comparisons

[Revised historical price indexes for months not shown are available at [www.nass.usda.gov](http://www.nass.usda.gov)]

Index	1910-1914=100				1990-1992=100		
	1990-1992 Average	February 2010	January 2011	February 2011	February 2010	January 2011	February 2011
	(percent)	(percent)	(percent)	(percent)	(percent)	(percent)	(percent)
All products .....	639	860	1041	1068	135	164	168
All crops .....	500	734	921	983	148	186	198
Food grains .....	325	552	686	826	174	217	261
Feed grains & hay .....	363	544	745	830	153	209	233
Cotton (Upland) .....	517	550	696	747	107	136	146
Tobacco .....	1263	1563	1483	1483	103	98	98
Oilseeds .....	554	921	1132	1188	168	207	217
Fruits & nuts .....	716	1045	1015	994	150	145	142
Commercial vegetables .....	698	1077	1380	1804	151	193	252
Potatoes & dry beans .....	540	665	767	802	131	151	158
Other crops .....	493	613	621	621	125	126	126
Livestock and products .....	768	944	1052	1085	123	137	141
Meat animals .....	1021	1162	1421	1440	114	140	141
Dairy products .....	799	978	1028	1132	122	128	141
Poultry & eggs .....	282	406	395	399	145	141	142
Food commodities .....	(NA)	(NA)	(NA)	(NA)	134	158	163

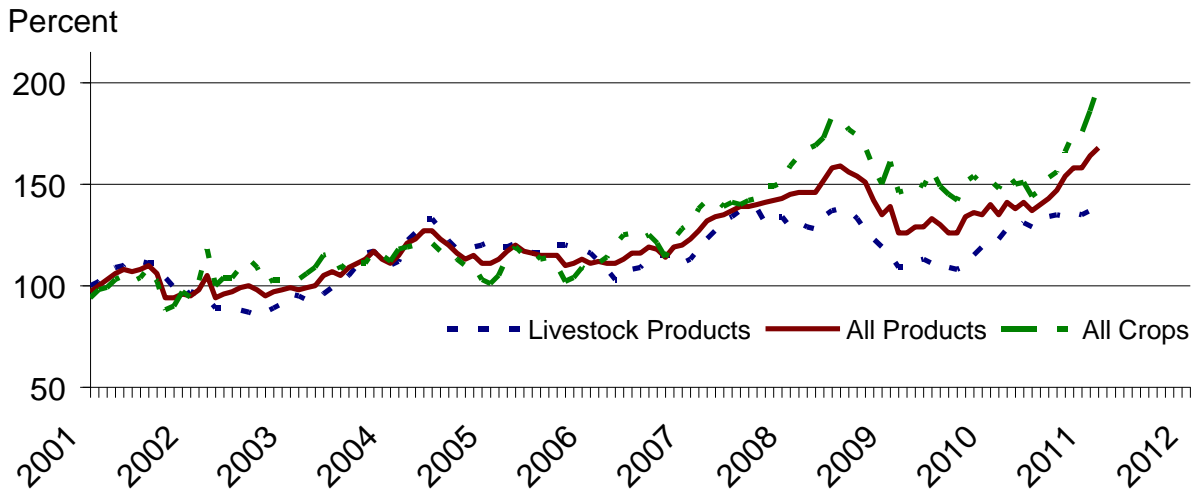
(NA) Not available.

## Prices Received and Prices Paid Indexes by Month for Selected Groups – United States: 2010 and 2011, 1990-1992=100

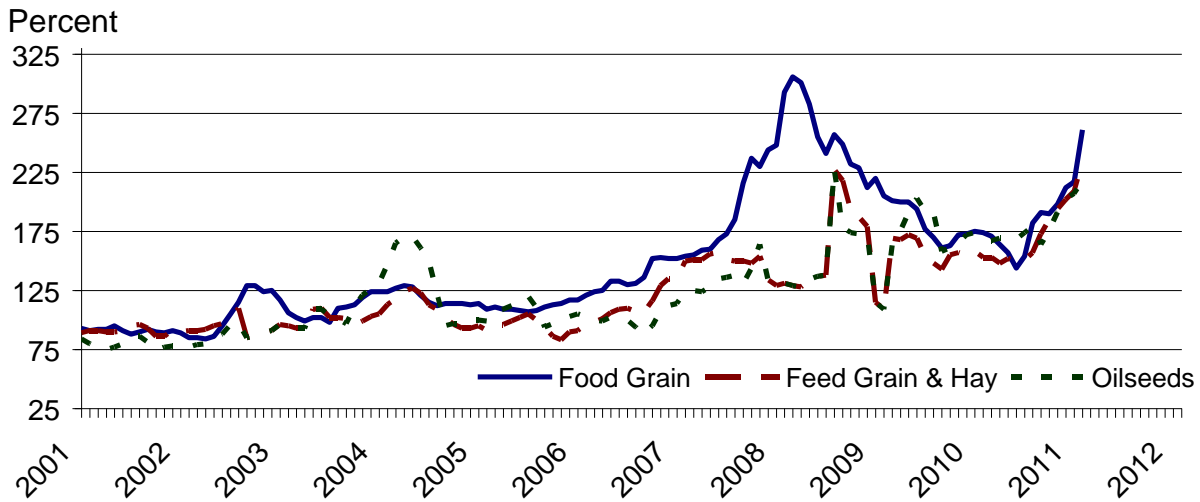
[Revised historical price indexes for months not shown are available at [www.nass.usda.gov](http://www.nass.usda.gov). Blank data cells indicate estimation period has not yet begun]

Month	Index of prices received						Index of prices paid			
	All farm products		All crops		Livestock and products		All items		Production items	
	2010	2011	2010	2011	2010	2011	2010	2011	2010	2011
	(percent)	(percent)	(percent)	(percent)	(percent)	(percent)	(percent)	(percent)	(percent)	(percent)
January .....	140	164	152	186	123	137	181	194	185	202
February .....	135	168	148	198	123	141	180	197	184	205
March .....	141		155		128		180		184	
April .....	138		150		128		181		185	
May .....	141		151		131		181		186	
June .....	137		144		129		180		184	
July .....	140		147		132		180		185	
August .....	143		153		134		181		185	
September .....	147		156		135		181		187	
October .....	154		166		134		184		189	
November .....	158		175		136		186		193	
December .....	158		175		135		188		196	

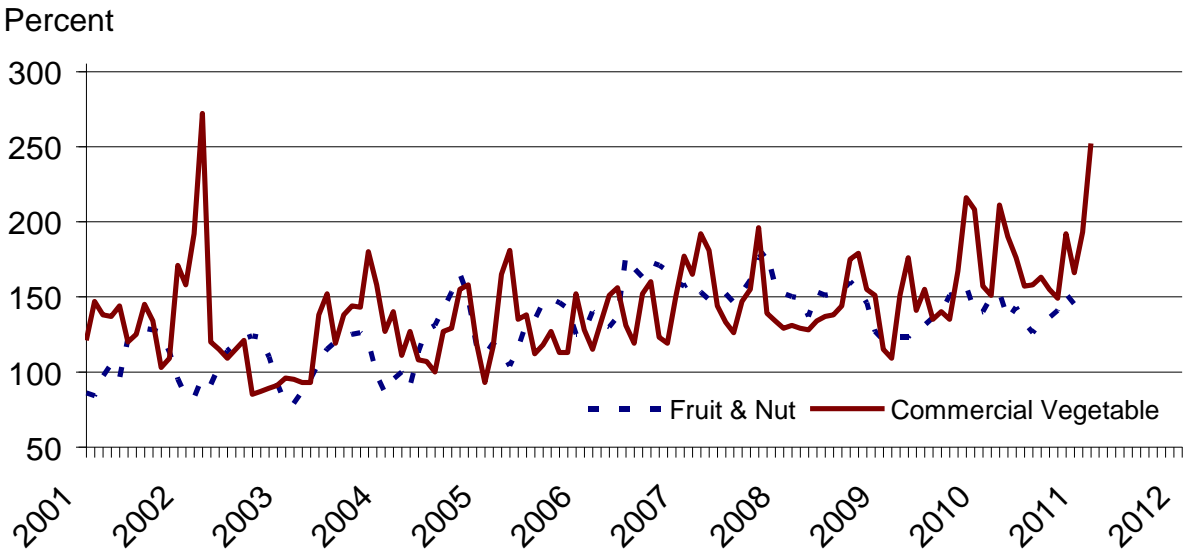
**Received Indexes by Month,  
Livestock Products, All Products, and All Crops –  
United States: 1990-1992=100**



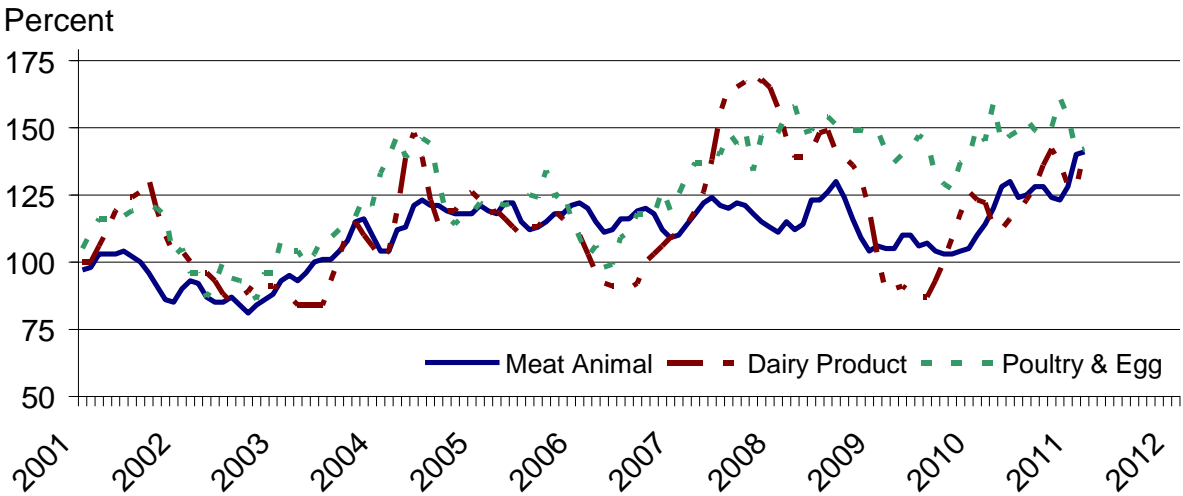
**Received Indexes by Month,  
Food Grains, Feed Grains & Hay, and Oilseeds –  
United States: 1990-1992=100**



## Received Indexes by Month, Fruit & Nut and Commercial Vegetables – United States: 1990-1992=100



## Received Indexes by Month, Meat Animal, Dairy Product, and Poultry & Egg – United States: 1990-1992=100



**Prices Received for Field Crops and Fruits – United States: February 2011 with Comparisons**

Commodity	Average 1990-1992=100	February 2010	January 2011	Preliminary February 2011
<b>Field crops</b>				
Austrian winter peas .....	dollars/cwt (NA)	(S)	(S)	(S)
Barley, all .....	dollars/bushel 2.12	4.53	3.85	4.36
Feed .....	dollars/bushel 1.90	3.11	3.43	4.17
Malting .....	dollars/bushel 2.43	4.70	3.96	4.40
Beans, dry edible .....	dollars/cwt 19.10	30.40	25.70	28.20
Canola .....	dollars/cwt (NA)	(D)	20.30	22.00
Chickpeas, all .....	dollars/cwt (NA)	27.50	30.60	31.40
Large .....	dollars/cwt (NA)	28.70	32.90	33.10
Small .....	dollars/cwt (NA)	19.30	22.30	(D)
Corn .....	dollars/bushel 2.30	3.55	4.94	5.66
Cotton (Upland) .....	dollars/pound 0.606	0.650	0.822	0.883
Cottonseed <sup>1</sup> .....	dollars/ton 96.00	153.00	165.00	172.00
Flaxseed .....	dollars/bushel 4.27	8.57	13.70	14.70
Hay, all, baled .....	dollars/ton 76.30	104.00	112.00	116.00
Alfalfa .....	dollars/ton 77.20	110.00	121.00	127.00
Other .....	dollars/ton 60.00	93.00	95.30	93.90
Lentils .....	dollars/cwt (NA)	29.60	27.60	27.80
Oats .....	dollars/bushel 1.22	2.30	3.11	3.38
Peanuts, in-shell .....	dollars/pound 0.304	0.210	0.229	0.231
Peas, dry edible .....	dollars/cwt (NA)	9.14	9.97	11.00
Potatoes .....	dollars/cwt 5.82	7.34	9.08	9.33
Rice, all .....	dollars/cwt 7.07	14.80	12.90	13.90
Long .....	dollars/cwt (NA)	13.50	11.90	12.70
Medium and short .....	dollars/cwt (NA)	18.10	16.20	17.10
Sorghum grain .....	dollars/cwt 3.75	5.44	9.45	10.40
Soybeans .....	dollars/bushel 5.61	9.41	11.60	12.10
Sunflowers, all .....	dollars/cwt 9.50	16.70	21.90	25.20
Wheat, all .....	dollars/bushel 2.96	4.73	6.71	8.56
Winter .....	dollars/bushel 2.93	4.53	6.37	8.13
Durum .....	dollars/bushel 2.86	4.61	7.07	9.39
Other spring .....	dollars/bushel 3.11	5.04	7.13	9.09
Hard red winter <sup>2</sup> .....	dollars/bushel (NA)	4.54	6.51	(NA)
Soft red winter <sup>2</sup> .....	dollars/bushel (NA)	4.37	6.32	(NA)
Hard red spring <sup>2</sup> .....	dollars/bushel (NA)	5.06	7.21	(NA)
White <sup>2</sup> .....	dollars/bushel 3.24	4.56	6.04	(NA)
<b>Fruits</b>				
Citrus, equivalent on-tree				
Grapefruit .....	dollars/box 5.77	7.10	7.10	6.58
Lemons .....	dollars/box 10.10	8.48	9.06	4.74
Oranges .....	dollars/box 5.79	6.78	6.49	6.36
Tangelos .....	dollars/box 5.82	4.00	6.14	5.61
Tangerines and mandarins .....	dollars/box 15.11	8.12	18.58	14.94
Noncitrus, fresh				
Apples <sup>3</sup> .....	dollars/pound 0.212	0.289	0.297	0.285
Grapes <sup>3</sup> .....	dollars/ton 506.00	(S)	(S)	(S)
Peaches <sup>3</sup> .....	dollars/ton 432.00	(S)	(S)	(S)
Pears <sup>3</sup> .....	dollars/ton 370.00	368.00	662.00	673.00
Strawberries .....	dollars/cwt 56.00	179.00	224.00	145.00

(D) Withheld to avoid disclosing data for individual operations.

(NA) Not available.

(S) Insufficient number of reports to establish an estimate.

<sup>1</sup> Marketing year August - February.

<sup>2</sup> Preliminary estimates not set for this item.

<sup>3</sup> Equivalent packinghouse-door returns for California, Michigan, New York (apples only), and Washington (apples, peaches, and pears). Prices as sold for other states.



# Prices Received for Vegetables and Livestock – United States: February 2011 with Comparisons

[Price data source for livestock and poultry commodities is United States Department of Agriculture's Agricultural Marketing Service]

Commodity	Average 1990-1992=100	February 2010	January 2011	Preliminary February 2011
<b>Vegetables, fresh <sup>1</sup></b>				
Asparagus .....dollars/cwt	79.80	(S)	(S)	(S)
Beans, snap <sup>2</sup> .....dollars/cwt	(NA)	(S)	131.00	85.80
Broccoli .....dollars/cwt	22.50	26.70	58.70	45.60
Cantaloupes <sup>2</sup> .....dollars/cwt	(NA)	(S)	(S)	(S)
Carrots .....dollars/cwt	13.20	23.90	38.00	38.40
Cauliflower .....dollars/cwt	26.80	36.70	41.70	45.50
Celery .....dollars/cwt	11.60	21.60	25.10	47.60
Corn, sweet .....dollars/cwt	15.70	58.50	62.20	52.10
Cucumbers <sup>2</sup> .....dollars/cwt	(NA)	15.00	(S)	(S)
Lettuce .....dollars/cwt	11.90	14.10	26.80	45.10
Onions <sup>3</sup> .....dollars/cwt	12.80	15.00	12.40	10.60
Tomatoes .....dollars/cwt	32.30	84.60	51.90	104.00
<b>Livestock</b>				
Calves .....dollars/cwt	94.30	113.00	136.00	136.00
Cattle, all beef .....dollars/cwt	72.90	85.70	107.00	106.00
Cows <sup>4</sup> .....dollars/cwt	49.60	51.70	65.00	71.20
Steers & heifers .....dollars/cwt	77.10	90.50	110.00	109.00
Milk cows <sup>5</sup> .....dollars/head	1130.00	(NA)	1300.00	(NA)
Hogs, all .....dollars/cwt	47.70	48.90	55.80	61.50
Barrows & gilts .....dollars/cwt	48.40	48.90	56.70	62.60
Sows .....dollars/cwt	39.50	49.20	47.80	50.90
Lambs .....dollars/cwt	56.20	106.00	149.00	(NA)
Sheep .....dollars/cwt	23.40	54.80	81.90	(NA)
<b>Dairy and poultry</b>				
Milk, all <sup>6</sup> .....dollars/cwt	13.06	15.90	16.70	18.40
Fat test ..... percent	3.66	3.73	3.83	3.79
Broilers, live <sup>7</sup> .....dollars/pound	0.317	0.470	0.450	0.440
Eggs, all <sup>8</sup> .....dollars/dozen	0.643	0.917	0.850	0.954
Market <sup>8 9</sup> .....dollars/dozen	0.546	0.775	0.660	0.776
Turkeys, live <sup>8 10 11</sup> .....dollars/pound	0.380	0.491	0.564	0.572
<b>Adjusted for seasonal variation</b>				
Eggs, all .....dollars/dozen	0.545	0.859	0.713	0.896
Seasonal factor ..... percent	100	107	119	106
Milk, all <sup>6</sup> .....dollars/cwt	9.71	16.20	16.60	18.80
Seasonal factor ..... percent	100	98	101	98

(NA) Not available.

(S) Insufficient number of reports to establish an estimate.

<sup>1</sup> Beginning January 2006, point of first sale. FOB shipping point for prior years.

<sup>2</sup> Monthly estimates began January 1995.

<sup>3</sup> Includes some processing.

<sup>4</sup> Beef cows and cull dairy cows sold for slaughter.

<sup>5</sup> Animals sold for dairy herd replacement only. Prices available for January, April, July, and October.

<sup>6</sup> Before deductions for hauling. Includes quality, quantity, and other premiums. Excludes hauling subsidies.

<sup>7</sup> Equivalent live weight price.

<sup>8</sup> Mid-month price.

<sup>9</sup> Also referred to as table eggs.

<sup>10</sup> Live weight equivalent price is used when actual live weight price is not available.

<sup>11</sup> Beginning January 2011, price reflects F.O.B. shipping point basis. Prior year price reflects delivered basis.

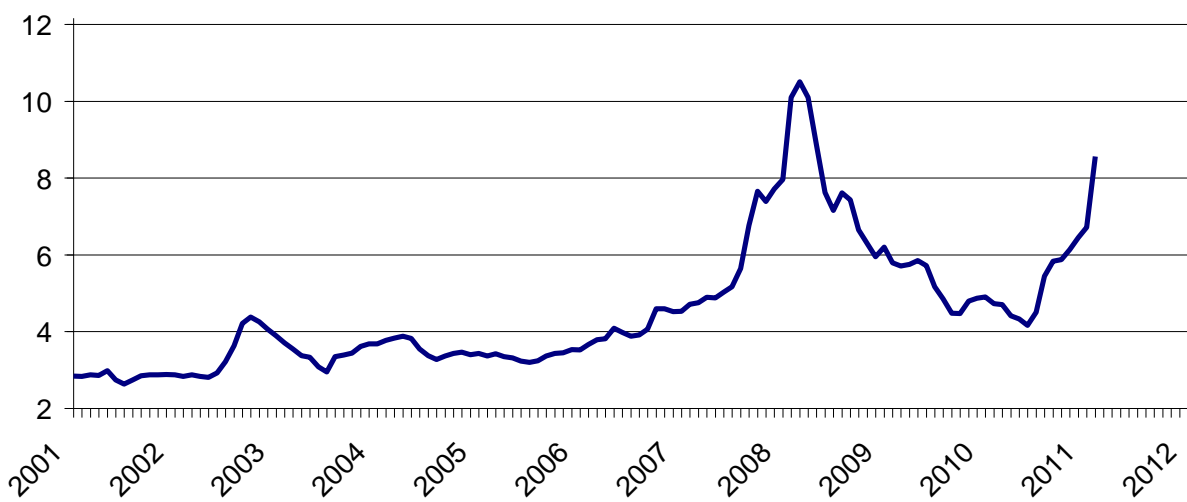
## Prices Received for Corn by Month – United States

Dollars per bushel

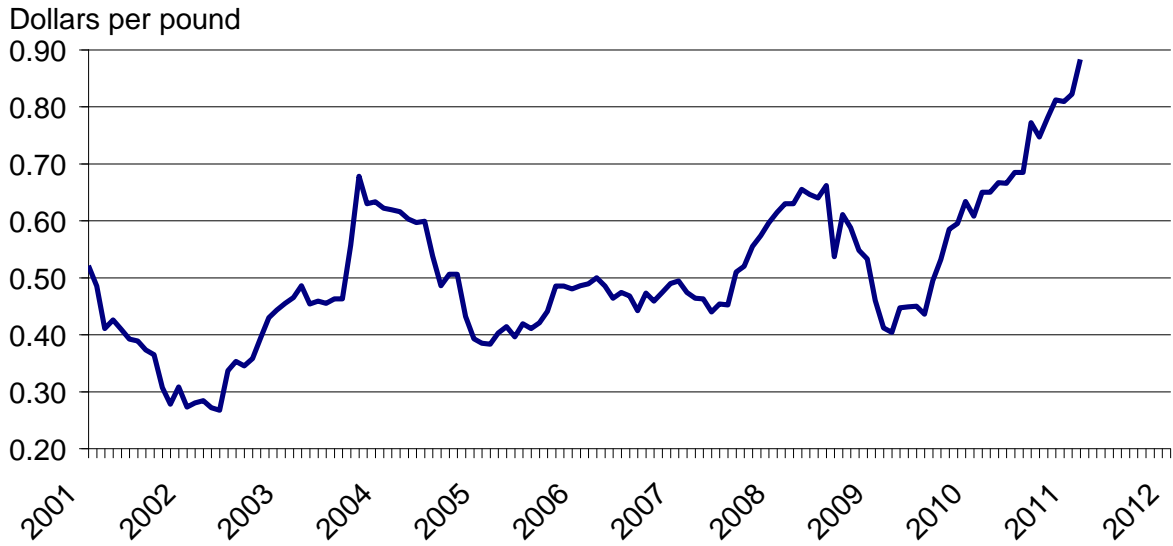


## Prices Received for Wheat by Month – United States

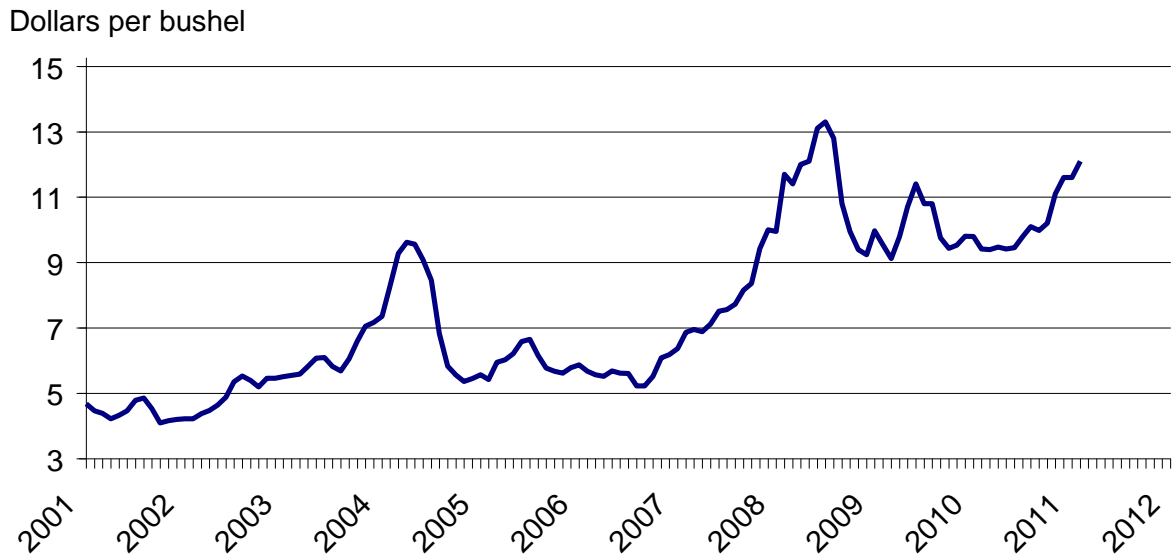
Dollars per bushel



## Prices Received for Cotton (Upland) by Month – United States

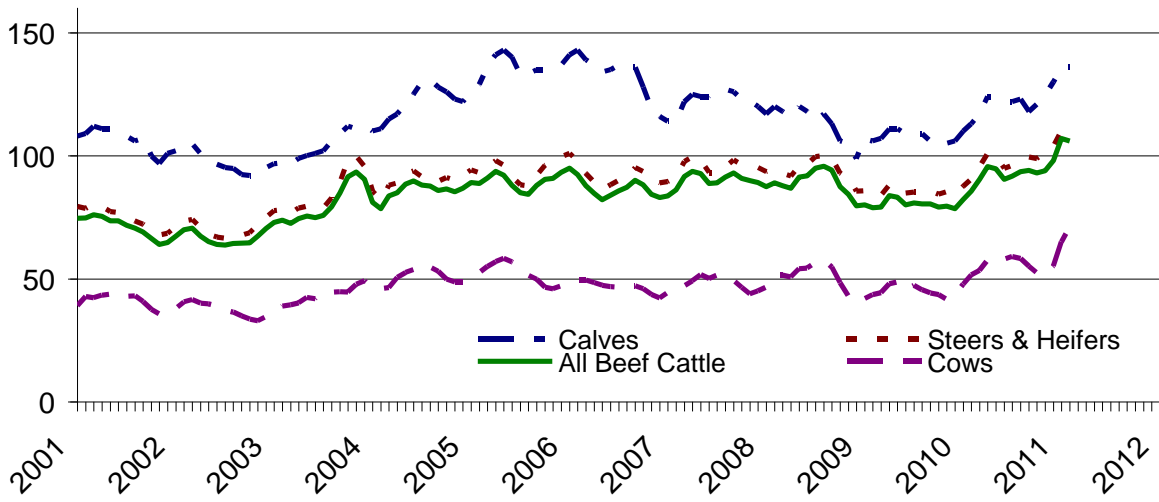


## Prices Received for Soybeans by Month – United States



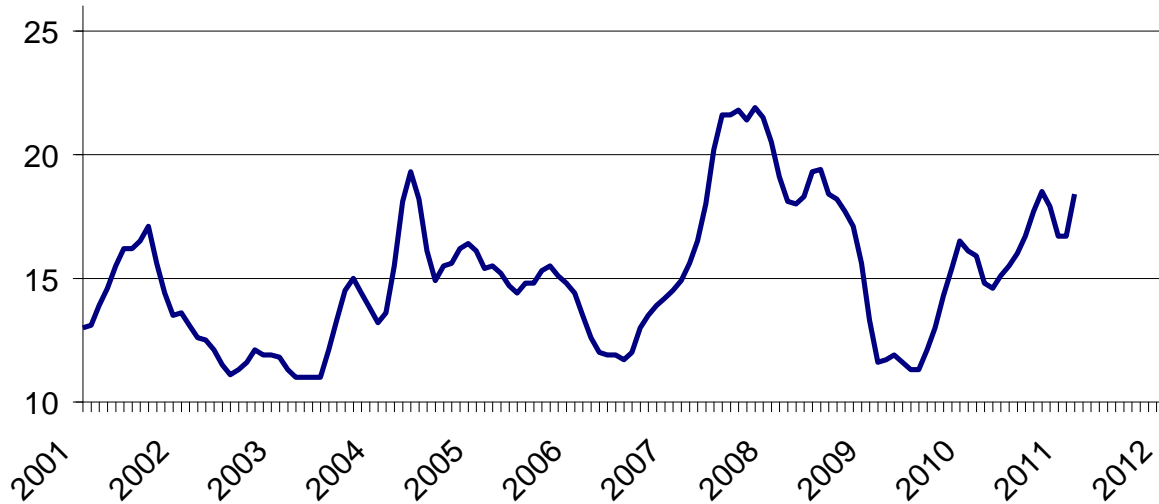
## Prices Received for Cattle by Month – United States

Dollars per cwt

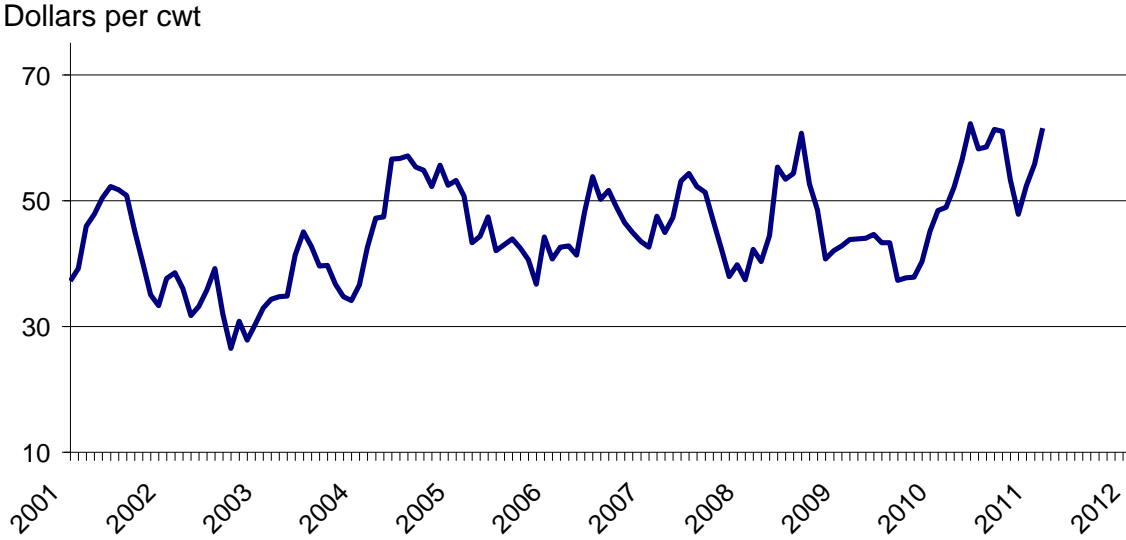


## Prices Received for Milk by Month – United States

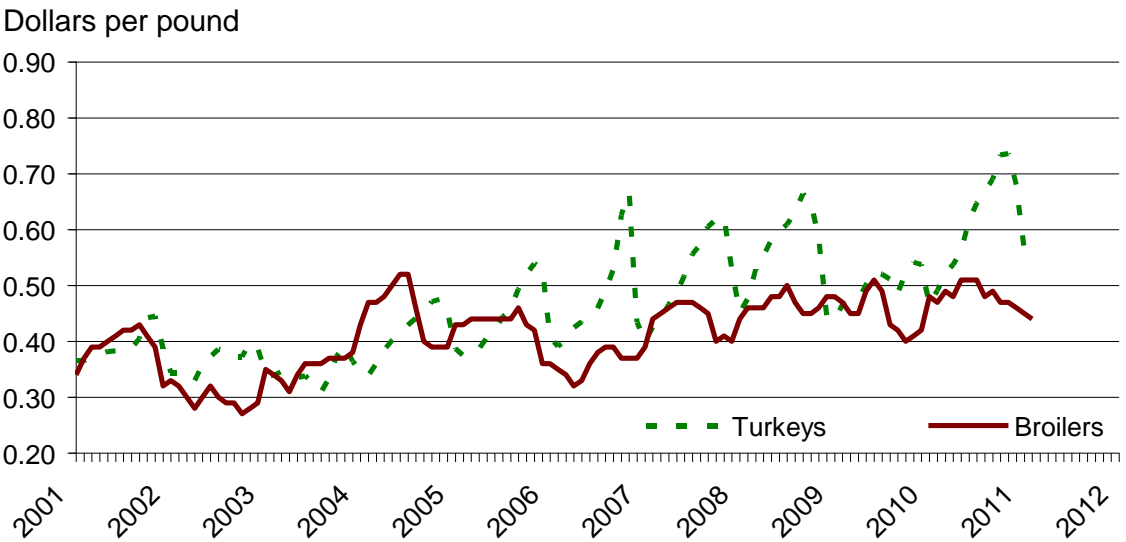
Dollars per cwt



## Prices Received for Hogs by Month – United States



## Prices Received for Turkeys and Broilers by Month – United States



**Prices Received for All Wheat, Corn, and Soybeans by Month – United States:  
2011 with Comparisons**

[Current month prices are mid-month; prices for previous months and years are for the entire month. Blank data cells indicate estimation period has not yet begun]

Month	All wheat			Corn			Soybeans		
	2009	2010	Preliminary 2011	2009	2010	Preliminary 2011	2009	2010	Preliminary 2011
	(dollars per bushel)	(dollars per bushel)	(dollars per bushel)	(dollars per bushel)	(dollars per bushel)	(dollars per bushel)	(dollars per bushel)	(dollars per bushel)	(dollars per bushel)
January ....	6.20	4.90	6.71	4.36	3.66	4.94	9.97	9.79	11.60
February ..	5.79	4.73	8.56	3.87	3.55	5.66	9.54	9.41	12.10
March .....	5.71	4.70		3.85	3.55		9.12	9.39	
April .....	5.75	4.41		3.85	3.41		9.79	9.47	
May .....	5.85	4.33		3.96	3.48		10.70	9.41	
June .....	5.72	4.16		4.01	3.41		11.40	9.45	
July .....	5.17	4.50		3.60	3.49		10.80	9.79	
August .....	4.85	5.44		3.33	3.65		10.80	10.10	
September	4.48	5.83		3.25	4.08		9.75	9.98	
October ....	4.47	5.87		3.61	4.32		9.43	10.20	
November	4.79	6.13		3.65	4.55		9.53	11.10	
December	4.87	6.45		3.60	4.82		9.80	11.60	

**Prices Received for Beef Cattle and All Hogs by Month – United States:  
2011 with Comparisons**

[Current month prices are mid-month; prices for previous months and years are for the entire month. Blank data cells indicate estimation period has not yet begun. Price data source is United States Department of Agriculture's Agricultural Marketing Service]

Month	Beef cattle <sup>1</sup>			All hogs <sup>2</sup>		
	2009	2010	Preliminary 2011	2009	2010	Preliminary 2011
	(dollars per cwt)	(dollars per cwt)	(dollars per cwt)	(dollars per cwt)	(dollars per cwt)	(dollars per cwt)
January .....	80.10	82.30	107.00	42.80	48.40	55.80
February .....	78.90	85.70	106.00	43.80	48.90	61.50
March .....	79.10	90.40		43.90	52.10	
April .....	83.80	95.60		44.00	56.50	
May .....	83.20	94.70		44.60	62.20	
June .....	80.10	90.40		43.30	58.20	
July .....	80.90	91.70		43.30	58.50	
August .....	80.40	93.50		37.30	61.30	
September .....	80.50	94.10		37.70	61.00	
October .....	79.20	93.10		37.80	53.30	
November .....	79.60	94.00		40.30	47.80	
December .....	78.50	98.10		45.10	52.30	

<sup>1</sup> Cows and steers & heifers.

<sup>2</sup> Barrows & gilts and sows.

**Prices Received for All Wheat – States and United States:  
February 2011 with Comparisons**

State	February 2010	January 2011	Preliminary February 2011
	(dollars per bushel)	(dollars per bushel)	(dollars per bushel)
Arizona .....	(D)	(D)	(D)
Arkansas .....	4.26	7.31	8.50
California .....	5.78	5.30	(D)
Colorado .....	4.29	6.33	8.03
Idaho .....	4.89	5.95	7.32
Illinois .....	4.08	6.42	6.80
Indiana .....	4.30	7.13	8.02
Kansas .....	4.32	7.09	8.50
Michigan .....	4.39	6.34	7.00
Minnesota .....	4.66	6.74	8.93
Missouri .....	4.26	6.02	6.50
Montana .....	5.18	6.44	9.18
Nebraska .....	4.35	6.27	6.80
North Carolina .....	4.92	6.95	8.08
North Dakota .....	4.72	7.18	8.92
Ohio .....	4.40	6.15	6.63
Oklahoma .....	4.08	6.64	8.56
Oregon .....	4.87	6.29	7.98
South Dakota .....	4.99	7.41	8.12
Texas .....	5.47	7.15	9.01
Washington .....	4.84	6.40	8.35
United States .....	4.73	6.71	8.56

(D) Withheld to avoid disclosing data for individual operations.

**Prices Received for Winter Wheat – States and United States:  
February 2011 with Comparisons**

State	February 2010	January 2011	Preliminary February 2011
	(dollars per bushel)	(dollars per bushel)	(dollars per bushel)
Arkansas .....	4.26	7.31	8.50
California .....	(D)	5.30	(D)
Colorado .....	4.29	6.32	8.04
Idaho .....	4.52	5.78	7.60
Illinois .....	4.08	6.42	6.80
Indiana .....	4.30	7.13	8.02
Kansas .....	4.32	7.09	8.50
Michigan .....	4.39	6.34	7.00
Minnesota .....	3.92	5.10	6.50
Missouri .....	4.26	6.02	6.50
Montana .....	4.67	6.03	8.28
Nebraska .....	4.35	6.27	6.80
North Carolina .....	4.92	6.95	8.08
North Dakota .....	3.88	5.68	6.75
Ohio .....	4.40	6.15	6.63
Oklahoma .....	4.08	6.64	8.56
Oregon .....	4.81	6.20	7.90
South Dakota .....	4.44	6.31	7.00
Texas .....	5.47	7.15	9.01
Washington .....	4.55	6.20	8.09
United States .....	4.53	6.37	8.13

(D) Withheld to avoid disclosing data for individual operations.

**Prices Received for Durum Wheat – States and United States:  
February 2011 with Comparisons**

State	February 2010	January 2011	Preliminary February 2011
	(dollars per bushel)	(dollars per bushel)	(dollars per bushel)
Arizona .....	(D)	(D)	(D)
California .....	(D)	(S)	(S)
Idaho .....	(D)	(D)	(D)
Montana .....	5.28	6.55	9.85
North Dakota .....	4.38	7.22	9.20
United States .....	4.61	7.07	9.39

(D) Withheld to avoid disclosing data for individual operations.

(S) Insufficient number of reports to establish an estimate.

**Prices Received for Spring Wheat – States and United States:  
February 2011 with Comparisons**

State	February 2010	January 2011	Preliminary February 2011
	(dollars per bushel)	(dollars per bushel)	(dollars per bushel)
Colorado .....	(D)	(D)	(D)
Idaho .....	5.16	6.35	6.90
Minnesota .....	4.67	6.80	9.00
Montana .....	5.81	6.85	10.00
North Dakota .....	4.83	7.23	9.00
Oregon .....	5.29	6.97	8.50
South Dakota .....	5.44	8.03	8.75
Washington .....	5.74	7.27	9.55
United States .....	5.04	7.13	9.09

(D) Withheld to avoid disclosing data for individual operations.



**Prices Received for All Barley – States and United States:  
February 2011 with Comparisons**

State	February 2010	January 2011	Preliminary February 2011
	(dollars per bushel)	(dollars per bushel)	(dollars per bushel)
California .....	(D)	(S)	(S)
Colorado .....	(D)	(D)	(D)
Idaho .....	4.85	3.99	4.25
Minnesota .....	4.48	(D)	(D)
Montana .....	4.75	3.90	4.62
North Dakota .....	3.97	3.59	4.13
Oregon .....	3.11	3.95	4.70
Utah .....	3.03	4.38	4.71
Washington .....	2.92	4.18	4.85
Wyoming .....	(D)	(D)	(D)
United States .....	4.53	3.85	4.36

(D) Withheld to avoid disclosing data for individual operations.

(S) Insufficient number of reports to establish an estimate.

**Prices Received for Malting Barley – States: February 2011 with Comparisons**

State	February 2010	January 2011	Preliminary February 2011
	(dollars per bushel)	(dollars per bushel)	(dollars per bushel)
Idaho .....	4.96	4.00	4.25
Minnesota .....	(D)	(D)	(D)
Montana .....	4.88	3.93	4.68
North Dakota .....	4.06	3.88	4.25
Wyoming .....	(D)	(D)	(D)

(D) Withheld to avoid disclosing data for individual operations.

**Prices Received for Feed Barley – States: February 2011 with Comparisons**

State	February 2010	January 2011	Preliminary February 2011
	(dollars per bushel)	(dollars per bushel)	(dollars per bushel)
Idaho .....	2.83	3.92	4.30
Minnesota .....	(D)	3.18	(D)
Montana .....	2.60	3.67	4.16
North Dakota .....	2.72	3.19	3.65
Wyoming .....	(D)	(S)	(S)

(D) Withheld to avoid disclosing data for individual operations.

(S) Insufficient number of reports to establish an estimate.

**Prices Received for Corn – States and United States:  
February 2011 with Comparisons**

State	February 2010	January 2011	Preliminary February 2011
	(dollars per bushel)	(dollars per bushel)	(dollars per bushel)
Colorado .....	3.56	4.77	5.97
Illinois .....	3.48	4.94	5.60
Indiana .....	3.69	4.97	5.81
Iowa .....	3.66	5.07	5.85
Kansas .....	3.39	5.39	6.10
Kentucky .....	3.88	4.80	5.60
Michigan .....	3.32	5.25	6.05
Minnesota .....	3.57	4.72	5.50
Missouri .....	3.68	4.99	5.60
Nebraska .....	3.57	4.81	5.40
North Carolina .....	4.26	6.10	7.00
North Dakota .....	3.14	4.36	5.15
Ohio .....	3.50	5.23	5.71
Pennsylvania .....	3.89	6.34	7.01
South Dakota .....	3.12	4.48	5.00
Tennessee .....	3.97	5.09	5.80
Texas .....	3.82	4.91	6.54
Wisconsin .....	3.48	4.89	5.81
United States .....	3.55	4.94	5.66

**Prices Received for Soybeans – States and United States:  
February 2011 with Comparisons**

State	February 2010	January 2011	Preliminary February 2011
	(dollars per bushel)	(dollars per bushel)	(dollars per bushel)
Arkansas .....	9.00	11.20	11.80
Illinois .....	9.44	11.70	12.00
Indiana .....	9.82	11.80	12.30
Iowa .....	9.30	11.70	12.10
Kansas .....	9.17	12.50	12.90
Kentucky .....	10.00	11.60	12.30
Louisiana .....	9.44	10.90	11.20
Michigan .....	9.50	11.80	12.50
Minnesota .....	9.16	11.20	11.80
Mississippi .....	8.96	11.70	12.30
Missouri .....	9.47	11.60	12.50
Nebraska .....	9.21	11.40	12.40
North Carolina .....	9.49	12.10	12.50
North Dakota .....	9.23	10.80	11.60
Ohio .....	9.87	11.90	12.00
South Dakota .....	9.22	11.30	12.00
Tennessee .....	9.47	11.10	11.60
Wisconsin .....	9.59	11.50	12.20
United States .....	9.41	11.60	12.10

**Prices Received for Oats – States and United States:  
February 2011 with Comparisons**

State	February 2010	January 2011	Preliminary February 2011
	(dollars per bushel)	(dollars per bushel)	(dollars per bushel)
Illinois .....	(D)	(S)	(S)
Iowa .....	3.05	3.84	3.60
Michigan .....	2.66	3.68	3.70
Minnesota .....	1.98	2.87	3.00
Montana .....	2.54	2.62	(D)
Nebraska .....	(D)	3.01	3.00
New York .....	(D)	(D)	(S)
North Dakota .....	2.07	(D)	(D)
Oregon .....	(S)	(D)	(S)
Pennsylvania .....	3.67	4.31	4.55
South Dakota .....	2.11	3.25	3.44
Texas .....	(S)	(S)	(S)
Wisconsin .....	2.17	2.68	2.75
United States .....	2.30	3.11	3.38

(D) Withheld to avoid disclosing data for individual operations.

(S) Insufficient number of reports to establish an estimate.

**Prices Received for Sorghum Grain – States and United States:  
February 2011 with Comparisons**

State	February 2010	January 2011	Preliminary February 2011
	(dollars per cwt)	(dollars per cwt)	(dollars per cwt)
Arkansas .....	(S)	(D)	(D)
Illinois .....	7.44	10.70	11.00
Kansas .....	5.30	9.56	10.80
Louisiana .....	(D)	(D)	(S)
Missouri .....	6.29	9.00	9.50
Nebraska .....	5.55	8.99	10.00
Oklahoma .....	5.48	9.52	10.30
Texas .....	6.13	9.16	9.19
United States .....	5.44	9.45	10.40

(D) Withheld to avoid disclosing data for individual operations.

(S) Insufficient number of reports to establish an estimate.

**Prices Received for Dry Beans – States and United States:  
February 2011 with Comparisons**

State	February 2010	January 2011	Preliminary February 2011
	(dollars per cwt)	(dollars per cwt)	(dollars per cwt)
California .....	60.00	50.60	50.40
Colorado .....	33.00	24.90	25.90
Idaho .....	29.60	25.30	26.70
Michigan .....	35.80	31.60	(D)
Minnesota .....	35.90	28.00	30.00
Nebraska .....	30.00	25.30	29.20
North Dakota .....	26.50	22.90	25.00
United States .....	30.40	25.70	28.20

(D) Withheld to avoid disclosing data for individual operations.

**Prices Received for Peanuts (In-Shell) – States and United States:  
February 2011 with Comparisons**

State	February 2010	January 2011	Preliminary February 2011
	(dollars per pound)	(dollars per pound)	(dollars per pound)
Alabama .....	0.200	0.209	0.215
Florida .....	0.201	0.230	0.226
Georgia .....	0.197	0.213	0.226
Mississippi .....	(S)	(S)	(S)
New Mexico .....	0.236	0.324	0.242
North Carolina .....	0.235	0.219	(D)
Oklahoma .....	(D)	(D)	0.253
South Carolina .....	0.222	0.241	0.246
Texas .....	0.234	0.254	0.254
Virginia .....	0.228	0.213	(S)
United States .....	0.210	0.229	0.231

(D) Withheld to avoid disclosing data for individual operations.

(S) Insufficient number of reports to establish an estimate.

### Prices Received for Sunflowers – States and United States: February 2011 with Comparisons

State	February 2010	January 2011	Preliminary February 2011
	(dollars per cwt)	(dollars per cwt)	(dollars per cwt)
Colorado .....	(D)	(D)	(S)
Kansas .....	15.80	22.00	24.70
Minnesota .....	19.30	20.90	(D)
North Dakota .....	17.30	22.80	25.90
South Dakota .....	14.60	19.20	24.10
United States .....	16.70	21.90	25.20

(D) Withheld to avoid disclosing data for individual operations.

(S) Insufficient number of reports to establish an estimate.

### Prices Received for Canola – States and United States: February 2011 with Comparisons

State	February 2010	January 2011	Preliminary February 2011
	(dollars per cwt)	(dollars per cwt)	(dollars per cwt)
Minnesota .....	(D)	20.20	(S)
North Dakota .....	(D)	20.30	22.00
United States .....	(D)	20.30	22.00

(D) Withheld to avoid disclosing data for individual operations.

(S) Insufficient number of reports to establish an estimate.

### Prices Received for Flaxseed – States and United States: February 2011 with Comparisons

State	February 2010	January 2011	Preliminary February 2011
	(dollars per bushel)	(dollars per bushel)	(dollars per bushel)
North Dakota .....	8.57	13.70	14.70
United States .....	8.57	13.70	14.70

**Prices Received for Cotton (Upland) and Cottonseed – States and United States:  
February 2011 with Comparisons**

[Cottonseed marketing year August - February]

State	Upland cotton			Cottonseed		
	February 2010	January 2011	Preliminary February 2011	February 2010	January 2011	Preliminary February 2011
	(dollars per pound)	(dollars per pound)	(dollars per pound)	(dollars per ton)	(dollars per ton)	(dollars per ton)
Alabama .....	0.648	0.957	(D)	(S)	146.00	149.00
Arizona .....	0.649	(D)	(D)	(S)	227.00	(S)
Arkansas .....	0.627	0.753	0.790	(S)	(S)	(S)
California .....	0.651	(D)	(S)	(S)	(D)	(D)
Georgia .....	0.691	1.050	1.030	131.00	140.00	141.00
Louisiana .....	0.612	0.744	(D)	(S)	(S)	(S)
Mississippi .....	0.641	0.798	0.765	(S)	(S)	(S)
North Carolina .....	0.620	1.040	(D)	(S)	(S)	(S)
Tennessee .....	0.660	0.776	(D)	(S)	(S)	(S)
Texas .....	0.636	0.775	0.872	168.00	158.00	150.00
United States .....	0.650	0.822	0.883	153.00	165.00	172.00

(D) Withheld to avoid disclosing data for individual operations.

(S) Insufficient number of reports to establish an estimate.

**Prices Received and Marketings for Cotton (Upland) and Rice – United States:  
February 2011 with Comparisons**

Item	February 2010	January 2011	Preliminary February 2011
Cotton, Upland			
Average price ..... dollars/pound	0.650	0.822	0.883
Marketings <sup>1</sup> ..... 1,000 bales	1,276	2,784	(NA)
Rice, all			
Average price ..... dollars/cwt	14.80	12.90	13.90
Marketings <sup>2</sup> ..... 1,000 cwt	13,991	20,424	(NA)
Rice, long			
Average price ..... dollars/cwt	13.50	11.90	12.70
Marketings <sup>2</sup> ..... 1,000 cwt	9,999	15,567	(NA)
Rice, medium and short			
Average price ..... dollars/cwt	18.10	16.20	17.10
Marketings <sup>2</sup> ..... 1,000 cwt	3,992	4,857	(NA)

(NA) Not available.

<sup>1</sup> Marketings based on a survey of cotton buyers in the major producing States - Alabama, Arizona, Arkansas, California, Georgia, Louisiana, Mississippi, North Carolina, Tennessee, and Texas.

<sup>2</sup> Purchases by private firms and rice (rough equivalent) shipped by cooperatives.

**Prices Received for Hay by Type – States and United States:  
February 2011 with Comparisons**

State	All hay			Alfalfa hay			Other hay		
	February 2010	January 2011	Preliminary February 2011	February 2010	January 2011	Preliminary February 2011	February 2010	January 2011	Preliminary February 2011
	(dollars per ton)	(dollars per ton)	(dollars per ton)	(dollars per ton)	(dollars per ton)	(dollars per ton)	(dollars per ton)	(dollars per ton)	(dollars per ton)
Arizona .....	110.00	135.00	144.00	110.00	135.00	145.00	105.00	125.00	125.00
California .....	103.00	142.00	159.00	109.00	151.00	170.00	76.00	103.00	109.00
Colorado .....	124.00	127.00	132.00	125.00	130.00	135.00	115.00	105.00	105.00
Idaho .....	105.00	134.00	147.00	107.00	135.00	149.00	82.00	106.00	115.00
Illinois .....	120.00	124.00	131.00	128.00	145.00	145.00	84.00	87.00	90.00
Iowa .....	122.00	112.00	110.00	128.00	117.00	118.00	88.00	80.00	80.00
Kansas .....	96.00	105.00	104.00	103.00	115.00	115.00	67.00	75.00	70.00
Kentucky .....	94.00	91.00	93.00	145.00	140.00	140.00	75.00	75.00	75.00
Michigan .....	130.00	97.00	99.00	140.00	110.00	110.00	115.00	80.00	80.00
Minnesota .....	114.00	91.00	94.00	125.00	100.00	105.00	85.00	75.00	75.00
Missouri .....	59.00	76.00	68.00	140.00	140.00	140.00	50.00	65.00	60.00
Montana .....	85.00	77.00	77.00	84.00	77.00	78.00	90.00	77.00	74.00
Nebraska .....	80.00	76.00	76.00	84.00	79.00	80.00	68.00	63.00	65.00
Nevada .....	104.00	144.00	142.00	105.00	145.00	143.00	90.00	115.00	120.00
New Mexico .....	141.00	162.00	162.00	145.00	165.00	165.00	118.00	132.00	133.00
New York .....	105.00	109.00	112.00	150.00	130.00	144.00	95.00	105.00	105.00
North Dakota .....	63.00	61.00	59.00	68.00	67.00	64.00	48.00	48.00	45.00
Ohio .....	109.00	110.00	120.00	147.00	144.00	160.00	85.00	79.00	85.00
Oklahoma .....	89.00	110.00	112.00	135.00	140.00	147.00	83.00	71.00	74.00
Oregon .....	138.00	148.00	160.00	110.00	144.00	160.00	176.00	160.00	160.00
Pennsylvania .....	123.00	119.00	128.00	153.00	153.00	163.00	115.00	110.00	113.00
South Dakota .....	87.00	83.00	80.00	89.00	87.00	83.00	78.00	69.00	70.00
Texas .....	126.00	120.00	124.00	183.00	190.00	190.00	115.00	112.00	112.00
Utah .....	100.00	112.00	112.00	100.00	114.00	113.00	100.00	99.00	99.00
Washington .....	130.00	142.00	143.00	115.00	130.00	130.00	175.00	170.00	170.00
Wisconsin .....	114.00	91.00	96.00	120.00	95.00	100.00	85.00	70.00	70.00
Wyoming .....	89.00	89.00	90.00	91.00	90.00	90.00	80.00	85.00	90.00
United States .....	104.00	112.00	116.00	110.00	121.00	127.00	93.00	95.30	93.90

**Prices Received for Apples – States and United States:  
February 2011 with Comparisons**

[Equivalent packinghouse-door returns for California, Michigan, New York, and Washington. Prices at point of first sale for other States]

State	Apples, fresh use		
	February 2010	January 2011	Preliminary February 2011
	(dollars per pound)	(dollars per pound)	(dollars per pound)
Michigan .....	0.200	0.285	0.305
New York .....	0.199	0.238	0.247
Ohio .....	0.389	0.390	0.330
Pennsylvania .....	0.263	(S)	0.214
Virginia .....	0.305	0.320	0.340
Washington .....	0.314	0.308	0.301
United States .....	0.289	0.297	0.285

(S) Insufficient number of reports to establish an estimate.

## Prices Received for Citrus Fruits by Utilization – States and United States: February 2010

[Net pounds per box: grapefruit in Arizona and California-67, Florida-85, Texas-80; lemons in Arizona and California-76; oranges in Arizona and California-75, Florida-90, Texas-85; tangelos in Florida-90; tangerines and mandarins in Arizona and California-75, Florida-95]

Commodity, State, and type	FOB packed fresh	Equivalent returns					
		Packinghouse-door			On-tree		
		All	Fresh	Process	All	Fresh	Process
	(dollars per box)	(dollars per box)	(dollars per box)	(dollars per box)	(dollars per box)	(dollars per box)	
Grapefruit							
California .....	15.70	5.90	5.90	(S)	2.80	2.80	(S)
Florida .....	23.60	9.28	14.28	5.91	6.48	11.86	2.85
White .....	24.80	8.50	15.45	5.85	5.78	12.80	3.10
Colored .....	23.30	9.65	13.95	5.95	6.82	11.60	2.70
Texas .....	29.50	13.02	19.25	1.60	11.56	17.75	0.20
United States .....	24.40	9.72	14.84	5.53	7.10	12.57	2.62
Lemons							
Arizona .....	38.00	13.88	27.31	(D)	8.13	21.56	(D)
California .....	38.80	14.28	28.11	(D)	8.53	22.36	(D)
United States .....	38.70	14.23	28.01	(D)	8.48	22.26	(D)
Oranges							
California							
Navel and miscellaneous .....	21.90	11.76	13.51	(D)	9.11	10.86	(D)
Florida							
Early and mids .....	21.70	8.41	11.80	8.29	5.90	9.00	5.79
United States .....	21.80	9.31	13.09	7.93	6.78	10.52	5.42
Tangelos							
Florida .....	22.00	7.07	11.75	3.80	4.00	8.50	0.85
Tangerines and mandarins							
California .....	(D)	(D)	(D)	(D)	(D)	(D)	(D)
Florida .....	28.60	10.87	16.60	3.90	6.71	12.60	-0.45
United States .....	25.00	11.76	14.78	2.89	8.12	11.22	-1.00

(D) Withheld to avoid disclosing data for individual operations.

(S) Insufficient number of reports to establish an estimate.



## Prices Received for Citrus Fruits by Utilization – States and United States: January 2011

[Net pounds per box: grapefruit in Arizona and California-80, Florida-85, Texas-80; lemons in Arizona and California-80; oranges in Arizona and California-80, Florida-90, Texas-85; tangelos in Florida-90; tangerines and mandarins in Arizona and California-80, Florida-95]

Commodity, State, and type	FOB packed fresh	Equivalent returns					
		Packinghouse-door			On-tree		
		All	Fresh	Process	All	Fresh	Process
	(dollars per box)	(dollars per box)	(dollars per box)	(dollars per box)	(dollars per box)	(dollars per box)	(dollars per box)
Grapefruit							
California .....	20.80	14.40	14.40	(S)	12.30	12.30	(S)
Florida .....	22.60	8.75	12.79	5.34	6.24	10.60	2.57
White .....	26.30	8.39	16.40	4.90	5.96	14.25	2.35
Colored .....	22.00	8.84	12.20	5.50	6.32	10.00	2.65
Texas .....	22.50	9.62	12.20	1.60	8.11	10.65	0.20
United States .....	22.50	9.25	12.61	4.57	7.10	10.72	2.08
Lemons							
Arizona .....	(D)	(D)	(D)	(D)	(D)	(D)	(D)
California .....	31.90	15.06	21.00	(D)	9.19	15.13	(D)
United States .....	31.80	14.93	20.85	(D)	9.06	14.98	(D)
Oranges							
California							
Navel and miscellaneous .....	23.40	12.88	14.76	(D)	10.45	12.35	(D)
Florida							
Early and mids .....	21.60	8.01	11.60	7.90	5.50	8.85	5.40
United States .....	23.20	8.98	14.38	7.64	6.49	11.93	5.14
Tangelos							
Florida .....	22.40	9.32	12.00	7.80	6.14	8.85	4.60
Tangerines and mandarins							
Arizona .....	(D)	(D)	(D)	(D)	(D)	(D)	(D)
California .....	(D)	(D)	(D)	(D)	(D)	(D)	(D)
Florida .....	34.60	16.28	22.35	7.00	12.78	18.85	3.50
United States .....	34.20	21.59	24.84	6.11	18.58	21.96	2.54

(D) Withheld to avoid disclosing data for individual operations.

(S) Insufficient number of reports to establish an estimate.

## Prices Received for Citrus Fruits by Utilization – States and United States: February 2011

[Net pounds per box: grapefruit in Arizona and California-80, Florida-85, Texas-80; lemons in Arizona and California-80; oranges in Arizona and California-80, Florida-90, Texas-85; tangelos in Florida-90; tangerines and mandarins in Arizona and California-80, Florida-95]

Commodity, State, and type	FOB packed fresh	Equivalent returns					
		Packinghouse-door			On-tree		
		All	Fresh	Process	All	Fresh	Process
	(dollars per box)	(dollars per box)	(dollars per box)	(dollars per box)	(dollars per box)	(dollars per box)	
Grapefruit							
California .....	12.80	6.40	6.40	(S)	4.30	4.30	(S)
Florida .....	22.10	8.83	12.33	5.78	6.34	10.14	3.03
White .....	24.60	9.74	14.70	6.85	7.33	12.55	4.30
Colored .....	21.50	8.50	11.70	5.30	5.98	9.50	2.45
Texas .....	22.60	8.46	12.30	1.60	6.96	10.75	0.20
United States .....	22.10	8.63	12.16	4.34	6.58	10.30	2.05
Lemons							
Arizona .....	(D)	(D)	(D)	(D)	(D)	(D)	(D)
California .....	29.40	10.41	18.50	(D)	4.54	12.63	(D)
United States .....	29.40	10.61	18.51	(D)	4.74	12.64	(D)
Oranges							
California							
Navel and miscellaneous .....	20.70	9.44	12.06	(D)	6.99	9.65	(D)
Florida							
Early and mids .....	22.10	8.64	12.10	8.55	6.14	9.35	6.05
United States .....	20.80	8.85	12.06	7.90	6.36	9.62	5.39
Tangelos							
Florida .....	21.40	8.80	11.00	8.25	5.61	7.85	5.05
Tangerines and mandarins							
Arizona .....	(D)	(D)	(D)	(D)	(D)	(D)	(D)
California .....	(D)	(D)	(D)	(D)	(D)	(D)	(D)
Florida .....	30.60	14.28	18.35	8.00	10.78	14.85	4.50
United States .....	30.40	17.93	21.42	3.94	14.94	18.62	0.19

(D) Withheld to avoid disclosing data for individual operations.

(S) Insufficient number of reports to establish an estimate.

**Prices Received for Potatoes – States and United States:  
February 2011 with Comparisons**

State	February 2010	January 2011	Preliminary February 2011
	(dollars per cwt)	(dollars per cwt)	(dollars per cwt)
California			
Spring <sup>1</sup> .....	(S)	(S)	(S)
Fall .....	8.50	8.70	9.45
All <sup>2</sup> .....	8.50	8.70	9.45
Colorado			
Fresh <sup>3</sup> .....	5.60	13.50	(D)
All <sup>2</sup> .....	5.70	13.00	14.30
Florida .....	38.50	(S)	(S)
Idaho			
Fresh <sup>3</sup> .....	3.00	8.30	(D)
Processing .....	7.90	6.50	(D)
All <sup>2</sup> .....	5.35	7.25	7.55
Maine .....	10.00	9.90	10.30
Michigan .....	11.30	11.20	11.70
Minnesota .....	7.00	6.80	(D)
New York .....	12.30	13.70	13.50
North Carolina .....	(S)	(S)	(S)
North Dakota			
Fresh <sup>3</sup> .....	8.30	12.00	(D)
Processing .....	9.50	7.60	(D)
All <sup>2</sup> .....	9.25	9.15	8.75
Oregon .....	7.35	9.10	9.10
Texas .....	(S)	(S)	(S)
Virginia .....	(S)	(S)	(S)
Washington			
Processing .....	8.10	6.55	(D)
All <sup>2</sup> .....	7.45	8.15	8.60
Wisconsin			
Fresh <sup>3</sup> .....	5.75	11.80	(D)
Processing .....	11.00	11.10	(D)
All <sup>2</sup> .....	9.10	11.40	11.60
United States			
Fresh <sup>3</sup> .....	5.76	11.21	(D)
Processing .....	8.44	7.68	(D)
All <sup>2</sup> .....	7.34	9.08	9.33

(D) Withheld to avoid disclosing data for individual operations.

(S) Insufficient number of reports to establish an estimate.

<sup>1</sup> Beginning in 2010, winter and summer potatoes included in spring potatoes.

<sup>2</sup> Average price of potatoes sold for all uses, including table stock, processing, seed, and livestock feed.

<sup>3</sup> Fresh market prices only. Includes table stock prices.

**Prices Received for Sheep – States and United States:  
January 2011 with Comparisons**

State	January 2010 (dollars per cwt)	December 2010 (dollars per cwt)	January 2011 (dollars per cwt)
California .....	60.50	62.00	(NA)
Colorado .....	45.00	55.00	(NA)
Idaho .....	36.00	50.00	(NA)
Iowa .....	45.50	63.00	(NA)
Minnesota .....	53.00	61.20	(NA)
Missouri .....	55.20	70.50	(NA)
Montana .....	59.30	67.60	(NA)
Nebraska .....	47.70	67.00	(NA)
North Dakota .....	39.00	55.00	(NA)
Ohio .....	48.00	70.00	(NA)
Oregon .....	60.00	65.00	(NA)
Pennsylvania .....	62.00	71.50	(NA)
South Dakota .....	60.60	68.60	(NA)
Texas .....	58.00	68.00	(NA)
Virginia .....	49.00	66.00	(NA)
West Virginia .....	48.00	55.00	(NA)
Wyoming .....	49.60	72.60	(NA)
United States .....	53.30	66.20	81.90

(NA) Not available.

**Prices Received for Lambs – States and United States:  
January 2011 with Comparisons**

State	January 2010 (dollars per cwt)	December 2010 (dollars per cwt)	January 2011 (dollars per cwt)
California .....	84.50	126.00	(NA)
Colorado .....	101.00	145.00	(NA)
Idaho .....	90.00	133.00	(NA)
Iowa .....	95.00	155.00	(NA)
Minnesota .....	96.80	152.00	(NA)
Missouri .....	117.00	157.00	(NA)
Montana .....	112.00	155.00	(NA)
Nebraska .....	101.00	146.00	(NA)
North Dakota .....	101.00	160.00	(NA)
Ohio .....	115.00	158.00	(NA)
Oregon .....	90.00	139.00	(NA)
Pennsylvania .....	121.00	140.00	(NA)
South Dakota .....	117.00	170.00	(NA)
Texas .....	122.00	166.00	(NA)
Virginia .....	117.00	148.00	(NA)
West Virginia .....	121.00	151.00	(NA)
Wyoming .....	97.00	146.00	(NA)
United States .....	101.00	146.00	149.00

(NA) Not available.

**Prices Received for All Milk – States and United States:  
February 2011 with Comparisons**

[Before deduction for hauling. Includes quality, quantity, and other premiums. Excludes hauling subsidies]

State	February 2010		January 2011		Preliminary February 2011	
	Price	Fat test	Price	Fat test	Price	Fat test
	(dollars per cwt)	(percent)	(dollars per cwt)	(percent)	(dollars per cwt)	(percent)
Arizona .....	15.30	3.55	16.50	3.69	18.00	3.65
California .....	14.22	3.74	15.35	3.83	17.70	3.77
Colorado .....	15.90	3.55	16.70	3.69	18.00	3.60
Florida .....	20.00	3.62	20.90	3.76	21.50	3.72
Idaho .....	14.10	3.66	15.40	3.78	17.40	3.71
Illinois .....	16.30	3.81	17.20	3.86	18.30	3.83
Indiana .....	17.00	3.71	17.90	3.83	18.60	3.75
Iowa .....	16.40	3.72	16.50	3.78	17.70	3.71
Kansas .....	16.80	3.78	17.90	3.89	19.10	3.85
Michigan .....	16.70	3.68	17.40	3.77	18.80	3.75
Minnesota .....	15.90	3.77	16.20	3.84	18.90	3.82
Missouri .....	16.30	3.75	16.40	3.83	17.60	3.80
New Mexico .....	15.50	3.69	16.40	3.78	17.40	3.75
New York .....	16.80	3.77	17.80	3.84	18.50	3.81
Ohio .....	17.60	3.83	18.40	3.93	19.10	3.86
Oregon .....	16.60	3.71	16.90	3.90	18.40	3.83
Pennsylvania .....	18.10	3.75	18.90	3.85	19.80	3.85
Texas .....	16.80	3.88	17.60	3.96	18.60	3.92
Utah .....	15.70	3.70	16.80	3.87	17.60	3.84
Vermont .....	17.30	3.80	18.20	3.87	18.60	3.84
Virginia .....	19.00	3.75	20.10	3.90	21.00	3.89
Washington .....	15.30	3.71	17.00	3.90	19.20	3.83
Wisconsin .....	16.00	3.71	16.20	3.81	18.90	3.80
United States .....	15.90	3.73	16.70	3.83	18.40	3.79

**Prices Received for Milk Cows – States and United States:  
January 2011 with Comparisons**

[Animals sold for dairy herd replacement only. Prices estimated in January, April, July, and October]

State	January 2010 (dollars per head)	October 2010 (dollars per head)	January 2011 (dollars per head)
Arizona .....	1,350	1,400	1,380
California .....	1,300	1,300	1,200
Colorado .....	1,250	1,350	1,330
Florida .....	1,360	1,400	1,360
Idaho .....	1,350	1,350	1,200
Illinois .....	1,400	1,320	1,330
Indiana .....	1,300	1,340	1,350
Iowa .....	1,250	1,250	1,250
Kansas .....	1,250	1,250	1,200
Michigan .....	1,400	1,400	1,450
Minnesota .....	1,290	1,280	1,310
Missouri .....	1,100	1,190	1,130
New Mexico .....	1,360	1,370	1,320
New York .....	1,300	1,300	1,300
Ohio .....	1,350	1,360	1,360
Oregon .....	1,350	1,300	1,290
Pennsylvania .....	1,400	1,400	1,400
Texas .....	1,300	1,260	1,200
Utah .....	1,100	1,150	1,140
Vermont .....	1,350	1,350	1,400
Virginia .....	1,260	1,340	1,360
Washington .....	1,300	1,300	1,300
Wisconsin .....	1,460	1,410	1,430
United States .....	1,340	1,330	1,300

**Parity Price Equivalent for Manufacturing Grade Milk – United States:  
February 2011 with Comparisons**

[The parity price equivalent during 2011 is 93.2 percent of the parity price of all milk sold to plants, compared with 92.4 percent in 2010]

Item	February 2010	January 2011	February 2011
Parity equivalent ..... dollars/cwt	42.30	44.00	44.80
Average price FOB ..... dollars/cwt	14.50	(NA)	(NA)
Average fat test of milk ..... percent	4.05	(NA)	(NA)

(NA) Not available.

## Commodity Parity Prices and Price as Percent of Parity Price – United States: February 2011 with Comparisons

[Parity prices are computed under the provisions of Title III, Subtitle a, Section 301 (a) of the Agricultural Adjustment Act of 1938 as amended by the Agricultural Acts of 1948, 1949, and 1956. See January *Agricultural Prices* for details on adjusted base price and parity price computations. Parity data not available for blank cells. Primary source of data for livestock and milk prices is United States Department of Agriculture's Agricultural Marketing Service]

Commodity and unit	Adjusted base price	Parity price			Price as percent of parity		
		February 2010	January 2011	February 2011	February 2010	January 2011	February 2011
	(dollars)	(dollars)	(dollars)	(dollars)	(percent)	(percent)	(percent)
<b>Basic commodities</b>							
All wheat ..... bushel	0.608	14.70	15.60	15.90	32	43	54
Rice ..... cwt	1.63	33.90	42.00	42.70	44	31	33
Corn ..... bushel	0.384	9.15	9.88	10.10	39	50	56
<b>Cotton</b>							
Upland ..... pound	0.071	2.07	1.83	1.86	31	45	47
American Pima ..... pound	0.129	3.25	3.32	3.38	36	35	35
Peanuts ..... pound	0.027	0.713	0.695	0.707	29	33	33
<b>Designated nonbasic</b>							
All milk, to plants <sup>1</sup> ..... cwt	1.82	45.00	46.80	47.60	36	35	39
Honey, extracted <sup>2</sup> ..... pound	0.134	3.12	3.45	3.51	46	42	41
<b>Wool and mohair</b>							
Wool ..... pound	0.092	2.09	2.37	2.41	38	49	48
Mohair ..... pound	0.324	8.44	8.34	8.48	31	42	41
<b>Other nonbasic</b>							
Apples, fresh <sup>3</sup> ..... pound	0.033	0.812	0.849	0.864	36	35	33
Barley ..... bushel	0.425	10.20	10.90	11.10	44	35	39
Canola ..... cwt	1.740	40.10	44.80	45.60	41	45	48
Cottonseed ..... ton	15.40	371.00	396.00	403.00	41	42	43
Dry edible beans ..... cwt	2.92	70.80	75.20	76.40	43	34	37
Flaxseed ..... bushel	1.020	23.90	26.30	26.70	36	52	55
Oats ..... bushel	0.250	6.00	6.44	6.55	38	48	52
Potatoes ..... cwt	0.834	20.50	21.50	21.80	36	42	43
Sorghum grain ..... cwt	0.675	16.10	17.40	17.70	34	54	59
Soybeans ..... bushel	0.948	22.50	24.40	24.80	42	48	49
Sunflower, all ..... cwt	1.91	45.50	49.20	50.00	37	45	50
<b>Citrus (equivalent on-tree)</b>							
Grapefruit ..... box	0.663	15.90	17.10	17.40	45	42	38
Lemons ..... box	1.36	33.90	35.00	35.60	25	26	13
Oranges ..... box	0.686	16.20	17.70	18.00	42	37	35
Tangerines ..... box	1.43	34.20	36.80	37.40	24	50	40
<b>Livestock and poultry</b>							
Beef cattle ..... cwt	10.10	251.00	260.00	264.00	34	41	40
Calves ..... cwt	14.10	354.00	363.00	369.00	32	37	37
Hogs ..... cwt	5.51	136.00	142.00	144.00	36	39	43
Lambs ..... cwt	11.70	283.00	301.00	306.00	37	50	(NA)
Sheep ..... cwt	4.38	107.00	113.00	115.00	51	72	(NA)
Eggs <sup>1</sup> ..... dozen	0.091	2.24	2.34	2.38	38	30	38
Turkeys, live ..... pound	0.056	1.380	1.440	1.470	36	39	39

(NA) Not available.

<sup>1</sup> Seasonally adjusted price as percentage of parity price.

<sup>2</sup> Wholesale extracted. Adjusted base price derived from state annual averages prices weighted by production. For 1982 through 1985 the national averages are the support prices.

<sup>3</sup> Equivalent packinghouse-door returns for California, New York (apples only), Oregon (except peaches), and Washington. Price at point of first sale for other states.

## Commodity Parity Prices – United States: February 2011 with Comparisons

[Parity prices are computed under the provisions of Title III, Subtitle a, Section 301 (a) of the Agricultural Adjustment Act of 1938 as amended by the Agricultural Acts of 1948, 1949, and 1956. See January *Agricultural Prices* for details on adjusted base price and parity price computations]

Commodity and unit	Adjusted base price	Parity price		
		February 2010	January 2011	February 2011
	(dollars)	(dollars)	(dollars)	(dollars)
<b>Field crops and miscellaneous</b>				
Hops .....pound	0.307	7.38	7.90	8.04
Mustard seed ..... cwt	2.66	63.70	68.50	69.60
Rapeseed ..... cwt	2.14	50.20	55.10	56.00
Rye ..... bushel	0.492	11.70	12.70	12.90
Safflower ..... cwt	1.94	48.00	49.90	50.80
Spearmint oil .....pound	1.44	34.90	37.10	37.70
Sweetpotatoes ..... cwt	2.27	55.80	58.40	59.40
<b>Tobacco</b>				
Flue-cured, 11-14 .....pound	0.208	5.31	5.35	5.45
Fire-cured, 21-23 .....pound	0.293	7.33	7.54	7.67
Burley, 31 .....pound	0.214	5.58	5.51	5.60
Maryland, 32 .....pound	0.183	4.58	4.71	4.79
Dark air-cured, 35-37 .....pound	0.261	6.59	6.72	6.83
Pennsylvania seedleaf, 41 .....pound	0.191	4.77	4.92	5.00
Cigar binder, 51 .....pound	0.675	16.00	17.40	17.70
<b>Noncitrus fruit</b>				
Apples, processing <sup>1</sup> .....ton	16.10	411.00	414.00	421.00
Apricots				
Fresh <sup>2</sup> .....ton	114.00	2,660.00	2,930.00	2,980.00
Dried (California) .....ton	262.00	6,220.00	6,740.00	6,860.00
Avocados <sup>2</sup> .....ton	198.00	5,190.00	5,100.00	5,180.00
Cherries				
Sweet .....ton	210.00	5,040.00	5,410.00	5,500.00
Tart .....pound	0.034	0.861	0.875	0.890
Cranberry <sup>3</sup> ..... barrel	4.89	117.00	126.00	128.00
Dates <sup>2</sup> (California) .....ton	183.00	4,850.00	4,710.00	4,790.00
Grapes				
Raisin variety .....ton	117.00	2,710.00	3,010.00	3,060.00
Other dried .....ton	65.40	1,640.00	1,680.00	1,710.00
Kiwifruit .....ton	94.40	2,340.00	2,430.00	2,470.00
Nectarines, fresh <sup>2</sup> (California) .....ton	55.30	1,360.00	1,420.00	1,450.00
Olives, canning <sup>3</sup> (California) .....ton	87.40	2,330.00	2,250.00	2,290.00

See footnote(s) at end of table.

--continued



## Commodity Parity Prices – United States: February 2011 with Comparisons (continued)

[Parity prices are computed under the provisions of Title III, Subtitle a, Section 301 (a) of the Agricultural Adjustment Act of 1938 as amended by the Agricultural Acts of 1948, 1949, and 1956. See January *Agricultural Prices* for details on adjusted base price and parity price computations]

Commodity and unit	Adjusted base price	Parity price		
		February 2010	January 2011	February 2011
	(dollars)	(dollars)	(dollars)	(dollars)
<b>Noncitrus fruit - continued</b>				
Papayas (Hawaii) .....pound	0.046	1.13	1.12	1.20
<b>Peaches</b>				
Fresh <sup>4</sup> ..... ton	83.00	2,040.00	2,030.00	2,170.00
Dried (California) ..... ton	57.30	1,600.00	1,580.00	1,500.00
<b>Processing, excludes dried</b>				
Clingstone <sup>3</sup> (California) ..... ton	33.70	829.00	823.00	882.00
<b>Pears</b>				
Fresh <sup>4</sup> ..... ton	55.60	1,350.00	1,340.00	1,460.00
Dried <sup>1</sup> (California) ..... ton	178.00	4,260.00	4,220.00	4,660.00
<b>Plums (California)</b>				
Fresh, equivalent on-tree ..... ton	60.20	1,500.00	1,490.00	1,580.00
Prunes, dried <sup>1</sup> (California) ..... ton	147.00	3,590.00	3,560.00	3,850.00
<b>Prunes and plums</b>				
Fresh, excludes California <sup>5</sup> ..... ton	63.80	1,550.00	1,540.00	1,670.00
Processing, excludes dried <sup>1</sup> ..... ton	25.70	652.00	647.00	673.00
<b>Tree nuts <sup>6</sup></b>				
Almonds .....pound	0.209	4.97	4.93	5.47
Hazelnuts ..... ton	183.00	4,210.00	4,170.00	4,790.00
Pistachios .....pound	0.194	4.67	4.64	5.08
Walnuts ..... ton	177.00	4,230.00	4,200.00	4,630.00
<b>Vegetables, fresh <sup>7</sup></b>				
Carrots <sup>8</sup> ..... cwt	2.61	62.50	62.00	68.30
Cauliflower <sup>8</sup> ..... cwt	4.26	106.00	105.00	112.00
Celery <sup>8</sup> ..... cwt	2.05	51.40	51.00	53.70
Honeydew melons ..... cwt	2.17	56.80	56.40	56.80
Lettuce ..... cwt	2.35	57.80	57.40	61.50
Onions <sup>8</sup> ..... cwt	1.57	37.40	37.10	41.10
Tomatoes ..... cwt	4.75	115.00	114.00	124.00

<sup>1</sup> Equivalent returns at processing plant door.

<sup>2</sup> Equivalent returns at packinghouse door.

<sup>3</sup> Equivalent returns for bulk fruit at first delivery point.

<sup>4</sup> Equivalent packinghouse-door returns for California, New York (apples only), Oregon (except peaches), and Washington. Price at point of first sale for other states.

<sup>5</sup> Based on "as sold" prices for fresh fruit in all states.

<sup>6</sup> Prices In-Shell basis except almonds which are shelled basis.

<sup>7</sup> FOB shipping point prices.

<sup>8</sup> Includes some processing.

## Market Year for Specified Commodities

**Cattle:** January 1 - December 31 for United States and all States.

**Hogs:** December 1 - November 30 for United States and all States.

**Sheep and Lambs:** January 1 - December 31 for United States and all States.

### Market Year Average Prices Received for Cattle – States and United States: 2009 and 2010

State	Cows <sup>1</sup>		Steers & heifers		All beef <sup>2</sup>	
	2009	2010	2009	2010	2009	2010
	(dollars per cwt)	(dollars per cwt)	(dollars per cwt)	(dollars per cwt)	(dollars per cwt)	(dollars per cwt)
Alabama .....	42.30	49.50	79.00	89.30	67.20	76.70
Alaska .....	90.00	85.00	120.00	120.00	105.00	103.00
Arizona .....	45.40	58.70	84.10	95.10	62.30	76.80
Arkansas .....	42.60	53.60	88.90	103.00	75.00	83.60
California .....	42.80	54.90	84.60	96.40	64.80	78.00
Colorado .....	47.00	59.20	91.00	104.00	90.10	103.00
Connecticut .....	39.00	47.00	58.00	70.00	54.00	65.00
Delaware .....	49.80	57.20	84.60	94.40	81.10	90.60
Florida .....	43.90	51.20	81.50	95.20	67.30	76.30
Georgia .....	47.80	55.20	81.60	95.00	61.60	69.20
Hawaii .....	29.50	29.60	59.70	60.00	53.30	48.20
Idaho .....	45.00	56.50	84.20	96.60	74.60	86.60
Illinois .....	45.20	54.20	83.90	94.80	83.10	94.00
Indiana .....	46.20	52.40	83.20	94.30	73.80	83.70
Iowa .....	47.10	56.90	84.30	96.90	83.60	96.20
Kansas .....	46.40	54.30	85.10	97.20	84.30	96.30
Kentucky .....	43.90	54.80	85.60	99.20	75.70	88.40
Louisiana .....	42.70	51.50	82.90	94.40	55.50	65.20
Maine .....	39.00	48.00	63.00	72.00	58.00	67.00
Maryland .....	48.50	54.90	79.50	88.00	76.30	84.60
Massachusetts .....	39.00	46.00	59.00	69.00	55.00	64.00
Michigan .....	45.80	54.00	78.50	88.80	68.70	78.40
Minnesota .....	47.80	57.90	81.50	94.10	74.00	86.60
Mississippi .....	44.80	50.80	80.30	91.00	63.90	69.40
Missouri .....	43.70	50.60	92.70	106.00	80.60	91.80
Montana .....	43.40	54.90	94.50	107.00	77.70	90.10
Nebraska .....	48.60	58.90	85.40	97.30	84.30	96.20
Nevada .....	45.00	58.00	90.00	104.00	79.00	93.00
New Hampshire .....	39.00	47.00	60.00	68.00	56.00	64.00
New Jersey .....	44.00	51.00	63.00	69.00	47.00	55.00
New Mexico .....	47.90	59.90	88.70	101.00	72.90	84.70
New York .....	47.00	55.60	81.90	90.60	53.00	60.50
North Carolina .....	47.20	53.70	82.00	94.20	61.40	68.20
North Dakota .....	46.80	56.50	91.10	104.00	80.40	92.70
Ohio .....	42.20	48.00	81.20	92.40	77.30	88.00
Oklahoma .....	46.40	59.60	90.20	101.00	86.70	96.80
Oregon .....	45.90	57.40	83.20	95.10	77.10	90.60
Pennsylvania .....	45.40	52.10	80.20	89.60	71.10	79.90
Rhode Island .....	41.00	49.00	58.00	68.00	55.00	64.00
South Carolina .....	45.70	51.30	80.30	94.60	72.00	84.20
South Dakota .....	47.40	59.10	90.40	102.00	87.40	101.00
Tennessee .....	42.80	51.10	85.50	98.00	68.30	79.40
Texas .....	41.40	51.70	85.70	97.50	81.10	92.20
Utah .....	42.00	54.00	83.00	99.00	80.00	96.00
Vermont .....	40.00	49.00	59.00	70.00	55.00	66.00
Virginia .....	43.00	48.70	84.50	97.90	71.40	82.50
Washington .....	43.70	57.20	88.70	106.00	82.50	99.60
West Virginia .....	43.80	52.00	77.80	91.60	58.90	66.70
Wisconsin .....	43.70	54.20	76.90	88.40	57.70	68.60
Wyoming .....	43.30	54.10	92.70	109.00	82.60	97.20
United States .....	44.80	54.80	85.40	97.70	80.30	92.20

See footnote(s) at end of table.

--continued

**Market Year Average Prices Received for Cattle – States and United States: 2009 and 2010 (continued)**

State	Calves		Milk cows <sup>3</sup>	
	2009 (dollars per cwt)	2010 (dollars per cwt)	2009 (dollars per head)	2010 (dollars per head)
Alabama .....	88.50	108.00	1,400	1,300
Alaska .....	120.00	120.00	1,300	1,300
Arizona .....	102.00	118.00	1,510	1,350
Arkansas .....	96.70	113.00	1,310	1,200
California .....	100.00	116.00	1,200	1,300
Colorado .....	107.00	124.00	1,450	1,310
Connecticut .....	95.00	100.00	1,550	1,360
Delaware .....	95.00	104.00	1,500	1,400
Florida .....	93.70	111.00	1,610	1,390
Georgia .....	94.70	110.00	1,570	1,350
Hawaii .....	88.00	91.00	1,400	1,530
Idaho .....	101.00	118.00	1,370	1,340
Illinois .....	97.40	112.00	1,500	1,370
Indiana .....	96.40	107.00	1,510	1,290
Iowa .....	103.00	120.00	1,390	1,250
Kansas .....	113.00	126.00	1,440	1,250
Kentucky .....	96.00	110.00	1,400	1,290
Louisiana .....	93.20	106.00	1,400	1,320
Maine .....	95.00	100.00	1,450	1,280
Maryland .....	95.00	104.00	1,500	1,340
Massachusetts .....	95.00	100.00	1,500	1,380
Michigan .....	88.60	92.80	1,550	1,400
Minnesota .....	111.00	125.00	1,460	1,270
Mississippi .....	90.70	105.00	1,320	1,230
Missouri .....	105.00	119.00	1,250	1,150
Montana .....	108.00	128.00	1,400	1,340
Nebraska .....	113.00	131.00	1,440	1,290
Nevada .....	111.00	123.00	1,350	1,240
New Hampshire .....	100.00	100.00	1,550	1,350
New Jersey .....	78.00	83.00	1,540	1,420
New Mexico .....	105.00	118.00	1,370	1,340
New York .....	90.00	92.00	1,400	1,300
North Carolina .....	89.30	105.00	1,580	1,460
North Dakota .....	103.00	122.00	1,160	1,190
Ohio .....	93.60	107.00	1,440	1,330
Oklahoma .....	105.00	120.00	1,350	1,200
Oregon .....	96.70	115.00	1,400	1,320
Pennsylvania .....	102.00	99.90	1,510	1,400
Rhode Island .....	95.00	100.00	1,500	1,330
South Carolina .....	89.40	105.00	1,650	1,430
South Dakota .....	111.00	127.00	1,300	1,250
Tennessee .....	93.80	108.00	1,420	1,290
Texas .....	104.00	118.00	1,390	1,270
Utah .....	104.00	120.00	1,220	1,160
Vermont .....	100.00	100.00	1,580	1,360
Virginia .....	93.70	110.00	1,510	1,300
Washington .....	93.30	114.00	1,330	1,300
West Virginia .....	85.30	99.10	1,520	1,300
Wisconsin .....	129.00	141.00	1,440	1,430
Wyoming .....	110.00	132.00	1,250	1,100
United States .....	105.00	117.00	1,390	1,330

<sup>1</sup> Beef cows and cull dairy cows sold for slaughter.

<sup>2</sup> Cows and steer & heifers combined.

<sup>3</sup> Calendar year average.

## Market Year Average Prices Received for Hogs – State and United States: 2009 and 2010

State	Barrows & gilts		Sows		All	
	2009 (dollars per cwt)	2010 (dollars per cwt)	2009 (dollars per cwt)	2010 (dollars per cwt)	2009 (dollars per cwt)	2010 (dollars per cwt)
Alabama .....	42.60	53.10	40.90	50.50	41.70	52.80
Alaska .....	95.00	95.00	75.00	75.00	90.00	90.00
Arizona .....	50.80	64.80	40.60	52.70	50.70	64.70
Arkansas .....	38.30	50.30	38.20	50.20	38.30	50.30
California .....	42.50	55.10	34.50	47.40	42.30	54.90
Colorado .....	42.00	56.40	38.00	50.40	42.00	56.40
Connecticut .....	40.50	52.00	30.50	41.00	39.00	49.50
Delaware .....	40.50	54.70	34.20	48.20	40.00	54.20
Florida .....	42.10	55.30	40.90	54.10	41.80	55.10
Georgia .....	44.30	55.60	40.90	54.00	43.80	55.40
Hawaii .....	98.60	100.00	52.30	53.80	96.80	97.60
Idaho .....	41.90	54.80	33.90	46.70	41.50	54.40
Illinois .....	45.30	54.30	33.60	46.50	44.40	53.60
Indiana .....	45.20	54.70	41.60	53.50	44.80	54.60
Iowa .....	42.40	54.90	36.10	50.50	42.30	54.90
Kansas .....	36.80	50.30	38.00	50.60	36.90	50.40
Kentucky .....	38.90	54.80	41.70	54.70	39.00	54.80
Louisiana .....	37.50	47.00	31.60	39.40	35.70	44.60
Maine .....	40.50	52.00	30.50	41.00	39.00	49.50
Maryland .....	40.40	55.40	34.20	48.20	40.00	54.90
Massachusetts .....	40.50	52.00	30.50	41.00	39.00	49.50
Michigan .....	37.40	50.50	33.00	44.60	37.00	50.00
Minnesota .....	42.60	56.20	37.80	50.20	42.60	56.10
Mississippi .....	38.70	51.00	36.10	48.90	38.70	51.00
Missouri .....	36.90	49.10	34.80	48.10	36.80	49.00
Montana .....	41.90	53.30	31.90	37.30	40.90	52.00
Nebraska .....	42.80	55.90	39.30	50.60	42.70	55.80
Nevada .....	42.30	54.70	35.50	49.50	38.80	52.10
New Hampshire .....	40.50	52.00	30.50	41.00	39.00	49.50
New Jersey .....	34.00	50.00	30.00	40.00	33.00	49.00
New Mexico .....	35.10	47.70	33.40	45.60	34.80	47.60
New York .....	37.20	49.50	26.80	35.70	35.20	47.90
North Carolina .....	41.80	54.80	41.20	53.10	41.70	54.80
North Dakota .....	41.50	54.20	32.40	41.70	41.30	53.90
Ohio .....	40.60	54.10	36.40	49.90	40.30	53.80
Oklahoma .....	34.90	48.40	34.30	46.40	34.80	48.10
Oregon .....	45.00	58.10	29.40	35.70	44.70	57.70
Pennsylvania .....	40.10	51.30	39.80	52.20	40.00	51.50
Rhode Island .....	40.50	52.00	30.50	41.00	39.00	49.50
South Carolina .....	43.70	55.20	41.90	53.80	43.60	55.10
South Dakota .....	42.80	55.80	33.30	45.40	41.70	54.50
Tennessee .....	40.00	54.00	36.00	52.00	39.60	53.80
Texas .....	41.10	53.10	28.70	37.30	37.60	50.20
Utah .....	47.60	61.00	40.30	47.00	47.50	60.70
Vermont .....	40.50	52.00	30.50	41.00	39.00	49.50
Virginia .....	44.20	53.00	40.00	51.40	43.90	52.80
Washington .....	45.60	56.30	33.50	38.80	39.70	55.00
West Virginia .....	50.10	54.10	34.00	43.10	49.00	52.50
Wisconsin .....	40.20	51.20	32.80	46.10	39.40	50.70
Wyoming .....	41.20	53.00	31.00	42.00	38.30	49.50
United States .....	42.00	54.40	36.10	48.70	41.60	54.10

## Market Year Average Prices Received for Sheep and Lambs – States and United States: 2009 and 2010

State	Sheep		Lambs	
	2009 (dollars per cwt)	2010 (dollars per cwt)	2009 (dollars per cwt)	2010 (dollars per cwt)
Arizona .....	35.00	45.00	96.00	110.00
California .....	31.10	45.60	88.70	106.00
Colorado .....	32.60	49.10	99.20	122.00
Idaho .....	25.50	40.60	93.50	124.00
Illinois .....	31.40	51.60	102.00	123.00
Indiana .....	29.00	52.40	105.00	124.00
Iowa .....	30.70	49.30	96.50	124.00
Kansas .....	24.00	42.00	95.00	122.00
Kentucky .....	40.70	55.30	109.00	131.00
Michigan .....	34.00	51.00	101.00	130.00
Minnesota .....	31.70	50.00	99.90	131.00
Missouri .....	37.80	52.40	103.00	131.00
Montana .....	31.10	49.00	101.00	136.00
Nebraska .....	34.70	53.10	99.60	126.00
Nevada .....	35.00	49.00	106.00	120.00
New England <sup>1</sup> .....	50.00	70.00	130.00	145.00
New Mexico .....	34.00	52.90	109.00	135.00
New York .....	42.70	56.50	116.00	141.00
North Carolina .....	40.00	50.00	111.00	130.00
North Dakota .....	27.80	40.80	101.00	136.00
Ohio .....	33.40	49.70	106.00	131.00
Oklahoma .....	31.00	46.00	97.00	120.00
Oregon .....	38.80	52.50	93.40	118.00
Pennsylvania .....	45.90	64.20	118.00	129.00
South Dakota .....	28.30	49.10	104.00	146.00
Tennessee .....	37.00	50.00	109.00	128.00
Texas .....	34.70	52.00	109.00	134.00
Utah .....	30.20	47.80	99.90	126.00
Virginia .....	37.70	51.30	114.00	131.00
Washington .....	32.00	40.30	96.00	131.00
West Virginia .....	33.00	47.60	110.00	131.00
Wisconsin .....	30.70	50.50	93.40	130.00
Wyoming .....	32.80	51.50	100.00	122.00
Other States <sup>2</sup> .....	36.00	50.00	103.00	130.00
United States .....	32.50	49.70	99.60	125.00

<sup>1</sup> Includes Connecticut, Maine, Massachusetts, New Hampshire, Rhode Island, and Vermont.

<sup>2</sup> Individual State estimates not available for States not shown, but are included in Other States.

## Prices Received for Cows by Month – States and United States: 2009 and 2010

[Beef cows and cull dairy cows sold for slaughter]

State	January 2010	February 2010	March 2010	April 2010	May 2010	June 2010
	(dollars per cwt)	(dollars per cwt)	(dollars per cwt)	(dollars per cwt)	(dollars per cwt)	(dollars per cwt)
Arizona .....	49.00	54.00	57.00	61.00	64.00	62.00
Arkansas .....	45.00	49.00	50.00	55.00	55.50	55.50
California .....	49.40	51.50	54.00	57.90	59.40	57.10
Colorado .....	48.50	54.20	56.00	61.00	63.50	62.00
Florida .....	47.00	52.60	50.40	53.30	53.60	54.40
Georgia .....	50.50	53.80	53.50	56.70	58.90	59.10
Idaho .....	47.70	53.90	56.70	61.80	63.60	59.80
Illinois .....	46.60	50.20	51.60	57.40	60.60	59.20
Iowa .....	48.00	52.00	55.00	59.00	61.00	60.00
Kansas .....	50.10	54.70	55.60	58.70	60.00	56.00
Kentucky .....	45.00	49.00	51.00	57.00	59.00	59.00
Louisiana .....	45.40	50.20	51.50	55.40	54.50	53.80
Michigan .....	49.00	53.00	54.00	57.00	58.00	56.00
Minnesota .....	49.70	52.80	54.80	60.50	62.80	61.30
Missouri .....	44.00	48.40	49.50	55.10	57.90	56.60
Montana .....	45.40	50.90	54.10	59.00	61.70	60.90
Nebraska .....	51.10	54.70	57.00	60.30	63.50	62.60
New Mexico .....	52.00	54.50	59.10	63.00	66.00	64.00
North Dakota .....	48.00	52.00	56.00	61.00	63.00	61.00
Ohio .....	43.10	44.70	45.60	49.10	51.20	50.40
Oklahoma .....	53.50	57.90	58.60	62.30	62.30	61.50
Oregon .....	48.00	52.00	55.00	60.00	64.00	61.00
Pennsylvania .....	45.60	48.70	50.00	53.10	55.50	55.50
South Dakota .....	51.20	54.10	56.90	60.40	63.90	62.10
Tennessee .....	43.00	47.00	48.00	54.00	56.00	55.00
Texas .....	45.30	50.00	51.50	55.30	54.00	54.40
Virginia .....	44.20	48.10	47.00	48.00	51.20	53.60
Wisconsin .....	46.00	50.00	51.80	56.80	58.80	57.00
Wyoming .....	46.30	51.60	55.90	58.60	61.80	59.70
United States						
2010 .....	47.90	51.70	53.50	57.50	59.00	57.90
2009 .....	42.10	43.60	44.40	48.00	48.80	45.40

--continued

**Prices Received for Cows by Month – States and United States: 2009 and 2010 (continued)**

[Beef cows and cull dairy cows sold for slaughter]

State	July 2010	August 2010	September 2010	October 2010	November 2010	December 2010
	(dollars per cwt)	(dollars per cwt)	(dollars per cwt)	(dollars per cwt)	(dollars per cwt)	(dollars per cwt)
Arizona .....	61.00	61.00	60.00	57.00	57.00	60.00
Arkansas .....	56.00	56.00	55.00	53.00	53.00	59.00
California .....	59.00	57.30	53.00	52.00	52.80	56.20
Colorado .....	64.00	63.00	61.50	57.10	56.40	61.50
Florida .....	53.60	54.50	49.80	47.80	46.90	51.30
Georgia .....	57.20	57.60	52.60	51.80	53.20	57.60
Idaho .....	60.00	59.50	56.80	53.40	52.10	55.10
Illinois .....	59.20	59.80	55.70	53.30	52.00	54.70
Iowa .....	61.00	61.50	57.50	55.00	53.00	57.00
Kansas .....	56.00	56.00	52.50	49.50	49.00	54.00
Kentucky .....	59.00	60.00	57.00	54.00	53.00	55.00
Louisiana .....	54.30	55.20	50.20	49.00	51.00	52.50
Michigan .....	57.00	57.00	55.00	51.00	49.00	52.00
Minnesota .....	61.50	61.80	59.90	57.00	54.90	58.60
Missouri .....	57.40	57.70	53.70	51.70	49.70	53.50
Montana .....	59.70	59.00	55.60	52.60	51.70	54.70
Nebraska .....	63.60	63.70	60.20	57.60	54.10	59.10
New Mexico .....	64.00	64.00	62.00	59.00	58.00	61.00
North Dakota .....	62.00	61.00	57.00	54.00	52.00	57.00
Ohio .....	49.70	50.00	49.70	46.80	47.30	48.50
Oklahoma .....	62.90	63.90	59.00	56.70	55.50	61.50
Oregon .....	62.00	62.00	59.00	55.00	54.00	57.00
Pennsylvania .....	54.60	54.70	53.80	50.80	50.80	52.30
South Dakota .....	63.30	64.20	60.70	56.80	56.20	61.10
Tennessee .....	55.00	55.00	52.00	49.00	49.00	52.00
Texas .....	59.10	55.10	50.80	47.80	46.90	51.20
Virginia .....	50.30	50.70	48.70	46.40	48.20	49.00
Wisconsin .....	57.80	58.70	56.00	53.00	51.50	54.10
Wyoming .....	59.80	56.40	55.10	51.60	50.60	54.80
United States						
2010 .....	59.10	58.30	55.20	52.50	51.50	55.10
2009 .....	47.30	45.50	44.30	43.60	41.70	43.50

**Prices Received for Steers and Heifers by Month – States and United States: 2009 and 2010**

State	January 2010	February 2010	March 2010	April 2010	May 2010	June 2010
	(dollars per cwt)	(dollars per cwt)	(dollars per cwt)	(dollars per cwt)	(dollars per cwt)	(dollars per cwt)
Arizona .....	84.00	87.00	94.00	98.00	99.00	94.00
Arkansas .....	92.00	97.00	103.00	109.00	107.00	106.00
California .....	85.90	89.00	93.10	97.90	99.50	94.90
Colorado .....	92.60	96.00	102.00	108.00	104.00	100.00
Florida .....	82.80	89.50	94.60	99.80	101.00	98.80
Georgia .....	82.30	88.30	95.10	99.70	99.40	97.90
Idaho .....	87.70	90.00	96.40	101.00	101.00	93.40
Illinois .....	85.90	88.30	93.60	98.70	97.90	93.30
Iowa .....	88.50	91.50	94.50	101.00	99.50	94.50
Kansas .....	87.00	91.30	96.20	102.00	99.00	93.00
Kentucky .....	86.00	91.00	95.00	104.00	105.00	103.00
Louisiana .....	83.80	89.30	96.50	101.00	98.60	95.80
Michigan .....	80.00	83.00	88.00	92.00	92.00	90.00
Minnesota .....	84.00	86.00	90.50	98.40	98.30	92.90
Missouri .....	92.60	98.30	102.00	110.00	109.00	107.00
Montana .....	94.50	96.50	103.00	109.00	106.00	98.90
Nebraska .....	88.20	90.40	95.00	101.00	100.00	95.30
New Mexico .....	89.00	95.20	101.00	108.00	106.00	100.00
North Dakota .....	95.00	97.50	101.00	108.00	103.00	96.00
Ohio .....	83.10	87.90	90.10	93.90	96.30	91.10
Oklahoma .....	90.00	92.90	98.30	103.00	103.00	100.00
Oregon .....	85.00	87.00	92.00	98.00	100.00	95.00
Pennsylvania .....	81.80	82.90	86.60	90.80	92.70	90.00
South Dakota .....	93.10	96.00	99.70	106.00	104.00	98.70
Tennessee .....	86.00	92.00	96.00	102.00	103.00	100.00
Texas .....	87.50	89.90	96.50	100.00	101.00	96.10
Virginia .....	82.90	90.10	93.50	101.00	103.00	101.00
Wisconsin .....	78.80	80.80	84.70	90.00	92.00	87.00
Wyoming .....	99.00	102.00	105.00	109.00	109.00	106.00
United States						
2010 .....	87.60	90.50	95.70	101.00	99.70	94.80
2009 .....	85.80	83.80	84.00	88.30	87.70	84.90

--continued



**Prices Received for Steers and Heifers by Month – States and United States:  
2009 and 2010 (continued)**

State	July 2010	August 2010	September 2010	October 2010	November 2010	December 2010
	(dollars per cwt)	(dollars per cwt)	(dollars per cwt)	(dollars per cwt)	(dollars per cwt)	(dollars per cwt)
Arizona .....	93.00	95.00	98.00	97.00	98.00	102.00
Arkansas .....	109.00	108.00	101.00	98.00	102.00	110.00
California .....	93.70	97.80	98.50	98.60	101.00	105.00
Colorado .....	101.00	103.00	105.00	106.00	111.00	116.00
Florida .....	101.00	102.00	95.40	89.90	90.90	96.30
Georgia .....	100.00	99.20	92.70	89.90	92.40	99.50
Idaho .....	93.70	95.70	98.20	98.40	101.00	105.00
Illinois .....	92.40	94.50	96.10	96.10	98.60	102.00
Iowa .....	93.50	97.00	98.00	98.00	100.00	105.00
Kansas .....	96.00	99.00	100.00	99.00	100.00	103.00
Kentucky .....	105.00	106.00	100.00	98.00	99.00	106.00
Louisiana .....	98.50	96.60	91.50	90.50	93.40	96.20
Michigan .....	88.00	88.00	89.00	89.00	90.00	94.00
Minnesota .....	92.60	94.40	95.60	96.50	97.80	101.00
Missouri .....	110.00	110.00	107.00	105.00	106.00	114.00
Montana .....	102.00	105.00	105.00	113.00	115.00	118.00
Nebraska .....	95.30	97.00	98.50	98.90	101.00	105.00
New Mexico .....	99.00	100.00	101.00	99.00	102.00	107.00
North Dakota .....	95.00	103.00	103.00	108.00	114.00	116.00
Ohio .....	91.40	93.20	93.50	93.40	94.80	99.70
Oklahoma .....	99.60	102.00	101.00	101.00	103.00	107.00
Oregon .....	93.00	94.00	96.00	97.00	98.00	101.00
Pennsylvania .....	89.90	90.00	91.10	91.50	92.70	94.20
South Dakota .....	98.70	102.00	101.00	105.00	109.00	112.00
Tennessee .....	104.00	104.00	97.00	96.00	99.00	103.00
Texas .....	97.80	98.80	100.00	98.20	98.80	103.00
Virginia .....	103.00	105.00	99.10	95.40	96.30	100.00
Wisconsin .....	86.50	88.90	90.40	91.00	92.80	96.10
Wyoming .....	107.00	108.00	113.00	110.00	116.00	119.00
United States						
2010 .....	96.00	98.10	99.50	98.90	101.00	104.00
2009 .....	85.30	85.10	85.50	84.40	85.40	83.80

## Prices Received for Beef Cattle by Month – States and United States: 2009 and 2010

[Cows and Steers & Heifers combined]

State	January 2010	February 2010	March 2010	April 2010	May 2010	June 2010
	(dollars per cwt)	(dollars per cwt)	(dollars per cwt)	(dollars per cwt)	(dollars per cwt)	(dollars per cwt)
Arizona .....	65.10	70.50	75.10	77.70	77.70	74.50
Arkansas .....	73.20	82.60	84.50	90.10	83.80	85.80
California .....	68.40	71.00	75.10	80.30	83.10	79.80
Colorado .....	91.70	95.20	101.00	107.00	103.00	99.20
Florida .....	63.40	69.50	72.80	80.30	81.40	80.00
Georgia .....	61.10	66.80	70.20	74.50	73.80	72.30
Idaho .....	76.90	82.10	86.90	91.60	92.00	85.30
Illinois .....	85.10	87.50	92.80	97.90	97.20	92.60
Iowa .....	87.70	90.70	93.70	101.00	98.70	93.80
Kansas .....	86.30	90.60	95.40	101.00	98.20	92.30
Kentucky .....	76.20	80.90	84.40	92.70	94.00	92.40
Louisiana .....	56.90	61.10	64.10	68.60	68.20	66.80
Michigan .....	70.70	74.00	77.80	81.50	81.80	79.80
Minnesota .....	76.70	80.40	81.90	91.80	91.70	85.80
Missouri .....	78.00	81.30	90.50	96.80	96.20	92.90
Montana .....	79.30	85.10	86.90	93.50	83.90	80.70
Nebraska .....	87.10	89.30	93.90	99.80	98.90	94.30
New Mexico .....	73.10	78.90	85.90	92.70	92.40	87.40
North Dakota .....	88.40	92.00	94.30	99.50	87.80	72.20
Ohio .....	79.10	83.60	85.70	89.40	91.80	87.00
Oklahoma .....	86.70	90.60	95.30	99.90	100.00	96.90
Oregon .....	81.30	81.80	86.50	94.20	97.50	91.30
Pennsylvania .....	72.40	74.00	77.10	81.00	83.00	81.00
South Dakota .....	91.80	94.70	97.60	105.00	102.00	97.60
Tennessee .....	68.80	74.00	76.80	82.80	84.20	82.00
Texas .....	81.60	85.10	92.00	95.50	96.30	91.50
Virginia .....	66.30	74.60	80.90	88.80	83.30	83.00
Wisconsin .....	59.80	62.90	65.60	70.70	72.70	69.60
Wyoming .....	86.90	88.90	96.70	103.00	94.40	95.80
United States						
2010 .....	82.30	85.70	90.40	95.60	94.70	90.40
2009 .....	80.10	78.90	79.10	83.80	83.20	80.10

--continued

## Prices Received for Beef Cattle by Month – States and United States: 2009 and 2010 (continued)

[Cows and Steers & Heifers combined]

State	July 2010	August 2010	September 2010	October 2010	November 2010	December 2010
	(dollars per cwt)	(dollars per cwt)	(dollars per cwt)	(dollars per cwt)	(dollars per cwt)	(dollars per cwt)
Arizona .....	79.20	82.10	80.50	76.60	77.50	83.90
Arkansas .....	87.80	87.20	80.30	77.80	82.40	89.60
California .....	79.50	80.80	78.90	77.60	78.30	82.10
Colorado .....	100.00	102.00	104.00	105.00	110.00	115.00
Florida .....	81.30	83.30	78.30	73.10	72.60	77.10
Georgia .....	72.70	73.90	67.80	65.60	66.30	67.90
Idaho .....	85.90	89.20	89.10	85.80	84.90	91.00
Illinois .....	91.70	93.80	95.30	95.20	97.70	101.00
Iowa .....	92.90	96.30	97.20	97.10	99.10	104.00
Kansas .....	95.20	98.10	99.10	98.00	99.00	102.00
Kentucky .....	94.00	95.00	89.70	87.40	88.00	93.80
Louisiana .....	69.30	70.50	65.50	64.40	66.30	66.50
Michigan .....	78.70	78.70	78.80	77.60	77.70	81.40
Minnesota .....	87.90	89.00	90.20	88.30	85.40	90.30
Missouri .....	96.90	98.50	95.30	93.30	94.70	101.00
Montana .....	91.00	93.00	93.60	94.90	95.40	95.80
Nebraska .....	94.30	96.00	97.40	97.70	99.60	104.00
New Mexico .....	85.40	86.00	85.80	83.80	83.10	87.20
North Dakota .....	71.90	91.20	92.40	95.60	97.90	98.30
Ohio .....	87.20	88.90	89.10	88.70	90.10	94.60
Oklahoma .....	96.30	98.80	96.80	96.10	97.40	102.00
Oregon .....	89.00	91.10	88.60	92.40	93.20	95.70
Pennsylvania .....	80.70	80.80	81.40	80.90	81.80	83.30
South Dakota .....	97.30	100.00	100.00	104.00	107.00	109.00
Tennessee .....	84.40	84.40	79.00	77.20	79.00	82.60
Texas .....	93.20	94.00	94.60	92.20	91.50	96.80
Virginia .....	84.60	88.20	88.00	85.10	83.80	78.10
Wisconsin .....	69.90	71.40	70.40	69.00	68.80	71.70
Wyoming .....	102.00	103.00	104.00	94.80	91.10	97.80
United States						
2010 .....	91.70	93.50	94.10	93.10	94.00	98.10
2009 .....	80.90	80.40	80.50	79.20	79.60	78.50

**Prices Received for Calves by Month – States and United States: 2009 and 2010**

State	January 2010	February 2010	March 2010	April 2010	May 2010	June 2010
	(dollars per cwt)	(dollars per cwt)	(dollars per cwt)	(dollars per cwt)	(dollars per cwt)	(dollars per cwt)
Arizona .....	105.00	117.00	123.00	126.00	115.00	108.00
Arkansas .....	102.00	105.00	114.00	122.00	116.00	112.00
California .....	111.00	114.00	112.00	120.00	117.00	111.00
Colorado .....	114.00	115.00	119.00	128.00	127.00	126.00
Florida .....	96.90	105.00	113.00	119.00	117.00	116.00
Georgia .....	97.00	102.00	110.00	115.00	114.00	112.00
Idaho .....	108.00	114.00	116.00	119.00	119.00	119.00
Illinois .....	95.80	102.00	108.00	118.00	120.00	121.00
Iowa .....	104.00	111.00	115.00	126.00	128.00	128.00
Kansas .....	115.00	119.00	126.00	129.00	131.00	126.00
Kentucky .....	97.00	103.00	108.00	117.00	118.00	115.00
Louisiana .....	96.70	98.80	108.00	114.00	110.00	106.00
Michigan .....	80.00	82.00	85.00	90.00	98.00	97.00
Minnesota .....	111.00	115.00	120.00	129.00	130.00	131.00
Missouri .....	105.00	113.00	116.00	124.00	126.00	121.00
Montana .....	115.00	120.00	124.00	131.00	128.00	126.00
Nebraska .....	117.00	121.00	126.00	134.00	134.00	135.00
New Mexico .....	105.00	112.00	122.00	129.00	124.00	113.00
North Dakota .....	111.00	114.00	117.00	126.00	126.00	122.00
Ohio .....	94.80	99.80	103.00	108.00	112.00	108.00
Oklahoma .....	106.00	114.00	121.00	126.00	125.00	122.00
Oregon .....	101.00	111.00	116.00	113.00	119.00	113.00
Pennsylvania .....	96.00	96.00	98.30	102.00	101.00	101.00
South Dakota .....	113.00	117.00	122.00	130.00	131.00	131.00
Tennessee .....	96.00	102.00	109.00	115.00	116.00	113.00
Texas .....	106.00	108.00	119.00	126.00	124.00	119.00
Virginia .....	94.40	98.80	107.00	114.00	118.00	117.00
Wisconsin .....	130.00	134.00	138.00	144.00	144.00	141.00
Wyoming .....	120.00	125.00	129.00	132.00	134.00	122.00
United States						
2010 .....	110.00	113.00	117.00	124.00	124.00	122.00
2009 .....	107.00	106.00	107.00	111.00	111.00	109.00

--continued

**Prices Received for Calves by Month – States and United States: 2009 and 2010 (continued)**

State	July 2010	August 2010	September 2010	October 2010	November 2010	December 2010
	(dollars per cwt)	(dollars per cwt)	(dollars per cwt)	(dollars per cwt)	(dollars per cwt)	(dollars per cwt)
Arizona .....	119.00	123.00	115.00	112.00	119.00	127.00
Arkansas .....	118.00	117.00	109.00	107.00	112.00	122.00
California .....	109.00	112.00	116.00	122.00	122.00	129.00
Colorado .....	126.00	128.00	117.00	120.00	128.00	139.00
Florida .....	117.00	117.00	109.00	105.00	107.00	116.00
Georgia .....	114.00	113.00	105.00	106.00	112.00	119.00
Idaho .....	118.00	120.00	116.00	118.00	122.00	124.00
Illinois .....	119.00	120.00	116.00	109.00	115.00	115.00
Iowa .....	129.00	125.00	122.00	115.00	118.00	124.00
Kansas .....	127.00	128.00	122.00	122.00	129.00	136.00
Kentucky .....	116.00	115.00	107.00	103.00	104.00	113.00
Louisiana .....	111.00	111.00	103.00	100.00	103.00	107.00
Michigan .....	97.00	98.00	99.00	97.00	95.00	96.00
Minnesota .....	131.00	132.00	125.00	123.00	125.00	133.00
Missouri .....	123.00	122.00	117.00	117.00	121.00	129.00
Montana .....	126.00	138.00	129.00	130.00	131.00	136.00
Nebraska .....	135.00	134.00	128.00	129.00	131.00	143.00
New Mexico .....	118.00	121.00	113.00	111.00	122.00	126.00
North Dakota .....	119.00	123.00	123.00	120.00	126.00	130.00
Ohio .....	108.00	111.00	109.00	108.00	108.00	109.00
Oklahoma .....	124.00	121.00	115.00	114.00	119.00	129.00
Oregon .....	108.00	112.00	115.00	119.00	123.00	127.00
Pennsylvania .....	101.00	102.00	100.00	101.00	100.00	101.00
South Dakota .....	129.00	125.00	129.00	130.00	132.00	140.00
Tennessee .....	114.00	113.00	105.00	101.00	105.00	113.00
Texas .....	126.00	128.00	121.00	113.00	115.00	123.00
Virginia .....	113.00	115.00	110.00	106.00	107.00	113.00
Wisconsin .....	142.00	142.00	137.00	141.00	144.00	150.00
Wyoming .....	128.00	129.00	128.00	129.00	134.00	147.00
United States						
2010 .....	122.00	123.00	118.00	121.00	125.00	130.00
2009 .....	109.00	109.00	106.00	104.00	105.00	106.00

## Prices Received for Milk Cows by Month – States and United States: 2009 and 2010

[Cows sold for dairy herd replacement]

State	January 2010	April 2010	July 2010	October 2010
	(dollars per head)	(dollars per head)	(dollars per head)	(dollars per head)
Arizona .....	1,350	1,350	1,300	1,400
California .....	1,300	1,300	1,300	1,300
Colorado .....	1,250	1,300	1,350	1,350
Florida .....	1,360	1,450	1,360	1,400
Idaho .....	1,350	1,300	1,350	1,350
Illinois .....	1,400	1,400	1,350	1,320
Indiana .....	1,300	1,270	1,260	1,340
Iowa .....	1,250	1,250	1,250	1,250
Kansas .....	1,250	1,250	1,250	1,250
Michigan .....	1,400	1,400	1,400	1,400
Minnesota .....	1,290	1,250	1,270	1,280
Missouri .....	1,100	1,160	1,150	1,190
New Mexico .....	1,360	1,320	1,320	1,370
New York .....	1,300	1,300	1,300	1,300
Ohio .....	1,350	1,310	1,300	1,360
Oregon .....	1,350	1,320	1,320	1,300
Pennsylvania .....	1,400	1,400	1,400	1,400
Texas .....	1,300	1,270	1,230	1,260
Utah .....	1,100	1,150	1,250	1,150
Vermont .....	1,350	1,350	1,400	1,350
Virginia .....	1,260	1,300	1,320	1,340
Washington .....	1,300	1,300	1,300	1,300
Wisconsin .....	1,460	1,450	1,400	1,410
United States				
2010 .....	1,340	1,330	1,320	1,330
2009 .....	1,630	1,390	1,280	1,240

## Prices Received for All Hogs by Month – States and United States: 2009 and 2010

[Sows and Barrows & Gilts combined]

State	December 2009	January 2010	February 2010	March 2010	April 2010	May 2010
	(dollars per cwt)	(dollars per cwt)	(dollars per cwt)	(dollars per cwt)	(dollars per cwt)	(dollars per cwt)
Arkansas .....						
Illinois .....	44.30	47.60	48.80	51.50	56.00	61.60
Indiana .....	44.90	48.80	50.10	52.90	57.30	61.90
Iowa .....	45.40	48.80	49.00	52.40	56.70	62.40
Kansas .....	40.70	44.50	45.70	48.20	53.80	57.90
Minnesota .....	47.40	51.00	50.70	54.20	59.00	64.80
Missouri .....	40.30	43.90	44.20	47.30	52.60	57.30
Nebraska .....	47.40	50.80	50.50	53.80	58.30	64.00
North Carolina .....	46.30	49.60	49.10	52.90	56.20	63.50
Ohio .....	44.80	47.90	49.20	51.50	56.60	63.00
Oklahoma .....	37.70	41.40	43.00	45.80	51.30	55.60
Pennsylvania .....	41.80	45.80	47.80	49.80	54.70	58.40
South Dakota .....	45.30	49.00	50.20	53.10	58.30	62.70
United States						
2010 <sup>1</sup> .....	45.10	48.40	48.90	52.10	56.50	62.20
2009 <sup>1</sup> .....	42.00	42.80	43.80	43.90	44.00	44.60
State	June 2010	July 2010	August 2010	September 2010	October 2010	November 2010
	(dollars per cwt)	(dollars per cwt)	(dollars per cwt)	(dollars per cwt)	(dollars per cwt)	(dollars per cwt)
Arkansas .....						
Illinois .....	57.50	57.70	60.60	60.20	52.70	47.10
Indiana .....	58.70	59.10	60.50	59.60	53.80	49.80
Iowa .....	58.90	59.40	62.40	62.40	54.90	49.00
Kansas .....	53.90	54.10	57.40	56.80	49.10	43.10
Minnesota .....	59.90	59.60	63.30	62.70	54.90	49.00
Missouri .....	52.90	52.70	55.30	54.80	47.60	42.40
Nebraska .....	59.30	59.50	63.10	62.40	55.00	49.10
North Carolina .....	59.40	59.50	63.10	61.90	53.30	48.00
Ohio .....	58.20	58.50	60.30	59.20	51.80	46.80
Oklahoma .....	52.40	52.90	55.10	54.80	46.70	41.40
Pennsylvania .....	55.10	55.70	57.20	56.80	50.00	45.90
South Dakota .....	57.80	58.20	61.80	61.30	52.70	46.90
United States						
2010 .....	58.20	58.50	61.30	61.00	53.30	47.80
2009 .....	43.30	43.30	37.30	37.70	37.80	40.30

<sup>1</sup> December preceding year.

**Prices Received for Barrows and Gilts by Month – States and United States: 2009 and 2010**

State	December 2009	January 2010	February 2010	March 2010	April 2010	May 2010
	(dollars per cwt)	(dollars per cwt)	(dollars per cwt)	(dollars per cwt)	(dollars per cwt)	(dollars per cwt)
Arkansas .....						
Illinois .....	45.60	48.60	49.10	52.10	56.50	62.30
Indiana .....	46.00	49.40	49.70	52.90	57.20	61.90
Iowa .....	45.50	49.00	49.00	52.50	56.70	62.50
Kansas .....	41.90	45.40	45.00	48.00	53.70	58.00
Minnesota .....	47.50	51.10	50.70	54.20	59.00	64.80
Missouri .....	41.00	44.40	43.90	47.40	52.60	57.40
Nebraska .....	47.70	51.00	50.50	53.90	58.30	64.10
North Carolina .....	46.40	49.70	49.10	52.90	56.20	63.50
Ohio .....	45.70	48.60	49.10	51.70	56.80	63.20
Oklahoma .....	39.20	42.60	42.30	45.80	51.50	56.00
Pennsylvania .....	43.10	46.60	47.10	49.50	54.50	58.30
South Dakota .....	47.10	50.90	50.70	54.00	59.30	64.00
United States						
2010 <sup>1</sup> .....	45.60	48.90	48.90	52.30	56.60	62.40
2009 <sup>1</sup> .....	42.00	42.70	43.80	44.00	44.20	44.60
State	June 2010	July 2010	August 2010	September 2010	October 2010	November 2010
	(dollars per cwt)	(dollars per cwt)	(dollars per cwt)	(dollars per cwt)	(dollars per cwt)	(dollars per cwt)
Arkansas .....						
Illinois .....	58.10	58.30	61.10	60.70	53.20	47.60
Indiana .....	58.80	59.20	60.30	59.30	53.80	50.00
Iowa .....	59.00	59.50	62.50	62.40	55.00	49.00
Kansas .....	54.00	54.00	57.20	56.50	49.00	43.00
Minnesota .....	59.90	59.60	63.30	62.70	54.90	49.00
Missouri .....	53.00	52.70	55.10	54.60	47.70	42.40
Nebraska .....	59.40	59.60	63.10	62.40	55.10	49.20
North Carolina .....	59.40	59.50	63.10	61.90	53.30	48.00
Ohio .....	58.50	59.00	60.50	59.30	52.00	47.00
Oklahoma .....	52.80	53.20	55.00	54.70	46.70	41.50
Pennsylvania .....	55.00	55.60	56.60	56.10	49.60	45.60
South Dakota .....	59.30	59.80	63.20	62.40	53.90	48.00
United States						
2010 .....	58.50	58.70	61.50	61.20	53.50	48.00
2009 .....	43.70	44.00	37.60	38.20	38.30	40.50

<sup>1</sup> December preceding year.



**Prices Received for Sows by Month – States and United States: 2009 and 2010**

State	December 2009	January 2010	February 2010	March 2010	April 2010	May 2010
	(dollars per cwt)	(dollars per cwt)	(dollars per cwt)	(dollars per cwt)	(dollars per cwt)	(dollars per cwt)
Arkansas .....						
Illinois .....	29.40	35.50	45.50	45.20	50.20	53.50
Indiana .....	34.80	42.20	54.10	53.50	58.70	61.50
Iowa .....	33.00	38.50	48.50	48.20	53.00	56.50
Kansas .....	32.50	38.50	50.00	49.50	54.70	57.50
Minnesota .....	31.50	38.10	49.40	49.10	54.00	57.10
Missouri .....	29.90	36.60	47.10	46.60	51.90	54.90
Nebraska .....	33.70	40.20	51.50	51.30	56.10	59.20
North Carolina .....	35.80	42.40	53.70	53.40	58.30	61.40
Ohio .....	31.10	38.50	50.40	49.50	54.80	57.60
Oklahoma .....	30.20	35.90	46.00	45.80	50.20	53.80
Pennsylvania .....	34.30	41.10	51.90	51.80	55.90	58.80
South Dakota .....	30.80	36.20	45.70	45.30	49.50	52.50
United States						
2010 <sup>1</sup> .....	32.10	38.30	49.20	48.80	53.30	56.70
2009 <sup>1</sup> .....	43.50	44.10	43.30	41.90	41.50	43.30
State	June 2010	July 2010	August 2010	September 2010	October 2010	November 2010
	(dollars per cwt)	(dollars per cwt)	(dollars per cwt)	(dollars per cwt)	(dollars per cwt)	(dollars per cwt)
Arkansas .....						
Illinois .....	50.40	51.20	55.10	54.90	46.70	41.50
Indiana .....	57.50	58.50	63.20	62.90	53.30	47.70
Iowa .....	53.70	54.20	59.00	59.00	50.50	45.00
Kansas .....	53.50	54.50	59.00	58.50	49.50	44.00
Minnesota .....	53.30	54.20	58.70	58.40	49.00	43.20
Missouri .....	51.50	52.80	57.10	56.30	46.70	42.10
Nebraska .....	55.40	56.20	60.70	60.40	51.10	45.40
North Carolina .....	57.60	58.50	63.00	62.70	53.30	47.50
Ohio .....	53.30	53.80	57.90	57.90	48.60	44.40
Oklahoma .....	50.50	51.50	55.50	55.30	46.50	41.20
Pennsylvania .....	55.60	56.50	60.50	60.50	52.30	47.60
South Dakota .....	48.70	49.20	53.20	53.00	44.00	39.90
United States						
2010 .....	53.20	54.20	57.90	57.80	49.40	43.30
2009 .....	32.80	28.30	30.00	24.10	27.40	36.10

<sup>1</sup> December preceding year.

**Prices Received for Sheep by Month – States and United States: 2009 and 2010**

State	January 2010	February 2010	March 2010	April 2010	May 2010	June 2010
	(dollars per cwt)	(dollars per cwt)	(dollars per cwt)	(dollars per cwt)	(dollars per cwt)	(dollars per cwt)
California .....	60.50	48.00	50.00	52.00	42.00	39.00
Colorado .....	45.00	55.00	51.00	48.00	52.00	51.00
Idaho .....	36.00	42.00	50.00	42.00	35.00	35.00
Iowa .....	45.50	51.00	50.00	45.00	46.00	46.00
Minnesota .....	53.00	53.00	45.20	44.60	44.60	43.30
Missouri .....	55.20	55.60	51.50	49.30	47.40	40.70
Montana .....	59.30	61.00	51.70	48.70	46.30	39.80
Nebraska .....	47.70	56.20	52.70	53.10	51.10	47.90
North Dakota .....	39.00	39.00	39.00	39.00	35.00	33.00
Ohio .....	48.00	45.60	39.90	46.10	44.70	46.90
Oregon .....	60.00	61.00	68.00	64.00	58.00	50.00
Pennsylvania .....	62.00	69.00	70.00	65.00	59.00	59.40
South Dakota .....	60.60	56.90	46.40	37.30	36.40	36.20
Texas .....	58.00	62.00	57.00	52.00	50.00	48.00
Virginia .....	49.00	55.00	57.00	45.00	45.00	44.00
West Virginia .....	48.00	44.00	45.00	45.00	43.00	42.00
Wyoming .....	49.60	53.60	49.50	50.30	49.10	40.30
United States						
2010 .....	53.30	54.80	51.30	49.40	46.20	42.10
2009 .....	31.40	31.40	32.10	34.70	31.70	28.90
	July 2010	August 2010	September 2010	October 2010	November 2010	December 2010
	(dollars per cwt)	(dollars per cwt)	(dollars per cwt)	(dollars per cwt)	(dollars per cwt)	(dollars per cwt)
California .....	38.00	40.00	48.00	56.00	60.00	62.00
Colorado .....	50.00	47.00	51.00	47.00	46.00	55.00
Idaho .....	34.00	39.00	44.00	41.00	44.00	50.00
Iowa .....	46.50	55.00	50.00	51.00	61.00	63.00
Minnesota .....	45.80	52.00	52.00	52.00	56.30	61.20
Missouri .....	42.40	53.20	51.30	53.00	61.00	70.50
Montana .....	39.80	50.40	50.10	49.30	55.00	67.60
Nebraska .....	48.30	53.70	57.60	51.40	55.10	67.00
North Dakota .....	36.00	45.00	40.00	41.00	45.00	55.00
Ohio .....	47.50	54.50	53.00	57.50	58.00	70.00
Oregon .....	45.00	48.00	45.00	49.00	60.00	65.00
Pennsylvania .....	60.00	61.00	63.00	64.00	66.00	71.50
South Dakota .....	39.20	50.80	47.90	45.80	53.70	68.00
Texas .....	46.00	43.00	44.00	51.00	57.00	68.00
Virginia .....	45.00	48.00	54.00	55.00	63.00	66.00
West Virginia .....	46.00	52.00	49.00	51.00	51.00	55.00
Wyoming .....	49.50	54.40	51.60	46.20	55.50	72.60
United States						
2010 .....	43.80	47.60	48.70	48.40	54.80	66.20
2009 .....	29.60	31.30	29.70	29.80	36.30	44.40

## Prices Received for Lambs by Month – States and United States: 2009 and 2010

State	January 2010	February 2010	March 2010	April 2010	May 2010	June 2010
	(dollars per cwt)	(dollars per cwt)	(dollars per cwt)	(dollars per cwt)	(dollars per cwt)	(dollars per cwt)
California .....	84.50	90.00	99.00	98.00	101.00	104.00
Colorado .....	101.00	106.00	115.00	118.00	128.00	120.00
Idaho .....	90.00	95.00	101.00	107.00	108.00	110.00
Iowa .....	95.00	103.00	111.00	121.00	128.00	128.00
Minnesota .....	96.80	109.00	120.00	123.00	129.00	134.00
Missouri .....	117.00	126.00	137.00	136.00	131.00	116.00
Montana .....	112.00	112.00	128.00	125.00	139.00	127.00
Nebraska .....	101.00	106.00	111.00	116.00	122.00	127.00
North Dakota .....	101.00	107.00	111.00	122.00	137.00	135.00
Ohio .....	115.00	113.00	138.00	139.00	133.00	123.00
Oregon .....	90.00	98.00	108.00	106.00	111.00	112.00
Pennsylvania .....	121.00	125.00	133.00	130.00	128.00	127.00
South Dakota .....	117.00	129.00	131.00	135.00	144.00	133.00
Texas .....	122.00	135.00	130.00	131.00	120.00	116.00
Virginia .....	117.00	126.00	140.00	136.00	135.00	131.00
West Virginia .....	121.00	118.00	138.00	141.00	139.00	131.00
Wyoming .....	97.00	103.00	111.00	115.00	119.00	122.00
United States						
2010 .....	101.00	106.00	115.00	118.00	122.00	119.00
2009 .....	101.00	100.00	100.00	101.00	102.00	104.00
State	July 2010	August 2010	September 2010	October 2010	November 2010	December 2010
	(dollars per cwt)	(dollars per cwt)	(dollars per cwt)	(dollars per cwt)	(dollars per cwt)	(dollars per cwt)
California .....	106.00	110.00	113.00	118.00	120.00	126.00
Colorado .....	123.00	124.00	130.00	133.00	136.00	145.00
Idaho .....	116.00	121.00	132.00	134.00	131.00	133.00
Iowa .....	125.00	126.00	139.00	140.00	150.00	155.00
Minnesota .....	135.00	137.00	144.00	146.00	147.00	152.00
Missouri .....	113.00	130.00	131.00	133.00	144.00	157.00
Montana .....	128.00	136.00	145.00	145.00	144.00	155.00
Nebraska .....	124.00	126.00	133.00	138.00	139.00	146.00
North Dakota .....	135.00	136.00	138.00	141.00	155.00	160.00
Ohio .....	122.00	129.00	125.00	129.00	145.00	158.00
Oregon .....	112.00	119.00	125.00	134.00	133.00	139.00
Pennsylvania .....	126.00	127.00	126.00	128.00	135.00	140.00
South Dakota .....	131.00	139.00	153.00	156.00	165.00	170.00
Texas .....	126.00	130.00	136.00	142.00	157.00	166.00
Virginia .....	122.00	123.00	120.00	130.00	138.00	148.00
West Virginia .....	125.00	126.00	125.00	129.00	143.00	151.00
Wyoming .....	124.00	124.00	129.00	138.00	144.00	146.00
United States						
2010 .....	122.00	127.00	135.00	137.00	143.00	146.00
2009 .....	102.00	97.10	98.10	96.80	97.70	98.70

**Prices Received Value per Head for All Cattle and Calves –  
States and United States: January 1, 2010 and 2011**

State	Value per head		Total value	
	2010 (dollars)	2011 (dollars)	2010 (1,000 dollars)	2011 (1,000 dollars)
Alabama .....	670	710	857,600	873,300
Alaska .....	950	1,000	13,775	13,500
Arizona .....	810	980	753,300	852,600
Arkansas .....	700	770	1,337,000	1,324,400
California .....	960	980	4,944,000	5,047,000
Colorado .....	850	1,080	2,210,000	2,862,000
Connecticut .....	1,030	990	49,440	48,510
Delaware .....	920	930	18,400	16,740
Florida .....	710	780	1,221,200	1,271,400
Georgia .....	720	810	763,200	826,200
Hawaii .....	640	620	96,640	87,420
Idaho .....	990	1,020	2,148,300	2,244,000
Illinois .....	840	950	982,800	1,045,000
Indiana .....	870	920	756,900	782,000
Iowa .....	830	980	3,195,500	3,822,000
Kansas .....	790	940	4,740,000	5,922,000
Kentucky .....	710	820	1,633,000	1,795,800
Louisiana .....	730	820	613,200	647,800
Maine .....	1,010	940	87,870	84,600
Maryland .....	940	940	183,300	183,300
Massachusetts .....	970	910	41,710	36,400
Michigan .....	930	1,000	1,023,000	1,090,000
Minnesota .....	870	970	2,105,400	2,308,600
Mississippi .....	700	680	686,000	612,000
Missouri .....	790	920	3,278,500	3,634,000
Montana .....	960	1,150	2,448,000	2,875,000
Nebraska .....	850	1,040	5,355,000	6,448,000
Nevada .....	920	1,000	414,000	460,000
New Hampshire .....	1,090	1,020	40,330	34,680
New Jersey .....	1,030	1,010	37,080	32,320
New Mexico .....	870	980	1,357,200	1,509,200
New York .....	940	1,020	1,325,400	1,428,000
North Carolina .....	680	720	557,600	561,600
North Dakota .....	1,010	1,210	1,737,200	2,057,000
Ohio .....	850	950	1,088,000	1,168,500
Oklahoma .....	730	860	4,015,000	4,386,000
Oregon .....	850	1,010	1,071,000	1,343,300
Pennsylvania .....	970	970	1,571,400	1,561,700
Rhode Island .....	950	950	4,465	4,655
South Carolina .....	730	740	277,400	284,900
South Dakota .....	930	1,150	3,534,000	4,255,000
Tennessee .....	690	760	1,407,600	1,512,400
Texas .....	760	860	10,108,000	11,438,000
Utah .....	830	990	672,300	792,000
Vermont .....	1,060	1,060	280,900	286,200
Virginia .....	690	780	1,069,500	1,201,200
Washington .....	950	1,000	988,000	1,090,000
West Virginia .....	740	840	273,800	310,800
Wisconsin .....	1,040	1,070	3,536,000	3,691,500
Wyoming .....	940	1,180	1,240,800	1,534,000
United States .....	832	947	78,150,010	87,696,525

**Prices Received Value per Head and Total Value for Hogs –  
States and United States: December 1, 2009 and 2010**

State	Value per head		Total value	
	2009 (dollars)	2010 (dollars)	2009 (1,000 dollars)	2010 (1,000 dollars)
Alabama .....	82	110	11,070	14,300
Alaska .....	190	190	266	228
Arizona .....	87	110	14,529	18,150
Arkansas .....	92	110	17,940	17,600
California .....	110	140	11,000	14,700
Colorado .....	88	100	62,480	72,000
Connecticut .....	110	140	319	476
Delaware .....	82	110	615	605
Florida .....	87	110	1,740	1,650
Georgia .....	77	96	15,015	15,360
Hawaii .....	140	140	1,820	1,750
Idaho .....	87	(D)	3,132	(D)
Illinois .....	84	100	357,000	430,000
Indiana .....	84	110	302,400	401,500
Iowa .....	87	110	1,653,000	2,079,000
Kansas .....	75	90	135,750	162,900
Kentucky .....	63	78	21,735	25,350
Louisiana .....	87	110	870	1,100
Maine .....	87	110	426	517
Maryland .....	82	110	2,460	2,860
Massachusetts .....	87	110	957	1,210
Michigan .....	91	120	98,280	124,800
Minnesota .....	97	130	698,400	1,001,000
Mississippi .....	87	110	31,755	42,350
Missouri .....	72	92	223,200	266,800
Montana .....	87	110	15,225	19,800
Nebraska .....	90	110	279,000	341,000
Nevada .....	110	140	319	196
New Hampshire .....	94	120	226	396
New Jersey .....	94	120	752	960
New Mexico .....	87	110	131	165
New York .....	82	110	6,314	11,880
North Carolina .....	70	90	672,000	792,000
North Dakota .....	87	110	13,485	15,730
Ohio .....	86	110	172,860	223,300
Oklahoma .....	79	92	180,910	214,360
Oregon .....	87	110	1,479	1,760
Pennsylvania .....	78	98	88,920	108,780
Rhode Island .....	87	110	148	198
South Carolina .....	72	92	16,200	21,160
South Dakota .....	92	120	109,480	154,800
Tennessee .....	73	94	13,505	15,980
Texas .....	69	85	52,440	56,100
Utah .....	87	110	63,510	81,400
Vermont .....	110	140	330	378
Virginia .....	68	86	24,480	30,530
Washington .....	94	(D)	2,162	(D)
West Virginia .....	87	110	435	550
Wisconsin .....	80	95	28,000	32,300
Wyoming .....	94	120	8,178	11,880
Idaho and Washington .....	(X)	113	(X)	6,870
United States .....	83	106	5,416,647	6,838,679

(D) Withheld to avoid disclosing data for individual operations.

(X) Not applicable.

**Prices Received Value per Head and Total Value for Sheep and Lambs – States and United States: January 1, 2010 and 2011**

State	Sheep and lambs			
	Value per head		Total value	
	2010	2011	2010	2011
	(dollars)	(dollars)	(1,000 dollars)	(1,000 dollars)
Arizona .....	147	157	23,520	23,550
California .....	137	166	83,570	101,260
Colorado .....	133	163	49,210	60,310
Idaho .....	142	188	31,240	44,180
Illinois .....	193	218	12,352	12,208
Indiana .....	187	227	9,724	11,350
Iowa .....	147	196	30,870	39,200
Kansas .....	134	174	10,720	12,180
Kentucky .....	148	193	5,476	6,562
Michigan .....	150	196	12,000	14,504
Minnesota .....	145	185	18,850	24,050
Missouri .....	165	185	13,035	14,985
Montana .....	119	173	29,155	39,790
Nebraska .....	133	171	9,842	12,654
Nevada .....	143	183	10,725	12,444
New England <sup>1</sup> .....	191	221	9,073	11,271
New Mexico .....	123	136	14,760	14,960
New York .....	153	180	10,098	12,600
North Carolina .....	158	174	3,950	4,698
North Dakota .....	130	180	11,440	14,040
Ohio .....	183	206	23,424	26,574
Oklahoma .....	152	175	11,400	13,125
Oregon .....	129	169	29,025	36,335
Pennsylvania .....	170	195	15,980	19,110
South Dakota .....	135	187	43,875	51,425
Tennessee .....	149	172	4,694	6,020
Texas .....	100	129	83,000	113,520
Utah .....	154	196	44,660	54,880
Virginia .....	128	167	11,392	15,030
Washington .....	126	177	7,560	9,912
West Virginia .....	128	164	3,840	5,576
Wisconsin .....	176	201	15,840	18,090
Wyoming .....	131	171	49,125	62,415
Other States <sup>2</sup> .....	122	140	17,690	19,600
United States .....	135	170	761,115	938,408

<sup>1</sup> New England includes Connecticut, Maine, Massachusetts, New Hampshire, Rhode Island, and Vermont.

<sup>2</sup> Individual state estimates not available for states not shown, but are included in Other States.

**Prices Received Value per Head and Total Value for Angora Goats – States and United States: January 1, 2010 and 2011**

State	Angora goats			
	Value per head		Total value	
	2010	2011	2010	2011
	(dollars)	(dollars)	(1,000 dollars)	(1,000 dollars)
Arizona .....	70.00	75.00	1,540	1,875
California .....	60.00	70.00	210	245
New Mexico .....	65.00	75.00	683	863
Texas .....	75.00	100.00	7,500	11,000
United States <sup>1</sup> .....	73.00	93.20	9,933	13,983

<sup>1</sup> 4 States

**Market Year Average Prices Received for Other Hay, Baled – Selected Regions: 2006-2008, 2007-2009, and 2008-2010 Averages**

[Prices provided to the Forest Service, United States Department of Agriculture to compute Eastern National Forest grazing fees]

Region	3-year average		
	2006-2008	2007-2009	2008-2010
	(dollars per ton)	(dollars per ton)	(dollars per ton)
Appalachia <sup>1</sup> .....	90.40	96.60	92.90
Corn Belt <sup>2</sup> .....	84.50	85.60	73.30
Florida .....	118.30	129.10	138.90
Lake States <sup>3</sup> .....	79.70	89.10	84.00
Northeast <sup>4</sup> .....	137.00	139.60	125.20
Southeast/Delta <sup>5</sup> .....	81.90	84.10	82.40

<sup>1</sup> Kentucky, North Carolina, Tennessee, Virginia, and West Virginia.

<sup>2</sup> Illinois, Indiana, Missouri, and Ohio.

<sup>3</sup> Michigan, Minnesota, and Wisconsin.

<sup>4</sup> Maine, New Hampshire, New York, Pennsylvania, and Vermont.

<sup>5</sup> Alabama, Arkansas, Georgia, Louisiana, Mississippi, and South Carolina.

## Reliability of Prices Received Estimates

**Definition:** Prices received represent sales from producers to first buyers. They include all grades and qualities. The average commodity price from the survey multiplied by the total quantity marketed theoretically should give the total cash receipts for the commodity.

**Survey procedures:** Primary sales data used to determine grain prices were obtained from probability samples of about 1900 mills and elevators. These procedures ensure that virtually all grain moving into commercial channels has a chance of being included in the survey. Generally, States surveyed account for 90 percent or more of total United States production. Livestock prices are obtained from packers, stockyards, auctions, dealers, and market check data from AMS-USDA, private marketing organizations, and state commodity groups and agencies. Inter-farm sales of grain and livestock are not included since they represent very small percentages of the total marketings. Grain marketed for seed is also excluded. Fruit and vegetable prices are obtained from sample surveys and market check data from AMS-USDA, private marketing organizations, state agencies, and universities.

**Summary and estimation procedures:** Survey quantities sold are expanded by strata to state levels and used to weight average strata prices to a state average. State prices are then weighted to a United States price based on expanded marketings. Recommendations are prepared by the State Field Offices and reviewed by the Agricultural Statistics Board in Washington, D.C. State recommendations are reviewed for reasonableness with survey data, other States, and recent historic estimates.

**Revisions:** For most items, the current month's preliminary price represents a 3-5 day period around the 15th of the month. Previous month's prices represent actual dollars received for quantities sold during the entire month. Revisions are published in monthly issues of Agricultural Prices.

**Reliability:** United States price estimates based on probability surveys generally have a sampling error of less than one percent for the major commodities such as corn, wheat, soybeans, cotton, and rice. Current methods of summarization for non-probability commodities are not designed directly to calculate sampling errors. However, analytical measures approximate the United States relative sampling errors at around five percent. Any nonsampling errors are attributed to such things as the inability to obtain correct information, differences in interpreting questions or definitions, mistakes in coding or processing the data, etc. Efforts are made at each step in the survey process to minimize these nonsampling errors.



## Prices Paid by Farmers

The February Index of Prices Paid for Commodities and Services, Interest, Taxes, and Farm Wage Rates (PPITW) at 197 (1990-1992=100), is up 1.5 percent from January 2011 and 9.4 percent from February 2010.

**Production index:** The February index, at 205, increased 1.5 percent from last month and 11 percent from last year. Higher prices in February for feed grains, complete feeds, nitrogen, and diesel more than offset lower prices for LP gas and other services.

**Feed:** The February index, at 226, increased 4.6 percent from January and 27 percent from last February. Since January, prices are higher for feed grains, complete feeds, concentrates, supplements, and hay & forages.

**Livestock and poultry:** The February index, at 153, increased 2.0 percent from last month and 21 percent from last year. Since January, prices are higher for feeder pigs and feeder cattle. The February feeder cattle price, at \$127.50 per cwt, is up \$1.20 from the January price. February feeder pigs averaged \$200.00 per cwt, up \$17.00 from January.

**Fertilizer:** The February index, at 287, is up 3.6 percent from January and is 21 percent above February a year ago. Since January, prices are higher for nitrogen, potash & phosphate, and mixed fertilizer.

**Chemicals:** The February index, at 145, increased 0.7 percent from January but is unchanged from last February. Compared with last month, prices are higher for herbicides, insecticides, and fungicides/other.

**Fuels:** The February index, at 328, is up 2.8 percent from a month earlier and is 21 percent above February 2010. Compared with last month, prices are higher for diesel and gasoline but lower for LP gas.

**Machinery:** The February index, at 232, is unchanged from January but is 2.2 percent above last February. Compared with last month, prices are higher for other machinery and self-propelled machinery.

**Consumer price index:** The January 2011 Consumer Price Index, as issued by the Bureau of Labor Statistics, for all urban consumers (CPIU) increased 0.5 percent before seasonal adjustment to a level of 220.223 (1982-1984=100). The December index is 219.179. For the 12-month period ending in January, the overall index increased 1.6 percent.

## Prices Paid Indexes and Related Parity Ratios – United States: February 2011 with Comparisons

[Revised historical price indexes for months not shown are available at [www.nass.usda.gov](http://www.nass.usda.gov)]

Indexes and ratios	1910-1914 = 100			1990-1992 = 100		
	February 2010	January 2011	February 2011	February 2010	January 2011	February 2011
	(percent)	(percent)	(percent)	(percent)	(percent)	(percent)
Prices paid by farmers for commodities, services, interest, taxes, and wage rates (PPITW) .....	2397	2583	2618	180	194	197
Production .....	1788	1957	1991	184	202	205
Feed .....	867	1054	1103	178	216	226
Livestock & poultry .....	1609	1922	1955	126	150	153
Seeds .....	3008	2815	2815	304	284	284
Fertilizer .....	874	1016	1051	238	277	287
Chemicals .....	899	890	897	145	144	145
Fuels .....	2097	2464	2530	272	319	328
Supplies & repairs .....	1124	1149	1155	158	162	163
Autos & trucks .....	3004	3026	3039	113	114	114
Machinery .....	5688	5810	5831	227	232	232
Building materials .....	2224	2272	2282	164	167	168
Services & rent .....	2028	2117	2116	(NA)	(NA)	(NA)
Services .....	(NA)	(NA)	(NA)	159	165	165
Rent .....	(NA)	(NA)	(NA)	191	203	203
Interest <sup>1</sup> .....	3389	3646	3646	135	145	145
Taxes <sup>2</sup> .....	5549	6032	6032	207	225	225
Wage rates .....	7159	7295	7295	191	195	195
Production, interest, taxes, and wage rates (PITW) .....	2467	2682	2721	184	200	203
Family living-CPI <sup>3</sup> .....	2059	2092	2102	161	163	164
Ratio (received/paid) .....	(NA)	(NA)	(NA)	75	85	85
Parity ratio <sup>4</sup> .....	36	40	41	(NA)	(NA)	(NA)
Parity ratio adjusted <sup>5</sup> .....	37	42	42	(NA)	(NA)	(NA)
PPITW adjusted for productivity <sup>6</sup> .....	1405	1452	1459	(NA)	(NA)	(NA)
Crop sector (PPITW) .....	(NA)	(NA)	(NA)	191	201	203
Livestock sector (PPITW) .....	(NA)	(NA)	(NA)	169	187	190
Farm sector (production) .....	(NA)	(NA)	(NA)	180	205	210
Non-farm sector (production) .....	(NA)	(NA)	(NA)	187	200	202

(NA) Not available.

<sup>1</sup> Interest per acre on farm real estate debt and interest rate on farm non-real estate debt.

<sup>2</sup> Farm real estate taxes payable per acre.

<sup>3</sup> Bureau of Labor Statistics, Consumer Price Index for all urban consumers (CPI-U), for the previous month converted by the USDA.

<sup>4</sup> Ratio of index of prices received to PPITW (1910-1914=100).

<sup>5</sup> Based on estimated cash receipts, from marketings and government payments, the preliminary adjustment factor is 1.044 for 2011 and the revised factor is 1.041 for 2010.

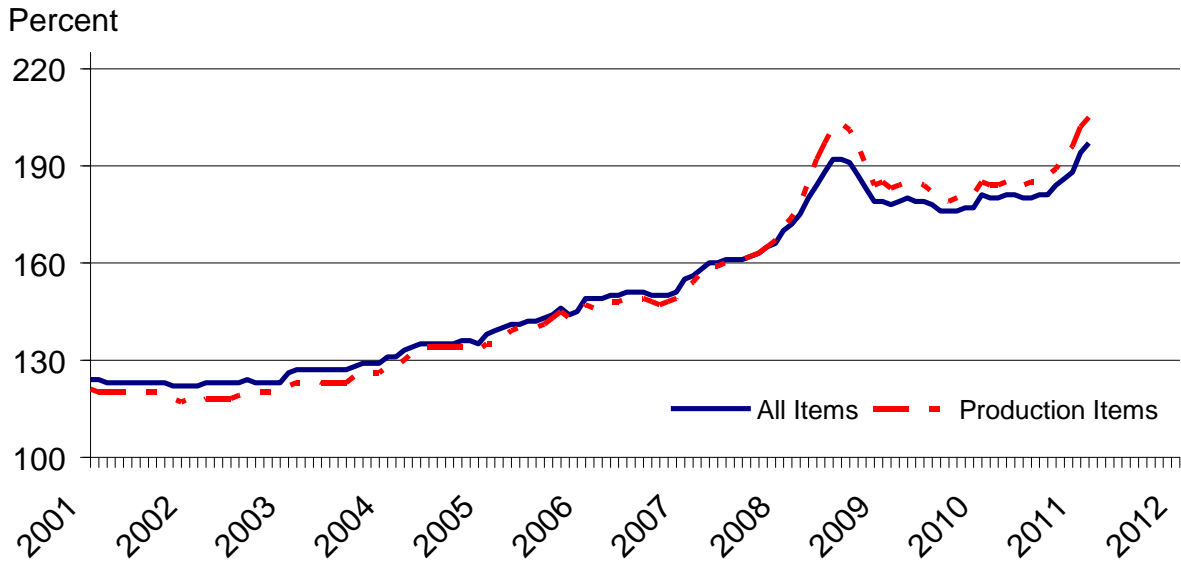
<sup>6</sup> PPITW is adjusted based on productivity trend for the prior 15 years.

## Prices Paid Indexes and Annual Weights for Input Components and Sub-Components – United States: February 2011 with Comparisons

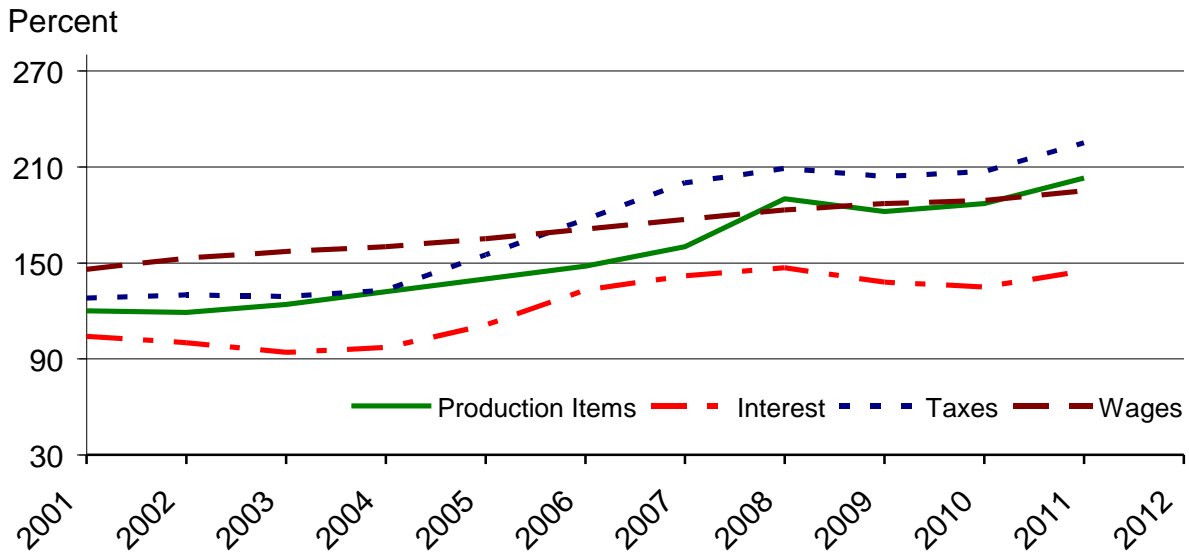
[Revised historical price indexes for months not shown are available at [www.nass.usda.gov](http://www.nass.usda.gov). Relative weights are a five year moving average]

	Relative weights		Indexes (1990-1992=100)		
	2010	2011	February 2010	January 2011	February 2011
	(percent)	(percent)	(percent)	(percent)	(percent)
Production items .....	70.2	70.6	184	202	205
Feed .....	11.9	12.2	178	216	226
Feed grains .....	1.7	1.7	152	215	244
Complete feeds .....	5.8	6.0	187	218	225
Hay & forages .....	1.5	1.5	139	148	152
Concentrates .....	1.9	1.9	186	223	233
Supplements .....	1.0	1.0	205	291	301
Livestock & poultry .....	8.6	8.5	126	150	153
Feeder cattle .....	6.7	6.6	120	149	151
Feeder pigs .....	0.7	0.7	174	199	218
Milk cow replacements .....	0.7	0.7	119	115	115
Poultry .....	0.5	0.5	148	148	148
Seeds .....	3.9	4.1	304	284	284
Field crops .....	3.6	3.7	319	299	299
Grasses & legumes .....	0.4	0.4	161	139	139
Fertilizer .....	5.2	5.5	238	277	287
Mixed fertilizer .....	2.3	2.4	228	247	250
Nitrogen .....	2.2	2.3	229	281	296
Potash & phosphate .....	0.7	0.8	299	360	375
Chemicals .....	3.2	3.3	145	144	145
Herbicides .....	2.0	2.1	134	133	134
Insecticides .....	0.7	0.7	163	162	163
Fungicides & other .....	0.5	0.5	166	165	167
Fuels .....	3.9	4.0	272	319	328
Diesel .....	2.5	2.5	275	337	350
Gasoline .....	0.9	0.8	231	270	274
LP gas .....	0.5	0.7	316	317	313
Supplies & repairs .....	4.6	4.6	158	162	163
Supplies .....	1.5	1.5	153	158	160
Repairs .....	3.0	3.0	161	164	164
Autos & trucks .....	1.5	1.4	113	114	114
Autos .....	0.2	0.2	111	111	111
Trucks .....	1.3	1.2	113	114	115
Machinery .....	4.5	4.3	227	232	232
Tractors .....	1.0	0.9	189	191	191
Self-propelled .....	1.8	1.7	234	241	242
Other machinery .....	1.7	1.6	241	245	247
Building materials .....	4.5	4.4	164	167	168
Services .....	12.1	12.1	159	165	165
Custom rates .....	1.2	1.2	145	145	145
Other services .....	10.8	10.9	161	167	167
Rent .....	6.3	6.3	191	203	203
Cash .....	3.4	3.4	243	258	258
Share .....	2.9	2.9	130	138	138
Interest .....	3.6	3.5	135	145	145
Taxes .....	3.0	3.1	207	225	225
Wage rates .....	7.5	7.4	191	195	195
Family living-CPI .....	15.7	15.4	161	163	164

## Paid Indexes by Month, All Items and Production Items – United States: 1990-1992=100

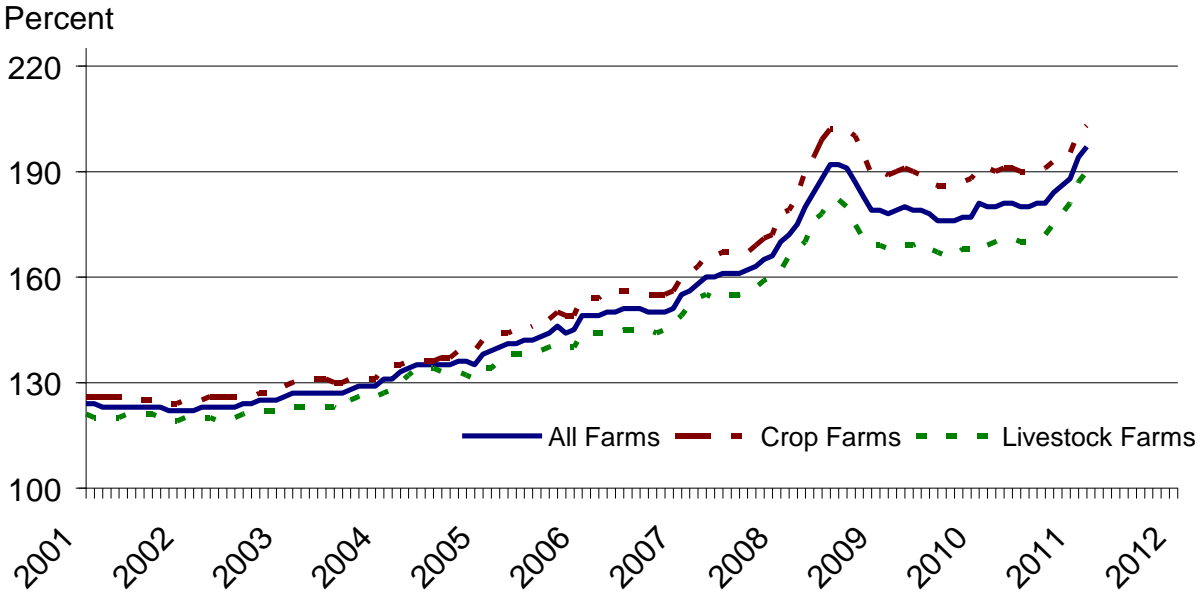


## Paid Indexes, Annual Averages, Production Items, Interest, Taxes, and Wages – United States: 1990-1992=100

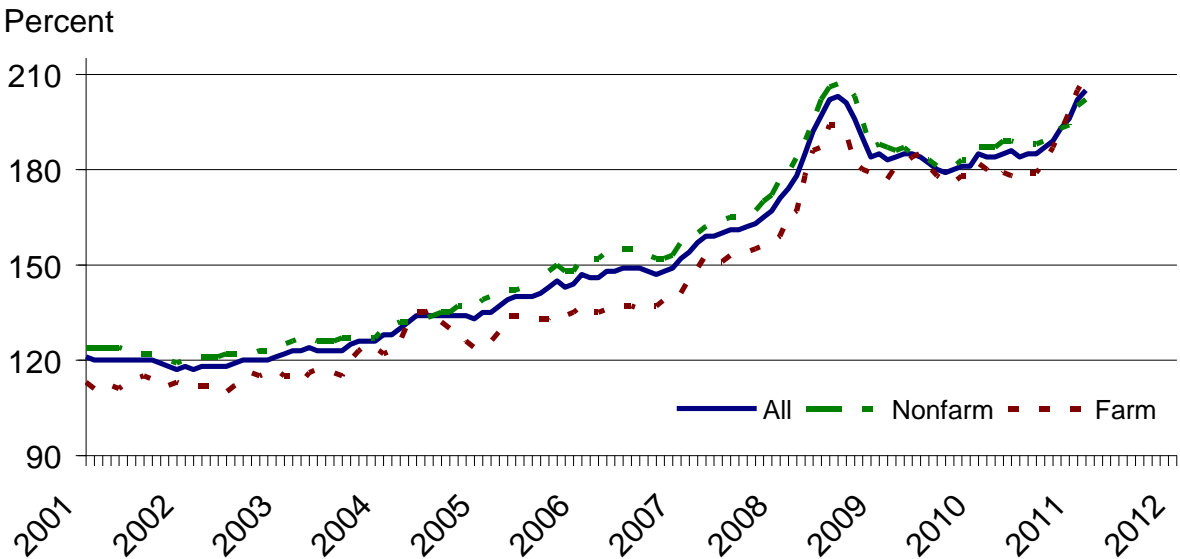


Index values are year-to-date for current year.

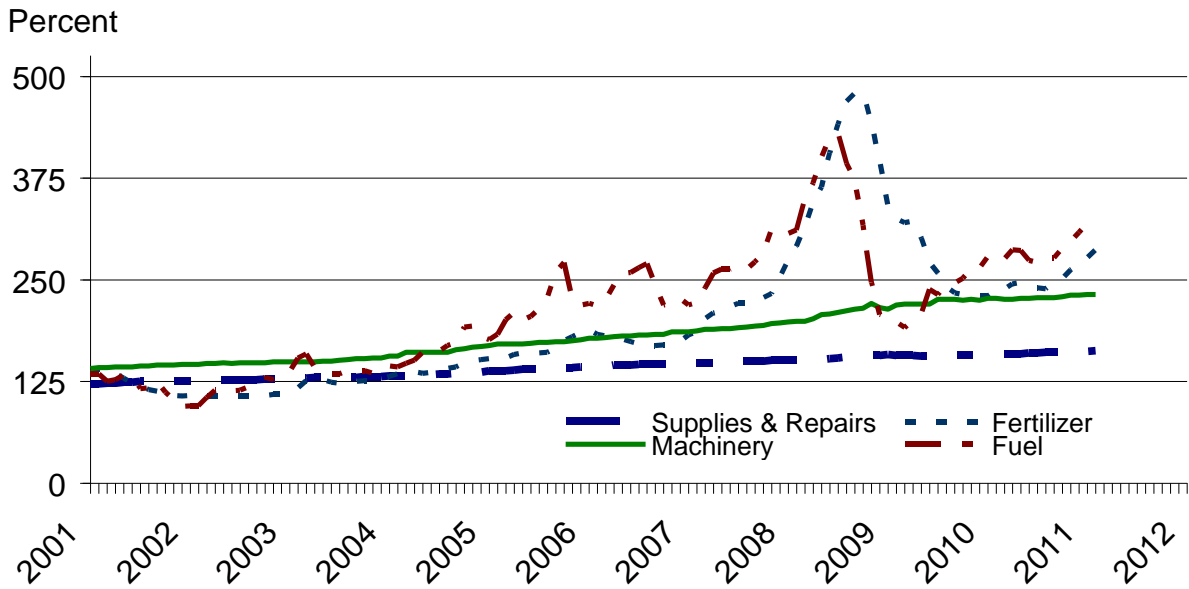
## Paid Indexes by Farm Type and Month, All Items – United States: 1990-1992=100



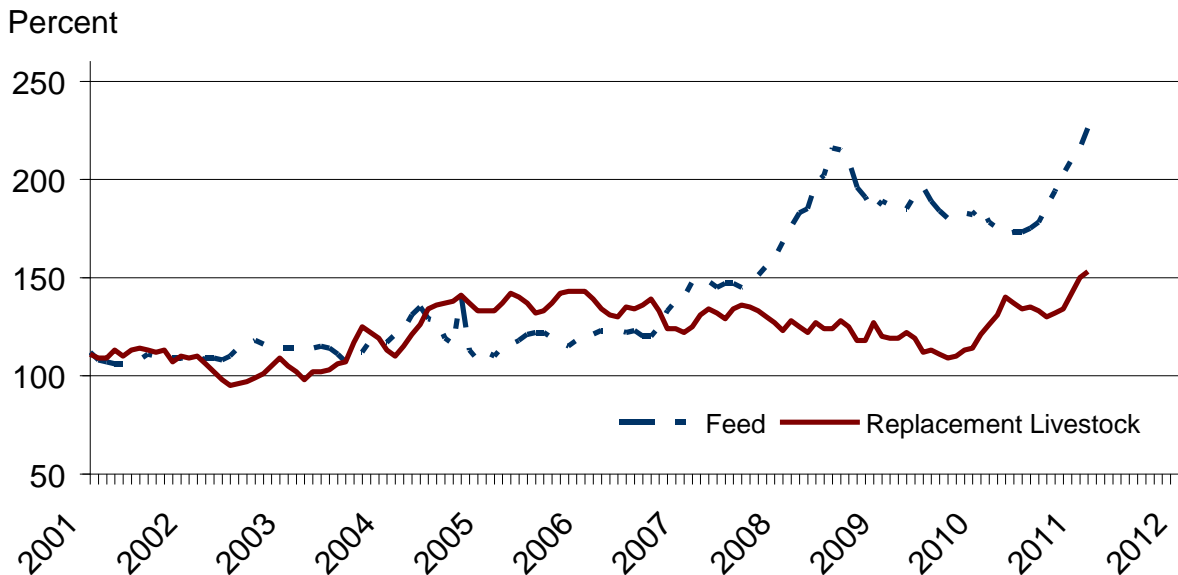
## Paid Indexes by Origin and Month, All Production Items – United States: 1990-1992=100



## Paid Indexes by Non-Farm Sector and Month, Supplies & Repairs, Fertilizer, Machinery, and Fuel – United States 1990-1992=100



## Paid Indexes by Month, Feed and Replacement Livestock – United States: 1990-1992=100



## Feed Price Ratios – United States: February 2011 with Comparisons

Feed price ratio <sup>1</sup>	February 2010	January 2011	Preliminary February 2011
Broiler-feed: pounds of broiler grower feed equal in value to 1 pound of broiler, live weight <sup>2</sup> .....	4.6	3.4	3.1
Market egg feed: pounds of laying feed equal in value to 1 dozen eggs <sup>3</sup> .....	8.9	5.8	6.1
Hog-corn: bushels of corn equal in value to 100 pounds of hog, live weight .....	13.8	11.3	10.9
Milk-feed: pounds of 16% mixed dairy feed equal in value to 1 pound of whole milk <sup>4</sup> .....	2.36	1.96	1.96
Steer & heifer-corn: bushels of corn equal in value to 100 pounds of steer & heifers, live weight .....	25.5	22.3	19.3
Turkey-feed: pounds of turkey grower equal in value to 1 pound of turkey, live weight <sup>5</sup> .....	5.3	4.6	4.1

<sup>1</sup> Effective January 1995, prices of commercial prepared feeds are based on current United States prices received for corn, soybeans, alfalfa hay, and all wheat.

<sup>2</sup> The price of commercial prepared broiler feed is based on current United States prices received for corn and soybeans. The modeled feed uses 58 percent corn and 42 percent soybeans.

<sup>3</sup> The price of commercial prepared layer feed is based on current United States prices received for corn and soybeans. The modeled feed uses 75 percent corn and 25 percent soybeans.

<sup>4</sup> The price of commercial prepared dairy feed is based on current United States prices received for corn, soybeans, and alfalfa hay. The modeled feed uses 51 percent corn, 41 percent alfalfa hay, and 8 percent soybeans.

<sup>5</sup> The price of commercial prepared turkey feed is based on current United States prices received for corn, soybeans, and wheat. The modeled feed uses 51 percent corn, 28 percent soybeans, and 21 percent wheat.

## Prices Received Used to Calculate Feed Price Ratios – United States: February 2011 with Comparisons

[Price data source for livestock and poultry commodities is United States Department of Agriculture's Agricultural Marketing Service]

Item	February 2010	January 2011	Preliminary February 2011
	(dollars)	(dollars)	(dollars)
Broilers, live ..... pound	0.470	0.450	0.440
Eggs, market .....dozen	0.775	0.660	0.776
Hogs, all .....cwt	48.90	55.80	61.50
Milk, all .....cwt	15.90	16.70	18.40
Steers and heifers .....cwt	90.50	110.00	109.00
Turkeys, live ..... pound	0.491	0.564	0.572
Corn .....bushel	3.55	4.94	5.66
Hay, alfalfa ..... ton	110.00	121.00	127.00
Soybeans .....bushel	9.41	11.60	12.10
Wheat, all .....bushel	4.73	6.71	8.56

## Prices Paid for Feeder Livestock – United States: February 2011 with Comparisons

[Price data source is United States Department of Agriculture's Agricultural Marketing Service]

Item	February 2010	January 2011	Preliminary February 2011
	(dollars)	(dollars)	(dollars)
Feeder cattle & calves .....cwt	101.50	126.30	127.50
Feeder pigs .....cwt	160.00	183.00	200.00

## Reliability of Prices Paid Estimates

**Definition:** Prices paid by farmers represent the average costs of inputs purchased by farmers and ranchers to produce agricultural commodities. Conceptually, the average price when multiplied by quantity purchased should equal total producer expenditures for the item.

**Survey procedures:** The prices paid data are obtained from establishments that sell goods and services to farmers and ranchers. Annually, about 8,500 firms are randomly selected from lists by type of item sold with an average response rate in the range of 75-80 percent. Firms are asked to report the price for the specified item "most commonly bought by farmers" or that was the "volume seller". Approximately 135 items are surveyed each March to represent all production input items purchased. The survey reference period for most items is the five business days centered around the 15th of the month. Separate prices paid surveys are conducted for agricultural chemicals, fuels, feed, fertilizer, machinery, and seed.

**Summary and estimation procedures:** The annual March Prices Paid Survey is summarized as a nonprobability survey. Average prices reported are aggregated to the region and United States level using weights available from expenditure data and other administrative sources. Price recommendations are prepared by the State Field Offices and Headquarters for review by the Agricultural Statistics Board in Washington, D.C. Also, the change in price level for individual items surveyed are combined to the regional and United States levels, and are published as prices paid indexes referenced to a specific base period. Prices paid indexes for new autos and trucks, building materials, farm supplies, motor supplies, and marketing containers are updated based on price changes measured in selected Bureau of Labor Statistics (BLS) indexes.

**Revisions:** Any revisions are published in the monthly and in annual issues of Agricultural Prices. The basis for revision must be supported by additional data that directly affect the level of the estimate. More revisions are likely for March when separate prices paid surveys are conducted, in lieu of BLS indexes, by the USDA to measure price change.

**Reliability:** Current methods of summarization for the March data are not designed directly to calculate sampling errors. However, analytical measures approximate the United States relative sampling errors for major items around 10 percent. Any nonsampling errors are attributed to such things as the inability to obtain correct information, differences in interpreting questions or definitions, mistakes in coding or processing the data, etc. Efforts are made at each step in the survey process to minimize these nonsampling errors.

**Program change:** Effective January 1, 1995, the National Agricultural Statistics Service updated the weights and changed the construction of its prices paid and received by farmers indexes. A Federal Register Notice dated October 28, 1994 discussed these program modifications.

A 1990-1992 reference and base period replaced the 1977 reference and 1971-1973 base weight period. Five-year moving average weights replaced the current fixed 1971-1973 base period weights. The 1910-1914=100 price indexes, required by statute for computing parity prices, were linked forward based on the changes in the new 1990-1992=100 indexes. The new indexes were constructed by multiplying the ratios of the current prices to the base period prices by the moving average weights (adjusted for seasonal marketing patterns for the prices received indexes).



## Information Contacts

Direct general questions to Kevin Barnes, Chief, Environmental, Economics and Demographics Branch at (202) 720-6146. Below are the commodity specialists to contact for additional information.

### Crop Prices Received

Lance Honig, Chief, Crops Branch .....	(202) 720-2127
Jacqueline Moore, Head, Field Crops Section .....	(202) 720-2127
Suzanne Avilla – Peanuts, Rice .....	(202) 720-7688
Bryan Durham – Hay, Oats .....	(202) 690-3234
Steve Maliszewski – Cotton, Cotton Ginnings, Sorghum .....	(202) 720-5944
Anthony Prillaman – Corn, Proso Millet, Flaxseed .....	(202) 720-9526
Nick Schauer – Wheat, Rye .....	(202) 720-8068
Julie Schmidt – Crop Weather, Barley, Sugar Crops .....	(202) 720-7621
Travis Thorson – Soybeans, Sunflower, Other Oilseeds .....	(202) 720-7369
Jorge Garcia-Pratts, Head, Fruits, Vegetables and Special Crops Section .....	(202) 720-2127
Debbie Flippin – Fresh and Processing Vegetables, Onions, Strawberries .....	(202) 720-2157
Fred Granja – Apples, Apricots, Cherries, Plums, Prunes, Tobacco .....	(202) 720-4288
Dawn Keen – Floriculture, Maple Syrup, Nursery, Tree Nuts .....	(202) 720-4215
Steve Maliszewski – Citrus, Coffee, Grapes, Tropical Fruits .....	(202) 720-5944
Tierra Mobley – Berries, Cranberries, Potatoes, Sweet Potatoes .....	(202) 720-4285
Dan Norris – Austrian Winter Peas, Dry Edible Peas, Lentils, Mints, Mushrooms, Peaches, Pears, Wrinkled Seed Peas, Dry Beans .....	(202) 720-3250
Kim Ritchie – Hops .....	(360) 709-2400

### Livestock Prices Received

Dan Kerestes, Chief, Livestock Branch .....	(202) 720-3570
Scott Hollis, Livestock Section .....	(202) 720-3570
Jason Hardegree - Cattle .....	(202) 720-3040
Mike Miller - Milk, Milk Cows .....	(202) 720-3278
Everett Olbert - Sheep, Lambs, Goats, Wool, Mohair .....	(202) 720-4751
Doug Bounds - Hogs .....	(202) 720-3106
Bruce Boess, Poultry and Specialty Commodities Section .....	(202) 720-3570
Doug Bounds - Turkeys .....	(202) 720-3106
Kim Linonis - Eggs .....	(202) 690-8632
Troy Marshall - Broilers, Honey .....	(202) 720-3244

### Indexes, Prices Paid, and Parity Prices

Kevin Barnes, Chief, Environmental, Economics and Demographics Branch .....	(202) 720-6146
Kevin Hintzman, Economics Section .....	(202) 720-6146
Daryl Brinkman - Prices Received Indexes, Parity Prices .....	(202) 720-8844
Joe Samson - Grazing Fees .....	(202) 720-5446
Jennifer Sissom - Prices Paid Indexes, Prices Paid for Feed, Fertilizer, Agricultural Chemicals, Seeds, Farm Supplies and Repairs, Farm Machinery, Fuels, Feeder Livestock, Poultry Chicks, Feed Price Ratios, Autos & Trucks .....	(202) 690-3229

## Access to NASS Reports

For your convenience, you may access NASS reports and products the following ways:

- All reports are available electronically, at no cost, on the NASS web site: <http://www.nass.usda.gov>
- Both national and state specific reports are available via a free e-mail subscription. To set-up this free subscription, visit <http://www.nass.usda.gov> and in the “Receive NASS Updates” box under “Receive reports by Email,” click on “National” or “State” to select the reports you would like to receive.
- Printed reports may be purchased from the National Technical Information Service (NTIS) by calling toll-free (800) 999-6779, or (703) 605-6220 if calling from outside the United States or Canada. Accepted methods of payment are Visa, MasterCard, check, or money order.

For more information on NASS surveys and reports, call the NASS Agricultural Statistics Hotline at (800) 727-9540, 7:30 a.m. to 4:00 p.m. ET, or e-mail: [nass@nass.usda.gov](mailto:nass@nass.usda.gov).

The United States Department of Agriculture (USDA) prohibits discrimination in all its programs and activities on the basis of race, color, national origin, age, disability, and where applicable, sex, marital status, familial status, parental status, religion, sexual orientation, political beliefs, genetic information, reprisal, or because all or a part of an individual's income is derived from any public assistance program. (Not all prohibited bases apply to all programs.) Persons with disabilities who require alternative means for communication of program information (Braille, large print, audiotape, etc.) should contact USDA's TARGET Center at (202) 720-2600 (voice and TDD).

To file a complaint of discrimination, write to USDA, Assistant Secretary for Civil Rights, Office of the Assistant Secretary for Civil Rights, 1400 Independence Avenue, S.W., Stop 9410, Washington, DC 20250-9410, or call toll-free at (866) 632-9992 (English) or (800) 877-8339 (TDD) or (866) 377-8642 (English Federal-relay) or (800) 845-6136 (Spanish Federal-relay). USDA is an equal opportunity provider and employer.