



Agricultural Prices

ISSN: 1937-4216

Released March 30, 2011, by the National Agricultural Statistics Service (NASS), Agricultural Statistics Board, United States Department of Agriculture (USDA).

March Farm Prices Received Index Advanced 4 Points

The preliminary All Farm Products Index of Prices Received by Farmers in March, at 174 percent, based on 1990-1992=100, increased 4 points (2.4 percent) from February. The Crop Index is up 1 point (0.5 percent) and the Livestock Index increased 7 points (4.9 percent). Producers received higher prices for cattle, broilers, milk, and lettuce and lower prices for corn, soybeans, eggs, and cotton. In addition to prices, the overall index is also affected by the seasonal change based on a 3-year average mix of commodities producers sell. Increased monthly marketings of strawberries, soybeans, tomatoes, and milk offset decreased marketings of cattle, corn, cotton, and wheat.

The preliminary All Farm Products Index is up 33 points (23 percent) from March 2010. The Food Commodities Index, at 172, increased 7 points (4.2 percent) from last month and 30 points (21 percent) from March 2010.

Prices Paid Index up 2 Points

The March Index of Prices Paid for Commodities and Services, Interest, Taxes, and Farm Wage Rates (PPITW) is 199 percent of the 1990-1992 average. The index is up 2 points (1.0 percent) from February and is 19 points (11 percent) above March 2010. Higher prices in March for diesel, complete feeds, gasoline, and feeder cattle more than offset lower prices for feed grains, herbicides, insecticides, and fungicides/other.

Prices Received, Prices Paid, and Ratio of Prices Received to Prices Paid Indexes 1990-1992 Base – United States: March 2011 with Comparisons

Index	March 2010	February 2011	March 2011
Prices received by farmers	141	170	174
Prices paid by farmers	180	197	199
Ratio of prices received to prices paid	78	86	87

Contents

Prices Received by Farmers	4
Prices Received Indexes – United States: March 2011 with Comparisons	5
Prices Received and Prices Paid Indexes by Month for Selected Groups – United States: 2010 and 2011, 1990-1992 Base	5
Received Indexes by Month, Livestock Products, All Products, and All Crops – United States: 1990-1992=100 Chart.....	6
Received Indexes by Month, Food Grains, Feed Grains & Hay, and Oilseeds – United States: 1990-1992=100 Chart.....	6
Received Indexes by Month, Fruit & Nut and Commercial Vegetables – United States: 1990-1992=100 Chart.....	7
Received Indexes by Month, Meat Animal, Dairy Products, and Poultry & Eggs – United States: 1990-1992=100 Chart.....	7
Prices Received for Field Crops and Fruits – United States: March 2011 with Comparisons.....	8
Prices Received for Vegetables and Livestock – United States: March 2011 with Comparisons	9
Prices Received for Corn by Month – United States Chart.....	10
Prices Received for Wheat by Month – United States Chart	10
Prices Received for Cotton by Month – United States Chart.....	11
Prices Received for Soybeans by Month – United States Chart	11
Prices Received for Cattle by Month – United States Chart	12
Prices Received for Milk by Month – United States Chart.....	12
Prices Received for Hogs by Month – United States Chart	13
Prices Received for Turkeys and Broilers by Month – United States Chart	13
Prices Received for All Wheat, Corn, and Soybeans by Month – United States: 2011 with Comparisons.....	14
Prices Received for Beef Cattle and All Hogs by Month – United States: 2011 with Comparisons	14
Prices Received for All Wheat – States and United States: March 2011 with Comparisons.....	15
Prices Received for Winter Wheat – States and United States: March 2011 with Comparisons.....	15
Prices Received for Durum Wheat – States and United States: March 2011 with Comparisons.....	16
Prices Received for Spring Wheat – States and United States: March 2011 with Comparisons	16
Prices Received for All Barley – States and United States: March 2011 with Comparisons.....	17
Prices Received for Malting Barley – States: March 2011 with Comparisons	17
Prices Received for Feed Barley – States: March 2011 with Comparisons	17
Prices Received for Corn – States and United States: March 2011 with Comparisons	18
Prices Received for Soybeans – States and United States: March 2011 with Comparisons	18
Prices Received for Oats – States and United States: March 2011 with Comparisons	19
Prices Received for Sorghum Grain – States and United States: March 2011 with Comparisons.....	19
Prices Received for Dry Beans – States and United States: March 2011 with Comparisons	20
Prices Received for Peanuts (In-Shell) – States and United States: March 2011 with Comparisons	20
Prices Received for Sunflowers – States and United States: March 2011 with Comparisons	21
Prices Received for Canola – States and United States: March 2011 with Comparisons	21
Prices Received for Flaxseed – States and United States: March 2011 with Comparisons	21
Prices Received for Upland Cotton and Cottonseed – States and United States: March 2011 with Comparisons	22
Prices Received and Marketings for Upland Cotton and Rice – United States: March 2011 with Comparisons	22
Prices Received for Hay by Type – States and United States: March 2011 with Comparisons	23
Prices Received for Apples – States and United States: March 2011 with Comparisons	23
Prices Received for Citrus Fruits by Utilization – States and United States: March 2010	24
Prices Received for Citrus Fruits by Utilization – States and United States: February 2011	25
Prices Received for Citrus Fruits by Utilization – States and United States: March 2011	26
Prices Received for Potatoes – States and United States: March 2011 with Comparisons.....	27
Prices Received for All Milk – States and United States: March 2011 with Comparisons.....	28
Prices Received for Milk Cows – States and United States: January 2011 with Comparisons.....	29
Commodity Parity Prices and Price as Percent of Parity Price – United States: March 2011 with Comparisons	30
Commodity Parity Prices – United States: March 2011 with Comparisons	31

Reliability of Prices Received Estimates	33
Prices Paid by Farmers.....	34
Prices Paid Indexes and Related Parity Ratios – United States: March 2011 with Comparisons.....	35
Prices Paid Indexes and Annual Weights for Input Components and Sub-Components – United States: March 2011 with Comparisons.....	36
Paid Indexes by Month, All Items and Production Items – United States: 1990-1992=100 Chart.....	37
Paid Indexes, Annual Averages, Production Items, Interest, Taxes, and Wages – United States: 1990-1992=100 Chart	37
Paid Indexes by Farm Type, All Items – United States: 1990-1991=100 Chart.....	38
Paid Indexes by Origin, All Production Items – United States: 1990-1992=100 Chart	38
Paid Indexes by Non-Farm Sector, Supplies & Repairs, Fertilizer, Machinery, and Fuel – United States: 1990-1992=100 Chart	39
Paid Indexes by Month, Feed and Replacement Livestock – United States: 1990-1992=100 Chart.....	39
Feed Price Ratios – United States: March 2011 with Comparisons	40
Prices Received Used to Calculate Feed Price Ratios – United States: March 2011 with Comparisons.....	40
Prices Paid for Feeder Livestock – United States: March 2011 with Comparisons.....	40
Reliability of Prices Paid Estimates	41
Information Contacts	42

Prices Received by Farmers

The March All Farm Products Index is 174 percent of its 1990-1992 base, up 2.4 percent from the February index and 23 percent above the March 2010 index.

All crops: The March index is 200, up 0.5 percent from February and 29 percent above March 2010. Index increases for commercial vegetables, food grains, fruits & nuts, and potatoes & dry beans more than offset the index decreases for feed grains & hay, oilseeds, and cotton.

Food grains: The March index, at 239, is 3.5 percent above the previous month and 40 percent above a year ago. The March all wheat price, at \$7.63 per bushel, is up 20 cents from February and \$2.93 above March 2010.

Feed grains & hay: The March index is 227, down 2.2 percent from last month but 48 percent above a year ago. The corn price, at \$5.46 per bushel, is down 18 cents from last month but \$1.91 above March 2010. The all hay price, at \$124.00 per ton, is up \$8.00 from February and \$17.00 higher than last March. Sorghum grain, at \$10.10 per cwt, is 80 cents below February but \$4.42 above March last year.

Cotton, Upland: The March index, at 135, is down 12 percent from February but 26 percent above last year. The March price, at 81.7 cents per pound, is down 11.0 cents from the previous month but 16.7 cents above last March.

Oilseeds: The March index, at 218, is down 4.4 percent from February but 31 percent higher than March 2010. The soybean price, at \$12.10 per bushel, decreased 60 cents from February but is \$2.71 above March 2010.

Fruits & nuts: The March index, at 144, is up 3.6 percent from February but 5.3 percent lower than a year ago. Price increases for oranges, apples, and lemons more than offset price decreases for strawberries, grapefruit, and pears.

Commercial vegetables: The March index, at 283, is up 3.3 percent from last month and 34 percent above March 2010. Price increases during March for lettuce, carrots, snap beans, and cauliflower more than offset price declines for celery, onions, sweet corn, and tomatoes.

Potatoes & dry beans: The March index, at 169, is up 7.0 percent from last month and 29 percent above March 2010. The all potato price, at \$9.95 per cwt, is up 69 cents from February and \$2.53 higher than last March. The all dry bean price, at \$30.30 per cwt, is up \$1.70 from the previous month and 60 cents above March 2010.

Livestock and products: The March index, at 151, is 4.9 percent above last month and up 18 percent from March 2010. Compared with a year ago, prices are higher for milk, cattle, hogs, calves, and turkeys. Egg prices are down from last year. Broiler prices are unchanged from a year ago.

Meat animals: The March index, at 149, is up 3.5 percent from last month and 24 percent higher than last year. The March hog price, at \$62.70 per cwt, is up \$1.10 from February and \$10.60 higher than a year ago. The March beef cattle price of \$113 per cwt is up \$5.00 from last month and \$22.60 higher than March 2010.

Dairy products: The March index, at 156, is up 6.8 percent from a month ago and 38 percent higher than March last year. The March all milk price of \$20.40 per cwt is \$1.30 higher than last month and up \$5.60 from March 2010.

Poultry & eggs: The March index, at 150, is up 5.6 percent from February but 5.7 percent below a year ago. The March market egg price, at 65.2 cents per dozen, decreased 12.4 cents from February and is 40.8 cents lower than March 2010. The March broiler price, at 49.0 cents per pound, is up 5.0 cents from February but unchanged from a year ago. The March turkey price, at 59.9 cents per pound, is up 2.1 cents from the previous month and 7.7 cents higher than a year earlier.

Prices Received Indexes – United States: March 2011 with Comparisons

[Revised historical price indexes for months not shown are available at www.nass.usda.gov]

Index	1910-1914 Base				1990-1992 Base		
	1990-1992 Average	March 2010	February 2011	March 2011	March 2010	February 2011	March 2011
	(percent)	(percent)	(percent)	(percent)	(percent)	(percent)	(percent)
All products	639	896	1079	1104	141	170	174
All crops	500	769	988	990	155	199	200
Food grains	325	543	733	757	171	231	239
Feed grains & hay	363	546	827	809	153	232	227
Cotton, Upland	517	550	785	692	107	153	135
Tobacco	1263	1563	1483	1483	103	98	98
Oilseeds	554	918	1248	1193	167	228	218
Fruits & nuts	716	1058	968	1007	152	139	144
Commercial vegetables	698	1505	1958	2025	211	274	283
Potatoes & dry beans	540	665	799	858	131	158	169
Other crops	493	613	621	621	125	126	126
Livestock and products	768	981	1104	1158	128	144	151
Meat animals	1021	1224	1462	1518	120	144	149
Dairy products	799	911	1175	1255	113	146	156
Poultry & eggs	282	445	400	421	159	142	150
Food commodities	(NA)	(NA)	(NA)	(NA)	142	165	172

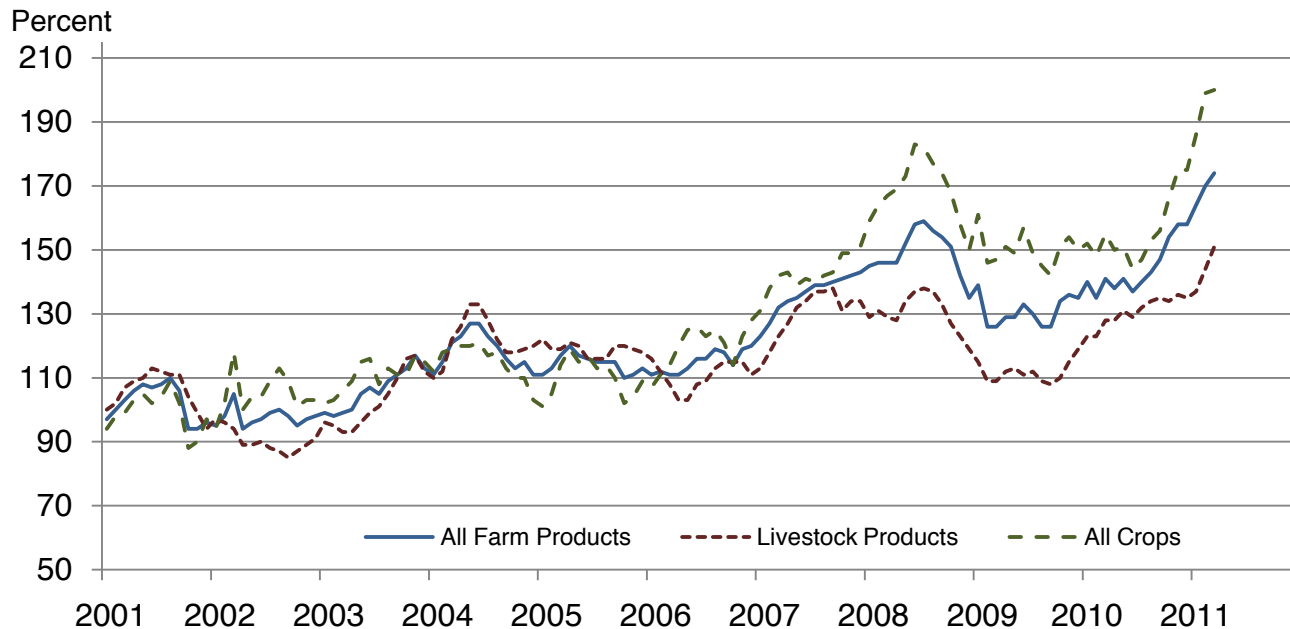
(NA) Not available.

Prices Received and Prices Paid Indexes by Month for Selected Groups – United States: 2010 and 2011, 1990-1992 Base

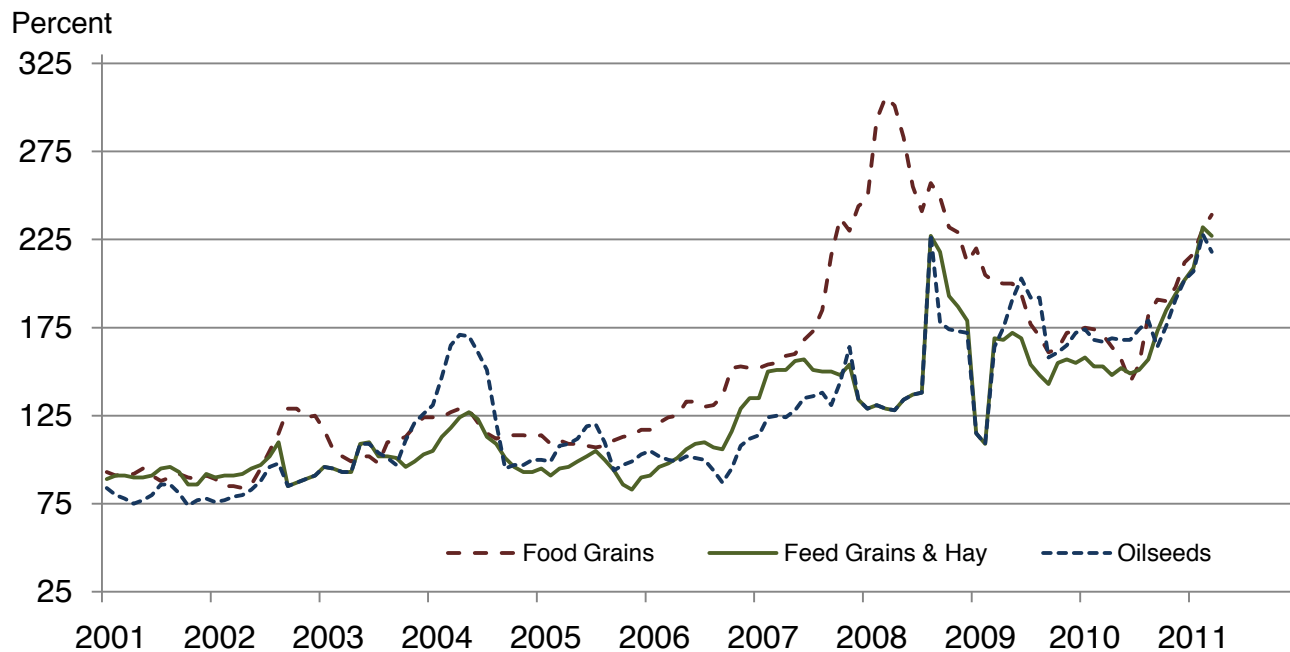
[Revised historical price indexes for months not shown are available at www.nass.usda.gov. Blank data cells indicate estimation period has not yet begun]

Month	Index of prices received						Index of prices paid			
	All farm products		All crops		Livestock and products		All items		Production items	
	2010	2011	2010	2011	2010	2011	2010	2011	2010	2011
	(percent)	(percent)	(percent)	(percent)	(percent)	(percent)	(percent)	(percent)	(percent)	(percent)
January	140	164	152	186	123	137	181	194	185	202
February	135	170	148	199	123	144	180	197	184	205
March	141	174	155	200	128	151	180	199	184	208
April	138		150		128		181		185	
May	141		151		131		181		186	
June	137		144		129		180		184	
July	140		147		132		180		185	
August	143		153		134		181		185	
September	147		156		135		182		187	
October	154		166		134		184		190	
November	158		175		136		186		193	
December	158		175		135		188		196	

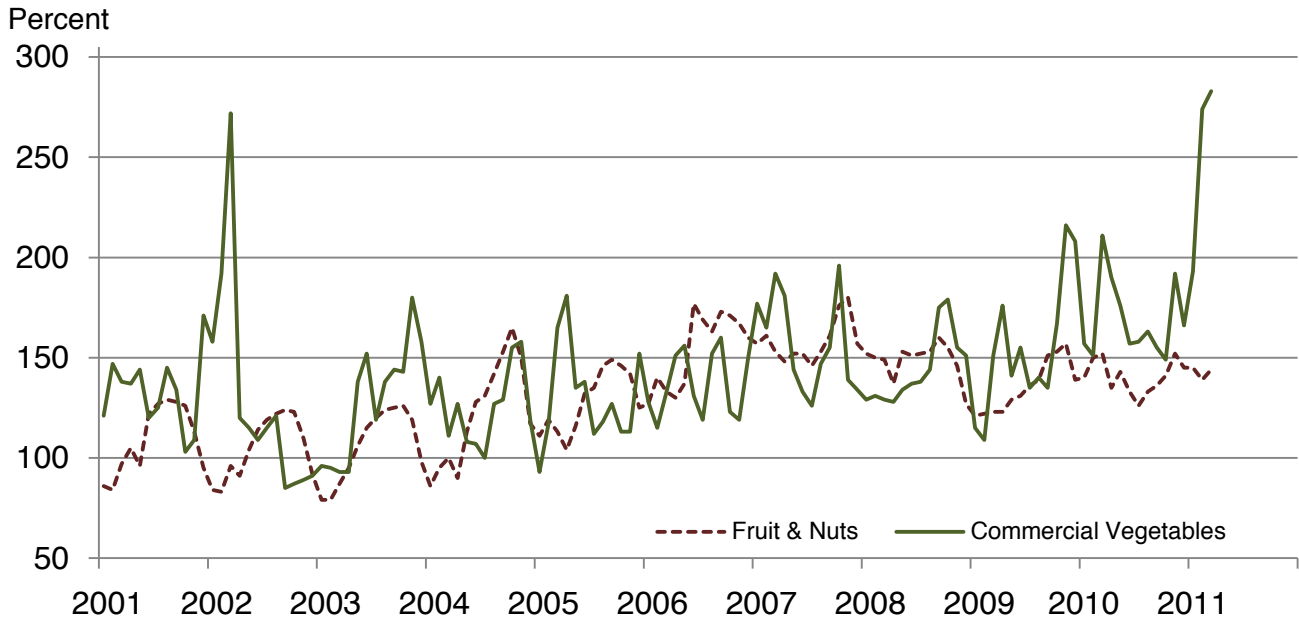
Received Indexes by Month, Livestock Products, All Products, and All Crops – United States: 1990-1992=100



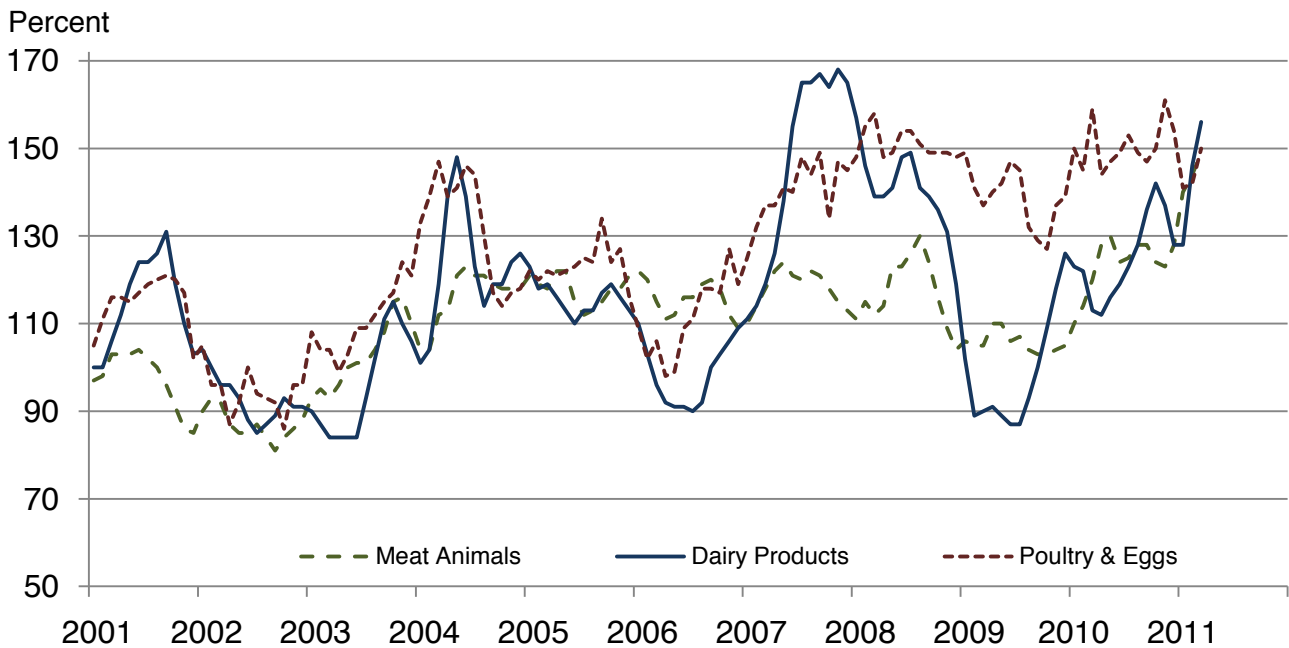
Received Indexes by Month, Food Grains, Feed Grains & Hay, and Oilseeds – United States: 1990-1992=100



Received Indexes by Month, Fruit & Nut and Commercial Vegetables – United States: 1990-1992=100



Received Indexes by Month, Meat Animal, Dairy Product, and Poultry & Egg – United States: 1990-1992=100



Prices Received for Field Crops and Fruits – United States: March 2011 with Comparisons

Commodity	Average 1990-1992=100	March 2010	February 2011	Preliminary March 2011
Field crops				
Austrian winter peas dollars/cwt	(NA)	(S)	20.00	(D)
Barley, all dollars/bushel	2.12	4.22	3.97	4.58
Feed dollars/bushel	1.90	2.66	3.55	4.31
Malting dollars/bushel	2.43	4.43	4.10	4.64
Beans, dry edible dollars/cwt	19.10	29.70	28.60	30.30
Canola dollars/cwt	(NA)	16.50	20.40	21.00
Chickpeas, all dollars/cwt	(NA)	29.70	30.30	34.60
Large dollars/cwt	(NA)	30.80	31.40	35.10
Small dollars/cwt	(NA)	23.70	20.00	(D)
Corn dollars/bushel	2.30	3.55	5.64	5.46
Cotton, Upland dollars/pound	0.606	0.650	0.927	0.817
Cottonseed ¹ dollars/ton	96.00	(NA)	172.00	(NA)
Flaxseed dollars/bushel	4.27	8.82	15.30	13.10
Hay, all, baled dollars/ton	76.30	107.00	116.00	124.00
Alfalfa dollars/ton	77.20	113.00	127.00	136.00
Other dollars/ton	60.00	95.30	93.90	97.30
Lentils dollars/cwt	(NA)	28.60	28.90	32.00
Oats dollars/bushel	1.22	2.29	3.27	3.12
Peanuts, in-shell dollars/pound	0.304	0.206	0.230	0.234
Peas, dry edible dollars/cwt	(NA)	8.49	11.90	11.00
Potatoes dollars/cwt	5.82	7.42	9.26	9.95
Rice, all dollars/cwt	7.07	14.30	13.20	13.90
Long dollars/cwt	(NA)	13.10	12.00	12.30
Medium and short dollars/cwt	(NA)	17.90	17.70	20.30
Sorghum grain dollars/cwt	3.75	5.68	10.90	10.10
Soybeans dollars/bushel	5.61	9.39	12.70	12.10
Sunflowers, all dollars/cwt	9.50	15.80	27.40	28.20
Wheat, all dollars/bushel	2.96	4.70	7.43	7.63
Winter dollars/bushel	2.93	4.45	7.03	6.82
Durum dollars/bushel	2.86	4.57	8.43	8.58
Other spring dollars/bushel	3.11	5.04	7.70	8.61
Hard red winter ² dollars/bushel	(NA)	4.48	7.07	(NA)
Soft red winter ² dollars/bushel	(NA)	4.14	7.09	(NA)
Hard red spring ² dollars/bushel	(NA)	5.06	7.73	(NA)
White ² dollars/bushel	3.24	4.52	6.83	(NA)
Fruits				
Citrus, equivalent on-tree				
Grapefruit dollars/box	5.77	5.93	6.58	6.48
Lemons dollars/box	10.10	8.68	4.74	5.84
Oranges dollars/box	5.79	7.97	6.36	6.69
Tangelos dollars/box	5.82	(S)	5.61	(S)
Tangerines and mandarins dollars/box	15.11	12.07	14.94	13.15
Noncitrus, fresh				
Apples ³ dollars/pound	0.212	0.295	0.285	0.292
Grapes ³ dollars/ton	506.00	(S)	(S)	(S)
Peaches ³ dollars/ton	432.00	(S)	(S)	(S)
Pears ³ dollars/ton	370.00	350.00	673.00	653.00
Strawberries dollars/cwt	56.00	116.00	125.00	103.00

(D) Withheld to avoid disclosing data for individual operations.

(NA) Not available.

(S) Insufficient number of reports to establish an estimate.

¹ Marketing year August - February.

² Preliminary estimates not set for this item.

³ Equivalent packinghouse-door returns for California, Michigan, New York (apples only), and Washington (apples, peaches, and pears). Prices as sold for other states.

Prices Received for Vegetables and Livestock – United States: March 2011 with Comparisons

[Price data source for livestock and poultry commodities is United States Department of Agriculture's Agricultural Marketing Service]

Commodity	Average 1990-1992=100	March 2010	February 2011	Preliminary March 2011
Vegetables, fresh ¹				
Asparagusdollars/cwt	79.80	122.00	(S)	(S)
Beans, snap ²dollars/cwt	(NA)	97.70	48.50	62.80
Broccolidollars/cwt	22.50	48.30	46.70	46.00
Cantaloupes ²dollars/cwt	(NA)	(S)	(S)	(S)
Carrotsdollars/cwt	13.20	27.50	40.70	43.40
Cauliflowerdollars/cwt	26.80	50.40	56.10	61.50
Celerydollars/cwt	11.60	25.70	46.50	32.30
Corn, sweetdollars/cwt	15.70	62.70	51.80	46.10
Cucumbers ²dollars/cwt	(NA)	18.50	(S)	(S)
Lettucedollars/cwt	11.90	20.80	54.40	63.90
Onions ³dollars/cwt	12.80	34.20	9.90	6.89
Tomatoesdollars/cwt	32.30	109.00	108.00	104.00
Livestock				
Calvesdollars/cwt	94.30	117.00	139.00	148.00
Cattle, all beefdollars/cwt	72.90	90.40	108.00	113.00
Cows ⁴dollars/cwt	49.60	53.50	72.50	73.40
Steers & heifersdollars/cwt	77.10	95.70	111.00	116.00
Milk cows ⁵dollars/head	1130.00	(NA)	(NA)	(NA)
Hogs, alldollars/cwt	47.70	52.10	61.60	62.70
Barrows & giltsdollars/cwt	48.40	52.30	62.60	63.50
Sowsdollars/cwt	39.50	48.80	53.30	56.20
Lambsdollars/cwt	56.20	115.00	155.00	(NA)
Sheepdollars/cwt	23.40	51.30	76.00	(NA)
Dairy and poultry				
Milk, all ⁶dollars/cwt	13.06	14.80	19.10	20.40
Fat test percent	3.66	3.68	3.79	3.74
Broilers, live ⁷dollars/pound	0.317	0.490	0.440	0.490
Eggs, all ⁸dollars/dozen	0.643	1.160	0.954	0.848
Market ^{8,9}dollars/dozen	0.546	1.060	0.776	0.652
Turkeys, live ^{8,10,11}dollars/pound	0.380	0.522	0.578	0.599
Adjusted for seasonal variation				
Eggs, alldollars/dozen	0.545	1.050	0.880	0.774
Seasonal factor percent	100	110	108	110
Milk, all ⁶dollars/cwt	9.71	15.90	19.40	22.00
Seasonal factor percent	100	93	98	93

(NA) Not available.

(S) Insufficient number of reports to establish an estimate.

¹ Beginning January 2006, point of first sale. FOB shipping point for prior years.

² Monthly estimates began January 1995.

³ Includes some processing.

⁴ Beef cows and cull dairy cows sold for slaughter.

⁵ Animals sold for dairy herd replacement only. Prices available for January, April, July, and October.

⁶ Before deductions for hauling. Includes quality, quantity, and other premiums. Excludes hauling subsidies.

⁷ Equivalent live weight price.

⁸ Mid-month price.

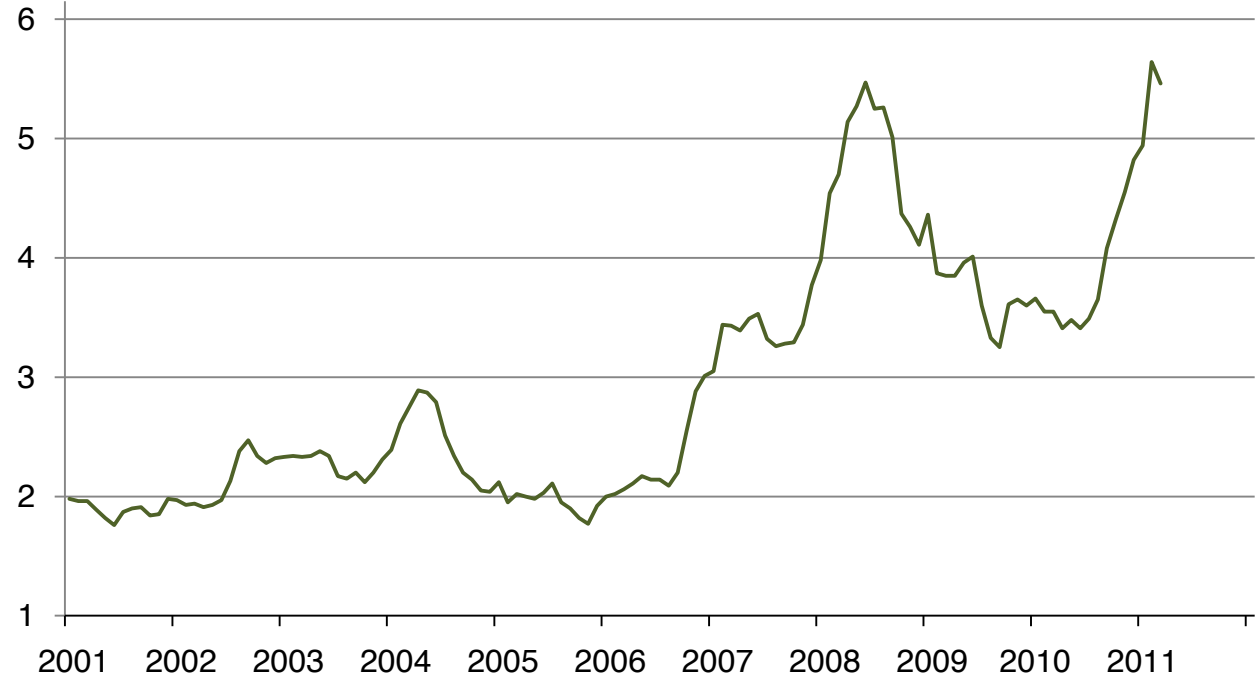
⁹ Also referred to as table eggs.

¹⁰ Live weight equivalent price is used when actual live weight price is not available.

¹¹ Beginning January 2011, price reflects FOB shipping point basis. Prior year price reflects delivered basis.

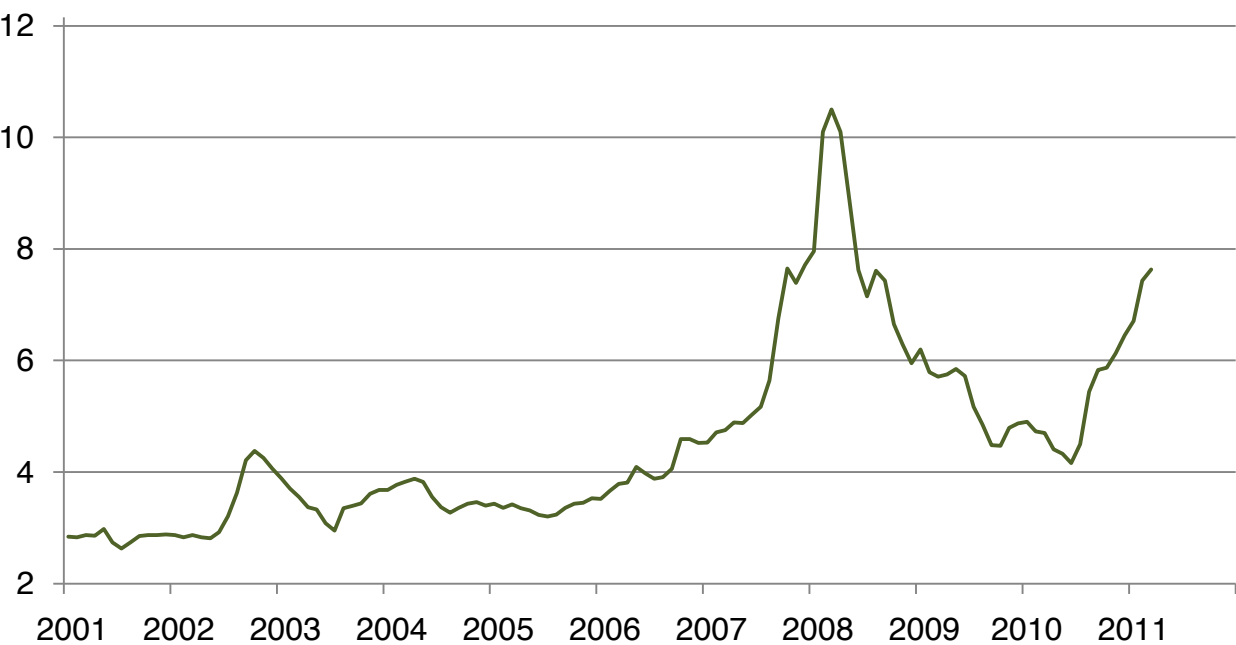
Prices Received for Corn by Month – United States

Dollars per bushel



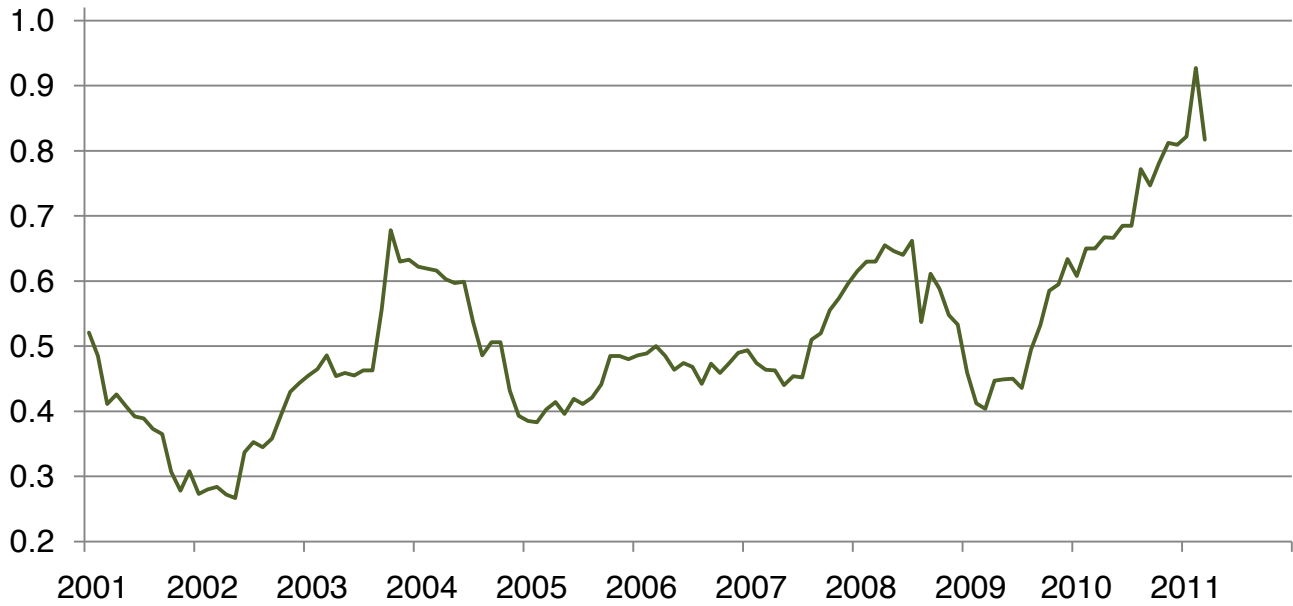
Prices Received for Wheat by Month – United States

Dollars per bushel



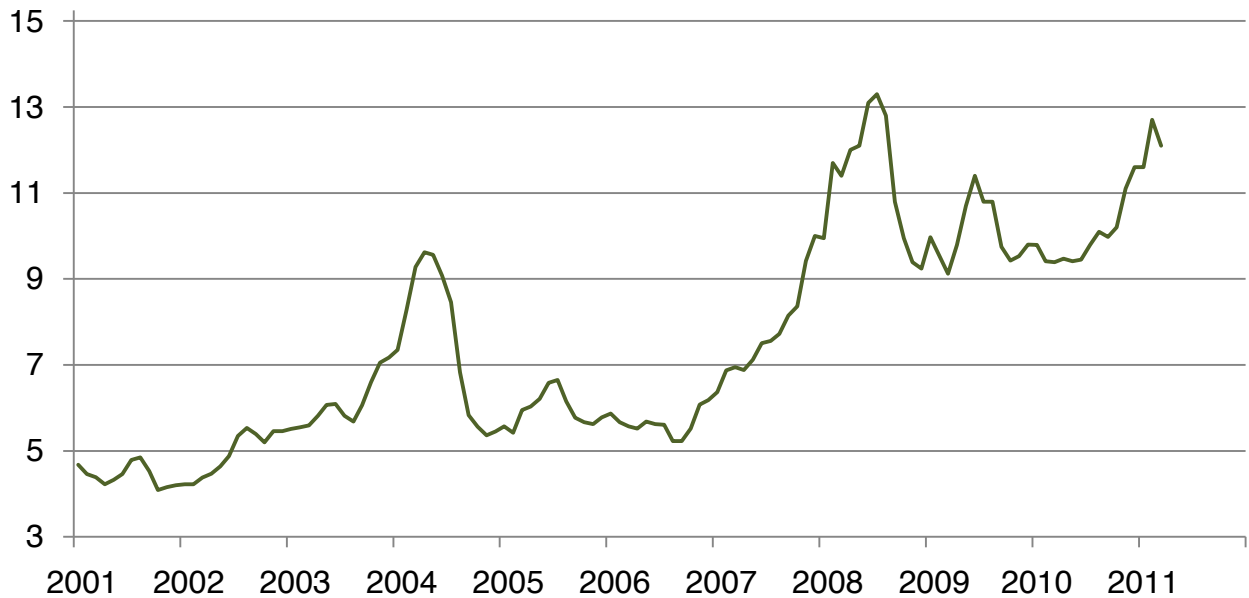
Prices Received for Upland Cotton by Month – United States

Dollars per pound



Prices Received for Soybeans by Month – United States

Dollars per bushel



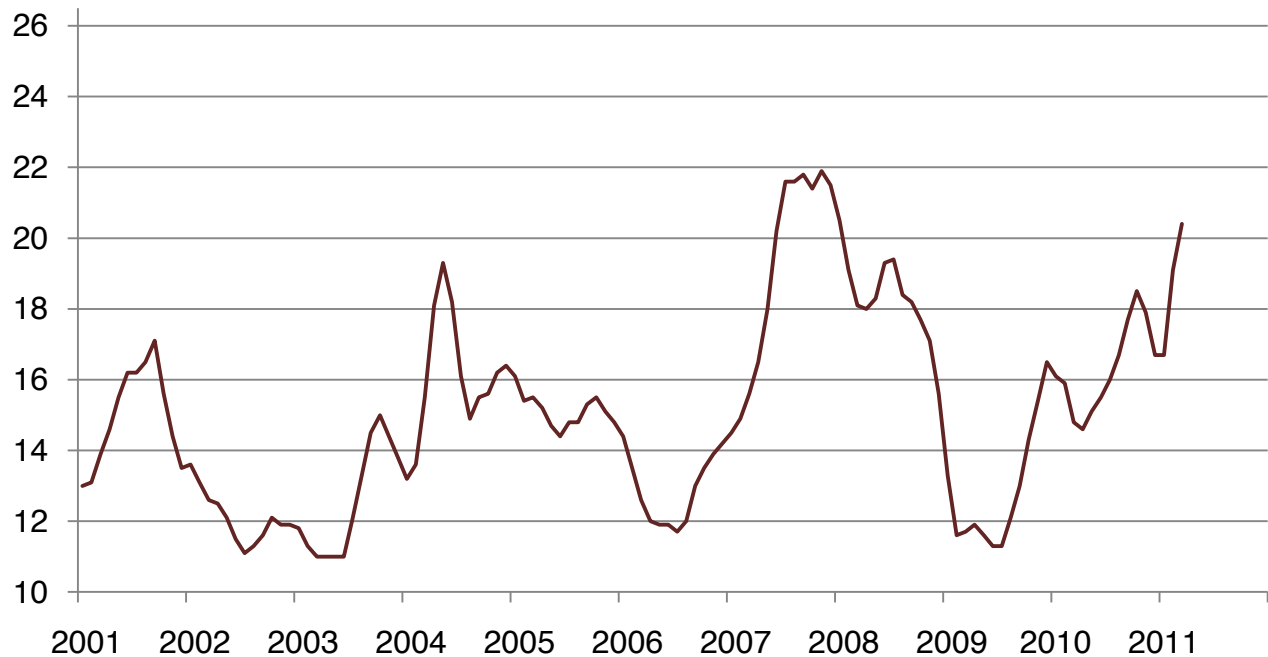
Prices Received for Cattle by Month – United States

Dollars per cwt



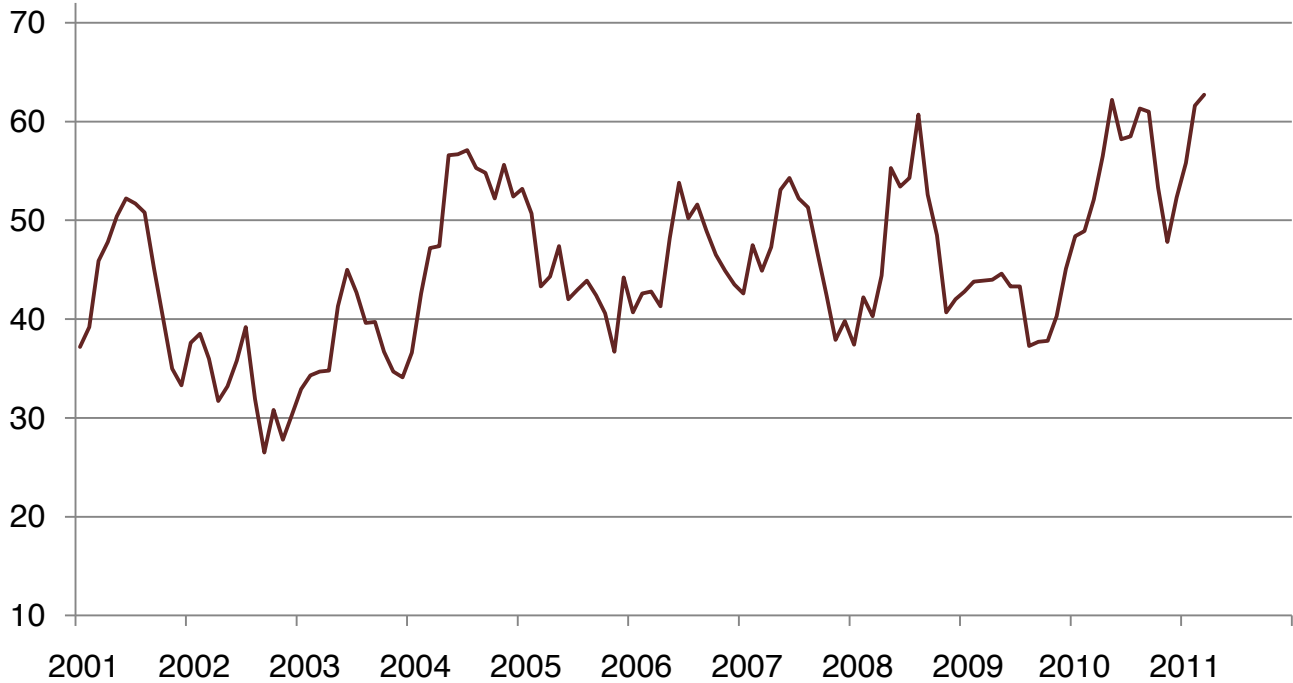
Prices Received for Milk by Month – United States

Dollars per cwt



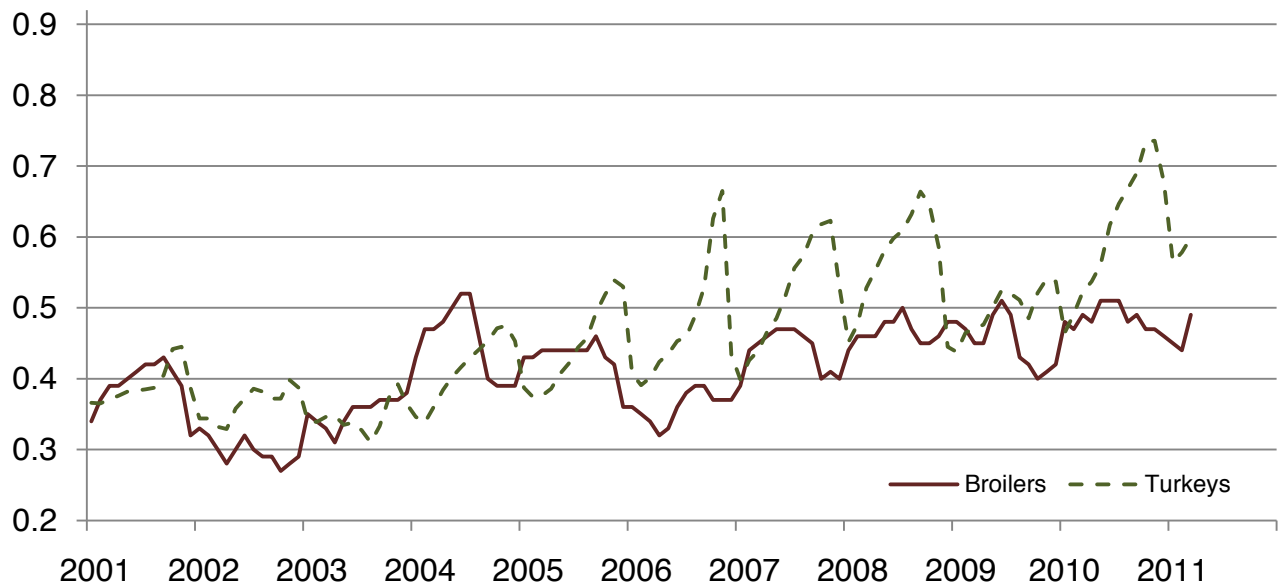
Prices Received for Hogs by Month – United States

Dollars per cwt



Prices Received for Poultry by Month – United States

Dollars per pound



Prices Received for All Wheat, Corn, and Soybeans by Month – United States: 2011 with Comparisons

[Current month prices are mid-month; prices for previous months and years are for the entire month. Blank data cells indicate estimation period has not yet begun]

Month	All wheat			Corn			Soybeans		
	2009	2010	Preliminary 2011	2009	2010	Preliminary 2011	2009	2010	Preliminary 2011
	(dollars per bushel)	(dollars per bushel)	(dollars per bushel)	(dollars per bushel)	(dollars per bushel)	(dollars per bushel)	(dollars per bushel)	(dollars per bushel)	(dollars per bushel)
January	6.20	4.90	6.71	4.36	3.66	4.94	9.97	9.79	11.60
February ..	5.79	4.73	7.43	3.87	3.55	5.64	9.54	9.41	12.70
March	5.71	4.70	7.63	3.85	3.55	5.46	9.12	9.39	12.10
April	5.75	4.41		3.85	3.41		9.79	9.47	
May	5.85	4.33		3.96	3.48		10.70	9.41	
June	5.72	4.16		4.01	3.41		11.40	9.45	
July	5.17	4.50		3.60	3.49		10.80	9.79	
August	4.85	5.44		3.33	3.65		10.80	10.10	
September ..	4.48	5.83		3.25	4.08		9.75	9.98	
October	4.47	5.87		3.61	4.32		9.43	10.20	
November	4.79	6.13		3.65	4.55		9.53	11.10	
December	4.87	6.45		3.60	4.82		9.80	11.60	

Prices Received for Beef Cattle and All Hogs by Month – United States: 2011 with Comparisons

[Current month prices are mid-month; prices for previous months and years are for the entire month. Blank data cells indicate estimation period has not yet begun. Price data source is United States Department of Agriculture's Agricultural Marketing Service]

Month	Beef cattle ¹			All hogs ²		
	2009	2010	Preliminary 2011	2009	2010	Preliminary 2011
	(dollars per cwt)	(dollars per cwt)	(dollars per cwt)	(dollars per cwt)	(dollars per cwt)	(dollars per cwt)
January	80.10	82.30	107.00	42.80	48.40	55.80
February	78.90	85.70	108.00	43.80	48.90	61.60
March	79.10	90.40	113.00	43.90	52.10	62.70
April	83.80	95.60		44.00	56.50	
May	83.20	94.70		44.60	62.20	
June	80.10	90.40		43.30	58.20	
July	80.90	91.70		43.30	58.50	
August	80.40	93.50		37.30	61.30	
September	80.50	94.10		37.70	61.00	
October	79.20	93.10		37.80	53.30	
November	79.60	94.00		40.30	47.80	
December	78.50	98.10		45.10	52.30	

¹ Cows and steers & heifers.

² Barrows & gilts and sows.

Prices Received for All Wheat – States and United States: March 2011 with Comparisons

State	March 2010	February 2011	Preliminary March 2011
	(dollars per bushel)	(dollars per bushel)	(dollars per bushel)
Arizona	(D)	(D)	(D)
Arkansas	4.26	(D)	(D)
California	(D)	6.47	(D)
Colorado	4.37	6.88	6.79
Idaho	5.02	6.72	7.00
Illinois	4.18	7.64	6.40
Indiana	4.17	7.77	6.19
Kansas	4.34	7.99	7.05
Michigan	4.68	6.80	6.20
Minnesota	4.56	6.78	8.47
Missouri	3.80	7.47	6.00
Montana	5.21	6.52	7.92
Nebraska	4.07	7.24	6.30
North Carolina	4.67	(D)	(D)
North Dakota	4.69	8.30	8.37
Ohio	4.36	6.87	5.45
Oklahoma	4.03	7.65	7.00
Oregon	4.63	6.79	6.91
South Dakota	4.95	8.13	8.34
Texas	5.09	8.37	7.24
Washington	4.84	7.67	7.25
United States	4.70	7.43	7.63

(D) Withheld to avoid disclosing data for individual operations.

Prices Received for Winter Wheat – States and United States: March 2011 with Comparisons

State	March 2010	February 2011	Preliminary March 2011
	(dollars per bushel)	(dollars per bushel)	(dollars per bushel)
Arkansas	4.26	(D)	(D)
California	(D)	6.47	(D)
Colorado	4.37	6.92	6.79
Idaho	4.55	6.23	6.50
Illinois	4.18	7.64	6.40
Indiana	4.17	7.77	6.19
Kansas	4.34	7.99	7.05
Michigan	4.68	6.80	6.20
Minnesota	4.56	5.44	5.60
Missouri	3.80	7.47	6.00
Montana	4.76	5.98	6.86
Nebraska	4.07	7.24	6.30
North Carolina	4.67	(D)	(D)
North Dakota	3.76	6.51	6.55
Ohio	4.36	6.87	5.45
Oklahoma	4.03	7.65	7.00
Oregon	4.56	6.76	6.85
South Dakota	4.53	7.21	6.83
Texas	5.09	8.37	7.24
Washington	4.45	7.24	6.71
United States	4.45	7.03	6.82

(D) Withheld to avoid disclosing data for individual operations.

Prices Received for Durum Wheat – States and United States: March 2011 with Comparisons

State	March 2010	February 2011	Preliminary March 2011
	(dollars per bushel)	(dollars per bushel)	(dollars per bushel)
Arizona	(D)	(D)	(D)
California	(D)	(S)	(S)
Idaho	(D)	(D)	(D)
Montana	5.25	7.00	7.16
North Dakota	4.32	8.58	8.80
United States	4.57	8.43	8.58

(D) Withheld to avoid disclosing data for individual operations.

(S) Insufficient number of reports to establish an estimate.

Prices Received for Spring Wheat – States and United States: March 2011 with Comparisons

State	March 2010	February 2011	Preliminary March 2011
	(dollars per bushel)	(dollars per bushel)	(dollars per bushel)
Colorado	(D)	(D)	(S)
Idaho	5.51	7.48	7.60
Minnesota	4.56	6.80	8.50
Montana	5.77	7.13	9.24
North Dakota	4.80	8.29	8.40
Oregon	5.06	7.06	7.30
South Dakota	5.72	8.52	8.99
Washington	5.73	8.83	8.85
United States	5.04	7.70	8.61

(D) Withheld to avoid disclosing data for individual operations.

(S) Insufficient number of reports to establish an estimate.

Prices Received for All Barley – States and United States: March 2011 with Comparisons

State	March 2010	February 2011	Preliminary March 2011
	(dollars per bushel)	(dollars per bushel)	(dollars per bushel)
California	(S)	(S)	(S)
Colorado	(D)	4.08	(S)
Idaho	4.71	4.26	4.02
Minnesota	(D)	(D)	(D)
Montana	4.41	3.99	5.00
North Dakota	3.99	3.84	4.77
Oregon	3.03	4.21	4.60
Utah	2.95	4.49	4.80
Washington	2.83	4.60	4.94
Wyoming	(D)	(D)	(D)
United States	4.22	3.97	4.58

(D) Withheld to avoid disclosing data for individual operations.

(S) Insufficient number of reports to establish an estimate.

Prices Received for Malting Barley – States: March 2011 with Comparisons

State	March 2010	February 2011	Preliminary March 2011
	(dollars per bushel)	(dollars per bushel)	(dollars per bushel)
Idaho	4.90	4.23	4.00
Minnesota	(D)	(D)	(D)
Montana	4.49	4.03	5.17
North Dakota	4.16	4.11	4.95
Wyoming	(D)	(D)	(D)

(D) Withheld to avoid disclosing data for individual operations.

Prices Received for Feed Barley – States: March 2011 with Comparisons

State	March 2010	February 2011	Preliminary March 2011
	(dollars per bushel)	(dollars per bushel)	(dollars per bushel)
Idaho	2.96	4.60	4.40
Minnesota	2.26	3.51	(D)
Montana	2.41	3.77	4.19
North Dakota	2.63	3.31	4.05
Wyoming	(D)	(S)	(S)

(D) Withheld to avoid disclosing data for individual operations.

(S) Insufficient number of reports to establish an estimate.

Prices Received for Corn – States and United States: March 2011 with Comparisons

State	March 2010	February 2011	Preliminary March 2011
	(dollars per bushel)	(dollars per bushel)	(dollars per bushel)
Colorado	3.62	5.36	5.29
Illinois	3.53	5.86	5.60
Indiana	3.62	5.77	5.63
Iowa	3.61	5.60	5.45
Kansas	3.52	6.11	5.80
Kentucky	3.87	5.60	5.40
Michigan	3.35	5.88	5.65
Minnesota	3.41	5.31	5.15
Missouri	3.64	5.63	5.40
Nebraska	3.60	5.49	5.30
North Carolina	4.19	6.44	6.37
North Dakota	3.15	5.36	5.25
Ohio	3.50	5.90	5.59
Pennsylvania	3.92	6.82	6.67
South Dakota	3.13	5.32	5.30
Tennessee	3.88	5.87	5.65
Texas	4.13	5.82	5.35
Wisconsin	3.56	5.59	5.43
United States	3.55	5.64	5.46

Prices Received for Soybeans – States and United States: March 2011 with Comparisons

State	March 2010	February 2011	Preliminary March 2011
	(dollars per bushel)	(dollars per bushel)	(dollars per bushel)
Arkansas	9.25	12.80	12.50
Illinois	9.52	12.90	12.30
Indiana	9.70	12.90	12.40
Iowa	9.27	12.60	12.20
Kansas	9.24	13.20	12.30
Kentucky	9.66	12.60	12.30
Louisiana	(D)	12.50	(D)
Michigan	9.40	12.30	12.00
Minnesota	9.08	12.10	11.50
Mississippi	8.88	12.30	12.30
Missouri	9.44	12.40	12.10
Nebraska	9.22	12.40	12.00
North Carolina	9.55	13.30	12.50
North Dakota	9.05	12.50	11.90
Ohio	9.73	12.60	12.00
South Dakota	9.00	12.60	12.10
Tennessee	9.43	12.80	12.50
Wisconsin	9.33	12.90	12.00
United States	9.39	12.70	12.10

(D) Withheld to avoid disclosing data for individual operations.

Prices Received for Oats – States and United States: March 2011 with Comparisons

State	March 2010	February 2011	Preliminary March 2011
	(dollars per bushel)	(dollars per bushel)	(dollars per bushel)
Illinois	(D)	(D)	(D)
Iowa	1.97	2.96	3.10
Michigan	2.63	3.79	3.70
Minnesota	2.33	3.12	2.95
Montana	2.53	3.13	(S)
Nebraska	(D)	3.16	3.15
New York	(D)	(D)	(D)
North Dakota	1.73	3.34	(D)
Oregon	(S)	(D)	(S)
Pennsylvania	2.82	3.99	3.90
South Dakota	2.14	3.62	3.00
Texas	(S)	(S)	(S)
Wisconsin	2.00	3.12	2.90
United States	2.29	3.27	3.12

(D) Withheld to avoid disclosing data for individual operations.

(S) Insufficient number of reports to establish an estimate.

Prices Received for Sorghum Grain – States and United States: March 2011 with Comparisons

State	March 2010	February 2011	Preliminary March 2011
	(dollars per cwt)	(dollars per cwt)	(dollars per cwt)
Arkansas	4.36	(S)	(S)
Illinois	(D)	12.40	11.80
Kansas	5.53	10.80	9.95
Louisiana	(S)	(D)	(S)
Missouri	(S)	11.40	10.40
Nebraska	5.66	10.60	10.10
Oklahoma	5.40	10.80	9.66
Texas	5.79	11.00	10.70
United States	5.68	10.90	10.10

(D) Withheld to avoid disclosing data for individual operations.

(S) Insufficient number of reports to establish an estimate.

Prices Received for Dry Beans – States and United States: March 2011 with Comparisons

State	March 2010	February 2011	Preliminary March 2011
	(dollars per cwt)	(dollars per cwt)	(dollars per cwt)
California	(D)	47.90	51.20
Colorado	31.50	27.50	27.70
Idaho	30.80	28.70	32.50
Michigan	35.60	34.10	(D)
Minnesota	32.10	29.10	32.00
Nebraska	30.80	29.30	32.70
North Dakota	26.30	25.60	26.80
United States	29.70	28.60	30.30

(D) Withheld to avoid disclosing data for individual operations.

Prices Received for Peanuts (In-Shell) – States and United States: March 2011 with Comparisons

State	March 2010	February 2011	Preliminary March 2011
	(dollars per pound)	(dollars per pound)	(dollars per pound)
Alabama	0.197	0.217	0.218
Florida	0.196	0.224	0.218
Georgia	0.197	0.224	0.223
Mississippi	(S)	0.220	0.217
New Mexico	(D)	0.242	(D)
North Carolina	0.237	0.254	0.260
Oklahoma	0.211	(D)	0.225
South Carolina	0.222	0.247	0.253
Texas	0.219	0.254	0.274
Virginia	0.232	0.232	0.255
United States	0.206	0.230	0.234

(D) Withheld to avoid disclosing data for individual operations.

(S) Insufficient number of reports to establish an estimate.

Prices Received for Sunflowers – States and United States: March 2011 with Comparisons

State	March 2010	February 2011	Preliminary March 2011
	(dollars per cwt)	(dollars per cwt)	(dollars per cwt)
Colorado	(D)	(D)	(S)
Kansas	15.90	28.10	28.10
Minnesota	16.40	26.60	(S)
North Dakota	16.50	27.20	28.10
South Dakota	13.90	28.40	28.70
United States	15.80	27.40	28.20

(D) Withheld to avoid disclosing data for individual operations.

(S) Insufficient number of reports to establish an estimate.

Prices Received for Canola – States and United States: March 2011 with Comparisons

State	March 2010	February 2011	Preliminary March 2011
	(dollars per cwt)	(dollars per cwt)	(dollars per cwt)
Minnesota	(D)	(D)	(S)
North Dakota	16.50	20.40	21.00
United States	16.50	20.40	21.00

(D) Withheld to avoid disclosing data for individual operations.

(S) Insufficient number of reports to establish an estimate.

Prices Received for Flaxseed – States and United States: March 2011 with Comparisons

State	March 2010	February 2011	Preliminary March 2011
	(dollars per bushel)	(dollars per bushel)	(dollars per bushel)
North Dakota	8.82	15.30	13.10
United States	8.82	15.30	13.10

Prices Received for Upland Cotton and Cottonseed – States and United States: March 2011 with Comparisons

[Cottonseed marketing year August - February]

State	Cotton, Upland			Cottonseed		
	March 2010	February 2011	Preliminary March 2011	March 2010	February 2011	Preliminary March 2011
	(dollars per pound)	(dollars per pound)	(dollars per pound)	(dollars per ton)	(dollars per ton)	(dollars per ton)
Alabama	0.641	0.811	(D)	(NA)	149.00	(NA)
Arizona	0.665	1.070	(D)	(NA)	(S)	(NA)
Arkansas	0.590	0.826	(D)	(NA)	(S)	(NA)
California	0.739	(D)	(S)	(NA)	(D)	(NA)
Georgia	0.692	1.020	(D)	(NA)	141.00	(NA)
Louisiana	0.633	0.777	(D)	(NA)	(S)	(NA)
Mississippi	0.652	0.778	(D)	(NA)	(S)	(NA)
North Carolina	0.667	0.971	(D)	(NA)	(S)	(NA)
Tennessee	0.660	0.895	0.833	(NA)	(S)	(NA)
Texas	0.625	0.899	0.818	(NA)	150.00	(NA)
United States	0.650	0.927	0.817	(NA)	172.00	(NA)

(D) Withheld to avoid disclosing data for individual operations.

(NA) Not available.

(S) Insufficient number of reports to establish an estimate.

Prices Received and Marketings for Upland Cotton and Rice – United States: March 2011 with Comparisons

Item	March 2010	February 2011	Preliminary March 2011
Cotton, Upland			
Average price dollars/pound	0.650	0.927	0.817
Marketings ¹ 1,000 bales	588	1,082	(NA)
Rice, all			
Average price dollars/cwt	14.30	13.20	13.90
Marketings ² 1,000 cwt	16,292	14,895	(NA)
Rice, long			
Average price dollars/cwt	13.10	12.00	12.30
Marketings ² 1,000 cwt	12,248	11,750	(NA)
Rice, medium and short			
Average price dollars/cwt	17.90	17.70	20.30
Marketings ² 1,000 cwt	4,044	3,145	(NA)

(NA) Not available.

¹ Marketings based on a survey of cotton buyers in the major producing States - Alabama, Arizona, Arkansas, California, Georgia, Louisiana, Mississippi, North Carolina, Tennessee, and Texas.

² Purchases by private firms and rice (rough equivalent) shipped by cooperatives.

Prices Received for Hay by Type – States and United States: March 2011 with Comparisons

State	All hay			Alfalfa hay			Other hay		
	March 2010	February 2011	Preliminary March 2011	March 2010	February 2011	Preliminary March 2011	March 2010	February 2011	Preliminary March 2011
	(dollars per ton)	(dollars per ton)	(dollars per ton)	(dollars per ton)	(dollars per ton)	(dollars per ton)	(dollars per ton)	(dollars per ton)	(dollars per ton)
Arizona	115.00	144.00	154.00	115.00	145.00	155.00	110.00	125.00	125.00
California	114.00	159.00	192.00	118.00	170.00	209.00	98.00	109.00	114.00
Colorado	120.00	132.00	137.00	120.00	135.00	140.00	120.00	105.00	115.00
Idaho	105.00	147.00	156.00	107.00	149.00	157.00	72.00	115.00	120.00
Illinois	125.00	131.00	135.00	130.00	145.00	145.00	92.00	90.00	90.00
Iowa	127.00	110.00	112.00	132.00	118.00	118.00	92.00	80.00	79.00
Kansas	98.00	104.00	107.00	105.00	115.00	115.00	67.00	70.00	75.00
Kentucky	98.00	93.00	98.00	140.00	140.00	140.00	80.00	75.00	75.00
Michigan	130.00	99.00	96.00	140.00	110.00	105.00	110.00	80.00	80.00
Minnesota	117.00	94.00	100.00	125.00	105.00	110.00	80.00	75.00	80.00
Missouri	67.00	68.00	74.00	140.00	140.00	135.00	50.00	60.00	60.00
Montana	85.00	77.00	79.00	85.00	78.00	80.00	82.00	74.00	74.00
Nebraska	77.00	76.00	76.00	83.00	80.00	80.00	62.00	65.00	65.00
Nevada	101.00	142.00	150.00	101.00	143.00	151.00	99.00	120.00	129.00
New Mexico	143.00	162.00	161.00	147.00	165.00	164.00	120.00	133.00	134.00
New York	119.00	112.00	116.00	155.00	144.00	140.00	110.00	105.00	110.00
North Dakota	59.00	59.00	57.00	68.00	64.00	66.00	48.00	45.00	47.00
Ohio	120.00	120.00	111.00	154.00	160.00	152.00	91.00	85.00	85.00
Oklahoma	79.00	112.00	106.00	124.00	147.00	143.00	72.00	74.00	74.00
Oregon	137.00	160.00	168.00	116.00	160.00	168.00	165.00	160.00	170.00
Pennsylvania	124.00	128.00	130.00	160.00	163.00	159.00	115.00	113.00	118.00
South Dakota	87.00	80.00	81.00	89.00	83.00	83.00	75.00	70.00	70.00
Texas	127.00	124.00	125.00	183.00	190.00	190.00	115.00	112.00	112.00
Utah	100.00	112.00	114.00	100.00	113.00	116.00	105.00	99.00	101.00
Washington	129.00	143.00	151.00	115.00	130.00	140.00	170.00	170.00	170.00
Wisconsin	112.00	96.00	97.00	120.00	100.00	100.00	85.00	70.00	75.00
Wyoming	89.00	90.00	92.00	90.00	90.00	93.00	85.00	90.00	90.00
United States	107.00	116.00	124.00	113.00	127.00	136.00	95.30	93.90	97.30

Prices Received for Apples – States and United States: March 2011 with Comparisons

[Equivalent packinghouse-door returns for California, Michigan, New York, and Washington. Prices at point of first sale for other States]

State	Apples, fresh use		
	March 2010	February 2011	Preliminary March 2011
	(dollars per pound)	(dollars per pound)	(dollars per pound)
California	(NA)	(NA)	(NA)
Michigan	0.205	0.305	0.295
New York	0.200	0.247	0.260
Ohio	0.348	0.330	0.400
Pennsylvania	0.306	0.214	(S)
Virginia	0.295	0.340	0.350
Washington	0.320	0.301	0.295
United States	0.295	0.285	0.292

(NA) Not available.

(S) Insufficient number of reports to establish an estimate.

Prices Received for Citrus Fruits by Utilization – States and United States: March 2010

[Net pounds per box: grapefruit in California-67, Florida-85, Texas-80; lemons-76; oranges in California-75, Florida-90, Texas-85; tangelos in Florida-90; tangerines and mandarins in Arizona and California-75, Florida-95]

Commodity, State, and type	FOB packed fresh	Equivalent returns					
		Packinghouse-door			On-tree		
		All	Fresh	Process	All	Fresh	Process
	(dollars per box)	(dollars per box)	(dollars per box)	(dollars per box)	(dollars per box)	(dollars per box)	(dollars per box)
Grapefruit							
California	19.40	9.60	9.60	(S)	6.50	6.50	(S)
Florida	22.90	8.63	13.58	6.12	5.81	11.18	3.09
White	24.00	7.38	14.65	5.90	4.64	12.00	3.15
Colored	22.70	9.32	13.35	6.30	6.46	11.00	3.05
Texas	24.60	7.98	14.35	1.60	6.53	12.85	0.20
United States	23.00	8.55	13.51	5.58	5.93	11.25	2.74
Lemons							
California	37.70	14.43	27.01	(D)	8.68	21.26	(D)
United States	37.70	14.43	27.01	(D)	8.68	21.26	(D)
Oranges							
California							
Navel and miscellaneous	21.70	11.89	13.31	(D)	9.24	10.66	(D)
Florida							
Valencia	22.70	9.44	12.80	9.25	6.83	10.00	6.65
United States	22.10	10.59	13.48	8.63	7.97	10.83	6.03
Tangerines and mandarins							
Arizona	(D)	(D)	(D)	(D)	(D)	(D)	(D)
California	(D)	(D)	(D)	(D)	(D)	(D)	(D)
Florida	26.90	11.64	14.90	3.80	7.54	10.90	-0.55
United States	30.30	15.68	19.97	2.46	12.07	16.40	-1.26

(D) Withheld to avoid disclosing data for individual operations.

(S) Insufficient number of reports to establish an estimate.

Prices Received for Citrus Fruits by Utilization – States and United States: February 2011

[Net pounds per box: grapefruit in California-80, Florida-85, Texas-80; lemons-80; oranges in California-80, Florida-90, Texas-85; tangelos in Florida-90; tangerines and mandarins in Arizona and California-80, Florida-95]

Commodity, State, and type	FOB packed fresh	Equivalent returns					
		Packinghouse-door			On-tree		
		All	Fresh	Process	All	Fresh	Process
	(dollars per box)	(dollars per box)	(dollars per box)	(dollars per box)	(dollars per box)	(dollars per box)	(dollars per box)
Grapefruit							
California	12.80	6.40	6.40	(D)	4.30	4.30	(D)
Florida	22.10	8.83	12.33	5.78	6.34	10.14	3.03
White	24.60	9.74	14.70	6.85	7.33	12.55	4.30
Colored	21.50	8.50	11.70	5.30	5.98	9.50	2.45
Texas	22.60	8.46	12.30	1.60	6.96	10.75	0.20
United States	22.10	8.63	12.16	4.34	6.58	10.30	2.05
Lemons							
Arizona	(D)	(D)	(D)	(D)	(D)	(D)	(D)
California	29.40	10.41	18.50	(D)	4.54	12.63	(D)
United States	29.40	10.61	18.51	(D)	4.74	12.64	(D)
Oranges							
California							
Navel and miscellaneous	20.70	9.44	12.06	(D)	6.99	9.65	(D)
Florida							
Early and mids	22.10	8.64	12.10	8.55	6.14	9.35	6.05
United States	20.80	8.85	12.06	7.90	6.36	9.62	5.39
Tangelos							
Florida	21.40	8.80	11.00	8.25	5.61	7.85	5.05
Tangerines and mandarins							
Arizona	(D)	(D)	(D)	(D)	(D)	(D)	(D)
California	(D)	(D)	(D)	(D)	(D)	(D)	(D)
Florida	30.60	14.28	18.35	8.00	10.78	14.85	4.50
United States	30.40	17.93	21.42	3.94	14.94	18.62	0.19

(D) Withheld to avoid disclosing data for individual operations.

Prices Received for Citrus Fruits by Utilization – States and United States: March 2011

[Net pounds per box: grapefruit in California-80, Florida-85, Texas-80; lemons-80; oranges in California-80, Florida-90, Texas-85; tangelos in Florida-90; tangerines and mandarins in Arizona and California-80, Florida-95]

Commodity, State, and type	FOB packed fresh	Equivalent returns					
		Packinghouse-door			On-tree		
		All	Fresh	Process	All	Fresh	Process
	(dollars per box)	(dollars per box)	(dollars per box)	(dollars per box)	(dollars per box)	(dollars per box)	
Grapefruit							
California	17.00	10.60	10.60	(D)	8.50	8.50	(D)
Florida	21.70	8.27	11.92	6.50	5.70	9.73	3.75
White	24.00	7.68	14.10	5.90	5.21	11.95	3.35
Colored	21.20	8.51	11.40	6.80	5.90	9.20	3.95
Texas	24.00	8.75	13.70	1.60	7.26	12.15	0.20
United States	23.00	8.52	12.98	4.71	6.48	11.19	2.46
Lemons							
Arizona	(D)	(D)	(D)	(D)	(D)	(D)	(D)
California	29.70	11.88	18.80	(D)	6.01	12.93	(D)
United States	29.70	11.71	18.79	(D)	5.84	12.92	(D)
Oranges							
California							
Navel and miscellaneous	19.40	8.23	10.76	(D)	5.78	8.35	(D)
Valencia	(D)	(D)	(D)	(D)	(D)	(D)	(D)
Florida							
Early and mids	21.70	9.26	11.70	9.00	6.74	8.95	6.50
Valencia	23.00	9.66	13.00	9.50	7.06	10.30	6.90
United States	20.10	9.20	11.39	7.66	6.69	8.96	5.08
Tangerines and mandarins							
Arizona	(S)	(S)	(S)	(S)	(S)	(S)	(S)
California	(D)	(D)	(D)	(D)	(D)	(D)	(D)
Florida	27.60	13.45	15.35	8.60	9.95	11.85	5.10
United States	27.50	16.10	18.53	3.24	13.15	15.74	-0.60

(D) Withheld to avoid disclosing data for individual operations.

(S) Insufficient number of reports to establish an estimate.

Prices Received for Potatoes – States and United States: March 2011 with Comparisons

State	March 2010	February 2011	Preliminary March 2011
	(dollars per cwt)	(dollars per cwt)	(dollars per cwt)
California			
Spring ¹	(S)	(S)	(S)
Fall	8.35	9.70	10.50
All ²	8.35	9.70	10.50
Colorado			
Fresh ³	5.50	13.90	(D)
All ²	5.60	13.40	13.90
Florida	36.70	(S)	26.50
Idaho			
Fresh ³	2.90	9.10	(D)
Processing	7.80	6.50	(D)
All ²	5.35	7.60	8.75
Maine	10.60	10.30	10.80
Michigan	11.90	11.90	12.70
Minnesota	8.70	6.65	(D)
New York	12.40	14.00	14.10
North Carolina	(S)	(S)	(S)
North Dakota			
Fresh ³	8.85	12.10	(D)
Processing	10.30	7.90	(D)
All ²	9.90	9.30	9.15
Oregon	8.10	9.05	9.95
Texas	(S)	(S)	(S)
Virginia	(S)	(S)	(S)
Washington			
Processing	8.05	7.00	(D)
All ²	7.80	8.70	8.75
Wisconsin			
Fresh ³	5.20	12.70	(D)
Processing	11.30	10.10	(D)
All ²	9.75	11.00	11.50
United States			
Fresh ³	5.26	12.07	(D)
Processing	8.86	7.63	(D)
All ²	7.42	9.26	9.95

(D) Withheld to avoid disclosing data for individual operations.

(S) Insufficient number of reports to establish an estimate.

¹ Beginning in 2010, winter and summer potatoes included in spring potatoes.

² Average price of potatoes sold for all uses, including table stock, processing, seed, and livestock feed.

³ Fresh market prices only. Includes table stock prices.

Prices Received for All Milk – States and United States: March 2011 with Comparisons

[Before deduction for hauling. Includes quality, quantity, and other premiums. Excludes hauling subsidies]

State	March 2010		February 2011		Preliminary March 2011	
	Price	Fat test	Price	Fat test	Price	Fat test
	(dollars per cwt)	(percent)	(dollars per cwt)	(percent)	(dollars per cwt)	(percent)
Arizona	14.30	3.51	18.30	3.62	19.90	3.55
California	13.32	3.68	18.01	3.77	18.40	3.71
Colorado	15.00	3.52	18.90	3.66	20.20	3.58
Florida	19.60	3.56	21.90	3.71	24.00	3.65
Idaho	13.10	3.64	17.90	3.75	20.00	3.72
Illinois	15.20	3.75	19.50	3.82	21.00	3.79
Indiana	16.00	3.64	19.70	3.78	21.50	3.73
Iowa	15.20	3.66	19.30	3.76	20.50	3.72
Kansas	16.00	3.72	20.20	3.87	22.00	3.82
Michigan	15.70	3.62	19.20	3.74	21.20	3.71
Minnesota	14.60	3.72	19.50	3.80	20.40	3.76
Missouri	15.50	3.66	18.40	3.79	20.20	3.77
New Mexico	14.50	3.56	18.50	3.76	19.70	3.65
New York	16.10	3.73	19.60	3.82	21.30	3.79
Ohio	16.60	3.78	20.40	3.88	21.90	3.81
Oregon	15.40	3.72	20.10	3.85	22.10	3.80
Pennsylvania	17.00	3.70	20.70	3.80	22.50	3.75
Texas	15.80	3.75	19.90	3.95	21.00	3.89
Utah	14.90	3.68	18.40	3.78	19.50	3.75
Vermont	16.30	3.77	20.10	3.86	21.50	3.82
Virginia	18.10	3.61	21.30	3.82	23.00	3.79
Washington	14.40	3.72	19.40	3.85	21.10	3.82
Wisconsin	14.70	3.68	19.20	3.77	21.00	3.75
United States	14.80	3.68	19.10	3.79	20.40	3.74

Prices Received for Milk Cows – States and United States: January 2011 with Comparisons

[Animals sold for dairy herd replacement only. Prices estimated in January, April, July, and October]

State	January 2010 (dollars per head)	October 2010 (dollars per head)	January 2011 (dollars per head)
Arizona	1,350	1,400	1,380
California	1,300	1,300	1,200
Colorado	1,250	1,350	1,330
Florida	1,360	1,400	1,360
Idaho	1,350	1,350	1,200
Illinois	1,400	1,320	1,330
Indiana	1,300	1,340	1,350
Iowa	1,250	1,250	1,250
Kansas	1,250	1,250	1,200
Michigan	1,400	1,400	1,450
Minnesota	1,290	1,280	1,310
Missouri	1,100	1,190	1,130
New Mexico	1,360	1,370	1,320
New York	1,300	1,300	1,300
Ohio	1,350	1,360	1,360
Oregon	1,350	1,300	1,290
Pennsylvania	1,400	1,400	1,400
Texas	1,300	1,260	1,200
Utah	1,100	1,150	1,140
Vermont	1,350	1,350	1,400
Virginia	1,260	1,340	1,360
Washington	1,300	1,300	1,300
Wisconsin	1,460	1,410	1,430
United States	1,340	1,330	1,300

Commodity Parity Prices and Price as Percent of Parity Price – United States: March 2011 with Comparisons

[Parity prices are computed under the provisions of Title III, Subtitle a, Section 301 (a) of the Agricultural Adjustment Act of 1938 as amended by the Agricultural Acts of 1948, 1949, and 1956. See January *Agricultural Prices* for details on adjusted base price and parity price computations. Parity data not available for blank cells. Primary source of data for livestock and milk prices is United States Department of Agriculture's Agricultural Marketing Service]

Commodity and unit	Adjusted base price	Parity price			Price as percent of parity		
		March 2010	February 2011	March 2011	March 2010	February 2011	March 2011
	(dollars)	(dollars)	(dollars)	(dollars)	(percent)	(percent)	(percent)
Basic commodities							
All wheat	0.608	14.60	15.90	16.10	32	47	47
Rice	1.63	33.80	42.70	43.20	42	31	32
Corn	0.384	9.11	10.10	10.20	39	56	54
Cotton							
Upland	0.071	2.06	1.86	1.88	32	50	43
American Pima	0.129	3.23	3.38	3.42	36	35	34
Peanuts	0.027	0.710	0.707	0.715	29	33	33
Designated nonbasic							
All milk, to plants ¹	1.82	44.80	47.60	48.20	35	41	46
Honey, extracted ²	0.134	3.11	3.51	3.55	46	41	41
Wool and mohair							
Wool	0.092	2.08	2.41	2.44	38	48	47
Mohair	0.324	8.40	8.48	8.58	32	41	41
Other nonbasic							
Apples, fresh ³	0.033	0.808	0.864	0.874	37	33	33
Barley	0.425	10.20	11.10	11.30	41	36	41
Canola	1.740	39.90	45.60	46.10	41	45	46
Cottonseed	15.40	370.00	403.00	408.00	41	43	42
Dry edible beans	2.92	70.50	76.40	77.30	42	37	39
Flaxseed	1.020	23.80	26.70	27.00	37	57	49
Oats	0.250	5.97	6.55	6.62	38	50	47
Potatoes	0.834	20.40	21.80	22.10	36	42	45
Sorghum grain	0.675	16.10	17.70	17.90	35	62	56
Soybeans	0.948	22.40	24.80	25.10	42	51	48
Sunflower, all	1.91	45.30	50.00	50.60	35	55	56
Citrus (equivalent on-tree)							
Grapefruit	0.663	15.90	17.40	17.60	37	38	37
Lemons	1.36	33.80	35.60	36.00	26	13	16
Oranges	0.686	16.20	18.00	18.20	49	35	37
Tangerines	1.43	34.00	37.40	37.90	36	40	35
Livestock and poultry							
Beef cattle	10.10	250.00	264.00	267.00	36	41	42
Calves	14.10	353.00	369.00	373.00	33	38	40
Hogs	5.51	136.00	144.00	146.00	38	43	43
Lambs	11.70	282.00	306.00	310.00	41	51	(NA)
Sheep	4.38	106.00	115.00	116.00	48	66	(NA)
Eggs ¹	0.091	2.23	2.38	2.41	47	37	32
Turkeys, live	0.056	1.370	1.470	1.480	38	39	40

(NA) Not available.

¹ Seasonally adjusted price as percentage of parity price.

² Wholesale extracted. Adjusted base price derived from state annual averages prices weighted by production. For 1982 through 1985 the national averages are the support prices.

³ Equivalent packinghouse-door returns for California, New York (apples only), Oregon (except peaches), and Washington. Price at point of first sale for other states.

Commodity Parity Prices – United States: March 2011 with Comparisons

[Parity prices are computed under the provisions of Title III, Subtitle a, Section 301 (a) of the Agricultural Adjustment Act of 1938 as amended by the Agricultural Acts of 1948, 1949, and 1956. See January *Agricultural Prices* for details on adjusted base price and parity price computations]

Commodity and unit	Adjusted base price	Parity price		
		March 2010	February 2011	March 2011
	(dollars)	(dollars)	(dollars)	(dollars)
Field crops and miscellaneous				
Hops pound	0.307	7.34	8.04	8.13
Mustard seed cwt	2.66	63.40	69.60	70.40
Rapeseed cwt	2.14	49.90	56.00	56.70
Rye bushel	0.492	11.60	12.90	13.00
Safflower cwt	1.94	47.70	50.80	51.40
Spearmint oil pound	1.44	34.80	37.70	38.10
Sweetpotatoes cwt	2.27	55.60	59.40	60.10
Tobacco				
Flue-cured, 11-14 pound	0.208	5.29	5.45	5.51
Fire-cured, 21-23 pound	0.293	7.30	7.67	7.76
Burley, 31 pound	0.214	5.56	5.60	5.67
Maryland, 32 pound	0.183	4.55	4.79	4.85
Dark air-cured, 35-37 pound	0.261	6.56	6.83	6.91
Pennsylvania seedleaf, 41 pound	0.191	4.75	5.00	5.06
Cigar binder, 51 pound	0.675	15.90	17.70	17.90
Noncitrus fruit				
Apples, processing ¹ ton	16.10	409.00	421.00	426.00
Apricots				
Fresh ² ton	114.00	2,640.00	2,980.00	3,020.00
Dried (California) ton	262.00	6,190.00	6,860.00	6,940.00
Avocados ² ton	198.00	5,170.00	5,180.00	5,240.00
Cherries				
Sweet ton	210.00	5,020.00	5,500.00	5,560.00
Tart pound	0.034	0.857	0.890	0.900
Cranberry ³ barrel	4.89	116.00	128.00	129.00
Dates ² (California) ton	183.00	4,820.00	4,790.00	4,850.00
Grapes				
Raisin variety ton	117.00	2,690.00	3,060.00	3,100.00
Other dried ton	65.40	1,630.00	1,710.00	1,730.00
Kiwifruit ton	94.40	2,330.00	2,470.00	2,500.00
Nectarines, fresh ² (California) ton	55.30	1,360.00	1,450.00	1,460.00
Olives, canning ³ (California) ton	87.40	2,320.00	2,290.00	2,310.00

See footnote(s) at end of table.

--continued

Commodity Parity Prices – United States: March 2011 with Comparisons (continued)

[Parity prices are computed under the provisions of Title III, Subtitle a, Section 301 (a) of the Agricultural Adjustment Act of 1938 as amended by the Agricultural Acts of 1948, 1949, and 1956. See January *Agricultural Prices* for details on adjusted base price and parity price computations]

Commodity and unit	Adjusted base price	Parity price			
		March 2010	February 2011	March 2011	
	(dollars)	(dollars)	(dollars)	(dollars)	
Noncitrus fruit - continued					
Papayas (Hawaii)	pound	0.046	1.13	1.13	1.22
Peaches					
Fresh ⁴	ton	83.00	2,030.00	2,040.00	2,200.00
Dried (California)	ton	57.30	1,590.00	1,600.00	1,520.00
Processing, excludes dried					
Clingstone ³ (California)	ton	33.70	825.00	829.00	892.00
Pears					
Fresh ⁴	ton	55.60	1,340.00	1,350.00	1,470.00
Dried ¹ (California)	ton	178.00	4,240.00	4,260.00	4,710.00
Plums (California)					
Fresh, equivalent on-tree	ton	60.20	1,490.00	1,500.00	1,590.00
Prunes, dried ¹ (California)	ton	147.00	3,570.00	3,590.00	3,890.00
Prunes and plums					
Fresh, excludes California ⁵	ton	63.80	1,550.00	1,550.00	1,690.00
Processing, excludes dried ¹	ton	25.70	649.00	652.00	681.00
Tree nuts ⁶					
Almonds	pound	0.209	4.94	4.97	5.53
Hazelnuts	ton	183.00	4,190.00	4,210.00	4,850.00
Pistachios	pound	0.194	4.65	4.67	5.14
Walnuts	ton	177.00	4,210.00	4,230.00	4,690.00
Vegetables, fresh ⁷					
Carrots ⁸	cwt	2.61	62.20	62.50	69.10
Cauliflower ⁸	cwt	4.26	106.00	106.00	113.00
Celery ⁸	cwt	2.05	51.20	51.40	54.30
Honeydew melons	cwt	2.17	56.50	56.80	57.50
Lettuce	cwt	2.35	57.50	57.80	62.20
Onions ⁸	cwt	1.57	37.20	37.40	41.60
Tomatoes	cwt	4.75	115.00	115.00	126.00

¹ Equivalent returns at processing plant door.

² Equivalent returns at packinghouse door.

³ Equivalent returns for bulk fruit at first delivery point.

⁴ Equivalent packinghouse-door returns for California, New York (apples only), Oregon (except peaches), and Washington. Price at point of first sale for other states.

⁵ Based on "as sold" prices for fresh fruit in all states.

⁶ Prices In-Shell basis except almonds which are shelled basis.

⁷ FOB shipping point prices.

⁸ Includes some processing.

Reliability of Prices Received Estimates

Definition: Prices received represent sales from producers to first buyers. They include all grades and qualities. The average commodity price from the survey multiplied by the total quantity marketed theoretically should give the total cash receipts for the commodity.

Survey procedures: Primary sales data used to determine grain prices were obtained from probability samples of about 1900 mills and elevators. These procedures ensure that virtually all grain moving into commercial channels has a chance of being included in the survey. Generally, States surveyed account for 90 percent or more of total United States production. Livestock prices are obtained from packers, stockyards, auctions, dealers, and market check data from AMS-USDA, private marketing organizations, and state commodity groups and agencies. Inter-farm sales of grain and livestock are not included since they represent very small percentages of the total marketings. Grain marketed for seed is also excluded. Fruit and vegetable prices are obtained from sample surveys and market check data from AMS-USDA, private marketing organizations, state agencies, and universities.

Summary and estimation procedures: Survey quantities sold are expanded by strata to state levels and used to weight average strata prices to a state average. State prices are then weighted to a United States price based on expanded marketings. Recommendations are prepared by the State Field Offices and reviewed by the Agricultural Statistics Board in Washington, D.C. State recommendations are reviewed for reasonableness with survey data, other States, and recent historic estimates.

Revisions: For most items, the current month's preliminary price represents a 3-5 day period around the 15th of the month. Previous month's prices represent actual dollars received for quantities sold during the entire month. Revisions are published in monthly issues of Agricultural Prices.

Reliability: United States price estimates based on probability surveys generally have a sampling error of less than one percent for the major commodities such as corn, wheat, soybeans, cotton, and rice. Current methods of summarization for non-probability commodities are not designed directly to calculate sampling errors. However, analytical measures approximate the United States relative sampling errors at around five percent. Any nonsampling errors are attributed to such things as the inability to obtain correct information, differences in interpreting questions or definitions, mistakes in coding or processing the data, etc. Efforts are made at each step in the survey process to minimize these nonsampling errors.

Prices Paid by Farmers

The March Index of Prices Paid for Commodities and Services, Interest, Taxes, and Farm Wage Rates (PPITW) at 199 (1990-1992=100), is up 1.0 percent from February 2011 and 11 percent from March 2010.

Production index: The March index, at 208, increased 1.5 percent from last month and 13 percent from last year. Higher prices in February for diesel, complete feeds, gasoline, and feeder cattle more than offset lower prices for feed grains, herbicides, insecticides, and fungicides/other.

Feed: The March index, at 228, increased 1.8 percent from February and 30 percent from last March. Since February, higher prices for complete feeds, hay & forages, supplements, and concentrates more than offset lower prices for feed grains.

Livestock and poultry: The March index, at 157, increased 1.3 percent from last month and 20 percent from last year. Since February, prices are higher for feeder cattle and feeder pigs. The March feeder cattle price, at \$132.10 per cwt, is up \$3.00 from the February price. March feeder pigs averaged \$203.00 per cwt, up \$1.00 from February.

Fertilizer: The March index, at 292, is up 2.8 percent from February and is 23 percent above March a year ago. Since February, prices are higher for mixed fertilizer, potash & phosphate, and nitrogen.

Chemicals: The March index, at 140, decreased 1.4 percent from February and 2.8 percent from last March. Compared with last month, prices are lower for herbicides, insecticides, and fungicides/other.

Fuels: The March index, at 362, is up 7.7 percent from a month earlier and is 31 percent above March 2010. Compared with last month, prices are higher for diesel, gasoline, and LP gas.

Machinery: The March index, at 234, increased 0.4 percent from February and is 3.5 percent above last March. Compared with last month, prices are higher for other machinery but lower for self-propelled machinery.

Consumer price index: The February 2011 Consumer Price Index, as issued by the Bureau of Labor Statistics, for all urban consumers (CPIU) increased 0.5 percent before seasonal adjustment to a level of 221.309 (1982-1984=100). The January index is 220.223. For the 12-month period ending in February, the overall index increased 2.1 percent.

Prices Paid Indexes and Related Parity Ratios – United States: March 2011 with Comparisons

[Revised historical price indexes for months not shown are available at www.nass.usda.gov]

Indexes and ratios	1910-1914 Base			1990-1992 Base		
	March 2010	February 2011	March 2011	March 2010	February 2011	March 2011
	(percent)	(percent)	(percent)	(percent)	(percent)	(percent)
Prices paid by farmers for commodities, services, interest, taxes, and wage rates (PPITW)	2393	2618	2648	180	197	199
Production	1782	1991	2021	184	205	208
Feed	854	1095	1113	175	224	228
Livestock & poultry	1672	1976	2012	131	155	157
Seeds	2815	2815	2815	284	284	284
Fertilizer	871	1042	1069	238	284	292
Chemicals	887	878	866	144	142	140
Fuels	2133	2590	2793	276	336	362
Supplies & repairs	1125	1150	1151	159	162	162
Autos & trucks	3003	3053	3081	113	115	116
Machinery	5678	5835	5861	226	233	234
Building materials	2236	2286	2299	165	168	169
Services & rent	2033	2116	2116	(NA)	(NA)	(NA)
Services	(NA)	(NA)	(NA)	160	165	165
Rent	(NA)	(NA)	(NA)	191	203	203
Interest ¹	3389	3646	3646	135	145	145
Taxes ²	5549	6032	6032	207	225	225
Wage rates	7159	7295	7295	191	195	195
Production, interest, taxes, and wage rates (PITW)	2460	2721	2755	183	203	205
Family living-CPI ³	2067	2102	2112	161	164	165
Ratio (received/paid)	(NA)	(NA)	(NA)	78	86	87
Parity ratio ⁴	37	41	42	(NA)	(NA)	(NA)
Parity ratio adjusted ⁵	39	43	43	(NA)	(NA)	(NA)
PPITW adjusted for productivity ⁶	1405	1459	1465	(NA)	(NA)	(NA)
Crop sector (PPITW)	(NA)	(NA)	(NA)	190	203	205
Livestock sector (PPITW)	(NA)	(NA)	(NA)	170	190	192
Farm sector (production)	(NA)	(NA)	(NA)	177	210	213
Non-farm sector (production)	(NA)	(NA)	(NA)	187	202	206

(NA) Not available.

¹ Interest per acre on farm real estate debt and interest rate on farm non-real estate debt.

² Farm real estate taxes payable per acre.

³ Bureau of Labor Statistics, Consumer Price Index for all urban consumers (CPI-U), for the previous month converted by the USDA.

⁴ Ratio of index of prices received to PPITW (1910-1914=100).

⁵ Based on estimated cash receipts, from marketings and government payments, the preliminary adjustment factor is 1.044 for 2011 and the revised factor is 1.041 for 2010.

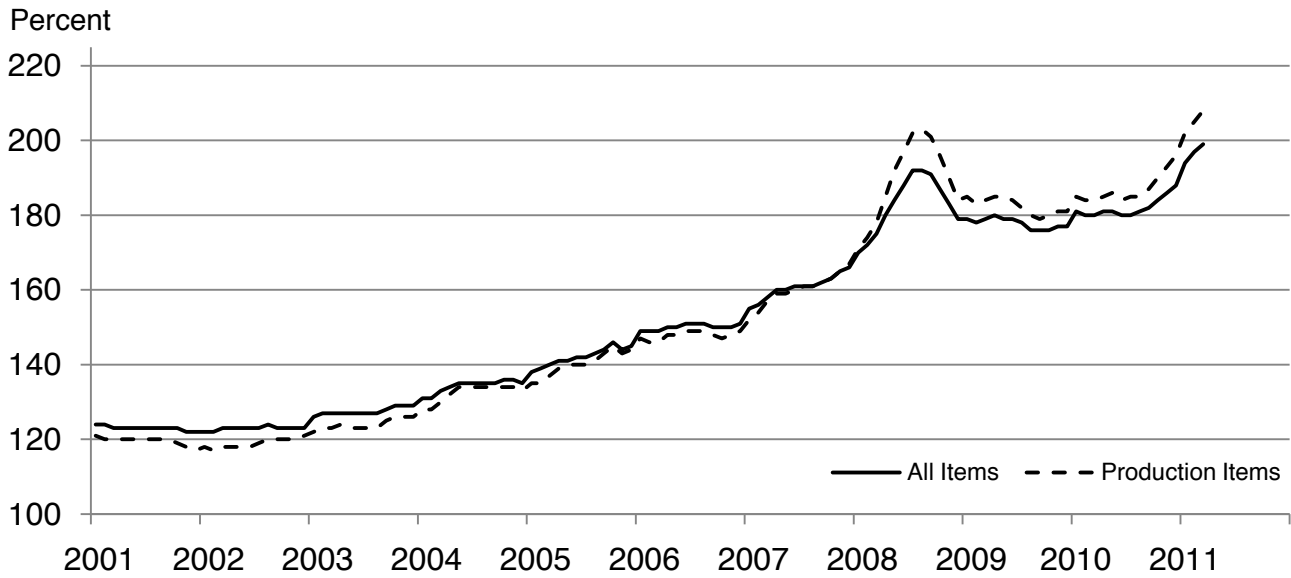
⁶ PPITW is adjusted based on productivity trend for the prior 15 years.

Prices Paid Indexes and Annual Weights for Input Components and Sub-Components – United States: March 2011 with Comparisons

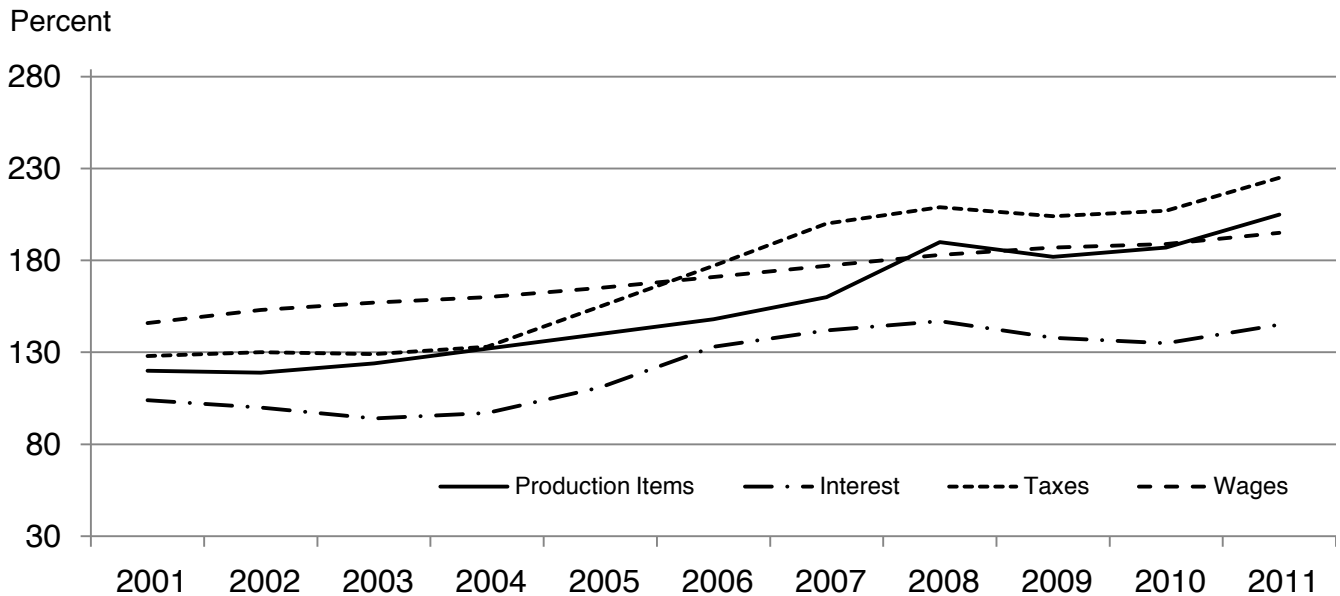
[Revised historical price indexes for months not shown are available at www.nass.usda.gov. Relative weights are a five year moving average]

	Relative weights		Indexes (1990-1992=100)		
	2010 (percent)	2011 (percent)	March 2010 (percent)	February 2011 (percent)	March 2011 (percent)
Production items	70.2	70.6	184	205	208
Feed	11.9	12.2	175	224	228
Feed grains	1.7	1.7	153	244	236
Complete feeds	5.8	6.0	183	225	231
Hay & forages	1.5	1.5	142	152	161
Concentrates	1.9	1.9	183	224	226
Supplements	1.0	1.0	202	295	300
Livestock & poultry	8.6	8.5	131	155	157
Feeder cattle	6.7	6.6	125	153	156
Feeder pigs	0.7	0.7	189	220	221
Milk cow replacements	0.7	0.7	119	115	115
Poultry	0.5	0.5	148	148	148
Seeds	3.9	4.1	284	284	284
Field crops	3.6	3.7	299	299	299
Grasses & legumes	0.4	0.4	139	139	139
Fertilizer	5.2	5.5	238	284	292
Mixed fertilizer	2.3	2.4	225	254	261
Nitrogen	2.2	2.3	229	284	288
Potash & phosphate	0.7	0.8	301	379	399
Chemicals	3.2	3.3	144	142	140
Herbicides	2.0	2.1	132	131	129
Insecticides	0.7	0.7	162	160	158
Fungicides & other	0.5	0.5	165	163	161
Fuels	3.9	4.0	276	336	362
Diesel	2.5	2.5	290	356	387
Gasoline	0.9	0.8	242	280	309
LP gas	0.5	0.7	263	329	335
Supplies & repairs	4.6	4.6	159	162	162
Supplies	1.5	1.5	153	157	157
Repairs	3.0	3.0	161	164	165
Autos & trucks	1.5	1.4	113	115	116
Autos	0.2	0.2	111	112	113
Trucks	1.3	1.2	113	115	116
Machinery	4.5	4.3	226	233	234
Tractors	1.0	0.9	189	191	191
Self-propelled	1.8	1.7	234	240	240
Other machinery	1.7	1.6	240	249	252
Building materials	4.5	4.4	165	168	169
Services	12.1	12.1	160	165	165
Custom rates	1.2	1.2	145	145	145
Other services	10.8	10.9	162	167	167
Rent	6.3	6.3	191	203	203
Cash	3.4	3.4	243	258	258
Share	2.9	2.9	130	138	138
Interest	3.6	3.5	135	145	145
Taxes	3.0	3.1	207	225	225
Wage rates	7.5	7.4	191	195	195
Family living-CPI	15.7	15.4	161	164	165

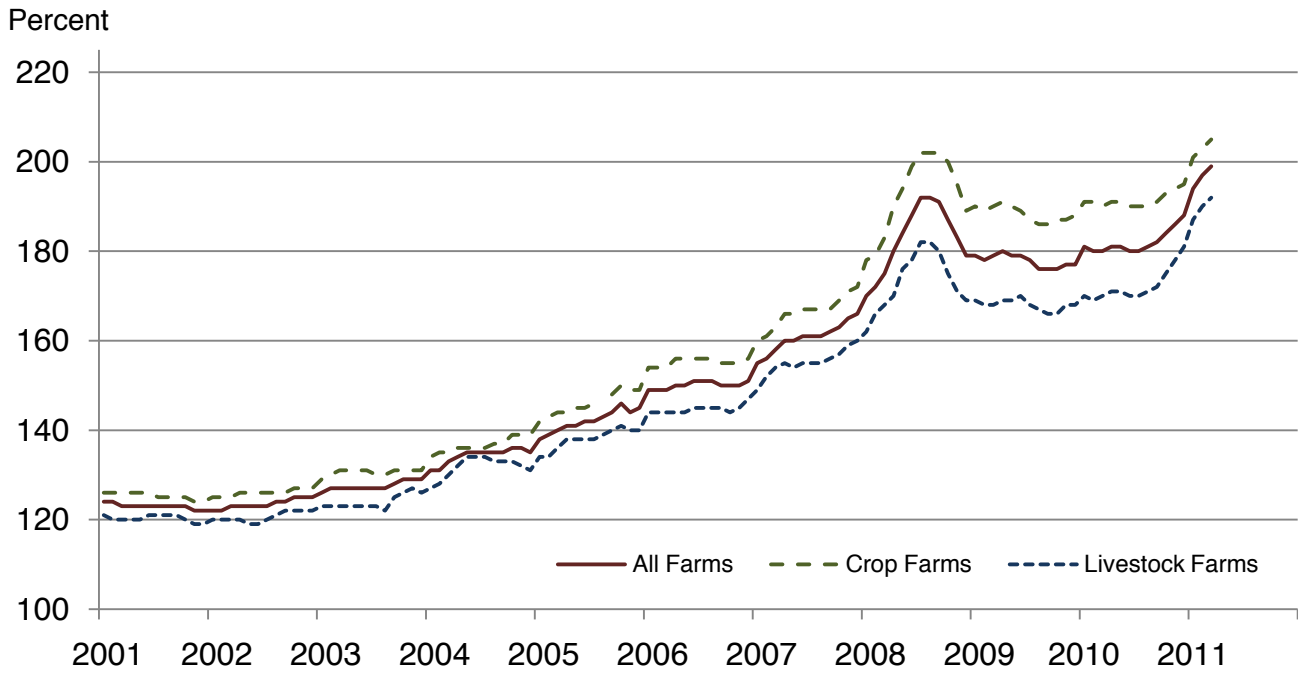
Paid Indexes by Month, All Items and Production Items – United States: 1990-1992=100



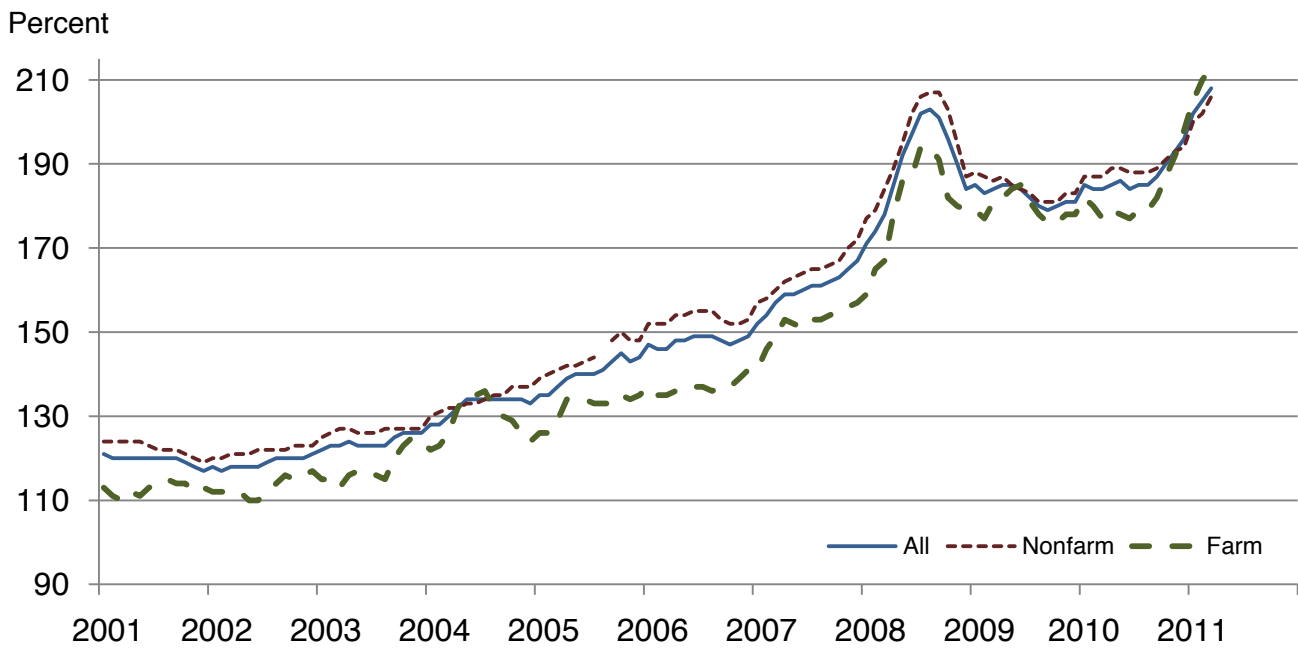
Paid Indexes, Annual Averages, Production Items, Interest, Taxes, and Wages – United States: 1990-1992=100



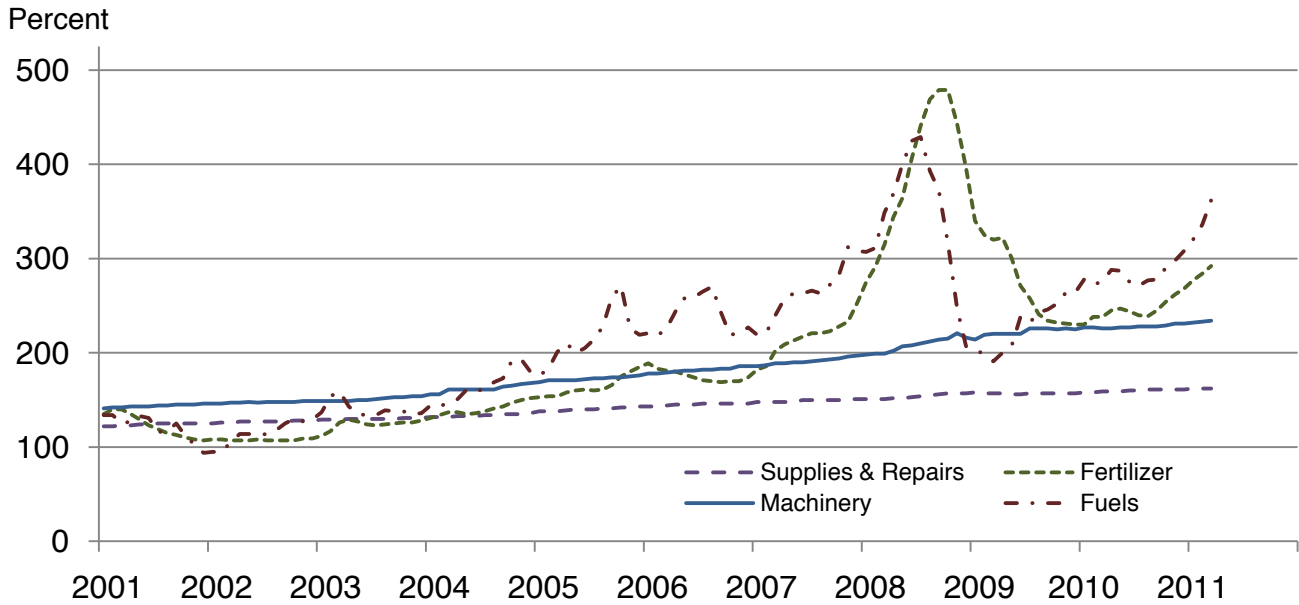
Paid Indexes by Farm Type and Month, All Items – United States: 1990-1992=100



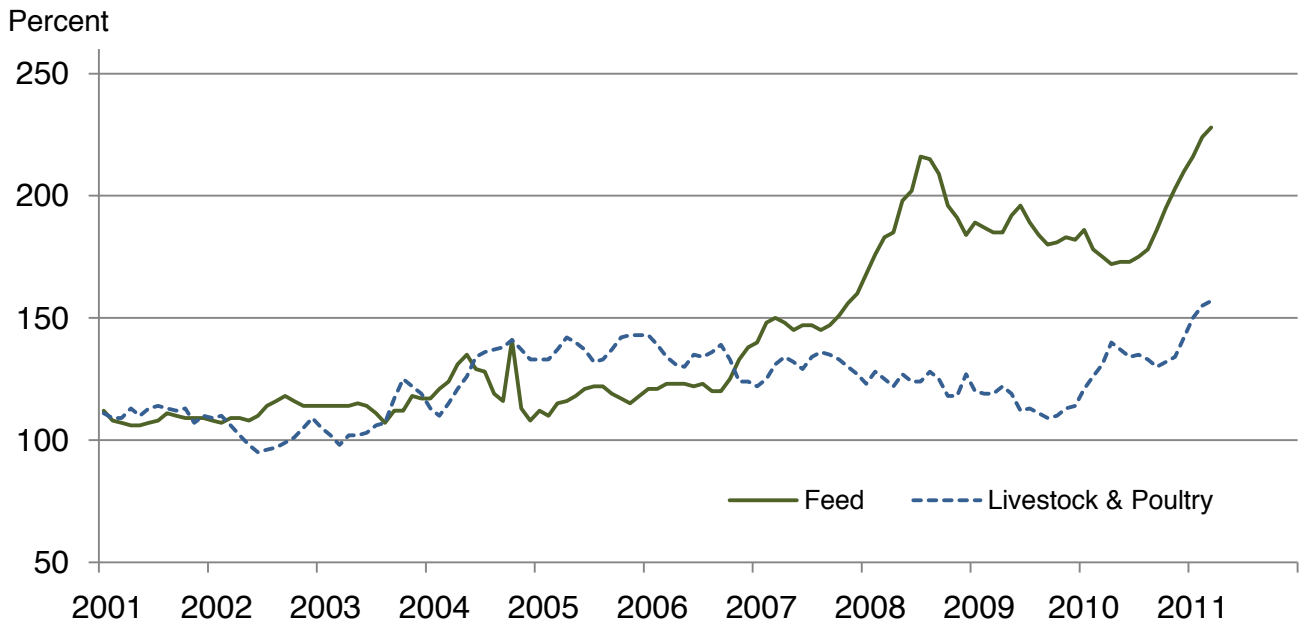
Paid Indexes by Origin and Month, All Production Items – United States: 1990-1992=100



Paid Indexes by Non-Farm Sector and Month, Supplies & Repairs, Fertilizer, Machinery, and Fuel – United States: 1990-1992=100



Paid Indexes by Month, Feed and Livestock & Poultry – United States: 1990-1992=100



Feed Price Ratios – United States: March 2011 with Comparisons

Feed price ratio ¹	March 2010	February 2011	Preliminary March 2011
Broiler-feed: pounds of broiler grower feed equal in value to 1 pound of broiler, live weight ²	4.8	3.0	3.5
Market egg feed: pounds of laying feed equal in value to 1 dozen eggs ³	12.2	6.0	5.3
Hog-corn: bushels of corn equal in value to 100 pounds of hog, live weight	14.7	10.9	11.5
Milk-feed: pounds of 16% mixed dairy feed equal in value to 1 pound of whole milk ⁴	2.18	2.02	2.18
Steer & heifer-corn: bushels of corn equal in value to 100 pounds of steer & heifers, live weight	27.0	19.7	21.2
Turkey-feed: pounds of turkey grower equal in value to 1 pound of turkey, live weight ⁵	5.6	4.2	4.5

¹ Effective January 1995, prices of commercial prepared feeds are based on current United States prices received for corn, soybeans, alfalfa hay, and all wheat.

² The price of commercial prepared broiler feed is based on current United States prices received for corn and soybeans. The modeled feed uses 58 percent corn and 42 percent soybeans.

³ The price of commercial prepared layer feed is based on current United States prices received for corn and soybeans. The modeled feed uses 75 percent corn and 25 percent soybeans.

⁴ The price of commercial prepared dairy feed is based on current United States prices received for corn, soybeans, and alfalfa hay. The modeled feed uses 51 percent corn, 41 percent alfalfa hay, and 8 percent soybeans.

⁵ The price of commercial prepared turkey feed is based on current United States prices received for corn, soybeans, and wheat. The modeled feed uses 51 percent corn, 28 percent soybeans, and 21 percent wheat.

Prices Received Used to Calculate Feed Price Ratios – United States: March 2011 with Comparisons

[Price data source for livestock and poultry commodities is United States Department of Agriculture's Agricultural Marketing Service]

Item	March 2010	February 2011	Preliminary March 2011
	(dollars)	(dollars)	(dollars)
Broilers, live pound	0.490	0.440	0.490
Eggs, market dozen	1.060	0.776	0.652
Hogs, allcwt	52.10	61.60	62.70
Milk, allcwt	14.80	19.10	20.40
Steers and heiferscwt	95.70	111.00	116.00
Turkeys, live pound	0.522	0.578	0.599
Corn bushel	3.55	5.64	5.46
Hay, alfalfa ton	113.00	127.00	136.00
Soybeans bushel	9.39	12.70	12.10
Wheat, all bushel	4.70	7.43	7.63

Prices Paid for Feeder Livestock – United States: March 2011 with Comparisons

[Price data source is United States Department of Agriculture's Agricultural Marketing Service]

Item	March 2010	February 2011	Preliminary March 2011
	(dollars)	(dollars)	(dollars)
Feeder cattle & calvescwt	105.60	129.10	132.10
Feeder pigscwt	174.00	202.00	203.00

Reliability of Prices Paid Estimates

Definition: Prices paid by farmers represent the average costs of inputs purchased by farmers and ranchers to produce agricultural commodities. Conceptually, the average price when multiplied by quantity purchased should equal total producer expenditures for the item.

Survey procedures: The prices paid data are obtained from establishments that sell goods and services to farmers and ranchers. Annually, about 8,500 firms are randomly selected from lists by type of item sold with an average response rate in the range of 75-80 percent. Firms are asked to report the price for the specified item "most commonly bought by farmers" or that was the "volume seller". Approximately 135 items are surveyed each March to represent all production input items purchased. The survey reference period for most items is the five business days centered around the 15th of the month. Separate prices paid surveys are conducted for agricultural chemicals, fuels, feed, fertilizer, machinery, and seed.

Summary and estimation procedures: The annual March Prices Paid Survey is summarized as a nonprobability survey. Average prices reported are aggregated to the region and United States level using weights available from expenditure data and other administrative sources. Price recommendations are prepared by the State Field Offices and Headquarters for review by the Agricultural Statistics Board in Washington, D.C. Also, the change in price level for individual items surveyed are combined to the regional and United States levels, and are published as prices paid indexes referenced to a specific base period. Prices paid indexes for new autos and trucks, building materials, farm supplies, motor supplies, and marketing containers are updated based on price changes measured in selected Bureau of Labor Statistics (BLS) indexes.

Revisions: Any revisions are published in the monthly and in annual issues of Agricultural Prices. The basis for revision must be supported by additional data that directly affect the level of the estimate. More revisions are likely for March when separate prices paid surveys are conducted, in lieu of BLS indexes, by the USDA to measure price change.

Reliability: Current methods of summarization for the March data are not designed directly to calculate sampling errors. However, analytical measures approximate the United States relative sampling errors for major items around 10 percent. Any nonsampling errors are attributed to such things as the inability to obtain correct information, differences in interpreting questions or definitions, mistakes in coding or processing the data, etc. Efforts are made at each step in the survey process to minimize these nonsampling errors.

Program change: Effective January 1, 1995, the National Agricultural Statistics Service updated the weights and changed the construction of its prices paid and received by farmers indexes. A Federal Register Notice dated October 28, 1994 discussed these program modifications.

A 1990-1992 reference and base period replaced the 1977 reference and 1971-1973 base weight period. Five-year moving average weights replaced the current fixed 1971-1973 base period weights. The 1910-1914=100 price indexes, required by statute for computing parity prices, were linked forward based on the changes in the new 1990-1992=100 indexes. The new indexes were constructed by multiplying the ratios of the current prices to the base period prices by the moving average weights (adjusted for seasonal marketing patterns for the prices received indexes).

Information Contacts

Direct general questions to Kevin Barnes, Chief, Environmental, Economics and Demographics Branch at (202) 720-6146. Below are the commodity specialists to contact for additional information.

Crop Prices Received

Lance Honig, Chief, Crops Branch	(202) 720-2127
Jacqueline Moore, Head, Field Crops Section	(202) 720-2127
Suzanne Avilla – Peanuts, Rice.....	(202) 720-7688
Bryan Durham – Hay, Oats	(202) 690-3234
Steve Maliszewski – Cotton, Cotton Ginnings, Sorghum.....	(202) 720-5944
Anthony Prillaman – Corn, Proso Millet, Flaxseed	(202) 720-9526
Nick Schauer – Wheat, Rye	(202) 720-8068
Julie Schmidt – Crop Weather, Barley, Sugar Crops	(202) 720-7621
Travis Thorson – Soybeans, Sunflower, Other Oilseeds.....	(202) 720-7369
Jorge Garcia-Pratts, Head, Fruits, Vegetables and Special Crops Section.....	(202) 720-2127
Debbie Flippin – Fresh and Processing Vegetables, Onions, Strawberries.....	(202) 720-2157
Fred Granja – Apples, Apricots, Cherries, Plums, Prunes, Tobacco	(202) 720-4288
Dawn Keen – Floriculture, Maple Syrup, Nursery, Tree Nuts	(202) 720-4215
Chris Hawthorn – Citrus, Coffee, Grapes, Tropical Fruits.....	(202) 720-5412
Tierra Mobley – Berries, Cranberries, Potatoes, Sweet Potatoes	(202) 720-4285
Dan Norris – Austrian Winter Peas, Dry Edible Peas, Lentils, Mints, Mushrooms, Peaches, Pears, Wrinkled Seed Peas, Dry Beans	(202) 720-3250
Kim Ritchie – Hops.....	(360) 709-2400

Livestock Prices Received

Dan Kerestes, Chief, Livestock Branch	(202) 720-3570
Scott Hollis, Livestock Section	(202) 720-3570
Jason Hardegree - Cattle	(202) 720-3040
Mike Miller - Milk, Milk Cows	(202) 720-3278
Everett Olbert - Sheep, Lambs, Goats, Wool, Mohair.....	(202) 720-4751
Doug Bounds - Hogs.....	(202) 720-3106
Bruce Boess, Poultry and Specialty Commodities Section.....	(202) 720-3570
Doug Bounds - Turkeys	(202) 720-3106
Kim Linonis - Eggs.....	(202) 690-8632
Troy Marshall - Broilers, Honey	(202) 720-3244

Indexes, Prices Paid, and Parity Prices

Kevin Barnes, Chief, Environmental, Economics and Demographics Branch.....	(202) 720-6146
Kevin Hintzman, Economics Section.....	(202) 720-6146
Daryl Brinkman - Prices Received Indexes, Parity Prices	(202) 720-8844
Joe Samson - Grazing Fees	(202) 720-5446
Jennifer Sissom - Prices Paid Indexes, Prices Paid for Feed, Fertilizer, Agricultural Chemicals, Seeds, Farm Supplies and Repairs, Farm Machinery, Fuels, Feeder Livestock, Poultry Chicks, Feed Price Ratios, Autos & Trucks.....	(202) 690-3229

Access to NASS Reports

For your convenience, you may access NASS reports and products the following ways:

- All reports are available electronically, at no cost, on the NASS web site: <http://www.nass.usda.gov>
- Both national and state specific reports are available via a free e-mail subscription. To set-up this free subscription, visit <http://www.nass.usda.gov> and in the “Receive NASS Updates” box under “Receive reports by Email,” click on “National” or “State” to select the reports you would like to receive.
- Printed reports may be purchased from the National Technical Information Service (NTIS) by calling toll-free (800) 999-6779, or (703) 605-6220 if calling from outside the United States or Canada. Accepted methods of payment are Visa, MasterCard, check, or money order.

For more information on NASS surveys and reports, call the NASS Agricultural Statistics Hotline at (800) 727-9540, 7:30 a.m. to 4:00 p.m. ET, or e-mail: nass@nass.usda.gov.

The United States Department of Agriculture (USDA) prohibits discrimination in all its programs and activities on the basis of race, color, national origin, age, disability, and where applicable, sex, marital status, familial status, parental status, religion, sexual orientation, political beliefs, genetic information, reprisal, or because all or a part of an individual's income is derived from any public assistance program. (Not all prohibited bases apply to all programs.) Persons with disabilities who require alternative means for communication of program information (Braille, large print, audiotape, etc.) should contact USDA's TARGET Center at (202) 720-2600 (voice and TDD).

To file a complaint of discrimination, write to USDA, Assistant Secretary for Civil Rights, Office of the Assistant Secretary for Civil Rights, 1400 Independence Avenue, S.W., Stop 9410, Washington, DC 20250-9410, or call toll-free at (866) 632-9992 (English) or (800) 877-8339 (TDD) or (866) 377-8642 (English Federal-relay) or (800) 845-6136 (Spanish Federal-relay). USDA is an equal opportunity provider and employer.